



Monthly Statistical Report

November 2020

There were 896,198 individuals that received Medicaid in November 2020, an 8.33% increase from one year ago. The count of Medicaid recipients has increased by 6,312, or 0.71%, since last month.

The SNAP caseload in November 2020 was 247,734, an 11.03% increase from one year ago. The SNAP caseload has increased by 11,268 cases, or 4.77%, since last month.

The TANF caseload was 12,153 in November 2020 an increase of 16.58% from November 2019. The TANF caseload had 529 more cases compared to October 2020, an increase of 4.6%.

The caseload for General Assistance was 1,872 in November 2020, a decrease of 24.85% from one year ago and a decrease of 65 cases from last month.

Michelle Lujan Grisham, Governor
David Scrase, M.D., Secretary

Contents	Page
Summary	3-5
Medicaid	6-20
SNAP	21-41
Cash Assistance	42-56
Child Care Assistance	57-58
SNAP EA and P-EBT	59
Income Eligibility Guidelines	60-61

Regions are reported as follows:

Region 1		
Catron	San Juan	Valencia
Cibola	Sierra	
McKinley	Socorro	
Region 2		
Colfax	Mora	Santa Fe
De Baca	Quay	Taos
Guadalupe	Rio Arriba	Union
Harding	Sandoval	
Los Alamos	San Miguel	
Region 3		
Bernalillo	Torrance	
Region 4		
Chaves	Eddy	Lincoln
Curry	Lea	Roosevelt
Region 5		
Dona Ana	Hidalgo	Otero
Grant	Luna	

The Mission of the Human Services Department

To transform lives. Working with our partners, we design and deliver innovative, high quality health and human services that improve the security and promote independence for New Mexicans in their communities.

Angela Medrano, Deputy Secretary
Kari Armijo, Deputy Secretary

Prepared by Income Support Division
PO Box 2348
Santa Fe, NM 87504-2348
505-827-7250

Karmela Martinez, Director
Vida Tapia-Sanchez, Deputy Director

<http://www.hsd.state.nm.us/monthly-statistical-reports.aspx>

Program Summary for November 2020

SNAP, TANF and GA-Unrelated Child Program interviews are waived. Recertification periods are automatically extended for households with an Interim Review due in March and April for 6 months to the month recertification due. SNAP expenditures and cases include Emergency Allotments. SNAP Emergency Allotments and Pandemic EBT can be found at the end of this report.

	Percent Change				
	Nov-19	Oct-20	Nov-20	Nov-19- Nov-20	Oct-20- Nov-20
Expenditures¹	\$472,332,889	\$573,828,707	\$564,205,466	19.5%	-1.7%
Cases²	496,594	537,179	541,936	9.13%	0.89%
Expenditures/Case	\$951	\$1,068	\$1,041	9.5%	-2.5%
Recipients³	827,269	889,886	896,198	8.33%	0.71%
<i>Adults</i>	470,566	516,696	521,777	10.88%	0.98%
<i>Children</i>	356,703	373,190	374,421	4.97%	0.33%
Recipients /Case	1.67	1.66	1.65	-1.20%	-0.60%
Cases Processed⁴	10,398	8,032	8,860	-14.79%	10.31%
<i>Approvals⁴</i>	7,209	5,375	5,887	-18.34%	9.53%

	Percent Change				
	Nov-19	Oct-20	Nov-20	Nov-19- Nov-20	Oct-20- Nov-20
Expenditures⁵	\$53,042,361	\$86,620,866	\$89,706,329	69.12%	3.56%
Cases⁶	223,116	236,466	247,734	11.03%	4.77%
Expenditures/Case	\$238	\$366	\$362	52.10%	-1.09%
Recipients⁷	447,770	475,189	492,388	9.96%	3.62%
<i>Adults</i>	262,242	282,077	293,389	11.88%	4.01%
<i>Children</i>	185,528	193,112	198,999	7.26%	3.05%
Recipients /Case	2.01	2.01	1.99	-1.00%	-1.00%
Cases Processed⁴	16,861	19,354	17,976	6.61%	-7.12%
<i>Approvals⁴</i>	13,697	13,617	11,582	-15.44%	-14.94%

	Percent Change				
	Nov-19	Oct-20	Nov-20	Nov-19- Nov-20	Oct-20- Nov-20
Expenditures⁵	\$4,031,919	\$4,478,101	\$4,675,638	15.97%	4.41%
Cases⁶	13,091	13,668	14,161	8.17%	3.61%
Expenditures/Case	\$308	\$328	\$330	7.14%	0.61%
Recipients⁷	29,595	33,367	34,688	17.21%	3.96%
<i>Adults</i>	9,425	10,663	11,124	18.03%	4.32%
<i>Children</i>	20,170	22,704	23,564	16.83%	3.79%
Recipients /Case	2.26	2.44	2.45	8.41%	0.41%
Cases Processed⁴	4,150	4,835	4,866	17.25%	0.64%
<i>Approvals⁴</i>	1,352	1,199	945	-30.10%	-21.18%

	Percent Change				
	Nov-19	Oct-20	Nov-20	Nov-19- Nov-20	Oct-20- Nov-20
Expenditures⁸	\$3,124,120	\$4,268,440	\$2,869,640	-8.15%	-32.77%
Cases⁸	10,206	13,774	9,518	-6.74%	-30.90%
Expenditures/Case	\$306	\$310	\$301	-1.63%	-2.90%
Recipients⁸	22,853	30,192	21,821	-4.52%	-27.73%
<i>Adults</i>	13,273	17,666	12,510	-5.75%	-29.19%
<i>Children</i>	9,580	12,526	9,311	-2.81%	-25.67%
Recipients /Case	2.24	2.19	2.29	2.23%	4.57%
Cases Processed⁴	10,578	13,587	10,536	-0.40%	-22.46%
<i>Approvals⁴</i>	9,614	12,273	9,118	-5.16%	-25.71%

Cash Assistance Summary for November 2020

Temporary Assistance for Needy Families (TANF)

	Nov-19	Oct-20	Nov-20	Percent Change	
				Nov-19- Nov-20	Oct-20- Nov-20
Expenditures ⁵	\$3,333,880	\$3,970,290	\$4,164,499	24.91%	4.89%
Cases ⁶	10,425	11,624	12,153	16.58%	4.55%
Expenditures/Case	\$320	\$342	\$343	7.19%	0.29%
Recipients ⁷	26,733	31,107	32,451	21.39%	4.32%
<i>Adults</i>	6,965	8,758	9,268	33.07%	5.82%
<i>Children</i>	19,768	22,349	23,183	17.28%	3.73%
Approvals ⁴	1,115	1,104	866	-22.33%	-21.56%

Education Works

	Nov-19	Oct-20	Nov-20	Percent Change	
				Nov-19- Nov-20	Oct-20- Nov-20
Expenditures ⁵	\$43,593	\$32,738	\$40,238	-7.70%	22.91%
Cases ⁶	112	84	96	-14.29%	14.29%
Expenditures/Case	\$389	\$390	\$419	7.71%	7.44%
Recipients ⁷	316	249	278	-12.03%	11.65%
<i>Adults</i>	124	96	108	-12.90%	12.50%
<i>Children</i>	192	153	170	-11.46%	11.11%

State Supplement for Residential Care

	Nov-19	Oct-20	Nov-20	Percent Change	
				Nov-19- Nov-20	Oct-20- Nov-20
Expenditures ⁵	\$1,900	\$1,000	\$900	-52.63%	-10.00%
Cases ⁶	19	10	9	-52.63%	-10.00%
Expenditures/Case	\$100	\$100	\$100	0.00%	0.00%
Recipients ⁷	19	9	9	-52.63%	0.00%

General Assistance (GA)

	Nov-19	Oct-20	Nov-20	Percent Change	
				Nov-19- Nov-20	Oct-20- Nov-20
Expenditures ⁵	\$641,250	\$469,970	\$458,114	-28.56%	-2.52%
Cases ⁶	2,491	1,937	1,872	-24.85%	-3.36%
Expenditures/Case	\$257	\$243	\$245	-4.67%	0.82%
Recipients ⁷	2,483	1,987	1,920	-22.67%	-3.37%
<i>Adults</i>	2,273	1,785	1,709	-24.81%	-4.26%
<i>Children</i>	210	202	211	0.48%	4.46%
Approvals ⁴	201	49	49	-75.62%	0.00%

Refugee Cash (RCA)

	Nov-19	Oct-20	Nov-20	Percent Change	
				Nov-19- Nov-20	Oct-20- Nov-20
Expenditures ⁵	\$11,296	\$4,103	\$11,886	5.22%	189.69%
Cases ⁶	44	13	31	-29.55%	138.46%
Expenditures/Case	\$257	\$316	\$383	49.03%	21.20%
Recipients ⁷	44	15	30	-31.82%	100.00%

Expenditures YTD			
	SFY 2021	FFY 2021	CY 2020
Medicaid ¹	\$2,854,589,736	\$1,138,034,172	\$6,221,734,068
Supplemental Nutrition Assistance Program ⁹	\$432,409,391	\$176,327,195	\$867,806,576
Temporary Assistance for Needy Families ⁹	\$21,869,673	\$8,134,789	\$44,040,175
General Assistance ⁹	\$2,663,626	\$928,084	\$6,581,075
Education Work ⁹	\$183,010	\$72,976	\$524,791
LIHEAP ⁸	\$9,149,840	\$7,138,080	\$16,109,920

Average Caseload YTD			
	SFY 2021	FFY 2021	CY 2020
Medicaid ²	532,844	539,558	518,773
Supplemental Nutrition Assistance Program ⁶	242,042	242,100	238,259
Temporary Assistance for Needy Families ⁶	11,918	11,889	11,394
General Assistance ⁶	2,157	1,905	2,376
Education Work ⁶	87	90	105
LIHEAP ⁸	6,135	11,646	5,007

Demographic Profile- November 2020					
	SNAP	TANF	GA	Education Works	RCA
<i>Gender of Recipients</i> ¹⁰					
Male	223,021	13,631	1,066	93	20
Female	269,367	18,820	854	185	10
<i>Ethnicity</i> ¹⁰					
Hispanic	275,193	21,949	991	158	21
Non-Hispanic	217,195	10,502	929	120	9
<i>Race</i> ¹⁰					
Native American or Alaskan Native	83,790	2,942	206	35	0
Asian	4,245	250	12	1	0
African American or Black	13,473	1,459	73	16	8
Native Hawaiian or Pacific Islander	950	55	2	2	0
White	374,575	26,519	1,561	214	21
Unknown / Not Declared	3,515	224	17	3	0
More than One Race	11,840	1,002	49	7	1

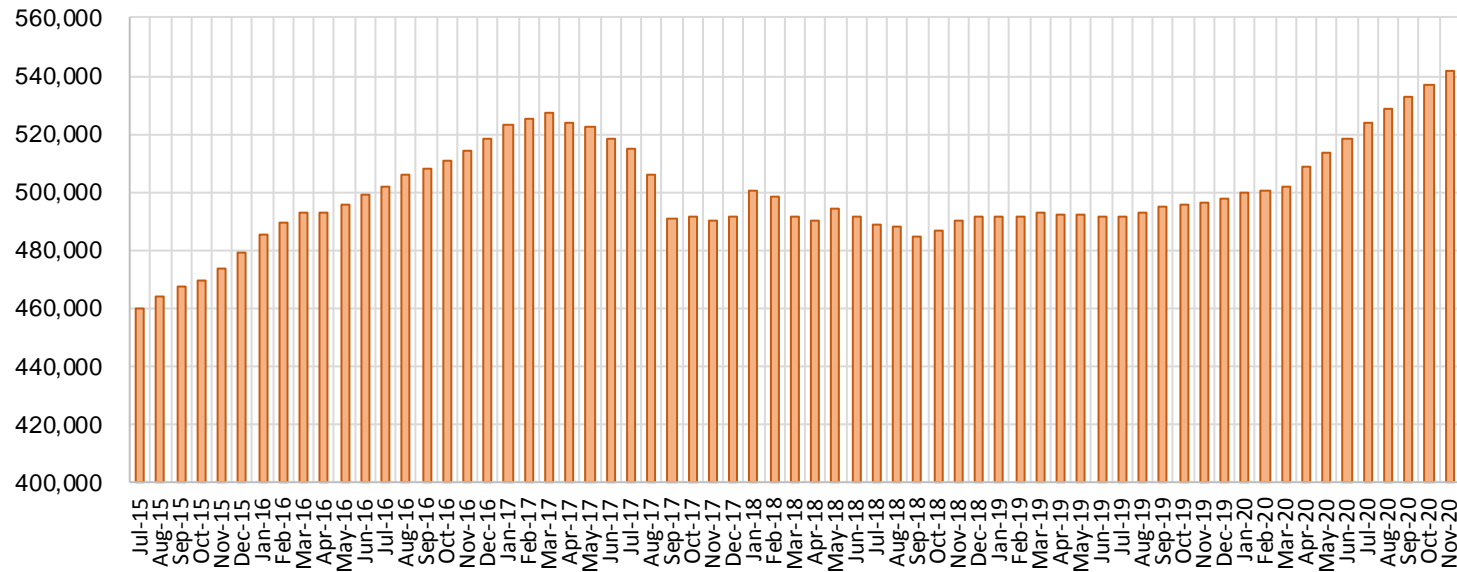
Medicaid Cases by Field Office²

Office				Percent Change	
	Nov-19	Oct-20	Nov-20	Nov-19- Nov-20	Oct-20- Nov-20
Chaves County ISD	16,115	22,758	23,498	45.81%	3.25%
Cibola County ISD	7,486	7,445	7,359	-1.70%	-1.16%
Colfax County ISD	3,612	3,803	3,821	5.79%	0.47%
Curry County ISD	14,952	16,138	16,080	7.54%	-0.36%
East Dona Ana County ISD	18,009	20,833	20,927	16.20%	0.45%
Eddy Artesia County ISD	3,873	4,228	4,207	8.62%	-0.50%
Eddy Carlsbad County ISD	7,628	8,437	8,481	11.18%	0.52%
Grant County ISD	7,841	8,495	8,544	8.97%	0.58%
Guadalupe County ISD	1,603	1,665	1,670	4.18%	0.30%
Hidalgo County ISD	50	32	33	-34.00%	3.13%
Lea County ISD	14,807	16,514	16,560	11.84%	0.28%
Lincoln County ISD	4,341	4,679	4,681	7.83%	0.04%
Luna County ISD	8,779	9,414	9,476	7.94%	0.66%
McKinley County ISD	22,395	23,098	23,027	2.82%	-0.31%
Northeast Bernalillo County ISD	43,281	48,131	48,688	12.49%	1.16%
Northwest Bernalillo County ISD	53,294	58,788	60,691	13.88%	3.24%
Otero County ISD	12,195	13,166	13,151	7.84%	-0.11%
Quay County ISD	2,524	3,455	3,593	42.35%	3.99%
Rio Arriba County ISD	13,403	14,459	14,512	8.27%	0.37%
Roosevelt County ISD	10	9	13	30.00%	44.44%
San Juan County ISD	30,536	41,573	42,947	40.64%	3.31%
San Miguel County ISD	9,157	9,890	9,959	8.76%	0.70%
Sandoval County ISD	23,377	21,227	20,864	-10.75%	-1.71%
Santa Fe County ISD	24,180	23,970	23,996	-0.76%	0.11%
Sierra County ISD	5,274	4,763	4,814	-8.72%	1.07%
Socorro County ISD	5,258	5,490	5,414	2.97%	-1.38%
South Dona Ana ISD	19,814	20,281	20,444	3.18%	0.80%
Southeast Bernalillo County ISD	24,910	18,906	18,545	-25.55%	-1.91%
Southwest Bernalillo County ISD	39,822	48,936	49,618	24.60%	1.39%
Taos County ISD	9,225	9,108	9,074	-1.64%	-0.37%
Torrance County ISD	7,996	7,882	7,646	-4.38%	-2.99%
Valencia North County ISD	18,574	16,677	16,476	-11.30%	-1.21%
Valencia South County ISD	90	147	180	100.00%	22.45%
West Dona Ana County ISD	22,182	22,781	22,946	3.44%	0.72%
Centralized Units	1	1	1	0.00%	0.00%
Statewide Total	496,594	537,179	541,936	9.13%	0.89%

Medicaid Cases by Region²

Region	Nov-19	Oct-20	Nov-20	Percent Change	
				Nov-19- Nov-20	Oct-20- Nov-20
Region 1 - NW	89,613	99,193	100,217	11.83%	1.03%
Region 2 - NE	87,081	87,577	87,489	0.47%	-0.10%
Region 3 - Central	169,303	182,643	185,188	9.38%	1.39%
Region 4 - SE	61,726	72,763	73,520	19.11%	1.04%
Region 5 - SW	88,870	95,002	95,521	7.48%	0.55%
Centralized Units	1	1	1	0.00%	0.00%
Statewide Total	496,594	537,179	541,936	9.1%	0.89%

Medicaid Caseload: SFY-16 to Current



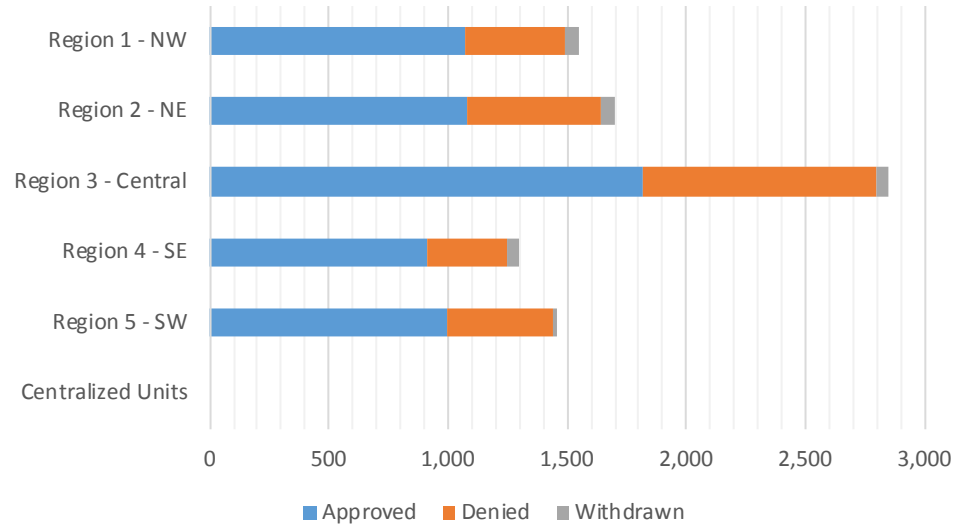
Medicaid Initial Applications by Field Office^{4,11}
November 2020

Office	Approved	Denied	Withdrawn	Total Cases Processed
Chaves County ISD	389	136	26	551
Cibola County ISD	49	22	3	74
Colfax County ISD	29	10	7	46
Curry County ISD	145	59	7	211
East Dona Ana County ISD	189	96	5	290
Eddy Artesia County ISD	44	25	2	71
Eddy Carlsbad County ISD	123	46	4	173
Grant County ISD	92	34	5	131
Guadalupe County ISD	11	11	0	22
Hidalgo County ISD	0	0	0	0
Lea County ISD	173	49	13	235
Lincoln County ISD	38	17	2	57
Luna County ISD	128	42	2	172
McKinley County ISD	128	26	31	185
Northeast Bernalillo County ISD	599	322	20	941
Northwest Bernalillo County ISD	476	236	3	715
Otero County ISD	136	70	3	209
Quay County ISD	59	20	0	79
Rio Arriba County ISD	122	57	0	179
Roosevelt County ISD	1	2	0	3
San Juan County ISD	743	259	21	1,023
San Miguel County ISD	440	221	17	678
Sandoval County ISD	109	51	12	172
Santa Fe County ISD	235	153	15	403
Sierra County ISD	34	22	1	57
Socorro County ISD	32	21	1	54
South Dona Ana ISD	206	98	3	307
Southeast Bernalillo County ISD	236	147	6	389
Southwest Bernalillo County ISD	470	233	20	723
Taos County ISD	79	35	6	120
Torrance County ISD	36	41	2	79
Valencia North County ISD	79	59	5	143
Valencia South County ISD	10	6	0	16
West Dona Ana County ISD	247	101	4	352
Centralized Units	0	0	0	0
Statewide Total	5,887	2,727	246	8,860

Medicaid Initial Applications by Region^{4,11}
November 2020

	Approved	Denied	Withdrawn	Total Cases Processed
Region				
Region 1 - NW	1,075	415	62	1,552
Region 2 - NE	1,084	558	57	1,699
Region 3 - Central	1,817	979	51	2,847
Region 4 - SE	913	334	54	1,301
Region 5 - SW	998	441	22	1,461
Centralized Units	0	0	0	0

Statewide Total	5,887	2,727	246	8,860
-----------------	-------	-------	-----	-------

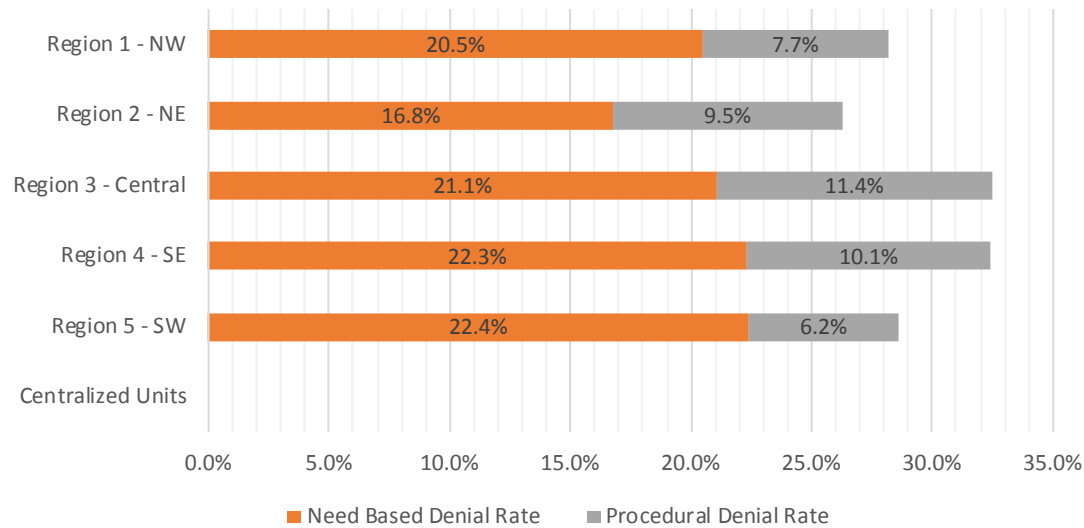


Medicaid EDG Initial Disposition Rates by Field Office^{4,11,19}
November 2020

Office	Approval Rate	Denial Rate	Need Based Denial Rate	Procedural Denial Rate
Chaves County ISD	71.2%	28.8%	20.9%	7.9%
Cibola County ISD	74.2%	25.8%	19.7%	6.1%
Colfax County ISD	67.4%	32.6%	23.3%	9.3%
Curry County ISD	65.0%	35.0%	21.1%	13.9%
East Dona Ana County ISD	66.5%	33.5%	26.5%	7.0%
Eddy Artesia County ISD	59.5%	40.5%	28.3%	12.2%
Eddy Carlsbad County ISD	73.2%	26.8%	13.1%	13.7%
Grant County ISD	71.3%	28.7%	22.5%	6.2%
Guadalupe County ISD	55.0%	45.0%	40.0%	5.0%
Hidalgo County ISD	0.0%	0.0%	0.0%	0.0%
Lea County ISD	65.0%	35.0%	27.9%	7.1%
Lincoln County ISD	52.8%	47.2%	30.5%	16.7%
Luna County ISD	69.2%	30.8%	25.4%	5.4%
McKinley County ISD	66.0%	34.0%	21.6%	12.4%
Northeast Bernalillo County ISD	70.6%	29.4%	18.1%	11.3%
Northwest Bernalillo County ISD	68.6%	31.4%	19.3%	12.1%
Otero County ISD	75.1%	24.9%	18.3%	6.6%
Quay County ISD	83.1%	16.9%	11.3%	5.6%
Rio Arriba County ISD	67.4%	32.6%	21.6%	11.0%
Roosevelt County ISD	100.0%	0.0%	0.0%	0.0%
San Juan County ISD	75.2%	24.8%	18.6%	6.2%
San Miguel County ISD	88.7%	11.3%	7.5%	3.8%
Sandoval County ISD	65.7%	34.3%	22.3%	12.0%
Santa Fe County ISD	62.7%	37.3%	23.2%	14.1%
Sierra County ISD	56.7%	43.3%	26.6%	16.7%
Socorro County ISD	71.1%	28.9%	22.2%	6.7%
South Dona Ana ISD	69.8%	30.2%	24.8%	5.4%
Southeast Bernalillo County ISD	61.0%	39.0%	28.9%	10.1%
Southwest Bernalillo County ISD	67.9%	32.1%	21.4%	10.7%
Taos County ISD	66.9%	33.1%	17.8%	15.3%
Torrance County ISD	51.4%	48.6%	30.0%	18.6%
Valencia North County ISD	59.0%	41.0%	31.3%	9.7%
Valencia South County ISD	100.0%	0.0%	0.0%	0.0%
West Dona Ana County ISD	76.5%	23.5%	17.0%	6.5%
Centralized Units	0.0%	0.0%	0.0%	0.0%
Statewide Total	70.0%	30.0%	20.7%	9.3%

Medicaid EDG Initial Disposition Rates by Region^{4,11,19}
November 2020

Region	Approval Rate	Denial Rate	Need Based Denial Rate	Procedural Denial Rate
Region 1 - NW	71.8%	28.2%	20.5%	7.7%
Region 2 - NE	73.7%	26.3%	16.8%	9.5%
Region 3 - Central	67.5%	32.5%	21.1%	11.4%
Region 4 - SE	67.6%	32.4%	22.3%	10.1%
Region 5 - SW	71.4%	28.6%	22.4%	6.2%
Centralized Units				
Statewide Total	70.0%	30.0%	20.7%	9.3%



Medicaid: Percentage of Initial EDG Approvals Processed Timely by Field Office^{13,19}

	Oct-20	Nov-20	Dec-20	Jan-21	Feb-21	Mar-21	Apr-21	May-21	Jun-21	Jul-21	Aug-21	Sep-21	Average
Cibola	100.0 %	100.0 %											100.0%
McKinley	99.0 %	98.8 %											98.9%
San Juan	98.8 %	99.1 %											99.0%
Sierra	97.7 %	97.8 %											97.8%
Socorro	100.0 %	100.0 %											100.0%
Valencia North	100.0 %	100.0 %											100.0%
Valencia South	100.0 %	100.0 %											100.0%
NW Region 1 Total	99.0 %	99.2 %											99.1%
Colfax	100.0 %	100.0 %											100.0%
Guadalupe	100.0 %	100.0 %											100.0%
Quay	100.0 %	100.0 %											100.0%
Rio Arriba	97.8 %	100.0 %											98.9%
San Miguel	100.0 %	99.8 %											99.9%
Sandoval	99.4 %	99.4 %											99.4%
Santa Fe	99.3 %	99.0 %											99.2%
Taos	100.0 %	100.0 %											100.0%
NE Region 2 Total	99.4 %	99.7 %											99.5%
NE Bernalillo	99.0 %	98.7 %											98.9%
NW Bernalillo	99.8 %	99.4 %											99.6%
SE Bernalillo	98.7 %	93.5 %											96.1%
SW Bernalillo	97.7 %	98.7 %											98.2%
Torrance	100.0 %	100.0 %											100.0%
Cen. Region 3 Total	98.9 %	98.4 %											98.6%
Chaves	99.5 %	98.4 %											98.9%
Curry	99.1 %	99.0 %											99.1%
Eddy Artesia	100.0 %	100.0 %											100.0%
Eddy Carlsbad	98.8 %	100.0 %											99.4%
Lea	99.1 %	99.0 %											99.0%
Lincoln	98.6 %	100.0 %											99.3%
Roosevelt	100.0 %	100.0 %											100.0%
SE Region 4 Total	99.2 %	99.0 %											99.1%
East Dona Ana	98.6 %	99.3 %											98.9%
Grant	99.2 %	99.2 %											99.2%
Luna	100.0 %	99.1 %											99.6%
Otero	100.0 %	99.5 %											99.8%
South Dona Ana	99.6 %	97.4 %											98.5%
West Dona Ana	98.5 %	99.3 %											98.9%
SW Region 5 Total	99.2 %	98.9 %											99.0%
STATE TOTAL	99.1 %	98.9 %											99.0%

Medicaid: Percentage of Initial EDG Denials Processed Timely by Field Office^{13,19}

	Oct-20	Nov-20	Dec-20	Jan-21	Feb-21	Mar-21	Apr-21	May-21	Jun-21	Jul-21	Aug-21	Sep-21	Average
Cibola	100.0 %	97.7 %											98.9%
McKinley	95.7 %	89.6 %											92.6%
San Juan	96.9 %	94.6 %											95.8%
Sierra	100.0 %	93.9 %											97.0%
Socorro	90.0 %	90.6 %											90.3%
Valencia North	93.5 %	97.1 %											95.3%
Valencia South	100.0 %	100.0 %											100.0%
NW Region 1 Total	96.5 %	94.4 %											95.4%
Colfax	100.0 %	100.0 %											100.0%
Guadalupe	100.0 %	100.0 %											100.0%
Quay	100.0 %	96.7 %											98.3%
Rio Arriba	97.1 %	94.9 %											96.0%
San Miguel	100.0 %	100.0 %											100.0%
Sandoval	97.5 %	95.2 %											96.4%
Santa Fe	90.3 %	92.1 %											91.2%
Taos	100.0 %	98.1 %											99.1%
NE Region 2 Total	95.9 %	96.6 %											96.2%
NE Bernalillo	92.1 %	95.2 %											93.6%
NW Bernalillo	94.4 %	94.3 %											94.4%
SE Bernalillo	96.4 %	98.4 %											97.4%
SW Bernalillo	95.3 %	97.2 %											96.2%
Torrance	98.3 %	89.6 %											93.9%
Gen. Region 3 Total	94.4 %	95.6 %											95.0%
Chaves	97.3 %	98.3 %											97.8%
Curry	94.7 %	90.8 %											92.8%
Eddy Artesia	100.0 %	94.6 %											97.3%
Eddy Carlsbad	98.7 %	94.4 %											96.6%
Lea	92.2 %	97.7 %											95.0%
Lincoln	97.8 %	96.8 %											97.3%
Roosevelt		100.0 %											
SE Region 4 Total	96.1 %	96.2 %											96.1%
East Dona Ana	98.9 %	96.0 %											97.5%
Grant	100.0 %	95.7 %											97.9%
Luna	100.0 %	97.9 %											99.0%
Otero	94.9 %	96.3 %											95.6%
South Dona Ana	99.4 %	100.0 %											99.7%
West Dona Ana	91.6 %	90.8 %											91.2%
SW Region 5 Total	97.6 %	96.3 %											97.0%
STATE TOTAL	95.9 %	95.8 %											95.8%

Medicaid: Percentage of Initial EDG Approvals and Denials Combined Processed Timely by Field Office^{13,19}

	Oct-20	Nov-20	Dec-20	Jan-21	Feb-21	Mar-21	Apr-21	May-21	Jun-21	Jul-21	Aug-21	Sep-21	Average
Cibola	100.0 %	99.2 %											99.6%
McKinley	97.7 %	95.4 %											96.6%
San Juan	98.3 %	97.8 %											98.1%
Sierra	98.9 %	96.2 %											97.6%
Socorro	96.6 %	96.3 %											96.4%
Valencia North	97.4 %	98.7 %											98.0%
Valencia South	100.0 %	100.0 %											100.0%
NW Region 1 Total	98.2 %	97.6 %											97.9%
Colfax	100.0 %	100.0 %											100.0%
Guadalupe	100.0 %	100.0 %											100.0%
Quay	100.0 %	99.0 %											99.5%
Rio Arriba	97.5 %	98.3 %											97.9%
San Miguel	100.0 %	99.9 %											99.9%
Sandoval	98.8 %	97.8 %											98.3%
Santa Fe	96.1 %	96.0 %											96.0%
Taos	100.0 %	99.4 %											99.7%
NE Region 2 Total	98.2 %	98.5 %											98.4%
NE Bernalillo	96.6 %	97.4 %											97.0%
NW Bernalillo	98.0 %	97.6 %											97.8%
SE Bernalillo	97.7 %	95.5 %											96.6%
SW Bernalillo	96.9 %	98.2 %											97.5%
Torrance	99.3 %	94.4 %											96.8%
Gen. Region 3 Total	97.2 %	97.3 %											97.3%
Chaves	98.8 %	98.4 %											98.6%
Curry	97.6 %	96.4 %											97.0%
Eddy Artesia	100.0 %	98.2 %											99.1%
Eddy Carlsbad	98.8 %	98.4 %											98.6%
Lea	96.8 %	98.7 %											97.7%
Lincoln	98.3 %	98.8 %											98.5%
Roosevelt	100.0 %	100.0 %											100.0%
SE Region 4 Total	98.2 %	98.2 %											98.2%
East Dona Ana	98.7 %	98.0 %											98.4%
Grant	99.5 %	98.2 %											98.9%
Luna	100.0 %	98.8 %											99.4%
Otero	98.5 %	98.4 %											98.4%
South Dona Ana	99.6 %	98.3 %											99.0%
West Dona Ana	96.3 %	96.6 %											96.5%
SW Region 5 Total	98.7 %	98.0 %											98.3%
STATE TOTAL	98.0 %	97.8 %											97.9%

Medicaid Renewal Disposition Counts by Field Office^{4,11}
November 2020

Office	Approvals	Closures	Need Based Closures	Procedural Closures
Chaves County ISD	2,890	193	193	0
Cibola County ISD	752	41	40	1
Colfax County ISD	430	6	6	0
Curry County ISD	1,770	80	80	0
East Dona Ana County ISD	2,732	145	142	3
Eddy Artesia County ISD	457	27	26	1
Eddy Carlsbad County ISD	843	63	62	1
Grant County ISD	1,086	60	60	0
Guadalupe County ISD	196	7	7	0
Hidalgo County ISD	0	0	0	0
Lea County ISD	1,905	111	111	0
Lincoln County ISD	469	36	36	0
Luna County ISD	1,369	87	87	0
McKinley County ISD	2,444	135	135	0
Northeast Bernalillo County ISD	4,204	249	249	0
Northwest Bernalillo County ISD	3,750	207	207	0
Otero County ISD	1,602	105	105	0
Quay County ISD	386	29	29	0
Rio Arriba County ISD	1,621	76	76	0
Roosevelt County ISD	0	0	0	0
San Juan County ISD	5,747	408	406	2
San Miguel County ISD	1,011	66	66	0
Sandoval County ISD	1,942	98	97	1
Santa Fe County ISD	1,746	92	92	0
Sierra County ISD	444	17	17	0
Socorro County ISD	585	38	38	0
South Dona Ana ISD	2,872	145	145	0
Southeast Bernalillo County ISD	988	46	46	0
Southwest Bernalillo County ISD	5,852	419	418	1
Taos County ISD	755	37	37	0
Torrance County ISD	471	16	16	0
Valencia North County ISD	1,434	74	74	0
Valencia South County ISD	0	1	1	0
West Dona Ana County ISD	0	125	123	2
Centralized Units	0	0	0	0
Statewide Total	52,753	3,239	3,227	12

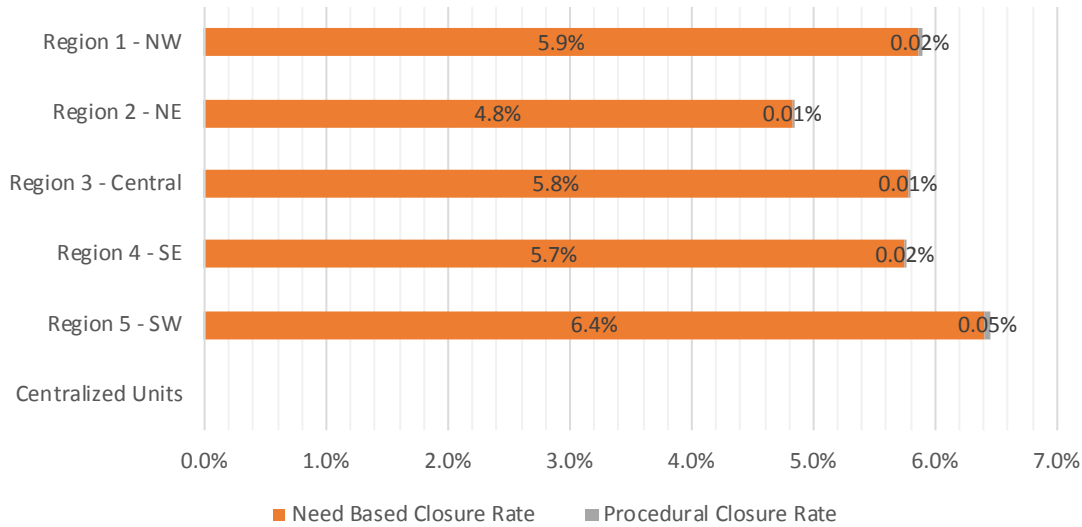
Determinations at Administrative, Annual, and Auto Renewals are included

Medicaid Renewal Disposition Rates by Field Office²⁰
November 2020

Office	Approval Rate	Closure Rate	Need Based Closure Rate	Procedural Closure Rate
Chaves County ISD	93.7%	6.3%	6.3%	0.00%
Cibola County ISD	94.8%	5.2%	5.0%	0.13%
Colfax County ISD	98.6%	1.4%	1.4%	0.00%
Curry County ISD	95.7%	4.3%	4.3%	0.00%
East Dona Ana County ISD	95.0%	5.0%	4.9%	0.10%
Eddy Artesia County ISD	94.4%	5.6%	5.4%	0.21%
Eddy Carlsbad County ISD	93.0%	7.0%	6.8%	0.11%
Grant County ISD	94.8%	5.2%	5.2%	0.00%
Guadalupe County ISD	96.6%	3.4%	3.4%	0.00%
Hidalgo County ISD	0.0%	0.0%	0.0%	0.00%
Lea County ISD	94.5%	5.5%	5.5%	0.00%
Lincoln County ISD	92.9%	7.1%	7.1%	0.00%
Luna County ISD	94.0%	6.0%	6.0%	0.00%
McKinley County ISD	94.8%	5.2%	5.2%	0.00%
Northeast Bernalillo County ISD	94.4%	5.6%	5.6%	0.00%
Northwest Bernalillo County ISD	94.8%	5.2%	5.2%	0.00%
Otero County ISD	93.8%	6.2%	6.2%	0.00%
Quay County ISD	93.0%	7.0%	7.0%	0.00%
Rio Arriba County ISD	95.5%	4.5%	4.5%	0.00%
Roosevelt County ISD	0.0%	0.0%	0.0%	0.00%
San Juan County ISD	93.4%	6.6%	6.6%	0.03%
San Miguel County ISD	93.9%	6.1%	6.1%	0.00%
Sandoval County ISD	95.2%	4.8%	4.8%	0.05%
Santa Fe County ISD	95.0%	5.0%	5.0%	0.00%
Sierra County ISD	96.3%	3.7%	3.7%	0.00%
Socorro County ISD	93.9%	6.1%	6.1%	0.00%
South Dona Ana ISD	95.2%	4.8%	4.8%	0.00%
Southeast Bernalillo County ISD	95.6%	4.4%	4.4%	0.00%
Southwest Bernalillo County ISD	93.3%	6.7%	6.7%	0.02%
Taos County ISD	95.3%	4.7%	4.7%	0.00%
Torrance County ISD	96.7%	3.3%	3.3%	0.00%
Valencia North County ISD	95.1%	4.9%	4.9%	0.00%
Valencia South County ISD	0.0%	100.0%	100.0%	0.00%
West Dona Ana County ISD	0.0%	100.0%	98.4%	1.60%
Centralized Units	0.0%	0.0%	0.0%	0.00%
Statewide Total	94.2%	5.8%	5.8%	0.02%

Medicaid Renewal Disposition Rates by Region²⁰
November 2020

Region	Approval Rate	Closure Rate	Need Based Closure Rate	Procedural Closure Rate
Region 1 - NW	94.1%	5.9%	5.9%	0.02%
Region 2 - NE	95.2%	4.8%	4.8%	0.01%
Region 3 - Central	94.2%	5.8%	5.8%	0.01%
Region 4 - SE	94.2%	5.8%	5.7%	0.02%
Region 5 - SW	93.5%	6.5%	6.4%	0.05%
Centralized Units	0.0%	0.0%	0.0%	0.00%
Statewide Total	94.2%	5.8%	5.8%	0.02%



Medicaid: Percentage of Approved Renewal EDGs Processed by Certification Date ¹¹

	Oct-20	Nov-20	Dec-20	Jan-21	Feb-21	Mar-21	Apr-21	May-21	Jun-21	Jul-21	Aug-21	Sep-21	Average
Cibola	100.0%	100.0%											100.0%
McKinley	100.0%	99.9%											100.0%
San Juan	100.0%	100.0%											100.0%
Sierra	100.0%	100.0%											100.0%
Socorro	100.0%	99.8%											99.9%
Valencia North	100.0%	99.9%											100.0%
Valencia South	100.0%												100.0%
NW Region 1 Total	100.0%	99.9%											100.0%
Colfax	100.0%	100.0%											100.0%
Guadalupe	100.0%	100.0%											100.0%
Quay	100.0%	100.0%											100.0%
Rio Arriba	100.0%	100.0%											100.0%
San Miguel	100.0%	100.0%											100.0%
Sandoval	100.0%	99.9%											100.0%
Santa Fe	100.0%	100.0%											100.0%
Taos	100.0%	99.9%											100.0%
NE Region 2 Total	100.0%	100.0%											100.0%
NE Bernalillo	100.0%	100.0%											100.0%
NW Bernalillo	100.0%	100.0%											100.0%
SE Bernalillo	100.0%	100.0%											100.0%
SW Bernalillo	100.0%	99.9%											100.0%
Torrance	100.0%	100.0%											100.0%
Gen. Region 3 Total	100.0%	100.0%											100.0%
Chaves	100.0%	99.9%											100.0%
Curry	100.0%	99.9%											100.0%
Eddy Artesia	100.0%	100.0%											100.0%
Eddy Carlsbad	100.0%	100.0%											100.0%
Lea	100.0%	100.0%											100.0%
Lincoln	100.0%	100.0%											100.0%
Roosevelt	100.0%												100.0%
SE Region 4 Total	100.0%	100.0%											100.0%
East Dona Ana	100.0%	100.0%											100.0%
Grant	99.9%	100.0%											100.0%
Luna	100.0%	100.0%											100.0%
Otero	100.0%	100.0%											100.0%
South Dona Ana	99.9%	100.0%											100.0%
West Dona Ana	100.0%												100.0%
SW Region 5 Total	100.0%	100.0%											100.0%
STATE TOTAL	100.0%	100.0%											100.0%

Administrative, Annual, and Auto Renewals are included

Medicaid: Percentage of Closures EDGs Processed by Certification End Date ¹¹													
	Oct-20	Nov-20	Dec-20	Jan-21	Feb-21	Mar-21	Apr-21	May-21	Jun-21	Jul-21	Aug-21	Sep-21	Average
Cibola	100.0%	97.6%											98.8%
McKinley	94.2%	97.1%											95.7%
San Juan	96.6%	96.7%											96.7%
Sierra	100.0%	100.0%											100.0%
Socorro	100.0%	97.4%											98.7%
Valencia North	91.3%	98.7%											95.0%
Valencia South		100.0%											
NW Region 1 Total	97.0%	98.2%											97.6%
Colfax	100.0%	75.0%											87.5%
Guadalupe	100.0%	100.0%											100.0%
Quay	96.8%	100.0%											98.4%
Rio Arriba	100.0%	100.0%											100.0%
San Miguel	97.3%	98.5%											97.9%
Sandoval	100.0%	97.0%											98.5%
Santa Fe	92.9%	96.8%											94.9%
Taos	92.3%	97.4%											94.9%
NE Region 2 Total	97.4%	95.6%											96.5%
NE Bernalillo	93.2%	94.7%											94.0%
NW Bernalillo	95.6%	95.8%											95.7%
SE Bernalillo	100.0%	97.9%											99.0%
SW Bernalillo	96.1%	98.1%											97.1%
Torrance	100.0%	100.0%											100.0%
Gen. Region 3 Total	97.0%	97.3%											97.1%
Chaves	94.5%	93.7%											94.1%
Curry	98.9%	97.6%											98.3%
Eddy Artesia	100.0%	100.0%											100.0%
Eddy Carlsbad	95.9%	100.0%											98.0%
Lea	95.3%	98.2%											96.8%
Lincoln	97.0%	87.8%											92.4%
Roosevelt													
SE Region 4 Total	96.9%	96.2%											96.6%
East Dona Ana	95.2%	98.6%											96.9%
Grant	96.2%	98.4%											97.3%
Luna	100.0%	98.9%											99.5%
Otero	93.9%	95.5%											94.7%
South Dona Ana	97.7%	95.4%											96.6%
West Dona Ana	97.2%	96.2%											96.7%
SW Region 5 Total	96.7%	97.2%											96.9%
STATE TOTAL	97.0%	96.8%											96.9%

Annual and Auto Renewals are included

Medicaid: Percentage of Approved and Terminated Renewal EDGs Combined Processed by Certification Date ¹¹

	Oct-20	Nov-20	Dec-20	Jan-21	Feb-21	Mar-21	Apr-21	May-21	Jun-21	Jul-21	Aug-21	Sep-21	Average
Cibola	100.0%	99.9%											100.0%
McKinley	99.8%	99.8%											99.8%
San Juan	99.9%	99.7%											99.8%
Sierra	100.0%	100.0%											100.0%
Socorro	100.0%	99.7%											99.9%
Valencia North	99.7%	99.9%											99.8%
Valencia South	100.0%	100.0%											100.0%
NW Region 1 Total	99.9%	99.9%											99.9%
Colfax	100.0%	99.5%											99.8%
Guadalupe	100.0%	100.0%											100.0%
Quay	99.8%	100.0%											99.9%
Rio Arriba	100.0%	100.0%											100.0%
San Miguel	99.9%	99.9%											99.9%
Sandoval	100.0%	99.8%											99.9%
Santa Fe	99.8%	99.8%											99.8%
Taos	99.7%	99.7%											99.7%
NE Region 2 Total	99.9%	99.8%											99.9%
NE Bernalillo	99.7%	99.7%											99.7%
NW Bernalillo	99.8%	99.8%											99.8%
SE Bernalillo	100.0%	99.9%											100.0%
SW Bernalillo	99.8%	99.8%											99.8%
Torrance	100.0%	100.0%											100.0%
Gen. Region 3 Total	99.9%	99.8%											99.9%
Chaves	99.8%	99.5%											99.7%
Curry	100.0%	99.8%											99.9%
Eddy Artesia	100.0%	100.0%											100.0%
Eddy Carlsbad	99.7%	100.0%											99.9%
Lea	99.7%	99.9%											99.8%
Lincoln	99.8%	99.0%											99.4%
Roosevelt	100.0%												100.0%
SE Region 4 Total	99.9%	99.7%											99.8%
East Dona Ana	99.8%	99.9%											99.9%
Grant	99.8%	99.9%											99.9%
Luna	100.0%	99.9%											100.0%
Otero	99.7%	99.7%											99.7%
South Dona Ana	99.8%	99.7%											99.8%
West Dona Ana	99.9%	96.2%											98.1%
SW Region 5 Total	99.8%	99.2%											99.5%
STATE TOTAL	99.9%	99.7%											99.8%

Administrative, Annual, and Auto Renewals are included

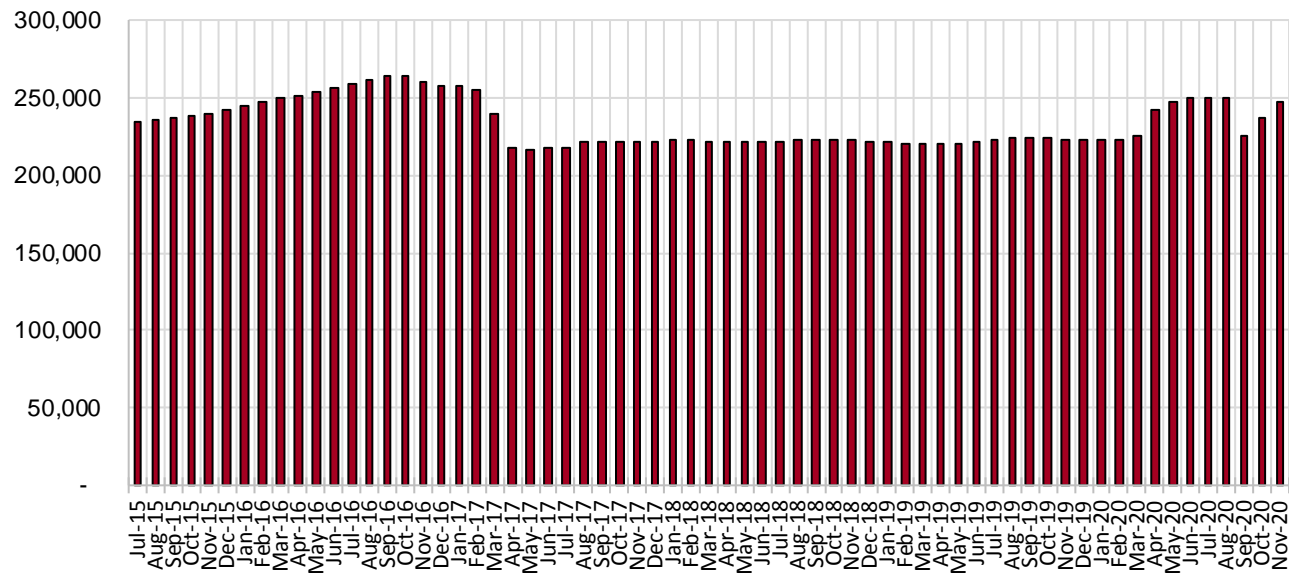
SNAP Cases by Field Office⁶

Office				Percent Change	
	Nov-19	Oct-20	Nov-20	Nov-19- Nov-20	Oct-20-Nov- 20
Chaves County ISD	7,084	11,771	12,645	78.50%	7.43%
Cibola County ISD	3,592	3,321	3,287	-8.49%	-1.02%
Colfax County ISD	1,628	1,696	1,738	6.76%	2.48%
Curry County ISD	7,338	7,771	7,938	8.18%	2.15%
East Dona Ana County ISD	7,980	9,493	9,732	21.95%	2.52%
Eddy Artesia County ISD	1,596	1,808	1,860	16.54%	2.88%
Eddy Carlsbad County ISD	2,980	3,507	3,624	21.61%	3.34%
Grant County ISD	3,958	4,129	4,312	8.94%	4.43%
Guadalupe County ISD	685	717	741	8.18%	3.35%
Hidalgo County ISD	9	8	7	-22.22%	-12.50%
Lea County ISD	5,790	7,057	7,227	24.82%	2.41%
Lincoln County ISD	1,838	1,989	2,064	12.30%	3.77%
Luna County ISD	4,336	4,565	4,774	10.10%	4.58%
McKinley County ISD	10,300	10,400	10,613	3.04%	2.05%
Northeast Bernalillo County ISD	20,496	22,323	23,454	14.43%	5.07%
Northwest Bernalillo County ISD	20,481	22,445	23,562	15.04%	4.98%
Otero County ISD	5,766	6,075	6,297	9.21%	3.65%
Quay County ISD	1,323	1,974	2,127	60.77%	7.75%
Rio Arriba County ISD	6,433	6,835	7,061	9.76%	3.31%
Roosevelt County ISD	1	2	2	100.00%	0.00%
San Juan County ISD	13,999	21,164	23,032	64.53%	8.83%
San Miguel County ISD	5,005	5,182	5,327	6.43%	2.80%
Sandoval County ISD	9,823	6,823	7,233	-26.37%	6.01%
Santa Fe County ISD	9,079	7,651	8,613	-5.13%	12.57%
Sierra County ISD	2,558	1,967	2,027	-20.76%	3.05%
Socorro County ISD	2,784	2,756	2,705	-2.84%	-1.85%
South Dona Ana ISD	8,470	8,313	8,716	2.90%	4.85%
Southeast Bernalillo County ISD	11,842	6,741	6,601	-44.26%	-2.08%
Southwest Bernalillo County ISD	19,096	23,289	25,986	36.08%	11.58%
Taos County ISD	4,190	3,637	3,733	-10.91%	2.64%
Torrance County ISD	3,581	3,331	3,123	-12.79%	-6.2%
Valencia North County ISD	8,317	6,422	6,379	-23.30%	-0.67%
Valencia South County ISD	0	35	60	N/A	71.43%
West Dona Ana County ISD	10,749	11,261	11,133	3.57%	-1.14%
Centralized Units	9	8	1	-88.89%	-87.50%
Statewide Total	223,116	236,466	247,734	11.03%	4.8%

SNAP Cases by Region⁶

Region	Nov-19	Oct-20	Nov-20	Percent Change	
				Nov-19- Nov-20	Oct-20- Nov-20
Region 1 - NW	41,550	46,065	48,103	15.8%	4.4%
Region 2 - NE	38,166	34,515	36,573	-4.2%	6.0%
Region 3 - Central	75,496	78,129	82,726	9.6%	5.9%
Region 4 - SE	26,627	33,905	35,360	32.8%	4.3%
Region 5 - SW	41,268	43,844	44,971	9.0%	2.6%
Centralized Units	9	8	1	-88.9%	-87.5%
Statewide Total	223,116	236,466	247,734	11.03%	4.8%

SNAP Caseload: SFY-16 to Current



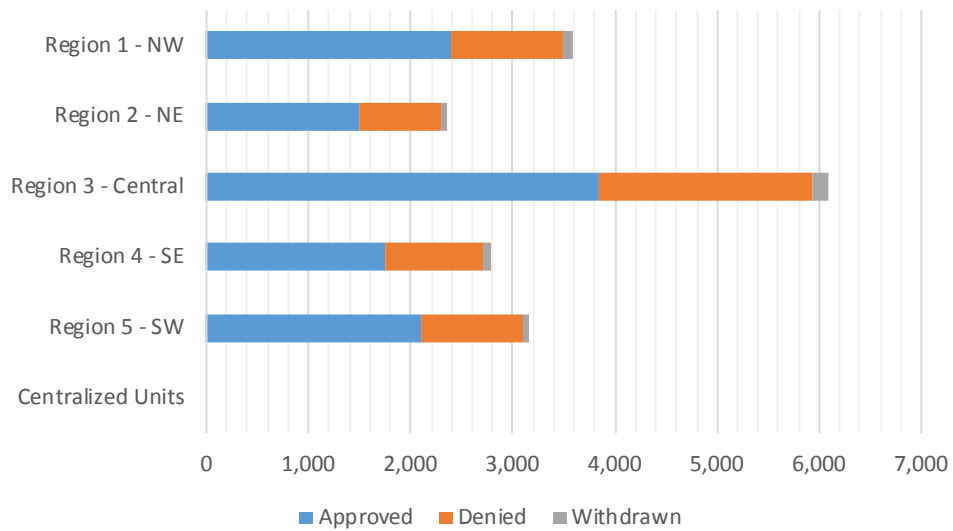
Note: Caseload higher due to COVID 19 emergency

SNAP Initial Applications by Field Office^{4,11}
November 2020

Office	Approved	Denied	Withdrawn	Total Cases Processed
Chaves County ISD	724	312	42	1,078
Cibola County ISD	85	66	2	153
Colfax County ISD	64	20	9	93
Curry County ISD	343	195	9	547
East Dona Ana County ISD	424	207	15	646
Eddy Artesia County ISD	85	59	1	145
Eddy Carlsbad County ISD	200	136	8	344
Grant County ISD	202	76	7	285
Guadalupe County ISD	34	18	1	53
Hidalgo County ISD	0	0	0	0
Lea County ISD	310	177	14	501
Lincoln County ISD	92	64	5	161
Luna County ISD	285	104	9	398
McKinley County ISD	330	147	10	487
Northeast Bernalillo County ISD	1,296	762	41	2,099
Northwest Bernalillo County ISD	1,033	590	41	1,664
Otero County ISD	317	146	6	469
Quay County ISD	129	30	1	160
Rio Arriba County ISD	295	157	9	461
Roosevelt County ISD	1	0	0	1
San Juan County ISD	1,689	670	80	2,439
San Miguel County ISD	224	155	18	397
Sandoval County ISD	175	141	8	324
Santa Fe County ISD	395	198	18	611
Sierra County ISD	65	45	0	110
Socorro County ISD	49	37	2	88
South Dona Ana ISD	358	155	12	525
Southeast Bernalillo County ISD	121	76	4	201
Southwest Bernalillo County ISD	1,359	640	67	2,066
Taos County ISD	174	81	2	257
Torrance County ISD	29	32	1	62
Valencia North County ISD	155	138	5	298
Valencia South County ISD	18	3	0	21
West Dona Ana County ISD	522	301	9	832
Centralized Units	0	0	0	0
Statewide Total	11,582	5,938	456	17,976

SNAP Initial Applications by Region^{4,11} November 2020

Region	Approved	Denied	Withdrawn	Total Cases Processed
Region 1 - NW	2,391	1,106	99	3,596
Region 2 - NE	1,490	800	66	2,356
Region 3 - Central	3,838	2,100	154	6,092
Region 4 - SE	1,755	943	79	2,777
Region 5 - SW	2,108	989	58	3,155
Centralized Units	0	0	0	0
Statewide Total	11,582	5,938	456	17,976

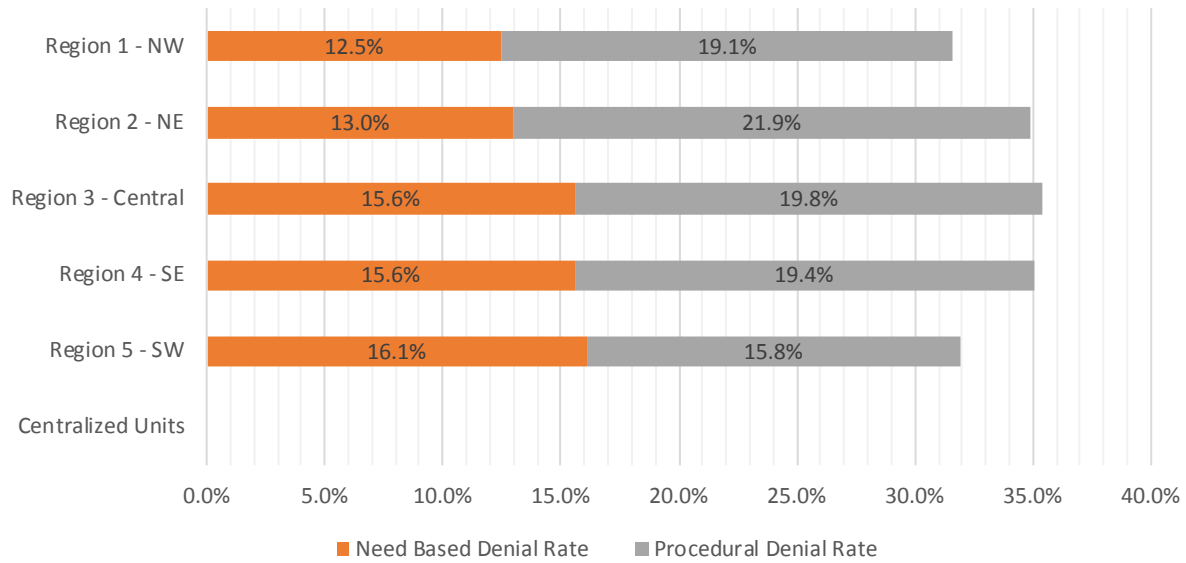


SNAP Initial Disposition Rates by Field Office^{4,11}
November 2020

Office	Approval Rate	Denial Rate	Need Based Denial Rate	Procedural Denial Rate
Chaves County ISD	69.9%	30.1%	15.4%	14.7%
Cibola County ISD	56.3%	43.7%	14.6%	29.1%
Colfax County ISD	76.2%	23.8%	8.3%	15.5%
Curry County ISD	63.8%	36.2%	16.1%	20.1%
East Dona Ana County ISD	67.2%	32.8%	15.5%	17.3%
Eddy Artesia County ISD	59.0%	41.0%	14.6%	26.4%
Eddy Carlsbad County ISD	59.5%	40.5%	15.5%	25.0%
Grant County ISD	72.7%	27.3%	14.4%	12.9%
Guadalupe County ISD	65.4%	34.6%	17.3%	17.3%
Hidalgo County ISD	0.0%	0.0%	0.0%	0.0%
Lea County ISD	63.7%	36.3%	16.8%	19.5%
Lincoln County ISD	59.0%	41.0%	10.9%	30.1%
Luna County ISD	73.3%	26.7%	13.8%	12.9%
McKinley County ISD	69.2%	30.8%	13.2%	17.6%
Northeast Bernalillo County ISD	63.0%	37.0%	17.3%	19.7%
Northwest Bernalillo County ISD	63.6%	36.4%	15.9%	20.5%
Otero County ISD	68.5%	31.5%	17.2%	14.3%
Quay County ISD	81.1%	18.9%	10.7%	8.2%
Rio Arriba County ISD	65.3%	34.7%	11.0%	23.7%
Roosevelt County ISD	100.0%	0.0%	0.0%	0.0%
San Juan County ISD	71.6%	28.4%	11.6%	16.8%
San Miguel County ISD	59.1%	40.9%	16.4%	24.5%
Sandoval County ISD	55.4%	44.6%	12.3%	32.3%
Santa Fe County ISD	66.6%	33.4%	13.8%	19.6%
Sierra County ISD	59.1%	40.9%	17.3%	23.6%
Socorro County ISD	57.0%	43.0%	9.3%	33.7%
South Dona Ana ISD	69.8%	30.2%	13.8%	16.4%
Southeast Bernalillo County ISD	61.4%	38.6%	22.9%	15.7%
Southwest Bernalillo County ISD	68.0%	32.0%	12.6%	19.4%
Taos County ISD	68.2%	31.8%	13.0%	18.8%
Torrance County ISD	47.5%	52.5%	19.7%	32.8%
Valencia North County ISD	52.9%	47.1%	16.4%	30.7%
Valencia South County ISD	85.7%	14.3%	14.3%	0.0%
West Dona Ana County ISD	63.4%	36.6%	19.0%	17.6%
Centralized Units	0.0%	0.0%	0.0%	0.0%
Statewide Total	66.1%	33.9%	14.7%	19.2%

SNAP Initial Disposition Rates by Region^{4,11}
November 2020

Region	Approval Rate	Denial Rate	Need Based Denial Rate	Procedural Denial Rate
Region 1 - NW	68.4%	31.6%	12.5%	19.1%
Region 2 - NE	65.1%	34.9%	13.0%	21.9%
Region 3 - Central	64.6%	35.4%	15.6%	19.8%
Region 4 - SE	65.0%	35.0%	15.6%	19.4%
Region 5 - SW	68.1%	31.9%	16.1%	15.8%
Centralized Units	0.0%	0.0%	0.0%	0.0%
Statewide Total	66.1%	33.9%	14.7%	19.2%



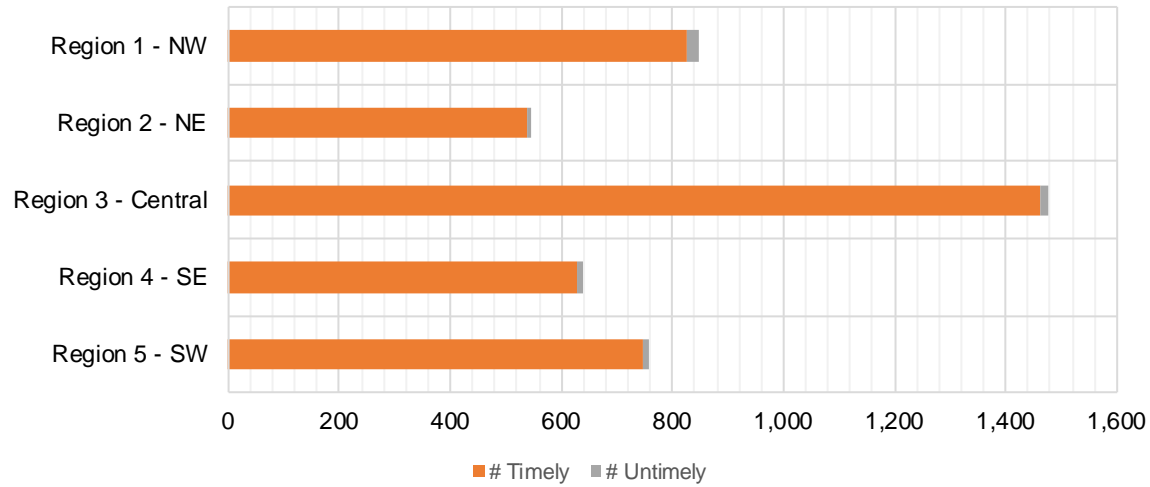
SNAP Expedite Timeliness by Field Office¹³
November 2020

Office Name	Total Expedited Approvals	# Timely	# Untimely	Percentage Timely
Chaves County ISD	274	272	2	99.3 %
Cibola County ISD	24	22	2	91.7 %
Colfax County ISD	14	14	0	100.0 %
Curry County ISD	117	115	2	98.3 %
East Dona Ana County ISD	143	141	2	98.6 %
Eddy Artesia County ISD	27	27	0	100.0 %
Eddy Carlsbad County ISD	74	72	2	97.3 %
Grant County ISD	69	66	3	95.7 %
Guadalupe County ISD	10	10	0	100.0 %
Lea County ISD	112	109	3	97.3 %
Lincoln County ISD	33	33	0	100.0 %
Luna County ISD	88	88	0	100.0 %
McKinley County ISD	122	115	7	94.3 %
Northeast Bernalillo County ISD	469	462	7	98.5 %
Northwest Bernalillo County ISD	433	431	2	99.5 %
Otero County ISD	134	133	1	99.3 %
Quay County ISD	44	44	0	100.0 %
Rio Arriba County ISD	125	123	2	98.4 %
Roosevelt County ISD	0	0	0	N/A
San Juan County ISD	626	619	7	98.9 %
San Miguel County ISD	84	84	0	100.0 %
Sandoval County ISD	54	53	1	98.1 %
Santa Fe County ISD	158	155	3	98.1 %
Sierra County ISD	17	14	3	82.4 %
Socorro County ISD	15	15	0	100.0 %
South Dona Ana ISD	126	125	1	99.2 %
Southeast Bernalillo County ISD	58	58	0	100.0 %
Southwest Bernalillo County ISD	510	504	6	98.8 %
Taos County ISD	55	54	1	98.2 %
Torrance County ISD	8	8	0	100.0 %
Valencia North County ISD	45	42	3	93.3 %
West Dona Ana County ISD	197	194	3	98.5 %
Statewide Total	4,265	4,202	63	98.5 %

SNAP Expedite Timeliness by Region¹³
November 2020

Region	Total Expedited Approvals	# Timely	# Untimely	Percentage Timely
Region 1 - NW	849	827	22	97.4%
Region 2 - NE	544	537	7	98.7%
Region 3 - Central	1,478	1,463	15	99.0%
Region 4 - SE	637	628	9	98.6%
Region 5 - SW	757	747	10	98.7%
Statewide Total	4,265	4,202	63	98.5%

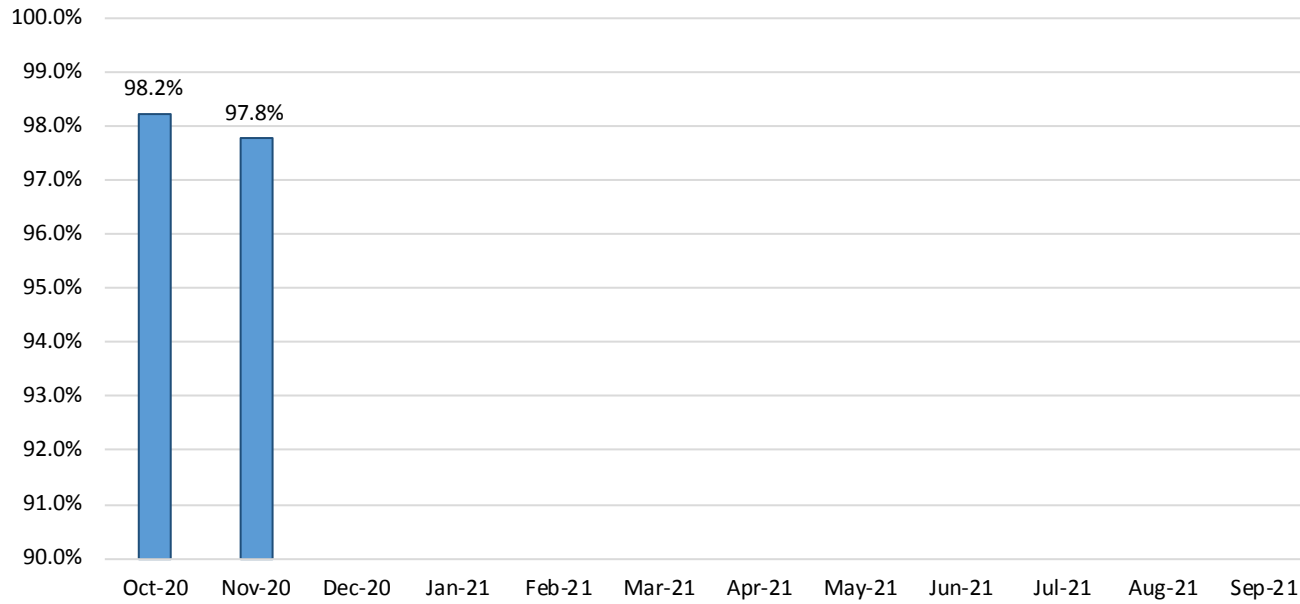
SNAP Expedite - Timeliness



SNAP: Percentage of Applications Processed Timely ¹³

	Oct-20	Nov-20	Dec-20	Jan-21	Feb-21	Mar-21	Apr-21	May-21	Jun-21	Jul-21	Aug-21	Sep-21	Average
APT	98.2%	97.8%											98.0%

SNAP Application Processing Timeliness (APT)



SNAP Non-Expedite: Percentage of Initial Applications Processed Timely by Field Office¹³

	Oct-20	Nov-20	Dec-20	Jan-21	Feb-21	Mar-21	Apr-21	May-21	Jun-21	Jul-21	Aug-21	Sep-21	Average
Cibola	98.6%	96.9%											97.8%
McKinley	97.7%	95.5%											96.6%
San Juan	98.4%	97.7%											98.1%
Sierra	97.8%	93.5%											95.7%
Socorro	97.7%	95.5%											96.6%
Valencia North	97.9%	100.0%											99.0%
Valencia South	100.0%	100.0%											
NW Region 1 Total	98.2%	97.0%											97.6%
Colfax	99.1%	100.0%											99.6%
Guadalupe	96.3%	100.0%											98.2%
Quay	99.1%	98.3%											98.7%
Rio Arriba	97.5%	97.4%											97.5%
San Miguel	97.8%	96.7%											97.3%
Sandoval	99.0%	97.5%											98.3%
Santa Fe	95.2%	97.8%											96.5%
Taos	98.2%	98.6%											98.4%
NE Region 2 Total	97.4%	97.8%											97.6%
NE Bernalillo	97.5%	96.2%											96.9%
NW Bernalillo	98.2%	97.9%											98.1%
SE Bernalillo	97.7%	96.6%											97.2%
SW Bernalillo	98.5%	97.5%											98.0%
Torrance	97.9%	96.6%											97.3%
Gen. Region 3 Total	98.0%	97.1%											97.6%
Chaves	98.5%	98.4%											98.5%
Curry	98.1%	97.1%											97.6%
Eddy Artesia	96.9%	98.4%											97.7%
Eddy Carlsbad	98.3%	97.8%											98.1%
Lea	98.1%	97.0%											97.6%
Lincoln	98.1%	100.0%											99.1%
Roosevelt	100.0%	100.0%											100.0%
SE Region 4 Total	98.2%	98.2%											98.2%
East Dona Ana	98.7%	98.6%											98.7%
Grant	99.2%	98.2%											98.7%
Luna	98.9%	97.2%											98.1%
Otero	99.5%	99.1%											99.3%
South Dona Ana	99.3%	98.0%											98.7%
West Dona Ana	99.1%	98.0%											98.6%
SW Region 5 Total	99.1%	98.2%											98.7%
STATE TOTAL	98.2%	97.5%											97.9%

SNAP Expedite: Percentage of Initial Applications Processed Timely by Field Office¹³

	Oct-20	Nov-20	Dec-20	Jan-21	Feb-21	Mar-21	Apr-21	May-21	Jun-21	Jul-21	Aug-21	Sep-21	Average
Cibola	100.0%	92.0%											96.0%
McKinley	96.2%	94.5%											95.4%
San Juan	97.7%	98.9%											98.3%
Sierra	100.0%	83.3%											91.7%
Socorro	96.9%	100.0%											98.5%
Valencia North	97.9%	93.6%											95.8%
Valencia South	100.0%												
NW Region 1 Total	97.7%	97.5%											97.6%
Colfax	100.0%	100.0%											100.0%
Guadalupe	100.0%	100.0%											100.0%
Quay	95.6%	100.0%											97.8%
Rio Arriba	98.8%	98.5%											98.7%
San Miguel	99.2%	100.0%											99.6%
Sandoval	96.4%	98.1%											97.3%
Santa Fe	96.0%	98.1%											97.1%
Taos	91.5%	98.2%											94.9%
NE Region 2 Total	97.2%	98.7%											98.0%
NE Bernalillo	98.3%	98.5%											98.4%
NW Bernalillo	98.3%	99.5%											98.9%
SE Bernalillo	100.0%	100.0%											100.0%
SW Bernalillo	99.7%	98.9%											99.3%
Torrance	100.0%	100.0%											100.0%
Gen. Region 3 Total	98.9%	99.0%											99.0%
Chaves	99.1%	99.3%											99.2%
Curry	96.6%	98.4%											97.5%
Eddy Artesia	94.9%	100.0%											97.5%
Eddy Carlsbad	98.1%	97.3%											97.7%
Lea	98.0%	97.4%											97.7%
Lincoln	100.0%	100.0%											100.0%
Roosevelt	100.0%	100.0%											100.0%
SE Region 4 Total	98.1%	98.6%											98.4%
East Dona Ana	98.3%	98.6%											98.5%
Grant	100.0%	95.7%											97.9%
Luna	100.0%	100.0%											100.0%
Otero	97.7%	99.3%											98.5%
South Dona Ana	99.3%	99.2%											99.3%
West Dona Ana	98.8%	98.5%											98.7%
SW Region 5 Total	98.8%	98.7%											98.8%
STATE TOTAL	98.3%	98.6%											98.5%

SNAP: Percentage of Denied Initial Applications Processed Within 30 Days by Field Office¹³

	Oct-20	Nov-20	Dec-20	Jan-21	Feb-21	Mar-21	Apr-21	May-21	Jun-21	Jul-21	Aug-21	Sep-21	Average
Cibola	100.0%	98.5%											99.3%
McKinley	95.8%	94.3%											95.1%
San Juan	98.1%	96.9%											97.5%
Sierra	97.3%	93.3%											95.3%
Socorro	97.4%	92.3%											94.9%
Valencia North	97.9%	93.7%											95.8%
Valencia South	100.0%	100.0%											100.0%
NW Region 1 Total	98.1%	95.6%											96.8%
Colfax	100.0%	100.0%											100.0%
Guadalupe	95.2%	100.0%											97.6%
Quay	96.6%	100.0%											98.3%
Rio Arriba	95.5%	95.2%											95.4%
San Miguel	99.2%	97.7%											98.5%
Sandoval	99.1%	98.0%											98.6%
Santa Fe	91.8%	97.2%											94.5%
Taos	96.7%	98.8%											97.8%
NE Region 2 Total	96.8%	98.4%											97.6%
NE Bernalillo	94.6%	95.0%											94.8%
NW Bernalillo	96.7%	97.8%											97.3%
SE Bernalillo	95.8%	93.8%											94.8%
SW Bernalillo	98.5%	97.6%											98.1%
Torrance	97.6%	97.0%											97.3%
Gen. Region 3 Total	96.6%	96.2%											96.4%
Chaves	96.8%	98.3%											97.6%
Curry	95.3%	95.6%											95.5%
Eddy Artesia	94.8%	98.3%											96.6%
Eddy Carlsbad	97.6%	95.8%											96.7%
Lea	97.4%	99.5%											98.5%
Lincoln	96.8%	95.7%											96.3%
Roosevelt	100.0%												100.0%
SE Region 4 Total	97.0%	97.2%											97.1%
East Dona Ana	98.3%	98.6%											98.5%
Grant	100.0%	97.6%											98.8%
Luna	96.9%	95.6%											96.3%
Otero	99.3%	98.0%											98.7%
South Dona Ana	99.2%	97.0%											98.1%
West Dona Ana	98.2%	97.4%											97.8%
SW Region 5 Total	98.7%	97.4%											98.0%
STATE TOTAL	97.4%	97.0%											97.2%

SNAP: Combined Approvals and Denials Percentage of Initial Applications Processed Timely by Field Office¹³

	Oct-20	Nov-20	Dec-20	Jan-21	Feb-21	Mar-21	Apr-21	May-21	Jun-21	Jul-21	Aug-21	Sep-21	Average
Cibola	98.9%	96.1%											97.5%
McKinley	97.3%	95.1%											96.2%
San Juan	98.3%	97.9%											98.1%
Sierra	98.1%	93.6%											95.9%
Socorro	97.4%	94.3%											95.9%
Valencia North	97.9%	95.0%											96.5%
Valencia South	100.0%	100.0%											100.0%
NW Region 1 Total	98.3%	96.0%											97.1%
Colfax	99.3%	100.0%											99.7%
Guadalupe	96.8%	100.0%											98.4%
Quay	98.1%	98.8%											98.5%
Rio Arriba	97.9%	97.6%											97.8%
San Miguel	98.2%	98.0%											98.1%
Sandoval	98.3%	97.8%											98.1%
Santa Fe	95.3%	98.0%											96.7%
Taos	96.7%	98.8%											97.8%
NE Region 2 Total	97.6%	98.6%											98.1%
NE Bernalillo	97.6%	96.9%											97.3%
NW Bernalillo	98.2%	98.3%											98.3%
SE Bernalillo	98.7%	97.5%											98.1%
SW Bernalillo	98.9%	97.9%											98.4%
Torrance	98.3%	96.8%											97.6%
Gen. Region 3 Total	98.3%	97.5%											97.9%
Chaves	98.6%	98.6%											98.6%
Curry	97.7%	97.4%											97.6%
Eddy Artesia	96.4%	98.6%											97.5%
Eddy Carlsbad	98.2%	97.4%											97.8%
Lea	98.0%	99.2%											98.6%
Lincoln	98.4%	97.5%											98.0%
Roosevelt	100.0%	100.0%											100.0%
SE Region 4 Total	98.2%	98.4%											98.3%
East Dona Ana	98.6%	98.6%											98.6%
Grant	99.4%	97.5%											98.5%
Luna	99.1%	98.0%											98.6%
Otero	99.0%	98.9%											99.0%
South Dona Ana	99.2%	98.3%											98.8%
West Dona Ana	99.0%	98.2%											98.6%
SW Region 5 Total	99.1%	98.3%											98.7%
STATE TOTAL	98.2%	97.8%											98.0%

SNAP Renewals Processed by Field Office²⁰
November 2020

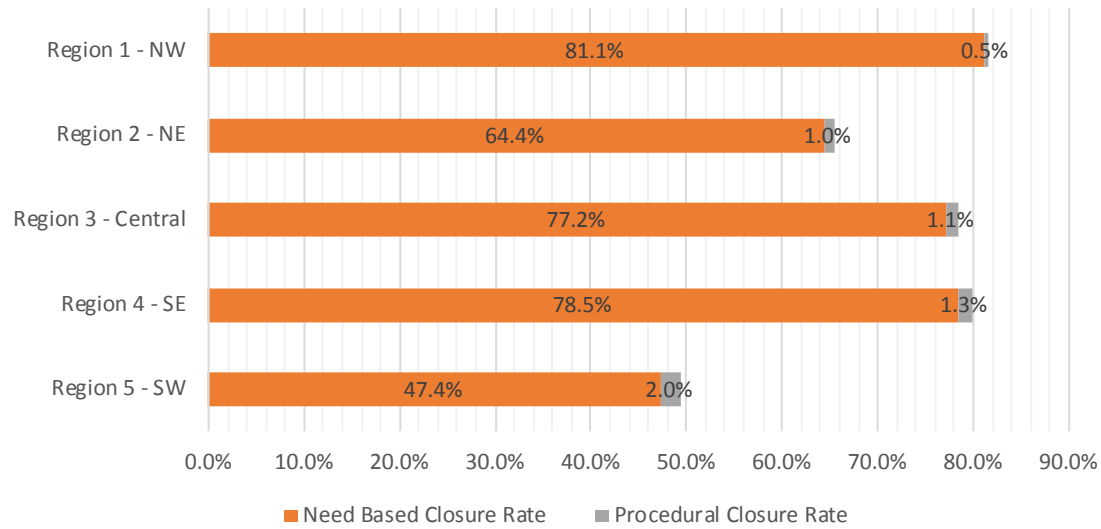
Office	Approvals	Closures	Need Based Closures	Procedural Closures
Chaves County ISD	132	472	466	6
Cibola County ISD	43	155	153	2
Colfax County ISD	46	38	35	3
Curry County ISD	75	309	308	1
East Dona Ana County ISD	253	231	222	9
Eddy Artesia County ISD	17	71	69	2
Eddy Carlsbad County ISD	21	119	118	1
Grant County ISD	106	102	100	2
Guadalupe County ISD	21	19	18	1
Hidalgo County ISD	0	0	0	0
Lea County ISD	64	244	235	9
Lincoln County ISD	16	73	71	2
Luna County ISD	119	98	95	3
McKinley County ISD	96	644	643	1
Northeast Bernalillo County ISD	230	949	938	11
Northwest Bernalillo County ISD	194	751	739	12
Otero County ISD	145	192	185	7
Quay County ISD	33	60	60	0
Rio Arriba County ISD	145	219	215	4
Roosevelt County ISD	0	0	0	0
San Juan County ISD	242	904	899	5
San Miguel County ISD	83	162	160	2
Sandoval County ISD	173	248	245	3
Santa Fe County ISD	87	299	295	4
Sierra County ISD	20	89	87	2
Socorro County ISD	45	77	75	2
South Dona Ana ISD	211	239	225	14
Southeast Bernalillo County ISD	38	368	367	1
Southwest Bernalillo County ISD	392	969	950	19
Taos County ISD	40	145	143	2
Torrance County ISD	11	99	96	3
Valencia North County ISD	52	349	348	1
Valencia South County ISD	2	2	2	0
West Dona Ana County ISD	303	247	237	10
Centralized Units	0	0	0	0
Statewide Total	3,455	8,943	8,799	144

SNAP Renewal Disposition Rates by Field Office²⁰
November 2020

Office	Approval Rate	Closure Rate	Need Based Closure Rate	Procedural Closure Rate
Chaves County ISD	21.9%	78.1%	77.2%	1.0%
Cibola County ISD	21.7%	78.3%	77.3%	1.0%
Colfax County ISD	54.8%	45.2%	41.7%	3.6%
Curry County ISD	19.5%	80.5%	80.2%	0.3%
East Dona Ana County ISD	52.3%	47.7%	45.9%	1.9%
Eddy Artesia County ISD	19.3%	80.7%	78.4%	2.3%
Eddy Carlsbad County ISD	15.0%	85.0%	84.3%	0.7%
Grant County ISD	51.0%	49.0%	48.1%	1.0%
Guadalupe County ISD	52.5%	47.5%	45.0%	2.5%
Hidalgo County ISD	0.0%	0.0%	0.0%	0.0%
Lea County ISD	20.8%	79.2%	76.3%	2.9%
Lincoln County ISD	18.0%	82.0%	79.8%	2.2%
Luna County ISD	54.8%	45.2%	43.8%	1.4%
McKinley County ISD	13.0%	87.0%	86.9%	0.1%
Northeast Bernalillo County ISD	19.5%	80.5%	79.6%	0.9%
Northwest Bernalillo County ISD	20.5%	79.5%	78.2%	1.3%
Otero County ISD	43.0%	57.0%	54.9%	2.1%
Quay County ISD	35.5%	64.5%	64.5%	0.0%
Rio Arriba County ISD	39.8%	60.2%	59.1%	1.1%
Roosevelt County ISD	0.0%	0.0%	0.0%	0.0%
San Juan County ISD	21.1%	78.9%	78.4%	0.4%
San Miguel County ISD	33.9%	66.1%	65.3%	0.8%
Sandoval County ISD	41.1%	58.9%	58.2%	0.7%
Santa Fe County ISD	22.5%	77.5%	76.4%	1.0%
Sierra County ISD	18.3%	81.7%	79.8%	1.8%
Socorro County ISD	36.9%	63.1%	61.5%	1.6%
South Dona Ana ISD	46.9%	53.1%	50.0%	3.1%
Southeast Bernalillo County ISD	9.4%	90.6%	90.4%	0.2%
Southwest Bernalillo County ISD	28.8%	71.2%	69.8%	1.4%
Taos County ISD	21.6%	78.4%	77.3%	1.1%
Torrance County ISD	10.0%	90.0%	87.3%	2.7%
Valencia North County ISD	13.0%	87.0%	86.8%	0.2%
Valencia South County ISD	50.0%	50.0%	50.0%	0.0%
West Dona Ana County ISD	55.1%	44.9%	43.1%	1.8%
Centralized Units	0.0%	0.0%	0.0%	0.0%
Statewide Total	27.9%	72.1%	71.0%	1.2%

SNAP Renewal Disposition Rates by Region²⁰
November 2020

Region	Approval Rate	Closure Rate	Need Based Closure Rate	Procedural Closure Rate
Region 1 - NW	18.4%	81.6%	81.1%	0.5%
Region 2 - NE	34.5%	65.5%	64.4%	1.0%
Region 3 - Central	21.6%	78.4%	77.2%	1.1%
Region 4 - SE	20.1%	79.9%	78.5%	1.3%
Region 5 - SW	50.6%	49.4%	47.4%	2.0%
Centralized Units				
Statewide Total	27.9%	72.1%	71.0%	1.2%



SNAP: Percentage of Approved Renewal Applications Processed¹¹

	Oct-20	Nov-20	Dec-20	Jan-21	Feb-21	Mar-21	Apr-21	May-21	Jun-21	Jul-21	Aug-21	Sep-21	Average
Cibola	100.0%	100.0%											100.0%
McKinley	100.0%	100.0%											100.0%
San Juan	100.0%	100.0%											100.0%
Sierra	100.0%	100.0%											100.0%
Socorro	100.0%	100.0%											100.0%
Valencia North	100.0%	100.0%											100.0%
Valencia South	100.0%	100.0%											100.0%
NW Region 1 Total	100.0%	100.0%											100.0%
Colfax	100.0%	100.0%											100.0%
Guadalupe	100.0%	100.0%											100.0%
Quay	100.0%	100.0%											100.0%
Rio Arriba	100.0%	100.0%											100.0%
San Miguel	100.0%	100.0%											100.0%
Sandoval	100.0%	100.0%											100.0%
Santa Fe	100.0%	100.0%											100.0%
Taos	100.0%	100.0%											100.0%
NE Region 2 Total	100.0%	100.0%											100.0%
NE Bernalillo	100.0%	100.0%											100.0%
NW Bernalillo	100.0%	100.0%											100.0%
SE Bernalillo	100.0%	100.0%											100.0%
SW Bernalillo	100.0%	100.0%											100.0%
Torrance	100.0%	100.0%											100.0%
Gen. Region 3 Total	100.0%	100.0%											100.0%
Chaves	100.0%	100.0%											100.0%
Curry	100.0%	100.0%											100.0%
Eddy Artesia	100.0%	100.0%											100.0%
Eddy Carlsbad	100.0%	100.0%											100.0%
Lea	100.0%	100.0%											100.0%
Lincoln	100.0%	100.0%											100.0%
Roosevelt	100.0%	100.0%											100.0%
SE Region 4 Total	100.0%	100.0%											100.0%
East Dona Ana	100.0%	100.0%											100.0%
Grant	100.0%	100.0%											100.0%
Luna	100.0%	100.0%											100.0%
Otero	100.0%	100.0%											100.0%
South Dona Ana	100.0%	100.0%											100.0%
West Dona Ana	100.0%	100.0%											100.0%
SW Region 5 Total	100.0%	100.0%											100.0%
STATE TOTAL	100.0%	100.0%											100.0%

If a renewal packet was received on or before 15th of the renewal month, the case shall be considered timely if the case was processed by renewal due date

Recertifications – If a Recertification cannot be processed under normal processing, ASPEN will automatically extend certification periods for households scheduled to recertify in March, April, May and June 2020, for 6 months until September, October and November 2020.

SNAP: Percentage of Approved Renewal Applications Processed¹¹

	Oct-20	Nov-20	Dec-20	Jan-21	Feb-21	Mar-21	Apr-21	May-21	Jun-21	Jul-21	Aug-21	Sep-21	Average
Cibola	100.0%	100.0%											100.0%
McKinley	100.0%	100.0%											100.0%
San Juan	100.0%	100.0%											100.0%
Sierra	100.0%	100.0%											100.0%
Socorro	100.0%												100.0%
Valencia North	100.0%	100.0%											100.0%
Valencia South	100.0%												100.0%
NW Region 1 Total	100.0%	100.0%											100.0%
Colfax	100.0%	100.0%											100.0%
Guadalupe	100.0%	100.0%											100.0%
Quay	100.0%	100.0%											100.0%
Rio Arriba	100.0%	100.0%											100.0%
San Miguel	100.0%	100.0%											100.0%
Sandoval	100.0%	100.0%											100.0%
Santa Fe	100.0%	100.0%											100.0%
Taos	100.0%	100.0%											100.0%
NE Region 2 Total	100.0%	100.0%											100.0%
NE Bernalillo	100.0%	100.0%											100.0%
NW Bernalillo	100.0%	100.0%											100.0%
SE Bernalillo	100.0%	100.0%											100.0%
SW Bernalillo	100.0%	100.0%											100.0%
Torrance	100.0%	100.0%											100.0%
Gen. Region 3 Total	100.0%	100.0%											100.0%
Chaves	100.0%	100.0%											100.0%
Curry	100.0%	100.0%											100.0%
Eddy Artesia	100.0%	100.0%											100.0%
Eddy Carlsbad	100.0%	100.0%											100.0%
Lea	100.0%	100.0%											100.0%
Lincoln	100.0%	100.0%											100.0%
Roosevelt													
SE Region 4 Total	100.0%	100.0%											100.0%
East Dona Ana	100.0%	100.0%											100.0%
Grant	100.0%	100.0%											100.0%
Luna	100.0%	100.0%											100.0%
Otero	100.0%	100.0%											100.0%
South Dona Ana	100.0%	100.0%											100.0%
West Dona Ana	100.0%	100.0%											100.0%
SW Region 5 Total	100.0%	100.0%											100.0%
STATE TOTAL	100.0%	100.0%											100.0%

Only includes cases in which the Renewal Packet was received by the 15th of the month

Recertifications – If a Recertification cannot be processed under normal processing, ASPEN will automatically extend certification periods for households scheduled to recertify in March, April, May and June 2020, for 6 months until September, October and November 2020.

SNAP: Percentage of Terminations Renewal Applications Processed ¹¹													
	Oct-20	Nov-20	Dec-20	Jan-21	Feb-21	Mar-21	Apr-21	May-21	Jun-21	Jul-21	Aug-21	Sep-21	Average
Cibola	100.0%	100.0%											100.0%
McKinley	100.0%	100.0%											100.0%
San Juan	100.0%	100.0%											100.0%
Sierra	100.0%	100.0%											100.0%
Socorro	100.0%	100.0%											100.0%
Valencia North	100.0%	100.0%											100.0%
Valencia South	100.0%	100.0%											100.0%
NW Region 1 Total	100.0%	100.0%											100.0%
Colfax	100.0%	100.0%											100.0%
Guadalupe	100.0%	100.0%											100.0%
Quay	100.0%	100.0%											100.0%
Rio Arriba	100.0%	100.0%											100.0%
San Miguel	100.0%	100.0%											100.0%
Sandoval	100.0%	100.0%											100.0%
Santa Fe	100.0%	100.0%											100.0%
Taos	100.0%	100.0%											100.0%
NE Region 2 Total	100.0%	100.0%											100.0%
NE Bernalillo	100.0%	100.0%											100.0%
NW Bernalillo	100.0%	100.0%											100.0%
SE Bernalillo	100.0%	100.0%											100.0%
SW Bernalillo	100.0%	100.0%											100.0%
Torrance	100.0%	100.0%											100.0%
Gen. Region 3 Total	100.0%	100.0%											100.0%
Chaves	100.0%	100.0%											100.0%
Curry	100.0%	100.0%											100.0%
Eddy Artesia	100.0%	100.0%											100.0%
Eddy Carlsbad	100.0%	100.0%											100.0%
Lea	100.0%	100.0%											100.0%
Lincoln	100.0%	100.0%											100.0%
Roosevelt													
SE Region 4 Total	100.0%	100.0%											100.0%
East Dona Ana	100.0%	100.0%											100.0%
Grant	100.0%	100.0%											100.0%
Luna	100.0%	100.0%											100.0%
Otero	100.0%	100.0%											100.0%
South Dona Ana	100.0%	100.0%											100.0%
West Dona Ana	100.0%	100.0%											100.0%
SW Region 5 Total	100.0%	100.0%											100.0%
STATE TOTAL	100.0%	100.0%											100.0%

Includes cases for which no renewal application was received.

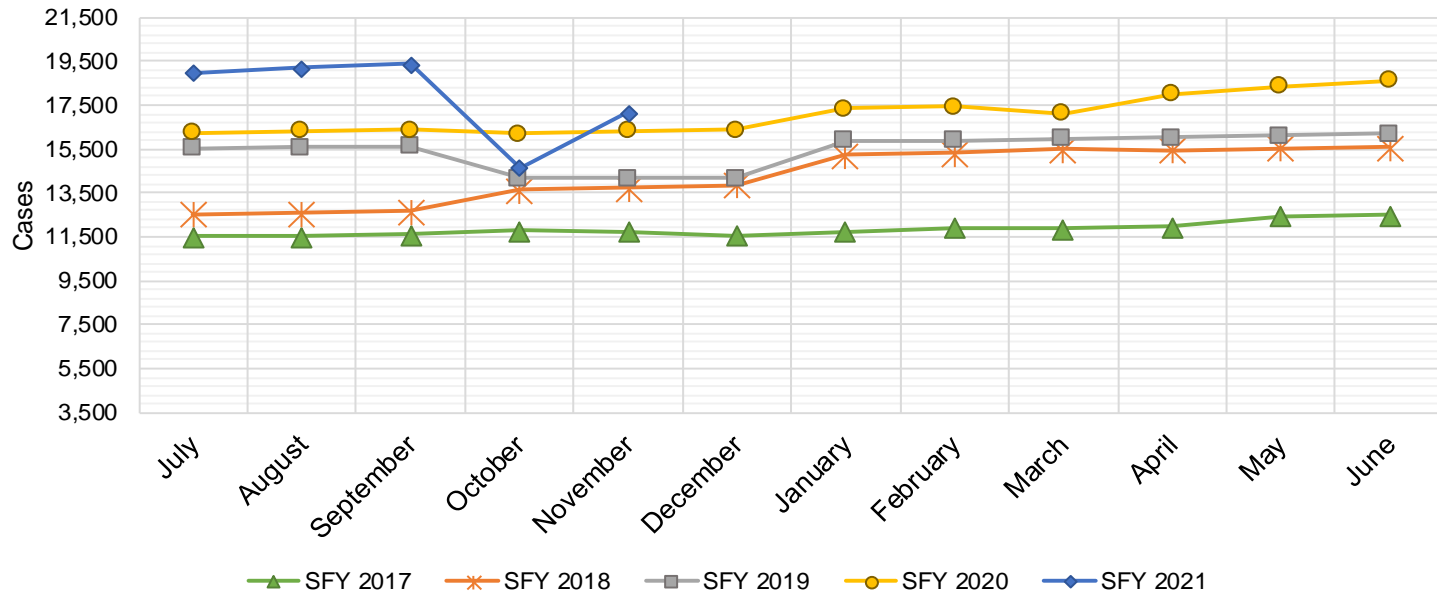
Recertifications – If a Recertification cannot be processed under normal processing, ASPEN will automatically extend certification periods for households scheduled to recertify in March, April, May and June 2020, for 6 months until September, October and November 2020.

SNAP: Combined Percentage of Approved and Terminated Renewal Applications Processed¹¹

	Oct-20	Nov-20	Dec-20	Jan-21	Feb-21	Mar-21	Apr-21	May-21	Jun-21	Jul-21	Aug-21	Sep-21	Average
Cibola	100.0%	100.0%											100.0%
McKinley	100.0%	100.0%											100.0%
San Juan	100.0%	100.0%											100.0%
Sierra	100.0%	100.0%											100.0%
Socorro	100.0%	100.0%											100.0%
Valencia North	100.0%	100.0%											100.0%
Valencia South	100.0%	100.0%											100.0%
NW Region 1 Total	100.0%	100.0%											100.0%
Colfax	100.0%	100.0%											100.0%
Guadalupe	100.0%	100.0%											100.0%
Quay	100.0%	100.0%											100.0%
Rio Arriba	100.0%	100.0%											100.0%
San Miguel	99.7%	100.0%											99.9%
Sandoval	100.0%	100.0%											100.0%
Santa Fe	100.0%	100.0%											100.0%
Taos	100.0%	100.0%											100.0%
NE Region 2 Total	100.0%	100.0%											100.0%
NE Bernalillo	100.0%	100.0%											100.0%
NW Bernalillo	100.0%	100.0%											100.0%
SE Bernalillo	100.0%	100.0%											100.0%
SW Bernalillo	100.0%	100.0%											100.0%
Torrance	100.0%	100.0%											100.0%
Gen. Region 3 Total	100.0%	100.0%											100.0%
Chaves	100.0%	100.0%											100.0%
Curry	100.0%	100.0%											100.0%
Eddy Artesia	100.0%	100.0%											100.0%
Eddy Carlsbad	100.0%	100.0%											100.0%
Lea	100.0%	100.0%											100.0%
Lincoln	100.0%	100.0%											100.0%
Roosevelt													
SE Region 4 Total	100.0%	100.0%											100.0%
East Dona Ana	100.0%	100.0%											100.0%
Grant	100.0%	100.0%											100.0%
Luna	100.0%	100.0%											100.0%
Otero	100.0%	100.0%											100.0%
South Dona Ana	100.0%	100.0%											100.0%
West Dona Ana	100.0%	100.0%											100.0%
SW Region 5 Total	100.0%	100.0%											100.0%
STATE TOTAL	100.0%	100.0%											100.0%

State SNAP Supplement

SFY 2017 ⁹			SFY 2018 ⁹			SFY 2019 ⁹			SFY 2020 ⁹			SFY 2021 ⁹		
	Cases	Expenditures		Cases	Expenditures		Cases	Expenditures		Cases	Expenditures		Cases	Expenditures
Jul-16	11,537	\$95,553	Jul-17	12,526	\$97,568	Jul-18	15,555	\$141,711	Jul-19	16,260	\$145,023	Jul-20	18,957	\$161,862
Aug-16	11,522	\$95,107	Aug-17	12,589	\$98,954	Aug-18	15,584	\$139,719	Aug-19	16,314	\$145,706	Aug-20	19,196	\$165,904
Sep-16	11,613	\$94,472	Sep-17	12,679	\$97,546	Sep-18	15,631	\$140,768	Sep-19	16,362	\$145,767	Sep-20	19,379	\$166,738
Oct-16	11,797	\$96,679	Oct-17	13,628	\$117,343	Oct-18	14,161	\$125,737	Oct-19	16,182	\$139,741	Oct-20	14,634	\$137,621
Nov-16	11,735	\$93,689	Nov-17	13,748	\$119,055	Nov-18	14,160	\$125,401	Nov-19	16,331	\$138,583	Nov-20	17,169	\$139,917
Dec-16	11,556	\$93,739	Dec-17	13,877	\$120,585	Dec-18	14,163	\$126,263	Dec-19	16,373	\$137,440	Dec-20		
Jan-17	11,763	\$96,074	Jan-18	15,246	\$135,993	Jan-19	15,890	\$141,357	Jan-20	17,360	\$145,696	Jan-21		
Feb-17	11,907	\$98,251	Feb-18	15,308	\$137,296	Feb-19	15,882	\$142,396	Feb-20	17,429	\$154,849	Feb-21		
Mar-17	11,853	\$96,693	Mar-18	15,482	\$139,132	Mar-19	15,970	\$142,427	Mar-20	17,131	\$150,568	Mar-21		
Apr-17	11,944	\$97,060	Apr-18	15,466	\$139,202	Apr-19	16,032	\$143,982	Apr-20	18,017	\$157,944	Apr-21		
May-17	12,457	\$96,940	May-18	15,525	\$139,397	May-19	16,126	\$143,697	May-20	18,368	\$157,089	May-21		
Jun-17	12,498	\$97,405	Jun-18	15,577	\$140,802	Jun-19	16,182	\$143,128	Jun-20	18,645	\$158,748	Jun-21		
TOTAL	142,182	\$1,151,662		171,651	\$1,482,874		185,336	\$1,656,584		204,772	\$1,777,156		89,335	\$772,043
AVERAGE	11,849	\$95,972		14,304	\$123,573		15,445	\$138,049		17,064	\$148,096		17,867	\$154,409



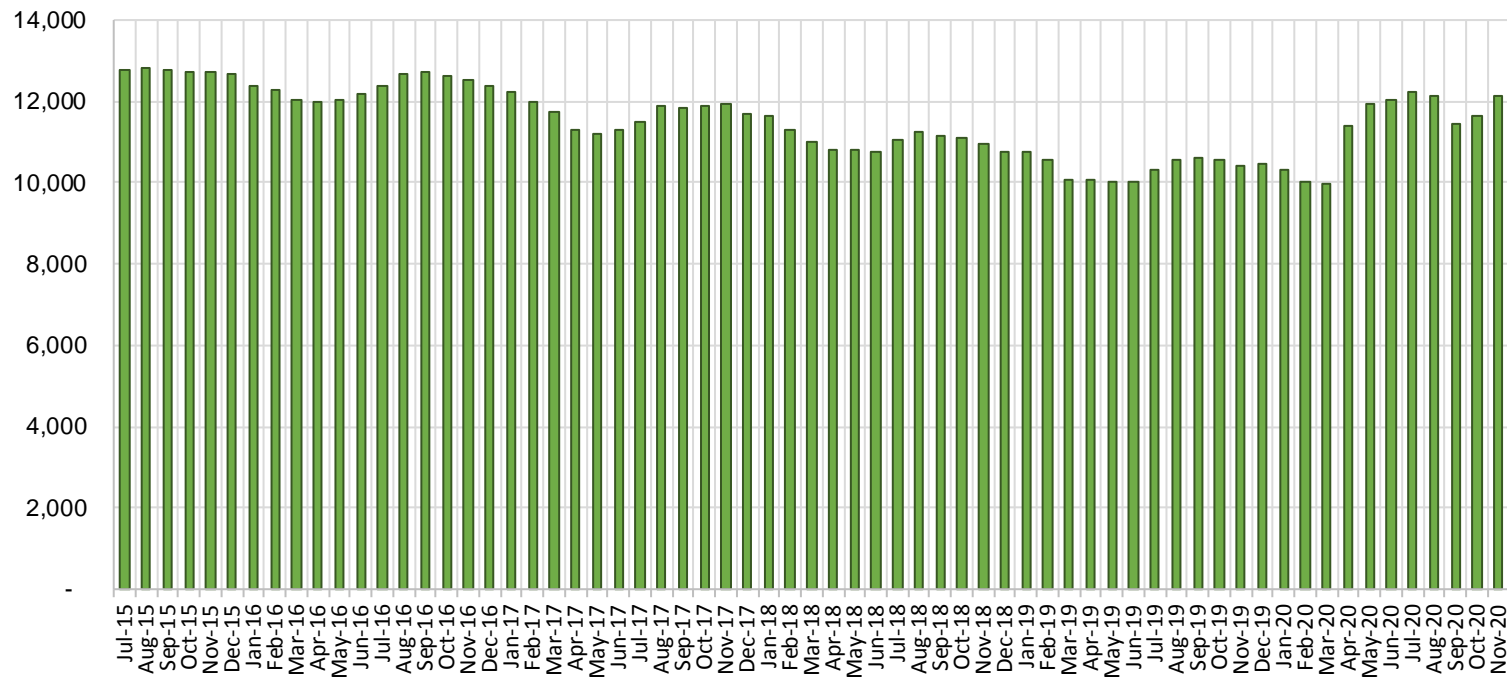
TANF Cases by Field Office⁶

Office				Percent Change	
	Nov-19	Oct-20	Nov-20	Nov-19- Nov-20	Oct-20- Nov-20
Chaves County ISD	397	813	871	119.40%	7.13%
Cibola County ISD	102	122	129	26.47%	5.74%
Colfax County ISD	88	105	110	25.00%	4.76%
Curry County ISD	619	608	623	0.65%	2.47%
East Dona Ana County ISD	413	560	582	40.92%	3.93%
Eddy Artesia County ISD	90	111	112	24.44%	0.90%
Eddy Carlsbad County ISD	151	209	216	43.05%	3.35%
Grant County ISD	190	206	214	12.63%	3.88%
Guadalupe County ISD	23	28	30	30.43%	7.14%
Hidalgo County ISD	0	0	0	NA	N/A
Lea County ISD	358	478	518	44.69%	8.37%
Lincoln County ISD	81	97	101	24.69%	4.12%
Luna County ISD	209	216	238	13.88%	10.19%
McKinley County ISD	70	87	88	25.71%	1.15%
Northeast Bernalillo County ISD	913	1,066	1,127	23.44%	5.72%
Northwest Bernalillo County ISD	852	928	964	13.15%	3.88%
Otero County ISD	296	354	354	19.59%	0.00%
Quay County ISD	80	127	139	73.75%	9.45%
Rio Arriba County ISD	364	409	410	12.64%	0.24%
Roosevelt County ISD	0	0	0	NA	N/A
San Juan County ISD	267	490	542	103.00%	10.61%
San Miguel County ISD	197	216	227	15.23%	5.09%
Sandoval County ISD	442	290	308	-30.32%	6.21%
Santa Fe County ISD	377	316	325	-13.79%	2.85%
Sierra County ISD	68	62	72	5.88%	16.13%
Socorro County ISD	82	88	85	3.66%	-3.41%
South Dona Ana ISD	598	587	619	3.51%	5.45%
Southeast Bernalillo County ISD	583	239	221	-62.09%	-7.53%
Southwest Bernalillo County ISD	1,123	1,497	1,580	40.69%	5.54%
Taos County ISD	132	117	119	-9.85%	1.71%
Torrance County ISD	181	174	163	-9.94%	-6.32%
Valencia North County ISD	421	370	379	-9.98%	2.43%
Valencia South County ISD	0	1	2	N/A	100.0%
West Dona Ana County ISD	656	650	685	4.42%	5.38%
Centralized Units	2	3	0	-100.00%	-100.00%
Statewide Total	10,425	11,624	12,153	16.58%	4.55%

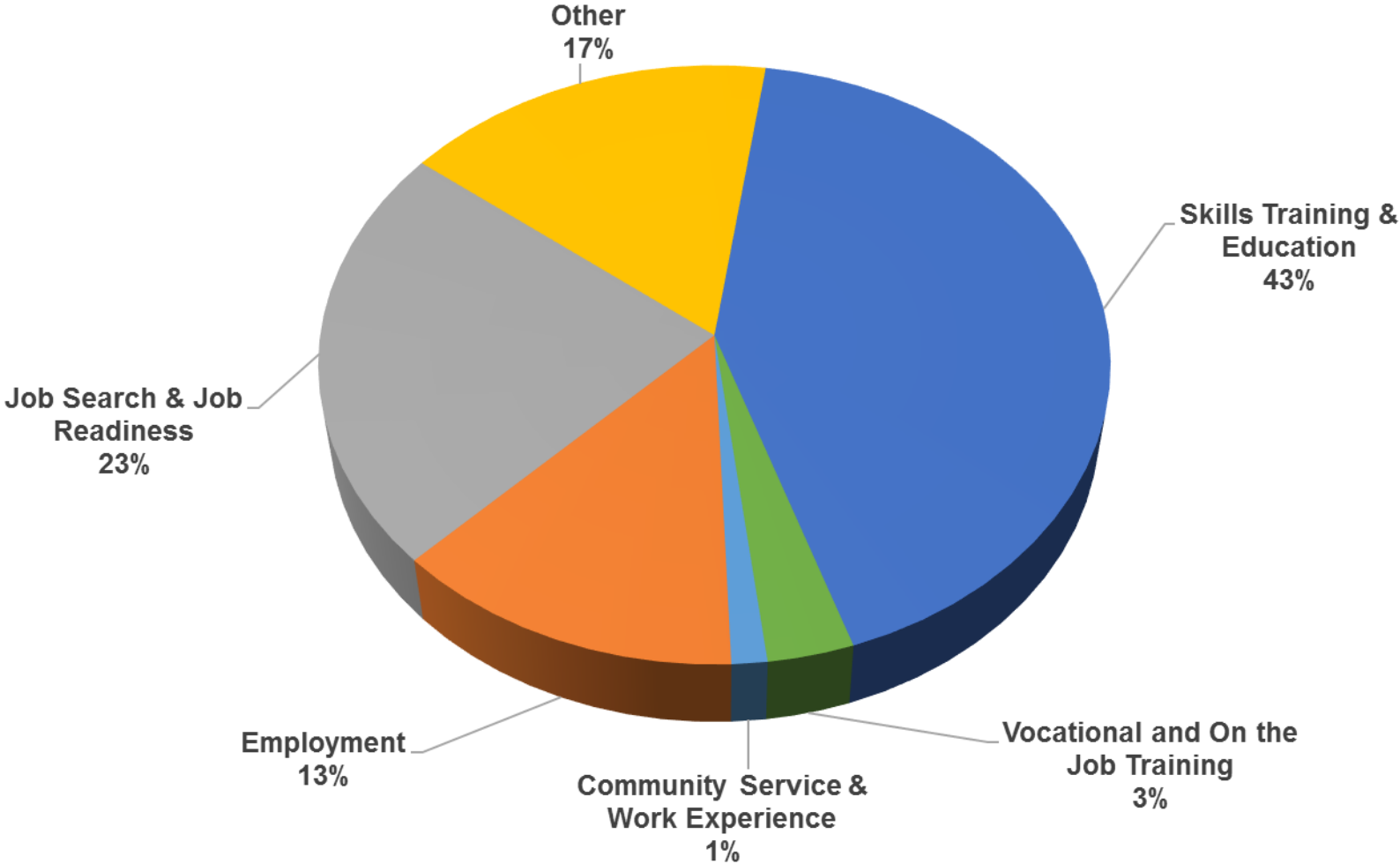
TANF Cases by Region⁶

Region				Percent Change	
	Nov-19	Oct-20	Nov-20	Nov-19- Nov-20	Oct-20- Nov-20
Region 1- NW	1,010	1,220	1,297	28.42%	6.31%
Region 2- NE	1,703	1,608	1,668	-2.06%	3.73%
Region 3- Central	3,652	3,904	4,055	11.04%	3.87%
Region 4- SE	1,696	2,316	2,441	43.93%	5.40%
Region 5- SW	2,362	2,573	2,692	13.97%	4.62%
Centralized Units	2	3	0	-100.0%	-100.0%
Statewide Total	10,425	11,624	12,153	16.58%	4.55%

TANF Caseload: SFY-16 to Current

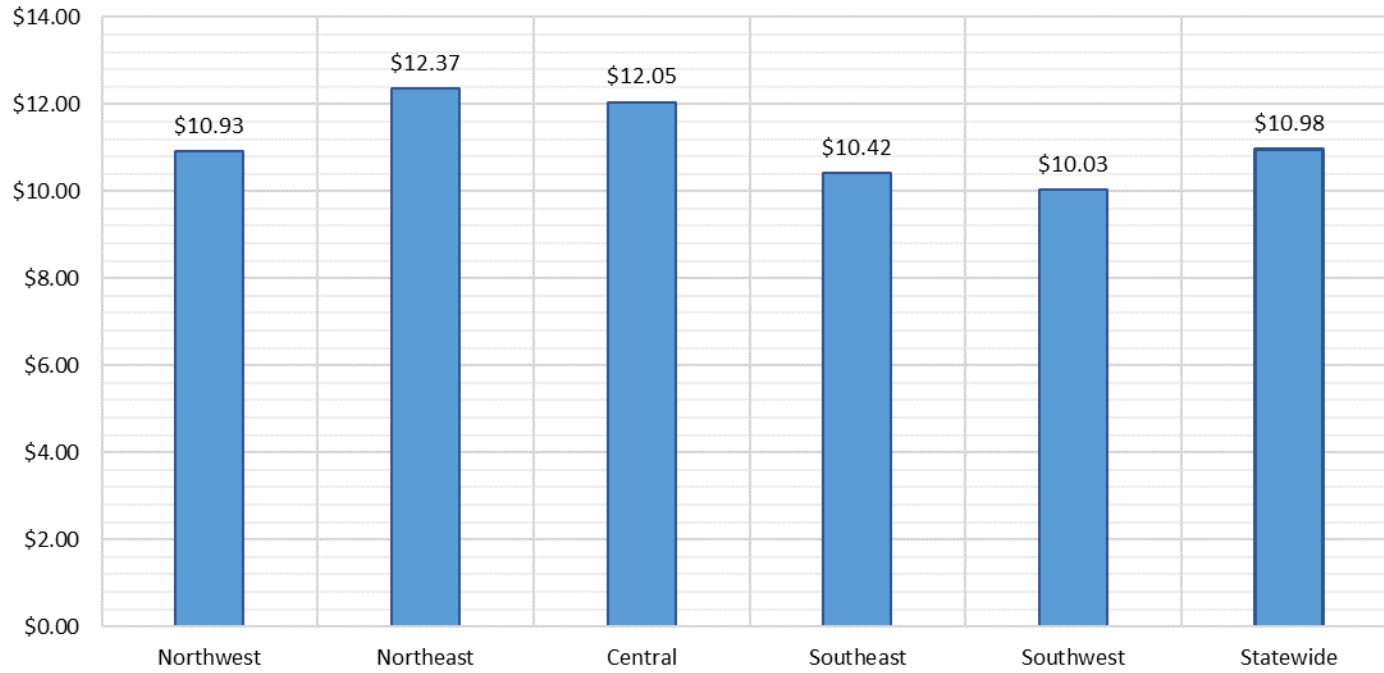


**NM Works Activity Placements on November 30, 2020
as reported by SL Start¹⁴**

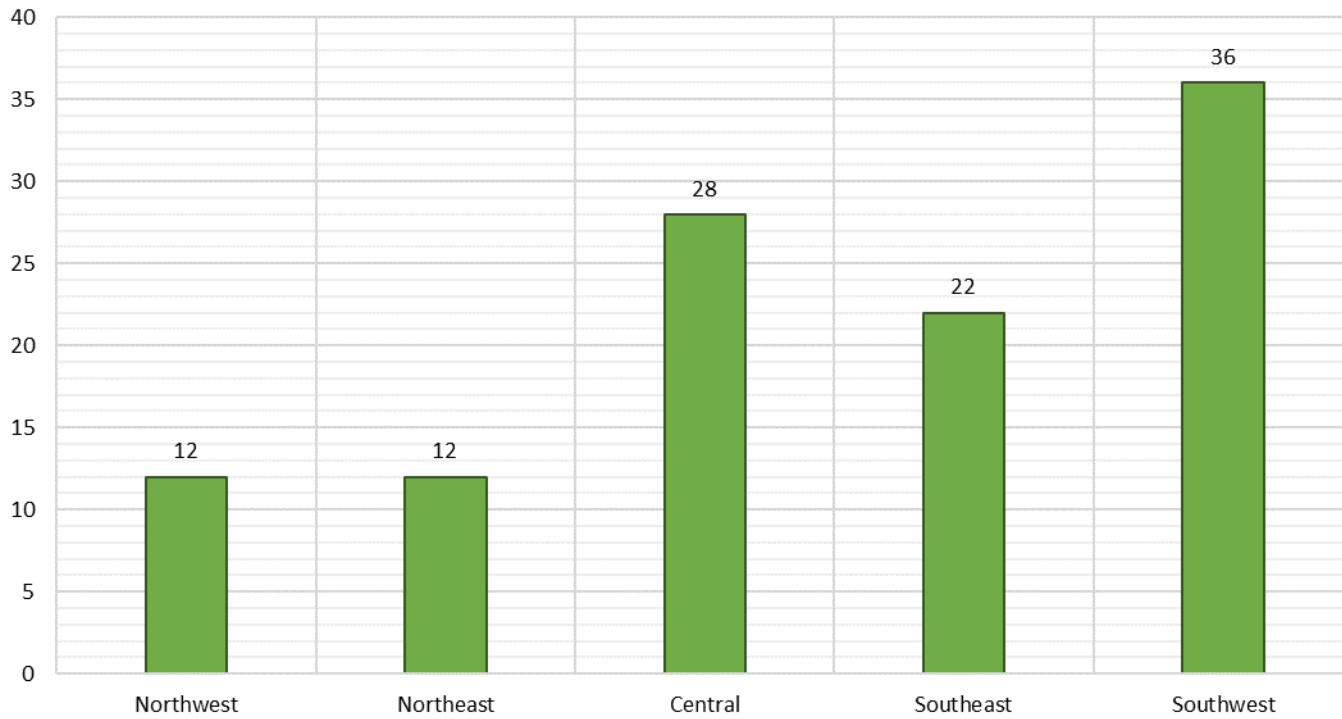


Employment, Vocational Training and Community Service and Work Experience might be reduced due to COVID 19 circumstances.

Average Starting Hourly Wage of Nov 2020 TANF Employments
as reported by SL Start¹⁵



Number of New Employments in November 2020 by Region
as reported by SL Start¹⁵
Statewide Total: 110



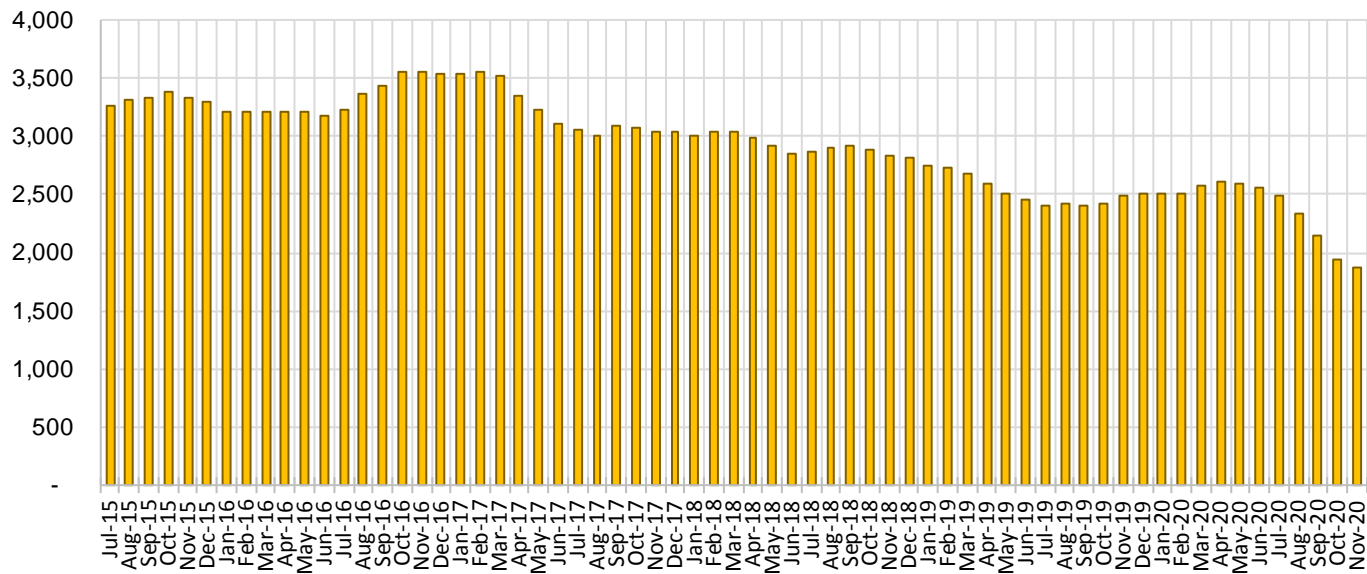
General Assistance Cases by Field Office⁶

Office				Percent Change	
	Nov-19	Oct-20	Nov-20	Nov-19- Nov-20	Oct-20- Nov-20
Chaves County ISD	112	99	104	-7.14%	5.05%
Cibola County ISD	35	24	24	-31.43%	0.00%
Colfax County ISD	23	19	20	-13.04%	5.26%
Curry County ISD	78	69	65	-16.67%	-5.80%
East Dona Ana County ISD	95	81	82	-13.68%	1.23%
Eddy Artesia County ISD	21	20	19	-9.52%	-5.00%
Eddy Carlsbad County ISD	44	46	45	2.27%	-2.17%
Grant County ISD	70	58	56	-20.00%	-3.45%
Guadalupe County ISD	9	5	6	-33.33%	20.00%
Hidalgo County ISD	0	0	0	N/A	N/A
Lea County ISD	60	50	45	-25.00%	-10.00%
Lincoln County ISD	32	24	24	-25.00%	0.00%
Luna County ISD	63	42	41	-34.92%	-2.38%
McKinley County ISD	63	54	49	-22.22%	-9.26%
Northeast Bernalillo County ISD	225	175	170	-24.44%	-2.86%
Northwest Bernalillo County ISD	228	175	170	-25.44%	-2.86%
Otero County ISD	73	52	44	-39.73%	-15.38%
Quay County ISD	34	20	19	-44.12%	-5.00%
Rio Arriba County ISD	57	54	52	-8.77%	-3.70%
Roosevelt County ISD	0	0	0	N/A	N/A
San Juan County ISD	119	158	160	34.45%	1.27%
San Miguel County ISD	65	44	44	-32.31%	0.00%
Sandoval County ISD	85	34	31	-63.53%	-8.82%
Santa Fe County ISD	89	61	59	-33.71%	-3.28%
Sierra County ISD	38	22	23	-39.47%	4.55%
Socorro County ISD	44	27	27	-38.64%	0.00%
South Dona Ana ISD	58	32	31	-46.55%	-3.13%
Southeast Bernalillo County ISD	146	65	57	-60.96%	-12.31%
Southwest Bernalillo County ISD	194	197	194	0.00%	-1.52%
Taos County ISD	29	24	20	-31.03%	-16.67%
Torrance County ISD	45	30	26	-42.22%	-13.33%
Valencia North County ISD	87	54	51	-41.38%	-5.56%
Valencia South County ISD	0	0	0	N/A	N/A
West Dona Ana County ISD	170	122	114	-32.94%	-6.56%
Centralized Units	0	0	0	N/A	N/A
Statewide Total	2,491	1,937	1,872	-24.85%	-3.36%

General Assistance Cases by Region⁶

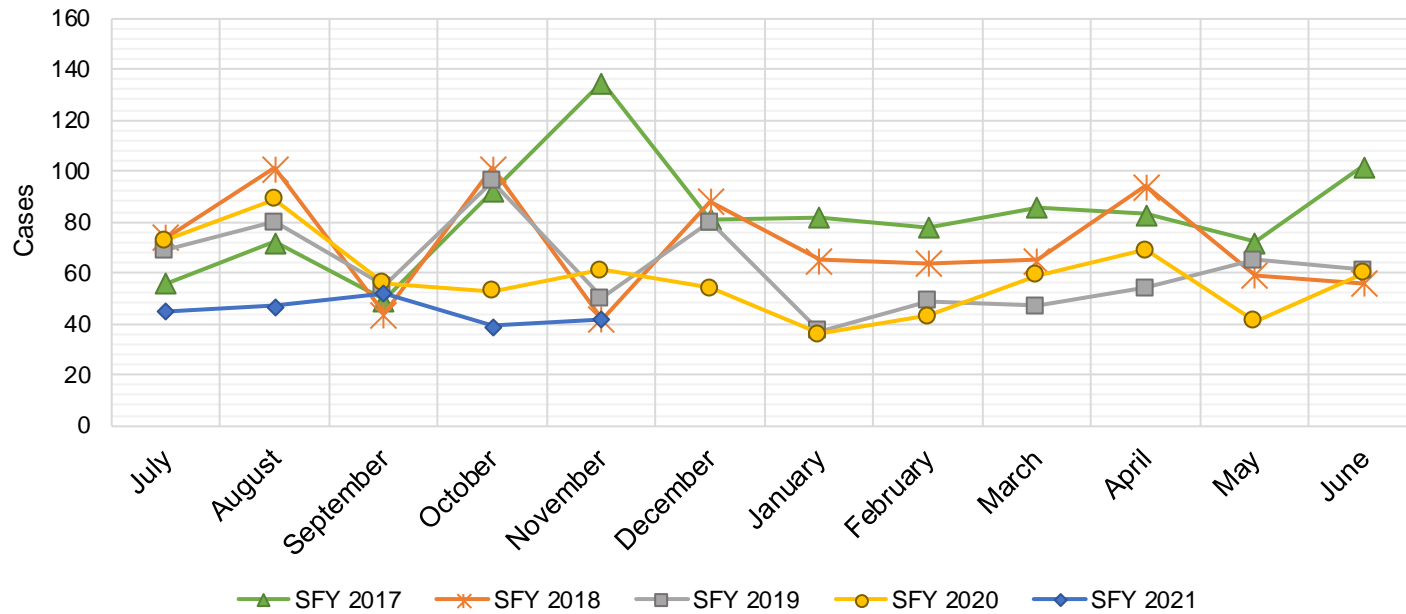
Region	Nov-19	Oct-20	Nov-20	Percent Change	
				Nov-19- Nov-20	Oct-20-Nov- 20
Region 1 - NW	386	339	334	-13.47%	-1.47%
Region 2 - NE	391	261	251	-35.81%	-3.83%
Region 3 - Central	838	642	617	-26.37%	-3.89%
Region 4 - SE	347	308	302	-12.97%	-1.95%
Region 5 - SW	529	387	368	-30.43%	-4.91%
Centralized Units	0	0	0	N/A	N/A
Statewide Total	2,491	1,937	1,872	-24.85%	-3.36%

General Assistance Caseload: SFY-16 to Current



General Assistance Interim Assistance Reimbursements¹⁶

SFY 2017			SFY 2018			SFY 2019			SFY 2020			SFY 2021		
	Cases	Expenditures		Cases	Expenditures		Cases	Expenditures		Cases	Expenditures		Cases	Expenditures
Jul-16	56	\$164,970	Jul-17	74	\$241,438	Jul-18	69	\$228,333	Jul-19	73	\$303,584	Jul-20	45	\$135,037
Aug-16	72	\$223,182	Aug-17	101	\$339,301	Aug-18	80	\$241,292	Aug-19	89	\$310,047	Aug-20	47	\$154,783
Sep-16	49	\$158,027	Sep-17	44	\$131,229	Sep-18	55	\$188,192	Sep-19	56	\$172,016	Sep-20	52	\$168,200
Oct-16	92	\$257,830	Oct-17	101	\$335,752	Oct-18	96	\$298,502	Oct-19	53	\$168,461	Oct-20	39	\$124,285
Nov-16	135	\$402,305	Nov-17	42	\$139,572	Nov-18	50	\$148,641	Nov-19	61	\$171,883	Nov-20	42	\$116,498
Dec-16	81	\$227,569	Dec-17	88	\$245,453	Dec-18	80	\$246,422	Dec-19	54	\$164,045	Dec-20		
Jan-17	82	\$274,050	Jan-18	65	\$258,239	Jan-19	37	\$106,081	Jan-20	36	\$96,668	Jan-21		
Feb-17	78	\$227,569	Feb-18	64	\$195,815	Feb-19	49	\$119,300	Feb-20	43	\$126,743	Feb-21		
Mar-17	86	\$278,219	Mar-18	65	\$172,188	Mar-19	47	\$137,296	Mar-20	59	\$169,363	Mar-21		
Apr-17	83	\$267,187	Apr-18	94	\$312,340	Apr-19	54	\$173,772	Apr-20	69	\$199,975	Apr-21		
May-17	72	\$232,836	May-18	59	\$155,406	May-19	65	\$237,979	May-20	41	\$129,317	May-21		
Jun-17	102	\$306,228	Jun-18	56	\$159,268	Jun-19	61	\$214,497	Jun-20	60	\$184,603	Jun-21		
TOTAL	988	\$3,019,972		853	\$2,686,001		743	\$2,340,307		694	\$2,196,707		225	\$698,803
AVERAGE	82	\$251,664		71	\$223,833		62	\$195,026		58	\$183,059		45	\$139,761



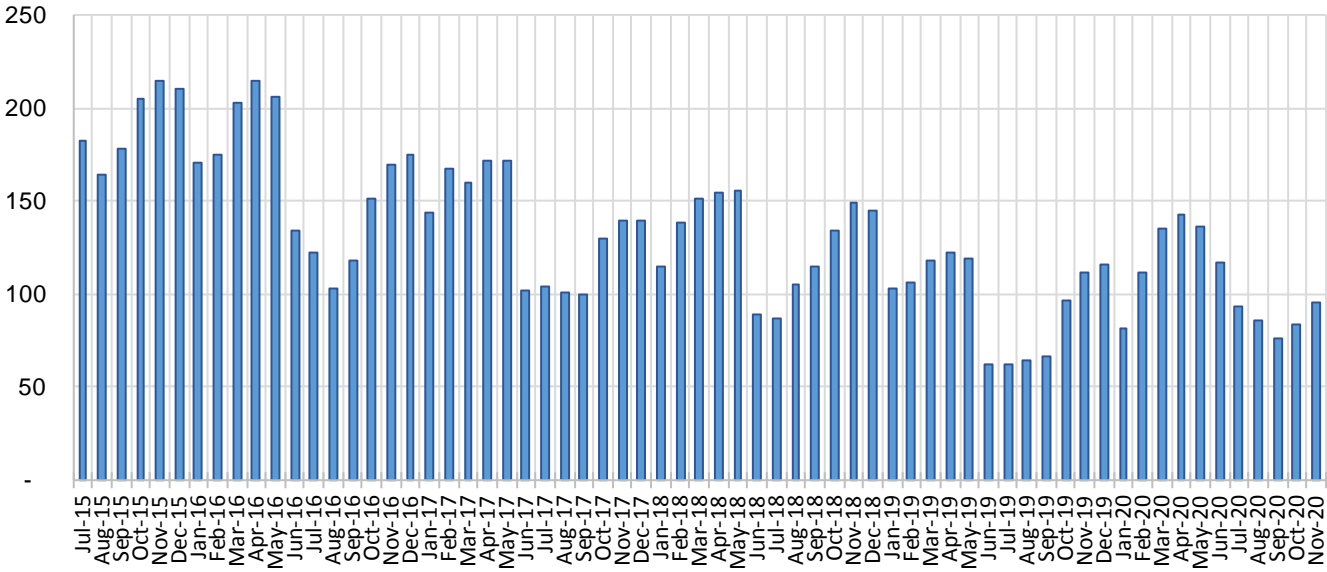
Education Works Cases by Field Office⁶

Office				Percent Change	
	Nov-19	Oct-20	Nov-20	Nov-19- Nov-20	Oct-20- Nov-20
Chaves County ISD	3	3	3	0.0%	0.0%
Cibola County ISD	1	0	0	-100.0%	N/A
Colfax County ISD	0	0	0	N/A	N/A
Curry County ISD	5	4	4	-20.0%	0.0%
East Dona Ana County ISD	9	5	9	0.0%	80.0%
Eddy Artesia County ISD	2	1	1	-50.0%	0.0%
Eddy Carlsbad County ISD	1	0	0	-100.0%	N/A
Grant County ISD	2	3	3	50.0%	0.0%
Guadalupe County ISD	0	1	1	N/A	0.0%
Hidalgo County ISD	0	0	0	N/A	N/A
Lea County ISD	2	2	2	0.0%	0.0%
Lincoln County ISD	0	0	0	N/A	N/A
Luna County ISD	2	0	0	-100.0%	N/A
McKinley County ISD	1	1	1	0.0%	0.0%
Northeast Bernalillo County ISD	3	8	9	200.0%	12.5%
Northwest Bernalillo County ISD	17	6	7	-58.8%	16.7%
Otero County ISD	0	0	1	N/A	N/A
Quay County ISD	0	1	1	N/A	0.0%
Rio Arriba County ISD	1	1	1	0.0%	0.0%
Roosevelt County ISD	0	0	0	N/A	N/A
San Juan County ISD	3	2	3	0.0%	50.0%
San Miguel County ISD	4	4	4	0.0%	0.0%
Sandoval County ISD	8	5	7	-12.5%	40.0%
Santa Fe County ISD	10	4	6	-40.0%	50.0%
Sierra County ISD	1	0	0	-100.0%	N/A
Socorro County ISD	0	0	0	N/A	N/A
South Dona Ana ISD	7	2	2	-71.4%	0.0%
Southeast Bernalillo County ISD	6	2	2	-66.7%	0.0%
Southwest Bernalillo County ISD	9	9	10	11.1%	11.1%
Taos County ISD	0	0	0	N/A	N/A
Torrance County ISD	3	2	1	-66.7%	-50.0%
Valencia North County ISD	1	0	1	0.0%	N/A
Valencia South County ISD	0	0	0	N/A	N/A
West Dona Ana County ISD	11	18	17	54.5%	-5.6%
Centralized Units	0	0	0	N/A	N/A
Statewide Total	112	84	96	-14.3%	14.3%

Education Works Cases by Region⁶

				Percent Change	
Region	Nov-19	Oct-20	Nov-20	Nov-19- Nov-20	Oct-20- Nov-20
Region 1 - NW	7	3	5	-28.57%	66.67%
Region 2 - NE	23	16	20	-13.04%	25.00%
Region 3 - Central	38	27	29	-23.68%	7.41%
Region 4 - SE	13	10	10	-23.08%	0.00%
Region 5 - SW	31	28	32	3.23%	14.29%
Centralized Units	0	0	0	N/A	N/A
Statewide Total	112	84	96	-14.29%	14.29%

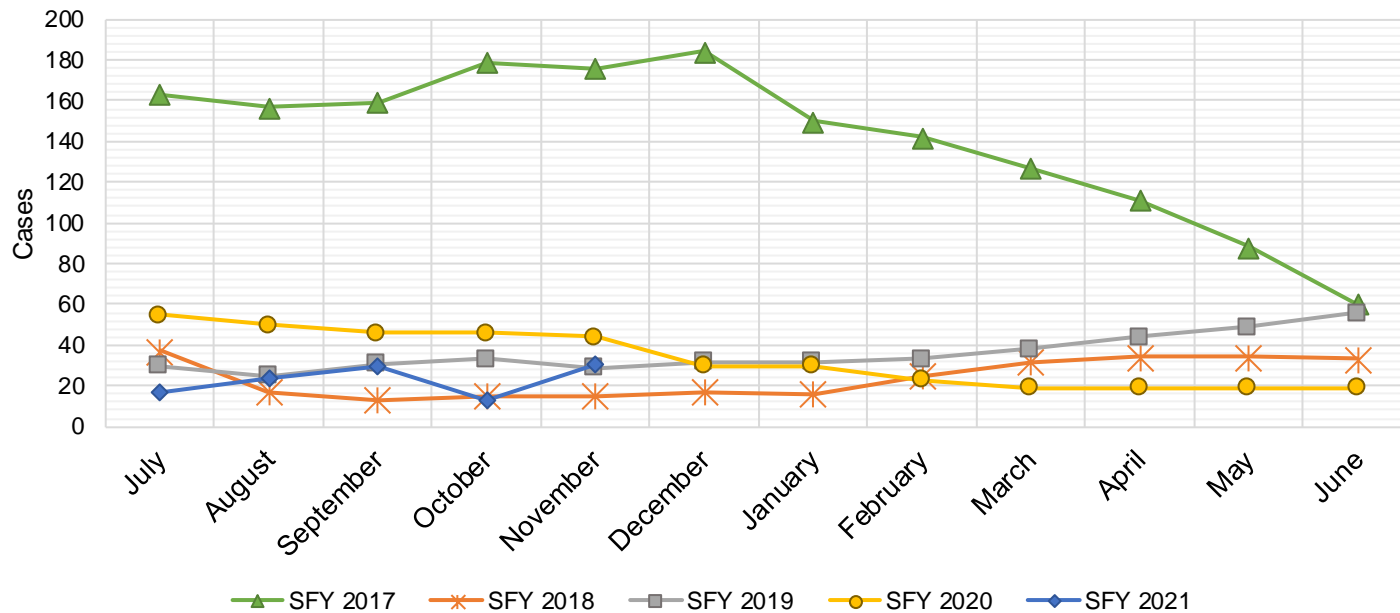
Education Works Caseload: SFY-16 to Current



Refugee Cash Assistance

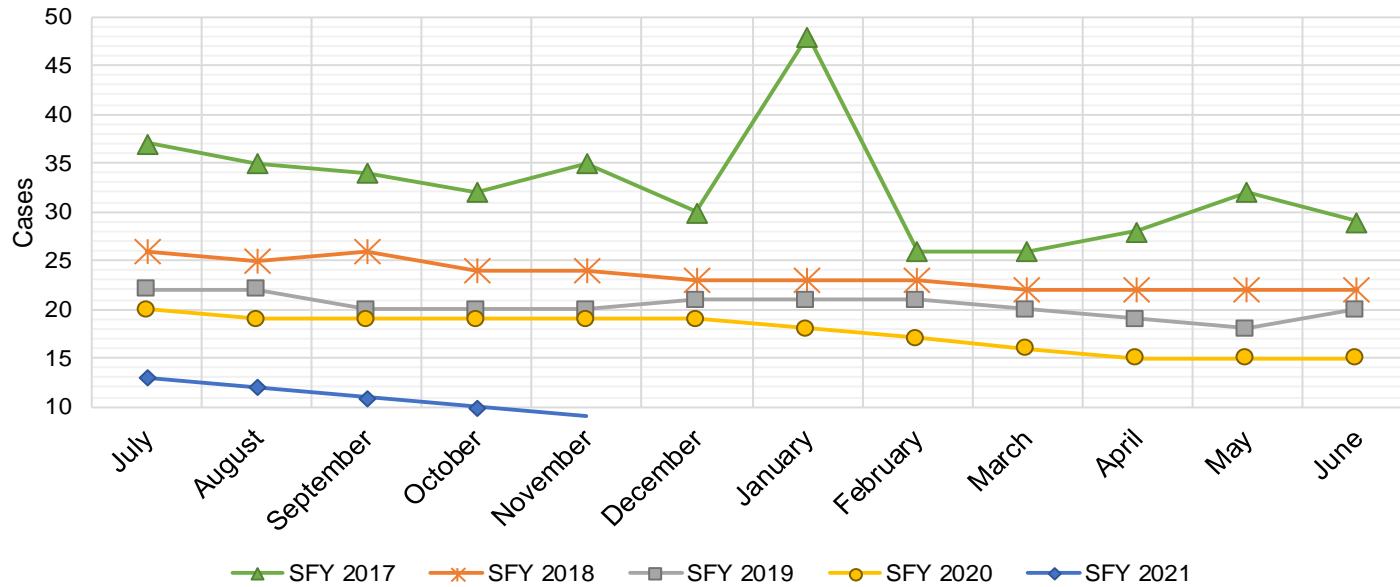
SFY 2017 ^{8,9}			SFY 2018 ^{8,9}			SFY 2019 ^{8,9}			SFY 2020 ^{8,9}			SFY 2021 ^{8,9}		
	Cases	Expenditures		Cases	Expenditures		Cases	Expenditures		Cases	Expenditures		Cases	Expenditures
Jul-16	163	\$39,756	Jul-17	37	\$9,981	Jul-18	30	\$7,408	Jul-19	55	\$13,851	Jul-20	17	\$9,650
Aug-16	157	\$40,115	Aug-17	17	\$4,704	Aug-18	25	\$6,434	Aug-19	50	\$12,497	Aug-20	24	\$12,930
Sep-16	159	\$39,359	Sep-17	13	\$3,159	Sep-18	31	\$6,947	Sep-19	46	\$11,473	Sep-20	30	\$16,276
Oct-16	179	\$41,520	Oct-17	15	\$3,543	Oct-18	33	\$6,323	Oct-19	46	\$11,341	Oct-20	13	\$4,103
Nov-16	176	\$45,434	Nov-17	15	\$4,263	Nov-18	29	\$7,036	Nov-19	44	\$11,296	Nov-20	31	\$11,886
Dec-16	184	\$46,673	Dec-17	17	\$4,795	Dec-18	32	\$7,300	Dec-19	30	\$7,679	Dec-20		
Jan-17	150	\$38,790	Jan-18	16	\$4,166	Jan-19	32	\$7,418	Jan-20	30	\$7,407	Jan-21		
Feb-17	142	\$37,956	Feb-18	25	\$5,723	Feb-19	33	\$8,591	Feb-20	23	\$7,577	Feb-21		
Mar-17	127	\$33,066	Mar-18	32	\$7,636	Mar-19	38	\$9,165	Mar-20	19	\$6,500	Mar-21		
Apr-17	111	\$29,183	Apr-18	34	\$8,827	Apr-19	44	\$10,648	Apr-20	19	\$4,847	Apr-21		
May-17	88	\$23,343	May-18	34	\$8,939	May-19	49	\$11,823	May-20	19	\$4,908	May-21		
Jun-17	60	\$15,538	Jun-18	33	\$8,513	Jun-19	56	\$13,558	Jun-20	19	\$5,386	Jun-21		

TOTAL	1,696	\$430,732	288	\$74,249	432	\$102,651	400	\$104,762	115	\$54,845
AVERAGE	141	\$35,894	24	\$6,187	36	\$8,554	33	\$8,730	23	\$10,969



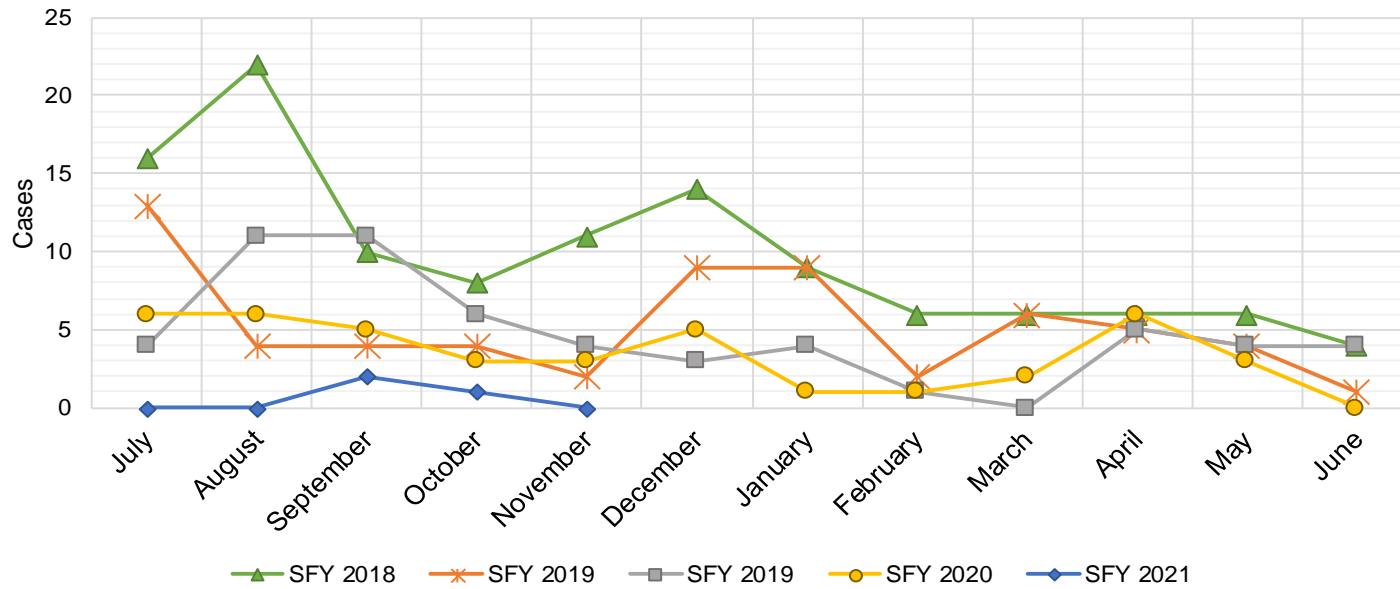
State Supplement for Residential Care

SFY 2017 ⁹			SFY 2018 ⁹			SFY 2019 ⁹			SFY 2020 ⁹			SFY 2021 ⁹		
	Cases	Expenditures		Cases	Expenditures		Cases	Expenditures		Cases	Expenditures		Cases	Expenditures
Jul-16	37	\$3,700	Jul-17	26	\$2,700	Jul-18	22	\$2,200	Jul-19	20	\$1,900	Jul-20	13	\$1,300
Aug-16	35	\$3,500	Aug-17	25	\$2,500	Aug-18	22	\$2,200	Aug-19	19	\$1,900	Aug-20	12	\$1,200
Sep-16	34	\$3,400	Sep-17	26	\$2,700	Sep-18	20	\$2,000	Sep-19	19	\$1,900	Sep-20	11	\$1,200
Oct-16	32	\$3,200	Oct-17	24	\$2,500	Oct-18	20	\$2,000	Oct-19	19	\$1,900	Oct-20	10	\$1,000
Nov-16	35	\$3,500	Nov-17	24	\$2,400	Nov-18	20	\$2,000	Nov-19	19	\$1,900	Nov-20	9	\$900
Dec-16	30	\$3,000	Dec-17	23	\$2,200	Dec-18	21	\$2,100	Dec-19	19	\$1,900	Dec-20		
Jan-17	48	\$4,800	Jan-18	23	\$2,400	Jan-19	21	\$2,000	Jan-20	18	\$1,800	Jan-21		
Feb-17	26	\$2,600	Feb-18	23	\$2,300	Feb-19	21	\$2,200	Feb-20	17	\$1,600	Feb-21		
Mar-17	26	\$2,600	Mar-18	22	\$2,400	Mar-19	20	\$1,900	Mar-20	16	\$1,500	Mar-21		
Apr-17	28	\$2,800	Apr-18	22	\$2,200	Apr-19	19	\$1,800	Apr-20	15	\$1,500	Apr-21		
May-17	32	\$3,200	May-18	22	\$2,200	May-19	18	\$1,800	May-20	15	\$1,500	May-21		
Jun-17	29	\$2,900	Jun-18	22	\$2,200	Jun-19	20	\$2,000	Jun-20	15	\$1,500	Jun-21		
TOTAL	392	\$39,200		282	\$28,700		244	\$24,200		211	\$20,800		55	\$5,600
AVERAGE	33	\$3,267		24	\$2,392		20	\$2,017		18	\$1,733		11	\$1,120



TANF Diversion Payments

SFY 2018 ⁹			SFY 2019 ⁹			SFY 2019 ⁹			SFY 2020 ⁹			SFY 2021 ⁹		
	Cases	Expenditures		Cases	Expenditures		Cases	Expenditures		Cases	Expenditures		Cases	Expenditures
Jul-16	16	\$30,843	Jul-17	13	\$26,500	Jul-18	4	\$3,000	Jul-19	6	\$18,500	Jul-20	0	\$0
Aug-16	22	\$42,731	Aug-17	4	\$12,000	Aug-18	11	\$18,583	Aug-19	6	\$16,500	Aug-20	0	\$1,500
Sep-16	10	\$21,000	Sep-17	4	\$4,000	Sep-18	11	\$20,999	Sep-19	5	\$11,000	Sep-20	2	\$1,500
Oct-16	8	\$16,744	Oct-17	4	\$16,000	Oct-18	6	\$10,499	Oct-19	3	\$3,000	Oct-20	1	\$1,500
Nov-16	11	\$24,500	Nov-17	2	\$15,500	Nov-18	4	\$7,499	Nov-19	3	\$16,180	Nov-20	0	\$1,500
Dec-16	14	\$26,611	Dec-17	9	\$17,500	Dec-18	3	\$2,499	Dec-19	5	\$14,000	Dec-20		
Jan-17	9	\$18,500	Jan-18	9	\$21,731	Jan-19	4	\$5,999	Jan-20	1	\$1,500	Jan-21		
Feb-17	6	\$12,000	Feb-18	2	\$7,731	Feb-19	1	\$1,678	Feb-20	1	\$1,857	Feb-21		
Mar-17	6	\$11,000	Mar-18	6	\$8,496	Mar-19	0	\$3,000	Mar-20	2	\$5,920	Mar-21		
Apr-17	6	\$12,000	Apr-18	5	\$13,500	Apr-19	5	\$6,500	Apr-20	6	\$14,905	Apr-21		
May-17	6	\$11,500	May-18	4	\$12,500	May-19	4	\$16,000	May-20	3	\$8,000	May-21		
Jun-17	4	\$13,500	Jun-18	1	\$5,389	Jun-19	4	\$8,000	Jun-20	0	\$0	Jun-21		
TOTAL	118	\$240,929	63	\$160,847	57	\$104,256	41	\$111,362	3	\$6,000				
AVERAGE	10	\$20,077	5	\$13,404	5	\$8,688	3	\$9,280	1	\$1,200				

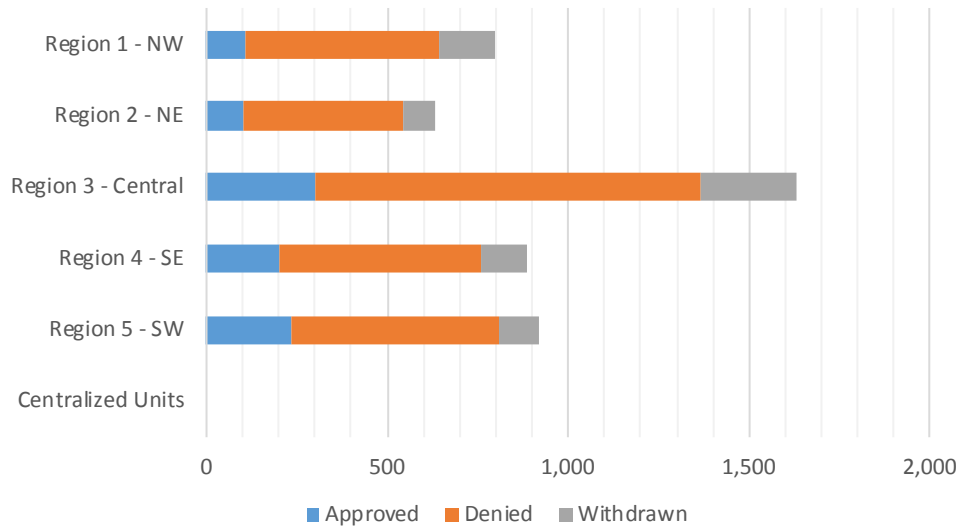


Cash Assistance Applications by Field Office^{4,11}
November 2020

Office	Approved	Denied	Withdrawn	Total Cases Processed
Chaves County ISD	92	214	53	359
Cibola County ISD	15	18	7	40
Colfax County ISD	6	31	0	37
Curry County ISD	42	122	23	187
East Dona Ana County ISD	48	145	17	210
Eddy Artesia County ISD	9	35	8	52
Eddy Carlsbad County ISD	13	81	14	108
Grant County ISD	20	34	10	64
Guadalupe County ISD	0	12	1	13
Hidalgo County ISD	0	0	0	0
Lea County ISD	41	68	23	132
Lincoln County ISD	6	34	7	47
Luna County ISD	33	45	9	87
McKinley County ISD	4	60	15	79
Northeast Bernalillo County ISD	100	425	90	615
Northwest Bernalillo County ISD	65	263	75	403
Otero County ISD	33	72	16	121
Quay County ISD	14	32	6	52
Rio Arriba County ISD	20	86	14	120
Roosevelt County ISD	0	0	0	0
San Juan County ISD	49	375	106	530
San Miguel County ISD	17	58	17	92
Sandoval County ISD	16	58	17	91
Santa Fe County ISD	17	117	22	156
Sierra County ISD	8	19	3	30
Socorro County ISD	11	16	3	30
South Dona Ana ISD	53	110	18	181
Southeast Bernalillo County ISD	7	27	9	43
Southwest Bernalillo County ISD	124	342	91	557
Taos County ISD	10	49	13	72
Torrance County ISD	3	11	1	15
Valencia North County ISD	22	48	16	86
Valencia South County ISD	0	0	3	3
West Dona Ana County ISD	47	168	39	254
Centralized Units	0	0	0	0
Statewide Total	945	3,175	746	4,866

Cash Assistance Applications by Region^{4,11}
November 2020

Region	Approved	Denied	Withdrawn	Total Cases Processed
Region 1 - NW	109	536	153	798
Region 2 - NE	100	443	90	633
Region 3 - Central	299	1,068	266	1,633
Region 4 - SE	203	554	128	885
Region 5 - SW	234	574	109	917
Centralized Units	0	0	0	0
Statewide Total	945	3,175	746	4,866



**Early Childhood Education and Care Department
Children Receiving Child Care Assistance Subsidies By County**

County	Nov 2019	Dec 2019	Jan 2020	Feb 2020	Mar 2020	Apr 2020	May 2020	June 2020	July 2020	Aug 2020	Sept 2020	Oct 2020	Nov 2020	Change Fr. Cases	Last Year Percent
<i>Bernalillo</i>	7,759	7,591	7,673	7,779	7,975	8,683	8,506	8,061	7,316	5,905	5,462	5,001	4,935	-2,824	-36.4%
Catron	0	0	0	0	0	0	0	0	0	0	0	0	0	0	0.0%
<i>Chaves</i>	891	827	835	830	830	911	918	857	852	683	650	662	634	-257	-28.8%
Cibola	238	247	224	226	227	271	263	256	247	184	199	185	190	-48	-20.2%
<i>Colfax</i>	34	31	32	32	26	28	29	28	28	30	22	23	24	-10	-29.4%
Curry	596	587	605	613	600	669	668	613	625	482	444	435	448	-148	-24.8%
<i>De Baca</i>	1	1	0	0	0	0	0	0	0	0	0	0	0	-1	-100.0%
Dona Ana	4,493	4,348	4,350	4,313	4,388	4,806	4,691	4,466	4,363	3,306	3,084	2,994	3,056	-1,437	-32.0%
<i>Eddy</i>	239	234	225	227	231	235	233	213	226	200	184	165	172	-67	-28.0%
Grant	133	145	143	146	132	159	157	160	135	63	78	80	92	-41	-30.8%
<i>Guadalupe</i>	7	7	7	7	8	9	8	8	10	10	10	10	11	4	57.1%
Harding	0	0	0	0	0	0	0	0	0	0	0	0	0	0	0.0%
<i>Hidalgo</i>	28	28	28	27	24	23	20	17	23	14	19	20	18	-10	-35.7%
Lea	753	741	736	785	767	828	839	798	779	683	596	572	558	-195	-25.9%
<i>Lincoln</i>	97	86	89	89	88	100	99	88	87	66	47	50	55	-42	-43.3%
Los Alamos	42	40	42	38	37	48	48	44	45	28	27	24	25	-17	-40.5%
<i>Luna</i>	148	155	158	163	164	196	216	189	188	143	148	144	138	-10	-6.8%
McKinley	172	172	170	171	166	185	169	172	155	56	72	88	84	-88	-51.2%
<i>Mora</i>	11	11	11	11	12	13	12	12	12	10	14	11	17	6	54.5%
Otero	510	501	506	511	520	578	592	564	564	413	446	352	383	-127	-24.9%
<i>Out of State</i>	0	0	0	0	0	0	0	0	0	0	0	0	0	0	0.0%
Quay	34	35	32	34	37	42	41	39	40	28	27	22	27	-7	-20.6%
<i>Rio Arriba</i>	153	155	152	153	149	160	155	153	144	99	84	79	83	-70	-45.8%
Roosevelt	134	133	131	132	131	146	178	168	143	97	98	107	105	-29	-21.6%
<i>San Juan</i>	926	958	928	951	979	1,231	1,252	1,221	1,144	737	781	785	796	-130	-14.0%
San Miguel	356	353	349	361	373	412	403	399	405	326	339	330	349	-7	-2.0%
<i>Sandoval</i>	803	770	738	765	736	897	902	865	865	570	551	529	509	-294	-36.6%
Santa Fe	567	537	533	522	537	601	616	605	580	354	358	392	367	-200	-35.3%
<i>Sierra</i>	56	63	61	52	55	67	67	78	84	51	49	44	41	-15	-26.8%
Socorro	53	48	43	40	41	46	46	43	38	29	27	27	25	-28	-52.8%
<i>Taos</i>	125	126	126	117	139	156	149	141	115	89	77	85	93	-32	-25.6%
Torrance	57	63	68	63	71	78	86	74	78	63	55	47	50	-7	-12.3%
<i>Union</i>	3	3	3	3	3	3	3	3	3	2	2	2	2	-1	-33.3%
Valencia	595	573	564	533	547	628	620	632	566	457	467	448	475	-120	-20.2%
Totals	20,014	19,569	19,562	19,694	19,993	22,209	21,986	20,967	19,860	15,178	14,417	13,713	13,762	-6,252	-31.2%

EARLY CHILDHOOD EDUCATION AND CARE DEPARTMENT CHILD CARE ASSISTANCE ELIGIBILITY PROGRAMS

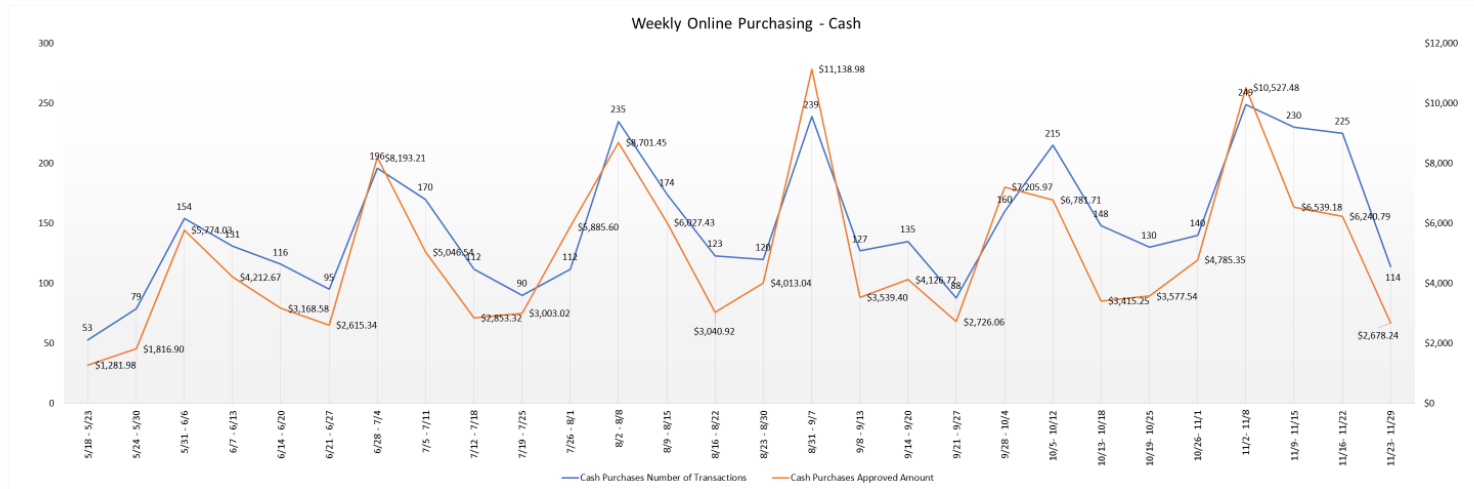
MONTH	Dec'19	Jan'20	Feb'20	Mar'20	Apr'20	May'20	June'20	July'20	Aug'20	Sept'20	Oct'20	Nov'20
TANF (Child Care Priority 1 Clients)												
CLIENTS	2,055	2,030	2,001	2,031	2,005	1,941	1,943	1,866	1,453	1,317	1,239	1,188
COST	\$1,239,407	\$1,257,977	\$1,195,404	\$1,280,286	\$1,306,318	\$1,304,392	\$1,292,773	\$1,249,411	\$954,523	\$846,281	\$829,004	\$814,035
TANF AVERAGE COST	\$603	\$620	\$597	\$630	\$652	\$672	\$665	\$670	\$657	\$643	\$669	\$689
TRANSITION OFF TANF (Child Care Priority 2 Clients)												
CLIENTS	178	196	209	209	223	211	199	174	159	146	134	148
COST	\$111,325	\$120,862	\$136,239	\$127,986	\$144,617	\$142,374	\$136,509	\$109,243	\$99,130	\$87,238	\$87,914	\$107,570
TRAN OFF TANF AVG COST	\$625	\$617	\$652	\$612	\$649	\$675	\$686	\$628	\$623	\$88	\$88	\$88
TANF ELIGIBLE (Child Care Priority 1B Clients at or below 100% of the Federal Poverty Level)												
CLIENTS	7,830	7,697	7,671	7,857	7,797	7,634	7,597	7,258	5,827	5,333	4,957	4,956
COST	\$4,694,761	\$4,551,874	\$4,539,530	\$4,868,148	\$4,955,752	\$5,017,736	\$4,897,618	\$4,696,062	\$3,702,155	\$3,227,351	\$3,349,454	\$3,330,950
TANF ELIGIBLE AVG COST	\$600	\$591	\$592	\$620	\$636	\$657	\$645	\$647	\$635	\$605	\$676	\$672
INCOME ELIGIBLE (Child Care Priority 3, and Priority 4 Clients)												
CLIENTS	8,520	8,701	8,848	8,978	10,600	10,132	8,870	8,084	6,945	6,857	6,578	6,684
COST	\$4,488,101	\$4,573,609	\$4,700,981	\$4,891,611	\$10,456,494	\$10,002,092	\$5,863,605	\$4,768,416	\$4,041,977	\$3,734,881	\$4,705,258	\$4,714,528
INCOME ELIG AVG COST	\$527	\$526	\$531	\$545	\$986	\$987	\$661	\$590	\$582	\$545	\$715	\$705
AT-RISK CHILD PROTECTIVE SERVICES CHILD CARE PILOT (Priority 5 Clients)												
CLIENTS	187	190	182	144	829	1,379	1,699	1,796	145	137	159	175
COST	\$137,644	\$145,544	\$136,364	\$99,487	\$357,417	\$941,656	\$1,216,142	\$1,292,805	\$91,596	\$96,923	\$104,888	\$123,602
CPS AVG COST	\$736	\$766	\$749	\$691	\$431	\$683	\$716	\$720	\$632	\$707	\$660	\$706
CHILD PROTECTIVE SERVICES (Child Care CPS Clients)												
CLIENTS	799	748	783	774	755	689	659	682	649	627	646	618
COST	\$539,629	\$501,038	\$520,094	\$547,029	\$490,287	\$633,230	\$616,005	\$455,989	\$455,542	\$419,097	\$483,711	\$437,483
CPS AVG COST	\$675	\$670	\$664	\$707	\$649	\$919	\$935	\$669	\$702	\$668	\$749	\$708
GRAND TOTAL - ALL CHILD CARE PROGRAMS												
CLIENTS	19,569	19,562	19,694	19,993	22,209	21,986	20,967	19,860	15,178	14,417	13,713	13,762
COST	\$11,210,867	\$11,150,904	\$11,228,612	\$11,814,547	\$17,710,886	\$18,041,480	\$14,022,651	\$12,571,928	\$9,344,924	\$8,411,771	\$9,560,229	\$9,528,168
ALL PROGRAMS AVG COST	\$573	\$570	\$570	\$591	\$797	\$821	\$669	\$633	\$616	\$583	\$697	\$692

SNAP Emergency Allotment and Pandemic EBT: Expenditures, Cases, and Recipients

Note: Pandemic EBT will start to be issued in May 2020

Date	Expenditures		Cases Processed		Recipients Served		Average Expenditures Per Case Processed		Average Expenditures Per Recipient Served	
	Pandemic EBT	Emergency Allotment	Pandemic EBT	Emergency Allotment	Pandemic EBT	Emergency Allotment	Pandemic EBT	Emergency Allotment	Pandemic EBT	Emergency Allotment
Apr-20	—	\$50,524,646	—	158,060	—	340,960	—	\$319.65	—	\$148.18
May-20	\$24,456,957	\$24,802,215	44,236	137,797	68,815	247,857	\$552.87	\$179.99	\$355.40	\$100.07
Jun-20	\$74,641,557	\$24,058,493	96,197	134,557	186,959	297,304	\$775.92	\$178.80	\$399.24	\$80.92
Jul-20	\$2,172,555	\$24,722,792	5,440	136,783	5,440	299,330	\$399.37	\$180.74	\$399.37	\$82.59
Aug-20	\$356,706	\$26,012,689	894	140,924	894	309,638	\$399.00	\$184.59	\$399.00	\$84.01
Sep-20	\$46,820,023	\$24,462,456	251,491	134,896	251,491	296,936	\$186.17	\$181.34	\$186.17	\$82.38
Oct-20	\$0.00	\$24,425,558	0	132,520	0	290,479	\$0.00	\$184.32	\$0.00	\$84.09
Nov-20	\$0.00	\$25,951,251.00	0	139,390	0	306,779	\$0.00	\$186.18	\$0.00	\$84.59
Dec-20										
Total to Date	\$148,447,798	\$224,960,100	398,258	1,114,927	513,599	2,389,283	\$372.74	\$201.77	\$289.03	\$94.15

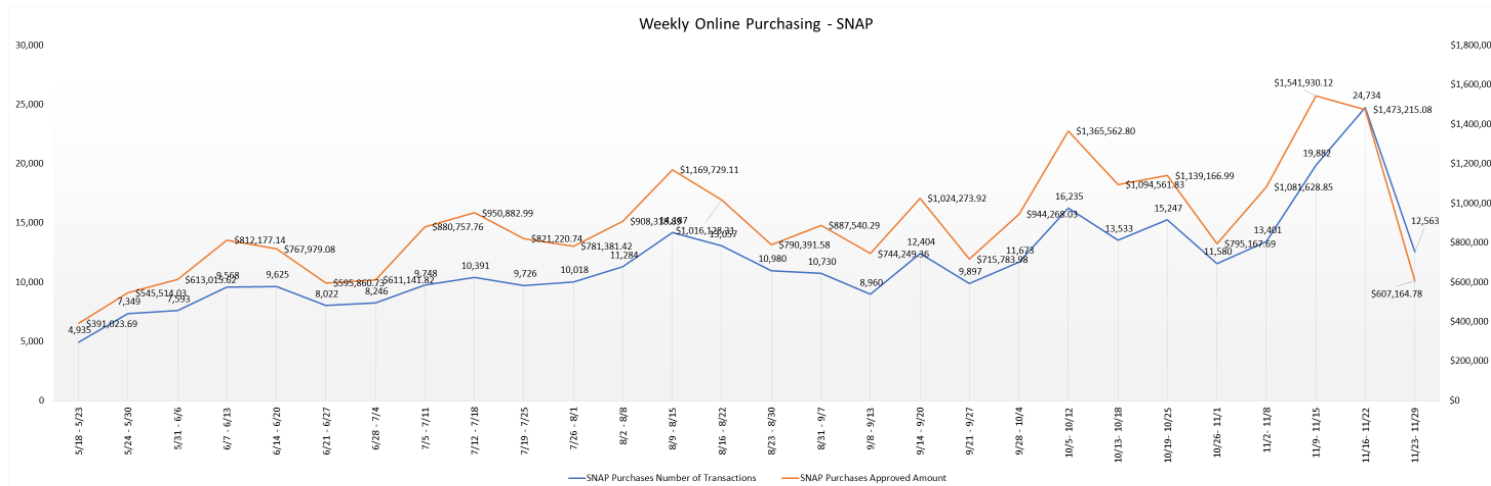
Reporting Date – Nov 29th,2020



Data Source: ISD/ FIS

22

Reporting Date – Nov 29th,2020



Data Source: ISD/ FIS

21

Income Eligibility Guidelines: October 1, 2020 - September 30, 2021

Federal Poverty Guidelines (FPG) Monthly Income Standards

Supplemental Nutrition Program (SNAP)					
Household Size	100% FPG Net Income	130% FPG Gross Income	165% FPG Gross Income for Categorical Eligibility	Maximum SNAP Monthly Allotment	LIHEAP 150% FPG
1	\$1,064	\$1,383	\$1,755	\$204	\$1,596
2	\$1,437	\$1,868	\$2,371	\$374	\$2,156
3	\$1,810	\$2,353	\$2,987	\$535	\$2,715
4	\$2,184	\$2,839	\$3,603	\$680	\$3,276
5	\$2,557	\$3,324	\$4,219	\$807	\$3,836
6	\$2,930	\$3,809	\$4,835	\$969	\$4,395
7	\$3,304	\$4,295	\$5,451	\$1,071	\$4,956
8	\$3,677	\$4,780	\$6,067	\$1,224	\$5,516
+1	+\$374	+\$486	+\$616	+\$153	+\$561
Minimum Allotment of \$16 effective from 10/1/2019 - 9/30/2020					
Deduction Limit: \$586, Heating and Cooling Standard Utility Allowance (HCSUA): \$348, Limited Utility Allowance (LUA): \$140, Telephone Standard: \$48, Dependent Care: Actual Amount (No Limit), Earned Income Deduction: 20%, Homeless Shelter Standard: \$156.74, LIHEAP (only) Energy Standard Allowance (ESA): \$208, A45, Cash Assistance & Support Services October 1, 2020 – September 30, 2021, House- hold Size, Federal Poverty Guidelines (FPG) Monthly Income					

CASH Assistance & Support Services				
Household Size	Federal Poverty Guidelines (FPG) Monthly Income Standards		Maximum Monthly Benefit	
	100% FPG Net Income	85% FPG Gross Limit	New Mexico Works Cash Assistance	General Assistance
1	\$1,064	\$904	\$266	\$245
2	\$1,437	\$1,221	\$357	\$329
3	\$1,810	\$1,539	\$447	\$412
4	\$2,184	\$1,856	\$539	\$496
5	\$2,557	\$2,173	\$630	\$580
6	\$2,930	\$2,491	\$721	\$664
7	\$3,304	\$2,808	\$812	\$748
8	\$3,677	\$3,125	\$922	\$849
+1	+\$374	+\$318	+\$91	+\$84
Deductions- Dependent Care: For a child under age 2 = \$200; For a child age 2 and over = \$175. Work Incentives- Earned Income Disregard: Single parent = \$125 & ½ remainder; Two parent = \$225 & ½ remainder.				

Medical Assistance Division					
Federal Poverty Guidelines New Mexico Affordable Care Eligibility Groups Effective April 01, 2020 thru March 31, 2021 Monthly Guidelines					
HH SIZE	PERCENT OF POVERTY				
	138%	190%	240%	250%	300%
1	\$1,468	\$2,021	\$2,552	\$2,659	\$3,190
2	\$1,983	\$2,730	\$3,449	\$3,592	\$4,311
3	\$2,498	\$3,439	\$4,344	\$4,525	\$5,430
4	\$3,013	\$4,149	\$5,240	\$5,459	\$6,550
5	\$3,529	\$4,858	\$6,137	\$6,392	\$7,671
6	\$4,044	\$5,567	\$7,032	\$7,325	\$8,790
7	\$4,559	\$6,277	\$7,928	\$8,259	\$9,910
8	\$5,074	\$6,986	\$8,825	\$9,192	\$11,031
138% Adult Expansion, 190% Children ages 6 to 19 (Medicaid), 240% Children ages 0 to 6 (Medicaid); ages 6 to 19 (CHIP), 250% Pregnancy Related Services Only, 300% Children 0 to 6 (CHIP)					

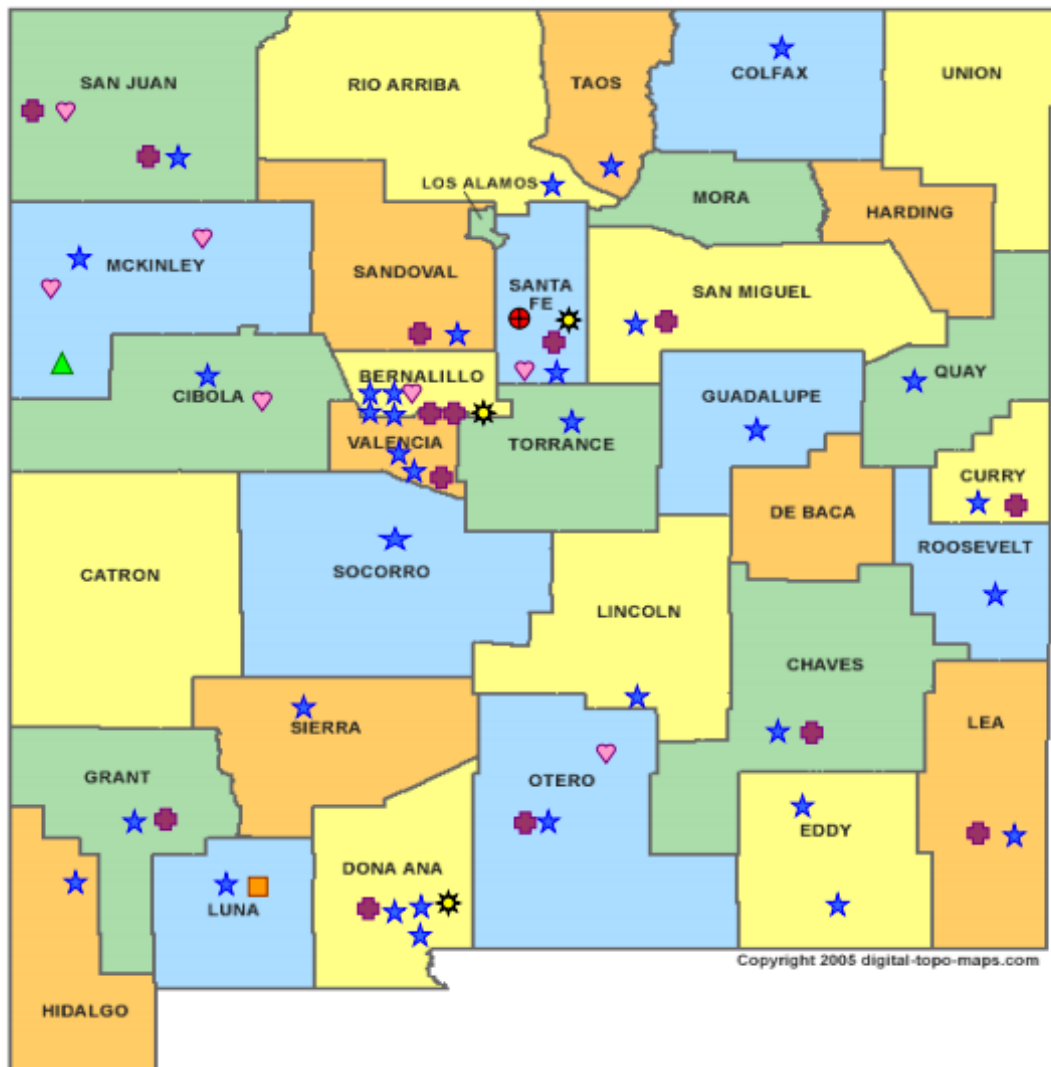
Medical Assistance Division					
Federal Poverty Guidelines New Mexico Affordable Care Eligibility Groups Effective April 01, 2020 thru March 31, 2021 Annual Guidelines					
HH SIZE	PERCENT OF POVERTY				
	138%	190%	240%	250%	300%
1	\$17,616	\$24,252	\$30,624	\$31,908	\$38,280
2	\$23,796	\$32,760	\$41,388	\$43,104	\$51,732
3	\$29,976	\$41,268	\$52,128	\$54,300	\$65,160
4	\$36,156	\$49,788	\$62,880	\$65,508	\$78,600
5	\$42,348	\$58,296	\$73,644	\$76,704	\$92,052
6	\$48,528	\$66,804	\$84,384	\$87,900	\$105,480
7	\$54,708	\$75,324	\$95,136	\$99,108	\$118,920
8	\$60,888	\$83,832	\$105,900	\$110,304	\$132,372
138% Adult Expansion, 190% Children ages 6 to 19 (Medicaid), 240% Children ages 0 to 6 (Medicaid); ages 6 to 19 (CHIP), 250% Pregnancy Related Services Only, 300% Children 0 to 6 (CHIP)					

References

- ¹ *Medicaid Expenditures* (Omnicaid, Medicare Buy-Ins, Lump Sum Payments)
- ² *ASPEN Business Intelligence Tool: Eligibility*
- ³ New Mexico Human Services Department, *Medicaid Eligibility Reports*, Retrieved from <http://www.hsd.state.nm.us/LookingForInformation/medicaid-eligibility.aspx> (for reporting month)
- ⁴ *ASPEN Business Intelligence Tool: Application Tracking*
- ⁵ Fidelity Information Services, *EBT Daily Statistical Report* (for reporting month)
- ⁶ *ASPEN Report DQ-180: Length of Time Cases are Open* (for reporting month)
- ⁷ *ASPEN Report EY-180: Individual Demographics by State and Age* (for reporting month)
- ⁸ *ASPEN Business Intelligence Tool: Benefit Issuance*
- ⁹ Fidelity Information Services, *EBT Daily Statistical Reports* (Month End)
- ¹⁰ *ASPEN Report EY-180R: Individual Demographics by State, Race, Ethnicity and Gender* (for reporting month)
- ¹¹ SQL Queries from ASPEN
- ¹² JP Morgan, *New Mexico – NM EBT System- Monthly Benefit Draw Down Totals*
- ¹³ *ASPEN Business Intelligence Tool: Application Tracking* (w/Parameters: SNAP, Expedite, Approved)
- ¹⁴ SL Start, *As of Today Report*
- ¹⁵ SL Start, *Statewide Employment Report*
- ¹⁶ *SSIAR Payments*
- ¹⁷ Children, Youth, and Families Department, *Children Receiving Child Care Assistance Subsidies by County*
- ¹⁸ Children, Youth, and Families Department, *Child Care Assistance Eligibility Programs*








¹⁹ EDG is defined as an Eligibility Determination Group

²⁰SQL Query from ASPEN



HUMAN SERVICES
DEPARTMENT

New Mexico Human Services Department
Field Offices

-  Central Office (1)
-  Income Support Division County Office (35)
-  Income Support Division Satellite Office (2)
-  Child Support Enforcement Regional Office (16)
-  Child Support Enforcement Satellite Office (1)
-  Indian Health Services (7)
-  Hospital Site (3)

For a complete listing of field offices and other government and community resources:
http://www.hsd.state.nm.us/LookingForAssistance/Field_Offices_1.aspx

Medicaid Policy Changes Due to COVID-19

Already implemented:

1. **Three month renewal extensions**-MAGI Medicaid renewals are extended three months for individuals who fail to complete the 12-month recertification process after going through the automated administrative renewal process, the manual administrative renewal process, and issuance of the MAD 608 renewal form. Individuals who normally would have closed March 31, 2020 due to failure to recertify had their certification period extended through June 30, 2020. This same process will occur for April and May renewals. This may continue for later months if the emergency continues. Applies to non-MAGI Medicaid categories also that failed to recertify. Implemented in ASPEN on March 31st.

2. **Increase Presumptive Eligibility (PE) Determiner scope and qualified entities**-Most PE determiners are limited to approving PE for MAGI Children/CHIP and MAGI Pregnancy Services. Change was made to allow HSD employees to approve PE and to allow most PE determiners to approve all MAGI Medicaid categories of eligibility. Change was implemented on April 07, 2020.

3. **Reopen and Sustain Medicaid Cases**-The requirement is that anyone receiving Medicaid March 18th and ongoing for the duration of the emergency continue to be covered at the same level of coverage. There are three exceptions: client requested closure, deceased individuals, and moved out of state. April 2020 closures were reopened and sustained through July 31, 2020 and can be extended if the emergency continues. Implemented into ASPEN on April 26, 2020.

In process (not implemented yet):

4. **Accept self-attestation for Medicaid**-Accept self-attestation for all factors of Medicaid except for citizenship/immigration. Process Medicaid applications for MAGI and non-MAGI categories based on self-attestation of 2 income and resources. Excludes IC/Waiver/PACE categories. For those cases not reasonably compatible approve and issue a 90 day HUMAD.

5. **New COVID-19 testing category**-This will be implemented in Omnicaid and not ASPEN. New uninsured category which will cover COVID-19 testing and related services. Applications will be sent to and processed by Conduent staff to allow for fee-for-service payments to providers for COVID-19 testing and related services.

6. **Exclusion of \$600 weekly unemployment benefit stimulus payments**-Medicaid excludes \$600 weekly unemployment benefit stimulus payments. ASPEN solution being developed across programs that treat the handling of unemployment monies differently as well as regular unemployment benefit extensions.

Cases closed for procedural reasons show low timeliness percentages due to the requirement to maintain Medicaid from March 18, 2020 for the duration of the COVID-19 emergency. To maintain Medicaid many March 2020 cases had to be reinstated manually by ISD field workers so there would not be a gap in coverage. To maintain Medicaid eligibility for April 2020 cases also required a manual reinstatement effort by ISD field workers as the ASPEN system fix to maintain Medicaid for the duration of the emergency still resulted in exceptions that had to be resolved manually.

SNAP Policy Changes During COVID-19

1. Suspension of SNAP Employment and Training (E&T) Program

- House of Representatives passed H.R. 6201, the Families First Coronavirus Response Act.
- ISD has chosen to suspend the SNAP E&T Program until further notice.
- interim policy and procedure for 8.139.410.13 NMAC “SUPPLEMENTAL NUTRITION ASSISTANCE PROGRAM (SNAP) EMPLOYMENT AND TRAINING PROGRAM (E&T).”

2. Amendment to Waiver - Interview Process for SNAP and TANF and Waiver - Recertification Waiver Process for SNAP, TANF, and Medicaid

- FNS approved a blanket waiver for all states to utilize.
- Interim policy and procedures for the following:
 - General Operating Policies – Application 8.100.110 NMAC.
 - Interviews in accordance with 8.139.110.11 NMAC and 8.102.110 NMAC.
 - Interim Reports (IRs) in accordance with 8.139.120.9B NMAC. and 8.102.120.11C NMAC.
 - Recertifications in accordance with 8.139.120.8, 8.102.120.9B NMAC 8.106.120.9 and 8.106.120.10 NMAC.
- Waives all SNAP, TANF and GA-Unrelated Child interviews, if all mandatory verification standards are met. o GA-Disability is excluded from this waiver; an interview must be conducted for GA as medical documentation is needed. Allows us to waive the requirement of having to offer a face-to-face and to conduct all interviews by phone.
- IR's - If an IR cannot be processed under normal processing, ASPEN will automatically extend certification periods for households with an IR due in March, and April for 6 months to the month the customers recertification is due. May and June IRs will be suspended and not mailed.
- Recertifications – If a Recertification cannot be processed under normal processing, ASPEN will automatically extend certification periods for households scheduled to recertify in March, April, May and June 2020, for 6 months until September, October and November 2020.
- IPP 20-06 in regards to the policy change can be found on the HSD website at:

3. SNAP Supplement Waiver

- State applied for a waiver through FNS.
- New Mexico has requested and been approved by FNS to provide an emergency allotment to address temporary food needs to households by bringing all households up to the maximum benefit due to pandemic related economic conditions. States that have already received FNS approval this supplemental issuance in March and April, or April and May, are approved to continue issuing full benefits each month.
- Interim policy and procedure for 8.139.610.12 NMAC.

4. Suspension of SNAP General Work Requirements

- House of Representatives passed H.R. 6201, the Families First Coronavirus Response Act.
- During the declared public health emergency, SNAP recipients who would otherwise be mandatory to comply with the SNAP general work requirements will be waived from this requirement and will not experience any type of disqualification for noncompliance during this time.
- Interim policy and procedure guidance for SNAP General Work Requirements set forth in 8.139.410.12 C and D NMAC.

5. Telephonic Signature Waiver

- State applied for a waiver through FNS
- If a customer calls to apply for benefits and does not have a paper application on file Conduent will accept a telephonic application and telephonic signature for applications by completing an online application through YesNM.
- Interim policy and procedures for 8.100.110.9A NMAC Submission of Forms.

TANF Policy Changes During COVID-19

1. Good cause exemptions from work requirements for TANF	TANF Non-Compliance Process Suspension of Non-Compliance for NMW Participants	
2. Increased cash benefit levels for TANF cash assistance recipients	Process as normal	
3. 60-month time limit	IPP Hardship	Hardship extensions will allow individuals impacted by COVID-19 to apply for a TANF hardship or continue to receive TANF beyond their 60 th month
4. Work Participation Rate	Process as normal	The state will still need to meet the WPR. However, States can use Good Cause that is outlined in CFR and not be penalized for not meeting WPR due to the emergency
5. CARES Act Direct Payment	CARES Act Direct Payment	Guidance is to exclude as income and as a resource
6. UCB under CARES Act	Only to exclude UCB benefits under CARES Act	ACF Guidance is to <i>EXCLUDE</i> all UCB income at this time. New Mexico choose to exclude only CARES Act UCB

Children Youth and Families Department Policy Changes During COVID-19

NM Children Youth and Families Department received \$29.5 million in emergency funds, which resulted in the following changes:

1. Waiver of copay for families which paid for by CYFD
2. Payment of \$250 per child premium for children who are still in care (emergency, first responders and essential personnel)
3. Streamlining of licensing of new facilities that provide emergency child care
4. Payment to the original and temporary child care provider for children of emergency, first responders and essential personnel, whose child care Program closed due to COVID-19

Additional Changes Anticipated

1. Hazardous pay for child care providers currently operating
2. Compensation for programs that are losing their funding due to private pay