



# Monthly Statistical Report

## September 2017

There were 854,426 individuals that received Medicaid in September 2017, a 3.2% decrease from one year ago. The count of Medicaid recipients has decreased by 22,987, or 2.6%, since last month.

The SNAP caseload in September 2017 was 221,910, a 15.8% decrease from one year ago. The SNAP caseload has increased by 876 cases, or 0.4%, since last month.

The TANF caseload was 11,828 in September 2017, a decrease of 6.9% from September 2016. The TANF caseload had 71 fewer cases compared to August 2017, a decrease of 0.6%.

The caseload for General Assistance was 3,086 in September 2017, a decrease of 10.2% from one year ago and an increase of 78 cases from last month.

Susana Martinez, Governor  
Brent Earnest, Cabinet Secretary

<b>Contents</b>	<b>Page</b>
Summary	3-5
Medicaid	6-13
SNAP	14-28
Cash Assistance	29-43
Child Care Assistance	44-45
Income Eligibility Guidelines	46-47

**Regions are reported as follows:**

<b>Region 1</b>		
Catron	San Juan	Valencia
Cibola	Sierra	
McKinley	Socorro	
<b>Region 2</b>		
Colfax	Mora	Santa Fe
De Baca	Quay	Taos
Guadalupe	Rio Arriba	Union
Harding	Sandoval	
Los Alamos	San Miguel	
<b>Region 3</b>		
Bernalillo	Torrance	
<b>Region 4</b>		
Chaves	Eddy	Lincoln
Curry	Lea	Roosevelt
<b>Region 5</b>		
Dona Ana	Hidalgo	Otero
Grant	Luna	

***The Mission of the Human Services Department***

*To reduce the impact of poverty on people living in New Mexico by providing support services that help families break the cycle of dependency on public assistance*

Sean Pearson, Deputy Secretary  
Michael Nelson, Deputy Secretary

Prepared by Income Support Division  
PO Box 2348  
Santa Fe, NM 87504-2348  
505-827-7250

Mary Brogdon, Director  
Vida Tapia-Sanchez, Deputy Director  
Shanita Harrison, Deputy Director

<http://www.hsd.state.nm.us/monthly-statistical-reports.aspx>

# Program Summary for September 2017

Medicaid				Percent Change	
	Sep-16	Aug-17	Sep-17	Sep-16- Sep-17	Aug-17- Sep-17
<b>Expenditures<sup>1</sup></b>	\$480,635,703	\$287,375,278	\$481,272,367	0.1%	67.5%
<b>Cases<sup>2</sup></b>	508,341	506,069	491,238	-3.4%	-2.9%
<b>Expenditures/Case</b>	\$945	\$568	\$980	3.6%	72.5%
<b>Recipients<sup>3</sup></b>	882,797	877,413	854,426	-3.2%	-2.6%
<i>Adults</i>	496,435	499,874	483,983	-2.5%	-3.2%
<i>Children</i>	386,362	377,539	370,443	-4.1%	-1.9%
<b>Recipients /Case</b>	1.74	1.73	1.74	0.2%	0.3%
<b>Cases Processed<sup>4</sup></b>	10,790	17,795	16,240	50.5%	-8.7%
<i>Approvals<sup>4</sup></i>	8,505	13,322	11,745	38.1%	-11.8%

Supplemental Nutrition Assistance Program (SNAP)				Percent Change	
	Sep-16	Aug-17	Sep-17	Sep-16- Sep-17	Aug-17- Sep-17
<b>Expenditures<sup>5</sup></b>	\$58,884,578	\$55,608,651	\$55,811,711	-5.2%	0.4%
<b>Cases<sup>6</sup></b>	263,618	221,034	221,910	-15.8%	0.4%
<b>Expenditures/Case</b>	\$223	\$252	\$252	12.6%	0.0%
<b>Recipients<sup>7</sup></b>	541,729	464,102	464,197	-14.3%	0.0%
<i>Adults</i>	314,845	264,816	265,102	-15.8%	0.1%
<i>Children</i>	226,884	199,286	199,095	-12.2%	-0.1%
<b>Recipients /Case</b>	2.05	2.10	2.09	1.8%	-0.4%
<b>Cases Processed<sup>4</sup></b>	11,987	21,692	18,820	57.0%	-13.2%
<i>Approvals<sup>4</sup></i>	9,938	16,908	14,986	50.8%	-11.4%

Cash Assistance Programs				Percent Change	
	Sep-16	Aug-17	Sep-17	Sep-16- Sep-17	Aug-17- Sep-17
<b>Expenditures<sup>5</sup></b>	\$4,718,449	\$5,681,888	\$4,300,916	-8.8%	-24.3%
<b>Cases<sup>6</sup></b>	16,455	15,050	15,053	-8.5%	0.0%
<b>Expenditures/Case</b>	\$287	\$378	\$286	-0.4%	-24.3%
<b>Recipients<sup>7</sup></b>	37,630	34,750	34,551	-8.2%	-0.6%
<i>Adults</i>	12,527	11,247	11,191	-10.7%	-0.5%
<i>Children</i>	25,103	23,503	23,360	-6.9%	-0.6%
<b>Recipients /Case</b>	2.29	2.31	2.30	0.4%	-0.6%
<b>Cases Processed<sup>4</sup></b>	4,827	6,813	6,031	24.9%	-11.5%
<i>Approvals<sup>4</sup></i>	2,011	1,982	1,707	-15.1%	-13.9%

Low Income Home Energy Assistance Program (LIHEAP)				Percent Change	
	Sep-16	Aug-17	Sep-17	Sep-16- Sep-17	Aug-17- Sep-17
<b>Expenditures<sup>8</sup></b>	\$570,755	\$802,916	\$610,319	6.9%	-24.0%
<b>Cases<sup>8</sup></b>	2,701	3,274	2,496	-7.6%	-23.8%
<b>Expenditures/Case</b>	\$211	\$245	\$245	15.7%	-0.3%
<b>Recipients<sup>8</sup></b>	6,888	8,520	6,434	-6.6%	-24.5%
<i>Adults</i>	3,583	4,408	3,358	-6.3%	-23.8%
<i>Children</i>	3,305	4,112	3,076	-6.9%	-25.2%
<b>Recipients /Case</b>	2.55	2.60	2.58	1.1%	-0.9%
<b>Cases Processed<sup>4</sup></b>	4,796	5,630	6,363	32.7%	13.0%
<i>Approvals<sup>4</sup></i>	2,687	2,557	4,092	52.3%	60.0%

# Cash Assistance Summary for September 2017

## Temporary Assistance for Needy Families (TANF)

	Sep-16	Aug-17	Sep-17	Percent Change	
				Sep-16- Sep-17	Aug-17- Sep-17
Expenditures <sup>5</sup>	\$3,762,827	\$4,871,504	\$3,498,505	-7.0%	-28.2%
Cases <sup>6</sup>	12,708	11,899	11,828	-6.9%	-0.6%
Expenditures/Case	\$296	\$409	\$296	-0.1%	-27.8%
Recipients <sup>7</sup>	33,547	31,332	31,130	-7.2%	-0.6%
<i>Adults</i>	8,919	8,258	8,197	-8.1%	-0.7%
<i>Children</i>	24,628	23,074	22,933	-6.9%	-0.6%
Approvals <sup>4</sup>	1,581	1,637	1,383	-12.5%	-15.5%

## General Assistance (GA)

	Sep-16	Aug-17	Sep-17	Percent Change	
				Sep-16- Sep-17	Aug-17- Sep-17
Expenditures <sup>5</sup>	\$871,874	\$756,953	\$761,317	-12.7%	0.6%
Cases <sup>6</sup>	3,436	3,008	3,086	-10.2%	2.6%
Expenditures/Case	\$254	\$252	\$247	-2.8%	-2.0%
Recipients <sup>7</sup>	3,536	3,079	3,081	-12.9%	0.1%
<i>Adults</i>	3,277	2,830	2,835	-13.5%	0.2%
<i>Children</i>	259	249	246	-5.0%	-1.2%
Approvals <sup>4</sup>	311	262	246	-20.9%	-6.1%

## Education Works

	Sep-16	Aug-17	Sep-17	Percent Change	
				Sep-16- Sep-17	Aug-17- Sep-17
Expenditures <sup>5</sup>	\$40,990	\$46,227	\$35,235	-14.0%	-23.8%
Cases <sup>6</sup>	118	101	100	-15.3%	-1.0%
Expenditures/Case	\$347	\$458	\$352	1.4%	-23.0%
Recipients <sup>7</sup>	347	295	299	-13.8%	1.4%
<i>Adults</i>	131	115	118	-9.9%	2.6%
<i>Children</i>	216	180	181	-16.2%	0.6%
Approvals <sup>4</sup>	14	5	6	-57.1%	20.0%

## Refugee Cash (RCA)

	Sep-16	Aug-17	Sep-17	Percent Change	
				Sep-16- Sep-17	Aug-17- Sep-17
Expenditures <sup>5</sup>	\$39,359	\$4,704	\$3,159	-92.0%	-32.8%
Cases <sup>6</sup>	159	17	13	-91.8%	-23.5%
Expenditures/Case	\$248	\$277	\$243	-1.8%	-12.2%
Recipients <sup>7</sup>	166	19	15	-91.0%	-21.1%
<i>Adults</i>	166	19	15	-91.0%	-21.1%
<i>Children</i>	0	0	0	N/A	N/A

## State Supplement for Residential Care

	Sep-16	Aug-17	Sep-17	Percent Change	
				Sep-16- Sep-17	Aug-17- Sep-17
Expenditures <sup>5</sup>	\$3,400	\$2,500	\$2,700	-20.6%	8.0%
Cases <sup>6</sup>	34	25	26	-23.5%	4.0%
Expenditures/Case	\$100	\$100	\$104	3.8%	3.8%
Recipients <sup>7</sup>	34	25	26	-23.5%	4.0%
<i>Adults</i>	34	25	26	-23.5%	4.0%
<i>Children</i>	0	0	0	N/A	N/A

<b>Expenditures YTD</b>			
	SFY 2018	FFY 2017	CY 2017
Medicaid <sup>1</sup>	\$1,226,155,964	\$5,199,427,695	\$3,846,076,981
Supplemental Nutrition Assistance Program <sup>9</sup>	\$166,294,115	\$669,643,203	\$498,982,713
Temporary Assistance for Needy Families <sup>9</sup>	\$11,753,390	\$44,173,014	\$33,016,548
General Assistance <sup>9</sup>	\$2,247,302	\$9,842,052	\$7,145,331
Education Work <sup>9</sup>	\$118,226	\$618,496	\$439,971
LIHEAP <sup>8</sup>	\$2,035,472	\$16,838,816	\$8,862,349

<b>Average Caseload YTD</b>			
	SFY 2018	FFY 2017	CY 2017
Medicaid <sup>2</sup>	503,994	516,198	516,817
Supplemental Nutrition Assistance Program <sup>6</sup>	220,361	237,065	229,283
Temporary Assistance for Needy Families <sup>6</sup>	11,737	11,876	11,663
General Assistance <sup>6</sup>	3,049	3,341	3,272
Education Work <sup>6</sup>	102	143	136
LIHEAP <sup>8</sup>	2,671	5,316	3,829

<b>Demographic Profile- September 2017</b>					
	SNAP	TANF	GA	Education Works	RCA
<b>Gender of Recipients<sup>10</sup></b>					
Male	210,091	13,223	1,729	112	10
Female	254,106	17,907	1,352	187	5
<b>Ethnicity<sup>10</sup></b>					
Hispanic	259,794	21,424	1,647	185	11
Non-Hispanic	204,403	9,706	1,434	114	4
<b>Race<sup>10</sup></b>					
Native American or Alaskan Native	76,764	2,442	230	18	0
Asian	4,583	312	32	3	0
African American or Black	11,277	1,264	115	6	1
Native Hawaiian or Pacific Islander	879	50	5	1	0
White	361,933	26,327	2,653	259	8
Unknown / Not Declared	4,812	285	24	6	1
More than One Race	3,949	450	22	6	5

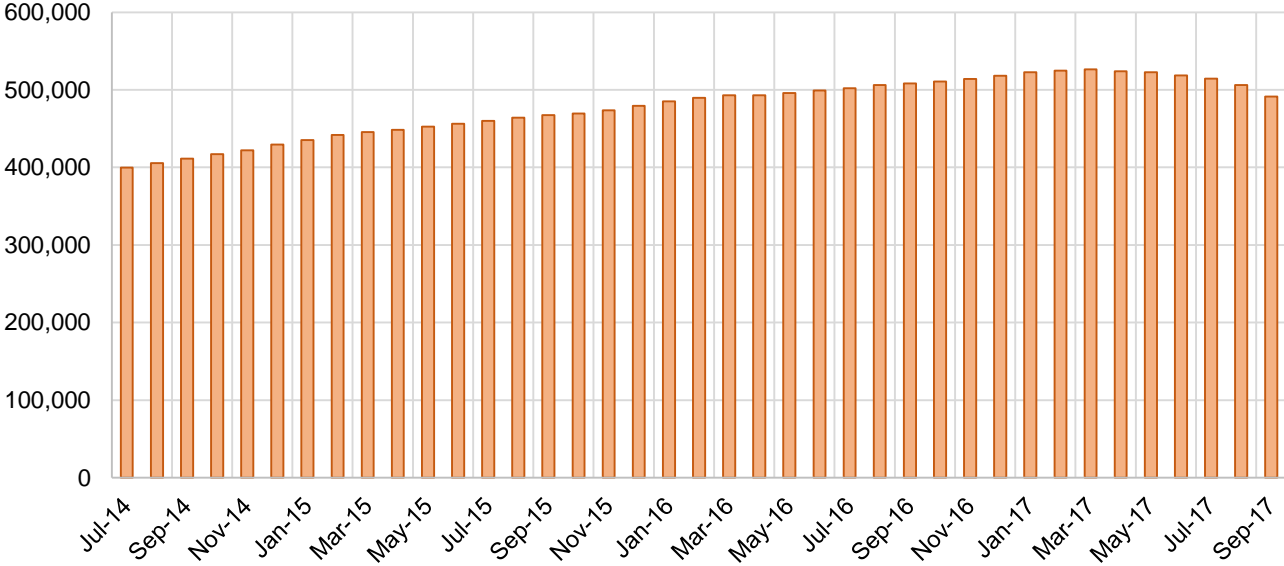
## Medicaid Cases by Field Office<sup>2</sup>

Office				Percent Change	
	Sep-16	Aug-17	Sep-17	Sep-16- Sep-17	Aug-17- Sep-17
Chaves County ISD	16,673	16,288	16,128	-3.3%	-1.0%
Cibola County ISD	7,447	7,536	7,490	0.6%	-0.6%
Colfax County ISD	3,457	3,438	3,412	-1.3%	-0.8%
Curry County ISD	10,298	9,973	9,888	-4.0%	-0.9%
East Dona Ana County ISD	18,049	17,829	17,741	-1.7%	-0.5%
Eddy Artesia County ISD	3,850	3,861	3,855	0.1%	-0.2%
Eddy Carlsbad County ISD	8,169	8,005	7,980	-2.3%	-0.3%
Grant County ISD	7,125	6,854	6,772	-5.0%	-1.2%
Guadalupe County ISD	1,624	1,659	1,725	6.2%	4.0%
Hidalgo County ISD	1,037	971	961	-7.3%	-1.0%
Lea County ISD	14,357	14,236	14,157	-1.4%	-0.6%
Lincoln County ISD	4,544	4,366	4,352	-4.2%	-0.3%
Luna County ISD	8,927	8,752	8,717	-2.4%	-0.4%
McKinley County ISD	23,032	22,236	22,164	-3.8%	-0.3%
Northeast Bernalillo County ISD	44,410	46,322	42,674	-3.9%	-7.9%
Northwest Bernalillo County ISD	50,352	50,794	47,186	-6.3%	-7.1%
Otero County ISD	11,778	11,943	11,937	1.3%	-0.1%
Quay County ISD	2,596	2,602	2,581	-0.6%	-0.8%
Rio Arriba County ISD	14,860	14,461	14,370	-3.3%	-0.6%
Roosevelt County ISD	3,968	3,949	3,929	-1.0%	-0.5%
San Juan County ISD	30,050	30,607	29,851	-0.7%	-2.5%
San Miguel County ISD	9,564	9,340	9,269	-3.1%	-0.8%
Sandoval County ISD	26,364	25,674	25,468	-3.4%	-0.8%
Santa Fe County ISD	26,408	25,864	25,268	-4.3%	-2.3%
Sierra County ISD	5,497	5,609	5,528	0.6%	-1.4%
Socorro County ISD	5,731	5,540	5,393	-5.9%	-2.7%
South Dona Ana ISD	19,833	19,979	19,851	0.1%	-0.6%
Southeast Bernalillo County ISD	29,141	29,724	26,759	-8.2%	-10.0%
Southwest Bernalillo County ISD	41,132	39,164	38,950	-5.3%	-0.5%
Taos County ISD	9,523	9,634	9,328	-2.0%	-3.2%
Torrance County ISD	7,671	7,973	7,453	-2.8%	-6.5%
Valencia North County ISD	18,495	18,351	17,646	-4.6%	-3.8%
Valencia South County ISD	26	80	92	253.8%	15.0%
West Dona Ana County ISD	22,349	22,453	22,360	0.0%	-0.4%
Centralized Units	4	2	3	-25.0%	50.0%
Statewide Total	508,341	506,069	491,238	-3.4%	-2.9%

## Medicaid Cases by Region<sup>2</sup>

				Percent Change	
Region	Sep-16	Aug-17	Sep-17	Sep-16- Sep-17	Aug-17- Sep-17
Region 1 - NW	90,278	89,959	88,164	-2.3%	-2.0%
Region 2 - NE	94,396	92,672	91,421	-3.2%	-1.3%
Region 3 - Central	172,706	173,977	163,022	-5.6%	-6.3%
Region 4 - SE	61,859	60,678	60,289	-2.5%	-0.6%
Region 5 - SW	89,098	88,781	88,339	-0.9%	-0.5%
Centralized Units	4	2	3	-25.0%	50.0%
Statewide Total	508,341	506,069	491,238	-3.4%	-2.9%

**Medicaid Caseload: SFY-15 to Current**



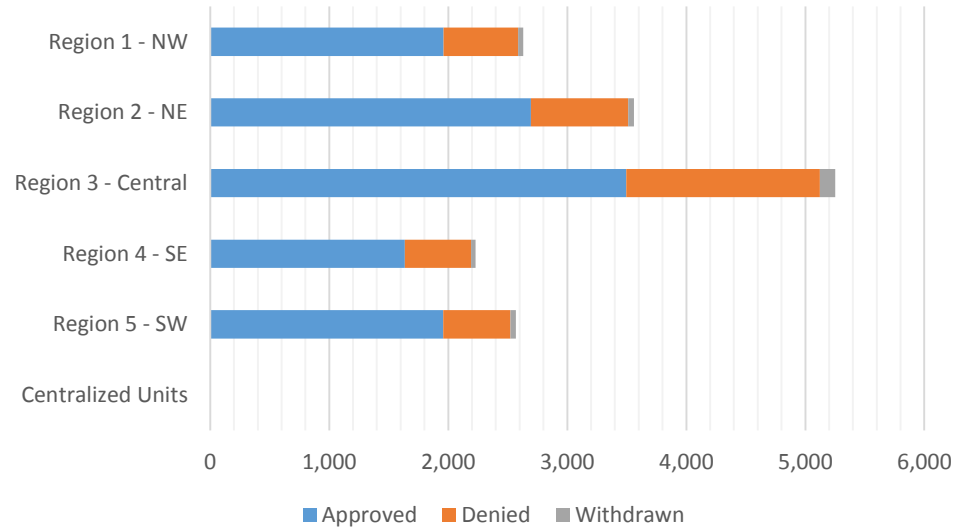
**Medicaid Initial Applications by Field Office<sup>4,11</sup>**  
**September 2017**

Office	Approved	Denied	Withdrawn	Total Cases Processed
Chaves County ISD	444	125	7	576
Cibola County ISD	157	38	3	198
Colfax County ISD	63	12	4	79
Curry County ISD	231	107	8	346
East Dona Ana County ISD	494	143	7	644
Eddy Artesia County ISD	227	53	5	285
Eddy Carlsbad County ISD	185	77	3	265
Grant County ISD	130	52	8	190
Guadalupe County ISD	20	13	1	34
Hidalgo County ISD	0	0	0	0
Lea County ISD	260	102	10	372
Lincoln County ISD	168	50	1	219
Luna County ISD	174	51	5	230
McKinley County ISD	440	146	11	597
Northeast Bernalillo County ISD	958	431	44	1,433
Northwest Bernalillo County ISD	910	454	32	1,396
Otero County ISD	269	56	3	328
Quay County ISD	108	29	3	140
Rio Arriba County ISD	309	108	4	421
Roosevelt County ISD	120	44	3	167
San Juan County ISD	724	227	11	962
San Miguel County ISD	527	113	6	646
Sandoval County ISD	947	224	14	1,185
Santa Fe County ISD	447	247	10	704
Sierra County ISD	91	18	2	111
Socorro County ISD	109	30	4	143
South Dona Ana ISD	422	126	11	559
Southeast Bernalillo County ISD	703	393	16	1,112
Southwest Bernalillo County ISD	701	259	32	992
Taos County ISD	274	71	6	351
Torrance County ISD	225	88	6	319
Valencia North County ISD	394	117	13	524
Valencia South County ISD	45	50	0	95
West Dona Ana County ISD	469	137	11	617
Centralized Units	0	0	0	0
<b>Statewide Total</b>	<b>11,745</b>	<b>4,191</b>	<b>304</b>	<b>16,240</b>



## Medicaid Initial Applications by Region<sup>4,11</sup> September 2017

Region	Approved	Denied	Withdrawn	Total Cases Processed
Region 1 - NW	1,960	626	44	2,630
Region 2 - NE	2,695	817	48	3,560
Region 3 - Central	3,497	1,625	130	5,252
Region 4 - SE	1,635	558	37	2,230
Region 5 - SW	1,958	565	45	2,568
Centralized Units	0	0	0	0
<b>Statewide Total</b>	<b>11,745</b>	<b>4,191</b>	<b>304</b>	<b>16,240</b>

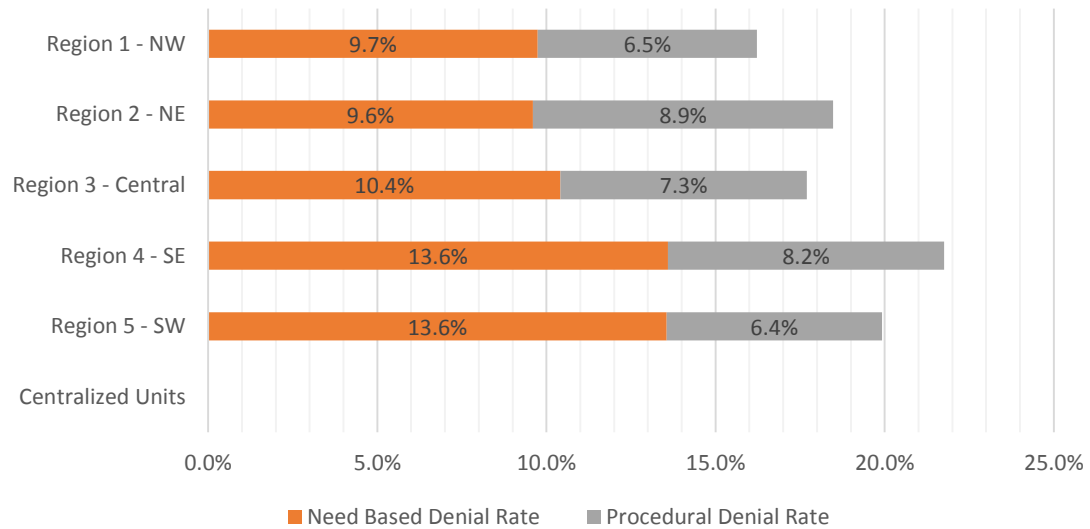


**Medicaid EDG Initial Disposition Rates by Field Office<sup>4,11,19</sup>**  
**September 2017**

Office	Approval Rate	Denial Rate	Need Based Denial Rate	Procedural Denial Rate
Chaves County ISD	83.1%	16.9%	13.0%	3.9%
Cibola County ISD	89.0%	11.0%	6.1%	4.9%
Colfax County ISD	87.0%	13.0%	13.0%	0.0%
Curry County ISD	77.3%	22.7%	10.7%	12.0%
East Dona Ana County ISD	78.2%	21.8%	15.3%	6.5%
Eddy Artesia County ISD	85.2%	14.8%	12.5%	2.3%
Eddy Carlsbad County ISD	76.4%	23.6%	17.3%	6.3%
Grant County ISD	82.0%	18.0%	11.4%	6.6%
Guadalupe County ISD	92.7%	7.3%	7.3%	0.0%
Hidalgo County ISD	0.0%	0.0%	0.0%	0.0%
Lea County ISD	75.8%	24.2%	14.9%	9.2%
Lincoln County ISD	79.6%	20.4%	10.5%	9.9%
Luna County ISD	79.8%	20.2%	14.3%	5.9%
McKinley County ISD	81.2%	18.8%	9.9%	8.9%
Northeast Bernalillo County ISD	83.4%	16.6%	9.4%	7.3%
Northwest Bernalillo County ISD	82.5%	17.5%	9.9%	7.6%
Otero County ISD	86.0%	14.0%	7.4%	6.6%
Quay County ISD	77.8%	22.2%	18.2%	4.0%
Rio Arriba County ISD	83.4%	16.6%	9.1%	7.5%
Roosevelt County ISD	73.6%	26.4%	12.4%	14.0%
San Juan County ISD	85.3%	14.7%	9.6%	5.2%
San Miguel County ISD	91.9%	8.1%	5.5%	2.6%
Sandoval County ISD	84.2%	15.8%	9.7%	6.1%
Santa Fe County ISD	70.5%	29.5%	10.4%	19.1%
Sierra County ISD	83.6%	16.4%	12.5%	3.9%
Socorro County ISD	86.1%	13.9%	7.3%	6.7%
South Dona Ana ISD	76.0%	24.0%	18.5%	5.5%
Southeast Bernalillo County ISD	78.2%	21.8%	14.4%	7.4%
Southwest Bernalillo County ISD	82.7%	17.3%	9.7%	7.6%
Taos County ISD	84.7%	15.3%	9.9%	5.5%
Torrance County ISD	87.5%	12.5%	8.8%	3.8%
Valencia North County ISD	81.3%	18.8%	11.3%	7.5%
Valencia South County ISD	100.0%	0.0%	0.0%	0.0%
West Dona Ana County ISD	81.2%	18.8%	11.8%	7.1%
Centralized Units	0.0%	0.0%	0.0%	0.0%
Statewide Total	81.4%	18.6%	11.1%	7.4%

**Medicaid EDG Initial Disposition Rates by Region<sup>4,11,19</sup>**  
**September 2017**

Region	Approval Rate	Denial Rate	Need Based Denial Rate	Procedural Denial Rate
Region 1 - NW	83.8%	16.2%	9.7%	6.5%
Region 2 - NE	81.5%	18.5%	9.6%	8.9%
Region 3 - Central	82.3%	17.7%	10.4%	7.3%
Region 4 - SE	78.2%	21.8%	13.6%	8.2%
Region 5 - SW	80.1%	19.9%	13.6%	6.4%
Centralized Units				
<b>Statewide Total</b>	<b>81.4%</b>	<b>18.6%</b>	<b>11.1%</b>	<b>7.4%</b>



**Medicaid: Percentage of Initial EDG Approvals Processed Timely by Field Office <sup>13,19</sup>**

	Oct-16	Nov-16	Dec-16	Jan-17	Feb-17	Mar-17	Apr-17	May-17	Jun-17	Jul-17	Aug-17	Sep-17	Average
Cibola	84.1%	92.0%	90.9%	96.3%	85.6%	93.6%	95.3%	92.1%	94.0%	92.3%	97.7%	99.1%	92.8%
McKinley	86.7%	90.4%	93.0%	87.4%	82.3%	89.8%	94.2%	92.2%	94.5%	95.5%	94.6%	94.0%	91.2%
San Juan	87.0%	86.3%	86.1%	82.3%	80.6%	74.5%	86.2%	82.1%	92.4%	93.1%	93.2%	95.2%	86.6%
Sierra	86.5%	91.8%	84.3%	87.9%	92.1%	88.8%	97.0%	92.6%	98.0%	95.3%	95.9%	96.9%	92.3%
Socorro	88.4%	83.3%	91.0%	87.5%	87.2%	94.3%	95.8%	97.5%	95.1%	96.3%	93.8%	95.0%	92.1%
Valencia North	89.7%	88.8%	89.0%	83.9%	83.9%	80.0%	84.4%	89.0%	88.5%	93.6%	95.1%	96.0%	88.5%
Valencia South	100.0%	95.8%	100.0%	100.0%	50.0%	100.0%	100.0%	100.0%	80.0%		100.0%	100.0%	93.3%
<b>NW Region 1 Total</b>	<b>87.2%</b>	<b>88.4%</b>	<b>88.8%</b>	<b>86.1%</b>	<b>83.0%</b>	<b>88.7%</b>	<b>89.9%</b>	<b>88.7%</b>	<b>92.6%</b>	<b>94.0%</b>	<b>94.5%</b>	<b>95.5%</b>	<b>89.8%</b>
Colfax	90.0%	79.5%	95.2%	83.7%	78.7%	89.8%	93.2%	83.3%	93.4%	98.0%	95.4%	97.9%	89.8%
Guadalupe	100.0%	97.6%	85.7%	94.7%	95.6%	90.5%	100.0%	100.0%	94.4%	92.6%	100.0%	97.4%	95.7%
Quay	86.3%	96.0%	86.8%	91.1%	96.6%	89.5%	96.4%	92.2%	98.5%	95.5%	95.0%	98.7%	93.6%
Rio Arriba	92.1%	88.8%	91.5%	89.6%	79.5%	91.5%	92.6%	83.6%	93.6%	91.8%	94.9%	97.9%	90.6%
San Miguel	92.4%	89.2%	96.6%	96.4%	97.5%	97.7%	96.7%	89.4%	95.6%	98.3%	98.9%	99.1%	95.7%
Sandoval	83.5%	91.6%	89.2%	90.9%	82.1%	85.9%	88.3%	82.3%	93.9%	95.4%	96.9%	97.6%	89.8%
Santa Fe	90.1%	88.8%	93.4%	82.5%	81.7%	88.2%	92.8%	82.6%	92.8%	90.7%	93.4%	94.5%	89.3%
Taos	90.4%	95.2%	90.6%	89.1%	88.1%	88.4%	91.5%	78.8%	96.0%	94.6%	98.1%	96.3%	91.4%
<b>NE Region 2 Total</b>	<b>88.3%</b>	<b>90.3%</b>	<b>91.8%</b>	<b>89.7%</b>	<b>87.2%</b>	<b>90.2%</b>	<b>92.2%</b>	<b>83.0%</b>	<b>94.2%</b>	<b>94.1%</b>	<b>96.1%</b>	<b>97.0%</b>	<b>91.2%</b>
NE Bernalillo	81.0%	83.3%	85.5%	75.0%	73.1%	76.6%	80.4%	82.2%	83.7%	89.6%	94.0%	95.8%	83.4%
NW Bernalillo	87.6%	87.3%	88.6%	87.5%	84.8%	80.5%	81.3%	82.2%	91.2%	91.6%	97.2%	96.7%	88.0%
SE Bernalillo	83.0%	75.5%	77.2%	79.8%	72.7%	68.6%	82.1%	77.4%	78.7%	86.0%	92.2%	94.5%	80.6%
SW Bernalillo	89.3%	87.6%	88.5%	84.5%	76.6%	86.8%	85.1%	85.1%	93.6%	94.3%	96.7%	95.9%	88.7%
Torrance	83.7%	83.6%	87.4%	80.9%	83.6%	86.2%	96.8%	91.9%	95.7%	90.2%	96.7%	95.3%	89.3%
<b>Gen. Region 3 Total</b>	<b>85.0%</b>	<b>83.4%</b>	<b>85.2%</b>	<b>81.1%</b>	<b>77.0%</b>	<b>79.7%</b>	<b>82.8%</b>	<b>82.4%</b>	<b>87.7%</b>	<b>90.8%</b>	<b>95.5%</b>	<b>95.8%</b>	<b>85.5%</b>
Chaves	85.3%	87.1%	91.9%	89.3%	90.8%	93.2%	89.7%	91.5%	92.9%	93.8%	97.3%	96.4%	91.6%
Curry	86.2%	80.8%	85.2%	84.1%	70.2%	81.6%	88.9%	86.6%	92.5%	94.3%	97.0%	95.1%	86.9%
Eddy Artesia	91.1%	83.6%	90.2%	82.6%	89.0%	85.6%	91.3%	92.2%	97.1%	96.9%	96.4%	92.7%	90.7%
Eddy Carlsbad	85.5%	87.2%	86.7%	84.7%	85.6%	83.3%	90.4%	83.3%	82.0%	93.5%	92.6%	94.8%	87.5%
Lea	88.4%	90.4%	90.4%	83.1%	72.5%	87.7%	93.5%	85.4%	90.1%	91.6%	91.9%	96.7%	88.5%
Lincoln	89.6%	87.8%	94.3%	84.6%	84.6%	96.3%	95.1%	88.3%	96.2%	96.2%	97.8%	93.6%	92.0%
Roosevelt	89.7%	89.8%	88.9%	80.8%	82.9%	89.7%	95.5%	90.2%	94.9%	94.4%	96.4%	93.3%	90.5%
<b>SE Region 4 Total</b>	<b>87.3%</b>	<b>87.0%</b>	<b>89.6%</b>	<b>85.0%</b>	<b>80.9%</b>	<b>88.2%</b>	<b>91.6%</b>	<b>87.8%</b>	<b>91.4%</b>	<b>93.6%</b>	<b>95.2%</b>	<b>95.4%</b>	<b>89.4%</b>
East Dona Ana	86.0%	88.9%	90.1%	89.8%	87.9%	84.7%	92.5%	90.1%	95.9%	91.1%	95.2%	97.4%	90.8%
Grant	94.6%	93.5%	88.1%	87.4%	83.9%	87.6%	88.2%	90.6%	94.8%	88.3%	97.0%	100.0%	91.2%
Luna	87.5%	87.9%	88.9%	88.4%	90.8%	90.4%	93.8%	91.4%	96.3%	96.9%	98.0%	95.1%	92.1%
Otero	79.7%	74.7%	88.3%	81.6%	78.3%	86.5%	91.0%	88.5%	89.5%	95.8%	97.3%	96.0%	87.3%
South Dona Ana	87.6%	88.4%	90.7%	88.5%	88.5%	87.0%	95.0%	94.8%	95.7%	97.5%	97.6%	97.5%	92.4%
West Dona Ana	88.8%	82.5%	91.6%	86.7%	82.5%	93.1%	94.5%	91.3%	93.9%	96.5%	97.4%	97.1%	91.3%
<b>SW Region 5 Total</b>	<b>87.1%</b>	<b>85.4%</b>	<b>90.0%</b>	<b>87.2%</b>	<b>85.3%</b>	<b>88.2%</b>	<b>93.0%</b>	<b>91.4%</b>	<b>94.5%</b>	<b>94.8%</b>	<b>96.9%</b>	<b>97.1%</b>	<b>90.9%</b>
<b>STATE TOTAL</b>	<b>86.7%</b>	<b>86.6%</b>	<b>88.6%</b>	<b>85.6%</b>	<b>82.3%</b>	<b>87.0%</b>	<b>89.1%</b>	<b>86.4%</b>	<b>91.6%</b>	<b>93.2%</b>	<b>95.6%</b>	<b>96.1%</b>	<b>89.1%</b>

**Medicaid: Percentage of Initial EDG Denials Processed Timely by Field Office<sup>13,19</sup>**

	Oct-16	Nov-16	Dec-16	Jan-17	Feb-17	Mar-17	Apr-17	May-17	Jun-17	Jul-17	Aug-17	Sep-17	Average
Cibola	38.5%	45.5%	70.0%	43.3%	18.8%	10.8%	41.2%	23.5%	67.9%	34.5%	70.0%	34.5%	41.5%
McKinley	42.3%	60.6%	68.6%	21.4%	12.8%	30.9%	45.1%	48.6%	58.7%	43.6%	59.8%	53.4%	45.5%
San Juan	54.0%	38.2%	57.1%	18.4%	4.3%	25.4%	25.7%	23.3%	37.6%	49.4%	66.5%	63.3%	38.6%
Sierra	52.4%	43.8%	61.5%	76.9%	83.3%	30.0%	100.0%	94.4%	100.0%	29.0%	86.7%	64.0%	68.5%
Socorro	42.9%	20.0%	52.6%	44.7%	25.4%	41.9%	62.1%	78.6%	68.3%	44.8%	75.0%	86.4%	53.6%
Valencia North	50.0%	52.1%	57.7%	11.8%	47.5%	21.7%	11.0%	46.1%	58.7%	59.2%	70.9%	59.4%	45.5%
Valencia South	100.0%	100.0%	100.0%						100.0%		0.0%	100.0%	83.3%
<b>NW Region 1 Total</b>	<b>48.3%</b>	<b>43.2%</b>	<b>60.5%</b>	<b>20.4%</b>	<b>11.5%</b>	<b>26.8%</b>	<b>27.2%</b>	<b>40.0%</b>	<b>55.8%</b>	<b>47.6%</b>	<b>66.7%</b>	<b>59.3%</b>	<b>42.3%</b>
Colfax	45.7%	19.0%	70.6%	58.3%	27.1%	58.3%	55.6%	40.0%	90.0%	45.0%	90.9%	100.0%	58.4%
Guadalupe	44.4%	12.9%	40.0%	30.8%	58.3%	14.3%	33.3%	20.0%	71.4%	66.7%	75.0%	100.0%	47.3%
Quay	72.5%	26.4%	69.2%	42.9%	81.6%	40.9%	76.0%	64.3%	91.3%	63.2%	85.7%	90.9%	67.1%
Rio Arriba	53.4%	67.3%	42.9%	11.0%	21.1%	50.7%	54.2%	37.0%	53.0%	47.6%	55.2%	56.0%	45.8%
San Miguel	60.0%	19.9%	47.6%	59.0%	43.4%	28.4%	60.5%	17.6%	43.3%	52.6%	75.0%	70.3%	48.1%
Sandoval	56.6%	59.8%	58.6%	38.7%	5.6%	22.8%	54.7%	10.0%	51.5%	66.7%	60.5%	60.4%	45.5%
Santa Fe	58.6%	70.7%	64.2%	12.2%	47.2%	52.2%	65.5%	10.2%	45.6%	39.6%	59.6%	53.6%	48.3%
Taos	48.8%	13.7%	47.2%	46.4%	62.5%	30.2%	56.4%	17.0%	31.6%	50.9%	64.9%	72.9%	45.2%
<b>NE Region 2 Total</b>	<b>56.6%</b>	<b>38.8%</b>	<b>55.8%</b>	<b>19.5%</b>	<b>20.6%</b>	<b>37.2%</b>	<b>59.8%</b>	<b>14.2%</b>	<b>51.6%</b>	<b>49.4%</b>	<b>63.1%</b>	<b>60.6%</b>	<b>43.9%</b>
NE Bernalillo	47.8%	36.4%	57.7%	9.6%	9.3%	44.0%	35.6%	20.6%	18.5%	38.0%	51.7%	50.5%	35.0%
NW Bernalillo	49.5%	39.4%	63.4%	36.8%	14.7%	10.1%	8.2%	16.2%	29.8%	18.5%	55.8%	57.9%	33.4%
SE Bernalillo	53.7%	34.8%	44.1%	31.7%	25.8%	21.4%	42.1%	14.2%	20.0%	26.5%	51.9%	60.8%	35.6%
SW Bernalillo	48.0%	42.7%	53.7%	48.9%	11.4%	34.2%	41.3%	39.9%	60.8%	36.7%	71.9%	67.6%	46.4%
Torrance	57.1%	16.5%	33.3%	19.3%	20.0%	11.3%	77.3%	29.8%	66.7%	20.5%	52.9%	82.5%	40.6%
<b>Cen. Region 3 Total</b>	<b>49.8%</b>	<b>36.3%</b>	<b>53.3%</b>	<b>20.3%</b>	<b>13.6%</b>	<b>24.2%</b>	<b>23.8%</b>	<b>18.9%</b>	<b>27.6%</b>	<b>28.1%</b>	<b>57.9%</b>	<b>59.6%</b>	<b>34.5%</b>
Chaves	52.0%	48.1%	65.6%	81.1%	42.3%	23.9%	37.7%	27.5%	44.5%	59.7%	68.2%	76.8%	52.3%
Curry	41.4%	44.8%	61.8%	56.9%	10.4%	16.3%	45.0%	17.9%	57.3%	53.9%	68.8%	55.5%	44.2%
Eddy Artesia	75.6%	54.8%	52.0%	27.7%	28.0%	44.0%	57.1%	53.3%	50.0%	40.0%	67.9%	72.0%	51.9%
Eddy Carlsbad	55.0%	35.3%	68.3%	18.6%	29.3%	20.9%	60.9%	33.7%	40.7%	54.0%	64.4%	63.4%	45.4%
Lea	43.9%	68.7%	67.6%	67.0%	18.2%	25.4%	76.7%	32.3%	55.9%	65.4%	65.9%	65.0%	54.3%
Lincoln	57.1%	55.0%	76.2%	11.3%	32.7%	47.8%	17.4%	37.8%	44.4%	61.8%	37.5%	54.1%	44.4%
Roosevelt	41.4%	51.4%	56.5%	9.1%	25.0%	27.5%	36.5%	46.3%	60.4%	65.3%	81.4%	48.4%	45.8%
<b>SE Region 4 Total</b>	<b>49.7%</b>	<b>52.8%</b>	<b>64.7%</b>	<b>34.2%</b>	<b>21.6%</b>	<b>29.4%</b>	<b>50.3%</b>	<b>29.5%</b>	<b>51.1%</b>	<b>59.8%</b>	<b>65.8%</b>	<b>63.1%</b>	<b>47.7%</b>
East Dona Ana	56.6%	30.8%	52.1%	20.6%	25.0%	32.5%	28.9%	50.4%	56.2%	50.0%	71.7%	72.2%	45.6%
Grant	61.9%	42.2%	70.8%	25.0%	55.6%	31.3%	46.9%	59.3%	29.7%	35.3%	62.3%	65.9%	48.9%
Luna	55.6%	44.3%	55.6%	19.5%	38.4%	22.2%	76.5%	69.6%	61.5%	44.9%	66.2%	77.4%	52.6%
Otero	38.8%	14.0%	40.0%	8.3%	18.0%	33.3%	50.0%	36.2%	45.5%	36.6%	57.1%	62.9%	36.7%
South Dona Ana	56.7%	47.9%	60.2%	27.8%	49.5%	33.6%	69.5%	81.5%	78.0%	77.0%	80.6%	71.0%	61.1%
West Dona Ana	46.3%	31.6%	50.0%	20.7%	19.1%	42.4%	62.1%	64.5%	61.9%	64.8%	68.2%	61.8%	49.5%
<b>SW Region 5 Total</b>	<b>52.2%</b>	<b>31.9%</b>	<b>53.1%</b>	<b>19.9%</b>	<b>30.5%</b>	<b>32.6%</b>	<b>51.5%</b>	<b>61.7%</b>	<b>61.5%</b>	<b>58.2%</b>	<b>69.9%</b>	<b>68.7%</b>	<b>49.3%</b>
<b>STATE TOTAL</b>	<b>51.1%</b>	<b>39.5%</b>	<b>56.5%</b>	<b>22.0%</b>	<b>18.5%</b>	<b>30.0%</b>	<b>37.9%</b>	<b>24.8%</b>	<b>42.8%</b>	<b>43.5%</b>	<b>63.9%</b>	<b>61.9%</b>	<b>41.0%</b>

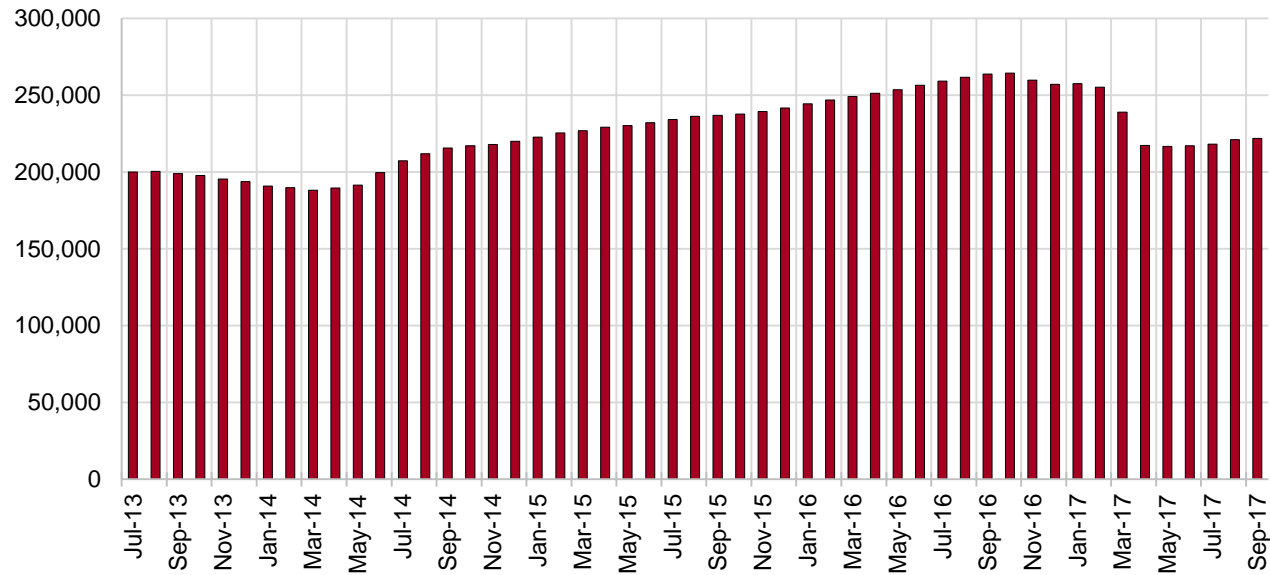
## SNAP Cases by Field Office<sup>6</sup>

Office				Percent Change	
	Sep-16	Aug-17	Sep-17	Sep-16- Sep-17	Aug-17- Sep-17
Chaves County ISD	8,421	7,225	7,215	-14.3%	-0.1%
Cibola County ISD	4,187	3,676	3,697	-11.7%	0.6%
Colfax County ISD	1,863	1,572	1,581	-15.1%	0.6%
Curry County ISD	5,566	4,737	4,746	-14.7%	0.2%
East Dona Ana County ISD	9,673	8,125	8,129	-16.0%	0.0%
Eddy Artesia County ISD	1,939	1,730	1,698	-12.4%	-1.8%
Eddy Carlsbad County ISD	4,080	3,346	3,365	-17.5%	0.6%
Grant County ISD	4,171	3,597	3,609	-13.5%	0.3%
Guadalupe County ISD	786	710	724	-7.9%	2.0%
Hidalgo County ISD	541	422	425	-21.4%	0.7%
Lea County ISD	7,226	5,817	5,857	-18.9%	0.7%
Lincoln County ISD	2,180	1,904	1,917	-12.1%	0.7%
Luna County ISD	5,079	4,266	4,264	-16.0%	0.0%
McKinley County ISD	10,987	9,677	9,730	-11.4%	0.5%
Northeast Bernalillo County ISD	23,920	19,970	19,974	-16.5%	0.0%
Northwest Bernalillo County ISD	21,467	18,151	18,408	-14.2%	1.4%
Otero County ISD	6,185	5,542	5,590	-9.6%	0.9%
Quay County ISD	1,435	1,282	1,284	-10.5%	0.2%
Rio Arriba County ISD	8,237	6,852	6,874	-16.5%	0.3%
Roosevelt County ISD	2,124	1,690	1,708	-19.6%	1.1%
San Juan County ISD	15,568	13,389	13,380	-14.1%	-0.1%
San Miguel County ISD	5,863	5,017	5,040	-14.0%	0.5%
Sandoval County ISD	13,086	10,940	10,998	-16.0%	0.5%
Santa Fe County ISD	13,033	10,185	10,161	-22.0%	-0.2%
Sierra County ISD	3,007	2,659	2,651	-11.8%	-0.3%
Socorro County ISD	3,315	2,835	2,853	-13.9%	0.6%
South Dona Ana ISD	9,498	8,682	8,664	-8.8%	-0.2%
Southeast Bernalillo County ISD	16,232	12,188	12,171	-25.0%	-0.1%
Southwest Bernalillo County ISD	22,249	18,383	18,520	-16.8%	0.7%
Taos County ISD	4,736	4,082	4,124	-12.9%	1.0%
Torrance County ISD	4,067	3,341	3,344	-17.8%	0.1%
Valencia North County ISD	9,380	8,313	8,429	-10.1%	1.4%
Valencia South County ISD	622	5	10	-98.4%	100.0%
West Dona Ana County ISD	12,877	10,696	10,720	-16.8%	0.2%
Centralized Units	18	28	50	177.8%	78.6%
Statewide Total	263,618	221,034	221,910	-15.8%	0.4%

## SNAP Cases by Region<sup>6</sup>

Region	Sep-16	Aug-17	Sep-17	Percent Change	
				Sep-16- Sep-17	Aug-17- Sep-17
Region 1 - NW	47,066	40,554	40,750	-13.4%	0.5%
Region 2 - NE	49,039	40,640	40,786	-16.8%	0.4%
Region 3 - Central	87,935	72,033	72,417	-17.6%	0.5%
Region 4 - SE	31,536	26,449	26,506	-16.0%	0.2%
Region 5 - SW	48,024	41,330	41,401	-13.8%	0.2%
Centralized Units	18	28	50	177.8%	78.6%
<b>Statewide Total</b>	<b>263,618</b>	<b>221,034</b>	<b>221,910</b>	<b>-15.8%</b>	<b>0.4%</b>

## SNAP Caseload: SFY-14 to Current



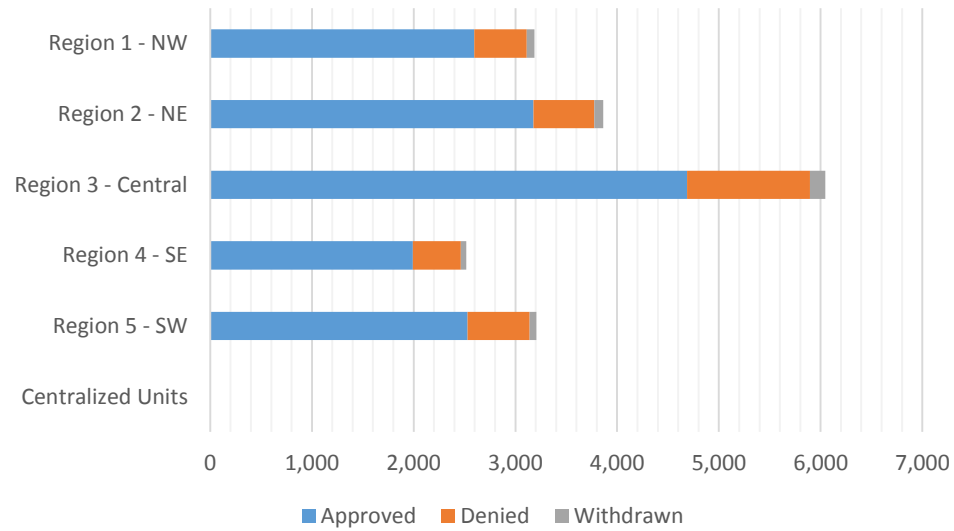
**SNAP Initial Applications by Field Office<sup>4,11</sup>**  
**September 2017**

Office	Approved	Denied	Withdrawn	Total Cases Processed
Chaves County ISD	534	78	12	624
Cibola County ISD	231	40	5	276
Colfax County ISD	102	19	1	122
Curry County ISD	311	75	11	397
East Dona Ana County ISD	541	171	14	726
Eddy Artesia County ISD	190	20	3	213
Eddy Carlsbad County ISD	286	74	5	365
Grant County ISD	234	48	6	288
Guadalupe County ISD	37	7	7	51
Hidalgo County ISD	0	0	0	0
Lea County ISD	358	156	13	527
Lincoln County ISD	166	27	4	197
Luna County ISD	247	52	11	310
McKinley County ISD	620	116	18	754
Northeast Bernalillo County ISD	1,408	346	50	1,804
Northwest Bernalillo County ISD	1,172	329	45	1,546
Otero County ISD	351	91	6	448
Quay County ISD	116	16	5	137
Rio Arriba County ISD	484	78	10	572
Roosevelt County ISD	148	42	3	193
San Juan County ISD	884	183	29	1,096
San Miguel County ISD	339	58	13	410
Sandoval County ISD	1,095	219	25	1,339
Santa Fe County ISD	717	158	17	892
Sierra County ISD	119	20	0	139
Socorro County ISD	148	25	3	176
South Dona Ana ISD	453	91	7	551
Southeast Bernalillo County ISD	814	197	24	1,035
Southwest Bernalillo County ISD	1,056	272	32	1,360
Taos County ISD	289	42	8	339
Torrance County ISD	236	64	2	302
Valencia North County ISD	574	130	22	726
Valencia South County ISD	21	0	0	21
West Dona Ana County ISD	705	157	22	884
Centralized Units	0	0	0	0
<b>Statewide Total</b>	<b>14,986</b>	<b>3,401</b>	<b>433</b>	<b>18,820</b>



## SNAP Initial Applications by Region<sup>4,11</sup> September 2017

Region	Approved	Denied	Withdrawn	Total Cases Processed
Region 1 - NW	2,597	514	77	3,188
Region 2 - NE	3,179	597	86	3,862
Region 3 - Central	4,686	1,208	153	6,047
Region 4 - SE	1,993	472	51	2,516
Region 5 - SW	2,531	610	66	3,207
Centralized Units	0	0	0	0
<b>Statewide Total</b>	<b>14,986</b>	<b>3,401</b>	<b>433</b>	<b>18,820</b>

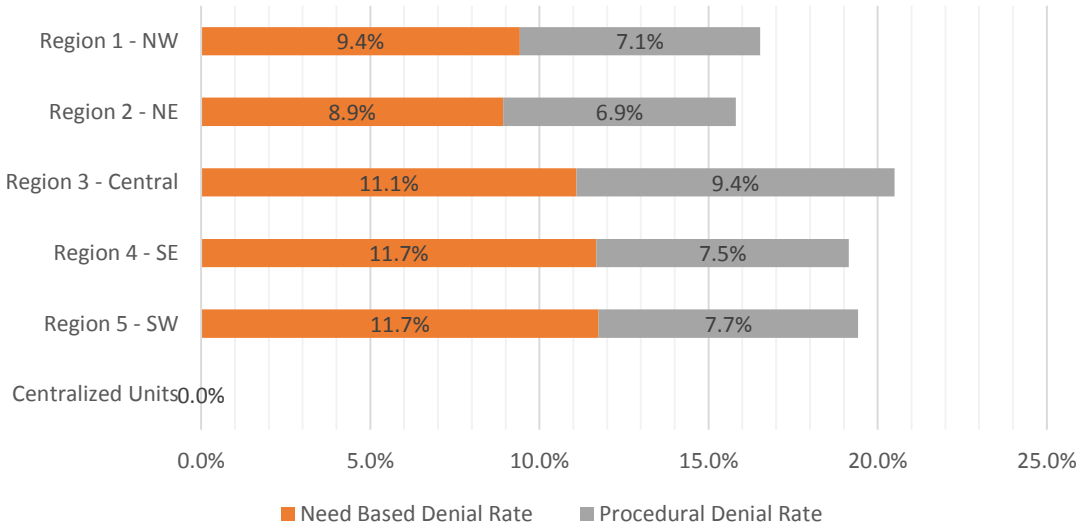


**SNAP Initial Disposition Rates by Field Office<sup>4,11</sup>**  
**September 2017**

Office	Approval Rate	Denial Rate	Need Based Denial Rate	Procedural Denial Rate
Chaves County ISD	87.3%	12.7%	9.6%	3.1%
Cibola County ISD	85.2%	14.8%	10.0%	4.8%
Colfax County ISD	84.3%	15.7%	11.6%	4.1%
Curry County ISD	80.6%	19.4%	10.4%	9.1%
East Dona Ana County ISD	76.0%	24.0%	14.7%	9.3%
Eddy Artesia County ISD	90.5%	9.5%	5.2%	4.3%
Eddy Carlsbad County ISD	79.4%	20.6%	13.9%	6.7%
Grant County ISD	83.0%	17.0%	9.9%	7.1%
Guadalupe County ISD	84.1%	15.9%	11.4%	4.5%
Hidalgo County ISD	0.0%	100.0%	100.0%	0.0%
Lea County ISD	69.6%	30.4%	16.7%	13.6%
Lincoln County ISD	86.0%	14.0%	6.7%	7.3%
Luna County ISD	82.6%	17.4%	11.0%	6.4%
McKinley County ISD	84.2%	15.8%	8.7%	7.1%
Northeast Bernalillo County ISD	80.3%	19.7%	11.0%	8.7%
Northwest Bernalillo County ISD	78.1%	21.9%	11.7%	10.3%
Otero County ISD	79.4%	20.6%	12.2%	8.4%
Quay County ISD	87.9%	12.1%	9.8%	2.3%
Rio Arriba County ISD	86.1%	13.9%	7.5%	6.4%
Roosevelt County ISD	77.9%	22.1%	15.3%	6.8%
San Juan County ISD	82.8%	17.2%	9.9%	7.2%
San Miguel County ISD	85.4%	14.6%	10.1%	4.5%
Sandoval County ISD	83.3%	16.7%	9.0%	7.7%
Santa Fe County ISD	81.9%	18.1%	9.4%	8.7%
Sierra County ISD	85.6%	14.4%	10.8%	3.6%
Socorro County ISD	85.5%	14.5%	9.2%	5.2%
South Dona Ana ISD	83.3%	16.7%	9.9%	6.8%
Southeast Bernalillo County ISD	80.5%	19.5%	10.0%	9.5%
Southwest Bernalillo County ISD	79.5%	20.5%	11.7%	8.8%
Taos County ISD	87.3%	12.7%	6.9%	5.7%
Torrance County ISD	78.7%	21.3%	10.0%	11.3%
Valencia North County ISD	81.5%	18.5%	9.2%	9.2%
Valencia South County ISD	100.0%	0.0%	0.0%	0.0%
West Dona Ana County ISD	81.8%	18.2%	11.0%	7.2%
Centralized Units				
Statewide Total	81.5%	18.5%	10.6%	7.9%

**SNAP Initial Disposition Rates by Region<sup>4,11</sup>**  
**September 2017**

Region	Approval Rate	Denial Rate	Need Based Denial Rate	Procedural Denial Rate
Region 1 - NW	83.5%	16.5%	9.4%	7.1%
Region 2 - NE	84.2%	15.8%	8.9%	6.9%
Region 3 - Central	79.5%	20.5%	11.1%	9.4%
Region 4 - SE	80.9%	19.1%	11.7%	7.5%
Region 5 - SW	80.6%	19.4%	11.7%	7.7%
Centralized Units				
Statewide Total	81.5%	18.5%	10.6%	7.9%



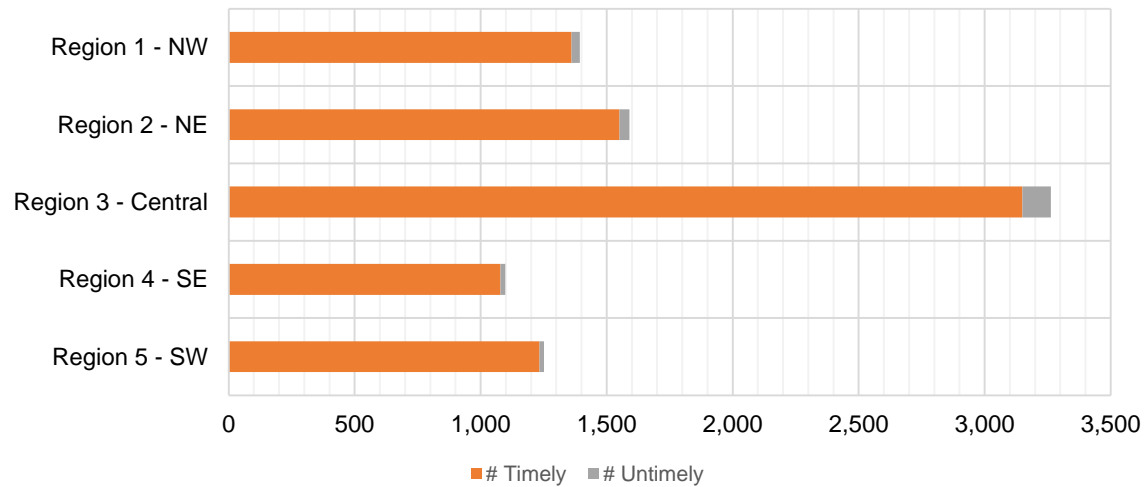
**SNAP Expedite Timeliness by Field Office<sup>13</sup>**  
**September 2017**

Office Name	Total Expedited Approvals	# Timely	# Untimely	Percentage Timely
Chaves County ISD	235	232	3	98.7 %
Cibola County ISD	119	116	3	97.5 %
Colfax County ISD	51	51	0	100.0 %
Curry County ISD	187	184	3	98.4 %
East Dona Ana County ISD	268	264	4	98.5 %
Eddy Artesia County ISD	61	60	1	98.4 %
Eddy Carlsbad County ISD	197	194	3	98.5 %
Grant County ISD	145	145	0	100.0 %
Guadalupe County ISD	16	16	0	100.0 %
Lea County ISD	267	260	7	97.4 %
Lincoln County ISD	74	74	0	100.0 %
Luna County ISD	124	122	2	98.4 %
McKinley County ISD	303	299	4	98.7 %
Northeast Bernalillo County ISD	1,054	1,018	36	96.6 %
Northwest Bernalillo County ISD	879	854	25	97.2 %
Otero County ISD	221	216	5	97.7 %
Quay County ISD	43	43	0	100.0 %
Rio Arriba County ISD	337	329	8	97.6 %
Roosevelt County ISD	76	75	1	98.7 %
San Juan County ISD	541	525	16	97.0 %
San Miguel County ISD	195	190	5	97.4 %
Sandoval County ISD	377	367	10	97.3 %
Santa Fe County ISD	437	422	15	96.6 %
Sierra County ISD	52	51	1	98.1 %
Socorro County ISD	79	79	0	100.0 %
South Dona Ana ISD	142	139	3	97.9 %
Southeast Bernalillo County ISD	494	467	27	94.5 %
Southwest Bernalillo County ISD	704	680	24	96.6 %
Taos County ISD	134	133	1	99.3 %
Torrance County ISD	132	131	1	99.2 %
Valencia North County ISD	300	290	10	96.7 %
West Dona Ana County ISD	351	348	3	99.1 %
<b>Statewide Total</b>	<b>8,595</b>	<b>8,374</b>	<b>221</b>	<b>97.4 %</b>

## SNAP Expedite Timeliness by Region<sup>13</sup> September 2017

Region	Total Expedited Approvals	# Timely	# Untimely	Percentage Timely
Region 1 - NW	1,394	1,360	34	97.6%
Region 2 - NE	1,590	1,551	39	97.5%
Region 3 - Central	3,263	3,150	113	96.5%
Region 4 - SE	1,097	1,079	18	98.4%
Region 5 - SW	1,251	1,234	17	98.6%
Statewide Total	8,595	8,374	221	97.4%

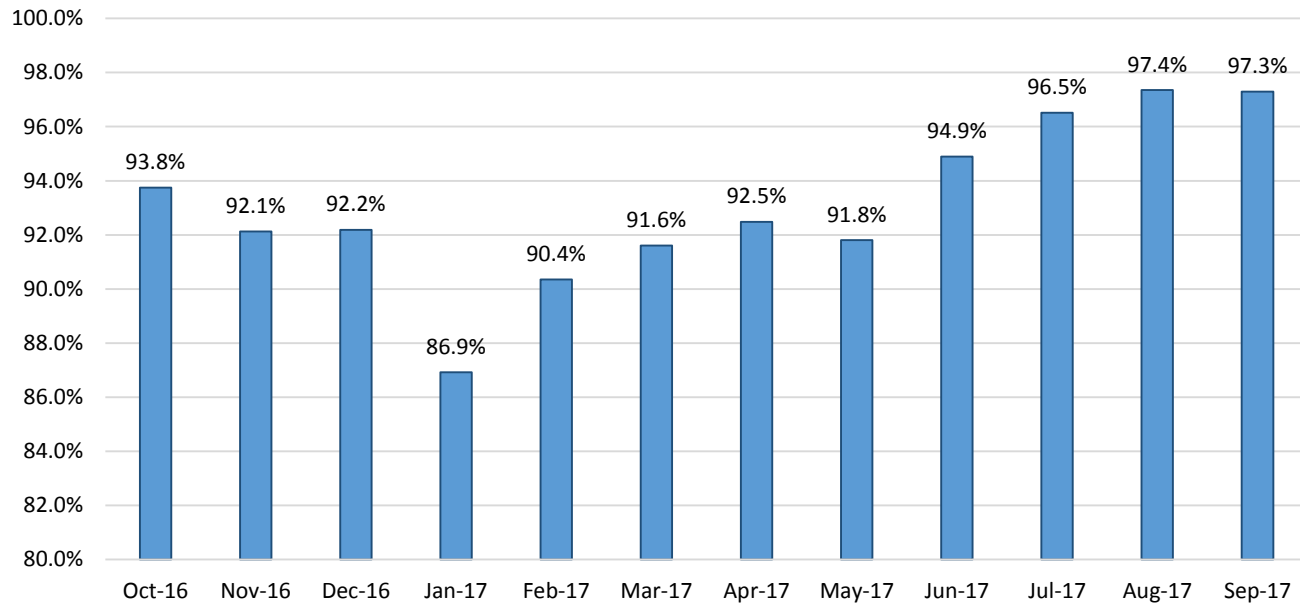
### SNAP Expedite - Timeliness



## SNAP: Percentage of Applications Processed Timely <sup>13</sup>

	Oct-16	Nov-16	Dec-16	Jan-17	Feb-17	Mar-17	Apr-17	May-17	Jun-17	Jul-17	Aug-17	Sep-17	Average
APT	93.8%	92.1%	92.2%	86.9%	90.4%	91.6%	92.5%	91.8%	94.9%	96.5%	97.4%	97.3%	93.1%

### SNAP Application Processing Timeliness (APT)



**SNAP Non-Expedite: Percentage of Initial Applications Processed Timely by Field Office<sup>13</sup>**

	Oct-16	Nov-16	Dec-16	Jan-17	Feb-17	Mar-17	Apr-17	May-17	Jun-17	Jul-17	Aug-17	Sep-17	Average
Cibola	93.5%	94.7%	93.4%	94.7%	92.9%	93.9%	95.2%	97.9%	95.6%	98.0%	97.2%	98.2%	95.4%
McKinley	90.9%	95.3%	92.9%	94.4%	85.8%	94.0%	96.8%	98.6%	97.9%	97.7%	97.1%	98.1%	95.0%
San Juan	88.2%	86.3%	86.8%	88.0%	83.9%	79.9%	82.2%	85.3%	90.8%	89.7%	94.4%	93.3%	87.4%
Sierra	98.6%	100.0%	100.0%	100.0%	100.0%	100.0%	98.4%	100.0%	100.0%	100.0%	100.0%	100.0%	99.8%
Socorro	95.4%	97.1%	98.1%	100.0%	98.8%	94.4%	98.7%	100.0%	98.0%	98.8%	99.0%	98.7%	98.1%
Valencia North	90.9%	94.3%	89.4%	91.2%	90.8%	89.2%	94.9%	97.3%	93.6%	93.2%	97.0%	92.5%	92.9%
Valencia South	100.0%	100.0%				100.0%							100.0%
<b>NW Region 1 Total</b>	<b>91.4%</b>	<b>93.0%</b>	<b>91.4%</b>	<b>92.9%</b>	<b>88.6%</b>	<b>89.0%</b>	<b>91.9%</b>	<b>94.4%</b>	<b>94.5%</b>	<b>94.3%</b>	<b>96.5%</b>	<b>95.5%</b>	<b>92.8%</b>
Colfax	97.4%	98.6%	97.7%	97.9%	100.0%	100.0%	98.3%	100.0%	100.0%	100.0%	100.0%	100.0%	99.2%
Guadalupe	100.0%	89.3%	100.0%	100.0%	100.0%	92.9%	92.9%	94.7%	100.0%	100.0%	100.0%	100.0%	97.5%
Quay	90.9%	91.7%	90.2%	100.0%	96.9%	92.9%	97.4%	100.0%	100.0%	100.0%	100.0%	95.8%	96.3%
Rio Arriba	97.7%	92.9%	96.2%	96.8%	97.0%	92.6%	93.0%	96.2%	94.8%	97.0%	96.8%	98.8%	95.8%
San Miguel	97.5%	97.8%	97.8%	95.8%	97.4%	99.2%	99.3%	99.3%	98.7%	100.0%	100.0%	99.3%	98.5%
Sandoval	93.0%	98.6%	95.9%	97.0%	98.1%	98.0%	98.1%	97.9%	99.3%	97.1%	98.3%	98.9%	97.5%
Santa Fe	88.7%	96.1%	96.5%	94.7%	96.0%	93.1%	96.2%	98.3%	98.2%	95.9%	97.8%	97.6%	95.8%
Taos	91.7%	96.6%	96.4%	95.1%	94.8%	91.9%	99.2%	99.3%	99.2%	99.1%	100.0%	99.2%	96.9%
<b>NE Region 2 Total</b>	<b>93.1%</b>	<b>96.2%</b>	<b>96.3%</b>	<b>96.3%</b>	<b>97.1%</b>	<b>95.2%</b>	<b>97.1%</b>	<b>98.2%</b>	<b>98.3%</b>	<b>97.5%</b>	<b>98.5%</b>	<b>98.6%</b>	<b>96.9%</b>
NE Bernalillo	79.9%	90.6%	85.6%	85.7%	73.2%	76.4%	76.0%	93.5%	94.1%	94.5%	95.8%	95.2%	86.7%
NW Bernalillo	90.1%	91.3%	94.2%	88.2%	87.9%	88.8%	93.9%	95.9%	87.0%	91.3%	96.6%	96.7%	91.8%
SE Bernalillo	89.6%	93.8%	91.6%	85.6%	76.4%	70.0%	77.5%	82.1%	91.8%	93.3%	97.9%	93.5%	86.9%
SW Bernalillo	90.9%	95.4%	93.1%	88.7%	84.0%	77.6%	78.3%	80.4%	92.3%	95.4%	96.9%	96.9%	89.2%
Torrance	84.4%	83.1%	95.4%	93.4%	95.0%	95.2%	91.2%	95.5%	98.1%	98.8%	96.6%	96.5%	93.6%
<b>Gen. Region 3 Total</b>	<b>87.5%</b>	<b>92.4%</b>	<b>91.1%</b>	<b>87.4%</b>	<b>80.4%</b>	<b>79.4%</b>	<b>81.8%</b>	<b>88.4%</b>	<b>97.7%</b>	<b>94.0%</b>	<b>96.7%</b>	<b>95.7%</b>	<b>89.4%</b>
Chaves	94.8%	95.0%	98.4%	97.3%	95.8%	96.3%	96.8%	100.0%	99.7%	98.8%	99.1%	100.0%	97.7%
Curry	90.3%	98.1%	94.1%	93.1%	90.9%	86.8%	94.9%	98.7%	96.9%	95.5%	98.3%	97.4%	94.6%
Eddy Artesia	92.1%	86.5%	94.8%	92.9%	98.4%	96.0%	94.6%	97.7%	98.6%	96.8%	98.4%	90.2%	94.7%
Eddy Carlsbad	79.5%	94.8%	92.0%	90.9%	91.3%	94.9%	97.0%	96.6%	98.3%	95.4%	97.0%	94.4%	93.5%
Lea	89.6%	94.0%	93.6%	87.1%	94.2%	90.4%	90.6%	94.4%	94.6%	97.3%	96.6%	96.0%	93.2%
Lincoln	94.2%	98.7%	100.0%	98.4%	94.4%	94.7%	98.3%	93.4%	98.9%	97.1%	96.8%	100.0%	97.1%
Roosevelt	100.0%	94.3%	100.0%	97.8%	95.0%	91.3%	100.0%	98.3%	97.0%	98.6%	100.0%	100.0%	97.7%
<b>SE Region 4 Total</b>	<b>91.4%</b>	<b>95.0%</b>	<b>95.9%</b>	<b>93.9%</b>	<b>93.9%</b>	<b>92.9%</b>	<b>95.3%</b>	<b>97.5%</b>	<b>97.7%</b>	<b>97.2%</b>	<b>98.0%</b>	<b>97.3%</b>	<b>95.5%</b>
East Dona Ana	92.7%	95.0%	98.3%	98.6%	99.6%	98.7%	98.6%	99.3%	99.7%	97.1%	97.9%	99.6%	97.9%
Grant	96.3%	98.8%	97.8%	98.9%	100.0%	95.5%	98.9%	98.1%	98.5%	98.3%	97.0%	100.0%	98.2%
Luna	89.7%	97.8%	95.7%	94.7%	97.8%	97.3%	100.0%	100.0%	100.0%	100.0%	97.9%	100.0%	97.6%
Otero	91.6%	92.4%	97.1%	96.3%	100.0%	99.4%	100.0%	99.5%	98.8%	98.9%	99.5%	97.6%	97.6%
South Dona Ana	93.6%	92.9%	99.2%	98.9%	97.6%	98.8%	98.7%	99.7%	99.0%	100.0%	100.0%	100.0%	98.2%
West Dona Ana	95.9%	93.4%	96.7%	96.9%	98.2%	99.4%	99.7%	99.5%	99.4%	99.7%	99.5%	99.7%	98.2%
<b>SW Region 5 Total</b>	<b>93.6%</b>	<b>94.2%</b>	<b>97.6%</b>	<b>97.4%</b>	<b>98.6%</b>	<b>98.6%</b>	<b>99.3%</b>	<b>99.4%</b>	<b>99.3%</b>	<b>99.0%</b>	<b>98.9%</b>	<b>99.5%</b>	<b>98.0%</b>
<b>STATE TOTAL</b>	<b>91.0%</b>	<b>93.9%</b>	<b>94.0%</b>	<b>93.2%</b>	<b>91.0%</b>	<b>89.6%</b>	<b>91.7%</b>	<b>94.8%</b>	<b>95.6%</b>	<b>96.1%</b>	<b>97.6%</b>	<b>97.1%</b>	<b>93.8%</b>

**SNAP Expedite: Percentage of Initial Applications Processed Timely by Field Office<sup>13</sup>**

	Oct-16	Nov-16	Dec-16	Jan-17	Feb-17	Mar-17	Apr-17	May-17	Jun-17	Jul-17	Aug-17	Sep-17	Average
Cibola	97.7%	98.2%	97.7%	94.4%	97.9%	92.1%	97.3%	96.8%	96.6%	98.4%	98.2%	97.5%	96.9%
McKinley	97.8%	95.1%	92.8%	95.8%	93.5%	98.7%	99.3%	97.8%	98.4%	98.6%	98.7%	98.7%	97.1%
San Juan	95.3%	85.8%	86.8%	86.1%	84.8%	88.1%	89.4%	93.5%	91.4%	89.3%	95.6%	97.0%	90.3%
Sierra	96.3%	100.0%	100.0%	97.6%	100.0%	98.2%	100.0%	100.0%	100.0%	98.5%	95.5%	98.1%	98.7%
Socorro	97.8%	96.6%	95.8%	97.4%	97.2%	97.4%	96.7%	96.9%	97.4%	97.8%	97.4%	100.0%	97.4%
Valencia North	98.5%	94.6%	94.7%	95.0%	93.7%	93.2%	95.5%	95.4%	96.0%	95.7%	97.9%	96.7%	95.6%
Valencia South	100.0%	100.0%		100.0%	100.0%	100.0%						100.0%	100.0%
<b>NW Region 1 Total</b>	<b>96.9%</b>	<b>92.8%</b>	<b>91.9%</b>	<b>92.0%</b>	<b>90.9%</b>	<b>93.0%</b>	<b>94.5%</b>	<b>95.5%</b>	<b>95.1%</b>	<b>94.5%</b>	<b>97.0%</b>	<b>97.6%</b>	<b>94.3%</b>
Colfax	100.0%	100.0%	97.6%	100.0%	95.0%	97.9%	98.3%	98.1%	100.0%	100.0%	100.0%	100.0%	98.9%
Guadalupe	100.0%	100.0%	100.0%	100.0%	100.0%	100.0%	100.0%	100.0%	100.0%	100.0%	100.0%	100.0%	100.0%
Quay	100.0%	98.3%	98.0%	100.0%	100.0%	97.1%	97.6%	95.8%	100.0%	97.1%	97.8%	100.0%	98.5%
Rio Arriba	98.3%	95.5%	97.7%	95.3%	98.0%	98.3%	98.4%	96.9%	97.6%	97.4%	98.2%	97.6%	97.4%
San Miguel	99.0%	99.3%	97.8%	98.7%	100.0%	96.5%	97.7%	96.9%	98.8%	99.5%	97.9%	97.4%	98.3%
Sandoval	96.5%	97.1%	98.0%	97.5%	95.6%	96.8%	97.6%	94.7%	96.5%	97.7%	96.6%	97.3%	96.8%
Santa Fe	97.6%	95.3%	95.7%	96.8%	96.1%	96.6%	95.6%	97.3%	96.9%	96.4%	97.5%	96.6%	96.5%
Taos	96.8%	98.6%	95.1%	95.4%	96.4%	95.0%	95.2%	97.1%	94.5%	99.2%	96.6%	99.3%	96.6%
<b>NE Region 2 Total</b>	<b>97.7%</b>	<b>96.8%</b>	<b>97.0%</b>	<b>97.0%</b>	<b>96.8%</b>	<b>96.9%</b>	<b>97.0%</b>	<b>96.5%</b>	<b>97.1%</b>	<b>97.7%</b>	<b>97.5%</b>	<b>97.5%</b>	<b>97.1%</b>
NE Bernalillo	90.9%	63.3%	86.9%	62.9%	93.3%	95.5%	93.9%	93.4%	95.6%	97.9%	96.8%	96.6%	88.9%
NW Bernalillo	96.7%	93.0%	75.5%	47.0%	69.5%	92.2%	83.4%	61.2%	84.7%	96.9%	97.5%	97.2%	82.9%
SE Bernalillo	94.1%	93.3%	86.3%	84.2%	90.4%	88.7%	90.7%	88.9%	91.9%	95.1%	95.7%	94.5%	91.2%
SW Bernalillo	92.3%	76.8%	72.0%	54.9%	79.2%	77.5%	72.7%	62.5%	89.6%	96.8%	96.6%	96.6%	80.6%
Torrance	88.5%	92.8%	94.5%	94.7%	99.2%	91.0%	94.2%	93.8%	90.9%	98.3%	98.4%	99.2%	94.6%
<b>Gen. Region 3 Total</b>	<b>93.4%</b>	<b>81.3%</b>	<b>81.2%</b>	<b>60.8%</b>	<b>83.9%</b>	<b>89.3%</b>	<b>86.3%</b>	<b>77.6%</b>	<b>90.8%</b>	<b>96.9%</b>	<b>96.8%</b>	<b>96.5%</b>	<b>86.2%</b>
Chaves	98.8%	97.3%	98.1%	97.6%	98.0%	97.3%	98.7%	99.6%	97.8%	98.1%	98.0%	98.7%	98.2%
Curry	98.3%	97.3%	97.3%	78.2%	88.0%	94.9%	95.1%	95.7%	89.0%	99.0%	98.5%	98.4%	94.1%
Eddy Artesia	95.8%	98.6%	100.0%	96.8%	91.1%	94.5%	96.2%	92.6%	98.4%	100.0%	97.7%	98.4%	96.7%
Eddy Carlsbad	93.8%	94.1%	95.0%	95.8%	90.8%	93.1%	96.3%	98.6%	95.8%	97.4%	95.8%	98.5%	95.4%
Lea	97.8%	92.7%	96.8%	89.3%	72.7%	88.2%	93.9%	87.0%	94.7%	93.9%	93.2%	97.4%	91.5%
Lincoln	98.3%	97.5%	98.6%	98.6%	96.0%	100.0%	98.8%	95.9%	98.3%	100.0%	98.5%	100.0%	98.4%
Roosevelt	96.8%	91.5%	98.3%	94.8%	90.2%	98.4%	98.6%	97.7%	100.0%	98.6%	98.9%	98.7%	96.9%
<b>SE Region 4 Total</b>	<b>97.3%</b>	<b>95.5%</b>	<b>97.3%</b>	<b>91.8%</b>	<b>88.1%</b>	<b>94.0%</b>	<b>96.4%</b>	<b>95.1%</b>	<b>95.2%</b>	<b>97.3%</b>	<b>96.5%</b>	<b>98.4%</b>	<b>95.2%</b>
East Dona Ana	97.8%	95.1%	91.3%	97.8%	95.1%	95.1%	97.9%	96.8%	97.5%	94.8%	96.5%	98.5%	96.2%
Grant	96.7%	99.3%	98.0%	96.5%	98.6%	97.0%	98.1%	96.4%	96.8%	96.5%	98.1%	100.0%	97.7%
Luna	98.9%	98.6%	98.8%	99.3%	100.0%	99.1%	100.0%	100.0%	100.0%	99.3%	100.0%	98.4%	99.4%
Otero	96.7%	95.6%	93.8%	95.8%	96.7%	97.5%	99.0%	97.9%	97.5%	97.6%	99.1%	97.7%	97.1%
South Dona Ana	97.5%	95.4%	97.0%	96.7%	96.4%	96.7%	96.6%	98.2%	99.5%	97.1%	98.1%	97.9%	97.3%
West Dona Ana	94.7%	97.0%	95.8%	97.3%	97.0%	98.7%	98.4%	98.8%	98.6%	98.1%	98.9%	99.1%	97.7%
<b>SW Region 5 Total</b>	<b>96.7%</b>	<b>96.7%</b>	<b>95.4%</b>	<b>97.2%</b>	<b>96.9%</b>	<b>97.4%</b>	<b>98.3%</b>	<b>98.1%</b>	<b>98.2%</b>	<b>97.2%</b>	<b>98.4%</b>	<b>98.6%</b>	<b>97.4%</b>
<b>STATE TOTAL</b>	<b>95.9%</b>	<b>90.8%</b>	<b>90.8%</b>	<b>82.7%</b>	<b>89.9%</b>	<b>93.1%</b>	<b>93.1%</b>	<b>89.6%</b>	<b>94.3%</b>	<b>96.8%</b>	<b>97.2%</b>	<b>97.4%</b>	<b>92.6%</b>



**SNAP: Percentage of Denied Initial Applications Processed Within 30 Days by Field Office <sup>13</sup>**

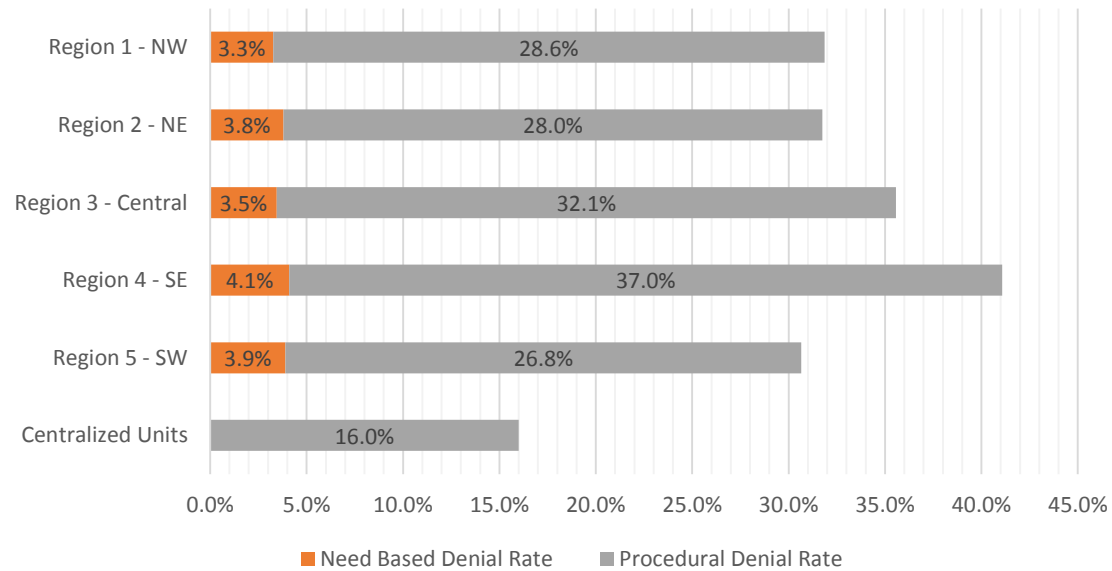
	Aug-17	Sep-17	Average
Cibola	71.7%	75.0%	73.4%
McKinley	70.7%	60.3%	65.5%
San Juan	53.6%	51.9%	52.8%
Sierra	95.0%	85.0%	90.0%
Socorro	81.5%	68.0%	74.8%
Valencia North	54.8%	44.6%	49.7%
Valencia South			
<b>NW Region 1 Total</b>	<b>62.1%</b>	<b>55.8%</b>	<b>59.0%</b>
Colfax	100.0%	100.0%	100.0%
Guadalupe	100.0%	100.0%	100.0%
Quay	85.7%	75.0%	80.4%
Rio Arriba	65.8%	64.1%	65.0%
San Miguel	83.7%	69.0%	76.4%
Sandoval	84.5%	71.2%	77.9%
Santa Fe	65.1%	69.0%	67.1%
Taos	83.3%	59.5%	71.4%
<b>NE Region 2 Total</b>	<b>77.5%</b>	<b>70.0%</b>	<b>73.8%</b>
NE Bernalillo	59.2%	47.7%	53.5%
NW Bernalillo	40.3%	37.4%	38.9%
SE Bernalillo	59.9%	58.4%	59.2%
SW Bernalillo	47.9%	52.6%	50.3%
Torrance	66.1%	39.1%	52.6%
<b>Gen. Region 3 Total</b>	<b>51.6%</b>	<b>47.3%</b>	<b>49.5%</b>
Chaves	96.8%	88.5%	92.7%
Curry	74.0%	73.3%	73.7%
Eddy Artesia	50.0%	45.0%	47.5%
Eddy Carlsbad	74.4%	64.9%	69.7%
Lea	60.7%	72.4%	66.6%
Lincoln	51.4%	33.3%	42.4%
Roosevelt	73.9%	71.4%	72.7%
<b>SE Region 4 Total</b>	<b>72.9%</b>	<b>70.6%</b>	<b>71.8%</b>
East Dona Ana	64.7%	70.2%	67.5%
Grant	79.0%	66.7%	72.9%
Luna	40.7%	50.0%	45.4%
Otero	50.0%	52.7%	51.4%
South Dona Ana	73.1%	51.6%	62.4%
West Dona Ana	65.4%	53.5%	59.5%
<b>SW Region 5 Total</b>	<b>63.4%</b>	<b>58.5%</b>	<b>61.0%</b>
<b>STATE TOTAL</b>	<b>62.9%</b>	<b>57.8%</b>	<b>60.4%</b>

**SNAP Renewal Disposition Rates by Field Office<sup>20</sup>**  
**September 2017**

Office	Approval Rate	Denial Rate	Need Based Denial Rate	Procedural Denial Rate
Chaves County ISD	57.9%	42.1%	4.4%	37.7%
Cibola County ISD	70.5%	29.5%	1.6%	27.9%
Colfax County ISD	67.1%	32.9%	6.3%	26.6%
Curry County ISD	60.1%	39.9%	3.2%	36.7%
East Dona Ana County ISD	70.2%	29.8%	4.5%	25.3%
Eddy Artesia County ISD	65.9%	34.1%	7.3%	26.8%
Eddy Carlsbad County ISD	54.0%	46.0%	4.3%	41.7%
Grant County ISD	66.5%	33.5%	4.5%	29.0%
Guadalupe County ISD	74.2%	25.8%	3.2%	22.6%
Hidalgo County ISD	60.0%	40.0%	0.0%	40.0%
Lea County ISD	59.3%	40.7%	3.7%	37.0%
Lincoln County ISD	63.8%	36.3%	2.5%	33.8%
Luna County ISD	68.6%	31.4%	2.9%	28.6%
McKinley County ISD	77.7%	22.3%	2.1%	20.2%
Northeast Bernalillo County ISD	57.3%	42.7%	4.2%	38.5%
Northwest Bernalillo County ISD	66.4%	33.6%	4.8%	28.7%
Otero County ISD	72.1%	27.9%	0.8%	27.1%
Quay County ISD	62.9%	37.1%	2.9%	34.3%
Rio Arriba County ISD	61.6%	38.4%	3.1%	35.3%
Roosevelt County ISD	55.7%	44.3%	4.5%	39.8%
San Juan County ISD	62.8%	37.2%	4.6%	32.6%
San Miguel County ISD	68.4%	31.6%	2.8%	28.7%
Sandoval County ISD	73.2%	26.8%	3.9%	22.9%
Santa Fe County ISD	65.5%	34.5%	3.6%	30.9%
Sierra County ISD	64.1%	35.9%	7.8%	28.1%
Socorro County ISD	69.7%	30.3%	2.8%	27.6%
South Dona Ana ISD	73.0%	27.0%	5.3%	21.7%
Southeast Bernalillo County ISD	60.7%	39.3%	2.7%	36.6%
Southwest Bernalillo County ISD	70.6%	29.4%	1.6%	27.8%
Taos County ISD	71.0%	29.0%	5.9%	23.1%
Torrance County ISD	65.2%	34.8%	5.6%	29.2%
Valencia North County ISD	64.4%	35.6%	1.3%	34.3%
Valencia South County ISD	100.0%	0.0%	0.0%	0.0%
West Dona Ana County ISD	65.2%	34.8%	4.3%	30.6%
Centralized Units	84.0%	16.0%	0.0%	16.0%
Statewide Total	66.2%	33.8%	3.6%	30.2%

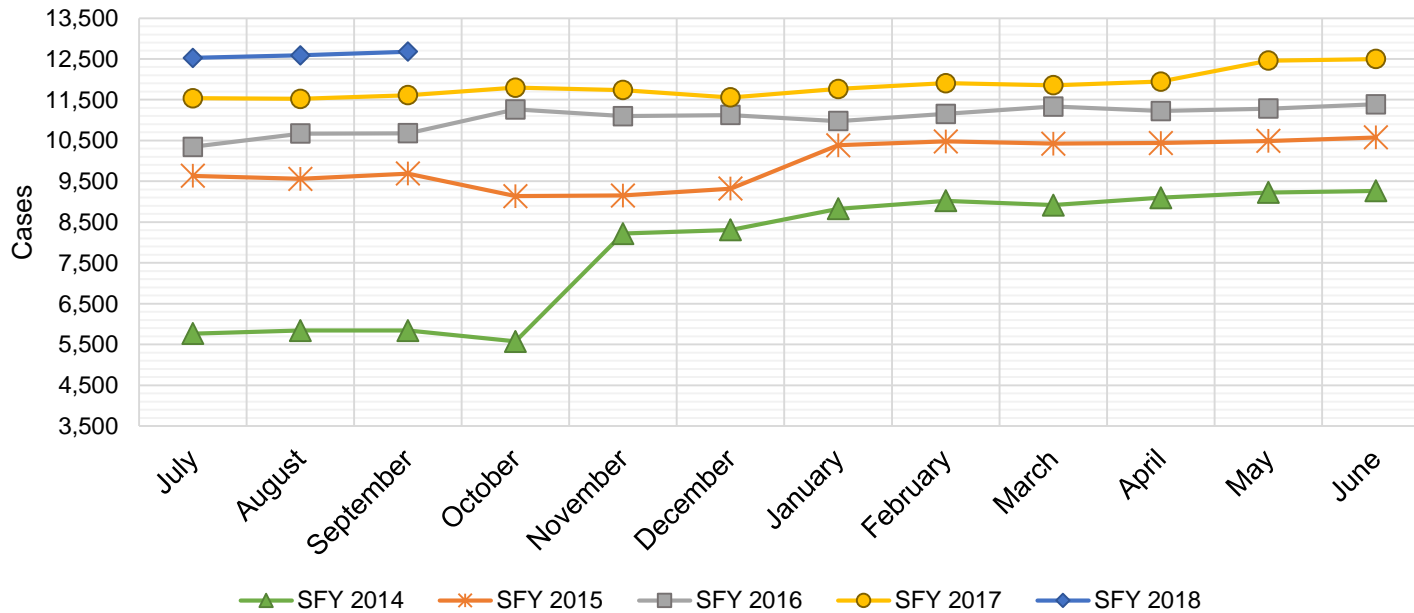
**SNAP Renewal Disposition Rates by Region<sup>20</sup>**  
**September 2017**

Region	Approval Rate	Denial Rate	Need Based Denial Rate	Procedural Denial Rate
Region 1 - NW	68.1%	31.9%	3.3%	28.6%
Region 2 - NE	68.2%	31.8%	3.8%	28.0%
Region 3 - Central	64.4%	35.6%	3.5%	32.1%
Region 4 - SE	58.9%	41.1%	4.1%	37.0%
Region 5 - SW	69.3%	30.7%	3.9%	26.8%
Centralized Units	84.0%	16.0%	0.0%	16.0%
Statewide Total	66.2%	33.8%	3.6%	30.2%



## State SNAP Supplement

SFY 2014 <sup>12</sup>			SFY 2015 <sup>12,9</sup>			SFY 2016 <sup>9</sup>			SFY 2017 <sup>9</sup>			SFY 2018 <sup>9</sup>		
	Cases	Expenditures		Cases	Expenditures		Cases	Expenditures		Cases	Expenditures		Cases	Expenditures
Jul-13	5,767	\$48,040	Jul-14	9,635	\$88,859	Jul-15	10,345	\$86,143	Jul-16	11,537	\$95,553	Jul-17	12,526	\$97,568
Aug-13	5,841	\$48,417	Aug-14	9,559	\$87,757	Aug-15	10,669	\$88,197	Aug-16	11,522	\$95,107	Aug-17	12,589	\$98,954
Sep-13	5,841	\$48,732	Sep-14	9,688	\$87,372	Sep-15	10,676	\$88,426	Sep-16	11,613	\$94,472	Sep-17	12,679	\$97,546
Oct-13	5,575	\$46,610	Oct-14	9,136	\$70,490	Oct-15	11,262	\$96,758	Oct-16	11,797	\$96,679	Oct-17		
Nov-13	8,219	\$69,564	Nov-14	9,152	\$69,955	Nov-15	11,099	\$91,996	Nov-16	11,735	\$93,689	Nov-17		
Dec-13	8,310	\$71,839	Dec-14	9,322	\$73,226	Dec-15	11,125	\$90,771	Dec-16	11,556	\$93,739	Dec-17		
Jan-14	8,826	\$77,933	Jan-15	10,384	\$84,578	Jan-16	10,977	\$92,760	Jan-17	11,763	\$96,074	Jan-18		
Feb-14	9,024	\$84,758	Feb-15	10,477	\$82,901	Feb-16	11,153	\$95,363	Feb-17	11,907	\$98,251	Feb-18		
Mar-14	8,916	\$80,597	Mar-15	10,423	\$87,461	Mar-16	11,332	\$96,751	Mar-17	11,853	\$96,693	Mar-18		
Apr-14	9,098	\$84,599	Apr-15	10,440	\$79,605	Apr-16	11,222	\$93,959	Apr-17	11,944	\$97,060	Apr-18		
May-14	9,226	\$85,035	May-15	10,491	\$82,511	May-16	11,283	\$95,271	May-17	12,457	\$96,940	May-18		
Jun-14	9,264	\$84,329	Jun-15	10,575	\$85,134	Jun-16	11,389	\$93,061	Jun-17	12,498	\$97,405	Jun-18		
<b>TOTAL</b>	<b>93,907</b>	<b>\$830,453</b>		<b>119,282</b>	<b>\$979,850</b>		<b>132,532</b>	<b>\$1,109,455</b>		<b>142,182</b>	<b>\$1,151,662</b>		<b>37,794</b>	<b>\$294,068</b>
<b>AVERAGE</b>	<b>7,826</b>	<b>\$69,204</b>		<b>9,940</b>	<b>\$81,654</b>		<b>11,044</b>	<b>\$92,455</b>		<b>11,849</b>	<b>\$95,972</b>		<b>12,598</b>	<b>\$98,023</b>



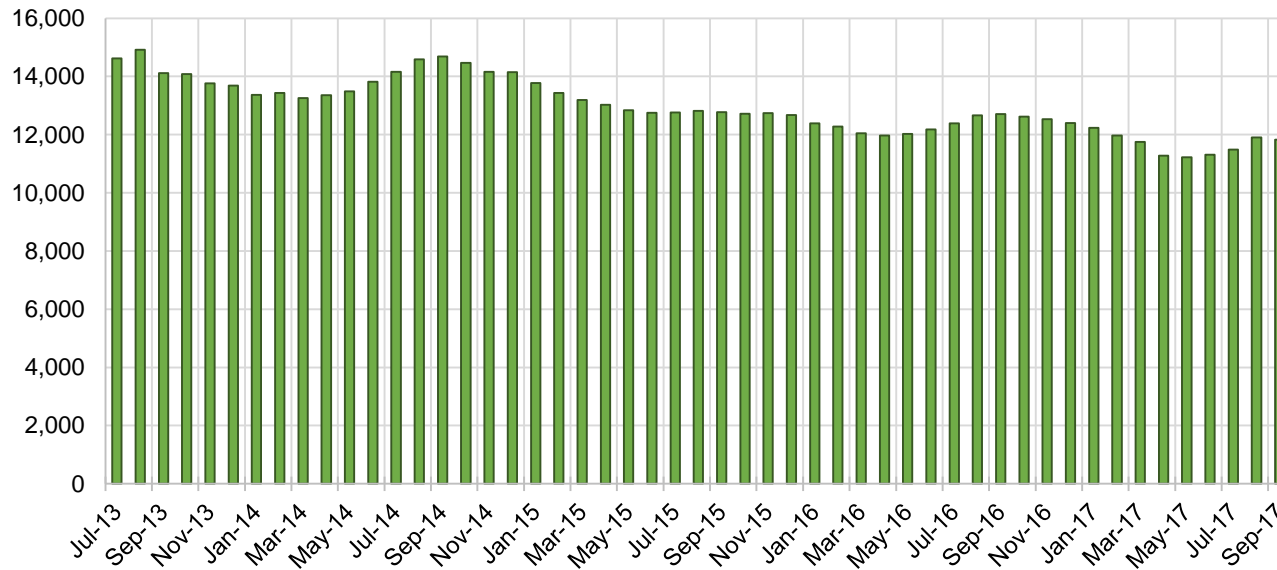
## TANF Cases by Field Office<sup>6</sup>

Office	Sep-16	Aug-17	Sep-17	Percent Change	
				Sep-16- Sep-17	Aug-17- Sep-17
Chaves County ISD	589	568	568	-3.6%	0.0%
Cibola County ISD	177	140	149	-15.8%	6.4%
Colfax County ISD	81	83	83	2.5%	0.0%
Curry County ISD	542	521	530	-2.2%	1.7%
East Dona Ana County ISD	529	502	501	-5.3%	-0.2%
Eddy Artesia County ISD	163	125	128	-21.5%	2.4%
Eddy Carlsbad County ISD	224	186	171	-23.7%	-8.1%
Grant County ISD	198	220	212	7.1%	-3.6%
Guadalupe County ISD	27	32	31	14.8%	-3.1%
Hidalgo County ISD	24	20	23	-4.2%	15.0%
Lea County ISD	557	441	451	-19.0%	2.3%
Lincoln County ISD	103	99	97	-5.8%	-2.0%
Luna County ISD	216	221	209	-3.2%	-5.4%
McKinley County ISD	72	66	68	-5.6%	3.0%
Northeast Bernalillo County ISD	988	1,023	1,005	1.7%	-1.8%
Northwest Bernalillo County ISD	872	810	804	-7.8%	-0.7%
Otero County ISD	257	309	309	20.2%	0.0%
Quay County ISD	77	90	81	5.2%	-10.0%
Rio Arriba County ISD	466	427	411	-11.8%	-3.7%
Roosevelt County ISD	159	171	173	8.8%	1.2%
San Juan County ISD	361	325	314	-13.0%	-3.4%
San Miguel County ISD	256	219	219	-14.5%	0.0%
Sandoval County ISD	619	562	583	-5.8%	3.7%
Santa Fe County ISD	590	434	435	-26.3%	0.2%
Sierra County ISD	82	81	76	-7.3%	-6.2%
Socorro County ISD	118	99	93	-21.2%	-6.1%
South Dona Ana ISD	745	759	739	-0.8%	-2.6%
Southeast Bernalillo County ISD	764	670	654	-14.4%	-2.4%
Southwest Bernalillo County ISD	1,208	1,093	1,110	-8.1%	1.6%
Taos County ISD	146	128	132	-9.6%	3.1%
Torrance County ISD	199	194	193	-3.0%	-0.5%
Valencia North County ISD	496	496	515	3.8%	3.8%
Valencia South County ISD	23	1	2	-91.3%	100.0%
West Dona Ana County ISD	779	783	755	-3.1%	-3.6%
Centralized Units	1	1	4	300.0%	300.0%
<b>Statewide Total</b>	<b>12,708</b>	<b>11,899</b>	<b>11,828</b>	<b>-6.9%</b>	<b>-0.6%</b>

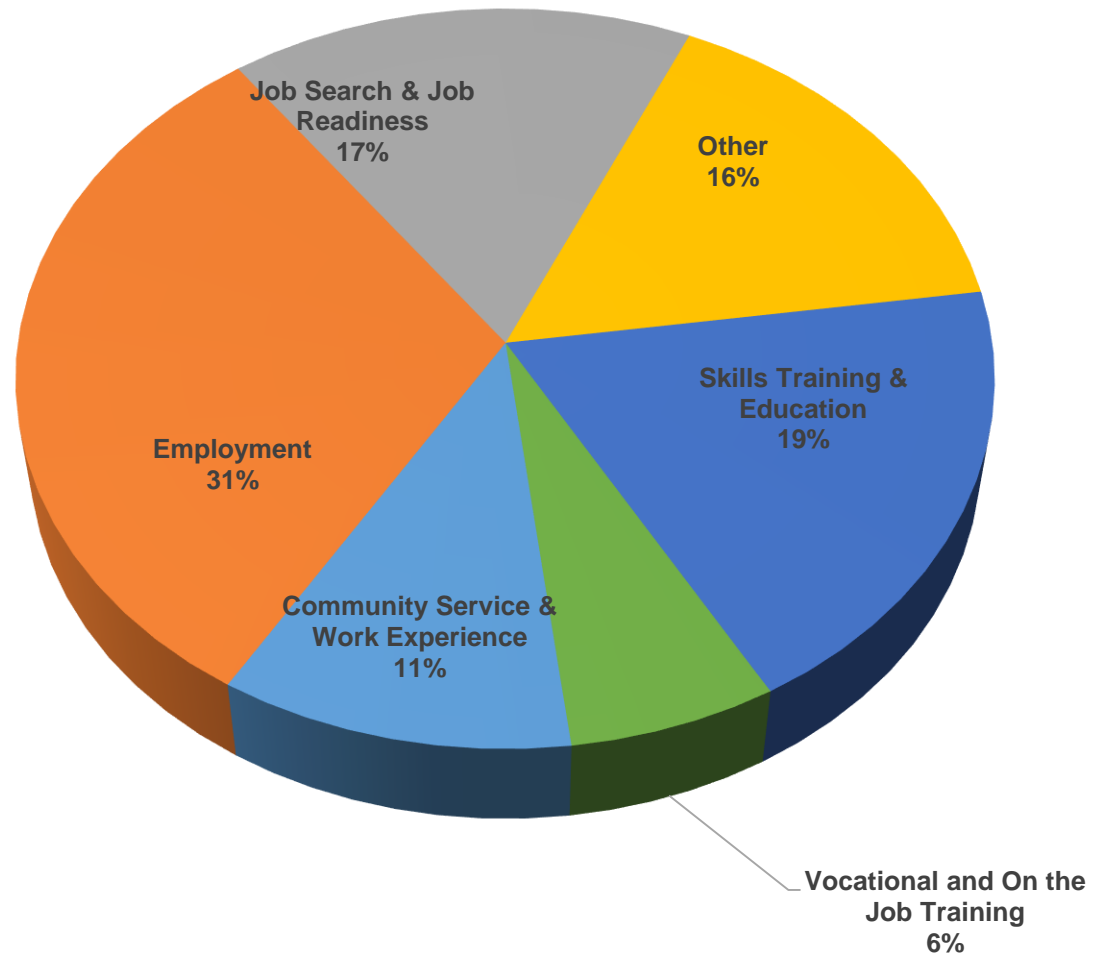
## TANF Cases by Region<sup>6</sup>

Region	Sep-16	Aug-17	Sep-17	Percent Change	
				Sep-16- Sep-17	Aug-17- Sep-17
Region 1- NW	1,329	1,208	1,217	-8.4%	0.7%
Region 2- NE	2,262	1,975	1,975	-12.7%	0.0%
Region 3- Central	4,031	3,790	3,766	-6.6%	-0.6%
Region 4- SE	2,337	2,111	2,118	-9.4%	0.3%
Region 5- SW	2,748	2,814	2,748	0.0%	-2.3%
Centralized Units	1	1	4	300.0%	300.0%
<b>Statewide Total</b>	<b>12,708</b>	<b>11,899</b>	<b>11,828</b>	<b>-6.9%</b>	<b>-0.6%</b>

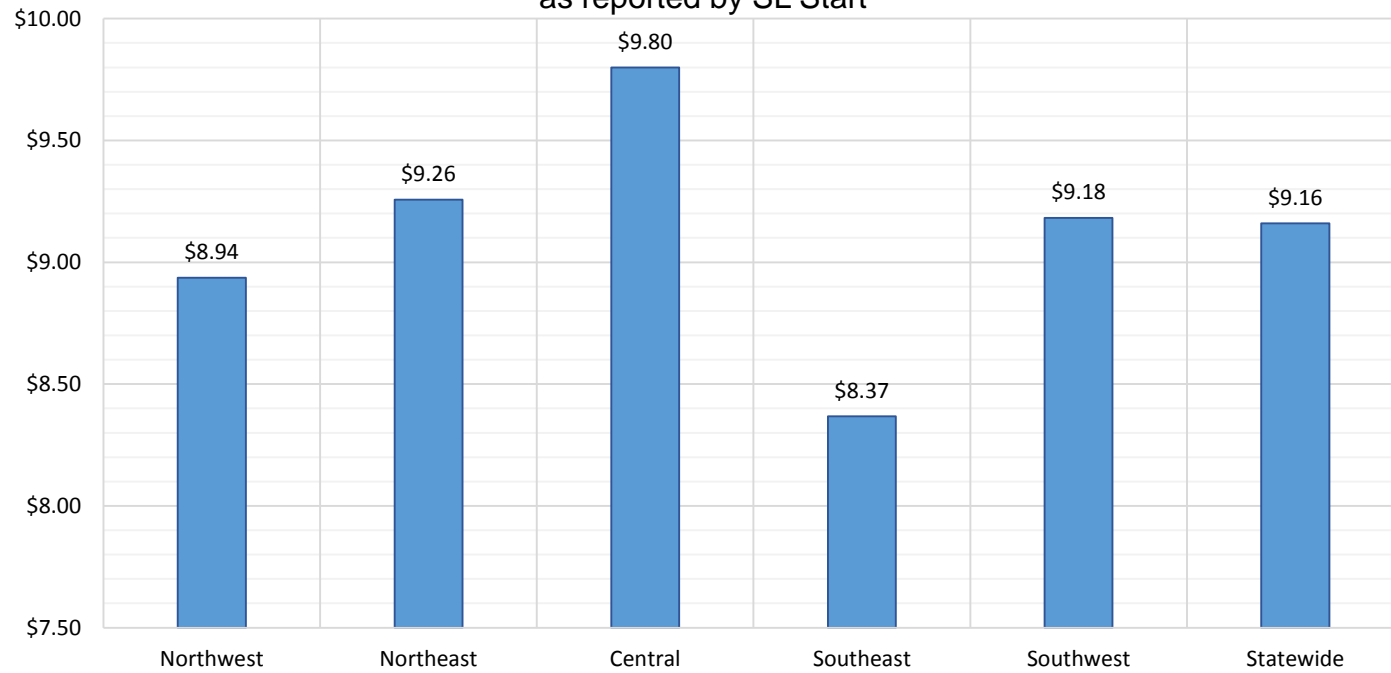
## TANF Caseload: SFY-14 to Current



## NM Works Activity Placements on September 30, 2017 as reported by SL Start<sup>14</sup>

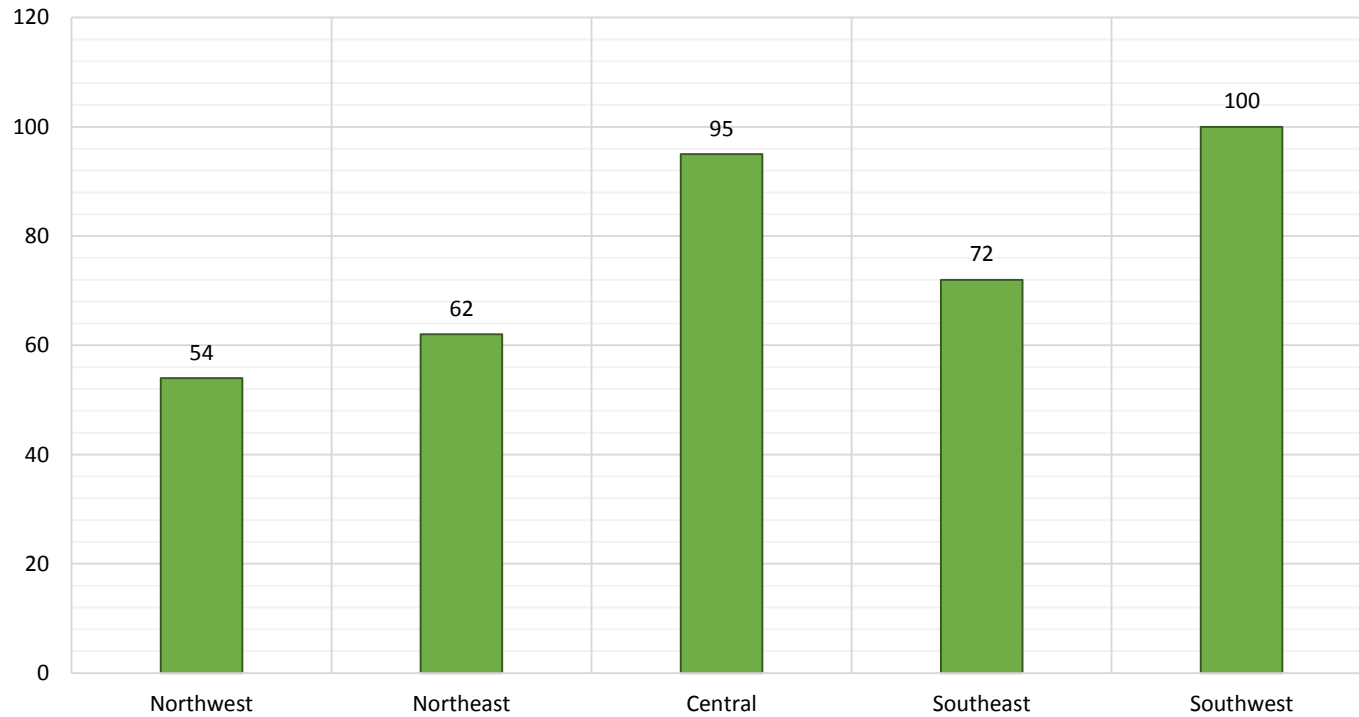


### Average Starting Hourly Wage of September 2017 TANF Employments as reported by SL Start<sup>15</sup>





Number of New Employments in September 2017 by Region  
as reported by SL Start<sup>15</sup>  
Statewide Total: 383



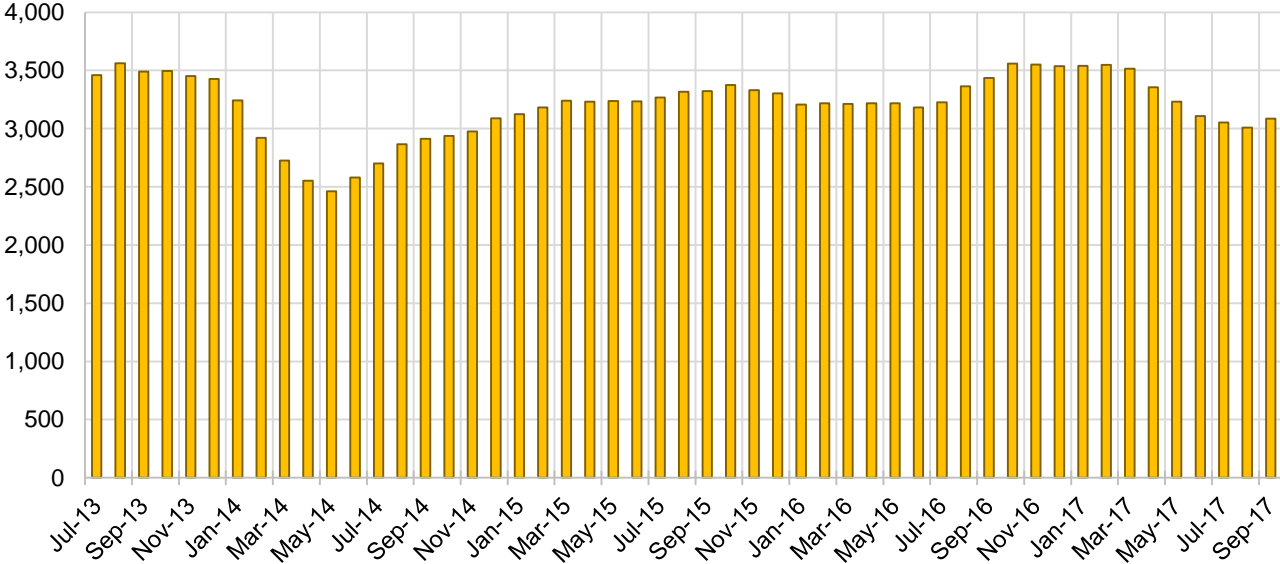
## General Assistance Cases by Field Office<sup>6</sup>

Office	Sep-16	Aug-17	Sep-17	Percent Change	
				Sep-16- Sep-17	Aug-17- Sep-17
Chaves County ISD	142	128	135	-4.9%	5.5%
Cibola County ISD	47	51	49	4.3%	-3.9%
Colfax County ISD	30	23	25	-16.7%	8.7%
Curry County ISD	80	64	61	-23.8%	-4.7%
East Dona Ana County ISD	114	105	115	0.9%	9.5%
Eddy Artesia County ISD	24	25	27	12.5%	8.0%
Eddy Carlsbad County ISD	72	66	69	-4.2%	4.5%
Grant County ISD	69	72	73	5.8%	1.4%
Guadalupe County ISD	15	15	18	20.0%	20.0%
Hidalgo County ISD	11	11	12	9.1%	9.1%
Lea County ISD	96	84	84	-12.5%	0.0%
Lincoln County ISD	31	33	30	-3.2%	-9.1%
Luna County ISD	55	61	62	12.7%	1.6%
McKinley County ISD	37	38	43	16.2%	13.2%
Northeast Bernalillo County ISD	367	359	370	0.8%	3.1%
Northwest Bernalillo County ISD	320	290	294	-8.1%	1.4%
Otero County ISD	84	98	96	14.3%	-2.0%
Quay County ISD	27	30	29	7.4%	-3.3%
Rio Arriba County ISD	120	87	92	-23.3%	5.7%
Roosevelt County ISD	23	20	20	-13.0%	0.0%
San Juan County ISD	85	111	110	29.4%	-0.9%
San Miguel County ISD	96	75	81	-15.6%	8.0%
Sandoval County ISD	151	122	123	-18.5%	0.8%
Santa Fe County ISD	219	157	154	-29.7%	-1.9%
Sierra County ISD	40	33	34	-15.0%	3.0%
Socorro County ISD	52	46	44	-15.4%	-4.3%
South Dona Ana ISD	56	57	61	8.9%	7.0%
Southeast Bernalillo County ISD	238	153	169	-29.0%	10.5%
Southwest Bernalillo County ISD	267	203	208	-22.1%	2.5%
Taos County ISD	73	63	62	-15.1%	-1.6%
Torrance County ISD	77	49	47	-39.0%	-4.1%
Valencia North County ISD	124	111	120	-3.2%	8.1%
Valencia South County ISD	5	0	0	-100.0%	N/A
West Dona Ana County ISD	189	168	169	-10.6%	0.6%
Centralized Units	0	0	0	N/A	N/A
<b>Statewide Total</b>	<b>3,436</b>	<b>3,008</b>	<b>3,086</b>	<b>-10.2%</b>	<b>2.6%</b>

## General Assistance Cases by Region<sup>6</sup>

Region	Sep-16	Aug-17	Sep-17	Percent Change	
				Sep-16- Sep-17	Aug-17- Sep-17
Region 1 - NW	390	390	400	2.6%	2.6%
Region 2 - NE	731	572	584	-20.1%	2.1%
Region 3 - Central	1,269	1,054	1,088	-14.3%	3.2%
Region 4 - SE	468	420	426	-9.0%	1.4%
Region 5 - SW	578	572	588	1.7%	2.8%
Centralized Units	0	0	0	N/A	N/A
Statewide Total	3,436	3,008	3,086	-10.2%	2.6%

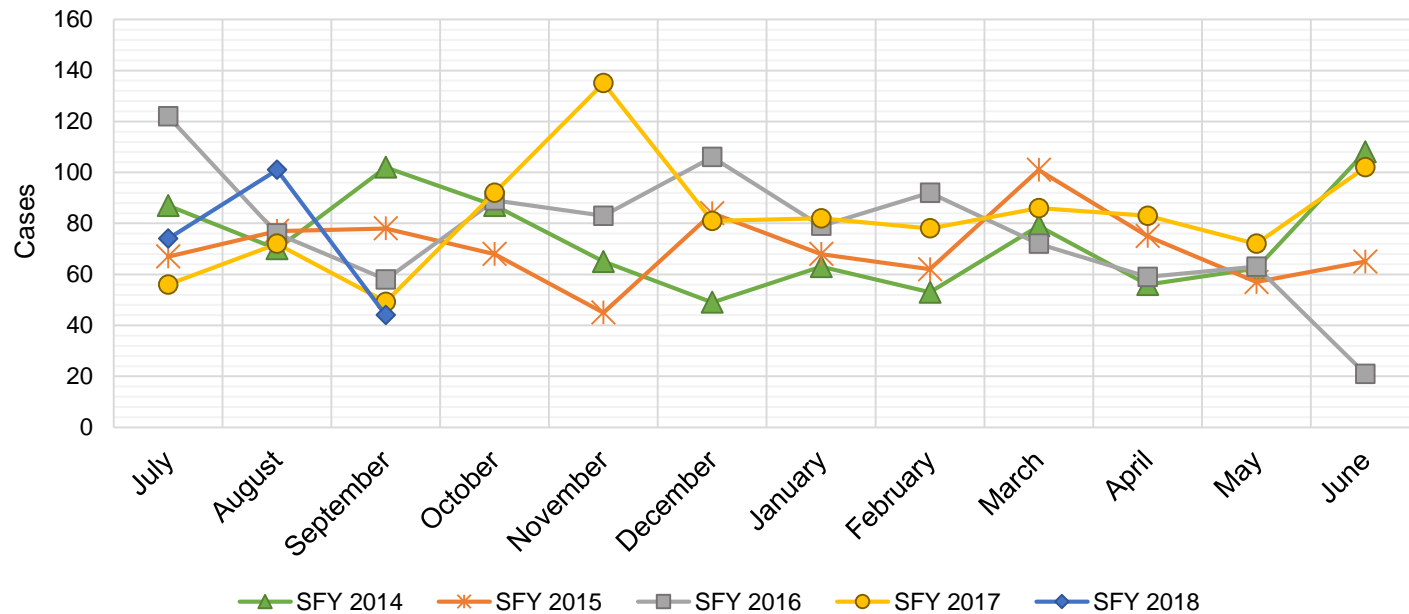
**General Assistance Caseload: SFY-14 to Current**



## General Assistance Interim Assistance Reimbursements<sup>16</sup>

SFY 2014			SFY 2015			SFY 2016			SFY 2017			SFY 2018		
	Cases	Expenditures		Cases	Expenditures		Cases	Expenditures		Cases	Expenditures		Cases	Expenditures
Jul-13	87	\$185,368	Jul-14	67	\$144,679	Jul-15	122	\$342,648	Jul-16	56	\$164,970	Jul-17	74	\$241,438
Aug-13	70	\$184,639	Aug-14	77	\$244,233	Aug-15	76	\$245,236	Aug-16	72	\$223,182	Aug-17	101	\$339,301
Sep-13	102	\$268,243	Sep-14	78	\$168,421	Sep-15	58	\$170,093	Sep-16	49	\$158,027	Sep-17	44	\$131,229
Oct-13	87	\$165,578	Oct-14	68	\$182,265	Oct-15	89	\$277,912	Oct-16	92	\$257,830	Oct-17		
Nov-13	65	\$139,197	Nov-14	45	\$134,482	Nov-15	83	\$238,948	Nov-16	135	\$402,305	Nov-17		
Dec-13	49	\$147,853	Dec-14	84	\$239,926	Dec-15	106	\$388,102	Dec-16	81	\$227,569	Dec-17		
Jan-14	63	\$178,944	Jan-15	68	\$227,066	Jan-16	79	\$239,263	Jan-17	82	\$274,050	Jan-18		
Feb-14	53	\$130,352	Feb-15	62	\$159,564	Feb-16	92	\$296,332	Feb-17	78	\$227,569	Feb-18		
Mar-14	79	\$176,756	Mar-15	101	\$317,899	Mar-16	72	\$254,360	Mar-17	86	\$278,219	Mar-18		
Apr-14	56	\$155,245	Apr-15	75	\$199,038	Apr-16	59	\$208,631	Apr-17	83	\$267,187	Apr-18		
May-14	62	\$138,827	May-15	57	\$167,383	May-16	63	\$182,241	May-17	72	\$232,836	May-18		
Jun-14	108	\$241,016	Jun-15	65	\$188,159	Jun-16	21	\$51,760	Jun-17	102	\$306,228	Jun-18		

TOTAL	881	\$2,112,017	847	\$2,373,115	920	\$2,895,525	988	\$3,019,972	219	\$711,967
AVERAGE	73	\$176,001	71	\$197,760	77	\$241,294	82	\$251,664	73	\$237,322



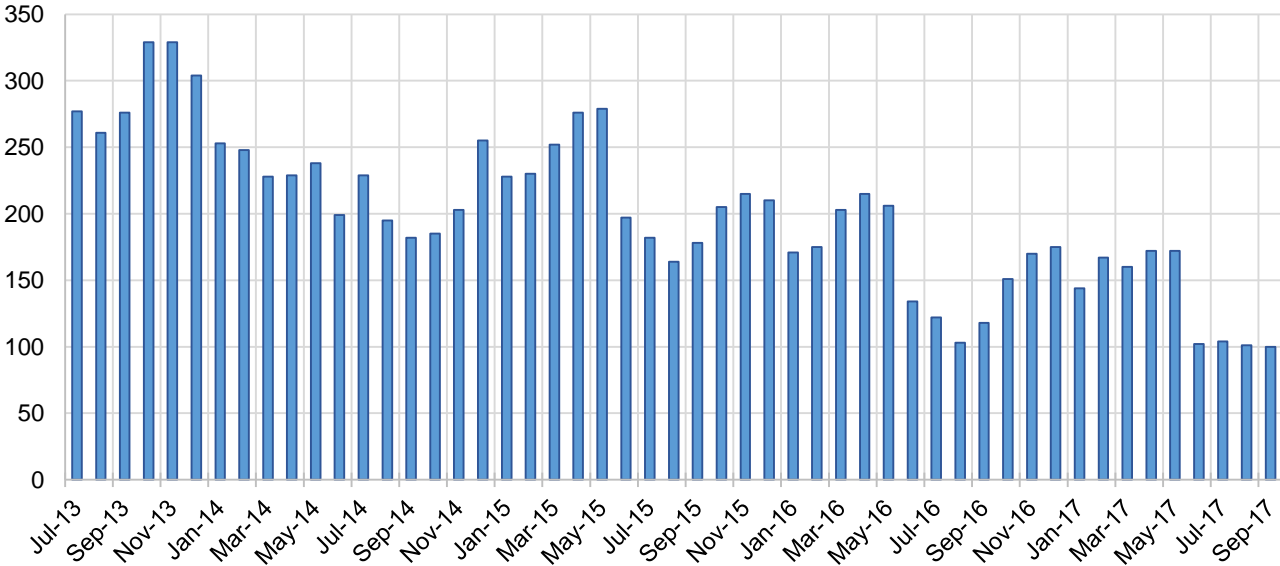
## Education Works Cases by Field Office<sup>6</sup>

Office				Percent Change	
	Sep-16	Aug-17	Sep-17	Sep-16- Sep-17	Aug-17- Sep-17
Chaves County ISD	1	1	3	200.0%	200.0%
Cibola County ISD	2	0	0	-100.0%	N/A
Colfax County ISD	2	0	0	-100.0%	N/A
Curry County ISD	1	1	0	-100.0%	-100.0%
East Dona Ana County ISD	5	2	5	0.0%	150.0%
Eddy Artesia County ISD	0	0	0	N/A	N/A
Eddy Carlsbad County ISD	1	1	0	-100.0%	-100.0%
Grant County ISD	2	8	7	250.0%	-12.5%
Guadalupe County ISD	1	1	0	-100.0%	-100.0%
Hidalgo County ISD	1	0	0	-100.0%	N/A
Lea County ISD	1	6	5	400.0%	-16.7%
Lincoln County ISD	0	0	0	N/A	N/A
Luna County ISD	1	0	2	100.0%	N/A
McKinley County ISD	0	0	0	N/A	N/A
Northeast Bernalillo County ISD	22	13	12	-45.5%	-7.7%
Northwest Bernalillo County ISD	14	7	10	-28.6%	42.9%
Otero County ISD	1	0	0	-100.0%	N/A
Quay County ISD	0	0	0	N/A	N/A
Rio Arriba County ISD	1	2	3	200.0%	50.0%
Roosevelt County ISD	2	1	1	-50.0%	0.0%
San Juan County ISD	0	3	3	N/A	0.0%
San Miguel County ISD	2	4	1	-50.0%	-75.0%
Sandoval County ISD	9	8	7	-22.2%	-12.5%
Santa Fe County ISD	2	9	6	200.0%	-33.3%
Sierra County ISD	0	0	0	N/A	N/A
Socorro County ISD	1	1	1	0.0%	0.0%
South Dona Ana ISD	10	15	15	50.0%	0.0%
Southeast Bernalillo County ISD	9	1	1	-88.9%	0.0%
Southwest Bernalillo County ISD	15	9	6	-60.0%	-33.3%
Taos County ISD	1	2	2	100.0%	0.0%
Torrance County ISD	0	1	1	N/A	0.0%
Valencia North County ISD	2	1	0	-100.0%	-100.0%
Valencia South County ISD	0	0	0	N/A	N/A
West Dona Ana County ISD	9	4	9	0.0%	125.0%
Centralized Units	0	0	0	N/A	N/A
Statewide Total	118	101	100	-15.3%	-1.0%

## Education Works Cases by Region<sup>6</sup>

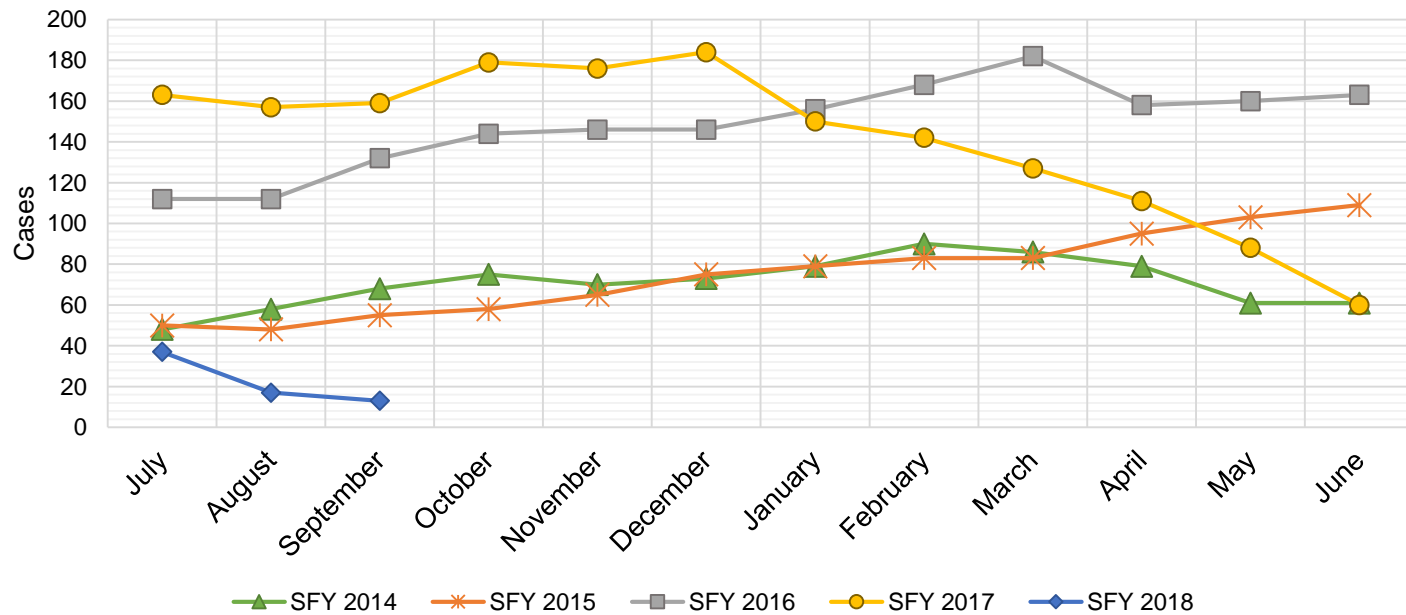
Region				Percent Change	
	Sep-16	Aug-17	Sep-17	Sep-16- Sep-17	Aug-17- Sep-17
Region 1 - NW	5	5	4	-20.0%	-20.0%
Region 2 - NE	18	26	19	5.6%	-26.9%
Region 3 - Central	60	31	30	-50.0%	-3.2%
Region 4 - SE	6	10	9	50.0%	-10.0%
Region 5 - SW	29	29	38	31.0%	31.0%
Centralized Units	0	0	0	N/A	N/A
Statewide Total	118	101	100	-15.3%	-1.0%

**Education Works Caseload: SFY-14 to Current**



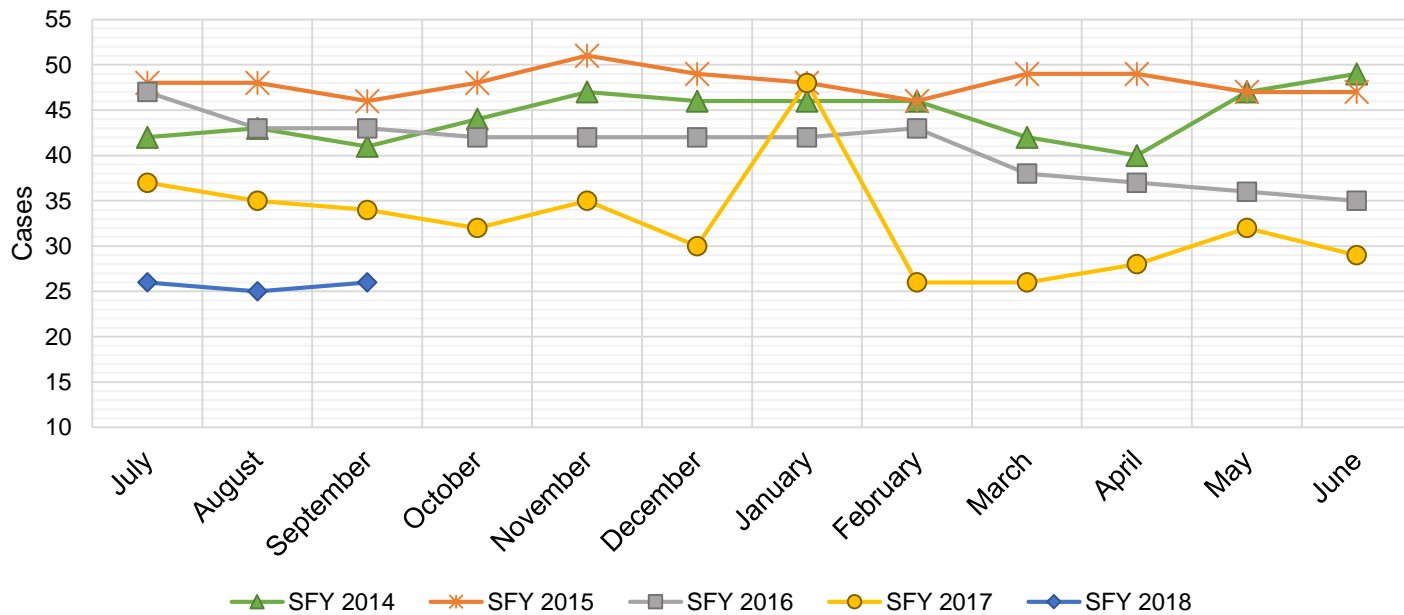
## Refugee Cash Assistance

SFY 2014 <sup>12</sup>			SFY 2015 <sup>8,12,9</sup>			SFY 2016 <sup>8,9</sup>			SFY 2017 <sup>8,9</sup>			SFY 2018 <sup>8,9</sup>		
Cases	Expenditures		Cases	Expenditures		Cases	Expenditures		Cases	Expenditures		Cases	Expenditures	
Jul-13	48	\$12,013	Jul-14	50	\$11,679	Jul-15	112	\$27,516	Jul-16	163	\$39,756	Jul-17	37	\$9,981
Aug-13	58	\$16,129	Aug-14	48	\$11,760	Aug-15	112	\$27,438	Aug-16	157	\$40,115	Aug-17	17	\$4,704
Sep-13	68	\$19,061	Sep-14	55	\$13,094	Sep-15	132	\$31,321	Sep-16	159	\$39,359	Sep-17	13	\$3,159
Oct-13	75	\$20,962	Oct-14	58	\$13,726	Oct-15	144	\$36,153	Oct-16	179	\$41,520	Oct-17		
Nov-13	70	\$21,880	Nov-14	65	\$16,461	Nov-15	146	\$36,515	Nov-16	176	\$45,434	Nov-17		
Dec-13	73	\$22,053	Dec-14	75	\$18,699	Dec-15	146	\$35,763	Dec-16	184	\$46,673	Dec-17		
Jan-14	79	\$22,670	Jan-15	79	\$19,009	Jan-16	156	\$38,686	Jan-17	150	\$38,790	Jan-18		
Feb-14	90	\$23,227	Feb-15	83	\$21,349	Feb-16	168	\$41,368	Feb-17	142	\$37,956	Feb-18		
Mar-14	86	\$21,808	Mar-15	83	\$20,730	Mar-16	182	\$45,307	Mar-17	127	\$33,066	Mar-18		
Apr-14	79	\$20,109	Apr-15	95	\$23,495	Apr-16	158	\$41,143	Apr-17	111	\$29,183	Apr-18		
May-14	61	\$15,703	May-15	103	\$25,363	May-16	160	\$38,332	May-17	88	\$23,343	May-18		
Jun-14	61	\$14,783	Jun-15	109	\$27,958	Jun-16	163	\$39,856	Jun-17	60	\$15,538	Jun-18		
<b>TOTAL</b>	<b>848</b>	<b>\$230,398</b>	<b>903</b>	<b>\$223,323</b>		<b>1,779</b>	<b>\$439,397</b>		<b>1,696</b>	<b>\$430,732</b>		<b>67</b>	<b>\$17,844</b>	
<b>AVERAGE</b>	<b>71</b>	<b>\$19,200</b>	<b>75</b>	<b>\$18,610</b>		<b>148</b>	<b>\$36,616</b>		<b>141</b>	<b>\$35,894</b>		<b>22</b>	<b>\$5,948</b>	



## State Supplement for Residential Care

SFY 2014 <sup>12</sup>			SFY 2015 <sup>12,9</sup>			SFY 2016 <sup>9</sup>			SFY 2017 <sup>9</sup>			SFY 2018 <sup>9</sup>		
Cases	Expenditures		Cases	Expenditures		Cases	Expenditures		Cases	Expenditures		Cases	Expenditures	
Jul-13	42	\$4,400	Jul-14	48	\$4,700	Jul-15	47	\$4,700	Jul-16	37	\$3,700	Jul-17	26	\$2,700
Aug-13	43	\$4,300	Aug-14	48	\$5,000	Aug-15	43	\$4,900	Aug-16	35	\$3,500	Aug-17	25	\$2,500
Sep-13	41	\$4,700	Sep-14	46	\$4,600	Sep-15	43	\$4,500	Sep-16	34	\$3,400	Sep-17	26	\$2,700
Oct-13	44	\$4,500	Oct-14	48	\$4,600	Oct-15	42	\$4,400	Oct-16	32	\$3,200	Oct-17		
Nov-13	47	\$4,700	Nov-14	51	\$5,600	Nov-15	42	\$4,200	Nov-16	35	\$3,500	Nov-17		
Dec-13	46	\$4,600	Dec-14	49	\$5,000	Dec-15	42	\$4,200	Dec-16	30	\$3,000	Dec-17		
Jan-14	46	\$4,700	Jan-15	48	\$4,900	Jan-16	42	\$4,200	Jan-17	48	\$4,800	Jan-18		
Feb-14	46	\$4,700	Feb-15	46	\$4,800	Feb-16	43	\$4,300	Feb-17	26	\$2,600	Feb-18		
Mar-14	42	\$4,500	Mar-15	49	\$4,800	Mar-16	38	\$3,800	Mar-17	26	\$2,600	Mar-18		
Apr-14	40	\$4,200	Apr-15	49	\$5,400	Apr-16	37	\$3,700	Apr-17	28	\$2,800	Apr-18		
May-14	47	\$5,000	May-15	47	\$4,700	May-16	36	\$3,600	May-17	32	\$3,200	May-18		
Jun-14	49	\$4,900	Jun-15	47	\$5,300	Jun-16	35	\$3,500	Jun-17	29	\$2,900	Jun-18		
<b>TOTAL</b>	<b>533</b>	<b>\$55,200</b>	<b>576</b>	<b>\$59,400</b>		<b>490</b>	<b>\$50,000</b>		<b>392</b>	<b>\$39,200</b>		<b>77</b>	<b>\$7,900</b>	
<b>AVERAGE</b>	<b>44</b>	<b>\$4,600</b>	<b>48</b>	<b>\$4,950</b>		<b>41</b>	<b>\$4,167</b>		<b>33</b>	<b>\$3,267</b>		<b>26</b>	<b>\$2,633</b>	

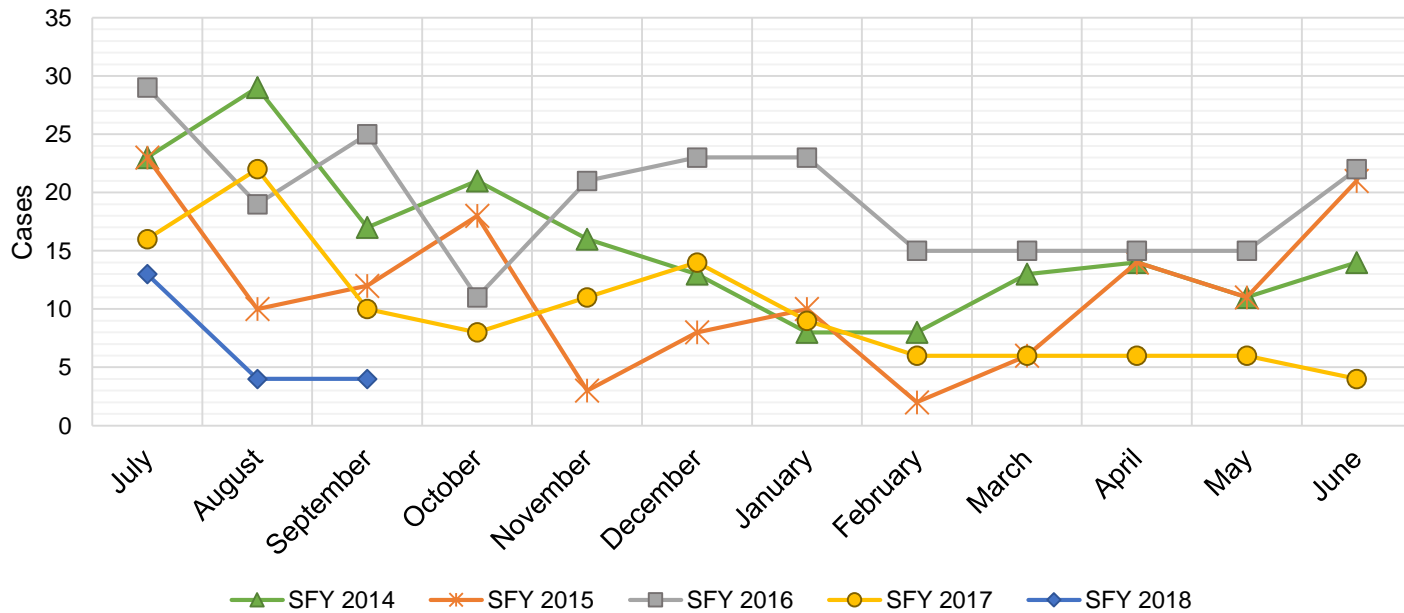




## TANF Diversion Payments

SFY 2014 <sup>12</sup>			SFY 2015 <sup>12,9</sup>			SFY 2016 <sup>9</sup>			SFY 2017 <sup>9</sup>			SFY 2018 <sup>9</sup>		
	Cases	Expenditures		Cases	Expenditures		Cases	Expenditures		Cases	Expenditures		Cases	Expenditures
Jul-13	23	\$46,500	Jul-14	23	\$48,098	Jul-15	29	\$62,074	Jul-16	16	\$30,843	Jul-17	13	\$26,500
Aug-13	29	\$54,500	Aug-14	10	\$21,810	Aug-15	19	\$33,584	Aug-16	22	\$42,731	Aug-17	4	\$12,000
Sep-13	17	\$36,500	Sep-14	12	\$23,500	Sep-15	25	\$47,977	Sep-16	10	\$21,000	Sep-17	4	\$4,000
Oct-13	21	\$42,500	Oct-14	18	\$30,589	Oct-15	11	\$20,500	Oct-16	8	\$16,744	Oct-17		
Nov-13	16	\$28,953	Nov-14	3	\$4,411	Nov-15	21	\$45,500	Nov-16	11	\$24,500	Nov-17		
Dec-13	13	\$25,500	Dec-14	8	\$14,634	Dec-15	23	\$45,389	Dec-16	14	\$26,611	Dec-17		
Jan-14	8	\$16,000	Jan-15	10	\$18,000	Jan-16	23	\$41,874	Jan-17	9	\$18,500	Jan-18		
Feb-14	8	\$16,994	Feb-15	2	\$5,500	Feb-16	15	\$28,500	Feb-17	6	\$12,000	Feb-18		
Mar-14	13	\$27,396	Mar-15	6	\$12,000	Mar-16	15	\$27,008	Mar-17	6	\$11,000	Mar-18		
Apr-14	14	\$28,000	Apr-15	14	\$26,000	Apr-16	15	\$31,389	Apr-17	6	\$12,000	Apr-18		
May-14	11	\$20,500	May-15	11	\$21,500	May-16	15	\$31,916	May-17	6	\$11,500	May-18		
Jun-14	14	\$29,911	Jun-15	21	\$40,039	Jun-16	22	\$43,000	Jun-17	4	\$13,500	Jun-18		

TOTAL	187	\$373,254	138	\$266,081	233	\$458,711	118	\$240,929	21	\$42,500
AVERAGE	16	\$31,105	12	\$22,173	19	\$38,226	10	\$20,077	7	\$14,167

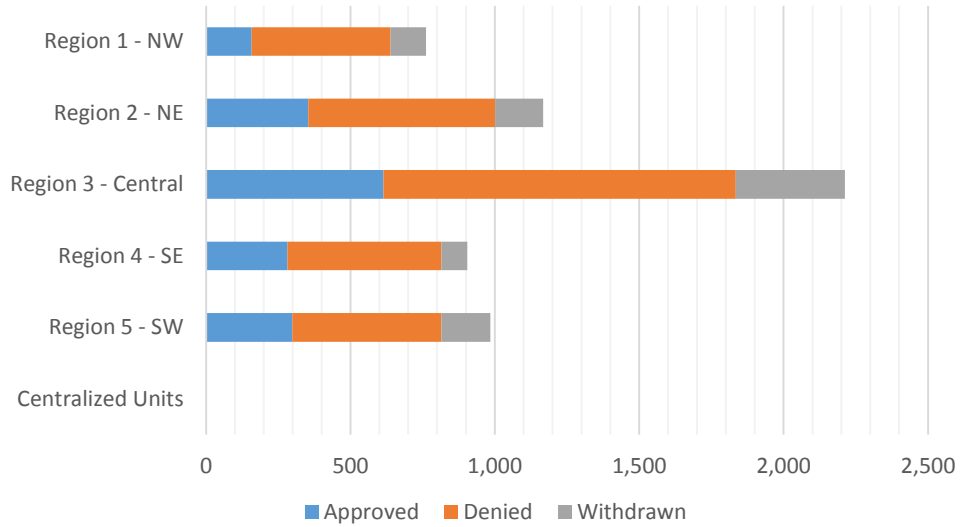


**Cash Assistance Applications by Field Office<sup>4,11</sup>**  
**September 2017**

Office	Approved	Denied	Withdrawn	Total Cases Processed
Chaves County ISD	86	143	22	251
Cibola County ISD	19	22	19	60
Colfax County ISD	12	18	6	36
Curry County ISD	44	101	6	151
East Dona Ana County ISD	61	114	57	232
Eddy Artesia County ISD	48	64	6	118
Eddy Carlsbad County ISD	19	66	25	110
Grant County ISD	25	51	14	90
Guadalupe County ISD	6	6	2	14
Hidalgo County ISD	0	0	0	0
Lea County ISD	50	85	23	158
Lincoln County ISD	14	37	2	53
Luna County ISD	27	37	14	78
McKinley County ISD	3	75	32	110
Northeast Bernalillo County ISD	105	280	151	536
Northwest Bernalillo County ISD	71	213	109	393
Otero County ISD	34	79	24	137
Quay County ISD	15	25	11	51
Rio Arriba County ISD	56	95	29	180
Roosevelt County ISD	21	37	6	64
San Juan County ISD	46	228	32	306
San Miguel County ISD	26	59	12	97
Sandoval County ISD	161	231	51	443
Santa Fe County ISD	53	180	43	276
Sierra County ISD	7	16	10	33
Socorro County ISD	6	12	4	22
South Dona Ana ISD	65	73	17	155
Southeast Bernalillo County ISD	71	160	42	273
Southwest Bernalillo County ISD	341	534	63	938
Taos County ISD	25	33	12	70
Torrance County ISD	26	33	13	72
Valencia North County ISD	76	94	26	196
Valencia South County ISD	1	34	0	35
West Dona Ana County ISD	87	162	44	293
Centralized Units	0	0	0	0
<b>Statewide Total</b>	<b>1,707</b>	<b>3,397</b>	<b>927</b>	<b>6,031</b>

**Cash Assistance Applications by Region<sup>4,11</sup>**  
**September 2017**

	Approved	Denied	Withdrawn	Total Cases Processed
Region				
Region 1 - NW	158	481	123	762
Region 2 - NE	354	647	166	1,167
Region 3 - Central	614	1,220	378	2,212
Region 4 - SE	282	533	90	905
Region 5 - SW	299	516	170	985
Centralized Units	0	0	0	0
<b>Statewide Total</b>	<b>1,707</b>	<b>3,397</b>	<b>927</b>	<b>6,031</b>



**Children Youth and Families Department  
Children Receiving Child Care Assistance Subsidies By County**

County	Sep 2016	Oct 2016	Nov 2016	Dec 2016	Jan 2017	Feb 2017	Mar 2017	Apr 2017	May 2017	June 2017	July 2017	Aug 2017	Sep 2017	Change Fr. Last Year Cases	Percent
<i>Bernalillo</i>	7,237	7,030	7,092	7,134	7,043	7,068	7,170	7,385	7,519	7,895	7,547	7,616	8,154	917	12.7%
<b>Catron</b>	<b>2</b>	<b>0</b>	<b>0</b>	<b>0</b>	<b>0</b>	<b>0</b>	<b>0</b>	<b>0</b>	<b>0</b>	<b>0</b>	<b>0</b>	<b>0</b>	<b>0</b>	<b>-2</b>	<b>0.0%</b>
<i>Chaves</i>	739	737	733	744	744	756	759	768	796	860	826	821	889	150	20.3%
<b>Cibola</b>	<b>278</b>	<b>269</b>	<b>272</b>	<b>269</b>	<b>271</b>	<b>284</b>	<b>282</b>	<b>294</b>	<b>299</b>	<b>305</b>	<b>293</b>	<b>294</b>	<b>311</b>	<b>33</b>	<b>11.9%</b>
<i>Colfax</i>	46	50	49	47	42	40	41	38	39	46	46	41	44	-2	-4.3%
<b>Curry</b>	<b>389</b>	<b>361</b>	<b>384</b>	<b>394</b>	<b>413</b>	<b>398</b>	<b>398</b>	<b>437</b>	<b>445</b>	<b>480</b>	<b>486</b>	<b>459</b>	<b>422</b>	<b>33</b>	<b>8.5%</b>
<i>De Baca</i>	12	12	11	11	11	10	12	13	14	14	12	11	11	-1	-8.3%
<b>Dona Ana</b>	<b>3,957</b>	<b>3,915</b>	<b>4,005</b>	<b>3,976</b>	<b>4,003</b>	<b>4,047</b>	<b>4,084</b>	<b>4,217</b>	<b>4,309</b>	<b>4,499</b>	<b>4,509</b>	<b>4,473</b>	<b>4,693</b>	<b>736</b>	<b>18.6%</b>
<i>Eddy</i>	285	265	263	277	271	275	283	294	301	306	292	287	313	28	9.8%
<b>Grant</b>	<b>170</b>	<b>152</b>	<b>152</b>	<b>151</b>	<b>142</b>	<b>135</b>	<b>142</b>	<b>153</b>	<b>159</b>	<b>161</b>	<b>134</b>	<b>114</b>	<b>164</b>	<b>-6</b>	<b>-3.5%</b>
<i>Guadalupe</i>	15	12	11	15	16	16	17	17	16	16	16	16	15	0	0.0%
<b>Harding</b>	<b>0</b>	<b>0</b>	<b>0</b>	<b>0</b>	<b>0</b>	<b>0</b>	<b>0</b>	<b>0</b>	<b>0</b>	<b>0</b>	<b>0</b>	<b>0</b>	<b>0</b>	<b>0</b>	<b>0.0%</b>
<i>Hidalgo</i>	33	28	33	34	35	35	35	35	39	40	37	37	39	6	18.2%
<b>Lea</b>	<b>716</b>	<b>702</b>	<b>731</b>	<b>722</b>	<b>698</b>	<b>715</b>	<b>729</b>	<b>748</b>	<b>781</b>	<b>818</b>	<b>837</b>	<b>856</b>	<b>954</b>	<b>238</b>	<b>33.2%</b>
<i>Lincoln</i>	135	129	130	135	132	139	135	141	136	147	146	145	150	15	11.1%
<b>Los Alamos</b>	<b>7</b>	<b>7</b>	<b>14</b>	<b>15</b>	<b>16</b>	<b>15</b>	<b>13</b>	<b>15</b>	<b>16</b>	<b>16</b>	<b>17</b>	<b>16</b>	<b>19</b>	<b>12</b>	<b>171.4%</b>
<i>Luna</i>	152	163	173	149	159	154	159	164	177	188	165	176	177	25	16.4%
<b>McKinley</b>	<b>175</b>	<b>163</b>	<b>156</b>	<b>153</b>	<b>159</b>	<b>164</b>	<b>171</b>	<b>182</b>	<b>170</b>	<b>171</b>	<b>145</b>	<b>136</b>	<b>161</b>	<b>-14</b>	<b>-8.0%</b>
<i>Mora</i>	19	19	19	20	18	20	20	21	21	21	18	18	19	0	0.0%
<b>Otero</b>	<b>474</b>	<b>472</b>	<b>449</b>	<b>450</b>	<b>440</b>	<b>442</b>	<b>416</b>	<b>481</b>	<b>498</b>	<b>532</b>	<b>500</b>	<b>491</b>	<b>530</b>	<b>56</b>	<b>11.8%</b>
<i>Out of State</i>	5	5	11	10	11	12	14	12	11	10	14	11	12	7	140.0%
<b>Quay</b>	<b>39</b>	<b>40</b>	<b>36</b>	<b>34</b>	<b>33</b>	<b>38</b>	<b>40</b>	<b>38</b>	<b>35</b>	<b>39</b>	<b>35</b>	<b>36</b>	<b>39</b>	<b>0</b>	<b>0.0%</b>
<i>Rio Arriba</i>	130	132	137	145	135	147	144	137	140	149	144	145	159	29	22.3%
<b>Roosevelt</b>	<b>116</b>	<b>122</b>	<b>132</b>	<b>135</b>	<b>124</b>	<b>120</b>	<b>125</b>	<b>123</b>	<b>118</b>	<b>134</b>	<b>123</b>	<b>125</b>	<b>137</b>	<b>21</b>	<b>18.1%</b>
<i>San Juan</i>	951	923	926	928	919	911	911	946	956	997	979	960	1,132	181	19.0%
<b>San Miguel</b>	<b>390</b>	<b>395</b>	<b>387</b>	<b>375</b>	<b>371</b>	<b>374</b>	<b>373</b>	<b>366</b>	<b>367</b>	<b>382</b>	<b>366</b>	<b>356</b>	<b>362</b>	<b>-28</b>	<b>-7.2%</b>
<i>Sandoval</i>	927	859	868	870	880	852	873	878	890	938	932	948	974	47	5.1%
<b>Santa Fe</b>	<b>473</b>	<b>461</b>	<b>469</b>	<b>478</b>	<b>472</b>	<b>487</b>	<b>477</b>	<b>490</b>	<b>499</b>	<b>536</b>	<b>534</b>	<b>520</b>	<b>580</b>	<b>107</b>	<b>22.6%</b>
<i>Sierra</i>	57	63	59	46	51	50	52	52	58	69	74	76	79	22	38.6%
<b>Socorro</b>	<b>62</b>	<b>59</b>	<b>59</b>	<b>58</b>	<b>65</b>	<b>62</b>	<b>61</b>	<b>59</b>	<b>59</b>	<b>58</b>	<b>56</b>	<b>63</b>	<b>63</b>	<b>1</b>	<b>1.6%</b>
<i>Taos</i>	113	115	109	114	116	114	112	118	120	127	132	137	145	32	28.3%
<b>Torrance</b>	<b>81</b>	<b>80</b>	<b>82</b>	<b>77</b>	<b>79</b>	<b>83</b>	<b>87</b>	<b>91</b>	<b>96</b>	<b>101</b>	<b>107</b>	<b>117</b>	<b>106</b>	<b>25</b>	<b>30.9%</b>
<i>Union</i>	3	5	5	5	5	5	5	5	4	4	5	5	5	2	66.7%
<b>Valencia</b>	<b>583</b>	<b>593</b>	<b>608</b>	<b>602</b>	<b>593</b>	<b>585</b>	<b>583</b>	<b>629</b>	<b>658</b>	<b>678</b>	<b>642</b>	<b>677</b>	<b>714</b>	<b>131</b>	<b>22.5%</b>
<b>Totals</b>	<b>18,771</b>	<b>18,338</b>	<b>18,565</b>	<b>18,573</b>	<b>18,467</b>	<b>18,553</b>	<b>18,723</b>	<b>19,347</b>	<b>19,746</b>	<b>20,737</b>	<b>20,169</b>	<b>20,183</b>	<b>21,572</b>	<b>2,801</b>	<b>14.9%</b>

## CHILDREN YOUTH AND FAMILIES DEPARTMENT CHILD CARE ASSISTANCE ELIGIBILITY PROGRAMS

MONTH	OCT'16	NOV'16	DEC'16	JAN'17	FEB'17	MAR'17	APR'17	MAY'17	JUNE'17	JULY'17	AUG'17	SEP'17
<b>TANF (Child Care Priority 1 Clients)</b>												
CLIENTS	1,775	1,801	1,829	1,797	1,930	1,994	2,047	2,121	2,300	2,302	2,353	2,455
COST	\$882,251	\$920,189	\$936,139	\$914,933	\$1,005,906	\$1,096,473	\$1,148,841	\$1,186,719	\$1,271,336	\$1,323,182	\$1,381,202	\$1,364,956
TANF AVERAGE COST	\$497	\$511	\$512	\$509	\$521	\$550	\$561	\$560	\$553	\$575	\$587	\$556
<b>TRANSITION OFF TANF (Child Care Priority 2 Clients)</b>												
CLIENTS	180	193	212	202	212	197	202	205	213	197	189	179
COST	\$81,750	\$90,646	\$101,388	\$95,662	\$102,062	\$102,582	\$101,314	\$104,115	\$111,219	\$106,835	\$103,813	\$93,119
TRAN OFF TANF AVG COST	\$454	\$470	\$478	\$474	\$481	\$521	\$502	\$508	\$522	\$542	\$549	\$520
<b>TANF ELIGIBLE (Child Care Priority 1B Clients at or below 100% of the Federal Poverty Level)</b>												
CLIENTS	7,570	7,649	7,614	7,538	7,420	7,442	7,819	8,075	8,472	8,193	8,254	9,064
COST	\$3,746,796	\$3,824,118	\$3,904,245	\$3,557,568	\$3,662,965	\$3,957,431	\$4,194,223	\$4,302,207	\$4,448,742	\$4,521,900	\$4,657,974	\$4,755,691
TANF ELIGIBLE AVG COST	\$495	\$500	\$513	\$472	\$494	\$532	\$536	\$533	\$525	\$552	\$564	\$525
<b>INCOME ELIGIBLE (Child Care Priority 3, and Priority 4 Clients )</b>												
CLIENTS	7,507	7,569	7,539	7,527	7,514	7,559	7,612	7,632	7,832	7,426	7,337	7,749
COST	\$3,352,594	\$3,404,386	\$3,460,624	\$3,294,431	\$3,386,741	\$3,683,902	\$3,733,797	\$3,757,012	\$3,843,887	\$3,805,939	\$3,838,152	\$3,779,202
INCOME ELIG AVG COST	\$447	\$450	\$459	\$438	\$451	\$487	\$491	\$492	\$491	\$513	\$523	\$488
<b>AT-RISK CHILD PROTECTIVE SERVICES CHILD CARE PILOT (Priority 5 Clients)</b>												
CLIENTS	343	378	397	431	518	553	679	733	881	1,021	1,073	1,152
COST	\$214,804	\$232,406	\$257,933	\$266,739	\$305,785	\$335,795	\$396,799	\$449,007	\$535,980	\$622,872	\$686,919	\$723,334
CPS AVG COST	\$626	\$615	\$650	\$619	\$590	\$607	\$584	\$613	\$608	\$610	\$640	\$628
<b>CHILD PROTECTIVE SERVICES (Child Care CPS Clients)</b>												
CLIENTS	963	975	982	972	959	978	988	980	1,039	1,030	977	973
COST	\$555,413	\$600,010	\$579,310	\$567,980	\$559,627	\$607,288	\$652,529	\$627,325	\$649,417	\$652,471	\$663,134	\$623,416
CPS AVG COST	\$577	\$615	\$590	\$584	\$584	\$621	\$660	\$640	\$625	\$633	\$679	\$641
<b>GRAND TOTAL - ALL CHILD CARE PROGRAMS</b>												
CLIENTS	18,338	18,565	18,573	18,467	18,553	18,723	19,347	19,746	20,737	20,169	20,183	21,572
COST	\$8,833,608	\$9,071,755	\$9,239,639	\$8,697,313	\$9,023,086	\$9,783,471	\$10,227,503	\$10,426,385	\$10,860,581	\$11,033,199	\$11,331,194	\$11,339,719
ALL PROGRAMS AVG COST	\$482	\$489	\$497	\$471	\$486	\$523	\$529	\$528	\$524	\$547	\$561	\$526

## Income Eligibility Guidelines: October 1, 2016 - September 30, 2017

### Federal Poverty Guidelines (FPG) Monthly Income Standards

Supplemental Nutrition Program (SNAP)					
Household Size	100% FPG Net Income	130% FPG Gross Income	165% FPG Gross Income for Categorical Eligibility	Maximum SNAP Monthly Allotment	LIHEAP 150% FPG
1	\$990	\$1,287	\$1,634	\$194	\$1,485
2	\$1,335	\$1,736	\$2,203	\$357	\$2,003
3	\$1,680	\$2,184	\$2,772	\$511	\$2,520
4	\$2,025	\$2,633	\$3,342	\$649	\$3,038
5	\$2,370	\$3,081	\$3,911	\$771	\$3,555
6	\$2,715	\$3,530	\$4,480	\$925	\$4,073
7	\$3,061	\$3,980	\$5,051	\$1,022	\$4,592
8	\$3,408	\$4,430	\$5,623	\$1,169	\$5,112
+1	+\$347	+\$481	+\$572	+\$146	+\$521
Minimum Allotment of \$16 effective from 10/1/2016 - 9/30/2017					
DEDUCTIONS: Standard Deduction: For HH size 1-3 = \$157; 4 = \$168; 5 = \$197; 6 or more = \$226; Excess Shelter Deduction Limit: \$517; Heating and Cooling Standard Utility Allowance: \$325 (HCSUA) – Limited Utility Allowance: \$125 (LUA); Telephone Standard: \$40; Dependent Care: Actual Amount (No Limit); Earned Income Deduction: 20%; Homeless Shelter Standard: \$143					

CASH Assistance & Support Services					
Household Size	Federal Poverty Guidelines (FPG) Monthly Income Standards			Maximum Monthly Benefit	
	100% FPG Net Income	85% FPG Gross Limit	NM Works Cash Net Income	Maximum Monthly Benefit	General Assistance
1	\$990	\$842	\$266	\$244	\$245
2	\$1,335	\$1,135	\$357	\$327	\$329
3	\$1,680	\$1,428	\$447	\$409	\$412
4	\$2,025	\$1,721	\$539	\$493	\$496
5	\$2,370	\$2,015	\$630	\$576	\$580
6	\$2,715	\$2,308	\$721	\$659	\$664
7	\$3,061	\$2,602	\$812	\$743	\$748
8	\$3,408	\$2,897	\$922	\$843	\$849
+1	\$347	+\$295	+\$91	+\$83	+\$84
Deductions- Dependent Care: For a child under age 2 = \$200; For a child age 2 and over = \$175. Work Incentives- Earned Income Disregard: Single parent = \$125 & ½ remainder; Two parent = \$225 & ½ remainder.					

<b>Medical Assistance Division</b>					
Federal Poverty Guidelines New Mexico Affordable Care Eligibility Groups Effective April 01, 2017 thru March 31, 2018 <b>Monthly Guidelines</b>					
HH SIZE	PERCENT OF POVERTY				
	138%	190%	240%	250%	300%
1	\$1,387	\$1,910	\$2,412	\$2,513	\$3,015
2	\$1,868	\$2,572	\$3,248	\$3,384	\$4,060
3	\$2,349	\$3,234	\$4,084	\$4,255	\$5,105
4	\$2,829	\$3,895	\$4,920	\$5,125	\$6,150
5	\$3,310	\$4,557	\$5,756	\$5,996	\$7,195
6	\$3,791	\$5,219	\$6,592	\$6,867	\$8,240
7	\$4,272	\$5,881	\$7,428	\$7,738	\$9,285
8	\$4,752	\$6,543	\$8,264	\$8,609	\$10,330
138% Adult Expansion, 190% Children ages 6 to 19 (Medicaid), 240% Children ages 0 to 6 (Medicaid); ages 6 to 19 (CHIP), 250% Pregnancy Related Services Only, 300% Children 0 to 6 (CHIP)					

<b>Medical Assistance Division</b>					
Federal Poverty Guidelines New Mexico Affordable Care Eligibility Groups Effective April 01, 2017 thru March 31, 2018 <b>Annual Guidelines</b>					
HH SIZE	PERCENT OF POVERTY				
	138%	190%	240%	250%	300%
1	\$16,644	\$22,920	\$28,944	\$30,156	\$36,180
2	\$22,416	\$30,864	\$38,976	\$40,608	\$48,720
3	\$28,188	\$38,808	\$49,008	\$51,060	\$61,260
4	\$33,948	\$46,740	\$59,040	\$61,500	\$73,800
5	\$39,720	\$54,684	\$69,072	\$71,952	\$86,340
6	\$45,492	\$62,628	\$79,104	\$82,404	\$98,880
7	\$51,264	\$70,572	\$89,136	\$92,856	\$111,420
8	\$57,024	\$78,516	\$99,168	\$103,308	\$123,960
138% Adult Expansion, 190% Children ages 6 to 19 (Medicaid), 240% Children ages 0 to 6 (Medicaid); ages 6 to 19 (CHIP), 250% Pregnancy Related Services Only, 300% Children 0 to 6 (CHIP)					

## References

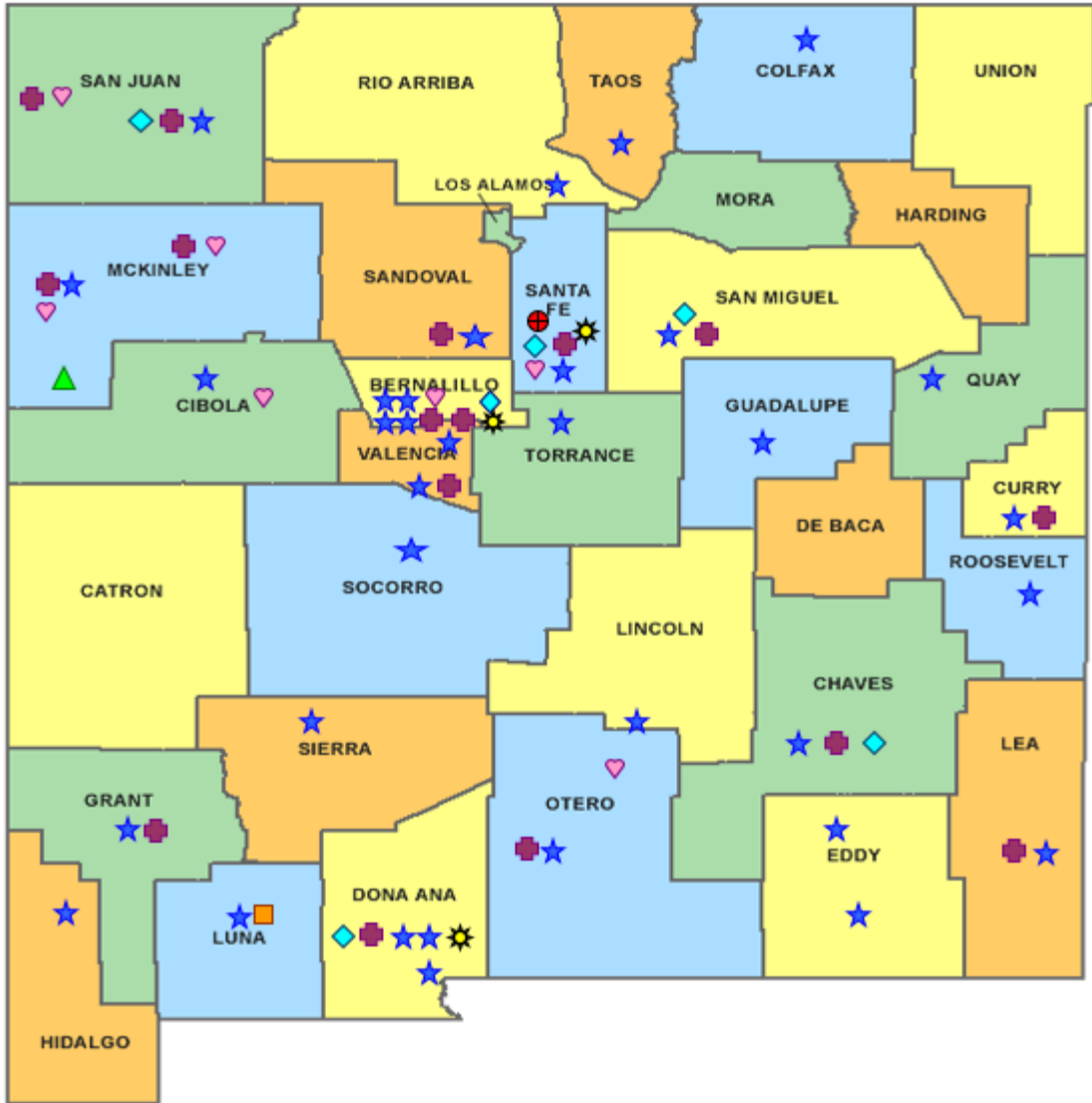
- <sup>1</sup> *Medicaid Expenditures* (Omnicaid, Medicare Buy-Ins, Lump Sum Payments), Received on October 16, 2017
- <sup>2</sup> *ASPEN Business Intelligence Tool: Eligibility*, Retrieved on October 13, 2017
- <sup>3</sup> New Mexico Human Services Department, *Medicaid Eligibility Reports*, Retrieved from <http://www.hsd.state.nm.us/LookingForInformation/medicaid-eligibility.aspx> on September 12, 2017
- <sup>4</sup> *ASPEN Business Intelligence Tool: Application Tracking*, Retrieved on October 13, 2017
- <sup>5</sup> Fidelity Information Services, *EBT Daily Statistical Report* (for 09/30/2016, 08/31/2017, and 09/30/2017), Retrieved on October 10, 2017
- <sup>6</sup> *ASPEN Report DQ-180: Length of Time Cases are Open* (for 09/01/2016-09/30/2016, 08/01/2017-08/31/2017, 09/01/2017-09/30/2017), Retrieved on October 16, 2017
- <sup>7</sup> *ASPEN Report EY-180: Individual Demographics by State and Age* (for 09/01/2016-09/30/2016, 08/01/2017-08/31/2017, 09/01/2017-09/30/2017), Retrieved on October 16, 2017
- <sup>8</sup> *ASPEN Business Intelligence Tool: Benefit Issuance*, Retrieved on October 13, 2017
- <sup>9</sup> Fidelity Information Services, *EBT Daily Statistical Reports* (Month End), Retrieved on October 10, 2017
- <sup>10</sup> *ASPEN Report EY-180R: Individual Demographics by State, Race, Ethnicity and Gender* (for 09/01/2017-09/30/2017), Retrieved on October 16, 2017
- <sup>11</sup> SQL Query from ASPEN, completed October 16, 2017 (Note: Withdrawn Applications, & Denial Reasons)
- <sup>12</sup> JP Morgan, *New Mexico – NM EBT System- Monthly Benefit Draw Down Totals*
- <sup>13</sup> *ASPEN Business Intelligence Tool: Application Tracking* (w/Parameters: SNAP, Expedite, Approved), Retrieved on October 13, 2017
- <sup>14</sup> SL Start, *As of Today Report 07.31.17*, received October 11, 2017
- <sup>15</sup> SL Start, *Statewide Employment Report 08.01.17*, October 11, 2017
- <sup>16</sup> *SSIAR Payments*, Received October 2, 2017
- <sup>17</sup> Children, Youth, and Families Department, *Children Receiving Child Care Assistance Subsidies by County*, Received October 10, 2017



<sup>18</sup> Children, Youth, and Families Department, *Child Care Assistance Eligibility Programs*, Received October 10, 2017









<sup>19</sup> EDG is defined as an Eligibility Determination Group

<sup>20</sup>SQL Query from ASPEN, completed October 30, 2017



**HUMAN SERVICES**  
DEPARTMENT

New Mexico Human Services Department  
Field Offices

-  Central Office (1)
-  Income Support Division County Office (35)
-  Income Support Division Satellite Office (2)
-  Child Support Enforcement Regional Office (16)
-  Child Support Enforcement Satellite Office (1)
-  Quality Control Office (8)
-  Indian Health Services (7)
-  Hospital Site (3)

For a complete listing of field offices and other government and community resources:  
[http://www.hsd.state.nm.us/LookingForAssistance/Field\\_Offices\\_1.aspx](http://www.hsd.state.nm.us/LookingForAssistance/Field_Offices_1.aspx)