



Monthly Statistical Report

October 2017

There were 854,942 individuals that received Medicaid in October 2017, a 3.4% decrease from one year ago. The count of Medicaid recipients has increased by 516, or 0.1%, since last month.

The SNAP caseload in October 2017 was 221,876, a 16.1% decrease from one year ago. The SNAP caseload has decreased by 34 cases, or 0.0%, since last month.

The TANF caseload was 11,901 in October 2017, a decrease of 5.7% from October 2016. The TANF caseload had 73 more cases compared to September 2017, an increase of 0.6%.

The caseload for General Assistance was 3,072 in October 2017, a decrease of 13.7% from one year ago and a decrease of 14 cases from last month.

Susana Martinez, Governor
Brent Earnest, Cabinet Secretary

Contents	Page
Summary	3-5
Medicaid	6-15
SNAP	16-30
Cash Assistance	31-45
Child Care Assistance	46-47
Income Eligibility Guidelines	48-49

Regions are reported as follows:

Region 1		
Catron	San Juan	Valencia
Cibola	Sierra	
McKinley	Socorro	
Region 2		
Colfax	Mora	Santa Fe
De Baca	Quay	Taos
Guadalupe	Rio Arriba	Union
Harding	Sandoval	
Los Alamos	San Miguel	
Region 3		
Bernalillo	Torrance	
Region 4		
Chaves	Eddy	Lincoln
Curry	Lea	Roosevelt
Region 5		
Dona Ana	Hidalgo	Otero
Grant	Luna	

The Mission of the Human Services Department

To reduce the impact of poverty on people living in New Mexico by providing support services that help families break the cycle of dependency on public assistance

Sean Pearson, Deputy Secretary
Michael Nelson, Deputy Secretary

Prepared by Income Support Division
PO Box 2348
Santa Fe, NM 87504-2348
505-827-7250

Mary Brogdon, Director
Vida Tapia-Sanchez, Deputy Director
Shanita Harrison, Deputy Director

<http://www.hsd.state.nm.us/monthly-statistical-reports.aspx>

Program Summary for October 2017

Medicaid				Percent Change	
	Oct-16	Sep-17	Oct-17	Oct-16- Oct-17	Sep-17- Oct-17
Expenditures¹	\$467,653,113	\$481,272,367	\$439,315,207	-6.1%	-8.7%
Cases²	510,857	491,238	491,938	-3.7%	0.1%
Expenditures/Case	\$915	\$980	\$893	-2.4%	-8.8%
Recipients³	884,735	854,426	854,942	-3.4%	0.1%
<i>Adults</i>	498,304	483,983	484,570	-2.8%	0.1%
<i>Children</i>	386,431	370,443	370,372	-4.2%	0.0%
Recipients /Case	1.73	1.74	1.74	0.3%	-0.1%
Cases Processed⁴	9,485	16,240	15,252	60.8%	-6.1%
<i>Approvals⁴</i>	7,682	11,745	11,686	52.1%	-0.5%

Supplemental Nutrition Assistance Program (SNAP)				Percent Change	
	Oct-16	Sep-17	Oct-17	Oct-16- Oct-17	Sep-17- Oct-17
Expenditures⁵	\$57,615,567	\$55,811,711	\$54,304,196	-5.7%	-2.7%
Cases⁶	264,410	221,910	221,876	-16.1%	0.0%
Expenditures/Case	\$218	\$252	\$245	12.3%	-2.7%
Recipients⁷	541,166	464,197	462,720	-14.5%	-0.3%
<i>Adults</i>	315,206	265,102	264,188	-16.2%	-0.3%
<i>Children</i>	225,960	199,095	198,532	-12.1%	-0.3%
Recipients /Case	2.05	2.09	2.09	1.9%	-0.3%
Cases Processed⁴	11,667	18,820	20,550	76.1%	9.2%
<i>Approvals⁴</i>	9,333	14,986	16,829	80.3%	12.3%

Cash Assistance Programs				Percent Change	
	Oct-16	Sep-17	Oct-17	Oct-16- Oct-17	Sep-17- Oct-17
Expenditures⁵	\$4,769,313	\$4,300,916	\$4,303,930	-9.8%	0.1%
Cases⁶	16,538	15,053	15,142	-8.4%	0.6%
Expenditures/Case	\$288	\$286	\$284	-1.4%	-0.5%
Recipients⁷	37,722	34,551	34,834	-7.7%	0.8%
<i>Adults</i>	12,678	11,191	11,260	-11.2%	0.6%
<i>Children</i>	25,044	23,360	23,574	-5.9%	0.9%
Recipients /Case	2.28	2.30	2.30	0.9%	0.2%
Cases Processed⁴	4,337	6,031	6,043	39.3%	0.2%
<i>Approvals⁴</i>	1,710	1,707	1,893	10.7%	10.9%

Low Income Home Energy Assistance Program (LIHEAP)				Percent Change	
	Oct-16	Sep-17	Oct-17	Oct-16- Oct-17	Sep-17- Oct-17
Expenditures⁸	\$3,129,410	\$610,319	\$3,805,188	21.6%	523.5%
Cases⁸	11,416	2,496	13,821	21.1%	453.7%
Expenditures/Case	\$274	\$245	\$275	0.4%	12.6%
Recipients⁸	25,077	6,434	30,314	20.9%	371.2%
<i>Adults</i>	14,698	3,358	17,877	21.6%	432.4%
<i>Children</i>	10,379	3,076	12,437	19.8%	304.3%
Recipients /Case	2.20	2.58	2.19	-0.2%	-14.9%
Cases Processed⁴	14,583	6,363	14,489	-0.6%	127.7%
<i>Approvals⁴</i>	12,550	4,092	12,726	1.4%	211.0%

Cash Assistance Summary for October 2017

Temporary Assistance for Needy Families (TANF)

	Oct-16	Sep-17	Oct-17	Percent Change	
				Oct-16- Oct-17	Sep-17- Oct-17
Expenditures ⁵	\$3,752,189	\$3,498,505	\$3,489,355	-7.0%	-0.3%
Cases ⁶	12,616	11,828	11,901	-5.7%	0.6%
Expenditures/Case	\$297	\$296	\$293	-1.4%	-0.9%
Recipients ⁷	33,384	31,130	31,338	-6.1%	0.7%
<i>Adults</i>	8,881	8,197	8,239	-7.2%	0.5%
<i>Children</i>	24,503	22,933	23,099	-5.7%	0.7%
Approvals ⁴	1,259	1,383	1,547	22.9%	11.9%

General Assistance (GA)

	Oct-16	Sep-17	Oct-17	Percent Change	
				Oct-16- Oct-17	Sep-17- Oct-17
Expenditures ⁵	\$918,011	\$761,317	\$762,823	-16.9%	0.2%
Cases ⁶	3,560	3,086	3,072	-13.7%	-0.5%
Expenditures/Case	\$258	\$247	\$248	-3.7%	0.7%
Recipients ⁷	3,673	3,081	3,082	-16.1%	0.0%
<i>Adults</i>	3,407	2,835	2,833	-16.8%	-0.1%
<i>Children</i>	266	246	249	-6.4%	1.2%
Approvals ⁴	340	246	257	-24.4%	4.5%

Education Works

	Oct-16	Sep-17	Oct-17	Percent Change	
				Oct-16- Oct-17	Sep-17- Oct-17
Expenditures ⁵	\$54,393	\$35,235	\$45,709	-16.0%	29.7%
Cases ⁶	151	100	130	-13.9%	30.0%
Expenditures/Case	\$360	\$352	\$352	-2.4%	-0.2%
Recipients ⁷	446	299	372	-16.6%	24.4%
<i>Adults</i>	171	118	146	-14.6%	23.7%
<i>Children</i>	275	181	226	-17.8%	24.9%
Approvals ⁴	6	6	7	16.7%	16.7%

Refugee Cash (RCA)

	Oct-16	Sep-17	Oct-17	Percent Change	
				Oct-16- Oct-17	Sep-17- Oct-17
Expenditures ⁵	\$41,520	\$3,159	\$3,543	-91.5%	12.2%
Cases ⁶	179	13	15	-91.6%	15.4%
Expenditures/Case	\$232	\$243	\$236	1.8%	-2.8%
Recipients ⁷	187	15	18	-90.4%	20.0%
<i>Adults</i>	187	15	18	-90.4%	20.0%
<i>Children</i>	0	0	0	N/A	N/A

State Supplement for Residential Care

	Oct-16	Sep-17	Oct-17	Percent Change	
				Oct-16- Oct-17	Sep-17- Oct-17
Expenditures ⁵	\$3,200	\$2,700	\$2,500	-21.9%	-7.4%
Cases ⁶	32	26	24	-25.0%	-7.7%
Expenditures/Case	\$100	\$104	\$104	4.2%	0.3%
Recipients ⁷	32	26	24	-25.0%	-7.7%
<i>Adults</i>	32	26	24	-25.0%	-7.7%
<i>Children</i>	0	0	0	N/A	N/A

Expenditures YTD			
	SFY 2018	FFY 2018	CY 2017
Medicaid ¹	\$1,665,471,171	\$439,315,207	\$4,285,392,188
Supplemental Nutrition Assistance Program ⁹	\$220,598,311	\$54,304,196	\$553,286,910
Temporary Assistance for Needy Families ⁹	\$15,242,746	\$3,489,355	\$36,505,903
General Assistance ⁹	\$3,010,125	\$762,823	\$7,908,154
Education Work ⁹	\$163,935	\$45,709	\$485,680
LIHEAP ⁸	\$5,840,660	\$3,805,188	\$12,667,537

Average Caseload YTD			
	SFY 2018	FFY 2018	CY 2017
Medicaid ²	500,980	491,938	514,329
Supplemental Nutrition Assistance Program ⁶	220,740	221,876	228,542
Temporary Assistance for Needy Families ⁶	11,778	11,901	11,687
General Assistance ⁶	3,055	3,072	3,252
Education Work ⁶	109	130	135
LIHEAP ⁸	4,901	13,821	4,828

Demographic Profile- October 2017					
	SNAP	TANF	GA	Education Works	RCA
<i>Gender of Recipients¹⁰</i>					
Male	209,244	13,248	1,737	144	11
Female	253,476	18,090	1,345	228	7
<i>Ethnicity¹⁰</i>					
Hispanic	259,218	21,516	1,658	224	12
Non-Hispanic	203,502	9,822	1,424	148	6
<i>Race¹⁰</i>					
Native American or Alaskan Native	76,199	2,568	229	19	0
Asian	4,558	283	36	3	0
African American or Black	11,219	1,253	119	12	2
Native Hawaiian or Pacific Islander	890	39	3	1	0
White	361,095	26,457	2,651	322	10
Unknown / Not Declared	4,835	283	23	9	1
More than One Race	3,924	455	21	6	5

Medicaid demographic data can be found here: <http://www.hsd.state.nm.us/LookingForInformation/medicaid-eligibility.aspx>

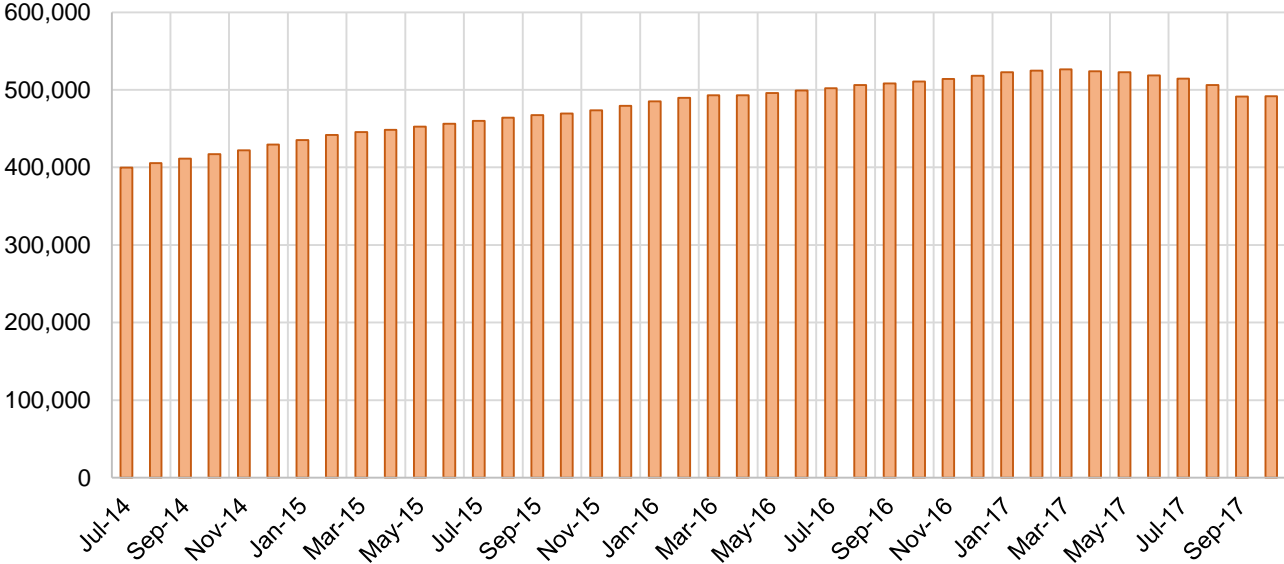
Medicaid Cases by Field Office²

Office	Oct-16	Sep-17	Oct-17	Percent Change	
				Oct-16- Oct-17	Sep-17- Oct-17
Chaves County ISD	16,734	16,128	16,148	-3.5%	0.1%
Cibola County ISD	7,476	7,490	7,515	0.5%	0.3%
Colfax County ISD	3,484	3,412	3,427	-1.6%	0.4%
Curry County ISD	10,385	9,888	9,926	-4.4%	0.4%
East Dona Ana County ISD	18,114	17,741	17,680	-2.4%	-0.3%
Eddy Artesia County ISD	3,890	3,855	3,867	-0.6%	0.3%
Eddy Carlsbad County ISD	8,235	7,980	7,974	-3.2%	-0.1%
Grant County ISD	7,169	6,772	6,779	-5.4%	0.1%
Guadalupe County ISD	1,625	1,725	1,764	8.6%	2.3%
Hidalgo County ISD	1,027	961	944	-8.1%	-1.8%
Lea County ISD	14,492	14,157	14,203	-2.0%	0.3%
Lincoln County ISD	4,600	4,352	4,367	-5.1%	0.3%
Luna County ISD	8,964	8,717	8,731	-2.6%	0.2%
McKinley County ISD	23,132	22,164	22,262	-3.8%	0.4%
Northeast Bernalillo County ISD	44,650	42,674	42,905	-3.9%	0.5%
Northwest Bernalillo County ISD	50,567	47,186	47,621	-5.8%	0.9%
Otero County ISD	11,860	11,937	11,922	0.5%	-0.1%
Quay County ISD	2,608	2,581	2,583	-1.0%	0.1%
Rio Arriba County ISD	14,931	14,370	14,382	-3.7%	0.1%
Roosevelt County ISD	4,000	3,929	3,909	-2.3%	-0.5%
San Juan County ISD	30,312	29,851	29,921	-1.3%	0.2%
San Miguel County ISD	9,615	9,269	9,248	-3.8%	-0.2%
Sandoval County ISD	26,429	25,468	25,535	-3.4%	0.3%
Santa Fe County ISD	26,480	25,268	25,173	-4.9%	-0.4%
Sierra County ISD	5,522	5,528	5,536	0.3%	0.1%
Socorro County ISD	5,742	5,393	5,408	-5.8%	0.3%
South Dona Ana ISD	19,939	19,851	19,866	-0.4%	0.1%
Southeast Bernalillo County ISD	29,194	26,759	26,441	-9.4%	-1.2%
Southwest Bernalillo County ISD	41,325	38,950	39,058	-5.5%	0.3%
Taos County ISD	9,567	9,328	9,303	-2.8%	-0.3%
Torrance County ISD	7,740	7,453	7,472	-3.5%	0.3%
Valencia North County ISD	18,574	17,646	17,692	-4.7%	0.3%
Valencia South County ISD	4	92	3	-25.0%	-96.7%
West Dona Ana County ISD	22,469	22,360	22,370	-0.4%	0.0%
Centralized Units	2	3	3	50.0%	0.0%
Statewide Total	510,857	491,238	491,938	-3.7%	0.1%

Medicaid Cases by Region²

Region	Oct-16	Sep-17	Oct-17	Percent Change	
				Oct-16- Oct-17	Sep-17- Oct-17
Region 1 - NW	90,762	88,164	88,337	-2.7%	0.2%
Region 2 - NE	94,739	91,421	91,415	-3.5%	0.0%
Region 3 - Central	173,476	163,022	163,497	-5.8%	0.3%
Region 4 - SE	62,336	60,289	60,394	-3.1%	0.2%
Region 5 - SW	89,542	88,339	88,292	-1.4%	-0.1%
Centralized Units	2	3	3	50.0%	0.0%
Statewide Total	510,857	491,238	491,938	-3.7%	0.1%

Medicaid Caseload: SFY-15 to Current

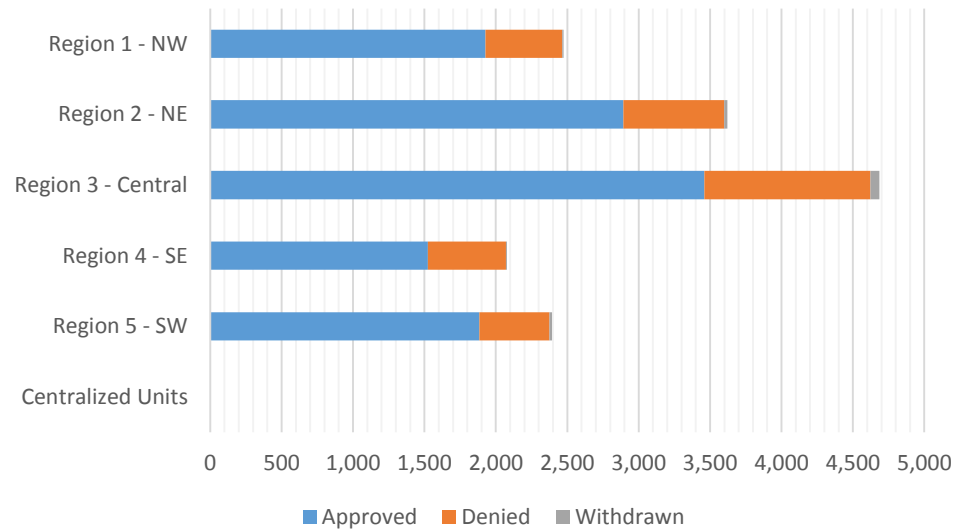


Medicaid Initial Applications by Field Office^{4,11}
October 2017

Office	Approved	Denied	Withdrawn	Total Cases Processed
Chaves County ISD	408	142	0	550
Cibola County ISD	140	32	2	174
Colfax County ISD	83	18	3	104
Curry County ISD	228	78	4	310
East Dona Ana County ISD	467	118	6	591
Eddy Artesia County ISD	204	56	1	261
Eddy Carlsbad County ISD	160	83	1	244
Grant County ISD	148	36	2	186
Guadalupe County ISD	35	14	0	49
Hidalgo County ISD	0	0	0	0
Lea County ISD	253	91	0	344
Lincoln County ISD	160	55	0	215
Luna County ISD	168	47	0	215
McKinley County ISD	507	131	1	639
Northeast Bernalillo County ISD	955	316	29	1,300
Northwest Bernalillo County ISD	818	226	10	1,054
Otero County ISD	228	58	1	287
Quay County ISD	87	21	0	108
Rio Arriba County ISD	308	94	3	405
Roosevelt County ISD	110	43	1	154
San Juan County ISD	683	193	3	879
San Miguel County ISD	474	88	5	567
Sandoval County ISD	1,092	214	4	1,310
Santa Fe County ISD	573	205	4	782
Sierra County ISD	65	14	1	80
Socorro County ISD	123	32	0	155
South Dona Ana ISD	418	111	4	533
Southeast Bernalillo County ISD	762	336	11	1,109
Southwest Bernalillo County ISD	702	241	9	952
Taos County ISD	240	53	2	295
Torrance County ISD	222	44	4	270
Valencia North County ISD	381	86	2	469
Valencia South County ISD	28	51	0	79
West Dona Ana County ISD	456	121	5	582
Centralized Units	0	0	0	0
Statewide Total	11,686	3,448	118	15,252

Medicaid Initial Applications by Region^{4,11} October 2017

	Approved	Denied	Withdrawn	Total Cases Processed
Region				
Region 1 - NW	1,927	539	9	2,475
Region 2 - NE	2,892	707	21	3,620
Region 3 - Central	3,459	1,163	63	4,685
Region 4 - SE	1,523	548	7	2,078
Region 5 - SW	1,885	491	18	2,394
Centralized Units	0	0	0	0
Statewide Total	11,686	3,448	118	15,252

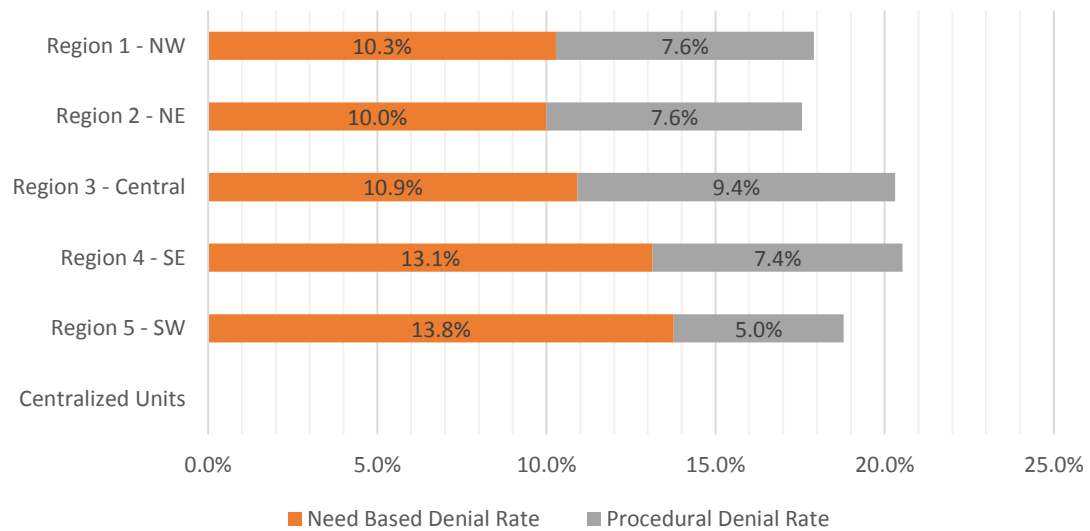


Medicaid EDG Initial Disposition Rates by Field Office^{4,11,19}
October 2017

Office	Approval Rate	Denial Rate	Need Based Denial Rate	Procedural Denial Rate
Chaves County ISD	80.6%	19.4%	12.9%	6.5%
Cibola County ISD	86.9%	13.1%	6.7%	6.3%
Colfax County ISD	80.2%	19.8%	15.4%	4.3%
Curry County ISD	82.9%	17.1%	10.1%	7.0%
East Dona Ana County ISD	84.1%	15.9%	12.9%	3.0%
Eddy Artesia County ISD	82.2%	17.8%	12.2%	5.6%
Eddy Carlsbad County ISD	75.4%	24.6%	14.9%	9.7%
Grant County ISD	83.3%	16.7%	13.2%	3.5%
Guadalupe County ISD	82.8%	17.2%	15.5%	1.7%
Hidalgo County ISD	0.0%	0.0%	0.0%	0.0%
Lea County ISD	80.0%	20.0%	14.7%	5.4%
Lincoln County ISD	74.3%	25.7%	14.5%	11.2%
Luna County ISD	86.6%	13.4%	6.4%	7.0%
McKinley County ISD	83.9%	16.1%	7.5%	8.5%
Northeast Bernalillo County ISD	78.5%	21.5%	10.6%	10.9%
Northwest Bernalillo County ISD	82.1%	17.9%	8.0%	9.9%
Otero County ISD	84.2%	15.8%	8.5%	7.3%
Quay County ISD	82.3%	17.7%	12.9%	4.8%
Rio Arriba County ISD	85.5%	14.5%	9.7%	4.8%
Roosevelt County ISD	77.2%	22.8%	9.7%	13.1%
San Juan County ISD	79.7%	20.3%	12.2%	8.1%
San Miguel County ISD	89.9%	10.1%	5.8%	4.3%
Sandoval County ISD	83.8%	16.2%	8.7%	7.6%
Santa Fe County ISD	74.6%	25.4%	13.8%	11.5%
Sierra County ISD	87.3%	12.7%	11.8%	0.9%
Socorro County ISD	78.9%	21.1%	13.2%	7.9%
South Dona Ana ISD	75.4%	24.6%	21.4%	3.2%
Southeast Bernalillo County ISD	76.8%	23.2%	14.9%	8.3%
Southwest Bernalillo County ISD	80.1%	19.9%	11.3%	8.6%
Taos County ISD	88.8%	11.2%	4.7%	6.5%
Torrance County ISD	84.9%	15.1%	8.9%	6.2%
Valencia North County ISD	82.8%	17.2%	10.3%	6.9%
Valencia South County ISD	50.0%	50.0%	33.3%	16.7%
West Dona Ana County ISD	79.5%	20.5%	13.5%	7.0%
Centralized Units	0.0%	0.0%	0.0%	0.0%
Statewide Total	80.8%	19.2%	11.4%	7.8%

Medicaid EDG Initial Disposition Rates by Region^{4,11,19}
October 2017

Region	Approval Rate	Denial Rate	Need Based Denial Rate	Procedural Denial Rate
Region 1 - NW	82.1%	17.9%	10.3%	7.6%
Region 2 - NE	82.4%	17.6%	10.0%	7.6%
Region 3 - Central	79.7%	20.3%	10.9%	9.4%
Region 4 - SE	79.5%	20.5%	13.1%	7.4%
Region 5 - SW	81.2%	18.8%	13.8%	5.0%
Centralized Units				
Statewide Total	80.8%	19.2%	11.4%	7.8%



Medicaid: Percentage of Initial EDG Approvals Processed Timely by Field Office ^{13,19}

	Oct-17	Nov-17	Dec-17	Jan-18	Feb-18	Mar-18	Apr-18	May-18	Jun-18	Jul-18	Aug-18	Sep-18	Average
Cibola	92.2%												92.2%
McKinley	95.6%												95.6%
San Juan	93.4%												93.4%
Sierra	95.8%												95.8%
Socorro	95.4%												95.4%
Valencia North	93.2%												93.2%
Valencia South	100.0%												#####
NW Region 1 Total	94.0%												94.0%
Colfax	93.9%												93.9%
Guadalupe	97.9%												97.9%
Quay	98.0%												98.0%
Rio Arriba	96.9%												96.9%
San Miguel	97.3%												97.3%
Sandoval	97.0%												97.0%
Santa Fe	96.1%												96.1%
Taos	98.3%												98.3%
NE Region 2 Total	96.8%												96.8%
NE Bernalillo	95.1%												95.1%
NW Bernalillo	96.3%												96.3%
SE Bernalillo	88.2%												88.2%
SW Bernalillo	95.8%												95.8%
Torrance	95.5%												95.5%
Gen. Region 3 Total	94.3%												94.3%
Chaves	96.4%												96.4%
Curry	94.8%												94.8%
Eddy Artesia	95.3%												95.3%
Eddy Carlsbad	93.2%												93.2%
Lea	96.1%												96.1%
Lincoln	95.7%												95.7%
Roosevelt	94.6%												94.6%
SE Region 4 Total	95.4%												95.4%
East Dona Ana	96.1%												96.1%
Grant	93.9%												93.9%
Luna	96.8%												96.8%
Otero	97.6%												97.6%
South Dona Ana	97.2%												97.2%
West Dona Ana	97.4%												97.4%
SW Region 5 Total	96.7%												96.7%
STATE TOTAL	95.3%												95.3%

Medicaid: Percentage of Initial EDG Denials Processed Timely by Field Office^{13,19}

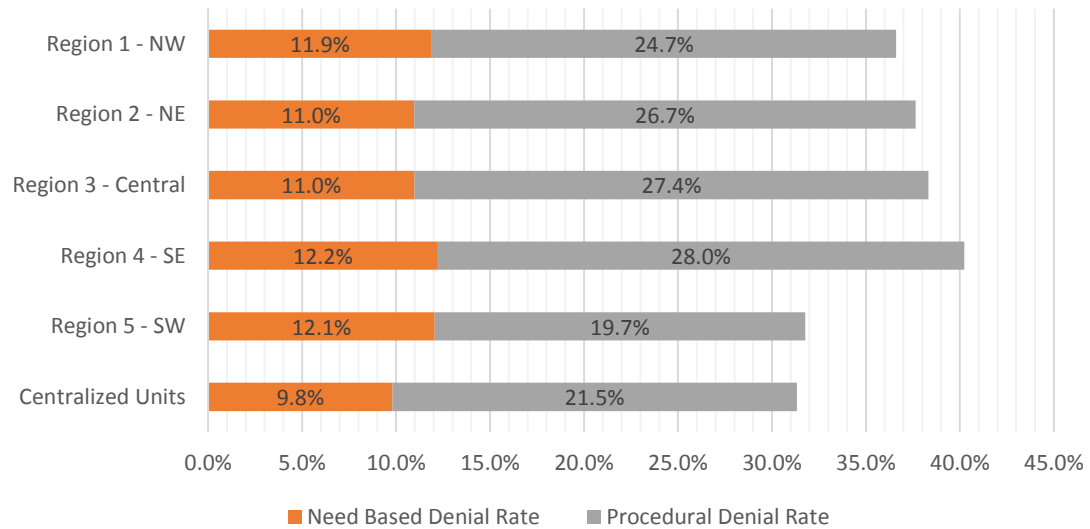
	Oct-17	Nov-17	Dec-17	Jan-18	Feb-18	Mar-18	Apr-18	May-18	Jun-18	Jul-18	Aug-18	Sep-18	Average
Cibola	51.4%												51.4%
McKinley	54.4%												54.4%
San Juan	53.1%												53.1%
Sierra	92.9%												92.9%
Socorro	57.5%												57.5%
Valencia North	55.8%												55.8%
Valencia South	66.7%												66.7%
NW Region 1 Total	55.0%												55.0%
Colfax	90.6%												90.6%
Guadalupe	90.0%												90.0%
Quay	72.7%												72.7%
Rio Arriba	71.4%												71.4%
San Miguel	59.5%												59.5%
Sandoval	43.6%												43.6%
Santa Fe	59.1%												59.1%
Taos	47.4%												47.4%
NE Region 2 Total	57.2%												57.2%
NE Bernalillo	45.7%												45.7%
NW Bernalillo	39.2%												39.2%
SE Bernalillo	56.6%												56.6%
SW Bernalillo	68.5%												68.5%
Torrance	56.8%												56.8%
Gen. Region 3 Total	52.5%												52.5%
Chaves	72.3%												72.3%
Curry	61.4%												61.4%
Eddy Artesia	65.6%												65.6%
Eddy Carlsbad	51.8%												51.8%
Lea	72.7%												72.7%
Lincoln	35.9%												35.9%
Roosevelt	36.4%												36.4%
SE Region 4 Total	61.3%												61.3%
East Dona Ana	80.0%												80.0%
Grant	76.7%												76.7%
Luna	47.7%												47.7%
Otero	61.9%												61.9%
South Dona Ana	86.3%												86.3%
West Dona Ana	66.9%												66.9%
SW Region 5 Total	73.8%												73.8%
STATE TOTAL	58.4%												58.4%

Medicaid Renewal Disposition Rates by Field Office²⁰
October 2017

Office	Approval Rate	Denial Rate	Need Based Denial Rate	Procedural Denial Rate
Chaves County ISD	61.5%	38.5%	11.8%	26.6%
Cibola County ISD	66.3%	33.7%	12.6%	21.1%
Colfax County ISD	73.8%	26.2%	10.7%	15.6%
Curry County ISD	57.2%	42.8%	13.5%	29.3%
East Dona Ana County ISD	68.0%	32.1%	11.8%	20.3%
Eddy Artesia County ISD	60.9%	39.1%	12.0%	27.0%
Eddy Carlsbad County ISD	59.8%	40.2%	12.0%	28.1%
Grant County ISD	68.6%	31.4%	12.2%	19.2%
Guadalupe County ISD	71.8%	28.2%	12.4%	15.8%
Hidalgo County ISD	73.9%	26.1%	9.8%	16.3%
Lea County ISD	60.9%	39.1%	12.4%	26.7%
Lincoln County ISD	57.0%	43.0%	12.5%	30.5%
Luna County ISD	66.2%	33.8%	11.9%	22.0%
McKinley County ISD	57.7%	42.3%	14.1%	28.1%
Northeast Bernalillo County ISD	61.9%	38.1%	11.4%	26.6%
Northwest Bernalillo County ISD	64.1%	35.9%	11.9%	24.0%
Otero County ISD	66.2%	33.8%	11.0%	22.8%
Quay County ISD	61.4%	38.6%	14.2%	24.3%
Rio Arriba County ISD	65.8%	34.2%	11.3%	23.0%
Roosevelt County ISD	57.6%	42.4%	9.4%	33.0%
San Juan County ISD	64.4%	35.6%	11.4%	24.2%
San Miguel County ISD	63.3%	36.7%	9.2%	27.6%
Sandoval County ISD	59.9%	40.1%	11.3%	28.8%
Santa Fe County ISD	61.5%	38.5%	10.5%	28.0%
Sierra County ISD	75.7%	24.3%	7.7%	16.6%
Socorro County ISD	62.7%	37.3%	10.0%	27.4%
South Dona Ana ISD	72.3%	27.7%	12.2%	15.5%
Southeast Bernalillo County ISD	59.7%	40.3%	10.1%	30.2%
Southwest Bernalillo County ISD	59.9%	40.1%	9.9%	30.2%
Taos County ISD	60.0%	40.0%	11.4%	28.6%
Torrance County ISD	60.1%	39.9%	11.1%	28.8%
Valencia North County ISD	62.9%	37.1%	11.8%	25.4%
Valencia South County ISD	0.0%	0.0%	0.0%	0.0%
West Dona Ana County ISD	66.0%	34.0%	12.9%	21.1%
Centralized Units	68.7%	31.3%	9.8%	21.5%
Statewide Total	63.1%	36.9%	11.5%	25.4%

Medicaid Renewal Disposition Rates by Region²⁰
October 2017

Region	Approval Rate	Denial Rate	Need Based Denial Rate	Procedural Denial Rate
Region 1 - NW	63.4%	36.6%	11.9%	24.7%
Region 2 - NE	62.3%	37.7%	11.0%	26.7%
Region 3 - Central	61.7%	38.3%	11.0%	27.4%
Region 4 - SE	59.8%	40.2%	12.2%	28.0%
Region 5 - SW	68.2%	31.8%	12.1%	19.7%
Centralized Units	68.7%	31.3%	9.8%	21.5%
Statewide Total	63.1%	36.9%	11.5%	25.4%



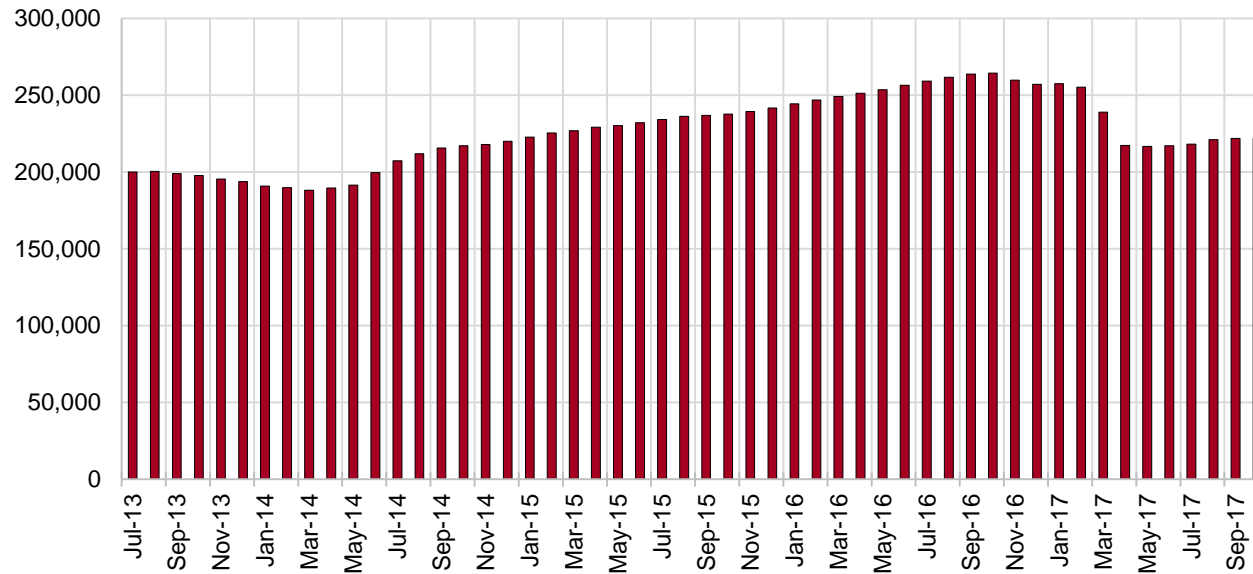
SNAP Cases by Field Office⁶

Office				Percent Change	
	Oct-16	Sep-17	Oct-17	Oct-16- Oct-17	Sep-17- Oct-17
Chaves County ISD	8,438	7,215	7,196	-14.7%	-0.3%
Cibola County ISD	4,163	3,697	3,694	-11.3%	-0.1%
Colfax County ISD	1,871	1,581	1,584	-15.3%	0.2%
Curry County ISD	5,555	4,746	4,795	-13.7%	1.0%
East Dona Ana County ISD	9,700	8,129	8,049	-17.0%	-1.0%
Eddy Artesia County ISD	1,975	1,698	1,711	-13.4%	0.8%
Eddy Carlsbad County ISD	4,154	3,365	3,356	-19.2%	-0.3%
Grant County ISD	4,184	3,609	3,578	-14.5%	-0.9%
Guadalupe County ISD	791	724	720	-9.0%	-0.6%
Hidalgo County ISD	540	425	425	-21.3%	0.0%
Lea County ISD	7,291	5,857	5,829	-20.1%	-0.5%
Lincoln County ISD	2,214	1,917	1,918	-13.4%	0.1%
Luna County ISD	5,082	4,264	4,270	-16.0%	0.1%
McKinley County ISD	10,971	9,730	9,747	-11.2%	0.2%
Northeast Bernalillo County ISD	23,878	19,974	19,938	-16.5%	-0.2%
Northwest Bernalillo County ISD	21,640	18,408	18,518	-14.4%	0.6%
Otero County ISD	6,204	5,590	5,579	-10.1%	-0.2%
Quay County ISD	1,436	1,284	1,273	-11.4%	-0.9%
Rio Arriba County ISD	8,227	6,874	6,863	-16.6%	-0.2%
Roosevelt County ISD	2,114	1,708	1,699	-19.6%	-0.5%
San Juan County ISD	15,624	13,380	13,373	-14.4%	-0.1%
San Miguel County ISD	5,914	5,040	5,025	-15.0%	-0.3%
Sandoval County ISD	13,061	10,998	11,009	-15.7%	0.1%
Santa Fe County ISD	13,105	10,161	10,095	-23.0%	-0.6%
Sierra County ISD	2,985	2,651	2,668	-10.6%	0.6%
Socorro County ISD	3,335	2,853	2,860	-14.2%	0.2%
South Dona Ana ISD	9,546	8,664	8,693	-8.9%	0.3%
Southeast Bernalillo County ISD	16,296	12,171	12,091	-25.8%	-0.7%
Southwest Bernalillo County ISD	22,299	18,520	18,659	-16.3%	0.8%
Taos County ISD	4,729	4,124	4,117	-12.9%	-0.2%
Torrance County ISD	4,106	3,344	3,316	-19.2%	-0.8%
Valencia North County ISD	9,990	8,429	8,418	-15.7%	-0.1%
Valencia South County ISD	32	10	1	-96.9%	-90.0%
West Dona Ana County ISD	12,943	10,720	10,763	-16.8%	0.4%
Centralized Units	17	50	46	170.6%	-8.0%
Statewide Total	264,410	221,910	221,876	-16.1%	0.0%

SNAP Cases by Region⁶

Region				Percent Change	
	Oct-16	Sep-17	Oct-17	Oct-16- Oct-17	Sep-17- Oct-17
Region 1 - NW	47,100	40,750	40,761	-13.5%	0.0%
Region 2 - NE	49,134	40,786	40,686	-17.2%	-0.2%
Region 3 - Central	88,219	72,417	72,522	-17.8%	0.1%
Region 4 - SE	31,741	26,506	26,504	-16.5%	0.0%
Region 5 - SW	48,199	41,401	41,357	-14.2%	-0.1%
Centralized Units	17	50	46	170.6%	-8.0%
Statewide Total	264,410	221,910	221,876	-16.1%	0.0%

SNAP Caseload: SFY-14 to Current

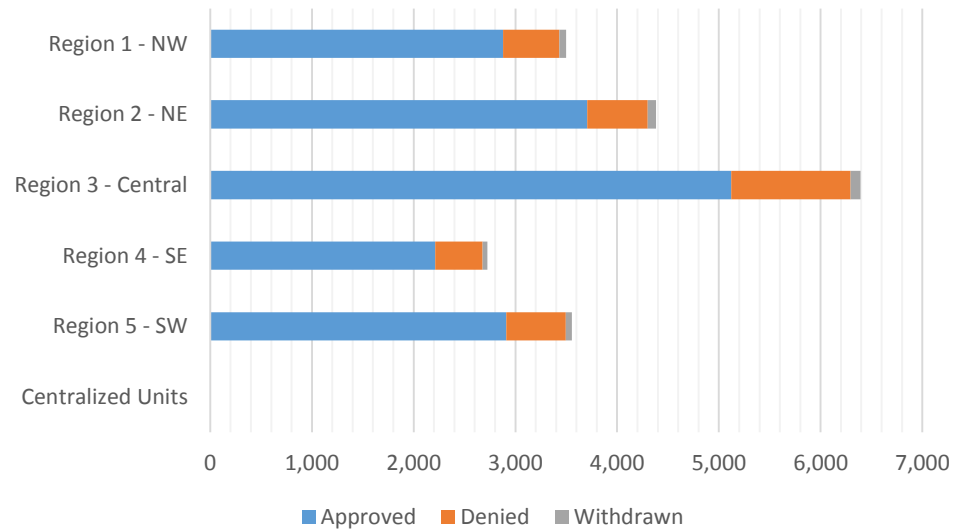


SNAP Initial Applications by Field Office^{4,11}
October 2017

Office	Approved	Denied	Withdrawn	Total Cases Processed
Chaves County ISD	589	103	13	705
Cibola County ISD	226	33	5	264
Colfax County ISD	123	30	1	154
Curry County ISD	385	85	15	485
East Dona Ana County ISD	581	133	12	726
Eddy Artesia County ISD	257	33	5	295
Eddy Carlsbad County ISD	274	61	1	336
Grant County ISD	275	49	4	328
Guadalupe County ISD	63	15	6	84
Hidalgo County ISD	0	0	0	0
Lea County ISD	351	95	10	456
Lincoln County ISD	183	40	5	228
Luna County ISD	277	43	7	327
McKinley County ISD	688	100	21	809
Northeast Bernalillo County ISD	1,410	315	24	1,749
Northwest Bernalillo County ISD	1,279	326	26	1,631
Otero County ISD	411	77	7	495
Quay County ISD	77	12	5	94
Rio Arriba County ISD	566	77	11	654
Roosevelt County ISD	173	48	0	221
San Juan County ISD	1,030	227	21	1,278
San Miguel County ISD	371	65	9	445
Sandoval County ISD	1,303	202	25	1,530
Santa Fe County ISD	880	156	14	1,050
Sierra County ISD	151	22	0	173
Socorro County ISD	168	23	2	193
South Dona Ana ISD	579	89	10	678
Southeast Bernalillo County ISD	915	243	20	1,178
Southwest Bernalillo County ISD	1,221	244	21	1,486
Taos County ISD	324	36	10	370
Torrance County ISD	295	48	4	347
Valencia North County ISD	605	148	16	769
Valencia South County ISD	12	0	0	12
West Dona Ana County ISD	787	195	18	1,000
Centralized Units	0	0	0	0
Statewide Total	16,829	3,373	348	20,550

SNAP Initial Applications by Region^{4,11}
October 2017

Region	Approved	Denied	Withdrawn	Total Cases Processed
Region 1 - NW	2,880	553	65	3,498
Region 2 - NE	3,707	593	81	4,381
Region 3 - Central	5,120	1,176	95	6,391
Region 4 - SE	2,212	465	49	2,726
Region 5 - SW	2,910	586	58	3,554
Centralized Units	0	0	0	0
Statewide Total	16,829	3,373	348	20,550

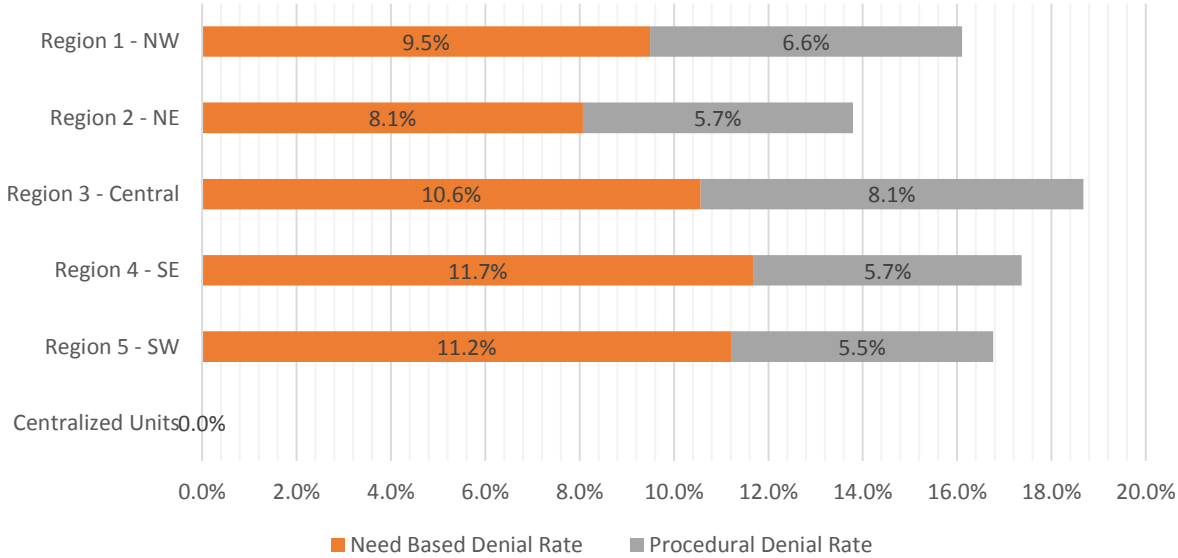


SNAP Initial Disposition Rates by Field Office^{4,11}
October 2017

Office	Approval Rate	Denial Rate	Need Based Denial Rate	Procedural Denial Rate
Chaves County ISD	85.1%	14.9%	11.1%	3.8%
Cibola County ISD	87.3%	12.7%	9.3%	3.5%
Colfax County ISD	80.4%	19.6%	17.6%	2.0%
Curry County ISD	81.9%	18.1%	10.6%	7.4%
East Dona Ana County ISD	81.4%	18.6%	12.6%	6.0%
Eddy Artesia County ISD	88.6%	11.4%	8.6%	2.8%
Eddy Carlsbad County ISD	81.8%	18.2%	11.3%	6.9%
Grant County ISD	84.9%	15.1%	9.3%	5.9%
Guadalupe County ISD	80.8%	19.2%	14.1%	5.1%
Hidalgo County ISD	0.0%	100.0%	100.0%	0.0%
Lea County ISD	78.7%	21.3%	14.1%	7.2%
Lincoln County ISD	82.1%	17.9%	12.6%	5.4%
Luna County ISD	86.6%	13.4%	9.1%	4.4%
McKinley County ISD	87.3%	12.7%	8.2%	4.4%
Northeast Bernalillo County ISD	81.7%	18.3%	10.4%	7.9%
Northwest Bernalillo County ISD	79.7%	20.3%	11.0%	9.3%
Otero County ISD	84.2%	15.8%	8.2%	7.6%
Quay County ISD	86.5%	13.5%	11.2%	2.2%
Rio Arriba County ISD	88.0%	12.0%	6.8%	5.1%
Roosevelt County ISD	78.3%	21.7%	14.5%	7.2%
San Juan County ISD	81.9%	18.1%	9.3%	8.8%
San Miguel County ISD	85.1%	14.9%	9.6%	5.3%
Sandoval County ISD	86.6%	13.4%	7.1%	6.3%
Santa Fe County ISD	84.9%	15.1%	8.6%	6.5%
Sierra County ISD	87.3%	12.7%	11.6%	1.2%
Socorro County ISD	88.0%	12.0%	7.9%	4.2%
South Dona Ana ISD	86.7%	13.3%	10.0%	3.3%
Southeast Bernalillo County ISD	79.0%	21.0%	11.2%	9.8%
Southwest Bernalillo County ISD	83.3%	16.7%	9.8%	6.9%
Taos County ISD	90.0%	10.0%	4.7%	5.3%
Torrance County ISD	86.0%	14.0%	10.5%	3.5%
Valencia North County ISD	80.3%	19.7%	11.3%	8.4%
Valencia South County ISD	100.0%	0.0%	0.0%	0.0%
West Dona Ana County ISD	80.1%	19.9%	13.8%	6.0%
Centralized Units				
Statewide Total	83.3%	16.7%	10.1%	6.6%

SNAP Initial Disposition Rates by Region^{4,11}
October 2017

Region	Approval Rate	Denial Rate	Need Based Denial Rate	Procedural Denial Rate
Region 1 - NW	83.9%	16.1%	9.5%	6.6%
Region 2 - NE	86.2%	13.8%	8.1%	5.7%
Region 3 - Central	81.3%	18.7%	10.6%	8.1%
Region 4 - SE	82.6%	17.4%	11.7%	5.7%
Region 5 - SW	83.2%	16.8%	11.2%	5.5%
Centralized Units				
Statewide Total	83.3%	16.7%	10.1%	6.6%



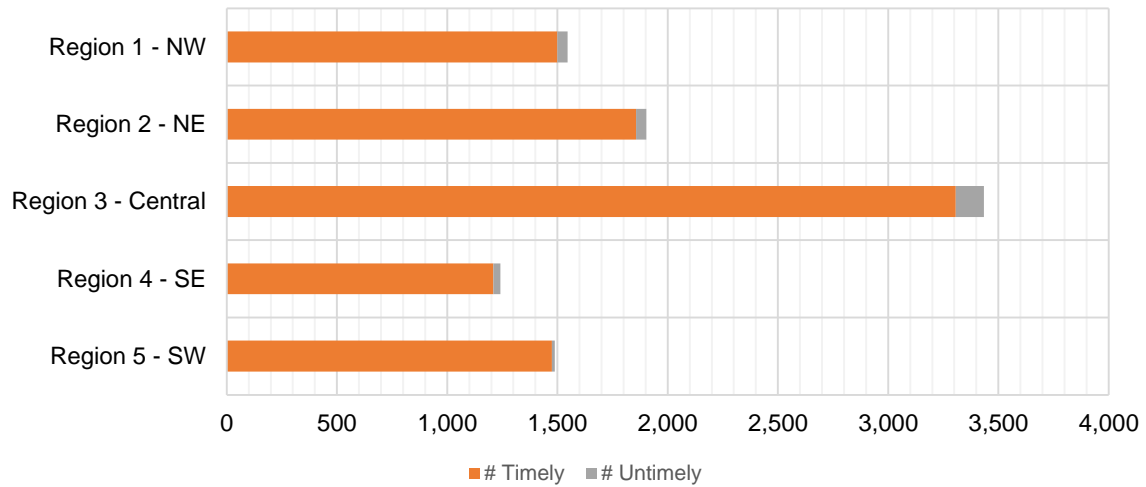
SNAP Expedite Timeliness by Field Office¹³
October 2017

Office Name	Total Expedited Approvals	# Timely	# Untimely	Percentage Timely
Chaves County ISD	259	254	5	98.1 %
Cibola County ISD	121	114	7	94.2 %
Colfax County ISD	71	70	1	98.6 %
Curry County ISD	253	243	10	96.0 %
East Dona Ana County ISD	287	285	2	99.3 %
Eddy Artesia County ISD	80	80	0	100.0 %
Eddy Carlsbad County ISD	206	203	3	98.5 %
Grant County ISD	189	185	4	97.9 %
Guadalupe County ISD	13	13	0	100.0 %
Lea County ISD	256	252	4	98.4 %
Lincoln County ISD	91	88	3	96.7 %
Luna County ISD	142	141	1	99.3 %
McKinley County ISD	341	339	2	99.4 %
Northeast Bernalillo County ISD	1,056	999	57	94.6 %
Northwest Bernalillo County ISD	969	946	23	97.6 %
Otero County ISD	245	242	3	98.8 %
Quay County ISD	39	39	0	100.0 %
Rio Arriba County ISD	369	349	20	94.6 %
Roosevelt County ISD	97	90	7	92.8 %
San Juan County ISD	619	593	26	95.8 %
San Miguel County ISD	230	228	2	99.1 %
Sandoval County ISD	506	497	9	98.2 %
Santa Fe County ISD	522	509	13	97.5 %
Sierra County ISD	59	58	1	98.3 %
Socorro County ISD	94	93	1	98.9 %
South Dona Ana ISD	204	204	0	100.0 %
Southeast Bernalillo County ISD	544	525	19	96.5 %
Southwest Bernalillo County ISD	736	711	25	96.6 %
Taos County ISD	153	151	2	98.7 %
Torrance County ISD	129	125	4	96.9 %
Valencia North County ISD	312	303	9	97.1 %
West Dona Ana County ISD	421	418	3	99.3 %
Statewide Total	9,613	9,347	266	97.2 %

SNAP Expedite Timeliness by Region¹³
October 2017

Region	Total Expedited Approvals	# Timely	# Untimely	Percentage Timely
Region 1 - NW	1,546	1,500	46	97.0%
Region 2 - NE	1,903	1,856	47	97.5%
Region 3 - Central	3,434	3,306	128	96.3%
Region 4 - SE	1,242	1,210	32	97.4%
Region 5 - SW	1,488	1,475	13	99.1%
Statewide Total	9,613	9,347	266	97.2%

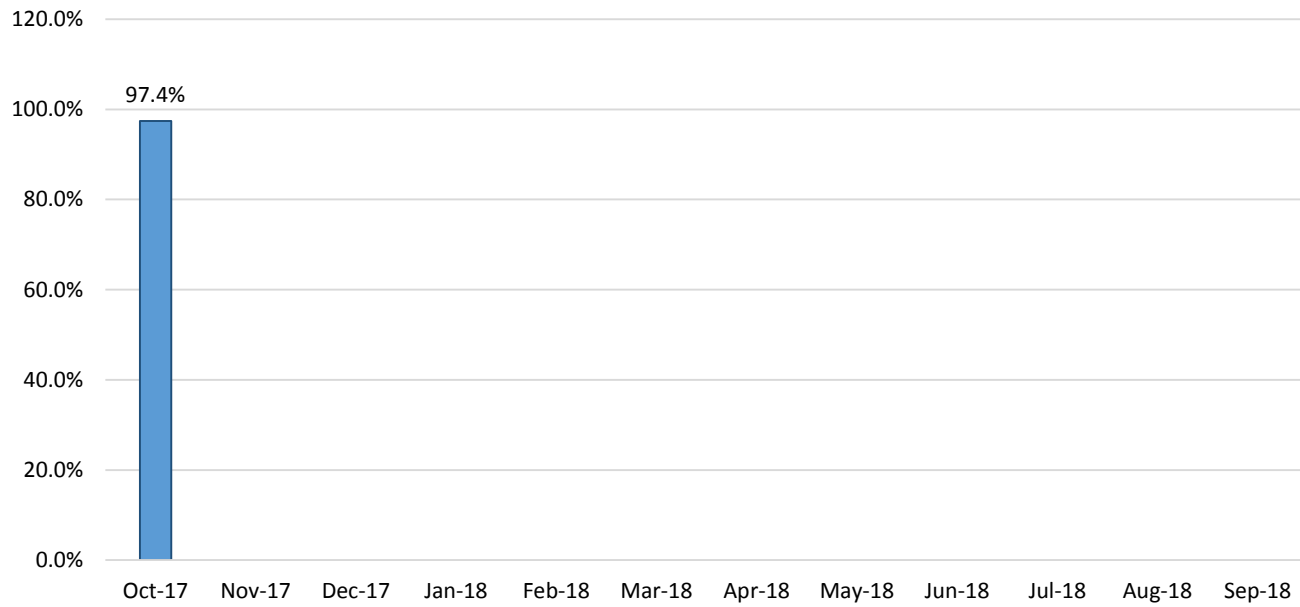
SNAP Expedite - Timeliness



SNAP: Percentage of Applications Processed Timely ¹³

	Oct-17	Nov-17	Dec-17	Jan-18	Feb-18	Mar-18	Apr-18	May-18	Jun-18	Jul-18	Aug-18	Sep-18	Average
APT	97.4%												97.4%

SNAP Application Processing Timeliness (APT)



SNAP Non-Expedite: Percentage of Initial Applications Processed Timely by Field Office¹³

	Oct-17	Nov-17	Dec-17	Jan-18	Feb-18	Mar-18	Apr-18	May-18	Jun-18	Jul-18	Aug-18	Sep-18	Average
Cibola	96.8%												96.8%
McKinley	97.4%												97.4%
San Juan	94.8%												94.8%
Sierra	100.0%												100.0%
Socorro	100.0%												100.0%
Valencia North	96.5%												96.5%
Valencia South	100.0%												100.0%
NW Region 1 Total	96.5%												96.5%
Colfax	100.0%												100.0%
Guadalupe	100.0%												100.0%
Quay	97.2%												97.2%
Rio Arriba	97.0%												97.0%
San Miguel	100.0%												100.0%
Sandoval	98.2%												98.2%
Santa Fe	97.6%												97.6%
Taos	98.7%												98.7%
NE Region 2 Total	98.2%												98.2%
NE Bernalillo	95.4%												95.4%
NW Bernalillo	97.6%												97.6%
SE Bernalillo	96.0%												96.0%
SW Bernalillo	97.9%												97.9%
Torrance	98.9%												98.9%
Gen. Region 3 Total	96.9%												96.9%
Chaves	99.3%												99.3%
Curry	95.7%												95.7%
Eddy Artesia	100.0%												100.0%
Eddy Carlsbad	94.8%												94.8%
Lea	97.0%												97.0%
Lincoln	97.8%												97.8%
Roosevelt	100.0%												100.0%
SE Region 4 Total	97.6%												97.6%
East Dona Ana	99.6%												99.6%
Grant	100.0%												100.0%
Luna	100.0%												100.0%
Otero	100.0%												100.0%
South Dona Ana	100.0%												100.0%
West Dona Ana	99.2%												99.2%
SW Region 5 Total	99.7%												99.7%
STATE TOTAL	97.7%												97.7%

SNAP Expedite: Percentage of Initial Applications Processed Timely by Field Office¹³

	Oct-17	Nov-17	Dec-17	Jan-18	Feb-18	Mar-18	Apr-18	May-18	Jun-18	Jul-18	Aug-18	Sep-18	Average
Cibola	94.1%												94.1%
McKinley	99.4%												99.4%
San Juan	95.8%												95.8%
Sierra	98.3%												98.3%
Socorro	98.9%												98.9%
Valencia North	97.1%												97.1%
Valencia South	100.0%												100.0%
NW Region 1 Total	97.0%												97.0%
Colfax	98.6%												98.6%
Guadalupe	100.0%												100.0%
Quay	100.0%												100.0%
Rio Arriba	94.6%												94.6%
San Miguel	99.1%												99.1%
Sandoval	98.2%												98.2%
Santa Fe	97.5%												97.5%
Taos	98.7%												98.7%
NE Region 2 Total	97.5%												97.5%
NE Bernalillo	94.6%												94.6%
NW Bernalillo	97.6%												97.6%
SE Bernalillo	96.5%												96.5%
SW Bernalillo	96.6%												96.6%
Torrance	96.9%												96.9%
Cen. Region 3 Total	96.3%												96.3%
Chaves	98.1%												98.1%
Curry	96.0%												96.0%
Eddy Artesia	100.0%												100.0%
Eddy Carlsbad	98.5%												98.5%
Lea	98.4%												98.4%
Lincoln	96.7%												96.7%
Roosevelt	92.7%												92.7%
SE Region 4 Total	97.4%												97.4%
East Dona Ana	99.0%												99.0%
Grant	97.9%												97.9%
Luna	99.3%												99.3%
Otero	98.8%												98.8%
South Dona Ana	100.0%												100.0%
West Dona Ana	99.5%												99.5%
SW Region 5 Total	99.1%												99.1%
STATE TOTAL	97.2%												97.2%

SNAP: Percentage of Denied Initial Applications Processed Within 30 Days by Field Office¹³

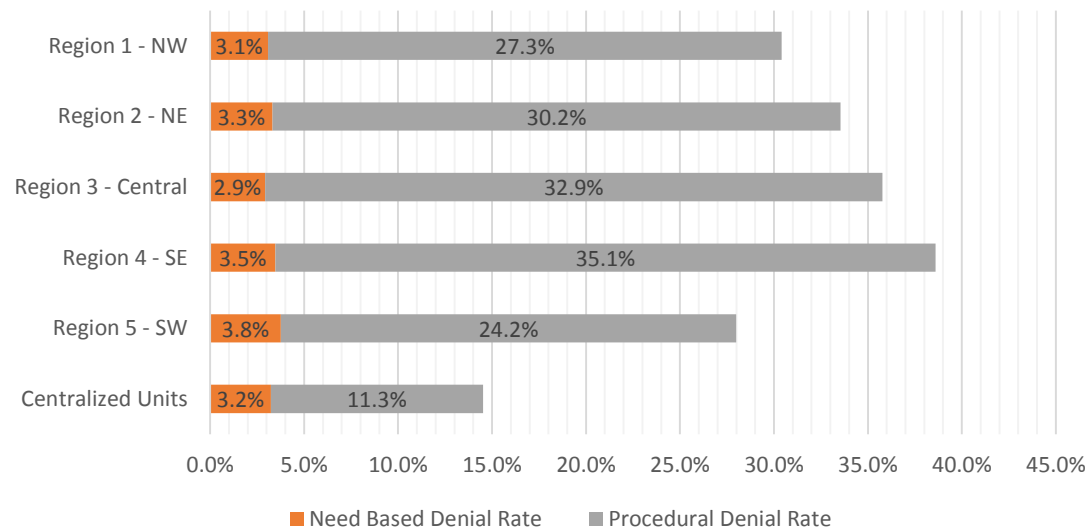
	Oct-17	Nov-17	Dec-17	Jan-18	Feb-18	Mar-18	Apr-18	May-18	Jun-18	Jul-18	Aug-18	Sep-18	Average
Cibola	66.7%												66.7%
McKinley	59.0%												59.0%
San Juan	35.7%												35.7%
Sierra	95.5%												95.5%
Socorro	69.6%												69.6%
Valencia North	45.9%												45.9%
Valencia South													#DIV/0!
NW Region 1 Total	48.3%												48.3%
Colfax	100.0%												100.0%
Guadalupe	73.3%												73.3%
Quay	83.3%												83.3%
Rio Arriba	70.1%												70.1%
San Miguel	66.2%												66.2%
Sandoval	70.8%												70.8%
Santa Fe	64.7%												64.7%
Taos	77.8%												77.8%
NE Region 2 Total	70.8%												70.8%
NE Bernalillo	43.5%												43.5%
NW Bernalillo	41.7%												41.7%
SE Bernalillo	52.3%												52.3%
SW Bernalillo	63.9%												63.9%
Torrance	60.4%												60.4%
Cen. Region 3 Total	49.7%												49.7%
Chaves	86.4%												86.4%
Curry	63.5%												63.5%
Eddy Artesia	75.8%												75.8%
Eddy Carlsbad	60.7%												60.7%
Lea	86.3%												86.3%
Lincoln	55.0%												55.0%
Roosevelt	77.1%												77.1%
SE Region 4 Total	74.4%												74.4%
East Dona Ana	81.2%												81.2%
Grant	73.5%												73.5%
Luna	55.8%												55.8%
Otero	40.3%												40.3%
South Dona Ana	70.8%												70.8%
West Dona Ana	65.6%												65.6%
SW Region 5 Total	66.6%												66.6%
STATE TOTAL	59.5%												59.5%

SNAP Renewal Disposition Rates by Field Office²⁰
October 2017

Office	Approval Rate	Denial Rate	Need Based Denial Rate	Procedural Denial Rate
Chaves County ISD	59.1%	40.9%	4.3%	36.5%
Cibola County ISD	72.1%	27.9%	2.2%	25.7%
Colfax County ISD	64.4%	35.6%	9.2%	26.4%
Curry County ISD	69.1%	30.9%	3.3%	27.6%
East Dona Ana County ISD	70.8%	29.2%	4.9%	24.3%
Eddy Artesia County ISD	48.8%	51.3%	3.8%	47.5%
Eddy Carlsbad County ISD	59.4%	40.6%	3.6%	37.0%
Grant County ISD	59.9%	40.1%	3.7%	36.4%
Guadalupe County ISD	65.4%	34.6%	5.8%	28.8%
Hidalgo County ISD	62.5%	37.5%	4.2%	33.3%
Lea County ISD	61.0%	39.0%	2.2%	36.8%
Lincoln County ISD	61.3%	38.7%	1.1%	37.6%
Luna County ISD	73.5%	26.5%	1.9%	24.7%
McKinley County ISD	69.2%	30.8%	3.0%	27.9%
Northeast Bernalillo County ISD	60.5%	39.5%	2.9%	36.6%
Northwest Bernalillo County ISD	67.1%	32.9%	3.3%	29.7%
Otero County ISD	70.5%	29.5%	2.3%	27.2%
Quay County ISD	78.9%	21.1%	3.9%	17.1%
Rio Arriba County ISD	64.5%	35.5%	2.5%	33.0%
Roosevelt County ISD	61.8%	38.2%	6.7%	31.5%
San Juan County ISD	67.2%	32.8%	3.3%	29.4%
San Miguel County ISD	69.8%	30.2%	0.3%	29.9%
Sandoval County ISD	69.1%	30.9%	4.1%	26.7%
Santa Fe County ISD	62.1%	37.9%	3.2%	34.7%
Sierra County ISD	76.4%	23.6%	3.1%	20.5%
Socorro County ISD	77.8%	22.2%	1.2%	21.1%
South Dona Ana ISD	77.2%	22.8%	5.3%	17.5%
Southeast Bernalillo County ISD	62.2%	37.8%	3.1%	34.7%
Southwest Bernalillo County ISD	67.0%	33.0%	2.2%	30.8%
Taos County ISD	63.0%	37.0%	3.4%	33.7%
Torrance County ISD	58.5%	41.5%	4.9%	36.6%
Valencia North County ISD	68.5%	31.5%	3.8%	27.8%
Valencia South County ISD	0.0%	0.0%	0.0%	0.0%
West Dona Ana County ISD	73.0%	27.0%	3.2%	23.8%
Centralized Units	85.5%	14.5%	3.2%	11.3%
Statewide Total	67.1%	32.9%	3.3%	29.7%

SNAP Renewal Disposition Rates by Region²⁰
October 2017

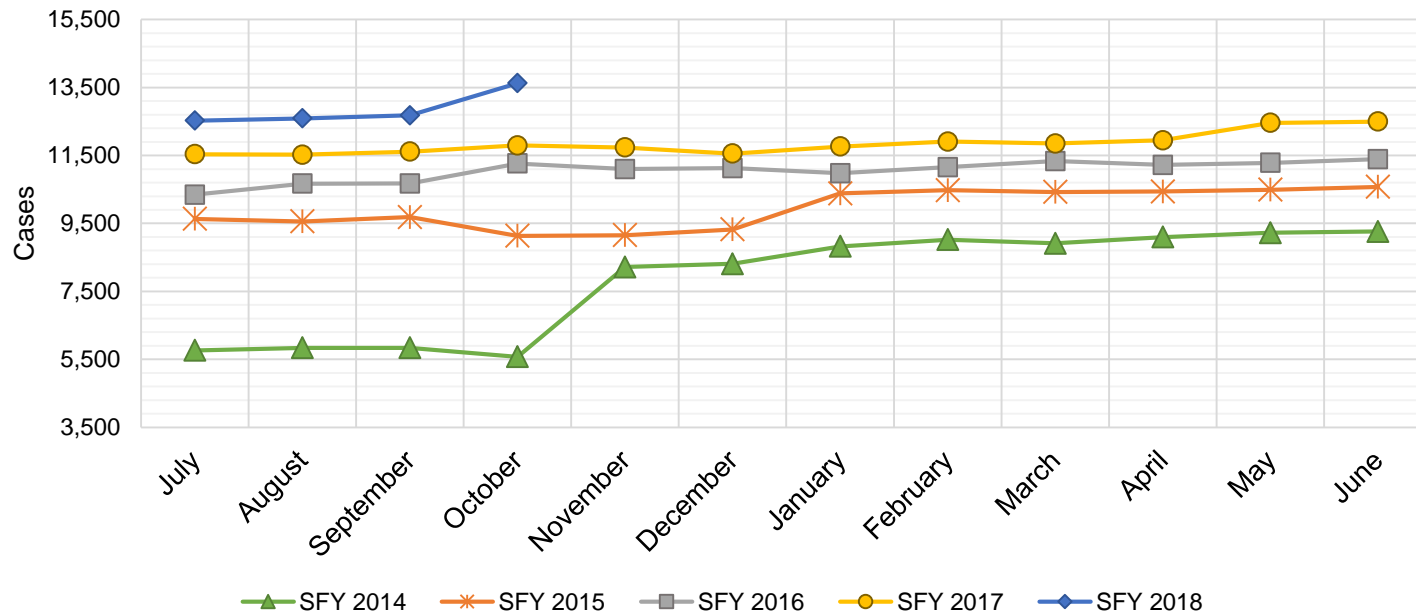
Region	Approval Rate	Denial Rate	Need Based Denial Rate	Procedural Denial Rate
Region 1 - NW	69.6%	30.4%	3.1%	27.3%
Region 2 - NE	66.5%	33.5%	3.3%	30.2%
Region 3 - Central	64.2%	35.8%	2.9%	32.9%
Region 4 - SE	61.4%	38.6%	3.5%	35.1%
Region 5 - SW	72.0%	28.0%	3.8%	24.2%
Centralized Units	85.5%	14.5%	3.2%	11.3%
Statewide Total	67.1%	32.9%	3.3%	29.7%



State SNAP Supplement

SFY 2014 ¹²			SFY 2015 ^{12,9}			SFY 2016 ⁹			SFY 2017 ⁹			SFY 2018 ⁹		
	Cases	Expenditures		Cases	Expenditures		Cases	Expenditures		Cases	Expenditures		Cases	Expenditures
Jul-13	5,767	\$48,040	Jul-14	9,635	\$88,859	Jul-15	10,345	\$86,143	Jul-16	11,537	\$95,553	Jul-17	12,526	\$97,568
Aug-13	5,841	\$48,417	Aug-14	9,559	\$87,757	Aug-15	10,669	\$88,197	Aug-16	11,522	\$95,107	Aug-17	12,589	\$98,954
Sep-13	5,841	\$48,732	Sep-14	9,688	\$87,372	Sep-15	10,676	\$88,426	Sep-16	11,613	\$94,472	Sep-17	12,679	\$97,546
Oct-13	5,575	\$46,610	Oct-14	9,136	\$70,490	Oct-15	11,262	\$96,758	Oct-16	11,797	\$96,679	Oct-17	13,628	\$117,343
Nov-13	8,219	\$69,564	Nov-14	9,152	\$69,955	Nov-15	11,099	\$91,996	Nov-16	11,735	\$93,689	Nov-17		
Dec-13	8,310	\$71,839	Dec-14	9,322	\$73,226	Dec-15	11,125	\$90,771	Dec-16	11,556	\$93,739	Dec-17		
Jan-14	8,826	\$77,933	Jan-15	10,384	\$84,578	Jan-16	10,977	\$92,760	Jan-17	11,763	\$96,074	Jan-18		
Feb-14	9,024	\$84,758	Feb-15	10,477	\$82,901	Feb-16	11,153	\$95,363	Feb-17	11,907	\$98,251	Feb-18		
Mar-14	8,916	\$80,597	Mar-15	10,423	\$87,461	Mar-16	11,332	\$96,751	Mar-17	11,853	\$96,693	Mar-18		
Apr-14	9,098	\$84,599	Apr-15	10,440	\$79,605	Apr-16	11,222	\$93,959	Apr-17	11,944	\$97,060	Apr-18		
May-14	9,226	\$85,035	May-15	10,491	\$82,511	May-16	11,283	\$95,271	May-17	12,457	\$96,940	May-18		
Jun-14	9,264	\$84,329	Jun-15	10,575	\$85,134	Jun-16	11,389	\$93,061	Jun-17	12,498	\$97,405	Jun-18		

TOTAL	93,907	\$830,453	119,282	\$979,850	132,532	\$1,109,455	142,182	\$1,151,662	51,422	\$411,411
AVERAGE	7,826	\$69,204	9,940	\$81,654	11,044	\$92,455	11,849	\$95,972	12,856	\$102,853



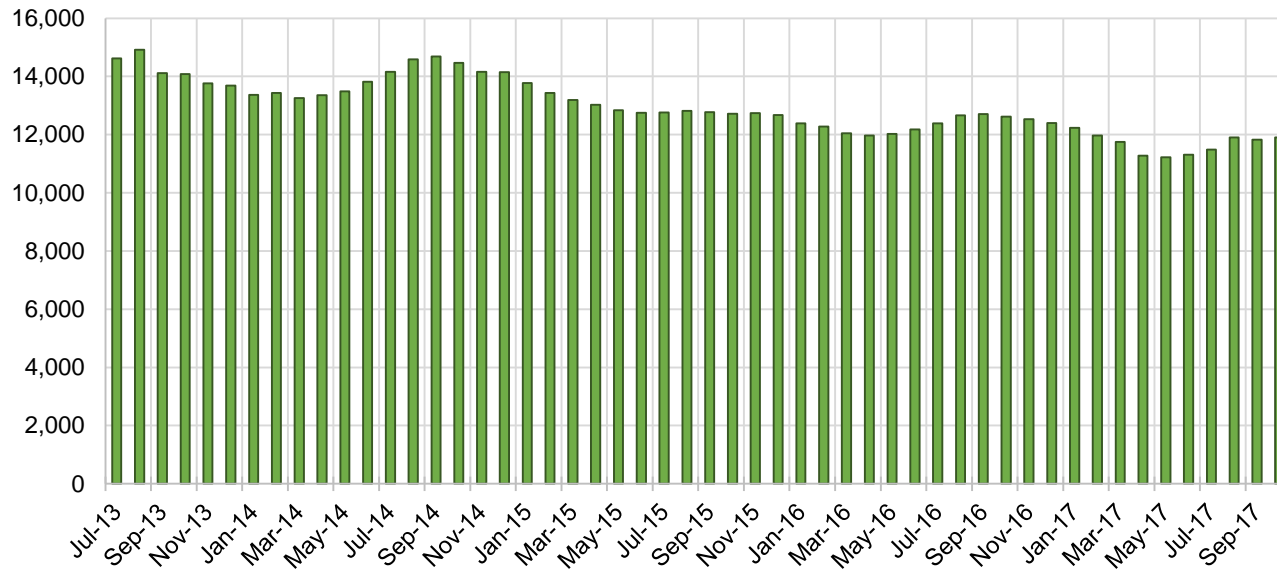
TANF Cases by Field Office⁶

Office	Oct-16	Sep-17	Oct-17	Percent Change	
				Oct-16- Oct-17	Sep-17- Oct-17
Chaves County ISD	606	568	567	-6.4%	-0.2%
Cibola County ISD	171	149	153	-10.5%	2.7%
Colfax County ISD	83	83	79	-4.8%	-4.8%
Curry County ISD	503	530	521	3.6%	-1.7%
East Dona Ana County ISD	543	501	507	-6.6%	1.2%
Eddy Artesia County ISD	157	128	124	-21.0%	-3.1%
Eddy Carlsbad County ISD	225	171	168	-25.3%	-1.8%
Grant County ISD	209	212	202	-3.3%	-4.7%
Guadalupe County ISD	25	31	31	24.0%	0.0%
Hidalgo County ISD	25	23	25	0.0%	8.7%
Lea County ISD	565	451	445	-21.2%	-1.3%
Lincoln County ISD	111	97	92	-17.1%	-5.2%
Luna County ISD	211	209	213	0.9%	1.9%
McKinley County ISD	71	68	64	-9.9%	-5.9%
Northeast Bernalillo County ISD	980	1,005	1,023	4.4%	1.8%
Northwest Bernalillo County ISD	845	804	811	-4.0%	0.9%
Otero County ISD	269	309	312	16.0%	1.0%
Quay County ISD	79	81	77	-2.5%	-4.9%
Rio Arriba County ISD	462	411	412	-10.8%	0.2%
Roosevelt County ISD	157	173	173	10.2%	0.0%
San Juan County ISD	348	314	336	-3.4%	7.0%
San Miguel County ISD	249	219	206	-17.3%	-5.9%
Sandoval County ISD	602	583	572	-5.0%	-1.9%
Santa Fe County ISD	584	435	440	-24.7%	1.1%
Sierra County ISD	84	76	79	-6.0%	3.9%
Socorro County ISD	121	93	89	-26.4%	-4.3%
South Dona Ana ISD	734	739	733	-0.1%	-0.8%
Southeast Bernalillo County ISD	762	654	669	-12.2%	2.3%
Southwest Bernalillo County ISD	1,198	1,110	1,170	-2.3%	5.4%
Taos County ISD	145	132	139	-4.1%	5.3%
Torrance County ISD	194	193	184	-5.2%	-4.7%
Valencia North County ISD	517	515	518	0.2%	0.6%
Valencia South County ISD	3	2	0	-100.0%	-100.0%
West Dona Ana County ISD	773	755	763	-1.3%	1.1%
Centralized Units	5	4	4	-20.0%	0.0%
Statewide Total	12,616	11,828	11,901	-5.7%	0.6%

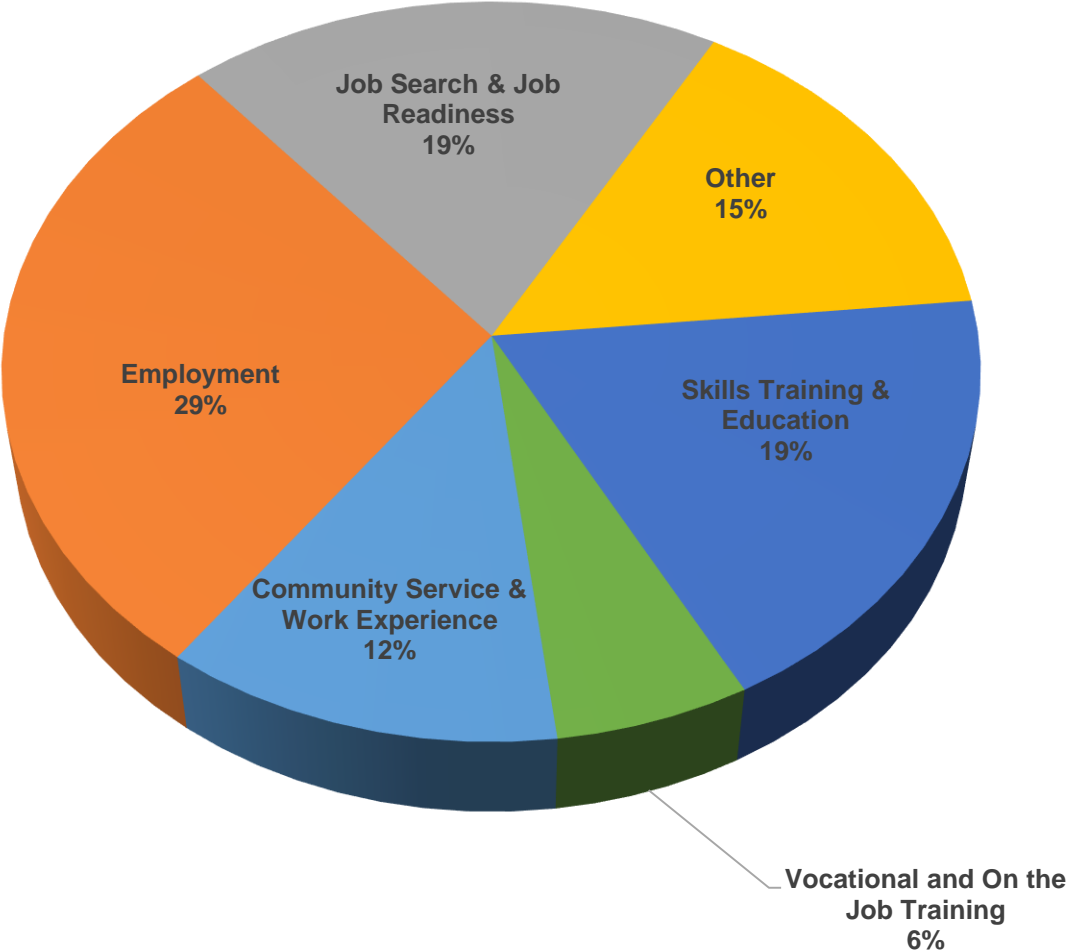
TANF Cases by Region⁶

Region	Oct-16	Sep-17	Oct-17	Percent Change	
				Oct-16- Oct-17	Sep-17- Oct-17
Region 1- NW	1,315	1,217	1,239	-5.8%	1.8%
Region 2- NE	2,229	1,975	1,956	-12.2%	-1.0%
Region 3- Central	3,979	3,766	3,857	-3.1%	2.4%
Region 4- SE	2,324	2,118	2,090	-10.1%	-1.3%
Region 5- SW	2,764	2,748	2,755	-0.3%	0.3%
Centralized Units	5	4	4	-20.0%	0.0%
Statewide Total	12,616	11,828	11,901	-5.7%	0.6%

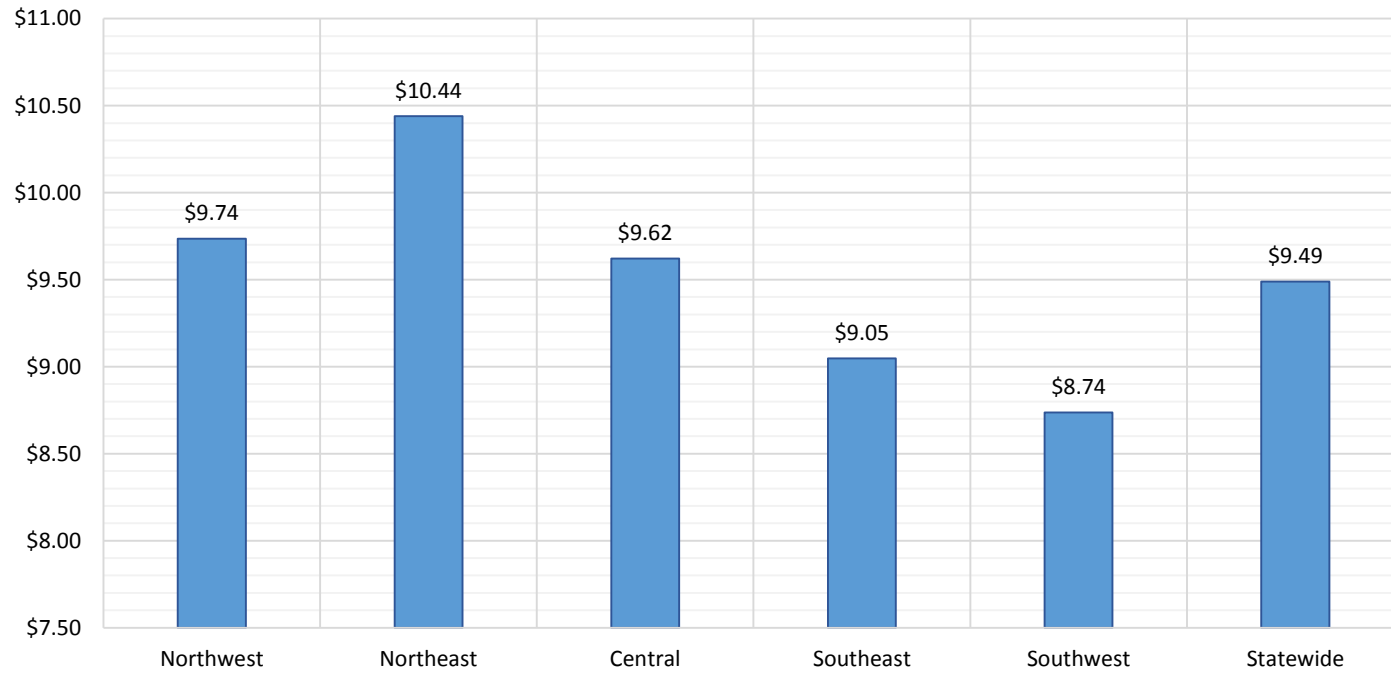
TANF Caseload: SFY-14 to Current



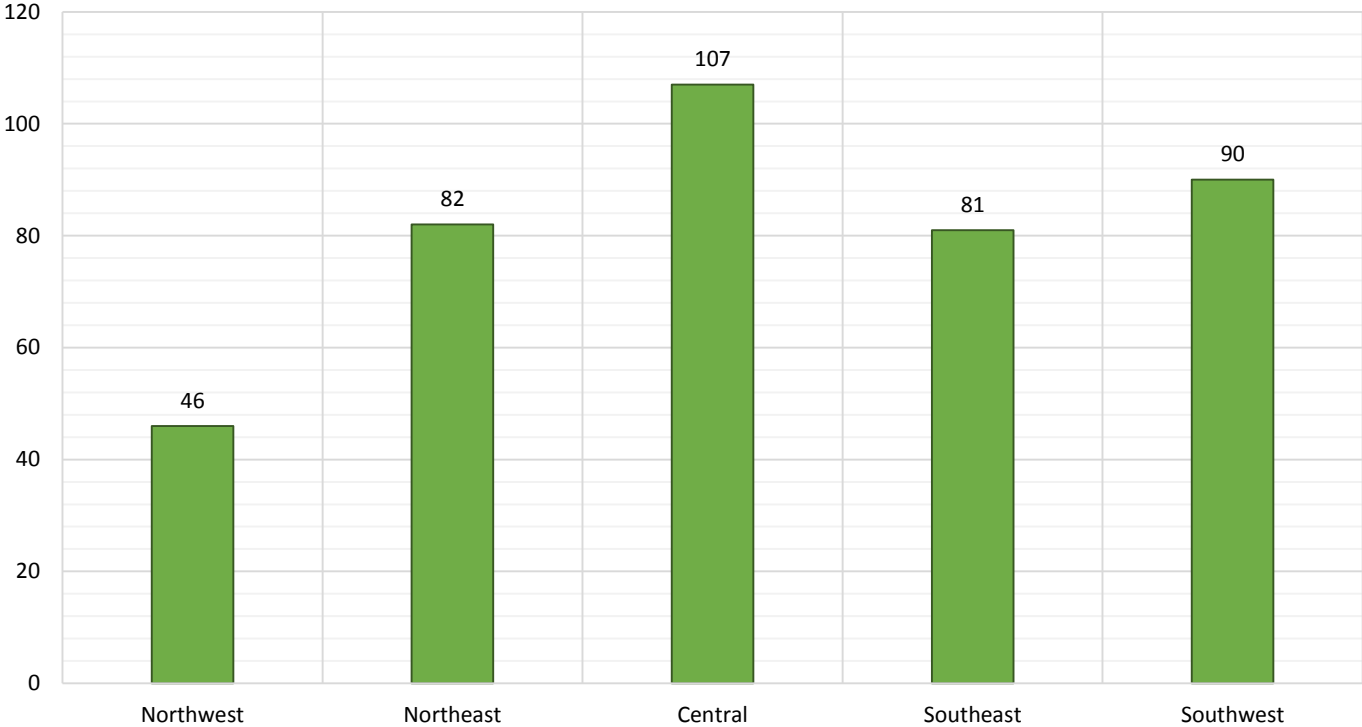
**NM Works Activity Placements on October 31, 2017
as reported by SL Start¹⁴**



Average Starting Hourly Wage of October 2017 TANF Employments as reported by SL Start¹⁵



Number of New Employments in October 2017 by Region
as reported by SL Start¹⁵
Statewide Total: 406



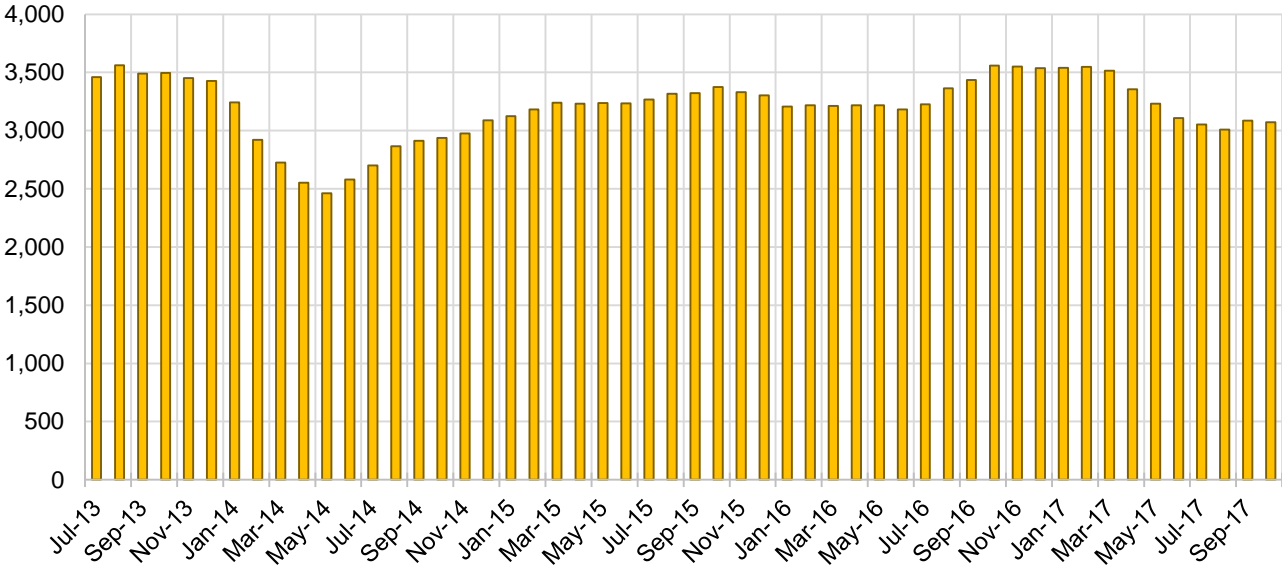
General Assistance Cases by Field Office⁶

Office	Oct-16	Sep-17	Oct-17	Percent Change	
				Oct-16- Oct-17	Sep-17- Oct-17
Chaves County ISD	148	135	131	-11.5%	-3.0%
Cibola County ISD	52	49	46	-11.5%	-6.1%
Colfax County ISD	33	25	23	-30.3%	-8.0%
Curry County ISD	81	61	62	-23.5%	1.6%
East Dona Ana County ISD	119	115	118	-0.8%	2.6%
Eddy Artesia County ISD	28	27	30	7.1%	11.1%
Eddy Carlsbad County ISD	81	69	69	-14.8%	0.0%
Grant County ISD	72	73	70	-2.8%	-4.1%
Guadalupe County ISD	14	18	18	28.6%	0.0%
Hidalgo County ISD	12	12	13	8.3%	8.3%
Lea County ISD	103	84	83	-19.4%	-1.2%
Lincoln County ISD	33	30	30	-9.1%	0.0%
Luna County ISD	58	62	58	0.0%	-6.5%
McKinley County ISD	34	43	46	35.3%	7.0%
Northeast Bernalillo County ISD	365	370	367	0.5%	-0.8%
Northwest Bernalillo County ISD	342	294	283	-17.3%	-3.7%
Otero County ISD	91	96	101	11.0%	5.2%
Quay County ISD	29	29	24	-17.2%	-17.2%
Rio Arriba County ISD	122	92	86	-29.5%	-6.5%
Roosevelt County ISD	24	20	18	-25.0%	-10.0%
San Juan County ISD	87	110	123	41.4%	11.8%
San Miguel County ISD	96	81	79	-17.7%	-2.5%
Sandoval County ISD	149	123	121	-18.8%	-1.6%
Santa Fe County ISD	220	154	151	-31.4%	-1.9%
Sierra County ISD	40	34	34	-15.0%	0.0%
Socorro County ISD	52	44	44	-15.4%	0.0%
South Dona Ana ISD	57	61	61	7.0%	0.0%
Southeast Bernalillo County ISD	246	169	172	-30.1%	1.8%
Southwest Bernalillo County ISD	271	208	211	-22.1%	1.4%
Taos County ISD	79	62	60	-24.1%	-3.2%
Torrance County ISD	78	47	47	-39.7%	0.0%
Valencia North County ISD	137	120	118	-13.9%	-1.7%
Valencia South County ISD	0	0	0	N/A	N/A
West Dona Ana County ISD	207	169	175	-15.5%	3.6%
Centralized Units	0	0	0	N/A	N/A
Statewide Total	3,560	3,086	3,072	-13.7%	-0.5%

General Assistance Cases by Region⁶

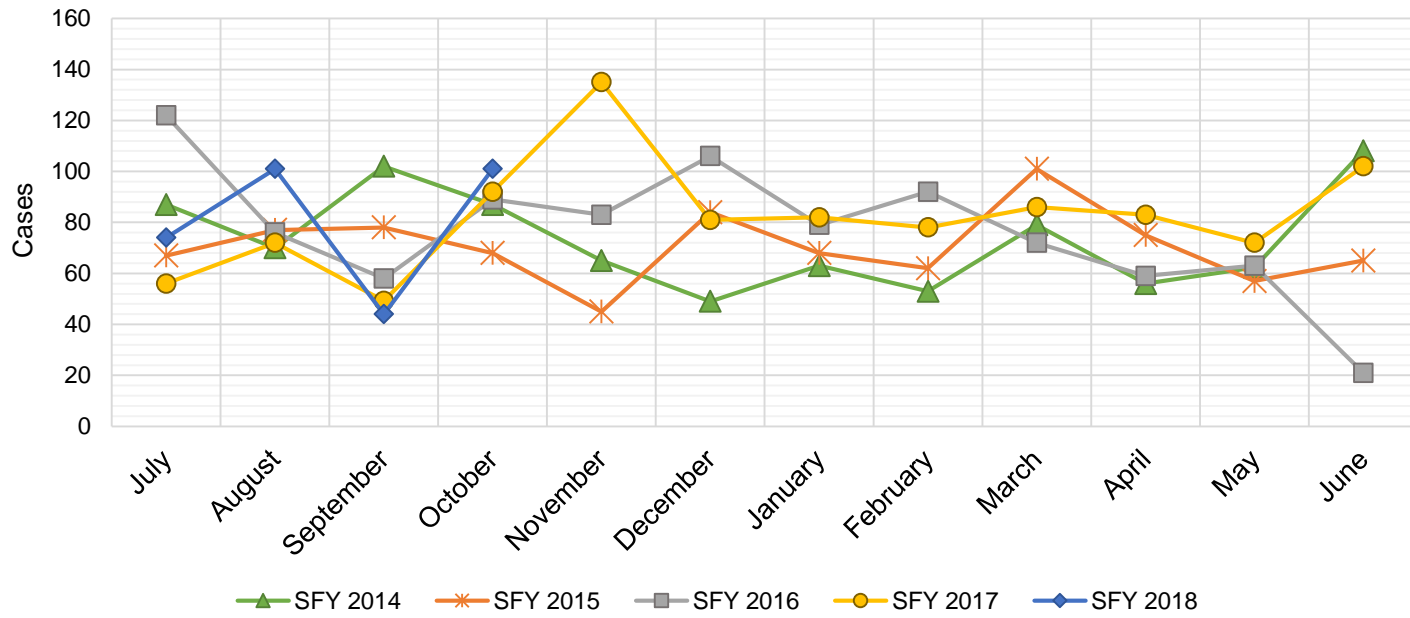
				Percent Change	
Region	Oct-16	Sep-17	Oct-17	Oct-16- Oct-17	Sep-17- Oct-17
Region 1 - NW	402	400	411	2.2%	2.8%
Region 2 - NE	742	584	562	-24.3%	-3.8%
Region 3 - Central	1,302	1,088	1,080	-17.1%	-0.7%
Region 4 - SE	498	426	423	-15.1%	-0.7%
Region 5 - SW	616	588	596	-3.2%	1.4%
Centralized Units	0	0	0	N/A	N/A
Statewide Total	3,560	3,086	3,072	-13.7%	-0.5%

General Assistance Caseload: SFY-14 to Current



General Assistance Interim Assistance Reimbursements¹⁶

SFY 2014			SFY 2015			SFY 2016			SFY 2017			SFY 2018		
	Cases	Expenditures		Cases	Expenditures		Cases	Expenditures		Cases	Expenditures		Cases	Expenditures
Jul-13	87	\$185,368	Jul-14	67	\$144,679	Jul-15	122	\$342,648	Jul-16	56	\$164,970	Jul-17	74	\$241,438
Aug-13	70	\$184,639	Aug-14	77	\$244,233	Aug-15	76	\$245,236	Aug-16	72	\$223,182	Aug-17	101	\$339,301
Sep-13	102	\$268,243	Sep-14	78	\$168,421	Sep-15	58	\$170,093	Sep-16	49	\$158,027	Sep-17	44	\$131,229
Oct-13	87	\$165,578	Oct-14	68	\$182,265	Oct-15	89	\$277,912	Oct-16	92	\$257,830	Oct-17	101	\$335,752
Nov-13	65	\$139,197	Nov-14	45	\$134,482	Nov-15	83	\$238,948	Nov-16	135	\$402,305	Nov-17		
Dec-13	49	\$147,853	Dec-14	84	\$239,926	Dec-15	106	\$388,102	Dec-16	81	\$227,569	Dec-17		
Jan-14	63	\$178,944	Jan-15	68	\$227,066	Jan-16	79	\$239,263	Jan-17	82	\$274,050	Jan-18		
Feb-14	53	\$130,352	Feb-15	62	\$159,564	Feb-16	92	\$296,332	Feb-17	78	\$227,569	Feb-18		
Mar-14	79	\$176,756	Mar-15	101	\$317,899	Mar-16	72	\$254,360	Mar-17	86	\$278,219	Mar-18		
Apr-14	56	\$155,245	Apr-15	75	\$199,038	Apr-16	59	\$208,631	Apr-17	83	\$267,187	Apr-18		
May-14	62	\$138,827	May-15	57	\$167,383	May-16	63	\$182,241	May-17	72	\$232,836	May-18		
Jun-14	108	\$241,016	Jun-15	65	\$188,159	Jun-16	21	\$51,760	Jun-17	102	\$306,228	Jun-18		
TOTAL	881	\$2,112,017	847	\$2,373,115	920	\$2,895,525	988	\$3,019,972	320	\$1,047,720				
AVERAGE	73	\$176,001	71	\$197,760	77	\$241,294	82	\$251,664	80	\$261,930				



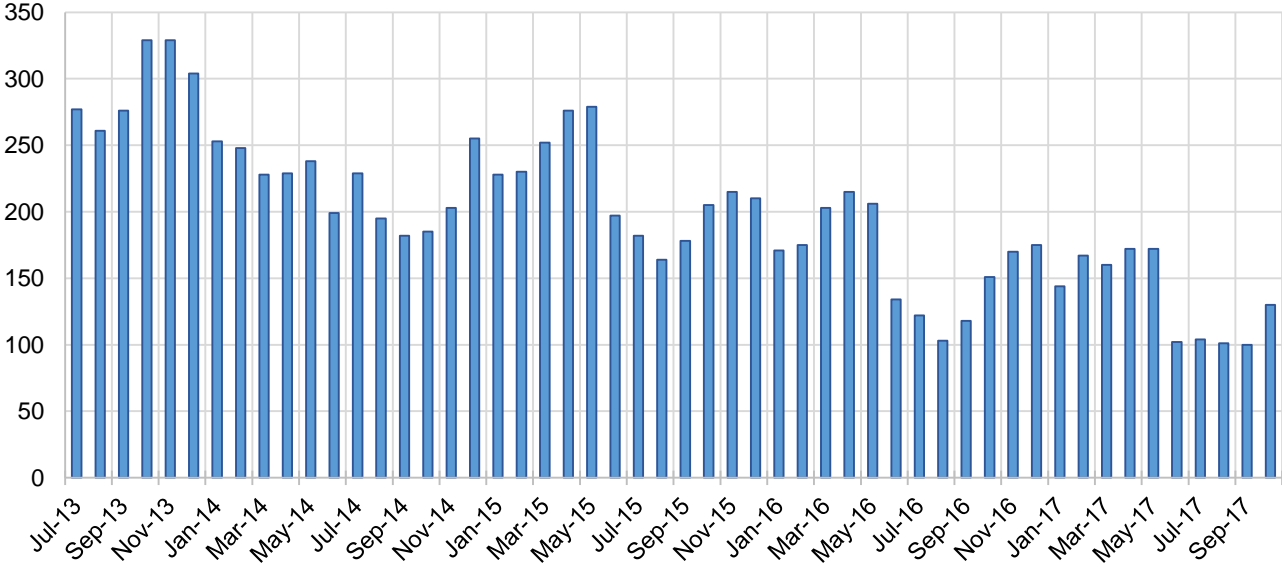
Education Works Cases by Field Office⁶

Office				Percent Change	
	Oct-16	Sep-17	Oct-17	Oct-16- Oct-17	Sep-17- Oct-17
Chaves County ISD	2	3	5	150.0%	66.7%
Cibola County ISD	2	0	0	-100.0%	N/A
Colfax County ISD	3	0	0	-100.0%	N/A
Curry County ISD	1	0	2	100.0%	N/A
East Dona Ana County ISD	5	5	5	0.0%	0.0%
Eddy Artesia County ISD	0	0	1	N/A	N/A
Eddy Carlsbad County ISD	1	0	0	-100.0%	N/A
Grant County ISD	2	7	10	400.0%	42.9%
Guadalupe County ISD	1	0	1	0.0%	N/A
Hidalgo County ISD	1	0	0	-100.0%	N/A
Lea County ISD	1	5	7	600.0%	40.0%
Lincoln County ISD	0	0	0	N/A	N/A
Luna County ISD	1	2	2	100.0%	0.0%
McKinley County ISD	0	0	0	N/A	N/A
Northeast Bernalillo County ISD	25	12	14	-44.0%	16.7%
Northwest Bernalillo County ISD	19	10	9	-52.6%	-10.0%
Otero County ISD	1	0	1	0.0%	N/A
Quay County ISD	1	0	0	-100.0%	N/A
Rio Arriba County ISD	1	3	3	200.0%	0.0%
Roosevelt County ISD	2	1	2	0.0%	100.0%
San Juan County ISD	5	3	3	-40.0%	0.0%
San Miguel County ISD	5	1	5	0.0%	400.0%
Sandoval County ISD	13	7	9	-30.8%	28.6%
Santa Fe County ISD	3	6	9	200.0%	50.0%
Sierra County ISD	0	0	0	N/A	N/A
Socorro County ISD	1	1	1	0.0%	0.0%
South Dona Ana ISD	14	15	18	28.6%	20.0%
Southeast Bernalillo County ISD	11	1	5	-54.5%	400.0%
Southwest Bernalillo County ISD	15	6	6	-60.0%	0.0%
Taos County ISD	1	2	2	100.0%	0.0%
Torrance County ISD	1	1	1	0.0%	0.0%
Valencia North County ISD	2	0	0	-100.0%	N/A
Valencia South County ISD	0	0	0	N/A	N/A
West Dona Ana County ISD	11	9	9	-18.2%	0.0%
Centralized Units	0	0	0	N/A	N/A
Statewide Total	151	100	130	-13.9%	30.0%

Education Works Cases by Region⁶

Region	Oct-16	Sep-17	Oct-17	Percent Change	
				Oct-16- Oct-17	Sep-17- Oct-17
Region 1 - NW	10	4	4	-60.0%	0.0%
Region 2 - NE	28	19	29	3.6%	52.6%
Region 3 - Central	71	30	35	-50.7%	16.7%
Region 4 - SE	7	9	17	142.9%	88.9%
Region 5 - SW	35	38	45	28.6%	18.4%
Centralized Units	0	0	0	N/A	N/A
Statewide Total	151	100	130	-13.9%	30.0%

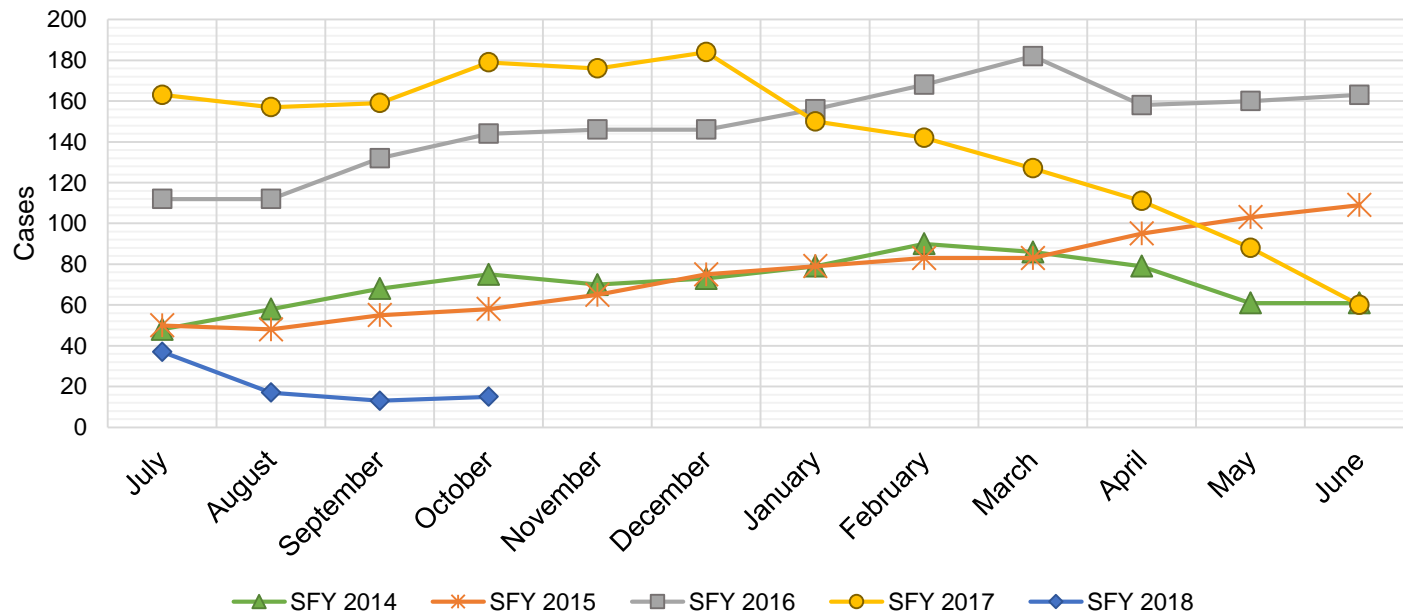
Education Works Caseload: SFY-14 to Current



Refugee Cash Assistance

SFY 2014 ¹²			SFY 2015 ^{8,12,9}			SFY 2016 ^{8,9}			SFY 2017 ^{8,9}			SFY 2018 ^{8,9}		
Cases	Expenditures		Cases	Expenditures		Cases	Expenditures		Cases	Expenditures		Cases	Expenditures	
Jul-13	48	\$12,013	Jul-14	50	\$11,679	Jul-15	112	\$27,516	Jul-16	163	\$39,756	Jul-17	37	\$9,981
Aug-13	58	\$16,129	Aug-14	48	\$11,760	Aug-15	112	\$27,438	Aug-16	157	\$40,115	Aug-17	17	\$4,704
Sep-13	68	\$19,061	Sep-14	55	\$13,094	Sep-15	132	\$31,321	Sep-16	159	\$39,359	Sep-17	13	\$3,159
Oct-13	75	\$20,962	Oct-14	58	\$13,726	Oct-15	144	\$36,153	Oct-16	179	\$41,520	Oct-17	15	\$3,543
Nov-13	70	\$21,880	Nov-14	65	\$16,461	Nov-15	146	\$36,515	Nov-16	176	\$45,434	Nov-17		
Dec-13	73	\$22,053	Dec-14	75	\$18,699	Dec-15	146	\$35,763	Dec-16	184	\$46,673	Dec-17		
Jan-14	79	\$22,670	Jan-15	79	\$19,009	Jan-16	156	\$38,686	Jan-17	150	\$38,790	Jan-18		
Feb-14	90	\$23,227	Feb-15	83	\$21,349	Feb-16	168	\$41,368	Feb-17	142	\$37,956	Feb-18		
Mar-14	86	\$21,808	Mar-15	83	\$20,730	Mar-16	182	\$45,307	Mar-17	127	\$33,066	Mar-18		
Apr-14	79	\$20,109	Apr-15	95	\$23,495	Apr-16	158	\$41,143	Apr-17	111	\$29,183	Apr-18		
May-14	61	\$15,703	May-15	103	\$25,363	May-16	160	\$38,332	May-17	88	\$23,343	May-18		
Jun-14	61	\$14,783	Jun-15	109	\$27,958	Jun-16	163	\$39,856	Jun-17	60	\$15,538	Jun-18		

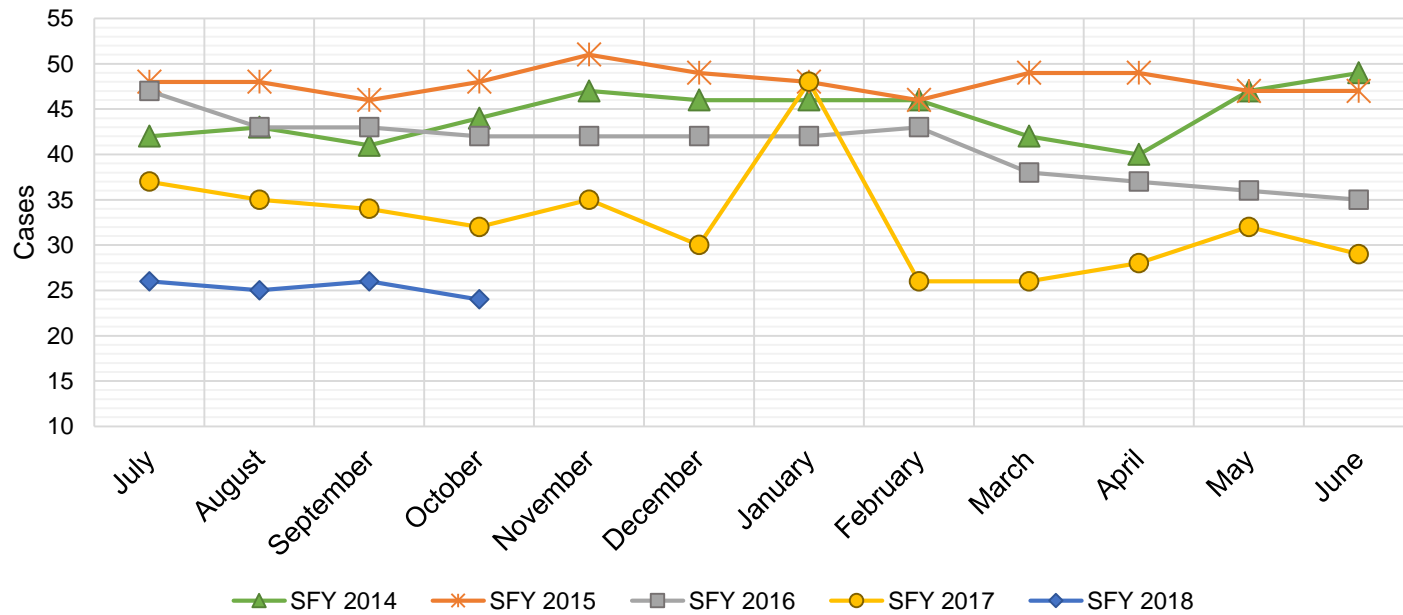
TOTAL	848	\$230,398	903	\$223,323	1,779	\$439,397	1,696	\$430,732	82	\$21,387
AVERAGE	71	\$19,200	75	\$18,610	148	\$36,616	141	\$35,894	21	\$5,347



State Supplement for Residential Care

SFY 2014 ¹²			SFY 2015 ^{12,9}			SFY 2016 ⁹			SFY 2017 ⁹			SFY 2018 ⁹		
	Cases	Expenditures		Cases	Expenditures		Cases	Expenditures		Cases	Expenditures		Cases	Expenditures
Jul-13	42	\$4,400	Jul-14	48	\$4,700	Jul-15	47	\$4,700	Jul-16	37	\$3,700	Jul-17	26	\$2,700
Aug-13	43	\$4,300	Aug-14	48	\$5,000	Aug-15	43	\$4,900	Aug-16	35	\$3,500	Aug-17	25	\$2,500
Sep-13	41	\$4,700	Sep-14	46	\$4,600	Sep-15	43	\$4,500	Sep-16	34	\$3,400	Sep-17	26	\$2,700
Oct-13	44	\$4,500	Oct-14	48	\$4,600	Oct-15	42	\$4,400	Oct-16	32	\$3,200	Oct-17	24	\$2,500
Nov-13	47	\$4,700	Nov-14	51	\$5,600	Nov-15	42	\$4,200	Nov-16	35	\$3,500	Nov-17		
Dec-13	46	\$4,600	Dec-14	49	\$5,000	Dec-15	42	\$4,200	Dec-16	30	\$3,000	Dec-17		
Jan-14	46	\$4,700	Jan-15	48	\$4,900	Jan-16	42	\$4,200	Jan-17	48	\$4,800	Jan-18		
Feb-14	46	\$4,700	Feb-15	46	\$4,800	Feb-16	43	\$4,300	Feb-17	26	\$2,600	Feb-18		
Mar-14	42	\$4,500	Mar-15	49	\$4,800	Mar-16	38	\$3,800	Mar-17	26	\$2,600	Mar-18		
Apr-14	40	\$4,200	Apr-15	49	\$5,400	Apr-16	37	\$3,700	Apr-17	28	\$2,800	Apr-18		
May-14	47	\$5,000	May-15	47	\$4,700	May-16	36	\$3,600	May-17	32	\$3,200	May-18		
Jun-14	49	\$4,900	Jun-15	47	\$5,300	Jun-16	35	\$3,500	Jun-17	29	\$2,900	Jun-18		

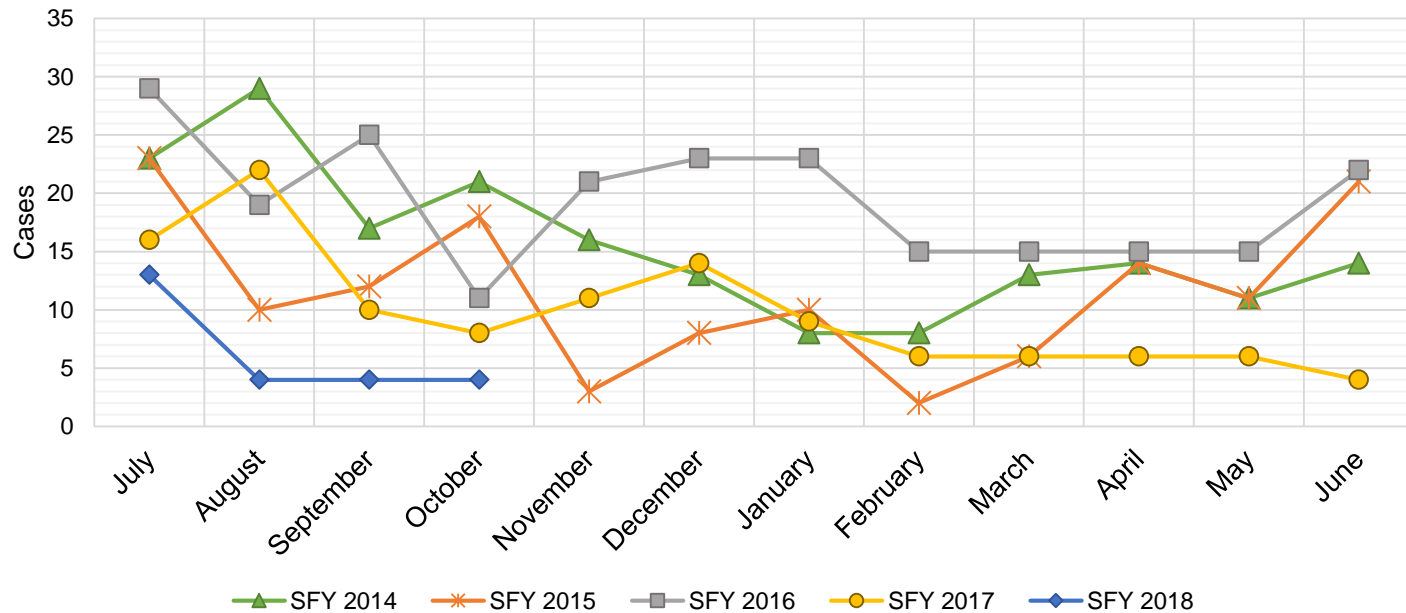
TOTAL	533	\$55,200	576	\$59,400	490	\$50,000	392	\$39,200	101	\$10,400
AVERAGE	44	\$4,600	48	\$4,950	41	\$4,167	33	\$3,267	25	\$2,600



TANF Diversion Payments

SFY 2014 ¹²			SFY 2015 ^{12,9}			SFY 2016 ⁹			SFY 2017 ⁹			SFY 2018 ⁹		
	Cases	Expenditures		Cases	Expenditures		Cases	Expenditures		Cases	Expenditures		Cases	Expenditures
Jul-13	23	\$46,500	Jul-14	23	\$48,098	Jul-15	29	\$62,074	Jul-16	16	\$30,843	Jul-17	13	\$26,500
Aug-13	29	\$54,500	Aug-14	10	\$21,810	Aug-15	19	\$33,584	Aug-16	22	\$42,731	Aug-17	4	\$12,000
Sep-13	17	\$36,500	Sep-14	12	\$23,500	Sep-15	25	\$47,977	Sep-16	10	\$21,000	Sep-17	4	\$4,000
Oct-13	21	\$42,500	Oct-14	18	\$30,589	Oct-15	11	\$20,500	Oct-16	8	\$16,744	Oct-17	4	\$16,000
Nov-13	16	\$28,953	Nov-14	3	\$4,411	Nov-15	21	\$45,500	Nov-16	11	\$24,500	Nov-17		
Dec-13	13	\$25,500	Dec-14	8	\$14,634	Dec-15	23	\$45,389	Dec-16	14	\$26,611	Dec-17		
Jan-14	8	\$16,000	Jan-15	10	\$18,000	Jan-16	23	\$41,874	Jan-17	9	\$18,500	Jan-18		
Feb-14	8	\$16,994	Feb-15	2	\$5,500	Feb-16	15	\$28,500	Feb-17	6	\$12,000	Feb-18		
Mar-14	13	\$27,396	Mar-15	6	\$12,000	Mar-16	15	\$27,008	Mar-17	6	\$11,000	Mar-18		
Apr-14	14	\$28,000	Apr-15	14	\$26,000	Apr-16	15	\$31,389	Apr-17	6	\$12,000	Apr-18		
May-14	11	\$20,500	May-15	11	\$21,500	May-16	15	\$31,916	May-17	6	\$11,500	May-18		
Jun-14	14	\$29,911	Jun-15	21	\$40,039	Jun-16	22	\$43,000	Jun-17	4	\$13,500	Jun-18		

TOTAL	187	\$373,254	138	\$266,081	233	\$458,711	118	\$240,929	25	\$58,500
AVERAGE	16	\$31,105	12	\$22,173	19	\$38,226	10	\$20,077	6	\$14,625

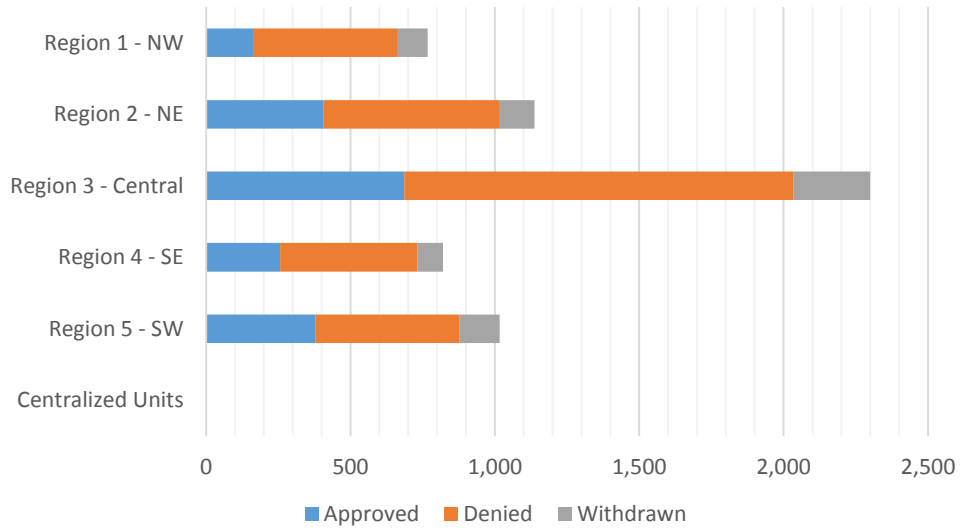


Cash Assistance Applications by Field Office^{4,11}
October 2017

Office	Approved	Denied	Withdrawn	Total Cases Processed
Chaves County ISD	82	111	25	218
Cibola County ISD	24	40	11	75
Colfax County ISD	11	22	7	40
Curry County ISD	33	95	14	142
East Dona Ana County ISD	77	109	47	233
Eddy Artesia County ISD	31	67	7	105
Eddy Carlsbad County ISD	16	60	16	92
Grant County ISD	34	37	7	78
Guadalupe County ISD	6	7	2	15
Hidalgo County ISD	0	0	0	0
Lea County ISD	46	69	15	130
Lincoln County ISD	17	34	4	55
Luna County ISD	23	32	7	62
McKinley County ISD	4	58	35	97
Northeast Bernalillo County ISD	107	279	99	485
Northwest Bernalillo County ISD	74	185	76	335
Otero County ISD	44	61	21	126
Quay County ISD	16	14	7	37
Rio Arriba County ISD	59	68	25	152
Roosevelt County ISD	31	40	8	79
San Juan County ISD	47	255	24	326
San Miguel County ISD	30	51	16	97
Sandoval County ISD	186	265	34	485
Santa Fe County ISD	68	155	27	250
Sierra County ISD	8	11	7	26
Socorro County ISD	13	23	4	40
South Dona Ana ISD	102	83	19	204
Southeast Bernalillo County ISD	79	145	36	260
Southwest Bernalillo County ISD	408	675	44	1,127
Taos County ISD	30	26	6	62
Torrance County ISD	18	65	10	93
Valencia North County ISD	65	96	22	183
Valencia South County ISD	5	15	0	20
West Dona Ana County ISD	99	177	38	314
Centralized Units	0	0	0	0
Statewide Total	1,893	3,430	720	6,043

Cash Assistance Applications by Region^{4,11}
October 2017

	Approved	Denied	Withdrawn	Total Cases Processed
Region				
Region 1 - NW	166	498	103	767
Region 2 - NE	406	608	124	1,138
Region 3 - Central	686	1,349	265	2,300
Region 4 - SE	256	476	89	821
Region 5 - SW	379	499	139	1,017
Centralized Units	0	0	0	0
Statewide Total	1,893	3,430	720	6,043



**Children Youth and Families Department
Children Receiving Child Care Assistance Subsidies By County**

County	Oct 2016	Nov 2016	Dec 2016	Jan 2017	Feb 2017	Mar 2017	Apr 2017	May 2017	June 2017	July 2017	Aug 2017	Sep 2017	Oct 2017	Change Fr. Last Year Cases	Percent
Bernalillo	7,030	7,092	7,134	7,043	7,068	7,170	7,385	7,519	7,895	7,547	7,616	8,154	7,848	818	11.6%
Catron	0	0	0	0	0	0	0	0	0	0	0	0	0	0	0.0%
Chaves	737	733	744	744	756	759	768	796	860	826	821	889	884	147	19.9%
Cibola	269	272	269	271	284	282	294	299	305	293	294	311	304	35	13.0%
Colfax	50	49	47	42	40	41	38	39	46	46	41	44	41	-9	-18.0%
Curry	361	384	394	413	398	398	437	445	480	486	459	422	446	85	23.5%
De Baca	12	11	11	11	10	12	13	14	14	12	11	11	9	-3	-25.0%
Dona Ana	3,915	4,005	3,976	4,003	4,047	4,084	4,217	4,309	4,499	4,509	4,473	4,693	4,585	670	17.1%
Eddy	265	263	277	271	275	283	294	301	306	292	287	313	297	32	12.1%
Grant	152	152	151	142	135	142	153	159	161	134	114	164	161	9	5.9%
Guadalupe	12	11	15	16	16	17	17	16	16	16	16	15	16	4	33.3%
Harding	0	0	0	0	0	0	0	0	0	0	0	0	0	0	0.0%
Hidalgo	28	33	34	35	35	35	35	39	40	37	37	39	39	11	39.3%
Lea	702	731	722	698	715	729	748	781	818	837	856	954	909	207	29.5%
Lincoln	129	130	135	132	139	135	141	136	147	146	145	150	147	18	14.0%
Los Alamos	7	14	15	16	15	13	15	16	16	17	16	19	18	11	157.1%
Luna	163	173	149	159	154	159	164	177	188	165	176	177	177	14	8.6%
McKinley	163	156	153	159	164	171	182	170	171	145	136	161	165	2	1.2%
Mora	19	19	20	18	20	20	21	21	21	18	18	19	18	-1	-5.3%
Otero	472	449	450	440	442	416	481	498	532	500	491	530	525	53	11.2%
Out of State	5	11	10	11	12	14	12	11	10	14	11	12	14	9	180.0%
Quay	40	36	34	33	38	40	38	35	39	35	36	39	35	-5	-12.5%
Rio Arriba	132	137	145	135	147	144	137	140	149	144	145	159	163	31	23.5%
Roosevelt	122	132	135	124	120	125	123	118	134	123	125	137	120	-2	-1.6%
San Juan	923	926	928	919	911	911	946	956	997	979	960	1,132	1,050	127	13.8%
San Miguel	395	387	375	371	374	373	366	367	382	366	356	362	368	-27	-6.8%
Sandoval	859	868	870	880	852	873	878	890	938	932	948	974	859	0	0.0%
Santa Fe	461	469	478	472	487	477	490	499	536	534	520	580	554	93	20.2%
Sierra	63	59	46	51	50	52	52	58	69	74	76	79	86	23	36.5%
Socorro	59	59	58	65	62	61	59	59	58	56	63	63	68	9	15.3%
Taos	115	109	114	116	114	112	118	120	127	132	137	145	139	24	20.9%
Torrance	80	82	77	79	83	87	91	96	101	107	117	106	99	19	23.8%
Union	5	5	5	5	5	5	5	4	4	5	5	5	4	-1	-20.0%
Valencia	593	608	602	593	585	583	629	658	678	642	677	714	723	130	21.9%
Totals	18,338	18,565	18,573	18,467	18,553	18,723	19,347	19,746	20,737	20,169	20,183	21,572	20,871	2,533	13.8%

CHILDREN YOUTH AND FAMILIES DEPARTMENT CHILD CARE ASSISTANCE ELIGIBILITY PROGRAMS

MONTH	NOV'16	DEC'16	JAN'17	FEB'17	MAR'17	APR'17	MAY'17	JUNE'17	JULY'17	AUG'17	SEP'17	SEP'17
TANF (Child Care Priority 1 Clients)												
CLIENTS	1,801	1,829	1,797	1,930	1,994	2,047	2,121	2,300	2,302	2,353	2,455	2,419
COST	\$920,189	\$936,139	\$914,933	\$1,005,906	\$1,096,473	\$1,148,841	\$1,186,719	\$1,271,336	\$1,323,182	\$1,381,202	\$1,364,956	\$1,423,748
TANF AVERAGE COST	\$511	\$512	\$509	\$521	\$550	\$561	\$560	\$553	\$575	\$587	\$556	\$589
TRANSITION OFF TANF (Child Care Priority 2 Clients)												
CLIENTS	193	212	202	212	197	202	205	213	197	189	179	181
COST	\$90,646	\$101,388	\$95,662	\$102,062	\$102,582	\$101,314	\$104,115	\$111,219	\$106,835	\$103,813	\$93,119	\$96,629
TRAN OFF TANF AVG COST	\$470	\$478	\$474	\$481	\$521	\$502	\$508	\$522	\$542	\$549	\$520	\$534
TANF ELIGIBLE (Child Care Priority 1B Clients at or below 100% of the Federal Poverty Level)												
CLIENTS	7,649	7,614	7,538	7,420	7,442	7,819	8,075	8,472	8,193	8,254	9,064	8,899
COST	\$3,824,118	\$3,904,245	\$3,557,568	\$3,662,965	\$3,957,431	\$4,194,223	\$4,302,207	\$4,448,742	\$4,521,900	\$4,657,974	\$4,755,691	\$5,021,574
TANF ELIGIBLE AVG COST	\$500	\$513	\$472	\$494	\$532	\$536	\$533	\$525	\$552	\$564	\$525	\$564
INCOME ELIGIBLE (Child Care Priority 3, and Priority 4 Clients)												
CLIENTS	7,569	7,539	7,527	7,514	7,559	7,612	7,632	7,832	7,426	7,337	7,749	7,464
COST	\$3,404,386	\$3,460,624	\$3,294,431	\$3,386,741	\$3,683,902	\$3,733,797	\$3,757,012	\$3,843,887	\$3,805,939	\$3,838,152	\$3,779,202	\$3,760,398
INCOME ELIG AVG COST	\$450	\$459	\$438	\$451	\$487	\$491	\$492	\$491	\$513	\$523	\$488	\$504
AT-RISK CHILD PROTECTIVE SERVICES CHILD CARE PILOT (Priority 5 Clients)												
CLIENTS	378	397	431	518	553	679	733	881	1,021	1,073	1,152	1,032
COST	\$232,406	\$257,933	\$266,739	\$305,785	\$335,795	\$396,799	\$449,007	\$535,980	\$622,872	\$686,919	\$723,334	\$684,194
CPS AVG COST	\$615	\$650	\$619	\$590	\$607	\$584	\$613	\$608	\$610	\$640	\$628	\$663
CHILD PROTECTIVE SERVICES (Child Care CPS Clients)												
CLIENTS	975	982	972	959	978	988	980	1,039	1,030	977	973	876
COST	\$600,010	\$579,310	\$567,980	\$559,627	\$607,288	\$652,529	\$627,325	\$649,417	\$652,471	\$663,134	\$623,416	\$567,608
CPS AVG COST	\$615	\$590	\$584	\$584	\$621	\$660	\$640	\$625	\$633	\$679	\$641	\$648
GRAND TOTAL - ALL CHILD CARE PROGRAMS												
CLIENTS	18,565	18,573	18,467	18,553	18,723	19,347	19,746	20,737	20,169	20,183	21,572	20,871
COST	\$9,071,755	\$9,239,639	\$8,697,313	\$9,023,086	\$9,783,471	\$10,227,503	\$10,426,385	\$10,860,581	\$11,033,199	\$11,331,194	\$11,339,719	\$11,554,151
ALL PROGRAMS AVG COST	\$489	\$497	\$471	\$486	\$523	\$529	\$528	\$524	\$547	\$561	\$526	\$554

Income Eligibility Guidelines: October 1, 2017 - September 30, 2018

Federal Poverty Guidelines (FPG) Monthly Income Standards

Supplemental Nutrition Program (SNAP)					
Household Size	100% FPG Net Income	130% FPG Gross Income	165% FPG Gross Income for Categorical Eligibility	Maximum SNAP Monthly Allotment	LIHEAP 150% FPG
1	\$1,005	\$1,307	\$1,659	\$192	\$1,508
2	\$1,354	\$1,760	\$2,233	\$352	\$2,031
3	\$1,702	\$2,213	\$2,808	\$504	\$2,553
4	\$2,050	\$2,665	\$3,383	\$640	\$3,075
5	\$2,399	\$3,118	\$3,958	\$760	\$3,599
6	\$2,747	\$3,571	\$4,532	\$913	\$4,121
7	\$3,095	\$4,024	\$5,107	\$1,009	\$4,643
8	\$3,444	\$4,477	\$5,682	\$1,153	\$5,166
+1	+\$349	+\$453	+\$575	+\$144	+\$523
Minimum Allotment of \$15 effective from 10/1/2017 - 9/30/2018					
DEDUCTIONS: Standard Deduction: For HH size 1-3 = \$160; 4 = \$170; 5 = \$199; 6 or more = \$228; Excess Shelter Deduction Limit: \$535; Heating and Cooling Standard Utility Allowance: \$320 (HCSUA) – Limited Utility Allowance: \$127 (LUA); Telephone Standard: \$42; Dependent Care: Actual Amount (No Limit); Earned Income Deduction: 20%; Homeless Shelter Standard: \$143					

CASH Assistance & Support Services					
Household Size	Federal Poverty Guidelines (FPG) Monthly Income Standards			Maximum Monthly Benefit	
	100% FPG Net Income	85% FPG Gross Limit	NM Works Cash Net Income	Maximum Monthly Benefit	General Assistance
1	\$1,005	\$854	\$266	\$244	\$245
2	\$1,354	\$1,151	\$357	\$327	\$329
3	\$1,702	\$1,447	\$447	\$409	\$412
4	\$2,050	\$1,743	\$539	\$493	\$496
5	\$2,399	\$2,039	\$630	\$576	\$580
6	\$2,747	\$2,335	\$721	\$659	\$664
7	\$3,095	\$2,631	\$812	\$743	\$748
8	\$3,444	\$2,927	\$922	\$843	\$849
+1	+\$349	+\$296	+\$91	+\$83	+\$84
Deductions- Dependent Care: For a child under age 2 = \$200; For a child age 2 and over = \$175. Work Incentives- Earned Income Disregard: Single parent = \$125 & ½ remainder; Two parent = \$225 & ½ remainder.					

Medical Assistance Division					
Federal Poverty Guidelines New Mexico Affordable Care Eligibility Groups Effective April 01, 2017 thru March 31, 2018 Monthly Guidelines					
HH SIZE	PERCENT OF POVERTY				
	138%	190%	240%	250%	300%
1	\$1,387	\$1,910	\$2,412	\$2,513	\$3,015
2	\$1,868	\$2,572	\$3,248	\$3,384	\$4,060
3	\$2,349	\$3,234	\$4,084	\$4,255	\$5,105
4	\$2,829	\$3,895	\$4,920	\$5,125	\$6,150
5	\$3,310	\$4,557	\$5,756	\$5,996	\$7,195
6	\$3,791	\$5,219	\$6,592	\$6,867	\$8,240
7	\$4,272	\$5,881	\$7,428	\$7,738	\$9,285
8	\$4,752	\$6,543	\$8,264	\$8,609	\$10,330
138% Adult Expansion, 190% Children ages 6 to 19 (Medicaid), 240% Children ages 0 to 6 (Medicaid); ages 6 to 19 (CHIP), 250% Pregnancy Related Services Only, 300% Children 0 to 6 (CHIP)					

Medical Assistance Division					
Federal Poverty Guidelines New Mexico Affordable Care Eligibility Groups Effective April 01, 2017 thru March 31, 2018 Annual Guidelines					
HH SIZE	PERCENT OF POVERTY				
	138%	190%	240%	250%	300%
1	\$16,644	\$22,920	\$28,944	\$30,156	\$36,180
2	\$22,416	\$30,864	\$38,976	\$40,608	\$48,720
3	\$28,188	\$38,808	\$49,008	\$51,060	\$61,260
4	\$33,948	\$46,740	\$59,040	\$61,500	\$73,800
5	\$39,720	\$54,684	\$69,072	\$71,952	\$86,340
6	\$45,492	\$62,628	\$79,104	\$82,404	\$98,880
7	\$51,264	\$70,572	\$89,136	\$92,856	\$111,420
8	\$57,024	\$78,516	\$99,168	\$103,308	\$123,960
138% Adult Expansion, 190% Children ages 6 to 19 (Medicaid), 240% Children ages 0 to 6 (Medicaid); ages 6 to 19 (CHIP), 250% Pregnancy Related Services Only, 300% Children 0 to 6 (CHIP)					

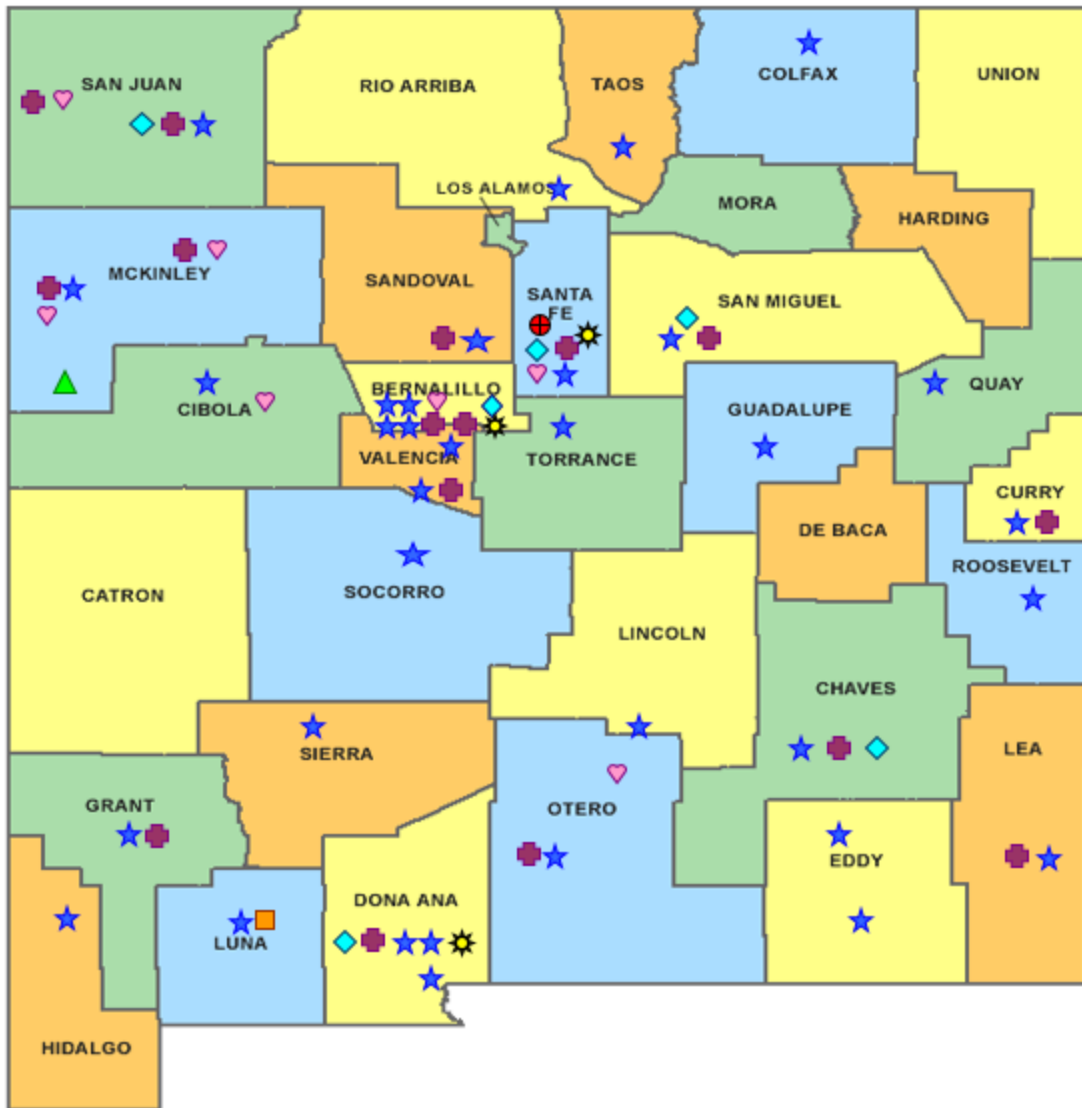
References

- ¹ *Medicaid Expenditures* (Omnicaid, Medicare Buy-Ins, Lump Sum Payments), Received on November 20, 2017
- ² *ASPEN Business Intelligence Tool: Eligibility*, Retrieved on November 17, 2017
- ³ New Mexico Human Services Department, *Medicaid Eligibility Reports*, Retrieved from <http://www.hsd.state.nm.us/LookingForInformation/medicaid-eligibility.aspx> on November 16, 2017
- ⁴ *ASPEN Business Intelligence Tool: Application Tracking*, Retrieved on November 17, 2017
- ⁵ Fidelity Information Services, *EBT Daily Statistical Report* (for 10/30/2016, 09/30/2017, and 10/31/2017), Retrieved on November 16, 2017
- ⁶ *ASPEN Report DQ-180: Length of Time Cases are Open* (for 10/01/2016-10/31/2016, 09/01/2017-09/30/2017, 10/01/2017-10/31/2017), Retrieved on November 16, 2017
- ⁷ *ASPEN Report EY-180: Individual Demographics by State and Age* (for 10/01/2016-10/31/2016, 09/01/2017-09/30/2017, 10/01/2017-10/31/2017), Retrieved on November 16, 2017
- ⁸ *ASPEN Business Intelligence Tool: Benefit Issuance*, Retrieved on November 17, 2017
- ⁹ Fidelity Information Services, *EBT Daily Statistical Reports* (Month End), Retrieved on November 16, 2017
- ¹⁰ *ASPEN Report EY-180R: Individual Demographics by State, Race, Ethnicity and Gender* (for 09/01/2017-09/30/2017), Retrieved on November 16, 2017
- ¹¹ SQL Query from ASPEN, completed November 18, 2017 (Note: Denial Reasons)
- ¹² JP Morgan, *New Mexico – NM EBT System- Monthly Benefit Draw Down Totals*
- ¹³ *ASPEN Business Intelligence Tool: Application Tracking* (w/Parameters: SNAP, Expedite, Approved), Retrieved on November 17, 2017
- ¹⁴ SL Start, *As of Today Report 10.31.17*, received November 17, 2017
- ¹⁵ SL Start, *Statewide Employment Report 10.01.17*, November 17, 2017
- ¹⁶ *SSIAR Payments*, Received November 2, 2017
- ¹⁷ Children, Youth, and Families Department, *Children Receiving Child Care Assistance Subsidies by County*, Received on November 13, 2017

¹⁸ Children, Youth, and Families Department, *Child Care Assistance Eligibility Programs*, Received on November 13, 2017









¹⁹ EDG is defined as an Eligibility Determination Group

²⁰SQL Query from ASPEN, completed November 18, 2017



HUMAN SERVICES DEPARTMENT

New Mexico Human Services Department
Field Offices

-  Central Office (1)
-  Income Support Division County Office (35)
-  Income Support Division Satellite Office (2)
-  Child Support Enforcement Regional Office (16)
-  Child Support Enforcement Satellite Office (1)
-  Quality Control Office (8)
-  Indian Health Services (7)
-  Hospital Site (3)

For a complete listing of field offices and other government and community resources:
http://www.hsd.state.nm.us/LookingForAssistance/Field_Offices_1.aspx