



# Monthly Statistical Report

## November 2017

There were 852,374 individuals that received Medicaid in November 2017, a 4.1% decrease from one year ago. The count of Medicaid recipients has decreased by 2,568, or 0.3%, since last month.

The SNAP caseload in November 2017 was 221,745, a 14.7% decrease from one year ago. The SNAP caseload has decreased by 131 cases, or 0.1%, since last month.

The TANF caseload was 11,915 in November 2017, a decrease of 4.9% from November 2016. The TANF caseload had 14 more cases compared to October 2017, an increase of 0.1%.

The caseload for General Assistance was 3,044 in November 2017, a decrease of 14.3% from one year ago and a decrease of 28 cases from last month.

Susana Martinez, Governor  
Brent Earnest, Cabinet Secretary

| <b>Contents</b>               | <b>Page</b> |
|-------------------------------|-------------|
| Summary                       | 3-5         |
| Medicaid                      | 6-18        |
| SNAP                          | 19-37       |
| Cash Assistance               | 38-52       |
| Child Care Assistance         | 53-54       |
| Income Eligibility Guidelines | 55-56       |

**Regions are reported as follows:**

| <b>Region 1</b> |            |           |
|-----------------|------------|-----------|
| Catron          | San Juan   | Valencia  |
| Cibola          | Sierra     |           |
| McKinley        | Socorro    |           |
| <b>Region 2</b> |            |           |
| Colfax          | Mora       | Santa Fe  |
| De Baca         | Quay       | Taos      |
| Guadalupe       | Rio Arriba | Union     |
| Harding         | Sandoval   |           |
| Los Alamos      | San Miguel |           |
| <b>Region 3</b> |            |           |
| Bernalillo      | Torrance   |           |
| <b>Region 4</b> |            |           |
| Chaves          | Eddy       | Lincoln   |
| Curry           | Lea        | Roosevelt |
| <b>Region 5</b> |            |           |
| Dona Ana        | Hidalgo    | Otero     |
| Grant           | Luna       |           |

***The Mission of the Human Services Department***

*To reduce the impact of poverty on people living in New Mexico by providing support services that help families break the cycle of dependency on public assistance*

Sean Pearson, Deputy Secretary  
Michael Nelson, Deputy Secretary

Prepared by Income Support Division  
PO Box 2348  
Santa Fe, NM 87504-2348  
505-827-7250

Mary Brogdon, Director  
Vida Tapia-Sanchez, Deputy Director  
Shanita Harrison, Deputy Director

<http://www.hsd.state.nm.us/monthly-statistical-reports.aspx>

# Program Summary for November 2017

## Medicaid

|                                    | Nov-16        | Oct-17        | Nov-17        | Percent Change    |                   |
|------------------------------------|---------------|---------------|---------------|-------------------|-------------------|
|                                    |               |               |               | Nov-16-<br>Nov-17 | Oct-17-<br>Nov-17 |
| <b>Expenditures<sup>1</sup></b>    | \$430,122,327 | \$439,315,207 | \$427,736,768 | -0.6%             | -2.6%             |
| <b>Cases<sup>2</sup></b>           | 514,186       | 491,938       | 489,917       | -4.7%             | -0.4%             |
| <b>Expenditures/Case</b>           | \$837         | \$893         | \$873         | 4.4%              | -2.2%             |
| <b>Recipients<sup>3</sup></b>      | 888,447       | 854,942       | 852,374       | -4.1%             | -0.3%             |
| <i>Adults</i>                      | 501,366       | 484,570       | 483,085       | -3.6%             | -0.3%             |
| <i>Children</i>                    | 387,081       | 370,372       | 369,289       | -4.6%             | -0.3%             |
| <b>Recipients /Case</b>            | 1.73          | 1.74          | 1.74          | 0.7%              | 0.1%              |
| <b>Cases Processed<sup>4</sup></b> | 10,445        | 15,252        | 15,497        | 48.4%             | 1.6%              |
| <i>Approvals<sup>4</sup></i>       | 7,960         | 11,686        | 11,730        | 47.4%             | 0.4%              |

## Supplemental Nutrition Assistance Program (SNAP)

|                                    | Nov-16       | Oct-17       | Nov-17       | Percent Change    |                   |
|------------------------------------|--------------|--------------|--------------|-------------------|-------------------|
|                                    |              |              |              | Nov-16-<br>Nov-17 | Oct-17-<br>Nov-17 |
| <b>Expenditures<sup>5</sup></b>    | \$57,143,080 | \$54,304,196 | \$53,623,068 | -6.2%             | -1.3%             |
| <b>Cases<sup>6</sup></b>           | 259,820      | 221,876      | 221,745      | -14.7%            | -0.1%             |
| <b>Expenditures/Case</b>           | \$220        | \$245        | \$242        | 10.0%             | -1.2%             |
| <b>Recipients<sup>7</sup></b>      | 531,482      | 462,720      | 461,268      | -13.2%            | -0.3%             |
| <i>Adults</i>                      | 309,517      | 264,188      | 263,750      | -14.8%            | -0.2%             |
| <i>Children</i>                    | 221,965      | 198,532      | 197,518      | -11.0%            | -0.5%             |
| <b>Recipients /Case</b>            | 2.05         | 2.09         | 2.08         | 1.7%              | -0.3%             |
| <b>Cases Processed<sup>4</sup></b> | 16,797       | 21,023       | 19,862       | 18.2%             | -5.5%             |
| <i>Approvals<sup>4</sup></i>       | 12,912       | 16,829       | 16,390       | 26.9%             | -2.6%             |

## Cash Assistance Programs

|                                    | Nov-16      | Oct-17      | Nov-17      | Percent Change    |                   |
|------------------------------------|-------------|-------------|-------------|-------------------|-------------------|
|                                    |             |             |             | Nov-16-<br>Nov-17 | Oct-17-<br>Nov-17 |
| <b>Expenditures<sup>5</sup></b>    | \$4,711,743 | \$4,303,930 | \$4,299,165 | -8.8%             | -0.1%             |
| <b>Cases<sup>6</sup></b>           | 16,457      | 15,142      | 15,138      | -8.0%             | 0.0%              |
| <b>Expenditures/Case</b>           | \$286       | \$284       | \$284       | -0.8%             | -0.1%             |
| <b>Recipients<sup>7</sup></b>      | 37,538      | 34,834      | 34,941      | -6.9%             | 0.3%              |
| <i>Adults</i>                      | 12,602      | 11,260      | 11,329      | -10.1%            | 0.6%              |
| <i>Children</i>                    | 24,936      | 23,574      | 23,612      | -5.3%             | 0.2%              |
| <b>Recipients /Case</b>            | 2.28        | 2.30        | 2.31        | 1.2%              | 0.3%              |
| <b>Cases Processed<sup>4</sup></b> | 4,601       | 6,043       | 5,690       | 23.7%             | -5.8%             |
| <i>Approvals<sup>4</sup></i>       | 1,718       | 1,893       | 1,716       | -0.1%             | -9.4%             |

## Low Income Home Energy Assistance Program (LIHEAP)

|                                    | Nov-16      | Oct-17      | Nov-17      | Percent Change    |                   |
|------------------------------------|-------------|-------------|-------------|-------------------|-------------------|
|                                    |             |             |             | Nov-16-<br>Nov-17 | Oct-17-<br>Nov-17 |
| <b>Expenditures<sup>8</sup></b>    | \$2,565,111 | \$3,805,188 | \$2,523,278 | -1.6%             | -33.7%            |
| <b>Cases<sup>8</sup></b>           | 9,409       | 13,821      | 9,362       | -0.5%             | -32.3%            |
| <b>Expenditures/Case</b>           | \$273       | \$275       | \$270       | -1.1%             | -2.1%             |
| <b>Recipients<sup>8</sup></b>      | 21,342      | 30,314      | 21,108      | -1.1%             | -30.4%            |
| <i>Adults</i>                      | 12,384      | 17,877      | 12,213      | -1.4%             | -31.7%            |
| <i>Children</i>                    | 8,958       | 12,437      | 8,895       | -0.7%             | -28.5%            |
| <b>Recipients /Case</b>            | 2.27        | 2.19        | 2.25        | -0.6%             | 2.8%              |
| <b>Cases Processed<sup>4</sup></b> | 10,330      | 14,489      | 11,606      | 12.4%             | -19.9%            |
| <i>Approvals<sup>4</sup></i>       | 9,115       | 12,726      | 9,593       | 5.2%              | -24.6%            |

# Cash Assistance Summary for November 2017

## Temporary Assistance for Needy Families (TANF)

|                           | Percent Change |             |             |                   |                   |
|---------------------------|----------------|-------------|-------------|-------------------|-------------------|
|                           | Nov-16         | Oct-17      | Nov-17      | Nov-16-<br>Nov-17 | Oct-17-<br>Nov-17 |
| Expenditures <sup>5</sup> | \$3,707,224    | \$3,489,355 | \$3,486,390 | -6.0%             | -0.1%             |
| Cases <sup>6</sup>        | 12,526         | 11,901      | 11,915      | -4.9%             | 0.1%              |
| Expenditures/Case         | \$296          | \$293       | \$293       | -1.1%             | -0.2%             |
| Recipients <sup>7</sup>   | 33,158         | 31,338      | 31,410      | -5.3%             | 0.2%              |
| <i>Adults</i>             | 8,793          | 8,239       | 8,283       | -5.8%             | 0.5%              |
| <i>Children</i>           | 24,365         | 23,099      | 23,127      | -5.1%             | 0.1%              |
| Approvals <sup>4</sup>    | 1,332          | 1,547       | 1,369       | 2.8%              | -11.5%            |

## General Assistance (GA)

|                           | Percent Change |           |           |                   |                   |
|---------------------------|----------------|-----------|-----------|-------------------|-------------------|
|                           | Nov-16         | Oct-17    | Nov-17    | Nov-16-<br>Nov-17 | Oct-17-<br>Nov-17 |
| Expenditures <sup>5</sup> | \$894,295      | \$762,823 | \$757,191 | -15.3%            | -0.7%             |
| Cases <sup>6</sup>        | 3,550          | 3,072     | 3,044     | -14.3%            | -0.9%             |
| Expenditures/Case         | \$252          | \$248     | \$249     | -1.3%             | 0.2%              |
| Recipients <sup>7</sup>   | 3,660          | 3,082     | 3,089     | -15.6%            | 0.2%              |
| <i>Adults</i>             | 3,398          | 2,833     | 2,847     | -16.2%            | 0.5%              |
| <i>Children</i>           | 262            | 249       | 242       | -7.6%             | -2.8%             |
| Approvals <sup>4</sup>    | 284            | 257       | 283       | -0.4%             | 10.1%             |

## Education Works

|                           | Percent Change |          |          |                   |                   |
|---------------------------|----------------|----------|----------|-------------------|-------------------|
|                           | Nov-16         | Oct-17   | Nov-17   | Nov-16-<br>Nov-17 | Oct-17-<br>Nov-17 |
| Expenditures <sup>5</sup> | \$61,290       | \$45,709 | \$48,921 | -20.2%            | 7.0%              |
| Cases <sup>6</sup>        | 170            | 130      | 140      | -17.6%            | 7.7%              |
| Expenditures/Case         | \$361          | \$352    | \$349    | -3.1%             | -0.6%             |
| Recipients <sup>7</sup>   | 498            | 372      | 400      | -19.7%            | 7.5%              |
| <i>Adults</i>             | 189            | 146      | 157      | -16.9%            | 7.5%              |
| <i>Children</i>           | 309            | 226      | 243      | -21.4%            | 7.5%              |
| Approvals <sup>4</sup>    | 6              | 7        | 2        | -66.7%            | -71.4%            |

## Refugee Cash (RCA)

|                           | Percent Change |         |         |                   |                   |
|---------------------------|----------------|---------|---------|-------------------|-------------------|
|                           | Nov-16         | Oct-17  | Nov-17  | Nov-16-<br>Nov-17 | Oct-17-<br>Nov-17 |
| Expenditures <sup>5</sup> | \$45,434       | \$3,543 | \$4,263 | -90.6%            | 20.3%             |
| Cases <sup>6</sup>        | 176            | 15      | 15      | -91.5%            | 0.0%              |
| Expenditures/Case         | \$258          | \$236   | \$284   | 10.1%             | 20.3%             |
| Recipients <sup>7</sup>   | 187            | 18      | 18      | -90.4%            | 0.0%              |
| <i>Adults</i>             | 187            | 18      | 18      | -90.4%            | 0.0%              |
| <i>Children</i>           | 0              | 0       | 0       | N/A               | N/A               |

## State Supplement for Residential Care

|                           | Percent Change |         |         |                   |                   |
|---------------------------|----------------|---------|---------|-------------------|-------------------|
|                           | Nov-16         | Oct-17  | Nov-17  | Nov-16-<br>Nov-17 | Oct-17-<br>Nov-17 |
| Expenditures <sup>5</sup> | \$3,500        | \$2,500 | \$2,400 | -31.4%            | -4.0%             |
| Cases <sup>6</sup>        | 35             | 24      | 24      | -31.4%            | 0.0%              |
| Expenditures/Case         | \$100          | \$104   | \$100   | 0.0%              | -4.0%             |
| Recipients <sup>7</sup>   | 35             | 24      | 24      | -31.4%            | 0.0%              |
| <i>Adults</i>             | 35             | 24      | 24      | -31.4%            | 0.0%              |
| <i>Children</i>           | 0              | 0       | 0       | N/A               | N/A               |

| <b>Expenditures YTD</b>                                |                 |               |                 |
|--|-----------------|---------------|-----------------|
|  | SFY 2018        | FFY 2018      | CY 2017         |
| Medicaid <sup>1</sup>                                  | \$2,093,207,939 | \$867,051,975 | \$4,713,128,956 |
| Supplemental Nutrition Assistance Program <sup>9</sup> | \$274,221,379   | \$107,927,264 | \$606,909,978   |
| Temporary Assistance for Needy Families <sup>9</sup>   | \$18,729,136    | \$6,975,745   | \$39,992,293    |
| General Assistance <sup>9</sup>                        | \$3,767,316     | \$1,520,014   | \$8,665,345     |
| Education Work <sup>9</sup>                            | \$212,856       | \$94,630      | \$534,601       |
| LIHEAP <sup>8</sup>                                    | \$8,363,938     | \$6,328,466   | \$15,190,815    |

| <b>Average Caseload YTD</b>                            |          |          |         |
|--|----------|----------|---------|
|  | SFY 2018 | FFY 2018 | CY 2017 |
| Medicaid <sup>2</sup>                                  | 498,767  | 490,928  | 512,110 |
| Supplemental Nutrition Assistance Program <sup>6</sup> | 220,941  | 221,811  | 227,924 |
| Temporary Assistance for Needy Families <sup>6</sup>   | 11,805   | 11,908   | 11,708  |
| General Assistance <sup>6</sup>                        | 3,052    | 3,058    | 3,233   |
| Education Work <sup>6</sup>                            | 115      | 135      | 136     |
| LIHEAP <sup>8</sup>                                    | 5,644    | 11,592   | 5,240   |

| <b>Demographic Profile- November 2017</b> |         |        |       |                 |     |
|---|---------|--------|-------|-----------------|-----|
|   | SNAP    | TANF   | GA    | Education Works | RCA |
| <b>Gender of Recipients<sup>10</sup></b>  |         |        |       |                 |     |
| Male                                      | 208,636 | 13,353 | 1,745 | 151             | 11  |
| Female                                    | 252,632 | 18,057 | 1,344 | 249             | 7   |
| <b>Ethnicity<sup>10</sup></b>             |         |        |       |                 |     |
| Hispanic                                  | 258,005 | 21,548 | 1,651 | 233             | 12  |
| Non-Hispanic                              | 203,263 | 9,862  | 1,438 | 167             | 6   |
| <b>Race<sup>10</sup></b>                  |         |        |       |                 |     |
| Native American or Alaskan Native         | 75,912  | 2,512  | 248   | 27              | 0   |
| Asian                                     | 4,549   | 287    | 37    | 3               | 0   |
| African American or Black                 | 11,175  | 1,288  | 117   | 12              | 2   |
| Native Hawaiian or Pacific Islander       | 883     | 36     | 4     | 1               | 0   |
| White                                     | 359,976 | 26,542 | 2,640 | 340             | 10  |
| Unknown / Not Declared                    | 4,870   | 291    | 21    | 10              | 1   |
| More than One Race                        | 3,903   | 454    | 22    | 7               | 5   |

Medicaid demographic data can be found here: <http://www.hsd.state.nm.us/LookingForInformation/medicaid-eligibility.aspx>

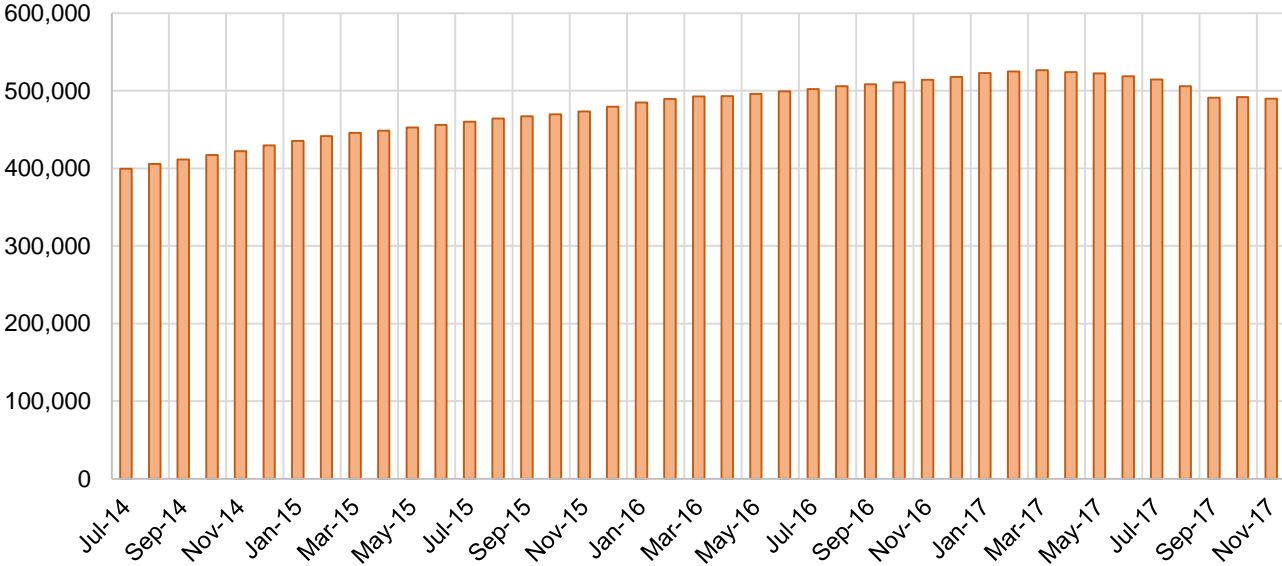
## Medicaid Cases by Field Office<sup>2</sup>

| Office                          | Nov-16  | Oct-17  | Nov-17  | Percent Change    |                   |
|---------------------------------|---------|---------|---------|-------------------|-------------------|
|                                 |         |         |         | Nov-16-<br>Nov-17 | Oct-17-<br>Nov-17 |
| Chaves County ISD               | 16,812  | 16,148  | 16,057  | -4.5%             | -0.6%             |
| Cibola County ISD               | 7,482   | 7,515   | 7,510   | 0.4%              | -0.1%             |
| Colfax County ISD               | 3,512   | 3,427   | 3,445   | -1.9%             | 0.5%              |
| Curry County ISD                | 10,450  | 9,926   | 9,896   | -5.3%             | -0.3%             |
| East Dona Ana County ISD        | 18,293  | 17,680  | 17,672  | -3.4%             | 0.0%              |
| Eddy Artesia County ISD         | 3,942   | 3,867   | 3,872   | -1.8%             | 0.1%              |
| Eddy Carlsbad County ISD        | 8,324   | 7,974   | 7,934   | -4.7%             | -0.5%             |
| Grant County ISD                | 7,203   | 6,779   | 6,791   | -5.7%             | 0.2%              |
| Guadalupe County ISD            | 1,636   | 1,764   | 1,756   | 7.3%              | -0.5%             |
| Hidalgo County ISD              | 1,024   | 944     | 942     | -8.0%             | -0.2%             |
| Lea County ISD                  | 14,648  | 14,203  | 14,204  | -3.0%             | 0.0%              |
| Lincoln County ISD              | 4,618   | 4,367   | 4,333   | -6.2%             | -0.8%             |
| Luna County ISD                 | 9,007   | 8,731   | 8,745   | -2.9%             | 0.2%              |
| McKinley County ISD             | 23,289  | 22,262  | 22,320  | -4.2%             | 0.3%              |
| Northeast Bernalillo County ISD | 45,136  | 42,905  | 42,609  | -5.6%             | -0.7%             |
| Northwest Bernalillo County ISD | 50,743  | 47,621  | 47,130  | -7.1%             | -1.0%             |
| Otero County ISD                | 11,947  | 11,922  | 11,897  | -0.4%             | -0.2%             |
| Quay County ISD                 | 2,628   | 2,583   | 2,572   | -2.1%             | -0.4%             |
| Rio Arriba County ISD           | 15,035  | 14,382  | 14,320  | -4.8%             | -0.4%             |
| Roosevelt County ISD            | 4,022   | 3,909   | 3,897   | -3.1%             | -0.3%             |
| San Juan County ISD             | 30,519  | 29,921  | 29,912  | -2.0%             | 0.0%              |
| San Miguel County ISD           | 9,692   | 9,248   | 9,194   | -5.1%             | -0.6%             |
| Sandoval County ISD             | 26,673  | 25,535  | 25,518  | -4.3%             | -0.1%             |
| Santa Fe County ISD             | 26,654  | 25,173  | 24,961  | -6.4%             | -0.8%             |
| Sierra County ISD               | 5,562   | 5,536   | 5,542   | -0.4%             | 0.1%              |
| Socorro County ISD              | 5,758   | 5,408   | 5,414   | -6.0%             | 0.1%              |
| South Dona Ana ISD              | 20,039  | 19,866  | 19,829  | -1.0%             | -0.2%             |
| Southeast Bernalillo County ISD | 29,273  | 26,441  | 26,052  | -11.0%            | -1.5%             |
| Southwest Bernalillo County ISD | 41,542  | 39,058  | 38,856  | -6.5%             | -0.5%             |
| Taos County ISD                 | 9,653   | 9,303   | 9,323   | -3.4%             | 0.2%              |
| Torrance County ISD             | 7,808   | 7,472   | 7,448   | -4.6%             | -0.3%             |
| Valencia North County ISD       | 18,657  | 17,692  | 17,681  | -5.2%             | -0.1%             |
| Valencia South County ISD       | 5       | 3       | 5       | 0.0%              | 66.7%             |
| West Dona Ana County ISD        | 22,599  | 22,370  | 22,277  | -1.4%             | -0.4%             |
| Centralized Units               | 1       | 3       | 3       | 200.0%            | 0.0%              |
| Statewide Total                 | 514,186 | 491,938 | 489,917 | -4.7%             | -0.4%             |

## Medicaid Cases by Region<sup>2</sup>

|                    |         |         |         | Percent Change    |                   |
|--------------------|---------|---------|---------|-------------------|-------------------|
| Region             | Nov-16  | Oct-17  | Nov-17  | Nov-16-<br>Nov-17 | Oct-17-<br>Nov-17 |
| Region 1 - NW      | 91,272  | 88,337  | 88,384  | -3.2%             | 0.1%              |
| Region 2 - NE      | 95,483  | 91,415  | 91,089  | -4.6%             | -0.4%             |
| Region 3 - Central | 174,502 | 163,497 | 162,095 | -7.1%             | -0.9%             |
| Region 4 - SE      | 62,816  | 60,394  | 60,193  | -4.2%             | -0.3%             |
| Region 5 - SW      | 90,112  | 88,292  | 88,153  | -2.2%             | -0.2%             |
| Centralized Units  | 1       | 3       | 3       | 200.0%            | 0.0%              |
| Statewide Total    | 514,186 | 491,938 | 489,917 | -4.7%             | -0.4%             |

**Medicaid Caseload: SFY-15 to Current**



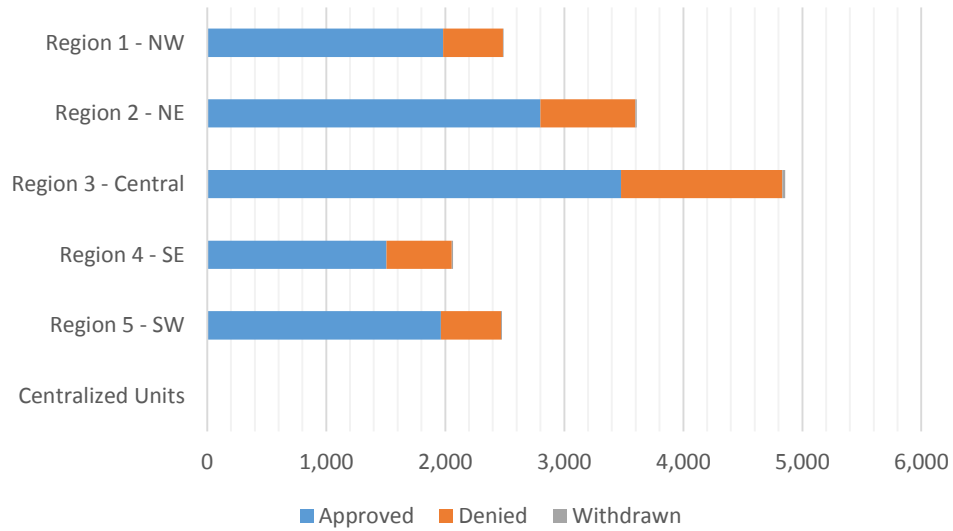
**Medicaid Initial Applications by Field Office<sup>4,11</sup>**  
**November 2017**

| Office                          | Approved      | Denied       | Withdrawn | Total Cases Processed |
|---------------------------------|---------------|--------------|-----------|-----------------------|
| Chaves County ISD               | 383           | 123          | 2         | 508                   |
| Cibola County ISD               | 154           | 33           | 0         | 187                   |
| Colfax County ISD               | 80            | 21           | 0         | 101                   |
| Curry County ISD                | 254           | 98           | 1         | 353                   |
| East Dona Ana County ISD        | 509           | 127          | 4         | 640                   |
| Eddy Artesia County ISD         | 189           | 77           | 1         | 267                   |
| Eddy Carlsbad County ISD        | 139           | 72           | 1         | 212                   |
| Grant County ISD                | 149           | 41           | 1         | 191                   |
| Guadalupe County ISD            | 24            | 10           | 0         | 34                    |
| Hidalgo County ISD              | 0             | 0            | 0         | 0                     |
| Lea County ISD                  | 243           | 66           | 2         | 311                   |
| Lincoln County ISD              | 174           | 50           | 1         | 225                   |
| Luna County ISD                 | 184           | 46           | 0         | 230                   |
| McKinley County ISD             | 517           | 141          | 1         | 659                   |
| Northeast Bernalillo County ISD | 905           | 346          | 16        | 1,267                 |
| Northwest Bernalillo County ISD | 827           | 266          | 3         | 1,096                 |
| Otero County ISD                | 265           | 63           | 1         | 329                   |
| Quay County ISD                 | 82            | 21           | 0         | 103                   |
| Rio Arriba County ISD           | 262           | 80           | 3         | 345                   |
| Roosevelt County ISD            | 125           | 63           | 1         | 189                   |
| San Juan County ISD             | 687           | 180          | 1         | 868                   |
| San Miguel County ISD           | 482           | 165          | 1         | 648                   |
| Sandoval County ISD             | 1,018         | 219          | 3         | 1,240                 |
| Santa Fe County ISD             | 582           | 239          | 1         | 822                   |
| Sierra County ISD               | 98            | 10           | 1         | 109                   |
| Socorro County ISD              | 115           | 25           | 0         | 140                   |
| South Dona Ana ISD              | 365           | 108          | 0         | 473                   |
| Southeast Bernalillo County ISD | 751           | 417          | 1         | 1,169                 |
| Southwest Bernalillo County ISD | 755           | 267          | 2         | 1,024                 |
| Taos County ISD                 | 269           | 45           | 1         | 315                   |
| Torrance County ISD             | 239           | 58           | 3         | 300                   |
| Valencia North County ISD       | 382           | 80           | 2         | 464                   |
| Valencia South County ISD       | 30            | 33           | 0         | 63                    |
| West Dona Ana County ISD        | 492           | 121          | 2         | 615                   |
| Centralized Units               | 0             | 0            | 0         | 0                     |
| <b>Statewide Total</b>          | <b>11,730</b> | <b>3,711</b> | <b>56</b> | <b>15,497</b>         |



## Medicaid Initial Applications by Region<sup>4,11</sup> November 2017

|                        | Approved      | Denied       | Withdrawn | Total Cases Processed |
|------------------------|---------------|--------------|-----------|-----------------------|
| Region                 |               |              |           |                       |
| Region 1 - NW          | 1,983         | 502          | 5         | 2,490                 |
| Region 2 - NE          | 2,799         | 800          | 9         | 3,608                 |
| Region 3 - Central     | 3,477         | 1,354        | 25        | 4,856                 |
| Region 4 - SE          | 1,507         | 549          | 9         | 2,065                 |
| Region 5 - SW          | 1,964         | 506          | 8         | 2,478                 |
| Centralized Units      | 0             | 0            | 0         | 0                     |
| <b>Statewide Total</b> | <b>11,730</b> | <b>3,711</b> | <b>56</b> | <b>15,497</b>         |

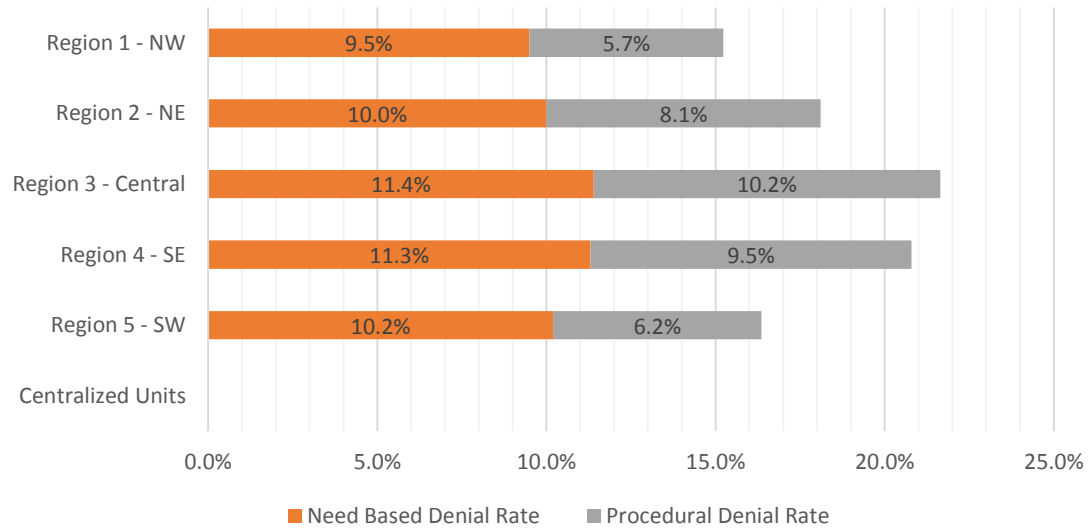


**Medicaid EDG Initial Disposition Rates by Field Office<sup>4,11,19</sup>**  
**November 2017**

| Office                          | Approval Rate | Denial Rate | Need Based Denial Rate | Procedural Denial Rate |
|---------------------------------|---------------|-------------|------------------------|------------------------|
| Chaves County ISD               | 82.3%         | 17.7%       | 11.3%                  | 6.4%                   |
| Cibola County ISD               | 88.1%         | 11.9%       | 4.6%                   | 7.3%                   |
| Colfax County ISD               | 83.8%         | 16.2%       | 15.5%                  | 0.7%                   |
| Curry County ISD                | 78.6%         | 21.4%       | 10.6%                  | 10.8%                  |
| East Dona Ana County ISD        | 82.7%         | 17.3%       | 12.1%                  | 5.2%                   |
| Eddy Artesia County ISD         | 84.0%         | 16.0%       | 9.0%                   | 7.0%                   |
| Eddy Carlsbad County ISD        | 74.9%         | 25.1%       | 10.4%                  | 14.7%                  |
| Grant County ISD                | 86.7%         | 13.3%       | 4.7%                   | 8.6%                   |
| Guadalupe County ISD            | 79.1%         | 20.9%       | 13.9%                  | 7.0%                   |
| Hidalgo County ISD              | 0.0%          | 0.0%        | 0.0%                   | 0.0%                   |
| Lea County ISD                  | 81.7%         | 18.3%       | 13.3%                  | 5.0%                   |
| Lincoln County ISD              | 74.4%         | 25.6%       | 12.8%                  | 12.8%                  |
| Luna County ISD                 | 87.9%         | 12.1%       | 6.5%                   | 5.6%                   |
| McKinley County ISD             | 85.2%         | 14.8%       | 8.8%                   | 6.0%                   |
| Northeast Bernalillo County ISD | 79.1%         | 20.9%       | 8.8%                   | 12.1%                  |
| Northwest Bernalillo County ISD | 80.5%         | 19.5%       | 8.7%                   | 10.8%                  |
| Otero County ISD                | 80.4%         | 19.6%       | 9.5%                   | 10.1%                  |
| Quay County ISD                 | 89.8%         | 10.2%       | 4.5%                   | 5.7%                   |
| Rio Arriba County ISD           | 82.8%         | 17.2%       | 8.2%                   | 9.0%                   |
| Roosevelt County ISD            | 71.3%         | 28.7%       | 8.7%                   | 20.0%                  |
| San Juan County ISD             | 83.2%         | 16.8%       | 10.7%                  | 6.1%                   |
| San Miguel County ISD           | 84.2%         | 15.8%       | 9.0%                   | 6.8%                   |
| Sandoval County ISD             | 83.9%         | 16.1%       | 8.9%                   | 7.2%                   |
| Santa Fe County ISD             | 74.6%         | 25.4%       | 12.7%                  | 12.7%                  |
| Sierra County ISD               | 88.0%         | 12.0%       | 12.0%                  | 0.0%                   |
| Socorro County ISD              | 91.1%         | 8.9%        | 5.9%                   | 3.0%                   |
| South Dona Ana ISD              | 81.2%         | 18.8%       | 14.6%                  | 4.2%                   |
| Southeast Bernalillo County ISD | 71.6%         | 28.4%       | 18.4%                  | 10.0%                  |
| Southwest Bernalillo County ISD | 79.0%         | 21.0%       | 12.8%                  | 8.2%                   |
| Taos County ISD                 | 91.0%         | 9.0%        | 6.9%                   | 2.1%                   |
| Torrance County ISD             | 88.2%         | 11.8%       | 3.4%                   | 8.4%                   |
| Valencia North County ISD       | 83.1%         | 16.9%       | 10.7%                  | 6.2%                   |
| Valencia South County ISD       | 100.0%        | 0.0%        | 0.0%                   | 0.0%                   |
| West Dona Ana County ISD        | 85.5%         | 14.5%       | 8.7%                   | 5.8%                   |
| Centralized Units               | 0.0%          | 0.0%        | 0.0%                   | 0.0%                   |
| Statewide Total                 | 81.2%         | 18.8%       | 10.5%                  | 8.3%                   |

**Medicaid EDG Initial Disposition Rates by Region<sup>4,11,19</sup>**  
**November 2017**

| Region                 | Approval Rate | Denial Rate  | Need Based Denial Rate | Procedural Denial Rate |
|------------------------|---------------|--------------|------------------------|------------------------|
| Region 1 - NW          | 84.8%         | 15.2%        | 9.5%                   | 5.7%                   |
| Region 2 - NE          | 81.9%         | 18.1%        | 10.0%                  | 8.1%                   |
| Region 3 - Central     | 78.4%         | 21.6%        | 11.4%                  | 10.2%                  |
| Region 4 - SE          | 79.2%         | 20.8%        | 11.3%                  | 9.5%                   |
| Region 5 - SW          | 83.6%         | 16.4%        | 10.2%                  | 6.2%                   |
| Centralized Units      |               |              |                        |                        |
| <b>Statewide Total</b> | <b>81.2%</b>  | <b>18.8%</b> | <b>10.5%</b>           | <b>8.3%</b>            |



**Medicaid: Percentage of Initial EDG Approvals Processed Timely by Field Office <sup>13,19</sup>**

|                            | Oct-17       | Nov-17       | Dec-17 | Jan-18 | Feb-18 | Mar-18 | Apr-18 | May-18 | Jun-18 | Jul-18 | Aug-18 | Sep-18 | Average      |
|----------------------------|--------------|--------------|--------|--------|--------|--------|--------|--------|--------|--------|--------|--------|--------------|
| Cibola                     | 92.2%        | 94.4%        |        |        |        |        |        |        |        |        |        |        | 93.3%        |
| McKinley                   | 95.6%        | 97.4%        |        |        |        |        |        |        |        |        |        |        | 96.5%        |
| San Juan                   | 93.4%        | 92.0%        |        |        |        |        |        |        |        |        |        |        | 92.7%        |
| Sierra                     | 95.8%        | 98.6%        |        |        |        |        |        |        |        |        |        |        | 97.2%        |
| Socorro                    | 95.4%        | 98.7%        |        |        |        |        |        |        |        |        |        |        | 97.1%        |
| Valencia North             | 93.2%        | 94.1%        |        |        |        |        |        |        |        |        |        |        | 93.7%        |
| Valencia South             | 100.0%       | 100.0%       |        |        |        |        |        |        |        |        |        |        | 100.0%       |
| <b>NW Region 1 Total</b>   | <b>94.0%</b> | <b>94.7%</b> |        |        |        |        |        |        |        |        |        |        | <b>94.4%</b> |
| Colfax                     | 93.9%        | 98.4%        |        |        |        |        |        |        |        |        |        |        | 96.1%        |
| Guadalupe                  | 97.9%        | 100.0%       |        |        |        |        |        |        |        |        |        |        | 99.0%        |
| Quay                       | 98.0%        | 94.9%        |        |        |        |        |        |        |        |        |        |        | 96.5%        |
| Rio Arriba                 | 96.9%        | 94.7%        |        |        |        |        |        |        |        |        |        |        | 95.8%        |
| San Miguel                 | 97.3%        | 98.9%        |        |        |        |        |        |        |        |        |        |        | 98.1%        |
| Sandoval                   | 97.0%        | 97.0%        |        |        |        |        |        |        |        |        |        |        | 97.0%        |
| Santa Fe                   | 96.1%        | 95.7%        |        |        |        |        |        |        |        |        |        |        | 95.9%        |
| Taos                       | 98.3%        | 96.8%        |        |        |        |        |        |        |        |        |        |        | 97.6%        |
| <b>NE Region 2 Total</b>   | <b>96.8%</b> | <b>96.6%</b> |        |        |        |        |        |        |        |        |        |        | <b>96.7%</b> |
| NE Bernalillo              | 95.1%        | 93.6%        |        |        |        |        |        |        |        |        |        |        | 94.4%        |
| NW Bernalillo              | 96.3%        | 95.4%        |        |        |        |        |        |        |        |        |        |        | 95.8%        |
| SE Bernalillo              | 88.2%        | 90.8%        |        |        |        |        |        |        |        |        |        |        | 89.5%        |
| SW Bernalillo              | 95.8%        | 96.2%        |        |        |        |        |        |        |        |        |        |        | 96.0%        |
| Torrance                   | 95.5%        | 95.1%        |        |        |        |        |        |        |        |        |        |        | 95.3%        |
| <b>Gen. Region 3 Total</b> | <b>94.3%</b> | <b>94.3%</b> |        |        |        |        |        |        |        |        |        |        | <b>94.3%</b> |
| Chaves                     | 96.4%        | 96.6%        |        |        |        |        |        |        |        |        |        |        | 96.5%        |
| Curry                      | 94.8%        | 94.2%        |        |        |        |        |        |        |        |        |        |        | 94.5%        |
| Eddy Artesia               | 95.3%        | 94.9%        |        |        |        |        |        |        |        |        |        |        | 95.1%        |
| Eddy Carlsbad              | 93.2%        | 98.4%        |        |        |        |        |        |        |        |        |        |        | 95.8%        |
| Lea                        | 96.1%        | 94.7%        |        |        |        |        |        |        |        |        |        |        | 95.4%        |
| Lincoln                    | 95.7%        | 94.7%        |        |        |        |        |        |        |        |        |        |        | 95.2%        |
| Roosevelt                  | 94.6%        | 94.2%        |        |        |        |        |        |        |        |        |        |        | 94.4%        |
| <b>SE Region 4 Total</b>   | <b>95.4%</b> | <b>95.5%</b> |        |        |        |        |        |        |        |        |        |        | <b>95.5%</b> |
| East Dona Ana              | 96.1%        | 97.1%        |        |        |        |        |        |        |        |        |        |        | 96.6%        |
| Grant                      | 93.9%        | 96.8%        |        |        |        |        |        |        |        |        |        |        | 95.4%        |
| Luna                       | 96.8%        | 97.8%        |        |        |        |        |        |        |        |        |        |        | 97.3%        |
| Otero                      | 97.6%        | 96.4%        |        |        |        |        |        |        |        |        |        |        | 97.0%        |
| South Dona Ana             | 97.2%        | 98.3%        |        |        |        |        |        |        |        |        |        |        | 97.8%        |
| West Dona Ana              | 97.4%        | 96.7%        |        |        |        |        |        |        |        |        |        |        | 97.0%        |
| <b>SW Region 5 Total</b>   | <b>96.7%</b> | <b>97.2%</b> |        |        |        |        |        |        |        |        |        |        | <b>97.0%</b> |
| <b>STATE TOTAL</b>         | <b>95.3%</b> | <b>95.4%</b> |        |        |        |        |        |        |        |        |        |        | <b>95.4%</b> |

Medicaid: Percentage of Initial EDG Denials Processed Timely by Field Office<sup>13,19</sup>

|                            | Oct-17       | Nov-17       | Dec-17 | Jan-18 | Feb-18 | Mar-18 | Apr-18 | May-18 | Jun-18 | Jul-18 | Aug-18 | Sep-18 | Average      |
|----------------------------|--------------|--------------|--------|--------|--------|--------|--------|--------|--------|--------|--------|--------|--------------|
| Cibola                     | 51.4%        | 41.2%        |        |        |        |        |        |        |        |        |        |        | 46.3%        |
| McKinley                   | 54.4%        | 59.7%        |        |        |        |        |        |        |        |        |        |        | 57.1%        |
| San Juan                   | 53.1%        | 57.1%        |        |        |        |        |        |        |        |        |        |        | 55.1%        |
| Sierra                     | 92.9%        | 95.0%        |        |        |        |        |        |        |        |        |        |        | 94.0%        |
| Socorro                    | 57.5%        | 80.0%        |        |        |        |        |        |        |        |        |        |        | 68.8%        |
| Valencia North             | 55.8%        | 52.1%        |        |        |        |        |        |        |        |        |        |        | 54.0%        |
| Valencia South             | 66.7%        |              |        |        |        |        |        |        |        |        |        |        | 66.7%        |
| <b>NW Region 1 Total</b>   | <b>55.0%</b> | <b>57.7%</b> |        |        |        |        |        |        |        |        |        |        | <b>56.4%</b> |
| Colfax                     | 90.6%        | 95.8%        |        |        |        |        |        |        |        |        |        |        | 93.2%        |
| Guadalupe                  | 90.0%        | 11.1%        |        |        |        |        |        |        |        |        |        |        | 50.6%        |
| Quay                       | 72.7%        | 33.3%        |        |        |        |        |        |        |        |        |        |        | 53.0%        |
| Rio Arriba                 | 71.4%        | 56.3%        |        |        |        |        |        |        |        |        |        |        | 63.9%        |
| San Miguel                 | 59.5%        | 67.3%        |        |        |        |        |        |        |        |        |        |        | 63.4%        |
| Sandoval                   | 43.6%        | 51.2%        |        |        |        |        |        |        |        |        |        |        | 47.4%        |
| Santa Fe                   | 59.1%        | 53.7%        |        |        |        |        |        |        |        |        |        |        | 56.4%        |
| Taos                       | 47.4%        | 76.5%        |        |        |        |        |        |        |        |        |        |        | 61.9%        |
| <b>NE Region 2 Total</b>   | <b>57.2%</b> | <b>56.4%</b> |        |        |        |        |        |        |        |        |        |        | <b>56.8%</b> |
| NE Bernalillo              | 45.7%        | 38.4%        |        |        |        |        |        |        |        |        |        |        | 42.1%        |
| NW Bernalillo              | 39.2%        | 40.9%        |        |        |        |        |        |        |        |        |        |        | 40.1%        |
| SE Bernalillo              | 56.6%        | 46.6%        |        |        |        |        |        |        |        |        |        |        | 51.6%        |
| SW Bernalillo              | 68.5%        | 68.1%        |        |        |        |        |        |        |        |        |        |        | 68.3%        |
| Torrance                   | 56.8%        | 42.1%        |        |        |        |        |        |        |        |        |        |        | 49.5%        |
| <b>Gen. Region 3 Total</b> | <b>52.5%</b> | <b>48.0%</b> |        |        |        |        |        |        |        |        |        |        | <b>50.2%</b> |
| Chaves                     | 72.3%        | 60.2%        |        |        |        |        |        |        |        |        |        |        | 66.2%        |
| Curry                      | 61.4%        | 59.0%        |        |        |        |        |        |        |        |        |        |        | 60.2%        |
| Eddy Artesia               | 65.6%        | 53.3%        |        |        |        |        |        |        |        |        |        |        | 59.5%        |
| Eddy Carlsbad              | 51.8%        | 35.8%        |        |        |        |        |        |        |        |        |        |        | 43.8%        |
| Lea                        | 72.7%        | 69.6%        |        |        |        |        |        |        |        |        |        |        | 71.2%        |
| Lincoln                    | 35.9%        | 63.8%        |        |        |        |        |        |        |        |        |        |        | 49.8%        |
| Roosevelt                  | 36.4%        | 46.4%        |        |        |        |        |        |        |        |        |        |        | 41.4%        |
| <b>SE Region 4 Total</b>   | <b>61.3%</b> | <b>56.6%</b> |        |        |        |        |        |        |        |        |        |        | <b>58.9%</b> |
| East Dona Ana              | 80.0%        | 74.3%        |        |        |        |        |        |        |        |        |        |        | 77.2%        |
| Grant                      | 76.7%        | 32.4%        |        |        |        |        |        |        |        |        |        |        | 54.5%        |
| Luna                       | 47.7%        | 64.9%        |        |        |        |        |        |        |        |        |        |        | 56.3%        |
| Otero                      | 61.9%        | 48.3%        |        |        |        |        |        |        |        |        |        |        | 55.1%        |
| South Dona Ana             | 86.3%        | 73.0%        |        |        |        |        |        |        |        |        |        |        | 79.7%        |
| West Dona Ana              | 66.9%        | 67.0%        |        |        |        |        |        |        |        |        |        |        | 66.9%        |
| <b>SW Region 5 Total</b>   | <b>73.8%</b> | <b>64.3%</b> |        |        |        |        |        |        |        |        |        |        | <b>69.1%</b> |
| <b>STATE TOTAL</b>         | <b>58.4%</b> | <b>54.6%</b> |        |        |        |        |        |        |        |        |        |        | <b>56.5%</b> |

**Medicaid Renewal Disposition Counts by Field Office<sup>4,11</sup>**  
**November 2017**

| Office                          | Approvals     | Closures      | Need Based Closures | Procedural Closures |
|---------------------------------|---------------|---------------|---------------------|---------------------|
| Chaves County ISD               | 2,532         | 558           | 205                 | 353                 |
| Cibola County ISD               | 1,537         | 245           | 100                 | 145                 |
| Colfax County ISD               | 365           | 75            | 41                  | 34                  |
| Curry County ISD                | 1,801         | 379           | 113                 | 266                 |
| East Dona Ana County ISD        | 3,147         | 515           | 172                 | 343                 |
| Eddy Artesia County ISD         | 723           | 151           | 48                  | 103                 |
| Eddy Carlsbad County ISD        | 1,087         | 368           | 119                 | 249                 |
| Grant County ISD                | 1,054         | 186           | 75                  | 111                 |
| Guadalupe County ISD            | 247           | 21            | 6                   | 15                  |
| Hidalgo County ISD              | 157           | 15            | 6                   | 9                   |
| Lea County ISD                  | 2,402         | 566           | 159                 | 407                 |
| Lincoln County ISD              | 640           | 160           | 45                  | 115                 |
| Luna County ISD                 | 1,320         | 213           | 87                  | 126                 |
| McKinley County ISD             | 3,823         | 766           | 217                 | 549                 |
| Northeast Bernalillo County ISD | 4,637         | 1469          | 373                 | 1096                |
| Northwest Bernalillo County ISD | 4,897         | 2439          | 662                 | 1777                |
| Otero County ISD                | 1,973         | 381           | 153                 | 228                 |
| Quay County ISD                 | 402           | 73            | 22                  | 51                  |
| Rio Arriba County ISD           | 1,696         | 416           | 113                 | 303                 |
| Roosevelt County ISD            | 667           | 210           | 60                  | 150                 |
| San Juan County ISD             | 5,141         | 959           | 387                 | 572                 |
| San Miguel County ISD           | 1,054         | 237           | 51                  | 186                 |
| Sandoval County ISD             | 3,932         | 959           | 231                 | 728                 |
| Santa Fe County ISD             | 3,090         | 794           | 215                 | 579                 |
| Sierra County ISD               | 954           | 103           | 52                  | 51                  |
| Socorro County ISD              | 875           | 109           | 36                  | 73                  |
| South Dona Ana ISD              | 3,956         | 517           | 230                 | 287                 |
| Southeast Bernalillo County ISD | 3,332         | 891           | 210                 | 681                 |
| Southwest Bernalillo County ISD | 5,338         | 1142          | 329                 | 813                 |
| Taos County ISD                 | 1,197         | 311           | 83                  | 228                 |
| Torrance County ISD             | 1,052         | 276           | 74                  | 202                 |
| Valencia North County ISD       | 2,964         | 434           | 165                 | 269                 |
| Valencia South County ISD       | 0             | 0             | 0                   | 0                   |
| West Dona Ana County ISD        | 3,334         | 579           | 222                 | 357                 |
| Centralized Units               | 479           | 76            | 33                  | 43                  |
| <b>Statewide Total</b>          | <b>71,805</b> | <b>16,593</b> | <b>5,094</b>        | <b>11,499</b>       |

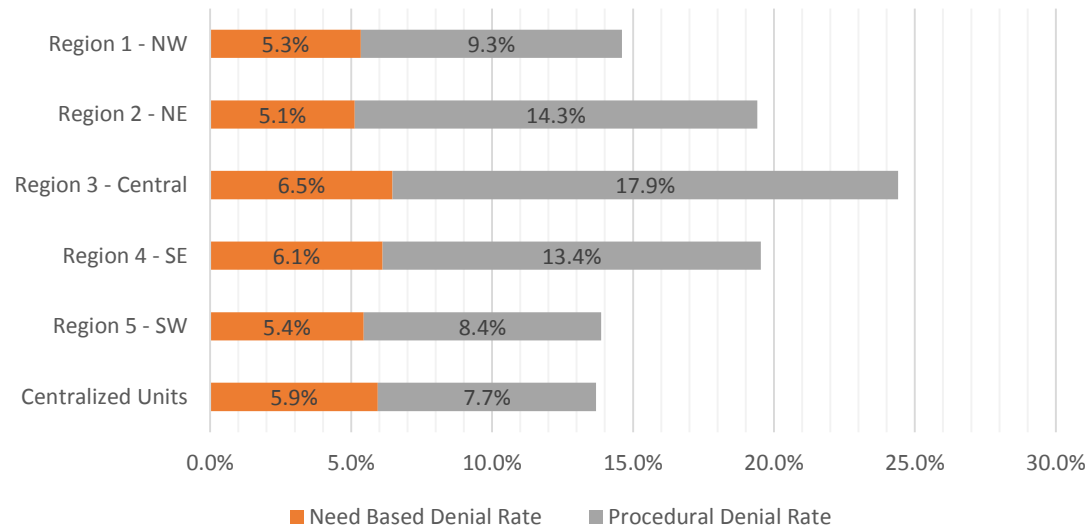
*Determinations at Administrative, Annual, and Auto Renewals are included*

**Medicaid Renewal Disposition Rates by Field Office<sup>20</sup>**  
**November 2017**

| Office                          | Approval Rate | Closure Rate | Need Based Closure Rate | Procedural Closure Rate |
|---------------------------------|---------------|--------------|-------------------------|-------------------------|
| Chaves County ISD               | 81.9%         | 18.1%        | 6.6%                    | 11.4%                   |
| Cibola County ISD               | 86.3%         | 13.7%        | 5.6%                    | 8.1%                    |
| Colfax County ISD               | 83.0%         | 17.0%        | 9.3%                    | 7.7%                    |
| Curry County ISD                | 82.6%         | 17.4%        | 5.2%                    | 12.2%                   |
| East Dona Ana County ISD        | 85.9%         | 14.1%        | 4.7%                    | 9.4%                    |
| Eddy Artesia County ISD         | 82.7%         | 17.3%        | 5.5%                    | 11.8%                   |
| Eddy Carlsbad County ISD        | 74.7%         | 25.3%        | 8.2%                    | 17.1%                   |
| Grant County ISD                | 85.0%         | 15.0%        | 6.0%                    | 9.0%                    |
| Guadalupe County ISD            | 92.2%         | 7.8%         | 2.2%                    | 5.6%                    |
| Hidalgo County ISD              | 91.3%         | 8.7%         | 3.5%                    | 5.2%                    |
| Lea County ISD                  | 80.9%         | 19.1%        | 5.4%                    | 13.7%                   |
| Lincoln County ISD              | 80.0%         | 20.0%        | 5.6%                    | 14.4%                   |
| Luna County ISD                 | 86.1%         | 13.9%        | 5.7%                    | 8.2%                    |
| McKinley County ISD             | 83.3%         | 16.7%        | 4.7%                    | 12.0%                   |
| Northeast Bernalillo County ISD | 75.9%         | 24.1%        | 6.1%                    | 17.9%                   |
| Northwest Bernalillo County ISD | 66.8%         | 33.2%        | 9.0%                    | 24.2%                   |
| Otero County ISD                | 83.8%         | 16.2%        | 6.5%                    | 9.7%                    |
| Quay County ISD                 | 84.6%         | 15.4%        | 4.6%                    | 10.7%                   |
| Rio Arriba County ISD           | 80.3%         | 19.7%        | 5.4%                    | 14.3%                   |
| Roosevelt County ISD            | 76.1%         | 23.9%        | 6.8%                    | 17.1%                   |
| San Juan County ISD             | 84.3%         | 15.7%        | 6.3%                    | 9.4%                    |
| San Miguel County ISD           | 81.6%         | 18.4%        | 4.0%                    | 14.4%                   |
| Sandoval County ISD             | 80.4%         | 19.6%        | 4.7%                    | 14.9%                   |
| Santa Fe County ISD             | 79.6%         | 20.4%        | 5.5%                    | 14.9%                   |
| Sierra County ISD               | 90.3%         | 9.7%         | 4.9%                    | 4.8%                    |
| Socorro County ISD              | 88.9%         | 11.1%        | 3.7%                    | 7.4%                    |
| South Dona Ana ISD              | 88.4%         | 11.6%        | 5.1%                    | 6.4%                    |
| Southeast Bernalillo County ISD | 78.9%         | 21.1%        | 5.0%                    | 16.1%                   |
| Southwest Bernalillo County ISD | 82.4%         | 17.6%        | 5.1%                    | 12.5%                   |
| Taos County ISD                 | 79.4%         | 20.6%        | 5.5%                    | 15.1%                   |
| Torrance County ISD             | 79.2%         | 20.8%        | 5.6%                    | 15.2%                   |
| Valencia North County ISD       | 87.2%         | 12.8%        | 4.9%                    | 7.9%                    |
| Valencia South County ISD       | 0.0%          | 0.0%         | 0.0%                    | 0.0%                    |
| West Dona Ana County ISD        | 85.2%         | 14.8%        | 5.7%                    | 9.1%                    |
| Centralized Units               | 86.3%         | 13.7%        | 5.9%                    | 7.7%                    |
| Statewide Total                 | 81.2%         | 18.8%        | 5.8%                    | 13.0%                   |

## Medicaid Renewal Disposition Rates by Region<sup>20</sup> November 2017

| Region                 | Approval Rate | Closure Rate | Need Based Closure Rate | Procedural Closure Rate |
|------------------------|---------------|--------------|-------------------------|-------------------------|
| Region 1 - NW          | 85.4%         | 14.6%        | 5.3%                    | 9.3%                    |
| Region 2 - NE          | 80.6%         | 19.4%        | 5.1%                    | 14.3%                   |
| Region 3 - Central     | 75.6%         | 24.4%        | 6.5%                    | 17.9%                   |
| Region 4 - SE          | 80.5%         | 19.5%        | 6.1%                    | 13.4%                   |
| Region 5 - SW          | 86.1%         | 13.9%        | 5.4%                    | 8.4%                    |
| Centralized Units      | 86.3%         | 13.7%        | 5.9%                    | 7.7%                    |
| <b>Statewide Total</b> | <b>81.2%</b>  | <b>18.8%</b> | <b>5.8%</b>             | <b>13.0%</b>            |





| Medicaid: Percentage of Approved Renewal EDGs Processed by Certification Date <sup>11</sup> |        |              |        |        |        |        |        |        |        |        |        |        |              |
|---|--------|--------------|--------|--------|--------|--------|--------|--------|--------|--------|--------|--------|--------------|
|   | Oct-17 | Nov-17       | Dec-17 | Jan-18 | Feb-18 | Mar-18 | Apr-18 | May-18 | Jun-18 | Jul-18 | Aug-18 | Sep-18 | Average      |
| Cibola  |        | 98.9%        |        |        |        |        |        |        |        |        |        |        | 98.9%        |
| McKinley  |        | 98.9%        |        |        |        |        |        |        |        |        |        |        | 98.9%        |
| San Juan  |        | 98.9%        |        |        |        |        |        |        |        |        |        |        | 98.9%        |
| Sierra  |        | 99.1%        |        |        |        |        |        |        |        |        |        |        | 99.1%        |
| Socorro   |        | 99.5%        |        |        |        |        |        |        |        |        |        |        | 99.5%        |
| Valencia North  |        | 98.5%        |        |        |        |        |        |        |        |        |        |        | 98.5%        |
| Valencia South  |        |              |        |        |        |        |        |        |        |        |        |        |              |
| <b>NW Region 1 Total</b>  |        | <b>99.0%</b> |        |        |        |        |        |        |        |        |        |        | <b>99.0%</b> |
| Colfax  |        | 98.7%        |        |        |        |        |        |        |        |        |        |        | 98.7%        |
| Guadalupe   |        | 99.2%        |        |        |        |        |        |        |        |        |        |        | 99.2%        |
| Quay  |        | 99.0%        |        |        |        |        |        |        |        |        |        |        | 99.0%        |
| Rio Arriba  |        | 98.4%        |        |        |        |        |        |        |        |        |        |        | 98.4%        |
| San Miguel  |        | 99.5%        |        |        |        |        |        |        |        |        |        |        | 99.5%        |
| Sandoval  |        | 98.4%        |        |        |        |        |        |        |        |        |        |        | 98.4%        |
| Santa Fe  |        | 95.6%        |        |        |        |        |        |        |        |        |        |        | 95.6%        |
| Taos  |        | 98.7%        |        |        |        |        |        |        |        |        |        |        | 98.7%        |
| <b>NE Region 2 Total</b>  |        | <b>98.5%</b> |        |        |        |        |        |        |        |        |        |        | <b>98.5%</b> |
| NE Bernalillo   |        | 97.8%        |        |        |        |        |        |        |        |        |        |        | 97.8%        |
| NW Bernalillo   |        | 97.6%        |        |        |        |        |        |        |        |        |        |        | 97.6%        |
| SE Bernalillo   |        | 86.5%        |        |        |        |        |        |        |        |        |        |        | 86.5%        |
| SW Bernalillo   |        | 98.8%        |        |        |        |        |        |        |        |        |        |        | 98.8%        |
| Torrance  |        | 98.8%        |        |        |        |        |        |        |        |        |        |        | 98.8%        |
| <b>Cen. Region 3 Total</b>  |        | <b>95.9%</b> |        |        |        |        |        |        |        |        |        |        | <b>95.9%</b> |
| Chaves  |        | 98.7%        |        |        |        |        |        |        |        |        |        |        | 98.7%        |
| Curry   |        | 99.0%        |        |        |        |        |        |        |        |        |        |        | 99.0%        |
| Eddy Artesia  |        | 99.2%        |        |        |        |        |        |        |        |        |        |        | 99.2%        |
| Eddy Carlsbad   |        | 97.7%        |        |        |        |        |        |        |        |        |        |        | 97.7%        |
| Lea   |        | 98.8%        |        |        |        |        |        |        |        |        |        |        | 98.8%        |
| Lincoln   |        | 98.2%        |        |        |        |        |        |        |        |        |        |        | 98.2%        |
| Roosevelt   |        | 99.4%        |        |        |        |        |        |        |        |        |        |        | 99.4%        |
| <b>SE Region 4 Total</b>  |        | <b>98.7%</b> |        |        |        |        |        |        |        |        |        |        | <b>98.7%</b> |
| East Dona Ana   |        | 98.9%        |        |        |        |        |        |        |        |        |        |        | 98.9%        |
| Grant   |        | 98.5%        |        |        |        |        |        |        |        |        |        |        | 98.5%        |
| Luna  |        | 99.1%        |        |        |        |        |        |        |        |        |        |        | 99.1%        |
| Otero   |        | 98.9%        |        |        |        |        |        |        |        |        |        |        | 98.9%        |
| South Dona Ana  |        | 98.2%        |        |        |        |        |        |        |        |        |        |        | 98.2%        |
| West Dona Ana   |        | 99.2%        |        |        |        |        |        |        |        |        |        |        | 99.2%        |
| <b>SW Region 5 Total</b>  |        | <b>98.8%</b> |        |        |        |        |        |        |        |        |        |        | <b>98.8%</b> |
| <b>STATE TOTAL</b>  |        | <b>97.8%</b> |        |        |        |        |        |        |        |        |        |        | <b>97.8%</b> |

Administrative, Annual, and Auto Renewals are included  
No data available for October 2017

| Medicaid: Percentage of Closures EDGs Processed by Certification Date <sup>11</sup> |        |              |        |        |        |        |        |        |        |        |        |        |              |
|---|--------|--------------|--------|--------|--------|--------|--------|--------|--------|--------|--------|--------|--------------|
|   | Oct-17 | Nov-17       | Dec-17 | Jan-18 | Feb-18 | Mar-18 | Apr-18 | May-18 | Jun-18 | Jul-18 | Aug-18 | Sep-18 | Average      |
| Cibola  |        | 37.6%        |        |        |        |        |        |        |        |        |        |        | 37.6%        |
| McKinley  |        | 23.9%        |        |        |        |        |        |        |        |        |        |        | 23.9%        |
| San Juan  |        | 36.7%        |        |        |        |        |        |        |        |        |        |        | 36.7%        |
| Sierra  |        | 45.6%        |        |        |        |        |        |        |        |        |        |        | 45.6%        |
| Socorro   |        | 33.0%        |        |        |        |        |        |        |        |        |        |        | 33.0%        |
| Valencia North  |        | 34.6%        |        |        |        |        |        |        |        |        |        |        | 34.6%        |
| Valencia South  |        |              |        |        |        |        |        |        |        |        |        |        |              |
| <b>NW Region 1 Total</b>  |        | <b>35.2%</b> |        |        |        |        |        |        |        |        |        |        | <b>35.2%</b> |
| Colfax  |        | 49.3%        |        |        |        |        |        |        |        |        |        |        | 49.3%        |
| Guadalupe   |        | 28.6%        |        |        |        |        |        |        |        |        |        |        | 28.6%        |
| Quay  |        | 24.7%        |        |        |        |        |        |        |        |        |        |        | 24.7%        |
| Rio Arriba  |        | 23.3%        |        |        |        |        |        |        |        |        |        |        | 23.3%        |
| San Miguel  |        | 19.4%        |        |        |        |        |        |        |        |        |        |        | 19.4%        |
| Sandoval  |        | 20.5%        |        |        |        |        |        |        |        |        |        |        | 20.5%        |
| Santa Fe  |        | 22.0%        |        |        |        |        |        |        |        |        |        |        | 22.0%        |
| Taos  |        | 24.4%        |        |        |        |        |        |        |        |        |        |        | 24.4%        |
| <b>NE Region 2 Total</b>  |        | <b>26.5%</b> |        |        |        |        |        |        |        |        |        |        | <b>26.5%</b> |
| NE Bernalillo   |        | 20.3%        |        |        |        |        |        |        |        |        |        |        | 20.3%        |
| NW Bernalillo   |        | 16.2%        |        |        |        |        |        |        |        |        |        |        | 16.2%        |
| SE Bernalillo   |        | 18.7%        |        |        |        |        |        |        |        |        |        |        | 18.7%        |
| SW Bernalillo   |        | 24.5%        |        |        |        |        |        |        |        |        |        |        | 24.5%        |
| Torrance  |        | 25.4%        |        |        |        |        |        |        |        |        |        |        | 25.4%        |
| <b>Gen. Region 3 Total</b>  |        | <b>21.0%</b> |        |        |        |        |        |        |        |        |        |        | <b>21.0%</b> |
| Chaves  |        | 34.4%        |        |        |        |        |        |        |        |        |        |        | 34.4%        |
| Curry   |        | 27.2%        |        |        |        |        |        |        |        |        |        |        | 27.2%        |
| Eddy Artesia  |        | 31.1%        |        |        |        |        |        |        |        |        |        |        | 31.1%        |
| Eddy Carlsbad   |        | 26.9%        |        |        |        |        |        |        |        |        |        |        | 26.9%        |
| Lea   |        | 24.6%        |        |        |        |        |        |        |        |        |        |        | 24.6%        |
| Lincoln   |        | 23.1%        |        |        |        |        |        |        |        |        |        |        | 23.1%        |
| Roosevelt   |        | 24.3%        |        |        |        |        |        |        |        |        |        |        | 24.3%        |
| <b>SE Region 4 Total</b>  |        | <b>27.4%</b> |        |        |        |        |        |        |        |        |        |        | <b>27.4%</b> |
| East Dona Ana   |        | 28.5%        |        |        |        |        |        |        |        |        |        |        | 28.5%        |
| Grant   |        | 38.7%        |        |        |        |        |        |        |        |        |        |        | 38.7%        |
| Luna  |        | 37.1%        |        |        |        |        |        |        |        |        |        |        | 37.1%        |
| Otero   |        | 37.3%        |        |        |        |        |        |        |        |        |        |        | 37.3%        |
| South Dona Ana  |        | 41.6%        |        |        |        |        |        |        |        |        |        |        | 41.6%        |
| West Dona Ana   |        | 35.1%        |        |        |        |        |        |        |        |        |        |        | 35.1%        |
| <b>SW Region 5 Total</b>  |        | <b>36.4%</b> |        |        |        |        |        |        |        |        |        |        | <b>36.4%</b> |
| <b>STATE TOTAL</b>  |        | <b>25.8%</b> |        |        |        |        |        |        |        |        |        |        | <b>25.8%</b> |

Annual and Auto Renewals are included  
No data available for October 2017

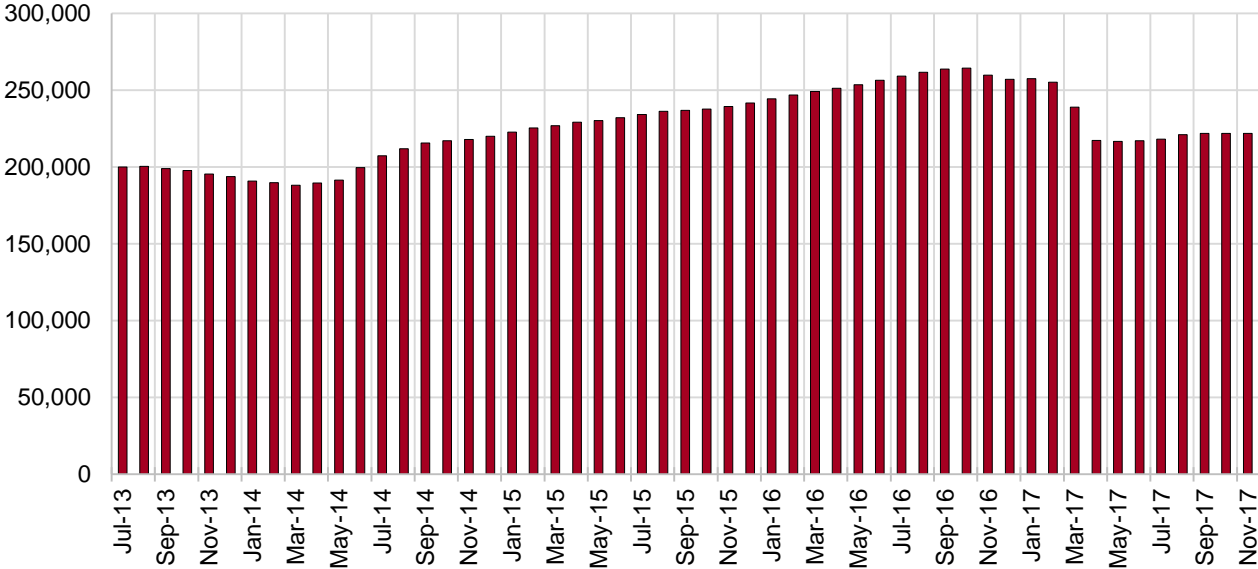
## SNAP Cases by Field Office<sup>6</sup>

| Office                          | Nov-16  | Oct-17  | Nov-17  | Percent Change    |                   |
|---------------------------------|---------|---------|---------|-------------------|-------------------|
|                                 |         |         |         | Nov-16-<br>Nov-17 | Oct-17-<br>Nov-17 |
| Chaves County ISD               | 8,207   | 7,196   | 7,160   | -12.8%            | -0.5%             |
| Cibola County ISD               | 4,065   | 3,694   | 3,677   | -9.5%             | -0.5%             |
| Colfax County ISD               | 1,840   | 1,584   | 1,598   | -13.2%            | 0.9%              |
| Curry County ISD                | 5,469   | 4,795   | 4,768   | -12.8%            | -0.6%             |
| East Dona Ana County ISD        | 9,600   | 8,049   | 7,983   | -16.8%            | -0.8%             |
| Eddy Artesia County ISD         | 1,956   | 1,711   | 1,719   | -12.1%            | 0.5%              |
| Eddy Carlsbad County ISD        | 4,076   | 3,356   | 3,303   | -19.0%            | -1.6%             |
| Grant County ISD                | 4,055   | 3,578   | 3,567   | -12.0%            | -0.3%             |
| Guadalupe County ISD            | 754     | 720     | 712     | -5.6%             | -1.1%             |
| Hidalgo County ISD              | 518     | 425     | 420     | -18.9%            | -1.2%             |
| Lea County ISD                  | 7,063   | 5,829   | 5,839   | -17.3%            | 0.2%              |
| Lincoln County ISD              | 2,163   | 1,918   | 1,953   | -9.7%             | 1.8%              |
| Luna County ISD                 | 5,055   | 4,270   | 4,293   | -15.1%            | 0.5%              |
| McKinley County ISD             | 10,676  | 9,747   | 9,683   | -9.3%             | -0.7%             |
| Northeast Bernalillo County ISD | 23,620  | 19,938  | 20,064  | -15.1%            | 0.6%              |
| Northwest Bernalillo County ISD | 21,513  | 18,518  | 18,595  | -13.6%            | 0.4%              |
| Otero County ISD                | 6,075   | 5,579   | 5,573   | -8.3%             | -0.1%             |
| Quay County ISD                 | 1,380   | 1,273   | 1,268   | -8.1%             | -0.4%             |
| Rio Arriba County ISD           | 7,971   | 6,863   | 6,818   | -14.5%            | -0.7%             |
| Roosevelt County ISD            | 2,082   | 1,699   | 1,695   | -18.6%            | -0.2%             |
| San Juan County ISD             | 15,329  | 13,373  | 13,372  | -12.8%            | 0.0%              |
| San Miguel County ISD           | 5,802   | 5,025   | 5,004   | -13.8%            | -0.4%             |
| Sandoval County ISD             | 12,978  | 11,009  | 11,003  | -15.2%            | -0.1%             |
| Santa Fe County ISD             | 12,954  | 10,095  | 9,983   | -22.9%            | -1.1%             |
| Sierra County ISD               | 2,981   | 2,668   | 2,690   | -9.8%             | 0.8%              |
| Socorro County ISD              | 3,194   | 2,860   | 2,890   | -9.5%             | 1.0%              |
| South Dona Ana ISD              | 9,397   | 8,693   | 8,651   | -7.9%             | -0.5%             |
| Southeast Bernalillo County ISD | 15,771  | 12,091  | 12,048  | -23.6%            | -0.4%             |
| Southwest Bernalillo County ISD | 21,974  | 18,659  | 18,699  | -14.9%            | 0.2%              |
| Taos County ISD                 | 4,627   | 4,117   | 4,137   | -10.6%            | 0.5%              |
| Torrance County ISD             | 4,002   | 3,316   | 3,367   | -15.9%            | 1.5%              |
| Valencia North County ISD       | 9,707   | 8,418   | 8,445   | -13.0%            | 0.3%              |
| Valencia South County ISD       | 9       | 1       | 1       | -88.9%            | 0.0%              |
| West Dona Ana County ISD        | 12,930  | 10,763  | 10,710  | -17.2%            | -0.5%             |
| Centralized Units               | 27      | 46      | 57      | 111.1%            | 23.9%             |
| Statewide Total                 | 259,820 | 221,876 | 221,745 | -14.7%            | -0.1%             |

## SNAP Cases by Region<sup>6</sup>

|                        |                |                |                | Percent Change    |                   |
|------------------------|----------------|----------------|----------------|-------------------|-------------------|
| Region                 | Nov-16         | Oct-17         | Nov-17         | Nov-16-<br>Nov-17 | Oct-17-<br>Nov-17 |
| Region 1 - NW          | 45,961         | 40,761         | 40,758         | -11.3%            | 0.0%              |
| Region 2 - NE          | 48,306         | 40,686         | 40,523         | -16.1%            | -0.4%             |
| Region 3 - Central     | 86,880         | 72,522         | 72,773         | -16.2%            | 0.3%              |
| Region 4 - SE          | 31,016         | 26,504         | 26,437         | -14.8%            | -0.3%             |
| Region 5 - SW          | 47,630         | 41,357         | 41,197         | -13.5%            | -0.4%             |
| Centralized Units      | 27             | 46             | 57             | 111.1%            | 23.9%             |
| <b>Statewide Total</b> | <b>259,820</b> | <b>221,876</b> | <b>221,745</b> | <b>-14.7%</b>     | <b>-0.1%</b>      |

**SNAP Caseload: SFY-14 to Current**



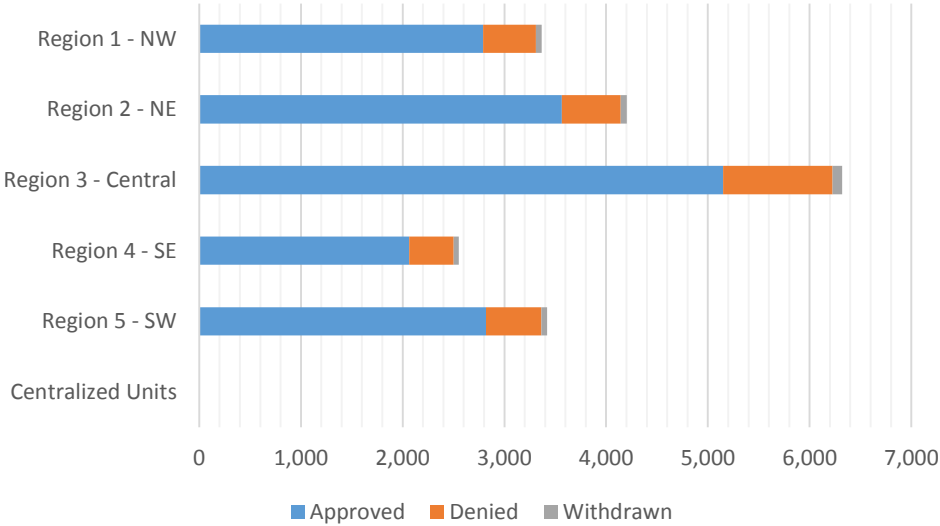
**SNAP Initial Applications by Field Office<sup>4,11</sup>**  
**November 2017**

| Office                          | Approved | Denied | Withdrawn | Total Cases Processed |
|---------------------------------|----------|--------|-----------|-----------------------|
| Chaves County ISD               | 536      | 83     | 19        | 638                   |
| Cibola County ISD               | 221      | 30     | 2         | 253                   |
| Colfax County ISD               | 117      | 20     | 2         | 139                   |
| Curry County ISD                | 379      | 71     | 12        | 462                   |
| East Dona Ana County ISD        | 616      | 133    | 15        | 764                   |
| Eddy Artesia County ISD         | 213      | 30     | 4         | 247                   |
| Eddy Carlsbad County ISD        | 215      | 65     | 5         | 285                   |
| Grant County ISD                | 247      | 37     | 4         | 288                   |
| Guadalupe County ISD            | 36       | 12     | 2         | 50                    |
| Hidalgo County ISD              | 0        | 0      | 0         | 0                     |
| Lea County ISD                  | 373      | 104    | 6         | 483                   |
| Lincoln County ISD              | 183      | 37     | 1         | 221                   |
| Luna County ISD                 | 287      | 45     | 10        | 342                   |
| McKinley County ISD             | 673      | 114    | 19        | 806                   |
| Northeast Bernalillo County ISD | 1,509    | 275    | 24        | 1,808                 |
| Northwest Bernalillo County ISD | 1,245    | 258    | 31        | 1,534                 |
| Otero County ISD                | 387      | 70     | 10        | 467                   |
| Quay County ISD                 | 87       | 9      | 0         | 96                    |
| Rio Arriba County ISD           | 478      | 85     | 14        | 577                   |
| Roosevelt County ISD            | 165      | 47     | 5         | 217                   |
| San Juan County ISD             | 960      | 224    | 20        | 1,204                 |
| San Miguel County ISD           | 351      | 44     | 3         | 398                   |
| Sandoval County ISD             | 1,381    | 196    | 25        | 1,602                 |
| Santa Fe County ISD             | 768      | 162    | 6         | 936                   |
| Sierra County ISD               | 179      | 21     | 2         | 202                   |
| Socorro County ISD              | 194      | 22     | 3         | 219                   |
| South Dona Ana ISD              | 494      | 91     | 7         | 592                   |
| Southeast Bernalillo County ISD | 905      | 244    | 17        | 1,166                 |
| Southwest Bernalillo County ISD | 1,140    | 253    | 17        | 1,410                 |
| Taos County ISD                 | 348      | 48     | 8         | 404                   |
| Torrance County ISD             | 351      | 44     | 8         | 403                   |
| Valencia North County ISD       | 551      | 109    | 9         | 669                   |
| Valencia South County ISD       | 12       | 0      | 0         | 12                    |
| West Dona Ana County ISD        | 789      | 167    | 12        | 968                   |
| Centralized Units               | 0        | 0      | 0         | 0                     |
| Statewide Total                 | 16,390   | 3,150  | 322       | 19,862                |

**SNAP Initial Applications by Region<sup>4,11</sup>  
November 2017**

| Region             | Approved | Denied | Withdrawn | Total Cases Processed |
|--------------------|----------|--------|-----------|-----------------------|
| Region 1 - NW      | 2,790    | 520    | 55        | 3,365                 |
| Region 2 - NE      | 3,566    | 576    | 60        | 4,202                 |
| Region 3 - Central | 5,150    | 1,074  | 97        | 6,321                 |
| Region 4 - SE      | 2,064    | 437    | 52        | 2,553                 |
| Region 5 - SW      | 2,820    | 543    | 58        | 3,421                 |
| Centralized Units  | 0        | 0      | 0         | 0                     |

|                        |               |              |            |               |
|------------------------|---------------|--------------|------------|---------------|
| <b>Statewide Total</b> | <b>16,390</b> | <b>3,150</b> | <b>322</b> | <b>19,862</b> |
|------------------------|---------------|--------------|------------|---------------|



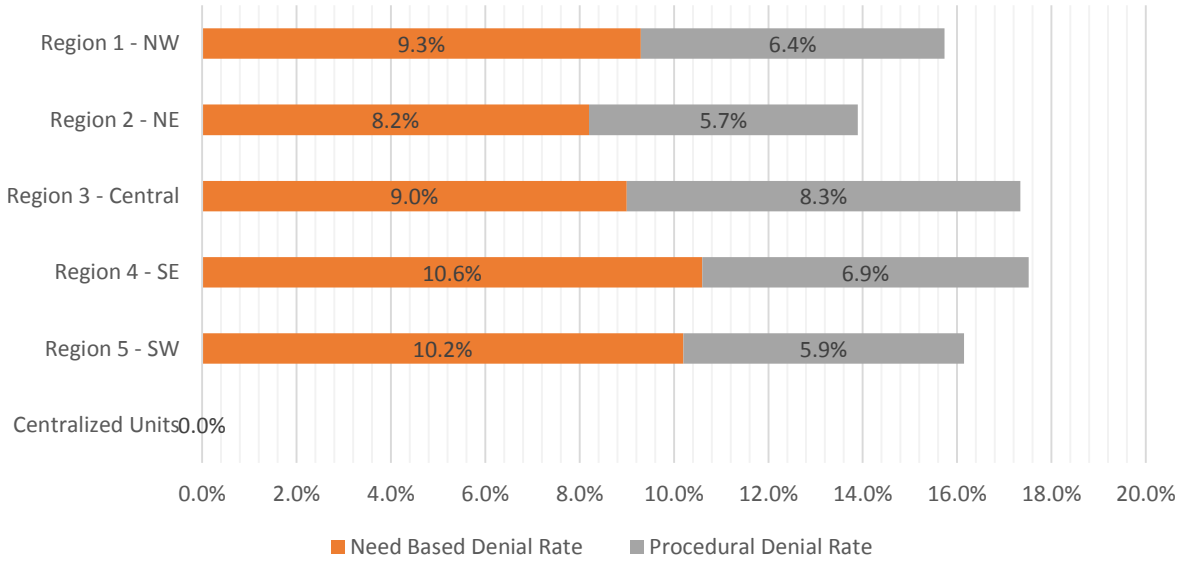
**SNAP Initial Disposition Rates by Field Office<sup>4,11</sup>**  
**November 2017**

| Office                          | Approval Rate | Denial Rate | Need Based Denial Rate | Procedural Denial Rate |
|---------------------------------|---------------|-------------|------------------------|------------------------|
| Chaves County ISD               | 86.6%         | 13.4%       | 9.4%                   | 4.0%                   |
| Cibola County ISD               | 88.0%         | 12.0%       | 6.0%                   | 6.0%                   |
| Colfax County ISD               | 85.4%         | 14.6%       | 13.9%                  | 0.7%                   |
| Curry County ISD                | 84.2%         | 15.8%       | 8.2%                   | 7.6%                   |
| East Dona Ana County ISD        | 82.2%         | 17.8%       | 12.3%                  | 5.5%                   |
| Eddy Artesia County ISD         | 87.7%         | 12.3%       | 6.5%                   | 5.8%                   |
| Eddy Carlsbad County ISD        | 76.8%         | 23.2%       | 13.2%                  | 10.0%                  |
| Grant County ISD                | 87.0%         | 13.0%       | 8.1%                   | 4.9%                   |
| Guadalupe County ISD            | 75.0%         | 25.0%       | 18.7%                  | 6.3%                   |
| Hidalgo County ISD              | 0.0%          | 100.0%      | 100.0%                 | 0.0%                   |
| Lea County ISD                  | 78.2%         | 21.8%       | 13.4%                  | 8.4%                   |
| Lincoln County ISD              | 83.2%         | 16.8%       | 12.3%                  | 4.5%                   |
| Luna County ISD                 | 86.4%         | 13.6%       | 6.7%                   | 6.9%                   |
| McKinley County ISD             | 85.5%         | 14.5%       | 8.3%                   | 6.2%                   |
| Northeast Bernalillo County ISD | 84.6%         | 15.4%       | 7.9%                   | 7.5%                   |
| Northwest Bernalillo County ISD | 82.8%         | 17.2%       | 8.1%                   | 9.1%                   |
| Otero County ISD                | 84.7%         | 15.3%       | 6.5%                   | 8.8%                   |
| Quay County ISD                 | 90.6%         | 9.4%        | 5.2%                   | 4.2%                   |
| Rio Arriba County ISD           | 84.9%         | 15.1%       | 9.2%                   | 5.9%                   |
| Roosevelt County ISD            | 77.8%         | 22.2%       | 11.8%                  | 10.4%                  |
| San Juan County ISD             | 81.1%         | 18.9%       | 11.2%                  | 7.7%                   |
| San Miguel County ISD           | 88.9%         | 11.1%       | 7.6%                   | 3.5%                   |
| Sandoval County ISD             | 87.6%         | 12.4%       | 6.5%                   | 5.9%                   |
| Santa Fe County ISD             | 82.6%         | 17.4%       | 10.2%                  | 7.2%                   |
| Sierra County ISD               | 89.5%         | 10.5%       | 9.0%                   | 1.5%                   |
| Socorro County ISD              | 89.8%         | 10.2%       | 7.0%                   | 3.2%                   |
| South Dona Ana ISD              | 84.4%         | 15.6%       | 11.3%                  | 4.3%                   |
| Southeast Bernalillo County ISD | 78.8%         | 21.2%       | 10.6%                  | 10.6%                  |
| Southwest Bernalillo County ISD | 81.8%         | 18.2%       | 10.2%                  | 8.0%                   |
| Taos County ISD                 | 87.9%         | 12.1%       | 6.8%                   | 5.3%                   |
| Torrance County ISD             | 88.9%         | 11.1%       | 7.3%                   | 3.8%                   |
| Valencia North County ISD       | 83.5%         | 16.5%       | 9.2%                   | 7.3%                   |
| Valencia South County ISD       | 100.0%        | 0.0%        | 0.0%                   | 0.0%                   |
| West Dona Ana County ISD        | 82.5%         | 17.5%       | 11.5%                  | 6.0%                   |
| Centralized Units               |               |             |                        |                        |
| Statewide Total                 | 83.9%         | 16.1%       | 9.2%                   | 6.9%                   |

**SNAP Initial Disposition Rates by Region<sup>4,11</sup>**  
**November 2017**

| Region             | Approval Rate | Denial Rate | Need Based Denial Rate | Procedural Denial Rate |
|--------------------|---------------|-------------|------------------------|------------------------|
| Region 1 - NW      | 84.3%         | 15.7%       | 9.3%                   | 6.4%                   |
| Region 2 - NE      | 86.1%         | 13.9%       | 8.2%                   | 5.7%                   |
| Region 3 - Central | 82.7%         | 17.3%       | 9.0%                   | 8.3%                   |
| Region 4 - SE      | 82.5%         | 17.5%       | 10.6%                  | 6.9%                   |
| Region 5 - SW      | 83.9%         | 16.1%       | 10.2%                  | 5.9%                   |
| Centralized Units  |               |             |                        |                        |

|                 |       |       |      |      |
|-----------------|-------|-------|------|------|
| Statewide Total | 83.9% | 16.1% | 9.2% | 6.9% |
|-----------------|-------|-------|------|------|





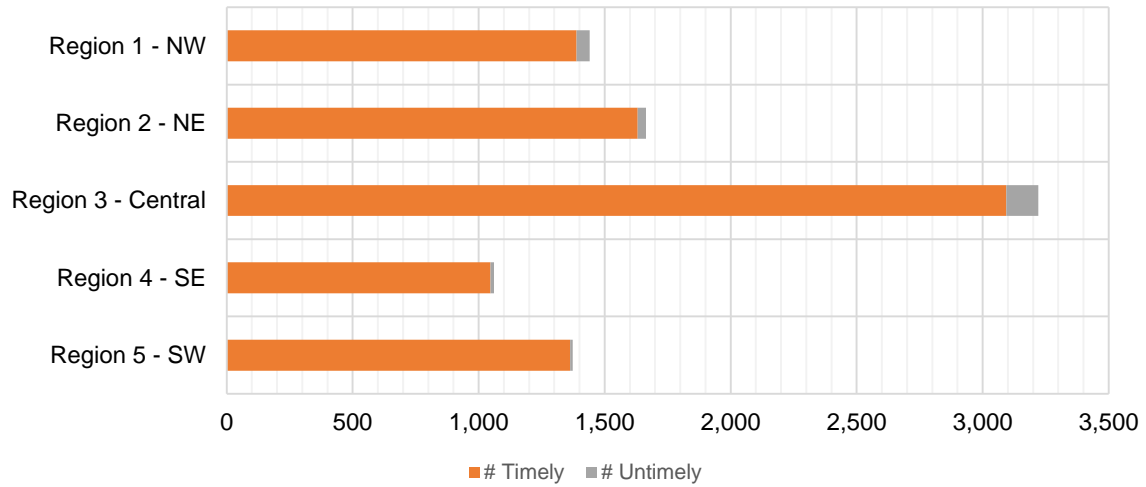
**SNAP Expedite Timeliness by Field Office<sup>13</sup>**  
**November 2017**

| Office Name                     | Total Expedited Approvals | # Timely     | # Untimely | Percentage Timely |
|---------------------------------|---------------------------|--------------|------------|-------------------|
| Chaves County ISD               | 220                       | 217          | 3          | 98.6 %            |
| Cibola County ISD               | 99                        | 99           | 0          | 100.0 %           |
| Colfax County ISD               | 56                        | 56           | 0          | 100.0 %           |
| Curry County ISD                | 229                       | 226          | 3          | 98.7 %            |
| East Dona Ana County ISD        | 246                       | 243          | 3          | 98.8 %            |
| Eddy Artesia County ISD         | 64                        | 63           | 1          | 98.4 %            |
| Eddy Carlsbad County ISD        | 144                       | 142          | 2          | 98.6 %            |
| Grant County ISD                | 170                       | 170          | 0          | 100.0 %           |
| Guadalupe County ISD            | 18                        | 18           | 0          | 100.0 %           |
| Lea County ISD                  | 243                       | 239          | 4          | 98.4 %            |
| Lincoln County ISD              | 73                        | 72           | 1          | 98.6 %            |
| Luna County ISD                 | 141                       | 141          | 0          | 100.0 %           |
| McKinley County ISD             | 338                       | 336          | 2          | 99.4 %            |
| Northeast Bernalillo County ISD | 1,051                     | 1,013        | 38         | 96.4 %            |
| Northwest Bernalillo County ISD | 904                       | 864          | 40         | 95.6 %            |
| Otero County ISD                | 249                       | 245          | 4          | 98.4 %            |
| Quay County ISD                 | 41                        | 41           | 0          | 100.0 %           |
| Rio Arriba County ISD           | 299                       | 291          | 8          | 97.3 %            |
| Roosevelt County ISD            | 88                        | 88           | 0          | 100.0 %           |
| San Juan County ISD             | 553                       | 521          | 32         | 94.2 %            |
| San Miguel County ISD           | 180                       | 177          | 3          | 98.3 %            |
| Sandoval County ISD             | 458                       | 450          | 8          | 98.3 %            |
| Santa Fe County ISD             | 433                       | 423          | 10         | 97.7 %            |
| Sierra County ISD               | 84                        | 84           | 0          | 100.0 %           |
| Socorro County ISD              | 97                        | 97           | 0          | 100.0 %           |
| South Dona Ana ISD              | 179                       | 178          | 1          | 99.4 %            |
| Southeast Bernalillo County ISD | 494                       | 473          | 21         | 95.7 %            |
| Southwest Bernalillo County ISD | 631                       | 608          | 23         | 96.4 %            |
| Taos County ISD                 | 179                       | 175          | 4          | 97.8 %            |
| Torrance County ISD             | 141                       | 136          | 5          | 96.5 %            |
| Valencia North County ISD       | 270                       | 252          | 18         | 93.3 %            |
| West Dona Ana County ISD        | 388                       | 386          | 2          | 99.5 %            |
| <b>Statewide Total</b>          | <b>8,760</b>              | <b>8,524</b> | <b>236</b> | <b>97.3 %</b>     |

**SNAP Expedite Timeliness by Region<sup>13</sup>**  
**November 2017**

| Region             | Total Expedited Approvals | # Timely | # Untimely | Percentage Timely |
|--------------------|---------------------------|----------|------------|-------------------|
| Region 1 - NW      | 1,441                     | 1,389    | 52         | 96.4%             |
| Region 2 - NE      | 1,664                     | 1,631    | 33         | 98.0%             |
| Region 3 - Central | 3,221                     | 3,094    | 127        | 96.1%             |
| Region 4 - SE      | 1,061                     | 1,047    | 14         | 98.7%             |
| Region 5 - SW      | 1,373                     | 1,363    | 10         | 99.3%             |
| Statewide Total    | 8,760                     | 8,524    | 236        | 97.3%             |

**SNAP Expedite - Timeliness**



### SNAP: Percentage of Applications Processed Timely <sup>13</sup>

|     | Oct-17 | Nov-17 | Dec-17 | Jan-18 | Feb-18 | Mar-18 | Apr-18 | May-18 | Jun-18 | Jul-18 | Aug-18 | Sep-18 | Average |
|-----|--------|--------|--------|--------|--------|--------|--------|--------|--------|--------|--------|--------|---------|
| APT | 97.4%  | 97.5%  |        |        |        |        |        |        |        |        |        |        | 97.5%   |

### SNAP Application Processing Timeliness (APT)



**SNAP Non-Expedite: Percentage of Initial Applications Processed Timely by Field Office** <sup>13</sup>

|                            | Oct-17       | Nov-17       | Dec-17 | Jan-18 | Feb-18 | Mar-18 | Apr-18 | May-18 | Jun-18 | Jul-18 | Aug-18 | Sep-18 | Average      |
|----------------------------|--------------|--------------|--------|--------|--------|--------|--------|--------|--------|--------|--------|--------|--------------|
| Cibola                     | 96.8%        | 97.2%        |        |        |        |        |        |        |        |        |        |        | 97.0%        |
| McKinley                   | 97.4%        | 98.8%        |        |        |        |        |        |        |        |        |        |        | 98.1%        |
| San Juan                   | 94.8%        | 93.5%        |        |        |        |        |        |        |        |        |        |        | 94.2%        |
| Sierra                     | 100.0%       | 100.0%       |        |        |        |        |        |        |        |        |        |        | 100.0%       |
| Socorro                    | 100.0%       | 96.8%        |        |        |        |        |        |        |        |        |        |        | 98.4%        |
| Valencia North             | 96.5%        | 96.3%        |        |        |        |        |        |        |        |        |        |        | 96.4%        |
| Valencia South             | 100.0%       |              |        |        |        |        |        |        |        |        |        |        | 100.0%       |
| <b>NW Region 1 Total</b>   | <b>96.5%</b> | <b>96.4%</b> |        |        |        |        |        |        |        |        |        |        | <b>96.5%</b> |
| Colfax                     | 100.0%       | 100.0%       |        |        |        |        |        |        |        |        |        |        | 100.0%       |
| Guadalupe                  | 100.0%       | 100.0%       |        |        |        |        |        |        |        |        |        |        | 100.0%       |
| Quay                       | 97.2%        | 100.0%       |        |        |        |        |        |        |        |        |        |        | 98.6%        |
| Rio Arriba                 | 97.0%        | 99.4%        |        |        |        |        |        |        |        |        |        |        | 98.2%        |
| San Miguel                 | 100.0%       | 98.5%        |        |        |        |        |        |        |        |        |        |        | 99.3%        |
| Sandoval                   | 98.2%        | 98.6%        |        |        |        |        |        |        |        |        |        |        | 98.4%        |
| Santa Fe                   | 97.6%        | 97.5%        |        |        |        |        |        |        |        |        |        |        | 97.6%        |
| Taos                       | 98.7%        | 98.7%        |        |        |        |        |        |        |        |        |        |        | 98.7%        |
| <b>NE Region 2 Total</b>   | <b>98.2%</b> | <b>98.6%</b> |        |        |        |        |        |        |        |        |        |        | <b>98.4%</b> |
| NE Bernalillo              | 95.4%        | 95.7%        |        |        |        |        |        |        |        |        |        |        | 95.6%        |
| NW Bernalillo              | 97.6%        | 95.1%        |        |        |        |        |        |        |        |        |        |        | 96.4%        |
| SE Bernalillo              | 96.0%        | 96.8%        |        |        |        |        |        |        |        |        |        |        | 96.4%        |
| SW Bernalillo              | 97.9%        | 97.3%        |        |        |        |        |        |        |        |        |        |        | 97.6%        |
| Torrance                   | 98.9%        | 98.2%        |        |        |        |        |        |        |        |        |        |        | 98.6%        |
| <b>Gen. Region 3 Total</b> | <b>96.9%</b> | <b>96.3%</b> |        |        |        |        |        |        |        |        |        |        | <b>96.6%</b> |
| Chaves                     | 99.3%        | 98.9%        |        |        |        |        |        |        |        |        |        |        | 99.1%        |
| Curry                      | 95.7%        | 97.1%        |        |        |        |        |        |        |        |        |        |        | 96.4%        |
| Eddy Artesia               | 100.0%       | 97.2%        |        |        |        |        |        |        |        |        |        |        | 98.6%        |
| Eddy Carlsbad              | 94.8%        | 97.3%        |        |        |        |        |        |        |        |        |        |        | 96.1%        |
| Lea                        | 97.0%        | 98.3%        |        |        |        |        |        |        |        |        |        |        | 97.7%        |
| Lincoln                    | 97.8%        | 98.9%        |        |        |        |        |        |        |        |        |        |        | 98.4%        |
| Roosevelt                  | 100.0%       | 98.6%        |        |        |        |        |        |        |        |        |        |        | 99.3%        |
| <b>SE Region 4 Total</b>   | <b>97.6%</b> | <b>98.2%</b> |        |        |        |        |        |        |        |        |        |        | <b>97.9%</b> |
| East Dona Ana              | 99.6%        | 98.9%        |        |        |        |        |        |        |        |        |        |        | 99.3%        |
| Grant                      | 100.0%       | 99.0%        |        |        |        |        |        |        |        |        |        |        | 99.5%        |
| Luna                       | 100.0%       | 99.4%        |        |        |        |        |        |        |        |        |        |        | 99.7%        |
| Otero                      | 100.0%       | 98.9%        |        |        |        |        |        |        |        |        |        |        | 99.5%        |
| South Dona Ana             | 100.0%       | 99.6%        |        |        |        |        |        |        |        |        |        |        | 99.8%        |
| West Dona Ana              | 99.2%        | 98.7%        |        |        |        |        |        |        |        |        |        |        | 99.0%        |
| <b>SW Region 5 Total</b>   | <b>99.7%</b> | <b>99.0%</b> |        |        |        |        |        |        |        |        |        |        | <b>99.4%</b> |
| <b>STATE TOTAL</b>         | <b>97.7%</b> | <b>97.5%</b> |        |        |        |        |        |        |        |        |        |        | <b>97.6%</b> |

**SNAP Expedite: Percentage of Initial Applications Processed Timely by Field Office<sup>13</sup>**

|                            | Oct-17       | Nov-17       | Dec-17 | Jan-18 | Feb-18 | Mar-18 | Apr-18 | May-18 | Jun-18 | Jul-18 | Aug-18 | Sep-18 | Average      |
|----------------------------|--------------|--------------|--------|--------|--------|--------|--------|--------|--------|--------|--------|--------|--------------|
| Cibola                     | 94.1%        | 100.0%       |        |        |        |        |        |        |        |        |        |        | 97.1%        |
| McKinley                   | 99.4%        | 99.4%        |        |        |        |        |        |        |        |        |        |        | 99.4%        |
| San Juan                   | 95.8%        | 94.2%        |        |        |        |        |        |        |        |        |        |        | 95.0%        |
| Sierra                     | 98.3%        | 100.0%       |        |        |        |        |        |        |        |        |        |        | 99.2%        |
| Socorro                    | 98.9%        | 100.0%       |        |        |        |        |        |        |        |        |        |        | 99.5%        |
| Valencia North             | 97.1%        | 93.3%        |        |        |        |        |        |        |        |        |        |        | 95.2%        |
| Valencia South             | 100.0%       | 100.0%       |        |        |        |        |        |        |        |        |        |        | 100.0%       |
| <b>NW Region 1 Total</b>   | <b>97.0%</b> | <b>96.4%</b> |        |        |        |        |        |        |        |        |        |        | <b>96.7%</b> |
| Colfax                     | 98.6%        | 100.0%       |        |        |        |        |        |        |        |        |        |        | 99.3%        |
| Guadalupe                  | 100.0%       | 100.0%       |        |        |        |        |        |        |        |        |        |        | 100.0%       |
| Quay                       | 100.0%       | 100.0%       |        |        |        |        |        |        |        |        |        |        | 100.0%       |
| Rio Arriba                 | 94.6%        | 97.3%        |        |        |        |        |        |        |        |        |        |        | 96.0%        |
| San Miguel                 | 99.1%        | 98.3%        |        |        |        |        |        |        |        |        |        |        | 98.7%        |
| Sandoval                   | 98.2%        | 98.3%        |        |        |        |        |        |        |        |        |        |        | 98.3%        |
| Santa Fe                   | 97.5%        | 97.7%        |        |        |        |        |        |        |        |        |        |        | 97.6%        |
| Taos                       | 98.7%        | 97.8%        |        |        |        |        |        |        |        |        |        |        | 98.3%        |
| <b>NE Region 2 Total</b>   | <b>97.5%</b> | <b>98.0%</b> |        |        |        |        |        |        |        |        |        |        | <b>97.8%</b> |
| NE Bernalillo              | 94.6%        | 96.4%        |        |        |        |        |        |        |        |        |        |        | 95.5%        |
| NW Bernalillo              | 97.6%        | 95.6%        |        |        |        |        |        |        |        |        |        |        | 96.6%        |
| SE Bernalillo              | 96.5%        | 95.7%        |        |        |        |        |        |        |        |        |        |        | 96.1%        |
| SW Bernalillo              | 96.6%        | 96.4%        |        |        |        |        |        |        |        |        |        |        | 96.5%        |
| Torrance                   | 96.9%        | 96.5%        |        |        |        |        |        |        |        |        |        |        | 96.7%        |
| <b>Gen. Region 3 Total</b> | <b>96.3%</b> | <b>96.1%</b> |        |        |        |        |        |        |        |        |        |        | <b>96.2%</b> |
| Chaves                     | 98.1%        | 98.6%        |        |        |        |        |        |        |        |        |        |        | 98.4%        |
| Curry                      | 96.0%        | 98.7%        |        |        |        |        |        |        |        |        |        |        | 97.4%        |
| Eddy Artesia               | 100.0%       | 98.4%        |        |        |        |        |        |        |        |        |        |        | 99.2%        |
| Eddy Carlsbad              | 98.5%        | 98.6%        |        |        |        |        |        |        |        |        |        |        | 98.6%        |
| Lea                        | 98.4%        | 98.4%        |        |        |        |        |        |        |        |        |        |        | 98.4%        |
| Lincoln                    | 96.7%        | 98.6%        |        |        |        |        |        |        |        |        |        |        | 97.7%        |
| Roosevelt                  | 92.7%        | 100.0%       |        |        |        |        |        |        |        |        |        |        | 96.4%        |
| <b>SE Region 4 Total</b>   | <b>97.4%</b> | <b>98.7%</b> |        |        |        |        |        |        |        |        |        |        | <b>98.1%</b> |
| East Dona Ana              | 99.0%        | 98.8%        |        |        |        |        |        |        |        |        |        |        | 98.9%        |
| Grant                      | 97.9%        | 100.0%       |        |        |        |        |        |        |        |        |        |        | 99.0%        |
| Luna                       | 99.3%        | 100.0%       |        |        |        |        |        |        |        |        |        |        | 99.7%        |
| Otero                      | 98.8%        | 98.4%        |        |        |        |        |        |        |        |        |        |        | 98.6%        |
| South Dona Ana             | 100.0%       | 99.4%        |        |        |        |        |        |        |        |        |        |        | 99.7%        |
| West Dona Ana              | 99.5%        | 99.5%        |        |        |        |        |        |        |        |        |        |        | 99.5%        |
| <b>SW Region 5 Total</b>   | <b>99.1%</b> | <b>99.3%</b> |        |        |        |        |        |        |        |        |        |        | <b>99.2%</b> |
| <b>STATE TOTAL</b>         | <b>97.2%</b> | <b>97.3%</b> |        |        |        |        |        |        |        |        |        |        | <b>97.3%</b> |

**SNAP: Percentage of Denied Initial Applications Processed Within 30 Days by Field Office<sup>13</sup>**

|                            | Oct-17       | Nov-17       | Dec-17 | Jan-18 | Feb-18 | Mar-18 | Apr-18 | May-18 | Jun-18 | Jul-18 | Aug-18 | Sep-18 | Average      |
|----------------------------|--------------|--------------|--------|--------|--------|--------|--------|--------|--------|--------|--------|--------|--------------|
| Cibola                     | 66.7%        | 50.0%        |        |        |        |        |        |        |        |        |        |        | 58.3%        |
| McKinley                   | 59.0%        | 57.8%        |        |        |        |        |        |        |        |        |        |        | 58.4%        |
| San Juan                   | 35.7%        | 51.8%        |        |        |        |        |        |        |        |        |        |        | 43.7%        |
| Sierra                     | 95.5%        | 90.9%        |        |        |        |        |        |        |        |        |        |        | 93.2%        |
| Socorro                    | 69.6%        | 68.2%        |        |        |        |        |        |        |        |        |        |        | 68.9%        |
| Valencia North             | 45.9%        | 41.8%        |        |        |        |        |        |        |        |        |        |        | 43.9%        |
| Valencia South             |              |              |        |        |        |        |        |        |        |        |        |        | #DIV/0!      |
| <b>NW Region 1 Total</b>   | <b>48.3%</b> | <b>53.2%</b> |        |        |        |        |        |        |        |        |        |        | <b>50.8%</b> |
| Colfax                     | 100.0%       | 100.0%       |        |        |        |        |        |        |        |        |        |        | 100.0%       |
| Guadalupe                  | 73.3%        | 75.0%        |        |        |        |        |        |        |        |        |        |        | 74.2%        |
| Quay                       | 83.3%        | 33.3%        |        |        |        |        |        |        |        |        |        |        | 58.3%        |
| Rio Arriba                 | 70.1%        | 56.3%        |        |        |        |        |        |        |        |        |        |        | 63.2%        |
| San Miguel                 | 66.2%        | 77.3%        |        |        |        |        |        |        |        |        |        |        | 71.7%        |
| Sandoval                   | 70.8%        | 69.2%        |        |        |        |        |        |        |        |        |        |        | 70.0%        |
| Santa Fe                   | 64.7%        | 70.6%        |        |        |        |        |        |        |        |        |        |        | 67.6%        |
| Taos                       | 77.8%        | 79.2%        |        |        |        |        |        |        |        |        |        |        | 78.5%        |
| <b>NE Region 2 Total</b>   | <b>70.8%</b> | <b>69.7%</b> |        |        |        |        |        |        |        |        |        |        | <b>70.3%</b> |
| NE Bernalillo              | 43.5%        | 40.5%        |        |        |        |        |        |        |        |        |        |        | 42.0%        |
| NW Bernalillo              | 41.7%        | 42.8%        |        |        |        |        |        |        |        |        |        |        | 42.3%        |
| SE Bernalillo              | 52.3%        | 52.0%        |        |        |        |        |        |        |        |        |        |        | 52.1%        |
| SW Bernalillo              | 63.9%        | 62.9%        |        |        |        |        |        |        |        |        |        |        | 63.4%        |
| Torrance                   | 60.4%        | 68.2%        |        |        |        |        |        |        |        |        |        |        | 64.3%        |
| <b>Cen. Region 3 Total</b> | <b>49.7%</b> | <b>50.0%</b> |        |        |        |        |        |        |        |        |        |        | <b>49.9%</b> |
| Chaves                     | 86.4%        | 85.7%        |        |        |        |        |        |        |        |        |        |        | 86.1%        |
| Curry                      | 63.5%        | 60.3%        |        |        |        |        |        |        |        |        |        |        | 61.9%        |
| Eddy Artesia               | 75.8%        | 58.1%        |        |        |        |        |        |        |        |        |        |        | 66.9%        |
| Eddy Carlsbad              | 60.7%        | 67.6%        |        |        |        |        |        |        |        |        |        |        | 64.1%        |
| Lea                        | 86.3%        | 63.8%        |        |        |        |        |        |        |        |        |        |        | 75.1%        |
| Lincoln                    | 55.0%        | 78.4%        |        |        |        |        |        |        |        |        |        |        | 66.7%        |
| Roosevelt                  | 77.1%        | 68.1%        |        |        |        |        |        |        |        |        |        |        | 72.6%        |
| <b>SE Region 4 Total</b>   | <b>74.4%</b> | <b>69.2%</b> |        |        |        |        |        |        |        |        |        |        | <b>71.8%</b> |
| East Dona Ana              | 81.2%        | 77.6%        |        |        |        |        |        |        |        |        |        |        | 79.4%        |
| Grant                      | 73.5%        | 81.1%        |        |        |        |        |        |        |        |        |        |        | 77.3%        |
| Luna                       | 55.8%        | 51.1%        |        |        |        |        |        |        |        |        |        |        | 53.4%        |
| Otero                      | 40.3%        | 38.6%        |        |        |        |        |        |        |        |        |        |        | 39.4%        |
| South Dona Ana             | 70.8%        | 68.1%        |        |        |        |        |        |        |        |        |        |        | 69.5%        |
| West Dona Ana              | 65.6%        | 55.7%        |        |        |        |        |        |        |        |        |        |        | 60.7%        |
| <b>SW Region 5 Total</b>   | <b>66.6%</b> | <b>62.3%</b> |        |        |        |        |        |        |        |        |        |        | <b>64.4%</b> |
| <b>STATE TOTAL</b>         | <b>59.5%</b> | <b>58.9%</b> |        |        |        |        |        |        |        |        |        |        | <b>59.2%</b> |

**SNAP Renewals Processed by Field Office<sup>20</sup>**  
**November 2017**

| Office                          | Approvals    | Closures     | Need Based Closures | Procedural Closures |
|---------------------------------|--------------|--------------|---------------------|---------------------|
| Chaves County ISD               | 214          | 138          | 20                  | 118                 |
| Cibola County ISD               | 145          | 81           | 4                   | 77                  |
| Colfax County ISD               | 39           | 23           | 1                   | 22                  |
| Curry County ISD                | 191          | 95           | 9                   | 86                  |
| East Dona Ana County ISD        | 341          | 142          | 28                  | 114                 |
| Eddy Artesia County ISD         | 51           | 28           | 1                   | 27                  |
| Eddy Carlsbad County ISD        | 73           | 80           | 12                  | 68                  |
| Grant County ISD                | 176          | 87           | 12                  | 75                  |
| Guadalupe County ISD            | 34           | 14           | 0                   | 14                  |
| Hidalgo County ISD              | 25           | 8            | 1                   | 7                   |
| Lea County ISD                  | 183          | 133          | 13                  | 120                 |
| Lincoln County ISD              | 47           | 34           | 2                   | 32                  |
| Luna County ISD                 | 171          | 88           | 7                   | 81                  |
| McKinley County ISD             | 429          | 198          | 12                  | 186                 |
| Northeast Bernalillo County ISD | 553          | 386          | 30                  | 356                 |
| Northwest Bernalillo County ISD | 501          | 275          | 20                  | 255                 |
| Otero County ISD                | 256          | 124          | 8                   | 116                 |
| Quay County ISD                 | 66           | 29           | 3                   | 26                  |
| Rio Arriba County ISD           | 204          | 107          | 9                   | 98                  |
| Roosevelt County ISD            | 48           | 28           | 4                   | 24                  |
| San Juan County ISD             | 502          | 262          | 27                  | 235                 |
| San Miguel County ISD           | 168          | 109          | 9                   | 100                 |
| Sandoval County ISD             | 461          | 218          | 28                  | 190                 |
| Santa Fe County ISD             | 371          | 175          | 14                  | 161                 |
| Sierra County ISD               | 108          | 56           | 9                   | 47                  |
| Socorro County ISD              | 135          | 53           | 8                   | 45                  |
| South Dona Ana ISD              | 445          | 147          | 16                  | 131                 |
| Southeast Bernalillo County ISD | 439          | 254          | 19                  | 235                 |
| Southwest Bernalillo County ISD | 645          | 309          | 21                  | 288                 |
| Taos County ISD                 | 149          | 83           | 4                   | 79                  |
| Torrance County ISD             | 147          | 66           | 9                   | 57                  |
| Valencia North County ISD       | 338          | 184          | 20                  | 164                 |
| Valencia South County ISD       | 0            | 0            | 0                   | 0                   |
| West Dona Ana County ISD        | 427          | 192          | 15                  | 177                 |
| Centralized Units               | 56           | 25           | 4                   | 21                  |
| <b>Statewide Total</b>          | <b>8,138</b> | <b>4,231</b> | <b>399</b>          | <b>3,832</b>        |

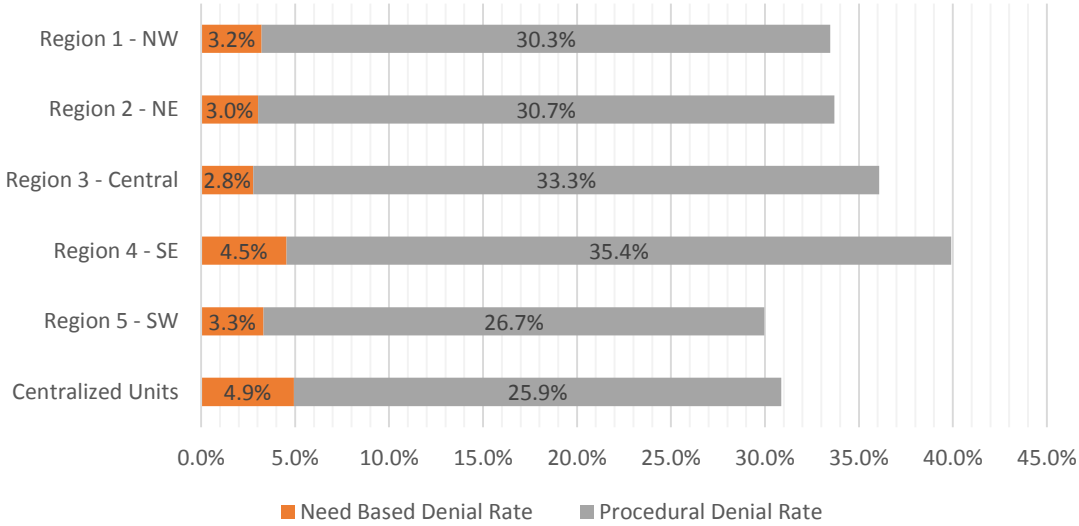
**SNAP Renewal Disposition Rates by Field Office<sup>20</sup>**  
**November 2017**

| <b>Office</b>                   | <b>Approval Rate</b> | <b>Closure Rate</b> | <b>Need Based Closure Rate</b> | <b>Procedural Closure Rate</b> |
|---------------------------------|----------------------|---------------------|--------------------------------|--------------------------------|
| Chaves County ISD               | 60.8%                | 39.2%               | 5.7%                           | 33.5%                          |
| Cibola County ISD               | 64.2%                | 35.8%               | 1.8%                           | 34.1%                          |
| Colfax County ISD               | 62.9%                | 37.1%               | 1.6%                           | 35.5%                          |
| Curry County ISD                | 66.8%                | 33.2%               | 3.1%                           | 30.1%                          |
| East Dona Ana County ISD        | 70.6%                | 29.4%               | 5.8%                           | 23.6%                          |
| Eddy Artesia County ISD         | 64.6%                | 35.4%               | 1.3%                           | 34.2%                          |
| Eddy Carlsbad County ISD        | 47.7%                | 52.3%               | 7.8%                           | 44.4%                          |
| Grant County ISD                | 66.9%                | 33.1%               | 4.6%                           | 28.5%                          |
| Guadalupe County ISD            | 70.8%                | 29.2%               | 0.0%                           | 29.2%                          |
| Hidalgo County ISD              | 75.8%                | 24.2%               | 3.0%                           | 21.2%                          |
| Lea County ISD                  | 57.9%                | 42.1%               | 4.1%                           | 38.0%                          |
| Lincoln County ISD              | 58.0%                | 42.0%               | 2.5%                           | 39.5%                          |
| Luna County ISD                 | 66.0%                | 34.0%               | 2.7%                           | 31.3%                          |
| McKinley County ISD             | 68.4%                | 31.6%               | 1.9%                           | 29.7%                          |
| Northeast Bernalillo County ISD | 58.9%                | 41.1%               | 3.2%                           | 37.9%                          |
| Northwest Bernalillo County ISD | 64.6%                | 35.4%               | 2.6%                           | 32.9%                          |
| Otero County ISD                | 67.4%                | 32.6%               | 2.1%                           | 30.5%                          |
| Quay County ISD                 | 69.5%                | 30.5%               | 3.2%                           | 27.4%                          |
| Rio Arriba County ISD           | 65.6%                | 34.4%               | 2.9%                           | 31.5%                          |
| Roosevelt County ISD            | 63.2%                | 36.8%               | 5.3%                           | 31.6%                          |
| San Juan County ISD             | 65.7%                | 34.3%               | 3.5%                           | 30.8%                          |
| San Miguel County ISD           | 60.6%                | 39.4%               | 3.2%                           | 36.1%                          |
| Sandoval County ISD             | 67.9%                | 32.1%               | 4.1%                           | 28.0%                          |
| Santa Fe County ISD             | 67.9%                | 32.1%               | 2.6%                           | 29.5%                          |
| Sierra County ISD               | 65.9%                | 34.1%               | 5.5%                           | 28.7%                          |
| Socorro County ISD              | 71.8%                | 28.2%               | 4.3%                           | 23.9%                          |
| South Dona Ana ISD              | 75.2%                | 24.8%               | 2.7%                           | 22.1%                          |
| Southeast Bernalillo County ISD | 63.3%                | 36.7%               | 2.7%                           | 33.9%                          |
| Southwest Bernalillo County ISD | 67.6%                | 32.4%               | 2.2%                           | 30.2%                          |
| Taos County ISD                 | 64.2%                | 35.8%               | 1.7%                           | 34.1%                          |
| Torrance County ISD             | 69.0%                | 31.0%               | 4.2%                           | 26.8%                          |
| Valencia North County ISD       | 64.8%                | 35.2%               | 3.8%                           | 31.4%                          |
| Valencia South County ISD       | 0.0%                 | 0.0%                | 0.0%                           | 0.0%                           |
| West Dona Ana County ISD        | 69.0%                | 31.0%               | 2.4%                           | 28.6%                          |
| Centralized Units               | 69.1%                | 30.9%               | 4.9%                           | 25.9%                          |
| <b>Statewide Total</b>          | <b>65.8%</b>         | <b>34.2%</b>        | <b>3.2%</b>                    | <b>31.0%</b>                   |



## SNAP Renewal Disposition Rates by Region<sup>20</sup> November 2017

| Region             | Approval Rate | Closure Rate | Need Based Closure Rate | Procedural Closure Rate |
|--------------------|---------------|--------------|-------------------------|-------------------------|
| Region 1 - NW      | 66.5%         | 33.5%        | 3.2%                    | 30.3%                   |
| Region 2 - NE      | 66.3%         | 33.7%        | 3.0%                    | 30.7%                   |
| Region 3 - Central | 63.9%         | 36.1%        | 2.8%                    | 33.3%                   |
| Region 4 - SE      | 60.1%         | 39.9%        | 4.5%                    | 35.4%                   |
| Region 5 - SW      | 70.0%         | 30.0%        | 3.3%                    | 26.7%                   |
| Centralized Units  | 69.1%         | 30.9%        | 4.9%                    | 25.9%                   |
| Statewide Total    | 65.8%         | 34.2%        | 3.2%                    | 31.0%                   |



| SNAP: Percentage of Approved Renewal Applications Processed by Normal Accessibility Date <sup>11</sup> |        |              |        |        |        |        |        |        |        |        |        |        |              |
|--|--------|--------------|--------|--------|--------|--------|--------|--------|--------|--------|--------|--------|--------------|
|  | Oct-17 | Nov-17       | Dec-17 | Jan-18 | Feb-18 | Mar-18 | Apr-18 | May-18 | Jun-18 | Jul-18 | Aug-18 | Sep-18 | Average      |
| Cibola   |        | 72.8%        |        |        |        |        |        |        |        |        |        |        | 72.8%        |
| McKinley   |        | 92.8%        |        |        |        |        |        |        |        |        |        |        | 92.8%        |
| San Juan   |        | 89.0%        |        |        |        |        |        |        |        |        |        |        | 89.0%        |
| Sierra   |        | 100.0%       |        |        |        |        |        |        |        |        |        |        | 100.0%       |
| Socorro  |        | 94.7%        |        |        |        |        |        |        |        |        |        |        | 94.7%        |
| Valencia North   |        | 89.1%        |        |        |        |        |        |        |        |        |        |        | 89.1%        |
| Valencia South   |        |              |        |        |        |        |        |        |        |        |        |        |              |
| <b>NW Region 1 Total</b>   |        | <b>89.8%</b> |        |        |        |        |        |        |        |        |        |        | <b>89.8%</b> |
| Colfax   |        | 95.1%        |        |        |        |        |        |        |        |        |        |        | 95.1%        |
| Guadalupe  |        | 96.7%        |        |        |        |        |        |        |        |        |        |        | 96.7%        |
| Quay   |        | 100.0%       |        |        |        |        |        |        |        |        |        |        | 100.0%       |
| Rio Arriba   |        | 90.5%        |        |        |        |        |        |        |        |        |        |        | 90.5%        |
| San Miguel   |        | 93.6%        |        |        |        |        |        |        |        |        |        |        | 93.6%        |
| Sandoval   |        | 93.1%        |        |        |        |        |        |        |        |        |        |        | 93.1%        |
| Santa Fe   |        | 91.6%        |        |        |        |        |        |        |        |        |        |        | 91.6%        |
| Taos   |        | 95.8%        |        |        |        |        |        |        |        |        |        |        | 95.8%        |
| <b>NE Region 2 Total</b>   |        | <b>94.6%</b> |        |        |        |        |        |        |        |        |        |        | <b>94.6%</b> |
| NE Bernalillo  |        | 75.7%        |        |        |        |        |        |        |        |        |        |        | 75.7%        |
| NW Bernalillo  |        | 88.7%        |        |        |        |        |        |        |        |        |        |        | 88.7%        |
| SE Bernalillo  |        | 85.2%        |        |        |        |        |        |        |        |        |        |        | 85.2%        |
| SW Bernalillo  |        | 88.9%        |        |        |        |        |        |        |        |        |        |        | 88.9%        |
| Torrance   |        | 83.1%        |        |        |        |        |        |        |        |        |        |        | 83.1%        |
| <b>Gen. Region 3 Total</b>   |        | <b>84.3%</b> |        |        |        |        |        |        |        |        |        |        | <b>84.3%</b> |
| Chaves   |        | 92.0%        |        |        |        |        |        |        |        |        |        |        | 92.0%        |
| Curry  |        | 94.6%        |        |        |        |        |        |        |        |        |        |        | 94.6%        |
| Eddy Artesia   |        | 100.0%       |        |        |        |        |        |        |        |        |        |        | 100.0%       |
| Eddy Carlsbad  |        | 80.3%        |        |        |        |        |        |        |        |        |        |        | 80.3%        |
| Lea  |        | 94.6%        |        |        |        |        |        |        |        |        |        |        | 94.6%        |
| Lincoln  |        | 88.5%        |        |        |        |        |        |        |        |        |        |        | 88.5%        |
| Roosevelt  |        | 92.9%        |        |        |        |        |        |        |        |        |        |        | 92.9%        |
| <b>SE Region 4 Total</b>   |        | <b>91.8%</b> |        |        |        |        |        |        |        |        |        |        | <b>91.8%</b> |
| East Dona Ana  |        | 96.8%        |        |        |        |        |        |        |        |        |        |        | 96.8%        |
| Grant  |        | 94.2%        |        |        |        |        |        |        |        |        |        |        | 94.2%        |
| Luna   |        | 96.9%        |        |        |        |        |        |        |        |        |        |        | 96.9%        |
| Otero  |        | 96.2%        |        |        |        |        |        |        |        |        |        |        | 96.2%        |
| South Dona Ana   |        | 97.4%        |        |        |        |        |        |        |        |        |        |        | 97.4%        |
| West Dona Ana  |        | 99.1%        |        |        |        |        |        |        |        |        |        |        | 99.1%        |
| <b>SW Region 5 Total</b>   |        | <b>96.8%</b> |        |        |        |        |        |        |        |        |        |        | <b>96.8%</b> |
| <b>STATE TOTAL</b>   |        | <b>90.4%</b> |        |        |        |        |        |        |        |        |        |        | <b>90.4%</b> |

Only includes cases in which the Renewal Packet was received by the 15th of the month, the due date for uninterrupted benefits.  
No data available for October 2017

| SNAP: Percentage of Approved Renewal Applications Processed by Normal Accessibility Date <sup>11</sup> |        |              |        |        |        |        |        |        |        |        |        |        |              |
|--|--------|--------------|--------|--------|--------|--------|--------|--------|--------|--------|--------|--------|--------------|
|  | Oct-17 | Nov-17       | Dec-17 | Jan-18 | Feb-18 | Mar-18 | Apr-18 | May-18 | Jun-18 | Jul-18 | Aug-18 | Sep-18 | Average      |
| Cibola   |        | 71.2%        |        |        |        |        |        |        |        |        |        |        | 71.2%        |
| McKinley   |        | 90.4%        |        |        |        |        |        |        |        |        |        |        | 90.4%        |
| San Juan   |        | 85.9%        |        |        |        |        |        |        |        |        |        |        | 85.9%        |
| Sierra   |        | 98.1%        |        |        |        |        |        |        |        |        |        |        | 98.1%        |
| Socorro  |        | 92.5%        |        |        |        |        |        |        |        |        |        |        | 92.5%        |
| Valencia North   |        | 84.1%        |        |        |        |        |        |        |        |        |        |        | 84.1%        |
| Valencia South   |        |              |        |        |        |        |        |        |        |        |        |        |              |
| <b>NW Region 1 Total</b>   |        | <b>87.1%</b> |        |        |        |        |        |        |        |        |        |        | <b>87.1%</b> |
| Colfax   |        | 87.8%        |        |        |        |        |        |        |        |        |        |        | 87.8%        |
| Guadalupe  |        | 94.4%        |        |        |        |        |        |        |        |        |        |        | 94.4%        |
| Quay   |        | 94.3%        |        |        |        |        |        |        |        |        |        |        | 94.3%        |
| Rio Arriba   |        | 79.7%        |        |        |        |        |        |        |        |        |        |        | 79.7%        |
| San Miguel   |        | 90.4%        |        |        |        |        |        |        |        |        |        |        | 90.4%        |
| Sandoval   |        | 90.1%        |        |        |        |        |        |        |        |        |        |        | 90.1%        |
| Santa Fe   |        | 87.1%        |        |        |        |        |        |        |        |        |        |        | 87.1%        |
| Taos   |        | 90.8%        |        |        |        |        |        |        |        |        |        |        | 90.8%        |
| <b>NE Region 2 Total</b>   |        | <b>89.3%</b> |        |        |        |        |        |        |        |        |        |        | <b>89.3%</b> |
| NE Bernalillo  |        | 71.8%        |        |        |        |        |        |        |        |        |        |        | 71.8%        |
| NW Bernalillo  |        | 85.5%        |        |        |        |        |        |        |        |        |        |        | 85.5%        |
| SE Bernalillo  |        | 79.7%        |        |        |        |        |        |        |        |        |        |        | 79.7%        |
| SW Bernalillo  |        | 83.4%        |        |        |        |        |        |        |        |        |        |        | 83.4%        |
| Torrance   |        | 74.5%        |        |        |        |        |        |        |        |        |        |        | 74.5%        |
| <b>Gen. Region 3 Total</b>   |        | <b>79.0%</b> |        |        |        |        |        |        |        |        |        |        | <b>79.0%</b> |
| Chaves   |        | 91.2%        |        |        |        |        |        |        |        |        |        |        | 91.2%        |
| Curry  |        | 94.1%        |        |        |        |        |        |        |        |        |        |        | 94.1%        |
| Eddy Artesia   |        | 94.1%        |        |        |        |        |        |        |        |        |        |        | 94.1%        |
| Eddy Carlsbad  |        | 75.8%        |        |        |        |        |        |        |        |        |        |        | 75.8%        |
| Lea  |        | 91.8%        |        |        |        |        |        |        |        |        |        |        | 91.8%        |
| Lincoln  |        | 87.5%        |        |        |        |        |        |        |        |        |        |        | 87.5%        |
| Roosevelt  |        | 93.6%        |        |        |        |        |        |        |        |        |        |        | 93.6%        |
| <b>SE Region 4 Total</b>   |        | <b>89.7%</b> |        |        |        |        |        |        |        |        |        |        | <b>89.7%</b> |
| East Dona Ana  |        | 94.8%        |        |        |        |        |        |        |        |        |        |        | 94.8%        |
| Grant  |        | 90.5%        |        |        |        |        |        |        |        |        |        |        | 90.5%        |
| Luna   |        | 91.7%        |        |        |        |        |        |        |        |        |        |        | 91.7%        |
| Otero  |        | 87.3%        |        |        |        |        |        |        |        |        |        |        | 87.3%        |
| South Dona Ana   |        | 94.3%        |        |        |        |        |        |        |        |        |        |        | 94.3%        |
| West Dona Ana  |        | 97.4%        |        |        |        |        |        |        |        |        |        |        | 97.4%        |
| <b>SW Region 5 Total</b>   |        | <b>92.7%</b> |        |        |        |        |        |        |        |        |        |        | <b>92.7%</b> |
| <b>STATE TOTAL</b>   |        | <b>86.4%</b> |        |        |        |        |        |        |        |        |        |        | <b>86.4%</b> |

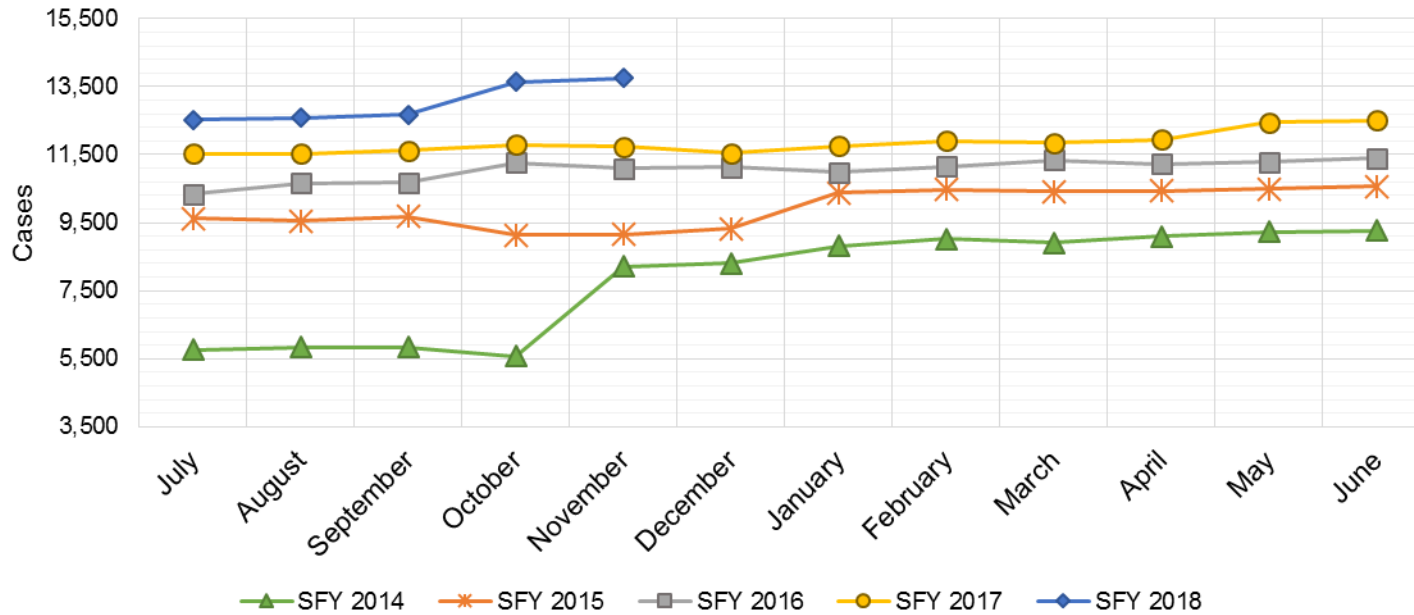
Includes cases in which the Renewal Packet was received after the 15th of the month, the due date for uninterrupted benefits.  
 No data available for October 2017

| SNAP: Percentage of Closures at Renewal Processed by Certification End Date <sup>11</sup> |        |             |        |        |        |        |        |        |        |        |        |        |             |
|---|--------|-------------|--------|--------|--------|--------|--------|--------|--------|--------|--------|--------|-------------|
|   | Oct-17 | Nov-17      | Dec-17 | Jan-18 | Feb-18 | Mar-18 | Apr-18 | May-18 | Jun-18 | Jul-18 | Aug-18 | Sep-18 | Average     |
| Cibola  |        | 6.8%        |        |        |        |        |        |        |        |        |        |        | 6.8%        |
| McKinley  |        | 3.7%        |        |        |        |        |        |        |        |        |        |        | 3.7%        |
| San Juan  |        | 7.0%        |        |        |        |        |        |        |        |        |        |        | 7.0%        |
| Sierra  |        | 19.2%       |        |        |        |        |        |        |        |        |        |        | 19.2%       |
| Socorro   |        | 11.8%       |        |        |        |        |        |        |        |        |        |        | 11.8%       |
| Valencia North  |        | 6.2%        |        |        |        |        |        |        |        |        |        |        | 6.2%        |
| Valencia South  |        |             |        |        |        |        |        |        |        |        |        |        |             |
| <b>NW Region 1 Total</b>  |        | <b>9.1%</b> |        |        |        |        |        |        |        |        |        |        | <b>9.1%</b> |
| Colfax  |        | 6.3%        |        |        |        |        |        |        |        |        |        |        | 6.3%        |
| Guadalupe   |        | 7.7%        |        |        |        |        |        |        |        |        |        |        | 7.7%        |
| Quay  |        | 15.8%       |        |        |        |        |        |        |        |        |        |        | 15.8%       |
| Rio Arriba  |        | 6.1%        |        |        |        |        |        |        |        |        |        |        | 6.1%        |
| San Miguel  |        | 4.7%        |        |        |        |        |        |        |        |        |        |        | 4.7%        |
| Sandoval  |        | 12.9%       |        |        |        |        |        |        |        |        |        |        | 12.9%       |
| Santa Fe  |        | 3.0%        |        |        |        |        |        |        |        |        |        |        | 3.0%        |
| Taos  |        | 4.1%        |        |        |        |        |        |        |        |        |        |        | 4.1%        |
| <b>NE Region 2 Total</b>  |        | <b>7.6%</b> |        |        |        |        |        |        |        |        |        |        | <b>7.6%</b> |
| NE Bernalillo   |        | 3.0%        |        |        |        |        |        |        |        |        |        |        | 3.0%        |
| NW Bernalillo   |        | 3.4%        |        |        |        |        |        |        |        |        |        |        | 3.4%        |
| SE Bernalillo   |        | 4.1%        |        |        |        |        |        |        |        |        |        |        | 4.1%        |
| SW Bernalillo   |        | 7.2%        |        |        |        |        |        |        |        |        |        |        | 7.2%        |
| Torrance  |        | 3.6%        |        |        |        |        |        |        |        |        |        |        | 3.6%        |
| <b>Cen. Region 3 Total</b>  |        | <b>4.3%</b> |        |        |        |        |        |        |        |        |        |        | <b>4.3%</b> |
| Chaves  |        | 7.7%        |        |        |        |        |        |        |        |        |        |        | 7.7%        |
| Curry   |        | 8.0%        |        |        |        |        |        |        |        |        |        |        | 8.0%        |
| Eddy Artesia  |        | 6.9%        |        |        |        |        |        |        |        |        |        |        | 6.9%        |
| Eddy Carlsbad   |        | 8.6%        |        |        |        |        |        |        |        |        |        |        | 8.6%        |
| Lea   |        | 5.3%        |        |        |        |        |        |        |        |        |        |        | 5.3%        |
| Lincoln   |        | 2.9%        |        |        |        |        |        |        |        |        |        |        | 2.9%        |
| Roosevelt   |        | 15.0%       |        |        |        |        |        |        |        |        |        |        | 15.0%       |
| <b>SE Region 4 Total</b>  |        | <b>7.8%</b> |        |        |        |        |        |        |        |        |        |        | <b>7.8%</b> |
| East Dona Ana   |        | 12.9%       |        |        |        |        |        |        |        |        |        |        | 12.9%       |
| Grant   |        | 6.0%        |        |        |        |        |        |        |        |        |        |        | 6.0%        |
| Luna  |        | 5.6%        |        |        |        |        |        |        |        |        |        |        | 5.6%        |
| Otero   |        | 2.9%        |        |        |        |        |        |        |        |        |        |        | 2.9%        |
| South Dona Ana  |        | 13.8%       |        |        |        |        |        |        |        |        |        |        | 13.8%       |
| West Dona Ana   |        | 8.9%        |        |        |        |        |        |        |        |        |        |        | 8.9%        |
| <b>SW Region 5 Total</b>  |        | <b>8.3%</b> |        |        |        |        |        |        |        |        |        |        | <b>8.3%</b> |
| <b>STATE TOTAL</b>  |        | <b>6.6%</b> |        |        |        |        |        |        |        |        |        |        | <b>6.6%</b> |

*Includes cases for which no renewal application was received.  
No data available for October 2017*

## State SNAP Supplement

| SFY 2014 <sup>12</sup> |               |                  | SFY 2015 <sup>12,9</sup> |                |                  | SFY 2016 <sup>9</sup> |                |                    | SFY 2017 <sup>9</sup> |                |                    | SFY 2018 <sup>9</sup> |               |                  |
|------------------------|---------------|------------------|--------------------------|----------------|------------------|-----------------------|----------------|--------------------|-----------------------|----------------|--------------------|-----------------------|---------------|------------------|
|                        | Cases         | Expenditures     |                          | Cases          | Expenditures     |                       | Cases          | Expenditures       |                       | Cases          | Expenditures       |                       | Cases         | Expenditures     |
| Jul-13                 | 5,767         | \$48,040         | Jul-14                   | 9,635          | \$88,859         | Jul-15                | 10,345         | \$86,143           | Jul-16                | 11,537         | \$95,553           | Jul-17                | 12,526        | \$97,568         |
| Aug-13                 | 5,841         | \$48,417         | Aug-14                   | 9,559          | \$87,757         | Aug-15                | 10,669         | \$88,197           | Aug-16                | 11,522         | \$95,107           | Aug-17                | 12,589        | \$98,954         |
| Sep-13                 | 5,841         | \$48,732         | Sep-14                   | 9,688          | \$87,372         | Sep-15                | 10,676         | \$88,426           | Sep-16                | 11,613         | \$94,472           | Sep-17                | 12,679        | \$97,546         |
| Oct-13                 | 5,575         | \$46,610         | Oct-14                   | 9,136          | \$70,490         | Oct-15                | 11,262         | \$96,758           | Oct-16                | 11,797         | \$96,679           | Oct-17                | 13,628        | \$117,343        |
| Nov-13                 | 8,219         | \$69,564         | Nov-14                   | 9,152          | \$69,955         | Nov-15                | 11,099         | \$91,996           | Nov-16                | 11,735         | \$93,689           | Nov-17                | 13,748        | \$119,055        |
| Dec-13                 | 8,310         | \$71,839         | Dec-14                   | 9,322          | \$73,226         | Dec-15                | 11,125         | \$90,771           | Dec-16                | 11,556         | \$93,739           | Dec-17                |               |                  |
| Jan-14                 | 8,826         | \$77,933         | Jan-15                   | 10,384         | \$84,578         | Jan-16                | 10,977         | \$92,760           | Jan-17                | 11,763         | \$96,074           | Jan-18                |               |                  |
| Feb-14                 | 9,024         | \$84,758         | Feb-15                   | 10,477         | \$82,901         | Feb-16                | 11,153         | \$95,363           | Feb-17                | 11,907         | \$98,251           | Feb-18                |               |                  |
| Mar-14                 | 8,916         | \$80,597         | Mar-15                   | 10,423         | \$87,461         | Mar-16                | 11,332         | \$96,751           | Mar-17                | 11,853         | \$96,693           | Mar-18                |               |                  |
| Apr-14                 | 9,098         | \$84,599         | Apr-15                   | 10,440         | \$79,605         | Apr-16                | 11,222         | \$93,959           | Apr-17                | 11,944         | \$97,060           | Apr-18                |               |                  |
| May-14                 | 9,226         | \$85,035         | May-15                   | 10,491         | \$82,511         | May-16                | 11,283         | \$95,271           | May-17                | 12,457         | \$96,940           | May-18                |               |                  |
| Jun-14                 | 9,264         | \$84,329         | Jun-15                   | 10,575         | \$85,134         | Jun-16                | 11,389         | \$93,061           | Jun-17                | 12,498         | \$97,405           | Jun-18                |               |                  |
| <b>TOTAL</b>           | <b>93,907</b> | <b>\$830,453</b> |                          | <b>119,282</b> | <b>\$979,850</b> |                       | <b>132,532</b> | <b>\$1,109,455</b> |                       | <b>142,182</b> | <b>\$1,151,662</b> |                       | <b>65,170</b> | <b>\$530,466</b> |
| <b>AVERAGE</b>         | <b>7,826</b>  | <b>\$69,204</b>  |                          | <b>9,940</b>   | <b>\$81,654</b>  |                       | <b>11,044</b>  | <b>\$92,455</b>    |                       | <b>11,849</b>  | <b>\$95,972</b>    |                       | <b>13,034</b> | <b>\$106,093</b> |



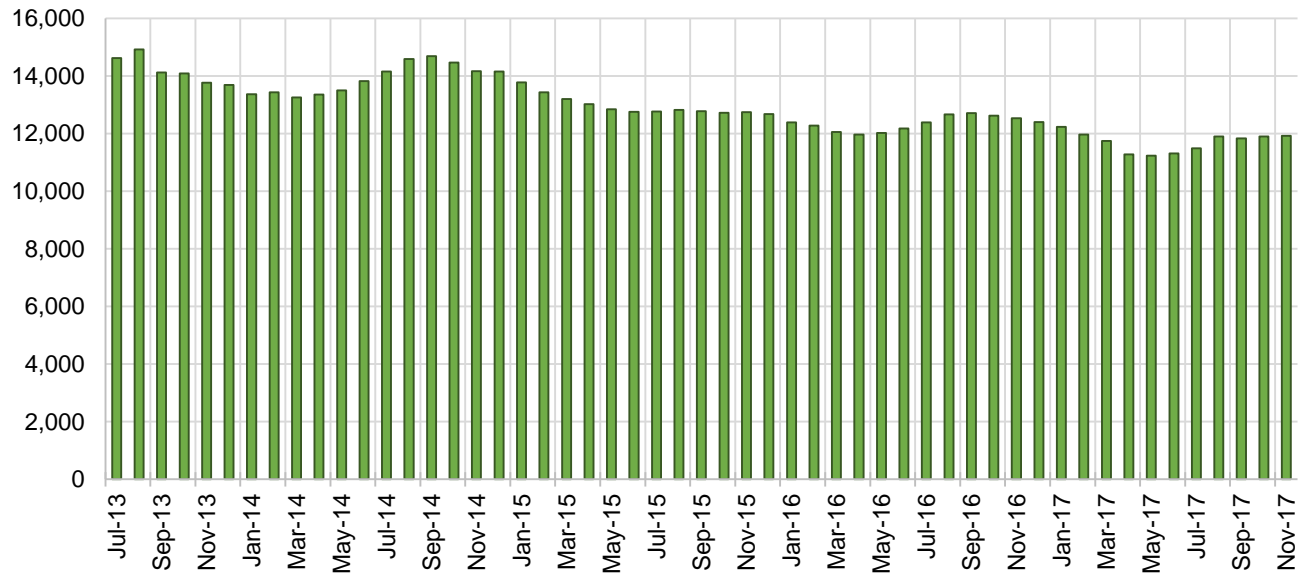
## TANF Cases by Field Office<sup>6</sup>

| Office                          | Nov-16 | Oct-17 | Nov-17 | Percent Change    |                   |
|---------------------------------|--------|--------|--------|-------------------|-------------------|
|                                 |        |        |        | Nov-16-<br>Nov-17 | Oct-17-<br>Nov-17 |
| Chaves County ISD               | 609    | 567    | 564    | -7.4%             | -0.5%             |
| Cibola County ISD               | 169    | 153    | 145    | -14.2%            | -5.2%             |
| Colfax County ISD               | 82     | 79     | 80     | -2.4%             | 1.3%              |
| Curry County ISD                | 518    | 521    | 527    | 1.7%              | 1.2%              |
| East Dona Ana County ISD        | 531    | 507    | 514    | -3.2%             | 1.4%              |
| Eddy Artesia County ISD         | 163    | 124    | 127    | -22.1%            | 2.4%              |
| Eddy Carlsbad County ISD        | 241    | 168    | 167    | -30.7%            | -0.6%             |
| Grant County ISD                | 197    | 202    | 190    | -3.6%             | -5.9%             |
| Guadalupe County ISD            | 27     | 31     | 32     | 18.5%             | 3.2%              |
| Hidalgo County ISD              | 27     | 25     | 23     | -14.8%            | -8.0%             |
| Lea County ISD                  | 534    | 445    | 448    | -16.1%            | 0.7%              |
| Lincoln County ISD              | 115    | 92     | 102    | -11.3%            | 10.9%             |
| Luna County ISD                 | 217    | 213    | 217    | 0.0%              | 1.9%              |
| McKinley County ISD             | 67     | 64     | 56     | -16.4%            | -12.5%            |
| Northeast Bernalillo County ISD | 967    | 1,023  | 1,000  | 3.4%              | -2.2%             |
| Northwest Bernalillo County ISD | 838    | 811    | 829    | -1.1%             | 2.2%              |
| Otero County ISD                | 281    | 312    | 331    | 17.8%             | 6.1%              |
| Quay County ISD                 | 81     | 77     | 78     | -3.7%             | 1.3%              |
| Rio Arriba County ISD           | 455    | 412    | 399    | -12.3%            | -3.2%             |
| Roosevelt County ISD            | 165    | 173    | 162    | -1.8%             | -6.4%             |
| San Juan County ISD             | 343    | 336    | 323    | -5.8%             | -3.9%             |
| San Miguel County ISD           | 234    | 206    | 207    | -11.5%            | 0.5%              |
| Sandoval County ISD             | 586    | 572    | 595    | 1.5%              | 4.0%              |
| Santa Fe County ISD             | 568    | 440    | 452    | -20.4%            | 2.7%              |
| Sierra County ISD               | 90     | 79     | 83     | -7.8%             | 5.1%              |
| Socorro County ISD              | 115    | 89     | 91     | -20.9%            | 2.2%              |
| South Dona Ana ISD              | 735    | 733    | 722    | -1.8%             | -1.5%             |
| Southeast Bernalillo County ISD | 752    | 669    | 654    | -13.0%            | -2.2%             |
| Southwest Bernalillo County ISD | 1,187  | 1,170  | 1,186  | -0.1%             | 1.4%              |
| Taos County ISD                 | 145    | 139    | 143    | -1.4%             | 2.9%              |
| Torrance County ISD             | 195    | 184    | 184    | -5.6%             | 0.0%              |
| Valencia North County ISD       | 513    | 518    | 512    | -0.2%             | -1.2%             |
| Valencia South County ISD       | 2      | 0      | 0      | -100.0%           | N/A               |
| West Dona Ana County ISD        | 775    | 763    | 767    | -1.0%             | 0.5%              |
| Centralized Units               | 2      | 4      | 5      | 150.0%            | 25.0%             |
| Statewide Total                 | 12,526 | 11,901 | 11,915 | -4.9%             | 0.1%              |

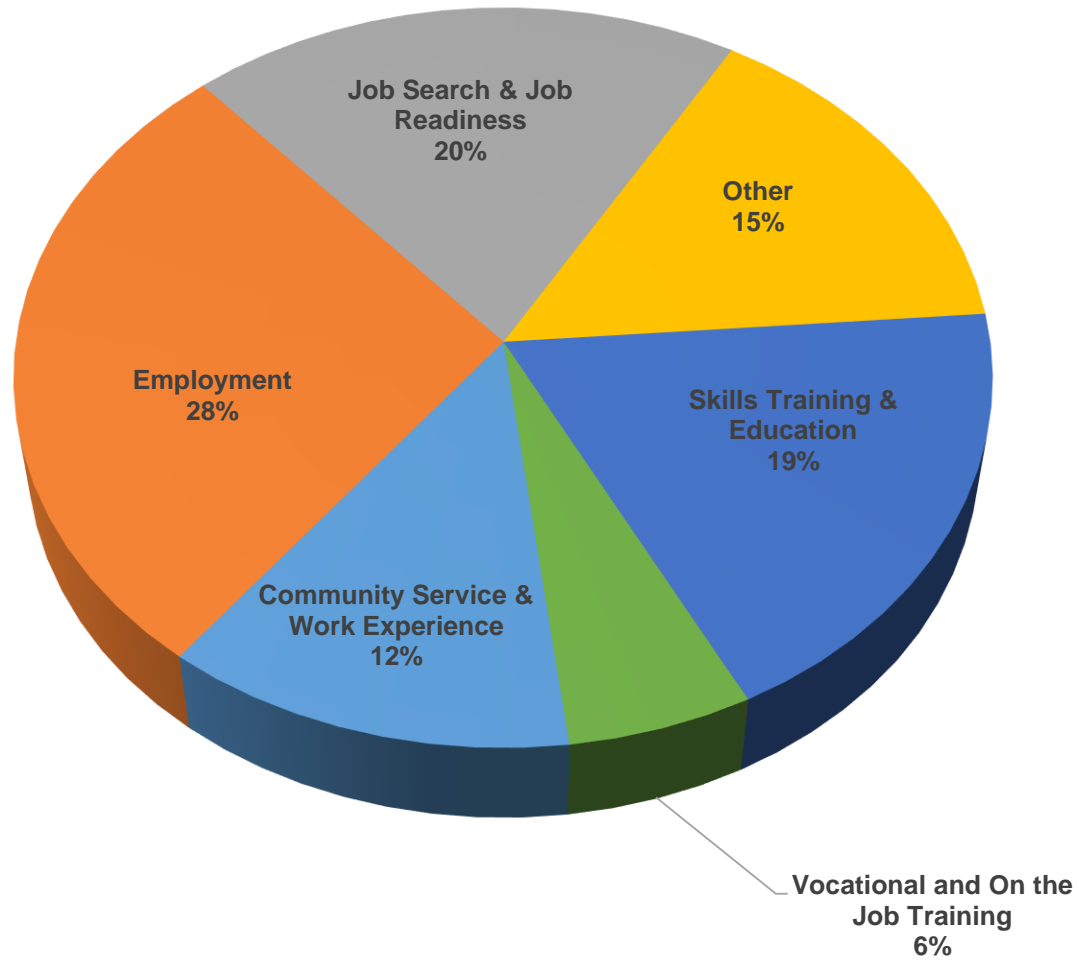
## TANF Cases by Region<sup>6</sup>

| Region                 | Nov-16        | Oct-17        | Nov-17        | Percent Change    |                   |
|------------------------|---------------|---------------|---------------|-------------------|-------------------|
|                        |               |               |               | Nov-16-<br>Nov-17 | Oct-17-<br>Nov-17 |
| Region 1- NW           | 1,299         | 1,239         | 1,210         | -6.9%             | -2.3%             |
| Region 2- NE           | 2,178         | 1,956         | 1,986         | -8.8%             | 1.5%              |
| Region 3- Central      | 3,939         | 3,857         | 3,853         | -2.2%             | -0.1%             |
| Region 4- SE           | 2,345         | 2,090         | 2,097         | -10.6%            | 0.3%              |
| Region 5- SW           | 2,763         | 2,755         | 2,764         | 0.0%              | 0.3%              |
| Centralized Units      | 2             | 4             | 5             | 150.0%            | 25.0%             |
| <b>Statewide Total</b> | <b>12,526</b> | <b>11,901</b> | <b>11,915</b> | <b>-4.9%</b>      | <b>0.1%</b>       |

### TANF Caseload: SFY-14 to Current

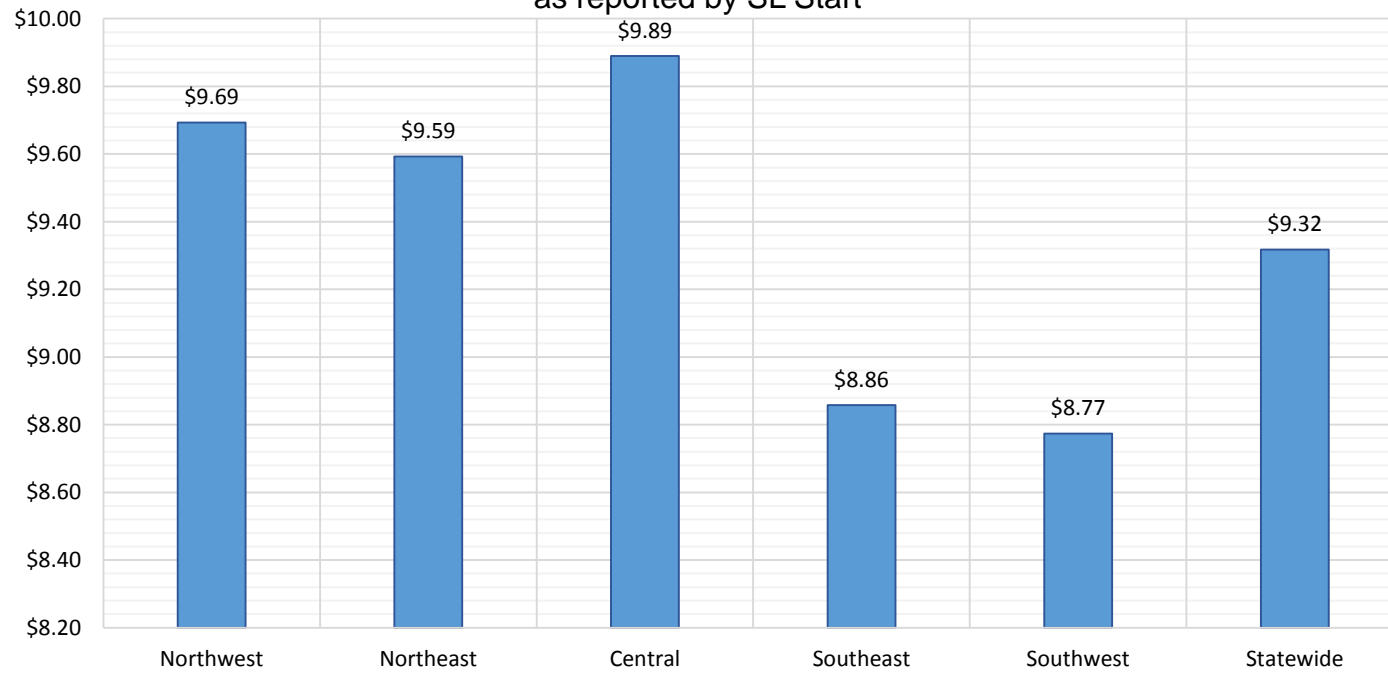


# NM Works Activity Placements on November 30, 2017 as reported by SL Start<sup>14</sup>

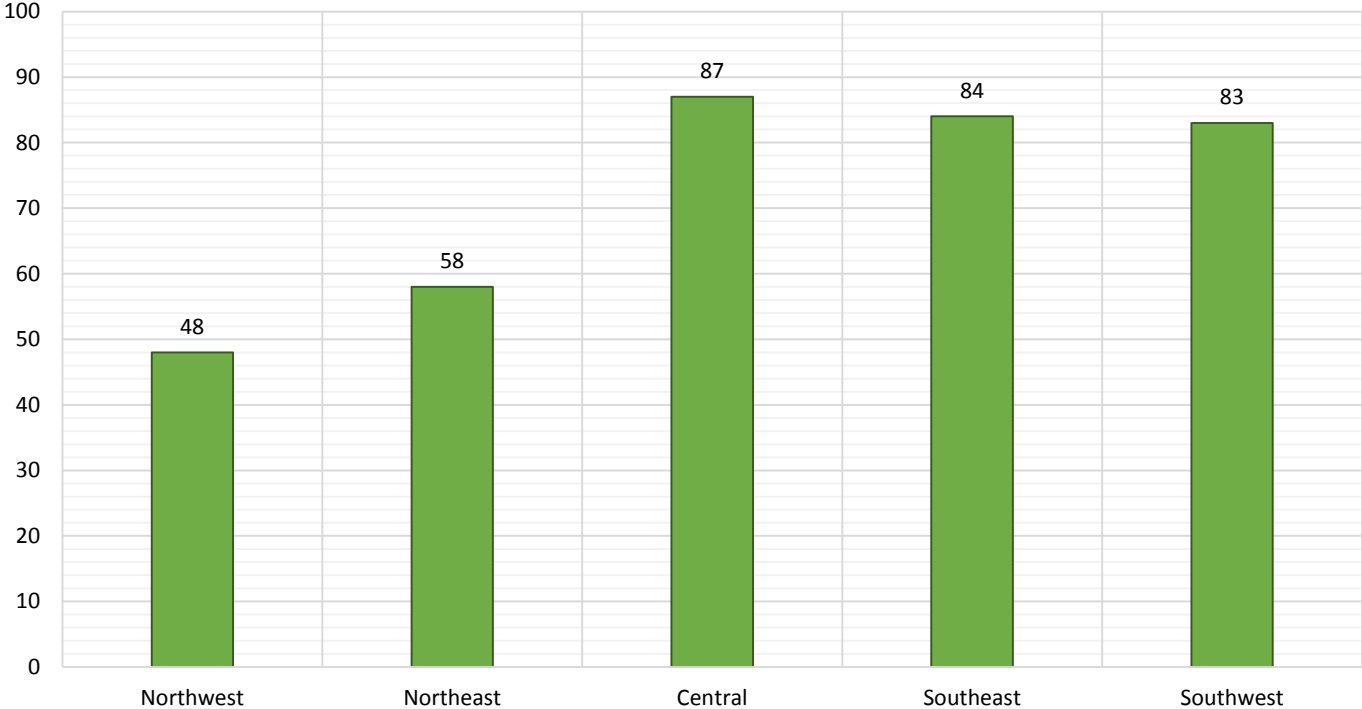




Average Starting Hourly Wage of November 2017 TANF  
Employments  
as reported by SL Start<sup>15</sup>



Number of New Employments in November 2017 by Region  
as reported by SL Start<sup>15</sup>  
Statewide Total: 360



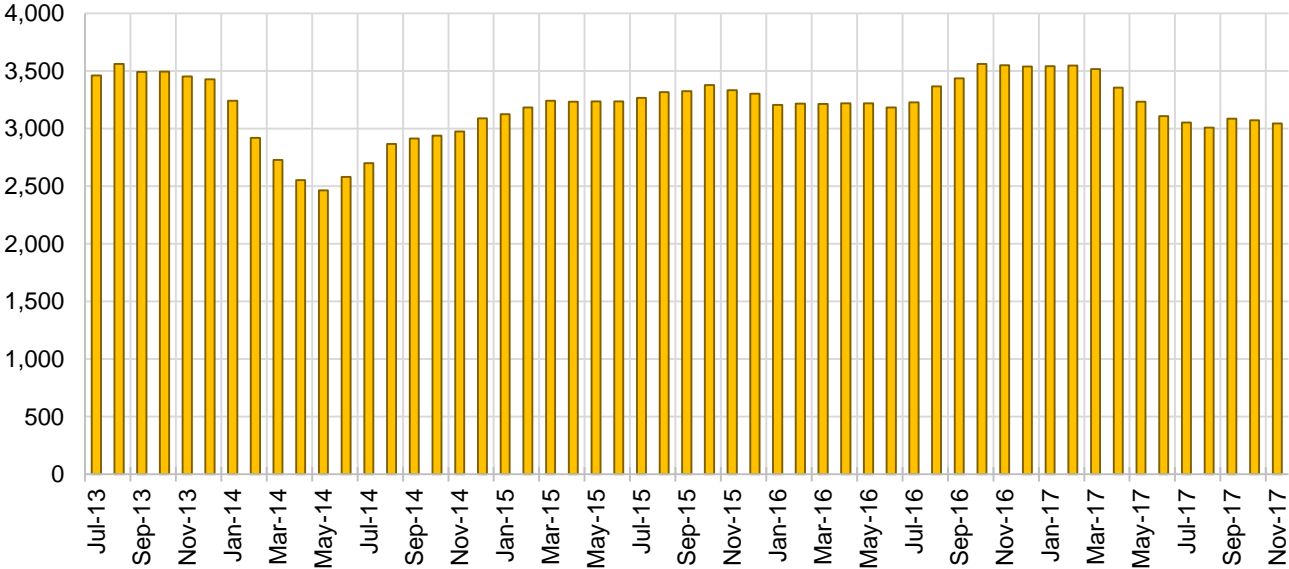
## General Assistance Cases by Field Office<sup>6</sup>

| Office                          |        |        |        | Percent Change    |                   |
|---------------------------------|--------|--------|--------|-------------------|-------------------|
|                                 | Nov-16 | Oct-17 | Nov-17 | Nov-16-<br>Nov-17 | Oct-17-<br>Nov-17 |
| Chaves County ISD               | 144    | 131    | 130    | -9.7%             | -0.8%             |
| Cibola County ISD               | 46     | 46     | 49     | 6.5%              | 6.5%              |
| Colfax County ISD               | 31     | 23     | 24     | -22.6%            | 4.3%              |
| Curry County ISD                | 81     | 62     | 65     | -19.8%            | 4.8%              |
| East Dona Ana County ISD        | 119    | 118    | 115    | -3.4%             | -2.5%             |
| Eddy Artesia County ISD         | 28     | 30     | 30     | 7.1%              | 0.0%              |
| Eddy Carlsbad County ISD        | 83     | 69     | 66     | -20.5%            | -4.3%             |
| Grant County ISD                | 76     | 70     | 70     | -7.9%             | 0.0%              |
| Guadalupe County ISD            | 14     | 18     | 20     | 42.9%             | 11.1%             |
| Hidalgo County ISD              | 13     | 13     | 11     | -15.4%            | -15.4%            |
| Lea County ISD                  | 103    | 83     | 86     | -16.5%            | 3.6%              |
| Lincoln County ISD              | 36     | 30     | 26     | -27.8%            | -13.3%            |
| Luna County ISD                 | 58     | 58     | 57     | -1.7%             | -1.7%             |
| McKinley County ISD             | 30     | 46     | 49     | 63.3%             | 6.5%              |
| Northeast Bernalillo County ISD | 382    | 367    | 360    | -5.8%             | -1.9%             |
| Northwest Bernalillo County ISD | 352    | 283    | 287    | -18.5%            | 1.4%              |
| Otero County ISD                | 97     | 101    | 100    | 3.1%              | -1.0%             |
| Quay County ISD                 | 27     | 24     | 20     | -25.9%            | -16.7%            |
| Rio Arriba County ISD           | 116    | 86     | 87     | -25.0%            | 1.2%              |
| Roosevelt County ISD            | 22     | 18     | 15     | -31.8%            | -16.7%            |
| San Juan County ISD             | 93     | 123    | 129    | 38.7%             | 4.9%              |
| San Miguel County ISD           | 90     | 79     | 73     | -18.9%            | -7.6%             |
| Sandoval County ISD             | 151    | 121    | 122    | -19.2%            | 0.8%              |
| Santa Fe County ISD             | 207    | 151    | 144    | -30.4%            | -4.6%             |
| Sierra County ISD               | 35     | 34     | 27     | -22.9%            | -20.6%            |
| Socorro County ISD              | 50     | 44     | 45     | -10.0%            | 2.3%              |
| South Dona Ana ISD              | 56     | 61     | 60     | 7.1%              | -1.6%             |
| Southeast Bernalillo County ISD | 242    | 172    | 171    | -29.3%            | -0.6%             |
| Southwest Bernalillo County ISD | 277    | 211    | 213    | -23.1%            | 0.9%              |
| Taos County ISD                 | 66     | 60     | 63     | -4.5%             | 5.0%              |
| Torrance County ISD             | 73     | 47     | 46     | -37.0%            | -2.1%             |
| Valencia North County ISD       | 139    | 118    | 114    | -18.0%            | -3.4%             |
| Valencia South County ISD       | 0      | 0      | 0      | N/A               | N/A               |
| West Dona Ana County ISD        | 213    | 175    | 170    | -20.2%            | -2.9%             |
| Centralized Units               | 0      | 0      | 0      | N/A               | N/A               |
| Statewide Total                 | 3,550  | 3,072  | 3,044  | -14.3%            | -0.9%             |

## General Assistance Cases by Region<sup>6</sup>

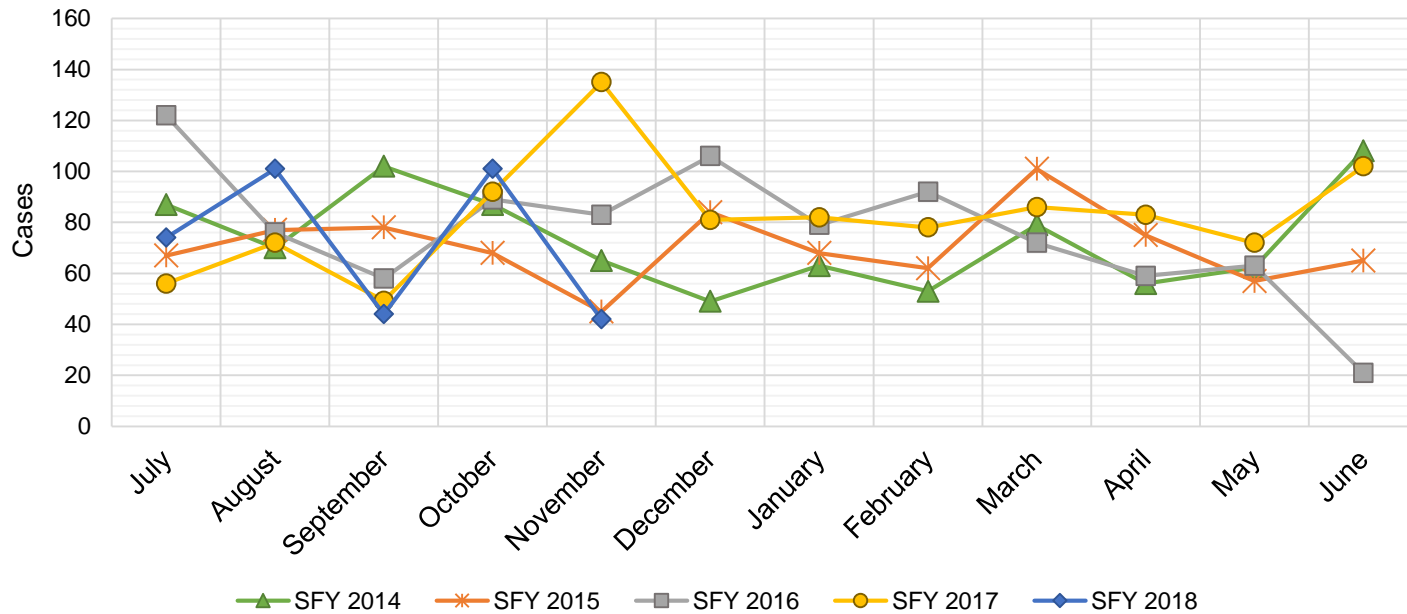
|                    |        |        |        | Percent Change    |                   |
|--------------------|--------|--------|--------|-------------------|-------------------|
| Region             | Nov-16 | Oct-17 | Nov-17 | Nov-16-<br>Nov-17 | Oct-17-<br>Nov-17 |
| Region 1 - NW      | 393    | 411    | 413    | 5.1%              | 0.5%              |
| Region 2 - NE      | 702    | 562    | 553    | -21.2%            | -1.6%             |
| Region 3 - Central | 1,326  | 1,080  | 1,077  | -18.8%            | -0.3%             |
| Region 4 - SE      | 497    | 423    | 418    | -15.9%            | -1.2%             |
| Region 5 - SW      | 632    | 596    | 583    | -7.8%             | -2.2%             |
| Centralized Units  | 0      | 0      | 0      | N/A               | N/A               |
| Statewide Total    | 3,550  | 3,072  | 3,044  | -14.3%            | -0.9%             |

### General Assistance Caseload: SFY-14 to Current



## General Assistance Interim Assistance Reimbursements<sup>16</sup>

| SFY 2014 |              |             | SFY 2015 |              |           | SFY 2016    |              |             | SFY 2017 |              |           | SFY 2018 |              |           |
|----------|--------------|-------------|----------|--------------|-----------|-------------|--------------|-------------|----------|--------------|-----------|----------|--------------|-----------|
| Cases    | Expenditures |             | Cases    | Expenditures |           | Cases       | Expenditures |             | Cases    | Expenditures |           | Cases    | Expenditures |           |
| Jul-13   | 87           | \$185,368   | Jul-14   | 67           | \$144,679 | Jul-15      | 122          | \$342,648   | Jul-16   | 56           | \$164,970 | Jul-17   | 74           | \$241,438 |
| Aug-13   | 70           | \$184,639   | Aug-14   | 77           | \$244,233 | Aug-15      | 76           | \$245,236   | Aug-16   | 72           | \$223,182 | Aug-17   | 101          | \$339,301 |
| Sep-13   | 102          | \$268,243   | Sep-14   | 78           | \$168,421 | Sep-15      | 58           | \$170,093   | Sep-16   | 49           | \$158,027 | Sep-17   | 44           | \$131,229 |
| Oct-13   | 87           | \$165,578   | Oct-14   | 68           | \$182,265 | Oct-15      | 89           | \$277,912   | Oct-16   | 92           | \$257,830 | Oct-17   | 101          | \$335,752 |
| Nov-13   | 65           | \$139,197   | Nov-14   | 45           | \$134,482 | Nov-15      | 83           | \$238,948   | Nov-16   | 135          | \$402,305 | Nov-17   | 42           | \$139,572 |
| Dec-13   | 49           | \$147,853   | Dec-14   | 84           | \$239,926 | Dec-15      | 106          | \$388,102   | Dec-16   | 81           | \$227,569 | Dec-17   |              |           |
| Jan-14   | 63           | \$178,944   | Jan-15   | 68           | \$227,066 | Jan-16      | 79           | \$239,263   | Jan-17   | 82           | \$274,050 | Jan-18   |              |           |
| Feb-14   | 53           | \$130,352   | Feb-15   | 62           | \$159,564 | Feb-16      | 92           | \$296,332   | Feb-17   | 78           | \$227,569 | Feb-18   |              |           |
| Mar-14   | 79           | \$176,756   | Mar-15   | 101          | \$317,899 | Mar-16      | 72           | \$254,360   | Mar-17   | 86           | \$278,219 | Mar-18   |              |           |
| Apr-14   | 56           | \$155,245   | Apr-15   | 75           | \$199,038 | Apr-16      | 59           | \$208,631   | Apr-17   | 83           | \$267,187 | Apr-18   |              |           |
| May-14   | 62           | \$138,827   | May-15   | 57           | \$167,383 | May-16      | 63           | \$182,241   | May-17   | 72           | \$232,836 | May-18   |              |           |
| Jun-14   | 108          | \$241,016   | Jun-15   | 65           | \$188,159 | Jun-16      | 21           | \$51,760    | Jun-17   | 102          | \$306,228 | Jun-18   |              |           |
| TOTAL    | 881          | \$2,112,017 | 847      | \$2,373,115  | 920       | \$2,895,525 | 988          | \$3,019,972 | 362      | \$1,187,292  |           |          |              |           |
| AVERAGE  | 73           | \$176,001   | 71       | \$197,760    | 77        | \$241,294   | 82           | \$251,664   | 72       | \$237,458    |           |          |              |           |



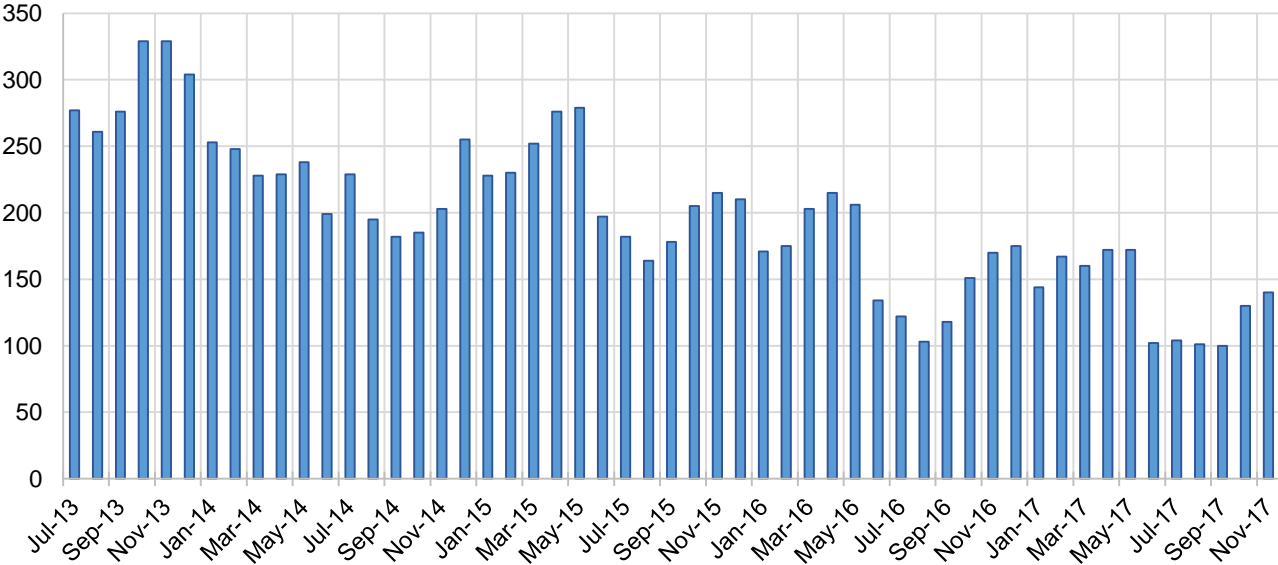
## Education Works Cases by Field Office<sup>6</sup>

| Office                          |        |        |        | Percent Change    |                   |
|---------------------------------|--------|--------|--------|-------------------|-------------------|
|                                 | Nov-16 | Oct-17 | Nov-17 | Nov-16-<br>Nov-17 | Oct-17-<br>Nov-17 |
| Chaves County ISD               | 3      | 5      | 3      | 0.0%              | -40.0%            |
| Cibola County ISD               | 2      | 0      | 0      | -100.0%           | N/A               |
| Colfax County ISD               | 3      | 0      | 0      | -100.0%           | N/A               |
| Curry County ISD                | 1      | 2      | 3      | 200.0%            | 50.0%             |
| East Dona Ana County ISD        | 5      | 5      | 5      | 0.0%              | 0.0%              |
| Eddy Artesia County ISD         | 0      | 1      | 1      | N/A               | 0.0%              |
| Eddy Carlsbad County ISD        | 1      | 0      | 2      | 100.0%            | N/A               |
| Grant County ISD                | 5      | 10     | 12     | 140.0%            | 20.0%             |
| Guadalupe County ISD            | 1      | 1      | 1      | 0.0%              | 0.0%              |
| Hidalgo County ISD              | 1      | 0      | 0      | -100.0%           | N/A               |
| Lea County ISD                  | 6      | 7      | 7      | 16.7%             | 0.0%              |
| Lincoln County ISD              | 0      | 0      | 0      | N/A               | N/A               |
| Luna County ISD                 | 1      | 2      | 2      | 100.0%            | 0.0%              |
| McKinley County ISD             | 0      | 0      | 0      | N/A               | N/A               |
| Northeast Bernalillo County ISD | 25     | 14     | 13     | -48.0%            | -7.1%             |
| Northwest Bernalillo County ISD | 15     | 9      | 10     | -33.3%            | 11.1%             |
| Otero County ISD                | 1      | 1      | 2      | 100.0%            | 100.0%            |
| Quay County ISD                 | 1      | 0      | 0      | -100.0%           | N/A               |
| Rio Arriba County ISD           | 2      | 3      | 3      | 50.0%             | 0.0%              |
| Roosevelt County ISD            | 2      | 2      | 2      | 0.0%              | 0.0%              |
| San Juan County ISD             | 6      | 3      | 3      | -50.0%            | 0.0%              |
| San Miguel County ISD           | 6      | 5      | 6      | 0.0%              | 20.0%             |
| Sandoval County ISD             | 15     | 9      | 12     | -20.0%            | 33.3%             |
| Santa Fe County ISD             | 5      | 9      | 12     | 140.0%            | 33.3%             |
| Sierra County ISD               | 0      | 0      | 0      | N/A               | N/A               |
| Socorro County ISD              | 1      | 1      | 1      | 0.0%              | 0.0%              |
| South Dona Ana ISD              | 15     | 18     | 17     | 13.3%             | -5.6%             |
| Southeast Bernalillo County ISD | 11     | 5      | 5      | -54.5%            | 0.0%              |
| Southwest Bernalillo County ISD | 17     | 6      | 6      | -64.7%            | 0.0%              |
| Taos County ISD                 | 1      | 2      | 2      | 100.0%            | 0.0%              |
| Torrance County ISD             | 1      | 1      | 1      | 0.0%              | 0.0%              |
| Valencia North County ISD       | 6      | 0      | 0      | -100.0%           | N/A               |
| Valencia South County ISD       | 0      | 0      | 0      | N/A               | N/A               |
| West Dona Ana County ISD        | 11     | 9      | 9      | -18.2%            | 0.0%              |
| Centralized Units               | 0      | 0      | 0      | N/A               | N/A               |
| Statewide Total                 | 170    | 130    | 140    | -17.6%            | 7.7%              |

## Education Works Cases by Region<sup>6</sup>

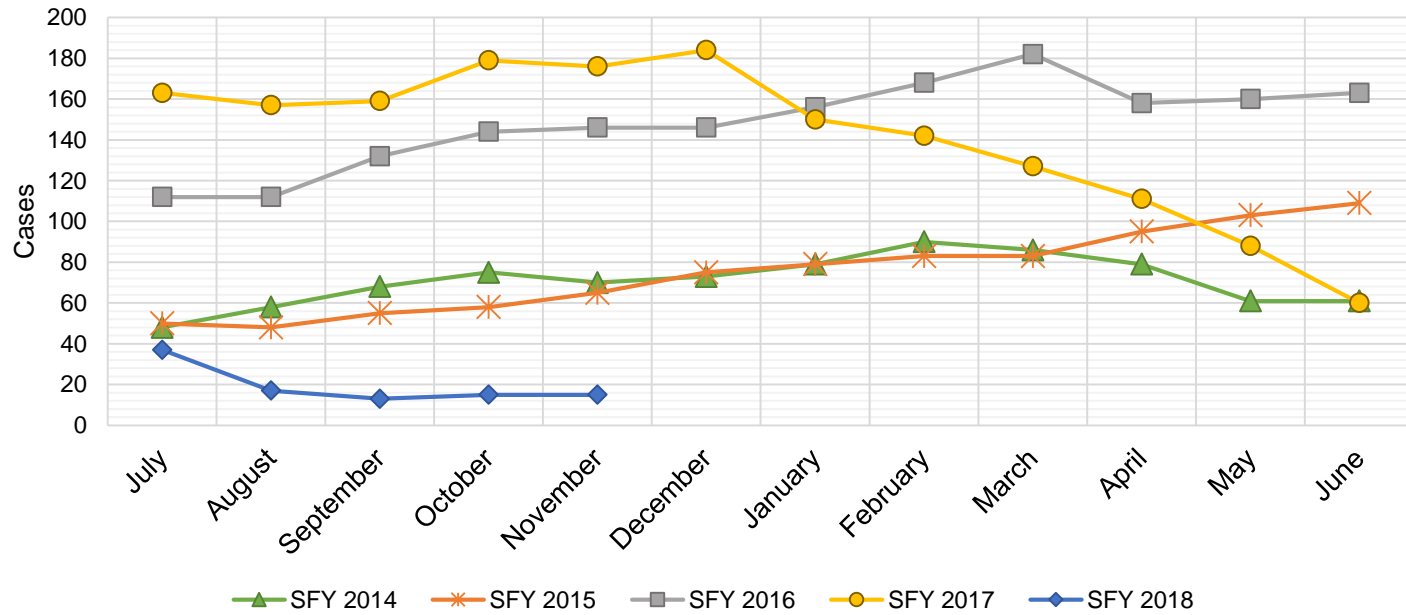
|                    |        |        |        | Percent Change    |                   |
|--------------------|--------|--------|--------|-------------------|-------------------|
| Region             | Nov-16 | Oct-17 | Nov-17 | Nov-16-<br>Nov-17 | Oct-17-<br>Nov-17 |
| Region 1 - NW      | 15     | 4      | 4      | -73.3%            | 0.0%              |
| Region 2 - NE      | 34     | 29     | 36     | 5.9%              | 24.1%             |
| Region 3 - Central | 69     | 35     | 35     | -49.3%            | 0.0%              |
| Region 4 - SE      | 13     | 17     | 18     | 38.5%             | 5.9%              |
| Region 5 - SW      | 39     | 45     | 47     | 20.5%             | 4.4%              |
| Centralized Units  | 0      | 0      | 0      | N/A               | N/A               |
| Statewide Total    | 170    | 130    | 140    | -17.6%            | 7.7%              |

**Education Works Caseload: SFY-14 to Current**



## Refugee Cash Assistance

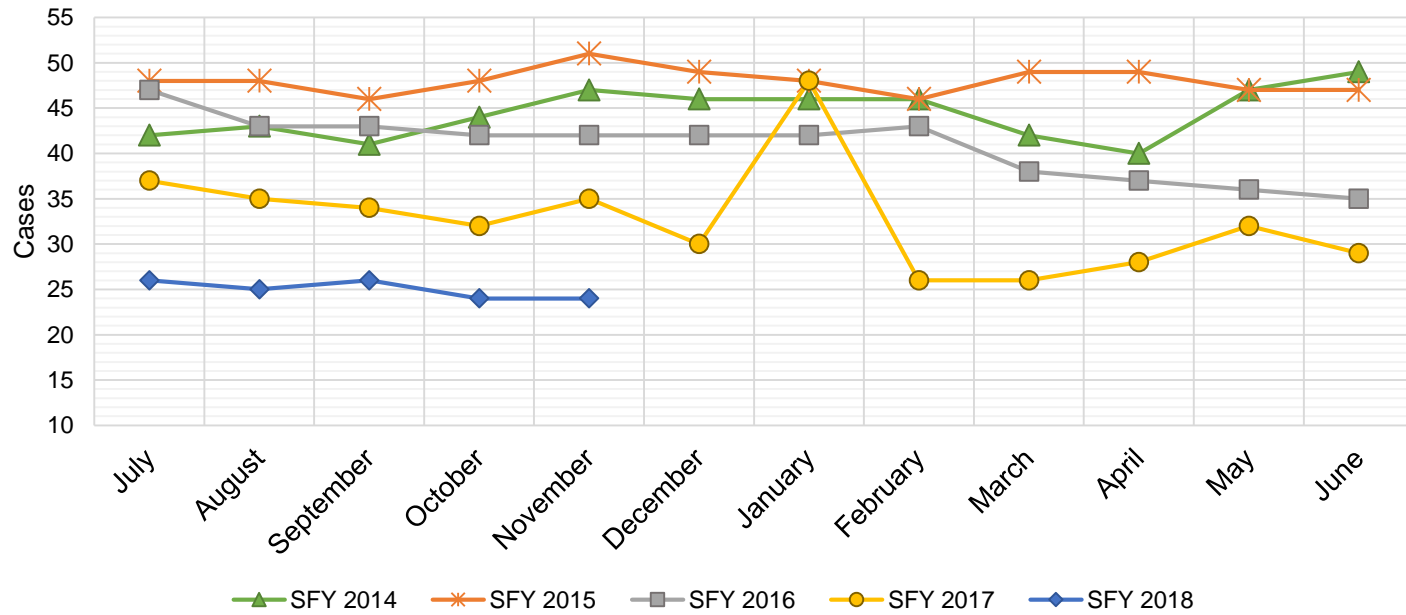
| SFY 2014 <sup>12</sup> |            |                  | SFY 2015 <sup>8,12,9</sup> |                  |              | SFY 2016 <sup>8,9</sup> |              |                  | SFY 2017 <sup>8,9</sup> |                 |              | SFY 2018 <sup>8,9</sup> |       |              |
|------------------------|------------|------------------|----------------------------|------------------|--------------|-------------------------|--------------|------------------|-------------------------|-----------------|--------------|-------------------------|-------|--------------|
|                        | Cases      | Expenditures     |                            | Cases            | Expenditures |                         | Cases        | Expenditures     |                         | Cases           | Expenditures |                         | Cases | Expenditures |
| Jul-13                 | 48         | \$12,013         | Jul-14                     | 50               | \$11,679     | Jul-15                  | 112          | \$27,516         | Jul-16                  | 163             | \$39,756     | Jul-17                  | 37    | \$9,981      |
| Aug-13                 | 58         | \$16,129         | Aug-14                     | 48               | \$11,760     | Aug-15                  | 112          | \$27,438         | Aug-16                  | 157             | \$40,115     | Aug-17                  | 17    | \$4,704      |
| Sep-13                 | 68         | \$19,061         | Sep-14                     | 55               | \$13,094     | Sep-15                  | 132          | \$31,321         | Sep-16                  | 159             | \$39,359     | Sep-17                  | 13    | \$3,159      |
| Oct-13                 | 75         | \$20,962         | Oct-14                     | 58               | \$13,726     | Oct-15                  | 144          | \$36,153         | Oct-16                  | 179             | \$41,520     | Oct-17                  | 15    | \$3,543      |
| Nov-13                 | 70         | \$21,880         | Nov-14                     | 65               | \$16,461     | Nov-15                  | 146          | \$36,515         | Nov-16                  | 176             | \$45,434     | Nov-17                  | 15    | \$4,263      |
| Dec-13                 | 73         | \$22,053         | Dec-14                     | 75               | \$18,699     | Dec-15                  | 146          | \$35,763         | Dec-16                  | 184             | \$46,673     | Dec-17                  |       |              |
| Jan-14                 | 79         | \$22,670         | Jan-15                     | 79               | \$19,009     | Jan-16                  | 156          | \$38,686         | Jan-17                  | 150             | \$38,790     | Jan-18                  |       |              |
| Feb-14                 | 90         | \$23,227         | Feb-15                     | 83               | \$21,349     | Feb-16                  | 168          | \$41,368         | Feb-17                  | 142             | \$37,956     | Feb-18                  |       |              |
| Mar-14                 | 86         | \$21,808         | Mar-15                     | 83               | \$20,730     | Mar-16                  | 182          | \$45,307         | Mar-17                  | 127             | \$33,066     | Mar-18                  |       |              |
| Apr-14                 | 79         | \$20,109         | Apr-15                     | 95               | \$23,495     | Apr-16                  | 158          | \$41,143         | Apr-17                  | 111             | \$29,183     | Apr-18                  |       |              |
| May-14                 | 61         | \$15,703         | May-15                     | 103              | \$25,363     | May-16                  | 160          | \$38,332         | May-17                  | 88              | \$23,343     | May-18                  |       |              |
| Jun-14                 | 61         | \$14,783         | Jun-15                     | 109              | \$27,958     | Jun-16                  | 163          | \$39,856         | Jun-17                  | 60              | \$15,538     | Jun-18                  |       |              |
| <b>TOTAL</b>           | <b>848</b> | <b>\$230,398</b> | <b>903</b>                 | <b>\$223,323</b> | <b>1,779</b> | <b>\$439,397</b>        | <b>1,696</b> | <b>\$430,732</b> | <b>97</b>               | <b>\$25,650</b> |              |                         |       |              |
| <b>AVERAGE</b>         | <b>71</b>  | <b>\$19,200</b>  | <b>75</b>                  | <b>\$18,610</b>  | <b>148</b>   | <b>\$36,616</b>         | <b>141</b>   | <b>\$35,894</b>  | <b>19</b>               | <b>\$5,130</b>  |              |                         |       |              |





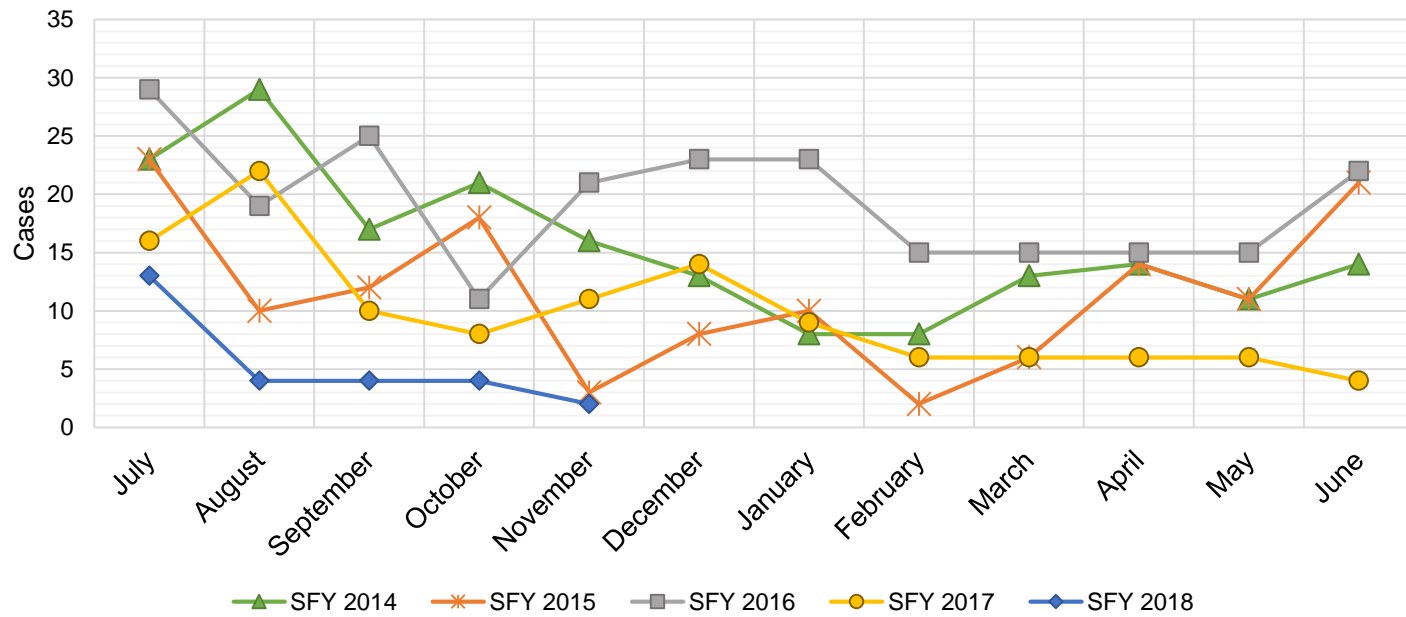
## State Supplement for Residential Care

| SFY 2014 <sup>12</sup> |              |                 | SFY 2015 <sup>12,9</sup> |                 |            | SFY 2016 <sup>9</sup> |              |                 | SFY 2017 <sup>9</sup> |                 |         | SFY 2018 <sup>9</sup> |              |         |
|------------------------|--------------|-----------------|--------------------------|-----------------|------------|-----------------------|--------------|-----------------|-----------------------|-----------------|---------|-----------------------|--------------|---------|
| Cases                  | Expenditures |                 | Cases                    | Expenditures    |            | Cases                 | Expenditures |                 | Cases                 | Expenditures    |         | Cases                 | Expenditures |         |
| Jul-13                 | 42           | \$4,400         | Jul-14                   | 48              | \$4,700    | Jul-15                | 47           | \$4,700         | Jul-16                | 37              | \$3,700 | Jul-17                | 26           | \$2,700 |
| Aug-13                 | 43           | \$4,300         | Aug-14                   | 48              | \$5,000    | Aug-15                | 43           | \$4,900         | Aug-16                | 35              | \$3,500 | Aug-17                | 25           | \$2,500 |
| Sep-13                 | 41           | \$4,700         | Sep-14                   | 46              | \$4,600    | Sep-15                | 43           | \$4,500         | Sep-16                | 34              | \$3,400 | Sep-17                | 26           | \$2,700 |
| Oct-13                 | 44           | \$4,500         | Oct-14                   | 48              | \$4,600    | Oct-15                | 42           | \$4,400         | Oct-16                | 32              | \$3,200 | Oct-17                | 24           | \$2,500 |
| Nov-13                 | 47           | \$4,700         | Nov-14                   | 51              | \$5,600    | Nov-15                | 42           | \$4,200         | Nov-16                | 35              | \$3,500 | Nov-17                | 24           | \$2,400 |
| Dec-13                 | 46           | \$4,600         | Dec-14                   | 49              | \$5,000    | Dec-15                | 42           | \$4,200         | Dec-16                | 30              | \$3,000 | Dec-17                |              |         |
| Jan-14                 | 46           | \$4,700         | Jan-15                   | 48              | \$4,900    | Jan-16                | 42           | \$4,200         | Jan-17                | 48              | \$4,800 | Jan-18                |              |         |
| Feb-14                 | 46           | \$4,700         | Feb-15                   | 46              | \$4,800    | Feb-16                | 43           | \$4,300         | Feb-17                | 26              | \$2,600 | Feb-18                |              |         |
| Mar-14                 | 42           | \$4,500         | Mar-15                   | 49              | \$4,800    | Mar-16                | 38           | \$3,800         | Mar-17                | 26              | \$2,600 | Mar-18                |              |         |
| Apr-14                 | 40           | \$4,200         | Apr-15                   | 49              | \$5,400    | Apr-16                | 37           | \$3,700         | Apr-17                | 28              | \$2,800 | Apr-18                |              |         |
| May-14                 | 47           | \$5,000         | May-15                   | 47              | \$4,700    | May-16                | 36           | \$3,600         | May-17                | 32              | \$3,200 | May-18                |              |         |
| Jun-14                 | 49           | \$4,900         | Jun-15                   | 47              | \$5,300    | Jun-16                | 35           | \$3,500         | Jun-17                | 29              | \$2,900 | Jun-18                |              |         |
| <b>TOTAL</b>           | <b>533</b>   | <b>\$55,200</b> | <b>576</b>               | <b>\$59,400</b> | <b>490</b> | <b>\$50,000</b>       | <b>392</b>   | <b>\$39,200</b> | <b>125</b>            | <b>\$12,800</b> |         |                       |              |         |
| <b>AVERAGE</b>         | <b>44</b>    | <b>\$4,600</b>  | <b>48</b>                | <b>\$4,950</b>  | <b>41</b>  | <b>\$4,167</b>        | <b>33</b>    | <b>\$3,267</b>  | <b>25</b>             | <b>\$2,560</b>  |         |                       |              |         |



## TANF Diversion Payments

| SFY 2014 <sup>12</sup> |       |              | SFY 2015 <sup>12,9</sup> |       |              | SFY 2016 <sup>9</sup> |       |              | SFY 2017 <sup>9</sup> |       |              | SFY 2018 <sup>9</sup> |       |              |
|------------------------|-------|--------------|--------------------------|-------|--------------|-----------------------|-------|--------------|-----------------------|-------|--------------|-----------------------|-------|--------------|
|                        | Cases | Expenditures |                          | Cases | Expenditures |                       | Cases | Expenditures |                       | Cases | Expenditures |                       | Cases | Expenditures |
| Jul-13                 | 23    | \$46,500     | Jul-14                   | 23    | \$48,098     | Jul-15                | 29    | \$62,074     | Jul-16                | 16    | \$30,843     | Jul-17                | 13    | \$26,500     |
| Aug-13                 | 29    | \$54,500     | Aug-14                   | 10    | \$21,810     | Aug-15                | 19    | \$33,584     | Aug-16                | 22    | \$42,731     | Aug-17                | 4     | \$12,000     |
| Sep-13                 | 17    | \$36,500     | Sep-14                   | 12    | \$23,500     | Sep-15                | 25    | \$47,977     | Sep-16                | 10    | \$21,000     | Sep-17                | 4     | \$4,000      |
| Oct-13                 | 21    | \$42,500     | Oct-14                   | 18    | \$30,589     | Oct-15                | 11    | \$20,500     | Oct-16                | 8     | \$16,744     | Oct-17                | 4     | \$16,000     |
| Nov-13                 | 16    | \$28,953     | Nov-14                   | 3     | \$4,411      | Nov-15                | 21    | \$45,500     | Nov-16                | 11    | \$24,500     | Nov-17                | 2     | \$15,500     |
| Dec-13                 | 13    | \$25,500     | Dec-14                   | 8     | \$14,634     | Dec-15                | 23    | \$45,389     | Dec-16                | 14    | \$26,611     | Dec-17                |       |              |
| Jan-14                 | 8     | \$16,000     | Jan-15                   | 10    | \$18,000     | Jan-16                | 23    | \$41,874     | Jan-17                | 9     | \$18,500     | Jan-18                |       |              |
| Feb-14                 | 8     | \$16,994     | Feb-15                   | 2     | \$5,500      | Feb-16                | 15    | \$28,500     | Feb-17                | 6     | \$12,000     | Feb-18                |       |              |
| Mar-14                 | 13    | \$27,396     | Mar-15                   | 6     | \$12,000     | Mar-16                | 15    | \$27,008     | Mar-17                | 6     | \$11,000     | Mar-18                |       |              |
| Apr-14                 | 14    | \$28,000     | Apr-15                   | 14    | \$26,000     | Apr-16                | 15    | \$31,389     | Apr-17                | 6     | \$12,000     | Apr-18                |       |              |
| May-14                 | 11    | \$20,500     | May-15                   | 11    | \$21,500     | May-16                | 15    | \$31,916     | May-17                | 6     | \$11,500     | May-18                |       |              |
| Jun-14                 | 14    | \$29,911     | Jun-15                   | 21    | \$40,039     | Jun-16                | 22    | \$43,000     | Jun-17                | 4     | \$13,500     | Jun-18                |       |              |
| TOTAL                  | 187   | \$373,254    |                          | 138   | \$266,081    |                       | 233   | \$458,711    |                       | 118   | \$240,929    |                       | 27    | \$74,000     |
| AVERAGE                | 16    | \$31,105     |                          | 12    | \$22,173     |                       | 19    | \$38,226     |                       | 10    | \$20,077     |                       | 5     | \$14,800     |

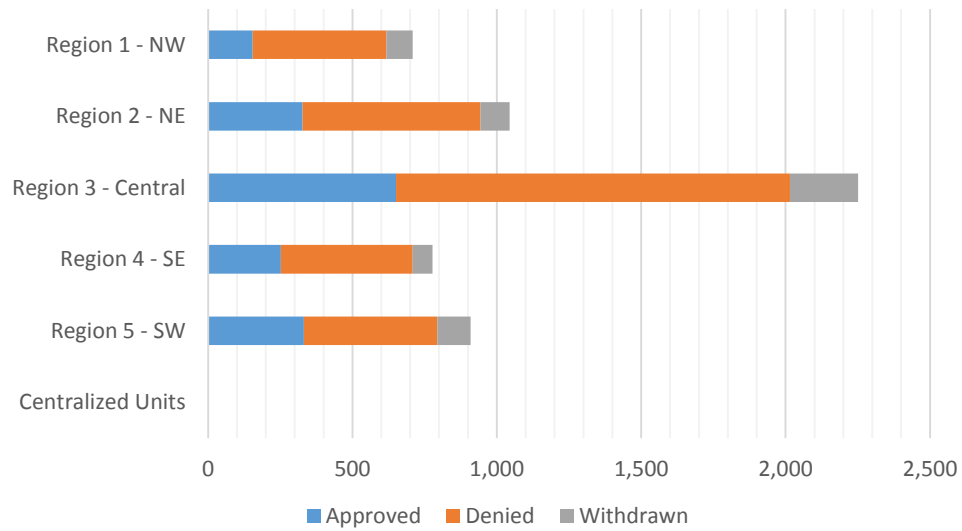


**Cash Assistance Applications by Field Office<sup>4,11</sup>**  
**November 2017**

| Office                          | Approved | Denied | Withdrawn | Total Cases Processed |
|---------------------------------|----------|--------|-----------|-----------------------|
| Chaves County ISD               | 75       | 123    | 20        | 218                   |
| Cibola County ISD               | 12       | 43     | 8         | 63                    |
| Colfax County ISD               | 11       | 16     | 2         | 29                    |
| Curry County ISD                | 55       | 75     | 16        | 146                   |
| East Dona Ana County ISD        | 75       | 107    | 32        | 214                   |
| Eddy Artesia County ISD         | 32       | 61     | 6         | 99                    |
| Eddy Carlsbad County ISD        | 19       | 41     | 10        | 70                    |
| Grant County ISD                | 24       | 40     | 9         | 73                    |
| Guadalupe County ISD            | 3        | 6      | 2         | 11                    |
| Hidalgo County ISD              | 0        | 0      | 0         | 0                     |
| Lea County ISD                  | 34       | 73     | 11        | 118                   |
| Lincoln County ISD              | 19       | 43     | 1         | 63                    |
| Luna County ISD                 | 32       | 31     | 4         | 67                    |
| McKinley County ISD             | 2        | 76     | 36        | 114                   |
| Northeast Bernalillo County ISD | 112      | 272    | 92        | 476                   |
| Northwest Bernalillo County ISD | 81       | 195    | 53        | 329                   |
| Otero County ISD                | 51       | 72     | 23        | 146                   |
| Quay County ISD                 | 9        | 15     | 1         | 25                    |
| Rio Arriba County ISD           | 42       | 70     | 12        | 124                   |
| Roosevelt County ISD            | 18       | 41     | 4         | 63                    |
| San Juan County ISD             | 42       | 198    | 25        | 265                   |
| San Miguel County ISD           | 19       | 56     | 8         | 83                    |
| Sandoval County ISD             | 162      | 260    | 47        | 469                   |
| Santa Fe County ISD             | 57       | 150    | 21        | 228                   |
| Sierra County ISD               | 12       | 17     | 3         | 32                    |
| Socorro County ISD              | 15       | 16     | 6         | 37                    |
| South Dona Ana ISD              | 69       | 76     | 14        | 159                   |
| Southeast Bernalillo County ISD | 62       | 175    | 43        | 280                   |
| Southwest Bernalillo County ISD | 370      | 670    | 34        | 1,074                 |
| Taos County ISD                 | 24       | 43     | 8         | 75                    |
| Torrance County ISD             | 26       | 52     | 14        | 92                    |
| Valencia North County ISD       | 70       | 94     | 13        | 177                   |
| Valencia South County ISD       | 1        | 20     | 0         | 21                    |
| West Dona Ana County ISD        | 81       | 136    | 33        | 250                   |
| Centralized Units               | 0        | 0      | 0         | 0                     |
| Statewide Total                 | 1,716    | 3,363  | 611       | 5,690                 |

## Cash Assistance Applications by Region<sup>4,11</sup> November 2017

|                        | Approved     | Denied       | Withdrawn  | Total Cases Processed |
|------------------------|--------------|--------------|------------|-----------------------|
| Region                 |              |              |            |                       |
| Region 1 - NW          | 154          | 464          | 91         | 709                   |
| Region 2 - NE          | 327          | 616          | 101        | 1,044                 |
| Region 3 - Central     | 651          | 1,364        | 236        | 2,251                 |
| Region 4 - SE          | 252          | 457          | 68         | 777                   |
| Region 5 - SW          | 332          | 462          | 115        | 909                   |
| Centralized Units      | 0            | 0            | 0          | 0                     |
| <b>Statewide Total</b> | <b>1,716</b> | <b>3,363</b> | <b>611</b> | <b>5,690</b>          |



**Children Youth and Families Department**  
**Children Receiving Child Care Assistance Subsidies By County**

| County        | Nov 2016      | Dec 2016      | Jan 2017      | Feb 2017      | Mar 2017      | Apr 2017      | May 2017      | June 2017     | July 2017     | Aug 2017      | Sep 2017      | Oct 2017      | Nov 2017      | Change Fr. Last Year Cases | Percent      |
|---------------|---------------|---------------|---------------|---------------|---------------|---------------|---------------|---------------|---------------|---------------|---------------|---------------|---------------|----------------------------|--------------|
| Bernalillo    | 7,092         | 7,134         | 7,043         | 7,068         | 7,170         | 7,385         | 7,519         | 7,895         | 7,547         | 7,616         | 8,154         | 7,848         | 7,985         | 893                        | 12.6%        |
| Catron        | 0             | 0             | 0             | 0             | 0             | 0             | 0             | 0             | 0             | 0             | 0             | 0             | 0             | 0                          | 0.0%         |
| Chaves        | 733           | 744           | 744           | 756           | 759           | 768           | 796           | 860           | 826           | 821           | 889           | 884           | 870           | 137                        | 18.7%        |
| Cibola        | 272           | 269           | 271           | 284           | 282           | 294           | 299           | 305           | 293           | 294           | 311           | 304           | 303           | 31                         | 11.4%        |
| Colfax        | 49            | 47            | 42            | 40            | 41            | 38            | 39            | 46            | 46            | 41            | 44            | 41            | 42            | -7                         | -14.3%       |
| Curry         | 384           | 394           | 413           | 398           | 398           | 437           | 445           | 480           | 486           | 459           | 422           | 446           | 467           | 83                         | 21.6%        |
| De Baca       | 11            | 11            | 11            | 10            | 12            | 13            | 14            | 14            | 12            | 11            | 11            | 9             | 11            | 0                          | 0.0%         |
| Dona Ana      | 4,005         | 3,976         | 4,003         | 4,047         | 4,084         | 4,217         | 4,309         | 4,499         | 4,509         | 4,473         | 4,693         | 4,585         | 4,581         | 576                        | 14.4%        |
| Eddy          | 263           | 277           | 271           | 275           | 283           | 294           | 301           | 306           | 292           | 287           | 313           | 297           | 297           | 34                         | 12.9%        |
| Grant         | 152           | 151           | 142           | 135           | 142           | 153           | 159           | 161           | 134           | 114           | 164           | 161           | 157           | 5                          | 3.3%         |
| Guadalupe     | 11            | 15            | 16            | 16            | 17            | 17            | 16            | 16            | 16            | 16            | 15            | 16            | 16            | 5                          | 45.5%        |
| Harding       | 0             | 0             | 0             | 0             | 0             | 0             | 0             | 0             | 0             | 0             | 0             | 0             | 0             | 0                          | 0.0%         |
| Hidalgo       | 33            | 34            | 35            | 35            | 35            | 35            | 39            | 40            | 37            | 37            | 39            | 39            | 35            | 2                          | 6.1%         |
| Lea           | 731           | 722           | 698           | 715           | 729           | 748           | 781           | 818           | 837           | 856           | 954           | 909           | 895           | 164                        | 22.4%        |
| Lincoln       | 130           | 135           | 132           | 139           | 135           | 141           | 136           | 147           | 146           | 145           | 150           | 147           | 136           | 6                          | 4.6%         |
| Los Alamos    | 14            | 15            | 16            | 15            | 13            | 15            | 16            | 16            | 17            | 16            | 19            | 18            | 14            | 0                          | 0.0%         |
| Luna          | 173           | 149           | 159           | 154           | 159           | 164           | 177           | 188           | 165           | 176           | 177           | 177           | 166           | -7                         | -4.0%        |
| McKinley      | 156           | 153           | 159           | 164           | 171           | 182           | 170           | 171           | 145           | 136           | 161           | 165           | 167           | 11                         | 7.1%         |
| Mora          | 19            | 20            | 18            | 20            | 20            | 21            | 21            | 21            | 18            | 18            | 19            | 18            | 20            | 1                          | 5.3%         |
| Otero         | 449           | 450           | 440           | 442           | 416           | 481           | 498           | 532           | 500           | 491           | 530           | 525           | 518           | 69                         | 15.4%        |
| Out of State  | 11            | 10            | 11            | 12            | 14            | 12            | 11            | 10            | 14            | 11            | 12            | 14            | 12            | 1                          | 9.1%         |
| Quay          | 36            | 34            | 33            | 38            | 40            | 38            | 35            | 39            | 35            | 36            | 39            | 35            | 35            | -1                         | -2.8%        |
| Rio Arriba    | 137           | 145           | 135           | 147           | 144           | 137           | 140           | 149           | 144           | 145           | 159           | 163           | 166           | 29                         | 21.2%        |
| Roosevelt     | 132           | 135           | 124           | 120           | 125           | 123           | 118           | 134           | 123           | 125           | 137           | 120           | 120           | -12                        | -9.1%        |
| San Juan      | 926           | 928           | 919           | 911           | 911           | 946           | 956           | 997           | 979           | 960           | 1,132         | 1,050         | 1,043         | 117                        | 12.6%        |
| San Miguel    | 387           | 375           | 371           | 374           | 373           | 366           | 367           | 382           | 366           | 356           | 362           | 368           | 371           | -16                        | -4.1%        |
| Sandoval      | 868           | 870           | 880           | 852           | 873           | 878           | 890           | 938           | 932           | 948           | 974           | 859           | 839           | -29                        | -3.3%        |
| Santa Fe      | 469           | 478           | 472           | 487           | 477           | 490           | 499           | 536           | 534           | 520           | 580           | 554           | 547           | 78                         | 16.6%        |
| Sierra        | 59            | 46            | 51            | 50            | 52            | 52            | 58            | 69            | 74            | 76            | 79            | 86            | 80            | 21                         | 35.6%        |
| Socorro       | 59            | 58            | 65            | 62            | 61            | 59            | 59            | 58            | 56            | 63            | 63            | 68            | 66            | 7                          | 11.9%        |
| Taos          | 109           | 114           | 116           | 114           | 112           | 118           | 120           | 127           | 132           | 137           | 145           | 139           | 142           | 33                         | 30.3%        |
| Torrance      | 82            | 77            | 79            | 83            | 87            | 91            | 96            | 101           | 107           | 117           | 106           | 99            | 115           | 33                         | 40.2%        |
| Union         | 5             | 5             | 5             | 5             | 5             | 5             | 4             | 4             | 5             | 5             | 5             | 4             | 6             | 1                          | 20.0%        |
| Valencia      | 608           | 602           | 593           | 585           | 583           | 629           | 658           | 678           | 642           | 677           | 714           | 723           | 713           | 105                        | 17.3%        |
| <b>Totals</b> | <b>18,565</b> | <b>18,573</b> | <b>18,467</b> | <b>18,553</b> | <b>18,723</b> | <b>19,347</b> | <b>19,746</b> | <b>20,737</b> | <b>20,169</b> | <b>20,183</b> | <b>21,572</b> | <b>20,871</b> | <b>20,935</b> | <b>2,370</b>               | <b>12.8%</b> |

**CHILDREN YOUTH AND FAMILIES DEPARTMENT  
CHILD CARE ASSISTANCE ELIGIBILITY PROGRAMS**

| MONTH   | DEC'16      | JAN'17      | FEB'17      | MAR'17      | APR'17      | MAY'17       | JUNE'17      | JULY'17      | AUG'17       | SEP'17       | OCT'17       | NOV'17       |
|---|-------------|-------------|-------------|-------------|-------------|--------------|--------------|--------------|--------------|--------------|--------------|--------------|
| <b>TANF (Child Care Priority 1 Clients)</b>   |             |             |             |             |             |              |              |              |              |              |              |              |
| CLIENTS   | 1,829       | 1,797       | 1,930       | 1,994       | 2,047       | 2,121        | 2,300        | 2,302        | 2,353        | 2,455        | 2,419        | 2,374        |
| COST  | \$936,139   | \$914,933   | \$1,005,906 | \$1,096,473 | \$1,148,841 | \$1,186,719  | \$1,271,336  | \$1,323,182  | \$1,381,202  | \$1,364,956  | \$1,423,748  | \$1,411,060  |
| TANF AVERAGE COST   | \$512       | \$509       | \$521       | \$550       | \$561       | \$560        | \$553        | \$575        | \$587        | \$556        | \$589        | \$594        |
| <b>TRANSITION OFF TANF (Child Care Priority 2 Clients)</b>  |             |             |             |             |             |              |              |              |              |              |              |              |
| CLIENTS   | 212         | 202         | 212         | 197         | 202         | 205          | 213          | 197          | 189          | 179          | 181          | 154          |
| COST  | \$101,388   | \$95,662    | \$102,062   | \$102,582   | \$101,314   | \$104,115    | \$111,219    | \$106,835    | \$103,813    | \$93,119     | \$96,629     | \$81,975     |
| TRAN OFF TANF AVG COST  | \$478       | \$474       | \$481       | \$521       | \$502       | \$508        | \$522        | \$542        | \$549        | \$520        | \$534        | \$532        |
| <b>TANF ELIGIBLE (Child Care Priority 1B Clients at or below 100% of the Federal Poverty Level)</b> |             |             |             |             |             |              |              |              |              |              |              |              |
| CLIENTS   | 7,614       | 7,538       | 7,420       | 7,442       | 7,819       | 8,075        | 8,472        | 8,193        | 8,254        | 9,064        | 8,899        | 8,900        |
| COST  | \$3,904,245 | \$3,557,568 | \$3,662,965 | \$3,957,431 | \$4,194,223 | \$4,302,207  | \$4,448,742  | \$4,521,900  | \$4,657,974  | \$4,755,691  | \$5,021,574  | \$5,099,212  |
| TANF ELIGIBLE AVG COST  | \$513       | \$472       | \$494       | \$532       | \$536       | \$533        | \$525        | \$552        | \$564        | \$525        | \$564        | \$573        |
| <b>INCOME ELIGIBLE (Child Care Priority 3, and Priority 4 Clients)</b>                              |             |             |             |             |             |              |              |              |              |              |              |              |
| CLIENTS   | 7,539       | 7,527       | 7,514       | 7,559       | 7,612       | 7,632        | 7,832        | 7,426        | 7,337        | 7,749        | 7,464        | 7,578        |
| COST  | \$3,460,624 | \$3,294,431 | \$3,386,741 | \$3,683,902 | \$3,733,797 | \$3,757,012  | \$3,843,887  | \$3,805,939  | \$3,838,152  | \$3,779,202  | \$3,760,398  | \$3,838,169  |
| INCOME ELIG AVG COST  | \$459       | \$438       | \$451       | \$487       | \$491       | \$492        | \$491        | \$513        | \$523        | \$488        | \$504        | \$506        |
| <b>AT-RISK CHILD PROTECTIVE SERVICES CHILD CARE PILOT (Priority 5 Clients)</b>                      |             |             |             |             |             |              |              |              |              |              |              |              |
| CLIENTS   | 397         | 431         | 518         | 553         | 679         | 733          | 881          | 1,021        | 1,073        | 1,152        | 1,032        | 1,027        |
| COST  | \$257,933   | \$266,739   | \$305,785   | \$335,795   | \$396,799   | \$449,007    | \$535,980    | \$622,872    | \$686,919    | \$723,334    | \$684,194    | \$678,258    |
| CPS AVG COST  | \$650       | \$619       | \$590       | \$607       | \$584       | \$613        | \$608        | \$610        | \$640        | \$628        | \$663        | \$660        |
| <b>CHILD PROTECTIVE SERVICES (Child Care CPS Clients)</b>   |             |             |             |             |             |              |              |              |              |              |              |              |
| CLIENTS   | 982         | 972         | 959         | 978         | 988         | 980          | 1,039        | 1,030        | 977          | 973          | 876          | 902          |
| COST  | \$579,310   | \$567,980   | \$559,627   | \$607,288   | \$652,529   | \$627,325    | \$649,417    | \$652,471    | \$663,134    | \$623,416    | \$567,608    | \$585,009    |
| CPS AVG COST  | \$590       | \$584       | \$584       | \$621       | \$660       | \$640        | \$625        | \$633        | \$679        | \$641        | \$648        | \$649        |
| <b>GRAND TOTAL - ALL CHILD CARE PROGRAMS</b>  |             |             |             |             |             |              |              |              |              |              |              |              |
| CLIENTS   | 18,565      | 18,573      | 18,467      | 18,553      | 18,723      | 19,347       | 19,746       | 20,737       | 20,169       | 20,183       | 20,871       | 20,935       |
| COST  | \$9,071,755 | \$9,239,639 | \$8,697,313 | \$9,023,086 | \$9,783,471 | \$10,227,503 | \$10,426,385 | \$10,860,581 | \$11,033,199 | \$11,331,194 | \$11,554,151 | \$11,693,682 |
| ALL PROGRAMS AVG COST   | \$489       | \$497       | \$471       | \$486       | \$523       | \$529        | \$528        | \$524        | \$547        | \$561        | \$554        | \$559        |

## Income Eligibility Guidelines: October 1, 2017 - September 30, 2018

### Federal Poverty Guidelines (FPG) Monthly Income Standards

| Supplemental Nutrition Program (SNAP)   |                     |                       |   |                                |                 |
|---|---------------------|-----------------------|---|--------------------------------|-----------------|
| Household Size  | 100% FPG Net Income | 130% FPG Gross Income | 165% FPG Gross Income for Categorical Eligibility | Maximum SNAP Monthly Allotment | LIHEAP 150% FPG |
| 1   | \$1,005             | \$1,307               | \$1,659   | \$192                          | \$1,508         |
| 2   | \$1,354             | \$1,760               | \$2,233   | \$352                          | \$2,031         |
| 3   | \$1,702             | \$2,213               | \$2,808   | \$504                          | \$2,553         |
| 4   | \$2,050             | \$2,665               | \$3,383   | \$640                          | \$3,075         |
| 5   | \$2,399             | \$3,118               | \$3,958   | \$760                          | \$3,599         |
| 6   | \$2,747             | \$3,571               | \$4,532   | \$913                          | \$4,121         |
| 7   | \$3,095             | \$4,024               | \$5,107   | \$1,009                        | \$4,643         |
| 8   | \$3,444             | \$4,477               | \$5,682   | \$1,153                        | \$5,166         |
| +1  | +\$349              | +\$453                | +\$575  | +\$144                         | +\$523          |
| Minimum Allotment of \$15 effective from 10/1/2017 - 9/30/2018  |                     |                       |   |                                |                 |
| DEDUCTIONS: Standard Deduction: For HH size 1-3 = \$160; 4 = \$170; 5 = \$199; 6 or more = \$228; Excess Shelter Deduction Limit: \$535; Heating and Cooling Standard Utility Allowance: \$320 (HCSUA) – Limited Utility Allowance: \$127 (LUA); Telephone Standard: \$42; Dependent Care: Actual Amount (No Limit); Earned Income Deduction: 20%; Homeless Shelter Standard: \$143 |                     |                       |   |                                |                 |

| CASH Assistance & Support Services   |   |                     |                          |                         |                    |
|--|---|---------------------|--------------------------|-------------------------|--------------------|
| Household Size   | Federal Poverty Guidelines (FPG) Monthly Income Standards |                     |                          | Maximum Monthly Benefit |                    |
|  | 100% FPG Net Income                                       | 85% FPG Gross Limit | NM Works Cash Net Income | Maximum Monthly Benefit | General Assistance |
| 1  | \$1,005   | \$854               | \$266                    | \$244                   | \$245              |
| 2  | \$1,354   | \$1,151             | \$357                    | \$327                   | \$329              |
| 3  | \$1,702   | \$1,447             | \$447                    | \$409                   | \$412              |
| 4  | \$2,050   | \$1,743             | \$539                    | \$493                   | \$496              |
| 5  | \$2,399   | \$2,039             | \$630                    | \$576                   | \$580              |
| 6  | \$2,747   | \$2,335             | \$721                    | \$659                   | \$664              |
| 7  | \$3,095   | \$2,631             | \$812                    | \$743                   | \$748              |
| 8  | \$3,444   | \$2,927             | \$922                    | \$843                   | \$849              |
| +1   | +\$349  | +\$296              | +\$91                    | +\$83                   | +\$84              |
| Deductions- Dependent Care: For a child under age 2 = \$200; For a child age 2 and over = \$175.<br>Work Incentives- Earned Income Disregard: Single parent = \$125 & ½ remainder; Two parent = \$225 & ½ remainder. |   |                     |                          |                         |                    |

| <b>Medical Assistance Division</b>  |                    |         |         |         |          |
|---|--------------------|---------|---------|---------|----------|
| Federal Poverty Guidelines<br>New Mexico Affordable Care Eligibility Groups<br>Effective April 01, 2017 thru March 31, 2018<br><b>Monthly Guidelines</b>                                  |                    |         |         |         |          |
| HH SIZE   | PERCENT OF POVERTY |         |         |         |          |
|   | 138%               | 190%    | 240%    | 250%    | 300%     |
| 1   | \$1,387            | \$1,910 | \$2,412 | \$2,513 | \$3,015  |
| 2   | \$1,868            | \$2,572 | \$3,248 | \$3,384 | \$4,060  |
| 3   | \$2,349            | \$3,234 | \$4,084 | \$4,255 | \$5,105  |
| 4   | \$2,829            | \$3,895 | \$4,920 | \$5,125 | \$6,150  |
| 5   | \$3,310            | \$4,557 | \$5,756 | \$5,996 | \$7,195  |
| 6   | \$3,791            | \$5,219 | \$6,592 | \$6,867 | \$8,240  |
| 7   | \$4,272            | \$5,881 | \$7,428 | \$7,738 | \$9,285  |
| 8   | \$4,752            | \$6,543 | \$8,264 | \$8,609 | \$10,330 |
| 138% Adult Expansion, 190% Children ages 6 to 19 (Medicaid), 240% Children ages 0 to 6 (Medicaid); ages 6 to 19 (CHIP), 250% Pregnancy Related Services Only, 300% Children 0 to 6 (CHIP) |                    |         |         |         |          |

| <b>Medical Assistance Division</b>  |                    |          |          |           |           |
|---|--------------------|----------|----------|-----------|-----------|
| Federal Poverty Guidelines<br>New Mexico Affordable Care Eligibility Groups<br>Effective April 01, 2017 thru March 31, 2018<br><b>Annual Guidelines</b>                                   |                    |          |          |           |           |
| HH SIZE   | PERCENT OF POVERTY |          |          |           |           |
|   | 138%               | 190%     | 240%     | 250%      | 300%      |
| 1   | \$16,644           | \$22,920 | \$28,944 | \$30,156  | \$36,180  |
| 2   | \$22,416           | \$30,864 | \$38,976 | \$40,608  | \$48,720  |
| 3   | \$28,188           | \$38,808 | \$49,008 | \$51,060  | \$61,260  |
| 4   | \$33,948           | \$46,740 | \$59,040 | \$61,500  | \$73,800  |
| 5   | \$39,720           | \$54,684 | \$69,072 | \$71,952  | \$86,340  |
| 6   | \$45,492           | \$62,628 | \$79,104 | \$82,404  | \$98,880  |
| 7   | \$51,264           | \$70,572 | \$89,136 | \$92,856  | \$111,420 |
| 8   | \$57,024           | \$78,516 | \$99,168 | \$103,308 | \$123,960 |
| 138% Adult Expansion, 190% Children ages 6 to 19 (Medicaid), 240% Children ages 0 to 6 (Medicaid); ages 6 to 19 (CHIP), 250% Pregnancy Related Services Only, 300% Children 0 to 6 (CHIP) |                    |          |          |           |           |



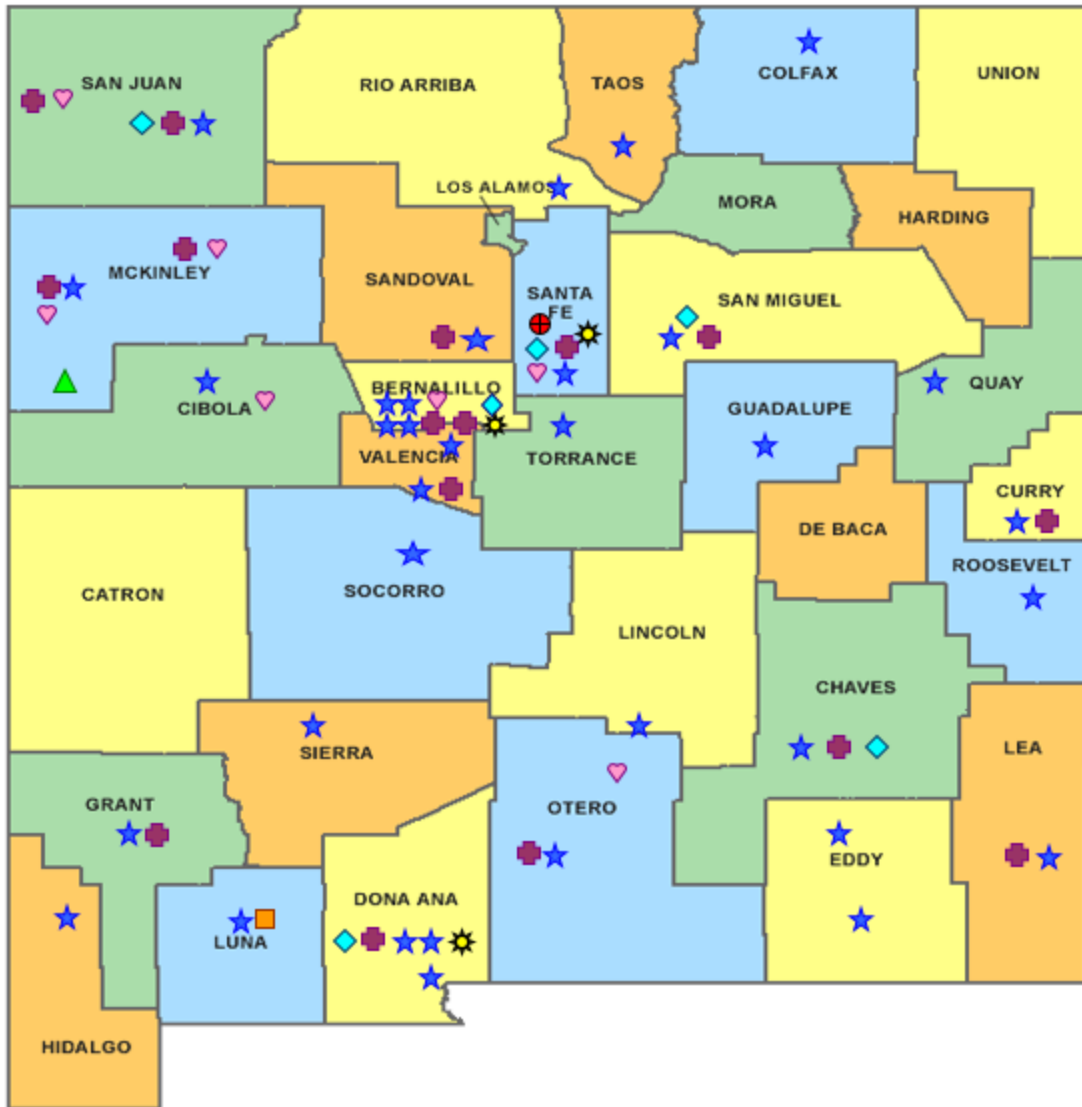
## References

- <sup>1</sup> *Medicaid Expenditures* (Omnicaid, Medicare Buy-Ins, Lump Sum Payments), Received on December 18, 2017
- <sup>2</sup> *ASPEN Business Intelligence Tool: Eligibility*, Retrieved on December 13, 2017
- <sup>3</sup> New Mexico Human Services Department, *Medicaid Eligibility Reports*, Retrieved from <http://www.hsd.state.nm.us/LookingForInformation/medicaid-eligibility.aspx> on December 13, 2017
- <sup>4</sup> *ASPEN Business Intelligence Tool: Application Tracking*, Retrieved on December 13, 2017
- <sup>5</sup> Fidelity Information Services, *EBT Daily Statistical Report* (for 11/30/2016, 10/31/2017, and 11/30/2017), Retrieved on December 11, 2017
- <sup>6</sup> *ASPEN Report DQ-180: Length of Time Cases are Open* (for 11/01/2016-11/30/2016, 10/01/2017-10/31/2017, 11/01/2017-11/30/2017), Retrieved on December 18, 2017
- <sup>7</sup> *ASPEN Report EY-180: Individual Demographics by State and Age* (for 11/01/2016-11/30/2016, 10/01/2017-10/31/2017, 11/01/2017-11/30/2017), Retrieved on December 18, 2017
- <sup>8</sup> *ASPEN Business Intelligence Tool: Benefit Issuance*, Retrieved on December 13, 2017
- <sup>9</sup> Fidelity Information Services, *EBT Daily Statistical Reports* (Month End), Retrieved on December 11, 2017
- <sup>10</sup> *ASPEN Report EY-180R: Individual Demographics by State, Race, Ethnicity and Gender* (for 11/01/2017-11/30/2017), Retrieved on December 18, 2017
- <sup>11</sup> SQL Queries from ASPEN, completed December 2017
- <sup>12</sup> JP Morgan, *New Mexico – NM EBT System- Monthly Benefit Draw Down Totals*
- <sup>13</sup> *ASPEN Business Intelligence Tool: Application Tracking* (w/Parameters: SNAP, Expedite, Approved), Retrieved on December 13, 2017
- <sup>14</sup> SL Start, *As of Today Report 11.30.17*, received December 18, 2017
- <sup>15</sup> SL Start, *Statewide Employment Report 11.01.17*, received December 18, 2017
- <sup>16</sup> *SSIAR Payments*, Received December 4, 2017
- <sup>17</sup> Children, Youth, and Families Department, *Children Receiving Child Care Assistance Subsidies by County*, Received on December 13, 2017

<sup>18</sup> Children, Youth, and Families Department, *Child Care Assistance Eligibility Programs*, Received on December 13, 2017









<sup>19</sup> EDG is defined as an Eligibility Determination Group

<sup>20</sup>SQL Query from ASPEN, completed December 20, 2017



# HUMAN SERVICES DEPARTMENT

New Mexico Human Services Department  
Field Offices

-  Central Office (1)
-  Income Support Division County Office (35)
-  Income Support Division Satellite Office (2)
-  Child Support Enforcement Regional Office (16)
-  Child Support Enforcement Satellite Office (1)
-  Quality Control Office (8)
-  Indian Health Services (7)
-  Hospital Site (3)

For a complete listing of field offices and other government and community resources:  
[http://www.hsd.state.nm.us/LookingForAssistance/Field\\_Offices\\_1.aspx](http://www.hsd.state.nm.us/LookingForAssistance/Field_Offices_1.aspx)