



Monthly Statistical Report

May 2017

There were 902,860 individuals that received Medicaid in May 2017, a 4.6% increase from one year ago. The count of Medicaid recipients has decreased by 2,405, or 0.3%, since last month.

The SNAP caseload in May 2017 was 216,559, a 14.6% decrease from one year ago. The SNAP caseload has decreased by 683 cases, or 0.3%, since last month.

The TANF caseload was 11,226 in May 2017, a decrease of 6.6% from May 2016. The TANF caseload had 51 fewer cases compared to April 2017, a decrease of 0.5%.

The caseload for General Assistance was 3,233 in May 2017, an increase of 0.4% from one year ago and a decrease of 122 cases from last month.

Susana Martinez, Governor
Brent Earnest, Cabinet Secretary

Contents	Page
Summary	3-5
Medicaid	6-9
SNAP	10-16
Cash Assistance	17-31
Child Care Assistance	32-33
Income Eligibility Guidelines	34-35

Regions are reported as follows:

Region 1		
Catron	San Juan	Valencia
Cibola	Sierra	
McKinley	Socorro	
Region 2		
Colfax	Mora	Santa Fe
De Baca	Quay	Taos
Guadalupe	Rio Arriba	Union
Harding	Sandoval	
Los Alamos	San Miguel	
Region 3		
Bernalillo	Torrance	
Region 4		
Chaves	Eddy	Lincoln
Curry	Lea	Roosevelt
Region 5		
Dona Ana	Hidalgo	Otero
Grant	Luna	

The Mission of the Human Services Department

To reduce the impact of poverty on people living in New Mexico by providing support services that help families break the cycle of dependency on public assistance

Sean Pearson, Deputy Secretary
Michael Nelson, Deputy Secretary

Prepared by Income Support Division
PO Box 2348
Santa Fe, NM 87504-2348
505-827-7250

Mary Brogdon, Director
Vida Tapia-Sanchez, Deputy Director
Shanita Harrison, Deputy Director

<http://www.hsd.state.nm.us/monthly-statistical-reports.aspx>

Program Summary for May 2017

Medicaid				Percent Change	
	May-16	Apr-17	May-17	May-16- May-17	Apr-17- May-17
Expenditures	\$452,580,943	\$478,759,931	\$401,515,425	-11.3%	-16.1%
Cases	495,963	524,007	522,542	5.4%	-0.3%
Expenditures/Case	\$913	\$914	\$768	-15.8%	-15.9%
Recipients	863,358	905,265	902,860	4.6%	-0.3%
<i>Adults</i>	481,628	515,957	514,934	6.9%	-0.2%
<i>Children</i>	381,730	389,308	387,926	1.6%	-0.4%
Recipients /Case	1.74	1.73	1.73	-0.7%	0.0%
Cases Processed	9,834	11,650	14,411	46.5%	23.7%
<i>Approvals</i>	8,291	8,702	9,293	12.1%	6.8%

Supplemental Nutrition Assistance Program (SNAP)				Percent Change	
	May-16	Apr-17	May-17	May-16- May-17	Apr-17- May-17
Expenditures	\$58,094,163	\$55,289,574	\$54,983,197	-5.4%	-0.6%
Cases	253,553	217,242	216,559	-14.6%	-0.3%
Expenditures/Case	\$229	\$255	\$254	10.8%	-0.2%
Recipients	527,086	458,782	455,529	-13.6%	-0.7%
<i>Adults</i>	303,161	260,744	259,292	-14.5%	-0.6%
<i>Children</i>	223,925	198,038	196,237	-12.4%	-0.9%
Recipients /Case	2.08	2.11	2.10	1.2%	-0.4%
Cases Processed	12,247	17,171	20,388	66.5%	18.7%
<i>Approvals</i>	9,503	13,728	16,437	73.0%	19.7%

Cash Assistance Programs				Percent Change	
	May-16	Apr-17	May-17	May-16- May-17	Apr-17- May-17
Expenditures	\$4,499,268	\$4,227,023	\$4,176,777	-7.2%	-1.2%
Cases	15,645	14,943	14,751	-5.7%	-1.3%
Expenditures/Case	\$288	\$283	\$283	-1.5%	0.1%
Recipients	35,472	33,567	33,193	-6.4%	-1.1%
<i>Adults</i>	11,828	11,159	11,015	-6.9%	-1.3%
<i>Children</i>	23,644	22,408	22,178	-6.2%	-1.0%
Recipients /Case	2.27	2.25	2.25	-0.8%	0.2%
Cases Processed	4,968	4,559	6,030	21.4%	32.3%
<i>Approvals</i>	1,727	1,376	1,634	-5.4%	18.8%

Low Income Home Energy Assistance Program (LIHEAP)				Percent Change	
	May-16	Apr-17	May-17	May-16- May-17	Apr-17- May-17
Expenditures	\$469,000	\$702,415	\$587,515	25.3%	-16.4%
Cases	2,169	2,779	2,362	8.9%	-15.0%
Expenditures/Case	\$216	\$253	\$249	15.0%	-1.6%
Recipients	5,540	6,510	5,945	7.3%	-8.7%
<i>Adults</i>	2,922	3,623	3,111	6.5%	-14.1%
<i>Children</i>	2,618	2,887	2,834	8.3%	-1.8%
Recipients /Case	2.55	2.34	2.52	-1.5%	7.4%
Cases Processed	4,049	3,896	4,252	5.0%	9.1%
<i>Approvals</i>	2,195	2,760	2,523	14.9%	-8.6%

Cash Assistance Summary for May 2017

Temporary Assistance for Needy Families (TANF)

	May-16	Apr-17	May-17	Percent Change	
				May-16- May-17	Apr-17- May-17
Expenditures	\$3,575,181	\$3,338,332	\$3,321,193	-7.1%	-0.5%
Cases	12,024	11,277	11,226	-6.6%	-0.5%
Expenditures/Case	\$297	\$296	\$296	-0.5%	-0.1%
Recipients	31,333	29,509	29,285	-6.5%	-0.8%
<i>Adults</i>	8,329	7,641	7,644	-8.2%	0.0%
<i>Children</i>	23,004	21,868	21,641	-5.9%	-1.0%
Approvals	1,366	1,121	1,333	-2.4%	18.9%

General Assistance (GA)

	May-16	Apr-17	May-17	Percent Change	
				May-16- May-17	Apr-17- May-17
Expenditures	\$807,391	\$795,861	\$767,418	-5.0%	-3.6%
Cases	3,219	3,355	3,233	0.4%	-3.6%
Expenditures/Case	\$251	\$237	\$237	-5.4%	0.1%
Recipients	3,319	3,420	3,288	-0.9%	-3.9%
<i>Adults</i>	3,056	3,186	3,061	0.2%	-3.9%
<i>Children</i>	263	234	227	-13.7%	-3.0%
Approvals	240	215	237	-1.3%	10.2%

Education Works

	May-16	Apr-17	May-17	Percent Change	
				May-16- May-17	Apr-17- May-17
Expenditures	\$74,764	\$60,846	\$61,623	-17.6%	1.3%
Cases	206	172	172	-16.5%	0.0%
Expenditures/Case	\$363	\$354	\$358	-1.3%	1.3%
Recipients	612	495	497	-18.8%	0.4%
<i>Adults</i>	235	189	187	-20.4%	-1.1%
<i>Children</i>	377	306	310	-17.8%	1.3%
Approvals	12	3	2	-83.3%	-33.3%

Refugee Cash (RCA)

	May-16	Apr-17	May-17	Percent Change	
				May-16- May-17	Apr-17- May-17
Expenditures	\$38,332	\$29,183	\$23,343	-39.1%	-20.0%
Cases	160	111	88	-45.0%	-20.7%
Expenditures/Case	\$240	\$263	\$265	10.7%	0.9%
Recipients	172	115	94	-45.3%	-18.3%
<i>Adults</i>	172	115	94	-45.3%	-18.3%
<i>Children</i>	0	0	0	N/A	N/A

State Supplement for Residential Care

	May-16	Apr-17	May-17	Percent Change	
				May-16- May-17	Apr-17- May-17
Expenditures	\$3,600	\$2,800	\$3,200	-11.1%	14.3%
Cases	36	28	32	-11.1%	14.3%
Expenditures/Case	\$100	\$100	\$100	0.0%	0.0%
Recipients	36	28	29	-19.4%	3.6%
<i>Adults</i>	36	28	29	-19.4%	3.6%
<i>Children</i>	0	0	0	N/A	N/A

Expenditures YTD			
	SFY 2017	FFY 2017	CY 2017
Medicaid	\$4,922,973,928	\$3,472,215,723	\$2,118,865,009
Supplemental Nutrition Assistance Program	\$626,351,784	\$448,407,433	\$277,746,943
Temporary Assistance for Needy Families	\$41,707,406	\$29,089,512	\$17,933,045
General Assistance	\$9,432,125	\$6,835,865	\$4,139,144
Education Works	\$599,491	\$468,158	\$289,633
LIHEAP	\$15,908,928	\$14,212,873	\$6,236,406

Average Caseload YTD			
	SFY 2017	FFY 2017	CY 2017
Medicaid	516,393	520,466	524,143
Supplemental Nutrition Assistance Program	250,083	245,824	237,071
Temporary Assistance for Needy Families	12,159	11,999	11,690
General Assistance	3,443	3,480	3,438
Education Works	150	164	163
LIHEAP	5,557	6,639	4,755

Demographic Profile- May 2017					
	SNAP	TANF	GA	Education Works	RCA
<i>Gender of Recipients</i>					
Male	206,879	12,509	1,895	198	61
Female	248,650	16,776	1,393	299	33
<i>Ethnicity</i>					
Hispanic	255,750	20,209	1,759	332	69
Non-Hispanic	199,779	9,076	1,529	165	25
<i>Race</i>					
Native American or Alaskan Native	74,893	2,108	213	47	0
Asian	4,627	281	34	4	1
African American or Black	10,878	1,183	122	14	4
Native Hawaiian or Pacific Islander	872	30	3	2	1
White	355,578	24,922	2,863	420	47
Unknown / Not Declared	4,754	286	33	3	1
More than One Race	3,927	475	20	7	40

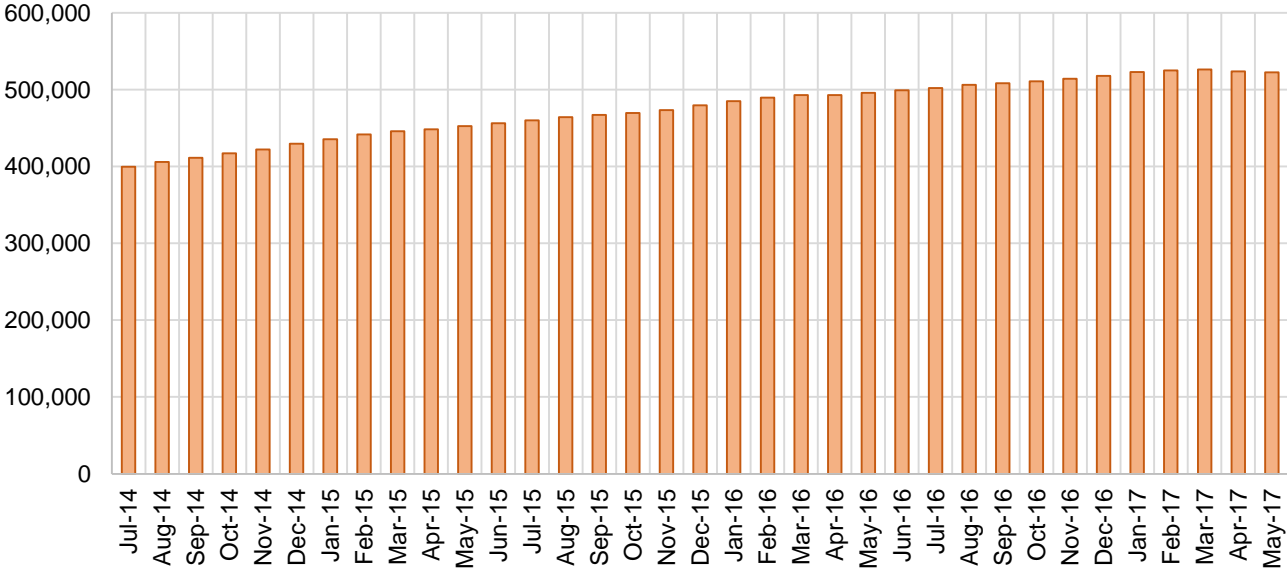
Medicaid Cases by Field Office

Office				Percent Change	
	May-16	Apr-17	May-17	May-16- May-17	Apr-17- May-17
Chaves County ISD	16,293	16,676	16,593	1.8%	-0.5%
Cibola County ISD	7,276	7,645	7,639	5.0%	-0.1%
Colfax County ISD	3,389	3,578	3,581	5.7%	0.1%
Curry County ISD	10,020	10,601	10,571	5.5%	-0.3%
East Dona Ana County ISD	17,565	18,787	18,621	6.0%	-0.9%
Eddy Artesia County ISD	3,725	4,047	4,067	9.2%	0.5%
Eddy Carlsbad County ISD	7,848	8,454	8,389	6.9%	-0.8%
Grant County ISD	6,980	7,221	7,205	3.2%	-0.2%
Guadalupe County ISD	1,606	1,669	1,673	4.2%	0.2%
Hidalgo County ISD	1,016	1,082	1,054	3.7%	-2.6%
Lea County ISD	13,664	14,944	15,021	9.9%	0.5%
Lincoln County ISD	4,423	4,700	4,632	4.7%	-1.4%
Luna County ISD	8,762	9,217	9,161	4.6%	-0.6%
McKinley County ISD	22,498	23,314	23,349	3.8%	0.2%
Northeast Bernalillo County ISD	43,022	45,753	46,085	7.1%	0.7%
Northwest Bernalillo County ISD	48,701	50,476	50,379	3.4%	-0.2%
Otero County ISD	11,477	12,314	12,199	6.3%	-0.9%
Quay County ISD	2,559	2,647	2,646	3.4%	0.0%
Rio Arriba County ISD	14,652	15,132	15,048	2.7%	-0.6%
Roosevelt County ISD	3,849	4,171	4,149	7.8%	-0.5%
San Juan County ISD	29,117	31,440	31,542	8.3%	0.3%
San Miguel County ISD	9,380	9,803	9,813	4.6%	0.1%
Sandoval County ISD	25,691	27,122	27,168	5.7%	0.2%
Santa Fe County ISD	25,889	27,749	27,706	7.0%	-0.2%
Sierra County ISD	5,418	5,699	5,697	5.1%	0.0%
Socorro County ISD	5,724	5,751	5,743	0.3%	-0.1%
South Dona Ana ISD	19,485	20,728	20,465	5.0%	-1.3%
Southeast Bernalillo County ISD	28,943	30,438	30,113	4.0%	-1.1%
Southwest Bernalillo County ISD	40,243	42,194	42,006	4.4%	-0.4%
Taos County ISD	9,482	9,970	10,007	5.5%	0.4%
Torrance County ISD	7,499	8,004	7,997	6.6%	-0.1%
Valencia North County ISD	17,844	19,054	18,936	6.1%	-0.6%
Valencia South County ISD	54	51	66	22.2%	29.4%
West Dona Ana County ISD	21,865	23,572	23,217	6.2%	-1.5%
Centralized Units	4	4	4	0.0%	0.0%
Total	495,963	524,007	522,542	5.4%	-0.3%

Medicaid Cases by Region

				Percent Change	
Region	May-16	Apr-17	May-17	May-16- May-17	Apr-17- May-17
Region 1 - NW	87,931	92,954	92,972	5.7%	0.0%
Region 2 - NE	92,648	97,670	97,642	5.4%	0.0%
Region 3 - Central	168,408	176,865	176,580	4.9%	-0.2%
Region 4 - SE	59,822	63,593	63,422	6.0%	-0.3%
Region 5 - SW	87,150	92,921	91,922	5.5%	-1.1%
Centralized Units	4	4	4	0.0%	0.0%
Total	495,963	524,007	522,542	5.4%	-0.3%

Medicaid Caseload: SFY-15 to Current

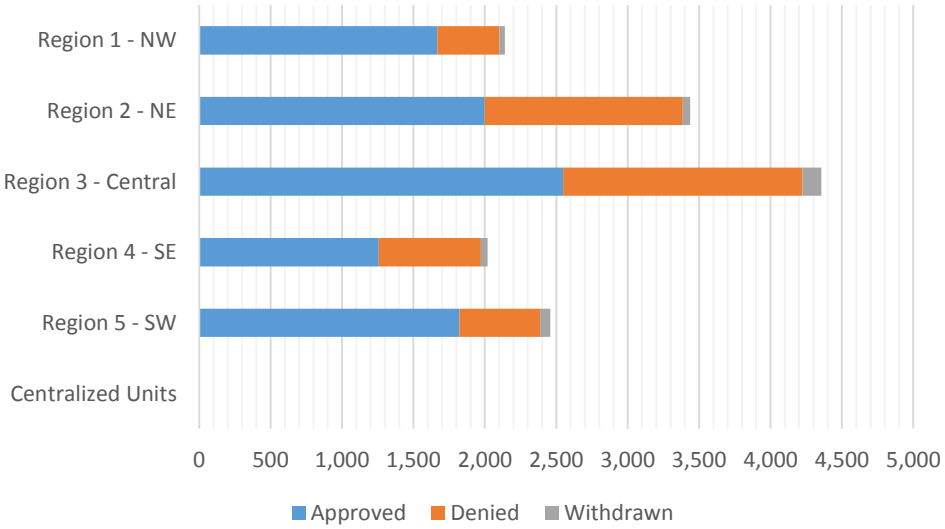


**Medicaid Applications by Field Office
May 2017**

Office	Approved	Denied	Withdrawn	Total Cases Processed
Chaves County ISD	350	246	14	610
Cibola County ISD	165	41	2	208
Colfax County ISD	56	17	4	77
Curry County ISD	201	91	13	305
East Dona Ana County ISD	424	150	21	595
Eddy Artesia County ISD	123	48	6	177
Eddy Carlsbad County ISD	121	102	6	229
Grant County ISD	120	42	5	167
Guadalupe County ISD	35	6	1	42
Hidalgo County ISD	0	0	0	0
Lea County ISD	225	92	6	323
Lincoln County ISD	133	93	1	227
Luna County ISD	155	42	11	208
McKinley County ISD	417	120	12	549
Northeast Bernalillo County ISD	773	460	60	1,293
Northwest Bernalillo County ISD	708	385	22	1,115
Otero County ISD	259	65	3	327
Quay County ISD	54	151	1	206
Rio Arriba County ISD	233	244	7	484
Roosevelt County ISD	104	43	1	148
San Juan County ISD	500	107	14	621
San Miguel County ISD	261	152	6	419
Sandoval County ISD	619	374	12	1,005
Santa Fe County ISD	537	326	17	880
Sierra County ISD	155	34	7	196
Socorro County ISD	121	26	4	151
South Dona Ana ISD	417	143	13	573
Southeast Bernalillo County ISD	491	356	21	868
Southwest Bernalillo County ISD	450	300	23	773
Taos County ISD	204	116	4	324
Torrance County ISD	125	176	6	307
Valencia North County ISD	254	68	0	322
Valencia South County ISD	55	38	0	93
West Dona Ana County ISD	448	121	20	589
Centralized Units	0	0	0	0
Total	9,293	4,775	343	14,411

Medicaid Applications by Region May 2017

	Approved	Denied	Withdrawn	Total Cases Processed
Region				
Region 1 - NW	1,667	434	39	2,140
Region 2 - NE	1,999	1,386	52	3,437
Region 3 - Central	2,547	1,677	132	4,356
Region 4 - SE	1,257	715	47	2,019
Region 5 - SW	1,823	563	73	2,459
Centralized Units	0	0	0	0
Total	9,293	4,775	343	14,411



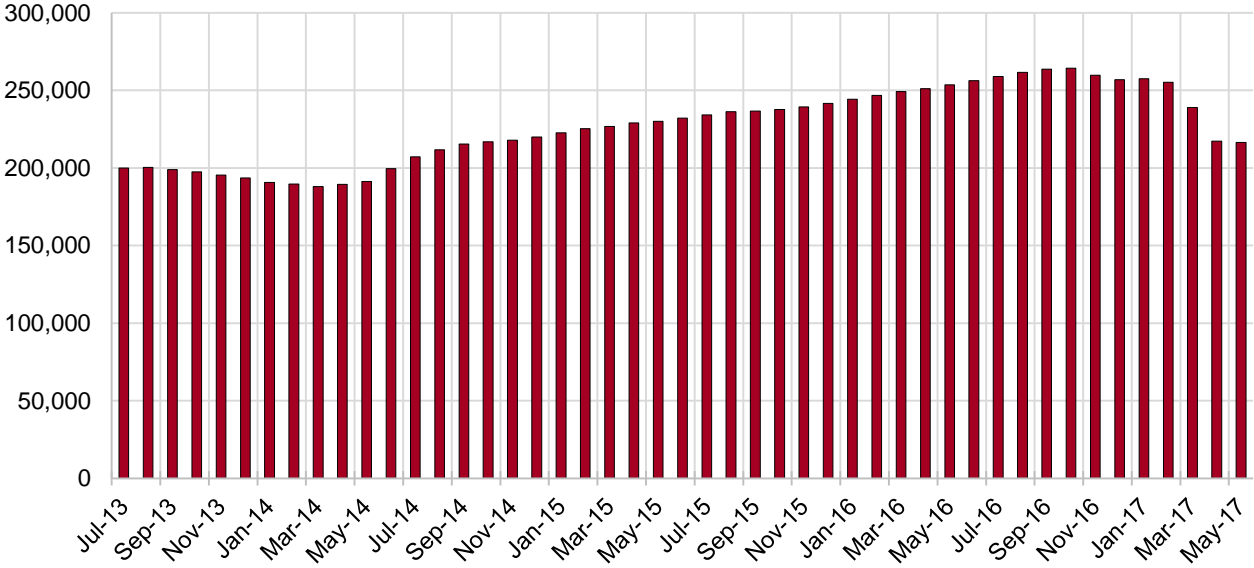
SNAP Cases by Field Office

Office	May-16	Apr-17	May-17	Percent Change	
				May-16- May-17	Apr-17- May-17
Chaves County ISD	8,108	7,195	7,153	-11.8%	-0.6%
Cibola County ISD	3,989	3,603	3,599	-9.8%	-0.1%
Colfax County ISD	1,779	1,577	1,569	-11.8%	-0.5%
Curry County ISD	5,259	4,598	4,626	-12.0%	0.6%
East Dona Ana County ISD	9,361	7,876	7,930	-15.3%	0.7%
Eddy Artesia County ISD	1,822	1,677	1,690	-7.2%	0.8%
Eddy Carlsbad County ISD	3,804	3,406	3,378	-11.2%	-0.8%
Grant County ISD	3,975	3,495	3,446	-13.3%	-1.4%
Guadalupe County ISD	784	713	714	-8.9%	0.1%
Hidalgo County ISD	517	438	422	-18.4%	-3.7%
Lea County ISD	6,573	5,749	5,674	-13.7%	-1.3%
Lincoln County ISD	2,113	1,920	1,897	-10.2%	-1.2%
Luna County ISD	4,951	4,263	4,254	-14.1%	-0.2%
McKinley County ISD	10,733	9,358	9,325	-13.1%	-0.4%
Northeast Bernalillo County ISD	22,947	19,041	19,240	-16.2%	1.0%
Northwest Bernalillo County ISD	20,057	17,485	17,554	-12.5%	0.4%
Otero County ISD	5,810	5,401	5,401	-7.0%	0.0%
Quay County ISD	1,398	1,250	1,235	-11.7%	-1.2%
Rio Arriba County ISD	8,100	6,766	6,756	-16.6%	-0.1%
Roosevelt County ISD	1,945	1,655	1,663	-14.5%	0.5%
San Juan County ISD	14,709	13,558	13,150	-10.6%	-3.0%
San Miguel County ISD	5,719	4,948	4,916	-14.0%	-0.6%
Sandoval County ISD	12,562	10,586	10,619	-15.5%	0.3%
Santa Fe County ISD	12,728	10,356	10,362	-18.6%	0.1%
Sierra County ISD	2,960	2,665	2,679	-9.5%	0.5%
Socorro County ISD	2,914	2,808	2,815	-3.4%	0.2%
South Dona Ana ISD	9,201	8,506	8,504	-7.6%	0.0%
Southeast Bernalillo County ISD	16,132	12,325	12,152	-24.7%	-1.4%
Southwest Bernalillo County ISD	21,555	17,920	17,764	-17.6%	-0.9%
Taos County ISD	4,593	4,027	4,054	-11.7%	0.7%
Torrance County ISD	3,859	3,328	3,320	-14.0%	-0.2%
Valencia North County ISD	6,474	8,169	8,119	25.4%	-0.6%
Valencia South County ISD	3,702	5	3	-99.9%	-40.0%
West Dona Ana County ISD	12,351	10,568	10,566	-14.5%	0.0%
Centralized Units	69	7	10	-85.5%	42.9%
Total	253,553	217,242	216,559	-14.6%	-0.3%

SNAP Cases by Region

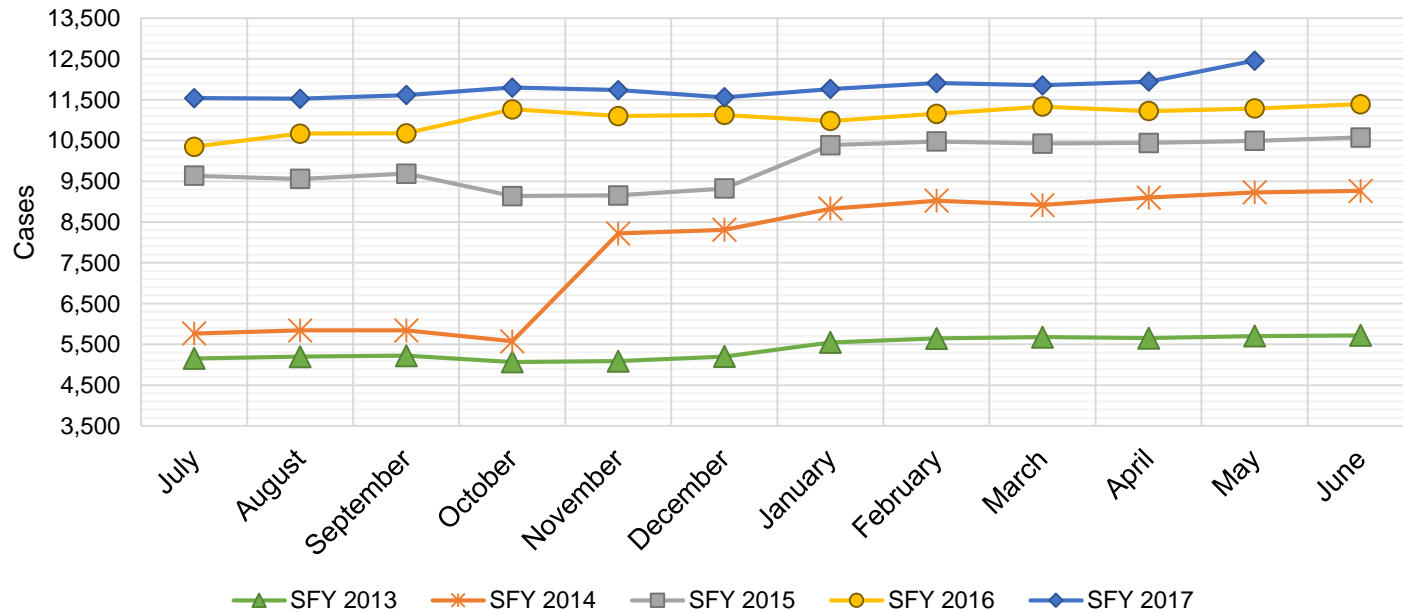
				Percent Change	
Region	May-16	Apr-17	May-17	May-16- May-17	Apr-17- May-17
Region 1 - NW	45,481	40,166	39,690	-12.7%	-1.2%
Region 2 - NE	47,663	40,223	40,225	-15.6%	0.0%
Region 3 - Central	84,550	70,099	70,030	-17.2%	-0.1%
Region 4 - SE	29,624	26,200	26,081	-12.0%	-0.5%
Region 5 - SW	46,166	40,547	40,523	-12.2%	-0.1%
Centralized Units	69	7	10	-85.5%	42.9%
Total	253,553	217,242	216,559	-14.6%	-0.3%

SNAP Caseload: SFY-14 to Current



State SNAP Supplement

SFY 2013			SFY 2014			SFY 2015			SFY 2016			SFY 2017		
	Cases	Expenditures		Cases	Expenditures		Cases	Expenditures		Cases	Expenditures		Cases	Expenditures
Jul-12	5,157	\$42,552	Jul-13	5,767	\$48,040	Jul-14	9,635	\$88,859	Jul-15	10,345	\$86,143	Jul-16	11,537	\$95,553
Aug-12	5,200	\$42,797	Aug-13	5,841	\$48,417	Aug-14	9,559	\$87,757	Aug-15	10,669	\$88,197	Aug-16	11,522	\$95,107
Sep-12	5,223	\$43,023	Sep-13	5,841	\$48,732	Sep-14	9,688	\$87,372	Sep-15	10,676	\$88,426	Sep-16	11,613	\$94,472
Oct-12	5,071	\$41,752	Oct-13	5,575	\$46,610	Oct-14	9,136	\$70,490	Oct-15	11,262	\$96,758	Oct-16	11,797	\$96,679
Nov-12	5,088	\$42,074	Nov-13	8,219	\$69,564	Nov-14	9,152	\$69,955	Nov-15	11,099	\$91,996	Nov-16	11,735	\$93,689
Dec-12	5,202	\$42,829	Dec-13	8,310	\$71,839	Dec-14	9,322	\$73,226	Dec-15	11,125	\$90,771	Dec-16	11,556	\$93,739
Jan-13	5,548	\$45,769	Jan-14	8,826	\$77,933	Jan-15	10,384	\$84,578	Jan-16	10,977	\$92,760	Jan-17	11,763	\$96,074
Feb-13	5,645	\$46,700	Feb-14	9,024	\$84,758	Feb-15	10,477	\$82,901	Feb-16	11,153	\$95,363	Feb-17	11,907	\$98,251
Mar-13	5,677	\$47,117	Mar-14	8,916	\$80,597	Mar-15	10,423	\$87,461	Mar-16	11,332	\$96,751	Mar-17	11,853	\$96,693
Apr-13	5,654	\$47,118	Apr-14	9,098	\$84,599	Apr-15	10,440	\$79,605	Apr-16	11,222	\$93,959	Apr-17	11,944	\$97,060
May-13	5,706	\$47,528	May-14	9,226	\$85,035	May-15	10,491	\$82,511	May-16	11,283	\$95,271	May-17	12,457	\$96,940
Jun-13	5,720	\$47,625	Jun-14	9,264	\$84,329	Jun-15	10,575	\$85,134	Jun-16	11,389	\$93,061	Jun-17		
TOTAL	64,891	\$536,884	93,907	\$830,453	119,282	\$979,850	132,532	\$1,109,455	129,684	\$1,054,257				
AVERAGE	5,408	\$44,740	7,826	\$69,204	9,940	\$81,654	11,044	\$92,455	11,789	\$95,842				

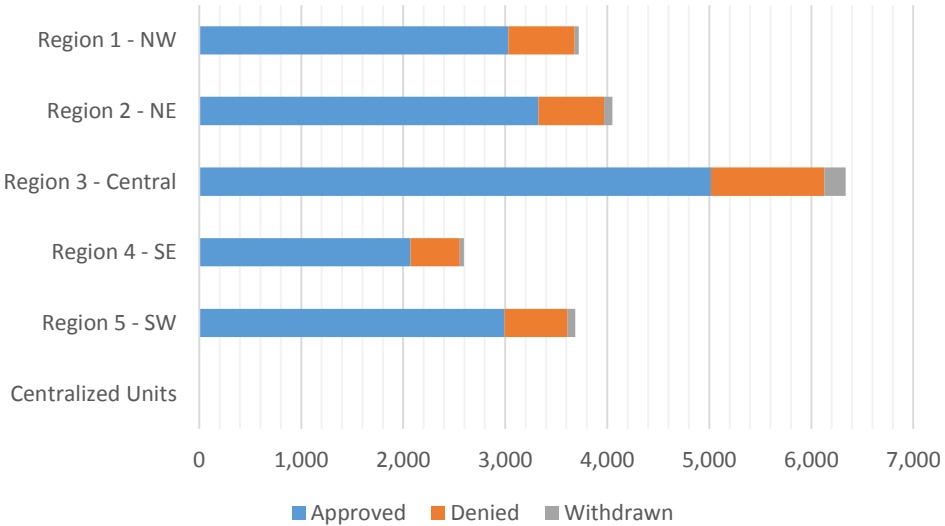


**SNAP Applications by Field Office
May 2017**

Office	Approved	Denied	Withdrawn	Total Cases Processed
Chaves County ISD	610	159	6	775
Cibola County ISD	288	65	6	359
Colfax County ISD	99	19	8	126
Curry County ISD	386	74	7	467
East Dona Ana County ISD	603	219	23	845
Eddy Artesia County ISD	152	30	9	191
Eddy Carlsbad County ISD	264	66	4	334
Grant County ISD	226	57	2	285
Guadalupe County ISD	39	4	0	43
Hidalgo County ISD	0	0	0	0
Lea County ISD	364	93	8	465
Lincoln County ISD	142	28	3	173
Luna County ISD	277	34	6	317
McKinley County ISD	741	185	12	938
Northeast Bernalillo County ISD	1,568	286	100	1,954
Northwest Bernalillo County ISD	1,269	268	38	1,575
Otero County ISD	432	103	9	544
Quay County ISD	114	33	2	149
Rio Arriba County ISD	525	66	9	600
Roosevelt County ISD	153	33	4	190
San Juan County ISD	996	185	17	1,198
San Miguel County ISD	278	46	9	333
Sandoval County ISD	1,056	253	22	1,331
Santa Fe County ISD	865	148	25	1,038
Sierra County ISD	168	35	2	205
Socorro County ISD	202	41	5	248
South Dona Ana ISD	605	101	15	721
Southeast Bernalillo County ISD	862	244	21	1,127
Southwest Bernalillo County ISD	1,096	267	41	1,404
Taos County ISD	350	72	8	430
Torrance County ISD	220	46	10	276
Valencia North County ISD	547	73	0	620
Valencia South County ISD	90	63	0	153
West Dona Ana County ISD	850	103	21	974
Centralized Units	0	0	0	0
Total	16,437	3,499	452	20,388

**SNAP Applications by Region
May 2017**

Region	Approved	Denied	Withdrawn	Total Cases Processed
Region 1 - NW	3,032	647	42	3,721
Region 2 - NE	3,326	641	83	4,050
Region 3 - Central	5,015	1,111	210	6,336
Region 4 - SE	2,071	483	41	2,595
Region 5 - SW	2,993	617	76	3,686
Centralized Units	0	0	0	0
Total	16,437	3,499	452	20,388



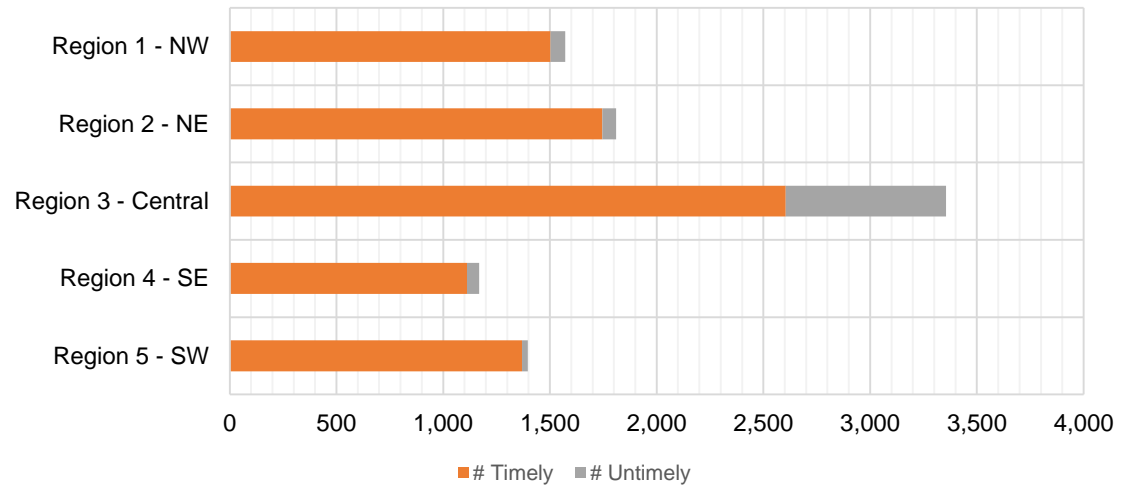
**SNAP Expedite Timeliness by Field Office
May 2017**

Office Name	Total Expedited Approvals	# Timely	# Untimely	Percentage Timely
Chaves County ISD	242	241	1	99.6 %
Cibola County ISD	124	120	4	96.8 %
Colfax County ISD	52	51	1	98.1 %
Curry County ISD	232	222	10	95.7 %
East Dona Ana County ISD	285	276	9	96.8 %
Eddy Artesia County ISD	68	63	5	92.6 %
Eddy Carlsbad County ISD	211	208	3	98.6 %
Grant County ISD	139	134	5	96.4 %
Guadalupe County ISD	12	12	0	100.0 %
Lea County ISD	253	220	33	87.0 %
Lincoln County ISD	74	71	3	95.9 %
Luna County ISD	145	145	0	100.0 %
McKinley County ISD	358	350	8	97.8 %
Northeast Bernalillo County ISD	1,113	1,040	73	93.4 %
Northwest Bernalillo County ISD	903	553	350	61.2 %
Otero County ISD	238	233	5	97.9 %
Quay County ISD	48	46	2	95.8 %
Rio Arriba County ISD	359	348	11	96.9 %
Roosevelt County ISD	88	86	2	97.7 %
San Juan County ISD	626	585	41	93.5 %
San Miguel County ISD	128	124	4	96.9 %
Sandoval County ISD	512	485	27	94.7 %
Santa Fe County ISD	528	514	14	97.3 %
Sierra County ISD	59	59	0	100.0 %
Socorro County ISD	98	95	3	96.9 %
South Dona Ana ISD	169	166	3	98.2 %
Southeast Bernalillo County ISD	505	449	56	88.9 %
Southwest Bernalillo County ISD	706	441	265	62.5 %
Taos County ISD	171	166	5	97.1 %
Torrance County ISD	129	121	8	93.8 %
Valencia North County ISD	307	293	14	95.4 %
West Dona Ana County ISD	420	415	5	98.8 %
Total	9,302	8,332	970	89.6 %

SNAP Expedite Timeliness by Region May 2017

Region	Total Expedited Approvals	# Timely	# Untimely	Percentage Timely
Region 1 - NW	1,572	1,502	70	95.5%
Region 2 - NE	1,810	1,746	64	96.5%
Region 3 - Central	3,356	2,604	752	77.6%
Region 4 - SE	1,168	1,111	57	95.1%
Region 5 - SW	1,396	1,369	27	98.1%
Total	9,302	8,332	970	89.6%

SNAP Expedite - Timeliness



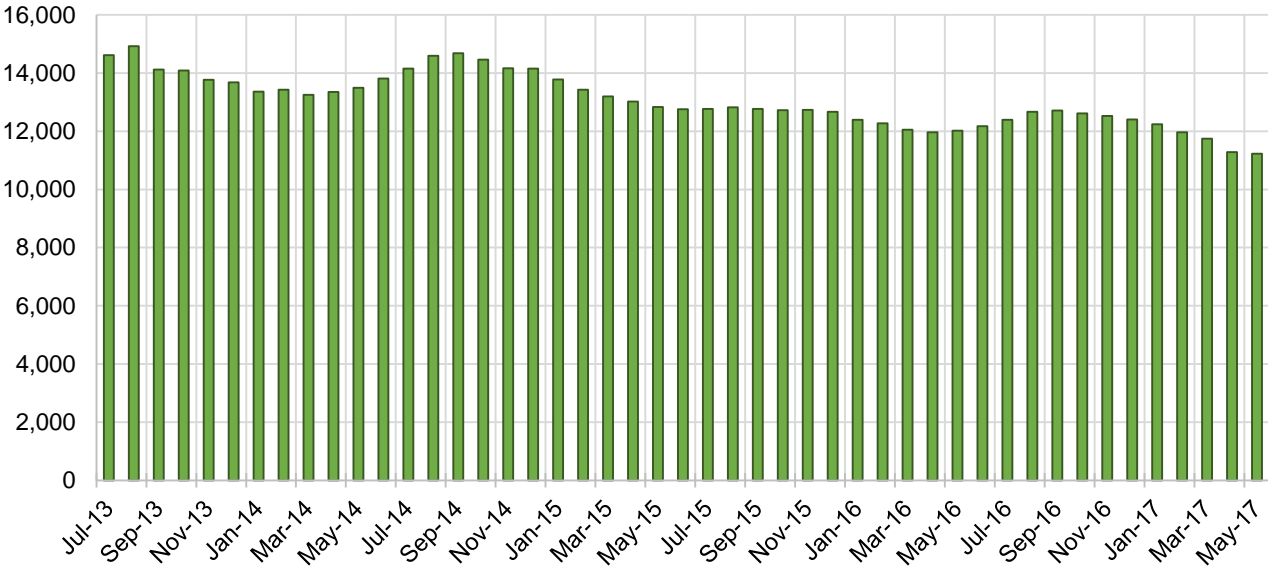
TANF Cases by Field Office

Office	May-16	Apr-17	May-17	Percent Change	
				May-16- May-17	Apr-17- May-17
Chaves County ISD	557	550	551	-1.1%	0.2%
Cibola County ISD	163	135	141	-13.5%	4.4%
Colfax County ISD	80	63	66	-17.5%	4.8%
Curry County ISD	521	489	484	-7.1%	-1.0%
East Dona Ana County ISD	522	473	500	-4.2%	5.7%
Eddy Artesia County ISD	132	127	135	2.3%	6.3%
Eddy Carlsbad County ISD	210	203	173	-17.6%	-14.8%
Grant County ISD	170	195	191	12.4%	-2.1%
Guadalupe County ISD	30	24	29	-3.3%	20.8%
Hidalgo County ISD	26	21	20	-23.1%	-4.8%
Lea County ISD	449	437	425	-5.3%	-2.7%
Lincoln County ISD	91	89	91	0.0%	2.2%
Luna County ISD	212	213	213	0.5%	0.0%
McKinley County ISD	64	56	55	-14.1%	-1.8%
Northeast Bernalillo County ISD	944	952	951	0.7%	-0.1%
Northwest Bernalillo County ISD	819	773	766	-6.5%	-0.9%
Otero County ISD	207	277	280	35.3%	1.1%
Quay County ISD	86	80	82	-4.7%	2.5%
Rio Arriba County ISD	482	393	382	-20.7%	-2.8%
Roosevelt County ISD	165	142	150	-9.1%	5.6%
San Juan County ISD	327	289	285	-12.8%	-1.4%
San Miguel County ISD	225	197	197	-12.4%	0.0%
Sandoval County ISD	533	525	512	-3.9%	-2.5%
Santa Fe County ISD	534	465	444	-16.9%	-4.5%
Sierra County ISD	87	78	82	-5.7%	5.1%
Socorro County ISD	109	85	84	-22.9%	-1.2%
South Dona Ana ISD	701	711	713	1.7%	0.3%
Southeast Bernalillo County ISD	740	633	637	-13.9%	0.6%
Southwest Bernalillo County ISD	1,194	1,045	1,040	-12.9%	-0.5%
Taos County ISD	139	147	144	3.6%	-2.0%
Torrance County ISD	194	192	186	-4.1%	-3.1%
Valencia North County ISD	368	463	455	23.6%	-1.7%
Valencia South County ISD	181	0	1	-99.4%	N/A
West Dona Ana County ISD	759	753	758	-0.1%	0.7%
Centralized Units	3	2	3	0.0%	50.0%
Total	12,024	11,277	11,226	-6.6%	-0.5%

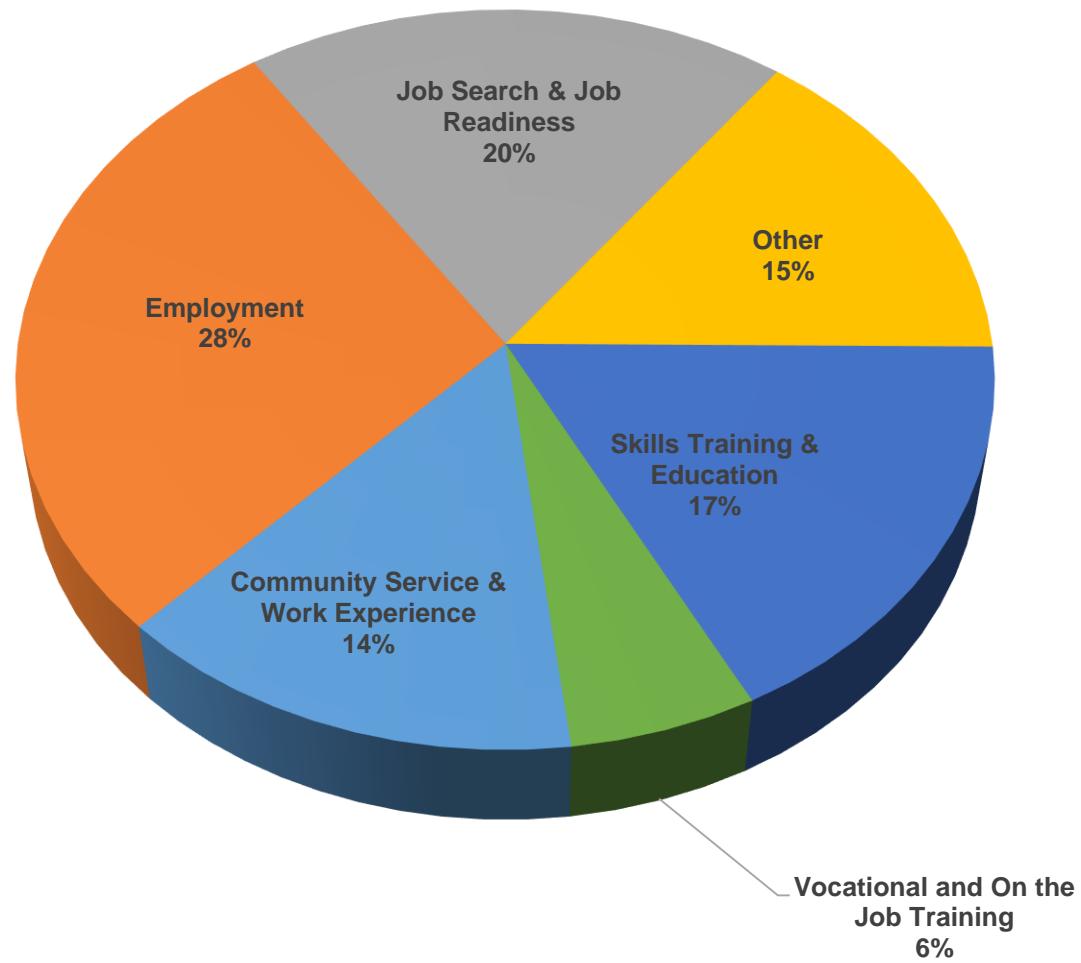
TANF Cases by Region

				Percent Change	
Region	May-16	Apr-17	May-17	May-16- May-17	Apr-17- May-17
Region 1- NW	1,299	1,106	1,103	-15.1%	-0.3%
Region 2- NE	2,109	1,894	1,856	-12.0%	-2.0%
Region 3- Central	3,891	3,595	3,580	-8.0%	-0.4%
Region 4- SE	2,125	2,037	2,009	-5.5%	-1.4%
Region 5- SW	2,597	2,643	2,675	3.0%	1.2%
Centralized Units	3	2	3	0.0%	50.0%
Total	12,024	11,277	11,226	-6.6%	-0.5%

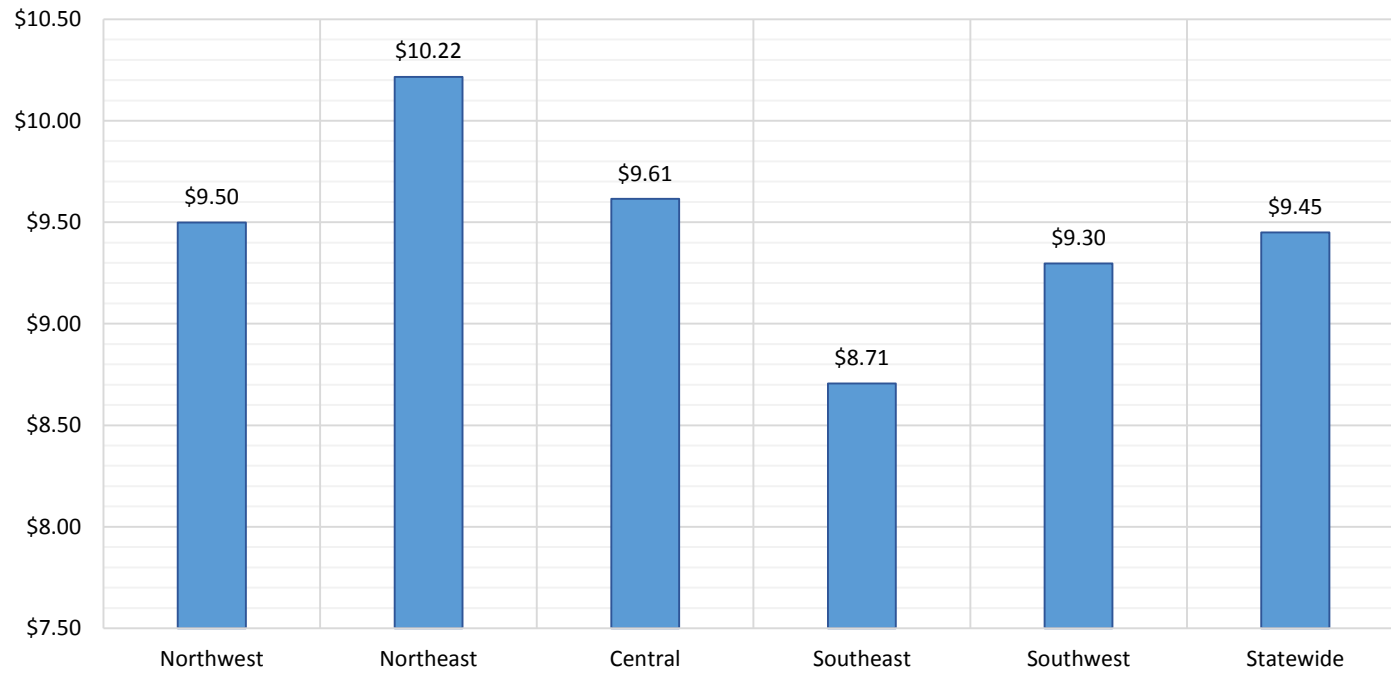
TANF Caseload: SFY-14 to Current



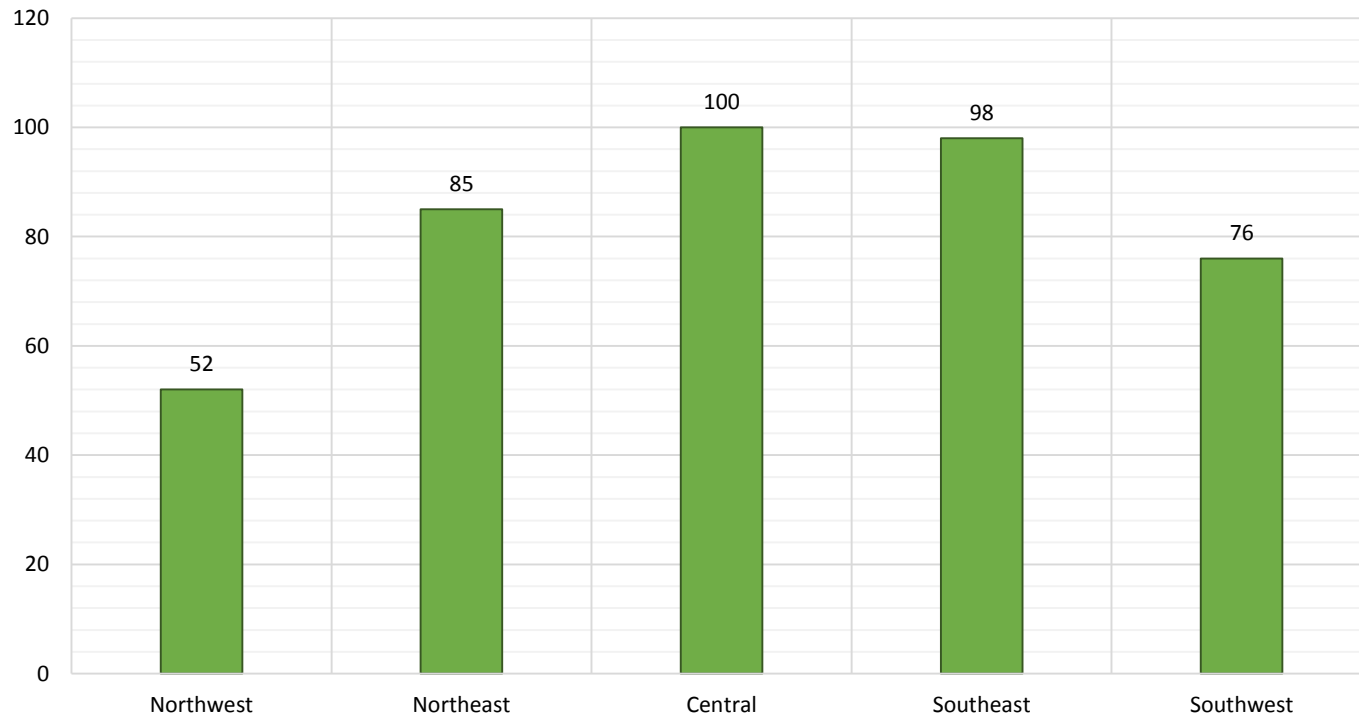
NM Works Activity Placements on May 31, 2017 as reported by SL Start



Average Starting Hourly Wage of May 2017 TANF Employments as reported by SL Start



Number of New Employments in May 2017 by Region
as reported by SL Start
Statewide Total: 411



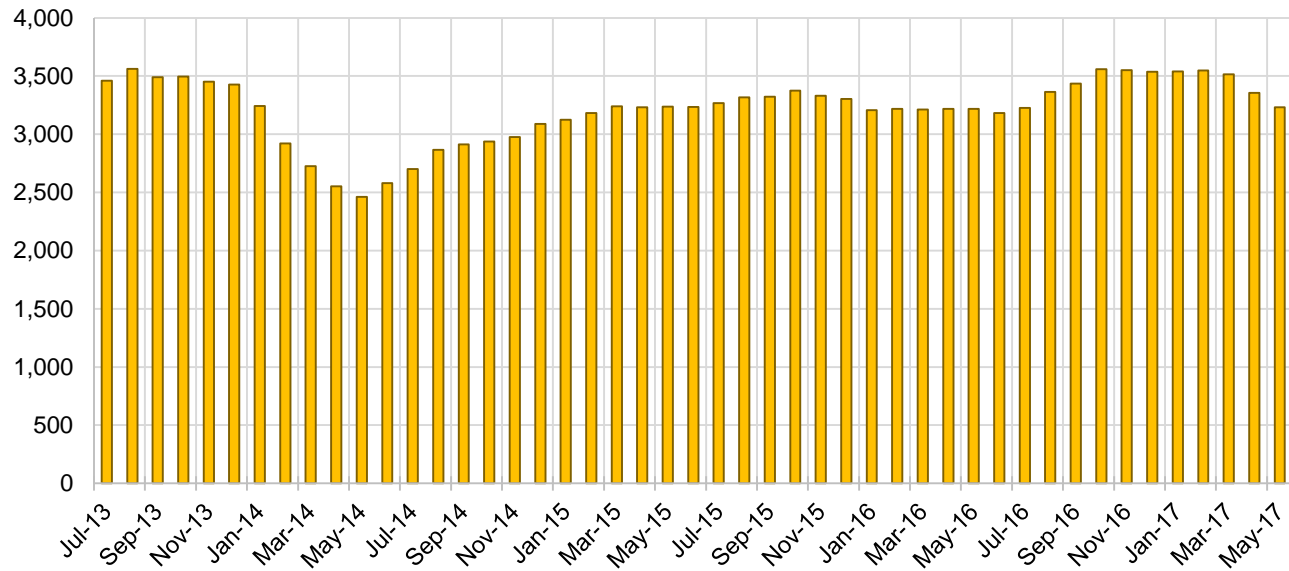
General Assistance Cases by Field Office

Office	May-16	Apr-17	May-17	Percent Change	
				May-16- May-17	Apr-17- May-17
Chaves County ISD	125	139	135	8.0%	-2.9%
Cibola County ISD	52	53	52	0.0%	-1.9%
Colfax County ISD	27	34	33	22.2%	-2.9%
Curry County ISD	67	78	74	10.4%	-5.1%
East Dona Ana County ISD	89	116	121	36.0%	4.3%
Eddy Artesia County ISD	23	22	24	4.3%	9.1%
Eddy Carlsbad County ISD	61	83	73	19.7%	-12.0%
Grant County ISD	73	85	78	6.8%	-8.2%
Guadalupe County ISD	12	14	14	16.7%	0.0%
Hidalgo County ISD	13	13	13	0.0%	0.0%
Lea County ISD	72	102	98	36.1%	-3.9%
Lincoln County ISD	25	46	43	72.0%	-6.5%
Luna County ISD	58	61	57	-1.7%	-6.6%
McKinley County ISD	24	30	32	33.3%	6.7%
Northeast Bernalillo County ISD	335	370	370	10.4%	0.0%
Northwest Bernalillo County ISD	304	315	307	1.0%	-2.5%
Otero County ISD	84	102	97	15.5%	-4.9%
Quay County ISD	27	31	37	37.0%	19.4%
Rio Arriba County ISD	113	106	100	-11.5%	-5.7%
Roosevelt County ISD	22	22	22	0.0%	0.0%
San Juan County ISD	84	106	101	20.2%	-4.7%
San Miguel County ISD	109	78	82	-24.8%	5.1%
Sandoval County ISD	146	143	131	-10.3%	-8.4%
Santa Fe County ISD	205	205	192	-6.3%	-6.3%
Sierra County ISD	36	34	34	-5.6%	0.0%
Socorro County ISD	53	53	48	-9.4%	-9.4%
South Dona Ana ISD	50	57	56	12.0%	-1.8%
Southeast Bernalillo County ISD	228	171	156	-31.6%	-8.8%
Southwest Bernalillo County ISD	238	235	219	-8.0%	-6.8%
Taos County ISD	74	68	70	-5.4%	2.9%
Torrance County ISD	73	61	61	-16.4%	0.0%
Valencia North County ISD	96	127	120	25.0%	-5.5%
Valencia South County ISD	47	1	0	-100.0%	-100.0%
West Dona Ana County ISD	173	194	183	5.8%	-5.7%
Centralized Units	1	0	0	-100.0%	N/A
Total	3,219	3,355	3,233	0.4%	-3.6%

General Assistance Cases by Region

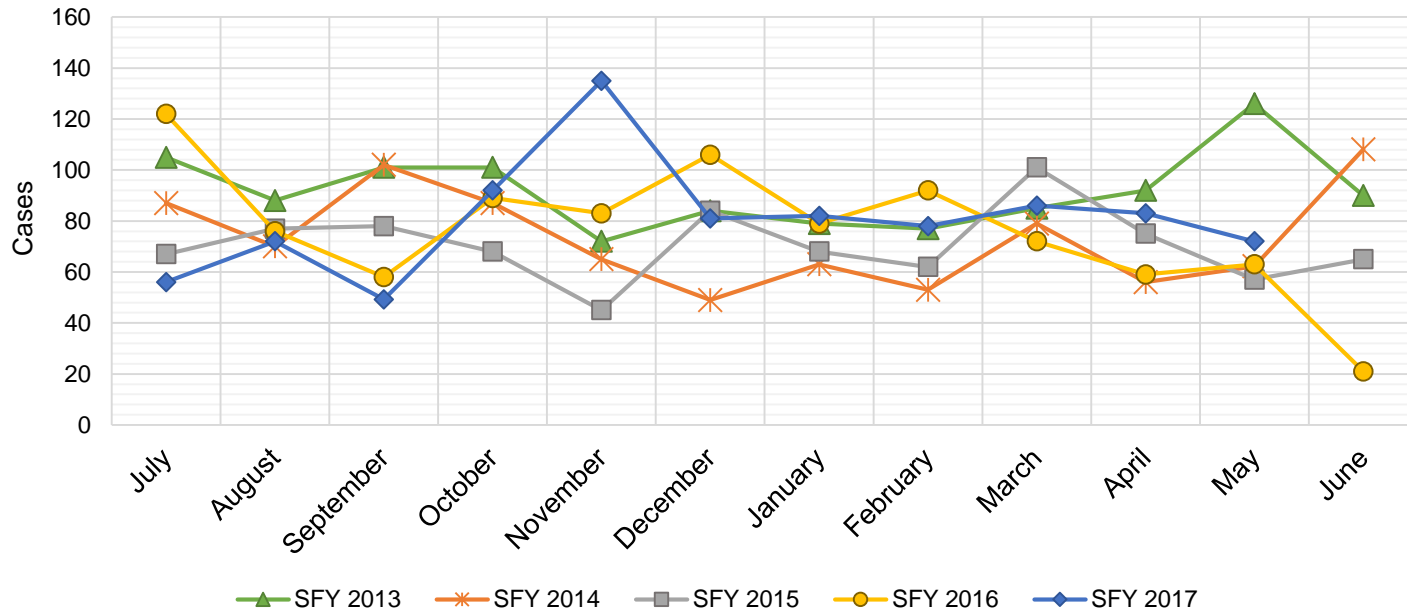
				Percent Change	
Region	May-16	Apr-17	May-17	May-16- May-17	Apr-17- May-17
Region 1 - NW	392	404	387	-1.3%	-4.2%
Region 2 - NE	713	679	659	-7.6%	-2.9%
Region 3 - Central	1,178	1,152	1,113	-5.5%	-3.4%
Region 4 - SE	395	492	469	18.7%	-4.7%
Region 5 - SW	540	628	605	12.0%	-3.7%
Centralized Units	1	0	0	-100.0%	N/A
Total	3,219	3,355	3,233	0.4%	-3.6%

General Assistance Caseload: SFY-14 to Current



General Assistance Interim Assistance Reimbursements

SFY 2013			SFY 2014			SFY 2015			SFY 2016			SFY 2017		
	Cases	Expenditures		Cases	Expenditures		Cases	Expenditures		Cases	Expenditures		Cases	Expenditures
Jul-12	105	\$254,087	Jul-13	87	\$185,368	Jul-14	67	\$144,679	Jul-15	122	\$342,648	Jul-16	56	\$164,970
Aug-12	88	\$248,471	Aug-13	70	\$184,639	Aug-14	77	\$244,233	Aug-15	76	\$245,236	Aug-16	72	\$223,182
Sep-12	101	\$233,341	Sep-13	102	\$268,243	Sep-14	78	\$168,421	Sep-15	58	\$170,093	Sep-16	49	\$158,027
Oct-12	101	\$293,784	Oct-13	87	\$165,578	Oct-14	68	\$182,265	Oct-15	89	\$277,912	Oct-16	92	\$257,830
Nov-12	72	\$193,152	Nov-13	65	\$139,197	Nov-14	45	\$134,482	Nov-15	83	\$238,948	Nov-16	135	\$402,305
Dec-12	84	\$236,221	Dec-13	49	\$147,853	Dec-14	84	\$239,926	Dec-15	106	\$388,102	Dec-16	81	\$227,569
Jan-13	79	\$209,922	Jan-14	63	\$178,944	Jan-15	68	\$227,066	Jan-16	79	\$239,263	Jan-17	82	\$274,050
Feb-13	77	\$178,441	Feb-14	53	\$130,352	Feb-15	62	\$159,564	Feb-16	92	\$296,332	Feb-17	78	\$227,569
Mar-13	85	\$229,599	Mar-14	79	\$176,756	Mar-15	101	\$317,899	Mar-16	72	\$254,360	Mar-17	86	\$278,219
Apr-13	92	\$240,540	Apr-14	56	\$155,245	Apr-15	75	\$199,038	Apr-16	59	\$208,631	Apr-17	83	\$267,187
May-13	126	\$346,079	May-14	62	\$138,827	May-15	57	\$167,383	May-16	63	\$182,241	May-17	72	\$232,836
Jun-13	90	\$225,355	Jun-14	108	\$241,016	Jun-15	65	\$188,159	Jun-16	21	\$51,760	Jun-17		
TOTAL	1,100	\$2,888,992	881	\$2,112,017	847	\$2,373,115	920	\$2,895,525	886	\$2,713,745				
AVERAGE	92	\$240,749	73	\$176,001	71	\$197,760	77	\$241,294	81	\$246,704				



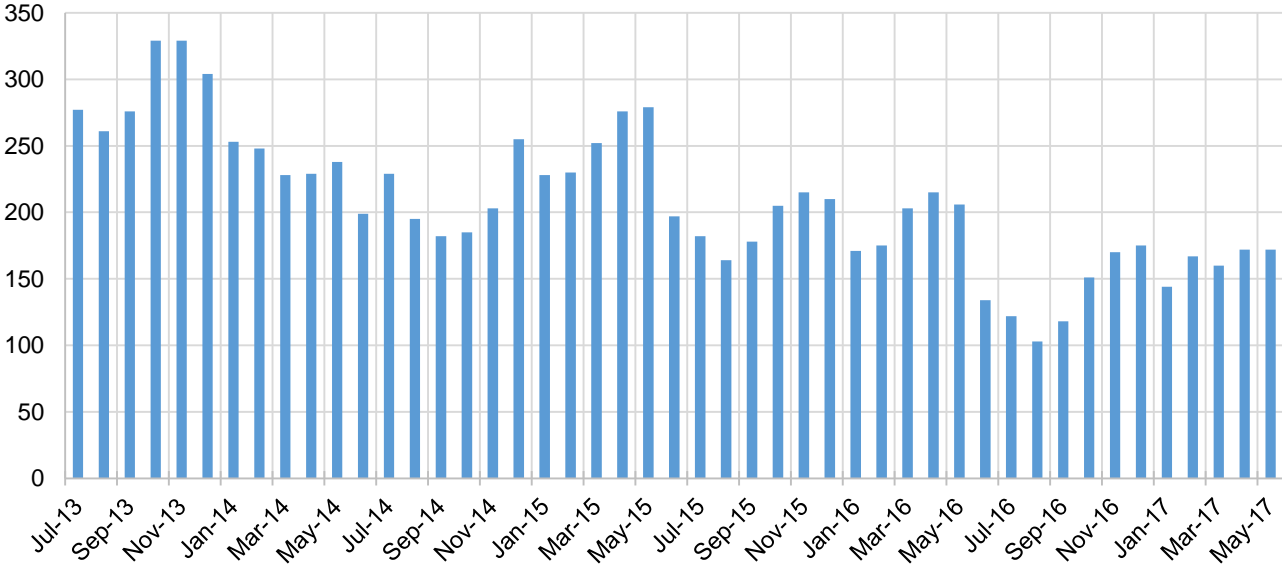
Education Works Cases by Field Office

Office				Percent Change	
	May-16	Apr-17	May-17	May-16- May-17	Apr-17- May-17
Chaves County ISD	3	2	2	-33.3%	0.0%
Cibola County ISD	3	0	0	-100.0%	N/A
Colfax County ISD	5	0	0	-100.0%	N/A
Curry County ISD	3	3	3	0.0%	0.0%
East Dona Ana County ISD	12	8	7	-41.7%	-12.5%
Eddy Artesia County ISD	0	1	1	N/A	0.0%
Eddy Carlsbad County ISD	4	2	1	-75.0%	-50.0%
Grant County ISD	8	6	8	0.0%	33.3%
Guadalupe County ISD	0	1	1	N/A	0.0%
Hidalgo County ISD	0	0	0	N/A	N/A
Lea County ISD	3	6	5	66.7%	-16.7%
Lincoln County ISD	0	0	0	N/A	N/A
Luna County ISD	1	2	2	100.0%	0.0%
McKinley County ISD	1	0	0	-100.0%	N/A
Northeast Bernalillo County ISD	37	31	30	-18.9%	-3.2%
Northwest Bernalillo County ISD	20	11	12	-40.0%	9.1%
Otero County ISD	1	1	1	0.0%	0.0%
Quay County ISD	2	1	1	-50.0%	0.0%
Rio Arriba County ISD	4	4	4	0.0%	0.0%
Roosevelt County ISD	1	2	2	100.0%	0.0%
San Juan County ISD	1	5	5	400.0%	0.0%
San Miguel County ISD	18	12	11	-38.9%	-8.3%
Sandoval County ISD	13	13	12	-7.7%	-7.7%
Santa Fe County ISD	6	8	10	66.7%	25.0%
Sierra County ISD	1	1	1	0.0%	0.0%
Socorro County ISD	1	2	2	100.0%	0.0%
South Dona Ana ISD	9	14	14	55.6%	0.0%
Southeast Bernalillo County ISD	7	5	5	-28.6%	0.0%
Southwest Bernalillo County ISD	19	15	16	-15.8%	6.7%
Taos County ISD	2	2	2	0.0%	0.0%
Torrance County ISD	2	1	1	-50.0%	0.0%
Valencia North County ISD	3	1	1	-66.7%	0.0%
Valencia South County ISD	1	0	0	-100.0%	N/A
West Dona Ana County ISD	15	12	12	-20.0%	0.0%
Centralized Units	0	0	0	N/A	N/A
Total	206	172	172	-16.5%	0.0%

Education Works Cases by Region

				Percent Change	
Region	May-16	Apr-17	May-17	May-16- May-17	Apr-17- May-17
Region 1 - NW	11	9	9	-18.2%	0.0%
Region 2 - NE	50	41	41	-18.0%	0.0%
Region 3 - Central	85	63	64	-24.7%	1.6%
Region 4 - SE	14	16	14	0.0%	-12.5%
Region 5 - SW	46	43	44	-4.3%	2.3%
Centralized Units	0	0	0	N/A	N/A
Total	206	172	172	-16.5%	0.0%

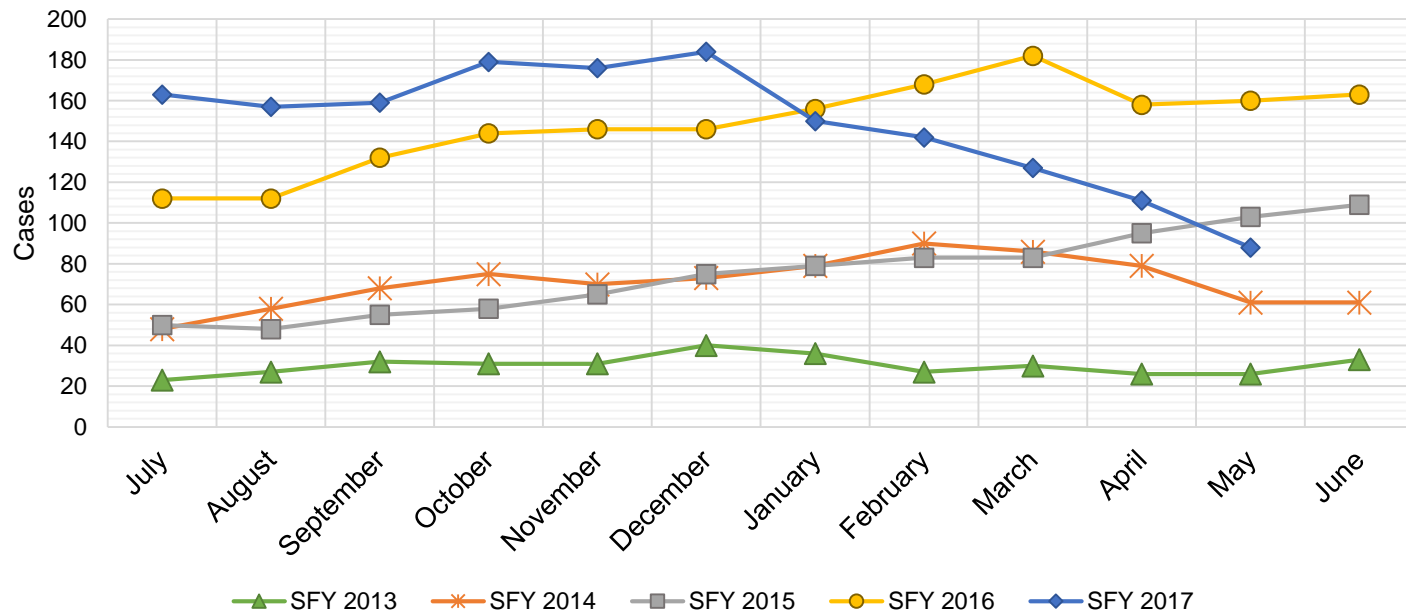
Education Works Caseload: SFY-14 to Current



Refugee Cash Assistance

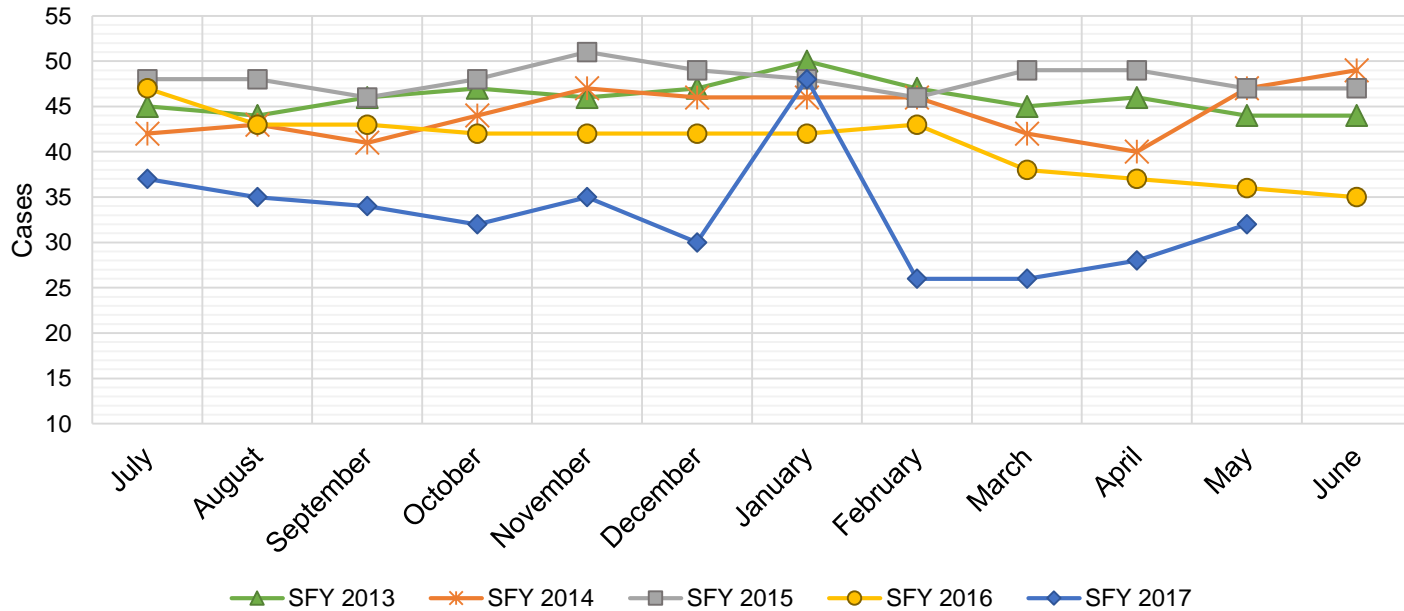
SFY 2013			SFY 2014			SFY 2015			SFY 2016			SFY 2017		
	Cases	Expenditures		Cases	Expenditures		Cases	Expenditures		Cases	Expenditures		Cases	Expenditures
Jul-12	23	\$7,155	Jul-13	48	\$12,013	Jul-14	50	\$11,679	Jul-15	112	\$27,516	Jul-16	163	\$39,756
Aug-12	27	\$7,742	Aug-13	58	\$16,129	Aug-14	48	\$11,760	Aug-15	112	\$27,438	Aug-16	157	\$40,115
Sep-12	32	\$8,267	Sep-13	68	\$19,061	Sep-14	55	\$13,094	Sep-15	132	\$31,321	Sep-16	159	\$39,359
Oct-12	31	\$9,803	Oct-13	75	\$20,962	Oct-14	58	\$13,726	Oct-15	144	\$36,153	Oct-16	179	\$41,520
Nov-12	31	\$9,552	Nov-13	70	\$21,880	Nov-14	65	\$16,461	Nov-15	146	\$36,515	Nov-16	176	\$45,434
Dec-12	40	\$10,435	Dec-13	73	\$22,053	Dec-14	75	\$18,699	Dec-15	146	\$35,763	Dec-16	184	\$46,673
Jan-13	36	\$11,489	Jan-14	79	\$22,670	Jan-15	79	\$19,009	Jan-16	156	\$38,686	Jan-17	150	\$38,790
Feb-13	27	\$11,107	Feb-14	90	\$23,227	Feb-15	83	\$21,349	Feb-16	168	\$41,368	Feb-17	142	\$37,956
Mar-13	30	\$8,678	Mar-14	86	\$21,808	Mar-15	83	\$20,730	Mar-16	182	\$45,307	Mar-17	127	\$33,066
Apr-13	26	\$9,410	Apr-14	79	\$20,109	Apr-15	95	\$23,495	Apr-16	158	\$41,143	Apr-17	111	\$29,183
May-13	26	\$8,901	May-14	61	\$15,703	May-15	103	\$25,363	May-16	160	\$38,332	May-17	88	\$23,343
Jun-13	33	\$9,535	Jun-14	61	\$14,783	Jun-15	109	\$27,958	Jun-16	163	\$39,856	Jun-17		

TOTAL	362	\$112,074	848	\$230,398	903	\$223,323	1,779	\$439,397	1,636	\$415,194
AVERAGE	30	\$9,340	71	\$19,200	75	\$18,610	148	\$36,616	149	\$37,745



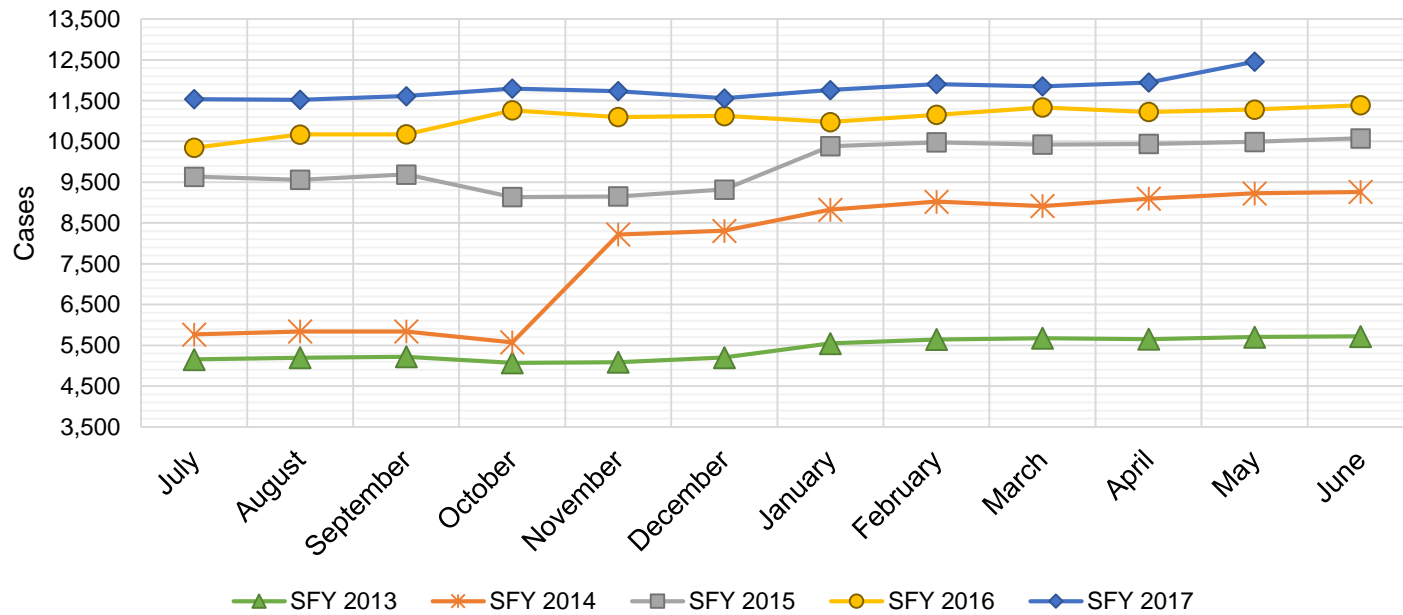
State Supplement for Residential Care

SFY 2013			SFY 2014			SFY 2015			SFY 2016			SFY 2017		
	Cases	Expenditures		Cases	Expenditures		Cases	Expenditures		Cases	Expenditures		Cases	Expenditures
Jul-12	45	\$4,600	Jul-13	42	\$4,400	Jul-14	48	\$4,700	Jul-15	47	\$4,700	Jul-16	37	\$3,700
Aug-12	44	\$4,600	Aug-13	43	\$4,300	Aug-14	48	\$5,000	Aug-15	43	\$4,900	Aug-16	35	\$3,500
Sep-12	46	\$4,800	Sep-13	41	\$4,700	Sep-14	46	\$4,600	Sep-15	43	\$4,500	Sep-16	34	\$3,400
Oct-12	47	\$4,700	Oct-13	44	\$4,500	Oct-14	48	\$4,600	Oct-15	42	\$4,400	Oct-16	32	\$3,200
Nov-12	46	\$4,900	Nov-13	47	\$4,700	Nov-14	51	\$5,600	Nov-15	42	\$4,200	Nov-16	35	\$3,500
Dec-12	47	\$5,200	Dec-13	46	\$4,600	Dec-14	49	\$5,000	Dec-15	42	\$4,200	Dec-16	30	\$3,000
Jan-13	50	\$5,100	Jan-14	46	\$4,700	Jan-15	48	\$4,900	Jan-16	42	\$4,200	Jan-17	48	\$4,800
Feb-13	47	\$4,900	Feb-14	46	\$4,700	Feb-15	46	\$4,800	Feb-16	43	\$4,300	Feb-17	26	\$2,600
Mar-13	45	\$4,800	Mar-14	42	\$4,500	Mar-15	49	\$4,800	Mar-16	38	\$3,800	Mar-17	26	\$2,600
Apr-13	46	\$4,700	Apr-14	40	\$4,200	Apr-15	49	\$5,400	Apr-16	37	\$3,700	Apr-17	28	\$2,800
May-13	44	\$4,600	May-14	47	\$5,000	May-15	47	\$4,700	May-16	36	\$3,600	May-17	32	\$3,200
Jun-13	44	\$4,400	Jun-14	49	\$4,900	Jun-15	47	\$5,300	Jun-16	35	\$3,500	Jun-17		
TOTAL	551	\$57,300		533	\$55,200		576	\$59,400		490	\$50,000		363	\$36,300
AVERAGE	46	\$4,775		44	\$4,600		48	\$4,950		41	\$4,167		33	\$3,300



TANF Diversion Payments

SFY 2013			SFY 2014			SFY 2015			SFY 2016			SFY 2017		
	Cases	Expenditures		Cases	Expenditures		Cases	Expenditures		Cases	Expenditures		Cases	Expenditures
Jul-12	10	\$20,000	Jul-13	23	\$46,500	Jul-14	23	\$48,098	Jul-15	29	\$62,074	Jul-16	16	\$30,843
Aug-12	10	\$19,000	Aug-13	29	\$54,500	Aug-14	10	\$21,810	Aug-15	19	\$33,584	Aug-16	22	\$42,731
Sep-12	14	\$31,500	Sep-13	17	\$36,500	Sep-14	12	\$23,500	Sep-15	25	\$47,977	Sep-16	10	\$21,000
Oct-12	10	\$18,000	Oct-13	21	\$42,500	Oct-14	18	\$30,589	Oct-15	11	\$20,500	Oct-16	8	\$16,744
Nov-12	8	\$15,000	Nov-13	16	\$28,953	Nov-14	3	\$4,411	Nov-15	21	\$45,500	Nov-16	11	\$24,500
Dec-12	12	\$25,000	Dec-13	13	\$25,500	Dec-14	8	\$14,634	Dec-15	23	\$45,389	Dec-16	14	\$26,611
Jan-13	9	\$17,500	Jan-14	8	\$16,000	Jan-15	10	\$18,000	Jan-16	23	\$41,874	Jan-17	9	\$18,500
Feb-13	7	\$13,500	Feb-14	8	\$16,994	Feb-15	2	\$5,500	Feb-16	15	\$28,500	Feb-17	6	\$12,000
Mar-13	9	\$17,500	Mar-14	13	\$27,396	Mar-15	6	\$12,000	Mar-16	15	\$27,008	Mar-17	6	\$11,000
Apr-13	14	\$30,000	Apr-14	14	\$28,000	Apr-15	14	\$26,000	Apr-16	15	\$31,389	Apr-17	6	\$12,000
May-13	15	\$30,500	May-14	11	\$20,500	May-15	11	\$21,500	May-16	15	\$31,916	May-17	6	\$11,500
Jun-13	18	\$37,000	Jun-14	14	\$29,911	Jun-15	21	\$40,039	Jun-16	22	\$43,000	Jun-17		
TOTAL	136	\$274,500	187	\$373,254	138	\$266,081	233	\$458,711	114	\$227,429				
AVERAGE	11	\$22,875	16	\$31,105	12	\$22,173	19	\$38,226	10	\$20,675				

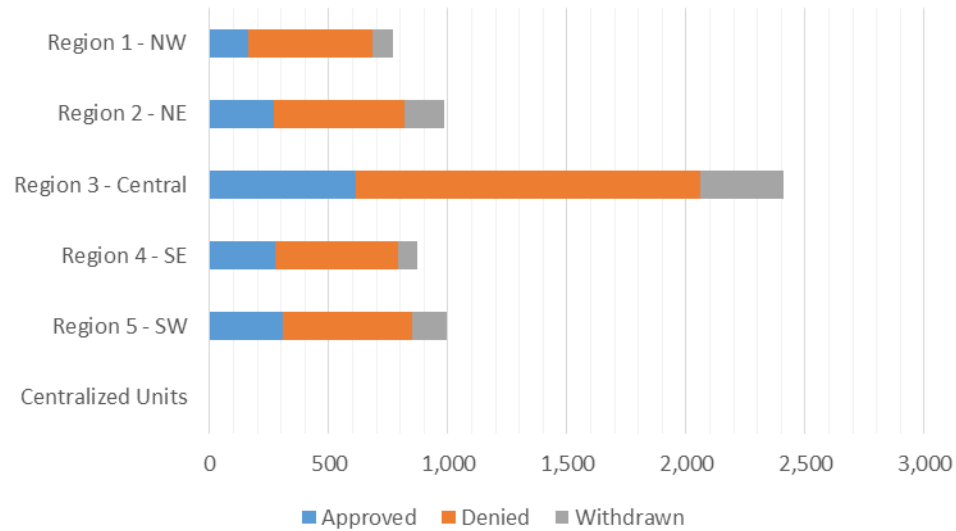


**Cash Assistance Applications by Field Office
May 2017**

Office	Approved	Denied	Withdrawn	Total Cases Processed
Chaves County ISD	89	105	21	215
Cibola County ISD	27	51	11	89
Colfax County ISD	10	20	11	41
Curry County ISD	54	122	10	186
East Dona Ana County ISD	51	150	38	239
Eddy Artesia County ISD	23	48	4	75
Eddy Carlsbad County ISD	18	65	21	104
Grant County ISD	30	62	10	102
Guadalupe County ISD	5	10	2	17
Hidalgo County ISD	0	0	0	0
Lea County ISD	50	94	11	155
Lincoln County ISD	16	40	6	62
Luna County ISD	21	29	12	62
McKinley County ISD	6	88	23	117
Northeast Bernalillo County ISD	100	338	129	567
Northwest Bernalillo County ISD	69	301	75	445
Otero County ISD	41	83	21	145
Quay County ISD	12	15	3	30
Rio Arriba County ISD	53	74	22	149
Roosevelt County ISD	25	43	9	77
San Juan County ISD	41	231	40	312
San Miguel County ISD	23	27	12	62
Sandoval County ISD	80	218	60	358
Santa Fe County ISD	62	137	48	247
Sierra County ISD	11	24	2	37
Socorro County ISD	15	32	5	52
South Dona Ana ISD	76	90	28	194
Southeast Bernalillo County ISD	81	191	67	339
Southwest Bernalillo County ISD	345	559	59	963
Taos County ISD	27	43	10	80
Torrance County ISD	20	54	24	98
Valencia North County ISD	56	66	0	122
Valencia South County ISD	7	31	0	38
West Dona Ana County ISD	90	127	34	251
Centralized Units	0	0	0	0
Total	1,634	3,568	828	6,030

Cash Assistance Applications by Region May 2017

	Approved	Denied	Withdrawn	Total Cases Processed
Region				
Region 1 - NW	163	523	81	767
Region 2 - NE	272	544	168	984
Region 3 - Central	615	1,443	354	2,412
Region 4 - SE	275	517	82	874
Region 5 - SW	309	541	143	993
Centralized Units	0	0	0	0
Total	1,634	3,568	828	6,030



**Children Youth and Families Department
Children Receiving Child Care Assistance Subsidies By County**

County	May 2016	June 2016	July 2016	Aug 2016	Sep 2016	Oct 2016	Nov 2016	Dec 2016	Jan 2017	Feb 2017	Mar 2017	Apr 2017	May 2017	Change Fr. Cases	Last Year Percent
<i>Bernalillo</i>	6,971	7,213	6,790	6,696	7,237	7,030	7,092	7,134	7,043	7,068	7,170	7,385	7,519	548	7.9%
Catron	4	4	2	2	2	0	0	0	0	0	0	0	0	-4	0.0%
<i>Chaves</i>	666	733	698	682	739	737	733	744	744	756	759	768	796	130	19.5%
Cibola	259	273	254	266	278	269	272	269	271	284	282	294	299	40	15.4%
<i>Colfax</i>	54	53	46	45	46	50	49	47	42	40	41	38	39	-15	-27.8%
Curry	382	397	381	386	389	361	384	394	413	398	398	437	445	63	16.5%
<i>De Baca</i>	7	9	10	12	12	12	11	11	11	10	12	13	14	7	100.0%
Dona Ana	3,930	4,083	3,600	3,687	3,957	3,915	4,005	3,976	4,003	4,047	4,084	4,217	4,309	379	9.6%
<i>Eddy</i>	257	272	265	263	285	265	263	277	271	275	283	294	301	44	17.1%
Grant	163	178	139	128	170	152	152	151	142	135	142	153	159	-4	-2.5%
<i>Guadalupe</i>	12	13	14	13	15	12	11	15	16	16	17	17	16	4	33.3%
Harding	0	0	0	0	0	0	0	0	0	0	0	0	0	0	0.0%
<i>Hidalgo</i>	27	25	25	25	33	28	33	34	35	35	35	35	39	12	44.4%
Lea	666	667	592	620	716	702	731	722	698	715	729	748	781	115	17.3%
<i>Lincoln</i>	108	114	122	135	135	129	130	135	132	139	135	141	136	28	25.9%
Los Alamos	15	15	10	11	7	7	14	15	16	15	13	15	16	1	6.7%
<i>Luna</i>	173	170	164	151	152	163	173	149	159	154	159	164	177	4	2.3%
McKinley	161	172	131	132	175	163	156	153	159	164	171	182	170	9	5.6%
<i>Mora</i>	15	15	16	17	19	19	19	20	18	20	20	21	21	6	40.0%
Otero	462	471	434	426	474	472	449	450	440	442	416	481	498	36	7.8%
<i>Out of State</i>	9	5	4	3	5	5	11	10	11	12	14	12	11	2	22.2%
Quay	38	43	41	40	39	40	36	34	33	38	40	38	35	-3	-7.9%
<i>Rio Arriba</i>	151	157	148	146	130	132	137	145	135	147	144	137	140	-11	-7.3%
Roosevelt	119	117	101	108	116	122	132	135	124	120	125	123	118	-1	-0.8%
<i>San Juan</i>	855	886	793	793	951	923	926	928	919	911	911	946	956	101	11.8%
San Miguel	378	401	369	375	390	395	387	375	371	374	373	366	367	-11	-2.9%
<i>Sandoval</i>	835	883	867	868	927	859	868	870	880	852	873	878	890	55	6.6%
Santa Fe	479	488	428	434	473	461	469	478	472	487	477	490	499	20	4.2%
<i>Sierra</i>	30	60	56	60	57	63	59	46	51	50	52	52	58	28	93.3%
Socorro	62	68	60	54	62	59	59	58	65	62	61	59	59	-3	-4.8%
<i>Taos</i>	111	130	120	120	113	115	109	114	116	114	112	118	120	9	8.1%
Torrance	72	80	78	78	81	80	82	77	79	83	87	91	96	24	33.3%
<i>Union</i>	6	6	6	5	3	5	5	5	5	5	5	5	4	-2	-33.3%
Valencia	618	619	552	543	583	593	608	602	593	585	583	629	658	40	6.5%
Totals	18,095	18,820	17,316	17,324	18,771	18,338	18,565	18,573	18,467	18,553	18,723	19,347	19,746	1,651	9.1%

**CHILDREN YOUTH AND FAMILIES DEPARTMENT
CHILD CARE ASSISTANCE ELIGIBILITY PROGRAMS**

MONTH	JUNE'16	JUL'16	AUG'16	SEP'16	OCT'16	NOV'16	DEC'16	JAN'17	FEB'17	MAR'17	APR'17	MAY'17
TANF (Child Care Priority 1 Clients)												
CLIENTS	1,760	1,682	1,647	1,756	1,775	1,801	1,829	1,797	1,930	1,994	2,047	2,121
COST	\$823,149	\$865,546	\$845,125	\$831,259	\$882,251	\$920,189	\$936,139	\$914,933	\$1,005,906	\$1,096,473	\$1,148,841	\$1,186,719
TANF AVERAGE COST	\$468	\$515	\$513	\$473	\$497	\$511	\$512	\$509	\$521	\$550	\$561	\$560
TRANSITION OFF TANF (Child Care Priority 2 Clients)												
CLIENTS	191	165	182	179	180	193	212	202	212	197	202	205
COST	\$87,098	\$82,957	\$91,871	\$80,066	\$81,750	\$90,646	\$101,388	\$95,662	\$102,062	\$102,582	\$101,314	\$104,115
TRAN OFF TANF AVG COST	\$456	\$503	\$505	\$447	\$454	\$470	\$478	\$474	\$481	\$521	\$502	\$508
TANF ELIGIBLE (Child Care Priority 1B Clients at or below 100% of the Federal Poverty Level)												
CLIENTS	7,907	6,923	6,870	7,690	7,570	7,649	7,614	7,538	7,420	7,442	7,819	8,075
COST	\$3,553,273	\$3,468,543	\$3,496,809	\$3,390,070	\$3,746,796	\$3,824,118	\$3,904,245	\$3,557,568	\$3,662,965	\$3,957,431	\$4,194,223	\$4,302,207
TANF ELIGIBLE AVG COST	\$449	\$501	\$509	\$441	\$495	\$500	\$513	\$472	\$494	\$532	\$536	\$533
INCOME ELIGIBLE (Child Care Priority 3, and Priority 4 Clients)												
CLIENTS	7,728	7,261	7,304	7,798	7,507	7,569	7,539	7,527	7,514	7,559	7,612	7,632
COST	\$3,239,123	\$3,345,777	\$3,394,168	\$3,265,029	\$3,352,594	\$3,404,386	\$3,460,624	\$3,294,431	\$3,386,741	\$3,683,902	\$3,733,797	\$3,757,012
INCOME ELIG AVG COST	\$419	\$461	\$465	\$419	\$447	\$450	\$459	\$438	\$451	\$487	\$491	\$492
AT-RISK CHILD PROTECTIVE SERVICES CHILD CARE PILOT (Priority 5 Clients)												
CLIENTS	195	243	286	323	343	378	397	431	518	553	679	733
COST	\$117,152	\$142,841	\$184,819	\$193,530	\$214,804	\$232,406	\$257,933	\$266,739	\$305,785	\$335,795	\$396,799	\$449,007
CPS AVG COST	\$601	\$588	\$646	\$599	\$626	\$615	\$650	\$619	\$590	\$607	\$584	\$613
CHILD PROTECTIVE SERVICES (Child Care CPS Clients)												
CLIENTS	1,039	1,042	1,035	1,025	963	975	982	972	959	978	988	980
COST	\$579,356	\$611,411	\$614,807	\$577,908	\$555,413	\$600,010	\$579,310	\$567,980	\$559,627	\$607,288	\$652,529	\$627,325
CPS AVG COST	\$558	\$587	\$594	\$564	\$577	\$615	\$590	\$584	\$584	\$621	\$660	\$640
GRAND TOTAL - ALL CHILD CARE PROGRAMS												
CLIENTS	18,820	17,316	17,324	18,771	18,338	18,565	18,573	18,467	18,553	18,723	19,347	19,746
COST	\$8,399,151	\$8,517,075	\$8,627,599	\$8,337,862	\$8,833,608	\$9,071,755	\$9,239,639	\$8,697,313	\$9,023,086	\$9,783,471	\$10,227,503	\$10,426,385
ALL PROGRAMS AVG COST	\$446	\$492	\$498	\$444	\$482	\$489	\$497	\$471	\$486	\$523	\$529	\$528

Income Eligibility Guidelines: October 1, 2016 - September 30, 2017

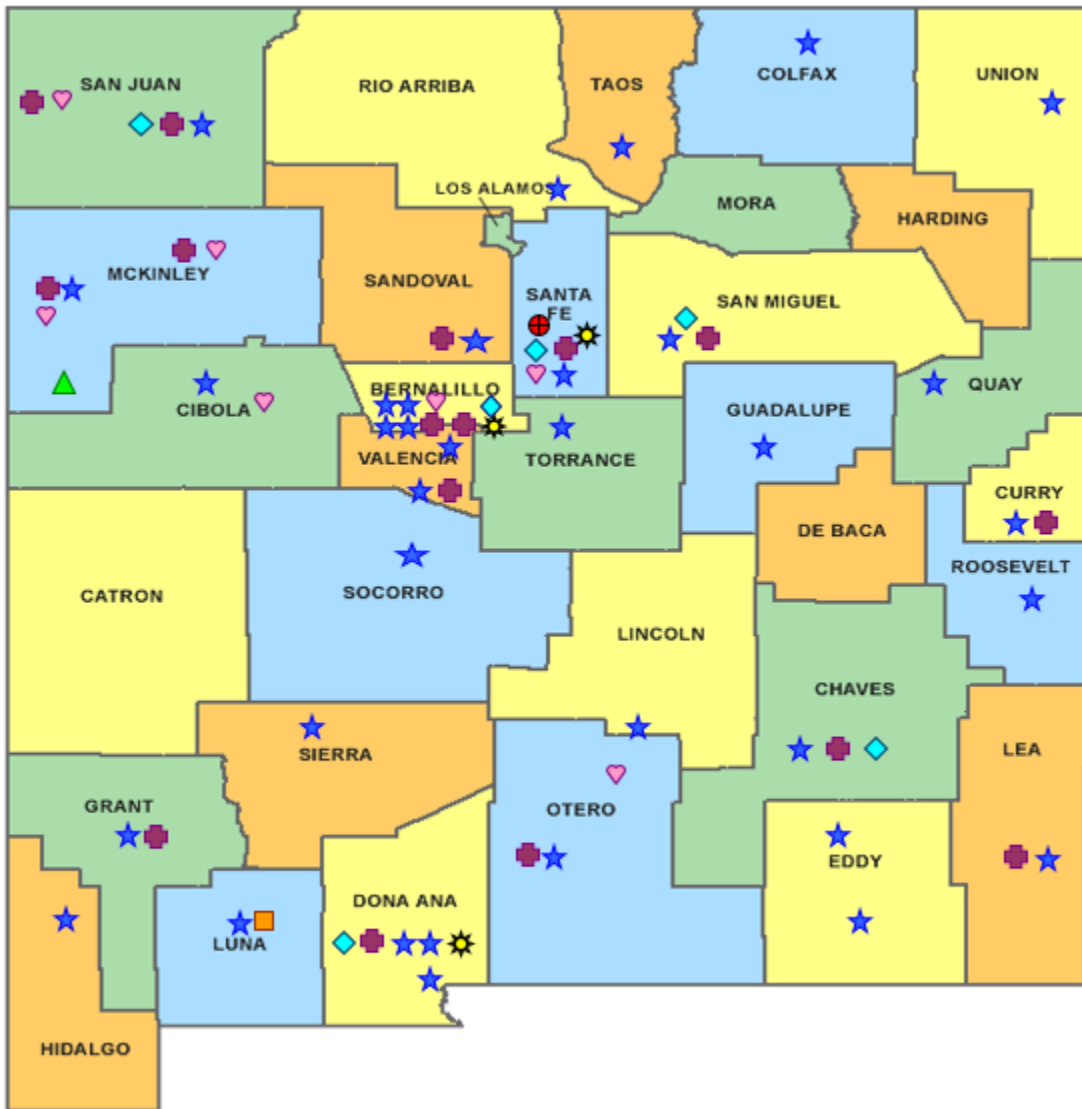

Federal Poverty Guidelines (FPG) Monthly Income Standards

Supplemental Nutrition Program (SNAP)					
Household Size	100% FPG Net Income	130% FPG Gross Income	165% FPG Gross Income for Categorical Eligibility	Maximum SNAP Monthly Allotment	LIHEAP 150% FPG
1	\$990	\$1,287	\$1,634	\$194	\$1,485
2	\$1,335	\$1,736	\$2,203	\$357	\$2,003
3	\$1,680	\$2,184	\$2,772	\$511	\$2,520
4	\$2,025	\$2,633	\$3,342	\$649	\$3,038
5	\$2,370	\$3,081	\$3,911	\$771	\$3,555
6	\$2,715	\$3,530	\$4,480	\$925	\$4,073
7	\$3,061	\$3,980	\$5,051	\$1,022	\$4,592
8	\$3,408	\$4,430	\$5,623	\$1,169	\$5,112
+1	+\$347	+\$481	+\$572	+\$146	+\$521
Minimum Allotment of \$16 effective from 10/1/2016 - 9/30/2017					
DEDUCTIONS: Standard Deduction: For HH size 1-3 = \$157; 4 = \$168; 5 = \$197; 6 or more = \$226; Excess Shelter Deduction Limit: \$517; Heating and Cooling Standard Utility Allowance: \$325 (HCSUA) – Limited Utility Allowance: \$125 (LUA); Telephone Standard: \$40; Dependent Care: Actual Amount (No Limit); Earned Income Deduction: 20%; Homeless Shelter Standard: \$143					

CASH Assistance & Support Services					
Household Size	Federal Poverty Guidelines (FPG) Monthly Income Standards			Maximum Monthly Benefit	
	100% FPG Net Income	85% FPG Gross Limit	NM Works Cash Net Income	Maximum Monthly Benefit	General Assistance
1	\$990	\$842	\$266	\$244	\$245
2	\$1,335	\$1,135	\$357	\$327	\$329
3	\$1,680	\$1,428	\$447	\$409	\$412
4	\$2,025	\$1,721	\$539	\$493	\$496
5	\$2,370	\$2,015	\$630	\$576	\$580
6	\$2,715	\$2,308	\$721	\$659	\$664
7	\$3,061	\$2,602	\$812	\$743	\$748
8	\$3,408	\$2,897	\$922	\$843	\$849
+1	\$347	+\$295	+\$91	+\$83	+\$84
Deductions- Dependent Care: For a child under age 2 = \$200; For a child age 2 and over = \$175. Work Incentives- Earned Income Disregard: Single parent = \$125 & ½ remainder; Two parent = \$225 & ½ remainder.					









Medical Assistance Division					
Federal Poverty Guidelines New Mexico Affordable Care Eligibility Groups Effective April 01, 2017 thru March 31, 2018 Monthly Guidelines					
HH SIZE	PERCENT OF POVERTY				
	138%	190%	240%	250%	300%
1	\$1,387	\$1,910	\$2,412	\$2,513	\$3,015
2	\$1,868	\$2,572	\$3,248	\$3,384	\$4,060
3	\$2,349	\$3,234	\$4,084	\$4,255	\$5,105
4	\$2,829	\$3,895	\$4,920	\$5,125	\$6,150
5	\$3,310	\$4,557	\$5,756	\$5,996	\$7,195
6	\$3,791	\$5,219	\$6,592	\$6,867	\$8,240
7	\$4,272	\$5,881	\$7,428	\$7,738	\$9,285
8	\$4,752	\$6,543	\$8,264	\$8,609	\$10,330
138% Adult Expansion, 190% Children ages 6 to 19 (Medicaid), 240% Children ages 0 to 6 (Medicaid); ages 6 to 19 (CHIP), 250% Pregnancy Related Services Only, 300% Children 0 to 6 (CHIP)					

Medical Assistance Division					
Federal Poverty Guidelines New Mexico Affordable Care Eligibility Groups Effective April 01, 2017 thru March 31, 2018 Annual Guidelines					
HH SIZE	PERCENT OF POVERTY				
	138%	190%	240%	250%	300%
1	\$16,644	\$22,920	\$28,944	\$30,156	\$36,180
2	\$22,416	\$30,864	\$38,976	\$40,608	\$48,720
3	\$28,188	\$38,808	\$49,008	\$51,060	\$61,260
4	\$33,948	\$46,740	\$59,040	\$61,500	\$73,800
5	\$39,720	\$54,684	\$69,072	\$71,952	\$86,340
6	\$45,492	\$62,628	\$79,104	\$82,404	\$98,880
7	\$51,264	\$70,572	\$89,136	\$92,856	\$111,420
8	\$57,024	\$78,516	\$99,168	\$103,308	\$123,960
138% Adult Expansion, 190% Children ages 6 to 19 (Medicaid), 240% Children ages 0 to 6 (Medicaid); ages 6 to 19 (CHIP), 250% Pregnancy Related Services Only, 300% Children 0 to 6 (CHIP)					

HUMAN SERVICES
DEPARTMENT

New Mexico Human Services Department
Field Offices

-  Central Office (1)
-  Income Support Division County Office (35)
-  Income Support Division Satellite Office (2)
-  Child Support Enforcement Regional Office (16)
-  Child Support Enforcement Satellite Office (1)
-  Quality Control Office (8)
-  Indian Health Services (7)
-  Hospital Site (3)

For a complete listing of field offices and other government and community resources:
http://www.hsd.state.nm.us/LookingForAssistance/Field_Offices_1.aspx