



# Monthly Statistical Report

## March 2018

There were 854,235 individuals that received Medicaid in March 2018, a 6.0% decrease from one year ago. The count of Medicaid recipients has decreased by 797, or 0.1%, since last month.

The SNAP caseload in March 2018 was 221,547, a 7.3% decrease from one year ago. The SNAP caseload has decreased by 718 cases, or 0.3%, since last month.

The TANF caseload was 11,000 in March 2018, a decrease of 6.3% from March 2017. The TANF caseload had 294 fewer cases compared to February 2018, a decrease of 2.6%.

The caseload for General Assistance was 3,041 in March 2018, a decrease of 13.5% from one year ago and a decrease of 2 cases from last month.

Susana Martinez, Governor  
Brent Earnest, Cabinet Secretary

<b>Contents</b>	<b>Page</b>
Summary	3-5
Medicaid	6-18
SNAP	19-37
Cash Assistance	38-52
Child Care Assistance	53-54
Income Eligibility Guidelines	55-56

**Regions are reported as follows:**

<b>Region 1</b>		
Catron	San Juan	Valencia
Cibola	Sierra	
McKinley	Socorro	
<b>Region 2</b>		
Colfax	Mora	Santa Fe
De Baca	Quay	Taos
Guadalupe	Rio Arriba	Union
Harding	Sandoval	
Los Alamos	San Miguel	
<b>Region 3</b>		
Bernalillo	Torrance	
<b>Region 4</b>		
Chaves	Eddy	Lincoln
Curry	Lea	Roosevelt
<b>Region 5</b>		
Dona Ana	Hidalgo	Otero
Grant	Luna	

***The Mission of the Human Services Department***

*To reduce the impact of poverty on people living in New Mexico by providing support services that help families break the cycle of dependency on public assistance*

Christopher Collins, Deputy Secretary  
Michael Nelson, Deputy Secretary

Prepared by Income Support Division  
PO Box 2348  
Santa Fe, NM 87504-2348  
505-827-7250

Mary Brogdon, Director  
Vida Tapia-Sanchez, Deputy Director  
Shanita Harrison, Deputy Director  
Judith Parks, Deputy Director

<http://www.hsd.state.nm.us/monthly-statistical-reports.aspx>

# Program Summary for March 2018

Medicaid				Percent Change	
	Mar-17	Feb-18	Mar-18	Mar-17- Mar-18	Feb-18- Mar-18
<b>Expenditures<sup>1</sup></b>	\$474,693,610	\$456,578,431	\$477,875,383	0.7%	4.7%
<b>Cases<sup>2</sup></b>	527,212	498,369	491,478	-6.8%	-1.4%
<b>Expenditures/Case</b>	\$900	\$916	\$972	8.0%	6.1%
<b>Recipients<sup>3</sup></b>	908,750	855,032	854,235	-6.0%	-0.1%
<i>Adults</i>	517,726	485,113	485,059	-6.3%	0.0%
<i>Children</i>	391,024	369,919	369,176	-5.6%	-0.2%
<b>Recipients /Case</b>	1.72	1.72	1.74	0.8%	1.3%
<b>Cases Processed<sup>4</sup></b>	14,680	17,149	16,416	11.8%	-4.3%
<i>Approvals<sup>4</sup></i>	11,128	12,392	11,945	7.3%	-3.6%

Supplemental Nutrition Assistance Program (SNAP)				Percent Change	
	Mar-17	Feb-18	Mar-18	Mar-17- Mar-18	Feb-18- Mar-18
<b>Expenditures<sup>5</sup></b>	\$55,820,032	\$52,979,666	\$53,147,542	-4.8%	0.3%
<b>Cases<sup>6</sup></b>	238,911	222,265	221,547	-7.3%	-0.3%
<b>Expenditures/Case</b>	\$234	\$238	\$240	2.7%	0.6%
<b>Recipients<sup>7</sup></b>	502,701	459,000	456,739	-9.1%	-0.5%
<i>Adults</i>	291,518	263,607	262,820	-9.8%	-0.3%
<i>Children</i>	211,183	195,393	193,919	-8.2%	-0.8%
<b>Recipients /Case</b>	2.10	2.07	2.06	-2.0%	-0.2%
<b>Cases Processed<sup>4</sup></b>	20,335	18,331	18,124	-10.9%	-1.1%
<i>Approvals<sup>4</sup></i>	14,291	14,636	14,579	2.0%	-0.4%

Cash Assistance Programs				Percent Change	
	Mar-17	Feb-18	Mar-18	Mar-17- Mar-18	Feb-18- Mar-18
<b>Expenditures<sup>5</sup></b>	\$4,409,270	\$4,098,871	\$4,007,501	-9.1%	-2.2%
<b>Cases<sup>6</sup></b>	15,574	14,523	14,246	-8.5%	-1.9%
<b>Expenditures/Case</b>	\$283	\$282	\$281	-0.6%	-0.3%
<b>Recipients<sup>7</sup></b>	34,994	32,639	31,804	-9.1%	-2.6%
<i>Adults</i>	11,751	10,581	10,275	-12.6%	-2.9%
<i>Children</i>	23,243	22,058	21,529	-7.4%	-2.4%
<b>Recipients /Case</b>	2.25	2.25	2.23	-0.6%	-0.7%
<b>Cases Processed<sup>4</sup></b>	5,343	5,210	4,718	-11.7%	-9.4%
<i>Approvals<sup>4</sup></i>	1,584	1,343	1,448	-8.6%	7.8%

Low Income Home Energy Assistance Program (LIHEAP)				Percent Change	
	Mar-17	Feb-18	Mar-18	Mar-17- Mar-18	Feb-18- Mar-18
<b>Expenditures<sup>8</sup></b>	\$1,247,100	\$1,542,520	\$1,020,530	-18.2%	-33.8%
<b>Cases<sup>8</sup></b>	4,569	6,021	3,996	-12.5%	-33.6%
<b>Expenditures/Case</b>	\$273	\$256	\$255	-6.4%	-0.3%
<b>Recipients<sup>8</sup></b>	10,363	13,925	8,586	-17.1%	-38.3%
<i>Adults</i>	6,000	7,887	4,909	-18.2%	-37.8%
<i>Children</i>	4,363	6,038	3,677	-15.7%	-39.1%
<b>Recipients /Case</b>	2.27	2.31	2.15	-5.3%	-7.1%
<b>Cases Processed<sup>4</sup></b>	5,833	8,886	6,354	8.9%	-28.5%
<i>Approvals<sup>4</sup></i>	4,472	6,034	4,034	-9.8%	-33.1%

# Cash Assistance Summary for March 2018

Temporary Assistance for Needy Families (TANF)				Percent Change	
	Mar-17	Feb-18	Mar-18	Mar-17- Mar-18	Feb-18- Mar-18
Expenditures <sup>5</sup>	\$3,478,002	\$3,306,422	\$3,205,980	-7.8%	-3.0%
Cases <sup>6</sup>	11,745	11,294	11,000	-6.3%	-2.6%
Expenditures/Case	\$296	\$293	\$291	-1.6%	-0.4%
Recipients <sup>7</sup>	30,782	29,110	28,255	-8.2%	-2.9%
<i>Adults</i>	8,074	7,532	7,210	-10.7%	-4.3%
<i>Children</i>	22,708	21,578	21,045	-7.3%	-2.5%
Approvals <sup>4</sup>	1,220	1,054	1,118	-8.4%	6.1%

General Assistance (GA)				Percent Change	
	Mar-17	Feb-18	Mar-18	Mar-17- Mar-18	Feb-18- Mar-18
Expenditures <sup>5</sup>	\$839,234	\$732,255	\$735,762	-12.3%	0.5%
Cases <sup>6</sup>	3,516	3,043	3,041	-13.5%	-0.1%
Expenditures/Case	\$239	\$241	\$242	1.4%	0.5%
Recipients <sup>7</sup>	3,595	3,067	3,043	-15.4%	-0.8%
<i>Adults</i>	3,345	2,839	2,833	-15.3%	-0.2%
<i>Children</i>	250	228	210	-16.0%	-7.9%
Approvals <sup>4</sup>	297	242	276	-7.1%	14.0%

Education Works				Percent Change	
	Mar-17	Feb-18	Mar-18	Mar-17- Mar-18	Feb-18- Mar-18
Expenditures <sup>5</sup>	\$56,368	\$52,171	\$55,723	-1.1%	6.8%
Cases <sup>6</sup>	160	138	151	-5.6%	9.4%
Expenditures/Case	\$352	\$378	\$369	4.7%	-2.4%
Recipients <sup>7</sup>	459	411	449	-2.2%	9.2%
<i>Adults</i>	174	159	175	0.6%	10.1%
<i>Children</i>	285	252	274	-3.9%	8.7%
Approvals <sup>4</sup>	7	6	5	-28.6%	-16.7%

Refugee Cash (RCA)				Percent Change	
	Mar-17	Feb-18	Mar-18	Mar-17- Mar-18	Feb-18- Mar-18
Expenditures <sup>5</sup>	\$33,066	\$5,723	\$7,636	-76.9%	33.4%
Cases <sup>6</sup>	127	25	32	-74.8%	28.0%
Expenditures/Case	\$260	\$229	\$239	-8.3%	4.2%
Recipients <sup>7</sup>	132	28	35	-73.5%	25.0%
<i>Adults</i>	132	28	35	-73.5%	25.0%
<i>Children</i>	0	0	0	N/A	N/A

State Supplement for Residential Care				Percent Change	
	Mar-17	Feb-18	Mar-18	Mar-17- Mar-18	Feb-18- Mar-18
Expenditures <sup>5</sup>	\$2,600	\$2,300	\$2,400	-7.7%	4.3%
Cases <sup>6</sup>	26	23	22	-15.4%	-4.3%
Expenditures/Case	\$100	\$100	\$109	9.1%	9.1%
Recipients <sup>7</sup>	26	23	22	-15.4%	-4.3%
<i>Adults</i>	26	23	22	-15.4%	-4.3%
<i>Children</i>	0	0	0	N/A	N/A

<b>Expenditures YTD</b>			
	SFY 2018	FFY 2018	CY 2018
Medicaid <sup>1</sup>	\$3,987,235,909	\$2,761,079,945	\$1,402,239,277
Supplemental Nutrition Assistance Program <sup>9</sup>	\$487,584,574	\$321,290,459	\$159,820,809
Temporary Assistance for Needy Families <sup>9</sup>	\$32,654,196	\$20,900,806	\$10,501,954
General Assistance <sup>9</sup>	\$6,729,704	\$4,482,402	\$2,221,304
Education Work <sup>9</sup>	\$414,988	\$296,762	\$152,458
LIHEAP <sup>8</sup>	\$15,297,368	\$13,261,896	\$4,765,145

<b>Average Caseload YTD</b>			
	SFY 2018	FFY 2018	CY 2018
Medicaid <sup>2</sup>	497,341	494,015	496,886
Supplemental Nutrition Assistance Program <sup>6</sup>	221,415	221,943	222,219
Temporary Assistance for Needy Families <sup>6</sup>	11,630	11,577	11,309
General Assistance <sup>6</sup>	3,043	3,041	3,030
Education Work <sup>6</sup>	124	136	135
LIHEAP <sup>8</sup>	6,006	8,230	6,153

<b>Demographic Profile- March 2018</b>					
	SNAP	TANF	GA	Education Works	RCA
<b>Gender of Recipients<sup>10</sup></b>					
Male	206,802	12,133	1,717	169	23
Female	249,937	16,122	1,326	280	12
<b>Ethnicity<sup>10</sup></b>					
Hispanic	254,454	19,414	1,553	281	10
Non-Hispanic	202,285	8,841	1,490	168	25
<b>Race<sup>10</sup></b>					
Native American or Alaskan Native	75,454	2,280	268	31	0
Asian	4,483	281	35	2	0
African American or Black	11,257	1,075	120	21	18
Native Hawaiian or Pacific Islander	876	31	3	1	0
White	355,468	23,832	2,569	385	13
Unknown / Not Declared	4,859	279	25	4	0
More than One Race	4,342	477	23	5	4

Medicaid demographic data can be found here: <http://www.hsd.state.nm.us/LookingForInformation/medicaid-eligibility.aspx>

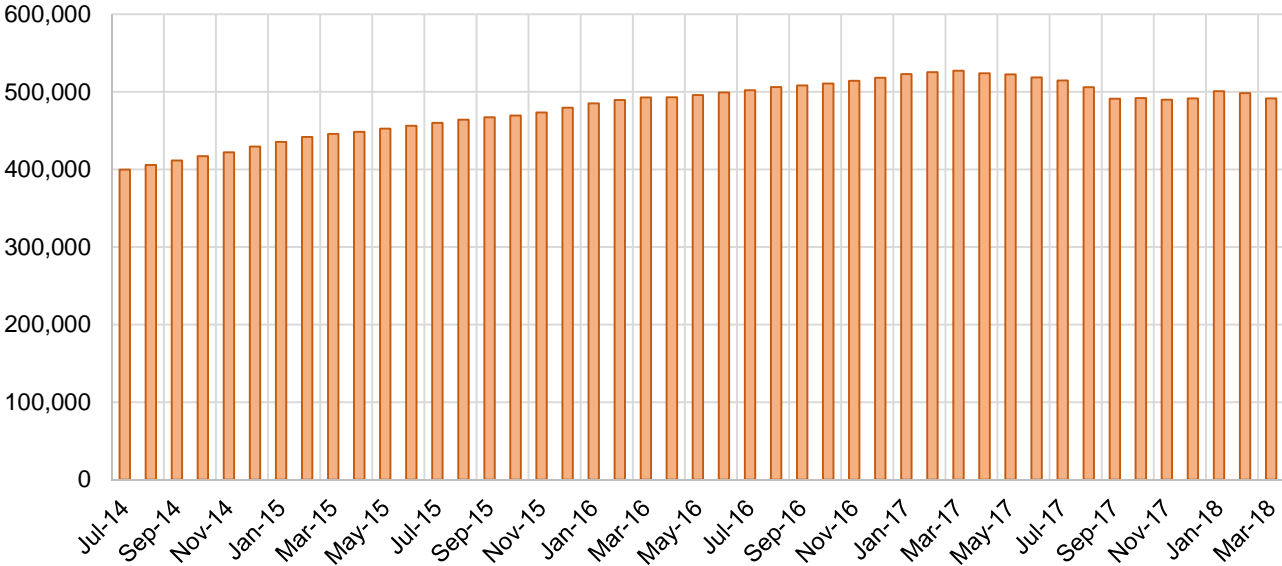
## Medicaid Cases by Field Office<sup>2</sup>

Office				Percent Change	
	Mar-17	Feb-18	Mar-18	Mar-17- Mar-18	Feb-18- Mar-18
Chaves County ISD	17,113	16,341	15,940	-6.9%	-2.5%
Cibola County ISD	7,644	7,563	7,434	-2.7%	-1.7%
Colfax County ISD	3,588	3,520	3,523	-1.8%	0.1%
Curry County ISD	10,644	13,945	13,814	29.8%	-0.9%
East Dona Ana County ISD	18,861	18,058	17,837	-5.4%	-1.2%
Eddy Artesia County ISD	4,031	3,941	3,817	-5.3%	-3.1%
Eddy Carlsbad County ISD	8,527	7,995	7,843	-8.0%	-1.9%
Grant County ISD	7,258	6,870	6,796	-6.4%	-1.1%
Guadalupe County ISD	1,670	1,772	1,757	5.2%	-0.8%
Hidalgo County ISD	1,065	973	973	-8.6%	0.0%
Lea County ISD	15,164	14,642	14,297	-5.7%	-2.4%
Lincoln County ISD	4,744	4,400	4,293	-9.5%	-2.4%
Luna County ISD	9,158	8,842	8,811	-3.8%	-0.4%
McKinley County ISD	23,444	23,139	22,202	-5.3%	-4.0%
Northeast Bernalillo County ISD	46,648	43,442	42,913	-8.0%	-1.2%
Northwest Bernalillo County ISD	52,957	48,677	48,437	-8.5%	-0.5%
Otero County ISD	12,276	12,071	11,883	-3.2%	-1.6%
Quay County ISD	2,661	2,590	2,565	-3.6%	-1.0%
Rio Arriba County ISD	15,173	14,454	14,087	-7.2%	-2.5%
Roosevelt County ISD	4,231	29	24	-99.4%	-17.2%
San Juan County ISD	31,481	30,599	30,153	-4.2%	-1.5%
San Miguel County ISD	9,772	9,250	9,117	-6.7%	-1.4%
Sandoval County ISD	27,380	25,959	25,521	-6.8%	-1.7%
Santa Fe County ISD	27,468	25,220	25,015	-8.9%	-0.8%
Sierra County ISD	5,683	5,526	5,423	-4.6%	-1.9%
Socorro County ISD	5,811	5,525	5,389	-7.3%	-2.5%
South Dona Ana ISD	20,767	19,946	19,873	-4.3%	-0.4%
Southeast Bernalillo County ISD	29,248	25,749	25,590	-12.5%	-0.6%
Southwest Bernalillo County ISD	42,254	39,302	38,871	-8.0%	-1.1%
Taos County ISD	10,036	9,482	9,428	-6.1%	-0.6%
Torrance County ISD	8,032	7,678	7,435	-7.4%	-3.2%
Valencia North County ISD	19,137	18,271	18,043	-5.7%	-1.2%
Valencia South County ISD	5	110	3	-40.0%	-97.3%
West Dona Ana County ISD	23,278	22,484	22,367	-3.9%	-0.5%
Centralized Units	3	4	4	33.3%	0.0%
Statewide Total	527,212	498,369	491,478	-6.8%	-1.4%

## Medicaid Cases by Region<sup>2</sup>

				Percent Change	
Region	Mar-17	Feb-18	Mar-18	Mar-17- Mar-18	Feb-18- Mar-18
Region 1 - NW	93,205	90,733	88,647	-4.9%	-2.3%
Region 2 - NE	97,748	92,247	91,013	-6.9%	-1.3%
Region 3 - Central	179,139	164,848	163,246	-8.9%	-1.0%
Region 4 - SE	64,454	61,293	60,028	-6.9%	-2.1%
Region 5 - SW	92,663	89,244	88,540	-4.4%	-0.8%
Centralized Units	3	4	4	33.3%	0.0%
Statewide Total	527,212	498,369	491,478	-6.8%	-1.4%

**Medicaid Caseload: SFY-15 to Current**



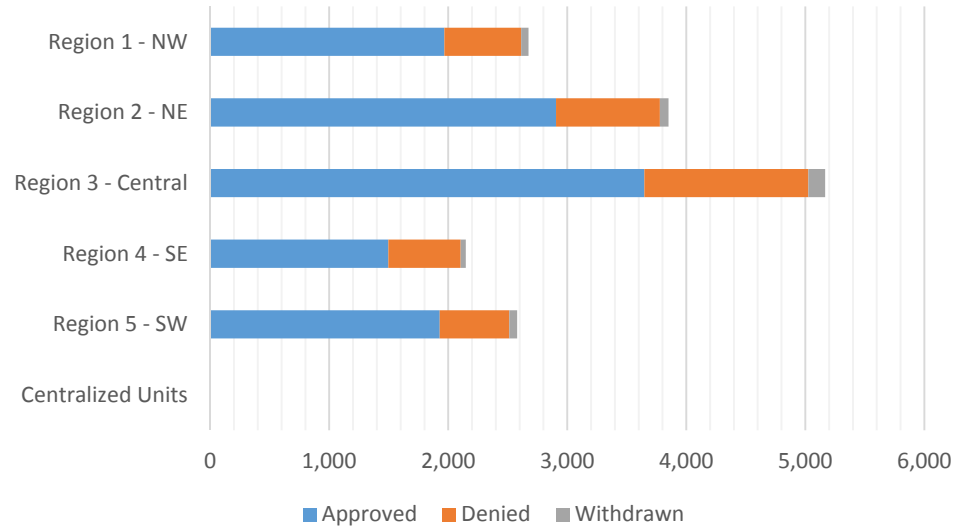
**Medicaid Initial Applications by Field Office<sup>4,11</sup>**  
**March 2018**

Office	Approved	Denied	Withdrawn	Total Cases Processed
Chaves County ISD	408	148	13	569
Cibola County ISD	165	56	11	232
Colfax County ISD	76	26	13	115
Curry County ISD	280	98	12	390
East Dona Ana County ISD	536	192	18	746
Eddy Artesia County ISD	153	108	4	265
Eddy Carlsbad County ISD	171	77	5	253
Grant County ISD	158	45	4	207
Guadalupe County ISD	38	16	2	56
Hidalgo County ISD	0	0	0	0
Lea County ISD	278	80	8	366
Lincoln County ISD	138	65	0	203
Luna County ISD	142	42	6	190
McKinley County ISD	504	159	7	670
Northeast Bernalillo County ISD	1,038	360	35	1,433
Northwest Bernalillo County ISD	948	302	38	1,288
Otero County ISD	247	65	4	316
Quay County ISD	128	28	0	156
Rio Arriba County ISD	265	104	3	372
Roosevelt County ISD	69	32	0	101
San Juan County ISD	673	217	29	919
San Miguel County ISD	803	175	12	990
Sandoval County ISD	773	207	21	1,001
Santa Fe County ISD	588	218	15	821
Sierra County ISD	137	28	3	168
Socorro County ISD	128	52	3	183
South Dona Ana ISD	385	110	8	503
Southeast Bernalillo County ISD	782	372	12	1,166
Southwest Bernalillo County ISD	623	253	49	925
Taos County ISD	234	99	6	339
Torrance County ISD	256	91	7	354
Valencia North County ISD	332	103	8	443
Valencia South County ISD	28	31	0	59
West Dona Ana County ISD	461	130	26	617
Centralized Units	0	0	0	0
<b>Statewide Total</b>	<b>11,945</b>	<b>4,089</b>	<b>382</b>	<b>16,416</b>



## Medicaid Initial Applications by Region<sup>4,11</sup> March 2018

	Approved	Denied	Withdrawn	Total Cases Processed
Region				
Region 1 - NW	1,967	646	61	2,674
Region 2 - NE	2,905	873	72	3,850
Region 3 - Central	3,647	1,378	141	5,166
Region 4 - SE	1,497	608	42	2,147
Region 5 - SW	1,929	584	66	2,579
Centralized Units	0	0	0	0
<b>Statewide Total</b>	<b>11,945</b>	<b>4,089</b>	<b>382</b>	<b>16,416</b>

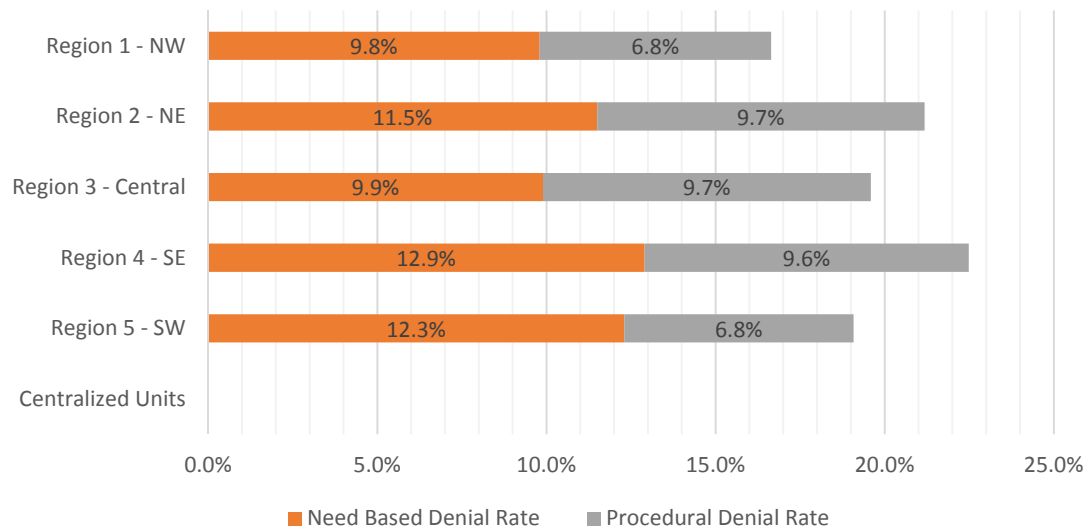


**Medicaid EDG Initial Disposition Rates by Field Office<sup>4,11,19</sup>**  
**March 2018**

Office	Approval Rate	Denial Rate	Need Based Denial Rate	Procedural Denial Rate
Chaves County ISD	82.3%	17.7%	11.9%	5.8%
Cibola County ISD	85.7%	14.3%	4.2%	10.1%
Colfax County ISD	82.8%	17.2%	9.6%	7.6%
Curry County ISD	76.3%	23.7%	11.9%	11.8%
East Dona Ana County ISD	75.0%	25.0%	17.4%	7.6%
Eddy Artesia County ISD	72.0%	28.0%	19.1%	8.9%
Eddy Carlsbad County ISD	78.2%	21.8%	9.4%	12.4%
Grant County ISD	87.0%	13.0%	8.0%	5.0%
Guadalupe County ISD	80.9%	19.1%	10.6%	8.5%
Hidalgo County ISD	0.0%	0.0%	0.0%	0.0%
Lea County ISD	74.8%	25.2%	14.3%	10.9%
Lincoln County ISD	79.2%	20.8%	12.9%	7.9%
Luna County ISD	82.5%	17.5%	11.7%	5.8%
McKinley County ISD	83.4%	16.6%	10.7%	5.9%
Northeast Bernalillo County ISD	80.7%	19.3%	9.6%	9.7%
Northwest Bernalillo County ISD	81.4%	18.6%	6.8%	11.8%
Otero County ISD	84.1%	15.9%	8.5%	7.4%
Quay County ISD	84.0%	16.0%	9.3%	6.7%
Rio Arriba County ISD	80.6%	19.4%	9.3%	10.1%
Roosevelt County ISD	58.3%	41.7%	41.7%	0.0%
San Juan County ISD	83.5%	16.5%	9.5%	7.0%
San Miguel County ISD	88.1%	11.9%	3.5%	8.4%
Sandoval County ISD	79.6%	20.4%	13.1%	7.3%
Santa Fe County ISD	70.8%	29.2%	15.0%	14.2%
Sierra County ISD	90.7%	9.3%	7.1%	2.2%
Socorro County ISD	76.4%	23.6%	12.4%	11.2%
South Dona Ana ISD	81.8%	18.2%	13.6%	4.6%
Southeast Bernalillo County ISD	76.0%	24.0%	15.0%	9.0%
Southwest Bernalillo County ISD	81.4%	18.6%	10.0%	8.6%
Taos County ISD	78.0%	22.0%	13.4%	8.6%
Torrance County ISD	87.2%	12.8%	6.2%	6.6%
Valencia North County ISD	81.9%	18.1%	11.0%	7.1%
Valencia South County ISD	100.0%	0.0%	0.0%	0.0%
West Dona Ana County ISD	80.4%	19.6%	10.7%	8.9%
Centralized Units	0.0%	0.0%	0.0%	0.0%
<b>Statewide Total</b>	<b>80.3%</b>	<b>19.7%</b>	<b>11.0%</b>	<b>8.7%</b>

**Medicaid EDG Initial Disposition Rates by Region<sup>4,11,19</sup>**  
**March 2018**

Region	Approval Rate	Denial Rate	Need Based Denial Rate	Procedural Denial Rate
Region 1 - NW	83.4%	16.6%	9.8%	6.8%
Region 2 - NE	78.8%	21.2%	11.5%	9.7%
Region 3 - Central	80.4%	19.6%	9.9%	9.7%
Region 4 - SE	77.5%	22.5%	12.9%	9.6%
Region 5 - SW	80.9%	19.1%	12.3%	6.8%
Centralized Units				
<b>Statewide Total</b>	<b>80.3%</b>	<b>19.7%</b>	<b>11.0%</b>	<b>8.7%</b>



**Medicaid: Percentage of Initial EDG Approvals Processed Timely by Field Office<sup>13,19</sup>**

	Oct-17	Nov-17	Dec-17	Jan-18	Feb-18	Mar-18	Apr-18	May-18	Jun-18	Jul-18	Aug-18	Sep-18	Average
Cibola	92.2%	94.4%	94.6%	98.5%	98.0%	98.9%							96.1%
McKinley	95.6%	97.4%	96.9%	97.9%	98.3%	98.8%							97.5%
San Juan	93.4%	92.0%	94.3%	94.7%	94.8%	95.9%							94.2%
Sierra	95.8%	98.6%	96.9%	97.3%	99.4%	100.0%							98.0%
Socorro	95.4%	98.7%	96.7%	97.0%	95.7%	95.9%							96.6%
Valencia North	93.2%	94.1%	94.0%	95.2%	97.7%	98.9%							95.5%
Valencia South	100.0%	100.0%	100.0%	100.0%		100.0%							100.0%
<b>NW Region 1 Total</b>	<b>94.0%</b>	<b>94.7%</b>	<b>95.2%</b>	<b>96.2%</b>	<b>96.8%</b>	<b>97.7%</b>							<b>95.8%</b>
Colfax	93.9%	98.4%	97.4%	98.4%	95.1%	100.0%							97.2%
Guadalupe	97.9%	100.0%	96.6%	100.0%	100.0%	100.0%							99.1%
Quay	98.0%	94.9%	94.6%	97.2%	97.1%	93.7%							95.9%
Rio Arriba	96.9%	94.7%	91.1%	96.9%	95.7%	97.3%							95.4%
San Miguel	97.3%	98.9%	99.0%	98.4%	98.0%	99.3%							98.5%
Sandoval	97.0%	97.0%	96.8%	97.9%	96.8%	97.7%							97.2%
Santa Fe	96.1%	95.7%	96.6%	95.2%	95.5%	98.4%							96.3%
Taos	98.3%	96.8%	98.2%	96.8%	97.0%	95.9%							97.2%
<b>NE Region 2 Total</b>	<b>96.8%</b>	<b>96.6%</b>	<b>96.6%</b>	<b>97.1%</b>	<b>96.4%</b>	<b>97.9%</b>							<b>96.9%</b>
NE Bernalillo	95.1%	93.6%	93.9%	94.5%	97.1%	96.7%							95.2%
NW Bernalillo	96.3%	95.4%	94.6%	94.7%	96.4%	96.9%							95.7%
SE Bernalillo	88.2%	90.8%	94.4%	92.2%	95.8%	95.9%							92.9%
SW Bernalillo	95.8%	96.2%	95.2%	94.9%	95.1%	97.1%							95.7%
Torrance	95.5%	95.1%	95.2%	94.8%	91.1%	99.2%							95.2%
<b>Gen. Region 3 Total</b>	<b>94.3%</b>	<b>94.3%</b>	<b>94.5%</b>	<b>94.2%</b>	<b>95.9%</b>	<b>96.8%</b>							<b>95.0%</b>
Chaves	96.4%	96.6%	97.1%	98.6%	97.4%	98.1%							97.4%
Curry	94.8%	94.2%	98.4%	98.3%	96.5%	97.3%							96.6%
Eddy Artesia	95.3%	94.9%	96.4%	93.2%	96.4%	98.2%							95.7%
Eddy Carlsbad	93.2%	98.4%	97.6%	94.8%	98.5%	96.6%							96.5%
Lea	96.1%	94.7%	94.0%	96.5%	99.5%	96.5%							96.2%
Lincoln	95.7%	94.7%	97.1%	97.4%	97.3%	99.4%							96.9%
Roosevelt	94.6%	94.2%	93.4%	94.9%		83.3%							92.1%
<b>SE Region 4 Total</b>	<b>95.4%</b>	<b>95.5%</b>	<b>96.3%</b>	<b>96.9%</b>	<b>97.7%</b>	<b>97.4%</b>							<b>96.5%</b>
East Dona Ana	96.1%	97.1%	97.5%	97.3%	97.1%	95.0%							96.7%
Grant	93.9%	96.8%	99.3%	97.5%	98.4%	97.0%							97.2%
Luna	96.8%	97.8%	97.4%	98.8%	98.2%	97.9%							97.8%
Otero	97.6%	96.4%	98.0%	96.3%	95.0%	97.6%							96.8%
South Dona Ana	97.2%	98.3%	98.0%	97.5%	98.6%	98.6%							98.0%
West Dona Ana	97.4%	96.7%	98.3%	98.5%	98.4%	98.6%							98.0%
<b>SW Region 5 Total</b>	<b>96.7%</b>	<b>97.2%</b>	<b>98.0%</b>	<b>97.6%</b>	<b>97.7%</b>	<b>97.5%</b>							<b>97.5%</b>
<b>STATE TOTAL</b>	<b>95.3%</b>	<b>95.4%</b>	<b>95.8%</b>	<b>96.0%</b>	<b>96.7%</b>	<b>97.4%</b>							<b>96.1%</b>

**Medicaid: Percentage of Initial EDG Denials Processed Timely by Field Office<sup>13,19</sup>**

	Oct-17	Nov-17	Dec-17	Jan-18	Feb-18	Mar-18	Apr-18	May-18	Jun-18	Jul-18	Aug-18	Sep-18	Average
Cibola	51.4%	41.2%	76.0%	78.3%	72.7%	64.5%							64.0%
McKinley	54.4%	59.7%	54.4%	51.6%	59.3%	69.4%							58.1%
San Juan	53.1%	57.1%	45.5%	43.6%	44.9%	58.6%							50.5%
Sierra	92.9%	95.0%	96.3%	33.3%	30.8%	77.8%							71.0%
Socorro	57.5%	80.0%	96.3%	95.8%	100.0%	71.1%							83.4%
Valencia North	55.8%	52.1%	42.3%	38.3%	55.6%	64.4%							51.4%
Valencia South	66.7%												66.7%
<b>NW Region 1 Total</b>	<b>55.0%</b>	<b>57.7%</b>	<b>53.2%</b>	<b>51.0%</b>	<b>53.0%</b>	<b>64.5%</b>							<b>55.7%</b>
Colfax	90.6%	95.8%	100.0%	92.9%	94.3%	88.0%							93.6%
Guadalupe	90.0%	11.1%	75.0%	72.7%	76.5%	44.4%							61.6%
Quay	72.7%	33.3%	54.5%	78.6%	58.8%	58.3%							59.4%
Rio Arriba	71.4%	56.3%	53.2%	71.9%	49.6%	44.3%							57.8%
San Miguel	59.5%	67.3%	76.5%	78.8%	82.1%	71.4%							72.6%
Sandoval	43.6%	51.2%	63.7%	74.3%	75.9%	72.8%							63.6%
Santa Fe	59.1%	53.7%	37.8%	48.1%	64.7%	71.3%							55.8%
Taos	47.4%	76.5%	75.9%	87.9%	65.7%	56.5%							68.3%
<b>NE Region 2 Total</b>	<b>57.2%</b>	<b>56.4%</b>	<b>55.2%</b>	<b>64.0%</b>	<b>67.8%</b>	<b>67.2%</b>							<b>61.3%</b>
NE Bernalillo	45.7%	38.4%	35.2%	50.0%	67.6%	74.1%							51.8%
NW Bernalillo	39.2%	40.9%	41.8%	36.0%	42.4%	48.5%							41.5%
SE Bernalillo	56.6%	46.6%	67.6%	80.6%	79.3%	81.1%							68.6%
SW Bernalillo	68.5%	68.1%	80.1%	88.4%	80.8%	78.7%							77.4%
Torrance	56.8%	42.1%	43.8%	38.5%	42.7%	56.8%							46.8%
<b>Gen. Region 3 Total</b>	<b>52.5%</b>	<b>48.0%</b>	<b>53.3%</b>	<b>59.5%</b>	<b>65.0%</b>	<b>70.0%</b>							<b>58.0%</b>
Chaves	72.3%	60.2%	79.9%	83.6%	79.6%	83.9%							76.6%
Curry	61.4%	59.0%	65.6%	84.3%	73.0%	78.8%							70.3%
Eddy Artesia	65.6%	53.3%	81.3%	76.4%	82.9%	84.1%							73.9%
Eddy Carlsbad	51.8%	35.8%	61.7%	79.3%	83.8%	67.2%							63.3%
Lea	72.7%	69.6%	70.0%	88.0%	85.3%	85.6%							78.5%
Lincoln	35.9%	63.8%	77.3%	91.3%	85.4%	90.5%							74.0%
Roosevelt	36.4%	46.4%	64.5%	64.6%		100.0%							62.4%
<b>SE Region 4 Total</b>	<b>61.3%</b>	<b>56.6%</b>	<b>70.5%</b>	<b>83.1%</b>	<b>80.7%</b>	<b>82.0%</b>							<b>72.4%</b>
East Dona Ana	80.0%	74.3%	73.1%	94.5%	67.5%	70.7%							76.7%
Grant	76.7%	32.4%	85.9%	79.7%	67.4%	83.3%							70.9%
Luna	47.7%	64.9%	41.8%	62.9%	61.5%	70.6%							58.2%
Otero	61.9%	48.3%	67.7%	62.8%	71.6%	80.6%							65.5%
South Dona Ana	86.3%	73.0%	86.6%	91.8%	82.3%	83.8%							84.0%
West Dona Ana	66.9%	67.0%	80.6%	94.7%	82.0%	84.0%							79.2%
<b>SW Region 5 Total</b>	<b>73.8%</b>	<b>64.3%</b>	<b>76.4%</b>	<b>85.1%</b>	<b>74.8%</b>	<b>78.5%</b>							<b>75.5%</b>
<b>STATE TOTAL</b>	<b>58.4%</b>	<b>54.6%</b>	<b>59.5%</b>	<b>66.4%</b>	<b>66.9%</b>	<b>72.0%</b>							<b>63.0%</b>

**Medicaid Renewal Disposition Counts by Field Office<sup>4,11</sup>**  
**March 2018**

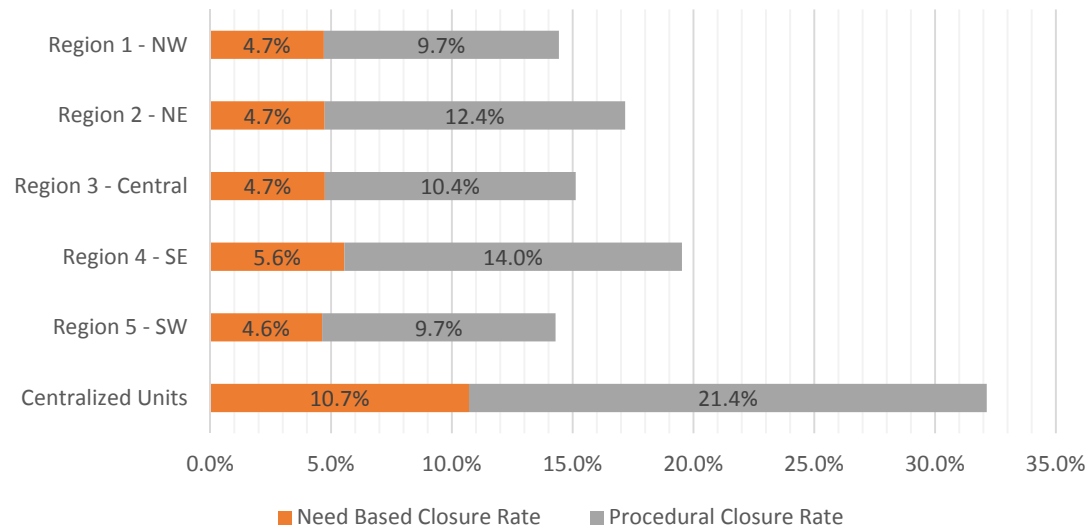
Office	Approvals	Closures	Need Based Closures	Procedural Closures
Chaves County ISD	2,741	591	182	409
Cibola County ISD	1,354	261	79	182
Colfax County ISD	450	157	29	128
Curry County ISD	2,308	486	144	342
East Dona Ana County ISD	2,979	564	170	394
Eddy Artesia County ISD	663	147	39	108
Eddy Carlsbad County ISD	1,036	360	67	293
Grant County ISD	1,062	217	68	149
Guadalupe County ISD	198	36	11	25
Hidalgo County ISD	134	23	8	15
Lea County ISD	2,305	647	182	465
Lincoln County ISD	728	142	61	81
Luna County ISD	1,771	259	93	166
McKinley County ISD	4,451	736	190	546
Northeast Bernalillo County ISD	6,335	1429	316	1113
Northwest Bernalillo County ISD	4,917	882	310	572
Otero County ISD	1,956	329	89	240
Quay County ISD	446	61	19	42
Rio Arriba County ISD	2,144	462	116	346
Roosevelt County ISD	0	0	0	0
San Juan County ISD	5,100	912	340	572
San Miguel County ISD	1,124	273	53	220
Sandoval County ISD	4,360	818	248	570
Santa Fe County ISD	3,415	526	177	349
Sierra County ISD	828	140	35	105
Socorro County ISD	803	156	51	105
South Dona Ana ISD	3,999	595	208	387
Southeast Bernalillo County ISD	3,571	528	183	345
Southwest Bernalillo County ISD	7,388	1144	438	706
Taos County ISD	1,128	418	106	312
Torrance County ISD	1,190	188	61	127
Valencia North County ISD	3,317	469	177	292
Valencia South County ISD	0	0	0	0
West Dona Ana County ISD	3,609	600	202	398
Centralized Units	19	9	3	6
<b>Statewide Total</b>	<b>77,829</b>	<b>14,565</b>	<b>4,455</b>	<b>10,110</b>

**Medicaid Renewal Disposition Rates by Field Office<sup>20</sup>**  
**March 2018**

Office	Approval Rate	Closure Rate	Need Based Closure Rate	Procedural Closure Rate
Chaves County ISD	82.3%	17.7%	5.5%	12.3%
Cibola County ISD	83.8%	16.2%	4.9%	11.3%
Colfax County ISD	74.1%	25.9%	4.8%	21.1%
Curry County ISD	82.6%	17.4%	5.2%	12.2%
East Dona Ana County ISD	84.1%	15.9%	4.8%	11.1%
Eddy Artesia County ISD	81.9%	18.1%	4.8%	13.3%
Eddy Carlsbad County ISD	74.2%	25.8%	4.8%	21.0%
Grant County ISD	83.0%	17.0%	5.3%	11.6%
Guadalupe County ISD	84.6%	15.4%	4.7%	10.7%
Hidalgo County ISD	85.4%	14.6%	5.1%	9.6%
Lea County ISD	78.1%	21.9%	6.2%	15.8%
Lincoln County ISD	83.7%	16.3%	7.0%	9.3%
Luna County ISD	87.2%	12.8%	4.6%	8.2%
McKinley County ISD	85.8%	14.2%	3.7%	10.5%
Northeast Bernalillo County ISD	81.6%	18.4%	4.1%	14.3%
Northwest Bernalillo County ISD	84.8%	15.2%	5.3%	9.9%
Otero County ISD	85.6%	14.4%	3.9%	10.5%
Quay County ISD	88.0%	12.0%	3.7%	8.3%
Rio Arriba County ISD	82.3%	17.7%	4.5%	13.3%
Roosevelt County ISD	0.0%	0.0%	0.0%	0.0%
San Juan County ISD	84.8%	15.2%	5.7%	9.5%
San Miguel County ISD	80.5%	19.5%	3.8%	15.7%
Sandoval County ISD	84.2%	15.8%	4.8%	11.0%
Santa Fe County ISD	86.7%	13.3%	4.5%	8.9%
Sierra County ISD	85.5%	14.5%	3.6%	10.8%
Socorro County ISD	83.7%	16.3%	5.3%	10.9%
South Dona Ana ISD	87.0%	13.0%	4.5%	8.4%
Southeast Bernalillo County ISD	87.1%	12.9%	4.5%	8.4%
Southwest Bernalillo County ISD	86.6%	13.4%	5.1%	8.3%
Taos County ISD	73.0%	27.0%	6.9%	20.2%
Torrance County ISD	86.4%	13.6%	4.4%	9.2%
Valencia North County ISD	87.6%	12.4%	4.7%	7.7%
Valencia South County ISD	0.0%	0.0%	0.0%	0.0%
West Dona Ana County ISD	85.7%	14.3%	4.8%	9.5%
Centralized Units	67.9%	32.1%	10.7%	21.4%
Statewide Total	84.2%	15.8%	4.8%	10.9%

## Medicaid Renewal Disposition Rates by Region<sup>20</sup> March 2018

Region	Approval Rate	Closure Rate	Need Based Closure Rate	Procedural Closure Rate
Region 1 - NW	85.6%	14.4%	4.7%	9.7%
Region 2 - NE	82.8%	17.2%	4.7%	12.4%
Region 3 - Central	84.9%	15.1%	4.7%	10.4%
Region 4 - SE	80.5%	19.5%	5.6%	14.0%
Region 5 - SW	85.7%	14.3%	4.6%	9.7%
Centralized Units	67.9%	32.1%	10.7%	21.4%
Statewide Total	84.2%	15.8%	4.8%	10.9%





**Medicaid: Percentage of Approved Renewal EDGs Processed by Certification Date <sup>11</sup>**

	Oct-17	Nov-17	Dec-17	Jan-18	Feb-18	Mar-18	Apr-18	May-18	Jun-18	Jul-18	Aug-18	Sep-18	Average
Cibola		98.9%	98.5%	99.3%	98.5%	98.9%							98.8%
McKinley		98.9%	99.3%	98.7%	99.1%	98.7%							98.9%
San Juan		98.9%	98.4%	98.6%	98.4%	98.8%							98.6%
Sierra		99.1%	99.5%	99.0%	99.6%	98.7%							99.2%
Socorro		99.5%	99.1%	99.0%	99.2%	98.9%							99.1%
Valencia North		98.5%	98.7%	98.1%	98.8%	98.7%							98.6%
Valencia South													
<b>NW Region 1 Total</b>		<b>99.0%</b>	<b>98.9%</b>	<b>98.8%</b>	<b>98.9%</b>	<b>98.8%</b>							<b>98.9%</b>
Colfax		98.7%	99.6%	97.3%	99.4%	98.2%							98.6%
Guadalupe		99.2%	98.5%	96.6%	99.6%	99.5%							98.7%
Quay		99.0%	99.0%	98.9%	97.6%	99.3%							98.8%
Rio Arriba		98.4%	97.8%	97.1%	98.1%	98.4%							98.0%
San Miguel		99.5%	98.3%	98.9%	98.9%	97.7%							98.7%
Sandoval		98.4%	98.6%	98.3%	98.3%	98.6%							98.4%
Santa Fe		95.6%	95.7%	95.5%	96.7%	97.1%							96.1%
Taos		98.7%	98.6%	98.6%	96.9%	98.8%							98.3%
<b>NE Region 2 Total</b>		<b>98.5%</b>	<b>98.2%</b>	<b>97.6%</b>	<b>98.2%</b>	<b>98.4%</b>							<b>98.2%</b>
NE Bernalillo		97.8%	97.0%	96.9%	97.5%	97.7%							97.4%
NW Bernalillo		97.6%	97.8%	97.4%	98.5%	98.3%							97.9%
SE Bernalillo		86.5%	96.2%	97.5%	98.1%	99.0%							95.5%
SW Bernalillo		98.8%	96.0%	97.0%	97.8%	97.9%							97.5%
Torrance		98.8%	96.9%	96.5%	98.0%	97.4%							97.5%
<b>Gen. Region 3 Total</b>		<b>95.9%</b>	<b>96.8%</b>	<b>97.1%</b>	<b>98.0%</b>	<b>98.0%</b>							<b>97.2%</b>
Chaves		98.7%	98.5%	98.6%	98.5%	98.2%							98.5%
Curry		99.0%	98.7%	98.7%	99.0%	98.7%							98.8%
Eddy Artesia		99.2%	97.5%	97.1%	96.9%	98.6%							97.9%
Eddy Carlsbad		97.7%	98.8%	97.2%	98.2%	98.1%							98.0%
Lea		98.8%	97.8%	98.7%	98.6%	98.7%							98.5%
Lincoln		98.2%	97.5%	97.6%	97.7%	98.8%							98.0%
Roosevelt		99.4%	97.9%										98.7%
<b>SE Region 4 Total</b>		<b>98.7%</b>	<b>98.1%</b>	<b>98.0%</b>	<b>98.2%</b>	<b>98.5%</b>							<b>98.3%</b>
East Dona Ana		98.9%	97.9%	98.6%	99.0%	98.6%							98.6%
Grant		98.5%	98.7%	98.5%	99.1%	98.9%							98.7%
Luna		99.1%	98.2%	98.1%	98.5%	98.3%							98.4%
Otero		98.9%	97.6%	98.0%	97.2%	97.5%							97.8%
South Dona Ana		98.2%	97.4%	98.1%	98.9%	98.5%							98.2%
West Dona Ana		99.2%	99.0%	98.7%	98.7%	98.3%							98.8%
<b>SW Region 5 Total</b>		<b>98.8%</b>	<b>98.1%</b>	<b>98.3%</b>	<b>98.6%</b>	<b>98.3%</b>							<b>98.4%</b>
<b>STATE TOTAL</b>		<b>97.8%</b>	<b>97.8%</b>	<b>97.9%</b>	<b>98.3%</b>	<b>98.3%</b>							<b>98.0%</b>

Administrative, Annual, and Auto Renewals are included  
 No data available for October 2017

Medicaid: Percentage of Closures EDGs Processed by Certification End Date <sup>11</sup>													
	Oct-17	Nov-17	Dec-17	Jan-18	Feb-18	Mar-18	Apr-18	May-18	Jun-18	Jul-18	Aug-18	Sep-18	Average
Cibola		37.6%	27.5%	14.6%	21.3%	39.8%							28.2%
McKinley		23.9%	21.0%	21.7%	30.7%	39.5%							27.4%
San Juan		36.7%	19.9%	39.0%	39.1%	48.1%							36.6%
Sierra		45.6%	22.7%	26.7%	37.9%	34.3%							33.4%
Socorro		33.0%	20.7%	50.0%	40.0%	37.8%							36.3%
Valencia North		34.6%	30.5%	53.8%	38.6%	40.7%							39.6%
Valencia South													
<b>NW Region 1 Total</b>		<b>35.2%</b>	<b>23.7%</b>	<b>34.3%</b>	<b>34.6%</b>	<b>40.1%</b>							<b>33.6%</b>
Colfax		49.3%	27.8%	26.2%	21.5%	23.6%							29.7%
Guadalupe		28.6%	57.9%	27.1%	26.3%	41.7%							36.3%
Quay		24.7%	26.5%	17.1%	40.0%	54.1%							32.5%
Rio Arriba		23.3%	26.1%	24.9%	29.5%	32.3%							27.2%
San Miguel		19.4%	21.8%	23.6%	26.9%	44.3%							27.2%
Sandoval		20.5%	25.9%	21.6%	21.5%	39.2%							25.7%
Santa Fe		22.0%	22.6%	23.2%	33.1%	38.4%							27.9%
Taos		24.4%	21.5%	44.9%	24.4%	34.9%							30.0%
<b>NE Region 2 Total</b>		<b>26.5%</b>	<b>28.8%</b>	<b>26.1%</b>	<b>27.9%</b>	<b>38.6%</b>							<b>29.6%</b>
NE Bernalillo		20.3%	16.0%	16.1%	26.4%	28.4%							21.5%
NW Bernalillo		16.2%	20.8%	24.8%	30.1%	47.5%							27.9%
SE Bernalillo		18.7%	21.5%	27.2%	26.7%	44.1%							27.6%
SW Bernalillo		24.5%	28.2%	34.9%	33.9%	46.2%							33.6%
Torrance		25.4%	21.9%	33.9%	24.7%	37.8%							28.7%
<b>Gen. Region 3 Total</b>		<b>21.0%</b>	<b>21.7%</b>	<b>27.4%</b>	<b>28.3%</b>	<b>40.8%</b>							<b>27.8%</b>
Chaves		34.4%	24.7%	28.7%	22.0%	36.7%							29.3%
Curry		27.2%	25.2%	19.7%	27.3%	38.7%							27.6%
Eddy Artesia		31.1%	24.0%	21.3%	20.0%	29.9%							25.3%
Eddy Carlsbad		26.9%	23.2%	19.9%	27.2%	26.7%							24.8%
Lea		24.6%	21.4%	26.4%	20.4%	35.1%							25.6%
Lincoln		23.1%	31.9%	16.9%	20.0%	45.8%							27.5%
Roosevelt		24.3%	14.5%	0.0%									12.9%
<b>SE Region 4 Total</b>		<b>27.4%</b>	<b>23.6%</b>	<b>19.0%</b>	<b>22.8%</b>	<b>35.5%</b>							<b>25.6%</b>
East Dona Ana		28.5%	31.6%	28.5%	37.3%	35.6%							32.3%
Grant		38.7%	27.7%	18.1%	30.7%	33.2%							29.7%
Luna		37.1%	38.5%	26.9%	47.7%	43.2%							38.7%
Otero		37.3%	31.9%	28.1%	38.4%	32.8%							33.7%
South Dona Ana		41.6%	35.7%	27.7%	32.6%	37.6%							35.0%
West Dona Ana		35.1%	29.6%	37.4%	41.5%	39.3%							36.6%
<b>SW Region 5 Total</b>		<b>36.4%</b>	<b>32.5%</b>	<b>27.8%</b>	<b>38.0%</b>	<b>37.0%</b>							<b>34.3%</b>
<b>STATE TOTAL</b>		<b>25.8%</b>	<b>24.2%</b>	<b>26.3%</b>	<b>30.1%</b>	<b>38.6%</b>							<b>29.0%</b>

Annual and Auto Renewals are included  
No data available for October 2017

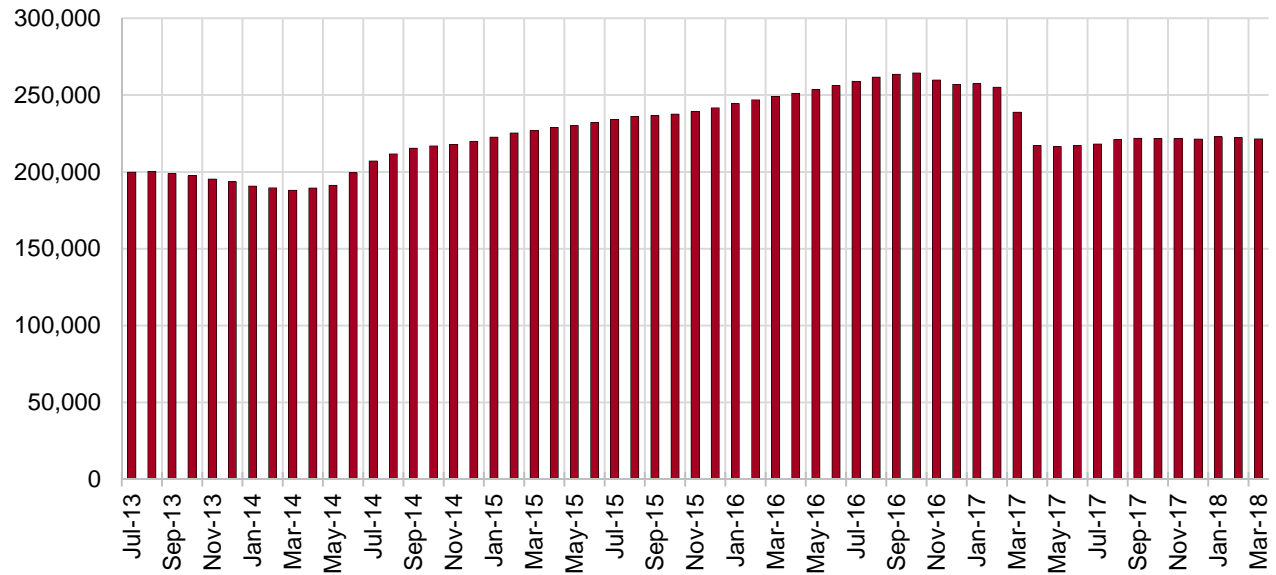
## SNAP Cases by Field Office<sup>6</sup>

Office				Percent Change	
	Mar-17	Feb-18	Mar-18	Mar-17- Mar-18	Feb-18- Mar-18
Chaves County ISD	7,475	7,138	7,117	-4.8%	-0.3%
Cibola County ISD	3,630	3,632	3,617	-0.4%	-0.4%
Colfax County ISD	1,678	1,646	1,633	-2.7%	-0.8%
Curry County ISD	5,062	6,548	6,508	28.6%	-0.6%
East Dona Ana County ISD	8,167	7,998	7,953	-2.6%	-0.6%
Eddy Artesia County ISD	1,892	1,670	1,654	-12.6%	-1.0%
Eddy Carlsbad County ISD	3,665	3,160	3,078	-16.0%	-2.6%
Grant County ISD	3,968	3,604	3,561	-10.3%	-1.2%
Guadalupe County ISD	718	702	719	0.1%	2.4%
Hidalgo County ISD	465	442	439	-5.6%	-0.7%
Lea County ISD	6,206	5,817	5,729	-7.7%	-1.5%
Lincoln County ISD	2,044	1,968	1,927	-5.7%	-2.1%
Luna County ISD	4,840	4,322	4,304	-11.1%	-0.4%
McKinley County ISD	9,740	9,686	9,638	-1.0%	-0.5%
Northeast Bernalillo County ISD	22,962	20,332	20,329	-11.5%	0.0%
Northwest Bernalillo County ISD	20,694	19,110	19,201	-7.2%	0.5%
Otero County ISD	5,629	5,567	5,556	-1.3%	-0.2%
Quay County ISD	1,254	1,267	1,267	1.0%	0.0%
Rio Arriba County ISD	7,049	6,764	6,754	-4.2%	-0.1%
Roosevelt County ISD	1,786	0	0	-100.0%	N/A
San Juan County ISD	15,054	13,379	13,404	-11.0%	0.2%
San Miguel County ISD	5,271	4,934	4,889	-7.2%	-0.9%
Sandoval County ISD	11,571	11,023	10,988	-5.0%	-0.3%
Santa Fe County ISD	11,786	9,918	9,830	-16.6%	-0.9%
Sierra County ISD	2,833	2,703	2,695	-4.9%	-0.3%
Socorro County ISD	2,859	2,843	2,825	-1.2%	-0.6%
South Dona Ana ISD	9,098	8,559	8,531	-6.2%	-0.3%
Southeast Bernalillo County ISD	13,793	11,994	11,909	-13.7%	-0.7%
Southwest Bernalillo County ISD	19,408	18,733	18,669	-3.8%	-0.3%
Taos County ISD	4,306	4,216	4,229	-1.8%	0.3%
Torrance County ISD	3,608	3,432	3,447	-4.5%	0.4%
Valencia North County ISD	9,158	8,415	8,390	-8.4%	-0.3%
Valencia South County ISD	2	0	0	-100.0%	N/A
West Dona Ana County ISD	11,229	10,700	10,725	-4.5%	0.2%
Centralized Units	11	43	32	190.9%	-25.6%
Statewide Total	238,911	222,265	221,547	-7.3%	-0.3%

## SNAP Cases by Region<sup>6</sup>

Region	Mar-17	Feb-18	Mar-18	Percent Change	
				Mar-17- Mar-18	Feb-18- Mar-18
Region 1 - NW	43,276	40,658	40,569	-6.3%	-0.2%
Region 2 - NE	43,633	40,470	40,309	-7.6%	-0.4%
Region 3 - Central	80,465	73,601	73,555	-8.6%	-0.1%
Region 4 - SE	28,130	26,301	26,013	-7.5%	-1.1%
Region 5 - SW	43,396	41,192	41,069	-5.4%	-0.3%
Centralized Units	11	43	32	190.9%	-25.6%
<b>Statewide Total</b>	<b>238,911</b>	<b>222,265</b>	<b>221,547</b>	<b>-7.3%</b>	<b>-0.3%</b>

## SNAP Caseload: SFY-14 to Current

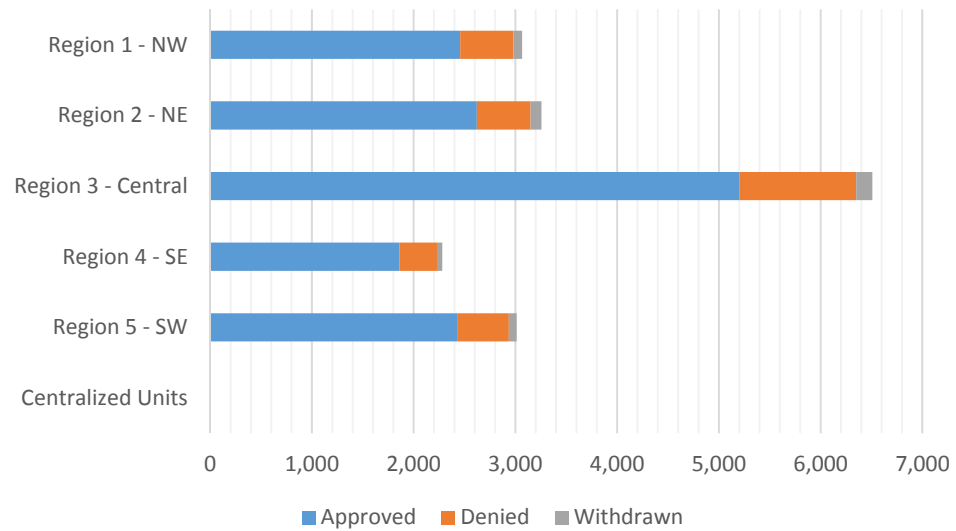


**SNAP Initial Applications by Field Office<sup>4,11</sup>**  
**March 2018**

Office	Approved	Denied	Withdrawn	Total Cases Processed
Chaves County ISD	506	91	15	612
Cibola County ISD	200	35	8	243
Colfax County ISD	84	19	9	112
Curry County ISD	442	80	9	531
East Dona Ana County ISD	484	123	24	631
Eddy Artesia County ISD	108	29	1	138
Eddy Carlsbad County ISD	255	47	6	308
Grant County ISD	258	27	1	286
Guadalupe County ISD	32	5	2	39
Hidalgo County ISD	0	0	0	0
Lea County ISD	436	92	16	544
Lincoln County ISD	109	28	4	141
Luna County ISD	213	34	5	252
McKinley County ISD	587	68	16	671
Northeast Bernalillo County ISD	1,649	334	48	2,031
Northwest Bernalillo County ISD	1,320	296	40	1,656
Otero County ISD	355	82	8	445
Quay County ISD	66	9	1	76
Rio Arriba County ISD	422	65	14	501
Roosevelt County ISD	6	1	0	7
San Juan County ISD	958	235	39	1,232
San Miguel County ISD	327	55	23	405
Sandoval County ISD	749	182	32	963
Santa Fe County ISD	665	152	16	833
Sierra County ISD	113	23	2	138
Socorro County ISD	150	24	7	181
South Dona Ana ISD	388	89	15	492
Southeast Bernalillo County ISD	889	217	20	1,126
Southwest Bernalillo County ISD	1,141	251	47	1,439
Taos County ISD	276	41	10	327
Torrance County ISD	205	48	4	257
Valencia North County ISD	449	138	13	600
Valencia South County ISD	1	0	0	1
West Dona Ana County ISD	736	147	23	906
Centralized Units	0	0	0	0
<b>Statewide Total</b>	<b>14,579</b>	<b>3,067</b>	<b>478</b>	<b>18,124</b>

**SNAP Initial Applications by Region<sup>4,11</sup>**  
**March 2018**

Region	Approved	Denied	Withdrawn	Total Cases Processed
Region 1 - NW	2,458	523	85	3,066
Region 2 - NE	2,621	528	107	3,256
Region 3 - Central	5,204	1,146	159	6,509
Region 4 - SE	1,862	368	51	2,281
Region 5 - SW	2,434	502	76	3,012
Centralized Units	0	0	0	0
<b>Statewide Total</b>	<b>14,579</b>	<b>3,067</b>	<b>478</b>	<b>18,124</b>

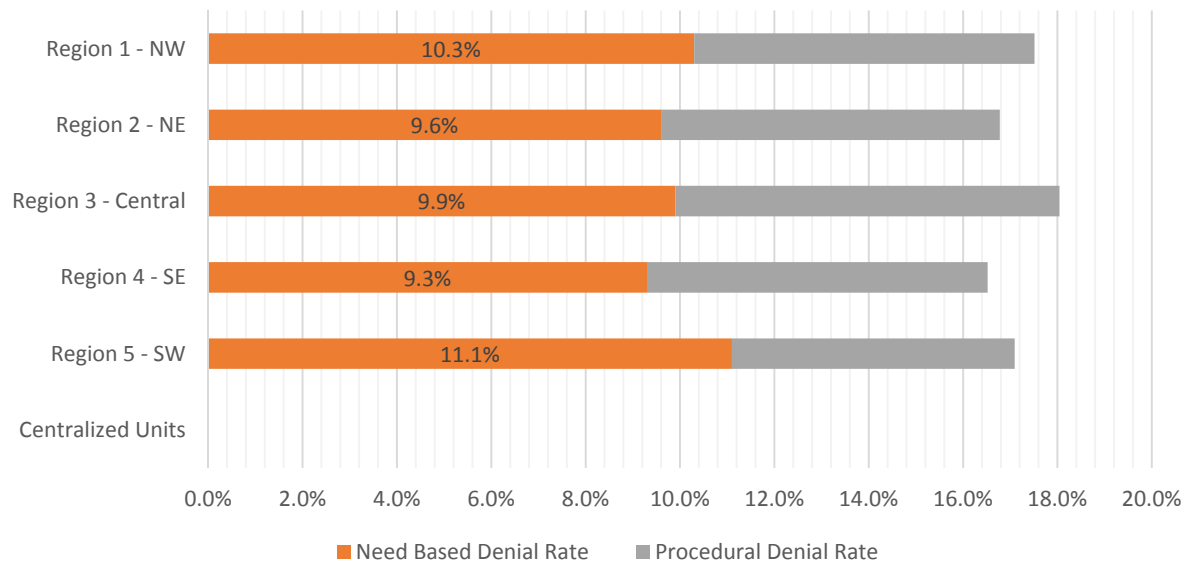


**SNAP Initial Disposition Rates by Field Office<sup>4,11</sup>**  
**March 2018**

Office	Approval Rate	Denial Rate	Need Based Denial Rate	Procedural Denial Rate
Chaves County ISD	84.8%	15.2%	8.8%	6.4%
Cibola County ISD	85.1%	14.9%	8.5%	6.4%
Colfax County ISD	81.6%	18.4%	15.5%	2.9%
Curry County ISD	84.7%	15.3%	8.6%	6.7%
East Dona Ana County ISD	79.7%	20.3%	14.0%	6.3%
Eddy Artesia County ISD	78.8%	21.2%	10.3%	10.9%
Eddy Carlsbad County ISD	84.4%	15.6%	9.3%	6.3%
Grant County ISD	90.5%	9.5%	8.1%	1.4%
Guadalupe County ISD	86.5%	13.5%	5.4%	8.1%
Hidalgo County ISD	0.0%	100.0%	100.0%	0.0%
Lea County ISD	82.6%	17.4%	9.4%	8.0%
Lincoln County ISD	79.6%	20.4%	11.6%	8.8%
Luna County ISD	86.2%	13.8%	6.5%	7.3%
McKinley County ISD	89.6%	10.4%	6.7%	3.7%
Northeast Bernalillo County ISD	83.2%	16.8%	9.5%	7.3%
Northwest Bernalillo County ISD	81.7%	18.3%	9.9%	8.4%
Otero County ISD	81.2%	18.8%	10.8%	8.0%
Quay County ISD	88.0%	12.0%	8.0%	4.0%
Rio Arriba County ISD	86.7%	13.3%	6.9%	6.4%
Roosevelt County ISD	85.7%	14.3%	14.3%	0.0%
San Juan County ISD	80.3%	19.7%	11.0%	8.7%
San Miguel County ISD	85.6%	14.4%	8.1%	6.3%
Sandoval County ISD	80.5%	19.5%	11.0%	8.5%
Santa Fe County ISD	81.4%	18.6%	10.5%	8.1%
Sierra County ISD	83.1%	16.9%	15.4%	1.5%
Socorro County ISD	86.2%	13.8%	7.5%	6.3%
South Dona Ana ISD	81.3%	18.7%	12.2%	6.5%
Southeast Bernalillo County ISD	80.4%	19.6%	10.6%	9.0%
Southwest Bernalillo County ISD	82.0%	18.0%	9.5%	8.5%
Taos County ISD	87.1%	12.9%	7.5%	5.4%
Torrance County ISD	81.0%	19.0%	11.1%	7.9%
Valencia North County ISD	76.5%	23.5%	13.4%	10.1%
Valencia South County ISD	100.0%	0.0%	0.0%	0.0%
West Dona Ana County ISD	83.4%	16.6%	10.9%	5.7%
Centralized Units				
Statewide Total	82.6%	17.4%	10.1%	7.3%

**SNAP Initial Disposition Rates by Region<sup>4,11</sup>**  
**March 2018**

Region	Approval Rate	Denial Rate	Need Based Denial Rate	Procedural Denial Rate
Region 1 - NW	82.5%	17.5%	10.3%	7.2%
Region 2 - NE	83.2%	16.8%	9.6%	7.2%
Region 3 - Central	82.0%	18.0%	9.9%	8.1%
Region 4 - SE	83.5%	16.5%	9.3%	7.2%
Region 5 - SW	82.9%	17.1%	11.1%	6.0%
Centralized Units				
<b>Statewide Total</b>	<b>82.6%</b>	<b>17.4%</b>	<b>10.1%</b>	<b>7.3%</b>





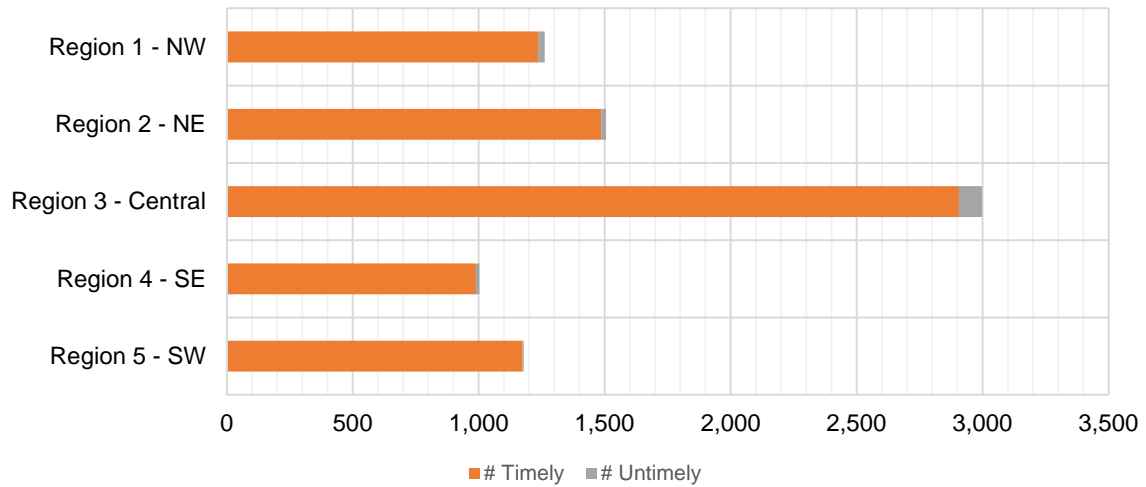
**SNAP Expedite Timeliness by Field Office<sup>13</sup>**  
**March 2018**

Office Name	Total Expedited Approvals	# Timely	# Untimely	Percentage Timely
Chaves County ISD	240	239	1	99.6 %
Cibola County ISD	110	104	6	94.5 %
Colfax County ISD	43	43	0	100.0 %
Curry County ISD	260	253	7	97.3 %
East Dona Ana County ISD	236	234	2	99.2 %
Eddy Artesia County ISD	54	53	1	98.1 %
Eddy Carlsbad County ISD	155	153	2	98.7 %
Grant County ISD	155	155	0	100.0 %
Guadalupe County ISD	17	17	0	100.0 %
Lea County ISD	238	235	3	98.7 %
Lincoln County ISD	52	52	0	100.0 %
Luna County ISD	87	87	0	100.0 %
McKinley County ISD	302	301	1	99.7 %
Northeast Bernalillo County ISD	1,024	988	36	96.5 %
Northwest Bernalillo County ISD	765	745	20	97.4 %
Otero County ISD	183	181	2	98.9 %
Quay County ISD	38	37	1	97.4 %
Rio Arriba County ISD	295	292	3	99.0 %
Roosevelt County ISD	4	4	0	100.0 %
San Juan County ISD	523	508	15	97.1 %
San Miguel County ISD	193	192	1	99.5 %
Sandoval County ISD	389	387	2	99.5 %
Santa Fe County ISD	370	365	5	98.6 %
Sierra County ISD	58	58	0	100.0 %
Socorro County ISD	66	66	0	100.0 %
South Dona Ana ISD	150	149	1	99.3 %
Southeast Bernalillo County ISD	473	462	11	97.7 %
Southwest Bernalillo County ISD	624	604	20	96.8 %
Taos County ISD	160	153	7	95.6 %
Torrance County ISD	112	107	5	95.5 %
Valencia North County ISD	203	199	4	98.0 %
West Dona Ana County ISD	368	368	0	100.0 %
<b>Statewide Total</b>	<b>7,947</b>	<b>7,791</b>	<b>156</b>	<b>98.0 %</b>

**SNAP Expedite Timeliness by Region<sup>13</sup>**  
**March 2018**

Region	Total Expedited Approvals	# Timely	# Untimely	Percentage Timely
Region 1 - NW	1,262	1,236	26	97.9%
Region 2 - NE	1,505	1,486	19	98.7%
Region 3 - Central	2,998	2,906	92	96.9%
Region 4 - SE	1,003	989	14	98.6%
Region 5 - SW	1,179	1,174	5	99.6%
Statewide Total	7,947	7,791	156	98.0%

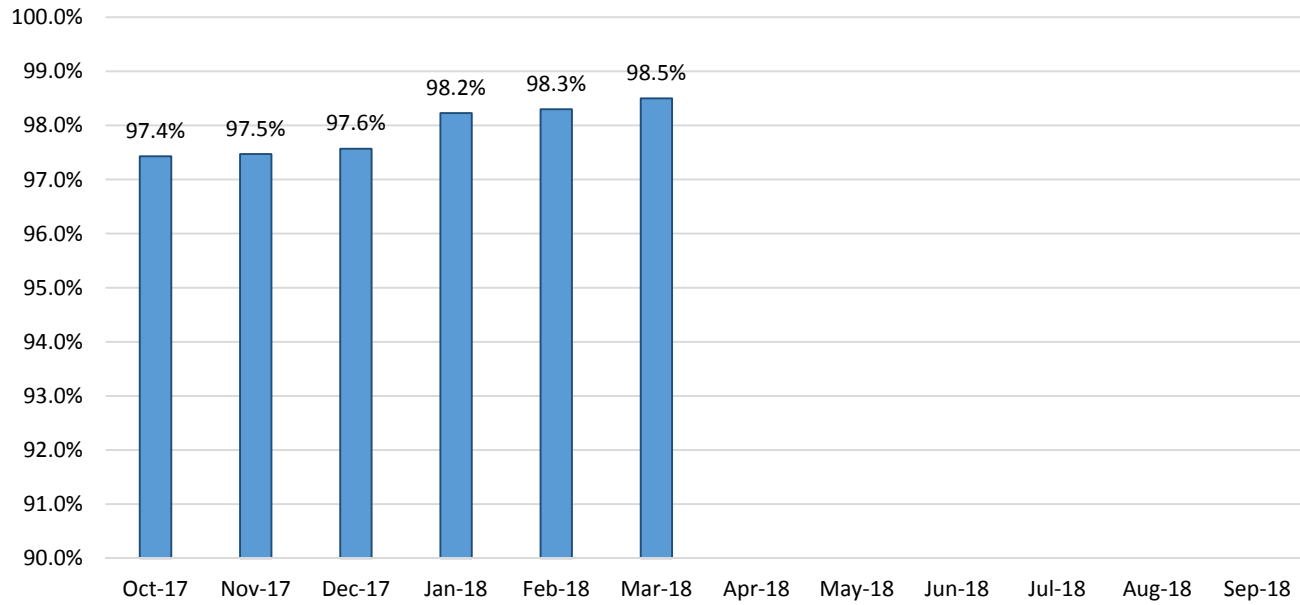
**SNAP Expedite - Timeliness**



## SNAP: Percentage of Applications Processed Timely <sup>13</sup>

	Oct-17	Nov-17	Dec-17	Jan-18	Feb-18	Mar-18	Apr-18	May-18	Jun-18	Jul-18	Aug-18	Sep-18	Average
APT	97.4%	97.5%	97.6%	98.2%	98.3%	98.5%							97.9%

### SNAP Application Processing Timeliness (APT)



**SNAP Non-Expedite: Percentage of Initial Applications Processed Timely by Field Office<sup>13</sup>**

	Oct-17	Nov-17	Dec-17	Jan-18	Feb-18	Mar-18	Apr-18	May-18	Jun-18	Jul-18	Aug-18	Sep-18	Average
Cibola	96.8%	97.2%	96.7%	92.9%	97.3%	100.0%							96.8%
McKinley	97.4%	98.8%	98.6%	99.3%	99.3%	99.6%							98.8%
San Juan	94.8%	93.5%	98.0%	97.8%	97.7%	97.9%							96.6%
Sierra	100.0%	100.0%	100.0%	100.0%	100.0%	100.0%							100.0%
Socorro	100.0%	96.8%	100.0%	98.9%	100.0%	98.8%							99.1%
Valencia North	96.5%	96.3%	96.6%	96.9%	99.6%	97.2%							97.2%
Valencia South	100.0%												100.0%
<b>NW Region 1 Total</b>	<b>96.5%</b>	<b>96.4%</b>	<b>98.0%</b>	<b>97.9%</b>	<b>98.7%</b>	<b>98.5%</b>							<b>97.7%</b>
Colfax	100.0%	100.0%	98.2%	98.2%	100.0%	100.0%							99.4%
Guadalupe	100.0%	100.0%	100.0%	100.0%	100.0%	100.0%							100.0%
Quay	97.2%	100.0%	100.0%	100.0%	97.1%	100.0%							99.1%
Rio Arriba	97.0%	99.4%	91.2%	95.3%	97.7%	98.5%							96.5%
San Miguel	100.0%	98.5%	100.0%	99.4%	99.3%	99.2%							99.4%
Sandoval	98.2%	98.6%	97.8%	98.8%	98.9%	99.2%							98.6%
Santa Fe	97.6%	97.5%	99.6%	98.4%	99.3%	99.7%							98.7%
Taos	98.7%	98.7%	98.7%	99.2%	100.0%	98.3%							98.9%
<b>NE Region 2 Total</b>	<b>98.2%</b>	<b>98.6%</b>	<b>97.8%</b>	<b>98.4%</b>	<b>99.0%</b>	<b>99.2%</b>							<b>98.5%</b>
NE Bernalillo	95.4%	95.7%	94.9%	97.1%	98.1%	97.4%							96.4%
NW Bernalillo	97.6%	95.1%	96.7%	98.0%	97.0%	98.7%							97.2%
SE Bernalillo	96.0%	96.8%	97.4%	96.8%	99.7%	98.6%							97.5%
SW Bernalillo	97.9%	97.3%	99.1%	96.6%	96.8%	97.7%							97.6%
Torrance	98.9%	98.2%	96.6%	99.0%	97.1%	100.0%							98.3%
<b>Gen. Region 3 Total</b>	<b>96.9%</b>	<b>96.3%</b>	<b>96.9%</b>	<b>97.2%</b>	<b>97.7%</b>	<b>98.1%</b>							<b>97.2%</b>
Chaves	99.3%	98.9%	98.5%	99.7%	98.5%	99.3%							99.0%
Curry	95.7%	97.1%	97.9%	99.4%	99.1%	98.4%							97.9%
Eddy Artesia	100.0%	97.2%	100.0%	100.0%	98.5%	100.0%							99.3%
Eddy Carlsbad	94.8%	97.3%	100.0%	100.0%	96.8%	99.0%							98.0%
Lea	97.0%	98.3%	99.5%	98.5%	99.5%	98.0%							98.5%
Lincoln	97.8%	98.9%	100.0%	100.0%	100.0%	98.3%							99.2%
Roosevelt	100.0%	98.6%	100.0%	98.5%	100.0%	100.0%							99.5%
<b>SE Region 4 Total</b>	<b>97.6%</b>	<b>98.2%</b>	<b>99.1%</b>	<b>99.4%</b>	<b>98.8%</b>	<b>98.7%</b>							<b>98.6%</b>
East Dona Ana	99.6%	98.9%	100.0%	99.7%	99.6%	100.0%							99.6%
Grant	100.0%	99.0%	97.9%	100.0%	99.1%	99.0%							99.2%
Luna	100.0%	99.4%	100.0%	97.7%	97.9%	99.2%							99.0%
Otero	100.0%	98.9%	99.4%	100.0%	100.0%	100.0%							99.7%
South Dona Ana	100.0%	99.6%	100.0%	100.0%	99.6%	100.0%							99.9%
West Dona Ana	99.2%	98.7%	99.0%	100.0%	99.4%	99.5%							99.3%
<b>SW Region 5 Total</b>	<b>99.7%</b>	<b>99.0%</b>	<b>99.5%</b>	<b>99.7%</b>	<b>99.4%</b>	<b>99.7%</b>							<b>99.5%</b>
<b>STATE TOTAL</b>	<b>97.7%</b>	<b>97.5%</b>	<b>98.1%</b>	<b>98.3%</b>	<b>98.6%</b>	<b>98.7%</b>							<b>98.2%</b>

**SNAP Expedite: Percentage of Initial Applications Processed Timely by Field Office<sup>13</sup>**

	Oct-17	Nov-17	Dec-17	Jan-18	Feb-18	Mar-18	Apr-18	May-18	Jun-18	Jul-18	Aug-18	Sep-18	Average
Cibola	94.1%	100.0%	92.2%	98.5%	98.2%	94.5%							96.3%
McKinley	99.4%	99.4%	97.8%	97.3%	99.2%	99.7%							98.8%
San Juan	95.8%	94.2%	96.5%	96.7%	97.0%	97.1%							96.2%
Sierra	98.3%	100.0%	100.0%	100.0%	100.0%	100.0%							99.7%
Socorro	98.9%	100.0%	94.4%	98.0%	97.4%	100.0%							98.1%
Valencia North	97.1%	93.3%	97.1%	97.7%	98.2%	98.0%							96.9%
Valencia South	100.0%	100.0%				100.0%							100.0%
<b>NW Region 1 Total</b>	<b>97.0%</b>	<b>96.4%</b>	<b>96.6%</b>	<b>97.4%</b>	<b>97.9%</b>	<b>97.9%</b>							<b>97.2%</b>
Colfax	98.6%	100.0%	100.0%	100.0%	100.0%	100.0%							99.8%
Guadalupe	100.0%	100.0%	100.0%	100.0%	100.0%	100.0%							100.0%
Quay	100.0%	100.0%	100.0%	94.9%	92.6%	97.4%							97.5%
Rio Arriba	94.6%	97.3%	97.6%	97.3%	95.7%	99.0%							96.9%
San Miguel	99.1%	98.3%	99.4%	98.1%	97.5%	99.5%							98.6%
Sandoval	98.2%	98.3%	97.9%	98.4%	98.4%	99.5%							98.4%
Santa Fe	97.5%	97.7%	96.7%	98.1%	97.4%	98.6%							97.7%
Taos	98.7%	97.8%	95.7%	98.3%	98.7%	95.6%							97.5%
<b>NE Region 2 Total</b>	<b>97.5%</b>	<b>98.0%</b>	<b>97.7%</b>	<b>98.1%</b>	<b>97.5%</b>	<b>98.7%</b>							<b>97.9%</b>
NE Bernalillo	94.6%	96.4%	94.7%	98.2%	96.6%	96.5%							96.2%
NW Bernalillo	97.6%	95.6%	95.6%	97.1%	96.3%	97.4%							96.6%
SE Bernalillo	96.5%	95.7%	95.2%	96.6%	96.4%	97.7%							96.3%
SW Bernalillo	96.6%	96.4%	96.9%	97.8%	97.8%	96.8%							97.0%
Torrance	96.9%	96.5%	99.2%	97.7%	99.1%	95.5%							97.5%
<b>Gen. Region 3 Total</b>	<b>96.3%</b>	<b>96.1%</b>	<b>95.7%</b>	<b>97.6%</b>	<b>96.8%</b>	<b>96.9%</b>							<b>96.6%</b>
Chaves	98.1%	98.6%	99.2%	98.6%	99.5%	99.6%							98.9%
Curry	96.0%	98.7%	98.1%	98.3%	98.8%	97.3%							97.9%
Eddy Artesia	100.0%	98.4%	100.0%	95.9%	100.0%	98.1%							98.7%
Eddy Carlsbad	98.5%	98.6%	98.3%	99.4%	97.4%	98.7%							98.5%
Lea	98.4%	98.4%	98.3%	97.1%	96.1%	98.7%							97.8%
Lincoln	96.7%	98.6%	98.4%	100.0%	97.0%	100.0%							98.5%
Roosevelt	92.7%	100.0%	96.2%	100.0%	100.0%	100.0%							98.2%
<b>SE Region 4 Total</b>	<b>97.4%</b>	<b>98.7%</b>	<b>98.4%</b>	<b>98.3%</b>	<b>98.1%</b>	<b>98.6%</b>							<b>98.3%</b>
East Dona Ana	99.0%	98.8%	98.7%	99.7%	100.0%	99.2%							99.2%
Grant	97.9%	100.0%	100.0%	98.0%	100.0%	100.0%							99.3%
Luna	99.3%	100.0%	100.0%	99.3%	100.0%	100.0%							99.8%
Otero	98.8%	98.4%	98.5%	98.4%	98.7%	98.9%							98.6%
South Dona Ana	100.0%	99.4%	98.8%	99.0%	100.0%	99.3%							99.4%
West Dona Ana	99.5%	99.5%	98.6%	99.1%	99.7%	100.0%							99.4%
<b>SW Region 5 Total</b>	<b>99.1%</b>	<b>99.3%</b>	<b>99.0%</b>	<b>98.9%</b>	<b>99.7%</b>	<b>99.6%</b>							<b>99.3%</b>
<b>STATE TOTAL</b>	<b>97.2%</b>	<b>97.3%</b>	<b>97.0%</b>	<b>97.9%</b>	<b>97.7%</b>	<b>98.0%</b>							<b>97.5%</b>

**SNAP: Percentage of Denied Initial Applications Processed Within 30 Days by Field Office<sup>13</sup>**

	Oct-17	Nov-17	Dec-17	Jan-18	Feb-18	Mar-18	Apr-18	May-18	Jun-18	Jul-18	Aug-18	Sep-18	Average
Cibola	66.7%	50.0%	66.7%	65.9%	88.1%	77.1%							69.1%
McKinley	59.0%	57.8%	65.9%	47.9%	81.7%	66.2%							63.1%
San Juan	35.7%	51.8%	46.5%	66.8%	77.3%	83.0%							60.2%
Sierra	95.5%	90.9%	90.5%	91.7%	100.0%	100.0%							94.8%
Socorro	69.6%	68.2%	94.3%	100.0%	96.2%	87.5%							86.0%
Valencia North	45.9%	41.8%	45.0%	44.1%	78.8%	73.2%							54.8%
Valencia South													
<b>NW Region 1 Total</b>	<b>48.3%</b>	<b>53.2%</b>	<b>55.5%</b>	<b>61.8%</b>	<b>80.5%</b>	<b>78.8%</b>							<b>63.0%</b>
Colfax	100.0%	100.0%	100.0%	100.0%	95.2%	100.0%							99.2%
Guadalupe	73.3%	75.0%	90.0%	92.3%	75.0%	20.0%							70.9%
Quay	83.3%	33.3%	66.7%	70.6%	100.0%	44.4%							66.4%
Rio Arriba	70.1%	56.3%	43.0%	69.1%	72.3%	76.9%							64.6%
San Miguel	66.2%	77.3%	90.0%	92.1%	90.0%	85.5%							83.5%
Sandoval	70.8%	69.2%	74.6%	66.2%	85.8%	84.1%							75.1%
Santa Fe	64.7%	70.6%	62.1%	44.3%	79.6%	73.0%							65.7%
Taos	77.8%	79.2%	84.1%	84.4%	87.8%	82.9%							82.7%
<b>NE Region 2 Total</b>	<b>70.8%</b>	<b>69.7%</b>	<b>68.8%</b>	<b>66.1%</b>	<b>83.3%</b>	<b>79.4%</b>							<b>73.0%</b>
NE Bernalillo	43.5%	40.5%	44.9%	47.0%	84.7%	70.1%							55.1%
NW Bernalillo	41.7%	42.8%	48.7%	50.0%	78.9%	84.5%							57.8%
SE Bernalillo	52.3%	52.0%	74.2%	60.9%	93.5%	82.9%							69.3%
SW Bernalillo	63.9%	62.9%	50.9%	67.3%	95.3%	88.0%							71.4%
Torrance	60.4%	68.2%	51.0%	54.4%	84.8%	85.4%							67.4%
<b>Gen. Region 3 Total</b>	<b>49.7%</b>	<b>50.0%</b>	<b>53.4%</b>	<b>55.5%</b>	<b>87.5%</b>	<b>80.8%</b>							<b>62.8%</b>
Chaves	86.4%	85.7%	89.3%	91.5%	91.7%	81.3%							87.7%
Curry	63.5%	60.3%	80.9%	87.5%	95.0%	83.8%							78.5%
Eddy Artesia	75.8%	58.1%	76.9%	96.0%	86.7%	89.7%							80.5%
Eddy Carlsbad	60.7%	67.6%	76.4%	85.7%	94.8%	74.5%							76.6%
Lea	86.3%	63.8%	68.0%	82.6%	94.3%	87.0%							80.3%
Lincoln	55.0%	78.4%	94.9%	88.6%	89.3%	82.1%							81.4%
Roosevelt	77.1%	68.1%	88.4%	91.5%		100.0%							85.0%
<b>SE Region 4 Total</b>	<b>74.4%</b>	<b>69.2%</b>	<b>81.2%</b>	<b>88.3%</b>	<b>93.0%</b>	<b>83.2%</b>							<b>81.5%</b>
East Dona Ana	81.2%	77.6%	72.7%	91.2%	92.1%	82.9%							83.0%
Grant	73.5%	81.1%	72.1%	80.0%	92.6%	96.3%							82.6%
Luna	55.8%	51.1%	65.9%	65.3%	90.2%	70.6%							66.5%
Otero	40.3%	38.6%	47.9%	40.7%	81.1%	84.1%							55.4%
South Dona Ana	70.8%	68.1%	63.2%	80.6%	81.1%	79.8%							73.9%
West Dona Ana	65.6%	55.7%	70.5%	79.5%	85.2%	86.4%							73.8%
<b>SW Region 5 Total</b>	<b>66.6%</b>	<b>62.3%</b>	<b>66.5%</b>	<b>75.4%</b>	<b>86.4%</b>	<b>83.5%</b>							<b>73.4%</b>
<b>STATE TOTAL</b>	<b>59.5%</b>	<b>58.9%</b>	<b>62.6%</b>	<b>66.5%</b>	<b>86.1%</b>	<b>80.9%</b>							<b>69.1%</b>

**SNAP Renewals Processed by Field Office<sup>20</sup>**  
**March 2018**

Office	Approvals	Closures	Need Based Closures	Procedural Closures
Chaves County ISD	256	102	14	88
Cibola County ISD	150	57	2	55
Colfax County ISD	57	26	0	26
Curry County ISD	206	104	14	90
East Dona Ana County ISD	305	132	18	114
Eddy Artesia County ISD	60	27	6	21
Eddy Carlsbad County ISD	93	54	11	43
Grant County ISD	111	46	6	40
Guadalupe County ISD	25	7	0	7
Hidalgo County ISD	18	12	2	10
Lea County ISD	150	103	14	89
Lincoln County ISD	61	22	3	19
Luna County ISD	153	66	6	60
McKinley County ISD	389	163	16	147
Northeast Bernalillo County ISD	719	343	40	303
Northwest Bernalillo County ISD	544	274	39	235
Otero County ISD	219	72	3	69
Quay County ISD	50	26	3	23
Rio Arriba County ISD	290	103	3	100
Roosevelt County ISD	0	0	0	0
San Juan County ISD	382	217	23	194
San Miguel County ISD	154	59	5	54
Sandoval County ISD	381	127	13	114
Santa Fe County ISD	347	151	17	134
Sierra County ISD	97	32	3	29
Socorro County ISD	97	34	5	29
South Dona Ana ISD	355	121	12	109
Southeast Bernalillo County ISD	430	157	17	140
Southwest Bernalillo County ISD	857	323	29	294
Taos County ISD	144	57	11	46
Torrance County ISD	117	39	7	32
Valencia North County ISD	309	159	11	148
Valencia South County ISD	0	0	0	0
West Dona Ana County ISD	386	159	10	149
Centralized Units	1	1	0	1
<b>Statewide Total</b>	<b>7,913</b>	<b>3,375</b>	<b>363</b>	<b>3,012</b>

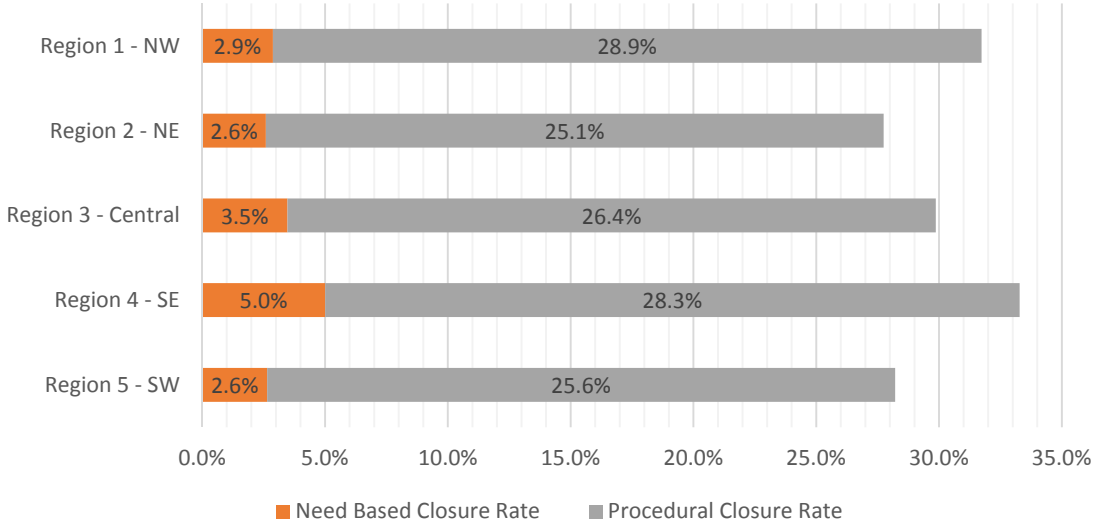
**SNAP Renewal Disposition Rates by Field Office<sup>20</sup>**  
**March 2018**

Office	Approval Rate	Closure Rate	Need Based Closure Rate	Procedural Closure Rate
Chaves County ISD	71.5%	28.5%	3.9%	24.6%
Cibola County ISD	72.5%	27.5%	1.0%	26.6%
Colfax County ISD	68.7%	31.3%	0.0%	31.3%
Curry County ISD	66.5%	33.5%	4.5%	29.0%
East Dona Ana County ISD	69.8%	30.2%	4.1%	26.1%
Eddy Artesia County ISD	69.0%	31.0%	6.9%	24.1%
Eddy Carlsbad County ISD	63.3%	36.7%	7.5%	29.3%
Grant County ISD	70.7%	29.3%	3.8%	25.5%
Guadalupe County ISD	78.1%	21.9%	0.0%	21.9%
Hidalgo County ISD	60.0%	40.0%	6.7%	33.3%
Lea County ISD	59.3%	40.7%	5.5%	35.2%
Lincoln County ISD	73.5%	26.5%	3.6%	22.9%
Luna County ISD	69.9%	30.1%	2.7%	27.4%
McKinley County ISD	70.5%	29.5%	2.9%	26.6%
Northeast Bernalillo County ISD	67.7%	32.3%	3.8%	28.5%
Northwest Bernalillo County ISD	66.5%	33.5%	4.8%	28.7%
Otero County ISD	75.3%	24.7%	1.0%	23.7%
Quay County ISD	65.8%	34.2%	3.9%	30.3%
Rio Arriba County ISD	73.8%	26.2%	0.8%	25.4%
Roosevelt County ISD	0.0%	0.0%	0.0%	0.0%
San Juan County ISD	63.8%	36.2%	3.8%	32.4%
San Miguel County ISD	72.3%	27.7%	2.3%	25.4%
Sandoval County ISD	75.0%	25.0%	2.6%	22.4%
Santa Fe County ISD	69.7%	30.3%	3.4%	26.9%
Sierra County ISD	75.2%	24.8%	2.3%	22.5%
Socorro County ISD	74.0%	26.0%	3.8%	22.1%
South Dona Ana ISD	74.6%	25.4%	2.5%	22.9%
Southeast Bernalillo County ISD	73.3%	26.7%	2.9%	23.9%
Southwest Bernalillo County ISD	72.6%	27.4%	2.5%	24.9%
Taos County ISD	71.6%	28.4%	5.5%	22.9%
Torrance County ISD	75.0%	25.0%	4.5%	20.5%
Valencia North County ISD	66.0%	34.0%	2.4%	31.6%
Valencia South County ISD	0.0%	0.0%	0.0%	0.0%
West Dona Ana County ISD	70.8%	29.2%	1.8%	27.3%
Centralized Units	50.0%	50.0%	0.0%	50.0%
Statewide Total	70.1%	29.9%	3.2%	26.7%



**SNAP Renewal Disposition Rates by Region<sup>20</sup>**  
**March 2018**

Region	Approval Rate	Closure Rate	Need Based Closure Rate	Procedural Closure Rate
Region 1 - NW	68.3%	31.7%	2.9%	28.9%
Region 2 - NE	72.3%	27.7%	2.6%	25.1%
Region 3 - Central	70.1%	29.9%	3.5%	26.4%
Region 4 - SE	66.7%	33.3%	5.0%	28.3%
Region 5 - SW	71.8%	28.2%	2.6%	25.6%
Centralized Units	50.0%	50.0%	0.0%	50.0%
Statewide Total	70.1%	29.9%	3.2%	26.7%



SNAP: Percentage of Approved Renewal Applications Processed by Normal Accessibility Date <sup>11</sup>													
	Oct-17	Nov-17	Dec-17	Jan-18	Feb-18	Mar-18	Apr-18	May-18	Jun-18	Jul-18	Aug-18	Sep-18	Average
Cibola		71.2%	73.1%	79.4%	90.4%	88.0%							80.4%
McKinley		90.4%	92.0%	95.6%	98.3%	96.4%							94.6%
San Juan		85.9%	80.5%	89.6%	94.2%	93.2%							88.7%
Sierra		98.1%	93.6%	92.8%	99.0%	99.0%							96.5%
Socorro		92.5%	89.7%	93.8%	100.0%	90.7%							93.4%
Valencia North		84.1%	86.9%	95.8%	98.6%	92.6%							91.6%
Valencia South													
<b>NW Region 1 Total</b>		<b>87.1%</b>	<b>86.0%</b>	<b>91.2%</b>	<b>96.8%</b>	<b>93.3%</b>							<b>90.9%</b>
Colfax		87.8%	82.5%	97.9%	100.0%	91.2%							91.9%
Guadalupe		94.4%	93.1%	100.0%	95.8%	100.0%							96.7%
Quay		94.3%	89.5%	100.0%	100.0%	88.0%							94.4%
Rio Arriba		79.7%	71.9%	94.2%	90.0%	88.3%							84.8%
San Miguel		90.4%	95.7%	98.5%	96.5%	97.4%							95.7%
Sandoval		90.1%	93.8%	96.2%	96.3%	96.3%							94.6%
Santa Fe		87.1%	92.0%	95.7%	96.9%	97.1%							93.8%
Taos		90.8%	91.5%	94.6%	97.0%	94.4%							93.7%
<b>NE Region 2 Total</b>		<b>89.3%</b>	<b>88.8%</b>	<b>97.1%</b>	<b>96.6%</b>	<b>94.1%</b>							<b>93.2%</b>
NE Bernalillo		71.8%	72.1%	85.0%	91.2%	92.6%							82.5%
NW Bernalillo		85.5%	80.4%	93.0%	96.1%	94.9%							90.0%
SE Bernalillo		79.7%	81.6%	91.7%	96.5%	96.5%							89.2%
SW Bernalillo		83.4%	89.0%	91.8%	96.1%	94.6%							91.0%
Torrance		74.5%	74.3%	90.3%	92.4%	95.7%							85.4%
<b>Gen. Region 3 Total</b>		<b>79.0%</b>	<b>79.5%</b>	<b>90.3%</b>	<b>94.4%</b>	<b>94.9%</b>							<b>87.6%</b>
Chaves		91.2%	92.0%	95.3%	98.6%	98.4%							95.1%
Curry		94.1%	81.9%	94.9%	94.6%	97.6%							92.6%
Eddy Artesia		94.1%	91.9%	95.2%	98.5%	98.3%							95.6%
Eddy Carlsbad		75.8%	90.8%	90.1%	93.6%	94.6%							89.0%
Lea		91.8%	90.9%	94.0%	95.8%	96.0%							93.7%
Lincoln		87.5%	92.6%	95.1%	100.0%	100.0%							95.0%
Roosevelt		93.6%	86.7%										90.1%
<b>SE Region 4 Total</b>		<b>89.7%</b>	<b>89.5%</b>	<b>94.1%</b>	<b>96.8%</b>	<b>97.5%</b>							<b>93.5%</b>
East Dona Ana		94.8%	93.1%	96.5%	98.2%	98.0%							96.1%
Grant		90.5%	93.5%	100.0%	96.7%	90.1%							94.2%
Luna		91.7%	84.0%	91.4%	95.1%	92.2%							90.9%
Otero		87.3%	86.5%	97.5%	93.5%	92.2%							91.4%
South Dona Ana		94.3%	93.1%	99.4%	99.1%	93.0%							95.8%
West Dona Ana		97.4%	95.0%	97.9%	98.9%	97.7%							97.4%
<b>SW Region 5 Total</b>		<b>92.7%</b>	<b>90.9%</b>	<b>97.1%</b>	<b>96.9%</b>	<b>93.9%</b>							<b>94.3%</b>
<b>STATE TOTAL</b>		<b>86.4%</b>	<b>86.3%</b>	<b>93.6%</b>	<b>95.9%</b>	<b>94.7%</b>							<b>91.4%</b>

*Includes cases in which the Renewal Packet was received after the 15th of the month, the due date for uninterrupted benefits.  
No data available for October 2017*

SNAP: Percentage of Approved Renewal Applications Processed by Normal Accessibility Date <sup>11</sup>													
	Oct-17	Nov-17	Dec-17	Jan-18	Feb-18	Mar-18	Apr-18	May-18	Jun-18	Jul-18	Aug-18	Sep-18	Average
Cibola		72.8%	86.1%	82.3%	92.7%	96.6%							86.1%
McKinley		92.8%	93.9%	97.6%	99.0%	99.1%							96.5%
San Juan		89.0%	85.1%	92.8%	96.4%	97.4%							92.2%
Sierra		100.0%	97.5%	97.1%	100.0%	100.0%							98.9%
Socorro		94.7%	95.7%	96.9%	100.0%	100.0%							97.5%
Valencia North		89.1%	93.1%	96.3%	98.8%	98.7%							95.2%
Valencia South													
<b>NW Region 1 Total</b>		<b>89.8%</b>	<b>91.9%</b>	<b>93.8%</b>	<b>97.8%</b>	<b>98.6%</b>							<b>94.4%</b>
Colfax		95.1%	91.2%	100.0%	100.0%	100.0%							97.3%
Guadalupe		96.7%	92.9%	100.0%	100.0%	100.0%							97.9%
Quay		100.0%	95.6%	100.0%	100.0%	100.0%							99.1%
Rio Arriba		90.5%	84.5%	95.6%	94.6%	95.0%							92.1%
San Miguel		93.6%	96.9%	100.0%	96.5%	99.3%							97.2%
Sandoval		93.1%	97.0%	98.7%	98.5%	97.9%							97.1%
Santa Fe		91.6%	97.0%	97.8%	97.9%	99.7%							96.8%
Taos		95.8%	94.8%	96.8%	98.9%	98.4%							96.9%
<b>NE Region 2 Total</b>		<b>94.6%</b>	<b>93.7%</b>	<b>98.6%</b>	<b>98.3%</b>	<b>98.8%</b>							<b>96.8%</b>
NE Bernalillo		75.7%	77.9%	90.1%	93.2%	96.9%							86.8%
NW Bernalillo		88.7%	84.5%	95.0%	97.5%	98.7%							92.9%
SE Bernalillo		85.2%	87.3%	94.9%	97.7%	98.8%							92.8%
SW Bernalillo		88.9%	93.5%	95.2%	98.6%	98.1%							94.8%
Torrance		83.1%	80.7%	97.2%	95.5%	98.0%							90.9%
<b>Gen. Region 3 Total</b>		<b>84.3%</b>	<b>84.8%</b>	<b>94.5%</b>	<b>96.5%</b>	<b>98.1%</b>							<b>91.6%</b>
Chaves		92.0%	92.0%	96.8%	99.5%	99.1%							95.9%
Curry		94.6%	85.4%	96.7%	96.3%	98.3%							94.3%
Eddy Artesia		100.0%	96.0%	100.0%	100.0%	98.2%							98.8%
Eddy Carlsbad		80.3%	94.4%	95.7%	94.1%	97.4%							92.4%
Lea		94.6%	94.2%	97.5%	97.6%	97.8%							96.4%
Lincoln		88.5%	95.7%	95.9%	100.0%	100.0%							96.0%
Roosevelt		92.9%	85.0%										88.9%
<b>SE Region 4 Total</b>		<b>91.8%</b>	<b>91.8%</b>	<b>97.1%</b>	<b>97.9%</b>	<b>98.5%</b>							<b>95.4%</b>
East Dona Ana		96.8%	97.8%	99.0%	99.2%	99.2%							98.4%
Grant		94.2%	99.1%	100.0%	100.0%	98.8%							98.4%
Luna		96.9%	90.2%	92.9%	96.5%	97.6%							94.8%
Otero		96.2%	96.4%	100.0%	97.8%	100.0%							98.1%
South Dona Ana		97.4%	97.4%	100.0%	99.7%	99.6%							98.8%
West Dona Ana		99.1%	98.2%	99.1%	100.0%	99.3%							99.1%
<b>SW Region 5 Total</b>		<b>96.8%</b>	<b>96.5%</b>	<b>98.5%</b>	<b>98.9%</b>	<b>99.1%</b>							<b>97.9%</b>
<b>STATE TOTAL</b>		<b>90.4%</b>	<b>91.3%</b>	<b>96.2%</b>	<b>97.6%</b>	<b>98.4%</b>							<b>94.8%</b>

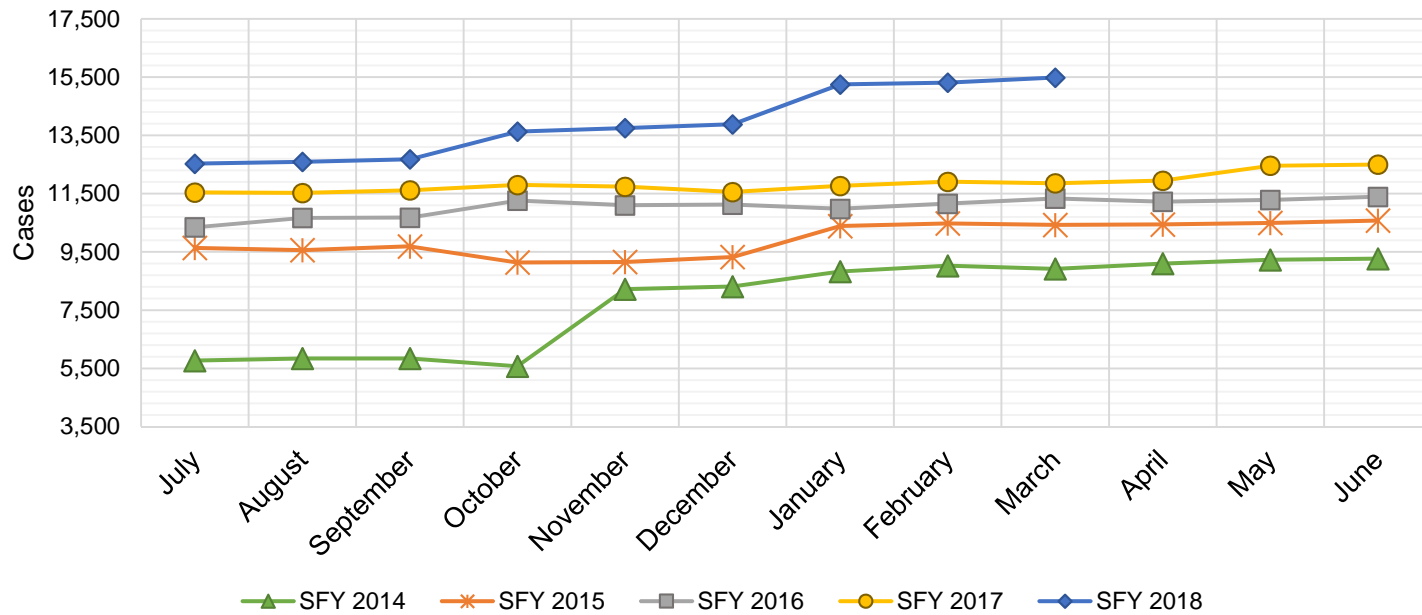
Only includes cases in which the Renewal Packet was received by the 15th of the month, the due date for uninterrupted benefits.  
No data available for October 2017

SNAP: Percentage of Closures at Renewal Processed by Certification End Date <sup>11</sup>													
	Oct-17	Nov-17	Dec-17	Jan-18	Feb-18	Mar-18	Apr-18	May-18	Jun-18	Jul-18	Aug-18	Sep-18	Average
Cibola		6.8%	3.3%	2.5%	9.1%	3.5%							5.0%
McKinley		3.7%	6.7%	6.8%	7.8%	6.1%							6.2%
San Juan		7.0%	5.1%	5.7%	8.0%	7.8%							6.7%
Sierra		19.2%	17.1%	8.8%	25.0%	15.6%							17.2%
Socorro		11.8%	4.3%	0.0%	7.7%	15.2%							7.8%
Valencia North		6.2%	9.8%	4.8%	10.5%	6.9%							7.7%
Valencia South													
<b>NW Region 1 Total</b>		<b>9.1%</b>	<b>7.7%</b>	<b>4.8%</b>	<b>11.4%</b>	<b>9.2%</b>							<b>8.4%</b>
Colfax		6.3%	11.1%	10.0%	3.4%	0.0%							6.2%
Guadalupe		7.7%	0.0%	0.0%	33.3%	0.0%							8.2%
Quay		15.8%	6.7%	0.0%	4.2%	7.7%							6.9%
Rio Arriba		6.1%	3.9%	2.9%	13.7%	3.8%							6.1%
San Miguel		4.7%	9.0%	8.6%	5.7%	6.8%							6.9%
Sandoval		12.9%	12.8%	3.0%	10.3%	7.1%							9.2%
Santa Fe		3.0%	5.8%	9.9%	4.9%	8.5%							6.4%
Taos		4.1%	3.7%	6.7%	3.3%	21.1%							7.8%
<b>NE Region 2 Total</b>		<b>7.6%</b>	<b>6.6%</b>	<b>5.1%</b>	<b>9.9%</b>	<b>6.9%</b>							<b>7.2%</b>
NE Bernalillo		3.0%	5.7%	3.5%	8.5%	9.4%							6.0%
NW Bernalillo		3.4%	3.8%	20.4%	51.8%	11.6%							18.2%
SE Bernalillo		4.1%	6.1%	4.2%	7.5%	7.7%							5.9%
SW Bernalillo		7.2%	6.6%	6.6%	7.5%	8.3%							7.2%
Torrance		3.6%	7.6%	5.1%	5.1%	20.5%							8.4%
<b>Gen. Region 3 Total</b>		<b>4.3%</b>	<b>6.0%</b>	<b>8.0%</b>	<b>16.1%</b>	<b>11.5%</b>							<b>9.2%</b>
Chaves		7.7%	12.2%	8.2%	13.9%	15.7%							11.6%
Curry		8.0%	3.8%	5.1%	5.8%	14.4%							7.5%
Eddy Artesia		6.9%	10.0%	10.0%	9.1%	11.1%							9.4%
Eddy Carlsbad		8.6%	4.7%	3.8%	6.8%	12.7%							7.3%
Lea		5.3%	14.8%	2.2%	7.0%	13.7%							8.6%
Lincoln		2.9%	9.3%	15.4%	10.3%	13.6%							10.3%
Roosevelt		15.0%	5.4%	0.0%									6.8%
<b>SE Region 4 Total</b>		<b>7.8%</b>	<b>8.6%</b>	<b>6.4%</b>	<b>8.8%</b>	<b>13.6%</b>							<b>9.0%</b>
East Dona Ana		12.9%	9.1%	5.6%	9.9%	14.6%							10.4%
Grant		6.0%	4.7%	3.4%	1.7%	10.9%							5.3%
Luna		5.6%	1.4%	3.2%	7.0%	9.1%							5.3%
Otero		2.9%	5.5%	3.5%	9.6%	2.8%							4.8%
South Dona Ana		13.8%	7.6%	14.3%	16.8%	8.3%							12.2%
West Dona Ana		8.9%	8.4%	6.8%	11.4%	8.8%							8.9%
<b>SW Region 5 Total</b>		<b>8.3%</b>	<b>6.1%</b>	<b>6.1%</b>	<b>9.4%</b>	<b>9.1%</b>							<b>7.8%</b>
<b>STATE TOTAL</b>		<b>6.6%</b>	<b>7.1%</b>	<b>6.9%</b>	<b>12.3%</b>	<b>9.5%</b>							<b>8.5%</b>

*Includes cases for which no renewal application was received.  
No data available for October 2017*

## State SNAP Supplement

SFY 2014 <sup>12</sup>			SFY 2015 <sup>12,9</sup>			SFY 2016 <sup>9</sup>			SFY 2017 <sup>9</sup>			SFY 2018 <sup>9</sup>		
	Cases	Expenditures		Cases	Expenditures		Cases	Expenditures		Cases	Expenditures		Cases	Expenditures
Jul-13	5,767	\$48,040	Jul-14	9,635	\$88,859	Jul-15	10,345	\$86,143	Jul-16	11,537	\$95,553	Jul-17	12,526	\$97,568
Aug-13	5,841	\$48,417	Aug-14	9,559	\$87,757	Aug-15	10,669	\$88,197	Aug-16	11,522	\$95,107	Aug-17	12,589	\$98,954
Sep-13	5,841	\$48,732	Sep-14	9,688	\$87,372	Sep-15	10,676	\$88,426	Sep-16	11,613	\$94,472	Sep-17	12,679	\$97,546
Oct-13	5,575	\$46,610	Oct-14	9,136	\$70,490	Oct-15	11,262	\$96,758	Oct-16	11,797	\$96,679	Oct-17	13,628	\$117,343
Nov-13	8,219	\$69,564	Nov-14	9,152	\$69,955	Nov-15	11,099	\$91,996	Nov-16	11,735	\$93,689	Nov-17	13,748	\$119,055
Dec-13	8,310	\$71,839	Dec-14	9,322	\$73,226	Dec-15	11,125	\$90,771	Dec-16	11,556	\$93,739	Dec-17	13,877	\$120,585
Jan-14	8,826	\$77,933	Jan-15	10,384	\$84,578	Jan-16	10,977	\$92,760	Jan-17	11,763	\$96,074	Jan-18	15,246	\$135,993
Feb-14	9,024	\$84,758	Feb-15	10,477	\$82,901	Feb-16	11,153	\$95,363	Feb-17	11,907	\$98,251	Feb-18	15,308	\$137,296
Mar-14	8,916	\$80,597	Mar-15	10,423	\$87,461	Mar-16	11,332	\$96,751	Mar-17	11,853	\$96,693	Mar-18	15,482	\$139,132
Apr-14	9,098	\$84,599	Apr-15	10,440	\$79,605	Apr-16	11,222	\$93,959	Apr-17	11,944	\$97,060	Apr-18		
May-14	9,226	\$85,035	May-15	10,491	\$82,511	May-16	11,283	\$95,271	May-17	12,457	\$96,940	May-18		
Jun-14	9,264	\$84,329	Jun-15	10,575	\$85,134	Jun-16	11,389	\$93,061	Jun-17	12,498	\$97,405	Jun-18		
<b>TOTAL</b>	<b>93,907</b>	<b>\$830,453</b>		<b>119,282</b>	<b>\$979,850</b>		<b>132,532</b>	<b>\$1,109,455</b>		<b>142,182</b>	<b>\$1,151,662</b>		<b>125,083</b>	<b>\$1,063,472</b>
<b>AVERAGE</b>	<b>7,826</b>	<b>\$69,204</b>		<b>9,940</b>	<b>\$81,654</b>		<b>11,044</b>	<b>\$92,455</b>		<b>11,849</b>	<b>\$95,972</b>		<b>13,898</b>	<b>\$118,164</b>



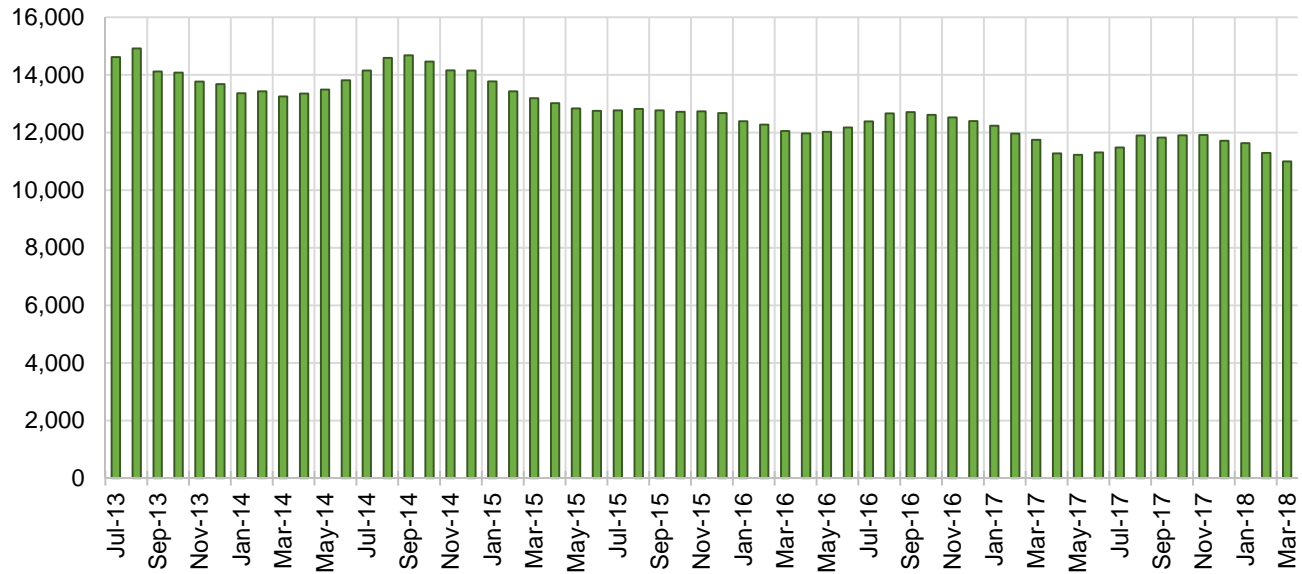
## TANF Cases by Field Office<sup>6</sup>

Office				Percent Change	
	Mar-17	Feb-18	Mar-18	Mar-17- Mar-18	Feb-18- Mar-18
Chaves County ISD	582	507	492	-15.5%	-3.0%
Cibola County ISD	135	149	148	9.6%	-0.7%
Colfax County ISD	68	74	68	0.0%	-8.1%
Curry County ISD	513	691	668	30.2%	-3.3%
East Dona Ana County ISD	485	475	437	-9.9%	-8.0%
Eddy Artesia County ISD	135	123	100	-25.9%	-18.7%
Eddy Carlsbad County ISD	216	150	141	-34.7%	-6.0%
Grant County ISD	200	185	174	-13.0%	-5.9%
Guadalupe County ISD	29	35	34	17.2%	-2.9%
Hidalgo County ISD	23	24	22	-4.3%	-8.3%
Lea County ISD	469	390	380	-19.0%	-2.6%
Lincoln County ISD	95	98	104	9.5%	6.1%
Luna County ISD	217	220	221	1.8%	0.5%
McKinley County ISD	63	59	57	-9.5%	-3.4%
Northeast Bernalillo County ISD	969	958	934	-3.6%	-2.5%
Northwest Bernalillo County ISD	799	790	798	-0.1%	1.0%
Otero County ISD	297	287	269	-9.4%	-6.3%
Quay County ISD	77	68	69	-10.4%	1.5%
Rio Arriba County ISD	419	409	406	-3.1%	-0.7%
Roosevelt County ISD	146	0	0	-100.0%	N/A
San Juan County ISD	307	313	309	0.7%	-1.3%
San Miguel County ISD	207	187	185	-10.6%	-1.1%
Sandoval County ISD	544	550	555	2.0%	0.9%
Santa Fe County ISD	500	436	445	-11.0%	2.1%
Sierra County ISD	89	69	65	-27.0%	-5.8%
Socorro County ISD	95	96	92	-3.2%	-4.2%
South Dona Ana ISD	720	677	643	-10.7%	-5.0%
Southeast Bernalillo County ISD	660	622	604	-8.5%	-2.9%
Southwest Bernalillo County ISD	1,083	1,134	1,096	1.2%	-3.4%
Taos County ISD	145	149	144	-0.7%	-3.4%
Torrance County ISD	190	201	183	-3.7%	-9.0%
Valencia North County ISD	490	471	451	-8.0%	-4.2%
Valencia South County ISD	0	0	0	N/A	N/A
West Dona Ana County ISD	778	692	704	-9.5%	1.7%
Centralized Units	0	5	2	NA	-60.0%
Statewide Total	11,745	11,294	11,000	-6.3%	-2.6%

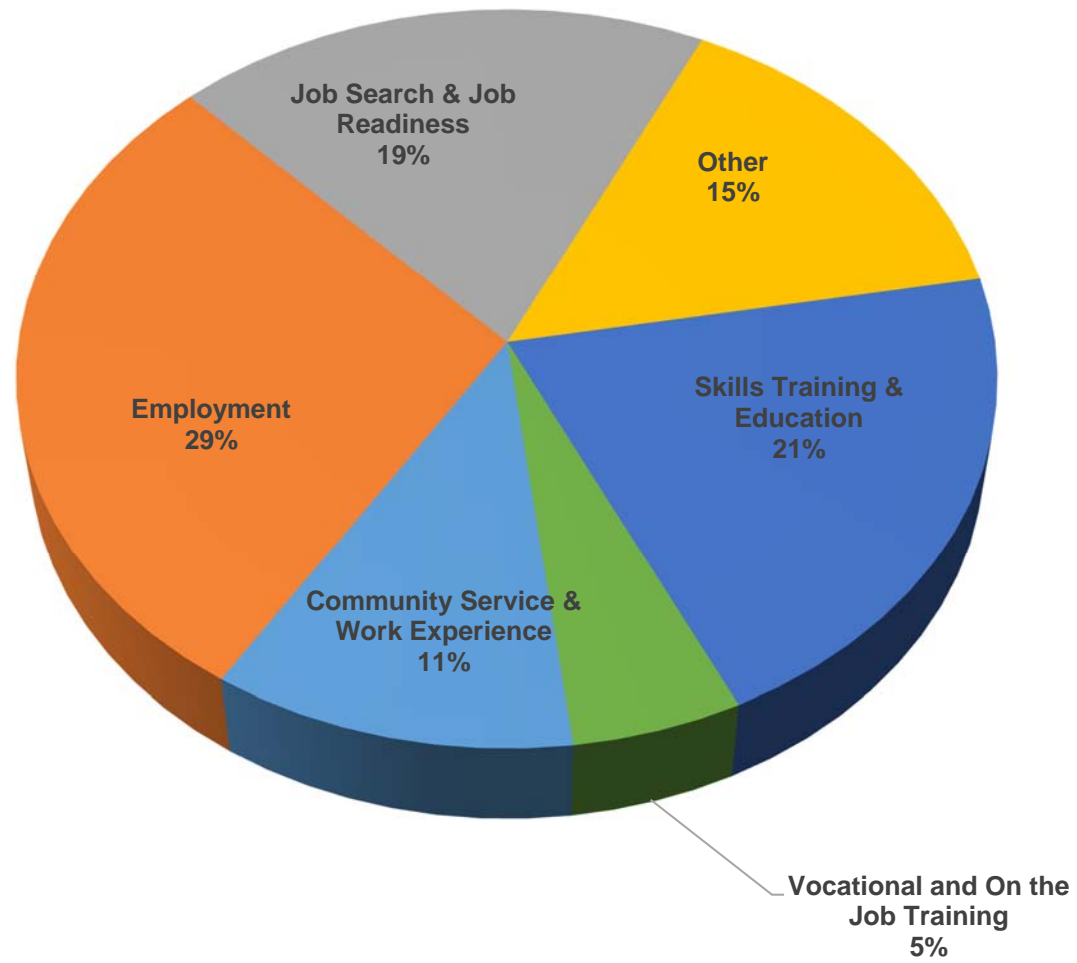
## TANF Cases by Region<sup>6</sup>

Region				Percent Change	
	Mar-17	Feb-18	Mar-18	Mar-17- Mar-18	Feb-18- Mar-18
Region 1- NW	1,179	1,157	1,122	-4.8%	-3.0%
Region 2- NE	1,989	1,908	1,906	-4.2%	-0.1%
Region 3- Central	3,701	3,705	3,615	-2.3%	-2.4%
Region 4- SE	2,156	1,959	1,885	-12.6%	-3.8%
Region 5- SW	2,720	2,560	2,470	-9.2%	-3.5%
Centralized Units	0	5	2	N/A	-60.0%
<b>Statewide Total</b>	<b>11,745</b>	<b>11,294</b>	<b>11,000</b>	<b>-6.3%</b>	<b>-2.6%</b>

## TANF Caseload: SFY-14 to Current

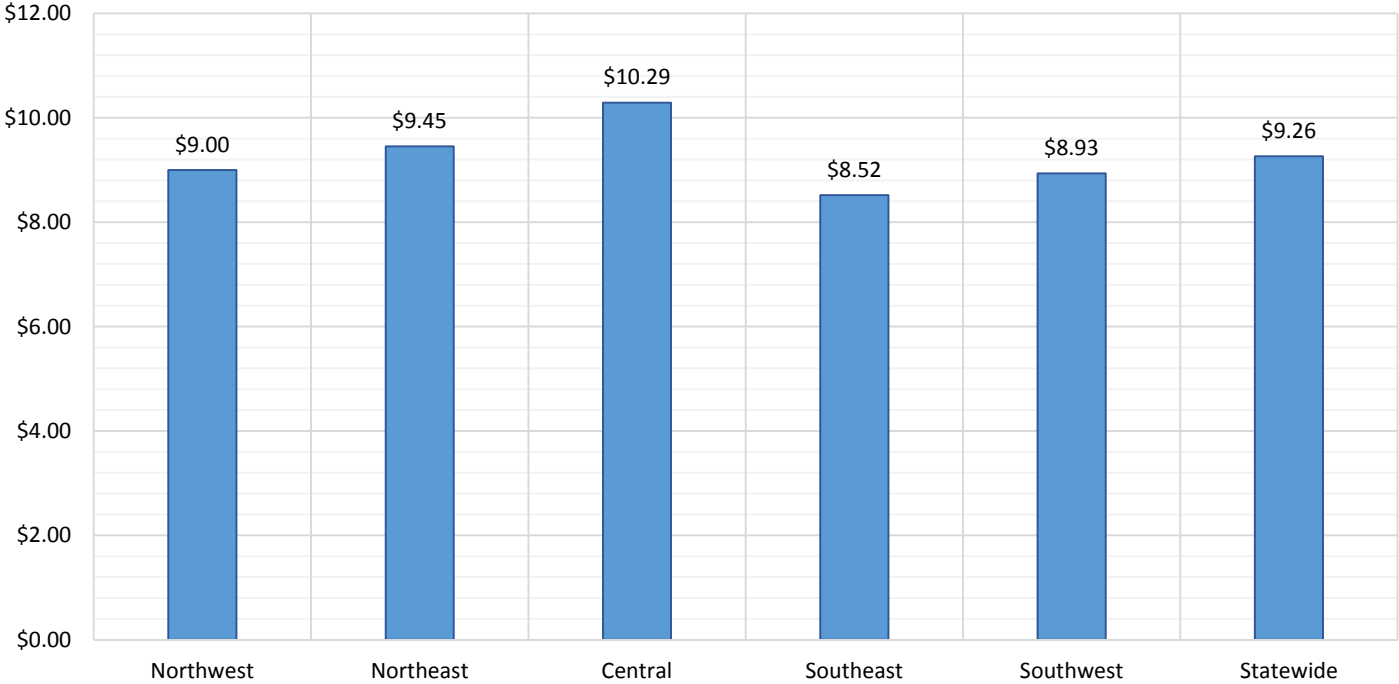


## NM Works Activity Placements on March 31, 2018 as reported by SL Start<sup>14</sup>

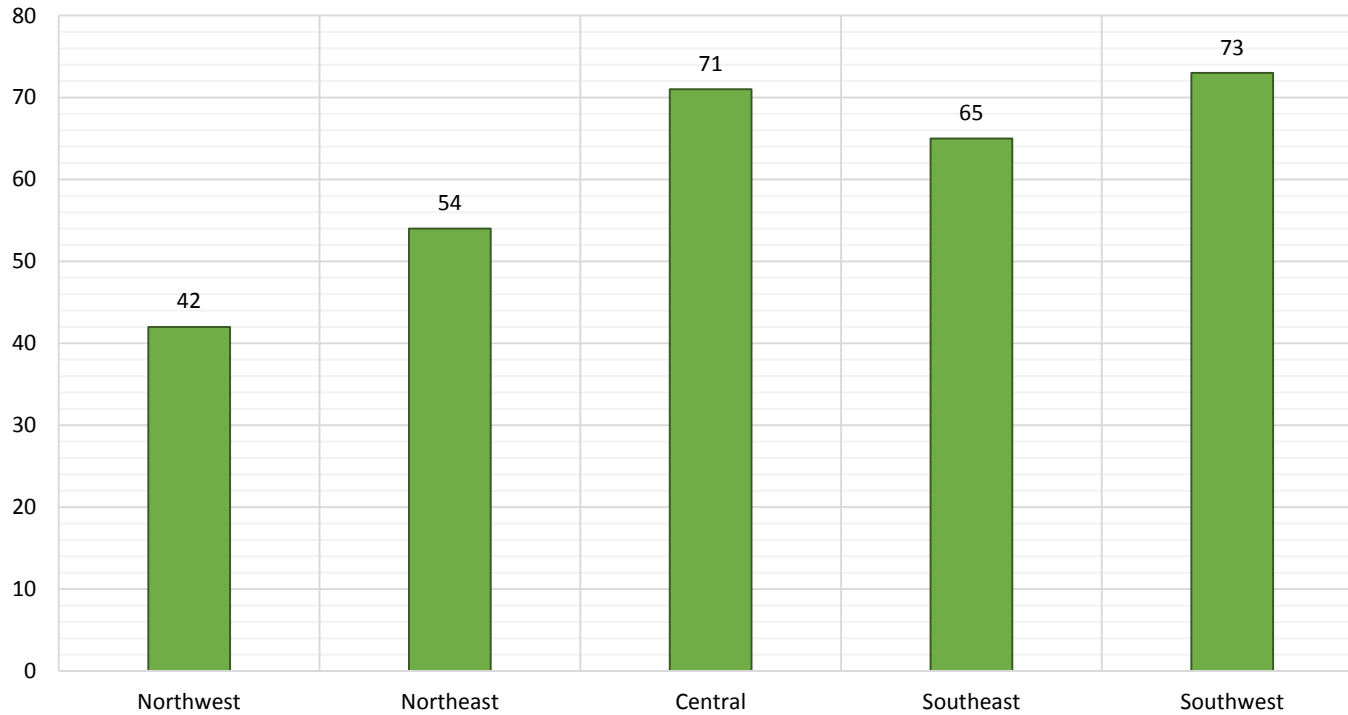




Average Starting Hourly Wage of March 2018 TANF Employments  
as reported by SL Start<sup>15</sup>



Number of New Employments in March 2018 by Region  
as reported by SL Start<sup>15</sup>  
Statewide Total: 305



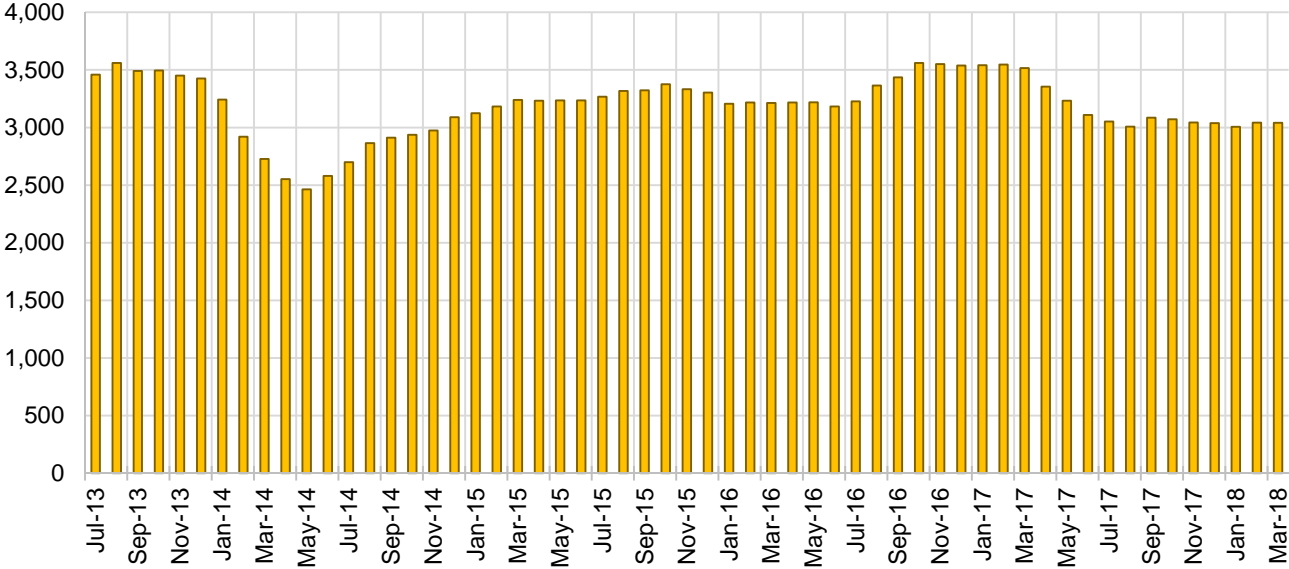
## General Assistance Cases by Field Office<sup>6</sup>

Office	Mar-17	Feb-18	Mar-18	Percent Change	
				Mar-17- Mar-18	Feb-18- Mar-18
Chaves County ISD	146	134	132	-9.6%	-1.5%
Cibola County ISD	49	46	41	-16.3%	-10.9%
Colfax County ISD	36	25	26	-27.8%	4.0%
Curry County ISD	86	78	79	-8.1%	1.3%
East Dona Ana County ISD	122	122	120	-1.6%	-1.6%
Eddy Artesia County ISD	22	25	26	18.2%	4.0%
Eddy Carlsbad County ISD	81	72	73	-9.9%	1.4%
Grant County ISD	82	66	64	-22.0%	-3.0%
Guadalupe County ISD	16	15	16	0.0%	6.7%
Hidalgo County ISD	16	13	14	-12.5%	7.7%
Lea County ISD	101	78	82	-18.8%	5.1%
Lincoln County ISD	43	30	34	-20.9%	13.3%
Luna County ISD	61	56	59	-3.3%	5.4%
McKinley County ISD	28	49	58	107.1%	18.4%
Northeast Bernalillo County ISD	382	354	349	-8.6%	-1.4%
Northwest Bernalillo County ISD	330	309	312	-5.5%	1.0%
Otero County ISD	107	95	92	-14.0%	-3.2%
Quay County ISD	33	24	24	-27.3%	0.0%
Rio Arriba County ISD	105	79	79	-24.8%	0.0%
Roosevelt County ISD	20	0	0	-100.0%	N/A
San Juan County ISD	118	136	148	25.4%	8.8%
San Miguel County ISD	85	76	70	-17.6%	-7.9%
Sandoval County ISD	153	120	128	-16.3%	6.7%
Santa Fe County ISD	219	139	136	-37.9%	-2.2%
Sierra County ISD	35	26	26	-25.7%	0.0%
Socorro County ISD	52	39	40	-23.1%	2.6%
South Dona Ana ISD	62	56	56	-9.7%	0.0%
Southeast Bernalillo County ISD	192	171	171	-10.9%	0.0%
Southwest Bernalillo County ISD	252	209	203	-19.4%	-2.9%
Taos County ISD	71	56	52	-26.8%	-7.1%
Torrance County ISD	64	49	47	-26.6%	-4.1%
Valencia North County ISD	133	112	105	-21.1%	-6.3%
Valencia South County ISD	0	0	0	N/A	N/A
West Dona Ana County ISD	214	184	179	-16.4%	-2.7%
Centralized Units	0	0	0	N/A	N/A
<b>Statewide Total</b>	<b>3,516</b>	<b>3,043</b>	<b>3,041</b>	<b>-13.5%</b>	<b>-0.1%</b>

## General Assistance Cases by Region<sup>6</sup>

				Percent Change	
Region	Mar-17	Feb-18	Mar-18	Mar-17- Mar-18	Feb-18- Mar-18
Region 1 - NW	415	408	418	0.7%	2.5%
Region 2 - NE	718	534	531	-26.0%	-0.6%
Region 3 - Central	1,220	1,092	1,082	-11.3%	-0.9%
Region 4 - SE	499	417	426	-14.6%	2.2%
Region 5 - SW	664	592	584	-12.0%	-1.4%
Centralized Units	0	0	0	N/A	N/A
<b>Statewide Total</b>	<b>3,516</b>	<b>3,043</b>	<b>3,041</b>	<b>-13.5%</b>	<b>-0.1%</b>

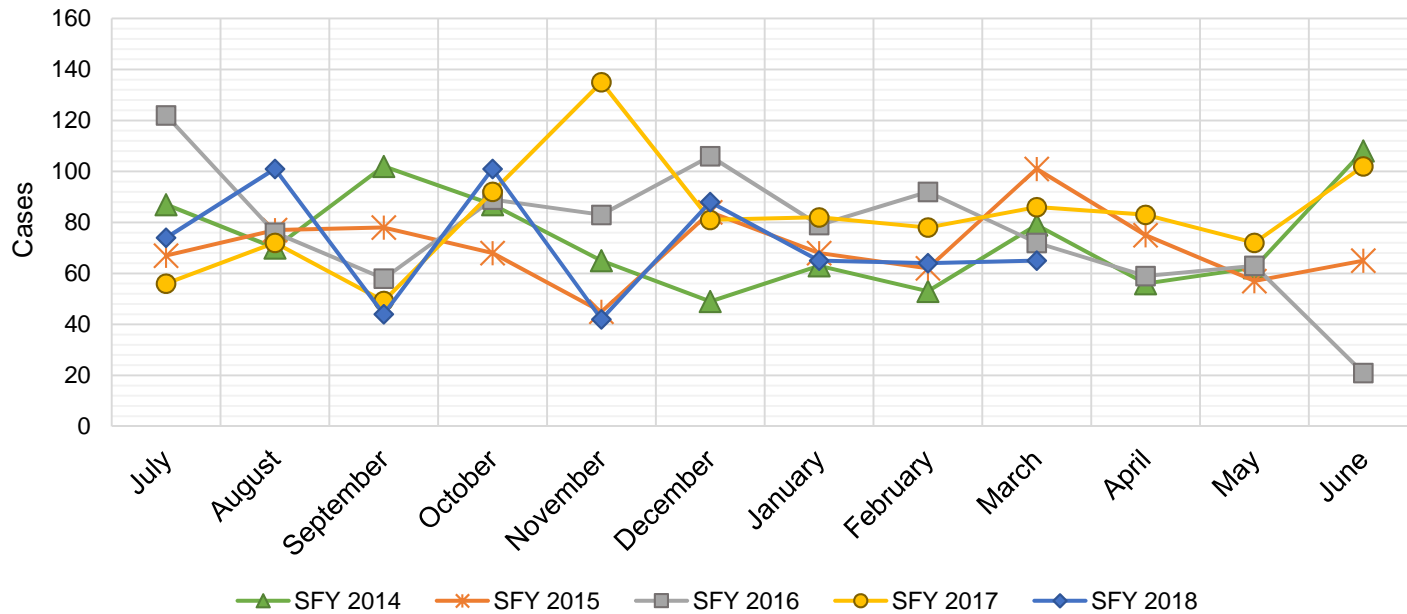
### General Assistance Caseload: SFY-14 to Current



## General Assistance Interim Assistance Reimbursements<sup>16</sup>

SFY 2014			SFY 2015			SFY 2016			SFY 2017			SFY 2018		
	Cases	Expenditures		Cases	Expenditures		Cases	Expenditures		Cases	Expenditures		Cases	Expenditures
Jul-13	87	\$185,368	Jul-14	67	\$144,679	Jul-15	122	\$342,648	Jul-16	56	\$164,970	Jul-17	74	\$241,438
Aug-13	70	\$184,639	Aug-14	77	\$244,233	Aug-15	76	\$245,236	Aug-16	72	\$223,182	Aug-17	101	\$339,301
Sep-13	102	\$268,243	Sep-14	78	\$168,421	Sep-15	58	\$170,093	Sep-16	49	\$158,027	Sep-17	44	\$131,229
Oct-13	87	\$165,578	Oct-14	68	\$182,265	Oct-15	89	\$277,912	Oct-16	92	\$257,830	Oct-17	101	\$335,752
Nov-13	65	\$139,197	Nov-14	45	\$134,482	Nov-15	83	\$238,948	Nov-16	135	\$402,305	Nov-17	42	\$139,572
Dec-13	49	\$147,853	Dec-14	84	\$239,926	Dec-15	106	\$388,102	Dec-16	81	\$227,569	Dec-17	88	\$245,453
Jan-14	63	\$178,944	Jan-15	68	\$227,066	Jan-16	79	\$239,263	Jan-17	82	\$274,050	Jan-18	65	\$258,239
Feb-14	53	\$130,352	Feb-15	62	\$159,564	Feb-16	92	\$296,332	Feb-17	78	\$227,569	Feb-18	64	\$195,815
Mar-14	79	\$176,756	Mar-15	101	\$317,899	Mar-16	72	\$254,360	Mar-17	86	\$278,219	Mar-18	65	\$172,188
Apr-14	56	\$155,245	Apr-15	75	\$199,038	Apr-16	59	\$208,631	Apr-17	83	\$267,187	Apr-18		
May-14	62	\$138,827	May-15	57	\$167,383	May-16	63	\$182,241	May-17	72	\$232,836	May-18		
Jun-14	108	\$241,016	Jun-15	65	\$188,159	Jun-16	21	\$51,760	Jun-17	102	\$306,228	Jun-18		

TOTAL	881	\$2,112,017	847	\$2,373,115	920	\$2,895,525	988	\$3,019,972	644	\$2,058,987
AVERAGE	73	\$176,001	71	\$197,760	77	\$241,294	82	\$251,664	72	\$228,776



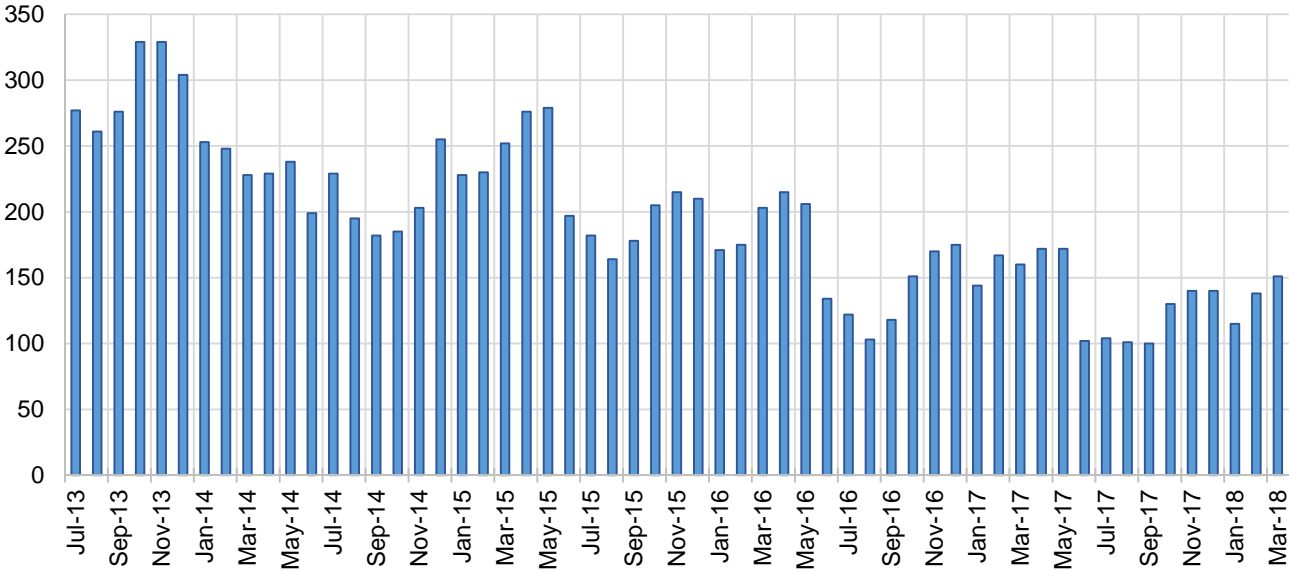
## Education Works Cases by Field Office<sup>6</sup>

Office				Percent Change	
	Mar-17	Feb-18	Mar-18	Mar-17- Mar-18	Feb-18- Mar-18
Chaves County ISD	2	2	3	50.0%	50.0%
Cibola County ISD	0	1	1	N/A	0.0%
Colfax County ISD	1	0	0	-100.0%	N/A
Curry County ISD	3	5	6	100.0%	20.0%
East Dona Ana County ISD	6	11	11	83.3%	0.0%
Eddy Artesia County ISD	1	3	3	200.0%	0.0%
Eddy Carlsbad County ISD	2	2	3	50.0%	50.0%
Grant County ISD	4	10	10	150.0%	0.0%
Guadalupe County ISD	0	0	0	N/A	N/A
Hidalgo County ISD	0	0	0	N/A	N/A
Lea County ISD	7	4	3	-57.1%	-25.0%
Lincoln County ISD	0	1	1	N/A	0.0%
Luna County ISD	2	3	3	50.0%	0.0%
McKinley County ISD	0	0	0	N/A	N/A
Northeast Bernalillo County ISD	28	12	10	-64.3%	-16.7%
Northwest Bernalillo County ISD	13	9	11	-15.4%	22.2%
Otero County ISD	1	3	3	200.0%	0.0%
Quay County ISD	1	0	0	-100.0%	N/A
Rio Arriba County ISD	2	2	5	150.0%	150.0%
Roosevelt County ISD	2	0	0	-100.0%	N/A
San Juan County ISD	5	3	2	-60.0%	-33.3%
San Miguel County ISD	7	2	5	-28.6%	150.0%
Sandoval County ISD	14	13	14	0.0%	7.7%
Santa Fe County ISD	7	13	13	85.7%	0.0%
Sierra County ISD	0	0	1	N/A	N/A
Socorro County ISD	2	2	2	0.0%	0.0%
South Dona Ana ISD	16	18	18	12.5%	0.0%
Southeast Bernalillo County ISD	8	4	4	-50.0%	0.0%
Southwest Bernalillo County ISD	12	7	7	-41.7%	0.0%
Taos County ISD	0	1	0	N/A	-100.0%
Torrance County ISD	1	0	0	-100.0%	N/A
Valencia North County ISD	1	0	0	-100.0%	N/A
Valencia South County ISD	0	0	0	N/A	N/A
West Dona Ana County ISD	12	7	12	0.0%	71.4%
Centralized Units	0	0	0	N/A	N/A
Statewide Total	160	138	151	-5.6%	9.4%

## Education Works Cases by Region<sup>6</sup>

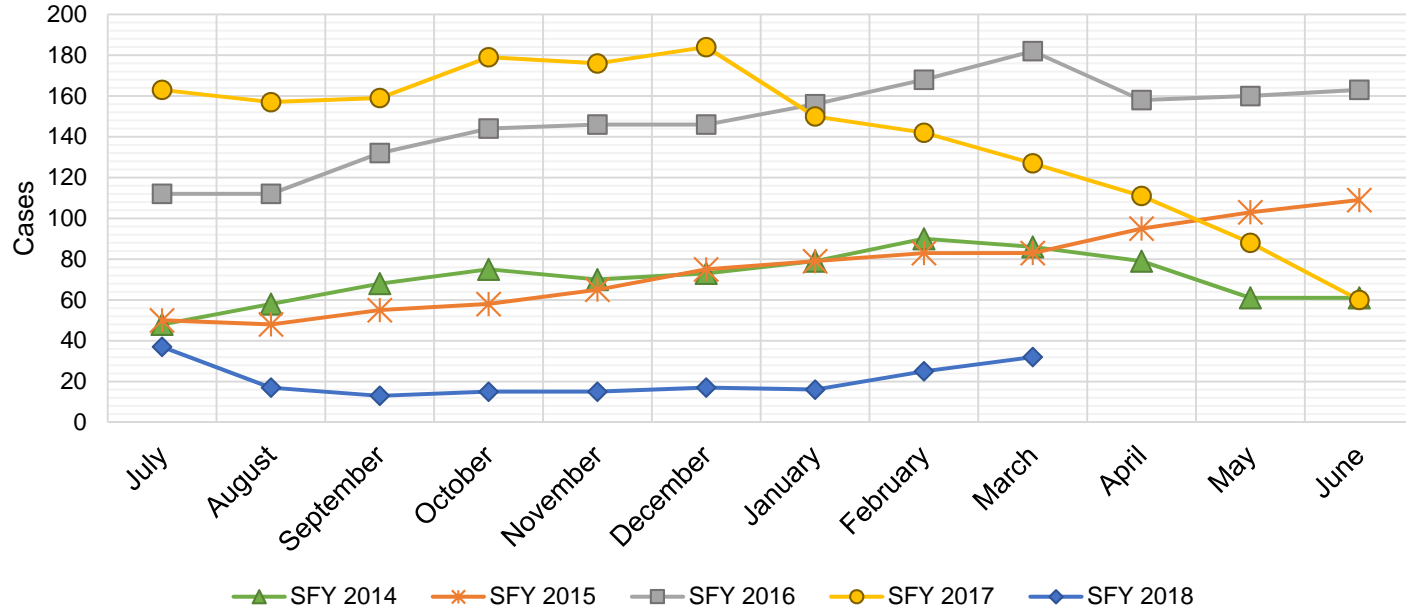
				Percent Change	
Region	Mar-17	Feb-18	Mar-18	Mar-17- Mar-18	Feb-18- Mar-18
Region 1 - NW	8	6	6	-25.0%	0.0%
Region 2 - NE	32	31	37	15.6%	19.4%
Region 3 - Central	62	32	32	-48.4%	0.0%
Region 4 - SE	17	17	19	11.8%	11.8%
Region 5 - SW	41	52	57	39.0%	9.6%
Centralized Units	0	0	0	N/A	N/A
Statewide Total	160	138	151	-5.6%	9.4%

**Education Works Caseload: SFY-14 to Current**



## Refugee Cash Assistance

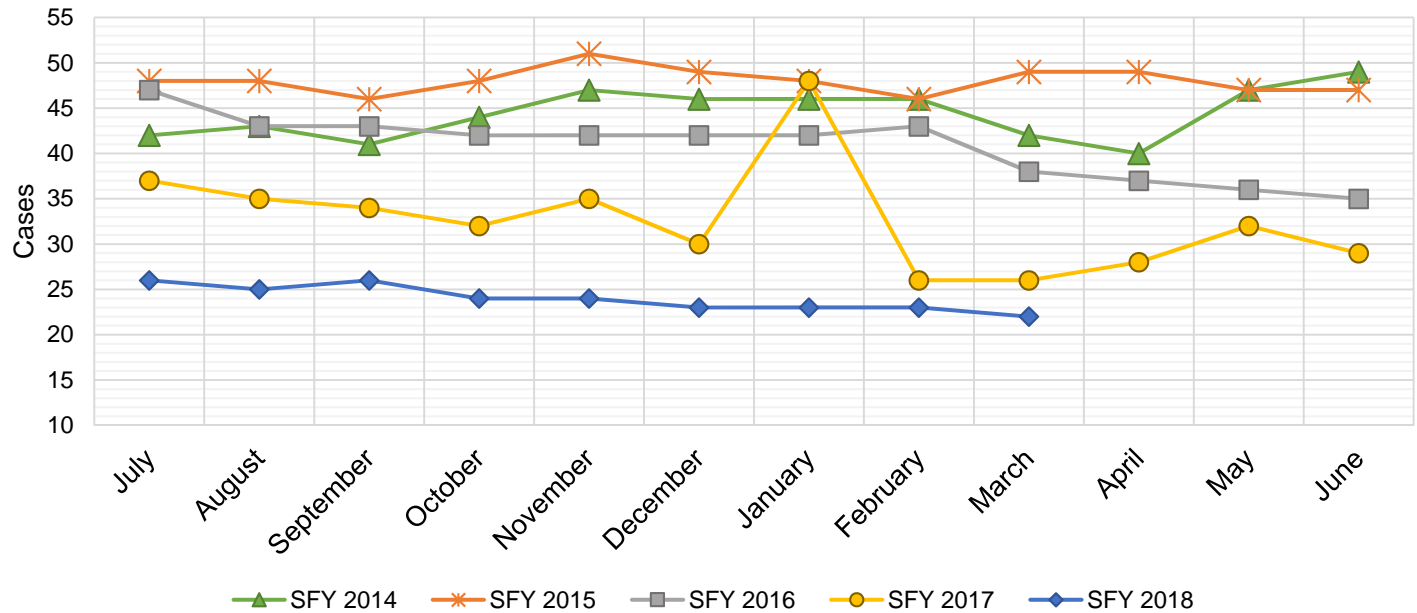
SFY 2014 <sup>12</sup>			SFY 2015 <sup>8,12,9</sup>			SFY 2016 <sup>8,9</sup>			SFY 2017 <sup>8,9</sup>			SFY 2018 <sup>8,9</sup>		
Cases	Expenditures		Cases	Expenditures		Cases	Expenditures		Cases	Expenditures		Cases	Expenditures	
Jul-13	48	\$12,013	Jul-14	50	\$11,679	Jul-15	112	\$27,516	Jul-16	163	\$39,756	Jul-17	37	\$9,981
Aug-13	58	\$16,129	Aug-14	48	\$11,760	Aug-15	112	\$27,438	Aug-16	157	\$40,115	Aug-17	17	\$4,704
Sep-13	68	\$19,061	Sep-14	55	\$13,094	Sep-15	132	\$31,321	Sep-16	159	\$39,359	Sep-17	13	\$3,159
Oct-13	75	\$20,962	Oct-14	58	\$13,726	Oct-15	144	\$36,153	Oct-16	179	\$41,520	Oct-17	15	\$3,543
Nov-13	70	\$21,880	Nov-14	65	\$16,461	Nov-15	146	\$36,515	Nov-16	176	\$45,434	Nov-17	15	\$4,263
Dec-13	73	\$22,053	Dec-14	75	\$18,699	Dec-15	146	\$35,763	Dec-16	184	\$46,673	Dec-17	17	\$4,795
Jan-14	79	\$22,670	Jan-15	79	\$19,009	Jan-16	156	\$38,686	Jan-17	150	\$38,790	Jan-18	16	\$4,166
Feb-14	90	\$23,227	Feb-15	83	\$21,349	Feb-16	168	\$41,368	Feb-17	142	\$37,956	Feb-18	25	\$5,723
Mar-14	86	\$21,808	Mar-15	83	\$20,730	Mar-16	182	\$45,307	Mar-17	127	\$33,066	Mar-18	32	\$7,636
Apr-14	79	\$20,109	Apr-15	95	\$23,495	Apr-16	158	\$41,143	Apr-17	111	\$29,183	Apr-18		
May-14	61	\$15,703	May-15	103	\$25,363	May-16	160	\$38,332	May-17	88	\$23,343	May-18		
Jun-14	61	\$14,783	Jun-15	109	\$27,958	Jun-16	163	\$39,856	Jun-17	60	\$15,538	Jun-18		
<b>TOTAL</b>	<b>848</b>	<b>\$230,398</b>	<b>903</b>	<b>\$223,323</b>		<b>1,779</b>	<b>\$439,397</b>		<b>1,696</b>	<b>\$430,732</b>		<b>187</b>	<b>\$47,970</b>	
<b>AVERAGE</b>	<b>71</b>	<b>\$19,200</b>	<b>75</b>	<b>\$18,610</b>		<b>148</b>	<b>\$36,616</b>		<b>141</b>	<b>\$35,894</b>		<b>21</b>	<b>\$5,330</b>	





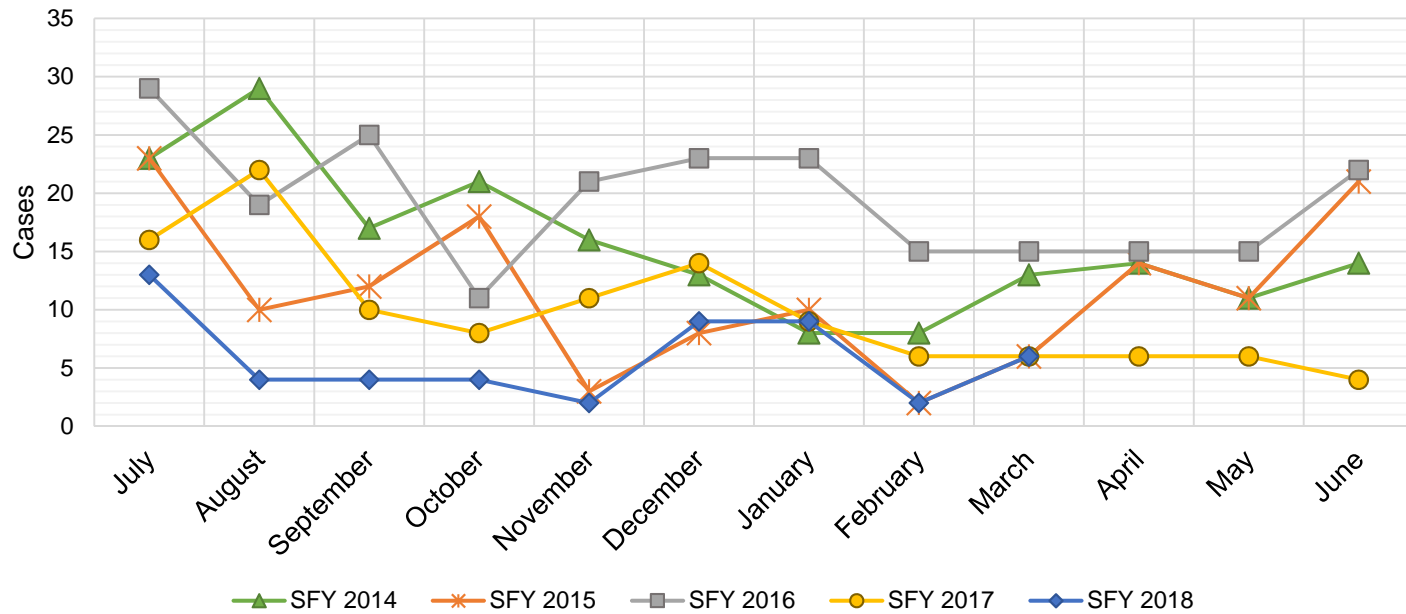
## State Supplement for Residential Care

SFY 2014 <sup>12</sup>			SFY 2015 <sup>12,9</sup>			SFY 2016 <sup>9</sup>			SFY 2017 <sup>9</sup>			SFY 2018 <sup>9</sup>		
Cases	Expenditures		Cases	Expenditures		Cases	Expenditures		Cases	Expenditures		Cases	Expenditures	
Jul-13	42	\$4,400	Jul-14	48	\$4,700	Jul-15	47	\$4,700	Jul-16	37	\$3,700	Jul-17	26	\$2,700
Aug-13	43	\$4,300	Aug-14	48	\$5,000	Aug-15	43	\$4,900	Aug-16	35	\$3,500	Aug-17	25	\$2,500
Sep-13	41	\$4,700	Sep-14	46	\$4,600	Sep-15	43	\$4,500	Sep-16	34	\$3,400	Sep-17	26	\$2,700
Oct-13	44	\$4,500	Oct-14	48	\$4,600	Oct-15	42	\$4,400	Oct-16	32	\$3,200	Oct-17	24	\$2,500
Nov-13	47	\$4,700	Nov-14	51	\$5,600	Nov-15	42	\$4,200	Nov-16	35	\$3,500	Nov-17	24	\$2,400
Dec-13	46	\$4,600	Dec-14	49	\$5,000	Dec-15	42	\$4,200	Dec-16	30	\$3,000	Dec-17	23	\$2,200
Jan-14	46	\$4,700	Jan-15	48	\$4,900	Jan-16	42	\$4,200	Jan-17	48	\$4,800	Jan-18	23	\$2,400
Feb-14	46	\$4,700	Feb-15	46	\$4,800	Feb-16	43	\$4,300	Feb-17	26	\$2,600	Feb-18	23	\$2,300
Mar-14	42	\$4,500	Mar-15	49	\$4,800	Mar-16	38	\$3,800	Mar-17	26	\$2,600	Mar-18	22	\$2,400
Apr-14	40	\$4,200	Apr-15	49	\$5,400	Apr-16	37	\$3,700	Apr-17	28	\$2,800	Apr-18		
May-14	47	\$5,000	May-15	47	\$4,700	May-16	36	\$3,600	May-17	32	\$3,200	May-18		
Jun-14	49	\$4,900	Jun-15	47	\$5,300	Jun-16	35	\$3,500	Jun-17	29	\$2,900	Jun-18		
<b>TOTAL</b>	<b>533</b>	<b>\$55,200</b>	<b>576</b>	<b>\$59,400</b>		<b>490</b>	<b>\$50,000</b>		<b>392</b>	<b>\$39,200</b>		<b>216</b>	<b>\$22,100</b>	
<b>AVERAGE</b>	<b>44</b>	<b>\$4,600</b>	<b>48</b>	<b>\$4,950</b>		<b>41</b>	<b>\$4,167</b>		<b>33</b>	<b>\$3,267</b>		<b>24</b>	<b>\$2,456</b>	



## TANF Diversion Payments

SFY 2014 <sup>12</sup>			SFY 2015 <sup>12,9</sup>			SFY 2016 <sup>9</sup>			SFY 2017 <sup>9</sup>			SFY 2018 <sup>9</sup>		
	Cases	Expenditures		Cases	Expenditures		Cases	Expenditures		Cases	Expenditures		Cases	Expenditures
Jul-13	23	\$46,500	Jul-14	23	\$48,098	Jul-15	29	\$62,074	Jul-16	16	\$30,843	Jul-17	13	\$26,500
Aug-13	29	\$54,500	Aug-14	10	\$21,810	Aug-15	19	\$33,584	Aug-16	22	\$42,731	Aug-17	4	\$12,000
Sep-13	17	\$36,500	Sep-14	12	\$23,500	Sep-15	25	\$47,977	Sep-16	10	\$21,000	Sep-17	4	\$4,000
Oct-13	21	\$42,500	Oct-14	18	\$30,589	Oct-15	11	\$20,500	Oct-16	8	\$16,744	Oct-17	4	\$16,000
Nov-13	16	\$28,953	Nov-14	3	\$4,411	Nov-15	21	\$45,500	Nov-16	11	\$24,500	Nov-17	2	\$15,500
Dec-13	13	\$25,500	Dec-14	8	\$14,634	Dec-15	23	\$45,389	Dec-16	14	\$26,611	Dec-17	9	\$17,500
Jan-14	8	\$16,000	Jan-15	10	\$18,000	Jan-16	23	\$41,874	Jan-17	9	\$18,500	Jan-18	9	\$21,731
Feb-14	8	\$16,994	Feb-15	2	\$5,500	Feb-16	15	\$28,500	Feb-17	6	\$12,000	Feb-18	2	\$7,731
Mar-14	13	\$27,396	Mar-15	6	\$12,000	Mar-16	15	\$27,008	Mar-17	6	\$11,000	Mar-18	6	\$8,496
Apr-14	14	\$28,000	Apr-15	14	\$26,000	Apr-16	15	\$31,389	Apr-17	6	\$12,000	Apr-18		
May-14	11	\$20,500	May-15	11	\$21,500	May-16	15	\$31,916	May-17	6	\$11,500	May-18		
Jun-14	14	\$29,911	Jun-15	21	\$40,039	Jun-16	22	\$43,000	Jun-17	4	\$13,500	Jun-18		
TOTAL	187	\$373,254	138	\$266,081	233	\$458,711	118	\$240,929	53	\$129,458				
AVERAGE	16	\$31,105	12	\$22,173	19	\$38,226	10	\$20,077	6	\$14,384				

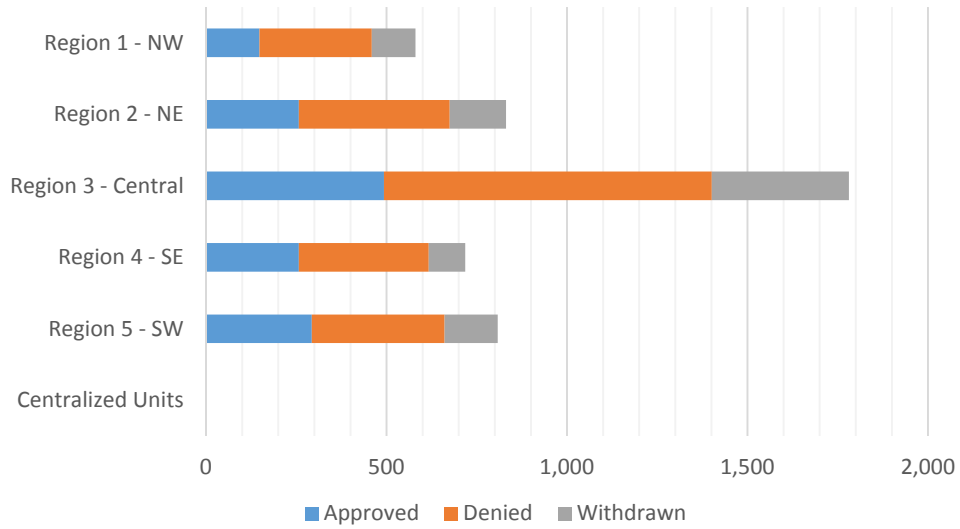


**Cash Assistance Applications by Field Office<sup>4,11</sup>**  
**March 2018**

Office	Approved	Denied	Withdrawn	Total Cases Processed
Chaves County ISD	69	92	37	198
Cibola County ISD	18	26	12	56
Colfax County ISD	10	23	7	40
Curry County ISD	67	94	18	179
East Dona Ana County ISD	48	78	36	162
Eddy Artesia County ISD	13	22	6	41
Eddy Carlsbad County ISD	25	56	16	97
Grant County ISD	32	38	15	85
Guadalupe County ISD	3	5	0	8
Hidalgo County ISD	0	0	0	0
Lea County ISD	65	76	18	159
Lincoln County ISD	18	18	6	42
Luna County ISD	24	26	16	66
McKinley County ISD	11	56	18	85
Northeast Bernalillo County ISD	136	292	144	572
Northwest Bernalillo County ISD	117	218	115	450
Otero County ISD	41	65	17	123
Quay County ISD	12	6	6	24
Rio Arriba County ISD	54	60	19	133
Roosevelt County ISD	0	2	0	2
San Juan County ISD	52	123	44	219
San Miguel County ISD	24	39	19	82
Sandoval County ISD	82	146	37	265
Santa Fe County ISD	56	110	44	210
Sierra County ISD	6	12	5	23
Socorro County ISD	12	21	10	43
South Dona Ana ISD	57	45	13	115
Southeast Bernalillo County ISD	114	164	57	335
Southwest Bernalillo County ISD	102	202	57	361
Taos County ISD	16	29	24	69
Torrance County ISD	24	32	7	63
Valencia North County ISD	49	73	32	154
Valencia South County ISD	0	0	0	0
West Dona Ana County ISD	91	116	50	257
Centralized Units	0	0	0	0
<b>Statewide Total</b>	<b>1,448</b>	<b>2,365</b>	<b>905</b>	<b>4,718</b>

**Cash Assistance Applications by Region<sup>4,11</sup>**  
**March 2018**

	Approved	Denied	Withdrawn	Total Cases Processed
Region				
Region 1 - NW	148	311	121	580
Region 2 - NE	257	418	156	831
Region 3 - Central	493	908	380	1,781
Region 4 - SE	257	360	101	718
Region 5 - SW	293	368	147	808
Centralized Units	0	0	0	0
<b>Statewide Total</b>	<b>1,448</b>	<b>2,365</b>	<b>905</b>	<b>4,718</b>



**Children Youth and Families Department  
Children Receiving Child Care Assistance Subsidies By County**

County	Mar 2017	Apr 2017	May 2017	June 2017	July 2017	Aug 2017	Sep 2017	Oct 2017	Nov 2017	Dec 2017	Jan 2018	Feb 2018	Mar 2018	Change Fr. Last Year Cases	Percent
<i>Bernalillo</i>	7,170	7,385	7,519	7,895	7,547	7,616	8,154	7,848	7,985	7,903	7,801	7,739	7,824	654	9.1%
<b>Catron</b>	<b>0</b>	<b>0</b>	<b>0</b>	<b>0</b>	<b>0</b>	<b>0</b>	<b>0</b>	<b>0</b>	<b>0</b>	<b>5</b>	<b>5</b>	<b>0</b>	<b>0</b>	<b>0</b>	0.0%
<i>Chaves</i>	759	768	796	860	826	821	889	884	870	855	843	823	807	48	6.3%
<b>Cibola</b>	<b>282</b>	<b>294</b>	<b>299</b>	<b>305</b>	<b>293</b>	<b>294</b>	<b>311</b>	<b>304</b>	<b>303</b>	<b>296</b>	<b>291</b>	<b>289</b>	<b>277</b>	<b>-5</b>	-1.8%
<i>Colfax</i>	41	38	39	46	46	41	44	41	42	42	47	50	51	10	24.4%
<b>Curry</b>	<b>398</b>	<b>437</b>	<b>445</b>	<b>480</b>	<b>486</b>	<b>459</b>	<b>422</b>	<b>446</b>	<b>467</b>	<b>470</b>	<b>493</b>	<b>514</b>	<b>517</b>	<b>119</b>	29.9%
<i>De Baca</i>	12	13	14	14	12	11	11	9	11	10	10	8	4	-8	-66.7%
<b>Dona Ana</b>	<b>4,084</b>	<b>4,217</b>	<b>4,309</b>	<b>4,499</b>	<b>4,509</b>	<b>4,473</b>	<b>4,693</b>	<b>4,585</b>	<b>4,581</b>	<b>4,492</b>	<b>4,349</b>	<b>4,382</b>	<b>4,322</b>	<b>238</b>	5.8%
<i>Eddy</i>	283	294	301	306	292	287	313	297	297	263	256	257	240	-43	-15.2%
<b>Grant</b>	<b>142</b>	<b>153</b>	<b>159</b>	<b>161</b>	<b>134</b>	<b>114</b>	<b>164</b>	<b>161</b>	<b>157</b>	<b>159</b>	<b>139</b>	<b>127</b>	<b>133</b>	<b>-9</b>	-6.3%
<i>Guadalupe</i>	17	17	16	16	16	16	15	16	16	16	14	11	15	-2	-11.8%
<b>Harding</b>	<b>0</b>	<b>0</b>	<b>0</b>	<b>0</b>	<b>0</b>	<b>0</b>	<b>0</b>	<b>0</b>	<b>0</b>	<b>0</b>	<b>0</b>	<b>0</b>	<b>0</b>	<b>0</b>	0.0%
<i>Hidalgo</i>	35	35	39	40	37	37	39	39	35	32	32	36	40	5	14.3%
<b>Lea</b>	<b>729</b>	<b>748</b>	<b>781</b>	<b>818</b>	<b>837</b>	<b>856</b>	<b>954</b>	<b>909</b>	<b>895</b>	<b>833</b>	<b>824</b>	<b>827</b>	<b>855</b>	<b>126</b>	17.3%
<i>Lincoln</i>	135	141	136	147	146	145	150	147	136	132	129	129	128	-7	-5.2%
<b>Los Alamos</b>	<b>13</b>	<b>15</b>	<b>16</b>	<b>16</b>	<b>17</b>	<b>16</b>	<b>19</b>	<b>18</b>	<b>14</b>	<b>13</b>	<b>13</b>	<b>14</b>	<b>15</b>	<b>2</b>	15.4%
<i>Luna</i>	159	164	177	188	165	176	177	177	166	171	167	161	166	7	4.4%
<b>McKinley</b>	<b>171</b>	<b>182</b>	<b>170</b>	<b>171</b>	<b>145</b>	<b>136</b>	<b>161</b>	<b>165</b>	<b>167</b>	<b>166</b>	<b>168</b>	<b>156</b>	<b>158</b>	<b>-13</b>	-7.6%
<i>Mora</i>	20	21	21	21	18	18	19	18	20	21	20	18	20	0	0.0%
<b>Otero</b>	<b>416</b>	<b>481</b>	<b>498</b>	<b>532</b>	<b>500</b>	<b>491</b>	<b>530</b>	<b>525</b>	<b>518</b>	<b>531</b>	<b>519</b>	<b>533</b>	<b>532</b>	<b>116</b>	27.9%
<i>Out of State</i>	14	12	11	10	14	11	12	14	12	3	9	12	8	-6	-42.9%
<b>Quay</b>	<b>40</b>	<b>38</b>	<b>35</b>	<b>39</b>	<b>35</b>	<b>36</b>	<b>39</b>	<b>35</b>	<b>35</b>	<b>35</b>	<b>35</b>	<b>36</b>	<b>36</b>	<b>-4</b>	-10.0%
<i>Rio Arriba</i>	144	137	140	149	144	145	159	163	166	165	154	151	152	8	5.6%
<b>Roosevelt</b>	<b>125</b>	<b>123</b>	<b>118</b>	<b>134</b>	<b>123</b>	<b>125</b>	<b>137</b>	<b>120</b>	<b>120</b>	<b>127</b>	<b>119</b>	<b>117</b>	<b>113</b>	<b>-12</b>	-9.6%
<i>San Juan</i>	911	946	956	997	979	960	1,132	1,050	1,043	1,039	1,005	1,036	1,026	115	12.6%
<b>San Miguel</b>	<b>373</b>	<b>366</b>	<b>367</b>	<b>382</b>	<b>366</b>	<b>356</b>	<b>362</b>	<b>368</b>	<b>371</b>	<b>372</b>	<b>357</b>	<b>353</b>	<b>362</b>	<b>-11</b>	-2.9%
<i>Sandoval</i>	873	878	890	938	932	948	974	859	839	836	794	774	765	-108	-12.4%
<b>Santa Fe</b>	<b>477</b>	<b>490</b>	<b>499</b>	<b>536</b>	<b>534</b>	<b>520</b>	<b>580</b>	<b>554</b>	<b>547</b>	<b>526</b>	<b>514</b>	<b>523</b>	<b>506</b>	<b>29</b>	6.1%
<i>Sierra</i>	52	52	58	69	74	76	79	86	80	77	59	76	67	15	28.8%
<b>Socorro</b>	<b>61</b>	<b>59</b>	<b>59</b>	<b>58</b>	<b>56</b>	<b>63</b>	<b>63</b>	<b>68</b>	<b>66</b>	<b>70</b>	<b>70</b>	<b>70</b>	<b>73</b>	<b>12</b>	19.7%
<i>Taos</i>	112	118	120	127	132	137	145	139	142	141	141	139	139	27	24.1%
<b>Torrance</b>	<b>87</b>	<b>91</b>	<b>96</b>	<b>101</b>	<b>107</b>	<b>117</b>	<b>106</b>	<b>99</b>	<b>115</b>	<b>115</b>	<b>114</b>	<b>110</b>	<b>104</b>	<b>17</b>	19.5%
<i>Union</i>	5	5	4	4	5	5	5	4	6	5	5	5	5	0	0.0%
<b>Valencia</b>	<b>583</b>	<b>629</b>	<b>658</b>	<b>678</b>	<b>642</b>	<b>677</b>	<b>714</b>	<b>723</b>	<b>713</b>	<b>678</b>	<b>651</b>	<b>640</b>	<b>634</b>	<b>51</b>	8.7%
<b>Totals</b>	<b>18,723</b>	<b>19,347</b>	<b>19,746</b>	<b>20,737</b>	<b>20,169</b>	<b>20,183</b>	<b>21,572</b>	<b>20,871</b>	<b>20,935</b>	<b>20,599</b>	<b>20,147</b>	<b>20,116</b>	<b>20,094</b>	<b>1,371</b>	7.3%

**CHILDREN YOUTH AND FAMILIES DEPARTMENT  
CHILD CARE ASSISTANCE ELIGIBILITY PROGRAMS**

MONTH	APR'17	MAY'17	JUNE'17	JULY'17	AUG'17	SEP'17	OCT'17	NOV'17	DEC'17	JAN'18	FEB'18	MAR'18
<b>TANF (Child Care Priority 1 Clients)</b>												
CLIENTS	2,047	2,121	2,300	2,302	2,353	2,455	2,419	2,374	2,315	2,240	2,153	2,178
COST	\$ 1,148,841	\$ 1,186,719	\$ 1,271,336	\$ 1,323,182	\$ 1,381,202	\$ 1,364,956	\$ 1,423,748	\$ 1,411,060	\$ 1,382,073	\$ 1,317,716	\$ 1,272,232	\$ 1,325,003
TANF AVERAGE COST	\$ 561	\$ 560	\$ 553	\$ 575	\$ 587	\$ 556	\$ 589	\$ 594	\$ 597	\$ 588	\$ 591	\$ 608
<b>TRANSITION OFF TANF (Child Care Priority 2 Clients)</b>												
CLIENTS	202	205	213	197	189	179	181	154	152	141	138	142
COST	\$ 101,314	\$ 104,115	\$ 111,219	\$ 106,835	\$ 103,813	\$ 93,119	\$ 96,629	\$ 81,975	\$ 81,337	\$ 74,507	\$ 72,696	\$ 77,354
TRAN OFF TANF AVG COST	\$ 502	\$ 508	\$ 522	\$ 542	\$ 549	\$ 520	\$ 534	\$ 532	\$ 535	\$ 528	\$ 527	\$ 545
<b>TANF ELIGIBLE (Child Care Priority 1B Clients at or below 100% of the Federal Poverty Level)</b>												
CLIENTS	7,819	8,075	8,472	8,193	8,254	9,064	8,899	8,900	8,729	8,435	8,374	8,373
COST	\$ 4,194,223	\$ 4,302,207	\$ 4,448,742	\$ 4,521,900	\$ 4,657,974	\$ 4,755,691	\$ 5,021,574	\$ 5,099,212	\$ 4,994,373	\$ 4,722,370	\$ 4,675,492	\$ 4,802,863
TANF ELIGIBLE AVG COST	\$ 536	\$ 533	\$ 525	\$ 552	\$ 564	\$ 525	\$ 564	\$ 573	\$ 572	\$ 560	\$ 558	\$ 574
<b>INCOME ELIGIBLE (Child Care Priority 3, and Priority 4 Clients )</b>												
CLIENTS	7,612	7,632	7,832	7,426	7,337	7,749	7,464	7,578	7,580	7,665	7,868	7,944
COST	\$ 3,733,797	\$ 3,757,012	\$ 3,843,887	\$ 3,805,939	\$ 3,838,152	\$ 3,779,202	\$ 3,760,398	\$ 3,838,169	\$ 3,824,777	\$ 3,785,466	\$ 3,929,313	\$ 4,010,729
INCOME ELIG AVG COST	\$ 491	\$ 492	\$ 491	\$ 513	\$ 523	\$ 488	\$ 504	\$ 506	\$ 505	\$ 494	\$ 499	\$ 505
<b>AT-RISK CHILD PROTECTIVE SERVICES CHILD CARE PILOT (Priority 5 Clients)</b>												
CLIENTS	679	733	881	1,021	1,073	1,152	1,032	1,027	935	772	689	578
COST	\$ 396,799	\$ 449,007	\$ 535,980	\$ 622,872	\$ 686,919	\$ 723,334	\$ 684,194	\$ 678,258	\$ 628,399	\$ 509,028	\$ 486,780	\$ 381,318
CPS AVG COST	\$ 584	\$ 613	\$ 608	\$ 610	\$ 640	\$ 628	\$ 663	\$ 660	\$ 672	\$ 659	\$ 707	\$ 660
<b>CHILD PROTECTIVE SERVICES (Child Care CPS Clients)</b>												
CLIENTS	988	980	1,039	1,030	977	973	876	902	888	894	894	879
COST	\$ 652,529	\$ 627,325	\$ 649,417	\$ 652,471	\$ 663,134	\$ 623,416	\$ 567,608	\$ 585,009	\$ 573,312	\$ 583,824	\$ 602,246	\$ 605,523
CPS AVG COST	\$ 660	\$ 640	\$ 625	\$ 633	\$ 679	\$ 641	\$ 648	\$ 649	\$ 646	\$ 653	\$ 674	\$ 689
<b>GRAND TOTAL - ALL CHILD CARE PROGRAMS</b>												
CLIENTS	18,723	19,347	19,746	20,737	20,169	20,183	20,871	20,935	20,599	20,147	20,116	20,094
COST	\$ 9,783,471	\$ 10,227,503	\$ 10,426,385	\$ 10,860,581	\$ 11,033,199	\$ 11,331,194	\$ 11,554,151	\$ 11,693,682	\$ 11,484,272	\$ 10,992,912	\$ 11,038,760	\$ 11,202,789
ALL PROGRAMS AVG COST	\$ 523	\$ 529	\$ 528	\$ 524	\$ 547	\$ 561	\$ 554	\$ 559	\$ 558	\$ 546	\$ 549	\$ 558

## Income Eligibility Guidelines: October 1, 2017 - September 30, 2018

### Federal Poverty Guidelines (FPG) Monthly Income Standards

Supplemental Nutrition Program (SNAP)					
Household Size	100% FPG Net Income	130% FPG Gross Income	165% FPG Gross Income for Categorical Eligibility	Maximum SNAP Monthly Allotment	LIHEAP 150% FPG
1	\$1,005	\$1,307	\$1,659	\$192	\$1,508
2	\$1,354	\$1,760	\$2,233	\$352	\$2,031
3	\$1,702	\$2,213	\$2,808	\$504	\$2,553
4	\$2,050	\$2,665	\$3,383	\$640	\$3,075
5	\$2,399	\$3,118	\$3,958	\$760	\$3,599
6	\$2,747	\$3,571	\$4,532	\$913	\$4,121
7	\$3,095	\$4,024	\$5,107	\$1,009	\$4,643
8	\$3,444	\$4,477	\$5,682	\$1,153	\$5,166
+1	+\$349	+\$453	+\$575	+\$144	+\$523
Minimum Allotment of \$15 effective from 10/1/2017 - 9/30/2018					
DEDUCTIONS: Standard Deduction: For HH size 1-3 = \$160; 4 = \$170; 5 = \$199; 6 or more = \$228; Excess Shelter Deduction Limit: \$535; Heating and Cooling Standard Utility Allowance: \$320 (HCSUA) – Limited Utility Allowance: \$ 127 (LUA); Telephone Standard: \$42; Dependent Care: Actual Amount (No Limit); Earned Income Deduction: 20%; Homeless Shelter Standard: \$143					

CASH Assistance & Support Services					
Household Size	Federal Poverty Guidelines (FPG) Monthly Income Standards			Maximum Monthly Benefit	
	100% FPG Net Income	85% FPG Gross Limit	NM Works Cash Net Income	Maximum Monthly Benefit	General Assistance
1	\$1,005	\$854	\$266	\$244	\$245
2	\$1,354	\$1,151	\$357	\$327	\$329
3	\$1,702	\$1,447	\$447	\$409	\$412
4	\$2,050	\$1,743	\$539	\$493	\$496
5	\$2,399	\$2,039	\$630	\$576	\$580
6	\$2,747	\$2,335	\$721	\$659	\$664
7	\$3,095	\$2,631	\$812	\$743	\$748
8	\$3,444	\$2,927	\$922	\$843	\$849
+1	+\$349	+\$296	+\$91	+\$83	+\$84
Deductions- Dependent Care: For a child under age 2 = \$200; For a child age 2 and over = \$175. Work Incentives- Earned Income Disregard: Single parent = \$125 & ½ remainder; Two parent = \$225 & ½ remainder.					

<b>Medical Assistance Division</b>					
Federal Poverty Guidelines New Mexico Affordable Care Eligibility Groups Effective April 01, 2017 thru March 31, 2018 <b>Monthly Guidelines</b>					
HH SIZE	PERCENT OF POVERTY				
	138%	190%	240%	250%	300%
1	\$1,387	\$1,910	\$2,412	\$2,513	\$3,015
2	\$1,868	\$2,572	\$3,248	\$3,384	\$4,060
3	\$2,349	\$3,234	\$4,084	\$4,255	\$5,105
4	\$2,829	\$3,895	\$4,920	\$5,125	\$6,150
5	\$3,310	\$4,557	\$5,756	\$5,996	\$7,195
6	\$3,791	\$5,219	\$6,592	\$6,867	\$8,240
7	\$4,272	\$5,881	\$7,428	\$7,738	\$9,285
8	\$4,752	\$6,543	\$8,264	\$8,609	\$10,330
138% Adult Expansion, 190% Children ages 6 to 19 (Medicaid), 240% Children ages 0 to 6 (Medicaid); ages 6 to 19 (CHIP), 250% Pregnancy Related Services Only, 300% Children 0 to 6 (CHIP)					

<b>Medical Assistance Division</b>					
Federal Poverty Guidelines New Mexico Affordable Care Eligibility Groups Effective April 01, 2017 thru March 31, 2018 <b>Annual Guidelines</b>					
HH SIZE	PERCENT OF POVERTY				
	138%	190%	240%	250%	300%
1	\$16,644	\$22,920	\$28,944	\$30,156	\$36,180
2	\$22,416	\$30,864	\$38,976	\$40,608	\$48,720
3	\$28,188	\$38,808	\$49,008	\$51,060	\$61,260
4	\$33,948	\$46,740	\$59,040	\$61,500	\$73,800
5	\$39,720	\$54,684	\$69,072	\$71,952	\$86,340
6	\$45,492	\$62,628	\$79,104	\$82,404	\$98,880
7	\$51,264	\$70,572	\$89,136	\$92,856	\$111,420
8	\$57,024	\$78,516	\$99,168	\$103,308	\$123,960
138% Adult Expansion, 190% Children ages 6 to 19 (Medicaid), 240% Children ages 0 to 6 (Medicaid); ages 6 to 19 (CHIP), 250% Pregnancy Related Services Only, 300% Children 0 to 6 (CHIP)					



## References

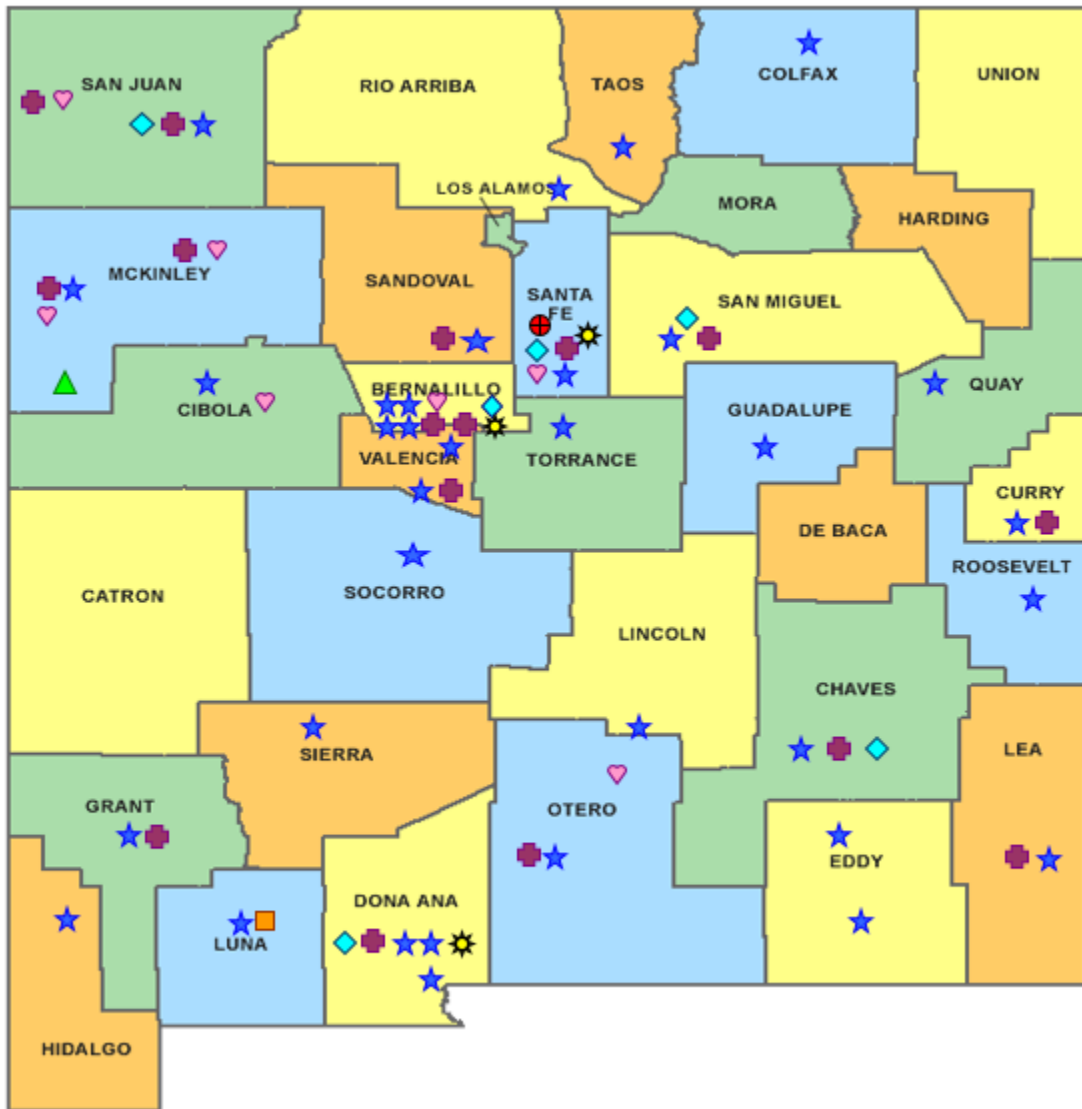
- <sup>1</sup> *Medicaid Expenditures* (Omnicaid, Medicare Buy-Ins, Lump Sum Payments), Received on April 26, 2018
- <sup>2</sup> *ASPEN Business Intelligence Tool: Eligibility*, Retrieved on April 12, 2018
- <sup>3</sup> New Mexico Human Services Department, *Medicaid Eligibility Reports*, Retrieved from <http://www.hsd.state.nm.us/LookingForInformation/medicaid-eligibility.aspx> on April 12, 2018
- <sup>4</sup> *ASPEN Business Intelligence Tool: Application Tracking*, Retrieved on April 12, 2018
- <sup>5</sup> Fidelity Information Services, *EBT Daily Statistical Report* (for 03/31/2017, 01/31/2018, and 03/31/2018), Retrieved on April 12, 2018
- <sup>6</sup> *ASPEN Report DQ-180: Length of Time Cases are Open* (for 03/01/2017-03/31/2017, 01/01/2018-01/31/2018, 03/01/2018-03/31/2018), Retrieved on April 16, 2018
- <sup>7</sup> *ASPEN Report EY-180: Individual Demographics by State and Age* (for 03/01/2017-03/31/2017, 01/01/2018-01/31/2018, 03/01/2018-03/31/2018), Retrieved April 16, 2018
- <sup>8</sup> *ASPEN Business Intelligence Tool: Benefit Issuance*, Retrieved on April 16, 2018
- <sup>9</sup> Fidelity Information Services, *EBT Daily Statistical Reports* (Month End), Retrieved on April 12, 2018
- <sup>10</sup> *ASPEN Report EY-180R: Individual Demographics by State, Race, Ethnicity and Gender* (for 03/01/2018-03/31/2018), Retrieved on April 16, 2018
- <sup>11</sup> SQL Queries from ASPEN, completed April 2018
- <sup>12</sup> JP Morgan, *New Mexico – NM EBT System- Monthly Benefit Draw Down Totals*
- <sup>13</sup> *ASPEN Business Intelligence Tool: Application Tracking* (w/Parameters: SNAP, Expedite, Approved), Retrieved on April 16, 2018
- <sup>14</sup> SL Start, *As of Today Report 3.31.18*, received April 12, 2018
- <sup>15</sup> SL Start, *Statewide Employment Report 03.01.18*, received April 12, 2018
- <sup>16</sup> *SSIAR Payments*, received April 18, 2018

<sup>17</sup> Children, Youth, and Families Department, *Children Receiving Child Care Assistance Subsidies by County*, Received on April 9, 2018

<sup>18</sup> Children, Youth, and Families Department, *Child Care Assistance Eligibility Programs*, Received on April 9, 2018









<sup>19</sup> EDG is defined as an Eligibility Determination Group

<sup>20</sup> SQL Query from ASPEN, completed April 25, 2018



# HUMAN SERVICES DEPARTMENT

New Mexico Human Services Department  
Field Offices

-  Central Office (1)
-  Income Support Division County Office (35)
-  Income Support Division Satellite Office (2)
-  Child Support Enforcement Regional Office (16)
-  Child Support Enforcement Satellite Office (1)
-  Quality Control Office (8)
-  Indian Health Services (7)
-  Hospital Site (3)

For a complete listing of field offices and other government and community resources:  
[http://www.hsd.state.nm.us/LookingForAssistance/Field\\_Offices\\_1.aspx](http://www.hsd.state.nm.us/LookingForAssistance/Field_Offices_1.aspx)