

# SFY 2013 Annual MSR

A compilation of SFY 13 and historical data contained in the Monthly Statistical Report



HUMAN SERVICES  
DEPARTMENT

***Susana Martinez, Governor***

***Sidonie Squier, Cabinet Secretary***

<b>CONTENTS</b>	<b>PAGE</b>
SNAP	3-9
State SNAP Benefits Supplement	10
TANF	11-23
Education Works	24-26
General Assistance	27-30
GA Interim Assistance Reimbursements	31
State Funded Legal Aliens	31
Refugee Assistance	32
State Supplement for Residential Care (SSRC)	32
LIHEAP	33-34
Medicaid	35-39
Timeliness	40-43
Applications	44-47
Total cases by admin office	48
Child Support Enforcement	49-50
Child Care Assistance	51-52

***The Mission of the Human  
Services Department***

*To reduce the impact of poverty  
on people living in New Mexico  
by providing support services that  
help families break the cycle of  
dependency on public assistance*

**Charissa Saavedra, Deputy Secretary  
Brent Earnest, Deputy Secretary**

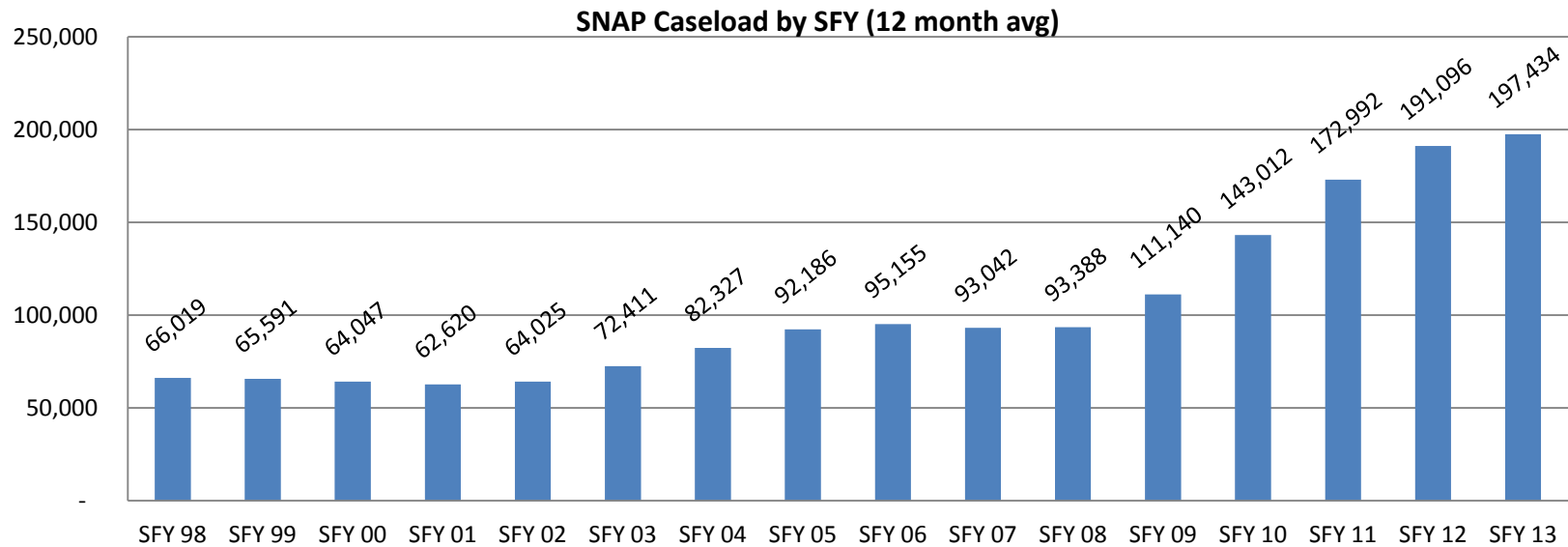
**Prepared by Income Support Division  
PO Box 2348  
Santa Fe, NM 87504-2348  
505-827-7250**

**Ted Roth, Division Director  
Penny Jimerson, Deputy Director  
Marilyn Martinez, Deputy Director**

**We're on the web!  
[www.hsd.state.nm.us/isd/reports.html](http://www.hsd.state.nm.us/isd/reports.html)**

### Supplemental Nutrition Assistance Program (SNAP) History

SFY	Total Expenditures	Avg Monthly Cases	Avg Monthly # Participants	Avg Monthly # Adults	Avg Monthly # Children	Total Applications	Total Approvals	Avg Approval Rate
SFY 1997	\$181,617,801	79,611	216,662	103,587	113,075	134,396	93,162	69.3%
SFY 1998	\$148,180,950	66,019	181,342	85,594	95,748	128,238	86,576	67.5%
SFY 1999	\$143,081,941	65,591	179,420	85,675	93,745	116,164	76,942	66.2%
SFY 2000	\$141,579,670	64,047	171,554	81,947	89,607	125,224	88,583	70.7%
SFY 2001	\$137,077,384	62,620	164,320	78,816	85,504	124,873	86,647	69.4%
SFY 2002	\$148,789,505	64,025	166,134	79,841	86,294	128,892	89,856	69.7%
SFY 2003	\$176,092,227	72,411	188,916	85,437	103,480	132,445	95,082	71.8%
SFY 2004	\$207,834,272	82,327	214,747	103,412	111,336	135,271	98,492	72.8%
SFY 2005	\$245,806,796	92,186	238,494	115,433	123,060	140,546	101,486	72.2%
SFY 2006	\$255,989,491	95,155	244,477	118,388	126,088	147,626	106,409	72.1%
SFY 2007	\$250,794,844	93,042	236,806	114,729	122,077	145,814	102,271	70.1%
SFY 2008	\$260,252,598	93,388	235,342	114,051	121,291	155,760	106,976	68.7%
SFY 2009	\$359,088,806	111,140	273,111	135,133	137,978	161,909	116,731	72.1%
SFY 2010	\$517,391,230	143,012	340,522	174,420	166,102	168,481	126,295	75.0%
SFY 2011	\$614,309,396	172,992	402,696	214,377	188,319	165,038	132,068	80.0%
SFY 2012	\$668,849,171	191,096	434,715	237,084	197,631	171,898	138,099	80.3%
SFY 2013	\$678,812,895	197,434	442,013	244,182	197,831	180,943	146,339	80.9%



### Supplemental Nutrition Assistance Program (SNAP) Cases and Expenditure History

Month	Cases	Recipients	Payments	Month	Cases	Recipients	Payments	Month	Cases	Recipients	Payments	Month	Cases	Recipients	Payments
Jul-97	68,118	186,713	\$12,499,973	Jul-01	61,778	161,139	\$11,531,069	Jul-05	92,721	240,204	\$20,714,231	Jul-09	130,053	314,998	\$40,035,271
Aug-97	66,472	182,642	\$12,207,927	Aug-01	62,400	162,371	\$11,616,141	Aug-05	93,831	243,350	\$20,964,566	Aug-09	133,205	321,422	\$40,844,956
Sep-97	65,561	179,675	\$12,094,007	Sep-01	61,994	160,744	\$11,453,347	Sep-05	94,614	244,565	\$21,167,918	Sep-09	135,021	324,909	\$41,349,498
Oct-97	65,445	179,734	\$12,506,243	Oct-01	62,669	162,171	\$12,189,531	Oct-05	95,102	245,048	\$21,708,583	Oct-09	137,556	329,583	\$41,803,500
Nov-97	64,021	175,901	\$12,150,277	Nov-01	63,112	163,213	\$12,295,960	Nov-05	95,394	245,095	\$21,744,210	Nov-09	140,116	334,537	\$42,421,707
Dec-97	65,763	180,945	\$12,711,284	Dec-01	64,342	166,477	\$12,582,614	Dec-05	96,193	246,676	\$21,828,613	Dec-09	142,174	339,203	\$42,991,436
Jan-98	65,803	181,477	\$12,507,172	Jan-02	61,806	159,888	\$12,429,143	Jan-06	95,798	245,179	\$21,235,172	Jan-10	144,118	342,290	\$43,087,072
Feb-98	66,550	183,033	\$12,786,595	Feb-02	65,302	169,069	\$12,861,977	Feb-06	95,574	244,374	\$21,415,091	Feb-10	146,081	346,141	\$44,335,443
Mar-98	67,289	184,354	\$12,888,735	Mar-02	65,983	170,946	\$12,993,658	Mar-06	95,931	244,910	\$21,393,319	Mar-10	147,259	347,652	\$43,871,756
Apr-98	66,291	181,921	\$12,163,285	Apr-02	65,919	171,006	\$12,865,895	Apr-06	95,449	244,092	\$21,264,137	Apr-10	150,001	353,748	\$44,487,739
May-98	65,673	180,415	\$11,820,100	May-02	66,519	173,123	\$12,976,401	May-06	95,560	244,741	\$21,316,536	May-10	153,337	361,450	\$45,636,220
Jun-98	65,247	179,296	\$11,845,352	Jun-02	66,492	173,464	\$12,993,769	Jun-06	95,690	245,484	\$21,237,115	Jun-10	157,218	370,334	\$46,526,632
Jul-98	64,248	176,779	\$11,446,269	Jul-02	67,504	176,789	\$13,251,616	Jul-06	95,102	244,085	\$21,089,709	Jul-10	160,942	378,805	\$47,756,050
Aug-98	64,607	178,128	\$11,520,758	Aug-02	68,580	179,295	\$13,461,535	Aug-06	95,774	245,216	\$21,286,737	Aug-10	165,089	387,966	\$49,409,512
Sep-98	64,415	177,528	\$11,417,191	Sep-02	69,084	180,165	\$13,552,178	Sep-06	94,425	241,160	\$20,908,218	Sep-10	165,659	390,154	\$49,479,156
Oct-98	64,392	176,701	\$11,759,596	Oct-02	70,310	183,263	\$14,386,449	Oct-06	94,180	240,290	\$21,447,575	Oct-10	167,968	394,256	\$49,835,632
Nov-98	65,031	178,494	\$11,956,962	Nov-02	71,534	186,636	\$14,596,339	Nov-06	93,801	238,804	\$21,317,686	Nov-10	170,927	399,454	\$50,446,539
Dec-98	66,412	182,559	\$12,308,973	Dec-02	72,495	189,067	\$14,844,618	Dec-06	93,255	237,371	\$21,169,314	Dec-10	173,357	403,551	\$51,296,104
Jan-99	66,023	180,883	\$11,915,431	Jan-03	73,540	191,782	\$14,859,729	Jan-07	92,903	235,616	\$20,659,762	Jan-11	175,744	407,943	\$51,901,972
Feb-99	66,445	181,588	\$12,260,886	Feb-03	73,959	191,804	\$15,111,841	Feb-07	92,002	233,094	\$20,634,652	Feb-11	175,821	408,270	\$52,173,849
Mar-99	67,419	183,153	\$12,366,308	Mar-03	74,662	193,776	\$15,267,527	Mar-07	91,477	231,994	\$20,546,223	Mar-11	178,226	411,947	\$52,696,392
Apr-99	66,746	181,229	\$12,070,555	Apr-03	75,015	196,094	\$15,438,972	Apr-07	90,980	230,693	\$20,567,215	Apr-11	178,787	412,998	\$53,101,063
May-99	65,881	178,481	\$11,885,894	May-03	75,640	197,722	\$15,574,683	May-07	91,210	231,337	\$20,572,101	May-11	181,030	417,260	\$53,184,433
Jun-99	65,471	177,514	\$12,173,118	Jun-03	76,614	200,599	\$15,746,740	Jun-07	91,394	232,012	\$20,595,652	Jun-11	182,356	419,750	\$53,028,694
Jul-99	64,642	175,105	\$11,975,944	Jul-03	76,547	200,380	\$15,691,485	Jul-07	91,012	231,487	\$20,485,975	Jul-11	183,441	422,123	\$54,183,893
Aug-99	64,771	175,195	\$11,957,426	Aug-03	77,431	202,591	\$15,907,049	Aug-07	92,114	233,778	\$20,652,756	Aug-11	186,786	428,642	\$54,786,568
Sep-99	64,271	173,113	\$11,803,941	Sep-03	77,991	203,822	\$16,050,666	Sep-07	90,794	230,539	\$20,398,845	Sep-11	187,741	430,032	\$55,046,217
Oct-99	63,583	170,476	\$11,778,306	Oct-03	79,462	207,828	\$16,748,474	Oct-07	91,170	231,074	\$21,687,007	Oct-11	189,333	432,289	\$55,690,323
Nov-99	63,984	171,525	\$11,919,849	Nov-03	80,198	209,501	\$16,934,956	Nov-07	91,544	231,393	\$21,699,554	Nov-11	191,080	435,482	\$56,147,002
Dec-99	64,773	173,431	\$12,083,384	Dec-03	81,222	212,269	\$17,307,161	Dec-07	92,080	232,696	\$21,927,871	Dec-11	192,418	437,540	\$56,426,342
Jan-00	64,371	172,229	\$11,747,297	Jan-04	81,970	213,604	\$17,195,645	Jan-08	93,092	234,331	\$21,569,686	Jan-12	193,122	438,455	\$55,863,456
Feb-00	64,357	172,134	\$11,927,687	Feb-04	83,833	218,473	\$17,882,628	Feb-08	93,562	234,765	\$21,811,831	Feb-12	192,741	437,424	\$56,027,506
Mar-00	64,736	172,838	\$11,985,892	Mar-04	85,847	227,168	\$18,280,758	Mar-08	94,593	237,102	\$22,235,045	Mar-12	193,647	438,145	\$56,310,281
Apr-00	63,202	168,238	\$11,533,603	Apr-04	87,284	227,467	\$18,500,632	Apr-08	95,848	240,102	\$22,406,746	Apr-12	193,464	437,267	\$55,980,072
May-00	63,054	167,573	\$11,545,378	May-04	87,638	227,168	\$18,550,691	May-08	96,854	242,228	\$22,628,317	May-12	194,333	438,911	\$56,038,310
Jun-00	62,822	166,785	\$11,320,963	Jun-04	88,499	230,107	\$18,784,127	Jun-08	97,989	244,604	\$22,748,965	Jun-12	195,043	440,267	\$56,349,201
Jul-00	62,272	165,477	\$11,353,393	Jul-04	88,905	231,123	\$18,850,222	Jul-08	99,131	247,390	\$23,117,076	Jul-12	195,163	440,019	\$56,225,159
Aug-00	62,921	167,005	\$11,379,594	Aug-04	90,440	235,222	\$19,150,079	Aug-08	101,028	251,523	\$23,527,725	Aug-12	196,232	442,594	\$56,513,887
Sep-00	62,370	164,534	\$11,109,153	Sep-04	90,934	236,060	\$19,238,786	Sep-08	102,327	254,296	\$23,828,838	Sep-12	195,683	440,628	\$56,495,426
Oct-00	62,352	164,300	\$11,450,727	Oct-04	91,463	236,701	\$20,935,652	Oct-08	104,326	258,130	\$27,582,529	Oct-12	197,005	442,237	\$56,733,068
Nov-00	62,606	164,584	\$11,416,189	Nov-04	92,555	239,118	\$21,093,768	Nov-08	106,231	261,838	\$28,226,127	Nov-12	196,917	442,217	\$56,652,671
Dec-00	63,023	165,498	\$11,518,802	Dec-04	93,286	241,090	\$21,307,409	Dec-08	109,069	268,400	\$29,002,698	Dec-12	197,629	442,631	\$56,796,828
Jan-01	63,131	165,558	\$11,441,196	Jan-05	93,410	240,866	\$20,853,424	Jan-09	109,968	270,286	\$28,924,326	Jan-13	198,314	442,753	\$56,456,541
Feb-01	62,552	163,467	\$11,530,565	Feb-05	93,013	239,593	\$20,976,753	Feb-09	113,330	277,045	\$29,771,692	Feb-13	197,323	440,872	\$56,372,327
Mar-01	63,181	164,688	\$11,608,491	Mar-05	93,016	239,958	\$20,901,478	Mar-09	116,437	284,618	\$30,475,510	Mar-13	198,533	442,302	\$56,775,944
Apr-01	62,497	162,343	\$11,449,553	Apr-05	93,065	240,314	\$20,856,380	Apr-09	120,958	294,325	\$37,093,939	Apr-13	198,283	441,550	\$56,283,996
May-01	62,436	162,569	\$11,453,501	May-05	92,947	240,491	\$20,831,597	May-09	123,735	301,070	\$38,335,145	May-13	198,814	442,570	\$56,587,820
Jun-01	62,094	161,813	\$11,366,220	Jun-05	93,203	241,386	\$20,811,248	Jun-09	127,141	308,416	\$39,203,201	Jun-13	199,316	443,784	\$56,919,228

### Supplemental Nutrition Assistance Program (SNAP) Cases by County

County	Jul-12	Aug-12	Sep-12	Oct-12	Nov-12	Dec-12	Jan-13	Feb-13	Mar-13	Apr-13	May-13	Jun-13
Bernalillo	63,536	63,262	62,681	63,053	62,717	62,985	62,906	62,228	62,991	62,739	63,009	63,097
Catron	213	210	199	199	194	193	197	195	199	204	203	202
Chaves	6,370	6,407	6,487	6,532	6,527	6,536	6,576	6,561	6,539	6,569	6,560	6,589
Cibola	3,181	3,216	3,242	3,284	3,292	3,270	3,284	3,248	3,229	3,205	3,255	3,270
Colfax	1,130	1,232	1,150	1,139	1,170	1,164	1,195	1,207	1,211	1,226	1,227	1,221
Curry	4,081	4,134	4,120	4,114	4,079	4,064	4,070	3,977	4,021	3,984	4,056	4,050
De Baca	161	164	170	165	168	171	163	159	157	162	158	157
Dona Ana	24,477	24,696	24,692	24,872	24,847	24,836	24,908	24,624	24,941	24,974	25,059	25,118
Eddy	4,173	4,228	4,181	4,231	4,263	4,236	4,221	4,168	4,262	4,176	4,178	4,171
Grant	3,047	3,060	3,048	3,080	3,073	3,056	3,063	3,181	3,045	3,025	3,042	3,060
Guadalupe	551	553	558	554	563	569	566	562	567	572	565	560
Harding	31	32	28	28	26	28	27	24	23	23	22	23
Hidalgo	489	497	490	490	479	478	486	489	485	488	476	478
Lea	3,895	3,962	3,957	3,960	3,995	3,950	3,932	3,935	3,921	3,951	3,914	3,956
Lincoln	1,619	1,638	1,643	1,643	1,647	1,679	1,670	1,676	1,704	1,708	1,724	1,722
Los Alamos	228	236	219	224	218	218	217	231	248	253	250	247
Luna	3,809	3,829	3,794	3,786	3,781	3,789	3,796	3,734	3,764	3,757	3,742	3,759
McKinley	8,720	8,869	8,785	8,754	8,796	8,829	8,757	8,755	8,767	8,734	8,912	9,038
Mora	541	530	524	520	513	506	491	483	478	469	454	440
Otero	4,281	4,340	4,289	4,325	4,235	4,261	4,295	4,283	4,295	4,333	4,396	4,399
Quay	1,222	1,238	1,226	1,228	1,241	1,241	1,262	1,258	1,258	1,248	1,228	1,216
Rio Arriba	6,331	6,338	6,376	6,469	6,470	6,525	6,568	6,541	6,605	6,597	6,596	6,568
Roosevelt	1,353	1,409	1,384	1,381	1,396	1,410	1,410	1,404	1,418	1,417	1,422	1,406
Sandoval	8,863	8,973	8,903	8,951	8,999	9,113	9,155	9,092	9,221	9,253	9,206	9,238
San Juan	10,634	10,753	10,764	10,744	10,747	10,677	10,722	10,740	10,880	10,921	10,935	11,058
San Miguel	4,378	4,540	4,585	4,719	4,794	4,819	4,940	4,854	4,825	4,778	4,656	4,599
Santa Fe	9,138	9,125	9,299	9,356	9,524	9,566	9,794	9,765	9,861	9,889	9,910	9,959
Sierra	1,721	1,719	1,734	1,736	1,750	1,791	1,808	1,965	1,819	1,821	1,809	1,795
Socorro	2,275	2,305	2,328	2,351	2,381	2,382	2,412	2,524	2,421	2,440	2,458	2,476
Taos	3,604	3,633	3,651	3,673	3,698	3,744	3,826	3,825	3,838	3,887	3,890	3,936
Torrance	2,454	2,472	2,486	2,515	2,535	2,593	2,590	2,606	2,657	2,625	2,626	2,617
Union	270	226	247	414	223	372	389	490	218	212	208	207
Valencia	8,387	8,406	8,443	8,515	8,576	8,578	8,618	8,539	8,665	8,643	8,668	8,684
TOTAL	195,163	196,232	195,683	197,005	196,917	197,629	198,314	197,323	198,533	198,283	198,814	199,316

## Supplemental Nutrition Assistance Program (SNAP) Recipients by County

County	Jul-12	Aug-12	Sep-12	Oct-12	Nov-12	Dec-12	Jan-13	Feb-13	Mar-13	Apr-13	May-13	Jun-13
Bernalillo	130,803	130,260	129,108	129,398	129,068	129,183	128,585	127,438	128,555	128,085	128,563	128,984
Catron	434	424	399	409	399	398	414	417	423	433	439	444
Chaves	15,117	15,267	15,338	15,361	15,427	15,506	15,581	15,497	15,353	15,407	15,447	15,482
Cibola	8,350	8,420	8,457	8,562	8,602	8,531	8,533	8,404	8,352	8,235	8,384	8,460
Colfax	2,540	2,708	2,539	2,520	2,545	2,511	2,558	2,608	2,609	2,625	2,627	2,631
Curry	9,842	10,058	9,968	9,935	9,854	9,830	9,862	9,661	9,740	9,664	9,746	9,773
De Baca	345	351	364	345	351	355	346	331	330	331	319	320
Dona Ana	58,576	59,058	59,003	59,385	59,234	59,176	59,135	58,441	59,275	59,232	59,343	59,516
Eddy	9,535	9,708	9,591	9,753	9,788	9,628	9,575	9,489	9,635	9,407	9,400	9,393
Grant	6,562	6,572	6,517	6,559	6,523	6,456	6,431	6,730	6,367	6,380	6,421	6,466
Guadalupe	1,090	1,102	1,099	1,103	1,109	1,111	1,107	1,107	1,110	1,135	1,124	1,118
Harding	53	55	49	48	41	44	43	40	39	39	37	39
Hidalgo	1,055	1,084	1,057	1,049	1,008	1,000	1,020	1,020	994	1,007	980	981
Lea	9,725	9,940	9,927	9,953	10,028	9,898	9,806	9,798	9,724	9,812	9,705	9,869
Lincoln	3,615	3,654	3,676	3,687	3,724	3,811	3,759	3,756	3,799	3,833	3,849	3,817
Los Alamos	456	478	438	456	440	433	438	460	491	498	494	478
Luna	9,058	9,089	8,982	8,944	8,886	8,826	8,848	8,680	8,762	8,738	8,695	8,677
McKinley	26,171	26,570	26,140	25,889	25,938	25,933	25,753	25,718	25,740	25,604	26,157	26,485
Mora	1,009	988	974	957	952	932	897	884	878	861	838	810
Otero	9,640	9,725	9,591	9,643	9,432	9,445	9,496	9,477	9,514	9,592	9,740	9,766
Quay	2,486	2,534	2,522	2,507	2,549	2,538	2,583	2,589	2,556	2,550	2,494	2,465
Rio Arriba	12,836	12,827	12,884	13,028	13,113	13,185	13,223	13,186	13,274	13,230	13,254	13,156
Roosevelt	3,480	3,598	3,522	3,473	3,495	3,538	3,549	3,518	3,527	3,527	3,523	3,473
Sandoval	22,164	22,447	22,227	22,249	22,338	22,551	22,519	22,460	22,631	22,720	22,546	22,554
San Juan	28,298	28,449	28,445	28,134	28,150	27,878	27,910	27,965	28,335	28,333	28,336	28,600
San Miguel	8,313	8,665	8,707	8,953	9,198	9,240	9,483	9,230	9,084	8,989	8,697	8,568
Santa Fe	18,160	18,214	18,574	18,731	19,046	19,127	19,487	19,448	19,566	19,625	19,672	19,646
Sierra	3,158	3,175	3,232	3,269	3,287	3,386	3,389	3,846	3,412	3,406	3,457	3,425
Socorro	4,986	5,053	5,039	5,093	5,195	5,170	5,235	5,456	5,252	5,268	5,295	5,325
Taos	7,047	7,092	7,105	7,100	7,145	7,241	7,373	7,396	7,409	7,488	7,529	7,597
Torrance	5,467	5,553	5,552	5,602	5,603	5,703	5,735	5,723	5,810	5,751	5,715	5,725
Union	667	502	581	991	515	889	866	1,070	507	491	477	472
Valencia	18,981	18,974	19,021	19,151	19,234	19,178	19,214	19,029	19,249	19,254	19,267	19,269
TOTAL	440,019	442,594	440,628	442,237	442,217	442,631	442,753	440,872	442,302	441,550	442,570	443,784

### Supplemental Nutrition Assistance Program (SNAP) Cases by Administrative Office

#	Office	Jul-12	Aug-12	Sep-12	Oct-12	Nov-12	Dec-12	Jan-13	Feb-13	Mar-13	Apr-13	May-13	Jun-13
1	SE Bernalillo	11,320	11,396	11,352	11,326	11,190	11,216	11,102	10,897	11,041	11,023	11,162	11,433
3	Chaves	6,370	6,407	6,487	6,532	6,527	6,536	6,576	6,561	6,539	6,569	6,560	6,589
4	Colfax	1,130	1,232	1,150	1,139	1,170	1,164	1,195	1,207	1,211	1,226	1,227	1,221
3104	Union	270	226	247	414	223	372	389	490	218	212	208	207
5	Curry	4,086	4,136	4,123	4,115	4,081	4,064	4,070	3,977	4,022	3,986	4,060	4,055
7	W Dona Ana	9,442	9,561	9,550	9,562	9,507	9,573	9,594	9,524	9,688	9,754	9,777	9,781
8	Eddy	2,882	2,899	2,844	2,924	2,954	2,910	2,910	2,863	2,943	2,884	2,905	2,886
9	Grant	3,081	3,093	3,082	3,112	3,095	3,077	3,084	3,201	3,065	3,046	3,060	3,076
1209	Hidalgo	489	497	490	490	479	478	486	489	485	488	476	478
10	Guadalupe	712	717	728	719	731	740	729	721	724	734	723	717
13	Lea	3,895	3,962	3,957	3,960	3,995	3,950	3,932	3,935	3,921	3,951	3,914	3,956
14	Lincoln	1,616	1,638	1,642	1,643	1,646	1,677	1,666	1,675	1,703	1,706	1,722	1,718
16	Luna	3,796	3,817	3,780	3,773	3,777	3,785	3,793	3,731	3,761	3,754	3,739	3,756
17	McKinley	8,735	8,883	8,798	8,766	8,809	8,844	8,770	8,768	8,777	8,745	8,922	9,048
19	Otero	4,284	4,340	4,290	4,325	4,236	4,263	4,299	4,284	4,296	4,335	4,398	4,403
20	Quay	1,221	1,237	1,225	1,227	1,241	1,241	1,262	1,258	1,258	1,248	1,228	1,214
21	Rio Arriba	6,667	6,682	6,701	6,797	6,787	6,843	6,886	6,875	6,951	6,950	6,946	6,914
22	Roosevelt	1,349	1,408	1,382	1,381	1,394	1,410	1,410	1,404	1,417	1,415	1,418	1,403
23	Sandoval	8,863	8,973	8,903	8,951	8,999	9,113	9,155	9,092	9,221	9,253	9,206	9,238
24	San Juan	10,634	10,753	10,764	10,744	10,747	10,677	10,722	10,740	10,880	10,921	10,935	11,058
25	San Miguel	4,923	5,073	5,109	5,234	5,306	5,322	5,429	5,331	5,299	5,242	5,102	5,033
26	Santa Fe	9,057	9,046	9,221	9,285	9,452	9,497	9,722	9,692	9,790	9,817	9,840	9,889
27	Sierra	2,457	2,435	2,436	2,441	2,469	2,511	2,540	2,694	2,542	2,523	2,494	2,487
28	Socorro	2,466	2,492	2,505	2,530	2,556	2,557	2,590	2,701	2,602	2,625	2,645	2,664
29	Taos	3,604	3,633	3,651	3,673	3,698	3,744	3,826	3,825	3,838	3,887	3,890	3,936
30	Torrance	2,453	2,471	2,484	2,514	2,535	2,592	2,589	2,604	2,655	2,623	2,623	2,614
32	S Valencia	2,999	3,028	3,063	3,090	3,094	3,084	3,115	3,054	3,140	3,107	3,104	3,101
33	Cibola	3,166	3,202	3,229	3,272	3,279	3,255	3,271	3,235	3,219	3,194	3,245	3,260
34	Eddy/Artesia	1,291	1,329	1,337	1,307	1,309	1,326	1,311	1,305	1,319	1,292	1,273	1,285
35	NW Bernalillo	14,496	14,588	14,670	14,775	14,888	14,896	14,890	14,664	15,007	14,941	15,011	15,064
36	SW Bernalillo	17,350	17,116	16,913	17,067	16,881	17,027	17,062	16,939	17,100	17,038	17,140	17,177
37	E Dona Ana	6,764	6,840	6,885	6,959	6,982	6,904	6,946	6,902	6,886	6,889	6,962	7,014
38	S Dona Ana	7,535	7,579	7,555	7,646	7,639	7,639	7,636	7,469	7,644	7,629	7,635	7,631
39	NE Bernalillo	20,371	20,163	19,748	19,886	19,758	19,847	19,853	19,730	19,845	19,739	19,699	19,426
42	N Valencia	5,389	5,380	5,382	5,426	5,483	5,495	5,504	5,486	5,526	5,537	5,565	5,584
	<b>TOTAL</b>	<b>195,163</b>	<b>196,232</b>	<b>195,683</b>	<b>197,005</b>	<b>196,917</b>	<b>197,629</b>	<b>198,314</b>	<b>197,323</b>	<b>198,533</b>	<b>198,283</b>	<b>198,814</b>	<b>199,316</b>

## Supplemental Nutrition Assistance Program (SNAP) Recipients by Administrative Office

#	Office	Jul-12	Aug-12	Sep-12	Oct-12	Nov-12	Dec-12	Jan-13	Feb-13	Mar-13	Apr-13	May-13	Jun-13
1	SE Bernalillo	22,847	23,070	22,937	22,848	22,660	22,623	22,474	22,199	22,398	22,405	22,617	23,244
3	Chaves	15,117	15,267	15,338	15,361	15,427	15,506	15,581	15,497	15,353	15,407	15,447	15,482
4	Colfax	2,540	2,708	2,539	2,520	2,545	2,511	2,558	2,608	2,609	2,625	2,627	2,631
3104	Union	667	502	581	991	515	889	866	1,070	507	491	477	472
5	Curry	9,851	10,060	9,972	9,936	9,856	9,830	9,862	9,661	9,742	9,667	9,754	9,778
7	W Dona Ana	19,790	20,058	20,063	20,015	19,929	20,003	19,982	19,950	20,340	20,414	20,443	20,468
8	Eddy	6,430	6,454	6,301	6,550	6,623	6,430	6,459	6,403	6,518	6,382	6,396	6,393
9	Grant	6,613	6,623	6,571	6,611	6,559	6,492	6,467	6,763	6,400	6,414	6,452	6,493
1209	Hidalgo	1,055	1,084	1,057	1,049	1,008	1,000	1,020	1,020	994	1,007	980	981
10	Guadalupe	1,435	1,453	1,463	1,448	1,460	1,466	1,453	1,438	1,440	1,466	1,443	1,438
13	Lea	9,725	9,940	9,927	9,953	10,028	9,898	9,806	9,798	9,724	9,812	9,705	9,869
14	Lincoln	3,610	3,654	3,675	3,687	3,723	3,807	3,753	3,755	3,798	3,831	3,847	3,813
16	Luna	9,043	9,074	8,965	8,928	8,882	8,822	8,845	8,677	8,759	8,735	8,692	8,674
17	McKinley	26,202	26,597	26,162	25,910	25,960	25,957	25,775	25,740	25,758	25,623	26,175	26,502
19	Otero	9,645	9,725	9,592	9,643	9,433	9,449	9,502	9,478	9,515	9,594	9,742	9,770
20	Quay	2,485	2,533	2,521	2,506	2,549	2,538	2,583	2,589	2,556	2,550	2,494	2,463
21	Rio Arriba	13,509	13,522	13,539	13,691	13,747	13,813	13,855	13,842	13,948	13,916	13,937	13,817
22	Roosevelt	3,472	3,597	3,519	3,473	3,493	3,538	3,549	3,518	3,525	3,524	3,515	3,470
23	Sandoval	22,164	22,447	22,227	22,249	22,338	22,551	22,519	22,460	22,631	22,720	22,546	22,554
24	San Juan	28,298	28,449	28,445	28,134	28,150	27,878	27,910	27,965	28,335	28,333	28,336	28,600
25	San Miguel	9,325	9,654	9,684	9,906	10,147	10,166	10,375	10,105	9,954	9,838	9,514	9,360
26	Santa Fe	17,993	18,051	18,403	18,576	18,896	18,982	19,341	19,301	19,430	19,488	19,541	19,520
27	Sierra	5,129	5,118	5,133	5,198	5,231	5,341	5,362	5,803	5,345	5,277	5,286	5,281
28	Socorro	5,383	5,439	5,399	5,465	5,561	5,535	5,615	5,842	5,644	5,669	5,705	5,744
29	Taos	7,047	7,092	7,105	7,100	7,145	7,241	7,373	7,396	7,409	7,488	7,529	7,597
30	Torrance	5,466	5,552	5,550	5,601	5,603	5,702	5,732	5,719	5,806	5,747	5,710	5,720
32	S Valencia	6,494	6,550	6,624	6,642	6,623	6,558	6,651	6,505	6,683	6,657	6,638	6,617
33	Cibola	8,319	8,393	8,435	8,541	8,580	8,507	8,511	8,382	8,334	8,216	8,366	8,443
34	Eddy/Artesia	3,105	3,254	3,290	3,203	3,165	3,198	3,116	3,086	3,117	3,025	3,004	3,000
35	NW Bernalillo	29,858	29,992	30,171	30,157	30,417	30,448	30,156	29,747	30,308	30,223	30,308	30,437
36	SW Bernalillo	39,163	38,566	38,133	38,318	38,033	38,153	38,133	37,902	38,179	37,961	38,112	38,230
37	E Dona Ana	15,991	16,147	16,232	16,333	16,358	16,234	16,269	16,112	16,117	16,144	16,224	16,316
38	S Dona Ana	20,824	20,910	20,807	21,108	21,003	20,984	20,911	20,422	20,885	20,803	20,847	20,876
39	NE Bernalillo	38,936	38,633	37,869	38,076	37,958	37,960	37,825	37,594	37,674	37,500	37,531	37,078
42	N Valencia	12,488	12,426	12,399	12,510	12,612	12,621	12,564	12,525	12,567	12,598	12,630	12,653
	TOTAL	440,019	442,594	440,628	442,237	442,217	442,631	442,753	440,872	442,302	441,550	442,570	443,784



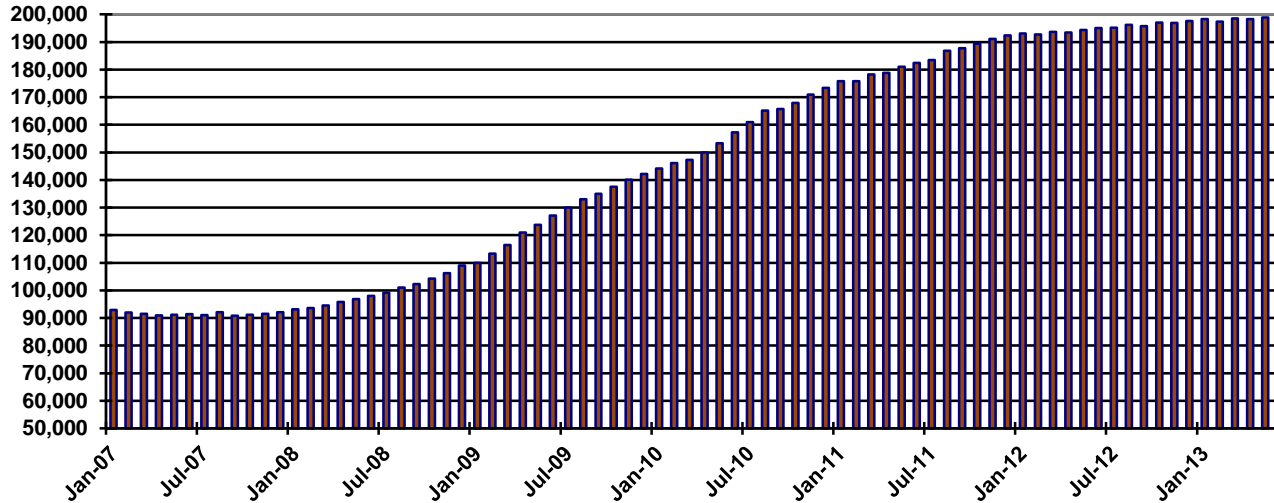
### Supplemental Nutrition Assistance Program (SNAP) Cases by Region

	Jul-12	Aug-12	Sep-12	Oct-12	Nov-12	Dec-12	Jan-13	Feb-13	Mar-13	Apr-13	May-13	Jun-13
NW Region 1	39,786	40,219	40,139	40,249	40,411	40,468	40,537	40,375	40,763	40,757	40,977	41,289
NE Region 2	25,651	25,892	26,079	26,542	26,636	26,942	27,447	27,420	27,307	27,334	27,213	27,200
Central Region 3	65,990	65,734	65,167	65,568	65,252	65,578	65,496	64,834	65,648	65,364	65,635	65,714
SE Region 4	21,806	22,095	22,083	22,165	22,232	22,177	22,200	22,024	22,143	22,079	22,081	22,105
SW Region 5	41,930	42,292	42,215	42,481	42,386	42,464	42,634	42,670	42,672	42,749	42,908	43,008
<b>TOTAL</b>	<b>195,163</b>	<b>196,232</b>	<b>195,683</b>	<b>197,005</b>	<b>196,917</b>	<b>197,629</b>	<b>198,314</b>	<b>197,323</b>	<b>198,533</b>	<b>198,283</b>	<b>198,814</b>	<b>199,316</b>

### Supplemental Nutrition Assistance Program (SNAP) Recipients by Region

	Jul-12	Aug-12	Sep-12	Oct-12	Nov-12	Dec-12	Jan-13	Feb-13	Mar-13	Apr-13	May-13	Jun-13
NW Region 1	103,965	104,862	104,292	103,986	104,263	104,072	103,930	103,577	104,308	104,147	104,691	105,369
NE Region 2	51,081	51,529	51,851	52,784	52,995	53,602	54,368	54,322	53,857	53,846	53,625	53,397
Central Region 3	136,270	135,813	134,660	135,000	134,671	134,886	134,320	133,161	134,365	133,836	134,278	134,709
SE Region 4	51,620	52,558	52,331	52,430	52,601	52,404	52,409	51,990	51,975	51,833	51,758	51,893
SW Region 5	97,083	97,832	97,494	98,037	97,687	97,667	97,726	97,822	97,797	97,888	98,218	98,416
<b>TOTAL</b>	<b>440,019</b>	<b>442,594</b>	<b>440,628</b>	<b>442,237</b>	<b>442,217</b>	<b>442,631</b>	<b>442,753</b>	<b>440,872</b>	<b>442,302</b>	<b>441,550</b>	<b>442,570</b>	<b>443,784</b>

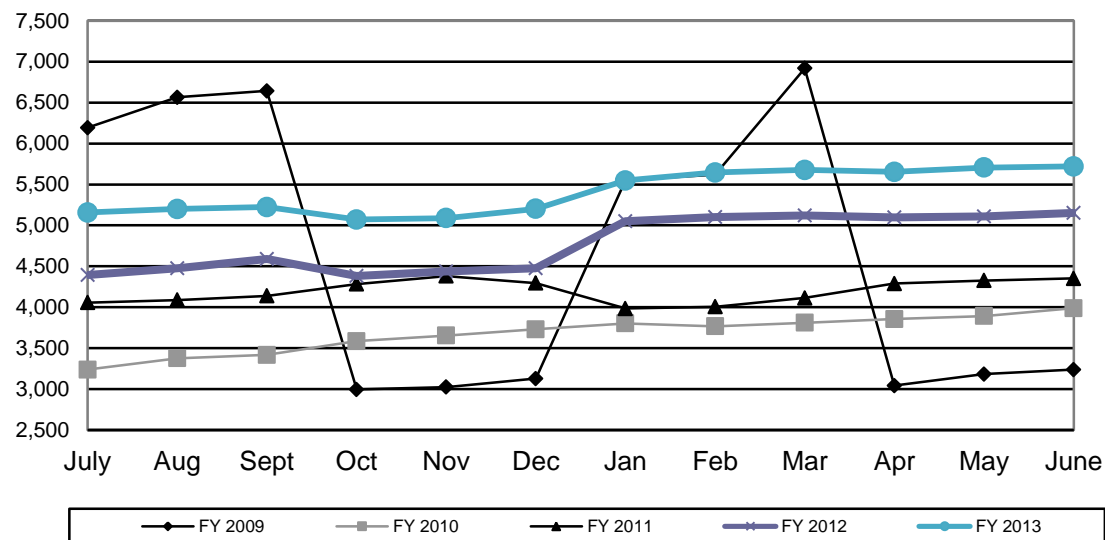
**SNAP Cases Per Month**



### State SNAP Benefits Supplement

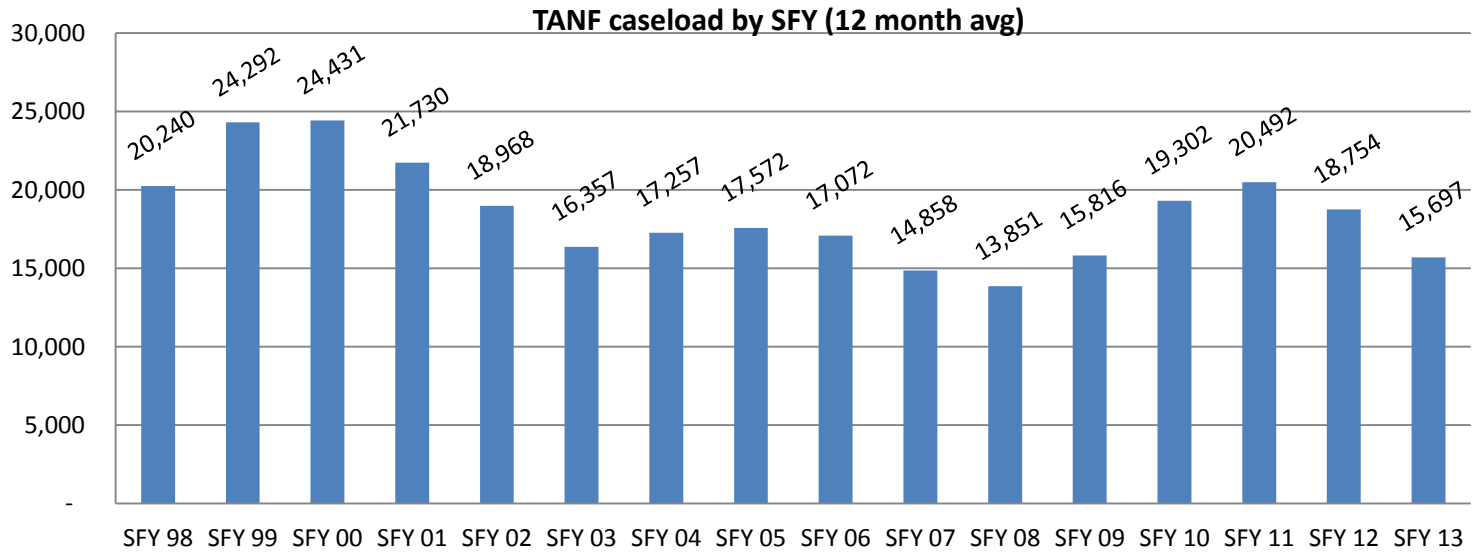
	SFY 2008		SFY 2009		SFY 2008		SFY 2011		SFY 2012		SFY 2013	
	Cases	\$	Cases	\$	Cases	\$	Cases	\$	Cases	\$	Cases	\$
July	5,624	\$51,664	6,193	\$59,840	3,298	\$38,216	4,056	\$50,241	4,395	\$34,773	5,157	\$42,552
Aug	5,226	\$49,735	6,300	\$54,356	3,376	\$39,476	4,088	\$50,502	4,477	\$35,360	5,200	\$42,797
Sept	4,725	\$50,429	6,643	\$59,039	3,418	\$39,790	4,139	\$50,946	4,591	\$36,455	5,223	\$43,023
Oct	4,904	\$42,574	2,996	\$16,032	3,585	\$43,887	4,284	\$52,530	4,384	\$34,850	5,071	\$41,752
Nov	5,006	\$44,383	3,025	\$15,789	3,655	\$44,952	4,381	\$53,820	4,436	\$35,260	5,088	\$42,074
Dec	5,458	\$45,287	3,129	\$16,411	3,731	\$45,855	4,296	\$52,649	4,474	\$35,619	5,202	\$42,829
Jan	5,550	\$53,976	5,553	\$30,388	3,802	\$46,338	3,984	\$31,897	5,050	\$41,519	5,548	\$45,769
Feb	5,610	\$55,049	5,621	\$30,696	3,767	\$46,156	4,006	\$31,970	5,102	\$41,900	5,645	\$46,700
Mar	5,743	\$55,589	6,918	\$98,305	3,810	\$46,502	4,113	\$33,226	5,119	\$41,960	5,677	\$47,117
April	5,891	\$57,211	3,043	\$38,332	3,856	\$43,830	4,290	\$34,599	5,099	\$41,988	5,654	\$47,118
May	6,002	\$58,150	3,184	\$36,698	3,893	\$47,719	4,326	\$34,892	5,109	\$43,587	5,706	\$47,528
June	6,085	\$58,964	3,237	\$37,297	3,988	\$49,230	4,351	\$28,199	5,154	\$42,442	5,720	\$47,625
<b>TOTAL</b>	<b>65,824</b>	<b>\$623,011</b>	<b>55,842</b>	<b>\$493,183</b>	<b>44,179</b>	<b>\$531,951</b>	<b>50,314</b>	<b>\$505,470</b>	<b>57,390</b>	<b>\$465,713</b>	<b>64,891</b>	<b>\$536,884</b>
<b>Mo avg</b>	<b>5,485</b>	<b>\$51,277</b>	<b>4,654</b>	<b>\$41,099</b>	<b>3,682</b>	<b>\$44,329</b>	<b>4,193</b>	<b>\$42,123</b>	<b>4,783</b>	<b>\$38,809</b>	<b>5,408</b>	<b>\$44,740</b>

State SNAP Benefits Supplement Cases by State Fiscal Year



### Temporary Assistance to Needy Families (TANF) History

SFY	Total Expenditures	Avg Monthly Cases	Avg Monthly # Participants	Avg Monthly # Adults	Avg Monthly # Children	Total Applications	Total Approvals	Avg Approval Rate
SFY 1997	\$140,767,128	30,283	90,733	31,838	58,895	42,730	20,589	48.2%
SFY 1998	\$102,176,407	20,240	64,313	22,715	41,599	48,419	26,199	54.1%
SFY 1999	\$124,666,504	24,292	77,723	28,019	49,704	42,741	23,064	54.0%
SFY 2000	\$104,365,749	24,431	72,109	25,821	46,289	45,671	24,313	53.2%
SFY 2001	\$91,492,566	21,730	61,721	22,073	39,648	50,202	24,867	49.5%
SFY 2002	\$75,316,151	18,968	52,443	18,814	33,629	53,747	26,798	49.9%
SFY 2003	\$64,009,216	16,357	42,885	15,104	27,781	50,831	25,872	50.9%
SFY 2004	\$66,077,881	17,257	44,485	16,138	28,348	51,094	26,435	51.7%
SFY 2005	\$65,480,163	17,572	44,548	16,374	28,174	50,276	25,906	51.5%
SFY 2006	\$63,302,785	17,072	42,876	15,694	27,182	48,122	24,699	51.3%
SFY 2007	\$55,285,675	14,858	36,726	13,367	23,359	44,200	21,423	48.5%
SFY 2008	\$56,749,013	13,851	34,442	12,487	21,954	44,753	20,959	46.8%
SFY 2009	\$70,104,383	15,816	39,481	14,447	25,034	48,885	23,562	48.2%
SFY 2010	\$86,651,200	19,302	48,765	18,092	30,674	50,486	24,679	48.9%
SFY 2011	\$82,577,692	20,492	51,535	19,194	32,340	50,334	24,859	49.4%
SFY 2012	\$67,170,505	18,754	46,512	17,252	29,260	49,842	23,519	47.2%
SFY 2013	\$55,773,926	15,697	38,092	14,036	24,055	47,279	21,502	45.5%



### AFDC/TANF Cases and Expenditure History

Month	Cases	Recipients	Payments	Month	Cases	Recipients	Payments	Month	Cases	Recipients	Payments	Month	Cases	Recipients	Payments
Jul-97	22,678	69,605	\$9,686,327	Jul-01	19,510	54,657	\$6,349,913	Jul-05	16,915	42,609	\$5,163,592	Jul-09	18,028	45,724	\$6,366,898
Aug-97	19,663	61,435	\$10,037,834	Aug-01	19,870	55,705	\$7,506,945	Aug-05	17,428	44,259	\$6,079,277	Aug-09	18,663	47,449	\$8,398,283
Sep-97	17,800	56,520	\$7,762,907	Sep-01	19,321	53,895	\$6,387,043	Sep-05	17,584	44,593	\$5,366,222	Sep-09	19,013	48,157	\$6,827,228
Oct-97	17,206	55,322	\$7,066,421	Oct-01	19,384	54,069	\$6,348,709	Oct-05	17,662	44,657	\$5,412,450	Oct-09	19,193	48,487	\$6,899,683
Nov-97	16,476	53,348	\$6,520,934	Nov-01	19,178	53,326	\$6,265,790	Nov-05	17,685	44,667	\$5,427,237	Nov-09	19,381	49,077	\$7,005,002
Dec-97	17,185	55,832	\$6,684,585	Dec-01	19,352	53,966	\$6,327,035	Dec-05	17,653	44,565	\$5,395,267	Dec-09	19,727	50,071	\$7,096,250
Jan-98	20,219	64,759	\$7,243,973	Jan-02	19,444	54,266	\$6,301,269	Jan-06	17,359	43,692	\$5,304,253	Jan-10	19,703	49,822	\$8,886,466
Feb-98	21,652	69,056	\$7,984,719	Feb-02	19,165	53,056	\$6,295,534	Feb-06	16,959	42,509	\$5,233,061	Feb-10	19,598	49,499	\$7,123,163
Mar-98	22,024	69,275	\$8,315,772	Mar-02	18,850	51,811	\$6,199,217	Mar-06	16,711	41,597	\$5,083,734	Mar-10	19,420	48,825	\$6,983,826
Apr-98	22,535	71,539	\$10,452,699	Apr-02	18,367	50,064	\$5,995,602	Apr-06	16,389	40,763	\$4,991,158	Apr-10	19,491	49,132	\$6,971,083
May-98	22,740	72,374	\$10,275,195	May-02	17,998	48,583	\$5,799,799	May-06	16,313	40,488	\$4,990,776	May-10	19,550	49,093	\$7,065,758
Jun-98	22,709	72,695	\$10,145,041	Jun-02	17,172	45,923	\$5,539,295	Jun-06	16,200	40,111	\$4,855,758	Jun-10	19,855	49,849	\$7,027,560
Jul-98	22,934	73,891	\$9,930,677	Jul-02	16,532	43,732	\$5,286,129	Jul-06	15,644	38,854	\$4,797,553	Jul-10	20,099	50,658	\$7,129,034
Aug-98	23,405	75,496	\$11,580,293	Aug-02	16,707	44,211	\$6,180,057	Aug-06	16,394	40,991	\$6,486,284	Aug-10	20,768	52,750	\$9,398,134
Sep-98	23,782	76,816	\$10,283,292	Sep-02	16,450	43,393	\$5,325,352	Sep-06	16,056	40,089	\$4,844,545	Sep-10	21,091	53,709	\$7,527,743
Oct-98	24,106	77,864	\$10,448,299	Oct-02	16,556	43,566	\$5,306,834	Oct-06	15,810	39,242	\$4,770,282	Oct-10	21,121	53,743	\$7,583,105
Nov-98	24,370	78,374	\$10,294,733	Nov-02	16,407	43,152	\$5,289,812	Nov-06	15,366	37,920	\$4,611,537	Nov-10	21,308	54,412	\$7,692,997
Dec-98	24,682	79,359	\$10,555,160	Dec-02	16,468	43,354	\$5,357,272	Dec-06	15,244	37,714	\$4,582,015	Dec-10	21,514	54,802	\$7,757,223
Jan-99	24,729	79,310	\$10,367,556	Jan-03	16,472	43,153	\$5,235,282	Jan-07	14,818	36,659	\$4,463,064	Jan-11	21,328	54,037	\$6,372,968
Feb-99	24,899	79,320	\$10,618,812	Feb-03	16,061	41,815	\$5,200,429	Feb-07	14,210	34,963	\$4,301,825	Feb-11	20,430	51,190	\$6,155,484
Mar-99	25,017	79,360	\$10,659,788	Mar-03	16,093	41,867	\$5,200,796	Mar-07	13,901	34,084	\$4,181,338	Mar-11	19,940	49,462	\$5,888,419
Apr-99	24,866	78,826	\$10,428,875	Apr-03	16,098	41,976	\$5,185,849	Apr-07	13,560	33,169	\$4,076,912	Apr-11	19,535	48,209	\$5,741,331
May-99	24,517	77,474	\$10,384,891	May-03	16,076	41,856	\$5,184,384	May-07	13,686	33,590	\$4,103,143	May-11	19,311	47,574	\$5,693,383
Jun-99	24,200	76,589	\$9,114,128	Jun-03	16,361	42,539	\$5,257,020	Jun-07	13,606	33,438	\$4,067,177	Jun-11	19,454	47,871	\$5,637,871
Jul-99	25,192	75,865	\$8,872,714	Jul-03	16,619	43,300	\$5,278,784	Jul-07	13,518	33,334	\$4,058,751	Jul-11	19,293	47,627	\$5,638,462
Aug-99	25,309	76,129	\$10,249,748	Aug-03	17,046	44,568	\$6,209,110	Aug-07	14,101	35,156	\$5,535,620	Aug-11	19,891	49,621	\$6,771,728
Sep-99	25,144	75,182	\$8,891,891	Sep-03	17,282	44,962	\$5,542,446	Sep-07	13,784	34,356	\$4,220,542	Sep-11	19,841	49,748	\$5,833,328
Oct-99	24,743	73,521	\$8,690,977	Oct-03	17,491	45,367	\$5,573,824	Oct-07	13,765	34,346	\$4,193,956	Oct-11	19,686	49,441	\$5,811,579
Nov-99	24,820	73,757	\$8,760,175	Nov-03	17,278	44,896	\$5,535,553	Nov-07	13,572	33,759	\$4,124,474	Nov-11	19,503	48,934	\$5,807,996
Dec-99	24,889	73,631	\$8,775,458	Dec-03	17,475	45,602	\$5,682,529	Dec-07	13,729	34,274	\$4,155,900	Dec-11	19,470	48,781	\$5,750,629
Jan-00	24,810	73,253	\$8,635,326	Jan-04	17,284	44,771	\$5,312,944	Jan-08	13,851	34,661	\$6,099,385	Jan-12	19,144	47,740	\$5,676,395
Feb-00	24,497	72,090	\$8,656,374	Feb-04	17,256	44,311	\$5,398,424	Feb-08	13,696	34,076	\$4,792,091	Feb-12	18,583	45,949	\$5,543,150
Mar-00	24,202	70,559	\$8,512,857	Mar-04	17,514	44,652	\$5,451,953	Mar-08	13,702	33,958	\$4,816,312	Mar-12	17,871	43,863	\$5,257,158
Apr-00	23,395	67,814	\$8,161,632	Apr-04	17,377	44,099	\$5,451,953	Apr-08	13,983	34,637	\$4,839,078	Apr-12	17,406	42,553	\$5,066,684
May-00	23,210	67,131	\$8,220,998	May-04	17,170	43,559	\$5,334,281	May-08	14,159	35,215	\$4,929,484	May-12	17,360	42,415	\$5,072,495
Jun-00	22,960	66,381	\$7,937,599	Jun-04	17,289	43,736	\$5,306,080	Jun-08	14,346	35,526	\$4,983,420	Jun-12	16,998	41,470	\$4,940,901
Jul-00	22,675	65,608	\$7,872,873	Jul-04	17,476	44,521	\$5,338,060	Jul-08	14,356	35,427	\$4,967,903	Jul-12	16,852	41,141	\$4,898,811
Aug-00	23,222	67,357	\$9,255,886	Aug-04	17,985	46,060	\$6,273,570	Aug-08	14,906	37,101	\$6,632,180	Aug-12	17,025	41,664	\$5,783,103
Sep-00	22,809	65,680	\$7,822,262	Sep-04	17,990	46,042	\$5,507,921	Sep-08	15,114	37,704	\$5,313,301	Sep-12	16,799	41,008	\$4,864,686
Oct-00	22,555	64,626	\$7,859,829	Oct-04	17,898	45,721	\$5,531,415	Oct-08	15,333	38,219	\$5,341,969	Oct-12	16,636	40,648	\$4,816,471
Nov-00	22,332	63,801	\$7,741,933	Nov-04	17,829	45,481	\$5,518,053	Nov-08	15,384	38,355	\$5,446,497	Nov-12	16,314	39,808	\$4,760,219
Dec-00	22,131	63,093	\$7,693,388	Dec-04	17,955	45,782	\$5,516,757	Dec-08	15,821	39,661	\$5,600,105	Dec-12	16,144	39,377	\$4,735,644
Jan-01	21,776	62,150	\$7,498,975	Jan-05	17,818	45,173	\$5,440,720	Jan-09	15,532	38,674	\$7,230,019	Jan-13	15,910	38,712	\$4,614,101
Feb-01	21,273	60,054	\$7,395,676	Feb-05	17,429	43,855	\$5,394,483	Feb-09	15,997	39,850	\$5,713,629	Feb-13	15,259	36,848	\$4,475,767
Mar-01	20,986	58,958	\$7,215,557	Mar-05	17,239	43,150	\$5,282,887	Mar-09	16,261	40,541	\$5,742,254	Mar-13	14,737	35,418	\$4,319,575
Apr-01	20,553	57,165	\$7,143,032	Apr-05	17,081	42,891	\$5,234,251	Apr-09	16,625	41,562	\$5,867,534	Apr-13	14,549	34,824	\$4,224,782
May-01	20,279	56,220	\$7,063,029	May-05	17,064	42,904	\$5,256,303	May-09	16,981	42,639	\$6,051,659	May-13	14,331	34,166	\$4,182,743
Jun-01	20,173	55,940	\$6,930,126	Jun-05	17,104	42,994	\$5,185,743	Jun-09	17,482	44,044	\$6,197,333	Jun-13	14,073	33,486	\$4,098,024

### Temporary Assistance of Needy Families (TANF) Cases by County

County	Jul-12	Aug-12	Sep-12	Oct-12	Nov-12	Dec-12	Jan-13	Feb-13	Mar-13	Apr-13	May-13	Jun-13
Bernalillo	5,727	5,740	5,662	5,632	5,525	5,435	5,306	5,044	4,921	4,814	4,706	4,611
Catron	15	16	14	15	11	10	13	12	13	13	10	9
Chaves	653	672	665	645	628	607	581	539	503	512	526	549
Cibola	254	269	275	278	270	269	267	262	239	244	243	240
Colfax	91	103	102	100	98	104	109	111	106	104	98	95
Curry	543	564	537	542	524	537	529	499	490	474	459	460
De Baca	16	16	12	12	12	8	7	8	12	12	11	9
Dona Ana	3,146	3,194	3,196	3,141	3,073	3,034	3,014	2,827	2,793	2,773	2,758	2,706
Eddy	450	447	440	443	439	430	424	409	393	385	381	383
Grant	237	237	240	230	221	213	206	212	179	167	180	165
Guadalupe	48	49	47	39	38	39	36	36	36	37	38	37
Harding	1	1	1	1	0	0	0	0	0	0	1	1
Hidalgo	52	51	51	47	47	41	42	40	39	40	40	40
Lea	429	442	446	470	456	446	430	399	380	401	377	369
Lincoln	163	168	165	165	177	166	159	167	167	169	170	161
Los Alamos	18	20	17	15	12	12	14	15	14	18	19	16
Luna	397	395	382	376	361	364	357	347	336	320	321	313
McKinley	124	127	114	113	111	96	93	90	95	95	94	99
Mora	32	30	29	27	23	24	23	21	21	21	20	18
Otero	377	389	363	366	355	349	346	339	320	326	322	299
Quay	105	111	111	119	118	116	110	99	91	87	87	93
Rio Arriba	573	563	545	534	539	542	531	504	501	464	452	429
Roosevelt	122	130	133	128	121	126	120	121	119	114	122	117
Sandoval	587	593	582	585	590	604	595	589	569	548	532	508
San Juan	289	292	302	301	290	290	282	266	248	249	237	225
San Miguel	350	344	336	327	316	324	326	310	296	277	276	291
Santa Fe	585	594	603	586	579	586	614	602	586	585	586	578
Sierra	86	88	90	87	79	88	89	126	90	93	91	83
Socorro	155	169	143	138	144	147	138	143	126	130	131	136
Taos	142	133	129	133	139	144	132	124	120	130	125	139
Torrance	254	274	279	262	259	265	264	261	250	253	242	240
Union	17	17	15	21	15	17	18	38	13	12	17	16
Valencia	814	787	773	758	744	711	735	699	671	682	659	638
<b>TOTAL</b>	<b>16,852</b>	<b>17,025</b>	<b>16,799</b>	<b>16,636</b>	<b>16,314</b>	<b>16,144</b>	<b>15,910</b>	<b>15,259</b>	<b>14,737</b>	<b>14,549</b>	<b>14,331</b>	<b>14,073</b>

## Temporary Assistance of Needy Families (TANF) Recipients by County

County	Jul-12	Aug-12	Sep-12	Oct-12	Nov-12	Dec-12	Jan-13	Feb-13	Mar-13	Apr-13	May-13	Jun-13
Bernalillo	13,693	13,772	13,563	13,525	13,189	12,939	12,654	11,903	11,638	11,360	10,994	10,766
Catron	32	34	27	32	24	24	32	27	38	39	28	22
Chaves	1,590	1,668	1,656	1,588	1,554	1,495	1,386	1,269	1,158	1,187	1,241	1,331
Cibola	682	728	739	758	724	712	698	685	627	644	646	650
Colfax	228	257	260	255	249	270	286	292	272	260	238	228
Curry	1,366	1,444	1,398	1,400	1,329	1,363	1,353	1,267	1,233	1,177	1,127	1,128
De Baca	38	37	27	28	32	19	13	17	26	24	27	17
Dona Ana	8,011	8,141	8,099	7,948	7,759	7,642	7,575	7,086	6,957	6,907	6,861	6,684
Eddy	1,084	1,079	1,053	1,060	1,043	1,011	1,000	952	912	884	885	883
Grant	552	556	545	518	489	476	468	509	417	395	445	403
Guadalupe	118	131	125	104	92	102	97	106	99	98	97	95
Harding	3	3	3	3	0	0	0	0	0	0	2	2
Hidalgo	121	116	115	97	96	94	91	78	80	86	84	79
Lea	1,079	1,109	1,089	1,182	1,145	1,104	1,064	975	915	962	899	908
Lincoln	409	429	421	406	448	419	403	420	425	428	425	382
Los Alamos	38	43	35	29	23	23	31	35	28	38	38	29
Luna	976	984	960	937	916	930	919	873	857	805	819	801
McKinley	348	357	323	306	292	246	227	218	242	243	245	252
Mora	65	58	61	61	49	52	44	42	43	43	40	37
Otero	1,000	1,022	948	946	917	884	887	847	812	830	793	711
Quay	244	259	261	282	282	270	255	234	216	205	201	217
Rio Arriba	1,265	1,218	1,210	1,174	1,219	1,235	1,209	1,110	1,094	987	948	901
Roosevelt	306	324	328	318	311	318	297	303	291	272	284	267
Sandoval	1,500	1,517	1,534	1,564	1,598	1,635	1,579	1,580	1,496	1,410	1,366	1,306
San Juan	722	727	738	749	711	743	724	675	594	578	539	503
San Miguel	793	762	740	729	705	732	741	716	676	630	639	691
Santa Fe	1,340	1,375	1,390	1,369	1,329	1,351	1,407	1,389	1,322	1,287	1,312	1,286
Sierra	190	194	205	187	171	200	202	288	200	206	202	184
Socorro	360	404	314	309	319	337	320	334	299	303	290	319
Taos	319	306	279	301	332	349	303	279	269	293	283	308
Torrance	655	707	717	654	659	685	684	673	640	656	620	595
Union	42	44	40	58	43	50	49	85	37	34	53	47
Valencia	1,972	1,859	1,805	1,771	1,759	1,667	1,714	1,581	1,505	1,553	1,495	1,454
TOTAL	41,141	41,664	41,008	40,648	39,808	39,377	38,712	36,848	35,418	34,824	34,166	33,486

## Temporary Assistance of Needy Families (TANF) Cases by Administrative Office

#	Office	Jul-12	Aug-12	Sep-12	Oct-12	Nov-12	Dec-12	Jan-13	Feb-13	Mar-13	Apr-13	May-13	Jun-13
1	SE Bernalillo	1,184	1,172	1,149	1,130	1,102	1,079	1,034	994	988	981	953	976
3	Chaves	653	672	665	645	628	607	581	539	503	512	526	549
4	Colfax	91	103	102	100	98	104	109	111	106	104	98	95
3104	Union	17	17	15	21	15	17	18	38	13	12	17	16
5	Curry	544	564	537	542	524	537	529	499	490	474	460	460
7	W Dona Ana	1,108	1,144	1,138	1,114	1,080	1,065	1,060	1,006	1,000	994	987	990
8	Eddy	294	309	278	287	290	284	283	278	266	266	255	251
9	Grant	237	237	241	231	221	213	206	212	179	167	180	165
1209	Hidalgo	52	51	51	47	47	41	42	40	39	40	40	40
10	Guadalupe	64	65	59	51	50	47	43	44	48	49	49	46
13	Lea	429	442	446	470	456	446	430	399	380	401	377	369
14	Lincoln	163	168	165	165	177	166	159	167	167	169	170	161
16	Luna	397	395	382	376	361	364	357	347	336	320	321	313
17	McKinley	125	128	115	114	112	97	94	91	96	96	95	99
19	Otero	377	389	363	366	355	349	346	339	320	326	322	299
20	Quay	105	111	111	119	118	116	110	99	91	87	87	93
21	Rio Arriba	599	589	570	557	557	562	552	526	522	488	478	450
22	Roosevelt	121	130	133	128	121	126	120	121	119	114	121	117
23	Sandoval	587	593	582	585	590	604	595	589	569	548	532	508
24	San Juan	289	292	302	301	290	290	282	266	248	249	237	225
25	San Miguel	381	372	362	352	337	346	347	330	317	298	297	310
26	Santa Fe	579	591	599	581	575	580	609	596	579	579	579	573
27	Sierra	137	135	136	130	124	136	139	175	136	138	133	121
28	Socorro	170	185	156	152	155	157	151	155	139	143	141	145
29	Taos	142	133	129	133	139	144	132	124	120	130	125	139
30	Torrance	254	274	279	262	259	264	264	261	250	253	242	240
32	S Valencia	259	251	252	250	241	230	249	230	227	235	208	223
33	Cibola	253	268	274	277	269	268	266	261	238	243	242	240
34	Eddy/Artesia	156	138	162	156	149	146	141	131	127	119	126	132
35	NW Bernalillo	1,240	1,256	1,257	1,259	1,230	1,198	1,203	1,130	1,105	1,113	1,098	1,064
36	SW Bernalillo	1,797	1,795	1,739	1,728	1,704	1,668	1,634	1,583	1,537	1,485	1,448	1,425
37	E Dona Ana	755	783	781	775	747	732	727	681	650	650	647	635
38	S Dona Ana	1,232	1,220	1,231	1,209	1,201	1,189	1,177	1,091	1,097	1,084	1,082	1,043
39	NE Bernalillo	1,506	1,517	1,517	1,515	1,489	1,491	1,435	1,337	1,291	1,235	1,207	1,146
42	N Valencia	555	536	521	508	503	481	486	469	444	447	451	415
	<b>TOTAL</b>	<b>16,852</b>	<b>17,025</b>	<b>16,799</b>	<b>16,636</b>	<b>16,314</b>	<b>16,144</b>	<b>15,910</b>	<b>15,259</b>	<b>14,737</b>	<b>14,549</b>	<b>14,331</b>	<b>14,073</b>

## Temporary Assistance of Needy Families (TANF) Recipients by Administrative Office

#	Office	Jul-12	Aug-12	Sep-12	Oct-12	Nov-12	Dec-12	Jan-13	Feb-13	Mar-13	Apr-13	May-13	Jun-13
1	SE Bernalillo	2,809	2,786	2,733	2,722	2,656	2,571	2,464	2,360	2,361	2,355	2,230	2,280
3	Chaves	1,590	1,668	1,656	1,588	1,554	1,495	1,386	1,269	1,158	1,187	1,241	1,331
4	Colfax	228	257	260	255	249	270	286	292	272	260	238	228
3104	Union	42	44	40	58	43	50	49	85	37	34	53	47
5	Curry	1,369	1,444	1,398	1,400	1,329	1,363	1,353	1,267	1,233	1,177	1,130	1,128
7	W Dona Ana	2,774	2,884	2,872	2,780	2,689	2,656	2,637	2,502	2,481	2,443	2,427	2,437
8	Eddy	699	734	647	667	693	672	663	636	619	609	601	581
9	Grant	552	556	547	520	489	476	468	509	417	395	445	403
1209	Hidalgo	121	116	115	97	96	94	91	78	80	86	84	79
10	Guadalupe	156	168	152	132	124	121	110	123	125	122	124	112
13	Lea	1,079	1,109	1,089	1,182	1,145	1,104	1,064	975	915	962	899	908
14	Lincoln	409	429	421	406	448	419	403	420	425	428	425	382
16	Luna	976	984	960	937	916	930	919	873	857	805	819	801
17	McKinley	350	359	325	308	294	248	229	220	244	245	247	252
19	Otero	1,000	1,022	948	946	917	884	887	847	812	830	793	711
20	Quay	244	259	261	282	282	270	255	234	216	205	201	217
21	Rio Arriba	1,330	1,277	1,266	1,224	1,261	1,283	1,260	1,163	1,139	1,039	1,000	936
22	Roosevelt	303	324	328	318	311	318	297	303	291	272	281	267
23	Sandoval	1,500	1,517	1,534	1,564	1,598	1,635	1,579	1,580	1,496	1,410	1,366	1,306
24	San Juan	722	727	738	749	711	743	724	675	594	578	539	503
25	San Miguel	856	815	795	786	748	778	780	756	719	673	681	730
26	Santa Fe	1,318	1,367	1,378	1,355	1,316	1,332	1,392	1,373	1,305	1,273	1,298	1,280
27	Sierra	315	309	306	283	272	311	323	402	307	306	295	265
28	Socorro	392	438	339	339	343	361	352	361	337	342	318	341
29	Taos	319	306	279	301	332	349	303	279	269	293	283	308
30	Torrance	655	707	717	654	659	682	684	673	640	656	620	595
32	S Valencia	588	544	548	535	512	482	548	502	492	525	448	488
33	Cibola	680	726	737	756	722	710	696	683	625	642	644	650
34	Eddy/Artesia	385	345	406	393	350	339	337	316	293	275	284	302
35	NW Bernalillo	3,010	3,042	3,065	3,055	2,929	2,840	2,843	2,647	2,592	2,624	2,588	2,505
36	SW Bernalillo	4,269	4,306	4,134	4,118	4,013	3,918	3,814	3,673	3,512	3,385	3,317	3,250
37	E Dona Ana	1,933	1,992	1,970	1,948	1,874	1,827	1,802	1,671	1,597	1,597	1,583	1,534
38	S Dona Ana	3,179	3,150	3,156	3,124	3,095	3,048	3,015	2,799	2,772	2,767	2,758	2,632
39	NE Bernalillo	3,605	3,638	3,631	3,630	3,591	3,613	3,533	3,223	3,173	2,996	2,859	2,731
42	N Valencia	1,384	1,315	1,257	1,236	1,247	1,185	1,166	1,079	1,013	1,028	1,047	966
	TOTAL	41,141	41,664	41,008	40,648	39,808	39,377	38,712	36,848	35,418	34,824	34,166	33,486



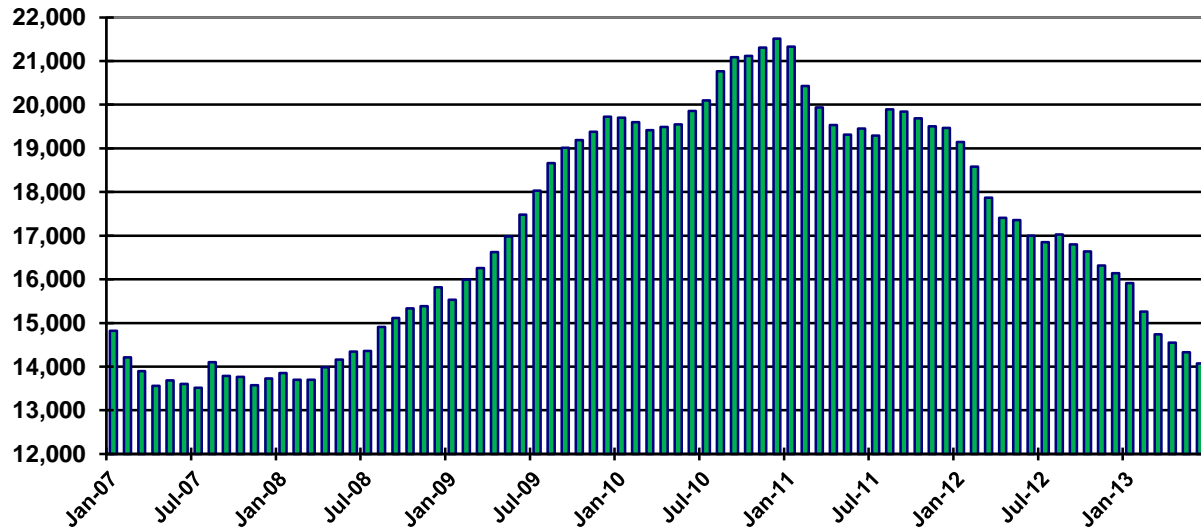
### Temporary Assistance of Needy Families (TANF) Cases by Region

	Jul-12	Aug-12	Sep-12	Oct-12	Nov-12	Dec-12	Jan-13	Feb-13	Mar-13	Apr-13	May-13	Jun-13
NW Region 1	2,068	2,068	2,046	2,035	2,005	1,970	1,972	1,906	1,822	1,818	1,765	1,710
NE Region 2	1,809	1,805	1,777	1,744	1,721	1,753	1,767	1,725	1,657	1,611	1,594	1,583
Central Region 3	5,981	6,014	5,941	5,894	5,784	5,700	5,570	5,305	5,171	5,067	4,948	4,611
SE Region 4	2,366	2,431	2,391	2,398	2,336	2,309	2,237	2,110	2,024	2,022	2,001	2,017
SW Region 5	4,628	4,707	4,644	4,565	4,468	4,412	4,364	4,213	4,063	4,031	4,023	4,152
<b>TOTAL</b>	<b>16,852</b>	<b>17,025</b>	<b>16,799</b>	<b>16,636</b>	<b>16,314</b>	<b>16,144</b>	<b>15,910</b>	<b>15,259</b>	<b>14,737</b>	<b>14,549</b>	<b>14,331</b>	<b>14,073</b>

### Temporary Assistance of Needy Families (TANF) Recipients by Region

	Jul-12	Aug-12	Sep-12	Oct-12	Nov-12	Dec-12	Jan-13	Feb-13	Mar-13	Apr-13	May-13	Jun-13
NW Region 1	5,224	5,188	5,139	5,148	5,084	5,003	4,942	4,739	4,464	4,428	4,291	4,165
NE Region 2	4,093	4,066	4,018	3,979	3,949	4,062	4,070	3,948	3,741	3,572	3,553	3,529
Central Region 3	14,348	14,479	14,280	14,179	13,848	13,624	13,338	12,576	12,278	12,016	11,614	10,766
SE Region 4	5,825	6,051	5,937	5,962	5,788	5,682	5,465	5,123	4,850	4,809	4,761	4,846
SW Region 5	11,651	11,880	11,634	11,380	11,139	11,006	10,897	10,462	10,085	9,999	9,947	10,180
<b>TOTAL</b>	<b>41,141</b>	<b>41,664</b>	<b>41,008</b>	<b>40,648</b>	<b>39,808</b>	<b>39,377</b>	<b>38,712</b>	<b>36,848</b>	<b>35,418</b>	<b>34,824</b>	<b>34,166</b>	<b>33,486</b>

**TANF Cases per month**



## TANF Standard Participants by Administrative Office

#	Office	Jul-12	Aug-12	Sep-12	Oct-12	Nov-12	Dec-12	Jan-13	Feb-13	Mar-13	Apr-13	May-13	Jun-13
1	SE Bernalillo	509	490	491	493	464	455	431	403	401	415	408	441
3	Chaves	364	390	389	371	377	379	348	306	254	255	274	305
4	Colfax	53	59	57	60	58	71	77	74	74	72	66	67
3104	Union	10	8	6	10	8	8	9	17	6	6	12	8
5	Curry	303	324	310	317	319	336	329	294	283	266	249	258
7	W Dona Ana	573	624	643	617	602	590	589	561	547	545	530	529
8	Eddy	173	181	161	161	155	138	139	135	131	133	121	117
9	Grant	149	154	160	150	147	141	133	130	105	102	112	94
1209	Hidalgo	32	30	27	30	29	20	23	16	14	17	21	21
10	Guadalupe	46	47	47	43	38	34	31	29	33	32	29	26
13	Lea	235	247	244	262	219	217	216	186	177	201	176	177
14	Lincoln	110	124	122	116	126	111	110	111	116	119	123	119
16	Luna	200	202	199	191	183	184	192	180	174	158	153	144
17	McKinley	104	105	95	91	91	71	70	63	70	68	70	70
19	Otero	237	243	224	223	202	200	198	187	177	192	191	169
20	Quay	61	64	60	66	69	69	71	63	58	50	47	58
21	Rio Arriba	366	332	295	271	271	274	272	266	264	230	218	197
22	Roosevelt	61	66	75	70	63	68	62	62	64	56	58	49
23	Sandoval	401	403	389	416	436	451	425	422	406	380	353	338
24	San Juan	153	158	167	163	161	163	148	135	125	131	126	110
25	San Miguel	289	287	282	277	254	258	248	223	218	203	205	218
26	Santa Fe	281	294	291	282	275	283	331	311	296	277	278	274
27	Sierra	72	71	74	72	62	77	82	96	74	72	72	58
28	Socorro	113	118	86	84	86	85	79	67	68	74	74	75
29	Taos	79	73	66	70	78	87	72	68	65	77	79	83
30	Torrance	170	193	198	178	178	180	187	179	157	155	144	136
32	S Valencia	142	132	134	129	125	113	128	112	106	117	98	111
33	Cibola	177	194	204	206	204	195	183	187	162	173	172	173
34	Eddy/Artesia	96	77	92	94	83	79	78	71	66	65	65	70
35	NW Bernalillo	789	817	797	794	763	752	767	690	689	657	638	612
36	SW Bernalillo	889	906	866	891	865	846	806	743	681	623	607	554
37	E Dona Ana	494	519	533	529	489	459	457	413	376	383	382	365
38	S Dona Ana	531	489	478	464	463	461	453	410	389	392	385	351
39	NE Bernalillo	1,002	995	1,029	1,023	1,000	1,013	959	880	858	792	734	688
42	N Valencia	361	342	343	327	299	282	272	261	236	239	233	203
	TOTAL	9,625	9,758	9,634	9,541	9,242	9,150	8,975	8,351	7,920	7,727	7,503	7,268

### Total TANF Sanctions by Administrative Office

#	Office	Jul-12	Aug-12	Sep-12	Oct-12	Nov-12	Dec-12	Jan-13	Feb-13	Mar-13	Apr-13	May-13	Jun-13
1	SE Bernalillo	109	100	92	88	76	105	106	68	86	98	80	71
3	Chaves	44	74	70	41	74	85	45	61	66	43	55	71
4	Colfax	5	5	9	3	10	7	7	8	18	11	10	12
31 04	Union	0	1	0	0	1	1	2	3	1	1	0	1
5	Curry	30	48	41	51	42	52	38	39	42	48	55	38
7	W Dona Ana	74	70	123	64	76	61	79	69	69	85	66	82
8	Eddy	16	26	19	6	27	26	26	17	21	13	21	19
9	Grant	28	30	42	35	28	34	22	29	25	21	15	16
12 09	Hidalgo	4	2	12	9	4	4	3	1	2	4	4	3
10	Guadalupe	8	6	9	11	3	6	1	7	9	4	5	3
13	Lea	47	49	37	46	49	51	44	35	33	38	38	41
14	Lincoln	15	18	24	16	17	20	18	6	18	17	23	14
16	Luna	35	42	31	22	17	40	26	27	30	34	24	24
17	McKinley	9	11	10	7	9	17	6	7	5	9	6	5
19	Otero	55	46	48	31	46	26	42	38	36	49	44	32
20	Quay	14	5	11	14	13	17	12	12	19	11	8	12
21	Rio Arriba	92	62	74	43	50	64	80	52	76	70	44	34
22	Roosevelt	14	11	6	6	15	15	4	9	8	13	11	10
23	Sandoval	74	57	54	50	57	59	58	92	94	63	69	43
24	San Juan	30	27	29	52	23	21	28	51	35	36	31	38
25	San Miguel	60	37	28	42	35	43	40	43	33	29	22	43
26	Santa Fe	33	67	37	48	43	43	49	69	92	59	55	53
27	Sierra	9	12	6	7	6	5	16	12	15	10	11	10
28	Socorro	14	26	10	27	23	18	19	8	13	17	20	22
29	Taos	21	14	12	11	14	17	13	15	11	17	23	20
30	Torrance	11	20	29	16	23	27	16	30	17	19	24	33
32	S Valencia	33	38	18	25	33	15	26	36	21	39	27	14
33	Cibola	13	29	18	41	35	31	27	31	28	16	27	26
34	Eddy/Artesia	24	13	7	18	17	12	10	22	11	16	8	17
35	NW Bernalillo	109	105	102	153	147	105	140	123	111	115	143	138
36	SW Bernalillo	137	172	146	145	180	165	153	161	149	142	130	113
37	E Dona Ana	88	89	50	80	75	69	73	76	69	63	85	60
38	S Dona Ana	97	73	70	83	74	63	72	88	35	67	85	77
39	NE Bernalillo	151	150	134	145	170	117	174	112	136	181	107	108
42	N Valencia	53	54	50	48	66	44	58	55	48	52	51	55
	<b>TOTAL</b>	<b>1,556</b>	<b>1,589</b>	<b>1,458</b>	<b>1,484</b>	<b>1,578</b>	<b>1,485</b>	<b>1,533</b>	<b>1,512</b>	<b>1,482</b>	<b>1,510</b>	<b>1,427</b>	<b>1,358</b>

### TANF Diversion Payments History

SFY 2008	Cases	Payments (\$)
Jul-07	1	\$1,000
Aug-07	3	\$3,000
Sep-07	4	\$4,000
Oct-07	2	\$2,000
Nov-07	0	\$0
Dec-07	3	\$5,500
Jan-08	1	\$2,500
Feb-08	4	\$7,000
Mar-08	4	\$7,000
Apr-08	4	\$9,000
May-08	3	\$5,500
Jun-08	5	\$9,500
<b>TOTAL SFY 2008</b>	<b>34</b>	<b>\$56,000</b>

SFY 2009	Cases	Payments (\$)
Jul-08	4	\$8,000
Aug-08	3	\$6,500
Sep-08	4	\$8,000
Oct-08	3	\$5,500
Nov-08	3	\$5,500
Dec-08	1	\$2,500
Jan-09	2	\$3,000
Feb-09	4	\$7,000
Mar-09	4	\$5,500
Apr-09	6	\$11,000
May-09	1	\$1,500
Jun-09	3	\$6,500
<b>TOTAL SFY 2009</b>	<b>38</b>	<b>\$70,500</b>

SFY 2010	Cases	Payments (\$)
Jul-09	6	\$10,000
Aug-09	7	\$10,500
Sep-09	5	\$9,500
Oct-09	4	\$6,000
Nov-09	7	\$10,500
Dec-09	6	\$12,000
Jan-10	2	\$5,000
Feb-10	2	\$5,000
Mar-10	1	\$1,500
Apr-10	1	\$2,500
May-10	1	\$1,500
Jun-10	3	\$5,500
<b>TOTAL SFY 2010</b>	<b>45</b>	<b>\$79,500</b>

SFY 2011	Cases	Payments (\$)
Jul-10	6	\$12,000
Aug-10	4	\$8,000
Sep-10	4	\$7,000
Oct-10	3	\$4,500
Nov-10	5	\$9,500
Dec-10	4	\$10,000
Jan-11	7	\$13,500
Feb-11	7	\$13,500
Mar-11	2	\$4,000
Apr-11	7	\$14,350
May-11	3	\$4,500
Jun-11	3	\$6,500
<b>TOTAL SFY 2011</b>	<b>55</b>	<b>\$107,350</b>

SFY 2012	Cases	Payments (\$)
Jul-11	9	\$19,500
Aug-11	5	\$12,500
Sep-11	2	\$4,000
Oct-11	7	\$12,500
Nov-11	4	\$7,000
Dec-11	3	\$5,500
Jan-12	5	\$10,500
Feb-12	5	\$11,500
Mar-12	4	\$7,000
Apr-12	6	\$10,000
May-12	8	\$17,000
Jun-12	8	\$20,000
<b>TOTAL SFY 2012</b>	<b>66</b>	<b>\$137,000</b>

SFY 2013	Cases	Payments (\$)
Jul-12	10	\$20,000
Aug-12	10	\$19,000
Sep-12	14	\$31,500
Oct-12	10	\$18,000
Nov-12	8	\$15,000
Dec-12	12	\$25,000
Jan-13	9	\$17,500
Feb-13	7	\$13,500
Mar-13	9	\$17,500
Apr-13	14	\$30,000
May-13	15	\$30,500
Jun-13	18	\$37,000
<b>TOTAL SFY 2013</b>	<b>136</b>	<b>\$274,500</b>

**Note:** Effective Nov 2007, TANF Diversion payments are up to \$1,500 for households with three members or less and \$2,500 for households with more than three members.

TANF Diversion Payments by Administrative Office and Region

Office/region	Jul 12	Aug 12	Sep 12	Oct 12	Nov 12	Dec 12	Jan 13	Feb 13	Mar 13	Apr 13	May 13	Jun 13	SFY 13 total
<i>Cibola</i>	\$6,500	\$5,500	\$6,500	\$4,000	\$0	\$0	\$5,000	\$4,000	\$0	\$4,000	\$1,500	\$0	\$37,000
McKinley	\$0	\$0	\$0	\$0	\$0	\$0	\$0	\$0	\$0	\$0	\$0	\$0	\$0
<i>Sandoval</i>	\$0	\$0	\$0	\$0	\$0	\$0	\$0	\$0	\$0	\$0	\$0	\$3,000	\$3,000
San Juan	\$0	\$0	\$0	\$0	\$0	\$0	\$0	\$0	\$2,500	\$2,500	\$3,000	\$1,500	\$9,500
<i>Valencia North</i>	\$7,000	\$12,000	\$22,000	\$12,500	\$12,000	\$20,000	\$7,000	\$9,500	\$11,000	\$10,500	\$18,000	\$5,500	\$147,000
Valencia South	\$0	\$0	\$1,500	\$0	\$0	\$0	\$1,500	\$0	\$2,500	\$6,500	\$0	\$19,500	\$31,500
<b>NW Region Total</b>	<b>\$13,500</b>	<b>\$17,500</b>	<b>\$30,000</b>	<b>\$16,500</b>	<b>\$12,000</b>	<b>\$20,000</b>	<b>\$13,500</b>	<b>\$13,500</b>	<b>\$16,000</b>	<b>\$23,500</b>	<b>\$22,500</b>	<b>\$29,500</b>	<b>\$228,000</b>
Colfax	\$0	\$0	\$0	\$0	\$0	\$0	\$0	\$0	\$0	\$0	\$0	\$0	\$0
Los Alamos	\$0	\$0	\$0	\$0	\$0	\$0	\$0	\$0	\$0	\$0	\$0	\$0	\$0
Mora	\$0	\$0	\$0	\$0	\$0	\$0	\$0	\$0	\$0	\$0	\$0	\$0	\$0
<i>Rio Arriba</i>	\$0	\$0	\$0	\$0	\$0	\$0	\$0	\$0	\$0	\$0	\$0	\$0	\$0
San Miguel	\$0	\$0	\$0	\$0	\$0	\$0	\$0	\$0	\$0	\$0	\$0	\$0	\$0
<i>Santa Fe</i>	\$0	\$0	\$0	\$0	\$0	\$0	\$0	\$0	\$0	\$0	\$3,000	\$0	\$3,000
Taos	\$0	\$0	\$0	\$0	\$0	\$0	\$0	\$0	\$0	\$0	\$0	\$0	\$0
<b>NE Region Total</b>	<b>\$0</b>	<b>\$0</b>	<b>\$0</b>	<b>\$0</b>	<b>\$0</b>	<b>\$0</b>	<b>\$0</b>	<b>\$0</b>	<b>\$0</b>	<b>\$0</b>	<b>\$3,000</b>	<b>\$0</b>	<b>\$3,000</b>
Bernalillo (NE)	\$0	\$0	\$0	\$0	\$3,000	\$2,500	\$1,500	\$0	\$0	\$2,500	\$2,500	\$0	\$12,000
<i>Bernalillo (NW)</i>	\$0	\$0	\$0	\$0	\$0	\$0	\$0	\$0	\$0	\$1,500	\$0	\$2,500	\$4,000
Bernalillo (SE)	\$0	\$0	\$0	\$0	\$0	\$0	\$0	\$0	\$0	\$0	\$0	\$0	\$0
<i>Bernalillo (SW)</i>	\$0	\$0	\$0	\$1,500	\$0	\$0	\$0	\$0	\$0	\$0	\$0	\$0	\$1,500
Torrance	\$0	\$1,500	\$1,500	\$0	\$0	\$2,500	\$0	\$0	\$0	\$0	\$0	\$0	\$5,500
<b>Central Region Total</b>	<b>\$0</b>	<b>\$1,500</b>	<b>\$1,500</b>	<b>\$1,500</b>	<b>\$3,000</b>	<b>\$5,000</b>	<b>\$1,500</b>	<b>\$0</b>	<b>\$0</b>	<b>\$4,000</b>	<b>\$2,500</b>	<b>\$2,500</b>	<b>\$23,000</b>
Chaves	\$0	\$0	\$0	\$0	\$0	\$0	\$0	\$0	\$0	\$0	\$0	\$2,500	\$2,500
<i>Curry</i>	\$0	\$0	\$0	\$0	\$0	\$0	\$0	\$0	\$0	\$0	\$0	\$0	\$0
De Baca	\$0	\$0	\$0	\$0	\$0	\$0	\$0	\$0	\$0	\$0	\$0	\$0	\$0
<i>Eddy</i>	\$4,000	\$0	\$0	\$0	\$0	\$0	\$2,500	\$0	\$0	\$0	\$0	\$0	\$6,500
Guadalupe	\$0	\$0	\$0	\$0	\$0	\$0	\$0	\$0	\$0	\$0	\$0	\$0	\$0
<i>Harding</i>	\$0	\$0	\$0	\$0	\$0	\$0	\$0	\$0	\$0	\$0	\$0	\$0	\$0
Lea	\$0	\$0	\$0	\$0	\$0	\$0	\$0	\$0	\$0	\$0	\$0	\$0	\$0
<i>Quay</i>	\$0	\$0	\$0	\$0	\$0	\$0	\$0	\$0	\$0	\$0	\$0	\$0	\$0
Roosevelt	\$0	\$0	\$0	\$0	\$0	\$0	\$0	\$0	\$0	\$0	\$0	\$0	\$0
<i>Union</i>	\$0	\$0	\$0	\$0	\$0	\$0	\$0	\$0	\$0	\$0	\$0	\$0	\$0
<b>SE Region Total</b>	<b>\$4,000</b>	<b>\$0</b>	<b>\$0</b>	<b>\$0</b>	<b>\$0</b>	<b>\$0</b>	<b>\$2,500</b>	<b>\$0</b>	<b>\$0</b>	<b>\$0</b>	<b>\$0</b>	<b>\$2,500</b>	<b>\$9,000</b>
Catron	\$0	\$0	\$0	\$0	\$0	\$0	\$0	\$0	\$0	\$0	\$0	\$0	\$0
<i>Doña Ana (West)</i>	\$0	\$0	\$0	\$0	\$0	\$0	\$0	\$0	\$1,500	\$0	\$0	\$0	\$1,500
Doña Ana (East)	\$0	\$0	\$0	\$0	\$0	\$0	\$0	\$0	\$0	\$0	\$0	\$0	\$0
<i>Doña Ana (Southern)</i>	\$0	\$0	\$0	\$0	\$0	\$0	\$0	\$0	\$0	\$0	\$0	\$0	\$0
Grant	\$0	\$0	\$0	\$0	\$0	\$0	\$0	\$0	\$0	\$0	\$0	\$0	\$0
<i>Hidalgo</i>	\$0	\$0	\$0	\$0	\$0	\$0	\$0	\$0	\$0	\$0	\$0	\$0	\$0
Lincoln	\$0	\$0	\$0	\$0	\$0	\$0	\$0	\$0	\$0	\$0	\$0	\$0	\$0
<i>Luna</i>	\$0	\$0	\$0	\$0	\$0	\$0	\$0	\$0	\$0	\$0	\$2,500	\$0	\$2,500
Otero	\$0	\$0	\$0	\$0	\$0	\$0	\$0	\$0	\$0	\$0	\$0	\$0	\$0
<i>Sierra</i>	\$0	\$0	\$0	\$0	\$0	\$0	\$0	\$0	\$0	\$0	\$0	\$0	\$0
Socorro	\$2,500	\$0	\$0	\$0	\$0	\$0	\$0	\$0	\$0	\$2,500	\$0	\$2,500	\$7,500
<b>SW Region Total</b>	<b>\$2,500</b>	<b>\$0</b>	<b>\$0</b>	<b>\$0</b>	<b>\$0</b>	<b>\$0</b>	<b>\$0</b>	<b>\$0</b>	<b>\$1,500</b>	<b>\$2,500</b>	<b>\$2,500</b>	<b>\$2,500</b>	<b>\$11,500</b>
<b>State Total</b>	<b>\$20,000</b>	<b>\$19,000</b>	<b>\$31,500</b>	<b>\$18,000</b>	<b>\$15,000</b>	<b>\$25,000</b>	<b>\$17,500</b>	<b>\$13,500</b>	<b>\$17,500</b>	<b>\$30,000</b>	<b>\$30,500</b>	<b>\$37,000</b>	<b>\$274,500</b>

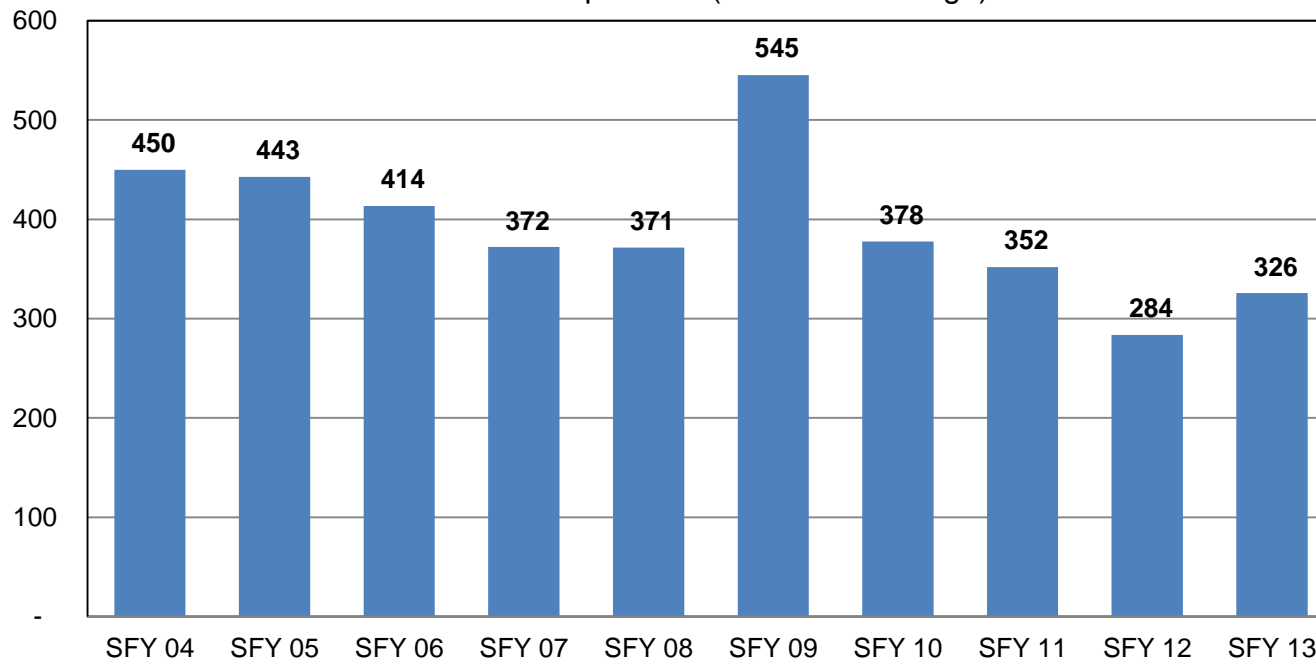
### Number of Active TANF Cases Extended Beyond 60 Month Time Limit

#	Office	Jul-12	Aug-12	Sep-12	Oct-12	Nov-12	Dec-12	Jan-13	Feb-13	Mar-13	Apr-13	May-13	Jun-13	AVG
1	SE Bernalillo	28	30	20	33	33	32	35	32	29	22	28	26	29
3	Chaves	22	20	13	19	14	18	17	16	11	6	7	6	14
4	Colfax	8	11	4	9	8	8	7	4	4	4	3	4	6
3104	Union	0	0	0	1	0	0	0	0	0	1	1	1	0
5	Curry	9	10	13	12	9	8	8	7	5	4	2	3	8
7	W Dona Ana	71	80	84	82	81	83	79	80	74	68	70	73	77
8	Eddy	22	22	21	16	13	14	13	12	11	14	13	11	15
9	Grant	8	8	8	8	8	8	8	7	4	4	4	3	7
1209	Hidalgo	9	5	4	5	5	5	5	4	3	2	2	2	4
10	Guadalupe	3	4	3	3	2	2	2	3	4	4	4	3	3
13	Lea	3	4	3	5	4	3	4	3	1	1	5	4	3
14	Lincoln	7	5	4	8	6	5	5	5	3	2	3	2	5
16	Luna	11	9	12	12	12	14	15	10	8	5	5	7	10
17	McKinley	6	7	5	3	2	1	1	1	2	2	4	3	3
19	Otero	3	3	2	2	3	7	9	7	8	7	6	5	5
20	Quay	8	7	5	7	7	6	7	7	9	9	7	8	7
21	Rio Arriba	25	26	21	24	24	24	28	27	31	26	25	23	25
22	Roosevelt	1	3	2	2	2	2	2	2	1	0	0	0	1
23	Sandoval	49	45	42	41	39	47	41	39	39	37	39	40	42
24	San Juan	0	0	0	0	0	0	0	1	1	1	1	1	0
25	San Miguel	16	15	19	19	20	17	17	14	14	14	13	8	16
26	Santa Fe	45	39	39	39	39	40	45	41	38	39	38	43	40
27	Sierra	5	5	2	4	3	3	3	2	2	2	2	2	3
28	Socorro	19	16	20	20	21	21	15	14	12	13	15	13	17
29	Taos	11	12	15	13	8	9	9	7	7	6	7	8	9
30	Torrance	8	10	11	9	7	8	8	9	14	14	14	14	11
32	S Valencia	8	9	7	7	8	9	8	10	9	8	8	6	8
33	Cibola	15	14	13	10	11	13	13	12	11	11	12	11	12
34	Eddy/Artesia	2	3	4	3	2	3	3	1	4	4	4	2	3
35	NW Bernalillo	68	64	37	61	56	55	62	53	54	56	57	55	57
36	SW Bernalillo	62	68	43	74	75	68	68	72	68	66	59	62	65
37	E Dona Ana	40	36	36	39	40	27	39	35	36	35	36	28	36
38	S Dona Ana	22	24	25	21	22	20	18	20	19	24	23	21	22
39	NE Bernalillo	55	53	27	47	47	37	35	41	38	43	42	38	42
42	N Valencia	17	17	21	21	18	15	17	13	15	15	15	14	17
	<b>TOTAL</b>	<b>686</b>	<b>684</b>	<b>585</b>	<b>679</b>	<b>649</b>	<b>632</b>	<b>646</b>	<b>611</b>	<b>589</b>	<b>569</b>	<b>574</b>	<b>550</b>	<b>621</b>

### Education Works (EW) History

SFY	Total Expenditures	Avg Monthly Cases	Avg Monthly # Participants	Avg Monthly # Adults	Avg Monthly # Children
SFY 2008	\$1,685,449	371	1,006	376	630
SFY 2009	\$2,575,903	545	1,608	594	1,013
SFY 2010	\$1,902,466	378	1,116	418	698
SFY 2011	\$1,654,458	352	1,060	400	660
SFY 2012	\$1,194,606	284	877	325	552
SFY 2013	\$1,270,589	326	952	364	587

EW Caseload per SFY (12 month average)



**Education Works Cases by Administrative Office**

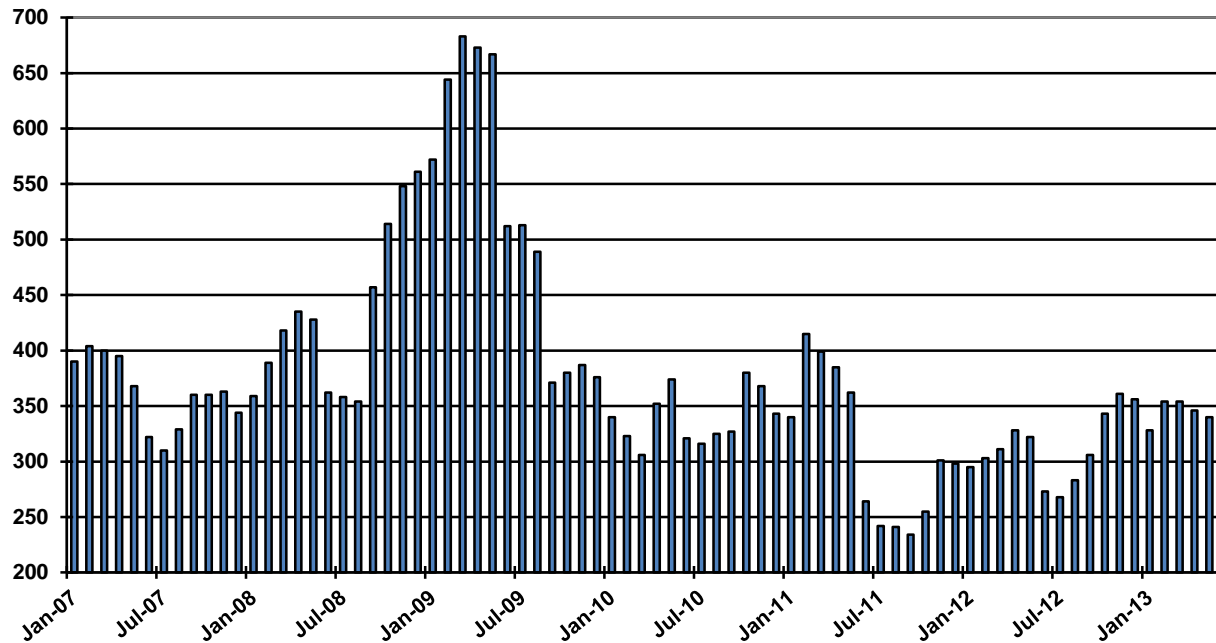
#	Office	Jul-12	Aug-12	Sep-12	Oct-12	Nov-12	Dec-12	Jan-13	Feb-13	Mar-13	Apr-13	May-13	Jun-13
1	SE Bernalillo	17	26	30	32	31	34	30	31	31	31	31	30
3	Chaves	1	1	1	1	1	2	3	5	5	5	5	1
4	Colfax	5	5	5	5	5	6	5	4	4	4	4	4
3104	Union	-	-	-	-	-	-	-	-	-	-	-	-
5	Curry	4	3	4	2	2	2	1	2	3	6	4	1
7	W Dona Ana	21	15	13	23	25	25	23	22	25	25	25	23
8	Eddy	6	6	6	5	5	3	3	4	4	5	6	5
9	Grant	15	15	13	15	15	14	11	12	14	13	11	8
1209	Hidalgo	-	-	-	-	-	-	-	-	-	-	-	-
10	Guadalupe	-	-	-	-	-	-	-	-	-	-	-	-
13	Lea	-	3	4	4	3	4	4	5	5	5	5	6
14	Lincoln	-	-	-	-	-	-	-	-	-	-	-	-
16	Luna	-	2	2	3	4	2	4	3	4	5	4	5
17	McKinley	-	-	-	1	1	-	-	1	1	1	-	-
19	Otero	2	3	3	3	3	4	4	4	3	2	3	2
20	Quay	2	2	3	3	4	4	6	6	5	5	5	-
21	Rio Arriba	4	3	3	2	6	6	6	5	5	4	4	2
22	Roosevelt	-	-	-	1	1	1	1	1	2	3	2	-
23	Sandoval	8	7	20	29	30	30	25	30	29	28	29	27
24	San Juan	1	1	1	1	1	1	1	1	1	1	1	1
25	San Miguel	13	15	16	20	21	20	17	15	15	13	13	6
26	Santa Fe	18	15	16	14	14	16	13	14	14	12	12	4
27	Sierra	-	1	1	2	2	3	2	3	2	1	1	-
28	Socorro	1	1	1	1	2	1	1	1	1	2	2	2
29	Taos	5	8	11	12	13	13	12	13	11	11	10	4
30	Torrance	9	10	10	10	10	9	8	9	9	8	10	9
32	S Valencia	3	2	2	2	3	3	4	4	6	6	5	4
33	Cibola	5	5	5	5	5	5	3	4	4	4	4	4
34	Eddy/Artesia	-	1	1	2	3	2	2	3	3	3	2	-
35	NW Bernalillo	26	25	24	27	25	26	25	28	26	26	27	27
36	SW Bernalillo	15	13	15	16	17	16	16	17	18	18	16	17
37	E Dona Ana	19	21	19	22	23	21	18	25	24	23	23	11
38	S Dona Ana	10	16	16	20	21	22	20	21	21	17	17	3
39	NE Bernalillo	54	54	56	55	58	53	54	57	53	54	55	58
42	N Valencia	4	4	5	5	7	8	6	4	6	5	4	5
	<b>TOTAL</b>	<b>268</b>	<b>283</b>	<b>306</b>	<b>343</b>	<b>361</b>	<b>356</b>	<b>328</b>	<b>354</b>	<b>354</b>	<b>346</b>	<b>340</b>	<b>269</b>



### Education Works Cases by Region

	Jul-12	Aug-12	Sep-12	Oct-12	Nov-12	Dec-12	Jan-13	Feb-13	Mar-13	Apr-13	May-13	Jun-13
NW Region 1	21	19	33	43	47	47	39	44	47	45	43	41
NE Region 2	45	46	51	53	59	61	53	51	49	44	43	20
Central Region 3	121	128	135	140	141	138	133	142	137	137	139	141
SE Region 4	13	16	19	18	19	18	20	26	27	32	29	13
SW Region 5	68	74	68	89	95	92	83	91	94	88	86	54
<b>TOTAL</b>	<b>268</b>	<b>283</b>	<b>306</b>	<b>343</b>	<b>361</b>	<b>356</b>	<b>328</b>	<b>354</b>	<b>354</b>	<b>346</b>	<b>340</b>	<b>269</b>

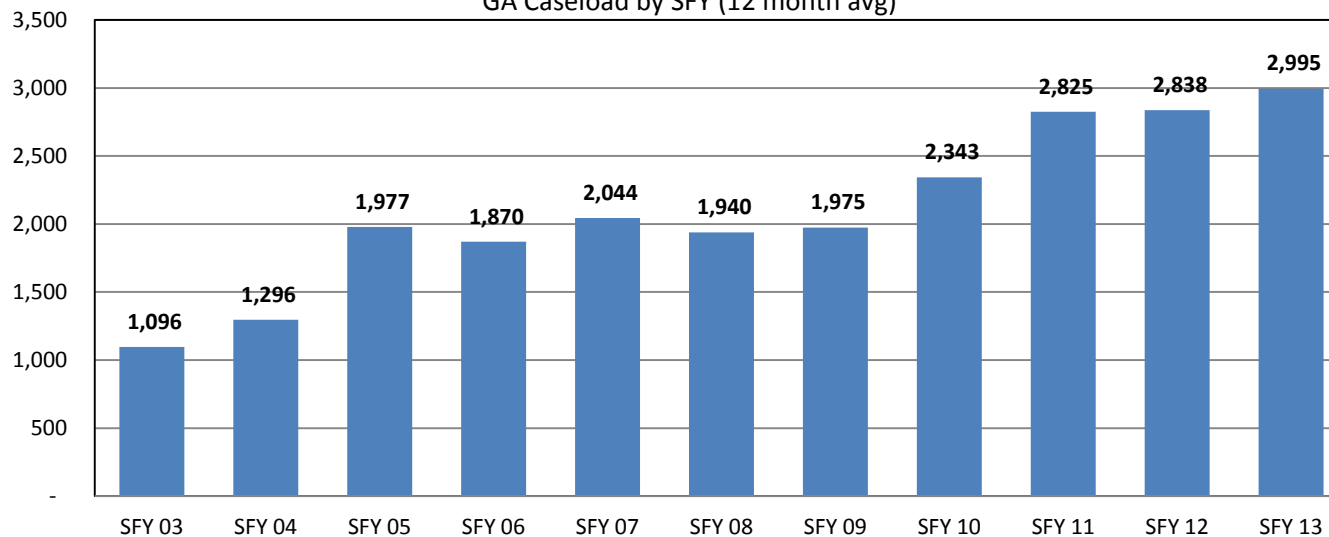
### Education Works Cases, by Month



**General Assistance (GA) History**

SFY	Total Expenditures	Avg Monthly Cases	Avg Monthly # Participants	Avg Monthly # Adults	Avg Monthly # Children	Total Applications	Total Approvals	Avg Approval Rate
SFY 2002	\$4,575,365	1,356	1,476	1,361	114	11,565	1,313	11.4%
SFY 2003	\$4,164,461	1,096	1,198	1,097	101	13,739	1,293	9.4%
SFY 2004	\$4,949,342	1,296	1,387	1,298	89	11,252	2,124	18.9%
SFY 2005	\$7,282,384	1,977	2,089	1,996	93	9,141	2,903	31.8%
SFY 2006	\$7,532,010	1,870	2,023	1,881	142	8,178	2,986	36.5%
SFY 2007	\$7,615,465	2,044	2,207	2,043	164	8,275	3,009	36.4%
SFY 2008	\$8,125,577	1,940	2,112	1,934	177	8,216	3,550	43.2%
SFY 2009	\$9,018,474	1,975	2,133	1,956	177	8,372	2,742	32.8%
SFY 2010	\$9,354,843	2,343	2,515	2,344	171	11,432	2,997	26.2%
SFY 2011	\$9,478,494	2,825	3,057	2,846	210	11,204	2,806	25.0%
SFY 2012	\$9,850,873	2,838	3,068	2,856	212	13,610	2,866	21.1%
SFY 2013	\$9,980,040	2,995	3,231	3,031	217	14,768	3,493	23.7%

GA Caseload by SFY (12 month avg)



### General Assistance (GA) Cases by County

County	Jul-12	Aug-12	Sep-12	Oct-12	Nov-12	Dec-12	Jan-13	Feb-13	Mar-13	Apr-13	May-13	Jun-13
Bernalillo	1,097	1,089	1,082	1,082	1,073	1,021	1,034	1,019	1,050	1,094	1,131	1,162
Catron	4	3	3	3	3	2	2	2	2	2	3	3
Chaves	93	92	87	93	92	93	99	98	100	99	98	100
Cibola	62	59	63	67	64	65	73	74	76	75	74	79
Colfax	31	29	29	26	28	26	24	23	25	29	29	29
Curry	71	72	71	70	72	65	70	69	70	69	76	80
De Baca	5	6	6	6	5	5	5	5	5	5	5	5
Dona Ana	235	227	227	245	261	258	265	269	260	274	277	284
Eddy	109	108	113	118	120	117	116	112	109	103	105	109
Grant	63	61	60	63	64	59	59	60	64	56	62	69
Guadalupe	16	14	14	14	15	15	15	16	15	15	15	19
Harding	0	0	0	0	0	0	1	1	1	1	1	1
Hidalgo	18	18	17	16	19	19	19	20	15	16	14	11
Lea	43	41	39	40	43	41	41	39	41	38	40	44
Lincoln	31	30	31	32	33	34	34	29	26	28	33	36
Los Alamos	4	4	4	5	6	7	6	6	7	7	7	7
Luna	45	44	45	41	41	42	42	45	43	43	44	43
McKinley	16	18	18	20	19	19	19	18	15	14	15	17
Mora	11	10	9	8	6	7	7	7	6	4	4	6
Otero	56	51	53	49	48	48	54	52	54	60	62	63
Quay	41	40	39	41	38	38	41	38	39	41	40	35
Rio Arriba	131	138	135	134	141	134	124	135	140	142	144	158
Roosevelt	6	7	6	8	7	7	9	12	9	9	10	11
Sandoval	95	83	84	87	98	98	106	106	101	102	115	111
San Juan	66	61	63	67	67	67	62	66	63	66	68	71
San Miguel	92	98	101	98	102	103	104	103	100	103	100	107
Santa Fe	170	169	169	180	189	196	207	204	221	242	242	252
Sierra	29	29	33	33	32	31	38	36	36	37	37	38
Socorro	46	53	54	49	51	50	54	49	47	46	50	52
Taos	69	68	68	70	68	75	75	72	76	88	94	94
Torrance	29	28	28	30	30	35	33	33	32	31	28	28
Union	3	2	3	3	4	5	11	9	10	9	8	8
Valencia	104	116	112	126	133	141	140	144	142	140	140	148
<b>TOTAL</b>	<b>2,891</b>	<b>2,868</b>	<b>2,866</b>	<b>2,924</b>	<b>2,972</b>	<b>2,923</b>	<b>2,989</b>	<b>2,971</b>	<b>3,000</b>	<b>3,088</b>	<b>3,171</b>	<b>3,280</b>

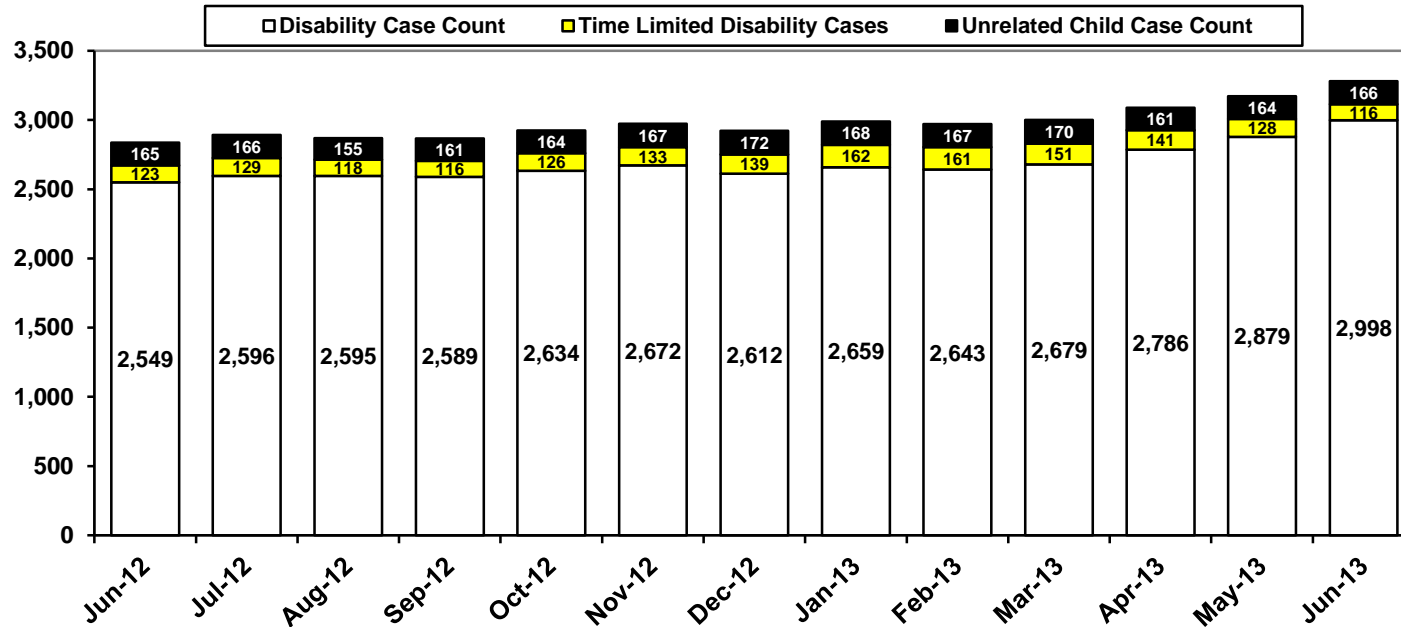
**General Assistance (GA) Cases by Administrative Office**

#	Office	Jul-12	Aug-12	Sep-12	Oct-12	Nov-12	Dec-12	Jan-13	Feb-13	Mar-13	Apr-13	May-13	Jun-13
1	SE Bernalillo	188	184	184	182	185	163	161	149	159	152	155	172
3	Chaves	93	92	87	93	92	93	99	98	100	99	98	100
4	Colfax	31	29	29	26	28	26	24	23	25	29	29	29
3104	Union	3	2	3	3	4	5	11	9	10	9	8	8
5	Curry	71	72	71	70	72	65	70	69	70	69	76	80
7	W Dona Ana	126	123	120	128	136	130	130	134	132	138	144	153
8	Eddy	77	76	83	85	83	80	79	75	74	71	70	76
9	Grant	64	62	61	63	64	59	59	60	64	56	62	69
1209	Hidalgo	18	18	17	16	19	19	19	20	15	16	14	11
10	Guadalupe	21	20	20	20	20	20	20	21	20	20	20	24
13	Lea	43	41	39	40	43	41	41	39	41	38	40	44
14	Lincoln	31	30	31	32	33	34	34	29	26	28	33	36
16	Luna	44	43	44	41	41	42	42	45	43	43	44	43
17	McKinley	16	18	18	20	19	19	19	18	15	14	15	17
19	Otero	56	51	53	49	48	48	54	52	54	60	62	63
20	Quay	41	40	39	41	38	38	41	38	39	41	40	35
21	Rio Arriba	137	144	141	140	148	142	131	142	148	150	153	167
22	Roosevelt	6	7	6	8	7	7	9	12	9	9	10	11
23	Sandoval	95	83	84	87	98	98	106	106	101	102	115	111
24	San Juan	66	61	63	67	67	67	62	66	63	66	68	71
25	San Miguel	103	108	110	106	108	109	110	109	105	106	103	112
26	Santa Fe	168	167	167	179	188	196	208	205	222	243	242	252
27	Sierra	34	33	38	39	39	39	43	39	37	38	39	40
28	Socorro	50	56	57	52	54	52	56	51	49	48	53	55
29	Taos	69	68	68	70	68	75	75	72	76	88	94	94
30	Torrance	29	28	28	30	30	35	33	33	32	31	28	28
32	S Valencia	33	36	38	38	43	44	45	49	48	48	44	44
33	Cibola	62	59	63	67	64	65	73	74	76	75	74	79
34	Eddy/Artesia	32	32	30	33	37	37	37	37	35	32	35	33
35	NW Bernalillo	285	291	288	293	285	272	289	286	293	313	322	324
36	SW Bernalillo	204	201	191	190	186	189	187	186	207	207	216	235
37	E Dona Ana	65	64	64	74	77	76	81	83	80	84	83	84
38	S Dona Ana	39	36	38	37	41	44	49	49	47	51	48	45
39	NE Bernalillo	420	413	419	417	417	397	397	398	391	422	438	431
42	N Valencia	71	80	74	88	90	97	95	95	94	92	96	104
	<b>TOTAL</b>	<b>2,891</b>	<b>2,868</b>	<b>2,866</b>	<b>2,924</b>	<b>2,972</b>	<b>2,923</b>	<b>2,989</b>	<b>2,971</b>	<b>3,000</b>	<b>3,088</b>	<b>3,171</b>	<b>3,280</b>

### General Assistance (GA) Cases by Region

	Jul-12	Aug-12	Sep-12	Oct-12	Nov-12	Dec-12	Jan-13	Feb-13	Mar-13	Apr-13	May-13	Jun-13
NW Region 1	343	337	340	367	381	390	400	408	397	397	412	426
NE Region 2	511	518	518	524	544	553	559	560	586	625	629	662
Central Region 3	1,126	1,117	1,110	1,112	1,103	1,056	1,067	1,052	1,082	1,125	1,159	1,190
SE Region 4	384	380	375	390	392	381	396	389	388	379	389	403
SW Region 5	527	516	523	531	552	543	567	562	547	562	582	599
<b>TOTAL</b>	<b>2,891</b>	<b>2,868</b>	<b>2,866</b>	<b>2,924</b>	<b>2,972</b>	<b>2,923</b>	<b>2,989</b>	<b>2,971</b>	<b>3,000</b>	<b>3,088</b>	<b>3,171</b>	<b>3,280</b>

### General Assistance Categories by Type



GA Interim Assistance Reimbursements						
	SFY 11		SFY 12		SFY 13	
	Cases	Amount	Cases	Amount	Cases	Amount
July	90	\$258,011	77	\$224,022	105	\$254,087
<b>August</b>	<b>103</b>	<b>\$322,128</b>	<b>100</b>	<b>\$256,766</b>	<b>88</b>	<b>\$248,471</b>
September	73	\$200,381	68	\$159,712	101	\$233,341
<b>October</b>	<b>60</b>	<b>\$191,660</b>	<b>60</b>	<b>\$158,539</b>	<b>101</b>	<b>\$293,784</b>
November	83	\$163,006	60	\$158,596	72	\$193,152
<b>December</b>	<b>82</b>	<b>\$104,640</b>	<b>74</b>	<b>\$183,600</b>	<b>84</b>	<b>\$236,221</b>
January	62	\$225,315	91	\$341,348	79	\$209,922
<b>February</b>	<b>112</b>	<b>\$219,600</b>	<b>113</b>	<b>\$307,090</b>	<b>77</b>	<b>\$178,441</b>
March	53	\$149,464	77	\$186,834	85	\$229,599
<b>April</b>	<b>90</b>	<b>\$292,761</b>	<b>102</b>	<b>\$357,392</b>	<b>92</b>	<b>\$240,540</b>
May	91	\$270,641	90	\$230,243	126	\$346,079
<b>June</b>	<b>73</b>	<b>\$207,618</b>	<b>57</b>	<b>\$215,729</b>	<b>90</b>	<b>\$225,355</b>
<b>SFY Total</b>	<b>899</b>	<b>\$2,605,223</b>	<b>969</b>	<b>\$2,779,871</b>	<b>1,100</b>	<b>\$2,888,992</b>
<b>Avg</b>	<b>75</b>	<b>\$217,102</b>	<b>81</b>	<b>\$231,656</b>	<b>92</b>	<b>\$240,749</b>

State Funded Legal Aliens										
	SFY 09		SFY 10		SFY 11		SFY 12		SFY 13	
	Participants	Payments	Participants	Payments	Participants	Payments	Participants	Payments	Participants	Payments
July	64	\$4,844	87	\$6,125	91	\$7,126	110	\$6,644	83	\$5,029
<b>August</b>	<b>62</b>	<b>\$6,498</b>	<b>89</b>	<b>\$8,883</b>	<b>94</b>	<b>\$8,363</b>	<b>113</b>	<b>\$8,612</b>	<b>83</b>	<b>\$6,132</b>
September	60	\$4,496	85	\$5,704	104	\$7,004	107	\$7,302	81	\$4,863
<b>October</b>	<b>65</b>	<b>\$4,741</b>	<b>89</b>	<b>\$5,743</b>	<b>112</b>	<b>\$7,997</b>	<b>93</b>	<b>\$6,292</b>	<b>74</b>	<b>\$4,270</b>
November	70	\$5,152	88	\$6,189	119	\$8,588	94	\$5,741	65	\$4,131
<b>December</b>	<b>70</b>	<b>\$4,580</b>	<b>94</b>	<b>\$6,854</b>	<b>124</b>	<b>\$8,644</b>	<b>94</b>	<b>\$6,593</b>	<b>73</b>	<b>\$4,040</b>
January	77	\$7,216	92	\$8,354	125	\$8,212	91	\$5,307	60	\$3,561
<b>February</b>	<b>81</b>	<b>\$6,070</b>	<b>89</b>	<b>\$7,003</b>	<b>109</b>	<b>\$7,692</b>	<b>83</b>	<b>\$5,614</b>	<b>67</b>	<b>\$3,796</b>
March	98	\$6,318	97	\$8,083	105	\$7,317	69	\$4,406	73	\$4,046
<b>April</b>	<b>88</b>	<b>\$6,148</b>	<b>101</b>	<b>\$8,219</b>	<b>102</b>	<b>\$6,911</b>	<b>73</b>	<b>\$3,862</b>	<b>64</b>	<b>\$2,771</b>
May	89	\$7,087	81	\$6,569	105	\$6,873	78	\$5,371	57	\$2,865
<b>June</b>	<b>93</b>	<b>\$6,805</b>	<b>85</b>	<b>\$6,778</b>	<b>109</b>	<b>\$7,064</b>	<b>80</b>	<b>\$4,689</b>	<b>49</b>	<b>\$2,898</b>
<b>SFY Total</b>	<b>917</b>	<b>\$63,150</b>	<b>1,077</b>	<b>\$77,726</b>	<b>1,299</b>	<b>\$91,791</b>	<b>1,085</b>	<b>\$70,433</b>	<b>829</b>	<b>\$48,402</b>
<b>Avg</b>	<b>76</b>	<b>\$5,262</b>	<b>90</b>	<b>\$6,477</b>	<b>108</b>	<b>\$7,649</b>	<b>90</b>	<b>\$5,869</b>	<b>69</b>	<b>\$4,034</b>

IAR case figures reflect those with expected reimbursement amounts above \$0. Payments reflect the amount that is received by the Social Security Administration. Figures unreconciled and subject to change.

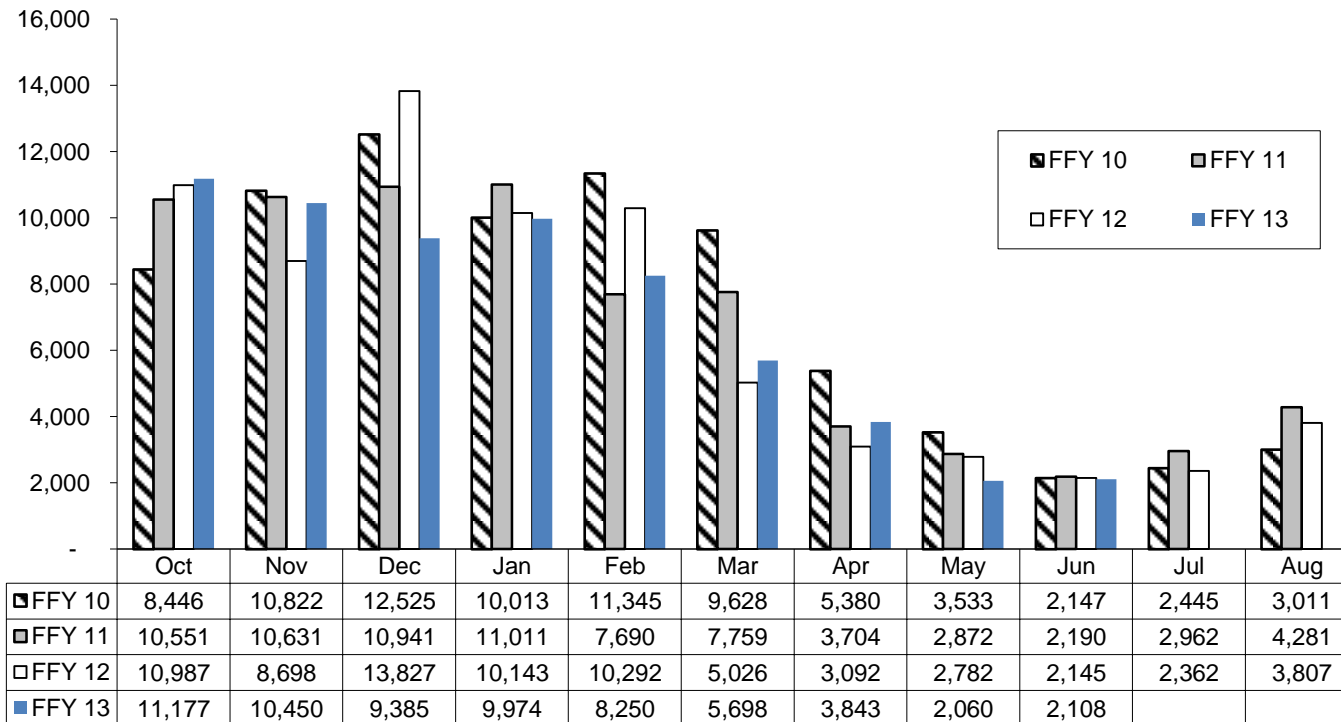
Refugee Cash Assistance										
	SFY 09		SFY 10		SFY 11		SFY 12		SFY 13	
	Cases	Payments	Cases	Payments	Cases	Payments	Cases	Payments	Cases	Payments
July	12	\$2,807	17	\$7,379	17	\$8,294	15	\$6,428	23	\$7,155
<b>August</b>	<b>8</b>	<b>\$3,374</b>	<b>12</b>	<b>\$5,499</b>	<b>15</b>	<b>\$5,423</b>	<b>9</b>	<b>\$4,433</b>	<b>27</b>	<b>\$7,742</b>
September	9	\$2,856	12	\$3,452	18	\$5,352	5	\$2,930	32	\$8,267
<b>October</b>	<b>9</b>	<b>\$2,625</b>	<b>12</b>	<b>\$4,098</b>	<b>19</b>	<b>\$7,134</b>	<b>5</b>	<b>\$1,519</b>	<b>32</b>	<b>\$9,803</b>
November	15	\$3,209	10	\$3,686	21	\$6,478	10	\$2,675	31	\$9,552
<b>December</b>	<b>16</b>	<b>\$5,650</b>	<b>15</b>	<b>\$3,693</b>	<b>27</b>	<b>\$8,716</b>	<b>9</b>	<b>\$3,380</b>	<b>40</b>	<b>\$10,435</b>
January	20	\$5,813	21	\$6,118	30	\$10,377	12	\$3,285	36	\$11,489
<b>February</b>	<b>24</b>	<b>\$6,991</b>	<b>22</b>	<b>\$7,013</b>	<b>34</b>	<b>\$10,040</b>	<b>13</b>	<b>\$3,210</b>	<b>27</b>	<b>\$11,107</b>
March	36	\$9,540	24	\$7,983	31	\$11,282	13	\$3,739	30	\$8,678
<b>April</b>	<b>31</b>	<b>\$10,444</b>	<b>28</b>	<b>\$7,850</b>	<b>26</b>	<b>\$8,831</b>	<b>23</b>	<b>\$5,654</b>	<b>26</b>	<b>\$9,410</b>
May	22	\$9,818	29	\$8,897	28	\$7,266	26	\$7,579	26	\$8,901
<b>June</b>	<b>24</b>	<b>\$7,116</b>	<b>28</b>	<b>\$10,480</b>	<b>20</b>	<b>\$7,533</b>	<b>22</b>	<b>\$7,496</b>	<b>33</b>	<b>\$9,535</b>
<b>SFY Total</b>	<b>226</b>	<b>\$70,243</b>	<b>230</b>	<b>\$76,148</b>	<b>286</b>	<b>\$96,726</b>	<b>162</b>	<b>\$52,328</b>	<b>363</b>	<b>\$112,074</b>
<b>Avg</b>	<b>19</b>	<b>\$5,854</b>	<b>19</b>	<b>\$6,346</b>	<b>24</b>	<b>\$8,061</b>	<b>14</b>	<b>\$4,361</b>	<b>30</b>	<b>\$9,340</b>

State Supplement for Residential Care (SSRC)										
	SFY 09		SFY 10		SFY 11		SFY 12		SFY 13	
	Cases	Payments	Cases	Payments	Cases	Payments	Cases	Payments	Cases	Payments
July	82	\$10,200	67	\$6,800	60	\$6,400	51	\$5,300	45	\$4,600
<b>August</b>	<b>81</b>	<b>\$8,300</b>	<b>66</b>	<b>\$6,700</b>	<b>56</b>	<b>\$6,100</b>	<b>53</b>	<b>\$5,500</b>	<b>44</b>	<b>\$4,600</b>
September	80	\$8,600	64	\$6,700	53	\$5,700	52	\$5,300	46	\$4,800
<b>October</b>	<b>74</b>	<b>\$8,200</b>	<b>66</b>	<b>\$6,800</b>	<b>55</b>	<b>\$5,800</b>	<b>53</b>	<b>\$5,400</b>	<b>47</b>	<b>\$4,700</b>
November	72	\$7,500	69	\$7,000	56	\$6,000	53	\$5,300	46	\$4,900
<b>December</b>	<b>71</b>	<b>\$7,300</b>	<b>69</b>	<b>\$6,900</b>	<b>56</b>	<b>\$5,800</b>	<b>52</b>	<b>\$5,400</b>	<b>47</b>	<b>\$5,200</b>
January	66	\$7,600	69	\$7,100	57	\$5,700	45	\$5,600	50	\$5,100
<b>February</b>	<b>64</b>	<b>\$6,600</b>	<b>70</b>	<b>\$6,900</b>	<b>50</b>	<b>\$5,800</b>	<b>44</b>	<b>\$4,700</b>	<b>47</b>	<b>\$4,900</b>
March	66	\$6,500	70	\$7,000	51	\$5,000	42	\$4,400	45	\$4,800
<b>April</b>	<b>65</b>	<b>\$6,800</b>	<b>71</b>	<b>\$7,200</b>	<b>51</b>	<b>\$5,100</b>	<b>44</b>	<b>\$4,400</b>	<b>46</b>	<b>\$4,700</b>
May	65	\$6,500	67	\$7,100	52	\$5,300	46	\$4,800	44	\$4,600
<b>June</b>	<b>66</b>	<b>\$6,800</b>	<b>64</b>	<b>\$6,800</b>	<b>52</b>	<b>\$5,600</b>	<b>46</b>	<b>\$4,600</b>	<b>44</b>	<b>\$4,400</b>
<b>SFY Total</b>	<b>852</b>	<b>\$90,900</b>	<b>812</b>	<b>\$83,000</b>	<b>649</b>	<b>\$68,300</b>	<b>581</b>	<b>\$60,700</b>	<b>551</b>	<b>\$57,300</b>
<b>Avg</b>	<b>71</b>	<b>\$7,575</b>	<b>68</b>	<b>\$6,917</b>	<b>54</b>	<b>\$5,692</b>	<b>48</b>	<b>\$5,058</b>	<b>46</b>	<b>\$4,775</b>

### Low Income Home Energy Assistance Program (LIHEAP)

	Total Payments	Total Households Served
FFY 2005	\$7,149,720	55,684
FFY 2006	\$29,913,725	71,794
FFY 2007	\$7,920,153	62,269
FFY 2008	\$8,887,155	65,960
FFY 2009	\$20,693,560	69,477
FFY 2010	\$15,541,348	80,013
FFY 2011	\$13,496,840	74,592
FFY 2012	\$8,663,200	73,161
FFY 2013 YTD (Oct – June)	\$7,435,664	62,052

### LIHEAP Application Approvals





**LIHEAP, Total Households Served and Total Payments, by County and Federal Fiscal Year**

County	FFY 2008		FFY 2009		FFY 2010		FFY 2011		FFY 2012		FFY 2013 YTD (Oct – June)	
	Payments	Households	Payments	Households	Payments	Households	Payments	Households	Payments	Households	Payments	Households
Bernalillo	\$2,133,605	16,128	\$4,974,320	17,369	\$3,791,420	20,497	\$3,314,593	19,467	\$2,228,816	19,833	\$1,841,520	16,197
Catron	\$25,327	196	\$58,960	170	\$47,200	206	\$33,910	157	\$22,016	155	\$14,272	101
Chaves	\$462,745	3,301	\$1,008,320	3,333	\$723,490	3,703	\$603,192	3,256	\$369,376	3,062	\$320,080	2,615
Cibola	\$188,309	1,390	\$396,320	1,281	\$298,295	1,484	\$252,302	1,356	\$156,224	1,282	\$140,624	1,156
Colfax	\$91,238	679	\$230,520	793	\$168,020	891	\$148,193	805	\$96,320	818	\$86,336	711
Curry	\$278,293	2,071	\$567,040	1,944	\$406,635	2,139	\$314,794	1,743	\$191,504	1,612	\$161,632	1,352
De Baca	\$20,615	144	\$47,600	148	\$29,670	143	\$30,127	152	\$20,416	158	\$18,096	140
Dona Ana	\$1,120,411	8,472	\$2,741,520	9,409	\$1,980,632	10,608	\$1,835,862	10,340	\$1,186,992	10,223	\$1,074,224	9,027
Eddy	\$272,232	1,989	\$592,280	1,982	\$398,930	2,085	\$324,683	1,771	\$189,808	1,593	\$144,832	1,201
Grant	\$167,314	1,233	\$399,960	1,314	\$302,825	1,539	\$273,775	1,481	\$179,200	1,469	\$152,480	1,246
Guadalupe	\$60,420	444	\$143,800	412	\$107,140	472	\$97,998	457	\$65,008	460	\$56,528	399
Harding	\$7,429	49	\$12,200	32	\$15,140	60	\$8,803	38	\$4,784	30	\$3,344	22
Hidalgo	\$29,697	209	\$84,880	280	\$64,715	342	\$57,208	314	\$34,672	294	\$25,536	211
Lea	\$196,574	1,442	\$503,520	1,696	\$387,720	2,000	\$285,134	1,533	\$169,856	1,399	\$121,216	976
Lincoln	\$63,061	475	\$154,200	516	\$117,330	607	\$102,065	549	\$65,664	550	\$59,760	499
Los Alamos	\$5,073	39	\$4,240	14	\$5,275	26	\$6,475	38	\$3,008	25	\$3,712	32
Luna	\$175,579	1,278	\$455,600	1,454	\$356,875	1,789	\$309,134	1,621	\$189,328	1,521	\$179,456	1,407
McKinley	\$147,687	1,105	\$303,920	1,033	\$216,120	1,140	\$185,493	1,020	\$109,920	944	\$90,112	768
Mora	\$85,291	595	\$204,640	584	\$143,540	626	\$121,355	552	\$71,632	493	\$63,424	436
Otero	\$280,991	2,140	\$624,360	2,135	\$444,795	2,335	\$397,795	2,208	\$236,192	2,008	\$84,064	762
Quay	\$93,822	672	\$192,680	612	\$143,125	720	\$133,623	712	\$79,232	648	\$68,160	553
Rio Arriba	\$464,189	3,339	\$953,520	3,083	\$756,034	3,553	\$651,177	3,483	\$422,928	3,469	\$395,808	3,252
Roosevelt	\$107,065	785	\$222,840	731	\$139,535	722	\$120,915	670	\$81,504	678	\$75,392	619
Sandoval	\$291,821	2,360	\$697,360	2,523	\$527,105	2,906	\$489,703	2,917	\$299,328	2,695	\$238,448	2,135
San Juan	\$317,623	2,385	\$839,320	2,849	\$683,966	3,517	\$591,403	3,200	\$365,360	3,045	\$286,832	2,373
San Miguel	\$312,835	2,182	\$688,640	2,106	\$544,435	2,550	\$501,793	2,504	\$319,120	2,434	\$294,832	2,243
Santa Fe	\$301,796	2,257	\$840,360	2,865	\$713,585	3,475	\$542,221	3,024	\$338,368	2,913	\$306,720	2,623
Sierra	\$97,470	689	\$247,760	774	\$175,040	842	\$154,173	777	\$101,664	781	\$127,936	985
Socorro	\$144,438	1,049	\$308,520	982	\$224,707	1,082	\$203,040	1,038	\$142,064	1,119	\$125,600	972
Taos	\$310,726	2,235	\$741,000	2,277	\$513,558	2,367	\$433,921	2,196	\$276,112	2,135	\$265,856	2,088
Torrance	\$148,352	1,092	\$365,200	1,193	\$260,530	1,305	\$231,211	1,222	\$140,048	1,136	\$134,784	1,071
Union	\$26,923	187	\$51,320	159	\$35,190	178	\$26,662	139	\$17,536	136	\$15,472	119
Valencia	\$458,204	3,349	\$1,036,840	3,424	\$818,771	4,104	\$714,107	3,852	\$489,200	4,043	\$458,576	3,761
<b>TOTAL</b>	<b>\$8,887,155</b>	<b>65,960</b>	<b>\$20,693,560</b>	<b>69,477</b>	<b>\$15,541,348</b>	<b>80,013</b>	<b>\$13,496,840</b>	<b>74,592</b>	<b>\$8,663,200</b>	<b>73,161</b>	<b>\$7,435,664</b>	<b>62,052</b>

Medicaid Cases by County

County	Jul-12	Aug-12	Sep-12	Oct-12	Nov-12	Dec-12	Jan-13	Feb-13	Mar-13	Apr-13	May-13	Jun-13
Bernalillo	90,587	90,729	90,784	91,264	91,326	91,166	91,033	91,314	91,237	91,558	91,883	91,975
Catron	338	338	336	337	329	326	315	323	322	318	316	314
Chaves	11,922	11,910	11,927	11,964	12,072	12,130	12,104	12,101	12,070	12,097	12,138	12,101
Cibola	4,495	4,505	4,533	4,571	4,575	4,587	4,574	4,530	4,494	4,495	4,525	4,514
Colfax	1,727	1,636	1,648	1,645	1,855	1,651	1,649	1,642	1,668	1,671	1,672	1,667
Curry	7,069	7,037	7,053	7,057	7,069	7,099	7,108	7,137	7,077	7,067	7,084	7,062
De Baca	282	286	286	287	286	291	292	288	288	279	274	273
Dona Ana	39,048	39,201	39,267	39,439	39,488	39,553	39,358	39,731	39,847	39,937	40,036	39,980
Eddy	7,978	7,990	7,969	8,024	8,021	8,022	8,021	8,091	8,077	8,087	8,100	8,110
Grant	4,344	4,326	4,316	4,326	4,280	4,275	4,417	4,318	4,275	4,331	4,314	4,315
Guadalupe	778	787	788	784	791	785	770	762	771	781	778	794
Harding	46	43	43	39	40	41	39	36	36	36	37	36
Hidalgo	784	785	793	788	786	782	778	766	791	751	753	756
Lea	8,805	8,844	8,847	8,916	8,989	9,022	9,004	8,982	8,902	8,913	8,884	8,915
Lincoln	2,979	2,963	2,992	3,019	3,042	3,058	3,111	3,130	3,140	3,142	3,152	3,154
Los Alamos	373	378	383	393	397	398	395	406	426	422	409	395
Luna	5,452	5,519	5,487	5,460	5,425	5,487	5,417	5,468	5,484	5,520	5,544	5,533
McKinley	13,970	14,035	13,887	14,116	14,035	13,992	13,996	14,090	13,982	13,923	14,002	13,940
Mora	686	669	660	660	651	638	626	627	611	610	605	591
Otero	7,251	7,199	7,171	7,173	7,197	7,209	7,195	7,214	7,127	7,194	7,198	7,210
Quay	1,612	1,620	1,623	1,619	1,611	1,605	1,623	1,597	1,580	1,578	1,570	1,552
Rio Arriba	8,923	9,019	9,045	9,063	9,040	9,035	9,004	9,011	9,013	9,013	9,005	9,047
Roosevelt	2,700	2,685	2,666	2,690	2,690	2,679	2,692	2,696	2,684	2,667	2,656	2,626
Sandoval	15,552	15,647	15,706	15,785	15,904	16,003	15,973	16,078	16,088	16,143	16,073	16,019
San Juan	17,665	17,811	17,866	17,898	17,948	17,972	17,934	17,960	18,039	18,197	18,290	18,267
San Miguel	5,210	5,156	5,316	5,408	5,508	5,539	5,477	5,410	5,314	5,225	5,131	5,076
Santa Fe	14,873	15,184	15,321	15,475	15,456	15,515	15,596	15,636	15,678	15,700	15,649	15,549
Sierra	2,143	2,170	2,172	2,199	2,239	2,183	2,429	2,220	2,223	2,242	2,242	2,216
Socorro	2,517	2,542	2,551	2,572	2,573	2,577	2,696	2,617	2,593	2,575	2,583	2,555
Taos	5,477	5,476	5,445	5,474	5,513	5,503	5,535	5,528	5,558	5,560	5,555	5,528
Torrance	3,725	3,762	3,749	3,778	3,801	3,799	3,778	3,811	3,816	3,821	3,831	3,788
Union	427	466	690	419	464	576	670	426	412	418	416	421
Valencia	12,295	12,357	12,408	12,614	12,532	12,570	12,567	12,599	12,604	12,577	12,529	12,504
TOTAL	302,033	303,075	303,728	305,256	305,933	306,068	306,176	306,545	306,227	306,848	307,234	306,783

SCI cases are included in the county of residence.

### Medicaid Cases by Administrative Office

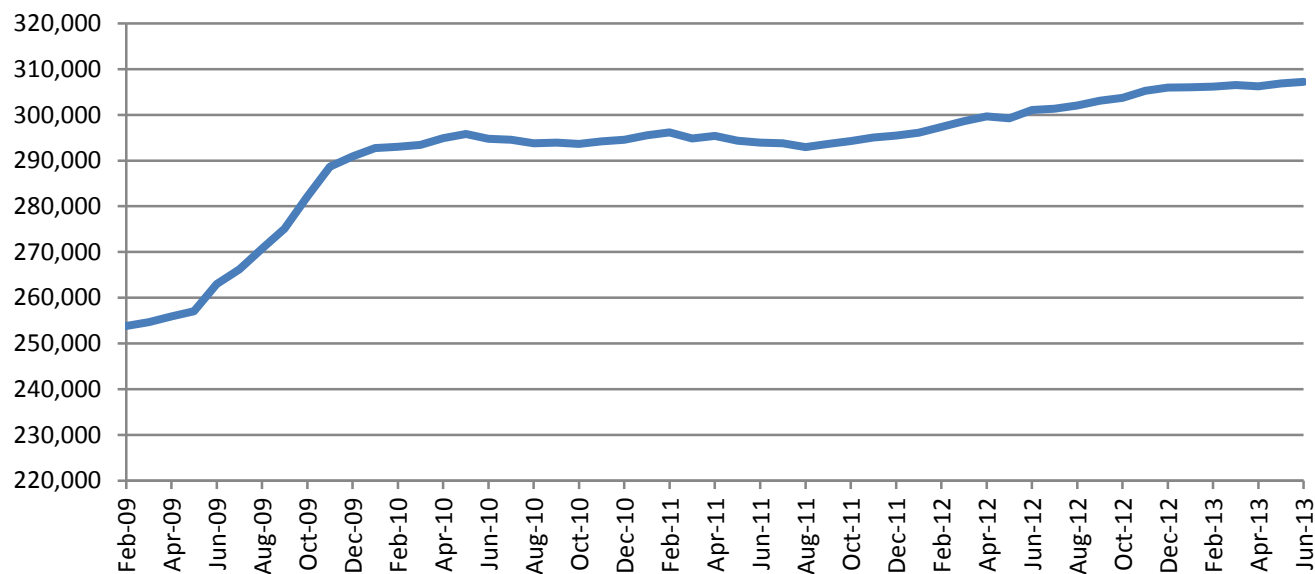
#	Office	Jul-12	Aug-12	Sep-12	Oct-12	Nov-12	Dec-12	Jan-13	Feb-13	Mar-13	Apr-13	May-13	Jun-13
1	SE Bernalillo	14,235	14,369	14,300	14,393	14,252	14,295	14,216	14,278	14,194	14,225	14,463	14,676
3	Chaves	10,185	10,189	10,213	10,262	10,394	10,467	10,462	10,474	10,453	10,495	10,553	10,524
4	Colfax	1,499	1,416	1,431	1,429	1,624	1,436	1,432	1,429	1,458	1,466	1,470	1,471
3104	Union	390	430	641	386	426	519	606	389	376	382	380	387
5	Curry	6,179	6,148	6,171	6,179	6,203	6,240	6,259	6,292	6,239	6,234	6,250	6,232
7	W Dona Ana	10,057	10,132	10,166	10,243	10,622	10,688	10,749	10,883	10,925	10,893	10,993	10,964
8	Eddy	4,474	4,455	4,470	4,507	4,501	4,504	4,511	4,547	4,551	4,602	4,640	4,624
9	Grant	3,677	3,677	3,688	3,587	3,546	3,550	3,675	3,597	3,572	3,614	3,602	3,609
1209	Hidalgo	604	607	614	609	612	610	611	602	606	592	593	596
10	Guadalupe	898	911	911	910	914	914	906	896	906	903	897	913
13	Lea	8,151	8,198	8,213	8,283	8,365	8,402	8,395	8,379	8,304	8,320	8,292	8,328
14	Lincoln	2,306	2,296	2,333	2,372	2,398	2,417	2,475	2,493	2,511	2,520	2,536	2,541
16	Luna	4,561	4,624	4,589	4,691	4,675	4,742	4,685	4,734	4,756	4,793	4,822	4,820
17	McKinley	13,417	13,485	13,348	13,577	13,504	13,465	13,476	13,569	13,462	13,411	13,491	13,432
19	Otero	5,941	5,899	5,878	5,891	5,929	5,949	5,951	5,976	5,897	5,973	5,984	6,000
20	Quay	1,341	1,352	1,357	1,353	1,347	1,343	1,357	1,335	1,318	1,319	1,316	1,301
21	Rio Arriba	8,178	8,287	8,322	8,349	8,338	8,349	8,320	8,342	8,384	8,388	8,390	8,427
22	Roosevelt	2,302	2,289	2,275	2,299	2,302	2,294	2,314	2,319	2,309	2,295	2,289	2,262
23	Sandoval	13,640	13,706	13,742	13,769	13,874	13,988	13,979	14,106	14,138	14,217	14,175	14,139
24	San Juan	17,151	17,304	17,365	17,402	17,467	17,493	17,459	17,490	17,572	17,732	17,824	17,810
25	San Miguel	4,992	4,929	5,072	5,157	5,250	5,275	5,214	5,171	5,074	5,004	4,919	4,861
26	Santa Fe	12,879	13,199	13,344	13,502	13,493	13,553	13,664	13,716	13,768	13,798	13,764	13,676
27	Sierra	2,851	2,878	2,878	2,915	2,960	2,917	3,133	2,935	2,937	2,943	2,936	2,900
28	Socorro	2,464	2,493	2,504	2,526	2,529	2,538	2,639	2,582	2,558	2,543	2,555	2,526
29	Taos	4,424	4,429	4,403	4,437	4,488	4,484	4,521	4,518	4,554	4,561	4,566	4,550
30	Torrance	2,939	2,974	2,964	2,995	3,005	3,009	2,991	3,033	3,047	3,060	3,073	3,039
32	S Valencia	3,276	3,295	3,297	3,327	3,307	3,327	3,332	3,346	3,361	3,320	3,265	3,228
33	Cibola	4,201	4,223	4,252	4,294	4,305	4,318	4,309	4,267	4,233	4,235	4,270	4,262
34	Eddy/Artesia	2,294	2,332	2,317	2,342	2,360	2,372	2,373	2,409	2,399	2,372	2,357	2,388
35	NW Bernalillo	20,526	20,653	20,713	20,934	21,108	21,009	20,991	21,101	21,144	21,296	21,379	21,377
36	SW Bernalillo	20,801	20,785	20,815	20,901	20,954	20,917	20,932	21,065	21,166	21,209	21,332	21,402
37	E Dona Ana	10,118	10,197	10,235	10,218	9,908	9,909	9,910	9,952	10,040	10,158	10,161	10,218
38	S Dona Ana	12,048	12,120	12,150	12,289	12,322	12,362	12,191	12,399	12,417	12,484	12,542	12,508
39	NE Bernalillo	21,601	21,543	21,625	21,741	21,840	21,879	21,930	21,927	21,891	22,067	22,005	21,890
42	N Valencia	7,276	7,297	7,252	7,333	7,255	7,273	7,284	7,312	7,328	7,366	7,394	7,422
	SCI	40,157	39,954	39,880	39,854	39,556	39,261	38,924	38,682	38,379	38,058	37,756	37,480
	<b>TOTAL</b>	<b>302,033</b>	<b>303,075</b>	<b>303,728</b>	<b>305,256</b>	<b>305,933</b>	<b>306,068</b>	<b>306,176</b>	<b>306,545</b>	<b>306,227</b>	<b>306,848</b>	<b>307,234</b>	<b>306,783</b>

**Medicaid Cases by Region**

	Jul-12	Aug-12	Sep-12	Oct-12	Nov-12	Dec-12	Jan-13	Feb-13	Mar-13	Apr-13	May-13	Jun-13
NW Region 1	58,961	59,310	59,256	59,702	59,712	59,864	59,839	60,090	60,094	60,281	60,419	60,293
NE Region 2	32,362	32,690	33,213	33,260	33,619	33,616	33,757	33,565	33,614	33,599	33,489	33,372
Central Region 3	80,102	80,324	80,417	80,964	81,159	81,109	81,060	81,404	81,442	81,857	82,252	82,384
SE Region 4	35,824	35,874	35,927	36,135	36,386	36,536	36,577	36,651	36,479	36,540	36,594	36,572
SW Region 5	94,784	94,877	94,915	95,195	95,057	94,943	94,943	94,835	94,598	94,571	94,480	94,162
<b>TOTAL</b>	<b>302,033</b>	<b>303,075</b>	<b>303,728</b>	<b>305,256</b>	<b>305,933</b>	<b>306,068</b>	<b>306,176</b>	<b>306,545</b>	<b>306,227</b>	<b>306,848</b>	<b>307,234</b>	<b>306,783</b>

SCI cases are included in Region 5.

**Medicaid Cases**



## Medicaid Cases by Category

Cat #	Category Description	Jul-12	Aug-12	Sep-12	Oct-12	Nov-12	Dec-12	Jan-13	Feb-13	Mar-13	Apr-13	May-13	Jun-13
<b>Medicaid Extension</b>													
001	Medicaid Extension for Aged	40	40	37	37	36	36	35	33	34	33	33	31
003	Medicaid Extension for Blind	5	5	5	5	6	6	6	6	6	6	5	5
004	Medicaid Extension for Disabled	574	578	565	557	559	556	540	538	544	525	527	544
	<b>Total</b>	<b>619</b>	<b>623</b>	<b>607</b>	<b>599</b>	<b>601</b>	<b>598</b>	<b>581</b>	<b>577</b>	<b>584</b>	<b>564</b>	<b>565</b>	<b>580</b>
<b>Medicaid for Women, Children, and Low Income Families</b>													
072	JUL Medicaid with Cash Assistance	9,248	9,328	9,117	9,108	8,956	8,602	8,381	7,972	7,756	7,683	7,503	7,288
072	JUL Medicaid without Cash Assistance	29,485	29,384	29,673	29,706	29,799	30,129	30,270	30,554	30,532	30,584	30,643	30,742
030	Full Coverage Medicaid for Pregnant Women	365	372	373	364	359	343	360	353	372	367	391	422
031	Newborns	13,644	13,829	13,809	14,083	14,086	14,045	14,200	14,278	14,307	14,286	14,204	13,939
032	Children (Up to 185% FPL)	101,105	101,205	101,223	101,580	101,616	101,802	101,555	101,502	101,197	101,167	101,109	100,816
032c	Children - SCHIP (Up to 235% FPL)	4,839	4,804	4,796	4,796	4,785	4,769	4,721	4,684	4,667	4,677	4,678	4,637
035f	Family Planning (Up to 185% FPL)	41,385	42,295	43,010	43,758	44,560	44,903	45,480	46,038	46,487	47,261	48,096	48,635
035p	Pregnancy (Up to 185% FPL)	6,895	6,915	6,750	6,666	6,611	6,586	6,601	6,672	6,618	6,724	6,779	6,727
052	Breast Cancer and Cervical Cancer	380	369	381	392	393	387	386	388	386	389	386	399
	<b>Total</b>	<b>207,346</b>	<b>208,501</b>	<b>209,132</b>	<b>210,453</b>	<b>211,165</b>	<b>211,566</b>	<b>211,954</b>	<b>212,441</b>	<b>212,322</b>	<b>213,138</b>	<b>213,789</b>	<b>213,605</b>
<b>Post-JUL Medicaid</b>													
027	4-Month Medicaid due to Increased Child Support	0	0	0	0	0	0	0	0	0	0	0	0
028	12-Month Medicaid due to Increased Earnings	8,220	8,215	8,243	8,359	8,392	8,339	8,399	8,327	8,388	8,430	8,463	8,395
	<b>Total</b>	<b>8,220</b>	<b>8,215</b>	<b>8,243</b>	<b>8,359</b>	<b>8,392</b>	<b>8,339</b>	<b>8,399</b>	<b>8,327</b>	<b>8,388</b>	<b>8,430</b>	<b>8,463</b>	<b>8,395</b>
<b>Special Medicaid Programs</b>													
040	Qualified Medicare Beneficiaries	21,406	21,487	21,541	21,618	21,755	21,788	21,745	21,837	21,890	21,974	22,055	22,130
045	Special Low Income Medicare Beneficiaries	8,084	8,128	8,126	8,116	8,129	7,598	7,604	7,610	8,569	8,266	8,588	8,539
045	Qualifying Individuals 1	3,145	3,149	3,168	3,186	3,188	3,719	3,716	3,749	2,836	3,147	2,828	2,846
043	Working Disabled Individuals	1,799	1,775	1,779	1,771	1,802	1,820	1,842	1,844	1,844	1,816	1,794	1,811
049	Medical Assistance for Single Adult Refugees	85	94	101	104	99	104	89	82	95	99	94	87
	<b>Total</b>	<b>34,519</b>	<b>34,633</b>	<b>34,715</b>	<b>34,795</b>	<b>34,973</b>	<b>35,029</b>	<b>34,996</b>	<b>35,122</b>	<b>35,234</b>	<b>35,302</b>	<b>35,359</b>	<b>35,413</b>

**Medicaid Cases by Category, Continued**

Cat #	Category Description	Jul-12	Aug-12	Sep-12	Oct-12	Nov-12	Dec-12	Jan-13	Feb-13	Mar-13	Apr-13	May-13	Jun-13
<b>State Funded Special Medical Needs</b>													
051	Medical Assistance for Aged and Seriously ill	0	0	0	0	0	0	0	0	0	0	0	0
053	Medical Assistance for Blind and Seriously ill	0	0	0	0	0	0	0	0	0	0	0	0
054	Medical Assistance for Disabled and Seriously ill	1	1	1	1	1	1	1	1	1	1	0	0
	<b>Total</b>	<b>1</b>	<b>1</b>	<b>1</b>	<b>1</b>	<b>1</b>	<b>1</b>	<b>1</b>	<b>1</b>	<b>1</b>	<b>1</b>	<b>0</b>	<b>0</b>
<b>Institutional Care Medicaid</b>													
081	Institutional Care Medicaid for Aged	3,189	3,202	3,190	3,213	3,205	3,187	3,187	3,199	3,115	3,124	3,081	3,065
083	Institutional Care Medicaid for Blind	2	2	2	2	2	2	2	1	0	0	0	0
084	Institutional Care Medicaid for Disabled	899	881	876	865	873	875	877	897	888	884	873	872
	<b>Total</b>	<b>4,090</b>	<b>4,085</b>	<b>4,068</b>	<b>4,080</b>	<b>4,080</b>	<b>4,064</b>	<b>4,066</b>	<b>4,097</b>	<b>4,003</b>	<b>4,008</b>	<b>3,954</b>	<b>3,937</b>
<b>Home and Community-Based Waivers Medicaid</b>													
090	Medicaid Waiver for HIV/AIDS	21	22	22	23	23	23	24	24	21	21	24	24
091	Medicaid Waiver for Aged	1,475	1,451	1,436	1,438	1,436	1,450	1,468	1,478	1,457	1,464	1,465	1,474
092	Brain Injury	308	306	305	304	300	298	296	295	292	290	290	290
093	Medicaid Waiver for Blind	5	5	5	5	5	5	5	5	5	5	5	5
094	Medicaid Waiver for Disabled	1,240	1,238	1,235	1,243	1,269	1,280	1,277	1,299	1,333	1,354	1,362	1,368
095	Medicaid Waiver for Medically Fragile Children	211	213	213	215	215	216	215	215	215	213	210	214
096	Medicaid Waiver for Developmentally Disabled	3,821	3,828	3,866	3,887	3,917	3,938	3,970	3,982	3,993	4,000	3,992	3,998
097	Non-Medicaid Waiver for Aged	0	0	0	0	0	0	0	0	0	0	0	0
098	Non-Medicaid Waiver for Blind	0	0	0	0	0	0	0	0	0	0	0	0
099	Non-Medicaid Waiver for Disabled	0	0	0	0	0	0	0	0	0	0	0	0
	<b>Total</b>	<b>7,081</b>	<b>7,063</b>	<b>7,082</b>	<b>7,115</b>	<b>7,165</b>	<b>7,210</b>	<b>7,255</b>	<b>7,298</b>	<b>7,316</b>	<b>7,347</b>	<b>7,348</b>	<b>7,373</b>
<b>Health Insurance Flexibility &amp; Accountability (HIFA) Waiver</b>													
062	State Coverage Insurance (registered) *	40,157	39,954	39,880	39,854	39,556	39,261	38,924	38,682	38,379	38,058	37,756	37,480
	<b>TOTAL MEDICAID CASES</b>	<b>302,033</b>	<b>303,075</b>	<b>303,728</b>	<b>305,256</b>	<b>305,933</b>	<b>306,068</b>	<b>306,176</b>	<b>306,545</b>	<b>306,227</b>	<b>306,848</b>	<b>307,234</b>	<b>306,783</b>

\* Category 062 reflects all registered cases determined eligible at the end of the benefit month. This table includes preliminary data that is subject to change.

## SNAP Timeliness Rates, Non-Expedited (Percent of Cases Processed Timely)

Region & Administrative office	Jul 2012	Aug 2012	Sep 2012	Oct 2012	Nov 2012	Dec 2012	Jan 2013	Feb 2013	Mar 2013	Apr 2013	May 2013	Jun 2013
<b><u>NW Region (1)</u></b>												
<b>Cibola</b>	100.0%	99.6%	99.6%	99.6%	100.0%	99.5%	100.0%	98.3%	99.4%	99.6%	82.0%	100.0%
<i>McKinley</i>	99.0%	98.8%	98.8%	98.8%	98.2%	100.0%	98.9%	99.6%	99.6%	99.7%	99.3%	100.0%
<b>Sandoval</b>	97.7%	97.4%	99.0%	99.2%	99.5%	99.3%	99.1%	98.7%	98.7%	95.8%	97.7%	96.5%
<i>San Juan</i>	99.9%	99.7%	99.0%	99.6%	99.8%	99.7%	99.2%	99.4%	99.8%	99.8%	99.7%	99.8%
<b>Valencia South</b>	99.1%	100.0%	98.9%	100.0%	98.9%	100.0%	100.0%	100.0%	100.0%	100.0%	100.0%	100.0%
<i>Valencia North</i>	99.5%	99.7%	100.0%	99.8%	99.7%	100.0%	99.0%	100.0%	100.0%	99.7%	98.5%	99.7%
<b>NW Region Total</b>	<b>99.2%</b>	<b>99.0%</b>	<b>99.1%</b>	<b>99.4%</b>	<b>99.4%</b>	<b>99.7%</b>	<b>99.2%</b>	<b>99.3%</b>	<b>99.5%</b>	<b>98.8%</b>	<b>99.0%</b>	<b>99.2%</b>
<b><u>NE Region (2)</u></b>												
<i>Cofax</i>	100.0%	99.0%	100.0%	98.6%	100.0%	99.0%	100.0%	100.0%	100.0%	99.0%	100.0%	100.0%
<b>Rio Arriba</b>	99.6%	99.6%	99.5%	99.8%	99.2%	99.5%	99.8%	99.2%	99.4%	99.7%	99.3%	99.5%
<i>San Miguel</i>	100.0%	99.7%	99.7%	99.7%	99.3%	99.1%	98.2%	98.1%	99.3%	99.6%	99.2%	100.0%
<b>Santa Fe</b>	99.1%	99.0%	98.9%	98.3%	98.7%	98.9%	98.7%	98.6%	98.8%	96.6%	96.3%	98.6%
<i>Taos</i>	100.0%	100.0%	100.0%	100.0%	99.3%	100.0%	98.9%	98.5%	99.6%	98.9%	100.0%	100.0%
<b>NE Region Total</b>	<b>99.5%</b>	<b>99.4%</b>	<b>99.4%</b>	<b>99.2%</b>	<b>99.1%</b>	<b>99.2%</b>	<b>99.0%</b>	<b>98.7%</b>	<b>99.2%</b>	<b>98.3%</b>	<b>98.3%</b>	<b>99.4%</b>
<b><u>Central Region (3)</u></b>												
<i>NE Bernalillo</i>	99.5%	99.6%	99.6%	99.4%	99.4%	99.6%	99.1%	99.6%	99.3%	99.6%	99.6%	99.5%
<b>NW Bernalillo</b>	99.3%	99.2%	99.3%	99.1%	98.6%	99.1%	98.8%	99.3%	98.7%	99.6%	99.0%	99.2%
<i>SE Bernalillo</i>	99.4%	99.0%	99.4%	98.8%	99.1%	99.2%	99.1%	99.1%	99.4%	99.8%	99.0%	98.8%
<b>SW Bernalillo</b>	98.8%	98.9%	83.5%	98.1%	99.2%	99.1%	99.3%	99.3%	99.2%	99.5%	99.4%	99.6%
<i>Torrance</i>	99.4%	99.5%	98.8%	100.0%	98.9%	99.4%	99.5%	99.4%	100.0%	99.4%	100.0%	100.0%
<b>Central Region Total</b>	<b>99.3%</b>	<b>99.2%</b>	<b>95.4%</b>	<b>98.9%</b>	<b>99.1%</b>	<b>99.3%</b>	<b>99.1%</b>	<b>99.4%</b>	<b>99.2%</b>	<b>99.6%</b>	<b>99.3%</b>	<b>99.3%</b>

**SNAP Timeliness Rates, Non-Expedited, continued (Percent of Cases Processed Timely)**

Region & Administrative office	Jul 2012	Aug 2012	Sep 2012	Oct 2012	Nov 2012	Dec 2012	Jan 2013	Feb 2013	Mar 2013	Apr 2013	May 2013	Jun 2013
<b>SE Region Four (4)</b>												
<b>Chaves</b>	98.8%	98.8%	98.9%	98.7%	98.7%	99.3%	99.2%	99.3%	99.3%	99.8%	99.8%	98.6%
<i>Curry</i>	100.0%	100.0%	100.0%	99.4%	100.0%	99.3%	99.4%	99.6%	99.0%	98.6%	99.7%	99.7%
<b>Guadalupe</b>	100.0%	100.0%	100.0%	100.0%	100.0%	100.0%	100.0%	100.0%	100.0%	100.0%	100.0%	100.0%
<i>Eddy</i>	99.3%	99.7%	99.2%	99.3%	100.0%	99.6%	100.0%	98.0%	98.9%	98.9%	97.9%	98.9%
<b>Eddy Artesia</b>	99.0%	100.0%	100.0%	99.2%	100.0%	100.0%	98.9%	100.0%	100.0%	98.2%	99.1%	100.0%
<i>Lea</i>	99.2%	99.5%	98.9%	98.7%	99.7%	98.7%	99.1%	99.7%	99.1%	99.0%	98.9%	99.2%
<b>Quay</b>	98.7%	100.0%	100.0%	100.0%	98.4%	100.0%	100.0%	100.0%	100.0%	100.0%	98.5%	98.3%
<i>Roosevelt</i>	100.0%	99.3%	100.0%	98.2%	98.9%	100.0%	100.0%	100.0%	100.0%	100.0%	99.1%	98.8%
<b>SE Region Total</b>	99.3%	99.5%	99.3%	99.0%	99.5%	99.4%	99.4%	99.3%	99.3%	99.2%	99.2%	99.1%
<b>SW Region (5)</b>												
<i>West Doña Ana</i>	99.3%	99.9%	99.6%	99.2%	99.5%	99.8%	99.9%	100.0%	100.0%	99.9%	99.2%	99.4%
<b>East Doña Ana</b>	99.0%	100.0%	99.3%	99.5%	99.4%	99.8%	99.7%	100.0%	99.3%	99.8%	99.4%	99.2%
<i>Southern Doña Ana</i>	99.8%	99.8%	99.7%	99.8%	99.5%	99.7%	99.3%	100.0%	99.7%	99.8%	100.0%	99.7%
<b>Grant</b>	100.0%	100.0%	99.6%	100.0%	98.8%	98.4%	99.2%	100.0%	99.6%	99.6%	100.0%	100.0%
<i>Lincoln</i>	99.2%	100.0%	100.0%	99.2%	100.0%	99.2%	100.0%	99.2%	100.0%	100.0%	99.2%	100.0%
<b>Luna</b>	99.6%	100.0%	100.0%	100.0%	99.6%	99.6%	100.0%	100.0%	100.0%	99.6%	100.0%	100.0%
<i>Otero</i>	98.7%	98.9%	99.7%	91.6%	100.0%	98.9%	100.0%	99.7%	100.0%	100.0%	99.3%	99.1%
<b>Sierra</b>	100.0%	100.0%	99.2%	98.8%	100.0%	100.0%	100.0%	100.0%	99.1%	100.0%	100.0%	100.0%
<i>Socorro</i>	98.6%	100.0%	98.2%	99.4%	98.7%	100.0%	100.0%	100.0%	99.3%	98.7%	98.8%	100.0%
<b>SW Region Total</b>	99.3%	99.8%	99.5%	98.4%	99.5%	99.5%	99.7%	99.9%	99.7%	99.8%	99.5%	99.6%
<b>State Total</b>	99.3%	99.4%	97.9%	99.0%	99.3%	99.4%	99.3%	99.4%	99.4%	99.3%	99.2%	99.3%

Timeliness of CAP cases is reflected in the appropriate administrative office.



## SNAP Timeliness Rates, Expedited (Percent of Cases Processed Timely)

Region & Administrative office	Jul 2012	Aug 2012	Sep 2012	Oct 2012	Nov 2012	Dec 2012	Jan 2013	Feb 2013	Mar 2013	Apr 2013	May 2013	Jun 2013
<b><u>NW Region (1)</u></b>												
<b>Cibola</b>	100.0%	100.0%	100.0%	98.7%	100.0%	98.8%	100.0%	100.0%	100.0%	98.7%	99.0%	100.0%
<i>McKinley</i>	98.4%	97.1%	96.5%	97.8%	94.7%	100.0%	99.0%	99.5%	98.9%	99.0%	98.1%	100.0%
<b>Sandoval</b>	96.8%	97.3%	99.4%	98.9%	99.2%	100.0%	99.3%	98.2%	98.7%	97.8%	98.9%	98.8%
<i>San Juan</i>	100.0%	99.4%	97.0%	99.5%	100.0%	100.0%	99.4%	99.5%	100.0%	99.6%	99.7%	100.0%
<b>Valencia South</b>	100.0%	100.0%	100.0%	100.0%	100.0%	100.0%	100.0%	100.0%	100.0%	100.0%	100.0%	100.0%
<i>Valencia North</i>	100.0%	100.0%	100.0%	99.2%	100.0%	100.0%	100.0%	100.0%	100.0%	100.0%	97.9%	99.2%
<b>NW Region Total</b>	<b>98.8%</b>	<b>98.5%</b>	<b>98.6%</b>	<b>98.9%</b>	<b>98.8%</b>	<b>99.9%</b>	<b>99.5%</b>	<b>99.2%</b>	<b>99.4%</b>	<b>99.0%</b>	<b>98.9%</b>	<b>99.5%</b>
<b><u>NE Region (2)</u></b>												
<i>Colfax</i>	100.0%	100.0%	100.0%	100.0%	100.0%	97.5%	100.0%	100.0%	100.0%	100.0%	100.0%	100.0%
<b>Rio Arriba</b>	99.5%	99.0%	100.0%	99.5%	100.0%	100.0%	99.6%	99.5%	99.4%	100.0%	98.9%	99.4%
<i>San Miguel</i>	100.0%	99.2%	99.2%	99.1%	99.0%	100.0%	96.3%	96.6%	98.2%	99.2%	99.0%	100.0%
<b>Santa Fe</b>	98.7%	99.3%	98.9%	98.8%	99.3%	98.5%	98.5%	98.0%	98.8%	95.1%	96.3%	98.4%
<i>Taos</i>	100.0%	100.0%	100.0%	100.0%	100.0%	100.0%	98.4%	98.4%	100.0%	100.0%	100.0%	100.0%
<b>NE Region Total</b>	<b>99.3%</b>	<b>99.3%</b>	<b>99.4%</b>	<b>99.2%</b>	<b>99.6%</b>	<b>99.2%</b>	<b>98.6%</b>	<b>98.3%</b>	<b>99.1%</b>	<b>97.9%</b>	<b>98.2%</b>	<b>99.2%</b>
<b><u>Central Region (3)</u></b>												
<i>NE Bernalillo</i>	99.6%	99.3%	99.3%	99.5%	99.5%	99.7%	99.3%	99.7%	99.1%	99.7%	99.9%	99.6%
<b>NW Bernalillo</b>	99.3%	99.0%	99.2%	99.0%	98.6%	99.4%	98.6%	99.6%	99.3%	99.1%	98.6%	99.1%
<i>SE Bernalillo</i>	99.8%	99.4%	99.5%	98.8%	99.1%	99.8%	99.6%	99.6%	99.8%	100.0%	99.6%	99.0%
<b>SW Bernalillo</b>	98.2%	98.6%	65.7%	96.7%	99.1%	98.9%	99.3%	99.3%	99.3%	99.2%	99.3%	99.5%
<i>Torrance</i>	100.0%	100.0%	96.6%	100.0%	98.7%	100.0%	100.0%	100.0%	100.0%	98.5%	100.0%	100.0%
<b>Central Region Total</b>	<b>99.2%</b>	<b>99.1%</b>	<b>91.0%</b>	<b>98.5%</b>	<b>99.1%</b>	<b>99.4%</b>	<b>99.2%</b>	<b>99.6%</b>	<b>99.3%</b>	<b>99.5%</b>	<b>99.4%</b>	<b>99.3%</b>

**SNAP Timeliness Rates, Expedited, continued (Percent of Cases Processed Timely)**

Region & Administrative office	Jul 2012	Aug 2012	Sep 2012	Oct 2012	Nov 2012	Dec 2012	Jan 2013	Feb 2013	Mar 2013	Apr 2013	May 2013	Jun 2013
<b>SE Region Four (4)</b>												
<b>Chaves</b>	99.5%	99.4%	100.0%	98.8%	100.0%	98.6%	99.0%	98.4%	98.7%	99.4%	100.0%	99.4%
<i>Curry</i>	100.0%	100.0%	100.0%	100.0%	100.0%	98.0%	99.2%	100.0%	100.0%	97.5%	99.2%	100.0%
<b>Guadalupe</b>	100.0%	100.0%	100.0%	100.0%	100.0%	100.0%	100.0%	100.0%	100.0%	100.0%	100.0%	100.0%
<i>Eddy</i>	99.2%	99.3%	98.0%	98.4%	100.0%	100.0%	100.0%	95.9%	97.9%	97.8%	96.6%	99.1%
<b>Eddy Artesia</b>	100.0%	100.0%	100.0%	97.6%	100.0%	100.0%	97.4%	100.0%	100.0%	97.1%	100.0%	100.0%
<i>Lea</i>	100.0%	100.0%	99.2%	100.0%	100.0%	98.0%	99.2%	100.0%	100.0%	98.7%	98.5%	99.3%
<b>Quay</b>	100.0%	100.0%	100.0%	100.0%	95.0%	100.0%	100.0%	100.0%	100.0%	100.0%	95.5%	100.0%
<i>Roosevelt</i>	100.0%	100.0%	100.0%	100.0%	100.0%	100.0%	100.0%	100.0%	100.0%	100.0%	100.0%	95.7%
<b>SE Region Total</b>	<b>99.7%</b>	<b>99.7%</b>	<b>99.5%</b>	<b>99.2%</b>	<b>99.8%</b>	<b>98.9%</b>	<b>99.3%</b>	<b>98.8%</b>	<b>99.2%</b>	<b>98.5%</b>	<b>98.7%</b>	<b>99.4%</b>
<b>SW Region (5)</b>												
<i>West Doña Ana</i>	99.0%	99.7%	99.6%	99.0%	99.2%	100.0%	99.7%	100.0%	100.0%	100.0%	99.7%	99.6%
<b>East Doña Ana</b>	98.8%	100.0%	97.6%	100.0%	99.4%	99.4%	99.6%	100.0%	100.0%	100.0%	97.9%	98.1%
<i>Southern Doña Ana</i>	100.0%	100.0%	99.1%	99.1%	100.0%	99.0%	98.4%	100.0%	100.0%	100.0%	100.0%	99.0%
<b>Grant</b>	100.0%	100.0%	100.0%	100.0%	98.7%	98.2%	99.0%	100.0%	100.0%	99.0%	100.0%	100.0%
<i>Lincoln</i>	100.0%	100.0%	100.0%	100.0%	100.0%	100.0%	100.0%	100.0%	100.0%	100.0%	100.0%	100.0%
<b>Luna</b>	99.2%	100.0%	100.0%	100.0%	100.0%	98.6%	100.0%	100.0%	100.0%	100.0%	100.0%	100.0%
<i>Otero</i>	98.4%	99.2%	100.0%	98.3%	100.0%	98.5%	100.0%	100.0%	100.0%	100.0%	100.0%	99.4%
<b>Sierra</b>	100.0%	100.0%	100.0%	97.8%	100.0%	100.0%	100.0%	100.0%	100.0%	100.0%	100.0%	100.0%
<i>Socorro</i>	98.3%	100.0%	97.9%	98.2%	98.1%	100.0%	100.0%	100.0%	100.0%	96.7%	100.0%	100.0%
<b>SW Region Total</b>	<b>99.1%</b>	<b>99.8%</b>	<b>99.3%</b>	<b>99.1%</b>	<b>99.4%</b>	<b>99.4%</b>	<b>99.6%</b>	<b>100.0%</b>	<b>100.0%</b>	<b>99.7%</b>	<b>99.6%</b>	<b>99.4%</b>
<b>State Total</b>	<b>99.2%</b>	<b>99.2%</b>	<b>95.7%</b>	<b>98.9%</b>	<b>99.2%</b>	<b>99.4%</b>	<b>99.3%</b>	<b>99.4%</b>	<b>99.4%</b>	<b>99.2%</b>	<b>99.1%</b>	<b>99.4%</b>

Timeliness of CAP cases is reflected in the appropriate administrative office.

### Total SNAP Applications Processed by Administrative Office

#	Office	Jul-12	Aug-12	Sep-12	Oct-12	Nov-12	Dec-12	Jan-13	Feb-13	Mar-13	Apr-13	May-13	Jun-13
1	SE Bernalillo	811	937	811	907	877	832	901	827	820	912	1,022	949
3	Chaves	442	517	457	484	485	418	514	423	434	459	471	420
4	Colfax	94	80	65	57	90	87	84	80	68	91	85	81
3104	Union	7	24	15	15	13	14	17	7	15	6	11	16
5	Curry	337	347	310	343	338	310	343	259	315	302	381	319
7	W Dona Ana	757	863	726	738	679	659	857	692	701	770	785	695
8	Eddy	276	288	240	309	271	255	275	251	279	278	294	264
9	Grant	207	237	227	251	218	165	222	217	220	225	222	201
1209	Hidalgo	33	39	32	24	27	25	30	38	21	24	17	30
10	Guadalupe	47	43	36	26	36	42	27	30	40	29	31	32
13	Lea	382	405	369	409	351	329	360	332	328	408	375	405
14	Lincoln	126	126	124	136	130	124	116	126	126	143	129	102
16	Luna	252	243	171	280	253	235	255	207	257	243	230	257
17	McKinley	602	630	532	680	590	523	567	564	565	606	779	661
19	Otero	344	494	364	456	376	364	398	395	359	402	424	354
20	Quay	76	102	72	89	62	58	98	77	66	61	67	61
21	Rio Arriba	449	478	386	449	400	401	519	403	368	397	443	421
22	Roosevelt	92	144	90	112	91	105	116	89	108	81	108	83
23	Sandoval	651	804	766	818	818	740	736	713	778	783	734	666
24	San Juan	968	1,036	967	889	1,013	927	1,047	977	976	1,082	964	1,042
25	San Miguel	273	320	304	332	286	240	334	316	308	287	266	258
26	Santa Fe	701	794	663	761	713	650	810	608	686	667	677	584
27	Sierra	149	152	132	169	161	128	173	113	112	130	140	127
28	Socorro	139	169	119	157	157	132	172	130	146	156	168	156
29	Taos	248	248	224	249	280	228	285	276	241	273	239	215
30	Torrance	159	185	172	168	190	160	208	184	170	165	165	147
32	S Valencia	227	213	192	237	174	172	255	171	196	183	181	202
33	Cibola	258	278	234	242	228	224	251	175	169	228	254	217
34	Eddy/Artesia	111	117	103	125	111	94	91	88	74	112	110	106
35	NW Bernalillo	1,086	1,213	1,149	1,295	1,205	1,022	1,219	1,083	1,125	1,201	1,119	1,056
36	SW Bernalillo	1,343	1,346	1,306	1,630	1,359	1,379	1,538	1,350	1,410	1,347	1,331	1,280
37	E Dona Ana	520	601	544	596	508	461	597	490	447	517	517	522
38	S Dona Ana	444	459	385	509	402	357	443	401	408	452	453	391
39	NE Bernalillo	1,831	1,947	1,673	1,995	1,950	1,847	1,943	1,830	1,885	1,940	1,935	1,542
42	N Valencia	367	372	331	418	329	365	402	292	355	362	351	339
	<b>TOTAL</b>	<b>14,809</b>	<b>16,251</b>	<b>14,291</b>	<b>16,355</b>	<b>15,171</b>	<b>14,072</b>	<b>16,203</b>	<b>14,214</b>	<b>14,576</b>	<b>15,322</b>	<b>15,478</b>	<b>14,201</b>

CAP cases are reflected in the appropriate administrative office. "Processed" includes applications that were approved, denied or withdrawn.

## Total TANF Applications Processed by Administrative Office

#	Office	Jul-12	Aug-12	Sep-12	Oct-12	Nov-12	Dec-12	Jan-13	Feb-13	Mar-13	Apr-13	May-13	Jun-13
1	SE Bernalillo	198	289	244	287	273	232	208	246	251	242	220	265
3	Chaves	158	204	173	168	167	147	162	132	120	162	183	164
4	Colfax	30	29	30	18	29	30	27	16	15	32	24	32
3104	Union	1	4	2	5	2	2	5	1	2	3	6	3
5	Curry	101	133	123	127	105	149	133	75	77	100	125	120
7	W Dona Ana	258	280	217	199	172	175	204	129	161	177	208	202
8	Eddy	105	110	82	118	87	100	90	85	73	87	89	93
9	Grant	61	75	60	57	57	41	53	44	40	56	51	34
1209	Hidalgo	18	14	10	8	6	9	8	7	3	4	7	4
10	Guadalupe	10	21	15	4	11	7	3	8	14	9	13	15
13	Lea	128	160	155	145	118	95	112	110	110	134	113	131
14	Lincoln	49	40	39	45	43	39	24	55	26	49	41	45
16	Luna	73	100	56	106	65	70	60	51	62	79	68	69
17	McKinley	54	94	51	64	57	45	48	46	59	43	52	56
19	Otero	100	171	111	119	106	107	107	108	70	110	115	84
20	Quay	26	31	27	38	20	21	39	18	22	26	23	21
21	Rio Arriba	166	157	118	142	129	138	144	107	113	106	141	93
22	Roosevelt	27	41	29	22	23	31	28	19	19	22	26	18
23	Sandoval	154	207	192	221	230	221	170	199	173	176	188	166
24	San Juan	102	108	106	112	96	102	103	80	88	93	100	97
25	San Miguel	64	67	63	59	47	58	48	48	40	40	50	53
26	Santa Fe	182	204	176	167	149	178	216	174	142	166	149	142
27	Sierra	47	41	25	40	21	27	24	25	29	29	23	18
28	Socorro	53	47	20	42	31	24	33	22	27	34	32	32
29	Taos	38	49	49	38	57	39	29	27	37	48	41	42
30	Torrance	69	82	70	58	58	71	62	58	49	55	50	55
32	S Valencia	69	67	64	66	66	53	92	50	54	54	45	76
33	Cibola	53	70	51	64	47	53	48	56	55	54	53	48
34	Eddy/Artesia	33	38	59	38	35	25	35	25	27	28	44	45
35	NW Bernalillo	299	311	297	327	289	247	257	225	259	309	318	284
36	SW Bernalillo	400	433	407	449	391	348	370	376	340	347	332	350
37	E Dona Ana	188	230	179	186	165	141	196	154	150	172	161	152
38	S Dona Ana	202	210	178	187	165	135	153	141	125	159	168	124
39	NE Bernalillo	487	551	488	497	514	491	458	453	429	481	464	394
42	N Valencia	142	147	162	161	132	150	165	95	110	123	134	100
	TOTAL	4,145	4,815	4,128	4,384	3,963	3,801	3,914	3,465	3,371	3,809	3,857	3,627

**Total GA Applications Processed by Administrative Office**

#	Office	Jul-12	Aug-12	Sep-12	Oct-12	Nov-12	Dec-12	Jan-13	Feb-13	Mar-13	Apr-13	May-13	Jun-13
1	SE Bernalillo	73	53	52	62	50	50	60	56	61	97	49	54
3	Chaves	33	23	23	40	26	21	36	27	29	27	27	29
4	Colfax	11	8	6	5	5	8	9	7	17	8	3	9
3104	Union	1	1	2	1	0	2	3	0	1	1	1	2
5	Curry	26	16	13	21	22	20	21	16	18	32	34	22
7	W Dona Ana	72	63	48	69	79	69	93	68	74	93	75	73
8	Eddy	35	27	29	35	36	22	30	22	21	23	43	33
9	Grant	22	13	12	17	17	16	20	30	30	28	30	26
1209	Hidalgo	4	7	1	4	4	3	4	3	2	7	2	1
10	Guadalupe	7	3	2	4	8	7	4	2	5	7	5	6
13	Lea	20	14	7	17	11	11	17	17	15	8	15	20
14	Lincoln	7	10	8	12	8	17	24	14	10	15	11	9
16	Luna	30	25	15	15	32	28	27	25	26	20	32	18
17	McKinley	30	29	28	38	20	15	13	27	14	22	18	20
19	Otero	39	67	36	50	46	42	62	49	62	65	59	51
20	Quay	10	15	4	18	9	13	11	6	13	14	6	7
21	Rio Arriba	61	31	19	41	28	25	38	44	42	35	28	35
22	Roosevelt	2	1	0	3	0	1	3	6	3	1	1	3
23	Sandoval	68	77	62	108	76	68	86	80	95	95	81	46
24	San Juan	32	39	37	53	36	36	51	42	52	56	40	41
25	San Miguel	37	29	28	34	19	18	29	24	29	34	20	33
26	Santa Fe	93	92	72	92	76	95	117	96	93	131	103	79
27	Sierra	18	5	7	10	5	7	9	3	8	10	5	7
28	Socorro	18	26	12	15	20	16	19	17	6	15	11	9
29	Taos	25	38	24	37	42	35	49	33	25	49	30	40
30	Torrance	13	11	5	13	12	10	10	11	18	10	9	12
32	S Valencia	14	23	7	13	17	17	19	23	14	20	12	14
33	Cibola	12	18	18	16	9	14	23	18	20	20	13	13
34	Eddy/Artesia	13	7	2	27	9	4	9	7	5	4	11	4
35	NW Bernalillo	139	130	118	150	83	106	124	122	139	156	106	110
36	SW Bernalillo	80	78	81	112	109	91	113	119	104	124	78	90
37	E Dona Ana	26	15	15	35	16	17	28	26	17	23	22	29
38	S Dona Ana	8	12	15	13	14	6	16	10	14	31	17	10
39	NE Bernalillo	186	151	125	185	174	138	159	176	146	195	172	135
42	N Valencia	29	30	24	42	33	29	20	33	27	38	21	31
	<b>TOTAL</b>	<b>1,294</b>	<b>1,187</b>	<b>957</b>	<b>1,407</b>	<b>1,151</b>	<b>1,077</b>	<b>1,356</b>	<b>1,259</b>	<b>1,255</b>	<b>1,514</b>	<b>1,190</b>	<b>1,121</b>

**SNAP Applications Processed by Region**

	Jul-12	Aug-12	Sep-12	Oct-12	Nov-12	Dec-12	Jan-13	Feb-13	Mar-13	Apr-13	May-13	Jun-13
NW Region 1	3,073	3,333	3,022	3,284	3,152	2,951	3,258	2,892	3,039	3,244	3,263	3,127
NE Region 2	1,772	1,944	1,657	1,863	1,782	1,620	2,049	1,690	1,686	1,721	1,721	1,575
Central Region 3	5,230	5,628	5,111	5,995	5,581	5,240	5,809	5,274	5,410	5,565	5,572	4,974
SE Region 4	1,763	1,963	1,677	1,897	1,745	1,611	1,824	1,549	1,644	1,730	1,837	1,690
SW Region 5	2,971	3,383	2,824	3,316	2,911	2,650	3,263	2,809	2,797	3,062	3,085	2,835
<b>TOTAL</b>	<b>14,809</b>	<b>16,251</b>	<b>14,291</b>	<b>16,355</b>	<b>15,171</b>	<b>14,072</b>	<b>16,203</b>	<b>14,214</b>	<b>14,576</b>	<b>15,322</b>	<b>15,478</b>	<b>14,201</b>

**TANF Applications Processed by Region**

	Jul-12	Aug-12	Sep-12	Oct-12	Nov-12	Dec-12	Jan-13	Feb-13	Mar-13	Apr-13	May-13	Jun-13
NW Region 1	574	693	626	688	628	624	626	526	539	543	572	543
NE Region 2	481	510	438	429	413	445	469	373	349	395	411	365
Central Region 3	1,453	1,666	1,506	1,618	1,525	1,389	1,355	1,358	1,328	1,434	1,384	1,348
SE Region 4	588	738	663	660	566	575	602	472	462	568	616	607
SW Region 5	1,049	1,208	895	989	831	768	862	736	693	869	874	764
<b>TOTAL</b>	<b>4,145</b>	<b>4,815</b>	<b>4,128</b>	<b>4,384</b>	<b>3,963</b>	<b>3,801</b>	<b>3,914</b>	<b>3,465</b>	<b>3,371</b>	<b>3,809</b>	<b>3,857</b>	<b>3,627</b>

**General Assistance Applications Processed by Region**

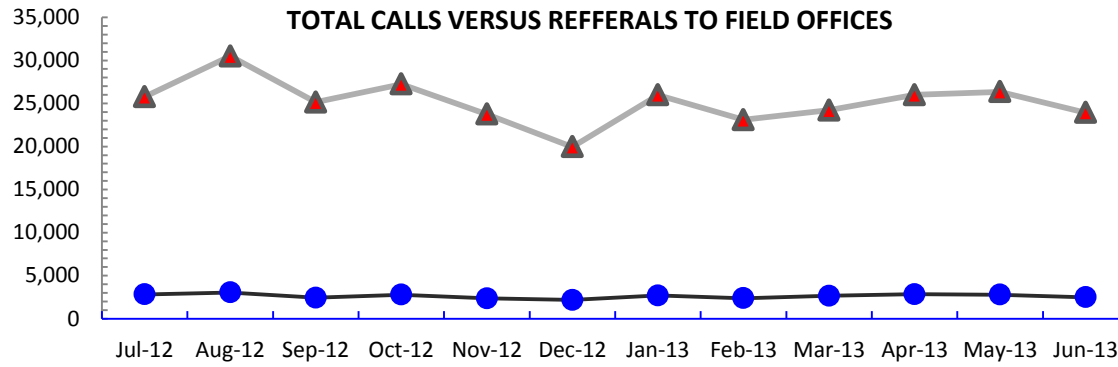
	Jul-12	Aug-12	Sep-12	Oct-12	Nov-12	Dec-12	Jan-13	Feb-13	Mar-13	Apr-13	May-13	Jun-13
NW Region 1	185	216	176	270	191	179	212	223	222	251	185	165
NE Region 2	228	199	151	210	170	183	245	204	207	258	185	198
Central Region 3	491	423	381	522	428	395	466	484	468	582	414	401
SE Region 4	146	106	80	165	121	99	131	103	109	116	142	124
SW Region 5	244	243	169	240	241	221	302	245	249	307	264	233
<b>TOTAL</b>	<b>1,294</b>	<b>1,187</b>	<b>957</b>	<b>1,407</b>	<b>1,151</b>	<b>1,077</b>	<b>1,356</b>	<b>1,259</b>	<b>1,255</b>	<b>1,514</b>	<b>1,190</b>	<b>1,121</b>

“Processed” includes applications that were approved, denied or withdrawn.

**Total cases per administrative office**

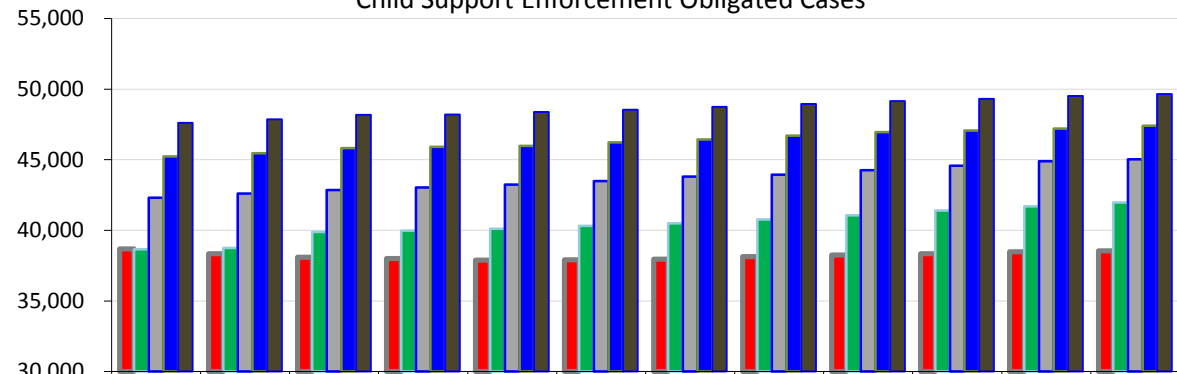
#	Office	Jul-12	Aug-12	Sep-12	Oct-12	Nov-12	Dec-12	Jan-13	Feb-13	Mar-13	Apr-13	May-13	Jun-13	AVG
1	SE Bernalillo	26,967	27,172	27,045	27,094	26,789	26,820	26,569	26,365	26,428	26,426	26,787	27,316	26,815
3	Chaves	17,302	17,361	17,453	17,533	17,642	17,705	17,721	17,677	17,600	17,680	17,742	17,763	17,598
4	Colfax	2,756	2,785	2,717	2,699	2,925	2,736	2,765	2,774	2,804	2,829	2,828	2,820	2,787
3104	Union	680	675	906	824	668	913	1,024	926	617	615	613	618	757
5	Curry	10,884	10,923	10,906	10,908	10,882	10,908	10,929	10,839	10,824	10,769	10,850	10,828	10,871
7	W Dona Ana	20,754	20,975	20,987	21,070	21,370	21,481	21,556	21,569	21,770	21,804	21,926	21,912	21,431
8	Eddy	7,733	7,745	7,681	7,808	7,833	7,781	7,786	7,767	7,838	7,828	7,876	7,842	7,793
9	Grant	6,945	6,948	6,946	6,975	6,919	6,892	7,015	7,062	6,877	6,879	6,897	6,909	6,939
1209	Hidalgo	1,292	1,309	1,311	1,195	1,179	1,169	1,178	1,171	1,162	1,153	1,141	1,143	1,200
10	Guadalupe	1,701	1,719	1,724	1,707	1,721	1,727	1,705	1,687	1,703	1,712	1,695	1,706	1,709
13	Lea	12,518	12,646	12,659	12,757	12,862	12,843	12,802	12,757	12,651	12,715	12,628	12,703	12,712
14	Lincoln	4,116	4,132	4,171	4,212	4,254	4,294	4,334	4,364	4,407	4,423	4,461	4,456	4,302
16	Luna	8,798	8,881	8,797	8,884	8,858	8,935	8,881	8,860	8,900	8,915	8,930	8,937	8,881
17	McKinley	22,293	22,514	22,279	22,478	22,445	22,425	22,359	22,447	22,351	22,267	22,523	22,596	22,415
19	Otero	10,660	10,682	10,587	10,634	10,571	10,613	10,654	10,655	10,570	10,696	10,769	10,767	10,655
20	Quay	2,710	2,742	2,735	2,743	2,748	2,742	2,776	2,736	2,711	2,700	2,676	2,643	2,722
21	Rio Arriba	15,585	15,705	15,737	15,845	15,836	15,902	15,895	15,890	16,010	15,980	15,971	15,960	15,860
22	Roosevelt	3,778	3,834	3,796	3,817	3,825	3,838	3,854	3,857	3,856	3,836	3,840	3,793	3,827
23	Sandoval	23,193	23,362	23,331	23,421	23,591	23,833	23,860	23,923	24,058	24,148	24,057	24,023	23,733
24	San Juan	28,141	28,411	28,495	28,515	28,572	28,528	28,526	28,563	28,764	28,969	29,065	29,165	28,643
25	San Miguel	10,437	10,521	10,693	10,892	11,044	11,096	11,142	10,982	10,836	10,689	10,458	10,346	10,761
26	Santa Fe	22,708	23,026	23,355	23,569	23,730	23,849	24,223	24,228	24,378	24,454	24,442	24,399	23,863
27	Sierra	5,479	5,482	5,489	5,527	5,594	5,606	5,857	5,846	5,654	5,643	5,603	5,548	5,611
28	Socorro	5,151	5,227	5,223	5,261	5,296	5,305	5,437	5,490	5,349	5,361	5,396	5,392	5,324
29	Taos	8,244	8,271	8,262	8,325	8,406	8,460	8,566	8,552	8,599	8,677	8,685	8,723	8,481
30	Torrance	5,684	5,757	5,765	5,811	5,839	5,909	5,885	5,940	5,993	5,975	5,976	5,930	5,872
32	S Valencia	6,570	6,612	6,652	6,707	6,688	6,688	6,745	6,683	6,782	6,716	6,626	6,600	6,672
33	Cibola	7,687	7,757	7,823	7,915	7,922	7,911	7,922	7,841	7,770	7,751	7,835	7,845	7,832
34	Eddy/Artesia	3,773	3,832	3,847	3,840	3,858	3,883	3,864	3,885	3,883	3,818	3,793	3,838	3,843
35	NW Bernalillo	36,574	36,814	36,953	37,289	37,537	37,402	37,399	37,210	37,576	37,690	37,838	37,857	37,345
36	SW Bernalillo	40,170	39,913	39,676	39,905	39,746	39,821	39,835	39,793	40,031	39,960	40,155	40,259	39,939
37	E Dona Ana	17,721	17,905	17,984	18,048	17,737	17,642	17,682	17,643	17,680	17,804	17,876	17,962	17,807
38	S Dona Ana	20,864	20,971	20,990	21,201	21,224	21,256	21,073	21,029	21,226	21,265	21,324	21,230	21,138
39	NE Bernalillo	43,952	43,691	43,366	43,615	43,563	43,673	43,678	43,460	43,486	43,529	43,407	42,954	43,531
42	N Valencia	13,298	13,300	13,239	13,365	13,344	13,360	13,382	13,373	13,403	13,452	13,515	13,535	13,381
	SCI	40,157	39,954	39,880	39,854	39,556	39,261	38,924	38,682	38,379	38,058	37,756	37,480	38,995
	<b>TOTAL</b>	<b>517,275</b>	<b>519,554</b>	<b>519,460</b>	<b>522,243</b>	<b>522,574</b>	<b>523,207</b>	<b>523,803</b>	<b>522,526</b>	<b>522,926</b>	<b>523,186</b>	<b>523,960</b>	<b>523,798</b>	<b>522,043</b>

**Child Support Information Center (Call Center)  
TOTAL CALLS VERSUS REFFERALS TO FIELD OFFICES**



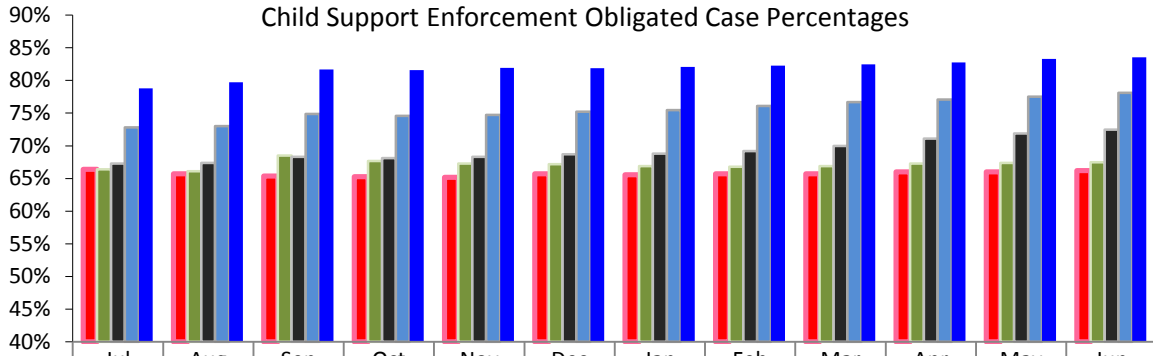
	Jul-12	Aug-12	Sep-12	Oct-12	Nov-12	Dec-12	Jan-13	Feb-13	Mar-13	Apr-13	May-13	Jun-13
▲ Calls	25,774	30,492	25,151	27,246	23,759	19,953	25,978	23,098	24,221	26,003	26,346	23,929
● Referrals	2,828	3,051	2,432	2,785	2,355	2,179	2,693	2,382	2,660	2,846	2,798	2,490
Percent	11.0%	10.0%	9.7%	10.2%	9.9%	10.9%	10.4%	10.3%	11.0%	11.0%	10.6%	10.4%

**Child Support Enforcement Obligated Cases**

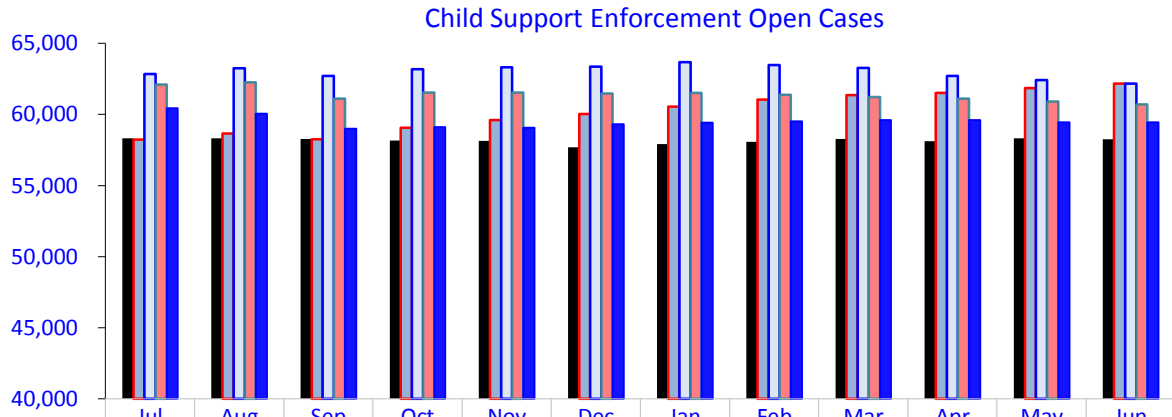


	Jul	Aug	Sep	Oct	Nov	Dec	Jan	Feb	Mar	Apr	May	Jun
■ SFY 09	38,689	38,347	38,106	37,999	37,895	37,906	37,967	38,143	38,260	38,343	38,475	38,558
■ SFY 10	38,655	38,763	39,891	39,976	40,116	40,326	40,507	40,770	41,069	41,410	41,698	41,974
■ SFY 11	42,310	42,601	42,850	43,035	43,250	43,498	43,818	43,946	44,270	44,588	44,899	45,043
■ SFY 12	45,238	45,457	45,817	45,922	45,993	46,231	46,439	46,703	46,952	47,075	47,215	47,412
■ SFY 13	47,616	47,875	48,190	48,205	48,398	48,550	48,758	48,955	49,153	49,318	49,511	49,653





	Jul	Aug	Sep	Oct	Nov	Dec	Jan	Feb	Mar	Apr	May	Jun
SFY 09	66.4%	65.7%	65.4%	65.3%	65.2%	65.7%	65.6%	65.7%	65.7%	66.0%	66.0%	66.2%
SFY 10	66.4%	66.1%	68.5%	67.7%	67.3%	67.2%	66.9%	66.8%	66.9%	67.3%	67.4%	67.5%
SFY 11	67.3%	67.4%	68.3%	68.1%	68.3%	68.7%	68.8%	69.2%	70.0%	71.1%	71.9%	72.5%
SFY 12	72.8%	73.0%	74.9%	74.6%	74.8%	75.2%	75.5%	76.1%	76.7%	77.1%	77.5%	78.1%
SFY 13	78.8%	79.7%	81.7%	81.6%	81.9%	81.9%	82.1%	82.3%	82.5%	82.7%	83.3%	83.5%



	Jul	Aug	Sep	Oct	Nov	Dec	Jan	Feb	Mar	Apr	May	Jun
SFY 09	58,310	58,328	58,270	58,155	58,135	57,699	57,920	58,072	58,277	58,114	58,308	58,243
SFY 10	58,218	58,649	58,248	59,070	59,590	60,036	60,557	61,051	61,363	61,503	61,856	62,168
SFY 11	62,841	63,237	62,699	63,174	63,309	63,355	63,684	63,479	63,273	62,709	62,418	62,167
SFY 12	62,102	62,252	61,106	61,537	61,530	61,474	61,522	61,380	61,217	61,118	60,897	60,702
SFY 13	60,423	60,059	58,985	59,104	59,064	59,306	59,417	59,507	59,599	59,604	59,454	59,451

### Children Receiving Child Care Assistance Subsidies By County

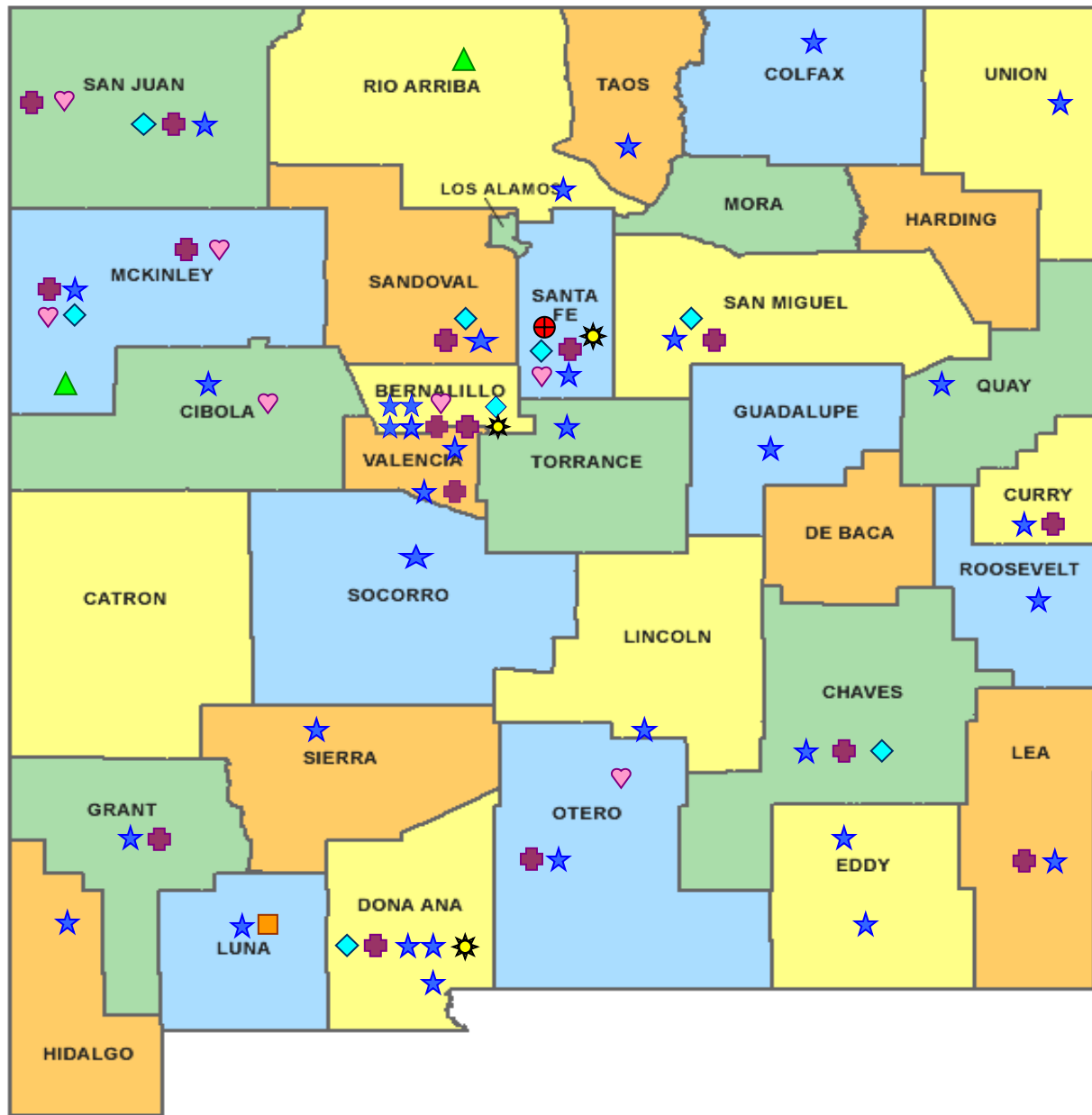
County	Jun	July	Aug	Sep	Oct	Nov	Dec	Jan	Feb	Mar	Apr	May	Jun	Year over year change	
	2012	2012	2012	2012	2012	2012	2012	2013	2013	2013	2013	2013	2013	Cases	Percent
Bernalillo	7,852	7,490	7,272	7,755	7,423	7,454	7,382	7,266	7,217	7,229	7,264	7,257	7,143	-709	-9.0%
Catron	2	2	2	2	0	0	0	0	0	0	0	0	0	-2	-100.0%
Chaves	751	707	715	737	714	736	718	721	694	695	681	709	753	2	0.3%
Cibola	272	241	225	287	283	299	281	262	251	260	248	247	254	-18	-6.6%
Colfax	61	58	60	65	54	53	57	58	53	51	52	52	53	-8	-13.1%
Curry	573	510	521	564	539	550	541	516	490	496	510	513	504	-69	-12.0%
De Baca	14	11	9	18	17	13	12	9	7	10	14	13	12	-2	-14.3%
Dona Ana	5,339	4,793	4,677	5,064	5,011	4,999	4,964	4,894	4,787	4,782	4,804	4,784	4,805	-534	-10.0%
Eddy	346	339	327	344	350	334	321	294	289	276	263	271	259	-87	-25.1%
Grant	396	282	289	334	342	361	362	358	315	323	323	345	315	-81	-20.5%
Guadalupe	29	21	20	18	23	22	20	20	17	19	20	23	24	-5	-17.2%
Harding	0	0	0	0	0	0	0	0	0	0	0	0	0	0	NA
Hidalgo	24	25	28	34	27	24	31	32	31	33	34	36	35	11	45.8%
Lea	626	569	543	639	609	655	642	628	598	578	562	583	567	-59	-9.4%
Lincoln	220	198	193	203	190	191	178	190	167	185	175	168	165	-55	-25.0%
Los Alamos	12	11	10	8	8	8	8	8	8	10	12	10	10	-2	-16.7%
Luna	257	222	222	248	218	224	225	210	205	214	217	219	207	-50	-19.5%
McKinley	327	257	231	294	273	283	287	269	250	264	263	268	264	-63	-19.3%
Mora	16	14	14	12	10	14	17	14	13	10	10	11	16	0	0.0%
Otero	585	535	540	578	580	562	538	536	492	503	493	509	501	-84	-14.4%
Out of State	7	8	8	9	8	6	7	5	5	6	5	5	8	1	14.3%
Quay	28	29	27	24	24	25	25	23	22	24	26	22	23	-5	-17.9%
Rio Arriba	122	96	93	105	96	99	104	101	100	104	99	98	113	-9	-7.4%
Roosevelt	192	151	149	189	195	197	191	189	179	179	185	187	187	-5	-2.6%
San Juan	710	630	609	746	718	720	715	692	694	702	717	722	721	11	1.5%
San Miguel	433	341	335	366	388	393	376	364	314	351	358	368	366	-67	-15.5%
Sandoval	866	814	786	827	795	785	768	759	706	717	722	741	741	-125	-14.4%
Santa Fe	523	507	485	522	452	463	452	435	439	440	433	430	431	-92	-17.6%
Sierra	99	88	87	85	73	83	83	89	90	89	81	68	84	-15	-15.2%
Socorro	61	52	46	55	61	63	66	62	52	53	53	56	59	-2	-3.3%
Taos	151	97	102	110	121	124	123	116	105	105	114	110	102	-49	-32.5%
Torrance	88	75	81	74	66	67	64	69	81	76	73	76	65	-23	-26.1%
Union	8	7	7	12	9	8	9	9	9	9	9	9	7	-1	-12.5%
Valencia	766	682	704	722	717	719	721	695	668	694	710	700	670	-96	-12.5%
<b>Totals</b>	<b>21,756</b>	<b>19,862</b>	<b>19,417</b>	<b>21,050</b>	<b>20,394</b>	<b>20,534</b>	<b>20,288</b>	<b>19,893</b>	<b>19,348</b>	<b>19,487</b>	<b>19,530</b>	<b>19,610</b>	<b>19,464</b>	<b>-2,292</b>	<b>-10.5%</b>

Source: Children, Youth and Families Department.









## Child Care Assistance Eligibility Programs

MONTH	JUN'12	JUL'12	AUG'12	SEP'12	OCT'12	NOV'12	DEC'12	JAN'13	FEB'13	MAR'13	APR'13	MAY'13	JUN'13
<b>TANF (Child Care Priority 1 Clients)</b>													
CLIENTS	3,551	3,220	3,103	3,340	3,182	3,131	2,999	2,859	2,714	2,732	2,729	2,681	2,602
COST	\$1,063,904	\$1,017,372	\$1,128,732	\$1,041,813	\$1,125,046	\$1,134,547	\$1,080,411	\$906,557	\$871,356	\$927,613	\$941,904	\$923,440	\$761,525
TANF AVERAGE COST	\$300	\$316	\$364	\$312	\$354	\$362	\$360	\$317	\$321	\$340	\$345	\$344	\$293
<b>TRANSITION OFF TANF (Child Care Priority 2 Clients)</b>													
CLIENTS	417	381	374	381	368	379	373	365	341	319	347	359	376
COST	\$134,108	\$125,253	\$129,561	\$129,933	\$132,174	\$135,318	\$130,153	\$118,069	\$113,013	\$105,768	\$117,349	\$119,416	\$115,426
TRAN OFF TANF AVG COST	\$322	\$329	\$346	\$341	\$359	\$357	\$349	\$323	\$331	\$332	\$338	\$333	\$307
<b>TANF ELIGIBLE (Child Care Priority 1B Clients at or below 100% of the Federal Poverty Level)</b>													
CLIENTS	11,469	10,258	10,120	11,259	11,080	11,250	11,179	10,910	10,502	10,624	10,603	10,531	10,399
COST	\$3,636,254	\$3,618,933	\$3,721,237	\$3,625,943	\$4,118,093	\$4,141,082	\$4,108,993	\$3,609,624	\$3,604,677	\$3,676,351	\$3,684,738	\$3,626,278	\$3,153,346
TANF ELIGIBLE AVG COST	\$317	\$353	\$368	\$322	\$372	\$368	\$368	\$331	\$343	\$346	\$348	\$344	\$303
<b>INCOME ELIGIBLE (Child Care Priority 3, and Priority 4 Clients)</b>													
CLIENTS	5,290	5,060	4,920	5,089	4,846	4,810	4,817	4,861	4,944	4,950	5,014	5,199	5,368
COST	\$1,570,429	\$1,813,867	\$1,606,535	\$1,591,509	\$1,585,741	\$1,572,320	\$1,558,272	\$1,529,136	\$1,543,444	\$1,507,551	\$1,505,608	\$1,551,405	\$1,543,349
INCOME ELIG AVG COST	\$297	\$358	\$327	\$313	\$327	\$327	\$323	\$315	\$312	\$305	\$300	\$298	\$288
<b>EMPLOYMENT &amp; TRAINING (Child Care Priority 1A Clients)</b>													
CLIENTS	352	262	221	239	245	260	257	259	213	199	157	128	0
COST	\$96,255	\$82,770	\$70,593	\$63,934	\$89,494	\$94,363	\$93,751	\$72,052	\$70,881	\$66,891	\$52,114	\$44,900	\$0
E & T AVG COST	\$273	\$316	\$319	\$268	\$365	\$363	\$365	\$278	\$333	\$336	\$332	\$351	\$0
<b>CHILD PROTECTIVE SERVICES (Child Care CPS Clients)</b>													
CLIENTS	677	681	679	742	673	704	663	639	634	663	680	712	719
COST	\$273,771	\$272,616	\$276,210	\$295,847	\$280,001	\$286,909	\$269,654	\$258,888	\$276,254	\$263,618	\$285,288	\$313,341	\$288,427
E & T AVG COST	\$404	\$400	\$407	\$399	\$416	\$408	\$407	\$405	\$436	\$398	\$420	\$440	\$401
<b>GRAND TOTAL - ALL CHILD CARE PROGRAMS</b>													
CLIENTS	21,756	19,862	19,417	21,050	20,394	20,534	20,288	19,893	19,348	19,487	19,530	19,610	19,464
COST	\$6,774,719	\$6,930,812	\$6,932,868	\$6,748,978	\$7,330,549	\$7,364,538	\$7,241,234	\$6,494,326	\$6,479,624	\$6,547,793	\$6,587,001	\$6,578,781	\$5,862,073
<b>ALL PROGRAMS AVG COST</b>	<b>\$311</b>	<b>\$349</b>	<b>\$357</b>	<b>\$321</b>	<b>\$359</b>	<b>\$359</b>	<b>\$357</b>	<b>\$326</b>	<b>\$335</b>	<b>\$336</b>	<b>\$337</b>	<b>\$335</b>	<b>\$301</b>

Notes: 1. This table is provided by the Children, Youth and Families Department. 2. All costs in the table are average costs  
3. Clients served and cost reflects total CYFD program funds and are not limited to funding provided by the Human Services Department.



New Mexico Human Services Department  
Field Offices

-  Central Office (1)
-  Income Support Division County Office (35)
-  Income Support Division Satellite Office (2)
-  Child Support Enforcement Regional Office (16)
-  Child Support Enforcement Satellite Office (1)
-  Quality Control Office (8)
-  Indian Health Services (7)
-  Hospital Site (3)

For a complete listing of field offices and other government and community resources:  
<http://www.hsd.state.nm.us/isd/fieldoffices.html>