



# Monthly Statistical Report

## October 2020

There were 889,886 individuals that received Medicaid in October 2020, an 7.54% increase from one year ago. The count of Medicaid recipients has increased by 6,229, or 0.70%, since last month.

The SNAP caseload in October 2020 was 236,466, a 5.62% increase from one year ago. The SNAP caseload has increased by 10,516 cases, or 4.65%, since last month.

The TANF caseload was 11,098 in October 2020 an increase of 5.03% from October 2019. The TANF caseload had 327 fewer cases compared to September 2020, a decrease of 2.9%.

The caseload for General Assistance was 1,937 in October 2020, a decrease of 19.83% from one year ago and a decrease of 211 cases from last month.

Michelle Lujan Grisham, Governor  
David Scrase, M.D., Secretary

1 Note: COVID 19 Health Emergency became effective March 12, 2020 and as a result, Medicaid, SNAP, TANF, and Child Care programs has undergone changes to policies which may be reflected in some of the tables and figures in this report. Please see end of report for details of policy changes.

<b>Contents</b>	<b>Page</b>
Summary	3-5
Medicaid	6-20
SNAP	21-41
Cash Assistance	42-56
Child Care Assistance	57-58
SNAP EA and P-EBT	59
Income Eligibility Guidelines	60-61

**Regions are reported as follows:**

<b>Region 1</b>		
Catron	San Juan	Valencia
Cibola	Sierra	
McKinley	Socorro	
<b>Region 2</b>		
Colfax	Mora	Santa Fe
De Baca	Quay	Taos
Guadalupe	Rio Arriba	Union
Harding	Sandoval	
Los Alamos	San Miguel	
<b>Region 3</b>		
Bernalillo	Torrance	
<b>Region 4</b>		
Chaves	Eddy	Lincoln
Curry	Lea	Roosevelt
<b>Region 5</b>		
Dona Ana	Hidalgo	Otero
Grant	Luna	

***The Mission of the Human Services Department***

*To transform lives. Working with our partners, we design and deliver innovative, high quality health and human services that improve the security and promote independence for New Mexicans in their communities.*

Angela Medrano, Deputy Secretary  
Kari Armijo, Deputy Secretary

Prepared by Income Support Division  
PO Box 2348  
Santa Fe, NM 87504-2348  
505-827-7250

Karmela Martinez, Director  
Vida Tapia-Sanchez, Deputy Director  
Shanita Harrison, Deputy Director

<http://www.hsd.state.nm.us/monthly-statistical-reports.aspx>

# Program Summary for October 2020

SNAP, TANF and GA-Unrelated Child Program interviews are waived. Recertification periods are automatically extended for households with an Interim Review due in March and April for 6 months to the month recertification due. SNAP expenditures and cases include Emergency Allotments. SNAP Emergency Allotments and Pandemic EBT can be found at the end of this report.

				Percent Change	
	Oct-19	Sep-20	Oct-20	Oct-19- Oct-20	Sep-20- Oct-20
<b>Expenditures<sup>1</sup></b>	\$512,091,068	\$540,045,948	\$573,828,707	12.1%	6.3%
<b>Cases<sup>2</sup></b>	495,743	532,624	537,179	8.36%	0.86%
<b>Expenditures/Case</b>	\$1,033	\$1,014	\$1,068	3.4%	5.3%
<b>Recipients<sup>3</sup></b>	827,495	883,657	889,886	7.54%	0.70%
<i>Adults</i>	470,625	511,715	516,696	9.79%	0.97%
<i>Children</i>	356,870	371,942	373,190	4.57%	0.34%
<b>Recipients /Case</b>	1.67	1.66	1.66	-0.60%	0.00%
<b>Cases Processed<sup>4</sup></b>	10,563	7,987	8,032	-23.96%	0.56%
<i>Approvals<sup>4</sup></i>	7,712	5,478	5,375	-30.30%	-1.88%

				Percent Change	
	Oct-19	Sep-20	Oct-20	Oct-19- Oct-20	Sep-20- Oct-20
<b>Expenditures<sup>5</sup></b>	\$53,673,965	\$84,845,064	\$86,620,866	61.38%	2.09%
<b>Cases<sup>6</sup></b>	223,881	225,950	236,466	5.62%	4.65%
<b>Expenditures/Case</b>	\$240	\$376	\$366	52.50%	-2.66%
<b>Recipients<sup>7</sup></b>	450,169	491,111	475,189	5.56%	-3.24%
<i>Adults</i>	263,490	292,850	282,077	7.05%	-3.68%
<i>Children</i>	186,679	198,261	193,112	3.45%	-2.60%
<b>Recipients /Case</b>	2.01	2.17	2.01	0.00%	-7.37%
<b>Cases Processed<sup>4</sup></b>	17,473	17,945	19,354	10.77%	7.85%
<i>Approvals<sup>4</sup></i>	14,272	12,315	13,617	-4.59%	10.57%

				Percent Change	
	Oct-19	Sep-20	Oct-20	Oct-19- Oct-20	Sep-20- Oct-20
<b>Expenditures<sup>5</sup></b>	\$4,056,024	\$4,634,685	\$4,478,101	10.41%	-3.38%
<b>Cases<sup>6</sup></b>	13,145	13,690	13,142	-0.02%	-4.00%
<b>Expenditures/Case</b>	\$309	\$339	\$341	10.36%	0.59%
<b>Recipients<sup>7</sup></b>	29,919	34,342	33,367	11.52%	-2.84%
<i>Adults</i>	9,465	11,200	10,663	12.66%	-4.79%
<i>Children</i>	20,454	23,142	22,704	11.00%	-1.89%
<b>Recipients /Case</b>	2.28	2.51	2.54	11.40%	1.20%
<b>Cases Processed<sup>4</sup></b>	4,494	4,704	4,835	7.59%	2.78%
<i>Approvals<sup>4</sup></i>	1,548	1,166	1,199	-22.55%	2.83%

				Percent Change	
	Oct-19	Sep-20	Oct-20	Oct-19- Oct-20	Sep-20- Oct-20
<b>Expenditures<sup>8</sup></b>	\$5,675,080	\$696,480	\$4,268,440	-24.79%	512.86%
<b>Cases<sup>8</sup></b>	18,054	2,549	13,774	-23.71%	440.37%
<b>Expenditures/Case</b>	\$314	\$273	\$310	-1.27%	13.55%
<b>Recipients<sup>8</sup></b>	38,610	6,715	30,192	-21.80%	349.62%
<i>Adults</i>	23,166	3,343	17,666	-23.74%	428.45%
<i>Children</i>	15,444	3,372	12,526	-18.89%	271.47%
<b>Recipients /Case</b>	2.14	2.63	2.19	2.34%	-16.73%
<b>Cases Processed<sup>4</sup></b>	17,038	7,220	13,587	-20.25%	88.19%
<i>Approvals<sup>4</sup></i>	15,960	5,554	12,273	-23.10%	120.98%

## Cash Assistance Summary for October 2020

### Temporary Assistance for Needy Families (TANF)

	Oct-19	Sep-20	Oct-20	Percent Change	
				Oct-19- Oct-20	Sep-20- Oct-20
Expenditures <sup>5</sup>	\$3,369,681	\$4,063,492	\$3,970,290	17.82%	-2.29%
Cases <sup>6</sup>	10,567	11,425	11,624	10.00%	1.74%
Expenditures/Case	\$319	\$356	\$342	7.21%	-3.93%
Recipients <sup>7</sup>	27,144	31,869	31,107	14.60%	-2.39%
<i>Adults</i>	7,070	9,062	8,758	23.88%	-3.35%
<i>Children</i>	20,074	22,807	22,349	11.33%	-2.01%
Approvals <sup>4</sup>	1,299	1,066	1,104	-15.01%	3.56%

### Education Works

	Oct-19	Sep-20	Oct-20	Percent Change	
				Oct-19- Oct-20	Sep-20- Oct-20
Expenditures <sup>5</sup>	\$37,676	\$29,313	\$32,738	-13.11%	11.68%
Cases <sup>6</sup>	97	76	84	-13.40%	10.53%
Expenditures/Case	\$388	\$386	\$390	0.52%	1.04%
Recipients <sup>7</sup>	270	217	249	-7.78%	14.75%
<i>Adults</i>	106	86	96	-9.43%	11.63%
<i>Children</i>	164	131	153	-6.71%	16.79%

### State Supplement for Residential Care

	Oct-19	Sep-20	Oct-20	Percent Change	
				Oct-19- Oct-20	Sep-20- Oct-20
Expenditures <sup>5</sup>	\$1,900	\$1,200	\$1,000	-47.37%	-16.67%
Cases <sup>6</sup>	19	11	10	-47.37%	-9.09%
Expenditures/Case	\$100	\$109	\$100	0.00%	-8.26%
Recipients <sup>7</sup>	19	11	9	-52.63%	-18.18%

### General Assistance (GA)

	Oct-19	Sep-20	Oct-20	Percent Change	
				Oct-19- Oct-20	Sep-20- Oct-20
Expenditures <sup>5</sup>	\$635,426	\$524,404	\$469,970	-26.04%	-10.38%
Cases <sup>6</sup>	2,416	2,148	1,937	-19.83%	-9.82%
Expenditures/Case	\$263	\$244	\$243	-7.60%	-0.41%
Recipients <sup>7</sup>	2,440	2,213	1,987	-18.57%	-10.21%
<i>Adults</i>	2,224	2,009	1,785	-19.74%	-11.15%
<i>Children</i>	216	204	202	-6.48%	-0.98%
Approvals <sup>4</sup>	207	65	49	-76.33%	-24.62%

### Refugee Cash (RCA)

	Oct-19	Sep-20	Oct-20	Percent Change	
				Oct-19- Oct-20	Sep-20- Oct-20
Expenditures <sup>5</sup>	\$11,341	\$16,276	\$4,103	-63.82%	-74.79%
Cases <sup>6</sup>	46	30	13	-71.74%	-56.67%
Expenditures/Case	\$247	\$543	\$316	27.94%	-41.80%
Recipients <sup>7</sup>	46	32	15	-67.39%	-53.13%

<b>Expenditures YTD</b>			
	SFY 2021	FFY 2021	CY 2020
Medicaid <sup>1</sup>	\$2,290,384,271	\$573,828,707	\$5,657,528,603
Supplemental Nutrition Assistance Program <sup>9</sup>	\$342,703,062	\$86,620,866	\$778,100,247
Temporary Assistance for Needy Families <sup>9</sup>	\$17,705,174	\$3,970,290	\$39,875,676
General Assistance <sup>9</sup>	\$2,205,512	\$469,970	\$6,122,961
Education Work <sup>9</sup>	\$142,772	\$32,738	\$484,553
LIHEAP <sup>8</sup>	\$6,280,200	\$4,268,440	\$13,240,280

<b>Average Caseload YTD</b>			
	SFY 2021	FFY 2021	CY 2020
Medicaid <sup>2</sup>	530,571	537,179	516,457
Supplemental Nutrition Assistance Program <sup>6</sup>	240,619	236,466	237,312
Temporary Assistance for Needy Families <sup>6</sup>	11,728	11,098	11,266
General Assistance <sup>6</sup>	2,228	1,937	2,427
Education Work <sup>6</sup>	85	84	106
LIHEAP <sup>8</sup>	5,289	13,774	4,556

<b>Demographic Profile- October 2020</b>					
	SNAP	TANF	GA	Education Works	RCA
<i>Gender of Recipients</i> <sup>10</sup>					
Male	214,862	13,080	1,107	84	8
Female	260,327	18,027	880	165	7
<i>Ethnicity</i> <sup>10</sup>					
Hispanic	265,276	21,052	1,026	137	7
Non-Hispanic	209,913	10,055	961	112	8
<i>Race</i> <sup>10</sup>					
Native American or Alaskan Native	80,905	2,812	197	31	0
Asian	4,123	240	13	1	0
African American or Black	12,947	1,438	74	16	6
Native Hawaiian or Pacific Islander	924	51	2	2	0
White	361,726	25,377	1,634	191	8
Unknown / Not Declared	3,403	205	18	3	0
More than One Race	11,161	984	49	5	1

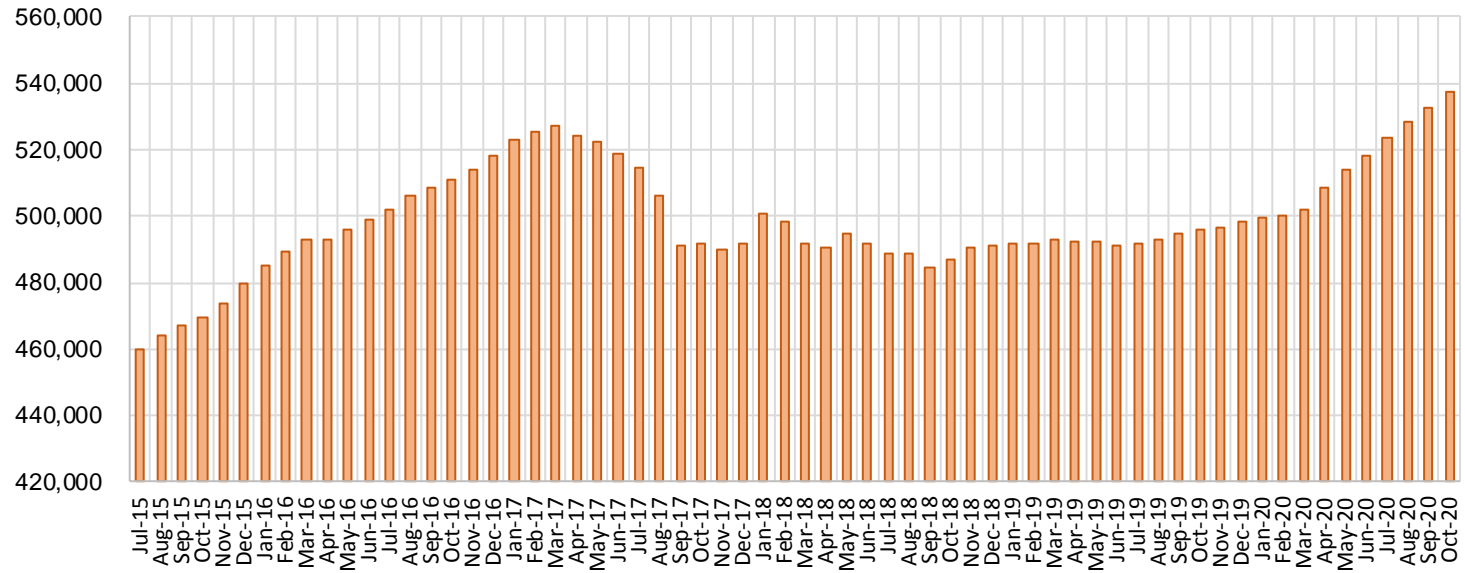
## Medicaid Cases by Field Office<sup>2</sup>

Office				Percent Change	
	Oct-19	Sep-20	Oct-20	Oct-19- Oct-20	Sep-20- Oct-20
Chaves County ISD	16,103	21,261	22,758	41.33%	7.04%
Cibola County ISD	7,495	7,606	7,445	-0.67%	-2.12%
Colfax County ISD	3,609	3,779	3,803	5.38%	0.64%
Curry County ISD	14,912	16,112	16,138	8.22%	0.16%
East Dona Ana County ISD	17,995	20,801	20,833	15.77%	0.15%
Eddy Artesia County ISD	3,867	4,196	4,228	9.34%	0.76%
Eddy Carlsbad County ISD	7,626	8,423	8,437	10.63%	0.17%
Grant County ISD	7,854	8,440	8,495	8.16%	0.65%
Guadalupe County ISD	1,600	1,653	1,665	4.06%	0.73%
Hidalgo County ISD	45	29	32	-28.89%	10.34%
Lea County ISD	14,714	16,619	16,514	12.23%	-0.63%
Lincoln County ISD	4,333	4,714	4,679	7.99%	-0.74%
Luna County ISD	8,743	9,330	9,414	7.67%	0.90%
McKinley County ISD	22,380	23,330	23,098	3.21%	-0.99%
Northeast Bernalillo County ISD	43,122	47,179	48,131	11.62%	2.02%
Northwest Bernalillo County ISD	52,817	57,839	58,788	11.31%	1.64%
Otero County ISD	12,183	13,048	13,166	8.07%	0.90%
Quay County ISD	2,519	3,219	3,455	37.16%	7.33%
Rio Arriba County ISD	13,391	14,355	14,459	7.98%	0.72%
Roosevelt County ISD	9	14	9	0.00%	-35.71%
San Juan County ISD	30,462	39,224	41,573	36.47%	5.99%
San Miguel County ISD	9,163	9,744	9,890	7.93%	1.50%
Sandoval County ISD	23,557	21,663	21,227	-9.89%	-2.01%
Santa Fe County ISD	24,162	23,982	23,970	-0.79%	-0.05%
Sierra County ISD	5,264	4,882	4,763	-9.52%	-2.44%
Socorro County ISD	5,256	5,654	5,490	4.45%	-2.90%
South Dona Ana ISD	19,779	20,009	20,281	2.54%	1.36%
Southeast Bernalillo County ISD	24,951	19,899	18,906	-24.23%	-4.99%
Southwest Bernalillo County ISD	39,831	47,710	48,936	22.86%	2.57%
Taos County ISD	9,239	9,262	9,108	-1.42%	-1.66%
Torrance County ISD	7,935	8,354	7,882	-0.67%	-5.65%
Valencia North County ISD	18,549	16,982	16,677	-10.09%	-1.80%
Valencia South County ISD	109	92	147	34.86%	59.78%
West Dona Ana County ISD	22,173	23,219	22,781	2.74%	-1.89%
Centralized Units	1	1	1	0.00%	0.00%
Statewide Total	495,748	532,624	537,179	8.36%	0.86%

## Medicaid Cases by Region<sup>2</sup>

Region	Percent Change				
	Oct-19	Sep-20	Oct-20	Oct-19- Oct-20	Sep-20- Oct-20
Region 1 - NW	89,515	97,770	99,193	10.81%	1.46%
Region 2 - NE	87,240	87,657	87,577	0.39%	-0.09%
Region 3 - Central	168,656	180,981	182,643	8.29%	0.92%
Region 4 - SE	61,564	71,339	72,763	18.19%	2.00%
Region 5 - SW	88,772	94,876	95,002	7.02%	0.13%
Centralized Units	1	1	1	0.00%	0.00%
Statewide Total	495,748	532,624	537,179	8.4%	0.86%

## Medicaid Caseload: SFY-16 to Current



**Medicaid Initial Applications by Field Office<sup>4,11</sup>**  
**October 2020**

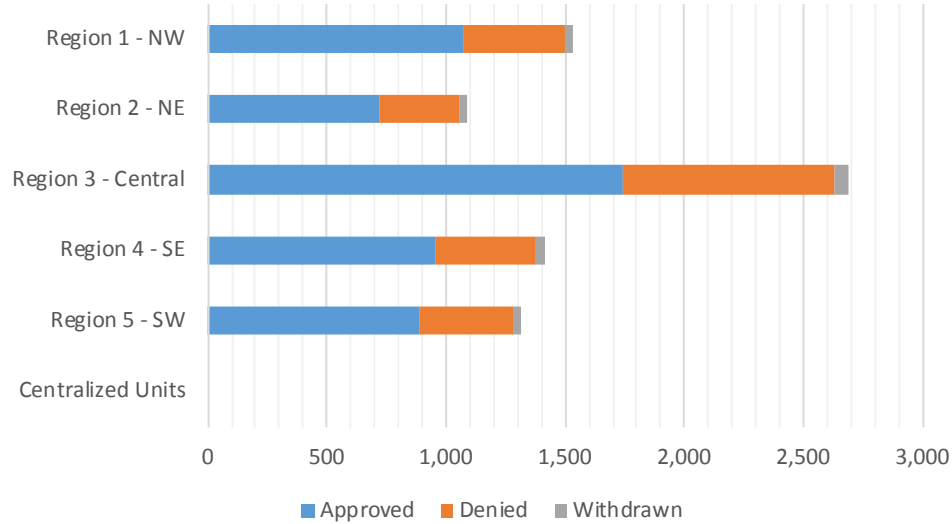
Office	Approved	Denied	Withdrawn	Total Cases Processed
Chaves County ISD	392	154	20	566
Cibola County ISD	42	14	5	61
Colfax County ISD	38	12	4	54
Curry County ISD	167	71	8	246
East Dona Ana County ISD	202	100	6	308
Eddy Artesia County ISD	33	23	1	57
Eddy Carlsbad County ISD	104	47	3	154
Grant County ISD	81	34	4	119
Guadalupe County ISD	5	7	0	12
Hidalgo County ISD	0	0	0	0
Lea County ISD	212	90	8	310
Lincoln County ISD	43	35	1	79
Luna County ISD	93	50	3	146
McKinley County ISD	137	67	3	207
Northeast Bernalillo County ISD	540	243	18	801
Northwest Bernalillo County ISD	454	218	12	684
Otero County ISD	118	45	4	167
Quay County ISD	48	11	2	61
Rio Arriba County ISD	113	54	5	172
Roosevelt County ISD	3	0	0	3
San Juan County ISD	747	253	22	1,022
San Miguel County ISD	146	43	13	202
Sandoval County ISD	109	52	6	167
Santa Fe County ISD	206	116	6	328
Sierra County ISD	28	24	2	54
Socorro County ISD	32	14	0	46
South Dona Ana ISD	185	82	8	275
Southeast Bernalillo County ISD	218	178	0	396
Southwest Bernalillo County ISD	482	208	29	719
Taos County ISD	55	36	1	92
Torrance County ISD	49	36	1	86
Valencia North County ISD	77	52	0	129
Valencia South County ISD	9	4	0	13
West Dona Ana County ISD	207	84	5	296
Centralized Units	0	0	0	0
<b>Statewide Total</b>	<b>5,375</b>	<b>2,457</b>	<b>200</b>	<b>8,032</b>



**Medicaid Initial Applications by Region<sup>4,11</sup>**  
**October 2020**

	Approved	Denied	Withdrawn	Total Cases Processed
Region				
Region 1 - NW	1,072	428	32	1,532
Region 2 - NE	720	331	37	1,088
Region 3 - Central	1,743	883	60	2,686
Region 4 - SE	954	420	41	1,415
Region 5 - SW	886	395	30	1,311
Centralized Units	0	0	0	0

Statewide Total	5,375	2,457	200	8,032
-----------------	-------	-------	-----	-------

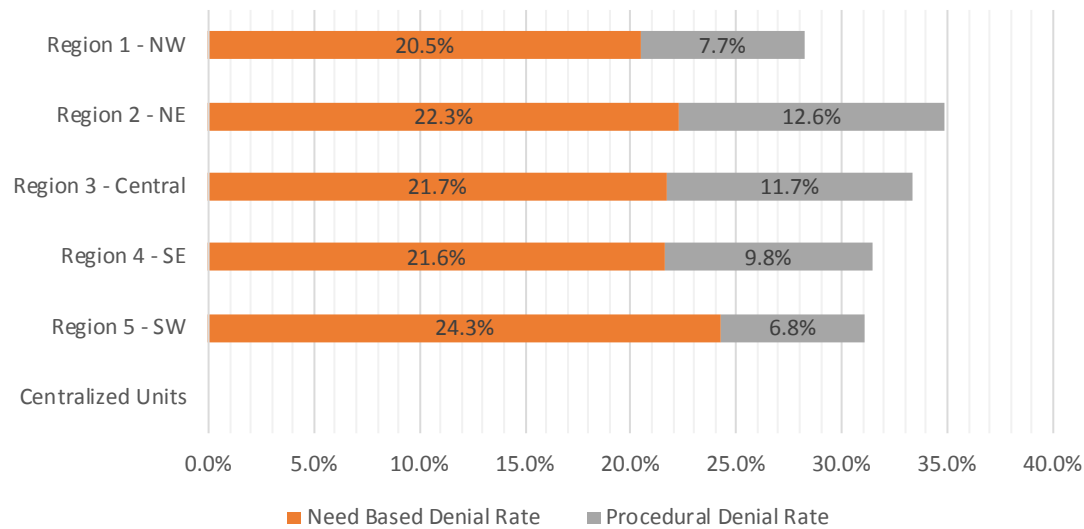


**Medicaid EDG Initial Disposition Rates by Field Office**<sup>4,11,19</sup>  
**October 2020**

Office	Approval Rate	Denial Rate	Need Based Denial Rate	Procedural Denial Rate
Chaves County ISD	71.4%	28.6%	20.8%	7.8%
Cibola County ISD	71.2%	28.8%	22.0%	6.8%
Colfax County ISD	73.1%	26.9%	19.2%	7.7%
Curry County ISD	68.2%	31.8%	19.1%	12.7%
East Dona Ana County ISD	68.0%	32.0%	25.3%	6.7%
Eddy Artesia County ISD	52.4%	47.6%	33.3%	14.3%
Eddy Carlsbad County ISD	69.8%	30.2%	14.8%	15.4%
Grant County ISD	68.6%	31.4%	24.6%	6.8%
Guadalupe County ISD	35.7%	64.3%	57.2%	7.1%
Hidalgo County ISD	0.0%	0.0%	0.0%	0.0%
Lea County ISD	69.5%	30.5%	24.3%	6.2%
Lincoln County ISD	55.8%	44.2%	28.6%	15.6%
Luna County ISD	62.0%	38.0%	31.3%	6.7%
McKinley County ISD	67.5%	32.5%	20.7%	11.8%
Northeast Bernalillo County ISD	68.4%	31.6%	19.4%	12.2%
Northwest Bernalillo County ISD	67.6%	32.4%	19.9%	12.5%
Otero County ISD	72.4%	27.6%	20.2%	7.4%
Quay County ISD	80.0%	20.0%	13.3%	6.7%
Rio Arriba County ISD	65.7%	34.3%	22.7%	11.6%
Roosevelt County ISD	100.0%	0.0%	0.0%	0.0%
San Juan County ISD	75.3%	24.7%	18.6%	6.1%
San Miguel County ISD	72.3%	27.7%	18.3%	9.4%
Sandoval County ISD	65.7%	34.3%	22.3%	12.0%
Santa Fe County ISD	59.5%	40.5%	25.2%	15.3%
Sierra County ISD	51.9%	48.1%	29.6%	18.5%
Socorro County ISD	71.1%	28.9%	22.2%	6.7%
South Dona Ana ISD	67.5%	32.5%	26.7%	5.8%
Southeast Bernalillo County ISD	59.1%	40.9%	30.3%	10.6%
Southwest Bernalillo County ISD	68.5%	31.5%	21.0%	10.5%
Taos County ISD	58.5%	41.5%	22.4%	19.1%
Torrance County ISD	59.0%	41.0%	25.3%	15.7%
Valencia North County ISD	58.3%	41.7%	31.9%	9.8%
Valencia South County ISD	100.0%	0.0%	0.0%	0.0%
West Dona Ana County ISD	73.1%	26.9%	19.5%	7.4%
Centralized Units	0.0%	0.0%	0.0%	0.0%
Statewide Total	68.1%	31.9%	22.0%	9.9%

**Medicaid EDG Initial Disposition Rates by Region<sup>4,11,19</sup>**  
**October 2020**

Region	Approval Rate	Denial Rate	Need Based Denial Rate	Procedural Denial Rate
Region 1 - NW	71.8%	28.2%	20.5%	7.7%
Region 2 - NE	65.1%	34.9%	22.3%	12.6%
Region 3 - Central	66.6%	33.4%	21.7%	11.7%
Region 4 - SE	68.6%	31.4%	21.6%	9.8%
Region 5 - SW	68.9%	31.1%	24.3%	6.8%
Centralized Units				
<b>Statewide Total</b>	<b>68.1%</b>	<b>31.9%</b>	<b>22.0%</b>	<b>9.9%</b>



**Medicaid: Percentage of Initial EDG Approvals Processed Timely by Field Office** <sup>13,19</sup>

	Oct-20	Nov-20	Dec-20	Jan-21	Feb-21	Mar-21	Apr-21	May-21	Jun-21	Jul-21	Aug-21	Sep-21	Average
Cibola	100.0 %												100.0%
McKinley	99.0 %												99.0%
San Juan	98.8 %												98.8%
Sierra	97.7 %												97.7%
Socorro	100.0 %												100.0%
Valencia North	100.0 %												100.0%
Valencia South	100.0 %												100.0%
<b>NW Region 1 Total</b>	<b>99.0 %</b>												<b>99.0%</b>
Colfax	100.0 %												100.0%
Guadalupe	100.0 %												100.0%
Quay	100.0 %												100.0%
Rio Arriba	97.8 %												97.8%
San Miguel	100.0 %												100.0%
Sandoval	99.4 %												99.4%
Santa Fe	99.3 %												99.3%
Taos	100.0 %												100.0%
<b>NE Region 2 Total</b>	<b>99.4 %</b>												<b>99.4%</b>
NE Bernalillo	99.0 %												99.0%
NW Bernalillo	99.8 %												99.8%
SE Bernalillo	98.7 %												98.7%
SW Bernalillo	97.7 %												97.7%
Torrance	100.0 %												100.0%
<b>Gen. Region 3 Total</b>	<b>98.9 %</b>												<b>98.9%</b>
Chaves	99.5 %												99.5%
Curry	99.1 %												99.1%
Eddy Artesia	100.0 %												100.0%
Eddy Carlsbad	98.8 %												98.8%
Lea	99.1 %												99.1%
Lincoln	98.6 %												98.6%
Roosevelt	100.0 %												100.0%
<b>SE Region 4 Total</b>	<b>99.2 %</b>												<b>99.2%</b>
East Dona Ana	98.6 %												98.6%
Grant	99.2 %												99.2%
Luna	100.0 %												100.0%
Otero	100.0 %												100.0%
South Dona Ana	99.6 %												99.6%
West Dona Ana	98.5 %												98.5%
<b>SW Region 5 Total</b>	<b>99.2 %</b>												<b>99.2%</b>
<b>STATE TOTAL</b>	<b>99.1 %</b>												<b>99.1%</b>

**Medicaid: Percentage of Initial EDG Denials Processed Timely by Field Office**<sup>13,19</sup>

	Oct-20	Nov-20	Dec-20	Jan-21	Feb-21	Mar-21	Apr-21	May-21	Jun-21	Jul-21	Aug-21	Sep-21	Average
Cibola	100.0 %												100.0%
McKinley	95.7 %												95.7%
San Juan	96.9 %												96.9%
Sierra	100.0 %												100.0%
Socorro	90.0 %												90.0%
Valencia North	93.5 %												93.5%
Valencia South	100.0 %												100.0%
<b>NW Region 1 Total</b>	<b>96.5 %</b>												<b>96.5%</b>
Colfax	100.0 %												100.0%
Guadalupe	100.0 %												100.0%
Quay	100.0 %												100.0%
Rio Arriba	97.1 %												97.1%
San Miguel	100.0 %												100.0%
Sandoval	97.5 %												97.5%
Santa Fe	90.3 %												90.3%
Taos	100.0 %												100.0%
<b>NE Region 2 Total</b>	<b>95.9 %</b>												<b>95.9%</b>
NE Bernalillo	92.1 %												92.1%
NW Bernalillo	94.4 %												94.4%
SE Bernalillo	96.4 %												96.4%
SW Bernalillo	95.3 %												95.3%
Torrance	98.3 %												98.3%
<b>Gen. Region 3 Total</b>	<b>94.4 %</b>												<b>94.4%</b>
Chaves	97.3 %												97.3%
Curry	94.7 %												94.7%
Eddy Artesia	100.0 %												100.0%
Eddy Carlsbad	98.7 %												98.7%
Lea	92.2 %												92.2%
Lincoln	97.8 %												97.8%
Roosevelt													
<b>SE Region 4 Total</b>	<b>96.1 %</b>												<b>96.1%</b>
East Dona Ana	98.9 %												98.9%
Grant	100.0 %												100.0%
Luna	100.0 %												100.0%
Otero	94.9 %												94.9%
South Dona Ana	99.4 %												99.4%
West Dona Ana	91.6 %												91.6%
<b>SW Region 5 Total</b>	<b>97.6 %</b>												<b>97.6%</b>
<b>STATE TOTAL</b>	<b>95.9 %</b>												<b>95.9%</b>

**Medicaid: Percentage of Initial EDG Approvals and Denials Combined Processed Timely by Field Office<sup>13,19</sup>**

	Oct-20	Nov-20	Dec-20	Jan-21	Feb-21	Mar-21	Apr-21	May-21	Jun-21	Jul-21	Aug-21	Sep-21	Average
Cibola	100.0 %												100.0%
McKinley	97.7 %												97.7%
San Juan	98.3 %												98.3%
Sierra	98.9 %												98.9%
Socorro	96.6 %												96.6%
Valencia North	97.4 %												97.4%
Valencia South	100.0 %												100.0%
<b>NW Region 1 Total</b>	<b>98.2 %</b>												<b>98.2%</b>
Colfax	100.0 %												100.0%
Guadalupe	100.0 %												100.0%
Quay	100.0 %												100.0%
Rio Arriba	97.5 %												97.5%
San Miguel	100.0 %												100.0%
Sandoval	98.8 %												98.8%
Santa Fe	96.1 %												96.1%
Taos	100.0 %												100.0%
<b>NE Region 2 Total</b>	<b>98.2 %</b>												<b>98.2%</b>
NE Bernalillo	96.6 %												96.6%
NW Bernalillo	98.0 %												98.0%
SE Bernalillo	97.7 %												97.7%
SW Bernalillo	96.9 %												96.9%
Torrance	99.3 %												99.3%
<b>Gen. Region 3 Total</b>	<b>97.2 %</b>												<b>97.2%</b>
Chaves	98.8 %												98.8%
Curry	97.6 %												97.6%
Eddy Artesia	100.0 %												100.0%
Eddy Carlsbad	98.8 %												98.8%
Lea	96.8 %												96.8%
Lincoln	98.3 %												98.3%
Roosevelt	100.0 %												100.0%
<b>SE Region 4 Total</b>	<b>98.2 %</b>												<b>98.2%</b>
East Dona Ana	98.7 %												98.7%
Grant	99.5 %												99.5%
Luna	100.0 %												100.0%
Otero	98.5 %												98.5%
South Dona Ana	99.6 %												99.6%
West Dona Ana	96.3 %												96.3%
<b>SW Region 5 Total</b>	<b>98.7 %</b>												<b>98.7%</b>
<b>STATE TOTAL</b>	<b>98.0 %</b>												<b>98.0%</b>

**Medicaid Renewal Disposition Counts by Field Office<sup>4,11</sup>**  
**October 2020**

Office	Approvals	Closures	Need Based Closures	Procedural Closures
Chaves County ISD	4,260	173	173	0
Cibola County ISD	1,250	40	38	2
Colfax County ISD	671	17	17	0
Curry County ISD	2,485	90	90	0
East Dona Ana County ISD	3,618	119	117	2
Eddy Artesia County ISD	692	33	33	0
Eddy Carlsbad County ISD	1,066	71	71	0
Grant County ISD	1,314	51	51	0
Guadalupe County ISD	203	17	17	0
Hidalgo County ISD	1	0	0	0
Lea County ISD	2,583	141	141	0
Lincoln County ISD	617	32	32	0
Luna County ISD	1,510	70	70	0
McKinley County ISD	4,246	147	147	0
Northeast Bernalillo County ISD	6,487	248	248	0
Northwest Bernalillo County ISD	5,873	240	240	0
Otero County ISD	2,230	93	93	0
Quay County ISD	566	30	30	0
Rio Arriba County ISD	2,000	67	67	0
Roosevelt County ISD	1	0	0	0
San Juan County ISD	8,451	367	367	0
San Miguel County ISD	1,471	72	72	0
Sandoval County ISD	2,554	111	109	2
Santa Fe County ISD	2,820	79	79	0
Sierra County ISD	586	28	28	0
Socorro County ISD	814	20	20	0
South Dona Ana ISD	3,708	125	125	0
Southeast Bernalillo County ISD	1,583	42	42	0
Southwest Bernalillo County ISD	9,254	416	415	1
Taos County ISD	954	36	36	0
Torrance County ISD	912	50	50	0
Valencia North County ISD	2,324	84	84	0
Valencia South County ISD	14	0	0	0
West Dona Ana County ISD	3,497	103	103	0
Centralized Units	0	0		0
<b>Statewide Total</b>	<b>80,615</b>	<b>3,212</b>	<b>3,205</b>	<b>7</b>

*Determinations at Administrative, Annual, and Auto Renewals are included*

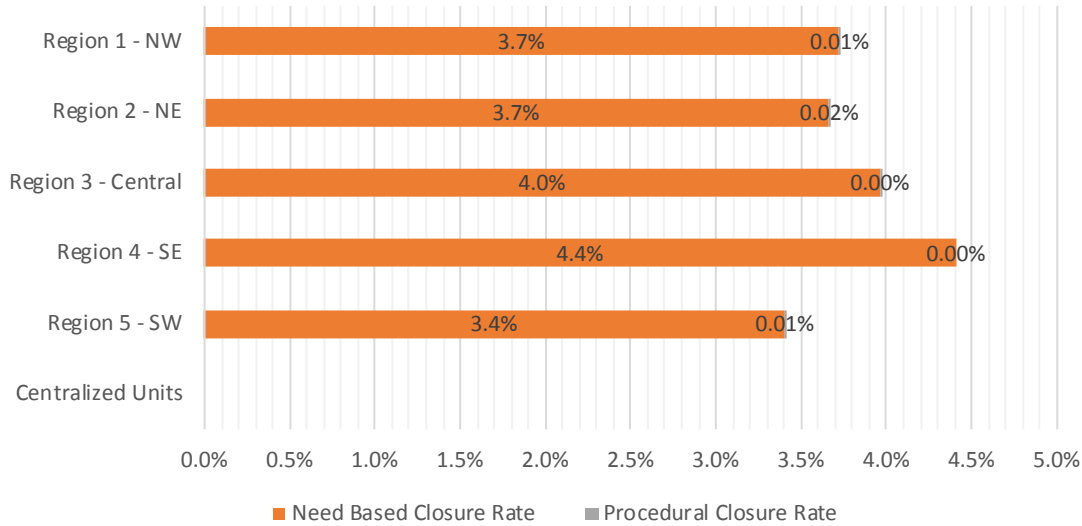
**Medicaid Renewal Disposition Rates by Field Office<sup>20</sup>**  
**October 2020**

Office	Approval Rate	Closure Rate	Need Based Closure Rate	Procedural Closure Rate
Chaves County ISD	96.1%	3.9%	3.9%	0.00%
Cibola County ISD	96.9%	3.1%	2.9%	0.16%
Colfax County ISD	97.5%	2.5%	2.5%	0.00%
Curry County ISD	96.5%	3.5%	3.5%	0.00%
East Dona Ana County ISD	96.8%	3.2%	3.1%	0.05%
Eddy Artesia County ISD	95.4%	4.6%	4.6%	0.00%
Eddy Carlsbad County ISD	93.8%	6.2%	6.2%	0.00%
Grant County ISD	96.3%	3.7%	3.7%	0.00%
Guadalupe County ISD	92.3%	7.7%	7.7%	0.00%
Hidalgo County ISD	100.0%	0.0%	0.0%	0.00%
Lea County ISD	94.8%	5.2%	5.2%	0.00%
Lincoln County ISD	95.1%	4.9%	4.9%	0.00%
Luna County ISD	95.6%	4.4%	4.4%	0.00%
McKinley County ISD	96.7%	3.3%	3.3%	0.00%
Northeast Bernalillo County ISD	96.3%	3.7%	3.7%	0.00%
Northwest Bernalillo County ISD	96.1%	3.9%	3.9%	0.00%
Otero County ISD	96.0%	4.0%	4.0%	0.00%
Quay County ISD	95.0%	5.0%	5.0%	0.00%
Rio Arriba County ISD	96.8%	3.2%	3.2%	0.00%
Roosevelt County ISD	100.0%	0.0%	0.0%	0.00%
San Juan County ISD	95.8%	4.2%	4.2%	0.00%
San Miguel County ISD	95.3%	4.7%	4.7%	0.00%
Sandoval County ISD	95.8%	4.2%	4.1%	0.08%
Santa Fe County ISD	97.3%	2.7%	2.7%	0.00%
Sierra County ISD	95.4%	4.6%	4.6%	0.00%
Socorro County ISD	97.6%	2.4%	2.4%	0.00%
South Dona Ana ISD	96.7%	3.3%	3.3%	0.00%
Southeast Bernalillo County ISD	97.4%	2.6%	2.6%	0.00%
Southwest Bernalillo County ISD	95.7%	4.3%	4.3%	0.01%
Taos County ISD	96.4%	3.6%	3.6%	0.00%
Torrance County ISD	94.8%	5.2%	5.2%	0.00%
Valencia North County ISD	96.5%	3.5%	3.5%	0.00%
Valencia South County ISD	100.0%	0.0%	0.0%	0.00%
West Dona Ana County ISD	97.1%	2.9%	2.9%	0.00%
Centralized Units	0.0%	0.0%	0.0%	0.00%
<b>Statewide Total</b>	<b>96.2%</b>	<b>3.8%</b>	<b>3.8%</b>	<b>0.01%</b>



**Medicaid Renewal Disposition Rates by Region<sup>20</sup>**  
**October 2020**

Region	Approval Rate	Closure Rate	Need Based Closure Rate	Procedural Closure Rate
Region 1 - NW	96.3%	3.7%	3.7%	0.01%
Region 2 - NE	96.3%	3.7%	3.7%	0.02%
Region 3 - Central	96.0%	4.0%	4.0%	0.00%
Region 4 - SE	95.6%	4.4%	4.4%	0.00%
Region 5 - SW	96.6%	3.4%	3.4%	0.01%
Centralized Units	0.0%	0.0%	0.0%	0.00%
<b>Statewide Total</b>	<b>96.2%</b>	<b>3.8%</b>	<b>3.8%</b>	<b>0.01%</b>



**Medicaid: Percentage of Approved Renewal EDGs Processed by Certification Date <sup>11</sup>**

	Oct-20	Nov-20	Dec-20	Jan-21	Feb-21	Mar-21	Apr-21	May-21	Jun-21	Jul-21	Aug-21	Sep-21	Average
Cibola	100.0%												100.0%
McKinley	100.0%												100.0%
San Juan	100.0%												100.0%
Sierra	100.0%												100.0%
Socorro	100.0%												100.0%
Valencia North	100.0%												100.0%
Valencia South	100.0%												100.0%
<b>NW Region 1 Total</b>	<b>100.0%</b>												<b>100.0%</b>
Colfax	100.0%												100.0%
Guadalupe	100.0%												100.0%
Quay	100.0%												100.0%
Rio Arriba	100.0%												100.0%
San Miguel	100.0%												100.0%
Sandoval	100.0%												100.0%
Santa Fe	100.0%												100.0%
Taos	100.0%												100.0%
<b>NE Region 2 Total</b>	<b>100.0%</b>												<b>100.0%</b>
NE Bernalillo	100.0%												100.0%
NW Bernalillo	100.0%												100.0%
SE Bernalillo	100.0%												100.0%
SW Bernalillo	100.0%												100.0%
Torrance	100.0%												100.0%
<b>Gen. Region 3 Total</b>	<b>100.0%</b>												<b>100.0%</b>
Chaves	100.0%												100.0%
Curry	100.0%												100.0%
Eddy Artesia	100.0%												100.0%
Eddy Carlsbad	100.0%												100.0%
Lea	100.0%												100.0%
Lincoln	100.0%												100.0%
Roosevelt	100.0%												100.0%
<b>SE Region 4 Total</b>	<b>100.0%</b>												<b>100.0%</b>
East Dona Ana	100.0%												100.0%
Grant	99.9%												99.9%
Luna	100.0%												100.0%
Otero	100.0%												100.0%
South Dona Ana	99.9%												99.9%
West Dona Ana	100.0%												100.0%
<b>SW Region 5 Total</b>	<b>100.0%</b>												<b>100.0%</b>
<b>STATE TOTAL</b>	<b>100.0%</b>												<b>100.0%</b>

Administrative, Annual, and Auto Renewals are included

**Medicaid: Percentage of Closures EDGs Processed by Certification End Date<sup>11</sup>**

	Oct-20	Nov-20	Dec-20	Jan-21	Feb-21	Mar-21	Apr-21	May-21	Jun-21	Jul-21	Aug-21	Sep-21	Average
Cibola	100.0%												100.0%
McKinley	94.2%												94.2%
San Juan	96.6%												96.6%
Sierra	100.0%												100.0%
Socorro	100.0%												100.0%
Valencia North	91.3%												91.3%
Valencia South													
<b>NW Region 1 Total</b>	<b>97.0%</b>												<b>97.0%</b>
Colfax	100.0%												100.0%
Guadalupe	100.0%												100.0%
Quay	96.8%												96.8%
Rio Arriba	100.0%												100.0%
San Miguel	97.3%												97.3%
Sandoval	100.0%												100.0%
Santa Fe	92.9%												92.9%
Taos	92.3%												92.3%
<b>NE Region 2 Total</b>	<b>97.4%</b>												<b>97.4%</b>
NE Bernalillo	93.2%												93.2%
NW Bernalillo	95.6%												95.6%
SE Bernalillo	100.0%												100.0%
SW Bernalillo	96.1%												96.1%
Torrance	100.0%												100.0%
<b>Gen. Region 3 Total</b>	<b>97.0%</b>												<b>97.0%</b>
Chaves	94.5%												94.5%
Curry	98.9%												98.9%
Eddy Artesia	100.0%												100.0%
Eddy Carlsbad	95.9%												95.9%
Lea	95.3%												95.3%
Lincoln	97.0%												97.0%
Roosevelt													
<b>SE Region 4 Total</b>	<b>96.9%</b>												<b>96.9%</b>
East Dona Ana	95.2%												95.2%
Grant	96.2%												96.2%
Luna	100.0%												100.0%
Otero	93.9%												93.9%
South Dona Ana	97.7%												97.7%
West Dona Ana	97.2%												97.2%
<b>SW Region 5 Total</b>	<b>96.7%</b>												<b>96.7%</b>
<b>STATE TOTAL</b>	<b>97.0%</b>												<b>97.0%</b>

**Medicaid: Percentage of Approved and Terminated Renewal EDGs Combined Processed by Certification Date <sup>11</sup>**

	Oct-20	Nov-20	Dec-20	Jan-21	Feb-21	Mar-21	Apr-21	May-21	Jun-21	Jul-21	Aug-21	Sep-21	Average
Cibola	100.0%												100.0%
McKinley	99.8%												99.8%
San Juan	99.9%												99.9%
Sierra	100.0%												100.0%
Socorro	100.0%												100.0%
Valencia North	99.7%												99.7%
Valencia South	100.0%												100.0%
<b>NW Region 1 Total</b>	<b>99.9%</b>												<b>99.9%</b>
Colfax	100.0%												100.0%
Guadalupe	100.0%												100.0%
Quay	99.8%												99.8%
Rio Arriba	100.0%												100.0%
San Miguel	99.9%												99.9%
Sandoval	100.0%												100.0%
Santa Fe	99.8%												99.8%
Taos	99.7%												99.7%
<b>NE Region 2 Total</b>	<b>99.9%</b>												<b>99.9%</b>
NE Bernalillo	99.7%												99.7%
NW Bernalillo	99.8%												99.8%
SE Bernalillo	100.0%												100.0%
SW Bernalillo	99.8%												99.8%
Torrance	100.0%												100.0%
<b>Gen. Region 3 Total</b>	<b>99.9%</b>												<b>99.9%</b>
Chaves	99.8%												99.8%
Curry	100.0%												100.0%
Eddy Artesia	100.0%												100.0%
Eddy Carlsbad	99.7%												99.7%
Lea	99.7%												99.7%
Lincoln	99.8%												99.8%
Roosevelt	100.0%												100.0%
<b>SE Region 4 Total</b>	<b>99.9%</b>												<b>99.9%</b>
East Dona Ana	99.8%												99.8%
Grant	99.8%												99.8%
Luna	100.0%												100.0%
Otero	99.7%												99.7%
South Dona Ana	99.8%												99.8%
West Dona Ana	99.9%												99.9%
<b>SW Region 5 Total</b>	<b>99.8%</b>												<b>99.8%</b>
<b>STATE TOTAL</b>	<b>99.9%</b>												<b>99.9%</b>

Administrative, Annual, and Auto Renewals are included

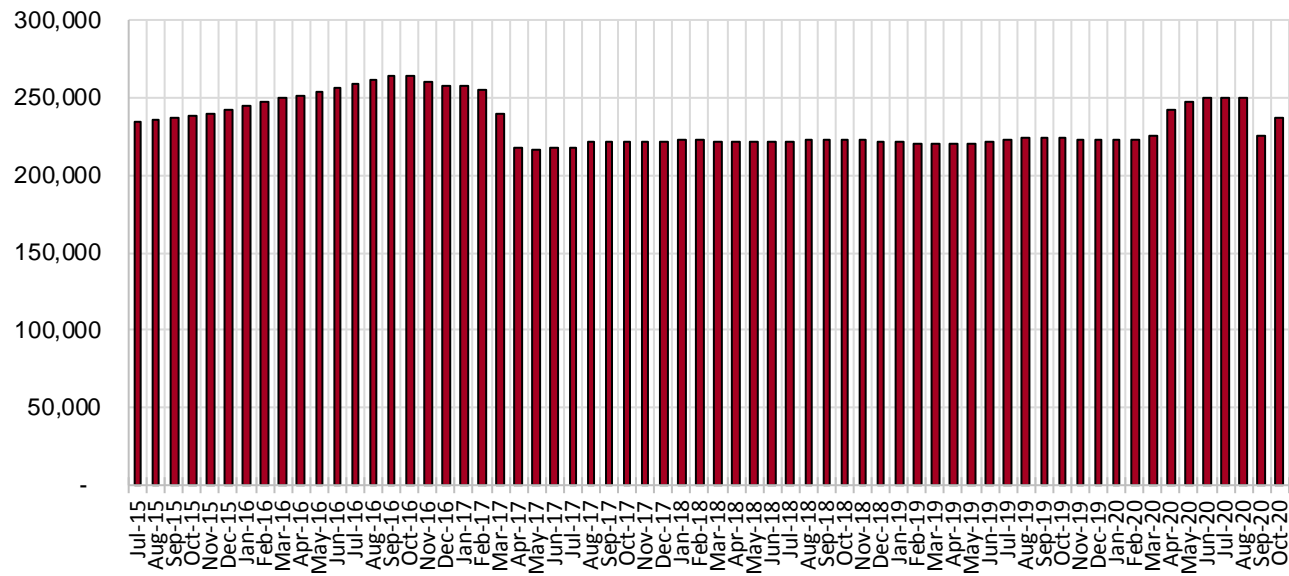
## SNAP Cases by Field Office<sup>6</sup>

Office	Oct-19	Sep-20	Oct-20	Percent Change	
				Oct-19-Oct-20	Sep-20-Oct-20
Chaves County ISD	7,056	10,256	11,771	66.82%	14.77%
Cibola County ISD	3,599	3,254	3,321	-7.72%	2.06%
Colfax County ISD	1,633	1,542	1,696	3.86%	9.99%
Curry County ISD	7,376	7,430	7,771	5.36%	4.59%
East Dona Ana County ISD	8,046	9,170	9,493	17.98%	3.52%
Eddy Artesia County ISD	1,597	1,685	1,808	13.21%	7.30%
Eddy Carlsbad County ISD	2,985	3,387	3,507	17.49%	3.54%
Grant County ISD	3,983	3,870	4,129	3.67%	6.69%
Guadalupe County ISD	690	603	717	3.91%	18.91%
Hidalgo County ISD	14	2	8	-42.86%	300.00%
Lea County ISD	5,780	6,986	7,057	22.09%	1.02%
Lincoln County ISD	1,853	1,853	1,989	7.34%	7.34%
Luna County ISD	4,302	4,225	4,565	6.11%	8.05%
McKinley County ISD	10,369	10,170	10,400	0.30%	2.26%
Northeast Bernalillo County ISD	20,557	21,139	22,323	8.59%	5.60%
Northwest Bernalillo County ISD	20,329	20,545	22,445	10.41%	9.25%
Otero County ISD	5,767	5,691	6,075	5.34%	6.75%
Quay County ISD	1,304	1,656	1,974	51.38%	19.20%
Rio Arriba County ISD	6,417	6,512	6,835	6.51%	4.96%
Roosevelt County ISD	0	2	2	N/A	0.00%
San Juan County ISD	13,996	19,122	21,164	51.21%	10.68%
San Miguel County ISD	5,044	4,854	5,182	2.74%	6.76%
Sandoval County ISD	9,993	7,500	6,823	-31.72%	-9.03%
Santa Fe County ISD	9,217	7,979	7,651	-16.99%	-4.11%
Sierra County ISD	2,553	1,799	1,967	-22.95%	9.34%
Socorro County ISD	2,775	2,725	2,756	-0.68%	1.14%
South Dona Ana ISD	8,482	7,716	8,313	-1.99%	7.74%
Southeast Bernalillo County ISD	11,915	7,030	6,741	-43.42%	-4.11%
Southwest Bernalillo County ISD	19,216	23,282	23,289	21.20%	0.03%
Taos County ISD	4,219	3,534	3,637	-13.79%	2.91%
Torrance County ISD	3,588	3,428	3,331	-7.16%	-2.8%
Valencia North County ISD	8,422	6,203	6,422	-23.75%	3.53%
Valencia South County ISD	2	18	35	1650.0%	94.44%
West Dona Ana County ISD	10,794	10,782	11,261	4.33%	4.44%
Centralized Units	8	0	8	0.00%	N/A
Statewide Total	223,881	225,950	236,466	5.62%	4.7%

## SNAP Cases by Region<sup>6</sup>

Region	Oct-19	Sep-20	Oct-20	Percent Change	
				Oct-19- Oct-20	Sep-20- Oct-20
Region 1 - NW	41,716	43,291	46,065	10.4%	6.4%
Region 2 - NE	38,517	34,180	34,515	-10.4%	1.0%
Region 3 - Central	75,605	75,424	78,129	3.3%	3.6%
Region 4 - SE	26,647	31,599	33,905	27.2%	7.3%
Region 5 - SW	41,388	41,456	43,844	5.9%	5.8%
Centralized Units	8	0	8	0.0%	N/A
<b>Statewide Total</b>	<b>223,881</b>	<b>225,950</b>	<b>236,466</b>	<b>5.62%</b>	<b>4.7%</b>

## SNAP Caseload: SFY-16 to Current

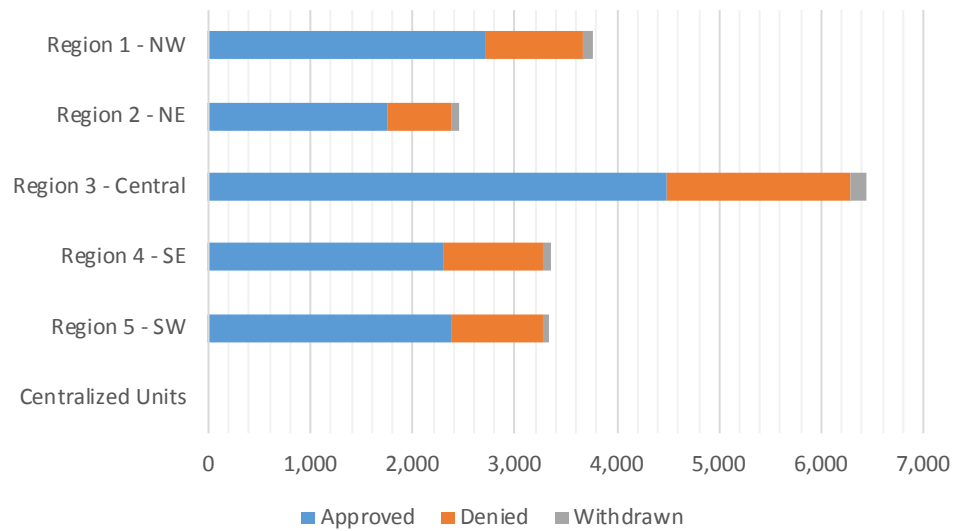


**SNAP Initial Applications by Field Office<sup>4,11</sup>**  
**October 2020**

Office	Approved	Denied	Withdrawn	Total Cases Processed
Chaves County ISD	886	312	36	1,234
Cibola County ISD	131	43	6	180
Colfax County ISD	98	35	2	135
Curry County ISD	429	200	14	643
East Dona Ana County ISD	526	229	9	764
Eddy Artesia County ISD	118	70	7	195
Eddy Carlsbad County ISD	268	122	2	392
Grant County ISD	221	88	8	317
Guadalupe County ISD	41	19	2	62
Hidalgo County ISD	0	0	0	0
Lea County ISD	470	211	16	697
Lincoln County ISD	120	57	6	183
Luna County ISD	248	92	4	344
McKinley County ISD	372	133	10	515
Northeast Bernalillo County ISD	1,449	568	40	2,057
Northwest Bernalillo County ISD	1,174	494	54	1,722
Otero County ISD	337	137	7	481
Quay County ISD	126	25	4	155
Rio Arriba County ISD	361	92	20	473
Roosevelt County ISD	6	1	0	7
San Juan County ISD	1,774	573	69	2,416
San Miguel County ISD	312	110	14	436
Sandoval County ISD	241	106	11	358
Santa Fe County ISD	425	179	16	620
Sierra County ISD	71	34	3	108
Socorro County ISD	76	37	2	115
South Dona Ana ISD	405	108	12	525
Southeast Bernalillo County ISD	165	68	3	236
Southwest Bernalillo County ISD	1,547	589	66	2,202
Taos County ISD	149	55	6	210
Torrance County ISD	147	79	3	229
Valencia North County ISD	280	136	5	421
Valencia South County ISD	12	2	0	14
West Dona Ana County ISD	632	257	19	908
Centralized Units	0	0	0	0
<b>Statewide Total</b>	<b>13,617</b>	<b>5,261</b>	<b>476</b>	<b>19,354</b>

## SNAP Initial Applications by Region<sup>4,11</sup> October 2020

Region	Approved	Denied	Withdrawn	Total Cases Processed
Region 1 - NW	2,716	958	95	3,769
Region 2 - NE	1,753	621	75	2,449
Region 3 - Central	4,482	1,798	166	6,446
Region 4 - SE	2,297	973	81	3,351
Region 5 - SW	2,369	911	59	3,339
Centralized Units	0	0	0	0
<b>Statewide Total</b>	<b>13,617</b>	<b>5,261</b>	<b>476</b>	<b>19,354</b>



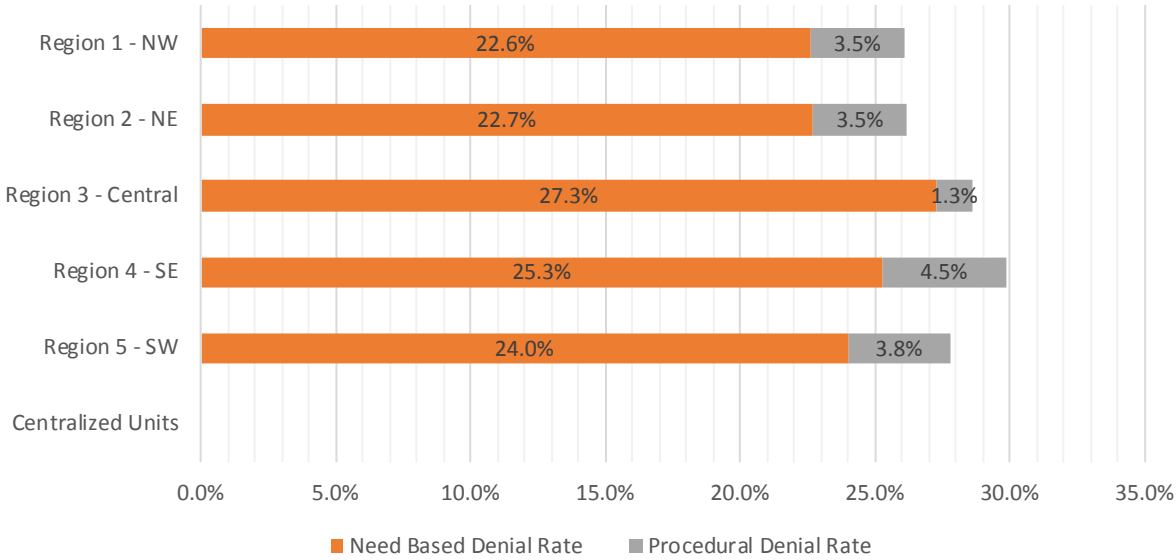


**SNAP Initial Disposition Rates by Field Office<sup>4,11</sup>**  
**October 2020**

Office	Approval Rate	Denial Rate	Need Based Denial Rate	Procedural Denial Rate
Chaves County ISD	74.0%	26.0%	22.6%	3.4%
Cibola County ISD	75.3%	24.7%	23.0%	1.7%
Colfax County ISD	73.7%	26.3%	24.0%	2.3%
Curry County ISD	68.2%	31.8%	27.2%	4.6%
East Dona Ana County ISD	69.7%	30.3%	26.9%	3.4%
Eddy Artesia County ISD	62.8%	37.2%	30.8%	6.4%
Eddy Carlsbad County ISD	68.7%	31.3%	24.4%	6.9%
Grant County ISD	71.5%	28.5%	24.9%	3.6%
Guadalupe County ISD	68.3%	31.7%	23.4%	8.3%
Hidalgo County ISD	0.0%	0.0%	0.0%	0.0%
Lea County ISD	69.0%	31.0%	26.2%	4.8%
Lincoln County ISD	67.8%	32.2%	28.8%	3.4%
Luna County ISD	72.9%	27.1%	22.4%	4.7%
McKinley County ISD	73.7%	26.3%	21.9%	4.4%
Northeast Bernalillo County ISD	71.8%	28.2%	27.0%	1.2%
Northwest Bernalillo County ISD	70.4%	29.6%	28.0%	1.6%
Otero County ISD	71.1%	28.9%	24.5%	4.4%
Quay County ISD	83.4%	16.6%	15.3%	1.3%
Rio Arriba County ISD	79.7%	20.3%	16.3%	4.0%
Roosevelt County ISD	85.7%	14.3%	14.3%	0.0%
San Juan County ISD	75.6%	24.4%	21.8%	2.6%
San Miguel County ISD	73.9%	26.1%	22.8%	3.3%
Sandoval County ISD	69.5%	30.5%	28.2%	2.3%
Santa Fe County ISD	70.4%	29.6%	25.0%	4.6%
Sierra County ISD	67.6%	32.4%	25.7%	6.7%
Socorro County ISD	67.3%	32.7%	23.0%	9.7%
South Dona Ana ISD	78.9%	21.1%	17.4%	3.7%
Southeast Bernalillo County ISD	70.8%	29.2%	28.3%	0.9%
Southwest Bernalillo County ISD	72.4%	27.6%	26.7%	0.9%
Taos County ISD	73.0%	27.0%	24.5%	2.5%
Torrance County ISD	65.0%	35.0%	31.5%	3.5%
Valencia North County ISD	67.3%	32.7%	27.2%	5.5%
Valencia South County ISD	85.7%	14.3%	14.3%	0.0%
West Dona Ana County ISD	71.1%	28.9%	25.4%	3.5%
Centralized Units	0.0%	0.0%	0.0%	0.0%
Statewide Total	72.1%	27.9%	24.9%	3.0%

**SNAP Initial Disposition Rates by Region<sup>4,11</sup>**  
**October 2020**

Region	Approval Rate	Denial Rate	Need Based Denial Rate	Procedural Denial Rate
Region 1 - NW	73.9%	26.1%	22.6%	3.5%
Region 2 - NE	73.8%	26.2%	22.7%	3.5%
Region 3 - Central	71.4%	28.6%	27.3%	1.3%
Region 4 - SE	70.2%	29.8%	25.3%	4.5%
Region 5 - SW	72.2%	27.8%	24.0%	3.8%
Centralized Units	0.0%	0.0%	0.0%	0.0%
<b>Statewide Total</b>	<b>72.1%</b>	<b>27.9%</b>	<b>24.9%</b>	<b>3.0%</b>



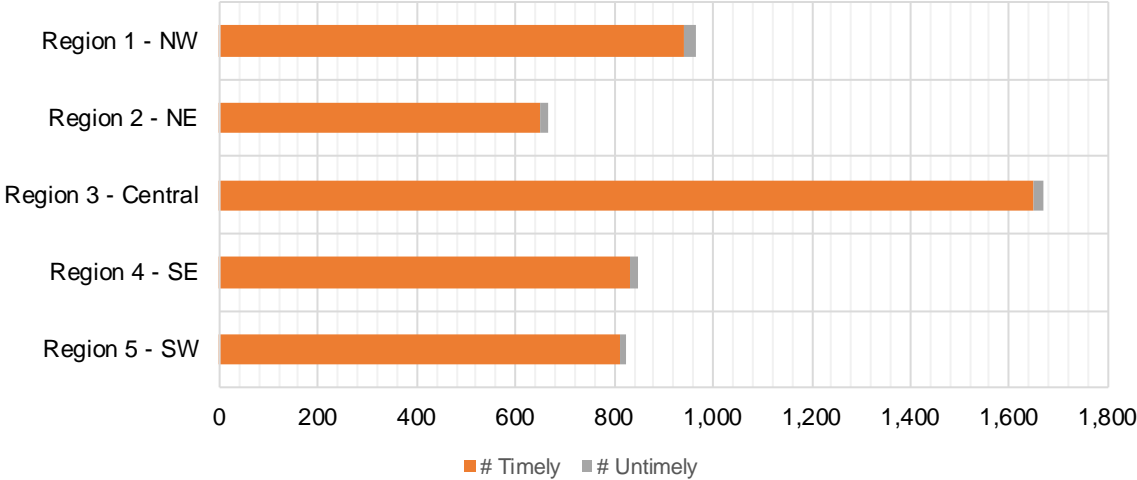
**SNAP Expedite Timeliness by Field Office<sup>13</sup>**  
**October 2020**

Office Name	Total Expedited Approvals	# Timely	# Untimely	Percentage Timely
Chaves County ISD	326	323	3	99.1 %
Cibola County ISD	45	45	0	100.0 %
Colfax County ISD	29	29	0	100.0 %
Curry County ISD	143	138	5	96.5 %
East Dona Ana County ISD	176	173	3	98.3 %
Eddy Artesia County ISD	38	36	2	94.7 %
Eddy Carlsbad County ISD	104	102	2	98.1 %
Grant County ISD	65	65	0	100.0 %
Guadalupe County ISD	9	9	0	100.0 %
Lea County ISD	200	196	4	98.0 %
Lincoln County ISD	35	35	0	100.0 %
Luna County ISD	85	85	0	100.0 %
McKinley County ISD	127	122	5	96.1 %
Northeast Bernalillo County ISD	533	524	9	98.3 %
Northwest Bernalillo County ISD	464	456	8	98.3 %
Otero County ISD	127	124	3	97.6 %
Quay County ISD	45	43	2	95.6 %
Rio Arriba County ISD	158	156	2	98.7 %
Roosevelt County ISD	2	2	0	100.0 %
San Juan County ISD	648	633	15	97.7 %
San Miguel County ISD	127	126	1	99.2 %
Sandoval County ISD	80	77	3	96.3 %
Santa Fe County ISD	173	166	7	96.0 %
Sierra County ISD	21	21	0	100.0 %
Socorro County ISD	32	31	1	96.9 %
South Dona Ana ISD	133	132	1	99.2 %
Southeast Bernalillo County ISD	67	67	0	100.0 %
Southwest Bernalillo County ISD	559	557	2	99.6 %
Taos County ISD	46	42	4	91.3 %
Torrance County ISD	45	45	0	100.0 %
Valencia North County ISD	93	91	2	97.8 %
West Dona Ana County ISD	237	234	3	98.7 %
<b>Statewide Total</b>	<b>4,972</b>	<b>4,885</b>	<b>87</b>	<b>98.3 %</b>

**SNAP Expedite Timeliness by Region<sup>13</sup>**  
**October 2020**

Region	Total Expedited Approvals	# Timely	# Untimely	Percentage Timely
Region 1 - NW	966	943	23	97.6%
Region 2 - NE	667	648	19	97.2%
Region 3 - Central	1,668	1,649	19	98.9%
Region 4 - SE	848	832	16	98.1%
Region 5 - SW	823	813	10	98.8%
Statewide Total	4,972	4,885	87	98.3%

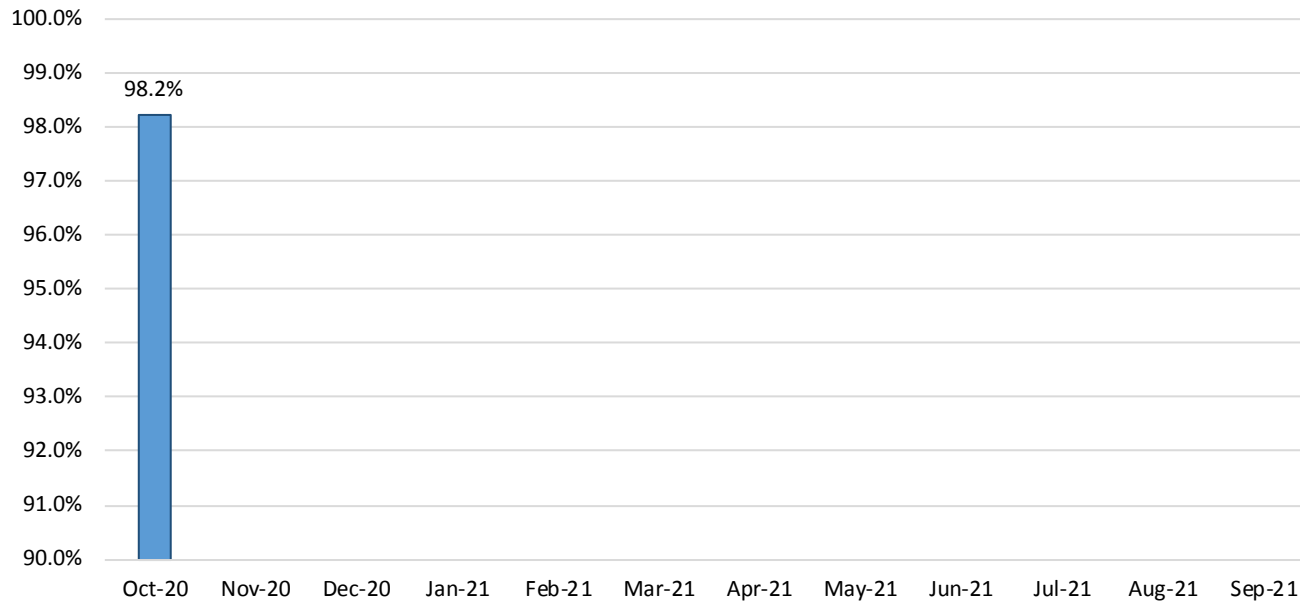
**SNAP Expedite - Timeliness**



**SNAP: Percentage of Applications Processed Timely<sup>13</sup>**

	Oct-20	Nov-20	Dec-20	Jan-21	Feb-21	Mar-21	Apr-21	May-21	Jun-21	Jul-21	Aug-21	Sep-21	Average
APT	98.2%												98.2%

**SNAP Application Processing Timeliness (APT)**



**SNAP Non-Expedite: Percentage of Initial Applications Processed Timely by Field Office<sup>13</sup>**

	Oct-20	Nov-20	Dec-20	Jan-21	Feb-21	Mar-21	Apr-21	May-21	Jun-21	Jul-21	Aug-21	Sep-21	Average
Cibola	98.6%												98.6%
McKinley	97.7%												97.7%
San Juan	98.4%												98.4%
Sierra	97.8%												97.8%
Socorro	97.7%												97.7%
Valencia North	97.9%												97.9%
Valencia South	100.0%												
<b>NW Region 1 Total</b>	<b>98.2%</b>												<b>98.2%</b>
Colfax	99.1%												99.1%
Guadalupe	96.3%												96.3%
Quay	99.1%												99.1%
Rio Arriba	97.5%												97.5%
San Miguel	97.8%												97.8%
Sandoval	99.0%												99.0%
Santa Fe	95.2%												95.2%
Taos	98.2%												98.2%
<b>NE Region 2 Total</b>	<b>97.4%</b>												<b>97.4%</b>
NE Bernalillo	97.5%												97.5%
NW Bernalillo	98.2%												98.2%
SE Bernalillo	97.7%												97.7%
SW Bernalillo	98.5%												98.5%
Torrance	97.9%												97.9%
<b>Gen. Region 3 Total</b>	<b>98.0%</b>												<b>98.0%</b>
Chaves	98.5%												98.5%
Curry	98.1%												98.1%
Eddy Artesia	96.9%												96.9%
Eddy Carlsbad	98.3%												98.3%
Lea	98.1%												98.1%
Lincoln	98.1%												98.1%
Roosevelt	100.0%												100.0%
<b>SE Region 4 Total</b>	<b>98.2%</b>												<b>98.2%</b>
East Dona Ana	98.7%												98.7%
Grant	99.2%												99.2%
Luna	98.9%												98.9%
Otero	99.5%												99.5%
South Dona Ana	99.3%												99.3%
West Dona Ana	99.1%												99.1%
<b>SW Region 5 Total</b>	<b>99.1%</b>												<b>99.1%</b>
<b>STATE TOTAL</b>	<b>98.2%</b>												<b>98.2%</b>

**SNAP Expedite: Percentage of Initial Applications Processed Timely by Field Office<sup>13</sup>**

	Oct-20	Nov-20	Dec-20	Jan-21	Feb-21	Mar-21	Apr-21	May-21	Jun-21	Jul-21	Aug-21	Sep-21	Average
Cibola	100.0%												100.0%
McKinley	96.2%												96.2%
San Juan	97.7%												97.7%
Sierra	100.0%												100.0%
Socorro	96.9%												96.9%
Valencia North	97.9%												97.9%
Valencia South	100.0%												
<b>NW Region 1 Total</b>	<b>97.7%</b>												<b>97.7%</b>
Colfax	100.0%												100.0%
Guadalupe	100.0%												100.0%
Quay	95.6%												95.6%
Rio Arriba	98.8%												98.8%
San Miguel	99.2%												99.2%
Sandoval	96.4%												96.4%
Santa Fe	96.0%												96.0%
Taos	91.5%												91.5%
<b>NE Region 2 Total</b>	<b>97.2%</b>												<b>97.2%</b>
NE Bernalillo	98.3%												98.3%
NW Bernalillo	98.3%												98.3%
SE Bernalillo	100.0%												100.0%
SW Bernalillo	99.7%												99.7%
Torrance	100.0%												100.0%
<b>Gen. Region 3 Total</b>	<b>98.9%</b>												<b>98.9%</b>
Chaves	99.1%												99.1%
Curry	96.6%												96.6%
Eddy Artesia	94.9%												94.9%
Eddy Carlsbad	98.1%												98.1%
Lea	98.0%												98.0%
Lincoln	100.0%												100.0%
Roosevelt	100.0%												100.0%
<b>SE Region 4 Total</b>	<b>98.1%</b>												<b>98.1%</b>
East Dona Ana	98.3%												98.3%
Grant	100.0%												100.0%
Luna	100.0%												100.0%
Otero	97.7%												97.7%
South Dona Ana	99.3%												99.3%
West Dona Ana	98.8%												98.8%
<b>SW Region 5 Total</b>	<b>98.8%</b>												<b>98.8%</b>
<b>STATE TOTAL</b>	<b>98.3%</b>												<b>98.3%</b>

**SNAP: Percentage of Denied Initial Applications Processed Within 30 Days by Field Office<sup>13</sup>**

	Oct-20	Nov-20	Dec-20	Jan-21	Feb-21	Mar-21	Apr-21	May-21	Jun-21	Jul-21	Aug-21	Sep-21	Average
Cibola	100.0%												100.0%
McKinley	95.8%												95.8%
San Juan	98.1%												98.1%
Sierra	97.3%												97.3%
Socorro	97.4%												97.4%
Valencia North	97.9%												97.9%
Valencia South	100.0%												100.0%
<b>NW Region 1 Total</b>	<b>98.1%</b>												<b>98.1%</b>
Colfax	100.0%												100.0%
Guadalupe	95.2%												95.2%
Quay	96.6%												96.6%
Rio Arriba	95.5%												95.5%
San Miguel	99.2%												99.2%
Sandoval	99.1%												99.1%
Santa Fe	91.8%												91.8%
Taos	96.7%												96.7%
<b>NE Region 2 Total</b>	<b>96.8%</b>												<b>96.8%</b>
NE Bernalillo	94.6%												94.6%
NW Bernalillo	96.7%												96.7%
SE Bernalillo	95.8%												95.8%
SW Bernalillo	98.5%												98.5%
Torrance	97.6%												97.6%
<b>Gen. Region 3 Total</b>	<b>96.6%</b>												<b>96.6%</b>
Chaves	96.8%												96.8%
Curry	95.3%												95.3%
Eddy Artesia	94.8%												94.8%
Eddy Carlsbad	97.6%												97.6%
Lea	97.4%												97.4%
Lincoln	96.8%												96.8%
Roosevelt	100.0%												100.0%
<b>SE Region 4 Total</b>	<b>97.0%</b>												<b>97.0%</b>
East Dona Ana	98.3%												98.3%
Grant	100.0%												100.0%
Luna	96.9%												96.9%
Otero	99.3%												99.3%
South Dona Ana	99.2%												99.2%
West Dona Ana	98.2%												98.2%
<b>SW Region 5 Total</b>	<b>98.7%</b>												<b>98.7%</b>
<b>STATE TOTAL</b>	<b>97.4%</b>												<b>97.4%</b>



**SNAP: Combined Approvals and Denials Percentage of Initial Applications Processed Timely by Field Office<sup>13</sup>**

	Oct-20	Nov-20	Dec-20	Jan-21	Feb-21	Mar-21	Apr-21	May-21	Jun-21	Jul-21	Aug-21	Sep-21	Average
Cibola	98.9%												98.9%
McKinley	97.3%												97.3%
San Juan	98.3%												98.3%
Sierra	98.1%												98.1%
Socorro	97.4%												97.4%
Valencia North	97.9%												97.9%
Valencia South	100.0%												100.0%
<b>NW Region 1 Total</b>	<b>98.3%</b>												<b>98.3%</b>
Colfax	99.3%												99.3%
Guadalupe	96.8%												96.8%
Quay	98.1%												98.1%
Rio Arriba	97.9%												97.9%
San Miguel	98.2%												98.2%
Sandoval	98.3%												98.3%
Santa Fe	95.3%												95.3%
Taos	96.7%												96.7%
<b>NE Region 2 Total</b>	<b>97.6%</b>												<b>97.6%</b>
NE Bernalillo	97.6%												97.6%
NW Bernalillo	98.2%												98.2%
SE Bernalillo	98.7%												98.7%
SW Bernalillo	98.9%												98.9%
Torrance	98.3%												98.3%
<b>Gen. Region 3 Total</b>	<b>98.3%</b>												<b>98.3%</b>
Chaves	98.6%												98.6%
Curry	97.7%												97.7%
Eddy Artesia	96.4%												96.4%
Eddy Carlsbad	98.2%												98.2%
Lea	98.0%												98.0%
Lincoln	98.4%												98.4%
Roosevelt	100.0%												100.0%
<b>SE Region 4 Total</b>	<b>98.2%</b>												<b>98.2%</b>
East Dona Ana	98.6%												98.6%
Grant	99.4%												99.4%
Luna	99.1%												99.1%
Otero	99.0%												99.0%
South Dona Ana	99.2%												99.2%
West Dona Ana	99.0%												99.0%
<b>SW Region 5 Total</b>	<b>99.1%</b>												<b>99.1%</b>
<b>STATE TOTAL</b>	<b>98.2%</b>												<b>98.2%</b>

**SNAP Renewals Processed by Field Office<sup>20</sup>**  
**October 2020**

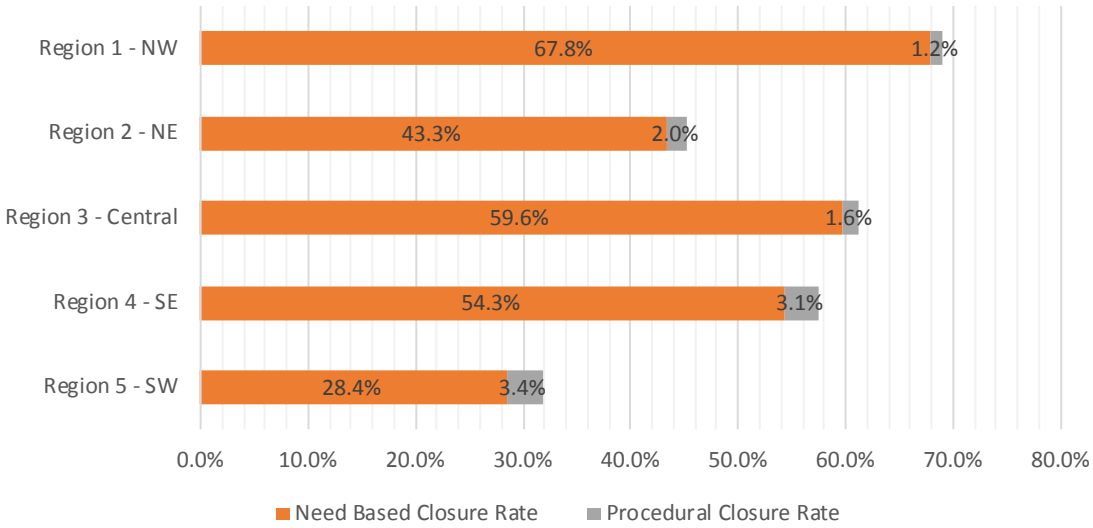
Office	Approvals	Closures	Need Based Closures	Procedural Closures
Chaves County ISD	233	312	294	18
Cibola County ISD	77	122	120	2
Colfax County ISD	61	28	26	2
Curry County ISD	201	258	244	14
East Dona Ana County ISD	349	178	158	20
Eddy Artesia County ISD	36	52	50	2
Eddy Carlsbad County ISD	58	89	84	5
Grant County ISD	163	64	56	8
Guadalupe County ISD	22	15	14	1
Hidalgo County ISD	1	0	0	0
Lea County ISD	109	162	151	11
Lincoln County ISD	56	63	62	1
Luna County ISD	181	76	71	5
McKinley County ISD	265	423	417	6
Northeast Bernalillo County ISD	435	672	655	17
Northwest Bernalillo County ISD	356	568	557	11
Otero County ISD	202	122	110	12
Quay County ISD	73	51	47	4
Rio Arriba County ISD	187	147	145	2
Roosevelt County ISD	0	0	0	0
San Juan County ISD	353	836	823	13
San Miguel County ISD	155	139	133	6
Sandoval County ISD	318	189	180	9
Santa Fe County ISD	150	181	170	11
Sierra County ISD	18	92	91	1
Socorro County ISD	60	79	78	1
South Dona Ana ISD	336	129	119	10
Southeast Bernalillo County ISD	46	29	26	3
Southwest Bernalillo County ISD	622	1049	1021	28
Taos County ISD	58	98	95	3
Torrance County ISD	70	98	94	4
Valencia North County ISD	55	299	290	9
Valencia South County ISD	2	0	0	0
West Dona Ana County ISD	355	170	147	23
Centralized Units	0	0	0	0
<b>Statewide Total</b>	<b>5,663</b>	<b>6,790</b>	<b>6,528</b>	<b>262</b>

**SNAP Renewal Disposition Rates by Field Office<sup>20</sup>**  
**October 2020**

Office	Approval Rate	Closure Rate	Need Based Closure Rate	Procedural Closure Rate
Chaves County ISD	42.8%	57.2%	53.9%	3.3%
Cibola County ISD	38.7%	61.3%	60.3%	1.0%
Colfax County ISD	68.5%	31.5%	29.2%	2.2%
Curry County ISD	43.8%	56.2%	53.2%	3.1%
East Dona Ana County ISD	66.2%	33.8%	30.0%	3.8%
Eddy Artesia County ISD	40.9%	59.1%	56.8%	2.3%
Eddy Carlsbad County ISD	39.5%	60.5%	57.1%	3.4%
Grant County ISD	71.8%	28.2%	24.7%	3.5%
Guadalupe County ISD	59.5%	40.5%	37.8%	2.7%
Hidalgo County ISD	100.0%	0.0%	0.0%	0.0%
Lea County ISD	40.2%	59.8%	55.7%	4.1%
Lincoln County ISD	47.1%	52.9%	52.1%	0.8%
Luna County ISD	70.4%	29.6%	27.6%	1.9%
McKinley County ISD	38.5%	61.5%	60.6%	0.9%
Northeast Bernalillo County ISD	39.3%	60.7%	59.2%	1.5%
Northwest Bernalillo County ISD	38.5%	61.5%	60.3%	1.2%
Otero County ISD	62.3%	37.7%	34.0%	3.7%
Quay County ISD	58.9%	41.1%	37.9%	3.2%
Rio Arriba County ISD	56.0%	44.0%	43.4%	0.6%
Roosevelt County ISD	0.0%	0.0%	0.0%	0.0%
San Juan County ISD	29.7%	70.3%	69.2%	1.1%
San Miguel County ISD	52.7%	47.3%	45.2%	2.0%
Sandoval County ISD	62.7%	37.3%	35.5%	1.8%
Santa Fe County ISD	45.3%	54.7%	51.4%	3.3%
Sierra County ISD	16.4%	83.6%	82.7%	0.9%
Socorro County ISD	43.2%	56.8%	56.1%	0.7%
South Dona Ana ISD	72.3%	27.7%	25.6%	2.2%
Southeast Bernalillo County ISD	61.3%	38.7%	34.7%	4.0%
Southwest Bernalillo County ISD	37.2%	62.8%	61.1%	1.7%
Taos County ISD	37.2%	62.8%	60.9%	1.9%
Torrance County ISD	41.7%	58.3%	56.0%	2.4%
Valencia North County ISD	15.5%	84.5%	81.9%	2.5%
Valencia South County ISD	100.0%	0.0%	0.0%	0.0%
West Dona Ana County ISD	67.6%	32.4%	28.0%	4.4%
Centralized Units	0.0%	0.0%	0.0%	0.0%
Statewide Total	45.5%	54.5%	52.4%	2.1%

**SNAP Renewal Disposition Rates by Region<sup>20</sup>**  
**October 2020**

Region	Approval Rate	Closure Rate	Need Based Closure Rate	Procedural Closure Rate
Region 1 - NW	31.0%	69.0%	67.8%	1.2%
Region 2 - NE	54.7%	45.3%	43.3%	2.0%
Region 3 - Central	38.8%	61.2%	59.6%	1.6%
Region 4 - SE	42.5%	57.5%	54.3%	3.1%
Region 5 - SW	68.2%	31.8%	28.4%	3.4%
Centralized Units				
<b>Statewide Total</b>	<b>45.5%</b>	<b>54.5%</b>	<b>52.4%</b>	<b>2.1%</b>



**SNAP: Percentage of Approved Renewal Applications Processed<sup>11</sup>**

	Oct-20	Nov-20	Dec-20	Jan-21	Feb-21	Mar-21	Apr-21	May-21	Jun-21	Jul-21	Aug-21	Sep-21	Average
Cibola	100.0%												100.0%
McKinley	100.0%												100.0%
San Juan	100.0%												100.0%
Sierra	100.0%												100.0%
Socorro	100.0%												100.0%
Valencia North	100.0%												100.0%
Valencia South	100.0%												100.0%
<b>NW Region 1 Total</b>	<b>100.0%</b>												<b>100.0%</b>
Colfax	100.0%												100.0%
Guadalupe	100.0%												100.0%
Quay	100.0%												100.0%
Rio Arriba	100.0%												100.0%
San Miguel	100.0%												100.0%
Sandoval	100.0%												100.0%
Santa Fe	100.0%												100.0%
Taos	100.0%												100.0%
<b>NE Region 2 Total</b>	<b>100.0%</b>												<b>100.0%</b>
NE Bernalillo	100.0%												100.0%
NW Bernalillo	100.0%												100.0%
SE Bernalillo	100.0%												100.0%
SW Bernalillo	100.0%												100.0%
Torrance	100.0%												100.0%
<b>Gen. Region 3 Total</b>	<b>100.0%</b>												<b>100.0%</b>
Chaves	100.0%												100.0%
Curry	100.0%												100.0%
Eddy Artesia	100.0%												100.0%
Eddy Carlsbad	100.0%												100.0%
Lea	100.0%												100.0%
Lincoln	100.0%												100.0%
Roosevelt													
<b>SE Region 4 Total</b>	<b>100.0%</b>												<b>100.0%</b>
East Dona Ana	100.0%												100.0%
Grant	100.0%												100.0%
Luna	100.0%												100.0%
Otero	100.0%												100.0%
South Dona Ana	100.0%												100.0%
West Dona Ana	100.0%												100.0%
<b>SW Region 5 Total</b>	<b>100.0%</b>												<b>100.0%</b>
<b>STATE TOTAL</b>	<b>100.0%</b>												<b>100.0%</b>

*If a renewal packet was received on or before 15th of the renewal month, the case shall be considered timely if the case was processed by renewal due date*  
 Recertifications – If a Recertification cannot be processed under normal processing, ASPEN will automatically extend certification periods for households scheduled to recertify in March, April, May and June 2020, for 6 months until September, October and November 2020.

**SNAP: Percentage of Approved Renewal Applications Processed<sup>11</sup>**

	Oct-20	Nov-20	Dec-20	Jan-21	Feb-21	Mar-21	Apr-21	May-21	Jun-21	Jul-21	Aug-21	Sep-21	Average
Cibola	100.0%												100.0%
McKinley	100.0%												100.0%
San Juan	100.0%												100.0%
Sierra	100.0%												100.0%
Socorro	100.0%												100.0%
Valencia North	100.0%												100.0%
Valencia South	100.0%												100.0%
<b>NW Region 1 Total</b>	<b>100.0%</b>												<b>100.0%</b>
Colfax	100.0%												100.0%
Guadalupe	100.0%												100.0%
Quay	100.0%												100.0%
Rio Arriba	100.0%												100.0%
San Miguel	100.0%												100.0%
Sandoval	100.0%												100.0%
Santa Fe	100.0%												100.0%
Taos	100.0%												100.0%
<b>NE Region 2 Total</b>	<b>100.0%</b>												<b>100.0%</b>
NE Bernalillo	100.0%												100.0%
NW Bernalillo	100.0%												100.0%
SE Bernalillo	100.0%												100.0%
SW Bernalillo	100.0%												100.0%
Torrance	100.0%												100.0%
<b>Gen. Region 3 Total</b>	<b>100.0%</b>												<b>100.0%</b>
Chaves	100.0%												100.0%
Curry	100.0%												100.0%
Eddy Artesia	100.0%												100.0%
Eddy Carlsbad	100.0%												100.0%
Lea	100.0%												100.0%
Lincoln	100.0%												100.0%
Roosevelt	100.0%												100.0%
<b>SE Region 4 Total</b>	<b>100.0%</b>												<b>100.0%</b>
East Dona Ana	100.0%												100.0%
Grant	100.0%												100.0%
Luna	100.0%												100.0%
Otero	100.0%												100.0%
South Dona Ana	100.0%												100.0%
West Dona Ana	100.0%												100.0%
<b>SW Region 5 Total</b>	<b>100.0%</b>												<b>100.0%</b>
<b>STATE TOTAL</b>	<b>100.0%</b>												<b>100.0%</b>

**SNAP: Percentage of Terminations Renewal Applications Processed<sup>11</sup>**

	Oct-20	Nov-20	Dec-20	Jan-21	Feb-21	Mar-21	Apr-21	May-21	Jun-21	Jul-21	Aug-21	Sep-21	Average
Cibola	100.0%												100.0%
McKinley	100.0%												100.0%
San Juan	100.0%												100.0%
Sierra	100.0%												100.0%
Socorro	100.0%												100.0%
Valencia North	100.0%												100.0%
Valencia South													
<b>NW Region 1 Total</b>	<b>100.0%</b>												<b>100.0%</b>
Colfax	100.0%												100.0%
Guadalupe	100.0%												100.0%
Quay	100.0%												100.0%
Rio Arriba	100.0%												100.0%
San Miguel	99.3%												99.3%
Sandoval	100.0%												100.0%
Santa Fe	100.0%												100.0%
Taos	100.0%												100.0%
<b>NE Region 2 Total</b>	<b>99.9%</b>												<b>99.9%</b>
NE Bernalillo	100.0%												100.0%
NW Bernalillo	100.0%												100.0%
SE Bernalillo	100.0%												100.0%
SW Bernalillo	100.0%												100.0%
Torrance	100.0%												100.0%
<b>Gen. Region 3 Total</b>	<b>100.0%</b>												<b>100.0%</b>
Chaves	100.0%												100.0%
Curry	100.0%												100.0%
Eddy Artesia	100.0%												100.0%
Eddy Carlsbad	100.0%												100.0%
Lea	100.0%												100.0%
Lincoln	100.0%												100.0%
Roosevelt													
<b>SE Region 4 Total</b>	<b>100.0%</b>												<b>100.0%</b>
East Dona Ana	100.0%												100.0%
Grant	100.0%												100.0%
Luna	100.0%												100.0%
Otero	100.0%												100.0%
South Dona Ana	100.0%												100.0%
West Dona Ana	100.0%												100.0%
<b>SW Region 5 Total</b>	<b>100.0%</b>												<b>100.0%</b>
<b>STATE TOTAL</b>	<b>100.0%</b>												<b>100.0%</b>

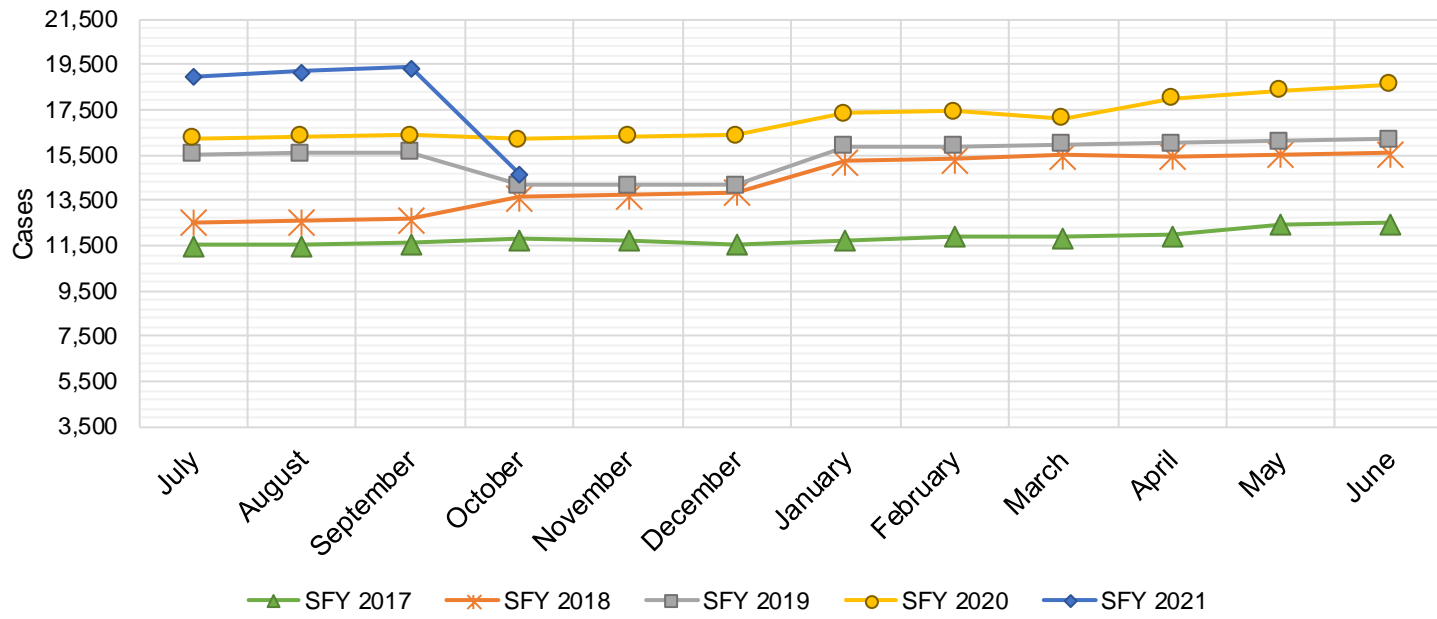
**SNAP: Combined Percentage of Approved and Terminated Renewal Applications Processed<sup>11</sup>**

	Oct-20	Nov-20	Dec-20	Jan-21	Feb-21	Mar-21	Apr-21	May-21	Jun-21	Jul-21	Aug-21	Sep-21	Average
Cibola	100.0%												100.0%
McKinley	100.0%												100.0%
San Juan	100.0%												100.0%
Sierra	100.0%												100.0%
Socorro	100.0%												100.0%
Valencia North	100.0%												100.0%
Valencia South	100.0%												100.0%
<b>NW Region 1 Total</b>	<b>100.0%</b>												<b>100.0%</b>
Colfax	100.0%												100.0%
Guadalupe	100.0%												100.0%
Quay	100.0%												100.0%
Rio Arriba	100.0%												100.0%
San Miguel	99.7%												99.7%
Sandoval	100.0%												100.0%
Santa Fe	100.0%												100.0%
Taos	100.0%												100.0%
<b>NE Region 2 Total</b>	<b>100.0%</b>												<b>100.0%</b>
NE Bernalillo	100.0%												100.0%
NW Bernalillo	100.0%												100.0%
SE Bernalillo	100.0%												100.0%
SW Bernalillo	100.0%												100.0%
Torrance	100.0%												100.0%
<b>Gen. Region 3 Total</b>	<b>100.0%</b>												<b>100.0%</b>
Chaves	100.0%												100.0%
Curry	100.0%												100.0%
Eddy Artesia	100.0%												100.0%
Eddy Carlsbad	100.0%												100.0%
Lea	100.0%												100.0%
Lincoln	100.0%												100.0%
Roosevelt													
<b>SE Region 4 Total</b>	<b>100.0%</b>												<b>100.0%</b>
East Dona Ana	100.0%												100.0%
Grant	100.0%												100.0%
Luna	100.0%												100.0%
Otero	100.0%												100.0%
South Dona Ana	100.0%												100.0%
West Dona Ana	100.0%												100.0%
<b>SW Region 5 Total</b>	<b>100.0%</b>												<b>100.0%</b>
<b>STATE TOTAL</b>	<b>100.0%</b>												<b>100.0%</b>



## State SNAP Supplement

SFY 2017 <sup>9</sup>			SFY 2018 <sup>9</sup>			SFY 2019 <sup>9</sup>			SFY 2020 <sup>9</sup>			SFY 2021 <sup>9</sup>		
	Cases	Expenditures		Cases	Expenditures		Cases	Expenditures		Cases	Expenditures		Cases	Expenditures
Jul-16	11,537	\$95,553	Jul-17	12,526	\$97,568	Jul-18	15,555	\$141,711	Jul-19	16,260	\$145,023	Jul-20	18,957	\$161,862
Aug-16	11,522	\$95,107	Aug-17	12,589	\$98,954	Aug-18	15,584	\$139,719	Aug-19	16,314	\$145,706	Aug-20	19,196	\$165,904
Sep-16	11,613	\$94,472	Sep-17	12,679	\$97,546	Sep-18	15,631	\$140,768	Sep-19	16,362	\$145,767	Sep-20	19,379	\$166,738
Oct-16	11,797	\$96,679	Oct-17	13,628	\$117,343	Oct-18	14,161	\$125,737	Oct-19	16,182	\$139,741	Oct-20	14,634	\$137,621
Nov-16	11,735	\$93,689	Nov-17	13,748	\$119,055	Nov-18	14,160	\$125,401	Nov-19	16,331	\$138,583	Nov-20		
Dec-16	11,556	\$93,739	Dec-17	13,877	\$120,585	Dec-18	14,163	\$126,263	Dec-19	16,373	\$137,440	Dec-20		
Jan-17	11,763	\$96,074	Jan-18	15,246	\$135,993	Jan-19	15,890	\$141,357	Jan-20	17,360	\$145,696	Jan-21		
Feb-17	11,907	\$98,251	Feb-18	15,308	\$137,296	Feb-19	15,882	\$142,396	Feb-20	17,429	\$154,849	Feb-21		
Mar-17	11,853	\$96,693	Mar-18	15,482	\$139,132	Mar-19	15,970	\$142,427	Mar-20	17,131	\$150,568	Mar-21		
Apr-17	11,944	\$97,060	Apr-18	15,466	\$139,202	Apr-19	16,032	\$143,982	Apr-20	18,017	\$157,944	Apr-21		
May-17	12,457	\$96,940	May-18	15,525	\$139,397	May-19	16,126	\$143,697	May-20	18,368	\$157,089	May-21		
Jun-17	12,498	\$97,405	Jun-18	15,577	\$140,802	Jun-19	16,182	\$143,128	Jun-20	18,645	\$158,748	Jun-21		
<b>TOTAL</b>	<b>142,182</b>	<b>\$1,151,662</b>		<b>171,651</b>	<b>\$1,482,874</b>		<b>185,336</b>	<b>\$1,656,584</b>		<b>204,772</b>	<b>\$1,777,156</b>		<b>72,166</b>	<b>\$632,126</b>
<b>AVERAGE</b>	<b>11,849</b>	<b>\$95,972</b>		<b>14,304</b>	<b>\$123,573</b>		<b>15,445</b>	<b>\$138,049</b>		<b>17,064</b>	<b>\$148,096</b>		<b>18,042</b>	<b>\$158,031</b>



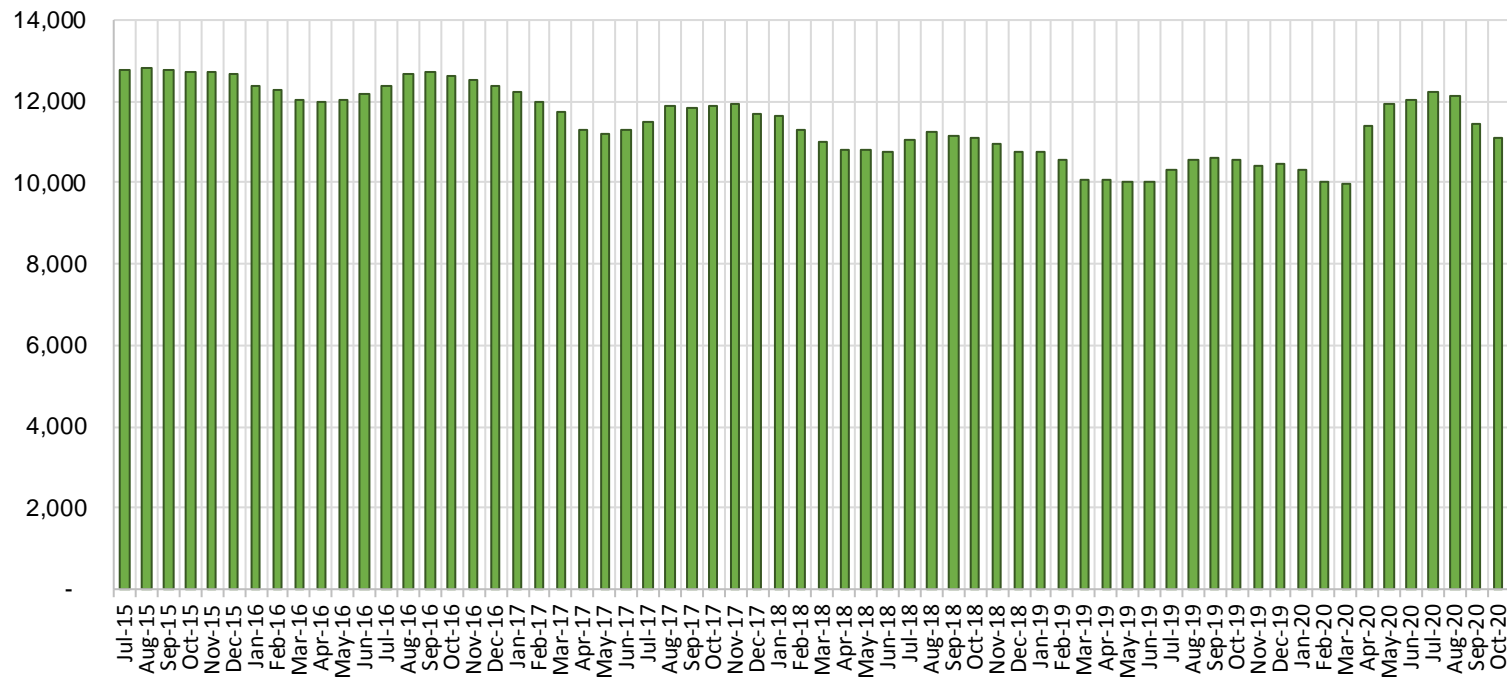
## TANF Cases by Field Office<sup>6</sup>

Office				Percent Change	
	Oct-19	Sep-20	Oct-20	Oct-19- Oct-20	Sep-20- Oct-20
Chaves County ISD	416	720	813	95.43%	12.92%
Cibola County ISD	115	123	122	6.09%	-0.81%
Colfax County ISD	92	92	105	14.13%	14.13%
Curry County ISD	634	621	608	-4.10%	-2.09%
East Dona Ana County ISD	421	530	560	33.02%	5.66%
Eddy Artesia County ISD	92	115	111	20.65%	-3.48%
Eddy Carlsbad County ISD	148	205	209	41.22%	1.95%
Grant County ISD	199	206	206	3.52%	0.00%
Guadalupe County ISD	23	24	28	21.74%	16.67%
Hidalgo County ISD	0	0	0	NA	N/A
Lea County ISD	354	482	478	35.03%	-0.83%
Lincoln County ISD	86	87	97	12.79%	11.49%
Luna County ISD	209	207	216	3.35%	4.35%
McKinley County ISD	66	83	87	31.82%	4.82%
Northeast Bernalillo County ISD	921	1,061	1,066	15.74%	0.47%
Northwest Bernalillo County ISD	831	903	928	11.67%	2.77%
Otero County ISD	298	339	354	18.79%	4.42%
Quay County ISD	82	111	127	54.88%	14.41%
Rio Arriba County ISD	361	399	409	13.30%	2.51%
Roosevelt County ISD	0	0	0	NA	N/A
San Juan County ISD	270	483	490	81.48%	1.45%
San Miguel County ISD	197	200	216	9.64%	8.00%
Sandoval County ISD	448	346	290	-35.27%	-16.18%
Santa Fe County ISD	374	320	316	-15.51%	-1.25%
Sierra County ISD	67	61	62	-7.46%	1.64%
Socorro County ISD	87	92	88	1.15%	-4.35%
South Dona Ana ISD	620	559	587	-5.32%	5.01%
Southeast Bernalillo County ISD	583	275	239	-59.01%	-13.09%
Southwest Bernalillo County ISD	1,145	1,431	1,497	30.74%	4.61%
Taos County ISD	139	119	117	-15.83%	-1.68%
Torrance County ISD	181	188	174	-3.87%	-7.45%
Valencia North County ISD	435	384	370	-14.94%	-3.65%
Valencia South County ISD	0	2	1	N/A	-50.0%
West Dona Ana County ISD	671	657	650	-3.13%	-1.07%
Centralized Units	2	0	3	50.00%	N/A
Statewide Total	10,567	11,425	11,624	10.00%	1.74%

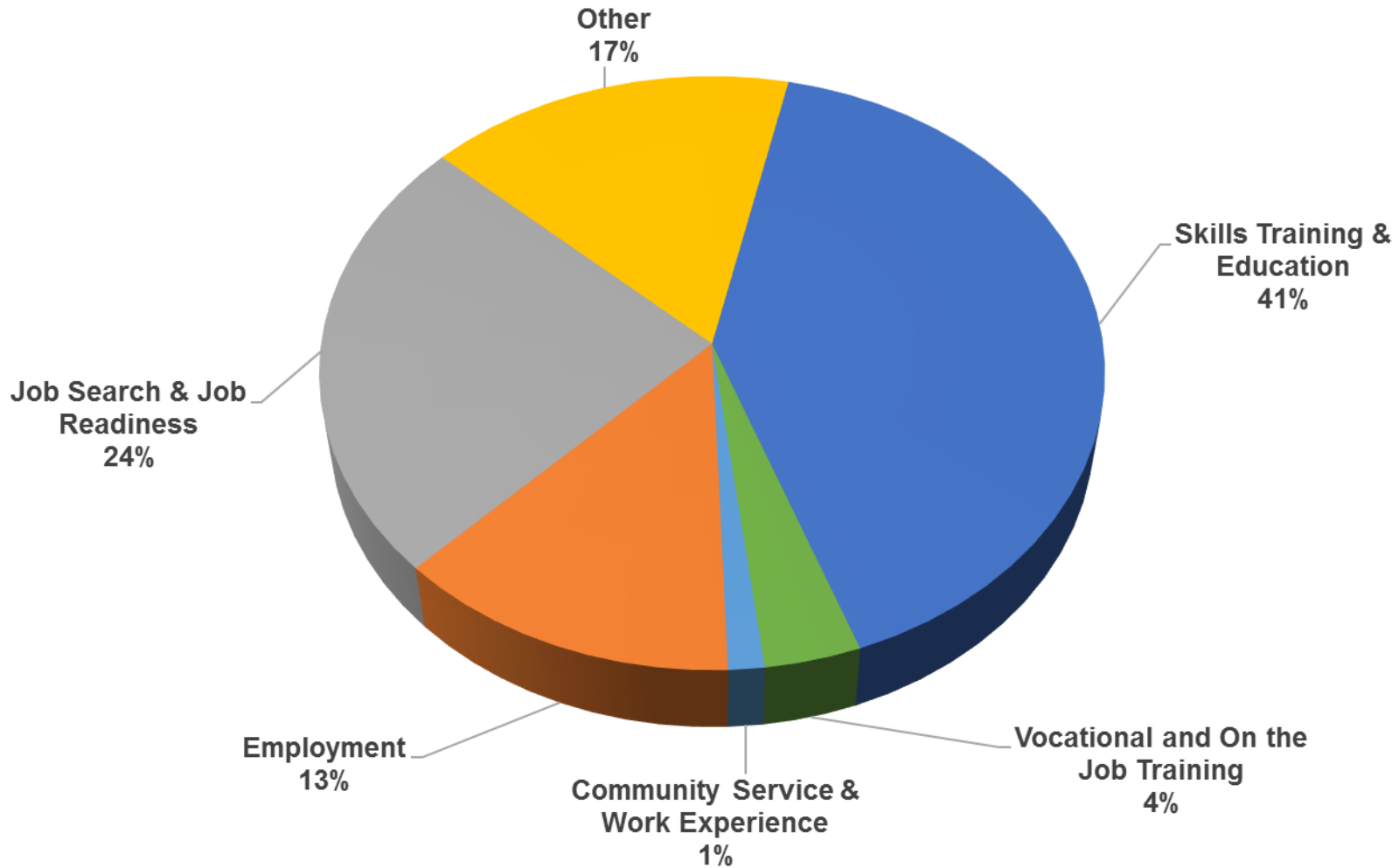
## TANF Cases by Region<sup>6</sup>

Region				Percent Change	
	Oct-19	Sep-20	Oct-20	Oct-19- Oct-20	Sep-20- Oct-20
Region 1- NW	1,040	1,228	1,220	17.31%	-0.65%
Region 2- NE	1,716	1,611	1,608	-6.29%	-0.19%
Region 3- Central	3,661	3,858	3,904	6.64%	1.19%
Region 4- SE	1,730	2,230	2,316	33.87%	3.86%
Region 5- SW	2,418	2,498	2,573	6.41%	3.00%
Centralized Units	2	0	3	50.0%	N/A
<b>Statewide Total</b>	<b>10,567</b>	<b>11,425</b>	<b>11,624</b>	<b>10.00%</b>	<b>1.74%</b>

## TANF Caseload: SFY-16 to Current

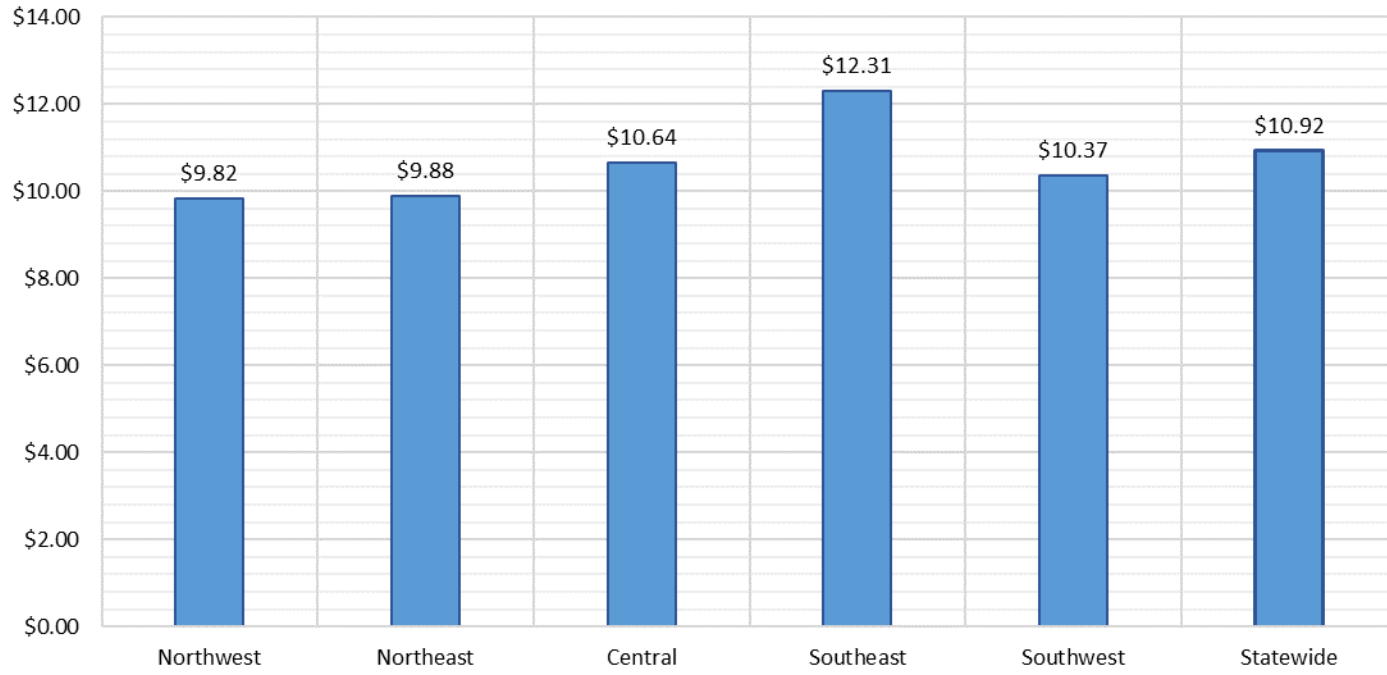


## NM Works Activity Placements on October 31, 2020 as reported by SL Start<sup>14</sup>

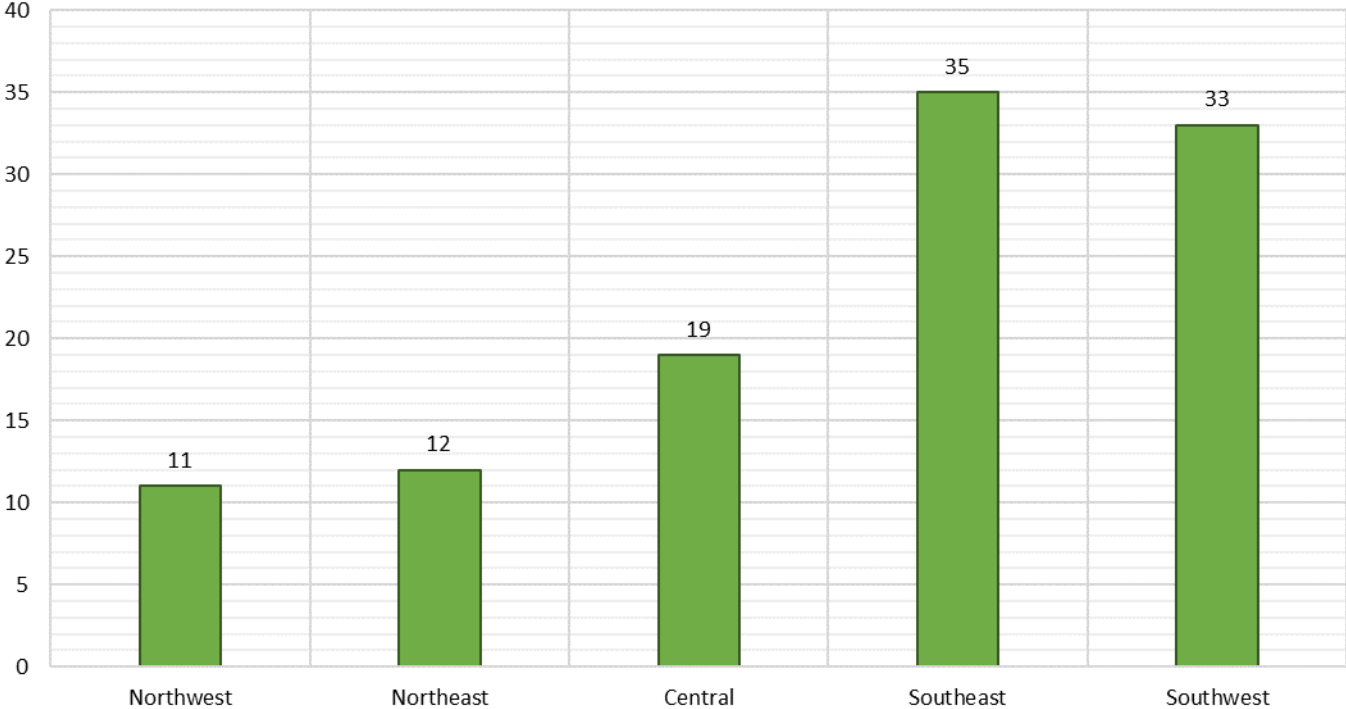


Employment, Vocational Training and Community Service and Work Experience might be reduced due to COVID 19 circumstances.

Average Starting Hourly Wage of Oct 2020 TANF Employments  
as reported by SL Start<sup>15</sup>



Number of New Employments in October 2020 by Region  
as reported by SL Start<sup>15</sup>  
Statewide Total: 110



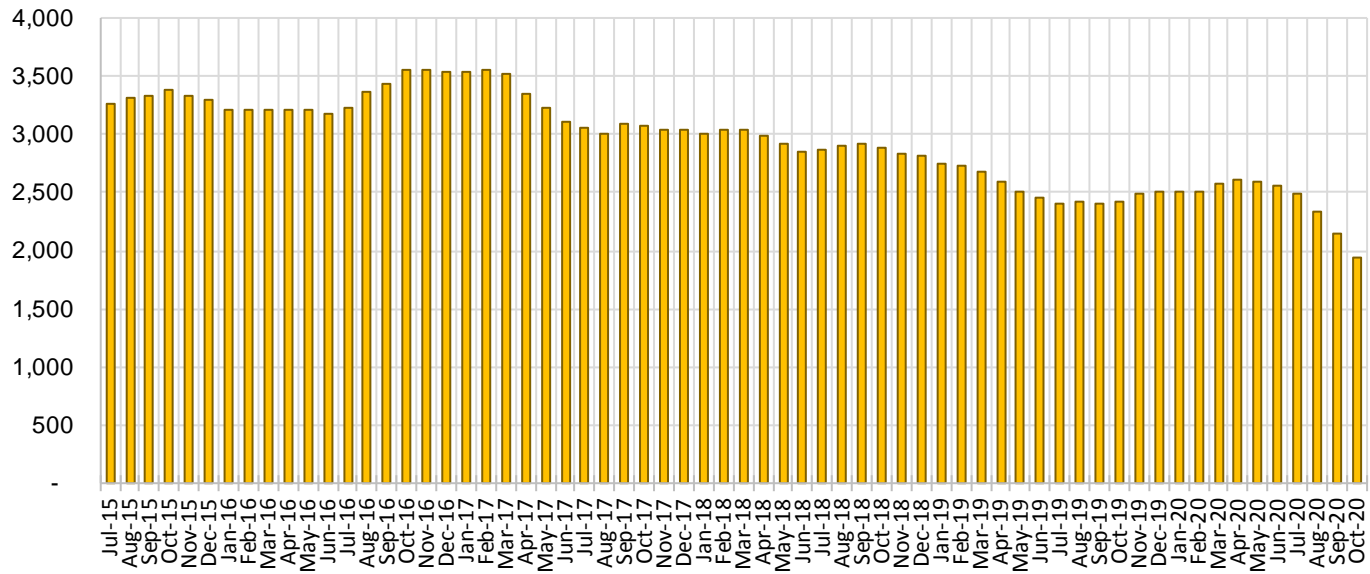
## General Assistance Cases by Field Office<sup>6</sup>

Office				Percent Change	
	Oct-19	Sep-20	Oct-20	Oct-19-Oct-20	Sep-20-Oct-20
Chaves County ISD	109	108	99	-9.17%	-8.33%
Cibola County ISD	32	30	24	-25.00%	-20.00%
Colfax County ISD	21	20	19	-9.52%	-5.00%
Curry County ISD	73	75	69	-5.48%	-8.00%
East Dona Ana County ISD	91	93	81	-10.99%	-12.90%
Eddy Artesia County ISD	21	23	20	-4.76%	-13.04%
Eddy Carlsbad County ISD	46	52	46	0.00%	-11.54%
Grant County ISD	65	62	58	-10.77%	-6.45%
Guadalupe County ISD	9	6	5	-44.44%	-16.67%
Hidalgo County ISD	0	0	0	N/A	N/A
Lea County ISD	58	58	50	-13.79%	-13.79%
Lincoln County ISD	29	26	24	-17.24%	-7.69%
Luna County ISD	62	43	42	-32.26%	-2.33%
McKinley County ISD	64	57	54	-15.63%	-5.26%
Northeast Bernalillo County ISD	236	195	175	-25.85%	-10.26%
Northwest Bernalillo County ISD	217	202	175	-19.35%	-13.37%
Otero County ISD	78	55	52	-33.33%	-5.45%
Quay County ISD	28	22	20	-28.57%	-9.09%
Rio Arriba County ISD	50	57	54	8.00%	-5.26%
Roosevelt County ISD	0	0	0	N/A	N/A
San Juan County ISD	115	152	158	37.39%	3.95%
San Miguel County ISD	68	49	44	-35.29%	-10.20%
Sandoval County ISD	80	45	34	-57.50%	-24.44%
Santa Fe County ISD	93	75	61	-34.41%	-18.67%
Sierra County ISD	34	24	22	-35.29%	-8.33%
Socorro County ISD	46	33	27	-41.30%	-18.18%
South Dona Ana ISD	54	36	32	-40.74%	-11.11%
Southeast Bernalillo County ISD	129	82	65	-49.61%	-20.73%
Southwest Bernalillo County ISD	188	202	197	4.79%	-2.48%
Taos County ISD	26	26	24	-7.69%	-7.69%
Torrance County ISD	41	37	30	-26.83%	-18.92%
Valencia North County ISD	83	65	54	-34.94%	-16.92%
Valencia South County ISD	0	0	0	N/A	N/A
West Dona Ana County ISD	170	138	122	-28.24%	-11.59%
Centralized Units	0	0	0	N/A	N/A
Statewide Total	2,416	2,148	1,937	-19.83%	-9.82%

## General Assistance Cases by Region<sup>6</sup>

Region	Oct-19	Sep-20	Oct-20	Percent Change	
				Oct-19-Oct-20	Sep-20-Oct-20
Region 1 - NW	374	361	339	-9.36%	-6.09%
Region 2 - NE	375	300	261	-30.40%	-13.00%
Region 3 - Central	811	718	642	-20.84%	-10.58%
Region 4 - SE	336	342	308	-8.33%	-9.94%
Region 5 - SW	520	427	387	-25.58%	-9.37%
Centralized Units	0	0	0	N/A	N/A
<b>Statewide Total</b>	<b>2,416</b>	<b>2,148</b>	<b>1,937</b>	<b>-19.83%</b>	<b>-9.82%</b>

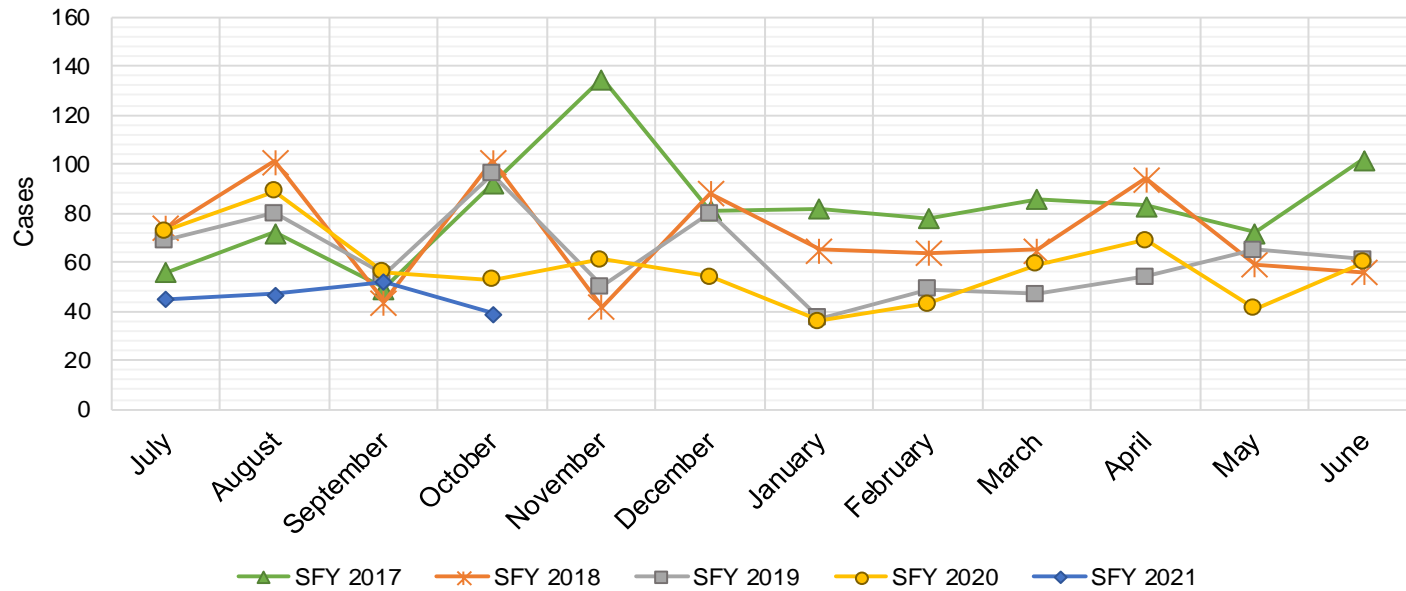
## General Assistance Caseload: SFY-16 to Current





## General Assistance Interim Assistance Reimbursements<sup>16</sup>

SFY 2017			SFY 2018			SFY 2019			SFY 2020			SFY 2021		
	Cases	Expenditures		Cases	Expenditures		Cases	Expenditures		Cases	Expenditures		Cases	Expenditures
Jul-16	56	\$164,970	Jul-17	74	\$241,438	Jul-18	69	\$228,333	Jul-19	73	\$303,584	Jul-20	45	\$135,037
Aug-16	72	\$223,182	Aug-17	101	\$339,301	Aug-18	80	\$241,292	Aug-19	89	\$310,047	Aug-20	47	\$154,783
Sep-16	49	\$158,027	Sep-17	44	\$131,229	Sep-18	55	\$188,192	Sep-19	56	\$172,016	Sep-20	52	\$168,200
Oct-16	92	\$257,830	Oct-17	101	\$335,752	Oct-18	96	\$298,502	Oct-19	53	\$168,461	Oct-20	39	\$124,285
Nov-16	135	\$402,305	Nov-17	42	\$139,572	Nov-18	50	\$148,641	Nov-19	61	\$171,883	Nov-20		
Dec-16	81	\$227,569	Dec-17	88	\$245,453	Dec-18	80	\$246,422	Dec-19	54	\$164,045	Dec-20		
Jan-17	82	\$274,050	Jan-18	65	\$258,239	Jan-19	37	\$106,081	Jan-20	36	\$96,668	Jan-21		
Feb-17	78	\$227,569	Feb-18	64	\$195,815	Feb-19	49	\$119,300	Feb-20	43	\$126,743	Feb-21		
Mar-17	86	\$278,219	Mar-18	65	\$172,188	Mar-19	47	\$137,296	Mar-20	59	\$169,363	Mar-21		
Apr-17	83	\$267,187	Apr-18	94	\$312,340	Apr-19	54	\$173,772	Apr-20	69	\$199,975	Apr-21		
May-17	72	\$232,836	May-18	59	\$155,406	May-19	65	\$237,979	May-20	41	\$129,317	May-21		
Jun-17	102	\$306,228	Jun-18	56	\$159,268	Jun-19	61	\$214,497	Jun-20	60	\$184,603	Jun-21		
<b>TOTAL</b>	<b>988</b>	<b>\$3,019,972</b>	<b>853</b>	<b>\$2,686,001</b>	<b>743</b>	<b>\$2,340,307</b>	<b>694</b>	<b>\$2,196,707</b>	<b>183</b>	<b>\$582,305</b>				
<b>AVERAGE</b>	<b>82</b>	<b>\$251,664</b>	<b>71</b>	<b>\$223,833</b>	<b>62</b>	<b>\$195,026</b>	<b>58</b>	<b>\$183,059</b>	<b>46</b>	<b>\$145,576</b>				



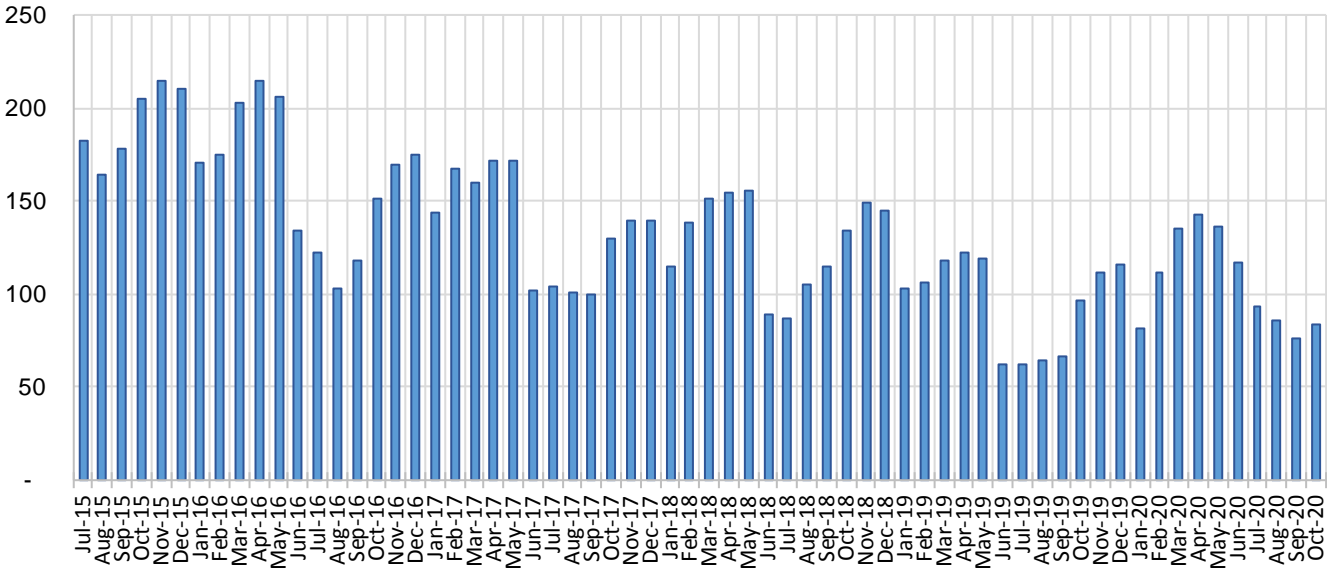
## Education Works Cases by Field Office<sup>6</sup>

Office				Percent Change	
	Oct-19	Sep-20	Oct-20	Oct-19- Oct-20	Sep-20- Oct-20
Chaves County ISD	3	2	3	0.0%	50.0%
Cibola County ISD	0	1	0	N/A	-100.0%
Colfax County ISD	0	0	0	N/A	N/A
Curry County ISD	5	3	4	-20.0%	33.3%
East Dona Ana County ISD	9	5	5	-44.4%	0.0%
Eddy Artesia County ISD	3	1	1	-66.7%	0.0%
Eddy Carlsbad County ISD	1	0	0	-100.0%	N/A
Grant County ISD	1	2	3	200.0%	50.0%
Guadalupe County ISD	0	1	1	N/A	0.0%
Hidalgo County ISD	0	0	0	N/A	N/A
Lea County ISD	2	0	2	0.0%	N/A
Lincoln County ISD	0	0	0	N/A	N/A
Luna County ISD	2	1	0	-100.0%	-100.0%
McKinley County ISD	1	1	1	0.0%	0.0%
Northeast Bernalillo County ISD	4	7	8	100.0%	14.3%
Northwest Bernalillo County ISD	12	6	6	-50.0%	0.0%
Otero County ISD	1	0	0	-100.0%	N/A
Quay County ISD	0	1	1	N/A	0.0%
Rio Arriba County ISD	0	1	1	N/A	0.0%
Roosevelt County ISD	0	0	0	N/A	N/A
San Juan County ISD	3	1	2	-33.3%	100.0%
San Miguel County ISD	3	3	4	33.3%	33.3%
Sandoval County ISD	6	6	5	-16.7%	-16.7%
Santa Fe County ISD	8	4	4	-50.0%	0.0%
Sierra County ISD	1	0	0	-100.0%	N/A
Socorro County ISD	0	0	0	N/A	N/A
South Dona Ana ISD	8	2	2	-75.0%	0.0%
Southeast Bernalillo County ISD	4	2	2	-50.0%	0.0%
Southwest Bernalillo County ISD	8	9	9	12.5%	0.0%
Taos County ISD	0	0	0	N/A	N/A
Torrance County ISD	3	2	2	-33.3%	0.0%
Valencia North County ISD	0	1	0	N/A	-100.0%
Valencia South County ISD	0	0	0	N/A	N/A
West Dona Ana County ISD	9	14	18	100.0%	28.6%
Centralized Units	0	0	0	N/A	N/A
Statewide Total	97	76	84	-13.4%	10.5%

### Education Works Cases by Region<sup>6</sup>

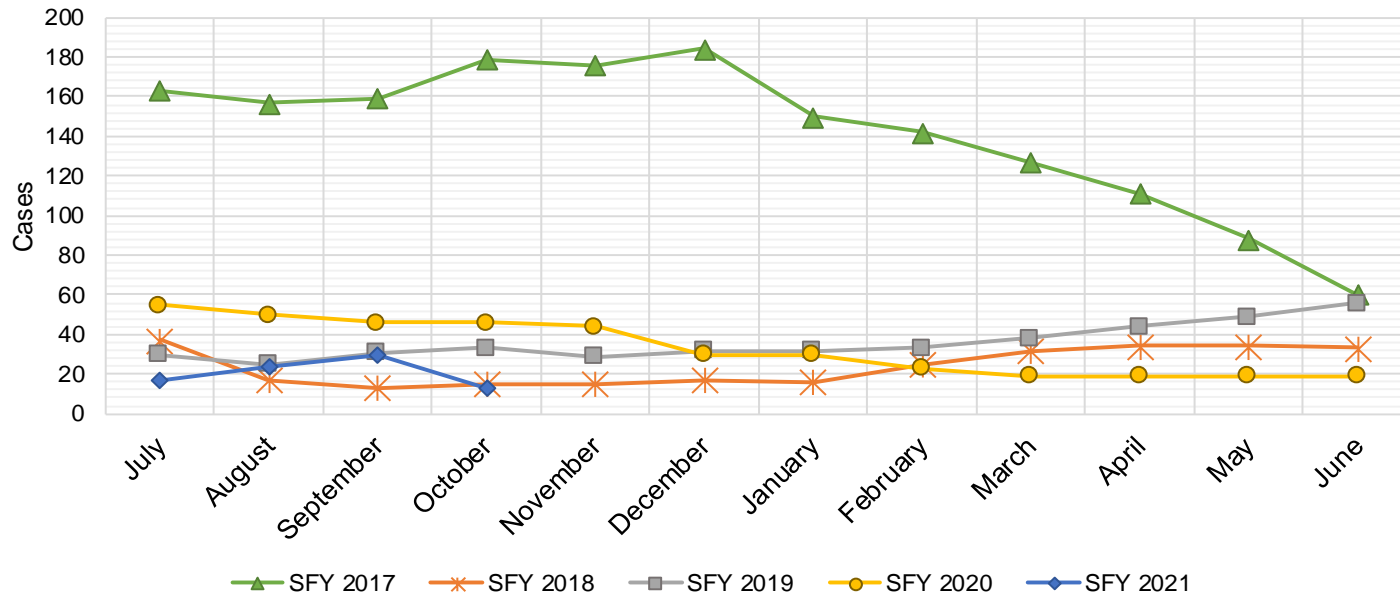
				Percent Change	
Region	Oct-19	Sep-20	Oct-20	Oct-19- Oct-20	Sep-20- Oct-20
Region 1 - NW	5	4	3	-40.00%	-25.00%
Region 2 - NE	17	16	16	-5.88%	0.00%
Region 3 - Central	31	26	27	-12.90%	3.85%
Region 4 - SE	14	6	10	-28.57%	66.67%
Region 5 - SW	30	24	28	-6.67%	16.67%
Centralized Units	0	0	0	N/A	N/A
<b>Statewide Total</b>	<b>97</b>	<b>76</b>	<b>84</b>	<b>-13.40%</b>	<b>10.53%</b>

**Education Works Caseload: SFY-16 to Current**



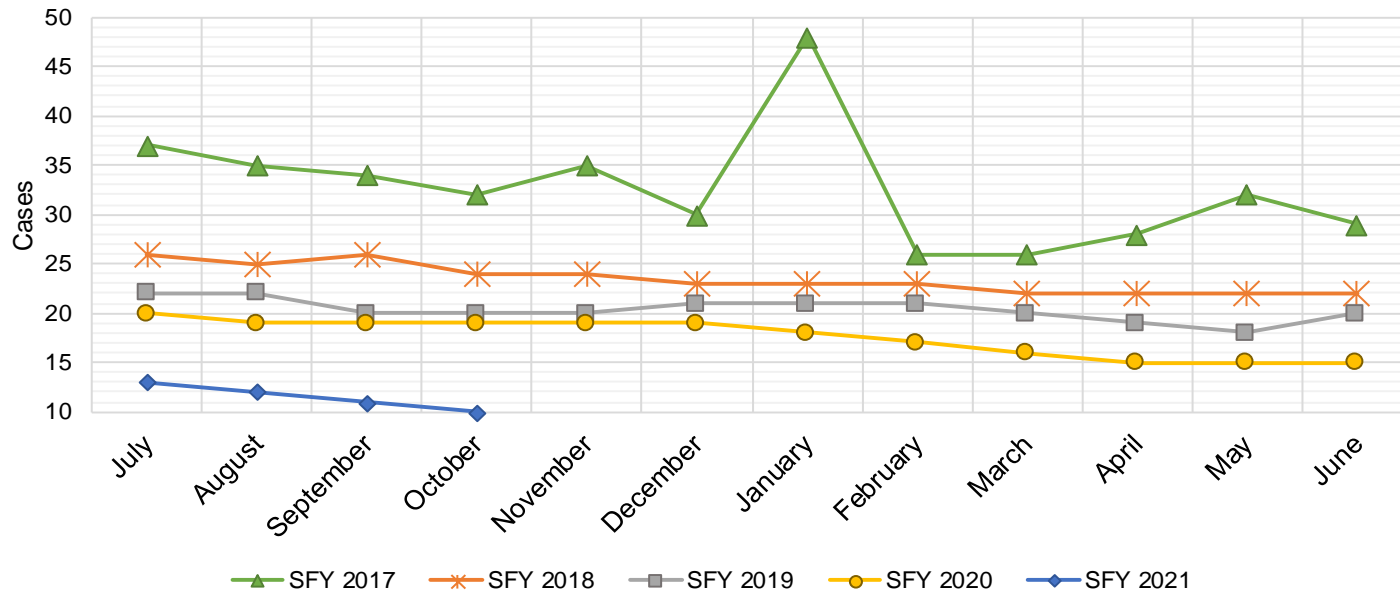
## Refugee Cash Assistance

SFY 2017 <sup>8,9</sup>			SFY 2018 <sup>8,9</sup>			SFY 2019 <sup>8,9</sup>			SFY 2020 <sup>8,9</sup>			SFY 2021 <sup>8,9</sup>		
	Cases	Expenditures		Cases	Expenditures		Cases	Expenditures		Cases	Expenditures		Cases	Expenditures
Jul-16	163	\$39,756	Jul-17	37	\$9,981	Jul-18	30	\$7,408	Jul-19	55	\$13,851	Jul-20	17	\$9,650
Aug-16	157	\$40,115	Aug-17	17	\$4,704	Aug-18	25	\$6,434	Aug-19	50	\$12,497	Aug-20	24	\$12,930
Sep-16	159	\$39,359	Sep-17	13	\$3,159	Sep-18	31	\$6,947	Sep-19	46	\$11,473	Sep-20	30	\$16,276
Oct-16	179	\$41,520	Oct-17	15	\$3,543	Oct-18	33	\$6,323	Oct-19	46	\$11,341	Oct-20	13	\$4,103
Nov-16	176	\$45,434	Nov-17	15	\$4,263	Nov-18	29	\$7,036	Nov-19	44	\$11,296	Nov-20		
Dec-16	184	\$46,673	Dec-17	17	\$4,795	Dec-18	32	\$7,300	Dec-19	30	\$7,679	Dec-20		
Jan-17	150	\$38,790	Jan-18	16	\$4,166	Jan-19	32	\$7,418	Jan-20	30	\$7,407	Jan-21		
Feb-17	142	\$37,956	Feb-18	25	\$5,723	Feb-19	33	\$8,591	Feb-20	23	\$7,577	Feb-21		
Mar-17	127	\$33,066	Mar-18	32	\$7,636	Mar-19	38	\$9,165	Mar-20	19	\$6,500	Mar-21		
Apr-17	111	\$29,183	Apr-18	34	\$8,827	Apr-19	44	\$10,648	Apr-20	19	\$4,847	Apr-21		
May-17	88	\$23,343	May-18	34	\$8,939	May-19	49	\$11,823	May-20	19	\$4,908	May-21		
Jun-17	60	\$15,538	Jun-18	33	\$8,513	Jun-19	56	\$13,558	Jun-20	19	\$5,386	Jun-21		
TOTAL	1,696	\$430,732		288	\$74,249		432	\$102,651		400	\$104,762		84	\$42,959
AVERAGE	141	\$35,894		24	\$6,187		36	\$8,554		33	\$8,730		21	\$10,740



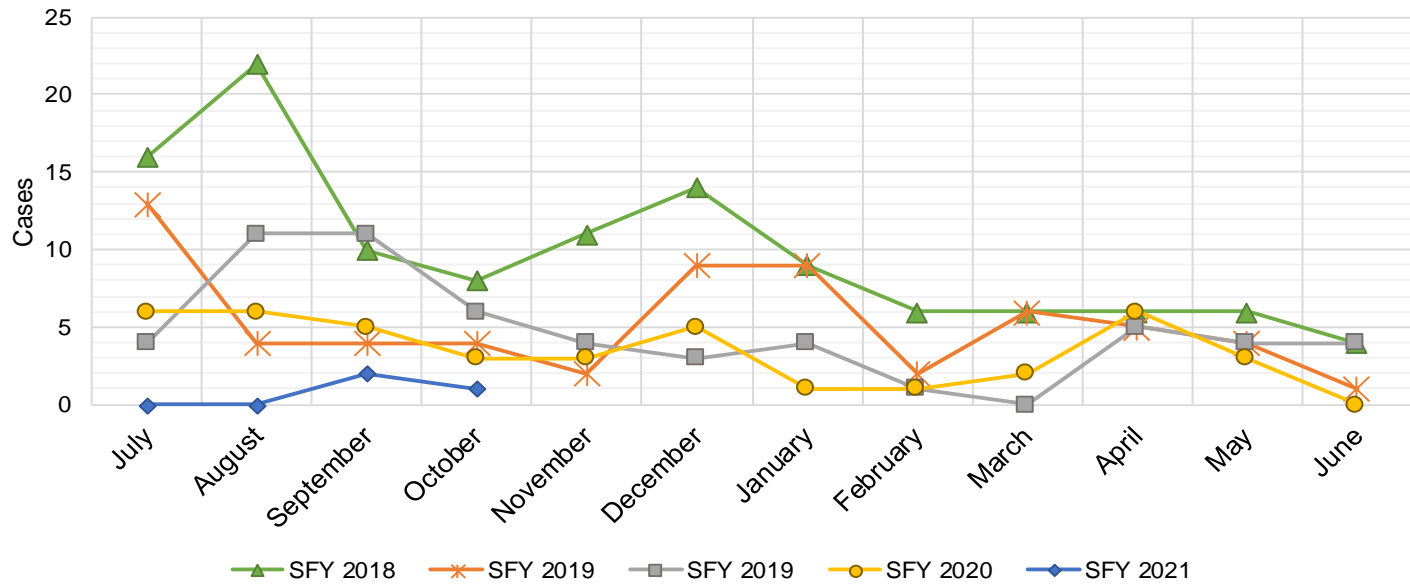
## State Supplement for Residential Care

SFY 2017 <sup>9</sup>			SFY 2018 <sup>9</sup>			SFY 2019 <sup>9</sup>			SFY 2020 <sup>9</sup>			SFY 2021 <sup>9</sup>		
	Cases	Expenditures		Cases	Expenditures		Cases	Expenditures		Cases	Expenditures		Cases	Expenditures
Jul-16	37	\$3,700	Jul-17	26	\$2,700	Jul-18	22	\$2,200	Jul-19	20	\$1,900	Jul-20	13	\$1,300
Aug-16	35	\$3,500	Aug-17	25	\$2,500	Aug-18	22	\$2,200	Aug-19	19	\$1,900	Aug-20	12	\$1,200
Sep-16	34	\$3,400	Sep-17	26	\$2,700	Sep-18	20	\$2,000	Sep-19	19	\$1,900	Sep-20	11	\$1,200
Oct-16	32	\$3,200	Oct-17	24	\$2,500	Oct-18	20	\$2,000	Oct-19	19	\$1,900	Oct-20	10	\$1,000
Nov-16	35	\$3,500	Nov-17	24	\$2,400	Nov-18	20	\$2,000	Nov-19	19	\$1,900	Nov-20		
Dec-16	30	\$3,000	Dec-17	23	\$2,200	Dec-18	21	\$2,100	Dec-19	19	\$1,900	Dec-20		
Jan-17	48	\$4,800	Jan-18	23	\$2,400	Jan-19	21	\$2,000	Jan-20	18	\$1,800	Jan-21		
Feb-17	26	\$2,600	Feb-18	23	\$2,300	Feb-19	21	\$2,200	Feb-20	17	\$1,600	Feb-21		
Mar-17	26	\$2,600	Mar-18	22	\$2,400	Mar-19	20	\$1,900	Mar-20	16	\$1,500	Mar-21		
Apr-17	28	\$2,800	Apr-18	22	\$2,200	Apr-19	19	\$1,800	Apr-20	15	\$1,500	Apr-21		
May-17	32	\$3,200	May-18	22	\$2,200	May-19	18	\$1,800	May-20	15	\$1,500	May-21		
Jun-17	29	\$2,900	Jun-18	22	\$2,200	Jun-19	20	\$2,000	Jun-20	15	\$1,500	Jun-21		
TOTAL	392	\$39,200		282	\$28,700		244	\$24,200		211	\$20,800		46	\$4,700
AVERAGE	33	\$3,267		24	\$2,392		20	\$2,017		18	\$1,733		12	\$1,175



## TANF Diversion Payments

SFY 2018 <sup>9</sup>			SFY 2019 <sup>9</sup>			SFY 2019 <sup>9</sup>			SFY 2020 <sup>9</sup>			SFY 2021 <sup>9</sup>		
Cases		Expenditures	Cases		Expenditures	Cases		Expenditures	Cases		Expenditures	Cases		Expenditures
Jul-16	16	\$30,843	Jul-17	13	\$26,500	Jul-18	4	\$3,000	Jul-19	6	\$18,500	Jul-20	0	\$0
Aug-16	22	\$42,731	Aug-17	4	\$12,000	Aug-18	11	\$18,583	Aug-19	6	\$16,500	Aug-20	0	\$1,500
Sep-16	10	\$21,000	Sep-17	4	\$4,000	Sep-18	11	\$20,999	Sep-19	5	\$11,000	Sep-20	2	\$1,500
Oct-16	8	\$16,744	Oct-17	4	\$16,000	Oct-18	6	\$10,499	Oct-19	3	\$3,000	Oct-20	1	\$1,500
Nov-16	11	\$24,500	Nov-17	2	\$15,500	Nov-18	4	\$7,499	Nov-19	3	\$16,180	Nov-20		
Dec-16	14	\$26,611	Dec-17	9	\$17,500	Dec-18	3	\$2,499	Dec-19	5	\$14,000	Dec-20		
Jan-17	9	\$18,500	Jan-18	9	\$21,731	Jan-19	4	\$5,999	Jan-20	1	\$1,500	Jan-21		
Feb-17	6	\$12,000	Feb-18	2	\$7,731	Feb-19	1	\$1,678	Feb-20	1	\$1,857	Feb-21		
Mar-17	6	\$11,000	Mar-18	6	\$8,496	Mar-19	0	\$3,000	Mar-20	2	\$5,920	Mar-21		
Apr-17	6	\$12,000	Apr-18	5	\$13,500	Apr-19	5	\$6,500	Apr-20	6	\$14,905	Apr-21		
May-17	6	\$11,500	May-18	4	\$12,500	May-19	4	\$16,000	May-20	3	\$8,000	May-21		
Jun-17	4	\$13,500	Jun-18	1	\$5,389	Jun-19	4	\$8,000	Jun-20	0	\$0	Jun-21		
TOTAL	118	\$240,929	63	\$160,847	57	\$104,256	41	\$111,362	3	\$4,500				
AVERAGE	10	\$20,077	5	\$13,404	5	\$8,688	3	\$9,280	1	\$1,125				

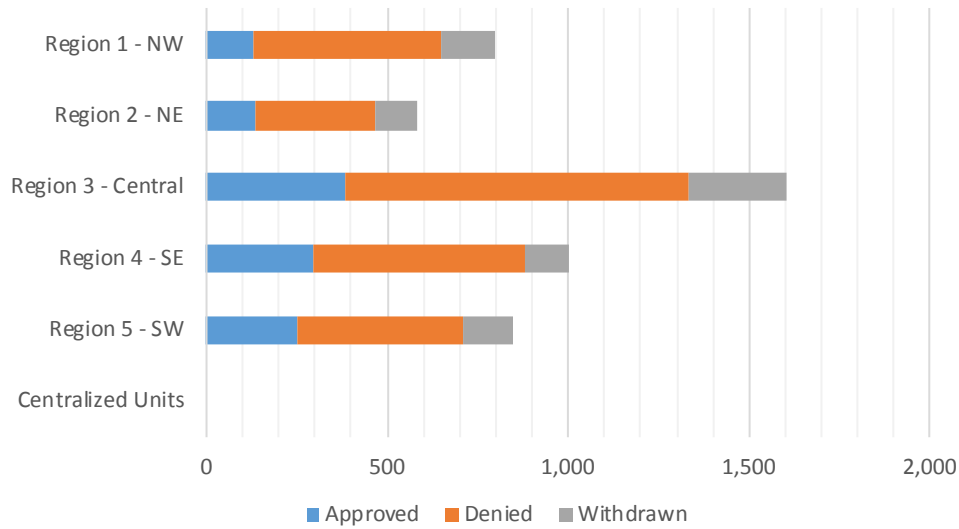


**Cash Assistance Applications by Field Office<sup>4,11</sup>**  
**October 2020**

Office	Approved	Denied	Withdrawn	Total Cases Processed
Chaves County ISD	126	197	54	377
Cibola County ISD	13	30	5	48
Colfax County ISD	12	14	7	33
Curry County ISD	41	114	17	172
East Dona Ana County ISD	50	108	32	190
Eddy Artesia County ISD	13	37	5	55
Eddy Carlsbad County ISD	31	72	13	116
Grant County ISD	18	41	12	71
Guadalupe County ISD	5	1	4	10
Hidalgo County ISD	0	0	0	0
Lea County ISD	71	141	21	233
Lincoln County ISD	13	25	9	47
Luna County ISD	36	21	21	78
McKinley County ISD	15	73	21	109
Northeast Bernalillo County ISD	112	374	73	559
Northwest Bernalillo County ISD	90	206	91	387
Otero County ISD	34	81	9	124
Quay County ISD	17	13	15	45
Rio Arriba County ISD	31	82	20	133
Roosevelt County ISD	0	2	0	2
San Juan County ISD	50	325	96	471
San Miguel County ISD	17	43	21	81
Sandoval County ISD	21	54	20	95
Santa Fe County ISD	28	84	23	135
Sierra County ISD	7	9	9	25
Socorro County ISD	8	16	5	29
South Dona Ana ISD	54	66	19	139
Southeast Bernalillo County ISD	12	16	6	34
Southwest Bernalillo County ISD	156	308	93	557
Taos County ISD	6	40	6	52
Torrance County ISD	12	47	9	68
Valencia North County ISD	38	64	15	117
Valencia South County ISD	0	0	1	1
West Dona Ana County ISD	62	139	43	244
Centralized Units	0	0	0	0
<b>Statewide Total</b>	<b>1,199</b>	<b>2,843</b>	<b>795</b>	<b>4,837</b>

**Cash Assistance Applications by Region<sup>4,11</sup>**  
**October 2020**

Region	Approved	Denied	Withdrawn	Total Cases Processed
Region 1 - NW	131	517	152	800
Region 2 - NE	137	331	116	584
Region 3 - Central	382	951	272	1,605
Region 4 - SE	295	588	119	1,002
Region 5 - SW	254	456	136	846
Centralized Units	0	0	0	0
<b>Statewide Total</b>	<b>1,199</b>	<b>2,843</b>	<b>795</b>	<b>4,837</b>





**Early Childhood Education and Care Department  
Children Receiving Child Care Assistance Subsidies By County**

County	Oct 2019	Nov 2019	Dec 2019	Jan 2020	Feb 2020	Mar 2020	Apr 2020	May 2020	June 2020	July 2020	Aug 2020	Sept 2020	Oct 2020	Change Fr. Cases	Last Year Percent
Bernalillo	7,690	7,759	7,591	7,673	7,779	7,975	8,683	8,506	8,061	7,316	5,905	5,462	5,001	-2,689	-35.0%
Catron	0	0	0	0	0	0	0	0	0	0	0	0	0	0	0.0%
Chaves	811	891	827	835	830	830	911	918	857	852	683	650	662	-149	-18.4%
Cibola	250	238	247	224	226	227	271	263	256	247	184	199	185	-65	-26.0%
Colfax	43	34	31	32	32	26	28	29	28	28	30	22	23	-20	-46.5%
Curry	563	596	587	605	613	600	669	668	613	625	482	444	435	-128	-22.7%
De Baca	1	1	1	0	0	0	0	0	0	0	0	0	0	-1	-100.0%
Dona Ana	4,429	4,493	4,348	4,350	4,313	4,388	4,806	4,691	4,466	4,363	3,306	3,084	2,994	-1,435	-32.4%
Eddy	244	239	234	225	227	231	235	233	213	226	200	184	165	-79	-32.4%
Grant	138	133	145	143	146	132	159	157	160	135	63	78	80	-58	-42.0%
Guadalupe	7	7	7	7	7	8	9	8	8	10	10	10	10	3	42.9%
Harding	0	0	0	0	0	0	0	0	0	0	0	0	0	0	0.0%
Hidalgo	21	28	28	28	27	24	23	20	17	23	14	19	20	-1	-4.8%
Lea	770	753	741	736	785	767	828	839	798	779	683	596	572	-198	-25.7%
Lincoln	101	97	86	89	89	88	100	99	88	87	66	47	50	-51	-50.5%
Los Alamos	38	42	40	42	38	37	48	48	44	45	28	27	24	-14	-36.8%
Luna	160	148	155	158	163	164	196	216	189	188	143	148	144	-16	-10.0%
McKinley	176	172	172	170	171	166	185	169	172	155	56	72	88	-88	-50.0%
Mora	12	11	11	11	11	12	13	12	12	12	10	14	11	-1	-8.3%
Otero	488	510	501	506	511	520	578	592	564	564	413	446	352	-136	-27.9%
Out of State	0	0	0	0	0	0	0	0	0	0	0	0	0	0	0.0%
Quay	33	34	35	32	34	37	42	41	39	40	28	27	22	-11	-33.3%
Rio Arriba	147	153	155	152	153	149	160	155	153	144	99	84	79	-68	-46.3%
Roosevelt	140	134	133	131	132	131	146	178	168	143	97	98	107	-33	-23.6%
San Juan	932	926	958	928	951	979	1,231	1,252	1,221	1,144	737	781	785	-147	-15.8%
San Miguel	375	356	353	349	361	373	412	403	399	405	326	339	330	-45	-12.0%
Sandoval	783	803	770	738	765	736	897	902	865	865	570	551	529	-254	-32.4%
Santa Fe	534	567	537	533	522	537	601	616	605	580	354	358	392	-142	-26.6%
Sierra	54	56	63	61	52	55	67	67	78	84	51	49	44	-10	-18.5%
Socorro	54	53	48	43	40	41	46	46	43	38	29	27	27	-27	-50.0%
Taos	118	125	126	126	117	139	156	149	141	115	89	77	85	-33	-28.0%
Torrance	57	57	63	68	63	71	78	86	74	78	63	55	47	-10	-17.5%
Union	3	3	3	3	3	3	3	3	3	3	2	2	2	-1	-33.3%
Valencia	602	595	573	564	533	547	628	620	632	566	457	467	448	-154	-25.6%
<b>Totals</b>	<b>19,774</b>	<b>20,014</b>	<b>19,569</b>	<b>19,562</b>	<b>19,694</b>	<b>19,993</b>	<b>22,209</b>	<b>21,986</b>	<b>20,967</b>	<b>19,860</b>	<b>15,178</b>	<b>14,417</b>	<b>13,713</b>	<b>-6,061</b>	<b>-30.7%</b>

# EARLY CHILDHOOD EDUCATION AND CARE DEPARTMENT CHILD CARE ASSISTANCE ELIGIBILITY PROGRAMS

MONTH	Nov'19	Dec'19	Jan'20	Feb'20	Mar'20	Apr'20	May'20	June'20	July'20	Aug'20	Sept'20	Oct'20
<b>TANF (Child Care Priority 1 Clients)</b>												
CLIENTS	2,120	2,055	2,030	2,001	2,031	2,005	1,941	1,943	1,866	1,453	1,317	1,239
COST	\$1,284,683	\$1,239,407	\$1,257,977	\$1,195,404	\$1,280,286	\$1,306,318	\$1,304,392	\$1,292,773	\$1,249,411	\$954,523	\$846,281	\$829,004
TANF AVERAGE COST	\$606	\$603	\$620	\$597	\$630	\$652	\$672	\$665	\$670	\$657	\$643	\$669
<b>TRANSITION OFF TANF (Child Care Priority 2 Clients)</b>												
CLIENTS	167	178	196	209	209	223	211	199	174	159	146	134
COST	\$107,596	\$111,325	\$120,862	\$136,239	\$127,986	\$144,617	\$142,374	\$136,509	\$109,243	\$99,130	\$87,238	\$87,914
TRAN OFF TANF AVG COST	\$644	\$625	\$617	\$652	\$612	\$649	\$675	\$686	\$628	\$623	\$88	\$88
<b>TANF ELIGIBLE (Child Care Priority 1B Clients at or below 100% of the Federal Poverty Level)</b>												
CLIENTS	8,135	7,830	7,697	7,671	7,857	7,797	7,634	7,597	7,258	5,827	5,333	4,957
COST	\$4,922,197	\$4,694,761	\$4,551,874	\$4,539,530	\$4,868,148	\$4,955,752	\$5,017,736	\$4,897,618	\$4,696,062	\$3,702,155	\$3,227,351	\$3,349,454
TANF ELIGIBLE AVG COST	\$605	\$600	\$591	\$592	\$620	\$636	\$657	\$645	\$647	\$635	\$605	\$676
<b>INCOME ELIGIBLE (Child Care Priority 3, and Priority 4 Clients )</b>												
CLIENTS	8,595	8,520	8,701	8,848	8,978	10,600	10,132	8,870	8,084	6,945	6,857	6,578
COST	\$4,557,011	\$4,488,101	\$4,573,609	\$4,700,981	\$4,891,611	\$10,456,494	\$10,002,092	\$5,863,605	\$4,768,416	\$4,041,977	\$3,734,881	\$4,705,258
INCOME ELIG AVG COST	\$530	\$527	\$526	\$531	\$545	\$986	\$987	\$661	\$590	\$582	\$545	\$715
<b>AT-RISK CHILD PROTECTIVE SERVICES CHILD CARE PILOT (Priority 5 Clients)</b>												
CLIENTS	200	187	190	182	144	829	1,379	1,699	1,796	145	137	159
COST	\$159,520	\$137,644	\$145,544	\$136,364	\$99,487	\$357,417	\$941,656	\$1,216,142	\$1,292,805	\$91,596	\$96,923	\$104,888
CPS AVG COST	\$798	\$736	\$766	\$749	\$691	\$431	\$683	\$716	\$720	\$632	\$707	\$660
<b>CHILD PROTECTIVE SERVICES (Child Care CPS Clients)</b>												
CLIENTS	797	799	748	783	774	755	689	659	682	649	627	646
COST	\$583,911	\$539,629	\$501,038	\$520,094	\$547,029	\$490,287	\$633,230	\$616,005	\$455,989	\$455,542	\$419,097	\$483,711
CPS AVG COST	\$733	\$675	\$670	\$664	\$707	\$649	\$919	\$935	\$669	\$702	\$668	\$749
<b>GRAND TOTAL - ALL CHILD CARE PROGRAMS</b>												
CLIENTS	20,014	19,569	19,562	19,694	19,993	22,209	21,986	20,967	19,860	15,178	14,417	13,713
COST	\$11,614,917	\$11,210,867	\$11,150,904	\$11,228,612	\$11,814,547	\$17,710,886	\$18,041,480	\$14,022,651	\$12,571,928	\$9,344,924	\$8,411,771	\$9,560,229
ALL PROGRAMS AVG COST	\$580	\$573	\$570	\$570	\$591	\$797	\$821	\$669	\$633	\$616	\$583	\$697

## SNAP Emergency Allotment and Pandemic EBT: Expenditures, Cases, and Recipients

Note: Pandemic EBT will start to be issued in May 2020

Date	Expenditures		Cases Processed		Recipients Served		Average Expenditures Per Case Processed		Average Expenditures Per Recipient Served	
	Pandemic EBT	Emergency Allotment	Pandemic EBT	Emergency Allotment	Pandemic EBT	Emergency Allotment	Pandemic EBT	Emergency Allotment	Pandemic EBT	Emergency Allotment
Apr-20	—	\$50,524,646	—	158,060	—	340,960	—	\$319.65	—	\$148.18
May-20	\$24,456,957	\$24,802,215	44,236	137,797	68,815	247,857	\$552.87	\$179.99	\$355.40	\$100.07
Jun-20	\$74,641,557	\$24,058,493	96,197	134,557	186,959	297,304	\$775.92	\$178.80	\$399.24	\$80.92
Jul-20	\$2,172,555	\$24,722,792	5,440	136,783	5,440	299,330	\$399.37	\$180.74	\$399.37	\$82.59
Aug-20	\$356,706	\$26,012,689	894	140,924	894	309,638	\$399.00	\$184.59	\$399.00	\$84.01
Sep-20	\$46,820,023	\$24,462,456	251,491	134,896	251,491	296,936	\$186.17	\$181.34	\$186.17	\$82.38
Oct-20	\$0.00	\$24,425,558	0	132,520	0	290,479	\$0.00	\$184.32	\$0.00	\$84.09
Nov-20										
Dec-20										
<b>Total to Date</b>	<b>\$148,447,798</b>	<b>\$199,008,849</b>	<b>398,258</b>	<b>975,537</b>	<b>513,599</b>	<b>2,082,504</b>	<b>\$372.74</b>	<b>\$204.00</b>	<b>\$289.03</b>	<b>\$95.56</b>

## Income Eligibility Guidelines: October 1, 2020 - September 30, 2021

### Federal Poverty Guidelines (FPG) Monthly Income Standards

Supplemental Nutrition Program (SNAP)					
Household Size	100% FPG Net Income	130% FPG Gross Income	165% FPG Gross Income for Categorical Eligibility	Maximum SNAP Monthly Allotment	LIHEAP 150% FPG
1	\$1,064	\$1,383	\$1,755	\$204	\$1,596
2	\$1,437	\$1,868	\$2,371	\$374	\$2,156
3	\$1,810	\$2,353	\$2,987	\$535	\$2,715
4	\$2,184	\$2,839	\$3,603	\$680	\$3,276
5	\$2,557	\$3,324	\$4,219	\$807	\$3,836
6	\$2,930	\$3,809	\$4,835	\$969	\$4,395
7	\$3,304	\$4,295	\$5,451	\$1,071	\$4,956
8	\$3,677	\$4,780	\$6,067	\$1,224	\$5,516
+1	+\$374	+\$486	+\$616	+\$153	+\$561
Minimum Allotment of \$16 effective from 10/1/2019 - 9/30/2020					
Deduction Limit: \$586, Heating and Cooling Standard Utility Allowance (HCSUA): \$348, Limited Utility Allowance (LUA): \$140, Telephone Standard: \$48, Dependent Care: Actual Amount (No Limit), Earned Income Deduction: 20%, Homeless Shelter Standard: \$156.74, LIHEAP (only) Energy Standard Allowance (ESA): \$208, A45, Cash Assistance & Support Services October 1, 2020 – September 30, 2021, House- hold Size, Federal Poverty Guidelines (FPG) Monthly Income					

CASH Assistance & Support Services				
Household Size	Federal Poverty Guidelines (FPG) Monthly Income Standards		Maximum Monthly Benefit	
	100% FPG Net Income	85% FPG Gross Limit	New Mexico Works Cash Assistance	General Assistance
1	\$1,064	\$904	\$266	\$245
2	\$1,437	\$1,221	\$357	\$329
3	\$1,810	\$1,539	\$447	\$412
4	\$2,184	\$1,856	\$539	\$496
5	\$2,557	\$2,173	\$630	\$580
6	\$2,930	\$2,491	\$721	\$664
7	\$3,304	\$2,808	\$812	\$748
8	\$3,677	\$3,125	\$922	\$849
+1	+\$374	+\$318	+\$91	+\$84
Deductions- Dependent Care: For a child under age 2 = \$200; For a child age 2 and over = \$175. Work Incentives- Earned Income Disregard: Single parent = \$125 & ½ remainder; Two parent = \$225 & ½ remainder.				

<b>Medical Assistance Division</b>					
Federal Poverty Guidelines New Mexico Affordable Care Eligibility Groups Effective April 01, 2020 thru March 31, 2021 <b>Monthly Guidelines</b>					
HH SIZE	PERCENT OF POVERTY				
	138%	190%	240%	250%	300%
1	\$1,468	\$2,021	\$2,552	\$2,659	\$3,190
2	\$1,983	\$2,730	\$3,449	\$3,592	\$4,311
3	\$2,498	\$3,439	\$4,344	\$4,525	\$5,430
4	\$3,013	\$4,149	\$5,240	\$5,459	\$6,550
5	\$3,529	\$4,858	\$6,137	\$6,392	\$7,671
6	\$4,044	\$5,567	\$7,032	\$7,325	\$8,790
7	\$4,559	\$6,277	\$7,928	\$8,259	\$9,910
8	\$5,074	\$6,986	\$8,825	\$9,192	\$11,031
138% Adult Expansion, 190% Children ages 6 to 19 (Medicaid), 240% Children ages 0 to 6 (Medicaid); ages 6 to 19 (CHIP), 250% Pregnancy Related Services Only, 300% Children 0 to 6 (CHIP)					

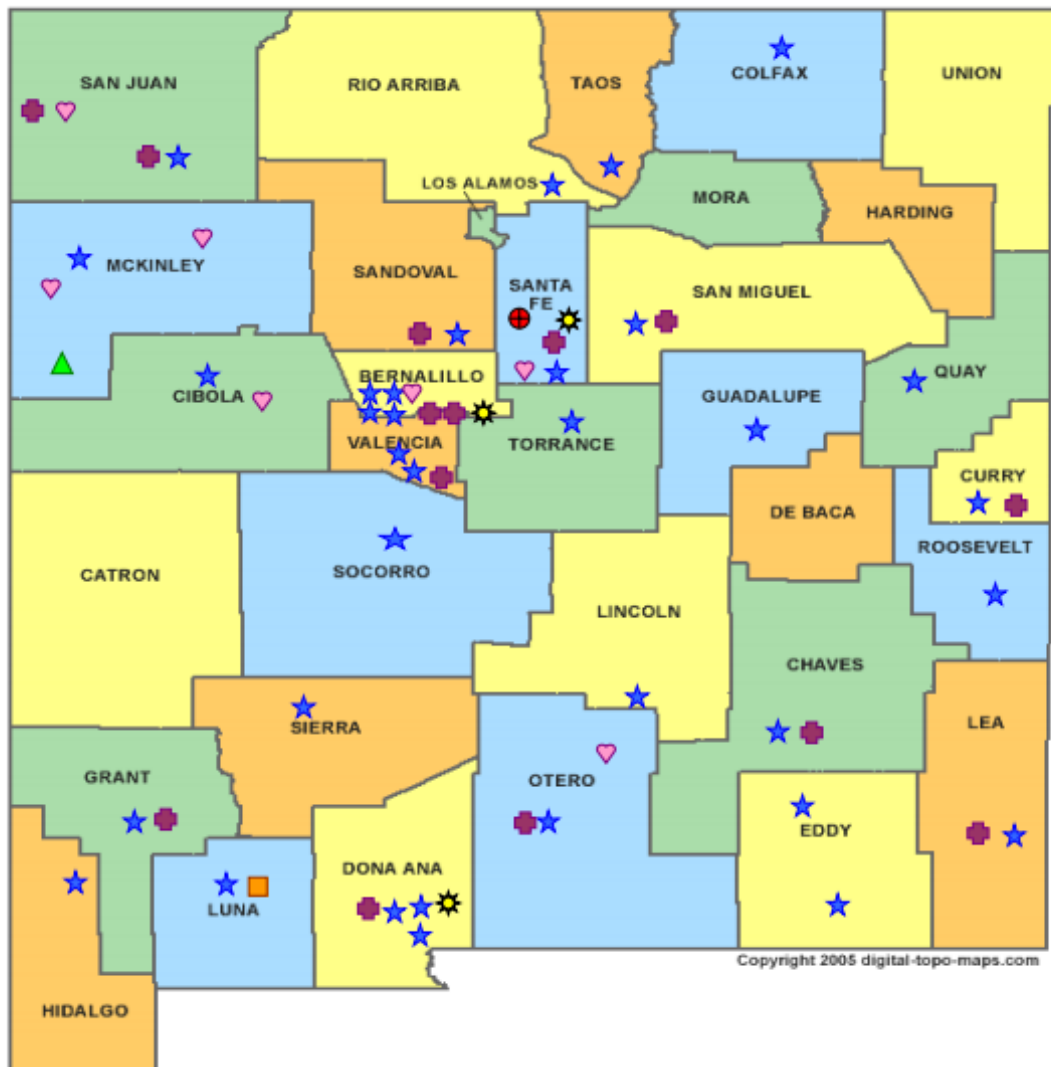
<b>Medical Assistance Division</b>					
Federal Poverty Guidelines New Mexico Affordable Care Eligibility Groups Effective April 01, 2020 thru March 31, 2021 <b>Annual Guidelines</b>					
HH SIZE	PERCENT OF POVERTY				
	138%	190%	240%	250%	300%
1	\$17,616	\$24,252	\$30,624	\$31,908	\$38,280
2	\$23,796	\$32,760	\$41,388	\$43,104	\$51,732
3	\$29,976	\$41,268	\$52,128	\$54,300	\$65,160
4	\$36,156	\$49,788	\$62,880	\$65,508	\$78,600
5	\$42,348	\$58,296	\$73,644	\$76,704	\$92,052
6	\$48,528	\$66,804	\$84,384	\$87,900	\$105,480
7	\$54,708	\$75,324	\$95,136	\$99,108	\$118,920
8	\$60,888	\$83,832	\$105,900	\$110,304	\$132,372
138% Adult Expansion, 190% Children ages 6 to 19 (Medicaid), 240% Children ages 0 to 6 (Medicaid); ages 6 to 19 (CHIP), 250% Pregnancy Related Services Only, 300% Children 0 to 6 (CHIP)					

## References

- <sup>1</sup> *Medicaid Expenditures* (Omnicaid, Medicare Buy-Ins, Lump Sum Payments)
- <sup>2</sup> *ASPEN Business Intelligence Tool: Eligibility*
- <sup>3</sup> New Mexico Human Services Department, *Medicaid Eligibility Reports*, Retrieved from <http://www.hsd.state.nm.us/LookingForInformation/medicaid-eligibility.aspx> (for reporting month)
- <sup>4</sup> *ASPEN Business Intelligence Tool: Application Tracking*
- <sup>5</sup> Fidelity Information Services, *EBT Daily Statistical Report* (for reporting month)
- <sup>6</sup> *ASPEN Report DQ-180: Length of Time Cases are Open* (for reporting month)
- <sup>7</sup> *ASPEN Report EY-180: Individual Demographics by State and Age* (for reporting month)
- <sup>8</sup> *ASPEN Business Intelligence Tool: Benefit Issuance*
- <sup>9</sup> Fidelity Information Services, *EBT Daily Statistical Reports* (Month End)
- <sup>10</sup> *ASPEN Report EY-180R: Individual Demographics by State, Race, Ethnicity and Gender* (for reporting month)
- <sup>11</sup> SQL Queries from ASPEN
- <sup>12</sup> JP Morgan, *New Mexico – NM EBT System- Monthly Benefit Draw Down Totals*
- <sup>13</sup> *ASPEN Business Intelligence Tool: Application Tracking* (w/Parameters: SNAP, Expedite, Approved)
- <sup>14</sup> SL Start, *As of Today Report*
- <sup>15</sup> SL Start, *Statewide Employment Report*
- <sup>16</sup> *SSIAR Payments*
- <sup>17</sup> Children, Youth, and Families Department, *Children Receiving Child Care Assistance Subsidies by County*
- <sup>18</sup> Children, Youth, and Families Department, *Child Care Assistance Eligibility Programs*

<sup>19</sup> EDG is defined as an Eligibility Determination Group

<sup>20</sup>SQL Query from ASPEN



**HUMAN SERVICES**  
DEPARTMENT

New Mexico Human Services Department  
Field Offices

- Central Office (1)
- Income Support Division County Office (35)
- Income Support Division Satellite Office (2)
- Child Support Enforcement Regional Office (16)
- Child Support Enforcement Satellite Office (1)
- Indian Health Services (7)
- Hospital Site (3)

For a complete listing of field offices and other government and community resources:  
[http://www.hsd.state.nm.us/LookingForAssistance/Field\\_Offices\\_1.aspx](http://www.hsd.state.nm.us/LookingForAssistance/Field_Offices_1.aspx)



## Medicaid Policy Changes Due to COVID-19

### Already implemented:

1. **Three month renewal extensions**-MAGI Medicaid renewals are extended three months for individuals who fail to complete the 12-month recertification process after going through the automated administrative renewal process, the manual administrative renewal process, and issuance of the MAD 608 renewal form. Individuals who normally would have closed March 31, 2020 due to failure to recertify had their certification period extended through June 30, 2020. This same process will occur for April and May renewals. This may continue for later months if the emergency continues. Applies to non-MAGI Medicaid categories also that failed to recertify. Implemented in ASPEN on March 31st.

2. **Increase Presumptive Eligibility (PE) Determiner scope and qualified entities**-Most PE determiners are limited to approving PE for MAGI Children/CHIP and MAGI Pregnancy Services. Change was made to allow HSD employees to approve PE and to allow most PE determiners to approve all MAGI Medicaid categories of eligibility. Change was implemented on April 07, 2020.

3. **Reopen and Sustain Medicaid Cases**-The requirement is that anyone receiving Medicaid March 18th and ongoing for the duration of the emergency continue to be covered at the same level of coverage. There are three exceptions: client requested closure, deceased individuals, and moved out of state. April 2020 closures were reopened and sustained through July 31, 2020 and can be extended if the emergency continues. Implemented into ASPEN on April 26, 2020.

### In process (not implemented yet):

4. **Accept self-attestation for Medicaid**-Accept self-attestation for all factors of Medicaid except for citizenship/immigration. Process Medicaid applications for MAGI and non-MAGI categories based on self-attestation of 2 income and resources. Excludes IC/Waiver/PACE categories. For those cases not reasonably compatible approve and issue a 90 day HUMAD.

5. **New COVID-19 testing category**-This will be implemented in Omnicaid and not ASPEN. New uninsured category which will cover COVID-19 testing and related services. Applications will be sent to and processed by Conduent staff to allow for fee-for-service payments to providers for COVID-19 testing and related services.

6. **Exclusion of \$600 weekly unemployment benefit stimulus payments**-Medicaid excludes \$600 weekly unemployment benefit stimulus payments. ASPEN solution being developed across programs that treat the handling of unemployment monies differently as well as regular unemployment benefit extensions.

Cases closed for procedural reasons show low timeliness percentages due to the requirement to maintain Medicaid from March 18, 2020 for the duration of the COVID-19 emergency. To maintain Medicaid many March 2020 cases had to be reinstated manually by ISD field workers so there would not be a gap in coverage. To maintain Medicaid eligibility for April 2020 cases also required a manual reinstatement effort by ISD field workers as the ASPEN system fix to maintain Medicaid for the duration of the emergency still resulted in exceptions that had to be resolved manually.

## **SNAP Policy Changes During COVID-19**

### **1. Suspension of SNAP Employment and Training (E&T) Program**

- House of Representatives passed H.R. 6201, the Families First Coronavirus Response Act.
- ISD has chosen to suspend the SNAP E&T Program until further notice.
- interim policy and procedure for 8.139.410.13 NMAC “SUPPLEMENTAL NUTRITION ASSISTANCE PROGRAM (SNAP) EMPLOYMENT AND TRAINING PROGRAM (E&T).”

### **2. Amendment to Waiver - Interview Process for SNAP and TANF and Waiver - Recertification Waiver Process for SNAP, TANF, and Medicaid**

- FNS approved a blanket waiver for all states to utilize.
- Interim policy and procedures for the following:
  - General Operating Policies – Application 8.100.110 NMAC.
  - Interviews in accordance with 8.139.110.11 NMAC and 8.102.110 NMAC.
  - Interim Reports (IRs) in accordance with 8.139.120.9B NMAC. and 8.102.120.11C NMAC.
  - Recertifications in accordance with 8.139.120.8, 8.102.120.9B NMAC 8.106.120.9 and 8.106.120.10 NMAC.
- Waives all SNAP, TANF and GA-Unrelated Child interviews, if all mandatory verification standards are met. o GA-Disability is excluded from this waiver; an interview must be conducted for GA as medical documentation is needed. Allows us to waive the requirement of having to offer a face-to-face and to conduct all interviews by phone.
- IR's - If an IR cannot be processed under normal processing, ASPEN will automatically extend certification periods for households with an IR due in March, and April for 6 months to the month the customers recertification is due. May and June IRs will be suspended and not mailed.
- Recertifications – If a Recertification cannot be processed under normal processing, ASPEN will automatically extend certification periods for households scheduled to recertify in March, April, May and June 2020, for 6 months until September, October and November 2020.
- IPP 20-06 in regards to the policy change can be found on the HSD website at:

### **3. SNAP Supplement Waiver**

- State applied for a waiver through FNS.
- New Mexico has requested and been approved by FNS to provide an emergency allotment to address temporary food needs to households by bringing all households up to the maximum benefit due to pandemic related economic conditions. States that have already received FNS approval this supplemental issuance in March and April, or April and May, are approved to continue issuing full benefits each month.
- Interim policy and procedure for 8.139.610.12 NMAC.

### **4. Suspension of SNAP General Work Requirements**

- House of Representatives passed H.R. 6201, the Families First Coronavirus Response Act.
- During the declared public health emergency, SNAP recipients who would otherwise be mandatory to comply with the SNAP general work requirements will be waived from this requirement and will not experience any type of disqualification for noncompliance during this time.
- Interim policy and procedure guidance for SNAP General Work Requirements set forth in 8.139.410.12 C and D NMAC.

### **5. Telephonic Signature Waiver**

- State applied for a waiver through FNS
- If a customer calls to apply for benefits and does not have a paper application on file Conduent will accept a telephonic application and telephonic signature for applications by completing an online application through YesNM.
- Interim policy and procedures for 8.100.110.9A NMAC Submission of Forms.

### TANF Policy Changes During COVID-19

1. Good cause exemptions from work requirements for TANF	TANF Non-Compliance Process Suspension of Non-Compliance for NMW Participants	
2. Increased cash benefit levels for TANF cash assistance recipients	Process as normal	
3. 60-month time limit	IPP Hardship	Hardship extensions will allow individuals impacted by COVID-19 to apply for a TANF hardship or continue to receive TANF beyond their 60 <sup>th</sup> month
4. Work Participation Rate	Process as normal	The state will still need to meet the WPR. However, States can use Good Cause that is outlined in CFR and not be penalized for not meeting WPR due to the emergency
5. CARES Act Direct Payment	CARES Act Direct Payment	Guidance is to exclude as income and as a resource
6. UCB under CARES Act	Only to exclude UCB benefits under CARES Act	ACF Guidance is to <b><i>EXCLUDE</i></b> all UCB income at this time. New Mexico choose to exclude only CARES Act UCB

## **Children Youth and Families Department Policy Changes During COVID-19**

**NM Children Youth and Families Department received \$29.5 million in emergency funds, which resulted in the following changes:**

1. Waiver of copay for families which paid for by CYFD
2. Payment of \$250 per child premium for children who are still in care (emergency, first responders and essential personnel)
3. Streamlining of licensing of new facilities that provide emergency child care
4. Payment to the original and temporary child care provider for children of emergency, first responders and essential personnel, whose child care Program closed due to COVID-19

### **Additional Changes Anticipated**

1. Hazardous pay for child care providers currently operating
2. Compensation for programs that are losing their funding due to private pay