



Monthly Statistical Report

November 2019

There were 827,269 individuals that received Medicaid in November 2019, a 0.5% decrease from one year ago. The count of Medicaid recipients has decreased by 226, or 0.03%, since last month.

The SNAP caseload in November 2019 was 223,116, a 0.01% decrease from one year ago. The SNAP caseload has decreased by 765 cases, or 0.3%, since last month.

The TANF caseload was 10,425 in November 2019, a decrease of 5.0% from November 2018. The TANF caseload had 142 fewer cases compared to October 2019, a decrease of 1.3%.

The caseload for General Assistance was 2,491 in November 2019, a decrease of 12.2% from one year ago and an increase of 75 cases from last month.

Michelle Lujan Grisham, Governor
David Scrase, M.D., Secretary

| Contents | Page |
|-------------------------------|-------------|
| Summary | 3-5 |
| Medicaid | 6-20 |
| SNAP | 21-41 |
| Cash Assistance | 42-56 |
| Child Care Assistance | 57-58 |
| Income Eligibility Guidelines | 59-60 |

Regions are reported as follows:

| Region 1 | | |
|-----------------|------------|-----------|
| Catron | San Juan | Valencia |
| Cibola | Sierra | |
| McKinley | Socorro | |
| Region 2 | | |
| Colfax | Mora | Santa Fe |
| De Baca | Quay | Taos |
| Guadalupe | Rio Arriba | Union |
| Harding | Sandoval | |
| Los Alamos | San Miguel | |
| Region 3 | | |
| Bernalillo | Torrance | |
| Region 4 | | |
| Chaves | Eddy | Lincoln |
| Curry | Lea | Roosevelt |
| Region 5 | | |
| Dona Ana | Hidalgo | Otero |
| Grant | Luna | |

The Mission of the Human Services Department

To transform lives. Working with our partners, we design and deliver innovative, high quality health and human services that improve the security and promote independence for New Mexicans in their communities.

Angela Medrano, Deputy Secretary
 Russell Toal, Deputy Secretary

Prepared by Income Support Division
 PO Box 2348
 Santa Fe, NM 87504-2348 □
 505-827-7250

Karmela Martinez, Director
 Vida Tapia-Sanchez, Deputy Director
 Shanita Harrison, Deputy Director
 Judith Parks, Deputy Director

<http://www.hsd.state.nm.us/monthly-statistical-reports.aspx>

Program Summary for November 2019

| | | | | Percent Change | |
|------------------------------------|---------------|---------------|---------------|-------------------|-------------------|
| | | | | Nov-18- Nov-19 | Oct-19- Nov-19 |
| | Nov-18 | Oct-19 | Nov-19 | | |
| Expenditures¹ | \$468,233,701 | \$512,091,068 | \$472,332,889 | 0.9% | -7.8% |
| Cases² | 490,457 | 495,743 | 496,594 | 1.3% | 0.2% |
| Expenditures/Case | \$955 | \$1,033 | \$951 | -0.4% | -7.9% |
| Recipients³ | 831,257 | 827,495 | 827,269 | -0.5% | -0.03% |
| <i>Adults</i> | 473,821 | 470,625 | 470,566 | -0.7% | -0.01% |
| <i>Children</i> | 357,436 | 356,870 | 356,703 | -0.2% | -0.05% |
| Recipients /Case | 1.69 | 1.67 | 1.67 | -1.2% | 0.0% |
| Cases Processed⁴ | 12,084 | 10,563 | 10,398 | -14.0% | -1.6% |
| <i>Approvals⁴</i> | 9,776 | 7,712 | 7,209 | -26.3% | -6.5% |

| | | | | Percent Change | |
|------------------------------------|--------------|--------------|--------------|-------------------|-------------------|
| | | | | Nov-18- Nov-19 | Oct-19- Nov-19 |
| | Nov-18 | Oct-19 | Nov-19 | | |
| Expenditures⁵ | \$53,349,067 | \$53,673,965 | \$53,042,361 | -0.57% | -1.2% |
| Cases⁶ | 223,131 | 223,881 | 223,116 | -0.01% | -0.3% |
| Expenditures/Case | \$239 | \$240 | \$238 | -0.4% | -0.8% |
| Recipients⁷ | 454,388 | 450,169 | 447,770 | -1.5% | -0.53% |
| <i>Adults</i> | 263,220 | 263,490 | 262,242 | -0.4% | -0.5% |
| <i>Children</i> | 191,168 | 186,679 | 185,528 | -3.0% | -0.6% |
| Recipients /Case | 2.04 | 2.01 | 2.01 | -1.5% | 0.0% |
| Cases Processed⁴ | 18,089 | 17,473 | 16,879 | -6.7% | -3.4% |
| <i>Approvals⁴</i> | 14,868 | 14,272 | 13,697 | -7.9% | -4.0% |

| | | | | Percent Change | |
|------------------------------------|-------------|-------------|-------------|-------------------|-------------------|
| | | | | Nov-18- Nov-19 | Oct-19- Nov-19 |
| | Nov-18 | Oct-19 | Nov-19 | | |
| Expenditures⁵ | \$4,253,453 | \$4,056,024 | \$4,031,919 | -5.2% | -0.6% |
| Cases⁶ | 14,006 | 13,145 | 13,091 | -6.5% | -0.4% |
| Expenditures/Case | \$304 | \$309 | \$308 | 1.3% | -0.3% |
| Recipients⁷ | 31,685 | 29,919 | 29,595 | -6.6% | -1.1% |
| <i>Adults</i> | 10,116 | 9,465 | 9,425 | -6.8% | -0.4% |
| <i>Children</i> | 21,569 | 20,454 | 20,170 | -6.5% | -1.4% |
| Recipients /Case | 2.26 | 2.28 | 2.26 | 0.0% | -0.9% |
| Cases Processed⁴ | 5,119 | 4,494 | 4,150 | -18.9% | -7.7% |
| <i>Approvals⁴</i> | 1,472 | 1,548 | 1,352 | -8.2% | -12.7% |

| | | | | Percent Change | |
|------------------------------------|-------------|-------------|-------------|-------------------|-------------------|
| | | | | Nov-18- Nov-19 | Oct-19- Nov-19 |
| | Nov-18 | Oct-19 | Nov-19 | | |
| Expenditures⁸ | \$3,187,615 | \$5,675,080 | \$3,124,120 | -2.0% | -45.0% |
| Cases⁸ | 10,378 | 18,054 | 10,206 | -1.7% | -43.5% |
| Expenditures/Case | \$307 | \$314 | \$306 | -0.3% | -2.5% |
| Recipients⁸ | 23,416 | 38,610 | 22,853 | -2.4% | -40.8% |
| <i>Adults</i> | 13,557 | 23,166 | 13,273 | -2.1% | -42.7% |
| <i>Children</i> | 9,859 | 15,444 | 9,580 | -2.8% | -38.0% |
| Recipients /Case | 2.26 | 2.14 | 2.24 | -0.9% | 4.7% |
| Cases Processed⁴ | 11,118 | 17,038 | 10,578 | -4.9% | -37.9% |
| <i>Approvals⁴</i> | 10,133 | 15,960 | 9,614 | -5.1% | -39.8% |

Cash Assistance Summary for November 2019

Temporary Assistance for Needy Families (TANF)

| | Nov-18 | Oct-19 | Nov-19 | Percent Change | |
|---------------------------|-------------|-------------|-------------|-------------------|-------------------|
| | | | | Nov-18- Nov-19 | Oct-19- Nov-19 |
| Expenditures ⁵ | \$3,479,658 | \$3,369,681 | \$3,333,880 | -4.2% | -1.1% |
| Cases ⁶ | 10,971 | 10,567 | 10,425 | -5.0% | -1.3% |
| Expenditures/Case | \$317 | \$319 | \$320 | 0.9% | 0.3% |
| Recipients ⁷ | 28,317 | 27,144 | 26,733 | -5.6% | -1.5% |
| <i>Adults</i> | 7,217 | 7,070 | 6,965 | -3.5% | -1.5% |
| <i>Children</i> | 21,100 | 20,074 | 19,768 | -6.3% | -1.5% |
| Approvals ⁴ | 1,283 | 1,299 | 1,115 | -13.1% | -14.2% |

General Assistance (GA)

| | Nov-18 | Oct-19 | Nov-19 | Percent Change | |
|---------------------------|-----------|-----------|-----------|-------------------|-------------------|
| | | | | Nov-18- Nov-19 | Oct-19- Nov-19 |
| Expenditures ⁵ | \$705,109 | \$635,426 | \$641,250 | -9.1% | 0.9% |
| Cases ⁶ | 2,837 | 2,416 | 2,491 | -12.2% | 3.1% |
| Expenditures/Case | \$249 | \$263 | \$257 | 3.2% | -2.3% |
| Recipients ⁷ | 2,893 | 2,440 | 2,483 | -14.2% | 1.8% |
| <i>Adults</i> | 2,683 | 2,224 | 2,273 | -15.3% | 2.2% |
| <i>Children</i> | 210 | 216 | 210 | 0.0% | -2.8% |
| Approvals ⁴ | 179 | 207 | 201 | 12.3% | -2.9% |

Education Works

| | Nov-18 | Oct-19 | Nov-19 | Percent Change | |
|---------------------------|----------|----------|----------|-------------------|-------------------|
| | | | | Nov-18- Nov-19 | Oct-19- Nov-19 |
| Expenditures ⁵ | \$59,650 | \$37,676 | \$43,593 | -26.9% | 15.7% |
| Cases ⁶ | 149 | 97 | 112 | -24.8% | 15.5% |
| Expenditures/Case | \$400 | \$388 | \$389 | -2.8% | 0.3% |
| Recipients ⁷ | 424 | 270 | 316 | -25.5% | 17.0% |
| <i>Adults</i> | 165 | 106 | 124 | -24.8% | 17.0% |
| <i>Children</i> | 259 | 164 | 192 | -25.9% | 17.1% |
| Approvals ⁴ | 1 | 0 | 0 | -100.0% | N/A |

Refugee Cash (RCA)

| | Nov-18 | Oct-19 | Nov-19 | Percent Change | |
|---------------------------|---------|----------|----------|-------------------|-------------------|
| | | | | Nov-18- Nov-19 | Oct-19- Nov-19 |
| Expenditures ⁵ | \$7,036 | \$11,341 | \$11,296 | 60.5% | -0.4% |
| Cases ⁶ | 29 | 46 | 44 | 51.7% | -4.3% |
| Expenditures/Case | \$243 | \$247 | \$257 | 5.8% | 4.0% |
| Recipients ⁷ | 31 | 46 | 44 | 41.9% | -4.3% |
| <i>Adults</i> | 31 | 46 | 44 | 41.9% | -4.3% |
| <i>Children</i> | 0 | 0 | 0 | N/A | N/A |

State Supplement for Residential Care

| | Nov-18 | Oct-19 | Nov-19 | Percent Change | |
|---------------------------|---------|---------|---------|-------------------|-------------------|
| | | | | Nov-18- Nov-19 | Oct-19- Nov-19 |
| Expenditures ⁵ | \$2,000 | \$1,900 | \$1,900 | -5.0% | 0.0% |
| Cases ⁶ | 20 | 19 | 19 | -5.0% | 0.0% |
| Expenditures/Case | \$100 | \$100 | \$100 | 0.0% | 0.0% |
| Recipients ⁷ | 20 | 19 | 19 | -5.0% | 0.0% |
| <i>Adults</i> | 20 | 19 | 19 | -5.0% | 0.0% |
| <i>Children</i> | 0 | 0 | 0 | N/A | N/A |

| Expenditures YTD | | | |
|--|-----------------|---------------|-----------------|
| | SFY 2020 | FFY 2020 | CY 2019 |
| Medicaid ¹ | \$2,425,284,724 | \$984,423,957 | \$5,179,038,966 |
| Supplemental Nutrition Assistance Program ⁹ | \$265,336,142 | \$106,716,326 | \$579,342,253 |
| Temporary Assistance for Needy Families ⁹ | \$18,149,674 | \$6,703,561 | \$37,590,335 |
| General Assistance ⁹ | \$3,136,655 | \$1,276,676 | \$7,076,193 |
| Education Work ⁹ | \$162,990 | \$81,269 | \$415,951 |
| LIHEAP ⁸ | \$10,965,310 | \$8,799,200 | \$18,184,075 |

| Average Caseload YTD | | | |
|--|----------|----------|---------|
| | SFY 2020 | FFY 2020 | CY 2019 |
| Medicaid ² | 494,358 | 496,169 | 493,129 |
| Supplemental Nutrition Assistance Program ⁶ | 223,368 | 223,499 | 221,877 |
| Temporary Assistance for Needy Families ⁶ | 10,499 | 10,496 | 10,365 |
| General Assistance ⁶ | 2,430 | 2,454 | 2,532 |
| Education Work ⁶ | 80 | 105 | 94 |
| LIHEAP ⁸ | 7,196 | 14,130 | 5,516 |

| Demographic Profile- November 2019 | | | | | |
|---|---------|--------|-------|-----------------|-----|
| | SNAP | TANF | GA | Education Works | RCA |
| <i>Gender of Recipients</i> ¹⁰ | | | | | |
| Male | 202,519 | 11,326 | 1,395 | 110 | 34 |
| Female | 245,251 | 15,407 | 1,088 | 206 | 10 |
| <i>Ethnicity</i> ¹⁰ | | | | | |
| Hispanic | 246,049 | 17,918 | 1,314 | 193 | 25 |
| Non-Hispanic | 201,721 | 8,815 | 1,169 | 123 | 19 |
| <i>Race</i> ¹⁰ | | | | | |
| Native American or Alaskan Native | 77,026 | 2,265 | 222 | 21 | 0 |
| Asian | 3,931 | 195 | 16 | 3 | 0 |
| African American or Black | 11,823 | 1,249 | 96 | 38 | 11 |
| Native Hawaiian or Pacific Islander | 829 | 27 | 1 | 0 | 0 |
| White | 344,102 | 22,170 | 2,097 | 247 | 31 |
| Unknown / Not Declared | 3,584 | 191 | 25 | 2 | 0 |
| More than One Race | 6,475 | 636 | 26 | 5 | 2 |

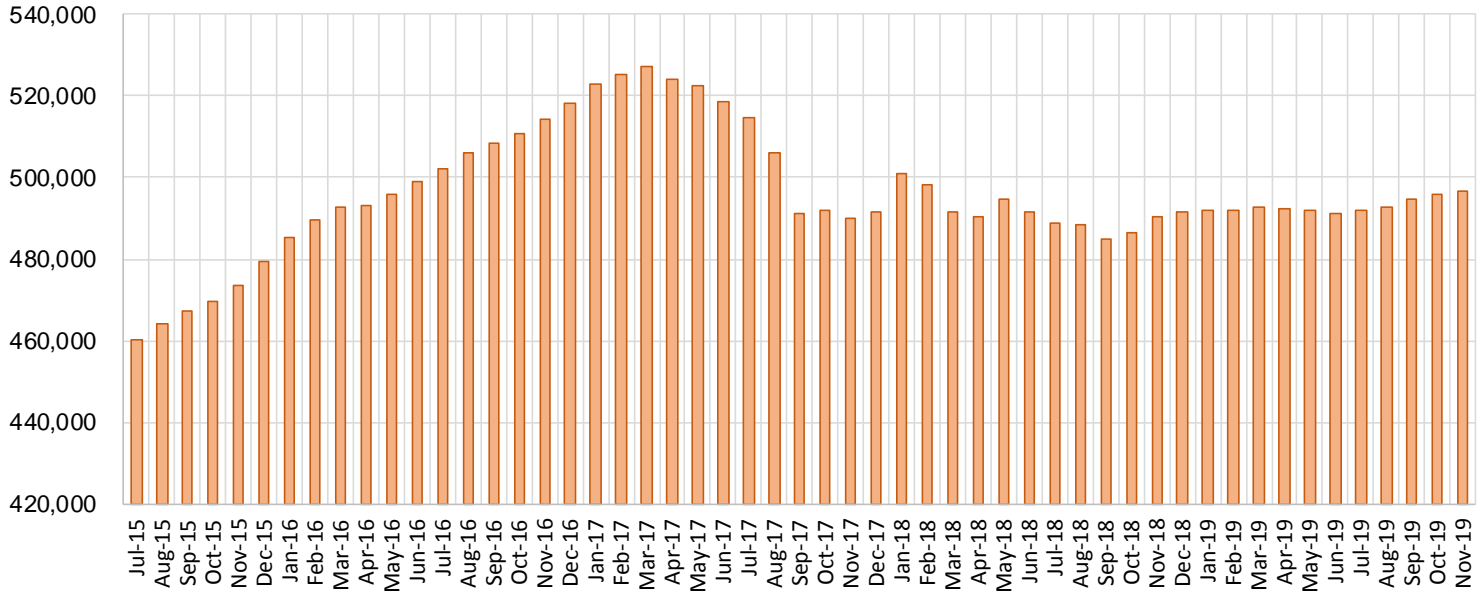
Medicaid Cases by Field Office²

| Office | | | | Percent Change | |
|---------------------------------|---------|---------|---------|-------------------|-------------------|
| | Nov-18 | Oct-19 | Nov-19 | Nov-18- Nov-19 | Oct-19- Nov-19 |
| Chaves County ISD | 15,888 | 16,103 | 16,115 | 1.4% | 0.1% |
| Cibola County ISD | 7,639 | 7,495 | 7,486 | -2.0% | -0.1% |
| Colfax County ISD | 3,595 | 3,609 | 3,612 | 0.5% | 0.1% |
| Curry County ISD | 14,216 | 14,912 | 14,952 | 5.2% | 0.3% |
| East Dona Ana County ISD | 17,729 | 17,995 | 18,009 | 1.6% | 0.1% |
| Eddy Artesia County ISD | 3,845 | 3,867 | 3,873 | 0.7% | 0.2% |
| Eddy Carlsbad County ISD | 7,563 | 7,626 | 7,628 | 0.9% | 0.0% |
| Grant County ISD | 7,682 | 7,854 | 7,841 | 2.1% | -0.2% |
| Guadalupe County ISD | 1,646 | 1,600 | 1,603 | -2.6% | 0.2% |
| Hidalgo County ISD | 42 | 45 | 50 | 19.0% | 11.1% |
| Lea County ISD | 14,343 | 14,714 | 14,807 | 3.2% | 0.6% |
| Lincoln County ISD | 4,301 | 4,333 | 4,341 | 0.9% | 0.2% |
| Luna County ISD | 8,604 | 8,743 | 8,779 | 2.0% | 0.4% |
| McKinley County ISD | 20,579 | 22,380 | 22,395 | 8.8% | 0.1% |
| Northeast Bernalillo County ISD | 43,036 | 43,122 | 43,281 | 0.6% | 0.4% |
| Northwest Bernalillo County ISD | 52,953 | 52,817 | 53,294 | 0.6% | 0.9% |
| Otero County ISD | 11,900 | 12,183 | 12,195 | 2.5% | 0.1% |
| Quay County ISD | 2,563 | 2,519 | 2,524 | -1.5% | 0.2% |
| Rio Arriba County ISD | 13,916 | 13,391 | 13,403 | -3.7% | 0.1% |
| Roosevelt County ISD | 9 | 9 | 10 | 11.1% | 11.1% |
| San Juan County ISD | 30,013 | 30,462 | 30,536 | 1.7% | 0.2% |
| San Miguel County ISD | 9,141 | 9,163 | 9,157 | 0.2% | -0.1% |
| Sandoval County ISD | 23,322 | 23,557 | 23,377 | 0.2% | -0.8% |
| Santa Fe County ISD | 24,555 | 24,162 | 24,180 | -1.5% | 0.1% |
| Sierra County ISD | 5,349 | 5,264 | 5,274 | -1.4% | 0.2% |
| Socorro County ISD | 5,254 | 5,256 | 5,258 | 0.1% | 0.0% |
| South Dona Ana ISD | 19,659 | 19,779 | 19,814 | 0.8% | 0.2% |
| Southeast Bernalillo County ISD | 25,107 | 24,951 | 24,910 | -0.8% | -0.2% |
| Southwest Bernalillo County ISD | 38,569 | 39,831 | 39,822 | 3.2% | 0.0% |
| Taos County ISD | 9,306 | 9,239 | 9,225 | -0.9% | -0.2% |
| Torrance County ISD | 7,780 | 7,935 | 7,996 | 2.8% | 0.8% |
| Valencia North County ISD | 18,358 | 18,549 | 18,574 | 1.2% | 0.1% |
| Valencia South County ISD | 103 | 109 | 90 | -12.6% | -17.4% |
| West Dona Ana County ISD | 21,889 | 22,173 | 22,182 | 1.3% | 0.0% |
| Centralized Units | 3 | 1 | 1 | -66.7% | 0.0% |
| Statewide Total | 490,457 | 495,748 | 496,594 | 1.3% | 0.2% |

Medicaid Cases by Region²

| | | | | Percent Change | |
|------------------------|----------------|----------------|----------------|-------------------|-------------------|
| Region | Nov-18 | Oct-19 | Nov-19 | Nov-18- Nov-19 | Oct-19- Nov-19 |
| Region 1 - NW | 87,295 | 89,515 | 89,613 | 2.7% | 0.1% |
| Region 2 - NE | 88,044 | 87,240 | 87,081 | -1.1% | -0.2% |
| Region 3 - Central | 167,445 | 168,656 | 169,303 | 1.1% | 0.4% |
| Region 4 - SE | 60,165 | 61,564 | 61,726 | 2.6% | 0.3% |
| Region 5 - SW | 87,505 | 88,772 | 88,870 | 1.6% | 0.1% |
| Centralized Units | 3 | 1 | 1 | -66.7% | 0.0% |
| Statewide Total | 490,457 | 495,748 | 496,594 | 1.3% | 0.2% |

Medicaid Caseload: SFY-16 to Current

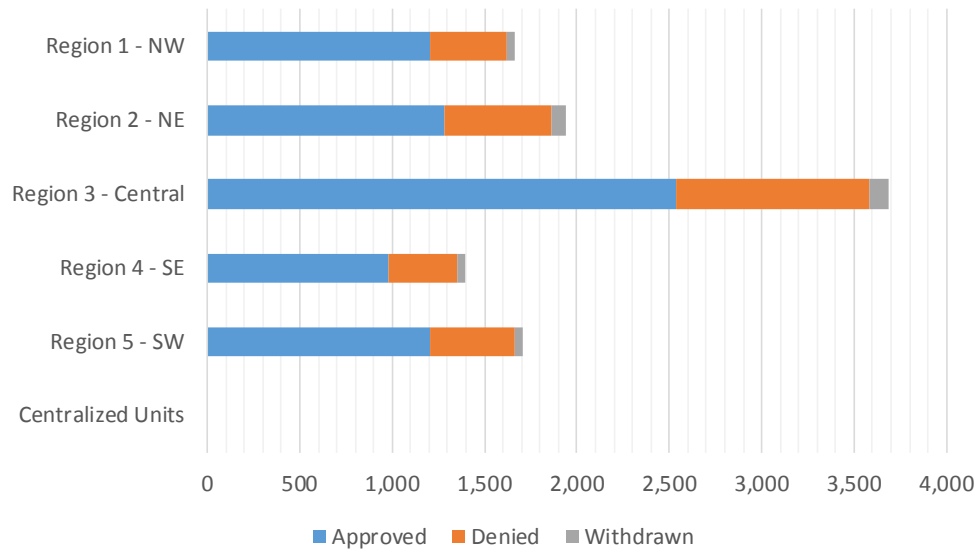


Medicaid Initial Applications by Field Office^{4,11}
November 2019

| Office | Approved | Denied | Withdrawn | Total Cases Processed |
|---------------------------------|--------------|--------------|------------|-----------------------|
| Chaves County ISD | 232 | 83 | 11 | 326 |
| Cibola County ISD | 102 | 47 | 4 | 153 |
| Colfax County ISD | 34 | 26 | 1 | 61 |
| Curry County ISD | 229 | 99 | 10 | 338 |
| East Dona Ana County ISD | 305 | 123 | 10 | 438 |
| Eddy Artesia County ISD | 56 | 21 | 2 | 79 |
| Eddy Carlsbad County ISD | 136 | 47 | 5 | 188 |
| Grant County ISD | 101 | 52 | 4 | 157 |
| Guadalupe County ISD | 18 | 8 | 3 | 29 |
| Hidalgo County ISD | 0 | 0 | 0 | 0 |
| Lea County ISD | 275 | 91 | 7 | 373 |
| Lincoln County ISD | 53 | 31 | 5 | 89 |
| Luna County ISD | 133 | 38 | 3 | 174 |
| McKinley County ISD | 277 | 99 | 6 | 382 |
| Northeast Bernalillo County ISD | 735 | 266 | 34 | 1,035 |
| Northwest Bernalillo County ISD | 618 | 226 | 40 | 884 |
| Otero County ISD | 164 | 64 | 0 | 228 |
| Quay County ISD | 24 | 7 | 1 | 32 |
| Rio Arriba County ISD | 158 | 71 | 3 | 232 |
| Roosevelt County ISD | 2 | 0 | 0 | 2 |
| San Juan County ISD | 469 | 143 | 28 | 640 |
| San Miguel County ISD | 199 | 79 | 6 | 284 |
| Sandoval County ISD | 344 | 147 | 33 | 524 |
| Santa Fe County ISD | 365 | 178 | 29 | 572 |
| Sierra County ISD | 63 | 21 | 5 | 89 |
| Socorro County ISD | 65 | 30 | 3 | 98 |
| South Dona Ana ISD | 202 | 77 | 10 | 289 |
| Southeast Bernalillo County ISD | 555 | 277 | 9 | 841 |
| Southwest Bernalillo County ISD | 515 | 226 | 19 | 760 |
| Taos County ISD | 139 | 62 | 4 | 205 |
| Torrance County ISD | 112 | 54 | 4 | 170 |
| Valencia North County ISD | 222 | 69 | 4 | 295 |
| Valencia South County ISD | 7 | 3 | 0 | 10 |
| West Dona Ana County ISD | 300 | 104 | 17 | 421 |
| Centralized Units | 0 | 0 | 0 | 0 |
| Statewide Total | 7,209 | 2,869 | 320 | 10,398 |

Medicaid Initial Applications by Region^{4,11}
November 2019

| | Approved | Denied | Withdrawn | Total Cases Processed |
|--------------------|----------|--------|-----------|-----------------------|
| Region | | | | |
| Region 1 - NW | 1,205 | 412 | 50 | 1,667 |
| Region 2 - NE | 1,281 | 578 | 80 | 1,939 |
| Region 3 - Central | 2,535 | 1,049 | 106 | 3,690 |
| Region 4 - SE | 983 | 372 | 40 | 1,395 |
| Region 5 - SW | 1,205 | 458 | 44 | 1,707 |
| Centralized Units | 0 | 0 | 0 | 0 |
| Statewide Total | 7,209 | 2,869 | 320 | 10,398 |



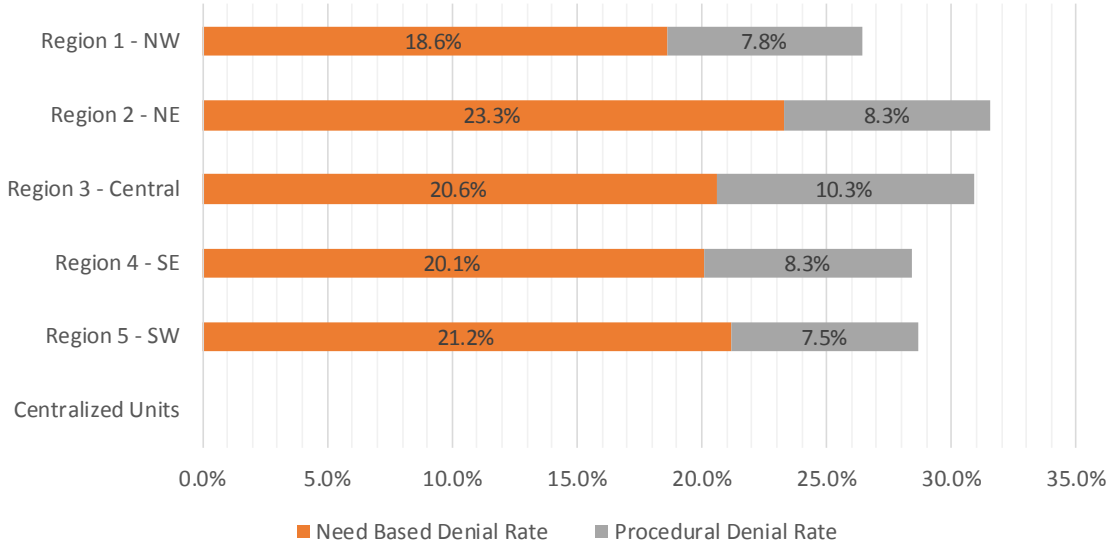
Medicaid EDG Initial Disposition Rates by Field Office^{4,11,19}
November 2019

| Office | Approval Rate | Denial Rate | Need Based Denial Rate | Procedural Denial Rate |
|---------------------------------|---------------|--------------|------------------------|------------------------|
| Chaves County ISD | 71.4% | 28.6% | 22.1% | 6.5% |
| Cibola County ISD | 68.9% | 31.1% | 24.3% | 6.8% |
| Colfax County ISD | 54.8% | 45.2% | 32.3% | 12.9% |
| Curry County ISD | 69.8% | 30.2% | 20.1% | 10.1% |
| East Dona Ana County ISD | 69.3% | 30.7% | 20.9% | 9.8% |
| Eddy Artesia County ISD | 68.3% | 31.7% | 25.6% | 6.1% |
| Eddy Carlsbad County ISD | 72.3% | 27.7% | 18.1% | 9.6% |
| Grant County ISD | 65.6% | 34.4% | 26.0% | 8.4% |
| Guadalupe County ISD | 62.1% | 37.9% | 27.6% | 10.3% |
| Hidalgo County ISD | 0.0% | 0.0% | 0.0% | 0.0% |
| Lea County ISD | 75.5% | 24.5% | 17.6% | 6.9% |
| Lincoln County ISD | 63.1% | 36.9% | 22.6% | 14.3% |
| Luna County ISD | 77.8% | 22.2% | 17.5% | 4.7% |
| McKinley County ISD | 74.1% | 25.9% | 19.5% | 6.4% |
| Northeast Bernalillo County ISD | 71.8% | 28.2% | 20.3% | 7.9% |
| Northwest Bernalillo County ISD | 69.1% | 30.9% | 18.8% | 12.1% |
| Otero County ISD | 74.9% | 25.1% | 21.4% | 3.7% |
| Quay County ISD | 75.0% | 25.0% | 18.7% | 6.3% |
| Rio Arriba County ISD | 69.9% | 30.1% | 19.5% | 10.6% |
| Roosevelt County ISD | 100.0% | 0.0% | 0.0% | 0.0% |
| San Juan County ISD | 74.8% | 25.2% | 14.5% | 10.7% |
| San Miguel County ISD | 80.9% | 19.1% | 15.4% | 3.7% |
| Sandoval County ISD | 67.2% | 32.8% | 24.6% | 8.2% |
| Santa Fe County ISD | 65.4% | 34.6% | 25.8% | 8.8% |
| Sierra County ISD | 72.4% | 27.6% | 23.0% | 4.6% |
| Socorro County ISD | 65.0% | 35.0% | 23.0% | 12.0% |
| South Dona Ana ISD | 70.4% | 29.6% | 26.5% | 3.1% |
| Southeast Bernalillo County ISD | 66.0% | 34.0% | 21.2% | 12.8% |
| Southwest Bernalillo County ISD | 69.2% | 30.8% | 21.8% | 9.0% |
| Taos County ISD | 67.1% | 32.9% | 24.2% | 8.7% |
| Torrance County ISD | 67.5% | 32.5% | 24.1% | 8.4% |
| Valencia North County ISD | 76.0% | 24.0% | 20.2% | 3.8% |
| Valencia South County ISD | 77.8% | 22.2% | 22.2% | 0.0% |
| West Dona Ana County ISD | 71.8% | 28.2% | 17.4% | 10.8% |
| Centralized Units | 0.0% | 0.0% | 0.0% | 0.0% |
| Statewide Total | 70.4% | 29.6% | 20.8% | 8.8% |

Medicaid EDG Initial Disposition Rates by Region ^{4,11,19}
November 2019

| Region | Approval Rate | Denial Rate | Need Based Denial Rate | Procedural Denial Rate |
|--------------------|---------------|-------------|------------------------|------------------------|
| Region 1 - NW | 73.6% | 26.4% | 18.6% | 7.8% |
| Region 2 - NE | 68.4% | 31.6% | 23.3% | 8.3% |
| Region 3 - Central | 69.1% | 30.9% | 20.6% | 10.3% |
| Region 4 - SE | 71.6% | 28.4% | 20.1% | 8.3% |
| Region 5 - SW | 71.3% | 28.7% | 21.2% | 7.5% |
| Centralized Units | | | | |

| | | | | |
|-----------------|-------|-------|-------|------|
| Statewide Total | 70.4% | 29.6% | 20.8% | 8.8% |
|-----------------|-------|-------|-------|------|



Medicaid: Percentage of Initial EDG Approvals Processed Timely by Field Office ^{13,19}

| | Oct-19 | Nov-19 | Dec-19 | Jan-20 | Feb-20 | Mar-20 | Apr-20 | May-20 | Jun-20 | Jul-20 | Aug-20 | Sep-20 | Average |
|----------------------------|---------------|---------------|--------|--------|--------|--------|--------|--------|--------|--------|--------|--------|--------------|
| Cibola | 99.5 % | 97.3 % | | | | | | | | | | | 98.4% |
| McKinley | 99.3 % | 99.0 % | | | | | | | | | | | 99.2% |
| San Juan | 98.9 % | 98.7 % | | | | | | | | | | | 98.8% |
| Sierra | 96.4 % | 99.0 % | | | | | | | | | | | 97.7% |
| Socorro | 100.0 % | 96.9 % | | | | | | | | | | | 98.4% |
| Valencia North | 99.7 % | 99.1 % | | | | | | | | | | | 99.4% |
| Valencia South | 100.0 % | 100.0 % | | | | | | | | | | | 100.0% |
| NW Region 1 Total | 99.2 % | 98.6 % | | | | | | | | | | | 98.9% |
| Colfax | 100.0 % | 100.0 % | | | | | | | | | | | 100.0% |
| Guadalupe | 100.0 % | 100.0 % | | | | | | | | | | | 100.0% |
| Quay | 98.4 % | 100.0 % | | | | | | | | | | | 99.2% |
| Rio Arriba | 99.6 % | 100.0 % | | | | | | | | | | | 99.8% |
| San Miguel | 100.0 % | 100.0 % | | | | | | | | | | | 100.0% |
| Sandoval | 99.4 % | 100.0 % | | | | | | | | | | | 99.7% |
| Santa Fe | 99.0 % | 97.9 % | | | | | | | | | | | 98.4% |
| Taos | 98.7 % | 100.0 % | | | | | | | | | | | 99.4% |
| NE Region 2 Total | 99.3 % | 99.4 % | | | | | | | | | | | 99.4% |
| NE Bernalillo | 98.4 % | 99.5 % | | | | | | | | | | | 98.9% |
| NW Bernalillo | 98.9 % | 98.9 % | | | | | | | | | | | 98.9% |
| SE Bernalillo | 97.4 % | 95.8 % | | | | | | | | | | | 96.6% |
| SW Bernalillo | 98.2 % | 97.9 % | | | | | | | | | | | 98.0% |
| Torrance | 100.0 % | 100.0 % | | | | | | | | | | | 100.0% |
| Gen. Region 3 Total | 98.3 % | 98.3 % | | | | | | | | | | | 98.3% |
| Chaves | 100.0 % | 99.1 % | | | | | | | | | | | 99.6% |
| Curry | 98.8 % | 98.9 % | | | | | | | | | | | 98.9% |
| Eddy Artesia | 98.3 % | 97.6 % | | | | | | | | | | | 97.9% |
| Eddy Carlsbad | 99.1 % | 99.5 % | | | | | | | | | | | 99.3% |
| Lea | 99.3 % | 100.0 % | | | | | | | | | | | 99.6% |
| Lincoln | 99.3 % | 98.7 % | | | | | | | | | | | 99.0% |
| Roosevelt | 100.0 % | 100.0 % | | | | | | | | | | | 100.0% |
| SE Region 4 Total | 99.2 % | 99.3 % | | | | | | | | | | | 99.3% |
| East Dona Ana | 98.0 % | 99.3 % | | | | | | | | | | | 98.7% |
| Grant | 100.0 % | 99.3 % | | | | | | | | | | | 99.7% |
| Luna | 99.5 % | 99.5 % | | | | | | | | | | | 99.5% |
| Otero | 99.6 % | 99.6 % | | | | | | | | | | | 99.6% |
| South Dona Ana | 99.7 % | 99.7 % | | | | | | | | | | | 99.7% |
| West Dona Ana | 99.5 % | 97.5 % | | | | | | | | | | | 98.5% |
| SW Region 5 Total | 99.2 % | 99.0 % | | | | | | | | | | | 99.1% |
| STATE TOTAL | 98.9 % | 98.8 % | | | | | | | | | | | 98.9% |

Medicaid: Percentage of Initial EDG Denials Processed Timely by Field Office^{13,19}

| | Oct-19 | Nov-19 | Dec-19 | Jan-20 | Feb-20 | Mar-20 | Apr-20 | May-20 | Jun-20 | Jul-20 | Aug-20 | Sep-20 | Average |
|----------------------------|---------------|---------------|--------|--------|--------|--------|--------|--------|--------|--------|--------|--------|--------------|
| Cibola | 97.8 % | 98.7 % | | | | | | | | | | | 98.3% |
| McKinley | 92.7 % | 95.5 % | | | | | | | | | | | 94.1% |
| San Juan | 95.4 % | 98.4 % | | | | | | | | | | | 96.9% |
| Sierra | 100.0 % | 94.1 % | | | | | | | | | | | 97.1% |
| Socorro | 95.9 % | 94.2 % | | | | | | | | | | | 95.1% |
| Valencia North | 98.5 % | 97.4 % | | | | | | | | | | | 98.0% |
| Valencia South | 100.0 % | 100.0 % | | | | | | | | | | | 100.0% |
| NW Region 1 Total | 95.8 % | 97.1 % | | | | | | | | | | | 96.5% |
| Colfax | 94.7 % | 97.3 % | | | | | | | | | | | 96.0% |
| Guadalupe | 100.0 % | 100.0 % | | | | | | | | | | | 100.0% |
| Quay | 92.9 % | 94.4 % | | | | | | | | | | | 93.7% |
| Rio Arriba | 94.8 % | 97.5 % | | | | | | | | | | | 96.2% |
| San Miguel | 100.0 % | 100.0 % | | | | | | | | | | | 100.0% |
| Sandoval | 98.0 % | 98.7 % | | | | | | | | | | | 98.4% |
| Santa Fe | 98.3 % | 94.7 % | | | | | | | | | | | 96.5% |
| Taos | 100.0 % | 100.0 % | | | | | | | | | | | 100.0% |
| NE Region 2 Total | 97.7 % | 97.6 % | | | | | | | | | | | 97.6% |
| NE Bernalillo | 97.5 % | 97.1 % | | | | | | | | | | | 97.3% |
| NW Bernalillo | 96.8 % | 97.4 % | | | | | | | | | | | 97.1% |
| SE Bernalillo | 93.9 % | 96.6 % | | | | | | | | | | | 95.3% |
| SW Bernalillo | 95.5 % | 97.5 % | | | | | | | | | | | 96.5% |
| Torrance | 97.3 % | 96.7 % | | | | | | | | | | | 97.0% |
| Gen. Region 3 Total | 96.1 % | 97.2 % | | | | | | | | | | | 96.6% |
| Chaves | 97.9 % | 100.0 % | | | | | | | | | | | 99.0% |
| Curry | 97.3 % | 97.8 % | | | | | | | | | | | 97.5% |
| Eddy Artesia | 82.7 % | 100.0 % | | | | | | | | | | | 91.3% |
| Eddy Carlsbad | 79.6 % | 100.0 % | | | | | | | | | | | 89.8% |
| Lea | 95.4 % | 97.1 % | | | | | | | | | | | 96.3% |
| Lincoln | 98.2 % | 98.2 % | | | | | | | | | | | 98.2% |
| Roosevelt | 95.6 % | | | | | | | | | | | | 95.6% |
| SE Region 4 Total | 93.1 % | 98.5 % | | | | | | | | | | | 95.8% |
| East Dona Ana | 95.6 % | 98.5 % | | | | | | | | | | | 97.0% |
| Grant | 98.4 % | 91.6 % | | | | | | | | | | | 95.0% |
| Luna | 94.9 % | 96.3 % | | | | | | | | | | | 95.6% |
| Otero | 100.0 % | 94.8 % | | | | | | | | | | | 97.4% |
| South Dona Ana | 97.3 % | 99.4 % | | | | | | | | | | | 98.4% |
| West Dona Ana | 99.3 % | 96.6 % | | | | | | | | | | | 98.0% |
| SW Region 5 Total | 97.6 % | 96.8 % | | | | | | | | | | | 97.2% |
| STATE TOTAL | 96.2 % | 97.4 % | | | | | | | | | | | 96.8% |

Medicaid: Percentage of Initial EDG Approvals and Denials Combined Processed Timely by Field Office^{13,19}

| | Oct-19 | Nov-19 | Dec-19 | Jan-20 | Feb-20 | Mar-20 | Apr-20 | May-20 | Jun-20 | Jul-20 | Aug-20 | Sep-20 | Average |
|----------------------------|---------------|---------------|--------|--------|--------|--------|--------|--------|--------|--------|--------|--------|--------------|
| Cibola | 99.1 % | 97.7 % | | | | | | | | | | | 98.4% |
| McKinley | 98.0 % | 98.0 % | | | | | | | | | | | 98.0% |
| San Juan | 97.8 % | 98.6 % | | | | | | | | | | | 98.2% |
| Sierra | 97.5 % | 97.8 % | | | | | | | | | | | 97.7% |
| Socorro | 98.4 % | 95.9 % | | | | | | | | | | | 97.2% |
| Valencia North | 99.4 % | 98.7 % | | | | | | | | | | | 99.0% |
| Valencia South | 100.0 % | 100.0 % | | | | | | | | | | | 100.0% |
| NW Region 1 Total | 98.3 % | 98.2 % | | | | | | | | | | | 98.2% |
| Colfax | 98.5 % | 98.8 % | | | | | | | | | | | 98.7% |
| Guadalupe | 100.0 % | 100.0 % | | | | | | | | | | | 100.0% |
| Quay | 96.7 % | 98.0 % | | | | | | | | | | | 97.3% |
| Rio Arriba | 98.1 % | 99.1 % | | | | | | | | | | | 98.6% |
| San Miguel | 100.0 % | 100.0 % | | | | | | | | | | | 100.0% |
| Sandoval | 99.0 % | 99.5 % | | | | | | | | | | | 99.3% |
| Santa Fe | 98.7 % | 96.8 % | | | | | | | | | | | 97.8% |
| Taos | 99.0 % | 100.0 % | | | | | | | | | | | 99.5% |
| NE Region 2 Total | 98.8 % | 98.8 % | | | | | | | | | | | 98.8% |
| NE Bernalillo | 98.1 % | 98.7 % | | | | | | | | | | | 98.4% |
| NW Bernalillo | 98.3 % | 98.4 % | | | | | | | | | | | 98.4% |
| SE Bernalillo | 96.5 % | 96.1 % | | | | | | | | | | | 96.3% |
| SW Bernalillo | 97.5 % | 97.8 % | | | | | | | | | | | 97.6% |
| Torrance | 97.5 % | 98.9 % | | | | | | | | | | | 98.2% |
| Gen. Region 3 Total | 97.7 % | 97.9 % | | | | | | | | | | | 97.8% |
| Chaves | 99.5 % | 99.4 % | | | | | | | | | | | 99.4% |
| Curry | 98.5 % | 98.5 % | | | | | | | | | | | 98.5% |
| Eddy Artesia | 93.5 % | 98.3 % | | | | | | | | | | | 95.9% |
| Eddy Carlsbad | 93.0 % | 99.7 % | | | | | | | | | | | 96.3% |
| Lea | 98.1 % | 99.2 % | | | | | | | | | | | 98.6% |
| Lincoln | 99.0 % | 98.5 % | | | | | | | | | | | 98.8% |
| Roosevelt | 100.0 % | 100.0 % | | | | | | | | | | | 100.0% |
| SE Region 4 Total | 97.6 % | 99.1 % | | | | | | | | | | | 98.3% |
| East Dona Ana | 97.3 % | 99.1 % | | | | | | | | | | | 98.2% |
| Grant | 99.5 % | 96.3 % | | | | | | | | | | | 97.9% |
| Luna | 98.4 % | 98.6 % | | | | | | | | | | | 98.5% |
| Otero | 99.7 % | 97.9 % | | | | | | | | | | | 98.8% |
| South Dona Ana | 99.1 % | 99.6 % | | | | | | | | | | | 99.3% |
| West Dona Ana | 99.4 % | 97.2 % | | | | | | | | | | | 98.3% |
| SW Region 5 Total | 98.8 % | 98.3 % | | | | | | | | | | | 98.5% |
| STATE TOTAL | 98.2 % | 98.4 % | | | | | | | | | | | 98.3% |

Medicaid Renewal Disposition Counts by Field Office^{4,11}
November 2019

| Office | Approvals | Closures | Need Based Closures | Procedural Closures |
|---------------------------------|---------------|---------------|---------------------|---------------------|
| Chaves County ISD | 2,608 | 541 | 248 | 293 |
| Cibola County ISD | 1,497 | 285 | 123 | 162 |
| Colfax County ISD | 570 | 106 | 46 | 60 |
| Curry County ISD | 2,745 | 455 | 201 | 254 |
| East Dona Ana County ISD | 2,618 | 656 | 249 | 407 |
| Eddy Artesia County ISD | 611 | 113 | 61 | 52 |
| Eddy Carlsbad County ISD | 888 | 292 | 101 | 191 |
| Grant County ISD | 1,217 | 237 | 116 | 121 |
| Guadalupe County ISD | 268 | 48 | 18 | 30 |
| Hidalgo County ISD | 0 | 1 | 0 | 1 |
| Lea County ISD | 2,215 | 490 | 212 | 278 |
| Lincoln County ISD | 685 | 148 | 50 | 98 |
| Luna County ISD | 1,476 | 267 | 141 | 126 |
| McKinley County ISD | 4,120 | 708 | 305 | 403 |
| Northeast Bernalillo County ISD | 5,658 | 1438 | 512 | 926 |
| Northwest Bernalillo County ISD | 4,747 | 1148 | 375 | 773 |
| Otero County ISD | 2,069 | 379 | 198 | 181 |
| Quay County ISD | 388 | 76 | 39 | 37 |
| Rio Arriba County ISD | 1,919 | 307 | 104 | 203 |
| Roosevelt County ISD | 0 | 0 | 0 | 0 |
| San Juan County ISD | 5,408 | 1125 | 509 | 616 |
| San Miguel County ISD | 1,201 | 221 | 100 | 121 |
| Sandoval County ISD | 3,576 | 799 | 376 | 423 |
| Santa Fe County ISD | 2,611 | 814 | 204 | 610 |
| Sierra County ISD | 819 | 159 | 85 | 74 |
| Socorro County ISD | 855 | 133 | 77 | 56 |
| South Dona Ana ISD | 3,652 | 573 | 400 | 173 |
| Southeast Bernalillo County ISD | 3,004 | 734 | 244 | 490 |
| Southwest Bernalillo County ISD | 6,802 | 1609 | 616 | 993 |
| Taos County ISD | 1,206 | 269 | 104 | 165 |
| Torrance County ISD | 1,181 | 287 | 106 | 181 |
| Valencia North County ISD | 2,824 | 552 | 243 | 309 |
| Valencia South County ISD | 0 | 0 | 0 | 0 |
| West Dona Ana County ISD | 3,520 | 623 | 353 | 270 |
| Centralized Units | 0 | 0 | 0 | 0 |
| Statewide Total | 72,958 | 15,593 | 6,516 | 9,077 |

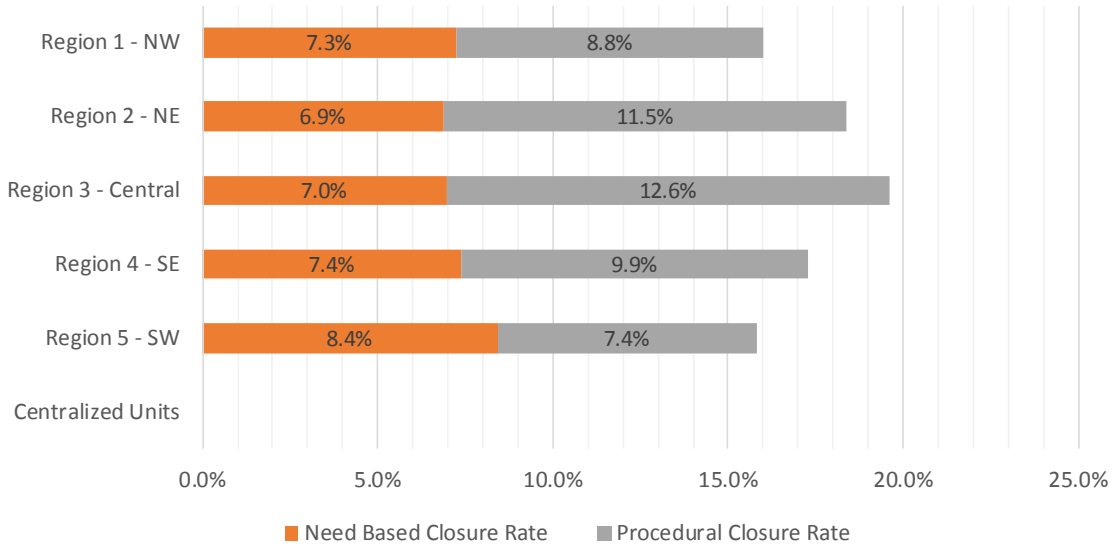
Medicaid Renewal Disposition Rates by Field Office²⁰
November 2019

| Office | Approval Rate | Closure Rate | Need Based Closure Rate | Procedural Closure Rate |
|---------------------------------|---------------|--------------|-------------------------|-------------------------|
| Chaves County ISD | 82.8% | 17.2% | 7.9% | 9.3% |
| Cibola County ISD | 84.0% | 16.0% | 6.9% | 9.1% |
| Colfax County ISD | 84.3% | 15.7% | 6.8% | 8.9% |
| Curry County ISD | 85.8% | 14.2% | 6.3% | 7.9% |
| East Dona Ana County ISD | 80.0% | 20.0% | 7.6% | 12.4% |
| Eddy Artesia County ISD | 84.4% | 15.6% | 8.4% | 7.2% |
| Eddy Carlsbad County ISD | 75.3% | 24.7% | 8.6% | 16.2% |
| Grant County ISD | 83.7% | 16.3% | 8.0% | 8.3% |
| Guadalupe County ISD | 84.8% | 15.2% | 5.7% | 9.5% |
| Hidalgo County ISD | 0.0% | 100.0% | 0.0% | 100.0% |
| Lea County ISD | 81.9% | 18.1% | 7.8% | 10.3% |
| Lincoln County ISD | 82.2% | 17.8% | 6.0% | 11.8% |
| Luna County ISD | 84.7% | 15.3% | 8.1% | 7.2% |
| McKinley County ISD | 85.3% | 14.7% | 6.3% | 8.3% |
| Northeast Bernalillo County ISD | 79.7% | 20.3% | 7.2% | 13.0% |
| Northwest Bernalillo County ISD | 80.5% | 19.5% | 6.4% | 13.1% |
| Otero County ISD | 84.5% | 15.5% | 8.1% | 7.4% |
| Quay County ISD | 83.6% | 16.4% | 8.4% | 8.0% |
| Rio Arriba County ISD | 86.2% | 13.8% | 4.7% | 9.1% |
| Roosevelt County ISD | 0.0% | 0.0% | 0.0% | 0.0% |
| San Juan County ISD | 82.8% | 17.2% | 7.8% | 9.4% |
| San Miguel County ISD | 84.5% | 15.5% | 7.0% | 8.5% |
| Sandoval County ISD | 81.7% | 18.3% | 8.6% | 9.7% |
| Santa Fe County ISD | 76.2% | 23.8% | 6.0% | 17.8% |
| Sierra County ISD | 83.7% | 16.3% | 8.7% | 7.6% |
| Socorro County ISD | 86.5% | 13.5% | 7.8% | 5.7% |
| South Dona Ana ISD | 86.4% | 13.6% | 9.5% | 4.1% |
| Southeast Bernalillo County ISD | 80.4% | 19.6% | 6.5% | 13.1% |
| Southwest Bernalillo County ISD | 80.9% | 19.1% | 7.3% | 11.8% |
| Taos County ISD | 81.8% | 18.2% | 7.1% | 11.2% |
| Torrance County ISD | 80.4% | 19.6% | 7.2% | 12.3% |
| Valencia North County ISD | 83.6% | 16.4% | 7.2% | 9.2% |
| Valencia South County ISD | 0.0% | 0.0% | 0.0% | 0.0% |
| West Dona Ana County ISD | 85.0% | 15.0% | 8.5% | 6.5% |
| Centralized Units | 0.0% | 0.0% | 0.0% | 0.0% |
| Statewide Total | 82.4% | 17.6% | 7.4% | 10.3% |

Medicaid Renewal Disposition Rates by Region²⁰
November 2019

| Region | Approval Rate | Closure Rate | Need Based Closure Rate | Procedural Closure Rate |
|--------------------|---------------|--------------|-------------------------|-------------------------|
| Region 1 - NW | 84.0% | 16.0% | 7.3% | 8.8% |
| Region 2 - NE | 81.6% | 18.4% | 6.9% | 11.5% |
| Region 3 - Central | 80.4% | 19.6% | 7.0% | 12.6% |
| Region 4 - SE | 82.7% | 17.3% | 7.4% | 9.9% |
| Region 5 - SW | 84.2% | 15.8% | 8.4% | 7.4% |
| Centralized Units | | | | |

| | | | | |
|-----------------|-------|-------|------|-------|
| Statewide Total | 82.4% | 17.6% | 7.4% | 10.3% |
|-----------------|-------|-------|------|-------|



Medicaid: Percentage of Approved Renewal EDGs Processed by Certification Date ¹¹

| | Oct-19 | Nov-19 | Dec-19 | Jan-20 | Feb-20 | Mar-20 | Apr-20 | May-20 | Jun-20 | Jul-20 | Aug-20 | Sep-20 | Average |
|----------------------------|--------------|--------------|--------|--------|--------|--------|--------|--------|--------|--------|--------|--------|--------------|
| Cibola | 99.5% | 99.4% | | | | | | | | | | | 99.5% |
| McKinley | 98.4% | 98.8% | | | | | | | | | | | 98.6% |
| San Juan | 98.8% | 98.6% | | | | | | | | | | | 98.7% |
| Sierra | 99.2% | 96.9% | | | | | | | | | | | 98.1% |
| Socorro | 98.6% | 98.3% | | | | | | | | | | | 98.5% |
| Valencia North | 99.1% | 98.4% | | | | | | | | | | | 98.8% |
| Valencia South | | | | | | | | | | | | | |
| NW Region 1 Total | 98.9% | 98.4% | | | | | | | | | | | 98.7% |
| Colfax | 98.5% | 98.1% | | | | | | | | | | | 98.3% |
| Guadalupe | 99.6% | 98.2% | | | | | | | | | | | 98.9% |
| Quay | 98.7% | 99.0% | | | | | | | | | | | 98.9% |
| Rio Arriba | 98.2% | 97.2% | | | | | | | | | | | 97.7% |
| San Miguel | 98.3% | 99.1% | | | | | | | | | | | 98.7% |
| Sandoval | 99.0% | 98.7% | | | | | | | | | | | 98.9% |
| Santa Fe | 97.4% | 97.5% | | | | | | | | | | | 97.5% |
| Taos | 97.3% | 98.8% | | | | | | | | | | | 98.1% |
| NE Region 2 Total | 98.4% | 98.3% | | | | | | | | | | | 98.4% |
| NE Bernalillo | 98.2% | 98.5% | | | | | | | | | | | 98.4% |
| NW Bernalillo | 97.5% | 97.8% | | | | | | | | | | | 97.7% |
| SE Bernalillo | 98.1% | 98.4% | | | | | | | | | | | 98.3% |
| SW Bernalillo | 97.5% | 97.2% | | | | | | | | | | | 97.4% |
| Torrance | 98.0% | 98.3% | | | | | | | | | | | 98.2% |
| Gen. Region 3 Total | 97.8% | 98.1% | | | | | | | | | | | 98.0% |
| Chaves | 99.7% | 99.6% | | | | | | | | | | | 99.7% |
| Curry | 98.8% | 99.3% | | | | | | | | | | | 99.1% |
| Eddy Artesia | 98.0% | 97.3% | | | | | | | | | | | 97.7% |
| Eddy Carlsbad | 98.5% | 98.7% | | | | | | | | | | | 98.6% |
| Lea | 98.3% | 98.7% | | | | | | | | | | | 98.5% |
| Lincoln | 96.5% | 98.1% | | | | | | | | | | | 97.3% |
| Roosevelt | | | | | | | | | | | | | |
| SE Region 4 Total | 98.3% | 98.6% | | | | | | | | | | | 98.5% |
| East Dona Ana | 99.4% | 99.1% | | | | | | | | | | | 99.3% |
| Grant | 98.4% | 99.0% | | | | | | | | | | | 98.7% |
| Luna | 98.9% | 99.4% | | | | | | | | | | | 99.2% |
| Otero | 98.5% | 98.8% | | | | | | | | | | | 98.7% |
| South Dona Ana | 98.4% | 99.2% | | | | | | | | | | | 98.8% |
| West Dona Ana | 99.3% | 98.7% | | | | | | | | | | | 99.0% |
| SW Region 5 Total | 98.8% | 99.0% | | | | | | | | | | | 98.9% |
| STATE TOTAL | 98.5% | 98.5% | | | | | | | | | | | 98.5% |

Administrative, Annual, and Auto Renewals are included

Medicaid: Percentage of Closures EDGs Processed by Certification End Date¹¹

| | Oct-19 | Nov-19 | Dec-19 | Jan-20 | Feb-20 | Mar-20 | Apr-20 | May-20 | Jun-20 | Jul-20 | Aug-20 | Sep-20 | Average |
|----------------------------|--------------|--------------|--------|--------|--------|--------|--------|--------|--------|--------|--------|--------|--------------|
| Cibola | 97.3% | 95.3% | | | | | | | | | | | 96.3% |
| McKinley | 94.2% | 96.5% | | | | | | | | | | | 95.4% |
| San Juan | 96.9% | 95.7% | | | | | | | | | | | 96.3% |
| Sierra | 94.4% | 97.0% | | | | | | | | | | | 95.7% |
| Socorro | 96.1% | 95.0% | | | | | | | | | | | 95.6% |
| Valencia North | 97.1% | 96.3% | | | | | | | | | | | 96.7% |
| Valencia South | | | | | | | | | | | | | |
| NW Region 1 Total | 96.0% | 96.0% | | | | | | | | | | | 96.0% |
| Colfax | 94.7% | 93.8% | | | | | | | | | | | 94.3% |
| Guadalupe | 93.8% | 96.0% | | | | | | | | | | | 94.9% |
| Quay | 96.4% | 98.7% | | | | | | | | | | | 97.6% |
| Rio Arriba | 95.3% | 96.8% | | | | | | | | | | | 96.1% |
| San Miguel | 95.3% | 92.9% | | | | | | | | | | | 94.1% |
| Sandoval | 96.7% | 96.8% | | | | | | | | | | | 96.8% |
| Santa Fe | 94.6% | 94.4% | | | | | | | | | | | 94.5% |
| Taos | 95.9% | 97.5% | | | | | | | | | | | 96.7% |
| NE Region 2 Total | 95.3% | 95.9% | | | | | | | | | | | 95.6% |
| NE Bernalillo | 96.0% | 96.5% | | | | | | | | | | | 96.3% |
| NW Bernalillo | 94.7% | 95.4% | | | | | | | | | | | 95.1% |
| SE Bernalillo | 96.1% | 97.1% | | | | | | | | | | | 96.6% |
| SW Bernalillo | 95.8% | 95.5% | | | | | | | | | | | 95.7% |
| Torrance | 96.4% | 98.0% | | | | | | | | | | | 97.2% |
| Gen. Region 3 Total | 95.8% | 96.5% | | | | | | | | | | | 96.2% |
| Chaves | 97.7% | 97.1% | | | | | | | | | | | 97.4% |
| Curry | 97.8% | 98.1% | | | | | | | | | | | 98.0% |
| Eddy Artesia | 94.9% | 95.8% | | | | | | | | | | | 95.4% |
| Eddy Carlsbad | 96.4% | 96.7% | | | | | | | | | | | 96.6% |
| Lea | 97.7% | 95.9% | | | | | | | | | | | 96.8% |
| Lincoln | 91.2% | 95.5% | | | | | | | | | | | 93.4% |
| Roosevelt | | | | | | | | | | | | | |
| SE Region 4 Total | 96.0% | 96.5% | | | | | | | | | | | 96.2% |
| East Dona Ana | 96.9% | 97.0% | | | | | | | | | | | 97.0% |
| Grant | 93.9% | 97.1% | | | | | | | | | | | 95.5% |
| Luna | 95.9% | 98.5% | | | | | | | | | | | 97.2% |
| Otero | 99.0% | 97.4% | | | | | | | | | | | 98.2% |
| South Dona Ana | 99.3% | 98.5% | | | | | | | | | | | 98.9% |
| West Dona Ana | 98.0% | 97.8% | | | | | | | | | | | 97.9% |
| SW Region 5 Total | 97.2% | 97.7% | | | | | | | | | | | 97.4% |
| STATE TOTAL | 96.0% | 96.5% | | | | | | | | | | | 96.2% |

Annual and Auto Renewals are included

Medicaid: Percentage of Approved and Terminated Renewal EDGs Combined Processed by Certification Date ¹¹

| | Oct-19 | Nov-19 | Dec-19 | Jan-20 | Feb-20 | Mar-20 | Apr-20 | May-20 | Jun-20 | Jul-20 | Aug-20 | Sep-20 | Average |
|----------------------------|--------------|--------------|--------|--------|--------|--------|--------|--------|--------|--------|--------|--------|--------------|
| Cibola | 98.9% | 98.7% | | | | | | | | | | | 98.8% |
| McKinley | 98.8% | 98.4% | | | | | | | | | | | 98.6% |
| San Juan | 98.4% | 98.1% | | | | | | | | | | | 98.3% |
| Sierra | 98.8% | 96.9% | | | | | | | | | | | 97.9% |
| Socorro | 99.0% | 97.8% | | | | | | | | | | | 98.4% |
| Valencia North | 98.5% | 98.1% | | | | | | | | | | | 98.3% |
| Valencia South | 100.0% | | | | | | | | | | | | 100.0% |
| NW Region 1 Total | 98.9% | 98.0% | | | | | | | | | | | 98.5% |
| Colfax | 99.8% | 97.4% | | | | | | | | | | | 98.6% |
| Guadalupe | 99.2% | 97.8% | | | | | | | | | | | 98.5% |
| Quay | 98.2% | 98.9% | | | | | | | | | | | 98.6% |
| Rio Arriba | 98.1% | 97.1% | | | | | | | | | | | 97.6% |
| San Miguel | 98.6% | 98.1% | | | | | | | | | | | 98.4% |
| Sandoval | 98.5% | 98.3% | | | | | | | | | | | 98.4% |
| Santa Fe | 98.3% | 96.8% | | | | | | | | | | | 97.6% |
| Taos | 98.3% | 98.5% | | | | | | | | | | | 98.4% |
| NE Region 2 Total | 98.6% | 97.9% | | | | | | | | | | | 98.2% |
| NE Bernalillo | 98.5% | 98.1% | | | | | | | | | | | 98.3% |
| NW Bernalillo | 98.0% | 97.4% | | | | | | | | | | | 97.7% |
| SE Bernalillo | 98.7% | 98.1% | | | | | | | | | | | 98.4% |
| SW Bernalillo | 98.0% | 96.9% | | | | | | | | | | | 97.5% |
| Torrance | 98.1% | 98.3% | | | | | | | | | | | 98.2% |
| Gen. Region 3 Total | 98.3% | 97.8% | | | | | | | | | | | 98.0% |
| Chaves | 98.3% | 99.1% | | | | | | | | | | | 98.7% |
| Curry | 99.0% | 99.1% | | | | | | | | | | | 99.1% |
| Eddy Artesia | 97.1% | 97.1% | | | | | | | | | | | 97.1% |
| Eddy Carlsbad | 98.6% | 98.2% | | | | | | | | | | | 98.4% |
| Lea | 98.9% | 98.2% | | | | | | | | | | | 98.6% |
| Lincoln | 97.2% | 97.7% | | | | | | | | | | | 97.5% |
| Roosevelt | | | | | | | | | | | | | |
| SE Region 4 Total | 98.2% | 98.2% | | | | | | | | | | | 98.2% |
| East Dona Ana | 98.7% | 98.7% | | | | | | | | | | | 98.7% |
| Grant | 98.5% | 98.7% | | | | | | | | | | | 98.6% |
| Luna | 98.5% | 99.3% | | | | | | | | | | | 98.9% |
| Otero | 98.8% | 98.6% | | | | | | | | | | | 98.7% |
| South Dona Ana | 98.0% | 99.1% | | | | | | | | | | | 98.6% |
| West Dona Ana | 99.5% | 98.5% | | | | | | | | | | | 99.0% |
| SW Region 5 Total | 98.7% | 98.8% | | | | | | | | | | | 98.7% |
| STATE TOTAL | 98.6% | 98.1% | | | | | | | | | | | 98.3% |

Administrative, Annual, and Auto Renewals are included

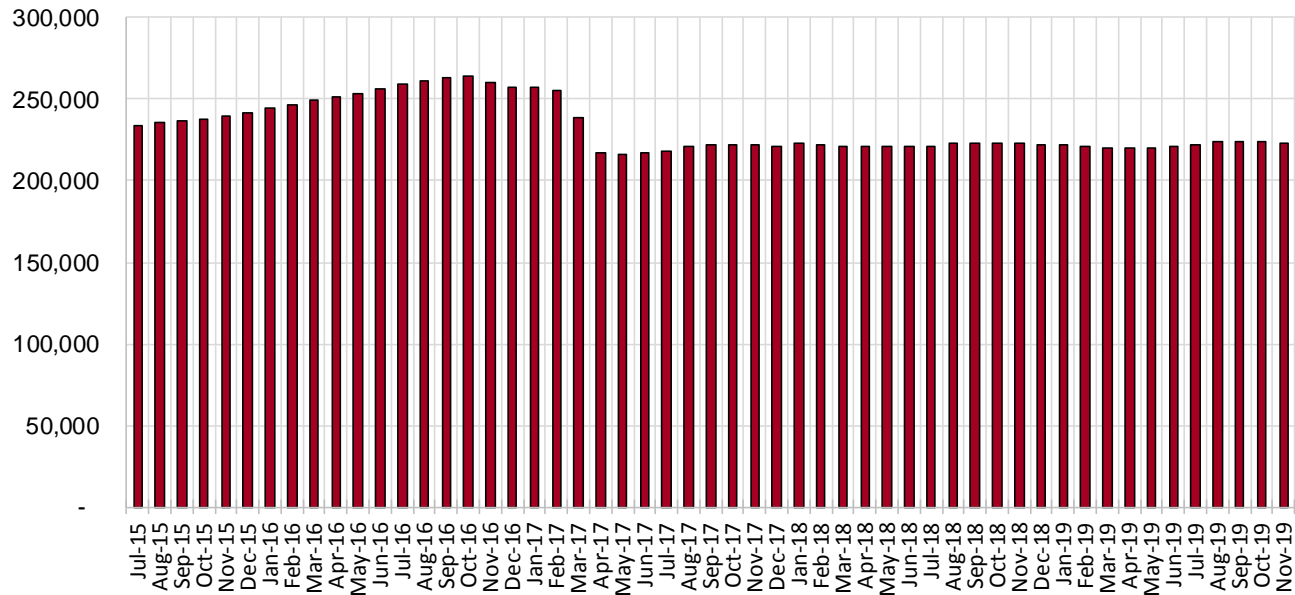
SNAP Cases by Field Office⁶

| Office | | | | Percent Change | |
|---------------------------------|---------|---------|---------|-------------------|-------------------|
| | Nov-18 | Oct-19 | Nov-19 | Nov-18- Nov-19 | Oct-19- Nov-19 |
| Chaves County ISD | 7,039 | 7,056 | 7,084 | 0.6% | 0.4% |
| Cibola County ISD | 3,740 | 3,599 | 3,592 | -4.0% | -0.2% |
| Colfax County ISD | 1,639 | 1,633 | 1,628 | -0.7% | -0.3% |
| Curry County ISD | 7,037 | 7,376 | 7,338 | 4.3% | -0.5% |
| East Dona Ana County ISD | 7,966 | 8,046 | 7,980 | 0.2% | -0.8% |
| Eddy Artesia County ISD | 1,612 | 1,597 | 1,596 | -1.0% | -0.1% |
| Eddy Carlsbad County ISD | 2,882 | 2,985 | 2,980 | 3.4% | -0.2% |
| Grant County ISD | 3,967 | 3,983 | 3,958 | -0.2% | -0.6% |
| Guadalupe County ISD | 716 | 690 | 685 | -4.3% | -0.7% |
| Hidalgo County ISD | 4 | 14 | 9 | 125.0% | -35.7% |
| Lea County ISD | 5,676 | 5,780 | 5,790 | 2.0% | 0.2% |
| Lincoln County ISD | 1,825 | 1,853 | 1,838 | 0.7% | -0.8% |
| Luna County ISD | 4,155 | 4,302 | 4,336 | 4.4% | 0.8% |
| McKinley County ISD | 9,938 | 10,369 | 10,300 | 3.6% | -0.7% |
| Northeast Bernalillo County ISD | 20,640 | 20,557 | 20,496 | -0.7% | -0.3% |
| Northwest Bernalillo County ISD | 20,011 | 20,329 | 20,481 | 2.3% | 0.7% |
| Otero County ISD | 5,667 | 5,767 | 5,766 | 1.7% | 0.0% |
| Quay County ISD | 1,289 | 1,304 | 1,323 | 2.6% | 1.5% |
| Rio Arriba County ISD | 6,760 | 6,417 | 6,433 | -4.8% | 0.2% |
| Roosevelt County ISD | 0 | 0 | 1 | N/A | N/A |
| San Juan County ISD | 13,663 | 13,996 | 13,999 | 2.5% | 0.0% |
| San Miguel County ISD | 5,050 | 5,044 | 5,005 | -0.9% | -0.8% |
| Sandoval County ISD | 10,655 | 9,993 | 9,823 | -7.8% | -1.7% |
| Santa Fe County ISD | 9,497 | 9,217 | 9,079 | -4.4% | -1.5% |
| Sierra County ISD | 2,675 | 2,553 | 2,558 | -4.4% | 0.2% |
| Socorro County ISD | 2,767 | 2,775 | 2,784 | 0.6% | 0.3% |
| South Dona Ana ISD | 8,571 | 8,482 | 8,470 | -1.2% | -0.1% |
| Southeast Bernalillo County ISD | 11,878 | 11,915 | 11,842 | -0.3% | -0.6% |
| Southwest Bernalillo County ISD | 18,763 | 19,216 | 19,096 | 1.8% | -0.6% |
| Taos County ISD | 4,163 | 4,219 | 4,190 | 0.6% | -0.7% |
| Torrance County ISD | 3,532 | 3,588 | 3,581 | 1.4% | -0.2% |
| Valencia North County ISD | 8,512 | 8,422 | 8,317 | -2.3% | -1.2% |
| Valencia South County ISD | 0 | 2 | 0 | N/A | -100.0% |
| West Dona Ana County ISD | 10,812 | 10,794 | 10,749 | -0.6% | -0.4% |
| Centralized Units | 30 | 8 | 9 | -70.0% | 12.5% |
| Statewide Total | 223,131 | 223,881 | 223,116 | -0.01% | -0.3% |

SNAP Cases by Region⁶

| Region | Nov-18 | Oct-19 | Nov-19 | Percent Change | |
|------------------------|----------------|----------------|----------------|-------------------|-------------------|
| | | | | Nov-18- Nov-19 | Oct-19- Nov-19 |
| Region 1 - NW | 41,295 | 41,716 | 41,550 | 0.6% | -0.4% |
| Region 2 - NE | 39,769 | 38,517 | 38,166 | -4.0% | -0.9% |
| Region 3 - Central | 74,824 | 75,605 | 75,496 | 0.9% | -0.1% |
| Region 4 - SE | 26,071 | 26,647 | 26,627 | 2.1% | -0.1% |
| Region 5 - SW | 41,142 | 41,388 | 41,268 | 0.3% | -0.3% |
| Centralized Units | 30 | 8 | 9 | -70.0% | 12.5% |
| Statewide Total | 223,131 | 223,881 | 223,116 | -0.01% | -0.3% |

SNAP Caseload: SFY-16 to Current

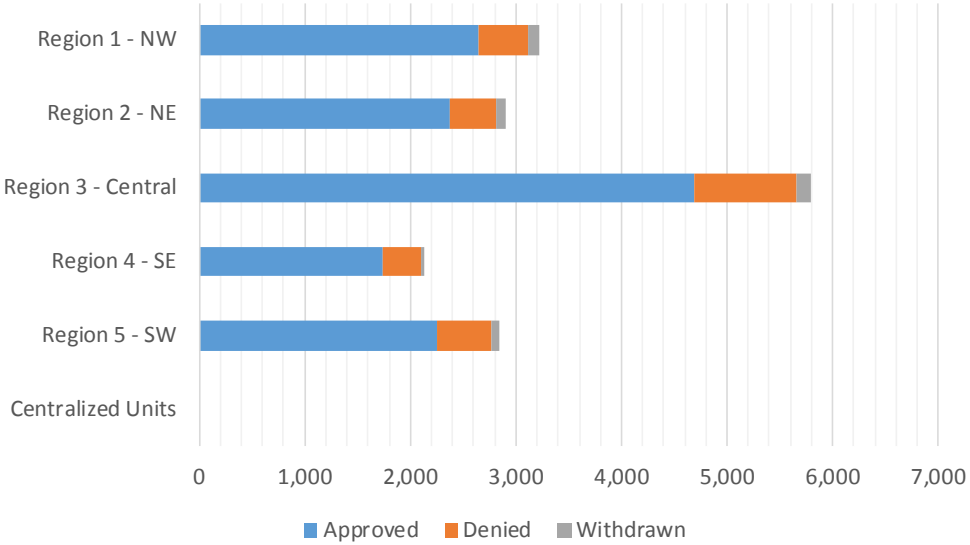


SNAP Initial Applications by Field Office^{4,11}
November 2019

| Office | Approved | Denied | Withdrawn | Total Cases Processed |
|---------------------------------|---------------|--------------|------------|-----------------------|
| Chaves County ISD | 459 | 70 | 9 | 538 |
| Cibola County ISD | 221 | 40 | 8 | 269 |
| Colfax County ISD | 107 | 14 | 3 | 124 |
| Curry County ISD | 455 | 91 | 15 | 561 |
| East Dona Ana County ISD | 464 | 137 | 20 | 621 |
| Eddy Artesia County ISD | 89 | 27 | 0 | 116 |
| Eddy Carlsbad County ISD | 217 | 58 | 2 | 277 |
| Grant County ISD | 193 | 49 | 3 | 245 |
| Guadalupe County ISD | 32 | 11 | 0 | 43 |
| Hidalgo County ISD | 0 | 0 | 0 | 0 |
| Lea County ISD | 407 | 98 | 6 | 511 |
| Lincoln County ISD | 103 | 20 | 3 | 126 |
| Luna County ISD | 271 | 43 | 7 | 321 |
| McKinley County ISD | 595 | 90 | 17 | 702 |
| Northeast Bernalillo County ISD | 1,344 | 314 | 43 | 1,701 |
| Northwest Bernalillo County ISD | 1,195 | 269 | 36 | 1,500 |
| Otero County ISD | 371 | 76 | 5 | 452 |
| Quay County ISD | 72 | 12 | 2 | 86 |
| Rio Arriba County ISD | 387 | 60 | 11 | 458 |
| Roosevelt County ISD | 7 | 1 | 0 | 8 |
| San Juan County ISD | 1,084 | 179 | 45 | 1,308 |
| San Miguel County ISD | 279 | 62 | 3 | 344 |
| Sandoval County ISD | 687 | 132 | 45 | 864 |
| Santa Fe County ISD | 532 | 97 | 14 | 643 |
| Sierra County ISD | 144 | 20 | 4 | 168 |
| Socorro County ISD | 153 | 16 | 4 | 173 |
| South Dona Ana ISD | 337 | 77 | 4 | 418 |
| Southeast Bernalillo County ISD | 838 | 176 | 25 | 1,039 |
| Southwest Bernalillo County ISD | 1,076 | 171 | 31 | 1,278 |
| Taos County ISD | 276 | 57 | 4 | 337 |
| Torrance County ISD | 237 | 33 | 4 | 274 |
| Valencia North County ISD | 444 | 121 | 10 | 575 |
| Valencia South County ISD | 1 | 0 | 18 | 19 |
| West Dona Ana County ISD | 620 | 136 | 24 | 780 |
| Centralized Units | 0 | 0 | 0 | 0 |
| Statewide Total | 13,697 | 2,757 | 425 | 16,879 |

SNAP Initial Applications by Region^{4,11}
November 2019

| Region | Approved | Denied | Withdrawn | Total Cases Processed |
|------------------------|---------------|--------------|------------|-----------------------|
| Region 1 - NW | 2,642 | 466 | 106 | 3,214 |
| Region 2 - NE | 2,372 | 445 | 82 | 2,899 |
| Region 3 - Central | 4,690 | 963 | 139 | 5,792 |
| Region 4 - SE | 1,737 | 365 | 35 | 2,137 |
| Region 5 - SW | 2,256 | 518 | 63 | 2,837 |
| Centralized Units | 0 | 0 | 0 | 0 |
| Statewide Total | 13,697 | 2,757 | 425 | 16,879 |

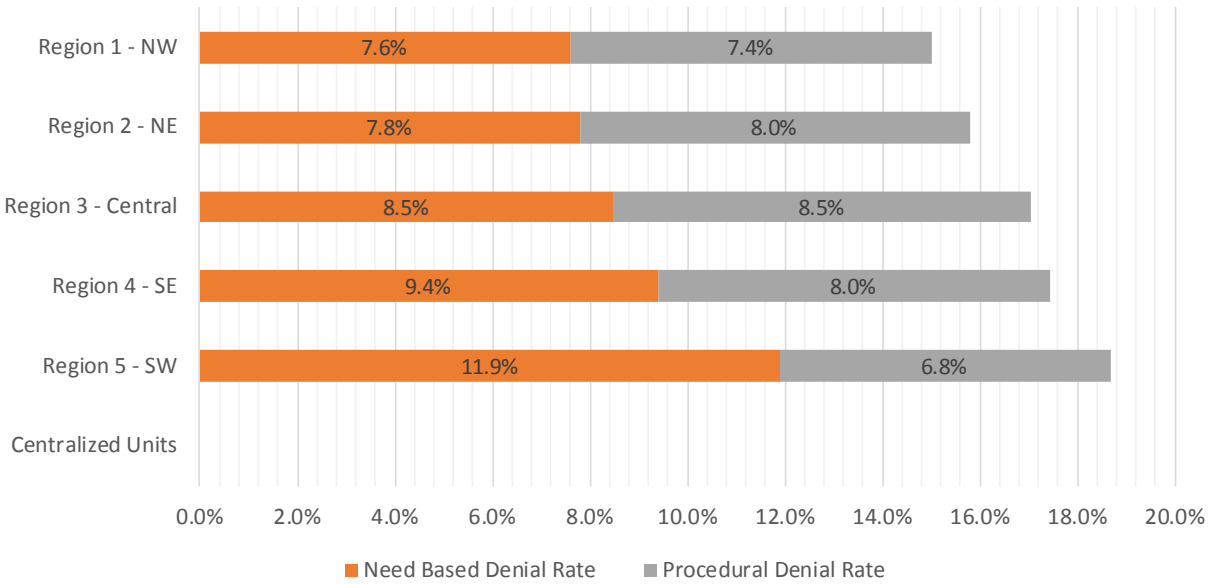


SNAP Initial Disposition Rates by Field Office^{4,11}
November 2019

| Office | Approval Rate | Denial Rate | Need Based Denial Rate | Procedural Denial Rate |
|---------------------------------|---------------|--------------|------------------------|------------------------|
| Chaves County ISD | 86.8% | 13.2% | 7.5% | 5.7% |
| Cibola County ISD | 84.7% | 15.3% | 6.1% | 9.2% |
| Colfax County ISD | 88.4% | 11.6% | 6.6% | 5.0% |
| Curry County ISD | 83.3% | 16.7% | 9.0% | 7.7% |
| East Dona Ana County ISD | 77.2% | 22.8% | 13.5% | 9.3% |
| Eddy Artesia County ISD | 76.7% | 23.3% | 16.4% | 6.9% |
| Eddy Carlsbad County ISD | 78.9% | 21.1% | 8.7% | 12.4% |
| Grant County ISD | 79.8% | 20.2% | 12.3% | 7.9% |
| Guadalupe County ISD | 74.4% | 25.6% | 11.6% | 14.0% |
| Hidalgo County ISD | 0.0% | 0.0% | 0.0% | 0.0% |
| Lea County ISD | 80.6% | 19.4% | 10.5% | 8.9% |
| Lincoln County ISD | 83.7% | 16.3% | 8.2% | 8.1% |
| Luna County ISD | 86.3% | 13.7% | 10.5% | 3.2% |
| McKinley County ISD | 86.9% | 13.1% | 7.3% | 5.8% |
| Northeast Bernalillo County ISD | 81.1% | 18.9% | 9.1% | 9.8% |
| Northwest Bernalillo County ISD | 81.6% | 18.4% | 9.7% | 8.7% |
| Otero County ISD | 83.0% | 17.0% | 9.8% | 7.2% |
| Quay County ISD | 85.7% | 14.3% | 10.7% | 3.6% |
| Rio Arriba County ISD | 86.6% | 13.4% | 5.6% | 7.8% |
| Roosevelt County ISD | 87.5% | 12.5% | 12.5% | 0.0% |
| San Juan County ISD | 85.8% | 14.2% | 6.4% | 7.8% |
| San Miguel County ISD | 81.8% | 18.2% | 10.3% | 7.9% |
| Sandoval County ISD | 83.9% | 16.1% | 7.2% | 8.9% |
| Santa Fe County ISD | 84.6% | 15.4% | 8.1% | 7.3% |
| Sierra County ISD | 87.8% | 12.2% | 6.7% | 5.5% |
| Socorro County ISD | 90.5% | 9.5% | 3.0% | 6.5% |
| South Dona Ana ISD | 81.4% | 18.6% | 13.5% | 5.1% |
| Southeast Bernalillo County ISD | 82.6% | 17.4% | 8.5% | 8.9% |
| Southwest Bernalillo County ISD | 86.3% | 13.7% | 7.0% | 6.7% |
| Taos County ISD | 82.9% | 17.1% | 8.4% | 8.7% |
| Torrance County ISD | 87.8% | 12.2% | 5.2% | 7.0% |
| Valencia North County ISD | 78.6% | 21.4% | 12.9% | 8.5% |
| Valencia South County ISD | 100.0% | 0.0% | 0.0% | 0.0% |
| West Dona Ana County ISD | 82.0% | 18.0% | 11.4% | 6.6% |
| Centralized Units | 0.0% | 0.0% | 0.0% | 0.0% |
| Statewide Total | 83.2% | 16.8% | 8.9% | 7.9% |

SNAP Initial Disposition Rates by Region^{4,11}
November 2019

| Region | Approval Rate | Denial Rate | Need Based Denial Rate | Procedural Denial Rate |
|--------------------|---------------|-------------|------------------------|------------------------|
| Region 1 - NW | 85.0% | 15.0% | 7.6% | 7.4% |
| Region 2 - NE | 84.2% | 15.8% | 7.8% | 8.0% |
| Region 3 - Central | 83.0% | 17.0% | 8.5% | 8.5% |
| Region 4 - SE | 82.6% | 17.4% | 9.4% | 8.0% |
| Region 5 - SW | 81.3% | 18.7% | 11.9% | 6.8% |
| Centralized Units | 0.0% | 0.0% | 0.0% | 0.0% |
| Statewide Total | 83.2% | 16.8% | 8.9% | 7.9% |



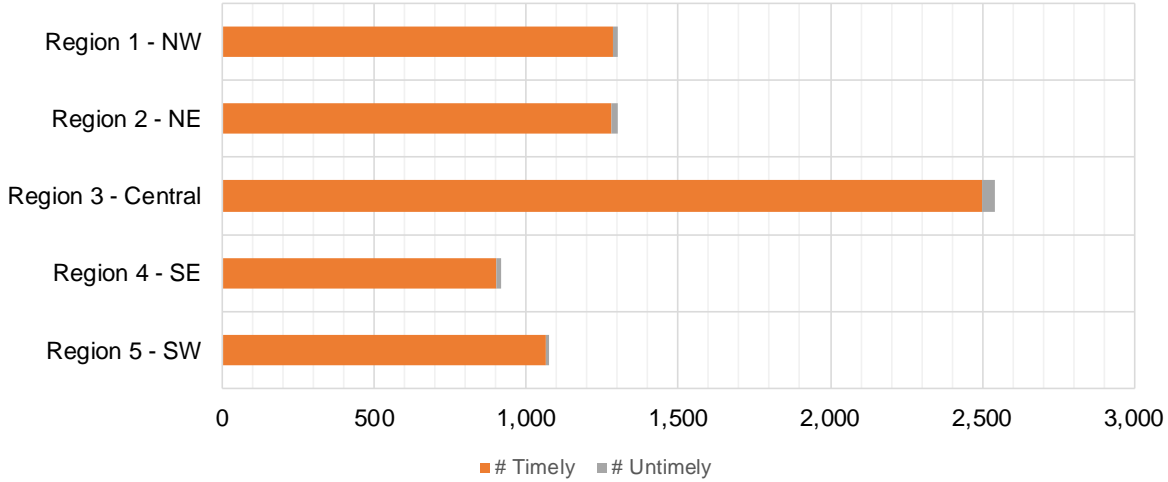
SNAP Expedite Timeliness by Field Office¹³
November 2019

| Office Name | Total Expedited Approvals | # Timely | # Untimely | Percentage Timely |
|---------------------------------|---------------------------|--------------|------------|-------------------|
| Chaves County ISD | 221 | 216 | 5 | 97.7 % |
| Cibola County ISD | 114 | 114 | 0 | 100.0 % |
| Colfax County ISD | 44 | 44 | 0 | 100.0 % |
| Curry County ISD | 248 | 242 | 6 | 97.6 % |
| East Dona Ana County ISD | 202 | 201 | 1 | 99.5 % |
| Eddy Artesia County ISD | 48 | 48 | 0 | 100.0 % |
| Eddy Carlsbad County ISD | 132 | 129 | 3 | 97.7 % |
| Grant County ISD | 94 | 94 | 0 | 100.0 % |
| Guadalupe County ISD | 9 | 9 | 0 | 100.0 % |
| Lea County ISD | 214 | 211 | 3 | 98.6 % |
| Lincoln County ISD | 51 | 49 | 2 | 96.1 % |
| Luna County ISD | 122 | 122 | 0 | 100.0 % |
| McKinley County ISD | 299 | 296 | 3 | 99.0 % |
| Northeast Bernalillo County ISD | 712 | 701 | 11 | 98.5 % |
| Northwest Bernalillo County ISD | 701 | 691 | 10 | 98.6 % |
| Otero County ISD | 201 | 199 | 2 | 99.0 % |
| Quay County ISD | 34 | 34 | 0 | 100.0 % |
| Rio Arriba County ISD | 243 | 236 | 7 | 97.1 % |
| Roosevelt County ISD | 5 | 5 | 0 | 100.0 % |
| San Juan County ISD | 564 | 559 | 5 | 99.1 % |
| San Miguel County ISD | 170 | 170 | 0 | 100.0 % |
| Sandoval County ISD | 334 | 330 | 4 | 98.8 % |
| Santa Fe County ISD | 319 | 313 | 6 | 98.1 % |
| Sierra County ISD | 49 | 48 | 1 | 98.0 % |
| Socorro County ISD | 60 | 57 | 3 | 95.0 % |
| South Dona Ana ISD | 144 | 142 | 2 | 98.6 % |
| Southeast Bernalillo County ISD | 429 | 421 | 8 | 98.1 % |
| Southwest Bernalillo County ISD | 573 | 560 | 13 | 97.7 % |
| Taos County ISD | 146 | 143 | 3 | 97.9 % |
| Torrance County ISD | 128 | 128 | 0 | 100.0 % |
| Valencia North County ISD | 212 | 209 | 3 | 98.6 % |
| West Dona Ana County ISD | 309 | 307 | 2 | 99.4 % |
| Statewide Total | 7,131 | 7,028 | 103 | 98.6 % |

SNAP Expedite Timeliness by Region¹³
November 2019

| Region | Total Expedited Approvals | # Timely | # Untimely | Percentage Timely |
|--------------------|---------------------------|----------|------------|-------------------|
| Region 1 - NW | 1,298 | 1,283 | 15 | 98.8% |
| Region 2 - NE | 1,299 | 1,279 | 20 | 98.5% |
| Region 3 - Central | 2,543 | 2,501 | 42 | 98.3% |
| Region 4 - SE | 919 | 900 | 19 | 97.9% |
| Region 5 - SW | 1,072 | 1,065 | 7 | 99.3% |
| Statewide Total | 7,131 | 7,028 | 103 | 98.6% |

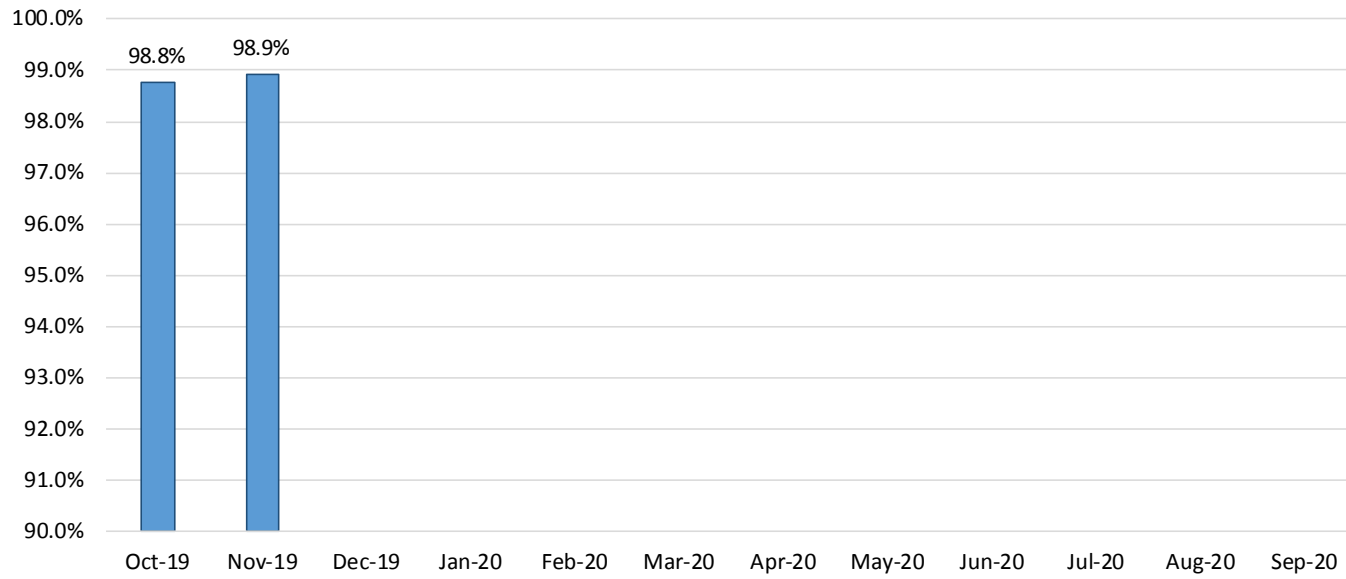
SNAP Expedite - Timeliness



SNAP: Percentage of Applications Processed Timely ¹³

| | Oct-19 | Nov-19 | Dec-19 | Jan-20 | Feb-20 | Mar-20 | Apr-20 | May-20 | Jun-20 | Jul-20 | Aug-20 | Sep-20 | Average |
|-----|--------|--------|--------|--------|--------|--------|--------|--------|--------|--------|--------|--------|---------|
| APT | 98.8% | 98.9% | | | | | | | | | | | 98.9% |

SNAP Application Processing Timeliness (APT)



SNAP Non-Expedite: Percentage of Initial Applications Processed Timely by Field Office¹³

| | Oct-19 | Nov-19 | Dec-19 | Jan-20 | Feb-20 | Mar-20 | Apr-20 | May-20 | Jun-20 | Jul-20 | Aug-20 | Sep-20 | Average |
|----------------------------|--------------|--------------|--------|--------|--------|--------|--------|--------|--------|--------|--------|--------|--------------|
| Cibola | 99.2% | 96.9% | | | | | | | | | | | 98.1% |
| McKinley | 99.0% | 98.5% | | | | | | | | | | | 98.8% |
| San Juan | 98.1% | 98.4% | | | | | | | | | | | 98.3% |
| Sierra | 98.0% | 100.0% | | | | | | | | | | | 99.0% |
| Socorro | 97.9% | 100.0% | | | | | | | | | | | 99.0% |
| Valencia North | 99.0% | 99.4% | | | | | | | | | | | 99.2% |
| Valencia South | | | | | | | | | | | | | |
| NW Region 1 Total | 98.5% | 98.7% | | | | | | | | | | | 98.6% |
| Colfax | 98.8% | 98.8% | | | | | | | | | | | 98.8% |
| Guadalupe | 100.0% | 100.0% | | | | | | | | | | | 100.0% |
| Quay | 100.0% | 100.0% | | | | | | | | | | | 100.0% |
| Rio Arriba | 98.2% | 99.5% | | | | | | | | | | | 98.9% |
| San Miguel | 98.1% | 98.9% | | | | | | | | | | | 98.5% |
| Sandoval | 99.5% | 98.7% | | | | | | | | | | | 99.1% |
| Santa Fe | 97.7% | 98.4% | | | | | | | | | | | 98.1% |
| Taos | 100.0% | 98.9% | | | | | | | | | | | 99.5% |
| NE Region 2 Total | 98.8% | 98.9% | | | | | | | | | | | 98.9% |
| NE Bernalillo | 98.5% | 98.9% | | | | | | | | | | | 98.7% |
| NW Bernalillo | 98.5% | 98.1% | | | | | | | | | | | 98.3% |
| SE Bernalillo | 98.8% | 98.2% | | | | | | | | | | | 98.5% |
| SW Bernalillo | 99.0% | 99.2% | | | | | | | | | | | 99.1% |
| Torrance | 99.4% | 100.0% | | | | | | | | | | | 99.7% |
| Cen. Region 3 Total | 98.7% | 98.7% | | | | | | | | | | | 98.7% |
| Chaves | 99.7% | 99.7% | | | | | | | | | | | 99.7% |
| Curry | 98.7% | 99.0% | | | | | | | | | | | 98.9% |
| Eddy Artesia | 100.0% | 98.5% | | | | | | | | | | | 99.3% |
| Eddy Carlsbad | 99.4% | 99.3% | | | | | | | | | | | 99.4% |
| Lea | 99.6% | 99.3% | | | | | | | | | | | 99.5% |
| Lincoln | 99.1% | 100.0% | | | | | | | | | | | 99.6% |
| Roosevelt | 100.0% | 100.0% | | | | | | | | | | | 100.0% |
| SE Region 4 Total | 99.4% | 99.3% | | | | | | | | | | | 99.4% |
| East Dona Ana | 99.5% | 99.5% | | | | | | | | | | | 99.5% |
| Grant | 99.3% | 98.7% | | | | | | | | | | | 99.0% |
| Luna | 99.4% | 100.0% | | | | | | | | | | | 99.7% |
| Otero | 98.9% | 99.6% | | | | | | | | | | | 99.3% |
| South Dona Ana | 100.0% | 99.6% | | | | | | | | | | | 99.8% |
| West Dona Ana | 98.7% | 99.6% | | | | | | | | | | | 99.2% |
| SW Region 5 Total | 99.3% | 99.5% | | | | | | | | | | | 99.4% |
| STATE TOTAL | 98.9% | 99.0% | | | | | | | | | | | 99.0% |

SNAP Expedite: Percentage of Initial Applications Processed Timely by Field Office¹³

| | Oct-19 | Nov-19 | Dec-19 | Jan-20 | Feb-20 | Mar-20 | Apr-20 | May-20 | Jun-20 | Jul-20 | Aug-20 | Sep-20 | Average |
|----------------------------|--------------|--------------|--------|--------|--------|--------|--------|--------|--------|--------|--------|--------|--------------|
| Cibola | 96.7% | 100.0% | | | | | | | | | | | 98.4% |
| McKinley | 98.2% | 99.0% | | | | | | | | | | | 98.6% |
| San Juan | 98.9% | 99.1% | | | | | | | | | | | 99.0% |
| Sierra | 95.5% | 98.1% | | | | | | | | | | | 96.8% |
| Socorro | 100.0% | 95.0% | | | | | | | | | | | 97.5% |
| Valencia North | 98.4% | 99.1% | | | | | | | | | | | 98.8% |
| Valencia South | | | | | | | | | | | | | |
| NW Region 1 Total | 98.4% | 98.9% | | | | | | | | | | | 98.7% |
| Colfax | 100.0% | 100.0% | | | | | | | | | | | 100.0% |
| Guadalupe | 93.8% | 100.0% | | | | | | | | | | | 96.9% |
| Quay | 96.9% | 100.0% | | | | | | | | | | | 98.5% |
| Rio Arriba | 99.2% | 97.1% | | | | | | | | | | | 98.2% |
| San Miguel | 98.9% | 100.0% | | | | | | | | | | | 99.5% |
| Sandoval | 97.9% | 98.9% | | | | | | | | | | | 98.4% |
| Santa Fe | 98.8% | 98.1% | | | | | | | | | | | 98.5% |
| Taos | 97.7% | 97.9% | | | | | | | | | | | 97.8% |
| NE Region 2 Total | 98.5% | 98.5% | | | | | | | | | | | 98.5% |
| NE Bernalillo | 98.7% | 98.5% | | | | | | | | | | | 98.6% |
| NW Bernalillo | 99.6% | 98.6% | | | | | | | | | | | 99.1% |
| SE Bernalillo | 98.5% | 98.6% | | | | | | | | | | | 98.6% |
| SW Bernalillo | 99.0% | 98.1% | | | | | | | | | | | 98.6% |
| Torrance | 99.2% | 100.0% | | | | | | | | | | | 99.6% |
| Gen. Region 3 Total | 99.0% | 98.5% | | | | | | | | | | | 98.8% |
| Chaves | 98.2% | 97.7% | | | | | | | | | | | 98.0% |
| Curry | 97.7% | 97.6% | | | | | | | | | | | 97.7% |
| Eddy Artesia | 96.4% | 100.0% | | | | | | | | | | | 98.2% |
| Eddy Carlsbad | 99.3% | 97.7% | | | | | | | | | | | 98.5% |
| Lea | 98.3% | 98.6% | | | | | | | | | | | 98.5% |
| Lincoln | 95.8% | 96.0% | | | | | | | | | | | 95.9% |
| Roosevelt | 100.0% | 100.0% | | | | | | | | | | | 100.0% |
| SE Region 4 Total | 98.0% | 97.9% | | | | | | | | | | | 98.0% |
| East Dona Ana | 98.5% | 99.5% | | | | | | | | | | | 99.0% |
| Grant | 99.2% | 100.0% | | | | | | | | | | | 99.6% |
| Luna | 99.2% | 100.0% | | | | | | | | | | | 99.6% |
| Otero | 99.4% | 99.5% | | | | | | | | | | | 99.5% |
| South Dona Ana | 97.9% | 98.6% | | | | | | | | | | | 98.3% |
| West Dona Ana | 99.1% | 99.4% | | | | | | | | | | | 99.3% |
| SW Region 5 Total | 98.9% | 99.4% | | | | | | | | | | | 99.2% |
| STATE TOTAL | 98.7% | 98.6% | | | | | | | | | | | 98.7% |

SNAP: Percentage of Denied Initial Applications Processed Within 30 Days by Field Office¹³

| | Oct-19 | Nov-19 | Dec-19 | Jan-20 | Feb-20 | Mar-20 | Apr-20 | May-20 | Jun-20 | Jul-20 | Aug-20 | Sep-20 | Average |
|----------------------------|--------------|--------------|--------|--------|--------|--------|--------|--------|--------|--------|--------|--------|--------------|
| Cibola | 97.3% | 100.0% | | | | | | | | | | | 98.7% |
| McKinley | 100.0% | 94.4% | | | | | | | | | | | 97.2% |
| San Juan | 97.6% | 98.2% | | | | | | | | | | | 97.9% |
| Sierra | 96.0% | 100.0% | | | | | | | | | | | 98.0% |
| Socorro | 100.0% | 100.0% | | | | | | | | | | | 100.0% |
| Valencia North | 99.0% | 97.7% | | | | | | | | | | | 98.4% |
| Valencia South | | | | | | | | | | | | | |
| NW Region 1 Total | 98.3% | 98.4% | | | | | | | | | | | 98.4% |
| Colfax | 96.8% | 94.1% | | | | | | | | | | | 95.5% |
| Guadalupe | 100.0% | 100.0% | | | | | | | | | | | 100.0% |
| Quay | 100.0% | 100.0% | | | | | | | | | | | 100.0% |
| Rio Arriba | 95.8% | 98.6% | | | | | | | | | | | 97.2% |
| San Miguel | 100.0% | 98.5% | | | | | | | | | | | 99.3% |
| Sandoval | 98.5% | 98.9% | | | | | | | | | | | 98.7% |
| Santa Fe | 96.4% | 98.2% | | | | | | | | | | | 97.3% |
| Taos | 100.0% | 98.4% | | | | | | | | | | | 99.2% |
| NE Region 2 Total | 98.4% | 98.3% | | | | | | | | | | | 98.4% |
| NE Bernalillo | 98.2% | 97.8% | | | | | | | | | | | 98.0% |
| NW Bernalillo | 96.4% | 96.7% | | | | | | | | | | | 96.6% |
| SE Bernalillo | 97.8% | 95.0% | | | | | | | | | | | 96.4% |
| SW Bernalillo | 97.7% | 98.0% | | | | | | | | | | | 97.9% |
| Torrance | 98.2% | 100.0% | | | | | | | | | | | 99.1% |
| Gen. Region 3 Total | 97.7% | 97.5% | | | | | | | | | | | 97.6% |
| Chaves | 100.0% | 100.0% | | | | | | | | | | | 100.0% |
| Curry | 97.2% | 97.2% | | | | | | | | | | | 97.2% |
| Eddy Artesia | 100.0% | 96.3% | | | | | | | | | | | 98.2% |
| Eddy Carlsbad | 98.2% | 100.0% | | | | | | | | | | | 99.1% |
| Lea | 100.0% | 99.0% | | | | | | | | | | | 99.5% |
| Lincoln | 97.6% | 100.0% | | | | | | | | | | | 98.8% |
| Roosevelt | | | | | | | | | | | | | |
| SE Region 4 Total | 98.8% | 98.8% | | | | | | | | | | | 98.8% |
| East Dona Ana | 99.4% | 98.7% | | | | | | | | | | | 99.1% |
| Grant | 97.4% | 98.1% | | | | | | | | | | | 97.8% |
| Luna | 97.7% | 100.0% | | | | | | | | | | | 98.9% |
| Otero | 98.9% | 98.8% | | | | | | | | | | | 98.9% |
| South Dona Ana | 100.0% | 100.0% | | | | | | | | | | | 100.0% |
| West Dona Ana | 97.5% | 99.4% | | | | | | | | | | | 98.5% |
| SW Region 5 Total | 98.5% | 99.2% | | | | | | | | | | | 98.8% |
| STATE TOTAL | 98.4% | 98.5% | | | | | | | | | | | 98.4% |

SNAP: Combined Approvals and Denials Percentage of Initial Applications Processed Timely by Field Office¹³

| | Oct-19 | Nov-19 | Dec-19 | Jan-20 | Feb-20 | Mar-20 | Apr-20 | May-20 | Jun-20 | Jul-20 | Aug-20 | Sep-20 | Average |
|----------------------------|--------------|--------------|--------|--------|--------|--------|--------|--------|--------|--------|--------|--------|--------------|
| Cibola | 98.0% | 98.5% | | | | | | | | | | | 98.3% |
| McKinley | 98.8% | 98.7% | | | | | | | | | | | 98.8% |
| San Juan | 98.5% | 98.8% | | | | | | | | | | | 98.7% |
| Sierra | 97.3% | 99.4% | | | | | | | | | | | 98.4% |
| Socorro | 98.9% | 98.3% | | | | | | | | | | | 98.6% |
| Valencia North | 98.7% | 99.1% | | | | | | | | | | | 98.9% |
| Valencia South | | | | | | | | | | | | | |
| NW Region 1 Total | 98.4% | 98.8% | | | | | | | | | | | 98.6% |
| Colfax | 99.3% | 99.2% | | | | | | | | | | | 99.3% |
| Guadalupe | 98.2% | 100.0% | | | | | | | | | | | 99.1% |
| Quay | 98.6% | 100.0% | | | | | | | | | | | 99.3% |
| Rio Arriba | 98.7% | 98.3% | | | | | | | | | | | 98.5% |
| San Miguel | 98.5% | 99.4% | | | | | | | | | | | 99.0% |
| Sandoval | 98.9% | 98.7% | | | | | | | | | | | 98.8% |
| Santa Fe | 98.2% | 98.3% | | | | | | | | | | | 98.3% |
| Taos | 99.0% | 98.5% | | | | | | | | | | | 98.8% |
| NE Region 2 Total | 98.7% | 99.1% | | | | | | | | | | | 98.9% |
| NE Bernalillo | 98.6% | 98.7% | | | | | | | | | | | 98.7% |
| NW Bernalillo | 99.0% | 98.3% | | | | | | | | | | | 98.7% |
| SE Bernalillo | 98.7% | 98.2% | | | | | | | | | | | 98.5% |
| SW Bernalillo | 98.9% | 98.5% | | | | | | | | | | | 98.7% |
| Torrance | 99.3% | 100.0% | | | | | | | | | | | 99.7% |
| Gen. Region 3 Total | 98.9% | 98.7% | | | | | | | | | | | 98.8% |
| Chaves | 99.1% | 98.9% | | | | | | | | | | | 99.0% |
| Curry | 98.3% | 98.4% | | | | | | | | | | | 98.4% |
| Eddy Artesia | 98.6% | 99.1% | | | | | | | | | | | 98.9% |
| Eddy Carlsbad | 99.3% | 98.6% | | | | | | | | | | | 99.0% |
| Lea | 99.0% | 99.0% | | | | | | | | | | | 99.0% |
| Lincoln | 97.5% | 98.4% | | | | | | | | | | | 98.0% |
| Roosevelt | | | | | | | | | | | | | |
| SE Region 4 Total | 98.6% | 98.7% | | | | | | | | | | | 98.7% |
| East Dona Ana | 99.2% | 99.5% | | | | | | | | | | | 99.4% |
| Grant | 99.3% | 99.2% | | | | | | | | | | | 99.3% |
| Luna | 99.3% | 100.0% | | | | | | | | | | | 99.7% |
| Otero | 99.3% | 99.6% | | | | | | | | | | | 99.5% |
| South Dona Ana | 99.3% | 99.3% | | | | | | | | | | | 99.3% |
| West Dona Ana | 98.9% | 99.5% | | | | | | | | | | | 99.2% |
| SW Region 5 Total | 99.2% | 99.5% | | | | | | | | | | | 99.4% |
| STATE TOTAL | 98.7% | 99.0% | | | | | | | | | | | 98.9% |

SNAP Renewals Processed by Field Office²⁰
November 2019

| Office | Approvals | Closures | Need Based Closures | Procedural Closures |
|---------------------------------|--------------|--------------|---------------------|---------------------|
| Chaves County ISD | 222 | 111 | 7 | 104 |
| Cibola County ISD | 138 | 75 | 2 | 73 |
| Colfax County ISD | 40 | 31 | 3 | 28 |
| Curry County ISD | 241 | 137 | 19 | 118 |
| East Dona Ana County ISD | 276 | 153 | 18 | 135 |
| Eddy Artesia County ISD | 52 | 31 | 5 | 26 |
| Eddy Carlsbad County ISD | 68 | 41 | 1 | 40 |
| Grant County ISD | 122 | 51 | 3 | 48 |
| Guadalupe County ISD | 26 | 10 | 2 | 8 |
| Hidalgo County ISD | 0 | 1 | 1 | 0 |
| Lea County ISD | 172 | 118 | 14 | 104 |
| Lincoln County ISD | 62 | 33 | 3 | 30 |
| Luna County ISD | 124 | 77 | 6 | 71 |
| McKinley County ISD | 437 | 212 | 8 | 204 |
| Northeast Bernalillo County ISD | 547 | 354 | 26 | 328 |
| Northwest Bernalillo County ISD | 451 | 264 | 20 | 244 |
| Otero County ISD | 207 | 98 | 11 | 87 |
| Quay County ISD | 55 | 26 | 3 | 23 |
| Rio Arriba County ISD | 162 | 148 | 5 | 143 |
| Roosevelt County ISD | 0 | 0 | 0 | 0 |
| San Juan County ISD | 428 | 296 | 17 | 279 |
| San Miguel County ISD | 165 | 83 | 4 | 79 |
| Sandoval County ISD | 282 | 196 | 16 | 180 |
| Santa Fe County ISD | 252 | 167 | 14 | 153 |
| Sierra County ISD | 81 | 51 | 1 | 50 |
| Socorro County ISD | 106 | 47 | 6 | 41 |
| South Dona Ana ISD | 345 | 136 | 27 | 109 |
| Southeast Bernalillo County ISD | 328 | 223 | 13 | 210 |
| Southwest Bernalillo County ISD | 717 | 381 | 27 | 354 |
| Taos County ISD | 133 | 78 | 4 | 74 |
| Torrance County ISD | 95 | 88 | 3 | 85 |
| Valencia North County ISD | 276 | 159 | 17 | 142 |
| Valencia South County ISD | 0 | 0 | 0 | 0 |
| West Dona Ana County ISD | 316 | 194 | 30 | 164 |
| Centralized Units | 0 | 0 | 0 | 0 |
| Statewide Total | 6,926 | 4,070 | 336 | 3,734 |

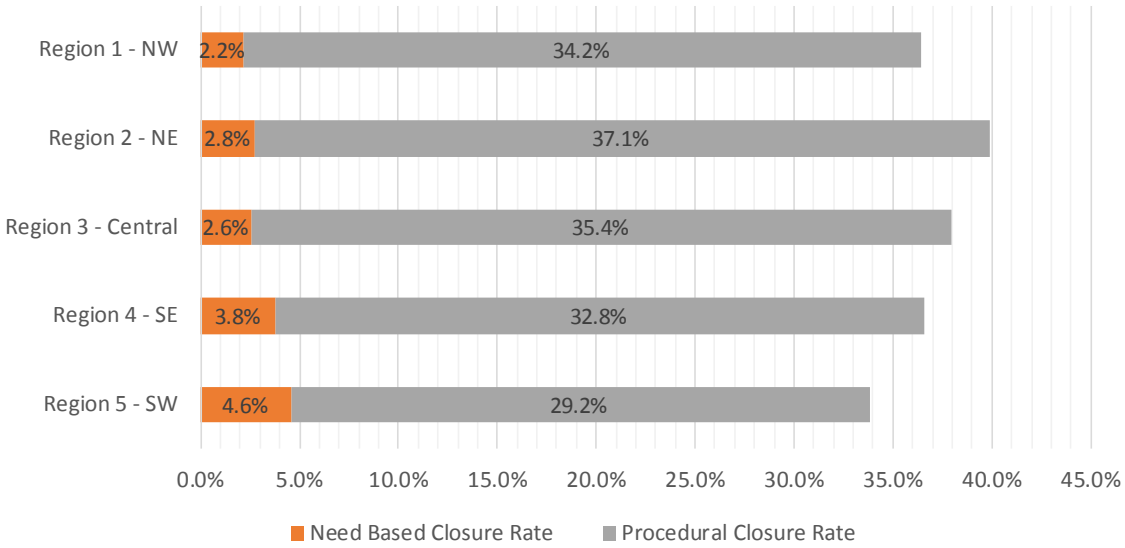
SNAP Renewal Disposition Rates by Field Office²⁰
November 2019

| Office | Approval Rate | Closure Rate | Need Based Closure Rate | Procedural Closure Rate |
|---------------------------------|---------------|--------------|-------------------------|-------------------------|
| Chaves County ISD | 66.7% | 33.3% | 2.1% | 31.2% |
| Cibola County ISD | 64.8% | 35.2% | 0.9% | 34.3% |
| Colfax County ISD | 56.3% | 43.7% | 4.2% | 39.4% |
| Curry County ISD | 63.8% | 36.2% | 5.0% | 31.2% |
| East Dona Ana County ISD | 64.3% | 35.7% | 4.2% | 31.5% |
| Eddy Artesia County ISD | 62.7% | 37.3% | 6.0% | 31.3% |
| Eddy Carlsbad County ISD | 62.4% | 37.6% | 0.9% | 36.7% |
| Grant County ISD | 70.5% | 29.5% | 1.7% | 27.7% |
| Guadalupe County ISD | 72.2% | 27.8% | 5.6% | 22.2% |
| Hidalgo County ISD | 0.0% | 100.0% | 100.0% | 0.0% |
| Lea County ISD | 59.3% | 40.7% | 4.8% | 35.9% |
| Lincoln County ISD | 65.3% | 34.7% | 3.2% | 31.6% |
| Luna County ISD | 61.7% | 38.3% | 3.0% | 35.3% |
| McKinley County ISD | 67.3% | 32.7% | 1.2% | 31.4% |
| Northeast Bernalillo County ISD | 60.7% | 39.3% | 2.9% | 36.4% |
| Northwest Bernalillo County ISD | 63.1% | 36.9% | 2.8% | 34.1% |
| Otero County ISD | 67.9% | 32.1% | 3.6% | 28.5% |
| Quay County ISD | 67.9% | 32.1% | 3.7% | 28.4% |
| Rio Arriba County ISD | 52.3% | 47.7% | 1.6% | 46.1% |
| Roosevelt County ISD | 0.0% | 0.0% | 0.0% | 0.0% |
| San Juan County ISD | 59.1% | 40.9% | 2.3% | 38.5% |
| San Miguel County ISD | 66.5% | 33.5% | 1.6% | 31.9% |
| Sandoval County ISD | 59.0% | 41.0% | 3.3% | 37.7% |
| Santa Fe County ISD | 60.1% | 39.9% | 3.3% | 36.5% |
| Sierra County ISD | 61.4% | 38.6% | 0.8% | 37.9% |
| Socorro County ISD | 69.3% | 30.7% | 3.9% | 26.8% |
| South Dona Ana ISD | 71.7% | 28.3% | 5.6% | 22.7% |
| Southeast Bernalillo County ISD | 59.5% | 40.5% | 2.4% | 38.1% |
| Southwest Bernalillo County ISD | 65.3% | 34.7% | 2.5% | 32.2% |
| Taos County ISD | 63.0% | 37.0% | 1.9% | 35.1% |
| Torrance County ISD | 51.9% | 48.1% | 1.6% | 46.4% |
| Valencia North County ISD | 63.4% | 36.6% | 3.9% | 32.6% |
| Valencia South County ISD | 0.0% | 0.0% | 0.0% | 0.0% |
| West Dona Ana County ISD | 62.0% | 38.0% | 5.9% | 32.2% |
| Centralized Units | 0.0% | 0.0% | 0.0% | 0.0% |
| Statewide Total | 63.0% | 37.0% | 3.1% | 34.0% |

SNAP Renewal Disposition Rates by Region²⁰
November 2019

| Region | Approval Rate | Closure Rate | Need Based Closure Rate | Procedural Closure Rate |
|--------------------|---------------|--------------|-------------------------|-------------------------|
| Region 1 - NW | 63.6% | 36.4% | 2.2% | 34.2% |
| Region 2 - NE | 60.1% | 39.9% | 2.8% | 37.1% |
| Region 3 - Central | 62.0% | 38.0% | 2.6% | 35.4% |
| Region 4 - SE | 63.4% | 36.6% | 3.8% | 32.8% |
| Region 5 - SW | 66.2% | 33.8% | 4.6% | 29.2% |
| Centralized Units | | | | |

| | | | | |
|-----------------|-------|-------|------|-------|
| Statewide Total | 63.0% | 37.0% | 3.1% | 34.0% |
|-----------------|-------|-------|------|-------|



SNAP: Percentage of Approved Renewal Applications Processed¹¹

| | Oct-19 | Nov-19 | Dec-19 | Jan-20 | Feb-20 | Mar-20 | Apr-20 | May-20 | Jun-20 | Jul-20 | Aug-20 | Sep-20 | Average |
|----------------------------|--------------|--------------|--------|--------|--------|--------|--------|--------|--------|--------|--------|--------|--------------|
| Cibola | 94.2% | 97.9% | | | | | | | | | | | 96.1% |
| McKinley | 99.0% | 94.2% | | | | | | | | | | | 96.6% |
| San Juan | 95.3% | 93.9% | | | | | | | | | | | 94.6% |
| Sierra | 97.2% | 95.3% | | | | | | | | | | | 96.3% |
| Socorro | 98.0% | 97.2% | | | | | | | | | | | 97.6% |
| Valencia North | 98.3% | 97.2% | | | | | | | | | | | 97.8% |
| Valencia South | | | | | | | | | | | | | |
| NW Region 1 Total | 97.0% | 96.0% | | | | | | | | | | | 96.5% |
| Colfax | 100.0% | 97.6% | | | | | | | | | | | 98.8% |
| Guadalupe | 94.7% | 100.0% | | | | | | | | | | | 97.4% |
| Quay | 100.0% | 98.2% | | | | | | | | | | | 99.1% |
| Rio Arriba | 99.1% | 96.4% | | | | | | | | | | | 97.8% |
| San Miguel | 94.4% | 95.9% | | | | | | | | | | | 95.2% |
| Sandoval | 99.5% | 98.6% | | | | | | | | | | | 99.1% |
| Santa Fe | 95.3% | 92.6% | | | | | | | | | | | 94.0% |
| Taos | 97.9% | 95.0% | | | | | | | | | | | 96.5% |
| NE Region 2 Total | 97.6% | 96.8% | | | | | | | | | | | 97.2% |
| NE Bernalillo | 98.6% | 96.6% | | | | | | | | | | | 97.6% |
| NW Bernalillo | 96.2% | 96.2% | | | | | | | | | | | 96.2% |
| SE Bernalillo | 97.2% | 94.8% | | | | | | | | | | | 96.0% |
| SW Bernalillo | 97.0% | 96.9% | | | | | | | | | | | 97.0% |
| Torrance | 95.6% | 95.0% | | | | | | | | | | | 95.3% |
| Gen. Region 3 Total | 96.9% | 95.9% | | | | | | | | | | | 96.4% |
| Chaves | 98.8% | 98.7% | | | | | | | | | | | 98.8% |
| Curry | 98.8% | 98.4% | | | | | | | | | | | 98.6% |
| Eddy Artesia | 100.0% | 100.0% | | | | | | | | | | | 100.0% |
| Eddy Carlsbad | 100.0% | 98.6% | | | | | | | | | | | 99.3% |
| Lea | 98.8% | 98.9% | | | | | | | | | | | 98.9% |
| Lincoln | 95.8% | 96.9% | | | | | | | | | | | 96.4% |
| Roosevelt | | | | | | | | | | | | | |
| SE Region 4 Total | 98.7% | 98.6% | | | | | | | | | | | 98.6% |
| East Dona Ana | 97.8% | 97.5% | | | | | | | | | | | 97.7% |
| Grant | 98.1% | 100.0% | | | | | | | | | | | 99.1% |
| Luna | 100.0% | 97.6% | | | | | | | | | | | 98.8% |
| Otero | 99.1% | 99.0% | | | | | | | | | | | 99.1% |
| South Dona Ana | 100.0% | 99.7% | | | | | | | | | | | 99.9% |
| West Dona Ana | 100.0% | 98.4% | | | | | | | | | | | 99.2% |
| SW Region 5 Total | 99.2% | 98.7% | | | | | | | | | | | 98.9% |
| STATE TOTAL | 97.9% | 97.2% | | | | | | | | | | | 97.5% |

If a renewal packet was received on or before 15th of the renewal month, the case shall be considered timely if the case was processed by renewal due date

SNAP: Percentage of Approved Renewal Applications Processed¹¹

| | Oct-19 | Nov-19 | Dec-19 | Jan-20 | Feb-20 | Mar-20 | Apr-20 | May-20 | Jun-20 | Jul-20 | Aug-20 | Sep-20 | Average |
|----------------------------|--------------|--------------|--------|--------|--------|--------|--------|--------|--------|--------|--------|--------|--------------|
| Cibola | 87.5% | 91.7% | | | | | | | | | | | 89.6% |
| McKinley | 97.6% | 95.5% | | | | | | | | | | | 96.6% |
| San Juan | 94.6% | 91.3% | | | | | | | | | | | 93.0% |
| Sierra | 96.8% | 100.0% | | | | | | | | | | | 98.4% |
| Socorro | 96.4% | 96.2% | | | | | | | | | | | 96.3% |
| Valencia North | 98.4% | 94.4% | | | | | | | | | | | 96.4% |
| Valencia South | | | | | | | | | | | | | |
| NW Region 1 Total | 95.2% | 94.9% | | | | | | | | | | | 95.0% |
| Colfax | 100.0% | 100.0% | | | | | | | | | | | 100.0% |
| Guadalupe | 100.0% | 100.0% | | | | | | | | | | | 100.0% |
| Quay | 100.0% | 100.0% | | | | | | | | | | | 100.0% |
| Rio Arriba | 98.4% | 93.3% | | | | | | | | | | | 95.9% |
| San Miguel | 92.9% | 100.0% | | | | | | | | | | | 96.5% |
| Sandoval | 100.0% | 97.9% | | | | | | | | | | | 99.0% |
| Santa Fe | 91.3% | 95.8% | | | | | | | | | | | 93.6% |
| Taos | 87.5% | 100.0% | | | | | | | | | | | 93.8% |
| NE Region 2 Total | 96.3% | 98.4% | | | | | | | | | | | 97.3% |
| NE Bernalillo | 100.0% | 94.6% | | | | | | | | | | | 97.3% |
| NW Bernalillo | 98.0% | 96.9% | | | | | | | | | | | 97.5% |
| SE Bernalillo | 97.8% | 100.0% | | | | | | | | | | | 98.9% |
| SW Bernalillo | 98.0% | 96.3% | | | | | | | | | | | 97.2% |
| Torrance | 96.2% | 81.8% | | | | | | | | | | | 89.0% |
| Gen. Region 3 Total | 98.0% | 93.9% | | | | | | | | | | | 96.0% |
| Chaves | 100.0% | 100.0% | | | | | | | | | | | 100.0% |
| Curry | 100.0% | 96.3% | | | | | | | | | | | 98.2% |
| Eddy Artesia | 100.0% | 100.0% | | | | | | | | | | | 100.0% |
| Eddy Carlsbad | 100.0% | 88.9% | | | | | | | | | | | 94.5% |
| Lea | 97.1% | 100.0% | | | | | | | | | | | 98.6% |
| Lincoln | 92.9% | 100.0% | | | | | | | | | | | 96.5% |
| Roosevelt | | | | | | | | | | | | | |
| SE Region 4 Total | 98.3% | 97.5% | | | | | | | | | | | 97.9% |
| East Dona Ana | 98.4% | 98.1% | | | | | | | | | | | 98.3% |
| Grant | 96.2% | 100.0% | | | | | | | | | | | 98.1% |
| Luna | 100.0% | 100.0% | | | | | | | | | | | 100.0% |
| Otero | 100.0% | 100.0% | | | | | | | | | | | 100.0% |
| South Dona Ana | 100.0% | 100.0% | | | | | | | | | | | 100.0% |
| West Dona Ana | 100.0% | 97.9% | | | | | | | | | | | 99.0% |
| SW Region 5 Total | 99.1% | 99.3% | | | | | | | | | | | 99.2% |
| STATE TOTAL | 97.3% | 97.0% | | | | | | | | | | | 97.1% |

Only includes cases in which the Renewal Packet was received by the 15th of the month

SNAP: Percentage of Terminations Renewal Applications Processed¹¹

| | Oct-19 | Nov-19 | Dec-19 | Jan-20 | Feb-20 | Mar-20 | Apr-20 | May-20 | Jun-20 | Jul-20 | Aug-20 | Sep-20 | Average |
|----------------------------|--------------|--------------|--------|--------|--------|--------|--------|--------|--------|--------|--------|--------|--------------|
| Cibola | 98.8% | 93.8% | | | | | | | | | | | 96.3% |
| McKinley | 97.1% | 91.8% | | | | | | | | | | | 94.5% |
| San Juan | 96.5% | 94.6% | | | | | | | | | | | 95.6% |
| Sierra | 98.5% | 96.2% | | | | | | | | | | | 97.4% |
| Socorro | 100.0% | 92.2% | | | | | | | | | | | 96.1% |
| Valencia North | 97.8% | 93.5% | | | | | | | | | | | 95.7% |
| Valencia South | | | | | | | | | | | | | |
| NW Region 1 Total | 98.1% | 93.7% | | | | | | | | | | | 95.9% |
| Colfax | 100.0% | 100.0% | | | | | | | | | | | 100.0% |
| Guadalupe | 100.0% | 90.9% | | | | | | | | | | | 95.5% |
| Quay | 100.0% | 100.0% | | | | | | | | | | | 100.0% |
| Rio Arriba | 98.2% | 93.7% | | | | | | | | | | | 96.0% |
| San Miguel | 92.9% | 97.6% | | | | | | | | | | | 95.3% |
| Sandoval | 98.0% | 96.6% | | | | | | | | | | | 97.3% |
| Santa Fe | 97.0% | 95.4% | | | | | | | | | | | 96.2% |
| Taos | 98.8% | 96.3% | | | | | | | | | | | 97.6% |
| NE Region 2 Total | 98.1% | 96.3% | | | | | | | | | | | 97.2% |
| NE Bernalillo | 95.0% | 94.9% | | | | | | | | | | | 95.0% |
| NW Bernalillo | 95.1% | 95.0% | | | | | | | | | | | 95.1% |
| SE Bernalillo | 95.2% | 96.1% | | | | | | | | | | | 95.7% |
| SW Bernalillo | 97.3% | 98.2% | | | | | | | | | | | 97.8% |
| Torrance | 100.0% | 97.8% | | | | | | | | | | | 98.9% |
| Gen. Region 3 Total | 96.5% | 96.4% | | | | | | | | | | | 96.5% |
| Chaves | 96.8% | 94.9% | | | | | | | | | | | 95.9% |
| Curry | 98.7% | 97.9% | | | | | | | | | | | 98.3% |
| Eddy Artesia | 92.3% | 100.0% | | | | | | | | | | | 96.2% |
| Eddy Carlsbad | 100.0% | 97.6% | | | | | | | | | | | 98.8% |
| Lea | 97.6% | 95.9% | | | | | | | | | | | 96.8% |
| Lincoln | 95.3% | 91.7% | | | | | | | | | | | 93.5% |
| Roosevelt | | | | | | | | | | | | | |
| SE Region 4 Total | 96.8% | 96.3% | | | | | | | | | | | 96.6% |
| East Dona Ana | 98.7% | 97.5% | | | | | | | | | | | 98.1% |
| Grant | 100.0% | 98.1% | | | | | | | | | | | 99.1% |
| Luna | 100.0% | 97.5% | | | | | | | | | | | 98.8% |
| Otero | 100.0% | 99.0% | | | | | | | | | | | 99.5% |
| South Dona Ana | 100.0% | 100.0% | | | | | | | | | | | 100.0% |
| West Dona Ana | 97.9% | 99.0% | | | | | | | | | | | 98.5% |
| SW Region 5 Total | 99.4% | 98.5% | | | | | | | | | | | 99.0% |
| STATE TOTAL | 97.9% | 96.2% | | | | | | | | | | | 97.1% |

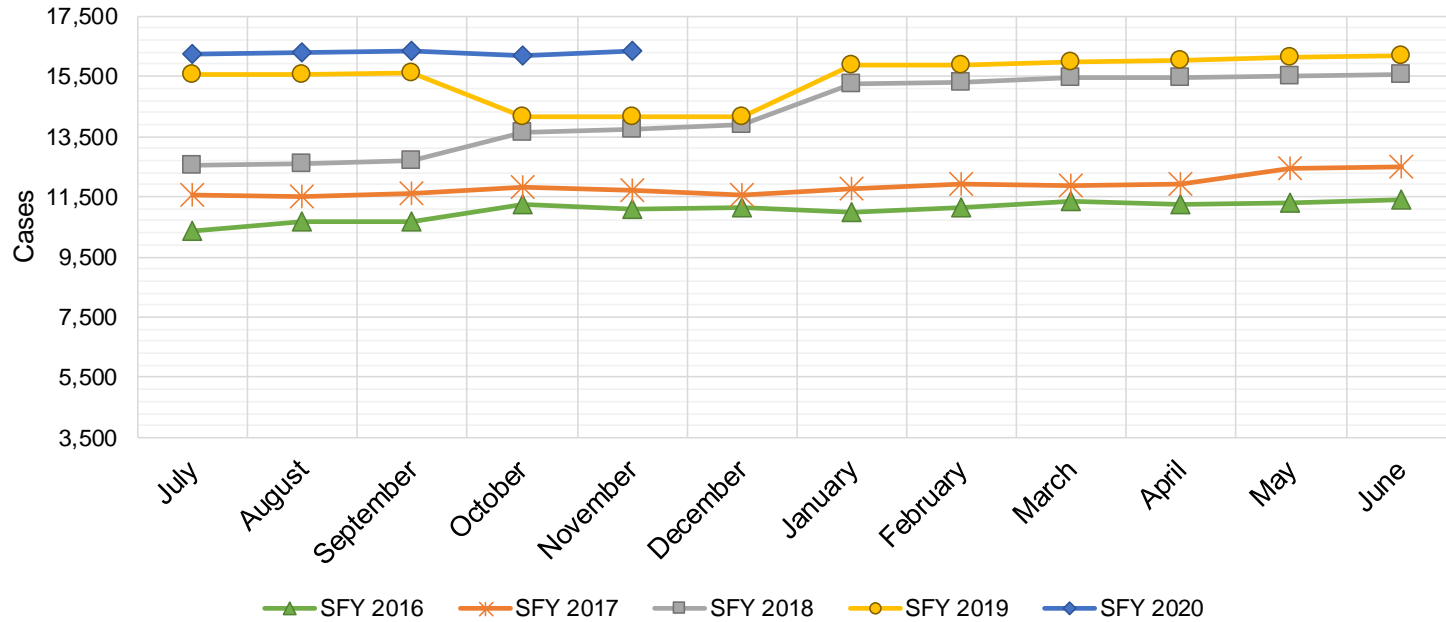
Includes cases for which no renewal application was received.

SNAP: Combined Percentage of Approved and Terminated Renewal Applications Processed¹¹

| | Oct-19 | Nov-19 | Dec-19 | Jan-20 | Feb-20 | Mar-20 | Apr-20 | May-20 | Jun-20 | Jul-20 | Aug-20 | Sep-20 | Average |
|----------------------------|--------------|--------------|--------|--------|--------|--------|--------|--------|--------|--------|--------|--------|--------------|
| Cibola | 96.1% | 96.4% | | | | | | | | | | | 96.3% |
| McKinley | 98.4% | 93.4% | | | | | | | | | | | 95.9% |
| San Juan | 95.8% | 94.1% | | | | | | | | | | | 95.0% |
| Sierra | 97.7% | 95.7% | | | | | | | | | | | 96.7% |
| Socorro | 98.7% | 95.6% | | | | | | | | | | | 97.2% |
| Valencia North | 98.1% | 95.8% | | | | | | | | | | | 97.0% |
| Valencia South | | | | | | | | | | | | | |
| NW Region 1 Total | 97.5% | 95.2% | | | | | | | | | | | 96.3% |
| Colfax | 100.0% | 98.6% | | | | | | | | | | | 99.3% |
| Guadalupe | 97.1% | 97.3% | | | | | | | | | | | 97.2% |
| Quay | 100.0% | 98.8% | | | | | | | | | | | 99.4% |
| Rio Arriba | 98.8% | 95.1% | | | | | | | | | | | 97.0% |
| San Miguel | 93.9% | 96.5% | | | | | | | | | | | 95.2% |
| Sandoval | 99.0% | 97.8% | | | | | | | | | | | 98.4% |
| Santa Fe | 96.0% | 93.7% | | | | | | | | | | | 94.9% |
| Taos | 98.2% | 95.5% | | | | | | | | | | | 96.9% |
| NE Region 2 Total | 97.9% | 96.7% | | | | | | | | | | | 97.3% |
| NE Bernalillo | 97.1% | 96.0% | | | | | | | | | | | 96.6% |
| NW Bernalillo | 95.7% | 95.7% | | | | | | | | | | | 95.7% |
| SE Bernalillo | 96.3% | 95.3% | | | | | | | | | | | 95.8% |
| SW Bernalillo | 97.1% | 97.3% | | | | | | | | | | | 97.2% |
| Torrance | 97.5% | 96.3% | | | | | | | | | | | 96.9% |
| Gen. Region 3 Total | 96.7% | 96.1% | | | | | | | | | | | 96.4% |
| Chaves | 98.1% | 97.4% | | | | | | | | | | | 97.8% |
| Curry | 98.8% | 98.2% | | | | | | | | | | | 98.5% |
| Eddy Artesia | 97.1% | 100.0% | | | | | | | | | | | 98.6% |
| Eddy Carlsbad | 100.0% | 98.2% | | | | | | | | | | | 99.1% |
| Lea | 98.3% | 97.6% | | | | | | | | | | | 98.0% |
| Lincoln | 95.7% | 95.0% | | | | | | | | | | | 95.4% |
| Roosevelt | | | | | | | | | | | | | |
| SE Region 4 Total | 98.0% | 97.7% | | | | | | | | | | | 97.9% |
| East Dona Ana | 98.1% | 97.5% | | | | | | | | | | | 97.8% |
| Grant | 98.7% | 99.4% | | | | | | | | | | | 99.1% |
| Luna | 100.0% | 97.6% | | | | | | | | | | | 98.8% |
| Otero | 99.4% | 99.0% | | | | | | | | | | | 99.2% |
| South Dona Ana | 100.0% | 99.8% | | | | | | | | | | | 99.9% |
| West Dona Ana | 99.3% | 98.6% | | | | | | | | | | | 99.0% |
| SW Region 5 Total | 99.3% | 98.7% | | | | | | | | | | | 99.0% |
| STATE TOTAL | 97.9% | 96.9% | | | | | | | | | | | 97.4% |

State SNAP Supplement

| SFY 2016 ^{12,9} | | | SFY 2017 ⁹ | | | SFY 2018 ⁹ | | | SFY 2019 ⁹ | | | SFY 2020 ⁹ | | |
|--------------------------|----------------|--------------------|-----------------------|--------------------|----------------|-----------------------|----------------|--------------------|-----------------------|------------------|-----------|-----------------------|--------|-----------|
| | Cases | Expenditures | Cases | Expenditures | Cases | Expenditures | Cases | Expenditures | Cases | Expenditures | Cases | Expenditures | | |
| Jul-15 | 10,345 | \$86,143 | Jul-16 | 11,537 | \$95,553 | Jul-17 | 12,526 | \$97,568 | Jul-18 | 15,555 | \$141,711 | Jul-19 | 16,260 | \$145,023 |
| Aug-15 | 10,669 | \$88,197 | Aug-16 | 11,522 | \$95,107 | Aug-17 | 12,589 | \$98,954 | Aug-18 | 15,584 | \$139,719 | Aug-19 | 16,314 | \$145,706 |
| Sep-15 | 10,676 | \$88,426 | Sep-16 | 11,613 | \$94,472 | Sep-17 | 12,679 | \$97,546 | Sep-18 | 15,631 | \$140,768 | Sep-19 | 16,362 | \$145,767 |
| Oct-15 | 11,262 | \$96,758 | Oct-16 | 11,797 | \$96,679 | Oct-17 | 13,628 | \$117,343 | Oct-18 | 14,161 | \$125,737 | Oct-19 | 16,182 | \$139,741 |
| Nov-15 | 11,099 | \$91,996 | Nov-16 | 11,735 | \$93,689 | Nov-17 | 13,748 | \$119,055 | Nov-18 | 14,160 | \$125,401 | Nov-19 | 16,331 | \$138,583 |
| Dec-15 | 11,125 | \$90,771 | Dec-16 | 11,556 | \$93,739 | Dec-17 | 13,877 | \$120,585 | Dec-18 | 14,163 | \$126,263 | Dec-19 | | |
| Jan-16 | 10,977 | \$92,760 | Jan-17 | 11,763 | \$96,074 | Jan-18 | 15,246 | \$135,993 | Jan-19 | 15,890 | \$141,357 | Jan-20 | | |
| Feb-16 | 11,153 | \$95,363 | Feb-17 | 11,907 | \$98,251 | Feb-18 | 15,308 | \$137,296 | Feb-19 | 15,882 | \$142,396 | Feb-20 | | |
| Mar-16 | 11,332 | \$96,751 | Mar-17 | 11,853 | \$96,693 | Mar-18 | 15,482 | \$139,132 | Mar-19 | 15,970 | \$142,427 | Mar-20 | | |
| Apr-16 | 11,222 | \$93,959 | Apr-17 | 11,944 | \$97,060 | Apr-18 | 15,466 | \$139,202 | Apr-19 | 16,032 | \$143,982 | Apr-20 | | |
| May-16 | 11,283 | \$95,271 | May-17 | 12,457 | \$96,940 | May-18 | 15,525 | \$139,397 | May-19 | 16,126 | \$143,697 | May-20 | | |
| Jun-16 | 11,389 | \$93,061 | Jun-17 | 12,498 | \$97,405 | Jun-18 | 15,577 | \$140,802 | Jun-19 | 16,182 | \$143,128 | Jun-20 | | |
| TOTAL | 132,532 | \$1,109,455 | 142,182 | \$1,151,662 | 171,651 | \$1,482,874 | 185,336 | \$1,656,584 | 81,449 | \$714,821 | | | | |
| AVERAGE | 11,044 | \$92,455 | 11,849 | \$95,972 | 14,304 | \$123,573 | 15,445 | \$138,049 | 16,290 | \$142,964 | | | | |



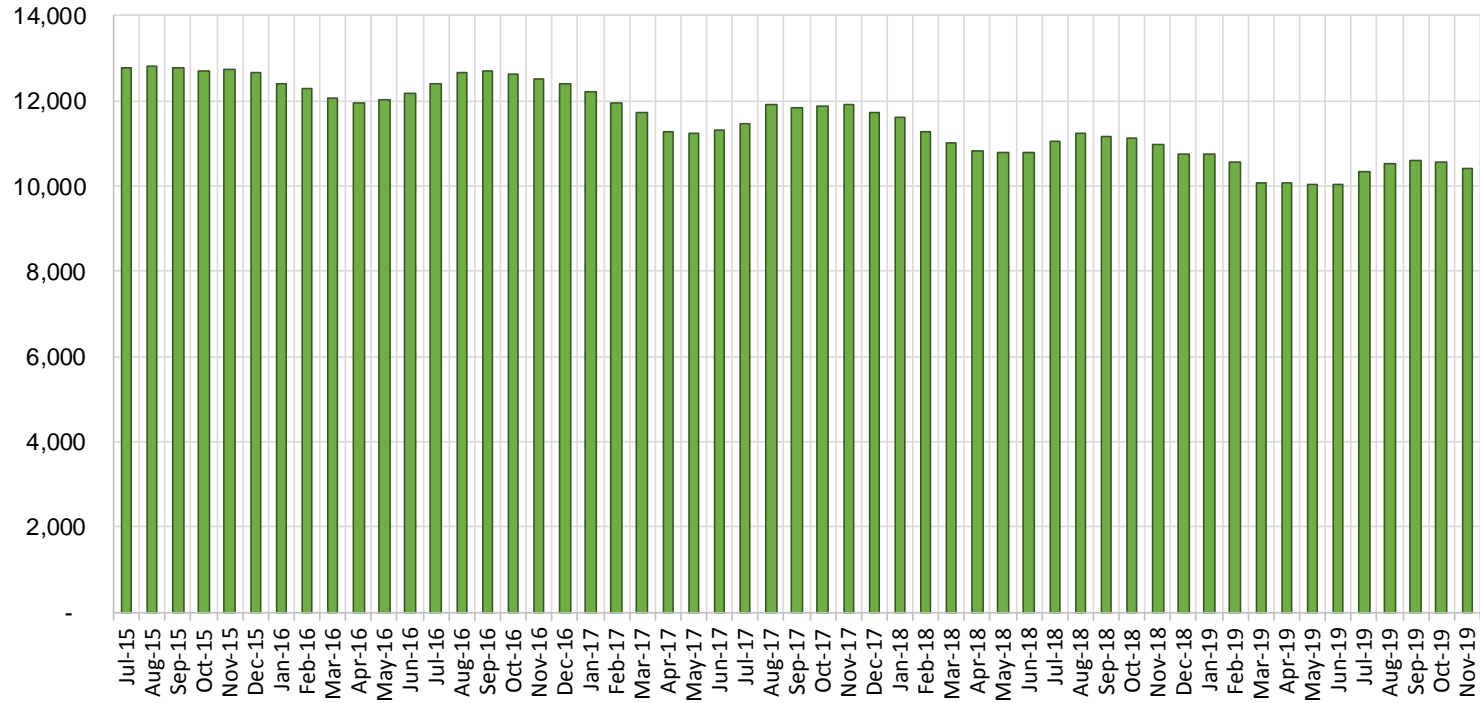
TANF Cases by Field Office⁶

| Office | Nov-18 | Oct-19 | Nov-19 | Percent Change | |
|---------------------------------|--------|--------|--------|-------------------|-------------------|
| | | | | Nov-18- Nov-19 | Oct-19- Nov-19 |
| Chaves County ISD | 426 | 416 | 397 | -6.8% | -4.6% |
| Cibola County ISD | 147 | 115 | 102 | -30.6% | -11.3% |
| Colfax County ISD | 76 | 92 | 88 | 15.8% | -4.3% |
| Curry County ISD | 681 | 634 | 619 | -9.1% | -2.4% |
| East Dona Ana County ISD | 456 | 421 | 413 | -9.4% | -1.9% |
| Eddy Artesia County ISD | 101 | 92 | 90 | -10.9% | -2.2% |
| Eddy Carlsbad County ISD | 145 | 148 | 151 | 4.1% | 2.0% |
| Grant County ISD | 204 | 199 | 190 | -6.9% | -4.5% |
| Guadalupe County ISD | 26 | 23 | 23 | -11.5% | 0.0% |
| Hidalgo County ISD | 0 | 0 | 0 | NA | N/A |
| Lea County ISD | 390 | 354 | 358 | -8.2% | 1.1% |
| Lincoln County ISD | 94 | 86 | 81 | -13.8% | -5.8% |
| Luna County ISD | 224 | 209 | 209 | -6.7% | 0.0% |
| McKinley County ISD | 71 | 66 | 70 | -1.4% | 6.1% |
| Northeast Bernalillo County ISD | 938 | 921 | 913 | -2.7% | -0.9% |
| Northwest Bernalillo County ISD | 823 | 831 | 852 | 3.5% | 2.5% |
| Otero County ISD | 267 | 298 | 296 | 10.9% | -0.7% |
| Quay County ISD | 58 | 82 | 80 | 37.9% | -2.4% |
| Rio Arriba County ISD | 371 | 361 | 364 | -1.9% | 0.8% |
| Roosevelt County ISD | 0 | 0 | 0 | NA | N/A |
| San Juan County ISD | 325 | 270 | 267 | -17.8% | -1.1% |
| San Miguel County ISD | 180 | 197 | 197 | 9.4% | 0.0% |
| Sandoval County ISD | 553 | 448 | 442 | -20.1% | -1.3% |
| Santa Fe County ISD | 377 | 374 | 377 | 0.0% | 0.8% |
| Sierra County ISD | 81 | 67 | 68 | -16.0% | 1.5% |
| Socorro County ISD | 85 | 87 | 82 | -3.5% | -5.7% |
| South Dona Ana ISD | 681 | 620 | 598 | -12.2% | -3.5% |
| Southeast Bernalillo County ISD | 602 | 583 | 583 | -3.2% | 0.0% |
| Southwest Bernalillo County ISD | 1,114 | 1,145 | 1,123 | 0.8% | -1.9% |
| Taos County ISD | 130 | 139 | 132 | 1.5% | -5.0% |
| Torrance County ISD | 199 | 181 | 181 | -9.0% | 0.0% |
| Valencia North County ISD | 424 | 435 | 421 | -0.7% | -3.2% |
| Valencia South County ISD | 0 | 0 | 0 | N/A | N/A |
| West Dona Ana County ISD | 718 | 671 | 656 | -8.6% | -2.2% |
| Centralized Units | 4 | 2 | 2 | -50.0% | 0.0% |
| Statewide Total | 10,971 | 10,567 | 10,425 | -5.0% | -1.3% |

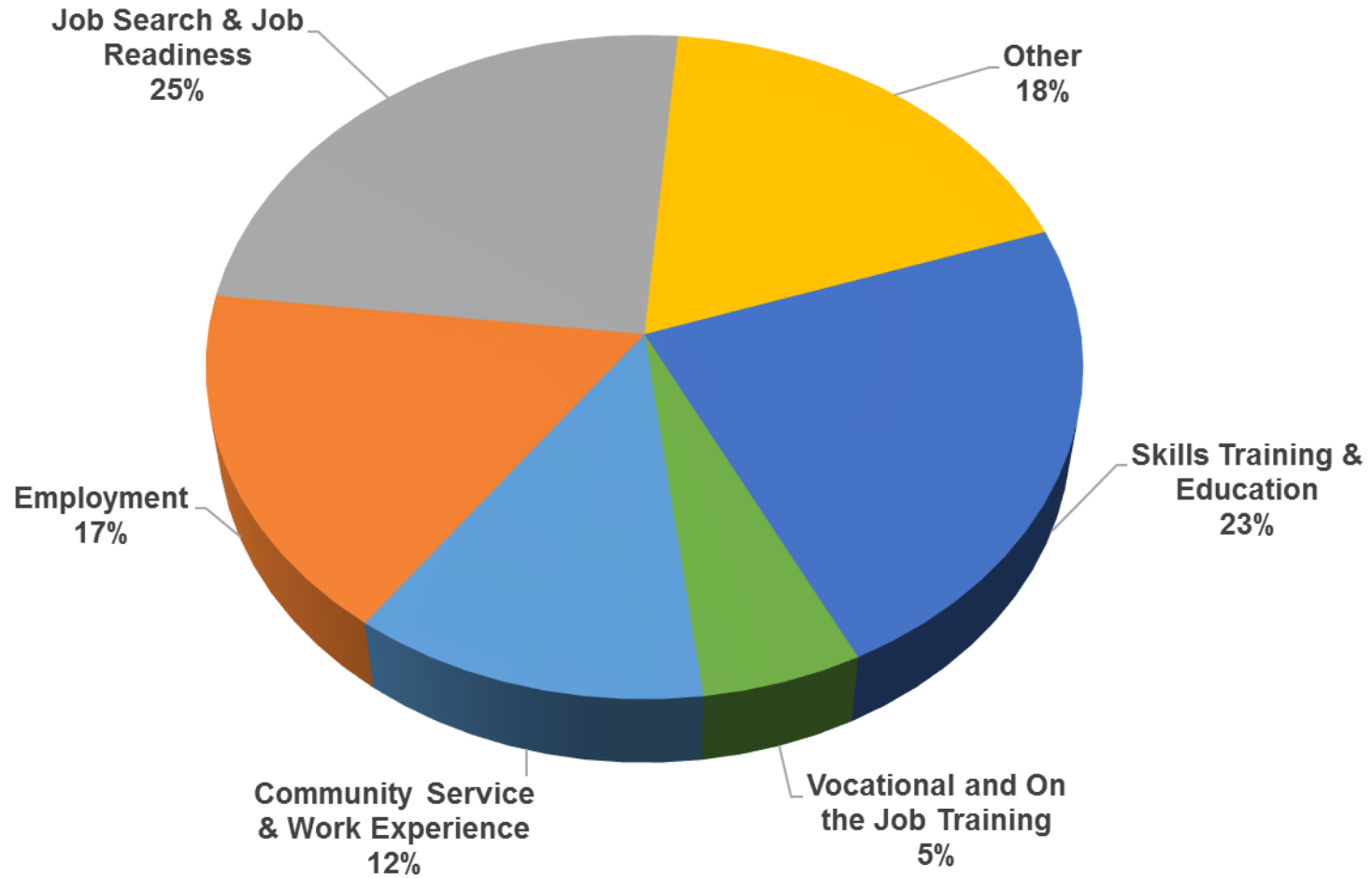
TANF Cases by Region⁶

| Region | Nov-18 | Oct-19 | Nov-19 | Percent Change | |
|------------------------|---------------|---------------|---------------|-------------------|-------------------|
| | | | | Nov-18- Nov-19 | Oct-19- Nov-19 |
| Region 1- NW | 1,133 | 1,040 | 1,010 | -10.9% | -2.9% |
| Region 2- NE | 1,771 | 1,716 | 1,703 | -3.8% | -0.8% |
| Region 3- Central | 3,676 | 3,661 | 3,652 | -0.7% | -0.2% |
| Region 4- SE | 1,837 | 1,730 | 1,696 | -7.7% | -2.0% |
| Region 5- SW | 2,550 | 2,418 | 2,362 | -7.4% | -2.3% |
| Centralized Units | 4 | 2 | 2 | -50.0% | 0.0% |
| Statewide Total | 10,971 | 10,567 | 10,425 | -5.0% | -1.3% |

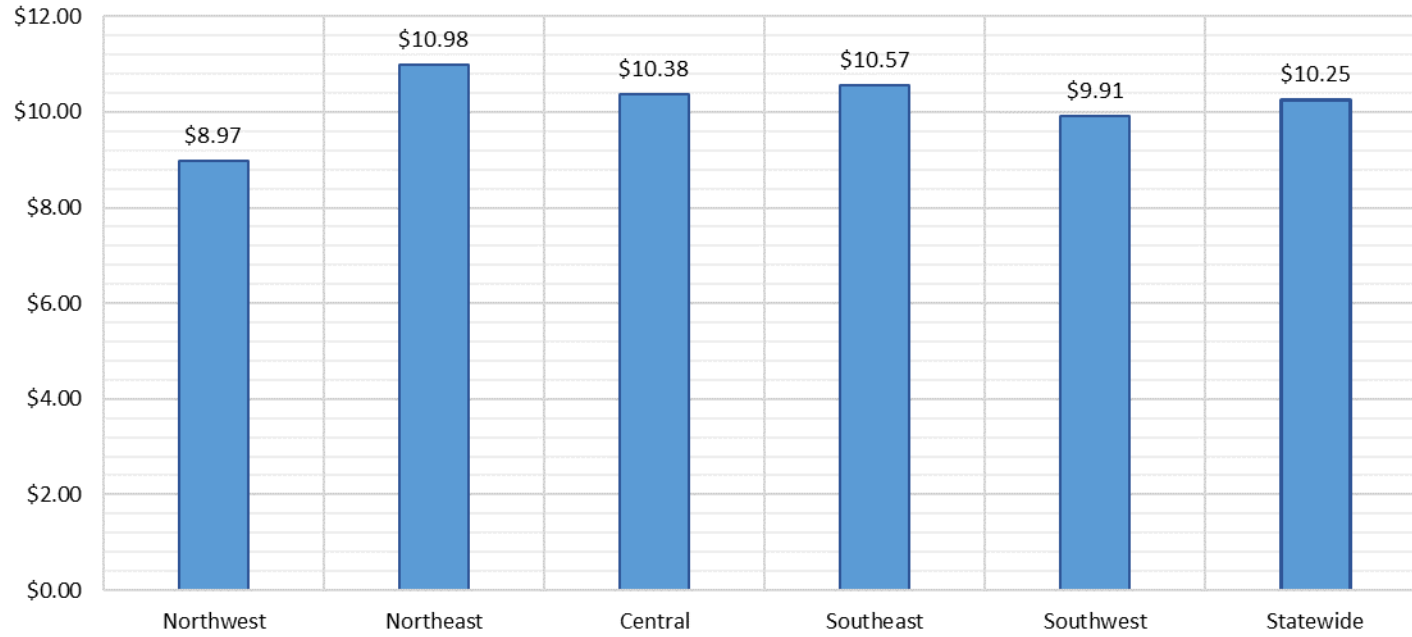
TANF Caseload: SFY-16 to Current



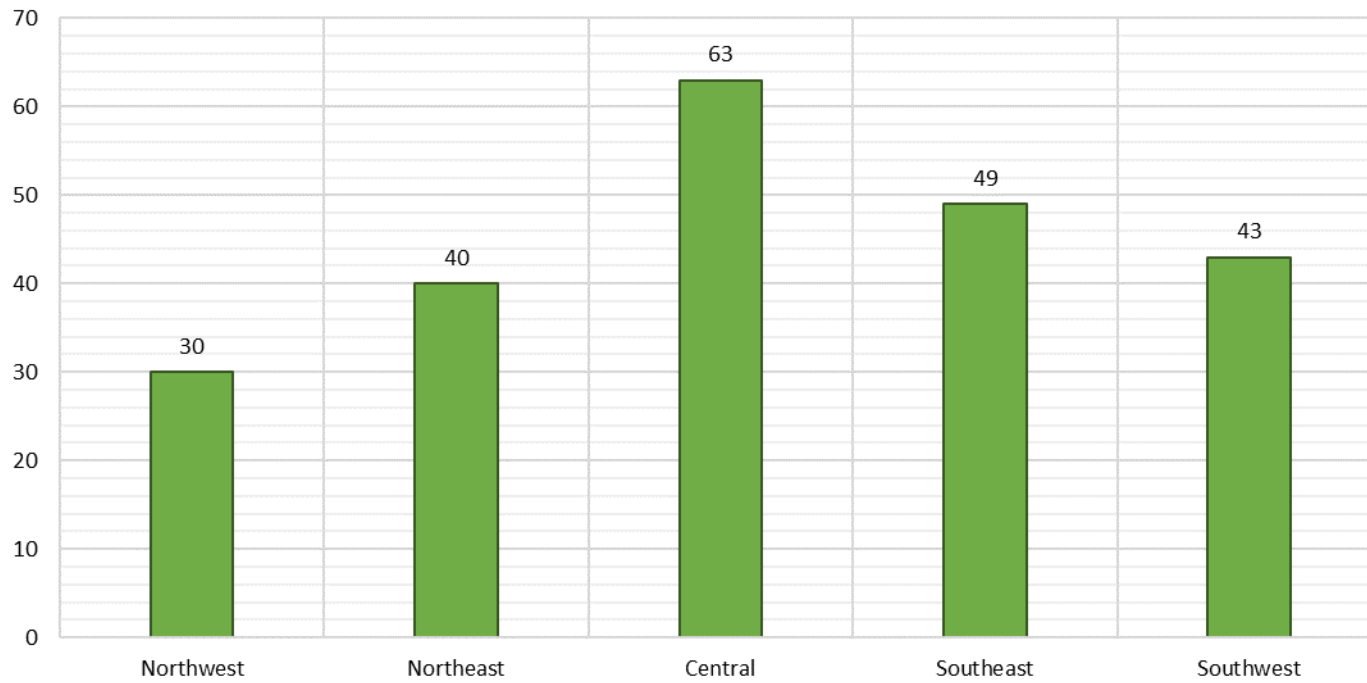
**NM Works Activity Placements on November 30, 2019
as reported by SL Start¹⁴**



Average Starting Hourly Wage of November 2019 TANF Employments
as reported by SL Start¹⁵



Number of New Employments in November 2019 by Region
as reported by SL Start¹⁵
Statewide Total: 225



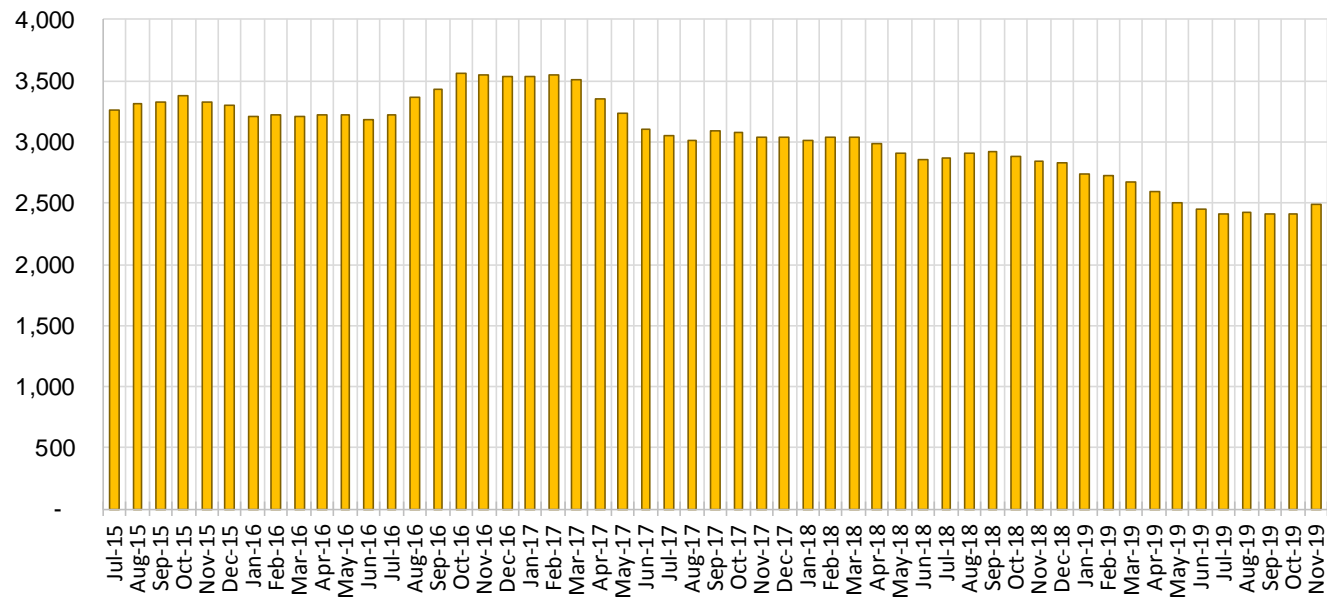
General Assistance Cases by Field Office⁶

| Office | | | | Percent Change | |
|---------------------------------|--------|--------|--------|-------------------|-------------------|
| | Nov-18 | Oct-19 | Nov-19 | Nov-18- Nov-19 | Oct-19- Nov-19 |
| Chaves County ISD | 123 | 109 | 112 | -8.9% | 2.8% |
| Cibola County ISD | 42 | 32 | 35 | -16.7% | 9.4% |
| Colfax County ISD | 21 | 21 | 23 | 9.5% | 9.5% |
| Curry County ISD | 89 | 73 | 78 | -12.4% | 6.8% |
| East Dona Ana County ISD | 108 | 91 | 95 | -12.0% | 4.4% |
| Eddy Artesia County ISD | 27 | 21 | 21 | -22.2% | 0.0% |
| Eddy Carlsbad County ISD | 67 | 46 | 44 | -34.3% | -4.3% |
| Grant County ISD | 64 | 65 | 70 | 9.4% | 7.7% |
| Guadalupe County ISD | 18 | 9 | 9 | -50.0% | 0.0% |
| Hidalgo County ISD | 0 | 0 | 0 | N/A | N/A |
| Lea County ISD | 84 | 58 | 60 | -28.6% | 3.4% |
| Lincoln County ISD | 26 | 29 | 32 | 23.1% | 10.3% |
| Luna County ISD | 55 | 62 | 63 | 14.5% | 1.6% |
| McKinley County ISD | 54 | 64 | 63 | 16.7% | -1.6% |
| Northeast Bernalillo County ISD | 297 | 236 | 225 | -24.2% | -4.7% |
| Northwest Bernalillo County ISD | 288 | 217 | 228 | -20.8% | 5.1% |
| Otero County ISD | 69 | 78 | 73 | 5.8% | -6.4% |
| Quay County ISD | 26 | 28 | 34 | 30.8% | 21.4% |
| Rio Arriba County ISD | 82 | 50 | 57 | -30.5% | 14.0% |
| Roosevelt County ISD | 0 | 0 | 0 | N/A | N/A |
| San Juan County ISD | 140 | 115 | 119 | -15.0% | 3.5% |
| San Miguel County ISD | 70 | 68 | 65 | -7.1% | -4.4% |
| Sandoval County ISD | 121 | 80 | 85 | -29.8% | 6.3% |
| Santa Fe County ISD | 123 | 93 | 89 | -27.6% | -4.3% |
| Sierra County ISD | 31 | 34 | 38 | 22.6% | 11.8% |
| Socorro County ISD | 36 | 46 | 44 | 22.2% | -4.3% |
| South Dona Ana ISD | 62 | 54 | 58 | -6.5% | 7.4% |
| Southeast Bernalillo County ISD | 171 | 129 | 146 | -14.6% | 13.2% |
| Southwest Bernalillo County ISD | 182 | 188 | 194 | 6.6% | 3.2% |
| Taos County ISD | 41 | 26 | 29 | -29.3% | 11.5% |
| Torrance County ISD | 41 | 41 | 45 | 9.8% | 9.8% |
| Valencia North County ISD | 114 | 83 | 87 | -23.7% | 4.8% |
| Valencia South County ISD | 0 | 0 | 0 | N/A | N/A |
| West Dona Ana County ISD | 165 | 170 | 170 | 3.0% | 0.0% |
| Centralized Units | 0 | 0 | 0 | N/A | N/A |
| Statewide Total | 2,837 | 2,416 | 2,491 | -12.2% | 3.1% |

General Assistance Cases by Region⁶

| | | | | Percent Change | |
|--------------------|--------|--------|--------|-------------------|-------------------|
| Region | Nov-18 | Oct-19 | Nov-19 | Nov-18- Nov-19 | Oct-19- Nov-19 |
| Region 1 - NW | 417 | 374 | 386 | -7.4% | 3.2% |
| Region 2 - NE | 502 | 375 | 391 | -22.1% | 4.3% |
| Region 3 - Central | 979 | 811 | 838 | -14.4% | 3.3% |
| Region 4 - SE | 416 | 336 | 347 | -16.6% | 3.3% |
| Region 5 - SW | 523 | 520 | 529 | 1.1% | 1.7% |
| Centralized Units | 0 | 0 | 0 | N/A | N/A |
| Statewide Total | 2,837 | 2,416 | 2,491 | -12.2% | 3.1% |

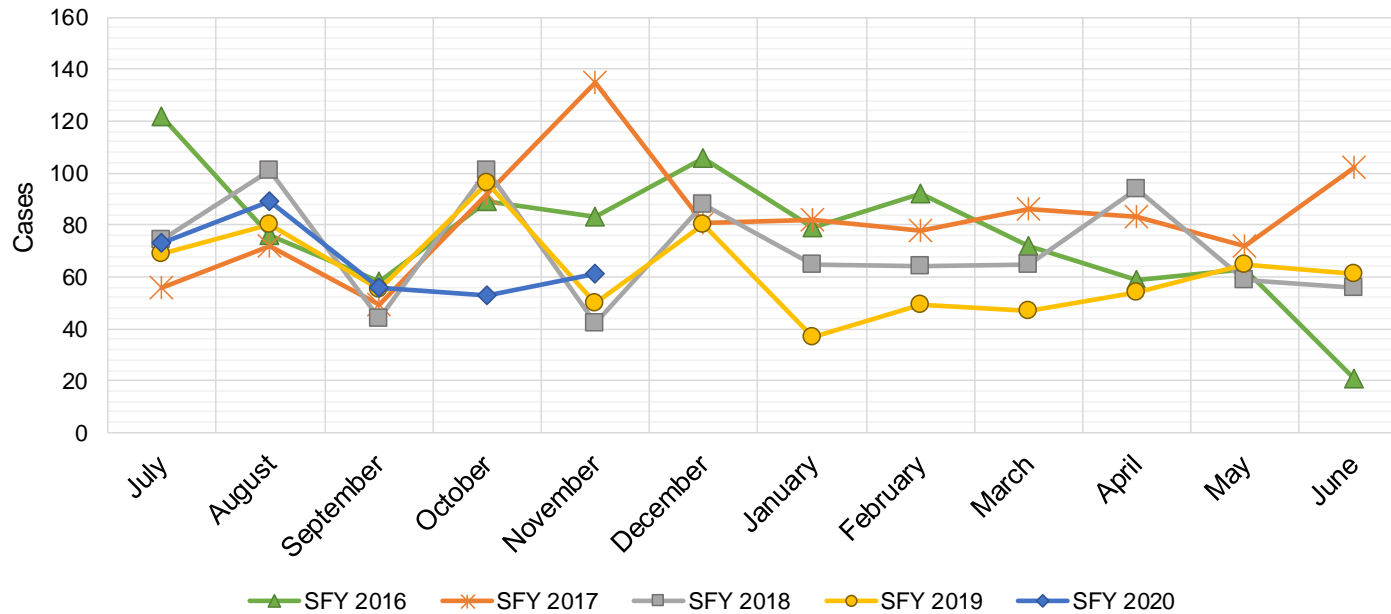
General Assistance Caseload: SFY-16 to Current



General Assistance Interim Assistance Reimbursements¹⁶

| SFY 2016 | | | SFY 2017 | | | SFY 2018 | | | SFY 2019 | | | SFY 2020 | | |
|----------|-------|--------------|----------|-------|--------------|----------|-------|--------------|----------|-------|--------------|----------|-------|--------------|
| | Cases | Expenditures | | Cases | Expenditures | | Cases | Expenditures | | Cases | Expenditures | | Cases | Expenditures |
| Jul-15 | 122 | \$342,648 | Jul-16 | 56 | \$164,970 | Jul-17 | 74 | \$241,438 | Jul-18 | 69 | \$228,333 | Jul-19 | 73 | \$303,584 |
| Aug-15 | 76 | \$245,236 | Aug-16 | 72 | \$223,182 | Aug-17 | 101 | \$339,301 | Aug-18 | 80 | \$241,292 | Aug-19 | 89 | \$310,047 |
| Sep-15 | 58 | \$170,093 | Sep-16 | 49 | \$158,027 | Sep-17 | 44 | \$131,229 | Sep-18 | 55 | \$188,192 | Sep-19 | 56 | \$172,016 |
| Oct-15 | 89 | \$277,912 | Oct-16 | 92 | \$257,830 | Oct-17 | 101 | \$335,752 | Oct-18 | 96 | \$298,502 | Oct-19 | 53 | \$168,461 |
| Nov-15 | 83 | \$238,948 | Nov-16 | 135 | \$402,305 | Nov-17 | 42 | \$139,572 | Nov-18 | 50 | \$148,641 | Nov-19 | 61 | \$171,883 |
| Dec-15 | 106 | \$388,102 | Dec-16 | 81 | \$227,569 | Dec-17 | 88 | \$245,453 | Dec-18 | 80 | \$246,422 | Dec-19 | | |
| Jan-16 | 79 | \$239,263 | Jan-17 | 82 | \$274,050 | Jan-18 | 65 | \$258,239 | Jan-19 | 37 | \$106,081 | Jan-20 | | |
| Feb-16 | 92 | \$296,332 | Feb-17 | 78 | \$227,569 | Feb-18 | 64 | \$195,815 | Feb-19 | 49 | \$119,300 | Feb-20 | | |
| Mar-16 | 72 | \$254,360 | Mar-17 | 86 | \$278,219 | Mar-18 | 65 | \$172,188 | Mar-19 | 47 | \$137,296 | Mar-20 | | |
| Apr-16 | 59 | \$208,631 | Apr-17 | 83 | \$267,187 | Apr-18 | 94 | \$312,340 | Apr-19 | 54 | \$173,772 | Apr-20 | | |
| May-16 | 63 | \$182,241 | May-17 | 72 | \$232,836 | May-18 | 59 | \$155,406 | May-19 | 65 | \$237,979 | May-20 | | |
| Jun-16 | 21 | \$51,760 | Jun-17 | 102 | \$306,228 | Jun-18 | 56 | \$159,268 | Jun-19 | 61 | \$214,497 | Jun-20 | | |

| | | | | | | | | | | |
|---------|-----|-------------|-----|-------------|-----|-------------|-----|-------------|-----|-------------|
| TOTAL | 920 | \$2,895,525 | 988 | \$3,019,972 | 853 | \$2,686,001 | 743 | \$2,340,307 | 332 | \$1,125,992 |
| AVERAGE | 77 | \$241,294 | 82 | \$251,664 | 71 | \$223,833 | 62 | \$195,026 | 66 | \$225,198 |



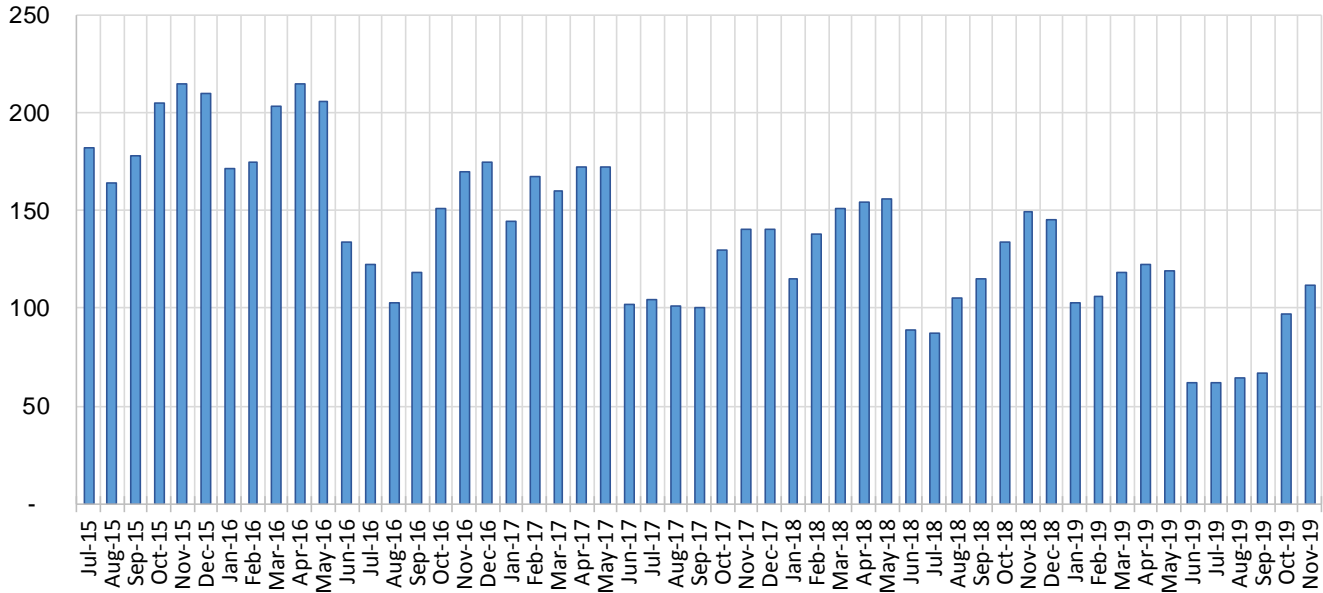
Education Works Cases by Field Office⁶

| Office | | | | Percent Change | |
|---------------------------------|--------|--------|--------|-------------------|-------------------|
| | Nov-18 | Oct-19 | Nov-19 | Nov-18- Nov-19 | Oct-19- Nov-19 |
| Chaves County ISD | 1 | 3 | 3 | 200.0% | 0.0% |
| Cibola County ISD | 1 | 0 | 1 | 0.0% | N/A |
| Colfax County ISD | 3 | 0 | 0 | -100.0% | N/A |
| Curry County ISD | 3 | 5 | 5 | 66.7% | 0.0% |
| East Dona Ana County ISD | 18 | 9 | 9 | -50.0% | 0.0% |
| Eddy Artesia County ISD | 1 | 3 | 2 | 100.0% | -33.3% |
| Eddy Carlsbad County ISD | 2 | 1 | 1 | -50.0% | 0.0% |
| Grant County ISD | 6 | 1 | 2 | -66.7% | 100.0% |
| Guadalupe County ISD | 0 | 0 | 0 | N/A | N/A |
| Hidalgo County ISD | 0 | 0 | 0 | N/A | N/A |
| Lea County ISD | 3 | 2 | 2 | -33.3% | 0.0% |
| Lincoln County ISD | 0 | 0 | 0 | N/A | N/A |
| Luna County ISD | 3 | 2 | 2 | -33.3% | 0.0% |
| McKinley County ISD | 0 | 1 | 1 | N/A | 0.0% |
| Northeast Bernalillo County ISD | 12 | 4 | 3 | -75.0% | -25.0% |
| Northwest Bernalillo County ISD | 12 | 12 | 17 | 41.7% | 41.7% |
| Otero County ISD | 1 | 1 | 0 | -100.0% | -100.0% |
| Quay County ISD | 0 | 0 | 0 | N/A | N/A |
| Rio Arriba County ISD | 4 | 0 | 1 | -75.0% | N/A |
| Roosevelt County ISD | 0 | 0 | 0 | N/A | N/A |
| San Juan County ISD | 3 | 3 | 3 | 0.0% | 0.0% |
| San Miguel County ISD | 7 | 3 | 4 | -42.9% | 33.3% |
| Sandoval County ISD | 9 | 6 | 8 | -11.1% | 33.3% |
| Santa Fe County ISD | 14 | 8 | 10 | -28.6% | 25.0% |
| Sierra County ISD | 0 | 1 | 1 | N/A | 0.0% |
| Socorro County ISD | 0 | 0 | 0 | N/A | N/A |
| South Dona Ana ISD | 18 | 8 | 7 | -61.1% | -12.5% |
| Southeast Bernalillo County ISD | 7 | 4 | 6 | -14.3% | 50.0% |
| Southwest Bernalillo County ISD | 12 | 8 | 9 | -25.0% | 12.5% |
| Taos County ISD | 0 | 0 | 0 | N/A | N/A |
| Torrance County ISD | 0 | 3 | 3 | N/A | 0.0% |
| Valencia North County ISD | 0 | 0 | 1 | N/A | N/A |
| Valencia South County ISD | 0 | 0 | 0 | N/A | N/A |
| West Dona Ana County ISD | 9 | 9 | 11 | 22.2% | 22.2% |
| Centralized Units | 0 | 0 | 0 | N/A | N/A |
| Statewide Total | 149 | 97 | 112 | -24.8% | 15.5% |

Education Works Cases by Region⁶

| | | | | Percent Change | |
|--------------------|--------|--------|--------|-------------------|-------------------|
| Region | Nov-18 | Oct-19 | Nov-19 | Nov-18- Nov-19 | Oct-19- Nov-19 |
| Region 1 - NW | 4 | 5 | 7 | 75.0% | 40.0% |
| Region 2 - NE | 37 | 17 | 23 | -37.8% | 35.3% |
| Region 3 - Central | 43 | 31 | 38 | -11.6% | 22.6% |
| Region 4 - SE | 10 | 14 | 13 | 30.0% | -7.1% |
| Region 5 - SW | 55 | 30 | 31 | -43.6% | 3.3% |
| Centralized Units | 0 | 0 | 0 | N/A | N/A |
| Statewide Total | 149 | 97 | 112 | -24.8% | 15.5% |

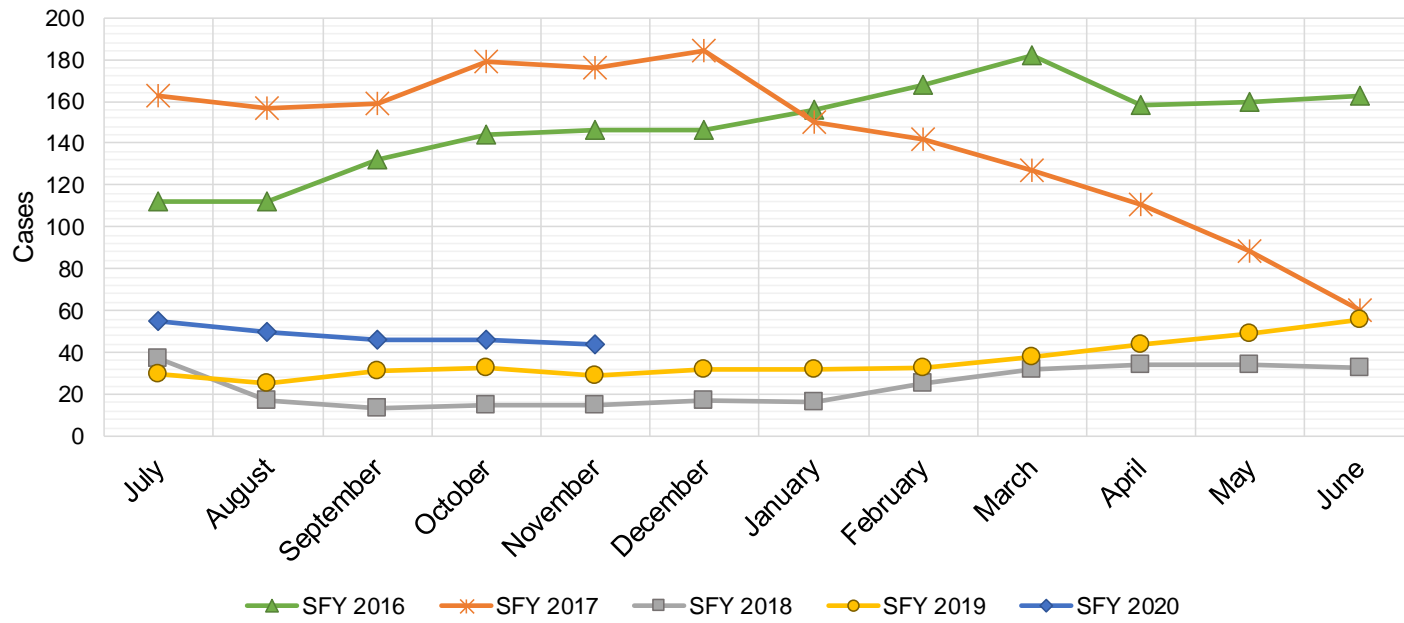
Education Works Caseload: SFY-16 to Current



Refugee Cash Assistance

| SFY 2016 ^{8,12,9} | | | SFY 2017 ^{8,9} | | | SFY 2018 ^{8,9} | | | SFY 2019 ^{8,9} | | | SFY 2020 ^{8,9} | | |
|----------------------------|-------|--------------|-------------------------|-------|--------------|-------------------------|-------|--------------|-------------------------|-------|--------------|-------------------------|-------|--------------|
| | Cases | Expenditures | | Cases | Expenditures | | Cases | Expenditures | | Cases | Expenditures | | Cases | Expenditures |
| Jul-15 | 112 | \$27,516 | Jul-16 | 163 | \$39,756 | Jul-17 | 37 | \$9,981 | Jul-18 | 30 | \$7,408 | Jul-19 | 55 | \$13,851 |
| Aug-15 | 112 | \$27,438 | Aug-16 | 157 | \$40,115 | Aug-17 | 17 | \$4,704 | Aug-18 | 25 | \$6,434 | Aug-19 | 50 | \$12,497 |
| Sep-15 | 132 | \$31,321 | Sep-16 | 159 | \$39,359 | Sep-17 | 13 | \$3,159 | Sep-18 | 31 | \$6,947 | Sep-19 | 46 | \$11,473 |
| Oct-15 | 144 | \$36,153 | Oct-16 | 179 | \$41,520 | Oct-17 | 15 | \$3,543 | Oct-18 | 33 | \$6,323 | Oct-19 | 46 | \$11,341 |
| Nov-15 | 146 | \$36,515 | Nov-16 | 176 | \$45,434 | Nov-17 | 15 | \$4,263 | Nov-18 | 29 | \$7,036 | Nov-19 | 44 | \$11,296 |
| Dec-15 | 146 | \$35,763 | Dec-16 | 184 | \$46,673 | Dec-17 | 17 | \$4,795 | Dec-18 | 32 | \$7,300 | Dec-19 | | |
| Jan-16 | 156 | \$38,686 | Jan-17 | 150 | \$38,790 | Jan-18 | 16 | \$4,166 | Jan-19 | 32 | \$7,418 | Jan-20 | | |
| Feb-16 | 168 | \$41,368 | Feb-17 | 142 | \$37,956 | Feb-18 | 25 | \$5,723 | Feb-19 | 33 | \$8,591 | Feb-20 | | |
| Mar-16 | 182 | \$45,307 | Mar-17 | 127 | \$33,066 | Mar-18 | 32 | \$7,636 | Mar-19 | 38 | \$9,165 | Mar-20 | | |
| Apr-16 | 158 | \$41,143 | Apr-17 | 111 | \$29,183 | Apr-18 | 34 | \$8,827 | Apr-19 | 44 | \$10,648 | Apr-20 | | |
| May-16 | 160 | \$38,332 | May-17 | 88 | \$23,343 | May-18 | 34 | \$8,939 | May-19 | 49 | \$11,823 | May-20 | | |
| Jun-16 | 163 | \$39,856 | Jun-17 | 60 | \$15,538 | Jun-18 | 33 | \$8,513 | Jun-19 | 56 | \$13,558 | Jun-20 | | |

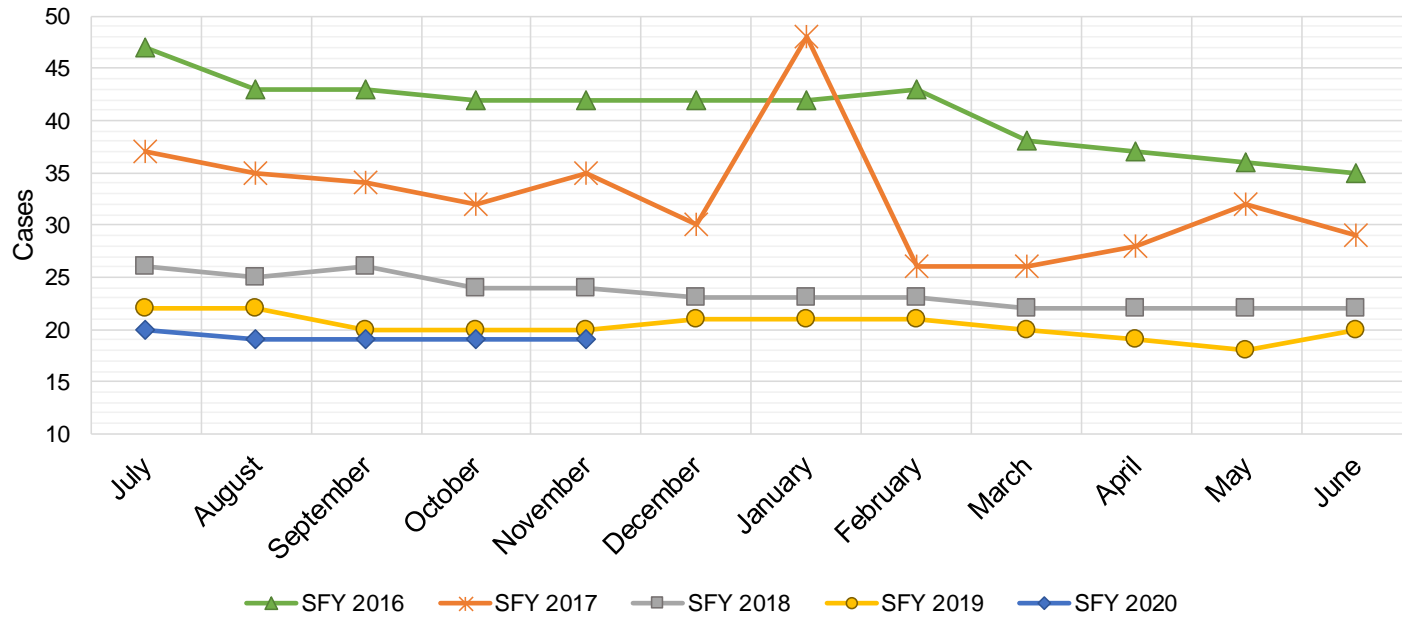
| | | | | | | | | | | |
|---------|-------|-----------|-------|-----------|-----|----------|-----|-----------|-----|----------|
| TOTAL | 1,779 | \$439,397 | 1,696 | \$430,732 | 288 | \$74,249 | 432 | \$102,651 | 241 | \$60,458 |
| AVERAGE | 148 | \$36,616 | 141 | \$35,894 | 24 | \$6,187 | 36 | \$8,554 | 48 | \$12,092 |



State Supplement for Residential Care

| SFY 2016 ^{12,9} | | | SFY 2017 ⁹ | | | SFY 2018 ⁹ | | | SFY 2019 ⁹ | | | SFY 2020 ⁹ | | |
|--------------------------|--------------|---------|-----------------------|--------------|---------|-----------------------|--------------|---------|-----------------------|--------------|---------|-----------------------|--------------|---------|
| Cases | Expenditures | | Cases | Expenditures | | Cases | Expenditures | | Cases | Expenditures | | Cases | Expenditures | |
| Jul-15 | 47 | \$4,700 | Jul-16 | 37 | \$3,700 | Jul-17 | 26 | \$2,700 | Jul-18 | 22 | \$2,200 | Jul-19 | 20 | \$1,900 |
| Aug-15 | 43 | \$4,900 | Aug-16 | 35 | \$3,500 | Aug-17 | 25 | \$2,500 | Aug-18 | 22 | \$2,200 | Aug-19 | 19 | \$1,900 |
| Sep-15 | 43 | \$4,500 | Sep-16 | 34 | \$3,400 | Sep-17 | 26 | \$2,700 | Sep-18 | 20 | \$2,000 | Sep-19 | 19 | \$1,900 |
| Oct-15 | 42 | \$4,400 | Oct-16 | 32 | \$3,200 | Oct-17 | 24 | \$2,500 | Oct-18 | 20 | \$2,000 | Oct-19 | 19 | \$1,900 |
| Nov-15 | 42 | \$4,200 | Nov-16 | 35 | \$3,500 | Nov-17 | 24 | \$2,400 | Nov-18 | 20 | \$2,000 | Nov-19 | 19 | \$1,900 |
| Dec-15 | 42 | \$4,200 | Dec-16 | 30 | \$3,000 | Dec-17 | 23 | \$2,200 | Dec-18 | 21 | \$2,100 | Dec-19 | | |
| Jan-16 | 42 | \$4,200 | Jan-17 | 48 | \$4,800 | Jan-18 | 23 | \$2,400 | Jan-19 | 21 | \$2,000 | Jan-20 | | |
| Feb-16 | 43 | \$4,300 | Feb-17 | 26 | \$2,600 | Feb-18 | 23 | \$2,300 | Feb-19 | 21 | \$2,200 | Feb-20 | | |
| Mar-16 | 38 | \$3,800 | Mar-17 | 26 | \$2,600 | Mar-18 | 22 | \$2,400 | Mar-19 | 20 | \$1,900 | Mar-20 | | |
| Apr-16 | 37 | \$3,700 | Apr-17 | 28 | \$2,800 | Apr-18 | 22 | \$2,200 | Apr-19 | 19 | \$1,800 | Apr-20 | | |
| May-16 | 36 | \$3,600 | May-17 | 32 | \$3,200 | May-18 | 22 | \$2,200 | May-19 | 18 | \$1,800 | May-20 | | |
| Jun-16 | 35 | \$3,500 | Jun-17 | 29 | \$2,900 | Jun-18 | 22 | \$2,200 | Jun-19 | 20 | \$2,000 | Jun-20 | | |

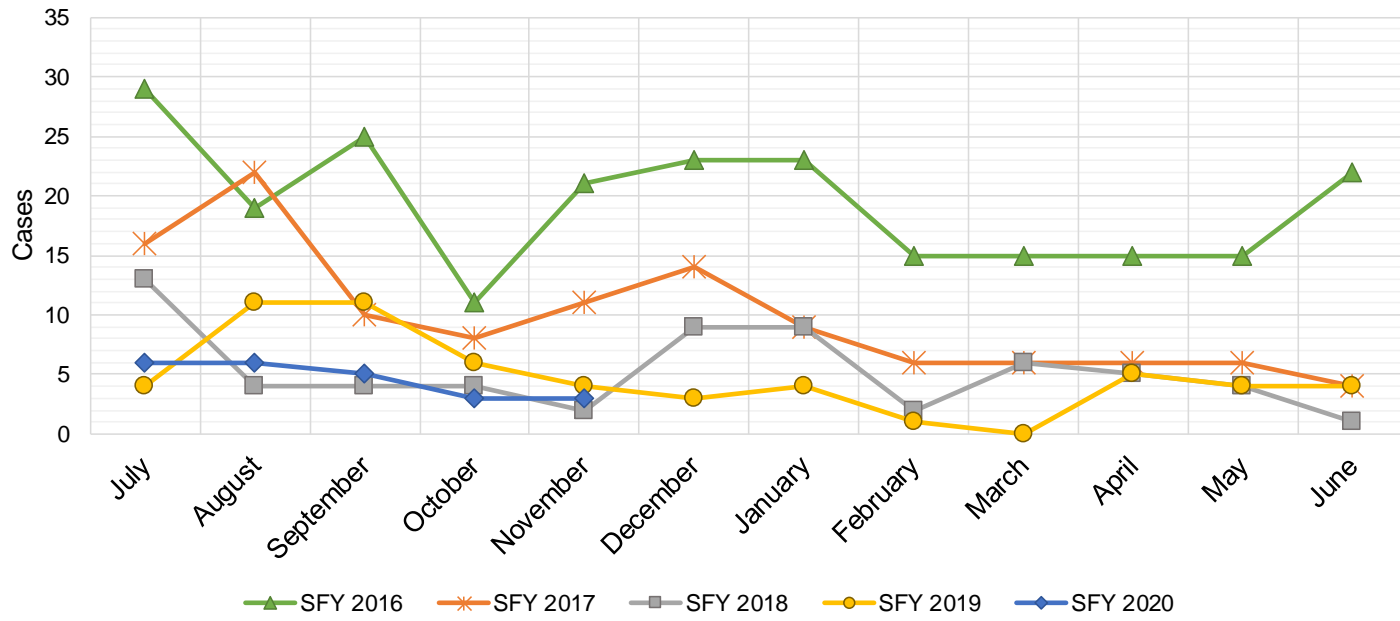
| | | | | | | | | | | |
|---------|-----|----------|-----|----------|-----|----------|-----|----------|----|---------|
| TOTAL | 490 | \$50,000 | 392 | \$39,200 | 282 | \$28,700 | 244 | \$24,200 | 96 | \$9,500 |
| AVERAGE | 41 | \$4,167 | 33 | \$3,267 | 24 | \$2,392 | 20 | \$2,017 | 19 | \$1,900 |



TANF Diversion Payments

| SFY 2016 ^{12,9} | | | SFY 2017 ⁹ | | | SFY 2018 ⁹ | | | SFY 2019 ⁹ | | | SFY 2020 ⁹ | | |
|--------------------------|-------|--------------|-----------------------|-------|--------------|-----------------------|-------|--------------|-----------------------|-------|--------------|-----------------------|-------|--------------|
| | Cases | Expenditures | | Cases | Expenditures | | Cases | Expenditures | | Cases | Expenditures | | Cases | Expenditures |
| Jul-15 | 29 | \$62,074 | Jul-16 | 16 | \$30,843 | Jul-17 | 13 | \$26,500 | Jul-18 | 4 | \$3,000 | Jul-19 | 6 | \$18,500 |
| Aug-15 | 19 | \$33,584 | Aug-16 | 22 | \$42,731 | Aug-17 | 4 | \$12,000 | Aug-18 | 11 | \$18,583 | Aug-19 | 6 | \$16,500 |
| Sep-15 | 25 | \$47,977 | Sep-16 | 10 | \$21,000 | Sep-17 | 4 | \$4,000 | Sep-18 | 11 | \$20,999 | Sep-19 | 5 | \$11,000 |
| Oct-15 | 11 | \$20,500 | Oct-16 | 8 | \$16,744 | Oct-17 | 4 | \$16,000 | Oct-18 | 6 | \$10,499 | Oct-19 | 3 | \$3,000 |
| Nov-15 | 21 | \$45,500 | Nov-16 | 11 | \$24,500 | Nov-17 | 2 | \$15,500 | Nov-18 | 4 | \$7,499 | Nov-19 | 3 | \$16,180 |
| Dec-15 | 23 | \$45,389 | Dec-16 | 14 | \$26,611 | Dec-17 | 9 | \$17,500 | Dec-18 | 3 | \$2,499 | Dec-19 | | |
| Jan-16 | 23 | \$41,874 | Jan-17 | 9 | \$18,500 | Jan-18 | 9 | \$21,731 | Jan-19 | 4 | \$5,999 | Jan-20 | | |
| Feb-16 | 15 | \$28,500 | Feb-17 | 6 | \$12,000 | Feb-18 | 2 | \$7,731 | Feb-19 | 1 | \$1,678 | Feb-20 | | |
| Mar-16 | 15 | \$27,008 | Mar-17 | 6 | \$11,000 | Mar-18 | 6 | \$8,496 | Mar-19 | 0 | \$3,000 | Mar-20 | | |
| Apr-16 | 15 | \$31,389 | Apr-17 | 6 | \$12,000 | Apr-18 | 5 | \$13,500 | Apr-19 | 5 | \$6,500 | Apr-20 | | |
| May-16 | 15 | \$31,916 | May-17 | 6 | \$11,500 | May-18 | 4 | \$12,500 | May-19 | 4 | \$16,000 | May-20 | | |
| Jun-16 | 22 | \$43,000 | Jun-17 | 4 | \$13,500 | Jun-18 | 1 | \$5,389 | Jun-19 | 4 | \$8,000 | Jun-20 | | |

| | | | | | | | | | | |
|---------|-----|-----------|-----|-----------|----|-----------|----|-----------|----|----------|
| TOTAL | 233 | \$458,711 | 118 | \$240,929 | 63 | \$160,847 | 57 | \$104,256 | 23 | \$65,180 |
| AVERAGE | 19 | \$38,226 | 10 | \$20,077 | 5 | \$13,404 | 5 | \$8,688 | 5 | \$13,036 |

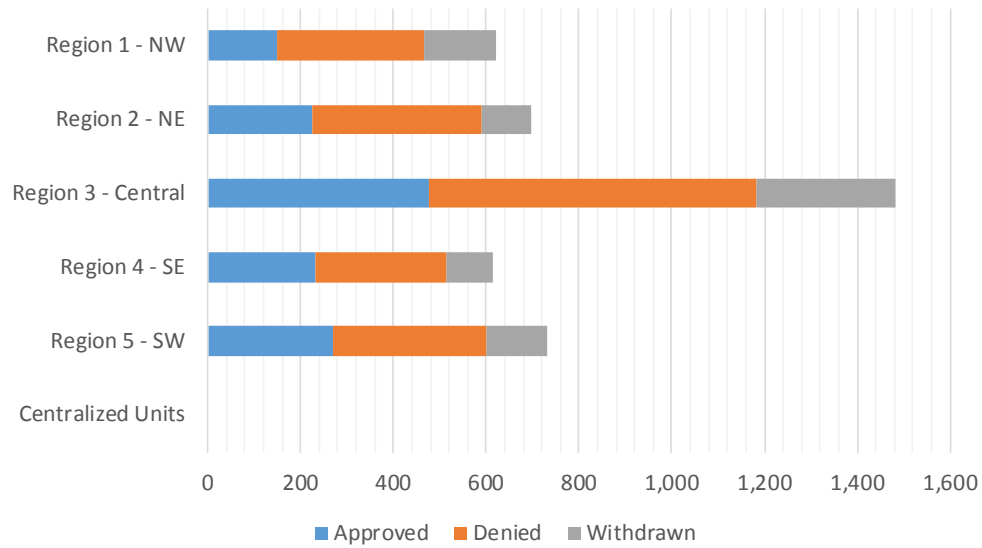


Cash Assistance Applications by Field Office^{4,11}
November 2019

| Office | Approved | Denied | Withdrawn | Total Cases Processed |
|---------------------------------|--------------|--------------|------------|-----------------------|
| Chaves County ISD | 49 | 44 | 43 | 136 |
| Cibola County ISD | 12 | 27 | 10 | 49 |
| Colfax County ISD | 6 | 20 | 7 | 33 |
| Curry County ISD | 68 | 100 | 17 | 185 |
| East Dona Ana County ISD | 56 | 67 | 35 | 158 |
| Eddy Artesia County ISD | 11 | 13 | 2 | 26 |
| Eddy Carlsbad County ISD | 26 | 41 | 9 | 76 |
| Grant County ISD | 22 | 35 | 8 | 65 |
| Guadalupe County ISD | 4 | 3 | 3 | 10 |
| Hidalgo County ISD | 0 | 0 | 0 | 0 |
| Lea County ISD | 69 | 68 | 19 | 156 |
| Lincoln County ISD | 10 | 14 | 12 | 36 |
| Luna County ISD | 31 | 22 | 8 | 61 |
| McKinley County ISD | 15 | 43 | 34 | 92 |
| Northeast Bernalillo County ISD | 123 | 250 | 63 | 436 |
| Northwest Bernalillo County ISD | 102 | 125 | 113 | 340 |
| Otero County ISD | 34 | 48 | 14 | 96 |
| Quay County ISD | 12 | 20 | 5 | 37 |
| Rio Arriba County ISD | 44 | 54 | 17 | 115 |
| Roosevelt County ISD | 0 | 1 | 0 | 1 |
| San Juan County ISD | 54 | 148 | 65 | 267 |
| San Miguel County ISD | 25 | 30 | 9 | 64 |
| Sandoval County ISD | 73 | 102 | 39 | 214 |
| Santa Fe County ISD | 45 | 99 | 22 | 166 |
| Sierra County ISD | 10 | 21 | 7 | 38 |
| Socorro County ISD | 8 | 24 | 5 | 37 |
| South Dona Ana ISD | 49 | 65 | 18 | 132 |
| Southeast Bernalillo County ISD | 87 | 106 | 51 | 244 |
| Southwest Bernalillo County ISD | 138 | 180 | 61 | 379 |
| Taos County ISD | 16 | 36 | 7 | 59 |
| Torrance County ISD | 27 | 45 | 10 | 82 |
| Valencia North County ISD | 49 | 56 | 34 | 139 |
| Valencia South County ISD | 0 | 0 | 0 | 0 |
| West Dona Ana County ISD | 77 | 93 | 51 | 221 |
| Centralized Units | 0 | 0 | 0 | 0 |
| Statewide Total | 1,352 | 2,000 | 798 | 4,150 |

Cash Assistance Applications by Region^{4,11}
November 2019

| | Approved | Denied | Withdrawn | Total Cases Processed |
|------------------------|--------------|--------------|------------|-----------------------|
| Region | | | | |
| Region 1 - NW | 148 | 319 | 155 | 622 |
| Region 2 - NE | 225 | 364 | 109 | 698 |
| Region 3 - Central | 477 | 706 | 298 | 1,481 |
| Region 4 - SE | 233 | 281 | 102 | 616 |
| Region 5 - SW | 269 | 330 | 134 | 733 |
| Centralized Units | 0 | 0 | 0 | 0 |
| Statewide Total | 1,352 | 2,000 | 798 | 4,150 |



Children Youth and Families Department
Children Receiving Child Care Assistance Subsidies By County

| County | Nov 2018 | Dec 2018 | Jan 2019 | Feb 2019 | Mar 2019 | Apr 2019 | May 2019 | June 2019 | July 2019 | Aug 2019 | Sept 2019 | Oct 2019 | Nov 2019 | Change Fr. Cases | Last Year Percent |
|---------------|---------------|---------------|---------------|---------------|---------------|---------------|---------------|---------------|---------------|---------------|---------------|---------------|---------------|------------------|-------------------|
| Bernalillo | 7,741 | 7,584 | 7,545 | 7,563 | 7,831 | 7,997 | 8,226 | 8,692 | 7,702 | 7,885 | 8,295 | 7,690 | 7,759 | 18 | 0.2% |
| Catron | 0 | 0 | 0 | 0 | 0 | 0 | 0 | 0 | 0 | 0 | 0 | 0 | 0 | 0 | 0.0% |
| Chaves | 836 | 814 | 812 | 834 | 878 | 868 | 868 | 875 | 830 | 824 | 886 | 811 | 891 | 55 | 6.6% |
| Cibola | 315 | 302 | 287 | 285 | 289 | 306 | 286 | 292 | 283 | 277 | 275 | 250 | 238 | -77 | -24.4% |
| Colfax | 60 | 57 | 62 | 57 | 59 | 52 | 50 | 44 | 38 | 40 | 33 | 43 | 34 | -26 | -43.3% |
| Curry | 548 | 517 | 492 | 489 | 524 | 548 | 542 | 590 | 597 | 613 | 625 | 563 | 596 | 48 | 8.8% |
| De Baca | 1 | 1 | 1 | 1 | 1 | 0 | 1 | 1 | 1 | 1 | 1 | 1 | 1 | 0 | 0.0% |
| Dona Ana | 4,304 | 4,191 | 4,198 | 4,351 | 4,453 | 4,413 | 4,536 | 4,751 | 4,360 | 4,384 | 4,575 | 4,429 | 4,493 | 189 | 4.4% |
| Eddy | 257 | 259 | 248 | 243 | 245 | 214 | 225 | 240 | 240 | 226 | 224 | 244 | 239 | -18 | -7.0% |
| Grant | 139 | 126 | 125 | 134 | 131 | 127 | 130 | 136 | 133 | 115 | 157 | 138 | 133 | -6 | -4.3% |
| Guadalupe | 14 | 12 | 11 | 11 | 11 | 11 | 11 | 11 | 10 | 10 | 10 | 7 | 7 | -7 | -50.0% |
| Harding | 1 | 1 | 1 | 1 | 0 | 0 | 0 | 0 | 0 | 0 | 0 | 0 | 0 | -1 | 0.0% |
| Hidalgo | 32 | 28 | 23 | 26 | 24 | 20 | 27 | 27 | 27 | 27 | 26 | 21 | 28 | -4 | -12.5% |
| Lea | 851 | 821 | 829 | 823 | 831 | 815 | 808 | 798 | 770 | 752 | 761 | 770 | 753 | -98 | -11.5% |
| Lincoln | 100 | 97 | 97 | 102 | 104 | 104 | 100 | 104 | 103 | 103 | 108 | 101 | 97 | -3 | -3.0% |
| Los Alamos | 34 | 34 | 34 | 34 | 34 | 36 | 40 | 40 | 37 | 37 | 47 | 38 | 42 | 8 | 23.5% |
| Luna | 145 | 153 | 150 | 176 | 180 | 176 | 190 | 191 | 172 | 160 | 173 | 160 | 148 | 3 | 2.1% |
| McKinley | 173 | 168 | 162 | 158 | 168 | 154 | 158 | 169 | 146 | 141 | 165 | 176 | 172 | -1 | -0.6% |
| Mora | 18 | 16 | 16 | 13 | 11 | 11 | 13 | 9 | 9 | 10 | 12 | 12 | 11 | -7 | -38.9% |
| Otero | 525 | 501 | 531 | 506 | 507 | 512 | 506 | 530 | 499 | 538 | 547 | 488 | 510 | -15 | -2.9% |
| Out of State | 4 | 5 | 3 | 4 | 1 | 2 | 0 | 1 | 0 | 0 | 0 | 0 | 0 | -4 | -100.0% |
| Quay | 34 | 33 | 34 | 32 | 34 | 33 | 33 | 38 | 34 | 38 | 37 | 33 | 34 | 0 | 0.0% |
| Rio Arriba | 146 | 142 | 134 | 137 | 132 | 141 | 151 | 155 | 158 | 151 | 150 | 147 | 153 | 7 | 4.8% |
| Roosevelt | 112 | 121 | 118 | 118 | 118 | 121 | 119 | 130 | 129 | 138 | 148 | 140 | 134 | 22 | 19.6% |
| San Juan | 955 | 926 | 913 | 942 | 935 | 958 | 966 | 961 | 905 | 897 | 1,018 | 932 | 926 | -29 | -3.0% |
| San Miguel | 357 | 345 | 317 | 316 | 319 | 332 | 349 | 373 | 363 | 357 | 363 | 375 | 356 | -1 | -0.3% |
| Sandoval | 697 | 708 | 741 | 734 | 744 | 758 | 751 | 802 | 765 | 806 | 827 | 783 | 803 | 106 | 15.2% |
| Santa Fe | 470 | 460 | 461 | 481 | 503 | 499 | 520 | 541 | 557 | 562 | 606 | 534 | 567 | 97 | 20.6% |
| Sierra | 60 | 57 | 49 | 51 | 48 | 42 | 40 | 50 | 48 | 47 | 58 | 54 | 56 | -4 | -6.7% |
| Socorro | 64 | 63 | 58 | 51 | 58 | 55 | 54 | 57 | 53 | 53 | 59 | 54 | 53 | -11 | -17.2% |
| Taos | 112 | 102 | 115 | 118 | 117 | 124 | 125 | 136 | 138 | 149 | 135 | 118 | 125 | 13 | 11.6% |
| Torrance | 94 | 88 | 90 | 85 | 79 | 69 | 67 | 82 | 68 | 67 | 73 | 57 | 57 | -37 | -39.4% |
| Union | 5 | 5 | 5 | 5 | 5 | 3 | 3 | 4 | 3 | 3 | 3 | 3 | 3 | -2 | -40.0% |
| Valencia | 611 | 610 | 614 | 604 | 589 | 591 | 607 | 656 | 559 | 569 | 625 | 602 | 595 | -16 | -2.6% |
| Totals | 19,815 | 19,347 | 19,276 | 19,485 | 19,963 | 20,092 | 20,502 | 21,486 | 19,737 | 19,980 | 21,022 | 19,774 | 20,014 | 199 | 1.0% |

CHILDREN YOUTH AND FAMILIES DEPARTMENT

CHILD CARE ASSISTANCE ELIGIBILITY PROGRAMS

| MONTH | Dec'18 | Jan'19 | Feb'19 | Mar'19 | Apr'19 | May'19 | June'19 | July'19 | Aug'19 | Sept'19 | Oct'19 | Nov'19 |
|---|--------------|--------------|--------------|--------------|--------------|--------------|--------------|--------------|--------------|--------------|--------------|--------------|
| TANF (Child Care Priority 1 Clients) | | | | | | | | | | | | |
| CLIENTS | 2,149 | 2,131 | 2,107 | 2,138 | 2,147 | 2,140 | 2,253 | 2,054 | 2,033 | 2,165 | 2,053 | 2,120 |
| COST | \$1,274,570 | \$1,281,263 | \$1,264,626 | \$1,284,582 | \$1,286,044 | \$1,278,678 | \$1,305,024 | \$1,273,209 | \$1,263,930 | \$1,184,381 | \$1,233,005 | \$1,284,683 |
| TANF AVERAGE COST | \$593 | \$601 | \$600 | \$601 | \$599 | \$598 | \$579 | \$620 | \$622 | \$547 | \$601 | \$606 |
| TRANSITION OFF TANF (Child Care Priority 2 Clients) | | | | | | | | | | | | |
| CLIENTS | 134 | 129 | 125 | 124 | 119 | 111 | 112 | 120 | 132 | 163 | 166 | 167 |
| COST | \$78,119 | \$81,456 | \$75,852 | \$73,930 | \$71,395 | \$69,505 | \$74,593 | \$74,688 | \$88,189 | \$90,271 | \$107,532 | \$107,596 |
| TRAN OFF TANF AVG COST | \$583 | \$631 | \$607 | \$596 | \$600 | \$626 | \$666 | \$622 | \$668 | \$554 | \$648 | \$644 |
| TANF ELIGIBLE (Child Care Priority 1B Clients at or below 100% of the Federal Poverty Level) | | | | | | | | | | | | |
| CLIENTS | 8,269 | 8,227 | 8,125 | 8,248 | 8,275 | 8,494 | 8,777 | 8,104 | 8,220 | 8,523 | 8,152 | 8,135 |
| COST | \$4,870,464 | \$4,796,096 | \$4,662,397 | \$4,825,487 | \$4,845,578 | \$4,939,239 | \$5,047,497 | \$4,909,110 | \$5,038,735 | \$4,665,509 | \$4,833,260 | \$4,922,197 |
| TANF ELIGIBLE AVG COST | \$589 | \$583 | \$574 | \$585 | \$586 | \$581 | \$575 | \$606 | \$613 | \$547 | \$593 | \$605 |
| INCOME ELIGIBLE (Child Care Priority 3, and Priority 4 Clients) | | | | | | | | | | | | |
| CLIENTS | 7,567 | 7,606 | 7,932 | 8,262 | 8,382 | 8,610 | 9,149 | 8,313 | 8,429 | 9,032 | 8,410 | 8,595 |
| COST | \$3,991,789 | \$3,956,942 | \$4,144,807 | \$4,325,025 | \$4,401,790 | \$4,546,220 | \$4,693,955 | \$4,573,196 | \$4,729,292 | \$4,390,092 | \$4,436,376 | \$4,557,011 |
| INCOME ELIG AVG COST | \$528 | \$520 | \$523 | \$523 | \$525 | \$528 | \$513 | \$550 | \$561 | \$486 | \$528 | \$530 |
| AT-RISK CHILD PROTECTIVE SERVICES CHILD CARE PILOT (Priority 5 Clients) | | | | | | | | | | | | |
| CLIENTS | 344 | 338 | 336 | 342 | 322 | 303 | 321 | 297 | 270 | 240 | 232 | 200 |
| COST | \$234,222 | \$239,514 | \$210,812 | \$223,510 | \$203,584 | \$204,504 | \$206,998 | \$200,185 | \$201,432 | \$161,487 | \$162,255 | \$159,520 |
| CPS AVG COST | \$681 | \$709 | \$627 | \$654 | \$632 | \$675 | \$645 | \$674 | \$746 | \$673 | \$699 | \$798 |
| CHILD PROTECTIVE SERVICES (Child Care CPS Clients) | | | | | | | | | | | | |
| CLIENTS | 884 | 845 | 860 | 849 | 847 | 844 | 874 | 849 | 896 | 899 | 761 | 797 |
| COST | \$607,486 | \$585,379 | \$576,818 | \$551,507 | \$594,790 | \$587,750 | \$612,880 | \$608,184 | \$644,539 | \$597,788 | \$520,249 | \$583,911 |
| CPS AVG COST | \$687 | \$693 | \$671 | \$650 | \$702 | \$696 | \$701 | \$716 | \$719 | \$665 | \$684 | \$733 |
| GRAND TOTAL - ALL CHILD CARE PROGRAMS | | | | | | | | | | | | |
| CLIENTS | 19,347 | 19,276 | 19,485 | 19,963 | 20,092 | 20,502 | 21,486 | 19,737 | 19,980 | 21,022 | 19,774 | 20,014 |
| COST | \$11,056,650 | \$10,940,651 | \$10,935,312 | \$11,284,041 | \$11,403,180 | \$11,625,897 | \$11,940,948 | \$11,638,571 | \$11,966,117 | \$11,089,528 | \$11,292,678 | \$11,614,917 |
| ALL PROGRAMS AVG COST | \$571 | \$568 | \$561 | \$565 | \$568 | \$567 | \$556 | \$590 | \$599 | \$528 | \$571 | \$580 |

Income Eligibility Guidelines: October 1, 2019 - September 30, 2020

Federal Poverty Guidelines (FPG) Monthly Income Standards

| Supplemental Nutrition Program (SNAP) | | | | | |
|---|---------------------|-----------------------|---|--------------------------------|-----------------|
| Household Size | 100% FPG Net Income | 130% FPG Gross Income | 165% FPG Gross Income for Categorical Eligibility | Maximum SNAP Monthly Allotment | LIHEAP 150% FPG |
| 1 | \$1,041 | \$1,354 | \$1,718 | \$194 | \$1,561 |
| 2 | \$1,410 | \$1,832 | \$2,326 | \$355 | \$2,114 |
| 3 | \$1,778 | \$2,311 | \$2,933 | \$509 | \$2,666 |
| 4 | \$2,146 | \$2,790 | \$3,541 | \$646 | \$3,219 |
| 5 | \$2,515 | \$3,269 | \$4,149 | \$768 | \$3,771 |
| 6 | \$2,883 | \$3,748 | \$4,757 | \$921 | \$4,324 |
| 7 | \$3,251 | \$4,227 | \$5,364 | \$1,018 | \$4,876 |
| 8 | \$3,620 | \$4,705 | \$5,972 | \$1,164 | \$5,429 |
| +1 | +\$369 | +\$479 | +\$608 | +\$146 | +\$553 |
| Minimum Allotment of \$16 effective from 10/1/2019 - 9/30/2020 | | | | | |
| DEDUCTIONS: Standard Deduction: For HH size 1-3 = \$167; 4 = \$178; 5 = \$209; 6 or more = \$240; Excess Shelter Deduction Limit: \$569; Heating and Cooling Standard Utility Allowance: \$340 (HCSUA) – Limited Utility Allowance: \$ 136 (LUA); Telephone Standard: \$44; Dependent Care: Actual Amount (No Limit); Earned Income Deduction: 20%; Homeless Shelter Standard: \$152.06, LIHEAP (only) Energy Standard Allowance (ESA): \$204 | | | | | |

| CASH Assistance & Support Services | | | | |
|--|---|---------------------|----------------------------------|--------------------|
| Household Size | Federal Poverty Guidelines (FPG) Monthly Income Standards | | Maximum Monthly Benefit | |
| | 100% FPG Net Income | 85% FPG Gross Limit | New Mexico Works Cash Assistance | General Assistance |
| 1 | \$1,041 | \$885 | \$266 | \$245 |
| 2 | \$1,410 | \$1,199 | \$357 | \$329 |
| 3 | \$1,778 | \$1,511 | \$447 | \$412 |
| 4 | \$2,146 | \$1,824 | \$539 | \$496 |
| 5 | \$2,515 | \$2,138 | \$630 | \$580 |
| 6 | \$2,883 | \$2,451 | \$721 | \$664 |
| 7 | \$3,251 | \$2,763 | \$812 | \$748 |
| 8 | \$3,620 | \$3,077 | \$922 | \$849 |
| +1 | +\$369 | +\$314 | +\$91 | +\$84 |
| Deductions- Dependent Care: For a child under age 2 = \$200; For a child age 2 and over = \$175. Work Incentives- Earned Income Disregard: Single parent = \$125 & ½ remainder; Two parent = \$225 & ½ remainder. | | | | |

ISD 017 Revised 11/26/2019

| Medical Assistance Division | | | | | |
|--|--------------------|---------|---------|---------|----------|
| Federal Poverty Guidelines New Mexico Affordable Care Eligibility Groups Effective April 01, 2019 thru March 31, 2020 Monthly Guidelines | | | | | |
| HH SIZE | PERCENT OF POVERTY | | | | |
| | 138% | 190% | 240% | 250% | 300% |
| 1 | \$1,437 | \$1,978 | \$2,498 | \$2,603 | \$3,123 |
| 2 | \$1,945 | \$2,678 | \$3,382 | \$3,523 | \$4,228 |
| 3 | \$2,453 | \$3,378 | \$4,266 | \$4,444 | \$5,333 |
| 4 | \$2,962 | \$4,078 | \$5,150 | \$5,365 | \$6,438 |
| 5 | \$3,470 | \$4,777 | \$6,034 | \$6,286 | \$7,543 |
| 6 | \$3,978 | \$5,477 | \$6,918 | \$7,207 | \$8,648 |
| 7 | \$4,487 | \$6,177 | \$7,802 | \$8,128 | \$9,753 |
| 8 | \$4,995 | \$6,877 | \$8,686 | \$9,048 | \$10,858 |

138% Adult Expansion, 190% Children ages 6 to 19 (Medicaid), 240% Children ages 0 to 6 (Medicaid); ages 6 to 19 (CHIP), 250% Pregnancy Related Services Only, 300% Children 0 to 6 (CHIP)

| Medical Assistance Division | | | | | |
|---|--------------------|----------|-----------|-----------|-----------|
| Federal Poverty Guidelines New Mexico Affordable Care Eligibility Groups Effective April 01, 2019 thru March 31, 2020 Annual Guidelines | | | | | |
| HH SIZE | PERCENT OF POVERTY | | | | |
| | 138% | 190% | 240% | 250% | 300% |
| 1 | \$17,244 | \$23,736 | \$29,976 | \$31,236 | \$37,476 |
| 2 | \$23,340 | \$32,136 | \$40,584 | \$42,276 | \$50,736 |
| 3 | \$29,436 | \$40,536 | \$51,192 | \$53,328 | \$63,996 |
| 4 | \$35,544 | \$48,936 | \$61,800 | \$64,380 | \$77,256 |
| 5 | \$41,640 | \$57,324 | \$72,408 | \$75,432 | \$90,516 |
| 6 | \$47,736 | \$65,724 | \$83,016 | \$86,484 | \$103,776 |
| 7 | \$53,844 | \$74,124 | \$93,624 | \$97,536 | \$117,036 |
| 8 | \$59,940 | \$82,524 | \$104,232 | \$108,576 | \$130,296 |

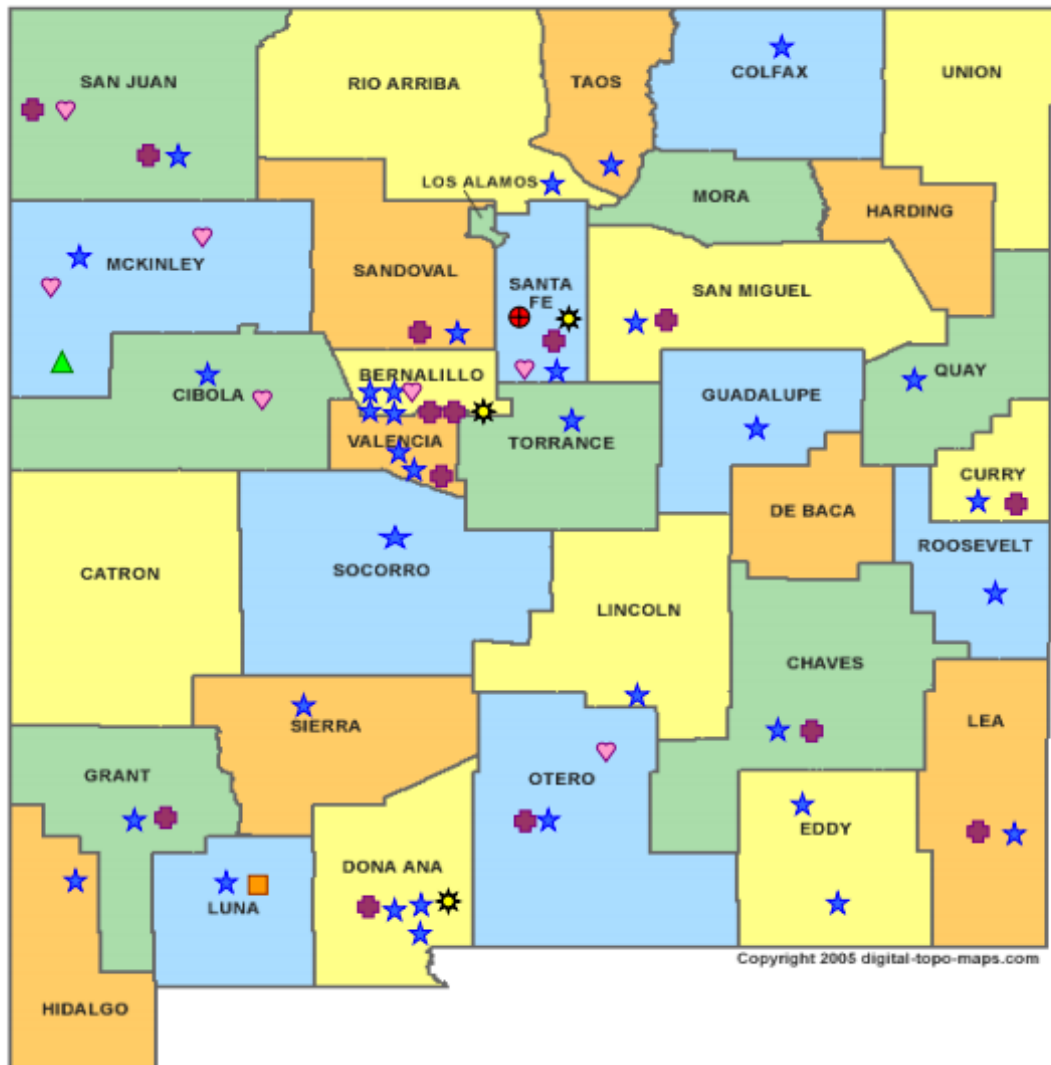
138% Adult Expansion, 190% Children ages 6 to 19 (Medicaid), 240% Children ages 0 to 6 (Medicaid); ages 6 to 19 (CHIP), 250% Pregnancy Related Services Only, 300% Children 0 to 6 (CHIP)

References

- ¹ *Medicaid Expenditures* (Omnicaid, Medicare Buy-Ins, Lump Sum Payments)
- ² *ASPEN Business Intelligence Tool: Eligibility*
- ³ New Mexico Human Services Department, *Medicaid Eligibility Reports*, Retrieved from <http://www.hsd.state.nm.us/LookingForInformation/medicaid-eligibility.aspx> (for reporting month)
- ⁴ *ASPEN Business Intelligence Tool: Application Tracking*
- ⁵ Fidelity Information Services, *EBT Daily Statistical Report* (for reporting month)
- ⁶ *ASPEN Report DQ-180: Length of Time Cases are Open* (for reporting month)
- ⁷ *ASPEN Report EY-180: Individual Demographics by State and Age* (for reporting month)
- ⁸ *ASPEN Business Intelligence Tool: Benefit Issuance*
- ⁹ Fidelity Information Services, *EBT Daily Statistical Reports* (Month End)
- ¹⁰ *ASPEN Report EY-180R: Individual Demographics by State, Race, Ethnicity and Gender* (for reporting month)
- ¹¹ SQL Queries from ASPEN
- ¹² JP Morgan, *New Mexico – NM EBT System- Monthly Benefit Draw Down Totals*
- ¹³ *ASPEN Business Intelligence Tool: Application Tracking* (w/Parameters: SNAP, Expedite, Approved)
- ¹⁴ SL Start, *As of Today Report*
- ¹⁵ SL Start, *Statewide Employment Report*
- ¹⁶ *SSIAR Payments*
- ¹⁷ Children, Youth, and Families Department, *Children Receiving Child Care Assistance Subsidies by County*
- ¹⁸ Children, Youth, and Families Department, *Child Care Assistance Eligibility Programs*

¹⁹ EDG is defined as an Eligibility Determination Group

²⁰SQL Query from ASPEN



HUMAN SERVICES
DEPARTMENT

New Mexico Human Services Department
Field Offices

- Central Office (1)
- Income Support Division County Office (35)
- Income Support Division Satellite Office (2)
- Child Support Enforcement Regional Office (16)
- Child Support Enforcement Satellite Office (1)
- Indian Health Services (7)
- Hospital Site (3)

For a complete listing of field offices and other government and community resources:
http://www.hsd.state.nm.us/LookingForAssistance/Field_Offices_1.aspx