



Monthly Statistical Report

November 2018

There were 832,316 individuals that received Medicaid in November 2018, a 2.4% decrease from one year ago. The count of Medicaid recipients has increased by 2,895, or 0.3%, since last month.

The SNAP caseload in November 2018 was 223,131, a 0.6% increase from one year ago. The SNAP caseload has decreased by 15 cases, or 0.0%, since last month.

The TANF caseload was 10,971 in November 2018, a decrease of 7.9% from November 2017. The TANF caseload had 157 fewer cases compared to October 2018, a decrease of 1.4%.

The caseload for General Assistance was 2,837 in November 2018, a decrease of 6.8% from one year ago and a decrease of 50 cases from last month.

Susana Martinez, Governor
Brent Earnest, Cabinet Secretary

Contents	Page
Summary	3-5
Medicaid	6-20
SNAP	21-41
Cash Assistance	42-56
Child Care Assistance	57-58
Income Eligibility Guidelines	59-60

Regions are reported as follows:

Region 1		
Catron	San Juan	Valencia
Cibola	Sierra	
McKinley	Socorro	
Region 2		
Colfax	Mora	Santa Fe
De Baca	Quay	Taos
Guadalupe	Rio Arriba	Union
Harding	Sandoval	
Los Alamos	San Miguel	
Region 3		
Bernalillo	Torrance	
Region 4		
Chaves	Eddy	Lincoln
Curry	Lea	Roosevelt
Region 5		
Dona Ana	Hidalgo	Otero
Grant	Luna	

The Mission of the Human Services Department

To reduce the impact of poverty on people living in New Mexico by providing support services that help families break the cycle of dependency on public assistance

Christopher Collins, Deputy Secretary
Michael Nelson, Deputy Secretary

Prepared by Income Support Division
PO Box 2348
Santa Fe, NM 87504-2348
505-827-7250

Mary Brogdon, Director
Vida Tapia-Sanchez, Deputy Director
Shanita Harrison, Deputy Director
Judith Parks, Deputy Director

<http://www.hsd.state.nm.us/monthly-statistical-reports.aspx>

Program Summary for November 2018

Medicaid				Percent Change	
	Nov-17	Oct-18	Nov-18	Nov-17- Nov-18	Oct-18- Nov-18
Expenditures¹	\$427,736,768	\$455,796,046	\$468,233,701	9.5%	2.7%
Cases²	489,917	486,650	490,457	0.1%	0.8%
Expenditures/Case	\$873	\$937	\$955	9.3%	1.9%
Recipients³	852,374	829,421	832,316	-2.4%	0.3%
<i>Adults</i>	483,085	472,503	475,116	-1.6%	0.6%
<i>Children</i>	369,289	356,918	357,200	-3.3%	0.1%
Recipients /Case	1.74	1.70	1.70	-2.5%	-0.4%
Cases Processed⁴	15,497	12,924	12,084	-22.0%	-6.5%
<i>Approvals⁴</i>	11,730	10,323	9,776	-16.7%	-5.3%

Supplemental Nutrition Assistance Program (SNAP)				Percent Change	
	Nov-17	Oct-18	Nov-18	Nov-17- Nov-18	Oct-18- Nov-18
Expenditures⁵	\$53,623,068	\$53,793,057	\$53,349,067	-0.5%	-0.8%
Cases⁶	221,742	223,146	223,131	0.6%	0.0%
Expenditures/Case	\$242	\$241	\$239	-1.1%	-0.8%
Recipients⁷	461,268	455,531	454,388	-1.5%	-0.3%
<i>Adults</i>	263,750	263,371	263,220	-0.2%	-0.1%
<i>Children</i>	197,518	192,160	191,168	-3.2%	-0.5%
Recipients /Case	2.08	2.04	2.04	-2.1%	-0.2%
Cases Processed⁴	19,862	19,707	18,594	-6.4%	-5.6%
<i>Approvals⁴</i>	16,390	16,337	14,868	-9.3%	-9.0%

Cash Assistance Programs				Percent Change	
	Nov-17	Oct-18	Nov-18	Nov-17- Nov-18	Oct-18- Nov-18
Expenditures⁵	\$4,299,165	\$3,978,563	\$4,253,453	-1.1%	6.9%
Cases⁶	15,138	14,202	14,006	-7.5%	-1.4%
Expenditures/Case	\$284	\$280	\$304	6.9%	8.4%
Recipients⁷	34,941	31,942	31,685	-9.3%	-0.8%
<i>Adults</i>	11,329	10,231	10,116	-10.7%	-1.1%
<i>Children</i>	23,612	21,711	21,569	-8.7%	-0.7%
Recipients /Case	2.31	2.25	2.26	-2.0%	0.6%
Cases Processed⁴	5,690	5,470	5,119	-10.0%	-6.4%
<i>Approvals⁴</i>	1,716	1,574	1,472	-14.2%	-6.5%

Low Income Home Energy Assistance Program (LIHEAP)				Percent Change	
	Nov-17	Oct-18	Nov-18	Nov-17- Nov-18	Oct-18- Nov-18
Expenditures⁸	\$2,523,278	\$5,306,960	\$3,187,615	26.3%	-39.9%
Cases⁸	9,362	17,018	10,378	10.9%	-39.0%
Expenditures/Case	\$270	\$312	\$307	14.0%	-1.5%
Recipients⁸	21,108	5,825	23,416	10.9%	302.0%
<i>Adults</i>	12,213	3,057	13,557	11.0%	343.5%
<i>Children</i>	8,895	2,768	9,859	10.8%	256.2%
Recipients /Case	2.25	0.34	2.26	0.1%	559.2%
Cases Processed⁴	11,606	16,859	11,118	-4.2%	-34.1%
<i>Approvals⁴</i>	9,593	15,666	10,133	5.6%	-35.3%

Cash Assistance Summary for November 2018

Temporary Assistance for Needy Families (TANF)

	Nov-17	Oct-18	Nov-18	Percent Change	
				Nov-17- Nov-18	Oct-18- Nov-18
Expenditures ⁵	\$3,486,390	\$3,201,671	\$3,479,658	-0.2%	8.7%
Cases ⁶	11,915	11,128	10,971	-7.9%	-1.4%
Expenditures/Case	\$293	\$288	\$317	8.4%	10.2%
Recipients ⁷	31,410	28,583	28,317	-9.8%	-0.9%
<i>Adults</i>	8,283	7,319	7,217	-12.9%	-1.4%
<i>Children</i>	23,127	21,264	21,100	-8.8%	-0.8%
Approvals ⁴	1,369	1,364	1,283	-6.3%	-5.9%

General Assistance (GA)

	Nov-17	Oct-18	Nov-18	Percent Change	
				Nov-17- Nov-18	Oct-18- Nov-18
Expenditures ⁵	\$757,191	\$714,155	\$705,109	-6.9%	-1.3%
Cases ⁶	3,044	2,887	2,837	-6.8%	-1.7%
Expenditures/Case	\$249	\$247	\$249	-0.1%	0.5%
Recipients ⁷	3,089	2,925	2,893	-6.3%	-1.1%
<i>Adults</i>	2,847	2,712	2,683	-5.8%	-1.1%
<i>Children</i>	242	213	210	-13.2%	-1.4%
Approvals ⁴	283	211	179	-36.7%	-15.2%

Education Works

	Nov-17	Oct-18	Nov-18	Percent Change	
				Nov-17- Nov-18	Oct-18- Nov-18
Expenditures ⁵	\$48,921	\$54,414	\$59,650	21.9%	9.6%
Cases ⁶	140	134	149	6.4%	11.2%
Expenditures/Case	\$349	\$406	\$400	14.6%	-1.4%
Recipients ⁷	400	381	424	6.0%	11.3%
<i>Adults</i>	157	147	165	5.1%	12.2%
<i>Children</i>	243	234	259	6.6%	10.7%
Approvals ⁴	2	4	1	-50.0%	-75.0%

Refugee Cash (RCA)

	Nov-17	Oct-18	Nov-18	Percent Change	
				Nov-17- Nov-18	Oct-18- Nov-18
Expenditures ⁵	\$4,263	\$6,323	\$7,036	65.0%	11.3%
Cases ⁶	15	33	29	93.3%	-12.1%
Expenditures/Case	\$284	\$192	\$243	-14.6%	26.6%
Recipients ⁷	18	33	31	72.2%	-6.1%
<i>Adults</i>	18	33	31	72.2%	-6.1%
<i>Children</i>	0	0	0	N/A	N/A

State Supplement for Residential Care

	Nov-17	Oct-18	Nov-18	Percent Change	
				Nov-17- Nov-18	Oct-18- Nov-18
Expenditures ⁵	\$2,400	\$2,000	\$2,000	-16.7%	0.0%
Cases ⁶	24	20	20	-16.7%	0.0%
Expenditures/Case	\$100	\$100	\$100	0.0%	0.0%
Recipients ⁷	24	20	20	-16.7%	0.0%
<i>Adults</i>	24	20	20	-16.7%	0.0%
<i>Children</i>	0	0	0	N/A	N/A

Expenditures YTD			
	SFY 2019	FFY 2018	CY 2018
Medicaid ¹	\$2,295,660,653	\$5,487,469,015	\$5,052,658,095
Supplemental Nutrition Assistance Program ⁹	\$266,134,181	\$638,535,473	\$584,207,947
Temporary Assistance for Needy Families ⁹	\$18,706,677	\$42,369,974	\$38,652,451
General Assistance ⁹	\$3,579,999	\$8,767,318	\$7,925,484
Education Work ⁹	\$247,873	\$574,478	\$544,238
LIHEAP ⁸	\$10,408,611	\$17,036,882	\$17,034,706

Average Caseload YTD			
	SFY 2019	FFY 2018	CY 2018
Medicaid ²	487,854	491,918	491,518
Supplemental Nutrition Assistance Program ⁶	222,582	221,815	222,096
Temporary Assistance for Needy Families ⁶	11,115	11,278	11,082
General Assistance ⁶	2,883	2,974	2,933
Education Work ⁶	118	127	127
LIHEAP ⁸	7,058	5,397	5,567

Demographic Profile- November 2018					
	SNAP	TANF	GA	Education Works	RCA
Gender of Recipients¹⁰					
Male	205,051	12,112	1,600	152	20
Female	249,337	16,205	1,293	272	11
Ethnicity¹⁰					
Hispanic	251,095	18,948	1,536	283	15
Non-Hispanic	203,293	9,369	1,357	141	16
Race¹⁰					
Native American or Alaskan Native	76,341	2,413	243	30	0
Asian	4,326	256	31	1	0
African American or Black	11,527	1,295	103	19	15
Native Hawaiian or Pacific Islander	857	40	2	0	0
White	351,126	23,466	2,447	364	14
Unknown / Not Declared	4,591	269	33	1	0
More than One Race	5,620	578	34	9	2

Medicaid demographic data can be found here: <http://www.hsd.state.nm.us/LookingForInformation/medicaid-eligibility.aspx>

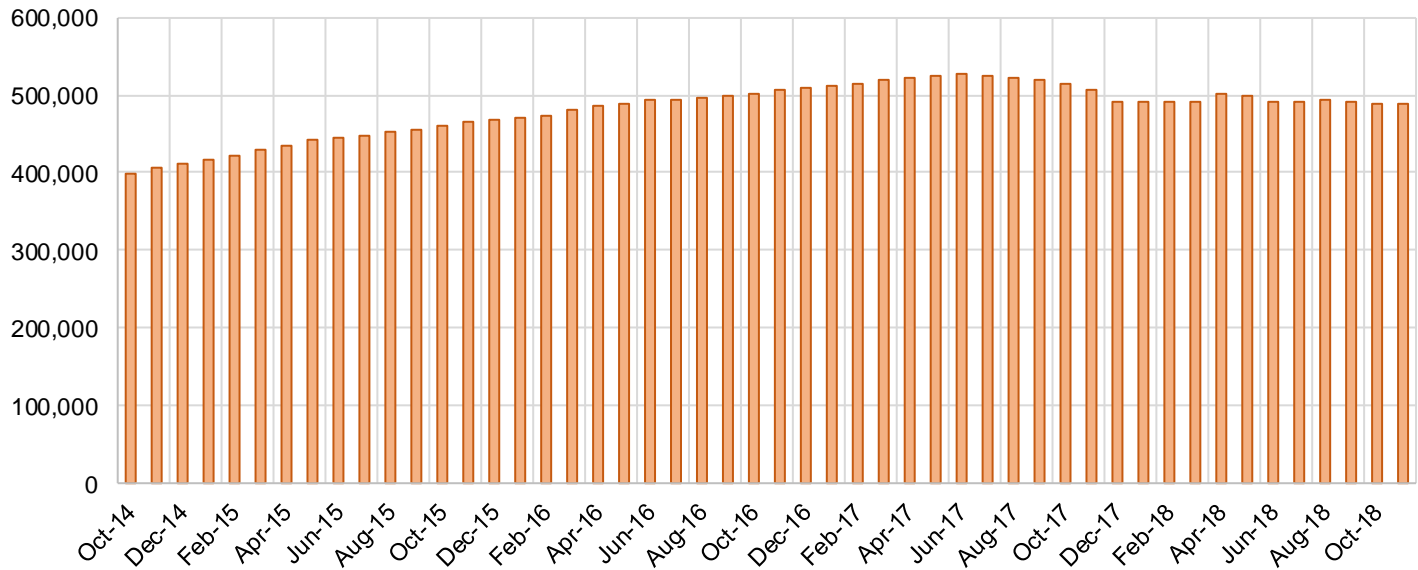
Medicaid Cases by Field Office²

Office	Nov-17	Oct-18	Nov-18	Percent Change	
				Nov-17- Nov-18	Oct-18- Nov-18
Chaves County ISD	16,057	15,848	15,888	-1.1%	0.3%
Cibola County ISD	7,510	7,557	7,639	1.7%	1.1%
Colfax County ISD	3,445	3,578	3,595	4.4%	0.5%
Curry County ISD	9,896	14,131	14,216	43.7%	0.6%
East Dona Ana County ISD	17,672	17,619	17,729	0.3%	0.6%
Eddy Artesia County ISD	3,872	3,835	3,845	-0.7%	0.3%
Eddy Carlsbad County ISD	7,934	7,563	7,563	-4.7%	0.0%
Grant County ISD	6,791	7,663	7,682	13.1%	0.2%
Guadalupe County ISD	1,756	1,680	1,646	-6.3%	-2.0%
Hidalgo County ISD	942	28	42	-95.5%	50.0%
Lea County ISD	14,204	14,281	14,343	1.0%	0.4%
Lincoln County ISD	4,333	4,231	4,301	-0.7%	1.7%
Luna County ISD	8,745	8,561	8,604	-1.6%	0.5%
McKinley County ISD	22,320	20,257	20,579	-7.8%	1.6%
Northeast Bernalillo County ISD	42,609	42,570	43,036	1.0%	1.1%
Northwest Bernalillo County ISD	47,130	49,780	52,953	12.4%	6.4%
Otero County ISD	11,897	11,829	11,900	0.0%	0.6%
Quay County ISD	2,572	2,561	2,563	-0.3%	0.1%
Rio Arriba County ISD	14,320	13,850	13,916	-2.8%	0.5%
Roosevelt County ISD	3,897	14	9	-99.8%	-35.7%
San Juan County ISD	29,912	29,825	30,013	0.3%	0.6%
San Miguel County ISD	9,194	9,069	9,141	-0.6%	0.8%
Sandoval County ISD	25,518	25,361	23,322	-8.6%	-8.0%
Santa Fe County ISD	24,961	24,430	24,555	-1.6%	0.5%
Sierra County ISD	5,542	5,324	5,349	-3.5%	0.5%
Socorro County ISD	5,414	5,231	5,254	-3.0%	0.4%
South Dona Ana ISD	19,829	19,648	19,659	-0.9%	0.1%
Southeast Bernalillo County ISD	26,052	24,833	25,107	-3.6%	1.1%
Southwest Bernalillo County ISD	38,856	38,342	38,569	-0.7%	0.6%
Taos County ISD	9,323	9,259	9,306	-0.2%	0.5%
Torrance County ISD	7,448	7,700	7,780	4.5%	1.0%
Valencia North County ISD	17,681	18,217	18,358	3.8%	0.8%
Valencia South County ISD	5	103	103	1960.0%	0.0%
West Dona Ana County ISD	22,277	21,869	21,889	-1.7%	0.1%
Centralized Units	3	3	3	0.0%	0.0%
Statewide Total	489,917	486,650	490,457	0.1%	0.8%

Medicaid Cases by Region²

				Percent Change	
Region	Nov-17	Oct-18	Nov-18	Nov-17- Nov-18	Oct-18- Nov-18
Region 1 - NW	88,384	86,514	87,295	-1.2%	0.9%
Region 2 - NE	91,089	89,788	88,044	-3.3%	-1.9%
Region 3 - Central	162,095	163,225	167,445	3.3%	2.6%
Region 4 - SE	60,193	59,903	60,165	0.0%	0.4%
Region 5 - SW	88,153	87,217	87,505	-0.7%	0.3%
Centralized Units	3	3	3	0.0%	0.0%
Statewide Total	489,917	486,650	490,457	0.1%	0.8%

Medicaid Caseload: SFY-15 to Current

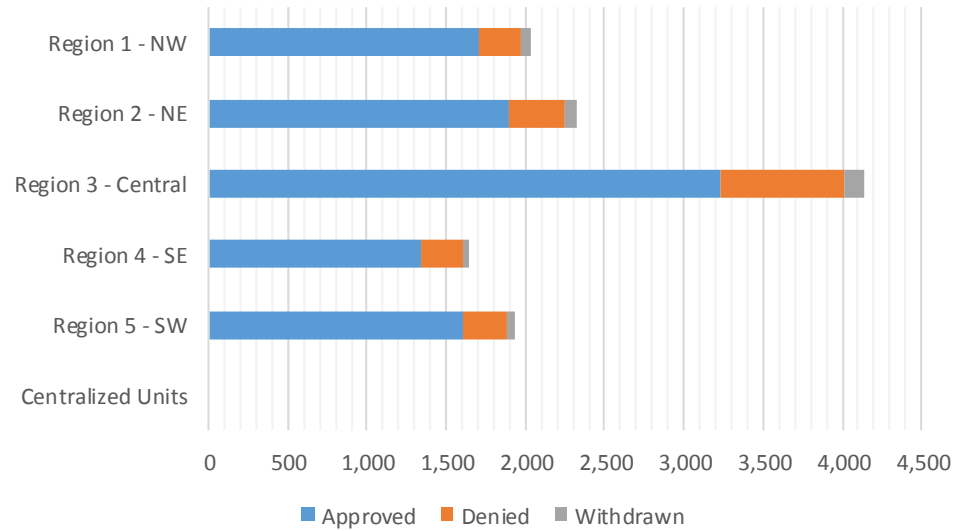


Medicaid Initial Applications by Field Office^{4,11}
November 2018

Office	Approved	Denied	Withdrawn	Total Cases Processed
Chaves County ISD	304	76	10	390
Cibola County ISD	146	28	9	183
Colfax County ISD	66	14	4	84
Curry County ISD	346	34	9	389
East Dona Ana County ISD	375	64	22	461
Eddy Artesia County ISD	82	20	1	103
Eddy Carlsbad County ISD	168	48	4	220
Grant County ISD	162	28	5	195
Guadalupe County ISD	18	2		20
Hidalgo County ISD	0	0	0	0
Lea County ISD	321	60	21	402
Lincoln County ISD	114	26	1	141
Luna County ISD	148	29	3	180
McKinley County ISD	391	67	8	466
Northeast Bernalillo County ISD	893	250	37	1,180
Northwest Bernalillo County ISD	837	189	37	1,063
Otero County ISD	242	43	5	290
Quay County ISD	27	12	5	44
Rio Arriba County ISD	239	54	7	300
Roosevelt County ISD	3	1		4
San Juan County ISD	623	82	22	727
San Miguel County ISD	251	29	3	283
Sandoval County ISD	548	93	19	660
Santa Fe County ISD	550	112	27	689
Sierra County ISD	104	12	7	123
Socorro County ISD	87	23	3	113
South Dona Ana ISD	308	49	6	363
Southeast Bernalillo County ISD	594	187	18	799
Southwest Bernalillo County ISD	701	125	29	855
Taos County ISD	197	35	8	240
Torrance County ISD	211	27	9	247
Valencia North County ISD	349	54	13	416
Valencia South County ISD	2	2		4
West Dona Ana County ISD	369	62	19	450
Centralized Units	0	0	0	0
Statewide Total	9,776	1,937	371	12,084

Medicaid Initial Applications by Region^{4,11} November 2018

Region	Approved	Denied	Withdrawn	Total Cases Processed
Region 1 - NW	1,702	268	62	2,032
Region 2 - NE	1,896	351	73	2,320
Region 3 - Central	3,236	778	130	4,144
Region 4 - SE	1,338	265	46	1,649
Region 5 - SW	1,604	275	60	1,939
Centralized Units	0	0	0	0
Statewide Total	9,776	1,937	371	12,084

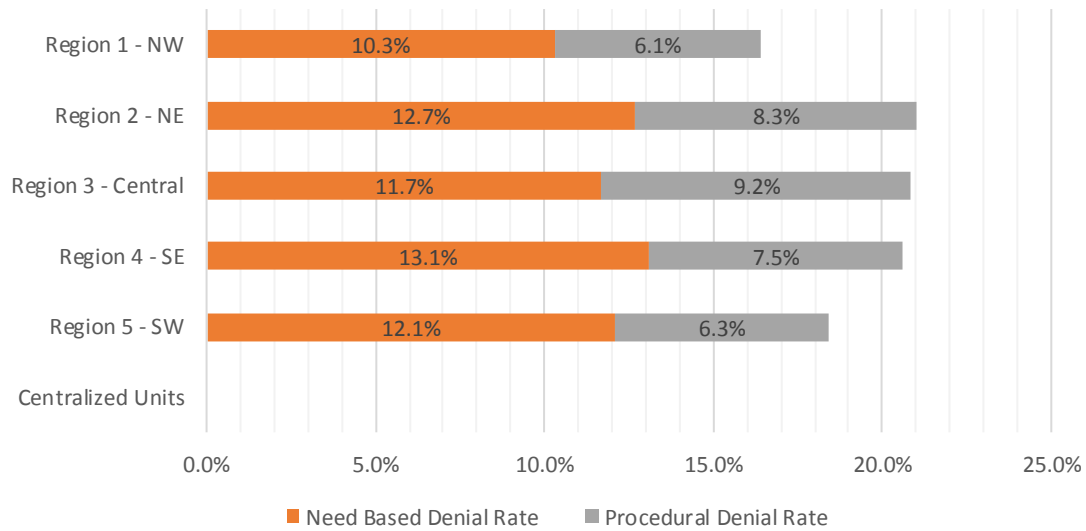


Medicaid EDG Initial Disposition Rates by Field Office^{4,11,19}
November 2018

Office	Approval Rate	Denial Rate	Need Based Denial Rate	Procedural Denial Rate
Chaves County ISD	77.4%	22.6%	12.6%	10.0%
Cibola County ISD	83.4%	16.6%	9.3%	7.3%
Colfax County ISD	72.8%	27.2%	15.8%	11.4%
Curry County ISD	87.8%	12.2%	10.6%	1.6%
East Dona Ana County ISD	81.8%	18.2%	13.9%	4.3%
Eddy Artesia County ISD	75.3%	24.7%	15.9%	8.8%
Eddy Carlsbad County ISD	70.6%	29.4%	14.3%	15.1%
Grant County ISD	81.2%	18.8%	8.9%	9.9%
Guadalupe County ISD	0.0%	0.0%	0.0%	0.0%
Hidalgo County ISD	0.0%	0.0%	0.0%	0.0%
Lea County ISD	80.9%	19.1%	13.6%	5.5%
Lincoln County ISD	77.6%	22.4%	14.8%	7.6%
Luna County ISD	81.5%	18.5%	11.9%	6.6%
McKinley County ISD	82.9%	17.1%	10.4%	6.7%
Northeast Bernalillo County ISD	75.2%	24.8%	12.5%	12.3%
Northwest Bernalillo County ISD	80.1%	19.9%	10.0%	9.9%
Otero County ISD	80.9%	19.1%	8.2%	10.9%
Quay County ISD	60.8%	39.2%	37.2%	2.0%
Rio Arriba County ISD	76.8%	23.2%	10.3%	12.9%
Roosevelt County ISD	0.0%	0.0%	0.0%	0.0%
San Juan County ISD	84.7%	15.3%	10.4%	4.9%
San Miguel County ISD	82.0%	18.0%	12.3%	5.7%
Sandoval County ISD	80.5%	19.5%	11.7%	7.8%
Santa Fe County ISD	78.4%	21.6%	13.8%	7.8%
Sierra County ISD	87.9%	12.1%	8.1%	4.0%
Socorro County ISD	75.9%	24.1%	14.9%	9.2%
South Dona Ana ISD	81.0%	19.0%	15.1%	3.9%
Southeast Bernalillo County ISD	76.0%	24.0%	15.8%	8.2%
Southwest Bernalillo County ISD	83.3%	16.7%	10.2%	6.5%
Taos County ISD	83.7%	16.3%	8.1%	8.2%
Torrance County ISD	85.8%	14.2%	9.4%	4.8%
Valencia North County ISD	84.0%	16.0%	9.3%	6.7%
Valencia South County ISD	0.0%	0.0%	0.0%	0.0%
West Dona Ana County ISD	82.6%	17.4%	11.7%	5.7%
Centralized Units	0.0%	0.0%	0.0%	0.0%
Statewide Total	80.7%	19.7%	12.0%	7.7%

Medicaid EDG Initial Disposition Rates by Region^{4,11,19}
November 2018

Region	Approval Rate	Denial Rate	Need Based Denial Rate	Procedural Denial Rate
Region 1 - NW	83.8%	16.4%	10.3%	6.1%
Region 2 - NE	80.3%	21.0%	12.7%	8.3%
Region 3 - Central	79.1%	20.9%	11.7%	9.2%
Region 4 - SE	79.6%	20.6%	13.1%	7.5%
Region 5 - SW	81.6%	18.4%	12.1%	6.3%
Centralized Units				
Statewide Total	80.7%	19.7%	12.0%	7.7%



Medicaid: Percentage of Initial EDG Approvals Processed Timely by Field Office ^{13,19}

	Oct-18	Nov-18	Dec-18	Jan-19	Feb-19	Mar-19	Apr-19	May-19	Jun-19	Jul-19	Aug-19	Sep-19	Average
Cibola	100.0%	98.8%											99.4%
McKinley	99.5%	99.4%											99.5%
San Juan	98.9%	98.9%											98.9%
Sierra	97.4%	99.3%											98.4%
Socorro	100.0%	100.0%											100.0%
Valencia North	98.9%	99.2%											99.1%
Valencia South	100.0%	100.0%											100.0%
NW Region 1 Total	99.1%	99.1%											99.1%
Colfax	99.1%	97.4%											98.3%
Guadalupe	96.8%	100.0%											98.4%
Quay	98.6%	100.0%											99.3%
Rio Arriba	99.7%	99.4%											99.6%
San Miguel	99.7%	100.0%											99.9%
Sandoval	98.2%	99.2%											98.7%
Santa Fe	99.0%	99.0%											99.0%
Taos	100.0%	98.8%											99.4%
NE Region 2 Total	99.0%	99.2%											99.1%
NE Bernalillo	97.5%	98.5%											98.0%
NW Bernalillo	98.6%	99.5%											99.1%
SE Bernalillo	98.4%	98.7%											98.6%
SW Bernalillo	98.7%	97.9%											98.3%
Torrance	99.3%	97.8%											98.6%
Gen. Region 3 Total	98.3%	98.6%											98.5%
Chaves	99.5%	99.2%											99.4%
Curry	98.5%	98.9%											98.7%
Eddy Artesia	100.0%	97.7%											98.9%
Eddy Carlsbad	98.0%	97.9%											98.0%
Lea	99.3%	99.5%											99.4%
Lincoln	99.3%	99.5%											99.4%
Roosevelt	100.0%	100.0%											100.0%
SE Region 4 Total	99.0%	99.0%											99.0%
East Dona Ana	99.7%	97.3%											98.5%
Grant	98.4%	99.2%											98.8%
Luna	97.5%	100.0%											98.8%
Otero	98.4%	98.9%											98.7%
South Dona Ana	99.6%	99.2%											99.4%
West Dona Ana	98.9%	99.2%											99.1%
SW Region 5 Total	99.0%	98.8%											98.9%
STATE TOTAL	98.8%	98.9%											98.9%

Medicaid: Percentage of Initial EDG Denials Processed Timely by Field Office ^{13,19}

	Oct-18	Nov-18	Dec-18	Jan-19	Feb-19	Mar-19	Apr-19	May-19	Jun-19	Jul-19	Aug-19	Sep-19	Average
Cibola	90.2%	93.8%											92.0%
McKinley	95.2%	97.7%											96.5%
San Juan	92.1%	87.2%											89.7%
Sierra	92.3%	100.0%											96.2%
Socorro	88.6%	97.6%											93.1%
Valencia North	96.8%	98.0%											97.4%
Valencia South	100.0%	100.0%											100.0%
NW Region 1 Total	93.2%	93.9%											93.6%
Colfax	100.0%	100.0%											100.0%
Guadalupe	100.0%	100.0%											100.0%
Quay	91.7%	95.0%											93.4%
Rio Arriba	82.2%	94.8%											88.5%
San Miguel	97.9%	100.0%											99.0%
Sandoval	90.0%	97.1%											93.6%
Santa Fe	92.7%	93.4%											93.1%
Taos	96.4%	98.0%											97.2%
NE Region 2 Total	91.9%	96.2%											94.1%
NE Bernalillo	91.1%	93.3%											92.2%
NW Bernalillo	89.6%	97.4%											93.5%
SE Bernalillo	95.0%	95.1%											95.1%
SW Bernalillo	83.6%	97.8%											90.7%
Torrance	94.0%	96.2%											95.1%
Gen. Region 3 Total	90.1%	95.6%											92.9%
Chaves	98.2%	98.0%											98.1%
Curry	92.0%	90.8%											91.4%
Eddy Artesia	97.7%	97.6%											97.7%
Eddy Carlsbad	90.1%	95.0%											92.6%
Lea	90.8%	98.6%											94.7%
Lincoln	92.5%	98.2%											95.4%
Roosevelt	100.0%	100.0%											100.0%
SE Region 4 Total	93.3%	96.6%											95.0%
East Dona Ana	96.6%	94.0%											95.3%
Grant	96.2%	100.0%											98.1%
Luna	96.4%	100.0%											98.2%
Otero	96.1%	98.8%											97.5%
South Dona Ana	100.0%	99.2%											99.6%
West Dona Ana	97.5%	97.2%											97.4%
SW Region 5 Total	97.4%	97.7%											97.6%
STATE TOTAL	92.6%	96.0%											94.3%

Medicaid: Percentage of Initial EDG Approvals and Denials Combined Processed Timely by Field Office ^{13,19}

	Oct-18	Nov-18	Dec-18	Jan-19	Feb-19	Mar-19	Apr-19	May-19	Jun-19	Jul-19	Aug-19	Sep-19	Average
Cibola	98.6%	97.9%											98.3%
McKinley	98.7%	99.1%											98.9%
San Juan	97.8%	97.1%											97.5%
Sierra	97.0%	99.4%											98.2%
Socorro	96.6%	99.4%											98.0%
Valencia North	98.6%	99.0%											98.8%
Valencia South	100.0%	100.0%											100.0%
NW Region 1 Total	98.1%	98.3%											98.2%
Colfax	99.2%	98.1%											98.7%
Guadalupe	96.8%	100.0%											98.4%
Quay	97.6%	98.0%											97.8%
Rio Arriba	97.6%	98.3%											98.0%
San Miguel	99.5%	100.0%											99.8%
Sandoval	97.0%	98.8%											97.9%
Santa Fe	97.8%	97.7%											97.8%
Taos	99.7%	98.7%											99.2%
NE Region 2 Total	98.0%	98.5%											98.3%
NE Bernalillo	96.1%	97.2%											96.7%
NW Bernalillo	96.8%	99.1%											98.0%
SE Bernalillo	97.6%	97.8%											97.7%
SW Bernalillo	96.1%	97.9%											97.0%
Torrance	98.4%	97.6%											98.0%
Cen. Region 3 Total	96.7%	98.0%											97.4%
Chaves	99.2%	99.0%											99.1%
Curry	97.3%	97.9%											97.6%
Eddy Artesia	99.5%	97.6%											98.6%
Eddy Carlsbad	96.5%	97.1%											96.8%
Lea	97.2%	99.3%											98.3%
Lincoln	97.5%	99.2%											98.4%
Roosevelt	100.0%	100.0%											100.0%
SE Region 4 Total	97.7%	98.5%											98.1%
East Dona Ana	99.1%	96.7%											97.9%
Grant	97.9%	99.4%											98.7%
Luna	97.3%	100.0%											98.7%
Otero	98.1%	98.9%											98.5%
South Dona Ana	99.7%	99.2%											99.5%
West Dona Ana	98.7%	98.9%											98.8%
SW Region 5 Total	98.7%	98.6%											98.7%
STATE TOTAL	97.7%	98.3%											98.0%

Medicaid Renewal Disposition Counts by Field Office^{4,11}
November 2018

Office	Approvals	Closures	Need Based Closures	Procedural Closures
Chaves County ISD	4,447	654	263	391
Cibola County ISD	2,341	281	115	166
Colfax County ISD	897	92	45	47
Curry County ISD	4,466	537	230	307
East Dona Ana County ISD	4,918	726	297	429
Eddy Artesia County ISD	1,001	225	82	143
Eddy Carlsbad County ISD	1,818	413	121	292
Grant County ISD	2,041	229	111	118
Guadalupe County ISD	350	58	27	31
Hidalgo County ISD	6			
Lea County ISD	4,144	646	250	396
Lincoln County ISD	1,034	197	65	132
Luna County ISD	2,286	334	161	173
McKinley County ISD	6,223	885	367	518
Northeast Bernalillo County ISD	9,088	1571	567	1004
Northwest Bernalillo County ISD	8,345	1357	537	820
Otero County ISD	3,021	453	201	252
Quay County ISD	571	67	34	33
Rio Arriba County ISD	3,418	426	173	253
Roosevelt County ISD				
San Juan County ISD	8,863	1322	560	762
San Miguel County ISD	2,163	250	115	135
Sandoval County ISD	6,668	1079	415	664
Santa Fe County ISD	4,857	961	281	680
Sierra County ISD	1,560	204	115	89
Socorro County ISD	1,210	172	78	94
South Dona Ana ISD	5,403	726	335	391
Southeast Bernalillo County ISD	5,195	811	314	497
Southwest Bernalillo County ISD	11,696	1772	771	1001
Taos County ISD	1,745	330	98	232
Torrance County ISD	1,938	271	127	144
Valencia North County ISD	5,142	709	310	399
Valencia South County ISD				
West Dona Ana County ISD	5,765	702	333	369
Centralized Units				
Statewide Total	122,620	18,460	7,498	10,962

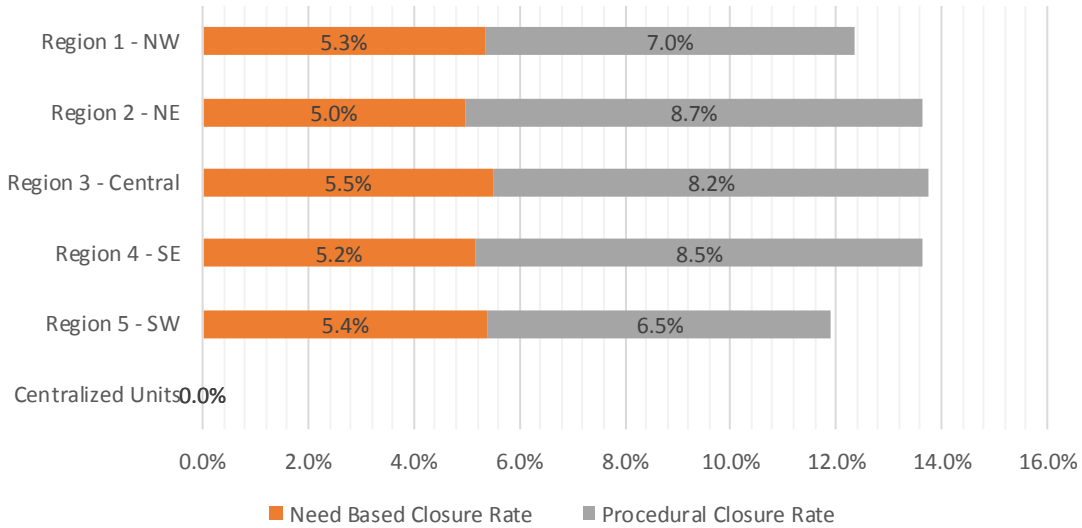
Determinations at Administrative, Annual, and Auto Renewals are included

Medicaid Renewal Disposition Rates by Field Office²⁰
November 2018

Office	Approval Rate	Closure Rate	Need Based Closure Rate	Procedural Closure Rate
Chaves County ISD	87.2%	12.8%	5.2%	7.7%
Cibola County ISD	89.3%	10.7%	4.4%	6.3%
Colfax County ISD	90.7%	9.3%	4.6%	4.8%
Curry County ISD	89.3%	10.7%	4.6%	6.1%
East Dona Ana County ISD	87.1%	12.9%	5.3%	7.6%
Eddy Artesia County ISD	81.6%	18.4%	6.7%	11.7%
Eddy Carlsbad County ISD	81.5%	18.5%	5.4%	13.1%
Grant County ISD	89.9%	10.1%	4.9%	5.2%
Guadalupe County ISD	85.8%	14.2%	6.6%	7.6%
Hidalgo County ISD	100.0%	0.0%	0.0%	0.0%
Lea County ISD	86.5%	13.5%	5.2%	8.3%
Lincoln County ISD	84.0%	16.0%	5.3%	10.7%
Luna County ISD	87.3%	12.7%	6.1%	6.6%
McKinley County ISD	87.5%	12.5%	5.2%	7.3%
Northeast Bernalillo County ISD	85.3%	14.7%	5.3%	9.4%
Northwest Bernalillo County ISD	86.0%	14.0%	5.5%	8.5%
Otero County ISD	87.0%	13.0%	5.8%	7.3%
Quay County ISD	89.5%	10.5%	5.3%	5.2%
Rio Arriba County ISD	88.9%	11.1%	4.5%	6.6%
Roosevelt County ISD	0.0%	0.0%	0.0%	0.0%
San Juan County ISD	87.0%	13.0%	5.5%	7.5%
San Miguel County ISD	89.6%	10.4%	4.8%	5.6%
Sandoval County ISD	86.1%	13.9%	5.4%	8.6%
Santa Fe County ISD	83.5%	16.5%	4.8%	11.7%
Sierra County ISD	88.4%	11.6%	6.5%	5.0%
Socorro County ISD	87.6%	12.4%	5.6%	6.8%
South Dona Ana ISD	88.2%	11.8%	5.5%	6.4%
Southeast Bernalillo County ISD	86.5%	13.5%	5.2%	8.3%
Southwest Bernalillo County ISD	86.8%	13.2%	5.7%	7.4%
Taos County ISD	84.1%	15.9%	4.7%	11.2%
Torrance County ISD	87.7%	12.3%	5.7%	6.5%
Valencia North County ISD	87.9%	12.1%	5.3%	6.8%
Valencia South County ISD	0.0%	0.0%	0.0%	0.0%
West Dona Ana County ISD	89.1%	10.9%	5.1%	5.7%
Centralized Units	0.0%	0.0%	0.0%	0.0%
Statewide Total	86.9%	13.1%	5.3%	7.8%

Medicaid Renewal Disposition Rates by Region²⁰
November 2018

Region	Approval Rate	Closure Rate	Need Based Closure Rate	Procedural Closure Rate
Region 1 - NW	87.6%	12.4%	5.3%	7.0%
Region 2 - NE	86.4%	13.6%	5.0%	8.7%
Region 3 - Central	86.2%	13.8%	5.5%	8.2%
Region 4 - SE	86.4%	13.6%	5.2%	8.5%
Region 5 - SW	88.1%	11.9%	5.4%	6.5%
Centralized Units				
Statewide Total	86.9%	13.1%	5.3%	7.8%



Medicaid: Percentage of Approved Renewal EDGs Processed by Certification Date ¹¹

	Oct-18	Nov-18	Dec-18	Jan-19	Feb-19	Mar-19	Apr-19	May-19	Jun-19	Jul-19	Aug-19	Sep-19	Average
Cibola	99.7%	97.1%											98.4%
McKinley	99.4%	97.5%											98.4%
San Juan	99.2%	97.3%											98.2%
Sierra	98.8%	97.6%											98.2%
Socorro	99.2%	96.2%											97.7%
Valencia North	99.0%	96.6%											97.8%
Valencia South													
NW Region 1 Total	99.2%	97.1%											98.1%
Colfax	99.2%	97.5%											98.4%
Guadalupe	99.6%	96.9%											98.2%
Quay	98.4%	97.0%											97.7%
Rio Arriba	98.6%	97.1%											97.8%
San Miguel	99.5%	97.3%											98.4%
Sandoval	98.6%	97.1%											97.9%
Santa Fe	97.9%	95.8%											96.9%
Taos	98.2%	97.1%											97.7%
NE Region 2 Total	98.8%	97.0%											97.9%
NE Bernalillo	98.1%	96.7%											97.4%
NW Bernalillo	97.9%	97.2%											97.5%
SE Bernalillo	98.5%	96.9%											97.7%
SW Bernalillo	98.2%	96.7%											97.5%
Torrance	99.5%	98.0%											98.8%
Gen. Region 3 Total	98.5%	97.1%											97.8%
Chaves	98.8%	97.1%											98.0%
Curry	98.9%	97.5%											98.2%
Eddy Artesia	98.2%	96.9%											97.6%
Eddy Carlsbad	98.9%	96.6%											97.8%
Lea	98.9%	97.8%											98.3%
Lincoln	98.6%	95.2%											96.9%
Roosevelt	100.0%												100.0%
SE Region 4 Total	98.9%	96.9%											97.9%
East Dona Ana	99.3%	97.1%											98.2%
Grant	99.1%	97.4%											98.2%
Luna	99.2%	97.2%											98.2%
Otero	98.3%	96.6%											97.4%
South Dona Ana	97.9%	97.4%											97.7%
West Dona Ana	99.6%	98.0%											98.8%
SW Region 5 Total	98.9%	97.3%											98.1%
STATE TOTAL	98.9%	97.0%											98.0%

Medicaid: Percentage of Closures EDGs Processed by Certification End Date¹¹

	<i>Oct-18</i>	<i>Nov-18</i>	<i>Dec-18</i>	<i>Jan-19</i>	<i>Feb-19</i>	<i>Mar-19</i>	<i>Apr-19</i>	<i>May-19</i>	<i>Jun-19</i>	<i>Jul-19</i>	<i>Aug-19</i>	<i>Sep-19</i>	<i>Average</i>
Cibola	96.0%	97.9%											97.0%
McKinley	98.6%	98.9%											98.7%
San Juan	97.1%	97.0%											97.1%
Sierra	98.5%	95.6%											97.0%
Socorro	96.0%	99.4%											97.7%
Valencia North	98.3%	98.7%											98.5%
Valencia South													
NW Region 1 Total	97.4%	97.9%											97.7%
Colfax	96.3%	97.8%											97.1%
Guadalupe	98.3%	100.0%											99.2%
Quay	96.6%	97.0%											96.8%
Rio Arriba	98.6%	98.1%											98.3%
San Miguel	100.0%	98.8%											99.4%
Sandoval	98.2%	98.1%											98.1%
Santa Fe	98.0%	98.5%											98.3%
Taos	97.4%	98.8%											98.1%
NE Region 2 Total	98.1%	98.5%											98.3%
NE Bernalillo	98.3%	97.6%											98.0%
NW Bernalillo	98.2%	98.5%											98.3%
SE Bernalillo	95.8%	98.4%											97.1%
SW Bernalillo	97.8%	98.3%											98.0%
Torrance	97.8%	98.5%											98.2%
Gen. Region 3 Total	97.7%	98.4%											98.0%
Chaves	98.2%	98.9%											98.6%
Curry	98.9%	98.1%											98.5%
Eddy Artesia	98.9%	97.3%											98.1%
Eddy Carlsbad	99.1%	99.3%											99.2%
Lea	97.7%	98.6%											98.2%
Lincoln	99.5%	99.5%											99.5%
Roosevelt	100.0%												100.0%
SE Region 4 Total	98.9%	98.6%											98.8%
East Dona Ana	98.1%	97.9%											98.0%
Grant	97.6%	97.4%											97.5%
Luna	99.1%	98.5%											98.8%
Otero	98.5%	98.9%											98.7%
South Dona Ana	97.9%	98.1%											98.0%
West Dona Ana	98.2%	98.4%											98.3%
SW Region 5 Total	98.3%	98.3%											98.3%
STATE TOTAL	98.1%	98.3%											98.2%

Medicaid: Percentage of Approved and Terminated Renewal EDGs Combined Processed by Certification Date ¹¹													
	Oct-18	Nov-18	Dec-18	Jan-19	Feb-19	Mar-19	Apr-19	May-19	Jun-19	Jul-19	Aug-19	Sep-19	Average
Cibola	99.1%	97.2%											98.2%
McKinley	99.3%	97.7%											98.5%
San Juan	98.8%	97.3%											98.0%
Sierra	98.8%	97.4%											98.1%
Socorro	98.6%	96.6%											97.6%
Valencia North	98.9%	96.8%											97.9%
Valencia South													
NW Region 1 Total	98.9%	97.2%											98.0%
Colfax	98.6%	97.6%											98.1%
Guadalupe	99.4%	97.3%											98.3%
Quay	98.1%	97.0%											97.6%
Rio Arriba	98.6%	97.2%											97.9%
San Miguel	99.6%	97.4%											98.5%
Sandoval	98.6%	97.2%											97.9%
Santa Fe	98.0%	96.3%											97.1%
Taos	98.0%	97.4%											97.7%
NE Region 2 Total	98.6%	97.2%											97.9%
NE Bernalillo	98.1%	96.9%											97.5%
NW Bernalillo	98.0%	97.4%											97.7%
SE Bernalillo	98.0%	97.1%											97.6%
SW Bernalillo	98.1%	96.9%											97.5%
Torrance	99.2%	98.1%											98.6%
Gen. Region 3 Total	98.3%	97.3%											97.8%
Chaves	98.7%	97.3%											98.0%
Curry	98.9%	97.6%											98.3%
Eddy Artesia	98.4%	97.0%											97.7%
Eddy Carlsbad	99.0%	97.1%											98.0%
Lea	98.6%	97.9%											98.3%
Lincoln	98.8%	95.9%											97.3%
Roosevelt	100.0%												100.0%
SE Region 4 Total	98.9%	97.1%											98.0%
East Dona Ana	99.1%	97.2%											98.2%
Grant	98.9%	97.4%											98.1%
Luna	99.2%	97.4%											98.3%
Otero	98.3%	96.9%											97.6%
South Dona Ana	97.9%	97.5%											97.7%
West Dona Ana	99.4%	98.0%											98.7%
SW Region 5 Total	98.8%	97.4%											98.1%
STATE TOTAL	98.7%	97.2%											98.0%

Administrative, Annual, and Auto Renewals are included

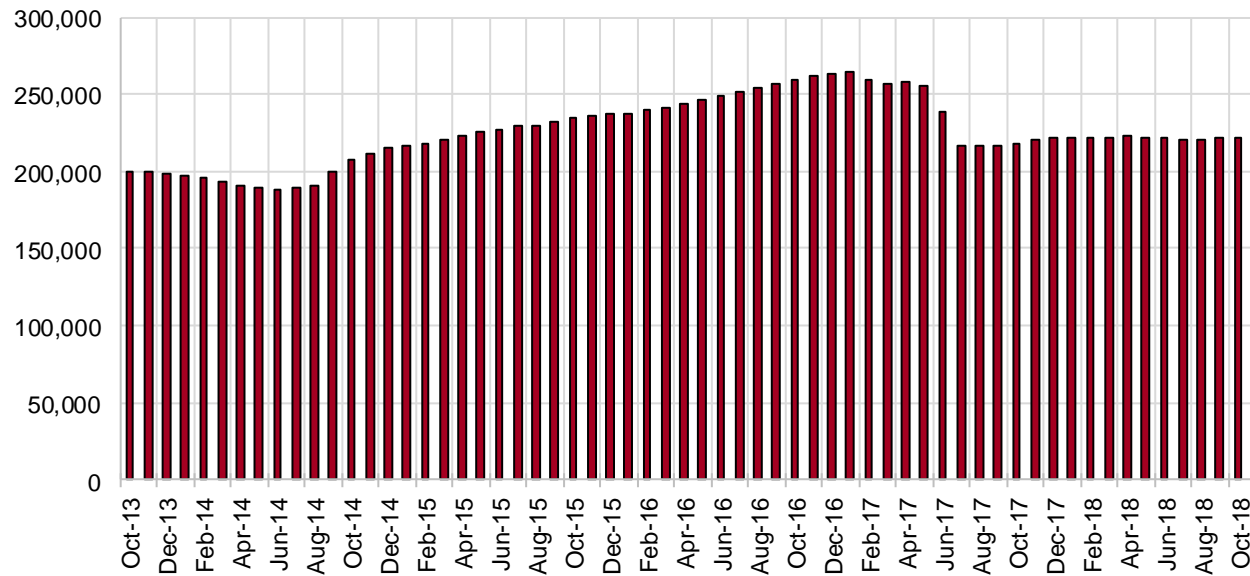
SNAP Cases by Field Office⁶

Office				Percent Change	
	Nov-17	Oct-18	Nov-18	Nov-17- Nov-18	Oct-18- Nov-18
Chaves County ISD	7,160	7,067	7,039	-1.7%	-0.4%
Cibola County ISD	3,677	3,724	3,740	1.7%	0.4%
Colfax County ISD	1,598	1,631	1,639	2.6%	0.5%
Curry County ISD	4,767	6,978	7,037	47.6%	0.8%
East Dona Ana County ISD	7,983	8,030	7,966	-0.2%	-0.8%
Eddy Artesia County ISD	1,719	1,624	1,612	-6.2%	-0.7%
Eddy Carlsbad County ISD	3,303	2,894	2,882	-12.7%	-0.4%
Grant County ISD	3,567	3,944	3,967	11.2%	0.6%
Guadalupe County ISD	712	728	716	0.6%	-1.6%
Hidalgo County ISD	420	2	4	-99.0%	100.0%
Lea County ISD	5,839	5,704	5,676	-2.8%	-0.5%
Lincoln County ISD	1,953	1,830	1,825	-6.6%	-0.3%
Luna County ISD	4,293	4,139	4,155	-3.2%	0.4%
McKinley County ISD	9,683	9,924	9,938	2.6%	0.1%
Northeast Bernalillo County ISD	20,064	20,442	20,640	2.9%	1.0%
Northwest Bernalillo County ISD	18,594	19,943	20,011	7.6%	0.3%
Otero County ISD	5,573	5,656	5,667	1.7%	0.2%
Quay County ISD	1,268	1,291	1,289	1.7%	-0.2%
Rio Arriba County ISD	6,818	6,725	6,760	-0.9%	0.5%
Roosevelt County ISD	1,695	3	0	-100.0%	-100.0%
San Juan County ISD	13,372	13,631	13,663	2.2%	0.2%
San Miguel County ISD	5,004	4,986	5,050	0.9%	1.3%
Sandoval County ISD	11,003	11,181	10,655	-3.2%	-4.7%
Santa Fe County ISD	9,983	9,542	9,497	-4.9%	-0.5%
Sierra County ISD	2,690	2,658	2,675	-0.6%	0.6%
Socorro County ISD	2,890	2,786	2,767	-4.3%	-0.7%
South Dona Ana ISD	8,651	8,598	8,571	-0.9%	-0.3%
Southeast Bernalillo County ISD	12,048	11,784	11,878	-1.4%	0.8%
Southwest Bernalillo County ISD	18,699	18,661	18,763	0.3%	0.5%
Taos County ISD	4,137	4,180	4,163	0.6%	-0.4%
Torrance County ISD	3,367	3,507	3,532	4.9%	0.7%
Valencia North County ISD	8,445	8,472	8,512	0.8%	0.5%
Valencia South County ISD	1	1	0	-100.0%	-100.0%
West Dona Ana County ISD	10,710	10,852	10,812	1.0%	-0.4%
Centralized Units	56	28	30	-46.4%	7.1%
Statewide Total	221,742	223,146	223,131	0.6%	0.0%

SNAP Cases by Region⁶

Region	Nov-17	Oct-18	Nov-18	Percent Change	
				Nov-17- Nov-18	Oct-18- Nov-18
Region 1 - NW	40,758	41,196	41,295	1.3%	0.2%
Region 2 - NE	40,523	40,264	39,769	-1.9%	-1.2%
Region 3 - Central	72,772	74,337	74,824	2.8%	0.7%
Region 4 - SE	26,436	26,100	26,071	-1.4%	-0.1%
Region 5 - SW	41,197	41,221	41,142	-0.1%	-0.2%
Centralized Units	56	28	30	-46.4%	7.1%
Statewide Total	221,742	223,146	223,131	0.6%	0.0%

SNAP Caseload: SFY-14 to Current



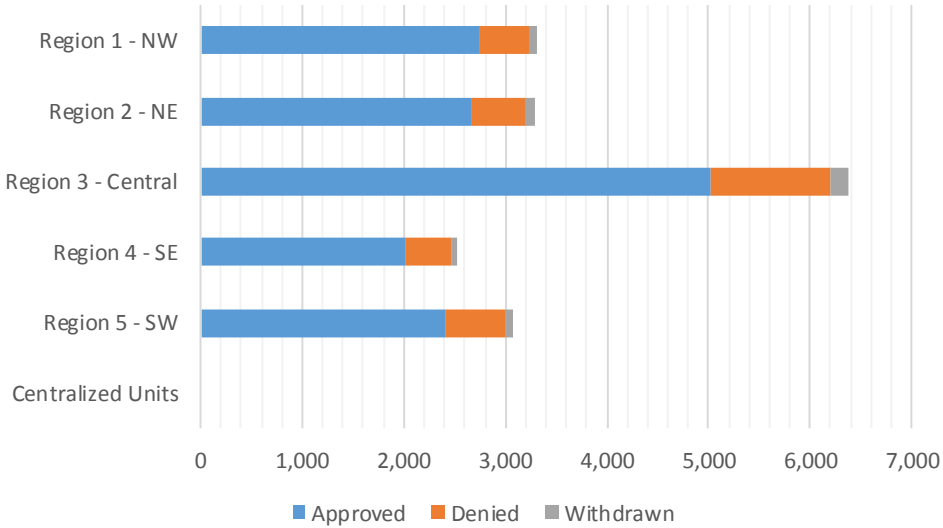
SNAP Initial Applications by Field Office^{4,11}
November 2018

Office	Approved	Denied	Withdrawn	Total Cases Processed
Chaves County ISD	506	134	14	654
Cibola County ISD	229	39	7	275
Colfax County ISD	115	26	5	146
Curry County ISD	518	88	9	615
East Dona Ana County ISD	485	162	26	673
Eddy Artesia County ISD	105	28	2	135
Eddy Carlsbad County ISD	275	63	9	347
Grant County ISD	256	48	4	308
Guadalupe County ISD	37	7	1	45
Hidalgo County ISD	0	0	0	0
Lea County ISD	453	101	14	568
Lincoln County ISD	151	39	4	194
Luna County ISD	262	57	9	328
McKinley County ISD	593	78	22	693
Northeast Bernalillo County ISD	1,493	364	52	1,909
Northwest Bernalillo County ISD	1,251	301	53	1,605
Otero County ISD	373	88	9	470
Quay County ISD	68	5	6	79
Rio Arriba County ISD	422	65	11	498
Roosevelt County ISD	7	3		10
San Juan County ISD	1,053	180	29	1,262
San Miguel County ISD	326	47	10	383
Sandoval County ISD	728	204	25	957
Santa Fe County ISD	687	117	23	827
Sierra County ISD	181	32	5	218
Socorro County ISD	132	33	6	171
South Dona Ana ISD	381	59	14	454
Southeast Bernalillo County ISD	823	193	19	1,035
Southwest Bernalillo County ISD	1,193	259	45	1,497
Taos County ISD	288	52	17	357
Torrance County ISD	263	59	13	335
Valencia North County ISD	560	122	19	701
Valencia South County ISD				0
West Dona Ana County ISD	654	168	23	845
Centralized Units	0	0	0	0
Statewide Total	14,868	3,221	505	18,594

SNAP Initial Applications by Region^{4,11}
November 2018

Region	Approved	Denied	Withdrawn	Total Cases Processed
Region 1 - NW	2,748	484	88	3,320
Region 2 - NE	2,671	523	98	3,292
Region 3 - Central	5,023	1,176	182	6,381
Region 4 - SE	2,015	456	52	2,523
Region 5 - SW	2,411	582	85	3,078
Centralized Units	0	0	0	0

Statewide Total	14,868	3,221	505	18,594
-----------------	--------	-------	-----	--------

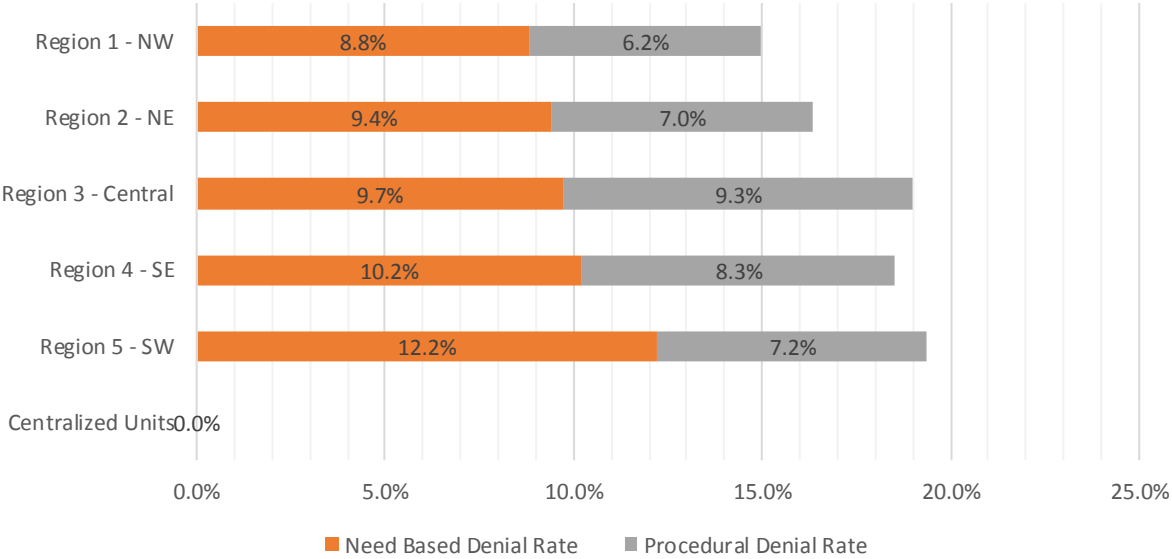


SNAP Initial Disposition Rates by Field Office^{4,11}
November 2018

Office	Approval Rate	Denial Rate	Need Based Denial Rate	Procedural Denial Rate
Chaves County ISD	79.1%	20.9%	10.9%	10.0%
Cibola County ISD	85.4%	14.6%	7.1%	7.5%
Colfax County ISD	81.6%	18.4%	9.9%	8.5%
Curry County ISD	85.5%	14.5%	10.9%	3.6%
East Dona Ana County ISD	75.0%	25.0%	15.9%	9.1%
Eddy Artesia County ISD	78.9%	21.1%	7.6%	13.5%
Eddy Carlsbad County ISD	81.4%	18.6%	8.5%	10.1%
Grant County ISD	84.2%	15.8%	9.5%	6.3%
Guadalupe County ISD	84.1%	15.9%	13.6%	2.3%
Hidalgo County ISD	0.0%	0.0%	0.0%	0.0%
Lea County ISD	81.8%	18.2%	9.4%	8.8%
Lincoln County ISD	79.5%	20.5%	10.5%	10.0%
Luna County ISD	82.1%	17.9%	13.5%	4.4%
McKinley County ISD	88.4%	11.6%	6.7%	4.9%
Northeast Bernalillo County ISD	80.4%	19.6%	9.0%	10.6%
Northwest Bernalillo County ISD	80.6%	19.4%	10.6%	8.8%
Otero County ISD	80.9%	19.1%	10.6%	8.5%
Quay County ISD	93.2%	6.8%	2.7%	4.1%
Rio Arriba County ISD	86.7%	13.3%	5.9%	7.4%
Roosevelt County ISD	70.0%	30.0%	30.0%	0.0%
San Juan County ISD	85.4%	14.6%	8.7%	5.9%
San Miguel County ISD	87.4%	12.6%	11.3%	1.3%
Sandoval County ISD	78.1%	21.9%	13.2%	8.7%
Santa Fe County ISD	85.4%	14.6%	8.3%	6.3%
Sierra County ISD	85.0%	15.0%	8.0%	7.0%
Socorro County ISD	80.0%	20.0%	12.1%	7.9%
South Dona Ana ISD	86.6%	13.4%	8.9%	4.5%
Southeast Bernalillo County ISD	81.0%	19.0%	10.7%	8.3%
Southwest Bernalillo County ISD	82.2%	17.8%	8.5%	9.3%
Taos County ISD	84.7%	15.3%	5.6%	9.7%
Torrance County ISD	81.7%	18.3%	10.2%	8.1%
Valencia North County ISD	82.1%	17.9%	11.2%	6.7%
Valencia South County ISD	0.0%	0.0%	0.0%	0.0%
West Dona Ana County ISD	79.6%	20.4%	12.6%	7.8%
Centralized Units				
Statewide Total	82.2%	17.8%	9.9%	7.9%

SNAP Initial Disposition Rates by Region^{4,11}
November 2018

Region	Approval Rate	Denial Rate	Need Based Denial Rate	Procedural Denial Rate
Region 1 - NW	85.0%	15.0%	8.8%	6.2%
Region 2 - NE	83.6%	16.4%	9.4%	7.0%
Region 3 - Central	81.0%	19.0%	9.7%	9.3%
Region 4 - SE	81.5%	18.5%	10.2%	8.3%
Region 5 - SW	80.6%	19.4%	12.2%	7.2%
Centralized Units				
Statewide Total	82.2%	17.8%	9.9%	7.9%



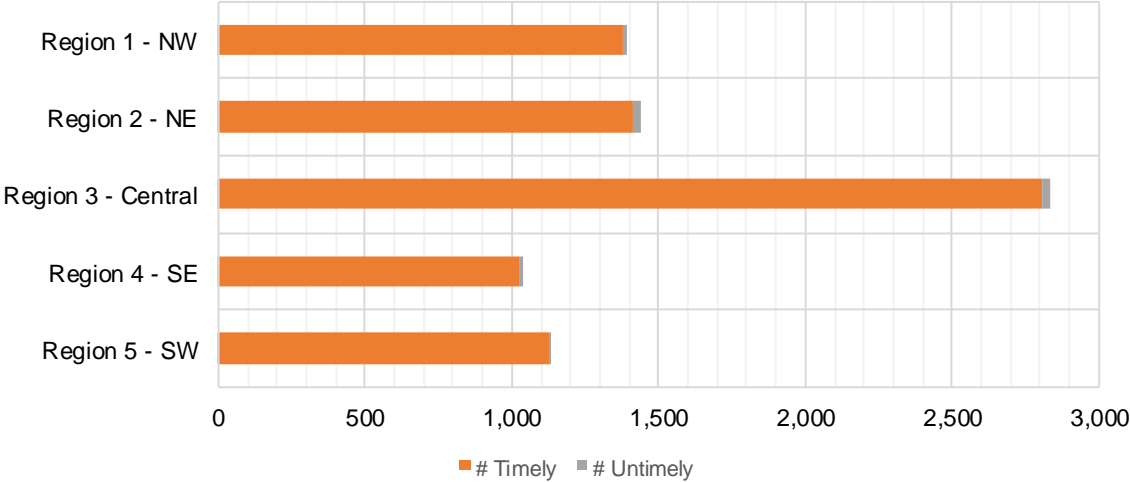
SNAP Expedite Timeliness by Field Office¹³
November 2018

Office Name	Total Expedited Approvals	# Timely	# Untimely	Percentage Timely
Chaves County ISD	230	228	2	99.1 %
Cibola County ISD	127	126	1	99.2 %
Colfax County ISD	46	46	0	100.0 %
Curry County ISD	280	276	4	98.6 %
East Dona Ana County ISD	197	195	2	99.0 %
Eddy Artesia County ISD	47	47	0	100.0 %
Eddy Carlsbad County ISD	167	167	0	100.0 %
Grant County ISD	149	148	1	99.3 %
Guadalupe County ISD	13	13	0	100.0 %
Lea County ISD	238	236	2	99.2 %
Lincoln County ISD	72	69	3	95.8 %
Luna County ISD	105	105	0	100.0 %
McKinley County ISD	284	280	4	98.6 %
Northeast Bernalillo County ISD	862	849	13	98.5 %
Northwest Bernalillo County ISD	720	717	3	99.6 %
Otero County ISD	194	193	1	99.5 %
Quay County ISD	31	31	0	100.0 %
Rio Arriba County ISD	243	238	5	97.9 %
Roosevelt County ISD	2	2	0	100.0 %
San Juan County ISD	575	572	3	99.5 %
San Miguel County ISD	190	190	0	100.0 %
Sandoval County ISD	335	330	5	98.5 %
Santa Fe County ISD	412	404	8	98.1 %
Sierra County ISD	74	73	1	98.6 %
Socorro County ISD	72	71	1	98.6 %
South Dona Ana ISD	146	146	0	100.0 %
Southeast Bernalillo County ISD	448	444	4	99.1 %
Southwest Bernalillo County ISD	646	641	5	99.2 %
Taos County ISD	169	164	5	97.0 %
Torrance County ISD	158	158	0	100.0 %
Valencia North County ISD	261	260	1	99.6 %
West Dona Ana County ISD	340	340	0	100.0 %
Statewide Total	7,833	7,759	74	99.1 %

SNAP Expedite Timeliness by Region¹³
November 2018

Region	Total Expedited Approvals	# Timely	# Untimely	Percentage Timely
Region 1 - NW	1,393	1,382	11	99.2%
Region 2 - NE	1,439	1,416	23	98.4%
Region 3 - Central	2,834	2,809	25	99.1%
Region 4 - SE	1,036	1,025	11	98.9%
Region 5 - SW	1,131	1,127	4	99.6%
Statewide Total	7,833	7,759	74	99.1%

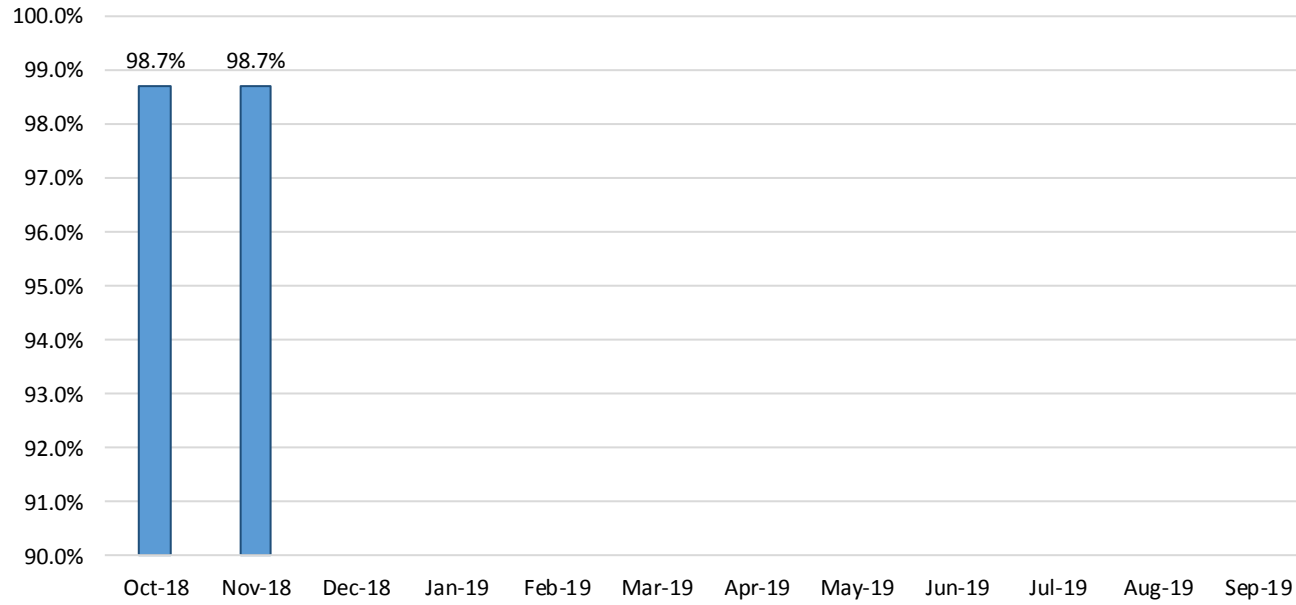
SNAP Expedite - Timeliness



SNAP: Percentage of Applications Processed Timely ¹³

	Oct-18	Nov-18	Dec-18	Jan-19	Feb-19	Mar-19	Apr-19	May-19	Jun-19	Jul-19	Aug-19	Sep-19	Average
APT	98.7%	98.7%											98.7%

SNAP Application Processing Timeliness (APT)



SNAP Non-Expedite: Percentage of Initial Applications Processed Timely by Field Office¹³

	Oct-18	Nov-18	Dec-18	Jan-19	Feb-19	Mar-19	Apr-19	May-19	Jun-19	Jul-19	Aug-19	Sep-19	Average
Cibola	100.0%	99.0%											99.5%
McKinley	98.8%	98.4%											98.6%
San Juan	99.6%	99.2%											99.4%
Sierra	98.9%	100.0%											99.5%
Socorro	100.0%	98.4%											99.2%
Valencia North	99.7%	99.3%											99.5%
Valencia South													
NW Region 1 Total	99.4%	99.1%											99.3%
Colfax	100.0%	100.0%											100.0%
Guadalupe	100.0%	100.0%											100.0%
Quay	100.0%	97.3%											98.7%
Rio Arriba	100.0%	99.5%											99.8%
San Miguel	100.0%	99.3%											99.7%
Sandoval	99.5%	99.2%											99.4%
Santa Fe	99.4%	98.6%											99.0%
Taos	100.0%	98.4%											99.2%
NE Region 2 Total	98.9%	99.0%											99.0%
NE Bernalillo	98.9%	98.8%											98.9%
NW Bernalillo	98.0%	99.3%											98.7%
SE Bernalillo	99.6%	98.7%											99.2%
SW Bernalillo	99.3%	99.5%											99.4%
Torrance	100.0%	97.2%											98.6%
Gen. Region 3 Total	98.9%	99.0%											99.0%
Chaves	100.0%	99.6%											99.8%
Curry	97.9%	98.4%											98.2%
Eddy Artesia	100.0%	100.0%											100.0%
Eddy Carlsbad	100.0%	99.1%											99.6%
Lea	99.1%	99.5%											99.3%
Lincoln	100.0%	98.8%											99.4%
Roosevelt		100.0%											100.0%
SE Region 4 Total	98.2%	99.2%											98.7%
East Dona Ana	99.7%	100.0%											99.9%
Grant	100.0%	100.0%											100.0%
Luna	100.0%	99.4%											99.7%
Otero	99.2%	100.0%											99.6%
South Dona Ana	99.6%	99.6%											99.6%
West Dona Ana	99.5%	100.0%											99.8%
SW Region 5 Total	99.4%	99.8%											99.6%
STATE TOTAL	99.0%	99.2%											99.1%

SNAP Expedite: Percentage of Initial Applications Processed Timely by Field Office¹³

	<i>Oct-18</i>	<i>Nov-18</i>	<i>Dec-18</i>	<i>Jan-19</i>	<i>Feb-19</i>	<i>Mar-19</i>	<i>Apr-19</i>	<i>May-19</i>	<i>Jun-19</i>	<i>Jul-19</i>	<i>Aug-19</i>	<i>Sep-19</i>	<i>Average</i>
Cibola	100.0%	99.2%											99.6%
McKinley	98.8%	98.6%											98.7%
San Juan	99.3%	99.5%											99.4%
Sierra	100.0%	98.6%											99.3%
Socorro	100.0%	98.6%											99.3%
Valencia North	99.6%	99.6%											99.6%
Valencia South													
NW Region 1 Total	99.6%	99.2%											99.4%
Colfax	100.0%	100.0%											100.0%
Guadalupe	95.2%	100.0%											97.6%
Quay	100.0%	100.0%											100.0%
Rio Arriba	98.6%	97.9%											98.3%
San Miguel	100.0%	100.0%											100.0%
Sandoval	99.0%	98.5%											98.8%
Santa Fe	98.5%	98.1%											98.3%
Taos	98.8%	97.0%											97.9%
NE Region 2 Total	98.8%	98.4%											98.6%
NE Bernalillo	98.8%	98.5%											98.7%
NW Bernalillo	99.0%	99.6%											99.3%
SE Bernalillo	99.2%	99.1%											99.2%
SW Bernalillo	98.7%	99.2%											99.0%
Torrance	98.3%	100.0%											99.2%
Gen. Region 3 Total	98.8%	99.1%											99.0%
Chaves	98.8%	99.1%											99.0%
Curry	98.1%	98.6%											98.4%
Eddy Artesia	96.1%	100.0%											98.1%
Eddy Carlsbad	97.0%	100.0%											98.5%
Lea	98.7%	99.2%											99.0%
Lincoln	100.0%	95.8%											97.9%
Roosevelt	100.0%	100.0%											100.0%
SE Region 4 Total	98.4%	98.9%											98.6%
East Dona Ana	99.6%	99.0%											99.3%
Grant	97.7%	99.3%											98.5%
Luna	100.0%	100.0%											100.0%
Otero	98.5%	99.5%											99.0%
South Dona Ana	99.4%	100.0%											99.7%
West Dona Ana	100.0%	100.0%											100.0%
SW Region 5 Total	99.2%	99.6%											99.4%
STATE TOTAL	98.9%	99.1%											99.0%

SNAP: Percentage of Denied Initial Applications Processed Within 30 Days by Field Office ¹³

	<i>Oct-18</i>	<i>Nov-18</i>	<i>Dec-18</i>	<i>Jan-19</i>	<i>Feb-19</i>	<i>Mar-19</i>	<i>Apr-19</i>	<i>May-19</i>	<i>Jun-19</i>	<i>Jul-19</i>	<i>Aug-19</i>	<i>Sep-19</i>	<i>Average</i>
Cibola	94.4%	92.3%											93.4%
McKinley	96.2%	97.6%											96.9%
San Juan	96.4%	93.2%											94.8%
Sierra	100.0%	93.9%											97.0%
Socorro	100.0%	100.0%											100.0%
Valencia North	100.0%	98.4%											99.2%
Valencia South													
NW Region 1 Total	97.3%	95.7%											96.5%
Colfax	100.0%	96.3%											98.2%
Guadalupe	100.0%	100.0%											100.0%
Quay	100.0%	100.0%											100.0%
Rio Arriba	94.6%	89.7%											92.2%
San Miguel	100.0%	100.0%											100.0%
Sandoval	98.4%	99.5%											99.0%
Santa Fe	96.6%	96.7%											96.7%
Taos	98.0%	98.3%											98.2%
NE Region 2 Total	97.6%	97.4%											97.5%
NE Bernalillo	94.8%	97.3%											96.1%
NW Bernalillo	95.6%	96.8%											96.2%
SE Bernalillo	94.1%	95.5%											94.8%
SW Bernalillo	97.1%	97.0%											97.1%
Torrance	93.2%	95.2%											94.2%
Cen. Region 3 Total	95.3%	96.7%											96.0%
Chaves	98.6%	95.7%											97.2%
Curry	97.8%	96.7%											97.3%
Eddy Artesia	92.6%	93.1%											92.9%
Eddy Carlsbad	96.9%	97.0%											97.0%
Lea	95.7%	97.1%											96.4%
Lincoln	97.4%	93.5%											95.5%
Roosevelt		100.0%											100.0%
SE Region 4 Total	97.1%	96.0%											96.6%
East Dona Ana	97.3%	100.0%											98.7%
Grant	95.8%	93.8%											94.8%
Luna	100.0%	100.0%											100.0%
Otero	100.0%	98.9%											99.5%
South Dona Ana	100.0%	98.4%											99.2%
West Dona Ana	98.2%	98.9%											98.6%
SW Region 5 Total	98.3%	98.8%											98.6%
STATE TOTAL	96.8%	97.0%											96.9%

SNAP: Combined Approvals and Denials Percentage of Initial Applications Processed Timely by Field Office¹³

	Oct-18	Nov-18	Dec-18	Jan-19	Feb-19	Mar-19	Apr-19	May-19	Jun-19	Jul-19	Aug-19	Sep-19	Average
Cibola	99.4%	98.1%											98.8%
McKinley	98.4%	98.4%											98.4%
San Juan	98.9%	98.4%											98.7%
Sierra	99.4%	98.6%											99.0%
Socorro	100.0%	98.8%											99.4%
Valencia North	99.7%	99.3%											99.5%
Valencia South													
NW Region 1 Total	99.1%	98.6%											98.9%
Colfax	100.0%	99.3%											99.7%
Guadalupe	98.4%	100.0%											99.2%
Quay	100.0%	98.6%											99.3%
Rio Arriba	98.3%	97.4%											97.9%
San Miguel	100.0%	99.7%											99.9%
Sandoval	99.1%	99.0%											99.1%
Santa Fe	98.5%	98.0%											98.3%
Taos	99.2%	97.7%											98.5%
NE Region 2 Total	99.0%	98.5%											98.8%
NE Bernalillo	98.1%	98.4%											98.3%
NW Bernalillo	98.0%	98.9%											98.5%
SE Bernalillo	98.5%	98.3%											98.4%
SW Bernalillo	98.7%	98.9%											98.8%
Torrance	97.9%	98.2%											98.1%
Gen. Region 3 Total	98.3%	98.6%											98.5%
Chaves	99.3%	98.6%											99.0%
Curry	98.0%	98.2%											98.1%
Eddy Artesia	97.0%	98.5%											97.8%
Eddy Carlsbad	98.0%	99.1%											98.6%
Lea	98.1%	98.9%											98.5%
Lincoln	99.5%	96.4%											98.0%
Roosevelt	100.0%	100.0%											100.0%
SE Region 4 Total	98.4%	98.5%											98.5%
East Dona Ana	99.2%	99.7%											99.5%
Grant	98.1%	98.7%											98.4%
Luna	100.0%	99.7%											99.9%
Otero	99.0%	99.6%											99.3%
South Dona Ana	99.6%	99.6%											99.6%
West Dona Ana	99.5%	99.8%											99.7%
SW Region 5 Total	99.3%	99.6%											99.5%
STATE TOTAL	98.7%	98.7%											98.7%

SNAP Renewals Processed by Field Office²⁰
November 2018

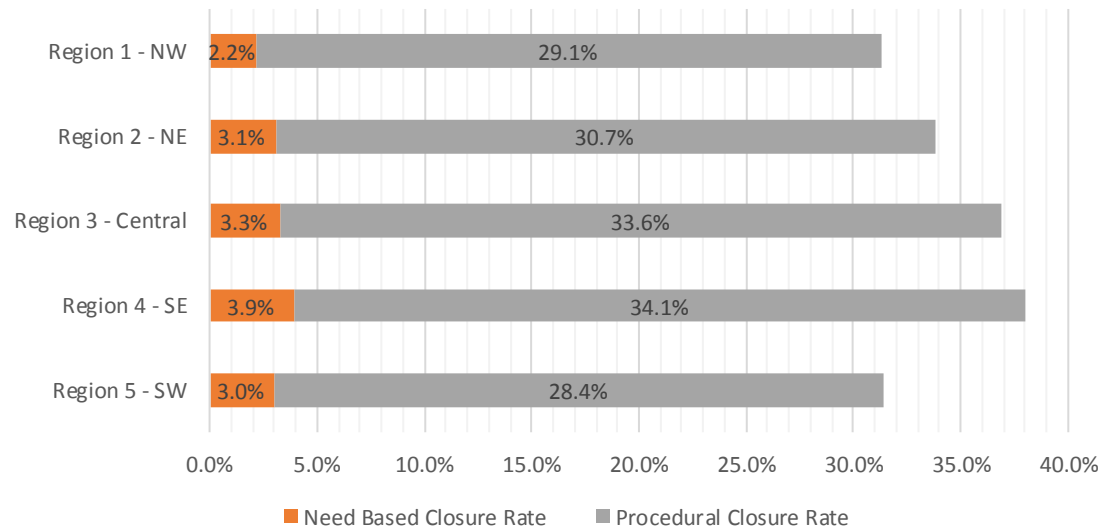
Office	Approvals	Closures	Need Based Closures	Procedural Closures
Chaves County ISD	224	122	13	109
Cibola County ISD	169	75	2	73
Colfax County ISD	51	29	3	26
Curry County ISD	230	118	12	106
East Dona Ana County ISD	292	128	13	115
Eddy Artesia County ISD	55	38	6	32
Eddy Carlsbad County ISD	66	54	8	46
Grant County ISD	144	74	4	70
Guadalupe County ISD	21	16	3	13
Hidalgo County ISD				
Lea County ISD	159	115	5	110
Lincoln County ISD	51	35	6	29
Luna County ISD	144	74	6	68
McKinley County ISD	546	167	9	158
Northeast Bernalillo County ISD	584	427	43	384
Northwest Bernalillo County ISD	509	280	22	258
Otero County ISD	206	126	8	118
Quay County ISD	57	19	1	18
Rio Arriba County ISD	228	118	10	108
Roosevelt County ISD				
San Juan County ISD	506	276	21	255
San Miguel County ISD	168	84	9	75
Sandoval County ISD	361	184	17	167
Santa Fe County ISD	302	159	14	145
Sierra County ISD	95	58	8	50
Socorro County ISD	109	61	5	56
South Dona Ana ISD	351	126	17	109
Southeast Bernalillo County ISD	405	219	18	201
Southwest Bernalillo County ISD	758	404	38	366
Taos County ISD	129	63	4	59
Torrance County ISD	132	67	4	63
Valencia North County ISD	354	173	11	162
Valencia South County ISD				
West Dona Ana County ISD	340	149	17	132
Centralized Units				
Statewide Total	7,746	4,038	357	3,681

SNAP Renewal Disposition Rates by Field Office²⁰
November 2018

Office	Approval Rate	Closure Rate	Need Based Closure Rate	Procedural Closure Rate
Chaves County ISD	64.7%	35.3%	3.8%	31.5%
Cibola County ISD	69.3%	30.7%	0.8%	29.9%
Colfax County ISD	63.8%	36.3%	3.8%	32.5%
Curry County ISD	66.1%	33.9%	3.4%	30.5%
East Dona Ana County ISD	69.5%	30.5%	3.1%	27.4%
Eddy Artesia County ISD	59.1%	40.9%	6.5%	34.4%
Eddy Carlsbad County ISD	55.0%	45.0%	6.7%	38.3%
Grant County ISD	66.1%	33.9%	1.8%	32.1%
Guadalupe County ISD	56.8%	43.2%	8.1%	35.1%
Hidalgo County ISD	0.0%	0.0%	0.0%	0.0%
Lea County ISD	58.0%	42.0%	1.8%	40.1%
Lincoln County ISD	59.3%	40.7%	7.0%	33.7%
Luna County ISD	66.1%	33.9%	2.8%	31.2%
McKinley County ISD	76.6%	23.4%	1.3%	22.2%
Northeast Bernalillo County ISD	57.8%	42.2%	4.3%	38.0%
Northwest Bernalillo County ISD	64.5%	35.5%	2.8%	32.7%
Otero County ISD	62.0%	38.0%	2.4%	35.5%
Quay County ISD	75.0%	25.0%	1.3%	23.7%
Rio Arriba County ISD	65.9%	34.1%	2.9%	31.2%
Roosevelt County ISD	0.0%	0.0%	0.0%	0.0%
San Juan County ISD	64.7%	35.3%	2.7%	32.6%
San Miguel County ISD	66.7%	33.3%	3.6%	29.8%
Sandoval County ISD	66.2%	33.8%	3.1%	30.6%
Santa Fe County ISD	65.5%	34.5%	3.0%	31.5%
Sierra County ISD	62.1%	37.9%	5.2%	32.7%
Socorro County ISD	64.1%	35.9%	2.9%	32.9%
South Dona Ana ISD	73.6%	26.4%	3.6%	22.9%
Southeast Bernalillo County ISD	64.9%	35.1%	2.9%	32.2%
Southwest Bernalillo County ISD	65.2%	34.8%	3.3%	31.5%
Taos County ISD	67.2%	32.8%	2.1%	30.7%
Torrance County ISD	66.3%	33.7%	2.0%	31.7%
Valencia North County ISD	67.2%	32.8%	2.1%	30.7%
Valencia South County ISD	0.0%	0.0%	0.0%	0.0%
West Dona Ana County ISD	69.5%	30.5%	3.5%	27.0%
Centralized Units	0.0%	0.0%	0.0%	0.0%
Statewide Total	65.7%	34.3%	3.0%	31.2%

SNAP Renewal Disposition Rates by Region²⁰
November 2018

Region	Approval Rate	Closure Rate	Need Based Closure Rate	Procedural Closure Rate
Region 1 - NW	68.7%	31.3%	2.2%	29.1%
Region 2 - NE	66.2%	33.8%	3.1%	30.7%
Region 3 - Central	63.1%	36.9%	3.3%	33.6%
Region 4 - SE	62.0%	38.0%	3.9%	34.1%
Region 5 - SW	68.6%	31.4%	3.0%	28.4%
Centralized Units				
Statewide Total	65.7%	34.3%	3.0%	31.2%



SNAP: Percentage of Approved Renewal Applications Processed ¹¹													
	Oct-18	Nov-18	Dec-18	Jan-19	Feb-19	Mar-19	Apr-19	May-19	Jun-19	Jul-19	Aug-19	Sep-19	Average
Cibola	96.4%	97.6%											97.0%
McKinley	98.9%	98.0%											98.5%
San Juan	98.5%	95.8%											97.2%
Sierra	99.1%	100.0%											99.6%
Socorro	98.3%	96.3%											97.3%
Valencia North	99.1%	99.2%											99.1%
Valencia South													
NW Region 1 Total	98.4%	97.8%											98.1%
Colfax	100.0%	92.2%											96.1%
Guadalupe	100.0%	90.5%											95.2%
Quay	100.0%	98.2%											99.1%
Rio Arriba	96.8%	97.4%											97.1%
San Miguel	97.3%	99.4%											98.3%
Sandoval	99.0%	99.2%											99.1%
Santa Fe	98.9%	99.3%											99.1%
Taos	98.5%	99.2%											98.9%
NE Region 2 Total	98.8%	96.9%											97.9%
NE Bernalillo	98.7%	97.9%											98.3%
NW Bernalillo	98.8%	98.0%											98.4%
SE Bernalillo	98.7%	98.0%											98.4%
SW Bernalillo	99.4%	99.3%											99.4%
Torrance	99.1%	97.0%											98.0%
Gen. Region 3 Total	99.0%	98.1%											98.5%
Chaves	99.1%	98.7%											98.9%
Curry	97.9%	96.1%											97.0%
Eddy Artesia	100.0%	92.7%											96.4%
Eddy Carlsbad	100.0%	98.5%											99.2%
Lea	98.7%	98.1%											98.4%
Lincoln	100.0%	96.1%											98.0%
Roosevelt													
SE Region 4 Total	99.3%	96.7%											98.0%
East Dona Ana	99.6%	100.0%											99.8%
Grant	99.3%	99.3%											99.3%
Luna	98.3%	99.3%											98.8%
Otero	99.5%	100.0%											99.8%
South Dona Ana	100.0%	99.4%											99.7%
West Dona Ana	99.5%	99.1%											99.3%
SW Region 5 Total	99.4%	99.5%											99.5%
STATE TOTAL	99.0%	97.7%											98.3%

If a renewal packet was received on or before 15th of the renewal month, the case shall be considered timely if the case was processed by renewal due date

SNAP: Percentage of Approved Renewal Applications Processed¹¹

	Oct-18	Nov-18	Dec-18	Jan-19	Feb-19	Mar-19	Apr-19	May-19	Jun-19	Jul-19	Aug-19	Sep-19	Average
Cibola	95.8%	97.4%											96.6%
McKinley	98.8%	97.7%											98.2%
San Juan	98.5%	95.4%											96.9%
Sierra	98.9%	100.0%											99.5%
Socorro	97.9%	96.1%											97.0%
Valencia North	99.0%	99.1%											99.0%
Valencia South													
NW Region 1 Total	98.1%	97.6%											97.9%
Colfax	100.0%	91.1%											95.6%
Guadalupe	100.0%	89.5%											94.7%
Quay	100.0%	98.0%											99.0%
Rio Arriba	96.4%	97.0%											96.7%
San Miguel	96.9%	99.3%											98.1%
Sandoval	98.9%	99.1%											99.0%
Santa Fe	98.8%	99.3%											99.0%
Taos	98.3%	99.1%											98.7%
NE Region 2 Total	98.6%	96.5%											97.6%
NE Bernalillo	98.5%	97.8%											98.2%
NW Bernalillo	98.5%	97.7%											98.1%
SE Bernalillo	98.5%	97.8%											98.2%
SW Bernalillo	99.3%	99.2%											99.3%
Torrance	98.9%	96.3%											97.6%
Gen. Region 3 Total	98.8%	97.8%											98.3%
Chaves	99.0%	98.5%											98.8%
Curry	97.5%	95.5%											96.5%
Eddy Artesia	100.0%	91.7%											95.8%
Eddy Carlsbad	100.0%	98.2%											99.1%
Lea	98.5%	98.0%											98.2%
Lincoln	100.0%	97.7%											98.9%
Roosevelt													
SE Region 4 Total	99.2%	96.6%											97.9%
East Dona Ana	99.6%	100.0%											99.8%
Grant	99.3%	99.2%											99.2%
Luna	98.0%	100.0%											99.0%
Otero	99.5%	100.0%											99.7%
South Dona Ana	100.0%	99.4%											99.7%
West Dona Ana	99.5%	99.0%											99.2%
SW Region 5 Total	99.3%	99.6%											99.4%
STATE TOTAL	98.8%	97.5%											98.2%

Only includes cases in which the Renewal Packet was received by the 15th of the month

SNAP: Percentage of Terminations Renewal Applications Processed¹¹

	Oct-18	Nov-18	Dec-18	Jan-19	Feb-19	Mar-19	Apr-19	May-19	Jun-19	Jul-19	Aug-19	Sep-19	Average
Cibola	97.5%	94.7%											96.1%
McKinley	98.3%	95.2%											96.8%
San Juan	96.9%	96.0%											96.5%
Sierra	100.0%	98.3%											99.1%
Socorro	100.0%	95.1%											97.5%
Valencia North	98.6%	98.8%											98.7%
Valencia South													
NW Region 1 Total	98.6%	96.3%											97.5%
Colfax	96.9%	96.6%											96.7%
Guadalupe	100.0%	93.8%											96.9%
Quay	100.0%	100.0%											100.0%
Rio Arriba	97.3%	99.2%											98.2%
San Miguel	95.4%	98.8%											97.1%
Sandoval	99.0%	97.3%											98.1%
Santa Fe	98.7%	99.4%											99.1%
Taos	100.0%	96.8%											98.4%
NE Region 2 Total	98.4%	97.7%											98.1%
NE Bernalillo	97.3%	97.9%											97.6%
NW Bernalillo	98.1%	97.5%											97.8%
SE Bernalillo	98.0%	95.0%											96.5%
SW Bernalillo	98.1%	98.3%											98.2%
Torrance	98.9%	98.5%											98.7%
Gen. Region 3 Total	98.1%	97.4%											97.8%
Chaves	98.6%	95.1%											96.9%
Curry	99.2%	100.0%											99.6%
Eddy Artesia	96.7%	94.7%											95.7%
Eddy Carlsbad	100.0%	98.1%											99.1%
Lea	97.8%	97.4%											97.6%
Lincoln	95.6%	94.3%											94.9%
Roosevelt													
SE Region 4 Total	98.0%	96.6%											97.3%
East Dona Ana	98.6%	99.2%											98.9%
Grant	97.1%	98.6%											97.9%
Luna	100.0%	98.6%											99.3%
Otero	99.1%	99.2%											99.2%
South Dona Ana	100.0%	100.0%											100.0%
West Dona Ana	100.0%	99.3%											99.7%
SW Region 5 Total	99.1%	99.2%											99.2%
STATE TOTAL	98.4%	97.5%											98.0%

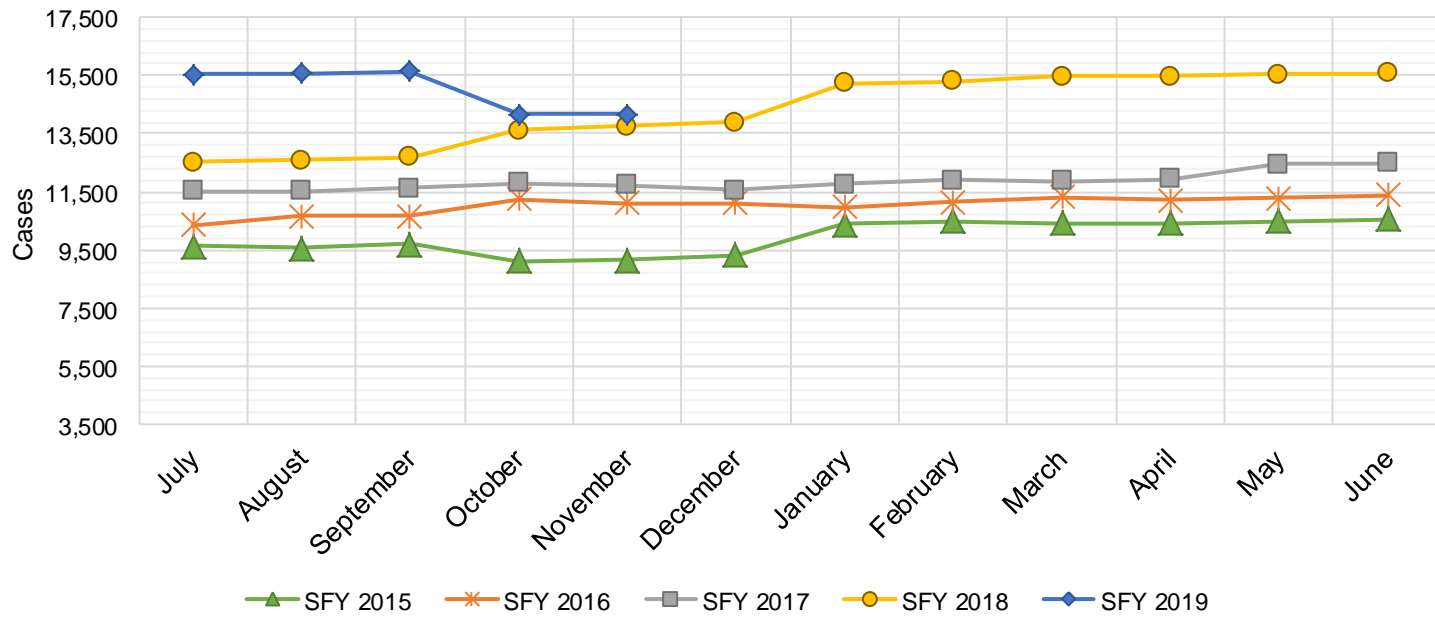
Includes cases for which no renewal application was received.

SNAP: Combined Percentage of Approved and Terminated Renewal Applications Processed ¹¹													
	Oct-18	Nov-18	Dec-18	Jan-19	Feb-19	Mar-19	Apr-19	May-19	Jun-19	Jul-19	Aug-19	Sep-19	Average
Cibola	96.8%	96.7%											96.8%
McKinley	98.8%	97.3%											98.1%
San Juan	97.9%	95.9%											96.9%
Sierra	99.4%	99.3%											99.4%
Socorro	98.8%	95.9%											97.3%
Valencia North	99.0%	99.1%											99.0%
Valencia South													
NW Region 1 Total	98.4%	97.4%											97.9%
Colfax	99.0%	93.8%											96.4%
Guadalupe	100.0%	91.9%											95.9%
Quay	100.0%	98.7%											99.3%
Rio Arriba	96.9%	98.0%											97.5%
San Miguel	96.7%	99.2%											97.9%
Sandoval	99.0%	98.5%											98.8%
Santa Fe	98.9%	99.3%											99.1%
Taos	99.1%	98.4%											98.8%
NE Region 2 Total	98.7%	97.2%											98.0%
NE Bernalillo	98.1%	97.9%											98.0%
NW Bernalillo	98.5%	97.8%											98.2%
SE Bernalillo	98.4%	97.0%											97.7%
SW Bernalillo	99.0%	99.0%											99.0%
Torrance	99.0%	97.5%											98.2%
Gen. Region 3 Total	98.6%	97.8%											98.2%
Chaves	98.9%	97.4%											98.2%
Curry	98.3%	97.4%											97.9%
Eddy Artesia	98.7%	93.5%											96.1%
Eddy Carlsbad	100.0%	98.3%											99.2%
Lea	98.3%	97.8%											98.0%
Lincoln	98.0%	95.3%											96.7%
Roosevelt													
SE Region 4 Total	98.7%	96.6%											97.7%
East Dona Ana	99.3%	99.8%											99.5%
Grant	98.6%	99.1%											98.8%
Luna	98.8%	99.1%											98.9%
Otero	99.4%	99.7%											99.5%
South Dona Ana	100.0%	99.6%											99.8%
West Dona Ana	99.7%	99.2%											99.4%
SW Region 5 Total	99.3%	99.4%											99.3%
STATE TOTAL	98.7%	97.7%											98.2%

State SNAP Supplement

SFY 2015 ¹²			SFY 2016 ^{12,9}			SFY 2017 ⁹			SFY 2018 ⁹			SFY 2019 ⁹		
	Cases	Expenditures		Cases	Expenditures		Cases	Expenditures		Cases	Expenditures		Cases	Expenditures
Jul-14	9,635	\$88,859	Jul-15	10,345	\$86,143	Jul-16	11,537	\$95,553	Jul-17	12,526	\$97,568	Jul-18	15,555	\$141,711
Aug-14	9,559	\$87,757	Aug-15	10,669	\$88,197	Aug-16	11,522	\$95,107	Aug-17	12,589	\$98,954	Aug-18	15,584	\$139,719
Sep-14	9,688	\$87,372	Sep-15	10,676	\$88,426	Sep-16	11,613	\$94,472	Sep-17	12,679	\$97,546	Sep-18	15,631	\$140,768
Oct-14	9,136	\$70,490	Oct-15	11,262	\$96,758	Oct-16	11,797	\$96,679	Oct-17	13,628	\$117,343	Oct-18	14,161	\$125,737
Nov-14	9,152	\$69,955	Nov-15	11,099	\$91,996	Nov-16	11,735	\$93,689	Nov-17	13,748	\$119,055	Nov-18	14,160	\$125,401
Dec-14	9,322	\$73,226	Dec-15	11,125	\$90,771	Dec-16	11,556	\$93,739	Dec-17	13,877	\$120,585	Dec-18		
Jan-15	10,384	\$84,578	Jan-16	10,977	\$92,760	Jan-17	11,763	\$96,074	Jan-18	15,246	\$135,993	Jan-19		
Feb-15	10,477	\$82,901	Feb-16	11,153	\$95,363	Feb-17	11,907	\$98,251	Feb-18	15,308	\$137,296	Feb-19		
Mar-15	10,423	\$87,461	Mar-16	11,332	\$96,751	Mar-17	11,853	\$96,693	Mar-18	15,482	\$139,132	Mar-19		
Apr-15	10,440	\$79,605	Apr-16	11,222	\$93,959	Apr-17	11,944	\$97,060	Apr-18	15,466	\$139,202	Apr-19		
May-15	10,491	\$82,511	May-16	11,283	\$95,271	May-17	12,457	\$96,940	May-18	15,525	\$139,397	May-19		
Jun-15	10,575	\$85,134	Jun-16	11,389	\$93,061	Jun-17	12,498	\$97,405	Jun-18	15,577	\$140,802	Jun-19		

TOTAL	119,282	\$979,850	132,532	\$1,109,455	142,182	\$1,151,662	171,651	\$1,482,874	75,091	\$673,336
AVERAGE	9,940	\$81,654	11,044	\$92,455	11,849	\$95,972	14,304	\$123,573	15,018	\$134,667



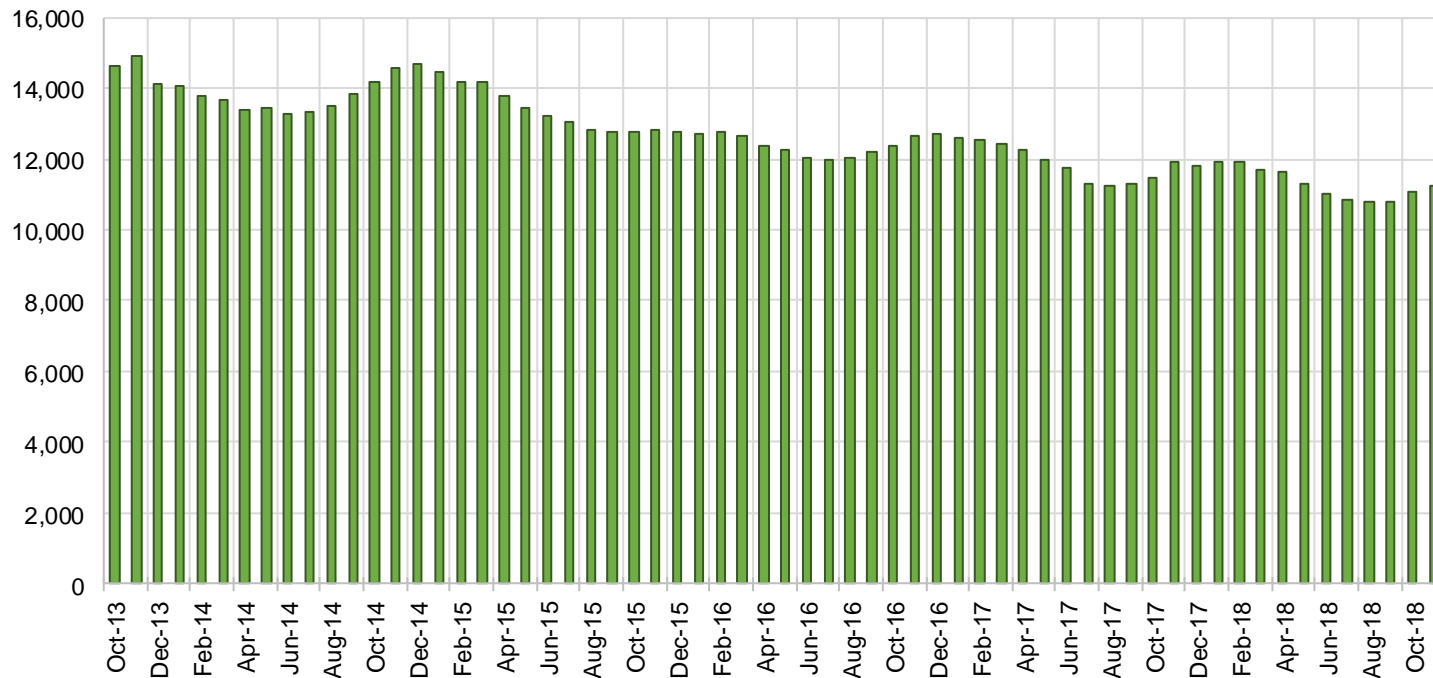
TANF Cases by Field Office⁶

Office	Nov-17	Oct-18	Nov-18	Percent Change	
				Nov-17- Nov-18	Oct-18- Nov-18
Chaves County ISD	564	446	426	-24.5%	-4.5%
Cibola County ISD	145	153	147	1.4%	-3.9%
Colfax County ISD	80	77	76	-5.0%	-1.3%
Curry County ISD	527	683	681	29.2%	-0.3%
East Dona Ana County ISD	514	470	456	-11.3%	-3.0%
Eddy Artesia County ISD	127	105	101	-20.5%	-3.8%
Eddy Carlsbad County ISD	167	151	145	-13.2%	-4.0%
Grant County ISD	190	201	204	7.4%	1.5%
Guadalupe County ISD	32	24	26	-18.8%	8.3%
Hidalgo County ISD	23	0	0	-100.0%	N/A
Lea County ISD	448	378	390	-12.9%	3.2%
Lincoln County ISD	102	100	94	-7.8%	-6.0%
Luna County ISD	217	233	224	3.2%	-3.9%
McKinley County ISD	56	74	71	26.8%	-4.1%
Northeast Bernalillo County ISD	1,000	949	938	-6.2%	-1.2%
Northwest Bernalillo County ISD	829	825	823	-0.7%	-0.2%
Otero County ISD	331	267	267	-19.3%	0.0%
Quay County ISD	78	60	58	-25.6%	-3.3%
Rio Arriba County ISD	399	366	371	-7.0%	1.4%
Roosevelt County ISD	162	0	0	-100.0%	N/A
San Juan County ISD	323	306	325	0.6%	6.2%
San Miguel County ISD	207	174	180	-13.0%	3.4%
Sandoval County ISD	595	593	553	-7.1%	-6.7%
Santa Fe County ISD	452	393	377	-16.6%	-4.1%
Sierra County ISD	83	86	81	-2.4%	-5.8%
Socorro County ISD	91	88	85	-6.6%	-3.4%
South Dona Ana ISD	722	717	681	-5.7%	-5.0%
Southeast Bernalillo County ISD	654	610	602	-8.0%	-1.3%
Southwest Bernalillo County ISD	1,186	1,125	1,114	-6.1%	-1.0%
Taos County ISD	143	133	130	-9.1%	-2.3%
Torrance County ISD	184	198	199	8.2%	0.5%
Valencia North County ISD	512	428	424	-17.2%	-0.9%
Valencia South County ISD	0	0	0	N/A	N/A
West Dona Ana County ISD	767	713	718	-6.4%	0.7%
Centralized Units	5	2	4	-20.0%	100.0%
Statewide Total	11,915	11,128	10,971	-7.9%	-1.4%

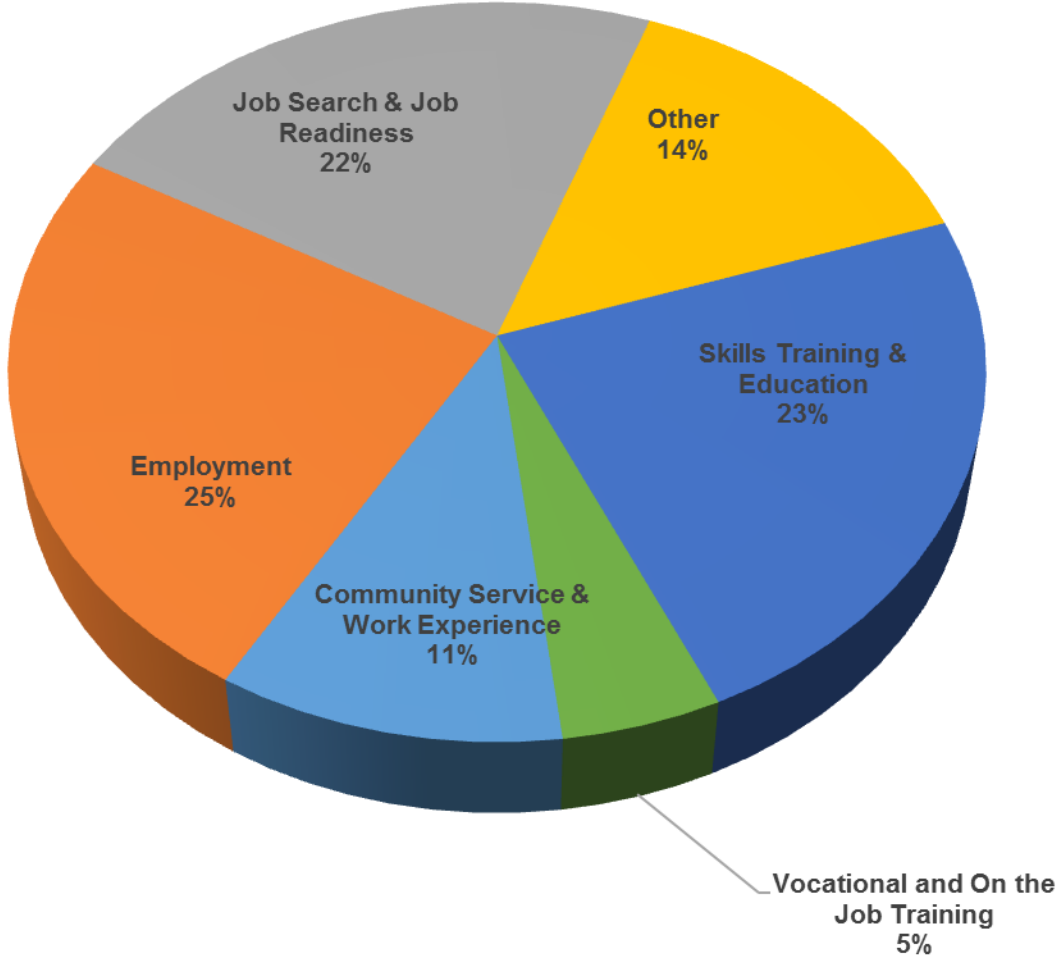
TANF Cases by Region⁶

Region	Nov-17	Oct-18	Nov-18	Percent Change	
				Nov-17- Nov-18	Oct-18- Nov-18
Region 1- NW	1,210	1,135	1,133	-6.4%	-0.2%
Region 2- NE	1,986	1,820	1,771	-10.8%	-2.7%
Region 3- Central	3,853	3,707	3,676	-4.6%	-0.8%
Region 4- SE	2,097	1,863	1,837	-12.4%	-1.4%
Region 5- SW	2,764	2,601	2,550	-7.7%	-2.0%
Centralized Units	5	2	4	-20.0%	100.0%
Statewide Total	11,915	11,128	10,971	-7.9%	-1.4%

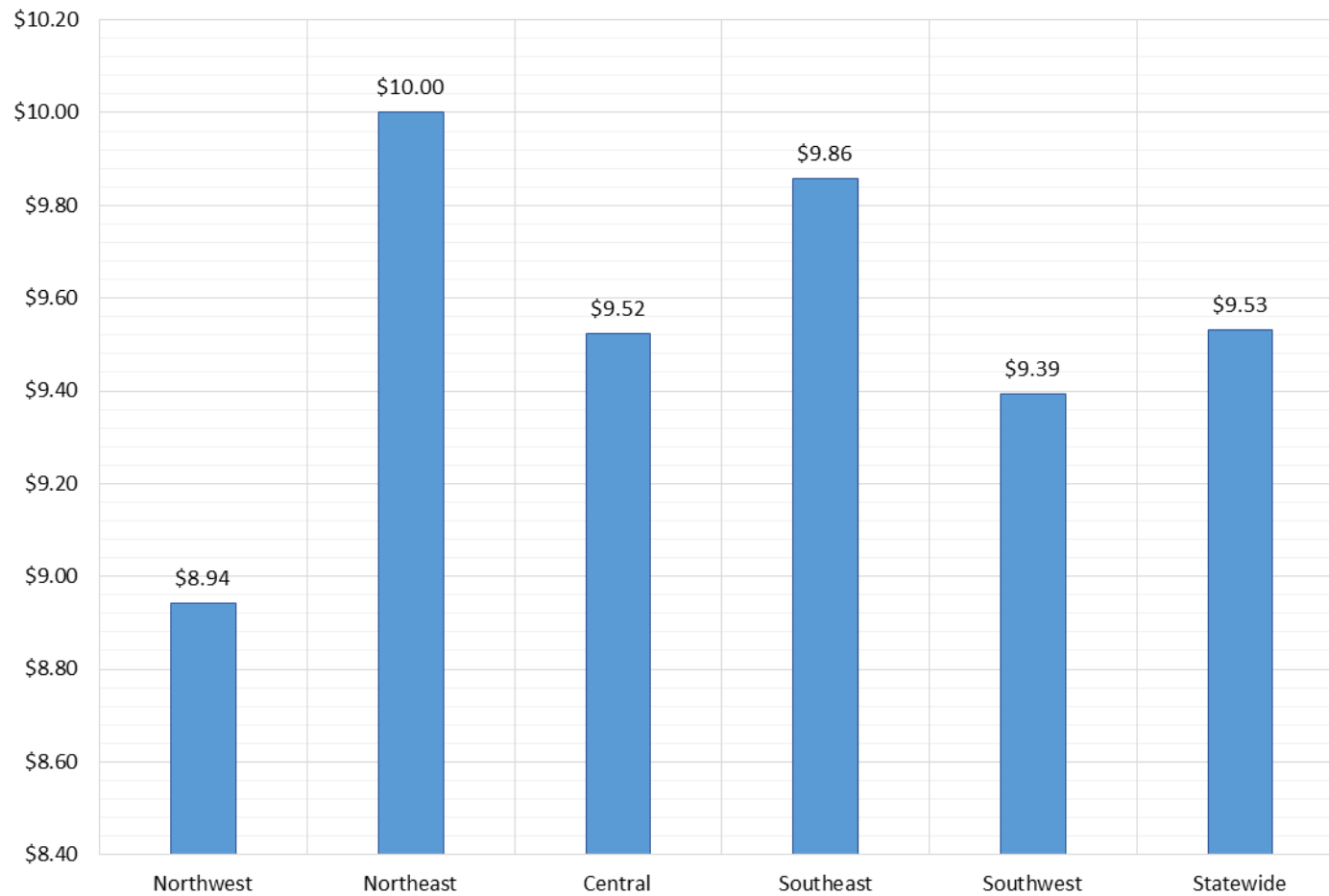
TANF Caseload: SFY-14 to Current



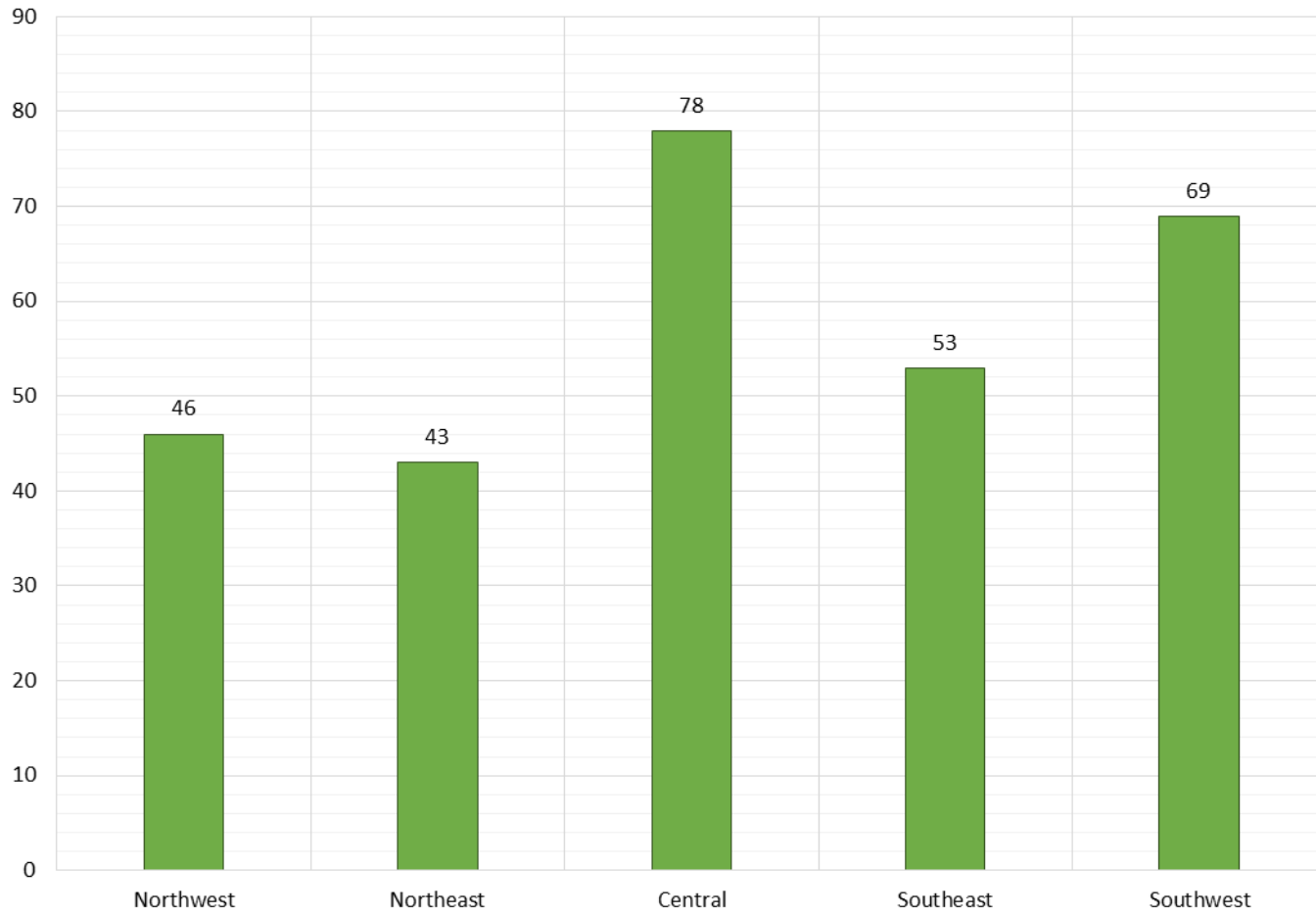
**NM Works Activity Placements on November 30, 2018
as reported by SL Start¹⁴**



Average Starting Hourly Wage of November 2018 TANF Employments
as reported by SL Start¹⁵



Number of New Employments in November 2018 by Region
as reported by SL Start¹⁵
Statewide Total: 289



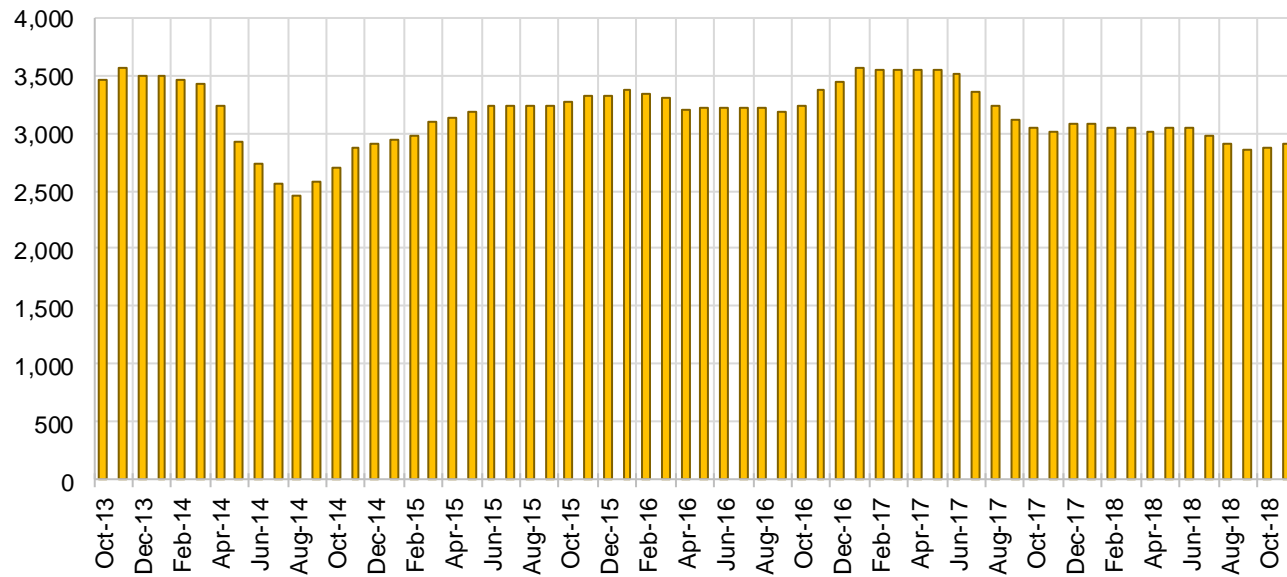
General Assistance Cases by Field Office⁶

Office	Nov-17	Oct-18	Nov-18	Percent Change	
				Nov-17- Nov-18	Oct-18- Nov-18
Chaves County ISD	130	134	123	-5.4%	-8.2%
Cibola County ISD	49	38	42	-14.3%	10.5%
Colfax County ISD	24	21	21	-12.5%	0.0%
Curry County ISD	65	90	89	36.9%	-1.1%
East Dona Ana County ISD	115	117	108	-6.1%	-7.7%
Eddy Artesia County ISD	30	23	27	-10.0%	17.4%
Eddy Carlsbad County ISD	66	71	67	1.5%	-5.6%
Grant County ISD	70	66	64	-8.6%	-3.0%
Guadalupe County ISD	20	19	18	-10.0%	-5.3%
Hidalgo County ISD	11	0	0	-100.0%	N/A
Lea County ISD	86	85	84	-2.3%	-1.2%
Lincoln County ISD	26	30	26	0.0%	-13.3%
Luna County ISD	57	53	55	-3.5%	3.8%
McKinley County ISD	49	54	54	10.2%	0.0%
Northeast Bernalillo County ISD	360	310	297	-17.5%	-4.2%
Northwest Bernalillo County ISD	287	298	288	0.3%	-3.4%
Otero County ISD	100	67	69	-31.0%	3.0%
Quay County ISD	20	28	26	30.0%	-7.1%
Rio Arriba County ISD	87	80	82	-5.7%	2.5%
Roosevelt County ISD	15	0	0	-100.0%	N/A
San Juan County ISD	129	134	140	8.5%	4.5%
San Miguel County ISD	73	73	70	-4.1%	-4.1%
Sandoval County ISD	122	137	121	-0.8%	-11.7%
Santa Fe County ISD	144	124	123	-14.6%	-0.8%
Sierra County ISD	27	30	31	14.8%	3.3%
Socorro County ISD	45	31	36	-20.0%	16.1%
South Dona Ana ISD	60	64	62	3.3%	-3.1%
Southeast Bernalillo County ISD	171	168	171	0.0%	1.8%
Southwest Bernalillo County ISD	213	173	182	-14.6%	5.2%
Taos County ISD	63	43	41	-34.9%	-4.7%
Torrance County ISD	46	40	41	-10.9%	2.5%
Valencia North County ISD	114	117	114	0.0%	-2.6%
Valencia South County ISD	0	0	0	N/A	N/A
West Dona Ana County ISD	170	169	165	-2.9%	-2.4%
Centralized Units	0	0	0	N/A	N/A
Statewide Total	3,044	2,887	2,837	-6.8%	-1.7%

General Assistance Cases by Region⁶

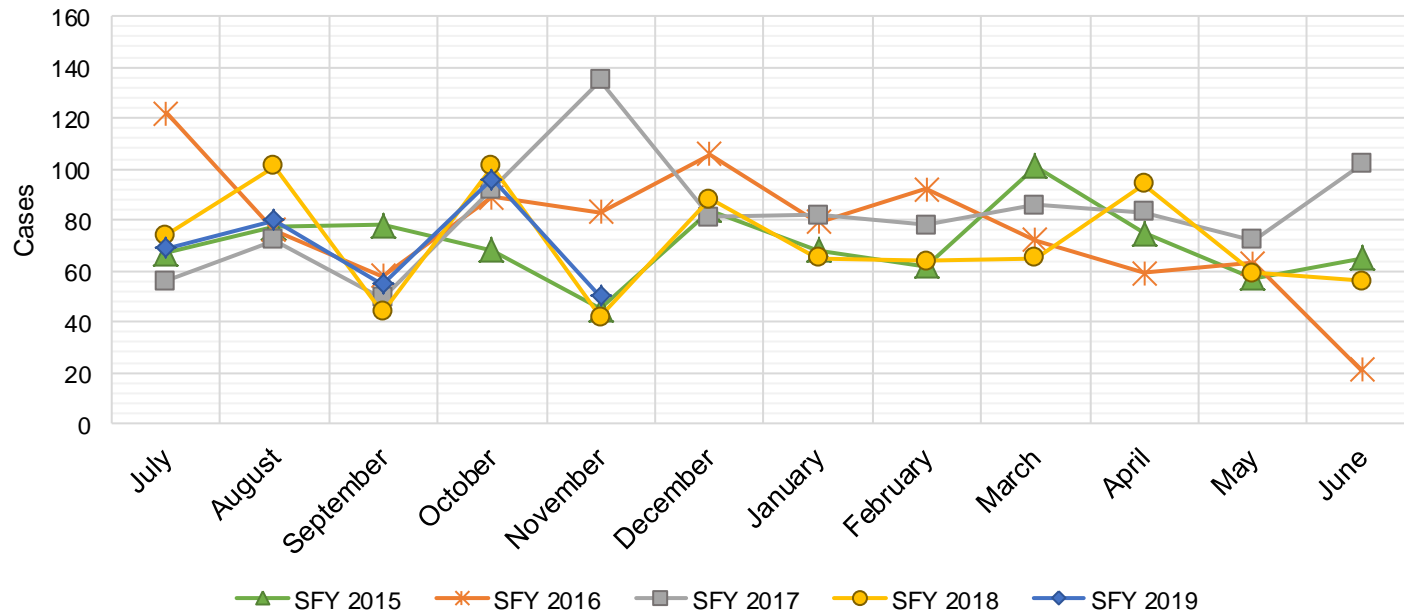
Region	Nov-17	Oct-18	Nov-18	Percent Change	
				Nov-17- Nov-18	Oct-18- Nov-18
Region 1 - NW	413	404	417	1.0%	3.2%
Region 2 - NE	553	525	502	-9.2%	-4.4%
Region 3 - Central	1,077	989	979	-9.1%	-1.0%
Region 4 - SE	418	433	416	-0.5%	-3.9%
Region 5 - SW	583	536	523	-10.3%	-2.4%
Centralized Units	0	0	0	N/A	N/A
Statewide Total	3,044	2,887	2,837	-6.8%	-1.7%

General Assistance Caseload: SFY-14 to Current



General Assistance Interim Assistance Reimbursements¹⁶

SFY 2015			SFY 2016			SFY 2017			SFY 2018			SFY 2019		
	Cases	Expenditures		Cases	Expenditures		Cases	Expenditures		Cases	Expenditures		Cases	Expenditures
Jul-14	67	\$144,679	Jul-15	122	\$342,648	Jul-16	56	\$164,970	Jul-17	74	\$241,438	Jul-18	69	\$228,333
Aug-14	77	\$244,233	Aug-15	76	\$245,236	Aug-16	72	\$223,182	Aug-17	101	\$339,301	Aug-18	80	\$241,292
Sep-14	78	\$168,421	Sep-15	58	\$170,093	Sep-16	49	\$158,027	Sep-17	44	\$131,229	Sep-18	55	\$188,192
Oct-14	68	\$182,265	Oct-15	89	\$277,912	Oct-16	92	\$257,830	Oct-17	101	\$335,752	Oct-18	96	\$298,502
Nov-14	45	\$134,482	Nov-15	83	\$238,948	Nov-16	135	\$402,305	Nov-17	42	\$139,572	Nov-18	50	\$148,641
Dec-14	84	\$239,926	Dec-15	106	\$388,102	Dec-16	81	\$227,569	Dec-17	88	\$245,453	Dec-18		
Jan-15	68	\$227,066	Jan-16	79	\$239,263	Jan-17	82	\$274,050	Jan-18	65	\$258,239	Jan-19		
Feb-15	62	\$159,564	Feb-16	92	\$296,332	Feb-17	78	\$227,569	Feb-18	64	\$195,815	Feb-19		
Mar-15	101	\$317,899	Mar-16	72	\$254,360	Mar-17	86	\$278,219	Mar-18	65	\$172,188	Mar-19		
Apr-15	75	\$199,038	Apr-16	59	\$208,631	Apr-17	83	\$267,187	Apr-18	94	\$312,340	Apr-19		
May-15	57	\$167,383	May-16	63	\$182,241	May-17	72	\$232,836	May-18	59	\$155,406	May-19		
Jun-15	65	\$188,159	Jun-16	21	\$51,760	Jun-17	102	\$306,228	Jun-18	56	\$159,268	Jun-19		
TOTAL	847	\$2,373,115	920	\$2,895,525	988	\$3,019,972	853	\$2,686,001	350	\$1,104,960				
AVERAGE	71	\$197,760	77	\$241,294	82	\$251,664	71	\$223,833	70	\$220,992				



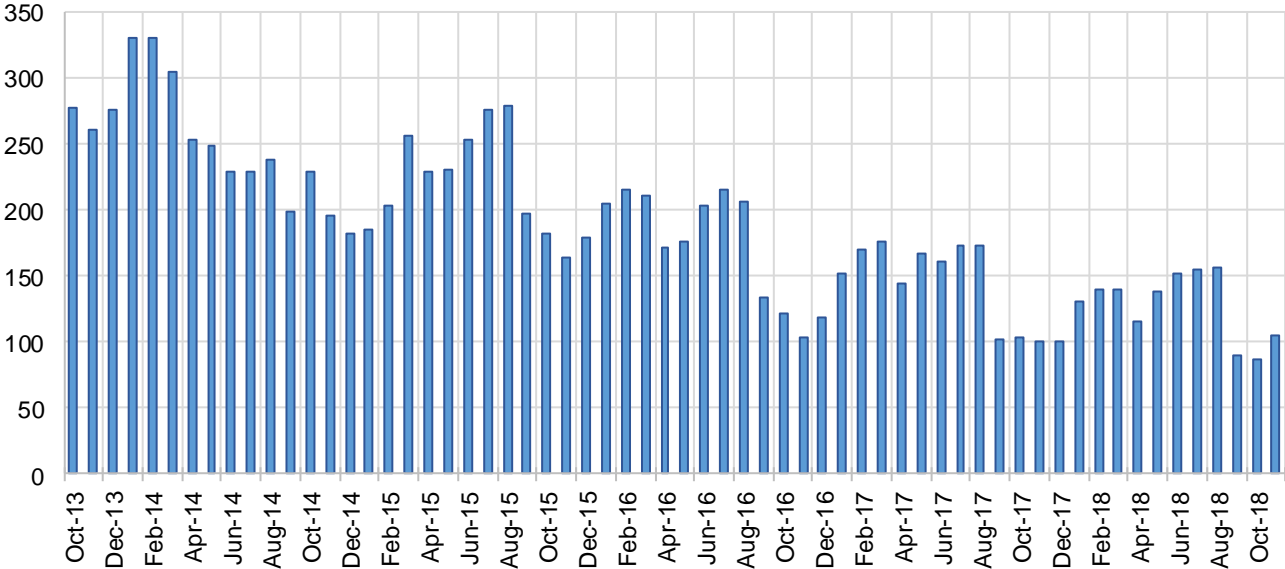
Education Works Cases by Field Office⁶

Office				Percent Change	
	Nov-17	Oct-18	Nov-18	Nov-17- Nov-18	Oct-18- Nov-18
Chaves County ISD	3	1	1	-66.7%	0.0%
Cibola County ISD	0	0	1	N/A	N/A
Colfax County ISD	0	1	3	N/A	200.0%
Curry County ISD	3	2	3	0.0%	50.0%
East Dona Ana County ISD	5	18	18	260.0%	0.0%
Eddy Artesia County ISD	1	1	1	0.0%	0.0%
Eddy Carlsbad County ISD	2	2	2	0.0%	0.0%
Grant County ISD	12	9	6	-50.0%	-33.3%
Guadalupe County ISD	1	0	0	-100.0%	N/A
Hidalgo County ISD	0	0	0	N/A	N/A
Lea County ISD	7	3	3	-57.1%	0.0%
Lincoln County ISD	0	0	0	N/A	N/A
Luna County ISD	2	1	3	50.0%	200.0%
McKinley County ISD	0	0	0	N/A	N/A
Northeast Bernalillo County ISD	13	12	12	-7.7%	0.0%
Northwest Bernalillo County ISD	10	10	12	20.0%	20.0%
Otero County ISD	2	1	1	-50.0%	0.0%
Quay County ISD	0	0	0	N/A	N/A
Rio Arriba County ISD	3	4	4	33.3%	0.0%
Roosevelt County ISD	2	0	0	-100.0%	N/A
San Juan County ISD	3	3	3	0.0%	0.0%
San Miguel County ISD	6	7	7	16.7%	0.0%
Sandoval County ISD	12	8	9	-25.0%	12.5%
Santa Fe County ISD	12	11	14	16.7%	27.3%
Sierra County ISD	0	0	0	N/A	N/A
Socorro County ISD	1	0	0	-100.0%	N/A
South Dona Ana ISD	17	15	18	5.9%	20.0%
Southeast Bernalillo County ISD	5	6	7	40.0%	16.7%
Southwest Bernalillo County ISD	6	11	12	100.0%	9.1%
Taos County ISD	2	0	0	-100.0%	N/A
Torrance County ISD	1	0	0	-100.0%	N/A
Valencia North County ISD	0	0	0	N/A	N/A
Valencia South County ISD	0	0	0	N/A	N/A
West Dona Ana County ISD	9	8	9	0.0%	12.5%
Centralized Units	0	0	0	N/A	N/A
Statewide Total	140	134	149	6.4%	11.2%

Education Works Cases by Region⁶

				Percent Change	
Region	Nov-17	Oct-18	Nov-18	Nov-17- Nov-18	Oct-18- Nov-18
Region 1 - NW	4	3	4	0.0%	33.3%
Region 2 - NE	36	31	37	2.8%	19.4%
Region 3 - Central	35	39	43	22.9%	10.3%
Region 4 - SE	18	9	10	-44.4%	11.1%
Region 5 - SW	47	52	55	17.0%	5.8%
Centralized Units	0	0	0	N/A	N/A
Statewide Total	140	134	149	6.4%	11.2%

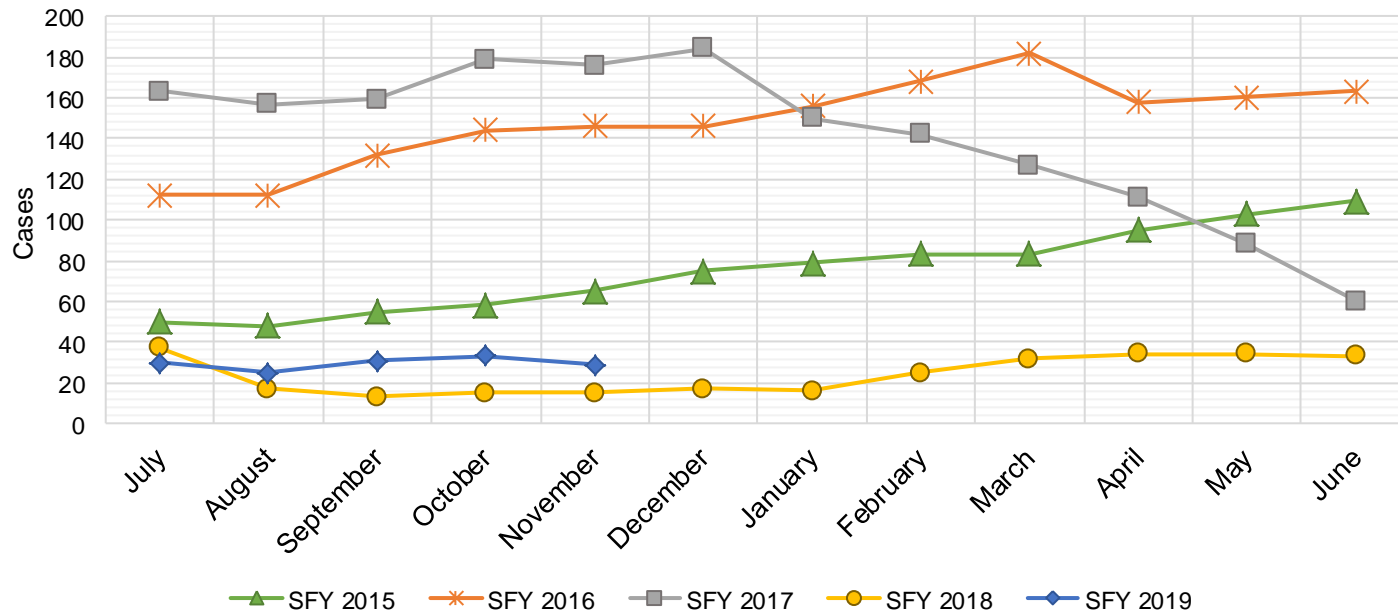
Education Works Caseload: SFY-14 to Current



Refugee Cash Assistance

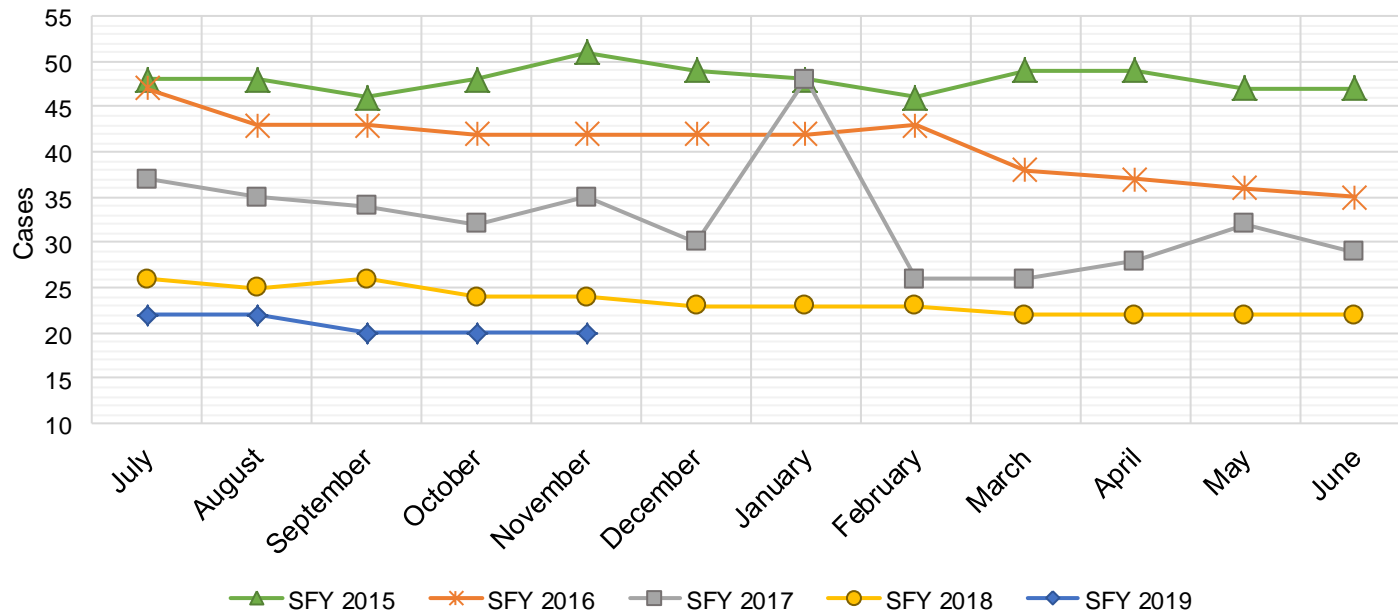
SFY 2015 ¹²			SFY 2016 ^{8,12,9}			SFY 2017 ^{8,9}			SFY 2018 ^{8,9}			SFY 2019 ^{8,9}		
	Cases	Expenditures		Cases	Expenditures		Cases	Expenditures		Cases	Expenditures		Cases	Expenditures
Jul-14	50	\$11,679	Jul-15	112	\$27,516	Jul-16	163	\$39,756	Jul-17	37	\$9,981	Jul-18	30	\$7,408
Aug-14	48	\$11,760	Aug-15	112	\$27,438	Aug-16	157	\$40,115	Aug-17	17	\$4,704	Aug-18	25	\$6,434
Sep-14	55	\$13,094	Sep-15	132	\$31,321	Sep-16	159	\$39,359	Sep-17	13	\$3,159	Sep-18	31	\$6,947
Oct-14	58	\$13,726	Oct-15	144	\$36,153	Oct-16	179	\$41,520	Oct-17	15	\$3,543	Oct-18	33	\$6,323
Nov-14	65	\$16,461	Nov-15	146	\$36,515	Nov-16	176	\$45,434	Nov-17	15	\$4,263	Nov-18	29	\$7,036
Dec-14	75	\$18,699	Dec-15	146	\$35,763	Dec-16	184	\$46,673	Dec-17	17	\$4,795	Dec-18		
Jan-15	79	\$19,009	Jan-16	156	\$38,686	Jan-17	150	\$38,790	Jan-18	16	\$4,166	Jan-19		
Feb-15	83	\$21,349	Feb-16	168	\$41,368	Feb-17	142	\$37,956	Feb-18	25	\$5,723	Feb-19		
Mar-15	83	\$20,730	Mar-16	182	\$45,307	Mar-17	127	\$33,066	Mar-18	32	\$7,636	Mar-19		
Apr-15	95	\$23,495	Apr-16	158	\$41,143	Apr-17	111	\$29,183	Apr-18	34	\$8,827	Apr-19		
May-15	103	\$25,363	May-16	160	\$38,332	May-17	88	\$23,343	May-18	34	\$8,939	May-19		
Jun-15	109	\$27,958	Jun-16	163	\$39,856	Jun-17	60	\$15,538	Jun-18	33	\$8,513	Jun-19		

TOTAL	903	\$223,323	1,779	\$439,397	1,696	\$430,732	288	\$74,249	148	\$34,148
AVERAGE	75	\$18,610	148	\$36,616	141	\$35,894	24	\$6,187	30	\$6,830



State Supplement for Residential Care

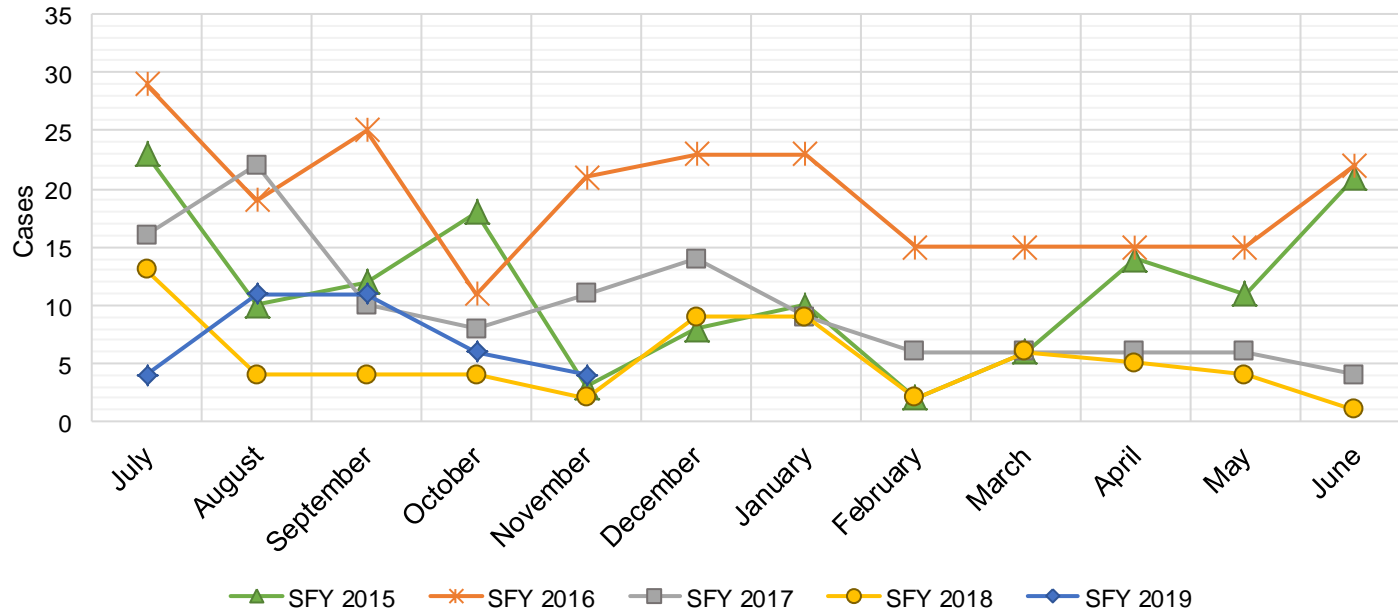
SFY 2015 ¹²			SFY 2016 ^{12,9}			SFY 2017 ⁹			SFY 2018 ⁹			SFY 2019 ⁹		
	Cases	Expenditures		Cases	Expenditures		Cases	Expenditures		Cases	Expenditures		Cases	Expenditures
Jul-14	48	\$4,700	Jul-15	47	\$4,700	Jul-16	37	\$3,700	Jul-17	26	\$2,700	Jul-18	22	\$2,200
Aug-14	48	\$5,000	Aug-15	43	\$4,900	Aug-16	35	\$3,500	Aug-17	25	\$2,500	Aug-18	22	\$2,200
Sep-14	46	\$4,600	Sep-15	43	\$4,500	Sep-16	34	\$3,400	Sep-17	26	\$2,700	Sep-18	20	\$2,000
Oct-14	48	\$4,600	Oct-15	42	\$4,400	Oct-16	32	\$3,200	Oct-17	24	\$2,500	Oct-18	20	\$2,000
Nov-14	51	\$5,600	Nov-15	42	\$4,200	Nov-16	35	\$3,500	Nov-17	24	\$2,400	Nov-18	20	\$2,000
Dec-14	49	\$5,000	Dec-15	42	\$4,200	Dec-16	30	\$3,000	Dec-17	23	\$2,200	Dec-18		
Jan-15	48	\$4,900	Jan-16	42	\$4,200	Jan-17	48	\$4,800	Jan-18	23	\$2,400	Jan-19		
Feb-15	46	\$4,800	Feb-16	43	\$4,300	Feb-17	26	\$2,600	Feb-18	23	\$2,300	Feb-19		
Mar-15	49	\$4,800	Mar-16	38	\$3,800	Mar-17	26	\$2,600	Mar-18	22	\$2,400	Mar-19		
Apr-15	49	\$5,400	Apr-16	37	\$3,700	Apr-17	28	\$2,800	Apr-18	22	\$2,200	Apr-19		
May-15	47	\$4,700	May-16	36	\$3,600	May-17	32	\$3,200	May-18	22	\$2,200	May-19		
Jun-15	47	\$5,300	Jun-16	35	\$3,500	Jun-17	29	\$2,900	Jun-18	22	\$2,200	Jun-19		
TOTAL	576	\$59,400	490	\$50,000	392	\$39,200	282	\$28,700	104	\$10,400				
AVERAGE	48	\$4,950	41	\$4,167	33	\$3,267	24	\$2,392	21	\$2,080				



TANF Diversion Payments

SFY 2015 ¹²			SFY 2016 ^{12,9}			SFY 2017 ⁹			SFY 2018 ⁹			SFY 2019 ⁹		
	Cases	Expenditures		Cases	Expenditures		Cases	Expenditures		Cases	Expenditures		Cases	Expenditures
Jul-14	23	\$48,098	Jul-15	29	\$62,074	Jul-16	16	\$30,843	Jul-17	13	\$26,500	Jul-18	4	\$3,000
Aug-14	10	\$21,810	Aug-15	19	\$33,584	Aug-16	22	\$42,731	Aug-17	4	\$12,000	Aug-18	11	\$18,583
Sep-14	12	\$23,500	Sep-15	25	\$47,977	Sep-16	10	\$21,000	Sep-17	4	\$4,000	Sep-18	11	\$20,999
Oct-14	18	\$30,589	Oct-15	11	\$20,500	Oct-16	8	\$16,744	Oct-17	4	\$16,000	Oct-18	6	\$10,499
Nov-14	3	\$4,411	Nov-15	21	\$45,500	Nov-16	11	\$24,500	Nov-17	2	\$15,500	Nov-18	4	\$7,499
Dec-14	8	\$14,634	Dec-15	23	\$45,389	Dec-16	14	\$26,611	Dec-17	9	\$17,500	Dec-18		
Jan-15	10	\$18,000	Jan-16	23	\$41,874	Jan-17	9	\$18,500	Jan-18	9	\$21,731	Jan-19		
Feb-15	2	\$5,500	Feb-16	15	\$28,500	Feb-17	6	\$12,000	Feb-18	2	\$7,731	Feb-19		
Mar-15	6	\$12,000	Mar-16	15	\$27,008	Mar-17	6	\$11,000	Mar-18	6	\$8,496	Mar-19		
Apr-15	14	\$26,000	Apr-16	15	\$31,389	Apr-17	6	\$12,000	Apr-18	5	\$13,500	Apr-19		
May-15	11	\$21,500	May-16	15	\$31,916	May-17	6	\$11,500	May-18	4	\$12,500	May-19		
Jun-15	21	\$40,039	Jun-16	22	\$43,000	Jun-17	4	\$13,500	Jun-18	1	\$5,389	Jun-19		

TOTAL	138	\$266,081	233	\$458,711	118	\$240,929	63	\$160,847	36	\$60,580
AVERAGE	12	\$22,173	19	\$38,226	10	\$20,077	5	\$13,404	7	\$12,116

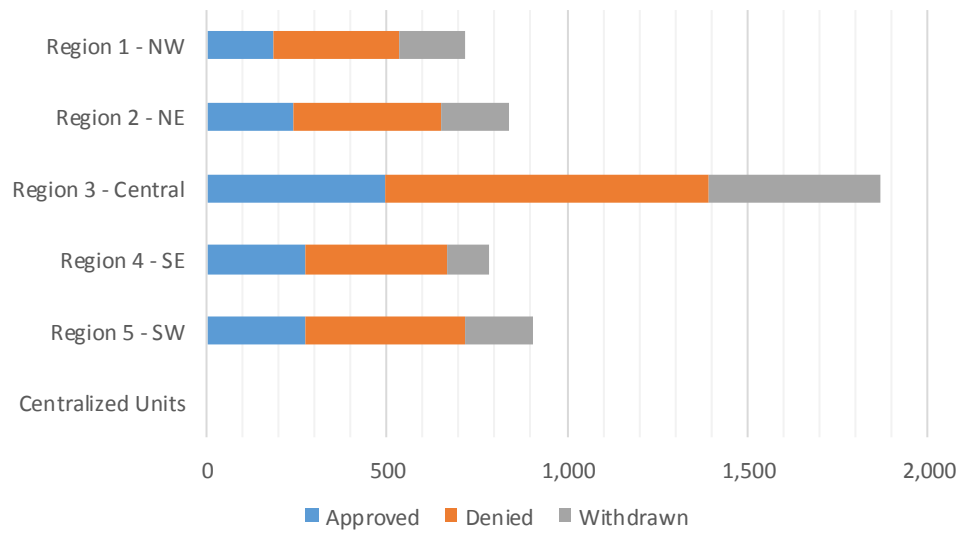


Cash Assistance Applications by Field Office^{4,11}
November 2018

Office	Approved	Denied	Withdrawn	Total Cases Processed
Chaves County ISD	53	83	28	164
Cibola County ISD	27	33	18	78
Colfax County ISD	11	18	9	38
Curry County ISD	97	105	28	230
East Dona Ana County ISD	42	105	34	181
Eddy Artesia County ISD	16	18	7	41
Eddy Carlsbad County ISD	23	57	30	110
Grant County ISD	33	42	17	92
Guadalupe County ISD	5	7	1	13
Hidalgo County ISD	0	0	0	0
Lea County ISD	68	96	16	180
Lincoln County ISD	16	33	9	58
Luna County ISD	26	22	20	68
McKinley County ISD	10	64	29	103
Northeast Bernalillo County ISD	124	271	172	567
Northwest Bernalillo County ISD	113	222	126	461
Otero County ISD	40	79	30	149
Quay County ISD	6	7	7	20
Rio Arriba County ISD	57	57	27	141
Roosevelt County ISD	1	0		1
San Juan County ISD	59	142	75	276
San Miguel County ISD	23	35	22	80
Sandoval County ISD	70	127	49	246
Santa Fe County ISD	51	120	46	217
Sierra County ISD	11	12	15	38
Socorro County ISD	13	14	8	35
South Dona Ana ISD	52	52	34	138
Southeast Bernalillo County ISD	84	143	73	300
Southwest Bernalillo County ISD	154	213	76	443
Taos County ISD	20	36	27	83
Torrance County ISD	22	48	30	100
Valencia North County ISD	63	85	41	189
Valencia South County ISD				0
West Dona Ana County ISD	82	143	54	279
Centralized Units	0	0	0	0
Statewide Total	1,472	2,489	1,158	5,119

Cash Assistance Applications by Region^{4,11} November 2018

Region	Approved	Denied	Withdrawn	Total Cases Processed
Region 1 - NW	183	350	186	719
Region 2 - NE	243	407	188	838
Region 3 - Central	497	897	477	1,871
Region 4 - SE	274	392	118	784
Region 5 - SW	275	443	189	907
Centralized Units	0	0	0	0
Statewide Total	1,472	2,489	1,158	5,119



Children Youth and Families Department
Children Receiving Child Care Assistance Subsidies By County

County	Nov 2017	Dec 2017	Jan 2018	Feb 2018	Mar 2018	Apr 2018	May 2018	June 2018	July 2018	Aug 2018	Sept 2018	Oct 2018	Nov 2018	Change Fr. Last Year Cases	Percent
<i>Bernalillo</i>	7,985	7,903	7,801	7,739	7,824	7,853	7,925	8,146	7,735	7,741	8,041	7,753	7,741	-244	-3.1%
Catron	0	5	5	0	0	0	0	0	0	0	0	0	0	0	0.0%
<i>Chaves</i>	870	855	843	823	807	791	819	865	837	828	861	817	836	-34	-3.9%
Cibola	303	296	291	289	277	291	286	295	289	278	312	316	315	12	4.0%
<i>Colfax</i>	42	42	47	50	51	56	57	59	56	56	59	62	60	18	42.9%
Curry	467	470	493	514	517	536	538	535	539	538	592	543	548	81	17.3%
<i>De Baca</i>	11	10	10	8	4	4	4	4	4	4	4	4	1	-10	-90.9%
Dona Ana	4,581	4,492	4,349	4,382	4,322	4,349	4,369	4,455	4,260	4,219	4,403	4,311	4,304	-277	-6.0%
<i>Eddy</i>	297	263	256	257	240	242	234	245	264	259	268	267	257	-40	-13.5%
Grant	157	159	139	127	133	140	138	142	110	111	134	133	139	-18	-11.5%
<i>Guadalupe</i>	16	16	14	11	15	14	14	14	14	18	11	16	14	-2	-12.5%
Harding	0	0	0	0	0	1	1	1	1	1	1	1	1	1	0.0%
<i>Hidalgo</i>	35	32	32	36	40	35	37	36	37	37	36	35	32	-3	-8.6%
Lea	895	833	824	827	855	805	817	817	806	813	877	840	851	-44	-4.9%
<i>Lincoln</i>	136	132	129	129	128	130	133	129	129	131	107	104	100	-36	-26.5%
Los Alamos	14	13	13	14	15	17	18	22	27	30	26	31	34	20	142.9%
<i>Luna</i>	166	171	167	161	166	166	163	162	143	149	153	142	145	-21	-12.7%
McKinley	167	166	168	156	158	162	168	176	168	157	188	173	173	6	3.6%
<i>Mora</i>	20	21	20	18	20	18	21	21	26	31	29	25	18	-2	-10.0%
Otero	518	531	519	533	532	518	504	502	490	496	520	505	525	7	1.4%
<i>Out of State</i>	12	3	9	12	8	5	7	8	6	6	4	4	4	-8	-66.7%
Quay	35	35	35	36	36	35	33	33	38	37	33	35	34	-1	-2.9%
<i>Rio Arriba</i>	166	165	154	151	152	148	146	147	146	143	139	141	146	-20	-12.0%
Roosevelt	120	127	119	117	113	109	101	102	94	88	101	106	112	-8	-6.7%
<i>San Juan</i>	1,043	1,039	1,005	1,036	1,026	1,053	1,030	1,059	928	892	1,020	954	955	-88	-8.4%
San Miguel	371	372	357	353	362	370	378	376	375	361	375	364	357	-14	-3.8%
<i>Sandoval</i>	839	836	794	774	765	782	765	798	739	756	763	693	697	-142	-16.9%
Santa Fe	547	526	514	523	506	514	531	545	533	511	497	448	470	-77	-14.1%
<i>Sierra</i>	80	77	59	76	67	69	70	62	53	50	64	62	60	-20	-25.0%
Socorro	66	70	70	70	73	75	73	68	55	63	62	65	64	-2	-3.0%
<i>Taos</i>	142	141	141	139	139	138	135	135	138	126	111	111	112	-30	-21.1%
Torrance	115	115	114	110	104	116	115	120	109	104	112	92	94	-21	-18.3%
<i>Union</i>	6	5	5	5	5	5	5	5	5	5	5	5	5	-1	-16.7%
Valencia	713	678	651	640	634	612	624	644	615	621	664	604	611	-102	-14.3%
Totals	20,935	20,599	20,147	20,116	20,094	20,159	20,259	20,728	19,769	19,660	20,572	19,762	19,815	-1,120	-5.3%

CHILDREN YOUTH AND FAMILIES DEPARTMENT CHILD CARE ASSISTANCE ELIGIBILITY PROGRAMS

MONTH	NOV'17	DEC'17	JAN'18	FEB'18	MAR'18	APR'18	May'18	June'18	July'18	Aug'18	Sept'18	Oct'18
TANF (Child Care Priority 1 Clients)												
CLIENTS	2,374	2,315	2,240	2,153	2,178	2,175	2,118	2,164	2,074	2,124	2,197	2,202
COST	\$1411,060	\$1,382,073	\$1,317,716	\$1,272,232	\$1,325,003	\$1,300,872	\$1,244,115	\$1,242,370	\$1,255,788	\$1,288,094	\$1,335,587	\$1,313,281
TANF AVERAGE COST	\$594	\$597	\$588	\$591	\$608	\$598	\$587	\$574	\$605	\$606	\$608	\$596
TRANSITION OFF TANF (Child Care Priority 2 Clients)												
CLIENTS	154	152	141	138	142	148	169	172	161	170	157	145
COST	\$81,975	\$81,337	\$74,507	\$72,696	\$77,354	\$80,098	\$93,823	\$96,261	\$97,664	\$97,412	\$87,146	\$81,849
TRAN OFF TANF AVG COST	\$532	\$535	\$528	\$527	\$545	\$541	\$555	\$560	\$607	\$573	\$555	\$564
TANF ELIGIBLE (Child Care Priority 1B Clients at or below 100% of the Federal Poverty Level)												
CLIENTS	8,900	8,729	8,435	8,374	8,373	8,382	8,570	8,816	8,404	8,352	8,505	8,452
COST	\$5,099,212	\$4,994,373	\$4,722,370	\$4,675,492	\$4,802,863	\$4,766,353	\$4,896,651	\$4,879,475	\$4,946,700	\$4,973,346	\$4,957,788	\$4,970,667
TANF ELIGIBLE AVG COST	\$573	\$572	\$560	\$558	\$574	\$569	\$571	\$553	\$589	\$595	\$583	\$588
INCOME ELIGIBLE (Child Care Priority 3, and Priority 4 Clients)												
CLIENTS	7,578	7,580	7,665	7,868	7,944	8,059	8,099	8,261	7,808	7,743	7,686	7,752
COST	\$3,838,169	\$3,824,777	\$3,785,466	\$3,929,313	\$4,010,729	\$4,051,487	\$4,104,126	\$4,096,260	\$4,133,552	\$4,208,252	\$4,056,059	\$4,049,318
INCOME ELIG AVG COST	\$506	\$505	\$494	\$499	\$505	\$503	\$507	\$496	\$529	\$543	\$528	\$522
AT-RISK CHILD PROTECTIVE SERVICES CHILD CARE PILOT (Priority 5 Clients)												
CLIENTS	1,027	935	772	689	578	516	424	393	405	355	326	351
COST	\$678,258	\$628,399	\$509,028	\$486,780	\$381,318	\$337,243	\$276,746	\$265,193	\$270,783	\$228,483	\$213,687	\$217,475
CPS AVG COST	\$660	\$672	\$659	\$707	\$660	\$654	\$653	\$675	\$669	\$644	\$655	\$620
CHILD PROTECTIVE SERVICES (Child Care CPS Clients)												
CLIENTS	902	888	894	894	879	879	879	942	917	916	891	913
COST	\$585,009	\$573,312	\$583,824	\$602,246	\$605,523	\$564,253	\$619,678	\$600,858	\$597,105	\$637,227	\$613,927	\$641,871
CPS AVG COST	\$649	\$646	\$653	\$674	\$689	\$642	\$705	\$638	\$651	\$696	\$689	\$703
GRAND TOTAL - ALL CHILD CARE PROGRAMS												
CLIENTS	20,935	20,599	20,147	20,116	20,094	20,159	20,259	20,748	19,769	19,660	19,762	19,815
COST	\$11,693,682	\$11,484,272	\$10,992,912	\$11,038,760	\$11,202,789	\$11,100,307	\$11,235,139	\$11,180,418	\$11,301,592	\$11,432,813	\$11,264,194	\$11,274,461
ALL PROGRAMS AVG COST	\$561	\$558	\$546	\$549	\$558	\$551	\$555	\$539	\$572	\$582	\$570	\$569

Income Eligibility Guidelines: October 1, 2018- September 30, 2019

Federal Poverty Guidelines (FPG) Monthly Income Standards

Supplemental Nutrition Program (SNAP)					
Household Size	100% FPG Net Income	130% FPG Gross Income	165% FPG Gross Income for Categorical Eligibility	Maximum SNAP Monthly Allotment	LIHEAP 150% FPG
1	\$1,012	\$1,316	\$1,670	\$192	\$1,518
2	\$1,372	\$1,784	\$2,264	\$353	\$2,058
3	\$1,732	\$2,252	\$2,858	\$505	\$2,598
4	\$2,092	\$2,720	\$3,452	\$642	\$3,138
5	\$2,452	\$3,188	\$4,046	\$762	\$3,678
6	\$2,812	\$3,656	\$4,640	\$914	\$4,218
7	\$3,172	\$4,124	\$5,234	\$1,011	\$4,758
8	\$3,532	\$4,592	\$5,828	\$1,155	\$5,298
+1	+\$60	+\$468	+\$594	+\$144	+\$540
Minimum Allotment of \$15 effective from 10/1/2017 - 9/30/2018					
DEDUCTIONS: Standard Deduction: For HH size 1-3 = \$164; 4 = \$174; 5 = \$204; 6 or more = \$234; Excess Shelter Deduction Limit: \$552; Heating and Cooling Standard Utility Allowance: \$344 (HCSUA) – Limited Utility Allowance: \$ 139 (LUA); Telephone Standard: \$52; Dependent Care: Actual Amount (No Limit); Earned Income Deduction: 20%; Homeless Shelter Standard: \$143					

CASH Assistance & Support Services					
Household Size	Federal Poverty Guidelines (FPG) Monthly Income Standards			Maximum Monthly Benefit	
	100% FPG Net Income	85% FPG Gross Limit	NM Works Cash Net Income	Maximum Monthly Benefit	General Assistance
1	\$1,012	\$860	\$266	\$244	\$245
2	\$1,372	\$1,166	\$357	\$327	\$329
3	\$1,732	\$1,472	\$447	\$409	\$412
4	\$2,092	\$1,778	\$539	\$493	\$496
5	\$2,452	\$2,084	\$630	\$576	\$580
6	\$2,812	\$2,390	\$721	\$659	\$664
7	\$3,172	\$2,696	\$812	\$743	\$748
8	\$3,532	\$3,002	\$922	\$843	\$849
+1	+\$360	+\$306	+\$91	+\$83	+\$84
Deductions- Dependent Care: For a child under age 2 = \$200; For a child age 2 and over = \$175. Work Incentives- Earned Income Disregard: Single parent = \$125 & ½ remainder; Two parent = \$225 & ½ remainder.					

ISD 017 Revised 08/13/2018

Medical Assistance Division					
Federal Poverty Guidelines New Mexico Affordable Care Eligibility Groups Effective April 01, 2018 thru March 31, 2019 Monthly Guidelines					
HH SIZE	PERCENT OF POVERTY				
	138%	190%	240%	250%	300%
1	\$1,397	\$1,923	\$2,428	\$2,530	\$3,035
2	\$1,893	\$2,607	\$3,292	\$3,430	\$4,115
3	\$2,390	\$3,291	\$4,156	\$4,330	\$5,195
4	\$2,887	\$3,975	\$5,020	\$5,230	\$6,275
5	\$3,384	\$4,659	\$5,884	\$6,130	\$7,355
6	\$3,881	\$5,343	\$6,748	\$7,030	\$8,435
7	\$4,377	\$6,027	\$7,612	\$7,930	\$9,515
8	\$4,874	\$6,711	\$8,476	\$8,830	\$10,595
138% Adult Expansion, 190% Children ages 6 to 19 (Medicaid), 240% Children ages 0 to 6 (Medicaid); ages 6 to 19 (CHIP), 250% Pregnancy Related Services Only, 300% Children 0 to 6 (CHIP)					

Medical Assistance Division					
Federal Poverty Guidelines New Mexico Affordable Care Eligibility Groups Effective April 01, 2018 thru March 31, 2019 Annual Guidelines					
HH SIZE	PERCENT OF POVERTY				
	138%	190%	240%	250%	300%
1	\$16,764	\$23,076	\$29,136	\$30,360	\$36,420
2	\$22,716	\$31,284	\$39,504	\$41,160	\$49,380
3	\$28,680	\$39,492	\$49,872	\$51,960	\$62,340
4	\$34,644	\$47,700	\$60,240	\$62,760	\$75,300
5	\$40,608	\$55,908	\$70,608	\$73,560	\$88,260
6	\$46,572	\$64,116	\$80,976	\$84,360	\$101,220
7	\$52,524	\$72,324	\$91,344	\$95,160	\$114,180
8	\$58,488	\$80,532	\$101,712	\$105,960	\$127,140
138% Adult Expansion, 190% Children ages 6 to 19 (Medicaid), 240% Children ages 0 to 6 (Medicaid); ages 6 to 19 (CHIP), 250% Pregnancy Related Services Only, 300% Children 0 to 6 (CHIP)					

References

- ¹ *Medicaid Expenditures* (Omnicaid, Medicare Buy-Ins, Lump Sum Payments), Received on December 16, 2018
- ² *ASPEN Business Intelligence Tool: Eligibility*, Retrieved on December 13, 2018
- ³ New Mexico Human Services Department, *Medicaid Eligibility Reports*, Retrieved from <http://www.hsd.state.nm.us/LookingForInformation/medicaid-eligibility.aspx> on December 13, 2018
- ⁴ *ASPEN Business Intelligence Tool: Application Tracking*, Retrieved on December 13, 2018
- ⁵ Fidelity Information Services, *EBT Daily Statistical Report* (for 11/30/2017, 10/31/2018, and 11/30/2018), Retrieved on December 13, 2018
- ⁶ *ASPEN Report DQ-180: Length of Time Cases are Open* (for 11/01/2017-11/30/2017, 10/01/2018-10/31/2018, 11/01/2018-11/30/2018), Retrieved on November 16, 2018
- ⁷ *ASPEN Report EY-180: Individual Demographics by State and Age* (for 11/01/2017-11/30/2017, 10/01/2018-10/31/2018, 11/01/2018-11/30/2018), Retrieved November 16, 2018
- ⁸ *ASPEN Business Intelligence Tool: Benefit Issuance*, Retrieved on December 13, 2018
- ⁹ Fidelity Information Services, *EBT Daily Statistical Reports* (Month End), Retrieved on December 13, 2018
- ¹⁰ *ASPEN Report EY-180R: Individual Demographics by State, Race, Ethnicity and Gender* (for 11/01/2018-11/30/2018), Retrieved on December 16, 2018
- ¹¹ SQL Queries from ASPEN, completed December 2018
- ¹² JP Morgan, *New Mexico – NM EBT System- Monthly Benefit Draw Down Totals*
- ¹³ *ASPEN Business Intelligence Tool: Application Tracking* (w/Parameters: SNAP, Expedite, Approved), Retrieved on December 13, 2018
- ¹⁴ SL Start, *As of Today Report 10.31.18*, received December 10, 2018
- ¹⁵ SL Start, *Statewide Employment Report 10.01.18*, received December 10, 2018

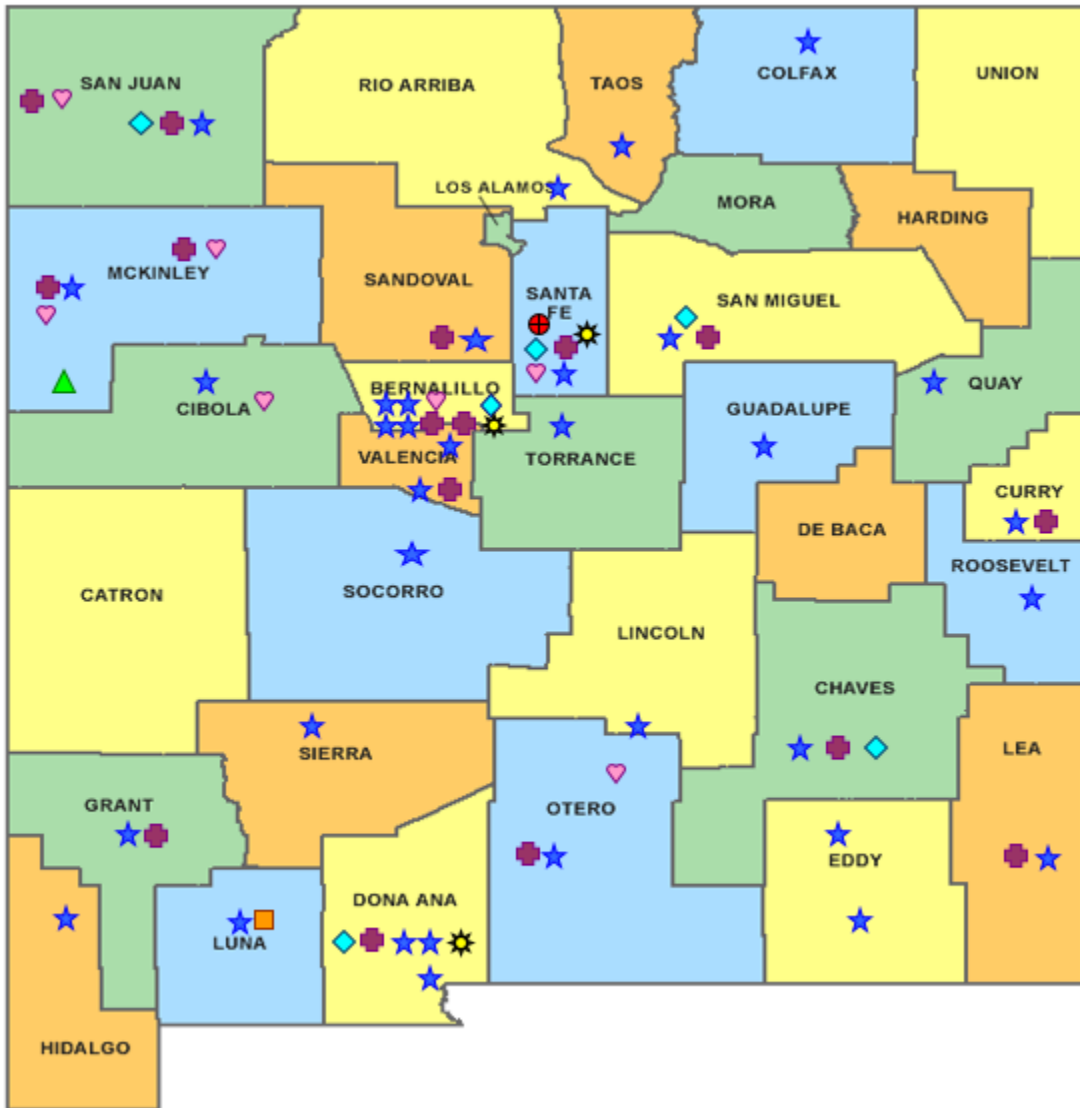

¹⁶SSIAR Payments, received December 2, 2018

¹⁷ Children, Youth, and Families Department, *Children Receiving Child Care Assistance Subsidies by County*, Received on December 10, 2018

¹⁸ Children, Youth, and Families Department, *Child Care Assistance Eligibility Programs*, Received on December 10, 2018









¹⁹ EDG is defined as an Eligibility Determination Group

²⁰SQL Query from ASPEN, completed December 28, 2018

HUMAN SERVICES
DEPARTMENT

New Mexico Human Services Department
Field Offices

-  Central Office (1)
-  Income Support Division County Office (35)
-  Income Support Division Satellite Office (2)
-  Child Support Enforcement Regional Office (16)
-  Child Support Enforcement Satellite Office (1)
-  Quality Control Office (8)
-  Indian Health Services (7)
-  Hospital Site (3)