



# Monthly Statistical Report

## May 2020

There were 853,251 individuals that received Medicaid in May 2020, a 3.11% increase from one year ago. The count of Medicaid recipients has increased by 10,606, or 1.26%, since last month.

The SNAP caseload in May 2020 was 247,674, a 12.39% increase from one year ago. The SNAP caseload has increased by 5,291 cases, or 2.18%, since last month.

The TANF caseload was 11,936 in May 2020 an increase of 18.92% from May 2019. The TANF caseload had 523 more cases compared to April 2020, an increase of 4.6%.

The caseload for General Assistance was 2,590 in May 2020, an increase of 3.43% from one year ago and a decrease of 12 cases from last month.

Michelle Lujan Grisham, Governor  
David Scrase, M.D., Secretary

<sup>1</sup> Note: COVID 19 Health Emergency became effective March 12, 2020 and as a result, Medicaid, SNAP, TANF, and Child Care programs has undergone changes to policies which may be reflected in some of the tables and figures in this report. Please see end of report for details of policy changes.

<b>Contents</b>	<b>Page</b>
Summary	3-5
Medicaid	6-20
SNAP	21-41
Cash Assistance	42-56
Child Care Assistance	57-58
SNAP EA and P-EBT	59
Income Eligibility Guidelines	60-61

**Regions are reported as follows:**

<b>Region 1</b>		
Catron	San Juan	Valencia
Cibola	Sierra	
McKinley	Socorro	
<b>Region 2</b>		
Colfax	Mora	Santa Fe
De Baca	Quay	Taos
Guadalupe	Rio Arriba	Union
Harding	Sandoval	
Los Alamos	San Miguel	
<b>Region 3</b>		
Bernalillo	Torrance	
<b>Region 4</b>		
Chaves	Eddy	Lincoln
Curry	Lea	Roosevelt
<b>Region 5</b>		
Dona Ana	Hidalgo	Otero
Grant	Luna	

***The Mission of the Human Services Department***

*To transform lives. Working with our partners, we design and deliver innovative, high quality health and human services that improve the security and promote independence for New Mexicans in their communities.*

Angela Medrano, Deputy Secretary  
Kari Armijo, Deputy Secretary

Prepared by Income Support Division  
PO Box 2348  
Santa Fe, NM 87504-2348  
505-827-7250

Karmela Martinez, Director  
Vida Tapia-Sanchez, Deputy Director  
Shanita Harrison, Deputy Director  
Judith Parks, Deputy Director

<http://www.hsd.state.nm.us/monthly-statistical-reports.aspx>

# Program Summary for May 2020

SNAP, TANF and GA-Unrelated Child Program interviews are waived. Recertification periods are automatically extended for households with an Interim Review due in March and April for 6 months to the month recertification due. SNAP expenditures and cases include Emergency Allotments. SNAP Emergency Allotments and Pandemic EBT can be found at the end of this report.

	May-19	Apr-20	May-20	Percent Change	
				May-19- May-20	Apr-20- May-20
<b>Expenditures<sup>1</sup></b>	\$451,165,409	\$613,868,720	\$577,583,062	28.0%	-5.9%
<b>Cases<sup>2</sup></b>	492,053	508,452	513,862	4.43%	1.06%
<b>Expenditures/Case</b>	\$917	\$1,207	\$1,124	22.6%	-6.9%
<b>Recipients<sup>3</sup></b>	827,543	842,645	853,251	3.11%	1.26%
<i>Adults</i>	471,444	481,895	489,216	3.77%	1.52%
<i>Children</i>	356,099	360,750	364,035	2.23%	0.91%
<b>Recipients /Case</b>	1.68	1.66	1.66	-1.19%	0.00%
<b>Cases Processed<sup>4</sup></b>	11,163	18,234	8,520	-23.68%	-53.27%
<i>Approvals<sup>4</sup></i>	8,488	13,578	6,171	-27.30%	-54.55%

	May-19	Apr-20	May-20	Percent Change	
				May-19- May-20	Apr-20- May-20
<b>Expenditures<sup>5</sup></b>	\$52,122,576	\$107,640,865	\$84,886,887	62.86%	-21.14%
<b>Cases<sup>6</sup></b>	220,379	242,383	247,674	12.39%	2.18%
<b>Expenditures/Case</b>	\$237	\$444	\$343	44.73%	-22.75%
<b>Recipients<sup>7</sup></b>	445,141	480,715	492,309	10.60%	2.41%
<i>Adults</i>	259,865	285,746	293,146	12.81%	2.59%
<i>Children</i>	185,276	194,969	199,163	7.50%	2.15%
<b>Recipients /Case</b>	2.02	1.98	1.99	-1.49%	0.51%
<b>Cases Processed<sup>4</sup></b>	17,884	26,951	14,724	-17.67%	-45.37%
<i>Approvals<sup>4</sup></i>	14,942	21,285	9,166	-38.66%	-56.94%

	May-19	Apr-20	May-20	Percent Change	
				May-19- May-20	Apr-20- May-20
<b>Expenditures<sup>5</sup></b>	\$3,916,102	\$4,471,508	\$4,815,596	22.97%	7.70%
<b>Cases<sup>6</sup></b>	12,727	14,192	14,696	15.47%	3.55%
<b>Expenditures/Case</b>	\$308	\$315	\$328	6.49%	4.13%
<b>Recipients<sup>7</sup></b>	28,282	32,758	34,454	21.82%	5.18%
<i>Adults</i>	8,960	10,927	11,612	29.60%	6.27%
<i>Children</i>	19,322	21,831	22,842	18.22%	4.63%
<b>Recipients /Case</b>	2.22	2.31	2.34	5.41%	1.30%
<b>Cases Processed<sup>4</sup></b>	3,888	9,351	4,749	22.15%	-49.21%
<i>Approvals<sup>4</sup></i>	1,398	2,256	1,137	-18.67%	-49.60%

	May-19	Apr-20	May-20	Percent Change	
				May-19- May-20	Apr-20- May-20
<b>Expenditures<sup>8</sup></b>	\$675,820	\$1,101,840	\$540,800	-19.98%	-50.92%
<b>Cases<sup>8</sup></b>	2,352	4,194	1,969	-16.28%	-53.05%
<b>Expenditures/Case</b>	\$287	\$263	\$275	-4.18%	4.56%
<b>Recipients<sup>8</sup></b>	5,577	9,795	4,538	-18.63%	-53.67%
<i>Adults</i>	3,058	5,798	2,623	-14.22%	-54.76%
<i>Children</i>	2,519	3,997	1,915	-23.98%	-52.09%
<b>Recipients /Case</b>	2.37	2.34	2.30	-2.95%	-1.71%
<b>Cases Processed<sup>4</sup></b>	3,529	6,279	3,282	-7.00%	-47.73%
<i>Approvals<sup>4</sup></i>	2,254	4,197	1,975	-12.38%	-52.94%

# Cash Assistance Summary for May 2020

## Temporary Assistance for Needy Families (TANF)

	May-19	Apr-20	May-20	Percent Change	
				May-19- May-20	Apr-20- May-20
Expenditures <sup>5</sup>	\$3,223,032	\$3,733,124	\$4,097,303	27.13%	9.76%
Cases <sup>6</sup>	10,037	11,413	11,936	18.92%	4.58%
Expenditures/Case	\$321	\$327	\$343	6.85%	4.89%
Recipients <sup>7</sup>	25,331	29,707	31,398	23.95%	5.69%
<i>Adults</i>	6,444	8,342	9,010	39.82%	8.01%
<i>Children</i>	18,887	21,365	22,388	18.54%	4.79%
Approvals <sup>4</sup>	1,189	1,945	939	-21.03%	-51.72%

## General Assistance (GA)

	May-19	Apr-20	May-20	Percent Change	
				May-19- May-20	Apr-20- May-20
Expenditures <sup>5</sup>	\$632,708	\$674,838	\$656,740	3.80%	-2.68%
Cases <sup>6</sup>	2,504	2,602	2,590	3.43%	-0.46%
Expenditures/Case	\$253	\$259	\$254	0.40%	-1.93%
Recipients <sup>7</sup>	2,542	2,606	2,628	3.38%	0.84%
<i>Adults</i>	2,320	2,393	2,418	4.22%	1.04%
<i>Children</i>	222	213	210	-5.41%	-1.41%
Approvals <sup>4</sup>	164	227	167	1.83%	-26.43%

## Education Works

	May-19	Apr-20	May-20	Percent Change	
				May-19- May-20	Apr-20- May-20
Expenditures <sup>5</sup>	\$46,739	\$57,199	\$55,145	17.98%	-3.59%
Cases <sup>6</sup>	119	143	136	14.29%	-4.90%
Expenditures/Case	\$393	\$400	\$405	3.05%	1.25%
Recipients <sup>7</sup>	341	411	395	15.84%	-3.89%
<i>Adults</i>	128	158	151	17.97%	-4.43%
<i>Children</i>	213	253	244	14.55%	-3.56%

## Refugee Cash (RCA)

	May-19	Apr-20	May-20	Percent Change	
				May-19- May-20	Apr-20- May-20
Expenditures <sup>5</sup>	\$11,823	\$4,847	\$4,908	-58.49%	1.26%
Cases <sup>6</sup>	49	19	19	-61.22%	0.00%
Expenditures/Case	\$241	\$255	\$258	7.05%	1.18%
Recipients <sup>7</sup>	50	19	19	-62.00%	0.00%

## State Supplement for Residential Care

	May-19	Apr-20	May-20	Percent Change	
				May-19- May-20	Apr-20- May-20
Expenditures <sup>5</sup>	\$1,800	\$1,500	\$1,500	-16.67%	0.00%
Cases <sup>6</sup>	18	15	15	-16.67%	0.00%
Expenditures/Case	\$100	\$100	\$100	0.00%	0.00%
Recipients <sup>7</sup>	18	15	14	-22.22%	-6.67%

<b>Expenditures YTD</b>			
	SFY 2020	FFY 2020	CY 2020
Medicaid <sup>1</sup>	\$5,791,571,612	\$4,350,710,846	\$2,834,381,901
Supplemental Nutrition Assistance Program <sup>9</sup>	\$706,203,993	\$547,584,178	\$387,790,479
Temporary Assistance for Needy Families <sup>9</sup>	\$39,496,552	\$28,050,439	\$18,005,996
General Assistance <sup>9</sup>	\$7,048,572	\$5,188,593	\$3,272,650
Education Work <sup>9</sup>	\$457,988	\$376,267	\$294,998
LIHEAP <sup>8</sup>	\$19,948,550	\$17,782,440	\$6,492,320

<b>Average Caseload YTD</b>			
	SFY 2020	FFY 2020	CY 2020
Medicaid <sup>2</sup>	499,436	501,793	504,779
Supplemental Nutrition Assistance Program <sup>6</sup>	227,365	228,897	232,255
Temporary Assistance for Needy Families <sup>6</sup>	10,604	10,643	10,742
General Assistance <sup>6</sup>	2,495	2,525	2,558
Education Work <sup>6</sup>	102	117	122
LIHEAP <sup>8</sup>	6,087	7,405	4,542

<b>Demographic Profile- May 2020</b>					
	SNAP	TANF	GA	Education Works	RCA
<i>Gender of Recipients</i> <sup>10</sup>					
Male	224,044	13,299	1,494	142	12
Female	268,265	18,099	1,134	253	7
<i>Ethnicity</i> <sup>10</sup>					
Hispanic	273,471	20,814	1,363	207	11
Non-Hispanic	218,838	10,584	1,265	188	8
<i>Race</i> <sup>10</sup>					
Native American or Alaskan Native	82,599	2,706	255	51	0
Asian	4,373	271	18	4	0
African American or Black	13,382	1,382	103	29	5
Native Hawaiian or Pacific Islander	915	57	1	5	0
White	377,394	25,855	2,172	299	12
Unknown / Not Declared	3,591	217	23	2	0
More than One Race	10,055	910	56	5	2

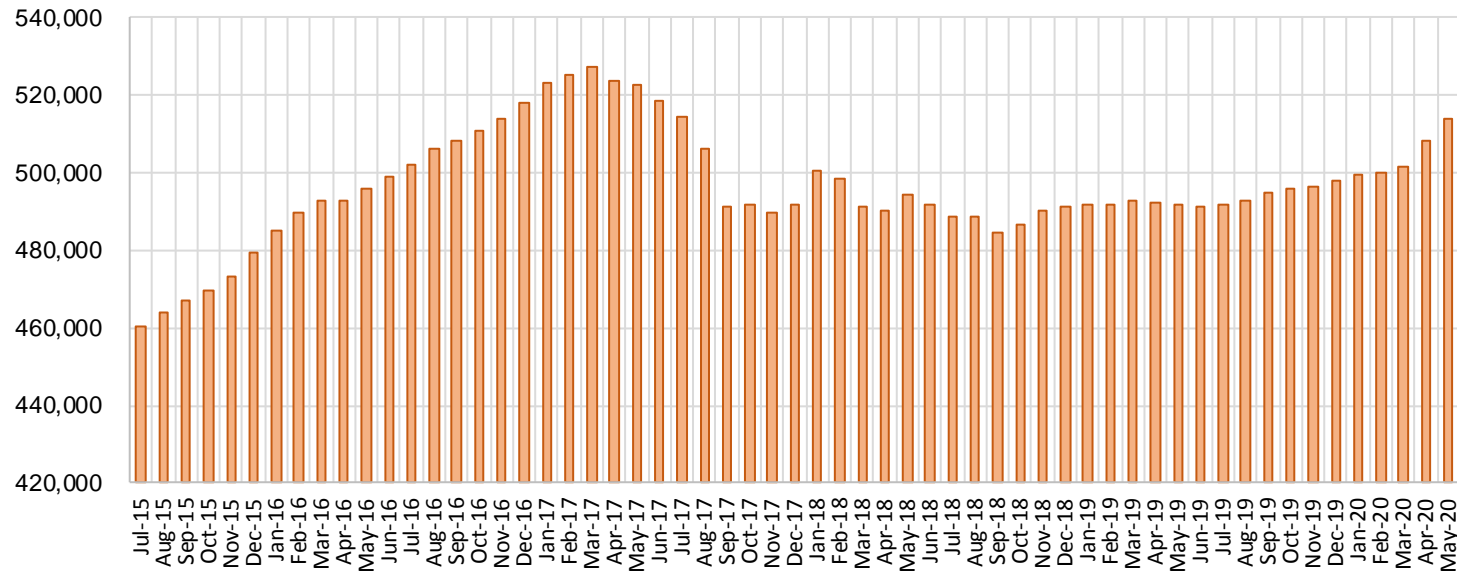
## Medicaid Cases by Field Office<sup>2</sup>

Office				Percent Change	
	May-19	Apr-20	May-20	May-19- May-20	Apr-20- May-20
Chaves County ISD	15,905	17,298	17,494	9.99%	1.13%
Cibola County ISD	7,585	7,634	7,689	1.37%	0.72%
Colfax County ISD	3,592	3,653	3,672	2.23%	0.52%
Curry County ISD	14,595	15,457	15,601	6.89%	0.93%
East Dona Ana County ISD	17,826	18,876	19,212	7.78%	1.78%
Eddy Artesia County ISD	3,822	4,018	4,083	6.83%	1.62%
Eddy Carlsbad County ISD	7,556	7,886	8,038	6.38%	1.93%
Grant County ISD	7,749	8,025	8,109	4.65%	1.05%
Guadalupe County ISD	1,613	1,577	1,580	-2.05%	0.19%
Hidalgo County ISD	49	55	57	16.33%	3.64%
Lea County ISD	14,461	15,547	15,905	9.99%	2.30%
Lincoln County ISD	4,333	4,462	4,522	4.36%	1.34%
Luna County ISD	8,583	9,013	9,086	5.86%	0.81%
McKinley County ISD	21,962	22,924	23,141	5.37%	0.95%
Northeast Bernalillo County ISD	42,804	44,345	44,926	4.96%	1.31%
Northwest Bernalillo County ISD	51,940	54,929	55,597	7.04%	1.22%
Otero County ISD	12,043	12,487	12,617	4.77%	1.04%
Quay County ISD	2,526	2,805	2,852	12.91%	1.68%
Rio Arriba County ISD	13,444	13,787	13,983	4.01%	1.42%
Roosevelt County ISD	9	10	9	0.00%	-10.00%
San Juan County ISD	30,298	32,980	33,804	11.57%	2.50%
San Miguel County ISD	9,109	9,299	9,375	2.92%	0.82%
Sandoval County ISD	23,391	23,141	23,218	-0.74%	0.33%
Santa Fe County ISD	24,406	23,832	24,036	-1.52%	0.86%
Sierra County ISD	5,333	5,188	5,164	-3.17%	-0.46%
Socorro County ISD	5,300	5,390	5,461	3.04%	1.32%
South Dona Ana ISD	19,808	19,937	19,985	0.89%	0.24%
Southeast Bernalillo County ISD	24,962	23,129	23,056	-7.64%	-0.32%
Southwest Bernalillo County ISD	39,692	42,386	42,900	8.08%	1.21%
Taos County ISD	9,242	9,243	9,296	0.58%	0.57%
Torrance County ISD	7,897	8,052	8,110	2.70%	0.72%
Valencia North County ISD	18,250	18,206	18,292	0.23%	0.47%
Valencia South County ISD	97	163	92	-5.15%	-43.56%
West Dona Ana County ISD	21,869	22,717	22,899	4.71%	0.80%
Centralized Units	2	1	1	-50.00%	0.00%
<b>Statewide Total</b>	<b>492,053</b>	<b>508,452</b>	<b>513,862</b>	<b>4.43%</b>	<b>1.06%</b>

## Medicaid Cases by Region<sup>2</sup>

Region	Percent Change				
	May-19	Apr-20	May-20	May-19- May-20	Apr-20- May-20
Region 1 - NW	88,825	92,485	93,643	5.42%	1.25%
Region 2 - NE	87,323	87,337	88,012	0.79%	0.77%
Region 3 - Central	167,295	172,841	174,589	4.36%	1.01%
Region 4 - SE	60,681	64,678	65,652	8.19%	1.51%
Region 5 - SW	87,927	91,110	91,965	4.59%	0.94%
Centralized Units	2	1	1	-50.00%	0.00%
Statewide Total	492,053	508,452	513,862	4.4%	1.06%

### Medicaid Caseload: SFY-16 to Current



**Medicaid Initial Applications by Field Office<sup>4,11</sup>**  
**May 2020**

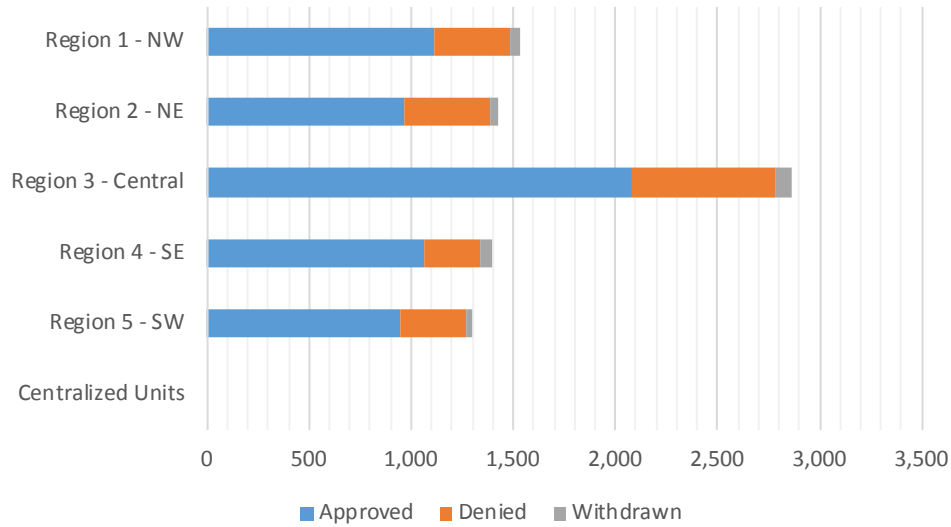
Office	Approved	Denied	Withdrawn	Total Cases Processed
Chaves County ISD	250	52	23	325
Cibola County ISD	72	22	4	98
Colfax County ISD	33	17	1	51
Curry County ISD	171	28	9	208
East Dona Ana County ISD	248	97	11	356
Eddy Artesia County ISD	77	21	3	101
Eddy Carlsbad County ISD	164	37	9	210
Grant County ISD	80	29	5	114
Guadalupe County ISD	8	3	2	13
Hidalgo County ISD	0	0	1	1
Lea County ISD	349	103	16	468
Lincoln County ISD	51	33	2	86
Luna County ISD	91	37	3	131
McKinley County ISD	276	56	11	343
Northeast Bernalillo County ISD	612	191	19	822
Northwest Bernalillo County ISD	508	196	19	723
Otero County ISD	129	48	5	182
Quay County ISD	31	10	1	42
Rio Arriba County ISD	123	48	7	178
Roosevelt County ISD	1	1	0	2
San Juan County ISD	505	199	23	727
San Miguel County ISD	155	71	6	232
Sandoval County ISD	228	116	4	348
Santa Fe County ISD	295	121	15	431
Sierra County ISD	49	27	0	76
Socorro County ISD	62	26	0	88
South Dona Ana ISD	174	49	2	225
Southeast Bernalillo County ISD	332	146	8	486
Southwest Bernalillo County ISD	540	149	23	712
Taos County ISD	93	32	3	128
Torrance County ISD	93	20	3	116
Valencia North County ISD	145	43	9	197
Valencia South County ISD	5	2	0	7
West Dona Ana County ISD	221	68	5	294
Centralized Units	0	0	0	0
<b>Statewide Total</b>	<b>6,171</b>	<b>2,098</b>	<b>252</b>	<b>8,521</b>



**Medicaid Initial Applications by Region<sup>4,11</sup>**  
**May 2020**

	Approved	Denied	Withdrawn	Total Cases Processed
Region				
Region 1 - NW	1,114	375	47	1,536
Region 2 - NE	966	418	39	1,423
Region 3 - Central	2,085	702	72	2,859
Region 4 - SE	1,063	275	62	1,400
Region 5 - SW	943	327	32	1,302
Centralized Units	0	0	0	0

Statewide Total	6,171	2,097	252	8,520
-----------------	-------	-------	-----	-------

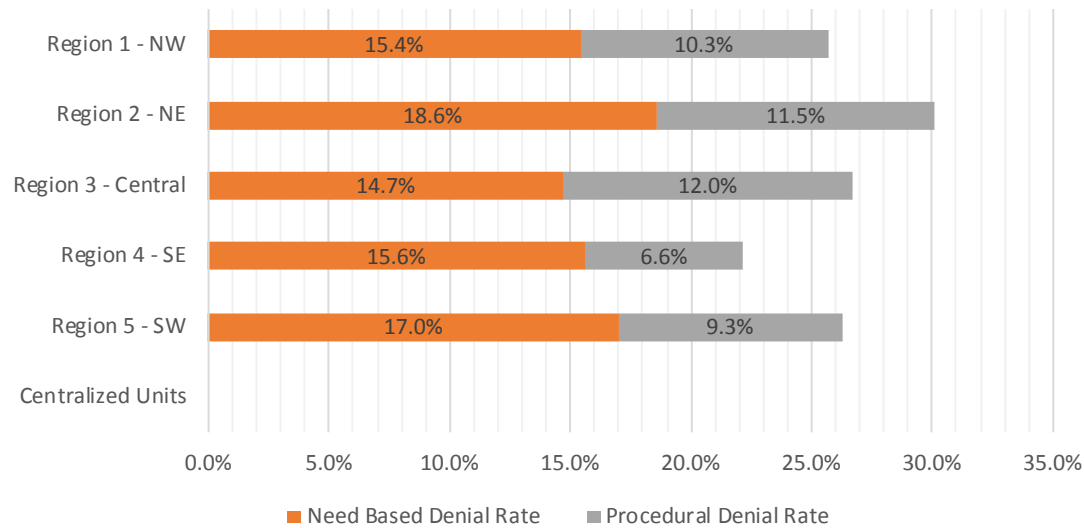


**Medicaid EDG Initial Disposition Rates by Field Office**<sup>4,11,19</sup>  
**May 2020**

Office	Approval Rate	Denial Rate	Need Based Denial Rate	Procedural Denial Rate
Chaves County ISD	80.1%	19.9%	15.4%	4.5%
Cibola County ISD	76.6%	23.4%	12.8%	10.6%
Colfax County ISD	66.0%	34.0%	28.0%	6.0%
Curry County ISD	82.2%	17.8%	14.4%	3.4%
East Dona Ana County ISD	71.5%	28.5%	14.7%	13.8%
Eddy Artesia County ISD	76.2%	23.8%	14.9%	8.9%
Eddy Carlsbad County ISD	80.0%	20.0%	9.8%	10.2%
Grant County ISD	74.8%	25.2%	17.7%	7.5%
Guadalupe County ISD	66.7%	33.3%	25.0%	8.3%
Hidalgo County ISD	0.0%	0.0%	0.0%	0.0%
Lea County ISD	75.7%	24.3%	18.7%	5.6%
Lincoln County ISD	64.6%	35.4%	18.9%	16.5%
Luna County ISD	70.5%	29.5%	18.6%	10.9%
McKinley County ISD	82.9%	17.1%	12.3%	4.8%
Northeast Bernalillo County ISD	75.3%	24.7%	11.8%	12.9%
Northwest Bernalillo County ISD	70.6%	29.4%	14.4%	15.0%
Otero County ISD	72.5%	27.5%	19.6%	7.9%
Quay County ISD	75.6%	24.4%	22.0%	2.4%
Rio Arriba County ISD	70.3%	29.7%	18.8%	10.9%
Roosevelt County ISD	100.0%	0.0%	0.0%	0.0%
San Juan County ISD	70.7%	29.3%	15.7%	13.6%
San Miguel County ISD	75.6%	24.4%	17.6%	6.8%
Sandoval County ISD	67.3%	32.7%	18.0%	14.7%
Santa Fe County ISD	67.8%	32.2%	18.4%	13.8%
Sierra County ISD	68.1%	31.9%	15.2%	16.7%
Socorro County ISD	70.5%	29.5%	21.5%	8.0%
South Dona Ana ISD	78.4%	21.6%	18.0%	3.6%
Southeast Bernalillo County ISD	66.5%	33.5%	22.3%	11.2%
Southwest Bernalillo County ISD	77.5%	22.5%	12.6%	9.9%
Taos County ISD	74.4%	25.6%	16.8%	8.8%
Torrance County ISD	81.6%	18.4%	15.8%	2.6%
Valencia North County ISD	75.1%	24.9%	18.7%	6.2%
Valencia South County ISD	100.0%	0.0%	0.0%	0.0%
West Dona Ana County ISD	75.7%	24.3%	15.7%	8.6%
Centralized Units	0.0%	0.0%	0.0%	0.0%
Statewide Total	73.8%	26.3%	16.0%	10.3%

**Medicaid EDG Initial Disposition Rates by Region<sup>4,11,19</sup>**  
**May 2020**

Region	Approval Rate	Denial Rate	Need Based Denial Rate	Procedural Denial Rate
Region 1 - NW	74.3%	25.7%	15.4%	10.3%
Region 2 - NE	69.9%	30.1%	18.6%	11.5%
Region 3 - Central	73.3%	26.7%	14.7%	12.0%
Region 4 - SE	77.8%	22.2%	15.6%	6.6%
Region 5 - SW	74.0%	26.3%	17.0%	9.3%
Centralized Units				
<b>Statewide Total</b>	<b>73.8%</b>	<b>26.3%</b>	<b>16.0%</b>	<b>10.3%</b>



**Medicaid: Percentage of Initial EDG Approvals Processed Timely by Field Office** <sup>13,19</sup>

	Oct-19	Nov-19	Dec-19	Jan-20	Feb-20	Mar-20	Apr-20	May-20	Jun-20	Jul-20	Aug-20	Sep-20	Average
Cibola	99.5 %	97.3 %	99.4 %	99.4 %	100.0 %	100.0 %	99.6 %	99.0 %					99.3%
McKinley	99.3 %	99.0 %	99.8 %	99.8 %	99.2 %	97.8 %	99.8 %	99.3 %					99.3%
San Juan	98.9 %	98.7 %	99.7 %	99.4 %	99.2 %	99.5 %	99.5 %	99.9 %					99.3%
Sierra	96.4 %	99.0 %	99.1 %	100.0 %	100.0 %	100.0 %	98.1 %	100.0 %					99.1%
Socorro	100.0 %	96.9 %	98.9 %	98.2 %	98.8 %	100.0 %	100.0 %	100.0 %					99.1%
Valencia North	99.7 %	99.1 %	99.4 %	99.2 %	98.8 %	99.7 %	99.5 %	98.6 %					99.3%
Valencia South	100.0 %	100.0 %	100.0 %	100.0 %	100.0 %	100.0 %	100.0 %	100.0 %					100.0%
<b>NW Region 1 Total</b>	<b>99.2 %</b>	<b>98.6 %</b>	<b>99.6 %</b>	<b>99.4 %</b>	<b>99.2 %</b>	<b>99.2 %</b>	<b>99.4 %</b>	<b>99.5 %</b>					<b>99.3%</b>
Colfax	100.0 %	100.0 %	100.0 %	98.9 %	100.0 %	100.0 %	100.0 %	100.0 %					99.9%
Guadalupe	100.0 %	100.0 %	100.0 %	100.0 %	100.0 %	100.0 %	100.0 %	100.0 %					100.0%
Quay	98.4 %	100.0 %	100.0 %	100.0 %	100.0 %	100.0 %	100.0 %	100.0 %					99.8%
Rio Arriba	99.6 %	100.0 %	99.3 %	93.0 %	98.4 %	99.0 %	100.0 %	99.4 %					98.6%
San Miguel	100.0 %	100.0 %	100.0 %	99.6 %	98.2 %	98.8 %	100.0 %	100.0 %					99.6%
Sandoval	99.4 %	100.0 %	99.5 %	98.5 %	99.8 %	99.2 %	99.3 %	98.5 %					99.3%
Santa Fe	99.0 %	97.9 %	99.0 %	98.2 %	98.4 %	99.2 %	98.3 %	100.0 %					98.7%
Taos	98.7 %	100.0 %	99.7 %	99.5 %	98.7 %	99.4 %	99.6 %	100.0 %					99.4%
<b>NE Region 2 Total</b>	<b>99.3 %</b>	<b>99.4 %</b>	<b>99.5 %</b>	<b>97.9 %</b>	<b>98.9 %</b>	<b>99.2 %</b>	<b>99.5 %</b>	<b>99.6 %</b>					<b>99.2%</b>
NE Bernalillo	98.4 %	99.5 %	99.0 %	98.8 %	98.5 %	98.3 %	98.7 %	99.1 %					98.8%
NW Bernalillo	98.9 %	98.9 %	99.0 %	97.4 %	98.8 %	99.2 %	99.7 %	98.3 %					98.8%
SE Bernalillo	97.4 %	95.8 %	98.3 %	98.1 %	97.8 %	97.5 %	98.4 %	96.8 %					97.5%
SW Bernalillo	98.2 %	97.9 %	99.2 %	98.8 %	98.8 %	98.8 %	99.5 %	98.6 %					98.7%
Torrance	100.0 %	100.0 %	98.3 %	100.0 %	99.4 %	100.0 %	99.8 %	99.2 %					99.6%
<b>Gen. Region 3 Total</b>	<b>98.3 %</b>	<b>98.3 %</b>	<b>98.9 %</b>	<b>98.4 %</b>	<b>98.5 %</b>	<b>98.6 %</b>	<b>99.1 %</b>	<b>98.5 %</b>					<b>98.6%</b>
Chaves	100.0 %	99.1 %	99.4 %	98.8 %	98.2 %	99.8 %	99.4 %	100.0 %					99.3%
Curry	98.8 %	98.9 %	99.2 %	99.1 %	98.8 %	98.7 %	99.8 %	99.3 %					99.1%
Eddy Artesia	98.3 %	97.6 %	100.0 %	99.1 %	98.7 %	100.0 %	99.5 %	98.6 %					99.0%
Eddy Carlsbad	99.1 %	99.5 %	99.1 %	97.8 %	100.0 %	99.6 %	100.0 %	98.9 %					99.3%
Lea	99.3 %	100.0 %	99.0 %	98.7 %	99.8 %	99.8 %	98.6 %	99.5 %					99.3%
Lincoln	99.3 %	98.7 %	97.4 %	100.0 %	99.0 %	98.1 %	100.0 %	100.0 %					99.1%
Roosevelt	100.0 %	100.0 %	100.0 %		100.0 %	100.0 %	92.0 %	100.0 %					98.9%
<b>SE Region 4 Total</b>	<b>99.2 %</b>	<b>99.3 %</b>	<b>99.1 %</b>	<b>98.8 %</b>	<b>99.2 %</b>	<b>99.4 %</b>	<b>99.2 %</b>	<b>99.4 %</b>					<b>99.2%</b>
East Dona Ana	98.0 %	99.3 %	99.6 %	99.1 %	99.7 %	100.0 %	99.2 %	99.7 %					99.3%
Grant	100.0 %	99.3 %	99.4 %	98.9 %	100.0 %	99.4 %	100.0 %	100.0 %					99.6%
Luna	99.5 %	99.5 %	100.0 %	100.0 %	99.5 %	98.9 %	100.0 %	99.3 %					99.6%
Otero	99.6 %	99.6 %	98.1 %	100.0 %	100.0 %	99.6 %	99.7 %	100.0 %					99.6%
South Dona Ana	99.7 %	99.7 %	99.7 %	99.8 %	100.0 %	99.5 %	99.8 %	99.7 %					99.7%
West Dona Ana	99.5 %	97.5 %	100.0 %	99.4 %	99.4 %	99.3 %	99.6 %	100.0 %					99.3%
<b>SW Region 5 Total</b>	<b>99.2 %</b>	<b>99.0 %</b>	<b>99.5 %</b>	<b>99.5 %</b>	<b>99.7 %</b>	<b>99.5 %</b>	<b>99.6 %</b>	<b>99.8 %</b>					<b>99.5%</b>
<b>STATE TOTAL</b>	<b>98.9 %</b>	<b>98.8 %</b>	<b>99.3 %</b>	<b>98.8 %</b>	<b>99.0 %</b>	<b>99.1 %</b>	<b>99.3 %</b>	<b>99.2 %</b>					<b>99.1%</b>

**Medicaid: Percentage of Initial EDG Denials Processed Timely by Field Office**<sup>13,19</sup>

	Oct-19	Nov-19	Dec-19	Jan-20	Feb-20	Mar-20	Apr-20	May-20	Jun-20	Jul-20	Aug-20	Sep-20	Average
Cibola	97.8 %	98.7 %	97.7 %	93.3 %	95.6 %	98.5 %	98.5 %	94.9 %					96.9%
McKinley	92.7 %	95.5 %	93.8 %	96.3 %	94.3 %	85.9 %	95.4 %	93.0 %					93.4%
San Juan	95.4 %	98.4 %	97.8 %	94.0 %	93.8 %	97.1 %	97.6 %	99.3 %					96.7%
Sierra	100.0 %	94.1 %	97.4 %	100.0 %	90.9 %	97.1 %	97.9 %	100.0 %					97.2%
Socorro	95.9 %	94.2 %	100.0 %	95.3 %	93.0 %	88.0 %	97.7 %	100.0 %					95.5%
Valencia North	98.5 %	97.4 %	96.4 %	98.9 %	94.7 %	91.3 %	95.4 %	97.8 %					96.3%
Valencia South	100.0 %	100.0 %			100.0 %	100.0 %	100.0 %	100.0 %					100.0%
<b>NW Region 1 Total</b>	<b>95.8 %</b>	<b>97.1 %</b>	<b>96.7 %</b>	<b>95.7 %</b>	<b>94.0 %</b>	<b>93.9 %</b>	<b>97.0 %</b>	<b>97.9 %</b>					<b>96.0%</b>
Colfax	94.7 %	97.3 %	95.5 %	98.4 %	87.0 %	97.2 %	100.0 %	84.6 %					94.3%
Guadalupe	100.0 %	100.0 %	91.7 %	100.0 %	100.0 %	100.0 %	100.0 %	100.0 %					99.0%
Quay	92.9 %	94.4 %	100.0 %	100.0 %	94.1 %	100.0 %	100.0 %	100.0 %					97.7%
Rio Arriba	94.8 %	97.5 %	98.4 %	94.8 %	90.0 %	92.3 %	98.8 %	94.6 %					95.1%
San Miguel	100.0 %	100.0 %	99.3 %	96.4 %	98.2 %	98.8 %	98.2 %	98.2 %					98.6%
Sandoval	98.0 %	98.7 %	96.7 %	92.9 %	96.2 %	97.8 %	97.8 %	98.9 %					97.1%
Santa Fe	98.3 %	94.7 %	95.3 %	94.8 %	92.1 %	89.6 %	89.8 %	97.0 %					93.9%
Taos	100.0 %	100.0 %	96.2 %	97.2 %	98.2 %	98.4 %	97.1 %	81.5 %					96.1%
<b>NE Region 2 Total</b>	<b>97.7 %</b>	<b>97.6 %</b>	<b>96.8 %</b>	<b>94.9 %</b>	<b>93.6 %</b>	<b>94.9 %</b>	<b>96.7 %</b>	<b>95.7 %</b>					<b>96.0%</b>
NE Bernalillo	97.5 %	97.1 %	97.2 %	94.3 %	94.0 %	94.3 %	94.6 %	95.0 %					95.5%
NW Bernalillo	96.8 %	97.4 %	97.7 %	95.0 %	95.2 %	93.1 %	93.4 %	94.6 %					95.4%
SE Bernalillo	93.9 %	96.6 %	95.0 %	96.1 %	97.9 %	94.7 %	97.8 %	93.8 %					95.7%
SW Bernalillo	95.5 %	97.5 %	97.5 %	94.8 %	96.1 %	94.9 %	92.7 %	95.0 %					95.5%
Torrance	97.3 %	96.7 %	97.2 %	100.0 %	95.2 %	95.0 %	97.4 %	100.0 %					97.4%
<b>Gen. Region 3 Total</b>	<b>96.1 %</b>	<b>97.2 %</b>	<b>96.9 %</b>	<b>95.2 %</b>	<b>95.7 %</b>	<b>94.2 %</b>	<b>95.1 %</b>	<b>94.9 %</b>					<b>95.7%</b>
Chaves	97.9 %	100.0 %	97.8 %	98.4 %	94.9 %	92.3 %	98.3 %	96.0 %					97.0%
Curry	97.3 %	97.8 %	97.4 %	97.6 %	98.4 %	97.1 %	92.1 %	98.5 %					97.0%
Eddy Artesia	82.7 %	100.0 %	91.5 %	100.0 %	92.7 %	94.2 %	98.6 %	98.2 %					94.7%
Eddy Carlsbad	79.6 %	100.0 %	93.6 %	96.9 %	98.9 %	87.0 %	95.2 %	100.0 %					93.9%
Lea	95.4 %	97.1 %	97.9 %	96.2 %	96.0 %	92.2 %	93.0 %	98.3 %					95.8%
Lincoln	98.2 %	98.2 %	100.0 %	97.4 %	95.3 %	84.2 %	100.0 %	98.0 %					96.4%
Roosevelt	95.6 %						83.3 %	100.0 %					93.0%
<b>SE Region 4 Total</b>	<b>93.1 %</b>	<b>98.5 %</b>	<b>97.1 %</b>	<b>97.5 %</b>	<b>96.4 %</b>	<b>92.0 %</b>	<b>95.5 %</b>	<b>98.0 %</b>					<b>96.0%</b>
East Dona Ana	95.6 %	98.5 %	96.8 %	97.8 %	96.0 %	93.6 %	97.5 %	96.9 %					96.6%
Grant	98.4 %	91.6 %	98.9 %	96.8 %	100.0 %	90.9 %	97.8 %	98.6 %					96.6%
Luna	94.9 %	96.3 %	99.2 %	100.0 %	100.0 %	95.5 %	99.0 %	100.0 %					98.1%
Otero	100.0 %	94.8 %	100.0 %	98.8 %	96.4 %	96.3 %	96.4 %	97.8 %					97.6%
South Dona Ana	97.3 %	99.4 %	98.9 %	98.0 %	99.4 %	94.7 %	98.6 %	97.9 %					98.0%
West Dona Ana	99.3 %	96.6 %	98.2 %	94.4 %	95.9 %	91.4 %	94.3 %	98.3 %					96.1%
<b>SW Region 5 Total</b>	<b>97.6 %</b>	<b>96.8 %</b>	<b>98.4 %</b>	<b>97.5 %</b>	<b>97.6 %</b>	<b>93.7 %</b>	<b>97.1 %</b>	<b>97.9 %</b>					<b>97.1%</b>
<b>STATE TOTAL</b>	<b>96.2 %</b>	<b>97.4 %</b>	<b>97.1 %</b>	<b>95.9 %</b>	<b>95.4 %</b>	<b>93.8 %</b>	<b>96.2 %</b>	<b>96.7 %</b>					<b>96.1%</b>

**Medicaid: Percentage of Initial EDG Approvals and Denials Combined Processed Timely by Field Office<sup>13,19</sup>**

	Oct-19	Nov-19	Dec-19	Jan-20	Feb-20	Mar-20	Apr-20	May-20	Jun-20	Jul-20	Aug-20	Sep-20	Average
Cibola	99.1 %	97.7 %	98.8 %	97.9 %	99.2 %	99.6 %	99.3 %	97.8 %					98.7%
McKinley	98.0 %	98.0 %	98.0 %	98.9 %	98.1 %	95.2 %	98.7 %	97.9 %					97.8%
San Juan	97.8 %	98.6 %	99.2 %	97.7 %	97.6 %	98.8 %	99.0 %	99.7 %					98.6%
Sierra	97.5 %	97.8 %	98.7 %	100.0 %	97.2 %	99.4 %	98.1 %	100.0 %					98.6%
Socorro	98.4 %	95.9 %	99.3 %	97.0 %	96.8 %	97.5 %	99.4 %	100.0 %					98.0%
Valencia North	99.4 %	98.7 %	98.5 %	99.1 %	97.8 %	97.5 %	98.6 %	98.4 %					98.5%
Valencia South	100.0 %	100.0 %	100.0 %	100.0 %	100.0 %	100.0 %	100.0 %	100.0 %					100.0%
<b>NW Region 1 Total</b>	<b>98.3 %</b>	<b>98.2 %</b>	<b>98.7 %</b>	<b>98.3 %</b>	<b>97.9 %</b>	<b>97.9 %</b>	<b>98.8 %</b>	<b>99.1 %</b>					<b>98.4%</b>
Colfax	98.5 %	98.8 %	98.1 %	98.7 %	95.5 %	99.0 %	100.0 %	94.8 %					97.9%
Guadalupe	100.0 %	100.0 %	97.1 %	100.0 %	100.0 %	100.0 %	100.0 %	100.0 %					99.6%
Quay	96.7 %	98.0 %	100.0 %	100.0 %	98.2 %	100.0 %	100.0 %	100.0 %					99.1%
Rio Arriba	98.1 %	99.1 %	99.0 %	93.7 %	96.0 %	97.5 %	99.7 %	97.9 %					97.6%
San Miguel	100.0 %	100.0 %	99.8 %	98.8 %	98.2 %	98.8 %	99.5 %	99.4 %					99.3%
Sandoval	99.0 %	99.5 %	98.5 %	96.2 %	98.7 %	98.7 %	99.0 %	98.6 %					98.5%
Santa Fe	98.7 %	96.8 %	97.5 %	96.5 %	96.0 %	96.4 %	95.8 %	99.0 %					97.1%
Taos	99.0 %	100.0 %	98.6 %	98.5 %	98.6 %	99.1 %	98.8 %	94.4 %					98.4%
<b>NE Region 2 Total</b>	<b>98.8 %</b>	<b>98.8 %</b>	<b>98.6 %</b>	<b>96.7 %</b>	<b>97.3 %</b>	<b>97.9 %</b>	<b>98.7 %</b>	<b>98.3 %</b>					<b>98.1%</b>
NE Bernalillo	98.1 %	98.7 %	98.4 %	97.0 %	97.2 %	97.2 %	97.6 %	97.9 %					97.8%
NW Bernalillo	98.3 %	98.4 %	98.6 %	96.4 %	97.8 %	97.4 %	98.0 %	97.2 %					97.8%
SE Bernalillo	96.5 %	96.1 %	97.2 %	97.4 %	97.8 %	96.5 %	98.3 %	95.8 %					96.9%
SW Bernalillo	97.5 %	97.8 %	98.6 %	97.5 %	98.0 %	97.8 %	97.7 %	97.6 %					97.8%
Torrance	97.5 %	98.9 %	98.0 %	100.0 %	98.1 %	98.5 %	99.2 %	99.4 %					98.7%
<b>Gen. Region 3 Total</b>	<b>97.7 %</b>	<b>97.9 %</b>	<b>98.2 %</b>	<b>97.2 %</b>	<b>97.7 %</b>	<b>97.3 %</b>	<b>98.1 %</b>	<b>97.4 %</b>					<b>97.7%</b>
Chaves	99.5 %	99.4 %	98.9 %	98.7 %	97.3 %	97.7 %	99.1 %	99.0 %					98.7%
Curry	98.5 %	98.5 %	98.7 %	98.7 %	98.7 %	98.3 %	98.2 %	99.1 %					98.6%
Eddy Artesia	93.5 %	98.3 %	97.5 %	99.4 %	96.6 %	98.3 %	99.3 %	98.5 %					97.7%
Eddy Carlsbad	93.0 %	99.7 %	97.3 %	97.5 %	99.7 %	96.0 %	98.6 %	99.2 %					97.6%
Lea	98.1 %	99.2 %	98.7 %	98.0 %	98.8 %	97.5 %	97.4 %	99.2 %					98.3%
Lincoln	99.0 %	98.5 %	98.5 %	98.7 %	98.0 %	93.3 %	100.0 %	99.3 %					98.2%
Roosevelt	100.0 %	100.0 %	100.0 %			100.0 %	89.5 %	100.0 %					98.3%
<b>SE Region 4 Total</b>	<b>97.6 %</b>	<b>99.1 %</b>	<b>98.4 %</b>	<b>98.4 %</b>	<b>98.4 %</b>	<b>97.3 %</b>	<b>98.3 %</b>	<b>99.1 %</b>					<b>98.3%</b>
East Dona Ana	97.3 %	99.1 %	98.6 %	98.6 %	98.4 %	98.1 %	98.8 %	98.8 %					98.4%
Grant	99.5 %	96.3 %	99.2 %	98.0 %	100.0 %	96.8 %	99.2 %	99.5 %					98.6%
Luna	98.4 %	98.6 %	99.7 %	100.0 %	99.6 %	97.8 %	99.7 %	99.5 %					99.2%
Otero	99.7 %	97.9 %	98.7 %	99.6 %	98.9 %	98.8 %	99.0 %	99.3 %					99.0%
South Dona Ana	99.1 %	99.6 %	99.5 %	99.1 %	98.9 %	98.2 %	99.5 %	99.2 %					99.1%
West Dona Ana	99.4 %	97.2 %	99.4 %	97.8 %	98.1 %	97.4 %	98.3 %	99.5 %					98.4%
<b>SW Region 5 Total</b>	<b>98.8 %</b>	<b>98.3 %</b>	<b>99.1 %</b>	<b>98.8 %</b>	<b>99.1 %</b>	<b>97.9 %</b>	<b>99.0 %</b>	<b>99.2 %</b>					<b>98.8%</b>
<b>STATE TOTAL</b>	<b>98.2 %</b>	<b>98.4 %</b>	<b>98.6 %</b>	<b>97.7 %</b>	<b>99.1 %</b>	<b>97.6 %</b>	<b>99.0 %</b>	<b>98.5 %</b>					<b>98.4%</b>

**Medicaid Renewal Disposition Counts by Field Office<sup>4,11</sup>**  
**May 2020**

Office	Approvals	Closures	Need Based Closures	Procedural Closures
Chaves County ISD	2,445	188	188	0
Cibola County ISD	1,013	66	62	4
Colfax County ISD	361	20	20	0
Curry County ISD	2,246	156	154	2
East Dona Ana County ISD	2,657	182	182	0
Eddy Artesia County ISD	577	38	38	0
Eddy Carlsbad County ISD	1,149	110	110	0
Grant County ISD	950	47	47	0
Guadalupe County ISD	162	12	12	0
Hidalgo County ISD	3	0	0	0
Lea County ISD	2,377	220	220	0
Lincoln County ISD	554	48	48	0
Luna County ISD	1,053	80	80	0
McKinley County ISD	2,903	214	212	2
Northeast Bernalillo County ISD	4,410	345	345	0
Northwest Bernalillo County ISD	3,517	278	277	1
Otero County ISD	1,565	114	114	0
Quay County ISD	331	17	17	0
Rio Arriba County ISD	1,357	99	99	0
Roosevelt County ISD	0	0	0	0
San Juan County ISD	4,650	345	345	0
San Miguel County ISD	794	47	47	0
Sandoval County ISD	3,493	163	163	0
Santa Fe County ISD	2,539	150	150	0
Sierra County ISD	663	39	39	0
Socorro County ISD	596	51	51	0
South Dona Ana ISD	2,619	149	149	0
Southeast Bernalillo County ISD	2,092	146	144	2
Southwest Bernalillo County ISD	6,539	514	506	8
Taos County ISD	1,000	56	56	0
Torrance County ISD	1,047	59	59	0
Valencia North County ISD	2,158	151	150	1
Valencia South County ISD	0	0	0	0
West Dona Ana County ISD	2,570	176	173	3
Centralized Units	0	0		0
<b>Statewide Total</b>	<b>60,390</b>	<b>4,280</b>	<b>4,257</b>	<b>23</b>

*Determinations at Administrative, Annual, and Auto Renewals are included*

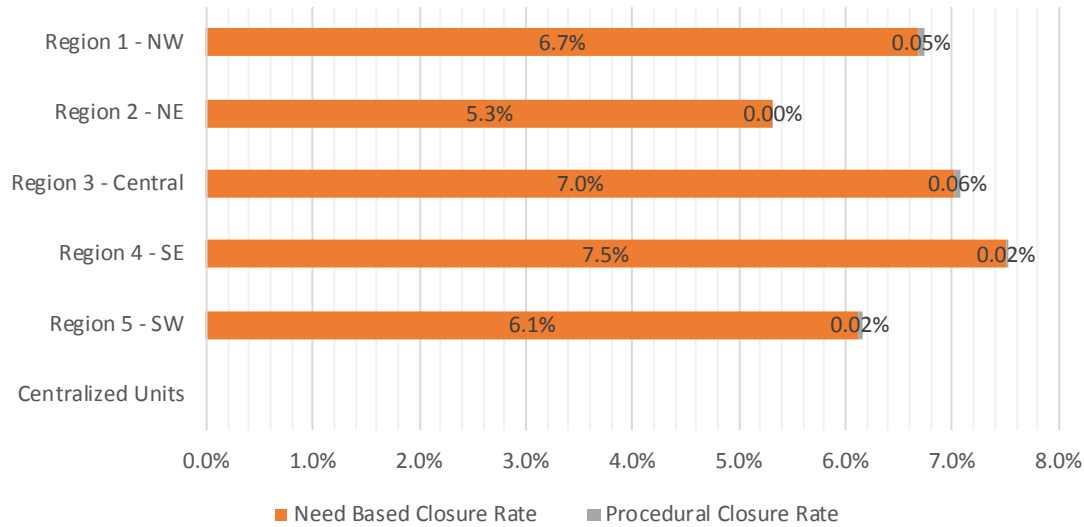
**Medicaid Renewal Disposition Rates by Field Office<sup>20</sup>**  
**May 2020**

Office	Approval Rate	Closure Rate	Need Based Closure Rate	Procedural Closure Rate
Chaves County ISD	92.9%	7.1%	7.1%	0.00%
Cibola County ISD	93.9%	6.1%	5.7%	0.37%
Colfax County ISD	94.8%	5.2%	5.2%	0.00%
Curry County ISD	93.5%	6.5%	6.4%	0.08%
East Dona Ana County ISD	93.6%	6.4%	6.4%	0.00%
Eddy Artesia County ISD	93.8%	6.2%	6.2%	0.00%
Eddy Carlsbad County ISD	91.3%	8.7%	8.7%	0.00%
Grant County ISD	95.3%	4.7%	4.7%	0.00%
Guadalupe County ISD	93.1%	6.9%	6.9%	0.00%
Hidalgo County ISD	100.0%	0.0%	0.0%	0.00%
Lea County ISD	91.5%	8.5%	8.5%	0.00%
Lincoln County ISD	92.0%	8.0%	8.0%	0.00%
Luna County ISD	92.9%	7.1%	7.1%	0.00%
McKinley County ISD	93.1%	6.9%	6.8%	0.06%
Northeast Bernalillo County ISD	92.7%	7.3%	7.3%	0.00%
Northwest Bernalillo County ISD	92.7%	7.3%	7.3%	0.03%
Otero County ISD	93.2%	6.8%	6.8%	0.00%
Quay County ISD	95.1%	4.9%	4.9%	0.00%
Rio Arriba County ISD	93.2%	6.8%	6.8%	0.00%
Roosevelt County ISD	0.0%	0.0%	0.0%	0.00%
San Juan County ISD	93.1%	6.9%	6.9%	0.00%
San Miguel County ISD	94.4%	5.6%	5.6%	0.00%
Sandoval County ISD	95.5%	4.5%	4.5%	0.00%
Santa Fe County ISD	94.4%	5.6%	5.6%	0.00%
Sierra County ISD	94.4%	5.6%	5.6%	0.00%
Socorro County ISD	92.1%	7.9%	7.9%	0.00%
South Dona Ana ISD	94.6%	5.4%	5.4%	0.00%
Southeast Bernalillo County ISD	93.5%	6.5%	6.4%	0.09%
Southwest Bernalillo County ISD	92.7%	7.3%	7.2%	0.11%
Taos County ISD	94.7%	5.3%	5.3%	0.00%
Torrance County ISD	94.7%	5.3%	5.3%	0.00%
Valencia North County ISD	93.5%	6.5%	6.5%	0.04%
Valencia South County ISD	0.0%	0.0%	0.0%	0.00%
West Dona Ana County ISD	93.6%	6.4%	6.3%	0.11%
Centralized Units	0.0%	0.0%	0.0%	0.00%
<b>Statewide Total</b>	<b>93.4%</b>	<b>6.6%</b>	<b>6.6%</b>	<b>0.04%</b>



**Medicaid Renewal Disposition Rates by Region<sup>20</sup>**  
**May 2020**

Region	Approval Rate	Closure Rate	Need Based Closure Rate	Procedural Closure Rate
Region 1 - NW	93.3%	6.7%	6.7%	0.05%
Region 2 - NE	94.7%	5.3%	5.3%	0.00%
Region 3 - Central	92.9%	7.1%	7.0%	0.06%
Region 4 - SE	92.5%	7.5%	7.5%	0.02%
Region 5 - SW	93.9%	6.1%	6.1%	0.02%
Centralized Units	0.0%	0.0%	0.0%	0.00%
<b>Statewide Total</b>	<b>93.4%</b>	<b>6.6%</b>	<b>6.6%</b>	<b>0.04%</b>



**Medicaid: Percentage of Approved Renewal EDGs Processed by Certification Date <sup>11</sup>**

	Oct-19	Nov-19	Dec-19	Jan-20	Feb-20	Mar-20	Apr-20	May-20	Jun-20	Jul-20	Aug-20	Sep-20	Average
Cibola	99.5%	99.4%	98.2%	98.3%	94.5%	98.2%	99.9%	99.8%					98.5%
McKinley	98.4%	98.8%	98.4%	99.1%	95.7%	98.5%	99.9%	99.9%					98.6%
San Juan	98.8%	98.6%	98.5%	99.1%	96.0%	98.8%	99.8%	99.8%					98.7%
Sierra	99.2%	96.9%	98.3%	98.7%	97.6%	98.3%	100.0%	99.1%					98.5%
Socorro	98.6%	98.3%	97.7%	98.8%	94.4%	96.7%	99.7%	100.0%					98.0%
Valencia North	99.1%	98.4%	98.1%	98.9%	94.5%	98.3%	99.9%	99.9%					98.4%
Valencia South			100.0%	100.0%	100.0%	100.0%	0.0%						80.0%
<b>NW Region 1 Total</b>	<b>98.9%</b>	<b>98.4%</b>	<b>98.5%</b>	<b>99.0%</b>	<b>96.1%</b>	<b>98.4%</b>	<b>85.6%</b>	<b>99.8%</b>					<b>96.8%</b>
Colfax	98.5%	98.1%	98.8%	98.8%	95.1%	96.8%	99.6%	100.0%					98.2%
Guadalupe	99.6%	98.2%	99.6%	99.1%	100.0%	99.6%	100.0%	100.0%					99.5%
Quay	98.7%	99.0%	97.2%	98.6%	100.0%	98.4%	99.7%	100.0%					99.0%
Rio Arriba	98.2%	97.2%	98.4%	98.9%	97.0%	99.2%	99.9%	99.9%					98.6%
San Miguel	98.3%	99.1%	99.4%	99.4%	93.2%	98.5%	99.9%	99.0%					98.4%
Sandoval	99.0%	98.7%	98.9%	98.5%	96.6%	98.9%	99.8%	100.0%					98.8%
Santa Fe	97.4%	97.5%	96.8%	97.1%	93.6%	97.3%	99.5%	99.9%					97.4%
Taos	97.3%	98.8%	98.5%	98.3%	93.9%	97.5%	99.1%	100.0%					97.9%
<b>NE Region 2 Total</b>	<b>98.4%</b>	<b>98.3%</b>	<b>98.5%</b>	<b>98.6%</b>	<b>96.2%</b>	<b>98.3%</b>	<b>99.7%</b>	<b>99.9%</b>					<b>98.5%</b>
NE Bernalillo	98.2%	98.5%	97.9%	98.3%	93.8%	98.7%	99.7%	99.9%					98.1%
NW Bernalillo	97.5%	97.8%	98.2%	98.4%	91.3%	98.8%	99.7%	99.8%					97.7%
SE Bernalillo	98.1%	98.4%	97.9%	98.7%	94.8%	98.6%	99.9%	99.9%					98.3%
SW Bernalillo	97.5%	97.2%	97.3%	97.2%	94.4%	98.7%	99.6%	99.8%					97.7%
Torrance	98.0%	98.3%	98.9%	99.3%	93.3%	98.6%	99.9%	99.9%					98.3%
<b>Gen. Region 3 Total</b>	<b>97.8%</b>	<b>98.1%</b>	<b>98.0%</b>	<b>98.4%</b>	<b>93.5%</b>	<b>98.7%</b>	<b>99.8%</b>	<b>99.9%</b>					<b>98.0%</b>
Chaves	99.7%	99.6%	98.8%	98.9%	94.8%	99.5%	99.9%	99.9%					98.9%
Curry	98.8%	99.3%	99.0%	99.4%	97.8%	99.2%	99.9%	100.0%					99.2%
Eddy Artesia	98.0%	97.3%	98.8%	99.5%	94.9%	98.8%	100.0%	100.0%					98.4%
Eddy Carlsbad	98.5%	98.7%	99.1%	99.4%	97.2%	99.0%	99.6%	100.0%					98.9%
Lea	98.3%	98.7%	99.0%	99.1%	97.6%	99.6%	99.9%	99.7%					99.0%
Lincoln	96.5%	98.1%	97.3%	97.8%	93.7%	99.3%	100.0%	100.0%					97.8%
Roosevelt													
<b>SE Region 4 Total</b>	<b>98.3%</b>	<b>98.6%</b>	<b>98.7%</b>	<b>99.0%</b>	<b>96.0%</b>	<b>99.2%</b>	<b>99.9%</b>	<b>99.9%</b>					<b>98.7%</b>
East Dona Ana	99.4%	99.1%	99.1%	98.9%	97.8%	99.3%	99.9%	99.9%					99.2%
Grant	98.4%	99.0%	98.9%	99.7%	98.0%	99.0%	99.9%	99.8%					99.1%
Luna	98.9%	99.4%	99.0%	99.1%	96.2%	99.3%	99.6%	99.9%					98.9%
Otero	98.5%	98.8%	98.8%	98.9%	95.1%	98.6%	99.7%	100.0%					98.6%
South Dona Ana	98.4%	99.2%	99.5%	99.5%	99.4%	98.7%	99.9%	100.0%					99.3%
West Dona Ana	99.3%	98.7%	99.0%	98.9%	99.1%	99.7%	99.8%	100.0%					99.3%
<b>SW Region 5 Total</b>	<b>98.8%</b>	<b>99.0%</b>	<b>99.1%</b>	<b>99.2%</b>	<b>97.6%</b>	<b>99.1%</b>	<b>99.8%</b>	<b>99.9%</b>					<b>99.1%</b>
<b>STATE TOTAL</b>	<b>98.5%</b>	<b>98.5%</b>	<b>98.5%</b>	<b>98.8%</b>	<b>96.0%</b>	<b>98.7%</b>	<b>96.7%</b>	<b>99.9%</b>					<b>98.2%</b>

Administrative, Annual, and Auto Renewals are included

**Medicaid: Percentage of Closures EDGs Processed by Certification End Date<sup>11</sup>**

	Oct-19	Nov-19	Dec-19	Jan-20	Feb-20	Mar-20	Apr-20	May-20	Jun-20	Jul-20	Aug-20	Sep-20	Average
Cibola	97.3%	95.3%	94.8%	95.4%	94.5%	91.6%	95.5%	95.7%					95.0%
McKinley	94.2%	96.5%	93.2%	97.2%	95.7%	96.8%	97.4%	96.4%					95.9%
San Juan	96.9%	95.7%	95.4%	96.2%	96.0%	94.0%	95.4%	92.5%					95.3%
Sierra	94.4%	97.0%	98.2%	97.1%	97.6%	94.7%	98.6%	100.0%					97.2%
Socorro	96.1%	95.0%	88.1%	93.5%	94.4%	84.3%	92.9%	94.4%					92.3%
Valencia North	97.1%	96.3%	92.7%	96.6%	94.5%	96.2%	95.7%	95.0%					95.5%
Valencia South			100.0%	100.0%	100.0%	100.0%	100.0%						100.0%
<b>NW Region 1 Total</b>	<b>96.0%</b>	<b>96.0%</b>	<b>94.6%</b>	<b>96.6%</b>	<b>96.1%</b>	<b>93.9%</b>	<b>96.5%</b>	<b>95.7%</b>					<b>95.7%</b>
Colfax	94.7%	93.8%	95.2%	98.0%	95.1%	92.5%	100.0%	95.2%					95.6%
Guadalupe	93.8%	96.0%	96.4%	100.0%	100.0%	100.0%	100.0%	100.0%					98.3%
Quay	96.4%	98.7%	98.4%	100.0%	100.0%	92.6%	97.5%	100.0%					98.0%
Rio Arriba	95.3%	96.8%	95.9%	93.2%	97.0%	96.9%	97.3%	99.0%					96.4%
San Miguel	95.3%	92.9%	91.4%	96.8%	93.2%	93.6%	99.0%	95.9%					94.8%
Sandoval	96.7%	96.8%	96.7%	96.1%	96.6%	97.1%	95.7%	98.2%					96.7%
Santa Fe	94.6%	94.4%	93.6%	94.4%	93.6%	92.7%	95.7%	95.5%					94.3%
Taos	95.9%	97.5%	94.7%	98.6%	93.9%	95.7%	96.4%	91.8%					95.6%
<b>NE Region 2 Total</b>	<b>95.3%</b>	<b>95.9%</b>	<b>95.3%</b>	<b>97.1%</b>	<b>96.2%</b>	<b>95.1%</b>	<b>97.7%</b>	<b>97.0%</b>					<b>96.2%</b>
NE Bernalillo	96.0%	96.5%	95.4%	93.8%	93.8%	95.0%	95.3%	96.1%					95.2%
NW Bernalillo	94.7%	95.4%	95.6%	95.4%	91.3%	92.3%	94.9%	97.2%					94.6%
SE Bernalillo	96.1%	97.1%	96.4%	92.9%	94.8%	95.4%	98.1%	94.8%					95.7%
SW Bernalillo	95.8%	95.5%	93.0%	94.9%	94.4%	92.8%	96.7%	96.1%					94.9%
Torrance	96.4%	98.0%	97.4%	94.3%	93.3%	96.2%	96.9%	95.2%					96.0%
<b>Gen. Region 3 Total</b>	<b>95.8%</b>	<b>96.5%</b>	<b>95.6%</b>	<b>94.3%</b>	<b>93.5%</b>	<b>94.3%</b>	<b>96.4%</b>	<b>95.9%</b>					<b>95.3%</b>
Chaves	97.7%	97.1%	93.0%	98.2%	94.8%	93.0%	97.6%	95.9%					95.9%
Curry	97.8%	98.1%	96.1%	95.8%	97.8%	98.3%	98.3%	96.9%					97.4%
Eddy Artesia	94.9%	95.8%	97.1%	100.0%	94.9%	92.8%	97.9%	95.0%					96.1%
Eddy Carlsbad	96.4%	96.7%	98.0%	97.5%	97.2%	94.4%	94.2%	97.3%					96.5%
Lea	97.7%	95.9%	94.2%	96.6%	97.6%	95.6%	95.1%	94.4%					95.9%
Lincoln	91.2%	95.5%	94.0%	100.0%	93.7%	95.0%	94.7%	98.0%					95.3%
Roosevelt			100.0%										100.0%
<b>SE Region 4 Total</b>	<b>96.0%</b>	<b>96.5%</b>	<b>96.1%</b>	<b>98.0%</b>	<b>96.0%</b>	<b>94.9%</b>	<b>96.3%</b>	<b>96.3%</b>					<b>96.2%</b>
East Dona Ana	96.9%	97.0%	95.4%	96.0%	97.8%	96.5%	96.7%	97.3%					96.7%
Grant	93.9%	97.1%	94.8%	96.8%	98.0%	95.3%	97.6%	92.2%					95.7%
Luna	95.9%	98.5%	95.2%	98.1%	96.2%	98.5%	95.6%	94.1%					96.5%
Otero	99.0%	97.4%	97.1%	97.7%	95.1%	94.8%	95.2%	100.0%					97.0%
South Dona Ana	99.3%	98.5%	98.2%	98.7%	99.4%	97.9%	97.0%	94.3%					97.9%
West Dona Ana	98.0%	97.8%	97.7%	96.8%	99.1%	98.9%	96.9%	93.6%					97.4%
<b>SW Region 5 Total</b>	<b>97.2%</b>	<b>97.7%</b>	<b>96.4%</b>	<b>97.4%</b>	<b>97.6%</b>	<b>97.0%</b>	<b>96.5%</b>	<b>95.3%</b>					<b>96.9%</b>
<b>STATE TOTAL</b>	<b>96.0%</b>	<b>96.5%</b>	<b>95.6%</b>	<b>96.8%</b>	<b>96.0%</b>	<b>95.0%</b>	<b>96.7%</b>	<b>96.1%</b>					<b>96.2%</b>

Annual and Auto Renewals are included

**Medicaid: Percentage of Approved and Terminated Renewal EDGs Combined Processed by Certification Date <sup>11</sup>**

	Oct-19	Nov-19	Dec-19	Jan-20	Feb-20	Mar-20	Apr-20	May-20	Jun-20	Jul-20	Aug-20	Sep-20	Average
Cibola	98.9%	98.7%	97.7%	97.8%	98.3%	97.6%	99.6%	99.5%					98.5%
McKinley	98.8%	98.4%	97.6%	98.8%	98.5%	98.3%	99.2%	99.6%					98.7%
San Juan	98.4%	98.1%	98.0%	98.6%	98.2%	98.2%	99.8%	99.3%					98.6%
Sierra	98.8%	96.9%	98.3%	98.4%	98.5%	98.0%	99.4%	99.2%					98.4%
Socorro	99.0%	97.8%	96.2%	98.1%	97.0%	94.9%	98.9%	99.5%					97.7%
Valencia North	98.5%	98.1%	97.3%	98.5%	97.5%	98.1%	99.9%	99.6%					98.4%
Valencia South	100.0%		100.0%	100.0%	100.0%	100.0%	96.9%						99.5%
<b>NW Region 1 Total</b>	<b>98.9%</b>	<b>98.0%</b>	<b>97.9%</b>	<b>98.6%</b>	<b>98.3%</b>	<b>97.9%</b>	<b>99.1%</b>	<b>99.5%</b>					<b>98.5%</b>
Colfax	99.8%	97.4%	98.1%	98.7%	97.3%	96.1%	99.6%	99.7%					98.3%
Guadalupe	99.2%	97.8%	99.1%	99.3%	99.7%	99.6%	100.0%	100.0%					99.3%
Quay	98.2%	98.9%	97.4%	98.8%	98.2%	97.8%	99.2%	100.0%					98.6%
Rio Arriba	98.1%	97.1%	97.9%	98.0%	98.0%	98.9%	98.8%	99.8%					98.3%
San Miguel	98.6%	98.1%	98.3%	98.9%	97.0%	97.9%	98.9%	98.8%					98.3%
Sandoval	98.5%	98.3%	98.5%	98.1%	98.0%	98.7%	99.4%	99.9%					98.7%
Santa Fe	98.3%	96.8%	96.2%	96.6%	95.8%	96.7%	99.5%	99.7%					97.5%
Taos	98.3%	98.5%	97.8%	98.4%	97.1%	97.3%	98.9%	99.5%					98.2%
<b>NE Region 2 Total</b>	<b>98.6%</b>	<b>97.9%</b>	<b>97.9%</b>	<b>98.4%</b>	<b>97.6%</b>	<b>97.9%</b>	<b>99.3%</b>	<b>99.7%</b>					<b>98.4%</b>
NE Bernalillo	98.5%	98.1%	97.4%	97.4%	97.1%	98.2%	99.2%	99.6%					98.2%
NW Bernalillo	98.0%	97.4%	97.6%	97.8%	96.6%	97.9%	99.5%	99.6%					98.1%
SE Bernalillo	98.7%	98.1%	97.6%	97.7%	97.2%	98.2%	99.0%	99.6%					98.3%
SW Bernalillo	98.0%	96.9%	96.5%	96.7%	97.2%	98.0%	99.6%	99.5%					97.8%
Torrance	98.1%	98.3%	98.6%	98.5%	96.7%	98.3%	99.3%	99.6%					98.4%
<b>Gen. Region 3 Total</b>	<b>98.3%</b>	<b>97.8%</b>	<b>97.5%</b>	<b>97.6%</b>	<b>97.0%</b>	<b>98.1%</b>	<b>99.3%</b>	<b>99.6%</b>					<b>98.1%</b>
Chaves	98.3%	99.1%	97.8%	98.8%	98.4%	98.6%	99.6%	99.6%					98.8%
Curry	99.0%	99.1%	98.5%	98.9%	98.7%	99.1%	99.7%	99.8%					99.1%
Eddy Artesia	97.1%	97.1%	98.6%	99.6%	97.6%	97.8%	99.8%	99.7%					98.4%
Eddy Carlsbad	98.6%	98.2%	98.9%	99.0%	99.0%	98.4%	99.0%	99.8%					98.9%
Lea	98.9%	98.2%	98.1%	98.6%	99.1%	99.0%	99.7%	99.2%					98.9%
Lincoln	97.2%	97.7%	96.7%	98.2%	97.9%	98.7%	99.5%	99.8%					98.2%
Roosevelt			100.0%										100.0%
<b>SE Region 4 Total</b>	<b>98.2%</b>	<b>98.2%</b>	<b>98.4%</b>	<b>98.9%</b>	<b>98.5%</b>	<b>98.6%</b>	<b>99.6%</b>	<b>99.7%</b>					<b>98.7%</b>
East Dona Ana	98.7%	98.7%	98.4%	98.5%	98.5%	98.9%	99.5%	99.7%					98.9%
Grant	98.5%	98.7%	98.3%	99.3%	98.9%	98.6%	99.7%	99.4%					98.9%
Luna	98.5%	99.3%	98.3%	98.9%	98.7%	99.2%	99.2%	99.5%					99.0%
Otero	98.8%	98.6%	98.5%	98.7%	98.4%	98.1%	99.7%	100.0%					98.9%
South Dona Ana	98.0%	99.1%	99.3%	99.4%	99.5%	98.6%	99.8%	99.6%					99.2%
West Dona Ana	99.5%	98.5%	98.8%	98.7%	99.0%	99.6%	97.3%	99.5%					98.9%
<b>SW Region 5 Total</b>	<b>98.7%</b>	<b>98.8%</b>	<b>98.6%</b>	<b>98.9%</b>	<b>98.8%</b>	<b>98.8%</b>	<b>99.2%</b>	<b>99.6%</b>					<b>98.9%</b>
<b>STATE TOTAL</b>	<b>98.6%</b>	<b>98.1%</b>	<b>98.1%</b>	<b>98.5%</b>	<b>98.1%</b>	<b>98.2%</b>	<b>99.3%</b>	<b>99.6%</b>					<b>98.6%</b>

Administrative, Annual, and Auto Renewals are included

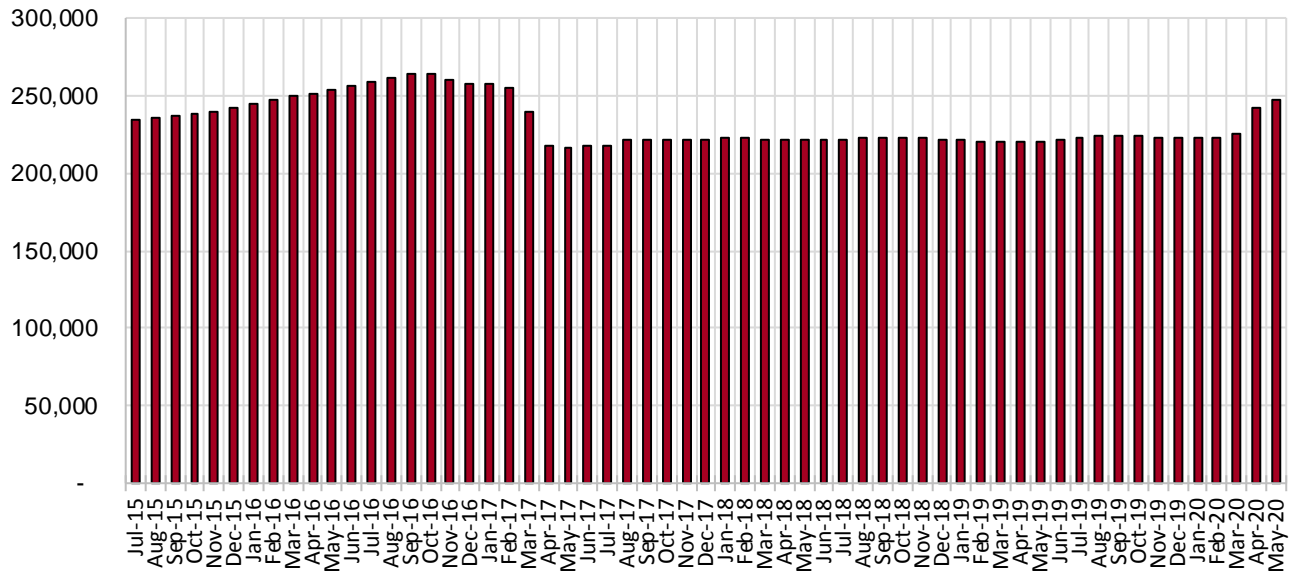
## SNAP Cases by Field Office<sup>6</sup>

Office				Percent Change	
	May-19	Apr-20	May-20	May-19- May-20	Apr-20- May-20
Chaves County ISD	6,881	8,419	8,705	26.51%	3.40%
Cibola County ISD	3,598	3,747	3,829	6.42%	2.19%
Colfax County ISD	1,673	1,744	1,770	5.80%	1.49%
Curry County ISD	7,000	7,912	8,126	16.09%	2.70%
East Dona Ana County ISD	7,934	8,951	9,208	16.06%	2.87%
Eddy Artesia County ISD	1,543	1,750	1,846	19.64%	5.49%
Eddy Carlsbad County ISD	2,764	3,353	3,496	26.48%	4.26%
Grant County ISD	3,903	4,194	4,268	9.35%	1.76%
Guadalupe County ISD	694	710	721	3.89%	1.55%
Hidalgo County ISD	16	8	11	-31.25%	37.50%
Lea County ISD	5,462	6,764	7,186	31.56%	6.24%
Lincoln County ISD	1,869	2,089	2,132	14.07%	2.06%
Luna County ISD	4,180	4,658	4,746	13.54%	1.89%
McKinley County ISD	9,995	10,841	11,107	11.13%	2.45%
Northeast Bernalillo County ISD	20,252	22,628	23,013	13.63%	1.70%
Northwest Bernalillo County ISD	19,646	22,760	23,237	18.28%	2.10%
Otero County ISD	5,633	6,158	6,298	11.81%	2.27%
Quay County ISD	1,249	1,584	1,614	29.22%	1.89%
Rio Arriba County ISD	6,487	6,940	7,087	9.25%	2.12%
Roosevelt County ISD	0	1	1	N/A	0.00%
San Juan County ISD	13,746	16,580	17,244	25.45%	4.00%
San Miguel County ISD	5,014	5,232	5,313	5.96%	1.55%
Sandoval County ISD	9,913	10,121	10,232	3.22%	1.10%
Santa Fe County ISD	9,457	9,696	9,878	4.45%	1.88%
Sierra County ISD	2,609	2,560	2,567	-1.61%	0.27%
Socorro County ISD	2,744	2,946	3,012	9.77%	2.24%
South Dona Ana ISD	8,481	8,678	8,819	3.99%	1.62%
Southeast Bernalillo County ISD	11,885	11,043	11,061	-6.93%	0.16%
Southwest Bernalillo County ISD	19,109	22,142	22,613	18.34%	2.13%
Taos County ISD	4,154	4,482	4,534	9.15%	1.16%
Torrance County ISD	3,612	3,839	3,902	8.03%	1.6%
Valencia North County ISD	8,289	8,373	8,465	2.12%	1.10%
Valencia South County ISD	1	18	4	300.0%	-77.78%
West Dona Ana County ISD	10,574	11,448	11,628	9.97%	1.57%
Centralized Units	12	14	1	-91.67%	-92.86%
Statewide Total	220,379	242,383	247,674	12.39%	2.2%

## SNAP Cases by Region<sup>6</sup>

Region	May-19	Apr-20	May-20	Percent Change	
				May-19- May-20	Apr-20- May-20
Region 1 - NW	40,982	45,065	46,228	12.8%	2.6%
Region 2 - NE	38,641	40,509	41,149	6.5%	1.6%
Region 3 - Central	74,504	82,412	83,826	12.5%	1.7%
Region 4 - SE	25,519	30,288	31,492	23.4%	4.0%
Region 5 - SW	40,721	44,095	44,978	10.5%	2.0%
Centralized Units	12	14	1	-91.7%	-92.9%
<b>Statewide Total</b>	<b>220,379</b>	<b>242,383</b>	<b>247,674</b>	<b>12.39%</b>	<b>2.2%</b>

## SNAP Caseload: SFY-16 to Current

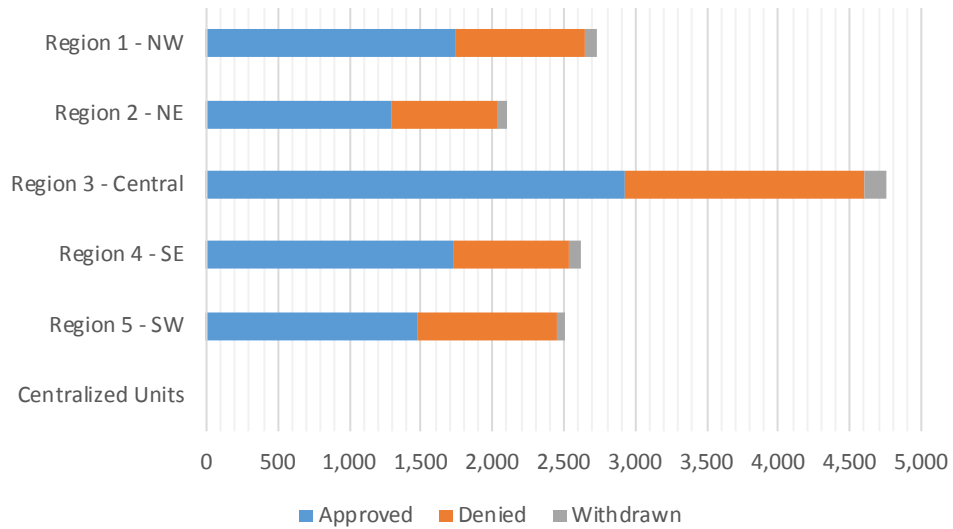


**SNAP Initial Applications by Field Office<sup>4,11</sup>**  
**May 2020**

Office	Approved	Denied	Withdrawn	Total Cases Processed
Chaves County ISD	427	226	21	674
Cibola County ISD	138	46	8	192
Colfax County ISD	59	33	2	94
Curry County ISD	355	133	21	509
East Dona Ana County ISD	363	286	19	668
Eddy Artesia County ISD	118	50	3	171
Eddy Carlsbad County ISD	208	101	15	324
Grant County ISD	135	82	5	222
Guadalupe County ISD	26	11	2	39
Hidalgo County ISD	0	0	0	0
Lea County ISD	545	237	19	801
Lincoln County ISD	76	62	7	145
Luna County ISD	141	108	7	256
McKinley County ISD	389	161	11	561
Northeast Bernalillo County ISD	887	556	47	1,490
Northwest Bernalillo County ISD	771	431	50	1,252
Otero County ISD	222	147	7	376
Quay County ISD	61	27	2	90
Rio Arriba County ISD	209	118	12	339
Roosevelt County ISD	1	0	0	1
San Juan County ISD	842	472	38	1,352
San Miguel County ISD	155	118	7	280
Sandoval County ISD	298	185	16	499
Santa Fe County ISD	348	194	21	563
Sierra County ISD	63	41	3	107
Socorro County ISD	96	68	1	165
South Dona Ana ISD	260	99	10	369
Southeast Bernalillo County ISD	276	139	15	430
Southwest Bernalillo County ISD	866	487	48	1,401
Taos County ISD	131	64	3	198
Torrance County ISD	127	55	4	186
Valencia North County ISD	200	119	15	334
Valencia South County ISD	14	3	0	17
West Dona Ana County ISD	359	243	17	619
Centralized Units	0	0	0	0
<b>Statewide Total</b>	<b>9,166</b>	<b>5,102</b>	<b>456</b>	<b>14,724</b>

**SNAP Initial Applications by Region<sup>4,11</sup>**  
**May 2020**

Region	Approved	Denied	Withdrawn	Total Cases Processed
Region 1 - NW	1,742	910	76	2,728
Region 2 - NE	1,287	750	65	2,102
Region 3 - Central	2,927	1,668	164	4,759
Region 4 - SE	1,730	809	86	2,625
Region 5 - SW	1,480	965	65	2,510
Centralized Units	0	0	0	0
<b>Statewide Total</b>	<b>9,166</b>	<b>5,102</b>	<b>456</b>	<b>14,724</b>



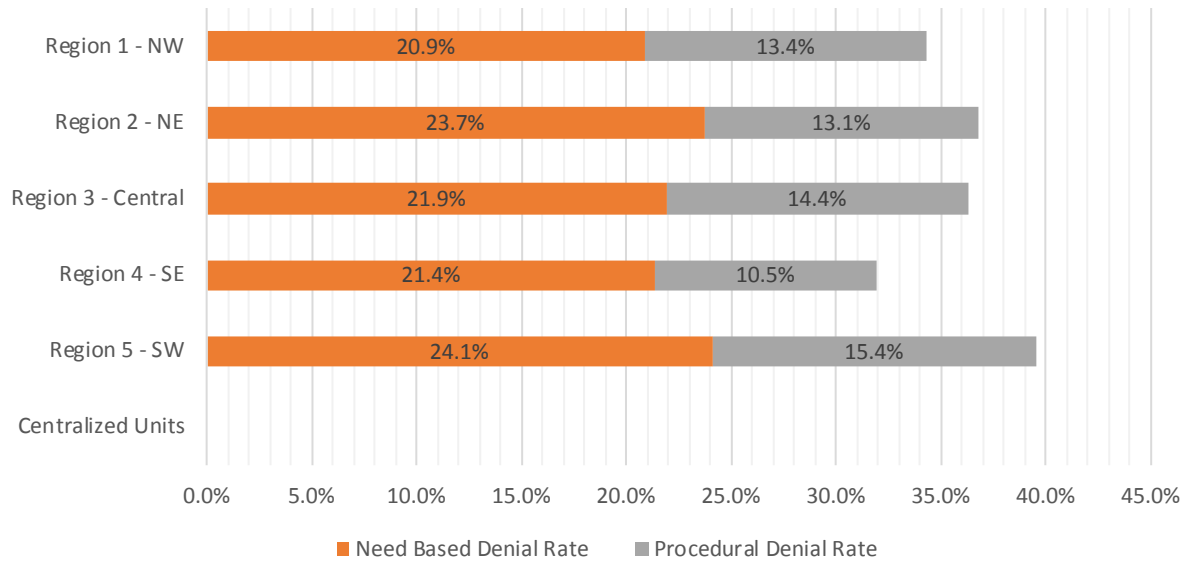


**SNAP Initial Disposition Rates by Field Office<sup>4,11</sup>**  
**May 2020**

Office	Approval Rate	Denial Rate	Need Based Denial Rate	Procedural Denial Rate
Chaves County ISD	65.4%	34.6%	26.8%	7.8%
Cibola County ISD	75.0%	25.0%	10.3%	14.7%
Colfax County ISD	64.1%	35.9%	16.3%	19.6%
Curry County ISD	72.7%	27.3%	19.1%	8.2%
East Dona Ana County ISD	55.9%	44.1%	27.5%	16.6%
Eddy Artesia County ISD	70.2%	29.8%	16.7%	13.1%
Eddy Carlsbad County ISD	67.3%	32.7%	19.4%	13.3%
Grant County ISD	62.2%	37.8%	26.7%	11.1%
Guadalupe County ISD	70.3%	29.7%	16.2%	13.5%
Hidalgo County ISD	0.0%	0.0%	0.0%	0.0%
Lea County ISD	69.7%	30.3%	18.9%	11.4%
Lincoln County ISD	55.1%	44.9%	28.2%	16.7%
Luna County ISD	56.6%	43.4%	26.5%	16.9%
McKinley County ISD	70.7%	29.3%	20.0%	9.3%
Northeast Bernalillo County ISD	61.5%	38.5%	21.5%	17.0%
Northwest Bernalillo County ISD	64.1%	35.9%	20.9%	15.0%
Otero County ISD	60.2%	39.8%	22.7%	17.1%
Quay County ISD	69.3%	30.7%	27.3%	3.4%
Rio Arriba County ISD	63.9%	36.1%	20.2%	15.9%
Roosevelt County ISD	100.0%	0.0%	0.0%	0.0%
San Juan County ISD	64.1%	35.9%	20.9%	15.0%
San Miguel County ISD	56.8%	43.2%	26.4%	16.8%
Sandoval County ISD	61.7%	38.3%	26.1%	12.2%
Santa Fe County ISD	64.2%	35.8%	24.0%	11.8%
Sierra County ISD	60.6%	39.4%	26.9%	12.5%
Socorro County ISD	58.5%	41.5%	28.7%	12.8%
South Dona Ana ISD	72.4%	27.6%	17.6%	10.0%
Southeast Bernalillo County ISD	66.5%	33.5%	26.0%	7.5%
Southwest Bernalillo County ISD	64.0%	36.0%	22.3%	13.7%
Taos County ISD	67.2%	32.8%	22.5%	10.3%
Torrance County ISD	69.8%	30.2%	19.8%	10.4%
Valencia North County ISD	62.7%	37.3%	22.9%	14.4%
Valencia South County ISD	82.4%	17.6%	17.6%	0.0%
West Dona Ana County ISD	59.6%	40.4%	23.1%	17.3%
Centralized Units	0.0%	0.0%	0.0%	0.0%
Statewide Total	64.2%	35.8%	22.3%	13.5%

**SNAP Initial Disposition Rates by Region<sup>4,11</sup>**  
**May 2020**

Region	Approval Rate	Denial Rate	Need Based Denial Rate	Procedural Denial Rate
Region 1 - NW	65.7%	34.3%	20.9%	13.4%
Region 2 - NE	63.2%	36.8%	23.7%	13.1%
Region 3 - Central	63.7%	36.3%	21.9%	14.4%
Region 4 - SE	68.1%	31.9%	21.4%	10.5%
Region 5 - SW	60.5%	39.5%	24.1%	15.4%
Centralized Units	0.0%	0.0%	0.0%	0.0%
Statewide Total	64.2%	35.8%	22.3%	13.5%



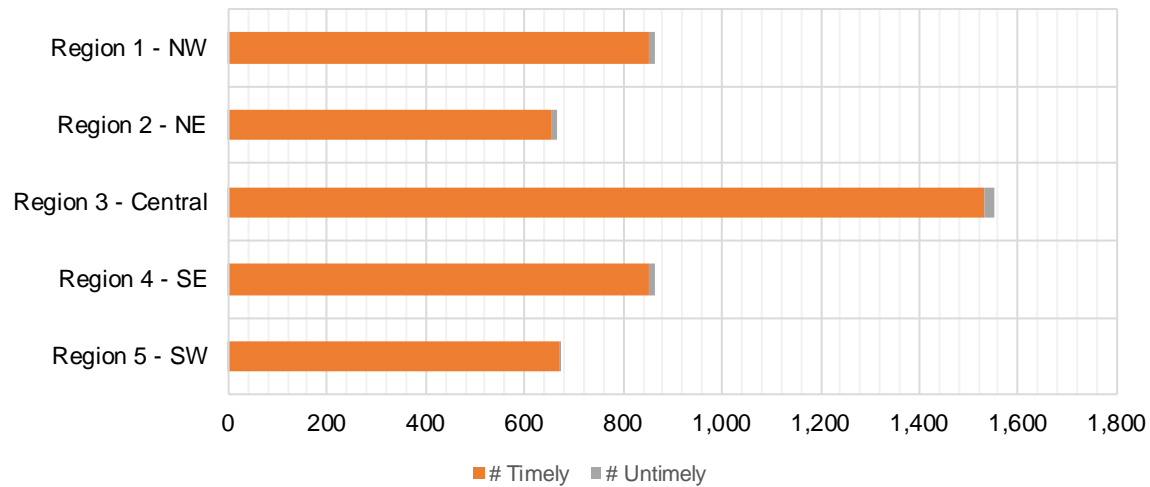
**SNAP Expedite Timeliness by Field Office<sup>13</sup>**  
**May 2020**

Office Name	Total Expedited Approvals	# Timely	# Untimely	Percentage Timely
Chaves County ISD	195	195	0	100.0 %
Cibola County ISD	80	80	0	100.0 %
Colfax County ISD	27	26	1	96.3 %
Curry County ISD	168	163	5	97.0 %
East Dona Ana County ISD	161	159	2	98.8 %
Eddy Artesia County ISD	60	60	0	100.0 %
Eddy Carlsbad County ISD	118	117	1	99.2 %
Grant County ISD	55	55	0	100.0 %
Guadalupe County ISD	12	11	1	91.7 %
Lea County ISD	277	273	4	98.6 %
Lincoln County ISD	45	44	1	97.8 %
Luna County ISD	54	54	0	100.0 %
McKinley County ISD	196	193	3	98.5 %
Northeast Bernalillo County ISD	466	457	9	98.1 %
Northwest Bernalillo County ISD	440	438	2	99.5 %
Otero County ISD	108	108	0	100.0 %
Quay County ISD	20	20	0	100.0 %
Rio Arriba County ISD	119	118	1	99.2 %
Roosevelt County ISD	0	0	0	N/A
San Juan County ISD	422	417	5	98.8 %
San Miguel County ISD	86	85	1	98.8 %
Sandoval County ISD	144	140	4	97.2 %
Santa Fe County ISD	193	189	4	97.9 %
Sierra County ISD	28	27	1	96.4 %
Socorro County ISD	42	42	0	100.0 %
South Dona Ana ISD	106	105	1	99.1 %
Southeast Bernalillo County ISD	137	133	4	97.1 %
Southwest Bernalillo County ISD	446	440	6	98.7 %
Taos County ISD	64	63	1	98.4 %
Torrance County ISD	63	63	0	100.0 %
Valencia North County ISD	95	93	2	97.9 %
West Dona Ana County ISD	190	190	0	100.0 %
<b>Statewide Total</b>	<b>4,617</b>	<b>4,558</b>	<b>59</b>	<b>98.7 %</b>

## SNAP Expedite Timeliness by Region<sup>13</sup> May 2020

Region	Total Expedited Approvals	# Timely	# Untimely	Percentage Timely
Region 1 - NW	863	852	11	98.7%
Region 2 - NE	665	652	13	98.0%
Region 3 - Central	1,552	1,531	21	98.6%
Region 4 - SE	863	852	11	98.7%
Region 5 - SW	674	671	3	99.6%
Statewide Total	4,617	4,558	59	98.7%

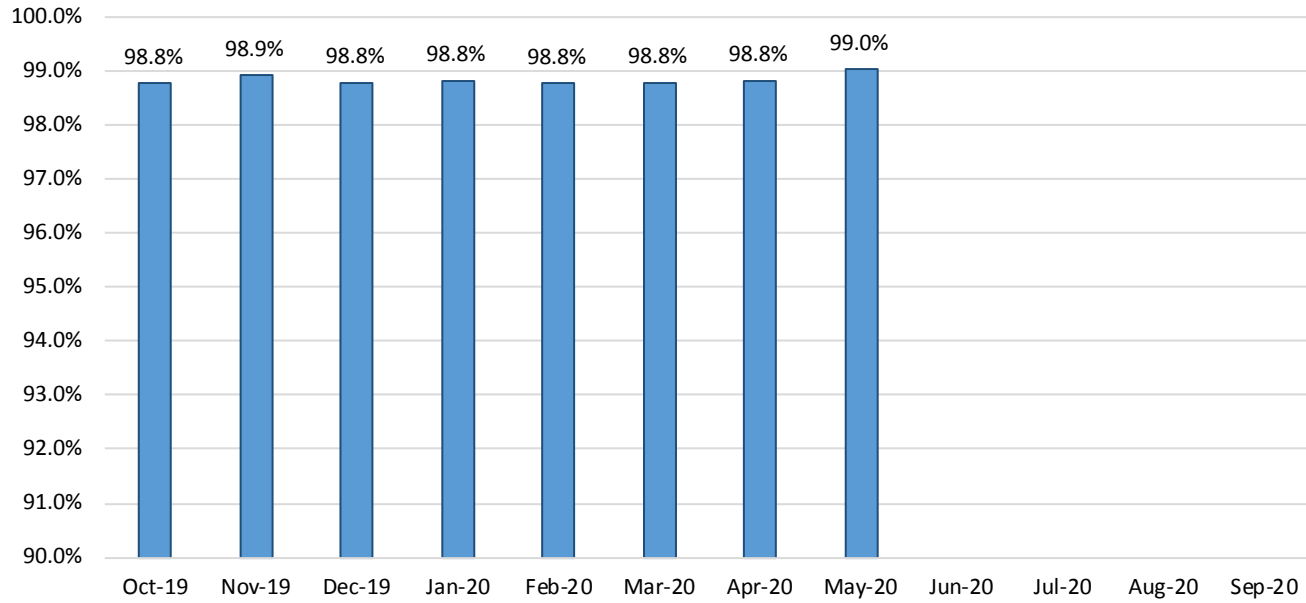
### SNAP Expedite - Timeliness



**SNAP: Percentage of Applications Processed Timely<sup>13</sup>**

	Oct-19	Nov-19	Dec-19	Jan-20	Feb-20	Mar-20	Apr-20	May-20	Jun-20	Jul-20	Aug-20	Sep-20	Average
APT	98.8%	98.9%	98.8%	98.8%	98.8%	98.8%	98.8%	99.0%					98.8%

**SNAP Application Processing Timeliness (APT)**



**SNAP Non-Expedite: Percentage of Initial Applications Processed Timely by Field Office<sup>13</sup>**

	Oct-19	Nov-19	Dec-19	Jan-20	Feb-20	Mar-20	Apr-20	May-20	Jun-20	Jul-20	Aug-20	Sep-20	Average
Cibola	99.2%	96.9%	98.0%	96.3%	99.4%	99.3%	98.8%	100.0%					98.5%
McKinley	99.0%	98.5%	98.4%	98.9%	98.7%	99.0%	98.9%	99.5%					98.9%
San Juan	98.1%	98.4%	99.1%	99.2%	98.0%	99.3%	98.7%	99.3%					98.8%
Sierra	98.0%	100.0%	100.0%	100.0%	98.9%	100.0%	98.3%	100.0%					99.4%
Socorro	97.9%	100.0%	100.0%	99.1%	100.0%	98.2%	100.0%	96.2%					98.9%
Valencia North	99.0%	99.4%	99.5%	99.5%	99.7%	99.5%	99.2%	100.0%					99.5%
Valencia South													
<b>NW Region 1 Total</b>	<b>98.5%</b>	<b>98.7%</b>	<b>99.0%</b>	<b>99.0%</b>	<b>98.8%</b>	<b>99.2%</b>	<b>98.9%</b>	<b>99.3%</b>					<b>98.9%</b>
Colfax	98.8%	98.8%	100.0%	98.7%	100.0%	100.0%	100.0%	100.0%					99.5%
Guadalupe	100.0%	100.0%	100.0%	100.0%	100.0%	100.0%	100.0%	100.0%					100.0%
Quay	100.0%	100.0%	100.0%	100.0%	100.0%	100.0%	100.0%	100.0%					100.0%
Rio Arriba	98.2%	99.5%	98.6%	98.9%	99.2%	99.6%	99.2%	97.8%					98.9%
San Miguel	98.1%	98.9%	100.0%	98.7%	99.5%	100.0%	99.2%	98.6%					99.1%
Sandoval	99.5%	98.7%	98.8%	99.6%	99.0%	99.6%	99.2%	99.4%					99.2%
Santa Fe	97.7%	98.4%	97.7%	99.7%	98.6%	98.6%	98.9%	99.4%					98.6%
Taos	100.0%	98.9%	99.4%	99.0%	100.0%	99.5%	100.0%	98.6%					99.4%
<b>NE Region 2 Total</b>	<b>98.8%</b>	<b>98.9%</b>	<b>98.8%</b>	<b>99.3%</b>	<b>99.2%</b>	<b>99.4%</b>	<b>99.3%</b>	<b>99.1%</b>					<b>99.1%</b>
NE Bernalillo	98.5%	98.9%	98.5%	97.9%	97.6%	96.7%	98.9%	99.1%					98.3%
NW Bernalillo	98.5%	98.1%	97.5%	98.4%	98.3%	98.1%	99.4%	99.7%					98.5%
SE Bernalillo	98.8%	98.2%	98.9%	99.3%	98.4%	98.1%	97.4%	100.0%					98.6%
SW Bernalillo	99.0%	99.2%	98.3%	99.1%	99.0%	99.6%	98.6%	99.1%					99.0%
Torrance	99.4%	100.0%	98.2%	100.0%	98.3%	99.4%	99.6%	98.5%					99.2%
<b>Gen. Region 3 Total</b>	<b>98.7%</b>	<b>98.7%</b>	<b>98.3%</b>	<b>98.7%</b>	<b>98.3%</b>	<b>98.2%</b>	<b>98.9%</b>	<b>99.3%</b>					<b>98.6%</b>
Chaves	99.7%	99.7%	98.1%	99.5%	99.0%	99.5%	99.0%	99.6%					99.3%
Curry	98.7%	99.0%	98.1%	97.1%	98.6%	98.4%	99.4%	99.5%					98.6%
Eddy Artesia	100.0%	98.5%	97.6%	100.0%	100.0%	98.9%	99.5%	98.3%					99.1%
Eddy Carlsbad	99.4%	99.3%	99.4%	98.3%	100.0%	99.0%	99.4%	100.0%					99.4%
Lea	99.6%	99.3%	98.9%	99.7%	99.4%	98.3%	99.5%	99.3%					99.3%
Lincoln	99.1%	100.0%	97.0%	99.3%	98.2%	97.5%	99.1%	100.0%					98.8%
Roosevelt	100.0%	100.0%		100.0%		100.0%		100.0%					100.0%
<b>SE Region 4 Total</b>	<b>99.4%</b>	<b>99.3%</b>	<b>98.3%</b>	<b>98.8%</b>	<b>99.1%</b>	<b>98.7%</b>	<b>99.3%</b>	<b>99.4%</b>					<b>99.0%</b>
East Dona Ana	99.5%	99.5%	99.2%	99.2%	99.5%	99.1%	99.2%	99.0%					99.3%
Grant	99.3%	98.7%	100.0%	98.3%	100.0%	98.6%	100.0%	100.0%					99.4%
Luna	99.4%	100.0%	98.8%	98.9%	100.0%	99.5%	99.2%	100.0%					99.5%
Otero	98.9%	99.6%	99.2%	99.6%	98.0%	98.5%	99.5%	100.0%					99.2%
South Dona Ana	100.0%	99.6%	99.6%	100.0%	99.6%	99.6%	99.7%	100.0%					99.8%
West Dona Ana	98.7%	99.6%	99.6%	99.1%	100.0%	99.4%	99.3%	98.8%					99.3%
<b>SW Region 5 Total</b>	<b>99.3%</b>	<b>99.5%</b>	<b>99.4%</b>	<b>99.2%</b>	<b>99.5%</b>	<b>99.2%</b>	<b>99.4%</b>	<b>99.5%</b>					<b>99.4%</b>
<b>STATE TOTAL</b>	<b>98.9%</b>	<b>99.0%</b>	<b>98.7%</b>	<b>99.0%</b>	<b>98.8%</b>	<b>98.8%</b>	<b>99.1%</b>	<b>99.3%</b>					<b>99.0%</b>

**SNAP Expedite: Percentage of Initial Applications Processed Timely by Field Office<sup>13</sup>**

	Oct-19	Nov-19	Dec-19	Jan-20	Feb-20	Mar-20	Apr-20	May-20	Jun-20	Jul-20	Aug-20	Sep-20	Average
Cibola	96.7%	100.0%	95.5%	98.5%	100.0%	98.2%	95.3%	100.0%					98.0%
McKinley	98.2%	99.0%	99.0%	98.6%	98.4%	98.9%	97.5%	98.6%					98.5%
San Juan	98.9%	99.1%	98.4%	99.0%	99.0%	99.1%	98.8%	98.9%					98.9%
Sierra	95.5%	98.1%	100.0%	96.8%	97.9%	98.3%	96.3%	96.3%					97.4%
Socorro	100.0%	95.0%	98.5%	100.0%	97.4%	100.0%	100.0%	100.0%					98.9%
Valencia North	98.4%	99.1%	99.1%	97.6%	98.1%	98.6%	95.3%	98.0%					98.0%
Valencia South													
<b>NW Region 1 Total</b>	<b>98.4%</b>	<b>98.9%</b>	<b>98.5%</b>	<b>98.6%</b>	<b>98.6%</b>	<b>98.9%</b>	<b>98.0%</b>	<b>99.3%</b>					<b>98.7%</b>
Colfax	100.0%	100.0%	98.4%	100.0%	100.0%	97.9%	100.0%	96.3%					99.1%
Guadalupe	93.8%	100.0%	100.0%	95.0%	100.0%	100.0%	90.5%	92.3%					96.5%
Quay	96.9%	100.0%	100.0%	100.0%	95.5%	100.0%	99.0%	100.0%					98.9%
Rio Arriba	99.2%	97.1%	98.3%	98.1%	100.0%	99.0%	98.2%	99.2%					98.6%
San Miguel	98.9%	100.0%	100.0%	98.8%	97.9%	98.6%	98.3%	98.8%					98.9%
Sandoval	97.9%	98.9%	98.7%	98.7%	97.9%	100.0%	99.6%	97.3%					98.6%
Santa Fe	98.8%	98.1%	98.1%	98.3%	97.4%	98.2%	97.0%	97.9%					98.0%
Taos	97.7%	97.9%	98.6%	100.0%	98.5%	97.9%	98.8%	98.4%					98.5%
<b>NE Region 2 Total</b>	<b>98.5%</b>	<b>98.5%</b>	<b>98.6%</b>	<b>98.7%</b>	<b>98.2%</b>	<b>98.8%</b>	<b>98.1%</b>	<b>99.1%</b>					<b>98.6%</b>
NE Bernalillo	98.7%	98.5%	98.7%	98.7%	98.2%	97.8%	98.3%	98.1%					98.4%
NW Bernalillo	99.6%	98.6%	99.5%	98.3%	99.5%	99.4%	99.1%	99.6%					99.2%
SE Bernalillo	98.5%	98.6%	99.3%	98.6%	98.9%	98.5%	98.7%	97.1%					98.5%
SW Bernalillo	99.0%	98.1%	98.5%	99.0%	99.1%	98.5%	98.0%	98.7%					98.6%
Torrance	99.2%	100.0%	99.3%	97.1%	99.1%	99.2%	97.1%	100.0%					98.9%
<b>Gen. Region 3 Total</b>	<b>99.0%</b>	<b>98.5%</b>	<b>99.0%</b>	<b>98.7%</b>	<b>98.8%</b>	<b>98.6%</b>	<b>98.4%</b>	<b>99.3%</b>					<b>98.8%</b>
Chaves	98.2%	97.7%	98.7%	98.2%	98.8%	99.0%	99.3%	100.0%					98.7%
Curry	97.7%	97.6%	98.6%	97.7%	99.1%	99.3%	97.7%	97.2%					98.1%
Eddy Artesia	96.4%	100.0%	98.5%	100.0%	100.0%	100.0%	98.7%	100.0%					99.2%
Eddy Carlsbad	99.3%	97.7%	97.3%	98.8%	98.6%	99.4%	98.3%	99.2%					98.6%
Lea	98.3%	98.6%	100.0%	98.5%	99.1%	99.0%	99.2%	98.6%					98.9%
Lincoln	95.8%	96.0%	95.7%	96.0%	97.6%	97.4%	96.4%	97.9%					96.6%
Roosevelt	100.0%	100.0%		100.0%	100.0%	100.0%	100.0%	97.9%					99.7%
<b>SE Region 4 Total</b>	<b>98.0%</b>	<b>97.9%</b>	<b>98.6%</b>	<b>98.2%</b>	<b>98.9%</b>	<b>99.1%</b>	<b>98.7%</b>	<b>99.4%</b>					<b>98.6%</b>
East Dona Ana	98.5%	99.5%	100.0%	99.6%	98.3%	98.8%	99.0%	98.8%					99.1%
Grant	99.2%	100.0%	98.5%	97.7%	98.3%	100.0%	98.6%	100.0%					99.0%
Luna	99.2%	100.0%	98.2%	99.3%	100.0%	99.1%	100.0%	100.0%					99.5%
Otero	99.4%	99.5%	98.8%	99.5%	98.2%	99.4%	99.6%	100.0%					99.3%
South Dona Ana	97.9%	98.6%	99.2%	100.0%	96.6%	97.8%	99.5%	99.1%					98.6%
West Dona Ana	99.1%	99.4%	99.7%	100.0%	99.3%	98.7%	98.4%	100.0%					99.3%
<b>SW Region 5 Total</b>	<b>98.9%</b>	<b>99.4%</b>	<b>99.3%</b>	<b>99.5%</b>	<b>98.6%</b>	<b>98.9%</b>	<b>99.1%</b>	<b>99.5%</b>					<b>99.2%</b>
<b>STATE TOTAL</b>	<b>98.7%</b>	<b>98.6%</b>	<b>98.8%</b>	<b>98.7%</b>	<b>98.7%</b>	<b>98.8%</b>	<b>98.4%</b>	<b>99.3%</b>					<b>98.8%</b>

**SNAP: Percentage of Denied Initial Applications Processed Within 30 Days by Field Office<sup>13</sup>**

	Oct-19	Nov-19	Dec-19	Jan-20	Feb-20	Mar-20	Apr-20	May-20	Jun-20	Jul-20	Aug-20	Sep-20	Average
Cibola	97.3%	100.0%	100.0%	98.1%	98.0%	100.0%	98.1%	94.4%					98.2%
McKinley	100.0%	94.4%	96.1%	99.0%	99.0%	97.8%	98.8%	98.3%					97.9%
San Juan	97.6%	98.2%	98.6%	97.7%	96.6%	98.3%	98.3%	99.4%					98.1%
Sierra	96.0%	100.0%	100.0%	100.0%	95.7%	100.0%	98.0%	100.0%					98.7%
Socorro	100.0%	100.0%	100.0%	100.0%	100.0%	96.8%	100.0%	100.0%					99.6%
Valencia North	99.0%	97.7%	98.4%	100.0%	99.1%	99.0%	99.2%	99.3%					99.0%
Valencia South					100.0%		100.0%	100.0%					100.0%
<b>NW Region 1 Total</b>	<b>98.3%</b>	<b>98.4%</b>	<b>98.9%</b>	<b>99.1%</b>	<b>98.3%</b>	<b>98.7%</b>	<b>98.9%</b>	<b>98.8%</b>					<b>98.7%</b>
Colfax	96.8%	94.1%	100.0%	100.0%	100.0%	100.0%	100.0%	100.0%					98.9%
Guadalupe	100.0%	100.0%	100.0%	100.0%	100.0%	100.0%	100.0%	100.0%					100.0%
Quay	100.0%	100.0%	100.0%	100.0%	100.0%	100.0%	100.0%	100.0%					100.0%
Rio Arriba	95.8%	98.6%	94.7%	96.0%	98.7%	98.6%	98.5%	100.0%					97.6%
San Miguel	100.0%	98.5%	100.0%	98.6%	100.0%	100.0%	98.3%	99.2%					99.3%
Sandoval	98.5%	98.9%	98.8%	100.0%	99.5%	98.7%	100.0%	98.5%					99.1%
Santa Fe	96.4%	98.2%	96.2%	99.1%	97.4%	94.9%	98.4%	99.5%					97.5%
Taos	100.0%	98.4%	100.0%	100.0%	100.0%	100.0%	100.0%	100.0%					99.8%
<b>NE Region 2 Total</b>	<b>98.4%</b>	<b>98.3%</b>	<b>98.7%</b>	<b>99.2%</b>	<b>99.5%</b>	<b>99.0%</b>	<b>99.4%</b>	<b>99.7%</b>					<b>99.0%</b>
NE Bernalillo	98.2%	97.8%	96.8%	94.7%	95.3%	91.7%	97.9%	98.0%					96.3%
NW Bernalillo	96.4%	96.7%	96.6%	97.9%	97.0%	96.0%	98.9%	97.9%					97.2%
SE Bernalillo	97.8%	95.0%	98.4%	99.0%	97.0%	95.7%	97.7%	97.4%					97.3%
SW Bernalillo	97.7%	98.0%	96.8%	96.8%	98.8%	98.7%	97.3%	97.8%					97.7%
Torrance	98.2%	100.0%	96.5%	100.0%	98.2%	100.0%	100.0%	98.3%					98.9%
<b>Gen. Region 3 Total</b>	<b>97.7%</b>	<b>97.5%</b>	<b>97.0%</b>	<b>97.7%</b>	<b>97.3%</b>	<b>96.4%</b>	<b>98.4%</b>	<b>97.9%</b>					<b>97.5%</b>
Chaves	100.0%	100.0%	95.0%	98.1%	98.0%	98.9%	98.8%	99.2%					98.5%
Curry	97.2%	97.2%	94.8%	96.9%	99.0%	96.2%	98.9%	98.1%					97.3%
Eddy Artesia	100.0%	96.3%	100.0%	100.0%	100.0%	100.0%	98.6%	100.0%					99.4%
Eddy Carlsbad	98.2%	100.0%	98.3%	97.7%	98.5%	98.4%	98.5%	100.0%					98.7%
Lea	100.0%	99.0%	97.0%	100.0%	100.0%	97.8%	99.6%	98.8%					99.0%
Lincoln	97.6%	100.0%	94.9%	100.0%	97.4%	97.5%	100.0%	98.6%					98.3%
Roosevelt		100.0%				100.0%							100.0%
<b>SE Region 4 Total</b>	<b>98.8%</b>	<b>98.9%</b>	<b>96.7%</b>	<b>98.8%</b>	<b>98.8%</b>	<b>98.4%</b>	<b>99.1%</b>	<b>99.1%</b>					<b>98.6%</b>
East Dona Ana	99.4%	98.7%	98.5%	98.0%	99.3%	99.2%	99.6%	98.4%					98.9%
Grant	97.4%	98.1%	100.0%	93.3%	100.0%	94.6%	100.0%	100.0%					97.9%
Luna	97.7%	100.0%	95.3%	98.0%	100.0%	100.0%	98.8%	98.3%					98.5%
Otero	98.9%	98.8%	97.1%	98.8%	95.9%	98.5%	99.2%	99.4%					98.3%
South Dona Ana	100.0%	100.0%	100.0%	100.0%	100.0%	98.5%	99.1%	99.1%					99.6%
West Dona Ana	97.5%	99.4%	99.2%	98.8%	100.0%	97.9%	98.2%	99.2%					98.8%
<b>SW Region 5 Total</b>	<b>98.5%</b>	<b>99.2%</b>	<b>98.4%</b>	<b>97.8%</b>	<b>99.2%</b>	<b>98.1%</b>	<b>99.2%</b>	<b>99.1%</b>					<b>98.7%</b>
<b>STATE TOTAL</b>	<b>98.4%</b>	<b>98.5%</b>	<b>98.0%</b>	<b>98.6%</b>	<b>98.7%</b>	<b>98.2%</b>	<b>99.0%</b>	<b>99.0%</b>					<b>98.6%</b>



**SNAP: Combined Approvals and Denials Percentage of Initial Applications Processed Timely by Field Office<sup>13</sup>**

	Oct-19	Nov-19	Dec-19	Jan-20	Feb-20	Mar-20	Apr-20	May-20	Jun-20	Jul-20	Aug-20	Sep-20	Average
Cibola	98.0%	98.5%	97.7%	97.6%	99.6%	98.8%	97.4%	98.4%					98.3%
McKinley	98.8%	98.7%	98.8%	98.7%	98.8%	99.1%	98.3%	98.8%					98.8%
San Juan	98.5%	98.8%	98.8%	99.1%	98.6%	99.2%	98.8%	99.2%					98.9%
Sierra	97.3%	99.4%	100.0%	98.8%	98.5%	99.3%	97.6%	99.1%					98.8%
Socorro	98.9%	98.3%	99.4%	99.5%	98.8%	98.9%	100.0%	98.8%					99.1%
Valencia North	98.7%	99.1%	99.4%	98.7%	99.1%	99.1%	98.0%	99.1%					98.9%
Valencia South		100.0%		100.0%			100.0%	100.0%					100.0%
<b>NW Region 1 Total</b>	<b>98.4%</b>	<b>99.0%</b>	<b>99.0%</b>	<b>98.9%</b>	<b>98.9%</b>	<b>99.1%</b>	<b>98.6%</b>	<b>99.1%</b>					<b>98.9%</b>
Colfax	99.3%	99.2%	99.2%	99.3%	100.0%	99.1%	100.0%	98.9%					99.4%
Guadalupe	98.2%	100.0%	100.0%	97.6%	97.6%	100.0%	96.4%	97.4%					98.4%
Quay	98.6%	100.0%	100.0%	100.0%	99.6%	100.0%	99.6%	100.0%					99.7%
Rio Arriba	98.7%	98.3%	98.5%	98.5%	98.8%	99.3%	98.8%	99.1%					98.8%
San Miguel	98.5%	99.4%	100.0%	98.7%	98.8%	99.5%	98.8%	98.9%					99.1%
Sandoval	98.9%	98.7%	98.9%	99.2%	98.0%	99.7%	99.3%	98.4%					98.9%
Santa Fe	98.2%	98.3%	97.9%	99.0%	99.3%	98.3%	98.1%	98.9%					98.5%
Taos	99.0%	98.5%	99.0%	99.4%	99.3%	99.1%	99.5%	99.0%					99.1%
<b>NE Region 2 Total</b>	<b>98.7%</b>	<b>99.1%</b>	<b>99.2%</b>	<b>99.0%</b>	<b>98.9%</b>	<b>99.4%</b>	<b>98.8%</b>	<b>98.8%</b>					<b>99.0%</b>
NE Bernalillo	98.6%	98.7%	98.7%	98.3%	97.9%	97.3%	98.6%	98.3%					98.3%
NW Bernalillo	99.0%	98.3%	98.6%	98.4%	98.8%	98.8%	99.3%	99.0%					98.8%
SE Bernalillo	98.7%	98.2%	99.3%	99.0%	98.5%	98.2%	97.8%	98.1%					98.5%
SW Bernalillo	98.9%	98.5%	98.4%	99.0%	99.1%	99.1%	98.3%	98.4%					98.7%
Torrance	99.3%	100.0%	98.7%	98.7%	98.6%	99.7%	98.6%	98.9%					99.1%
<b>Gen. Region 3 Total</b>	<b>98.9%</b>	<b>98.7%</b>	<b>98.7%</b>	<b>98.7%</b>	<b>98.6%</b>	<b>98.6%</b>	<b>98.5%</b>	<b>98.5%</b>					<b>98.7%</b>
Chaves	99.1%	98.9%	98.3%	99.0%	98.9%	99.3%	99.1%	99.6%					99.0%
Curry	98.3%	98.4%	98.3%	97.5%	99.0%	98.9%	98.7%	98.2%					98.4%
Eddy Artesia	98.6%	99.1%	98.0%	100.0%	100.0%	99.3%	99.2%	99.4%					99.2%
Eddy Carlsbad	99.3%	98.6%	98.4%	98.5%	99.1%	99.4%	98.8%	99.7%					99.0%
Lea	99.0%	99.0%	99.4%	99.1%	99.2%	98.7%	99.4%	98.9%					99.1%
Lincoln	97.5%	98.4%	96.6%	98.4%	98.0%	97.9%	98.2%	98.6%					98.0%
Roosevelt		100.0%	100.0%	100.0%	100.0%	100.0%		100.0%					100.0%
<b>SE Region 4 Total</b>	<b>98.6%</b>	<b>98.9%</b>	<b>98.4%</b>	<b>98.9%</b>	<b>99.2%</b>	<b>99.1%</b>	<b>98.9%</b>	<b>99.2%</b>					<b>98.9%</b>
East Dona Ana	99.2%	99.5%	99.5%	99.3%	99.1%	99.0%	99.1%	98.7%					99.2%
Grant	99.3%	99.2%	99.3%	97.7%	99.2%	99.2%	99.4%	100.0%					99.2%
Luna	99.3%	100.0%	98.6%	99.1%	100.0%	99.3%	99.5%	99.2%					99.4%
Otero	99.3%	99.6%	99.0%	99.6%	98.0%	98.9%	99.5%	99.7%					99.2%
South Dona Ana	99.3%	99.3%	99.4%	100.0%	98.9%	99.0%	99.7%	99.5%					99.4%
West Dona Ana	98.9%	99.5%	99.6%	99.4%	99.7%	99.0%	99.0%	99.4%					99.3%
<b>SW Region 5 Total</b>	<b>99.2%</b>	<b>99.5%</b>	<b>99.2%</b>	<b>99.2%</b>	<b>99.2%</b>	<b>99.1%</b>	<b>99.4%</b>	<b>99.4%</b>					<b>99.3%</b>
<b>STATE TOTAL</b>	<b>98.7%</b>	<b>99.0%</b>	<b>98.9%</b>	<b>98.9%</b>	<b>99.0%</b>	<b>99.1%</b>	<b>98.8%</b>	<b>99.0%</b>					<b>98.9%</b>

**SNAP Renewals Processed by Field Office<sup>20</sup>**  
**May 2020**

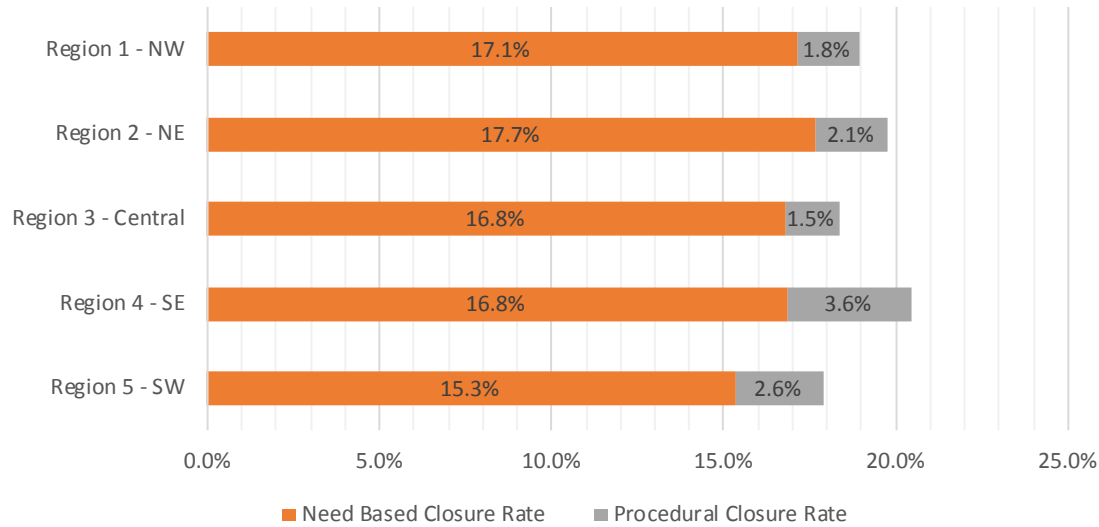
Office	Approvals	Closures	Need Based Closures	Procedural Closures
Chaves County ISD	213	56	47	9
Cibola County ISD	95	23	21	2
Colfax County ISD	42	8	7	1
Curry County ISD	233	56	40	16
East Dona Ana County ISD	260	74	61	13
Eddy Artesia County ISD	42	6	6	0
Eddy Carlsbad County ISD	73	14	12	2
Grant County ISD	104	15	12	3
Guadalupe County ISD	17	3	3	0
Hidalgo County ISD	0	0	0	0
Lea County ISD	152	48	41	7
Lincoln County ISD	52	17	16	1
Luna County ISD	110	30	23	7
McKinley County ISD	330	50	47	3
Northeast Bernalillo County ISD	589	138	128	10
Northwest Bernalillo County ISD	454	121	111	10
Otero County ISD	164	42	41	1
Quay County ISD	56	9	6	3
Rio Arriba County ISD	193	43	37	6
Roosevelt County ISD	0	0	0	0
San Juan County ISD	477	141	128	13
San Miguel County ISD	111	29	22	7
Sandoval County ISD	331	90	85	5
Santa Fe County ISD	225	54	49	5
Sierra County ISD	69	12	11	1
Socorro County ISD	92	12	12	0
South Dona Ana ISD	347	61	54	7
Southeast Bernalillo County ISD	299	58	52	6
Southwest Bernalillo County ISD	761	167	155	12
Taos County ISD	104	30	29	1
Torrance County ISD	137	19	15	4
Valencia North County ISD	220	62	52	10
Valencia South County ISD	0	0	0	0
West Dona Ana County ISD	294	57	48	9
Centralized Units	0	0	0	0
<b>Statewide Total</b>	<b>6,646</b>	<b>1,545</b>	<b>1,371</b>	<b>174</b>

**SNAP Renewal Disposition Rates by Field Office<sup>20</sup>**  
**May 2020**

Office	Approval Rate	Closure Rate	Need Based Closure Rate	Procedural Closure Rate
Chaves County ISD	79.2%	20.8%	17.5%	3.3%
Cibola County ISD	80.5%	19.5%	17.8%	1.7%
Colfax County ISD	84.0%	16.0%	14.0%	2.0%
Curry County ISD	80.6%	19.4%	13.8%	5.5%
East Dona Ana County ISD	77.8%	22.2%	18.3%	3.9%
Eddy Artesia County ISD	87.5%	12.5%	12.5%	0.0%
Eddy Carlsbad County ISD	83.9%	16.1%	13.8%	2.3%
Grant County ISD	87.4%	12.6%	10.1%	2.5%
Guadalupe County ISD	85.0%	15.0%	15.0%	0.0%
Hidalgo County ISD	0.0%	0.0%	0.0%	0.0%
Lea County ISD	76.0%	24.0%	20.5%	3.5%
Lincoln County ISD	75.4%	24.6%	23.2%	1.4%
Luna County ISD	78.6%	21.4%	16.4%	5.0%
McKinley County ISD	86.8%	13.2%	12.4%	0.8%
Northeast Bernalillo County ISD	81.0%	19.0%	17.6%	1.4%
Northwest Bernalillo County ISD	79.0%	21.0%	19.3%	1.7%
Otero County ISD	79.6%	20.4%	19.9%	0.5%
Quay County ISD	86.2%	13.8%	9.2%	4.6%
Rio Arriba County ISD	81.8%	18.2%	15.7%	2.5%
Roosevelt County ISD	0.0%	0.0%	0.0%	0.0%
San Juan County ISD	77.2%	22.8%	20.7%	2.1%
San Miguel County ISD	79.3%	20.7%	15.7%	5.0%
Sandoval County ISD	78.6%	21.4%	20.2%	1.2%
Santa Fe County ISD	80.6%	19.4%	17.6%	1.8%
Sierra County ISD	85.2%	14.8%	13.6%	1.2%
Socorro County ISD	88.5%	11.5%	11.5%	0.0%
South Dona Ana ISD	85.0%	15.0%	13.2%	1.7%
Southeast Bernalillo County ISD	83.8%	16.2%	14.6%	1.7%
Southwest Bernalillo County ISD	82.0%	18.0%	16.7%	1.3%
Taos County ISD	77.6%	22.4%	21.6%	0.7%
Torrance County ISD	87.8%	12.2%	9.6%	2.6%
Valencia North County ISD	78.0%	22.0%	18.4%	3.5%
Valencia South County ISD	0.0%	0.0%	0.0%	0.0%
West Dona Ana County ISD	83.8%	16.2%	13.7%	2.6%
Centralized Units	0.0%	0.0%	0.0%	0.0%
<b>Statewide Total</b>	<b>81.1%</b>	<b>18.9%</b>	<b>16.7%</b>	<b>2.1%</b>

**SNAP Renewal Disposition Rates by Region<sup>20</sup>**  
**May 2020**

Region	Approval Rate	Closure Rate	Need Based Closure Rate	Procedural Closure Rate
Region 1 - NW	81.0%	19.0%	17.1%	1.8%
Region 2 - NE	80.2%	19.8%	17.7%	2.1%
Region 3 - Central	81.7%	18.3%	16.8%	1.5%
Region 4 - SE	79.5%	20.5%	16.8%	3.6%
Region 5 - SW	82.1%	17.9%	15.3%	2.6%
Centralized Units				
Statewide Total	81.1%	18.9%	16.7%	2.1%



**SNAP: Percentage of Approved Renewal Applications Processed<sup>11</sup>**

	Oct-19	Nov-19	Dec-19	Jan-20	Feb-20	Mar-20	Apr-20	May-20	Jun-20	Jul-20	Aug-20	Sep-20	Average
Cibola	94.2%	97.9%	95.4%	94.4%	96.7%	100.0%	100.0%	100.0%					97.3%
McKinley	99.0%	94.2%	97.5%	97.4%	98.0%	100.0%	100.0%	100.0%					98.3%
San Juan	95.3%	93.9%	97.1%	97.8%	97.4%	100.0%	100.0%	100.0%					97.7%
Sierra	97.2%	95.3%	96.8%	98.9%	97.8%	100.0%	100.0%	100.0%					98.3%
Socorro	98.0%	97.2%	97.2%	98.7%	98.9%	100.0%	100.0%	100.0%					98.8%
Valencia North	98.3%	97.2%	95.7%	98.2%	99.6%	100.0%	100.0%	100.0%					98.6%
Valencia South						100.0%							100.0%
<b>NW Region 1 Total</b>	<b>97.0%</b>	<b>96.0%</b>	<b>96.6%</b>	<b>97.6%</b>	<b>98.1%</b>	<b>100.0%</b>	<b>100.0%</b>	<b>100.0%</b>					<b>98.2%</b>
Colfax	100.0%	97.6%	98.4%	100.0%	100.0%	100.0%	100.0%	100.0%					99.5%
Guadalupe	94.7%	100.0%	100.0%	100.0%	100.0%	100.0%	100.0%	100.0%					99.3%
Quay	100.0%	98.2%	100.0%	100.0%	100.0%	100.0%	100.0%	100.0%					99.8%
Rio Arriba	99.1%	96.4%	95.8%	97.1%	100.0%	100.0%	100.0%	100.0%					98.6%
San Miguel	94.4%	95.9%	99.5%	97.6%	97.5%	100.0%	100.0%	100.0%					98.1%
Sandoval	99.5%	98.6%	98.5%	99.3%	99.4%	100.0%	100.0%	100.0%					99.4%
Santa Fe	95.3%	92.6%	96.5%	93.0%	94.7%	100.0%	100.0%	100.0%					96.5%
Taos	97.9%	95.0%	100.0%	97.6%	97.6%	100.0%	100.0%	100.0%					98.5%
<b>NE Region 2 Total</b>	<b>97.6%</b>	<b>96.8%</b>	<b>98.6%</b>	<b>98.1%</b>	<b>98.7%</b>	<b>100.0%</b>	<b>100.0%</b>	<b>100.0%</b>					<b>98.7%</b>
NE Bernalillo	98.6%	96.6%	96.8%	93.1%	96.4%	100.0%	100.0%	100.0%					97.7%
NW Bernalillo	96.2%	96.2%	95.4%	93.9%	97.7%	100.0%	100.0%	100.0%					97.4%
SE Bernalillo	97.2%	94.8%	96.6%	92.5%	98.4%	100.0%	100.0%	100.0%					97.4%
SW Bernalillo	97.0%	96.9%	97.2%	95.1%	99.4%	100.0%	100.0%	100.0%					98.2%
Torrance	95.6%	95.0%	99.1%	96.4%	98.5%	100.0%	100.0%	100.0%					98.1%
<b>Gen. Region 3 Total</b>	<b>96.9%</b>	<b>95.9%</b>	<b>97.0%</b>	<b>94.2%</b>	<b>98.1%</b>	<b>100.0%</b>	<b>100.0%</b>	<b>100.0%</b>					<b>97.8%</b>
Chaves	98.8%	98.7%	97.8%	99.0%	98.7%	100.0%	100.0%	100.0%					99.1%
Curry	98.8%	98.4%	97.9%	99.5%	99.6%	100.0%	100.0%	100.0%					99.3%
Eddy Artesia	100.0%	100.0%	100.0%	96.4%	100.0%	100.0%	100.0%	100.0%					99.6%
Eddy Carlsbad	100.0%	98.6%	100.0%	100.0%	98.6%	100.0%	100.0%	100.0%					99.7%
Lea	98.8%	98.9%	97.0%	95.4%	100.0%	100.0%	100.0%	100.0%					98.8%
Lincoln	95.8%	96.9%	96.8%	96.6%	96.4%	100.0%	100.0%	100.0%					97.8%
Roosevelt													
<b>SE Region 4 Total</b>	<b>98.7%</b>	<b>98.6%</b>	<b>98.3%</b>	<b>97.8%</b>	<b>98.9%</b>	<b>100.0%</b>	<b>100.0%</b>	<b>100.0%</b>					<b>99.0%</b>
East Dona Ana	97.8%	97.5%	97.5%	98.5%	100.0%	100.0%	100.0%	100.0%					98.9%
Grant	98.1%	100.0%	96.1%	97.1%	99.3%	100.0%	100.0%	100.0%					98.8%
Luna	100.0%	97.6%	99.4%	99.2%	99.2%	100.0%	100.0%	100.0%					99.4%
Otero	99.1%	99.0%	100.0%	97.2%	99.5%	100.0%	100.0%	100.0%					99.4%
South Dona Ana	100.0%	99.7%	100.0%	99.7%	100.0%	100.0%	100.0%	100.0%					99.9%
West Dona Ana	100.0%	98.4%	99.5%	100.0%	99.7%	100.0%	100.0%	100.0%					99.7%
<b>SW Region 5 Total</b>	<b>99.2%</b>	<b>98.7%</b>	<b>98.8%</b>	<b>98.6%</b>	<b>99.6%</b>	<b>100.0%</b>	<b>100.0%</b>	<b>100.0%</b>					<b>99.4%</b>
<b>STATE TOTAL</b>	<b>97.9%</b>	<b>97.2%</b>	<b>97.9%</b>	<b>97.4%</b>	<b>98.7%</b>	<b>100.0%</b>	<b>100.0%</b>	<b>100.0%</b>					<b>98.6%</b>

*If a renewal packet was received on or before 15th of the renewal month, the case shall be considered timely if the case was processed by renewal due date*

Recertifications – If a Recertification cannot be processed under normal processing, ASPEN will automatically extend certification periods for households scheduled to recertify in March, April, May and June 2020, for 6 months until September, October and November 2020.

**SNAP: Percentage of Approved Renewal Applications Processed<sup>11</sup>**

	Oct-19	Nov-19	Dec-19	Jan-20	Feb-20	Mar-20	Apr-20	May-20	Jun-20	Jul-20	Aug-20	Sep-20	Average
Cibola	87.5%	91.7%	100.0%	100.0%	100.0%	100.0%	100.0%	100.0%					97.4%
McKinley	97.6%	95.5%	100.0%	93.9%	100.0%	100.0%	100.0%	100.0%					98.4%
San Juan	94.6%	91.3%	98.4%	100.0%	95.1%	100.0%	100.0%	100.0%					97.4%
Sierra	96.8%	100.0%	92.3%	100.0%	100.0%	100.0%	100.0%	100.0%					98.6%
Socorro	96.4%	96.2%	100.0%	100.0%	100.0%	100.0%	100.0%	100.0%					99.1%
Valencia North	98.4%	94.4%	100.0%	100.0%	100.0%	100.0%	100.0%	100.0%					99.1%
Valencia South						100.0%							100.0%
<b>NW Region 1 Total</b>	<b>95.2%</b>	<b>94.9%</b>	<b>98.5%</b>	<b>99.0%</b>	<b>99.2%</b>	<b>100.0%</b>	<b>100.0%</b>	<b>100.0%</b>					<b>98.3%</b>
Colfax	100.0%	100.0%	100.0%	100.0%	100.0%	100.0%	100.0%	100.0%					100.0%
Guadalupe	100.0%	100.0%	100.0%	100.0%	100.0%	100.0%	100.0%	100.0%					100.0%
Quay	100.0%	100.0%	100.0%	100.0%	100.0%	100.0%	100.0%	100.0%					100.0%
Rio Arriba	98.4%	93.3%	90.9%	100.0%	100.0%	100.0%	100.0%	100.0%					97.8%
San Miguel	92.9%	100.0%	100.0%	100.0%	100.0%	100.0%	100.0%	100.0%					99.1%
Sandoval	100.0%	97.9%	100.0%	100.0%	100.0%	100.0%	100.0%	100.0%					99.7%
Santa Fe	91.3%	95.8%	98.1%	93.9%	100.0%	100.0%	100.0%	100.0%					97.4%
Taos	87.5%	100.0%	100.0%	100.0%	100.0%	100.0%	100.0%	100.0%					98.4%
<b>NE Region 2 Total</b>	<b>96.3%</b>	<b>98.4%</b>	<b>98.6%</b>	<b>99.2%</b>	<b>100.0%</b>	<b>100.0%</b>	<b>100.0%</b>	<b>100.0%</b>					<b>99.1%</b>
NE Bernalillo	100.0%	94.6%	98.8%	94.0%	100.0%	100.0%	100.0%	100.0%					98.4%
NW Bernalillo	98.0%	96.9%	98.8%	95.2%	100.0%	100.0%	100.0%	100.0%					98.6%
SE Bernalillo	97.8%	100.0%	98.5%	93.6%	97.8%	100.0%	100.0%	100.0%					98.5%
SW Bernalillo	98.0%	96.3%	100.0%	97.5%	100.0%	100.0%	100.0%	100.0%					99.0%
Torrance	96.2%	81.8%	100.0%	100.0%	100.0%	100.0%	100.0%	100.0%					97.3%
<b>Gen. Region 3 Total</b>	<b>98.0%</b>	<b>93.9%</b>	<b>99.2%</b>	<b>96.1%</b>	<b>99.6%</b>	<b>100.0%</b>	<b>100.0%</b>	<b>100.0%</b>					<b>98.3%</b>
Chaves	100.0%	100.0%	96.6%	93.9%	100.0%	100.0%	100.0%	100.0%					98.8%
Curry	100.0%	96.3%	100.0%	100.0%	100.0%	100.0%	100.0%	100.0%					99.5%
Eddy Artesia	100.0%	100.0%	100.0%	100.0%	100.0%	100.0%	100.0%	100.0%					100.0%
Eddy Carlsbad	100.0%	88.9%	100.0%	100.0%	100.0%	100.0%	100.0%	100.0%					98.6%
Lea	97.1%	100.0%	100.0%	93.5%	100.0%	100.0%	100.0%	100.0%					98.8%
Lincoln	92.9%	100.0%	100.0%	100.0%	100.0%	100.0%	100.0%	100.0%					99.1%
Roosevelt													
<b>SE Region 4 Total</b>	<b>98.3%</b>	<b>97.5%</b>	<b>99.4%</b>	<b>97.9%</b>	<b>100.0%</b>	<b>100.0%</b>	<b>100.0%</b>	<b>100.0%</b>					<b>99.2%</b>
East Dona Ana	98.4%	98.1%	100.0%	100.0%	100.0%	100.0%	100.0%	100.0%					99.6%
Grant	96.2%	100.0%	100.0%	100.0%	100.0%	100.0%	100.0%	100.0%					99.5%
Luna	100.0%	100.0%	100.0%	100.0%	100.0%	100.0%	100.0%	100.0%					100.0%
Otero	100.0%	100.0%	100.0%	100.0%	100.0%	100.0%	100.0%	100.0%					100.0%
South Dona Ana	100.0%	100.0%	100.0%	100.0%	100.0%	100.0%	100.0%	100.0%					100.0%
West Dona Ana	100.0%	97.9%	98.2%	100.0%	100.0%	100.0%	100.0%	100.0%					99.5%
<b>SW Region 5 Total</b>	<b>99.1%</b>	<b>99.3%</b>	<b>99.7%</b>	<b>100.0%</b>	<b>100.0%</b>	<b>100.0%</b>	<b>100.0%</b>	<b>100.0%</b>					<b>99.8%</b>
<b>STATE TOTAL</b>	<b>97.3%</b>	<b>97.0%</b>	<b>99.1%</b>	<b>98.6%</b>	<b>99.8%</b>	<b>100.0%</b>	<b>100.0%</b>	<b>100.0%</b>					<b>99.0%</b>

*Only includes cases in which the Renewal Packet was received by the 15th of the month*

Recertifications – If a Recertification cannot be processed under normal processing, ASPEN will automatically extend certification periods for households scheduled to recertify in March, April, May and June 2020, for 6 months until September, October and November 2020.

SNAP: Percentage of Terminations Renewal Applications Processed <sup>11</sup>													
	Oct-19	Nov-19	Dec-19	Jan-20	Feb-20	Mar-20	Apr-20	May-20	Jun-20	Jul-20	Aug-20	Sep-20	Average
Cibola	98.8%	93.8%	96.6%	96.5%	95.8%	100.0%	100.0%	100.0%					97.7%
McKinley	97.1%	91.8%	98.0%	97.5%	97.5%	100.0%	100.0%	100.0%					97.7%
San Juan	96.5%	94.6%	97.4%	95.6%	95.6%	100.0%	100.0%	100.0%					97.5%
Sierra	98.5%	96.2%	93.3%	93.5%	100.0%	100.0%	100.0%	100.0%					97.7%
Socorro	100.0%	92.2%	100.0%	100.0%	100.0%	100.0%	100.0%	100.0%					99.0%
Valencia North	97.8%	93.5%	97.0%	97.5%	97.4%	100.0%	100.0%	100.0%					97.9%
Valencia South													
<b>NW Region 1 Total</b>	<b>98.1%</b>	<b>93.7%</b>	<b>97.1%</b>	<b>96.8%</b>	<b>97.7%</b>	<b>100.0%</b>	<b>100.0%</b>	<b>100.0%</b>					<b>97.9%</b>
Colfax	100.0%	100.0%	100.0%	92.9%	100.0%	100.0%	100.0%	100.0%					99.1%
Guadalupe	100.0%	90.9%	100.0%	100.0%	92.9%	100.0%	100.0%	100.0%					98.0%
Quay	100.0%	100.0%	100.0%	96.0%	96.3%	100.0%	100.0%	100.0%					99.0%
Rio Arriba	98.2%	93.7%	96.5%	94.9%	99.2%	100.0%	100.0%	100.0%					97.8%
San Miguel	92.9%	97.6%	100.0%	95.1%	87.7%	100.0%	100.0%	100.0%					96.7%
Sandoval	98.0%	96.6%	96.8%	98.9%	99.0%	100.0%	100.0%	100.0%					98.7%
Santa Fe	97.0%	95.4%	97.3%	93.3%	94.1%	100.0%	100.0%	100.0%					97.1%
Taos	98.8%	96.3%	98.8%	94.4%	98.5%	100.0%	100.0%	100.0%					98.4%
<b>NE Region 2 Total</b>	<b>98.1%</b>	<b>96.3%</b>	<b>98.7%</b>	<b>95.7%</b>	<b>96.0%</b>	<b>100.0%</b>	<b>100.0%</b>	<b>100.0%</b>					<b>98.1%</b>
NE Bernalillo	95.0%	94.9%	96.3%	94.6%	96.1%	100.0%	100.0%	100.0%					97.1%
NW Bernalillo	95.1%	95.0%	94.4%	94.2%	98.0%	100.0%	100.0%	100.0%					97.1%
SE Bernalillo	95.2%	96.1%	93.7%	95.6%	96.9%	100.0%	100.0%	100.0%					97.2%
SW Bernalillo	97.3%	98.2%	97.2%	93.2%	98.1%	100.0%	100.0%	100.0%					98.0%
Torrance	100.0%	97.8%	94.2%	95.4%	96.6%	100.0%	100.0%	100.0%					98.0%
<b>Cen. Region 3 Total</b>	<b>96.5%</b>	<b>96.4%</b>	<b>95.2%</b>	<b>94.6%</b>	<b>97.1%</b>	<b>100.0%</b>	<b>100.0%</b>	<b>100.0%</b>					<b>97.5%</b>
Chaves	96.8%	94.9%	94.5%	95.6%	99.2%	100.0%	100.0%	100.0%					97.6%
Curry	98.7%	97.9%	98.3%	99.1%	98.3%	100.0%	100.0%	100.0%					99.0%
Eddy Artesia	92.3%	100.0%	100.0%	95.7%	95.3%	100.0%	100.0%	100.0%					97.9%
Eddy Carlsbad	100.0%	97.6%	97.2%	93.9%	100.0%	100.0%	100.0%	100.0%					98.6%
Lea	97.6%	95.9%	98.6%	97.8%	99.0%	100.0%	100.0%	100.0%					98.6%
Lincoln	95.3%	91.7%	87.5%	96.2%	97.4%	100.0%	100.0%	100.0%					96.0%
Roosevelt													
<b>SE Region 4 Total</b>	<b>96.8%</b>	<b>96.3%</b>	<b>96.0%</b>	<b>96.4%</b>	<b>98.2%</b>	<b>100.0%</b>	<b>100.0%</b>	<b>100.0%</b>					<b>98.0%</b>
East Dona Ana	98.7%	97.5%	99.0%	99.3%	97.6%	100.0%	100.0%	100.0%					99.0%
Grant	100.0%	98.1%	95.9%	91.7%	100.0%	100.0%	100.0%	100.0%					98.2%
Luna	100.0%	97.5%	96.7%	98.5%	100.0%	100.0%	100.0%	100.0%					99.1%
Otero	100.0%	99.0%	97.7%	99.1%	98.1%	100.0%	100.0%	100.0%					99.2%
South Dona Ana	100.0%	100.0%	100.0%	99.2%	98.7%	100.0%	100.0%	100.0%					99.7%
West Dona Ana	97.9%	99.0%	99.1%	100.0%	100.0%	100.0%	100.0%	100.0%					99.5%
<b>SW Region 5 Total</b>	<b>99.4%</b>	<b>98.5%</b>	<b>98.1%</b>	<b>98.0%</b>	<b>99.1%</b>	<b>100.0%</b>	<b>100.0%</b>	<b>100.0%</b>					<b>99.1%</b>
<b>STATE TOTAL</b>	<b>97.9%</b>	<b>96.2%</b>	<b>97.2%</b>	<b>96.3%</b>	<b>97.5%</b>	<b>100.0%</b>	<b>100.0%</b>	<b>100.0%</b>					<b>98.1%</b>

Includes cases for which no renewal application was received.

Recertifications – If a Recertification cannot be processed under normal processing, ASPEN will automatically extend certification periods for households scheduled to recertify in March, April, May and June 2020, for 6 months until September, October and November 2020.

**SNAP: Combined Percentage of Approved and Terminated Renewal Applications Processed<sup>11</sup>**

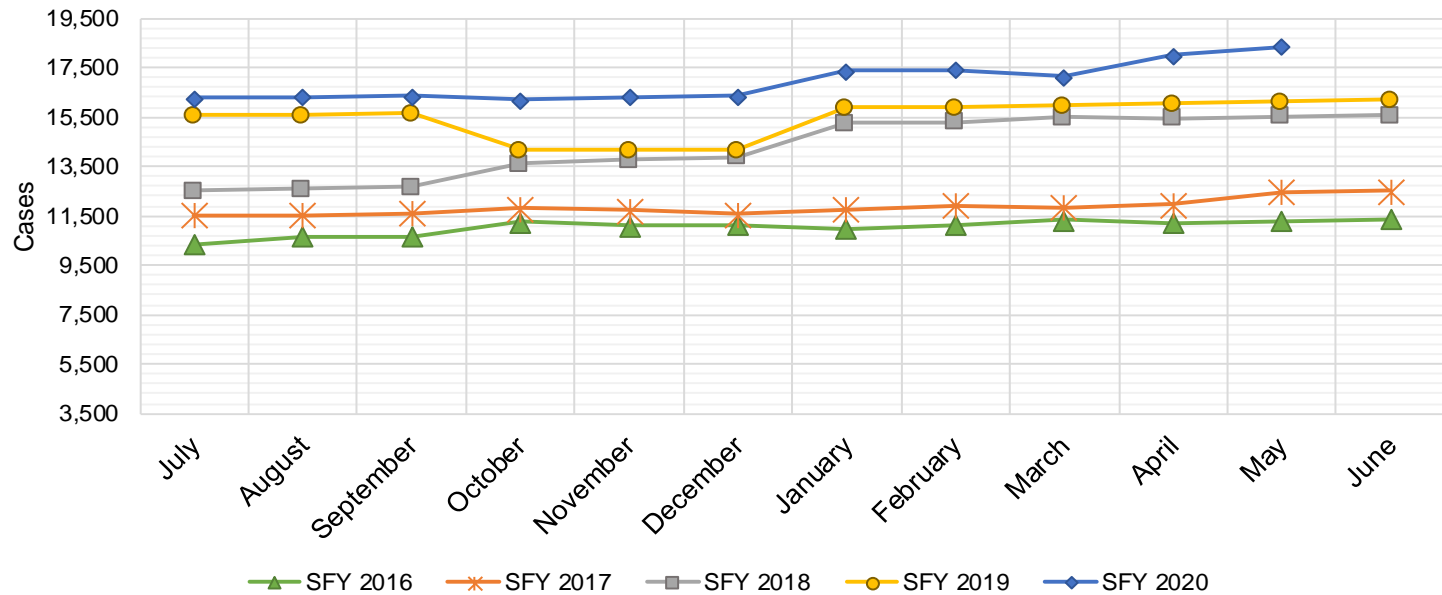
	Oct-19	Nov-19	Dec-19	Jan-20	Feb-20	Mar-20	Apr-20	May-20	Jun-20	Jul-20	Aug-20	Sep-20	Average
Cibola	96.1%	96.4%	95.9%	95.2%	96.4%	100.0%	100.0%	100.0%					97.5%
McKinley	98.4%	93.4%	97.6%	97.4%	97.9%	100.0%	100.0%	100.0%					98.1%
San Juan	95.8%	94.1%	97.2%	97.0%	96.6%	100.0%	100.0%	100.0%					97.6%
Sierra	97.7%	95.7%	95.9%	97.5%	98.4%	100.0%	100.0%	100.0%					98.2%
Socorro	98.7%	95.6%	98.1%	99.2%	99.2%	100.0%	100.0%	100.0%					98.9%
Valencia North	98.1%	95.8%	96.2%	97.9%	98.8%	100.0%	100.0%	100.0%					98.4%
Valencia South													
<b>NW Region 1 Total</b>	<b>97.5%</b>	<b>95.2%</b>	<b>96.8%</b>	<b>97.4%</b>	<b>97.9%</b>	<b>100.0%</b>	<b>100.0%</b>	<b>100.0%</b>					<b>98.1%</b>
Colfax	100.0%	98.6%	99.0%	98.3%	100.0%	100.0%	100.0%	100.0%					99.5%
Guadalupe	97.1%	97.3%	100.0%	100.0%	96.9%	100.0%	100.0%	100.0%					98.9%
Quay	100.0%	98.8%	100.0%	98.3%	98.6%	100.0%	100.0%	100.0%					99.5%
Rio Arriba	98.8%	95.1%	96.1%	96.2%	99.7%	100.0%	100.0%	100.0%					98.2%
San Miguel	93.9%	96.5%	99.6%	96.6%	94.6%	100.0%	100.0%	100.0%					97.7%
Sandoval	99.0%	97.8%	97.9%	99.1%	99.2%	100.0%	100.0%	100.0%					99.1%
Santa Fe	96.0%	93.7%	96.8%	93.1%	94.5%	100.0%	100.0%	100.0%					96.8%
Taos	98.2%	95.5%	99.6%	96.3%	97.9%	100.0%	100.0%	100.0%					98.4%
<b>NE Region 2 Total</b>	<b>97.9%</b>	<b>96.7%</b>	<b>98.6%</b>	<b>97.2%</b>	<b>97.7%</b>	<b>100.0%</b>	<b>100.0%</b>	<b>100.0%</b>					<b>98.5%</b>
NE Bernalillo	97.1%	96.0%	96.6%	93.7%	96.3%	100.0%	100.0%	100.0%					97.5%
NW Bernalillo	95.7%	95.7%	95.0%	94.0%	97.9%	100.0%	100.0%	100.0%					97.3%
SE Bernalillo	96.3%	95.3%	95.5%	93.7%	97.8%	100.0%	100.0%	100.0%					97.3%
SW Bernalillo	97.1%	97.3%	97.2%	94.4%	99.0%	100.0%	100.0%	100.0%					98.1%
Torrance	97.5%	96.3%	96.9%	96.0%	97.9%	100.0%	100.0%	100.0%					98.1%
<b>Gen. Region 3 Total</b>	<b>96.7%</b>	<b>96.1%</b>	<b>96.2%</b>	<b>94.4%</b>	<b>97.8%</b>	<b>100.0%</b>	<b>100.0%</b>	<b>100.0%</b>					<b>97.7%</b>
Chaves	98.1%	97.4%	96.9%	97.7%	98.9%	100.0%	100.0%	100.0%					98.6%
Curry	98.8%	98.2%	98.0%	99.3%	99.2%	100.0%	100.0%	100.0%					99.2%
Eddy Artesia	97.1%	100.0%	100.0%	96.2%	97.8%	100.0%	100.0%	100.0%					98.9%
Eddy Carlsbad	100.0%	98.2%	98.5%	97.5%	99.1%	100.0%	100.0%	100.0%					99.2%
Lea	98.3%	97.6%	97.7%	96.2%	99.6%	100.0%	100.0%	100.0%					98.7%
Lincoln	95.7%	95.0%	93.6%	96.5%	96.8%	100.0%	100.0%	100.0%					97.2%
Roosevelt													
<b>SE Region 4 Total</b>	<b>98.0%</b>	<b>97.7%</b>	<b>97.5%</b>	<b>97.2%</b>	<b>98.6%</b>	<b>100.0%</b>	<b>100.0%</b>	<b>100.0%</b>					<b>98.6%</b>
East Dona Ana	98.1%	97.5%	98.2%	98.8%	99.3%	100.0%	100.0%	100.0%					99.0%
Grant	98.7%	99.4%	96.0%	95.4%	99.5%	100.0%	100.0%	100.0%					98.6%
Luna	100.0%	97.6%	98.4%	99.0%	99.5%	100.0%	100.0%	100.0%					99.3%
Otero	99.4%	99.0%	99.1%	98.1%	99.0%	100.0%	100.0%	100.0%					99.3%
South Dona Ana	100.0%	99.8%	100.0%	99.6%	99.6%	100.0%	100.0%	100.0%					99.9%
West Dona Ana	99.3%	98.6%	99.3%	100.0%	99.8%	100.0%	100.0%	100.0%					99.6%
<b>SW Region 5 Total</b>	<b>99.3%</b>	<b>98.7%</b>	<b>98.5%</b>	<b>98.5%</b>	<b>99.5%</b>	<b>100.0%</b>	<b>100.0%</b>	<b>100.0%</b>					<b>99.3%</b>
<b>STATE TOTAL</b>	<b>97.9%</b>	<b>96.9%</b>	<b>97.6%</b>	<b>97.0%</b>	<b>98.2%</b>	<b>100.0%</b>	<b>100.0%</b>	<b>100.0%</b>					<b>98.5%</b>



## State SNAP Supplement

SFY 2016 <sup>12,9</sup>			SFY 2017 <sup>9</sup>			SFY 2018 <sup>9</sup>			SFY 2019 <sup>9</sup>			SFY 2020 <sup>9</sup>		
	Cases	Expenditures		Cases	Expenditures		Cases	Expenditures		Cases	Expenditures		Cases	Expenditures
Jul-15	10,345	\$86,143	Jul-16	11,537	\$95,553	Jul-17	12,526	\$97,568	Jul-18	15,555	\$141,711	Jul-19	16,260	\$145,023
Aug-15	10,669	\$88,197	Aug-16	11,522	\$95,107	Aug-17	12,589	\$98,954	Aug-18	15,584	\$139,719	Aug-19	16,314	\$145,706
Sep-15	10,676	\$88,426	Sep-16	11,613	\$94,472	Sep-17	12,679	\$97,546	Sep-18	15,631	\$140,768	Sep-19	16,362	\$145,767
Oct-15	11,262	\$96,758	Oct-16	11,797	\$96,679	Oct-17	13,628	\$117,343	Oct-18	14,161	\$125,737	Oct-19	16,182	\$139,741
Nov-15	11,099	\$91,996	Nov-16	11,735	\$93,689	Nov-17	13,748	\$119,055	Nov-18	14,160	\$125,401	Nov-19	16,331	\$138,583
Dec-15	11,125	\$90,771	Dec-16	11,556	\$93,739	Dec-17	13,877	\$120,585	Dec-18	14,163	\$126,263	Dec-19	16,373	\$137,440
Jan-16	10,977	\$92,760	Jan-17	11,763	\$96,074	Jan-18	15,246	\$135,993	Jan-19	15,890	\$141,357	Jan-20	17,360	\$145,696
Feb-16	11,153	\$95,363	Feb-17	11,907	\$98,251	Feb-18	15,308	\$137,296	Feb-19	15,882	\$142,396	Feb-20	17,429	\$154,849
Mar-16	11,332	\$96,751	Mar-17	11,853	\$96,693	Mar-18	15,482	\$139,132	Mar-19	15,970	\$142,427	Mar-20	17,131	\$150,568
Apr-16	11,222	\$93,959	Apr-17	11,944	\$97,060	Apr-18	15,466	\$139,202	Apr-19	16,032	\$143,982	Apr-20	18,017	\$157,944
May-16	11,283	\$95,271	May-17	12,457	\$96,940	May-18	15,525	\$139,397	May-19	16,126	\$143,697	May-20	18,368	\$157,089
Jun-16	11,389	\$93,061	Jun-17	12,498	\$97,405	Jun-18	15,577	\$140,802	Jun-19	16,182	\$143,128	Jun-20		

TOTAL	132,532	\$1,109,455	142,182	\$1,151,662	171,651	\$1,482,874	185,336	\$1,656,584	186,127	\$1,618,407
AVERAGE	11,044	\$92,455	11,849	\$95,972	14,304	\$123,573	15,445	\$138,049	16,921	\$147,128



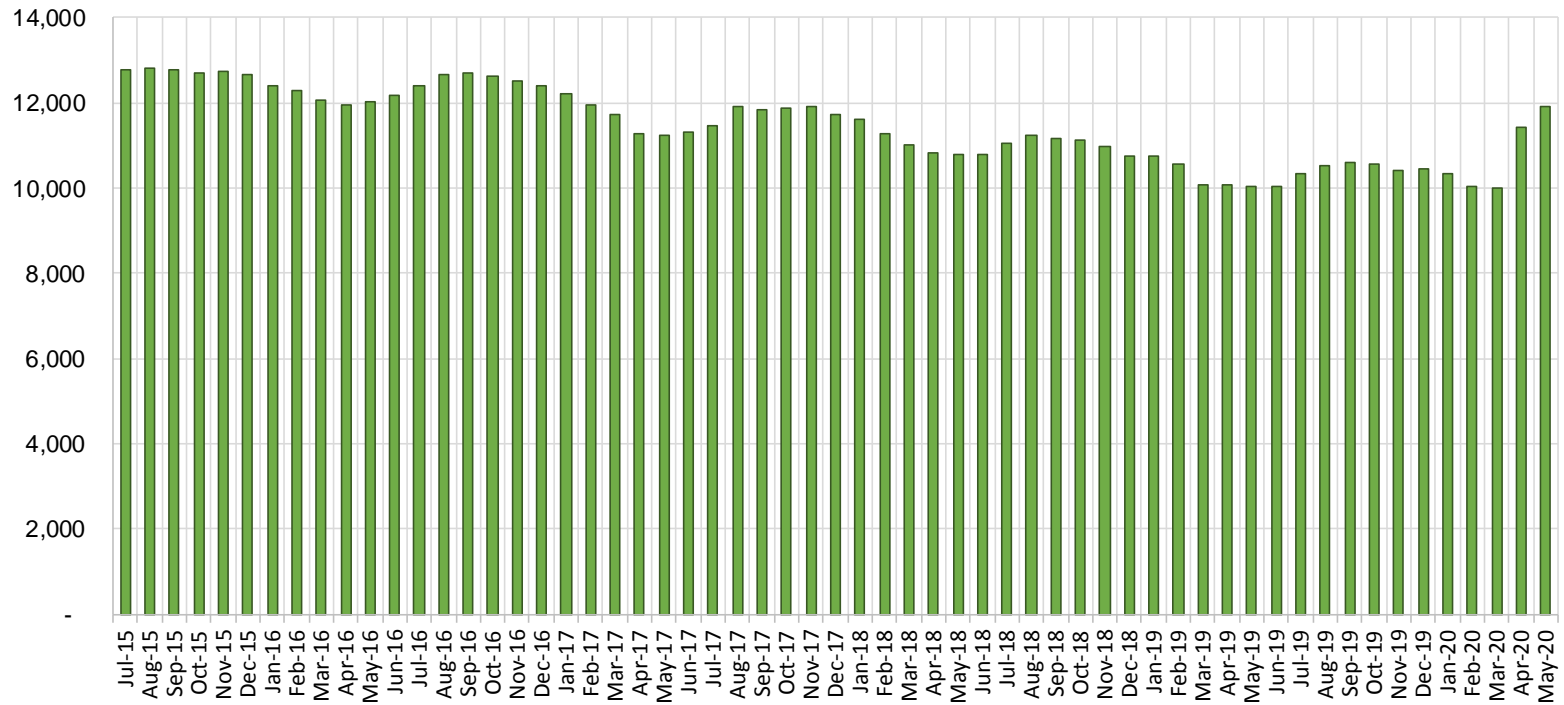
## TANF Cases by Field Office<sup>6</sup>

Office				Percent Change	
	May-19	Apr-20	May-20	May-19- May-20	Apr-20- May-20
Chaves County ISD	392	547	587	49.74%	7.31%
Cibola County ISD	128	116	127	-0.78%	9.48%
Colfax County ISD	78	98	104	33.33%	6.12%
Curry County ISD	610	614	654	7.21%	6.51%
East Dona Ana County ISD	409	480	513	25.43%	6.88%
Eddy Artesia County ISD	80	100	110	37.50%	10.00%
Eddy Carlsbad County ISD	119	169	183	53.78%	8.28%
Grant County ISD	191	212	228	19.37%	7.55%
Guadalupe County ISD	27	31	31	14.81%	0.00%
Hidalgo County ISD	0	0	0	NA	N/A
Lea County ISD	311	443	488	56.91%	10.16%
Lincoln County ISD	105	92	96	-8.57%	4.35%
Luna County ISD	216	211	210	-2.78%	-0.47%
McKinley County ISD	71	74	76	7.04%	2.70%
Northeast Bernalillo County ISD	863	1,090	1,128	30.71%	3.49%
Northwest Bernalillo County ISD	774	914	939	21.32%	2.74%
Otero County ISD	256	305	329	28.52%	7.87%
Quay County ISD	72	95	96	33.33%	1.05%
Rio Arriba County ISD	344	381	390	13.37%	2.36%
Roosevelt County ISD	0	0	0	NA	N/A
San Juan County ISD	274	410	406	48.18%	-0.98%
San Miguel County ISD	173	194	196	13.29%	1.03%
Sandoval County ISD	465	461	494	6.24%	7.16%
Santa Fe County ISD	365	396	419	14.79%	5.81%
Sierra County ISD	70	75	80	14.29%	6.67%
Socorro County ISD	87	85	94	8.05%	10.59%
South Dona Ana ISD	611	570	591	-3.27%	3.68%
Southeast Bernalillo County ISD	568	483	479	-15.67%	-0.83%
Southwest Bernalillo County ISD	1,027	1,285	1,350	31.45%	5.06%
Taos County ISD	144	149	159	10.42%	6.71%
Torrance County ISD	185	195	211	14.05%	8.21%
Valencia North County ISD	404	442	451	11.63%	2.04%
Valencia South County ISD	0	2	0	N/A	-100.0%
West Dona Ana County ISD	618	694	717	16.02%	3.31%
Centralized Units	0	0	0	NA	N/A
Statewide Total	10,037	11,413	11,936	18.92%	4.58%

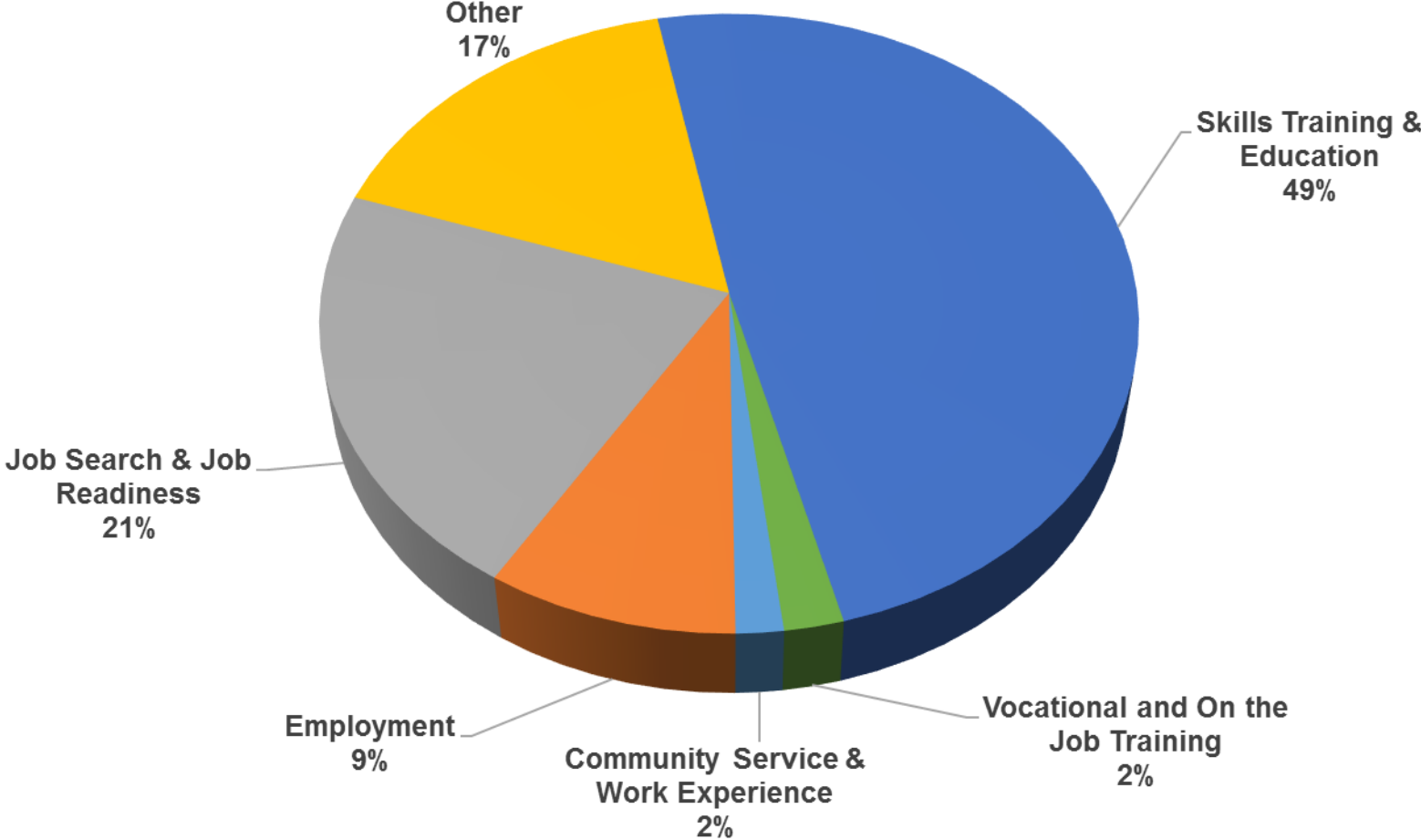
## TANF Cases by Region<sup>6</sup>

Region	May-19	Apr-20	May-20	Percent Change	
				May-19- May-20	Apr-20- May-20
Region 1- NW	1,034	1,204	1,234	19.34%	2.49%
Region 2- NE	1,668	1,805	1,889	13.25%	4.65%
Region 3- Central	3,417	3,967	4,107	20.19%	3.53%
Region 4- SE	1,617	1,965	2,118	30.98%	7.79%
Region 5- SW	2,301	2,472	2,588	12.47%	4.69%
Centralized Units	0	0	0	N/A	N/A
<b>Statewide Total</b>	<b>10,037</b>	<b>11,413</b>	<b>11,936</b>	<b>18.92%</b>	<b>4.58%</b>

## TANF Caseload: SFY-16 to Current

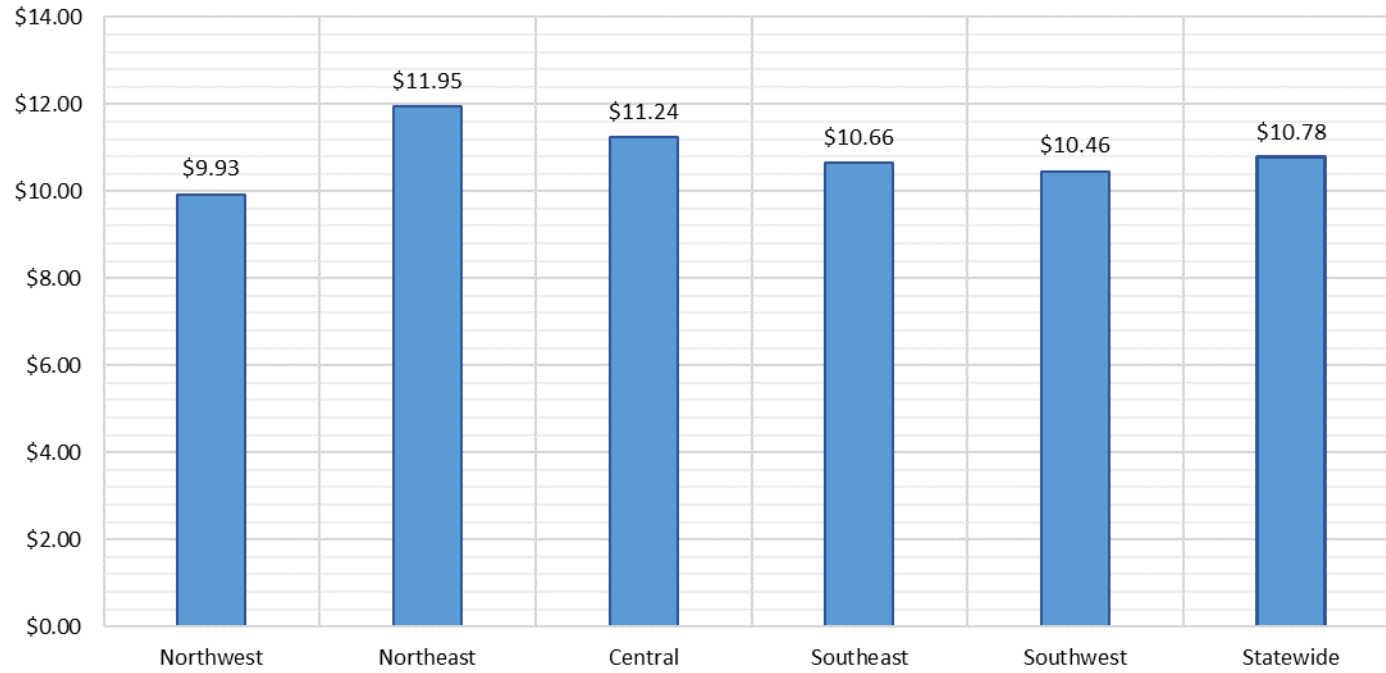


**NM Works Activity Placements on May 31, 2020  
as reported by SL Start<sup>14</sup>**

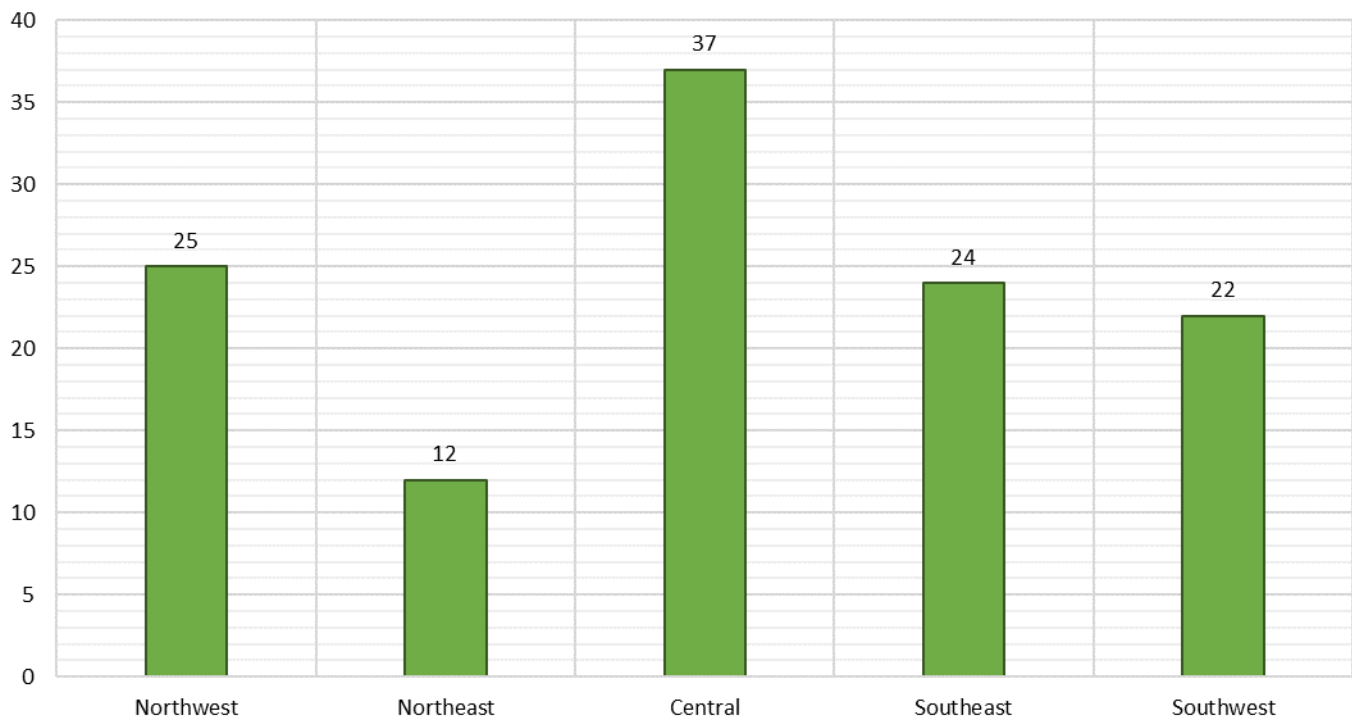


Employment, Vocational Training and Community Service and Work Experience might be reduced due to COVID 19 circumstances.

Average Starting Hourly Wage of May 2020 TANF Employments  
as reported by SL Start<sup>15</sup>



Number of New Employments in May 2020 by Region  
as reported by SL Start<sup>15</sup>  
Statewide Total: 120



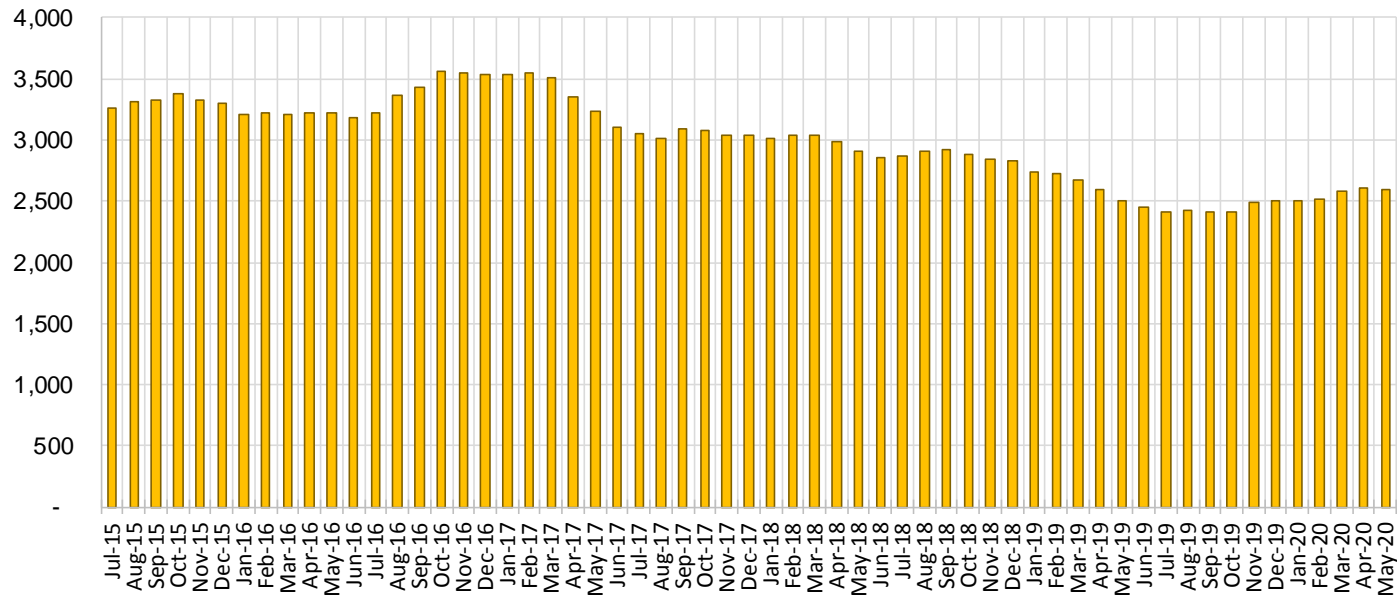
## General Assistance Cases by Field Office<sup>6</sup>

Office				Percent Change	
	May-19	Apr-20	May-20	May-19- May-20	Apr-20- May-20
Chaves County ISD	96	119	116	20.83%	-2.52%
Cibola County ISD	47	40	41	-12.77%	2.50%
Colfax County ISD	18	21	20	11.11%	-4.76%
Curry County ISD	86	96	94	9.30%	-2.08%
East Dona Ana County ISD	103	99	100	-2.91%	1.01%
Eddy Artesia County ISD	28	28	28	0.00%	0.00%
Eddy Carlsbad County ISD	50	60	56	12.00%	-6.67%
Grant County ISD	66	76	76	15.15%	0.00%
Guadalupe County ISD	12	7	7	-41.67%	0.00%
Hidalgo County ISD	0	0	0	N/A	N/A
Lea County ISD	69	69	67	-2.90%	-2.90%
Lincoln County ISD	29	31	28	-3.45%	-9.68%
Luna County ISD	53	55	55	3.77%	0.00%
McKinley County ISD	48	60	65	35.42%	8.33%
Northeast Bernalillo County ISD	252	239	239	-5.16%	0.00%
Northwest Bernalillo County ISD	242	238	240	-0.83%	0.84%
Otero County ISD	61	66	63	3.28%	-4.55%
Quay County ISD	29	30	29	0.00%	-3.33%
Rio Arriba County ISD	68	73	71	4.41%	-2.74%
Roosevelt County ISD	0	0	0	N/A	N/A
San Juan County ISD	122	138	143	17.21%	3.62%
San Miguel County ISD	69	59	54	-21.74%	-8.47%
Sandoval County ISD	81	80	80	-1.23%	0.00%
Santa Fe County ISD	100	93	95	-5.00%	2.15%
Sierra County ISD	30	43	44	46.67%	2.33%
Socorro County ISD	41	41	42	2.44%	2.44%
South Dona Ana ISD	50	60	48	-4.00%	-20.00%
Southeast Bernalillo County ISD	142	131	134	-5.63%	2.29%
Southwest Bernalillo County ISD	180	200	208	15.56%	4.00%
Taos County ISD	31	34	34	9.68%	0.00%
Torrance County ISD	52	46	45	-13.46%	-2.17%
Valencia North County ISD	87	91	90	3.45%	-1.10%
Valencia South County ISD	0	0	0	N/A	N/A
West Dona Ana County ISD	162	179	178	9.88%	-0.56%
Centralized Units	0	0	0	N/A	N/A
Statewide Total	2,504	2,602	2,590	3.43%	-0.46%

## General Assistance Cases by Region<sup>6</sup>

Region	May-19	Apr-20	May-20	Percent Change	
				May-19- May-20	Apr-20-May- 20
Region 1 - NW	375	413	425	13.33%	2.91%
Region 2 - NE	408	397	390	-4.41%	-1.76%
Region 3 - Central	868	854	866	-0.23%	1.41%
Region 4 - SE	358	403	389	8.66%	-3.47%
Region 5 - SW	495	535	520	5.05%	-2.80%
Centralized Units	0	0	0	N/A	N/A
<b>Statewide Total</b>	<b>2,504</b>	<b>2,602</b>	<b>2,590</b>	<b>3.43%</b>	<b>-0.46%</b>

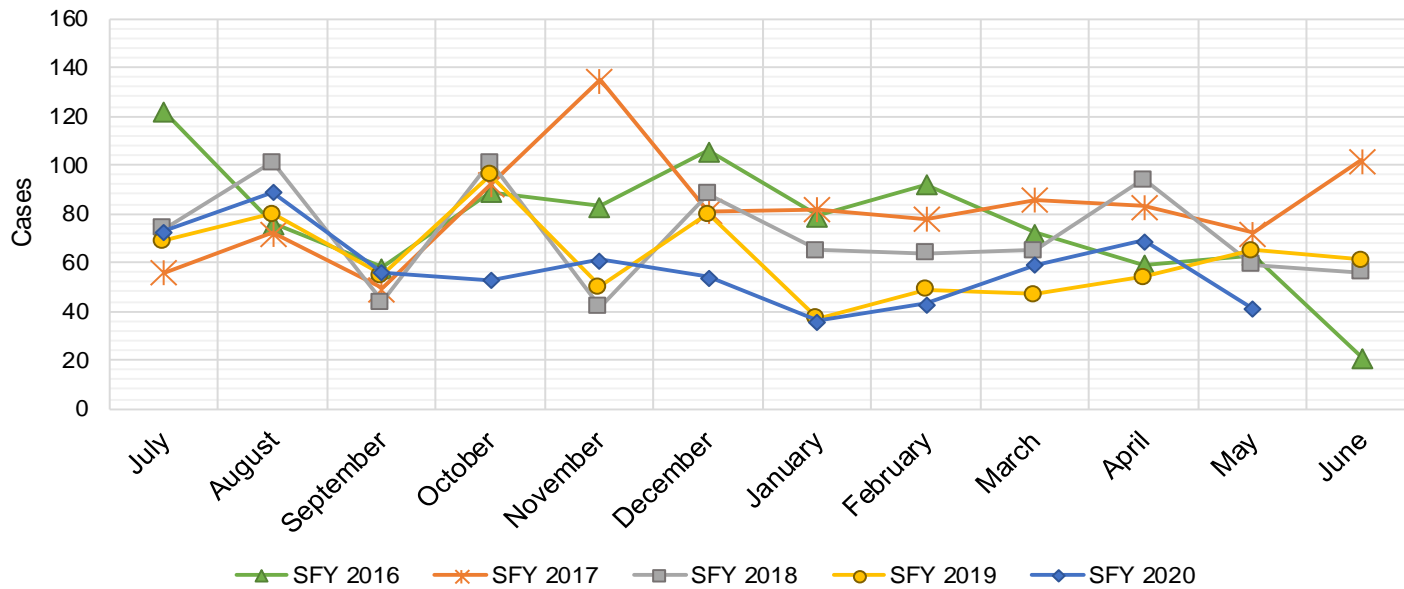
## General Assistance Caseload: SFY-16 to Current





## General Assistance Interim Assistance Reimbursements<sup>16</sup>

SFY 2016			SFY 2017			SFY 2018			SFY 2019			SFY 2020		
	Cases	Expenditures		Cases	Expenditures		Cases	Expenditures		Cases	Expenditures		Cases	Expenditures
Jul-15	122	\$342,648	Jul-16	56	\$164,970	Jul-17	74	\$241,438	Jul-18	69	\$228,333	Jul-19	73	\$303,584
Aug-15	76	\$245,236	Aug-16	72	\$223,182	Aug-17	101	\$339,301	Aug-18	80	\$241,292	Aug-19	89	\$310,047
Sep-15	58	\$170,093	Sep-16	49	\$158,027	Sep-17	44	\$131,229	Sep-18	55	\$188,192	Sep-19	56	\$172,016
Oct-15	89	\$277,912	Oct-16	92	\$257,830	Oct-17	101	\$335,752	Oct-18	96	\$298,502	Oct-19	53	\$168,461
Nov-15	83	\$238,948	Nov-16	135	\$402,305	Nov-17	42	\$139,572	Nov-18	50	\$148,641	Nov-19	61	\$171,883
Dec-15	106	\$388,102	Dec-16	81	\$227,569	Dec-17	88	\$245,453	Dec-18	80	\$246,422	Dec-19	54	\$164,045
Jan-16	79	\$239,263	Jan-17	82	\$274,050	Jan-18	65	\$258,239	Jan-19	37	\$106,081	Jan-20	36	\$96,668
Feb-16	92	\$296,332	Feb-17	78	\$227,569	Feb-18	64	\$195,815	Feb-19	49	\$119,300	Feb-20	43	\$126,743
Mar-16	72	\$254,360	Mar-17	86	\$278,219	Mar-18	65	\$172,188	Mar-19	47	\$137,296	Mar-20	59	\$169,363
Apr-16	59	\$208,631	Apr-17	83	\$267,187	Apr-18	94	\$312,340	Apr-19	54	\$173,772	Apr-20	69	\$199,975
May-16	63	\$182,241	May-17	72	\$232,836	May-18	59	\$155,406	May-19	65	\$237,979	May-20	41	\$129,317
Jun-16	21	\$51,760	Jun-17	102	\$306,228	Jun-18	56	\$159,268	Jun-19	61	\$214,497	Jun-20		
TOTAL	920	\$2,895,525	988	\$3,019,972	853	\$2,686,001	743	\$2,340,307	634	\$2,012,104				
AVERAGE	77	\$241,294	82	\$251,664	71	\$223,833	62	\$195,026	58	\$182,919				



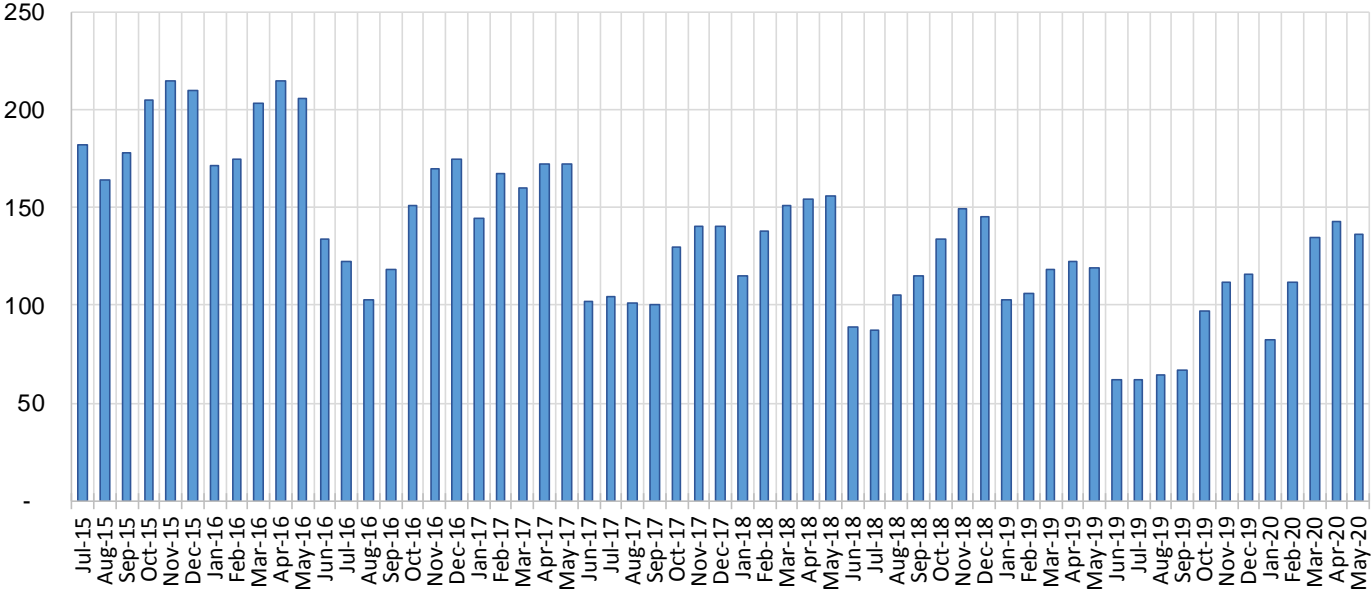
## Education Works Cases by Field Office<sup>6</sup>

Office				Percent Change	
	May-19	Apr-20	May-20	May-19- May-20	Apr-20- May-20
Chaves County ISD	1	5	4	300.0%	-20.0%
Cibola County ISD	1	1	1	0.0%	0.0%
Colfax County ISD	0	0	0	N/A	N/A
Curry County ISD	5	11	11	120.0%	0.0%
East Dona Ana County ISD	13	10	10	-23.1%	0.0%
Eddy Artesia County ISD	2	1	1	-50.0%	0.0%
Eddy Carlsbad County ISD	2	1	1	-50.0%	0.0%
Grant County ISD	3	2	2	-33.3%	0.0%
Guadalupe County ISD	0	0	0	N/A	N/A
Hidalgo County ISD	0	0	0	N/A	N/A
Lea County ISD	1	2	2	100.0%	0.0%
Lincoln County ISD	0	0	0	N/A	N/A
Luna County ISD	2	2	2	0.0%	0.0%
McKinley County ISD	0	1	1	N/A	0.0%
Northeast Bernalillo County ISD	9	9	10	11.1%	11.1%
Northwest Bernalillo County ISD	10	18	16	60.0%	-11.1%
Otero County ISD	1	0	0	-100.0%	N/A
Quay County ISD	0	0	0	N/A	N/A
Rio Arriba County ISD	0	3	3	N/A	0.0%
Roosevelt County ISD	0	0	0	N/A	N/A
San Juan County ISD	4	3	2	-50.0%	-33.3%
San Miguel County ISD	3	4	3	0.0%	-25.0%
Sandoval County ISD	11	11	10	-9.1%	-9.1%
Santa Fe County ISD	11	8	7	-36.4%	-12.5%
Sierra County ISD	1	1	1	0.0%	0.0%
Socorro County ISD	0	0	0	N/A	N/A
South Dona Ana ISD	12	6	6	-50.0%	0.0%
Southeast Bernalillo County ISD	6	11	10	66.7%	-9.1%
Southwest Bernalillo County ISD	7	10	10	42.9%	0.0%
Taos County ISD	0	0	0	N/A	N/A
Torrance County ISD	0	2	2	N/A	0.0%
Valencia North County ISD	1	2	2	100.0%	0.0%
Valencia South County ISD	0	0	0	N/A	N/A
West Dona Ana County ISD	13	19	19	46.2%	0.0%
Centralized Units	0	0	0	N/A	N/A
<b>Statewide Total</b>	<b>119</b>	<b>143</b>	<b>136</b>	<b>14.3%</b>	<b>-4.9%</b>

## Education Works Cases by Region<sup>6</sup>

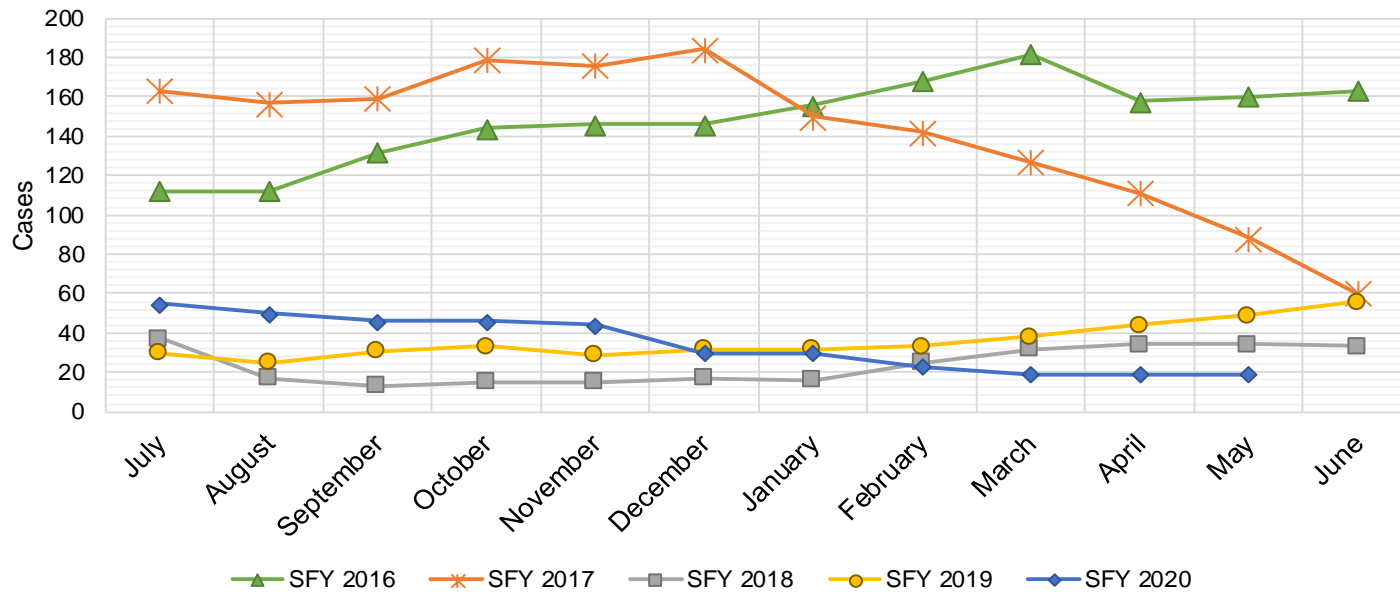
				Percent Change	
Region	May-19	Apr-20	May-20	May-19- May-20	Apr-20- May-20
Region 1 - NW	7	8	7	0.00%	-12.50%
Region 2 - NE	25	26	23	-8.00%	-11.54%
Region 3 - Central	32	50	48	50.00%	-4.00%
Region 4 - SE	11	20	19	72.73%	-5.00%
Region 5 - SW	44	39	39	-11.36%	0.00%
Centralized Units	0	0	0	N/A	N/A
Statewide Total	119	143	136	14.29%	-4.90%

**Education Works Caseload: SFY-16 to Current**



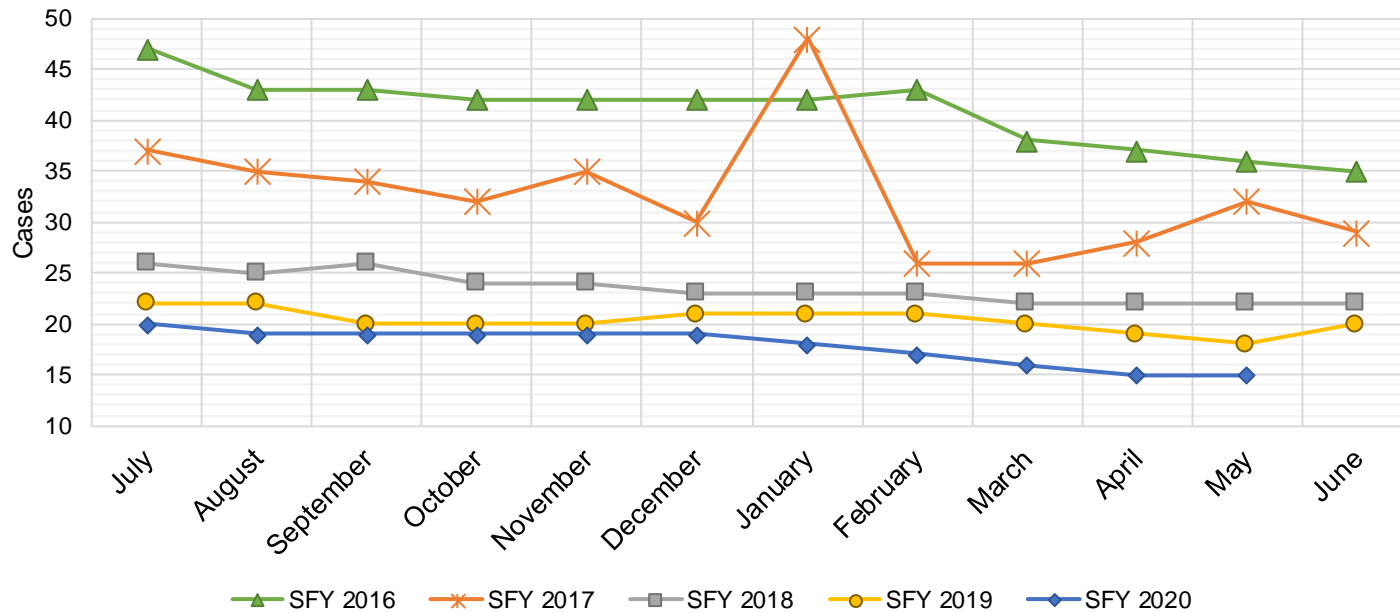
## Refugee Cash Assistance

SFY 2016 <sup>8,12,9</sup>			SFY 2017 <sup>8,9</sup>			SFY 2018 <sup>8,9</sup>			SFY 2019 <sup>8,9</sup>			SFY 2020 <sup>8,9</sup>		
	Cases	Expenditures		Cases	Expenditures		Cases	Expenditures		Cases	Expenditures		Cases	Expenditures
Jul-15	112	\$27,516	Jul-16	163	\$39,756	Jul-17	37	\$9,981	Jul-18	30	\$7,408	Jul-19	55	\$13,851
Aug-15	112	\$27,438	Aug-16	157	\$40,115	Aug-17	17	\$4,704	Aug-18	25	\$6,434	Aug-19	50	\$12,497
Sep-15	132	\$31,321	Sep-16	159	\$39,359	Sep-17	13	\$3,159	Sep-18	31	\$6,947	Sep-19	46	\$11,473
Oct-15	144	\$36,153	Oct-16	179	\$41,520	Oct-17	15	\$3,543	Oct-18	33	\$6,323	Oct-19	46	\$11,341
Nov-15	146	\$36,515	Nov-16	176	\$45,434	Nov-17	15	\$4,263	Nov-18	29	\$7,036	Nov-19	44	\$11,296
Dec-15	146	\$35,763	Dec-16	184	\$46,673	Dec-17	17	\$4,795	Dec-18	32	\$7,300	Dec-19	30	\$7,679
Jan-16	156	\$38,686	Jan-17	150	\$38,790	Jan-18	16	\$4,166	Jan-19	32	\$7,418	Jan-20	30	\$7,407
Feb-16	168	\$41,368	Feb-17	142	\$37,956	Feb-18	25	\$5,723	Feb-19	33	\$8,591	Feb-20	23	\$7,577
Mar-16	182	\$45,307	Mar-17	127	\$33,066	Mar-18	32	\$7,636	Mar-19	38	\$9,165	Mar-20	19	\$6,500
Apr-16	158	\$41,143	Apr-17	111	\$29,183	Apr-18	34	\$8,827	Apr-19	44	\$10,648	Apr-20	19	\$4,847
May-16	160	\$38,332	May-17	88	\$23,343	May-18	34	\$8,939	May-19	49	\$11,823	May-20	19	\$4,908
Jun-16	163	\$39,856	Jun-17	60	\$15,538	Jun-18	33	\$8,513	Jun-19	56	\$13,558	Jun-20		
<b>TOTAL</b>	<b>1,779</b>	<b>\$439,397</b>	<b>1,696</b>	<b>\$430,732</b>	<b>288</b>	<b>\$74,249</b>	<b>432</b>	<b>\$102,651</b>	<b>381</b>	<b>\$99,376</b>				
<b>AVERAGE</b>	<b>148</b>	<b>\$36,616</b>	<b>141</b>	<b>\$35,894</b>	<b>24</b>	<b>\$6,187</b>	<b>36</b>	<b>\$8,554</b>	<b>35</b>	<b>\$9,034</b>				



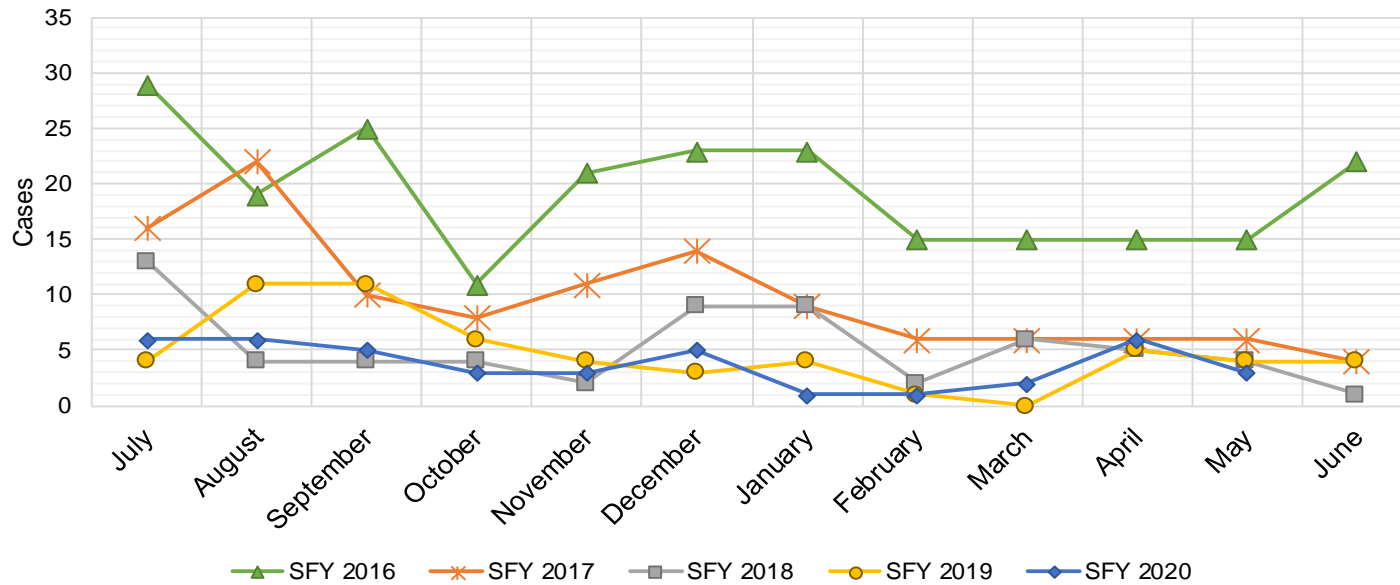
## State Supplement for Residential Care

SFY 2016 <sup>12,9</sup>			SFY 2017 <sup>9</sup>			SFY 2018 <sup>9</sup>			SFY 2019 <sup>9</sup>			SFY 2020 <sup>9</sup>		
Cases	Expenditures		Cases	Expenditures		Cases	Expenditures		Cases	Expenditures		Cases	Expenditures	
Jul-15	47	\$4,700	Jul-16	37	\$3,700	Jul-17	26	\$2,700	Jul-18	22	\$2,200	Jul-19	20	\$1,900
Aug-15	43	\$4,900	Aug-16	35	\$3,500	Aug-17	25	\$2,500	Aug-18	22	\$2,200	Aug-19	19	\$1,900
Sep-15	43	\$4,500	Sep-16	34	\$3,400	Sep-17	26	\$2,700	Sep-18	20	\$2,000	Sep-19	19	\$1,900
Oct-15	42	\$4,400	Oct-16	32	\$3,200	Oct-17	24	\$2,500	Oct-18	20	\$2,000	Oct-19	19	\$1,900
Nov-15	42	\$4,200	Nov-16	35	\$3,500	Nov-17	24	\$2,400	Nov-18	20	\$2,000	Nov-19	19	\$1,900
Dec-15	42	\$4,200	Dec-16	30	\$3,000	Dec-17	23	\$2,200	Dec-18	21	\$2,100	Dec-19	19	\$1,900
Jan-16	42	\$4,200	Jan-17	48	\$4,800	Jan-18	23	\$2,400	Jan-19	21	\$2,000	Jan-20	18	\$1,800
Feb-16	43	\$4,300	Feb-17	26	\$2,600	Feb-18	23	\$2,300	Feb-19	21	\$2,200	Feb-20	17	\$1,600
Mar-16	38	\$3,800	Mar-17	26	\$2,600	Mar-18	22	\$2,400	Mar-19	20	\$1,900	Mar-20	16	\$1,500
Apr-16	37	\$3,700	Apr-17	28	\$2,800	Apr-18	22	\$2,200	Apr-19	19	\$1,800	Apr-20	15	\$1,500
May-16	36	\$3,600	May-17	32	\$3,200	May-18	22	\$2,200	May-19	18	\$1,800	May-20	15	\$1,500
Jun-16	35	\$3,500	Jun-17	29	\$2,900	Jun-18	22	\$2,200	Jun-19	20	\$2,000	Jun-20		
<b>TOTAL</b>	<b>490</b>	<b>\$50,000</b>	<b>392</b>	<b>\$39,200</b>		<b>282</b>	<b>\$28,700</b>		<b>244</b>	<b>\$24,200</b>		<b>196</b>	<b>\$19,300</b>	
<b>AVERAGE</b>	<b>41</b>	<b>\$4,167</b>	<b>33</b>	<b>\$3,267</b>		<b>24</b>	<b>\$2,392</b>		<b>20</b>	<b>\$2,017</b>		<b>18</b>	<b>\$1,755</b>	



## TANF Diversion Payments

SFY 2016 <sup>12,9</sup>			SFY 2017 <sup>9</sup>			SFY 2018 <sup>9</sup>			SFY 2019 <sup>9</sup>			SFY 2020 <sup>9</sup>		
	Cases	Expenditures		Cases	Expenditures		Cases	Expenditures		Cases	Expenditures		Cases	Expenditures
Jul-15	29	\$62,074	Jul-16	16	\$30,843	Jul-17	13	\$26,500	Jul-18	4	\$3,000	Jul-19	6	\$18,500
Aug-15	19	\$33,584	Aug-16	22	\$42,731	Aug-17	4	\$12,000	Aug-18	11	\$18,583	Aug-19	6	\$16,500
Sep-15	25	\$47,977	Sep-16	10	\$21,000	Sep-17	4	\$4,000	Sep-18	11	\$20,999	Sep-19	5	\$11,000
Oct-15	11	\$20,500	Oct-16	8	\$16,744	Oct-17	4	\$16,000	Oct-18	6	\$10,499	Oct-19	3	\$3,000
Nov-15	21	\$45,500	Nov-16	11	\$24,500	Nov-17	2	\$15,500	Nov-18	4	\$7,499	Nov-19	3	\$16,180
Dec-15	23	\$45,389	Dec-16	14	\$26,611	Dec-17	9	\$17,500	Dec-18	3	\$2,499	Dec-19	5	\$14,000
Jan-16	23	\$41,874	Jan-17	9	\$18,500	Jan-18	9	\$21,731	Jan-19	4	\$5,999	Jan-20	1	\$1,500
Feb-16	15	\$28,500	Feb-17	6	\$12,000	Feb-18	2	\$7,731	Feb-19	1	\$1,678	Feb-20	1	\$1,857
Mar-16	15	\$27,008	Mar-17	6	\$11,000	Mar-18	6	\$8,496	Mar-19	0	\$3,000	Mar-20	2	\$5,920
Apr-16	15	\$31,389	Apr-17	6	\$12,000	Apr-18	5	\$13,500	Apr-19	5	\$6,500	Apr-20	6	\$14,905
May-16	15	\$31,916	May-17	6	\$11,500	May-18	4	\$12,500	May-19	4	\$16,000	May-20	3	\$8,000
Jun-16	22	\$43,000	Jun-17	4	\$13,500	Jun-18	1	\$5,389	Jun-19	4	\$8,000	Jun-20		
<b>TOTAL</b>	<b>233</b>	<b>\$458,711</b>		<b>118</b>	<b>\$240,929</b>		<b>63</b>	<b>\$160,847</b>		<b>57</b>	<b>\$104,256</b>		<b>41</b>	<b>\$111,362</b>
<b>AVERAGE</b>	<b>19</b>	<b>\$38,226</b>		<b>10</b>	<b>\$20,077</b>		<b>5</b>	<b>\$13,404</b>		<b>5</b>	<b>\$8,688</b>		<b>4</b>	<b>\$10,124</b>



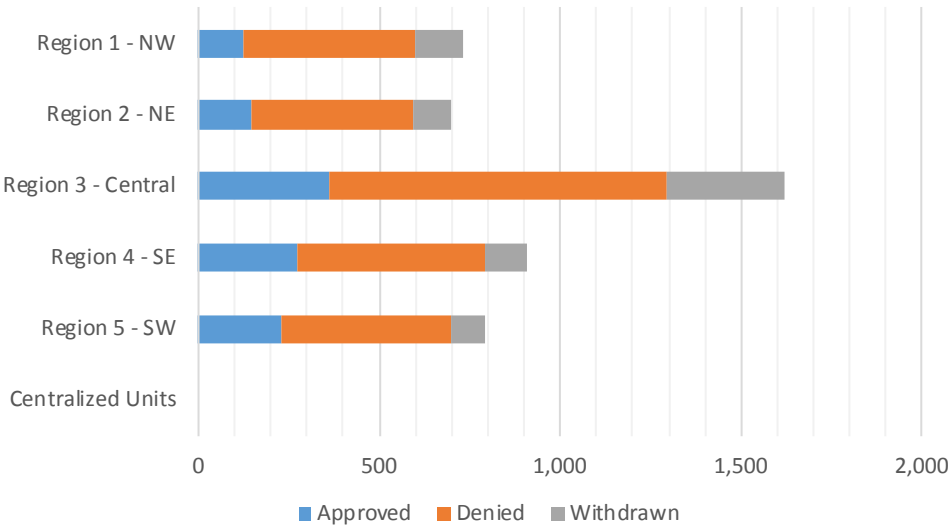
**Cash Assistance Applications by Field Office<sup>4,11</sup>**  
**May 2020**

Office	Approved	Denied	Withdrawn	Total Cases Processed
Chaves County ISD	74	134	28	236
Cibola County ISD	13	34	7	54
Colfax County ISD	9	18	1	28
Curry County ISD	65	99	28	192
East Dona Ana County ISD	57	114	32	203
Eddy Artesia County ISD	19	38	5	62
Eddy Carlsbad County ISD	23	67	18	108
Grant County ISD	26	47	11	84
Guadalupe County ISD	2	9	2	13
Hidalgo County ISD	0	0	0	0
Lea County ISD	76	157	26	259
Lincoln County ISD	15	26	8	49
Luna County ISD	17	26	8	51
McKinley County ISD	10	61	30	101
Northeast Bernalillo County ISD	92	328	92	512
Northwest Bernalillo County ISD	81	236	125	442
Otero County ISD	33	93	19	145
Quay County ISD	11	25	6	42
Rio Arriba County ISD	21	61	18	100
Roosevelt County ISD	0	0	0	0
San Juan County ISD	47	253	65	365
San Miguel County ISD	14	50	9	73
Sandoval County ISD	41	102	30	173
Santa Fe County ISD	38	123	28	189
Sierra County ISD	9	18	3	30
Socorro County ISD	13	49	5	67
South Dona Ana ISD	35	42	22	99
Southeast Bernalillo County ISD	30	76	23	129
Southwest Bernalillo County ISD	134	264	72	470
Taos County ISD	13	58	9	80
Torrance County ISD	24	31	13	68
Valencia North County ISD	34	60	22	116
Valencia South County ISD	0	0	0	0
West Dona Ana County ISD	61	146	2	209
Centralized Units	0	0	0	0
<b>Statewide Total</b>	<b>1,137</b>	<b>2,845</b>	<b>767</b>	<b>4,749</b>

**Cash Assistance Applications by Region<sup>4,11</sup>**  
**May 2020**

Region	Approved	Denied	Withdrawn	Total Cases Processed
Region 1 - NW	126	475	132	733
Region 2 - NE	149	446	103	698
Region 3 - Central	361	935	325	1,621
Region 4 - SE	272	521	113	906
Region 5 - SW	229	468	94	791
Centralized Units	0	0	0	0

<b>Statewide Total</b>	<b>1,137</b>	<b>2,845</b>	<b>767</b>	<b>4,749</b>
------------------------	--------------	--------------	------------	--------------





**Children Youth and Families Department**  
**Children Receiving Child Care Assistance Subsidies By County**

County	May 2019	June 2019	July 2019	Aug 2019	Sept 2019	Oct 2019	Nov 2019	Dec 2019	Jan 2020	Feb 2020	Mar 2020	Apr 2020	May 2020	Change Fr. Last Year Cases	Percent
Bernalillo	8,226	8,692	7,702	7,885	8,295	7,690	7,759	7,591	7,673	7,779	7,975	8,683	8,506	280	3.4%
Catron	0	0	0	0	0	0	0	0	0	0	0	0	0	0	0.0%
Chaves	868	875	830	824	886	811	891	827	835	830	830	911	918	50	5.8%
Cibola	286	292	283	277	275	250	238	247	224	226	227	271	263	-23	-8.0%
Colfax	50	44	38	40	33	43	34	31	32	32	26	28	29	-21	-42.0%
Curry	542	590	597	613	625	563	596	587	605	613	600	669	668	126	23.2%
De Baca	1	1	1	1	1	1	1	1	0	0	0	0	0	-1	-100.0%
Dona Ana	4,536	4,751	4,360	4,384	4,575	4,429	4,493	4,348	4,350	4,313	4,388	4,806	4,691	155	3.4%
Eddy	225	240	240	226	224	244	239	234	225	227	231	235	233	8	3.6%
Grant	130	136	133	115	157	138	133	145	143	146	132	159	157	27	20.8%
Guadalupe	11	11	10	10	10	7	7	7	7	7	8	9	8	-3	-27.3%
Harding	0	0	0	0	0	0	0	0	0	0	0	0	0	0	0.0%
Hidalgo	27	27	27	27	26	21	28	28	28	27	24	23	20	-7	-25.9%
Lea	808	798	770	752	761	770	753	741	736	785	767	828	839	31	3.8%
Lincoln	100	104	103	103	108	101	97	86	89	89	88	100	99	-1	-1.0%
Los Alamos	40	40	37	37	47	38	42	40	42	38	37	48	48	8	20.0%
Luna	190	191	172	160	173	160	148	155	158	163	164	196	216	26	13.7%
McKinley	158	169	146	141	165	176	172	172	170	171	166	185	169	11	7.0%
Mora	13	9	9	10	12	12	11	11	11	11	12	13	12	-1	-7.7%
Otero	506	530	499	538	547	488	510	501	506	511	520	578	592	86	17.0%
Out of State	0	1	0	0	0	0	0	0	0	0	0	0	0	0	0.0%
Quay	33	38	34	38	37	33	34	35	32	34	37	42	41	8	24.2%
Rio Arriba	151	155	158	151	150	147	153	155	152	153	149	160	155	4	2.6%
Roosevelt	119	130	129	138	148	140	134	133	131	132	131	146	178	59	49.6%
San Juan	966	961	905	897	1,018	932	926	958	928	951	979	1,231	1,252	286	29.6%
San Miguel	349	373	363	357	363	375	356	353	349	361	373	412	403	54	15.5%
Sandoval	751	802	765	806	827	783	803	770	738	765	736	897	902	151	20.1%
Santa Fe	520	541	557	562	606	534	567	537	533	522	537	601	616	96	18.5%
Sierra	40	50	48	47	58	54	56	63	61	52	55	67	67	27	67.5%
Socorro	54	57	53	53	59	54	53	48	43	40	41	46	46	-8	-14.8%
Taos	125	136	138	149	135	118	125	126	126	117	139	156	149	24	19.2%
Torrance	67	82	68	67	73	57	57	63	68	63	71	78	86	19	28.4%
Union	3	4	3	3	3	3	3	3	3	3	3	3	3	0	0.0%
Valencia	607	656	559	569	625	602	595	573	564	533	547	628	620	13	2.1%
<b>Totals</b>	<b>20,502</b>	<b>21,486</b>	<b>19,737</b>	<b>19,980</b>	<b>21,022</b>	<b>19,774</b>	<b>20,014</b>	<b>19,569</b>	<b>19,562</b>	<b>19,694</b>	<b>19,993</b>	<b>22,209</b>	<b>21,986</b>	<b>1,484</b>	<b>7.2%</b>

# CHILDREN YOUTH AND FAMILIES DEPARTMENT

## CHILD CARE ASSISTANCE ELIGIBILITY PROGRAMS

MONTH	June'19	July'19	Aug'19	Sept'19	Oct'19	Nov'19	Dec'19	Jan'20	Feb'20	Mar'20	Apr'20	May'20
<b>TANF (Child Care Priority 1 Clients)</b>												
CLIENTS	2,253	2,054	2,033	2,165	2,053	2,120	2,055	2,030	2,001	2,031	2,005	1,941
COST	\$1,305,024	\$1,273,209	\$1,263,930	\$1,184,381	\$1,233,005	\$1,284,683	\$1,239,407	\$1,257,977	\$1,195,404	\$1,280,286	\$1,306,318	\$1,304,392
TANF AVERAGE COST	\$579	\$620	\$622	\$547	\$601	\$606	\$603	\$620	\$597	\$630	\$652	\$672
<b>TRANSITION OFF TANF (Child Care Priority 2 Clients)</b>												
CLIENTS	112	120	132	163	166	167	178	196	209	209	223	211
COST	\$74,593	\$74,688	\$88,189	\$90,271	\$107,532	\$107,596	\$111,325	\$120,862	\$136,239	\$127,986	\$144,617	\$142,374
TRAN OFF TANF AVG COST	\$666	\$622	\$668	\$554	\$648	\$644	\$625	\$617	\$652	\$612	\$649	\$675
<b>TANF ELIGIBLE (Child Care Priority 1B Clients at or below 100% of the Federal Poverty Level)</b>												
CLIENTS	8,777	8,104	8,220	8,523	8,152	8,135	7,830	7,697	7,671	7,857	7,797	7,634
COST	\$5,047,497	\$4,909,110	\$5,038,735	\$4,665,509	\$4,833,260	\$4,922,197	\$4,694,761	\$4,551,874	\$4,539,530	\$4,868,148	\$4,955,752	\$5,017,736
TANF ELIGIBLE AVG COST	\$575	\$606	\$613	\$547	\$593	\$605	\$600	\$591	\$592	\$620	\$636	\$657
<b>INCOME ELIGIBLE (Child Care Priority 3, and Priority 4 Clients )</b>												
CLIENTS	9,149	8,313	8,429	9,032	8,410	8,595	8,520	8,701	8,848	8,978	10,600	10,131
COST	\$4,693,955	\$4,573,196	\$4,729,292	\$4,390,092	\$4,436,376	\$4,557,011	\$4,488,101	\$4,573,609	\$4,700,981	\$4,891,611	\$10,456,494	\$10,002,092
INCOME ELIG AVG COST	\$513	\$550	\$561	\$486	\$528	\$530	\$527	\$526	\$531	\$545	\$986	\$987
<b>AT-RISK CHILD PROTECTIVE SERVICES CHILD CARE PILOT (Priority 5 Clients)</b>												
CLIENTS	321	297	270	240	232	200	187	190	182	144	829	1,379
COST	\$206,998	\$200,185	\$201,432	\$161,487	\$162,255	\$159,520	\$137,644	\$145,544	\$136,364	\$99,487	\$357,417	\$941,656
CPS AVG COST	\$645	\$674	\$746	\$673	\$699	\$798	\$736	\$766	\$749	\$691	\$431	\$683
<b>CHILD PROTECTIVE SERVICES (Child Care CPS Clients)</b>												
CLIENTS	874	849	896	899	761	797	799	748	783	774	755	689
COST	\$612,880	\$608,184	\$644,539	\$597,788	\$520,249	\$583,911	\$539,629	\$501,038	\$520,094	\$547,029	\$490,287	\$633,230
CPS AVG COST	\$701	\$716	\$719	\$665	\$684	\$733	\$675	\$670	\$664	\$707	\$649	\$919
<b>GRAND TOTAL - ALL CHILD CARE PROGRAMS</b>												
CLIENTS	21,486	19,737	19,980	21,022	19,774	20,014	19,569	19,562	19,694	19,993	22,209	21,986
COST	\$11,940,948	\$11,638,571	\$11,966,117	\$11,089,528	\$11,292,678	\$11,614,917	\$11,210,867	\$11,150,904	\$11,228,612	\$11,814,547	\$17,710,886	\$18,041,480
ALL PROGRAMS AVG COST	\$556	\$590	\$599	\$528	\$571	\$580	\$573	\$570	\$570	\$591	\$797	\$821

## SNAP Emergency Allotment and Pandemic EBT: Expenditures, Cases, and Recipients

Note: Pandemic EBT will start to be issued in May 2020

Date	Expenditures		Cases		Recipients	
	Pandemic EBT	Emergency Allotment	Pandemic EBT	Emergency Allotment	Pandemic EBT	Emergency Allotment
Apr-20	—	\$50,524,646	—	158,060	—	340,960
May-20	\$24,456,957	\$24,802,215	247,857	68,815	137,797	44,236
Jun-20						
Jul-20						
Aug-20						
Sep-20						
Oct-20						
Nov-20						
Dec-20						
<b>Total to Date</b>	<b>\$24,456,957</b>	<b>\$75,326,861</b>				

## Income Eligibility Guidelines: October 1, 2019 - September 30, 2020

### Federal Poverty Guidelines (FPG) Monthly Income Standards

Supplemental Nutrition Program (SNAP)					
Household Size	100% FPG Net Income	130% FPG Gross Income	165% FPG Gross Income for Categorical Eligibility	Maximum SNAP Monthly Allotment	LIHEAP 150% FPG
1	\$1,041	\$1,354	\$1,718	\$194	\$1,561
2	\$1,410	\$1,832	\$2,326	\$355	\$2,114
3	\$1,778	\$2,311	\$2,933	\$509	\$2,666
4	\$2,146	\$2,790	\$3,541	\$646	\$3,219
5	\$2,515	\$3,269	\$4,149	\$768	\$3,771
6	\$2,883	\$3,748	\$4,757	\$921	\$4,324
7	\$3,251	\$4,227	\$5,364	\$1,018	\$4,876
8	\$3,620	\$4,705	\$5,972	\$1,164	\$5,429
+1	+\$369	+\$479	+\$608	+\$146	+\$553
Minimum Allotment of \$16 effective from 10/1/2019 - 9/30/2020					
DEDUCTIONS: Standard Deduction: For HH size 1-3 = \$167; 4 = \$178; 5 = \$209; 6 or more = \$240; Excess Shelter Deduction Limit: \$569; Heating and Cooling Standard Utility Allowance: \$340 (HCSUA) – Limited Utility Allowance: \$ 136 (LUA); Telephone Standard: \$44; Dependent Care: Actual Amount (No Limit); Earned Income Deduction: 20%; Homeless Shelter Standard: \$152.06, LIHEAP (only) Energy Standard Allowance (ESA): \$204					

CASH Assistance & Support Services				
Household Size	Federal Poverty Guidelines (FPG) Monthly Income Standards		Maximum Monthly Benefit	
	100% FPG Net Income	85% FPG Gross Limit	New Mexico Works Cash Assistance	General Assistance
1	\$1,041	\$885	\$266	\$245
2	\$1,410	\$1,199	\$357	\$329
3	\$1,778	\$1,511	\$447	\$412
4	\$2,146	\$1,824	\$539	\$496
5	\$2,515	\$2,138	\$630	\$580
6	\$2,883	\$2,451	\$721	\$664
7	\$3,251	\$2,763	\$812	\$748
8	\$3,620	\$3,077	\$922	\$849
+1	+\$369	+\$314	+\$91	+\$84
Deductions- Dependent Care: For a child under age 2 = \$200; For a child age 2 and over = \$175. Work Incentives- Earned Income Disregard: Single parent = \$125 & ½ remainder; Two parent = \$225 & ½ remainder.				

ISD 017 Revised 11/26/2019

<b>Medical Assistance Division</b>					
Federal Poverty Guidelines New Mexico Affordable Care Eligibility Groups Effective April 01, 2020 thru March 31, 2021 <b>Monthly Guidelines</b>					
HH SIZE	PERCENT OF POVERTY				
	138%	190%	240%	250%	300%
1	\$1,468	\$2,021	\$2,552	\$2,659	\$3,190
2	\$1,983	\$2,730	\$3,449	\$3,592	\$4,311
3	\$2,498	\$3,439	\$4,344	\$4,525	\$5,430
4	\$3,013	\$4,149	\$5,240	\$5,459	\$6,550
5	\$3,529	\$4,858	\$6,137	\$6,392	\$7,671
6	\$4,044	\$5,567	\$7,032	\$7,325	\$8,790
7	\$4,559	\$6,277	\$7,928	\$8,259	\$9,910
8	\$5,074	\$6,986	\$8,825	\$9,192	\$11,031
138% Adult Expansion, 190% Children ages 6 to 19 (Medicaid), 240% Children ages 0 to 6 (Medicaid); ages 6 to 19 (CHIP), 250% Pregnancy Related Services Only, 300% Children 0 to 6 (CHIP)					

<b>Medical Assistance Division</b>					
Federal Poverty Guidelines New Mexico Affordable Care Eligibility Groups Effective April 01, 2020 thru March 31, 2021 <b>Annual Guidelines</b>					
HH SIZE	PERCENT OF POVERTY				
	138%	190%	240%	250%	300%
1	\$17,616	\$24,252	\$30,624	\$31,908	\$38,280
2	\$23,796	\$32,760	\$41,388	\$43,104	\$51,732
3	\$29,976	\$41,268	\$52,128	\$54,300	\$65,160
4	\$36,156	\$49,788	\$62,880	\$65,508	\$78,600
5	\$42,348	\$58,296	\$73,644	\$76,704	\$92,052
6	\$48,528	\$66,804	\$84,384	\$87,900	\$105,480
7	\$54,708	\$75,324	\$95,136	\$99,108	\$118,920
8	\$60,888	\$83,832	\$105,900	\$110,304	\$132,372
138% Adult Expansion, 190% Children ages 6 to 19 (Medicaid), 240% Children ages 0 to 6 (Medicaid); ages 6 to 19 (CHIP), 250% Pregnancy Related Services Only, 300% Children 0 to 6 (CHIP)					

## References

<sup>1</sup> *Medicaid Expenditures* (Omnicaid, Medicare Buy-Ins, Lump Sum Payments)

<sup>2</sup> *ASPEN Business Intelligence Tool: Eligibility*

<sup>3</sup> New Mexico Human Services Department, *Medicaid Eligibility Reports*, Retrieved from <http://www.hsd.state.nm.us/LookingForInformation/medicaid-eligibility.aspx> (for reporting month)

<sup>4</sup> *ASPEN Business Intelligence Tool: Application Tracking*

<sup>5</sup> Fidelity Information Services, *EBT Daily Statistical Report* (for reporting month)

<sup>6</sup> *ASPEN Report DQ-180: Length of Time Cases are Open* (for reporting month)

<sup>7</sup> *ASPEN Report EY-180: Individual Demographics by State and Age* (for reporting month)

<sup>8</sup> *ASPEN Business Intelligence Tool: Benefit Issuance*

<sup>9</sup> Fidelity Information Services, *EBT Daily Statistical Reports* (Month End)

<sup>10</sup> *ASPEN Report EY-180R: Individual Demographics by State, Race, Ethnicity and Gender* (for reporting month)

<sup>11</sup> SQL Queries from ASPEN

<sup>12</sup> JP Morgan, *New Mexico – NM EBT System- Monthly Benefit Draw Down Totals*

<sup>13</sup> *ASPEN Business Intelligence Tool: Application Tracking* (w/Parameters: SNAP, Expedite, Approved)

<sup>14</sup> SL Start, *As of Today Report*

<sup>15</sup> SL Start, *Statewide Employment Report*

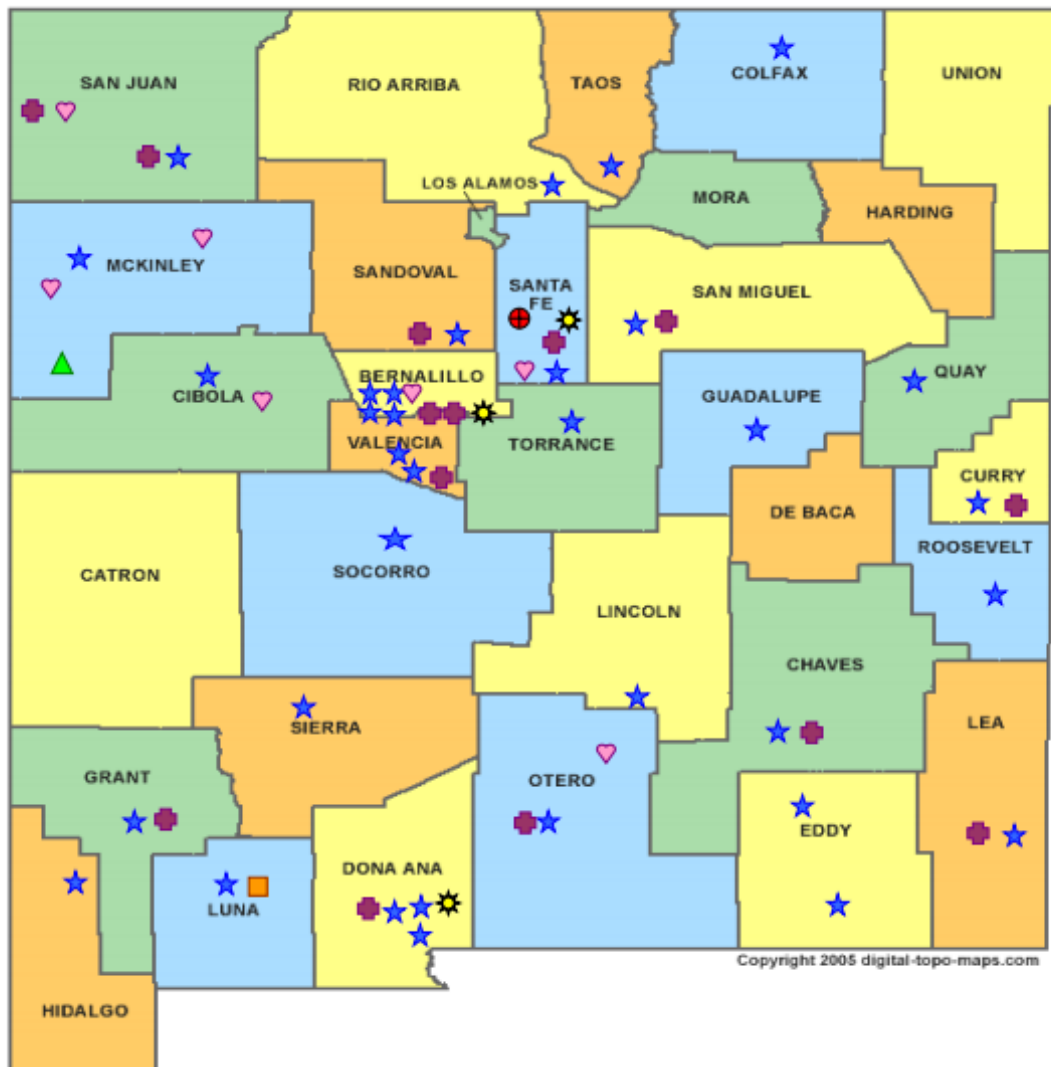
<sup>16</sup> *SSIAR Payments*

<sup>17</sup> Children, Youth, and Families Department, *Children Receiving Child Care Assistance Subsidies by County*

<sup>18</sup> Children, Youth, and Families Department, *Child Care Assistance Eligibility Programs*

<sup>19</sup> EDG is defined as an Eligibility Determination Group

<sup>20</sup>SQL Query from ASPEN



**HUMAN SERVICES**  
DEPARTMENT

New Mexico Human Services Department  
Field Offices

- Central Office (1)
- Income Support Division County Office (35)
- Income Support Division Satellite Office (2)
- Child Support Enforcement Regional Office (16)
- Child Support Enforcement Satellite Office (1)
- Indian Health Services (7)
- Hospital Site (3)

For a complete listing of field offices and other government and community resources:  
[http://www.hsd.state.nm.us/LookingForAssistance/Field\\_Offices\\_1.aspx](http://www.hsd.state.nm.us/LookingForAssistance/Field_Offices_1.aspx)



## Medicaid Policy Changes Due to COVID-19

### Already implemented:

1. **Three month renewal extensions**-MAGI Medicaid renewals are extended three months for individuals who fail to complete the 12-month recertification process after going through the automated administrative renewal process, the manual administrative renewal process, and issuance of the MAD 608 renewal form. Individuals who normally would have closed March 31, 2020 due to failure to recertify had their certification period extended through June 30, 2020. This same process will occur for April and May renewals. This may continue for later months if the emergency continues. Applies to non-MAGI Medicaid categories also that failed to recertify. Implemented in ASPEN on March 31st.

2. **Increase Presumptive Eligibility (PE) Determiner scope and qualified entities**-Most PE determiners are limited to approving PE for MAGI Children/CHIP and MAGI Pregnancy Services. Change was made to allow HSD employees to approve PE and to allow most PE determiners to approve all MAGI Medicaid categories of eligibility. Change was implemented on April 07, 2020.

3. **Reopen and Sustain Medicaid Cases**-The requirement is that anyone receiving Medicaid March 18th and ongoing for the duration of the emergency continue to be covered at the same level of coverage. There are three exceptions: client requested closure, deceased individuals, and moved out of state. April 2020 closures were reopened and sustained through July 31, 2020 and can be extended if the emergency continues. Implemented into ASPEN on April 26, 2020.

### In process (not implemented yet):

4. **Accept self-attestation for Medicaid**-Accept self-attestation for all factors of Medicaid except for citizenship/immigration. Process Medicaid applications for MAGI and non-MAGI categories based on self-attestation of 2 income and resources. Excludes IC/Waiver/PACE categories. For those cases not reasonably compatible approve and issue a 90 day HUMAD.

5. **New COVID-19 testing category**-This will be implemented in Omnicaid and not ASPEN. New uninsured category which will cover COVID-19 testing and related services. Applications will be sent to and processed by Conduent staff to allow for fee-for-service payments to providers for COVID-19 testing and related services.

6. **Exclusion of \$600 weekly unemployment benefit stimulus payments**-Medicaid excludes \$600 weekly unemployment benefit stimulus payments. ASPEN solution being developed across programs that treat the handling of unemployment monies differently as well as regular unemployment benefit extensions.

Cases closed for procedural reasons show low timeliness percentages due to the requirement to maintain Medicaid from March 18, 2020 for the duration of the COVID-19 emergency. To maintain Medicaid many March 2020 cases had to be reinstated manually by ISD field workers so there would not be a gap in coverage. To maintain Medicaid eligibility for April 2020 cases also required a manual reinstatement effort by ISD field workers as the ASPEN system fix to maintain Medicaid for the duration of the emergency still resulted in exceptions that had to be resolved manually.

## **SNAP Policy Changes During COVID-19**

### **1. Suspension of SNAP Employment and Training (E&T) Program**

- House of Representatives passed H.R. 6201, the Families First Coronavirus Response Act.
- ISD has chosen to suspend the SNAP E&T Program until further notice.
- interim policy and procedure for 8.139.410.13 NMAC “SUPPLEMENTAL NUTRITION ASSISTANCE PROGRAM (SNAP) EMPLOYMENT AND TRAINING PROGRAM (E&T).”

### **2. Amendment to Waiver - Interview Process for SNAP and TANF and Waiver - Recertification Waiver Process for SNAP, TANF, and Medicaid**

- FNS approved a blanket waiver for all states to utilize.
- Interim policy and procedures for the following:
  - General Operating Policies – Application 8.100.110 NMAC.
  - Interviews in accordance with 8.139.110.11 NMAC and 8.102.110 NMAC.
  - Interim Reports (IRs) in accordance with 8.139.120.9B NMAC. and 8.102.120.11C NMAC.
  - Recertifications in accordance with 8.139.120.8, 8.102.120.9B NMAC 8.106.120.9 and 8.106.120.10 NMAC.
- Waives all SNAP, TANF and GA-Unrelated Child interviews, if all mandatory verification standards are met. o GA-Disability is excluded from this waiver; an interview must be conducted for GA as medical documentation is needed. Allows us to waive the requirement of having to offer a face-to-face and to conduct all interviews by phone.
- IR's - If an IR cannot be processed under normal processing, ASPEN will automatically extend certification periods for households with an IR due in March, and April for 6 months to the month the customers recertification is due. May and June IRs will be suspended and not mailed.
- Recertifications – If a Recertification cannot be processed under normal processing, ASPEN will automatically extend certification periods for households scheduled to recertify in March, April, May and June 2020, for 6 months until September, October and November 2020.
- IPP 20-06 in regards to the policy change can be found on the HSD website at:

### **3. SNAP Supplement Waiver**

- State applied for a waiver through FNS.
- New Mexico has requested and been approved by FNS to provide an emergency allotment to address temporary food needs to households by bringing all households up to the maximum benefit due to pandemic related economic conditions. States that have already received FNS approval this supplemental issuance in March and April, or April and May, are approved to continue issuing full benefits each month.
- Interim policy and procedure for 8.139.610.12 NMAC.

### **4. Suspension of SNAP General Work Requirements**

- House of Representatives passed H.R. 6201, the Families First Coronavirus Response Act.
- During the declared public health emergency, SNAP recipients who would otherwise be mandatory to comply with the SNAP general work requirements will be waived from this requirement and will not experience any type of disqualification for noncompliance during this time.
- Interim policy and procedure guidance for SNAP General Work Requirements set forth in 8.139.410.12 C and D NMAC.

### **5. Telephonic Signature Waiver**

- State applied for a waiver through FNS
- If a customer calls to apply for benefits and does not have a paper application on file Conduent will accept a telephonic application and telephonic signature for applications by completing an online application through YesNM.
- Interim policy and procedures for 8.100.110.9A NMAC Submission of Forms.

### TANF Policy Changes During COVID-19

1. Good cause exemptions from work requirements for TANF	TANF Non-Compliance Process Suspension of Non-Compliance for NMW Participants	
2. Increased cash benefit levels for TANF cash assistance recipients	Process as normal	
3. 60-month time limit	IPP Hardship	Hardship extensions will allow individuals impacted by COVID-19 to apply for a TANF hardship or continue to receive TANF beyond their 60 <sup>th</sup> month
4. Work Participation Rate	Process as normal	The state will still need to meet the WPR. However, States can use Good Cause that is outlined in CFR and not be penalized for not meeting WPR due to the emergency
5. CARES Act Direct Payment	CARES Act Direct Payment	Guidance is to exclude as income and as a resource
6. UCB under CARES Act	Only to exclude UCB benefits under CARES Act	ACF Guidance is to <b><i>EXCLUDE</i></b> all UCB income at this time. New Mexico choose to exclude only CARES Act UCB

## **Children Youth and Families Department Policy Changes During COVID-19**

**NM Children Youth and Families Department received \$29.5 million in emergency funds, which resulted in the following changes:**

1. Waiver of copay for families which paid for by CYFD
2. Payment of \$250 per child premium for children who are still in care (emergency, first responders and essential personnel)
3. Streamlining of licensing of new facilities that provide emergency child care
4. Payment to the original and temporary child care provider for children of emergency, first responders and essential personnel, whose child care Program closed due to COVID-19

### **Additional Changes Anticipated**

1. Hazardous pay for child care providers currently operating
2. Compensation for programs that are losing their funding due to private pay