



Monthly Statistical Report

March 2020

There were 831,002 individuals that received Medicaid in March 2020, a 0.02% increase from one year ago. The count of Medicaid recipients has increased by 837, or 0.10%, since last month.

The SNAP caseload in March 2020 was 225,570, a 2.72% increase from one year ago. The SNAP caseload has increased by 3,150 cases, or 1.4%, since last month.

The TANF caseload was 9,992 in March 2020, a decrease of 0.8% from March 2019. The TANF caseload had 48 fewer cases compared to February 2020, a decrease of 0.5%.

The caseload for General Assistance was 2,581 in March 2020, a decrease of 3.6% from one year ago and an increase of 71 cases from last month.

Michelle Lujan Grisham, Governor
David Scrase, M.D., Secretary

1 Note: COVID 19 Health Emergency became effective March 12, 2020 and as a result, Medicaid, SNAP, TANF, and Child Care programs has undergone changes to policies which may be reflected in some of the tables and figures in this report. Please see end of report for details of policy changes.

Contents	Page
Summary	3-5
Medicaid	6-20
SNAP	21-41
Cash Assistance	42-56
Child Care Assistance	57-58
Income Eligibility Guidelines	59-60

Regions are reported as follows:

Region 1		
Catron	San Juan	Valencia
Cibola	Sierra	
McKinley	Socorro	
Region 2		
Colfax	Mora	Santa Fe
De Baca	Quay	Taos
Guadalupe	Rio Arriba	Union
Harding	Sandoval	
Los Alamos	San Miguel	
Region 3		
Bernalillo	Torrance	
Region 4		
Chaves	Eddy	Lincoln
Curry	Lea	Roosevelt
Region 5		
Dona Ana	Hidalgo	Otero
Grant	Luna	

The Mission of the Human Services Department

To transform lives. Working with our partners, we design and deliver innovative, high quality health and human services that improve the security and promote independence for New Mexicans in their communities.

Angela Medrano, Deputy Secretary
Kari Armijo, Deputy Secretary

Prepared by Income Support Division
PO Box 2348
Santa Fe, NM 87504-2348
505-827-7250

Karmela Martinez, Director
Vida Tapia-Sanchez, Deputy Director
Shanita Harrison, Deputy Director
Judith Parks, Deputy Director

<http://www.hsd.state.nm.us/monthly-statistical-reports.aspx>

Program Summary for March 2020

SNAP, TANF and GA-Unrelated Child Program interviews are waived. Recertification periods are automatically extended for households with an Interim Review due in March and April for 6 months to the month recertification due.

Medicaid				Percent Change	
	Mar-19	Feb-20	Mar-20	Mar-19- Mar-20	Feb-20- Mar-20
Expenditures¹	\$493,663,534	\$536,365,780	\$589,733,599	19.46%	9.95%
Cases²	492,874	500,243	501,806	1.81%	0.31%
Expenditures/Case	\$1,002	\$1,072	\$1,175	17.27%	9.61%
Recipients³	830,875	830,165	831,002	0.02%	0.10%
<i>Adults</i>	473,892	472,897	473,495	-0.08%	0.13%
<i>Children</i>	356,983	357,268	357,507	0.15%	0.07%
Recipients /Case	1.69	1.66	1.66	-1.78%	0.00%
Cases Processed⁴	10,973	9,486	10,537	-3.97%	11.08%
<i>Approvals⁴</i>	8,317	6,928	7,737	-6.97%	11.68%

Supplemental Nutrition Assistance Program (SNAP)				Percent Change	
	Mar-19	Feb-20	Mar-20	Mar-19- Mar-20	Feb-20- Mar-20
Expenditures⁵	\$52,190,262	\$52,651,765	\$52,828,100	1.22%	0.33%
Cases⁶	219,598	222,420	225,570	2.72%	1.42%
Expenditures/Case	\$238	\$237	\$234	-1.68%	-1.27%
Recipients⁷	445,116	444,727	447,427	0.52%	0.61%
<i>Adults</i>	259,308	261,241	263,511	1.62%	0.87%
<i>Children</i>	185,808	183,486	183,916	-1.02%	0.23%
Recipients /Case	2.03	2.00	1.98	-2.46%	-1.00%
Cases Processed⁴	16,137	15,807	18,668	15.68%	18.10%
<i>Approvals⁴</i>	13,374	12,640	15,684	17.27%	24.08%

Cash Assistance Programs				Percent Change	
	Mar-19	Feb-20	Mar-20	Mar-19- Mar-20	Feb-20- Mar-20
Expenditures⁵	\$3,946,066	\$3,901,568	\$3,803,632	-3.61%	-2.51%
Cases⁶	12,922	12,702	12,743	-1.39%	0.32%
Expenditures/Case	\$305	\$307	\$298	-2.30%	-2.93%
Recipients⁷	28,737	28,473	28,442	-1.03%	-0.11%
<i>Adults</i>	9,135	9,089	9,112	-0.25%	0.25%
<i>Children</i>	19,602	19,384	19,330	-1.39%	-0.28%
Recipients /Case	2.22	2.24	2.23	0.45%	-0.45%
Cases Processed⁴	3,426	3,615	5,542	61.76%	53.31%
<i>Approvals⁴</i>	1,213	1,058	1,565	29.02%	47.92%

Low Income Home Energy Assistance Program (LIHEAP)				Percent Change	
	Mar-19	Feb-20	Mar-20	Mar-19- Mar-20	Feb-20- Mar-20
Expenditures⁸	\$1,147,920	\$1,570,440	\$1,067,000	-7.05%	-32.06%
Cases⁸	3,927	5,359	3,700	-5.78%	-30.96%
Expenditures/Case	\$292	\$293	\$288	-1.37%	-1.71%
Recipients⁸	8,733	12,067	8,231	-5.75%	-31.79%
<i>Adults</i>	5,130	3,084	4,824	-5.96%	56.42%
<i>Children</i>	3,603	8,983	3,407	-5.44%	-62.07%
Recipients /Case	2.22	2.25	2.22	0.00%	-1.33%
Cases Processed⁴	4,943	6,367	5,202	5.24%	-18.30%
<i>Approvals⁴</i>	3,674	5,133	3,638	-0.98%	-29.13%

Cash Assistance Summary for March 2020

Temporary Assistance for Needy Families (TANF)

	Mar-19	Feb-20	Mar-20	Percent Change	
				Mar-19- Mar-20	Feb-20- Mar-20
Expenditures ⁵	\$3,214,793	\$3,208,723	\$3,107,017	-3.35%	-3.17%
Cases ⁶	10,070	10,040	9,992	-0.77%	-0.48%
Expenditures/Case	\$319	\$320	\$311	-2.51%	-2.81%
Recipients ⁷	25,645	25,587	25,500	-0.57%	-0.34%
<i>Adults</i>	6,472	6,630	6,637	2.55%	0.11%
<i>Children</i>	19,173	18,957	18,863	-1.62%	-0.50%
Approvals ⁴	1,029	866	1,356	31.78%	56.58%

General Assistance (GA)

	Mar-19	Feb-20	Mar-20	Percent Change	
				Mar-19- Mar-20	Feb-20- Mar-20
Expenditures ⁵	\$672,526	\$637,253	\$634,133	-5.71%	-0.49%
Cases ⁶	2,676	2,510	2,581	-3.55%	2.83%
Expenditures/Case	\$251	\$254	\$246	-1.99%	-3.15%
Recipients ⁷	2,685	2,513	2,516	-6.29%	0.12%
<i>Adults</i>	2,474	2,295	2,290	-7.44%	-0.22%
<i>Children</i>	211	218	226	7.11%	3.67%
Approvals ⁴	175	154	171	-2.29%	11.04%

Education Works

	Mar-19	Feb-20	Mar-20	Percent Change	
				Mar-19- Mar-20	Feb-20- Mar-20
Expenditures ⁵	\$47,682	\$46,415	\$54,482	14.26%	17.38%
Cases ⁶	118	112	135	14.41%	20.54%
Expenditures/Case	\$404	\$414	\$404	0.00%	-2.42%
Recipients ⁷	349	334	392	12.32%	17.37%
<i>Adults</i>	131	125	151	15.27%	20.80%
<i>Children</i>	218	209	241	10.55%	15.31%

Refugee Cash (RCA)

	Mar-19	Feb-20	Mar-20	Percent Change	
				Mar-19- Mar-20	Feb-20- Mar-20
Expenditures ⁵	\$9,165	\$7,577	\$6,500	-29.08%	-14.21%
Cases ⁶	38	23	19	-50.00%	-17.39%
Expenditures/Case	\$241	\$329	\$342	41.91%	3.95%
Recipients ⁷	39	23	19	-51.28%	-17.39%

State Supplement for Residential Care

	Mar-19	Feb-20	Mar-20	Percent Change	
				Mar-19- Mar-20	Feb-20- Mar-20
Expenditures ⁵	\$1,900	\$1,600	\$1,500	-21.05%	-6.25%
Cases ⁶	20	17	16	-20.00%	-5.88%
Expenditures/Case	\$95	\$94	\$94	-1.05%	0.00%
Recipients ⁷	19	16	15	-21.05%	-6.25%

Expenditures YTD			
	SFY 2020	FFY 2020	CY 2020
Medicaid ¹	\$4,600,119,831	\$3,159,259,065	\$1,642,930,120
Supplemental Nutrition Assistance Program ⁹	\$476,219,284	\$317,599,469	\$157,805,770
Temporary Assistance for Needy Families ⁹	\$31,666,125	\$20,220,012	\$10,175,569
General Assistance ⁹	\$5,716,994	\$3,857,015	\$1,941,072
Education Work ⁹	\$345,644	\$263,923	\$182,654
LIHEAP ⁸	\$18,305,910	\$16,139,800	\$4,849,680

Average Caseload YTD			
	SFY 2020	FFY 2020	CY 2020
Medicaid ²	496,832	498,672	500,528
Supplemental Nutrition Assistance Program ⁶	223,440	223,520	223,739
Temporary Assistance for Needy Families ⁶	10,367	10,299	10,120
General Assistance ⁶	2,472	2,501	2,532
Education Work ⁶	94	109	110
LIHEAP ⁸	6,755	8,846	5,516

Demographic Profile- March 2020					
	SNAP	TANF	GA	Education Works	RCA
<i>Gender of Recipients</i> ¹⁰					
Male	202,912	10,899	1,396	138	12
Female	244,515	14,601	1,120	254	7
<i>Ethnicity</i> ¹⁰					
Hispanic	246,767	17,028	1,331	211	10
Non-Hispanic	200,660	8,472	1,185	181	9
<i>Race</i> ¹⁰					
Native American or Alaskan Native	76,643	2,203	249	47	0
Asian	3,793	199	22	4	0
African American or Black	12,116	1,140	86	34	6
Native Hawaiian or Pacific Islander	824	45	2	5	0
White	342,828	21,090	2,093	294	11
Unknown / Not Declared	3,231	169	21	2	0
More than One Race	7,992	654	43	6	2

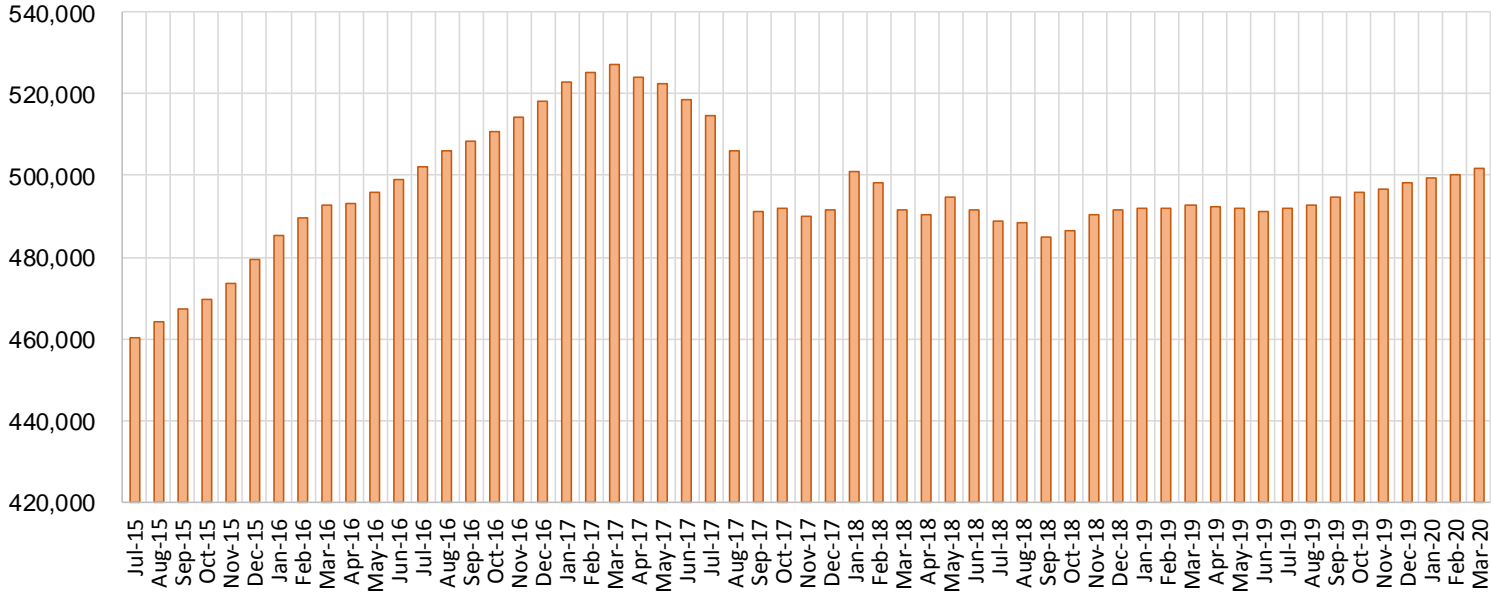
Medicaid Cases by Field Office²

Office				Percent Change	
	Mar-19	Feb-20	Mar-20	Mar-19- Mar-20	Feb-20- Mar-20
Chaves County ISD	15,875	16,282	16,931	6.65%	3.99%
Cibola County ISD	7,601	7,514	7,568	-0.43%	0.72%
Colfax County ISD	3,618	3,593	3,616	-0.06%	0.64%
Curry County ISD	14,533	15,115	15,283	5.16%	1.11%
East Dona Ana County ISD	17,885	18,198	18,510	3.49%	1.71%
Eddy Artesia County ISD	3,863	3,929	3,970	2.77%	1.04%
Eddy Carlsbad County ISD	7,551	7,673	7,731	2.38%	0.76%
Grant County ISD	7,745	7,937	7,940	2.52%	0.04%
Guadalupe County ISD	1,627	1,581	1,566	-3.75%	-0.95%
Hidalgo County ISD	53	53	56	5.66%	5.66%
Lea County ISD	14,443	15,039	15,185	5.14%	0.97%
Lincoln County ISD	4,305	4,375	4,384	1.84%	0.21%
Luna County ISD	8,601	8,904	8,902	3.50%	-0.02%
McKinley County ISD	21,921	22,546	22,694	3.53%	0.66%
Northeast Bernalillo County ISD	43,096	43,609	43,691	1.38%	0.19%
Northwest Bernalillo County ISD	52,002	53,912	54,126	4.08%	0.40%
Otero County ISD	12,060	12,298	12,337	2.30%	0.32%
Quay County ISD	2,512	2,541	2,723	8.40%	7.16%
Rio Arriba County ISD	13,477	13,509	13,593	0.86%	0.62%
Roosevelt County ISD	9	10	9	0.00%	-10.00%
San Juan County ISD	30,253	30,798	32,238	6.56%	4.68%
San Miguel County ISD	9,152	9,190	9,230	0.85%	0.44%
Sandoval County ISD	23,480	23,656	22,965	-2.19%	-2.92%
Santa Fe County ISD	24,690	24,083	23,480	-4.90%	-2.50%
Sierra County ISD	5,344	5,266	5,206	-2.58%	-1.14%
Socorro County ISD	5,342	5,303	5,345	0.06%	0.79%
South Dona Ana ISD	19,809	20,003	19,845	0.18%	-0.79%
Southeast Bernalillo County ISD	25,080	24,785	23,254	-7.28%	-6.18%
Southwest Bernalillo County ISD	39,444	40,035	41,549	5.34%	3.78%
Taos County ISD	9,251	9,317	9,149	-1.10%	-1.80%
Torrance County ISD	7,905	8,024	7,981	0.96%	-0.54%
Valencia North County ISD	18,245	18,660	18,178	-0.37%	-2.58%
Valencia South County ISD	97	113	127	30.93%	12.39%
West Dona Ana County ISD	22,002	22,391	22,443	2.00%	0.23%
Centralized Units	3	1	1	-66.67%	0.00%
Statewide Total	492,874	500,243	501,806	1.81%	0.31%

Medicaid Cases by Region²

				Percent Change	
Region	Mar-19	Feb-20	Mar-20	Mar-19- Mar-20	Feb-20- Mar-20
Region 1 - NW	88,803	90,200	91,356	2.87%	1.28%
Region 2 - NE	87,807	87,470	86,322	-1.69%	-1.31%
Region 3 - Central	167,527	170,365	170,601	1.83%	0.14%
Region 4 - SE	60,579	62,423	63,493	4.81%	1.71%
Region 5 - SW	88,155	89,784	90,033	2.13%	0.28%
Centralized Units	3	1	1	-66.67%	0.00%
Statewide Total	492,874	500,243	501,806	1.8%	0.31%

Medicaid Caseload: SFY-16 to Current

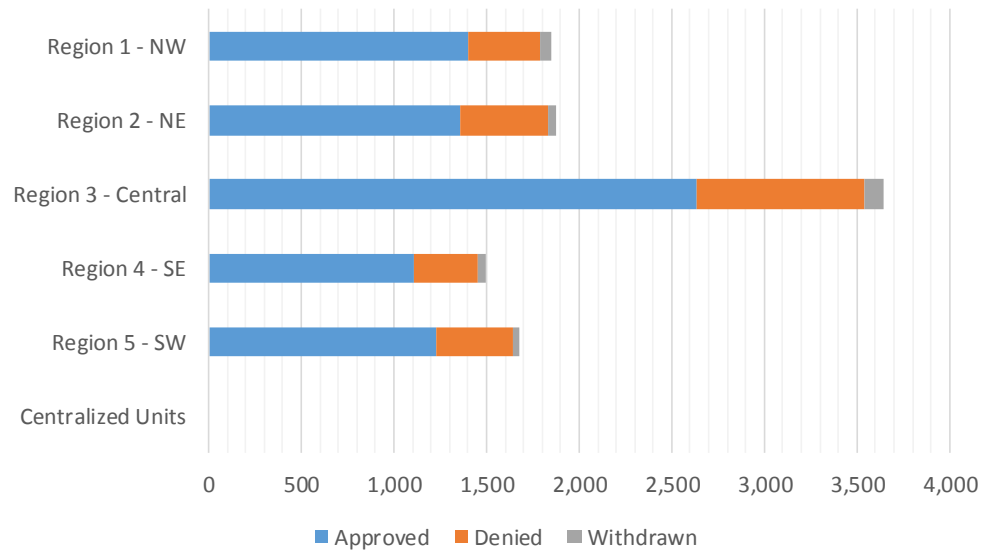


Medicaid Initial Applications by Field Office^{4,11}
March 2020

Office	Approved	Denied	Withdrawn	Total Cases Processed
Chaves County ISD	277	77	11	365
Cibola County ISD	105	36	5	146
Colfax County ISD	44	21	6	71
Curry County ISD	259	73	8	340
East Dona Ana County ISD	308	109	17	434
Eddy Artesia County ISD	67	14	6	87
Eddy Carlsbad County ISD	131	48	3	182
Grant County ISD	112	45	3	160
Guadalupe County ISD	16	4	0	20
Hidalgo County ISD	0	0	0	0
Lea County ISD	295	95	13	403
Lincoln County ISD	80	31	3	114
Luna County ISD	120	49	4	173
McKinley County ISD	322	74	9	405
Northeast Bernalillo County ISD	750	227	11	988
Northwest Bernalillo County ISD	668	215	30	913
Otero County ISD	164	42	2	208
Quay County ISD	40	4	3	47
Rio Arriba County ISD	196	47	5	248
Roosevelt County ISD	2	0	0	2
San Juan County ISD	594	172	32	798
San Miguel County ISD	193	60	6	259
Sandoval County ISD	331	139	10	480
Santa Fe County ISD	422	158	15	595
Sierra County ISD	77	18	3	98
Socorro County ISD	59	24	1	84
South Dona Ana ISD	215	77	3	295
Southeast Bernalillo County ISD	537	269	12	818
Southwest Bernalillo County ISD	581	151	45	777
Taos County ISD	118	36	4	158
Torrance County ISD	101	39	7	147
Valencia North County ISD	239	64	9	312
Valencia South County ISD	2	2	0	4
West Dona Ana County ISD	312	88	6	406
Centralized Units	0	0	0	0
Statewide Total	7,737	2,508	292	10,537

Medicaid Initial Applications by Region^{4,11}
March 2020

	Approved	Denied	Withdrawn	Total Cases Processed
Region				
Region 1 - NW	1,398	390	59	1,847
Region 2 - NE	1,360	469	49	1,878
Region 3 - Central	2,637	901	105	3,643
Region 4 - SE	1,111	338	44	1,493
Region 5 - SW	1,231	410	35	1,676
Centralized Units	0	0	0	0
Statewide Total	7,737	2,508	292	10,537



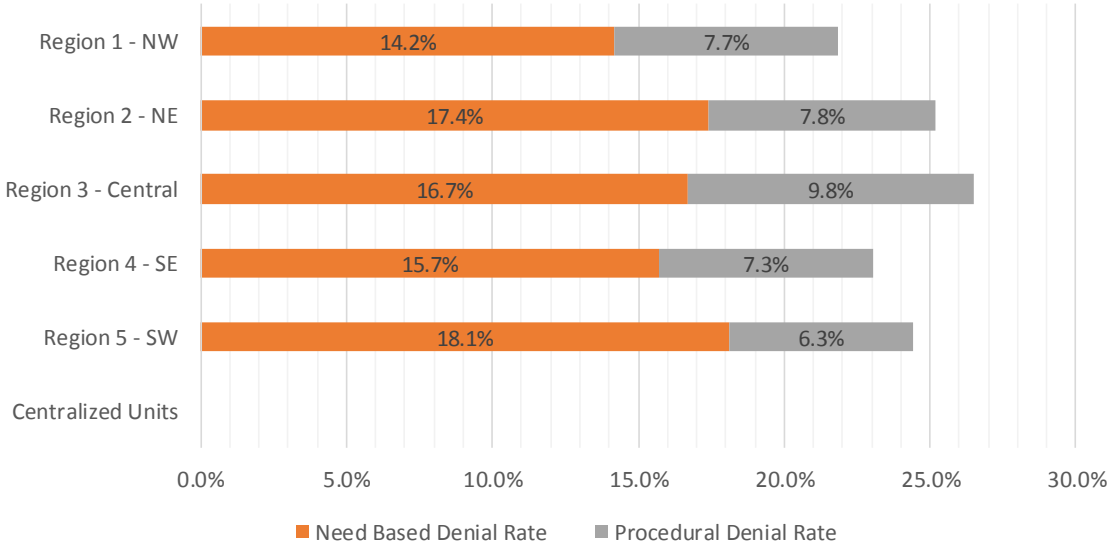
Medicaid EDG Initial Disposition Rates by Field Office^{4,11,19}
March 2020

Office	Approval Rate	Denial Rate	Need Based Denial Rate	Procedural Denial Rate
Chaves County ISD	76.7%	23.3%	15.8%	7.5%
Cibola County ISD	72.9%	27.1%	17.4%	9.7%
Colfax County ISD	63.8%	36.2%	23.2%	13.0%
Curry County ISD	78.2%	21.8%	16.1%	5.7%
East Dona Ana County ISD	73.2%	26.8%	15.4%	11.4%
Eddy Artesia County ISD	78.8%	21.2%	14.1%	7.1%
Eddy Carlsbad County ISD	74.9%	25.1%	13.7%	11.4%
Grant County ISD	72.3%	27.7%	20.6%	7.1%
Guadalupe County ISD	76.2%	23.8%	19.0%	4.8%
Hidalgo County ISD	0.0%	0.0%	0.0%	0.0%
Lea County ISD	77.2%	22.8%	15.7%	7.1%
Lincoln County ISD	74.8%	25.2%	18.7%	6.5%
Luna County ISD	71.4%	28.6%	23.8%	4.8%
McKinley County ISD	82.8%	17.2%	12.6%	4.6%
Northeast Bernalillo County ISD	76.7%	23.3%	15.0%	8.3%
Northwest Bernalillo County ISD	73.9%	26.1%	15.0%	11.1%
Otero County ISD	78.8%	21.2%	16.9%	4.3%
Quay County ISD	88.9%	11.1%	11.1%	0.0%
Rio Arriba County ISD	79.4%	20.6%	15.3%	5.3%
Roosevelt County ISD	100.0%	0.0%	0.0%	0.0%
San Juan County ISD	76.3%	23.7%	13.4%	10.3%
San Miguel County ISD	83.2%	16.8%	12.1%	4.7%
Sandoval County ISD	70.6%	29.4%	20.7%	8.7%
Santa Fe County ISD	73.4%	26.6%	17.2%	9.4%
Sierra County ISD	79.4%	20.6%	14.4%	6.2%
Socorro County ISD	77.6%	22.4%	14.5%	7.9%
South Dona Ana ISD	76.0%	24.0%	20.8%	3.2%
Southeast Bernalillo County ISD	67.3%	32.7%	19.7%	13.0%
Southwest Bernalillo County ISD	75.7%	24.3%	16.6%	7.7%
Taos County ISD	73.8%	26.3%	18.2%	8.1%
Torrance County ISD	71.1%	28.9%	24.0%	4.9%
Valencia North County ISD	78.9%	21.1%	16.8%	4.3%
Valencia South County ISD	66.7%	33.3%	33.3%	0.0%
West Dona Ana County ISD	79.8%	20.2%	15.6%	4.6%
Centralized Units	0.0%	0.0%	0.0%	0.0%
Statewide Total	75.4%	24.6%	16.4%	8.2%

Medicaid EDG Initial Disposition Rates by Region ^{4,11,19}
March 2020

Region	Approval Rate	Denial Rate	Need Based Denial Rate	Procedural Denial Rate
Region 1 - NW	78.1%	21.9%	14.2%	7.7%
Region 2 - NE	74.8%	25.2%	17.4%	7.8%
Region 3 - Central	73.5%	26.5%	16.7%	9.8%
Region 4 - SE	77.0%	23.0%	15.7%	7.3%
Region 5 - SW	75.7%	24.4%	18.1%	6.3%
Centralized Units				

Statewide Total	75.4%	24.6%	16.4%	8.2%
-----------------	-------	-------	-------	------



Medicaid: Percentage of Initial EDG Approvals Processed Timely by Field Office^{13,19}

	Oct-19	Nov-19	Dec-19	Jan-20	Feb-20	Mar-20	Apr-20	May-20	Jun-20	Jul-20	Aug-20	Sep-20	Average
Cibola	99.5 %	97.3 %	99.4 %	99.4 %	100.0 %	100.0 %							99.3%
McKinley	99.3 %	99.0 %	99.8 %	99.8 %	99.2 %	97.8 %							99.2%
San Juan	98.9 %	98.7 %	99.7 %	99.4 %	99.2 %	99.5 %							99.2%
Sierra	96.4 %	99.0 %	99.1 %	100.0 %	100.0 %	100.0 %							99.1%
Socorro	100.0 %	96.9 %	98.9 %	98.2 %	98.8 %	100.0 %							98.8%
Valencia North	99.7 %	99.1 %	99.4 %	99.2 %	98.8 %	99.7 %							99.3%
Valencia South	100.0 %	100.0 %	100.0 %	100.0 %	100.0 %	100.0 %							100.0%
NW Region 1 Total	99.2 %	98.6 %	99.6 %	99.4 %	99.2 %	99.2 %							99.2%
Colfax	100.0 %	100.0 %	100.0 %	98.9 %	100.0 %	100.0 %							99.8%
Guadalupe	100.0 %	100.0 %	100.0 %	100.0 %	100.0 %	100.0 %							100.0%
Quay	98.4 %	100.0 %	100.0 %	100.0 %	100.0 %	100.0 %							99.7%
Rio Arriba	99.6 %	100.0 %	99.3 %	93.0 %	98.4 %	99.0 %							98.2%
San Miguel	100.0 %	100.0 %	100.0 %	99.6 %	98.2 %	98.8 %							99.4%
Sandoval	99.4 %	100.0 %	99.5 %	98.5 %	99.8 %	99.2 %							99.4%
Santa Fe	99.0 %	97.9 %	99.0 %	98.2 %	98.4 %	99.2 %							98.6%
Taos	98.7 %	100.0 %	99.7 %	99.5 %	99.7 %	99.4 %							99.3%
NE Region 2 Total	99.3 %	99.4 %	99.5 %	97.9 %	98.9 %	99.2 %							99.0%
NE Bernalillo	98.4 %	99.5 %	99.0 %	98.8 %	98.5 %	98.3 %							98.8%
NW Bernalillo	98.9 %	98.9 %	99.0 %	97.4 %	98.8 %	99.2 %							98.7%
SE Bernalillo	97.4 %	95.8 %	98.3 %	98.1 %	97.8 %	97.5 %							97.5%
SW Bernalillo	98.2 %	97.9 %	99.2 %	98.8 %	98.8 %	98.8 %							98.6%
Torrance	100.0 %	100.0 %	98.3 %	100.0 %	99.4 %	100.0 %							99.6%
Gen. Region 3 Total	98.3 %	98.3 %	98.9 %	98.4 %	98.5 %	98.6 %							98.5%
Chaves	100.0 %	99.1 %	99.4 %	98.8 %	98.2 %	99.8 %							99.2%
Curry	98.8 %	98.9 %	99.2 %	99.1 %	98.8 %	98.7 %							98.9%
Eddy Artesia	98.3 %	97.6 %	100.0 %	99.1 %	98.7 %	100.0 %							98.9%
Eddy Carlsbad	99.1 %	99.5 %	99.1 %	97.8 %	100.0 %	99.6 %							99.2%
Lea	99.3 %	100.0 %	99.0 %	98.7 %	99.8 %	99.8 %							99.4%
Lincoln	99.3 %	98.7 %	97.4 %	100.0 %	99.0 %	98.1 %							98.8%
Roosevelt	100.0 %	100.0 %	100.0 %		100.0 %	100.0 %							100.0%
SE Region 4 Total	99.2 %	99.3 %	99.1 %	98.8 %	99.2 %	99.4 %							99.2%
East Dona Ana	98.0 %	99.3 %	99.6 %	99.1 %	99.7 %	100.0 %							99.3%
Grant	100.0 %	99.3 %	99.4 %	98.9 %	100.0 %	99.4 %							99.5%
Luna	99.5 %	99.5 %	100.0 %	100.0 %	99.5 %	98.9 %							99.6%
Otero	99.6 %	99.6 %	98.1 %	100.0 %	100.0 %	99.6 %							99.5%
South Dona Ana	99.7 %	99.7 %	99.7 %	99.8 %	100.0 %	99.5 %							99.7%
West Dona Ana	99.5 %	97.5 %	100.0 %	99.4 %	99.4 %	99.3 %							99.2%
SW Region 5 Total	99.2 %	99.0 %	99.5 %	99.5 %	99.7 %	99.5 %							99.4%
STATE TOTAL	98.9 %	98.8 %	99.3 %	98.8 %	99.0 %	99.1 %							99.0%

Medicaid: Percentage of Initial EDG Denials Processed Timely by Field Office^{13,19}

	Oct-19	Nov-19	Dec-19	Jan-20	Feb-20	Mar-20	Apr-20	May-20	Jun-20	Jul-20	Aug-20	Sep-20	Average
Cibola	97.8 %	98.7 %	97.7 %	93.3 %	95.6 %	98.5 %							96.9%
McKinley	92.7 %	95.5 %	93.8 %	96.3 %	94.3 %	85.9 %							93.1%
San Juan	95.4 %	98.4 %	97.8 %	94.0 %	93.8 %	97.1 %							96.1%
Sierra	100.0 %	94.1 %	97.4 %	100.0 %	90.9 %	97.1 %							96.6%
Socorro	95.9 %	94.2 %	100.0 %	95.3 %	93.0 %	88.0 %							94.4%
Valencia North	98.5 %	97.4 %	96.4 %	98.9 %	94.7 %	91.3 %							96.2%
Valencia South	100.0 %	100.0 %			100.0 %	100.0 %							100.0%
NW Region 1 Total	95.8 %	97.1 %	96.7 %	95.7 %	94.0 %	93.9 %							95.6%
Colfax	94.7 %	97.3 %	95.5 %	98.4 %	87.0 %	97.2 %							95.0%
Guadalupe	100.0 %	100.0 %	91.7 %	100.0 %	100.0 %	100.0 %							98.6%
Quay	92.9 %	94.4 %	100.0 %	100.0 %	94.1 %	100.0 %							96.9%
Rio Arriba	94.8 %	97.5 %	98.4 %	94.8 %	90.0 %	92.3 %							94.6%
San Miguel	100.0 %	100.0 %	99.3 %	96.4 %	98.2 %	98.8 %							98.8%
Sandoval	98.0 %	98.7 %	96.7 %	92.9 %	96.2 %	97.8 %							96.7%
Santa Fe	98.3 %	94.7 %	95.3 %	94.8 %	92.1 %	89.6 %							94.1%
Taos	100.0 %	100.0 %	96.2 %	97.2 %	98.2 %	98.4 %							98.3%
NE Region 2 Total	97.7 %	97.6 %	96.8 %	94.9 %	93.6 %	94.9 %							95.9%
NE Bernalillo	97.5 %	97.1 %	97.2 %	94.3 %	94.0 %	94.3 %							95.7%
NW Bernalillo	96.8 %	97.4 %	97.7 %	95.0 %	95.2 %	93.1 %							95.9%
SE Bernalillo	93.9 %	96.6 %	95.0 %	96.1 %	97.9 %	94.7 %							95.7%
SW Bernalillo	95.5 %	97.5 %	97.5 %	94.8 %	96.1 %	94.9 %							96.1%
Torrance	97.3 %	96.7 %	97.2 %	100.0 %	95.2 %	95.0 %							96.9%
Gen. Region 3 Total	96.1 %	97.2 %	96.9 %	95.2 %	95.7 %	94.2 %							95.9%
Chaves	97.9 %	100.0 %	97.8 %	98.4 %	94.9 %	92.3 %							96.9%
Curry	97.3 %	97.8 %	97.4 %	97.6 %	98.4 %	97.1 %							97.6%
Eddy Artesia	82.7 %	100.0 %	91.5 %	100.0 %	92.7 %	94.2 %							93.5%
Eddy Carlsbad	79.6 %	100.0 %	93.6 %	96.9 %	98.9 %	87.0 %							92.7%
Lea	95.4 %	97.1 %	97.9 %	96.2 %	96.0 %	92.2 %							95.8%
Lincoln	98.2 %	98.2 %	100.0 %	97.4 %	95.3 %	84.2 %							95.6%
Roosevelt	95.6 %												95.6%
SE Region 4 Total	93.1 %	98.5 %	97.1 %	97.5 %	96.4 %	92.0 %							95.8%
East Dona Ana	95.6 %	98.5 %	96.8 %	97.8 %	96.0 %	93.6 %							96.4%
Grant	98.4 %	91.6 %	98.9 %	96.8 %	100.0 %	90.9 %							96.1%
Luna	94.9 %	96.3 %	99.2 %	100.0 %	100.0 %	95.5 %							97.6%
Otero	100.0 %	94.8 %	100.0 %	98.8 %	96.4 %	96.3 %							97.7%
South Dona Ana	97.3 %	99.4 %	98.9 %	98.0 %	99.4 %	94.7 %							98.0%
West Dona Ana	99.3 %	96.6 %	98.2 %	94.4 %	95.9 %	91.4 %							96.0%
SW Region 5 Total	97.6 %	96.8 %	98.4 %	97.5 %	97.6 %	93.7 %							96.9%
STATE TOTAL	96.2 %	97.4 %	97.1 %	95.9 %	95.4 %	93.8 %							96.0%

Medicaid: Percentage of Initial EDG Approvals and Denials Combined Processed Timely by Field Office ^{13,19}

	Oct-19	Nov-19	Dec-19	Jan-20	Feb-20	Mar-20	Apr-20	May-20	Jun-20	Jul-20	Aug-20	Sep-20	Average
Cibola	99.1 %	97.7 %	98.8 %	97.9 %	99.2 %	99.6 %							98.7%
McKinley	98.0 %	98.0 %	98.0 %	98.9 %	98.1 %	95.2 %							97.7%
San Juan	97.8 %	98.6 %	99.2 %	97.7 %	97.6 %	98.8 %							98.3%
Sierra	97.5 %	97.8 %	98.7 %	100.0 %	97.2 %	99.4 %							98.4%
Socorro	98.4 %	95.9 %	99.3 %	97.0 %	96.8 %	97.5 %							97.5%
Valencia North	99.4 %	98.7 %	98.5 %	99.1 %	97.8 %	97.5 %							98.5%
Valencia South	100.0 %	100.0 %	100.0 %	100.0 %	100.0 %	100.0 %							100.0%
NW Region 1 Total	98.3 %	98.2 %	98.7 %	98.3 %	97.9 %	97.9 %							98.2%
Colfax	98.5 %	98.8 %	98.1 %	98.7 %	95.5 %	99.0 %							98.1%
Guadalupe	100.0 %	100.0 %	97.1 %	100.0 %	100.0 %	100.0 %							99.5%
Quay	96.7 %	98.0 %	100.0 %	100.0 %	98.2 %	100.0 %							98.8%
Rio Arriba	98.1 %	99.1 %	99.0 %	93.7 %	96.0 %	97.5 %							97.3%
San Miguel	100.0 %	100.0 %	99.8 %	98.8 %	98.2 %	98.8 %							99.3%
Sandoval	99.0 %	99.5 %	98.5 %	96.2 %	98.7 %	98.7 %							98.5%
Santa Fe	98.7 %	96.8 %	97.5 %	96.5 %	96.0 %	96.4 %							97.0%
Taos	99.0 %	100.0 %	98.6 %	98.5 %	98.6 %	99.1 %							99.0%
NE Region 2 Total	98.8 %	98.8 %	98.6 %	96.7 %	97.3 %	97.9 %							98.0%
NE Bernalillo	98.1 %	98.7 %	98.4 %	97.0 %	97.2 %	97.2 %							97.8%
NW Bernalillo	98.3 %	98.4 %	98.6 %	96.4 %	97.8 %	97.4 %							97.8%
SE Bernalillo	96.5 %	96.1 %	97.2 %	97.4 %	97.8 %	96.5 %							96.9%
SW Bernalillo	97.5 %	97.8 %	98.6 %	97.5 %	98.0 %	97.8 %							97.9%
Torrance	97.5 %	98.9 %	98.0 %	100.0 %	98.1 %	98.5 %							98.5%
Gen. Region 3 Total	97.7 %	97.9 %	98.2 %	97.2 %	97.7 %	97.3 %							97.7%
Chaves	99.5 %	99.4 %	98.9 %	98.7 %	97.3 %	97.7 %							98.6%
Curry	98.5 %	98.5 %	98.7 %	98.7 %	98.7 %	98.3 %							98.6%
Eddy Artesia	93.5 %	98.3 %	97.5 %	99.4 %	96.6 %	98.3 %							97.3%
Eddy Carlsbad	93.0 %	99.7 %	97.3 %	97.5 %	99.7 %	96.0 %							97.2%
Lea	98.1 %	99.2 %	98.7 %	98.0 %	98.8 %	97.5 %							98.4%
Lincoln	99.0 %	98.5 %	98.5 %	98.7 %	98.0 %	93.3 %							97.7%
Roosevelt	100.0 %	100.0 %	100.0 %			100.0 %							100.0%
SE Region 4 Total	97.6 %	99.1 %	98.4 %	98.4 %	98.4 %	97.3 %							98.2%
East Dona Ana	97.3 %	99.1 %	98.6 %	98.6 %	98.4 %	98.1 %							98.3%
Grant	99.5 %	96.3 %	99.2 %	98.0 %	100.0 %	96.8 %							98.3%
Luna	98.4 %	98.6 %	99.7 %	100.0 %	99.6 %	97.8 %							99.0%
Otero	99.7 %	97.9 %	98.7 %	99.6 %	99.6 %	98.8 %							98.9%
South Dona Ana	99.1 %	99.6 %	99.5 %	99.1 %	98.9 %	98.2 %							99.1%
West Dona Ana	99.4 %	97.2 %	99.4 %	97.8 %	98.1 %	97.4 %							98.2%
SW Region 5 Total	98.8 %	98.3 %	99.1 %	98.8 %	99.1 %	97.9 %							98.7%
STATE TOTAL	98.2 %	98.4 %	98.6 %	97.7 %	99.1 %	97.6 %							98.3%

Medicaid Renewal Disposition Counts by Field Office^{4,11}
March 2020

Office	Approvals	Closures	Need Based Closures	Procedural Closures
Chaves County ISD	2,726	415	410	5
Cibola County ISD	1,426	142	142	0
Colfax County ISD	481	86	85	1
Curry County ISD	3,208	407	404	3
East Dona Ana County ISD	3,189	496	494	2
Eddy Artesia County ISD	719	129	129	0
Eddy Carlsbad County ISD	1,115	170	170	0
Grant County ISD	1,350	141	138	3
Guadalupe County ISD	222	27	27	0
Hidalgo County ISD	2	0	0	0
Lea County ISD	2,672	456	453	3
Lincoln County ISD	693	95	95	0
Luna County ISD	1,641	201	199	2
McKinley County ISD	4,450	577	577	0
Northeast Bernalillo County ISD	6,064	878	876	2
Northwest Bernalillo County ISD	5,639	819	816	3
Otero County ISD	1,961	289	288	1
Quay County ISD	490	50	50	0
Rio Arriba County ISD	1,993	251	250	1
Roosevelt County ISD	0	0	0	0
San Juan County ISD	6,112	783	779	4
San Miguel County ISD	1,275	147	146	1
Sandoval County ISD	4,111	634	630	4
Santa Fe County ISD	3,157	472	464	8
Sierra County ISD	1,052	107	107	0
Socorro County ISD	839	118	118	0
South Dona Ana ISD	3,783	457	456	1
Southeast Bernalillo County ISD	2,853	413	413	0
Southwest Bernalillo County ISD	8,383	1179	1176	3
Taos County ISD	1,366	178	174	4
Torrance County ISD	1,265	152	149	3
Valencia North County ISD	2,917	432	431	1
Valencia South County ISD	11	4	4	0
West Dona Ana County ISD	3,547	519	518	1
Centralized Units	0	0	0	0

Statewide Total	80,712	11,224	11,168	56
-----------------	--------	--------	--------	----

Determinations at Administrative, Annual, and Auto Renewals are included

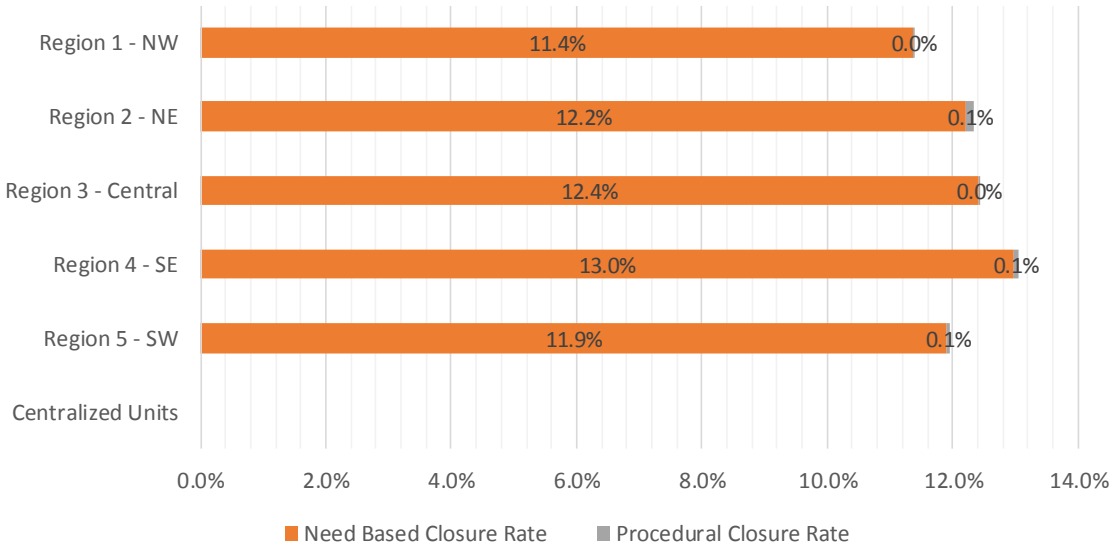
Medicaid Renewal Disposition Rates by Field Office²⁰
March 2020

Office	Approval Rate	Closure Rate	Need Based Closure Rate	Procedural Closure Rate
Chaves County ISD	86.8%	13.2%	13.1%	0.2%
Cibola County ISD	90.9%	9.1%	9.1%	0.0%
Colfax County ISD	84.8%	15.2%	15.0%	0.2%
Curry County ISD	88.7%	11.3%	11.2%	0.1%
East Dona Ana County ISD	86.5%	13.5%	13.4%	0.1%
Eddy Artesia County ISD	84.8%	15.2%	15.2%	0.0%
Eddy Carlsbad County ISD	86.8%	13.2%	13.2%	0.0%
Grant County ISD	90.5%	9.5%	9.3%	0.2%
Guadalupe County ISD	89.2%	10.8%	10.8%	0.0%
Hidalgo County ISD	100.0%	0.0%	0.0%	0.0%
Lea County ISD	85.4%	14.6%	14.5%	0.1%
Lincoln County ISD	87.9%	12.1%	12.1%	0.0%
Luna County ISD	89.1%	10.9%	10.8%	0.1%
McKinley County ISD	88.5%	11.5%	11.5%	0.0%
Northeast Bernalillo County ISD	87.4%	12.6%	12.6%	0.0%
Northwest Bernalillo County ISD	87.3%	12.7%	12.6%	0.0%
Otero County ISD	87.2%	12.8%	12.8%	0.0%
Quay County ISD	90.7%	9.3%	9.3%	0.0%
Rio Arriba County ISD	88.8%	11.2%	11.1%	0.0%
Roosevelt County ISD	0.0%	0.0%	0.0%	0.0%
San Juan County ISD	88.6%	11.4%	11.3%	0.1%
San Miguel County ISD	89.7%	10.3%	10.3%	0.1%
Sandoval County ISD	86.6%	13.4%	13.3%	0.1%
Santa Fe County ISD	87.0%	13.0%	12.8%	0.2%
Sierra County ISD	90.8%	9.2%	9.2%	0.0%
Socorro County ISD	87.7%	12.3%	12.3%	0.0%
South Dona Ana ISD	89.2%	10.8%	10.8%	0.0%
Southeast Bernalillo County ISD	87.4%	12.6%	12.6%	0.0%
Southwest Bernalillo County ISD	87.7%	12.3%	12.3%	0.0%
Taos County ISD	88.5%	11.5%	11.3%	0.3%
Torrance County ISD	89.3%	10.7%	10.5%	0.2%
Valencia North County ISD	87.1%	12.9%	12.9%	0.0%
Valencia South County ISD	73.3%	26.7%	26.7%	0.0%
West Dona Ana County ISD	87.2%	12.8%	12.7%	0.0%
Centralized Units	0.0%	0.0%	0.0%	0.0%
Statewide Total	87.8%	12.2%	12.1%	0.1%

Medicaid Renewal Disposition Rates by Region²⁰
March 2020

Region	Approval Rate	Closure Rate	Need Based Closure Rate	Procedural Closure Rate
Region 1 - NW	88.6%	11.4%	11.4%	0.0%
Region 2 - NE	87.7%	12.3%	12.2%	0.1%
Region 3 - Central	87.6%	12.4%	12.4%	0.0%
Region 4 - SE	86.9%	13.1%	13.0%	0.1%
Region 5 - SW	88.0%	12.0%	11.9%	0.1%
Centralized Units				

Statewide Total	87.8%	12.2%	12.1%	0.1%
-----------------	-------	-------	-------	------



Medicaid: Percentage of Approved Renewal EDGs Processed by Certification Date ¹¹

	Oct-19	Nov-19	Dec-19	Jan-20	Feb-20	Mar-20	Apr-20	May-20	Jun-20	Jul-20	Aug-20	Sep-20	Average
Cibola	99.5%	99.4%	98.2%	98.3%	98.2%	98.2%							98.6%
McKinley	98.4%	98.8%	98.4%	99.1%	98.5%	98.5%							98.6%
San Juan	98.8%	98.6%	98.5%	99.1%	98.8%	98.8%							98.8%
Sierra	99.2%	96.9%	98.3%	98.7%	98.3%	98.3%							98.3%
Socorro	98.6%	98.3%	97.7%	98.8%	96.7%	96.7%							97.8%
Valencia North	99.1%	98.4%	98.1%	98.9%	98.3%	98.3%							98.5%
Valencia South			100.0%	100.0%	100.0%	100.0%							100.0%
NW Region 1 Total	98.9%	98.4%	98.5%	99.0%	98.4%	98.4%							98.6%
Colfax	98.5%	98.1%	98.8%	98.8%	96.8%	96.8%							98.0%
Guadalupe	99.6%	98.2%	99.6%	99.1%	99.6%	99.6%							99.3%
Quay	98.7%	99.0%	97.2%	98.6%	98.4%	98.4%							98.4%
Rio Arriba	98.2%	97.2%	98.4%	98.9%	99.2%	99.2%							98.5%
San Miguel	98.3%	99.1%	99.4%	99.4%	98.5%	98.5%							98.9%
Sandoval	99.0%	98.7%	98.9%	98.5%	98.9%	98.9%							98.8%
Santa Fe	97.4%	97.5%	96.8%	97.1%	97.3%	97.3%							97.2%
Taos	97.3%	98.8%	98.5%	98.3%	97.5%	97.5%							98.0%
NE Region 2 Total	98.4%	98.3%	98.5%	98.6%	98.3%	98.3%							98.4%
NE Bernalillo	98.2%	98.5%	97.9%	98.3%	98.7%	98.7%							98.4%
NW Bernalillo	97.5%	97.8%	98.2%	98.4%	98.8%	98.8%							98.3%
SE Bernalillo	98.1%	98.4%	97.9%	98.7%	98.6%	98.6%							98.4%
SW Bernalillo	97.5%	97.2%	97.3%	97.2%	98.7%	98.7%							97.8%
Torrance	98.0%	98.3%	98.9%	99.3%	98.6%	98.6%							98.6%
Cen. Region 3 Total	97.8%	98.1%	98.0%	98.4%	98.7%	98.7%							98.3%
Chaves	99.7%	99.6%	98.8%	98.9%	99.5%	99.5%							99.3%
Curry	98.8%	99.3%	99.0%	99.4%	99.2%	99.2%							99.2%
Eddy Artesia	98.0%	97.3%	98.8%	99.5%	98.8%	98.8%							98.5%
Eddy Carlsbad	98.5%	98.7%	99.1%	99.4%	99.0%	99.0%							99.0%
Lea	98.3%	98.7%	99.0%	99.1%	99.6%	99.6%							99.1%
Lincoln	96.5%	98.1%	97.3%	97.8%	99.3%	99.3%							98.1%
Roosevelt													
SE Region 4 Total	98.3%	98.6%	98.7%	99.0%	99.2%	99.2%							98.8%
East Dona Ana	99.4%	99.1%	99.1%	98.9%	99.3%	99.3%							99.2%
Grant	98.4%	99.0%	98.9%	99.7%	99.0%	99.0%							99.0%
Luna	98.9%	99.4%	99.0%	99.1%	99.3%	99.3%							99.2%
Otero	98.5%	98.8%	98.8%	98.9%	98.6%	98.6%							98.7%
South Dona Ana	98.4%	99.2%	99.5%	99.5%	98.7%	98.7%							99.0%
West Dona Ana	99.3%	98.7%	99.0%	98.9%	99.7%	99.7%							99.2%
SW Region 5 Total	98.8%	99.0%	99.1%	99.2%	99.1%	99.1%							99.0%
STATE TOTAL	98.5%	98.5%	98.5%	98.8%	98.7%	98.7%							98.6%

Administrative, Annual, and Auto Renewals are included

Medicaid: Percentage of Closures EDGs Processed by Certification End Date¹¹

	Oct-19	Nov-19	Dec-19	Jan-20	Feb-20	Mar-20	Apr-20	May-20	Jun-20	Jul-20	Aug-20	Sep-20	Average
Cibola	97.3%	95.3%	94.8%	95.4%	94.5%	91.6%							94.8%
McKinley	94.2%	96.5%	93.2%	97.2%	95.7%	96.8%							95.6%
San Juan	96.9%	95.7%	95.4%	96.2%	96.0%	94.0%							95.7%
Sierra	94.4%	97.0%	98.2%	97.1%	97.6%	94.7%							96.5%
Socorro	96.1%	95.0%	88.1%	93.5%	94.4%	84.3%							91.9%
Valencia North	97.1%	96.3%	92.7%	96.6%	94.5%	96.2%							95.6%
Valencia South			100.0%	100.0%	100.0%	100.0%							100.0%
NW Region 1 Total	96.0%	96.0%	94.6%	96.6%	96.1%	93.9%							95.5%
Colfax	94.7%	93.8%	95.2%	98.0%	95.1%	92.5%							94.9%
Guadalupe	93.8%	96.0%	96.4%	100.0%	100.0%	100.0%							97.7%
Quay	96.4%	98.7%	98.4%	100.0%	100.0%	92.6%							97.7%
Rio Arriba	95.3%	96.8%	95.9%	93.2%	97.0%	96.9%							95.9%
San Miguel	95.3%	92.9%	91.4%	96.8%	93.2%	93.6%							93.9%
Sandoval	96.7%	96.8%	96.7%	96.1%	96.6%	97.1%							96.7%
Santa Fe	94.6%	94.4%	93.6%	94.4%	93.6%	92.7%							93.9%
Taos	95.9%	97.5%	94.7%	98.6%	93.9%	95.7%							96.1%
NE Region 2 Total	95.3%	95.9%	95.3%	97.1%	96.2%	95.1%							95.8%
NE Bernalillo	96.0%	96.5%	95.4%	93.8%	93.8%	95.0%							95.1%
NW Bernalillo	94.7%	95.4%	95.6%	95.4%	91.3%	92.3%							94.1%
SE Bernalillo	96.1%	97.1%	96.4%	92.9%	94.8%	95.4%							95.5%
SW Bernalillo	95.8%	95.5%	93.0%	94.9%	94.4%	92.8%							94.4%
Torrance	96.4%	98.0%	97.4%	94.3%	93.3%	96.2%							95.9%
Gen. Region 3 Total	95.8%	96.5%	95.6%	94.3%	93.5%	94.3%							95.0%
Chaves	97.7%	97.1%	93.0%	98.2%	94.8%	93.0%							95.6%
Curry	97.8%	98.1%	96.1%	95.8%	97.8%	98.3%							97.3%
Eddy Artesia	94.9%	95.8%	97.1%	100.0%	94.9%	92.8%							95.9%
Eddy Carlsbad	96.4%	96.7%	98.0%	97.5%	97.2%	94.4%							96.7%
Lea	97.7%	95.9%	94.2%	96.6%	97.6%	95.6%							96.3%
Lincoln	91.2%	95.5%	94.0%	100.0%	93.7%	95.0%							94.9%
Roosevelt			100.0%										100.0%
SE Region 4 Total	96.0%	96.5%	96.1%	98.0%	96.0%	94.9%							96.2%
East Dona Ana	96.9%	97.0%	95.4%	96.0%	97.8%	96.5%							96.6%
Grant	93.9%	97.1%	94.8%	96.8%	98.0%	95.3%							96.0%
Luna	95.9%	98.5%	95.2%	98.1%	96.2%	98.5%							97.1%
Otero	99.0%	97.4%	97.1%	97.7%	95.1%	94.8%							96.9%
South Dona Ana	99.3%	98.5%	98.2%	98.7%	99.4%	97.9%							98.7%
West Dona Ana	98.0%	97.8%	97.7%	96.8%	99.1%	98.9%							98.1%
SW Region 5 Total	97.2%	97.7%	96.4%	97.4%	97.6%	97.0%							97.2%
STATE TOTAL	96.0%	96.5%	95.6%	96.8%	96.0%	95.0%							96.1%

Annual and Auto Renewals are included

Medicaid: Percentage of Approved and Terminated Renewal EDGs Combined Processed by Certification Date ¹¹

	Oct-19	Nov-19	Dec-19	Jan-20	Feb-20	Mar-20	Apr-20	May-20	Jun-20	Jul-20	Aug-20	Sep-20	Average
Cibola	98.9%	98.7%	97.7%	97.8%	98.3%	97.6%							98.2%
McKinley	98.8%	98.4%	97.6%	98.8%	98.5%	98.3%							98.4%
San Juan	98.4%	98.1%	98.0%	98.6%	98.2%	98.2%							98.3%
Sierra	98.8%	96.9%	98.3%	98.4%	98.5%	98.0%							98.2%
Socorro	99.0%	97.8%	96.2%	98.1%	97.0%	94.9%							97.2%
Valencia North	98.5%	98.1%	97.3%	98.5%	97.5%	98.1%							98.0%
Valencia South	100.0%		100.0%	100.0%	100.0%	100.0%							100.0%
NW Region 1 Total	98.9%	98.0%	97.9%	98.6%	98.3%	97.9%							98.3%
Colfax	99.8%	97.4%	98.1%	98.7%	97.3%	96.1%							97.9%
Guadalupe	99.2%	97.8%	99.1%	99.3%	99.7%	99.6%							99.1%
Quay	98.2%	98.9%	97.4%	98.8%	98.2%	97.8%							98.2%
Rio Arriba	98.1%	97.1%	97.9%	98.0%	98.0%	98.9%							98.0%
San Miguel	98.6%	98.1%	98.3%	98.9%	97.0%	97.9%							98.1%
Sandoval	98.5%	98.3%	98.5%	98.1%	98.0%	98.7%							98.4%
Santa Fe	98.3%	96.8%	96.2%	96.6%	95.8%	96.7%							96.7%
Taos	98.3%	98.5%	97.8%	98.4%	97.1%	97.3%							97.9%
NE Region 2 Total	98.6%	97.9%	97.9%	98.4%	97.6%	97.9%							98.0%
NE Bernalillo	98.5%	98.1%	97.4%	97.4%	97.1%	98.2%							97.8%
NW Bernalillo	98.0%	97.4%	97.6%	97.8%	96.6%	97.9%							97.6%
SE Bernalillo	98.7%	98.1%	97.6%	97.7%	97.2%	98.2%							97.9%
SW Bernalillo	98.0%	96.9%	96.5%	96.7%	97.2%	98.0%							97.2%
Torrance	98.1%	98.3%	98.6%	98.5%	96.7%	98.3%							98.1%
Gen. Region 3 Total	98.3%	97.8%	97.5%	97.6%	97.0%	98.1%							97.7%
Chaves	98.3%	99.1%	97.8%	98.8%	98.4%	98.6%							98.5%
Curry	99.0%	99.1%	98.5%	98.9%	98.7%	99.1%							98.9%
Eddy Artesia	97.1%	97.1%	98.6%	99.6%	97.6%	97.8%							98.0%
Eddy Carlsbad	98.6%	98.2%	98.9%	99.0%	99.0%	98.4%							98.7%
Lea	98.9%	98.2%	98.1%	98.6%	99.1%	99.0%							98.7%
Lincoln	97.2%	97.7%	96.7%	98.2%	97.9%	98.7%							97.7%
Roosevelt			100.0%										100.0%
SE Region 4 Total	98.2%	98.2%	98.4%	98.9%	98.5%	98.6%							98.4%
East Dona Ana	98.7%	98.7%	98.4%	98.5%	98.5%	98.9%							98.6%
Grant	98.5%	98.7%	98.3%	99.3%	98.9%	98.6%							98.7%
Luna	98.5%	99.3%	98.3%	98.9%	98.7%	99.2%							98.8%
Otero	98.8%	98.6%	98.5%	98.7%	98.4%	98.1%							98.5%
South Dona Ana	98.0%	99.1%	99.3%	99.4%	99.5%	98.6%							99.0%
West Dona Ana	99.5%	98.5%	98.8%	98.7%	99.0%	99.6%							99.0%
SW Region 5 Total	98.7%	98.8%	98.6%	98.9%	98.8%	98.8%							98.8%
STATE TOTAL	98.6%	98.1%	98.1%	98.5%	98.1%	98.2%							98.3%

Administrative, Annual, and Auto Renewals are included

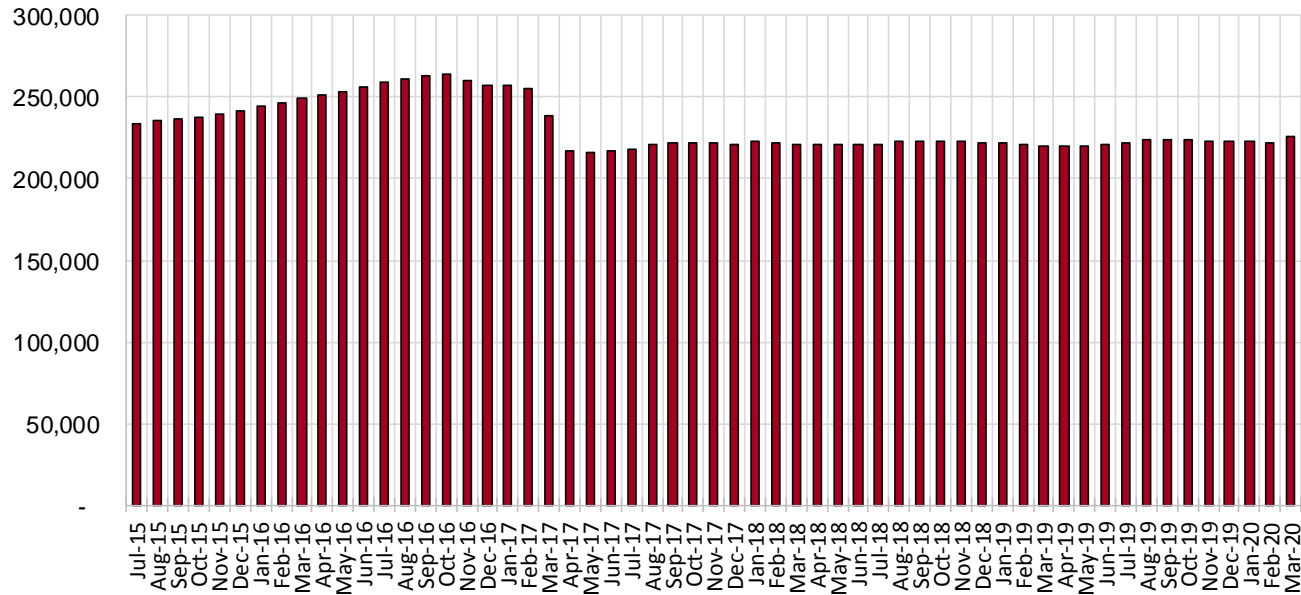
SNAP Cases by Field Office⁶

Office				Percent Change	
	Mar-19	Feb-20	Mar-20	Mar-19-Mar-20	Feb-20-Mar-20
Chaves County ISD	6,867	7,116	7,478	8.90%	5.09%
Cibola County ISD	3,624	3,525	3,562	-1.71%	1.05%
Colfax County ISD	1,648	1,622	1,638	-0.61%	0.99%
Curry County ISD	7,007	7,293	7,453	6.37%	2.19%
East Dona Ana County ISD	7,891	7,933	8,218	4.14%	3.59%
Eddy Artesia County ISD	1,544	1,613	1,603	3.82%	-0.62%
Eddy Carlsbad County ISD	2,749	2,949	3,046	10.80%	3.29%
Grant County ISD	3,872	3,967	3,988	3.00%	0.53%
Guadalupe County ISD	704	676	659	-6.39%	-2.51%
Hidalgo County ISD	15	5	4	-73.33%	-20.00%
Lea County ISD	5,429	5,834	6,000	10.52%	2.85%
Lincoln County ISD	1,841	1,870	1,901	3.26%	1.66%
Luna County ISD	4,145	4,346	4,371	5.45%	0.58%
McKinley County ISD	9,829	10,261	10,303	4.82%	0.41%
Northeast Bernalillo County ISD	20,285	20,400	20,785	2.46%	1.89%
Northwest Bernalillo County ISD	19,834	20,538	20,941	5.58%	1.96%
Otero County ISD	5,614	5,723	5,753	2.48%	0.52%
Quay County ISD	1,246	1,323	1,439	15.49%	8.77%
Rio Arriba County ISD	6,488	6,406	6,516	0.43%	1.72%
Roosevelt County ISD	0	1	0	N/A	-100.00%
San Juan County ISD	13,571	14,125	14,864	9.53%	5.23%
San Miguel County ISD	5,020	4,947	4,997	-0.46%	1.01%
Sandoval County ISD	9,918	9,867	9,731	-1.89%	-1.38%
Santa Fe County ISD	9,565	8,963	8,947	-6.46%	-0.18%
Sierra County ISD	2,652	2,549	2,497	-5.84%	-2.04%
Socorro County ISD	2,737	2,768	2,803	2.41%	1.26%
South Dona Ana ISD	8,466	8,415	8,337	-1.52%	-0.93%
Southeast Bernalillo County ISD	11,813	11,650	10,954	-7.27%	-5.97%
Southwest Bernalillo County ISD	18,677	18,922	20,054	7.37%	5.98%
Taos County ISD	4,108	4,211	4,190	2.00%	-0.50%
Torrance County ISD	3,592	3,581	3,575	-0.47%	-0.2%
Valencia North County ISD	8,241	8,332	8,121	-1.46%	-2.53%
Valencia South County ISD	0	7	8	N/A	14.29%
West Dona Ana County ISD	10,601	10,669	10,825	2.11%	1.46%
Centralized Units	5	13	9	80.00%	-30.77%
Statewide Total	219,598	222,420	225,570	2.72%	1.4%

SNAP Cases by Region⁶

Region	Mar-19	Feb-20	Mar-20	Percent Change	
				Mar-19- Mar-20	Feb-20- Mar-20
Region 1 - NW	40,654	41,567	42,158	3.7%	1.4%
Region 2 - NE	38,697	38,015	38,117	-1.5%	0.3%
Region 3 - Central	74,201	75,091	76,309	2.8%	1.6%
Region 4 - SE	25,437	26,676	27,481	8.0%	3.0%
Region 5 - SW	40,604	41,058	41,496	2.2%	1.1%
Centralized Units	5	13	9	80.0%	-30.8%
Statewide Total	219,598	222,420	225,570	2.72%	1.4%

SNAP Caseload: SFY-16 to Current



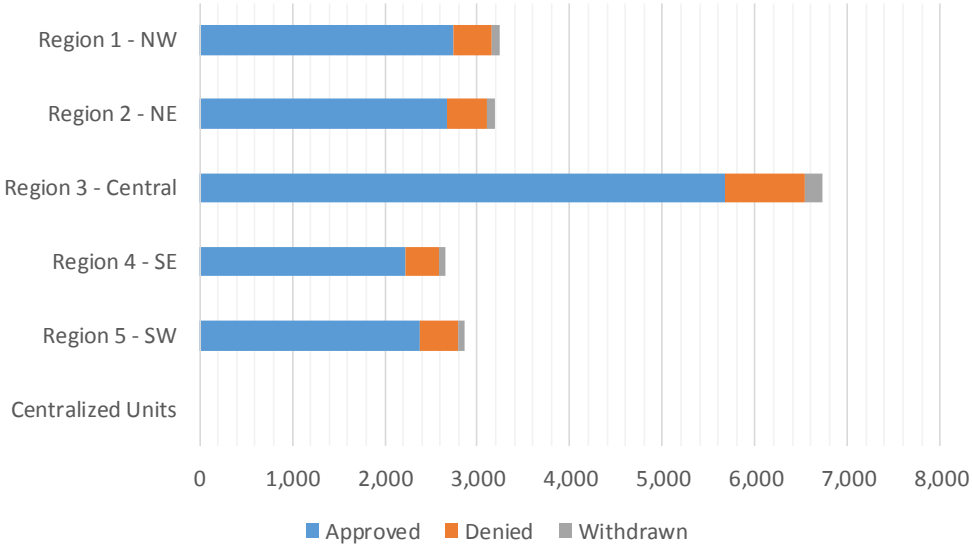
Note Caseload higher Due to COVID 19 emergency.

SNAP Initial Applications by Field Office^{4,11}
March 2020

Office	Approved	Denied	Withdrawn	Total Cases Processed
Chaves County ISD	583	68	24	675
Cibola County ISD	210	32	5	247
Colfax County ISD	103	10	3	116
Curry County ISD	526	94	12	632
East Dona Ana County ISD	579	102	23	704
Eddy Artesia County ISD	116	30	4	150
Eddy Carlsbad County ISD	297	58	6	361
Grant County ISD	216	34	3	253
Guadalupe County ISD	31	7	0	38
Hidalgo County ISD	0	0	0	0
Lea County ISD	543	77	15	635
Lincoln County ISD	150	35	5	190
Luna County ISD	248	35	6	289
McKinley County ISD	558	83	8	649
Northeast Bernalillo County ISD	1,675	287	40	2,002
Northwest Bernalillo County ISD	1,531	225	49	1,805
Otero County ISD	301	62	6	369
Quay County ISD	101	9	7	117
Rio Arriba County ISD	475	58	11	544
Roosevelt County ISD	4	2	0	6
San Juan County ISD	1,215	175	54	1,444
San Miguel County ISD	306	68	10	384
Sandoval County ISD	639	130	22	791
Santa Fe County ISD	725	118	18	861
Sierra County ISD	129	17	4	150
Socorro County ISD	150	24	7	181
South Dona Ana ISD	338	56	12	406
Southeast Bernalillo County ISD	734	146	17	897
Southwest Bernalillo County ISD	1,495	147	87	1,729
Taos County ISD	299	31	4	334
Torrance County ISD	243	51	8	302
Valencia North County ISD	472	84	16	572
Valencia South County ISD	0	0	0	0
West Dona Ana County ISD	692	123	20	835
Centralized Units	0	0	0	0
Statewide Total	15,684	2,478	506	18,668

SNAP Initial Applications by Region^{4,11}
March 2020

Region	Approved	Denied	Withdrawn	Total Cases Processed
Region 1 - NW	2,734	415	94	3,243
Region 2 - NE	2,679	431	75	3,185
Region 3 - Central	5,678	856	201	6,735
Region 4 - SE	2,219	364	66	2,649
Region 5 - SW	2,374	412	70	2,856
Centralized Units	0	0	0	0
Statewide Total	15,684	2,478	506	18,668

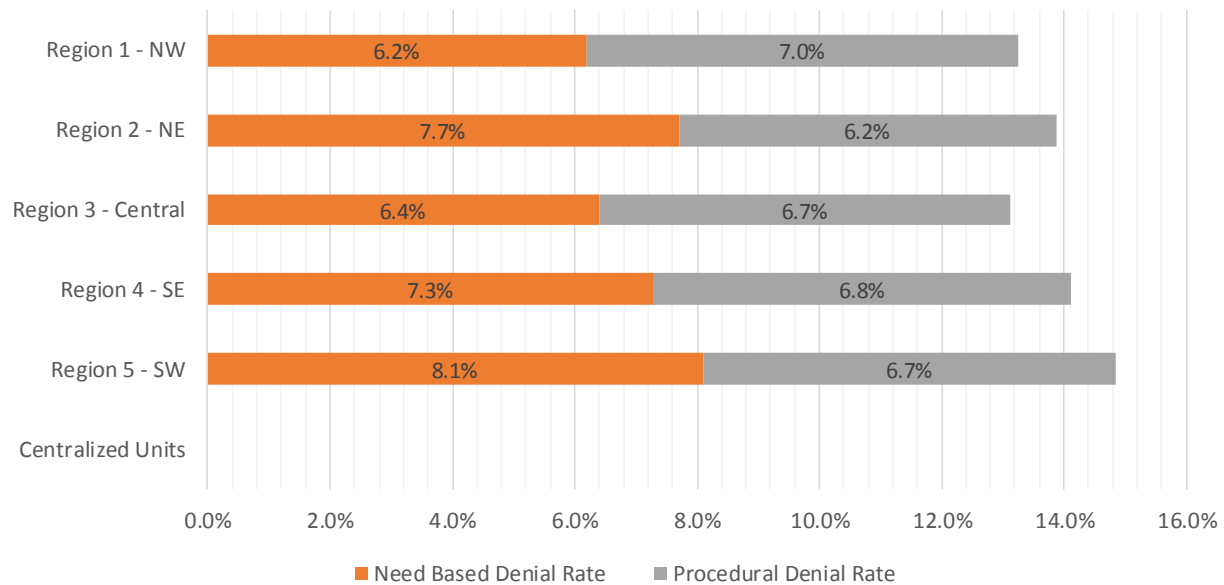


SNAP Initial Disposition Rates by Field Office^{4,11}
March 2020

Office	Approval Rate	Denial Rate	Need Based Denial Rate	Procedural Denial Rate
Chaves County ISD	89.6%	10.4%	4.3%	6.1%
Cibola County ISD	86.8%	13.2%	8.2%	5.0%
Colfax County ISD	91.2%	8.8%	2.6%	6.2%
Curry County ISD	84.8%	15.2%	8.1%	7.1%
East Dona Ana County ISD	85.0%	15.0%	7.2%	7.8%
Eddy Artesia County ISD	79.5%	20.5%	12.3%	8.2%
Eddy Carlsbad County ISD	83.7%	16.3%	7.8%	8.5%
Grant County ISD	86.4%	13.6%	8.4%	5.2%
Guadalupe County ISD	81.6%	18.4%	7.9%	10.5%
Hidalgo County ISD	0.0%	0.0%	0.0%	0.0%
Lea County ISD	87.6%	12.4%	7.1%	5.3%
Lincoln County ISD	81.1%	18.9%	9.7%	9.2%
Luna County ISD	87.6%	12.4%	5.7%	6.7%
McKinley County ISD	87.1%	12.9%	7.0%	5.9%
Northeast Bernalillo County ISD	85.4%	14.6%	6.5%	8.1%
Northwest Bernalillo County ISD	87.2%	12.8%	6.7%	6.1%
Otero County ISD	82.9%	17.1%	8.0%	9.1%
Quay County ISD	91.8%	8.2%	2.7%	5.5%
Rio Arriba County ISD	89.1%	10.9%	5.8%	5.1%
Roosevelt County ISD	66.7%	33.3%	33.3%	0.0%
San Juan County ISD	87.4%	12.6%	3.8%	8.8%
San Miguel County ISD	81.8%	18.2%	14.7%	3.5%
Sandoval County ISD	83.1%	16.9%	8.4%	8.5%
Santa Fe County ISD	86.0%	14.0%	7.2%	6.8%
Sierra County ISD	88.4%	11.6%	9.5%	2.1%
Socorro County ISD	86.2%	13.8%	7.5%	6.3%
South Dona Ana ISD	85.8%	14.2%	8.9%	5.3%
Southeast Bernalillo County ISD	83.4%	16.6%	11.1%	5.5%
Southwest Bernalillo County ISD	91.0%	9.0%	2.5%	6.5%
Taos County ISD	90.6%	9.4%	5.5%	3.9%
Torrance County ISD	82.7%	17.3%	10.2%	7.1%
Valencia North County ISD	84.9%	15.1%	8.8%	6.3%
Valencia South County ISD	0.0%	0.0%	0.0%	0.0%
West Dona Ana County ISD	84.9%	15.1%	9.1%	6.0%
Centralized Units	0.0%	0.0%	0.0%	0.0%
Statewide Total	86.4%	13.6%	6.9%	6.7%

SNAP Initial Disposition Rates by Region^{4,11}
March 2020

Region	Approval Rate	Denial Rate	Need Based Denial Rate	Procedural Denial Rate
Region 1 - NW	86.8%	13.2%	6.2%	7.0%
Region 2 - NE	86.1%	13.9%	7.7%	6.2%
Region 3 - Central	86.9%	13.1%	6.4%	6.7%
Region 4 - SE	85.9%	14.1%	7.3%	6.8%
Region 5 - SW	85.2%	14.8%	8.1%	6.7%
Centralized Units	0.0%	0.0%	0.0%	0.0%
Statewide Total	86.4%	13.6%	6.9%	6.7%



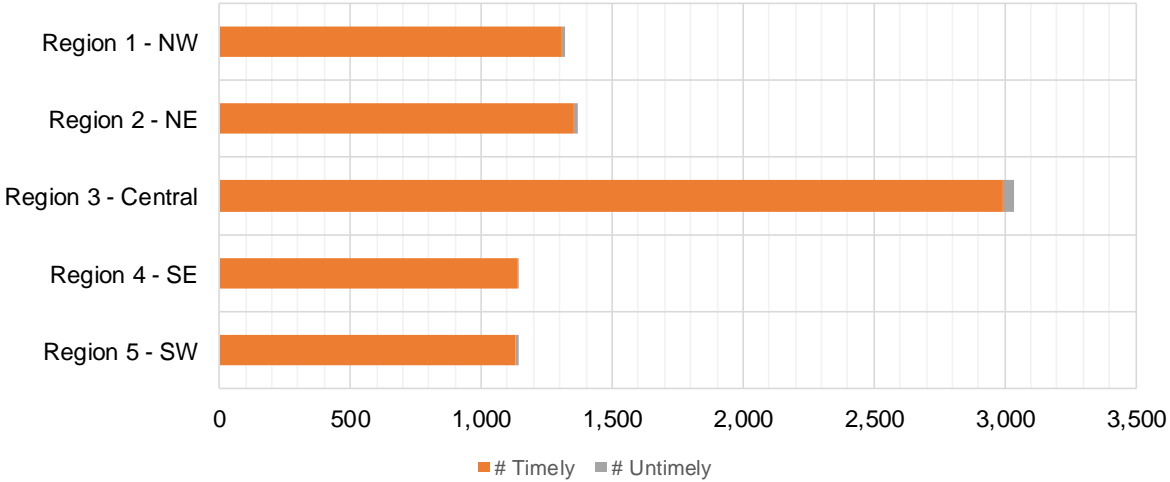
SNAP Expedite Timeliness by Field Office¹³
March 2020

Office Name	Total Expedited Approvals	# Timely	# Untimely	Percentage Timely
Chaves County ISD	281	278	3	98.9 %
Cibola County ISD	109	107	2	98.2 %
Colfax County ISD	46	45	1	97.8 %
Curry County ISD	273	271	2	99.3 %
East Dona Ana County ISD	256	253	3	98.8 %
Eddy Artesia County ISD	64	64	0	100.0 %
Eddy Carlsbad County ISD	165	164	1	99.4 %
Grant County ISD	111	111	0	100.0 %
Guadalupe County ISD	19	19	0	100.0 %
Lea County ISD	289	286	3	99.0 %
Lincoln County ISD	72	70	2	97.2 %
Luna County ISD	105	104	1	99.0 %
McKinley County ISD	255	252	3	98.8 %
Northeast Bernalillo County ISD	916	896	20	97.8 %
Northwest Bernalillo County ISD	863	858	5	99.4 %
Otero County ISD	167	166	1	99.4 %
Quay County ISD	45	45	0	100.0 %
Rio Arriba County ISD	288	285	3	99.0 %
Roosevelt County ISD	2	2	0	100.0 %
San Juan County ISD	624	618	6	99.0 %
San Miguel County ISD	146	144	2	98.6 %
Sandoval County ISD	304	304	0	100.0 %
Santa Fe County ISD	379	371	8	97.9 %
Sierra County ISD	56	55	1	98.2 %
Socorro County ISD	73	73	0	100.0 %
South Dona Ana ISD	136	133	3	97.8 %
Southeast Bernalillo County ISD	386	380	6	98.4 %
Southwest Bernalillo County ISD	741	730	11	98.5 %
Taos County ISD	141	138	3	97.9 %
Torrance County ISD	129	128	1	99.2 %
Valencia North County ISD	204	201	3	98.5 %
West Dona Ana County ISD	370	365	5	98.6 %
Statewide Total	8,015	7,916	99	98.8 %

SNAP Expedite Timeliness by Region¹³
March 2020

Region	Total Expedited Approvals	# Timely	# Untimely	Percentage Timely
Region 1 - NW	1,321	1,306	15	98.9%
Region 2 - NE	1,368	1,351	17	98.8%
Region 3 - Central	3,035	2,992	43	98.6%
Region 4 - SE	1,146	1,135	11	99.0%
Region 5 - SW	1,145	1,132	13	98.9%
Statewide Total	8,015	7,916	99	98.8%

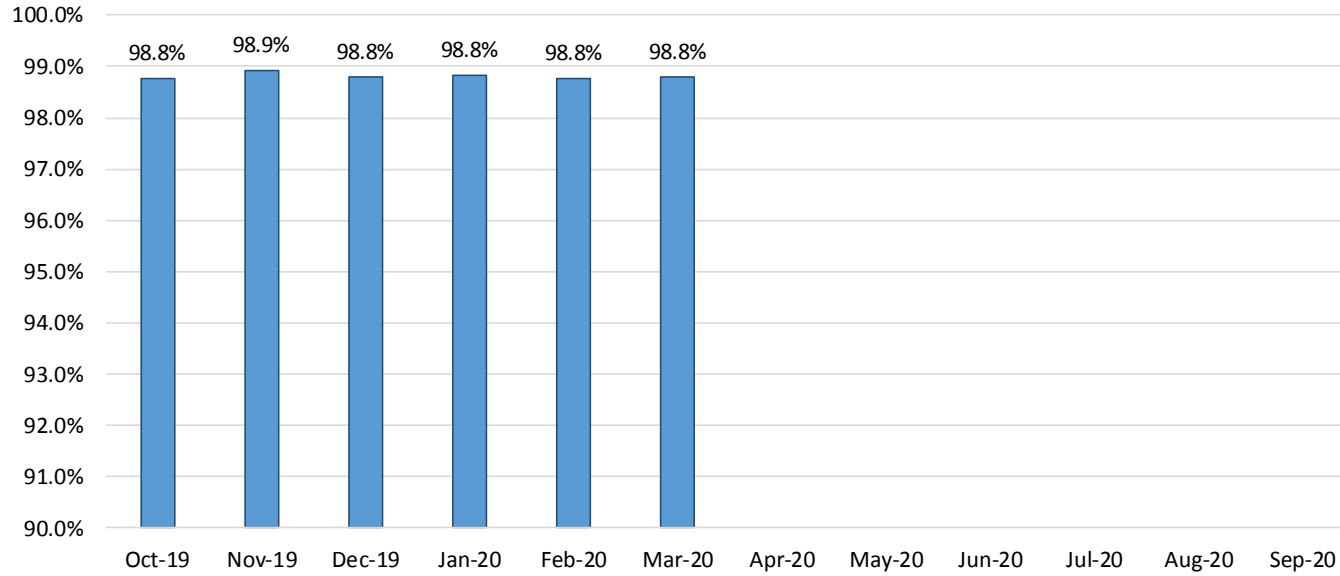
SNAP Expedite - Timeliness



SNAP: Percentage of Applications Processed Timely ¹³

	Oct-19	Nov-19	Dec-19	Jan-20	Feb-20	Mar-20	Apr-20	May-20	Jun-20	Jul-20	Aug-20	Sep-20	Average
APT	98.8%	98.9%	98.8%	98.8%	98.8%	98.8%							98.8%

SNAP Application Processing Timeliness (APT)



SNAP Non-Expedite: Percentage of Initial Applications Processed Timely by Field Office¹³

	Oct-19	Nov-19	Dec-19	Jan-20	Feb-20	Mar-20	Apr-20	May-20	Jun-20	Jul-20	Aug-20	Sep-20	Average
Cibola	99.2%	96.9%	98.0%	96.3%	99.4%	99.3%							98.2%
McKinley	99.0%	98.5%	98.4%	98.9%	98.7%	99.0%							98.8%
San Juan	98.1%	98.4%	99.1%	99.2%	98.0%	99.3%							98.7%
Sierra	98.0%	100.0%	100.0%	100.0%	98.9%	100.0%							99.5%
Socorro	97.9%	100.0%	100.0%	99.1%	100.0%	98.2%							99.2%
Valencia North	99.0%	99.4%	99.5%	99.5%	99.7%	99.5%							99.4%
Valencia South													
NW Region 1 Total	98.5%	98.7%	99.0%	99.0%	98.8%	99.2%							98.9%
Colfax	98.8%	98.8%	100.0%	98.7%	100.0%	100.0%							99.4%
Guadalupe	100.0%	100.0%	100.0%	100.0%	100.0%	100.0%							100.0%
Quay	100.0%	100.0%	100.0%	100.0%	100.0%	100.0%							100.0%
Rio Arriba	98.2%	99.5%	98.6%	98.9%	99.2%	99.6%							99.0%
San Miguel	98.1%	98.9%	100.0%	98.7%	99.5%	100.0%							99.2%
Sandoval	99.5%	98.7%	98.8%	99.6%	99.0%	99.6%							99.2%
Santa Fe	97.7%	98.4%	97.7%	99.7%	98.6%	98.6%							98.5%
Taos	100.0%	98.9%	99.4%	99.0%	100.0%	99.5%							99.5%
NE Region 2 Total	98.8%	98.9%	98.8%	99.3%	99.2%	99.4%							99.1%
NE Bernalillo	98.5%	98.9%	98.5%	97.9%	97.6%	96.7%							98.0%
NW Bernalillo	98.5%	98.1%	97.5%	98.4%	98.3%	98.1%							98.2%
SE Bernalillo	98.8%	98.2%	98.9%	99.3%	98.4%	98.1%							98.6%
SW Bernalillo	99.0%	99.2%	98.3%	99.1%	99.0%	99.6%							99.0%
Torrance	99.4%	100.0%	98.2%	100.0%	98.3%	99.4%							99.2%
Gen. Region 3 Total	98.7%	98.7%	98.3%	98.7%	98.3%	98.2%							98.5%
Chaves	99.7%	99.7%	98.1%	99.5%	99.0%	99.5%							99.3%
Curry	98.7%	99.0%	98.1%	97.1%	98.6%	98.4%							98.3%
Eddy Artesia	100.0%	98.5%	97.6%	100.0%	100.0%	98.9%							99.2%
Eddy Carlsbad	99.4%	99.3%	99.4%	98.3%	100.0%	99.0%							99.2%
Lea	99.6%	99.3%	98.9%	99.7%	99.4%	98.3%							99.2%
Lincoln	99.1%	100.0%	97.0%	99.3%	98.2%	97.5%							98.5%
Roosevelt	100.0%	100.0%		100.0%		100.0%							100.0%
SE Region 4 Total	99.4%	99.3%	98.3%	98.8%	99.1%	98.7%							98.9%
East Dona Ana	99.5%	99.5%	99.2%	99.2%	99.5%	99.1%							99.3%
Grant	99.3%	98.7%	100.0%	98.3%	100.0%	98.6%							99.2%
Luna	99.4%	100.0%	98.8%	98.9%	100.0%	99.5%							99.4%
Otero	98.9%	99.6%	99.2%	99.6%	98.0%	98.5%							99.0%
South Dona Ana	100.0%	99.6%	99.6%	100.0%	99.6%	99.6%							99.7%
West Dona Ana	98.7%	99.6%	99.6%	99.1%	100.0%	99.4%							99.4%
SW Region 5 Total	99.3%	99.5%	99.4%	99.2%	99.5%	99.2%							99.4%
STATE TOTAL	98.9%	99.0%	98.7%	99.0%	98.8%	98.8%							98.9%

SNAP Expedite: Percentage of Initial Applications Processed Timely by Field Office¹³

	Oct-19	Nov-19	Dec-19	Jan-20	Feb-20	Mar-20	Apr-20	May-20	Jun-20	Jul-20	Aug-20	Sep-20	Average
Cibola	96.7%	100.0%	95.5%	98.5%	100.0%	98.2%							98.2%
McKinley	98.2%	99.0%	99.0%	98.6%	98.4%	98.9%							98.7%
San Juan	98.9%	99.1%	98.4%	99.0%	99.0%	99.1%							98.9%
Sierra	95.5%	98.1%	100.0%	96.8%	97.9%	98.3%							97.8%
Socorro	100.0%	95.0%	98.5%	100.0%	97.4%	100.0%							98.5%
Valencia North	98.4%	99.1%	99.1%	97.6%	98.1%	98.6%							98.5%
Valencia South													
NW Region 1 Total	98.4%	98.9%	98.5%	98.6%	98.6%	98.9%							98.7%
Colfax	100.0%	100.0%	98.4%	100.0%	100.0%	97.9%							99.4%
Guadalupe	93.8%	100.0%	100.0%	95.0%	100.0%	100.0%							98.1%
Quay	96.9%	100.0%	100.0%	100.0%	95.5%	100.0%							98.7%
Rio Arriba	99.2%	97.1%	98.3%	98.1%	100.0%	99.0%							98.6%
San Miguel	98.9%	100.0%	100.0%	98.8%	97.9%	98.6%							99.0%
Sandoval	97.9%	98.9%	98.7%	98.7%	97.9%	100.0%							98.7%
Santa Fe	98.8%	98.1%	98.1%	98.3%	97.4%	98.2%							98.2%
Taos	97.7%	97.9%	98.6%	100.0%	98.5%	97.9%							98.4%
NE Region 2 Total	98.5%	98.5%	98.6%	98.7%	98.2%	98.8%							98.6%
NE Bernalillo	98.7%	98.5%	98.7%	98.7%	98.2%	97.8%							98.4%
NW Bernalillo	99.6%	98.6%	99.5%	98.3%	99.5%	99.4%							99.2%
SE Bernalillo	98.5%	98.6%	99.3%	98.6%	98.9%	98.5%							98.7%
SW Bernalillo	99.0%	98.1%	98.5%	99.0%	99.1%	98.5%							98.7%
Torrance	99.2%	100.0%	99.3%	97.1%	99.1%	99.2%							99.0%
Gen. Region 3 Total	99.0%	98.5%	99.0%	98.7%	98.8%	98.6%							98.8%
Chaves	98.2%	97.7%	98.7%	98.2%	98.8%	99.0%							98.4%
Curry	97.7%	97.6%	98.6%	97.7%	99.1%	99.3%							98.3%
Eddy Artesia	96.4%	100.0%	98.5%	100.0%	100.0%	100.0%							99.2%
Eddy Carlsbad	99.3%	97.7%	97.3%	98.8%	98.6%	99.4%							98.5%
Lea	98.3%	98.6%	100.0%	98.5%	99.1%	99.0%							98.9%
Lincoln	95.8%	96.0%	95.7%	96.0%	97.6%	97.4%							96.4%
Roosevelt	100.0%	100.0%		100.0%	100.0%	100.0%							100.0%
SE Region 4 Total	98.0%	97.9%	98.6%	98.2%	98.9%	99.1%							98.5%
East Dona Ana	98.5%	99.5%	100.0%	99.6%	98.3%	98.8%							99.1%
Grant	99.2%	100.0%	98.5%	97.7%	98.3%	100.0%							99.0%
Luna	99.2%	100.0%	98.2%	99.3%	100.0%	99.1%							99.3%
Otero	99.4%	99.5%	98.8%	99.5%	98.2%	99.4%							99.1%
South Dona Ana	97.9%	98.6%	99.2%	100.0%	96.6%	97.8%							98.4%
West Dona Ana	99.1%	99.4%	99.7%	100.0%	99.3%	98.7%							99.4%
SW Region 5 Total	98.9%	99.4%	99.3%	99.5%	98.6%	98.9%							99.1%
STATE TOTAL	98.7%	98.6%	98.8%	98.7%	98.7%	98.8%							98.7%

SNAP: Percentage of Denied Initial Applications Processed Within 30 Days by Field Office¹³

	Oct-19	Nov-19	Dec-19	Jan-20	Feb-20	Mar-20	Apr-20	May-20	Jun-20	Jul-20	Aug-20	Sep-20	Average
Cibola	97.3%	100.0%	100.0%	98.1%	98.0%	100.0%							98.9%
McKinley	100.0%	94.4%	96.1%	99.0%	99.0%	97.8%							97.7%
San Juan	97.6%	98.2%	98.6%	97.7%	96.6%	98.3%							97.8%
Sierra	96.0%	100.0%	100.0%	100.0%	95.7%	100.0%							98.6%
Socorro	100.0%	100.0%	100.0%	100.0%	100.0%	96.8%							99.5%
Valencia North	99.0%	97.7%	98.4%	100.0%	99.1%	99.0%							98.9%
Valencia South													
NW Region 1 Total	98.3%	98.4%	98.9%	99.1%	98.1%	98.7%							98.6%
Colfax	96.8%	94.1%	100.0%	100.0%	100.0%	100.0%							98.5%
Guadalupe	100.0%	100.0%	100.0%	100.0%	100.0%	100.0%							100.0%
Quay	100.0%	100.0%	100.0%	100.0%	100.0%	100.0%							100.0%
Rio Arriba	95.8%	98.6%	94.7%	96.0%	98.7%	98.6%							97.1%
San Miguel	100.0%	98.5%	100.0%	98.6%	100.0%	100.0%							99.5%
Sandoval	98.5%	98.9%	98.8%	100.0%	99.5%	98.7%							99.1%
Santa Fe	96.4%	98.2%	96.2%	99.1%	97.4%	94.9%							97.0%
Taos	100.0%	98.4%	100.0%	100.0%	100.0%	100.0%							99.7%
NE Region 2 Total	98.4%	98.3%	98.7%	99.2%	99.5%	99.0%							98.9%
NE Bernalillo	98.2%	97.8%	96.8%	94.7%	95.3%	91.7%							95.8%
NW Bernalillo	96.4%	96.7%	96.6%	97.9%	97.0%	96.0%							96.8%
SE Bernalillo	97.8%	95.0%	98.4%	99.0%	97.0%	95.7%							97.2%
SW Bernalillo	97.7%	98.0%	96.8%	96.8%	98.8%	98.7%							97.8%
Torrance	98.2%	100.0%	96.5%	100.0%	98.2%	100.0%							98.8%
Cen. Region 3 Total	97.7%	97.5%	97.0%	97.7%	97.3%	96.4%							97.3%
Chaves	100.0%	100.0%	95.0%	98.1%	98.0%	98.9%							98.3%
Curry	97.2%	97.2%	94.8%	96.9%	99.0%	96.2%							96.9%
Eddy Artesia	100.0%	96.3%	100.0%	100.0%	100.0%	100.0%							99.4%
Eddy Carlsbad	98.2%	100.0%	98.3%	97.7%	98.5%	98.4%							98.5%
Lea	100.0%	99.0%	97.0%	100.0%	100.0%	97.8%							99.0%
Lincoln	97.6%	100.0%	94.9%	100.0%	97.4%	97.5%							97.9%
Roosevelt		100.0%				100.0%							100.0%
SE Region 4 Total	98.8%	98.9%	96.7%	98.8%	98.8%	98.4%							98.4%
East Dona Ana	99.4%	98.7%	98.5%	98.0%	99.3%	99.2%							98.9%
Grant	97.4%	98.1%	100.0%	93.3%	100.0%	94.6%							97.2%
Luna	97.7%	100.0%	95.3%	98.0%	100.0%	100.0%							98.5%
Otero	98.9%	98.8%	97.1%	98.8%	95.9%	98.5%							98.0%
South Dona Ana	100.0%	100.0%	100.0%	100.0%	100.0%	98.5%							99.8%
West Dona Ana	97.5%	99.4%	99.2%	98.8%	100.0%	97.9%							98.8%
SW Region 5 Total	98.5%	99.2%	98.4%	97.8%	99.2%	98.1%							98.5%
STATE TOTAL	98.4%	98.5%	98.0%	98.6%	98.7%	98.2%							98.4%

SNAP: Combined Approvals and Denials Percentage of Initial Applications Processed Timely by Field Office¹³

	Oct-19	Nov-19	Dec-19	Jan-20	Feb-20	Mar-20	Apr-20	May-20	Jun-20	Jul-20	Aug-20	Sep-20	Average
Cibola	98.0%	98.5%	97.7%	97.6%	99.6%	98.8%							98.4%
McKinley	98.8%	98.7%	98.8%	98.7%	98.8%	99.1%							98.8%
San Juan	98.5%	98.8%	98.8%	99.1%	98.6%	99.2%							98.8%
Sierra	97.3%	99.4%	100.0%	98.8%	98.5%	99.3%							98.9%
Socorro	98.9%	98.3%	99.4%	99.5%	98.8%	98.9%							99.0%
Valencia North	98.7%	99.1%	99.4%	98.7%	99.1%	99.1%							99.0%
Valencia South		100.0%		100.0%									100.0%
NW Region 1 Total	98.4%	99.0%	99.0%	98.9%	98.9%	99.1%							98.9%
Colfax	99.3%	99.2%	99.2%	99.3%	100.0%	99.1%							99.4%
Guadalupe	98.2%	100.0%	100.0%	97.6%	97.6%	100.0%							98.9%
Quay	98.6%	100.0%	100.0%	100.0%	99.6%	100.0%							99.7%
Rio Arriba	98.7%	98.3%	98.5%	98.5%	98.8%	99.3%							98.7%
San Miguel	98.5%	99.4%	100.0%	98.7%	98.8%	99.5%							99.2%
Sandoval	98.9%	98.7%	98.9%	99.2%	98.0%	99.7%							98.9%
Santa Fe	98.2%	98.3%	97.9%	99.0%	99.3%	98.3%							98.5%
Taos	99.0%	98.5%	99.0%	99.4%	99.3%	99.1%							99.1%
NE Region 2 Total	98.7%	99.1%	99.2%	99.0%	98.9%	99.4%							99.0%
NE Bernalillo	98.6%	98.7%	98.7%	98.3%	97.9%	97.3%							98.3%
NW Bernalillo	99.0%	98.3%	98.6%	98.4%	98.8%	98.8%							98.7%
SE Bernalillo	98.7%	98.2%	99.3%	99.0%	98.5%	98.2%							98.7%
SW Bernalillo	98.9%	98.5%	98.4%	99.0%	99.1%	99.1%							98.8%
Torrance	99.3%	100.0%	98.7%	98.7%	98.6%	99.7%							99.2%
Gen. Region 3 Total	98.9%	98.7%	98.7%	98.7%	98.6%	98.6%							98.7%
Chaves	99.1%	98.9%	98.3%	99.0%	98.9%	99.3%							98.9%
Curry	98.3%	98.4%	98.3%	97.5%	99.0%	98.9%							98.4%
Eddy Artesia	98.6%	99.1%	98.0%	100.0%	100.0%	99.3%							99.2%
Eddy Carlsbad	99.3%	98.6%	98.4%	98.5%	99.1%	99.4%							98.9%
Lea	99.0%	99.0%	99.4%	99.1%	99.2%	98.7%							99.1%
Lincoln	97.5%	98.4%	96.6%	98.4%	98.0%	97.9%							97.8%
Roosevelt		100.0%	100.0%	100.0%	100.0%	100.0%							100.0%
SE Region 4 Total	98.6%	98.9%	98.4%	98.9%	99.2%	99.1%							98.9%
East Dona Ana	99.2%	99.5%	99.5%	99.3%	99.1%	99.0%							99.3%
Grant	99.3%	99.2%	99.3%	97.7%	99.2%	99.2%							99.0%
Luna	99.3%	100.0%	98.6%	99.1%	100.0%	99.3%							99.4%
Otero	99.3%	99.6%	99.0%	99.6%	98.0%	98.9%							99.1%
South Dona Ana	99.3%	99.3%	99.4%	100.0%	98.9%	99.0%							99.3%
West Dona Ana	98.9%	99.5%	99.6%	99.4%	99.7%	99.0%							99.4%
SW Region 5 Total	99.2%	99.5%	99.2%	99.2%	99.2%	99.1%							99.2%
STATE TOTAL	98.7%	99.0%	98.9%	98.9%	99.0%	99.1%							98.9%

SNAP Renewals Processed by Field Office²⁰
March 2020

Office	Approvals	Closures	Need Based Closures	Procedural Closures
Chaves County ISD	201	89	82	7
Cibola County ISD	124	38	37	1
Coffax County ISD	40	16	13	3
Curry County ISD	256	70	64	6
East Dona Ana County ISD	282	63	53	10
Eddy Artesia County ISD	46	24	23	1
Eddy Carlsbad County ISD	101	29	28	1
Grant County ISD	134	28	23	5
Guadalupe County ISD	29	4	4	0
Hidalgo County ISD	0	0	0	0
Lea County ISD	194	64	56	8
Lincoln County ISD	50	20	18	2
Luna County ISD	154	26	18	8
McKinley County ISD	394	85	83	2
Northeast Bernalillo County ISD	540	237	220	17
Northwest Bernalillo County ISD	470	172	163	9
Otero County ISD	185	60	55	5
Quay County ISD	45	12	9	3
Rio Arriba County ISD	211	44	40	4
Roosevelt County ISD	0	0	0	0
San Juan County ISD	401	178	170	8
San Miguel County ISD	136	38	36	2
Sandoval County ISD	323	70	65	5
Santa Fe County ISD	284	93	88	5
Sierra County ISD	75	12	11	1
Socorro County ISD	82	17	16	1
South Dona Ana ISD	313	77	62	15
Southeast Bernalillo County ISD	331	84	72	12
Southwest Bernalillo County ISD	748	213	189	24
Taos County ISD	130	34	30	4
Torrance County ISD	116	26	24	2
Valencia North County ISD	257	67	63	4
Valencia South County ISD	2	0	0	0
West Dona Ana County ISD	379	78	63	15
Centralized Units	0	0	0	0
Statewide Total	7,033	2,068	1,878	190

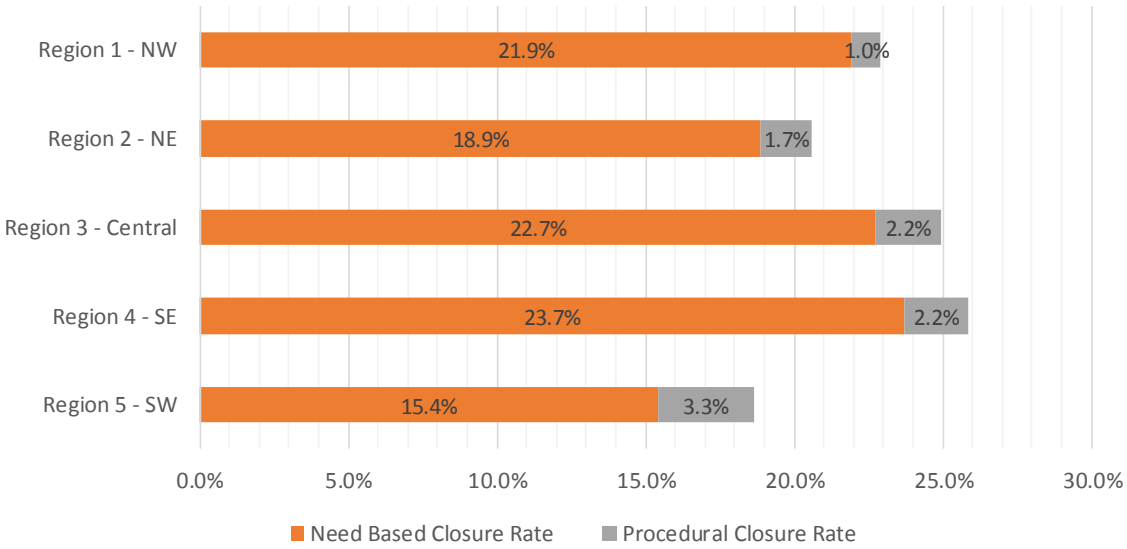
SNAP Renewal Disposition Rates by Field Office²⁰
March 2020

Office	Approval Rate	Closure Rate	Need Based Closure Rate	Procedural Closure Rate
Chaves County ISD	69.3%	30.7%	28.3%	2.4%
Cibola County ISD	76.5%	23.5%	22.8%	0.6%
Colfax County ISD	71.4%	28.6%	23.2%	5.4%
Curry County ISD	78.5%	21.5%	19.6%	1.8%
East Dona Ana County ISD	81.7%	18.3%	15.4%	2.9%
Eddy Artesia County ISD	65.7%	34.3%	32.9%	1.4%
Eddy Carlsbad County ISD	77.7%	22.3%	21.5%	0.8%
Grant County ISD	82.7%	17.3%	14.2%	3.1%
Guadalupe County ISD	87.9%	12.1%	12.1%	0.0%
Hidalgo County ISD	0.0%	0.0%	0.0%	0.0%
Lea County ISD	75.2%	24.8%	21.7%	3.1%
Lincoln County ISD	71.4%	28.6%	25.7%	2.9%
Luna County ISD	85.6%	14.4%	10.0%	4.4%
McKinley County ISD	82.3%	17.7%	17.3%	0.4%
Northeast Bernalillo County ISD	69.5%	30.5%	28.3%	2.2%
Northwest Bernalillo County ISD	73.2%	26.8%	25.4%	1.4%
Otero County ISD	75.5%	24.5%	22.4%	2.0%
Quay County ISD	78.9%	21.1%	15.8%	5.3%
Rio Arriba County ISD	82.7%	17.3%	15.7%	1.6%
Roosevelt County ISD	0.0%	0.0%	0.0%	0.0%
San Juan County ISD	69.3%	30.7%	29.4%	1.4%
San Miguel County ISD	78.2%	21.8%	20.7%	1.1%
Sandoval County ISD	82.2%	17.8%	16.5%	1.3%
Santa Fe County ISD	75.3%	24.7%	23.3%	1.3%
Sierra County ISD	86.2%	13.8%	12.6%	1.1%
Socorro County ISD	82.8%	17.2%	16.2%	1.0%
South Dona Ana ISD	80.3%	19.7%	15.9%	3.8%
Southeast Bernalillo County ISD	79.8%	20.2%	17.3%	2.9%
Southwest Bernalillo County ISD	77.8%	22.2%	19.7%	2.5%
Taos County ISD	79.3%	20.7%	18.3%	2.4%
Torrance County ISD	81.7%	18.3%	16.9%	1.4%
Valencia North County ISD	79.3%	20.7%	19.4%	1.2%
Valencia South County ISD	100.0%	0.0%	0.0%	0.0%
West Dona Ana County ISD	82.9%	17.1%	13.8%	3.3%
Centralized Units	0.0%	0.0%	0.0%	0.0%
Statewide Total	77.3%	22.7%	20.6%	2.1%

SNAP Renewal Disposition Rates by Region²⁰
March 2020

Region	Approval Rate	Closure Rate	Need Based Closure Rate	Procedural Closure Rate
Region 1 - NW	77.1%	22.9%	21.9%	1.0%
Region 2 - NE	79.4%	20.6%	18.9%	1.7%
Region 3 - Central	75.1%	24.9%	22.7%	2.2%
Region 4 - SE	74.1%	25.9%	23.7%	2.2%
Region 5 - SW	81.3%	18.7%	15.4%	3.3%
Centralized Units				

Statewide Total	77.3%	22.7%	20.6%	2.1%
-----------------	-------	-------	-------	------



SNAP: Percentage of Approved Renewal Applications Processed¹¹

	Oct-19	Nov-19	Dec-19	Jan-20	Feb-20	Mar-20	Apr-20	May-20	Jun-20	Jul-20	Aug-20	Sep-20	Average
Cibola	94.2%	97.9%	95.4%	94.4%	96.7%	100.0%							96.4%
McKinley	99.0%	94.2%	97.5%	97.4%	98.0%	100.0%							97.7%
San Juan	95.3%	93.9%	97.1%	97.8%	97.4%	100.0%							96.9%
Sierra	97.2%	95.3%	96.8%	98.9%	97.8%	100.0%							97.7%
Socorro	98.0%	97.2%	97.2%	98.7%	98.9%	100.0%							98.3%
Valencia North	98.3%	97.2%	95.7%	98.2%	99.6%	100.0%							98.2%
Valencia South					100.0%	100.0%							100.0%
NW Region 1 Total	97.0%	96.0%	96.6%	97.6%	98.3%	100.0%							97.6%
Colfax	100.0%	97.6%	98.4%	100.0%	100.0%	100.0%							99.3%
Guadalupe	94.7%	100.0%	100.0%	100.0%	100.0%	100.0%							99.1%
Quay	100.0%	98.2%	100.0%	100.0%	100.0%	100.0%							99.7%
Rio Arriba	99.1%	96.4%	95.8%	97.1%	100.0%	100.0%							98.1%
San Miguel	94.4%	95.9%	99.5%	97.6%	97.5%	100.0%							97.5%
Sandoval	99.5%	98.6%	98.5%	99.3%	99.4%	100.0%							99.2%
Santa Fe	95.3%	92.6%	96.5%	93.0%	94.7%	100.0%							95.4%
Taos	97.9%	95.0%	100.0%	97.6%	97.6%	100.0%							98.0%
NE Region 2 Total	97.6%	96.8%	98.6%	98.1%	98.7%	100.0%							98.3%
NE Bernalillo	98.6%	96.6%	96.8%	93.1%	96.4%	100.0%							96.9%
NW Bernalillo	96.2%	96.2%	95.4%	93.9%	97.7%	100.0%							96.6%
SE Bernalillo	97.2%	94.8%	96.6%	92.5%	98.4%	100.0%							96.6%
SW Bernalillo	97.0%	96.9%	97.2%	95.1%	99.4%	100.0%							97.6%
Torrance	95.6%	95.0%	99.1%	96.4%	98.5%	100.0%							97.4%
Gen. Region 3 Total	96.9%	95.9%	97.0%	94.2%	98.1%	100.0%							97.0%
Chaves	98.8%	98.7%	97.8%	99.0%	98.7%	100.0%							98.8%
Curry	98.8%	98.4%	97.9%	99.5%	99.6%	100.0%							99.0%
Eddy Artesia	100.0%	100.0%	100.0%	96.4%	100.0%	100.0%							99.4%
Eddy Carlsbad	100.0%	98.6%	100.0%	100.0%	98.6%	100.0%							99.5%
Lea	98.8%	98.9%	97.0%	95.4%	100.0%	100.0%							98.4%
Lincoln	95.8%	96.9%	96.8%	96.6%	96.4%	100.0%							97.1%
Roosevelt													
SE Region 4 Total	98.7%	98.6%	98.3%	97.8%	98.9%	100.0%							98.7%
East Dona Ana	97.8%	97.5%	97.5%	98.5%	100.0%	100.0%							98.6%
Grant	98.1%	100.0%	96.1%	97.1%	99.3%	100.0%							98.4%
Luna	100.0%	97.6%	99.4%	99.2%	99.2%	100.0%							99.2%
Otero	99.1%	99.0%	100.0%	97.2%	99.5%	100.0%							99.1%
South Dona Ana	100.0%	99.7%	100.0%	99.7%	100.0%	100.0%							99.9%
West Dona Ana	100.0%	98.4%	99.5%	100.0%	99.7%	100.0%							99.6%
SW Region 5 Total	99.2%	98.7%	98.8%	98.6%	99.6%	100.0%							99.1%
STATE TOTAL	97.9%	97.2%	97.9%	97.4%	98.7%	100.0%							98.2%

Includes cases in which the Renewal Packet was received after the 15th of the month.

Recertifications – If a Recertification cannot be processed under normal processing, ASPEN will automatically extend certification periods for households scheduled to recertify in March, April, May and June 2020, for 6 months until September, October and November 2020.

SNAP: Percentage of Approved Renewal Applications Processed¹¹

	Oct-19	Nov-19	Dec-19	Jan-20	Feb-20	Mar-20	Apr-20	May-20	Jun-20	Jul-20	Aug-20	Sep-20	Average
Cibola	87.5%	91.7%	100.0%	100.0%	100.0%	100.0%							96.5%
McKinley	97.6%	95.5%	100.0%	93.9%	100.0%	100.0%							97.8%
San Juan	94.6%	91.3%	98.4%	100.0%	95.1%	100.0%							96.6%
Sierra	96.8%	100.0%	92.3%	100.0%	100.0%	100.0%							98.2%
Socorro	96.4%	96.2%	100.0%	100.0%	100.0%	100.0%							98.8%
Valencia North	98.4%	94.4%	100.0%	100.0%	100.0%	100.0%							98.8%
Valencia South					100.0%	100.0%							100.0%
NW Region 1 Total	95.2%	94.9%	98.5%	99.0%	99.3%	100.0%							97.8%
Colfax	100.0%	100.0%	100.0%	100.0%	100.0%	100.0%							100.0%
Guadalupe	100.0%	100.0%	100.0%	100.0%	100.0%	100.0%							100.0%
Quay	100.0%	100.0%	100.0%	100.0%	100.0%	100.0%							100.0%
Rio Arriba	98.4%	93.3%	90.9%	100.0%	100.0%	100.0%							97.1%
San Miguel	92.9%	100.0%	100.0%	100.0%	100.0%	100.0%							98.8%
Sandoval	100.0%	97.9%	100.0%	100.0%	100.0%	100.0%							99.7%
Santa Fe	91.3%	95.8%	98.1%	93.9%	100.0%	100.0%							96.5%
Taos	87.5%	100.0%	100.0%	100.0%	100.0%	100.0%							97.9%
NE Region 2 Total	96.3%	98.4%	98.6%	99.2%	100.0%	100.0%							98.8%
NE Bernalillo	100.0%	94.6%	98.8%	94.0%	100.0%	100.0%							97.9%
NW Bernalillo	98.0%	96.9%	98.8%	95.2%	100.0%	100.0%							98.2%
SE Bernalillo	97.8%	100.0%	98.5%	93.6%	97.8%	100.0%							98.0%
SW Bernalillo	98.0%	96.3%	100.0%	97.5%	100.0%	100.0%							98.6%
Torrance	96.2%	81.8%	100.0%	100.0%	100.0%	100.0%							96.3%
Gen. Region 3 Total	98.0%	93.9%	99.2%	96.1%	99.6%	100.0%							97.8%
Chaves	100.0%	100.0%	96.6%	93.9%	100.0%	100.0%							98.4%
Curry	100.0%	96.3%	100.0%	100.0%	100.0%	100.0%							99.4%
Eddy Artesia	100.0%	100.0%	100.0%	100.0%	100.0%	100.0%							100.0%
Eddy Carlsbad	100.0%	88.9%	100.0%	100.0%	100.0%	100.0%							98.2%
Lea	97.1%	100.0%	100.0%	93.5%	100.0%	100.0%							98.4%
Lincoln	92.9%	100.0%	100.0%	100.0%	100.0%	100.0%							98.8%
Roosevelt													
SE Region 4 Total	98.3%	97.5%	99.4%	97.9%	100.0%	100.0%							98.9%
East Dona Ana	98.4%	98.1%	100.0%	100.0%	100.0%	100.0%							99.4%
Grant	96.2%	100.0%	100.0%	100.0%	100.0%	100.0%							99.4%
Luna	100.0%	100.0%	100.0%	100.0%	100.0%	100.0%							100.0%
Otero	100.0%	100.0%	100.0%	100.0%	100.0%	100.0%							100.0%
South Dona Ana	100.0%	100.0%	100.0%	100.0%	100.0%	100.0%							100.0%
West Dona Ana	100.0%	97.9%	98.2%	100.0%	100.0%	100.0%							99.4%
SW Region 5 Total	99.1%	99.3%	99.7%	100.0%	100.0%	100.0%							99.7%
STATE TOTAL	97.3%	97.0%	99.1%	98.6%	99.8%	100.0%							98.7%

Only includes cases in which the Renewal Packet was received by the 15th of the month

Recertifications – If a Recertification cannot be processed under normal processing, ASPEN will automatically extend certification periods for households scheduled to recertify in March, April, May and June 2020, for 6 months until September, October and November 2020.

SNAP: Percentage of Terminations Renewal Applications Processed¹¹

	Oct-19	Nov-19	Dec-19	Jan-20	Feb-20	Mar-20	Apr-20	May-20	Jun-20	Jul-20	Aug-20	Sep-20	Average
Cibola	98.8%	93.8%	96.6%	96.5%	95.8%	100.0%							96.9%
McKinley	97.1%	91.8%	98.0%	97.5%	97.5%	100.0%							97.0%
San Juan	96.5%	94.6%	97.4%	95.6%	95.6%	100.0%							96.6%
Sierra	98.5%	96.2%	93.3%	93.5%	100.0%	100.0%							96.9%
Socorro	100.0%	92.2%	100.0%	100.0%	100.0%	100.0%							98.7%
Valencia North	97.8%	93.5%	97.0%	97.5%	97.4%	100.0%							97.2%
Valencia South													
NW Region 1 Total	98.1%	93.7%	97.1%	96.8%	97.7%	100.0%							97.2%
Colfax	100.0%	100.0%	100.0%	92.9%	100.0%	100.0%							98.8%
Guadalupe	100.0%	90.9%	100.0%	100.0%	92.9%	100.0%							97.3%
Quay	100.0%	100.0%	100.0%	96.0%	96.3%	100.0%							98.7%
Rio Arriba	98.2%	93.7%	96.5%	94.9%	99.2%	100.0%							97.1%
San Miguel	92.9%	97.6%	100.0%	95.1%	87.7%	100.0%							95.6%
Sandoval	98.0%	96.6%	96.8%	98.9%	99.0%	100.0%							98.2%
Santa Fe	97.0%	95.4%	97.3%	93.3%	94.1%	100.0%							96.2%
Taos	98.8%	96.3%	98.8%	94.4%	98.5%	100.0%							97.8%
NE Region 2 Total	98.1%	96.3%	98.7%	95.7%	96.0%	100.0%							97.5%
NE Bernalillo	95.0%	94.9%	96.3%	94.6%	96.1%	100.0%							96.2%
NW Bernalillo	95.1%	95.0%	94.4%	94.2%	98.0%	100.0%							96.1%
SE Bernalillo	95.2%	96.1%	93.7%	95.6%	96.9%	100.0%							96.3%
SW Bernalillo	97.3%	98.2%	97.2%	93.2%	98.1%	100.0%							97.3%
Torrance	100.0%	97.8%	94.2%	95.4%	96.6%	100.0%							97.3%
Gen. Region 3 Total	96.5%	96.4%	95.2%	94.6%	97.1%	100.0%							96.6%
Chaves	96.8%	94.9%	94.5%	95.6%	99.2%	100.0%							96.8%
Curry	98.7%	97.9%	98.3%	99.1%	98.3%	100.0%							98.7%
Eddy Artesia	92.3%	100.0%	100.0%	95.7%	95.3%	100.0%							97.2%
Eddy Carlsbad	100.0%	97.6%	97.2%	93.9%	100.0%	100.0%							98.1%
Lea	97.6%	95.9%	98.6%	97.8%	99.0%	100.0%							98.2%
Lincoln	95.3%	91.7%	87.5%	96.2%	97.4%	100.0%							94.7%
Roosevelt													
SE Region 4 Total	96.8%	96.3%	96.0%	96.4%	98.2%	100.0%							97.3%
East Dona Ana	98.7%	97.5%	99.0%	99.3%	97.6%	100.0%							98.7%
Grant	100.0%	98.1%	95.9%	91.7%	100.0%	100.0%							97.6%
Luna	100.0%	97.5%	96.7%	98.5%	100.0%	100.0%							98.8%
Otero	100.0%	99.0%	97.7%	99.1%	98.1%	100.0%							99.0%
South Dona Ana	100.0%	100.0%	100.0%	99.2%	98.7%	100.0%							99.7%
West Dona Ana	97.9%	99.0%	99.1%	100.0%	100.0%	100.0%							99.3%
SW Region 5 Total	99.4%	98.5%	98.1%	98.0%	99.1%	100.0%							98.8%
STATE TOTAL	97.9%	96.2%	97.2%	96.3%	97.5%	100.0%							97.5%

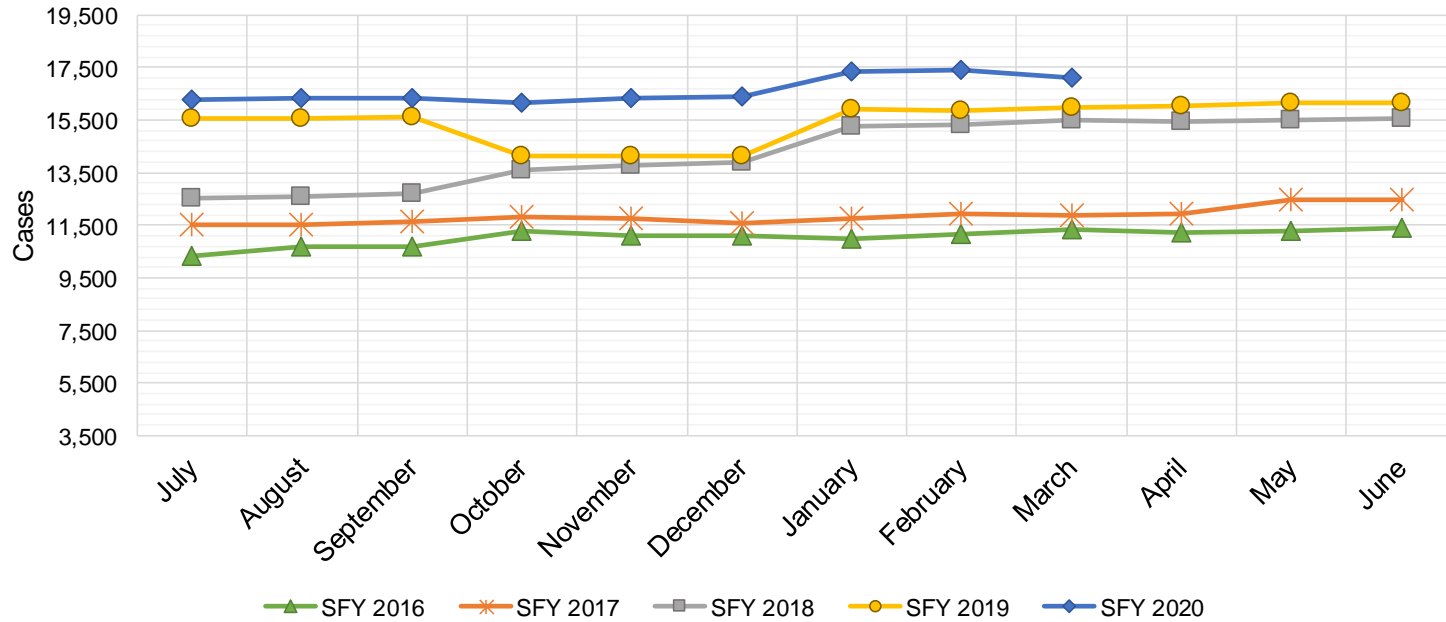
Includes cases for which no renewal application was received.

SNAP: Combined Percentage of Approved and Terminated Renewal Applications Processed¹¹

	Oct-19	Nov-19	Dec-19	Jan-20	Feb-20	Mar-20	Apr-20	May-20	Jun-20	Jul-20	Aug-20	Sep-20	Average
Cibola	96.1%	96.4%	95.9%	95.2%	96.4%	100.0%							96.7%
McKinley	98.4%	93.4%	97.6%	97.4%	97.9%	100.0%							97.5%
San Juan	95.8%	94.1%	97.2%	97.0%	96.6%	100.0%							96.8%
Sierra	97.7%	95.7%	95.9%	97.5%	98.4%	100.0%							97.5%
Socorro	98.7%	95.6%	98.1%	99.2%	99.2%	100.0%							98.5%
Valencia North	98.1%	95.8%	96.2%	97.9%	98.8%	100.0%							97.8%
Valencia South					100.0%								100.0%
NW Region 1 Total	97.5%	95.2%	96.8%	97.4%	98.2%	100.0%							97.5%
Colfax	100.0%	98.6%	99.0%	98.3%	100.0%	100.0%							99.3%
Guadalupe	97.1%	97.3%	100.0%	100.0%	96.9%	100.0%							98.6%
Quay	100.0%	98.8%	100.0%	98.3%	98.6%	100.0%							99.3%
Rio Arriba	98.8%	95.1%	96.1%	96.2%	99.7%	100.0%							97.7%
San Miguel	93.9%	96.5%	99.6%	96.6%	94.6%	100.0%							96.9%
Sandoval	99.0%	97.8%	97.9%	99.1%	99.2%	100.0%							98.8%
Santa Fe	96.0%	93.7%	96.8%	93.1%	94.5%	100.0%							95.7%
Taos	98.2%	95.5%	99.6%	96.3%	97.9%	100.0%							97.9%
NE Region 2 Total	97.9%	96.7%	98.6%	97.2%	97.7%	100.0%							98.0%
NE Bernalillo	97.1%	96.0%	96.6%	93.7%	96.3%	100.0%							96.6%
NW Bernalillo	95.7%	95.7%	95.0%	94.0%	97.9%	100.0%							96.4%
SE Bernalillo	96.3%	95.3%	95.5%	93.7%	97.8%	100.0%							96.4%
SW Bernalillo	97.1%	97.3%	97.2%	94.4%	99.0%	100.0%							97.5%
Torrance	97.5%	96.3%	96.9%	96.0%	97.9%	100.0%							97.4%
Gen. Region 3 Total	96.7%	96.1%	96.2%	94.4%	97.8%	100.0%							96.9%
Chaves	98.1%	97.4%	96.9%	97.7%	98.9%	100.0%							98.2%
Curry	98.8%	98.2%	98.0%	99.3%	99.2%	100.0%							98.9%
Eddy Artesia	97.1%	100.0%	100.0%	96.2%	97.8%	100.0%							98.5%
Eddy Carlsbad	100.0%	98.2%	98.5%	97.5%	99.1%	100.0%							98.9%
Lea	98.3%	97.6%	97.7%	96.2%	99.6%	100.0%							98.2%
Lincoln	95.7%	95.0%	93.6%	96.5%	96.8%	100.0%							96.3%
Roosevelt													
SE Region 4 Total	98.0%	97.7%	97.5%	97.2%	98.6%	100.0%							98.2%
East Dona Ana	98.1%	97.5%	98.2%	98.8%	99.3%	100.0%							98.7%
Grant	98.7%	99.4%	96.0%	95.4%	99.5%	100.0%							98.2%
Luna	100.0%	97.6%	98.4%	99.0%	99.5%	100.0%							99.1%
Otero	99.4%	99.0%	99.1%	98.1%	99.0%	100.0%							99.1%
South Dona Ana	100.0%	99.8%	100.0%	99.6%	99.6%	100.0%							99.8%
West Dona Ana	99.3%	98.6%	99.3%	100.0%	99.8%	100.0%							99.5%
SW Region 5 Total	99.3%	98.7%	98.5%	98.5%	99.5%	100.0%							99.1%
STATE TOTAL	97.9%	96.9%	97.6%	97.0%	98.3%	100.0%							98.0%

State SNAP Supplement

SFY 2016 ^{12,9}			SFY 2017 ⁹			SFY 2018 ⁹			SFY 2019 ⁹			SFY 2020 ⁹		
	Cases	Expenditures		Cases	Expenditures		Cases	Expenditures		Cases	Expenditures		Cases	Expenditures
Jul-15	10,345	\$86,143	Jul-16	11,537	\$95,553	Jul-17	12,526	\$97,568	Jul-18	15,555	\$141,711	Jul-19	16,260	\$145,023
Aug-15	10,669	\$88,197	Aug-16	11,522	\$95,107	Aug-17	12,589	\$98,954	Aug-18	15,584	\$139,719	Aug-19	16,314	\$145,706
Sep-15	10,676	\$88,426	Sep-16	11,613	\$94,472	Sep-17	12,679	\$97,546	Sep-18	15,631	\$140,768	Sep-19	16,362	\$145,767
Oct-15	11,262	\$96,758	Oct-16	11,797	\$96,679	Oct-17	13,628	\$117,343	Oct-18	14,161	\$125,737	Oct-19	16,182	\$139,741
Nov-15	11,099	\$91,996	Nov-16	11,735	\$93,689	Nov-17	13,748	\$119,055	Nov-18	14,160	\$125,401	Nov-19	16,331	\$138,583
Dec-15	11,125	\$90,771	Dec-16	11,556	\$93,739	Dec-17	13,877	\$120,585	Dec-18	14,163	\$126,263	Dec-19	16,373	\$137,440
Jan-16	10,977	\$92,760	Jan-17	11,763	\$96,074	Jan-18	15,246	\$135,993	Jan-19	15,890	\$141,357	Jan-20	17,360	\$145,696
Feb-16	11,153	\$95,363	Feb-17	11,907	\$98,251	Feb-18	15,308	\$137,296	Feb-19	15,882	\$142,396	Feb-20	17,429	\$154,849
Mar-16	11,332	\$96,751	Mar-17	11,853	\$96,693	Mar-18	15,482	\$139,132	Mar-19	15,970	\$142,427	Mar-20	17,131	\$150,568
Apr-16	11,222	\$93,959	Apr-17	11,944	\$97,060	Apr-18	15,466	\$139,202	Apr-19	16,032	\$143,982	Apr-20		
May-16	11,283	\$95,271	May-17	12,457	\$96,940	May-18	15,525	\$139,397	May-19	16,126	\$143,697	May-20		
Jun-16	11,389	\$93,061	Jun-17	12,498	\$97,405	Jun-18	15,577	\$140,802	Jun-19	16,182	\$143,128	Jun-20		
TOTAL	132,532	\$1,109,455	142,182	\$1,151,662	171,651	\$1,482,874	185,336	\$1,656,584	149,742	\$1,303,374				
AVERAGE	11,044	\$92,455	11,849	\$95,972	14,304	\$123,573	15,445	\$138,049	16,638	\$144,819				



TANF Cases by Field Office⁶

Office				Percent Change	
	Mar-19	Feb-20	Mar-20	Mar-19- Mar-20	Feb-20- Mar-20
Chaves County ISD	382	394	400	4.71%	1.52%
Cibola County ISD	132	108	105	-20.45%	-2.78%
Colfax County ISD	72	90	90	25.00%	0.00%
Curry County ISD	626	575	597	-4.63%	3.83%
East Dona Ana County ISD	405	400	406	0.25%	1.50%
Eddy Artesia County ISD	83	82	81	-2.41%	-1.22%
Eddy Carlsbad County ISD	133	149	150	12.78%	0.67%
Grant County ISD	186	183	185	-0.54%	1.09%
Guadalupe County ISD	24	27	25	4.17%	-7.41%
Hidalgo County ISD	0	0	0	NA	N/A
Lea County ISD	297	361	356	19.87%	-1.39%
Lincoln County ISD	100	72	76	-24.00%	5.56%
Luna County ISD	221	202	197	-10.86%	-2.48%
McKinley County ISD	80	60	65	-18.75%	8.33%
Northeast Bernalillo County ISD	867	938	918	5.88%	-2.13%
Northwest Bernalillo County ISD	777	769	779	0.26%	1.30%
Otero County ISD	226	264	264	16.81%	0.00%
Quay County ISD	63	76	74	17.46%	-2.63%
Rio Arriba County ISD	346	344	339	-2.02%	-1.45%
Roosevelt County ISD	0	0	0	NA	N/A
San Juan County ISD	301	277	315	4.65%	13.72%
San Miguel County ISD	172	186	181	5.23%	-2.69%
Sandoval County ISD	468	443	431	-7.91%	-2.71%
Santa Fe County ISD	369	342	350	-5.15%	2.34%
Sierra County ISD	62	67	68	9.68%	1.49%
Socorro County ISD	84	78	76	-9.52%	-2.56%
South Dona Ana ISD	623	580	543	-12.84%	-6.38%
Southeast Bernalillo County ISD	578	516	473	-18.17%	-8.33%
Southwest Bernalillo County ISD	1,033	1,071	1,098	6.29%	2.52%
Taos County ISD	154	128	135	-12.34%	5.47%
Torrance County ISD	187	180	179	-4.28%	-0.56%
Valencia North County ISD	378	425	404	6.88%	-4.94%
Valencia South County ISD	0	1	0	N/A	-100.0%
West Dona Ana County ISD	639	650	631	-1.25%	-2.92%
Centralized Units	2	2	1	-50.00%	-50.00%
Statewide Total	10,070	10,040	9,992	-0.77%	-0.48%

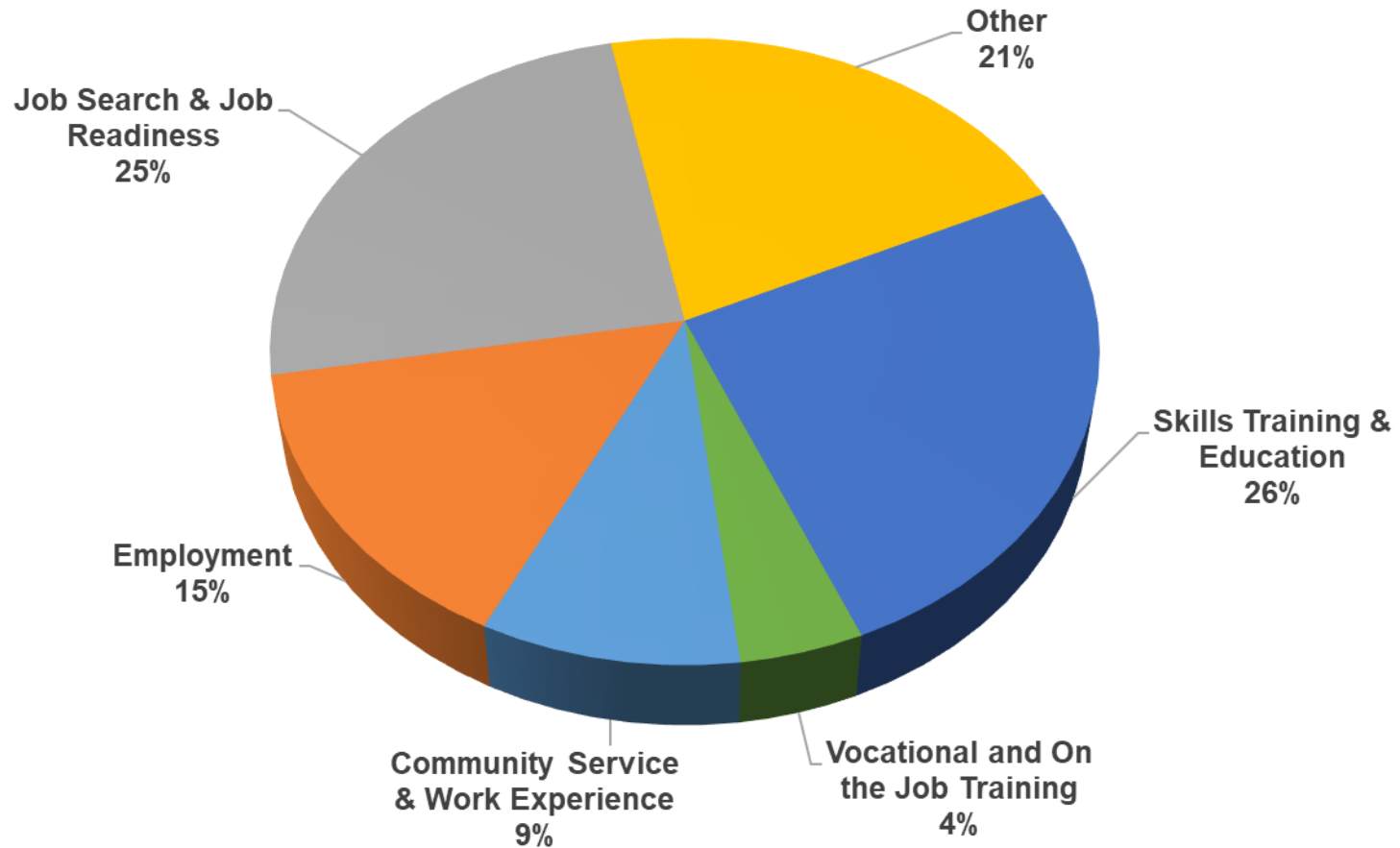
TANF Cases by Region⁶

Region	Mar-19	Feb-20	Mar-20	Percent Change	
				Mar-19- Mar-20	Feb-20- Mar-20
Region 1- NW	1,037	1,016	1,033	-0.39%	1.67%
Region 2- NE	1,668	1,636	1,625	-2.58%	-0.67%
Region 3- Central	3,442	3,474	3,447	0.15%	-0.78%
Region 4- SE	1,621	1,633	1,660	2.41%	1.65%
Region 5- SW	2,300	2,279	2,226	-3.22%	-2.33%
Centralized Units	2	2	1	-50.00%	-50.00%
Statewide Total	10,070	10,040	9,992	-0.77%	-0.48%

TANF Caseload: SFY-16 to Current

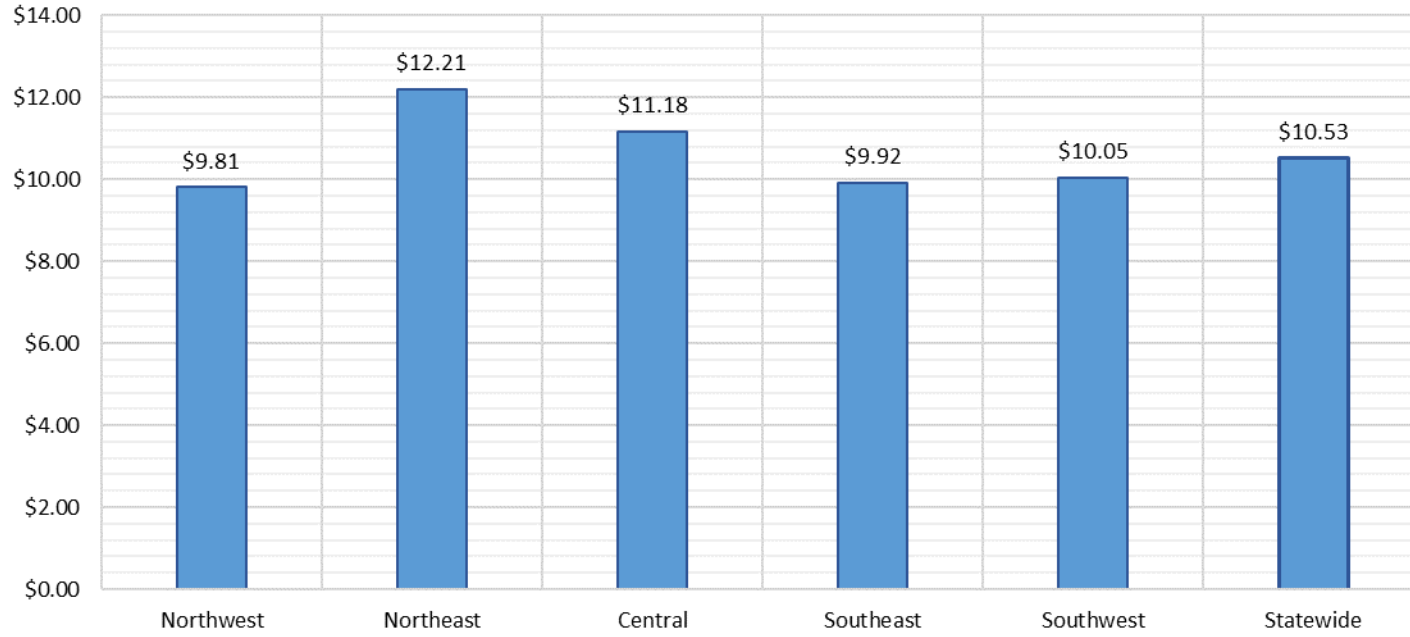


NM Works Activity Placements on March 31, 2020 as reported by SL Start¹⁴

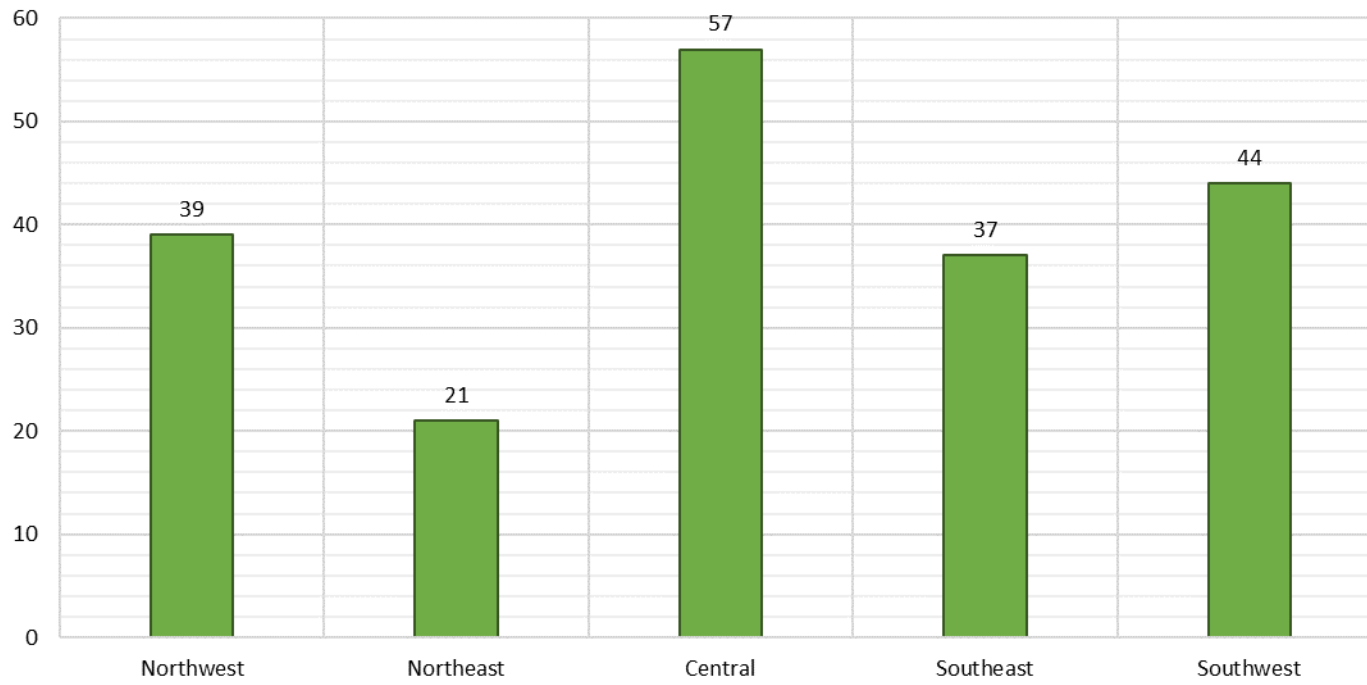


Employment, Vocational Training and Community Service and Work Experience might be reduced due to COVID 19 circumstances.

Average Starting Hourly Wage of March 2020 TANF Employments
as reported by SL Start¹⁵



Number of New Employments in March 2020 by Region
as reported by SL Start¹⁵
Statewide Total: 198



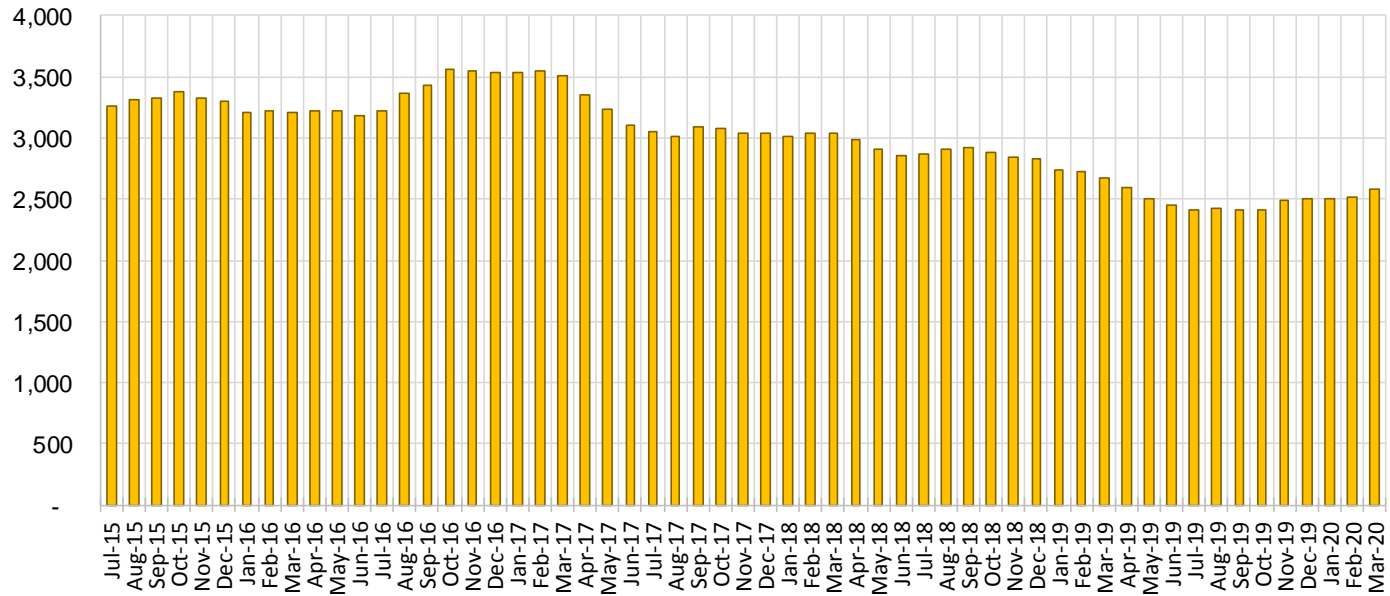
General Assistance Cases by Field Office⁶

Office				Percent Change	
	Mar-19	Feb-20	Mar-20	Mar-19- Mar-20	Feb-20- Mar-20
Chaves County ISD	112	108	120	7.14%	11.11%
Cibola County ISD	52	41	41	-21.15%	0.00%
Colfax County ISD	19	21	21	10.53%	0.00%
Curry County ISD	83	95	97	16.87%	2.11%
East Dona Ana County ISD	104	101	96	-7.69%	-4.95%
Eddy Artesia County ISD	29	24	27	-6.90%	12.50%
Eddy Carlsbad County ISD	58	54	57	-1.72%	5.56%
Grant County ISD	66	74	77	16.67%	4.05%
Guadalupe County ISD	14	7	8	-42.86%	14.29%
Hidalgo County ISD	0	0	0	N/A	N/A
Lea County ISD	72	58	63	-12.50%	8.62%
Lincoln County ISD	30	26	29	-3.33%	11.54%
Luna County ISD	56	57	54	-3.57%	-5.26%
McKinley County ISD	61	65	66	8.20%	1.54%
Northeast Bernalillo County ISD	272	227	231	-15.07%	1.76%
Northwest Bernalillo County ISD	250	240	249	-0.40%	3.75%
Otero County ISD	62	68	69	11.29%	1.47%
Quay County ISD	33	31	29	-12.12%	-6.45%
Rio Arriba County ISD	78	69	67	-14.10%	-2.90%
Roosevelt County ISD	0	0	0	N/A	N/A
San Juan County ISD	120	128	144	20.00%	12.50%
San Miguel County ISD	65	61	59	-9.23%	-3.28%
Sandoval County ISD	97	81	79	-18.56%	-2.47%
Santa Fe County ISD	117	97	97	-17.09%	0.00%
Sierra County ISD	30	40	40	33.33%	0.00%
Socorro County ISD	33	39	42	27.27%	7.69%
South Dona Ana ISD	51	56	58	13.73%	3.57%
Southeast Bernalillo County ISD	161	128	126	-21.74%	-1.56%
Southwest Bernalillo County ISD	182	188	194	6.59%	3.19%
Taos County ISD	38	31	32	-15.79%	3.23%
Torrance County ISD	48	44	48	0.00%	9.09%
Valencia North County ISD	104	86	90	-13.46%	4.65%
Valencia South County ISD	0	0	0	N/A	N/A
West Dona Ana County ISD	179	165	171	-4.47%	3.64%
Centralized Units	0	0	0	N/A	N/A
Statewide Total	2,676	2,510	2,581	-3.55%	2.83%

General Assistance Cases by Region⁶

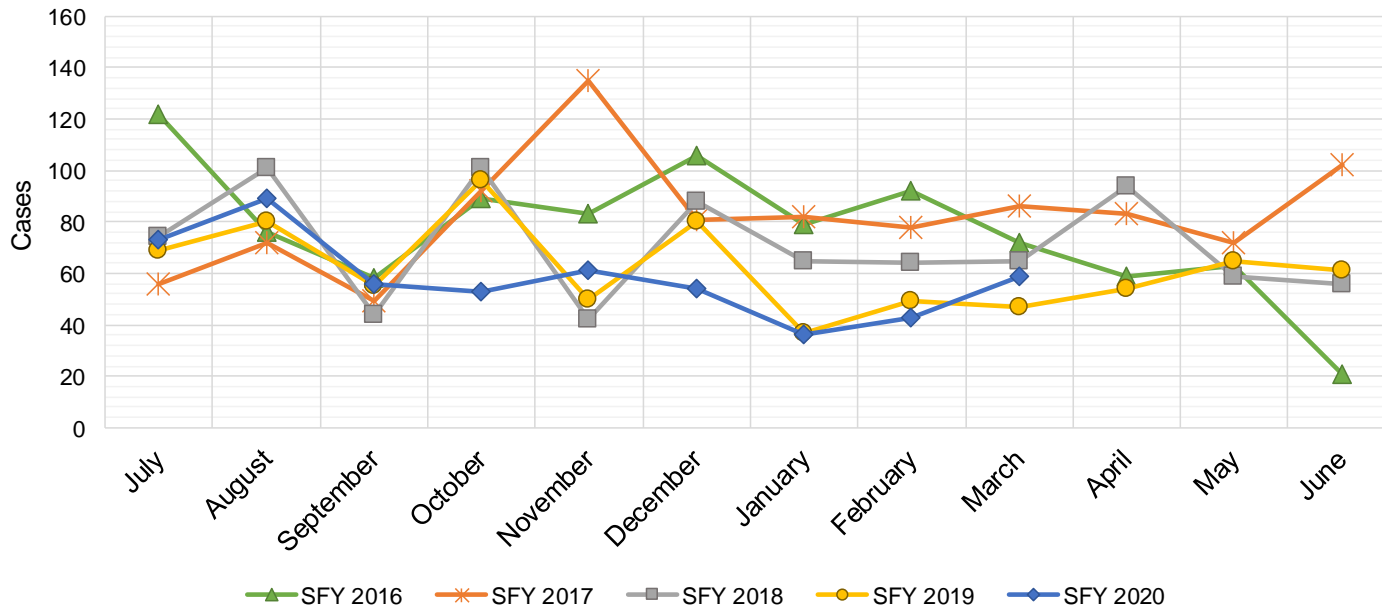
Region	Mar-19	Feb-20	Mar-20	Percent Change	
				Mar-19-Mar-20	Feb-20-Mar-20
Region 1 - NW	400	399	423	5.75%	6.02%
Region 2 - NE	461	398	392	-14.97%	-1.51%
Region 3 - Central	913	827	848	-7.12%	2.54%
Region 4 - SE	384	365	393	2.34%	7.67%
Region 5 - SW	518	521	525	1.35%	0.77%
Centralized Units	0	0	0	N/A	N/A
Statewide Total	2,676	2,510	2,581	-3.55%	2.83%

General Assistance Caseload: SFY-16 to Current



General Assistance Interim Assistance Reimbursements¹⁶

SFY 2016			SFY 2017			SFY 2018			SFY 2019			SFY 2020		
	Cases	Expenditures		Cases	Expenditures		Cases	Expenditures		Cases	Expenditures		Cases	Expenditures
Jul-15	122	\$342,648	Jul-16	56	\$164,970	Jul-17	74	\$241,438	Jul-18	69	\$228,333	Jul-19	73	\$303,584
Aug-15	76	\$245,236	Aug-16	72	\$223,182	Aug-17	101	\$339,301	Aug-18	80	\$241,292	Aug-19	89	\$310,047
Sep-15	58	\$170,093	Sep-16	49	\$158,027	Sep-17	44	\$131,229	Sep-18	55	\$188,192	Sep-19	56	\$172,016
Oct-15	89	\$277,912	Oct-16	92	\$257,830	Oct-17	101	\$335,752	Oct-18	96	\$298,502	Oct-19	53	\$168,461
Nov-15	83	\$238,948	Nov-16	135	\$402,305	Nov-17	42	\$139,572	Nov-18	50	\$148,641	Nov-19	61	\$171,883
Dec-15	106	\$388,102	Dec-16	81	\$227,569	Dec-17	88	\$245,453	Dec-18	80	\$246,422	Dec-19	54	\$164,045
Jan-16	79	\$239,263	Jan-17	82	\$274,050	Jan-18	65	\$258,239	Jan-19	37	\$106,081	Jan-20	36	\$96,668
Feb-16	92	\$296,332	Feb-17	78	\$227,569	Feb-18	64	\$195,815	Feb-19	49	\$119,300	Feb-20	43	\$126,743
Mar-16	72	\$254,360	Mar-17	86	\$278,219	Mar-18	65	\$172,188	Mar-19	47	\$137,296	Mar-20	59	\$169,363
Apr-16	59	\$208,631	Apr-17	83	\$267,187	Apr-18	94	\$312,340	Apr-19	54	\$173,772	Apr-20		
May-16	63	\$182,241	May-17	72	\$232,836	May-18	59	\$155,406	May-19	65	\$237,979	May-20		
Jun-16	21	\$51,760	Jun-17	102	\$306,228	Jun-18	56	\$159,268	Jun-19	61	\$214,497	Jun-20		
TOTAL	920	\$2,895,525	988	\$3,019,972	853	\$2,686,001	743	\$2,340,307	524	\$1,682,811				
AVERAGE	77	\$241,294	82	\$251,664	71	\$223,833	62	\$195,026	58	\$186,979				



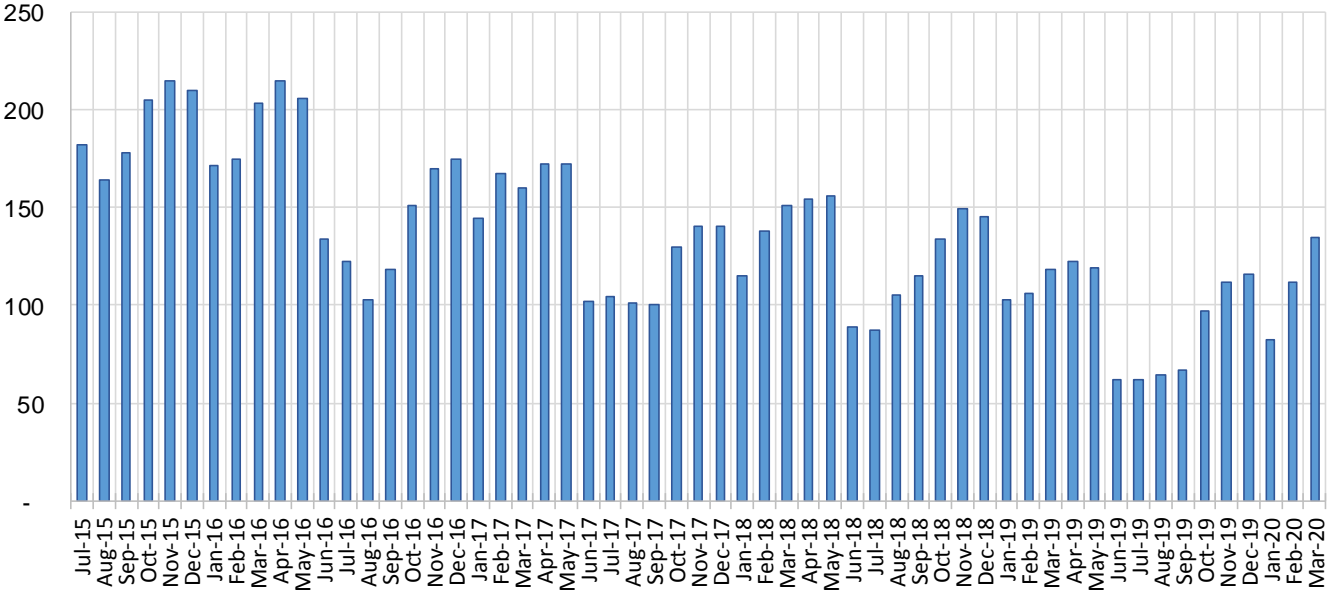
Education Works Cases by Field Office⁶

Office	Percent Change				
	Mar-19	Feb-20	Mar-20	Mar-19- Mar-20	Feb-20- Mar-20
Chaves County ISD	0	2	3	N/A	50.0%
Cibola County ISD	0	0	1	N/A	N/A
Colfax County ISD	1	0	0	-100.0%	N/A
Curry County ISD	5	6	7	40.0%	16.7%
East Dona Ana County ISD	14	7	10	-28.6%	42.9%
Eddy Artesia County ISD	2	1	1	-50.0%	0.0%
Eddy Carlsbad County ISD	2	1	0	-100.0%	-100.0%
Grant County ISD	4	1	1	-75.0%	0.0%
Guadalupe County ISD	0	0	0	N/A	N/A
Hidalgo County ISD	0	0	0	N/A	N/A
Lea County ISD	2	2	2	0.0%	0.0%
Lincoln County ISD	0	0	0	N/A	N/A
Luna County ISD	2	2	2	0.0%	0.0%
McKinley County ISD	0	1	1	N/A	0.0%
Northeast Bernalillo County ISD	11	4	9	-18.2%	125.0%
Northwest Bernalillo County ISD	7	16	18	157.1%	12.5%
Otero County ISD	1	0	0	-100.0%	N/A
Quay County ISD	0	0	0	N/A	N/A
Rio Arriba County ISD	1	2	3	200.0%	50.0%
Roosevelt County ISD	0	0	0	N/A	N/A
San Juan County ISD	3	2	3	0.0%	50.0%
San Miguel County ISD	5	5	4	-20.0%	-20.0%
Sandoval County ISD	8	10	10	25.0%	0.0%
Santa Fe County ISD	10	8	8	-20.0%	0.0%
Sierra County ISD	1	1	1	0.0%	0.0%
Socorro County ISD	0	0	0	N/A	N/A
South Dona Ana ISD	14	4	6	-57.1%	50.0%
Southeast Bernalillo County ISD	5	10	13	160.0%	30.0%
Southwest Bernalillo County ISD	8	5	9	12.5%	80.0%
Taos County ISD	0	0	0	N/A	N/A
Torrance County ISD	0	2	2	N/A	0.0%
Valencia North County ISD	1	2	2	100.0%	0.0%
Valencia South County ISD	0	0	0	N/A	N/A
West Dona Ana County ISD	11	18	19	72.7%	5.6%
Centralized Units	0	0	0	N/A	N/A
Statewide Total	118	112	135	14.4%	20.5%

Education Works Cases by Region⁶

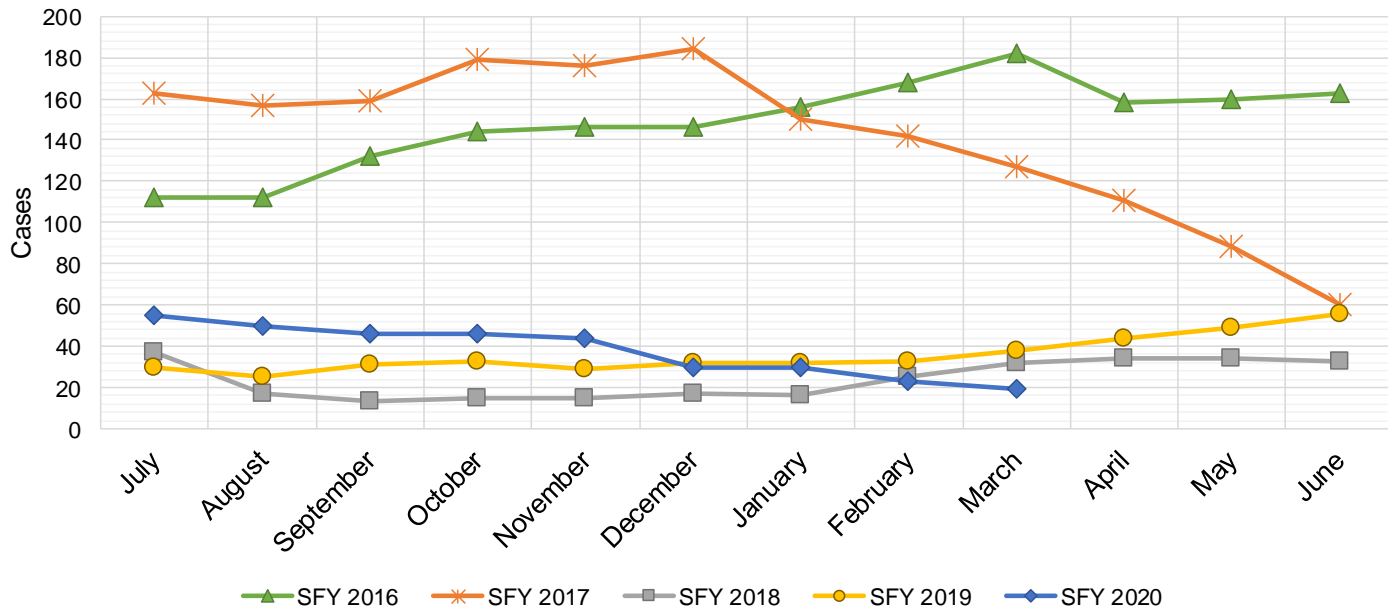
				Percent Change	
Region	Mar-19	Feb-20	Mar-20	Mar-19- Mar-20	Feb-20- Mar-20
Region 1 - NW	5	6	8	60.00%	33.33%
Region 2 - NE	25	25	25	0.00%	0.00%
Region 3 - Central	31	37	51	64.52%	37.84%
Region 4 - SE	11	12	13	18.18%	8.33%
Region 5 - SW	46	32	38	-17.39%	18.75%
Centralized Units	0	0	0	N/A	N/A
Statewide Total	118	112	135	14.41%	20.54%

Education Works Caseload: SFY-16 to Current



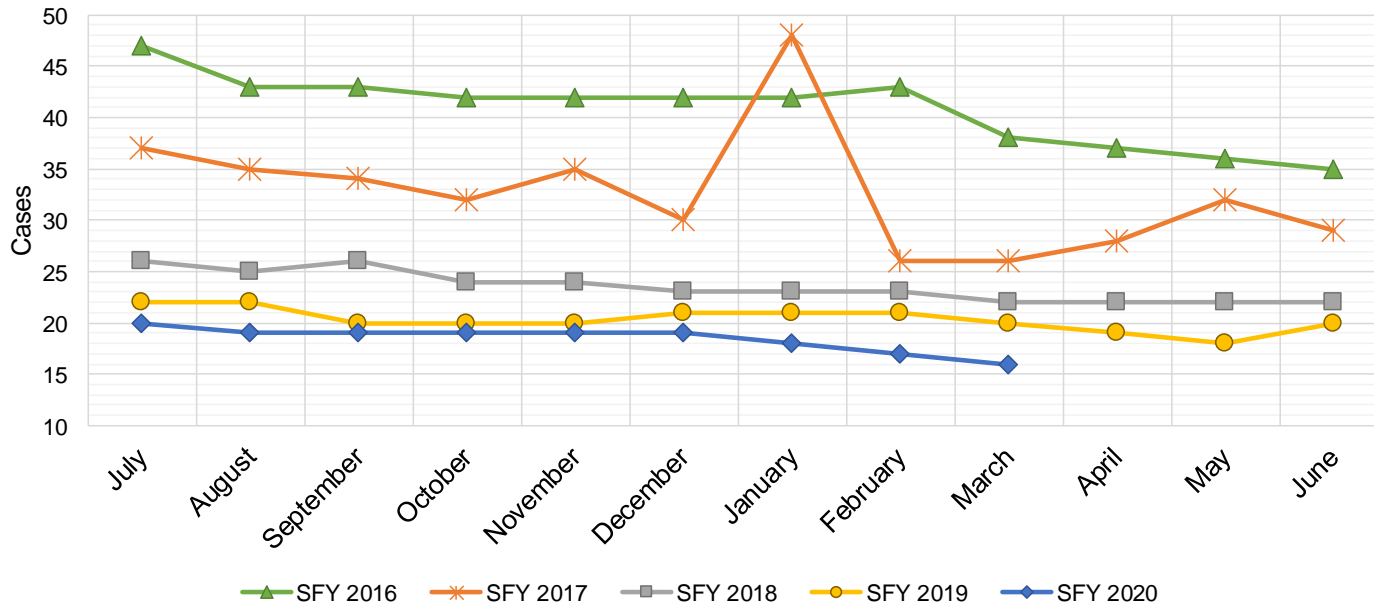
Refugee Cash Assistance

SFY 2016 ^{8,12,9}		SFY 2017 ^{8,9}		SFY 2018 ^{8,9}		SFY 2019 ^{8,9}		SFY 2020 ^{8,9}						
Cases	Expenditures	Cases	Expenditures	Cases	Expenditures	Cases	Expenditures	Cases	Expenditures					
Jul-15	112	\$27,516	Jul-16	163	\$39,756	Jul-17	37	\$9,981	Jul-18	30	\$7,408	Jul-19	55	\$13,851
Aug-15	112	\$27,438	Aug-16	157	\$40,115	Aug-17	17	\$4,704	Aug-18	25	\$6,434	Aug-19	50	\$12,497
Sep-15	132	\$31,321	Sep-16	159	\$39,359	Sep-17	13	\$3,159	Sep-18	31	\$6,947	Sep-19	46	\$11,473
Oct-15	144	\$36,153	Oct-16	179	\$41,520	Oct-17	15	\$3,543	Oct-18	33	\$6,323	Oct-19	46	\$11,341
Nov-15	146	\$36,515	Nov-16	176	\$45,434	Nov-17	15	\$4,263	Nov-18	29	\$7,036	Nov-19	44	\$11,296
Dec-15	146	\$35,763	Dec-16	184	\$46,673	Dec-17	17	\$4,795	Dec-18	32	\$7,300	Dec-19	30	\$7,679
Jan-16	156	\$38,686	Jan-17	150	\$38,790	Jan-18	16	\$4,166	Jan-19	32	\$7,418	Jan-20	30	\$7,407
Feb-16	168	\$41,368	Feb-17	142	\$37,956	Feb-18	25	\$5,723	Feb-19	33	\$8,591	Feb-20	23	\$7,577
Mar-16	182	\$45,307	Mar-17	127	\$33,066	Mar-18	32	\$7,636	Mar-19	38	\$9,165	Mar-20	19	\$6,500
Apr-16	158	\$41,143	Apr-17	111	\$29,183	Apr-18	34	\$8,827	Apr-19	44	\$10,648	Apr-20		
May-16	160	\$38,332	May-17	88	\$23,343	May-18	34	\$8,939	May-19	49	\$11,823	May-20		
Jun-16	163	\$39,856	Jun-17	60	\$15,538	Jun-18	33	\$8,513	Jun-19	56	\$13,558	Jun-20		
TOTAL	1,779	\$439,397	1,696	\$430,732	288	\$74,249	432	\$102,651	343	\$89,621				
AVERAGE	148	\$36,616	141	\$35,894	24	\$6,187	36	\$8,554	38	\$9,958				



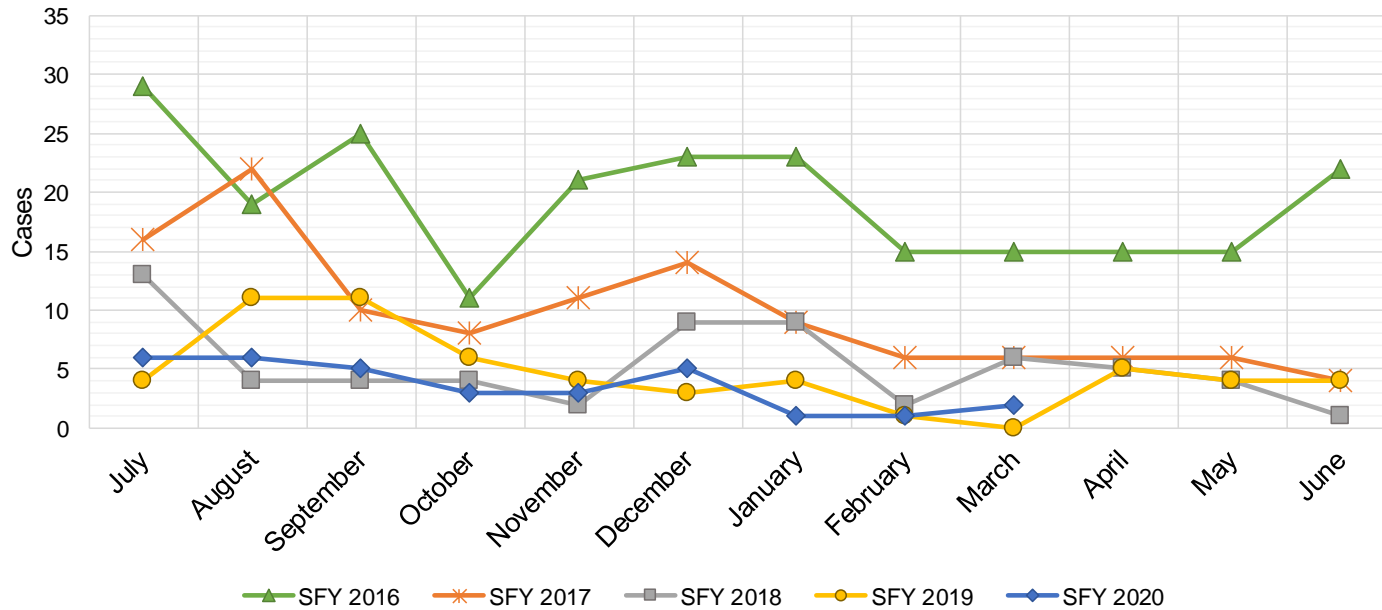
State Supplement for Residential Care

SFY 2016 ^{12,9}			SFY 2017 ⁹			SFY 2018 ⁹			SFY 2019 ⁹			SFY 2020 ⁹		
	Cases	Expenditures		Cases	Expenditures		Cases	Expenditures		Cases	Expenditures		Cases	Expenditures
Jul-15	47	\$4,700	Jul-16	37	\$3,700	Jul-17	26	\$2,700	Jul-18	22	\$2,200	Jul-19	20	\$1,900
Aug-15	43	\$4,900	Aug-16	35	\$3,500	Aug-17	25	\$2,500	Aug-18	22	\$2,200	Aug-19	19	\$1,900
Sep-15	43	\$4,500	Sep-16	34	\$3,400	Sep-17	26	\$2,700	Sep-18	20	\$2,000	Sep-19	19	\$1,900
Oct-15	42	\$4,400	Oct-16	32	\$3,200	Oct-17	24	\$2,500	Oct-18	20	\$2,000	Oct-19	19	\$1,900
Nov-15	42	\$4,200	Nov-16	35	\$3,500	Nov-17	24	\$2,400	Nov-18	20	\$2,000	Nov-19	19	\$1,900
Dec-15	42	\$4,200	Dec-16	30	\$3,000	Dec-17	23	\$2,200	Dec-18	21	\$2,100	Dec-19	19	\$1,900
Jan-16	42	\$4,200	Jan-17	48	\$4,800	Jan-18	23	\$2,400	Jan-19	21	\$2,000	Jan-20	18	\$1,800
Feb-16	43	\$4,300	Feb-17	26	\$2,600	Feb-18	23	\$2,300	Feb-19	21	\$2,200	Feb-20	17	\$1,600
Mar-16	38	\$3,800	Mar-17	26	\$2,600	Mar-18	22	\$2,400	Mar-19	20	\$1,900	Mar-20	16	\$1,500
Apr-16	37	\$3,700	Apr-17	28	\$2,800	Apr-18	22	\$2,200	Apr-19	19	\$1,800	Apr-20		
May-16	36	\$3,600	May-17	32	\$3,200	May-18	22	\$2,200	May-19	18	\$1,800	May-20		
Jun-16	35	\$3,500	Jun-17	29	\$2,900	Jun-18	22	\$2,200	Jun-19	20	\$2,000	Jun-20		
TOTAL	490	\$50,000	392	\$39,200	282	\$28,700	244	\$24,200	166	\$16,300				
AVERAGE	41	\$4,167	33	\$3,267	24	\$2,392	20	\$2,017	18	\$1,811				



TANF Diversion Payments

SFY 2016 ^{12,9}		SFY 2017 ⁹		SFY 2018 ⁹		SFY 2019 ⁹		SFY 2020 ⁹						
Cases	Expenditures	Cases	Expenditures	Cases	Expenditures	Cases	Expenditures	Cases	Expenditures					
Jul-15	29	\$62,074	Jul-16	16	\$30,843	Jul-17	13	\$26,500	Jul-18	4	\$3,000	Jul-19	6	\$18,500
Aug-15	19	\$33,584	Aug-16	22	\$42,731	Aug-17	4	\$12,000	Aug-18	11	\$18,583	Aug-19	6	\$16,500
Sep-15	25	\$47,977	Sep-16	10	\$21,000	Sep-17	4	\$4,000	Sep-18	11	\$20,999	Sep-19	5	\$11,000
Oct-15	11	\$20,500	Oct-16	8	\$16,744	Oct-17	4	\$16,000	Oct-18	6	\$10,499	Oct-19	3	\$3,000
Nov-15	21	\$45,500	Nov-16	11	\$24,500	Nov-17	2	\$15,500	Nov-18	4	\$7,499	Nov-19	3	\$16,180
Dec-15	23	\$45,389	Dec-16	14	\$26,611	Dec-17	9	\$17,500	Dec-18	3	\$2,499	Dec-19	5	\$14,000
Jan-16	23	\$41,874	Jan-17	9	\$18,500	Jan-18	9	\$21,731	Jan-19	4	\$5,999	Jan-20	1	\$1,500
Feb-16	15	\$28,500	Feb-17	6	\$12,000	Feb-18	2	\$7,731	Feb-19	1	\$1,678	Feb-20	1	\$1,857
Mar-16	15	\$27,008	Mar-17	6	\$11,000	Mar-18	6	\$8,496	Mar-19	0	\$3,000	Mar-20	2	\$5,920
Apr-16	15	\$31,389	Apr-17	6	\$12,000	Apr-18	5	\$13,500	Apr-19	5	\$6,500	Apr-20		
May-16	15	\$31,916	May-17	6	\$11,500	May-18	4	\$12,500	May-19	4	\$16,000	May-20		
Jun-16	22	\$43,000	Jun-17	4	\$13,500	Jun-18	1	\$5,389	Jun-19	4	\$8,000	Jun-20		
TOTAL	233	\$458,711	118	\$240,929	63	\$160,847	57	\$104,256	32	\$88,457				
AVERAGE	19	\$38,226	10	\$20,077	5	\$13,404	5	\$8,688	4	\$9,829				



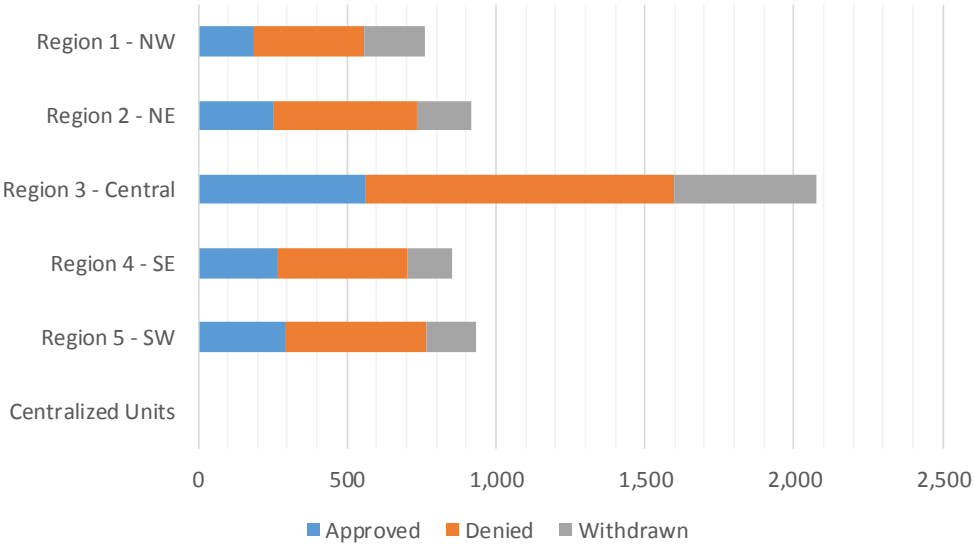
Cash Assistance Applications by Field Office^{4,11}
March 2020

Office	Approved	Denied	Withdrawn	Total Cases Processed
Chaves County ISD	73	95	58	226
Cibola County ISD	16	28	14	58
Colfax County ISD	10	21	4	35
Curry County ISD	74	109	27	210
East Dona Ana County ISD	66	106	50	222
Eddy Artesia County ISD	16	24	6	46
Eddy Carlsbad County ISD	32	58	17	107
Grant County ISD	32	55	9	96
Guadalupe County ISD	2	3	4	9
Hidalgo County ISD	0	0	0	0
Lea County ISD	59	103	38	200
Lincoln County ISD	13	48	4	65
Luna County ISD	25	27	9	61
McKinley County ISD	12	68	26	106
Northeast Bernalillo County ISD	157	319	141	617
Northwest Bernalillo County ISD	146	326	129	601
Otero County ISD	38	75	19	132
Quay County ISD	12	23	10	45
Rio Arriba County ISD	43	58	28	129
Roosevelt County ISD	1	0	0	1
San Juan County ISD	74	161	119	354
San Miguel County ISD	22	44	25	91
Sandoval County ISD	63	118	52	233
Santa Fe County ISD	75	168	42	285
Sierra County ISD	16	18	3	37
Socorro County ISD	14	26	5	45
South Dona Ana ISD	46	36	24	106
Southeast Bernalillo County ISD	78	123	54	255
Southwest Bernalillo County ISD	157	234	143	534
Taos County ISD	24	46	19	89
Torrance County ISD	24	32	15	71
Valencia North County ISD	58	67	36	161
Valencia South County ISD	0	0	1	1
West Dona Ana County ISD	87	172	56	315
Centralized Units	0	0	0	0
Statewide Total	1,565	2,791	1,187	5,543

Cash Assistance Applications by Region^{4,11}
March 2020

	Approved	Denied	Withdrawn	Total Cases Processed
Region				
Region 1 - NW	190	368	204	762
Region 2 - NE	251	481	184	916
Region 3 - Central	562	1,034	482	2,078
Region 4 - SE	268	437	150	855
Region 5 - SW	294	471	167	932
Centralized Units	0	0	0	0

Statewide Total	1,565	2,791	1,187	5,543
-----------------	-------	-------	-------	-------



**Children Youth and Families Department
Children Receiving Child Care Assistance Subsidies By County**

County	Mar 2019	Apr 2019	May 2019	June 2019	July 2019	Aug 2019	Sept 2019	Oct 2019	Nov 2019	Dec 2019	Jan 2020	Feb 2020	Mar 2020	Change Fr. Cases	Last Year Percent
Bernalillo	7,831	7,997	8,226	8,692	7,702	7,885	8,295	7,690	7,759	7,591	7,673	7,779	7,975	144	1.8%
Catron	0	0	0	0	0	0	0	0	0	0	0	0	0	0	0.0%
Chaves	878	868	868	875	830	824	886	811	891	827	835	830	830	-48	-5.5%
Cibola	289	306	286	292	283	277	275	250	238	247	224	226	227	-62	-21.5%
Colfax	59	52	50	44	38	40	33	43	34	31	32	32	26	-33	-55.9%
Curry	524	548	542	590	597	613	625	563	596	587	605	613	600	76	14.5%
De Baca	1	0	1	1	1	1	1	1	1	1	0	0	0	-1	-100.0%
Dona Ana	4,453	4,413	4,536	4,751	4,360	4,384	4,575	4,429	4,493	4,348	4,350	4,313	4,388	-65	-1.5%
Eddy	245	214	225	240	240	226	224	244	239	234	225	227	231	-14	-5.7%
Grant	131	127	130	136	133	115	157	138	133	145	143	146	132	1	0.8%
Guadalupe	11	11	11	11	10	10	10	7	7	7	7	7	8	-3	-27.3%
Harding	0	0	0	0	0	0	0	0	0	0	0	0	0	0	0.0%
Hidalgo	24	20	27	27	27	27	26	21	28	28	28	27	24	0	0.0%
Lea	831	815	808	798	770	752	761	770	753	741	736	785	767	-64	-7.7%
Lincoln	104	104	100	104	103	103	108	101	97	86	89	89	88	-16	-15.4%
Los Alamos	34	36	40	40	37	37	47	38	42	40	42	38	37	3	8.8%
Luna	180	176	190	191	172	160	173	160	148	155	158	163	164	-16	-8.9%
McKinley	168	154	158	169	146	141	165	176	172	172	170	171	166	-2	-1.2%
Mora	11	11	13	9	9	10	12	12	11	11	11	11	12	1	9.1%
Otero	507	512	506	530	499	538	547	488	510	501	506	511	520	13	2.6%
Out of State	1	2	0	1	0	0	0	0	0	0	0	0	0	-1	-100.0%
Quay	34	33	33	38	34	38	37	33	34	35	32	34	37	3	8.8%
Rio Arriba	132	141	151	155	158	151	150	147	153	155	152	153	149	17	12.9%
Roosevelt	118	121	119	130	129	138	148	140	134	133	131	132	131	13	11.0%
San Juan	935	958	966	961	905	897	1,018	932	926	958	928	951	979	44	4.7%
San Miguel	319	332	349	373	363	357	363	375	356	353	349	361	373	54	16.9%
Sandoval	744	758	751	802	765	806	827	783	803	770	738	765	736	-8	-1.1%
Santa Fe	503	499	520	541	557	562	606	534	567	537	533	522	537	34	6.8%
Sierra	48	42	40	50	48	47	58	54	56	63	61	52	55	7	14.6%
Socorro	58	55	54	57	53	53	59	54	53	48	43	40	41	-17	-29.3%
Taos	117	124	125	136	138	149	135	118	125	126	126	117	139	22	18.8%
Torrance	79	69	67	82	68	67	73	57	57	63	68	63	71	-8	-10.1%
Union	5	3	3	4	3	3	3	3	3	3	3	3	3	-2	-40.0%
Valencia	589	591	607	656	559	569	625	602	595	573	564	533	547	-42	-7.1%
Totals	19,963	20,092	20,502	21,486	19,737	19,980	21,022	19,774	20,014	19,569	19,562	19,694	19,993	30	0.2%

CHILDREN YOUTH AND FAMILIES DEPARTMENT

CHILD CARE ASSISTANCE ELIGIBILITY PROGRAMS

MONTH	Apr'19	May'19	June'19	July'19	Aug'19	Sept'19	Oct'19	Nov'19	Dec'19	Jan'20	Feb'20	Mar'20
TANF (Child Care Priority 1 Clients)												
CLIENTS	2,147	2,140	2,253	2,054	2,033	2,165	2,053	2,120	2,055	2,030	2,001	2,031
COST	\$1,286,044	\$1,278,678	\$1,305,024	\$1,273,209	\$1,263,930	\$1,184,381	\$1,233,005	\$1,284,683	\$1,239,407	\$1,257,977	\$1,195,404	\$1,280,286
TANF AVERAGE COST	\$599	\$598	\$579	\$620	\$622	\$547	\$601	\$606	\$603	\$620	\$597	\$630
TRANSITION OFF TANF (Child Care Priority 2 Clients)												
CLIENTS	119	111	112	120	132	163	166	167	178	196	209	209
COST	\$71,395	\$69,505	\$74,593	\$74,688	\$88,189	\$90,271	\$107,532	\$107,596	\$111,325	\$120,862	\$136,239	\$127,986
TRAN OFF TANF AVG COST	\$600	\$626	\$666	\$622	\$668	\$554	\$648	\$644	\$625	\$617	\$652	\$612
TANF ELIGIBLE (Child Care Priority 1B Clients at or below 100% of the Federal Poverty Level)												
CLIENTS	8,275	8,494	8,777	8,104	8,220	8,523	8,152	8,135	7,830	7,697	7,671	7,857
COST	\$4,845,578	\$4,939,239	\$5,047,497	\$4,909,110	\$5,038,735	\$4,665,509	\$4,833,260	\$4,922,197	\$4,694,761	\$4,551,874	\$4,539,530	\$4,868,148
TANF ELIGIBLE AVG COST	\$586	\$581	\$575	\$606	\$613	\$547	\$593	\$605	\$600	\$591	\$592	\$620
INCOME ELIGIBLE (Child Care Priority 3, and Priority 4 Clients)												
CLIENTS	8,382	8,610	9,149	8,313	8,429	9,032	8,410	8,595	8,520	8,701	8,848	8,978
COST	\$4,401,790	\$4,546,220	\$4,693,955	\$4,573,196	\$4,729,292	\$4,390,092	\$4,436,376	\$4,557,011	\$4,488,101	\$4,573,609	\$4,700,981	\$4,891,611
INCOME ELIG AVG COST	\$525	\$528	\$513	\$550	\$561	\$486	\$528	\$530	\$527	\$526	\$531	\$545
AT-RISK CHILD PROTECTIVE SERVICES CHILD CARE PILOT (Priority 5 Clients)												
CLIENTS	322	303	321	297	270	240	232	200	187	190	182	144
COST	\$203,584	\$204,504	\$206,998	\$200,185	\$201,432	\$161,487	\$162,255	\$159,520	\$137,644	\$145,544	\$136,364	\$99,487
CPS AVG COST	\$632	\$675	\$645	\$674	\$746	\$673	\$699	\$798	\$736	\$766	\$749	\$691
CHILD PROTECTIVE SERVICES (Child Care CPS Clients)												
CLIENTS	847	844	874	849	896	899	761	797	799	748	783	774
COST	\$594,790	\$587,750	\$612,880	\$608,184	\$644,539	\$597,788	\$520,249	\$583,911	\$539,629	\$501,038	\$520,094	\$547,029
CPS AVG COST	\$702	\$696	\$701	\$716	\$719	\$665	\$684	\$733	\$675	\$670	\$664	\$707
GRAND TOTAL - ALL CHILD CARE PROGRAMS												
CLIENTS	20,092	20,502	21,486	19,737	19,980	21,022	19,774	20,014	19,569	19,562	19,694	19,993
COST	\$11,403,180	\$11,625,897	\$11,940,948	\$11,638,571	\$11,966,117	\$11,089,528	\$11,292,678	\$11,614,917	\$11,210,867	\$11,150,904	\$11,228,612	\$11,814,547
ALL PROGRAMS AVG COST	\$568	\$567	\$556	\$590	\$599	\$528	\$571	\$580	\$573	\$570	\$570	\$591

Income Eligibility Guidelines: October 1, 2019 - September 30, 2020

Federal Poverty Guidelines (FPG) Monthly Income Standards

Supplemental Nutrition Program (SNAP)					
Household Size	100% FPG Net Income	130% FPG Gross Income	165% FPG Gross Income for Categorical Eligibility	Maximum SNAP Monthly Allotment	LIHEAP 150% FPG
1	\$1,041	\$1,354	\$1,718	\$194	\$1,561
2	\$1,410	\$1,832	\$2,326	\$355	\$2,114
3	\$1,778	\$2,311	\$2,933	\$509	\$2,666
4	\$2,146	\$2,790	\$3,541	\$646	\$3,219
5	\$2,515	\$3,269	\$4,149	\$768	\$3,771
6	\$2,883	\$3,748	\$4,757	\$921	\$4,324
7	\$3,251	\$4,227	\$5,364	\$1,018	\$4,876
8	\$3,620	\$4,705	\$5,972	\$1,164	\$5,429
+1	+\$369	+\$479	+\$608	+\$146	+\$553
Minimum Allotment of \$16 effective from 10/1/2019 - 9/30/2020					
DEDUCTIONS: Standard Deduction: For HH size 1-3 = \$167; 4 = \$178; 5 = \$209; 6 or more = \$240; Excess Shelter Deduction Limit: \$569; Heating and Cooling Standard Utility Allowance: \$340 (HCSUA) – Limited Utility Allowance: \$ 136 (LUA); Telephone Standard: \$44; Dependent Care: Actual Amount (No Limit); Earned Income Deduction: 20%; Homeless Shelter Standard: \$152.06, LIHEAP (only) Energy Standard Allowance (ESA): \$204					

CASH Assistance & Support Services				
Household Size	Federal Poverty Guidelines (FPG) Monthly Income Standards		Maximum Monthly Benefit	
	100% FPG Net Income	85% FPG Gross Limit	New Mexico Works Cash Assistance	General Assistance
1	\$1,041	\$885	\$266	\$245
2	\$1,410	\$1,199	\$357	\$329
3	\$1,778	\$1,511	\$447	\$412
4	\$2,146	\$1,824	\$539	\$496
5	\$2,515	\$2,138	\$630	\$580
6	\$2,883	\$2,451	\$721	\$664
7	\$3,251	\$2,763	\$812	\$748
8	\$3,620	\$3,077	\$922	\$849
+1	+\$369	+\$314	+\$91	+\$84
Deductions- Dependent Care: For a child under age 2 = \$200; For a child age 2 and over = \$175. Work Incentives- Earned Income Disregard: Single parent = \$125 & ½ remainder; Two parent = \$225 & ½ remainder.				

Medical Assistance Division					
Federal Poverty Guidelines New Mexico Affordable Care Eligibility Groups Effective April 01, 2019 thru March 31, 2020 Monthly Guidelines					
HH SIZE	PERCENT OF POVERTY				
	138%	190%	240%	250%	300%
1	\$1,437	\$1,978	\$2,498	\$2,603	\$3,123
2	\$1,945	\$2,678	\$3,382	\$3,523	\$4,228
3	\$2,453	\$3,378	\$4,266	\$4,444	\$5,333
4	\$2,962	\$4,078	\$5,150	\$5,365	\$6,438
5	\$3,470	\$4,777	\$6,034	\$6,286	\$7,543
6	\$3,978	\$5,477	\$6,918	\$7,207	\$8,648
7	\$4,487	\$6,177	\$7,802	\$8,128	\$9,753
8	\$4,995	\$6,877	\$8,686	\$9,048	\$10,858
138% Adult Expansion, 190% Children ages 6 to 19 (Medicaid), 240% Children ages 0 to 6 (Medicaid); ages 6 to 19 (CHIP), 250% Pregnancy Related Services Only, 300% Children 0 to 6 (CHIP)					

Medical Assistance Division					
Federal Poverty Guidelines New Mexico Affordable Care Eligibility Groups Effective April 01, 2019 thru March 31, 2020 Annual Guidelines					
HH SIZE	PERCENT OF POVERTY				
	138%	190%	240%	250%	300%
1	\$17,244	\$23,736	\$29,976	\$31,236	\$37,476
2	\$23,340	\$32,136	\$40,584	\$42,276	\$50,736
3	\$29,436	\$40,536	\$51,192	\$53,328	\$63,996
4	\$35,544	\$48,936	\$61,800	\$64,380	\$77,256
5	\$41,640	\$57,324	\$72,408	\$75,432	\$90,516
6	\$47,736	\$65,724	\$83,016	\$86,484	\$103,776
7	\$53,844	\$74,124	\$93,624	\$97,536	\$117,036
8	\$59,940	\$82,524	\$104,232	\$108,576	\$130,296
138% Adult Expansion, 190% Children ages 6 to 19 (Medicaid), 240% Children ages 0 to 6 (Medicaid); ages 6 to 19 (CHIP), 250% Pregnancy Related Services Only, 300% Children 0 to 6 (CHIP)					

References

¹ *Medicaid Expenditures* (Omnicaid, Medicare Buy-Ins, Lump Sum Payments)

² *ASPEN Business Intelligence Tool: Eligibility*

³ New Mexico Human Services Department, *Medicaid Eligibility Reports*, Retrieved from <http://www.hsd.state.nm.us/LookingForInformation/medicaid-eligibility.aspx> (for reporting month)

⁴ *ASPEN Business Intelligence Tool: Application Tracking*

⁵ Fidelity Information Services, *EBT Daily Statistical Report* (for reporting month)

⁶ *ASPEN Report DQ-180: Length of Time Cases are Open* (for reporting month)

⁷ *ASPEN Report EY-180: Individual Demographics by State and Age* (for reporting month)

⁸ *ASPEN Business Intelligence Tool: Benefit Issuance*

⁹ Fidelity Information Services, *EBT Daily Statistical Reports* (Month End)

¹⁰ *ASPEN Report EY-180R: Individual Demographics by State, Race, Ethnicity and Gender* (for reporting month)

¹¹ SQL Queries from ASPEN

¹² JP Morgan, *New Mexico – NM EBT System- Monthly Benefit Draw Down Totals*

¹³ *ASPEN Business Intelligence Tool: Application Tracking* (w/Parameters: SNAP, Expedite, Approved)

¹⁴ SL Start, *As of Today Report*

¹⁵ SL Start, *Statewide Employment Report*

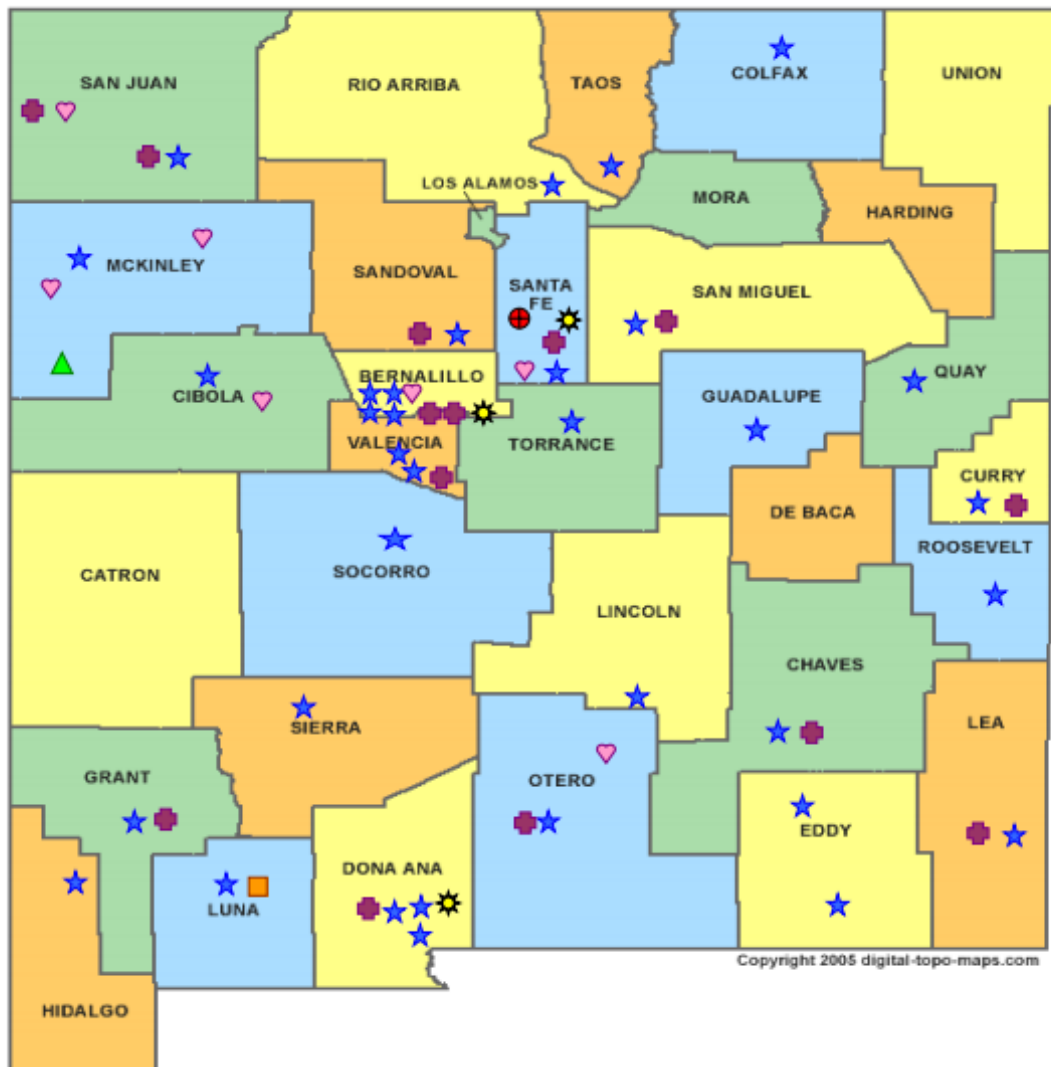
¹⁶ *SSIAR Payments*

¹⁷ Children, Youth, and Families Department, *Children Receiving Child Care Assistance Subsidies by County*

¹⁸ Children, Youth, and Families Department, *Child Care Assistance Eligibility Programs*








¹⁹ EDG is defined as an Eligibility Determination Group

²⁰SQL Query from ASPEN



HUMAN SERVICES
DEPARTMENT

New Mexico Human Services Department
Field Offices

-  Central Office (1)
-  Income Support Division County Office (35)
-  Income Support Division Satellite Office (2)
-  Child Support Enforcement Regional Office (16)
-  Child Support Enforcement Satellite Office (1)
-  Indian Health Services (7)
-  Hospital Site (3)

For a complete listing of field offices and other government and community resources:
http://www.hsd.state.nm.us/LookingForAssistance/Field_Offices_1.aspx

Medicaid Policy Changes Due to COVID-19

Already implemented:

1. **Three month renewal extensions**-MAGI Medicaid renewals are extended three months for individuals who fail to complete the 12-month recertification process after going through the automated administrative renewal process, the manual administrative renewal process, and issuance of the MAD 608 renewal form. Individuals who normally would have closed March 31, 2020 due to failure to recertify had their certification period extended through June 30, 2020. This same process will occur for April and May renewals. This may continue for later months if the emergency continues. Applies to non-MAGI Medicaid categories also that failed to recertify. Implemented in ASPEN on March 31st.

2. **Increase Presumptive Eligibility (PE) Determiner scope and qualified entities**-Most PE determiners are limited to approving PE for MAGI Children/CHIP and MAGI Pregnancy Services. Change was made to allow HSD employees to approve PE and to allow most PE determiners to approve all MAGI Medicaid categories of eligibility. Change was implemented on April 07, 2020.

3. **Reopen and Sustain Medicaid Cases**-The requirement is that anyone receiving Medicaid March 18th and ongoing for the duration of the emergency continue to be covered at the same level of coverage. There are three exceptions: client requested closure, deceased individuals, and moved out of state. April 2020 closures were reopened and sustained through July 31, 2020 and can be extended if the emergency continues. Implemented into ASPEN on April 26, 2020.

In process (not implemented yet):

4. **Accept self-attestation for Medicaid**-Accept self-attestation for all factors of Medicaid except for citizenship/immigration. Process Medicaid applications for MAGI and non-MAGI categories based on self-attestation of 2 income and resources. Excludes IC/Waiver/PACE categories. For those cases not reasonably compatible approve and issue a 90 day HUMAD.

5. **New COVID-19 testing category**-This will be implemented in Omnicaid and not ASPEN. New uninsured category which will cover COVID-19 testing and related services. Applications will be sent to and processed by Conduent staff to allow for fee-for-service payments to providers for COVID-19 testing and related services.

6. **Exclusion of \$600 weekly unemployment benefit stimulus payments**-Medicaid excludes \$600 weekly unemployment benefit stimulus payments. ASPEN solution being developed across programs that treat the handling of unemployment monies differently as well as regular unemployment benefit extensions.

Cases closed for procedural reasons show low timeliness percentages due to the requirement to maintain Medicaid from March 18, 2020 for the duration of the COVID-19 emergency. To maintain Medicaid many March 2020 cases had to be reinstated manually by ISD field workers so there would not be a gap in coverage. To maintain Medicaid eligibility for April 2020 cases also required a manual reinstatement effort by ISD field workers as the ASPEN system fix to maintain Medicaid for the duration of the emergency still resulted in exceptions that had to be resolved manually.

SNAP Policy Changes During COVID-19

1. Suspension of SNAP Employment and Training (E&T) Program

- House of Representatives passed H.R. 6201, the Families First Coronavirus Response Act.
- ISD has chosen to suspend the SNAP E&T Program until further notice.
- interim policy and procedure for 8.139.410.13 NMAC “SUPPLEMENTAL NUTRITION ASSISTANCE PROGRAM (SNAP) EMPLOYMENT AND TRAINING PROGRAM (E&T).”

2. Amendment to Waiver - Interview Process for SNAP and TANF and Waiver - Recertification Waiver Process for SNAP, TANF, and Medicaid

- FNS approved a blanket waiver for all states to utilize.
- Interim policy and procedures for the following:
 - General Operating Policies – Application 8.100.110 NMAC.
 - Interviews in accordance with 8.139.110.11 NMAC and 8.102.110 NMAC.
 - Interim Reports (IRs) in accordance with 8.139.120.9B NMAC. and 8.102.120.11C NMAC.
 - Recertifications in accordance with 8.139.120.8, 8.102.120.9B NMAC 8.106.120.9 and 8.106.120.10 NMAC.
- Waives all SNAP, TANF and GA-Unrelated Child interviews, if all mandatory verification standards are met. o GA-Disability is excluded from this waiver; an interview must be conducted for GA as medical documentation is needed. Allows us to waive the requirement of having to offer a face-to-face and to conduct all interviews by phone.
- IR's - If an IR cannot be processed under normal processing, ASPEN will automatically extend certification periods for households with an IR due in March, and April for 6 months to the month the customers recertification is due. May and June IRs will be suspended and not mailed.
- Recertifications – If a Recertification cannot be processed under normal processing, ASPEN will automatically extend certification periods for households scheduled to recertify in March, April, May and June 2020, for 6 months until September, October and November 2020.
- IPP 20-06 in regards to the policy change can be found on the HSD website at:

3. SNAP Supplement Waiver

- State applied for a waiver through FNS.
- New Mexico has requested and been approved by FNS to provide an emergency allotment to address temporary food needs to households by bringing all households up to the maximum benefit due to pandemic related economic conditions. States that have already received FNS approval this supplemental issuance in March and April, or April and May, are approved to continue issuing full benefits each month.
- Interim policy and procedure for 8.139.610.12 NMAC.

4. Suspension of SNAP General Work Requirements

- House of Representatives passed H.R. 6201, the Families First Coronavirus Response Act.
- During the declared public health emergency, SNAP recipients who would otherwise be mandatory to comply with the SNAP general work requirements will be waived from this requirement and will not experience any type of disqualification for noncompliance during this time.
- Interim policy and procedure guidance for SNAP General Work Requirements set forth in 8.139.410.12 C and D NMAC.

5. Telephonic Signature Waiver

- State applied for a waiver through FNS
- If a customer calls to apply for benefits and does not have a paper application on file Conduent will accept a telephonic application and telephonic signature for applications by completing an online application through YesNM.
- Interim policy and procedures for 8.100.110.9A NMAC Submission of Forms.

TANF Policy Changes During COVID-19

1. Good cause exemptions from work requirements for TANF	TANF Non-Compliance Process Suspension of Non-Compliance for NMW Participants	
2. Increased cash benefit levels for TANF cash assistance recipients	Process as normal	
3. 60-month time limit	IPP Hardship	Hardship extensions will allow individuals impacted by COVID-19 to apply for a TANF hardship or continue to receive TANF beyond their 60 th month
4. Work Participation Rate	Process as normal	The state will still need to meet the WPR. However, States can use Good Cause that is outlined in CFR and not be penalized for not meeting WPR due to the emergency
5. CARES Act Direct Payment	CARES Act Direct Payment	Guidance is to exclude as income and as a resource
6. UCB under CARES Act	Only to exclude UCB benefits under CARES Act	ACF Guidance is to EXCLUDE all UCB income at this time. New Mexico choose to exclude only CARES Act UCB

Children Youth and Families Department Policy Changes During COVID-19

NM Children Youth and Families Department received \$29.5 million in emergency funds, which resulted in the following changes:

1. Waiver of copay for families which paid for by CYFD
2. Payment of \$250 per child premium for children who are still in care (emergency, first responders and essential personnel)
3. Streamlining of licensing of new facilities that provide emergency child care
4. Payment to the original and temporary child care provider for children of emergency, first responders and essential personnel, whose child care Program closed due to COVID-19

Additional Changes Anticipated

1. Hazardous pay for child care providers currently operating
2. Compensation for programs that are losing their funding due to private pay