



Monthly Statistical Report

January 2021

There were 911,572 individuals that received Medicaid in January 2021, a 9.85% increase from one year ago. The count of Medicaid recipients has increased by 5,794, or 0.64%, since last month.

The SNAP caseload in January 2021 was 260,561, a 16.72% increase from one year ago. The SNAP caseload has increased by 5,078 cases, or 1.99%, since last month.

The TANF caseload was 12,692 in January 2021 an increase of 22.89% from January 2020. The TANF caseload had 81 more cases compared to December 2020, an increase of 0.6%.

The caseload for General Assistance was 1,898 in January 2021, a decrease of 24.23% from one year ago and an increase of 38 cases from last month.

Michelle Lujan Grisham, Governor
David Scrase, M.D., Secretary

Note: COVID 19 Health Emergency became effective March 12, 2020 and as a result, Medicaid, SNAP, TANF, and Child Care programs has undergone changes to policies which may be reflected in some of the tables and figures in this report. Please see end of report for details of policy changes.

Contents	Page
Summary	3-5
Medicaid	6-20
SNAP	21-41
Cash Assistance	42-56
Child Care Assistance	57-58
SNAP EA and P-EBT	59
Income Eligibility Guidelines	60-61

Regions are reported as follows:

Region 1		
Catron	San Juan	Valencia
Cibola	Sierra	
McKinley	Socorro	
Region 2		
Colfax	Mora	Santa Fe
De Baca	Quay	Taos
Guadalupe	Rio Arriba	Union
Harding	Sandoval	
Los Alamos	San Miguel	
Region 3		
Bernalillo	Torrance	
Region 4		
Chaves	Eddy	Lincoln
Curry	Lea	Roosevelt
Region 5		
Dona Ana	Hidalgo	Otero
Grant	Luna	

The Mission of the Human Services Department

To transform lives. Working with our partners, we design and deliver innovative, high quality health and human services that improve the security and promote independence for New Mexicans in their communities.

Angela Medrano, Deputy Secretary
Kari Armijo, Deputy Secretary

Prepared by Income Support Division
PO Box 2348
Santa Fe, NM 87504-2348
505-827-7250

Karmela Martinez, Director
Vida Tapia-Sanchez, Deputy Director

<http://www.hsd.state.nm.us/monthly-statistical-reports.aspx>

Program Summary for January 2021

SNAP, TANF and GA-Unrelated Child Program interviews are waived. Recertification periods are automatically extended for households with an Interim Review due in March and April for 6 months to the month recertification due. SNAP expenditures and cases include Emergency Allotments. SNAP Emergency Allotments and Pandemic EBT can be found at the end of this report.

Medicaid					
	Jan-20	Dec-20	Jan-21	Percent Change	
				Jan-20- Jan-21	Dec-20- Jan-21
Expenditures¹	\$516,830,741	\$656,626,453	\$621,537,921	20.3%	-5.3%
Cases²	499,534	548,164	551,787	10.46%	0.66%
Expenditures/Case	\$1,035	\$1,198	\$1,126	8.8%	-6.0%
Recipients³	829,830	905,778	911,572	9.85%	0.64%
<i>Adults</i>	472,552	529,453	533,954	12.99%	0.85%
<i>Children</i>	357,278	376,325	377,618	5.69%	0.34%
Recipients /Case	1.66	1.65	1.65	-0.60%	0.00%
Cases Processed⁴	12,872	11,376	8,984	-30.21%	-21.03%
<i>Approvals⁴</i>	8,484	7,331	5,296	-37.58%	-27.76%

Supplemental Nutrition Assistance Program (SNAP)					
	Jan-20	Dec-20	Jan-21	Percent Change	
				Jan-20- Jan-21	Dec-20- Jan-21
Expenditures⁵	\$52,325,905	\$92,994,588	\$93,892,314	79.44%	0.97%
Cases⁶	223,228	255,483	260,561	16.72%	1.99%
Expenditures/Case	\$234	\$364	\$360	53.85%	-1.10%
Recipients⁷	446,003	506,658	514,524	15.36%	1.55%
<i>Adults</i>	261,773	303,267	309,135	18.09%	1.93%
<i>Children</i>	184,230	203,391	205,389	11.49%	0.98%
Recipients /Case	2.00	1.98	1.97	-1.50%	-0.51%
Cases Processed⁴	18,434	17,561	13,199	-28.40%	-24.84%
<i>Approvals⁴</i>	15,253	10,737	8,128	-46.71%	-24.30%

Cash Assistance Programs					
	Jan-20	Dec-20	Jan-21	Percent Change	
				Jan-20- Jan-21	Dec-20- Jan-21
Expenditures⁵	\$4,574,751	\$4,855,059	\$5,663,402	23.80%	16.65%
Cases⁶	12,963	14,609	14,714	13.51%	0.72%
Expenditures/Case	\$353	\$332	\$385	9.07%	15.96%
Recipients⁷	29,317	36,058	36,278	23.74%	0.61%
<i>Adults</i>	7,929	11,684	11,802	48.85%	1.01%
<i>Children</i>	21,388	24,374	24,476	14.44%	0.42%
Recipients /Case	2.26	2.47	2.47	9.29%	0.00%
Cases Processed⁴	4,535	5,437	4,512	-0.51%	-17.01%
<i>Approvals⁴</i>	1,515	1,080	771	-49.11%	-28.61%

Low Income Home Energy Assistance Program (LIHEAP)					
	Jan-20	Dec-20	Jan-21	Percent Change	
				Jan-20- Jan-21	Dec-20- Jan-21
Expenditures⁸	\$2,212,240	\$5,621,740	\$3,442,200	55.60%	-38.77%
Cases⁸	7,490	18,137	11,374	51.86%	-37.29%
Expenditures/Case	\$295	\$310	\$303	2.71%	-2.26%
Recipients⁸	17,392	44,364	28,581	64.33%	-35.58%
<i>Adults</i>	7,846	24,899	15,315	95.20%	-38.49%
<i>Children</i>	9,546	19,465	13,266	38.97%	-31.85%
Recipients /Case	2.32	2.45	2.51	8.19%	2.45%
Cases Processed⁴	9,245	11,186	8,056	-12.86%	-27.98%
<i>Approvals⁴</i>	7,831	9,330	6,389	-18.41%	-31.52%

Note: December 2020 expenditures include the LIHEAP \$300 supplement payments that were tied to prior months since May 2020. The additional expenditures are reflected in the total cases and recipients reported.

Program Summary for January 2021

Temporary Assistance for Needy Families (TANF)

	Jan-20	Dec-20	Jan-21	Percent	
				Jan-20- Jan-21	Dec-20- Jan-21
Expenditures ⁵	\$3,859,829	\$4,327,998	\$5,111,044	32.42%	18.09%
Cases ⁶	10,328	12,611	12,692	22.89%	0.64%
Expenditures/Case	\$374	\$343	\$403	7.75%	17.49%
Recipients ⁷	26,485	33,833	34,062	28.61%	0.68%
<i>Adults</i>	5,459	9,841	9,956	82.38%	1.17%
<i>Children</i>	21,026	23,992	24,106	14.65%	0.48%
Approvals ⁴	1,269	956	641	-49.49%	-32.95%

Education Works

	Jan-20	Dec-20	Jan-21	Percent	
				Jan-20- Jan-21	Dec-20- Jan-21
Expenditures ⁵	\$36,028	\$38,031	\$36,875	2.35%	-3.04%
Cases ⁶	82	96	82	0.00%	-14.58%
Expenditures/Case	\$439	\$396	\$450	2.51%	13.64%
Recipients ⁷	241	275	237	-1.66%	-13.82%
<i>Adults</i>	91	107	90	-1.10%	-15.89%
<i>Children</i>	150	168	147	-2.00%	-12.50%

State Supplement for Residential Care

	Jan-20	Dec-20	Jan-21	Percent	
				Jan-20- Jan-21	Dec-20- Jan-21
Expenditures ⁵	\$1,800	\$900	\$700	-61.11%	-22.22%
Cases ⁶	18	9	7	-61.11%	-22.22%
Expenditures/Case	\$100	\$100	\$100	0.00%	0.00%
Recipients ⁷	17	9	7	-58.82%	-22.22%

General Assistance (GA)

	Jan-20	Dec-20	Jan-21	Percent	
				Jan-20- Jan-21	Dec-20- Jan-21
Expenditures ⁵	\$669,686	\$476,666	\$505,105	-24.58%	5.97%
Cases ⁶	2,505	1,860	1,898	-24.23%	2.04%
Expenditures/Case	\$267	\$256	\$266	-0.37%	3.91%
Recipients ⁷	2,545	1,906	1,935	-23.97%	1.52%
<i>Adults</i>	2,333	1,692	1,712	-26.62%	1.18%
<i>Children</i>	212	214	223	5.19%	4.21%
Approvals ⁴	194	81	107	-44.85%	32.10%

Refugee Cash (RCA)

	Jan-20	Dec-20	Jan-21	Percent	
				Jan-20- Jan-21	Dec-20- Jan-21
Expenditures ⁵	\$7,407	\$11,464	\$9,678	30.66%	-15.58%
Cases ⁶	30	33	35	16.67%	6.06%
Expenditures/Case	\$247	\$347	\$277	12.15%	-20.17%
Recipients ⁷	29	35	37	27.59%	5.71%

Expenditures YTD			
	SFY 2021	FFY 2021	CY 2021
Medicaid ¹	\$4,132,754,110	\$2,416,198,546	\$621,537,921
Supplemental Nutrition Assistance Program ⁹	\$619,296,293	\$363,214,097	\$93,892,314
Temporary Assistance for Needy Families ⁹	\$31,308,715	\$17,573,832	\$5,111,044
General Assistance ⁹	\$3,645,397	\$1,909,855	\$505,105
Education Work ⁹	\$257,917	\$147,882	\$36,875
LIHEAP ⁸	\$18,213,780	\$16,202,020	\$3,442,200

Average Caseload YTD			
	SFY 2021	FFY 2021	CY 2021
Medicaid ²	537,739	544,767	551,787
Supplemental Nutrition Assistance Program ⁶	246,608	250,061	260,561
Temporary Assistance for Needy Families ⁶	12,128	12,270	12,692
General Assistance ⁶	2,077	1,892	1,898
Education Work ⁶	88	90	82
LIHEAP ⁸	8,598	13,201	11,374

Demographic Profile- January 2021					
	SNAP	TANF	GA	Education Works	RCA
<i>Gender of Recipients</i> ¹⁰					
Male	234,376	14,281	1,063	76	27
Female	280,148	19,781	872	161	10
<i>Ethnicity</i> ¹⁰					
Hispanic	287,919	22,916	1,006	127	25
Non-Hispanic	226,605	11,146	929	110	12
<i>Race</i> ¹⁰					
Native American or Alaskan Native	87,278	3,170	219	27	0
Asian	4,464	251	10	1	0
African American or Black	14,334	1,569	77	17	10
Native Hawaiian or Pacific Islander	1,020	59	2	0	0
White	390,850	27,709	1,560	182	23
Unknown / Not Declared	3,736	225	17	3	1
More than One Race	12,842	1,079	50	7	3

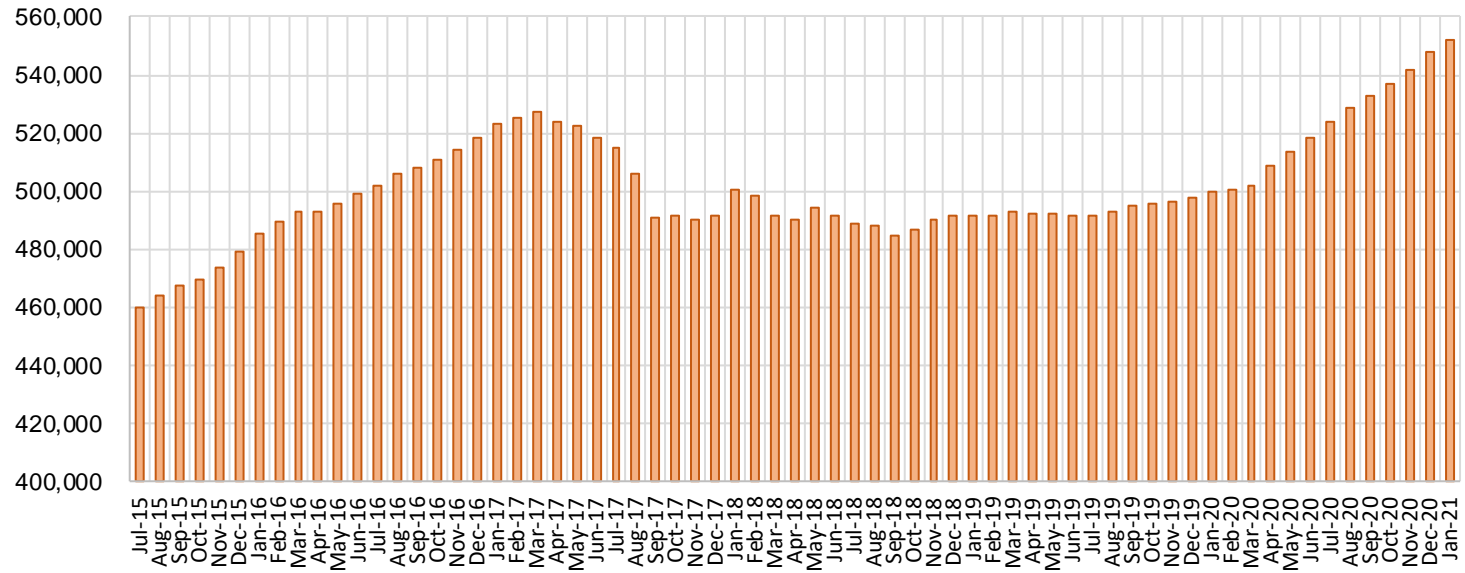
Medicaid Cases by Field Office²

Office				Percent Change	
	Jan-20	Dec-20	Jan-21	Jan-20- Jan-21	Dec-20- Jan-21
Chaves County ISD	16,207	23,494	24,205	49.35%	3.03%
Cibola County ISD	7,515	7,296	8,155	8.52%	11.77%
Colfax County ISD	3,594	3,859	3,891	8.26%	0.83%
Curry County ISD	15,068	16,184	16,294	8.14%	0.68%
East Dona Ana County ISD	18,178	21,176	21,327	17.32%	0.71%
Eddy Artesia County ISD	3,921	4,228	4,270	8.90%	0.99%
Eddy Carlsbad County ISD	7,633	8,555	8,601	12.68%	0.54%
Grant County ISD	7,903	8,642	8,719	10.33%	0.89%
Guadalupe County ISD	1,601	1,708	1,714	7.06%	0.35%
Hidalgo County ISD	51	39	39	-23.53%	0.00%
Lea County ISD	14,964	16,826	16,947	13.25%	0.72%
Lincoln County ISD	4,375	4,801	4,819	10.15%	0.37%
Luna County ISD	8,875	9,570	9,661	8.86%	0.95%
McKinley County ISD	22,502	23,014	23,320	3.64%	1.33%
Northeast Bernalillo County ISD	43,612	50,053	50,929	16.78%	1.75%
Northwest Bernalillo County ISD	53,736	60,161	60,472	12.54%	0.52%
Otero County ISD	12,290	13,169	13,264	7.93%	0.72%
Quay County ISD	2,531	3,494	3,489	37.85%	-0.14%
Rio Arriba County ISD	13,487	14,662	14,796	9.71%	0.91%
Roosevelt County ISD	10	9	9	-10.00%	0.00%
San Juan County ISD	30,741	44,548	36,090	17.40%	-18.99%
San Miguel County ISD	9,163	10,081	10,187	11.18%	1.05%
Sandoval County ISD	23,561	21,635	24,002	1.87%	10.94%
Santa Fe County ISD	24,147	24,461	24,561	1.71%	0.41%
Sierra County ISD	5,286	4,903	5,631	6.53%	14.85%
Socorro County ISD	5,297	5,369	5,872	10.86%	9.37%
South Dona Ana ISD	19,947	20,729	20,924	4.90%	0.94%
Southeast Bernalillo County ISD	24,870	18,300	18,102	-27.21%	-1.08%
Southwest Bernalillo County ISD	39,941	50,654	51,492	28.92%	1.65%
Taos County ISD	9,314	9,359	9,458	1.55%	1.06%
Torrance County ISD	8,092	7,298	6,986	-13.67%	-4.28%
Valencia North County ISD	18,628	16,391	19,932	7.00%	21.60%
Valencia South County ISD	91	261	284	212.09%	8.81%
West Dona Ana County ISD	22,402	23,234	23,344	4.20%	0.47%
Centralized Units	1	1	1	0.00%	0.00%
Statewide Total	499,534	548,164	551,787	10.46%	0.66%

Medicaid Cases by Region²

Region	Percent Change				
	Jan-20	Dec-20	Jan-21	Jan-20- Jan-21	Dec-20- Jan-21
Region 1 - NW	90,060	101,782	99,284	10.24%	-2.45%
Region 2 - NE	87,398	89,259	92,098	5.38%	3.18%
Region 3 - Central	170,251	186,466	187,981	10.41%	0.81%
Region 4 - SE	62,178	74,097	75,145	20.85%	1.41%
Region 5 - SW	89,646	96,559	97,278	8.51%	0.74%
Centralized Units	1	1	1	0.00%	0.00%
Statewide Total	499,534	548,164	551,787	10.5%	0.66%

Medicaid Caseload: SFY-16 to Current



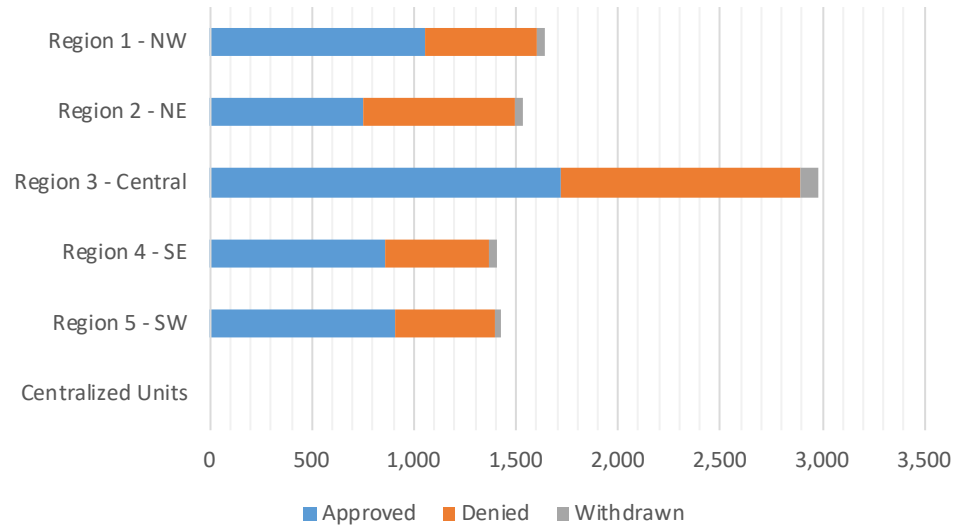
Medicaid Initial Applications by Field Office^{4,11}
January 2021

Office	Approved	Denied	Withdrawn	Total Cases Processed
Chaves County ISD	338	166	17	521
Cibola County ISD	55	28	2	85
Colfax County ISD	24	31	2	57
Curry County ISD	161	95	5	261
East Dona Ana County ISD	207	117	10	334
Eddy Artesia County ISD	44	34	0	78
Eddy Carlsbad County ISD	98	55	10	163
Grant County ISD	92	41	2	135
Guadalupe County ISD	11	9	0	20
Hidalgo County ISD	0	0	0	0
Lea County ISD	177	103	7	287
Lincoln County ISD	41	56	0	97
Luna County ISD	103	47	4	154
McKinley County ISD	155	94	4	253
Northeast Bernalillo County ISD	551	401	18	970
Northwest Bernalillo County ISD	460	296	21	777
Otero County ISD	101	57	5	163
Quay County ISD	48	21	0	69
Rio Arriba County ISD	121	83	0	204
Roosevelt County ISD	0	0	0	0
San Juan County ISD	605	276	25	906
San Miguel County ISD	100	65	7	172
Sandoval County ISD	119	146	9	274
Santa Fe County ISD	239	289	16	544
Sierra County ISD	43	28	1	72
Socorro County ISD	36	37	1	74
South Dona Ana ISD	195	102	5	302
Southeast Bernalillo County ISD	206	208	6	420
Southwest Bernalillo County ISD	478	235	33	746
Taos County ISD	93	96	3	192
Torrance County ISD	26	36	1	63
Valencia North County ISD	140	79	10	229
Valencia South County ISD	16	6	1	23
West Dona Ana County ISD	213	119	7	339
Centralized Units	0	0	0	0
Statewide Total	5,296	3,456	232	8,984

Medicaid Initial Applications by Region^{4,11} January 2021

Region	Approved	Denied	Withdrawn	Total Cases Processed
Region 1 - NW	1,050	548	44	1,642
Region 2 - NE	755	740	37	1,532
Region 3 - Central	1,721	1,176	79	2,976
Region 4 - SE	859	509	39	1,407
Region 5 - SW	911	483	33	1,427
Centralized Units	0	0	0	0

Statewide Total	5,296	3,456	232	8,984
-----------------	-------	-------	-----	-------

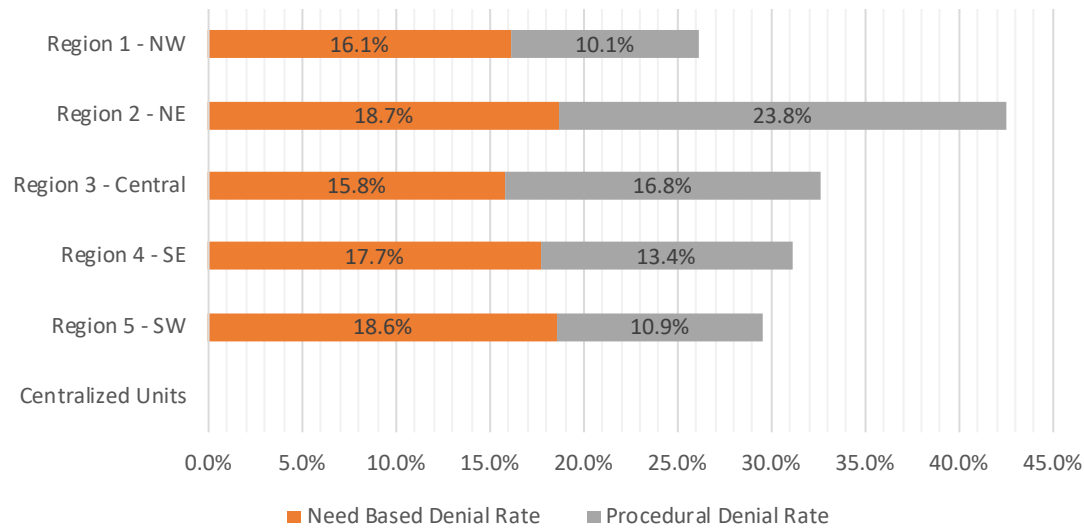


Medicaid EDG Initial Disposition Rates by Field Office^{4,11,19}
January 2021

Office	Approval Rate	Denial Rate	Need Based Denial Rate	Procedural Denial Rate
Chaves County ISD	71.3%	28.7%	18.8%	9.9%
Cibola County ISD	67.1%	32.9%	21.9%	11.0%
Colfax County ISD	48.0%	52.0%	22.0%	30.0%
Curry County ISD	66.5%	33.5%	19.5%	14.0%
East Dona Ana County ISD	68.1%	31.9%	21.4%	10.5%
Eddy Artesia County ISD	63.8%	36.2%	20.3%	15.9%
Eddy Carlsbad County ISD	69.0%	31.0%	14.8%	16.2%
Grant County ISD	76.7%	23.3%	10.8%	12.5%
Guadalupe County ISD	61.1%	38.9%	16.7%	22.2%
Hidalgo County ISD	0.0%	0.0%	0.0%	0.0%
Lea County ISD	72.8%	27.2%	14.4%	12.8%
Lincoln County ISD	53.9%	46.1%	18.5%	27.6%
Luna County ISD	74.6%	25.4%	18.9%	6.5%
McKinley County ISD	67.1%	32.9%	22.5%	10.4%
Northeast Bernalillo County ISD	65.5%	34.5%	17.0%	17.5%
Northwest Bernalillo County ISD	70.1%	29.9%	12.1%	17.8%
Otero County ISD	67.8%	32.2%	16.8%	15.4%
Quay County ISD	76.2%	23.8%	15.9%	7.9%
Rio Arriba County ISD	65.4%	34.6%	18.9%	15.7%
Roosevelt County ISD	0.0%	0.0%	0.0%	0.0%
San Juan County ISD	81.0%	19.0%	10.8%	8.2%
San Miguel County ISD	69.9%	30.1%	10.5%	19.6%
Sandoval County ISD	45.8%	54.2%	27.3%	26.9%
Santa Fe County ISD	55.6%	44.4%	16.7%	27.7%
Sierra County ISD	68.3%	31.7%	23.8%	7.9%
Socorro County ISD	52.9%	47.1%	32.4%	14.7%
South Dona Ana ISD	73.3%	26.7%	17.3%	9.4%
Southeast Bernalillo County ISD	60.1%	39.9%	22.1%	17.8%
Southwest Bernalillo County ISD	72.1%	27.9%	15.2%	12.7%
Taos County ISD	57.1%	42.9%	17.1%	25.8%
Torrance County ISD	52.0%	48.0%	8.0%	40.0%
Valencia North County ISD	66.0%	34.0%	18.0%	16.0%
Valencia South County ISD	84.2%	15.8%	15.8%	0.0%
West Dona Ana County ISD	67.4%	32.6%	20.9%	11.7%
Centralized Units	0.0%	0.0%	0.0%	0.0%
Statewide Total	67.7%	32.3%	17.1%	15.2%

Medicaid EDG Initial Disposition Rates by Region^{4,11,19}
January 2021

Region	Approval Rate	Denial Rate	Need Based Denial Rate	Procedural Denial Rate
Region 1 - NW	73.8%	26.2%	16.1%	10.1%
Region 2 - NE	57.5%	42.5%	18.7%	23.8%
Region 3 - Central	67.4%	32.6%	15.8%	16.8%
Region 4 - SE	68.9%	31.1%	17.7%	13.4%
Region 5 - SW	70.5%	29.5%	18.6%	10.9%
Centralized Units				
Statewide Total	67.7%	32.3%	17.1%	15.2%



Medicaid: Percentage of Initial EDG Approvals Processed Timely by Field Office^{13,19}

	Oct-20	Nov-20	Dec-20	Jan-21	Feb-21	Mar-21	Apr-21	May-21	Jun-21	Jul-21	Aug-21	Sep-21	Average
Cibola	100.0 %	100.0 %	100.0 %	100.0 %									100.0%
McKinley	99.0 %	98.8 %	97.1 %	95.6 %									97.6%
San Juan	98.8 %	99.1 %	99.3 %	97.0 %									98.6%
Sierra	97.7 %	97.8 %	100.0 %	100.0 %									98.9%
Socorro	100.0 %	100.0 %	100.0 %	98.1 %									99.5%
Valencia North	100.0 %	100.0 %	99.4 %	98.9 %									99.6%
Valencia South	100.0 %	100.0 %	100.0 %	100.0 %									100.0%
NW Region 1 Total	99.0 %	99.2 %	99.1 %	97.4 %									98.7%
Colfax	100.0 %	100.0 %	100.0 %	100.0 %									100.0%
Guadalupe	100.0 %	100.0 %	100.0 %	100.0 %									100.0%
Quay	100.0 %	100.0 %	100.0 %	96.7 %									99.2%
Rio Arriba	97.8 %	100.0 %	99.3 %	98.8 %									99.0%
San Miguel	100.0 %	99.8 %	98.9 %	100.0 %									99.7%
Sandoval	99.4 %	99.4 %	99.1 %	97.6 %									98.9%
Santa Fe	99.3 %	99.0 %	98.7 %	99.0 %									99.0%
Taos	100.0 %	100.0 %	100.0 %	99.2 %									99.8%
NE Region 2 Total	99.4 %	99.7 %	99.0 %	98.8 %									99.2%
NE Bernalillo	99.0 %	98.7 %	98.7 %	98.5 %									98.7%
NW Bernalillo	99.8 %	99.4 %	99.0 %	99.0 %									99.3%
SE Bernalillo	98.7 %	93.5 %	95.6 %	97.8 %									96.4%
SW Bernalillo	97.7 %	98.7 %	98.1 %	97.6 %									98.0%
Torrance	100.0 %	100.0 %	100.0 %	97.6 %									99.4%
Cen. Region 3 Total	98.9 %	98.4 %	98.3 %	98.3 %									98.5%
Chaves	99.5 %	98.4 %	97.5 %	99.2 %									98.6%
Curry	99.1 %	99.0 %	96.0 %	97.7 %									97.9%
Eddy Artesia	100.0 %	100.0 %	98.4 %	95.7 %									98.5%
Eddy Carlsbad	98.8 %	100.0 %	99.3 %	99.4 %									99.4%
Lea	99.1 %	99.0 %	98.6 %	97.8 %									98.6%
Lincoln	98.6 %	100.0 %	97.8 %	100.0 %									99.1%
Roosevelt	100.0 %	100.0 %	100.0 %	100.0 %									100.0%
SE Region 4 Total	99.2 %	99.0 %	97.8 %	98.5 %									98.6%
East Dona Ana	98.6 %	99.3 %	99.4 %	99.3 %									99.1%
Grant	99.2 %	99.2 %	98.6 %	99.2 %									99.0%
Luna	100.0 %	99.1 %	100.0 %	99.3 %									99.6%
Otero	100.0 %	99.5 %	100.0 %	99.4 %									99.7%
South Dona Ana	99.6 %	97.4 %	98.4 %	100.0 %									98.9%
West Dona Ana	98.5 %	99.3 %	100.0 %	98.6 %									99.1%
SW Region 5 Total	99.2 %	98.9 %	99.3 %	99.3 %									99.2%
STATE TOTAL	99.1 %	98.9 %	98.7 %	98.4 %									98.8%

Medicaid: Percentage of Initial EDG Denials Processed Timely by Field Office^{13,19}

	Oct-20	Nov-20	Dec-20	Jan-21	Feb-21	Mar-21	Apr-21	May-21	Jun-21	Jul-21	Aug-21	Sep-21	Average
Cibola	100.0 %	97.7 %	97.0 %	97.4 %									98.0%
McKinley	95.7 %	89.6 %	91.9 %	90.0 %									91.8%
San Juan	96.9 %	94.6 %	94.4 %	92.2 %									94.5%
Sierra	100.0 %	93.9 %	100.0 %	100.0 %									98.5%
Socorro	90.0 %	90.6 %	87.1 %	98.6 %									91.6%
Valencia North	93.5 %	97.1 %	99.1 %	97.8 %									96.9%
Valencia South	100.0 %	100.0 %	100.0 %	100.0 %									100.0%
NW Region 1 Total	96.5 %	94.4 %	94.9 %	93.9 %									94.9%
Colfax	100.0 %	100.0 %	100.0 %	98.1 %									99.5%
Guadalupe	100.0 %	100.0 %	100.0 %	92.9 %									98.2%
Quay	100.0 %	96.7 %	100.0 %	89.5 %									96.5%
Rio Arriba	97.1 %	94.9 %	95.0 %	89.5 %									94.1%
San Miguel	100.0 %	100.0 %	96.7 %	99.2 %									99.0%
Sandoval	97.5 %	95.2 %	95.9 %	94.4 %									95.8%
Santa Fe	90.3 %	92.1 %	95.2 %	95.9 %									93.4%
Taos	100.0 %	98.1 %	96.9 %	99.3 %									98.6%
NE Region 2 Total	95.9 %	96.6 %	96.5 %	96.5 %									96.3%
NE Bernalillo	92.1 %	95.2 %	94.4 %	94.1 %									93.9%
NW Bernalillo	94.4 %	94.3 %	95.1 %	94.8 %									94.7%
SE Bernalillo	96.4 %	98.4 %	94.8 %	96.8 %									96.6%
SW Bernalillo	95.3 %	97.2 %	94.7 %	94.4 %									95.4%
Torrance	98.3 %	89.6 %	100.0 %	100.0 %									97.0%
Gen. Region 3 Total	94.4 %	95.6 %	94.9 %	95.0 %									95.0%
Chaves	97.3 %	98.3 %	95.1 %	97.8 %									97.1%
Curry	94.7 %	90.8 %	97.7 %	95.5 %									94.7%
Eddy Artesia	100.0 %	94.6 %	96.8 %	95.7 %									96.8%
Eddy Carlsbad	98.7 %	94.4 %	92.1 %	95.3 %									95.1%
Lea	92.2 %	97.7 %	94.4 %	98.4 %									95.7%
Lincoln	97.8 %	96.8 %	98.8 %	97.8 %									97.8%
Roosevelt		100.0 %	100.0 %										
SE Region 4 Total	96.1 %	96.2 %	95.5 %	97.0 %									96.2%
East Dona Ana	98.9 %	96.0 %	94.2 %	98.5 %									96.9%
Grant	100.0 %	95.7 %	100.0 %	100.0 %									98.9%
Luna	100.0 %	97.9 %	96.8 %	98.7 %									98.4%
Otero	94.9 %	96.3 %	95.9 %	92.1 %									94.8%
South Dona Ana	99.4 %	100.0 %	97.5 %	96.7 %									98.4%
West Dona Ana	91.6 %	90.8 %	98.9 %	99.0 %									95.1%
SW Region 5 Total	97.6 %	96.3 %	96.9 %	97.7 %									97.1%
STATE TOTAL	95.9 %	95.8 %	95.8 %	95.8 %									95.8%

Medicaid: Percentage of Initial EDG Approvals and Denials Combined Processed Timely by Field Office^{13,19}

	Oct-20	Nov-20	Dec-20	Jan-21	Feb-21	Mar-21	Apr-21	May-21	Jun-21	Jul-21	Aug-21	Sep-21	Average
Cibola	100.0 %	99.2 %	99.1 %	99.1 %									99.3%
McKinley	97.7 %	95.4 %	95.5 %	93.4 %									95.5%
San Juan	98.3 %	97.8 %	97.7 %	95.4 %									97.3%
Sierra	98.9 %	96.2 %	100.0 %	100.0 %									98.8%
Socorro	96.6 %	96.3 %	93.8 %	98.3 %									96.3%
Valencia North	97.4 %	98.7 %	99.2 %	98.4 %									98.4%
Valencia South	100.0 %	100.0 %	100.0 %	100.0 %									100.0%
NW Region 1 Total	98.2 %	97.6 %	97.7 %	96.1 %									97.4%
Colfax	100.0 %	100.0 %	100.0 %	98.9 %									99.7%
Guadalupe	100.0 %	100.0 %	100.0 %	96.7 %									99.2%
Quay	100.0 %	99.0 %	100.0 %	93.9 %									98.2%
Rio Arriba	97.5 %	98.3 %	97.8 %	98.6 %									98.1%
San Miguel	100.0 %	99.9 %	98.0 %	99.6 %									99.4%
Sandoval	98.8 %	97.8 %	97.5 %	95.8 %									97.5%
Santa Fe	96.1 %	96.0 %	97.2 %	97.2 %									96.6%
Taos	100.0 %	99.4 %	98.7 %	99.3 %									99.3%
NE Region 2 Total	98.2 %	98.5 %	97.9 %	97.5 %									98.0%
NE Bernalillo	96.6 %	97.4 %	97.1 %	96.5 %									96.9%
NW Bernalillo	98.0 %	97.6 %	97.5 %	97.1 %									97.5%
SE Bernalillo	97.7 %	95.5 %	95.2 %	97.2 %									96.4%
SW Bernalillo	96.9 %	98.2 %	96.9 %	96.4 %									97.1%
Torrance	99.3 %	94.4 %	100.0 %	99.1 %									98.2%
Gen. Region 3 Total	97.2 %	97.3 %	97.0 %	96.8 %									97.1%
Chaves	98.8 %	98.4 %	96.7 %	98.7 %									98.2%
Curry	97.6 %	96.4 %	96.5 %	96.7 %									96.8%
Eddy Artesia	100.0 %	98.2 %	97.8 %	95.7 %									97.9%
Eddy Carlsbad	98.8 %	98.4 %	96.5 %	97.7 %									97.9%
Lea	96.8 %	98.7 %	97.4 %	98.0 %									97.7%
Lincoln	98.3 %	98.8 %	98.3 %	98.8 %									98.5%
Roosevelt	100.0 %	100.0 %	100.0 %										100.0%
SE Region 4 Total	98.2 %	98.2 %	97.0 %	97.9 %									97.8%
East Dona Ana	98.7 %	98.0 %	97.2 %	99.0 %									98.2%
Grant	99.5 %	98.2 %	99.1 %	99.5 %									99.1%
Luna	100.0 %	98.8 %	98.8 %	99.1 %									99.2%
Otero	98.5 %	98.4 %	98.3 %	96.9 %									98.0%
South Dona Ana	99.6 %	98.3 %	98.1 %	98.8 %									98.7%
West Dona Ana	96.3 %	96.6 %	99.6 %	98.7 %									97.8%
SW Region 5 Total	98.7 %	98.0 %	98.4 %	98.7 %									98.4%
STATE TOTAL	98.0 %	97.8 %	97.6 %	97.3 %									97.7%

Medicaid Renewal Disposition Counts by Field Office^{4,11}
January 2021

Office	Approvals	Closures	Need Based Closures	Procedural Closures
Chaves County ISD	4,231	223	222	1
Cibola County ISD	1,291	63	60	3
Colfax County ISD	480	15	15	0
Curry County ISD	2,483	121	120	1
East Dona Ana County ISD	3,481	160	160	0
Eddy Artesia County ISD	623	42	42	0
Eddy Carlsbad County ISD	1,069	42	42	0
Grant County ISD	1,091	68	68	0
Guadalupe County ISD	252	9	9	0
Hidalgo County ISD	0	0	0	0
Lea County ISD	2,588	112	112	0
Lincoln County ISD	615	36	35	1
Luna County ISD	1,377	69	69	0
McKinley County ISD	3,824	136	136	0
Northeast Bernalillo County ISD	5,896	259	259	0
Northwest Bernalillo County ISD	4,759	188	186	2
Otero County ISD	1,925	93	93	0
Quay County ISD	555	24	24	0
Rio Arriba County ISD	1,997	85	85	0
Roosevelt County ISD	0	0	0	0
San Juan County ISD	5,594	267	267	0
San Miguel County ISD	1,141	67	67	0
Sandoval County ISD	3,098	117	116	1
Santa Fe County ISD	2,691	159	159	0
Sierra County ISD	788	28	28	0
Socorro County ISD	804	30	30	0
South Dona Ana ISD	3,391	132	131	1
Southeast Bernalillo County ISD	1,316	46	45	1
Southwest Bernalillo County ISD	8,598	464	461	3
Taos County ISD	1,153	38	38	0
Torrance County ISD	614	14	14	0
Valencia North County ISD	3,007	118	118	0
Valencia South County ISD	0	0	0	0
West Dona Ana County ISD	3,178	109	109	0
Centralized Units	0	0	0	0
Statewide Total	73,910	3,334	3,320	14

Note: Renewal approvals based on COVID-19 extensions for periodic reviews are not included in total. Determinations at Administrative, Annual, and Auto Renewals are included

Medicaid Renewal Disposition Rates by Field Office²⁰
January 2021

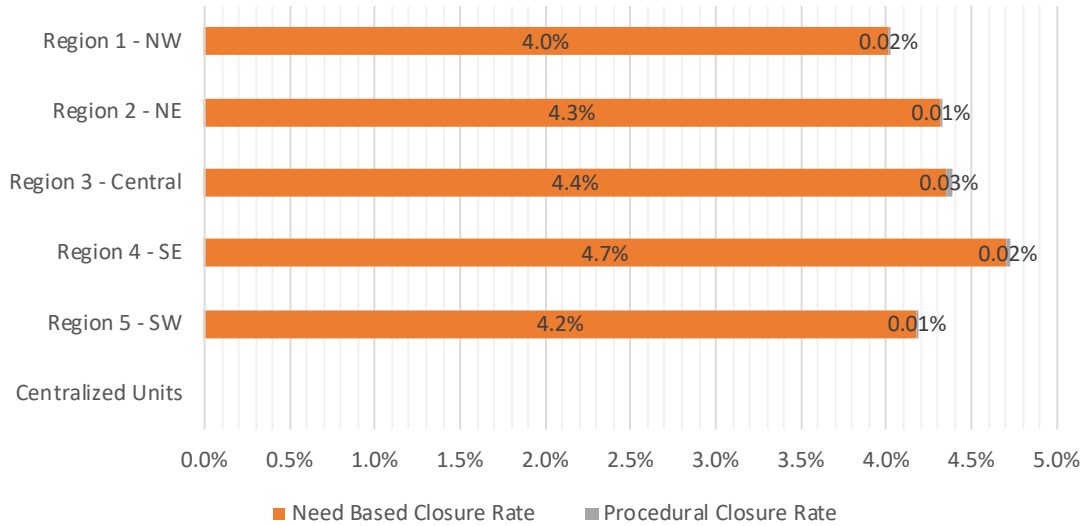
Office	Approval Rate	Closure Rate	Need Based Closure Rate	Procedural Closure Rate
Chaves County ISD	95.0%	5.0%	5.0%	0.02%
Cibola County ISD	95.3%	4.7%	4.4%	0.22%
Colfax County ISD	97.0%	3.0%	3.0%	0.00%
Curry County ISD	95.4%	4.6%	4.6%	0.04%
East Dona Ana County ISD	95.6%	4.4%	4.4%	0.00%
Eddy Artesia County ISD	93.7%	6.3%	6.3%	0.00%
Eddy Carlsbad County ISD	96.2%	3.8%	3.8%	0.00%
Grant County ISD	94.1%	5.9%	5.9%	0.00%
Guadalupe County ISD	96.6%	3.4%	3.4%	0.00%
Hidalgo County ISD	0.0%	0.0%	0.0%	0.00%
Lea County ISD	95.9%	4.1%	4.1%	0.00%
Lincoln County ISD	94.5%	5.5%	5.4%	0.15%
Luna County ISD	95.2%	4.8%	4.8%	0.00%
McKinley County ISD	96.6%	3.4%	3.4%	0.00%
Northeast Bernalillo County ISD	95.8%	4.2%	4.2%	0.00%
Northwest Bernalillo County ISD	96.2%	3.8%	3.8%	0.04%
Otero County ISD	95.4%	4.6%	4.6%	0.00%
Quay County ISD	95.9%	4.1%	4.1%	0.00%
Rio Arriba County ISD	95.9%	4.1%	4.1%	0.00%
Roosevelt County ISD	0.0%	0.0%	0.0%	0.00%
San Juan County ISD	95.4%	4.6%	4.6%	0.00%
San Miguel County ISD	94.5%	5.5%	5.5%	0.00%
Sandoval County ISD	96.4%	3.6%	3.6%	0.03%
Santa Fe County ISD	94.4%	5.6%	5.6%	0.00%
Sierra County ISD	96.6%	3.4%	3.4%	0.00%
Socorro County ISD	96.4%	3.6%	3.6%	0.00%
South Dona Ana ISD	96.3%	3.7%	3.7%	0.03%
Southeast Bernalillo County ISD	96.6%	3.4%	3.3%	0.07%
Southwest Bernalillo County ISD	94.9%	5.1%	5.1%	0.03%
Taos County ISD	96.8%	3.2%	3.2%	0.00%
Torrance County ISD	97.8%	2.2%	2.2%	0.00%
Valencia North County ISD	96.2%	3.8%	3.8%	0.00%
Valencia South County ISD	0.0%	0.0%	0.0%	0.00%
West Dona Ana County ISD	96.7%	3.3%	3.3%	0.00%
Centralized Units	0.0%	0.0%	0.0%	0.00%

Statewide Total	95.7%	4.3%	4.3%	0.02%
-----------------	-------	------	------	-------

Note: Renewal approvals based on COVID-19 extensions for periodic reviews are not included in total.

Medicaid Renewal Disposition Rates by Region²⁰
January 2021

Region	Approval Rate	Closure Rate	Need Based Closure Rate	Procedural Closure Rate
Region 1 - NW	96.0%	4.0%	4.0%	0.02%
Region 2 - NE	95.7%	4.3%	4.3%	0.01%
Region 3 - Central	95.6%	4.4%	4.4%	0.03%
Region 4 - SE	95.3%	4.7%	4.7%	0.02%
Region 5 - SW	95.8%	4.2%	4.2%	0.01%
Centralized Units	0.0%	0.0%	0.0%	0.00%
Statewide Total	95.7%	4.3%	4.3%	0.02%



Medicaid: Percentage of Approved Renewal EDGs Processed by Certification Date ¹¹

	Oct-20	Nov-20	Dec-20	Jan-21	Feb-21	Mar-21	Apr-21	May-21	Jun-21	Jul-21	Aug-21	Sep-21	Average
Cibola	100.0%	100.0%	100.0%	100.0%									100.0%
McKinley	100.0%	99.9%	100.0%	100.0%									100.0%
San Juan	100.0%	100.0%	100.0%	100.0%									100.0%
Sierra	100.0%	100.0%	99.8%	100.0%									100.0%
Socorro	100.0%	99.8%	100.0%	99.8%									99.9%
Valencia North	100.0%	99.9%	100.0%	100.0%									100.0%
Valencia South	100.0%		100.0%										100.0%
NW Region 1 Total	100.0%	99.9%	100.0%	100.0%									100.0%
Colfax	100.0%	100.0%	100.0%	100.0%									100.0%
Guadalupe	100.0%	100.0%	100.0%	100.0%									100.0%
Quay	100.0%	100.0%	100.0%	100.0%									100.0%
Rio Arriba	100.0%	100.0%	100.0%	100.0%									100.0%
San Miguel	100.0%	100.0%	100.0%	100.0%									100.0%
Sandoval	100.0%	99.9%	100.0%	100.0%									100.0%
Santa Fe	100.0%	100.0%	100.0%	100.0%									100.0%
Taos	100.0%	99.9%	99.8%	100.0%									99.9%
NE Region 2 Total	100.0%	100.0%	100.0%	100.0%									100.0%
NE Bernalillo	100.0%	100.0%	100.0%	100.0%									100.0%
NW Bernalillo	100.0%	100.0%	100.0%	100.0%									100.0%
SE Bernalillo	100.0%	100.0%	100.0%	100.0%									100.0%
SW Bernalillo	100.0%	99.9%	100.0%	100.0%									100.0%
Torrance	100.0%	100.0%	100.0%	99.8%									100.0%
Gen. Region 3 Total	100.0%	100.0%	100.0%	100.0%									100.0%
Chaves	100.0%	99.9%	100.0%	100.0%									100.0%
Curry	100.0%	99.9%	100.0%	100.0%									100.0%
Eddy Artesia	100.0%	100.0%	99.8%	99.8%									99.9%
Eddy Carlsbad	100.0%	100.0%	99.5%	99.5%									99.8%
Lea	100.0%	100.0%	100.0%	100.0%									100.0%
Lincoln	100.0%	100.0%	100.0%	100.0%									100.0%
Roosevelt	100.0%												
SE Region 4 Total	100.0%	100.0%	100.0%	100.0%									100.0%
East Dona Ana	100.0%	100.0%	99.9%	99.9%									100.0%
Grant	99.9%	100.0%	100.0%	100.0%									100.0%
Luna	100.0%	100.0%	100.0%	100.0%									100.0%
Otero	100.0%	100.0%	100.0%	100.0%									100.0%
South Dona Ana	99.9%	100.0%	100.0%	100.0%									100.0%
West Dona Ana	100.0%			100.0%									100.0%
SW Region 5 Total	100.0%	100.0%	100.0%	100.0%									100.0%
STATE TOTAL	100.0%	100.0%	100.0%	100.0%									100.0%

Administrative, Annual, and Auto Renewals are included

Medicaid: Percentage of Closures EDGs Processed by Certification End Date¹¹

	Oct-20	Nov-20	Dec-20	Jan-21	Feb-21	Mar-21	Apr-21	May-21	Jun-21	Jul-21	Aug-21	Sep-21	Average
Cibola	100.0%	97.6%	98.2%	96.9%									98.2%
McKinley	94.2%	97.1%	96.2%	96.5%									96.0%
San Juan	96.6%	96.7%	96.6%	97.1%									96.8%
Sierra	100.0%	100.0%	91.7%	100.0%									97.9%
Socorro	100.0%	97.4%	91.3%	100.0%									97.2%
Valencia North	91.3%	98.7%	96.5%	95.2%									95.4%
Valencia South		100.0%	100.0%										
NW Region 1 Total	97.0%	98.2%	95.8%	97.6%									97.2%
Colfax	100.0%	75.0%	100.0%	93.8%									92.2%
Guadalupe	100.0%	100.0%	100.0%	100.0%									100.0%
Quay	96.8%	100.0%	100.0%	96.0%									98.2%
Rio Arriba	100.0%	100.0%	94.4%	98.8%									98.3%
San Miguel	97.3%	98.5%	96.1%	97.1%									97.3%
Sandoval	100.0%	97.0%	97.9%	97.5%									98.1%
Santa Fe	92.9%	96.8%	95.3%	96.4%									95.4%
Taos	92.3%	97.4%	97.8%	92.7%									95.1%
NE Region 2 Total	97.4%	95.6%	97.7%	96.5%									96.8%
NE Bernalillo	93.2%	94.7%	94.1%	97.0%									94.8%
NW Bernalillo	95.6%	95.8%	95.8%	95.4%									95.7%
SE Bernalillo	100.0%	97.9%	100.0%	95.8%									98.4%
SW Bernalillo	96.1%	98.1%	97.7%	96.3%									97.1%
Torrance	100.0%	100.0%	96.9%	100.0%									99.2%
Gen. Region 3 Total	97.0%	97.3%	96.9%	96.9%									97.0%
Chaves	94.5%	93.7%	98.4%	94.1%									95.2%
Curry	98.9%	97.6%	97.8%	96.8%									97.8%
Eddy Artesia	100.0%	100.0%	89.5%	95.5%									96.3%
Eddy Carlsbad	95.9%	100.0%	96.3%	89.4%									95.4%
Lea	95.3%	98.2%	98.2%	95.7%									96.9%
Lincoln	97.0%	87.8%	100.0%	97.3%									95.5%
Roosevelt													
SE Region 4 Total	96.9%	96.2%	96.7%	94.8%									96.2%
East Dona Ana	95.2%	98.6%	95.5%	94.7%									96.0%
Grant	96.2%	98.4%	98.2%	98.6%									97.9%
Luna	100.0%	98.9%	98.4%	98.6%									99.0%
Otero	93.9%	95.5%	95.8%	98.9%									96.0%
South Dona Ana	97.7%	95.4%	95.7%	97.8%									96.7%
West Dona Ana	97.2%	96.2%	98.5%	96.5%									97.1%
SW Region 5 Total	96.7%	97.2%	97.0%	97.5%									97.1%
STATE TOTAL	97.0%	96.8%	96.8%	96.7%									96.8%

Medicaid: Percentage of Approved and Terminated Renewal EDGs Combined Processed by Certification Date ¹¹

	Oct-20	Nov-20	Dec-20	Jan-21	Feb-21	Mar-21	Apr-21	May-21	Jun-21	Jul-21	Aug-21	Sep-21	Average
Cibola	100.0%	99.9%	99.9%	99.9%									99.9%
McKinley	99.8%	99.8%	99.8%	99.9%									99.8%
San Juan	99.9%	99.7%	99.9%	99.9%									99.9%
Sierra	100.0%	100.0%	99.3%	100.0%									99.8%
Socorro	100.0%	99.7%	99.6%	100.0%									99.8%
Valencia North	99.7%	99.9%	99.8%	99.8%									99.8%
Valencia South	100.0%	100.0%	100.0%										100.0%
NW Region 1 Total	99.9%	99.9%	99.8%	99.9%									99.9%
Colfax	100.0%	99.5%	100.0%	99.8%									99.8%
Guadalupe	100.0%	100.0%	100.0%	99.2%									99.8%
Quay	99.8%	100.0%	100.0%	99.8%									99.9%
Rio Arriba	100.0%	100.0%	99.8%	100.0%									100.0%
San Miguel	99.9%	99.9%	99.8%	99.8%									99.9%
Sandoval	100.0%	99.8%	99.9%	99.9%									99.9%
Santa Fe	99.8%	99.8%	99.8%	99.8%									99.8%
Taos	99.7%	99.7%	99.7%	99.7%									99.7%
NE Region 2 Total	99.9%	99.8%	99.9%	99.8%									99.8%
NE Bernalillo	99.7%	99.7%	99.6%	99.9%									99.7%
NW Bernalillo	99.8%	99.8%	99.8%	99.8%									99.8%
SE Bernalillo	100.0%	99.9%	100.0%	99.9%									100.0%
SW Bernalillo	99.8%	99.8%	99.8%	99.8%									99.8%
Torrance	100.0%	100.0%	99.8%	100.0%									100.0%
Gen. Region 3 Total	99.9%	99.8%	99.8%	99.9%									99.8%
Chaves	99.8%	99.5%	99.9%	99.7%									99.7%
Curry	100.0%	99.8%	99.9%	99.8%									99.9%
Eddy Artesia	100.0%	100.0%	99.3%	99.7%									99.8%
Eddy Carlsbad	99.7%	100.0%	99.3%	99.6%									99.7%
Lea	99.7%	99.9%	99.9%	99.8%									99.8%
Lincoln	99.8%	99.0%	100.0%	99.8%									99.7%
Roosevelt	100.0%												100.0%
SE Region 4 Total	99.9%	99.7%	99.7%	99.7%									99.8%
East Dona Ana	99.8%	99.9%	99.7%	99.7%									99.8%
Grant	99.8%	99.9%	99.9%	99.9%									99.9%
Luna	100.0%	99.9%	99.9%	99.9%									99.9%
Otero	99.7%	99.7%	99.8%	99.9%									99.8%
South Dona Ana	99.8%	99.7%	99.8%	99.9%									99.8%
West Dona Ana	99.9%	96.2%	98.5%	99.9%									98.6%
SW Region 5 Total	99.8%	99.2%	99.6%	99.9%									99.6%
STATE TOTAL	99.9%	99.7%	99.8%	99.8%									99.8%

Administrative, Annual, and Auto Renewals are in

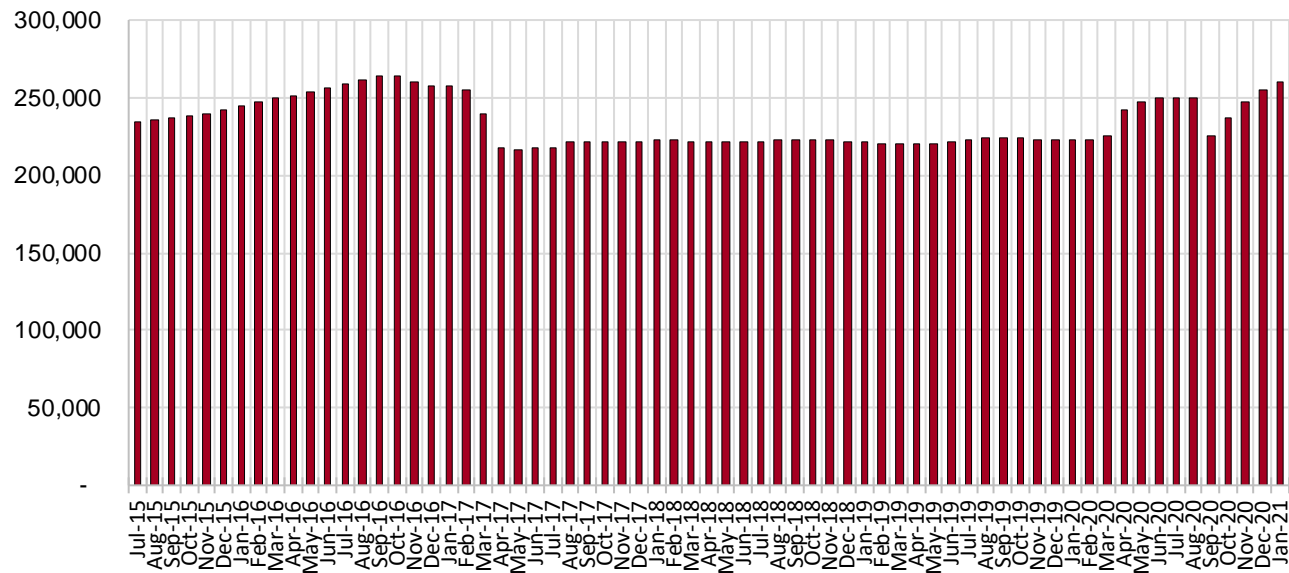
SNAP Cases by Field Office⁶

Office				Percent Change	
	Jan-20	Dec-20	Jan-21	Jan-20- Jan-21	Dec-20-Jan- 21
Chaves County ISD	7,158	12,679	13,334	86.28%	5.17%
Cibola County ISD	3,567	3,288	4,001	12.17%	21.68%
Colfax County ISD	1,614	1,784	1,810	12.14%	1.46%
Curry County ISD	7,372	8,100	8,191	11.11%	1.12%
East Dona Ana County ISD	7,964	9,975	10,074	26.49%	0.99%
Eddy Artesia County ISD	1,615	1,897	1,931	19.57%	1.79%
Eddy Carlsbad County ISD	2,948	3,738	3,825	29.75%	2.33%
Grant County ISD	3,991	4,404	4,461	11.78%	1.29%
Guadalupe County ISD	680	770	784	15.29%	1.82%
Hidalgo County ISD	8	9	8	0.00%	-11.11%
Lea County ISD	5,814	7,412	7,561	30.05%	2.01%
Lincoln County ISD	1,850	2,133	2,171	17.35%	1.78%
Luna County ISD	4,365	4,872	4,983	14.16%	2.28%
McKinley County ISD	10,316	10,688	10,989	6.52%	2.82%
Northeast Bernalillo County ISD	20,563	24,516	25,376	23.41%	3.51%
Northwest Bernalillo County ISD	20,486	24,387	24,969	21.88%	2.39%
Otero County ISD	5,779	6,397	6,518	12.79%	1.89%
Quay County ISD	1,311	2,050	2,089	59.34%	1.90%
Rio Arriba County ISD	6,409	7,261	7,435	16.01%	2.40%
Roosevelt County ISD	1	0	0	-100.00%	N/A
San Juan County ISD	14,089	24,565	18,185	29.07%	-25.97%
San Miguel County ISD	4,996	5,473	5,617	12.43%	2.63%
Sandoval County ISD	9,865	7,928	9,756	-1.10%	23.06%
Santa Fe County ISD	9,013	8,894	9,087	0.82%	2.17%
Sierra County ISD	2,570	2,150	2,815	9.53%	30.93%
Socorro County ISD	2,786	2,710	3,211	15.25%	18.49%
South Dona Ana ISD	8,439	8,946	9,164	8.59%	2.44%
Southeast Bernalillo County ISD	11,718	6,515	6,401	-45.37%	-1.75%
Southwest Bernalillo County ISD	19,008	27,072	27,967	47.13%	3.31%
Taos County ISD	4,204	3,976	4,075	-3.07%	2.49%
Torrance County ISD	3,652	2,961	2,709	-25.82%	-8.5%
Valencia North County ISD	8,311	6,358	9,247	11.26%	45.44%
Valencia South County ISD	6	94	122	1933.3%	29.79%
West Dona Ana County ISD	10,748	11,481	11,688	8.75%	1.80%
Centralized Units	12	0	7	-41.67%	N/A
Statewide Total	223,228	255,483	260,561	16.72%	2.0%

SNAP Cases by Region⁶

Region	Jan-20	Dec-20	Jan-21	Percent Change	
				Jan-20- Jan-21	Dec-20- Jan-21
Region 1 - NW	41,645	49,853	48,570	16.6%	-2.6%
Region 2 - NE	38,092	38,136	40,653	6.7%	6.6%
Region 3 - Central	75,427	85,451	87,422	15.9%	2.3%
Region 4 - SE	26,758	35,959	37,013	38.3%	2.9%
Region 5 - SW	41,294	46,084	46,896	13.6%	1.8%
Centralized Units	12	0	7	-41.7%	N/A
Statewide Total	223,228	255,483	260,561	16.72%	2.0%

SNAP Caseload: SFY-16 to Current



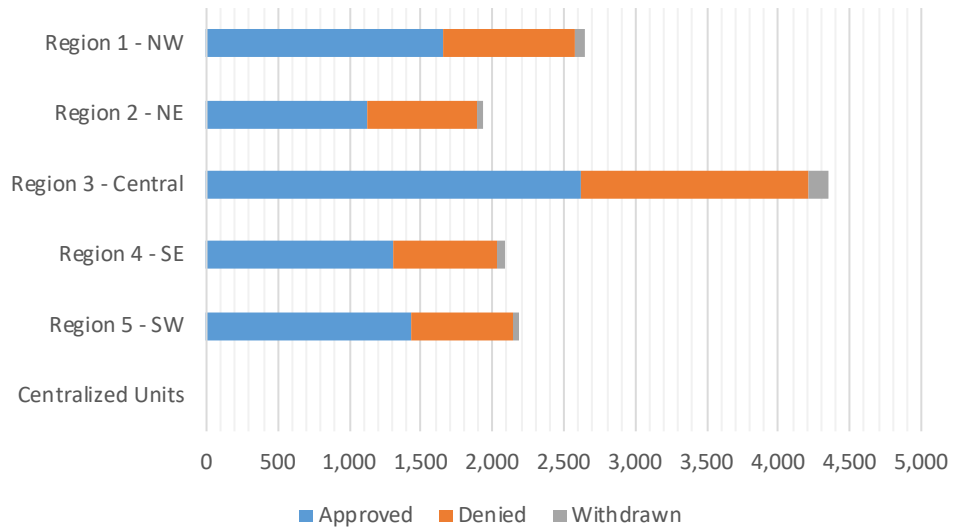
Note: Caseload higher due to COVID 19 emergency

SNAP Initial Applications by Field Office^{4,11}
January 2021

Office	Approved	Denied	Withdrawn	Total Cases Processed
Chaves County ISD	589	288	21	898
Cibola County ISD	73	47	4	124
Colfax County ISD	52	37	2	91
Curry County ISD	231	153	1	385
East Dona Ana County ISD	304	198	10	512
Eddy Artesia County ISD	51	37	1	89
Eddy Carlsbad County ISD	145	74	5	224
Grant County ISD	112	64	2	178
Guadalupe County ISD	21	21	1	43
Hidalgo County ISD	0	0	0	0
Lea County ISD	223	138	13	374
Lincoln County ISD	65	44	4	113
Luna County ISD	172	54	10	236
McKinley County ISD	237	156	7	400
Northeast Bernalillo County ISD	838	579	45	1,462
Northwest Bernalillo County ISD	761	479	31	1,271
Otero County ISD	206	84	6	296
Quay County ISD	81	42	2	125
Rio Arriba County ISD	226	119	6	351
Roosevelt County ISD	0	0	0	0
San Juan County ISD	993	520	44	1,557
San Miguel County ISD	179	143	11	333
Sandoval County ISD	142	145	9	296
Santa Fe County ISD	284	184	9	477
Sierra County ISD	94	43	5	142
Socorro County ISD	59	42	1	102
South Dona Ana ISD	253	111	12	376
Southeast Bernalillo County ISD	117	63	2	182
Southwest Bernalillo County ISD	902	468	53	1,423
Taos County ISD	136	76	5	217
Torrance County ISD	6	3	1	10
Valencia North County ISD	182	111	11	304
Valencia South County ISD	15	5	0	20
West Dona Ana County ISD	379	201	8	588
Centralized Units	0	0	0	0
Statewide Total	8,128	4,729	342	13,199

SNAP Initial Applications by Region^{4,11} January 2021

Region	Approved	Denied	Withdrawn	Total Cases Processed
Region 1 - NW	1,653	924	72	2,649
Region 2 - NE	1,121	767	45	1,933
Region 3 - Central	2,624	1,592	132	4,348
Region 4 - SE	1,304	734	45	2,083
Region 5 - SW	1,426	712	48	2,186
Centralized Units	0	0	0	0
Statewide Total	8,128	4,729	342	13,199

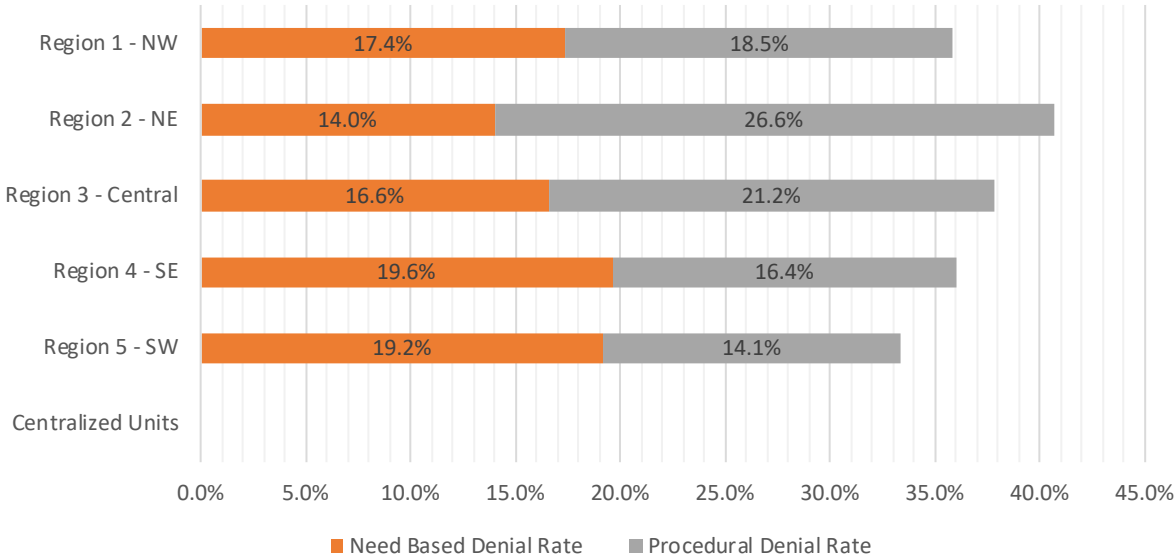


SNAP Initial Disposition Rates by Field Office^{4,11}
January 2021

Office	Approval Rate	Denial Rate	Need Based Denial Rate	Procedural Denial Rate
Chaves County ISD	67.2%	32.8%	22.1%	10.7%
Cibola County ISD	60.8%	39.2%	7.5%	31.7%
Colfax County ISD	58.4%	41.6%	18.0%	23.6%
Curry County ISD	60.2%	39.8%	17.9%	21.9%
East Dona Ana County ISD	60.6%	39.4%	24.3%	15.1%
Eddy Artesia County ISD	58.0%	42.0%	25.0%	17.0%
Eddy Carlsbad County ISD	66.2%	33.8%	16.4%	17.4%
Grant County ISD	63.6%	36.4%	18.8%	17.6%
Guadalupe County ISD	50.0%	50.0%	33.3%	16.7%
Hidalgo County ISD	0.0%	0.0%	0.0%	0.0%
Lea County ISD	61.8%	38.2%	17.7%	20.5%
Lincoln County ISD	59.6%	40.4%	12.9%	27.5%
Luna County ISD	76.1%	23.9%	10.2%	13.7%
McKinley County ISD	60.3%	39.7%	12.2%	27.5%
Northeast Bernalillo County ISD	59.1%	40.9%	15.4%	25.5%
Northwest Bernalillo County ISD	61.4%	38.6%	18.8%	19.8%
Otero County ISD	71.0%	29.0%	17.3%	11.7%
Quay County ISD	65.9%	34.1%	21.1%	13.0%
Rio Arriba County ISD	65.5%	34.5%	17.1%	17.4%
Roosevelt County ISD	0.0%	0.0%	0.0%	0.0%
San Juan County ISD	65.6%	34.4%	22.0%	12.4%
San Miguel County ISD	55.6%	44.4%	19.9%	24.5%
Sandoval County ISD	49.5%	50.5%	0.0%	50.5%
Santa Fe County ISD	60.7%	39.3%	12.4%	26.9%
Sierra County ISD	68.6%	31.4%	15.3%	16.1%
Socorro County ISD	58.4%	41.6%	11.9%	29.7%
South Dona Ana ISD	69.5%	30.5%	16.5%	14.0%
Southeast Bernalillo County ISD	65.0%	35.0%	25.0%	10.0%
Southwest Bernalillo County ISD	65.8%	34.2%	14.6%	19.6%
Taos County ISD	64.2%	35.8%	13.6%	22.2%
Torrance County ISD	66.7%	33.3%	22.2%	11.1%
Valencia North County ISD	62.1%	37.9%	7.2%	30.7%
Valencia South County ISD	75.0%	25.0%	25.0%	0.0%
West Dona Ana County ISD	65.3%	34.7%	21.1%	13.6%
Centralized Units	0.0%	0.0%	0.0%	0.0%
Statewide Total	63.2%	36.8%	17.3%	19.5%

SNAP Initial Disposition Rates by Region^{4,11}
January 2021

Region	Approval Rate	Denial Rate	Need Based Denial Rate	Procedural Denial Rate
Region 1 - NW	64.1%	35.9%	17.4%	18.5%
Region 2 - NE	59.4%	40.6%	14.0%	26.6%
Region 3 - Central	62.2%	37.8%	16.6%	21.2%
Region 4 - SE	64.0%	36.0%	19.6%	16.4%
Region 5 - SW	66.7%	33.3%	19.2%	14.1%
Centralized Units	0.0%	0.0%	0.0%	0.0%
Statewide Total	63.2%	36.8%	17.3%	19.5%



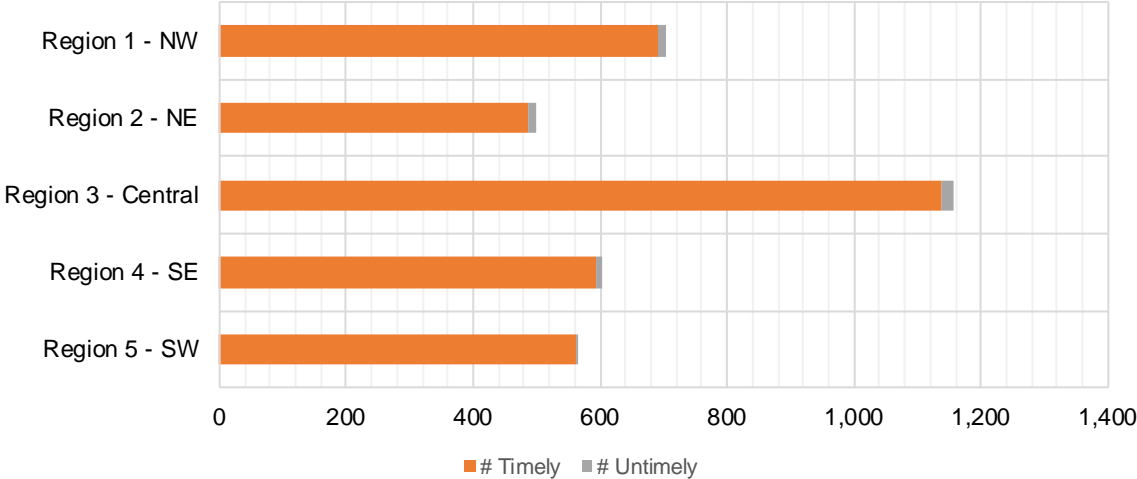
SNAP Expedite Timeliness by Field Office¹³
January 2021

Office Name	Total Expedited Approvals	# Timely	# Untimely	Percentage Timely
Chaves County ISD	268	263	5	98.1 %
Cibola County ISD	32	32	0	100.0 %
Colfax County ISD	18	18	0	100.0 %
Curry County ISD	101	97	4	96.0 %
East Dona Ana County ISD	98	98	0	100.0 %
Eddy Artesia County ISD	25	25	0	100.0 %
Eddy Carlsbad County ISD	72	72	0	100.0 %
Grant County ISD	42	42	0	100.0 %
Guadalupe County ISD	4	4	0	100.0 %
Lea County ISD	118	117	1	99.2 %
Lincoln County ISD	19	18	1	94.7 %
Luna County ISD	75	75	0	100.0 %
McKinley County ISD	105	104	1	99.0 %
Northeast Bernalillo County ISD	373	363	10	97.3 %
Northwest Bernalillo County ISD	350	346	4	98.9 %
Otero County ISD	93	93	0	100.0 %
Quay County ISD	29	29	0	100.0 %
Rio Arriba County ISD	118	114	4	96.6 %
Roosevelt County ISD	0	0	0	N/A
San Juan County ISD	445	435	10	97.8 %
San Miguel County ISD	79	79	0	100.0 %
Sandoval County ISD	58	56	2	96.6 %
Santa Fe County ISD	137	134	3	97.8 %
Sierra County ISD	31	31	0	100.0 %
Socorro County ISD	20	20	0	100.0 %
South Dona Ana ISD	78	78	0	100.0 %
Southeast Bernalillo County ISD	53	51	2	96.2 %
Southwest Bernalillo County ISD	378	373	5	98.7 %
Taos County ISD	55	54	1	98.2 %
Torrance County ISD	4	4	0	100.0 %
Valencia North County ISD	72	70	2	97.2 %
West Dona Ana County ISD	178	175	3	98.3 %
Statewide Total	3,528	3,470	58	98.4 %

SNAP Expedite Timeliness by Region¹³
January 2021

Region	Total Expedited Approvals	# Timely	# Untimely	Percentage Timely
Region 1 - NW	705	692	13	98.2%
Region 2 - NE	498	488	10	98.0%
Region 3 - Central	1,158	1,137	21	98.2%
Region 4 - SE	603	592	11	98.2%
Region 5 - SW	564	561	3	99.5%
Statewide Total	3,528	3,470	58	98.4%

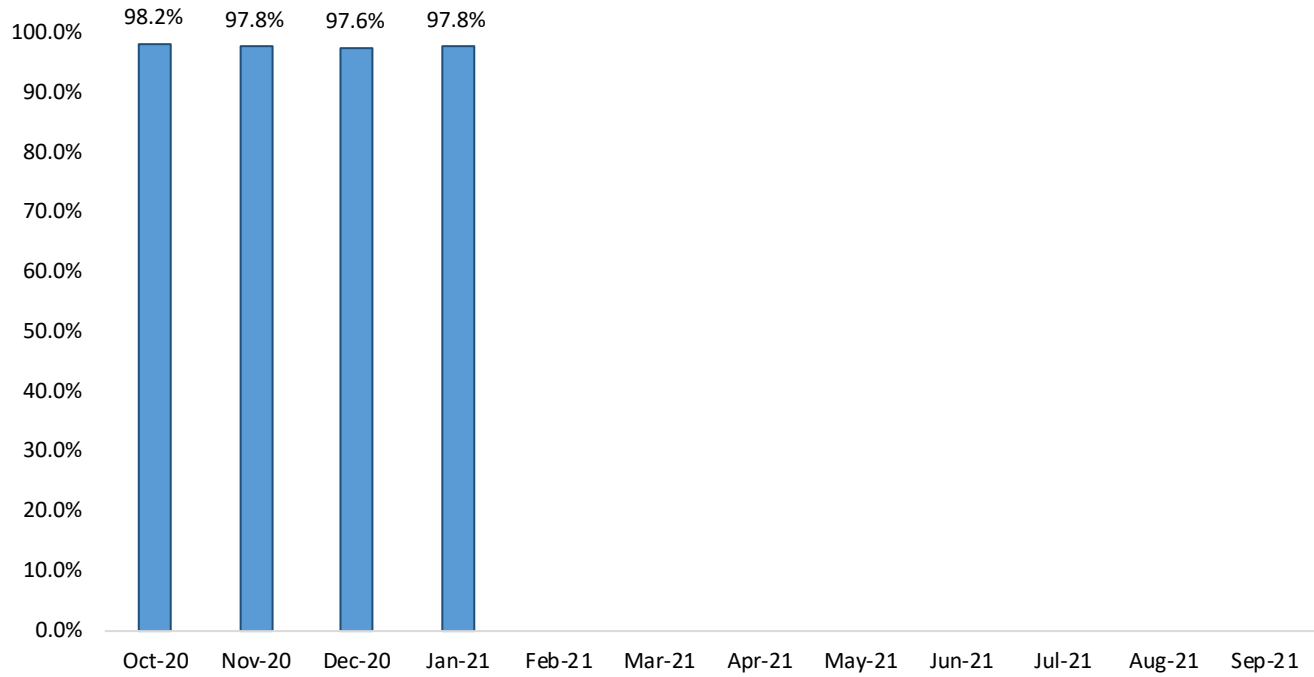
SNAP Expedite - Timeliness



SNAP: Percentage of Applications Processed Timely¹³

	Oct-20	Nov-20	Dec-20	Jan-21	Feb-21	Mar-21	Apr-21	May-21	Jun-21	Jul-21	Aug-21	Sep-21	Average
APT	98.2%	97.8%	97.6%	97.8%									97.9%

SNAP Application Processing Timeliness (APT)



SNAP Non-Expedite: Percentage of Initial Applications Processed Timely by Field Office¹³

	Oct-20	Nov-20	Dec-20	Jan-21	Feb-21	Mar-21	Apr-21	May-21	Jun-21	Jul-21	Aug-21	Sep-21	Average
Cibola	98.6%	96.9%	97.2%	97.8%									97.6%
McKinley	97.7%	95.5%	93.9%	98.0%									96.3%
San Juan	98.4%	97.7%	97.8%	96.6%									97.6%
Sierra	97.8%	93.5%	96.4%	97.4%									96.3%
Socorro	97.7%	95.5%	95.1%	100.0%									97.1%
Valencia North	97.9%	100.0%	98.1%	97.8%									98.5%
Valencia South	100.0%	100.0%	100.0%	100.0%									
NW Region 1 Total	98.2%	97.0%	97.2%	97.2%									97.4%
Colfax	99.1%	100.0%	98.7%	100.0%									99.5%
Guadalupe	96.3%	100.0%	97.6%	97.4%									97.8%
Quay	99.1%	98.3%	97.0%	98.0%									98.1%
Rio Arriba	97.5%	97.4%	98.0%	97.5%									97.6%
San Miguel	97.8%	96.7%	95.8%	99.6%									97.5%
Sandoval	99.0%	97.5%	96.2%	96.0%									97.2%
Santa Fe	95.2%	97.8%	98.0%	98.5%									97.4%
Taos	98.2%	98.6%	97.6%	99.4%									98.5%
NE Region 2 Total	97.4%	97.8%	97.3%	98.2%									97.7%
NE Bernalillo	97.5%	96.2%	95.9%	95.3%									96.2%
NW Bernalillo	98.2%	97.9%	97.9%	97.0%									97.8%
SE Bernalillo	97.7%	96.6%	98.5%	99.2%									98.0%
SW Bernalillo	98.5%	97.5%	97.1%	97.5%									97.7%
Torrance	97.9%	96.6%	100.0%	100.0%									98.6%
Gen. Region 3 Total	98.0%	97.1%	96.9%	96.7%									97.2%
Chaves	98.5%	98.4%	99.1%	98.5%									98.6%
Curry	98.1%	97.1%	96.1%	98.6%									97.5%
Eddy Artesia	96.9%	98.4%	97.3%	96.9%									97.4%
Eddy Carlsbad	98.3%	97.8%	97.6%	100.0%									98.4%
Lea	98.1%	97.0%	98.7%	97.0%									97.7%
Lincoln	98.1%	100.0%	95.5%	92.9%									96.6%
Roosevelt	100.0%	100.0%	100.0%	100.0%									100.0%
SE Region 4 Total	98.2%	98.2%	98.0%	98.0%									98.1%
East Dona Ana	98.7%	98.6%	98.2%	99.3%									98.7%
Grant	99.2%	98.2%	97.9%	99.3%									98.7%
Luna	98.9%	97.2%	97.9%	100.0%									98.5%
Otero	99.5%	99.1%	97.9%	98.1%									98.7%
South Dona Ana	99.3%	98.0%	98.4%	99.4%									98.8%
West Dona Ana	99.1%	98.0%	98.0%	98.6%									98.4%
SW Region 5 Total	99.1%	98.2%	98.1%	99.0%									98.6%
STATE TOTAL	98.2%	97.5%	97.4%	97.6%									97.7%

SNAP Expedite: Percentage of Initial Applications Processed Timely by Field Office¹³

	Oct-20	Nov-20	Dec-20	Jan-21	Feb-21	Mar-21	Apr-21	May-21	Jun-21	Jul-21	Aug-21	Sep-21	Average
Cibola	100.0%	92.0%	100.0%	100.0%									98.0%
McKinley	96.2%	94.5%	95.3%	99.1%									96.3%
San Juan	97.7%	98.9%	98.2%	97.9%									98.2%
Sierra	100.0%	83.3%	97.1%	100.0%									95.1%
Socorro	96.9%	100.0%	95.0%	100.0%									98.0%
Valencia North	97.9%	93.6%	93.5%	97.1%									95.5%
Valencia South	100.0%		100%	100.0%									
NW Region 1 Total	97.7%	97.5%	97.6%	98.2%									97.8%
Colfax	100.0%	100.0%	100.0%	100.0%									100.0%
Guadalupe	100.0%	100.0%	100.0%	100.0%									100.0%
Quay	95.6%	100.0%	96.9%	100.0%									98.1%
Rio Arriba	98.8%	98.5%	99.2%	96.8%									98.3%
San Miguel	99.2%	100.0%	97.2%	100.0%									99.1%
Sandoval	96.4%	98.1%	94.7%	96.6%									96.5%
Santa Fe	96.0%	98.1%	98.4%	97.9%									97.6%
Taos	91.5%	98.2%	100.0%	98.1%									97.0%
NE Region 2 Total	97.2%	98.7%	98.2%	98.1%									98.1%
NE Bernalillo	98.3%	98.5%	98.2%	97.4%									98.1%
NW Bernalillo	98.3%	99.5%	99.0%	98.9%									98.9%
SE Bernalillo	100.0%	100.0%	98.3%	96.4%									98.7%
SW Bernalillo	99.7%	98.9%	98.7%	98.7%									99.0%
Torrance	100.0%	100.0%	100.0%	100.0%									100.0%
Gen. Region 3 Total	98.9%	99.0%	98.6%	98.2%									98.7%
Chaves	99.1%	99.3%	98.5%	98.2%									98.8%
Curry	96.6%	98.4%	99.2%	96.1%									97.6%
Eddy Artesia	94.9%	100.0%	100.0%	100.0%									98.7%
Eddy Carlsbad	98.1%	97.3%	100.0%	100.0%									98.9%
Lea	98.0%	97.4%	98.2%	99.2%									98.2%
Lincoln	100.0%	100.0%	96.7%	95.0%									97.9%
Roosevelt	100.0%	100.0%	100.0%	100.0%									100.0%
SE Region 4 Total	98.1%	98.6%	98.8%	98.2%									98.4%
East Dona Ana	98.3%	98.6%	98.6%	100.0%									98.9%
Grant	100.0%	95.7%	97.9%	100.0%									98.4%
Luna	100.0%	100.0%	100.0%	100.0%									100.0%
Otero	97.7%	99.3%	98.8%	100.0%									99.0%
South Dona Ana	99.3%	99.2%	98.3%	100.0%									99.2%
West Dona Ana	98.8%	98.5%	98.9%	98.4%									98.7%
SW Region 5 Total	98.8%	98.7%	98.7%	99.5%									98.9%
STATE TOTAL	98.3%	98.6%	98.4%	98.4%									98.4%

SNAP: Percentage of Denied Initial Applications Processed Within 30 Days by Field Office¹³

	Oct-20	Nov-20	Dec-20	Jan-21	Feb-21	Mar-21	Apr-21	May-21	Jun-21	Jul-21	Aug-21	Sep-21	Average
Cibola	100.0%	98.5%	96.6%	100.0%									98.8%
McKinley	95.8%	94.3%	93.2%	97.5%									95.2%
San Juan	98.1%	96.9%	97.8%	96.6%									97.4%
Sierra	97.3%	93.3%	93.5%	95.8%									95.0%
Socorro	97.4%	92.3%	93.5%	100.0%									95.8%
Valencia North	97.9%	93.7%	97.6%	98.4%									96.9%
Valencia South	100.0%	100.0%	100.0%	100.0%									100.0%
NW Region 1 Total	98.1%	95.6%	96.0%	98.3%									97.0%
Colfax	100.0%	100.0%	100.0%	97.4%									99.4%
Guadalupe	95.2%	100.0%	100.0%	95.5%									97.7%
Quay	96.6%	100.0%	92.5%	95.5%									96.2%
Rio Arriba	95.5%	95.2%	96.7%	96.8%									96.1%
San Miguel	99.2%	97.7%	94.3%	99.4%									97.7%
Sandoval	99.1%	98.0%	97.6%	96.1%									97.7%
Santa Fe	91.8%	97.2%	98.7%	97.9%									96.4%
Taos	96.7%	98.8%	97.4%	98.8%									97.9%
NE Region 2 Total	96.8%	98.4%	97.2%	97.2%									97.4%
NE Bernalillo	94.6%	95.0%	94.4%	94.1%									94.5%
NW Bernalillo	96.7%	97.8%	97.4%	95.9%									97.0%
SE Bernalillo	95.8%	93.8%	97.1%	98.5%									96.3%
SW Bernalillo	98.5%	97.6%	95.9%	97.5%									97.4%
Torrance	97.6%	97.0%	100.0%	100.0%									98.7%
Cen. Region 3 Total	96.6%	96.2%	97.0%	97.2%									96.8%
Chaves	96.8%	98.3%	98.6%	98.7%									98.1%
Curry	95.3%	95.6%	96.4%	98.1%									96.4%
Eddy Artesia	94.8%	98.3%	96.7%	97.4%									96.8%
Eddy Carlsbad	97.6%	95.8%	96.6%	100.0%									97.5%
Lea	97.4%	99.5%	98.2%	96.7%									98.0%
Lincoln	96.8%	95.7%	93.9%	87.5%									93.5%
Roosevelt	100.0%		100.0%										100.0%
SE Region 4 Total	97.0%	97.2%	97.2%	96.4%									96.9%
East Dona Ana	98.3%	98.6%	97.9%	99.0%									98.5%
Grant	100.0%	97.6%	96.6%	98.5%									98.2%
Luna	96.9%	95.6%	96.0%	100.0%									97.1%
Otero	99.3%	98.0%	96.5%	97.8%									97.9%
South Dona Ana	99.2%	97.0%	98.3%	98.4%									98.2%
West Dona Ana	98.2%	97.4%	97.7%	97.6%									97.7%
SW Region 5 Total	98.7%	97.4%	97.2%	98.6%									97.9%
STATE TOTAL	97.4%	97.0%	96.9%	97.5%									97.2%

SNAP: Combined Approvals and Denials Percentage of Initial Applications Processed Timely by Field Office¹³

	Oct-20	Nov-20	Dec-20	Jan-21	Feb-21	Mar-21	Apr-21	May-21	Jun-21	Jul-21	Aug-21	Sep-21	Average
Cibola	98.9%	96.1%	97.6%	98.4%									97.8%
McKinley	97.3%	95.1%	94.2%	98.3%									96.2%
San Juan	98.3%	97.9%	98.0%	97.2%									97.9%
Sierra	98.1%	93.6%	96.7%	97.9%									96.6%
Socorro	97.4%	94.3%	94.8%	100.0%									96.6%
Valencia North	97.9%	95.0%	97.5%	97.7%									97.0%
Valencia South	100.0%	100.0%	100.0%	100.0%									100.0%
NW Region 1 Total	98.3%	96.0%	97.0%	98.5%									97.4%
Colfax	99.3%	100.0%	99.0%	98.9%									99.3%
Guadalupe	96.8%	100.0%	98.0%	97.7%									98.1%
Quay	98.1%	98.8%	96.8%	98.4%									98.0%
Rio Arriba	97.9%	97.6%	98.6%	97.2%									97.8%
San Miguel	98.2%	98.0%	95.7%	99.7%									97.9%
Sandoval	98.3%	97.8%	96.1%	96.6%									97.2%
Santa Fe	95.3%	98.0%	98.1%	98.3%									97.4%
Taos	96.7%	98.8%	98.1%	99.1%									98.2%
NE Region 2 Total	97.6%	98.6%	97.6%	98.2%									98.0%
NE Bernalillo	97.6%	96.9%	96.4%	95.9%									96.7%
NW Bernalillo	98.2%	98.3%	98.2%	97.4%									98.0%
SE Bernalillo	98.7%	97.5%	98.6%	98.4%									98.3%
SW Bernalillo	98.9%	97.9%	97.5%	97.9%									98.1%
Torrance	98.3%	96.8%	100.0%	100.0%									98.8%
Gen. Region 3 Total	98.3%	97.5%	98.1%	97.9%									98.0%
Chaves	98.6%	98.6%	99.0%	98.4%									98.7%
Curry	97.7%	97.4%	97.3%	97.9%									97.6%
Eddy Artesia	96.4%	98.6%	97.8%	97.8%									97.7%
Eddy Carlsbad	98.2%	97.4%	98.3%	100.0%									98.5%
Lea	98.0%	99.2%	98.4%	98.1%									98.4%
Lincoln	98.4%	97.5%	95.5%	92.9%									96.1%
Roosevelt	100.0%	100.0%	100.0%										100.0%
SE Region 4 Total	98.2%	98.4%	98.0%	97.5%									98.0%
East Dona Ana	98.6%	98.6%	98.3%	99.6%									98.8%
Grant	99.4%	97.5%	97.9%	99.4%									98.6%
Luna	99.1%	98.0%	98.5%	100.0%									98.9%
Otero	99.0%	98.9%	98.1%	99.0%									98.8%
South Dona Ana	99.2%	98.3%	98.4%	99.5%									98.9%
West Dona Ana	99.0%	98.2%	98.0%	98.5%									98.4%
SW Region 5 Total	99.1%	98.3%	98.2%	99.3%									98.7%
STATE TOTAL	98.2%	97.8%	97.7%	98.3%									98.0%

SNAP Renewals Processed by Field Office²⁰
January 2021

Office	Approvals	Closures	Need Based Closures	Procedural Closures
Chaves County ISD	204	100	81	19
Cibola County ISD	72	34	32	2
Colfax County ISD	26	17	16	1
Curry County ISD	130	91	81	10
East Dona Ana County ISD	203	74	69	5
Eddy Artesia County ISD	32	19	16	3
Eddy Carlsbad County ISD	59	51	48	3
Grant County ISD	91	36	32	4
Guadalupe County ISD	14	1	1	0
Hidalgo County ISD	0	0	0	0
Lea County ISD	127	76	65	11
Lincoln County ISD	31	18	16	2
Luna County ISD	108	23	18	5
McKinley County ISD	209	103	98	5
Northeast Bernalillo County ISD	387	244	230	14
Northwest Bernalillo County ISD	278	186	173	13
Otero County ISD	135	29	27	2
Quay County ISD	44	18	17	1
Rio Arriba County ISD	142	51	47	4
Roosevelt County ISD	0	0	0	0
San Juan County ISD	298	127	124	3
San Miguel County ISD	102	47	43	4
Sandoval County ISD	235	58	50	8
Santa Fe County ISD	156	80	73	7
Sierra County ISD	55	21	21	0
Socorro County ISD	64	36	35	1
South Dona Ana ISD	245	65	59	6
Southeast Bernalillo County ISD	94	17	13	4
Southwest Bernalillo County ISD	605	255	240	15
Taos County ISD	88	30	29	1
Torrance County ISD	32	42	42	0
Valencia North County ISD	182	42	38	4
Valencia South County ISD	0	0	0	0
West Dona Ana County ISD	242	54	45	9
Centralized Units	0	0	0	0
Statewide Total	4,690	2,045	1,879	166

Note: Renewal dispositions based on COVID-19 extensions for periodic reviews are not included in total.

SNAP Renewal Disposition Rates by Field Office²⁰
January 2021

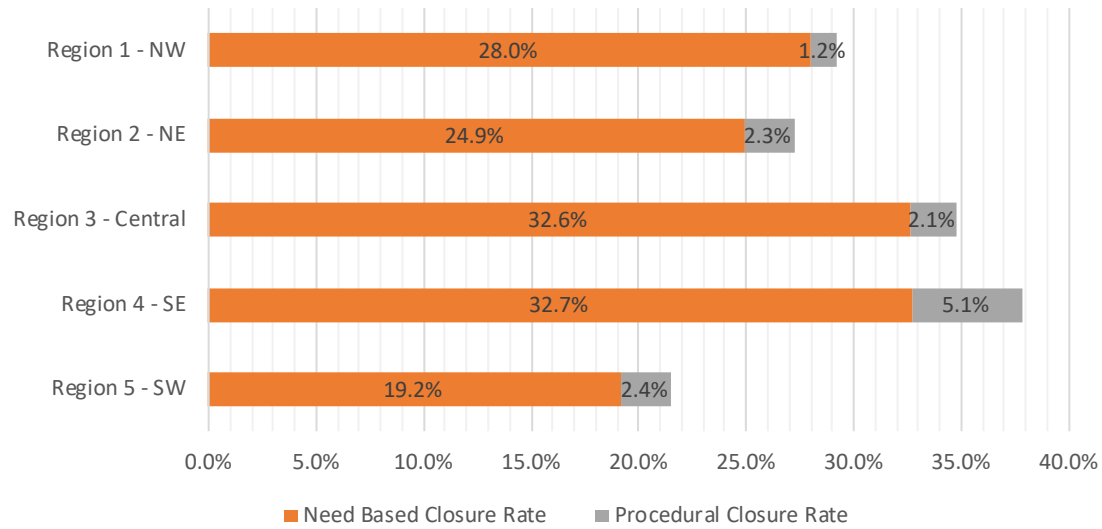
Office	Approval Rate	Closure Rate	Need Based Closure Rate	Procedural Closure Rate
Chaves County ISD	67.1%	32.9%	26.6%	6.3%
Cibola County ISD	67.9%	32.1%	30.2%	1.9%
Colfax County ISD	60.5%	39.5%	37.2%	2.3%
Curry County ISD	58.8%	41.2%	36.7%	4.5%
East Dona Ana County ISD	73.3%	26.7%	24.9%	1.8%
Eddy Artesia County ISD	62.7%	37.3%	31.4%	5.9%
Eddy Carlsbad County ISD	53.6%	46.4%	43.6%	2.7%
Grant County ISD	71.7%	28.3%	25.2%	3.1%
Guadalupe County ISD	93.3%	6.7%	6.7%	0.0%
Hidalgo County ISD	0.0%	0.0%	0.0%	0.0%
Lea County ISD	62.6%	37.4%	32.0%	5.4%
Lincoln County ISD	63.3%	36.7%	32.7%	4.1%
Luna County ISD	82.4%	17.6%	13.7%	3.8%
McKinley County ISD	67.0%	33.0%	31.4%	1.6%
Northeast Bernalillo County ISD	61.3%	38.7%	36.5%	2.2%
Northwest Bernalillo County ISD	59.9%	40.1%	37.3%	2.8%
Otero County ISD	82.3%	17.7%	16.5%	1.2%
Quay County ISD	71.0%	29.0%	27.4%	1.6%
Rio Arriba County ISD	73.6%	26.4%	24.4%	2.1%
Roosevelt County ISD	0.0%	0.0%	0.0%	0.0%
San Juan County ISD	70.1%	29.9%	29.2%	0.7%
San Miguel County ISD	68.5%	31.5%	28.9%	2.7%
Sandoval County ISD	80.2%	19.8%	17.1%	2.7%
Santa Fe County ISD	66.1%	33.9%	30.9%	3.0%
Sierra County ISD	72.4%	27.6%	27.6%	0.0%
Socorro County ISD	64.0%	36.0%	35.0%	1.0%
South Dona Ana ISD	79.0%	21.0%	19.0%	1.9%
Southeast Bernalillo County ISD	84.7%	15.3%	11.7%	3.6%
Southwest Bernalillo County ISD	70.3%	29.7%	27.9%	1.7%
Taos County ISD	74.6%	25.4%	24.6%	0.8%
Torrance County ISD	43.2%	56.8%	56.8%	0.0%
Valencia North County ISD	81.3%	18.8%	17.0%	1.8%
Valencia South County ISD	0.0%	0.0%	0.0%	0.0%
West Dona Ana County ISD	81.8%	18.2%	15.2%	3.0%
Centralized Units	0.0%	0.0%	0.0%	0.0%

Statewide Total	69.6%	30.4%	27.9%	2.5%
-----------------	-------	-------	-------	------

Note: Renewal approvals based on COVID-19 extensions for periodic reviews are not included in total.

SNAP Renewal Disposition Rates by Region²⁰
January 2021

Region	Approval Rate	Closure Rate	Need Based Closure Rate	Procedural Closure Rate
Region 1 - NW	70.8%	29.2%	28.0%	1.2%
Region 2 - NE	72.8%	27.2%	24.9%	2.3%
Region 3 - Central	65.2%	34.8%	32.6%	2.1%
Region 4 - SE	62.2%	37.8%	32.7%	5.1%
Region 5 - SW	78.5%	21.5%	19.2%	2.4%
Centralized Units				
Statewide Total	69.6%	30.4%	27.9%	2.5%



SNAP: Percentage of Approved Renewal Applications Processed ¹¹													
	Oct-20	Nov-20	Dec-20	Jan-21	Feb-21	Mar-21	Apr-21	May-21	Jun-21	Jul-21	Aug-21	Sep-21	Average
Cibola	100.0%	100.0%	100.0%	100.0%									100.0%
McKinley	100.0%	100.0%	100.0%	100.0%									100.0%
San Juan	100.0%	100.0%	100.0%	100.0%									100.0%
Sierra	100.0%	100.0%	100.0%	100.0%									100.0%
Socorro	100.0%	100.0%	100.0%	100.0%									100.0%
Valencia North	100.0%	100.0%	100.0%	100.0%									100.0%
Valencia South	100.0%	100.0%	100.0%	100.0%									100.0%
NW Region 1 Total	100.0%	100.0%	100.0%	100.0%									100.0%
Colfax	100.0%	100.0%	100.0%	100.0%									100.0%
Guadalupe	100.0%	100.0%	100.0%	100.0%									100.0%
Quay	100.0%	100.0%	100.0%	100.0%									100.0%
Rio Arriba	100.0%	100.0%	100.0%	100.0%									100.0%
San Miguel	100.0%	100.0%	100.0%	100.0%									100.0%
Sandoval	100.0%	100.0%	100.0%	100.0%									100.0%
Santa Fe	100.0%	100.0%	100.0%	100.0%									100.0%
Taos	100.0%	100.0%	100.0%	100.0%									100.0%
NE Region 2 Total	100.0%	100.0%	100.0%	100.0%									100.0%
NE Bernalillo	100.0%	100.0%	100.0%	100.0%									100.0%
NW Bernalillo	100.0%	100.0%	100.0%	100.0%									100.0%
SE Bernalillo	100.0%	100.0%	100.0%	100.0%									100.0%
SW Bernalillo	100.0%	100.0%	100.0%	99.8%									100.0%
Torrance	100.0%	100.0%	100.0%	100.0%									100.0%
Cen. Region 3 Total	100.0%	100.0%	100.0%	100.0%									100.0%
Chaves	100.0%	100.0%	100.0%	100.0%									100.0%
Curry	100.0%	100.0%	100.0%	100.0%									100.0%
Eddy Artesia	100.0%	100.0%	100.0%	100.0%									100.0%
Eddy Carlsbad	100.0%	100.0%	100.0%	100.0%									100.0%
Lea	100.0%	100.0%	100.0%	100.0%									100.0%
Lincoln	100.0%	100.0%	100.0%	100.0%									100.0%
Roosevelt													
SE Region 4 Total	100.0%	100.0%	100.0%	100.0%									100.0%
East Dona Ana	100.0%	100.0%	100.0%	100.0%									100.0%
Grant	100.0%	100.0%	100.0%	100.0%									100.0%
Luna	100.0%	100.0%	100.0%	100.0%									100.0%
Otero	100.0%	100.0%	100.0%	100.0%									100.0%
South Dona Ana	100.0%	100.0%	100.0%	100.0%									100.0%
West Dona Ana	100.0%	100.0%	100.0%	100.0%									100.0%
SW Region 5 Total	100.0%	100.0%	100.0%	100.0%									100.0%
STATE TOTAL	100.0%	100.0%	100.0%	100.0%									100.0%

If a renewal packet was received on or before 15th of the renewal month, the case shall be considered timely if the case was processed by renewal due date

Recertifications – If a Recertification cannot be processed under normal processing, ASPEN will automatically extend certification periods for households scheduled to recertify in March, April, May and June 2020, for 6 months until September, October and November 2020.

SNAP: Percentage of Approved Renewal Applications Processed¹¹

	Oct-20	Nov-20	Dec-20	Jan-21	Feb-21	Mar-21	Apr-21	May-21	Jun-21	Jul-21	Aug-21	Sep-21	Average
Cibola	100.0%	100.0%	100.0%	100.0%									100.0%
McKinley	100.0%	100.0%	100.0%	100.0%									100.0%
San Juan	100.0%	100.0%	100.0%	100.0%									100.0%
Sierra	100.0%	100.0%	100.0%	100.0%									100.0%
Socorro	100.0%		100.0%	100.0%									100.0%
Valencia North	100.0%	100.0%	100.0%	100.0%									100.0%
Valencia South	100.0%												100.0%
NW Region 1 Total	100.0%	100.0%	100.0%	100.0%									100.0%
Colfax	100.0%	100.0%	100.0%	100.0%									100.0%
Guadalupe	100.0%	100.0%	100.0%	100.0%									100.0%
Quay	100.0%	100.0%	100.0%	100.0%									100.0%
Rio Arriba	100.0%	100.0%	100.0%	100.0%									100.0%
San Miguel	100.0%	100.0%	100.0%	100.0%									100.0%
Sandoval	100.0%	100.0%	100.0%	100.0%									100.0%
Santa Fe	100.0%	100.0%	100.0%	100.0%									100.0%
Taos	100.0%	100.0%	100.0%	100.0%									100.0%
NE Region 2 Total	100.0%	100.0%	100.0%	100.0%									100.0%
NE Bernalillo	100.0%	100.0%	100.0%	100.0%									100.0%
NW Bernalillo	100.0%	100.0%	100.0%	100.0%									100.0%
SE Bernalillo	100.0%	100.0%	100.0%	100.0%									100.0%
SW Bernalillo	100.0%	100.0%	100.0%	100.0%									100.0%
Torrance	100.0%	100.0%	100.0%	100.0%									100.0%
Gen. Region 3 Total	100.0%	100.0%	100.0%	100.0%									100.0%
Chaves	100.0%	100.0%	100.0%	100.0%									100.0%
Curry	100.0%	100.0%	100.0%	100.0%									100.0%
Eddy Artesia	100.0%	100.0%	100.0%	100.0%									100.0%
Eddy Carlsbad	100.0%	100.0%	100.0%	100.0%									100.0%
Lea	100.0%	100.0%	100.0%	100.0%									100.0%
Lincoln	100.0%	100.0%	100.0%	100.0%									100.0%
Roosevelt													
SE Region 4 Total	100.0%	100.0%	100.0%	100.0%									100.0%
East Dona Ana	100.0%	100.0%	100.0%	100.0%									100.0%
Grant	100.0%	100.0%	100.0%	100.0%									100.0%
Luna	100.0%	100.0%	100.0%	100.0%									100.0%
Otero	100.0%	100.0%	100.0%	100.0%									100.0%
South Dona Ana	100.0%	100.0%	100.0%	100.0%									100.0%
West Dona Ana	100.0%	100.0%	100.0%	100.0%									100.0%
SW Region 5 Total	100.0%	100.0%	100.0%	100.0%									100.0%
STATE TOTAL	100.0%	100.0%	100.0%	100.0%									100.0%

Only includes cases in which the Renewal Packet was received by the 15th of the month

Recertifications – If a Recertification cannot be processed under normal processing, ASPEN will automatically extend certification periods for households scheduled to recertify in March, April, May and June 2020, for 6 months until September, October and November 2020.

SNAP: Percentage of Terminations Renewal Applications Processed ¹¹													
	Oct-20	Nov-20	Dec-20	Jan-21	Feb-21	Mar-21	Apr-21	May-21	Jun-21	Jul-21	Aug-21	Sep-21	Average
Cibola	100.0%	100.0%	100.0%	100.0%									100.0%
McKinley	100.0%	100.0%	100.0%	100.0%									100.0%
San Juan	100.0%	100.0%	100.0%	100.0%									100.0%
Sierra	100.0%	100.0%	100.0%	100.0%									100.0%
Socorro	100.0%	100.0%	100.0%	100.0%									100.0%
Valencia North	100.0%	100.0%	100.0%	100.0%									100.0%
Valencia South		100.0%	100.0%										100.0%
NW Region 1 Total	100.0%	100.0%	100.0%	100.0%									100.0%
Colfax	100.0%	100.0%	100.0%	100.0%									100.0%
Guadalupe	100.0%	100.0%	100.0%	100.0%									100.0%
Quay	100.0%	100.0%	100.0%	100.0%									100.0%
Rio Arriba	100.0%	100.0%	100.0%	100.0%									100.0%
San Miguel	100.0%	100.0%	100.0%	100.0%									100.0%
Sandoval	100.0%	100.0%	100.0%	100.0%									100.0%
Santa Fe	100.0%	100.0%	100.0%	100.0%									100.0%
Taos	100.0%	100.0%	100.0%	100.0%									100.0%
NE Region 2 Total	100.0%	100.0%	100.0%	100.0%									100.0%
NE Bernalillo	100.0%	100.0%	100.0%	100.0%									100.0%
NW Bernalillo	100.0%	100.0%	100.0%	100.0%									100.0%
SE Bernalillo	100.0%	100.0%	100.0%	100.0%									100.0%
SW Bernalillo	100.0%	100.0%	100.0%	100.0%									100.0%
Torrance	100.0%	100.0%	100.0%	100.0%									100.0%
Gen. Region 3 Total	100.0%	100.0%	100.0%	100.0%									100.0%
Chaves	100.0%	100.0%	100.0%	100.0%									100.0%
Curry	100.0%	100.0%	100.0%	100.0%									100.0%
Eddy Artesia	100.0%	100.0%	100.0%	100.0%									100.0%
Eddy Carlsbad	100.0%	100.0%	100.0%	100.0%									100.0%
Lea	100.0%	100.0%	100.0%	100.0%									100.0%
Lincoln	100.0%	100.0%	100.0%	100.0%									100.0%
Roosevelt													
SE Region 4 Total	100.0%	100.0%	100.0%	100.0%									100.0%
East Dona Ana	100.0%	100.0%	100.0%	100.0%									100.0%
Grant	100.0%	100.0%	100.0%	100.0%									100.0%
Luna	100.0%	100.0%	100.0%	100.0%									100.0%
Otero	100.0%	100.0%	100.0%	100.0%									100.0%
South Dona Ana	100.0%	100.0%	100.0%	100.0%									100.0%
West Dona Ana	100.0%	100.0%	100.0%	100.0%									100.0%
SW Region 5 Total	100.0%	100.0%	100.0%	100.0%									100.0%
STATE TOTAL	100.0%	100.0%	100.0%	100.0%									100.0%

Includes cases for which no renewal application was received.

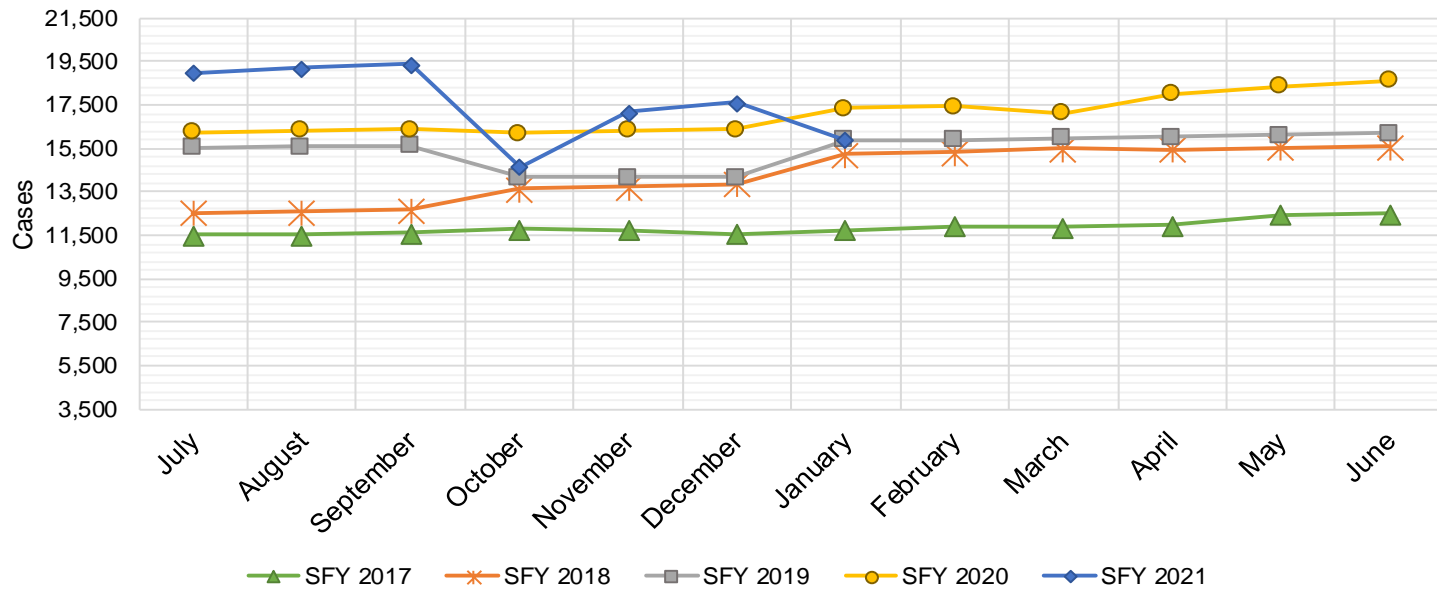
Recertifications – If a Recertification cannot be processed under normal processing, ASPEN will automatically extend certification periods for households scheduled to recertify in March, April, May and June 2020, for 6 months until September, October and November 2020.

SNAP: Combined Percentage of Approved and Terminated Renewal Applications Processed¹¹

	Oct-20	Nov-20	Dec-20	Jan-21	Feb-21	Mar-21	Apr-21	May-21	Jun-21	Jul-21	Aug-21	Sep-21	Average
Cibola	100.0%	100.0%	100.0%	100.0%									100.0%
McKinley	100.0%	100.0%	100.0%	100.0%									100.0%
San Juan	100.0%	100.0%	100.0%	100.0%									100.0%
Sierra	100.0%	100.0%	100.0%	100.0%									100.0%
Socorro	100.0%	100.0%	100.0%	100.0%									100.0%
Valencia North	100.0%	100.0%	100.0%	100.0%									100.0%
Valencia South	100.0%	100.0%											100.0%
NW Region 1 Total	100.0%	100.0%	100.0%	100.0%									100.0%
Colfax	100.0%	100.0%	100.0%	100.0%									100.0%
Guadalupe	100.0%	100.0%	100.0%	100.0%									100.0%
Quay	100.0%	100.0%	100.0%	100.0%									100.0%
Rio Arriba	100.0%	100.0%	100.0%	100.0%									100.0%
San Miguel	99.7%	100.0%	100.0%	100.0%									99.9%
Sandoval	100.0%	100.0%	100.0%	100.0%									100.0%
Santa Fe	100.0%	100.0%	100.0%	100.0%									100.0%
Taos	100.0%	100.0%	100.0%	100.0%									100.0%
NE Region 2 Total	100.0%	100.0%	100.0%	100.0%									100.0%
NE Bernalillo	100.0%	100.0%	100.0%	100.0%									100.0%
NW Bernalillo	100.0%	100.0%	100.0%	100.0%									100.0%
SE Bernalillo	100.0%	100.0%	100.0%	100.0%									100.0%
SW Bernalillo	100.0%	100.0%	99.9%	99.9%									100.0%
Torrance	100.0%	100.0%	100.0%	100.0%									100.0%
Gen. Region 3 Total	100.0%	100.0%	100.0%	100.0%									100.0%
Chaves	100.0%	100.0%	100.0%	100.0%									100.0%
Curry	100.0%	100.0%	100.0%	100.0%									100.0%
Eddy Artesia	100.0%	100.0%	100.0%	100.0%									100.0%
Eddy Carlsbad	100.0%	100.0%	100.0%	100.0%									100.0%
Lea	100.0%	100.0%	100.0%	100.0%									100.0%
Lincoln	100.0%	100.0%	100.0%	100.0%									100.0%
Roosevelt													
SE Region 4 Total	100.0%	100.0%	100.0%	100.0%									100.0%
East Dona Ana	100.0%	100.0%	100.0%	100.0%									100.0%
Grant	100.0%	100.0%	100.0%	100.0%									100.0%
Luna	100.0%	100.0%	100.0%	100.0%									100.0%
Otero	100.0%	100.0%	100.0%	100.0%									100.0%
South Dona Ana	100.0%	100.0%	100.0%	100.0%									100.0%
West Dona Ana	100.0%	100.0%	100.0%	100.0%									100.0%
SW Region 5 Total	100.0%	100.0%	100.0%	100.0%									100.0%
STATE TOTAL	100.0%	100.0%	100.0%	100.0%									100.0%

State SNAP Supplement

SFY 2017 ⁹			SFY 2018 ⁹			SFY 2019 ⁹			SFY 2020 ⁹			SFY 2021 ⁹		
	Cases	Expenditures		Cases	Expenditures		Cases	Expenditures		Cases	Expenditures		Cases	Expenditures
Jul-16	11,537	\$95,553	Jul-17	12,526	\$97,568	Jul-18	15,555	\$141,711	Jul-19	16,260	\$145,023	Jul-20	18,957	\$161,862
Aug-16	11,522	\$95,107	Aug-17	12,589	\$98,954	Aug-18	15,584	\$139,719	Aug-19	16,314	\$145,706	Aug-20	19,196	\$165,904
Sep-16	11,613	\$94,472	Sep-17	12,679	\$97,546	Sep-18	15,631	\$140,768	Sep-19	16,362	\$145,767	Sep-20	19,379	\$166,738
Oct-16	11,797	\$96,679	Oct-17	13,628	\$117,343	Oct-18	14,161	\$125,737	Oct-19	16,182	\$139,741	Oct-20	14,634	\$137,621
Nov-16	11,735	\$93,689	Nov-17	13,748	\$119,055	Nov-18	14,160	\$125,401	Nov-19	16,331	\$138,583	Nov-20	17,169	\$139,917
Dec-16	11,556	\$93,739	Dec-17	13,877	\$120,585	Dec-18	14,163	\$126,263	Dec-19	16,373	\$137,440	Dec-20	17,597	\$144,966
Jan-17	11,763	\$96,074	Jan-18	15,246	\$135,993	Jan-19	15,890	\$141,357	Jan-20	17,360	\$145,696	Jan-21	15,905	\$159,124
Feb-17	11,907	\$98,251	Feb-18	15,308	\$137,296	Feb-19	15,882	\$142,396	Feb-20	17,429	\$154,849	Feb-21		
Mar-17	11,853	\$96,693	Mar-18	15,482	\$139,132	Mar-19	15,970	\$142,427	Mar-20	17,131	\$150,568	Mar-21		
Apr-17	11,944	\$97,060	Apr-18	15,466	\$139,202	Apr-19	16,032	\$143,982	Apr-20	18,017	\$157,944	Apr-21		
May-17	12,457	\$96,940	May-18	15,525	\$139,397	May-19	16,126	\$143,697	May-20	18,368	\$157,089	May-21		
Jun-17	12,498	\$97,405	Jun-18	15,577	\$140,802	Jun-19	16,182	\$143,128	Jun-20	18,645	\$158,748	Jun-21		
TOTAL	142,182	\$1,151,662		171,651	\$1,482,874		185,336	\$1,656,584		204,772	\$1,777,156		122,837	\$1,076,133
AVERAGE	11,849	\$95,972		14,304	\$123,573		15,445	\$138,049		17,064	\$148,096		17,548	\$153,733



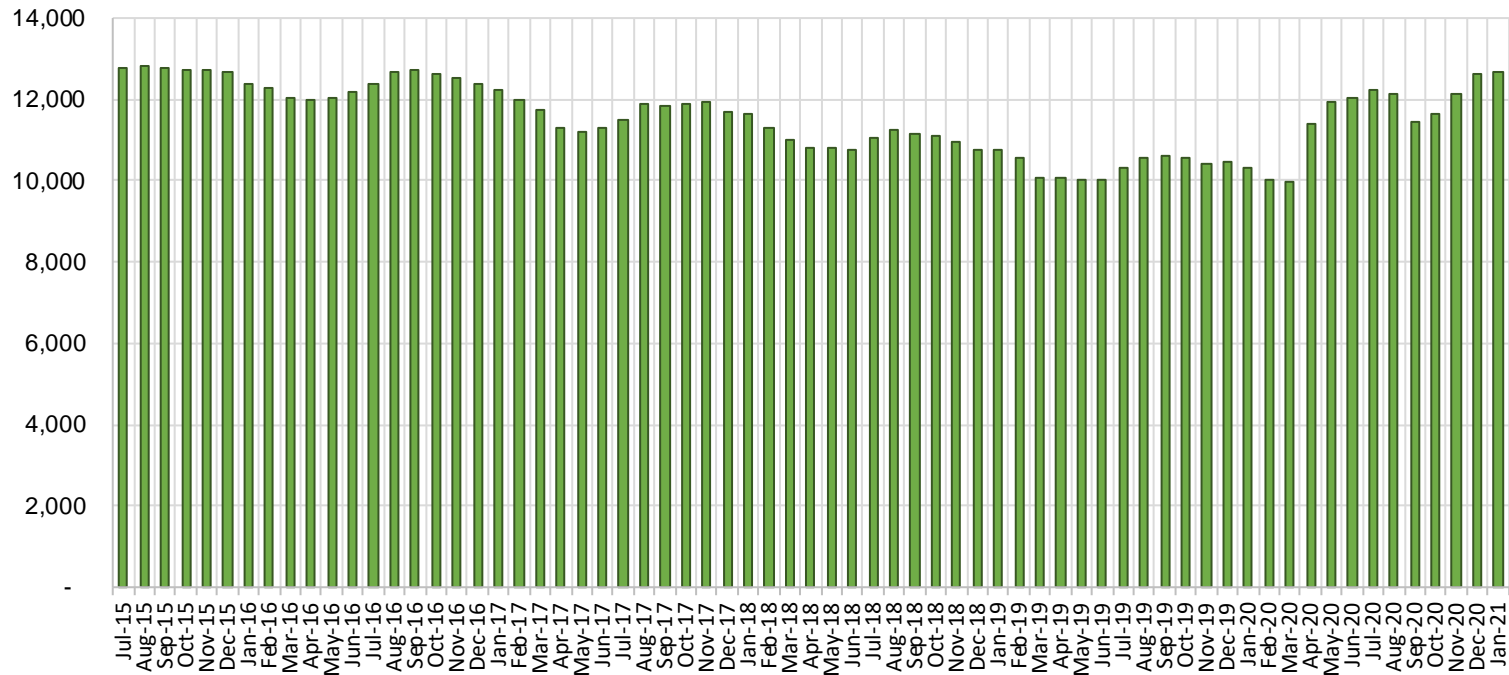
TANF Cases by Field Office⁶

Office				Percent Change	
	Jan-20	Dec-20	Jan-21	Jan-20- Jan-21	Dec-20- Jan-21
Chaves County ISD	406	890	846	108.37%	-4.94%
Cibola County ISD	100	133	150	50.00%	12.78%
Colfax County ISD	91	107	103	13.19%	-3.74%
Curry County ISD	589	667	667	13.24%	0.00%
East Dona Ana County ISD	408	579	572	40.20%	-1.21%
Eddy Artesia County ISD	82	114	114	39.02%	0.00%
Eddy Carlsbad County ISD	147	227	223	51.70%	-1.76%
Grant County ISD	187	230	228	21.93%	-0.87%
Guadalupe County ISD	25	32	32	28.00%	0.00%
Hidalgo County ISD	0	0	0	NA	N/A
Lea County ISD	365	541	550	50.68%	1.66%
Lincoln County ISD	73	101	103	41.10%	1.98%
Luna County ISD	201	249	241	19.90%	-3.21%
McKinley County ISD	73	90	90	23.29%	0.00%
Northeast Bernalillo County ISD	945	1,192	1,229	30.05%	3.10%
Northwest Bernalillo County ISD	824	1,005	1,014	23.06%	0.90%
Otero County ISD	287	354	363	26.48%	2.54%
Quay County ISD	78	132	117	50.00%	-11.36%
Rio Arriba County ISD	353	414	424	20.11%	2.42%
Roosevelt County ISD	0	0	0	NA	N/A
San Juan County ISD	275	571	384	39.64%	-32.75%
San Miguel County ISD	194	236	233	20.10%	-1.27%
Sandoval County ISD	445	343	414	-6.97%	20.70%
Santa Fe County ISD	359	342	381	6.13%	11.40%
Sierra County ISD	66	76	98	48.48%	28.95%
Socorro County ISD	77	89	101	31.17%	13.48%
South Dona Ana ISD	594	643	647	8.92%	0.62%
Southeast Bernalillo County ISD	552	215	199	-63.95%	-7.44%
Southwest Bernalillo County ISD	1,118	1,661	1,696	51.70%	2.11%
Taos County ISD	128	133	143	11.72%	7.52%
Torrance County ISD	193	146	126	-34.72%	-13.70%
Valencia North County ISD	426	396	483	13.38%	21.97%
Valencia South County ISD	0	2	2	N/A	0.0%
West Dona Ana County ISD	667	701	719	7.80%	2.57%
Centralized Units	0	0	0	NA	N/A
Statewide Total	10,328	12,611	12,692	22.89%	0.64%

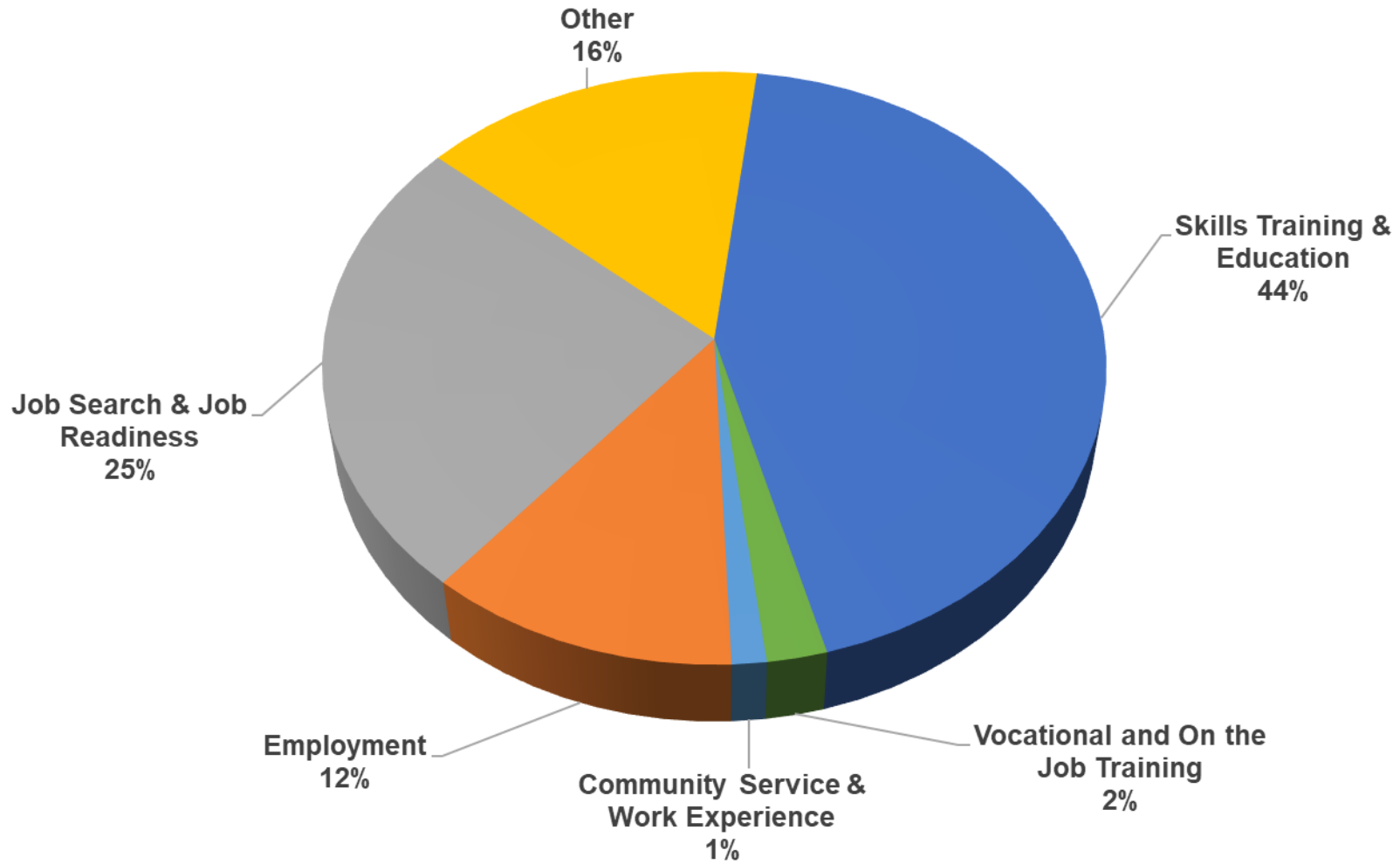
TANF Cases by Region⁶

Region				Percent Change	
	Jan-20	Dec-20	Jan-21	Jan-20- Jan-21	Dec-20- Jan-21
Region 1- NW	1,017	1,357	1,308	28.61%	-3.61%
Region 2- NE	1,673	1,739	1,847	10.40%	6.21%
Region 3- Central	3,632	4,219	4,264	17.40%	1.07%
Region 4- SE	1,662	2,540	2,503	50.60%	-1.46%
Region 5- SW	2,344	2,756	2,770	18.17%	0.51%
Centralized Units	0	0	0	N/A	N/A
Statewide Total	10,328	12,611	12,692	22.89%	0.64%

TANF Caseload: SFY-16 to Current

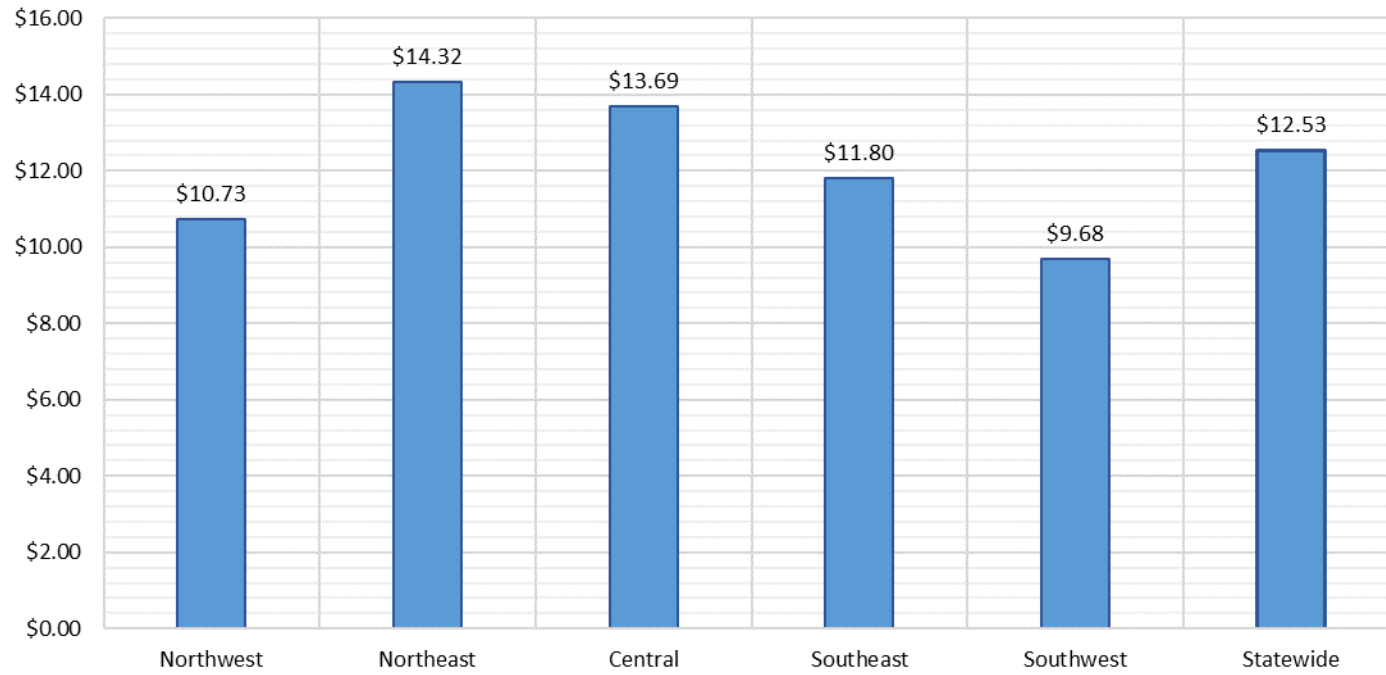


NM Works Activity Placements on January 31, 2021 as reported by SL Start¹⁴

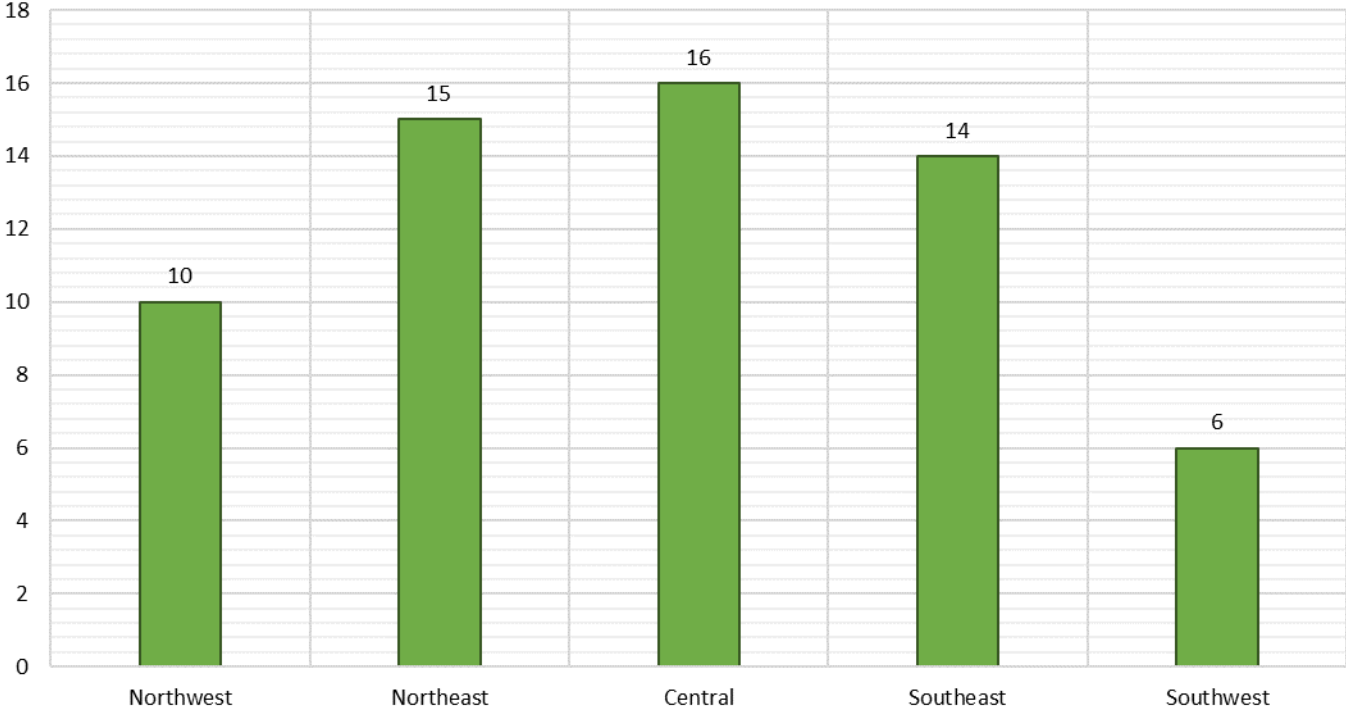


Employment, Vocational Training and Community Service and Work Experience might be reduced due to COVID 19 circumstances.

Average Starting Hourly Wage of Jan 2021 TANF Employments
as reported by SL Start¹⁵



Number of New Employments in January 2021 by Region
as reported by SL Start¹⁵
Statewide Total: 61



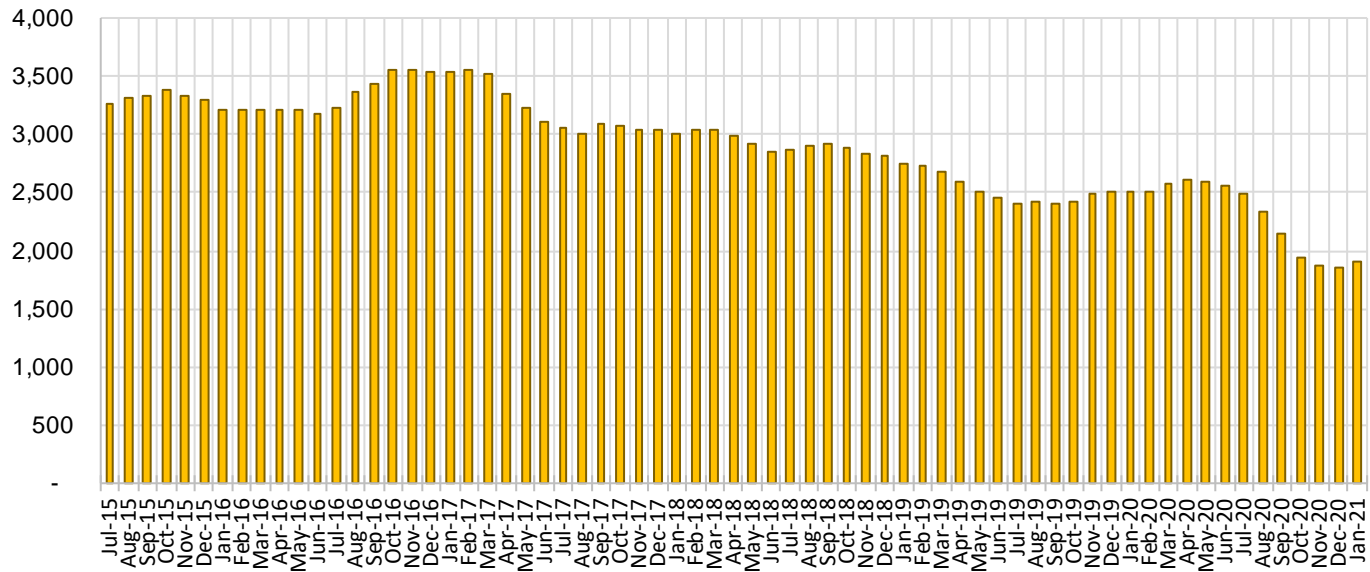
General Assistance Cases by Field Office⁶

Office				Percent Change	
	Jan-20	Dec-20	Jan-21	Jan-20- Jan-21	Dec-20- Jan-21
Chaves County ISD	115	117	139	20.87%	18.80%
Cibola County ISD	34	26	35	2.94%	34.62%
Colfax County ISD	22	23	24	9.09%	4.35%
Curry County ISD	89	61	58	-34.83%	-4.92%
East Dona Ana County ISD	105	80	77	-26.67%	-3.75%
Eddy Artesia County ISD	23	19	17	-26.09%	-10.53%
Eddy Carlsbad County ISD	49	42	42	-14.29%	0.00%
Grant County ISD	66	53	51	-22.73%	-3.77%
Guadalupe County ISD	8	7	7	-12.50%	0.00%
Hidalgo County ISD	0	0	0	N/A	N/A
Lea County ISD	63	41	44	-30.16%	7.32%
Lincoln County ISD	28	25	27	-3.57%	8.00%
Luna County ISD	57	38	39	-31.58%	2.63%
McKinley County ISD	61	47	44	-27.87%	-6.38%
Northeast Bernalillo County ISD	229	177	184	-19.65%	3.95%
Northwest Bernalillo County ISD	235	165	172	-26.81%	4.24%
Otero County ISD	70	41	45	-35.71%	9.76%
Quay County ISD	33	22	19	-42.42%	-13.64%
Rio Arriba County ISD	63	49	51	-19.05%	4.08%
Roosevelt County ISD	0	0	0	N/A	N/A
San Juan County ISD	130	160	105	-19.23%	-34.38%
San Miguel County ISD	61	40	39	-36.07%	-2.50%
Sandoval County ISD	80	30	39	-51.25%	30.00%
Santa Fe County ISD	94	53	52	-44.68%	-1.89%
Sierra County ISD	38	27	29	-23.68%	7.41%
Socorro County ISD	38	28	32	-15.79%	14.29%
South Dona Ana ISD	57	32	34	-40.35%	6.25%
Southeast Bernalillo County ISD	141	54	45	-68.09%	-16.67%
Southwest Bernalillo County ISD	191	204	220	15.18%	7.84%
Taos County ISD	34	19	23	-32.35%	21.05%
Torrance County ISD	42	22	18	-57.14%	-18.18%
Valencia North County ISD	87	45	67	-22.99%	48.89%
Valencia South County ISD	0	2	0	N/A	-100.00%
West Dona Ana County ISD	162	111	120	-25.93%	8.11%
Centralized Units	0	0	0	N/A	N/A
Statewide Total	2,505	1,860	1,898	-24.23%	2.04%

General Assistance Cases by Region⁶

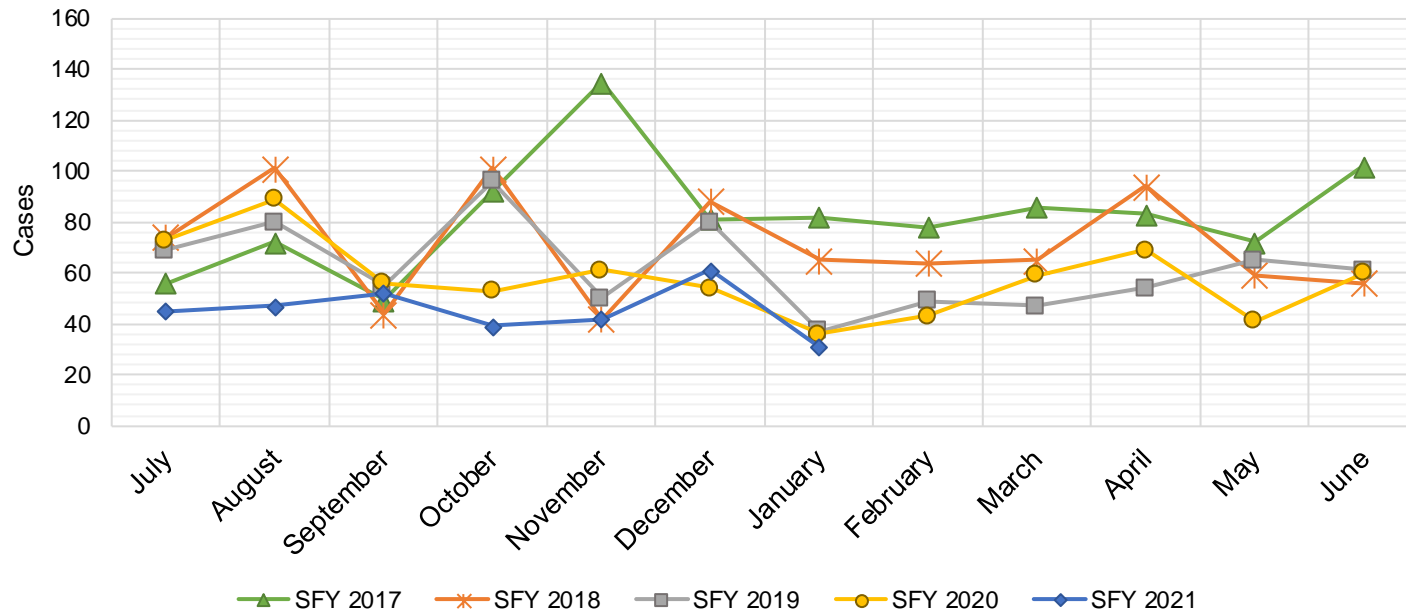
Region	Jan-20	Dec-20	Jan-21	Percent Change	
				Jan-20-Jan-21	Dec-20-Jan-21
Region 1 - NW	388	335	312	-19.59%	-6.87%
Region 2 - NE	395	243	254	-35.70%	4.53%
Region 3 - Central	838	622	639	-23.75%	2.73%
Region 4 - SE	367	305	327	-10.90%	7.21%
Region 5 - SW	517	355	366	-29.21%	3.10%
Centralized Units	0	0	0	N/A	N/A
Statewide Total	2,505	1,860	1,898	-24.23%	2.04%

General Assistance Caseload: SFY-16 to Current



General Assistance Interim Assistance Reimbursements¹⁶

SFY 2017			SFY 2018			SFY 2019			SFY 2020			SFY 2021		
	Cases	Expenditures		Cases	Expenditures		Cases	Expenditures		Cases	Expenditures		Cases	Expenditures
Jul-16	56	\$164,970	Jul-17	74	\$241,438	Jul-18	69	\$228,333	Jul-19	73	\$303,584	Jul-20	45	\$135,037
Aug-16	72	\$223,182	Aug-17	101	\$339,301	Aug-18	80	\$241,292	Aug-19	89	\$310,047	Aug-20	47	\$154,783
Sep-16	49	\$158,027	Sep-17	44	\$131,229	Sep-18	55	\$188,192	Sep-19	56	\$172,016	Sep-20	52	\$168,200
Oct-16	92	\$257,830	Oct-17	101	\$335,752	Oct-18	96	\$298,502	Oct-19	53	\$168,461	Oct-20	39	\$124,285
Nov-16	135	\$402,305	Nov-17	42	\$139,572	Nov-18	50	\$148,641	Nov-19	61	\$171,883	Nov-20	42	\$116,498
Dec-16	81	\$227,569	Dec-17	88	\$245,453	Dec-18	80	\$246,422	Dec-19	54	\$164,045	Dec-20	61	\$196,035
Jan-17	82	\$274,050	Jan-18	65	\$258,239	Jan-19	37	\$106,081	Jan-20	36	\$96,668	Jan-21	31	\$110,379
Feb-17	78	\$227,569	Feb-18	64	\$195,815	Feb-19	49	\$119,300	Feb-20	43	\$126,743	Feb-21		
Mar-17	86	\$278,219	Mar-18	65	\$172,188	Mar-19	47	\$137,296	Mar-20	59	\$169,363	Mar-21		
Apr-17	83	\$267,187	Apr-18	94	\$312,340	Apr-19	54	\$173,772	Apr-20	69	\$199,975	Apr-21		
May-17	72	\$232,836	May-18	59	\$155,406	May-19	65	\$237,979	May-20	41	\$129,317	May-21		
Jun-17	102	\$306,228	Jun-18	56	\$159,268	Jun-19	61	\$214,497	Jun-20	60	\$184,603	Jun-21		
TOTAL	988	\$3,019,972	853	\$2,686,001	743	\$2,340,307	694	\$2,196,707	317	\$1,005,217				
AVERAGE	82	\$251,664	71	\$223,833	62	\$195,026	58	\$183,059	45	\$143,602				



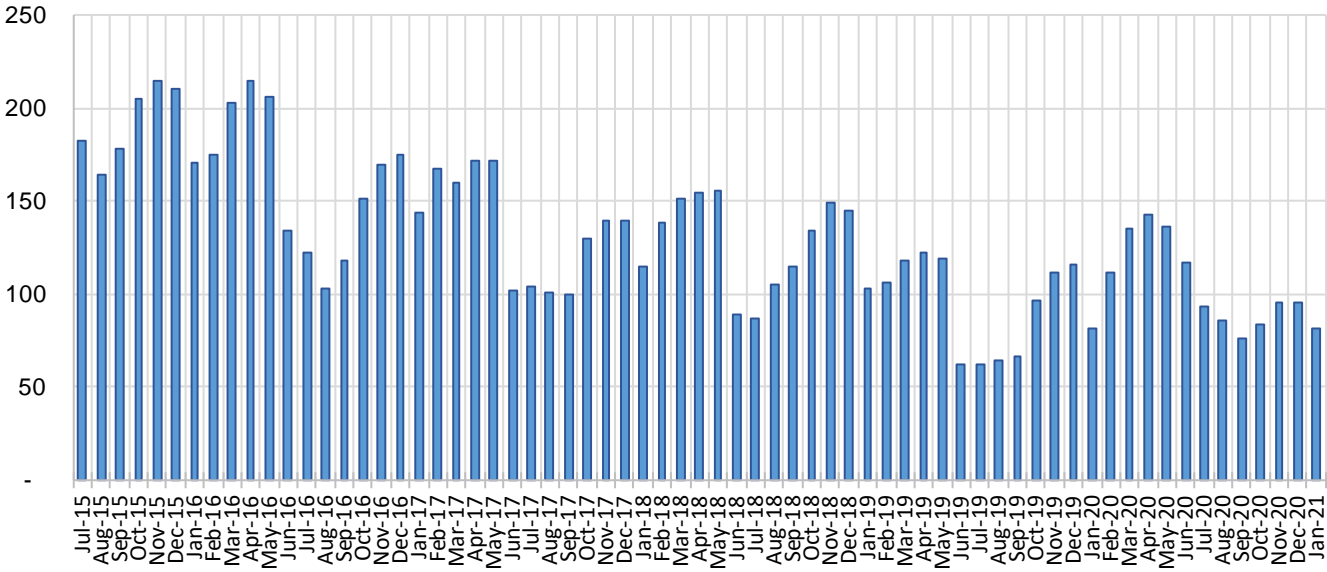
Education Works Cases by Field Office⁶

Office				Percent Change	
	Jan-20	Dec-20	Jan-21	Jan-20- Jan-21	Dec-20- Jan-21
Chaves County ISD	3	4	5	66.7%	25.0%
Cibola County ISD	0	0	0	N/A	N/A
Colfax County ISD	0	0	0	N/A	N/A
Curry County ISD	5	4	4	-20.0%	0.0%
East Dona Ana County ISD	5	9	3	-40.0%	-66.7%
Eddy Artesia County ISD	2	1	1	-50.0%	0.0%
Eddy Carlsbad County ISD	1	0	0	-100.0%	N/A
Grant County ISD	1	2	2	100.0%	0.0%
Guadalupe County ISD	0	1	1	N/A	0.0%
Hidalgo County ISD	0	0	0	N/A	N/A
Lea County ISD	0	2	2	N/A	0.0%
Lincoln County ISD	0	0	0	N/A	N/A
Luna County ISD	2	0	0	-100.0%	N/A
McKinley County ISD	0	1	1	N/A	0.0%
Northeast Bernalillo County ISD	2	8	9	350.0%	12.5%
Northwest Bernalillo County ISD	9	7	8	-11.1%	14.3%
Otero County ISD	0	1	1	N/A	0.0%
Quay County ISD	0	1	1	N/A	0.0%
Rio Arriba County ISD	1	1	2	100.0%	100.0%
Roosevelt County ISD	0	0	0	N/A	N/A
San Juan County ISD	2	4	1	-50.0%	-75.0%
San Miguel County ISD	4	4	3	-25.0%	-25.0%
Sandoval County ISD	6	7	6	0.0%	-14.3%
Santa Fe County ISD	7	5	5	-28.6%	0.0%
Sierra County ISD	1	0	0	-100.0%	N/A
Socorro County ISD	0	0	0	N/A	N/A
South Dona Ana ISD	4	2	0	-100.0%	-100.0%
Southeast Bernalillo County ISD	7	2	2	-71.4%	0.0%
Southwest Bernalillo County ISD	5	11	8	60.0%	-27.3%
Taos County ISD	0	0	0	N/A	N/A
Torrance County ISD	1	2	2	100.0%	0.0%
Valencia North County ISD	1	1	1	0.0%	0.0%
Valencia South County ISD	0	0	0	N/A	N/A
West Dona Ana County ISD	13	16	14	7.7%	-12.5%
Centralized Units	0	0	0	N/A	N/A
Statewide Total	82	96	82	0.0%	-14.6%

Education Works Cases by Region⁶

				Percent Change	
Region	Jan-20	Dec-20	Jan-21	Jan-20- Jan-21	Dec-20- Jan-21
Region 1 - NW	4	6	3	-25.00%	-50.00%
Region 2 - NE	18	19	18	0.00%	-5.26%
Region 3 - Central	24	30	29	20.83%	-3.33%
Region 4 - SE	11	11	12	9.09%	9.09%
Region 5 - SW	25	30	20	-20.00%	-33.33%
Centralized Units	0	0	0	N/A	N/A
Statewide Total	82	96	82	0.00%	-14.58%

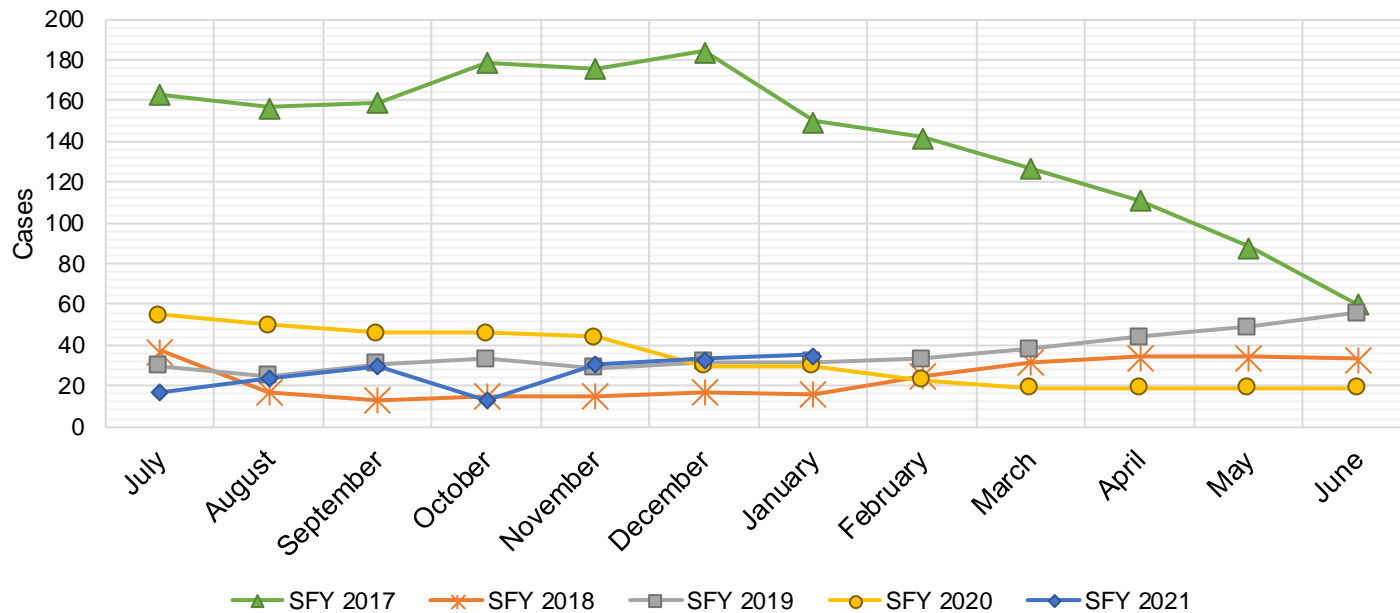
Education Works Caseload: SFY-16 to Current



Refugee Cash Assistance

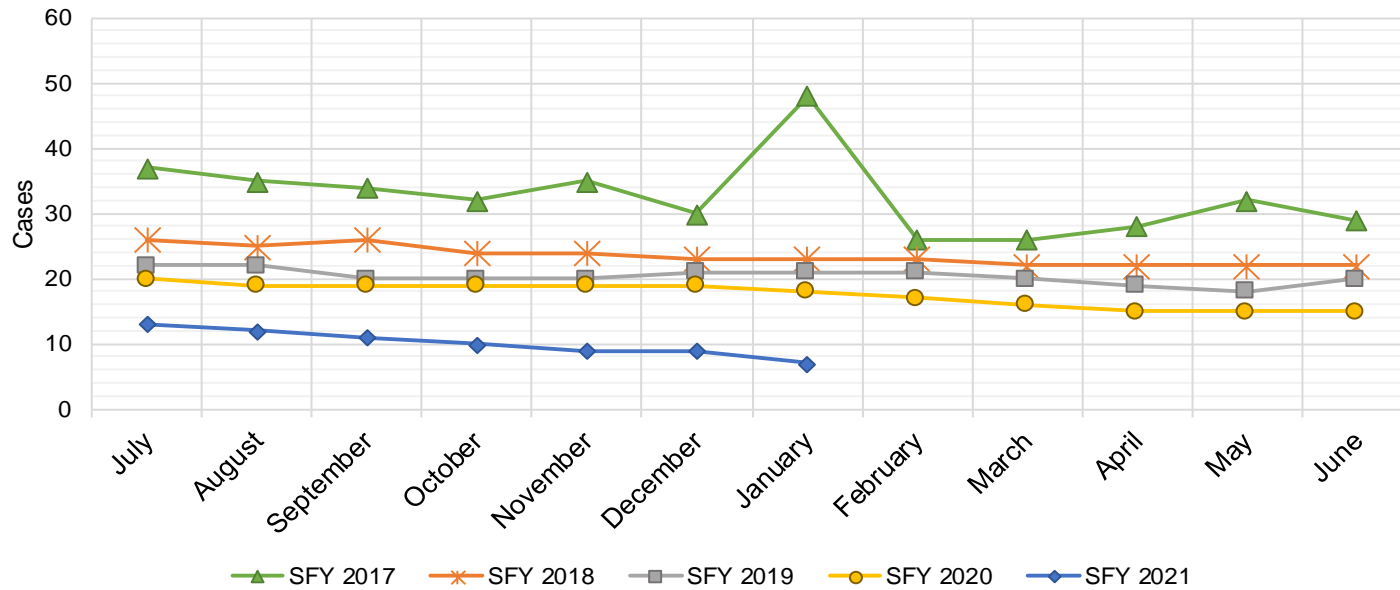
SFY 2017 ^{8,9}			SFY 2018 ^{8,9}			SFY 2019 ^{8,9}			SFY 2020 ^{8,9}			SFY 2021 ^{8,9}		
	Cases	Expenditures		Cases	Expenditures		Cases	Expenditures		Cases	Expenditures		Cases	Expenditures
Jul-16	163	\$39,756	Jul-17	37	\$9,981	Jul-18	30	\$7,408	Jul-19	55	\$13,851	Jul-20	17	\$9,650
Aug-16	157	\$40,115	Aug-17	17	\$4,704	Aug-18	25	\$6,434	Aug-19	50	\$12,497	Aug-20	24	\$12,930
Sep-16	159	\$39,359	Sep-17	13	\$3,159	Sep-18	31	\$6,947	Sep-19	46	\$11,473	Sep-20	30	\$16,276
Oct-16	179	\$41,520	Oct-17	15	\$3,543	Oct-18	33	\$6,323	Oct-19	46	\$11,341	Oct-20	13	\$4,103
Nov-16	176	\$45,434	Nov-17	15	\$4,263	Nov-18	29	\$7,036	Nov-19	44	\$11,296	Nov-20	31	\$11,886
Dec-16	184	\$46,673	Dec-17	17	\$4,795	Dec-18	32	\$7,300	Dec-19	30	\$7,679	Dec-20	33	\$11,464
Jan-17	150	\$38,790	Jan-18	16	\$4,166	Jan-19	32	\$7,418	Jan-20	30	\$7,407	Jan-21	35	\$9,678
Feb-17	142	\$37,956	Feb-18	25	\$5,723	Feb-19	33	\$8,591	Feb-20	23	\$7,577	Feb-21		
Mar-17	127	\$33,066	Mar-18	32	\$7,636	Mar-19	38	\$9,165	Mar-20	19	\$6,500	Mar-21		
Apr-17	111	\$29,183	Apr-18	34	\$8,827	Apr-19	44	\$10,648	Apr-20	19	\$4,847	Apr-21		
May-17	88	\$23,343	May-18	34	\$8,939	May-19	49	\$11,823	May-20	19	\$4,908	May-21		
Jun-17	60	\$15,538	Jun-18	33	\$8,513	Jun-19	56	\$13,558	Jun-20	19	\$5,386	Jun-21		

TOTAL	1,696	\$430,732	288	\$74,249	432	\$102,651	400	\$104,762	183	\$75,987
AVERAGE	141	\$35,894	24	\$6,187	36	\$8,554	33	\$8,730	26	\$10,855



State Supplement for Residential Care

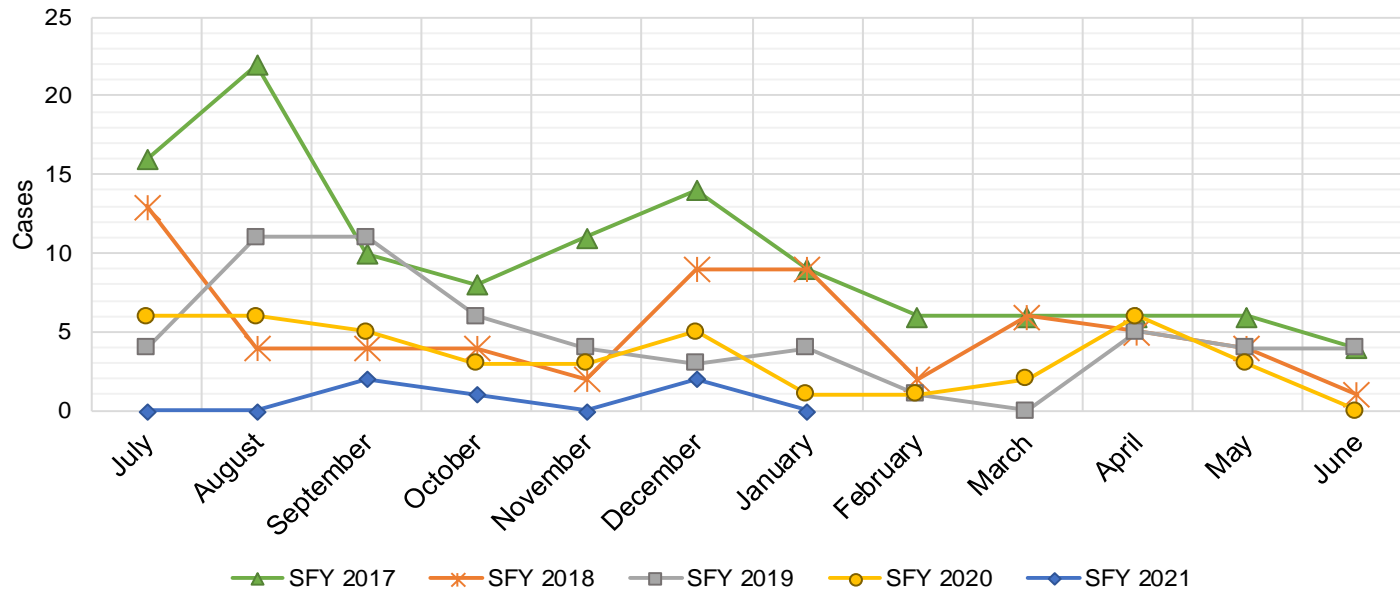
SFY 2017 ⁹			SFY 2018 ⁹			SFY 2019 ⁹			SFY 2020 ⁹			SFY 2021 ⁹		
	Cases	Expenditures		Cases	Expenditures		Cases	Expenditures		Cases	Expenditures		Cases	Expenditures
Jul-16	37	\$3,700	Jul-17	26	\$2,700	Jul-18	22	\$2,200	Jul-19	20	\$1,900	Jul-20	13	\$1,300
Aug-16	35	\$3,500	Aug-17	25	\$2,500	Aug-18	22	\$2,200	Aug-19	19	\$1,900	Aug-20	12	\$1,200
Sep-16	34	\$3,400	Sep-17	26	\$2,700	Sep-18	20	\$2,000	Sep-19	19	\$1,900	Sep-20	11	\$1,200
Oct-16	32	\$3,200	Oct-17	24	\$2,500	Oct-18	20	\$2,000	Oct-19	19	\$1,900	Oct-20	10	\$1,000
Nov-16	35	\$3,500	Nov-17	24	\$2,400	Nov-18	20	\$2,000	Nov-19	19	\$1,900	Nov-20	9	\$900
Dec-16	30	\$3,000	Dec-17	23	\$2,200	Dec-18	21	\$2,100	Dec-19	19	\$1,900	Dec-20	9	\$900
Jan-17	48	\$4,800	Jan-18	23	\$2,400	Jan-19	21	\$2,000	Jan-20	18	\$1,800	Jan-21	7	\$700
Feb-17	26	\$2,600	Feb-18	23	\$2,300	Feb-19	21	\$2,200	Feb-20	17	\$1,600	Feb-21		
Mar-17	26	\$2,600	Mar-18	22	\$2,400	Mar-19	20	\$1,900	Mar-20	16	\$1,500	Mar-21		
Apr-17	28	\$2,800	Apr-18	22	\$2,200	Apr-19	19	\$1,800	Apr-20	15	\$1,500	Apr-21		
May-17	32	\$3,200	May-18	22	\$2,200	May-19	18	\$1,800	May-20	15	\$1,500	May-21		
Jun-17	29	\$2,900	Jun-18	22	\$2,200	Jun-19	20	\$2,000	Jun-20	15	\$1,500	Jun-21		
TOTAL	392	\$39,200	282	\$28,700	244	\$24,200	211	\$20,800	71	\$7,200				
AVERAGE	33	\$3,267	24	\$2,392	20	\$2,017	18	\$1,733	10	\$1,029				



TANF Diversion Payments

SFY 2017 ⁹			SFY 2018 ⁹			SFY 2019 ⁹			SFY 2020 ⁹			SFY 2021 ⁹		
	Cases	Expenditures		Cases	Expenditures		Cases	Expenditures		Cases	Expenditures		Cases	Expenditures
Jul-16	16	\$30,843	Jul-17	13	\$26,500	Jul-18	4	\$3,000	Jul-19	6	\$18,500	Jul-20	0	\$0
Aug-16	22	\$42,731	Aug-17	4	\$12,000	Aug-18	11	\$18,583	Aug-19	6	\$16,500	Aug-20	0	\$1,500
Sep-16	10	\$21,000	Sep-17	4	\$4,000	Sep-18	11	\$20,999	Sep-19	5	\$11,000	Sep-20	2	\$1,500
Oct-16	8	\$16,744	Oct-17	4	\$16,000	Oct-18	6	\$10,499	Oct-19	3	\$3,000	Oct-20	1	\$1,500
Nov-16	11	\$24,500	Nov-17	2	\$15,500	Nov-18	4	\$7,499	Nov-19	3	\$16,180	Nov-20	0	\$1,500
Dec-16	14	\$26,611	Dec-17	9	\$17,500	Dec-18	3	\$2,499	Dec-19	5	\$14,000	Dec-20	2	\$4,000
Jan-17	9	\$18,500	Jan-18	9	\$21,731	Jan-19	4	\$5,999	Jan-20	1	\$1,500	Jan-21	0	\$0
Feb-17	6	\$12,000	Feb-18	2	\$7,731	Feb-19	1	\$1,678	Feb-20	1	\$1,857	Feb-21		
Mar-17	6	\$11,000	Mar-18	6	\$8,496	Mar-19	0	\$3,000	Mar-20	2	\$5,920	Mar-21		
Apr-17	6	\$12,000	Apr-18	5	\$13,500	Apr-19	5	\$6,500	Apr-20	6	\$14,905	Apr-21		
May-17	6	\$11,500	May-18	4	\$12,500	May-19	4	\$16,000	May-20	3	\$8,000	May-21		
Jun-17	4	\$13,500	Jun-18	1	\$5,389	Jun-19	4	\$8,000	Jun-20	0	\$0	Jun-21		

TOTAL	118	\$240,929	63	\$160,847	57	\$104,256	41	\$111,362	5	\$10,000
AVERAGE	10	\$20,077	5	\$13,404	5	\$8,688	3	\$9,280	1	\$1,429

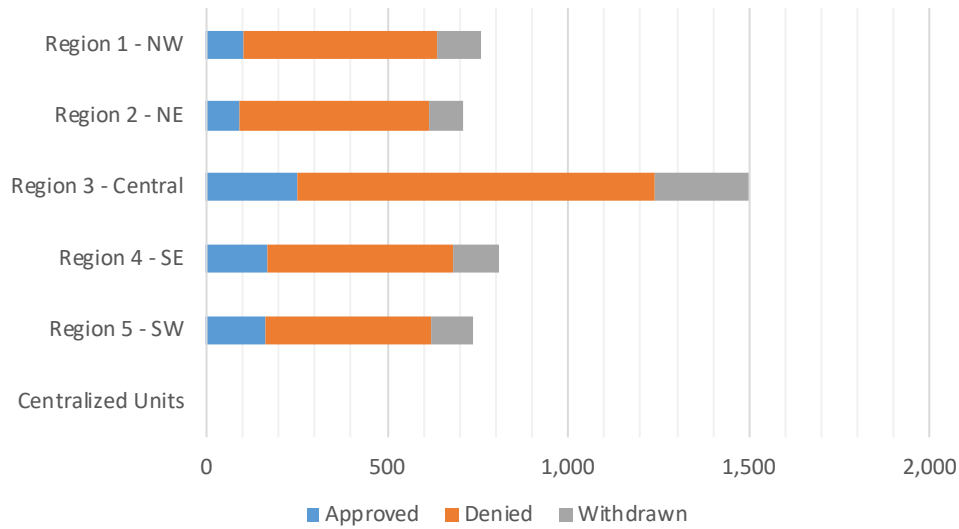


Cash Assistance Applications by Field Office^{4,11}
January 2021

Office	Approved	Denied	Withdrawn	Total Cases Processed
Chaves County ISD	71	195	55	321
Cibola County ISD	5	25	7	37
Colfax County ISD	3	28	4	35
Curry County ISD	25	128	20	173
East Dona Ana County ISD	34	86	33	153
Eddy Artesia County ISD	3	27	5	35
Eddy Carlsbad County ISD	15	45	15	75
Grant County ISD	17	56	2	75
Guadalupe County ISD	1	19	2	22
Hidalgo County ISD	0	0	0	0
Lea County ISD	47	105	23	175
Lincoln County ISD	5	18	9	32
Luna County ISD	14	37	14	65
McKinley County ISD	10	81	20	111
Northeast Bernalillo County ISD	83	419	79	581
Northwest Bernalillo County ISD	58	246	77	381
Otero County ISD	29	72	20	121
Quay County ISD	2	29	6	37
Rio Arriba County ISD	25	92	13	130
Roosevelt County ISD	0	0	0	0
San Juan County ISD	53	299	68	420
San Miguel County ISD	10	81	15	106
Sandoval County ISD	22	78	28	128
Santa Fe County ISD	20	161	20	201
Sierra County ISD	10	28	6	44
Socorro County ISD	4	29	2	35
South Dona Ana ISD	36	78	15	129
Southeast Bernalillo County ISD	2	24	11	37
Southwest Bernalillo County ISD	106	301	89	496
Taos County ISD	8	34	9	51
Torrance County ISD	0	0	1	1
Valencia North County ISD	21	73	17	111
Valencia South County ISD	0	0	0	0
West Dona Ana County ISD	32	132	28	192
Centralized Units	0	0	0	0
Statewide Total	771	3,026	713	4,510

Cash Assistance Applications by Region^{4,11}
January 2021

	Approved	Denied	Withdrawn	Total Cases Processed
Region				
Region 1 - NW	103	535	120	758
Region 2 - NE	91	522	97	710
Region 3 - Central	249	990	257	1,496
Region 4 - SE	166	518	127	811
Region 5 - SW	162	461	112	735
Centralized Units	0	0	0	0
Statewide Total	771	3,026	713	4,510



**Early Childhood Education and Care Department
Children Receiving Child Care Assistance Subsidies By County**

County	Jan 2020	Feb 2020	Mar 2020	Apr 2020	May 2020	June 2020	July 2020	Aug 2020	Sept 2020	Oct 2020	Nov 2020	Dec 2020	Jan 2021	Change Fr. Last Year Cases	Percent
Bernalillo	7,673	7,779	7,975	8,683	8,506	8,061	7,316	5,905	5,462	5,001	4,935	4,802	5,028	-2,645	-34.5%
Catron	0	0	0	0	0	0	0	0	0	0	0	0	0	0	0.0%
Chaves	835	830	830	911	918	857	852	683	650	662	634	657	660	-175	-21.0%
Cibola	224	226	227	271	263	256	247	184	199	185	190	167	171	-53	-23.7%
Colfax	32	32	26	28	29	28	28	30	22	23	24	23	26	-6	-18.8%
Curry	605	613	600	669	668	613	625	482	444	435	448	436	454	-151	-25.0%
De Baca	0	0	0	0	0	0	0	0	0	0	0	0	0	0	0.0%
Dona Ana	4,350	4,313	4,388	4,806	4,691	4,466	4,363	3,306	3,084	2,994	3,056	2,902	2,964	-1,386	-31.9%
Eddy	225	227	231	235	233	213	226	200	184	165	172	171	172	-53	-23.6%
Grant	143	146	132	159	157	160	135	63	78	80	92	93	99	-44	-30.8%
Guadalupe	7	7	8	9	8	8	10	10	10	10	11	8	8	1	14.3%
Harding	0	0	0	0	0	0	0	0	0	0	0	0	0	0	0.0%
Hidalgo	28	27	24	23	20	17	23	14	19	20	18	18	14	-14	-50.0%
Lea	736	785	767	828	839	798	779	683	596	572	558	534	549	-187	-25.4%
Lincoln	89	89	88	100	99	88	87	66	47	50	55	63	60	-29	-32.6%
Los Alamos	42	38	37	48	48	44	45	28	27	24	25	26	26	-16	-38.1%
Luna	158	163	164	196	216	189	188	143	148	144	138	140	151	-7	-4.4%
McKinley	170	171	166	185	169	172	155	56	72	88	84	74	78	-92	-54.1%
Mora	11	11	12	13	12	12	12	10	14	11	17	15	15	4	36.4%
Otero	506	511	520	578	592	564	564	413	446	352	383	382	384	-122	-24.1%
Out of State	0	0	0	0	0	0	0	0	0	0	0	0	1	1	0.0%
Quay	32	34	37	42	41	39	40	28	27	22	27	26	24	-8	-25.0%
Rio Arriba	152	153	149	160	155	153	144	99	84	79	83	86	87	-65	-42.8%
Roosevelt	131	132	131	146	178	168	143	97	98	107	105	105	104	-27	-20.6%
San Juan	928	951	979	1,231	1,252	1,221	1,144	737	781	785	796	788	807	-121	-13.0%
San Miguel	349	361	373	412	403	399	405	326	339	330	349	326	339	-10	-2.9%
Sandoval	738	765	736	897	902	865	865	570	551	529	509	514	525	-213	-28.9%
Santa Fe	533	522	537	601	616	605	580	354	358	392	367	359	347	-186	-34.9%
Sierra	61	52	55	67	67	78	84	51	49	44	41	38	38	-23	-37.7%
Socorro	43	40	41	46	46	43	38	29	27	27	25	23	24	-19	-44.2%
Taos	126	117	139	156	149	141	115	89	77	85	93	89	94	-32	-25.4%
Torrance	68	63	71	78	86	74	78	63	55	47	50	52	66	-2	-2.9%
Union	3	3	3	3	3	3	3	2	2	2	2	2	2	-1	-33.3%
Valencia	564	533	547	628	620	632	566	457	467	448	475	460	473	-91	-16.1%
Totals	19,562	19,694	19,993	22,209	21,986	20,967	19,860	15,178	14,417	13,713	13,762	13,379	13,790	-5,772	-29.5%

EARLY CHILDHOOD EDUCATION AND CARE DEPARTMENT CHILD CARE ASSISTANCE ELIGIBILITY PROGRAMS

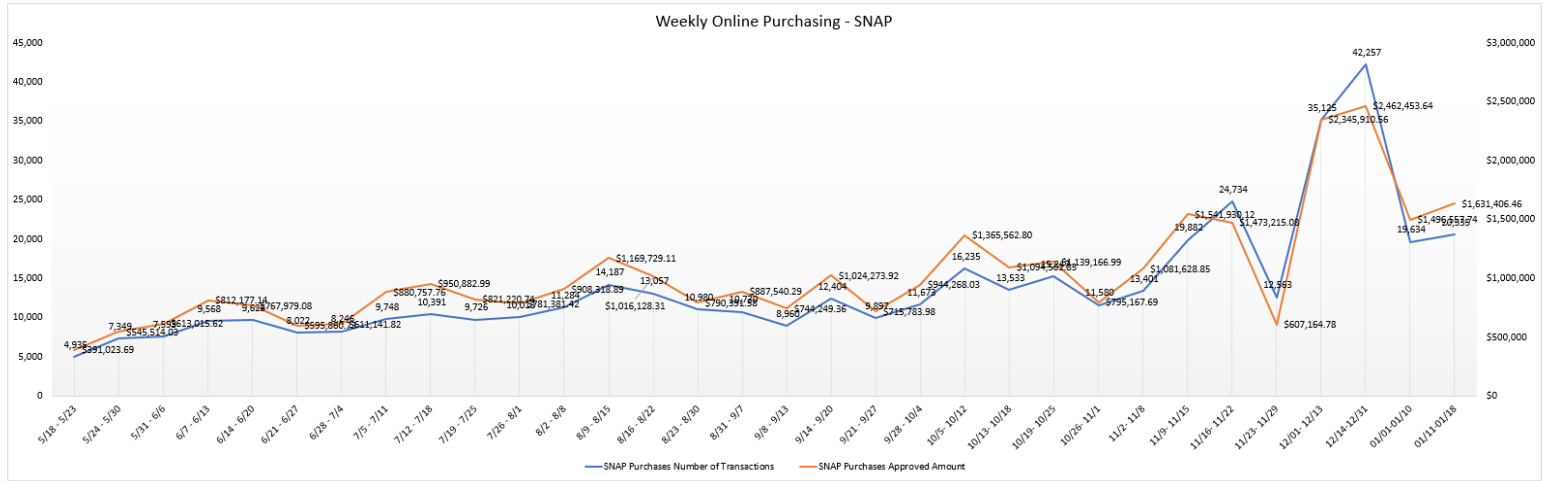
MONTH	Feb'20	Mar'20	Apr'20	May'20	June'20	July'20	Aug'20	Sept'20	Oct'20	Nov'20	Dec'20	Jan'21
TANF (Child Care Priority 1 Clients)												
CLIENTS	2,001	2,031	2,005	1,941	1,943	1,866	1,453	1,317	1,239	1,181	1,136	1,188
COST	\$1,195,404	\$1,280,286	\$1,306,318	\$1,304,392	\$1,292,773	\$1,249,411	\$954,523	\$846,281	\$829,004	\$814,035	\$795,611	\$808,868
TANF AVERAGE COST	\$597	\$630	\$652	\$672	\$665	\$670	\$657	\$643	\$669	\$689	\$700	\$680
TRANSITION OFF TANF (Child Care Priority 2 Clients)												
CLIENTS	209	209	223	211	199	174	159	146	134	148	140	134
COST	\$136,239	\$127,986	\$144,617	\$142,374	\$136,509	\$109,243	\$99,130	\$87,238	\$87,914	\$107,570	\$101,134	\$96,902
TRAN OFF TANF AVG COST	\$652	\$612	\$649	\$675	\$686	\$628	\$623	\$88	\$88	\$88	\$88	\$88
TANF ELIGIBLE (Child Care Priority 1B Clients at or below 100% of the Federal Poverty Level)												
CLIENTS	7,671	7,857	7,797	7,634	7,597	7,258	5,827	5,333	4,957	4,956	4,769	4,919
COST	\$4,539,530	\$4,868,148	\$4,955,752	\$5,017,736	\$4,897,618	\$4,696,062	\$3,702,155	\$3,227,351	\$3,349,454	\$3,330,950	\$3,178,720	\$3,290,098
TANF ELIGIBLE AVG COST	\$592	\$620	\$636	\$657	\$645	\$647	\$635	\$605	\$676	\$672	\$667	\$669
INCOME ELIGIBLE (Child Care Priority 3, and Priority 4 Clients)												
CLIENTS	8,848	8,978	10,600	10,132	8,870	8,084	6,945	6,857	6,578	6,684	6,573	6,796
COST	\$4,700,981	\$4,891,611	\$10,456,494	\$10,002,092	\$5,863,605	\$4,768,416	\$4,041,977	\$3,734,881	\$4,705,258	\$4,714,528	\$4,629,625	\$4,816,058
INCOME ELIG AVG COST	\$531	\$545	\$986	\$987	\$661	\$590	\$582	\$545	\$715	\$705	\$704	\$709
AT-RISK CHILD PROTECTIVE SERVICES CHILD CARE PILOT (Priority 5 Clients)												
CLIENTS	182	144	829	1,379	1,699	1,796	145	137	159	175	192	206
COST	\$136,364	\$99,487	\$357,417	\$941,656	\$1,216,142	\$1,292,805	\$91,596	\$96,923	\$104,888	\$123,602	\$134,511	\$148,884
CPS AVG COST	\$749	\$691	\$431	\$683	\$716	\$720	\$632	\$707	\$660	\$706	\$701	\$723
CHILD PROTECTIVE SERVICES (Child Care CPS Clients)												
CLIENTS	783	774	755	689	659	682	649	627	646	618	569	546
COST	\$520,094	\$547,029	\$490,287	\$633,230	\$616,005	\$455,989	\$455,542	\$419,097	\$483,711	\$437,483	\$495,401	\$520,650
CPS AVG COST	\$664	\$707	\$649	\$919	\$935	\$669	\$702	\$668	\$749	\$708	\$871	\$954
GRAND TOTAL - ALL CHILD CARE PROGRAMS												
CLIENTS	19,694	19,993	22,209	21,986	20,967	19,860	15,178	14,417	13,713	13,762	13,379	13,790
COST	\$11,228,612	\$11,814,547	\$17,710,886	\$18,041,480	\$14,022,651	\$12,571,928	\$9,344,924	\$8,411,771	\$9,560,229	\$9,528,168	\$9,335,003	\$9,681,459
ALL PROGRAMS AVG COST	\$570	\$591	\$797	\$821	\$669	\$633	\$616	\$583	\$697	\$692	\$698	\$702

SNAP Emergency Allotment and Pandemic EBT: Expenditures, Cases, and Recipients

Note: Pandemic EBT will start to be issued in May 2020

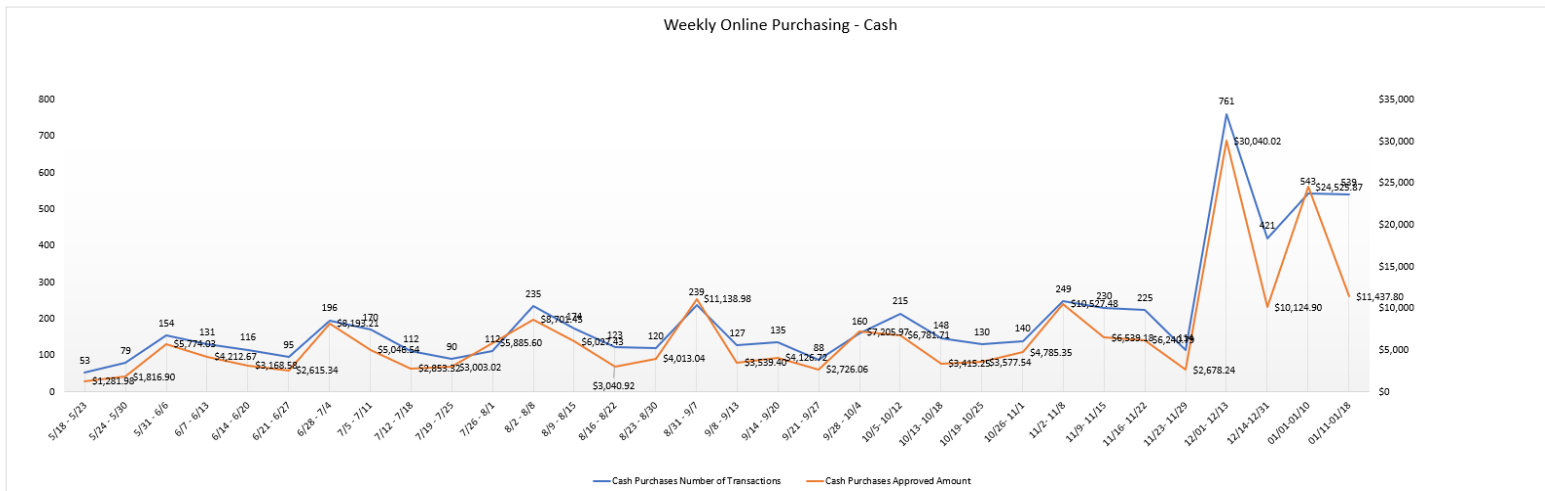
Date	Expenditures		Cases Processed		Recipients Served		Average Expenditures Per Case Processed		Average Expenditures Per Recipient Served	
	Pandemic EBT	Emergency Allotment	Pandemic EBT	Emergency Allotment	Pandemic EBT	Emergency Allotment	Pandemic EBT	Emergency Allotment	Pandemic EBT	Emergency Allotment
Apr-20	—	\$50,524,646	—	158,060	—	340,960	—	\$319.65	—	\$148.18
May-20	\$24,456,957	\$24,802,215	44,236	137,797	68,815	247,857	\$552.87	\$179.99	\$355.40	\$100.07
Jun-20	\$74,641,557	\$24,058,493	96,197	134,557	186,959	297,304	\$775.92	\$178.80	\$399.24	\$80.92
Jul-20	\$2,172,555	\$24,722,792	5,440	136,783	5,440	299,330	\$399.37	\$180.74	\$399.37	\$82.59
Aug-20	\$356,706	\$26,012,689	894	140,924	894	309,638	\$399.00	\$184.59	\$399.00	\$84.01
Sep-20	\$46,820,023	\$24,462,456	251,491	134,896	251,491	296,936	\$186.17	\$181.34	\$186.17	\$82.38
Oct-20	\$0.00	\$24,425,558	0	132,520	0	290,479	\$0.00	\$184.32	\$0.00	\$84.09
Nov-20	\$0.00	\$25,951,251	0	139,390	0	306,779	\$0.00	\$186.18	\$0.00	\$84.59
Dec-20	\$408,460	\$28,589,001	2,147	152,818	2,147	332,842	\$190.25	\$187.08	\$190.25	\$85.89
Jan-21	\$0.00	\$29,218,473	0	155,078	0	337,190	\$0.00	\$188.41	\$0.00	\$86.65
Feb-21										
Mar-21										
Apr-21										
May-21										
Jun-21										
Total to Date	\$148,856,257	\$282,767,574	400,405	1,422,823	515,746	3,059,315	\$371.76	\$198.74	\$288.62	\$92.43

Reporting Date – Jan 16th, 2021



Data Source: ISD/ FIS

Reporting Date – Jan 16th, 2021



Data Source: ISD/ FIS

Income Eligibility Guidelines: October 1, 2020 - September 30, 2021

Federal Poverty Guidelines (FPG) Monthly Income Standards

Supplemental Nutrition Program (SNAP)					
Household Size	100% FPG Net Income	130% FPG Gross Income	165% FPG Gross Income for Categorical Eligibility	Maximum SNAP Monthly Allotment	LIHEAP 150% FPG
1	\$1,064	\$1,383	\$1,755	\$204	\$1,596
2	\$1,437	\$1,868	\$2,371	\$374	\$2,156
3	\$1,810	\$2,353	\$2,987	\$535	\$2,715
4	\$2,184	\$2,839	\$3,603	\$680	\$3,276
5	\$2,557	\$3,324	\$4,219	\$807	\$3,836
6	\$2,930	\$3,809	\$4,835	\$969	\$4,395
7	\$3,304	\$4,295	\$5,451	\$1,071	\$4,956
8	\$3,677	\$4,780	\$6,067	\$1,224	\$5,516
+1	+\$374	+\$486	+\$616	+\$153	+\$561
Minimum Allotment of \$16 effective from 10/1/2019 - 9/30/2020					
Deduction Limit: \$586, Heating and Cooling Standard Utility Allowance (HCSUA): \$348, Limited Utility Allowance (LUA): \$140, Telephone Standard: \$48, Dependent Care: Actual Amount (No Limit), Earned Income Deduction: 20%, Homeless Shelter Standard: \$156.74, LIHEAP (only) Energy Standard Allowance (ESA): \$208, A45, Cash Assistance & Support Services October 1, 2020 – September 30, 2021, House- hold Size, Federal Poverty Guidelines (FPG) Monthly Income					

CASH Assistance & Support Services

Household Size	Federal Poverty Guidelines (FPG) Monthly Income Standards		Maximum Monthly Benefit	
	100% FPG Net Income	85% FPG Gross Limit	New Mexico Works Cash Assistance	General Assistance
1	\$1,064	\$904	\$266	\$245
2	\$1,437	\$1,221	\$357	\$329
3	\$1,810	\$1,539	\$447	\$412
4	\$2,184	\$1,856	\$539	\$496
5	\$2,557	\$2,173	\$630	\$580
6	\$2,930	\$2,491	\$721	\$664
7	\$3,304	\$2,808	\$812	\$748
8	\$3,677	\$3,125	\$922	\$849
+1	+\$374	+\$318	+\$91	+\$84
Deductions- Dependent Care: For a child under age 2 = \$200; For a child age 2 and over = \$175. Work Incentives- Earned Income Disregard: Single parent = \$125 & ½ remainder; Two parent = \$225 & ½ remainder.				

Medical Assistance Division					
Federal Poverty Guidelines New Mexico Affordable Care Eligibility Groups Effective April 01, 2020 thru March 31, 2021 Monthly Guidelines					
HH SIZE	PERCENT OF POVERTY				
	138%	190%	240%	250%	300%
1	\$1,468	\$2,021	\$2,552	\$2,659	\$3,190
2	\$1,983	\$2,730	\$3,449	\$3,592	\$4,311
3	\$2,498	\$3,439	\$4,344	\$4,525	\$5,430
4	\$3,013	\$4,149	\$5,240	\$5,459	\$6,550
5	\$3,529	\$4,858	\$6,137	\$6,392	\$7,671
6	\$4,044	\$5,567	\$7,032	\$7,325	\$8,790
7	\$4,559	\$6,277	\$7,928	\$8,259	\$9,910
8	\$5,074	\$6,986	\$8,825	\$9,192	\$11,031
138% Adult Expansion, 190% Children ages 6 to 19 (Medicaid), 240% Children ages 0 to 6 (Medicaid); ages 6 to 19 (CHIP), 250% Pregnancy Related Services Only, 300% Children 0 to 6 (CHIP)					

Medical Assistance Division					
Federal Poverty Guidelines New Mexico Affordable Care Eligibility Groups Effective April 01, 2020 thru March 31, 2021 Annual Guidelines					
HH SIZE	PERCENT OF POVERTY				
	138%	190%	240%	250%	300%
1	\$17,616	\$24,252	\$30,624	\$31,908	\$38,280
2	\$23,796	\$32,760	\$41,388	\$43,104	\$51,732
3	\$29,976	\$41,268	\$52,128	\$54,300	\$65,160
4	\$36,156	\$49,788	\$62,880	\$65,508	\$78,600
5	\$42,348	\$58,296	\$73,644	\$76,704	\$92,052
6	\$48,528	\$66,804	\$84,384	\$87,900	\$105,480
7	\$54,708	\$75,324	\$95,136	\$99,108	\$118,920
8	\$60,888	\$83,832	\$105,900	\$110,304	\$132,372
138% Adult Expansion, 190% Children ages 6 to 19 (Medicaid), 240% Children ages 0 to 6 (Medicaid); ages 6 to 19 (CHIP), 250% Pregnancy Related Services Only, 300% Children 0 to 6 (CHIP)					

References

¹ *Medicaid Expenditures* (Omnicaid, Medicare Buy-Ins, Lump Sum Payments)

² *ASPEN Business Intelligence Tool: Eligibility*

³ New Mexico Human Services Department, *Medicaid Eligibility Reports*, Retrieved from <http://www.hsd.state.nm.us/LookingForInformation/medicaid-eligibility.aspx> (for reporting month)

⁴ *ASPEN Business Intelligence Tool: Application Tracking*

⁵ Fidelity Information Services, *EBT Daily Statistical Report* (for reporting month)

⁶ *ASPEN Report DQ-180: Length of Time Cases are Open* (for reporting month)

⁷ *ASPEN Report EY-180: Individual Demographics by State and Age* (for reporting month)

⁸ *ASPEN Business Intelligence Tool: Benefit Issuance*

⁹ Fidelity Information Services, *EBT Daily Statistical Reports* (Month End)

¹⁰ *ASPEN Report EY-180R: Individual Demographics by State, Race, Ethnicity and Gender* (for reporting month)

¹¹ SQL Queries from ASPEN

¹² JP Morgan, *New Mexico – NM EBT System- Monthly Benefit Draw Down Totals*

¹³ *ASPEN Business Intelligence Tool: Application Tracking* (w/Parameters: SNAP, Expedite, Approved)

¹⁴ SL Start, *As of Today Report*

¹⁵ SL Start, *Statewide Employment Report*

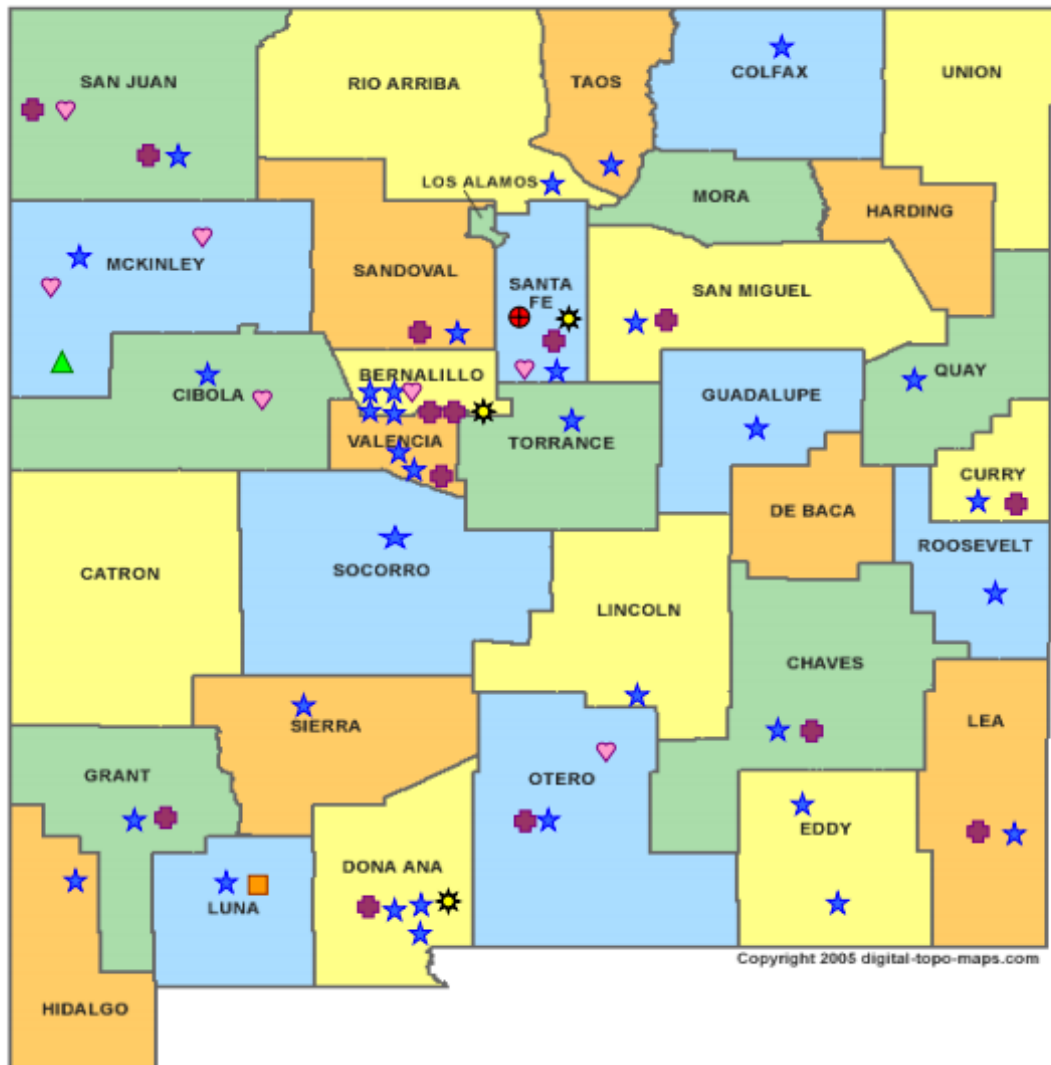
¹⁶ *SSIAR Payments*

¹⁷ Children, Youth, and Families Department, *Children Receiving Child Care Assistance Subsidies by County*


¹⁸ Children, Youth, and Families Department, *Child Care Assistance Eligibility Programs*

¹⁹ EDG is defined as an Eligibility Determination Group

²⁰SQL Query from ASPEN










Copyright 2005 digital-topo-maps.com



HUMAN SERVICES
DEPARTMENT

New Mexico Human Services Department
Field Offices

-  Central Office (1)
-  Income Support Division County Office (35)
-  Income Support Division Satellite Office (2)
-  Child Support Enforcement Regional Office (16)
-  Child Support Enforcement Satellite Office (1)
-  Indian Health Services (7)
-  Hospital Site (3)

For a complete listing of field offices and other government and community resources:
http://www.hsd.state.nm.us/LookingForAssistance/Field_Offices_1.aspx

Medicaid Policy Changes Due to COVID-19

Already implemented:

1. **Three month renewal extensions**-MAGI Medicaid renewals are extended three months for individuals who fail to complete the 12-month recertification process after going through the automated administrative renewal process, the manual administrative renewal process, and issuance of the MAD 608 renewal form. Individuals who normally would have closed March 31, 2020 due to failure to recertify had their certification period extended through June 30, 2020. This same process will occur for April and May renewals. This may continue for later months if the emergency continues. Applies to non-MAGI Medicaid categories also that failed to recertify. Implemented in ASPEN on March 31st.

2. **Increase Presumptive Eligibility (PE) Determiner scope and qualified entities**-Most PE determiners are limited to approving PE for MAGI Children/CHIP and MAGI Pregnancy Services. Change was made to allow HSD employees to approve PE and to allow most PE determiners to approve all MAGI Medicaid categories of eligibility. Change was implemented on April 07, 2020.

3. **Reopen and Sustain Medicaid Cases**-The requirement is that anyone receiving Medicaid March 18th and ongoing for the duration of the emergency continue to be covered at the same level of coverage. There are three exceptions: client requested closure, deceased individuals, and moved out of state. April 2020 closures were reopened and sustained through July 31, 2020 and can be extended if the emergency continues. Implemented into ASPEN on April 26, 2020.

In process (not implemented yet):

4. **Accept self-attestation for Medicaid**-Accept self-attestation for all factors of Medicaid except for citizenship/immigration. Process Medicaid applications for MAGI and non-MAGI categories based on self-attestation of 2 income and resources. Excludes IC/Waiver/PACE categories. For those cases not reasonably compatible approve and issue a 90 day HUMAD.

5. **New COVID-19 testing category**-This will be implemented in Omnicaid and not ASPEN. New uninsured category which will cover COVID-19 testing and related services. Applications will be sent to and processed by Conduent staff to allow for fee-for-service payments to providers for COVID-19 testing and related services.

6. **Exclusion of \$600 weekly unemployment benefit stimulus payments**-Medicaid excludes \$600 weekly unemployment benefit stimulus payments. ASPEN solution being developed across programs that treat the handling of unemployment monies differently as well as regular unemployment benefit extensions.

Cases closed for procedural reasons show low timeliness percentages due to the requirement to maintain Medicaid from March 18, 2020 for the duration of the COVID-19 emergency. To maintain Medicaid many March 2020 cases had to be reinstated manually by ISD field workers so there would not be a gap in coverage. To maintain Medicaid eligibility for April 2020 cases also required a manual reinstatement effort by ISD field workers as the ASPEN system fix to maintain Medicaid for the duration of the emergency still resulted in exceptions that had to be resolved manually.

SNAP Policy Changes During COVID-19

1. Suspension of SNAP Employment and Training (E&T) Program

- House of Representatives passed H.R. 6201, the Families First Coronavirus Response Act.
- ISD has chosen to suspend the SNAP E&T Program until further notice.
- interim policy and procedure for 8.139.410.13 NMAC “SUPPLEMENTAL NUTRITION ASSISTANCE PROGRAM (SNAP) EMPLOYMENT AND TRAINING PROGRAM (E&T).”

2. Amendment to Waiver - Interview Process for SNAP and TANF and Waiver - Recertification Waiver Process for SNAP, TANF, and Medicaid

- FNS approved a blanket waiver for all states to utilize.
- Interim policy and procedures for the following:
 - General Operating Policies – Application 8.100.110 NMAC.
 - Interviews in accordance with 8.139.110.11 NMAC and 8.102.110 NMAC.
 - Interim Reports (IRs) in accordance with 8.139.120.9B NMAC. and 8.102.120.11C NMAC.
 - Recertifications in accordance with 8.139.120.8, 8.102.120.9B NMAC 8.106.120.9 and 8.106.120.10 NMAC.
- Waives all SNAP, TANF and GA-Unrelated Child interviews, if all mandatory verification standards are met. o GA-Disability is excluded from this waiver; an interview must be conducted for GA as medical documentation is needed. Allows us to waive the requirement of having to offer a face-to-face and to conduct all interviews by phone.
- IR's - If an IR cannot be processed under normal processing, ASPEN will automatically extend certification periods for households with an IR due in March, and April for 6 months to the month the customers recertification is due. May and June IRs will be suspended and not mailed.
- Recertifications – If a Recertification cannot be processed under normal processing, ASPEN will automatically extend certification periods for households scheduled to recertify in March, April, May and June 2020, for 6 months until September, October and November 2020.
- IPP 20-06 in regards to the policy change can be found on the HSD website at:

3. SNAP Supplement Waiver

- State applied for a waiver through FNS.
- New Mexico has requested and been approved by FNS to provide an emergency allotment to address temporary food needs to households by bringing all households up to the maximum benefit due to pandemic related economic conditions. States that have already received FNS approval this supplemental issuance in March and April, or April and May, are approved to continue issuing full benefits each month.
- Interim policy and procedure for 8.139.610.12 NMAC.

4. Suspension of SNAP General Work Requirements

- House of Representatives passed H.R. 6201, the Families First Coronavirus Response Act.
- During the declared public health emergency, SNAP recipients who would otherwise be mandatory to comply with the SNAP general work requirements will be waived from this requirement and will not experience any type of disqualification for noncompliance during this time.
- Interim policy and procedure guidance for SNAP General Work Requirements set forth in 8.139.410.12 C and D NMAC.

5. Telephonic Signature Waiver

- State applied for a waiver through FNS
- If a customer calls to apply for benefits and does not have a paper application on file Conduent will accept a telephonic application and telephonic signature for applications by completing an online application through YesNM.
- Interim policy and procedures for 8.100.110.9A NMAC Submission of Forms.

TANF Policy Changes During COVID-19

1. Good cause exemptions from work requirements for TANF	TANF Non-Compliance Process Suspension of Non-Compliance for NMW Participants	
2. Increased cash benefit levels for TANF cash assistance recipients	Process as normal	
3. 60-month time limit	IPP Hardship	Hardship extensions will allow individuals impacted by COVID-19 to apply for a TANF hardship or continue to receive TANF beyond their 60 th month
4. Work Participation Rate	Process as normal	The state will still need to meet the WPR. However, States can use Good Cause that is outlined in CFR and not be penalized for not meeting WPR due to the emergency
5. CARES Act Direct Payment	CARES Act Direct Payment	Guidance is to exclude as income and as a resource
6. UCB under CARES Act	Only to exclude UCB benefits under CARES Act	ACF Guidance is to <i>EXCLUDE</i> all UCB income at this time. New Mexico choose to exclude only CARES Act UCB

Children Youth and Families Department Policy Changes During COVID-19

NM Children Youth and Families Department received \$29.5 million in emergency funds, which resulted in the following changes:

1. Waiver of copay for families which paid for by CYFD
2. Payment of \$250 per child premium for children who are still in care (emergency, first responders and essential personnel)
3. Streamlining of licensing of new facilities that provide emergency child care
4. Payment to the original and temporary child care provider for children of emergency, first responders and essential personnel, whose child care Program closed due to COVID-19

Additional Changes Anticipated

1. Hazardous pay for child care providers currently operating
2. Compensation for programs that are losing their funding due to private pay