



Monthly Statistical Report

January 2020

There were 829,830 individuals that received Medicaid in January 2020, a 0.3% decrease from one year ago. The count of Medicaid recipients has increased by 1,140, or 0.14%, since last month.

The SNAP caseload in January 2020 was 223,228, a 0.51% increase from one year ago. The SNAP caseload has increased by 326 cases, or 0.1%, since last month.

The TANF caseload was 10,328 in January 2020, a decrease of 3.9% from January 2019. The TANF caseload had 116 fewer cases compared to December 2019, a decrease of 1.1%.

The caseload for General Assistance was 2,505 in January 2020, a decrease of 8.5% from one year ago and an increase of 4 cases from last month.

Michelle Lujan Grisham, Governor
David Scrase, M.D., Secretary

Contents	Page
Summary	3-5
Medicaid	6-20
SNAP	21-41
Cash Assistance	42-56
Child Care Assistance	57-58
Income Eligibility Guidelines	59-60

Regions are reported as follows:

Region 1		
Catron	San Juan	Valencia
Cibola	Sierra	
McKinley	Socorro	
Region 2		
Colfax	Mora	Santa Fe
De Baca	Quay	Taos
Guadalupe	Rio Arriba	Union
Harding	Sandoval	
Los Alamos	San Miguel	
Region 3		
Bernalillo	Torrance	
Region 4		
Chaves	Eddy	Lincoln
Curry	Lea	Roosevelt
Region 5		
Dona Ana	Hidalgo	Otero
Grant	Luna	

The Mission of the Human Services Department

To transform lives. Working with our partners, we design and deliver innovative, high quality health and human services that improve the security and promote independence for New Mexicans in their communities.

Angela Medrano, Deputy Secretary
Kari Armijo, Deputy Secretary

Prepared by Income Support Division
PO Box 2348
Santa Fe, NM 87504-2348
505-827-7250

Karmela Martinez, Director
Vida Tapia-Sanchez, Deputy Director
Shanita Harrison, Deputy Director
Judith Parks, Deputy Director

<http://www.hsd.state.nm.us/monthly-statistical-reports.aspx>

Program Summary for January 2020

Medicaid				Percent Change	
	Jan-19	Dec-19	Jan-20	Jan-19- Jan-20	Dec-19- Jan-20
Expenditures¹	\$432,454,780	\$531,904,987	\$516,830,741	19.5%	-2.8%
Cases²	491,933	498,109	499,534	1.5%	0.3%
Expenditures/Case	\$879	\$1,068	\$1,035	17.7%	-3.1%
Recipients³	832,571	828,690	829,830	-0.3%	0.1%
<i>Adults</i>	475,215	471,858	472,552	-0.6%	0.1%
<i>Children</i>	357,356	356,832	357,278	-0.02%	0.1%
Recipients /Case	1.69	1.66	1.66	-1.8%	0.0%
Cases Processed⁴	13,473	11,985	12,872	-4.5%	7.4%
<i>Approvals⁴</i>	9,839	8,290	8,484	-13.8%	2.3%

Supplemental Nutrition Assistance Program (SNAP)				Percent Change	
	Jan-19	Dec-19	Jan-20	Jan-19- Jan-20	Dec-19- Jan-20
Expenditures⁵	\$51,212,077	\$53,077,372	\$52,325,905	2.17%	-1.4%
Cases⁶	222,090	222,902	223,228	0.5%	0.1%
Expenditures/Case	\$231	\$238	\$234	1.3%	-1.7%
Recipients⁷	451,845	446,531	446,003	-1.3%	-0.1%
<i>Adults</i>	262,373	261,798	261,773	-0.2%	-0.01%
<i>Children</i>	189,472	184,733	184,230	-2.8%	-0.3%
Recipients /Case	2.03	2.00	2.00	-1.5%	0.0%
Cases Processed⁴	19,316	16,558	18,435	-4.6%	11.3%
<i>Approvals⁴</i>	16,123	13,677	15,253	-5.4%	11.5%

Cash Assistance Programs				Percent Change	
	Jan-19	Dec-19	Jan-20	Jan-19- Jan-20	Dec-19- Jan-20
Expenditures⁵	\$4,646,322	\$4,035,456	\$4,574,751	-1.5%	13.4%
Cases⁶	13,644	13,110	12,963	-5.0%	-1.1%
Expenditures/Case	\$341	\$308	\$353	3.5%	14.6%
Recipients⁷	30,763	29,743	29,317	-4.7%	-1.4%
<i>Adults</i>	9,795	9,513	7,929	-19.1%	-16.7%
<i>Children</i>	20,968	20,230	21,388	2.0%	5.7%
Recipients /Case	2.25	2.27	2.26	0.4%	-0.4%
Cases Processed⁴	5,438	4,342	4,535	-16.6%	4.4%
<i>Approvals⁴</i>	1,497	1,429	1,515	1.2%	6.0%

Low Income Home Energy Assistance Program (LIHEAP)				Percent Change	
	Jan-19	Dec-19	Jan-20	Jan-19- Jan-20	Dec-19- Jan-20
Expenditures⁸	\$2,520,530	\$2,490,920	\$2,212,240	-12.2%	-11.2%
Cases⁸	8,540	8,267	7,490	-12.3%	-9.4%
Expenditures/Case	\$295	\$301	\$295	0.0%	-2.0%
Recipients⁸	19,842	19,172	17,392	-12.3%	-9.3%
<i>Adults</i>	11,113	10,791	7,846	-29.4%	-27.3%
<i>Children</i>	8,729	8,381	9,546	9.4%	13.9%
Recipients /Case	2.32	2.32	2.32	0.0%	0.0%
Cases Processed⁴	9,923	9,213	9,245	-6.8%	0.3%
<i>Approvals⁴</i>	8,465	8,180	7,831	-7.5%	-4.3%

Cash Assistance Summary for January 2020

Temporary Assistance for Needy Families (TANF)

	Jan-19	Dec-19	Jan-20	Percent Change	
				Jan-19- Jan-20	Dec-19- Jan-20
Expenditures ⁵	\$3,937,305	\$3,340,882	\$3,859,829	-2.0%	15.5%
Cases ⁶	10,749	10,444	10,328	-3.9%	-1.1%
Expenditures/Case	\$366	\$320	\$374	2.2%	16.9%
Recipients ⁷	27,631	26,855	26,485	-4.1%	-1.4%
<i>Adults</i>	7,073	7,037	5,459	-22.8%	-22.4%
<i>Children</i>	20,558	19,818	21,026	2.3%	6.1%
Approvals ⁴	1,328	1,226	1,269	-4.4%	3.5%

General Assistance (GA)

	Jan-19	Dec-19	Jan-20	Percent Change	
				Jan-19- Jan-20	Dec-19- Jan-20
Expenditures ⁵	\$654,988	\$639,267	\$669,686	2.2%	4.8%
Cases ⁶	2,739	2,501	2,505	-8.5%	0.2%
Expenditures/Case	\$239	\$256	\$267	11.7%	4.3%
Recipients ⁷	2,777	2,518	2,545	-8.4%	1.1%
<i>Adults</i>	2,557	2,301	2,333	-8.8%	1.4%
<i>Children</i>	220	217	212	-3.6%	-2.3%
Approvals ⁴	158	170	194	22.8%	14.1%

Education Works

	Jan-19	Dec-19	Jan-20	Percent Change	
				Jan-19- Jan-20	Dec-19- Jan-20
Expenditures ⁵	\$44,612	\$45,728	\$36,028	-19.2%	-21.2%
Cases ⁶	103	116	82	-20.4%	-29.3%
Expenditures/Case	\$433	\$394	\$439	1.4%	11.4%
Recipients ⁷	301	323	241	-19.9%	-25.4%
<i>Adults</i>	111	128	91	-18.0%	-28.9%
<i>Children</i>	190	195	150	-21.1%	-23.1%

Refugee Cash (RCA)

	Jan-19	Dec-19	Jan-20	Percent Change	
				Jan-19- Jan-20	Dec-19- Jan-20
Expenditures ⁵	\$7,418	\$7,679	\$7,407	-0.1%	-3.5%
Cases ⁶	32	30	30	-6.3%	0.0%
Expenditures/Case	\$232	\$256	\$247	6.5%	-3.5%
Recipients ⁷	33	29	29	-12.1%	0.0%

State Supplement for Residential Care

	Jan-19	Dec-19	Jan-20	Percent Change	
				Jan-19- Jan-20	Dec-19- Jan-20
Expenditures ⁵	\$2,000	\$1,900	\$1,800	-10.0%	-5.3%
Cases ⁶	21	19	18	-14.3%	-5.3%
Expenditures/Case	\$95	\$100	\$100	5.3%	0.0%
Recipients ⁷	21	18	17	-19.0%	-5.6%

Expenditures YTD			
	SFY 2020	FFY 2020	CY 2020
Medicaid ¹	\$3,474,020,452	\$2,033,159,686	\$516,830,741
Supplemental Nutrition Assistance Program ⁹	\$370,739,419	\$212,119,604	\$52,325,905
Temporary Assistance for Needy Families ⁹	\$25,350,384	\$13,904,271	\$3,859,829
General Assistance ⁹	\$4,445,609	\$2,585,630	\$669,686
Education Work ⁹	\$244,747	\$163,026	\$81,757
LIHEAP ⁸	\$15,668,470	\$13,502,360	\$2,212,240

Average Caseload YTD			
	SFY 2020	FFY 2020	CY 2020
Medicaid ²	495,634	497,495	499,534
Supplemental Nutrition Assistance Program ⁶	223,282	223,282	223,228
Temporary Assistance for Needy Families ⁶	10,467	10,441	10,328
General Assistance ⁶	2,451	2,478	2,505
Education Work ⁶	86	102	82
LIHEAP ⁸	7,391	11,004	7,490

Demographic Profile- January 2020					
	SNAP	TANF	GA	Education Works	RCA
Gender of Recipients¹⁰					
Male	202,110	11,317	1,395	85	21
Female	243,893	15,168	1,150	156	8
Ethnicity¹⁰					
Hispanic	245,401	17,745	1,360	143	17
Non-Hispanic	200,602	8,740	1,185	98	12
Race¹⁰					
Native American or Alaskan Native	76,953	2,254	238	12	0
Asian	3,838	188	20	2	0
African American or Black	11,859	1,198	96	21	7
Native Hawaiian or Pacific Islander	838	39	2	5	0
White	341,960	21,984	2,135	198	19
Unknown / Not Declared	3,325	170	22	2	0
More than One Race	7,230	652	32	1	3

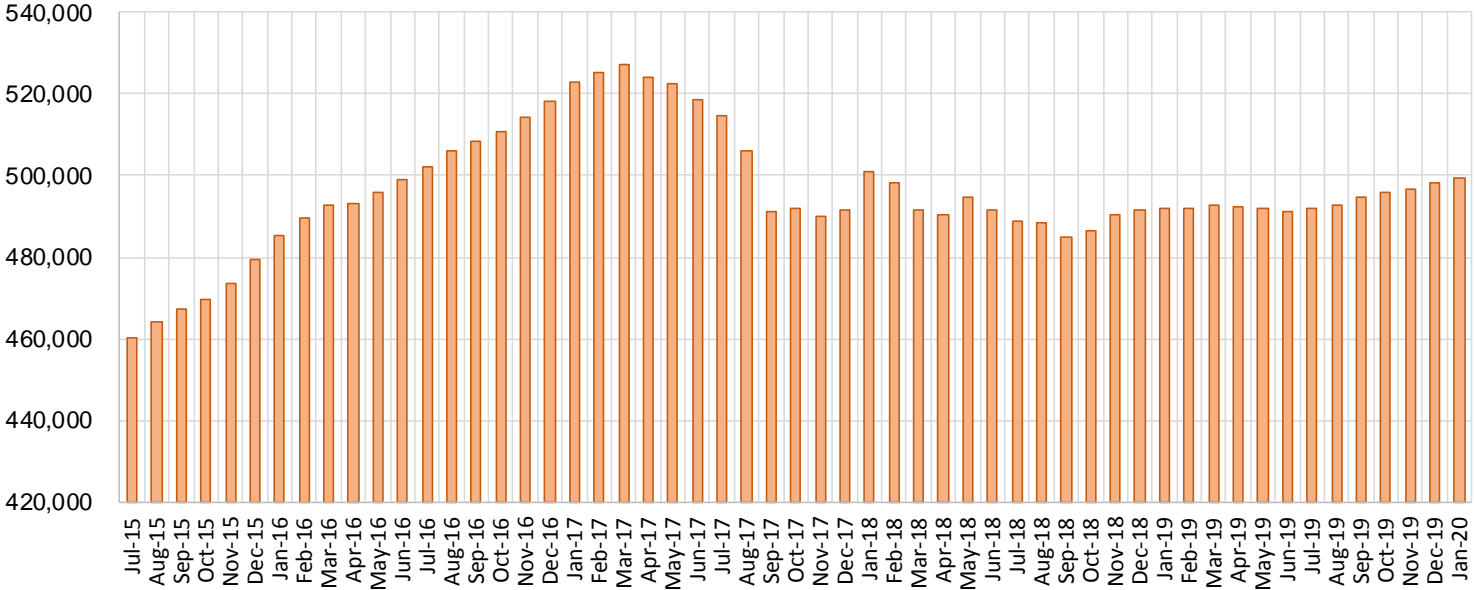
Medicaid Cases by Field Office²

Office				Percent Change	
	Jan-19	Dec-19	Jan-20	Jan-19- Jan-20	Dec-19- Jan-20
Chaves County ISD	15,885	16,156	16,207	2.0%	0.3%
Cibola County ISD	7,668	7,481	7,515	-2.0%	0.5%
Colfax County ISD	3,612	3,604	3,594	-0.5%	-0.3%
Curry County ISD	14,353	15,014	15,068	5.0%	0.4%
East Dona Ana County ISD	17,803	18,075	18,178	2.1%	0.6%
Eddy Artesia County ISD	3,860	3,905	3,921	1.6%	0.4%
Eddy Carlsbad County ISD	7,566	7,626	7,633	0.9%	0.1%
Grant County ISD	7,728	7,883	7,903	2.3%	0.3%
Guadalupe County ISD	1,638	1,599	1,601	-2.3%	0.1%
Hidalgo County ISD	47	51	51	8.5%	0.0%
Lea County ISD	14,377	14,849	14,964	4.1%	0.8%
Lincoln County ISD	4,309	4,355	4,375	1.5%	0.5%
Luna County ISD	8,630	8,857	8,875	2.8%	0.2%
McKinley County ISD	21,881	22,452	22,502	2.8%	0.2%
Northeast Bernalillo County ISD	43,127	43,493	43,612	1.1%	0.3%
Northwest Bernalillo County ISD	51,927	53,526	53,736	3.5%	0.4%
Otero County ISD	11,983	12,222	12,290	2.6%	0.6%
Quay County ISD	2,508	2,523	2,531	0.9%	0.3%
Rio Arriba County ISD	13,530	13,450	13,487	-0.3%	0.3%
Roosevelt County ISD	10	9	10	0.0%	11.1%
San Juan County ISD	30,143	30,599	30,741	2.0%	0.5%
San Miguel County ISD	9,161	9,161	9,163	0.0%	0.02%
Sandoval County ISD	23,403	23,500	23,561	0.7%	0.3%
Santa Fe County ISD	24,851	24,219	24,147	-2.8%	-0.3%
Sierra County ISD	5,342	5,283	5,286	-1.0%	0.1%
Socorro County ISD	5,334	5,271	5,297	-0.7%	0.5%
South Dona Ana ISD	19,716	19,883	19,947	1.2%	0.3%
Southeast Bernalillo County ISD	25,124	24,875	24,870	-1.0%	-0.02%
Southwest Bernalillo County ISD	38,901	39,835	39,941	2.7%	0.3%
Taos County ISD	9,248	9,300	9,314	0.7%	0.2%
Torrance County ISD	7,871	8,061	8,092	2.8%	0.4%
Valencia North County ISD	18,271	18,562	18,628	2.0%	0.4%
Valencia South County ISD	99	102	91	-8.1%	-10.8%
West Dona Ana County ISD	22,023	22,327	22,402	1.7%	0.3%
Centralized Units	4	1	1	-75.0%	0.0%
Statewide Total	491,933	498,109	499,534	1.5%	0.3%

Medicaid Cases by Region²

				Percent Change	
Region	Jan-19	Dec-19	Jan-20	Jan-19- Jan-20	Dec-19- Jan-20
Region 1 - NW	88,738	89,750	90,060	1.5%	0.3%
Region 2 - NE	87,951	87,356	87,398	-0.6%	0.05%
Region 3 - Central	166,950	169,790	170,251	2.0%	0.3%
Region 4 - SE	60,360	61,914	62,178	3.0%	0.4%
Region 5 - SW	87,930	89,298	89,646	2.0%	0.4%
Centralized Units	4	1	1	-75.0%	0.0%
Statewide Total	491,933	498,109	499,534	1.5%	0.3%

Medicaid Caseload: SFY-16 to Current

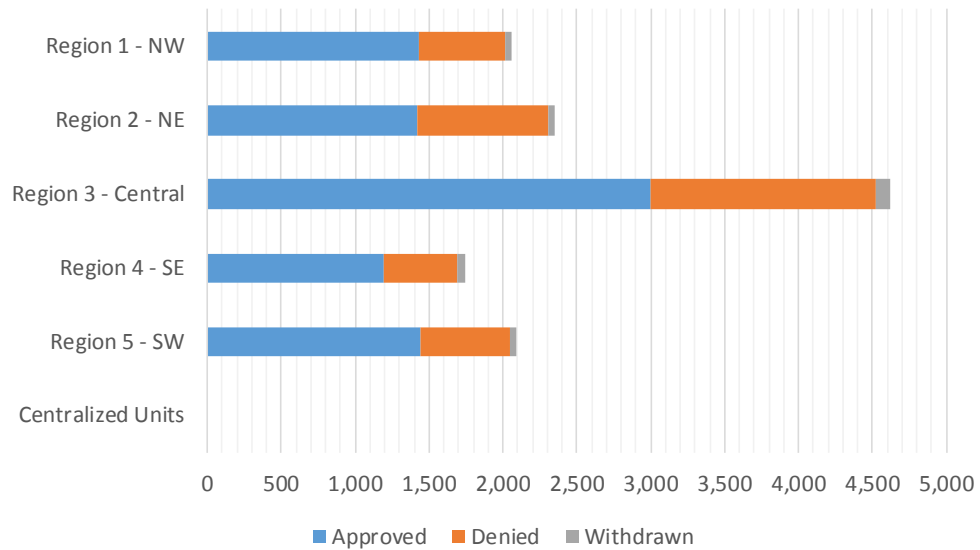


Medicaid Initial Applications by Field Office^{4,11}
January 2020

Office	Approved	Denied	Withdrawn	Total Cases Processed
Chaves County ISD	261	115	23	399
Cibola County ISD	118	38	2	158
Colfax County ISD	50	40	2	92
Curry County ISD	307	113	10	430
East Dona Ana County ISD	357	170	13	540
Eddy Artesia County ISD	69	26	3	98
Eddy Carlsbad County ISD	144	62	6	212
Grant County ISD	116	54	2	172
Guadalupe County ISD	18	9	1	28
Hidalgo County ISD	0	0	0	0
Lea County ISD	335	122	10	467
Lincoln County ISD	79	60	0	139
Luna County ISD	155	59	1	215
McKinley County ISD	368	137	10	515
Northeast Bernalillo County ISD	800	474	27	1,301
Northwest Bernalillo County ISD	673	419	23	1,115
Otero County ISD	203	91	2	296
Quay County ISD	45	2	3	50
Rio Arriba County ISD	207	103	6	316
Roosevelt County ISD	0	0	0	0
San Juan County ISD	562	229	26	817
San Miguel County ISD	197	58	2	257
Sandoval County ISD	382	230	19	631
Santa Fe County ISD	375	337	12	724
Sierra County ISD	55	31	1	87
Socorro County ISD	69	45	2	116
South Dona Ana ISD	269	118	8	395
Southeast Bernalillo County ISD	741	345	11	1,097
Southwest Bernalillo County ISD	635	227	31	893
Taos County ISD	145	107	1	253
Torrance County ISD	144	61	9	214
Valencia North County ISD	258	98	9	365
Valencia South County ISD	5	0	0	5
West Dona Ana County ISD	342	117	16	475
Centralized Units	0	0	0	0
Statewide Total	8,484	4,097	291	12,872

Medicaid Initial Applications by Region^{4,11}
January 2020

	Approved	Denied	Withdrawn	Total Cases Processed
Region				
Region 1 - NW	1,435	578	50	2,063
Region 2 - NE	1,419	886	46	2,351
Region 3 - Central	2,993	1,526	101	4,620
Region 4 - SE	1,195	498	52	1,745
Region 5 - SW	1,442	609	42	2,093
Centralized Units	0	0	0	0
Statewide Total	8,484	4,097	291	12,872

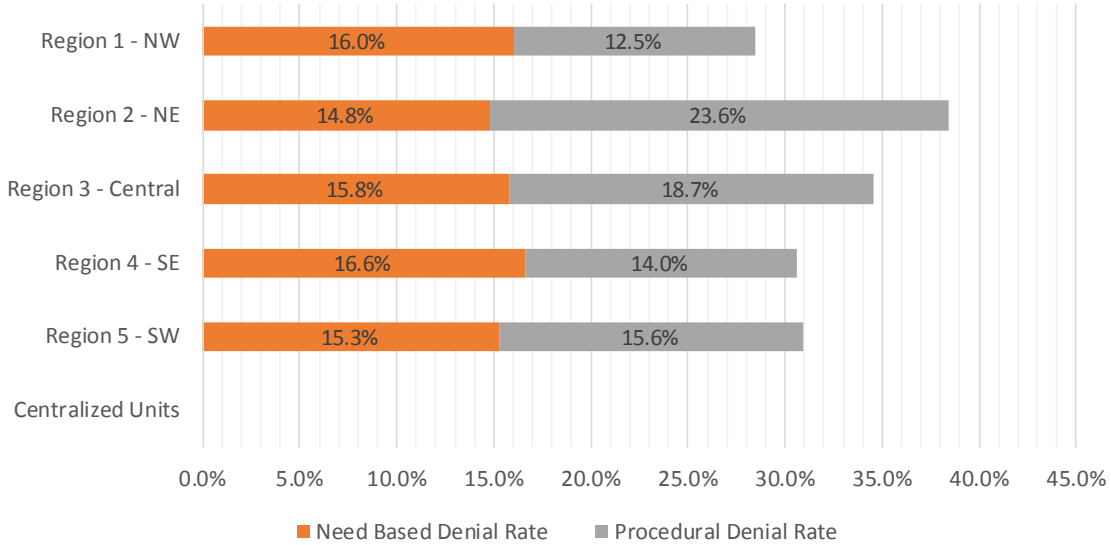


Medicaid EDG Initial Disposition Rates by Field Office^{4,11,19}
January 2020

Office	Approval Rate	Denial Rate	Need Based Denial Rate	Procedural Denial Rate
Chaves County ISD	66.9%	33.1%	16.9%	16.2%
Cibola County ISD	77.1%	22.9%	13.7%	9.2%
Colfax County ISD	56.8%	43.2%	25.0%	18.2%
Curry County ISD	72.2%	27.8%	14.6%	13.2%
East Dona Ana County ISD	65.1%	34.9%	16.5%	18.4%
Eddy Artesia County ISD	71.9%	28.1%	19.8%	8.3%
Eddy Carlsbad County ISD	67.6%	32.4%	13.6%	18.8%
Grant County ISD	69.9%	30.1%	12.0%	18.1%
Guadalupe County ISD	64.3%	35.7%	14.3%	21.4%
Hidalgo County ISD	0.0%	0.0%	0.0%	0.0%
Lea County ISD	72.5%	27.5%	16.7%	10.8%
Lincoln County ISD	58.1%	41.9%	24.3%	17.6%
Luna County ISD	71.4%	28.6%	18.5%	10.1%
McKinley County ISD	73.0%	27.0%	17.7%	9.3%
Northeast Bernalillo County ISD	61.5%	38.5%	16.1%	22.4%
Northwest Bernalillo County ISD	61.7%	38.3%	16.0%	22.3%
Otero County ISD	69.3%	30.7%	10.6%	20.1%
Quay County ISD	90.0%	10.0%	8.0%	2.0%
Rio Arriba County ISD	67.0%	33.0%	15.5%	17.5%
Roosevelt County ISD	0.0%	0.0%	0.0%	0.0%
San Juan County ISD	71.8%	28.2%	14.4%	13.8%
San Miguel County ISD	80.4%	19.6%	9.0%	10.6%
Sandoval County ISD	62.5%	37.5%	17.4%	20.1%
Santa Fe County ISD	51.7%	48.3%	14.3%	34.0%
Sierra County ISD	61.1%	38.9%	25.6%	13.3%
Socorro County ISD	59.0%	41.0%	17.9%	23.1%
South Dona Ana ISD	68.6%	31.4%	19.2%	12.2%
Southeast Bernalillo County ISD	68.2%	31.8%	15.2%	16.6%
Southwest Bernalillo County ISD	72.7%	27.3%	15.1%	12.2%
Taos County ISD	58.5%	41.5%	12.9%	28.6%
Torrance County ISD	66.1%	33.9%	17.8%	16.1%
Valencia North County ISD	73.1%	26.9%	15.0%	11.9%
Valencia South County ISD	83.3%	16.7%	16.7%	0.0%
West Dona Ana County ISD	73.1%	26.9%	13.0%	13.9%
Centralized Units	0.0%	0.0%	0.0%	0.0%
Statewide Total	66.9%	33.1%	15.6%	17.5%

Medicaid EDG Initial Disposition Rates by Region ^{4,11,19}
January 2020

Region	Approval Rate	Denial Rate	Need Based Denial Rate	Procedural Denial Rate
Region 1 - NW	71.5%	28.5%	16.0%	12.5%
Region 2 - NE	61.6%	38.4%	14.8%	23.6%
Region 3 - Central	65.5%	34.5%	15.8%	18.7%
Region 4 - SE	69.4%	30.6%	16.6%	14.0%
Region 5 - SW	69.2%	30.9%	15.3%	15.6%
Centralized Units				
Statewide Total	66.9%	33.1%	15.6%	17.5%



Medicaid: Percentage of Initial EDG Approvals Processed Timely by Field Office ^{13,19}

	Oct-19	Nov-19	Dec-19	Jan-20	Feb-20	Mar-20	Apr-20	May-20	Jun-20	Jul-20	Aug-20	Sep-20	Average
Cibola	99.5 %	97.3 %	99.4 %	99.4 %									98.9%
McKinley	99.3 %	99.0 %	99.8 %	99.8 %									99.5%
San Juan	98.9 %	98.7 %	99.7 %	99.4 %									99.2%
Sierra	96.4 %	99.0 %	99.1 %	100.0 %									98.6%
Socorro	100.0 %	96.9 %	98.9 %	98.2 %									98.5%
Valencia North	99.7 %	99.1 %	99.4 %	99.2 %									99.4%
Valencia South	100.0 %	100.0 %	100.0 %	100.0 %									100.0%
NW Region 1 Total	99.2 %	98.6 %	99.6 %	99.4 %									99.2%
Colfax	100.0 %	100.0 %	100.0 %	98.9 %									99.7%
Guadalupe	100.0 %	100.0 %	100.0 %	100.0 %									100.0%
Quay	98.4 %	100.0 %	100.0 %	100.0 %									99.6%
Rio Arriba	99.6 %	100.0 %	99.3 %	93.0 %									98.0%
San Miguel	100.0 %	100.0 %	100.0 %	99.6 %									99.9%
Sandoval	99.4 %	100.0 %	99.5 %	98.5 %									99.3%
Santa Fe	99.0 %	97.9 %	99.0 %	98.2 %									98.5%
Taos	98.7 %	100.0 %	99.7 %	99.5 %									99.5%
NE Region 2 Total	99.3 %	99.4 %	99.5 %	97.9 %									99.0%
NE Bernalillo	98.4 %	99.5 %	99.0 %	98.8 %									98.9%
NW Bernalillo	98.9 %	98.9 %	99.0 %	97.4 %									98.6%
SE Bernalillo	97.4 %	95.8 %	98.3 %	98.1 %									97.4%
SW Bernalillo	98.2 %	97.9 %	99.2 %	98.8 %									98.5%
Torrance	100.0 %	100.0 %	98.3 %	100.0 %									99.6%
Cen. Region 3 Total	98.3 %	98.3 %	98.9 %	98.4 %									98.5%
Chaves	100.0 %	99.1 %	99.4 %	98.8 %									99.3%
Curry	98.8 %	98.9 %	99.2 %	99.1 %									99.0%
Eddy Artesia	98.3 %	97.6 %	100.0 %	99.1 %									98.7%
Eddy Carlsbad	99.1 %	99.5 %	99.1 %	97.8 %									98.9%
Lea	99.3 %	100.0 %	99.0 %	98.7 %									99.2%
Lincoln	99.3 %	98.7 %	97.4 %	100.0 %									98.9%
Roosevelt	100.0 %	100.0 %	100.0 %										100.0%
SE Region 4 Total	99.2 %	99.3 %	99.1 %	98.8 %									99.1%
East Dona Ana	98.0 %	99.3 %	99.6 %	99.1 %									99.0%
Grant	100.0 %	99.3 %	99.4 %	98.9 %									99.4%
Luna	99.5 %	99.5 %	100.0 %	100.0 %									99.7%
Otero	99.6 %	99.6 %	98.1 %	100.0 %									99.3%
South Dona Ana	99.7 %	99.7 %	99.7 %	99.8 %									99.7%
West Dona Ana	99.5 %	97.5 %	100.0 %	99.4 %									99.1%
SW Region 5 Total	99.2 %	99.0 %	99.5 %	99.5 %									99.3%
STATE TOTAL	98.9 %	98.8 %	99.3 %	98.8 %									98.9%

Medicaid: Percentage of Initial EDG Denials Processed Timely by Field Office^{13,19}

	Oct-19	Nov-19	Dec-19	Jan-20	Feb-20	Mar-20	Apr-20	May-20	Jun-20	Jul-20	Aug-20	Sep-20	Average
Cibola	97.8 %	98.7 %	97.7 %	93.3 %									96.9%
McKinley	92.7 %	95.5 %	93.8 %	96.3 %									94.6%
San Juan	95.4 %	98.4 %	97.8 %	94.0 %									96.4%
Sierra	100.0 %	94.1 %	97.4 %	100.0 %									97.9%
Socorro	95.9 %	94.2 %	100.0 %	95.3 %									96.4%
Valencia North	98.5 %	97.4 %	96.4 %	98.9 %									97.8%
Valencia South	100.0 %	100.0 %											100.0%
NW Region 1 Total	95.8 %	97.1 %	96.7 %	95.7 %									96.3%
Colfax	94.7 %	97.3 %	95.5 %	98.4 %									96.5%
Guadalupe	100.0 %	100.0 %		100.0 %									97.9%
Quay	92.9 %	94.4 %	100.0 %	100.0 %									96.8%
Rio Arriba	94.8 %	97.5 %	98.4 %	94.8 %									96.4%
San Miguel	100.0 %	100.0 %	99.3 %	96.4 %									98.9%
Sandoval	98.0 %	98.7 %	96.7 %	92.9 %									96.6%
Santa Fe	98.3 %	94.7 %	95.3 %	94.8 %									95.8%
Taos	100.0 %	100.0 %	96.2 %	97.2 %									98.3%
NE Region 2 Total	97.7 %	97.6 %	96.8 %	94.9 %									96.7%
NE Bernalillo	97.5 %	97.1 %	97.2 %	94.3 %									96.5%
NW Bernalillo	96.8 %	97.4 %	97.7 %	95.0 %									96.7%
SE Bernalillo	93.9 %	96.6 %	95.0 %	96.1 %									95.4%
SW Bernalillo	95.5 %	97.5 %	97.5 %	94.8 %									96.3%
Torrance	97.3 %	96.7 %	97.2 %	100.0 %									97.8%
Gen. Region 3 Total	96.1 %	97.2 %	96.9 %	95.2 %									96.3%
Chaves	97.9 %	100.0 %	97.8 %	98.4 %									98.6%
Curry	97.3 %	97.8 %	97.4 %	97.6 %									97.5%
Eddy Artesia	82.7 %	100.0 %	91.5 %	100.0 %									93.5%
Eddy Carlsbad	79.6 %	100.0 %	93.6 %	96.9 %									92.5%
Lea	95.4 %	97.1 %	97.9 %	96.2 %									96.7%
Lincoln	98.2 %	98.2 %	100.0 %	97.4 %									98.5%
Roosevelt	95.6 %												95.6%
SE Region 4 Total	93.1 %	98.5 %	97.1 %	97.5 %									96.6%
East Dona Ana	95.6 %	98.5 %	96.8 %	97.8 %									97.2%
Grant	98.4 %	91.6 %	98.9 %	96.8 %									96.4%
Luna	94.9 %	96.3 %	99.2 %	100.0 %									97.6%
Otero	100.0 %	94.8 %	100.0 %	98.8 %									98.4%
South Dona Ana	97.3 %	99.4 %	98.9 %	98.0 %									98.4%
West Dona Ana	99.3 %	96.6 %	98.2 %	94.4 %									97.1%
SW Region 5 Total	97.6 %	96.8 %	98.4 %	97.5 %									97.6%
STATE TOTAL	96.2 %	97.4 %	97.1 %	95.9 %									96.7%

Medicaid: Percentage of Initial EDG Approvals and Denials Combined Processed Timely by Field Office^{13,19}

	Oct-19	Nov-19	Dec-19	Jan-20	Feb-20	Mar-20	Apr-20	May-20	Jun-20	Jul-20	Aug-20	Sep-20	Average
Cibola	99.1 %	97.7 %	98.8 %	97.9 %									98.4%
McKinley	98.0 %	98.0 %	98.0 %	98.9 %									98.2%
San Juan	97.8 %	98.6 %	99.2 %	97.7 %									98.3%
Sierra	97.5 %	97.8 %	98.7 %	100.0 %									98.5%
Socorro	98.4 %	95.9 %	99.3 %	97.0 %									97.7%
Valencia North	99.4 %	98.7 %	98.5 %	99.1 %									98.9%
Valencia South	100.0 %	100.0 %	100.0 %	100.0 %									100.0%
NW Region 1 Total	98.3 %	98.2 %	98.7 %	98.3 %									98.4%
Colfax	98.5 %	98.8 %	98.1 %	98.7 %									98.5%
Guadalupe	100.0 %	100.0 %	97.1 %	100.0 %									99.3%
Quay	96.7 %	98.0 %	100.0 %	100.0 %									98.7%
Rio Arriba	98.1 %	99.1 %	99.0 %	93.7 %									97.5%
San Miguel	100.0 %	100.0 %	99.8 %	98.8 %									99.7%
Sandoval	99.0 %	99.5 %	98.5 %	96.2 %									98.3%
Santa Fe	98.7 %	96.8 %	97.5 %	96.5 %									97.4%
Taos	99.0 %	100.0 %	98.6 %	98.5 %									99.0%
NE Region 2 Total	98.8 %	98.8 %	98.6 %	96.7 %									98.2%
NE Bernalillo	98.1 %	98.7 %	98.4 %	97.0 %									98.1%
NW Bernalillo	98.3 %	98.4 %	98.6 %	96.4 %									97.9%
SE Bernalillo	96.5 %	96.1 %	97.2 %	97.4 %									96.8%
SW Bernalillo	97.5 %	97.8 %	98.6 %	97.5 %									97.9%
Torrance	97.5 %	98.9 %	98.0 %	100.0 %									98.6%
Gen. Region 3 Total	97.7 %	97.9 %	98.2 %	97.2 %									97.8%
Chaves	99.5 %	99.4 %	98.9 %	98.7 %									99.1%
Curry	98.5 %	98.5 %	98.7 %	98.7 %									98.6%
Eddy Artesia	93.5 %	98.3 %	97.5 %	99.4 %									97.2%
Eddy Carlsbad	93.0 %	99.7 %	97.3 %	97.5 %									96.9%
Lea	98.1 %	99.2 %	98.7 %	98.0 %									98.5%
Lincoln	99.0 %	98.5 %	98.5 %	98.7 %									98.7%
Roosevelt	100.0 %	100.0 %	100.0 %										100.0%
SE Region 4 Total	97.6 %	99.1 %	98.4 %	98.4 %									98.4%
East Dona Ana	97.3 %	99.1 %	98.6 %	98.6 %									98.4%
Grant	99.5 %	96.3 %	99.2 %	98.0 %									98.2%
Luna	98.4 %	98.6 %	99.7 %	100.0 %									99.2%
Otero	99.7 %	97.9 %	98.7 %	99.6 %									99.0%
South Dona Ana	99.1 %	99.6 %	99.5 %	99.1 %									99.3%
West Dona Ana	99.4 %	97.2 %	99.4 %	97.8 %									98.5%
SW Region 5 Total	98.8 %	98.3 %	99.1 %	98.8 %									98.7%
STATE TOTAL	98.2 %	98.4 %	98.6 %	97.7 %									98.2%

Medicaid Renewal Disposition Counts by Field Office^{4,11}
January 2020

Office	Approvals	Closures	Need Based Closures	Procedural Closures
Chaves County ISD	2,938	429	260	169
Cibola County ISD	1,413	292	115	177
Colfax County ISD	515	97	57	40
Curry County ISD	2,959	415	233	182
East Dona Ana County ISD	3,510	593	295	298
Eddy Artesia County ISD	661	145	68	77
Eddy Carlsbad County ISD	1,115	268	132	136
Grant County ISD	1,148	180	95	85
Guadalupe County ISD	219	48	19	29
Hidalgo County ISD	3	0	0	0
Lea County ISD	2,737	532	274	258
Lincoln County ISD	754	148	74	74
Luna County ISD	1,569	309	167	142
McKinley County ISD	4,200	794	309	485
Northeast Bernalillo County ISD	5,891	1323	565	758
Northwest Bernalillo County ISD	5,297	1174	476	698
Otero County ISD	1,961	387	189	198
Quay County ISD	362	55	38	17
Rio Arriba County ISD	2,076	327	128	199
Roosevelt County ISD	0	0	0	0
San Juan County ISD	5,963	1150	579	571
San Miguel County ISD	1,246	244	120	124
Sandoval County ISD	3,987	797	336	461
Santa Fe County ISD	3,092	693	225	468
Sierra County ISD	891	198	97	101
Socorro County ISD	886	130	58	72
South Dona Ana ISD	4,064	521	352	169
Southeast Bernalillo County ISD	3,097	644	279	365
Southwest Bernalillo County ISD	7,186	1610	753	857
Taos County ISD	1,297	275	110	165
Torrance County ISD	1,326	246	108	138
Valencia North County ISD	3,260	595	247	348
Valencia South County ISD	8	1	0	1
West Dona Ana County ISD	4,096	583	306	277
Centralized Units	0	0	0	0
Statewide Total	79,727	15,203	7,064	8,139

Determinations at Administrative, Annual, and Auto Renewals are included

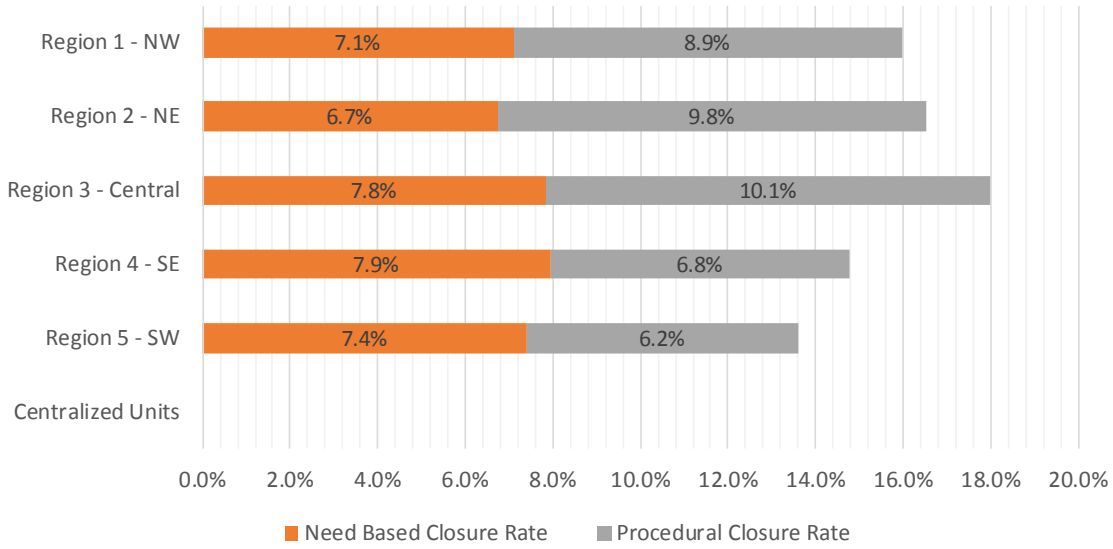
Medicaid Renewal Disposition Rates by Field Office²⁰
January 2020

Office	Approval Rate	Closure Rate	Need Based Closure Rate	Procedural Closure Rate
Chaves County ISD	87.3%	12.7%	7.7%	5.0%
Cibola County ISD	82.9%	17.1%	6.7%	10.4%
Colfax County ISD	84.2%	15.8%	9.3%	6.5%
Curry County ISD	87.7%	12.3%	6.9%	5.4%
East Dona Ana County ISD	85.5%	14.5%	7.2%	7.3%
Eddy Artesia County ISD	82.0%	18.0%	8.4%	9.6%
Eddy Carlsbad County ISD	80.6%	19.4%	9.5%	9.8%
Grant County ISD	86.4%	13.6%	7.2%	6.4%
Guadalupe County ISD	82.0%	18.0%	7.1%	10.9%
Hidalgo County ISD	100.0%	0.0%	0.0%	0.0%
Lea County ISD	83.7%	16.3%	8.4%	7.9%
Lincoln County ISD	83.6%	16.4%	8.2%	8.2%
Luna County ISD	83.5%	16.5%	8.9%	7.6%
McKinley County ISD	84.1%	15.9%	6.2%	9.7%
Northeast Bernalillo County ISD	81.7%	18.3%	7.8%	10.5%
Northwest Bernalillo County ISD	81.9%	18.1%	7.4%	10.8%
Otero County ISD	83.5%	16.5%	8.0%	8.4%
Quay County ISD	86.8%	13.2%	9.1%	4.1%
Rio Arriba County ISD	86.4%	13.6%	5.3%	8.3%
Roosevelt County ISD	0.0%	0.0%	0.0%	0.0%
San Juan County ISD	83.8%	16.2%	8.1%	8.0%
San Miguel County ISD	83.6%	16.4%	8.1%	8.3%
Sandoval County ISD	83.3%	16.7%	7.0%	9.6%
Santa Fe County ISD	81.7%	18.3%	5.9%	12.4%
Sierra County ISD	81.8%	18.2%	8.9%	9.3%
Socorro County ISD	87.2%	12.8%	5.7%	7.1%
South Dona Ana ISD	88.6%	11.4%	7.7%	3.7%
Southeast Bernalillo County ISD	82.8%	17.2%	7.5%	9.8%
Southwest Bernalillo County ISD	81.7%	18.3%	8.6%	9.7%
Taos County ISD	82.5%	17.5%	7.0%	10.5%
Torrance County ISD	84.4%	15.6%	6.9%	8.8%
Valencia North County ISD	84.6%	15.4%	6.4%	9.0%
Valencia South County ISD	88.9%	11.1%	0.0%	11.1%
West Dona Ana County ISD	87.5%	12.5%	6.5%	5.9%
Centralized Units	0.0%	0.0%	0.0%	0.0%
Statewide Total	84.0%	16.0%	7.4%	8.6%

Medicaid Renewal Disposition Rates by Region²⁰
January 2020

Region	Approval Rate	Closure Rate	Need Based Closure Rate	Procedural Closure Rate
Region 1 - NW	84.0%	16.0%	7.1%	8.9%
Region 2 - NE	83.5%	16.5%	6.7%	9.8%
Region 3 - Central	82.0%	18.0%	7.8%	10.1%
Region 4 - SE	85.2%	14.8%	7.9%	6.8%
Region 5 - SW	86.4%	13.6%	7.4%	6.2%
Centralized Units				

Statewide Total	84.0%	16.0%	7.4%	8.6%
-----------------	-------	-------	------	------



Medicaid: Percentage of Approved Renewal EDGs Processed by Certification Date ¹¹

	Oct-19	Nov-19	Dec-19	Jan-20	Feb-20	Mar-20	Apr-20	May-20	Jun-20	Jul-20	Aug-20	Sep-20	Average
Cibola	99.5%	99.4%	98.2%	98.3%									98.9%
McKinley	98.4%	98.8%	98.4%	99.1%									98.7%
San Juan	98.8%	98.6%	98.5%	99.1%									98.8%
Sierra	99.2%	96.9%	98.3%	98.7%									98.3%
Socorro	98.6%	98.3%	97.7%	98.8%									98.4%
Valencia North	99.1%	98.4%	98.1%	98.9%									98.6%
Valencia South			100.0%	100.0%									100.0%
NW Region 1 Total	98.9%	98.4%	98.5%	99.0%									98.7%
Colfax	98.5%	98.1%	98.8%	98.8%									98.6%
Guadalupe	99.6%	98.2%	99.6%	99.1%									99.1%
Quay	98.7%	99.0%	97.2%	98.6%									98.4%
Rio Arriba	98.2%	97.2%	98.4%	98.9%									98.2%
San Miguel	98.3%	99.1%	99.4%	99.4%									99.1%
Sandoval	99.0%	98.7%	98.9%	98.5%									98.8%
Santa Fe	97.4%	97.5%	96.8%	97.1%									97.2%
Taos	97.3%	98.8%	98.5%	98.3%									98.2%
NE Region 2 Total	98.4%	98.3%	98.5%	98.6%									98.4%
NE Bernalillo	98.2%	98.5%	97.9%	98.3%									98.2%
NW Bernalillo	97.5%	97.8%	98.2%	98.4%									98.0%
SE Bernalillo	98.1%	98.4%	97.9%	98.7%									98.3%
SW Bernalillo	97.5%	97.2%	97.3%	97.2%									97.3%
Torrance	98.0%	98.3%	98.9%	99.3%									98.6%
Gen. Region 3 Total	97.8%	98.1%	98.0%	98.4%									98.1%
Chaves	99.7%	99.6%	98.8%	98.9%									99.3%
Curry	98.8%	99.3%	99.0%	99.4%									99.1%
Eddy Artesia	98.0%	97.3%	98.8%	99.5%									98.4%
Eddy Carlsbad	98.5%	98.7%	99.1%	99.4%									98.9%
Lea	98.3%	98.7%	99.0%	99.1%									98.8%
Lincoln	96.5%	98.1%	97.3%	97.8%									97.4%
Roosevelt													
SE Region 4 Total	98.3%	98.6%	98.7%	99.0%									98.7%
East Dona Ana	99.4%	99.1%	99.1%	98.9%									99.1%
Grant	98.4%	99.0%	98.9%	99.7%									99.0%
Luna	98.9%	99.4%	99.0%	99.1%									99.1%
Otero	98.5%	98.8%	98.8%	98.9%									98.8%
South Dona Ana	98.4%	99.2%	99.5%	99.5%									99.2%
West Dona Ana	99.3%	98.7%	99.0%	98.9%									99.0%
SW Region 5 Total	98.8%	99.0%	99.1%	99.2%									99.0%
STATE TOTAL	98.5%	98.5%	98.5%	98.8%									98.6%

Administrative, Annual, and Auto Renewals are included

Medicaid: Percentage of Closures EDGs Processed by Certification End Date¹¹

	Oct-19	Nov-19	Dec-19	Jan-20	Feb-20	Mar-20	Apr-20	May-20	Jun-20	Jul-20	Aug-20	Sep-20	Average
Cibola	97.3%	95.3%	94.8%	95.4%									95.7%
McKinley	94.2%	96.5%	93.2%	97.2%									95.3%
San Juan	96.9%	95.7%	95.4%	96.2%									96.1%
Sierra	94.4%	97.0%	98.2%	97.1%									96.7%
Socorro	96.1%	95.0%	88.1%	93.5%									93.2%
Valencia North	97.1%	96.3%	92.7%	96.6%									95.7%
Valencia South			100.0%	100.0%									100.0%
NW Region 1 Total	96.0%	96.0%	94.6%	96.6%									95.8%
Colfax	94.7%	93.8%	95.2%	98.0%									95.4%
Guadalupe	93.8%	96.0%	96.4%	100.0%									96.6%
Quay	96.4%	98.7%	98.4%	100.0%									98.4%
Rio Arriba	95.3%	96.8%	95.9%	93.2%									95.3%
San Miguel	95.3%	92.9%	91.4%	96.8%									94.1%
Sandoval	96.7%	96.8%	96.7%	96.1%									96.6%
Santa Fe	94.6%	94.4%	93.6%	94.4%									94.3%
Taos	95.9%	97.5%	94.7%	98.6%									96.7%
NE Region 2 Total	95.3%	95.9%	95.3%	97.1%									95.9%
NE Bernalillo	96.0%	96.5%	95.4%	93.8%									95.4%
NW Bernalillo	94.7%	95.4%	95.6%	95.4%									95.3%
SE Bernalillo	96.1%	97.1%	96.4%	92.9%									95.6%
SW Bernalillo	95.8%	95.5%	93.0%	94.9%									94.8%
Torrance	96.4%	98.0%	97.4%	94.3%									96.5%
Gen. Region 3 Total	95.8%	96.5%	95.6%	94.3%									95.5%
Chaves	97.7%	97.1%	93.0%	98.2%									96.5%
Curry	97.8%	98.1%	96.1%	95.8%									97.0%
Eddy Artesia	94.9%	95.8%	97.1%	100.0%									97.0%
Eddy Carlsbad	96.4%	96.7%	98.0%	97.5%									97.2%
Lea	97.7%	95.9%	94.2%	96.6%									96.1%
Lincoln	91.2%	95.5%	94.0%	100.0%									95.2%
Roosevelt			100.0%										100.0%
SE Region 4 Total	96.0%	96.5%	96.1%	98.0%									96.6%
East Dona Ana	96.9%	97.0%	95.4%	96.0%									96.3%
Grant	93.9%	97.1%	94.8%	96.8%									95.7%
Luna	95.9%	98.5%	95.2%	98.1%									96.9%
Otero	99.0%	97.4%	97.1%	97.7%									97.8%
South Dona Ana	99.3%	98.5%	98.2%	98.7%									98.7%
West Dona Ana	98.0%	97.8%	97.7%	96.8%									97.6%
SW Region 5 Total	97.2%	97.7%	96.4%	97.4%									97.2%
STATE TOTAL	96.0%	96.5%	95.6%	96.8%									96.3%

Annual and Auto Renewals are included

Medicaid: Percentage of Approved and Terminated Renewal EDGs Combined Processed by Certification Date ¹¹

	Oct-19	Nov-19	Dec-19	Jan-20	Feb-20	Mar-20	Apr-20	May-20	Jun-20	Jul-20	Aug-20	Sep-20	Average
Cibola	98.9%	98.7%	97.7%	97.8%									98.3%
McKinley	98.8%	98.4%	97.6%	98.8%									98.4%
San Juan	98.4%	98.1%	98.0%	98.6%									98.3%
Sierra	98.8%	96.9%	98.3%	98.4%									98.1%
Socorro	99.0%	97.8%	96.2%	98.1%									97.8%
Valencia North	98.5%	98.1%	97.3%	98.5%									98.1%
Valencia South	100.0%		100.0%	100.0%									100.0%
NW Region 1 Total	98.9%	98.0%	97.9%	98.6%									98.3%
Colfax	99.8%	97.4%	98.1%	98.7%									98.5%
Guadalupe	99.2%	97.8%	99.1%	99.3%									98.9%
Quay	98.2%	98.9%	97.4%	98.8%									98.3%
Rio Arriba	98.1%	97.1%	97.9%	98.0%									97.8%
San Miguel	98.6%	98.1%	98.3%	98.9%									98.5%
Sandoval	98.5%	98.3%	98.5%	98.1%									98.4%
Santa Fe	98.3%	96.8%	96.2%	96.6%									97.0%
Taos	98.3%	98.5%	97.8%	98.4%									98.3%
NE Region 2 Total	98.6%	97.9%	97.9%	98.4%									98.2%
NE Bernalillo	98.5%	98.1%	97.4%	97.4%									97.9%
NW Bernalillo	98.0%	97.4%	97.6%	97.8%									97.7%
SE Bernalillo	98.7%	98.1%	97.6%	97.7%									98.0%
SW Bernalillo	98.0%	96.9%	96.5%	96.7%									97.0%
Torrance	98.1%	98.3%	98.6%	98.5%									98.4%
Gen. Region 3 Total	98.3%	97.8%	97.5%	97.6%									97.8%
Chaves	98.3%	99.1%	97.8%	98.8%									98.5%
Curry	99.0%	99.1%	98.5%	98.9%									98.9%
Eddy Artesia	97.1%	97.1%	98.6%	99.6%									98.1%
Eddy Carlsbad	98.6%	98.2%	98.9%	99.0%									98.7%
Lea	98.9%	98.2%	98.1%	98.6%									98.5%
Lincoln	97.2%	97.7%	96.7%	98.2%									97.5%
Roosevelt			100.0%										100.0%
SE Region 4 Total	98.2%	98.2%	98.4%	98.9%									98.4%
East Dona Ana	98.7%	98.7%	98.4%	98.5%									98.6%
Grant	98.5%	98.7%	98.3%	99.3%									98.7%
Luna	98.5%	99.3%	98.3%	98.9%									98.8%
Otero	98.8%	98.6%	98.5%	98.7%									98.7%
South Dona Ana	98.0%	99.1%	99.3%	99.4%									99.0%
West Dona Ana	99.5%	98.5%	98.8%	98.7%									98.9%
SW Region 5 Total	98.7%	98.8%	98.6%	98.9%									98.8%
STATE TOTAL	98.6%	98.1%	98.1%	98.5%									98.3%

Administrative, Annual, and Auto Renewals are included

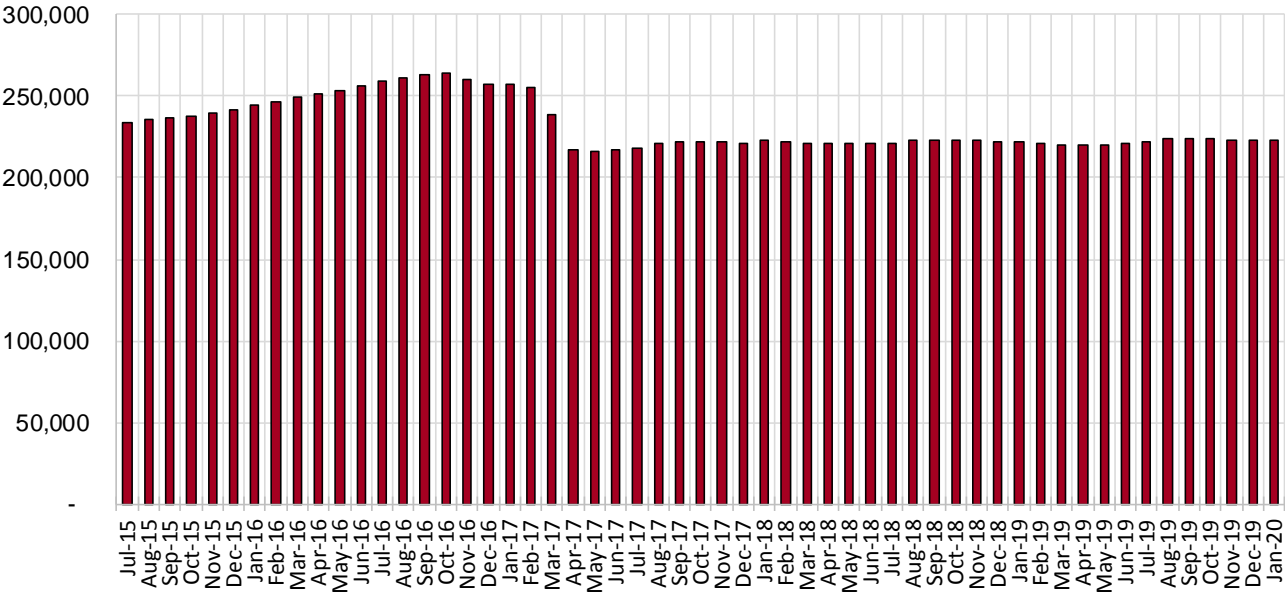
SNAP Cases by Field Office⁶

Office				Percent Change	
	Jan-19	Dec-19	Jan-20	Jan-19- Jan-20	Dec-19- Jan-20
Chaves County ISD	6,963	7,121	7,158	2.8%	0.5%
Cibola County ISD	3,734	3,580	3,567	-4.5%	-0.4%
Colfax County ISD	1,653	1,627	1,614	-2.4%	-0.8%
Curry County ISD	7,010	7,350	7,372	5.2%	0.3%
East Dona Ana County ISD	7,995	7,964	7,964	-0.4%	0.0%
Eddy Artesia County ISD	1,605	1,602	1,615	0.6%	0.8%
Eddy Carlsbad County ISD	2,832	2,989	2,948	4.1%	-1.4%
Grant County ISD	3,956	3,985	3,991	0.9%	0.2%
Guadalupe County ISD	734	685	680	-7.4%	-0.7%
Hidalgo County ISD	16	10	8	-50.0%	-20.0%
Lea County ISD	5,592	5,777	5,814	4.0%	0.6%
Lincoln County ISD	1,861	1,851	1,850	-0.6%	-0.1%
Luna County ISD	4,171	4,359	4,365	4.7%	0.1%
McKinley County ISD	9,951	10,268	10,316	3.7%	0.5%
Northeast Bernalillo County ISD	20,421	20,532	20,563	0.7%	0.2%
Northwest Bernalillo County ISD	20,226	20,557	20,486	1.3%	-0.3%
Otero County ISD	5,624	5,776	5,779	2.8%	0.1%
Quay County ISD	1,259	1,323	1,311	4.1%	-0.9%
Rio Arriba County ISD	6,555	6,422	6,409	-2.2%	-0.2%
Roosevelt County ISD	0	0	1	N/A	N/A
San Juan County ISD	13,732	13,970	14,089	2.6%	0.9%
San Miguel County ISD	5,045	4,973	4,996	-1.0%	0.5%
Sandoval County ISD	10,045	9,758	9,865	-1.8%	1.1%
Santa Fe County ISD	9,651	9,033	9,013	-6.6%	-0.2%
Sierra County ISD	2,658	2,564	2,570	-3.3%	0.2%
Socorro County ISD	2,744	2,776	2,786	1.5%	0.4%
South Dona Ana ISD	8,573	8,403	8,439	-1.6%	0.4%
Southeast Bernalillo County ISD	11,928	11,730	11,718	-1.8%	-0.1%
Southwest Bernalillo County ISD	18,722	19,031	19,008	1.5%	-0.1%
Taos County ISD	4,113	4,175	4,204	2.2%	0.7%
Torrance County ISD	3,595	3,621	3,652	1.6%	0.9%
Valencia North County ISD	8,383	8,304	8,311	-0.9%	0.1%
Valencia South County ISD	1	8	6	500.0%	-25.0%
West Dona Ana County ISD	10,732	10,751	10,748	0.1%	-0.03%
Centralized Units	10	27	12	20.0%	-55.6%
Statewide Total	222,090	222,902	223,228	0.51%	0.1%

SNAP Cases by Region⁶

				Percent Change	
Region	Jan-19	Dec-19	Jan-20	Jan-19- Jan-20	Dec-19- Jan-20
Region 1 - NW	41,203	41,470	41,645	1.1%	0.4%
Region 2 - NE	39,055	37,996	38,092	-2.5%	0.3%
Region 3 - Central	74,892	75,471	75,427	0.7%	-0.1%
Region 4 - SE	25,863	26,690	26,758	3.5%	0.3%
Region 5 - SW	41,067	41,248	41,294	0.6%	0.1%
Centralized Units	10	27	12	20.0%	-55.6%
Statewide Total	222,090	222,902	223,228	0.51%	0.1%

SNAP Caseload: SFY-16 to Current

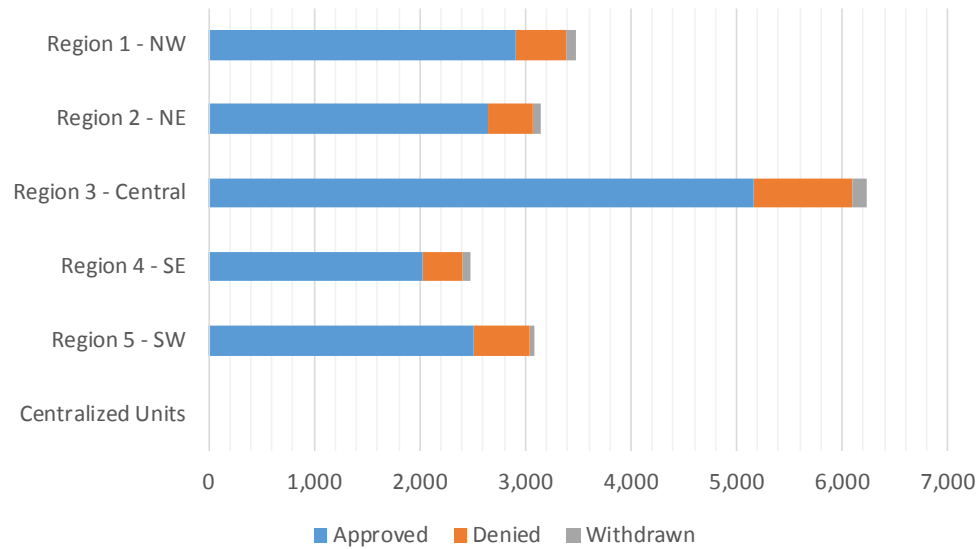


SNAP Initial Applications by Field Office^{4,11}
January 2020

Office	Approved	Denied	Withdrawn	Total Cases Processed
Chaves County ISD	483	79	27	589
Cibola County ISD	243	42	12	297
Colfax County ISD	111	19	4	134
Curry County ISD	510	109	22	641
East Dona Ana County ISD	567	133	15	715
Eddy Artesia County ISD	114	24	4	142
Eddy Carlsbad County ISD	288	35	8	331
Grant County ISD	255	40	5	300
Guadalupe County ISD	36	5	1	42
Hidalgo County ISD	0	0	0	0
Lea County ISD	492	82	13	587
Lincoln County ISD	139	43	1	183
Luna County ISD	271	41	9	321
McKinley County ISD	689	87	12	788
Northeast Bernalillo County ISD	1,571	260	41	1,872
Northwest Bernalillo County ISD	1,241	253	28	1,522
Otero County ISD	377	76	9	462
Quay County ISD	61	10	1	72
Rio Arriba County ISD	472	57	18	547
Roosevelt County ISD	3	0	0	3
San Juan County ISD	1,159	208	50	1,417
San Miguel County ISD	315	65	5	385
Sandoval County ISD	771	108	46	925
Santa Fe County ISD	589	107	9	705
Sierra County ISD	135	25	1	161
Socorro County ISD	167	24	1	192
South Dona Ana ISD	362	76	4	442
Southeast Bernalillo County ISD	857	178	15	1,050
Southwest Bernalillo County ISD	1,224	204	47	1,475
Taos County ISD	294	45	2	341
Torrance County ISD	262	46	9	317
Valencia North County ISD	509	91	22	622
Valencia South County ISD	2	0	1	3
West Dona Ana County ISD	684	155	13	852
Centralized Units	0	0	0	0
Statewide Total	15,253	2,727	455	18,435

SNAP Initial Applications by Region^{4,11}
January 2020

Region	Approved	Denied	Withdrawn	Total Cases Processed
Region 1 - NW	2,904	477	99	3,480
Region 2 - NE	2,649	416	86	3,151
Region 3 - Central	5,155	941	140	6,236
Region 4 - SE	2,029	372	75	2,476
Region 5 - SW	2,516	521	55	3,092
Centralized Units	0	0	0	0
Statewide Total	15,253	2,727	455	18,435

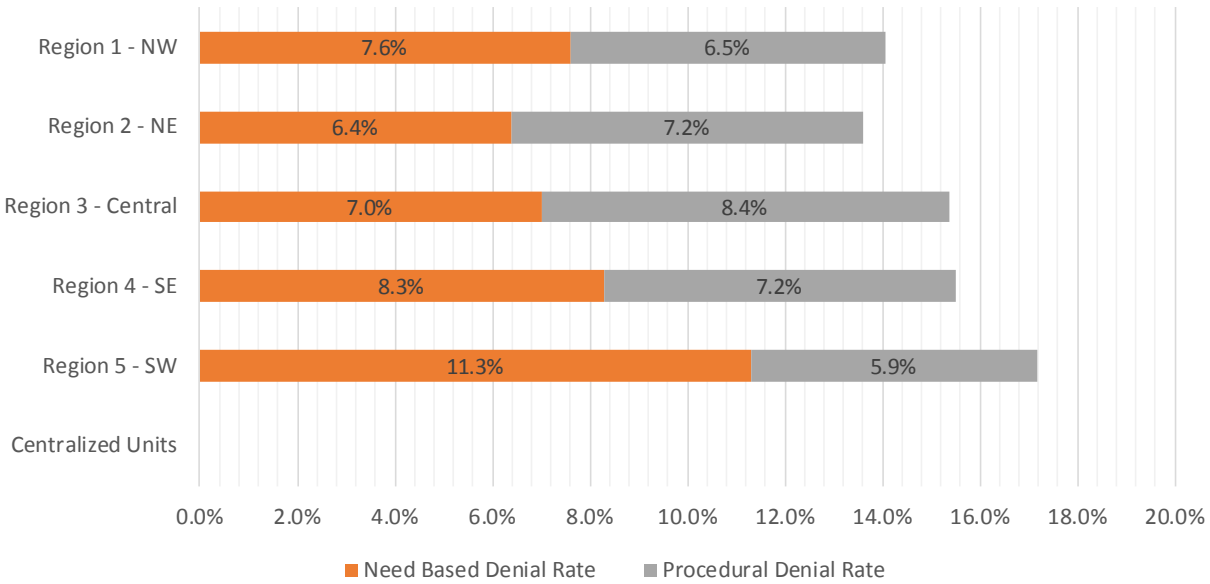


SNAP Initial Disposition Rates by Field Office^{4,11}
January 2020

Office	Approval Rate	Denial Rate	Need Based Denial Rate	Procedural Denial Rate
Chaves County ISD	85.9%	14.1%	8.1%	6.0%
Cibola County ISD	85.3%	14.7%	8.0%	6.7%
Colfax County ISD	85.4%	14.6%	6.9%	7.7%
Curry County ISD	82.4%	17.6%	9.4%	8.2%
East Dona Ana County ISD	81.0%	19.0%	13.0%	6.0%
Eddy Artesia County ISD	82.6%	17.4%	10.9%	6.5%
Eddy Carlsbad County ISD	89.2%	10.8%	6.2%	4.6%
Grant County ISD	86.4%	13.6%	7.8%	5.8%
Guadalupe County ISD	87.8%	12.2%	9.8%	2.4%
Hidalgo County ISD	0.0%	0.0%	0.0%	0.0%
Lea County ISD	85.7%	14.3%	6.6%	7.7%
Lincoln County ISD	76.4%	23.6%	12.6%	11.0%
Luna County ISD	86.9%	13.1%	7.7%	5.4%
McKinley County ISD	88.8%	11.2%	6.8%	4.4%
Northeast Bernalillo County ISD	85.8%	14.2%	5.8%	8.4%
Northwest Bernalillo County ISD	83.1%	16.9%	7.7%	9.2%
Otero County ISD	83.2%	16.8%	10.2%	6.6%
Quay County ISD	85.9%	14.1%	12.7%	1.4%
Rio Arriba County ISD	89.2%	10.8%	3.8%	7.0%
Roosevelt County ISD	100.0%	0.0%	0.0%	0.0%
San Juan County ISD	84.8%	15.2%	7.5%	7.7%
San Miguel County ISD	82.9%	17.1%	10.8%	6.3%
Sandoval County ISD	87.7%	12.3%	4.8%	7.5%
Santa Fe County ISD	84.6%	15.4%	6.9%	8.5%
Sierra County ISD	84.4%	15.6%	10.0%	5.6%
Socorro County ISD	87.4%	12.6%	7.4%	5.2%
South Dona Ana ISD	82.6%	17.4%	12.1%	5.3%
Southeast Bernalillo County ISD	82.8%	17.2%	9.1%	8.1%
Southwest Bernalillo County ISD	85.7%	14.3%	6.9%	7.4%
Taos County ISD	86.7%	13.3%	6.5%	6.8%
Torrance County ISD	85.1%	14.9%	4.8%	10.1%
Valencia North County ISD	84.8%	15.2%	8.2%	7.0%
Valencia South County ISD	100.0%	0.0%	0.0%	0.0%
West Dona Ana County ISD	81.5%	18.5%	12.5%	6.0%
Centralized Units	0.0%	0.0%	0.0%	0.0%
Statewide Total	84.8%	15.2%	8.0%	7.2%

SNAP Initial Disposition Rates by Region^{4,11}
January 2020

Region	Approval Rate	Denial Rate	Need Based Denial Rate	Procedural Denial Rate
Region 1 - NW	85.9%	14.1%	7.6%	6.5%
Region 2 - NE	86.4%	13.6%	6.4%	7.2%
Region 3 - Central	84.6%	15.4%	7.0%	8.4%
Region 4 - SE	84.5%	15.5%	8.3%	7.2%
Region 5 - SW	82.8%	17.2%	11.3%	5.9%
Centralized Units	0.0%	0.0%	0.0%	0.0%
Statewide Total	84.8%	15.2%	8.0%	7.2%



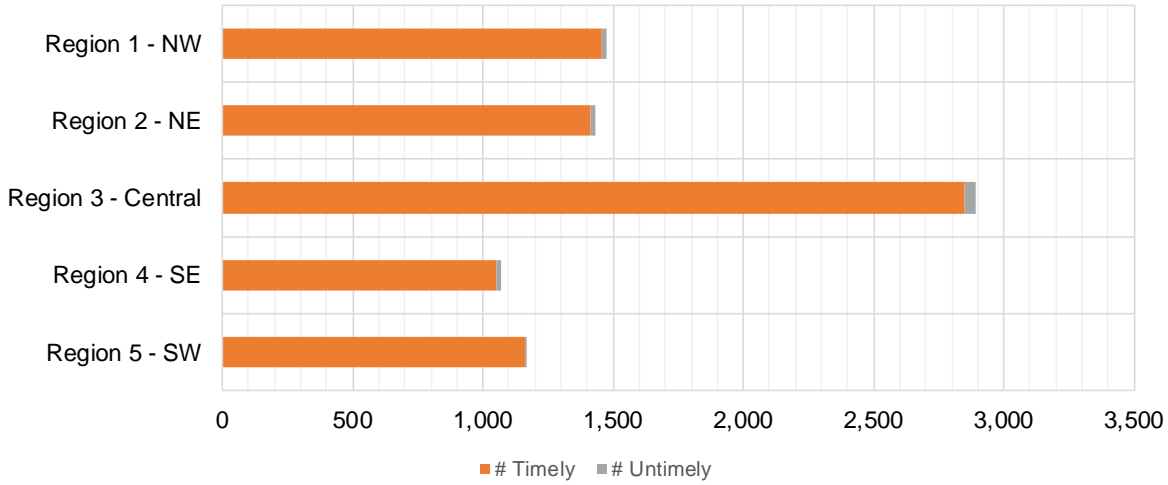
SNAP Expedite Timeliness by Field Office¹³
January 2020

Office Name	Total Expedited Approvals	# Timely	# Untimely	Percentage Timely
Chaves County ISD	221	217	4	98.2 %
Cibola County ISD	133	131	2	98.5 %
Colfax County ISD	55	55	0	100.0 %
Curry County ISD	304	297	7	97.7 %
East Dona Ana County ISD	246	245	1	99.6 %
Eddy Artesia County ISD	60	60	0	100.0 %
Eddy Carlsbad County ISD	160	158	2	98.8 %
Grant County ISD	129	125	4	96.9 %
Guadalupe County ISD	20	19	1	95.0 %
Lea County ISD	274	270	4	98.5 %
Lincoln County ISD	50	48	2	96.0 %
Luna County ISD	141	140	1	99.3 %
McKinley County ISD	350	345	5	98.6 %
Northeast Bernalillo County ISD	876	864	12	98.6 %
Northwest Bernalillo County ISD	717	705	12	98.3 %
Otero County ISD	185	184	1	99.5 %
Quay County ISD	36	36	0	100.0 %
Rio Arriba County ISD	266	261	5	98.1 %
Roosevelt County ISD	1	1	0	100.0 %
San Juan County ISD	602	596	6	99.0 %
San Miguel County ISD	168	166	2	98.8 %
Sandoval County ISD	384	379	5	98.7 %
Santa Fe County ISD	357	351	6	98.3 %
Sierra County ISD	62	60	2	96.8 %
Socorro County ISD	80	80	0	100.0 %
South Dona Ana ISD	143	143	0	100.0 %
Southeast Bernalillo County ISD	481	474	7	98.5 %
Southwest Bernalillo County ISD	680	672	8	98.8 %
Taos County ISD	144	144	0	100.0 %
Torrance County ISD	135	131	4	97.0 %
Valencia North County ISD	248	242	6	97.6 %
West Dona Ana County ISD	324	324	0	100.0 %
Statewide Total	8,032	7,923	109	98.6 %

SNAP Expedite Timeliness by Region¹³
January 2020

Region	Total Expedited Approvals	# Timely	# Untimely	Percentage Timely
Region 1 - NW	1,475	1,454	21	98.6%
Region 2 - NE	1,430	1,411	19	98.7%
Region 3 - Central	2,889	2,846	43	98.5%
Region 4 - SE	1,070	1,051	19	98.2%
Region 5 - SW	1,168	1,161	7	99.4%
Statewide Total	8,032	7,923	109	98.6%

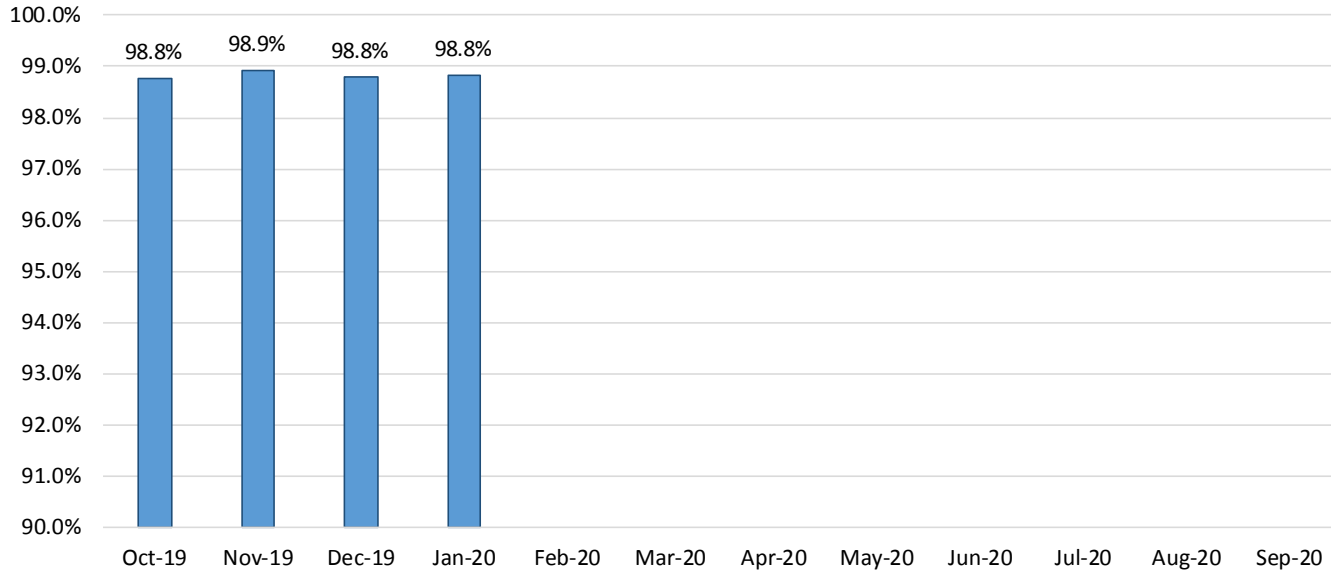
SNAP Expedite - Timeliness



SNAP: Percentage of Applications Processed Timely ¹³

	Oct-19	Nov-19	Dec-19	Jan-20	Feb-20	Mar-20	Apr-20	May-20	Jun-20	Jul-20	Aug-20	Sep-20	Average
APT	98.8%	98.9%	98.8%	98.8%									98.8%

SNAP Application Processing Timeliness (APT)



SNAP Non-Expedite: Percentage of Initial Applications Processed Timely by Field Office¹³

	Oct-19	Nov-19	Dec-19	Jan-20	Feb-20	Mar-20	Apr-20	May-20	Jun-20	Jul-20	Aug-20	Sep-20	Average
Cibola	99.2%	96.9%	98.0%	96.3%									97.6%
McKinley	99.0%	98.5%	98.4%	98.9%									98.7%
San Juan	98.1%	98.4%	99.1%	99.2%									98.7%
Sierra	98.0%	100.0%	100.0%	100.0%									99.5%
Socorro	97.9%	100.0%	100.0%	99.1%									99.3%
Valencia North	99.0%	99.4%	99.5%	99.5%									99.4%
Valencia South													
NW Region 1 Total	98.5%	98.7%	99.0%	99.0%									98.8%
Colfax	98.8%	98.8%	100.0%	98.7%									99.1%
Guadalupe	100.0%	100.0%	100.0%	100.0%									100.0%
Quay	100.0%	100.0%	100.0%	100.0%									100.0%
Rio Arriba	98.2%	99.5%	98.6%	98.9%									98.8%
San Miguel	98.1%	98.9%	100.0%	98.7%									98.9%
Sandoval	99.5%	98.7%	98.8%	99.6%									99.2%
Santa Fe	97.7%	98.4%	97.7%	99.7%									98.4%
Taos	100.0%	98.9%	99.4%	99.0%									99.3%
NE Region 2 Total	98.8%	98.9%	98.8%	99.3%									99.0%
NE Bernalillo	98.5%	98.9%	98.5%	97.9%									98.5%
NW Bernalillo	98.5%	98.1%	97.5%	98.4%									98.1%
SE Bernalillo	98.8%	98.2%	98.9%	99.3%									98.8%
SW Bernalillo	99.0%	99.2%	98.3%	99.1%									98.9%
Torrance	99.4%	100.0%	98.2%	100.0%									99.4%
Gen. Region 3 Total	98.7%	98.7%	98.3%	98.7%									98.6%
Chaves	99.7%	99.7%	98.1%	99.5%									99.3%
Curry	98.7%	99.0%	98.1%	97.1%									98.2%
Eddy Artesia	100.0%	98.5%	97.6%	100.0%									99.0%
Eddy Carlsbad	99.4%	99.3%	99.4%	98.3%									99.1%
Lea	99.6%	99.3%	98.9%	99.7%									99.4%
Lincoln	99.1%	100.0%	97.0%	99.3%									98.9%
Roosevelt	100.0%	100.0%		100.0%									100.0%
SE Region 4 Total	99.4%	99.3%	98.3%	98.8%									99.0%
East Dona Ana	99.5%	99.5%	99.2%	99.2%									99.4%
Grant	99.3%	98.7%	100.0%	98.3%									99.1%
Luna	99.4%	100.0%	98.8%	98.9%									99.3%
Otero	98.9%	99.6%	99.2%	99.6%									99.3%
South Dona Ana	100.0%	99.6%	99.6%	100.0%									99.8%
West Dona Ana	98.7%	99.6%	99.6%	99.1%									99.3%
SW Region 5 Total	99.3%	99.5%	99.4%	99.2%									99.4%
STATE TOTAL	98.9%	99.0%	98.7%	99.0%									98.9%

SNAP Expedite: Percentage of Initial Applications Processed Timely by Field Office¹³

	Oct-19	Nov-19	Dec-19	Jan-20	Feb-20	Mar-20	Apr-20	May-20	Jun-20	Jul-20	Aug-20	Sep-20	Average
Cibola	96.7%	100.0%	95.5%	98.5%									97.7%
McKinley	98.2%	99.0%	99.0%	98.6%									98.7%
San Juan	98.9%	99.1%	98.4%	99.0%									98.9%
Sierra	95.5%	98.1%	100.0%	96.8%									97.6%
Socorro	100.0%	95.0%	98.5%	100.0%									98.4%
Valencia North	98.4%	99.1%	99.1%	97.6%									98.6%
Valencia South													
NW Region 1 Total	98.4%	98.9%	98.5%	98.6%									98.6%
Colfax	100.0%	100.0%	98.4%	100.0%									99.6%
Guadalupe	93.8%	100.0%	100.0%	95.0%									97.2%
Quay	96.9%	100.0%	100.0%	100.0%									99.2%
Rio Arriba	99.2%	97.1%	98.3%	98.1%									98.2%
San Miguel	98.9%	100.0%	100.0%	98.8%									99.4%
Sandoval	97.9%	98.9%	98.7%	98.7%									98.6%
Santa Fe	98.8%	98.1%	98.1%	98.3%									98.3%
Taos	97.7%	97.9%	98.6%	100.0%									98.6%
NE Region 2 Total	98.5%	98.5%	98.6%	98.7%									98.6%
NE Bernalillo	98.7%	98.5%	98.7%	98.7%									98.7%
NW Bernalillo	99.6%	98.6%	99.5%	98.3%									99.0%
SE Bernalillo	98.5%	98.6%	99.3%	98.6%									98.8%
SW Bernalillo	99.0%	98.1%	98.5%	99.0%									98.7%
Torrance	99.2%	100.0%	99.3%	97.1%									98.9%
Gen. Region 3 Total	99.0%	98.5%	99.0%	98.7%									98.8%
Chaves	98.2%	97.7%	98.7%	98.2%									98.2%
Curry	97.7%	97.6%	98.6%	97.7%									97.9%
Eddy Artesia	96.4%	100.0%	98.5%	100.0%									98.7%
Eddy Carlsbad	99.3%	97.7%	97.3%	98.8%									98.3%
Lea	98.3%	98.6%	100.0%	98.5%									98.9%
Lincoln	95.8%	96.0%	95.7%	96.0%									95.9%
Roosevelt	100.0%	100.0%		100.0%									100.0%
SE Region 4 Total	98.0%	97.9%	98.6%	98.2%									98.2%
East Dona Ana	98.5%	99.5%	100.0%	99.6%									99.4%
Grant	99.2%	100.0%	98.5%	97.7%									98.9%
Luna	99.2%	100.0%	98.2%	99.3%									99.2%
Otero	99.4%	99.5%	98.8%	99.5%									99.3%
South Dona Ana	97.9%	98.6%	99.2%	100.0%									98.9%
West Dona Ana	99.1%	99.4%	99.7%	100.0%									99.6%
SW Region 5 Total	98.9%	99.4%	99.3%	99.5%									99.3%
STATE TOTAL	98.7%	98.6%	98.8%	98.7%									98.7%

SNAP: Percentage of Denied Initial Applications Processed Within 30 Days by Field Office¹³

	Oct-19	Nov-19	Dec-19	Jan-20	Feb-20	Mar-20	Apr-20	May-20	Jun-20	Jul-20	Aug-20	Sep-20	Average
Cibola	97.3%	100.0%	100.0%	98.1%									98.9%
McKinley	100.0%	94.4%	96.1%	99.0%									97.4%
San Juan	97.6%	98.2%	98.6%	97.7%									98.0%
Sierra	96.0%	100.0%	100.0%	100.0%									99.0%
Socorro	100.0%	100.0%	100.0%	100.0%									100.0%
Valencia North	99.0%	97.7%	98.4%	100.0%									98.8%
Valencia South													
NW Region 1 Total	98.3%	98.4%	98.9%	99.1%									98.7%
Colfax	96.8%	94.1%	100.0%	100.0%									97.7%
Guadalupe	100.0%	100.0%	100.0%	100.0%									100.0%
Quay	100.0%	100.0%	100.0%	100.0%									100.0%
Rio Arriba	95.8%	98.6%	94.7%	96.0%									96.3%
San Miguel	100.0%	98.5%	100.0%	98.6%									99.3%
Sandoval	98.5%	98.9%	98.8%	100.0%									99.1%
Santa Fe	96.4%	98.2%	96.2%	99.1%									97.5%
Taos	100.0%	98.4%	100.0%	100.0%									99.6%
NE Region 2 Total	98.4%	98.3%	98.7%	99.2%									98.7%
NE Bernalillo	98.2%	97.8%	96.8%	94.7%									96.9%
NW Bernalillo	96.4%	96.7%	96.6%	97.9%									96.9%
SE Bernalillo	97.8%	95.0%	98.4%	99.0%									97.6%
SW Bernalillo	97.7%	98.0%	96.8%	96.8%									97.3%
Torrance	98.2%	100.0%	96.5%	100.0%									98.7%
Gen. Region 3 Total	97.7%	97.5%	97.0%	97.7%									97.5%
Chaves	100.0%	100.0%	95.0%	98.1%									98.3%
Curry	97.2%	97.2%	94.8%	96.9%									96.5%
Eddy Artesia	100.0%	96.3%	100.0%	100.0%									99.1%
Eddy Carlsbad	98.2%	100.0%	98.3%	97.7%									98.6%
Lea	100.0%	99.0%	97.0%	100.0%									99.0%
Lincoln	97.6%	100.0%	94.9%	100.0%									98.1%
Roosevelt		100.0%											100.0%
SE Region 4 Total	98.8%	98.9%	96.7%	98.8%									98.3%
East Dona Ana	99.4%	98.7%	98.5%	98.0%									98.7%
Grant	97.4%	98.1%	100.0%	93.3%									97.2%
Luna	97.7%	100.0%	95.3%	98.0%									97.8%
Otero	98.9%	98.8%	97.1%	98.8%									98.4%
South Dona Ana	100.0%	100.0%	100.0%	100.0%									100.0%
West Dona Ana	97.5%	99.4%	99.2%	98.8%									98.7%
SW Region 5 Total	98.5%	99.2%	98.4%	97.8%									98.5%
STATE TOTAL	98.4%	98.5%	98.0%	98.6%									98.4%

SNAP: Combined Approvals and Denials Percentage of Initial Applications Processed Timely by Field Office¹³

	Oct-19	Nov-19	Dec-19	Jan-20	Feb-20	Mar-20	Apr-20	May-20	Jun-20	Jul-20	Aug-20	Sep-20	Average
Cibola	98.0%	98.5%	97.7%	97.6%									98.0%
McKinley	98.8%	98.7%	98.8%	98.7%									98.8%
San Juan	98.5%	98.8%	98.8%	99.1%									98.8%
Sierra	97.3%	99.4%	100.0%	98.8%									98.9%
Socorro	98.9%	98.3%	99.4%	99.5%									99.0%
Valencia North	98.7%	99.1%	99.4%	98.7%									99.0%
Valencia South		100.0%		100.0%									100.0%
NW Region 1 Total	98.4%	99.0%	99.0%	98.9%									98.8%
Colfax	99.3%	99.2%	99.2%	99.3%									99.3%
Guadalupe	98.2%	100.0%	100.0%	97.6%									99.0%
Quay	98.6%	100.0%	100.0%	100.0%									99.7%
Rio Arriba	98.7%	98.3%	98.5%	98.5%									98.5%
San Miguel	98.5%	99.4%	100.0%	98.7%									99.2%
Sandoval	98.9%	98.7%	98.9%	99.2%									98.9%
Santa Fe	98.2%	98.3%	97.9%	99.0%									98.4%
Taos	99.0%	98.5%	99.0%	99.4%									99.0%
NE Region 2 Total	98.7%	99.1%	99.2%	99.0%									99.0%
NE Bernalillo	98.6%	98.7%	98.7%	98.3%									98.6%
NW Bernalillo	99.0%	98.3%	98.6%	98.4%									98.6%
SE Bernalillo	98.7%	98.2%	99.3%	99.0%									98.8%
SW Bernalillo	98.9%	98.5%	98.4%	99.0%									98.7%
Torrance	99.3%	100.0%	98.7%	98.7%									99.2%
Gen. Region 3 Total	98.9%	98.7%	98.7%	98.7%									98.8%
Chaves	99.1%	98.9%	98.3%	99.0%									98.8%
Curry	98.3%	98.4%	98.3%	97.5%									98.1%
Eddy Artesia	98.6%	99.1%	98.0%	100.0%									98.9%
Eddy Carlsbad	99.3%	98.6%	98.4%	98.5%									98.7%
Lea	99.0%	99.0%	99.4%	99.1%									99.1%
Lincoln	97.5%	98.4%	96.6%	98.4%									97.7%
Roosevelt		100.0%	100.0%	100.0%									100.0%
SE Region 4 Total	98.6%	98.9%	98.4%	98.9%									98.7%
East Dona Ana	99.2%	99.5%	99.5%	99.3%									99.4%
Grant	99.3%	99.2%	99.3%	97.7%									98.9%
Luna	99.3%	100.0%	98.6%	99.1%									99.3%
Otero	99.3%	99.6%	99.0%	99.6%									99.4%
South Dona Ana	99.3%	99.3%	99.4%	100.0%									99.5%
West Dona Ana	98.9%	99.5%	99.6%	99.4%									99.4%
SW Region 5 Total	99.2%	99.5%	99.2%	99.2%									99.3%
STATE TOTAL	98.7%	99.0%	98.9%	98.9%									98.9%

SNAP Renewals Processed by Field Office²⁰
January 2020

Office	Approvals	Closures	Need Based Closures	Procedural Closures
Chaves County ISD	193	108	7	101
Cibola County ISD	85	55	2	53
Colfax County ISD	45	13	1	12
Curry County ISD	192	111	7	104
East Dona Ana County ISD	266	140	8	132
Eddy Artesia County ISD	53	22	1	21
Eddy Carlsbad County ISD	69	46	6	40
Grant County ISD	132	55	9	46
Guadalupe County ISD	21	10	0	10
Hidalgo County ISD	0	0	0	0
Lea County ISD	166	87	10	77
Lincoln County ISD	57	25	1	24
Luna County ISD	126	66	2	64
McKinley County ISD	264	116	6	110
Northeast Bernalillo County ISD	459	315	32	283
Northwest Bernalillo County ISD	383	290	19	271
Otero County ISD	141	112	10	102
Quay County ISD	35	24	0	24
Rio Arriba County ISD	165	111	2	109
Roosevelt County ISD	0	0	0	0
San Juan County ISD	351	196	11	185
San Miguel County ISD	123	77	6	71
Sandoval County ISD	267	172	17	155
Santa Fe County ISD	251	154	9	145
Sierra County ISD	86	29	1	28
Socorro County ISD	78	41	2	39
South Dona Ana ISD	330	123	27	96
Southeast Bernalillo County ISD	245	173	11	162
Southwest Bernalillo County ISD	557	276	23	253
Taos County ISD	122	84	7	77
Torrance County ISD	106	62	4	58
Valencia North County ISD	219	153	7	146
Valencia South County ISD	0	0	0	0
West Dona Ana County ISD	318	166	22	144
Centralized Units	0	0	0	0
Statewide Total	5,905	3,412	270	3,142

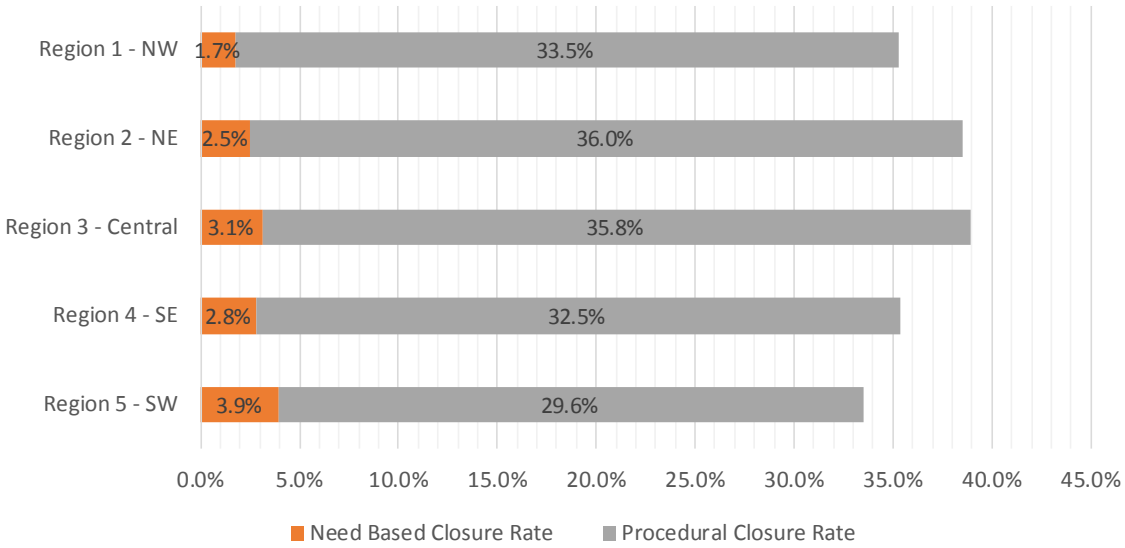
SNAP Renewal Disposition Rates by Field Office²⁰
January 2020

Office	Approval Rate	Closure Rate	Need Based Closure Rate	Procedural Closure Rate
Chaves County ISD	64.1%	35.9%	2.3%	33.6%
Cibola County ISD	60.7%	39.3%	1.4%	37.9%
Colfax County ISD	77.6%	22.4%	1.7%	20.7%
Curry County ISD	63.4%	36.6%	2.3%	34.3%
East Dona Ana County ISD	65.5%	34.5%	2.0%	32.5%
Eddy Artesia County ISD	70.7%	29.3%	1.3%	28.0%
Eddy Carlsbad County ISD	60.0%	40.0%	5.2%	34.8%
Grant County ISD	70.6%	29.4%	4.8%	24.6%
Guadalupe County ISD	67.7%	32.3%	0.0%	32.3%
Hidalgo County ISD	0.0%	0.0%	0.0%	0.0%
Lea County ISD	65.6%	34.4%	4.0%	30.4%
Lincoln County ISD	69.5%	30.5%	1.2%	29.3%
Luna County ISD	65.6%	34.4%	1.0%	33.3%
McKinley County ISD	69.5%	30.5%	1.6%	28.9%
Northeast Bernalillo County ISD	59.3%	40.7%	4.1%	36.6%
Northwest Bernalillo County ISD	56.9%	43.1%	2.8%	40.3%
Otero County ISD	55.7%	44.3%	4.0%	40.3%
Quay County ISD	59.3%	40.7%	0.0%	40.7%
Rio Arriba County ISD	59.8%	40.2%	0.7%	39.5%
Roosevelt County ISD	0.0%	0.0%	0.0%	0.0%
San Juan County ISD	64.2%	35.8%	2.0%	33.8%
San Miguel County ISD	61.5%	38.5%	3.0%	35.5%
Sandoval County ISD	60.8%	39.2%	3.9%	35.3%
Santa Fe County ISD	62.0%	38.0%	2.2%	35.8%
Sierra County ISD	74.8%	25.2%	0.9%	24.3%
Socorro County ISD	65.5%	34.5%	1.7%	32.8%
South Dona Ana ISD	72.8%	27.2%	6.0%	21.2%
Southeast Bernalillo County ISD	58.6%	41.4%	2.6%	38.8%
Southwest Bernalillo County ISD	66.9%	33.1%	2.8%	30.4%
Taos County ISD	59.2%	40.8%	3.4%	37.4%
Torrance County ISD	63.1%	36.9%	2.4%	34.5%
Valencia North County ISD	58.9%	41.1%	1.9%	39.2%
Valencia South County ISD	0.0%	0.0%	0.0%	0.0%
West Dona Ana County ISD	65.7%	34.3%	4.5%	29.8%
Centralized Units	0.0%	0.0%	0.0%	0.0%
Statewide Total	63.4%	36.6%	2.9%	33.7%

SNAP Renewal Disposition Rates by Region²⁰
January 2020

Region	Approval Rate	Closure Rate	Need Based Closure Rate	Procedural Closure Rate
Region 1 - NW	64.7%	35.3%	1.7%	33.5%
Region 2 - NE	61.5%	38.5%	2.5%	36.0%
Region 3 - Central	61.1%	38.9%	3.1%	35.8%
Region 4 - SE	64.7%	35.3%	2.8%	32.5%
Region 5 - SW	66.5%	33.5%	3.9%	29.6%
Centralized Units				

Statewide Total	63.4%	36.6%	2.9%	33.7%
-----------------	-------	-------	------	-------



SNAP: Percentage of Approved Renewal Applications Processed¹¹

	Oct-19	Nov-19	Dec-19	Jan-20	Feb-20	Mar-20	Apr-20	May-20	Jun-20	Jul-20	Aug-20	Sep-20	Average
Cibola	94.2%	97.9%	95.4%	94.4%									95.5%
McKinley	99.0%	94.2%	97.5%	97.4%									97.0%
San Juan	95.3%	93.9%	97.1%	97.8%									96.0%
Sierra	97.2%	95.3%	96.8%	98.9%									97.1%
Socorro	98.0%	97.2%	97.2%	98.7%									97.8%
Valencia North	98.3%	97.2%	95.7%	98.2%									97.4%
Valencia South													
NW Region 1 Total	97.0%	96.0%	96.6%	97.6%									96.8%
Colfax	100.0%	97.6%	98.4%	100.0%									99.0%
Guadalupe	94.7%	100.0%	100.0%	100.0%									98.7%
Quay	100.0%	98.2%	100.0%	100.0%									99.6%
Rio Arriba	99.1%	96.4%	95.8%	97.1%									97.1%
San Miguel	94.4%	95.9%	99.5%	97.6%									96.9%
Sandoval	99.5%	98.6%	98.5%	99.3%									99.0%
Santa Fe	95.3%	92.6%	96.5%	93.0%									94.4%
Taos	97.9%	95.0%	100.0%	97.6%									97.6%
NE Region 2 Total	97.6%	96.8%	98.6%	98.1%									97.8%
NE Bernalillo	98.6%	96.6%	96.8%	93.1%									96.3%
NW Bernalillo	96.2%	96.2%	95.4%	93.9%									95.4%
SE Bernalillo	97.2%	94.8%	96.6%	92.5%									95.3%
SW Bernalillo	97.0%	96.9%	97.2%	95.1%									96.6%
Torrance	95.6%	95.0%	99.1%	96.4%									96.5%
Gen. Region 3 Total	96.9%	95.9%	97.0%	94.2%									96.0%
Chaves	98.8%	98.7%	97.8%	99.0%									98.6%
Curry	98.8%	98.4%	97.9%	99.5%									98.7%
Eddy Artesia	100.0%	100.0%	100.0%	96.4%									99.1%
Eddy Carlsbad	100.0%	98.6%	100.0%	100.0%									99.7%
Lea	98.8%	98.9%	97.0%	95.4%									97.5%
Lincoln	95.8%	96.9%	96.8%	96.6%									96.5%
Roosevelt													
SE Region 4 Total	98.7%	98.6%	98.3%	97.8%									98.3%
East Dona Ana	97.8%	97.5%	97.5%	98.5%									97.8%
Grant	98.1%	100.0%	96.1%	97.1%									97.8%
Luna	100.0%	97.6%	99.4%	99.2%									99.1%
Otero	99.1%	99.0%	100.0%	97.2%									98.8%
South Dona Ana	100.0%	99.7%	100.0%	99.7%									99.9%
West Dona Ana	100.0%	98.4%	99.5%	100.0%									99.5%
SW Region 5 Total	99.2%	98.7%	98.8%	98.6%									98.8%
STATE TOTAL	97.9%	97.2%	97.9%	97.4%									97.6%

If a renewal packet was received on or before 15th of the renewal month, the case shall be considered timely if the case was processed by renewal due date

SNAP: Percentage of Approved Renewal Applications Processed¹¹

	Oct-19	Nov-19	Dec-19	Jan-20	Feb-20	Mar-20	Apr-20	May-20	Jun-20	Jul-20	Aug-20	Sep-20	Average
Cibola	87.5%	91.7%	100.0%	100.0%									94.8%
McKinley	97.6%	95.5%	100.0%	93.9%									96.8%
San Juan	94.6%	91.3%	98.4%	100.0%									96.1%
Sierra	96.8%	100.0%	92.3%	100.0%									97.3%
Socorro	96.4%	96.2%	100.0%	100.0%									98.2%
Valencia North	98.4%	94.4%	100.0%	100.0%									98.2%
Valencia South													
NW Region 1 Total	95.2%	94.9%	98.5%	99.0%									96.9%
Colfax	100.0%	100.0%	100.0%	100.0%									100.0%
Guadalupe	100.0%	100.0%	100.0%	100.0%									100.0%
Quay	100.0%	100.0%	100.0%	100.0%									100.0%
Rio Arriba	98.4%	93.3%	90.9%	100.0%									95.7%
San Miguel	92.9%	100.0%	100.0%	100.0%									98.2%
Sandoval	100.0%	97.9%	100.0%	100.0%									99.5%
Santa Fe	91.3%	95.8%	98.1%	93.9%									94.8%
Taos	87.5%	100.0%	100.0%	100.0%									96.9%
NE Region 2 Total	96.3%	98.4%	98.6%	99.2%									98.1%
NE Bernalillo	100.0%	94.6%	98.8%	94.0%									96.9%
NW Bernalillo	98.0%	96.9%	98.8%	95.2%									97.2%
SE Bernalillo	97.8%	100.0%	98.5%	93.6%									97.5%
SW Bernalillo	98.0%	96.3%	100.0%	97.5%									98.0%
Torrance	96.2%	81.8%	100.0%	100.0%									94.5%
Gen. Region 3 Total	98.0%	93.9%	99.2%	96.1%									96.8%
Chaves	100.0%	100.0%	96.6%	93.9%									97.6%
Curry	100.0%	96.3%	100.0%	100.0%									99.1%
Eddy Artesia	100.0%	100.0%	100.0%	100.0%									100.0%
Eddy Carlsbad	100.0%	88.9%	100.0%	100.0%									97.2%
Lea	97.1%	100.0%	100.0%	93.5%									97.7%
Lincoln	92.9%	100.0%	100.0%	100.0%									98.2%
Roosevelt													
SE Region 4 Total	98.3%	97.5%	99.4%	97.9%									98.3%
East Dona Ana	98.4%	98.1%	100.0%	100.0%									99.1%
Grant	96.2%	100.0%	100.0%	100.0%									99.1%
Luna	100.0%	100.0%	100.0%	100.0%									100.0%
Otero	100.0%	100.0%	100.0%	100.0%									100.0%
South Dona Ana	100.0%	100.0%	100.0%	100.0%									100.0%
West Dona Ana	100.0%	97.9%	98.2%	100.0%									99.0%
SW Region 5 Total	99.1%	99.3%	99.7%	100.0%									99.5%
STATE TOTAL	97.3%	97.0%	99.1%	98.6%									98.0%

Only includes cases in which the Renewal Packet was received by the 15th of the month

SNAP: Percentage of Terminations Renewal Applications Processed¹¹

	Oct-19	Nov-19	Dec-19	Jan-20	Feb-20	Mar-20	Apr-20	May-20	Jun-20	Jul-20	Aug-20	Sep-20	Average
Cibola	98.8%	93.8%	96.6%	96.5%									96.4%
McKinley	97.1%	91.8%	98.0%	97.5%									96.1%
San Juan	96.5%	94.6%	97.4%	95.6%									96.0%
Sierra	98.5%	96.2%	93.3%	93.5%									95.4%
Socorro	100.0%	92.2%	100.0%	100.0%									98.1%
Valencia North	97.8%	93.5%	97.0%	97.5%									96.5%
Valencia South													
NW Region 1 Total	98.1%	93.7%	97.1%	96.8%									96.4%
Colfax	100.0%	100.0%	100.0%	92.9%									98.2%
Guadalupe	100.0%	90.9%	100.0%	100.0%									97.7%
Quay	100.0%	100.0%	100.0%	96.0%									99.0%
Rio Arriba	98.2%	93.7%	96.5%	94.9%									95.8%
San Miguel	92.9%	97.6%	100.0%	95.1%									96.4%
Sandoval	98.0%	96.6%	96.8%	98.9%									97.6%
Santa Fe	97.0%	95.4%	97.3%	93.3%									95.8%
Taos	98.8%	96.3%	98.8%	94.4%									97.1%
NE Region 2 Total	98.1%	96.3%	98.7%	95.7%									97.2%
NE Bernalillo	95.0%	94.9%	96.3%	94.6%									95.2%
NW Bernalillo	95.1%	95.0%	94.4%	94.2%									94.7%
SE Bernalillo	95.2%	96.1%	93.7%	95.6%									95.2%
SW Bernalillo	97.3%	98.2%	97.2%	93.2%									96.5%
Torrance	100.0%	97.8%	94.2%	95.4%									96.9%
Gen. Region 3 Total	96.5%	96.4%	95.2%	94.6%									95.7%
Chaves	96.8%	94.9%	94.5%	95.6%									95.5%
Curry	98.7%	97.9%	98.3%	99.1%									98.5%
Eddy Artesia	92.3%	100.0%	100.0%	95.7%									97.0%
Eddy Carlsbad	100.0%	97.6%	97.2%	93.9%									97.2%
Lea	97.6%	95.9%	98.6%	97.8%									97.5%
Lincoln	95.3%	91.7%	87.5%	96.2%									92.7%
Roosevelt													
SE Region 4 Total	96.8%	96.3%	96.0%	96.4%									96.4%
East Dona Ana	98.7%	97.5%	99.0%	99.3%									98.6%
Grant	100.0%	98.1%	95.9%	91.7%									96.4%
Luna	100.0%	97.5%	96.7%	98.5%									98.2%
Otero	100.0%	99.0%	97.7%	99.1%									99.0%
South Dona Ana	100.0%	100.0%	100.0%	99.2%									99.8%
West Dona Ana	97.9%	99.0%	99.1%	100.0%									99.0%
SW Region 5 Total	99.4%	98.5%	98.1%	98.0%									98.5%
STATE TOTAL	97.9%	96.2%	97.2%	96.3%									96.9%

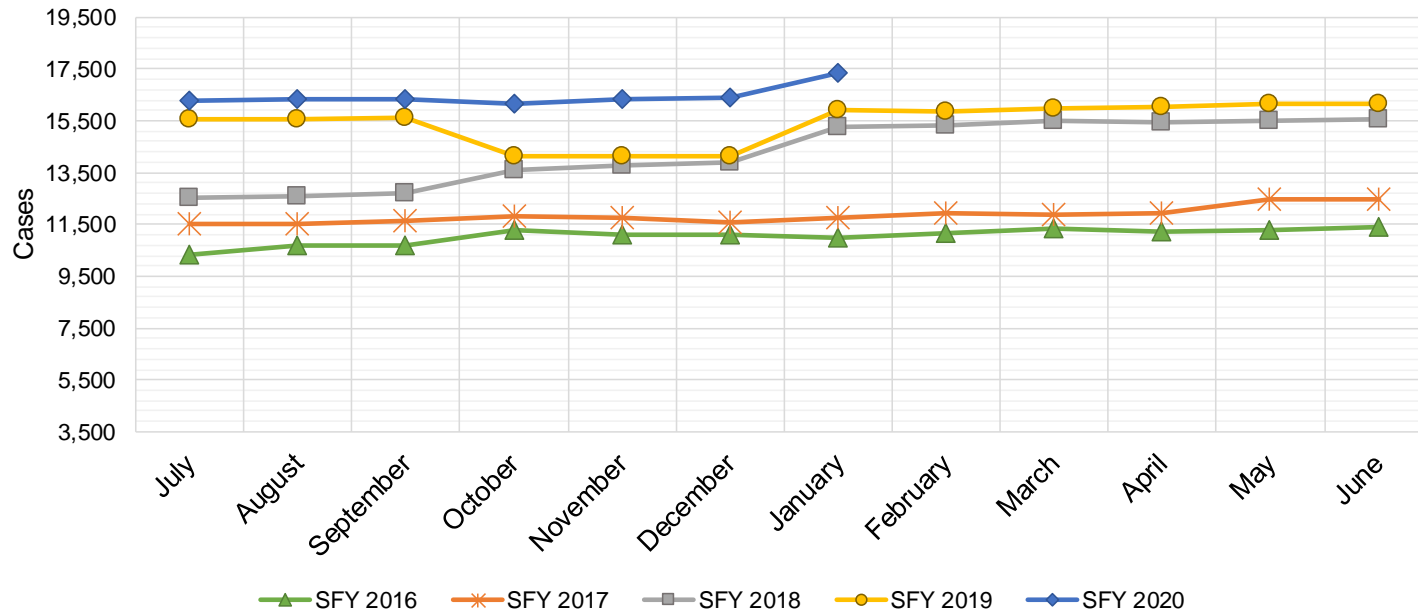
Includes cases for which no renewal application was received.

SNAP: Combined Percentage of Approved and Terminated Renewal Applications Processed¹¹

	Oct-19	Nov-19	Dec-19	Jan-20	Feb-20	Mar-20	Apr-20	May-20	Jun-20	Jul-20	Aug-20	Sep-20	Average
Cibola	96.1%	96.4%	95.9%	95.2%									95.9%
McKinley	98.4%	93.4%	97.6%	97.4%									96.7%
San Juan	95.8%	94.1%	97.2%	97.0%									96.0%
Sierra	97.7%	95.7%	95.9%	97.5%									96.7%
Socorro	98.7%	95.6%	98.1%	99.2%									97.9%
Valencia North	98.1%	95.8%	96.2%	97.9%									97.0%
Valencia South													
NW Region 1 Total	97.5%	95.2%	96.8%	97.4%									96.7%
Colfax	100.0%	98.6%	99.0%	98.3%									99.0%
Guadalupe	97.1%	97.3%	100.0%	100.0%									98.6%
Quay	100.0%	98.8%	100.0%	98.3%									99.3%
Rio Arriba	98.8%	95.1%	96.1%	96.2%									96.6%
San Miguel	93.9%	96.5%	99.6%	96.6%									96.7%
Sandoval	99.0%	97.8%	97.9%	99.1%									98.5%
Santa Fe	96.0%	93.7%	96.8%	93.1%									94.9%
Taos	98.2%	95.5%	99.6%	96.3%									97.4%
NE Region 2 Total	97.9%	96.7%	98.6%	97.2%									97.6%
NE Bernalillo	97.1%	96.0%	96.6%	93.7%									95.9%
NW Bernalillo	95.7%	95.7%	95.0%	94.0%									95.1%
SE Bernalillo	96.3%	95.3%	95.5%	93.7%									95.2%
SW Bernalillo	97.1%	97.3%	97.2%	94.4%									96.5%
Torrance	97.5%	96.3%	96.9%	96.0%									96.7%
Gen. Region 3 Total	96.7%	96.1%	96.2%	94.4%									95.9%
Chaves	98.1%	97.4%	96.9%	97.7%									97.5%
Curry	98.8%	98.2%	98.0%	99.3%									98.6%
Eddy Artesia	97.1%	100.0%	100.0%	96.2%									98.3%
Eddy Carlsbad	100.0%	98.2%	98.5%	97.5%									98.6%
Lea	98.3%	97.6%	97.7%	96.2%									97.5%
Lincoln	95.7%	95.0%	93.6%	96.5%									95.2%
Roosevelt													
SE Region 4 Total	98.0%	97.7%	97.5%	97.2%									97.6%
East Dona Ana	98.1%	97.5%	98.2%	98.8%									98.2%
Grant	98.7%	99.4%	96.0%	95.4%									97.4%
Luna	100.0%	97.6%	98.4%	99.0%									98.8%
Otero	99.4%	99.0%	99.1%	98.1%									98.9%
South Dona Ana	100.0%	99.8%	100.0%	99.6%									99.9%
West Dona Ana	99.3%	98.6%	99.3%	100.0%									99.3%
SW Region 5 Total	99.3%	98.7%	98.5%	98.5%									98.7%
STATE TOTAL	97.9%	96.9%	97.6%	97.0%									97.4%

State SNAP Supplement

SFY 2016 ^{12,9}			SFY 2017 ⁹			SFY 2018 ⁹			SFY 2019 ⁹			SFY 2020 ⁹		
	Cases	Expenditures		Cases	Expenditures		Cases	Expenditures		Cases	Expenditures		Cases	Expenditures
Jul-15	10,345	\$86,143	Jul-16	11,537	\$95,553	Jul-17	12,526	\$97,568	Jul-18	15,555	\$141,711	Jul-19	16,260	\$145,023
Aug-15	10,669	\$88,197	Aug-16	11,522	\$95,107	Aug-17	12,589	\$98,954	Aug-18	15,584	\$139,719	Aug-19	16,314	\$145,706
Sep-15	10,676	\$88,426	Sep-16	11,613	\$94,472	Sep-17	12,679	\$97,546	Sep-18	15,631	\$140,768	Sep-19	16,362	\$145,767
Oct-15	11,262	\$96,758	Oct-16	11,797	\$96,679	Oct-17	13,628	\$117,343	Oct-18	14,161	\$125,737	Oct-19	16,182	\$139,741
Nov-15	11,099	\$91,996	Nov-16	11,735	\$93,689	Nov-17	13,748	\$119,055	Nov-18	14,160	\$125,401	Nov-19	16,331	\$138,583
Dec-15	11,125	\$90,771	Dec-16	11,556	\$93,739	Dec-17	13,877	\$120,585	Dec-18	14,163	\$126,263	Dec-19	16,373	\$137,440
Jan-16	10,977	\$92,760	Jan-17	11,763	\$96,074	Jan-18	15,246	\$135,993	Jan-19	15,890	\$141,357	Jan-20	17,360	\$145,696
Feb-16	11,153	\$95,363	Feb-17	11,907	\$98,251	Feb-18	15,308	\$137,296	Feb-19	15,882	\$142,396	Feb-20		
Mar-16	11,332	\$96,751	Mar-17	11,853	\$96,693	Mar-18	15,482	\$139,132	Mar-19	15,970	\$142,427	Mar-20		
Apr-16	11,222	\$93,959	Apr-17	11,944	\$97,060	Apr-18	15,466	\$139,202	Apr-19	16,032	\$143,982	Apr-20		
May-16	11,283	\$95,271	May-17	12,457	\$96,940	May-18	15,525	\$139,397	May-19	16,126	\$143,697	May-20		
Jun-16	11,389	\$93,061	Jun-17	12,498	\$97,405	Jun-18	15,577	\$140,802	Jun-19	16,182	\$143,128	Jun-20		
TOTAL	132,532	\$1,109,455	142,182	\$1,151,662	171,651	\$1,482,874	185,336	\$1,656,584	115,182	\$997,957				
AVERAGE	11,044	\$92,455	11,849	\$95,972	14,304	\$123,573	15,445	\$138,049	16,455	\$142,565				



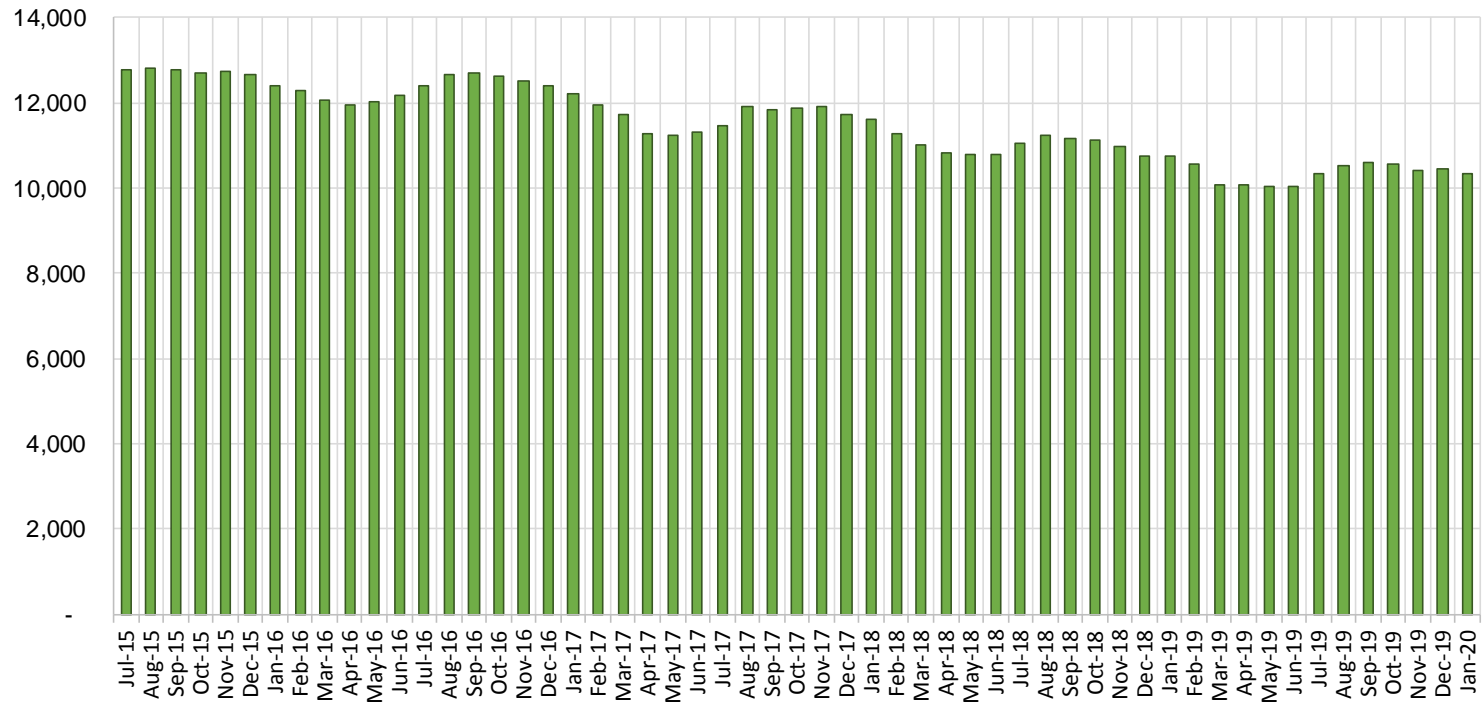
TANF Cases by Field Office⁶

Office	Jan-19	Dec-19	Jan-20	Percent Change	
				Jan-19- Jan-20	Dec-19- Jan-20
Chaves County ISD	399	406	406	1.8%	0.0%
Cibola County ISD	150	100	100	-33.3%	0.0%
Colfax County ISD	84	88	91	8.3%	3.4%
Curry County ISD	654	616	589	-9.9%	-4.4%
East Dona Ana County ISD	434	414	408	-6.0%	-1.4%
Eddy Artesia County ISD	92	83	82	-10.9%	-1.2%
Eddy Carlsbad County ISD	141	159	147	4.3%	-7.5%
Grant County ISD	205	186	187	-8.8%	0.5%
Guadalupe County ISD	24	26	25	4.2%	-3.8%
Hidalgo County ISD	0	0	0	NA	N/A
Lea County ISD	367	375	365	-0.5%	-2.7%
Lincoln County ISD	103	72	73	-29.1%	1.4%
Luna County ISD	238	208	201	-15.5%	-3.4%
McKinley County ISD	81	73	73	-9.9%	0.0%
Northeast Bernalillo County ISD	924	920	945	2.3%	2.7%
Northwest Bernalillo County ISD	830	843	824	-0.7%	-2.3%
Otero County ISD	245	287	287	17.1%	0.0%
Quay County ISD	59	80	78	32.2%	-2.5%
Rio Arriba County ISD	365	359	353	-3.3%	-1.7%
Roosevelt County ISD	0	0	0	NA	N/A
San Juan County ISD	328	278	275	-16.2%	-1.1%
San Miguel County ISD	181	193	194	7.2%	0.5%
Sandoval County ISD	501	432	445	-11.2%	3.0%
Santa Fe County ISD	377	374	359	-4.8%	-4.0%
Sierra County ISD	69	70	66	-4.3%	-5.7%
Socorro County ISD	83	82	77	-7.2%	-6.1%
South Dona Ana ISD	680	598	594	-12.6%	-0.7%
Southeast Bernalillo County ISD	611	562	552	-9.7%	-1.8%
Southwest Bernalillo County ISD	1,119	1,148	1,118	-0.1%	-2.6%
Taos County ISD	134	139	128	-4.5%	-7.9%
Torrance County ISD	192	183	193	0.5%	5.5%
Valencia North County ISD	403	423	426	5.7%	0.7%
Valencia South County ISD	1	0	0	-100.0%	N/A
West Dona Ana County ISD	674	663	667	-1.0%	0.6%
Centralized Units	1	4	0	-100.0%	-100.0%
Statewide Total	10,749	10,444	10,328	-3.9%	-1.1%

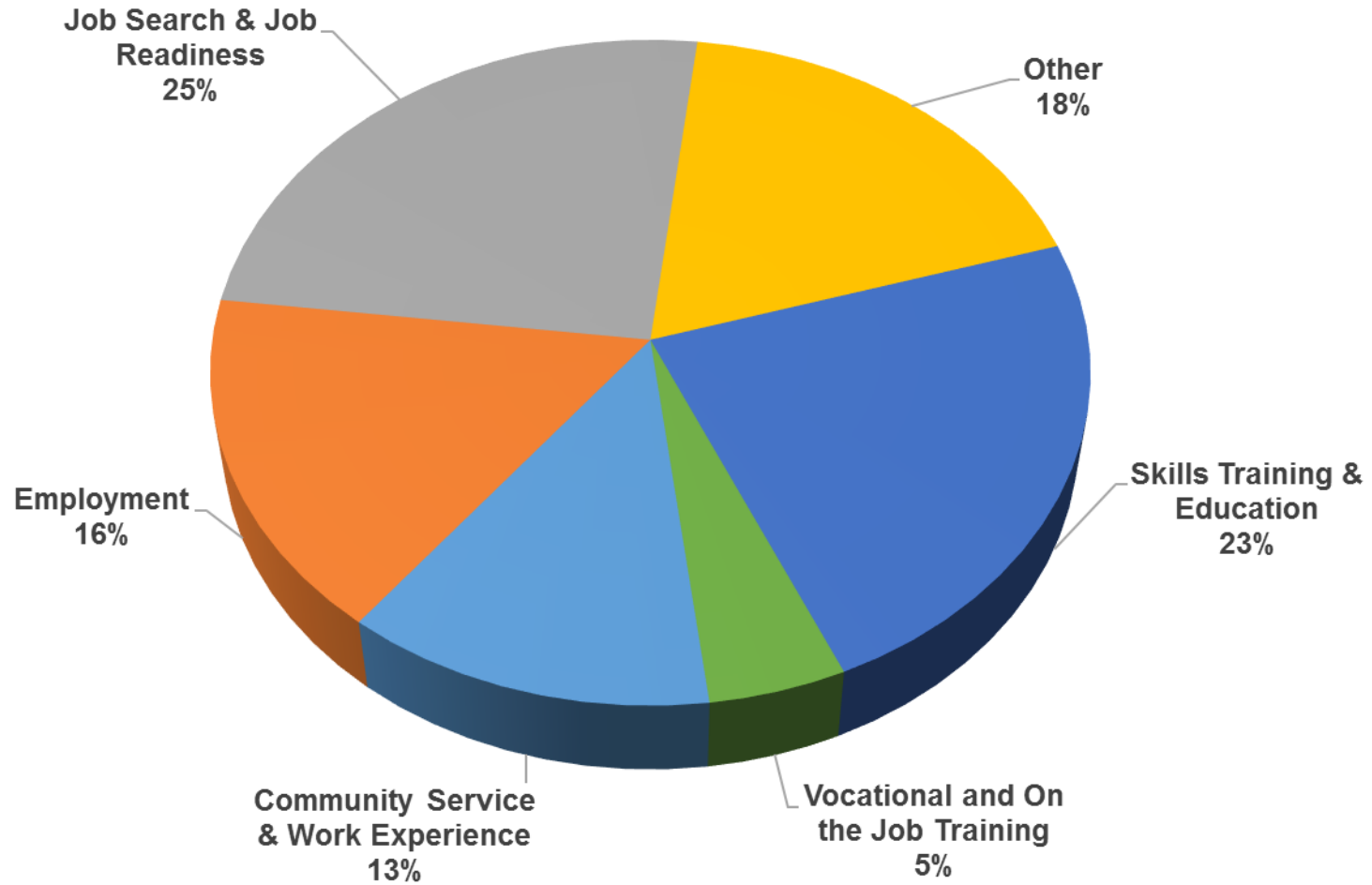
TANF Cases by Region⁶

Region	Jan-19	Dec-19	Jan-20	Percent Change	
				Jan-19- Jan-20	Dec-19- Jan-20
Region 1- NW	1,115	1,026	1,017	-8.8%	-0.9%
Region 2- NE	1,725	1,691	1,673	-3.0%	-1.1%
Region 3- Central	3,676	3,656	3,632	-1.2%	-0.7%
Region 4- SE	1,756	1,711	1,662	-5.4%	-2.9%
Region 5- SW	2,476	2,356	2,344	-5.3%	-0.5%
Centralized Units	1	4	0	-100.0%	-100.0%
Statewide Total	10,749	10,444	10,328	-3.9%	-1.1%

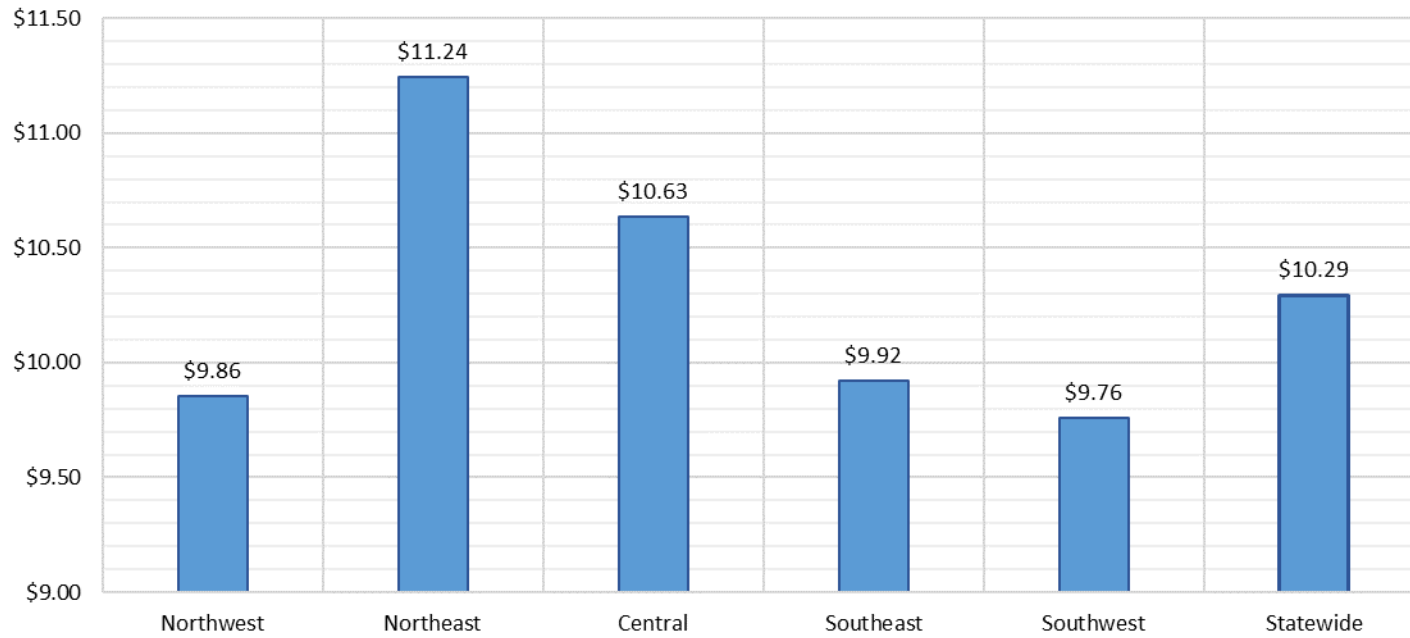
TANF Caseload: SFY-16 to Current



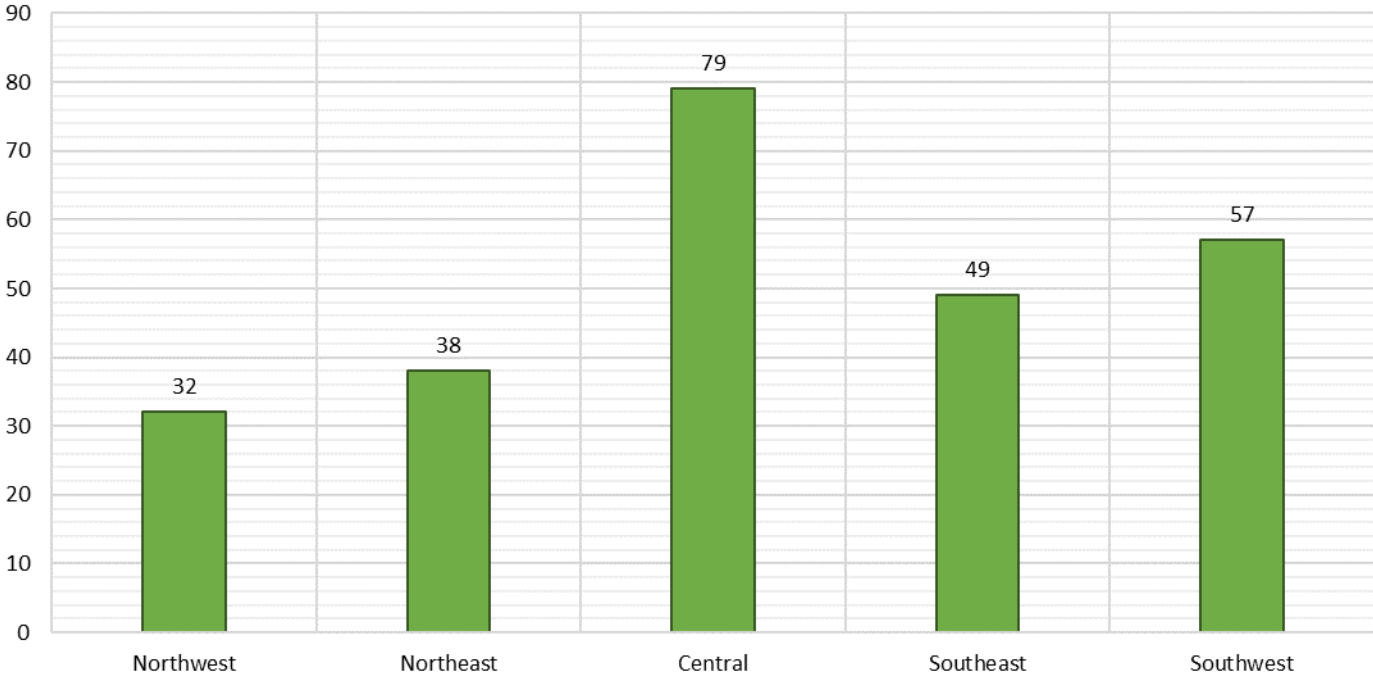
NM Works Activity Placements on January 31, 2020 as reported by SL Start¹⁴



Average Starting Hourly Wage of January 2020 TANF Employments
as reported by SL Start¹⁵



Number of New Employments in January 2020 by Region
as reported by SL Start¹⁵
Statewide Total: 255



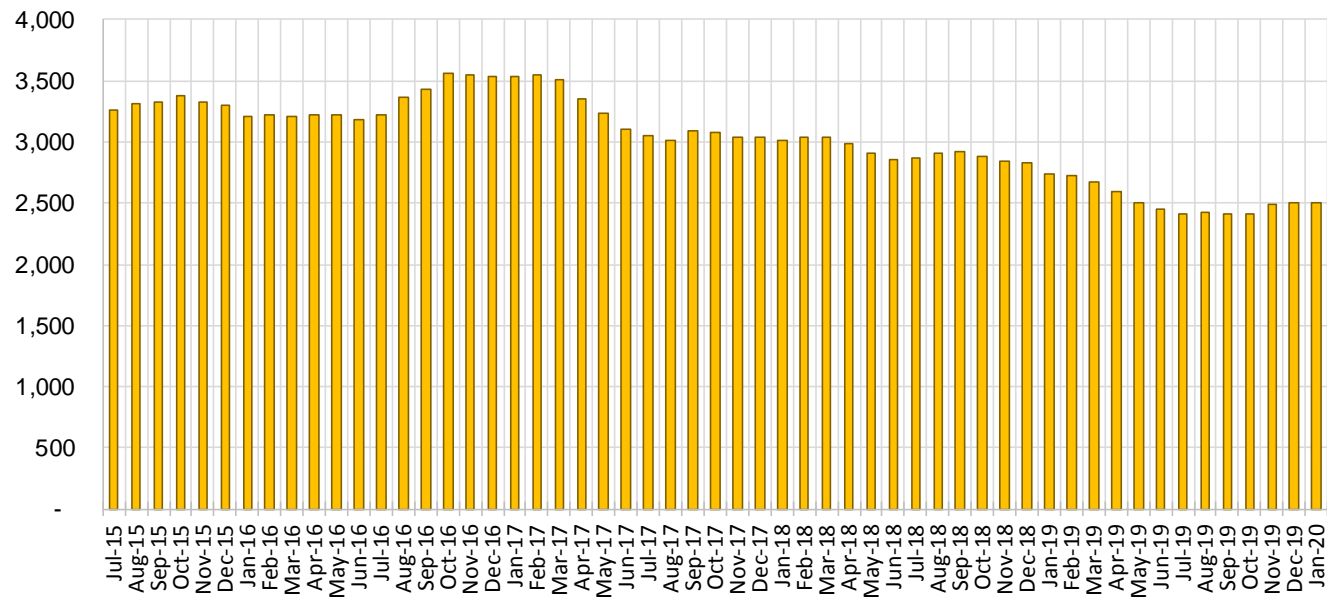
General Assistance Cases by Field Office⁶

Office				Percent Change	
	Jan-19	Dec-19	Jan-20	Jan-19- Jan-20	Dec-19- Jan-20
Chaves County ISD	116	114	115	-0.9%	0.9%
Cibola County ISD	50	33	34	-32.0%	3.0%
Colfax County ISD	22	23	22	0.0%	-4.3%
Curry County ISD	77	79	89	15.6%	12.7%
East Dona Ana County ISD	98	97	105	7.1%	8.2%
Eddy Artesia County ISD	29	23	23	-20.7%	0.0%
Eddy Carlsbad County ISD	67	46	49	-26.9%	6.5%
Grant County ISD	64	70	66	3.1%	-5.7%
Guadalupe County ISD	14	10	8	-42.9%	-20.0%
Hidalgo County ISD	0	0	0	N/A	N/A
Lea County ISD	75	61	63	-16.0%	3.3%
Lincoln County ISD	25	30	28	12.0%	-6.7%
Luna County ISD	51	57	57	11.8%	0.0%
McKinley County ISD	55	65	61	10.9%	-6.2%
Northeast Bernalillo County ISD	288	228	229	-20.5%	0.4%
Northwest Bernalillo County ISD	265	242	235	-11.3%	-2.9%
Otero County ISD	66	73	70	6.1%	-4.1%
Quay County ISD	28	31	33	17.9%	6.5%
Rio Arriba County ISD	80	60	63	-21.3%	5.0%
Roosevelt County ISD	0	0	0	N/A	N/A
San Juan County ISD	130	119	130	0.0%	9.2%
San Miguel County ISD	68	64	61	-10.3%	-4.7%
Sandoval County ISD	108	78	80	-25.9%	2.6%
Santa Fe County ISD	126	94	94	-25.4%	0.0%
Sierra County ISD	30	37	38	26.7%	2.7%
Socorro County ISD	36	43	38	5.6%	-11.6%
South Dona Ana ISD	57	57	57	0.0%	0.0%
Southeast Bernalillo County ISD	165	149	141	-14.5%	-5.4%
Southwest Bernalillo County ISD	180	197	191	6.1%	-3.0%
Taos County ISD	39	32	34	-12.8%	6.3%
Torrance County ISD	49	41	42	-14.3%	2.4%
Valencia North County ISD	112	84	87	-22.3%	3.6%
Valencia South County ISD	0	0	0	N/A	N/A
West Dona Ana County ISD	169	164	162	-4.1%	-1.2%
Centralized Units	0	0	0	N/A	N/A
Statewide Total	2,739	2,501	2,505	-8.5%	0.2%

General Assistance Cases by Region⁶

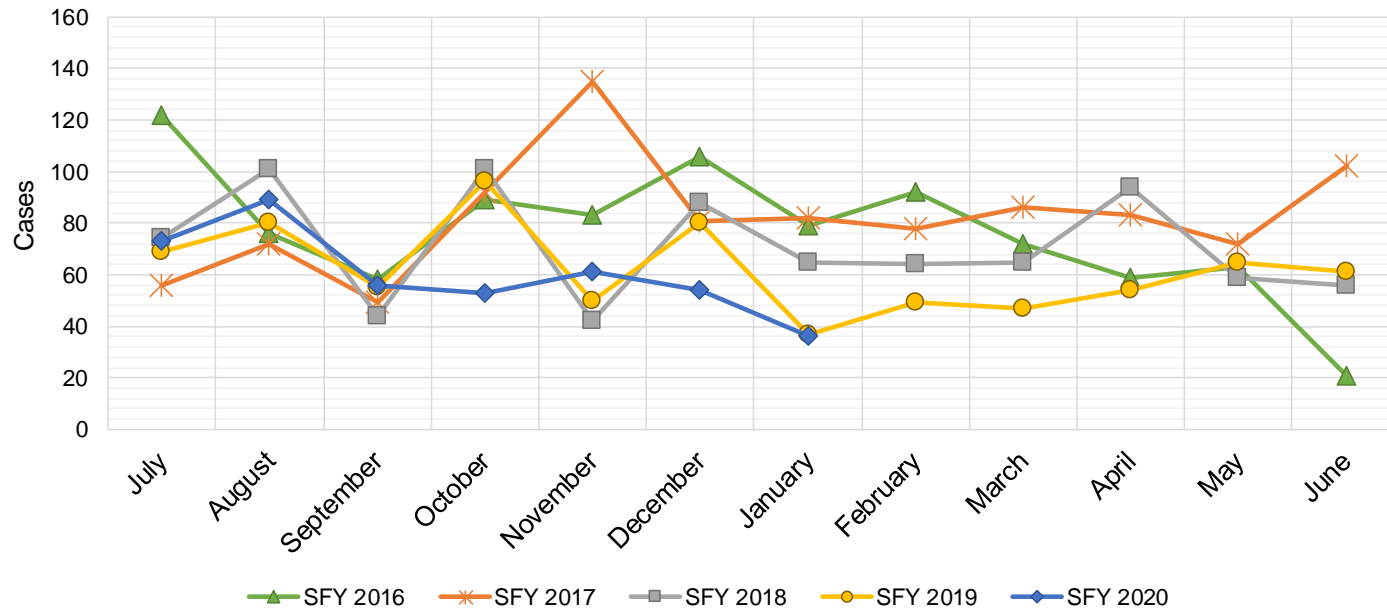
				Percent Change	
Region	Jan-19	Dec-19	Jan-20	Jan-19- Jan-20	Dec-19- Jan-20
Region 1 - NW	413	381	388	-6.1%	1.8%
Region 2 - NE	485	392	395	-18.6%	0.8%
Region 3 - Central	947	857	838	-11.5%	-2.2%
Region 4 - SE	389	353	367	-5.7%	4.0%
Region 5 - SW	505	518	517	2.4%	-0.2%
Centralized Units	0	0	0	N/A	N/A
Statewide Total	2,739	2,501	2,505	-8.5%	0.2%

General Assistance Caseload: SFY-16 to Current



General Assistance Interim Assistance Reimbursements¹⁶

SFY 2016			SFY 2017			SFY 2018			SFY 2019			SFY 2020		
	Cases	Expenditures		Cases	Expenditures		Cases	Expenditures		Cases	Expenditures		Cases	Expenditures
Jul-15	122	\$342,648	Jul-16	56	\$164,970	Jul-17	74	\$241,438	Jul-18	69	\$228,333	Jul-19	73	\$303,584
Aug-15	76	\$245,236	Aug-16	72	\$223,182	Aug-17	101	\$339,301	Aug-18	80	\$241,292	Aug-19	89	\$310,047
Sep-15	58	\$170,093	Sep-16	49	\$158,027	Sep-17	44	\$131,229	Sep-18	55	\$188,192	Sep-19	56	\$172,016
Oct-15	89	\$277,912	Oct-16	92	\$257,830	Oct-17	101	\$335,752	Oct-18	96	\$298,502	Oct-19	53	\$168,461
Nov-15	83	\$238,948	Nov-16	135	\$402,305	Nov-17	42	\$139,572	Nov-18	50	\$148,641	Nov-19	61	\$171,883
Dec-15	106	\$388,102	Dec-16	81	\$227,569	Dec-17	88	\$245,453	Dec-18	80	\$246,422	Dec-19	54	\$164,045
Jan-16	79	\$239,263	Jan-17	82	\$274,050	Jan-18	65	\$258,239	Jan-19	37	\$106,081	Jan-20	36	\$96,668
Feb-16	92	\$296,332	Feb-17	78	\$227,569	Feb-18	64	\$195,815	Feb-19	49	\$119,300	Feb-20		
Mar-16	72	\$254,360	Mar-17	86	\$278,219	Mar-18	65	\$172,188	Mar-19	47	\$137,296	Mar-20		
Apr-16	59	\$208,631	Apr-17	83	\$267,187	Apr-18	94	\$312,340	Apr-19	54	\$173,772	Apr-20		
May-16	63	\$182,241	May-17	72	\$232,836	May-18	59	\$155,406	May-19	65	\$237,979	May-20		
Jun-16	21	\$51,760	Jun-17	102	\$306,228	Jun-18	56	\$159,268	Jun-19	61	\$214,497	Jun-20		
TOTAL	920	\$2,895,525	988	\$3,019,972	853	\$2,686,001	743	\$2,340,307	422	\$1,386,705				
AVERAGE	77	\$241,294	82	\$251,664	71	\$223,833	62	\$195,026	60	\$198,101				



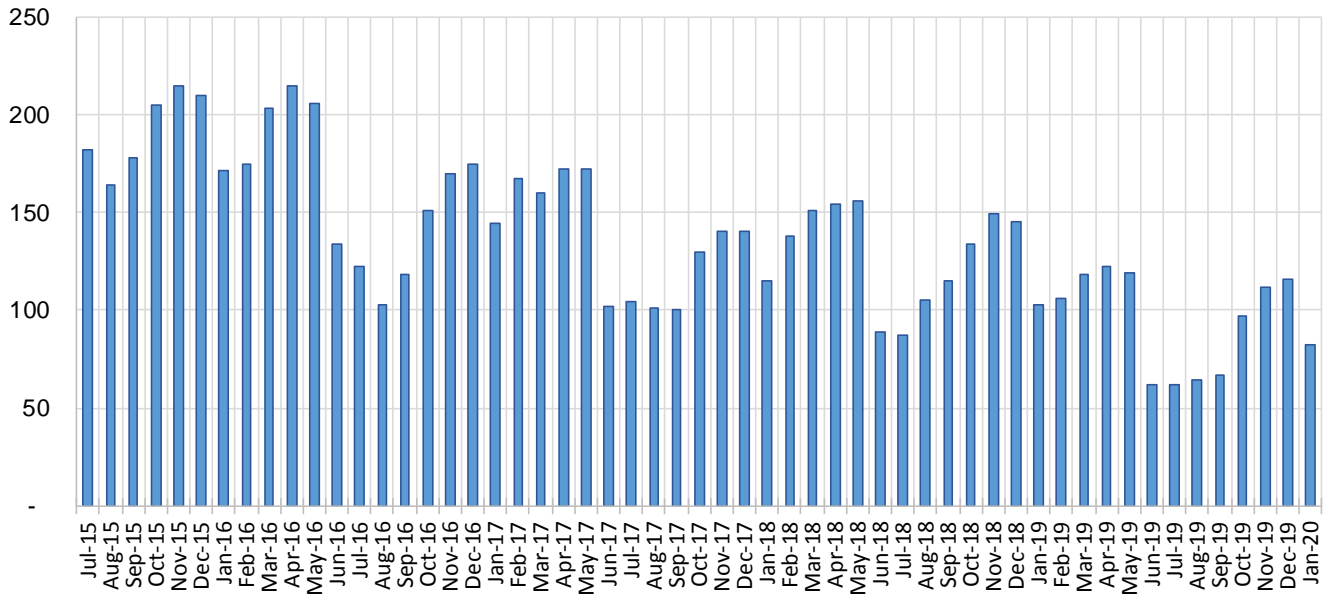
Education Works Cases by Field Office⁶

Office	Jan-19	Dec-19	Jan-20	Percent Change	
				Jan-19- Jan-20	Dec-19- Jan-20
Chaves County ISD	0	3	3	N/A	0.0%
Cibola County ISD	1	1	0	-100.0%	-100.0%
Colfax County ISD	1	0	0	-100.0%	N/A
Curry County ISD	3	6	5	66.7%	-16.7%
East Dona Ana County ISD	15	8	5	-66.7%	-37.5%
Eddy Artesia County ISD	1	3	2	100.0%	-33.3%
Eddy Carlsbad County ISD	2	1	1	-50.0%	0.0%
Grant County ISD	5	1	1	-80.0%	0.0%
Guadalupe County ISD	0	0	0	N/A	N/A
Hidalgo County ISD	0	0	0	N/A	N/A
Lea County ISD	2	1	0	-100.0%	-100.0%
Lincoln County ISD	0	0	0	N/A	N/A
Luna County ISD	1	2	2	100.0%	0.0%
McKinley County ISD	0	1	0	N/A	-100.0%
Northeast Bernalillo County ISD	10	6	2	-80.0%	-66.7%
Northwest Bernalillo County ISD	8	13	9	12.5%	-30.8%
Otero County ISD	1	0	0	-100.0%	N/A
Quay County ISD	0	0	0	N/A	N/A
Rio Arriba County ISD	2	2	1	-50.0%	-50.0%
Roosevelt County ISD	0	0	0	N/A	N/A
San Juan County ISD	2	2	2	0.0%	0.0%
San Miguel County ISD	3	6	4	33.3%	-33.3%
Sandoval County ISD	7	10	6	-14.3%	-40.0%
Santa Fe County ISD	9	10	7	-22.2%	-30.0%
Sierra County ISD	1	1	1	0.0%	0.0%
Socorro County ISD	0	0	0	N/A	N/A
South Dona Ana ISD	10	8	4	-60.0%	-50.0%
Southeast Bernalillo County ISD	4	6	7	75.0%	16.7%
Southwest Bernalillo County ISD	7	9	5	-28.6%	-44.4%
Taos County ISD	0	0	0	N/A	N/A
Torrance County ISD	0	4	1	N/A	-75.0%
Valencia North County ISD	0	1	1	N/A	0.0%
Valencia South County ISD	0	0	0	N/A	N/A
West Dona Ana County ISD	8	11	13	62.5%	18.2%
Centralized Units	0	0	0	N/A	N/A
Statewide Total	103	116	82	-20.4%	-29.3%

Education Works Cases by Region⁶

				Percent Change	
Region	Jan-19	Dec-19	Jan-20	Jan-19- Jan-20	Dec-19- Jan-20
Region 1 - NW	4	6	4	0.0%	-33.3%
Region 2 - NE	22	28	18	-18.2%	-35.7%
Region 3 - Central	29	38	24	-17.2%	-36.8%
Region 4 - SE	8	14	11	37.5%	-21.4%
Region 5 - SW	40	30	25	-37.5%	-16.7%
Centralized Units	0	0	0	N/A	N/A
Statewide Total	103	116	82	-20.4%	-29.3%

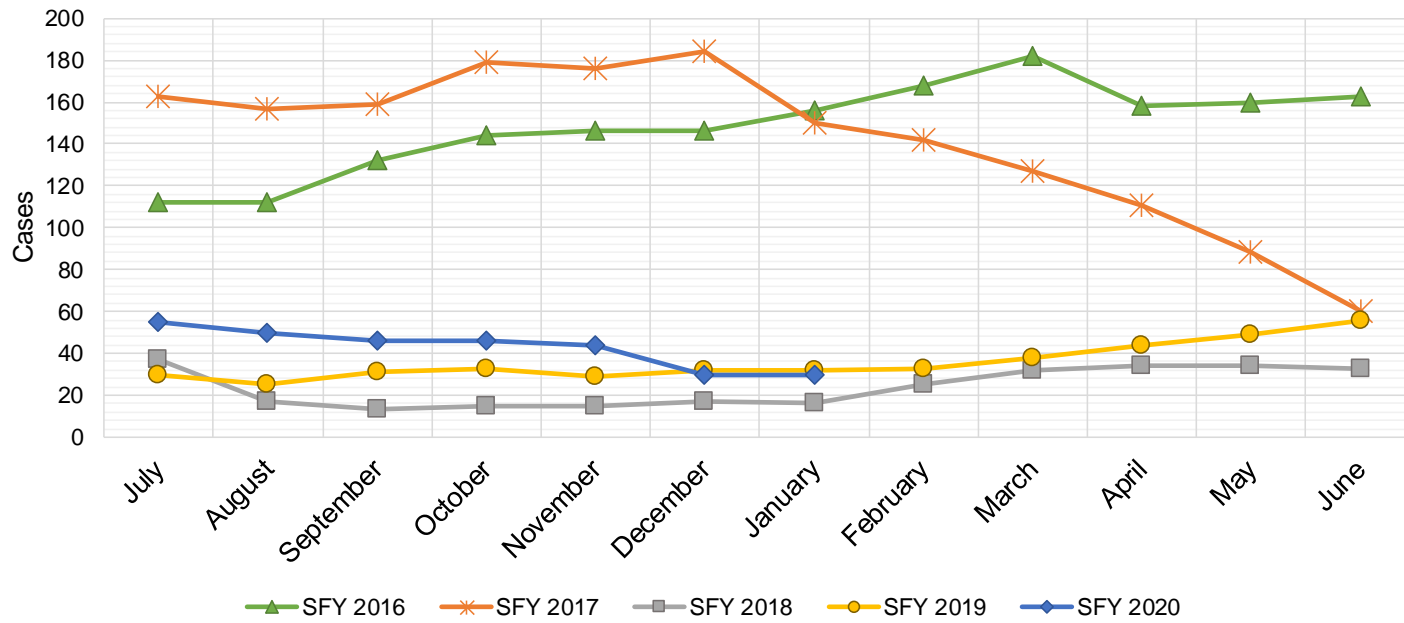
Education Works Caseload: SFY-16 to Current



Refugee Cash Assistance

SFY 2016 ^{8,12,9}			SFY 2017 ^{8,9}			SFY 2018 ^{8,9}			SFY 2019 ^{8,9}			SFY 2020 ^{8,9}		
	Cases	Expenditures		Cases	Expenditures		Cases	Expenditures		Cases	Expenditures		Cases	Expenditures
Jul-15	112	\$27,516	Jul-16	163	\$39,756	Jul-17	37	\$9,981	Jul-18	30	\$7,408	Jul-19	55	\$13,851
Aug-15	112	\$27,438	Aug-16	157	\$40,115	Aug-17	17	\$4,704	Aug-18	25	\$6,434	Aug-19	50	\$12,497
Sep-15	132	\$31,321	Sep-16	159	\$39,359	Sep-17	13	\$3,159	Sep-18	31	\$6,947	Sep-19	46	\$11,473
Oct-15	144	\$36,153	Oct-16	179	\$41,520	Oct-17	15	\$3,543	Oct-18	33	\$6,323	Oct-19	46	\$11,341
Nov-15	146	\$36,515	Nov-16	176	\$45,434	Nov-17	15	\$4,263	Nov-18	29	\$7,036	Nov-19	44	\$11,296
Dec-15	146	\$35,763	Dec-16	184	\$46,673	Dec-17	17	\$4,795	Dec-18	32	\$7,300	Dec-19	30	\$7,679
Jan-16	156	\$38,686	Jan-17	150	\$38,790	Jan-18	16	\$4,166	Jan-19	32	\$7,418	Jan-20	30	\$7,407
Feb-16	168	\$41,368	Feb-17	142	\$37,956	Feb-18	25	\$5,723	Feb-19	33	\$8,591	Feb-20		
Mar-16	182	\$45,307	Mar-17	127	\$33,066	Mar-18	32	\$7,636	Mar-19	38	\$9,165	Mar-20		
Apr-16	158	\$41,143	Apr-17	111	\$29,183	Apr-18	34	\$8,827	Apr-19	44	\$10,648	Apr-20		
May-16	160	\$38,332	May-17	88	\$23,343	May-18	34	\$8,939	May-19	49	\$11,823	May-20		
Jun-16	163	\$39,856	Jun-17	60	\$15,538	Jun-18	33	\$8,513	Jun-19	56	\$13,558	Jun-20		

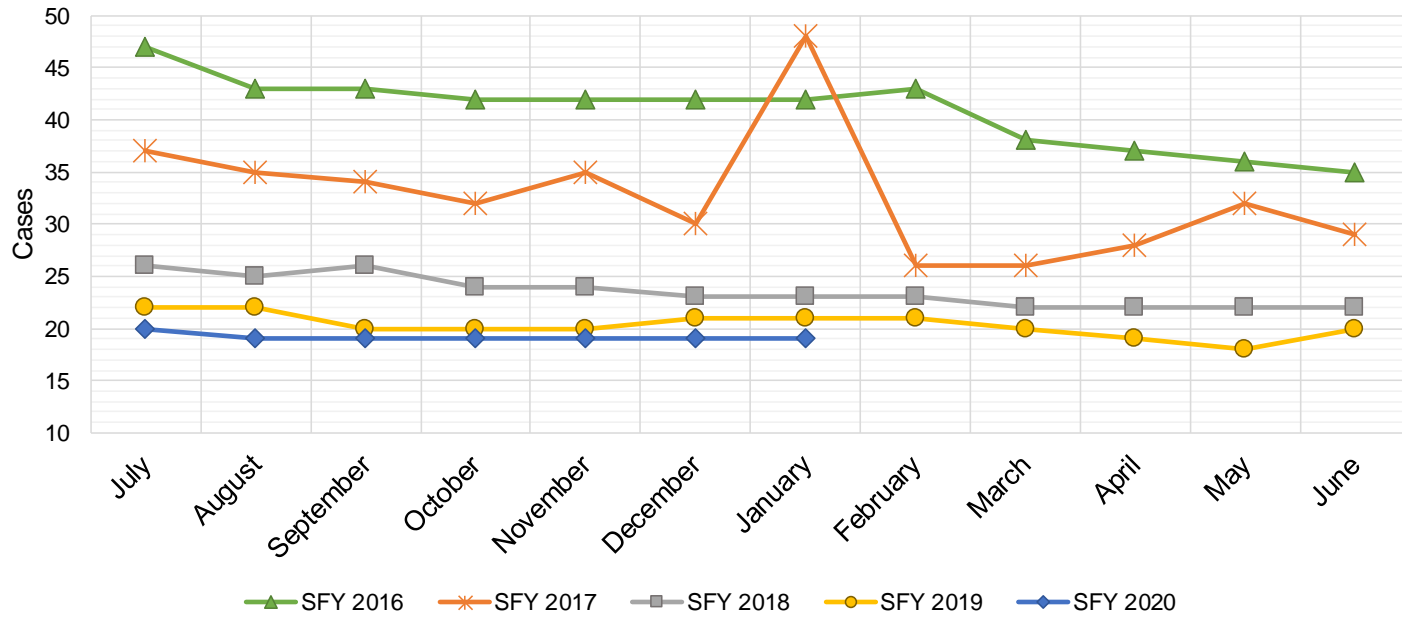
TOTAL	1,779	\$439,397	1,696	\$430,732	288	\$74,249	432	\$102,651	301	\$75,544
AVERAGE	148	\$36,616	141	\$35,894	24	\$6,187	36	\$8,554	43	\$10,792



State Supplement for Residential Care

SFY 2016 ^{12,9}			SFY 2017 ⁹			SFY 2018 ⁹			SFY 2019 ⁹			SFY 2020 ⁹		
Cases	Expenditures		Cases	Expenditures		Cases	Expenditures		Cases	Expenditures		Cases	Expenditures	
Jul-15	47	\$4,700	Jul-16	37	\$3,700	Jul-17	26	\$2,700	Jul-18	22	\$2,200	Jul-19	20	\$1,900
Aug-15	43	\$4,900	Aug-16	35	\$3,500	Aug-17	25	\$2,500	Aug-18	22	\$2,200	Aug-19	19	\$1,900
Sep-15	43	\$4,500	Sep-16	34	\$3,400	Sep-17	26	\$2,700	Sep-18	20	\$2,000	Sep-19	19	\$1,900
Oct-15	42	\$4,400	Oct-16	32	\$3,200	Oct-17	24	\$2,500	Oct-18	20	\$2,000	Oct-19	19	\$1,900
Nov-15	42	\$4,200	Nov-16	35	\$3,500	Nov-17	24	\$2,400	Nov-18	20	\$2,000	Nov-19	19	\$1,900
Dec-15	42	\$4,200	Dec-16	30	\$3,000	Dec-17	23	\$2,200	Dec-18	21	\$2,100	Dec-19	19	\$1,900
Jan-16	42	\$4,200	Jan-17	48	\$4,800	Jan-18	23	\$2,400	Jan-19	21	\$2,000	Jan-20	19	\$1,800
Feb-16	43	\$4,300	Feb-17	26	\$2,600	Feb-18	23	\$2,300	Feb-19	21	\$2,200	Feb-20		
Mar-16	38	\$3,800	Mar-17	26	\$2,600	Mar-18	22	\$2,400	Mar-19	20	\$1,900	Mar-20		
Apr-16	37	\$3,700	Apr-17	28	\$2,800	Apr-18	22	\$2,200	Apr-19	19	\$1,800	Apr-20		
May-16	36	\$3,600	May-17	32	\$3,200	May-18	22	\$2,200	May-19	18	\$1,800	May-20		
Jun-16	35	\$3,500	Jun-17	29	\$2,900	Jun-18	22	\$2,200	Jun-19	20	\$2,000	Jun-20		

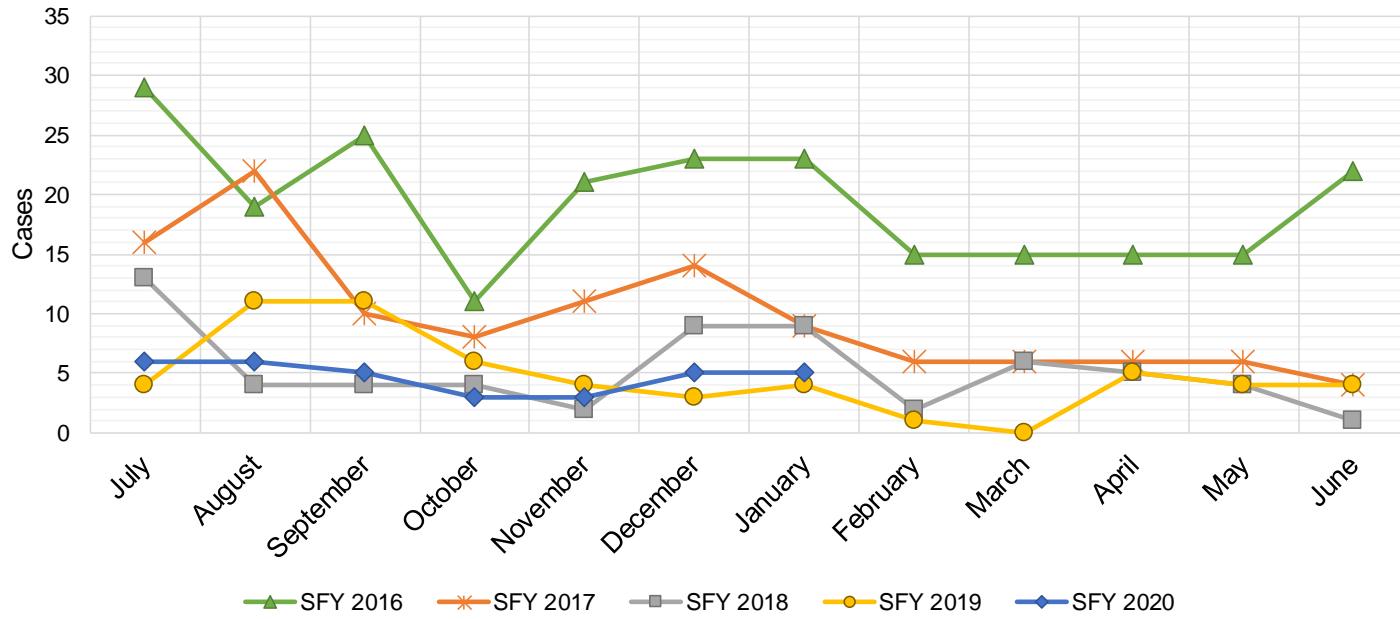
TOTAL	490	\$50,000	392	\$39,200	282	\$28,700	244	\$24,200	134	\$13,200
AVERAGE	41	\$4,167	33	\$3,267	24	\$2,392	20	\$2,017	19	\$1,886



TANF Diversion Payments

SFY 2016 ^{12,9}			SFY 2017 ⁹			SFY 2018 ⁹			SFY 2019 ⁹			SFY 2020 ⁹		
	Cases	Expenditures		Cases	Expenditures		Cases	Expenditures		Cases	Expenditures		Cases	Expenditures
Jul-15	29	\$62,074	Jul-16	16	\$30,843	Jul-17	13	\$26,500	Jul-18	4	\$3,000	Jul-19	6	\$18,500
Aug-15	19	\$33,584	Aug-16	22	\$42,731	Aug-17	4	\$12,000	Aug-18	11	\$18,583	Aug-19	6	\$16,500
Sep-15	25	\$47,977	Sep-16	10	\$21,000	Sep-17	4	\$4,000	Sep-18	11	\$20,999	Sep-19	5	\$11,000
Oct-15	11	\$20,500	Oct-16	8	\$16,744	Oct-17	4	\$16,000	Oct-18	6	\$10,499	Oct-19	3	\$3,000
Nov-15	21	\$45,500	Nov-16	11	\$24,500	Nov-17	2	\$15,500	Nov-18	4	\$7,499	Nov-19	3	\$16,180
Dec-15	23	\$45,389	Dec-16	14	\$26,611	Dec-17	9	\$17,500	Dec-18	3	\$2,499	Dec-19	5	\$14,000
Jan-16	23	\$41,874	Jan-17	9	\$18,500	Jan-18	9	\$21,731	Jan-19	4	\$5,999	Jan-20	5	\$1,500
Feb-16	15	\$28,500	Feb-17	6	\$12,000	Feb-18	2	\$7,731	Feb-19	1	\$1,678	Feb-20		
Mar-16	15	\$27,008	Mar-17	6	\$11,000	Mar-18	6	\$8,496	Mar-19	0	\$3,000	Mar-20		
Apr-16	15	\$31,389	Apr-17	6	\$12,000	Apr-18	5	\$13,500	Apr-19	5	\$6,500	Apr-20		
May-16	15	\$31,916	May-17	6	\$11,500	May-18	4	\$12,500	May-19	4	\$16,000	May-20		
Jun-16	22	\$43,000	Jun-17	4	\$13,500	Jun-18	1	\$5,389	Jun-19	4	\$8,000	Jun-20		

TOTAL	233	\$458,711	118	\$240,929	63	\$160,847	57	\$104,256	33	\$80,680
AVERAGE	19	\$38,226	10	\$20,077	5	\$13,404	5	\$8,688	5	\$11,526

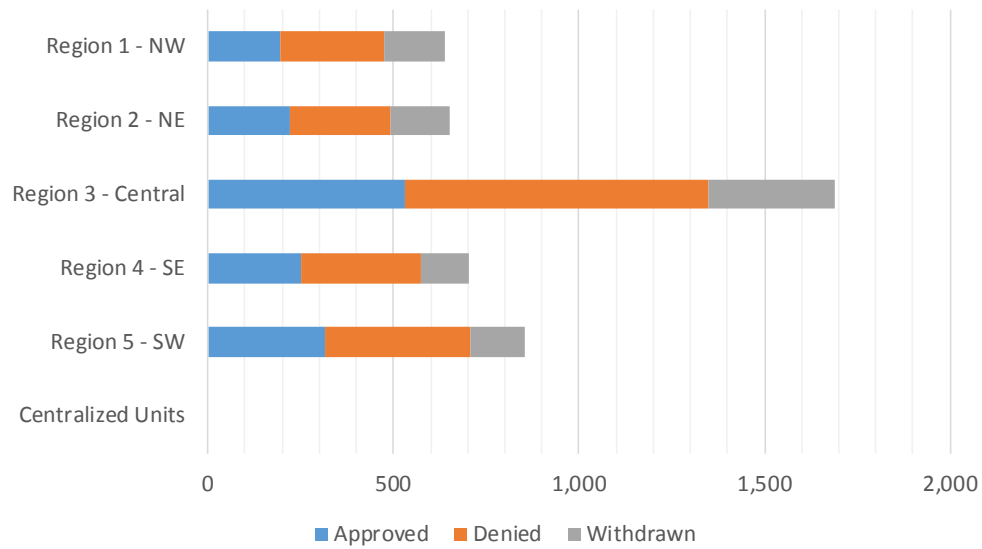


Cash Assistance Applications by Field Office^{4,11}
January 2020

Office	Approved	Denied	Withdrawn	Total Cases Processed
Chaves County ISD	58	54	43	155
Cibola County ISD	24	32	12	68
Colfax County ISD	11	5	11	27
Curry County ISD	82	93	26	201
East Dona Ana County ISD	77	89	31	197
Eddy Artesia County ISD	9	25	7	41
Eddy Carlsbad County ISD	28	35	21	84
Grant County ISD	40	20	16	76
Guadalupe County ISD	4	0	1	5
Hidalgo County ISD	0	0	0	0
Lea County ISD	64	81	26	171
Lincoln County ISD	12	33	5	50
Luna County ISD	22	25	23	70
McKinley County ISD	18	43	31	92
Northeast Bernalillo County ISD	151	228	117	496
Northwest Bernalillo County ISD	108	213	77	398
Otero County ISD	46	66	22	134
Quay County ISD	11	1	5	17
Rio Arriba County ISD	37	52	22	111
Roosevelt County ISD	0	1	0	1
San Juan County ISD	59	131	72	262
San Miguel County ISD	27	28	18	73
Sandoval County ISD	65	80	60	205
Santa Fe County ISD	50	77	28	155
Sierra County ISD	13	17	8	38
Socorro County ISD	10	13	2	25
South Dona Ana ISD	44	63	17	124
Southeast Bernalillo County ISD	92	132	44	268
Southwest Bernalillo County ISD	148	176	82	406
Taos County ISD	15	29	16	60
Torrance County ISD	34	68	19	121
Valencia North County ISD	71	46	35	152
Valencia South County ISD	0	0	0	0
West Dona Ana County ISD	85	129	38	252
Centralized Units	0	0	0	0
Statewide Total	1,515	2,085	935	4,535

Cash Assistance Applications by Region^{4,11}
January 2020

	Approved	Denied	Withdrawn	Total Cases Processed
Region				
Region 1 - NW	195	282	160	637
Region 2 - NE	220	272	161	653
Region 3 - Central	533	817	339	1,689
Region 4 - SE	253	322	128	703
Region 5 - SW	314	392	147	853
Centralized Units	0	0	0	0
Statewide Total	1,515	2,085	935	4,535



Children Youth and Families Department
Children Receiving Child Care Assistance Subsidies By County

County	Jan 2019	Feb 2019	Mar 2019	Apr 2019	May 2019	June 2019	July 2019	Aug 2019	Sept 2019	Oct 2019	Nov 2019	Dec 2019	Jan 2020	Change Fr. Cases	Last Year Percent
Bernalillo	7,545	7,563	7,831	7,997	8,226	8,692	7,702	7,885	8,295	7,690	7,759	7,591	7,673	128	1.7%
Catron	0	0	0	0	0	0	0	0	0	0	0	0	0	0	0.0%
Chaves	812	834	878	868	868	875	830	824	886	811	891	827	835	23	2.8%
Cibola	287	285	289	306	286	292	283	277	275	250	238	247	224	-63	-22.0%
Colfax	62	57	59	52	50	44	38	40	33	43	34	31	32	-30	-48.4%
Curry	492	489	524	548	542	590	597	613	625	563	596	587	605	113	23.0%
De Baca	1	1	1	0	1	1	1	1	1	1	1	1	0	-1	-100.0%
Dona Ana	4,198	4,351	4,453	4,413	4,536	4,751	4,360	4,384	4,575	4,429	4,493	4,348	4,350	152	3.6%
Eddy	248	243	245	214	225	240	240	226	224	244	239	234	225	-23	-9.3%
Grant	125	134	131	127	130	136	133	115	157	138	133	145	143	18	14.4%
Guadalupe	11	11	11	11	11	11	10	10	10	7	7	7	7	-4	-36.4%
Harding	1	1	0	0	0	0	0	0	0	0	0	0	0	-1	0.0%
Hidalgo	23	26	24	20	27	27	27	27	26	21	28	28	28	5	21.7%
Lea	829	823	831	815	808	798	770	752	761	770	753	741	736	-93	-11.2%
Lincoln	97	102	104	104	100	104	103	103	108	101	97	86	89	-8	-8.2%
Los Alamos	34	34	34	36	40	40	37	37	47	38	42	40	42	8	23.5%
Luna	150	176	180	176	190	191	172	160	173	160	148	155	158	8	5.3%
McKinley	162	158	168	154	158	169	146	141	165	176	172	172	170	8	4.9%
Mora	16	13	11	11	13	9	9	10	12	12	11	11	11	-5	-31.3%
Otero	531	506	507	512	506	530	499	538	547	488	510	501	506	-25	-4.7%
Out of State	3	4	1	2	0	1	0	0	0	0	0	0	0	-3	-100.0%
Quay	34	32	34	33	33	38	34	38	37	33	34	35	32	-2	-5.9%
Rio Arriba	134	137	132	141	151	155	158	151	150	147	153	155	152	18	13.4%
Roosevelt	118	118	118	121	119	130	129	138	148	140	134	133	131	13	11.0%
San Juan	913	942	935	958	966	961	905	897	1,018	932	926	958	928	15	1.6%
San Miguel	317	316	319	332	349	373	363	357	363	375	356	353	349	32	10.1%
Sandoval	741	734	744	758	751	802	765	806	827	783	803	770	738	-3	-0.4%
Santa Fe	461	481	503	499	520	541	557	562	606	534	567	537	533	72	15.6%
Sierra	49	51	48	42	40	50	48	47	58	54	56	63	61	12	24.5%
Socorro	58	51	58	55	54	57	53	53	59	54	53	48	43	-15	-25.9%
Taos	115	118	117	124	125	136	138	149	135	118	125	126	126	11	9.6%
Torrance	90	85	79	69	67	82	68	67	73	57	57	63	68	-22	-24.4%
Union	5	5	5	3	3	4	3	3	3	3	3	3	3	-2	-40.0%
Valencia	614	604	589	591	607	656	559	569	625	602	595	573	564	-50	-8.1%
Totals	19,276	19,485	19,963	20,092	20,502	21,486	19,737	19,980	21,022	19,774	20,014	19,569	19,562	286	1.5%

CHILDREN YOUTH AND FAMILIES DEPARTMENT

CHILD CARE ASSISTANCE ELIGIBILITY PROGRAMS

MONTH	Feb'19	Mar'19	Apr'19	May'19	June'19	July'19	Aug'19	Sept'19	Oct'19	Nov'19	Dec'19	Jan'20
TANF (Child Care Priority 1 Clients)												
CLIENTS	2,107	2,138	2,147	2,140	2,253	2,054	2,033	2,165	2,053	2,120	2,055	2,030
COST	\$1,264,626	\$1,284,582	\$1,286,044	\$1,278,678	\$1,305,024	\$1,273,209	\$1,263,930	\$1,184,381	\$1,233,005	\$1,284,683	\$1,239,407	\$1,257,977
TANF AVERAGE COST	\$600	\$601	\$599	\$598	\$579	\$620	\$622	\$547	\$601	\$606	\$603	\$620
TRANSITION OFF TANF (Child Care Priority 2 Clients)												
CLIENTS	125	124	119	111	112	120	132	163	166	167	178	196
COST	\$75,852	\$73,930	\$71,395	\$69,505	\$74,593	\$74,688	\$88,189	\$90,271	\$107,532	\$107,596	\$111,325	\$120,862
TRAN OFF TANF AVG COST	\$607	\$596	\$600	\$626	\$666	\$622	\$668	\$554	\$648	\$644	\$625	\$617
TANF ELIGIBLE (Child Care Priority 1B Clients at or below 100% of the Federal Poverty Level)												
CLIENTS	8,125	8,248	8,275	8,494	8,777	8,104	8,220	8,523	8,152	8,135	7,830	7,697
COST	\$4,662,397	\$4,825,487	\$4,845,578	\$4,939,239	\$5,047,497	\$4,909,110	\$5,038,735	\$4,665,509	\$4,833,260	\$4,922,197	\$4,694,761	\$4,551,874
TANF ELIGIBLE AVG COST	\$574	\$585	\$586	\$581	\$575	\$606	\$613	\$547	\$593	\$605	\$600	\$591
INCOME ELIGIBLE (Child Care Priority 3, and Priority 4 Clients)												
CLIENTS	7,932	8,262	8,382	8,610	9,149	8,313	8,429	9,032	8,410	8,595	8,520	8,701
COST	\$4,144,807	\$4,325,025	\$4,401,790	\$4,546,220	\$4,693,955	\$4,573,196	\$4,729,292	\$4,390,092	\$4,436,376	\$4,557,011	\$4,488,101	\$4,573,609
INCOME ELIG AVG COST	\$523	\$523	\$525	\$528	\$513	\$550	\$561	\$486	\$528	\$530	\$527	\$526
AT-RISK CHILD PROTECTIVE SERVICES CHILD CARE PILOT (Priority 5 Clients)												
CLIENTS	336	342	322	303	321	297	270	240	232	200	187	190
COST	\$210,812	\$223,510	\$203,584	\$204,504	\$206,998	\$200,185	\$201,432	\$161,487	\$162,255	\$159,520	\$137,644	\$145,544
CPS AVG COST	\$627	\$654	\$632	\$675	\$645	\$674	\$746	\$673	\$699	\$798	\$736	\$766
CHILD PROTECTIVE SERVICES (Child Care CPS Clients)												
CLIENTS	860	849	847	844	874	849	896	899	761	797	799	748
COST	\$576,818	\$551,507	\$594,790	\$587,750	\$612,880	\$608,184	\$644,539	\$597,788	\$520,249	\$583,911	\$539,629	\$501,038
CPS AVG COST	\$671	\$650	\$702	\$696	\$701	\$716	\$719	\$665	\$684	\$733	\$675	\$670
GRAND TOTAL - ALL CHILD CARE PROGRAMS												
CLIENTS	19,485	19,963	20,092	20,502	21,486	19,737	19,980	21,022	19,774	20,014	19,569	19,562
COST	\$10,935,312	\$11,284,041	\$11,403,180	\$11,625,897	\$11,940,948	\$11,638,571	\$11,966,117	\$11,089,528	\$11,292,678	\$11,614,917	\$11,210,867	\$11,150,904
ALL PROGRAMS AVG COST	\$561	\$565	\$568	\$567	\$556	\$590	\$599	\$528	\$571	\$580	\$573	\$570

Income Eligibility Guidelines: October 1, 2019 - September 30, 2020

Federal Poverty Guidelines (FPG) Monthly Income Standards

Supplemental Nutrition Program (SNAP)					
Household Size	100% FPG Net Income	130% FPG Gross Income	165% FPG Gross Income for Categorical Eligibility	Maximum SNAP Monthly Allotment	LIHEAP 150% FPG
1	\$1,041	\$1,354	\$1,718	\$194	\$1,561
2	\$1,410	\$1,832	\$2,326	\$355	\$2,114
3	\$1,778	\$2,311	\$2,933	\$509	\$2,666
4	\$2,146	\$2,790	\$3,541	\$646	\$3,219
5	\$2,515	\$3,269	\$4,149	\$768	\$3,771
6	\$2,883	\$3,748	\$4,757	\$921	\$4,324
7	\$3,251	\$4,227	\$5,364	\$1,018	\$4,876
8	\$3,620	\$4,705	\$5,972	\$1,164	\$5,429
+1	+\$369	+\$479	+\$608	+\$146	+\$553
Minimum Allotment of \$16 effective from 10/1/2019 - 9/30/2020					
DEDUCTIONS: Standard Deduction: For HH size 1-3 = \$167; 4 = \$178; 5 = \$209; 6 or more = \$240; Excess Shelter Deduction Limit: \$569; Heating and Cooling Standard Utility Allowance: \$340 (HCSUA) – Limited Utility Allowance: \$ 136 (LUA); Telephone Standard: \$44; Dependent Care: Actual Amount (No Limit); Earned Income Deduction: 20%; Homeless Shelter Standard: \$152.06, LIHEAP (only) Energy Standard Allowance (ESA): \$204					

CASH Assistance & Support Services				
Household Size	Federal Poverty Guidelines (FPG) Monthly Income Standards		Maximum Monthly Benefit	
	100% FPG Net Income	85% FPG Gross Limit	New Mexico Works Cash Assistance	General Assistance
1	\$1,041	\$885	\$266	\$245
2	\$1,410	\$1,199	\$357	\$329
3	\$1,778	\$1,511	\$447	\$412
4	\$2,146	\$1,824	\$539	\$496
5	\$2,515	\$2,138	\$630	\$580
6	\$2,883	\$2,451	\$721	\$664
7	\$3,251	\$2,763	\$812	\$748
8	\$3,620	\$3,077	\$922	\$849
+1	+\$369	+\$314	+\$91	+\$84
Deductions- Dependent Care: For a child under age 2 = \$200; For a child age 2 and over = \$175. Work Incentives- Earned Income Disregard: Single parent = \$125 & ½ remainder; Two parent = \$225 & ½ remainder.				

ISD 017 Revised 11/26/2019

Medical Assistance Division					
Federal Poverty Guidelines New Mexico Affordable Care Eligibility Groups Effective April 01, 2019 thru March 31, 2020 Monthly Guidelines					
HH SIZE	PERCENT OF POVERTY				
	138%	190%	240%	250%	300%
1	\$1,437	\$1,978	\$2,498	\$2,603	\$3,123
2	\$1,945	\$2,678	\$3,382	\$3,523	\$4,228
3	\$2,453	\$3,378	\$4,266	\$4,444	\$5,333
4	\$2,962	\$4,078	\$5,150	\$5,365	\$6,438
5	\$3,470	\$4,777	\$6,034	\$6,286	\$7,543
6	\$3,978	\$5,477	\$6,918	\$7,207	\$8,648
7	\$4,487	\$6,177	\$7,802	\$8,128	\$9,753
8	\$4,995	\$6,877	\$8,686	\$9,048	\$10,858
138% Adult Expansion, 190% Children ages 6 to 19 (Medicaid), 240% Children ages 0 to 6 (Medicaid); ages 6 to 19 (CHIP), 250% Pregnancy Related Services Only, 300% Children 0 to 6 (CHIP)					

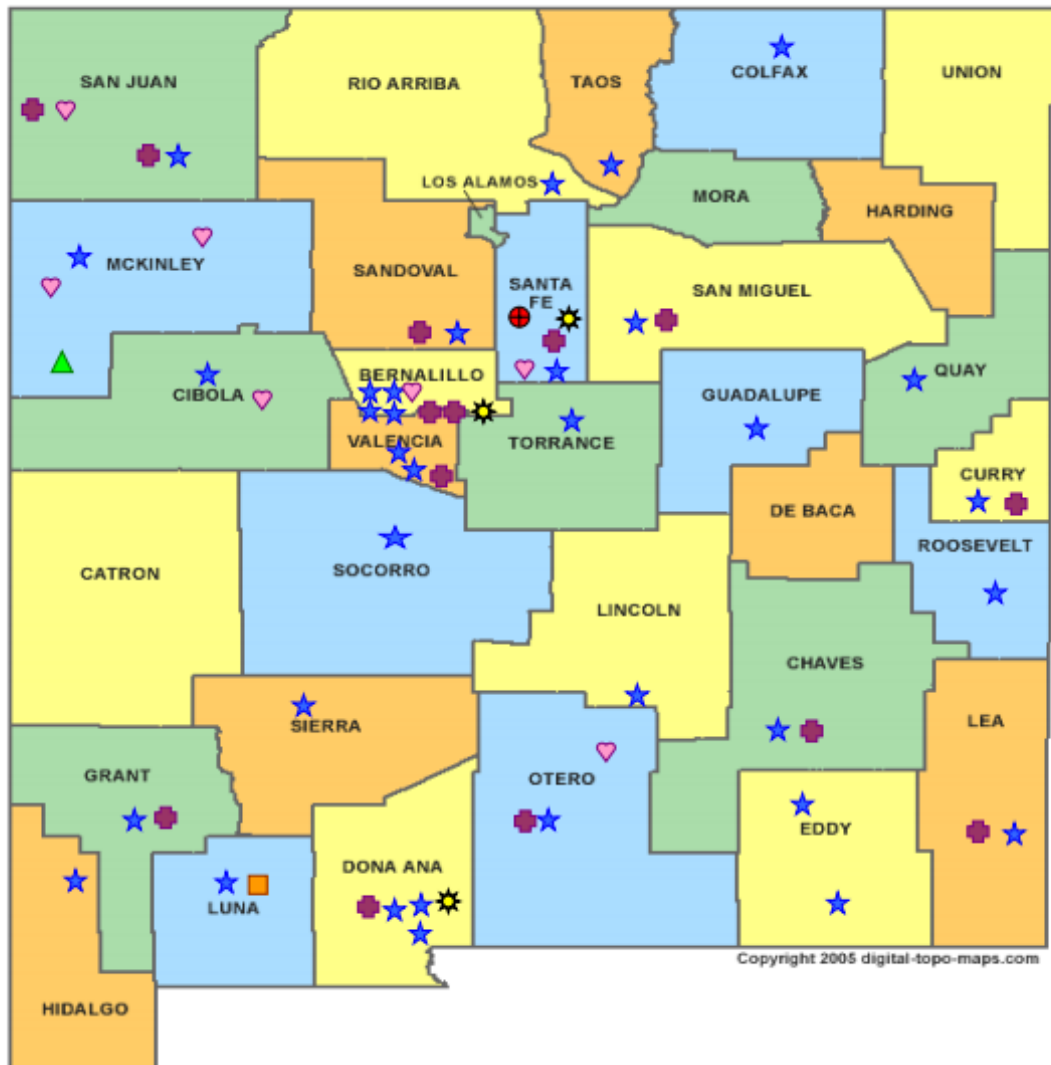
Medical Assistance Division					
Federal Poverty Guidelines New Mexico Affordable Care Eligibility Groups Effective April 01, 2019 thru March 31, 2020 Annual Guidelines					
HH SIZE	PERCENT OF POVERTY				
	138%	190%	240%	250%	300%
1	\$17,244	\$23,736	\$29,976	\$31,236	\$37,476
2	\$23,340	\$32,136	\$40,584	\$42,276	\$50,736
3	\$29,436	\$40,536	\$51,192	\$53,328	\$63,996
4	\$35,544	\$48,936	\$61,800	\$64,380	\$77,256
5	\$41,640	\$57,324	\$72,408	\$75,432	\$90,516
6	\$47,736	\$65,724	\$83,016	\$86,484	\$103,776
7	\$53,844	\$74,124	\$93,624	\$97,536	\$117,036
8	\$59,940	\$82,524	\$104,232	\$108,576	\$130,296
138% Adult Expansion, 190% Children ages 6 to 19 (Medicaid), 240% Children ages 0 to 6 (Medicaid); ages 6 to 19 (CHIP), 250% Pregnancy Related Services Only, 300% Children 0 to 6 (CHIP)					

References

- ¹ *Medicaid Expenditures* (Omnicaid, Medicare Buy-Ins, Lump Sum Payments)
- ² *ASPEN Business Intelligence Tool: Eligibility*
- ³ New Mexico Human Services Department, *Medicaid Eligibility Reports*, Retrieved from <http://www.hsd.state.nm.us/LookingForInformation/medicaid-eligibility.aspx> (for reporting month)
- ⁴ *ASPEN Business Intelligence Tool: Application Tracking*
- ⁵ Fidelity Information Services, *EBT Daily Statistical Report* (for reporting month)
- ⁶ *ASPEN Report DQ-180: Length of Time Cases are Open* (for reporting month)
- ⁷ *ASPEN Report EY-180: Individual Demographics by State and Age* (for reporting month)
- ⁸ *ASPEN Business Intelligence Tool: Benefit Issuance*
- ⁹ Fidelity Information Services, *EBT Daily Statistical Reports* (Month End)
- ¹⁰ *ASPEN Report EY-180R: Individual Demographics by State, Race, Ethnicity and Gender* (for reporting month)
- ¹¹ SQL Queries from ASPEN
- ¹² JP Morgan, *New Mexico – NM EBT System- Monthly Benefit Draw Down Totals*
- ¹³ *ASPEN Business Intelligence Tool: Application Tracking* (w/Parameters: SNAP, Expedite, Approved)
- ¹⁴ SL Start, *As of Today Report*
- ¹⁵ SL Start, *Statewide Employment Report*
- ¹⁶ *SSIAR Payments*
- ¹⁷ Children, Youth, and Families Department, *Children Receiving Child Care Assistance Subsidies by County*
- ¹⁸ Children, Youth, and Families Department, *Child Care Assistance Eligibility Programs*

¹⁹ EDG is defined as an Eligibility Determination Group

²⁰SQL Query from ASPEN



HUMAN SERVICES
DEPARTMENT

New Mexico Human Services Department
Field Offices

- Central Office (1)
- Income Support Division County Office (35)
- Income Support Division Satellite Office (2)
- Child Support Enforcement Regional Office (16)
- Child Support Enforcement Satellite Office (1)
- Indian Health Services (7)
- Hospital Site (3)

For a complete listing of field offices and other government and community resources:
http://www.hsd.state.nm.us/LookingForAssistance/Field_Offices_1.aspx