



Monthly Statistical Report

February 2020

There were 830,165 individuals that received Medicaid in February 2020, a 0.1% decrease from one year ago. The count of Medicaid recipients has increased by 335, or 0.04%, since last month.

The SNAP caseload in February 2020 was 218,839, a 0.90% decrease from one year ago. The SNAP caseload has decreased by 4,389 cases, or 2.0%, since last month.

The TANF caseload was 9,860 in February 2020, a decrease of 6.6% from February 2019. The TANF caseload had 468 fewer cases compared to January 2020, a decrease of 4.5%.

The caseload for General Assistance was 2,466 in February 2020, a decrease of 9.5% from one year ago and a decrease of 39 cases from last month.

Michelle Lujan Grisham, Governor
David Scrase, M.D., Secretary

Contents	Page
Summary	3-5
Medicaid	6-20
SNAP	21-41
Cash Assistance	42-56
Child Care Assistance	57-58
Income Eligibility Guidelines	59-60

Regions are reported as follows:

Region 1		
Catron	San Juan	Valencia
Cibola	Sierra	
McKinley	Socorro	
Region 2		
Colfax	Mora	Santa Fe
De Baca	Quay	Taos
Guadalupe	Rio Arriba	Union
Harding	Sandoval	
Los Alamos	San Miguel	
Region 3		
Bernalillo	Torrance	
Region 4		
Chaves	Eddy	Lincoln
Curry	Lea	Roosevelt
Region 5		
Dona Ana	Hidalgo	Otero
Grant	Luna	

The Mission of the Human Services Department

To transform lives. Working with our partners, we design and deliver innovative, high quality health and human services that improve the security and promote independence for New Mexicans in their communities.

Angela Medrano, Deputy Secretary
Kari Armijo, Deputy Secretary

Prepared by Income Support Division
PO Box 2348
Santa Fe, NM 87504-2348
505-827-7250

Karmela Martinez, Director
Vida Tapia-Sanchez, Deputy Director
Shanita Harrison, Deputy Director
Judith Parks, Deputy Director

<http://www.hsd.state.nm.us/monthly-statistical-reports.aspx>

Program Summary for February 2020

Medicaid				Percent Change	
	Feb-19	Jan-20	Feb-20	Feb-19- Feb-20	Jan-20- Feb-20
Expenditures¹	\$452,396,654	\$516,830,741	\$536,365,780	18.56%	3.78%
Cases²	491,952	499,534	500,243	1.69%	0.14%
Expenditures/Case	\$920	\$1,035	\$1,072	16.52%	3.57%
Recipients³	831,398	829,830	830,165	-0.15%	0.04%
<i>Adults</i>	474,378	472,552	472,897	-0.31%	0.07%
<i>Children</i>	357,020	357,278	357,268	0.07%	-0.003%
Recipients /Case	1.69	1.66	1.66	-1.78%	0.00%
Cases Processed⁴	10,479	12,872	9,486	-9.48%	-26.31%
<i>Approvals⁴</i>	7,794	8,484	6,928	-11.11%	-18.34%

Supplemental Nutrition Assistance Program (SNAP)				Percent Change	
	Feb-19	Jan-20	Feb-20	Feb-19- Feb-20	Jan-20- Feb-20
Expenditures⁵	\$53,978,995	\$52,325,905	\$52,651,765	-2.46%	0.62%
Cases⁶	220,830	223,228	222,420	0.72%	-0.36%
Expenditures/Case	\$244	\$234	\$237	-2.87%	1.28%
Recipients⁷	448,978	446,003	444,727	-0.95%	-0.29%
<i>Adults</i>	261,057	261,773	261,241	0.07%	-0.20%
<i>Children</i>	187,921	184,230	183,486	-2.36%	-0.40%
Recipients /Case	2.03	2.00	2.00	-1.48%	0.00%
Cases Processed⁴	12,888	18,434	15,807	22.65%	-14.25%
<i>Approvals⁴</i>	10,114	15,253	12,640	24.98%	-17.13%

Cash Assistance Programs				Percent Change	
	Feb-19	Jan-20	Feb-20	Feb-19- Feb-20	Jan-20- Feb-20
Expenditures⁵	\$3,414,593	\$4,574,751	\$3,901,568	14.26%	-14.72%
Cases⁶	13,443	12,963	12,702	-5.51%	-2.01%
Expenditures/Case	\$254	\$353	\$307	20.87%	-13.03%
Recipients⁷	30,255	29,317	28,473	-5.89%	-2.88%
<i>Adults</i>	9,661	7,929	9,089	-5.92%	14.63%
<i>Children</i>	20,594	21,388	19,384	-5.88%	-9.37%
Recipients /Case	2.25	2.26	2.24	-0.44%	-0.88%
Cases Processed⁴	3,096	4,535	3,615	16.76%	-20.29%
<i>Approvals⁴</i>	1,027	1,515	1,058	3.02%	-30.17%

Low Income Home Energy Assistance Program (LIHEAP)				Percent Change	
	Feb-19	Jan-20	Feb-20	Feb-19- Feb-20	Jan-20- Feb-20
Expenditures⁸	\$1,489,495	\$2,212,240	\$1,570,440	5.43%	-29.01%
Cases⁸	5,022	7,490	5,359	6.71%	-28.45%
Expenditures/Case	\$297	\$295	\$293	-1.35%	-0.68%
Recipients⁸	11,070	17,392	12,067	9.01%	-30.62%
<i>Adults</i>	6,558	7,846	3,084	-52.97%	-60.69%
<i>Children</i>	4,512	9,546	8,983	99.09%	-5.90%
Recipients /Case	2.20	2.32	2.25	2.27%	-3.02%
Cases Processed⁴	6,142	9,245	6,367	3.66%	-31.13%
<i>Approvals⁴</i>	4,961	7,831	5,133	3.47%	-34.45%

Cash Assistance Summary for February 2020

Temporary Assistance for Needy Families (TANF)

	Feb-19	Jan-20	Feb-20	Percent Change	
				Feb-19- Feb-20	Jan-20- Feb-20
Expenditures ⁵	\$2,653,960	\$3,859,829	\$3,208,723	20.90%	-16.87%
Cases ⁶	10,558	10,328	10,040	-4.91%	-2.79%
Expenditures/Case	\$251	\$374	\$320	27.49%	-14.44%
Recipients ⁷	27,132	26,485	25,587	-5.69%	-3.39%
<i>Adults</i>	6,956	5,459	6,630	-4.69%	21.45%
<i>Children</i>	20,176	21,026	18,957	-6.04%	-9.84%
Approvals ⁴	866	1,269	866	0.00%	-31.76%

General Assistance (GA)

	Feb-19	Jan-20	Feb-20	Percent Change	
				Feb-19- Feb-20	Jan-20- Feb-20
Expenditures ⁵	\$709,001	\$669,686	\$637,253	-10.12%	-4.84%
Cases ⁶	2,725	2,505	2,510	-7.89%	0.20%
Expenditures/Case	\$260	\$267	\$254	-2.31%	-4.87%
Recipients ⁷	2,759	2,545	2,513	-8.92%	-1.26%
<i>Adults</i>	2,537	2,333	2,295	-9.54%	-1.63%
<i>Children</i>	222	212	218	-1.80%	2.83%
Approvals ⁴	159	194	154	-3.14%	-20.62%

Education Works

	Feb-19	Jan-20	Feb-20	Percent Change	
				Feb-19- Feb-20	Jan-20- Feb-20
Expenditures ⁵	\$40,842	\$36,028	\$46,415	13.64%	28.83%
Cases ⁶	106	82	112	5.66%	36.59%
Expenditures/Case	\$385	\$439	\$414	7.53%	-5.69%
Recipients ⁷	311	241	334	7.40%	38.59%
<i>Adults</i>	115	91	125	8.70%	37.36%
<i>Children</i>	196	150	209	6.63%	39.33%

Refugee Cash (RCA)

	Feb-19	Jan-20	Feb-20	Percent Change	
				Feb-19- Feb-20	Jan-20- Feb-20
Expenditures ⁵	\$8,591	\$7,407	\$7,577	-11.80%	2.30%
Cases ⁶	33	30	23	-30.30%	-23.33%
Expenditures/Case	\$260	\$247	\$329	26.54%	33.20%
Recipients ⁷	34	29	23	-32.35%	-20.69%

State Supplement for Residential Care

	Feb-19	Jan-20	Feb-20	Percent Change	
				Feb-19- Feb-20	Jan-20- Feb-20
Expenditures ⁵	\$2,200	\$1,800	\$1,600	-27.27%	-11.11%
Cases ⁶	21	18	17	-19.05%	-5.56%
Expenditures/Case	\$105	\$100	\$94	-10.48%	-6.00%
Recipients ⁷	19	17	16	-15.79%	-5.88%

Expenditures YTD			
	SFY 2020	FFY 2020	CY 2020
Medicaid ¹	\$4,010,386,232	\$2,569,525,466	\$1,053,196,521
Supplemental Nutrition Assistance Program ⁹	\$423,391,185	\$264,771,369	\$104,977,671
Temporary Assistance for Needy Families ⁹	\$28,559,108	\$17,112,994	\$7,068,552
General Assistance ⁹	\$5,082,862	\$3,222,883	\$1,306,939
Education Work ⁹	\$291,162	\$209,441	\$128,172
LIHEAP ⁸	\$17,238,910	\$15,072,800	\$3,782,680

Average Caseload YTD			
	SFY 2020	FFY 2020	CY 2020
Medicaid ²	496,210	498,045	499,889
Supplemental Nutrition Assistance Program ⁶	222,726	222,393	221,034
Temporary Assistance for Needy Families ⁶	10,391	10,325	10,094
General Assistance ⁶	2,453	2,476	2,486
Education Work ⁶	89	103	96
LIHEAP ⁸	7,137	9,875	6,425

Demographic Profile- February 2020					
	SNAP	TANF	GA	Education Works	RCA
<i>Gender of Recipients</i> ¹⁰					
Male	201,644	10,944	1,389	116	15
Female	243,083	14,643	1,124	218	8
<i>Ethnicity</i> ¹⁰					
Hispanic	244,832	17,119	1,338	186	11
Non-Hispanic	199,895	8,468	1,175	148	12
<i>Race</i> ¹⁰					
Native American or Alaskan Native	76,614	2,180	246	39	0
Asian	3,797	184	22	3	0
African American or Black	11,957	1,169	89	24	8
Native Hawaiian or Pacific Islander	833	33	2	6	0
White	340,807	21,218	2,097	255	12
Unknown / Not Declared	3,254	168	21	2	0
More than One Race	7,465	635	36	5	3

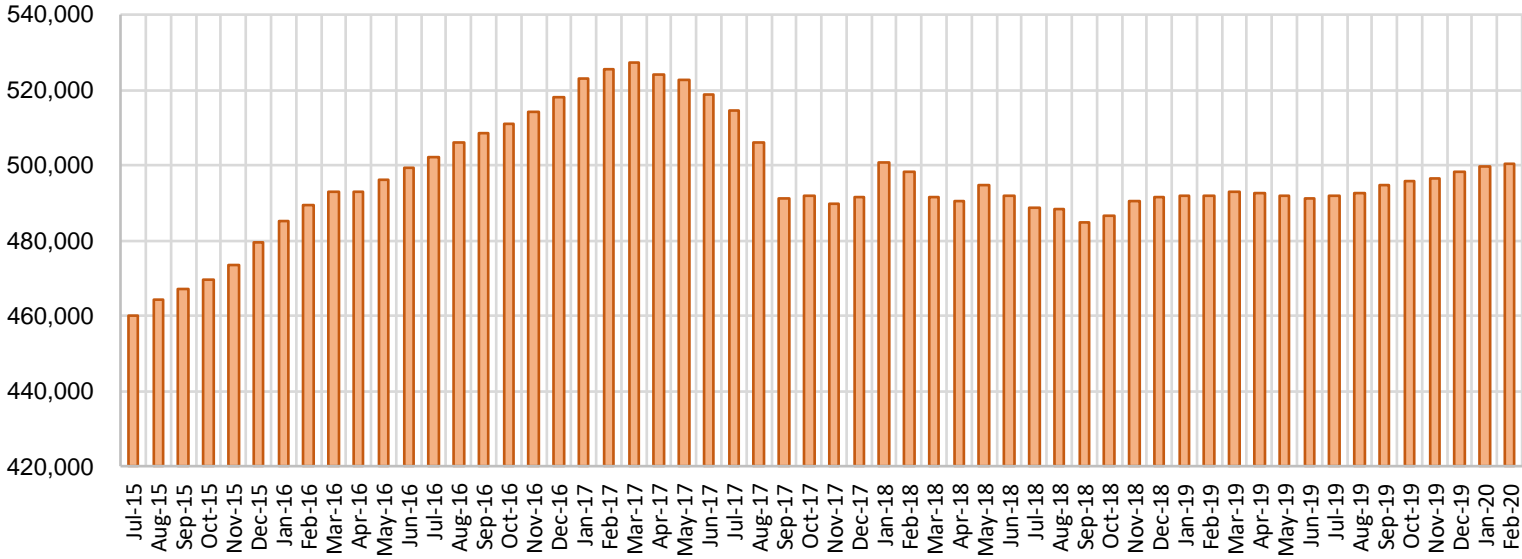
Medicaid Cases by Field Office²

Office	Percent Change				
	Feb-19	Jan-20	Feb-20	Feb-19- Feb-20	Jan-20- Feb-20
Chaves County ISD	15,859	16,207	16,282	2.67%	0.46%
Cibola County ISD	7,650	7,515	7,514	-1.78%	-0.01%
Colfax County ISD	3,617	3,594	3,593	-0.66%	-0.03%
Curry County ISD	14,413	15,068	15,115	4.87%	0.31%
East Dona Ana County ISD	17,812	18,178	18,198	2.17%	0.11%
Eddy Artesia County ISD	3,849	3,921	3,929	2.08%	0.20%
Eddy Carlsbad County ISD	7,564	7,633	7,673	1.44%	0.52%
Grant County ISD	7,728	7,903	7,937	2.70%	0.43%
Guadalupe County ISD	1,623	1,601	1,581	-2.59%	-1.25%
Hidalgo County ISD	51	51	53	3.92%	3.92%
Lea County ISD	14,406	14,964	15,039	4.39%	0.50%
Lincoln County ISD	4,303	4,375	4,375	1.67%	0.00%
Luna County ISD	8,637	8,875	8,904	3.09%	0.33%
McKinley County ISD	21,869	22,502	22,546	3.10%	0.20%
Northeast Bernalillo County ISD	42,983	43,612	43,609	1.46%	-0.01%
Northwest Bernalillo County ISD	51,990	53,736	53,912	3.70%	0.33%
Otero County ISD	12,044	12,290	12,298	2.11%	0.07%
Quay County ISD	2,513	2,531	2,541	1.11%	0.40%
Rio Arriba County ISD	13,478	13,487	13,509	0.23%	0.16%
Roosevelt County ISD	10	10	10	0.00%	0.00%
San Juan County ISD	30,175	30,741	30,798	2.06%	0.19%
San Miguel County ISD	9,167	9,163	9,190	0.25%	0.29%
Sandoval County ISD	23,486	23,561	23,656	0.72%	0.40%
Santa Fe County ISD	24,735	24,147	24,083	-2.64%	-0.27%
Sierra County ISD	5,323	5,286	5,266	-1.07%	-0.38%
Socorro County ISD	5,370	5,297	5,303	-1.25%	0.11%
South Dona Ana ISD	19,732	19,947	20,003	1.37%	0.28%
Southeast Bernalillo County ISD	25,066	24,870	24,785	-1.12%	-0.34%
Southwest Bernalillo County ISD	39,020	39,941	40,035	2.60%	0.24%
Taos County ISD	9,256	9,314	9,317	0.66%	0.03%
Torrance County ISD	7,872	8,092	8,024	1.93%	-0.84%
Valencia North County ISD	18,212	18,628	18,660	2.46%	0.17%
Valencia South County ISD	100	91	113	13.00%	24.18%
West Dona Ana County ISD	22,036	22,402	22,391	1.61%	-0.05%
Centralized Units	3	1	1	-66.67%	0.00%
Statewide Total	491,952	499,534	500,243	1.69%	0.14%

Medicaid Cases by Region²

Region	Percent Change				
	Feb-19	Jan-20	Feb-20	Feb-19- Feb-20	Jan-20- Feb-20
Region 1 - NW	88,699	90,060	90,200	1.69%	0.16%
Region 2 - NE	87,875	87,398	87,470	-0.46%	0.08%
Region 3 - Central	166,931	170,251	170,365	2.06%	0.07%
Region 4 - SE	60,404	62,178	62,423	3.34%	0.39%
Region 5 - SW	88,040	89,646	89,784	1.98%	0.15%
Centralized Units	3	1	1	-66.67%	0.00%
Statewide Total	491,952	499,534	500,243	1.7%	0.14%

Medicaid Caseload: SFY-16 to Current

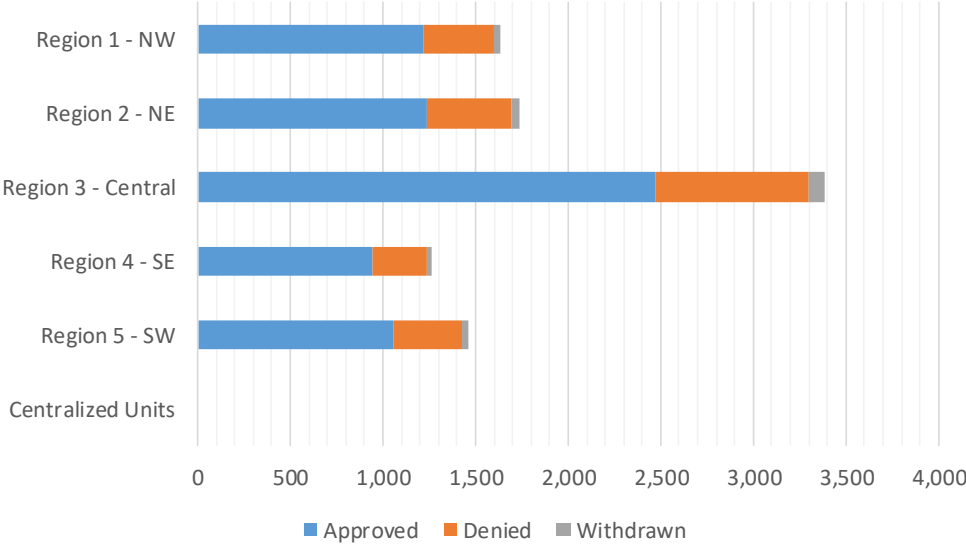


Medicaid Initial Applications by Field Office^{4,11}
February 2020

Office	Approved	Denied	Withdrawn	Total Cases Processed
Chaves County ISD	213	68	12	293
Cibola County ISD	128	27	2	157
Colfax County ISD	48	17	1	66
Curry County ISD	227	60	5	292
East Dona Ana County ISD	243	99	8	350
Eddy Artesia County ISD	50	23	2	75
Eddy Carlsbad County ISD	136	33	5	174
Grant County ISD	99	23	1	123
Guadalupe County ISD	13	7	1	21
Hidalgo County ISD	0	0	0	0
Lea County ISD	253	75	8	336
Lincoln County ISD	64	29	2	95
Luna County ISD	111	42	2	155
McKinley County ISD	309	77	3	389
Northeast Bernalillo County ISD	647	195	30	872
Northwest Bernalillo County ISD	585	201	15	801
Otero County ISD	158	58	5	221
Quay County ISD	27	8	1	36
Rio Arriba County ISD	178	57	7	242
Roosevelt County ISD	2	0	0	2
San Juan County ISD	446	165	21	632
San Miguel County ISD	182	33	6	221
Sandoval County ISD	323	125	10	458
Santa Fe County ISD	341	180	13	534
Sierra County ISD	52	15	4	71
Socorro County ISD	57	27	2	86
South Dona Ana ISD	182	77	5	264
Southeast Bernalillo County ISD	591	213	9	813
Southwest Bernalillo County ISD	539	172	29	740
Taos County ISD	122	35	2	159
Torrance County ISD	110	43	5	158
Valencia North County ISD	227	65	4	296
Valencia South County ISD	2	3	0	5
West Dona Ana County ISD	263	72	14	349
Centralized Units	0	0	0	0
Statewide Total	6,928	2,324	234	9,486

Medicaid Initial Applications by Region^{4,11}
February 2020

	Approved	Denied	Withdrawn	Total Cases Processed
Region				
Region 1 - NW	1,221	379	36	1,636
Region 2 - NE	1,234	462	41	1,737
Region 3 - Central	2,472	824	88	3,384
Region 4 - SE	945	288	34	1,267
Region 5 - SW	1,056	371	35	1,462
Centralized Units	0	0	0	0
Statewide Total	6,928	2,324	234	9,486



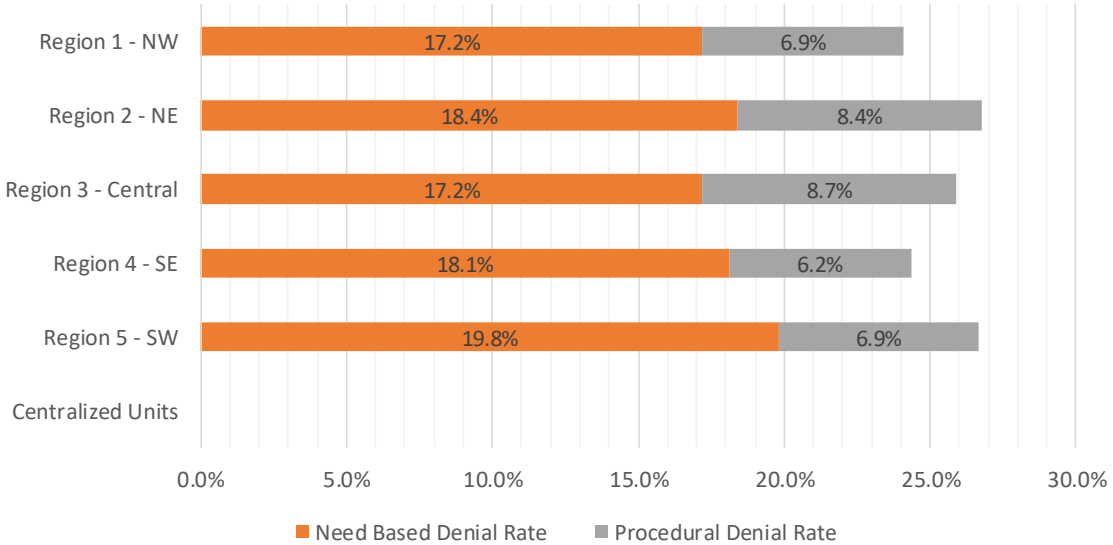
Medicaid EDG Initial Disposition Rates by Field Office^{4,11,19}
February 2020

Office	Approval Rate	Denial Rate	Need Based Denial Rate	Procedural Denial Rate
Chaves County ISD	73.7%	26.3%	18.0%	8.3%
Cibola County ISD	83.1%	16.9%	13.0%	3.9%
Colfax County ISD	77.4%	22.6%	16.1%	6.5%
Curry County ISD	79.4%	20.6%	16.1%	4.5%
East Dona Ana County ISD	71.7%	28.3%	18.0%	10.3%
Eddy Artesia County ISD	68.5%	31.5%	23.3%	8.2%
Eddy Carlsbad County ISD	78.2%	21.8%	15.5%	6.3%
Grant County ISD	82.5%	17.5%	14.2%	3.3%
Guadalupe County ISD	65.0%	35.0%	30.0%	5.0%
Hidalgo County ISD	0.0%	0.0%	0.0%	0.0%
Lea County ISD	76.4%	23.6%	19.1%	4.5%
Lincoln County ISD	68.1%	31.9%	22.3%	9.6%
Luna County ISD	74.5%	25.5%	22.8%	2.7%
McKinley County ISD	80.7%	19.3%	14.1%	5.2%
Northeast Bernalillo County ISD	76.0%	24.0%	14.2%	9.8%
Northwest Bernalillo County ISD	74.4%	25.6%	17.6%	8.0%
Otero County ISD	71.2%	28.8%	22.5%	6.3%
Quay County ISD	79.4%	20.6%	20.6%	0.0%
Rio Arriba County ISD	74.8%	25.2%	18.9%	6.3%
Roosevelt County ISD	100.0%	0.0%	0.0%	0.0%
San Juan County ISD	72.1%	27.9%	17.6%	10.3%
San Miguel County ISD	86.7%	13.3%	10.4%	2.9%
Sandoval County ISD	71.9%	28.1%	18.1%	10.0%
Santa Fe County ISD	66.6%	33.4%	21.7%	11.7%
Sierra County ISD	73.2%	26.8%	16.9%	9.9%
Socorro County ISD	68.7%	31.3%	25.3%	6.0%
South Dona Ana ISD	68.9%	31.1%	26.2%	4.9%
Southeast Bernalillo County ISD	72.0%	28.0%	18.3%	9.7%
Southwest Bernalillo County ISD	74.2%	25.8%	19.1%	6.7%
Taos County ISD	76.3%	23.8%	17.5%	6.3%
Torrance County ISD	73.3%	26.7%	16.7%	10.0%
Valencia North County ISD	76.9%	23.1%	20.0%	3.1%
Valencia South County ISD	50.0%	50.0%	50.0%	0.0%
West Dona Ana County ISD	76.0%	24.0%	15.6%	8.4%
Centralized Units	0.0%	0.0%	0.0%	0.0%
Statewide Total	74.4%	25.7%	18.0%	7.7%

Medicaid EDG Initial Disposition Rates by Region ^{4,11,19}
February 2020

Region	Approval Rate	Denial Rate	Need Based Denial Rate	Procedural Denial Rate
Region 1 - NW	75.9%	24.1%	17.2%	6.9%
Region 2 - NE	73.2%	26.8%	18.4%	8.4%
Region 3 - Central	74.1%	25.9%	17.2%	8.7%
Region 4 - SE	75.7%	24.3%	18.1%	6.2%
Region 5 - SW	73.3%	26.7%	19.8%	6.9%
Centralized Units				

Statewide Total	74.4%	25.7%	18.0%	7.7%
-----------------	-------	-------	-------	------



Medicaid: Percentage of Initial EDG Approvals Processed Timely by Field Office^{13,19}

	Oct-19	Nov-19	Dec-19	Jan-20	Feb-20	Mar-20	Apr-20	May-20	Jun-20	Jul-20	Aug-20	Sep-20	Average
Cibola	99.5 %	97.3 %	99.4 %	99.4 %	100.0 %								99.1%
McKinley	99.3 %	99.0 %	99.8 %	99.8 %	99.2 %								99.4%
San Juan	98.9 %	98.7 %	99.7 %	99.4 %	99.2 %								99.2%
Sierra	96.4 %	99.0 %	99.1 %	100.0 %	100.0 %								98.9%
Socorro	100.0 %	96.9 %	98.9 %	98.2 %	98.8 %								98.6%
Valencia North	99.7 %	99.1 %	99.4 %	99.2 %	98.8 %								99.2%
Valencia South	100.0 %	100.0 %	100.0 %	100.0 %	100.0 %								100.0%
NW Region 1 Total	99.2 %	98.6 %	99.6 %	99.4 %	99.2 %								99.2%
Colfax	100.0 %	100.0 %	100.0 %	98.9 %	100.0 %								99.8%
Guadalupe	100.0 %	100.0 %	100.0 %	100.0 %	100.0 %								100.0%
Quay	98.4 %	100.0 %	100.0 %	100.0 %	100.0 %								99.7%
Rio Arriba	99.6 %	100.0 %	99.3 %	93.0 %	98.4 %								98.1%
San Miguel	100.0 %	100.0 %	100.0 %	99.6 %	98.2 %								99.6%
Sandoval	99.4 %	100.0 %	99.5 %	98.5 %	99.8 %								99.4%
Santa Fe	99.0 %	97.9 %	99.0 %	98.2 %	98.4 %								98.5%
Taos	98.7 %	100.0 %	99.7 %	99.5 %	98.7 %								99.3%
NE Region 2 Total	99.3 %	99.4 %	99.5 %	97.9 %	98.9 %								99.0%
NE Bernalillo	98.4 %	99.5 %	99.0 %	98.8 %	98.5 %								98.8%
NW Bernalillo	98.9 %	98.9 %	99.0 %	97.4 %	98.8 %								98.6%
SE Bernalillo	97.4 %	95.8 %	98.3 %	98.1 %	97.8 %								97.5%
SW Bernalillo	98.2 %	97.9 %	99.2 %	98.8 %	98.8 %								98.6%
Torrance	100.0 %	100.0 %	98.3 %	100.0 %	99.4 %								99.6%
Gen. Region 3 Total	98.3 %	98.3 %	98.9 %	98.4 %	98.5 %								98.5%
Chaves	100.0 %	99.1 %	99.4 %	98.8 %	98.2 %								99.1%
Curry	98.8 %	98.9 %	99.2 %	99.1 %	98.8 %								99.0%
Eddy Artesia	98.3 %	97.6 %	100.0 %	99.1 %	98.7 %								98.7%
Eddy Carlsbad	99.1 %	99.5 %	99.1 %	97.8 %	100.0 %								99.1%
Lea	99.3 %	100.0 %	99.0 %	98.7 %	99.8 %								99.3%
Lincoln	99.3 %	98.7 %	97.4 %	100.0 %	99.0 %								98.9%
Roosevelt	100.0 %	100.0 %	100.0 %		100.0 %								100.0%
SE Region 4 Total	99.2 %	99.3 %	99.1 %	98.8 %	99.2 %								99.1%
East Dona Ana	98.0 %	99.3 %	99.6 %	99.1 %	99.7 %								99.1%
Grant	100.0 %	99.3 %	99.4 %	98.9 %	100.0 %								99.5%
Luna	99.5 %	99.5 %	100.0 %	100.0 %	99.5 %								99.7%
Otero	99.6 %	99.6 %	98.1 %	100.0 %	100.0 %								99.4%
South Dona Ana	99.7 %	99.7 %	99.7 %	99.8 %	100.0 %								99.8%
West Dona Ana	99.5 %	97.5 %	100.0 %	99.4 %	99.4 %								99.2%
SW Region 5 Total	99.2 %	99.0 %	99.5 %	99.5 %	99.7 %								99.4%
STATE TOTAL	98.9 %	98.8 %	99.3 %	98.8 %	99.0 %								99.0%

Medicaid: Percentage of Initial EDG Denials Processed Timely by Field Office^{13,19}

	Oct-19	Nov-19	Dec-19	Jan-20	Feb-20	Mar-20	Apr-20	May-20	Jun-20	Jul-20	Aug-20	Sep-20	Average
Cibola	97.8 %	98.7 %	97.7 %	93.3 %	95.6 %								96.6%
McKinley	92.7 %	95.5 %	93.8 %	96.3 %	94.3 %								94.5%
San Juan	95.4 %	98.4 %	97.8 %	94.0 %	93.8 %								95.9%
Sierra	100.0 %	94.1 %	97.4 %	100.0 %	90.9 %								96.5%
Socorro	95.9 %	94.2 %	100.0 %	95.3 %	93.0 %								95.7%
Valencia North	98.5 %	97.4 %	96.4 %	98.9 %	94.7 %								97.2%
Valencia South	100.0 %	100.0 %			100.0 %								100.0%
NW Region 1 Total	95.8 %	97.1 %	96.7 %	95.7 %	94.0 %								95.9%
Colfax	94.7 %	97.3 %	95.5 %	98.4 %	87.0 %								94.6%
Guadalupe	100.0 %	100.0 %	91.7 %	100.0 %	100.0 %								98.3%
Quay	92.9 %	94.4 %	100.0 %	100.0 %	94.1 %								96.3%
Rio Arriba	94.8 %	97.5 %	98.4 %	94.8 %	90.0 %								95.1%
San Miguel	100.0 %	100.0 %	99.3 %	96.4 %	98.2 %								98.8%
Sandoval	98.0 %	98.7 %	96.7 %	92.9 %	96.2 %								96.5%
Santa Fe	98.3 %	94.7 %	95.3 %	94.8 %	92.1 %								95.0%
Taos	100.0 %	100.0 %	96.2 %	97.2 %	98.2 %								98.3%
NE Region 2 Total	97.7 %	97.6 %	96.8 %	94.9 %	93.6 %								96.1%
NE Bernalillo	97.5 %	97.1 %	97.2 %	94.3 %	94.0 %								96.0%
NW Bernalillo	96.8 %	97.4 %	97.7 %	95.0 %	95.2 %								96.4%
SE Bernalillo	93.9 %	96.6 %	95.0 %	96.1 %	97.9 %								95.9%
SW Bernalillo	95.5 %	97.5 %	97.5 %	94.8 %	96.1 %								96.3%
Torrance	97.3 %	96.7 %	97.2 %	100.0 %	95.2 %								97.3%
Gen. Region 3 Total	96.1 %	97.2 %	96.9 %	95.2 %	95.7 %								96.2%
Chaves	97.9 %	100.0 %	97.8 %	98.4 %	94.9 %								97.8%
Curry	97.3 %	97.8 %	97.4 %	97.6 %	98.4 %								97.7%
Eddy Artesia	82.7 %	100.0 %	91.5 %	100.0 %	92.7 %								93.4%
Eddy Carlsbad	79.6 %	100.0 %	93.6 %	96.9 %	98.9 %								93.8%
Lea	95.4 %	97.1 %	97.9 %	96.2 %	96.0 %								96.5%
Lincoln	98.2 %	98.2 %	100.0 %	97.4 %	95.3 %								97.9%
Roosevelt	95.6 %												95.6%
SE Region 4 Total	93.1 %	98.5 %	97.1 %	97.5 %	96.4 %								96.5%
East Dona Ana	95.6 %	98.5 %	96.8 %	97.8 %	96.0 %								96.9%
Grant	98.4 %	91.6 %	98.9 %	96.8 %	100.0 %								97.1%
Luna	94.9 %	96.3 %	99.2 %	100.0 %	100.0 %								98.1%
Otero	100.0 %	94.8 %	100.0 %	98.8 %	96.4 %								98.0%
South Dona Ana	97.3 %	99.4 %	98.9 %	98.0 %	99.4 %								98.6%
West Dona Ana	99.3 %	96.6 %	98.2 %	94.4 %	95.9 %								96.9%
SW Region 5 Total	97.6 %	96.8 %	98.4 %	97.5 %	97.6 %								97.6%
STATE TOTAL	96.2 %	97.4 %	97.1 %	95.9 %	95.4 %								96.4%

Medicaid: Percentage of Initial EDG Approvals and Denials Combined Processed Timely by Field Office ^{13,19}

	Oct-19	Nov-19	Dec-19	Jan-20	Feb-20	Mar-20	Apr-20	May-20	Jun-20	Jul-20	Aug-20	Sep-20	Average
Cibola	99.1 %	97.7 %	98.8 %	97.9 %	99.2 %								98.5%
McKinley	98.0 %	98.0 %	98.0 %	98.9 %	98.1 %								98.2%
San Juan	97.8 %	98.6 %	99.2 %	97.7 %	97.6 %								98.2%
Sierra	97.5 %	97.8 %	98.7 %	100.0 %	97.2 %								98.2%
Socorro	98.4 %	95.9 %	99.3 %	97.0 %	96.8 %								97.5%
Valencia North	99.4 %	98.7 %	98.5 %	99.1 %	97.8 %								98.7%
Valencia South	100.0 %	100.0 %	100.0 %	100.0 %	100.0 %								100.0%
NW Region 1 Total	98.3 %	98.2 %	98.7 %	98.3 %	97.9 %								98.3%
Colfax	98.5 %	98.8 %	98.1 %	98.7 %	95.5 %								97.9%
Guadalupe	100.0 %	100.0 %	97.1 %	100.0 %	100.0 %								99.4%
Quay	96.7 %	98.0 %	100.0 %	100.0 %	98.2 %								98.6%
Rio Arriba	98.1 %	99.1 %	99.0 %	93.7 %	96.0 %								97.2%
San Miguel	100.0 %	100.0 %	99.8 %	98.8 %	98.2 %								99.4%
Sandoval	99.0 %	99.5 %	98.5 %	96.2 %	98.7 %								98.4%
Santa Fe	98.7 %	96.8 %	97.5 %	96.5 %	96.0 %								97.1%
Taos	99.0 %	100.0 %	98.6 %	98.5 %	98.6 %								98.9%
NE Region 2 Total	98.8 %	98.8 %	98.6 %	96.7 %	97.3 %								98.0%
NE Bernalillo	98.1 %	98.7 %	98.4 %	97.0 %	97.2 %								97.9%
NW Bernalillo	98.3 %	98.4 %	98.6 %	96.4 %	97.8 %								97.9%
SE Bernalillo	96.5 %	96.1 %	97.2 %	97.4 %	97.8 %								97.0%
SW Bernalillo	97.5 %	97.8 %	98.6 %	97.5 %	98.0 %								97.9%
Torrance	97.5 %	98.9 %	98.0 %	100.0 %	98.1 %								98.5%
Gen. Region 3 Total	97.7 %	97.9 %	98.2 %	97.2 %	97.7 %								97.8%
Chaves	99.5 %	99.4 %	98.9 %	98.7 %	97.3 %								98.7%
Curry	98.5 %	98.5 %	98.7 %	98.7 %	98.7 %								98.6%
Eddy Artesia	93.5 %	98.3 %	97.5 %	99.4 %	96.6 %								97.0%
Eddy Carlsbad	93.0 %	99.7 %	97.3 %	97.5 %	99.7 %								97.4%
Lea	98.1 %	99.2 %	98.7 %	98.0 %	98.8 %								98.5%
Lincoln	99.0 %	98.5 %	98.5 %	98.7 %	98.0 %								98.5%
Roosevelt	100.0 %	100.0 %	100.0 %										100.0%
SE Region 4 Total	97.6 %	99.1 %	98.4 %	98.4 %	98.4 %								98.4%
East Dona Ana	97.3 %	99.1 %	98.6 %	98.6 %	98.4 %								98.4%
Grant	99.5 %	96.3 %	99.2 %	98.0 %	100.0 %								98.6%
Luna	98.4 %	98.6 %	99.7 %	100.0 %	99.6 %								99.3%
Otero	99.7 %	97.9 %	98.7 %	99.6 %	98.9 %								99.0%
South Dona Ana	99.1 %	99.6 %	99.5 %	99.1 %	98.9 %								99.2%
West Dona Ana	99.4 %	97.2 %	99.4 %	97.8 %	98.1 %								98.4%
SW Region 5 Total	98.8 %	98.3 %	99.1 %	98.8 %	99.1 %								98.8%
STATE TOTAL	98.2 %	98.4 %	98.6 %	97.7 %	99.1 %								98.4%

Medicaid Renewal Disposition Counts by Field Office^{4,11}
February 2020

Office	Approvals	Closures	Need Based Closures	Procedural Closures
Chaves County ISD	2,552	405	217	188
Cibola County ISD	1,306	225	83	142
Colfax County ISD	373	97	34	63
Curry County ISD	2,536	409	204	205
East Dona Ana County ISD	2,809	610	252	358
Eddy Artesia County ISD	568	111	54	57
Eddy Carlsbad County ISD	1,046	241	89	152
Grant County ISD	1,186	197	120	77
Guadalupe County ISD	263	35	21	14
Hidalgo County ISD	5	2	1	1
Lea County ISD	2,450	520	204	316
Lincoln County ISD	672	119	49	70
Luna County ISD	1,369	251	121	130
McKinley County ISD	3,973	604	253	351
Northeast Bernalillo County ISD	5,932	1308	457	851
Northwest Bernalillo County ISD	5,185	1076	390	686
Otero County ISD	1,736	313	128	185
Quay County ISD	456	47	29	18
Rio Arriba County ISD	1,876	360	134	226
Roosevelt County ISD	0	0	0	0
San Juan County ISD	4,907	1043	429	614
San Miguel County ISD	947	204	82	122
Sandoval County ISD	3,656	801	290	511
Santa Fe County ISD	2,857	773	211	562
Sierra County ISD	700	164	49	115
Socorro County ISD	703	102	48	54
South Dona Ana ISD	3,264	539	253	286
Southeast Bernalillo County ISD	3,122	636	208	428
Southwest Bernalillo County ISD	7,511	1306	604	702
Taos County ISD	1,139	215	83	132
Torrance County ISD	1,241	265	94	171
Valencia North County ISD	2,848	482	238	244
Valencia South County ISD	9	2	0	2
West Dona Ana County ISD	3,254	545	251	294
Centralized Units	0	0	0	0

Statewide Total	72,451	14,007	5,680	8,327
-----------------	--------	--------	-------	-------

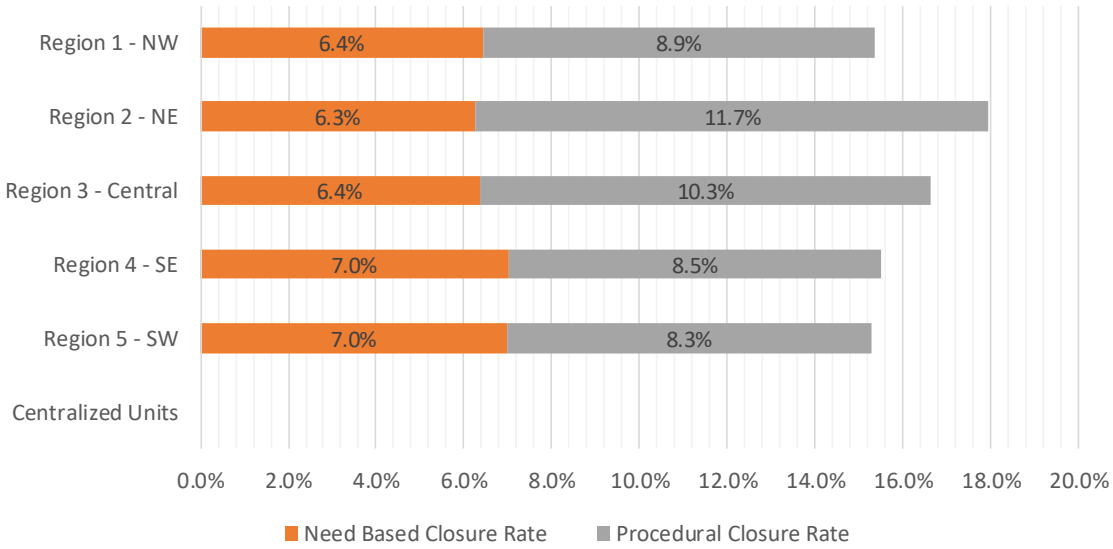
Medicaid Renewal Disposition Rates by Field Office²⁰
February 2020

Office	Approval Rate	Closure Rate	Need Based Closure Rate	Procedural Closure Rate
Chaves County ISD	86.3%	13.7%	7.3%	6.4%
Cibola County ISD	85.3%	14.7%	5.4%	9.3%
Colfax County ISD	79.4%	20.6%	7.2%	13.4%
Curry County ISD	86.1%	13.9%	6.9%	7.0%
East Dona Ana County ISD	82.2%	17.8%	7.4%	10.5%
Eddy Artesia County ISD	83.7%	16.3%	8.0%	8.4%
Eddy Carlsbad County ISD	81.3%	18.7%	6.9%	11.8%
Grant County ISD	85.8%	14.2%	8.7%	5.6%
Guadalupe County ISD	88.3%	11.7%	7.0%	4.7%
Hidalgo County ISD	71.4%	28.6%	14.3%	14.3%
Lea County ISD	82.5%	17.5%	6.9%	10.6%
Lincoln County ISD	85.0%	15.0%	6.2%	8.8%
Luna County ISD	84.5%	15.5%	7.5%	8.0%
McKinley County ISD	86.8%	13.2%	5.5%	7.7%
Northeast Bernalillo County ISD	81.9%	18.1%	6.3%	11.8%
Northwest Bernalillo County ISD	82.8%	17.2%	6.2%	11.0%
Otero County ISD	84.7%	15.3%	6.2%	9.0%
Quay County ISD	90.7%	9.3%	5.8%	3.6%
Rio Arriba County ISD	83.9%	16.1%	6.0%	10.1%
Roosevelt County ISD	0.0%	0.0%	0.0%	0.0%
San Juan County ISD	82.5%	17.5%	7.2%	10.3%
San Miguel County ISD	82.3%	17.7%	7.1%	10.6%
Sandoval County ISD	82.0%	18.0%	6.5%	11.5%
Santa Fe County ISD	78.7%	21.3%	5.8%	15.5%
Sierra County ISD	81.0%	19.0%	5.7%	13.3%
Socorro County ISD	87.3%	12.7%	6.0%	6.7%
South Dona Ana ISD	85.8%	14.2%	6.7%	7.5%
Southeast Bernalillo County ISD	83.1%	16.9%	5.5%	11.4%
Southwest Bernalillo County ISD	85.2%	14.8%	6.9%	8.0%
Taos County ISD	84.1%	15.9%	6.1%	9.7%
Torrance County ISD	82.4%	17.6%	6.2%	11.4%
Valencia North County ISD	85.5%	14.5%	7.1%	7.3%
Valencia South County ISD	81.8%	18.2%	0.0%	18.2%
West Dona Ana County ISD	85.7%	14.3%	6.6%	7.7%
Centralized Units	0.0%	0.0%	0.0%	0.0%
Statewide Total	83.8%	16.2%	6.6%	9.6%

Medicaid Renewal Disposition Rates by Region²⁰
February 2020

Region	Approval Rate	Closure Rate	Need Based Closure Rate	Procedural Closure Rate
Region 1 - NW	84.6%	15.4%	6.4%	8.9%
Region 2 - NE	82.0%	18.0%	6.3%	11.7%
Region 3 - Central	83.4%	16.6%	6.4%	10.3%
Region 4 - SE	84.5%	15.5%	7.0%	8.5%
Region 5 - SW	84.7%	15.3%	7.0%	8.3%
Centralized Units				

Statewide Total	83.8%	16.2%	6.6%	9.6%
-----------------	-------	-------	------	------



Medicaid: Percentage of Approved Renewal EDGs Processed by Certification Date ¹¹

	Oct-19	Nov-19	Dec-19	Jan-20	Feb-20	Mar-20	Apr-20	May-20	Jun-20	Jul-20	Aug-20	Sep-20	Average
Cibola	99.5%	99.4%	98.2%	98.3%	99.0%								98.9%
McKinley	98.4%	98.8%	98.4%	99.1%	99.0%								98.7%
San Juan	98.8%	98.6%	98.5%	99.1%	98.7%								98.7%
Sierra	99.2%	96.9%	98.3%	98.7%	98.7%								98.4%
Socorro	98.6%	98.3%	97.7%	98.8%	97.4%								98.2%
Valencia North	99.1%	98.4%	98.1%	98.9%	98.0%								98.5%
Valencia South			100.0%	100.0%	100.0%								100.0%
NW Region 1 Total	98.9%	98.4%	98.5%	99.0%	98.7%								98.7%
Colfax	98.5%	98.1%	98.8%	98.8%	97.9%								98.4%
Guadalupe	99.6%	98.2%	99.6%	99.1%	99.6%								99.2%
Quay	98.7%	99.0%	97.2%	98.6%	98.1%								98.3%
Rio Arriba	98.2%	97.2%	98.4%	98.9%	98.2%								98.2%
San Miguel	98.3%	99.1%	99.4%	99.4%	97.9%								98.8%
Sandoval	99.0%	98.7%	98.9%	98.5%	98.3%								98.7%
Santa Fe	97.4%	97.5%	96.8%	97.1%	96.4%								97.0%
Taos	97.3%	98.8%	98.5%	98.3%	97.7%								98.1%
NE Region 2 Total	98.4%	98.3%	98.5%	98.6%	98.0%								98.4%
NE Bernalillo	98.2%	98.5%	97.9%	98.3%	97.9%								98.2%
NW Bernalillo	97.5%	97.8%	98.2%	98.4%	97.8%								97.9%
SE Bernalillo	98.1%	98.4%	97.9%	98.7%	97.7%								98.2%
SW Bernalillo	97.5%	97.2%	97.3%	97.2%	97.7%								97.4%
Torrance	98.0%	98.3%	98.9%	99.3%	97.5%								98.4%
Gen. Region 3 Total	97.8%	98.1%	98.0%	98.4%	97.7%								98.0%
Chaves	99.7%	99.6%	98.8%	98.9%	99.0%								99.2%
Curry	98.8%	99.3%	99.0%	99.4%	98.8%								99.1%
Eddy Artesia	98.0%	97.3%	98.8%	99.5%	98.1%								98.3%
Eddy Carlsbad	98.5%	98.7%	99.1%	99.4%	99.4%								99.0%
Lea	98.3%	98.7%	99.0%	99.1%	99.4%								98.9%
Lincoln	96.5%	98.1%	97.3%	97.8%	98.7%								97.7%
Roosevelt													
SE Region 4 Total	98.3%	98.6%	98.7%	99.0%	98.9%								98.7%
East Dona Ana	99.4%	99.1%	99.1%	98.9%	98.7%								99.0%
Grant	98.4%	99.0%	98.9%	99.7%	99.1%								99.0%
Luna	98.9%	99.4%	99.0%	99.1%	99.2%								99.1%
Otero	98.5%	98.8%	98.8%	98.9%	99.0%								98.8%
South Dona Ana	98.4%	99.2%	99.5%	99.5%	99.5%								99.2%
West Dona Ana	99.3%	98.7%	99.0%	98.9%	99.0%								99.0%
SW Region 5 Total	98.8%	99.0%	99.1%	99.2%	99.1%								99.0%
STATE TOTAL	98.5%	98.5%	98.5%	98.8%	98.5%								98.6%

Administrative, Annual, and Auto Renewals are included

Medicaid: Percentage of Closures EDGs Processed by Certification End Date¹¹

	Oct-19	Nov-19	Dec-19	Jan-20	Feb-20	Mar-20	Apr-20	May-20	Jun-20	Jul-20	Aug-20	Sep-20	Average
Cibola	97.3%	95.3%	94.8%	95.4%	94.5%								95.5%
McKinley	94.2%	96.5%	93.2%	97.2%	95.7%								95.4%
San Juan	96.9%	95.7%	95.4%	96.2%	96.0%								96.0%
Sierra	94.4%	97.0%	98.2%	97.1%	97.6%								96.9%
Socorro	96.1%	95.0%	88.1%	93.5%	94.4%								93.4%
Valencia North	97.1%	96.3%	92.7%	96.6%	94.5%								95.4%
Valencia South			100.0%	100.0%	100.0%								100.0%
NW Region 1 Total	96.0%	96.0%	94.6%	96.6%	96.1%								95.9%
Colfax	94.7%	93.8%	95.2%	98.0%	95.1%								95.4%
Guadalupe	93.8%	96.0%	96.4%	100.0%	100.0%								97.2%
Quay	96.4%	98.7%	98.4%	100.0%	100.0%								98.7%
Rio Arriba	95.3%	96.8%	95.9%	93.2%	97.0%								95.6%
San Miguel	95.3%	92.9%	91.4%	96.8%	93.2%								93.9%
Sandoval	96.7%	96.8%	96.7%	96.1%	96.6%								96.6%
Santa Fe	94.6%	94.4%	93.6%	94.4%	93.6%								94.1%
Taos	95.9%	97.5%	94.7%	98.6%	93.9%								96.1%
NE Region 2 Total	95.3%	95.9%	95.3%	97.1%	96.2%								96.0%
NE Bernalillo	96.0%	96.5%	95.4%	93.8%	93.8%								95.1%
NW Bernalillo	94.7%	95.4%	95.6%	95.4%	91.3%								94.5%
SE Bernalillo	96.1%	97.1%	96.4%	92.9%	94.8%								95.5%
SW Bernalillo	95.8%	95.5%	93.0%	94.9%	94.4%								94.7%
Torrance	96.4%	98.0%	97.4%	94.3%	93.3%								95.9%
Gen. Region 3 Total	95.8%	96.5%	95.6%	94.3%	93.5%								95.1%
Chaves	97.7%	97.1%	93.0%	98.2%	94.8%								96.2%
Curry	97.8%	98.1%	96.1%	95.8%	97.8%								97.1%
Eddy Artesia	94.9%	95.8%	97.1%	100.0%	94.9%								96.5%
Eddy Carlsbad	96.4%	96.7%	98.0%	97.5%	97.2%								97.2%
Lea	97.7%	95.9%	94.2%	96.6%	97.6%								96.4%
Lincoln	91.2%	95.5%	94.0%	100.0%	93.7%								94.9%
Roosevelt			100.0%										100.0%
SE Region 4 Total	96.0%	96.5%	96.1%	98.0%	96.0%								96.5%
East Dona Ana	96.9%	97.0%	95.4%	96.0%	97.8%								96.6%
Grant	93.9%	97.1%	94.8%	96.8%	98.0%								96.1%
Luna	95.9%	98.5%	95.2%	98.1%	96.2%								96.8%
Otero	99.0%	97.4%	97.1%	97.7%	95.1%								97.3%
South Dona Ana	99.3%	98.5%	98.2%	98.7%	99.4%								98.8%
West Dona Ana	98.0%	97.8%	97.7%	96.8%	99.1%								97.9%
SW Region 5 Total	97.2%	97.7%	96.4%	97.4%	97.6%								97.2%
STATE TOTAL	96.0%	96.5%	95.6%	96.8%	96.0%								96.3%

Annual and Auto Renewals are included

Medicaid: Percentage of Approved and Terminated Renewal EDGs Combined Processed by Certification Date ¹¹

	Oct-19	Nov-19	Dec-19	Jan-20	Feb-20	Mar-20	Apr-20	May-20	Jun-20	Jul-20	Aug-20	Sep-20	Average
Cibola	98.9%	98.7%	97.7%	97.8%	98.3%								98.3%
McKinley	98.8%	98.4%	97.6%	98.8%	98.5%								98.4%
San Juan	98.4%	98.1%	98.0%	98.6%	98.2%								98.3%
Sierra	98.8%	96.9%	98.3%	98.4%	98.5%								98.2%
Socorro	99.0%	97.8%	96.2%	98.1%	97.0%								97.6%
Valencia North	98.5%	98.1%	97.3%	98.5%	97.5%								98.0%
Valencia South	100.0%		100.0%	100.0%	100.0%								100.0%
NW Region 1 Total	98.9%	98.0%	97.9%	98.6%	98.3%								98.3%
Colfax	99.8%	97.4%	98.1%	98.7%	97.3%								98.3%
Guadalupe	99.2%	97.8%	99.1%	99.3%	99.7%								99.0%
Quay	98.2%	98.9%	97.4%	98.8%	98.2%								98.3%
Rio Arriba	98.1%	97.1%	97.9%	98.0%	98.0%								97.8%
San Miguel	98.6%	98.1%	98.3%	98.9%	97.0%								98.2%
Sandoval	98.5%	98.3%	98.5%	98.1%	98.0%								98.3%
Santa Fe	98.3%	96.8%	96.2%	96.6%	95.8%								96.7%
Taos	98.3%	98.5%	97.8%	98.4%	97.1%								98.0%
NE Region 2 Total	98.6%	97.9%	97.9%	98.4%	97.6%								98.1%
NE Bernalillo	98.5%	98.1%	97.4%	97.4%	97.1%								97.7%
NW Bernalillo	98.0%	97.4%	97.6%	97.8%	96.6%								97.5%
SE Bernalillo	98.7%	98.1%	97.6%	97.7%	97.2%								97.9%
SW Bernalillo	98.0%	96.9%	96.5%	96.7%	97.2%								97.1%
Torrance	98.1%	98.3%	98.6%	98.5%	96.7%								98.0%
Gen. Region 3 Total	98.3%	97.8%	97.5%	97.6%	97.0%								97.6%
Chaves	98.3%	99.1%	97.8%	98.8%	98.4%								98.5%
Curry	99.0%	99.1%	98.5%	98.9%	98.7%								98.8%
Eddy Artesia	97.1%	97.1%	98.6%	99.6%	97.6%								98.0%
Eddy Carlsbad	98.6%	98.2%	98.9%	99.0%	99.0%								98.7%
Lea	98.9%	98.2%	98.1%	98.6%	99.1%								98.6%
Lincoln	97.2%	97.7%	96.7%	98.2%	97.9%								97.5%
Roosevelt			100.0%										100.0%
SE Region 4 Total	98.2%	98.2%	98.4%	98.9%	98.5%								98.4%
East Dona Ana	98.7%	98.7%	98.4%	98.5%	98.5%								98.6%
Grant	98.5%	98.7%	98.3%	99.3%	98.9%								98.7%
Luna	98.5%	99.3%	98.3%	98.9%	98.7%								98.7%
Otero	98.8%	98.6%	98.5%	98.7%	98.4%								98.6%
South Dona Ana	98.0%	99.1%	99.3%	99.4%	99.5%								99.1%
West Dona Ana	99.5%	98.5%	98.8%	98.7%	99.0%								98.9%
SW Region 5 Total	98.7%	98.8%	98.6%	98.9%	98.8%								98.8%
STATE TOTAL	98.6%	98.1%	98.1%	98.5%	98.1%								98.3%

Administrative, Annual, and Auto Renewals are included

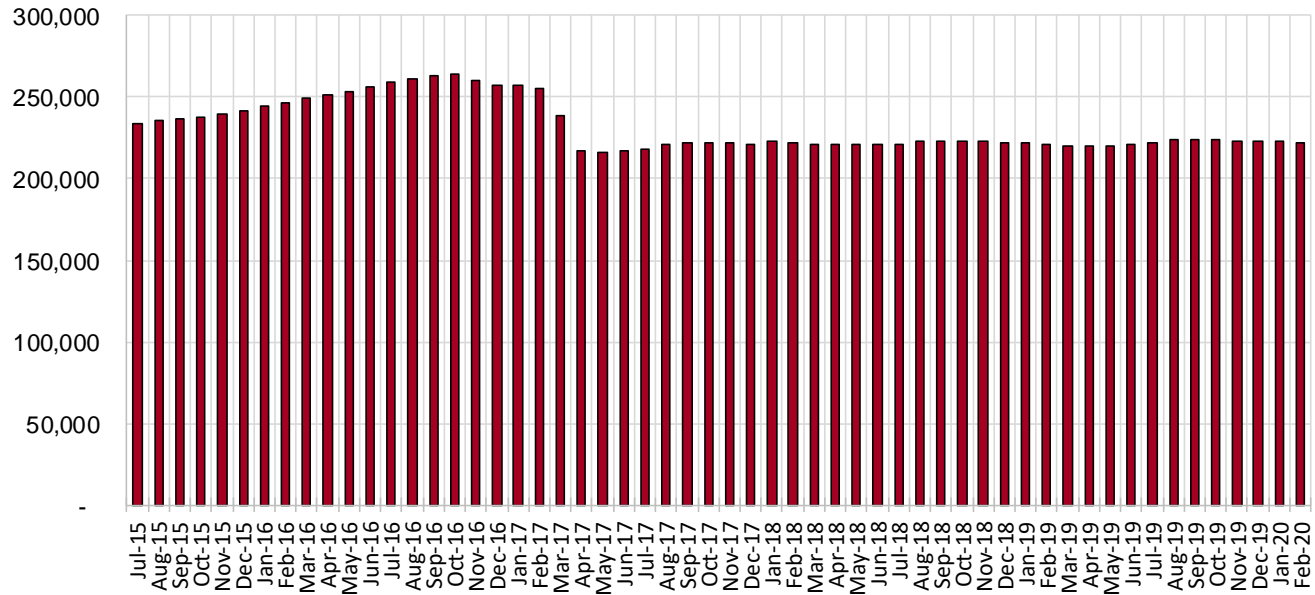
SNAP Cases by Field Office⁶

Office				Percent Change	
	Feb-19	Jan-20	Feb-20	Feb-19- Feb-20	Jan-20- Feb-20
Chaves County ISD	6,892	7,158	7,116	3.25%	-0.59%
Cibola County ISD	3,679	3,567	3,525	-4.19%	-1.18%
Colfax County ISD	1,656	1,614	1,622	-2.05%	0.50%
Curry County ISD	7,002	7,372	7,293	4.16%	-1.07%
East Dona Ana County ISD	7,936	7,964	7,933	-0.04%	-0.39%
Eddy Artesia County ISD	1,579	1,615	1,613	2.15%	-0.12%
Eddy Carlsbad County ISD	2,787	2,948	2,949	5.81%	0.03%
Grant County ISD	3,907	3,991	3,967	1.54%	-0.60%
Guadalupe County ISD	721	680	676	-6.24%	-0.59%
Hidalgo County ISD	15	8	5	-66.67%	-37.50%
Lea County ISD	5,508	5,814	5,834	5.92%	0.34%
Lincoln County ISD	1,828	1,850	1,870	2.30%	1.08%
Luna County ISD	4,158	4,365	4,346	4.52%	-0.44%
McKinley County ISD	9,869	10,316	10,261	3.97%	-0.53%
Northeast Bernalillo County ISD	20,337	20,563	20,400	0.31%	-0.79%
Northwest Bernalillo County ISD	20,091	20,486	20,538	2.22%	0.25%
Otero County ISD	5,654	5,779	5,723	1.22%	-0.97%
Quay County ISD	1,262	1,311	1,323	4.83%	0.92%
Rio Arriba County ISD	6,505	6,409	6,406	-1.52%	-0.05%
Roosevelt County ISD	1	1	1	0.00%	0.00%
San Juan County ISD	13,622	14,089	14,125	3.69%	0.26%
San Miguel County ISD	5,033	4,996	4,947	-1.71%	-0.98%
Sandoval County ISD	9,991	9,865	9,867	-1.24%	0.02%
Santa Fe County ISD	9,668	9,013	8,963	-7.29%	-0.55%
Sierra County ISD	2,664	2,570	2,549	-4.32%	-0.82%
Socorro County ISD	2,780	2,786	2,768	-0.43%	-0.65%
South Dona Ana ISD	8,555	8,439	8,415	-1.64%	-0.28%
Southeast Bernalillo County ISD	11,838	11,718	11,650	-1.59%	-0.58%
Southwest Bernalillo County ISD	18,579	19,008	18,922	1.85%	-0.45%
Taos County ISD	4,128	4,204	4,211	2.01%	0.17%
Torrance County ISD	3,630	3,652	3,581	-1.35%	-1.9%
Valencia North County ISD	8,280	8,311	8,332	0.63%	0.25%
Valencia South County ISD	0	6	7	N/A	16.67%
West Dona Ana County ISD	10,664	10,748	10,669	0.05%	-0.74%
Centralized Units	12	12	13	8.33%	8.33%
Statewide Total	220,831	223,228	222,420	0.72%	-0.4%

SNAP Cases by Region⁶

Region				Percent Change	
	Feb-19	Jan-20	Feb-20	Feb-19- Feb-20	Jan-20- Feb-20
Region 1 - NW	40,894	41,645	41,567	1.6%	-0.2%
Region 2 - NE	38,964	38,092	38,015	-2.4%	-0.2%
Region 3 - Central	74,475	75,427	75,091	0.8%	-0.4%
Region 4 - SE	25,597	26,758	26,676	4.2%	-0.3%
Region 5 - SW	40,889	41,294	41,058	0.4%	-0.6%
Centralized Units	12	12	13	8.3%	8.3%
Statewide Total	220,831	223,228	222,420	0.72%	-0.4%

SNAP Caseload: SFY-16 to Current

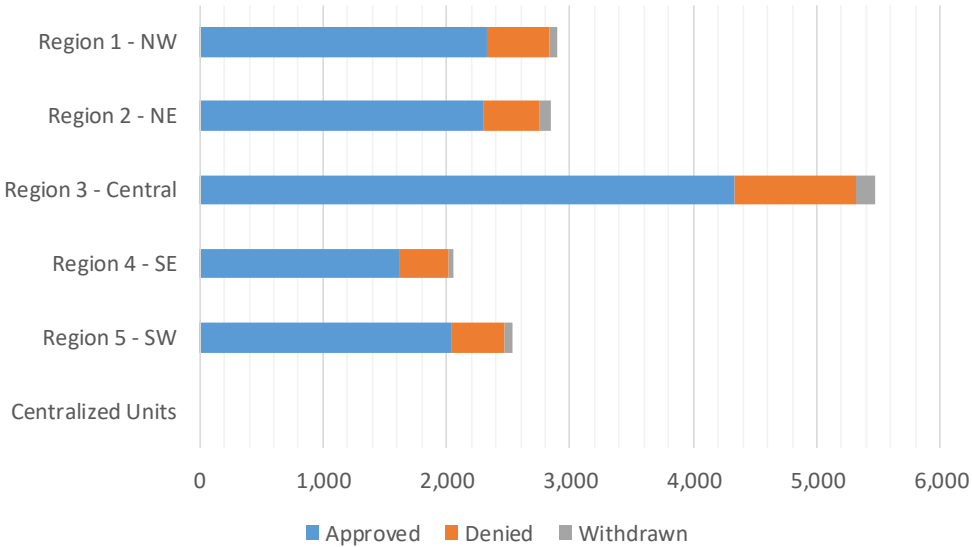


SNAP Initial Applications by Field Office^{4,11}
February 2020

Office	Approved	Denied	Withdrawn	Total Cases Processed
Chaves County ISD	352	89	13	454
Cibola County ISD	202	45	5	252
Colfax County ISD	103	20	2	125
Curry County ISD	403	90	10	503
East Dona Ana County ISD	406	129	17	552
Eddy Artesia County ISD	91	11	7	109
Eddy Carlsbad County ISD	250	64	4	318
Grant County ISD	214	40	4	258
Guadalupe County ISD	21	8	2	31
Hidalgo County ISD	0	0	0	0
Lea County ISD	405	105	12	522
Lincoln County ISD	112	36	3	151
Luna County ISD	229	28	7	264
McKinley County ISD	466	85	13	564
Northeast Bernalillo County ISD	1,270	315	47	1,632
Northwest Bernalillo County ISD	1,097	268	31	1,396
Otero County ISD	331	66	7	404
Quay County ISD	71	13	0	84
Rio Arriba County ISD	402	64	15	481
Roosevelt County ISD	4	0	0	4
San Juan County ISD	956	236	28	1,220
San Miguel County ISD	255	62	5	322
Sandoval County ISD	655	159	34	848
Santa Fe County ISD	546	88	26	660
Sierra County ISD	113	22	1	136
Socorro County ISD	142	24	3	169
South Dona Ana ISD	286	53	13	352
Southeast Bernalillo County ISD	714	154	11	879
Southwest Bernalillo County ISD	1,033	198	48	1,279
Taos County ISD	249	37	6	292
Torrance County ISD	226	46	9	281
Valencia North County ISD	453	86	21	560
Valencia South County ISD	0	0	0	0
West Dona Ana County ISD	583	100	22	705
Centralized Units	0	0	0	0
Statewide Total	12,640	2,741	426	15,807

SNAP Initial Applications by Region^{4,11}
February 2020

Region	Approved	Denied	Withdrawn	Total Cases Processed
Region 1 - NW	2,332	498	71	2,901
Region 2 - NE	2,302	451	90	2,843
Region 3 - Central	4,340	981	146	5,467
Region 4 - SE	1,617	395	49	2,061
Region 5 - SW	2,049	416	70	2,535
Centralized Units	0	0	0	0
Statewide Total	12,640	2,741	426	15,807

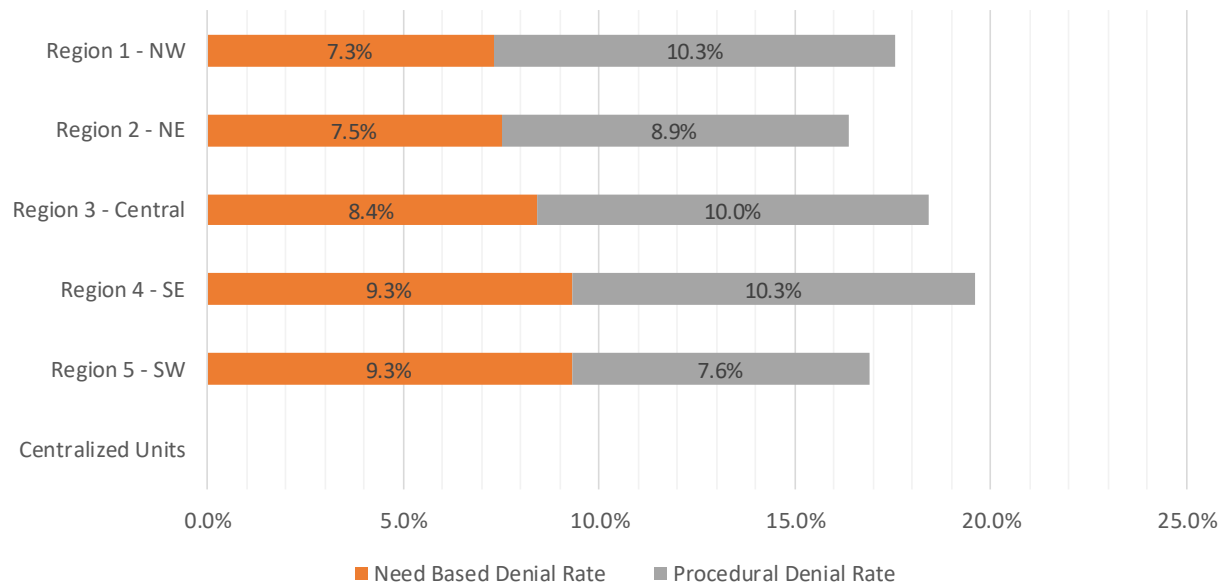


SNAP Initial Disposition Rates by Field Office^{4,11}
February 2020

Office	Approval Rate	Denial Rate	Need Based Denial Rate	Procedural Denial Rate
Chaves County ISD	79.8%	20.2%	9.5%	10.7%
Cibola County ISD	81.8%	18.2%	7.7%	10.5%
Colfax County ISD	83.7%	16.3%	9.0%	7.3%
Curry County ISD	81.7%	18.3%	9.2%	9.1%
East Dona Ana County ISD	75.9%	24.1%	12.3%	11.8%
Eddy Artesia County ISD	89.2%	10.8%	4.9%	5.9%
Eddy Carlsbad County ISD	79.6%	20.4%	9.3%	11.1%
Grant County ISD	84.3%	15.7%	8.6%	7.1%
Guadalupe County ISD	72.4%	27.6%	10.4%	17.2%
Hidalgo County ISD	0.0%	0.0%	0.0%	0.0%
Lea County ISD	79.4%	20.6%	10.0%	10.6%
Lincoln County ISD	75.7%	24.3%	10.8%	13.5%
Luna County ISD	89.1%	10.9%	6.6%	4.3%
McKinley County ISD	84.6%	15.4%	6.3%	9.1%
Northeast Bernalillo County ISD	80.1%	19.9%	7.9%	12.0%
Northwest Bernalillo County ISD	80.4%	19.6%	9.3%	10.3%
Otero County ISD	83.4%	16.6%	7.5%	9.1%
Quay County ISD	84.5%	15.5%	9.5%	6.0%
Rio Arriba County ISD	86.3%	13.7%	3.8%	9.9%
Roosevelt County ISD	100.0%	0.0%	0.0%	0.0%
San Juan County ISD	80.2%	19.8%	7.2%	12.6%
San Miguel County ISD	80.4%	19.6%	13.0%	6.6%
Sandoval County ISD	80.5%	19.5%	8.2%	11.3%
Santa Fe County ISD	86.1%	13.9%	6.6%	7.3%
Sierra County ISD	83.7%	16.3%	6.7%	9.6%
Socorro County ISD	85.5%	14.5%	8.5%	6.0%
South Dona Ana ISD	84.4%	15.6%	10.0%	5.6%
Southeast Bernalillo County ISD	82.3%	17.7%	9.8%	7.9%
Southwest Bernalillo County ISD	83.9%	16.1%	7.6%	8.5%
Taos County ISD	87.1%	12.9%	5.9%	7.0%
Torrance County ISD	83.1%	16.9%	6.2%	10.7%
Valencia North County ISD	84.0%	16.0%	8.4%	7.6%
Valencia South County ISD	0.0%	0.0%	0.0%	0.0%
West Dona Ana County ISD	85.4%	14.6%	8.6%	6.0%
Centralized Units	0.0%	0.0%	0.0%	0.0%
Statewide Total	82.2%	17.8%	8.3%	9.5%

SNAP Initial Disposition Rates by Region^{4,11}
February 2020

Region	Approval Rate	Denial Rate	Need Based Denial Rate	Procedural Denial Rate
Region 1 - NW	82.4%	17.6%	7.3%	10.3%
Region 2 - NE	83.6%	16.4%	7.5%	8.9%
Region 3 - Central	81.6%	18.4%	8.4%	10.0%
Region 4 - SE	80.4%	19.6%	9.3%	10.3%
Region 5 - SW	83.1%	16.9%	9.3%	7.6%
Centralized Units	0.0%	0.0%	0.0%	0.0%
Statewide Total	82.2%	17.8%	8.3%	9.5%



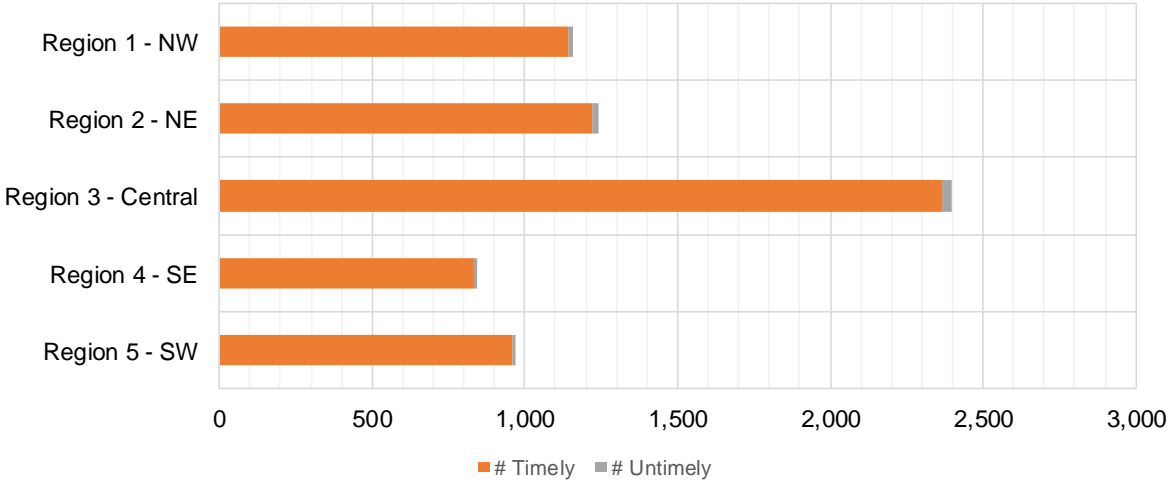
SNAP Expedite Timeliness by Field Office¹³
February 2020

Office Name	Total Expedited Approvals	# Timely	# Untimely	Percentage Timely
Chaves County ISD	166	164	2	98.8 %
Cibola County ISD	89	89	0	100.0 %
Colfax County ISD	47	47	0	100.0 %
Curry County ISD	216	214	2	99.1 %
East Dona Ana County ISD	172	169	3	98.3 %
Eddy Artesia County ISD	54	54	0	100.0 %
Eddy Carlsbad County ISD	144	141	3	97.9 %
Grant County ISD	118	116	2	98.3 %
Guadalupe County ISD	7	7	0	100.0 %
Lea County ISD	218	216	2	99.1 %
Lincoln County ISD	41	40	1	97.6 %
Luna County ISD	103	103	0	100.0 %
McKinley County ISD	251	247	4	98.4 %
Northeast Bernalillo County ISD	710	696	14	98.0 %
Northwest Bernalillo County ISD	634	630	4	99.4 %
Otero County ISD	166	163	3	98.2 %
Quay County ISD	44	42	2	95.5 %
Rio Arriba County ISD	241	241	0	100.0 %
Roosevelt County ISD	4	4	0	100.0 %
San Juan County ISD	484	480	4	99.2 %
San Miguel County ISD	142	139	3	97.9 %
Sandoval County ISD	326	320	6	98.2 %
Santa Fe County ISD	304	296	8	97.4 %
Sierra County ISD	48	47	1	97.9 %
Socorro County ISD	74	72	2	97.3 %
South Dona Ana ISD	116	113	3	97.4 %
Southeast Bernalillo County ISD	379	374	5	98.7 %
Southwest Bernalillo County ISD	562	557	5	99.1 %
Taos County ISD	133	131	2	98.5 %
Torrance County ISD	111	110	1	99.1 %
Valencia North County ISD	211	207	4	98.1 %
West Dona Ana County ISD	297	295	2	99.3 %
Statewide Total	6,612	6,524	88	98.7 %

SNAP Expedite Timeliness by Region¹³
February 2020

Region	Total Expedited Approvals	# Timely	# Untimely	Percentage Timely
Region 1 - NW	1,157	1,142	15	98.7%
Region 2 - NE	1,244	1,223	21	98.3%
Region 3 - Central	2,396	2,367	29	98.8%
Region 4 - SE	843	833	10	98.8%
Region 5 - SW	972	959	13	98.7%
Statewide Total	6,612	6,524	88	98.7%

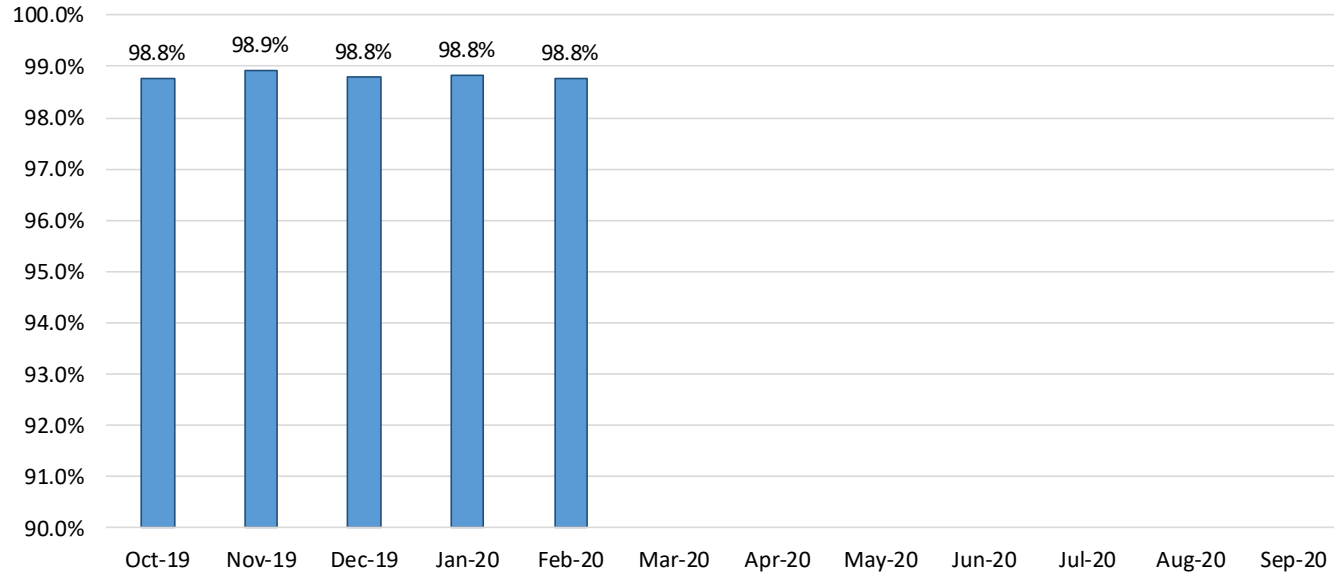
SNAP Expedite - Timeliness



SNAP: Percentage of Applications Processed Timely ¹³

	Oct-19	Nov-19	Dec-19	Jan-20	Feb-20	Mar-20	Apr-20	May-20	Jun-20	Jul-20	Aug-20	Sep-20	Average
APT	98.8%	98.9%	98.8%	98.8%	98.8%								98.8%

SNAP Application Processing Timeliness (APT)



SNAP Non-Expedite: Percentage of Initial Applications Processed Timely by Field Office¹³

	Oct-19	Nov-19	Dec-19	Jan-20	Feb-20	Mar-20	Apr-20	May-20	Jun-20	Jul-20	Aug-20	Sep-20	Average
Cibola	99.2%	96.9%	98.0%	96.3%	99.4%								98.0%
McKinley	99.0%	98.5%	98.4%	98.9%	98.7%								98.7%
San Juan	98.1%	98.4%	99.1%	99.2%	98.0%								98.6%
Sierra	98.0%	100.0%	100.0%	100.0%	98.9%								99.4%
Socorro	97.9%	100.0%	100.0%	99.1%	100.0%								99.4%
Valencia North	99.0%	99.4%	99.5%	99.5%	99.7%								99.4%
Valencia South													
NW Region 1 Total	98.5%	98.7%	99.0%	99.0%	98.8%								98.8%
Colfax	98.8%	98.8%	100.0%	98.7%	100.0%								99.3%
Guadalupe	100.0%	100.0%	100.0%	100.0%	100.0%								100.0%
Quay	100.0%	100.0%	100.0%	100.0%	100.0%								100.0%
Rio Arriba	98.2%	99.5%	98.6%	98.9%	99.2%								98.9%
San Miguel	98.1%	98.9%	100.0%	98.7%	99.5%								99.0%
Sandoval	99.5%	98.7%	98.8%	99.6%	99.0%								99.1%
Santa Fe	97.7%	98.4%	97.7%	99.7%	98.6%								98.4%
Taos	100.0%	98.9%	99.4%	99.0%	100.0%								99.5%
NE Region 2 Total	98.8%	98.9%	98.8%	99.3%	99.2%								99.0%
NE Bernalillo	98.5%	98.9%	98.5%	97.9%	97.6%								98.3%
NW Bernalillo	98.5%	98.1%	97.5%	98.4%	98.3%								98.2%
SE Bernalillo	98.8%	98.2%	98.9%	99.3%	98.4%								98.7%
SW Bernalillo	99.0%	99.2%	98.3%	99.1%	99.0%								98.9%
Torrance	99.4%	100.0%	98.2%	100.0%	98.3%								99.2%
Gen. Region 3 Total	98.7%	98.7%	98.3%	98.7%	98.3%								98.5%
Chaves	99.7%	99.7%	98.1%	99.5%	99.0%								99.2%
Curry	98.7%	99.0%	98.1%	97.1%	98.6%								98.3%
Eddy Artesia	100.0%	98.5%	97.6%	100.0%	100.0%								99.2%
Eddy Carlsbad	99.4%	99.3%	99.4%	98.3%	100.0%								99.3%
Lea	99.6%	99.3%	98.9%	99.7%	99.4%								99.4%
Lincoln	99.1%	100.0%	97.0%	99.3%	98.2%								98.7%
Roosevelt	100.0%	100.0%		100.0%									100.0%
SE Region 4 Total	99.4%	99.3%	98.3%	98.8%	99.1%								99.0%
East Dona Ana	99.5%	99.5%	99.2%	99.2%	99.5%								99.4%
Grant	99.3%	98.7%	100.0%	98.3%	100.0%								99.3%
Luna	99.4%	100.0%	98.8%	98.9%	100.0%								99.4%
Otero	98.9%	99.6%	99.2%	99.6%	98.0%								99.1%
South Dona Ana	100.0%	99.6%	99.6%	100.0%	99.6%								99.8%
West Dona Ana	98.7%	99.6%	99.6%	99.1%	100.0%								99.4%
SW Region 5 Total	99.3%	99.5%	99.4%	99.2%	99.5%								99.4%
STATE TOTAL	98.9%	99.0%	98.7%	99.0%	98.8%								98.9%

SNAP Expedite: Percentage of Initial Applications Processed Timely by Field Office¹³

	Oct-19	Nov-19	Dec-19	Jan-20	Feb-20	Mar-20	Apr-20	May-20	Jun-20	Jul-20	Aug-20	Sep-20	Average
Cibola	96.7%	100.0%	95.5%	98.5%	100.0%								98.1%
McKinley	98.2%	99.0%	99.0%	98.6%	98.4%								98.6%
San Juan	98.9%	99.1%	98.4%	99.0%	99.0%								98.9%
Sierra	95.5%	98.1%	100.0%	96.8%	97.9%								97.7%
Socorro	100.0%	95.0%	98.5%	100.0%	97.4%								98.2%
Valencia North	98.4%	99.1%	99.1%	97.6%	98.1%								98.5%
Valencia South													
NW Region 1 Total	98.4%	98.9%	98.5%	98.6%	98.6%								98.6%
Colfax	100.0%	100.0%	98.4%	100.0%	100.0%								99.7%
Guadalupe	93.8%	100.0%	100.0%	95.0%	100.0%								97.8%
Quay	96.9%	100.0%	100.0%	100.0%	95.5%								98.5%
Rio Arriba	99.2%	97.1%	98.3%	98.1%	100.0%								98.5%
San Miguel	98.9%	100.0%	100.0%	98.8%	97.9%								99.1%
Sandoval	97.9%	98.9%	98.7%	98.7%	97.9%								98.4%
Santa Fe	98.8%	98.1%	98.1%	98.3%	97.4%								98.1%
Taos	97.7%	97.9%	98.6%	100.0%	98.5%								98.5%
NE Region 2 Total	98.5%	98.5%	98.6%	98.7%	98.2%								98.5%
NE Bernalillo	98.7%	98.5%	98.7%	98.7%	98.2%								98.6%
NW Bernalillo	99.6%	98.6%	99.5%	98.3%	99.5%								99.1%
SE Bernalillo	98.5%	98.6%	99.3%	98.6%	98.9%								98.8%
SW Bernalillo	99.0%	98.1%	98.5%	99.0%	99.1%								98.7%
Torrance	99.2%	100.0%	99.3%	97.1%	99.1%								98.9%
Gen. Region 3 Total	99.0%	98.5%	99.0%	98.7%	98.8%								98.8%
Chaves	98.2%	97.7%	98.7%	98.2%	98.8%								98.3%
Curry	97.7%	97.6%	98.6%	97.7%	99.1%								98.1%
Eddy Artesia	96.4%	100.0%	98.5%	100.0%	100.0%								99.0%
Eddy Carlsbad	99.3%	97.7%	97.3%	98.8%	98.6%								98.3%
Lea	98.3%	98.6%	100.0%	98.5%	99.1%								98.9%
Lincoln	95.8%	96.0%	95.7%	96.0%	97.6%								96.2%
Roosevelt	100.0%	100.0%		100.0%	100.0%								100.0%
SE Region 4 Total	98.0%	97.9%	98.6%	98.2%	98.9%								98.3%
East Dona Ana	98.5%	99.5%	100.0%	99.6%	98.3%								99.2%
Grant	99.2%	100.0%	98.5%	97.7%	98.3%								98.7%
Luna	99.2%	100.0%	98.2%	99.3%	100.0%								99.3%
Otero	99.4%	99.5%	98.8%	99.5%	98.2%								99.1%
South Dona Ana	97.9%	98.6%	99.2%	100.0%	96.6%								98.5%
West Dona Ana	99.1%	99.4%	99.7%	100.0%	99.3%								99.5%
SW Region 5 Total	98.9%	99.4%	99.3%	99.5%	98.6%								99.1%
STATE TOTAL	98.7%	98.6%	98.8%	98.7%	98.7%								98.7%

SNAP: Percentage of Denied Initial Applications Processed Within 30 Days by Field Office¹³

	Oct-19	Nov-19	Dec-19	Jan-20	Feb-20	Mar-20	Apr-20	May-20	Jun-20	Jul-20	Aug-20	Sep-20	Average
Cibola	97.3%	100.0%	100.0%	98.1%	98.0%								98.7%
McKinley	100.0%	94.4%	96.1%	99.0%	99.0%								97.7%
San Juan	97.6%	98.2%	98.6%	97.7%	96.6%								97.7%
Sierra	96.0%	100.0%	100.0%	100.0%	95.7%								98.3%
Socorro	100.0%	100.0%	100.0%	100.0%	100.0%								100.0%
Valencia North	99.0%	97.7%	98.4%	100.0%	99.1%								98.8%
Valencia South													
NW Region 1 Total	98.3%	98.4%	98.9%	99.1%	98.1%								98.6%
Colfax	96.8%	94.1%	100.0%	100.0%	100.0%								98.2%
Guadalupe	100.0%	100.0%	100.0%	100.0%	100.0%								100.0%
Quay	100.0%	100.0%	100.0%	100.0%	100.0%								100.0%
Rio Arriba	95.8%	98.6%	94.7%	96.0%	98.7%								96.8%
San Miguel	100.0%	98.5%	100.0%	98.6%	100.0%								99.4%
Sandoval	98.5%	98.9%	98.8%	100.0%	99.5%								99.1%
Santa Fe	96.4%	98.2%	96.2%	99.1%	97.4%								97.5%
Taos	100.0%	98.4%	100.0%	100.0%	100.0%								99.7%
NE Region 2 Total	98.4%	98.3%	98.7%	99.2%	99.5%								98.8%
NE Bernalillo	98.2%	97.8%	96.8%	94.7%	95.3%								96.6%
NW Bernalillo	96.4%	96.7%	96.6%	97.9%	97.0%								96.9%
SE Bernalillo	97.8%	95.0%	98.4%	99.0%	97.0%								97.4%
SW Bernalillo	97.7%	98.0%	96.8%	96.8%	98.8%								97.6%
Torrance	98.2%	100.0%	96.5%	100.0%	98.2%								98.6%
Gen. Region 3 Total	97.7%	97.5%	97.0%	97.7%	97.3%								97.4%
Chaves	100.0%	100.0%	95.0%	98.1%	98.0%								98.2%
Curry	97.2%	97.2%	94.8%	96.9%	99.0%								97.0%
Eddy Artesia	100.0%	96.3%	100.0%	100.0%	100.0%								99.3%
Eddy Carlsbad	98.2%	100.0%	98.3%	97.7%	98.5%								98.5%
Lea	100.0%	99.0%	97.0%	100.0%	100.0%								99.2%
Lincoln	97.6%	100.0%	94.9%	100.0%	97.4%								98.0%
Roosevelt		100.0%											100.0%
SE Region 4 Total	98.8%	98.9%	96.7%	98.8%	98.8%								98.4%
East Dona Ana	99.4%	98.7%	98.5%	98.0%	99.3%								98.8%
Grant	97.4%	98.1%	100.0%	93.3%	100.0%								97.8%
Luna	97.7%	100.0%	95.3%	98.0%	100.0%								98.2%
Otero	98.9%	98.8%	97.1%	98.8%	95.9%								97.9%
South Dona Ana	100.0%	100.0%	100.0%	100.0%	100.0%								100.0%
West Dona Ana	97.5%	99.4%	99.2%	98.8%	100.0%								99.0%
SW Region 5 Total	98.5%	99.2%	98.4%	97.8%	99.2%								98.6%
STATE TOTAL	98.4%	98.5%	98.0%	98.6%	98.7%								98.4%

SNAP: Combined Approvals and Denials Percentage of Initial Applications Processed Timely by Field Office¹³

	Oct-19	Nov-19	Dec-19	Jan-20	Feb-20	Mar-20	Apr-20	May-20	Jun-20	Jul-20	Aug-20	Sep-20	Average
Cibola	98.0%	98.5%	97.7%	97.6%	99.6%								98.3%
McKinley	98.8%	98.7%	98.8%	98.7%	98.8%								98.8%
San Juan	98.5%	98.8%	98.8%	99.1%	98.6%								98.8%
Sierra	97.3%	99.4%	100.0%	98.8%	98.5%								98.8%
Socorro	98.9%	98.3%	99.4%	99.5%	98.8%								99.0%
Valencia North	98.7%	99.1%	99.4%	98.7%	99.1%								99.0%
Valencia South		100.0%		100.0%	0.0%								66.7%
NW Region 1 Total	98.4%	99.0%	99.0%	98.9%	84.8%								96.0%
Colfax	99.3%	99.2%	99.2%	99.3%	100.0%								99.4%
Guadalupe	98.2%	100.0%	100.0%	97.6%	97.6%								98.7%
Quay	98.6%	100.0%	100.0%	100.0%	99.6%								99.6%
Rio Arriba	98.7%	98.3%	98.5%	98.5%	98.8%								98.6%
San Miguel	98.5%	99.4%	100.0%	98.7%	98.8%								99.1%
Sandoval	98.9%	98.7%	98.9%	99.2%	98.0%								98.7%
Santa Fe	98.2%	98.3%	97.9%	99.0%	99.3%								98.5%
Taos	99.0%	98.5%	99.0%	99.4%	99.3%								99.0%
NE Region 2 Total	98.7%	99.1%	99.2%	99.0%	98.9%								99.0%
NE Bernalillo	98.6%	98.7%	98.7%	98.3%	97.9%								98.4%
NW Bernalillo	99.0%	98.3%	98.6%	98.4%	98.8%								98.6%
SE Bernalillo	98.7%	98.2%	99.3%	99.0%	98.5%								98.7%
SW Bernalillo	98.9%	98.5%	98.4%	99.0%	99.1%								98.8%
Torrance	99.3%	100.0%	98.7%	98.7%	98.6%								99.1%
Gen. Region 3 Total	98.9%	98.7%	98.7%	98.7%	98.6%								98.7%
Chaves	99.1%	98.9%	98.3%	99.0%	98.9%								98.8%
Curry	98.3%	98.4%	98.3%	97.5%	99.0%								98.3%
Eddy Artesia	98.6%	99.1%	98.0%	100.0%	100.0%								99.1%
Eddy Carlsbad	99.3%	98.6%	98.4%	98.5%	99.1%								98.8%
Lea	99.0%	99.0%	99.4%	99.1%	99.2%								99.1%
Lincoln	97.5%	98.4%	96.6%	98.4%	98.0%								97.8%
Roosevelt		100.0%	100.0%	100.0%	100.0%								100.0%
SE Region 4 Total	98.6%	98.9%	98.4%	98.9%	99.2%								98.8%
East Dona Ana	99.2%	99.5%	99.5%	99.3%	99.1%								99.3%
Grant	99.3%	99.2%	99.3%	97.7%	99.2%								98.9%
Luna	99.3%	100.0%	98.6%	99.1%	100.0%								99.4%
Otero	99.3%	99.6%	99.0%	99.6%	98.0%								99.1%
South Dona Ana	99.3%	99.3%	99.4%	100.0%	98.9%								99.4%
West Dona Ana	98.9%	99.5%	99.6%	99.4%	99.7%								99.4%
SW Region 5 Total	99.2%	99.5%	99.2%	99.2%	99.2%								99.3%
STATE TOTAL	98.7%	99.0%	98.9%	98.9%	96.0%								98.3%

SNAP Renewals Processed by Field Office²⁰
February 2020

Office	Approvals	Closures	Need Based Closures	Procedural Closures
Chaves County ISD	227	125	15	110
Cibola County ISD	118	68	3	65
Colfax County ISD	44	28	2	26
Curry County ISD	250	116	14	102
East Dona Ana County ISD	294	124	8	116
Eddy Artesia County ISD	50	41	2	39
Eddy Carlsbad County ISD	69	39	6	33
Grant County ISD	139	64	6	58
Guadalupe County ISD	18	13	0	13
Hidalgo County ISD	0	0	0	0
Lea County ISD	181	99	8	91
Lincoln County ISD	53	38	2	36
Luna County ISD	128	62	1	61
McKinley County ISD	401	196	15	181
Northeast Bernalillo County ISD	622	390	27	363
Northwest Bernalillo County ISD	471	349	27	322
Otero County ISD	186	104	10	94
Quay County ISD	47	26	6	20
Rio Arriba County ISD	187	127	6	121
Roosevelt County ISD	0	0	0	0
San Juan County ISD	408	301	26	275
San Miguel County ISD	192	71	3	68
Sandoval County ISD	307	207	19	188
Santa Fe County ISD	320	160	9	151
Sierra County ISD	89	38	3	35
Socorro County ISD	86	41	1	40
South Dona Ana ISD	381	147	28	119
Southeast Bernalillo County ISD	367	216	22	194
Southwest Bernalillo County ISD	826	412	51	361
Taos County ISD	121	67	4	63
Torrance County ISD	128	56	2	54
Valencia North County ISD	247	150	7	143
Valencia South County ISD	0	0	0	0
West Dona Ana County ISD	382	182	20	162
Centralized Units	0	0	0	0
Statewide Total	7,339	4,057	353	3,704

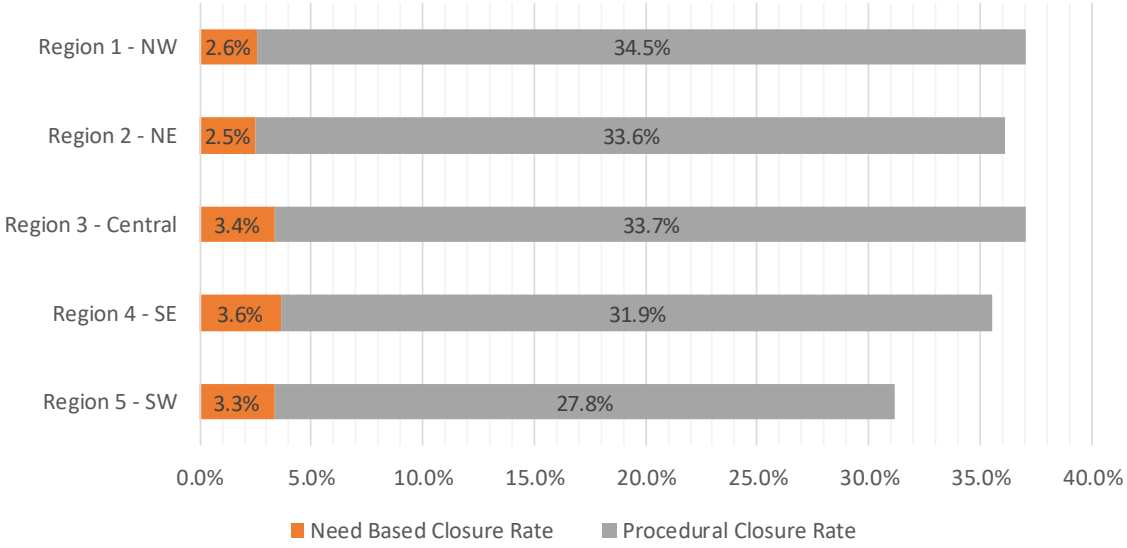
SNAP Renewal Disposition Rates by Field Office²⁰
February 2020

Office	Approval Rate	Closure Rate	Need Based Closure Rate	Procedural Closure Rate
Chaves County ISD	64.5%	35.5%	4.3%	31.3%
Cibola County ISD	63.4%	36.6%	1.6%	34.9%
Colfax County ISD	61.1%	38.9%	2.8%	36.1%
Curry County ISD	68.3%	31.7%	3.8%	27.9%
East Dona Ana County ISD	70.3%	29.7%	1.9%	27.8%
Eddy Artesia County ISD	54.9%	45.1%	2.2%	42.9%
Eddy Carlsbad County ISD	63.9%	36.1%	5.6%	30.6%
Grant County ISD	68.5%	31.5%	3.0%	28.6%
Guadalupe County ISD	58.1%	41.9%	0.0%	41.9%
Hidalgo County ISD	0.0%	0.0%	0.0%	0.0%
Lea County ISD	64.6%	35.4%	2.9%	32.5%
Lincoln County ISD	58.2%	41.8%	2.2%	39.6%
Luna County ISD	67.4%	32.6%	0.5%	32.1%
McKinley County ISD	67.2%	32.8%	2.5%	30.3%
Northeast Bernalillo County ISD	61.5%	38.5%	2.7%	35.9%
Northwest Bernalillo County ISD	57.4%	42.6%	3.3%	39.3%
Otero County ISD	64.1%	35.9%	3.4%	32.4%
Quay County ISD	64.4%	35.6%	8.2%	27.4%
Rio Arriba County ISD	59.6%	40.4%	1.9%	38.5%
Roosevelt County ISD	0.0%	0.0%	0.0%	0.0%
San Juan County ISD	57.5%	42.5%	3.7%	38.8%
San Miguel County ISD	73.0%	27.0%	1.1%	25.9%
Sandoval County ISD	59.7%	40.3%	3.7%	36.6%
Santa Fe County ISD	66.7%	33.3%	1.9%	31.5%
Sierra County ISD	70.1%	29.9%	2.4%	27.6%
Socorro County ISD	67.7%	32.3%	0.8%	31.5%
South Dona Ana ISD	72.2%	27.8%	5.3%	22.5%
Southeast Bernalillo County ISD	63.0%	37.0%	3.8%	33.3%
Southwest Bernalillo County ISD	66.7%	33.3%	4.1%	29.2%
Taos County ISD	64.4%	35.6%	2.1%	33.5%
Torrance County ISD	69.6%	30.4%	1.1%	29.3%
Valencia North County ISD	62.2%	37.8%	1.8%	36.0%
Valencia South County ISD	0.0%	0.0%	0.0%	0.0%
West Dona Ana County ISD	67.7%	32.3%	3.5%	28.7%
Centralized Units	0.0%	0.0%	0.0%	0.0%
Statewide Total	64.4%	35.6%	3.1%	32.5%

SNAP Renewal Disposition Rates by Region²⁰
February 2020

Region	Approval Rate	Closure Rate	Need Based Closure Rate	Procedural Closure Rate
Region 1 - NW	62.9%	37.1%	2.6%	34.5%
Region 2 - NE	63.9%	36.1%	2.5%	33.6%
Region 3 - Central	62.9%	37.1%	3.4%	33.7%
Region 4 - SE	64.4%	35.6%	3.6%	31.9%
Region 5 - SW	68.9%	31.1%	3.3%	27.8%
Centralized Units				

Statewide Total	64.4%	35.6%	3.1%	32.5%
-----------------	-------	-------	------	-------



SNAP: Percentage of Approved Renewal Applications Processed¹¹

	Oct-19	Nov-19	Dec-19	Jan-20	Feb-20	Mar-20	Apr-20	May-20	Jun-20	Jul-20	Aug-20	Sep-20	Average
Cibola	94.2%	97.9%	95.4%	94.4%	96.7%								95.7%
McKinley	99.0%	94.2%	97.5%	97.4%	98.0%								97.2%
San Juan	95.3%	93.9%	97.1%	97.8%	97.4%								96.3%
Sierra	97.2%	95.3%	96.8%	98.9%	97.8%								97.2%
Socorro	98.0%	97.2%	97.2%	98.7%	98.9%								98.0%
Valencia North	98.3%	97.2%	95.7%	98.2%	99.6%								97.8%
Valencia South													
NW Region 1 Total	97.0%	96.0%	96.6%	97.6%	98.1%								97.0%
Colfax	100.0%	97.6%	98.4%	100.0%	100.0%								99.2%
Guadalupe	94.7%	100.0%	100.0%	100.0%	100.0%								98.9%
Quay	100.0%	98.2%	100.0%	100.0%	100.0%								99.6%
Rio Arriba	99.1%	96.4%	95.8%	97.1%	100.0%								97.7%
San Miguel	94.4%	95.9%	99.5%	97.6%	97.5%								97.0%
Sandoval	99.5%	98.6%	98.5%	99.3%	99.4%								99.1%
Santa Fe	95.3%	92.6%	96.5%	93.0%	94.7%								94.4%
Taos	97.9%	95.0%	100.0%	97.6%	97.6%								97.6%
NE Region 2 Total	97.6%	96.8%	98.6%	98.1%	98.7%								97.9%
NE Bernalillo	98.6%	96.6%	96.8%	93.1%	96.4%								96.3%
NW Bernalillo	96.2%	96.2%	95.4%	93.9%	97.7%								95.9%
SE Bernalillo	97.2%	94.8%	96.6%	92.5%	98.4%								95.9%
SW Bernalillo	97.0%	96.9%	97.2%	95.1%	99.4%								97.1%
Torrance	95.6%	95.0%	99.1%	96.4%	98.5%								96.9%
Gen. Region 3 Total	96.9%	95.9%	97.0%	94.2%	98.1%								96.4%
Chaves	98.8%	98.7%	97.8%	99.0%	98.7%								98.6%
Curry	98.8%	98.4%	97.9%	99.5%	99.6%								98.8%
Eddy Artesia	100.0%	100.0%	100.0%	96.4%	100.0%								99.3%
Eddy Carlsbad	100.0%	98.6%	100.0%	100.0%	98.6%								99.4%
Lea	98.8%	98.9%	97.0%	95.4%	100.0%								98.0%
Lincoln	95.8%	96.9%	96.8%	96.6%	96.4%								96.5%
Roosevelt													
SE Region 4 Total	98.7%	98.6%	98.3%	97.8%	98.9%								98.4%
East Dona Ana	97.8%	97.5%	97.5%	98.5%	100.0%								98.3%
Grant	98.1%	100.0%	96.1%	97.1%	99.3%								98.1%
Luna	100.0%	97.6%	99.4%	99.2%	99.2%								99.1%
Otero	99.1%	99.0%	100.0%	97.2%	99.5%								99.0%
South Dona Ana	100.0%	99.7%	100.0%	99.7%	100.0%								99.9%
West Dona Ana	100.0%	98.4%	99.5%	100.0%	99.7%								99.5%
SW Region 5 Total	99.2%	98.7%	98.8%	98.6%	99.6%								99.0%
STATE TOTAL	97.9%	97.2%	97.9%	97.4%	98.7%								97.8%

If a renewal packet was received on or before 15th of the renewal month, the case shall be considered timely if the case was processed by renewal due date

SNAP: Percentage of Approved Renewal Applications Processed¹¹

	Oct-19	Nov-19	Dec-19	Jan-20	Feb-20	Mar-20	Apr-20	May-20	Jun-20	Jul-20	Aug-20	Sep-20	Average
Cibola	87.5%	91.7%	100.0%	100.0%	100.0%								95.8%
McKinley	97.6%	95.5%	100.0%	93.9%	100.0%								97.4%
San Juan	94.6%	91.3%	98.4%	100.0%	95.1%								95.9%
Sierra	96.8%	100.0%	92.3%	100.0%	100.0%								97.8%
Socorro	96.4%	96.2%	100.0%	100.0%	100.0%								98.5%
Valencia North	98.4%	94.4%	100.0%	100.0%	100.0%								98.6%
Valencia South													
NW Region 1 Total	95.2%	94.9%	98.5%	99.0%	99.2%								97.3%
Colfax	100.0%	100.0%	100.0%	100.0%	100.0%								100.0%
Guadalupe	100.0%	100.0%	100.0%	100.0%	100.0%								100.0%
Quay	100.0%	100.0%	100.0%	100.0%	100.0%								100.0%
Rio Arriba	98.4%	93.3%	90.9%	100.0%	100.0%								96.5%
San Miguel	92.9%	100.0%	100.0%	100.0%	100.0%								98.6%
Sandoval	100.0%	97.9%	100.0%	100.0%	100.0%								99.6%
Santa Fe	91.3%	95.8%	98.1%	93.9%	100.0%								95.8%
Taos	87.5%	100.0%	100.0%	100.0%	100.0%								97.5%
NE Region 2 Total	96.3%	98.4%	98.6%	99.2%	100.0%								98.5%
NE Bernalillo	100.0%	94.6%	98.8%	94.0%	100.0%								97.5%
NW Bernalillo	98.0%	96.9%	98.8%	95.2%	100.0%								97.8%
SE Bernalillo	97.8%	100.0%	98.5%	93.6%	97.8%								97.5%
SW Bernalillo	98.0%	96.3%	100.0%	97.5%	100.0%								98.4%
Torrance	96.2%	81.8%	100.0%	100.0%	100.0%								95.6%
Gen. Region 3 Total	98.0%	93.9%	99.2%	96.1%	99.6%								97.4%
Chaves	100.0%	100.0%	96.6%	93.9%	100.0%								98.1%
Curry	100.0%	96.3%	100.0%	100.0%	100.0%								99.3%
Eddy Artesia	100.0%	100.0%	100.0%	100.0%	100.0%								100.0%
Eddy Carlsbad	100.0%	88.9%	100.0%	100.0%	100.0%								97.8%
Lea	97.1%	100.0%	100.0%	93.5%	100.0%								98.1%
Lincoln	92.9%	100.0%	100.0%	100.0%	100.0%								98.6%
Roosevelt													
SE Region 4 Total	98.3%	97.5%	99.4%	97.9%	100.0%								98.6%
East Dona Ana	98.4%	98.1%	100.0%	100.0%	100.0%								99.3%
Grant	96.2%	100.0%	100.0%	100.0%	100.0%								99.2%
Luna	100.0%	100.0%	100.0%	100.0%	100.0%								100.0%
Otero	100.0%	100.0%	100.0%	100.0%	100.0%								100.0%
South Dona Ana	100.0%	100.0%	100.0%	100.0%	100.0%								100.0%
West Dona Ana	100.0%	97.9%	98.2%	100.0%	100.0%								99.2%
SW Region 5 Total	99.1%	99.3%	99.7%	100.0%	100.0%								99.6%
STATE TOTAL	97.3%	97.0%	99.1%	98.6%	99.8%								98.3%

Only includes cases in which the Renewal Packet was received by the 15th of the month

SNAP: Percentage of Terminations Renewal Applications Processed¹¹

	Oct-19	Nov-19	Dec-19	Jan-20	Feb-20	Mar-20	Apr-20	May-20	Jun-20	Jul-20	Aug-20	Sep-20	Average
Cibola	98.8%	93.8%	96.6%	96.5%	95.8%								96.3%
McKinley	97.1%	91.8%	98.0%	97.5%	97.5%								96.4%
San Juan	96.5%	94.6%	97.4%	95.6%	95.6%								95.9%
Sierra	98.5%	96.2%	93.3%	93.5%	100.0%								96.3%
Socorro	100.0%	92.2%	100.0%	100.0%	100.0%								98.4%
Valencia North	97.8%	93.5%	97.0%	97.5%	97.4%								96.6%
Valencia South													
NW Region 1 Total	98.1%	93.7%	97.1%	96.8%	97.7%								96.7%
Colfax	100.0%	100.0%	100.0%	92.9%	100.0%								98.6%
Guadalupe	100.0%	90.9%	100.0%	100.0%	92.9%								96.8%
Quay	100.0%	100.0%	100.0%	96.0%	96.3%								98.5%
Rio Arriba	98.2%	93.7%	96.5%	94.9%	99.2%								96.5%
San Miguel	92.9%	97.6%	100.0%	95.1%	87.7%								94.7%
Sandoval	98.0%	96.6%	96.8%	98.9%	99.0%								97.9%
Santa Fe	97.0%	95.4%	97.3%	93.3%	94.1%								95.4%
Taos	98.8%	96.3%	98.8%	94.4%	98.5%								97.4%
NE Region 2 Total	98.1%	96.3%	98.7%	95.7%	96.0%								97.0%
NE Bernalillo	95.0%	94.9%	96.3%	94.6%	96.1%								95.4%
NW Bernalillo	95.1%	95.0%	94.4%	94.2%	98.0%								95.3%
SE Bernalillo	95.2%	96.1%	93.7%	95.6%	96.9%								95.5%
SW Bernalillo	97.3%	98.2%	97.2%	93.2%	98.1%								96.8%
Torrance	100.0%	97.8%	94.2%	95.4%	96.6%								96.8%
Cen. Region 3 Total	96.5%	96.4%	95.2%	94.6%	97.1%								96.0%
Chaves	96.8%	94.9%	94.5%	95.6%	99.2%								96.2%
Curry	98.7%	97.9%	98.3%	99.1%	98.3%								98.5%
Eddy Artesia	92.3%	100.0%	100.0%	95.7%	95.3%								96.7%
Eddy Carlsbad	100.0%	97.6%	97.2%	93.9%	100.0%								97.7%
Lea	97.6%	95.9%	98.6%	97.8%	99.0%								97.8%
Lincoln	95.3%	91.7%	87.5%	96.2%	97.4%								93.6%
Roosevelt													
SE Region 4 Total	96.8%	96.3%	96.0%	96.4%	98.2%								96.7%
East Dona Ana	98.7%	97.5%	99.0%	99.3%	97.6%								98.4%
Grant	100.0%	98.1%	95.9%	91.7%	100.0%								97.1%
Luna	100.0%	97.5%	96.7%	98.5%	100.0%								98.5%
Otero	100.0%	99.0%	97.7%	99.1%	98.1%								98.8%
South Dona Ana	100.0%	100.0%	100.0%	99.2%	98.7%								99.6%
West Dona Ana	97.9%	99.0%	99.1%	100.0%	100.0%								99.2%
SW Region 5 Total	99.4%	98.5%	98.1%	98.0%	99.1%								98.6%
STATE TOTAL	97.9%	96.2%	97.2%	96.3%	97.5%								97.0%

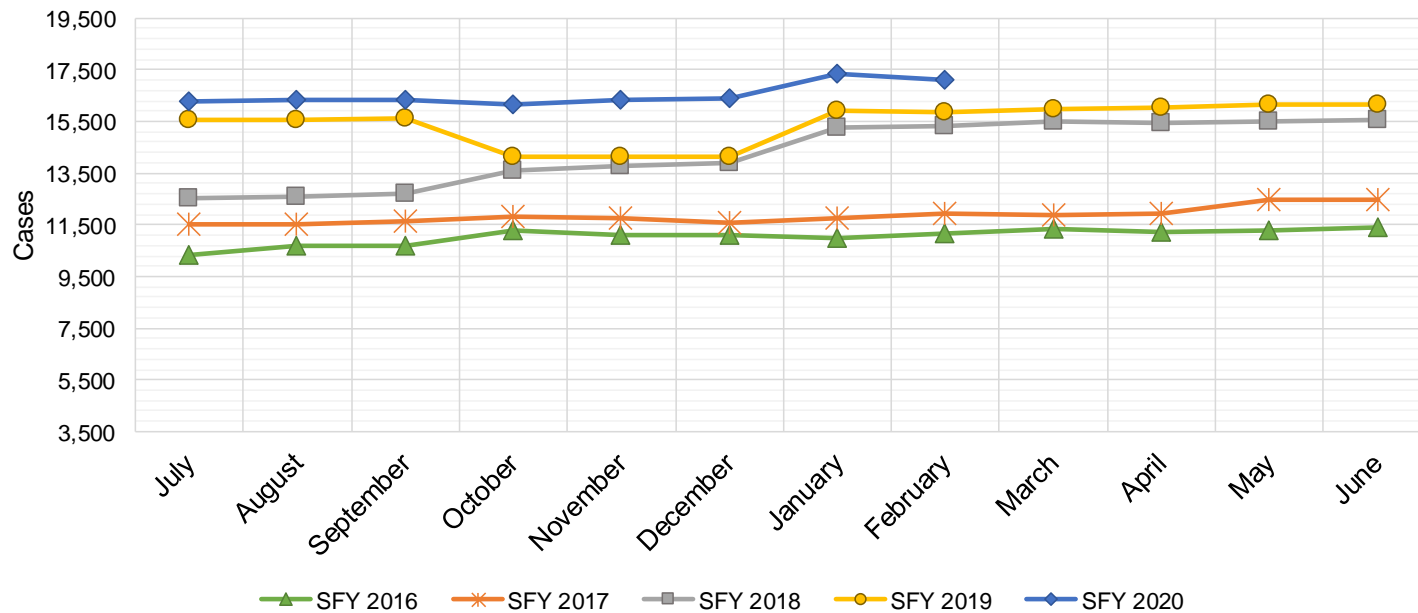
Includes cases for which no renewal application was received.

SNAP: Combined Percentage of Approved and Terminated Renewal Applications Processed¹¹

	Oct-19	Nov-19	Dec-19	Jan-20	Feb-20	Mar-20	Apr-20	May-20	Jun-20	Jul-20	Aug-20	Sep-20	Average
Cibola	96.1%	96.4%	95.9%	95.2%	96.4%								96.0%
McKinley	98.4%	93.4%	97.6%	97.4%	97.9%								96.9%
San Juan	95.8%	94.1%	97.2%	97.0%	96.6%								96.1%
Sierra	97.7%	95.7%	95.9%	97.5%	98.4%								97.0%
Socorro	98.7%	95.6%	98.1%	99.2%	99.2%								98.2%
Valencia North	98.1%	95.8%	96.2%	97.9%	98.8%								97.4%
Valencia South													
NW Region 1 Total	97.5%	95.2%	96.8%	97.4%	97.9%								96.9%
Colfax	100.0%	98.6%	99.0%	98.3%	100.0%								99.2%
Guadalupe	97.1%	97.3%	100.0%	100.0%	96.9%								98.3%
Quay	100.0%	98.8%	100.0%	98.3%	98.6%								99.1%
Rio Arriba	98.8%	95.1%	96.1%	96.2%	99.7%								97.2%
San Miguel	93.9%	96.5%	99.6%	96.6%	94.6%								96.2%
Sandoval	99.0%	97.8%	97.9%	99.1%	99.2%								98.6%
Santa Fe	96.0%	93.7%	96.8%	93.1%	94.5%								94.8%
Taos	98.2%	95.5%	99.6%	96.3%	97.9%								97.5%
NE Region 2 Total	97.9%	96.7%	98.6%	97.2%	97.7%								97.6%
NE Bernalillo	97.1%	96.0%	96.6%	93.7%	96.3%								95.9%
NW Bernalillo	95.7%	95.7%	95.0%	94.0%	97.9%								95.7%
SE Bernalillo	96.3%	95.3%	95.5%	93.7%	97.8%								95.7%
SW Bernalillo	97.1%	97.3%	97.2%	94.4%	99.0%								97.0%
Torrance	97.5%	96.3%	96.9%	96.0%	97.9%								96.9%
Gen. Region 3 Total	96.7%	96.1%	96.2%	94.4%	97.8%								96.2%
Chaves	98.1%	97.4%	96.9%	97.7%	98.9%								97.8%
Curry	98.8%	98.2%	98.0%	99.3%	99.2%								98.7%
Eddy Artesia	97.1%	100.0%	100.0%	96.2%	97.8%								98.2%
Eddy Carlsbad	100.0%	98.2%	98.5%	97.5%	99.1%								98.7%
Lea	98.3%	97.6%	97.7%	96.2%	99.6%								97.9%
Lincoln	95.7%	95.0%	93.6%	96.5%	96.8%								95.5%
Roosevelt													
SE Region 4 Total	98.0%	97.7%	97.5%	97.2%	98.6%								97.8%
East Dona Ana	98.1%	97.5%	98.2%	98.8%	99.3%								98.4%
Grant	98.7%	99.4%	96.0%	95.4%	99.5%								97.8%
Luna	100.0%	97.6%	98.4%	99.0%	99.5%								98.9%
Otero	99.4%	99.0%	99.1%	98.1%	99.0%								98.9%
South Dona Ana	100.0%	99.8%	100.0%	99.6%	99.6%								99.8%
West Dona Ana	99.3%	98.6%	99.3%	100.0%	99.8%								99.4%
SW Region 5 Total	99.3%	98.7%	98.5%	98.5%	99.5%								98.9%
STATE TOTAL	97.9%	96.9%	97.6%	97.0%	98.2%								97.5%

State SNAP Supplement

SFY 2016 ^{12,9}			SFY 2017 ⁹			SFY 2018 ⁹			SFY 2019 ⁹			SFY 2020 ⁹		
	Cases	Expenditures		Cases	Expenditures		Cases	Expenditures		Cases	Expenditures		Cases	Expenditures
Jul-15	10,345	\$86,143	Jul-16	11,537	\$95,553	Jul-17	12,526	\$97,568	Jul-18	15,555	\$141,711	Jul-19	16,260	\$145,023
Aug-15	10,669	\$88,197	Aug-16	11,522	\$95,107	Aug-17	12,589	\$98,954	Aug-18	15,584	\$139,719	Aug-19	16,314	\$145,706
Sep-15	10,676	\$88,426	Sep-16	11,613	\$94,472	Sep-17	12,679	\$97,546	Sep-18	15,631	\$140,768	Sep-19	16,362	\$145,767
Oct-15	11,262	\$96,758	Oct-16	11,797	\$96,679	Oct-17	13,628	\$117,343	Oct-18	14,161	\$125,737	Oct-19	16,182	\$139,741
Nov-15	11,099	\$91,996	Nov-16	11,735	\$93,689	Nov-17	13,748	\$119,055	Nov-18	14,160	\$125,401	Nov-19	16,331	\$138,583
Dec-15	11,125	\$90,771	Dec-16	11,556	\$93,739	Dec-17	13,877	\$120,585	Dec-18	14,163	\$126,263	Dec-19	16,373	\$137,440
Jan-16	10,977	\$92,760	Jan-17	11,763	\$96,074	Jan-18	15,246	\$135,993	Jan-19	15,890	\$141,357	Jan-20	17,360	\$145,696
Feb-16	11,153	\$95,363	Feb-17	11,907	\$98,251	Feb-18	15,308	\$137,296	Feb-19	15,882	\$142,396	Feb-20	17,113	\$154,841
Mar-16	11,332	\$96,751	Mar-17	11,853	\$96,693	Mar-18	15,482	\$139,132	Mar-19	15,970	\$142,427	Mar-20		
Apr-16	11,222	\$93,959	Apr-17	11,944	\$97,060	Apr-18	15,466	\$139,202	Apr-19	16,032	\$143,982	Apr-20		
May-16	11,283	\$95,271	May-17	12,457	\$96,940	May-18	15,525	\$139,397	May-19	16,126	\$143,697	May-20		
Jun-16	11,389	\$93,061	Jun-17	12,498	\$97,405	Jun-18	15,577	\$140,802	Jun-19	16,182	\$143,128	Jun-20		
TOTAL	132,532	\$1,109,455	142,182	\$1,151,662	171,651	\$1,482,874	185,336	\$1,656,584	132,295	\$1,152,798				
AVERAGE	11,044	\$92,455	11,849	\$95,972	14,304	\$123,573	15,445	\$138,049	16,537	\$144,100				



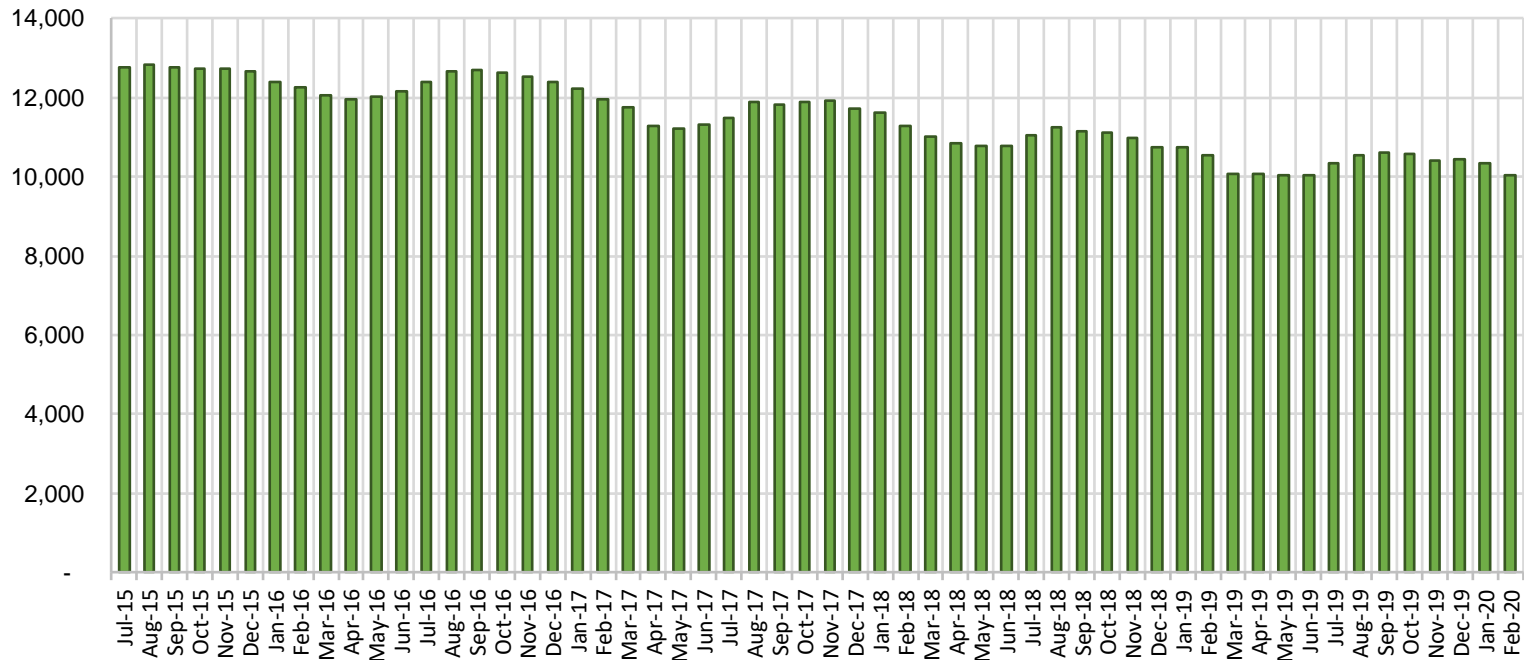
TANF Cases by Field Office⁶

Office				Percent Change	
	Feb-19	Jan-20	Feb-20	Feb-19- Feb-20	Jan-20- Feb-20
Chaves County ISD	391	406	394	0.77%	-2.96%
Cibola County ISD	143	100	108	-24.48%	8.00%
Colfax County ISD	81	91	90	11.11%	-1.10%
Curry County ISD	661	589	575	-13.01%	-2.38%
East Dona Ana County ISD	422	408	400	-5.21%	-1.96%
Eddy Artesia County ISD	92	82	82	-10.87%	0.00%
Eddy Carlsbad County ISD	138	147	149	7.97%	1.36%
Grant County ISD	196	187	183	-6.63%	-2.14%
Guadalupe County ISD	25	25	27	8.00%	8.00%
Hidalgo County ISD	0	0	0	NA	N/A
Lea County ISD	324	365	361	11.42%	-1.10%
Lincoln County ISD	102	73	72	-29.41%	-1.37%
Luna County ISD	225	201	202	-10.22%	0.50%
McKinley County ISD	83	73	60	-27.71%	-17.81%
Northeast Bernalillo County ISD	897	945	938	4.57%	-0.74%
Northwest Bernalillo County ISD	809	824	769	-4.94%	-6.67%
Otero County ISD	247	287	264	6.88%	-8.01%
Quay County ISD	60	78	76	26.67%	-2.56%
Rio Arriba County ISD	366	353	344	-6.01%	-2.55%
Roosevelt County ISD	0	0	0	NA	N/A
San Juan County ISD	331	275	277	-16.31%	0.73%
San Miguel County ISD	182	194	186	2.20%	-4.12%
Sandoval County ISD	494	445	443	-10.32%	-0.45%
Santa Fe County ISD	391	359	342	-12.53%	-4.74%
Sierra County ISD	68	66	67	-1.47%	1.52%
Socorro County ISD	80	77	78	-2.50%	1.30%
South Dona Ana ISD	675	594	580	-14.07%	-2.36%
Southeast Bernalillo County ISD	603	552	516	-14.43%	-6.52%
Southwest Bernalillo County ISD	1,086	1,118	1,071	-1.38%	-4.20%
Taos County ISD	149	128	128	-14.09%	0.00%
Torrance County ISD	189	193	180	-4.76%	-6.74%
Valencia North County ISD	391	426	425	8.70%	-0.23%
Valencia South County ISD	0	0	1	N/A	N/A
West Dona Ana County ISD	654	667	650	-0.61%	-2.55%
Centralized Units	3	0	2	-33.33%	N/A
Statewide Total	10,558	10,328	10,040	-4.91%	-2.79%

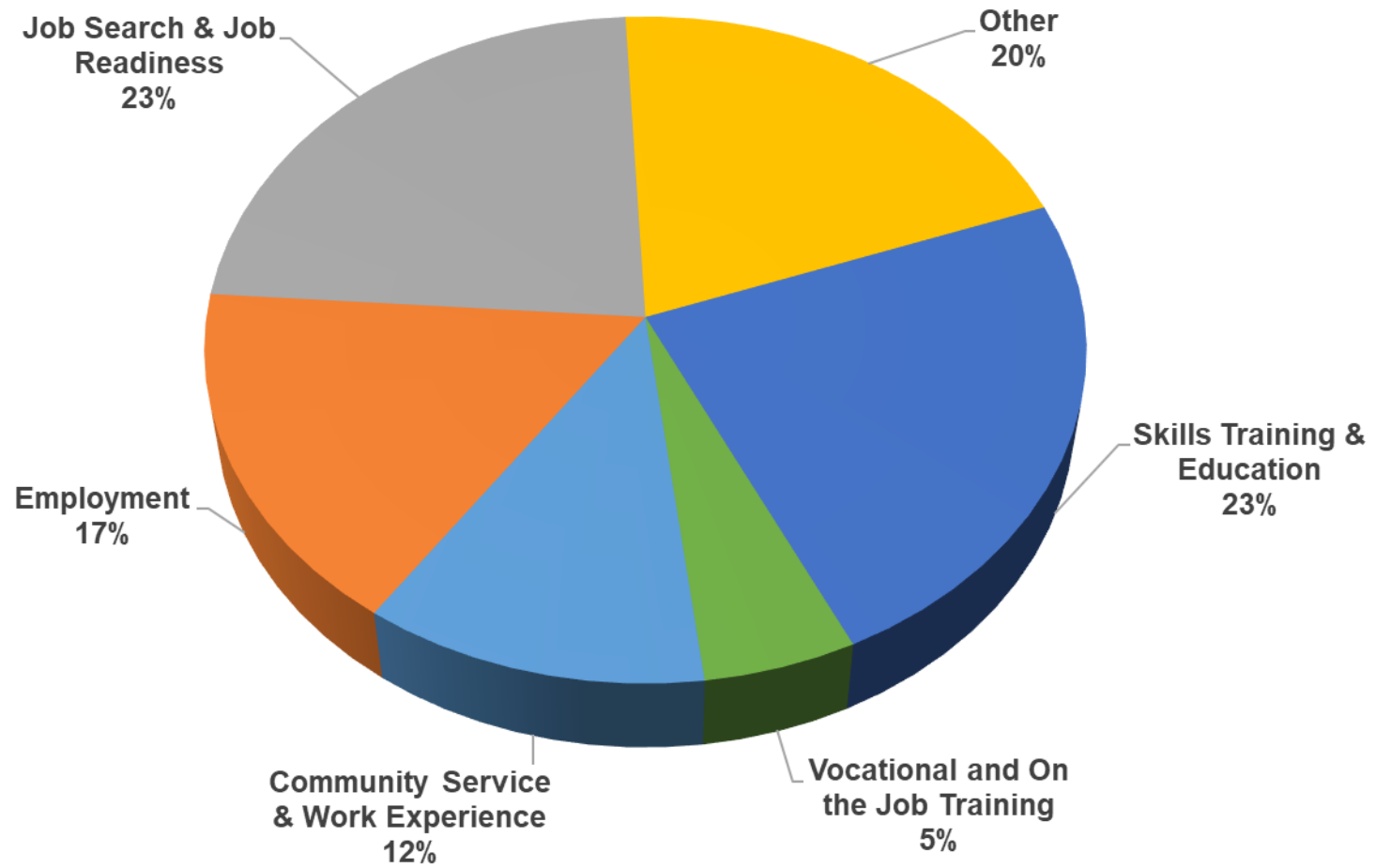
TANF Cases by Region⁶

Region	Feb-19	Jan-20	Feb-20	Percent Change	
				Feb-19- Feb-20	Jan-20- Feb-20
Region 1- NW	1,096	1,017	1,016	-7.30%	-0.10%
Region 2- NE	1,748	1,673	1,636	-6.41%	-2.21%
Region 3- Central	3,584	3,632	3,474	-3.07%	-4.35%
Region 4- SE	1,708	1,662	1,633	-4.39%	-1.74%
Region 5- SW	2,419	2,344	2,279	-5.79%	-2.77%
Centralized Units	3	0	2	-33.33%	N/A
Statewide Total	10,558	10,328	10,040	-4.91%	-2.79%

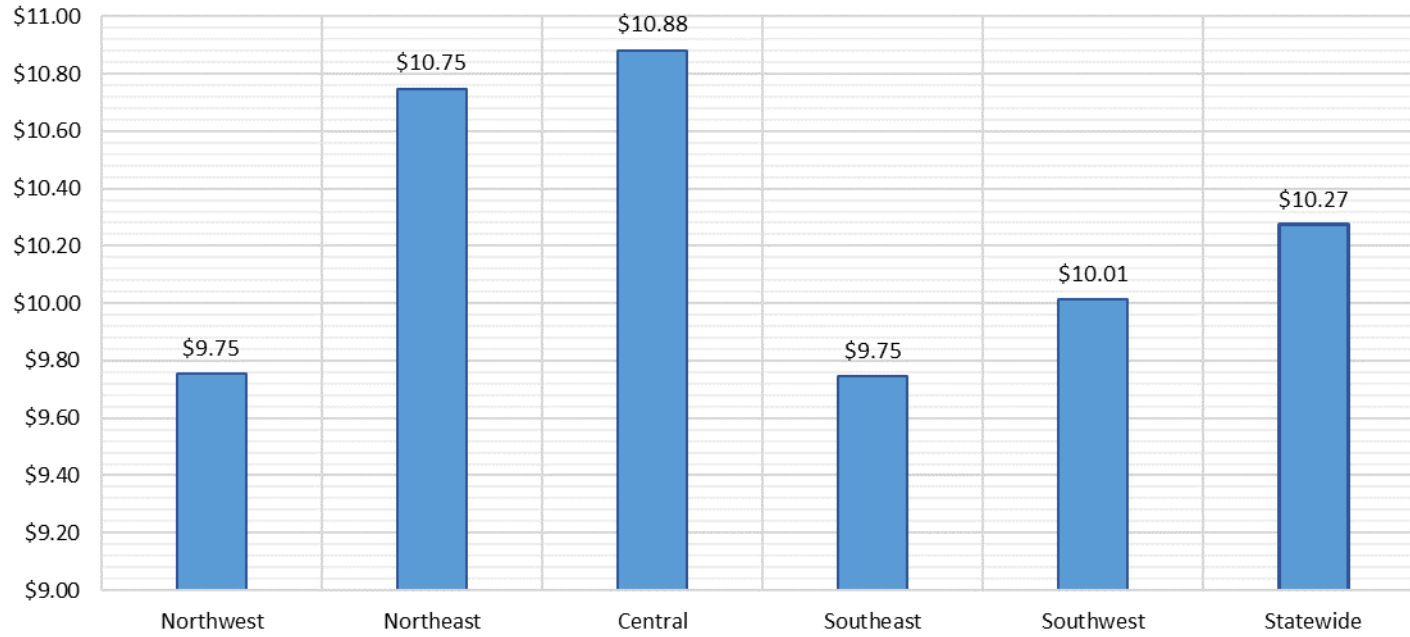
TANF Caseload: SFY-16 to Current



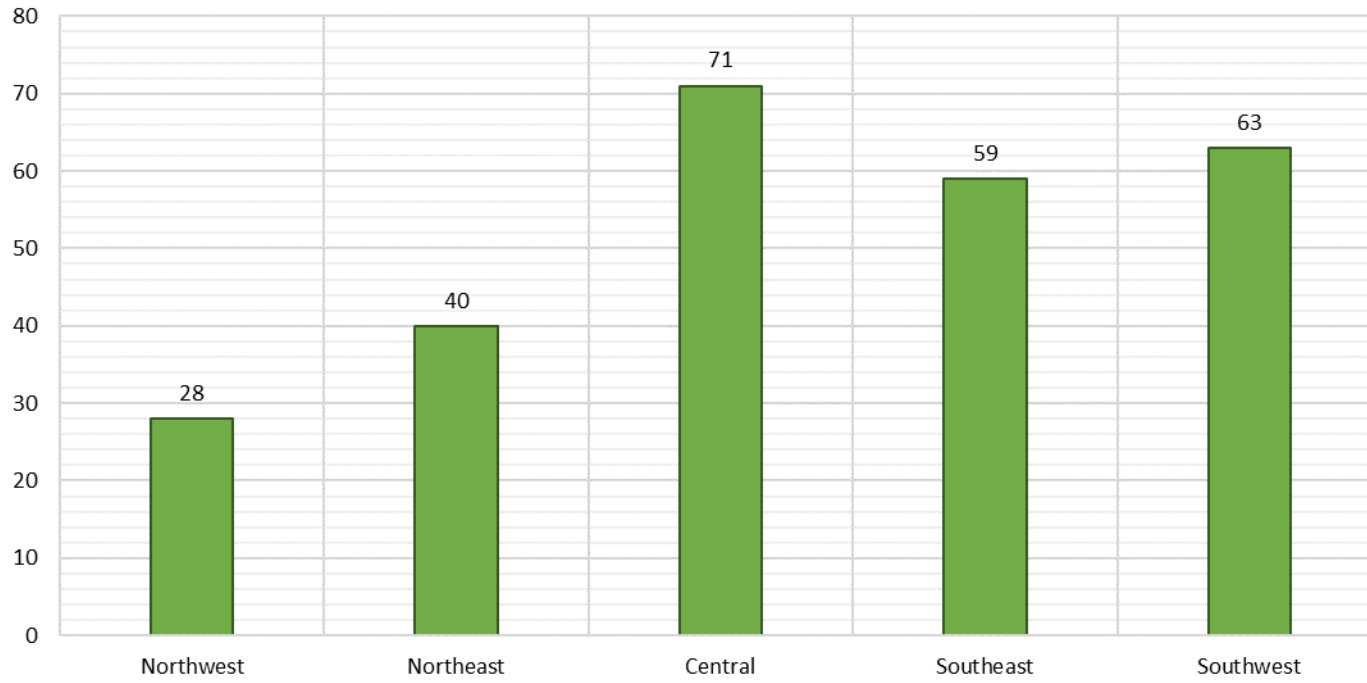
**NM Works Activity Placements on February 29, 2020
as reported by SL Start¹⁴**



Average Starting Hourly Wage of February 2020 TANF Employments
as reported by SL Start¹⁵



Number of New Employments in February 2020 by Region
as reported by SL Start¹⁵
Statewide Total: 261



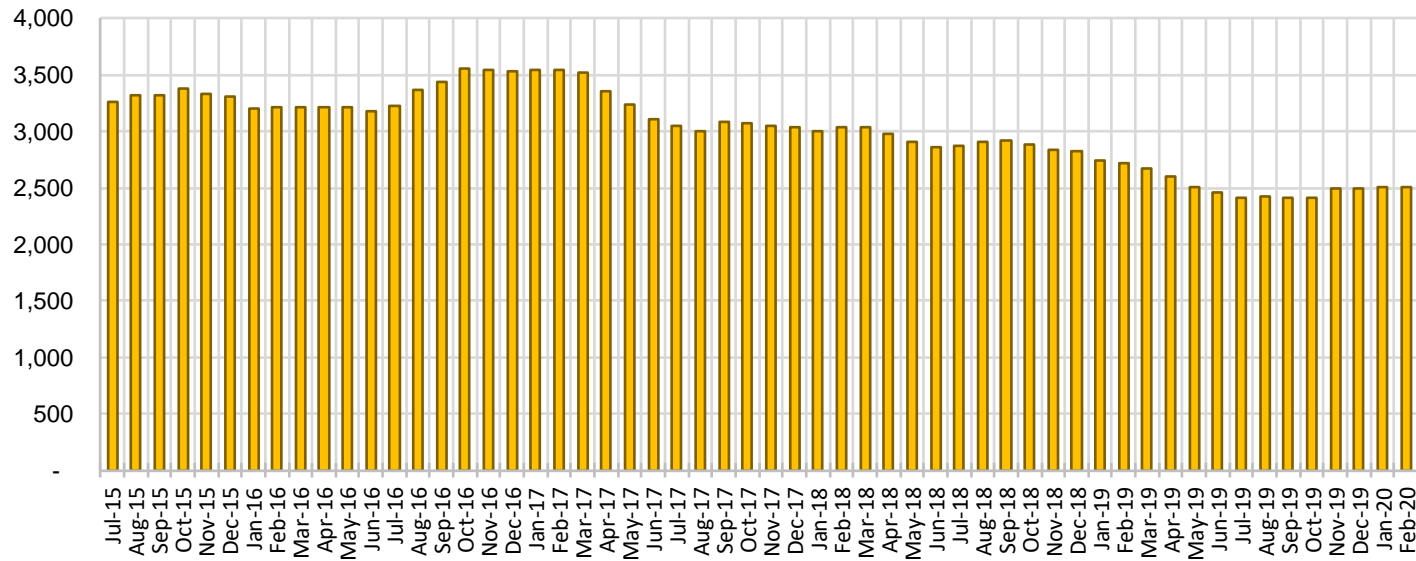
General Assistance Cases by Field Office⁶

Office				Percent Change	
	Feb-19	Jan-20	Feb-20	Feb-19- Feb-20	Jan-20- Feb-20
Chaves County ISD	115	115	108	-6.09%	-6.09%
Cibola County ISD	51	34	41	-19.61%	20.59%
Colfax County ISD	22	22	21	-4.55%	-4.55%
Curry County ISD	77	89	95	23.38%	6.74%
East Dona Ana County ISD	105	105	101	-3.81%	-3.81%
Eddy Artesia County ISD	30	23	24	-20.00%	4.35%
Eddy Carlsbad County ISD	66	49	54	-18.18%	10.20%
Grant County ISD	62	66	74	19.35%	12.12%
Guadalupe County ISD	13	8	7	-46.15%	-12.50%
Hidalgo County ISD	0	0	0	N/A	N/A
Lea County ISD	71	63	58	-18.31%	-7.94%
Lincoln County ISD	25	28	26	4.00%	-7.14%
Luna County ISD	52	57	57	9.62%	0.00%
McKinley County ISD	62	61	65	4.84%	6.56%
Northeast Bernalillo County ISD	285	229	227	-20.35%	-0.87%
Northwest Bernalillo County ISD	261	235	240	-8.05%	2.13%
Otero County ISD	67	70	68	1.49%	-2.86%
Quay County ISD	29	33	31	6.90%	-6.06%
Rio Arriba County ISD	81	63	69	-14.81%	9.52%
Roosevelt County ISD	0	0	0	N/A	N/A
San Juan County ISD	124	130	128	3.23%	-1.54%
San Miguel County ISD	72	61	61	-15.28%	0.00%
Sandoval County ISD	97	80	81	-16.49%	1.25%
Santa Fe County ISD	118	94	97	-17.80%	3.19%
Sierra County ISD	30	38	40	33.33%	5.26%
Socorro County ISD	37	38	39	5.41%	2.63%
South Dona Ana ISD	51	57	56	9.80%	-1.75%
Southeast Bernalillo County ISD	163	141	128	-21.47%	-9.22%
Southwest Bernalillo County ISD	182	191	188	3.30%	-1.57%
Taos County ISD	42	34	31	-26.19%	-8.82%
Torrance County ISD	51	42	44	-13.73%	4.76%
Valencia North County ISD	108	87	86	-20.37%	-1.15%
Valencia South County ISD	0	0	0	N/A	N/A
West Dona Ana County ISD	176	162	165	-6.25%	1.85%
Centralized Units	0	0	0	N/A	N/A
Statewide Total	2,725	2,505	2,510	-7.89%	0.20%

General Assistance Cases by Region⁶

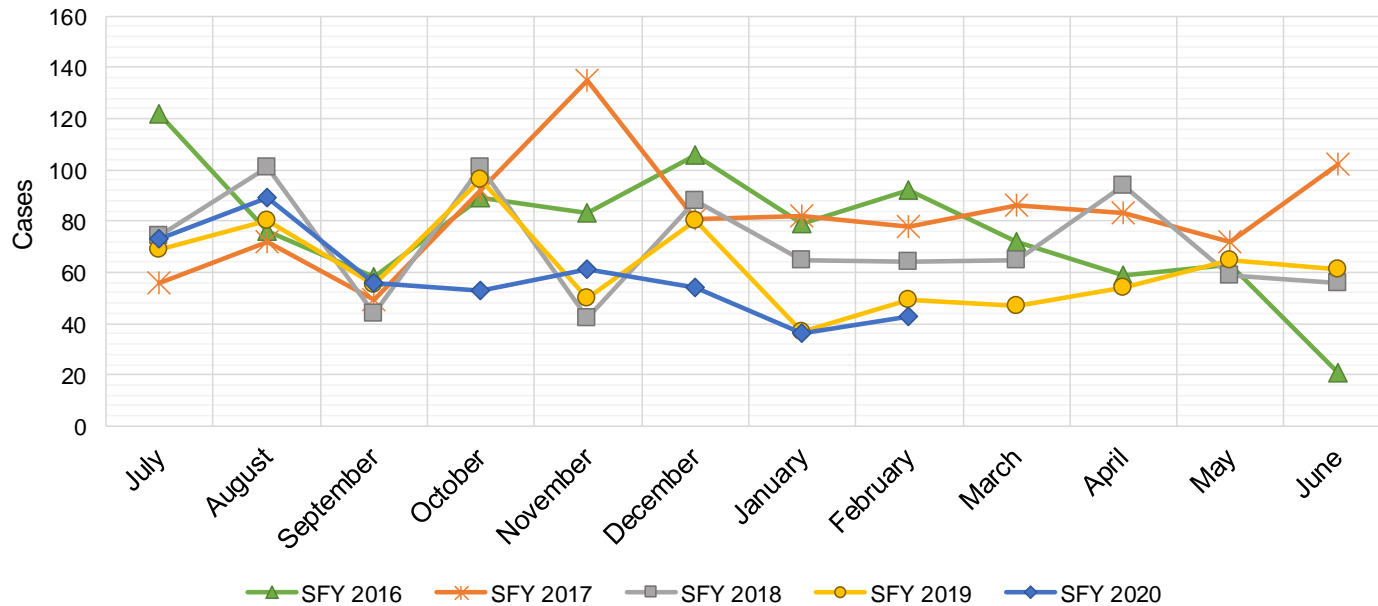
Region				Percent Change	
	Feb-19	Jan-20	Feb-20	Feb-19- Feb-20	Jan-20-Feb- 20
Region 1 - NW	412	388	399	-3.16%	2.84%
Region 2 - NE	474	395	398	-16.03%	0.76%
Region 3 - Central	942	838	827	-12.21%	-1.31%
Region 4 - SE	384	367	365	-4.95%	-0.54%
Region 5 - SW	513	517	521	1.56%	0.77%
Centralized Units	0	0	0	N/A	N/A
Statewide Total	2,725	2,505	2,510	-7.89%	0.20%

General Assistance Caseload: SFY-16 to Current



General Assistance Interim Assistance Reimbursements¹⁶

SFY 2016			SFY 2017			SFY 2018			SFY 2019			SFY 2020		
	Cases	Expenditures		Cases	Expenditures		Cases	Expenditures		Cases	Expenditures		Cases	Expenditures
Jul-15	122	\$342,648	Jul-16	56	\$164,970	Jul-17	74	\$241,438	Jul-18	69	\$228,333	Jul-19	73	\$303,584
Aug-15	76	\$245,236	Aug-16	72	\$223,182	Aug-17	101	\$339,301	Aug-18	80	\$241,292	Aug-19	89	\$310,047
Sep-15	58	\$170,093	Sep-16	49	\$158,027	Sep-17	44	\$131,229	Sep-18	55	\$188,192	Sep-19	56	\$172,016
Oct-15	89	\$277,912	Oct-16	92	\$257,830	Oct-17	101	\$335,752	Oct-18	96	\$298,502	Oct-19	53	\$168,461
Nov-15	83	\$238,948	Nov-16	135	\$402,305	Nov-17	42	\$139,572	Nov-18	50	\$148,641	Nov-19	61	\$171,883
Dec-15	106	\$388,102	Dec-16	81	\$227,569	Dec-17	88	\$245,453	Dec-18	80	\$246,422	Dec-19	54	\$164,045
Jan-16	79	\$239,263	Jan-17	82	\$274,050	Jan-18	65	\$258,239	Jan-19	37	\$106,081	Jan-20	36	\$96,668
Feb-16	92	\$296,332	Feb-17	78	\$227,569	Feb-18	64	\$195,815	Feb-19	49	\$119,300	Feb-20	43	\$126,743
Mar-16	72	\$254,360	Mar-17	86	\$278,219	Mar-18	65	\$172,188	Mar-19	47	\$137,296	Mar-20		
Apr-16	59	\$208,631	Apr-17	83	\$267,187	Apr-18	94	\$312,340	Apr-19	54	\$173,772	Apr-20		
May-16	63	\$182,241	May-17	72	\$232,836	May-18	59	\$155,406	May-19	65	\$237,979	May-20		
Jun-16	21	\$51,760	Jun-17	102	\$306,228	Jun-18	56	\$159,268	Jun-19	61	\$214,497	Jun-20		
TOTAL	920	\$2,895,525	988	\$3,019,972	853	\$2,686,001	743	\$2,340,307	465	\$1,513,448				
AVERAGE	77	\$241,294	82	\$251,664	71	\$223,833	62	\$195,026	58	\$189,181				



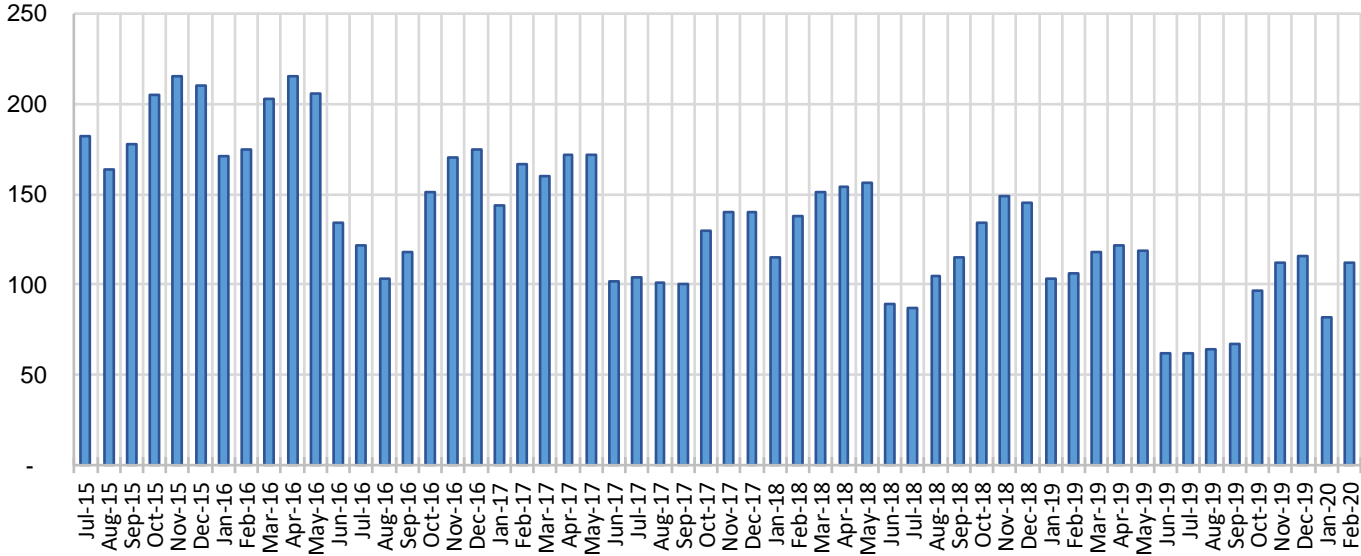
Education Works Cases by Field Office⁶

Office				Percent Change	
	Feb-19	Jan-20	Feb-20	Feb-19- Feb-20	Jan-20- Feb-20
Chaves County ISD	0	3	2	N/A	-33.33%
Cibola County ISD	0	0	0	N/A	N/A
Colfax County ISD	1	0	0	-100.00%	N/A
Curry County ISD	3	5	6	100.00%	20.00%
East Dona Ana County ISD	14	5	7	-50.00%	40.00%
Eddy Artesia County ISD	1	2	1	0.00%	-50.00%
Eddy Carlsbad County ISD	2	1	1	-50.00%	0.00%
Grant County ISD	4	1	1	-75.00%	0.00%
Guadalupe County ISD	0	0	0	N/A	N/A
Hidalgo County ISD	0	0	0	N/A	N/A
Lea County ISD	2	0	2	0.00%	N/A
Lincoln County ISD	0	0	0	N/A	N/A
Luna County ISD	2	2	2	0.00%	0.00%
McKinley County ISD	0	0	1	N/A	N/A
Northeast Bernalillo County ISD	11	2	4	-63.64%	100.00%
Northwest Bernalillo County ISD	6	9	16	166.67%	77.78%
Otero County ISD	1	0	0	-100.00%	N/A
Quay County ISD	0	0	0	N/A	N/A
Rio Arriba County ISD	2	1	2	0.00%	100.00%
Roosevelt County ISD	0	0	0	N/A	N/A
San Juan County ISD	2	2	2	0.00%	0.00%
San Miguel County ISD	4	4	5	25.00%	25.00%
Sandoval County ISD	7	6	10	42.86%	66.67%
Santa Fe County ISD	10	7	8	-20.00%	14.29%
Sierra County ISD	1	1	1	0.00%	0.00%
Socorro County ISD	0	0	0	N/A	N/A
South Dona Ana ISD	9	4	4	-55.56%	0.00%
Southeast Bernalillo County ISD	5	7	10	100.00%	42.86%
Southwest Bernalillo County ISD	11	5	5	-54.55%	0.00%
Taos County ISD	0	0	0	N/A	N/A
Torrance County ISD	0	1	2	N/A	100.00%
Valencia North County ISD	0	1	2	N/A	100.00%
Valencia South County ISD	0	0	0	N/A	N/A
West Dona Ana County ISD	8	13	18	125.00%	38.46%
Centralized Units	0	0	0	N/A	N/A
Statewide Total	106	82	112	5.66%	36.59%

Education Works Cases by Region⁶

				Percent Change	
Region	Feb-19	Jan-20	Feb-20	Feb-19- Feb-20	Jan-20- Feb-20
Region 1 - NW	3	4	6	100.00%	50.00%
Region 2 - NE	24	18	25	4.17%	38.89%
Region 3 - Central	33	24	37	12.12%	54.17%
Region 4 - SE	8	11	12	50.00%	9.09%
Region 5 - SW	38	25	32	-15.79%	28.00%
Centralized Units	0	0	0	N/A	N/A
Statewide Total	106	82	112	5.66%	36.59%

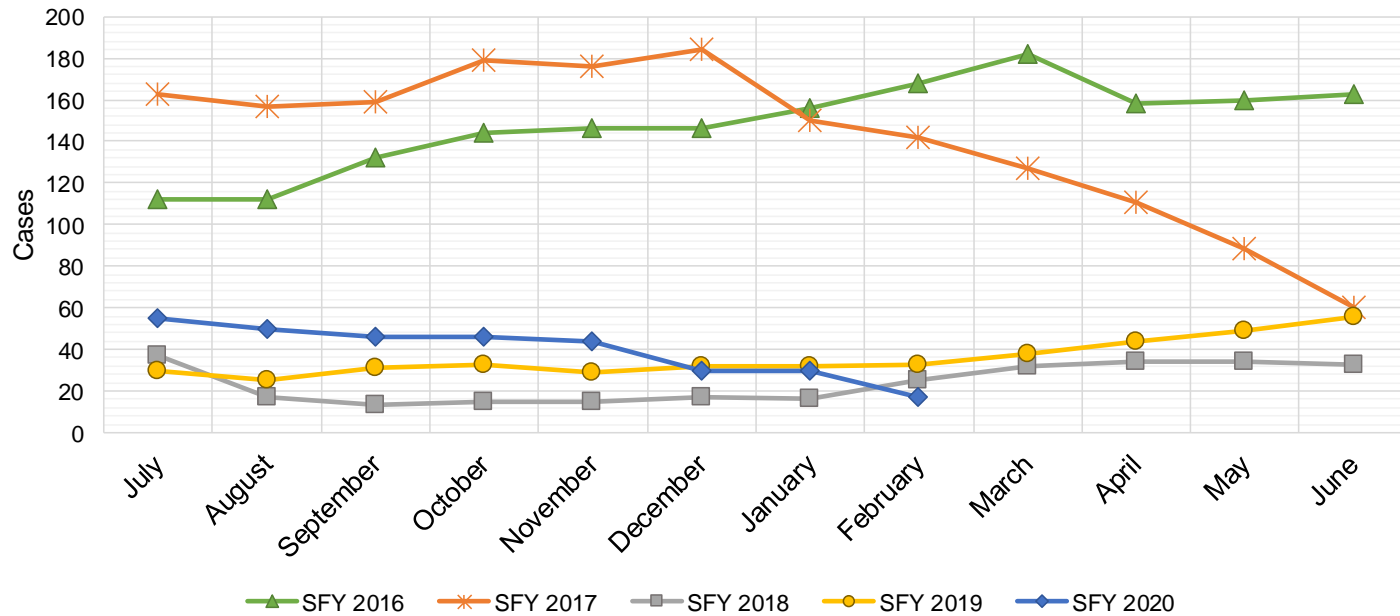
Education Works Caseload: SFY-16 to Current



Refugee Cash Assistance

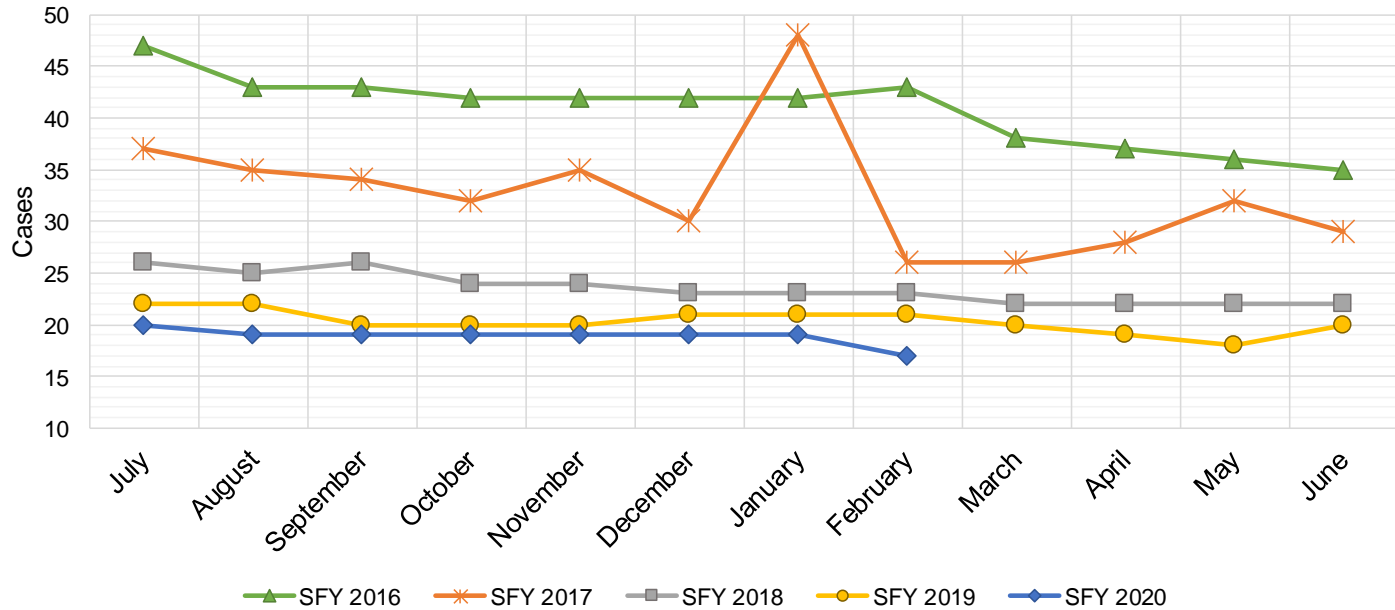
SFY 2016 ^{8,12,9}		SFY 2017 ^{8,9}		SFY 2018 ^{8,9}		SFY 2019 ^{8,9}		SFY 2020 ^{8,9}						
Cases	Expenditures	Cases	Expenditures	Cases	Expenditures	Cases	Expenditures	Cases	Expenditures					
Jul-15	112	\$27,516	Jul-16	163	\$39,756	Jul-17	37	\$9,981	Jul-18	30	\$7,408	Jul-19	55	\$13,851
Aug-15	112	\$27,438	Aug-16	157	\$40,115	Aug-17	17	\$4,704	Aug-18	25	\$6,434	Aug-19	50	\$12,497
Sep-15	132	\$31,321	Sep-16	159	\$39,359	Sep-17	13	\$3,159	Sep-18	31	\$6,947	Sep-19	46	\$11,473
Oct-15	144	\$36,153	Oct-16	179	\$41,520	Oct-17	15	\$3,543	Oct-18	33	\$6,323	Oct-19	46	\$11,341
Nov-15	146	\$36,515	Nov-16	176	\$45,434	Nov-17	15	\$4,263	Nov-18	29	\$7,036	Nov-19	44	\$11,296
Dec-15	146	\$35,763	Dec-16	184	\$46,673	Dec-17	17	\$4,795	Dec-18	32	\$7,300	Dec-19	30	\$7,679
Jan-16	156	\$38,686	Jan-17	150	\$38,790	Jan-18	16	\$4,166	Jan-19	32	\$7,418	Jan-20	30	\$7,407
Feb-16	168	\$41,368	Feb-17	142	\$37,956	Feb-18	25	\$5,723	Feb-19	33	\$8,591	Feb-20	17	\$7,577
Mar-16	182	\$45,307	Mar-17	127	\$33,066	Mar-18	32	\$7,636	Mar-19	38	\$9,165	Mar-20		
Apr-16	158	\$41,143	Apr-17	111	\$29,183	Apr-18	34	\$8,827	Apr-19	44	\$10,648	Apr-20		
May-16	160	\$38,332	May-17	88	\$23,343	May-18	34	\$8,939	May-19	49	\$11,823	May-20		
Jun-16	163	\$39,856	Jun-17	60	\$15,538	Jun-18	33	\$8,513	Jun-19	56	\$13,558	Jun-20		

TOTAL	1,779	\$439,397	1,696	\$430,732	288	\$74,249	432	\$102,651	318	\$83,121
AVERAGE	148	\$36,616	141	\$35,894	24	\$6,187	36	\$8,554	40	\$10,390



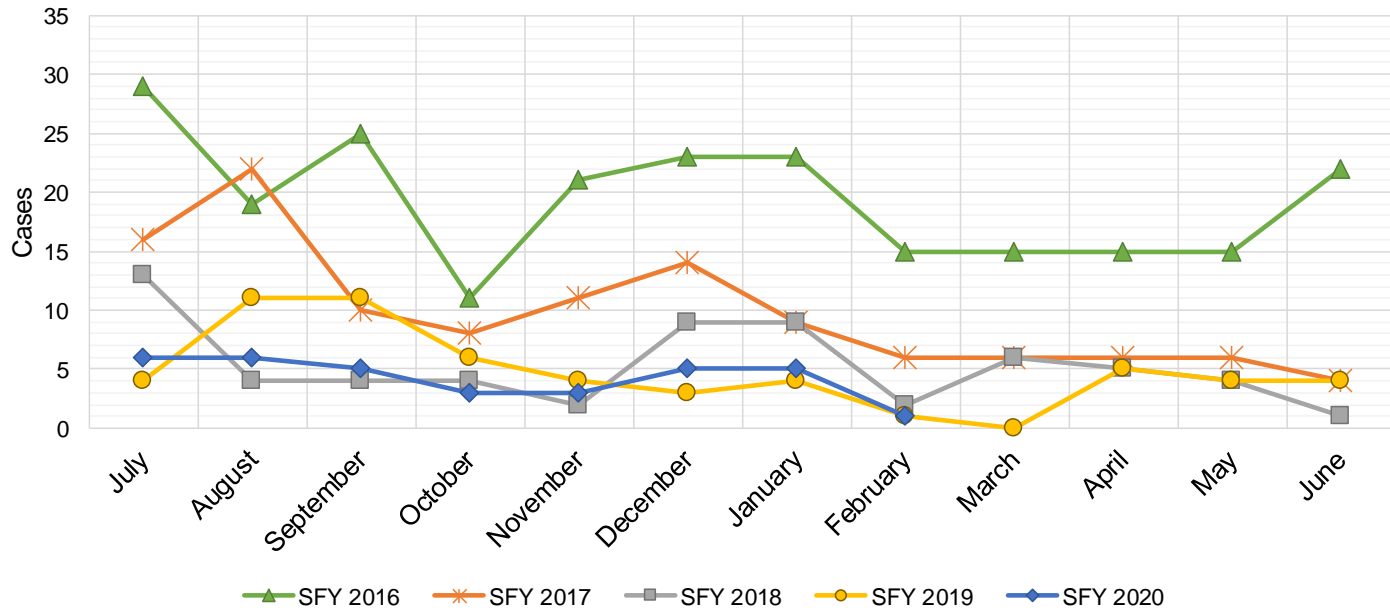
State Supplement for Residential Care

SFY 2016 ^{12,9}			SFY 2017 ⁹			SFY 2018 ⁹			SFY 2019 ⁹			SFY 2020 ⁹		
	Cases	Expenditures	Cases	Expenditures	Cases	Expenditures	Cases	Expenditures	Cases	Expenditures	Cases	Expenditures		
Jul-15	47	\$4,700	Jul-16	37	\$3,700	Jul-17	26	\$2,700	Jul-18	22	\$2,200	Jul-19	20	\$1,900
Aug-15	43	\$4,900	Aug-16	35	\$3,500	Aug-17	25	\$2,500	Aug-18	22	\$2,200	Aug-19	19	\$1,900
Sep-15	43	\$4,500	Sep-16	34	\$3,400	Sep-17	26	\$2,700	Sep-18	20	\$2,000	Sep-19	19	\$1,900
Oct-15	42	\$4,400	Oct-16	32	\$3,200	Oct-17	24	\$2,500	Oct-18	20	\$2,000	Oct-19	19	\$1,900
Nov-15	42	\$4,200	Nov-16	35	\$3,500	Nov-17	24	\$2,400	Nov-18	20	\$2,000	Nov-19	19	\$1,900
Dec-15	42	\$4,200	Dec-16	30	\$3,000	Dec-17	23	\$2,200	Dec-18	21	\$2,100	Dec-19	19	\$1,900
Jan-16	42	\$4,200	Jan-17	48	\$4,800	Jan-18	23	\$2,400	Jan-19	21	\$2,000	Jan-20	19	\$1,800
Feb-16	43	\$4,300	Feb-17	26	\$2,600	Feb-18	23	\$2,300	Feb-19	21	\$2,200	Feb-20	17	\$1,600
Mar-16	38	\$3,800	Mar-17	26	\$2,600	Mar-18	22	\$2,400	Mar-19	20	\$1,900	Mar-20		
Apr-16	37	\$3,700	Apr-17	28	\$2,800	Apr-18	22	\$2,200	Apr-19	19	\$1,800	Apr-20		
May-16	36	\$3,600	May-17	32	\$3,200	May-18	22	\$2,200	May-19	18	\$1,800	May-20		
Jun-16	35	\$3,500	Jun-17	29	\$2,900	Jun-18	22	\$2,200	Jun-19	20	\$2,000	Jun-20		
TOTAL	490	\$50,000	392	\$39,200	282	\$28,700	244	\$24,200	151	\$14,800				
AVERAGE	41	\$4,167	33	\$3,267	24	\$2,392	20	\$2,017	19	\$1,850				



TANF Diversion Payments

SFY 2016 ^{12,9}		SFY 2017 ⁹		SFY 2018 ⁹		SFY 2019 ⁹		SFY 2020 ⁹						
Cases	Expenditures	Cases	Expenditures	Cases	Expenditures	Cases	Expenditures	Cases	Expenditures					
Jul-15	29	\$62,074	Jul-16	16	\$30,843	Jul-17	13	\$26,500	Jul-18	4	\$3,000	Jul-19	6	\$18,500
Aug-15	19	\$33,584	Aug-16	22	\$42,731	Aug-17	4	\$12,000	Aug-18	11	\$18,583	Aug-19	6	\$16,500
Sep-15	25	\$47,977	Sep-16	10	\$21,000	Sep-17	4	\$4,000	Sep-18	11	\$20,999	Sep-19	5	\$11,000
Oct-15	11	\$20,500	Oct-16	8	\$16,744	Oct-17	4	\$16,000	Oct-18	6	\$10,499	Oct-19	3	\$3,000
Nov-15	21	\$45,500	Nov-16	11	\$24,500	Nov-17	2	\$15,500	Nov-18	4	\$7,499	Nov-19	3	\$16,180
Dec-15	23	\$45,389	Dec-16	14	\$26,611	Dec-17	9	\$17,500	Dec-18	3	\$2,499	Dec-19	5	\$14,000
Jan-16	23	\$41,874	Jan-17	9	\$18,500	Jan-18	9	\$21,731	Jan-19	4	\$5,999	Jan-20	5	\$1,500
Feb-16	15	\$28,500	Feb-17	6	\$12,000	Feb-18	2	\$7,731	Feb-19	1	\$1,678	Feb-20	1	\$1,857
Mar-16	15	\$27,008	Mar-17	6	\$11,000	Mar-18	6	\$8,496	Mar-19	0	\$3,000	Mar-20		
Apr-16	15	\$31,389	Apr-17	6	\$12,000	Apr-18	5	\$13,500	Apr-19	5	\$6,500	Apr-20		
May-16	15	\$31,916	May-17	6	\$11,500	May-18	4	\$12,500	May-19	4	\$16,000	May-20		
Jun-16	22	\$43,000	Jun-17	4	\$13,500	Jun-18	1	\$5,389	Jun-19	4	\$8,000	Jun-20		
TOTAL	233	\$458,711	118	\$240,929	63	\$160,847	57	\$104,256	34	\$82,537				
AVERAGE	19	\$38,226	10	\$20,077	5	\$13,404	5	\$8,688	4	\$10,317				

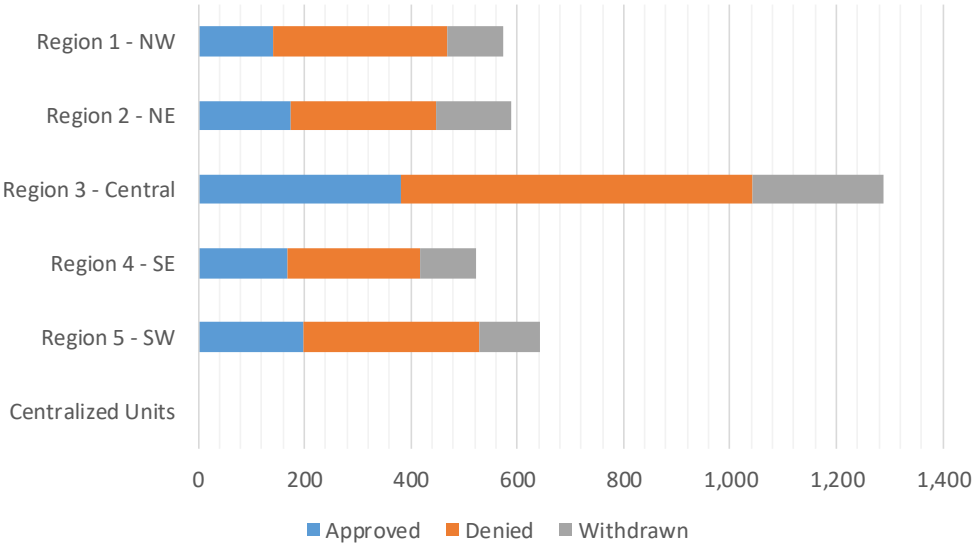


Cash Assistance Applications by Field Office^{4,11}
February 2020

Office	Approved	Denied	Withdrawn	Total Cases Processed
Chaves County ISD	33	47	27	107
Cibola County ISD	19	25	9	53
Colfax County ISD	10	19	1	30
Curry County ISD	47	61	19	127
East Dona Ana County ISD	31	75	30	136
Eddy Artesia County ISD	11	6	8	25
Eddy Carlsbad County ISD	23	27	24	74
Grant County ISD	29	41	10	80
Guadalupe County ISD	3	2	1	6
Hidalgo County ISD	0	0	0	0
Lea County ISD	46	80	24	150
Lincoln County ISD	6	28	4	38
Luna County ISD	20	16	10	46
McKinley County ISD	18	64	0	82
Northeast Bernalillo County ISD	117	222	71	410
Northwest Bernalillo County ISD	79	168	61	308
Otero County ISD	26	64	8	98
Quay County ISD	7	11	6	24
Rio Arriba County ISD	34	46	26	106
Roosevelt County ISD	1	0	0	1
San Juan County ISD	53	137	68	258
San Miguel County ISD	13	36	5	54
Sandoval County ISD	51	54	65	170
Santa Fe County ISD	39	73	27	139
Sierra County ISD	7	15	2	24
Socorro County ISD	5	26	1	32
South Dona Ana ISD	36	29	21	86
Southeast Bernalillo County ISD	55	128	40	223
Southwest Bernalillo County ISD	101	99	70	270
Taos County ISD	17	32	10	59
Torrance County ISD	28	44	7	79
Valencia North County ISD	38	61	25	124
Valencia South County ISD	0	0	0	0
West Dona Ana County ISD	55	107	34	196
Centralized Units	0	0	0	0
Statewide Total	1,058	1,843	714	3,615

Cash Assistance Applications by Region^{4,11}
February 2020

	Approved	Denied	Withdrawn	Total Cases Processed
Region				
Region 1 - NW	140	328	105	573
Region 2 - NE	174	273	141	588
Region 3 - Central	380	661	249	1,290
Region 4 - SE	167	249	106	522
Region 5 - SW	197	332	113	642
Centralized Units	0	0	0	0
Statewide Total	1,058	1,843	714	3,615



Children Youth and Families Department
Children Receiving Child Care Assistance Subsidies By County

County	Feb 2019	Mar 2019	Apr 2019	May 2019	June 2019	July 2019	Aug 2019	Sept 2019	Oct 2019	Nov 2019	Dec 2019	Jan 2020	Feb 2020	Change Fr. Cases	Last Year Percent
Bernalillo	7,563	7,831	7,997	8,226	8,692	7,702	7,885	8,295	7,690	7,759	7,591	7,673	7,779	216	2.9%
Catron	0	0	0	0	0	0	0	0	0	0	0	0	0	0	0.0%
Chaves	834	878	868	868	875	830	824	886	811	891	827	835	830	-4	-0.5%
Cibola	285	289	306	286	292	283	277	275	250	238	247	224	226	-59	-20.7%
Colfax	57	59	52	50	44	38	40	33	43	34	31	32	32	-25	-43.9%
Curry	489	524	548	542	590	597	613	625	563	596	587	605	613	124	25.4%
De Baca	1	1	0	1	1	1	1	1	1	1	1	0	0	-1	-100.0%
Dona Ana	4,351	4,453	4,413	4,536	4,751	4,360	4,384	4,575	4,429	4,493	4,348	4,350	4,313	-38	-0.9%
Eddy	243	245	214	225	240	240	226	224	244	239	234	225	227	-16	-6.6%
Grant	134	131	127	130	136	133	115	157	138	133	145	143	146	12	9.0%
Guadalupe	11	11	11	11	11	10	10	10	7	7	7	7	7	-4	-36.4%
Harding	1	0	0	0	0	0	0	0	0	0	0	0	0	-1	0.0%
Hidalgo	26	24	20	27	27	27	27	26	21	28	28	28	27	1	3.8%
Lea	823	831	815	808	798	770	752	761	770	753	741	736	785	-38	-4.6%
Lincoln	102	104	104	100	104	103	103	108	101	97	86	89	89	-13	-12.7%
Los Alamos	34	34	36	40	40	37	37	47	38	42	40	42	38	4	11.8%
Luna	176	180	176	190	191	172	160	173	160	148	155	158	163	-13	-7.4%
McKinley	158	168	154	158	169	146	141	165	176	172	172	170	171	13	8.2%
Mora	13	11	11	13	9	9	10	12	12	11	11	11	11	-2	-15.4%
Otero	506	507	512	506	530	499	538	547	488	510	501	506	511	5	1.0%
Out of State	4	1	2	0	1	0	0	0	0	0	0	0	0	-4	-100.0%
Quay	32	34	33	33	38	34	38	37	33	34	35	32	34	2	6.3%
Rio Arriba	137	132	141	151	155	158	151	150	147	153	155	152	153	16	11.7%
Roosevelt	118	118	121	119	130	129	138	148	140	134	133	131	132	14	11.9%
San Juan	942	935	958	966	961	905	897	1,018	932	926	958	928	951	9	1.0%
San Miguel	316	319	332	349	373	363	357	363	375	356	353	349	361	45	14.2%
Sandoval	734	744	758	751	802	765	806	827	783	803	770	738	765	31	4.2%
Santa Fe	481	503	499	520	541	557	562	606	534	567	537	533	522	41	8.5%
Sierra	51	48	42	40	50	48	47	58	54	56	63	61	52	1	2.0%
Socorro	51	58	55	54	57	53	53	59	54	53	48	43	40	-11	-21.6%
Taos	118	117	124	125	136	138	149	135	118	125	126	126	117	-1	-0.8%
Torrance	85	79	69	67	82	68	67	73	57	57	63	68	63	-22	-25.9%
Union	5	5	3	3	4	3	3	3	3	3	3	3	3	-2	-40.0%
Valencia	604	589	591	607	656	559	569	625	602	595	573	564	533	-71	-11.8%
Totals	19,485	19,963	20,092	20,502	21,486	19,737	19,980	21,022	19,774	20,014	19,569	19,562	19,694	209	1.1%

CHILDREN YOUTH AND FAMILIES DEPARTMENT

CHILD CARE ASSISTANCE ELIGIBILITY PROGRAMS

MONTH	Mar'19	Apr'19	May'19	June'19	July'19	Aug'19	Sept'19	Oct'19	Nov'19	Dec'19	Jan'20	Feb'20
TANF (Child Care Priority 1 Clients)												
CLIENTS	2,138	2,147	2,140	2,253	2,054	2,033	2,165	2,053	2,120	2,055	2,030	2,001
COST	\$1,284,582	\$1,286,044	\$1,278,678	\$1,305,024	\$1,273,209	\$1,263,930	\$1,184,381	\$1,233,005	\$1,284,683	\$1,239,407	\$1,257,977	\$1,195,404
TANF AVERAGE COST	\$601	\$599	\$598	\$579	\$620	\$622	\$547	\$601	\$606	\$603	\$620	\$597
TRANSITION OFF TANF (Child Care Priority 2 Clients)												
CLIENTS	124	119	111	112	120	132	163	166	167	178	196	209
COST	\$73,930	\$71,395	\$69,505	\$74,593	\$74,688	\$88,189	\$90,271	\$107,532	\$107,596	\$111,325	\$120,862	\$136,239
TRAN OFF TANF AVG COST	\$596	\$600	\$626	\$666	\$622	\$668	\$554	\$648	\$644	\$625	\$617	\$652
TANF ELIGIBLE (Child Care Priority 1B Clients at or below 100% of the Federal Poverty Level)												
CLIENTS	8,248	8,275	8,494	8,777	8,104	8,220	8,523	8,152	8,135	7,830	7,697	7,671
COST	\$4,825,487	\$4,845,578	\$4,939,239	\$5,047,497	\$4,909,110	\$5,038,735	\$4,665,509	\$4,833,260	\$4,922,197	\$4,694,761	\$4,551,874	\$4,539,530
TANF ELIGIBLE AVG COST	\$585	\$586	\$581	\$575	\$606	\$613	\$547	\$593	\$605	\$600	\$591	\$592
INCOME ELIGIBLE (Child Care Priority 3, and Priority 4 Clients)												
CLIENTS	8,262	8,382	8,610	9,149	8,313	8,429	9,032	8,410	8,595	8,520	8,701	8,848
COST	\$4,325,025	\$4,401,790	\$4,546,220	\$4,693,955	\$4,573,196	\$4,729,292	\$4,390,092	\$4,436,376	\$4,557,011	\$4,488,101	\$4,573,609	\$4,700,981
INCOME ELIG AVG COST	\$523	\$525	\$528	\$513	\$550	\$561	\$486	\$528	\$530	\$527	\$526	\$531
AT-RISK CHILD PROTECTIVE SERVICES CHILD CARE PILOT (Priority 5 Clients)												
CLIENTS	342	322	303	321	297	270	240	232	200	187	190	182
COST	\$223,510	\$203,584	\$204,504	\$206,998	\$200,185	\$201,432	\$161,487	\$162,255	\$159,520	\$137,644	\$145,544	\$136,364
CPS AVG COST	\$654	\$632	\$675	\$645	\$674	\$746	\$673	\$699	\$798	\$736	\$766	\$749
CHILD PROTECTIVE SERVICES (Child Care CPS Clients)												
CLIENTS	849	847	844	874	849	896	899	761	797	799	748	783
COST	\$551,507	\$594,790	\$587,750	\$612,880	\$608,184	\$644,539	\$597,788	\$520,249	\$583,911	\$539,629	\$501,038	\$520,094
CPS AVG COST	\$650	\$702	\$696	\$701	\$716	\$719	\$665	\$684	\$733	\$675	\$670	\$664
GRAND TOTAL - ALL CHILD CARE PROGRAMS												
CLIENTS	19,963	20,092	20,502	21,486	19,737	19,980	21,022	19,774	20,014	19,569	19,562	19,694
COST	\$11,284,041	\$11,403,180	\$11,625,897	\$11,940,948	\$11,638,571	\$11,966,117	\$11,089,528	\$11,292,678	\$11,614,917	\$11,210,867	\$11,150,904	\$11,228,612
ALL PROGRAMS AVG COST	\$565	\$568	\$567	\$556	\$590	\$599	\$528	\$571	\$580	\$573	\$570	\$570

Income Eligibility Guidelines: October 1, 2019 - September 30, 2020

Federal Poverty Guidelines (FPG) Monthly Income Standards

Supplemental Nutrition Program (SNAP)					
Household Size	100% FPG Net Income	130% FPG Gross Income	165% FPG Gross Income for Categorical Eligibility	Maximum SNAP Monthly Allotment	LIHEAP 150% FPG
1	\$1,041	\$1,354	\$1,718	\$194	\$1,561
2	\$1,410	\$1,832	\$2,326	\$355	\$2,114
3	\$1,778	\$2,311	\$2,933	\$509	\$2,666
4	\$2,146	\$2,790	\$3,541	\$646	\$3,219
5	\$2,515	\$3,269	\$4,149	\$768	\$3,771
6	\$2,883	\$3,748	\$4,757	\$921	\$4,324
7	\$3,251	\$4,227	\$5,364	\$1,018	\$4,876
8	\$3,620	\$4,705	\$5,972	\$1,164	\$5,429
+1	+\$369	+\$479	+\$608	+\$146	+\$553
Minimum Allotment of \$16 effective from 10/1/2019 - 9/30/2020					
DEDUCTIONS: Standard Deduction: For HH size 1-3 = \$167; 4 = \$178; 5 = \$209; 6 or more = \$240; Excess Shelter Deduction Limit: \$569; Heating and Cooling Standard Utility Allowance: \$340 (HCSUA) – Limited Utility Allowance: \$ 136 (LUA); Telephone Standard: \$44; Dependent Care: Actual Amount (No Limit); Earned Income Deduction: 20%; Homeless Shelter Standard: \$152.06, LIHEAP (only) Energy Standard Allowance (ESA): \$204					

CASH Assistance & Support Services				
Household Size	Federal Poverty Guidelines (FPG) Monthly Income Standards		Maximum Monthly Benefit	
	100% FPG Net Income	85% FPG Gross Limit	New Mexico Works Cash Assistance	General Assistance
1	\$1,041	\$885	\$266	\$245
2	\$1,410	\$1,199	\$357	\$329
3	\$1,778	\$1,511	\$447	\$412
4	\$2,146	\$1,824	\$539	\$496
5	\$2,515	\$2,138	\$630	\$580
6	\$2,883	\$2,451	\$721	\$664
7	\$3,251	\$2,763	\$812	\$748
8	\$3,620	\$3,077	\$922	\$849
+1	+\$369	+\$314	+\$91	+\$84
Deductions- Dependent Care: For a child under age 2 = \$200; For a child age 2 and over = \$175. Work Incentives- Earned Income Disregard: Single parent = \$125 & ½ remainder; Two parent = \$225 & ½ remainder.				

ISD 017 Revised 11/26/2019

Medical Assistance Division					
Federal Poverty Guidelines New Mexico Affordable Care Eligibility Groups Effective April 01, 2019 thru March 31, 2020 Monthly Guidelines					
HH SIZE	PERCENT OF POVERTY				
	138%	190%	240%	250%	300%
1	\$1,437	\$1,978	\$2,498	\$2,603	\$3,123
2	\$1,945	\$2,678	\$3,382	\$3,523	\$4,228
3	\$2,453	\$3,378	\$4,266	\$4,444	\$5,333
4	\$2,962	\$4,078	\$5,150	\$5,365	\$6,438
5	\$3,470	\$4,777	\$6,034	\$6,286	\$7,543
6	\$3,978	\$5,477	\$6,918	\$7,207	\$8,648
7	\$4,487	\$6,177	\$7,802	\$8,128	\$9,753
8	\$4,995	\$6,877	\$8,686	\$9,048	\$10,858
138% Adult Expansion, 190% Children ages 6 to 19 (Medicaid), 240% Children ages 0 to 6 (Medicaid); ages 6 to 19 (CHIP), 250% Pregnancy Related Services Only, 300% Children 0 to 6 (CHIP)					

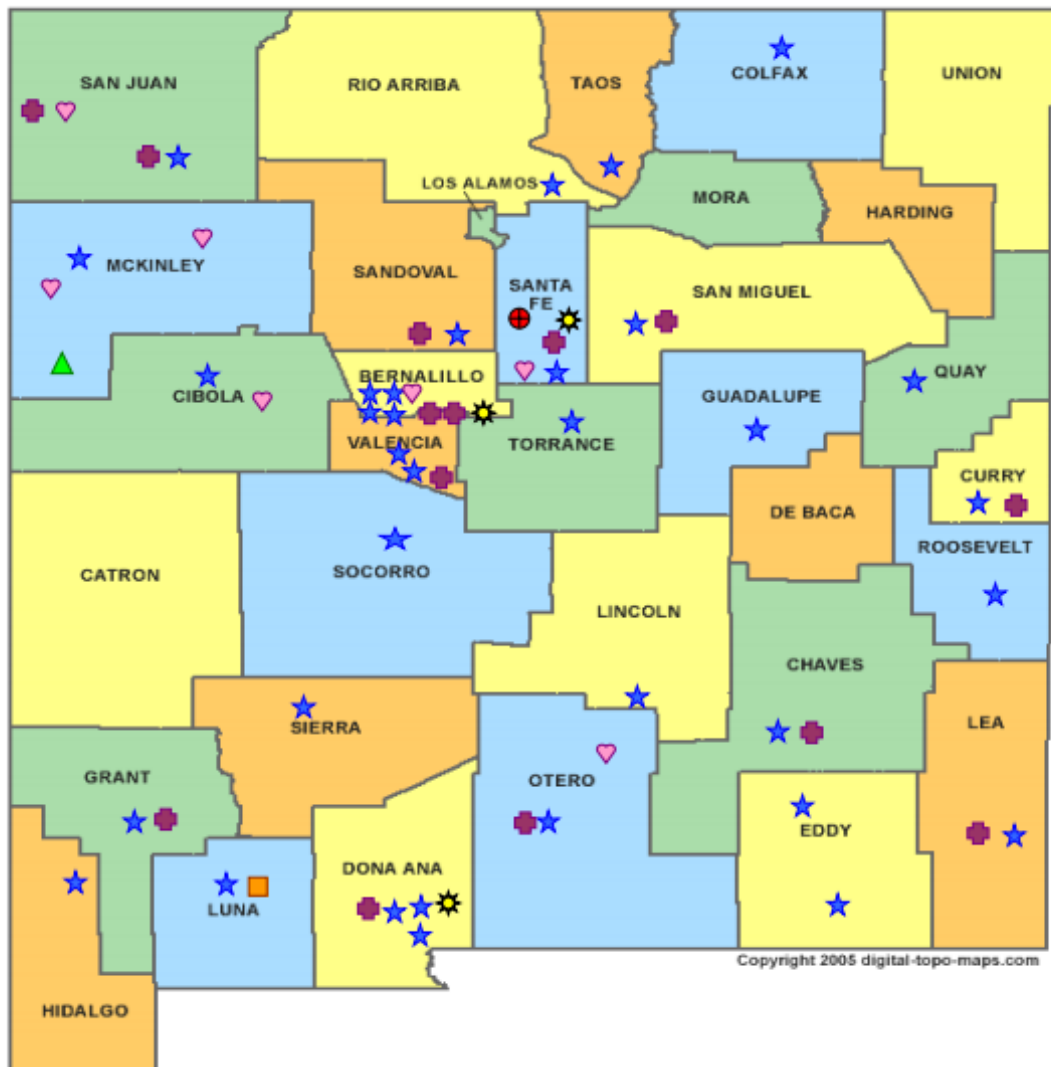
Medical Assistance Division					
Federal Poverty Guidelines New Mexico Affordable Care Eligibility Groups Effective April 01, 2019 thru March 31, 2020 Annual Guidelines					
HH SIZE	PERCENT OF POVERTY				
	138%	190%	240%	250%	300%
1	\$17,244	\$23,736	\$29,976	\$31,236	\$37,476
2	\$23,340	\$32,136	\$40,584	\$42,276	\$50,736
3	\$29,436	\$40,536	\$51,192	\$53,328	\$63,996
4	\$35,544	\$48,936	\$61,800	\$64,380	\$77,256
5	\$41,640	\$57,324	\$72,408	\$75,432	\$90,516
6	\$47,736	\$65,724	\$83,016	\$86,484	\$103,776
7	\$53,844	\$74,124	\$93,624	\$97,536	\$117,036
8	\$59,940	\$82,524	\$104,232	\$108,576	\$130,296
138% Adult Expansion, 190% Children ages 6 to 19 (Medicaid), 240% Children ages 0 to 6 (Medicaid); ages 6 to 19 (CHIP), 250% Pregnancy Related Services Only, 300% Children 0 to 6 (CHIP)					

References

- ¹ *Medicaid Expenditures* (Omnicaid, Medicare Buy-Ins, Lump Sum Payments)
- ² *ASPEN Business Intelligence Tool: Eligibility*
- ³ New Mexico Human Services Department, *Medicaid Eligibility Reports*, Retrieved from <http://www.hsd.state.nm.us/LookingForInformation/medicaid-eligibility.aspx> (for reporting month)
- ⁴ *ASPEN Business Intelligence Tool: Application Tracking*
- ⁵ Fidelity Information Services, *EBT Daily Statistical Report* (for reporting month)
- ⁶ *ASPEN Report DQ-180: Length of Time Cases are Open* (for reporting month)
- ⁷ *ASPEN Report EY-180: Individual Demographics by State and Age* (for reporting month)
- ⁸ *ASPEN Business Intelligence Tool: Benefit Issuance*
- ⁹ Fidelity Information Services, *EBT Daily Statistical Reports* (Month End)
- ¹⁰ *ASPEN Report EY-180R: Individual Demographics by State, Race, Ethnicity and Gender* (for reporting month)
- ¹¹ SQL Queries from ASPEN
- ¹² JP Morgan, *New Mexico – NM EBT System- Monthly Benefit Draw Down Totals*
- ¹³ *ASPEN Business Intelligence Tool: Application Tracking* (w/Parameters: SNAP, Expedite, Approved)
- ¹⁴ SL Start, *As of Today Report*
- ¹⁵ SL Start, *Statewide Employment Report*
- ¹⁶ *SSIAR Payments*
- ¹⁷ Children, Youth, and Families Department, *Children Receiving Child Care Assistance Subsidies by County*
- ¹⁸ Children, Youth, and Families Department, *Child Care Assistance Eligibility Programs*

¹⁹ EDG is defined as an Eligibility Determination Group

²⁰SQL Query from ASPEN



Copyright 2005 digital-topo-maps.com

HUMAN SERVICES
DEPARTMENT

New Mexico Human Services Department
Field Offices

- Central Office (1)
- Income Support Division County Office (35)
- Income Support Division Satellite Office (2)
- Child Support Enforcement Regional Office (16)
- Child Support Enforcement Satellite Office (1)
- Indian Health Services (7)
- Hospital Site (3)

For a complete listing of field offices and other government and community resources:
http://www.hsd.state.nm.us/LookingForAssistance/Field_Offices_1.aspx