



Monthly Statistical Report

February 2019

There were 831,398 individuals that received Medicaid in February 2019, a 2.8% decrease from one year ago. The count of Medicaid recipients has decreased by 1,173, or 0.1%, since last month.

The SNAP caseload in February 2019 was 220,830, a 0.6% decrease from one year ago. The SNAP caseload has decreased by 1,260 cases, or 0.6%, since last month.

The TANF caseload was 10,558 in February 2019, a decrease of 6.5% from February 2018. The TANF caseload had 191 fewer cases compared to January 2019, a decrease of 1.8%.

The caseload for General Assistance was 2,725 in February 2019, a decrease of 10.5% from one year ago and a decrease of 14 cases from last month.

Michelle Lujan Grisham, Governor
Dr. David Scrase, M.D., Secretary - Designate

Contents	Page
Summary	3-5
Medicaid	6-20
SNAP	21-41
Cash Assistance	42-56
Child Care Assistance	57-58
Income Eligibility Guidelines	59-60

Regions are reported as follows:

Region 1		
Catron	San Juan	Valencia
Cibola	Sierra	
McKinley	Socorro	
Region 2		
Colfax	Mora	Santa Fe
De Baca	Quay	Taos
Guadalupe	Rio Arriba	Union
Harding	Sandoval	
Los Alamos	San Miguel	
Region 3		
Bernalillo	Torrance	
Region 4		
Chaves	Eddy	Lincoln
Curry	Lea	Roosevelt
Region 5		
Dona Ana	Hidalgo	Otero
Grant	Luna	

The Mission of the Human Services Department

To reduce the impact of poverty on people living in New Mexico by providing support services that help families break the cycle of dependency on public assistance

Angela Medrano, Deputy Secretary
Russell Toal, Deputy Secretary

Prepared by Income Support Division
PO Box 2348
Santa Fe, NM 87504-2348
505-827-7250

Karmela Martinez, Acting Director
Vida Tapia-Sanchez, Deputy Director
Shanita Harrison, Deputy Director
Judith Parks, Deputy Director

<http://www.hsd.state.nm.us/monthly-statistical-reports.aspx>

Program Summary for February 2019

Medicaid				Percent Change	
	Feb-18	Jan-19	Feb-19	Feb-18- Feb-19	Jan-19- Feb-19
Expenditures¹	\$456,578,431	\$432,454,780	\$452,396,654	-0.9%	4.6%
Cases²	498,369	491,933	491,952	-1.3%	0.0%
Expenditures/Case	\$916	\$879	\$920	0.4%	4.6%
Recipients³	855,032	832,571	831,398	-2.8%	-0.1%
<i>Adults</i>	485,113	475,215	474,378	-2.2%	-0.2%
<i>Children</i>	369,919	357,356	357,020	-3.5%	-0.1%
Recipients /Case	1.72	1.69	1.69	-1.5%	-0.1%
Cases Processed⁴	17,149	13,473	10,479	-38.9%	-22.2%
<i>Approvals⁴</i>	12,392	9,839	7,794	-37.1%	-20.8%

Supplemental Nutrition Assistance Program (SNAP)				Percent Change	
	Feb-18	Jan-19	Feb-19	Feb-18- Feb-19	Jan-19- Feb-19
Expenditures⁵	\$52,979,666	\$51,212,077	\$53,978,995	1.9%	5.4%
Cases⁶	222,265	222,090	220,830	-0.6%	-0.6%
Expenditures/Case	\$238	\$231	\$244	2.5%	6.0%
Recipients⁷	459,000	451,845	448,978	-2.2%	-0.6%
<i>Adults</i>	263,607	262,373	261,057	-1.0%	-0.5%
<i>Children</i>	195,393	189,472	187,921	-3.8%	-0.8%
Recipients /Case	2.07	2.03	2.03	-1.5%	-0.1%
Cases Processed⁴	18,331	19,316	13,362	-27.1%	-30.8%
<i>Approvals⁴</i>	14,636	16,123	10,114	-30.9%	-37.3%

Cash Assistance Programs				Percent Change	
	Feb-18	Jan-19	Feb-19	Feb-18- Feb-19	Jan-19- Feb-19
Expenditures⁵	\$4,098,871	\$4,646,322	\$3,414,593	-16.7%	-26.5%
Cases⁶	14,523	13,644	13,443	-7.4%	-1.5%
Expenditures/Case	\$282	\$341	\$254	-10.0%	-25.4%
Recipients⁷	32,639	30,763	30,255	-7.3%	-1.7%
<i>Adults</i>	10,581	9,795	9,661	-8.7%	-1.4%
<i>Children</i>	22,058	20,968	20,594	-6.6%	-1.8%
Recipients /Case	2.25	2.25	2.25	0.1%	-0.2%
Cases Processed⁴	5,210	5,438	3,096	-40.6%	-43.1%
<i>Approvals⁴</i>	1,343	1,497	1,027	-23.5%	-31.4%

Low Income Home Energy Assistance Program (LIHEAP)				Percent Change	
	Feb-18	Jan-19	Feb-19	Feb-18- Feb-19	Jan-19- Feb-19
Expenditures⁸	\$1,542,520	\$2,520,530	\$1,489,495	-3.4%	-40.9%
Cases⁸	6,021	8,540	5,022	-16.6%	-41.2%
Expenditures/Case	\$256	\$295	\$297	15.8%	0.5%
Recipients⁸	13,925	19,842	11,070	-20.5%	-44.2%
<i>Adults</i>	7,887	11,113	6,558	-16.9%	-41.0%
<i>Children</i>	6,038	8,729	4,512	-25.3%	-48.3%
Recipients /Case	2.31	2.32	2.20	-4.7%	-5.1%
Cases Processed⁴	8,886	9,923	6,142	-30.9%	-38.1%
<i>Approvals⁴</i>	6,034	8,465	4,961	-17.8%	-41.4%

Cash Assistance Summary for February 2019

Temporary Assistance for Needy Families (TANF)

	Feb-18	Jan-19	Feb-19	Percent Change	
				Feb-18- Feb-19	Jan-19- Feb-19
Expenditures ⁵	\$3,306,422	\$3,937,305	\$2,653,960	-19.7%	-32.6%
Cases ⁶	11,294	10,749	10,558	-6.5%	-1.8%
Expenditures/Case	\$293	\$366	\$251	-14.1%	-31.4%
Recipients ⁷	29,110	27,631	27,132	-6.8%	-1.8%
<i>Adults</i>	7,532	7,073	6,956	-7.6%	-1.7%
<i>Children</i>	21,578	20,558	20,176	-6.5%	-1.9%
Approvals ⁴	1,054	1,328	866	-17.8%	-34.8%

General Assistance (GA)

	Feb-18	Jan-19	Feb-19	Percent Change	
				Feb-18- Feb-19	Jan-19- Feb-19
Expenditures ⁵	\$732,255	\$654,988	\$709,001	-3.2%	8.2%
Cases ⁶	3,043	2,739	2,725	-10.5%	-0.5%
Expenditures/Case	\$241	\$239	\$260	8.1%	8.8%
Recipients ⁷	3,067	2,777	2,759	-10.0%	-0.6%
<i>Adults</i>	2,839	2,557	2,537	-10.6%	-0.8%
<i>Children</i>	228	220	222	-2.6%	0.9%
Approvals ⁴	242	158	159	-34.3%	0.6%

Education Works

	Feb-18	Jan-19	Feb-19	Percent Change	
				Feb-18- Feb-19	Jan-19- Feb-19
Expenditures ⁵	\$52,171	\$44,612	\$40,842	-21.7%	-8.4%
Cases ⁶	138	103	106	-23.2%	2.9%
Expenditures/Case	\$378	\$433	\$385	1.9%	-11.0%
Recipients ⁷	411	301	311	-24.3%	3.3%
<i>Adults</i>	159	111	115	-27.7%	3.6%
<i>Children</i>	252	190	196	-22.2%	3.2%
Approvals ⁴	6	2	0	-100.0%	-100.0%

Refugee Cash (RCA)

	Feb-18	Jan-19	Feb-19	Percent Change	
				Feb-18- Feb-19	Jan-19- Feb-19
Expenditures ⁵	\$5,723	\$7,418	\$8,591	50.1%	15.8%
Cases ⁶	25	32	33	32.0%	3.1%
Expenditures/Case	\$229	\$232	\$260	13.7%	12.3%
Recipients ⁷	28	33	34	21.4%	3.0%
<i>Adults</i>	28	33	34	21.4%	3.0%
<i>Children</i>	0	0	0	N/A	N/A

State Supplement for Residential Care

	Feb-18	Jan-19	Feb-19	Percent Change	
				Feb-18- Feb-19	Jan-19- Feb-19
Expenditures ⁵	\$2,300	\$2,000	\$2,200	-4.3%	10.0%
Cases ⁶	23	21	21	-8.7%	0.0%
Expenditures/Case	\$100	\$95	\$105	4.8%	10.0%
Recipients ⁷	23	21	19	-17.4%	-9.5%
<i>Adults</i>	23	21	19	-17.4%	-9.5%
<i>Children</i>	0	0	0	N/A	N/A

Expenditures YTD			
	SFY 2019	FFY 2018	CY 2018
Medicaid ¹	\$3,692,901,968	\$5,487,469,015	\$5,565,047,976
Supplemental Nutrition Assistance Program ⁹	\$424,443,263	\$638,535,473	\$637,325,958
Temporary Assistance for Needy Families ⁹	\$28,741,151	\$42,369,974	\$42,095,660
General Assistance ⁹	\$5,647,027	\$8,767,318	\$8,628,524
Education Work ⁹	\$390,957	\$574,478	\$601,868
LIHEAP ⁸	\$16,753,581	\$17,036,882	\$19,369,651

Average Caseload YTD			
	SFY 2019	FFY 2018	CY 2018
Medicaid ²	489,322	491,918	491,510
Supplemental Nutrition Assistance Program ⁶	222,229	221,815	222,089
Temporary Assistance for Needy Families ⁶	10,956	11,278	11,056
General Assistance ⁶	2,838	2,974	2,924
Education Work ⁶	118	127	128
LIHEAP ⁸	7,070	5,397	5,745

Demographic Profile- February 2019					
	SNAP	TANF	GA	Education Works	RCA
<i>Gender of Recipients¹⁰</i>					
Male	203,137	11,610	1,526	114	22
Female	245,841	15,522	1,233	197	12
<i>Ethnicity¹⁰</i>					
Hispanic	247,650	18,160	1,477	212	12
Non-Hispanic	201,328	8,972	1,282	99	22
<i>Race¹⁰</i>					
Native American or Alaskan Native	75,435	2,452	244	18	0
Asian	4,247	238	24	1	0
African American or Black	11,315	1,158	107	16	19
Native Hawaiian or Pacific Islander	840	32	1	0	0
White	346,714	22,455	2,316	268	13
Unknown / Not Declared	4,354	235	30	3	0
More than One Race	6,073	562	37	5	2

Medicaid demographic data can be found here: <http://www.hsd.state.nm.us/LookingForInformation/medicaid-eligibility.aspx>

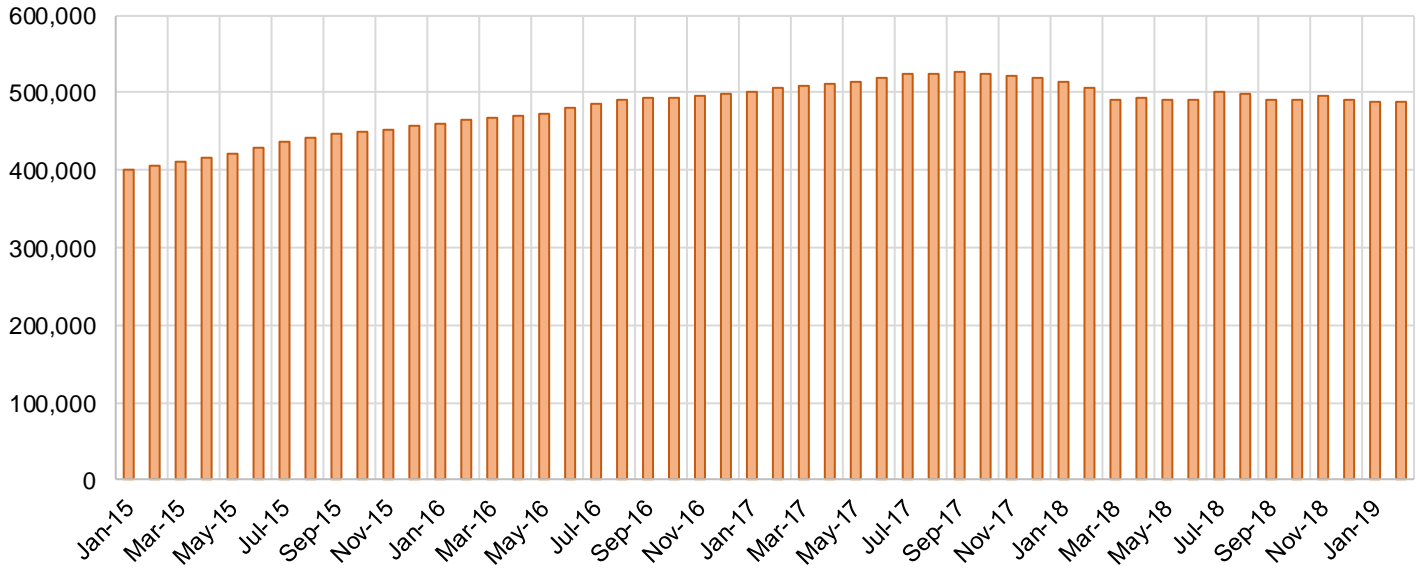
Medicaid Cases by Field Office²

Office	Feb-18	Jan-19	Feb-19	Percent Change	
				Feb-18- Feb-19	Jan-19- Feb-19
Chaves County ISD	16,341	15,885	15,859	-2.9%	-0.2%
Cibola County ISD	7,563	7,668	7,650	1.2%	-0.2%
Colfax County ISD	3,520	3,612	3,617	2.8%	0.1%
Curry County ISD	13,945	14,353	14,413	3.4%	0.4%
East Dona Ana County ISD	18,058	17,803	17,812	-1.4%	0.1%
Eddy Artesia County ISD	3,941	3,860	3,849	-2.3%	-0.3%
Eddy Carlsbad County ISD	7,995	7,566	7,564	-5.4%	0.0%
Grant County ISD	6,870	7,728	7,728	12.5%	0.0%
Guadalupe County ISD	1,772	1,638	1,623	-8.4%	-0.9%
Hidalgo County ISD	973	47	51	-94.8%	8.5%
Lea County ISD	14,642	14,377	14,406	-1.6%	0.2%
Lincoln County ISD	4,400	4,309	4,303	-2.2%	-0.1%
Luna County ISD	8,842	8,630	8,637	-2.3%	0.1%
McKinley County ISD	23,139	21,881	21,869	-5.5%	-0.1%
Northeast Bernalillo County ISD	43,442	43,127	42,983	-1.1%	-0.3%
Northwest Bernalillo County ISD	48,677	51,927	51,990	6.8%	0.1%
Otero County ISD	12,071	11,983	12,044	-0.2%	0.5%
Quay County ISD	2,590	2,508	2,513	-3.0%	0.2%
Rio Arriba County ISD	14,454	13,530	13,478	-6.8%	-0.4%
Roosevelt County ISD	29	10	10	-65.5%	0.0%
San Juan County ISD	30,599	30,143	30,175	-1.4%	0.1%
San Miguel County ISD	9,250	9,161	9,167	-0.9%	0.1%
Sandoval County ISD	25,959	23,403	23,486	-9.5%	0.4%
Santa Fe County ISD	25,220	24,851	24,735	-1.9%	-0.5%
Sierra County ISD	5,526	5,342	5,323	-3.7%	-0.4%
Socorro County ISD	5,525	5,334	5,370	-2.8%	0.7%
South Dona Ana ISD	19,946	19,716	19,732	-1.1%	0.1%
Southeast Bernalillo County ISD	25,749	25,124	25,066	-2.7%	-0.2%
Southwest Bernalillo County ISD	39,302	38,901	39,020	-0.7%	0.3%
Taos County ISD	9,482	9,248	9,256	-2.4%	0.1%
Torrance County ISD	7,678	7,871	7,872	2.5%	0.0%
Valencia North County ISD	18,271	18,271	18,212	-0.3%	-0.3%
Valencia South County ISD	110	99	100	-9.1%	1.0%
West Dona Ana County ISD	22,484	22,023	22,036	-2.0%	0.1%
Centralized Units	4	4	3	-25.0%	-25.0%
Statewide Total	498,369	491,933	491,952	-1.3%	0.0%

Medicaid Cases by Region²

				Percent Change	
Region	Feb-18	Jan-19	Feb-19	Feb-18- Feb-19	Jan-19- Feb-19
Region 1 - NW	90,733	88,738	88,699	-2.2%	0.0%
Region 2 - NE	92,247	87,951	87,875	-4.7%	-0.1%
Region 3 - Central	164,848	166,950	166,931	1.3%	0.0%
Region 4 - SE	61,293	60,360	60,404	-1.5%	0.1%
Region 5 - SW	89,244	87,930	88,040	-1.3%	0.1%
Centralized Units	4	4	3	-25.0%	-25.0%
Statewide Total	498,369	491,933	491,952	-1.3%	0.0%

Medicaid Caseload: SFY-15 to Current

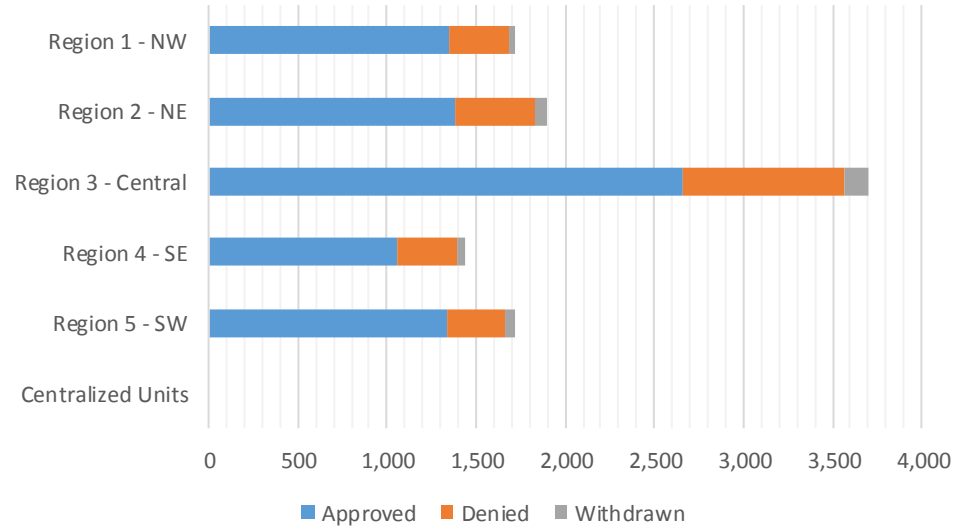


Medicaid Initial Applications by Field Office^{4,11}
February 2019

Office	Approved	Denied	Withdrawn	Total Cases Processed
Chaves County ISD	243	91	9	343
Cibola County ISD	123	30	1	154
Colfax County ISD	60	17	4	81
Curry County ISD	287	73	14	374
East Dona Ana County ISD	337	78	14	429
Eddy Artesia County ISD	62			62
Eddy Carlsbad County ISD	142	54	10	206
Grant County ISD	111	30	5	146
Guadalupe County ISD	16			16
Hidalgo County ISD				0
Lea County ISD	254	88	9	351
Lincoln County ISD	72	29	4	105
Luna County ISD	128	32	6	166
McKinley County ISD	333	75	10	418
Northeast Bernalillo County ISD	720	282	43	1,045
Northwest Bernalillo County ISD	657	225	32	914
Otero County ISD	201	40	7	248
Quay County ISD	35	7	1	43
Rio Arriba County ISD	162	47	10	219
Roosevelt County ISD	2			2
San Juan County ISD	492	127	14	633
San Miguel County ISD	194	37	11	242
Sandoval County ISD	402	116	23	541
Santa Fe County ISD	359	169	16	544
Sierra County ISD	78	19	3	100
Socorro County ISD	87	17	2	106
South Dona Ana ISD	248	74	6	328
Southeast Bernalillo County ISD	543	189	20	752
Southwest Bernalillo County ISD	605	167	33	805
Taos County ISD	156	54	5	215
Torrance County ISD	138	41	5	184
Valencia North County ISD	233	68	9	310
Valencia South County ISD	1			1
West Dona Ana County ISD	313	75	8	396
Centralized Units				0
Statewide Total	7,794	2,351	334	10,479

Medicaid Initial Applications by Region^{4,11} February 2019

Region	Approved	Denied	Withdrawn	Total Cases Processed
Region 1 - NW	1,347	336	39	1,722
Region 2 - NE	1,384	447	70	1,901
Region 3 - Central	2,663	904	133	3,700
Region 4 - SE	1,062	335	46	1,443
Region 5 - SW	1,338	329	46	1,713
Centralized Units	0	0	0	0
Statewide Total	7,794	2,351	334	10,479

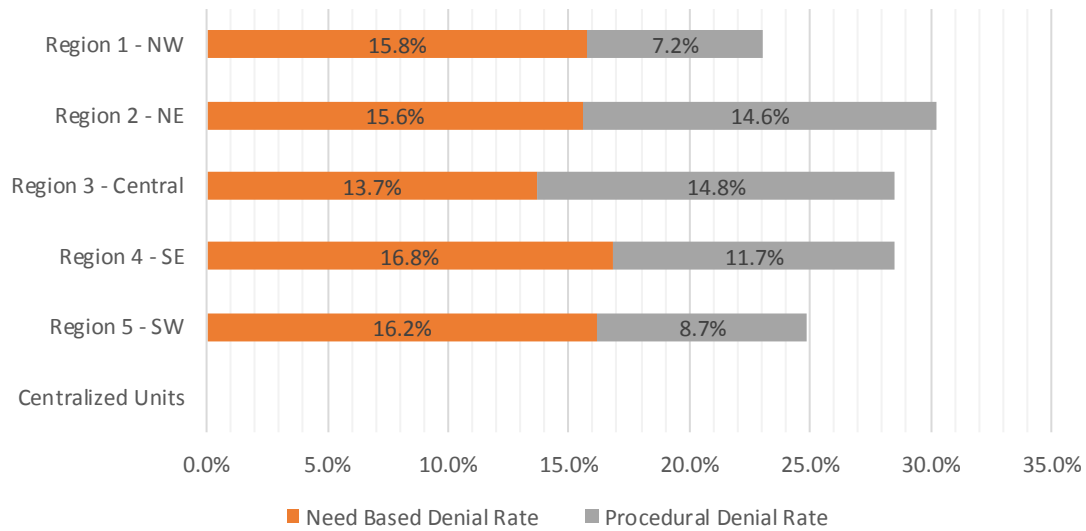


Medicaid EDG Initial Disposition Rates by Field Office^{4,11,19}
February 2019

Office	Approval Rate	Denial Rate	Need Based Denial Rate	Procedural Denial Rate
Chaves County ISD	71.0%	29.0%	16.4%	12.6%
Cibola County ISD	77.4%	22.6%	10.5%	12.1%
Colfax County ISD	71.1%	28.9%	13.1%	15.8%
Curry County ISD	74.4%	25.6%	16.7%	8.9%
East Dona Ana County ISD	75.2%	24.8%	15.8%	9.0%
Eddy Artesia County ISD	79.4%	20.6%	9.1%	11.5%
Eddy Carlsbad County ISD	68.0%	32.0%	19.0%	13.0%
Grant County ISD	71.1%	28.9%	13.4%	15.5%
Guadalupe County ISD	0.0%	0.0%	0.0%	0.0%
Hidalgo County ISD	0.0%	0.0%	0.0%	0.0%
Lea County ISD	72.4%	27.6%	17.2%	10.4%
Lincoln County ISD	62.0%	38.0%	16.8%	21.2%
Luna County ISD	71.7%	28.3%	18.3%	10.0%
McKinley County ISD	79.1%	20.9%	16.8%	4.1%
Northeast Bernalillo County ISD	67.0%	33.0%	13.1%	19.9%
Northwest Bernalillo County ISD	71.9%	28.1%	11.0%	17.1%
Otero County ISD	81.7%	18.3%	10.4%	7.9%
Quay County ISD	74.6%	25.4%	20.9%	4.5%
Rio Arriba County ISD	71.0%	29.0%	12.8%	16.2%
Roosevelt County ISD	0.0%	0.0%	0.0%	0.0%
San Juan County ISD	76.4%	23.6%	14.6%	9.0%
San Miguel County ISD	79.5%	20.5%	13.9%	6.6%
Sandoval County ISD	70.1%	29.9%	17.2%	12.7%
Santa Fe County ISD	65.6%	34.4%	14.6%	19.8%
Sierra County ISD	72.8%	27.2%	20.4%	6.8%
Socorro County ISD	82.6%	17.4%	13.8%	3.6%
South Dona Ana ISD	73.6%	26.4%	21.5%	4.9%
Southeast Bernalillo County ISD	73.3%	26.7%	16.6%	10.1%
Southwest Bernalillo County ISD	75.3%	24.7%	15.1%	9.6%
Taos County ISD	70.1%	29.9%	16.0%	13.9%
Torrance County ISD	70.6%	29.4%	14.5%	14.9%
Valencia North County ISD	74.3%	25.7%	18.8%	6.9%
Valencia South County ISD	0.0%	0.0%	0.0%	0.0%
West Dona Ana County ISD	75.7%	24.3%	14.6%	9.7%
Centralized Units	0.0%	0.0%	0.0%	0.0%
Statewide Total	73.0%	27.2%	15.3%	11.9%

Medicaid EDG Initial Disposition Rates by Region^{4,11,19}
February 2019

Region	Approval Rate	Denial Rate	Need Based Denial Rate	Procedural Denial Rate
Region 1 - NW	77.0%	23.0%	15.8%	7.2%
Region 2 - NE	70.9%	30.2%	15.6%	14.6%
Region 3 - Central	71.5%	28.5%	13.7%	14.8%
Region 4 - SE	71.7%	28.5%	16.8%	11.7%
Region 5 - SW	75.1%	24.9%	16.2%	8.7%
Centralized Units				
Statewide Total	73.0%	27.2%	15.3%	11.9%



Medicaid: Percentage of Initial EDG Approvals Processed Timely by Field Office^{13,19}

	Oct-18	Nov-18	Dec-18	Jan-19	Feb-19	Mar-19	Apr-19	May-19	Jun-19	Jul-19	Aug-19	Sep-19	Average
Cibola	100.0%	98.8%	96.8%	98.9%	99.5%								98.8%
McKinley	99.5%	99.4%	99.1%	99.3%	98.1%								99.1%
San Juan	98.9%	98.9%	99.2%	99.0%	99.3%								99.1%
Sierra	97.4%	99.3%	96.2%	99.2%	100.0%								98.4%
Socorro	100.0%	100.0%	100.0%	99.3%	99.3%								99.7%
Valencia North	98.9%	99.2%	99.3%	99.8%	99.1%								99.3%
Valencia South	100.0%	100.0%	100.0%	100.0%	100.0%								100.0%
NW Region 1 Total	99.1%	99.1%	99.0%	99.3%	99.0%								99.1%
Colfax	99.1%	97.4%	97.3%	96.2%	100.0%								98.0%
Guadalupe	96.8%	100.0%	100.0%	100.0%	100.0%								99.4%
Quay	98.6%	100.0%	100.0%	100.0%	98.0%								99.3%
Rio Arriba	99.7%	99.4%	98.9%	98.9%	98.6%								99.1%
San Miguel	99.7%	100.0%	99.3%	99.7%	100.0%								99.7%
Sandoval	98.2%	99.2%	98.6%	98.7%	99.7%								98.9%
Santa Fe	99.0%	99.0%	99.7%	99.2%	99.0%								99.2%
Taos	100.0%	98.8%	99.0%	100.0%	99.6%								99.5%
NE Region 2 Total	99.0%	99.2%	99.1%	99.0%	99.4%								99.1%
NE Bernalillo	97.5%	98.5%	98.5%	97.9%	98.5%								98.2%
NW Bernalillo	98.6%	99.5%	99.4%	98.7%	99.0%								99.0%
SE Bernalillo	98.4%	98.7%	98.7%	98.6%	98.7%								98.6%
SW Bernalillo	98.7%	97.9%	98.6%	97.6%	99.5%								98.5%
Torrance	99.3%	97.8%	99.6%	98.2%	96.9%								98.4%
Cen. Region 3 Total	98.3%	98.6%	98.9%	98.2%	98.8%								98.6%
Chaves	99.5%	99.2%	98.3%	99.6%	99.8%								99.3%
Curry	98.5%	98.9%	99.1%	98.5%	98.5%								98.7%
Eddy Artesia	100.0%	97.7%	99.0%	98.6%	98.1%								98.7%
Eddy Carlsbad	98.0%	97.9%	99.6%	98.8%	97.0%								98.3%
Lea	99.3%	99.5%	99.4%	99.4%	99.4%								99.4%
Lincoln	99.3%	99.5%	98.1%	98.7%	100.0%								99.1%
Roosevelt	100.0%	100.0%	100.0%	100.0%	100.0%								100.0%
SE Region 4 Total	99.0%	99.0%	98.9%	99.1%	98.9%								99.0%
East Dona Ana	99.7%	97.3%	98.7%	99.0%	97.9%								98.5%
Grant	98.4%	99.2%	98.6%	98.9%	95.3%								98.1%
Luna	97.5%	100.0%	100.0%	99.6%	100.0%								99.4%
Otero	98.4%	98.9%	99.1%	98.3%	99.3%								98.8%
South Dona Ana	99.6%	99.2%	99.1%	98.9%	99.6%								99.3%
West Dona Ana	98.9%	99.2%	100.0%	98.9%	99.3%								99.3%
SW Region 5 Total	99.0%	98.8%	99.2%	98.9%	98.8%								98.9%
STATE TOTAL	98.8%	98.9%	99.0%	98.8%	98.9%								98.9%

Medicaid: Percentage of Initial EDG Denials Processed Timely by Field Office ^{13,19}

	Oct-18	Nov-18	Dec-18	Jan-19	Feb-19	Mar-19	Apr-19	May-19	Jun-19	Jul-19	Aug-19	Sep-19	Average
Cibola	90.2%	93.8%	97.1%	100.0%	96.6%								95.5%
McKinley	95.2%	97.7%	97.2%	96.7%	94.2%								96.2%
San Juan	92.1%	87.2%	96.8%	97.5%	96.2%								94.0%
Sierra	92.3%	100.0%	100.0%	100.0%	100.0%								98.5%
Socorro	88.6%	97.6%	100.0%	100.0%	96.8%								96.6%
Valencia North	96.8%	98.0%	94.4%	96.3%	98.4%								96.8%
Valencia South	100.0%	100.0%	100.0%										100.0%
NW Region 1 Total	93.2%	93.9%	96.8%	97.5%	96.5%								95.6%
Colfax	100.0%	100.0%	100.0%	98.1%	85.7%								96.8%
Guadalupe	100.0%	100.0%	100.0%	84.6%	100.0%								96.9%
Quay	91.7%	95.0%	100.0%	100.0%	100.0%								97.3%
Rio Arriba	82.2%	94.8%	89.6%	100.0%	98.9%								93.1%
San Miguel	97.9%	100.0%	99.0%	97.9%	97.0%								98.4%
Sandoval	90.0%	97.1%	98.4%	98.0%	99.2%								96.5%
Santa Fe	92.7%	93.4%	96.1%	98.0%	96.2%								95.3%
Taos	96.4%	98.0%	100.0%	96.5%	99.0%								98.0%
NE Region 2 Total	91.9%	96.2%	97.0%	97.8%	97.5%								96.1%
NE Bernalillo	91.1%	93.3%	96.9%	95.7%	92.6%								93.9%
NW Bernalillo	89.6%	97.4%	95.6%	98.0%	95.3%								95.2%
SE Bernalillo	95.0%	95.1%	96.3%	93.1%	90.6%								94.0%
SW Bernalillo	83.6%	97.8%	98.6%	97.7%	93.9%								94.3%
Torrance	94.0%	96.2%	100.0%	95.8%	98.9%								97.0%
Gen. Region 3 Total	90.1%	95.6%	96.9%	96.4%	93.6%								94.5%
Chaves	98.2%	98.0%	96.8%	98.2%	96.3%								97.5%
Curry	92.0%	90.8%	97.7%	94.5%	96.6%								94.3%
Eddy Artesia	97.7%	97.6%	96.2%	98.4%	100.0%								98.0%
Eddy Carlsbad	90.1%	95.0%	96.0%	97.7%	94.1%								94.6%
Lea	90.8%	98.6%	97.0%	97.1%	93.2%								95.3%
Lincoln	92.5%	98.2%	98.0%	95.8%	90.1%								94.9%
Roosevelt	100.0%	100.0%											100.0%
SE Region 4 Total	93.3%	96.6%	97.0%	96.9%	94.8%								95.7%
East Dona Ana	96.6%	94.0%	97.7%	97.8%	97.9%								96.8%
Grant	96.2%	100.0%	98.5%	98.6%	98.6%								98.4%
Luna	96.4%	100.0%	100.0%	91.8%	100.0%								97.6%
Otero	96.1%	98.8%	93.9%	96.2%	90.5%								95.1%
South Dona Ana	100.0%	99.2%	99.4%	97.1%	98.8%								98.9%
West Dona Ana	97.5%	97.2%	100.0%	96.7%	96.5%								97.6%
SW Region 5 Total	97.4%	97.7%	98.3%	96.6%	97.4%								97.5%
STATE TOTAL	92.6%	96.0%	97.1%	97.0%	95.5%								95.6%

Medicaid: Percentage of Initial EDG Approvals and Denials Combined Processed Timely by Field Office ^{13,19}

	Oct-18	Nov-18	Dec-18	Jan-19	Feb-19	Mar-19	Apr-19	May-19	Jun-19	Jul-19	Aug-19	Sep-19	Average
Cibola	98.6%	97.9%	96.8%	99.1%	98.8%								98.2%
McKinley	98.7%	99.1%	98.8%	98.7%	97.2%								98.5%
San Juan	97.8%	97.1%	98.7%	98.7%	98.5%								98.2%
Sierra	97.0%	99.4%	96.9%	99.4%	100.0%								98.5%
Socorro	96.6%	99.4%	100.0%	99.5%	98.8%								98.9%
Valencia North	98.6%	99.0%	98.3%	99.0%	98.9%								98.8%
Valencia South	100.0%	100.0%	100.0%	100.0%	100.0%								100.0%
NW Region 1 Total	98.1%	98.3%	98.5%	98.8%	98.4%								98.4%
Colfax	99.2%	98.1%	98.1%	96.8%	95.7%								97.6%
Guadalupe	96.8%	100.0%	100.0%	96.7%	100.0%								98.7%
Quay	97.6%	98.0%	100.0%	100.0%	98.5%								98.8%
Rio Arriba	97.6%	98.3%	96.3%	99.1%	98.7%								98.0%
San Miguel	99.5%	100.0%	99.3%	99.3%	99.3%								99.5%
Sandoval	97.0%	98.8%	98.6%	98.5%	99.5%								98.5%
Santa Fe	97.8%	97.7%	98.9%	98.7%	98.0%								98.2%
Taos	99.7%	98.7%	99.3%	98.8%	99.4%								99.2%
NE Region 2 Total	98.0%	98.5%	98.6%	98.7%	98.8%								98.5%
NE Bernalillo	96.1%	97.2%	98.1%	97.3%	96.5%								97.0%
NW Bernalillo	96.8%	99.1%	98.4%	98.5%	97.9%								98.1%
SE Bernalillo	97.6%	97.8%	98.1%	97.1%	96.3%								97.4%
SW Bernalillo	96.1%	97.9%	98.6%	97.6%	97.9%								97.6%
Torrance	98.4%	97.6%	99.7%	97.5%	97.5%								98.1%
Gen. Region 3 Total	96.7%	98.0%	98.4%	97.6%	97.2%								97.6%
Chaves	99.2%	99.0%	97.8%	99.2%	98.7%								98.8%
Curry	97.3%	97.9%	98.7%	97.4%	98.0%								97.9%
Eddy Artesia	99.5%	97.6%	98.5%	98.5%	98.5%								98.5%
Eddy Carlsbad	96.5%	97.1%	98.7%	98.5%	96.0%								97.4%
Lea	97.2%	99.3%	98.8%	98.7%	97.5%								98.3%
Lincoln	97.5%	99.2%	98.1%	97.8%	96.2%								97.8%
Roosevelt	100.0%	100.0%	100.0%	100.0%	100.0%								100.0%
SE Region 4 Total	97.7%	98.5%	98.4%	98.5%	97.6%								98.1%
East Dona Ana	99.1%	96.7%	98.4%	98.7%	97.9%								98.2%
Grant	97.9%	99.4%	98.6%	98.8%	96.3%								98.2%
Luna	97.3%	100.0%	100.0%	97.6%	100.0%								99.0%
Otero	98.1%	98.9%	97.8%	97.7%	97.6%								98.0%
South Dona Ana	99.7%	99.2%	99.2%	98.3%	99.4%								99.2%
West Dona Ana	98.7%	98.9%	100.0%	98.3%	98.6%								98.9%
SW Region 5 Total	98.7%	98.6%	99.0%	98.3%	98.4%								98.6%
STATE TOTAL	97.7%	98.3%	98.6%	98.3%	98.0%								98.2%

Medicaid Renewal Disposition Counts by Field Office^{4,11}
February 2019

Office	Approvals	Closures	Need Based Closures	Procedural Closures
Chaves County ISD	2,253	404	102	302
Cibola County ISD	1,155	214	53	161
Colfax County ISD	459	89	18	71
Curry County ISD	2,281	393	77	316
East Dona Ana County ISD	2,853	483	113	370
Eddy Artesia County ISD	498	123	28	95
Eddy Carlsbad County ISD	967	268	44	224
Grant County ISD	1,007	152	35	117
Guadalupe County ISD	207	38	8	30
Hidalgo County ISD				
Lea County ISD	2,070	506	85	421
Lincoln County ISD	583	167	49	118
Luna County ISD	1,368	269	61	208
McKinley County ISD	2,938	654	109	545
Northeast Bernalillo County ISD	5,295	1256	250	1006
Northwest Bernalillo County ISD	4,829	1035	209	826
Otero County ISD	1,810	308	84	224
Quay County ISD	360	47	22	25
Rio Arriba County ISD	1,660	419	74	345
Roosevelt County ISD				
San Juan County ISD	4,573	957	204	753
San Miguel County ISD	1,001	196	35	161
Sandoval County ISD	3,784	654	104	550
Santa Fe County ISD	3,333	742	142	600
Sierra County ISD	869	120	55	65
Socorro County ISD	674	107	37	70
South Dona Ana ISD	3,403	489	157	332
Southeast Bernalillo County ISD	3,058	624	116	508
Southwest Bernalillo County ISD	6,632	1347	376	971
Taos County ISD	1,160	261	53	208
Torrance County ISD	1,161	175	66	109
Valencia North County ISD	2,918	473	99	374
Valencia South County ISD				
West Dona Ana County ISD	3,255	452	119	333
Centralized Units				
Statewide Total	68,414	13,422	2,984	10,438

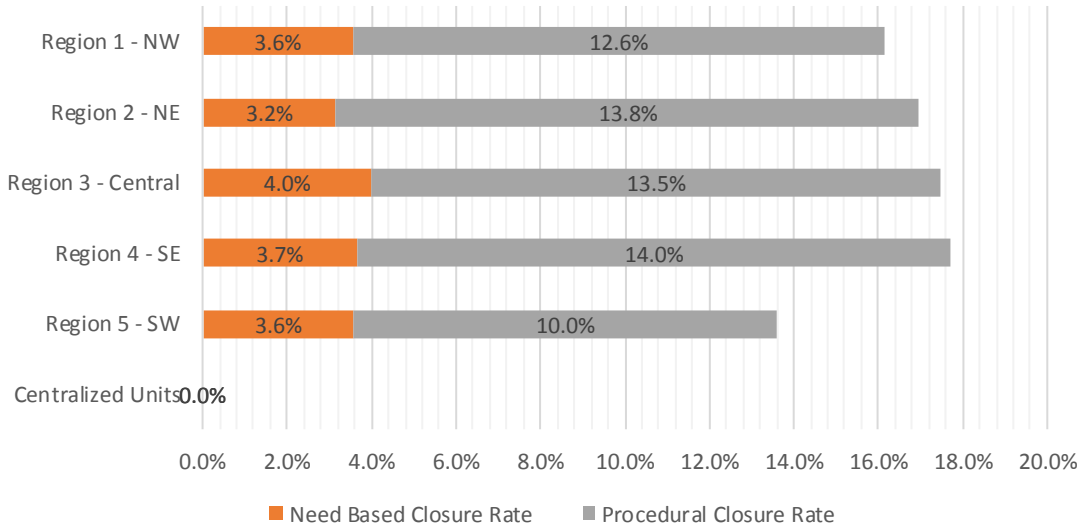
Determinations at Administrative, Annual, and Auto Renewals are included

Medicaid Renewal Disposition Rates by Field Office²⁰
February 2019

Office	Approval Rate	Closure Rate	Need Based Closure Rate	Procedural Closure Rate
Chaves County ISD	84.8%	15.2%	3.8%	11.4%
Cibola County ISD	84.4%	15.6%	3.9%	11.8%
Colfax County ISD	83.8%	16.2%	3.3%	13.0%
Curry County ISD	85.3%	14.7%	2.9%	11.8%
East Dona Ana County ISD	85.5%	14.5%	3.4%	11.1%
Eddy Artesia County ISD	80.2%	19.8%	4.5%	15.3%
Eddy Carlsbad County ISD	78.3%	21.7%	3.6%	18.1%
Grant County ISD	86.9%	13.1%	3.0%	10.1%
Guadalupe County ISD	84.5%	15.5%	3.3%	12.2%
Hidalgo County ISD	0.0%	0.0%	0.0%	0.0%
Lea County ISD	80.4%	19.6%	3.3%	16.3%
Lincoln County ISD	77.7%	22.3%	6.5%	15.7%
Luna County ISD	83.6%	16.4%	3.7%	12.7%
McKinley County ISD	81.8%	18.2%	3.0%	15.2%
Northeast Bernalillo County ISD	80.8%	19.2%	3.8%	15.4%
Northwest Bernalillo County ISD	82.3%	17.7%	3.6%	14.1%
Otero County ISD	85.5%	14.5%	4.0%	10.6%
Quay County ISD	88.5%	11.5%	5.4%	6.1%
Rio Arriba County ISD	79.8%	20.2%	3.6%	16.6%
Roosevelt County ISD	0.0%	0.0%	0.0%	0.0%
San Juan County ISD	82.7%	17.3%	3.7%	13.6%
San Miguel County ISD	83.6%	16.4%	2.9%	13.5%
Sandoval County ISD	85.3%	14.7%	2.3%	12.4%
Santa Fe County ISD	81.8%	18.2%	3.5%	14.7%
Sierra County ISD	87.9%	12.1%	5.6%	6.6%
Socorro County ISD	86.3%	13.7%	4.7%	9.0%
South Dona Ana ISD	87.4%	12.6%	4.0%	8.5%
Southeast Bernalillo County ISD	83.1%	16.9%	3.2%	13.8%
Southwest Bernalillo County ISD	83.1%	16.9%	4.7%	12.2%
Taos County ISD	81.6%	18.4%	3.7%	14.6%
Torrance County ISD	86.9%	13.1%	4.9%	8.2%
Valencia North County ISD	86.1%	13.9%	2.9%	11.0%
Valencia South County ISD	0.0%	0.0%	0.0%	0.0%
West Dona Ana County ISD	87.8%	12.2%	3.2%	9.0%
Centralized Units	0.0%	0.0%	0.0%	0.0%
Statewide Total	83.6%	16.4%	3.6%	12.8%

Medicaid Renewal Disposition Rates by Region²⁰
February 2019

Region	Approval Rate	Closure Rate	Need Based Closure Rate	Procedural Closure Rate
Region 1 - NW	83.9%	16.1%	3.6%	12.6%
Region 2 - NE	83.0%	17.0%	3.2%	13.8%
Region 3 - Central	82.5%	17.5%	4.0%	13.5%
Region 4 - SE	82.3%	17.7%	3.7%	14.0%
Region 5 - SW	86.4%	13.6%	3.6%	10.0%
Centralized Units				
Statewide Total	83.6%	16.4%	3.6%	12.8%



Medicaid: Percentage of Approved Renewal EDGs Processed by Certification Date ¹¹

	Oct-18	Nov-18	Dec-18	Jan-19	Feb-19	Mar-19	Apr-19	May-19	Jun-19	Jul-19	Aug-19	Sep-19	Average
Cibola	99.7%	97.1%	97.8%	98.2%	98.2%								98.2%
McKinley	99.4%	97.5%	98.9%	99.1%	97.7%								98.5%
San Juan	99.2%	97.3%	99.0%	98.2%	99.0%								98.5%
Sierra	98.8%	97.6%	99.1%	98.7%	97.7%								98.4%
Socorro	99.2%	96.2%	96.8%	99.3%	98.8%								98.0%
Valencia North	99.0%	96.6%	97.9%	98.1%	98.4%								98.0%
Valencia South													
NW Region 1 Total	99.2%	97.1%	98.2%	98.6%	98.3%								98.3%
Colfax	99.2%	97.5%	97.6%	99.5%	98.0%								98.4%
Guadalupe	99.6%	96.9%	99.2%	100.0%	99.5%								99.0%
Quay	98.4%	97.0%	99.1%	99.0%	96.1%								97.9%
Rio Arriba	98.6%	97.1%	98.6%	97.7%	97.0%								97.8%
San Miguel	99.5%	97.3%	99.7%	99.3%	99.3%								99.0%
Sandoval	98.6%	97.1%	97.7%	98.4%	97.8%								97.9%
Santa Fe	97.9%	95.8%	98.1%	96.9%	97.7%								97.3%
Taos	98.2%	97.1%	99.1%	99.1%	98.1%								98.3%
NE Region 2 Total	98.8%	97.0%	98.7%	98.7%	97.9%								98.2%
NE Bernalillo	98.1%	96.7%	98.3%	98.2%	98.4%								97.9%
NW Bernalillo	97.9%	97.2%	98.5%	98.2%	98.9%								98.1%
SE Bernalillo	98.5%	96.9%	98.8%	98.7%	98.5%								98.3%
SW Bernalillo	98.2%	96.7%	98.3%	98.5%	97.8%								97.9%
Torrance	99.5%	98.0%	98.8%	99.2%	99.8%								99.1%
Gen. Region 3 Total	98.5%	97.1%	98.5%	98.6%	98.7%								98.3%
Chaves	98.8%	97.1%	98.8%	99.2%	98.1%								98.4%
Curry	98.9%	97.5%	98.7%	98.7%	98.2%								98.4%
Eddy Artesia	98.2%	96.9%	98.2%	99.5%	97.4%								98.1%
Eddy Carlsbad	98.9%	96.6%	97.0%	98.1%	97.2%								97.6%
Lea	98.9%	97.8%	99.2%	99.4%	99.3%								98.9%
Lincoln	98.6%	95.2%	98.6%	96.3%	98.3%								97.4%
Roosevelt	100.0%												100.0%
SE Region 4 Total	98.9%	96.9%	98.4%	98.6%	98.1%								98.2%
East Dona Ana	99.3%	97.1%	99.5%	99.3%	99.3%								98.9%
Grant	99.1%	97.4%	99.1%	99.8%	98.7%								98.8%
Luna	99.2%	97.2%	99.3%	99.6%	97.9%								98.6%
Otero	98.3%	96.6%	96.9%	97.6%	99.0%								97.7%
South Dona Ana	97.9%	97.4%	98.3%	97.7%	97.9%								97.8%
West Dona Ana	99.6%	98.0%	99.4%	99.2%	99.3%								99.1%
SW Region 5 Total	98.9%	97.3%	98.8%	98.9%	98.7%								98.5%
STATE TOTAL	98.9%	97.0%	98.5%	98.7%	98.3%								98.3%

Administrative, Annual, and Auto Renewals are included

Medicaid: Percentage of Closures EDGs Processed by Certification End Date¹¹

	Oct-18	Nov-18	Dec-18	Jan-19	Feb-19	Mar-19	Apr-19	May-19	Jun-19	Jul-19	Aug-19	Sep-19	Average
Cibola	96.0%	97.9%	98.2%	94.0%	94.9%								96.2%
McKinley	98.6%	98.9%	97.3%	98.3%	98.0%								98.2%
San Juan	97.1%	97.0%	96.2%	97.5%	97.3%								97.0%
Sierra	98.5%	95.6%	97.7%	97.5%	96.7%								97.2%
Socorro	96.0%	99.4%	93.8%	98.9%	95.3%								96.7%
Valencia North	98.3%	98.7%	97.0%	96.9%	98.3%								97.8%
Valencia South													
NW Region 1 Total	97.4%	97.9%	96.7%	97.2%	96.7%								97.2%
Colfax	96.3%	97.8%	95.0%	98.9%	93.3%								96.3%
Guadalupe	98.3%	100.0%	100.0%	100.0%	100.0%								99.7%
Quay	96.6%	97.0%	100.0%	100.0%	95.7%								97.9%
Rio Arriba	98.6%	98.1%	96.6%	98.4%	97.9%								97.9%
San Miguel	100.0%	98.8%	98.4%	98.6%	98.0%								98.7%
Sandoval	98.2%	98.1%	97.4%	95.0%	97.1%								97.1%
Santa Fe	98.0%	98.5%	95.3%	96.9%	96.5%								97.0%
Taos	97.4%	98.8%	95.2%	99.1%	98.5%								97.8%
NE Region 2 Total	98.1%	98.5%	97.6%	98.3%	97.7%								98.0%
NE Bernalillo	98.3%	97.6%	97.3%	97.0%	97.1%								97.5%
NW Bernalillo	98.2%	98.5%	96.5%	97.4%	97.1%								97.5%
SE Bernalillo	95.8%	98.4%	96.0%	97.3%	96.2%								96.7%
SW Bernalillo	97.8%	98.3%	95.9%	96.3%	97.0%								97.1%
Torrance	97.8%	98.5%	97.6%	99.1%	97.7%								98.2%
Gen. Region 3 Total	97.7%	98.4%	96.6%	97.8%	97.3%								97.5%
Chaves	98.2%	98.9%	98.2%	98.5%	98.3%								98.4%
Curry	98.9%	98.1%	98.2%	97.6%	99.2%								98.4%
Eddy Artesia	98.9%	97.3%	98.7%	95.4%	97.6%								97.6%
Eddy Carlsbad	99.1%	99.3%	99.0%	97.3%	97.0%								98.3%
Lea	97.7%	98.6%	98.6%	97.8%	96.2%								97.8%
Lincoln	99.5%	99.5%	98.1%	96.0%	97.6%								98.1%
Roosevelt	100.0%												100.0%
SE Region 4 Total	98.9%	98.6%	98.5%	97.1%	97.7%								98.1%
East Dona Ana	98.1%	97.9%	98.9%	98.1%	99.0%								98.4%
Grant	97.6%	97.4%	97.3%	96.5%	96.7%								97.1%
Luna	99.1%	98.5%	100.0%	99.5%	99.3%								99.3%
Otero	98.5%	98.9%	99.0%	99.6%	98.4%								98.9%
South Dona Ana	97.9%	98.1%	98.3%	98.8%	98.0%								98.2%
West Dona Ana	98.2%	98.4%	99.2%	97.8%	98.2%								98.4%
SW Region 5 Total	98.3%	98.3%	98.7%	98.2%	98.2%								98.3%
STATE TOTAL	98.1%	98.3%	97.6%	97.7%	97.5%								97.9%

Medicaid: Percentage of Approved and Terminated Renewal EDGs Combined Processed by Certification Date ¹¹													
	Oct-18	Nov-18	Dec-18	Jan-19	Feb-19	Mar-19	Apr-19	May-19	Jun-19	Jul-19	Aug-19	Sep-19	Average
Cibola	99.1%	97.2%	97.8%	97.7%	97.7%								97.9%
McKinley	99.3%	97.7%	98.6%	99.0%	97.8%								98.5%
San Juan	98.8%	97.3%	98.5%	98.1%	98.7%								98.3%
Sierra	98.8%	97.4%	98.9%	98.6%	97.6%								98.2%
Socorro	98.6%	96.6%	96.3%	99.2%	98.3%								97.8%
Valencia North	98.9%	96.8%	97.7%	98.0%	98.3%								97.9%
Valencia South													
NW Region 1 Total	98.9%	97.2%	98.0%	98.4%	98.1%								98.1%
Colfax	98.6%	97.6%	97.2%	99.4%	97.3%								98.0%
Guadalupe	99.4%	97.3%	99.3%	100.0%	99.6%								99.1%
Quay	98.1%	97.0%	99.2%	99.1%	96.1%								97.9%
Rio Arriba	98.6%	97.2%	98.3%	97.8%	97.2%								97.8%
San Miguel	99.6%	97.4%	99.5%	99.2%	99.1%								99.0%
Sandoval	98.6%	97.2%	97.6%	97.9%	97.7%								97.8%
Santa Fe	98.0%	96.3%	97.5%	96.9%	97.5%								97.2%
Taos	98.0%	97.4%	98.3%	99.1%	98.2%								98.2%
NE Region 2 Total	98.6%	97.2%	98.4%	98.7%	97.8%								98.1%
NE Bernalillo	98.1%	96.9%	98.1%	98.0%	98.1%								97.8%
NW Bernalillo	98.0%	97.4%	98.2%	98.1%	98.6%								98.0%
SE Bernalillo	98.0%	97.1%	98.4%	98.5%	98.1%								98.0%
SW Bernalillo	98.1%	96.9%	97.9%	98.2%	97.6%								97.8%
Torrance	99.2%	98.1%	98.5%	99.2%	99.6%								98.9%
Gen. Region 3 Total	98.3%	97.3%	98.2%	98.4%	98.4%								98.1%
Chaves	98.7%	97.3%	98.7%	99.1%	98.1%								98.4%
Curry	98.9%	97.6%	98.6%	98.6%	98.4%								98.4%
Eddy Artesia	98.4%	97.0%	98.3%	98.9%	97.4%								98.0%
Eddy Carlsbad	99.0%	97.1%	97.6%	98.0%	97.2%								97.8%
Lea	98.6%	97.9%	99.0%	99.2%	98.7%								98.7%
Lincoln	98.8%	95.9%	98.5%	96.3%	98.1%								97.5%
Roosevelt	100.0%												100.0%
SE Region 4 Total	98.9%	97.1%	98.5%	98.3%	98.0%								98.2%
East Dona Ana	99.1%	97.2%	99.4%	99.1%	99.2%								98.8%
Grant	98.9%	97.4%	98.9%	99.4%	98.4%								98.6%
Luna	99.2%	97.4%	99.4%	99.6%	98.1%								98.7%
Otero	98.3%	96.9%	97.2%	97.9%	98.9%								97.8%
South Dona Ana	97.9%	97.5%	98.3%	97.8%	97.9%								97.9%
West Dona Ana	99.4%	98.0%	99.4%	99.1%	99.1%								99.0%
SW Region 5 Total	98.8%	97.4%	98.8%	98.8%	98.6%								98.5%
STATE TOTAL	98.7%	97.2%	98.4%	98.5%	98.1%								98.2%

Administrative, Annual, and Auto Renewals are included

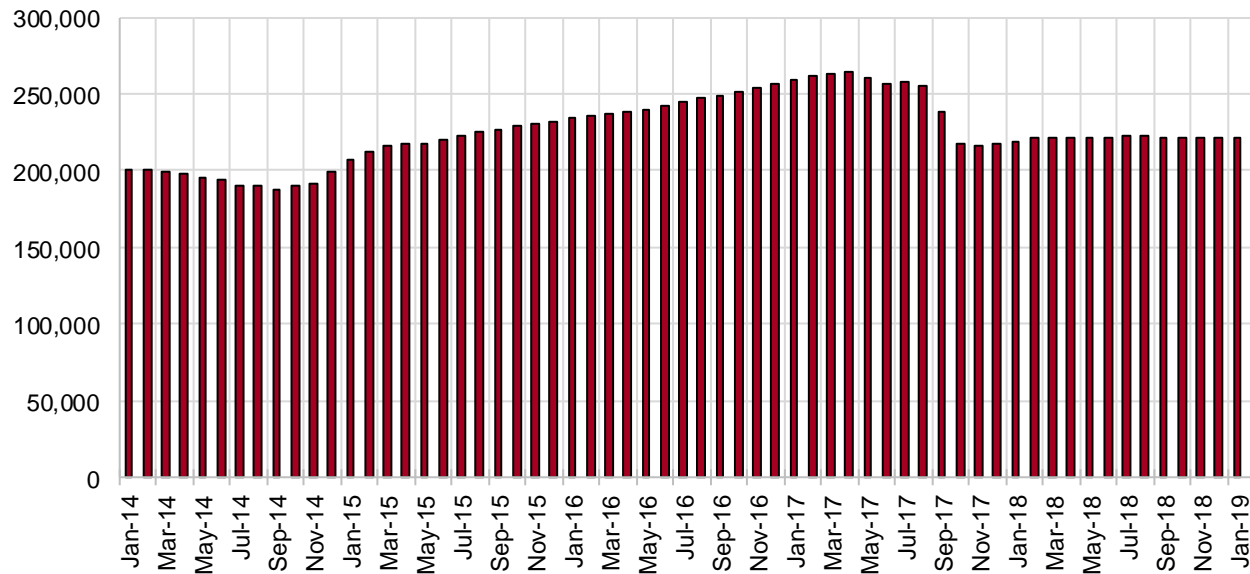
SNAP Cases by Field Office⁶

Office				Percent Change	
	Feb-18	Jan-19	Feb-19	Feb-18- Feb-19	Jan-19- Feb-19
Chaves County ISD	7,138	6,963	6,892	-3.4%	-1.0%
Cibola County ISD	3,632	3,734	3,679	1.3%	-1.5%
Colfax County ISD	1,646	1,653	1,656	0.6%	0.2%
Curry County ISD	6,548	7,010	7,002	6.9%	-0.1%
East Dona Ana County ISD	7,998	7,995	7,936	-0.8%	-0.7%
Eddy Artesia County ISD	1,670	1,605	1,579	-5.4%	-1.6%
Eddy Carlsbad County ISD	3,160	2,832	2,787	-11.8%	-1.6%
Grant County ISD	3,604	3,956	3,907	8.4%	-1.2%
Guadalupe County ISD	702	734	721	2.7%	-1.8%
Hidalgo County ISD	442	16	15	-96.6%	-6.3%
Lea County ISD	5,817	5,592	5,508	-5.3%	-1.5%
Lincoln County ISD	1,968	1,861	1,828	-7.1%	-1.8%
Luna County ISD	4,322	4,171	4,158	-3.8%	-0.3%
McKinley County ISD	9,686	9,951	9,869	1.9%	-0.8%
Northeast Bernalillo County ISD	20,332	20,421	20,337	0.0%	-0.4%
Northwest Bernalillo County ISD	19,110	20,226	20,091	5.1%	-0.7%
Otero County ISD	5,567	5,624	5,654	1.6%	0.5%
Quay County ISD	1,267	1,259	1,262	-0.4%	0.2%
Rio Arriba County ISD	6,764	6,555	6,505	-3.8%	-0.8%
Roosevelt County ISD	0	0	1	0.0%	N/A
San Juan County ISD	13,379	13,732	13,622	1.8%	-0.8%
San Miguel County ISD	4,934	5,045	5,033	2.0%	-0.2%
Sandoval County ISD	11,023	10,045	9,991	-9.4%	-0.5%
Santa Fe County ISD	9,918	9,651	9,668	-2.5%	0.2%
Sierra County ISD	2,703	2,658	2,664	-1.4%	0.2%
Socorro County ISD	2,843	2,744	2,780	-2.2%	1.3%
South Dona Ana ISD	8,559	8,573	8,555	0.0%	-0.2%
Southeast Bernalillo County ISD	11,994	11,928	11,838	-1.3%	-0.8%
Southwest Bernalillo County ISD	18,733	18,722	18,579	-0.8%	-0.8%
Taos County ISD	4,216	4,113	4,128	-2.1%	0.4%
Torrance County ISD	3,432	3,595	3,630	5.8%	1.0%
Valencia North County ISD	8,415	8,383	8,280	-1.6%	-1.2%
Valencia South County ISD	0	1	0	0.0%	-100.0%
West Dona Ana County ISD	10,700	10,732	10,664	-0.3%	-0.6%
Centralized Units	43	10	12	-72.1%	20.0%
Statewide Total	222,265	222,090	220,831	-0.6%	-0.6%

SNAP Cases by Region⁶

Region	Feb-18	Jan-19	Feb-19	Percent Change	
				Feb-18- Feb-19	Jan-19- Feb-19
Region 1 - NW	40,658	41,203	40,894	0.6%	-0.7%
Region 2 - NE	40,470	39,055	38,964	-3.7%	-0.2%
Region 3 - Central	73,601	74,892	74,475	1.2%	-0.6%
Region 4 - SE	26,301	25,863	25,597	-2.7%	-1.0%
Region 5 - SW	41,192	41,067	40,889	-0.7%	-0.4%
Centralized Units	43	10	12	-72.1%	20.0%
Statewide Total	222,265	222,090	220,831	-0.6%	-0.6%

SNAP Caseload: SFY-14 to Current

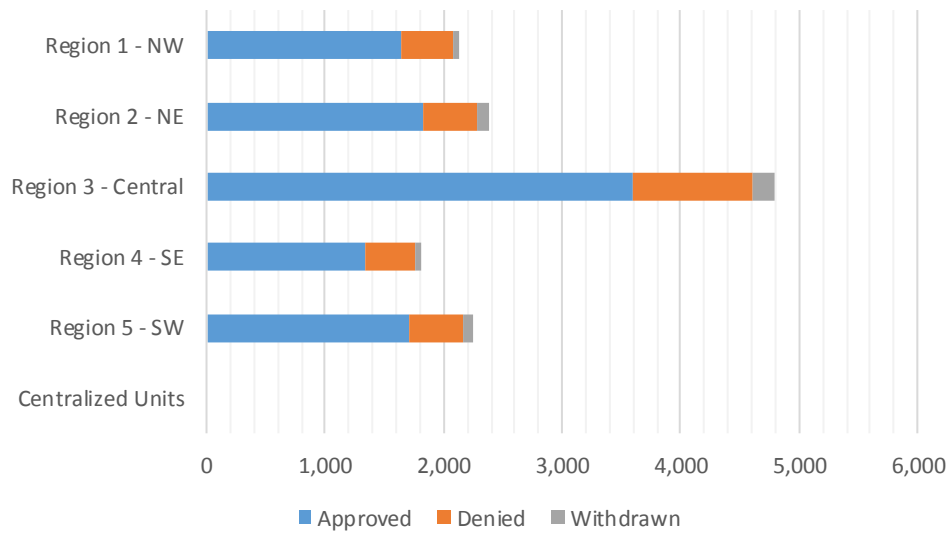


SNAP Initial Applications by Field Office^{4,11}
February 2019

Office	Approved	Denied	Withdrawn	Total Cases Processed
Chaves County ISD	340	95	14	449
Cibola County ISD	138	39	4	181
Colfax County ISD	73	23	6	102
Curry County ISD	347	102	16	465
East Dona Ana County ISD	358	113	21	492
Eddy Artesia County ISD	85	25	2	112
Eddy Carlsbad County ISD	161	63	5	229
Grant County ISD	157	46	12	215
Guadalupe County ISD	15	7		22
Hidalgo County ISD				0
Lea County ISD	306	103	12	421
Lincoln County ISD	96	29	5	130
Luna County ISD	165	37	12	214
McKinley County ISD	326	82	10	418
Northeast Bernalillo County ISD	1,098	325	41	1,464
Northwest Bernalillo County ISD	932	253	66	1,251
Otero County ISD	287	74	11	372
Quay County ISD	49	8	2	59
Rio Arriba County ISD	258	63	12	333
Roosevelt County ISD	3	0		3
San Juan County ISD	671	178	28	877
San Miguel County ISD	213	43	9	265
Sandoval County ISD	482	147	34	663
Santa Fe County ISD	530	129	23	682
Sierra County ISD	95	16	3	114
Socorro County ISD	90	25	2	117
South Dona Ana ISD	278	67	14	359
Southeast Bernalillo County ISD	572	161	22	755
Southwest Bernalillo County ISD	801	210	45	1,056
Taos County ISD	200	45	7	252
Torrance County ISD	194	57	7	258
Valencia North County ISD	329	89	13	431
Valencia South County ISD				0
West Dona Ana County ISD	465	120	16	601
Centralized Units				0
Statewide Total	10,114	2,774	474	13,362

SNAP Initial Applications by Region^{4,11} February 2019

Region	Approved	Denied	Withdrawn	Total Cases Processed
Region 1 - NW	1,649	429	60	2,138
Region 2 - NE	1,820	465	93	2,378
Region 3 - Central	3,597	1,006	181	4,784
Region 4 - SE	1,338	417	54	1,809
Region 5 - SW	1,710	457	86	2,253
Centralized Units	0	0	0	0
Statewide Total	10,114	2,774	474	13,362

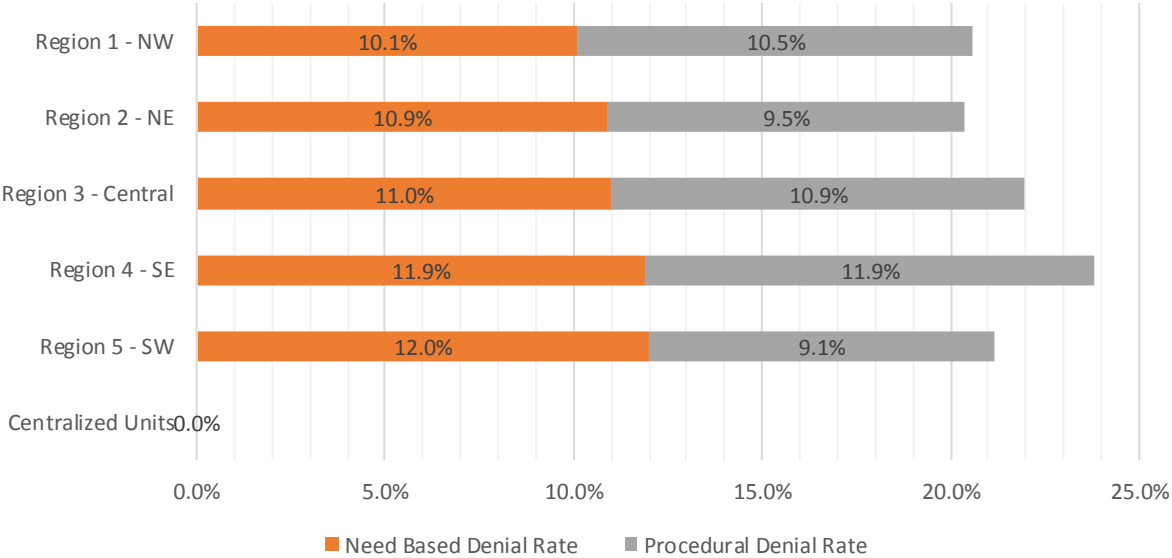


SNAP Initial Disposition Rates by Field Office^{4,11}
February 2019

Office	Approval Rate	Denial Rate	Need Based Denial Rate	Procedural Denial Rate
Chaves County ISD	78.2%	21.8%	10.8%	11.0%
Cibola County ISD	78.0%	22.0%	8.4%	13.6%
Colfax County ISD	76.0%	24.0%	10.5%	13.5%
Curry County ISD	77.3%	22.7%	12.5%	10.2%
East Dona Ana County ISD	76.0%	24.0%	13.6%	10.4%
Eddy Artesia County ISD	77.3%	22.7%	16.3%	6.4%
Eddy Carlsbad County ISD	71.9%	28.1%	10.7%	17.4%
Grant County ISD	77.3%	22.7%	12.4%	10.3%
Guadalupe County ISD	68.2%	31.8%	4.5%	27.3%
Hidalgo County ISD	0.0%	0.0%	0.0%	0.0%
Lea County ISD	74.8%	25.2%	11.8%	13.4%
Lincoln County ISD	76.8%	23.2%	12.0%	11.2%
Luna County ISD	81.7%	18.3%	9.9%	8.4%
McKinley County ISD	79.9%	20.1%	10.5%	9.6%
Northeast Bernalillo County ISD	77.2%	22.8%	10.4%	12.4%
Northwest Bernalillo County ISD	78.6%	21.4%	9.4%	12.0%
Otero County ISD	79.5%	20.5%	10.8%	9.7%
Quay County ISD	86.0%	14.0%	10.5%	3.5%
Rio Arriba County ISD	80.4%	19.6%	7.8%	11.8%
Roosevelt County ISD	100.0%	0.0%	0.0%	0.0%
San Juan County ISD	79.0%	21.0%	9.9%	11.1%
San Miguel County ISD	83.2%	16.8%	13.7%	3.1%
Sandoval County ISD	76.6%	23.4%	13.2%	10.2%
Santa Fe County ISD	80.4%	19.6%	10.6%	9.0%
Sierra County ISD	85.6%	14.4%	9.0%	5.4%
Socorro County ISD	78.3%	21.7%	9.5%	12.2%
South Dona Ana ISD	80.6%	19.4%	13.0%	6.4%
Southeast Bernalillo County ISD	78.0%	22.0%	11.5%	10.5%
Southwest Bernalillo County ISD	79.2%	20.8%	11.9%	8.9%
Taos County ISD	81.6%	18.4%	7.8%	10.6%
Torrance County ISD	77.3%	22.7%	15.5%	7.2%
Valencia North County ISD	78.7%	21.3%	11.5%	9.8%
Valencia South County ISD	0.0%	0.0%	0.0%	0.0%
West Dona Ana County ISD	79.5%	20.5%	11.3%	9.2%
Centralized Units				
Statewide Total	78.5%	21.5%	11.1%	10.4%

SNAP Initial Disposition Rates by Region^{4,11}
February 2019

Region	Approval Rate	Denial Rate	Need Based Denial Rate	Procedural Denial Rate
Region 1 - NW	79.4%	20.6%	10.1%	10.5%
Region 2 - NE	79.6%	20.4%	10.9%	9.5%
Region 3 - Central	78.1%	21.9%	11.0%	10.9%
Region 4 - SE	76.2%	23.8%	11.9%	11.9%
Region 5 - SW	78.9%	21.1%	12.0%	9.1%
Centralized Units				
Statewide Total	78.5%	21.5%	11.1%	10.4%



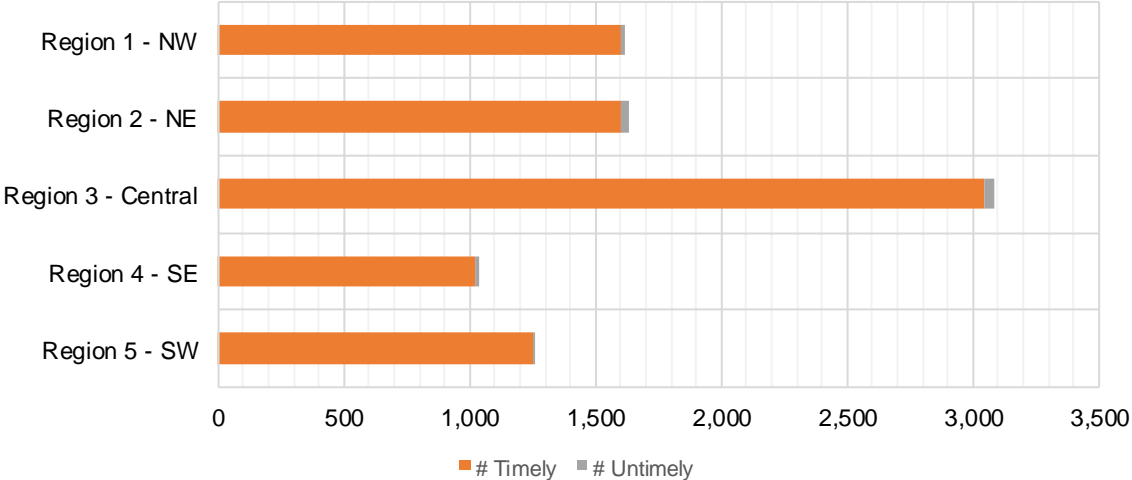
SNAP Expedite Timeliness by Field Office¹³
February 2019

Office Name	Total Expedited Approvals	# Timely	# Untimely	Percentage Timely
Chaves County ISD	237	235	2	99.2 %
Cibola County ISD	130	129	1	99.2 %
Colfax County ISD	53	53	0	100.0 %
Curry County ISD	282	279	3	98.9 %
East Dona Ana County ISD	270	268	2	99.3 %
Eddy Artesia County ISD	64	64	0	100.0 %
Eddy Carlsbad County ISD	114	113	1	99.1 %
Grant County ISD	158	157	1	99.4 %
Guadalupe County ISD	25	25	0	100.0 %
Lea County ISD	254	249	5	98.0 %
Lincoln County ISD	80	80	0	100.0 %
Luna County ISD	128	126	2	98.4 %
McKinley County ISD	389	388	1	99.7 %
Northeast Bernalillo County ISD	922	905	17	98.2 %
Northwest Bernalillo County ISD	797	792	5	99.4 %
Otero County ISD	185	183	2	98.9 %
Quay County ISD	40	39	1	97.5 %
Rio Arriba County ISD	300	294	6	98.0 %
Roosevelt County ISD	4	4	0	100.0 %
San Juan County ISD	679	675	4	99.4 %
San Miguel County ISD	213	211	2	99.1 %
Sandoval County ISD	430	425	5	98.8 %
Santa Fe County ISD	421	411	10	97.6 %
Sierra County ISD	91	89	2	97.8 %
Socorro County ISD	88	88	0	100.0 %
South Dona Ana ISD	176	176	0	100.0 %
Southeast Bernalillo County ISD	509	507	2	99.6 %
Southwest Bernalillo County ISD	722	711	11	98.5 %
Taos County ISD	147	146	1	99.3 %
Torrance County ISD	131	131	0	100.0 %
Valencia North County ISD	237	235	2	99.2 %
West Dona Ana County ISD	344	343	1	99.7 %
Statewide Total	8,620	8,531	89	99.0 %

SNAP Expedite Timeliness by Region¹³
February 2019

Region	Total Expedited Approvals	# Timely	# Untimely	Percentage Timely
Region 1 - NW	1,614	1,604	10	99.4%
Region 2 - NE	1,629	1,604	25	98.5%
Region 3 - Central	3,081	3,046	35	98.9%
Region 4 - SE	1,035	1,024	11	98.9%
Region 5 - SW	1,261	1,253	8	99.4%
Statewide Total	8,620	8,531	89	99.0%

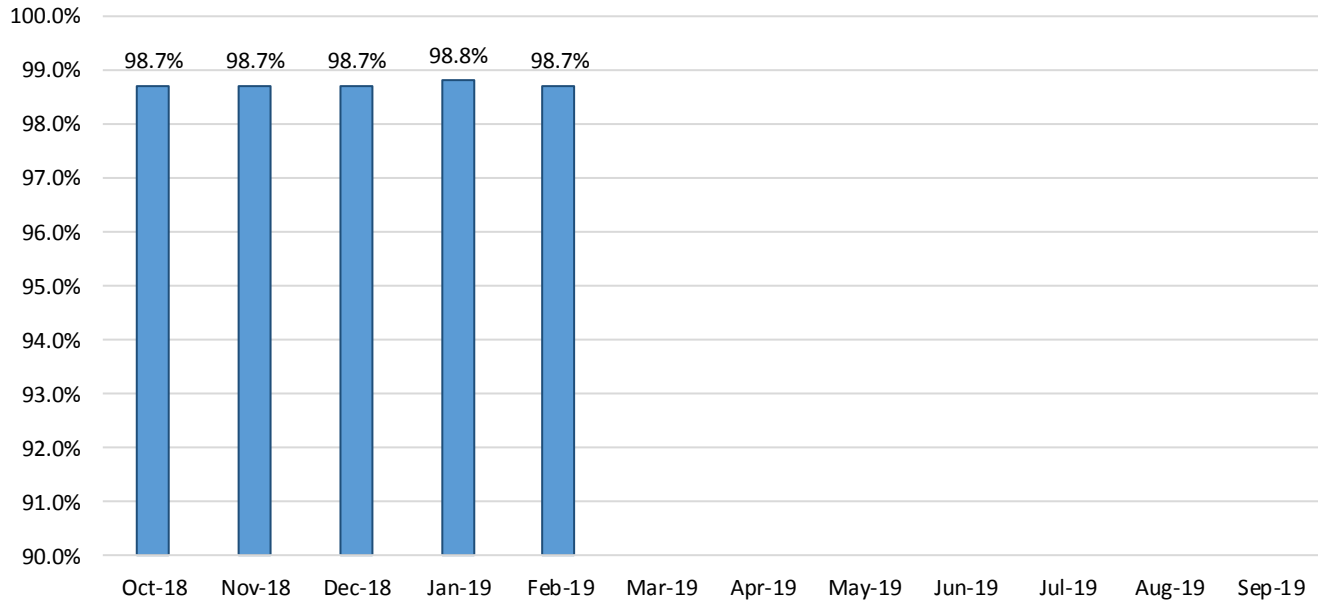
SNAP Expedite - Timeliness



SNAP: Percentage of Applications Processed Timely ¹³

	Oct-18	Nov-18	Dec-18	Jan-19	Feb-19	Mar-19	Apr-19	May-19	Jun-19	Jul-19	Aug-19	Sep-19	Average
APT	98.7%	98.7%	98.7%	98.8%	98.7%								98.7%

SNAP Application Processing Timeliness (APT)



SNAP Non-Expedite: Percentage of Initial Applications Processed Timely by Field Office¹³

	Oct-18	Nov-18	Dec-18	Jan-19	Feb-19	Mar-19	Apr-19	May-19	Jun-19	Jul-19	Aug-19	Sep-19	Average
Cibola	100.0%	99.0%	99.0%	97.5%	98.6%								98.8%
McKinley	98.8%	98.4%	98.9%	100.0%	96.6%								98.5%
San Juan	99.6%	99.2%	98.8%	99.1%	99.0%								99.1%
Sierra	98.9%	100.0%	100.0%	100.0%	100.0%								99.8%
Socorro	100.0%	98.4%	100.0%	100.0%	100.0%								99.7%
Valencia North	99.7%	99.3%	99.2%	100.0%	100.0%								99.6%
Valencia South													
NW Region 1 Total	99.4%	99.1%	99.1%	99.5%	98.8%								99.2%
Colfax	100.0%	100.0%	100.0%	100.0%	100.0%								100.0%
Guadalupe	100.0%	100.0%	96.3%	100.0%	100.0%								99.3%
Quay	100.0%	97.3%	100.0%	100.0%	100.0%								99.5%
Rio Arriba	100.0%	99.5%	98.1%	99.4%	98.9%								99.2%
San Miguel	100.0%	99.3%	99.2%	100.0%	100.0%								99.7%
Sandoval	99.5%	99.2%	99.6%	99.7%	99.6%								99.5%
Santa Fe	99.4%	98.6%	100.0%	99.3%	100.0%								99.5%
Taos	100.0%	98.4%	99.3%	98.9%	100.0%								99.3%
NE Region 2 Total	98.9%	99.0%	99.3%	99.5%	99.8%								99.3%
NE Bernalillo	98.9%	98.8%	98.8%	99.2%	99.4%								99.0%
NW Bernalillo	98.0%	99.3%	99.6%	99.0%	98.9%								99.0%
SE Bernalillo	99.6%	98.7%	99.0%	98.5%	99.3%								99.0%
SW Bernalillo	99.3%	99.5%	98.6%	99.6%	98.6%								99.1%
Torrance	100.0%	97.2%	97.3%	99.2%	97.7%								98.3%
Gen. Region 3 Total	98.9%	99.0%	98.9%	99.2%	99.0%								99.0%
Chaves	100.0%	99.6%	98.8%	99.7%	99.5%								99.5%
Curry	97.9%	98.4%	98.9%	98.4%	100.0%								98.7%
Eddy Artesia	100.0%	100.0%	100.0%	100.0%	100.0%								100.0%
Eddy Carlsbad	100.0%	99.1%	99.0%	100.0%	100.0%								99.6%
Lea	99.1%	99.5%	99.0%	97.8%	97.8%								98.6%
Lincoln	100.0%	98.8%	97.1%	98.8%	100.0%								98.9%
Roosevelt		100.0%		100.0%									100.0%
SE Region 4 Total	98.2%	99.2%	98.8%	99.0%	99.4%								98.9%
East Dona Ana	99.7%	100.0%	99.3%	98.8%	100.0%								99.6%
Grant	100.0%	100.0%	99.0%	100.0%	100.0%								99.8%
Luna	100.0%	99.4%	99.3%	100.0%	100.0%								99.7%
Otero	99.2%	100.0%	99.3%	99.5%	100.0%								99.6%
South Dona Ana	99.6%	99.6%	98.4%	100.0%	100.0%								99.5%
West Dona Ana	99.5%	100.0%	99.3%	99.7%	100.0%								99.7%
SW Region 5 Total	99.4%	99.8%	99.1%	99.6%	100.0%								99.6%
STATE TOTAL	99.0%	99.2%	99.0%	99.3%	99.3%								99.2%

SNAP Expedite: Percentage of Initial Applications Processed Timely by Field Office¹³

	Oct-18	Nov-18	Dec-18	Jan-19	Feb-19	Mar-19	Apr-19	May-19	Jun-19	Jul-19	Aug-19	Sep-19	Average
Cibola	100.0%	99.2%	100.0%	97.8%	96.9%								98.8%
McKinley	98.8%	98.6%	100.0%	99.7%	99.3%								99.3%
San Juan	99.3%	99.5%	99.0%	99.4%	99.5%								99.3%
Sierra	100.0%	98.6%	100.0%	97.8%	100.0%								99.3%
Socorro	100.0%	98.6%	100.0%	100.0%	100.0%								99.7%
Valencia North	99.6%	99.6%	99.0%	99.2%	98.6%								99.2%
Valencia South				100.0%									
NW Region 1 Total	99.6%	99.2%	99.4%	99.3%	99.2%								99.3%
Colfax	100.0%	100.0%	100.0%	100.0%	100.0%								100.0%
Guadalupe	95.2%	100.0%	100.0%	100.0%	100.0%								99.0%
Quay	100.0%	100.0%	100.0%	97.6%	100.0%								99.5%
Rio Arriba	98.6%	97.9%	99.6%	98.0%	97.6%								98.3%
San Miguel	100.0%	100.0%	100.0%	99.1%	100.0%								99.8%
Sandoval	99.0%	98.5%	99.0%	98.8%	98.1%								98.7%
Santa Fe	98.5%	98.1%	99.2%	97.6%	99.1%								98.5%
Taos	98.8%	97.0%	94.3%	99.3%	99.0%								97.7%
NE Region 2 Total	98.8%	98.4%	98.9%	98.5%	98.7%								98.7%
NE Bernalillo	98.8%	98.5%	98.4%	98.1%	97.8%								98.3%
NW Bernalillo	99.0%	99.6%	99.4%	99.4%	99.3%								99.3%
SE Bernalillo	99.2%	99.1%	99.4%	99.6%	97.7%								99.0%
SW Bernalillo	98.7%	99.2%	97.5%	98.6%	98.9%								98.6%
Torrance	98.3%	100.0%	98.1%	100.0%	99.1%								99.1%
Gen. Region 3 Total	98.8%	99.1%	98.7%	98.9%	98.5%								98.8%
Chaves	98.8%	99.1%	100.0%	99.2%	100.0%								99.4%
Curry	98.1%	98.6%	98.4%	98.9%	97.6%								98.3%
Eddy Artesia	96.1%	100.0%	100.0%	100.0%	97.7%								98.8%
Eddy Carlsbad	97.0%	100.0%	98.6%	99.2%	98.9%								98.7%
Lea	98.7%	99.2%	99.1%	98.0%	100.0%								99.0%
Lincoln	100.0%	95.8%	98.2%	100.0%	100.0%								98.8%
Roosevelt	100.0%	100.0%	100.0%	100.0%	100.0%								100.0%
SE Region 4 Total	98.4%	98.9%	99.0%	98.9%	99.0%								98.8%
East Dona Ana	99.6%	99.0%	99.5%	99.3%	100.0%								99.5%
Grant	97.7%	99.3%	100.0%	99.4%	98.8%								99.0%
Luna	100.0%	100.0%	98.9%	98.4%	100.0%								99.5%
Otero	98.5%	99.5%	98.3%	98.9%	97.5%								98.5%
South Dona Ana	99.4%	100.0%	100.0%	100.0%	99.1%								99.7%
West Dona Ana	100.0%	100.0%	99.6%	99.7%	98.8%								99.6%
SW Region 5 Total	99.2%	99.6%	99.4%	99.4%	98.9%								99.3%
STATE TOTAL	98.9%	99.1%	99.0%	99.0%	98.8%								99.0%

SNAP: Percentage of Denied Initial Applications Processed Within 30 Days by Field Office ¹³

	<i>Oct-18</i>	<i>Nov-18</i>	<i>Dec-18</i>	<i>Jan-19</i>	<i>Feb-19</i>	<i>Mar-19</i>	<i>Apr-19</i>	<i>May-19</i>	<i>Jun-19</i>	<i>Jul-19</i>	<i>Aug-19</i>	<i>Sep-19</i>	<i>Average</i>
Cibola	94.4%	92.3%	95.1%	93.9%	97.7%								94.7%
McKinley	96.2%	97.6%	95.2%	99.0%	96.4%								96.9%
San Juan	96.4%	93.2%	93.3%	94.9%	91.5%								93.9%
Sierra	100.0%	93.9%	100.0%	100.0%	100.0%								98.8%
Socorro	100.0%	100.0%	96.8%	97.4%	96.2%								98.1%
Valencia North	100.0%	98.4%	100.0%	99.3%	97.8%								99.1%
Valencia South													
NW Region 1 Total	97.3%	95.7%	95.8%	97.0%	94.9%								96.1%
Colfax	100.0%	96.3%	100.0%	100.0%	100.0%								99.3%
Guadalupe	100.0%	100.0%	100.0%	100.0%	100.0%								100.0%
Quay	100.0%	100.0%	100.0%	92.3%	100.0%								98.5%
Rio Arriba	94.6%	89.7%	93.2%	98.5%	95.6%								94.3%
San Miguel	100.0%	100.0%	100.0%	100.0%	100.0%								100.0%
Sandoval	98.4%	99.5%	99.4%	97.0%	98.1%								98.5%
Santa Fe	96.6%	96.7%	96.7%	97.3%	99.3%								97.3%
Taos	98.0%	98.3%	100.0%	95.2%	97.9%								97.9%
NE Region 2 Total	97.6%	97.4%	98.1%	97.4%	98.4%								97.8%
NE Bernalillo	94.8%	97.3%	93.5%	96.0%	98.6%								96.0%
NW Bernalillo	95.6%	96.8%	97.3%	95.6%	94.9%								96.0%
SE Bernalillo	94.1%	95.5%	96.3%	96.2%	96.5%								95.7%
SW Bernalillo	97.1%	97.0%	98.3%	97.8%	98.6%								97.8%
Torrance	93.2%	95.2%	96.6%	93.3%	100.0%								95.7%
Cen. Region 3 Total	95.3%	96.7%	96.2%	96.2%	97.4%								96.4%
Chaves	98.6%	95.7%	100.0%	99.2%	98.1%								98.3%
Curry	97.8%	96.7%	96.6%	94.5%	99.0%								96.9%
Eddy Artesia	92.6%	93.1%	100.0%	95.8%	96.0%								95.5%
Eddy Carlsbad	96.9%	97.0%	98.6%	100.0%	97.1%								97.9%
Lea	95.7%	97.1%	95.2%	99.1%	99.0%								97.2%
Lincoln	97.4%	93.5%	95.2%	96.6%	96.6%								95.9%
Roosevelt		100.0%											100.0%
SE Region 4 Total	97.1%	96.0%	97.6%	97.9%	98.2%								97.4%
East Dona Ana	97.3%	100.0%	99.2%	97.5%	99.1%								98.6%
Grant	95.8%	93.8%	97.6%	100.0%	97.9%								97.0%
Luna	100.0%	100.0%	98.1%	100.0%	97.6%								99.1%
Otero	100.0%	98.9%	100.0%	97.6%	97.4%								98.8%
South Dona Ana	100.0%	98.4%	98.7%	98.9%	98.6%								98.9%
West Dona Ana	98.2%	98.9%	99.3%	100.0%	98.4%								99.0%
SW Region 5 Total	98.3%	98.8%	99.1%	98.9%	98.3%								98.7%
STATE TOTAL	96.8%	97.0%	97.1%	97.3%	97.4%								97.1%

SNAP: Combined Approvals and Denials Percentage of Initial Applications Processed Timely by Field Office¹³

	Oct-18	Nov-18	Dec-18	Jan-19	Feb-19	Mar-19	Apr-19	May-19	Jun-19	Jul-19	Aug-19	Sep-19	Average
Cibola	99.4%	98.1%	98.9%	97.2%	97.8%								98.3%
McKinley	98.4%	98.4%	99.0%	99.8%	97.6%								98.6%
San Juan	98.9%	98.4%	98.0%	98.5%	97.6%								98.3%
Sierra	99.4%	98.6%	100.0%	99.0%	100.0%								99.4%
Socorro	100.0%	98.8%	99.4%	99.5%	99.1%								99.4%
Valencia North	99.7%	99.3%	99.3%	99.5%	99.1%								99.4%
Valencia South				100.0%									100.0%
NW Region 1 Total	99.1%	98.6%	98.7%	99.0%	98.1%								98.7%
Colfax	100.0%	99.3%	100.0%	100.0%	100.0%								99.9%
Guadalupe	98.4%	100.0%	97.7%	100.0%	100.0%								99.2%
Quay	100.0%	98.6%	100.0%	97.9%	100.0%								99.3%
Rio Arriba	98.3%	97.4%	98.2%	98.5%	97.6%								98.0%
San Miguel	100.0%	99.7%	99.7%	99.5%	100.0%								99.8%
Sandoval	99.1%	99.0%	99.3%	98.9%	98.6%								99.0%
Santa Fe	98.5%	98.0%	99.0%	98.2%	99.4%								98.6%
Taos	99.2%	97.7%	97.5%	98.5%	99.2%								98.4%
NE Region 2 Total	99.0%	98.5%	98.9%	98.7%	99.0%								98.8%
NE Bernalillo	98.1%	98.4%	97.6%	98.1%	98.4%								98.1%
NW Bernalillo	98.0%	98.9%	99.0%	98.5%	98.2%								98.5%
SE Bernalillo	98.5%	98.3%	98.6%	98.6%	98.0%								98.4%
SW Bernalillo	98.7%	98.9%	98.1%	98.9%	98.7%								98.7%
Torrance	97.9%	98.2%	97.5%	98.4%	98.8%								98.2%
Gen. Region 3 Total	98.3%	98.6%	98.3%	98.5%	98.4%								98.4%
Chaves	99.3%	98.6%	99.4%	99.4%	99.3%								99.2%
Curry	98.0%	98.2%	98.3%	97.9%	98.7%								98.2%
Eddy Artesia	97.0%	98.5%	100.0%	99.3%	98.2%								98.6%
Eddy Carlsbad	98.0%	99.1%	98.7%	99.7%	98.7%								98.8%
Lea	98.1%	98.9%	98.4%	98.1%	99.0%								98.5%
Lincoln	99.5%	96.4%	97.0%	99.0%	99.2%								98.2%
Roosevelt	100.0%	100.0%	100.0%	100.0%	100.0%								100.0%
SE Region 4 Total	98.4%	98.5%	98.7%	98.8%	98.9%								98.7%
East Dona Ana	99.2%	99.7%	99.3%	98.7%	99.8%								99.3%
Grant	98.1%	98.7%	99.2%	99.7%	99.0%								98.9%
Luna	100.0%	99.7%	98.9%	99.5%	99.5%								99.5%
Otero	99.0%	99.6%	99.0%	99.0%	98.4%								99.0%
South Dona Ana	99.6%	99.6%	99.0%	99.8%	99.4%								99.5%
West Dona Ana	99.5%	99.8%	99.4%	99.8%	99.2%								99.5%
SW Region 5 Total	99.3%	99.6%	99.2%	99.4%	99.2%								99.3%
STATE TOTAL	98.7%	98.7%	98.7%	98.8%	98.7%								98.7%

SNAP Renewals Processed by Field Office²⁰
February 2019

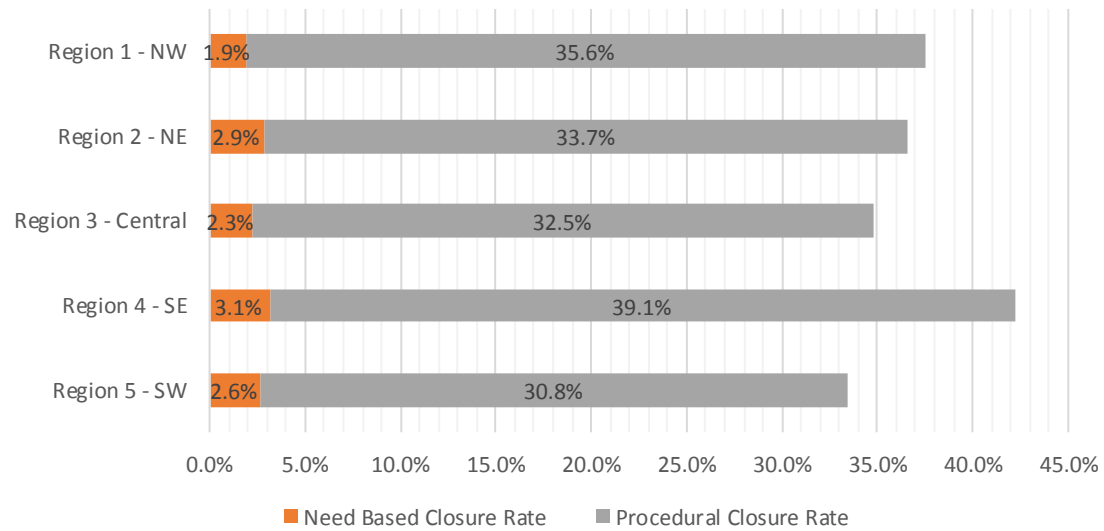
Office	Approvals	Closures	Need Based Closures	Procedural Closures
Chaves County ISD	170	137	14	123
Cibola County ISD	109	71	4	67
Colfax County ISD	47	24	4	20
Curry County ISD	212	127	5	122
East Dona Ana County ISD	255	135	14	121
Eddy Artesia County ISD	50	33	1	32
Eddy Carlsbad County ISD	61	56	5	51
Grant County ISD	128	78	4	74
Guadalupe County ISD	22	5	1	4
Hidalgo County ISD				
Lea County ISD	161	129	11	118
Lincoln County ISD	46	30	2	28
Luna County ISD	126	67	2	65
McKinley County ISD	381	187	4	183
Northeast Bernalillo County ISD	591	366	27	339
Northwest Bernalillo County ISD	548	299	22	277
Otero County ISD	179	102	3	99
Quay County ISD	38	27	3	24
Rio Arriba County ISD	205	145	8	137
Roosevelt County ISD				
San Juan County ISD	382	301	19	282
San Miguel County ISD	152	74	7	67
Sandoval County ISD	323	195	18	177
Santa Fe County ISD	324	168	13	155
Sierra County ISD	83	35	7	28
Socorro County ISD	89	34	0	34
South Dona Ana ISD	365	151	17	134
Southeast Bernalillo County ISD	391	219	7	212
Southwest Bernalillo County ISD	748	334	23	311
Taos County ISD	108	66	2	64
Torrance County ISD	143	72	6	66
Valencia North County ISD	237	142	5	137
Valencia South County ISD				
West Dona Ana County ISD	355	176	16	160
Centralized Units				
Statewide Total	7,029	3,985	274	3,711

SNAP Renewal Disposition Rates by Field Office²⁰
February 2019

Office	Approval Rate	Closure Rate	Need Based Closure Rate	Procedural Closure Rate
Chaves County ISD	55.4%	44.6%	4.6%	40.1%
Cibola County ISD	60.6%	39.4%	2.2%	37.2%
Colfax County ISD	66.2%	33.8%	5.6%	28.2%
Curry County ISD	62.5%	37.5%	1.5%	36.0%
East Dona Ana County ISD	65.4%	34.6%	3.6%	31.0%
Eddy Artesia County ISD	60.2%	39.8%	1.2%	38.6%
Eddy Carlsbad County ISD	52.1%	47.9%	4.3%	43.6%
Grant County ISD	62.1%	37.9%	1.9%	35.9%
Guadalupe County ISD	81.5%	18.5%	3.7%	14.8%
Hidalgo County ISD	0.0%	0.0%	0.0%	0.0%
Lea County ISD	55.5%	44.5%	3.8%	40.7%
Lincoln County ISD	60.5%	39.5%	2.6%	36.8%
Luna County ISD	65.3%	34.7%	1.0%	33.7%
McKinley County ISD	67.1%	32.9%	0.7%	32.2%
Northeast Bernalillo County ISD	61.8%	38.2%	2.8%	35.4%
Northwest Bernalillo County ISD	64.7%	35.3%	2.6%	32.7%
Otero County ISD	63.7%	36.3%	1.1%	35.2%
Quay County ISD	58.5%	41.5%	4.6%	36.9%
Rio Arriba County ISD	58.6%	41.4%	2.3%	39.1%
Roosevelt County ISD	0.0%	0.0%	0.0%	0.0%
San Juan County ISD	55.9%	44.1%	2.8%	41.3%
San Miguel County ISD	67.3%	32.7%	3.1%	29.6%
Sandoval County ISD	62.4%	37.6%	3.5%	34.2%
Santa Fe County ISD	65.9%	34.1%	2.6%	31.5%
Sierra County ISD	70.3%	29.7%	5.9%	23.7%
Socorro County ISD	72.4%	27.6%	0.0%	27.6%
South Dona Ana ISD	70.7%	29.3%	3.3%	26.0%
Southeast Bernalillo County ISD	64.1%	35.9%	1.1%	34.8%
Southwest Bernalillo County ISD	69.1%	30.9%	2.1%	28.7%
Taos County ISD	62.1%	37.9%	1.1%	36.8%
Torrance County ISD	66.5%	33.5%	2.8%	30.7%
Valencia North County ISD	62.5%	37.5%	1.3%	36.1%
Valencia South County ISD	0.0%	0.0%	0.0%	0.0%
West Dona Ana County ISD	66.9%	33.1%	3.0%	30.1%
Centralized Units	0.0%	0.0%	0.0%	0.0%
Statewide Total	63.8%	36.2%	2.5%	33.7%

SNAP Renewal Disposition Rates by Region²⁰
February 2019

Region	Approval Rate	Closure Rate	Need Based Closure Rate	Procedural Closure Rate
Region 1 - NW	62.5%	37.5%	1.9%	35.6%
Region 2 - NE	63.4%	36.6%	2.9%	33.7%
Region 3 - Central	65.2%	34.8%	2.3%	32.5%
Region 4 - SE	57.8%	42.2%	3.1%	39.1%
Region 5 - SW	66.5%	33.5%	2.6%	30.8%
Centralized Units				
Statewide Total	63.8%	36.2%	2.5%	33.7%



SNAP: Percentage of Approved Renewal Applications Processed¹¹

	Oct-18	Nov-18	Dec-18	Jan-19	Feb-19	Mar-19	Apr-19	May-19	Jun-19	Jul-19	Aug-19	Sep-19	Average
Cibola	96.4%	97.6%	99.2%	100.0%	100.0%								98.6%
McKinley	98.9%	98.0%	97.1%	100.0%	98.2%								98.4%
San Juan	98.5%	95.8%	96.8%	99.3%	95.3%								97.1%
Sierra	99.1%	100.0%	98.8%	100.0%	98.8%								99.3%
Socorro	98.3%	96.3%	100.0%	100.0%	96.6%								98.3%
Valencia North	99.1%	99.2%	98.6%	99.6%	95.4%								98.4%
Valencia South													
NW Region 1 Total	98.4%	97.8%	98.4%	99.8%	97.4%								98.4%
Colfax	100.0%	92.2%	98.4%	100.0%	100.0%								98.1%
Guadalupe	100.0%	90.5%	100.0%	100.0%	100.0%								98.1%
Quay	100.0%	98.2%	95.9%	100.0%	100.0%								98.8%
Rio Arriba	96.8%	97.4%	96.7%	100.0%	98.5%								97.9%
San Miguel	97.3%	99.4%	98.8%	100.0%	97.4%								98.6%
Sandoval	99.0%	99.2%	98.0%	99.7%	100.0%								99.2%
Santa Fe	98.9%	99.3%	97.8%	100.0%	98.8%								99.0%
Taos	98.5%	99.2%	99.2%	100.0%	100.0%								99.4%
NE Region 2 Total	98.8%	96.9%	98.1%	100.0%	99.3%								98.6%
NE Bernalillo	98.7%	97.9%	97.3%	98.6%	98.1%								98.1%
NW Bernalillo	98.8%	98.0%	98.3%	97.6%	98.2%								98.2%
SE Bernalillo	98.7%	98.0%	98.3%	99.7%	98.2%								98.6%
SW Bernalillo	99.4%	99.3%	98.8%	99.7%	99.1%								99.3%
Torrance	99.1%	97.0%	96.0%	99.4%	97.9%								97.9%
Gen. Region 3 Total	99.0%	98.1%	97.7%	99.0%	98.3%								98.4%
Chaves	99.1%	98.7%	98.7%	99.5%	100.0%								99.2%
Curry	97.9%	96.1%	93.7%	100.0%	99.1%								97.3%
Eddy Artesia	100.0%	92.7%	90.9%	100.0%	100.0%								96.7%
Eddy Carlsbad	100.0%	98.5%	100.0%	100.0%	98.4%								99.4%
Lea	98.7%	98.1%	98.4%	98.8%	98.8%								98.5%
Lincoln	100.0%	96.1%	100.0%	100.0%	97.8%								98.8%
Roosevelt													
SE Region 4 Total	99.3%	96.7%	96.9%	99.7%	99.0%								98.3%
East Dona Ana	99.6%	100.0%	100.0%	100.0%	99.6%								99.9%
Grant	99.3%	99.3%	100.0%	100.0%	100.0%								99.7%
Luna	98.3%	99.3%	99.4%	100.0%	98.4%								99.1%
Otero	99.5%	100.0%	100.0%	100.0%	99.4%								99.8%
South Dona Ana	100.0%	99.4%	100.0%	100.0%	100.0%								99.9%
West Dona Ana	99.5%	99.1%	99.4%	100.0%	99.7%								99.6%
SW Region 5 Total	99.4%	99.5%	99.8%	100.0%	99.5%								99.6%
STATE TOTAL	99.0%	97.7%	98.2%	99.7%	98.8%								98.7%

If a renewal packet was received on or before 15th of the renewal month, the case shall be considered timely if the case was processed by renewal due date

SNAP: Percentage of Approved Renewal Applications Processed¹¹

	Oct-18	Nov-18	Dec-18	Jan-19	Feb-19	Mar-19	Apr-19	May-19	Jun-19	Jul-19	Aug-19	Sep-19	Average
Cibola	95.8%	97.4%	99.1%	100.0%	100.0%								98.5%
McKinley	98.8%	97.7%	96.7%	100.0%	98.1%								98.3%
San Juan	98.5%	95.4%	96.5%	99.5%	94.7%								96.9%
Sierra	98.9%	100.0%	98.6%	100.0%	98.6%								99.2%
Socorro	97.9%	96.1%	100.0%	100.0%	96.1%								98.0%
Valencia North	99.0%	99.1%	98.5%	99.6%	94.6%								98.1%
Valencia South													
NW Region 1 Total	98.1%	97.6%	98.2%	99.8%	97.0%								98.2%
Colfax	100.0%	91.1%	98.2%	100.0%	100.0%								97.9%
Guadalupe	100.0%	89.5%	100.0%	100.0%	100.0%								97.9%
Quay	100.0%	98.0%	95.7%	100.0%	100.0%								98.7%
Rio Arriba	96.4%	97.0%	96.1%	100.0%	98.3%								97.6%
San Miguel	96.9%	99.3%	98.6%	100.0%	97.0%								98.4%
Sandoval	98.9%	99.1%	97.7%	99.7%	100.0%								99.1%
Santa Fe	98.8%	99.3%	97.5%	100.0%	98.6%								98.8%
Taos	98.3%	99.1%	99.1%	100.0%	100.0%								99.3%
NE Region 2 Total	98.6%	96.5%	97.9%	100.0%	99.2%								98.4%
NE Bernalillo	98.5%	97.8%	96.9%	98.4%	97.9%								97.9%
NW Bernalillo	98.5%	97.7%	98.1%	97.3%	97.9%								97.9%
SE Bernalillo	98.5%	97.8%	98.0%	99.7%	98.1%								98.4%
SW Bernalillo	99.3%	99.2%	98.6%	99.7%	98.9%								99.2%
Torrance	98.9%	96.3%	95.5%	99.3%	97.7%								97.6%
Gen. Region 3 Total	98.8%	97.8%	97.4%	98.9%	98.1%								98.2%
Chaves	99.0%	98.5%	98.5%	99.5%	100.0%								99.1%
Curry	97.5%	95.5%	92.6%	100.0%	98.9%								96.9%
Eddy Artesia	100.0%	91.7%	87.1%	100.0%	100.0%								95.8%
Eddy Carlsbad	100.0%	98.2%	100.0%	100.0%	98.0%								99.2%
Lea	98.5%	98.0%	98.1%	98.6%	98.6%								98.3%
Lincoln	100.0%	97.7%	100.0%	100.0%	97.5%								99.0%
Roosevelt													
SE Region 4 Total	99.2%	96.6%	96.0%	99.7%	98.8%								98.1%
East Dona Ana	99.6%	100.0%	100.0%	100.0%	99.5%								99.8%
Grant	99.3%	99.2%	100.0%	100.0%	100.0%								99.7%
Luna	98.0%	100.0%	99.2%	100.0%	98.1%								99.1%
Otero	99.5%	100.0%	100.0%	100.0%	99.4%								99.8%
South Dona Ana	100.0%	99.4%	100.0%	100.0%	100.0%								99.9%
West Dona Ana	99.5%	99.0%	99.4%	100.0%	99.7%								99.5%
SW Region 5 Total	99.3%	99.6%	99.8%	100.0%	99.4%								99.6%
STATE TOTAL	98.8%	97.5%	97.9%	99.7%	98.6%								98.5%

Only includes cases in which the Renewal Packet was received by the 15th of the month

SNAP: Percentage of Terminations Renewal Applications Processed¹¹

	Oct-18	Nov-18	Dec-18	Jan-19	Feb-19	Mar-19	Apr-19	May-19	Jun-19	Jul-19	Aug-19	Sep-19	Average
Cibola	97.5%	94.7%	98.6%	100.0%	98.6%								97.9%
McKinley	98.3%	95.2%	95.0%	98.6%	100.0%								97.4%
San Juan	96.9%	96.0%	94.5%	96.6%	98.0%								96.4%
Sierra	100.0%	98.3%	100.0%	100.0%	100.0%								99.7%
Socorro	100.0%	95.1%	96.5%	100.0%	100.0%								98.3%
Valencia North	98.6%	98.8%	99.0%	98.8%	98.6%								98.8%
Valencia South													
NW Region 1 Total	98.6%	96.3%	97.3%	99.0%	99.2%								98.1%
Colfax	96.9%	96.6%	93.3%	95.8%	91.7%								94.9%
Guadalupe	100.0%	93.8%	100.0%	100.0%	100.0%								98.8%
Quay	100.0%	100.0%	100.0%	100.0%	100.0%								100.0%
Rio Arriba	97.3%	99.2%	98.6%	100.0%	97.9%								98.6%
San Miguel	95.4%	98.8%	100.0%	100.0%	98.6%								98.6%
Sandoval	99.0%	97.3%	97.3%	99.1%	100.0%								98.5%
Santa Fe	98.7%	99.4%	98.3%	97.4%	95.8%								97.9%
Taos	100.0%	96.8%	97.7%	100.0%	97.0%								98.3%
NE Region 2 Total	98.4%	97.7%	98.2%	99.0%	97.6%								98.2%
NE Bernalillo	97.3%	97.9%	95.8%	97.0%	98.9%								97.4%
NW Bernalillo	98.1%	97.5%	97.3%	97.0%	97.0%								97.4%
SE Bernalillo	98.0%	95.0%	98.1%	95.8%	97.7%								96.9%
SW Bernalillo	98.1%	98.3%	98.8%	98.1%	98.5%								98.4%
Torrance	98.9%	98.5%	90.7%	97.5%	98.6%								96.8%
Gen. Region 3 Total	98.1%	97.4%	96.1%	97.1%	98.1%								97.4%
Chaves	98.6%	95.1%	97.9%	97.9%	97.8%								97.5%
Curry	99.2%	100.0%	93.3%	100.0%	100.0%								98.5%
Eddy Artesia	96.7%	94.7%	93.1%	96.4%	100.0%								96.2%
Eddy Carlsbad	100.0%	98.1%	100.0%	94.4%	100.0%								98.5%
Lea	97.8%	97.4%	96.4%	98.8%	96.9%								97.4%
Lincoln	95.6%	94.3%	97.8%	100.0%	100.0%								97.5%
Roosevelt													
SE Region 4 Total	98.0%	96.6%	96.4%	97.9%	99.1%								97.6%
East Dona Ana	98.6%	99.2%	98.0%	100.0%	97.8%								98.7%
Grant	97.1%	98.6%	100.0%	100.0%	100.0%								99.1%
Luna	100.0%	98.6%	98.9%	100.0%	100.0%								99.5%
Otero	99.1%	99.2%	99.2%	100.0%	100.0%								99.5%
South Dona Ana	100.0%	100.0%	100.0%	98.9%	100.0%								99.8%
West Dona Ana	100.0%	99.3%	99.5%	100.0%	99.4%								99.7%
SW Region 5 Total	99.1%	99.2%	99.3%	99.8%	99.5%								99.4%
STATE TOTAL	98.4%	97.5%	97.5%	98.7%	98.7%								98.2%

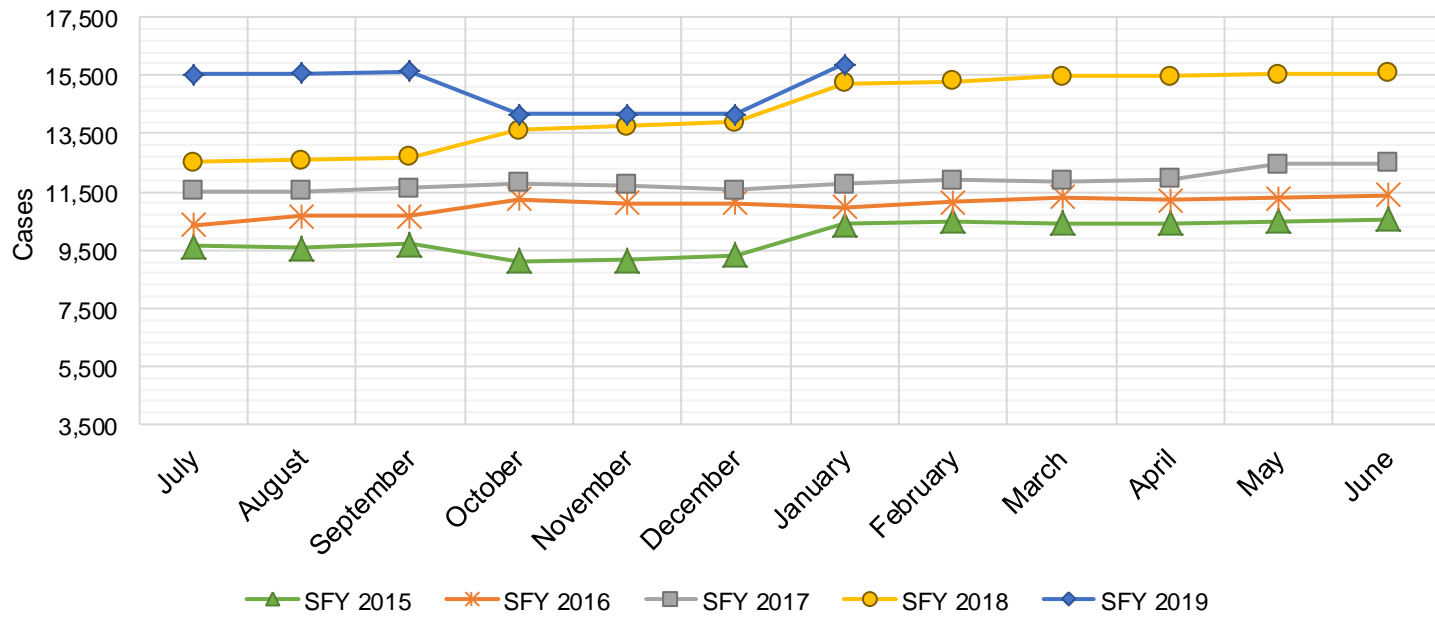
Includes cases for which no renewal application was received.

SNAP: Combined Percentage of Approved and Terminated Renewal Applications Processed ¹¹													
	Oct-18	Nov-18	Dec-18	Jan-19	Feb-19	Mar-19	Apr-19	May-19	Jun-19	Jul-19	Aug-19	Sep-19	Average
Cibola	96.8%	96.7%	99.0%	100.0%	99.4%								98.4%
McKinley	98.8%	97.3%	96.3%	99.7%	98.8%								98.2%
San Juan	97.9%	95.9%	95.9%	98.5%	96.5%								96.9%
Sierra	99.4%	99.3%	99.2%	100.0%	99.2%								99.4%
Socorro	98.8%	95.9%	98.7%	100.0%	97.6%								98.2%
Valencia North	99.0%	99.1%	98.8%	99.4%	96.6%								98.6%
Valencia South													
NW Region 1 Total	98.4%	97.4%	98.0%	99.6%	98.0%								98.3%
Colfax	99.0%	93.8%	96.8%	98.7%	97.2%								97.1%
Guadalupe	100.0%	91.9%	100.0%	100.0%	100.0%								98.4%
Quay	100.0%	98.7%	96.8%	100.0%	100.0%								99.1%
Rio Arriba	96.9%	98.0%	97.4%	100.0%	98.3%								98.1%
San Miguel	96.7%	99.2%	99.2%	100.0%	97.8%								98.6%
Sandoval	99.0%	98.5%	97.7%	99.5%	100.0%								99.0%
Santa Fe	98.9%	99.3%	98.0%	99.2%	97.8%								98.6%
Taos	99.1%	98.4%	98.6%	100.0%	98.9%								99.0%
NE Region 2 Total	98.7%	97.2%	98.1%	99.7%	98.7%								98.5%
NE Bernalillo	98.1%	97.9%	96.7%	98.1%	98.4%								97.8%
NW Bernalillo	98.5%	97.8%	97.9%	97.4%	97.8%								97.9%
SE Bernalillo	98.4%	97.0%	98.2%	98.6%	98.0%								98.0%
SW Bernalillo	99.0%	99.0%	98.8%	99.3%	98.9%								99.0%
Torrance	99.0%	97.5%	93.8%	99.0%	98.1%								97.5%
Gen. Region 3 Total	98.6%	97.8%	97.1%	98.5%	98.3%								98.0%
Chaves	98.9%	97.4%	98.4%	99.0%	99.0%								98.5%
Curry	98.3%	97.4%	93.5%	100.0%	99.4%								97.7%
Eddy Artesia	98.7%	93.5%	91.7%	98.6%	100.0%								96.5%
Eddy Carlsbad	100.0%	98.3%	100.0%	98.1%	99.1%								99.1%
Lea	98.3%	97.8%	97.5%	98.8%	97.9%								98.1%
Lincoln	98.0%	95.3%	98.9%	100.0%	98.7%								98.2%
Roosevelt													
SE Region 4 Total	98.7%	96.6%	96.7%	99.1%	99.0%								98.0%
East Dona Ana	99.3%	99.8%	99.3%	100.0%	99.0%								99.5%
Grant	98.6%	99.1%	100.0%	100.0%	100.0%								99.5%
Luna	98.8%	99.1%	99.2%	100.0%	99.0%								99.2%
Otero	99.4%	99.7%	99.7%	100.0%	99.6%								99.7%
South Dona Ana	100.0%	99.6%	100.0%	99.8%	100.0%								99.9%
West Dona Ana	99.7%	99.2%	99.4%	100.0%	99.6%								99.6%
SW Region 5 Total	99.3%	99.4%	99.6%	100.0%	99.5%								99.6%
STATE TOTAL	98.7%	97.7%	97.9%	99.4%	98.7%								98.5%

State SNAP Supplement

SFY 2015 ¹²			SFY 2016 ^{12,9}			SFY 2017 ⁹			SFY 2018 ⁹			SFY 2019 ⁹		
	Cases	Expenditures		Cases	Expenditures		Cases	Expenditures		Cases	Expenditures		Cases	Expenditures
Jul-14	9,635	\$88,859	Jul-15	10,345	\$86,143	Jul-16	11,537	\$95,553	Jul-17	12,526	\$97,568	Jul-18	15,555	\$141,711
Aug-14	9,559	\$87,757	Aug-15	10,669	\$88,197	Aug-16	11,522	\$95,107	Aug-17	12,589	\$98,954	Aug-18	15,584	\$139,719
Sep-14	9,688	\$87,372	Sep-15	10,676	\$88,426	Sep-16	11,613	\$94,472	Sep-17	12,679	\$97,546	Sep-18	15,631	\$140,768
Oct-14	9,136	\$70,490	Oct-15	11,262	\$96,758	Oct-16	11,797	\$96,679	Oct-17	13,628	\$117,343	Oct-18	14,161	\$125,737
Nov-14	9,152	\$69,955	Nov-15	11,099	\$91,996	Nov-16	11,735	\$93,689	Nov-17	13,748	\$119,055	Nov-18	14,160	\$125,401
Dec-14	9,322	\$73,226	Dec-15	11,125	\$90,771	Dec-16	11,556	\$93,739	Dec-17	13,877	\$120,585	Dec-18	14,163	\$126,263
Jan-15	10,384	\$84,578	Jan-16	10,977	\$92,760	Jan-17	11,763	\$96,074	Jan-18	15,246	\$135,993	Jan-19	15,890	\$141,357
Feb-15	10,477	\$82,901	Feb-16	11,153	\$95,363	Feb-17	11,907	\$98,251	Feb-18	15,308	\$137,296	Feb-19		
Mar-15	10,423	\$87,461	Mar-16	11,332	\$96,751	Mar-17	11,853	\$96,693	Mar-18	15,482	\$139,132	Mar-19		
Apr-15	10,440	\$79,605	Apr-16	11,222	\$93,959	Apr-17	11,944	\$97,060	Apr-18	15,466	\$139,202	Apr-19		
May-15	10,491	\$82,511	May-16	11,283	\$95,271	May-17	12,457	\$96,940	May-18	15,525	\$139,397	May-19		
Jun-15	10,575	\$85,134	Jun-16	11,389	\$93,061	Jun-17	12,498	\$97,405	Jun-18	15,577	\$140,802	Jun-19		

TOTAL	119,282	\$979,850	132,532	\$1,109,455	142,182	\$1,151,662	171,651	\$1,482,874	105,144	\$940,955
AVERAGE	9,940	\$81,654	11,044	\$92,455	11,849	\$95,972	14,304	\$123,573	15,021	\$134,422



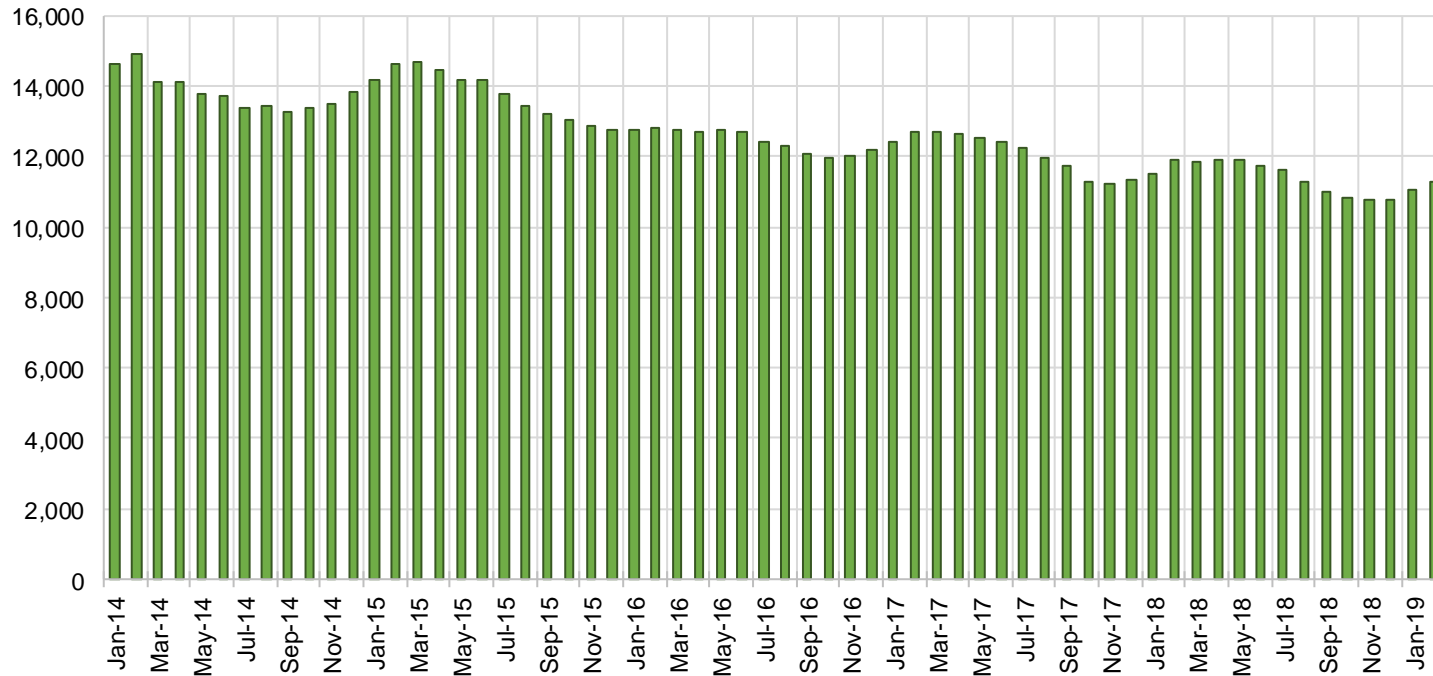
TANF Cases by Field Office⁶

Office	Feb-18	Jan-19	Feb-19	Percent Change	
				Feb-18- Feb-19	Jan-19- Feb-19
Chaves County ISD	507	399	391	-22.9%	-2.0%
Cibola County ISD	149	150	143	-4.0%	-4.7%
Colfax County ISD	74	84	81	9.5%	-3.6%
Curry County ISD	691	654	661	-4.3%	1.1%
East Dona Ana County ISD	475	434	422	-11.2%	-2.8%
Eddy Artesia County ISD	123	92	92	-25.2%	0.0%
Eddy Carlsbad County ISD	150	141	138	-8.0%	-2.1%
Grant County ISD	185	205	196	5.9%	-4.4%
Guadalupe County ISD	35	24	25	-28.6%	4.2%
Hidalgo County ISD	24	0	0	-100.0%	N/A
Lea County ISD	390	367	324	-16.9%	-11.7%
Lincoln County ISD	98	103	102	4.1%	-1.0%
Luna County ISD	220	238	225	2.3%	-5.5%
McKinley County ISD	59	81	83	40.7%	2.5%
Northeast Bernalillo County ISD	958	924	897	-6.4%	-2.9%
Northwest Bernalillo County ISD	790	830	809	2.4%	-2.5%
Otero County ISD	287	245	247	-13.9%	0.8%
Quay County ISD	68	59	60	-11.8%	1.7%
Rio Arriba County ISD	409	365	366	-10.5%	0.3%
Roosevelt County ISD	0	0	0	NA	N/A
San Juan County ISD	313	328	331	5.8%	0.9%
San Miguel County ISD	187	181	182	-2.7%	0.6%
Sandoval County ISD	550	501	494	-10.2%	-1.4%
Santa Fe County ISD	436	377	391	-10.3%	3.7%
Sierra County ISD	69	69	68	-1.4%	-1.4%
Socorro County ISD	96	83	80	-16.7%	-3.6%
South Dona Ana ISD	677	680	675	-0.3%	-0.7%
Southeast Bernalillo County ISD	622	611	603	-3.1%	-1.3%
Southwest Bernalillo County ISD	1,134	1,119	1,086	-4.2%	-2.9%
Taos County ISD	149	134	149	0.0%	11.2%
Torrance County ISD	201	192	189	-6.0%	-1.6%
Valencia North County ISD	471	403	391	-17.0%	-3.0%
Valencia South County ISD	0	1	0	N/A	-100.0%
West Dona Ana County ISD	692	674	654	-5.5%	-3.0%
Centralized Units	5	1	3	-40.0%	200.0%
Statewide Total	11,294	10,749	10,558	-6.5%	-1.8%

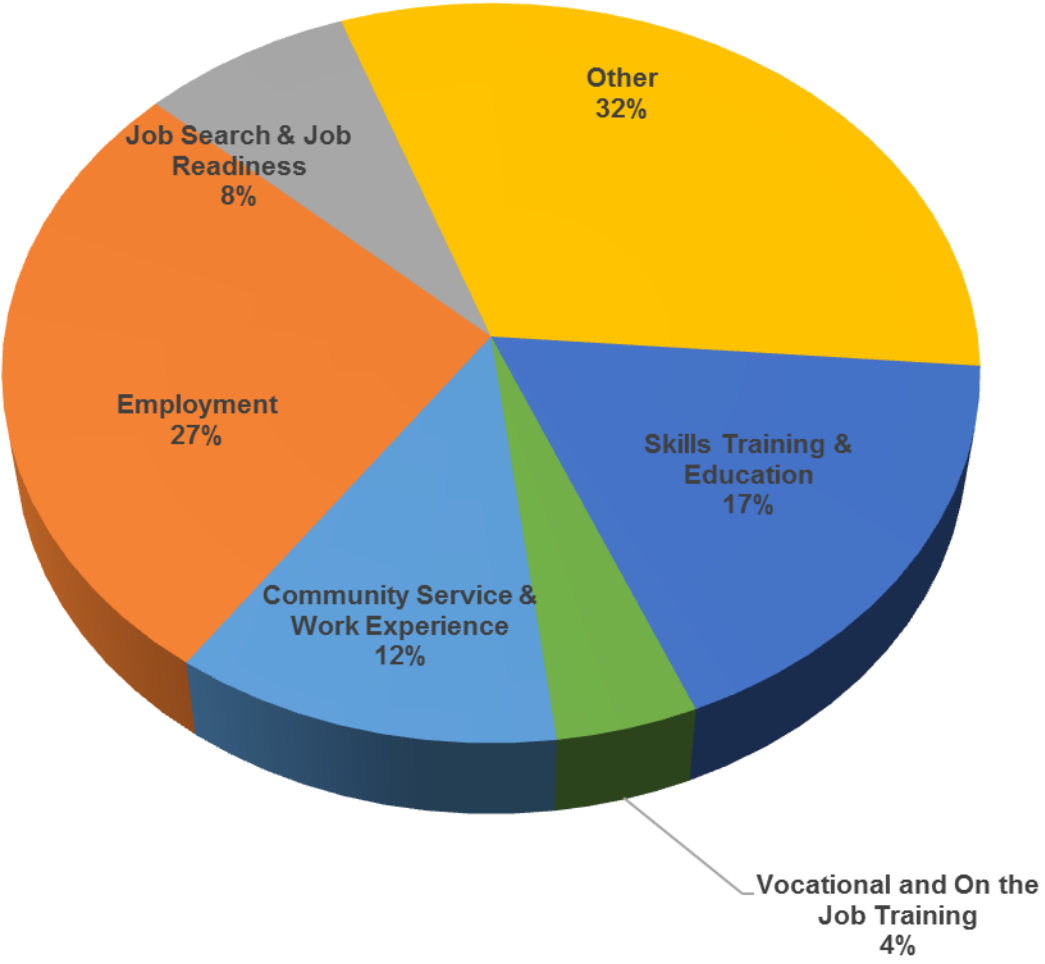
TANF Cases by Region⁶

Region	Feb-18	Jan-19	Feb-19	Percent Change	
				Feb-18- Feb-19	Jan-19- Feb-19
Region 1- NW	1,157	1,115	1,096	-5.3%	-1.7%
Region 2- NE	1,908	1,725	1,748	-8.4%	1.3%
Region 3- Central	3,705	3,676	3,584	-3.3%	-2.5%
Region 4- SE	1,959	1,756	1,708	-12.8%	-2.7%
Region 5- SW	2,560	2,476	2,419	-5.5%	-2.3%
Centralized Units	5	1	3	-40.0%	200.0%
Statewide Total	11,294	10,749	10,558	-6.5%	-1.8%

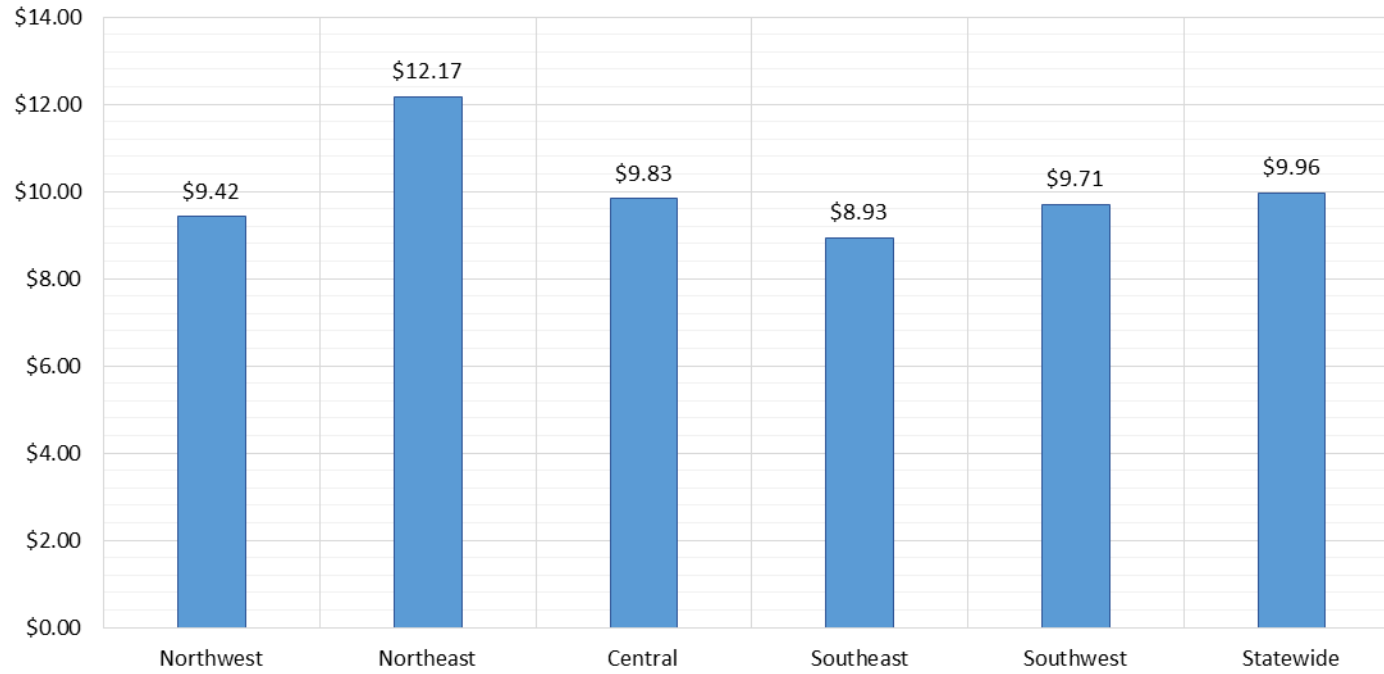
TANF Caseload: SFY-14 to Current



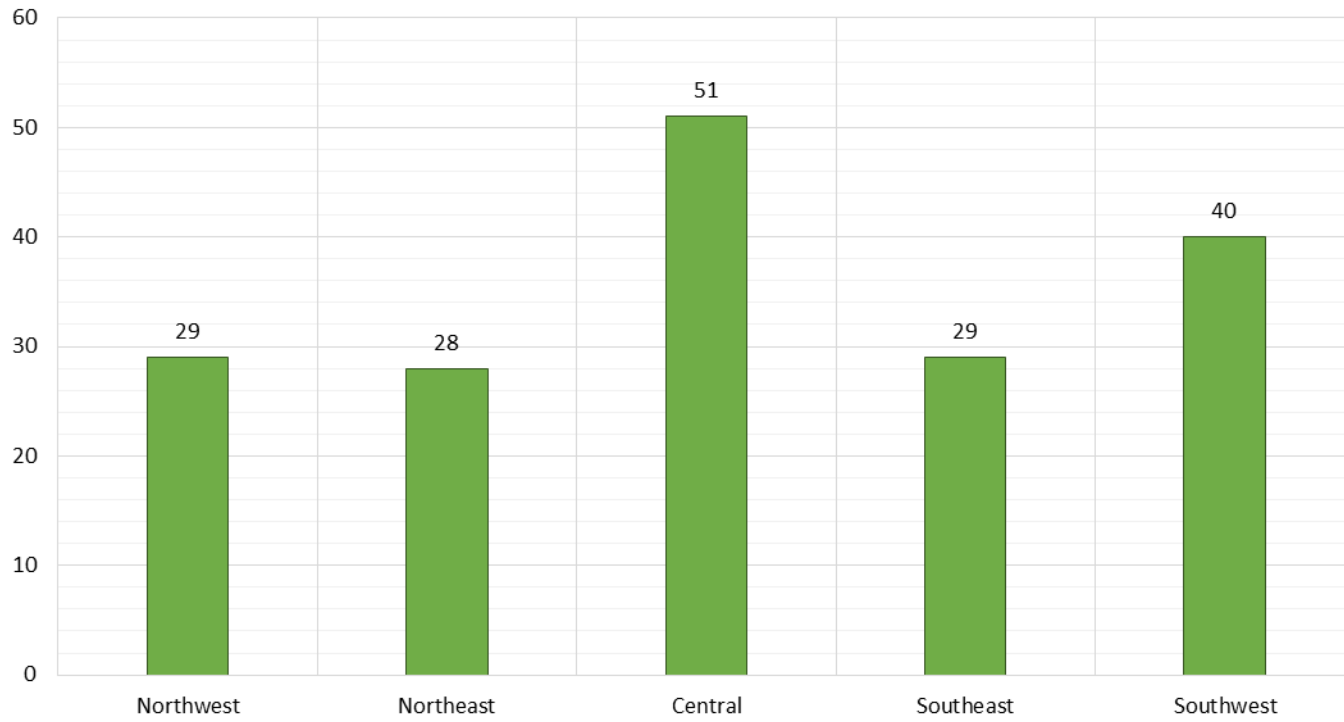
**NM Works Activity Placements on February 28, 2019
as reported by SL Start¹⁴**



Average Starting Hourly Wage of February 2019 TANF Employments
as reported by SL Start¹⁵



Number of New Employments in February 2019 by Region
as reported by SL Start¹⁵
Statewide Total: 177



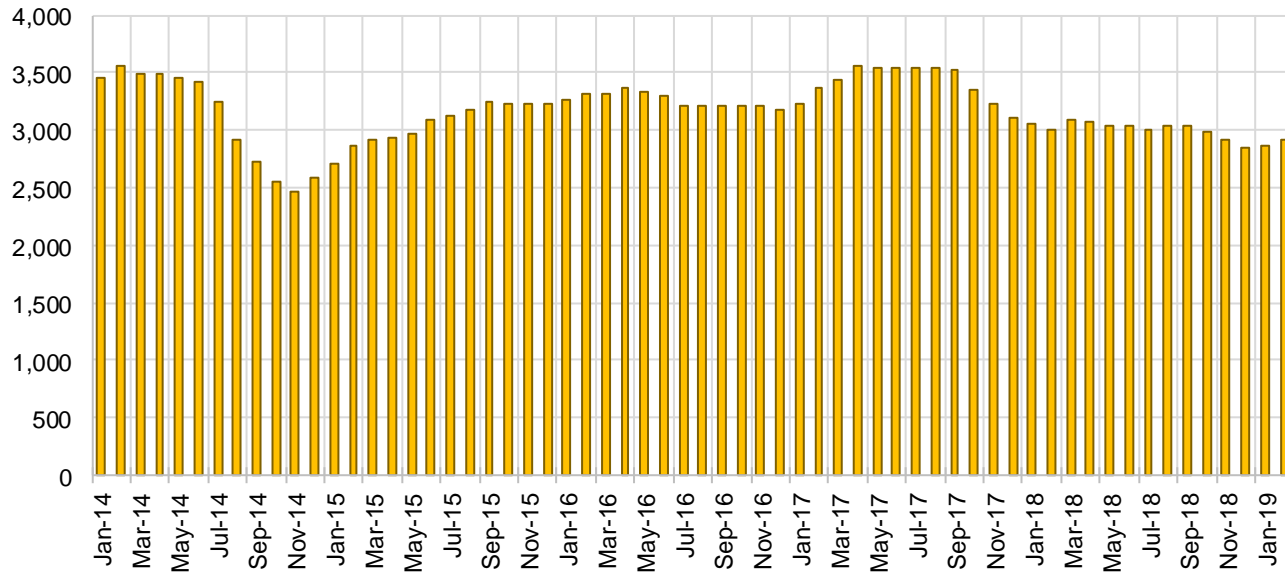
General Assistance Cases by Field Office⁶

Office	Feb-18	Jan-19	Feb-19	Percent Change	
				Feb-18- Feb-19	Jan-19- Feb-19
Chaves County ISD	134	116	115	-14.2%	-0.9%
Cibola County ISD	46	50	51	10.9%	2.0%
Colfax County ISD	25	22	22	-12.0%	0.0%
Curry County ISD	78	77	77	-1.3%	0.0%
East Dona Ana County ISD	122	98	105	-13.9%	7.1%
Eddy Artesia County ISD	25	29	30	20.0%	3.4%
Eddy Carlsbad County ISD	72	67	66	-8.3%	-1.5%
Grant County ISD	66	64	62	-6.1%	-3.1%
Guadalupe County ISD	15	14	13	-13.3%	-7.1%
Hidalgo County ISD	13	0	0	-100.0%	N/A
Lea County ISD	78	75	71	-9.0%	-5.3%
Lincoln County ISD	30	25	25	-16.7%	0.0%
Luna County ISD	56	51	52	-7.1%	2.0%
McKinley County ISD	49	55	62	26.5%	12.7%
Northeast Bernalillo County ISD	354	288	285	-19.5%	-1.0%
Northwest Bernalillo County ISD	309	265	261	-15.5%	-1.5%
Otero County ISD	95	66	67	-29.5%	1.5%
Quay County ISD	24	28	29	20.8%	3.6%
Rio Arriba County ISD	79	80	81	2.5%	1.3%
Roosevelt County ISD	0	0	0	N/A	N/A
San Juan County ISD	136	130	124	-8.8%	-4.6%
San Miguel County ISD	76	68	72	-5.3%	5.9%
Sandoval County ISD	120	108	97	-19.2%	-10.2%
Santa Fe County ISD	139	126	118	-15.1%	-6.3%
Sierra County ISD	26	30	30	15.4%	0.0%
Socorro County ISD	39	36	37	-5.1%	2.8%
South Dona Ana ISD	56	57	51	-8.9%	-10.5%
Southeast Bernalillo County ISD	171	165	163	-4.7%	-1.2%
Southwest Bernalillo County ISD	209	180	182	-12.9%	1.1%
Taos County ISD	56	39	42	-25.0%	7.7%
Torrance County ISD	49	49	51	4.1%	4.1%
Valencia North County ISD	112	112	108	-3.6%	-3.6%
Valencia South County ISD	0	0	0	N/A	N/A
West Dona Ana County ISD	184	169	176	-4.3%	4.1%
Centralized Units	0	0	0	N/A	N/A
Statewide Total	3,043	2,739	2,725	-10.5%	-0.5%

General Assistance Cases by Region⁶

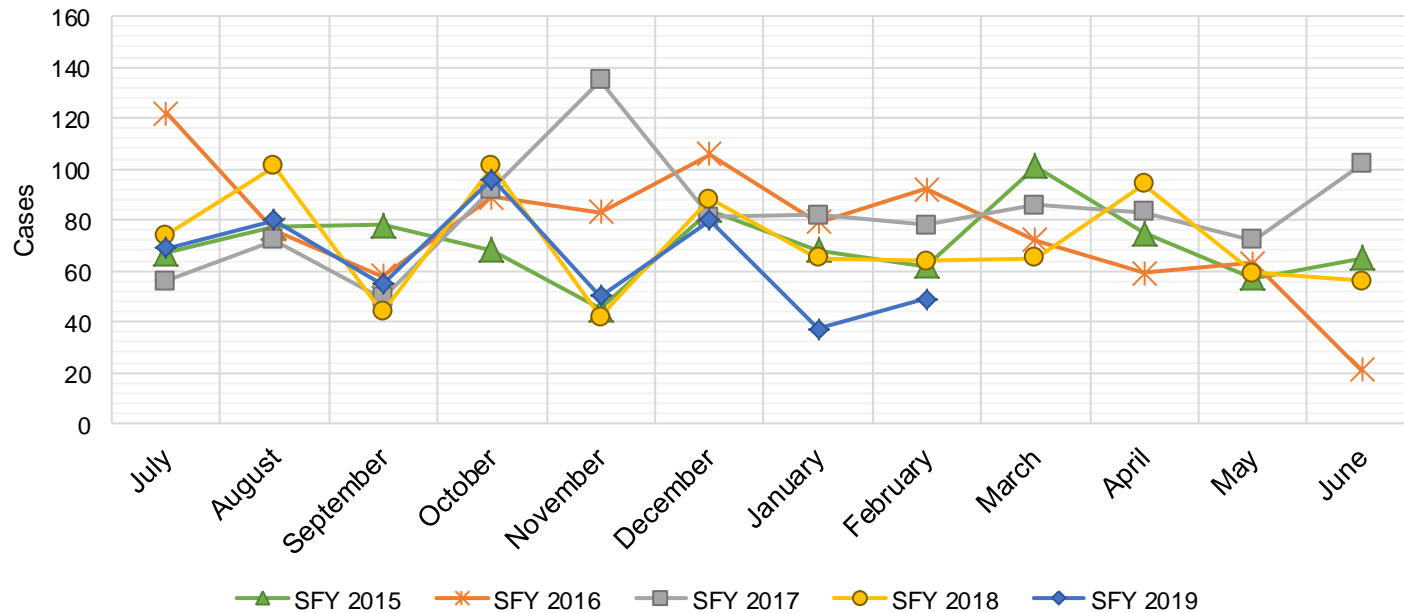
Region	Feb-18	Jan-19	Feb-19	Percent Change	
				Feb-18- Feb-19	Jan-19- Feb-19
Region 1 - NW	408	413	412	1.0%	-0.2%
Region 2 - NE	534	485	474	-11.2%	-2.3%
Region 3 - Central	1,092	947	942	-13.7%	-0.5%
Region 4 - SE	417	389	384	-7.9%	-1.3%
Region 5 - SW	592	505	513	-13.3%	1.6%
Centralized Units	0	0	0	N/A	N/A
Statewide Total	3,043	2,739	2,725	-10.5%	-0.5%

General Assistance Caseload: SFY-14 to Current



General Assistance Interim Assistance Reimbursements¹⁶

SFY 2015			SFY 2016			SFY 2017			SFY 2018			SFY 2019		
	Cases	Expenditures		Cases	Expenditures		Cases	Expenditures		Cases	Expenditures		Cases	Expenditures
Jul-14	67	\$144,679	Jul-15	122	\$342,648	Jul-16	56	\$164,970	Jul-17	74	\$241,438	Jul-18	69	\$228,333
Aug-14	77	\$244,233	Aug-15	76	\$245,236	Aug-16	72	\$223,182	Aug-17	101	\$339,301	Aug-18	80	\$241,292
Sep-14	78	\$168,421	Sep-15	58	\$170,093	Sep-16	49	\$158,027	Sep-17	44	\$131,229	Sep-18	55	\$188,192
Oct-14	68	\$182,265	Oct-15	89	\$277,912	Oct-16	92	\$257,830	Oct-17	101	\$335,752	Oct-18	96	\$298,502
Nov-14	45	\$134,482	Nov-15	83	\$238,948	Nov-16	135	\$402,305	Nov-17	42	\$139,572	Nov-18	50	\$148,641
Dec-14	84	\$239,926	Dec-15	106	\$388,102	Dec-16	81	\$227,569	Dec-17	88	\$245,453	Dec-18	80	\$246,422
Jan-15	68	\$227,066	Jan-16	79	\$239,263	Jan-17	82	\$274,050	Jan-18	65	\$258,239	Jan-19	37	\$106,081
Feb-15	62	\$159,564	Feb-16	92	\$296,332	Feb-17	78	\$227,569	Feb-18	64	\$195,815	Feb-19	49	\$119,300
Mar-15	101	\$317,899	Mar-16	72	\$254,360	Mar-17	86	\$278,219	Mar-18	65	\$172,188	Mar-19		
Apr-15	75	\$199,038	Apr-16	59	\$208,631	Apr-17	83	\$267,187	Apr-18	94	\$312,340	Apr-19		
May-15	57	\$167,383	May-16	63	\$182,241	May-17	72	\$232,836	May-18	59	\$155,406	May-19		
Jun-15	65	\$188,159	Jun-16	21	\$51,760	Jun-17	102	\$306,228	Jun-18	56	\$159,268	Jun-19		
TOTAL	847	\$2,373,115	920	\$2,895,525	988	\$3,019,972	853	\$2,686,001	516	\$1,576,763				
AVERAGE	71	\$197,760	77	\$241,294	82	\$251,664	71	\$223,833	65	\$197,095				



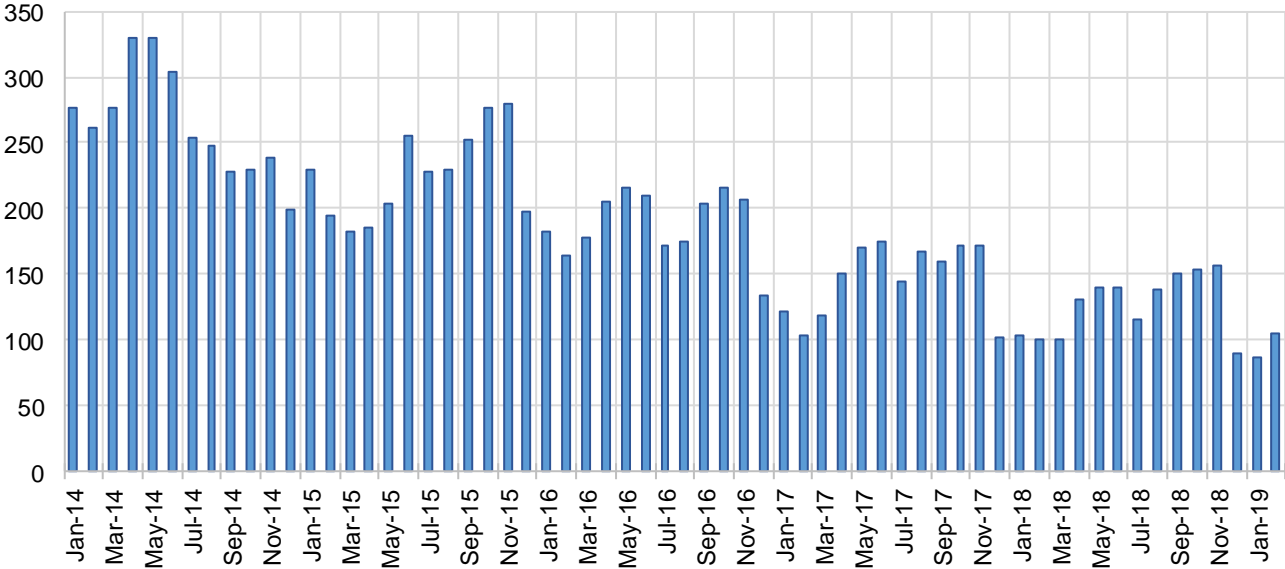
Education Works Cases by Field Office⁶

Office				Percent Change	
	Feb-18	Jan-19	Feb-19	Feb-18- Feb-19	Jan-19- Feb-19
Chaves County ISD	2	0	0	-100.0%	N/A
Cibola County ISD	1	1	0	-100.0%	-100.0%
Colfax County ISD	0	1	1	N/A	0.0%
Curry County ISD	5	3	3	-40.0%	0.0%
East Dona Ana County ISD	11	15	14	27.3%	-6.7%
Eddy Artesia County ISD	3	1	1	-66.7%	0.0%
Eddy Carlsbad County ISD	2	2	2	0.0%	0.0%
Grant County ISD	10	5	4	-60.0%	-20.0%
Guadalupe County ISD	0	0	0	N/A	N/A
Hidalgo County ISD	0	0	0	N/A	N/A
Lea County ISD	4	2	2	-50.0%	0.0%
Lincoln County ISD	1	0	0	-100.0%	N/A
Luna County ISD	3	1	2	-33.3%	100.0%
McKinley County ISD	0	0	0	N/A	N/A
Northeast Bernalillo County ISD	12	10	11	-8.3%	10.0%
Northwest Bernalillo County ISD	9	8	6	-33.3%	-25.0%
Otero County ISD	3	1	1	-66.7%	0.0%
Quay County ISD	0	0	0	N/A	N/A
Rio Arriba County ISD	2	2	2	0.0%	0.0%
Roosevelt County ISD	0	0	0	N/A	N/A
San Juan County ISD	3	2	2	-33.3%	0.0%
San Miguel County ISD	2	3	4	100.0%	33.3%
Sandoval County ISD	13	7	7	-46.2%	0.0%
Santa Fe County ISD	13	9	10	-23.1%	11.1%
Sierra County ISD	0	1	1	N/A	0.0%
Socorro County ISD	2	0	0	-100.0%	N/A
South Dona Ana ISD	18	10	9	-50.0%	-10.0%
Southeast Bernalillo County ISD	4	4	5	25.0%	25.0%
Southwest Bernalillo County ISD	7	7	11	57.1%	57.1%
Taos County ISD	1	0	0	-100.0%	N/A
Torrance County ISD	0	0	0	N/A	N/A
Valencia North County ISD	0	0	0	N/A	N/A
Valencia South County ISD	0	0	0	N/A	N/A
West Dona Ana County ISD	7	8	8	14.3%	0.0%
Centralized Units	0	0	0	N/A	N/A
Statewide Total	138	103	106	-23.2%	2.9%

Education Works Cases by Region⁶

				Percent Change	
Region	Feb-18	Jan-19	Feb-19	Feb-18- Feb-19	Jan-19- Feb-19
Region 1 - NW	6	4	3	-50.0%	-25.0%
Region 2 - NE	31	22	24	-22.6%	9.1%
Region 3 - Central	32	29	33	3.1%	13.8%
Region 4 - SE	17	8	8	-52.9%	0.0%
Region 5 - SW	52	40	38	-26.9%	-5.0%
Centralized Units	0	0	0	N/A	N/A
Statewide Total	138	103	106	-23.2%	2.9%

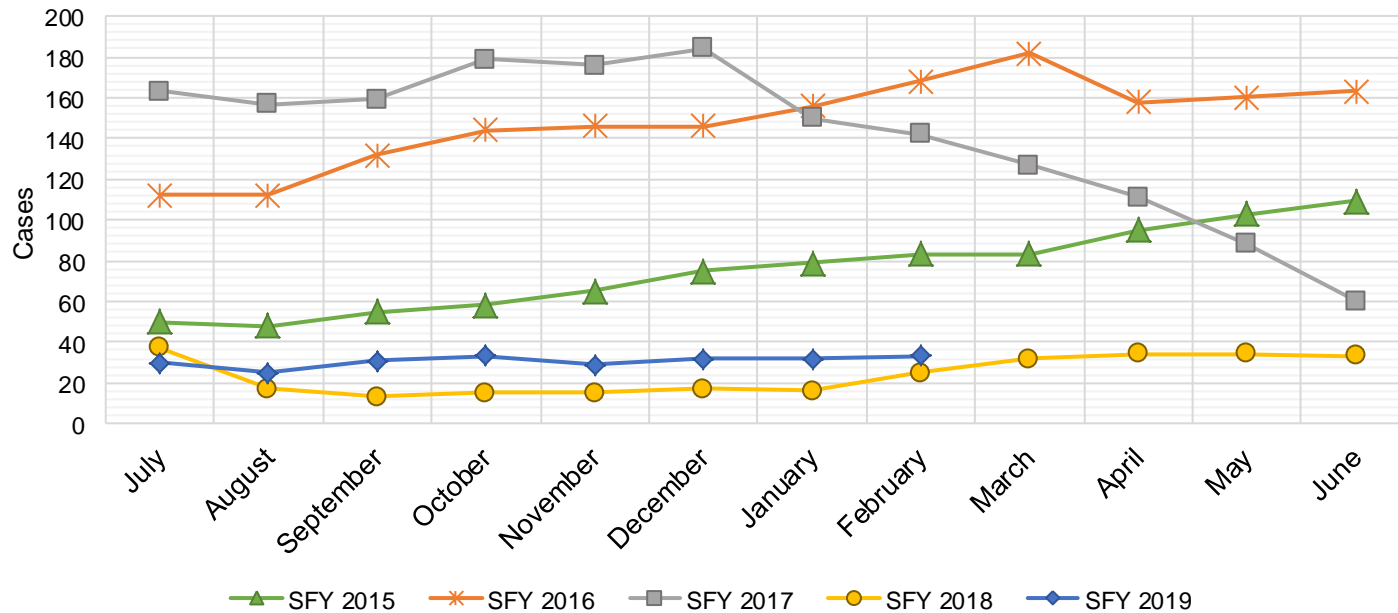
Education Works Caseload: SFY-14 to Current



Refugee Cash Assistance

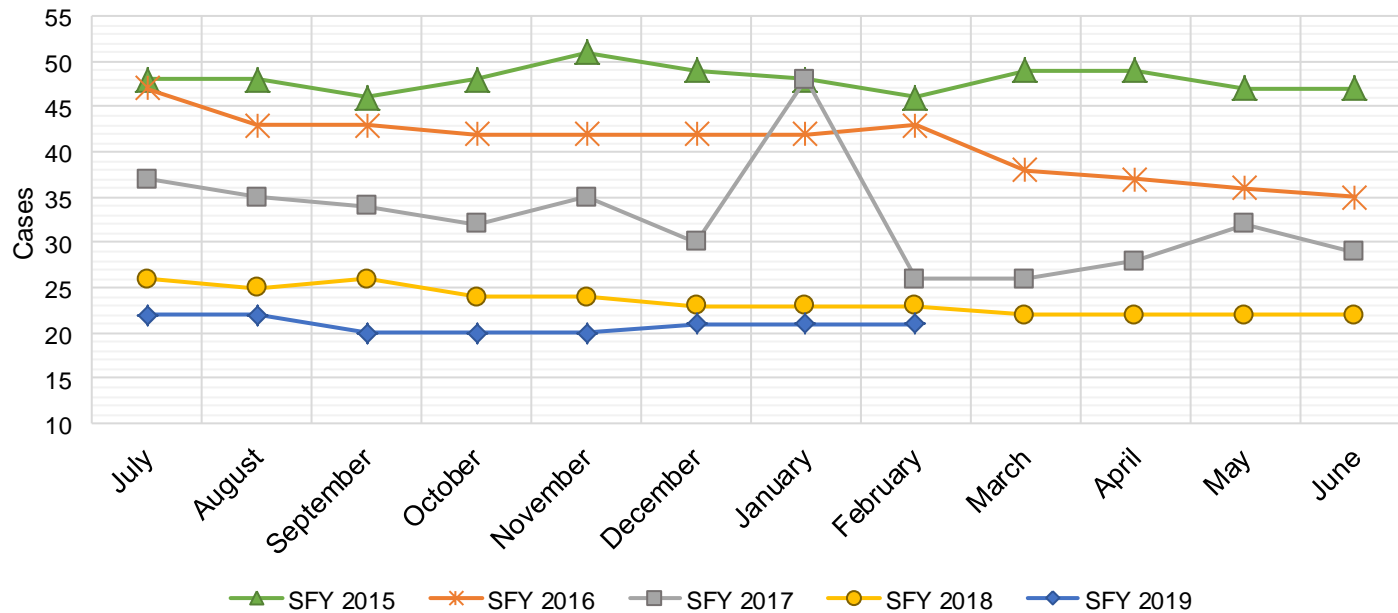
SFY 2015 ¹²			SFY 2016 ^{8,12,9}			SFY 2017 ^{8,9}			SFY 2018 ^{8,9}			SFY 2019 ^{8,9}		
	Cases	Expenditures		Cases	Expenditures		Cases	Expenditures		Cases	Expenditures		Cases	Expenditures
Jul-14	50	\$11,679	Jul-15	112	\$27,516	Jul-16	163	\$39,756	Jul-17	37	\$9,981	Jul-18	30	\$7,408
Aug-14	48	\$11,760	Aug-15	112	\$27,438	Aug-16	157	\$40,115	Aug-17	17	\$4,704	Aug-18	25	\$6,434
Sep-14	55	\$13,094	Sep-15	132	\$31,321	Sep-16	159	\$39,359	Sep-17	13	\$3,159	Sep-18	31	\$6,947
Oct-14	58	\$13,726	Oct-15	144	\$36,153	Oct-16	179	\$41,520	Oct-17	15	\$3,543	Oct-18	33	\$6,323
Nov-14	65	\$16,461	Nov-15	146	\$36,515	Nov-16	176	\$45,434	Nov-17	15	\$4,263	Nov-18	29	\$7,036
Dec-14	75	\$18,699	Dec-15	146	\$35,763	Dec-16	184	\$46,673	Dec-17	17	\$4,795	Dec-18	32	\$7,300
Jan-15	79	\$19,009	Jan-16	156	\$38,686	Jan-17	150	\$38,790	Jan-18	16	\$4,166	Jan-19	32	\$7,418
Feb-15	83	\$21,349	Feb-16	168	\$41,368	Feb-17	142	\$37,956	Feb-18	25	\$5,723	Feb-19	33	\$8,591
Mar-15	83	\$20,730	Mar-16	182	\$45,307	Mar-17	127	\$33,066	Mar-18	32	\$7,636	Mar-19		
Apr-15	95	\$23,495	Apr-16	158	\$41,143	Apr-17	111	\$29,183	Apr-18	34	\$8,827	Apr-19		
May-15	103	\$25,363	May-16	160	\$38,332	May-17	88	\$23,343	May-18	34	\$8,939	May-19		
Jun-15	109	\$27,958	Jun-16	163	\$39,856	Jun-17	60	\$15,538	Jun-18	33	\$8,513	Jun-19		

TOTAL	903	\$223,323	1,779	\$439,397	1,696	\$430,732	288	\$74,249	245	\$57,457
AVERAGE	75	\$18,610	148	\$36,616	141	\$35,894	24	\$6,187	31	\$7,182



State Supplement for Residential Care

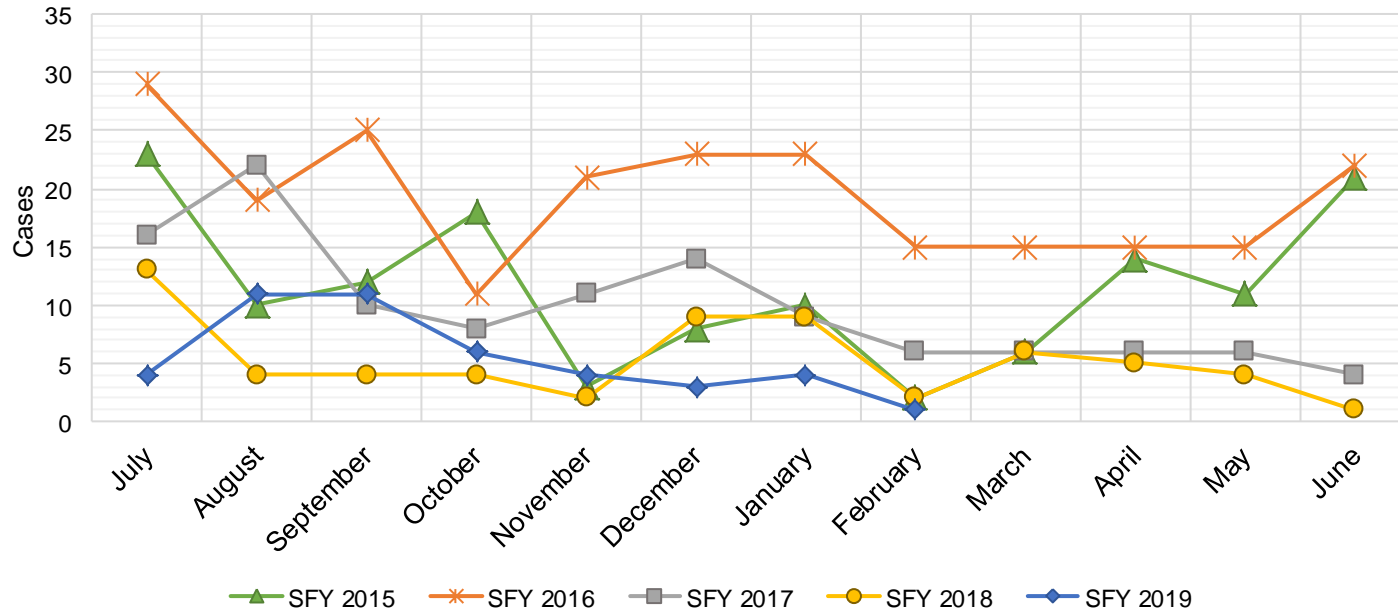
SFY 2015 ¹²			SFY 2016 ^{12,9}			SFY 2017 ⁹			SFY 2018 ⁹			SFY 2019 ⁹		
	Cases	Expenditures		Cases	Expenditures		Cases	Expenditures		Cases	Expenditures		Cases	Expenditures
Jul-14	48	\$4,700	Jul-15	47	\$4,700	Jul-16	37	\$3,700	Jul-17	26	\$2,700	Jul-18	22	\$2,200
Aug-14	48	\$5,000	Aug-15	43	\$4,900	Aug-16	35	\$3,500	Aug-17	25	\$2,500	Aug-18	22	\$2,200
Sep-14	46	\$4,600	Sep-15	43	\$4,500	Sep-16	34	\$3,400	Sep-17	26	\$2,700	Sep-18	20	\$2,000
Oct-14	48	\$4,600	Oct-15	42	\$4,400	Oct-16	32	\$3,200	Oct-17	24	\$2,500	Oct-18	20	\$2,000
Nov-14	51	\$5,600	Nov-15	42	\$4,200	Nov-16	35	\$3,500	Nov-17	24	\$2,400	Nov-18	20	\$2,000
Dec-14	49	\$5,000	Dec-15	42	\$4,200	Dec-16	30	\$3,000	Dec-17	23	\$2,200	Dec-18	21	\$2,100
Jan-15	48	\$4,900	Jan-16	42	\$4,200	Jan-17	48	\$4,800	Jan-18	23	\$2,400	Jan-19	21	\$2,000
Feb-15	46	\$4,800	Feb-16	43	\$4,300	Feb-17	26	\$2,600	Feb-18	23	\$2,300	Feb-19	21	\$2,200
Mar-15	49	\$4,800	Mar-16	38	\$3,800	Mar-17	26	\$2,600	Mar-18	22	\$2,400	Mar-19		
Apr-15	49	\$5,400	Apr-16	37	\$3,700	Apr-17	28	\$2,800	Apr-18	22	\$2,200	Apr-19		
May-15	47	\$4,700	May-16	36	\$3,600	May-17	32	\$3,200	May-18	22	\$2,200	May-19		
Jun-15	47	\$5,300	Jun-16	35	\$3,500	Jun-17	29	\$2,900	Jun-18	22	\$2,200	Jun-19		
TOTAL	576	\$59,400	490	\$50,000	392	\$39,200	282	\$28,700	167	\$16,700				
AVERAGE	48	\$4,950	41	\$4,167	33	\$3,267	24	\$2,392	21	\$2,088				



TANF Diversion Payments

SFY 2015 ¹²			SFY 2016 ^{12,9}			SFY 2017 ⁹			SFY 2018 ⁹			SFY 2019 ⁹		
	Cases	Expenditures		Cases	Expenditures		Cases	Expenditures		Cases	Expenditures		Cases	Expenditures
Jul-14	23	\$48,098	Jul-15	29	\$62,074	Jul-16	16	\$30,843	Jul-17	13	\$26,500	Jul-18	4	\$3,000
Aug-14	10	\$21,810	Aug-15	19	\$33,584	Aug-16	22	\$42,731	Aug-17	4	\$12,000	Aug-18	11	\$18,583
Sep-14	12	\$23,500	Sep-15	25	\$47,977	Sep-16	10	\$21,000	Sep-17	4	\$4,000	Sep-18	11	\$20,999
Oct-14	18	\$30,589	Oct-15	11	\$20,500	Oct-16	8	\$16,744	Oct-17	4	\$16,000	Oct-18	6	\$10,499
Nov-14	3	\$4,411	Nov-15	21	\$45,500	Nov-16	11	\$24,500	Nov-17	2	\$15,500	Nov-18	4	\$7,499
Dec-14	8	\$14,634	Dec-15	23	\$45,389	Dec-16	14	\$26,611	Dec-17	9	\$17,500	Dec-18	3	\$2,499
Jan-15	10	\$18,000	Jan-16	23	\$41,874	Jan-17	9	\$18,500	Jan-18	9	\$21,731	Jan-19	4	\$5,999
Feb-15	2	\$5,500	Feb-16	15	\$28,500	Feb-17	6	\$12,000	Feb-18	2	\$7,731	Feb-19	1	\$1,678
Mar-15	6	\$12,000	Mar-16	15	\$27,008	Mar-17	6	\$11,000	Mar-18	6	\$8,496	Mar-19		
Apr-15	14	\$26,000	Apr-16	15	\$31,389	Apr-17	6	\$12,000	Apr-18	5	\$13,500	Apr-19		
May-15	11	\$21,500	May-16	15	\$31,916	May-17	6	\$11,500	May-18	4	\$12,500	May-19		
Jun-15	21	\$40,039	Jun-16	22	\$43,000	Jun-17	4	\$13,500	Jun-18	1	\$5,389	Jun-19		

TOTAL	138	\$266,081	233	\$458,711	118	\$240,929	63	\$160,847	44	\$70,756
AVERAGE	12	\$22,173	19	\$38,226	10	\$20,077	5	\$13,404	6	\$8,845

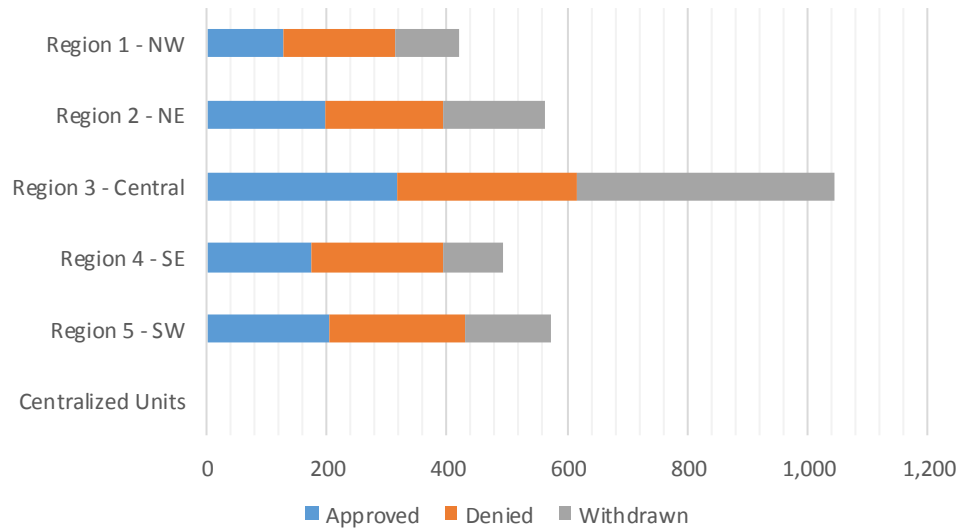


Cash Assistance Applications by Field Office^{4,11}
February 2019

Office	Approved	Denied	Withdrawn	Total Cases Processed
Chaves County ISD	36	63	17	116
Cibola County ISD	12	20	3	35
Colfax County ISD	12	16	5	33
Curry County ISD	69	57	31	157
East Dona Ana County ISD	43	81	18	142
Eddy Artesia County ISD	10	7	6	23
Eddy Carlsbad County ISD	19	21	18	58
Grant County ISD	16	27	20	63
Guadalupe County ISD	1	1	3	5
Hidalgo County ISD	0	0	0	0
Lea County ISD	24	49	21	94
Lincoln County ISD	17	21	8	46
Luna County ISD	17	12	8	37
McKinley County ISD	13	27	23	63
Northeast Bernalillo County ISD	75	66	164	305
Northwest Bernalillo County ISD	75	64	128	267
Otero County ISD	27	24	27	78
Quay County ISD	4	10	5	19
Rio Arriba County ISD	30	37	17	84
Roosevelt County ISD				0
San Juan County ISD	49	93	47	189
San Miguel County ISD	21	20	12	53
Sandoval County ISD	50	61	57	168
Santa Fe County ISD	51	27	59	137
Sierra County ISD	5	-2	9	12
Socorro County ISD	13	15	4	32
South Dona Ana ISD	39	24	26	89
Southeast Bernalillo County ISD	64	61	69	194
Southwest Bernalillo County ISD	82	88	48	218
Taos County ISD	30	24	11	65
Torrance County ISD	23	19	19	61
Valencia North County ISD	36	34	18	88
Valencia South County ISD				0
West Dona Ana County ISD	64	57	44	165
Centralized Units	0	0	0	0
Statewide Total	1,027	1,124	945	3,096

Cash Assistance Applications by Region^{4,11} February 2019

	Approved	Denied	Withdrawn	Total Cases Processed
Region				
Region 1 - NW	128	187	104	419
Region 2 - NE	199	196	169	564
Region 3 - Central	319	298	428	1,045
Region 4 - SE	175	218	101	494
Region 5 - SW	206	225	143	574
Centralized Units	0	0	0	0
Statewide Total	1,027	1,124	945	3,096



Children Youth and Families Department
Children Receiving Child Care Assistance Subsidies By County

County	Feb 2018	Mar 2018	Apr 2018	May 2018	June 2018	July 2018	Aug 2018	Sept 2018	Oct 2018	Nov 2018	Dec 2018	Jan 2019	Feb 2019	Change Fr. Last Year Cases	Percent
Bernalillo	7,739	7,824	7,853	7,925	8,146	7,735	7,741	8,041	7,753	7,741	7,584	7,545	7,563	-176	-2.3%
Catron	0	0	0	0	0	0	0	0	0	0	0	0	0	0	0.0%
Chaves	823	807	791	819	865	837	828	861	817	836	814	812	834	11	1.3%
Cibola	289	277	291	286	295	289	278	312	316	315	302	287	285	-4	-1.4%
Colfax	50	51	56	57	59	56	56	59	62	60	57	62	57	7	14.0%
Curry	514	517	536	538	535	539	538	592	543	548	517	492	489	-25	-4.9%
De Baca	8	4	4	4	4	4	4	4	4	1	1	1	1	-7	-87.5%
Dona Ana	4,382	4,322	4,349	4,369	4,455	4,260	4,219	4,403	4,311	4,304	4,191	4,198	4,351	-31	-0.7%
Eddy	257	240	242	234	245	264	259	268	267	257	259	248	243	-14	-5.4%
Grant	127	133	140	138	142	110	111	134	133	139	126	125	134	7	5.5%
Guadalupe	11	15	14	14	14	14	18	11	16	14	12	11	11	0	0.0%
Harding	0	0	1	1	1	1	1	1	1	1	1	1	1	1	0.0%
Hidalgo	36	40	35	37	36	37	37	36	35	32	28	23	26	-10	-27.8%
Lea	827	855	805	817	817	806	813	877	840	851	821	829	823	-4	-0.5%
Lincoln	129	128	130	133	129	129	131	107	104	100	97	97	102	-27	-20.9%
Los Alamos	14	15	17	18	22	27	30	26	31	34	34	34	34	20	142.9%
Luna	161	166	166	163	162	143	149	153	142	145	153	150	176	15	9.3%
McKinley	156	158	162	168	176	168	157	188	173	173	168	162	158	2	1.3%
Mora	18	20	18	21	21	26	31	29	25	18	16	16	13	-5	-27.8%
Otero	533	532	518	504	502	490	496	520	505	525	501	531	506	-27	-5.1%
Out of State	12	8	5	7	8	6	6	4	4	4	5	3	4	-8	-66.7%
Quay	36	36	35	33	33	38	37	33	35	34	33	34	32	-4	-11.1%
Rio Arriba	151	152	148	146	147	146	143	139	141	146	142	134	137	-14	-9.3%
Roosevelt	117	113	109	101	102	94	88	101	106	112	121	118	118	1	0.9%
San Juan	1,036	1,026	1,053	1,030	1,059	928	892	1,020	954	955	926	913	942	-94	-9.1%
San Miguel	353	362	370	378	376	375	361	375	364	357	345	317	316	-37	-10.5%
Sandoval	774	765	782	765	798	739	756	763	693	697	708	741	734	-40	-5.2%
Santa Fe	523	506	514	531	545	533	511	497	448	470	460	461	481	-42	-8.0%
Sierra	76	67	69	70	62	53	50	64	62	60	57	49	51	-25	-32.9%
Socorro	70	73	75	73	68	55	63	62	65	64	63	58	51	-19	-27.1%
Taos	139	139	138	135	135	138	126	111	111	112	102	115	118	-21	-15.1%
Torrance	110	104	116	115	120	109	104	112	92	94	88	90	85	-25	-22.7%
Union	5	5	5	5	5	5	5	5	5	5	5	5	5	0	0.0%
Valencia	640	634	612	624	644	615	621	664	604	611	610	614	604	-36	-5.6%
Totals	20,116	20,094	20,159	20,259	20,728	19,769	19,660	20,572	19,762	19,815	19,347	19,276	19,485	-631	-3.1%

CHILDREN YOUTH AND FAMILIES DEPARTMENT CHILD CARE ASSISTANCE ELIGIBILITY PROGRAMS

MONTH	MAR'18	APR'18	May'18	June'18	July'18	Aug'18	Sept'18	Oct'18	Nov'18	Dec'18	Jan'19	Feb'19
TANF (Child Care Priority 1 Clients)												
CLIENTS	2,178	2,175	2,118	2,164	2,074	2,124	2,221	2,197	2,202	2,149	2,131	2,107
COST	\$1,325,003	\$1,300,872	\$1,244,115	\$1,242,370	\$1,255,788	\$1,288,094	\$1,238,106	\$1,335,587	\$1,313,281	\$1,274,570	\$1,281,263	\$1,264,626
TANF AVERAGE COST	\$608	\$598	\$587	\$574	\$605	\$606	\$557	\$608	\$596	\$593	\$601	\$600
TRANSITION OFF TANF (Child Care Priority 2 Clients)												
CLIENTS	142	148	169	172	161	170	165	157	145	134	129	125
COST	\$77,354	\$80,098	\$93,823	\$96,261	\$97,664	\$97,412	\$89,581	\$87,146	\$81,849	\$78,119	\$81,456	\$75,852
TRAN OFF TANF AVG COST	\$545	\$541	\$555	\$560	\$607	\$573	\$543	\$555	\$564	\$583	\$631	\$607
TANF ELIGIBLE (Child Care Priority 1B Clients at or below 100% of the Federal Poverty Level)												
CLIENTS	8,373	8,382	8,570	8,816	8,404	8,352	8,755	8,505	8,452	8,269	8,227	8,125
COST	\$4,802,863	\$4,766,353	\$4,896,651	\$4,879,475	\$4,946,700	\$4,973,346	\$4,776,708	\$4,957,788	\$4,970,667	\$4,870,464	\$4,796,096	\$4,662,397
TANF ELIGIBLE AVG COST	\$574	\$569	\$571	\$553	\$589	\$595	\$546	\$583	\$588	\$589	\$583	\$574
INCOME ELIGIBLE (Child Care Priority 3, and Priority 4 Clients)												
CLIENTS	7,944	8,059	8,099	8,261	7,808	7,743	8,122	7,686	7,752	7,567	7,606	7,932
COST	\$4,010,729	\$4,051,487	\$4,104,126	\$4,096,260	\$4,133,552	\$4,208,252	\$3,980,270	\$4,056,059	\$4,049,318	\$3,991,789	\$3,956,942	\$4,144,807
INCOME ELIG AVG COST	\$505	\$503	\$507	\$496	\$529	\$543	\$490	\$528	\$522	\$528	\$520	\$523
AT-RISK CHILD PROTECTIVE SERVICES CHILD CARE PILOT (Priority 5 Clients)												
CLIENTS	578	516	424	393	405	355	364	326	351	344	338	336
COST	\$381,318	\$337,243	\$276,746	\$265,193	\$270,783	\$228,483	\$224,486	\$213,687	\$217,475	\$234,222	\$239,514	\$210,812
CPS AVG COST	\$660	\$654	\$653	\$675	\$669	\$644	\$617	\$655	\$620	\$681	\$709	\$627
CHILD PROTECTIVE SERVICES (Child Care CPS Clients)												
CLIENTS	879	879	879	942	917	916	945	891	913	884	845	860
COST	\$605,523	\$564,253	\$619,678	\$600,858	\$597,105	\$637,227	\$581,981	\$613,927	\$641,871	\$607,486	\$585,379	\$576,818
CPS AVG COST	\$689	\$642	\$705	\$638	\$651	\$696	\$616	\$689	\$703	\$687	\$693	\$671
GRAND TOTAL - ALL CHILD CARE PROGRAMS												
CLIENTS	20,094	20,159	20,259	20,748	19,769	19,660	20,572	19,762	19,815	19,347	19,276	19,485
COST	\$11,202,789	\$11,100,307	\$11,235,139	\$11,180,418	\$11,301,592	\$11,432,813	\$10,891,133	\$11,264,194	\$11,274,461	\$11,056,650	\$10,940,651	\$10,935,312
ALL PROGRAMS AVG C	\$558	\$551	\$555	\$539	\$572	\$582	\$529	\$570	\$569	\$571	\$568	\$561

Income Eligibility Guidelines: October 1, 2018- September 30, 2019

Federal Poverty Guidelines (FPG) Monthly Income Standards

Supplemental Nutrition Program (SNAP)					
Household Size	100% FPG Net Income	130% FPG Gross Income	165% FPG Gross Income for Categorical Eligibility	Maximum SNAP Monthly Allotment	LIHEAP 150% FPG
1	\$1,012	\$1,316	\$1,670	\$192	\$1,518
2	\$1,372	\$1,784	\$2,264	\$353	\$2,058
3	\$1,732	\$2,252	\$2,858	\$505	\$2,598
4	\$2,092	\$2,720	\$3,452	\$642	\$3,138
5	\$2,452	\$3,188	\$4,046	\$762	\$3,678
6	\$2,812	\$3,656	\$4,640	\$914	\$4,218
7	\$3,172	\$4,124	\$5,234	\$1,011	\$4,758
8	\$3,532	\$4,592	\$5,828	\$1,155	\$5,298
+1	+\$60	+\$468	+\$594	+\$144	+\$540
Minimum Allotment of \$15 effective from 10/1/2017 - 9/30/2018					
DEDUCTIONS: Standard Deduction: For HH size 1-3 = \$164; 4 = \$174; 5 = \$204; 6 or more = \$234; Excess Shelter Deduction Limit: \$552; Heating and Cooling Standard Utility Allowance: \$344 (HCSUA) – Limited Utility Allowance: \$ 139 (LUA); Telephone Standard: \$52; Dependent Care: Actual Amount (No Limit); Earned Income Deduction: 20%; Homeless Shelter Standard: \$143					

CASH Assistance & Support Services					
Household Size	Federal Poverty Guidelines (FPG) Monthly Income Standards			Maximum Monthly Benefit	
	100% FPG Net Income	85% FPG Gross Limit	NM Works Cash Net Income	Maximum Monthly Benefit	General Assistance
1	\$1,012	\$860	\$266	\$244	\$245
2	\$1,372	\$1,166	\$357	\$327	\$329
3	\$1,732	\$1,472	\$447	\$409	\$412
4	\$2,092	\$1,778	\$539	\$493	\$496
5	\$2,452	\$2,084	\$630	\$576	\$580
6	\$2,812	\$2,390	\$721	\$659	\$664
7	\$3,172	\$2,696	\$812	\$743	\$748
8	\$3,532	\$3,002	\$922	\$843	\$849
+1	+\$360	+\$306	+\$91	+\$83	+\$84
Deductions- Dependent Care: For a child under age 2 = \$200; For a child age 2 and over = \$175. Work Incentives- Earned Income Disregard: Single parent = \$125 & ½ remainder; Two parent = \$225 & ½ remainder.					

ISD 017 Revised 08/13/2018

Medical Assistance Division					
Federal Poverty Guidelines New Mexico Affordable Care Eligibility Groups Effective April 01, 2018 thru March 31, 2019 Monthly Guidelines					
HH SIZE	PERCENT OF POVERTY				
	138%	190%	240%	250%	300%
1	\$1,397	\$1,923	\$2,428	\$2,530	\$3,035
2	\$1,893	\$2,607	\$3,292	\$3,430	\$4,115
3	\$2,390	\$3,291	\$4,156	\$4,330	\$5,195
4	\$2,887	\$3,975	\$5,020	\$5,230	\$6,275
5	\$3,384	\$4,659	\$5,884	\$6,130	\$7,355
6	\$3,881	\$5,343	\$6,748	\$7,030	\$8,435
7	\$4,377	\$6,027	\$7,612	\$7,930	\$9,515
8	\$4,874	\$6,711	\$8,476	\$8,830	\$10,595
138% Adult Expansion, 190% Children ages 6 to 19 (Medicaid), 240% Children ages 0 to 6 (Medicaid); ages 6 to 19 (CHIP), 250% Pregnancy Related Services Only, 300% Children 0 to 6 (CHIP)					

Medical Assistance Division					
Federal Poverty Guidelines New Mexico Affordable Care Eligibility Groups Effective April 01, 2018 thru March 31, 2019 Annual Guidelines					
HH SIZE	PERCENT OF POVERTY				
	138%	190%	240%	250%	300%
1	\$16,764	\$23,076	\$29,136	\$30,360	\$36,420
2	\$22,716	\$31,284	\$39,504	\$41,160	\$49,380
3	\$28,680	\$39,492	\$49,872	\$51,960	\$62,340
4	\$34,644	\$47,700	\$60,240	\$62,760	\$75,300
5	\$40,608	\$55,908	\$70,608	\$73,560	\$88,260
6	\$46,572	\$64,116	\$80,976	\$84,360	\$101,220
7	\$52,524	\$72,324	\$91,344	\$95,160	\$114,180
8	\$58,488	\$80,532	\$101,712	\$105,960	\$127,140
138% Adult Expansion, 190% Children ages 6 to 19 (Medicaid), 240% Children ages 0 to 6 (Medicaid); ages 6 to 19 (CHIP), 250% Pregnancy Related Services Only, 300% Children 0 to 6 (CHIP)					

References

- ¹ *Medicaid Expenditures* (Omnicaid, Medicare Buy-Ins, Lump Sum Payments), Received on March 16, 2019
- ² *ASPEN Business Intelligence Tool: Eligibility*, Retrieved on March 13, 2019
- ³ New Mexico Human Services Department, *Medicaid Eligibility Reports*, Retrieved from <http://www.hsd.state.nm.us/LookingForInformation/medicaid-eligibility.aspx> on March 13, 2019
- ⁴ *ASPEN Business Intelligence Tool: Application Tracking*, Retrieved on March 13, 2019
- ⁵ Fidelity Information Services, *EBT Daily Statistical Report* (for 02/28/2018, 01/31/2019, and 02/28/2019), Retrieved on March 13, 2019
- ⁶ *ASPEN Report DQ-180: Length of Time Cases are Open* (for 02/01/2018-02/28/2018, 01/01/2019-01/31/2018, 02/01/2019-02/28/2019), Retrieved on March 16, 2019
- ⁷ *ASPEN Report EY-180: Individual Demographics by State and Age* (for 02/01/2018-02/28/2018, 01/01/2019-01/31/2019, 02/01/2019-02/28/2019), Retrieved March 16, 2019
- ⁸ *ASPEN Business Intelligence Tool: Benefit Issuance*, Retrieved on March 13, 2019
- ⁹ Fidelity Information Services, *EBT Daily Statistical Reports* (Month End), Retrieved on March 13, 2019
- ¹⁰ *ASPEN Report EY-180R: Individual Demographics by State, Race, Ethnicity and Gender* (for 02/01/2018-02/28/2018), Retrieved on March 16, 2019
- ¹¹ SQL Queries from ASPEN, completed March 2019
- ¹² JP Morgan, *New Mexico – NM EBT System- Monthly Benefit Draw Down Totals*
- ¹³ *ASPEN Business Intelligence Tool: Application Tracking* (w/Parameters: SNAP, Expedite, Approved), Retrieved on March 13, 2019
- ¹⁴ SL Start, *As of Today Report 02.28.19*, received March 10, 2019
- ¹⁵ SL Start, *Statewide Employment Report 02.01.19*, received March 10, 2019

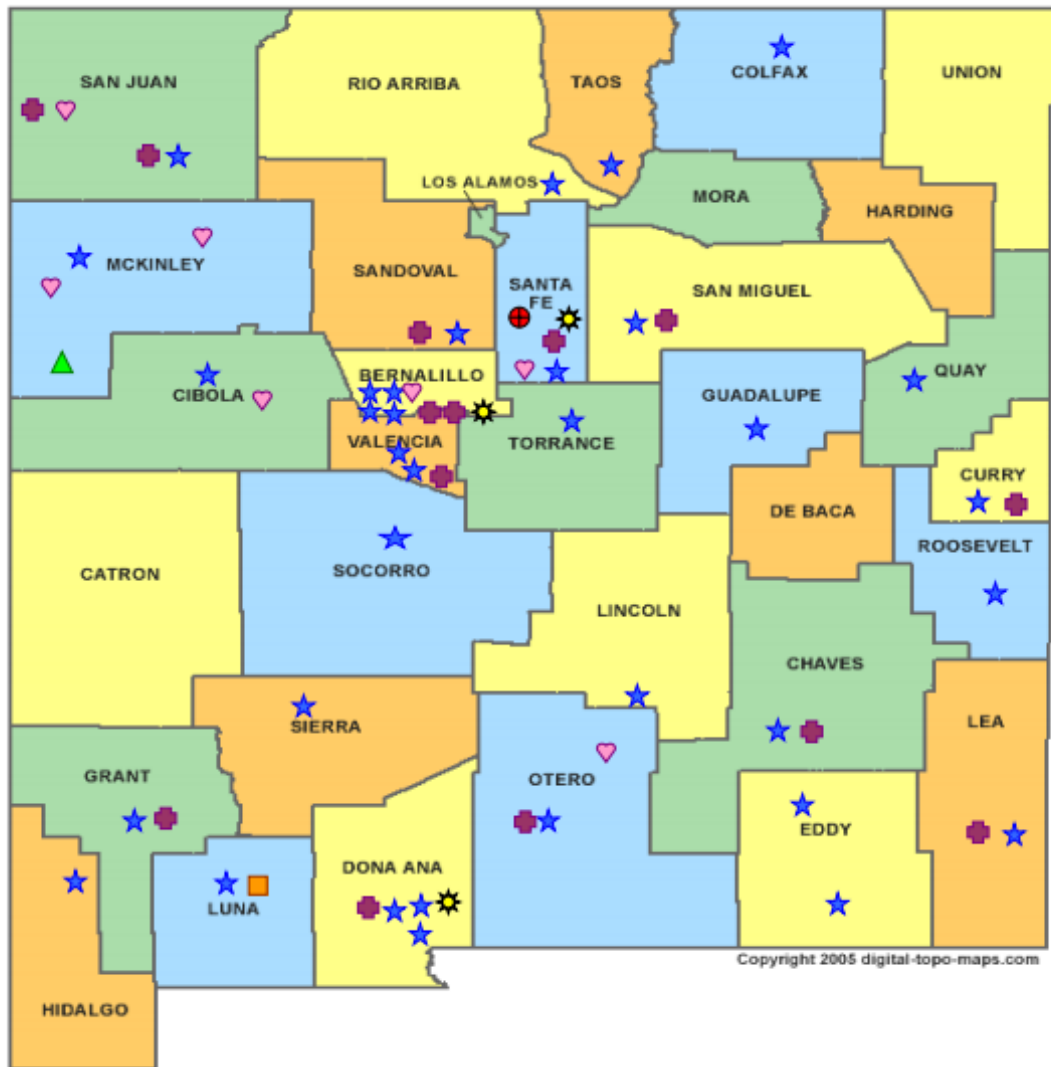
¹⁶SSIAR Payments, received March 2, 2019

¹⁷ Children, Youth, and Families Department, *Children Receiving Child Care Assistance Subsidies by County*, Received on March 10, 2019

¹⁸ Children, Youth, and Families Department, *Child Care Assistance Eligibility Programs*, Received on March 10, 2019

¹⁹ EDG is defined as an Eligibility Determination Group

²⁰SQL Query from ASPEN, completed March 28, 2019



HUMAN SERVICES
DEPARTMENT

New Mexico Human Services Department
Field Offices

- Central Office (1)
- Income Support Division County Office (35)
- Income Support Division Satellite Office (2)
- Child Support Enforcement Regional Office (16)
- Child Support Enforcement Satellite Office (1)
- Indian Health Services (7)
- Hospital Site (3)

For a complete listing of field offices and other government and community resources:
http://www.hsd.state.nm.us/LookingForAssistance/Field_Offices_1.aspx