



Monthly Statistical Report

December 2019

There were 828,690 individuals that received Medicaid in December 2019, a 0.4% decrease from one year ago. The count of Medicaid recipients has increased by 1,421, or 0.17%, since last month.

The SNAP caseload in December 2019 was 222,902, a 0.40% increase from one year ago. The SNAP caseload has decreased by 214 cases, or 0.1%, since last month.

The TANF caseload was 10,444 in December 2019, a decrease of 3.0% from December 2018. The TANF caseload had 19 more cases compared to November 2019, an increase of 0.2%.

The caseload for General Assistance was 2,501 in December 2019, a decrease of 11.4% from one year ago and an increase of 10 cases from last month.

Michelle Lujan Grisham, Governor
David Scrase, M.D., Secretary

Contents	Page
Summary	3-5
Medicaid	6-20
SNAP	21-41
Cash Assistance	42-56
Child Care Assistance	57-58
Income Eligibility Guidelines	59-60

Regions are reported as follows:

Region 1		
Catron	San Juan	Valencia
Cibola	Sierra	
McKinley	Socorro	
Region 2		
Colfax	Mora	Santa Fe
De Baca	Quay	Taos
Guadalupe	Rio Arriba	Union
Harding	Sandoval	
Los Alamos	San Miguel	
Region 3		
Bernalillo	Torrance	
Region 4		
Chaves	Eddy	Lincoln
Curry	Lea	Roosevelt
Region 5		
Dona Ana	Hidalgo	Otero
Grant	Luna	

The Mission of the Human Services Department

To transform lives. Working with our partners, we design and deliver innovative, high quality health and human services that improve the security and promote independence for New Mexicans in their communities.

Angela Medrano, Deputy Secretary
Kari Armijo, Deputy Secretary

Prepared by Income Support Division
PO Box 2348
Santa Fe, NM 87504-2348
505-827-7250

Karmela Martinez, Director
Vida Tapia-Sanchez, Deputy Director
Shanita Harrison, Deputy Director
Judith Parks, Deputy Director

<http://www.hsd.state.nm.us/monthly-statistical-reports.aspx>

Program Summary for December 2019

Medicaid				Percent Change	
	Dec-18	Nov-19	Dec-19	Dec-18- Dec-19	Nov-19- Dec-19
Expenditures¹	\$512,389,881	\$472,332,889	\$531,904,987	3.8%	12.6%
Cases²	491,423	496,594	498,109	1.4%	0.3%
Expenditures/Case	\$1,043	\$951	\$1,068	2.4%	12.3%
Recipients³	832,316	827,269	828,690	-0.4%	0.17%
<i>Adults</i>	475,116	470,566	471,858	-0.7%	0.27%
<i>Children</i>	357,200	356,703	356,832	-0.1%	0.04%
Recipients /Case	1.69	1.67	1.66	-1.8%	-0.6%
Cases Processed⁴	12,081	10,398	11,985	-0.8%	15.3%
<i>Approvals⁴</i>	9,354	7,209	8,290	-11.4%	15.0%

Supplemental Nutrition Assistance Program (SNAP)				Percent Change	
	Dec-18	Nov-19	Dec-19	Dec-18- Dec-19	Nov-19- Dec-19
Expenditures⁵	\$53,118,011	\$53,042,361	\$53,077,372	-0.08%	0.1%
Cases⁶	222,004	223,116	222,902	0.40%	-0.1%
Expenditures/Case	\$239	\$238	\$238	-0.4%	0.0%
Recipients⁷	451,396	447,770	446,531	-1.1%	-0.28%
<i>Adults</i>	261,903	262,242	261,798	-0.04%	-0.2%
<i>Children</i>	189,493	185,528	184,733	-2.5%	-0.4%
Recipients /Case	2.03	2.01	2.00	-1.5%	-0.5%
Cases Processed⁴	16,355	16,861	16,558	1.2%	-1.8%
<i>Approvals⁴</i>	13,364	13,697	13,677	2.3%	-0.1%

Cash Assistance Programs				Percent Change	
	Dec-18	Nov-19	Dec-19	Dec-18- Dec-19	Nov-19- Dec-19
Expenditures⁵	\$4,213,279	\$4,031,919	\$4,035,456	-4.2%	0.1%
Cases⁶	13,784	13,091	13,110	-4.9%	0.1%
Expenditures/Case	\$306	\$308	\$308	0.7%	0.0%
Recipients⁷	30,965	29,595	29,743	-3.9%	0.5%
<i>Adults</i>	9,864	9,425	9,513	-3.6%	0.9%
<i>Children</i>	21,101	20,170	20,230	-4.1%	0.3%
Recipients /Case	2.25	2.26	2.27	0.9%	0.4%
Cases Processed⁴	4,676	4,150	4,342	-7.1%	4.6%
<i>Approvals⁴</i>	1,291	1,352	1,429	10.7%	5.7%

Low Income Home Energy Assistance Program (LIHEAP)				Percent Change	
	Dec-18	Nov-19	Dec-19	Dec-18- Dec-19	Nov-19- Dec-19
Expenditures⁸	\$2,334,945	\$3,124,120	\$2,490,920	6.7%	-20.3%
Cases⁸	7,705	10,206	8,267	7.3%	-19.0%
Expenditures/Case	\$303	\$306	\$301	-0.7%	-1.6%
Recipients⁸	17,763	22,853	19,172	7.9%	-16.1%
<i>Adults</i>	10,171	13,273	10,791	6.1%	-18.7%
<i>Children</i>	7,592	9,580	8,381	10.4%	-12.5%
Recipients /Case	2.31	2.24	2.32	0.4%	3.6%
Cases Processed⁴	8,518	10,578	9,213	8.2%	-12.9%
<i>Approvals⁴</i>	7,533	9,614	8,180	8.6%	-14.9%

Cash Assistance Summary for December 2019

Temporary Assistance for Needy Families (TANF)

	Dec-18	Nov-19	Dec-19	Percent Change	
				Dec-18- Dec-19	Nov-19- Dec-19
Expenditures ⁵	\$3,443,209	\$3,333,880	\$3,340,882	-3.0%	0.2%
Cases ⁶	10,762	10,425	10,444	-3.0%	0.2%
Expenditures/Case	\$320	\$320	\$320	0.0%	0.0%
Recipients ⁷	27,657	26,733	26,855	-2.9%	0.5%
<i>Adults</i>	7,024	6,965	7,037	0.2%	1.0%
<i>Children</i>	20,633	19,768	19,818	-3.9%	0.3%
Approvals ⁴	1,111	1,115	1,226	10.4%	10.0%

General Assistance (GA)

	Dec-18	Nov-19	Dec-19	Percent Change	
				Dec-18- Dec-19	Nov-19- Dec-19
Expenditures ⁵	\$703,040	\$641,250	\$639,267	-9.1%	-0.3%
Cases ⁶	2,824	2,491	2,501	-11.4%	0.4%
Expenditures/Case	\$249	\$257	\$256	2.8%	-0.4%
Recipients ⁷	2,841	2,483	2,518	-11.4%	1.4%
<i>Adults</i>	2,628	2,273	2,301	-12.4%	1.2%
<i>Children</i>	213	210	217	1.9%	3.3%
Approvals ⁴	168	201	170	1.2%	-15.4%

Education Works

	Dec-18	Nov-19	Dec-19	Percent Change	
				Dec-18- Dec-19	Nov-19- Dec-19
Expenditures ⁵	\$57,630	\$43,593	\$45,728	-20.7%	4.9%
Cases ⁶	145	112	116	-20.0%	3.6%
Expenditures/Case	\$397	\$389	\$394	-0.8%	1.3%
Recipients ⁷	412	316	323	-21.6%	2.2%
<i>Adults</i>	157	124	128	-18.5%	3.2%
<i>Children</i>	255	192	195	-23.5%	1.6%
Approvals ⁴	1	0	0	-100.0%	N/A

Refugee Cash (RCA)

	Dec-18	Nov-19	Dec-19	Percent Change	
				Dec-18- Dec-19	Nov-19- Dec-19
Expenditures ⁵	\$7,300	\$11,296	\$7,679	5.2%	-32.0%
Cases ⁶	32	44	30	-6.3%	-31.8%
Expenditures/Case	\$228	\$257	\$256	12.3%	-0.4%
Recipients ⁷	34	44	29	-14.7%	-34.1%
<i>Adults</i>	34	44	29	-14.7%	-34.1%
<i>Children</i>	0	0	0	N/A	N/A

State Supplement for Residential Care

	Dec-18	Nov-19	Dec-19	Percent Change	
				Dec-18- Dec-19	Nov-19- Dec-19
Expenditures ⁵	\$2,100	\$1,900	\$1,900	-9.5%	0.0%
Cases ⁶	21	19	19	-9.5%	0.0%
Expenditures/Case	\$100	\$100	\$100	0.0%	0.0%
Recipients ⁷	21	19	18	-14.3%	-5.3%
<i>Adults</i>	21	19	18	-14.3%	-5.3%
<i>Children</i>	0	0	0	N/A	N/A

Expenditures YTD			
	SFY 2020	FFY 2020	CY 2019
Medicaid ¹	\$2,957,189,711	\$1,516,328,944	\$5,710,943,954
Supplemental Nutrition Assistance Program ⁹	\$318,413,514	\$159,793,698	\$632,419,625
Temporary Assistance for Needy Families ⁹	\$21,490,556	\$10,044,442	\$40,931,217
General Assistance ⁹	\$3,775,922	\$1,915,943	\$7,715,460
Education Work ⁹	\$208,719	\$126,998	\$461,679
LIHEAP ⁸	\$13,456,230	\$11,290,120	\$20,674,995

Average Caseload YTD			
	SFY 2020	FFY 2020	CY 2019
Medicaid ²	494,984	496,815	493,544
Supplemental Nutrition Assistance Program ⁶	223,291	223,300	221,962
Temporary Assistance for Needy Families ⁶	10,490	10,479	10,372
General Assistance ⁶	2,442	2,469	2,529
Education Work ⁶	86	108	96
LIHEAP ⁸	7,375	12,176	5,745

Demographic Profile- December 2019					
	SNAP	TANF	GA	Education Works	RCA
<i>Gender of Recipients</i> ¹⁰					
Male	202,116	11,422	1,391	108	23
Female	244,415	15,433	1,127	215	6
<i>Ethnicity</i> ¹⁰					
Hispanic	245,563	18,015	1,346	198	18
Non-Hispanic	200,968	8,840	1,172	125	11
<i>Race</i> ¹⁰					
Native American or Alaskan Native	76,649	2,259	223	19	0
Asian	3,868	188	16	3	0
African American or Black	11,860	1,235	92	30	8
Native Hawaiian or Pacific Islander	835	34	1	0	0
White	343,101	22,307	2,136	265	19
Unknown / Not Declared	3,444	184	24	2	0
More than One Race	6,774	648	26	4	2

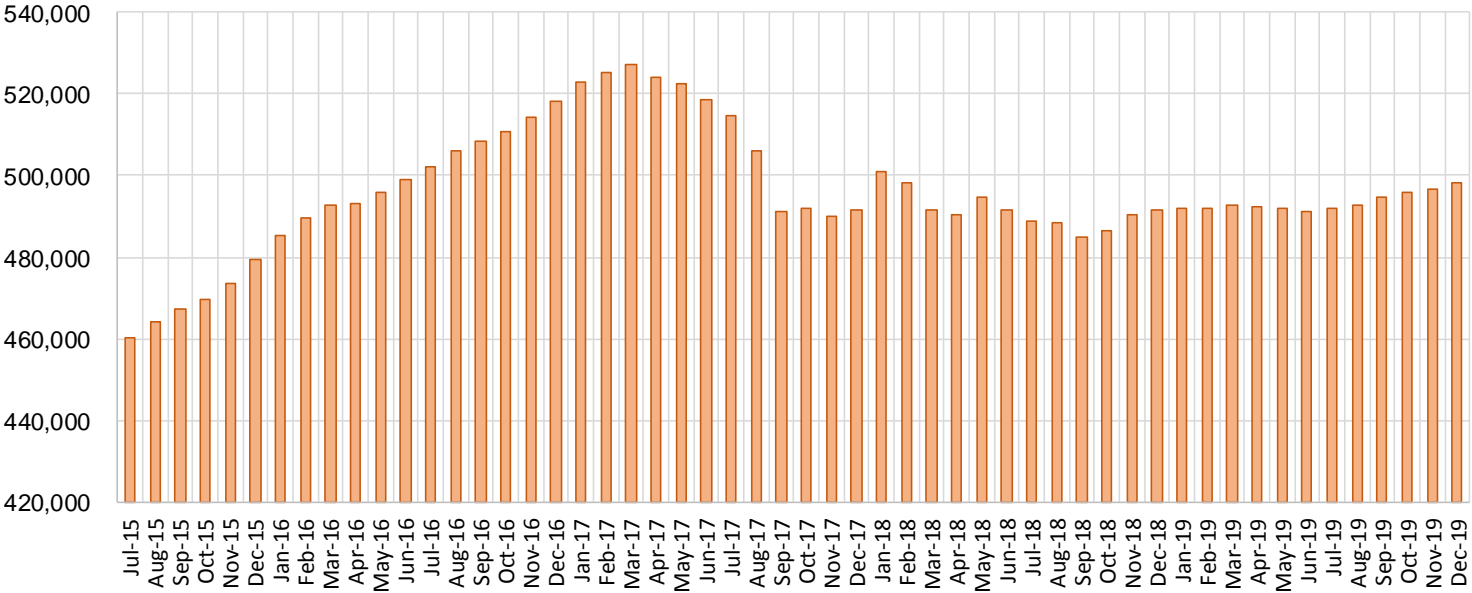
Medicaid Cases by Field Office²

Office				Percent Change	
	Dec-18	Nov-19	Dec-19	Dec-18- Dec-19	Nov-19- Dec-19
Chaves County ISD	15,889	16,115	16,156	1.7%	0.3%
Cibola County ISD	7,650	7,486	7,481	-2.2%	-0.1%
Colfax County ISD	3,593	3,612	3,604	0.3%	-0.2%
Curry County ISD	14,300	14,952	15,014	5.0%	0.4%
East Dona Ana County ISD	17,768	18,009	18,075	1.7%	0.4%
Eddy Artesia County ISD	3,849	3,873	3,905	1.5%	0.8%
Eddy Carlsbad County ISD	7,565	7,628	7,626	0.8%	-0.03%
Grant County ISD	7,731	7,841	7,883	2.0%	0.5%
Guadalupe County ISD	1,658	1,603	1,599	-3.6%	-0.2%
Hidalgo County ISD	46	50	51	10.9%	2.0%
Lea County ISD	14,353	14,807	14,849	3.5%	0.3%
Lincoln County ISD	4,304	4,341	4,355	1.2%	0.3%
Luna County ISD	8,626	8,779	8,857	2.7%	0.9%
McKinley County ISD	20,767	22,395	22,452	8.1%	0.3%
Northeast Bernalillo County ISD	43,114	43,281	43,493	0.9%	0.5%
Northwest Bernalillo County ISD	52,944	53,294	53,526	1.1%	0.4%
Otero County ISD	11,917	12,195	12,222	2.6%	0.2%
Quay County ISD	2,567	2,524	2,523	-1.7%	-0.04%
Rio Arriba County ISD	13,940	13,403	13,450	-3.5%	0.4%
Roosevelt County ISD	9	10	9	0.0%	-10.0%
San Juan County ISD	30,054	30,536	30,599	1.8%	0.2%
San Miguel County ISD	9,151	9,157	9,161	0.1%	0.04%
Sandoval County ISD	23,332	23,377	23,500	0.7%	0.5%
Santa Fe County ISD	24,595	24,180	24,219	-1.5%	0.2%
Sierra County ISD	5,343	5,274	5,283	-1.1%	0.2%
Socorro County ISD	5,275	5,258	5,271	-0.1%	0.2%
South Dona Ana ISD	19,686	19,814	19,883	1.0%	0.3%
Southeast Bernalillo County ISD	25,136	24,910	24,875	-1.0%	-0.1%
Southwest Bernalillo County ISD	38,679	39,822	39,835	3.0%	0.03%
Taos County ISD	9,215	9,225	9,300	0.9%	0.8%
Torrance County ISD	7,875	7,996	8,061	2.4%	0.8%
Valencia North County ISD	18,430	18,574	18,562	0.7%	-0.1%
Valencia South County ISD	106	90	102	-3.8%	13.3%
West Dona Ana County ISD	21,953	22,182	22,327	1.7%	0.7%
Centralized Units	3	1	1	-66.7%	0.0%
Statewide Total	491,423	496,594	498,109	1.4%	0.3%

Medicaid Cases by Region²

Region				Percent Change	
	Dec-18	Nov-19	Dec-19	Dec-18- Dec-19	Nov-19- Dec-19
Region 1 - NW	87,625	89,613	89,750	2.4%	0.2%
Region 2 - NE	88,051	87,081	87,356	-0.8%	0.3%
Region 3 - Central	167,748	169,303	169,790	1.2%	0.3%
Region 4 - SE	60,269	61,726	61,914	2.7%	0.3%
Region 5 - SW	87,727	88,870	89,298	1.8%	0.5%
Centralized Units	3	1	1	-66.7%	0.0%
Statewide Total	491,423	496,594	498,109	1.4%	0.3%

Medicaid Caseload: SFY-16 to Current

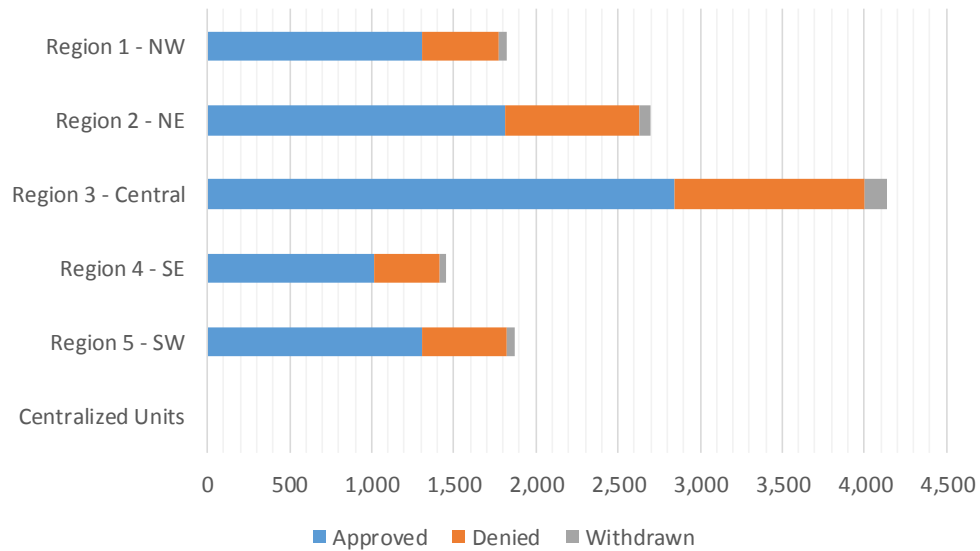


Medicaid Initial Applications by Field Office^{4,11}
December 2019

Office	Approved	Denied	Withdrawn	Total Cases Processed
Chaves County ISD	227	104	5	336
Cibola County ISD	107	43	7	157
Colfax County ISD	45	27	4	76
Curry County ISD	260	74	12	346
East Dona Ana County ISD	306	138	16	460
Eddy Artesia County ISD	66	25	4	95
Eddy Carlsbad County ISD	129	51	4	184
Grant County ISD	125	41	6	172
Guadalupe County ISD	17	10	0	27
Hidalgo County ISD	0	0	0	0
Lea County ISD	238	97	9	344
Lincoln County ISD	92	48	7	147
Luna County ISD	114	54	6	174
McKinley County ISD	339	106	10	455
Northeast Bernalillo County ISD	787	315	35	1,137
Northwest Bernalillo County ISD	698	292	30	1,020
Otero County ISD	173	71	6	250
Quay County ISD	26	6	1	33
Rio Arriba County ISD	187	72	8	267
Roosevelt County ISD	1	0	0	1
San Juan County ISD	479	170	16	665
San Miguel County ISD	492	179	4	675
Sandoval County ISD	417	188	24	629
Santa Fe County ISD	440	255	24	719
Sierra County ISD	80	22	7	109
Socorro County ISD	65	38	2	105
South Dona Ana ISD	239	93	6	338
Southeast Bernalillo County ISD	680	312	11	1,003
Southwest Bernalillo County ISD	520	178	42	740
Taos County ISD	192	78	5	275
Torrance County ISD	162	58	14	234
Valencia North County ISD	237	80	11	328
Valencia South County ISD	4	0	0	4
West Dona Ana County ISD	346	120	14	480
Centralized Units	0	0	0	0
Statewide Total	8,290	3,345	350	11,985

Medicaid Initial Applications by Region^{4,11}
December 2019

	Approved	Denied	Withdrawn	Total Cases Processed
Region				
Region 1 - NW	1,311	459	53	1,823
Region 2 - NE	1,816	815	70	2,701
Region 3 - Central	2,847	1,155	132	4,134
Region 4 - SE	1,013	399	41	1,453
Region 5 - SW	1,303	517	54	1,874
Centralized Units	0	0	0	0
Statewide Total	8,290	3,345	350	11,985

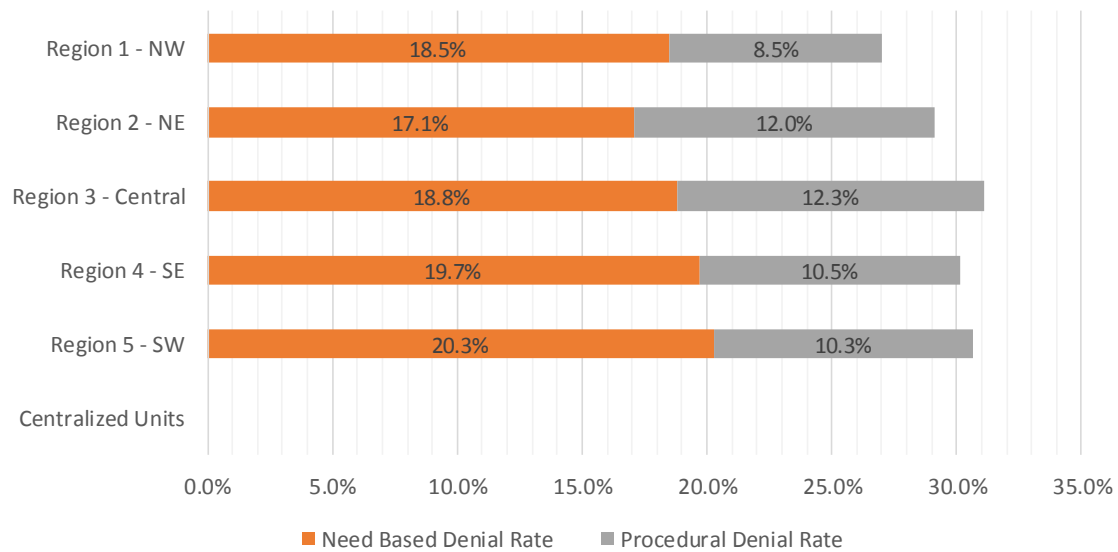


Medicaid EDG Initial Disposition Rates by Field Office^{4,11,19}
December 2019

Office	Approval Rate	Denial Rate	Need Based Denial Rate	Procedural Denial Rate
Chaves County ISD	67.2%	32.8%	20.4%	12.4%
Cibola County ISD	66.5%	33.5%	22.9%	10.6%
Colfax County ISD	64.3%	35.7%	25.7%	10.0%
Curry County ISD	75.1%	24.9%	14.5%	10.4%
East Dona Ana County ISD	67.0%	33.0%	18.8%	14.2%
Eddy Artesia County ISD	73.3%	26.7%	23.4%	3.3%
Eddy Carlsbad County ISD	70.9%	29.1%	18.1%	11.0%
Grant County ISD	72.3%	27.7%	22.5%	5.2%
Guadalupe County ISD	63.0%	37.0%	33.3%	3.7%
Hidalgo County ISD	0.0%	0.0%	0.0%	0.0%
Lea County ISD	70.8%	29.2%	20.6%	8.6%
Lincoln County ISD	57.9%	42.1%	28.3%	13.8%
Luna County ISD	65.5%	34.5%	23.0%	11.5%
McKinley County ISD	76.7%	23.3%	15.2%	8.1%
Northeast Bernalillo County ISD	68.4%	31.6%	19.3%	12.3%
Northwest Bernalillo County ISD	68.1%	31.9%	15.7%	16.2%
Otero County ISD	68.1%	31.9%	18.5%	13.4%
Quay County ISD	76.5%	23.5%	14.7%	8.8%
Rio Arriba County ISD	70.3%	29.7%	17.7%	12.0%
Roosevelt County ISD	100.0%	0.0%	0.0%	0.0%
San Juan County ISD	73.5%	26.5%	17.5%	9.0%
San Miguel County ISD	92.3%	7.7%	4.7%	3.0%
Sandoval County ISD	66.5%	33.5%	19.3%	14.2%
Santa Fe County ISD	60.4%	39.6%	21.9%	17.7%
Sierra County ISD	74.8%	25.2%	18.7%	6.5%
Socorro County ISD	63.7%	36.3%	25.5%	10.8%
South Dona Ana ISD	70.7%	29.3%	21.3%	8.0%
Southeast Bernalillo County ISD	68.3%	31.7%	19.3%	12.4%
Southwest Bernalillo County ISD	71.0%	29.0%	19.7%	9.3%
Taos County ISD	69.8%	30.2%	18.9%	11.3%
Torrance County ISD	70.7%	29.3%	24.9%	4.4%
Valencia North County ISD	72.7%	27.3%	20.2%	7.1%
Valencia South County ISD	80.0%	20.0%	20.0%	0.0%
West Dona Ana County ISD	72.2%	27.8%	19.7%	8.1%
Centralized Units	0.0%	0.0%	0.0%	0.0%
Statewide Total	70.2%	29.8%	18.7%	11.1%

Medicaid EDG Initial Disposition Rates by Region^{4,11,19}
December 2019

Region	Approval Rate	Denial Rate	Need Based Denial Rate	Procedural Denial Rate
Region 1 - NW	73.0%	27.0%	18.5%	8.5%
Region 2 - NE	70.9%	29.1%	17.1%	12.0%
Region 3 - Central	68.9%	31.1%	18.8%	12.3%
Region 4 - SE	69.8%	30.2%	19.7%	10.5%
Region 5 - SW	69.5%	30.6%	20.3%	10.3%
Centralized Units				
Statewide Total	70.2%	29.8%	18.7%	11.1%



Medicaid: Percentage of Initial EDG Approvals Processed Timely by Field Office ^{13,19}

	Oct-19	Nov-19	Dec-19	Jan-20	Feb-20	Mar-20	Apr-20	May-20	Jun-20	Jul-20	Aug-20	Sep-20	Average
Cibola	99.5 %	97.3 %	99.4 %										98.7%
McKinley	99.3 %	99.0 %	99.8 %										99.4%
San Juan	98.9 %	98.7 %	99.7 %										99.1%
Sierra	96.4 %	99.0 %	99.1 %										98.2%
Socorro	100.0 %	96.9 %	98.9 %										98.6%
Valencia North	99.7 %	99.1 %	99.4 %										99.4%
Valencia South	100.0 %	100.0 %	100.0 %										100.0%
NW Region 1 Total	99.2 %	98.6 %	99.6 %										99.1%
Colfax	100.0 %	100.0 %	100.0 %										100.0%
Guadalupe	100.0 %	100.0 %	100.0 %										100.0%
Quay	98.4 %	100.0 %	100.0 %										99.5%
Rio Arriba	99.6 %	100.0 %	99.3 %										99.6%
San Miguel	100.0 %	100.0 %	100.0 %										100.0%
Sandoval	99.4 %	100.0 %	99.5 %										99.6%
Santa Fe	99.0 %	97.9 %	99.0 %										98.6%
Taos	98.7 %	100.0 %	99.7 %										99.5%
NE Region 2 Total	99.3 %	99.4 %	99.5 %										99.4%
NE Bernalillo	98.4 %	99.5 %	99.0 %										99.0%
NW Bernalillo	98.9 %	98.9 %	99.0 %										98.9%
SE Bernalillo	97.4 %	95.8 %	98.3 %										97.2%
SW Bernalillo	98.2 %	97.9 %	99.2 %										98.4%
Torrance	100.0 %	100.0 %	98.3 %										99.4%
Cen. Region 3 Total	98.3 %	98.3 %	98.9 %										98.5%
Chaves	100.0 %	99.1 %	99.4 %										99.5%
Curry	98.8 %	98.9 %	99.2 %										99.0%
Eddy Artesia	98.3 %	97.6 %	100.0 %										98.6%
Eddy Carlsbad	99.1 %	99.5 %	99.1 %										99.2%
Lea	99.3 %	100.0 %	99.0 %										99.4%
Lincoln	99.3 %	98.7 %	97.4 %										98.5%
Roosevelt	100.0 %	100.0 %	100.0 %										100.0%
SE Region 4 Total	99.2 %	99.3 %	99.1 %										99.2%
East Dona Ana	98.0 %	99.3 %	99.6 %										99.0%
Grant	100.0 %	99.3 %	99.4 %										99.6%
Luna	99.5 %	99.5 %	100.0 %										99.7%
Otero	99.6 %	99.6 %	98.1 %										99.1%
South Dona Ana	99.7 %	99.7 %	99.7 %										99.7%
West Dona Ana	99.5 %	97.5 %	100.0 %										99.0%
SW Region 5 Total	99.2 %	99.0 %	99.5 %										99.3%
STATE TOTAL	98.9 %	98.8 %	99.3 %										99.0%

Medicaid: Percentage of Initial EDG Denials Processed Timely by Field Office ^{13,19}

	Oct-19	Nov-19	Dec-19	Jan-20	Feb-20	Mar-20	Apr-20	May-20	Jun-20	Jul-20	Aug-20	Sep-20	Average
Cibola	97.8 %	98.7 %	97.7 %										98.1%
McKinley	92.7 %	95.5 %	93.8 %										94.0%
San Juan	95.4 %	98.4 %	97.8 %										97.2%
Sierra	100.0 %	94.1 %	97.4 %										97.2%
Socorro	95.9 %	94.2 %	100.0 %										96.7%
Valencia North	98.5 %	97.4 %	96.4 %										97.4%
Valencia South	100.0 %	100.0 %											100.0%
NW Region 1 Total	95.8 %	97.1 %	96.7 %										96.6%
Colfax	94.7 %	97.3 %	95.5 %										95.8%
Guadalupe	100.0 %	100.0 %	91.7 %										97.2%
Quay	92.9 %	94.4 %	100.0 %										95.8%
Rio Arriba	94.8 %	97.5 %	98.4 %										96.9%
San Miguel	100.0 %	100.0 %	99.3 %										99.8%
Sandoval	98.0 %	98.7 %	96.7 %										97.8%
Santa Fe	98.3 %	94.7 %	95.3 %										96.1%
Taos	100.0 %	100.0 %	96.2 %										98.7%
NE Region 2 Total	97.7 %	97.6 %	96.8 %										97.4%
NE Bernalillo	97.5 %	97.1 %	97.2 %										97.2%
NW Bernalillo	96.8 %	97.4 %	97.7 %										97.3%
SE Bernalillo	93.9 %	96.6 %	95.0 %										95.2%
SW Bernalillo	95.5 %	97.5 %	97.5 %										96.8%
Torrance	97.3 %	96.7 %	97.2 %										97.1%
Gen. Region 3 Total	96.1 %	97.2 %	96.9 %										96.7%
Chaves	97.9 %	100.0 %	97.8 %										98.6%
Curry	97.3 %	97.8 %	97.4 %										97.5%
Eddy Artesia	82.7 %	100.0 %	91.5 %										91.4%
Eddy Carlsbad	79.6 %	100.0 %	93.6 %										91.1%
Lea	95.4 %	97.1 %	97.9 %										96.8%
Lincoln	98.2 %	98.2 %	100.0 %										98.8%
Roosevelt	95.6 %												95.6%
SE Region 4 Total	93.1 %	98.5 %	97.1 %										96.2%
East Dona Ana	95.6 %	98.5 %	96.8 %										97.0%
Grant	98.4 %	91.6 %	98.9 %										96.3%
Luna	94.9 %	96.3 %	99.2 %										96.8%
Otero	100.0 %	94.8 %	100.0 %										98.3%
South Dona Ana	97.3 %	99.4 %	98.9 %										98.6%
West Dona Ana	99.3 %	96.6 %	98.2 %										98.1%
SW Region 5 Total	97.6 %	96.8 %	98.4 %										97.6%
STATE TOTAL	96.2 %	97.4 %	97.1 %										96.9%

Medicaid: Percentage of Initial EDG Approvals and Denials Combined Processed Timely by Field Office^{13,19}

	Oct-19	Nov-19	Dec-19	Jan-20	Feb-20	Mar-20	Apr-20	May-20	Jun-20	Jul-20	Aug-20	Sep-20	Average
Cibola	99.1 %	97.7 %	98.8 %										98.5%
McKinley	98.0 %	98.0 %	98.0 %										98.0%
San Juan	97.8 %	98.6 %	99.2 %										98.5%
Sierra	97.5 %	97.8 %	98.7 %										98.0%
Socorro	98.4 %	95.9 %	99.3 %										97.9%
Valencia North	99.4 %	98.7 %	98.5 %										98.9%
Valencia South	100.0 %	100.0 %	100.0 %										100.0%
NW Region 1 Total	98.3 %	98.2 %	98.7 %										98.4%
Colfax	98.5 %	98.8 %	98.1 %										98.5%
Guadalupe	100.0 %	100.0 %	97.1 %										99.0%
Quay	96.7 %	98.0 %	100.0 %										98.2%
Rio Arriba	98.1 %	99.1 %	99.0 %										98.8%
San Miguel	100.0 %	100.0 %	99.8 %										99.9%
Sandoval	99.0 %	99.5 %	98.5 %										99.0%
Santa Fe	98.7 %	96.8 %	97.5 %										97.7%
Taos	99.0 %	100.0 %	98.6 %										99.2%
NE Region 2 Total	98.8 %	98.8 %	98.6 %										98.7%
NE Bernalillo	98.1 %	98.7 %	98.4 %										98.4%
NW Bernalillo	98.3 %	98.4 %	98.6 %										98.4%
SE Bernalillo	96.5 %	96.1 %	97.2 %										96.6%
SW Bernalillo	97.5 %	97.8 %	98.6 %										98.0%
Torrance	97.5 %	98.9 %	98.0 %										98.1%
Gen. Region 3 Total	97.7 %	97.9 %	98.2 %										97.9%
Chaves	99.5 %	99.4 %	98.9 %										99.2%
Curry	98.5 %	98.5 %	98.7 %										98.6%
Eddy Artesia	93.5 %	98.3 %	97.5 %										96.4%
Eddy Carlsbad	93.0 %	99.7 %	97.3 %										96.7%
Lea	98.1 %	99.2 %	98.7 %										98.6%
Lincoln	99.0 %	98.5 %	98.5 %										98.7%
Roosevelt	100.0 %	100.0 %	100.0 %										100.0%
SE Region 4 Total	97.6 %	99.1 %	98.4 %										98.4%
East Dona Ana	97.3 %	99.1 %	98.6 %										98.3%
Grant	99.5 %	96.3 %	99.2 %										98.3%
Luna	98.4 %	98.6 %	99.7 %										98.9%
Otero	99.7 %	97.9 %	98.7 %										98.8%
South Dona Ana	99.1 %	99.6 %	99.5 %										99.4%
West Dona Ana	99.4 %	97.2 %	99.4 %										98.7%
SW Region 5 Total	98.8 %	98.3 %	99.1 %										98.7%
STATE TOTAL	98.2 %	98.4 %	98.6 %										98.4%

Medicaid Renewal Disposition Counts by Field Office^{4,11}
December 2019

Office	Approvals	Closures	Need Based Closures	Procedural Closures
Chaves County ISD	2,975	575	291	284
Cibola County ISD	1,346	235	104	131
Colfax County ISD	558	118	43	75
Curry County ISD	2,762	573	292	281
East Dona Ana County ISD	3,081	629	312	317
Eddy Artesia County ISD	665	101	76	25
Eddy Carlsbad County ISD	1,046	339	135	204
Grant County ISD	1,253	200	117	83
Guadalupe County ISD	273	54	26	28
Hidalgo County ISD	1	0	0	0
Lea County ISD	2,417	565	301	264
Lincoln County ISD	655	158	81	77
Luna County ISD	1,474	300	139	161
McKinley County ISD	4,415	710	373	337
Northeast Bernalillo County ISD	5,668	1394	591	803
Northwest Bernalillo County ISD	4,971	1233	526	707
Otero County ISD	1,851	367	181	186
Quay County ISD	422	60	38	22
Rio Arriba County ISD	1,822	423	192	231
Roosevelt County ISD	0	1	1	0
San Juan County ISD	6,115	1129	576	553
San Miguel County ISD	1,417	223	123	100
Sandoval County ISD	3,976	896	355	541
Santa Fe County ISD	3,164	788	268	520
Sierra County ISD	886	160	81	79
Socorro County ISD	885	141	83	58
South Dona Ana ISD	3,940	592	406	186
Southeast Bernalillo County ISD	3,373	727	315	412
Southwest Bernalillo County ISD	7,299	1637	717	920
Taos County ISD	1,349	324	159	165
Torrance County ISD	1,219	261	144	117
Valencia North County ISD	3,111	570	308	262
Valencia South County ISD	5	6	1	5
West Dona Ana County ISD	3,742	643	349	294
Centralized Units	0	0	0	0

Statewide Total	78,136	16,132	7,704	8,428
-----------------	--------	--------	-------	-------

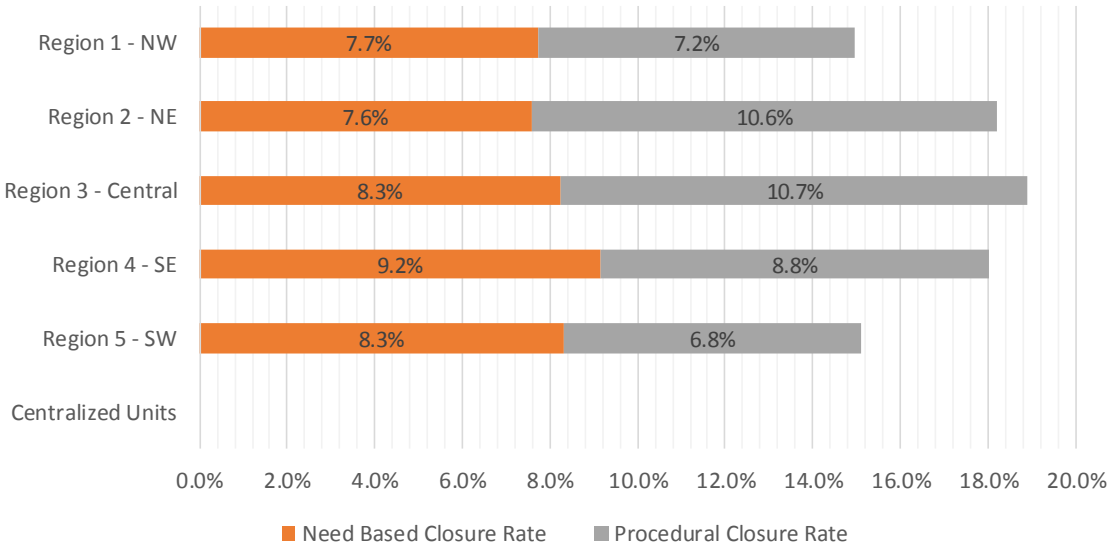
Medicaid Renewal Disposition Rates by Field Office²⁰
December 2019

Office	Approval Rate	Closure Rate	Need Based Closure Rate	Procedural Closure Rate
Chaves County ISD	83.8%	16.2%	8.2%	8.0%
Cibola County ISD	85.1%	14.9%	6.6%	8.3%
Colfax County ISD	82.5%	17.5%	6.4%	11.1%
Curry County ISD	82.8%	17.2%	8.8%	8.4%
East Dona Ana County ISD	83.0%	17.0%	8.4%	8.5%
Eddy Artesia County ISD	86.8%	13.2%	9.9%	3.3%
Eddy Carlsbad County ISD	75.5%	24.5%	9.7%	14.7%
Grant County ISD	86.2%	13.8%	8.1%	5.7%
Guadalupe County ISD	83.5%	16.5%	8.0%	8.6%
Hidalgo County ISD	100.0%	0.0%	0.0%	0.0%
Lea County ISD	81.1%	18.9%	10.1%	8.9%
Lincoln County ISD	80.6%	19.4%	10.0%	9.5%
Luna County ISD	83.1%	16.9%	7.8%	9.1%
McKinley County ISD	86.1%	13.9%	7.3%	6.6%
Northeast Bernalillo County ISD	80.3%	19.7%	8.4%	11.4%
Northwest Bernalillo County ISD	80.1%	19.9%	8.5%	11.4%
Otero County ISD	83.5%	16.5%	8.2%	8.4%
Quay County ISD	87.6%	12.4%	7.9%	4.6%
Rio Arriba County ISD	81.2%	18.8%	8.6%	10.3%
Roosevelt County ISD	0.0%	100.0%	100.0%	0.0%
San Juan County ISD	84.4%	15.6%	8.0%	7.6%
San Miguel County ISD	86.4%	13.6%	7.5%	6.1%
Sandoval County ISD	81.6%	18.4%	7.3%	11.1%
Santa Fe County ISD	80.1%	19.9%	6.8%	13.2%
Sierra County ISD	84.7%	15.3%	7.7%	7.6%
Socorro County ISD	86.3%	13.7%	8.1%	5.7%
South Dona Ana ISD	86.9%	13.1%	9.0%	4.1%
Southeast Bernalillo County ISD	82.3%	17.7%	7.7%	10.0%
Southwest Bernalillo County ISD	81.7%	18.3%	8.0%	10.3%
Taos County ISD	80.6%	19.4%	9.5%	9.9%
Torrance County ISD	82.4%	17.6%	9.7%	7.9%
Valencia North County ISD	84.5%	15.5%	8.4%	7.1%
Valencia South County ISD	45.5%	54.5%	9.1%	45.5%
West Dona Ana County ISD	85.3%	14.7%	8.0%	6.7%
Centralized Units	0.0%	0.0%	0.0%	0.0%
Statewide Total	82.9%	17.1%	8.2%	8.9%

Medicaid Renewal Disposition Rates by Region²⁰
December 2019

Region	Approval Rate	Closure Rate	Need Based Closure Rate	Procedural Closure Rate
Region 1 - NW	85.0%	15.0%	7.7%	7.2%
Region 2 - NE	81.8%	18.2%	7.6%	10.6%
Region 3 - Central	81.1%	18.9%	8.3%	10.7%
Region 4 - SE	82.0%	18.0%	9.2%	8.8%
Region 5 - SW	84.9%	15.1%	8.3%	6.8%
Centralized Units				

Statewide Total	82.9%	17.1%	8.2%	8.9%
-----------------	-------	-------	------	------



Medicaid: Percentage of Approved Renewal EDGs Processed by Certification Date ¹¹

	Oct-19	Nov-19	Dec-19	Jan-20	Feb-20	Mar-20	Apr-20	May-20	Jun-20	Jul-20	Aug-20	Sep-20	Average
Cibola	99.5%	99.4%	98.2%										99.0%
McKinley	98.4%	98.8%	98.4%										98.5%
San Juan	98.8%	98.6%	98.5%										98.6%
Sierra	99.2%	96.9%	98.3%										98.1%
Socorro	98.6%	98.3%	97.7%										98.2%
Valencia North	99.1%	98.4%	98.1%										98.5%
Valencia South			100.0%										100.0%
NW Region 1 Total	98.9%	98.4%	98.5%										98.6%
Colfax	98.5%	98.1%	98.8%										98.5%
Guadalupe	99.6%	98.2%	99.6%										99.1%
Quay	98.7%	99.0%	97.2%										98.3%
Rio Arriba	98.2%	97.2%	98.4%										97.9%
San Miguel	98.3%	99.1%	99.4%										98.9%
Sandoval	99.0%	98.7%	98.9%										98.9%
Santa Fe	97.4%	97.5%	96.8%										97.2%
Taos	97.3%	98.8%	98.5%										98.2%
NE Region 2 Total	98.4%	98.3%	98.5%										98.4%
NE Bernalillo	98.2%	98.5%	97.9%										98.2%
NW Bernalillo	97.5%	97.8%	98.2%										97.8%
SE Bernalillo	98.1%	98.4%	97.9%										98.1%
SW Bernalillo	97.5%	97.2%	97.3%										97.3%
Torrance	98.0%	98.3%	98.9%										98.4%
Gen. Region 3 Total	97.8%	98.1%	98.0%										98.0%
Chaves	99.7%	99.6%	98.8%										99.4%
Curry	98.8%	99.3%	99.0%										99.0%
Eddy Artesia	98.0%	97.3%	98.8%										98.0%
Eddy Carlsbad	98.5%	98.7%	99.1%										98.8%
Lea	98.3%	98.7%	99.0%										98.7%
Lincoln	96.5%	98.1%	97.3%										97.3%
Roosevelt													
SE Region 4 Total	98.3%	98.6%	98.7%										98.5%
East Dona Ana	99.4%	99.1%	99.1%										99.2%
Grant	98.4%	99.0%	98.9%										98.8%
Luna	98.9%	99.4%	99.0%										99.1%
Otero	98.5%	98.8%	98.8%										98.7%
South Dona Ana	98.4%	99.2%	99.5%										99.0%
West Dona Ana	99.3%	98.7%	99.0%										99.0%
SW Region 5 Total	98.8%	99.0%	99.1%										99.0%
STATE TOTAL	98.5%	98.5%	98.5%										98.5%

Administrative, Annual, and Auto Renewals are included

Medicaid: Percentage of Closures EDGs Processed by Certification End Date¹¹

	Oct-19	Nov-19	Dec-19	Jan-20	Feb-20	Mar-20	Apr-20	May-20	Jun-20	Jul-20	Aug-20	Sep-20	Average
Cibola	97.3%	95.3%	94.8%										95.8%
McKinley	94.2%	96.5%	93.2%										94.6%
San Juan	96.9%	95.7%	95.4%										96.0%
Sierra	94.4%	97.0%	98.2%										96.5%
Socorro	96.1%	95.0%	88.1%										93.1%
Valencia North	97.1%	96.3%	92.7%										95.4%
Valencia South			100.0%										100.0%
NW Region 1 Total	96.0%	96.0%	94.6%										95.5%
Colfax	94.7%	93.8%	95.2%										94.6%
Guadalupe	93.8%	96.0%	96.4%										95.4%
Quay	96.4%	98.7%	98.4%										97.8%
Rio Arriba	95.3%	96.8%	95.9%										96.0%
San Miguel	95.3%	92.9%	91.4%										93.2%
Sandoval	96.7%	96.8%	96.7%										96.7%
Santa Fe	94.6%	94.4%	93.6%										94.2%
Taos	95.9%	97.5%	94.7%										96.0%
NE Region 2 Total	95.3%	95.9%	95.3%										95.5%
NE Bernalillo	96.0%	96.5%	95.4%										96.0%
NW Bernalillo	94.7%	95.4%	95.6%										95.2%
SE Bernalillo	96.1%	97.1%	96.4%										96.5%
SW Bernalillo	95.8%	95.5%	93.0%										94.8%
Torrance	96.4%	98.0%	97.4%										97.3%
Gen. Region 3 Total	95.8%	96.5%	95.6%										96.0%
Chaves	97.7%	97.1%	93.0%										95.9%
Curry	97.8%	98.1%	96.1%										97.3%
Eddy Artesia	94.9%	95.8%	97.1%										95.9%
Eddy Carlsbad	96.4%	96.7%	98.0%										97.0%
Lea	97.7%	95.9%	94.2%										95.9%
Lincoln	91.2%	95.5%	94.0%										93.6%
Roosevelt			100.0%										100.0%
SE Region 4 Total	96.0%	96.5%	96.1%										96.2%
East Dona Ana	96.9%	97.0%	95.4%										96.4%
Grant	93.9%	97.1%	94.8%										95.3%
Luna	95.9%	98.5%	95.2%										96.5%
Otero	99.0%	97.4%	97.1%										97.8%
South Dona Ana	99.3%	98.5%	98.2%										98.7%
West Dona Ana	98.0%	97.8%	97.7%										97.8%
SW Region 5 Total	97.2%	97.7%	96.4%										97.1%
STATE TOTAL	96.0%	96.5%	95.6%										96.2%

Annual and Auto Renewals are included

Medicaid: Percentage of Approved and Terminated Renewal EDGs Combined Processed by Certification Date ¹¹

	Oct-19	Nov-19	Dec-19	Jan-20	Feb-20	Mar-20	Apr-20	May-20	Jun-20	Jul-20	Aug-20	Sep-20	Average
Cibola	98.9%	98.7%	97.7%										98.4%
McKinley	98.8%	98.4%	97.6%										98.3%
San Juan	98.4%	98.1%	98.0%										98.2%
Sierra	98.8%	96.9%	98.3%										98.0%
Socorro	99.0%	97.8%	96.2%										97.7%
Valencia North	98.5%	98.1%	97.3%										98.0%
Valencia South	100.0%		100.0%										100.0%
NW Region 1 Total	98.9%	98.0%	97.9%										98.3%
Colfax	99.8%	97.4%	98.1%										98.4%
Guadalupe	99.2%	97.8%	99.1%										98.7%
Quay	98.2%	98.9%	97.4%										98.2%
Rio Arriba	98.1%	97.1%	97.9%										97.7%
San Miguel	98.6%	98.1%	98.3%										98.3%
Sandoval	98.5%	98.3%	98.5%										98.4%
Santa Fe	98.3%	96.8%	96.2%										97.1%
Taos	98.3%	98.5%	97.8%										98.2%
NE Region 2 Total	98.6%	97.9%	97.9%										98.1%
NE Bernalillo	98.5%	98.1%	97.4%										98.0%
NW Bernalillo	98.0%	97.4%	97.6%										97.7%
SE Bernalillo	98.7%	98.1%	97.6%										98.1%
SW Bernalillo	98.0%	96.9%	96.5%										97.1%
Torrance	98.1%	98.3%	98.6%										98.3%
Cen. Region 3 Total	98.3%	97.8%	97.5%										97.9%
Chaves	98.3%	99.1%	97.8%										98.4%
Curry	99.0%	99.1%	98.5%										98.9%
Eddy Artesia	97.1%	97.1%	98.6%										97.6%
Eddy Carlsbad	98.6%	98.2%	98.9%										98.6%
Lea	98.9%	98.2%	98.1%										98.4%
Lincoln	97.2%	97.7%	96.7%										97.2%
Roosevelt			100.0%										100.0%
SE Region 4 Total	98.2%	98.2%	98.4%										98.3%
East Dona Ana	98.7%	98.7%	98.4%										98.6%
Grant	98.5%	98.7%	98.3%										98.5%
Luna	98.5%	99.3%	98.3%										98.7%
Otero	98.8%	98.6%	98.5%										98.6%
South Dona Ana	98.0%	99.1%	99.3%										98.8%
West Dona Ana	99.5%	98.5%	98.8%										98.9%
SW Region 5 Total	98.7%	98.8%	98.6%										98.7%
STATE TOTAL	98.6%	98.1%	98.1%										98.3%

Administrative, Annual, and Auto Renewals are included

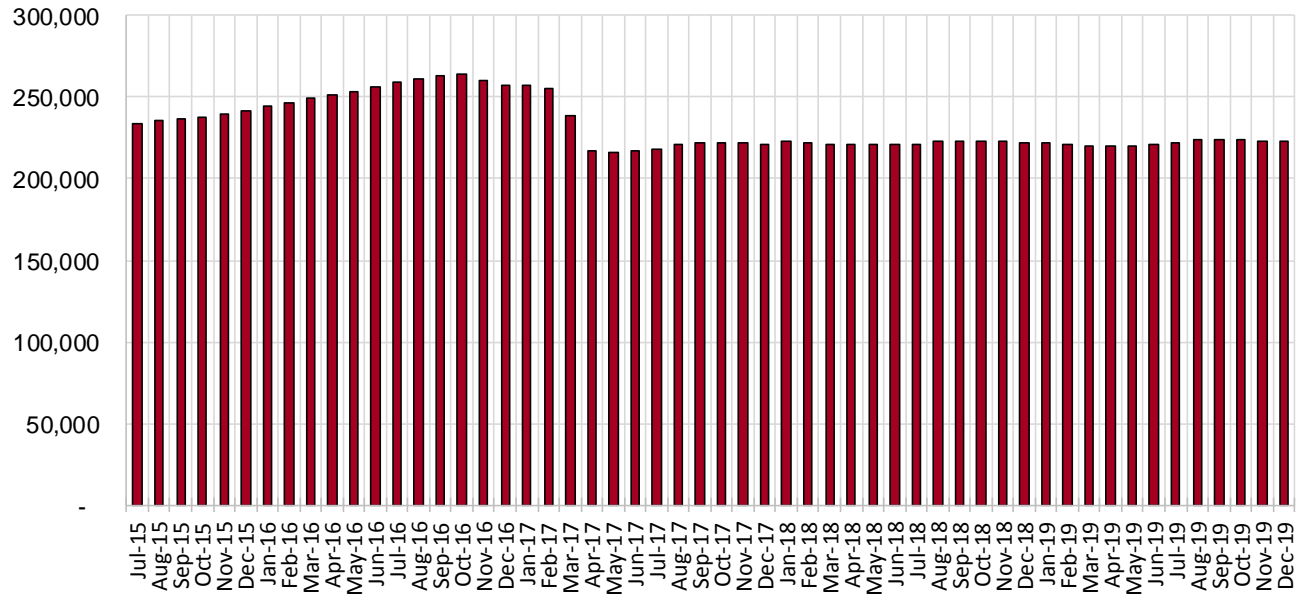
SNAP Cases by Field Office⁶

Office				Percent Change	
	Dec-18	Nov-19	Dec-19	Dec-18- Dec-19	Nov-19- Dec-19
Chaves County ISD	7,002	7,084	7,121	1.7%	0.5%
Cibola County ISD	3,754	3,592	3,580	-4.6%	-0.3%
Colfax County ISD	1,654	1,628	1,627	-1.6%	-0.1%
Curry County ISD	6,998	7,338	7,350	5.0%	0.2%
East Dona Ana County ISD	7,955	7,980	7,964	0.1%	-0.2%
Eddy Artesia County ISD	1,610	1,596	1,602	-0.5%	0.4%
Eddy Carlsbad County ISD	2,861	2,980	2,989	4.5%	0.3%
Grant County ISD	3,928	3,958	3,985	1.5%	0.7%
Guadalupe County ISD	713	685	685	-3.9%	0.0%
Hidalgo County ISD	10	9	10	0.0%	11.1%
Lea County ISD	5,637	5,790	5,777	2.5%	-0.2%
Lincoln County ISD	1,841	1,838	1,851	0.5%	0.7%
Luna County ISD	4,148	4,336	4,359	5.1%	0.5%
McKinley County ISD	9,959	10,300	10,268	3.1%	-0.3%
Northeast Bernalillo County ISD	20,475	20,496	20,532	0.3%	0.2%
Northwest Bernalillo County ISD	20,258	20,481	20,557	1.5%	0.4%
Otero County ISD	5,611	5,766	5,776	2.9%	0.2%
Quay County ISD	1,284	1,323	1,323	3.0%	0.0%
Rio Arriba County ISD	6,762	6,433	6,422	-5.0%	-0.2%
Roosevelt County ISD	2	1	0	-100.0%	-100.0%
San Juan County ISD	13,687	13,999	13,970	2.1%	-0.2%
San Miguel County ISD	5,021	5,005	4,973	-1.0%	-0.6%
Sandoval County ISD	9,996	9,823	9,758	-2.4%	-0.7%
Santa Fe County ISD	9,462	9,079	9,033	-4.5%	-0.5%
Sierra County ISD	2,642	2,558	2,564	-3.0%	0.2%
Socorro County ISD	2,728	2,784	2,776	1.8%	-0.3%
South Dona Ana ISD	8,525	8,470	8,403	-1.4%	-0.8%
Southeast Bernalillo County ISD	11,962	11,842	11,730	-1.9%	-0.9%
Southwest Bernalillo County ISD	18,604	19,096	19,031	2.3%	-0.3%
Taos County ISD	4,147	4,190	4,175	0.7%	-0.4%
Torrance County ISD	3,563	3,581	3,621	1.6%	1.1%
Valencia North County ISD	8,478	8,317	8,304	-2.1%	-0.2%
Valencia South County ISD	0	0	8	N/A	N/A
West Dona Ana County ISD	10,702	10,749	10,751	0.5%	0.0%
Centralized Units	25	9	27	8.0%	200.0%
Statewide Total	222,004	223,116	222,902	0.40%	-0.1%

SNAP Cases by Region⁶

Region	Dec-18	Nov-19	Dec-19	Percent Change	
				Dec-18- Dec-19	Nov-19- Dec-19
Region 1 - NW	41,248	41,550	41,470	0.5%	-0.2%
Region 2 - NE	39,039	38,166	37,996	-2.7%	-0.4%
Region 3 - Central	74,862	75,496	75,471	0.8%	0.0%
Region 4 - SE	25,951	26,627	26,690	2.8%	0.2%
Region 5 - SW	40,879	41,268	41,248	0.9%	0.0%
Centralized Units	25	9	27	8.0%	200.0%
Statewide Total	222,004	223,116	222,902	0.40%	-0.1%

SNAP Caseload: SFY-16 to Current



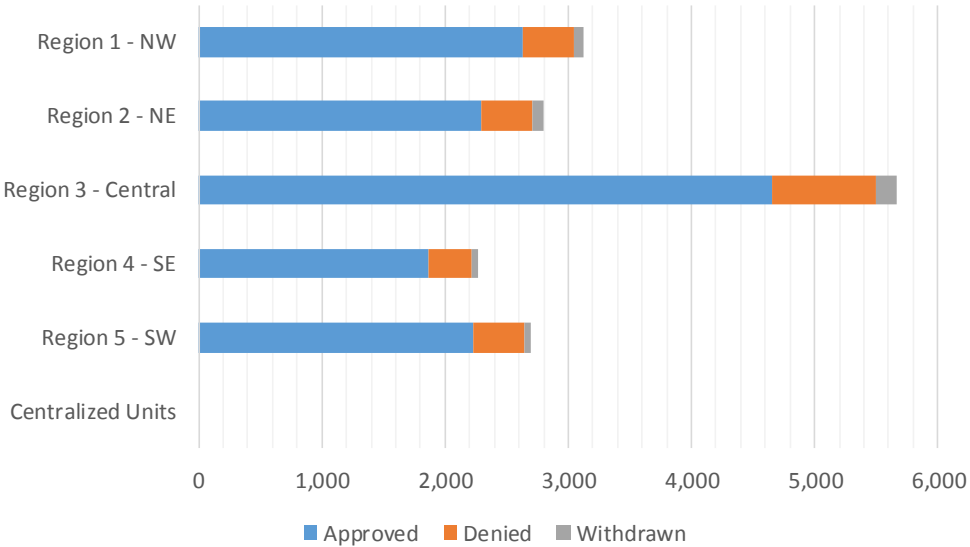
SNAP Initial Applications by Field Office^{4,11}
December 2019

Office	Approved	Denied	Withdrawn	Total Cases Processed
Chaves County ISD	458	63	17	538
Cibola County ISD	218	36	5	259
Colfax County ISD	94	32	0	126
Curry County ISD	488	78	18	584
East Dona Ana County ISD	472	119	11	602
Eddy Artesia County ISD	123	24	2	149
Eddy Carlsbad County ISD	252	53	5	310
Grant County ISD	230	37	4	271
Guadalupe County ISD	30	9	0	39
Hidalgo County ISD	0	0	0	0
Lea County ISD	407	92	8	507
Lincoln County ISD	139	37	2	178
Luna County ISD	234	39	4	277
McKinley County ISD	646	56	21	723
Northeast Bernalillo County ISD	1,389	283	33	1,705
Northwest Bernalillo County ISD	1,136	216	45	1,397
Otero County ISD	334	63	7	404
Quay County ISD	72	11	0	83
Rio Arriba County ISD	403	47	10	460
Roosevelt County ISD	2	0	0	2
San Juan County ISD	996	174	34	1,204
San Miguel County ISD	262	36	13	311
Sandoval County ISD	634	136	36	806
Santa Fe County ISD	537	112	21	670
Sierra County ISD	128	21	5	154
Socorro County ISD	142	21	2	165
South Dona Ana ISD	297	48	11	356
Southeast Bernalillo County ISD	787	163	20	970
Southwest Bernalillo County ISD	1,101	143	45	1,289
Taos County ISD	260	39	10	309
Torrance County ISD	243	42	15	300
Valencia North County ISD	497	108	16	621
Valencia South County ISD	0	0	0	0
West Dona Ana County ISD	666	106	17	789
Centralized Units	0	0	0	0
Statewide Total	13,677	2,444	437	16,558

SNAP Initial Applications by Region^{4,11}
December 2019

Region	Approved	Denied	Withdrawn	Total Cases Processed
Region 1 - NW	2,627	416	83	3,126
Region 2 - NE	2,292	422	90	2,804
Region 3 - Central	4,656	847	158	5,661
Region 4 - SE	1,869	347	52	2,268
Region 5 - SW	2,233	412	54	2,699
Centralized Units	0	0	0	0

Statewide Total	13,677	2,444	437	16,558
-----------------	--------	-------	-----	--------

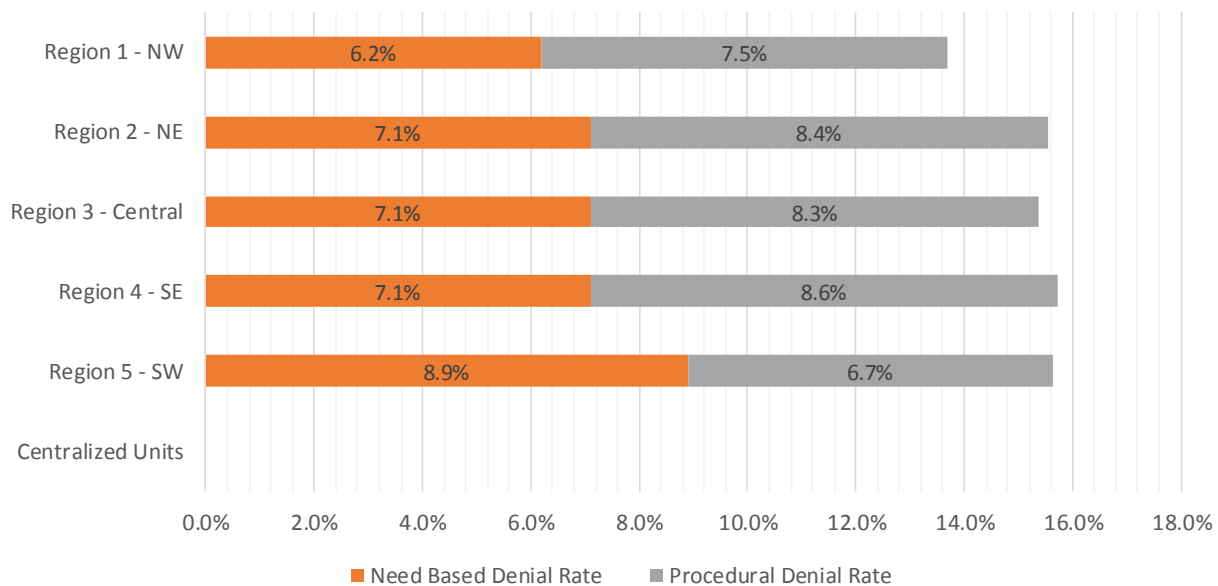


SNAP Initial Disposition Rates by Field Office^{4,11}
December 2019

Office	Approval Rate	Denial Rate	Need Based Denial Rate	Procedural Denial Rate
Chaves County ISD	87.9%	12.1%	4.0%	8.1%
Cibola County ISD	85.8%	14.2%	5.5%	8.7%
Colfax County ISD	74.6%	25.4%	14.3%	11.1%
Curry County ISD	86.2%	13.8%	6.7%	7.1%
East Dona Ana County ISD	79.9%	20.1%	11.8%	8.3%
Eddy Artesia County ISD	83.7%	16.3%	8.1%	8.2%
Eddy Carlsbad County ISD	82.6%	17.4%	8.5%	8.9%
Grant County ISD	86.1%	13.9%	8.7%	5.2%
Guadalupe County ISD	76.9%	23.1%	12.8%	10.3%
Hidalgo County ISD	0.0%	0.0%	0.0%	0.0%
Lea County ISD	81.6%	18.4%	8.4%	10.0%
Lincoln County ISD	79.0%	21.0%	9.6%	11.4%
Luna County ISD	85.7%	14.3%	9.5%	4.8%
McKinley County ISD	92.0%	8.0%	2.6%	5.4%
Northeast Bernalillo County ISD	83.1%	16.9%	7.6%	9.3%
Northwest Bernalillo County ISD	84.0%	16.0%	6.8%	9.2%
Otero County ISD	84.1%	15.9%	5.8%	10.1%
Quay County ISD	86.7%	13.3%	8.5%	4.8%
Rio Arriba County ISD	89.6%	10.4%	4.0%	6.4%
Roosevelt County ISD	100.0%	0.0%	0.0%	0.0%
San Juan County ISD	85.1%	14.9%	6.3%	8.6%
San Miguel County ISD	87.9%	12.1%	4.4%	7.7%
Sandoval County ISD	82.3%	17.7%	8.2%	9.5%
Santa Fe County ISD	82.7%	17.3%	9.0%	8.3%
Sierra County ISD	85.9%	14.1%	8.1%	6.0%
Socorro County ISD	87.1%	12.9%	6.8%	6.1%
South Dona Ana ISD	86.1%	13.9%	7.2%	6.7%
Southeast Bernalillo County ISD	82.8%	17.2%	10.5%	6.7%
Southwest Bernalillo County ISD	88.5%	11.5%	4.6%	6.9%
Taos County ISD	87.0%	13.0%	3.6%	9.4%
Torrance County ISD	85.3%	14.7%	5.2%	9.5%
Valencia North County ISD	82.1%	17.9%	10.0%	7.9%
Valencia South County ISD	0.0%	0.0%	0.0%	0.0%
West Dona Ana County ISD	86.3%	13.7%	8.6%	5.1%
Centralized Units	0.0%	0.0%	0.0%	0.0%
Statewide Total	84.8%	15.2%	7.2%	8.0%

SNAP Initial Disposition Rates by Region^{4,11}
December 2019

Region	Approval Rate	Denial Rate	Need Based Denial Rate	Procedural Denial Rate
Region 1 - NW	86.3%	13.7%	6.2%	7.5%
Region 2 - NE	84.5%	15.5%	7.1%	8.4%
Region 3 - Central	84.6%	15.4%	7.1%	8.3%
Region 4 - SE	84.3%	15.7%	7.1%	8.6%
Region 5 - SW	84.4%	15.6%	8.9%	6.7%
Centralized Units	0.0%	0.0%	0.0%	0.0%
Statewide Total	84.8%	15.2%	7.2%	8.0%



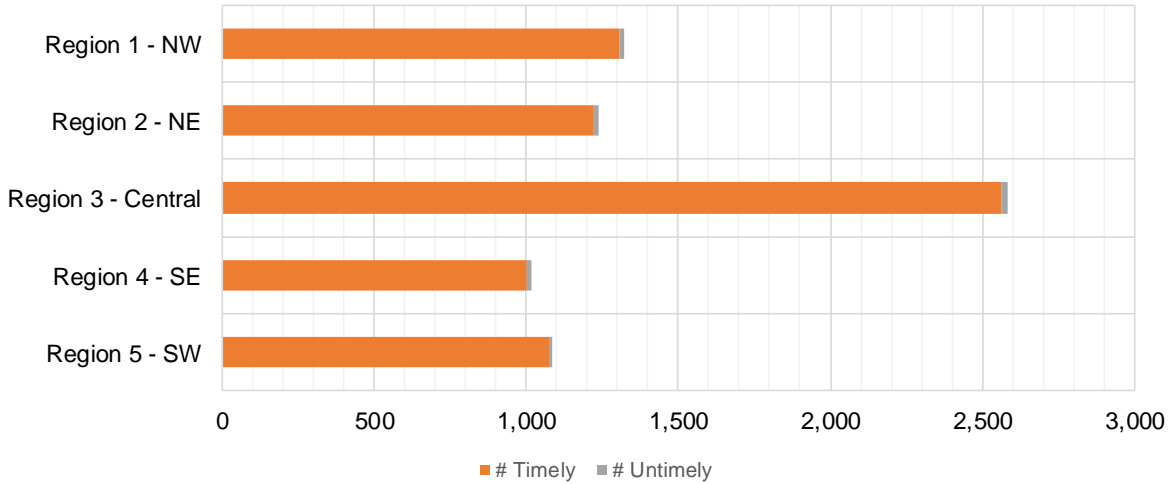
SNAP Expedite Timeliness by Field Office¹³
December 2019

Office Name	Total Expedited Approvals	# Timely	# Untimely	Percentage Timely
Chaves County ISD	234	231	3	98.7 %
Cibola County ISD	109	105	4	96.3 %
Colfax County ISD	59	58	1	98.3 %
Curry County ISD	280	276	4	98.6 %
East Dona Ana County ISD	230	230	0	100.0 %
Eddy Artesia County ISD	67	66	1	98.5 %
Eddy Carlsbad County ISD	150	146	4	97.3 %
Grant County ISD	133	131	2	98.5 %
Guadalupe County ISD	10	10	0	100.0 %
Lea County ISD	237	237	0	100.0 %
Lincoln County ISD	47	45	2	95.7 %
Luna County ISD	111	109	2	98.2 %
McKinley County ISD	303	300	3	99.0 %
Northeast Bernalillo County ISD	783	775	8	99.0 %
Northwest Bernalillo County ISD	666	663	3	99.5 %
Otero County ISD	168	166	2	98.8 %
Quay County ISD	39	39	0	100.0 %
Rio Arriba County ISD	239	235	4	98.3 %
Roosevelt County ISD	2	2	0	100.0 %
San Juan County ISD	566	557	9	98.4 %
San Miguel County ISD	125	125	0	100.0 %
Sandoval County ISD	308	304	4	98.7 %
Santa Fe County ISD	315	309	6	98.1 %
Sierra County ISD	47	47	0	100.0 %
Socorro County ISD	68	67	1	98.5 %
South Dona Ana ISD	116	115	1	99.1 %
Southeast Bernalillo County ISD	420	418	2	99.5 %
Southwest Bernalillo County ISD	579	570	9	98.4 %
Taos County ISD	144	142	2	98.6 %
Torrance County ISD	136	135	1	99.3 %
Valencia North County ISD	230	228	2	99.1 %
West Dona Ana County ISD	325	324	1	99.7 %
Statewide Total	7,246	7,165	81	98.9 %

SNAP Expedite Timeliness by Region¹³
December 2019

Region	Total Expedited Approvals	# Timely	# Untimely	Percentage Timely
Region 1 - NW	1,323	1,304	19	98.6%
Region 2 - NE	1,239	1,222	17	98.6%
Region 3 - Central	2,584	2,561	23	99.1%
Region 4 - SE	1,017	1,003	14	98.6%
Region 5 - SW	1,083	1,075	8	99.3%
Statewide Total	7,246	7,165	81	98.9%

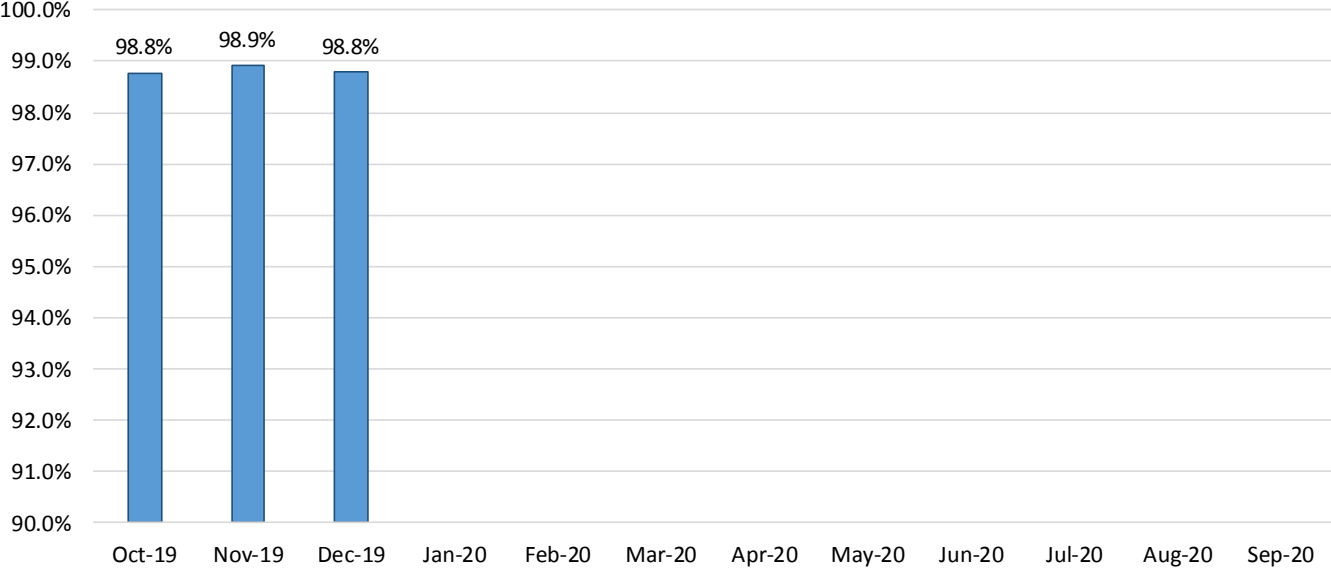
SNAP Expedite - Timeliness



SNAP: Percentage of Applications Processed Timely ¹³

	Oct-19	Nov-19	Dec-19	Jan-20	Feb-20	Mar-20	Apr-20	May-20	Jun-20	Jul-20	Aug-20	Sep-20	Average
APT	98.8%	98.9%	98.8%										98.8%

SNAP Application Processing Timeliness (APT)



SNAP Non-Expedite: Percentage of Initial Applications Processed Timely by Field Office¹³

	Oct-19	Nov-19	Dec-19	Jan-20	Feb-20	Mar-20	Apr-20	May-20	Jun-20	Jul-20	Aug-20	Sep-20	Average
Cibola	99.2%	96.9%	98.0%										98.0%
McKinley	99.0%	98.5%	98.4%										98.6%
San Juan	98.1%	98.4%	99.1%										98.5%
Sierra	98.0%	100.0%	100.0%										99.3%
Socorro	97.9%	100.0%	100.0%										99.3%
Valencia North	99.0%	99.4%	99.5%										99.3%
Valencia South													
NW Region 1 Total	98.5%	98.7%	99.0%										98.7%
Colfax	98.8%	98.8%	100.0%										99.2%
Guadalupe	100.0%	100.0%	100.0%										100.0%
Quay	100.0%	100.0%	100.0%										100.0%
Rio Arriba	98.2%	99.5%	98.6%										98.8%
San Miguel	98.1%	98.9%	100.0%										99.0%
Sandoval	99.5%	98.7%	98.8%										99.0%
Santa Fe	97.7%	98.4%	97.7%										97.9%
Taos	100.0%	98.9%	99.4%										99.4%
NE Region 2 Total	98.8%	98.9%	98.8%										98.8%
NE Bernalillo	98.5%	98.9%	98.5%										98.6%
NW Bernalillo	98.5%	98.1%	97.5%										98.0%
SE Bernalillo	98.8%	98.2%	98.9%										98.6%
SW Bernalillo	99.0%	99.2%	98.3%										98.8%
Torrance	99.4%	100.0%	98.2%										99.2%
Gen. Region 3 Total	98.7%	98.7%	98.3%										98.6%
Chaves	99.7%	99.7%	98.1%										99.2%
Curry	98.7%	99.0%	98.1%										98.6%
Eddy Artesia	100.0%	98.5%	97.6%										98.7%
Eddy Carlsbad	99.4%	99.3%	99.4%										99.4%
Lea	99.6%	99.3%	98.9%										99.3%
Lincoln	99.1%	100.0%	97.0%										98.7%
Roosevelt	100.0%	100.0%											100.0%
SE Region 4 Total	99.4%	99.3%	98.3%										99.0%
East Dona Ana	99.5%	99.5%	99.2%										99.4%
Grant	99.3%	98.7%	100.0%										99.3%
Luna	99.4%	100.0%	98.8%										99.4%
Otero	98.9%	99.6%	99.2%										99.2%
South Dona Ana	100.0%	99.6%	99.6%										99.7%
West Dona Ana	98.7%	99.6%	99.6%										99.3%
SW Region 5 Total	99.3%	99.5%	99.4%										99.4%
STATE TOTAL	98.9%	99.0%	98.7%										98.9%

SNAP Expedite: Percentage of Initial Applications Processed Timely by Field Office¹³

	Oct-19	Nov-19	Dec-19	Jan-20	Feb-20	Mar-20	Apr-20	May-20	Jun-20	Jul-20	Aug-20	Sep-20	Average
Cibola	96.7%	100.0%	95.5%										97.4%
McKinley	98.2%	99.0%	99.0%										98.7%
San Juan	98.9%	99.1%	98.4%										98.8%
Sierra	95.5%	98.1%	100.0%										97.9%
Socorro	100.0%	95.0%	98.5%										97.8%
Valencia North	98.4%	99.1%	99.1%										98.9%
Valencia South													
NW Region 1 Total	98.4%	98.9%	98.5%										98.6%
Colfax	100.0%	100.0%	98.4%										99.5%
Guadalupe	93.8%	100.0%	100.0%										97.9%
Quay	96.9%	100.0%	100.0%										99.0%
Rio Arriba	99.2%	97.1%	98.3%										98.2%
San Miguel	98.9%	100.0%	100.0%										99.6%
Sandoval	97.9%	98.9%	98.7%										98.5%
Santa Fe	98.8%	98.1%	98.1%										98.3%
Taos	97.7%	97.9%	98.6%										98.1%
NE Region 2 Total	98.5%	98.5%	98.6%										98.5%
NE Bernalillo	98.7%	98.5%	98.7%										98.6%
NW Bernalillo	99.6%	98.6%	99.5%										99.2%
SE Bernalillo	98.5%	98.6%	99.3%										98.8%
SW Bernalillo	99.0%	98.1%	98.5%										98.5%
Torrance	99.2%	100.0%	99.3%										99.5%
Gen. Region 3 Total	99.0%	98.5%	99.0%										98.8%
Chaves	98.2%	97.7%	98.7%										98.2%
Curry	97.7%	97.6%	98.6%										98.0%
Eddy Artesia	96.4%	100.0%	98.5%										98.3%
Eddy Carlsbad	99.3%	97.7%	97.3%										98.1%
Lea	98.3%	98.6%	100.0%										99.0%
Lincoln	95.8%	96.0%	95.7%										95.8%
Roosevelt	100.0%	100.0%											100.0%
SE Region 4 Total	98.0%	97.9%	98.6%										98.2%
East Dona Ana	98.5%	99.5%	100.0%										99.3%
Grant	99.2%	100.0%	98.5%										99.2%
Luna	99.2%	100.0%	98.2%										99.1%
Otero	99.4%	99.5%	98.8%										99.2%
South Dona Ana	97.9%	98.6%	99.2%										98.6%
West Dona Ana	99.1%	99.4%	99.7%										99.4%
SW Region 5 Total	98.9%	99.4%	99.3%										99.2%
STATE TOTAL	98.7%	98.6%	98.8%										98.7%

SNAP: Percentage of Denied Initial Applications Processed Within 30 Days by Field Office¹³

	Oct-19	Nov-19	Dec-19	Jan-20	Feb-20	Mar-20	Apr-20	May-20	Jun-20	Jul-20	Aug-20	Sep-20	Average
Cibola	97.3%	100.0%	100.0%										99.1%
McKinley	100.0%	94.4%	96.1%										96.8%
San Juan	97.6%	98.2%	98.6%										98.1%
Sierra	96.0%	100.0%	100.0%										98.7%
Socorro	100.0%	100.0%	100.0%										100.0%
Valencia North	99.0%	97.7%	98.4%										98.4%
Valencia South													
NW Region 1 Total	98.3%	98.4%	98.9%										98.5%
Colfax	96.8%	94.1%	100.0%										97.0%
Guadalupe	100.0%	100.0%	100.0%										100.0%
Quay	100.0%	100.0%	100.0%										100.0%
Rio Arriba	95.8%	98.6%	94.7%										96.4%
San Miguel	100.0%	98.5%	100.0%										99.5%
Sandoval	98.5%	98.9%	98.8%										98.7%
Santa Fe	96.4%	98.2%	96.2%										96.9%
Taos	100.0%	98.4%	100.0%										99.5%
NE Region 2 Total	98.4%	98.3%	98.7%										98.5%
NE Bernalillo	98.2%	97.8%	96.8%										97.6%
NW Bernalillo	96.4%	96.7%	96.6%										96.6%
SE Bernalillo	97.8%	95.0%	98.4%										97.1%
SW Bernalillo	97.7%	98.0%	96.8%										97.5%
Torrance	98.2%	100.0%	96.5%										98.2%
Gen. Region 3 Total	97.7%	97.5%	97.0%										97.4%
Chaves	100.0%	100.0%	95.0%										98.3%
Curry	97.2%	97.2%	94.8%										96.4%
Eddy Artesia	100.0%	96.3%	100.0%										98.8%
Eddy Carlsbad	98.2%	100.0%	98.3%										98.8%
Lea	100.0%	99.0%	97.0%										98.7%
Lincoln	97.6%	100.0%	94.9%										97.5%
Roosevelt		100.0%											100.0%
SE Region 4 Total	98.8%	98.9%	96.7%										98.1%
East Dona Ana	99.4%	98.7%	98.5%										98.9%
Grant	97.4%	98.1%	100.0%										98.5%
Luna	97.7%	100.0%	95.3%										97.7%
Otero	98.9%	98.8%	97.1%										98.3%
South Dona Ana	100.0%	100.0%	100.0%										100.0%
West Dona Ana	97.5%	99.4%	99.2%										98.7%
SW Region 5 Total	98.5%	99.2%	98.4%										98.7%
STATE TOTAL	98.4%	98.5%	98.0%										98.3%

SNAP: Combined Approvals and Denials Percentage of Initial Applications Processed Timely by Field Office¹³

	Oct-19	Nov-19	Dec-19	Jan-20	Feb-20	Mar-20	Apr-20	May-20	Jun-20	Jul-20	Aug-20	Sep-20	Average
Cibola	98.0%	98.5%	97.7%										98.1%
McKinley	98.8%	98.7%	98.8%										98.8%
San Juan	98.5%	98.8%	98.8%										98.7%
Sierra	97.3%	99.4%	100.0%										98.9%
Socorro	98.9%	98.3%	99.4%										98.9%
Valencia North	98.7%	99.1%	99.4%										99.1%
Valencia South		100.0%											100.0%
NW Region 1 Total	98.4%	99.0%	99.0%										98.8%
Colfax	99.3%	99.2%	99.2%										99.2%
Guadalupe	98.2%	100.0%	100.0%										99.4%
Quay	98.6%	100.0%	100.0%										99.5%
Rio Arriba	98.7%	98.3%	98.5%										98.5%
San Miguel	98.5%	99.4%	100.0%										99.3%
Sandoval	98.9%	98.7%	98.9%										98.8%
Santa Fe	98.2%	98.3%	97.9%										98.1%
Taos	99.0%	98.5%	99.0%										98.8%
NE Region 2 Total	98.7%	99.1%	99.2%										99.0%
NE Bernalillo	98.6%	98.7%	98.7%										98.7%
NW Bernalillo	99.0%	98.3%	98.6%										98.6%
SE Bernalillo	98.7%	98.2%	99.3%										98.7%
SW Bernalillo	98.9%	98.5%	98.4%										98.6%
Torrance	99.3%	100.0%	98.7%										99.3%
Gen. Region 3 Total	98.9%	98.7%	98.7%										98.8%
Chaves	99.1%	98.9%	98.3%										98.8%
Curry	98.3%	98.4%	98.3%										98.3%
Eddy Artesia	98.6%	99.1%	98.0%										98.6%
Eddy Carlsbad	99.3%	98.6%	98.4%										98.8%
Lea	99.0%	99.0%	99.4%										99.1%
Lincoln	97.5%	98.4%	96.6%										97.5%
Roosevelt		100.0%	100.0%										100.0%
SE Region 4 Total	98.6%	98.9%	98.4%										98.7%
East Dona Ana	99.2%	99.5%	99.5%										99.4%
Grant	99.3%	99.2%	99.3%										99.3%
Luna	99.3%	100.0%	98.6%										99.3%
Otero	99.3%	99.6%	99.0%										99.3%
South Dona Ana	99.3%	99.3%	99.4%										99.3%
West Dona Ana	98.9%	99.5%	99.6%										99.3%
SW Region 5 Total	99.2%	99.5%	99.2%										99.3%
STATE TOTAL	98.7%	99.0%	98.9%										98.9%

SNAP Renewals Processed by Field Office²⁰
December 2019

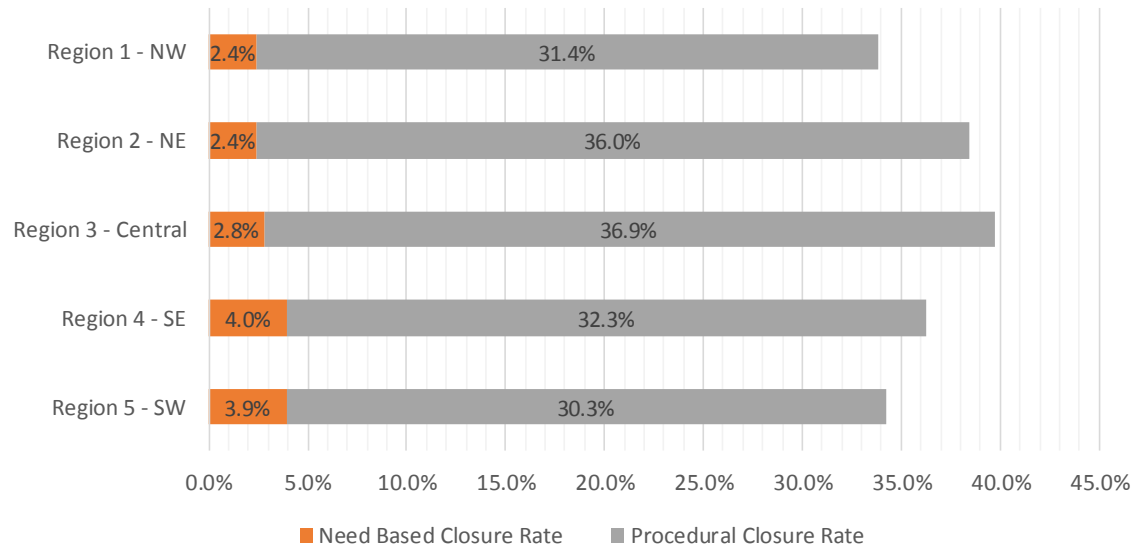
Office	Approvals	Closures	Need Based Closures	Procedural Closures
Chaves County ISD	265	104	8	96
Cibola County ISD	145	86	4	82
Coffax County ISD	62	37	3	34
Curry County ISD	229	117	12	105
East Dona Ana County ISD	278	204	24	180
Eddy Artesia County ISD	47	32	7	25
Eddy Carlsbad County ISD	65	70	5	65
Grant County ISD	146	70	8	62
Guadalupe County ISD	30	14	2	12
Hidalgo County ISD	0	0	0	0
Lea County ISD	197	140	21	119
Lincoln County ISD	60	28	1	27
Luna County ISD	163	88	5	83
McKinley County ISD	501	198	13	185
Northeast Bernalillo County ISD	516	439	24	415
Northwest Bernalillo County ISD	494	334	31	303
Otero County ISD	187	130	9	121
Quay County ISD	46	17	2	15
Rio Arriba County ISD	230	165	8	157
Roosevelt County ISD	0	0	0	0
San Juan County ISD	495	303	23	280
San Miguel County ISD	196	75	6	69
Sandoval County ISD	336	214	11	203
Santa Fe County ISD	273	216	12	204
Sierra County ISD	90	28	3	25
Socorro County ISD	106	53	8	45
South Dona Ana ISD	410	112	22	90
Southeast Bernalillo County ISD	365	209	14	195
Southwest Bernalillo County ISD	769	420	30	390
Taos County ISD	143	84	8	76
Torrance County ISD	108	81	5	76
Valencia North County ISD	287	163	9	154
Valencia South County ISD	0	0	0	0
West Dona Ana County ISD	389	216	26	190
Centralized Units	0	0	0	0
Statewide Total	7,628	4,447	364	4,083

SNAP Renewal Disposition Rates by Field Office²⁰
December 2019

Office	Approval Rate	Closure Rate	Need Based Closure Rate	Procedural Closure Rate
Chaves County ISD	71.8%	28.2%	2.2%	26.0%
Cibola County ISD	62.8%	37.2%	1.7%	35.5%
Colfax County ISD	62.6%	37.4%	3.0%	34.3%
Curry County ISD	66.2%	33.8%	3.5%	30.3%
East Dona Ana County ISD	57.7%	42.3%	5.0%	37.3%
Eddy Artesia County ISD	59.5%	40.5%	8.9%	31.6%
Eddy Carlsbad County ISD	48.1%	51.9%	3.7%	48.1%
Grant County ISD	67.6%	32.4%	3.7%	28.7%
Guadalupe County ISD	68.2%	31.8%	4.5%	27.3%
Hidalgo County ISD	0.0%	0.0%	0.0%	0.0%
Lea County ISD	58.5%	41.5%	6.2%	35.3%
Lincoln County ISD	68.2%	31.8%	1.1%	30.7%
Luna County ISD	64.9%	35.1%	2.0%	33.1%
McKinley County ISD	71.7%	28.3%	1.9%	26.5%
Northeast Bernalillo County ISD	54.0%	46.0%	2.5%	43.5%
Northwest Bernalillo County ISD	59.7%	40.3%	3.7%	36.6%
Otero County ISD	59.0%	41.0%	2.8%	38.2%
Quay County ISD	73.0%	27.0%	3.2%	23.8%
Rio Arriba County ISD	58.2%	41.8%	2.0%	39.7%
Roosevelt County ISD	0.0%	0.0%	0.0%	0.0%
San Juan County ISD	62.0%	38.0%	2.9%	35.1%
San Miguel County ISD	72.3%	27.7%	2.2%	25.5%
Sandoval County ISD	61.1%	38.9%	2.0%	36.9%
Santa Fe County ISD	55.8%	44.2%	2.5%	41.7%
Sierra County ISD	76.3%	23.7%	2.5%	21.2%
Socorro County ISD	66.7%	33.3%	5.0%	28.3%
South Dona Ana ISD	78.5%	21.5%	4.2%	17.2%
Southeast Bernalillo County ISD	63.6%	36.4%	2.4%	34.0%
Southwest Bernalillo County ISD	64.7%	35.3%	2.5%	32.8%
Taos County ISD	63.0%	37.0%	3.5%	33.5%
Torrance County ISD	57.1%	42.9%	2.6%	40.2%
Valencia North County ISD	63.8%	36.2%	2.0%	34.2%
Valencia South County ISD	0.0%	0.0%	0.0%	0.0%
West Dona Ana County ISD	64.3%	35.7%	4.3%	31.4%
Centralized Units	0.0%	0.0%	0.0%	0.0%
Statewide Total	63.2%	36.8%	3.0%	33.8%

SNAP Renewal Disposition Rates by Region²⁰
December 2019

Region	Approval Rate	Closure Rate	Need Based Closure Rate	Procedural Closure Rate
Region 1 - NW	66.2%	33.8%	2.4%	31.4%
Region 2 - NE	61.6%	38.4%	2.4%	36.0%
Region 3 - Central	60.3%	39.7%	2.8%	36.9%
Region 4 - SE	63.7%	36.3%	4.0%	32.3%
Region 5 - SW	65.7%	34.3%	3.9%	30.3%
Centralized Units				
Statewide Total	63.2%	36.8%	3.0%	33.8%



SNAP: Percentage of Approved Renewal Applications Processed¹¹

	Oct-19	Nov-19	Dec-19	Jan-20	Feb-20	Mar-20	Apr-20	May-20	Jun-20	Jul-20	Aug-20	Sep-20	Average
Cibola	94.2%	97.9%	95.4%										95.8%
McKinley	99.0%	94.2%	97.5%										96.9%
San Juan	95.3%	93.9%	97.1%										95.4%
Sierra	97.2%	95.3%	96.8%										96.4%
Socorro	98.0%	97.2%	97.2%										97.5%
Valencia North	98.3%	97.2%	95.7%										97.1%
Valencia South													
NW Region 1 Total	97.0%	96.0%	96.6%										96.5%
Colfax	100.0%	97.6%	98.4%										98.7%
Guadalupe	94.7%	100.0%	100.0%										98.2%
Quay	100.0%	98.2%	100.0%										99.4%
Rio Arriba	99.1%	96.4%	95.8%										97.1%
San Miguel	94.4%	95.9%	99.5%										96.6%
Sandoval	99.5%	98.6%	98.5%										98.9%
Santa Fe	95.3%	92.6%	96.5%										94.8%
Taos	97.9%	95.0%	100.0%										97.6%
NE Region 2 Total	97.6%	96.8%	98.6%										97.7%
NE Bernalillo	98.6%	96.6%	96.8%										97.3%
NW Bernalillo	96.2%	96.2%	95.4%										95.9%
SE Bernalillo	97.2%	94.8%	96.6%										96.2%
SW Bernalillo	97.0%	96.9%	97.2%										97.0%
Torrance	95.6%	95.0%	99.1%										96.6%
Gen. Region 3 Total	96.9%	95.9%	97.0%										96.6%
Chaves	98.8%	98.7%	97.8%										98.4%
Curry	98.8%	98.4%	97.9%										98.4%
Eddy Artesia	100.0%	100.0%	100.0%										100.0%
Eddy Carlsbad	100.0%	98.6%	100.0%										99.5%
Lea	98.8%	98.9%	97.0%										98.2%
Lincoln	95.8%	96.9%	96.8%										96.5%
Roosevelt													
SE Region 4 Total	98.7%	98.6%	98.3%										98.5%
East Dona Ana	97.8%	97.5%	97.5%										97.6%
Grant	98.1%	100.0%	96.1%										98.1%
Luna	100.0%	97.6%	99.4%										99.0%
Otero	99.1%	99.0%	100.0%										99.4%
South Dona Ana	100.0%	99.7%	100.0%										99.9%
West Dona Ana	100.0%	98.4%	99.5%										99.3%
SW Region 5 Total	99.2%	98.7%	98.8%										98.9%
STATE TOTAL	97.9%	97.2%	97.9%										97.7%

If a renewal packet was received on or before 15th of the renewal month, the case shall be considered timely if the case was processed by renewal due date

SNAP: Percentage of Approved Renewal Applications Processed¹¹

	Oct-19	Nov-19	Dec-19	Jan-20	Feb-20	Mar-20	Apr-20	May-20	Jun-20	Jul-20	Aug-20	Sep-20	Average
Cibola	87.5%	91.7%	100.0%										93.1%
McKinley	97.6%	95.5%	100.0%										97.7%
San Juan	94.6%	91.3%	98.4%										94.8%
Sierra	96.8%	100.0%	92.3%										96.4%
Socorro	96.4%	96.2%	100.0%										97.5%
Valencia North	98.4%	94.4%	100.0%										97.6%
Valencia South													
NW Region 1 Total	95.2%	94.9%	98.5%										96.2%
Colfax	100.0%	100.0%	100.0%										100.0%
Guadalupe	100.0%	100.0%	100.0%										100.0%
Quay	100.0%	100.0%	100.0%										100.0%
Rio Arriba	98.4%	93.3%	90.9%										94.2%
San Miguel	92.9%	100.0%	100.0%										97.6%
Sandoval	100.0%	97.9%	100.0%										99.3%
Santa Fe	91.3%	95.8%	98.1%										95.1%
Taos	87.5%	100.0%	100.0%										95.8%
NE Region 2 Total	96.3%	98.4%	98.6%										97.8%
NE Bernalillo	100.0%	94.6%	98.8%										97.8%
NW Bernalillo	98.0%	96.9%	98.8%										97.9%
SE Bernalillo	97.8%	100.0%	98.5%										98.8%
SW Bernalillo	98.0%	96.3%	100.0%										98.1%
Torrance	96.2%	81.8%	100.0%										92.7%
Cen. Region 3 Total	98.0%	93.9%	99.2%										97.0%
Chaves	100.0%	100.0%	96.6%										98.9%
Curry	100.0%	96.3%	100.0%										98.8%
Eddy Artesia	100.0%	100.0%	100.0%										100.0%
Eddy Carlsbad	100.0%	88.9%	100.0%										96.3%
Lea	97.1%	100.0%	100.0%										99.0%
Lincoln	92.9%	100.0%	100.0%										97.6%
Roosevelt													
SE Region 4 Total	98.3%	97.5%	99.4%										98.4%
East Dona Ana	98.4%	98.1%	100.0%										98.8%
Grant	96.2%	100.0%	100.0%										98.7%
Luna	100.0%	100.0%	100.0%										100.0%
Otero	100.0%	100.0%	100.0%										100.0%
South Dona Ana	100.0%	100.0%	100.0%										100.0%
West Dona Ana	100.0%	97.9%	98.2%										98.7%
SW Region 5 Total	99.1%	99.3%	99.7%										99.4%
STATE TOTAL	97.3%	97.0%	99.1%										97.8%

Only includes cases in which the Renewal Packet was received by the 15th of the month

SNAP: Percentage of Terminations Renewal Applications Processed¹¹

	Oct-19	Nov-19	Dec-19	Jan-20	Feb-20	Mar-20	Apr-20	May-20	Jun-20	Jul-20	Aug-20	Sep-20	Average
Cibola	98.8%	93.8%	96.6%										96.4%
McKinley	97.1%	91.8%	98.0%										95.6%
San Juan	96.5%	94.6%	97.4%										96.2%
Sierra	98.5%	96.2%	93.3%										96.0%
Socorro	100.0%	92.2%	100.0%										97.4%
Valencia North	97.8%	93.5%	97.0%										96.1%
Valencia South													
NW Region 1 Total	98.1%	93.7%	97.1%										96.3%
Colfax	100.0%	100.0%	100.0%										100.0%
Guadalupe	100.0%	90.9%	100.0%										97.0%
Quay	100.0%	100.0%	100.0%										100.0%
Rio Arriba	98.2%	93.7%	96.5%										96.1%
San Miguel	92.9%	97.6%	100.0%										96.8%
Sandoval	98.0%	96.6%	96.8%										97.1%
Santa Fe	97.0%	95.4%	97.3%										96.6%
Taos	98.8%	96.3%	98.8%										98.0%
NE Region 2 Total	98.1%	96.3%	98.7%										97.7%
NE Bernalillo	95.0%	94.9%	96.3%										95.4%
NW Bernalillo	95.1%	95.0%	94.4%										94.8%
SE Bernalillo	95.2%	96.1%	93.7%										95.0%
SW Bernalillo	97.3%	98.2%	97.2%										97.6%
Torrance	100.0%	97.8%	94.2%										97.3%
Gen. Region 3 Total	96.5%	96.4%	95.2%										96.0%
Chaves	96.8%	94.9%	94.5%										95.4%
Curry	98.7%	97.9%	98.3%										98.3%
Eddy Artesia	92.3%	100.0%	100.0%										97.4%
Eddy Carlsbad	100.0%	97.6%	97.2%										98.3%
Lea	97.6%	95.9%	98.6%										97.4%
Lincoln	95.3%	91.7%	87.5%										91.5%
Roosevelt													
SE Region 4 Total	96.8%	96.3%	96.0%										96.4%
East Dona Ana	98.7%	97.5%	99.0%										98.4%
Grant	100.0%	98.1%	95.9%										98.0%
Luna	100.0%	97.5%	96.7%										98.1%
Otero	100.0%	99.0%	97.7%										98.9%
South Dona Ana	100.0%	100.0%	100.0%										100.0%
West Dona Ana	97.9%	99.0%	99.1%										98.7%
SW Region 5 Total	99.4%	98.5%	98.1%										98.7%
STATE TOTAL	97.9%	96.2%	97.2%										97.1%

Includes cases for which no renewal application was received.

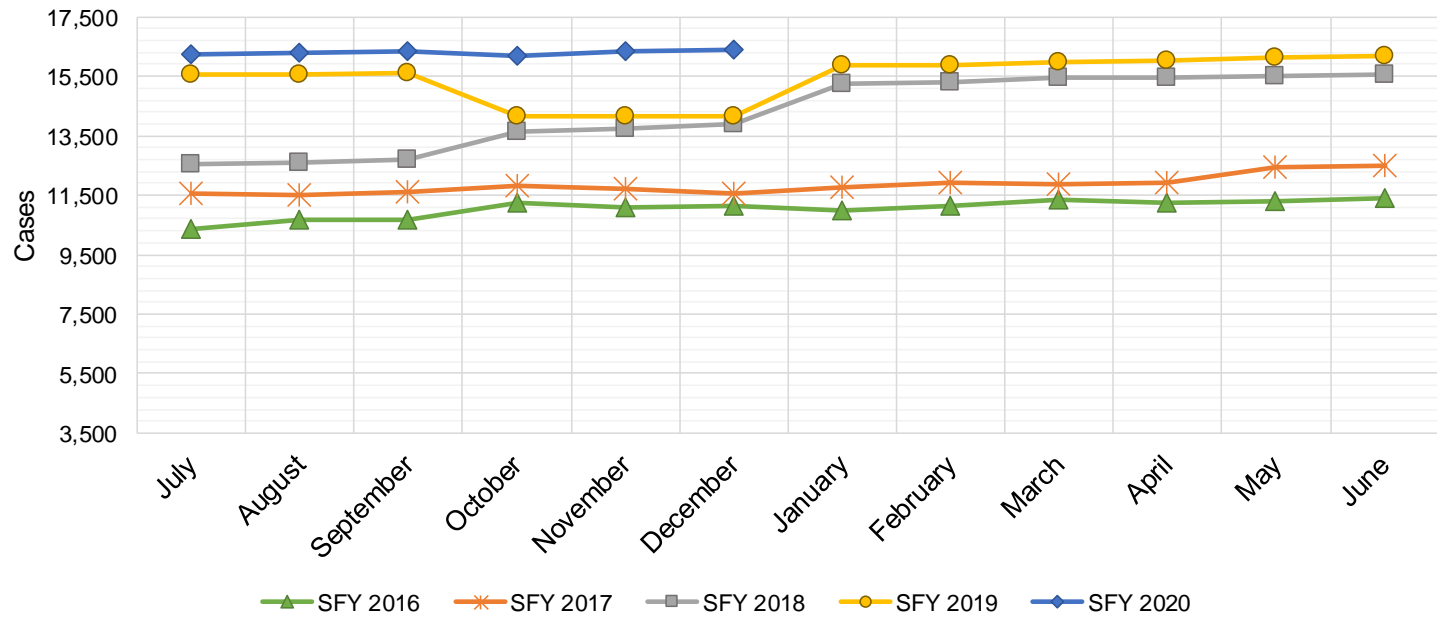
SNAP: Combined Percentage of Approved and Terminated Renewal Applications Processed¹¹

	Oct-19	Nov-19	Dec-19	Jan-20	Feb-20	Mar-20	Apr-20	May-20	Jun-20	Jul-20	Aug-20	Sep-20	Average
Cibola	96.1%	96.4%	95.9%										96.1%
McKinley	98.4%	93.4%	97.6%										96.5%
San Juan	95.8%	94.1%	97.2%										95.7%
Sierra	97.7%	95.7%	95.9%										96.4%
Socorro	98.7%	95.6%	98.1%										97.5%
Valencia North	98.1%	95.8%	96.2%										96.7%
Valencia South													
NW Region 1 Total	97.5%	95.2%	96.8%										96.5%
Colfax	100.0%	98.6%	99.0%										99.2%
Guadalupe	97.1%	97.3%	100.0%										98.1%
Quay	100.0%	98.8%	100.0%										99.6%
Rio Arriba	98.8%	95.1%	96.1%										96.7%
San Miguel	93.9%	96.5%	99.6%										96.7%
Sandoval	99.0%	97.8%	97.9%										98.2%
Santa Fe	96.0%	93.7%	96.8%										95.5%
Taos	98.2%	95.5%	99.6%										97.8%
NE Region 2 Total	97.9%	96.7%	98.6%										97.7%
NE Bernalillo	97.1%	96.0%	96.6%										96.6%
NW Bernalillo	95.7%	95.7%	95.0%										95.5%
SE Bernalillo	96.3%	95.3%	95.5%										95.7%
SW Bernalillo	97.1%	97.3%	97.2%										97.2%
Torrance	97.5%	96.3%	96.9%										96.9%
Gen. Region 3 Total	96.7%	96.1%	96.2%										96.4%
Chaves	98.1%	97.4%	96.9%										97.5%
Curry	98.8%	98.2%	98.0%										98.3%
Eddy Artesia	97.1%	100.0%	100.0%										99.0%
Eddy Carlsbad	100.0%	98.2%	98.5%										98.9%
Lea	98.3%	97.6%	97.7%										97.9%
Lincoln	95.7%	95.0%	93.6%										94.8%
Roosevelt													
SE Region 4 Total	98.0%	97.7%	97.5%										97.7%
East Dona Ana	98.1%	97.5%	98.2%										97.9%
Grant	98.7%	99.4%	96.0%										98.0%
Luna	100.0%	97.6%	98.4%										98.7%
Otero	99.4%	99.0%	99.1%										99.2%
South Dona Ana	100.0%	99.8%	100.0%										99.9%
West Dona Ana	99.3%	98.6%	99.3%										99.1%
SW Region 5 Total	99.3%	98.7%	98.5%										98.8%
STATE TOTAL	97.9%	96.9%	97.6%										97.5%

State SNAP Supplement

SFY 2016 ^{12,9}			SFY 2017 ⁹			SFY 2018 ⁹			SFY 2019 ⁹			SFY 2020 ⁹		
	Cases	Expenditures		Cases	Expenditures		Cases	Expenditures		Cases	Expenditures		Cases	Expenditures
Jul-15	10,345	\$86,143	Jul-16	11,537	\$95,553	Jul-17	12,526	\$97,568	Jul-18	15,555	\$141,711	Jul-19	16,260	\$145,023
Aug-15	10,669	\$88,197	Aug-16	11,522	\$95,107	Aug-17	12,589	\$98,954	Aug-18	15,584	\$139,719	Aug-19	16,314	\$145,706
Sep-15	10,676	\$88,426	Sep-16	11,613	\$94,472	Sep-17	12,679	\$97,546	Sep-18	15,631	\$140,768	Sep-19	16,362	\$145,767
Oct-15	11,262	\$96,758	Oct-16	11,797	\$96,679	Oct-17	13,628	\$117,343	Oct-18	14,161	\$125,737	Oct-19	16,182	\$139,741
Nov-15	11,099	\$91,996	Nov-16	11,735	\$93,689	Nov-17	13,748	\$119,055	Nov-18	14,160	\$125,401	Nov-19	16,331	\$138,583
Dec-15	11,125	\$90,771	Dec-16	11,556	\$93,739	Dec-17	13,877	\$120,585	Dec-18	14,163	\$126,263	Dec-19	16,373	\$137,440
Jan-16	10,977	\$92,760	Jan-17	11,763	\$96,074	Jan-18	15,246	\$135,993	Jan-19	15,890	\$141,357	Jan-20		
Feb-16	11,153	\$95,363	Feb-17	11,907	\$98,251	Feb-18	15,308	\$137,296	Feb-19	15,882	\$142,396	Feb-20		
Mar-16	11,332	\$96,751	Mar-17	11,853	\$96,693	Mar-18	15,482	\$139,132	Mar-19	15,970	\$142,427	Mar-20		
Apr-16	11,222	\$93,959	Apr-17	11,944	\$97,060	Apr-18	15,466	\$139,202	Apr-19	16,032	\$143,982	Apr-20		
May-16	11,283	\$95,271	May-17	12,457	\$96,940	May-18	15,525	\$139,397	May-19	16,126	\$143,697	May-20		
Jun-16	11,389	\$93,061	Jun-17	12,498	\$97,405	Jun-18	15,577	\$140,802	Jun-19	16,182	\$143,128	Jun-20		

TOTAL	132,532	\$1,109,455	142,182	\$1,151,662	171,651	\$1,482,874	185,336	\$1,656,584	97,822	\$852,261
AVERAGE	11,044	\$92,455	11,849	\$95,972	14,304	\$123,573	15,445	\$138,049	16,304	\$142,043



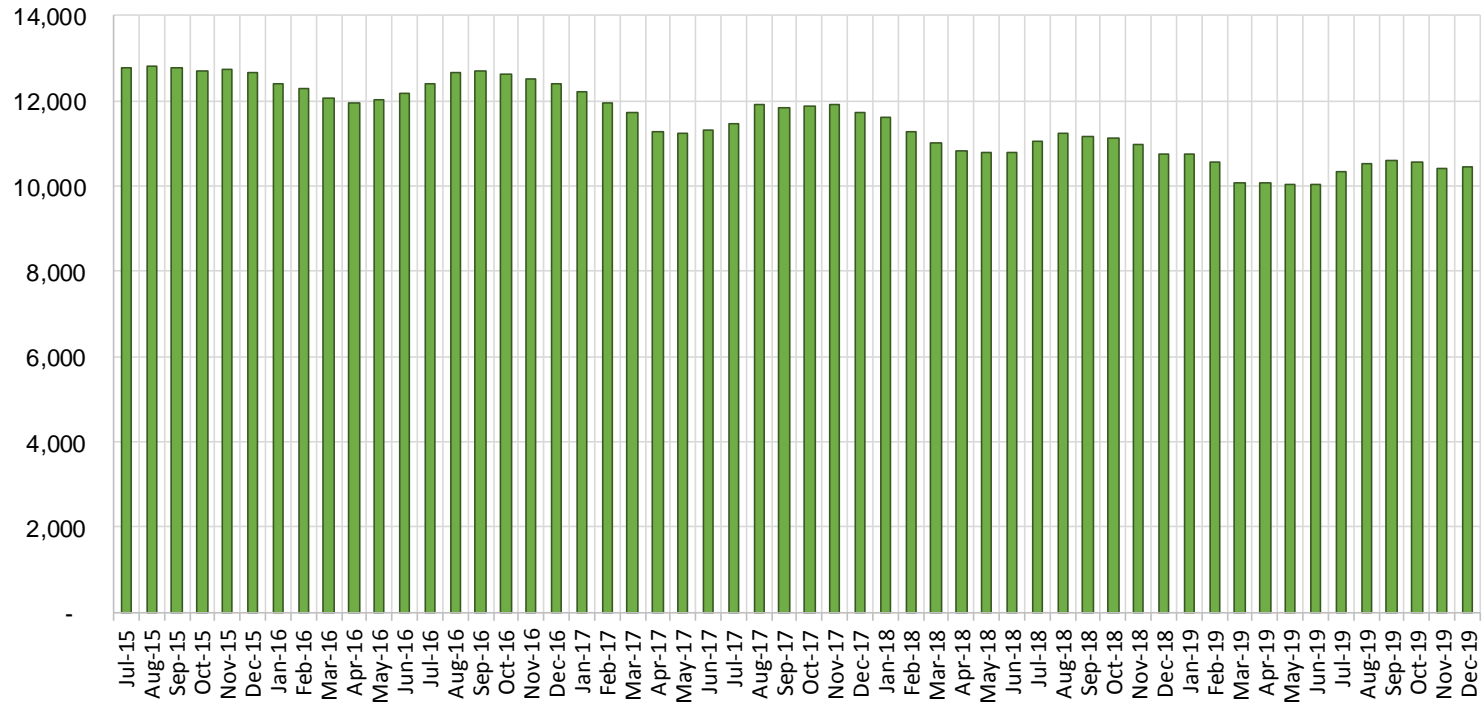
TANF Cases by Field Office⁶

Office	Dec-18	Nov-19	Dec-19	Percent Change	
				Dec-18- Dec-19	Nov-19- Dec-19
Chaves County ISD	414	397	406	-1.9%	2.3%
Cibola County ISD	147	102	100	-32.0%	-2.0%
Colfax County ISD	79	88	88	11.4%	0.0%
Curry County ISD	667	619	616	-7.6%	-0.5%
East Dona Ana County ISD	446	413	414	-7.2%	0.2%
Eddy Artesia County ISD	105	90	83	-21.0%	-7.8%
Eddy Carlsbad County ISD	145	151	159	9.7%	5.3%
Grant County ISD	206	190	186	-9.7%	-2.1%
Guadalupe County ISD	23	23	26	13.0%	13.0%
Hidalgo County ISD	0	0	0	NA	N/A
Lea County ISD	385	358	375	-2.6%	4.7%
Lincoln County ISD	99	81	72	-27.3%	-11.1%
Luna County ISD	226	209	208	-8.0%	-0.5%
McKinley County ISD	73	70	73	0.0%	4.3%
Northeast Bernalillo County ISD	900	913	920	2.2%	0.8%
Northwest Bernalillo County ISD	819	852	843	2.9%	-1.1%
Otero County ISD	247	296	287	16.2%	-3.0%
Quay County ISD	55	80	80	45.5%	0.0%
Rio Arriba County ISD	376	364	359	-4.5%	-1.4%
Roosevelt County ISD	1	0	0	-100.0%	N/A
San Juan County ISD	321	267	278	-13.4%	4.1%
San Miguel County ISD	181	197	193	6.6%	-2.0%
Sandoval County ISD	499	442	432	-13.4%	-2.3%
Santa Fe County ISD	359	377	374	4.2%	-0.8%
Sierra County ISD	71	68	70	-1.4%	2.9%
Socorro County ISD	82	82	82	0.0%	0.0%
South Dona Ana ISD	674	598	598	-11.3%	0.0%
Southeast Bernalillo County ISD	608	583	562	-7.6%	-3.6%
Southwest Bernalillo County ISD	1,119	1,123	1,148	2.6%	2.2%
Taos County ISD	130	132	139	6.9%	5.3%
Torrance County ISD	203	181	183	-9.9%	1.1%
Valencia North County ISD	409	421	423	3.4%	0.5%
Valencia South County ISD	0	0	0	N/A	N/A
West Dona Ana County ISD	691	656	663	-4.1%	1.1%
Centralized Units	2	2	4	100.0%	100.0%
Statewide Total	10,762	10,425	10,444	-3.0%	0.2%

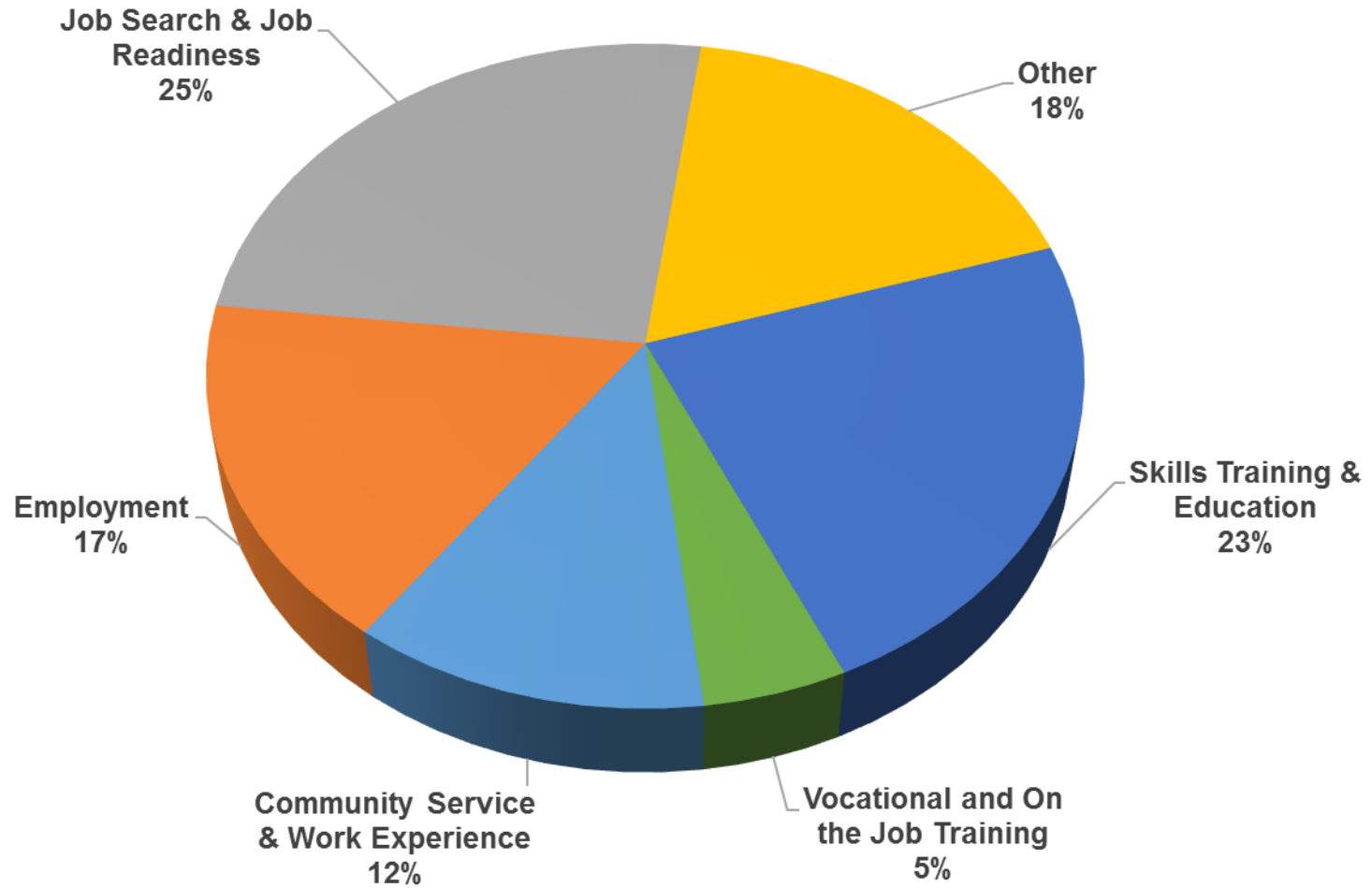
TANF Cases by Region⁶

Region	Dec-18	Nov-19	Dec-19	Percent Change	
				Dec-18- Dec-19	Nov-19- Dec-19
Region 1- NW	1,103	1,010	1,026	-7.0%	1.6%
Region 2- NE	1,702	1,703	1,691	-0.6%	-0.7%
Region 3- Central	3,649	3,652	3,656	0.2%	0.1%
Region 4- SE	1,816	1,696	1,711	-5.8%	0.9%
Region 5- SW	2,490	2,362	2,356	-5.4%	-0.3%
Centralized Units	2	2	4	100.0%	100.0%
Statewide Total	10,762	10,425	10,444	-3.0%	0.2%

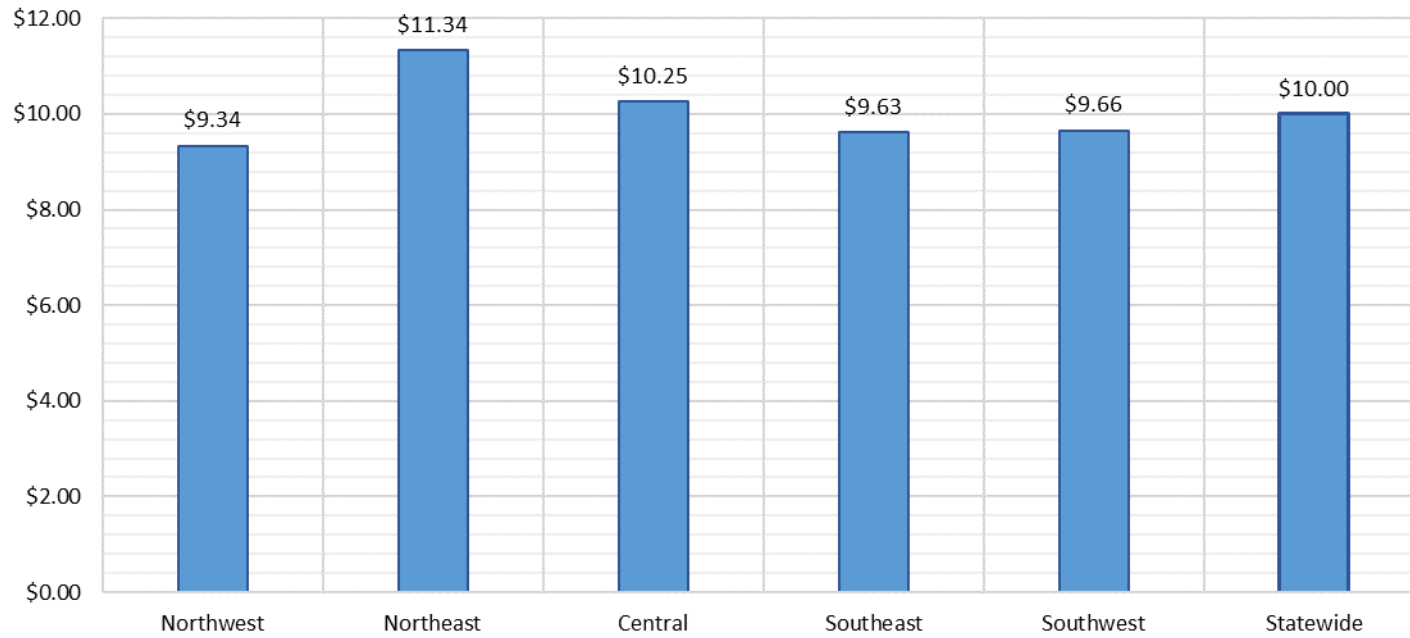
TANF Caseload: SFY-16 to Current



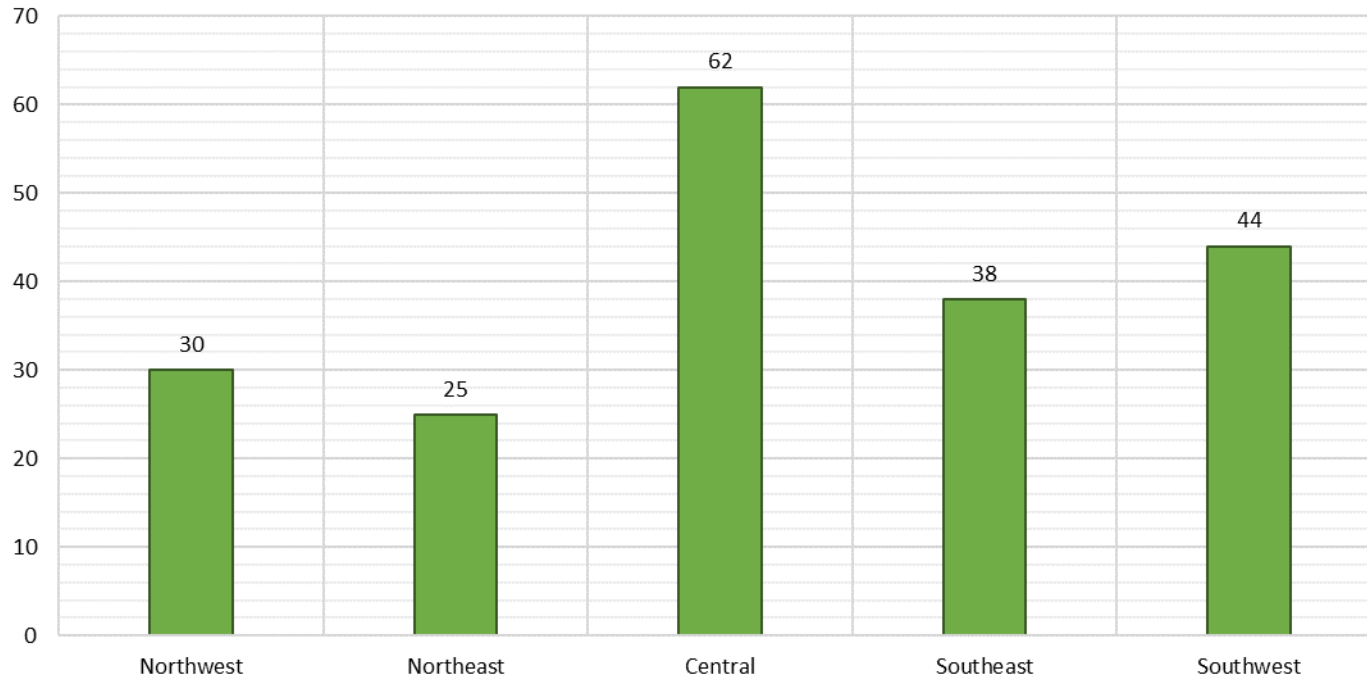
**NM Works Activity Placements on December 31, 2019
as reported by SL Start¹⁴**



Average Starting Hourly Wage of December 2019 TANF Employments
as reported by SL Start¹⁵



Number of New Employments in December 2019 by Region
as reported by SL Start¹⁵
Statewide Total: 199



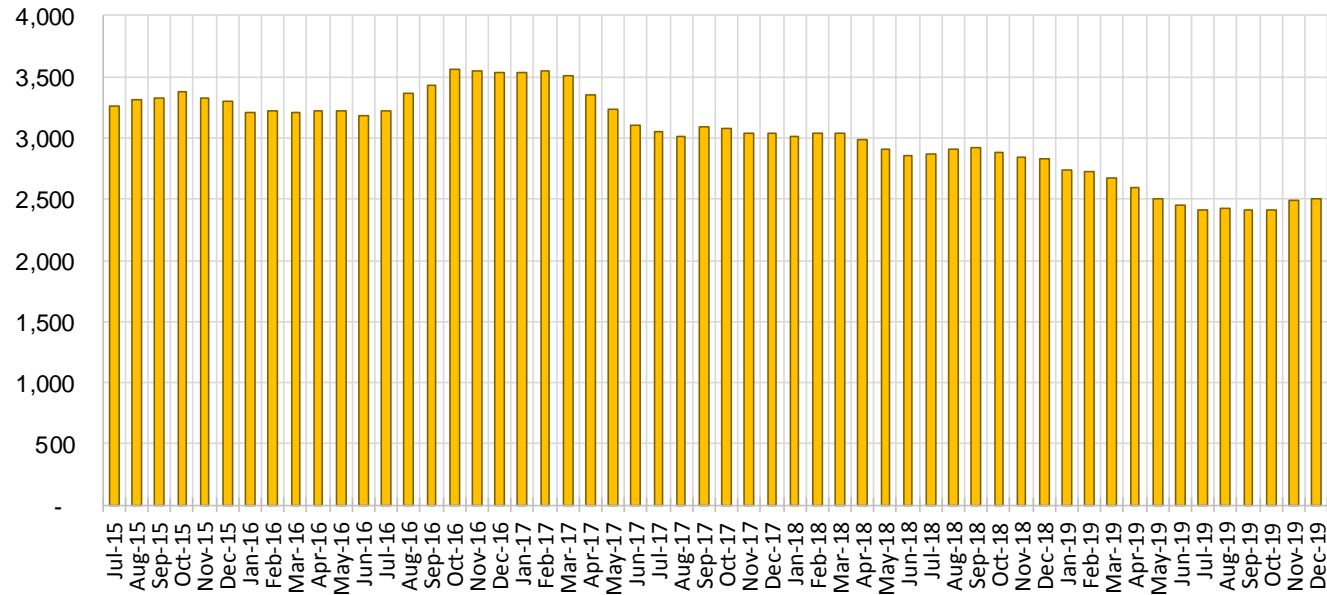
General Assistance Cases by Field Office⁶

Office	Percent Change				
	Dec-18	Nov-19	Dec-19	Dec-18- Dec-19	Nov-19- Dec-19
Chaves County ISD	120	112	114	-5.0%	1.8%
Cibola County ISD	46	35	33	-28.3%	-5.7%
Colfax County ISD	23	23	23	0.0%	0.0%
Curry County ISD	79	78	79	0.0%	1.3%
East Dona Ana County ISD	99	95	97	-2.0%	2.1%
Eddy Artesia County ISD	30	21	23	-23.3%	9.5%
Eddy Carlsbad County ISD	67	44	46	-31.3%	4.5%
Grant County ISD	66	70	70	6.1%	0.0%
Guadalupe County ISD	17	9	10	-41.2%	11.1%
Hidalgo County ISD	0	0	0	N/A	N/A
Lea County ISD	83	60	61	-26.5%	1.7%
Lincoln County ISD	27	32	30	11.1%	-6.3%
Luna County ISD	53	63	57	7.5%	-9.5%
McKinley County ISD	56	63	65	16.1%	3.2%
Northeast Bernalillo County ISD	300	225	228	-24.0%	1.3%
Northwest Bernalillo County ISD	281	228	242	-13.9%	6.1%
Otero County ISD	68	73	73	7.4%	0.0%
Quay County ISD	29	34	31	6.9%	-8.8%
Rio Arriba County ISD	81	57	60	-25.9%	5.3%
Roosevelt County ISD	0	0	0	N/A	N/A
San Juan County ISD	136	119	119	-12.5%	0.0%
San Miguel County ISD	70	65	64	-8.6%	-1.5%
Sandoval County ISD	111	85	78	-29.7%	-8.2%
Santa Fe County ISD	131	89	94	-28.2%	5.6%
Sierra County ISD	31	38	37	19.4%	-2.6%
Socorro County ISD	40	44	43	7.5%	-2.3%
South Dona Ana ISD	61	58	57	-6.6%	-1.7%
Southeast Bernalillo County ISD	169	146	149	-11.8%	2.1%
Southwest Bernalillo County ISD	175	194	197	12.6%	1.5%
Taos County ISD	36	29	32	-11.1%	10.3%
Torrance County ISD	48	45	41	-14.6%	-8.9%
Valencia North County ISD	115	87	84	-27.0%	-3.4%
Valencia South County ISD	0	0	0	N/A	N/A
West Dona Ana County ISD	176	170	164	-6.8%	-3.5%
Centralized Units	0	0	0	N/A	N/A
Statewide Total	2,824	2,491	2,501	-11.4%	0.4%

General Assistance Cases by Region⁶

Region	Dec-18	Nov-19	Dec-19	Percent Change	
				Dec-18- Dec-19	Nov-19- Dec-19
Region 1 - NW	424	386	381	-10.1%	-1.3%
Region 2 - NE	498	391	392	-21.3%	0.3%
Region 3 - Central	973	838	857	-11.9%	2.3%
Region 4 - SE	406	347	353	-13.1%	1.7%
Region 5 - SW	523	529	518	-1.0%	-2.1%
Centralized Units	0	0	0	N/A	N/A
Statewide Total	2,824	2,491	2,501	-11.4%	0.4%

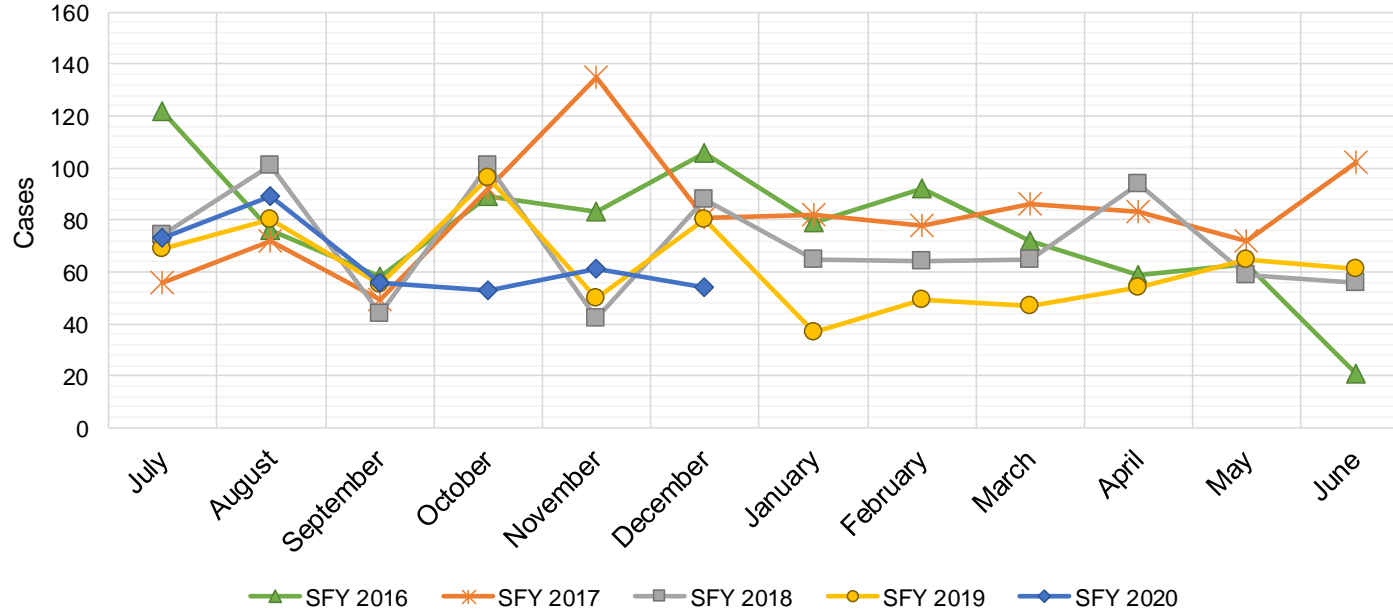
General Assistance Caseload: SFY-16 to Current



General Assistance Interim Assistance Reimbursements¹⁶

SFY 2016			SFY 2017			SFY 2018			SFY 2019			SFY 2020		
	Cases	Expenditures		Cases	Expenditures		Cases	Expenditures		Cases	Expenditures		Cases	Expenditures
Jul-15	122	\$342,648	Jul-16	56	\$164,970	Jul-17	74	\$241,438	Jul-18	69	\$228,333	Jul-19	73	\$303,584
Aug-15	76	\$245,236	Aug-16	72	\$223,182	Aug-17	101	\$339,301	Aug-18	80	\$241,292	Aug-19	89	\$310,047
Sep-15	58	\$170,093	Sep-16	49	\$158,027	Sep-17	44	\$131,229	Sep-18	55	\$188,192	Sep-19	56	\$172,016
Oct-15	89	\$277,912	Oct-16	92	\$257,830	Oct-17	101	\$335,752	Oct-18	96	\$298,502	Oct-19	53	\$168,461
Nov-15	83	\$238,948	Nov-16	135	\$402,305	Nov-17	42	\$139,572	Nov-18	50	\$148,641	Nov-19	61	\$171,883
Dec-15	106	\$388,102	Dec-16	81	\$227,569	Dec-17	88	\$245,453	Dec-18	80	\$246,422	Dec-19	54	\$164,045
Jan-16	79	\$239,263	Jan-17	82	\$274,050	Jan-18	65	\$258,239	Jan-19	37	\$106,081	Jan-20		
Feb-16	92	\$296,332	Feb-17	78	\$227,569	Feb-18	64	\$195,815	Feb-19	49	\$119,300	Feb-20		
Mar-16	72	\$254,360	Mar-17	86	\$278,219	Mar-18	65	\$172,188	Mar-19	47	\$137,296	Mar-20		
Apr-16	59	\$208,631	Apr-17	83	\$267,187	Apr-18	94	\$312,340	Apr-19	54	\$173,772	Apr-20		
May-16	63	\$182,241	May-17	72	\$232,836	May-18	59	\$155,406	May-19	65	\$237,979	May-20		
Jun-16	21	\$51,760	Jun-17	102	\$306,228	Jun-18	56	\$159,268	Jun-19	61	\$214,497	Jun-20		

TOTAL	920	\$2,895,525	988	\$3,019,972	853	\$2,686,001	743	\$2,340,307	386	\$1,290,037
AVERAGE	77	\$241,294	82	\$251,664	71	\$223,833	62	\$195,026	64	\$215,006



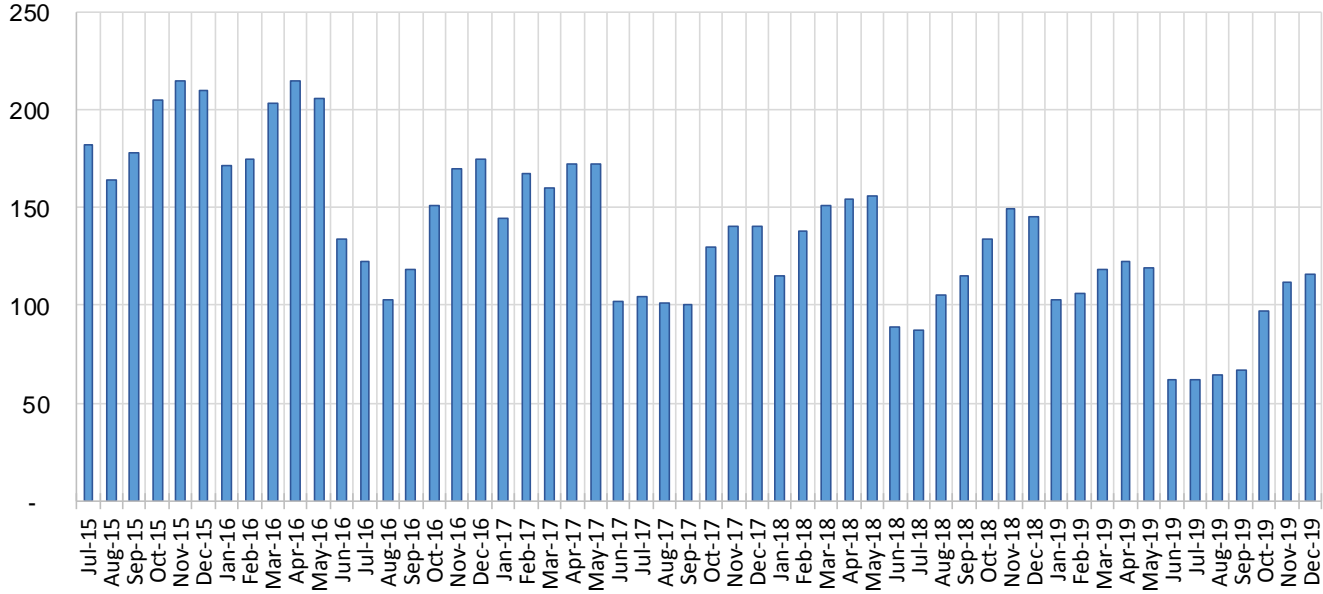
Education Works Cases by Field Office⁶

Office				Percent Change	
	Dec-18	Nov-19	Dec-19	Dec-18- Dec-19	Nov-19- Dec-19
Chaves County ISD	1	3	3	200.0%	0.0%
Cibola County ISD	1	1	1	0.0%	0.0%
Colfax County ISD	3	0	0	-100.0%	N/A
Curry County ISD	5	5	6	20.0%	20.0%
East Dona Ana County ISD	18	9	8	-55.6%	-11.1%
Eddy Artesia County ISD	2	2	3	50.0%	50.0%
Eddy Carlsbad County ISD	2	1	1	-50.0%	0.0%
Grant County ISD	7	2	1	-85.7%	-50.0%
Guadalupe County ISD	0	0	0	N/A	N/A
Hidalgo County ISD	0	0	0	N/A	N/A
Lea County ISD	3	2	1	-66.7%	-50.0%
Lincoln County ISD	0	0	0	N/A	N/A
Luna County ISD	2	2	2	0.0%	0.0%
McKinley County ISD	0	1	1	N/A	0.0%
Northeast Bernalillo County ISD	11	3	6	-45.5%	100.0%
Northwest Bernalillo County ISD	11	17	13	18.2%	-23.5%
Otero County ISD	1	0	0	-100.0%	N/A
Quay County ISD	0	0	0	N/A	N/A
Rio Arriba County ISD	4	1	2	-50.0%	100.0%
Roosevelt County ISD	0	0	0	N/A	N/A
San Juan County ISD	3	3	2	-33.3%	-33.3%
San Miguel County ISD	6	4	6	0.0%	50.0%
Sandoval County ISD	8	8	10	25.0%	25.0%
Santa Fe County ISD	13	10	10	-23.1%	0.0%
Sierra County ISD	1	1	1	0.0%	0.0%
Socorro County ISD	0	0	0	N/A	N/A
South Dona Ana ISD	17	7	8	-52.9%	14.3%
Southeast Bernalillo County ISD	5	6	6	20.0%	0.0%
Southwest Bernalillo County ISD	13	9	9	-30.8%	0.0%
Taos County ISD	0	0	0	N/A	N/A
Torrance County ISD	0	3	4	N/A	33.3%
Valencia North County ISD	0	1	1	N/A	0.0%
Valencia South County ISD	0	0	0	N/A	N/A
West Dona Ana County ISD	8	11	11	37.5%	0.0%
Centralized Units	0	0	0	N/A	N/A
Statewide Total	145	112	116	-20.0%	3.6%

Education Works Cases by Region⁶

Region	Dec-18	Nov-19	Dec-19	Percent Change	
				Dec-18- Dec-19	Nov-19- Dec-19
Region 1 - NW	5	7	6	20.0%	-14.3%
Region 2 - NE	34	23	28	-17.6%	21.7%
Region 3 - Central	40	38	38	-5.0%	0.0%
Region 4 - SE	13	13	14	7.7%	7.7%
Region 5 - SW	53	31	30	-43.4%	-3.2%
Centralized Units	0	0	0	N/A	N/A
Statewide Total	145	112	116	-20.0%	3.6%

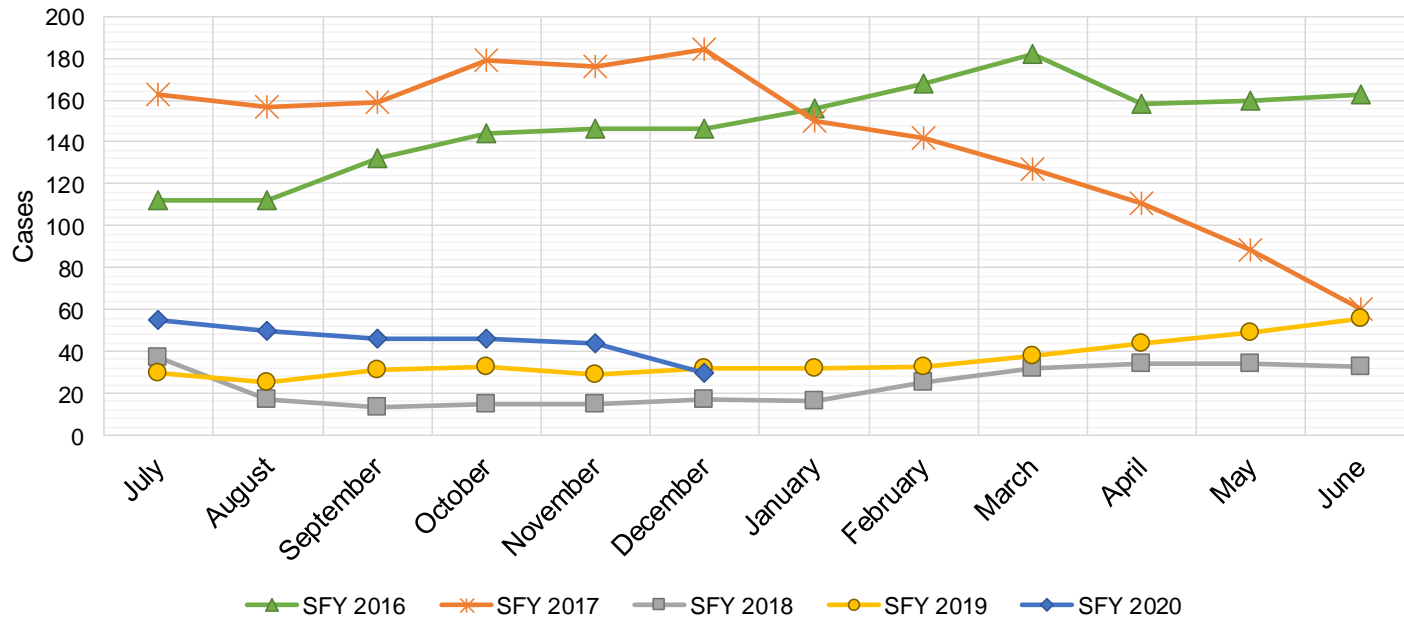
Education Works Caseload: SFY-16 to Current



Refugee Cash Assistance

SFY 2016 ^{8,12,9}			SFY 2017 ^{8,9}			SFY 2018 ^{8,9}			SFY 2019 ^{8,9}			SFY 2020 ^{8,9}		
	Cases	Expenditures		Cases	Expenditures		Cases	Expenditures		Cases	Expenditures		Cases	Expenditures
Jul-15	112	\$27,516	Jul-16	163	\$39,756	Jul-17	37	\$9,981	Jul-18	30	\$7,408	Jul-19	55	\$13,851
Aug-15	112	\$27,438	Aug-16	157	\$40,115	Aug-17	17	\$4,704	Aug-18	25	\$6,434	Aug-19	50	\$12,497
Sep-15	132	\$31,321	Sep-16	159	\$39,359	Sep-17	13	\$3,159	Sep-18	31	\$6,947	Sep-19	46	\$11,473
Oct-15	144	\$36,153	Oct-16	179	\$41,520	Oct-17	15	\$3,543	Oct-18	33	\$6,323	Oct-19	46	\$11,341
Nov-15	146	\$36,515	Nov-16	176	\$45,434	Nov-17	15	\$4,263	Nov-18	29	\$7,036	Nov-19	44	\$11,296
Dec-15	146	\$35,763	Dec-16	184	\$46,673	Dec-17	17	\$4,795	Dec-18	32	\$7,300	Dec-19	30	\$7,679
Jan-16	156	\$38,686	Jan-17	150	\$38,790	Jan-18	16	\$4,166	Jan-19	32	\$7,418	Jan-20		
Feb-16	168	\$41,368	Feb-17	142	\$37,956	Feb-18	25	\$5,723	Feb-19	33	\$8,591	Feb-20		
Mar-16	182	\$45,307	Mar-17	127	\$33,066	Mar-18	32	\$7,636	Mar-19	38	\$9,165	Mar-20		
Apr-16	158	\$41,143	Apr-17	111	\$29,183	Apr-18	34	\$8,827	Apr-19	44	\$10,648	Apr-20		
May-16	160	\$38,332	May-17	88	\$23,343	May-18	34	\$8,939	May-19	49	\$11,823	May-20		
Jun-16	163	\$39,856	Jun-17	60	\$15,538	Jun-18	33	\$8,513	Jun-19	56	\$13,558	Jun-20		

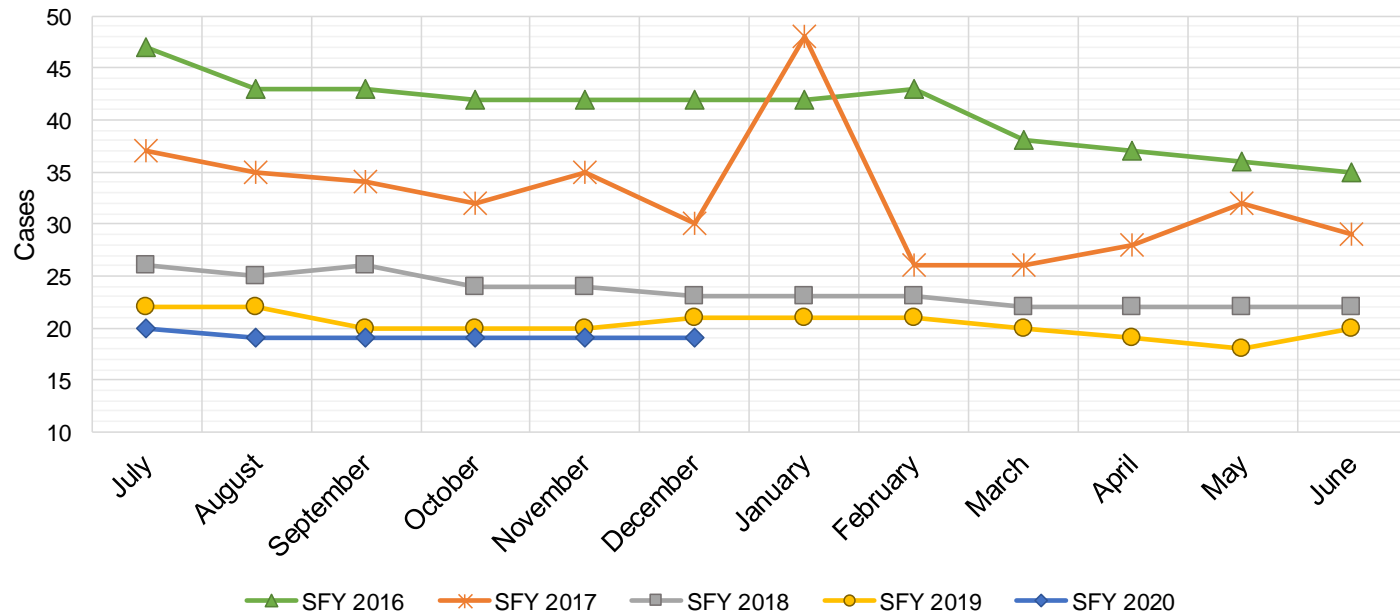
TOTAL	1,779	\$439,397	1,696	\$430,732	288	\$74,249	432	\$102,651	271	\$68,137
AVERAGE	148	\$36,616	141	\$35,894	24	\$6,187	36	\$8,554	45	\$11,356



State Supplement for Residential Care

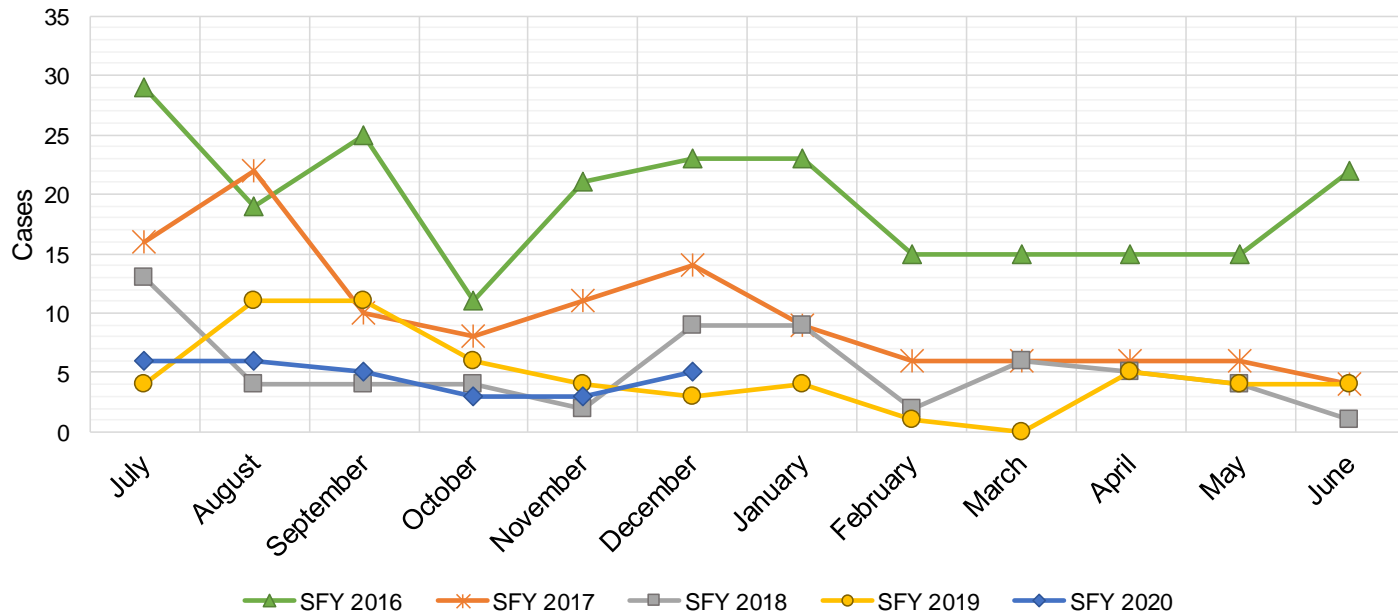
SFY 2016 ^{12,9}			SFY 2017 ⁹			SFY 2018 ⁹			SFY 2019 ⁹			SFY 2020 ⁹		
Cases	Expenditures		Cases	Expenditures		Cases	Expenditures		Cases	Expenditures		Cases	Expenditures	
Jul-15	47	\$4,700	Jul-16	37	\$3,700	Jul-17	26	\$2,700	Jul-18	22	\$2,200	Jul-19	20	\$1,900
Aug-15	43	\$4,900	Aug-16	35	\$3,500	Aug-17	25	\$2,500	Aug-18	22	\$2,200	Aug-19	19	\$1,900
Sep-15	43	\$4,500	Sep-16	34	\$3,400	Sep-17	26	\$2,700	Sep-18	20	\$2,000	Sep-19	19	\$1,900
Oct-15	42	\$4,400	Oct-16	32	\$3,200	Oct-17	24	\$2,500	Oct-18	20	\$2,000	Oct-19	19	\$1,900
Nov-15	42	\$4,200	Nov-16	35	\$3,500	Nov-17	24	\$2,400	Nov-18	20	\$2,000	Nov-19	19	\$1,900
Dec-15	42	\$4,200	Dec-16	30	\$3,000	Dec-17	23	\$2,200	Dec-18	21	\$2,100	Dec-19	19	\$1,900
Jan-16	42	\$4,200	Jan-17	48	\$4,800	Jan-18	23	\$2,400	Jan-19	21	\$2,000	Jan-20		
Feb-16	43	\$4,300	Feb-17	26	\$2,600	Feb-18	23	\$2,300	Feb-19	21	\$2,200	Feb-20		
Mar-16	38	\$3,800	Mar-17	26	\$2,600	Mar-18	22	\$2,400	Mar-19	20	\$1,900	Mar-20		
Apr-16	37	\$3,700	Apr-17	28	\$2,800	Apr-18	22	\$2,200	Apr-19	19	\$1,800	Apr-20		
May-16	36	\$3,600	May-17	32	\$3,200	May-18	22	\$2,200	May-19	18	\$1,800	May-20		
Jun-16	35	\$3,500	Jun-17	29	\$2,900	Jun-18	22	\$2,200	Jun-19	20	\$2,000	Jun-20		

TOTAL	490	\$50,000	392	\$39,200	282	\$28,700	244	\$24,200	115	\$11,400
AVERAGE	41	\$4,167	33	\$3,267	24	\$2,392	20	\$2,017	19	\$1,900



TANF Diversion Payments

SFY 2016 ^{12,9}		SFY 2017 ⁹		SFY 2018 ⁹		SFY 2019 ⁹		SFY 2020 ⁹						
Cases	Expenditures	Cases	Expenditures	Cases	Expenditures	Cases	Expenditures	Cases	Expenditures					
Jul-15	29	\$62,074	Jul-16	16	\$30,843	Jul-17	13	\$26,500	Jul-18	4	\$3,000	Jul-19	6	\$18,500
Aug-15	19	\$33,584	Aug-16	22	\$42,731	Aug-17	4	\$12,000	Aug-18	11	\$18,583	Aug-19	6	\$16,500
Sep-15	25	\$47,977	Sep-16	10	\$21,000	Sep-17	4	\$4,000	Sep-18	11	\$20,999	Sep-19	5	\$11,000
Oct-15	11	\$20,500	Oct-16	8	\$16,744	Oct-17	4	\$16,000	Oct-18	6	\$10,499	Oct-19	3	\$3,000
Nov-15	21	\$45,500	Nov-16	11	\$24,500	Nov-17	2	\$15,500	Nov-18	4	\$7,499	Nov-19	3	\$16,180
Dec-15	23	\$45,389	Dec-16	14	\$26,611	Dec-17	9	\$17,500	Dec-18	3	\$2,499	Dec-19	5	\$14,000
Jan-16	23	\$41,874	Jan-17	9	\$18,500	Jan-18	9	\$21,731	Jan-19	4	\$5,999	Jan-20		
Feb-16	15	\$28,500	Feb-17	6	\$12,000	Feb-18	2	\$7,731	Feb-19	1	\$1,678	Feb-20		
Mar-16	15	\$27,008	Mar-17	6	\$11,000	Mar-18	6	\$8,496	Mar-19	0	\$3,000	Mar-20		
Apr-16	15	\$31,389	Apr-17	6	\$12,000	Apr-18	5	\$13,500	Apr-19	5	\$6,500	Apr-20		
May-16	15	\$31,916	May-17	6	\$11,500	May-18	4	\$12,500	May-19	4	\$16,000	May-20		
Jun-16	22	\$43,000	Jun-17	4	\$13,500	Jun-18	1	\$5,389	Jun-19	4	\$8,000	Jun-20		
TOTAL	233	\$458,711		118	\$240,929		63	\$160,847		57	\$104,256		28	\$79,180
AVERAGE	19	\$38,226		10	\$20,077		5	\$13,404		5	\$8,688		5	\$13,197

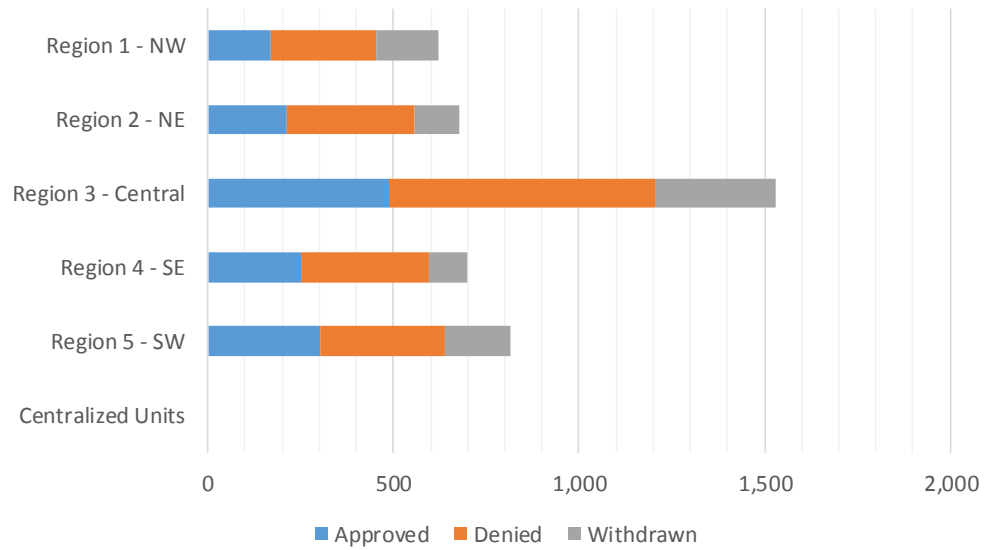


Cash Assistance Applications by Field Office^{4,11}
December 2019

Office	Approved	Denied	Withdrawn	Total Cases Processed
Chaves County ISD	67	62	37	166
Cibola County ISD	8	29	6	43
Colfax County ISD	9	16	6	31
Curry County ISD	69	96	28	193
East Dona Ana County ISD	61	71	47	179
Eddy Artesia County ISD	9	19	6	34
Eddy Carlsbad County ISD	27	43	14	84
Grant County ISD	37	48	10	95
Guadalupe County ISD	4	3	3	10
Hidalgo County ISD	0	0	0	0
Lea County ISD	68	90	18	176
Lincoln County ISD	13	32	0	45
Luna County ISD	25	7	19	51
McKinley County ISD	14	43	32	89
Northeast Bernalillo County ISD	138	238	91	467
Northwest Bernalillo County ISD	118	160	94	372
Otero County ISD	38	44	26	108
Quay County ISD	16	6	6	28
Rio Arriba County ISD	44	77	0	121
Roosevelt County ISD	0	0	0	0
San Juan County ISD	53	101	82	236
San Miguel County ISD	24	26	19	69
Sandoval County ISD	60	67	45	172
Santa Fe County ISD	37	101	31	169
Sierra County ISD	10	12	11	33
Socorro County ISD	12	20	5	37
South Dona Ana ISD	64	40	18	122
Southeast Bernalillo County ISD	63	100	56	219
Southwest Bernalillo County ISD	144	163	71	378
Taos County ISD	19	47	10	76
Torrance County ISD	25	58	12	95
Valencia North County ISD	74	80	30	184
Valencia South County ISD	0	0	1	1
West Dona Ana County ISD	79	123	58	260
Centralized Units	0	0	0	0
Statewide Total	1,429	2,022	892	4,343

Cash Assistance Applications by Region^{4,11}
December 2019

	Approved	Denied	Withdrawn	Total Cases Processed
Region				
Region 1 - NW	171	284	167	622
Region 2 - NE	213	343	120	676
Region 3 - Central	488	719	324	1,531
Region 4 - SE	253	342	103	698
Region 5 - SW	304	333	178	815
Centralized Units	0	0	0	0
Statewide Total	1,429	2,021	892	4,342



**Children Youth and Families Department
Children Receiving Child Care Assistance Subsidies By County**

County	Dec 2018	Jan 2019	Feb 2019	Mar 2019	Apr 2019	May 2019	June 2019	July 2019	Aug 2019	Sept 2019	Oct 2019	Nov 2019	Dec 2019	Change Fr. Cases	Last Year Percent
Bernalillo	7,584	7,545	7,563	7,831	7,997	8,226	8,692	7,702	7,885	8,295	7,690	7,759	7,591	7	0.1%
Catron	0	0	0	0	0	0	0	0	0	0	0	0	0	0	0.0%
Chaves	814	812	834	878	868	868	875	830	824	886	811	891	827	13	1.6%
Cibola	302	287	285	289	306	286	292	283	277	275	250	238	247	-55	-18.2%
Colfax	57	62	57	59	52	50	44	38	40	33	43	34	31	-26	-45.6%
Curry	517	492	489	524	548	542	590	597	613	625	563	596	587	70	13.5%
De Baca	1	1	1	1	0	1	1	1	1	1	1	1	1	0	0.0%
Dona Ana	4,191	4,198	4,351	4,453	4,413	4,536	4,751	4,360	4,384	4,575	4,429	4,493	4,348	157	3.7%
Eddy	259	248	243	245	214	225	240	240	226	224	244	239	234	-25	-9.7%
Grant	126	125	134	131	127	130	136	133	115	157	138	133	145	19	15.1%
Guadalupe	12	11	11	11	11	11	11	10	10	10	7	7	7	-5	-41.7%
Harding	1	1	1	0	0	0	0	0	0	0	0	0	0	-1	0.0%
Hidalgo	28	23	26	24	20	27	27	27	27	26	21	28	28	0	0.0%
Lea	821	829	823	831	815	808	798	770	752	761	770	753	741	-80	-9.7%
Lincoln	97	97	102	104	104	100	104	103	103	108	101	97	86	-11	-11.3%
Los Alamos	34	34	34	34	36	40	40	37	37	47	38	42	40	6	17.6%
Luna	153	150	176	180	176	190	191	172	160	173	160	148	155	2	1.3%
McKinley	168	162	158	168	154	158	169	146	141	165	176	172	172	4	2.4%
Mora	16	16	13	11	11	13	9	9	10	12	12	11	11	-5	-31.3%
Otero	501	531	506	507	512	506	530	499	538	547	488	510	501	0	0.0%
Out of State	5	3	4	1	2	0	1	0	0	0	0	0	0	-5	-100.0%
Quay	33	34	32	34	33	33	38	34	38	37	33	34	35	2	6.1%
Rio Arriba	142	134	137	132	141	151	155	158	151	150	147	153	155	13	9.2%
Roosevelt	121	118	118	118	121	119	130	129	138	148	140	134	133	12	9.9%
San Juan	926	913	942	935	958	966	961	905	897	1,018	932	926	958	32	3.5%
San Miguel	345	317	316	319	332	349	373	363	357	363	375	356	353	8	2.3%
Sandoval	708	741	734	744	758	751	802	765	806	827	783	803	770	62	8.8%
Santa Fe	460	461	481	503	499	520	541	557	562	606	534	567	537	77	16.7%
Sierra	57	49	51	48	42	40	50	48	47	58	54	56	63	6	10.5%
Socorro	63	58	51	58	55	54	57	53	53	59	54	53	48	-15	-23.8%
Taos	102	115	118	117	124	125	136	138	149	135	118	125	126	24	23.5%
Torrance	88	90	85	79	69	67	82	68	67	73	57	57	63	-25	-28.4%
Union	5	5	5	5	3	3	4	3	3	3	3	3	3	-2	-40.0%
Valencia	610	614	604	589	591	607	656	559	569	625	602	595	573	-37	-6.1%
Totals	19,347	19,276	19,485	19,963	20,092	20,502	21,486	19,737	19,980	21,022	19,774	20,014	19,569	222	1.1%

CHILDREN YOUTH AND FAMILIES DEPARTMENT

CHILD CARE ASSISTANCE ELIGIBILITY PROGRAMS

MONTH	Jan'19	Feb'19	Mar'19	Apr'19	May'19	June'19	July'19	Aug'19	Sept'19	Oct'19	Nov'19	Dec'19
TANF (Child Care Priority 1 Clients)												
CLIENTS	2,131	2,107	2,138	2,147	2,140	2,253	2,054	2,033	2,165	2,053	2,120	2,055
COST	\$1,281,263	\$1,264,626	\$1,284,582	\$1,286,044	\$1,278,678	\$1,305,024	\$1,273,209	\$1,263,930	\$1,184,381	\$1,233,005	\$1,284,683	\$1,239,407
TANF AVERAGE COST	\$601	\$600	\$601	\$599	\$598	\$579	\$620	\$622	\$547	\$601	\$606	\$603
TRANSITION OFF TANF (Child Care Priority 2 Clients)												
CLIENTS	129	125	124	119	111	112	120	132	163	166	167	178
COST	\$81,456	\$75,852	\$73,930	\$71,395	\$69,505	\$74,593	\$74,688	\$88,189	\$90,271	\$107,532	\$107,596	\$111,325
TRAN OFF TANF AVG COST	\$631	\$607	\$596	\$600	\$626	\$666	\$622	\$668	\$554	\$648	\$644	\$625
TANF ELIGIBLE (Child Care Priority 1B Clients at or below 100% of the Federal Poverty Level)												
CLIENTS	8,227	8,125	8,248	8,275	8,494	8,777	8,104	8,220	8,523	8,152	8,135	7,830
COST	\$4,796,096	\$4,662,397	\$4,825,487	\$4,845,578	\$4,939,239	\$5,047,497	\$4,909,110	\$5,038,735	\$4,665,509	\$4,833,260	\$4,922,197	\$4,694,761
TANF ELIGIBLE AVG COST	\$583	\$574	\$585	\$586	\$581	\$575	\$606	\$613	\$547	\$593	\$605	\$600
INCOME ELIGIBLE (Child Care Priority 3, and Priority 4 Clients)												
CLIENTS	7,606	7,932	8,262	8,382	8,610	9,149	8,313	8,429	9,032	8,410	8,595	8,520
COST	\$3,956,942	\$4,144,807	\$4,325,025	\$4,401,790	\$4,546,220	\$4,693,955	\$4,573,196	\$4,729,292	\$4,390,092	\$4,436,376	\$4,557,011	\$4,488,101
INCOME ELIG AVG COST	\$520	\$523	\$523	\$525	\$528	\$513	\$550	\$561	\$486	\$528	\$530	\$527
AT-RISK CHILD PROTECTIVE SERVICES CHILD CARE PILOT (Priority 5 Clients)												
CLIENTS	338	336	342	322	303	321	297	270	240	232	200	187
COST	\$239,514	\$210,812	\$223,510	\$203,584	\$204,504	\$206,998	\$200,185	\$201,432	\$161,487	\$162,255	\$159,520	\$137,644
CPS AVG COST	\$709	\$627	\$654	\$632	\$675	\$645	\$674	\$746	\$673	\$699	\$798	\$736
CHILD PROTECTIVE SERVICES (Child Care CPS Clients)												
CLIENTS	845	860	849	847	844	874	849	896	899	761	797	799
COST	\$585,379	\$576,818	\$551,507	\$594,790	\$587,750	\$612,880	\$608,184	\$644,539	\$597,788	\$520,249	\$583,911	\$539,629
CPS AVG COST	\$693	\$671	\$650	\$702	\$696	\$701	\$716	\$719	\$665	\$684	\$733	\$675
GRAND TOTAL - ALL CHILD CARE PROGRAMS												
CLIENTS	19,276	19,485	19,963	20,092	20,502	21,486	19,737	19,980	21,022	19,774	20,014	19,569
COST	\$10,940,651	\$10,935,312	\$11,284,041	\$11,403,180	\$11,625,897	\$11,940,948	\$11,638,571	\$11,966,117	\$11,089,528	\$11,292,678	\$11,614,917	\$11,210,867
ALL PROGRAMS AVG COST	\$568	\$561	\$565	\$568	\$567	\$556	\$590	\$599	\$528	\$571	\$580	\$573

Income Eligibility Guidelines: October 1, 2019 - September 30, 2020

Federal Poverty Guidelines (FPG) Monthly Income Standards

Supplemental Nutrition Program (SNAP)					
Household Size	100% FPG Net Income	130% FPG Gross Income	165% FPG Gross Income for Categorical Eligibility	Maximum SNAP Monthly Allotment	LIHEAP 150% FPG
1	\$1,041	\$1,354	\$1,718	\$194	\$1,561
2	\$1,410	\$1,832	\$2,326	\$355	\$2,114
3	\$1,778	\$2,311	\$2,933	\$509	\$2,666
4	\$2,146	\$2,790	\$3,541	\$646	\$3,219
5	\$2,515	\$3,269	\$4,149	\$768	\$3,771
6	\$2,883	\$3,748	\$4,757	\$921	\$4,324
7	\$3,251	\$4,227	\$5,364	\$1,018	\$4,876
8	\$3,620	\$4,705	\$5,972	\$1,164	\$5,429
+1	+\$369	+\$479	+\$608	+\$146	+\$553
Minimum Allotment of \$16 effective from 10/1/2019 - 9/30/2020					
DEDUCTIONS: Standard Deduction: For HH size 1-3 = \$167; 4 = \$178; 5 = \$209; 6 or more = \$240; Excess Shelter Deduction Limit: \$569; Heating and Cooling Standard Utility Allowance: \$340 (HCSUA) – Limited Utility Allowance: \$ 136 (LUA); Telephone Standard: \$44; Dependent Care: Actual Amount (No Limit); Earned Income Deduction: 20%; Homeless Shelter Standard: \$152.06, LIHEAP (only) Energy Standard Allowance (ESA): \$204					

CASH Assistance & Support Services				
Household Size	Federal Poverty Guidelines (FPG) Monthly Income Standards		Maximum Monthly Benefit	
	100% FPG Net Income	85% FPG Gross Limit	New Mexico Works Cash Assistance	General Assistance
1	\$1,041	\$885	\$266	\$245
2	\$1,410	\$1,199	\$357	\$329
3	\$1,778	\$1,511	\$447	\$412
4	\$2,146	\$1,824	\$539	\$496
5	\$2,515	\$2,138	\$630	\$580
6	\$2,883	\$2,451	\$721	\$664
7	\$3,251	\$2,763	\$812	\$748
8	\$3,620	\$3,077	\$922	\$849
+1	+\$369	+\$314	+\$91	+\$84
Deductions- Dependent Care: For a child under age 2 = \$200; For a child age 2 and over = \$175. Work Incentives- Earned Income Disregard: Single parent = \$125 & ½ remainder; Two parent = \$225 & ½ remainder.				

ISD 017 Revised 11/26/2019

Medical Assistance Division					
Federal Poverty Guidelines New Mexico Affordable Care Eligibility Groups Effective April 01, 2019 thru March 31, 2020 Monthly Guidelines					
HH SIZE	PERCENT OF POVERTY				
	138%	190%	240%	250%	300%
1	\$1,437	\$1,978	\$2,498	\$2,603	\$3,123
2	\$1,945	\$2,678	\$3,382	\$3,523	\$4,228
3	\$2,453	\$3,378	\$4,266	\$4,444	\$5,333
4	\$2,962	\$4,078	\$5,150	\$5,365	\$6,438
5	\$3,470	\$4,777	\$6,034	\$6,286	\$7,543
6	\$3,978	\$5,477	\$6,918	\$7,207	\$8,648
7	\$4,487	\$6,177	\$7,802	\$8,128	\$9,753
8	\$4,995	\$6,877	\$8,686	\$9,048	\$10,858
138% Adult Expansion, 190% Children ages 6 to 19 (Medicaid), 240% Children ages 0 to 6 (Medicaid); ages 6 to 19 (CHIP), 250% Pregnancy Related Services Only, 300% Children 0 to 6 (CHIP)					

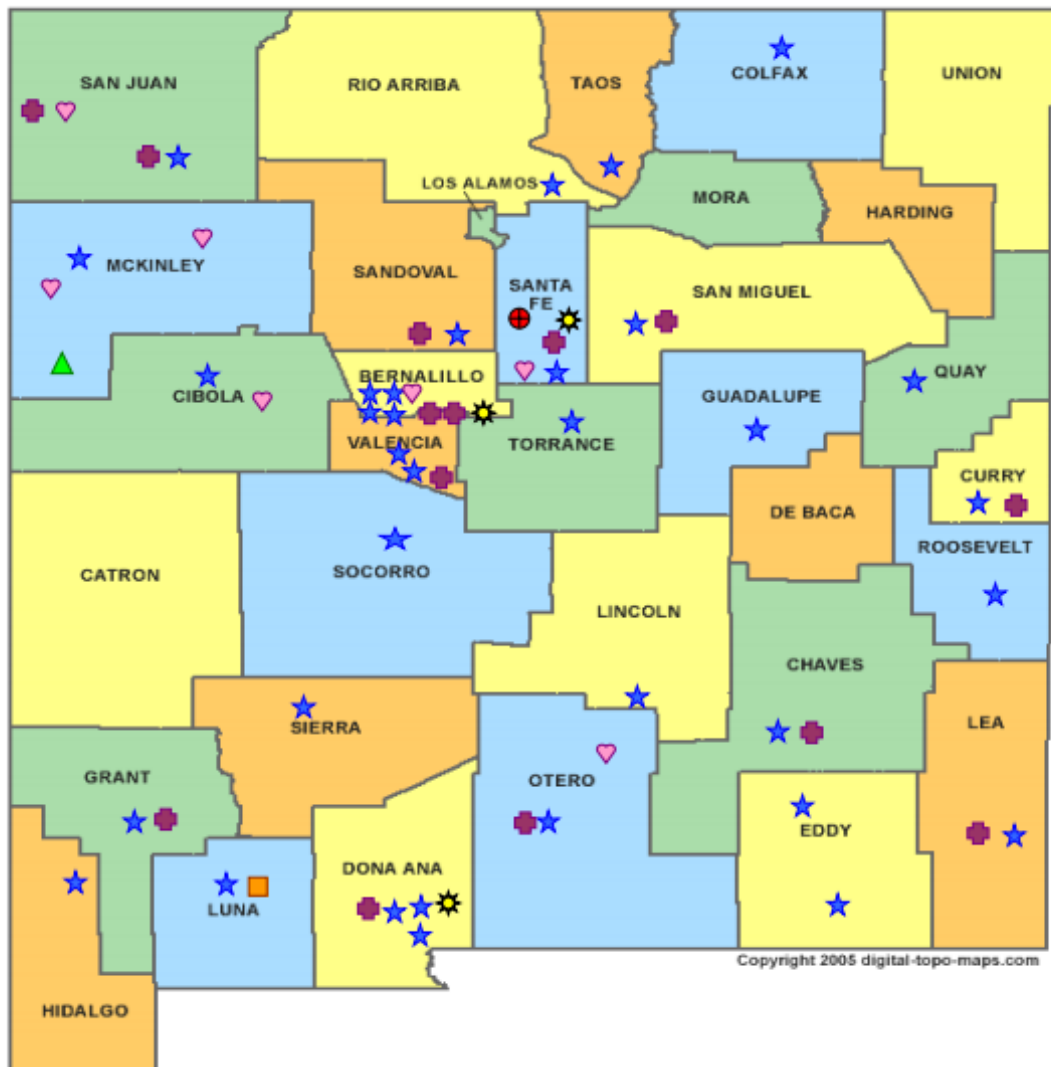
Medical Assistance Division					
Federal Poverty Guidelines New Mexico Affordable Care Eligibility Groups Effective April 01, 2019 thru March 31, 2020 Annual Guidelines					
HH SIZE	PERCENT OF POVERTY				
	138%	190%	240%	250%	300%
1	\$17,244	\$23,736	\$29,976	\$31,236	\$37,476
2	\$23,340	\$32,136	\$40,584	\$42,276	\$50,736
3	\$29,436	\$40,536	\$51,192	\$53,328	\$63,996
4	\$35,544	\$48,936	\$61,800	\$64,380	\$77,256
5	\$41,640	\$57,324	\$72,408	\$75,432	\$90,516
6	\$47,736	\$65,724	\$83,016	\$86,484	\$103,776
7	\$53,844	\$74,124	\$93,624	\$97,536	\$117,036
8	\$59,940	\$82,524	\$104,232	\$108,576	\$130,296
138% Adult Expansion, 190% Children ages 6 to 19 (Medicaid), 240% Children ages 0 to 6 (Medicaid); ages 6 to 19 (CHIP), 250% Pregnancy Related Services Only, 300% Children 0 to 6 (CHIP)					

References


- ¹ *Medicaid Expenditures* (Omnicaid, Medicare Buy-Ins, Lump Sum Payments)
- ² *ASPEN Business Intelligence Tool: Eligibility*
- ³ New Mexico Human Services Department, *Medicaid Eligibility Reports*, Retrieved from <http://www.hsd.state.nm.us/LookingForInformation/medicaid-eligibility.aspx> (for reporting month)
- ⁴ *ASPEN Business Intelligence Tool: Application Tracking*
- ⁵ Fidelity Information Services, *EBT Daily Statistical Report* (for reporting month)
- ⁶ *ASPEN Report DQ-180: Length of Time Cases are Open* (for reporting month)
- ⁷ *ASPEN Report EY-180: Individual Demographics by State and Age* (for reporting month)
- ⁸ *ASPEN Business Intelligence Tool: Benefit Issuance*
- ⁹ Fidelity Information Services, *EBT Daily Statistical Reports* (Month End)
- ¹⁰ *ASPEN Report EY-180R: Individual Demographics by State, Race, Ethnicity and Gender* (for reporting month)
- ¹¹ SQL Queries from ASPEN
- ¹² JP Morgan, *New Mexico – NM EBT System- Monthly Benefit Draw Down Totals*
- ¹³ *ASPEN Business Intelligence Tool: Application Tracking* (w/Parameters: SNAP, Expedite, Approved)
- ¹⁴ SL Start, *As of Today Report*
- ¹⁵ SL Start, *Statewide Employment Report*
- ¹⁶ *SSIAR Payments*
- ¹⁷ Children, Youth, and Families Department, *Children Receiving Child Care Assistance Subsidies by County*
- ¹⁸ Children, Youth, and Families Department, *Child Care Assistance Eligibility Programs*

¹⁹ EDG is defined as an Eligibility Determination Group

²⁰SQL Query from ASPEN










Copyright 2005 digital-topo-maps.com



HUMAN SERVICES
DEPARTMENT

New Mexico Human Services Department
Field Offices

-  Central Office (1)
-  Income Support Division County Office (35)
-  Income Support Division Satellite Office (2)
-  Child Support Enforcement Regional Office (16)
-  Child Support Enforcement Satellite Office (1)
-  Indian Health Services (7)
-  Hospital Site (3)

For a complete listing of field offices and other government and community resources:
http://www.hsd.state.nm.us/LookingForAssistance/Field_Offices_1.aspx