



Monthly Statistical Report

December 2018

There were 832,316 individuals that received Medicaid in December 2018, a 2.5% decrease from one year ago. The count of Medicaid recipients has increased by 1,059, or 0.1%, since last month.

The SNAP caseload in December 2018 was 222,004, a 0.3% increase from one year ago. The SNAP caseload has decreased by 1,127 cases, or 0.5%, since last month.

The TANF caseload was 10,762 in December 2018, a decrease of 8.2% from December 2017. The TANF caseload had 209 fewer cases compared to November 2018, a decrease of 1.9%.

The caseload for General Assistance was 2,824 in December 2018, a decrease of 7.0% from one year ago and a decrease of 13 cases from last month.

Susana Martinez, Governor
Brent Earnest, Cabinet Secretary

Contents	Page
Summary	3-5
Medicaid	6-20
SNAP	21-41
Cash Assistance	42-56
Child Care Assistance	57-58
Income Eligibility Guidelines	59-60

Regions are reported as follows:

Region 1		
Catron	San Juan	Valencia
Cibola	Sierra	
McKinley	Socorro	
Region 2		
Colfax	Mora	Santa Fe
De Baca	Quay	Taos
Guadalupe	Rio Arriba	Union
Harding	Sandoval	
Los Alamos	San Miguel	
Region 3		
Bernalillo	Torrance	
Region 4		
Chaves	Eddy	Lincoln
Curry	Lea	Roosevelt
Region 5		
Dona Ana	Hidalgo	Otero
Grant	Luna	

The Mission of the Human Services Department

To reduce the impact of poverty on people living in New Mexico by providing support services that help families break the cycle of dependency on public assistance

Christopher Collins, Deputy Secretary
Michael Nelson, Deputy Secretary

Prepared by Income Support Division
PO Box 2348
Santa Fe, NM 87504-2348
505-827-7250

Mary Brogdon, Director
Vida Tapia-Sanchez, Deputy Director
Shanita Harrison, Deputy Director
Judith Parks, Deputy Director

<http://www.hsd.state.nm.us/monthly-statistical-reports.aspx>

Program Summary for December 2018

Medicaid				Percent Change	
				Dec-17- Dec-18	Nov-18- Dec-18
	Dec-17	Nov-18	Dec-18	Dec-17- Dec-18	Nov-18- Dec-18
Expenditures¹	\$491,788,693	\$468,233,701	\$512,389,881	4.2%	9.4%
Cases²	491,576	490,457	491,423	0.0%	0.2%
Expenditures/Case	\$1,000	\$955	\$1,043	4.2%	9.2%
Recipients³	853,861	831,257	832,316	-2.5%	0.1%
<i>Adults</i>	484,410	473,821	475,116	-1.9%	0.3%
<i>Children</i>	369,451	357,436	357,200	-3.3%	-0.1%
Recipients /Case	1.74	1.69	1.69	-2.5%	-0.1%
Cases Processed⁴	17,862	12,084	12,081	-32.4%	0.0%
<i>Approvals⁴</i>	12,741	9,776	9,354	-26.6%	-4.3%

Supplemental Nutrition Assistance Program (SNAP)				Percent Change	
				Dec-17- Dec-18	Nov-18- Dec-18
	Dec-17	Nov-18	Dec-18	Dec-17- Dec-18	Nov-18- Dec-18
Expenditures⁵	\$53,542,385	\$53,349,067	\$53,118,011	-0.8%	-0.4%
Cases⁶	221,376	223,131	222,004	0.3%	-0.5%
Expenditures/Case	\$242	\$239	\$239	-1.1%	0.1%
Recipients⁷	458,955	454,388	451,396	-1.6%	-0.7%
<i>Adults</i>	262,816	263,220	261,903	-0.3%	-0.5%
<i>Children</i>	196,139	191,168	189,493	-3.4%	-0.9%
Recipients /Case	2.07	2.04	2.03	-1.9%	-0.2%
Cases Processed⁴	18,814	18,089	16,760	-10.9%	-7.3%
<i>Approvals⁴</i>	15,300	14,868	13,364	-12.7%	-10.1%

Cash Assistance Programs				Percent Change	
				Dec-17- Dec-18	Nov-18- Dec-18
	Dec-17	Nov-18	Dec-18	Dec-17- Dec-18	Nov-18- Dec-18
Expenditures⁵	\$4,220,860	\$4,253,453	\$4,213,279	-0.2%	-0.9%
Cases⁶	14,935	14,006	13,784	-7.7%	-1.6%
Expenditures/Case	\$283	\$304	\$306	8.2%	0.7%
Recipients⁷	34,058	31,685	30,965	-9.1%	-2.3%
<i>Adults</i>	11,019	10,116	9,864	-10.5%	-2.5%
<i>Children</i>	23,039	21,569	21,101	-8.4%	-2.2%
Recipients /Case	2.28	2.26	2.25	-1.5%	-0.7%
Cases Processed⁴	5,500	5,119	4,676	-15.0%	-8.7%
<i>Approvals⁴</i>	1,555	1,472	1,291	-17.0%	-12.3%

Low Income Home Energy Assistance Program (LIHEAP)				Percent Change	
				Dec-17- Dec-18	Nov-18- Dec-18
	Dec-17	Nov-18	Dec-18	Dec-17- Dec-18	Nov-18- Dec-18
Expenditures⁸	\$2,168,285	\$3,187,615	\$2,334,945	7.7%	-26.7%
Cases⁸	7,737	10,378	7,705	-0.4%	-25.8%
Expenditures/Case	\$280	\$307	\$303	8.1%	-1.3%
Recipients⁸	17,707	23,416	17,763	0.3%	-24.1%
<i>Adults</i>	10,180	13,557	10,171	-0.1%	-25.0%
<i>Children</i>	7,527	9,859	7,592	0.9%	-23.0%
Recipients /Case	2.29	2.26	2.31	0.7%	2.2%
Cases Processed⁴	10,051	11,118	8,518	-15.3%	-23.4%
<i>Approvals⁴</i>	7,852	10,133	7,533	-4.1%	-25.7%

Cash Assistance Summary for December 2018

Temporary Assistance for Needy Families (TANF)

	Dec-17	Nov-18	Dec-18	Percent Change	
				Dec-17- Dec-18	Nov-18- Dec-18
Expenditures ⁵	\$3,423,107	\$3,479,658	\$3,443,209	0.6%	-1.0%
Cases ⁶	11,717	10,971	10,762	-8.2%	-1.9%
Expenditures/Case	\$292	\$317	\$320	9.5%	0.9%
Recipients ⁷	30,581	28,317	27,657	-9.6%	-2.3%
<i>Adults</i>	8,025	7,217	7,024	-12.5%	-2.7%
<i>Children</i>	22,556	21,100	20,633	-8.5%	-2.2%
Approvals ⁴	1,252	1,283	1,111	-11.3%	-13.4%

General Assistance (GA)

	Dec-17	Nov-18	Dec-18	Percent Change	
				Dec-17- Dec-18	Nov-18- Dec-18
Expenditures ⁵	\$741,084	\$705,109	\$703,040	-5.1%	-0.3%
Cases ⁶	3,038	2,837	2,824	-7.0%	-0.5%
Expenditures/Case	\$244	\$249	\$249	2.1%	0.2%
Recipients ⁷	3,032	2,893	2,841	-6.3%	-1.8%
<i>Adults</i>	2,794	2,683	2,628	-5.9%	-2.0%
<i>Children</i>	238	210	213	-10.5%	1.4%
Approvals ⁴	231	179	168	-27.3%	-6.1%

Education Works

	Dec-17	Nov-18	Dec-18	Percent Change	
				Dec-17- Dec-18	Nov-18- Dec-18
Expenditures ⁵	\$49,674	\$59,650	\$57,630	16.0%	-3.4%
Cases ⁶	140	149	145	3.6%	-2.7%
Expenditures/Case	\$355	\$400	\$397	12.0%	-0.7%
Recipients ⁷	403	424	412	2.2%	-2.8%
<i>Adults</i>	158	165	157	-0.6%	-4.8%
<i>Children</i>	245	259	255	4.1%	-1.5%
Approvals ⁴	4	1	1	-75.0%	0.0%

Refugee Cash (RCA)

	Dec-17	Nov-18	Dec-18	Percent Change	
				Dec-17- Dec-18	Nov-18- Dec-18
Expenditures ⁵	\$4,795	\$7,036	\$7,300	52.2%	3.8%
Cases ⁶	17	29	32	88.2%	10.3%
Expenditures/Case	\$282	\$243	\$228	-19.1%	-6.0%
Recipients ⁷	20	31	34	70.0%	9.7%
<i>Adults</i>	20	31	34	70.0%	9.7%
<i>Children</i>	0	0	0	N/A	N/A

State Supplement for Residential Care

	Dec-17	Nov-18	Dec-18	Percent Change	
				Dec-17- Dec-18	Nov-18- Dec-18
Expenditures ⁵	\$2,200	\$2,000	\$2,100	-4.5%	5.0%
Cases ⁶	23	20	21	-8.7%	5.0%
Expenditures/Case	\$96	\$100	\$100	4.5%	0.0%
Recipients ⁷	22	20	21	-4.5%	5.0%
<i>Adults</i>	22	20	21	-4.5%	5.0%
<i>Children</i>	0	0	0	N/A	N/A

Expenditures YTD			
	SFY 2019	FFY 2018	CY 2018
Medicaid ¹	\$2,808,050,534	\$5,487,469,015	\$5,565,047,976
Supplemental Nutrition Assistance Program ⁹	\$319,252,191	\$638,535,473	\$637,325,958
Temporary Assistance for Needy Families ⁹	\$22,149,886	\$42,369,974	\$42,095,660
General Assistance ⁹	\$4,283,039	\$8,767,318	\$8,628,524
Education Work ⁹	\$305,503	\$574,478	\$601,868
LIHEAP ⁸	\$12,743,556	\$17,036,882	\$19,369,651

Average Caseload YTD			
	SFY 2019	FFY 2018	CY 2018
Medicaid ²	488,449	491,918	491,510
Supplemental Nutrition Assistance Program ⁶	222,486	221,815	222,089
Temporary Assistance for Needy Families ⁶	11,056	11,278	11,056
General Assistance ⁶	2,874	2,974	2,924
Education Work ⁶	123	127	128
LIHEAP ⁸	7,166	5,397	5,745

Demographic Profile- December 2018					
	SNAP	TANF	GA	Education Works	RCA
Gender of Recipients¹⁰					
Male	203,990	11,825	1,572	153	22
Female	247,406	15,832	1,269	259	12
Ethnicity¹⁰					
Hispanic	249,171	18,560	1,501	273	13
Non-Hispanic	202,225	9,097	1,340	139	21
Race¹⁰					
Native American or Alaskan Native	75,853	2,381	243	27	0
Asian	4,287	251	27	1	0
African American or Black	11,420	1,217	102	17	18
Native Hawaiian or Pacific Islander	865	35	2	0	0
White	348,757	22,966	2,400	357	15
Unknown / Not Declared	4,523	246	31	1	0
More than One Race	5,691	561	36	9	1

Medicaid demographic data can be found here: <http://www.hsd.state.nm.us/LookingForInformation/medicaid-eligibility.aspx>

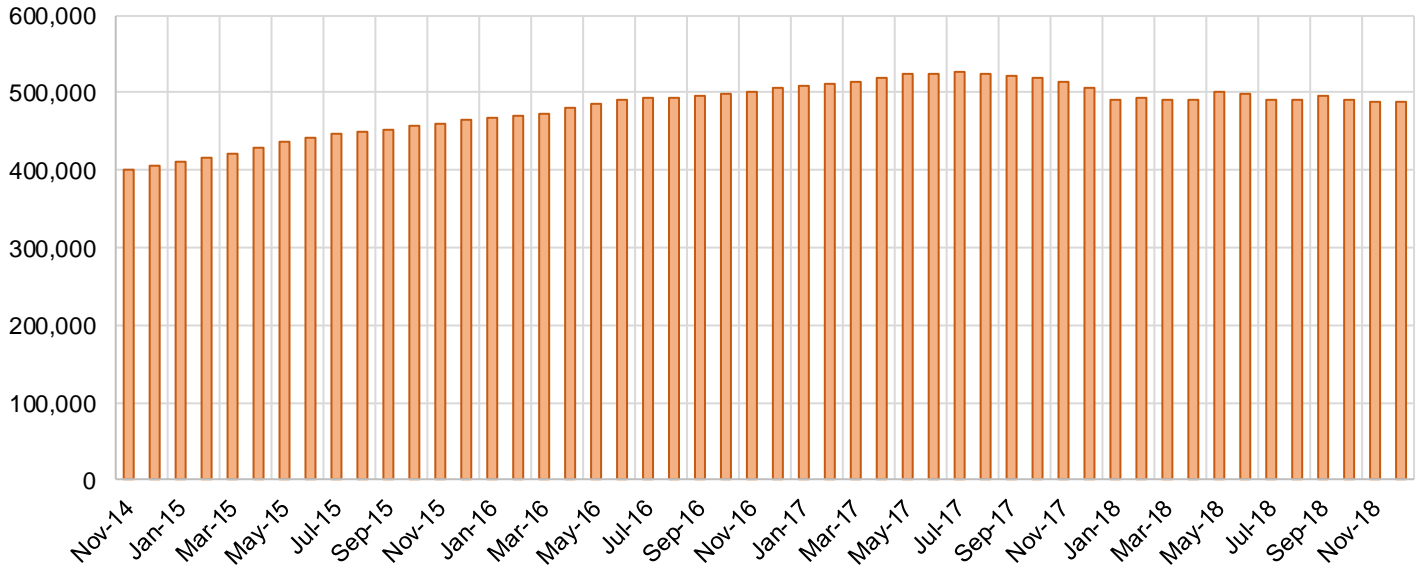
Medicaid Cases by Field Office²

Office	Dec-17	Nov-18	Dec-18	Percent Change	
				Dec-17- Dec-18	Nov-18- Dec-18
Chaves County ISD	16,077	15,888	15,889	-1.2%	0.0%
Cibola County ISD	7,513	7,639	7,650	1.8%	0.1%
Colfax County ISD	3,476	3,595	3,593	3.4%	-0.1%
Curry County ISD	9,906	14,216	14,300	44.4%	0.6%
East Dona Ana County ISD	17,824	17,729	17,768	-0.3%	0.2%
Eddy Artesia County ISD	3,879	3,845	3,849	-0.8%	0.1%
Eddy Carlsbad County ISD	7,934	7,563	7,565	-4.7%	0.0%
Grant County ISD	6,813	7,682	7,731	13.5%	0.6%
Guadalupe County ISD	1,760	1,646	1,658	-5.8%	0.7%
Hidalgo County ISD	960	42	46	-95.2%	9.5%
Lea County ISD	14,313	14,343	14,353	0.3%	0.1%
Lincoln County ISD	4,354	4,301	4,304	-1.1%	0.1%
Luna County ISD	8,770	8,604	8,626	-1.6%	0.3%
McKinley County ISD	22,296	20,579	20,767	-6.9%	0.9%
Northeast Bernalillo County ISD	42,952	43,036	43,114	0.4%	0.2%
Northwest Bernalillo County ISD	47,467	52,953	52,944	11.5%	0.0%
Otero County ISD	11,901	11,900	11,917	0.1%	0.1%
Quay County ISD	2,559	2,563	2,567	0.3%	0.2%
Rio Arriba County ISD	14,316	13,916	13,940	-2.6%	0.2%
Roosevelt County ISD	3,903	9	9	-99.8%	0.0%
San Juan County ISD	30,091	30,013	30,054	-0.1%	0.1%
San Miguel County ISD	9,184	9,141	9,151	-0.4%	0.1%
Sandoval County ISD	25,627	23,322	23,332	-9.0%	0.0%
Santa Fe County ISD	25,109	24,555	24,595	-2.0%	0.2%
Sierra County ISD	5,540	5,349	5,343	-3.6%	-0.1%
Socorro County ISD	5,434	5,254	5,275	-2.9%	0.4%
South Dona Ana ISD	19,891	19,659	19,686	-1.0%	0.1%
Southeast Bernalillo County ISD	25,829	25,107	25,136	-2.7%	0.1%
Southwest Bernalillo County ISD	38,923	38,569	38,679	-0.6%	0.3%
Taos County ISD	9,392	9,306	9,215	-1.9%	-1.0%
Torrance County ISD	7,600	7,780	7,875	3.6%	1.2%
Valencia North County ISD	17,707	18,358	18,430	4.1%	0.4%
Valencia South County ISD	19	103	106	457.9%	2.9%
West Dona Ana County ISD	22,253	21,889	21,953	-1.3%	0.3%
Centralized Units	4	3	3	-25.0%	0.0%
Statewide Total	491,576	490,457	491,423	0.0%	0.2%

Medicaid Cases by Region²

Region				Percent Change	
	Dec-17	Nov-18	Dec-18	Dec-17- Dec-18	Nov-18- Dec-18
Region 1 - NW	88,600	87,295	87,625	-1.1%	0.4%
Region 2 - NE	91,423	88,044	88,051	-3.7%	0.0%
Region 3 - Central	162,771	167,445	167,748	3.1%	0.2%
Region 4 - SE	60,366	60,165	60,269	-0.2%	0.2%
Region 5 - SW	88,412	87,505	87,727	-0.8%	0.3%
Centralized Units	4	3	3	-25.0%	0.0%
Statewide Total	491,576	490,457	491,423	0.0%	0.2%

Medicaid Caseload: SFY-15 to Current

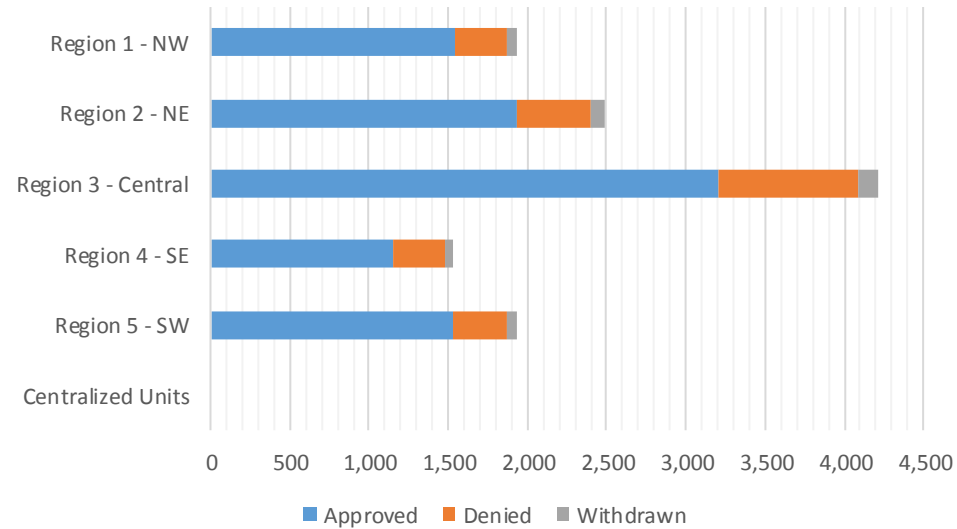


Medicaid Initial Applications by Field Office^{4,11}
December 2018

Office	Approved	Denied	Withdrawn	Total Cases Processed
Chaves County ISD	287	93	7	387
Cibola County ISD	131	23	4	158
Colfax County ISD	55	16	5	76
Curry County ISD	282	77	16	375
East Dona Ana County ISD	393	87	23	503
Eddy Artesia County ISD	65	12		77
Eddy Carlsbad County ISD	167	39	13	219
Grant County ISD	151	33	5	189
Guadalupe County ISD	29	2	1	32
Hidalgo County ISD	0	0	0	0
Lea County ISD	255	81	8	344
Lincoln County ISD	91	27	5	123
Luna County ISD	137	22	3	162
McKinley County ISD	361	75	9	445
Northeast Bernalillo County ISD	910	269	38	1,217
Northwest Bernalillo County ISD	825	247	31	1,103
Otero County ISD	199	55	7	261
Quay County ISD	32	1		33
Rio Arriba County ISD	193	55	9	257
Roosevelt County ISD	1	0		1
San Juan County ISD	570	144	20	734
San Miguel County ISD	376	57	7	440
Sandoval County ISD	483	133	20	636
Santa Fe County ISD	548	151	34	733
Sierra County ISD	70	10	8	88
Socorro County ISD	93	19	5	117
South Dona Ana ISD	254	77	7	338
Southeast Bernalillo County ISD	658	182	10	850
Southwest Bernalillo County ISD	628	154	31	813
Taos County ISD	217	55	3	275
Torrance County ISD	180	35	10	225
Valencia North County ISD	314	63	15	392
Valencia South County ISD	2	1		3
West Dona Ana County ISD	397	61	17	475
Centralized Units	0	0	0	0
Statewide Total	9,354	2,356	371	12,081

Medicaid Initial Applications by Region^{4,11}
December 2018

Region	Approved	Denied	Withdrawn	Total Cases Processed
Region 1 - NW	1,541	335	61	1,937
Region 2 - NE	1,933	470	79	2,482
Region 3 - Central	3,201	887	120	4,208
Region 4 - SE	1,148	329	49	1,526
Region 5 - SW	1,531	335	62	1,928
Centralized Units	0	0	0	0
Statewide Total	9,354	2,356	371	12,081

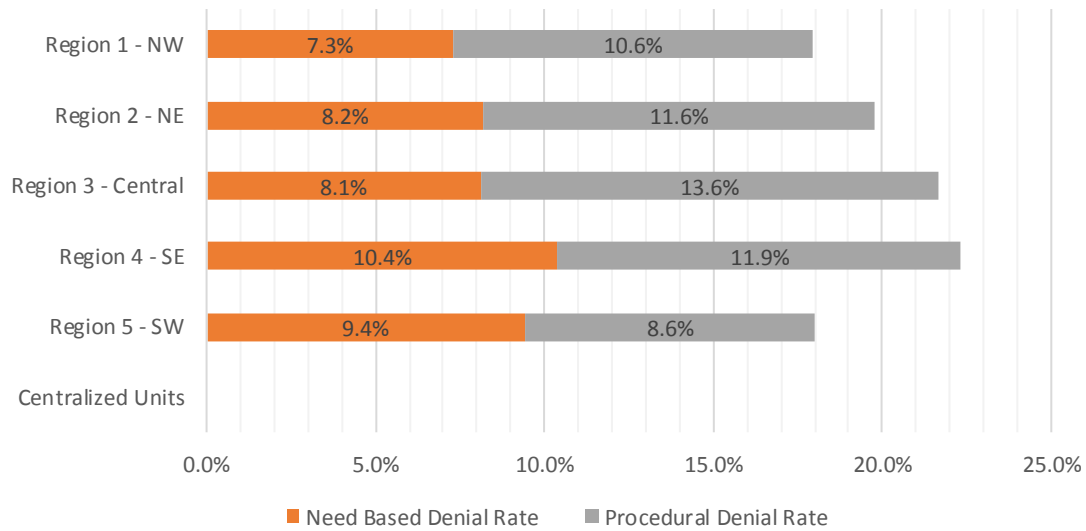


Medicaid EDG Initial Disposition Rates by Field Office^{4,11,19}
December 2018

Office	Approval Rate	Denial Rate	Need Based Denial Rate	Procedural Denial Rate
Chaves County ISD	75.5%	24.5%	11.3%	13.2%
Cibola County ISD	85.1%	14.9%	5.8%	9.1%
Colfax County ISD	77.5%	22.5%	5.6%	16.9%
Curry County ISD	78.6%	21.4%	10.8%	10.6%
East Dona Ana County ISD	81.9%	18.1%	10.0%	8.1%
Eddy Artesia County ISD	84.4%	15.6%	7.8%	7.8%
Eddy Carlsbad County ISD	81.1%	18.9%	7.2%	11.7%
Grant County ISD	82.1%	17.9%	5.9%	12.0%
Guadalupe County ISD	0.0%	0.0%	0.0%	0.0%
Hidalgo County ISD	0.0%	0.0%	0.0%	0.0%
Lea County ISD	75.9%	24.1%	12.2%	11.9%
Lincoln County ISD	77.1%	22.9%	7.6%	15.3%
Luna County ISD	86.2%	13.8%	6.9%	6.9%
McKinley County ISD	82.8%	17.2%	7.3%	9.9%
Northeast Bernalillo County ISD	77.2%	22.8%	7.0%	15.8%
Northwest Bernalillo County ISD	77.0%	23.0%	6.7%	16.3%
Otero County ISD	78.3%	21.7%	6.3%	15.4%
Quay County ISD	97.0%	3.0%	3.0%	0.0%
Rio Arriba County ISD	77.8%	22.2%	10.1%	12.1%
Roosevelt County ISD	0.0%	0.0%	0.0%	0.0%
San Juan County ISD	79.8%	20.2%	7.7%	12.5%
San Miguel County ISD	86.8%	13.2%	4.7%	8.5%
Sandoval County ISD	78.4%	21.6%	8.8%	12.8%
Santa Fe County ISD	78.4%	21.6%	9.4%	12.2%
Sierra County ISD	87.5%	12.5%	5.0%	7.5%
Socorro County ISD	83.0%	17.0%	3.6%	13.4%
South Dona Ana ISD	76.7%	23.3%	17.3%	6.0%
Southeast Bernalillo County ISD	78.3%	21.7%	11.7%	10.0%
Southwest Bernalillo County ISD	80.3%	19.7%	8.6%	11.1%
Taos County ISD	79.8%	20.2%	8.8%	11.4%
Torrance County ISD	83.7%	16.3%	6.1%	10.2%
Valencia North County ISD	83.3%	16.7%	8.5%	8.2%
Valencia South County ISD	0.0%	0.0%	0.0%	0.0%
West Dona Ana County ISD	86.7%	13.3%	6.7%	6.6%
Centralized Units	0.0%	0.0%	0.0%	0.0%
Statewide Total	80.1%	20.2%	8.5%	11.7%

Medicaid EDG Initial Disposition Rates by Region^{4,11,19}
December 2018

Region	Approval Rate	Denial Rate	Need Based Denial Rate	Procedural Denial Rate
Region 1 - NW	82.3%	17.9%	7.3%	10.6%
Region 2 - NE	81.5%	19.8%	8.2%	11.6%
Region 3 - Central	78.3%	21.7%	8.1%	13.6%
Region 4 - SE	77.8%	22.3%	10.4%	11.9%
Region 5 - SW	82.0%	18.0%	9.4%	8.6%
Centralized Units				
Statewide Total	80.1%	20.2%	8.5%	11.7%



Medicaid: Percentage of Initial EDG Approvals Processed Timely by Field Office ^{13,19}

	Oct-18	Nov-18	Dec-18	Jan-19	Feb-19	Mar-19	Apr-19	May-19	Jun-19	Jul-19	Aug-19	Sep-19	Average
Cibola	100.0%	98.8%	96.8%										98.5%
McKinley	99.5%	99.4%	99.1%										99.3%
San Juan	98.9%	98.9%	99.2%										99.0%
Sierra	97.4%	99.3%	96.2%										97.6%
Socorro	100.0%	100.0%	100.0%										100.0%
Valencia North	98.9%	99.2%	99.3%										99.1%
Valencia South	100.0%	100.0%	100.0%										100.0%
NW Region 1 Total	99.1%	99.1%	99.0%										99.1%
Colfax	99.1%	97.4%	97.3%										97.9%
Guadalupe	96.8%	100.0%	100.0%										98.9%
Quay	98.6%	100.0%	100.0%										99.5%
Rio Arriba	99.7%	99.4%	98.9%										99.3%
San Miguel	99.7%	100.0%	99.3%										99.7%
Sandoval	98.2%	99.2%	98.6%										98.7%
Santa Fe	99.0%	99.0%	99.7%										99.2%
Taos	100.0%	98.8%	99.0%										99.3%
NE Region 2 Total	99.0%	99.2%	99.1%										99.1%
NE Bernalillo	97.5%	98.5%	98.5%										98.2%
NW Bernalillo	98.6%	99.5%	99.4%										99.2%
SE Bernalillo	98.4%	98.7%	98.7%										98.6%
SW Bernalillo	98.7%	97.9%	98.6%										98.4%
Torrance	99.3%	97.8%	99.6%										98.9%
Gen. Region 3 Total	98.3%	98.6%	98.9%										98.6%
Chaves	99.5%	99.2%	98.3%										99.0%
Curry	98.5%	98.9%	99.1%										98.8%
Eddy Artesia	100.0%	97.7%	99.0%										98.9%
Eddy Carlsbad	98.0%	97.9%	99.6%										98.5%
Lea	99.3%	99.5%	99.4%										99.4%
Lincoln	99.3%	99.5%	98.1%										99.0%
Roosevelt	100.0%	100.0%	100.0%										100.0%
SE Region 4 Total	99.0%	99.0%	98.9%										99.0%
East Dona Ana	99.7%	97.3%	98.7%										98.6%
Grant	98.4%	99.2%	98.6%										98.7%
Luna	97.5%	100.0%	100.0%										99.2%
Otero	98.4%	98.9%	99.1%										98.8%
South Dona Ana	99.6%	99.2%	99.1%										99.3%
West Dona Ana	98.9%	99.2%	100.0%										99.4%
SW Region 5 Total	99.0%	98.8%	99.2%										99.0%
STATE TOTAL	98.8%	98.9%	99.0%										98.9%

Medicaid: Percentage of Initial EDG Denials Processed Timely by Field Office^{13,19}

	Oct-18	Nov-18	Dec-18	Jan-19	Feb-19	Mar-19	Apr-19	May-19	Jun-19	Jul-19	Aug-19	Sep-19	Average
Cibola	90.2%	93.8%	97.1%										93.7%
McKinley	95.2%	97.7%	97.2%										96.7%
San Juan	92.1%	87.2%	96.8%										92.0%
Sierra	92.3%	100.0%	100.0%										97.4%
Socorro	88.6%	97.6%	100.0%										95.4%
Valencia North	96.8%	98.0%	94.4%										96.4%
Valencia South	100.0%	100.0%	100.0%										100.0%
NW Region 1 Total	93.2%	93.9%	96.8%										94.6%
Colfax	100.0%	100.0%	100.0%										100.0%
Guadalupe	100.0%	100.0%	100.0%										100.0%
Quay	91.7%	95.0%	100.0%										95.6%
Rio Arriba	82.2%	94.8%	89.6%										88.9%
San Miguel	97.9%	100.0%	99.0%										99.0%
Sandoval	90.0%	97.1%	98.4%										95.2%
Santa Fe	92.7%	93.4%	96.1%										94.1%
Taos	96.4%	98.0%	100.0%										98.1%
NE Region 2 Total	91.9%	96.2%	97.0%										95.0%
NE Bernalillo	91.1%	93.3%	96.9%										93.8%
NW Bernalillo	89.6%	97.4%	95.6%										94.2%
SE Bernalillo	95.0%	95.1%	96.3%										95.5%
SW Bernalillo	83.6%	97.8%	98.6%										93.3%
Torrance	94.0%	96.2%	100.0%										96.7%
Gen. Region 3 Total	90.1%	95.6%	96.9%										94.2%
Chaves	98.2%	98.0%	96.8%										97.7%
Curry	92.0%	90.8%	97.7%										93.5%
Eddy Artesia	97.7%	97.6%	96.2%										97.2%
Eddy Carlsbad	90.1%	95.0%	96.0%										93.7%
Lea	90.8%	98.6%	97.0%										95.5%
Lincoln	92.5%	98.2%	98.0%										96.2%
Roosevelt	100.0%	100.0%											100.0%
SE Region 4 Total	93.3%	96.6%	97.0%										95.6%
East Dona Ana	96.6%	94.0%	97.7%										96.1%
Grant	96.2%	100.0%	98.5%										98.2%
Luna	96.4%	100.0%	100.0%										98.8%
Otero	96.1%	98.8%	93.9%										96.3%
South Dona Ana	100.0%	99.2%	99.4%										99.5%
West Dona Ana	97.5%	97.2%	100.0%										98.2%
SW Region 5 Total	97.4%	97.7%	98.3%										97.8%
STATE TOTAL	92.6%	96.0%	97.1%										95.2%

Medicaid: Percentage of Initial EDG Approvals and Denials Combined Processed Timely by Field Office ^{13,19}

	Oct-18	Nov-18	Dec-18	Jan-19	Feb-19	Mar-19	Apr-19	May-19	Jun-19	Jul-19	Aug-19	Sep-19	Average
Cibola	98.6%	97.9%	96.8%										97.8%
McKinley	98.7%	99.1%	98.8%										98.9%
San Juan	97.8%	97.1%	98.7%										97.9%
Sierra	97.0%	99.4%	96.9%										97.8%
Socorro	96.6%	99.4%	100.0%										98.7%
Valencia North	98.6%	99.0%	98.3%										98.6%
Valencia South	100.0%	100.0%	100.0%										100.0%
NW Region 1 Total	98.1%	98.3%	98.5%										98.3%
Colfax	99.2%	98.1%	98.1%										98.5%
Guadalupe	96.8%	100.0%	100.0%										98.9%
Quay	97.6%	98.0%	100.0%										98.5%
Rio Arriba	97.6%	98.3%	96.3%										97.4%
San Miguel	99.5%	100.0%	99.3%										99.6%
Sandoval	97.0%	98.8%	98.6%										98.1%
Santa Fe	97.8%	97.7%	98.9%										98.1%
Taos	99.7%	98.7%	99.3%										99.2%
NE Region 2 Total	98.0%	98.5%	98.6%										98.4%
NE Bernalillo	96.1%	97.2%	98.1%										97.1%
NW Bernalillo	96.8%	99.1%	98.4%										98.1%
SE Bernalillo	97.6%	97.8%	98.1%										97.8%
SW Bernalillo	96.1%	97.9%	98.6%										97.5%
Torrance	98.4%	97.6%	99.7%										98.6%
Gen. Region 3 Total	96.7%	98.0%	98.4%										97.7%
Chaves	99.2%	99.0%	97.8%										98.7%
Curry	97.3%	97.9%	98.7%										98.0%
Eddy Artesia	99.5%	97.6%	98.5%										98.5%
Eddy Carlsbad	96.5%	97.1%	98.7%										97.4%
Lea	97.2%	99.3%	98.8%										98.4%
Lincoln	97.5%	99.2%	98.1%										98.3%
Roosevelt	100.0%	100.0%	100.0%										100.0%
SE Region 4 Total	97.7%	98.5%	98.4%										98.2%
East Dona Ana	99.1%	96.7%	98.4%										98.1%
Grant	97.9%	99.4%	98.6%										98.6%
Luna	97.3%	100.0%	100.0%										99.1%
Otero	98.1%	98.9%	97.8%										98.3%
South Dona Ana	99.7%	99.2%	99.2%										99.4%
West Dona Ana	98.7%	98.9%	100.0%										99.2%
SW Region 5 Total	98.7%	98.6%	99.0%										98.8%
STATE TOTAL	97.7%	98.3%	98.6%										98.2%

Medicaid Renewal Disposition Counts by Field Office^{4,11}
December 2018

Office	Approvals	Closures	Need Based Closures	Procedural Closures
Chaves County ISD	2,341	504	126	378
Cibola County ISD	1,247	223	53	170
Colfax County ISD	508	101	23	78
Curry County ISD	2,175	487	115	372
East Dona Ana County ISD	2,834	551	102	449
Eddy Artesia County ISD	617	152	39	113
Eddy Carlsbad County ISD	876	312	45	267
Grant County ISD	1,128	185	46	139
Guadalupe County ISD	258	42	12	30
Hidalgo County ISD	1	0		
Lea County ISD	1,950	629	142	487
Lincoln County ISD	644	159	47	112
Luna County ISD	1,493	230	54	176
McKinley County ISD	3,464	706	178	528
Northeast Bernalillo County ISD	5,444	1441	277	1164
Northwest Bernalillo County ISD	5,026	1174	241	933
Otero County ISD	1,519	298	82	216
Quay County ISD	347	52	12	40
Rio Arriba County ISD	1,923	413	76	337
Roosevelt County ISD				
San Juan County ISD	4,943	1030	236	794
San Miguel County ISD	1,095	183	43	140
Sandoval County ISD	3,429	839	166	673
Santa Fe County ISD	2,735	772	128	644
Sierra County ISD	795	131	31	100
Socorro County ISD	775	129	27	102
South Dona Ana ISD	3,702	596	166	430
Southeast Bernalillo County ISD	3,185	571	130	441
Southwest Bernalillo County ISD	7,046	1453	361	1092
Taos County ISD	1,174	271	60	211
Torrance County ISD	1,048	255	81	174
Valencia North County ISD	2,654	565	123	442
Valencia South County ISD				
West Dona Ana County ISD	3,343	514	102	412
Centralized Units				
Statewide Total	69,719	14,968	3,324	11,644

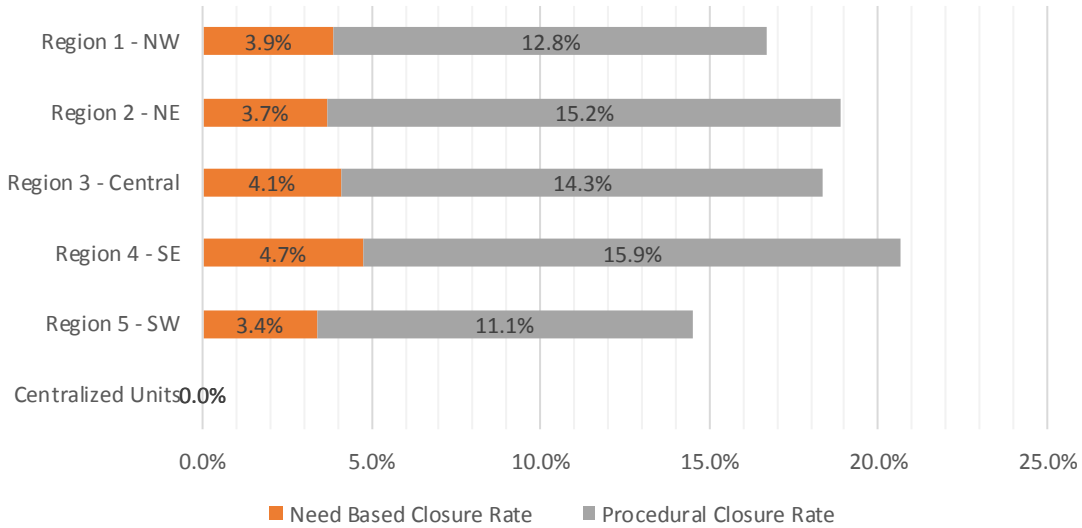
Determinations at Administrative, Annual, and Auto Renewals are included

Medicaid Renewal Disposition Rates by Field Office²⁰
December 2018

Office	Approval Rate	Closure Rate	Need Based Closure Rate	Procedural Closure Rate
Chaves County ISD	82.3%	17.7%	4.4%	13.3%
Cibola County ISD	84.8%	15.2%	3.6%	11.6%
Colfax County ISD	83.4%	16.6%	3.8%	12.8%
Curry County ISD	81.7%	18.3%	4.3%	14.0%
East Dona Ana County ISD	83.7%	16.3%	3.0%	13.3%
Eddy Artesia County ISD	80.2%	19.8%	5.1%	14.7%
Eddy Carlsbad County ISD	73.7%	26.3%	3.8%	22.5%
Grant County ISD	85.9%	14.1%	3.5%	10.6%
Guadalupe County ISD	86.0%	14.0%	4.0%	10.0%
Hidalgo County ISD	100.0%	0.0%	0.0%	0.0%
Lea County ISD	75.6%	24.4%	5.5%	18.9%
Lincoln County ISD	80.2%	19.8%	5.9%	13.9%
Luna County ISD	86.7%	13.3%	3.1%	10.2%
McKinley County ISD	83.1%	16.9%	4.3%	12.7%
Northeast Bernalillo County ISD	79.1%	20.9%	4.0%	16.9%
Northwest Bernalillo County ISD	81.1%	18.9%	3.9%	15.0%
Otero County ISD	83.6%	16.4%	4.5%	11.9%
Quay County ISD	87.0%	13.0%	3.0%	10.0%
Rio Arriba County ISD	82.3%	17.7%	3.3%	14.4%
Roosevelt County ISD	0.0%	0.0%	0.0%	0.0%
San Juan County ISD	82.8%	17.2%	4.0%	13.3%
San Miguel County ISD	85.7%	14.3%	3.4%	11.0%
Sandoval County ISD	80.3%	19.7%	3.9%	15.8%
Santa Fe County ISD	78.0%	22.0%	3.6%	18.4%
Sierra County ISD	85.9%	14.1%	3.3%	10.8%
Socorro County ISD	85.7%	14.3%	3.0%	11.3%
South Dona Ana ISD	86.1%	13.9%	3.9%	10.0%
Southeast Bernalillo County ISD	84.8%	15.2%	3.5%	11.7%
Southwest Bernalillo County ISD	82.9%	17.1%	4.2%	12.8%
Taos County ISD	81.2%	18.8%	4.2%	14.6%
Torrance County ISD	80.4%	19.6%	6.2%	13.4%
Valencia North County ISD	82.4%	17.6%	3.8%	13.7%
Valencia South County ISD	0.0%	0.0%	0.0%	0.0%
West Dona Ana County ISD	86.7%	13.3%	2.6%	10.7%
Centralized Units	0.0%	0.0%	0.0%	0.0%
Statewide Total	82.3%	17.7%	3.9%	13.7%

Medicaid Renewal Disposition Rates by Region²⁰
December 2018

Region	Approval Rate	Closure Rate	Need Based Closure Rate	Procedural Closure Rate
Region 1 - NW	83.3%	16.7%	3.9%	12.8%
Region 2 - NE	81.1%	18.9%	3.7%	15.2%
Region 3 - Central	81.6%	18.4%	4.1%	14.3%
Region 4 - SE	79.3%	20.7%	4.7%	15.9%
Region 5 - SW	85.5%	14.5%	3.4%	11.1%
Centralized Units				
Statewide Total	82.3%	17.7%	3.9%	13.7%



Medicaid: Percentage of Approved Renewal EDGs Processed by Certification Date ¹¹

	Oct-18	Nov-18	Dec-18	Jan-19	Feb-19	Mar-19	Apr-19	May-19	Jun-19	Jul-19	Aug-19	Sep-19	Average
Cibola	99.7%	97.1%	97.8%										98.2%
McKinley	99.4%	97.5%	98.9%										98.6%
San Juan	99.2%	97.3%	99.0%										98.5%
Sierra	98.8%	97.6%	99.1%										98.5%
Socorro	99.2%	96.2%	96.8%										97.4%
Valencia North	99.0%	96.6%	97.9%										97.8%
Valencia South													
NW Region 1 Total	99.2%	97.1%	98.2%										98.2%
Colfax	99.2%	97.5%	97.6%										98.1%
Guadalupe	99.6%	96.9%	99.2%										98.6%
Quay	98.4%	97.0%	99.1%										98.2%
Rio Arriba	98.6%	97.1%	98.6%										98.1%
San Miguel	99.5%	97.3%	99.7%										98.8%
Sandoval	98.6%	97.1%	97.7%										97.8%
Santa Fe	97.9%	95.8%	98.1%										97.3%
Taos	98.2%	97.1%	99.1%										98.1%
NE Region 2 Total	98.8%	97.0%	98.7%										98.1%
NE Bernalillo	98.1%	96.7%	98.3%										97.7%
NW Bernalillo	97.9%	97.2%	98.5%										97.9%
SE Bernalillo	98.5%	96.9%	98.8%										98.1%
SW Bernalillo	98.2%	96.7%	98.3%										97.8%
Torrance	99.5%	98.0%	98.8%										98.8%
Gen. Region 3 Total	98.5%	97.1%	98.5%										98.0%
Chaves	98.8%	97.1%	98.8%										98.3%
Curry	98.9%	97.5%	98.7%										98.4%
Eddy Artesia	98.2%	96.9%	98.2%										97.8%
Eddy Carlsbad	98.9%	96.6%	97.0%										97.5%
Lea	98.9%	97.8%	99.2%										98.6%
Lincoln	98.6%	95.2%	98.6%										97.5%
Roosevelt	100.0%												100.0%
SE Region 4 Total	98.9%	96.9%	98.4%										98.1%
East Dona Ana	99.3%	97.1%	99.5%										98.7%
Grant	99.1%	97.4%	99.1%										98.5%
Luna	99.2%	97.2%	99.3%										98.6%
Otero	98.3%	96.6%	96.9%										97.3%
South Dona Ana	97.9%	97.4%	98.3%										97.9%
West Dona Ana	99.6%	98.0%	99.4%										99.0%
SW Region 5 Total	98.9%	97.3%	98.8%										98.3%
STATE TOTAL	98.9%	97.0%	98.5%										98.1%

Administrative, Annual, and Auto Renewals are included

Medicaid: Percentage of Closures EDGs Processed by Certification End Date¹¹

	<i>Oct-18</i>	<i>Nov-18</i>	<i>Dec-18</i>	<i>Jan-19</i>	<i>Feb-19</i>	<i>Mar-19</i>	<i>Apr-19</i>	<i>May-19</i>	<i>Jun-19</i>	<i>Jul-19</i>	<i>Aug-19</i>	<i>Sep-19</i>	<i>Average</i>
Cibola	96.0%	97.9%	98.2%										97.4%
McKinley	98.6%	98.9%	97.3%										98.3%
San Juan	97.1%	97.0%	96.2%										96.8%
Sierra	98.5%	95.6%	97.7%										97.3%
Socorro	96.0%	99.4%	93.8%										96.4%
Valencia North	98.3%	98.7%	97.0%										98.0%
Valencia South													
NW Region 1 Total	97.4%	97.9%	96.7%										97.3%
Colfax	96.3%	97.8%	95.0%										96.4%
Guadalupe	98.3%	100.0%	100.0%										99.4%
Quay	96.6%	97.0%	100.0%										97.9%
Rio Arriba	98.6%	98.1%	96.6%										97.8%
San Miguel	100.0%	98.8%	98.4%										99.1%
Sandoval	98.2%	98.1%	97.4%										97.9%
Santa Fe	98.0%	98.5%	95.3%										97.3%
Taos	97.4%	98.8%	95.2%										97.1%
NE Region 2 Total	98.1%	98.5%	97.6%										98.1%
NE Bernalillo	98.3%	97.6%	97.3%										97.8%
NW Bernalillo	98.2%	98.5%	96.5%										97.7%
SE Bernalillo	95.8%	98.4%	96.0%										96.7%
SW Bernalillo	97.8%	98.3%	95.9%										97.3%
Torrance	97.8%	98.5%	97.6%										98.0%
Gen. Region 3 Total	97.7%	98.4%	96.6%										97.5%
Chaves	98.2%	98.9%	98.2%										98.4%
Curry	98.9%	98.1%	98.2%										98.4%
Eddy Artesia	98.9%	97.3%	98.7%										98.3%
Eddy Carlsbad	99.1%	99.3%	99.0%										99.2%
Lea	97.7%	98.6%	98.6%										98.3%
Lincoln	99.5%	99.5%	98.1%										99.0%
Roosevelt	100.0%												100.0%
SE Region 4 Total	98.9%	98.6%	98.5%										98.7%
East Dona Ana	98.1%	97.9%	98.9%										98.3%
Grant	97.6%	97.4%	97.3%										97.4%
Luna	99.1%	98.5%	100.0%										99.2%
Otero	98.5%	98.9%	99.0%										98.8%
South Dona Ana	97.9%	98.1%	98.3%										98.1%
West Dona Ana	98.2%	98.4%	99.2%										98.6%
SW Region 5 Total	98.3%	98.3%	98.7%										98.4%
STATE TOTAL	98.1%	98.3%	97.6%										98.0%

Medicaid: Percentage of Approved and Terminated Renewal EDGs Combined Processed by Certification Date ¹¹													
	Oct-18	Nov-18	Dec-18	Jan-19	Feb-19	Mar-19	Apr-19	May-19	Jun-19	Jul-19	Aug-19	Sep-19	Average
Cibola	99.1%	97.2%	97.8%										98.0%
McKinley	99.3%	97.7%	98.6%										98.5%
San Juan	98.8%	97.3%	98.5%										98.2%
Sierra	98.8%	97.4%	98.9%										98.4%
Socorro	98.6%	96.6%	96.3%										97.2%
Valencia North	98.9%	96.8%	97.7%										97.8%
Valencia South													
NW Region 1 Total	98.9%	97.2%	98.0%										98.0%
Colfax	98.6%	97.6%	97.2%										97.8%
Guadalupe	99.4%	97.3%	99.3%										98.7%
Quay	98.1%	97.0%	99.2%										98.1%
Rio Arriba	98.6%	97.2%	98.3%										98.0%
San Miguel	99.6%	97.4%	99.5%										98.9%
Sandoval	98.6%	97.2%	97.6%										97.8%
Santa Fe	98.0%	96.3%	97.5%										97.2%
Taos	98.0%	97.4%	98.3%										97.9%
NE Region 2 Total	98.6%	97.2%	98.4%										98.1%
NE Bernalillo	98.1%	96.9%	98.1%										97.7%
NW Bernalillo	98.0%	97.4%	98.2%										97.8%
SE Bernalillo	98.0%	97.1%	98.4%										97.8%
SW Bernalillo	98.1%	96.9%	97.9%										97.7%
Torrance	99.2%	98.1%	98.5%										98.6%
Cen. Region 3 Total	98.3%	97.3%	98.2%										97.9%
Chaves	98.7%	97.3%	98.7%										98.2%
Curry	98.9%	97.6%	98.6%										98.4%
Eddy Artesia	98.4%	97.0%	98.3%										97.9%
Eddy Carlsbad	99.0%	97.1%	97.6%										97.9%
Lea	98.6%	97.9%	99.0%										98.5%
Lincoln	98.8%	95.9%	98.5%										97.7%
Roosevelt	100.0%												100.0%
SE Region 4 Total	98.9%	97.1%	98.5%										98.2%
East Dona Ana	99.1%	97.2%	99.4%										98.6%
Grant	98.9%	97.4%	98.9%										98.4%
Luna	99.2%	97.4%	99.4%										98.6%
Otero	98.3%	96.9%	97.2%										97.5%
South Dona Ana	97.9%	97.5%	98.3%										97.9%
West Dona Ana	99.4%	98.0%	99.4%										98.9%
SW Region 5 Total	98.8%	97.4%	98.8%										98.3%
STATE TOTAL	98.7%	97.2%	98.4%										98.1%

Administrative, Annual, and Auto Renewals are included

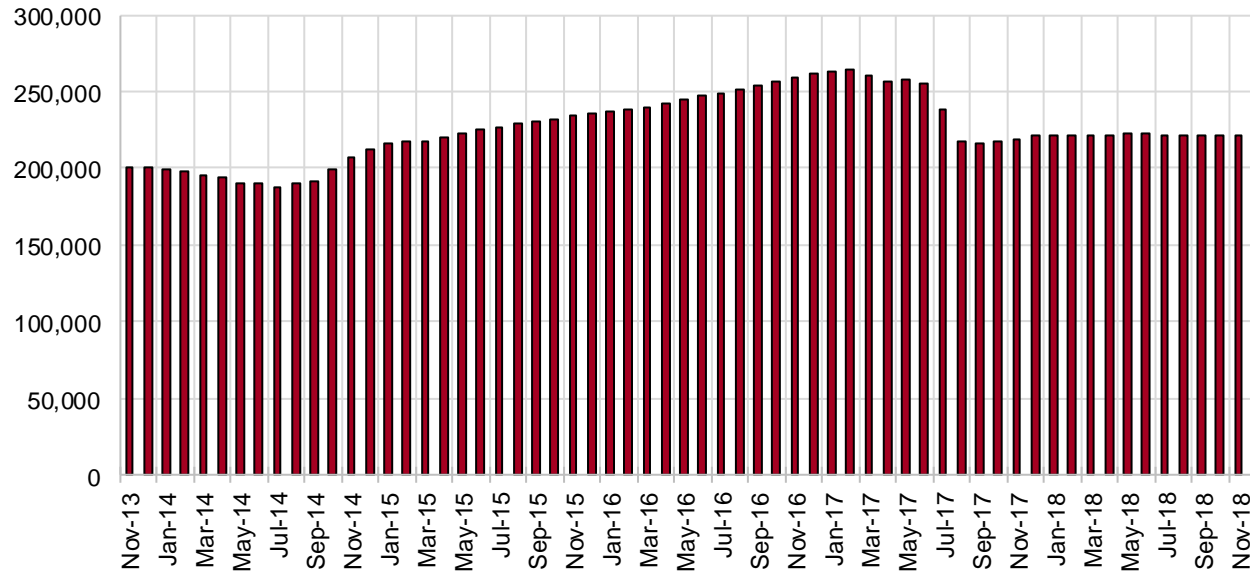
SNAP Cases by Field Office⁶

Office				Percent Change	
	Dec-17	Nov-18	Dec-18	Dec-17- Dec-18	Nov-18- Dec-18
Chaves County ISD	7,165	7,039	7,002	-2.3%	-0.5%
Cibola County ISD	3,644	3,740	3,754	3.0%	0.4%
Colfax County ISD	1,609	1,639	1,654	2.8%	0.9%
Curry County ISD	4,769	7,037	6,998	46.7%	-0.6%
East Dona Ana County ISD	7,981	7,966	7,955	-0.3%	-0.1%
Eddy Artesia County ISD	1,710	1,612	1,610	-5.8%	-0.1%
Eddy Carlsbad County ISD	3,274	2,882	2,861	-12.6%	-0.7%
Grant County ISD	3,530	3,967	3,928	11.3%	-1.0%
Guadalupe County ISD	716	716	713	-0.4%	-0.4%
Hidalgo County ISD	436	4	10	-97.7%	150.0%
Lea County ISD	5,815	5,676	5,637	-3.1%	-0.7%
Lincoln County ISD	1,961	1,825	1,841	-6.1%	0.9%
Luna County ISD	4,300	4,155	4,148	-3.5%	-0.2%
McKinley County ISD	9,657	9,938	9,959	3.1%	0.2%
Northeast Bernalillo County ISD	20,009	20,640	20,475	2.3%	-0.8%
Northwest Bernalillo County ISD	18,824	20,011	20,258	7.6%	1.2%
Otero County ISD	5,589	5,667	5,611	0.4%	-1.0%
Quay County ISD	1,247	1,289	1,284	3.0%	-0.4%
Rio Arriba County ISD	6,750	6,760	6,762	0.2%	0.0%
Roosevelt County ISD	1,672	0	2	-99.9%	N/A
San Juan County ISD	13,288	13,663	13,687	3.0%	0.2%
San Miguel County ISD	4,965	5,050	5,021	1.1%	-0.6%
Sandoval County ISD	10,972	10,655	9,996	-8.9%	-6.2%
Santa Fe County ISD	9,882	9,497	9,462	-4.3%	-0.4%
Sierra County ISD	2,700	2,675	2,642	-2.1%	-1.2%
Socorro County ISD	2,865	2,767	2,728	-4.8%	-1.4%
South Dona Ana ISD	8,607	8,571	8,525	-1.0%	-0.5%
Southeast Bernalillo County ISD	11,985	11,878	11,962	-0.2%	0.7%
Southwest Bernalillo County ISD	18,708	18,763	18,604	-0.6%	-0.8%
Taos County ISD	4,160	4,163	4,147	-0.3%	-0.4%
Torrance County ISD	3,426	3,532	3,563	4.0%	0.9%
Valencia North County ISD	8,378	8,512	8,478	1.2%	-0.4%
Valencia South County ISD	5	0	0	-100.0%	N/A
West Dona Ana County ISD	10,715	10,812	10,702	-0.1%	-1.0%
Centralized Units	62	30	25	-59.7%	-16.7%
Statewide Total	221,376	223,131	222,004	0.3%	-0.5%

SNAP Cases by Region⁶

Region	Dec-17	Nov-18	Dec-18	Percent Change	
				Dec-17- Dec-18	Nov-18- Dec-18
Region 1 - NW	40,537	41,295	41,248	1.8%	-0.1%
Region 2 - NE	40,301	39,769	39,039	-3.1%	-1.8%
Region 3 - Central	72,952	74,824	74,862	2.6%	0.1%
Region 4 - SE	26,366	26,071	25,951	-1.6%	-0.5%
Region 5 - SW	41,158	41,142	40,879	-0.7%	-0.6%
Centralized Units	62	30	25	-59.7%	-16.7%
Statewide Total	221,376	223,131	222,004	0.3%	-0.5%

SNAP Caseload: SFY-14 to Current



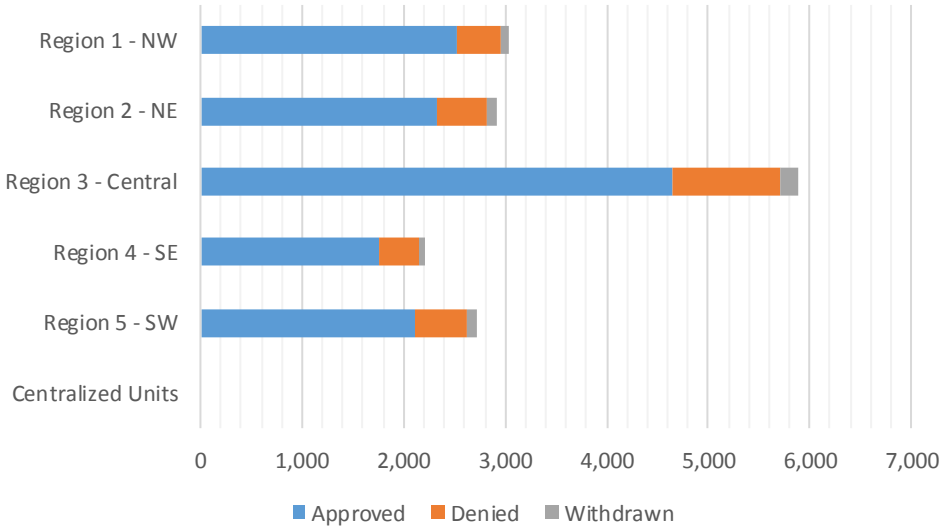
SNAP Initial Applications by Field Office^{4,11}
December 2018

Office	Approved	Denied	Withdrawn	Total Cases Processed
Chaves County ISD	432	99	12	543
Cibola County ISD	218	37	8	263
Colfax County ISD	103	18	5	126
Curry County ISD	434	83	22	539
East Dona Ana County ISD	468	125	28	621
Eddy Artesia County ISD	118	19	1	138
Eddy Carlsbad County ISD	231	71	12	314
Grant County ISD	215	42	9	266
Guadalupe County ISD	36	7		43
Hidalgo County ISD	0		0	0
Lea County ISD	413	81	11	505
Lincoln County ISD	123	38	6	167
Luna County ISD	225	39	11	275
McKinley County ISD	590	77	15	682
Northeast Bernalillo County ISD	1,353	309	49	1,711
Northwest Bernalillo County ISD	1,167	314	47	1,528
Otero County ISD	324	79	11	414
Quay County ISD	48	8	1	57
Rio Arriba County ISD	396	58	12	466
Roosevelt County ISD	3			3
San Juan County ISD	998	187	27	1,212
San Miguel County ISD	306	43	9	358
Sandoval County ISD	573	154	32	759
Santa Fe County ISD	611	147	20	778
Sierra County ISD	130	26	2	158
Socorro County ISD	134	28	7	169
South Dona Ana ISD	321	84	6	411
Southeast Bernalillo County ISD	843	172	19	1,034
Southwest Bernalillo County ISD	1,061	215	55	1,331
Taos County ISD	258	62	14	334
Torrance County ISD	215	56	4	275
Valencia North County ISD	452	88	16	556
Valencia South County ISD	0			0
West Dona Ana County ISD	565	140	19	724
Centralized Units	0		0	0
Statewide Total	13,364	2,906	490	16,760

SNAP Initial Applications by Region^{4,11}
December 2018

Region	Approved	Denied	Withdrawn	Total Cases Processed
Region 1 - NW	2,522	443	75	3,040
Region 2 - NE	2,331	497	93	2,921
Region 3 - Central	4,639	1,066	174	5,879
Region 4 - SE	1,754	391	64	2,209
Region 5 - SW	2,118	509	84	2,711
Centralized Units	0	0	0	0

Statewide Total	13,364	2,906	490	16,760
-----------------	--------	-------	-----	--------

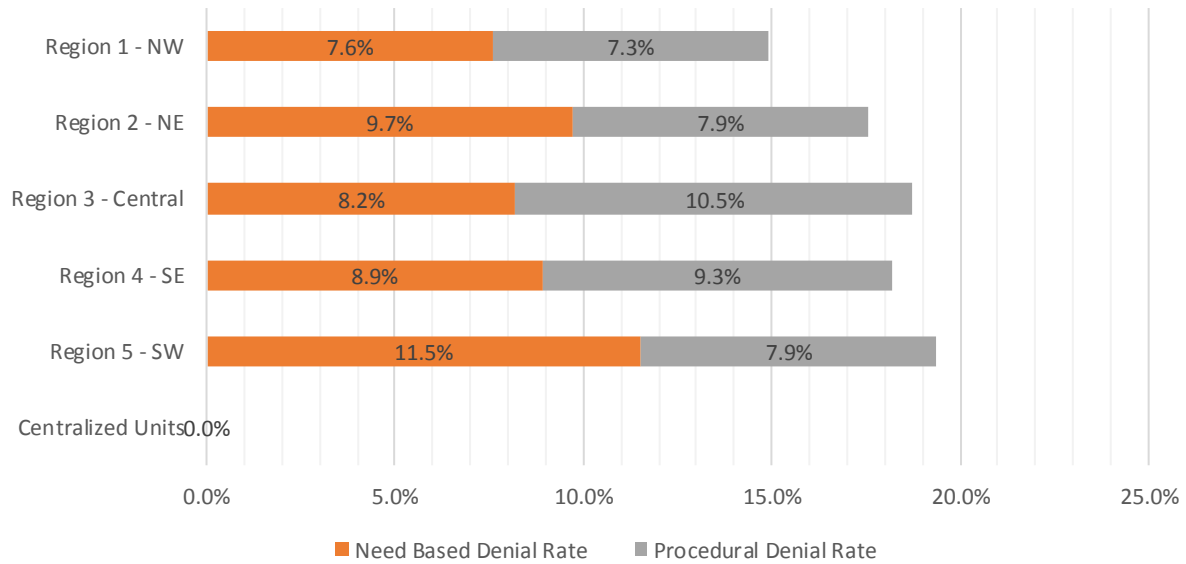


SNAP Initial Disposition Rates by Field Office^{4,11}
December 2018

Office	Approval Rate	Denial Rate	Need Based Denial Rate	Procedural Denial Rate
Chaves County ISD	81.4%	18.6%	8.1%	10.5%
Cibola County ISD	85.5%	14.5%	9.0%	5.5%
Colfax County ISD	85.1%	14.9%	8.3%	6.6%
Curry County ISD	83.9%	16.1%	11.7%	4.4%
East Dona Ana County ISD	78.9%	21.1%	13.0%	8.1%
Eddy Artesia County ISD	86.1%	13.9%	5.9%	8.0%
Eddy Carlsbad County ISD	76.5%	23.5%	7.6%	15.9%
Grant County ISD	83.7%	16.3%	11.2%	5.1%
Guadalupe County ISD	83.7%	16.3%	9.3%	7.0%
Hidalgo County ISD	0.0%	0.0%	0.0%	0.0%
Lea County ISD	83.6%	16.4%	8.5%	7.9%
Lincoln County ISD	76.4%	23.6%	9.9%	13.7%
Luna County ISD	85.2%	14.8%	9.5%	5.3%
McKinley County ISD	88.5%	11.5%	6.1%	5.4%
Northeast Bernalillo County ISD	81.4%	18.6%	7.4%	11.2%
Northwest Bernalillo County ISD	78.8%	21.2%	9.5%	11.7%
Otero County ISD	80.4%	19.6%	8.9%	10.7%
Quay County ISD	85.7%	14.3%	10.7%	3.6%
Rio Arriba County ISD	87.2%	12.8%	6.2%	6.6%
Roosevelt County ISD	0.0%	100.0%	100.0%	0.0%
San Juan County ISD	84.2%	15.8%	7.8%	8.0%
San Miguel County ISD	87.7%	12.3%	8.9%	3.4%
Sandoval County ISD	78.8%	21.2%	12.4%	8.8%
Santa Fe County ISD	80.6%	19.4%	10.2%	9.2%
Sierra County ISD	83.3%	16.7%	8.4%	8.3%
Socorro County ISD	82.7%	17.3%	8.0%	9.3%
South Dona Ana ISD	79.3%	20.7%	14.3%	6.4%
Southeast Bernalillo County ISD	83.1%	16.9%	7.5%	9.4%
Southwest Bernalillo County ISD	83.2%	16.8%	7.4%	9.4%
Taos County ISD	80.6%	19.4%	9.1%	10.3%
Torrance County ISD	79.3%	20.7%	11.1%	9.6%
Valencia North County ISD	83.7%	16.3%	8.3%	8.0%
Valencia South County ISD	0.0%	0.0%	0.0%	0.0%
West Dona Ana County ISD	80.1%	19.9%	11.0%	8.9%
Centralized Units				
Statewide Total	82.1%	17.9%	9.0%	8.9%

SNAP Initial Disposition Rates by Region^{4,11}
December 2018

Region	Approval Rate	Denial Rate	Need Based Denial Rate	Procedural Denial Rate
Region 1 - NW	85.1%	14.9%	7.6%	7.3%
Region 2 - NE	82.4%	17.6%	9.7%	7.9%
Region 3 - Central	81.3%	18.7%	8.2%	10.5%
Region 4 - SE	81.8%	18.2%	8.9%	9.3%
Region 5 - SW	80.6%	19.4%	11.5%	7.9%
Centralized Units				
Statewide Total	82.1%	17.9%	9.0%	8.9%



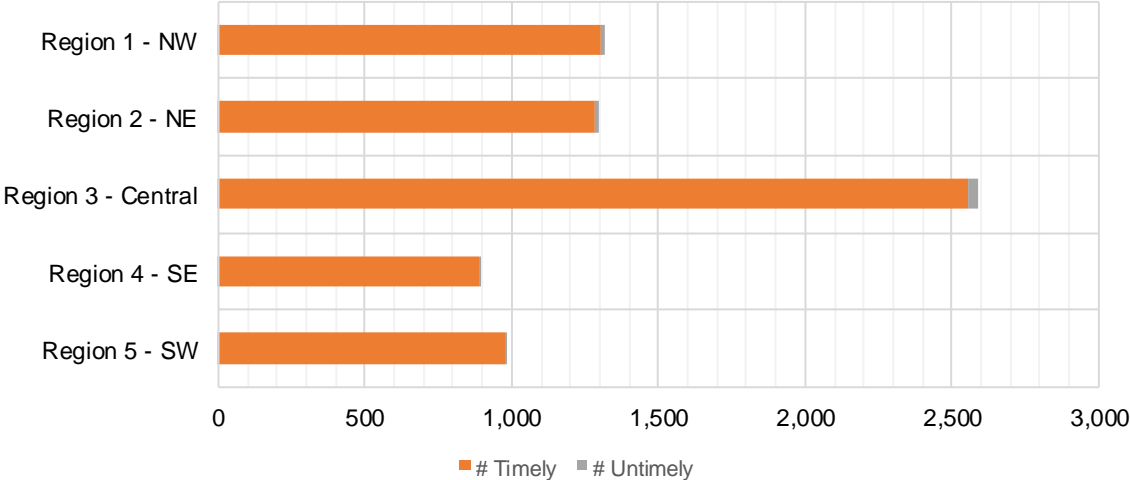
SNAP Expedite Timeliness by Field Office¹³
December 2018

Office Name	Total Expedited Approvals	# Timely	# Untimely	Percentage Timely
Chaves County ISD	186	186	0	100.0 %
Cibola County ISD	115	115	0	100.0 %
Colfax County ISD	55	55	0	100.0 %
Curry County ISD	254	250	4	98.4 %
East Dona Ana County ISD	200	199	1	99.5 %
Eddy Artesia County ISD	53	53	0	100.0 %
Eddy Carlsbad County ISD	132	130	2	98.5 %
Grant County ISD	119	119	0	100.0 %
Guadalupe County ISD	10	10	0	100.0 %
Lea County ISD	213	211	2	99.1 %
Lincoln County ISD	56	55	1	98.2 %
Luna County ISD	87	86	1	98.9 %
McKinley County ISD	307	307	0	100.0 %
Northeast Bernalillo County ISD	763	751	12	98.4 %
Northwest Bernalillo County ISD	696	692	4	99.4 %
Otero County ISD	172	169	3	98.3 %
Quay County ISD	32	32	0	100.0 %
Rio Arriba County ISD	240	239	1	99.6 %
Roosevelt County ISD	3	3	0	100.0 %
San Juan County ISD	572	566	6	99.0 %
San Miguel County ISD	177	177	0	100.0 %
Sandoval County ISD	293	290	3	99.0 %
Santa Fe County ISD	367	364	3	99.2 %
Sierra County ISD	52	52	0	100.0 %
Socorro County ISD	62	62	0	100.0 %
South Dona Ana ISD	133	133	0	100.0 %
Southeast Bernalillo County ISD	462	459	3	99.4 %
Southwest Bernalillo County ISD	560	546	14	97.5 %
Taos County ISD	122	115	7	94.3 %
Torrance County ISD	107	105	2	98.1 %
Valencia North County ISD	206	204	2	99.0 %
West Dona Ana County ISD	272	271	1	99.6 %
Statewide Total	7,078	7,006	72	99.0 %

SNAP Expedite Timeliness by Region¹³
December 2018

Region	Total Expedited Approvals	# Timely	# Untimely	Percentage Timely
Region 1 - NW	1,314	1,306	8	99.4%
Region 2 - NE	1,296	1,282	14	98.9%
Region 3 - Central	2,588	2,553	35	98.6%
Region 4 - SE	897	888	9	99.0%
Region 5 - SW	983	977	6	99.4%
Statewide Total	7,078	7,006	72	99.0%

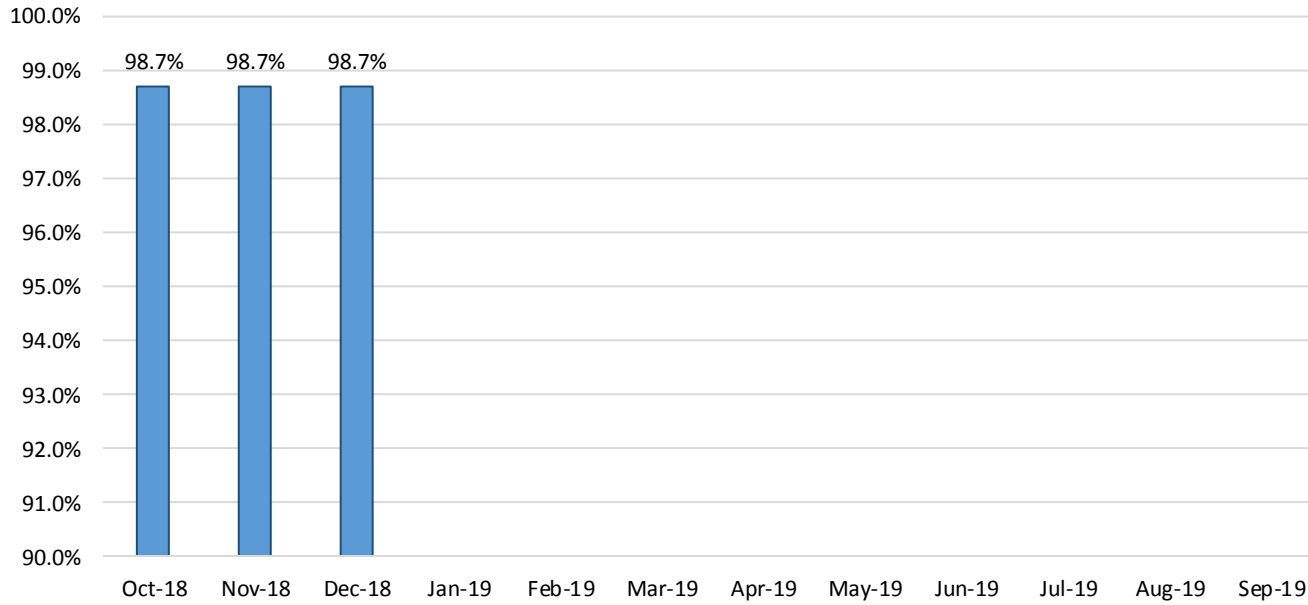
SNAP Expedite - Timeliness



SNAP: Percentage of Applications Processed Timely ¹³

	Oct-18	Nov-18	Dec-18	Jan-19	Feb-19	Mar-19	Apr-19	May-19	Jun-19	Jul-19	Aug-19	Sep-19	Average
APT	98.7%	98.7%	98.7%										98.7%

SNAP Application Processing Timeliness (APT)



SNAP Non-Expedite: Percentage of Initial Applications Processed Timely by Field Office¹³

	Oct-18	Nov-18	Dec-18	Jan-19	Feb-19	Mar-19	Apr-19	May-19	Jun-19	Jul-19	Aug-19	Sep-19	Average
Cibola	100.0%	99.0%	99.0%										99.3%
McKinley	98.8%	98.4%	98.9%										98.7%
San Juan	99.6%	99.2%	98.8%										99.2%
Sierra	98.9%	100.0%	100.0%										99.6%
Socorro	100.0%	98.4%	100.0%										99.5%
Valencia North	99.7%	99.3%	99.2%										99.4%
Valencia South													
NW Region 1 Total	99.4%	99.1%	99.1%										99.2%
Colfax	100.0%	100.0%	100.0%										100.0%
Guadalupe	100.0%	100.0%	96.3%										98.8%
Quay	100.0%	97.3%	100.0%										99.1%
Rio Arriba	100.0%	99.5%	98.1%										99.2%
San Miguel	100.0%	99.3%	99.2%										99.5%
Sandoval	99.5%	99.2%	99.6%										99.4%
Santa Fe	99.4%	98.6%	100.0%										99.3%
Taos	100.0%	98.4%	99.3%										99.2%
NE Region 2 Total	98.9%	99.0%	99.3%										99.1%
NE Bernalillo	98.9%	98.8%	98.8%										98.8%
NW Bernalillo	98.0%	99.3%	99.6%										99.0%
SE Bernalillo	99.6%	98.7%	99.0%										99.1%
SW Bernalillo	99.3%	99.5%	98.6%										99.1%
Torrance	100.0%	97.2%	97.3%										98.2%
Gen. Region 3 Total	98.9%	99.0%	98.9%										98.9%
Chaves	100.0%	99.6%	98.8%										99.5%
Curry	97.9%	98.4%	98.9%										98.4%
Eddy Artesia	100.0%	100.0%	100.0%										100.0%
Eddy Carlsbad	100.0%	99.1%	99.0%										99.4%
Lea	99.1%	99.5%	99.0%										99.2%
Lincoln	100.0%	98.8%	97.1%										98.6%
Roosevelt		100.0%											100.0%
SE Region 4 Total	98.2%	99.2%	98.8%										98.7%
East Dona Ana	99.7%	100.0%	99.3%										99.7%
Grant	100.0%	100.0%	99.0%										99.7%
Luna	100.0%	99.4%	99.3%										99.6%
Otero	99.2%	100.0%	99.3%										99.5%
South Dona Ana	99.6%	99.6%	98.4%										99.2%
West Dona Ana	99.5%	100.0%	99.3%										99.6%
SW Region 5 Total	99.4%	99.8%	99.1%										99.4%
STATE TOTAL	99.0%	99.2%	99.0%										99.1%

SNAP Expedite: Percentage of Initial Applications Processed Timely by Field Office¹³

	<i>Oct-18</i>	<i>Nov-18</i>	<i>Dec-18</i>	<i>Jan-19</i>	<i>Feb-19</i>	<i>Mar-19</i>	<i>Apr-19</i>	<i>May-19</i>	<i>Jun-19</i>	<i>Jul-19</i>	<i>Aug-19</i>	<i>Sep-19</i>	<i>Average</i>
Cibola	100.0%	99.2%	100.0%										99.7%
McKinley	98.8%	98.6%	100.0%										99.1%
San Juan	99.3%	99.5%	99.0%										99.3%
Sierra	100.0%	98.6%	100.0%										99.5%
Socorro	100.0%	98.6%	100.0%										99.5%
Valencia North	99.6%	99.6%	99.0%										99.4%
Valencia South													
NW Region 1 Total	99.6%	99.2%	99.4%										99.4%
Colfax	100.0%	100.0%	100.0%										100.0%
Guadalupe	95.2%	100.0%	100.0%										98.4%
Quay	100.0%	100.0%	100.0%										100.0%
Rio Arriba	98.6%	97.9%	99.6%										98.7%
San Miguel	100.0%	100.0%	100.0%										100.0%
Sandoval	99.0%	98.5%	99.0%										98.8%
Santa Fe	98.5%	98.1%	99.2%										98.6%
Taos	98.8%	97.0%	94.3%										96.7%
NE Region 2 Total	98.8%	98.4%	98.9%										98.7%
NE Bernalillo	98.8%	98.5%	98.4%										98.6%
NW Bernalillo	99.0%	99.6%	99.4%										99.3%
SE Bernalillo	99.2%	99.1%	99.4%										99.2%
SW Bernalillo	98.7%	99.2%	97.5%										98.5%
Torrance	98.3%	100.0%	98.1%										98.8%
Gen. Region 3 Total	98.8%	99.1%	98.7%										98.9%
Chaves	98.8%	99.1%	100.0%										99.3%
Curry	98.1%	98.6%	98.4%										98.4%
Eddy Artesia	96.1%	100.0%	100.0%										98.7%
Eddy Carlsbad	97.0%	100.0%	98.6%										98.5%
Lea	98.7%	99.2%	99.1%										99.0%
Lincoln	100.0%	95.8%	98.2%										98.0%
Roosevelt	100.0%	100.0%	100.0%										100.0%
SE Region 4 Total	98.4%	98.9%	99.0%										98.8%
East Dona Ana	99.6%	99.0%	99.5%										99.4%
Grant	97.7%	99.3%	100.0%										99.0%
Luna	100.0%	100.0%	98.9%										99.6%
Otero	98.5%	99.5%	98.3%										98.8%
South Dona Ana	99.4%	100.0%	100.0%										99.8%
West Dona Ana	100.0%	100.0%	99.6%										99.9%
SW Region 5 Total	99.2%	99.6%	99.4%										99.4%
STATE TOTAL	98.9%	99.1%	99.0%										99.0%

SNAP: Percentage of Denied Initial Applications Processed Within 30 Days by Field Office¹³

	<i>Oct-18</i>	<i>Nov-18</i>	<i>Dec-18</i>	<i>Jan-19</i>	<i>Feb-19</i>	<i>Mar-19</i>	<i>Apr-19</i>	<i>May-19</i>	<i>Jun-19</i>	<i>Jul-19</i>	<i>Aug-19</i>	<i>Sep-19</i>	<i>Average</i>
Cibola	94.4%	92.3%	95.1%										93.9%
McKinley	96.2%	97.6%	95.2%										96.3%
San Juan	96.4%	93.2%	93.3%										94.3%
Sierra	100.0%	93.9%	100.0%										98.0%
Socorro	100.0%	100.0%	96.8%										98.9%
Valencia North	100.0%	98.4%	100.0%										99.5%
Valencia South													
NW Region 1 Total	97.3%	95.7%	95.8%										96.3%
Colfax	100.0%	96.3%	100.0%										98.8%
Guadalupe	100.0%	100.0%	100.0%										100.0%
Quay	100.0%	100.0%	100.0%										100.0%
Rio Arriba	94.6%	89.7%	93.2%										92.5%
San Miguel	100.0%	100.0%	100.0%										100.0%
Sandoval	98.4%	99.5%	99.4%										99.1%
Santa Fe	96.6%	96.7%	96.7%										96.7%
Taos	98.0%	98.3%	100.0%										98.8%
NE Region 2 Total	97.6%	97.4%	98.1%										97.7%
NE Bernalillo	94.8%	97.3%	93.5%										95.2%
NW Bernalillo	95.6%	96.8%	97.3%										96.6%
SE Bernalillo	94.1%	95.5%	96.3%										95.3%
SW Bernalillo	97.1%	97.0%	98.3%										97.5%
Torrance	93.2%	95.2%	96.6%										95.0%
Cen. Region 3 Total	95.3%	96.7%	96.2%										96.1%
Chaves	98.6%	95.7%	100.0%										98.1%
Curry	97.8%	96.7%	96.6%										97.0%
Eddy Artesia	92.6%	93.1%	100.0%										95.2%
Eddy Carlsbad	96.9%	97.0%	98.6%										97.5%
Lea	95.7%	97.1%	95.2%										96.0%
Lincoln	97.4%	93.5%	95.2%										95.4%
Roosevelt		100.0%											100.0%
SE Region 4 Total	97.1%	96.0%	97.6%										96.9%
East Dona Ana	97.3%	100.0%	99.2%										98.8%
Grant	95.8%	93.8%	97.6%										95.7%
Luna	100.0%	100.0%	98.1%										99.4%
Otero	100.0%	98.9%	100.0%										99.6%
South Dona Ana	100.0%	98.4%	98.7%										99.0%
West Dona Ana	98.2%	98.9%	99.3%										98.8%
SW Region 5 Total	98.3%	98.8%	99.1%										98.7%
STATE TOTAL	96.8%	97.0%	97.1%										97.0%

SNAP: Combined Approvals and Denials Percentage of Initial Applications Processed Timely by Field Office¹³

	<i>Oct-18</i>	<i>Nov-18</i>	<i>Dec-18</i>	<i>Jan-19</i>	<i>Feb-19</i>	<i>Mar-19</i>	<i>Apr-19</i>	<i>May-19</i>	<i>Jun-19</i>	<i>Jul-19</i>	<i>Aug-19</i>	<i>Sep-19</i>	<i>Average</i>
Cibola	99.4%	98.1%	98.9%										98.8%
McKinley	98.4%	98.4%	99.0%										98.6%
San Juan	98.9%	98.4%	98.0%										98.4%
Sierra	99.4%	98.6%	100.0%										99.3%
Socorro	100.0%	98.8%	99.4%										99.4%
Valencia North	99.7%	99.3%	99.3%										99.4%
Valencia South													
NW Region 1 Total	99.1%	98.6%	98.7%										98.8%
Colfax	100.0%	99.3%	100.0%										99.8%
Guadalupe	98.4%	100.0%	97.7%										98.7%
Quay	100.0%	98.6%	100.0%										99.5%
Rio Arriba	98.3%	97.4%	98.2%										98.0%
San Miguel	100.0%	99.7%	99.7%										99.8%
Sandoval	99.1%	99.0%	99.3%										99.1%
Santa Fe	98.5%	98.0%	99.0%										98.5%
Taos	99.2%	97.7%	97.5%										98.1%
NE Region 2 Total	99.0%	98.5%	98.9%										98.8%
NE Bernalillo	98.1%	98.4%	97.6%										98.0%
NW Bernalillo	98.0%	98.9%	99.0%										98.6%
SE Bernalillo	98.5%	98.3%	98.6%										98.5%
SW Bernalillo	98.7%	98.9%	98.1%										98.6%
Torrance	97.9%	98.2%	97.5%										97.9%
Gen. Region 3 Total	98.3%	98.6%	98.3%										98.4%
Chaves	99.3%	98.6%	99.4%										99.1%
Curry	98.0%	98.2%	98.3%										98.2%
Eddy Artesia	97.0%	98.5%	100.0%										98.5%
Eddy Carlsbad	98.0%	99.1%	98.7%										98.6%
Lea	98.1%	98.9%	98.4%										98.5%
Lincoln	99.5%	96.4%	97.0%										97.6%
Roosevelt	100.0%	100.0%	100.0%										100.0%
SE Region 4 Total	98.4%	98.5%	98.7%										98.5%
East Dona Ana	99.2%	99.7%	99.3%										99.4%
Grant	98.1%	98.7%	99.2%										98.7%
Luna	100.0%	99.7%	98.9%										99.5%
Otero	99.0%	99.6%	99.0%										99.2%
South Dona Ana	99.6%	99.6%	99.0%										99.4%
West Dona Ana	99.5%	99.8%	99.4%										99.6%
SW Region 5 Total	99.3%	99.6%	99.2%										99.4%
STATE TOTAL	98.7%	98.7%	98.7%										98.7%

SNAP Renewals Processed by Field Office²⁰
December 2018

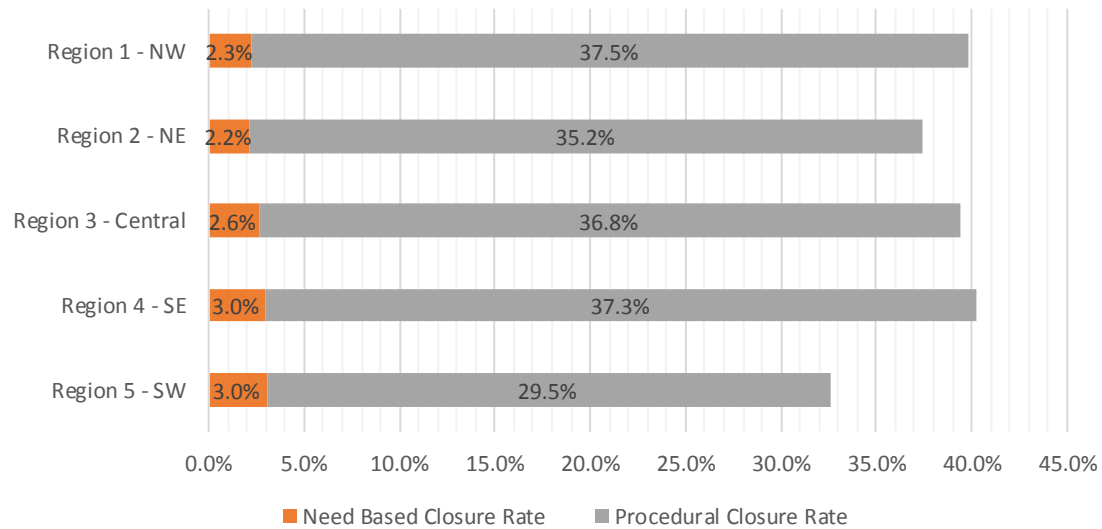
Office	Approvals	Closures	Need Based Closures	Procedural Closures
Chaves County ISD	230	142	11	131
Cibola County ISD	131	73	4	69
Colfax County ISD	63	31	4	27
Curry County ISD	205	120	11	109
East Dona Ana County ISD	301	153	13	140
Eddy Artesia County ISD	44	30	5	25
Eddy Carlsbad County ISD	71	50	1	49
Grant County ISD	154	85	6	79
Guadalupe County ISD	28	7	3	4
Hidalgo County ISD				
Lea County ISD	183	139	6	133
Lincoln County ISD	49	46	5	41
Luna County ISD	156	88	8	80
McKinley County ISD	449	281	18	263
Northeast Bernalillo County ISD	592	409	35	374
Northwest Bernalillo County ISD	534	335	14	321
Otero County ISD	177	120	10	110
Quay County ISD	49	13	0	13
Rio Arriba County ISD	241	143	7	136
Roosevelt County ISD				
San Juan County ISD	444	331	20	311
San Miguel County ISD	170	91	6	85
Sandoval County ISD	347	222	8	214
Santa Fe County ISD	267	179	7	172
Sierra County ISD	83	47	1	46
Socorro County ISD	97	57	4	53
South Dona Ana ISD	421	107	16	91
Southeast Bernalillo County ISD	353	261	14	247
Southwest Bernalillo County ISD	731	422	29	393
Taos County ISD	131	88	10	78
Torrance County ISD	101	75	8	67
Valencia North County ISD	292	200	9	191
Valencia South County ISD				
West Dona Ana County ISD	348	199	17	182
Centralized Units				
Statewide Total	7,442	4,544	310	4,234

SNAP Renewal Disposition Rates by Field Office²⁰
December 2018

Office	Approval Rate	Closure Rate	Need Based Closure Rate	Procedural Closure Rate
Chaves County ISD	61.8%	38.2%	3.0%	35.2%
Cibola County ISD	64.2%	35.8%	2.0%	33.8%
Colfax County ISD	67.0%	33.0%	4.3%	28.7%
Curry County ISD	63.1%	36.9%	3.4%	33.5%
East Dona Ana County ISD	66.3%	33.7%	2.9%	30.8%
Eddy Artesia County ISD	59.5%	40.5%	6.8%	33.8%
Eddy Carlsbad County ISD	58.7%	41.3%	0.8%	40.5%
Grant County ISD	64.4%	35.6%	2.5%	33.1%
Guadalupe County ISD	80.0%	20.0%	8.6%	11.4%
Hidalgo County ISD	0.0%	0.0%	0.0%	0.0%
Lea County ISD	56.8%	43.2%	1.9%	41.3%
Lincoln County ISD	51.6%	48.4%	5.3%	43.2%
Luna County ISD	63.9%	36.1%	3.3%	32.8%
McKinley County ISD	61.5%	38.5%	2.5%	36.0%
Northeast Bernalillo County ISD	59.1%	40.9%	3.5%	37.4%
Northwest Bernalillo County ISD	61.4%	38.6%	1.6%	36.9%
Otero County ISD	59.6%	40.4%	3.4%	37.0%
Quay County ISD	79.0%	21.0%	0.0%	21.0%
Rio Arriba County ISD	62.8%	37.2%	1.8%	35.4%
Roosevelt County ISD	0.0%	0.0%	0.0%	0.0%
San Juan County ISD	57.3%	42.7%	2.6%	40.1%
San Miguel County ISD	65.1%	34.9%	2.3%	32.6%
Sandoval County ISD	61.0%	39.0%	1.4%	37.6%
Santa Fe County ISD	59.9%	40.1%	1.6%	38.6%
Sierra County ISD	63.8%	36.2%	0.8%	35.4%
Socorro County ISD	63.0%	37.0%	2.6%	34.4%
South Dona Ana ISD	79.7%	20.3%	3.0%	17.2%
Southeast Bernalillo County ISD	57.5%	42.5%	2.3%	40.2%
Southwest Bernalillo County ISD	63.4%	36.6%	2.5%	34.1%
Taos County ISD	59.8%	40.2%	4.6%	35.6%
Torrance County ISD	57.4%	42.6%	4.5%	38.1%
Valencia North County ISD	59.3%	40.7%	1.8%	38.8%
Valencia South County ISD	0.0%	0.0%	0.0%	0.0%
West Dona Ana County ISD	63.6%	36.4%	3.1%	33.3%
Centralized Units	0.0%	0.0%	0.0%	0.0%
Statewide Total	62.1%	37.9%	2.6%	35.3%

SNAP Renewal Disposition Rates by Region²⁰
December 2018

Region	Approval Rate	Closure Rate	Need Based Closure Rate	Procedural Closure Rate
Region 1 - NW	60.2%	39.8%	2.3%	37.5%
Region 2 - NE	62.6%	37.4%	2.2%	35.2%
Region 3 - Central	60.6%	39.4%	2.6%	36.8%
Region 4 - SE	59.7%	40.3%	3.0%	37.3%
Region 5 - SW	67.4%	32.6%	3.0%	29.5%
Centralized Units				
Statewide Total	62.1%	37.9%	2.6%	35.3%



SNAP: Percentage of Approved Renewal Applications Processed¹¹

	Oct-18	Nov-18	Dec-18	Jan-19	Feb-19	Mar-19	Apr-19	May-19	Jun-19	Jul-19	Aug-19	Sep-19	Average
Cibola	96.4%	97.6%	99.2%										97.7%
McKinley	98.9%	98.0%	97.1%										98.0%
San Juan	98.5%	95.8%	96.8%										97.1%
Sierra	99.1%	100.0%	98.8%										99.3%
Socorro	98.3%	96.3%	100.0%										98.2%
Valencia North	99.1%	99.2%	98.6%										99.0%
Valencia South													
NW Region 1 Total	98.4%	97.8%	98.4%										98.2%
Colfax	100.0%	92.2%	98.4%										96.9%
Guadalupe	100.0%	90.5%	100.0%										96.8%
Quay	100.0%	98.2%	95.9%										98.1%
Rio Arriba	96.8%	97.4%	96.7%										96.9%
San Miguel	97.3%	99.4%	98.8%										98.5%
Sandoval	99.0%	99.2%	98.0%										98.7%
Santa Fe	98.9%	99.3%	97.8%										98.7%
Taos	98.5%	99.2%	99.2%										99.0%
NE Region 2 Total	98.8%	96.9%	98.1%										97.9%
NE Bernalillo	98.7%	97.9%	97.3%										98.0%
NW Bernalillo	98.8%	98.0%	98.3%										98.4%
SE Bernalillo	98.7%	98.0%	98.3%										98.4%
SW Bernalillo	99.4%	99.3%	98.8%										99.2%
Torrance	99.1%	97.0%	96.0%										97.4%
Cen. Region 3 Total	99.0%	98.1%	97.7%										98.3%
Chaves	99.1%	98.7%	98.7%										98.8%
Curry	97.9%	96.1%	93.7%										95.9%
Eddy Artesia	100.0%	92.7%	90.9%										94.5%
Eddy Carlsbad	100.0%	98.5%	100.0%										99.5%
Lea	98.7%	98.1%	98.4%										98.4%
Lincoln	100.0%	96.1%	100.0%										98.7%
Roosevelt													
SE Region 4 Total	99.3%	96.7%	96.9%										97.6%
East Dona Ana	99.6%	100.0%	100.0%										99.9%
Grant	99.3%	99.3%	100.0%										99.5%
Luna	98.3%	99.3%	99.4%										99.0%
Otero	99.5%	100.0%	100.0%										99.8%
South Dona Ana	100.0%	99.4%	100.0%										99.8%
West Dona Ana	99.5%	99.1%	99.4%										99.4%
SW Region 5 Total	99.4%	99.5%	99.8%										99.6%
STATE TOTAL	99.0%	97.7%	98.2%										98.3%

If a renewal packet was received on or before 15th of the renewal month, the case shall be considered timely if the case was processed by renewal due date

SNAP: Percentage of Approved Renewal Applications Processed¹¹

	Oct-18	Nov-18	Dec-18	Jan-19	Feb-19	Mar-19	Apr-19	May-19	Jun-19	Jul-19	Aug-19	Sep-19	Average
Cibola	95.8%	97.4%	99.1%										97.4%
McKinley	98.8%	97.7%	96.7%										97.7%
San Juan	98.5%	95.4%	96.5%										96.8%
Sierra	98.9%	100.0%	98.6%										99.2%
Socorro	97.9%	96.1%	100.0%										98.0%
Valencia North	99.0%	99.1%	98.5%										98.8%
Valencia South													
NW Region 1 Total	98.1%	97.6%	98.2%										98.0%
Colfax	100.0%	91.1%	98.2%										96.4%
Guadalupe	100.0%	89.5%	100.0%										96.5%
Quay	100.0%	98.0%	95.7%										97.9%
Rio Arriba	96.4%	97.0%	96.1%										96.5%
San Miguel	96.9%	99.3%	98.6%										98.3%
Sandoval	98.9%	99.1%	97.7%										98.6%
Santa Fe	98.8%	99.3%	97.5%										98.5%
Taos	98.3%	99.1%	99.1%										98.8%
NE Region 2 Total	98.6%	96.5%	97.9%										97.7%
NE Bernalillo	98.5%	97.8%	96.9%										97.7%
NW Bernalillo	98.5%	97.7%	98.1%										98.1%
SE Bernalillo	98.5%	97.8%	98.0%										98.1%
SW Bernalillo	99.3%	99.2%	98.6%										99.1%
Torrance	98.9%	96.3%	95.5%										96.9%
Gen. Region 3 Total	98.8%	97.8%	97.4%										98.0%
Chaves	99.0%	98.5%	98.5%										98.7%
Curry	97.5%	95.5%	92.6%										95.2%
Eddy Artesia	100.0%	91.7%	87.1%										92.9%
Eddy Carlsbad	100.0%	98.2%	100.0%										99.4%
Lea	98.5%	98.0%	98.1%										98.2%
Lincoln	100.0%	97.7%	100.0%										99.2%
Roosevelt													
SE Region 4 Total	99.2%	96.6%	96.0%										97.3%
East Dona Ana	99.6%	100.0%	100.0%										99.9%
Grant	99.3%	99.2%	100.0%										99.5%
Luna	98.0%	100.0%	99.2%										99.1%
Otero	99.5%	100.0%	100.0%										99.8%
South Dona Ana	100.0%	99.4%	100.0%										99.8%
West Dona Ana	99.5%	99.0%	99.4%										99.3%
SW Region 5 Total	99.3%	99.6%	99.8%										99.6%
STATE TOTAL	98.8%	97.5%	97.9%										98.1%

Only includes cases in which the Renewal Packet was received by the 15th of the month

SNAP: Percentage of Terminations Renewal Applications Processed¹¹

	Oct-18	Nov-18	Dec-18	Jan-19	Feb-19	Mar-19	Apr-19	May-19	Jun-19	Jul-19	Aug-19	Sep-19	Average
Cibola	97.5%	94.7%	98.6%										96.9%
McKinley	98.3%	95.2%	95.0%										96.2%
San Juan	96.9%	96.0%	94.5%										95.8%
Sierra	100.0%	98.3%	100.0%										99.4%
Socorro	100.0%	95.1%	96.5%										97.2%
Valencia North	98.6%	98.8%	99.0%										98.8%
Valencia South													
NW Region 1 Total	98.6%	96.3%	97.3%										97.4%
Colfax	96.9%	96.6%	93.3%										95.6%
Guadalupe	100.0%	93.8%	100.0%										97.9%
Quay	100.0%	100.0%	100.0%										100.0%
Rio Arriba	97.3%	99.2%	98.6%										98.3%
San Miguel	95.4%	98.8%	100.0%										98.1%
Sandoval	99.0%	97.3%	97.3%										97.9%
Santa Fe	98.7%	99.4%	98.3%										98.8%
Taos	100.0%	96.8%	97.7%										98.2%
NE Region 2 Total	98.4%	97.7%	98.2%										98.1%
NE Bernalillo	97.3%	97.9%	95.8%										97.0%
NW Bernalillo	98.1%	97.5%	97.3%										97.6%
SE Bernalillo	98.0%	95.0%	98.1%										97.0%
SW Bernalillo	98.1%	98.3%	98.8%										98.4%
Torrance	98.9%	98.5%	90.7%										96.0%
Gen. Region 3 Total	98.1%	97.4%	96.1%										97.2%
Chaves	98.6%	95.1%	97.9%										97.2%
Curry	99.2%	100.0%	93.3%										97.5%
Eddy Artesia	96.7%	94.7%	93.1%										94.8%
Eddy Carlsbad	100.0%	98.1%	100.0%										99.4%
Lea	97.8%	97.4%	96.4%										97.2%
Lincoln	95.6%	94.3%	97.8%										95.9%
Roosevelt													
SE Region 4 Total	98.0%	96.6%	96.4%										97.0%
East Dona Ana	98.6%	99.2%	98.0%										98.6%
Grant	97.1%	98.6%	100.0%										98.6%
Luna	100.0%	98.6%	98.9%										99.2%
Otero	99.1%	99.2%	99.2%										99.2%
South Dona Ana	100.0%	100.0%	100.0%										100.0%
West Dona Ana	100.0%	99.3%	99.5%										99.6%
SW Region 5 Total	99.1%	99.2%	99.3%										99.2%
STATE TOTAL	98.4%	97.5%	97.5%										97.8%

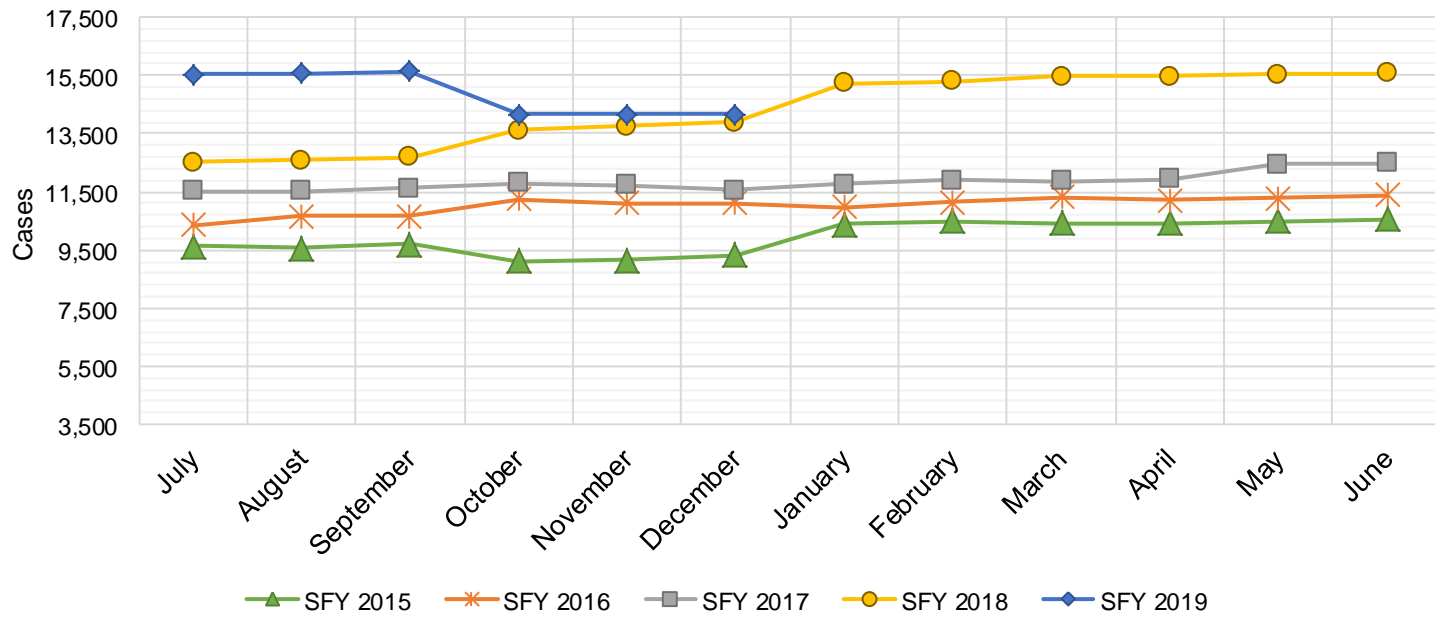
Includes cases for which no renewal application was received.

SNAP: Combined Percentage of Approved and Terminated Renewal Applications Processed ¹¹													
	Oct-18	Nov-18	Dec-18	Jan-19	Feb-19	Mar-19	Apr-19	May-19	Jun-19	Jul-19	Aug-19	Sep-19	Average
Cibola	96.8%	96.7%	99.0%										97.5%
McKinley	98.8%	97.3%	96.3%										97.5%
San Juan	97.9%	95.9%	95.9%										96.6%
Sierra	99.4%	99.3%	99.2%										99.3%
Socorro	98.8%	95.9%	98.7%										97.8%
Valencia North	99.0%	99.1%	98.8%										98.9%
Valencia South													
NW Region 1 Total	98.4%	97.4%	98.0%										97.9%
Colfax	99.0%	93.8%	96.8%										96.5%
Guadalupe	100.0%	91.9%	100.0%										97.3%
Quay	100.0%	98.7%	96.8%										98.5%
Rio Arriba	96.9%	98.0%	97.4%										97.4%
San Miguel	96.7%	99.2%	99.2%										98.4%
Sandoval	99.0%	98.5%	97.7%										98.4%
Santa Fe	98.9%	99.3%	98.0%										98.7%
Taos	99.1%	98.4%	98.6%										98.7%
NE Region 2 Total	98.7%	97.2%	98.1%										98.0%
NE Bernalillo	98.1%	97.9%	96.7%										97.6%
NW Bernalillo	98.5%	97.8%	97.9%										98.1%
SE Bernalillo	98.4%	97.0%	98.2%										97.9%
SW Bernalillo	99.0%	99.0%	98.8%										98.9%
Torrance	99.0%	97.5%	93.8%										96.7%
Cen. Region 3 Total	98.6%	97.8%	97.1%										97.8%
Chaves	98.9%	97.4%	98.4%										98.2%
Curry	98.3%	97.4%	93.5%										96.4%
Eddy Artesia	98.7%	93.5%	91.7%										94.6%
Eddy Carlsbad	100.0%	98.3%	100.0%										99.4%
Lea	98.3%	97.8%	97.5%										97.9%
Lincoln	98.0%	95.3%	98.9%										97.4%
Roosevelt													
SE Region 4 Total	98.7%	96.6%	96.7%										97.3%
East Dona Ana	99.3%	99.8%	99.3%										99.5%
Grant	98.6%	99.1%	100.0%										99.2%
Luna	98.8%	99.1%	99.2%										99.0%
Otero	99.4%	99.7%	99.7%										99.6%
South Dona Ana	100.0%	99.6%	100.0%										99.9%
West Dona Ana	99.7%	99.2%	99.4%										99.4%
SW Region 5 Total	99.3%	99.4%	99.6%										99.4%
STATE TOTAL	98.7%	97.7%	97.9%										98.1%

State SNAP Supplement

SFY 2015 ¹²			SFY 2016 ^{12,9}			SFY 2017 ⁹			SFY 2018 ⁹			SFY 2019 ⁹		
	Cases	Expenditures		Cases	Expenditures		Cases	Expenditures		Cases	Expenditures		Cases	Expenditures
Jul-14	9,635	\$88,859	Jul-15	10,345	\$86,143	Jul-16	11,537	\$95,553	Jul-17	12,526	\$97,568	Jul-18	15,555	\$141,711
Aug-14	9,559	\$87,757	Aug-15	10,669	\$88,197	Aug-16	11,522	\$95,107	Aug-17	12,589	\$98,954	Aug-18	15,584	\$139,719
Sep-14	9,688	\$87,372	Sep-15	10,676	\$88,426	Sep-16	11,613	\$94,472	Sep-17	12,679	\$97,546	Sep-18	15,631	\$140,768
Oct-14	9,136	\$70,490	Oct-15	11,262	\$96,758	Oct-16	11,797	\$96,679	Oct-17	13,628	\$117,343	Oct-18	14,161	\$125,737
Nov-14	9,152	\$69,955	Nov-15	11,099	\$91,996	Nov-16	11,735	\$93,689	Nov-17	13,748	\$119,055	Nov-18	14,160	\$125,401
Dec-14	9,322	\$73,226	Dec-15	11,125	\$90,771	Dec-16	11,556	\$93,739	Dec-17	13,877	\$120,585	Dec-18	14,163	\$126,263
Jan-15	10,384	\$84,578	Jan-16	10,977	\$92,760	Jan-17	11,763	\$96,074	Jan-18	15,246	\$135,993	Jan-19		
Feb-15	10,477	\$82,901	Feb-16	11,153	\$95,363	Feb-17	11,907	\$98,251	Feb-18	15,308	\$137,296	Feb-19		
Mar-15	10,423	\$87,461	Mar-16	11,332	\$96,751	Mar-17	11,853	\$96,693	Mar-18	15,482	\$139,132	Mar-19		
Apr-15	10,440	\$79,605	Apr-16	11,222	\$93,959	Apr-17	11,944	\$97,060	Apr-18	15,466	\$139,202	Apr-19		
May-15	10,491	\$82,511	May-16	11,283	\$95,271	May-17	12,457	\$96,940	May-18	15,525	\$139,397	May-19		
Jun-15	10,575	\$85,134	Jun-16	11,389	\$93,061	Jun-17	12,498	\$97,405	Jun-18	15,577	\$140,802	Jun-19		

TOTAL	119,282	\$979,850	132,532	\$1,109,455	142,182	\$1,151,662	171,651	\$1,482,874	89,254	\$799,599
AVERAGE	9,940	\$81,654	11,044	\$92,455	11,849	\$95,972	14,304	\$123,573	14,876	\$133,266



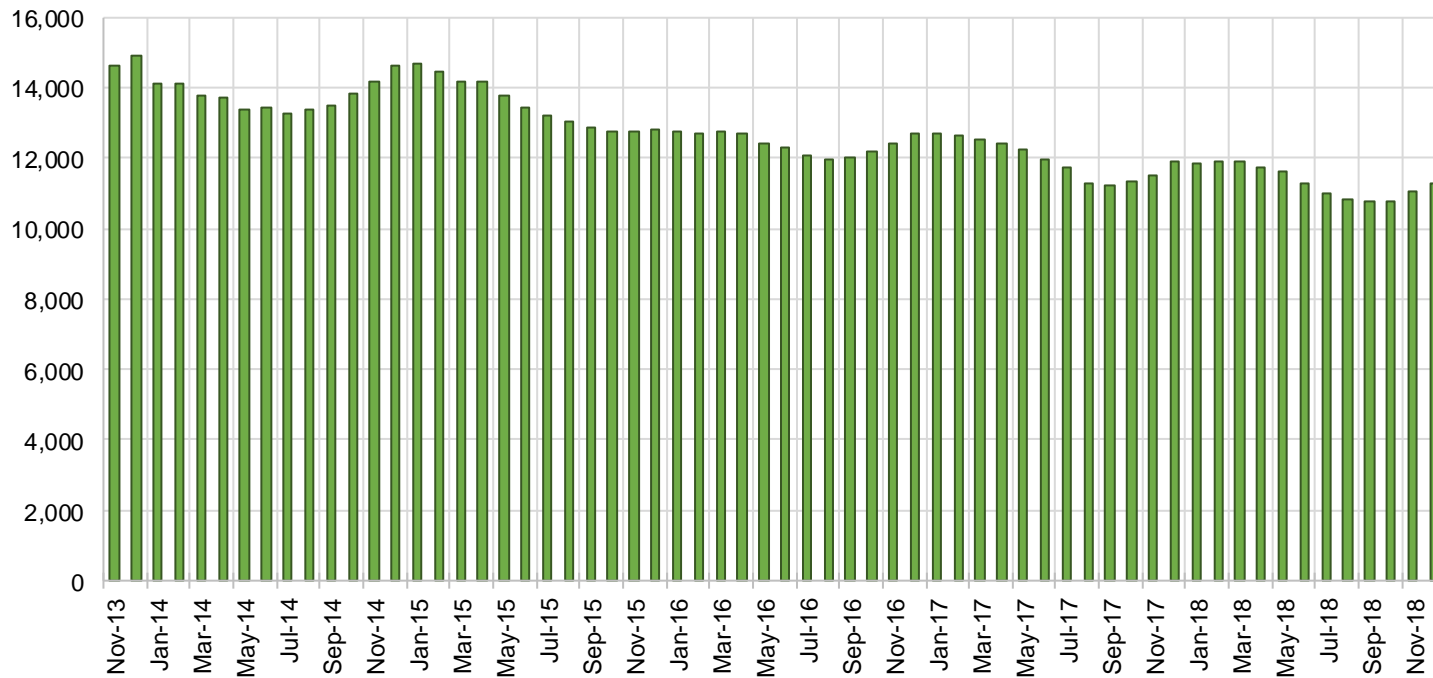
TANF Cases by Field Office⁶

Office	Dec-17	Nov-18	Dec-18	Percent Change	
				Dec-17- Dec-18	Nov-18- Dec-18
Chaves County ISD	544	426	414	-23.9%	-2.8%
Cibola County ISD	153	147	147	-3.9%	0.0%
Colfax County ISD	76	76	79	3.9%	3.9%
Curry County ISD	522	681	667	27.8%	-2.1%
East Dona Ana County ISD	503	456	446	-11.3%	-2.2%
Eddy Artesia County ISD	128	101	105	-18.0%	4.0%
Eddy Carlsbad County ISD	157	145	145	-7.6%	0.0%
Grant County ISD	184	204	206	12.0%	1.0%
Guadalupe County ISD	30	26	23	-23.3%	-11.5%
Hidalgo County ISD	25	0	0	-100.0%	N/A
Lea County ISD	443	390	385	-13.1%	-1.3%
Lincoln County ISD	102	94	99	-2.9%	5.3%
Luna County ISD	221	224	226	2.3%	0.9%
McKinley County ISD	63	71	73	15.9%	2.8%
Northeast Bernalillo County ISD	962	938	900	-6.4%	-4.1%
Northwest Bernalillo County ISD	823	823	819	-0.5%	-0.5%
Otero County ISD	313	267	247	-21.1%	-7.5%
Quay County ISD	73	58	55	-24.7%	-5.2%
Rio Arriba County ISD	409	371	376	-8.1%	1.3%
Roosevelt County ISD	168	0	1	-99.4%	N/A
San Juan County ISD	300	325	321	7.0%	-1.2%
San Miguel County ISD	206	180	181	-12.1%	0.6%
Sandoval County ISD	582	553	499	-14.3%	-9.8%
Santa Fe County ISD	444	377	359	-19.1%	-4.8%
Sierra County ISD	79	81	71	-10.1%	-12.3%
Socorro County ISD	89	85	82	-7.9%	-3.5%
South Dona Ana ISD	714	681	674	-5.6%	-1.0%
Southeast Bernalillo County ISD	646	602	608	-5.9%	1.0%
Southwest Bernalillo County ISD	1,168	1,114	1,119	-4.2%	0.4%
Taos County ISD	151	130	130	-13.9%	0.0%
Torrance County ISD	190	199	203	6.8%	2.0%
Valencia North County ISD	498	424	409	-17.9%	-3.5%
Valencia South County ISD	1	0	0	-100.0%	N/A
West Dona Ana County ISD	745	718	691	-7.2%	-3.8%
Centralized Units	5	4	2	-60.0%	-50.0%
Statewide Total	11,717	10,971	10,762	-8.2%	-1.9%

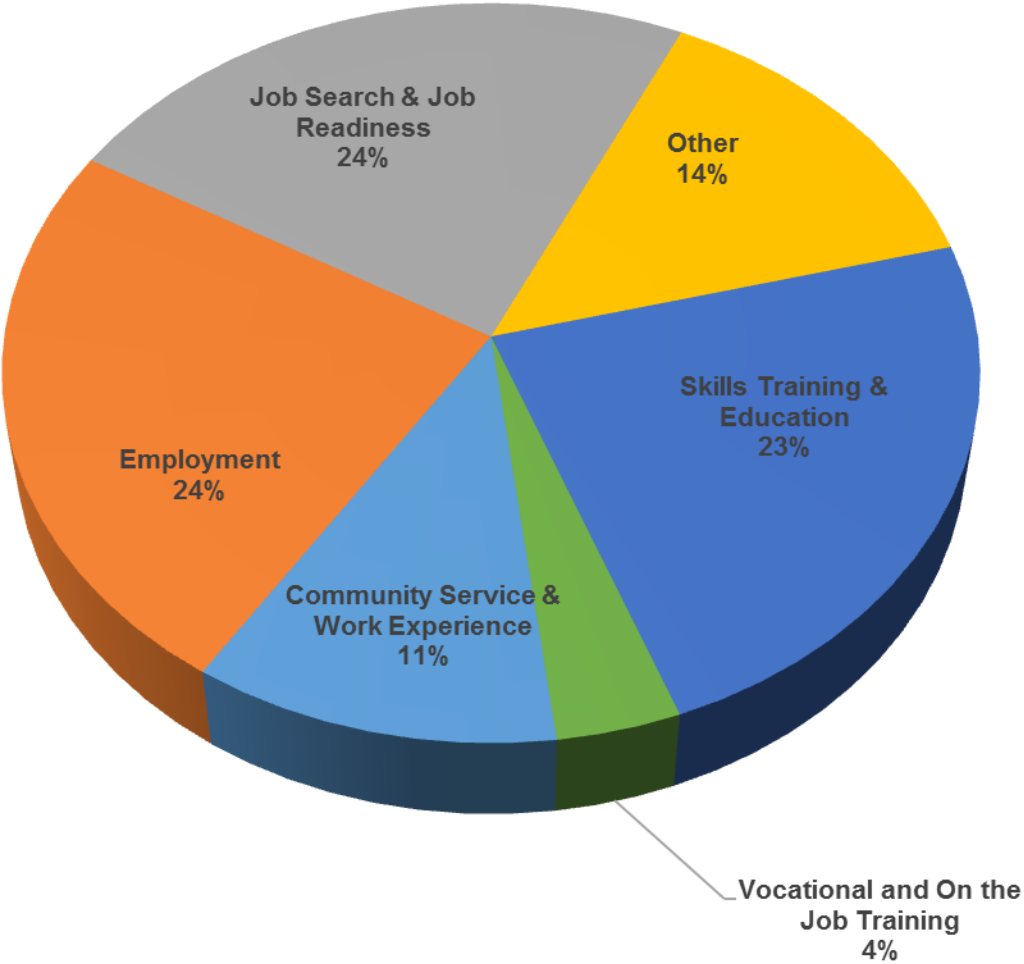
TANF Cases by Region⁶

Region	Dec-17	Nov-18	Dec-18	Percent Change	
				Dec-17- Dec-18	Nov-18- Dec-18
Region 1- NW	1,183	1,133	1,103	-6.8%	-2.6%
Region 2- NE	1,971	1,771	1,702	-13.6%	-3.9%
Region 3- Central	3,789	3,676	3,649	-3.7%	-0.7%
Region 4- SE	2,064	1,837	1,816	-12.0%	-1.1%
Region 5- SW	2,705	2,550	2,490	-7.9%	-2.4%
Centralized Units	5	4	2	-60.0%	-50.0%
Statewide Total	11,717	10,971	10,762	-8.2%	-1.9%

TANF Caseload: SFY-14 to Current



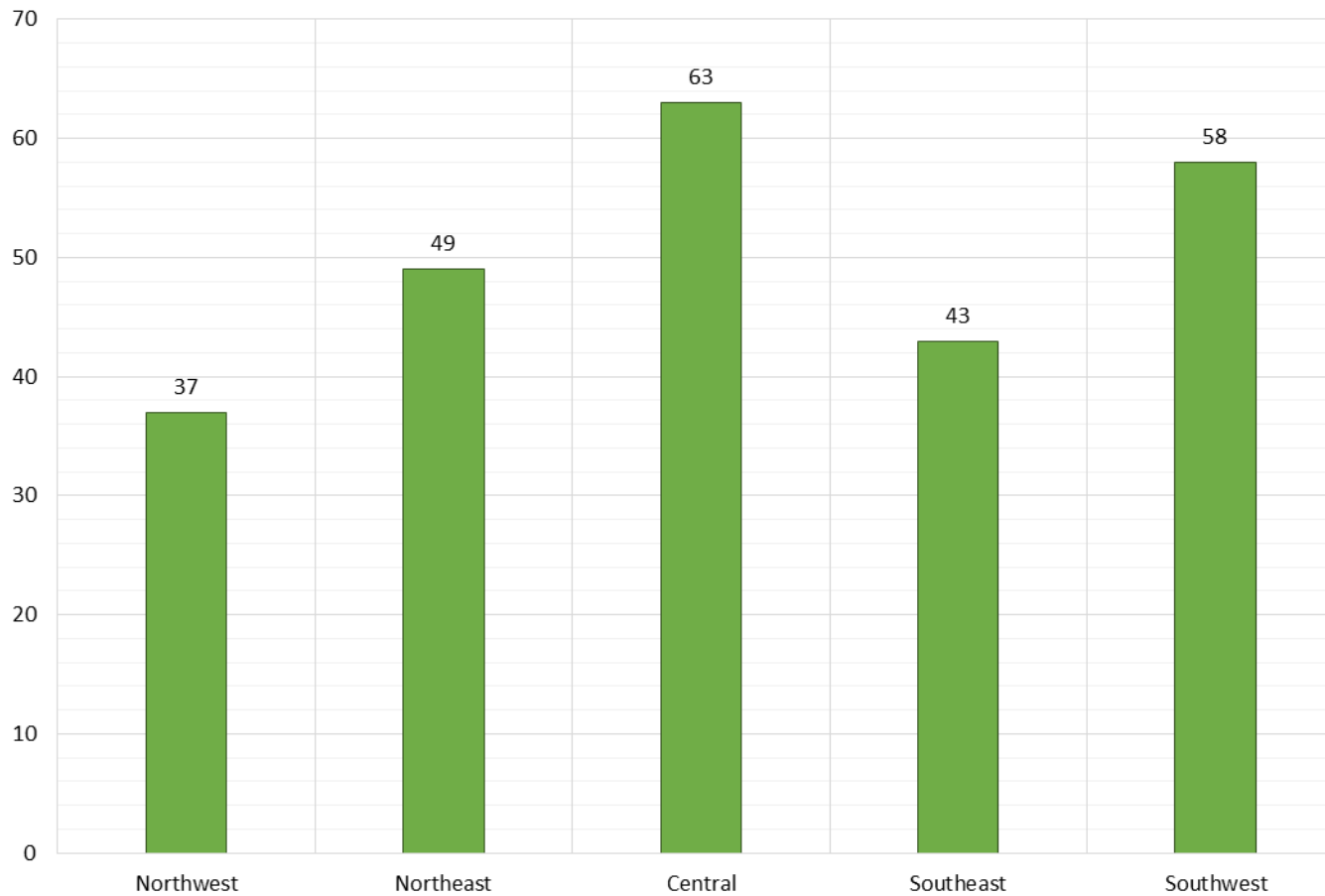
**NM Works Activity Placements on December 31, 2018
as reported by SL Start¹⁴**



Average Starting Hourly Wage of December 2018 TANF Employments
as reported by SL Start¹⁵



Number of New Employments in December 2018 by Region
as reported by SL Start¹⁵
Statewide Total: 250



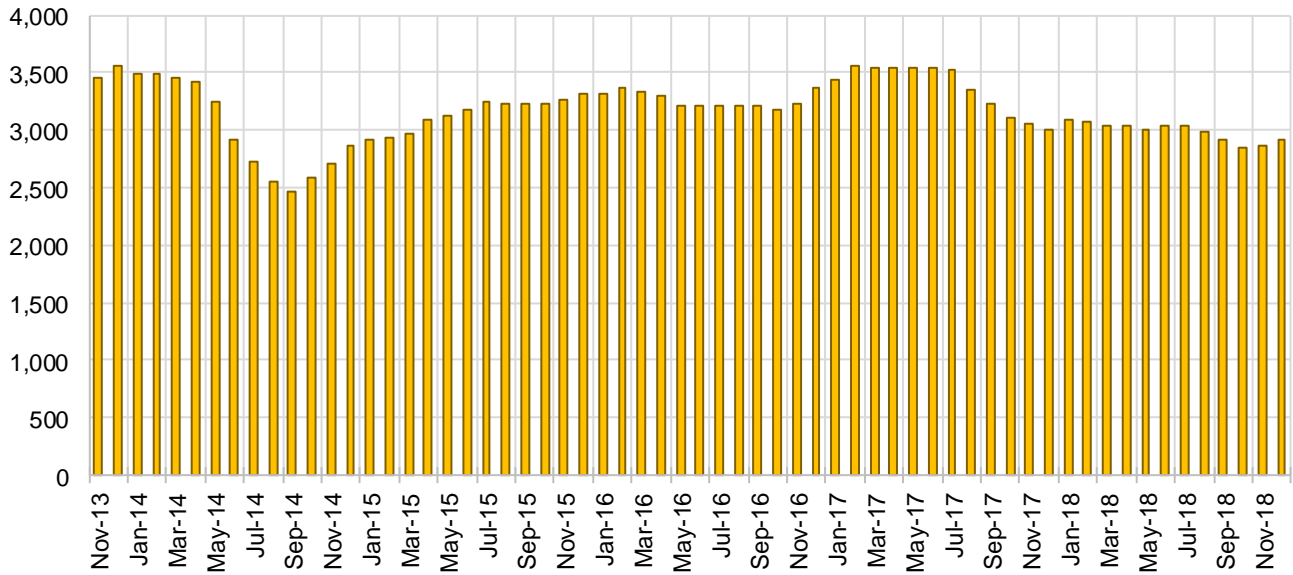
General Assistance Cases by Field Office⁶

Office	Dec-17	Nov-18	Dec-18	Percent Change	
				Dec-17- Dec-18	Nov-18- Dec-18
Chaves County ISD	128	123	120	-6.3%	-2.4%
Cibola County ISD	50	42	46	-8.0%	9.5%
Colfax County ISD	20	21	23	15.0%	9.5%
Curry County ISD	65	89	79	21.5%	-11.2%
East Dona Ana County ISD	115	108	99	-13.9%	-8.3%
Eddy Artesia County ISD	27	27	30	11.1%	11.1%
Eddy Carlsbad County ISD	65	67	67	3.1%	0.0%
Grant County ISD	66	64	66	0.0%	3.1%
Guadalupe County ISD	18	18	17	-5.6%	-5.6%
Hidalgo County ISD	12	0	0	-100.0%	N/A
Lea County ISD	84	84	83	-1.2%	-1.2%
Lincoln County ISD	27	26	27	0.0%	3.8%
Luna County ISD	59	55	53	-10.2%	-3.6%
McKinley County ISD	48	54	56	16.7%	3.7%
Northeast Bernalillo County ISD	347	297	300	-13.5%	1.0%
Northwest Bernalillo County ISD	290	288	281	-3.1%	-2.4%
Otero County ISD	100	69	68	-32.0%	-1.4%
Quay County ISD	20	26	29	45.0%	11.5%
Rio Arriba County ISD	86	82	81	-5.8%	-1.2%
Roosevelt County ISD	16	0	0	-100.0%	N/A
San Juan County ISD	131	140	136	3.8%	-2.9%
San Miguel County ISD	77	70	70	-9.1%	0.0%
Sandoval County ISD	118	121	111	-5.9%	-8.3%
Santa Fe County ISD	140	123	131	-6.4%	6.5%
Sierra County ISD	29	31	31	6.9%	0.0%
Socorro County ISD	44	36	40	-9.1%	11.1%
South Dona Ana ISD	57	62	61	7.0%	-1.6%
Southeast Bernalillo County ISD	186	171	169	-9.1%	-1.2%
Southwest Bernalillo County ISD	217	182	175	-19.4%	-3.8%
Taos County ISD	57	41	36	-36.8%	-12.2%
Torrance County ISD	47	41	48	2.1%	17.1%
Valencia North County ISD	115	114	115	0.0%	0.9%
Valencia South County ISD	0	0	0	N/A	N/A
West Dona Ana County ISD	177	165	176	-0.6%	6.7%
Centralized Units	0	0	0	N/A	N/A
Statewide Total	3,038	2,837	2,824	-7.0%	-0.5%

General Assistance Cases by Region⁶

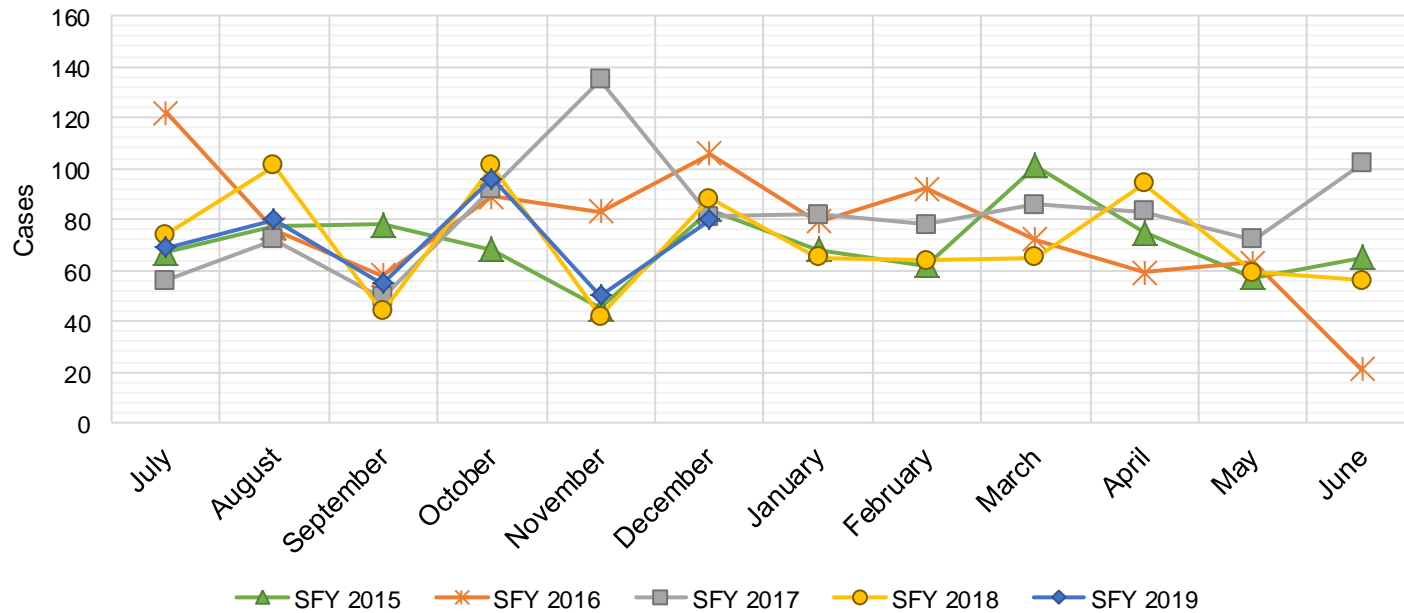
				Percent Change	
Region	Dec-17	Nov-18	Dec-18	Dec-17- Dec-18	Nov-18- Dec-18
Region 1 - NW	417	417	424	1.7%	1.7%
Region 2 - NE	536	502	498	-7.1%	-0.8%
Region 3 - Central	1,087	979	973	-10.5%	-0.6%
Region 4 - SE	412	416	406	-1.5%	-2.4%
Region 5 - SW	586	523	523	-10.8%	0.0%
Centralized Units	0	0	0	N/A	N/A
Statewide Total	3,038	2,837	2,824	-7.0%	-0.5%

General Assistance Caseload: SFY-14 to Current



General Assistance Interim Assistance Reimbursements¹⁶

SFY 2015			SFY 2016			SFY 2017			SFY 2018			SFY 2019		
	Cases	Expenditures		Cases	Expenditures		Cases	Expenditures		Cases	Expenditures		Cases	Expenditures
Jul-14	67	\$144,679	Jul-15	122	\$342,648	Jul-16	56	\$164,970	Jul-17	74	\$241,438	Jul-18	69	\$228,333
Aug-14	77	\$244,233	Aug-15	76	\$245,236	Aug-16	72	\$223,182	Aug-17	101	\$339,301	Aug-18	80	\$241,292
Sep-14	78	\$168,421	Sep-15	58	\$170,093	Sep-16	49	\$158,027	Sep-17	44	\$131,229	Sep-18	55	\$188,192
Oct-14	68	\$182,265	Oct-15	89	\$277,912	Oct-16	92	\$257,830	Oct-17	101	\$335,752	Oct-18	96	\$298,502
Nov-14	45	\$134,482	Nov-15	83	\$238,948	Nov-16	135	\$402,305	Nov-17	42	\$139,572	Nov-18	50	\$148,641
Dec-14	84	\$239,926	Dec-15	106	\$388,102	Dec-16	81	\$227,569	Dec-17	88	\$245,453	Dec-18	80	\$246,422
Jan-15	68	\$227,066	Jan-16	79	\$239,263	Jan-17	82	\$274,050	Jan-18	65	\$258,239	Jan-19		
Feb-15	62	\$159,564	Feb-16	92	\$296,332	Feb-17	78	\$227,569	Feb-18	64	\$195,815	Feb-19		
Mar-15	101	\$317,899	Mar-16	72	\$254,360	Mar-17	86	\$278,219	Mar-18	65	\$172,188	Mar-19		
Apr-15	75	\$199,038	Apr-16	59	\$208,631	Apr-17	83	\$267,187	Apr-18	94	\$312,340	Apr-19		
May-15	57	\$167,383	May-16	63	\$182,241	May-17	72	\$232,836	May-18	59	\$155,406	May-19		
Jun-15	65	\$188,159	Jun-16	21	\$51,760	Jun-17	102	\$306,228	Jun-18	56	\$159,268	Jun-19		
TOTAL	847	\$2,373,115	920	\$2,895,525	988	\$3,019,972	853	\$2,686,001	430	\$1,351,382				
AVERAGE	71	\$197,760	77	\$241,294	82	\$251,664	71	\$223,833	72	\$225,230				



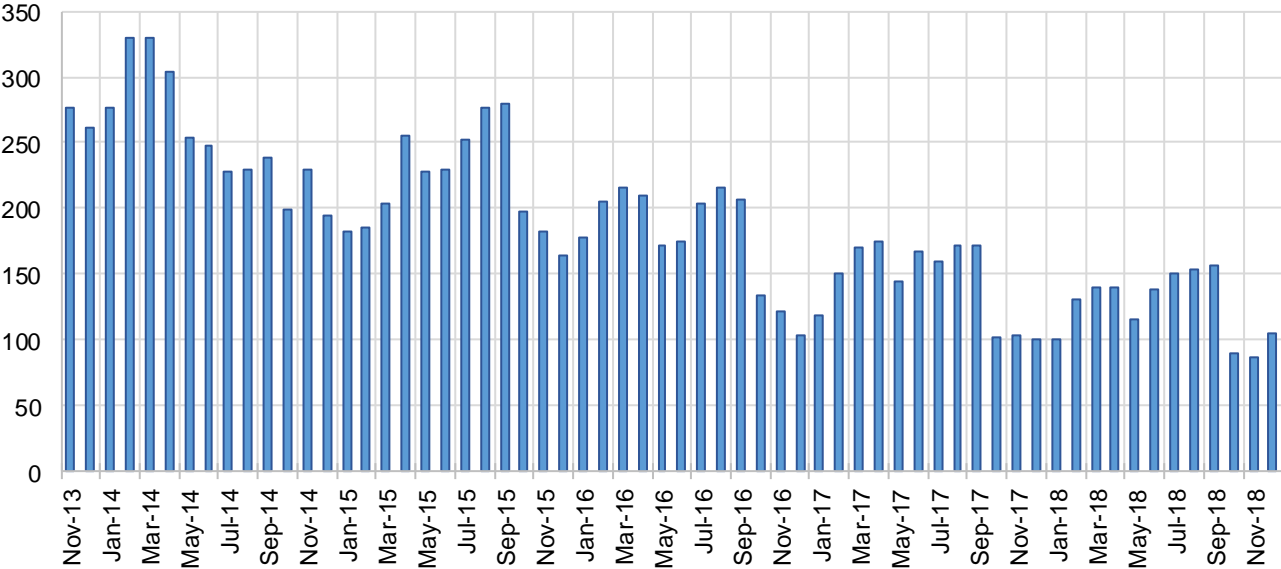
Education Works Cases by Field Office⁶

Office	Percent Change				
	Dec-17	Nov-18	Dec-18	Dec-17- Dec-18	Nov-18- Dec-18
Chaves County ISD	3	1	1	-66.7%	0.0%
Cibola County ISD	0	1	1	N/A	0.0%
Colfax County ISD	0	3	3	N/A	0.0%
Curry County ISD	3	3	5	66.7%	66.7%
East Dona Ana County ISD	7	18	18	157.1%	0.0%
Eddy Artesia County ISD	2	1	2	0.0%	100.0%
Eddy Carlsbad County ISD	2	2	2	0.0%	0.0%
Grant County ISD	12	6	7	-41.7%	16.7%
Guadalupe County ISD	1	0	0	-100.0%	N/A
Hidalgo County ISD	0	0	0	N/A	N/A
Lea County ISD	6	3	3	-50.0%	0.0%
Lincoln County ISD	0	0	0	N/A	N/A
Luna County ISD	3	3	2	-33.3%	-33.3%
McKinley County ISD	0	0	0	N/A	N/A
Northeast Bernalillo County ISD	13	12	11	-15.4%	-8.3%
Northwest Bernalillo County ISD	11	12	11	0.0%	-8.3%
Otero County ISD	2	1	1	-50.0%	0.0%
Quay County ISD	0	0	0	N/A	N/A
Rio Arriba County ISD	3	4	4	33.3%	0.0%
Roosevelt County ISD	2	0	0	-100.0%	N/A
San Juan County ISD	2	3	3	50.0%	0.0%
San Miguel County ISD	6	7	6	0.0%	-14.3%
Sandoval County ISD	10	9	8	-20.0%	-11.1%
Santa Fe County ISD	14	14	13	-7.1%	-7.1%
Sierra County ISD	0	0	1	N/A	N/A
Socorro County ISD	1	0	0	-100.0%	N/A
South Dona Ana ISD	17	18	17	0.0%	-5.6%
Southeast Bernalillo County ISD	4	7	5	25.0%	-28.6%
Southwest Bernalillo County ISD	5	12	13	160.0%	8.3%
Taos County ISD	1	0	0	-100.0%	N/A
Torrance County ISD	0	0	0	N/A	N/A
Valencia North County ISD	0	0	0	N/A	N/A
Valencia South County ISD	0	0	0	N/A	N/A
West Dona Ana County ISD	10	9	8	-20.0%	-11.1%
Centralized Units	0	0	0	N/A	N/A
Statewide Total	140	149	145	3.6%	-2.7%

Education Works Cases by Region⁶

Region	Dec-17	Nov-18	Dec-18	Percent Change	
				Dec-17- Dec-18	Nov-18- Dec-18
Region 1 - NW	3	4	5	66.7%	25.0%
Region 2 - NE	35	37	34	-2.9%	-8.1%
Region 3 - Central	33	43	40	21.2%	-7.0%
Region 4 - SE	18	10	13	-27.8%	30.0%
Region 5 - SW	51	55	53	3.9%	-3.6%
Centralized Units	0	0	0	N/A	N/A
Statewide Total	140	149	145	3.6%	-2.7%

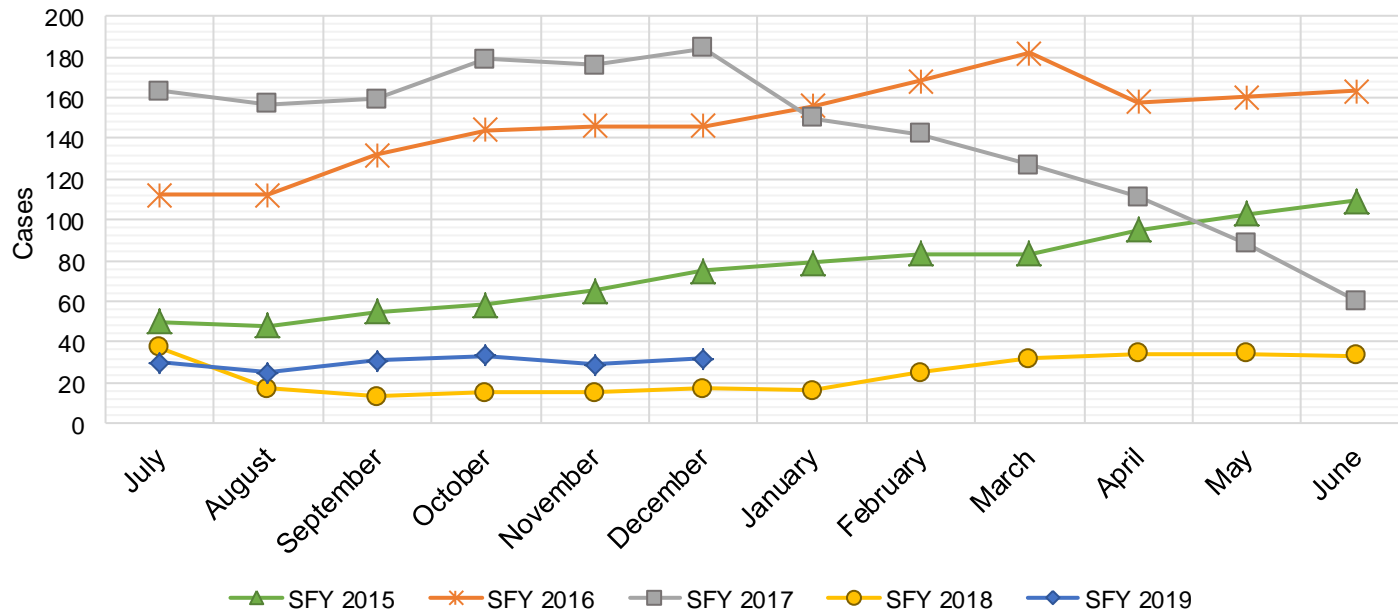
Education Works Caseload: SFY-14 to Current



Refugee Cash Assistance

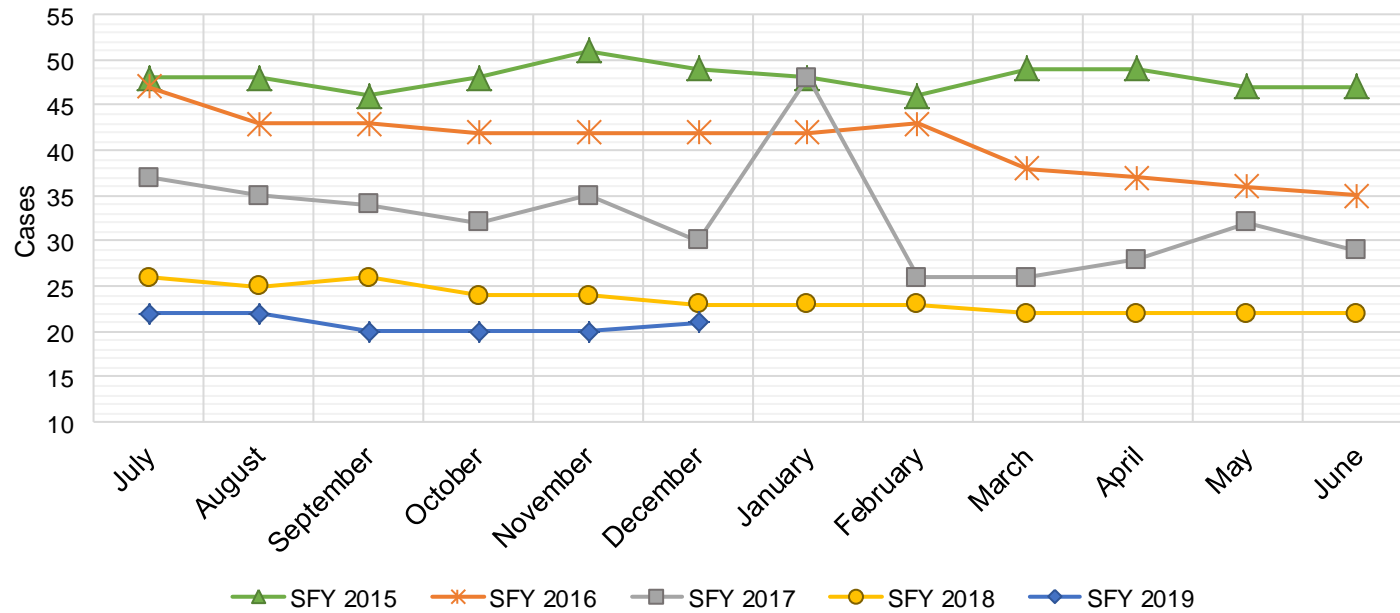
SFY 2015 ¹²			SFY 2016 ^{8,12,9}			SFY 2017 ^{8,9}			SFY 2018 ^{8,9}			SFY 2019 ^{8,9}		
	Cases	Expenditures		Cases	Expenditures		Cases	Expenditures		Cases	Expenditures		Cases	Expenditures
Jul-14	50	\$11,679	Jul-15	112	\$27,516	Jul-16	163	\$39,756	Jul-17	37	\$9,981	Jul-18	30	\$7,408
Aug-14	48	\$11,760	Aug-15	112	\$27,438	Aug-16	157	\$40,115	Aug-17	17	\$4,704	Aug-18	25	\$6,434
Sep-14	55	\$13,094	Sep-15	132	\$31,321	Sep-16	159	\$39,359	Sep-17	13	\$3,159	Sep-18	31	\$6,947
Oct-14	58	\$13,726	Oct-15	144	\$36,153	Oct-16	179	\$41,520	Oct-17	15	\$3,543	Oct-18	33	\$6,323
Nov-14	65	\$16,461	Nov-15	146	\$36,515	Nov-16	176	\$45,434	Nov-17	15	\$4,263	Nov-18	29	\$7,036
Dec-14	75	\$18,699	Dec-15	146	\$35,763	Dec-16	184	\$46,673	Dec-17	17	\$4,795	Dec-18	32	\$7,300
Jan-15	79	\$19,009	Jan-16	156	\$38,686	Jan-17	150	\$38,790	Jan-18	16	\$4,166	Jan-19		
Feb-15	83	\$21,349	Feb-16	168	\$41,368	Feb-17	142	\$37,956	Feb-18	25	\$5,723	Feb-19		
Mar-15	83	\$20,730	Mar-16	182	\$45,307	Mar-17	127	\$33,066	Mar-18	32	\$7,636	Mar-19		
Apr-15	95	\$23,495	Apr-16	158	\$41,143	Apr-17	111	\$29,183	Apr-18	34	\$8,827	Apr-19		
May-15	103	\$25,363	May-16	160	\$38,332	May-17	88	\$23,343	May-18	34	\$8,939	May-19		
Jun-15	109	\$27,958	Jun-16	163	\$39,856	Jun-17	60	\$15,538	Jun-18	33	\$8,513	Jun-19		

TOTAL	903	\$223,323	1,779	\$439,397	1,696	\$430,732	288	\$74,249	180	\$41,448
AVERAGE	75	\$18,610	148	\$36,616	141	\$35,894	24	\$6,187	30	\$6,908



State Supplement for Residential Care

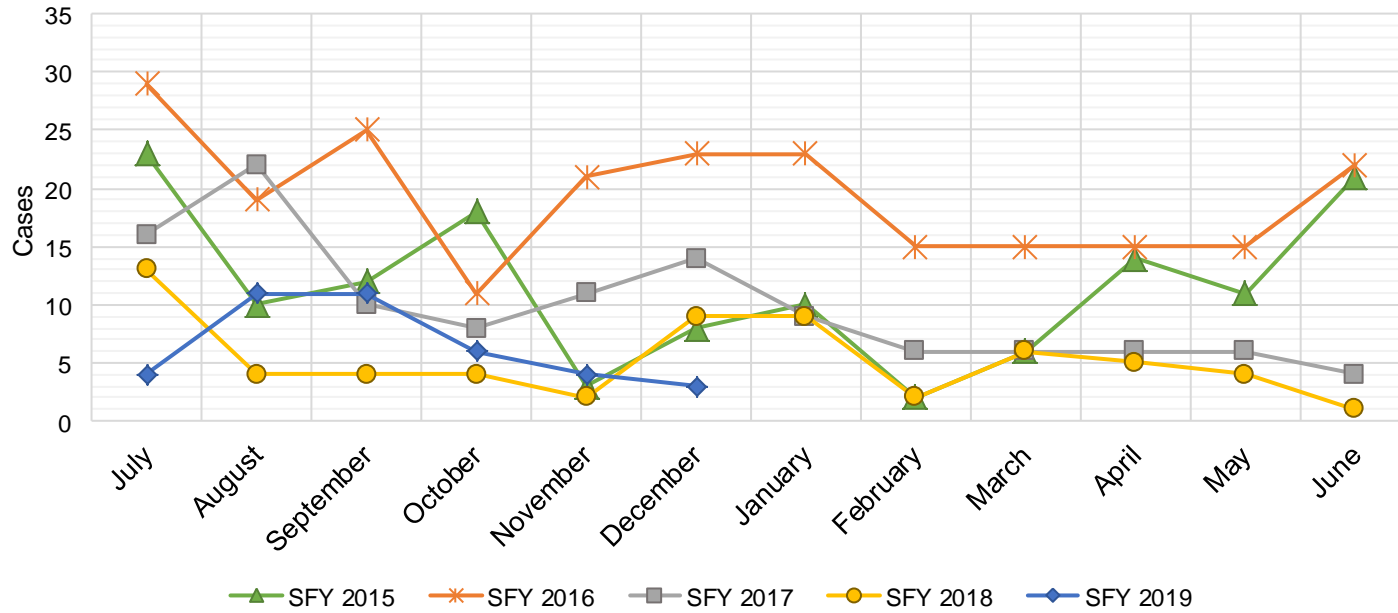
SFY 2015 ¹²			SFY 2016 ^{12,9}			SFY 2017 ⁹			SFY 2018 ⁹			SFY 2019 ⁹		
Cases	Expenditures		Cases	Expenditures		Cases	Expenditures		Cases	Expenditures		Cases	Expenditures	
Jul-14	48	\$4,700	Jul-15	47	\$4,700	Jul-16	37	\$3,700	Jul-17	26	\$2,700	Jul-18	22	\$2,200
Aug-14	48	\$5,000	Aug-15	43	\$4,900	Aug-16	35	\$3,500	Aug-17	25	\$2,500	Aug-18	22	\$2,200
Sep-14	46	\$4,600	Sep-15	43	\$4,500	Sep-16	34	\$3,400	Sep-17	26	\$2,700	Sep-18	20	\$2,000
Oct-14	48	\$4,600	Oct-15	42	\$4,400	Oct-16	32	\$3,200	Oct-17	24	\$2,500	Oct-18	20	\$2,000
Nov-14	51	\$5,600	Nov-15	42	\$4,200	Nov-16	35	\$3,500	Nov-17	24	\$2,400	Nov-18	20	\$2,000
Dec-14	49	\$5,000	Dec-15	42	\$4,200	Dec-16	30	\$3,000	Dec-17	23	\$2,200	Dec-18	21	\$2,100
Jan-15	48	\$4,900	Jan-16	42	\$4,200	Jan-17	48	\$4,800	Jan-18	23	\$2,400	Jan-19		
Feb-15	46	\$4,800	Feb-16	43	\$4,300	Feb-17	26	\$2,600	Feb-18	23	\$2,300	Feb-19		
Mar-15	49	\$4,800	Mar-16	38	\$3,800	Mar-17	26	\$2,600	Mar-18	22	\$2,400	Mar-19		
Apr-15	49	\$5,400	Apr-16	37	\$3,700	Apr-17	28	\$2,800	Apr-18	22	\$2,200	Apr-19		
May-15	47	\$4,700	May-16	36	\$3,600	May-17	32	\$3,200	May-18	22	\$2,200	May-19		
Jun-15	47	\$5,300	Jun-16	35	\$3,500	Jun-17	29	\$2,900	Jun-18	22	\$2,200	Jun-19		
TOTAL	576	\$59,400	490	\$50,000		392	\$39,200		282	\$28,700		125	\$12,500	
AVERAGE	48	\$4,950	41	\$4,167		33	\$3,267		24	\$2,392		21	\$2,083	



TANF Diversion Payments

SFY 2015 ¹²			SFY 2016 ^{12,9}			SFY 2017 ⁹			SFY 2018 ⁹			SFY 2019 ⁹		
	Cases	Expenditures		Cases	Expenditures		Cases	Expenditures		Cases	Expenditures		Cases	Expenditures
Jul-14	23	\$48,098	Jul-15	29	\$62,074	Jul-16	16	\$30,843	Jul-17	13	\$26,500	Jul-18	4	\$3,000
Aug-14	10	\$21,810	Aug-15	19	\$33,584	Aug-16	22	\$42,731	Aug-17	4	\$12,000	Aug-18	11	\$18,583
Sep-14	12	\$23,500	Sep-15	25	\$47,977	Sep-16	10	\$21,000	Sep-17	4	\$4,000	Sep-18	11	\$20,999
Oct-14	18	\$30,589	Oct-15	11	\$20,500	Oct-16	8	\$16,744	Oct-17	4	\$16,000	Oct-18	6	\$10,499
Nov-14	3	\$4,411	Nov-15	21	\$45,500	Nov-16	11	\$24,500	Nov-17	2	\$15,500	Nov-18	4	\$7,499
Dec-14	8	\$14,634	Dec-15	23	\$45,389	Dec-16	14	\$26,611	Dec-17	9	\$17,500	Dec-18	3	\$2,499
Jan-15	10	\$18,000	Jan-16	23	\$41,874	Jan-17	9	\$18,500	Jan-18	9	\$21,731	Jan-19		
Feb-15	2	\$5,500	Feb-16	15	\$28,500	Feb-17	6	\$12,000	Feb-18	2	\$7,731	Feb-19		
Mar-15	6	\$12,000	Mar-16	15	\$27,008	Mar-17	6	\$11,000	Mar-18	6	\$8,496	Mar-19		
Apr-15	14	\$26,000	Apr-16	15	\$31,389	Apr-17	6	\$12,000	Apr-18	5	\$13,500	Apr-19		
May-15	11	\$21,500	May-16	15	\$31,916	May-17	6	\$11,500	May-18	4	\$12,500	May-19		
Jun-15	21	\$40,039	Jun-16	22	\$43,000	Jun-17	4	\$13,500	Jun-18	1	\$5,389	Jun-19		

TOTAL	138	\$266,081	233	\$458,711	118	\$240,929	63	\$160,847	39	\$63,079
AVERAGE	12	\$22,173	19	\$38,226	10	\$20,077	5	\$13,404	7	\$10,513

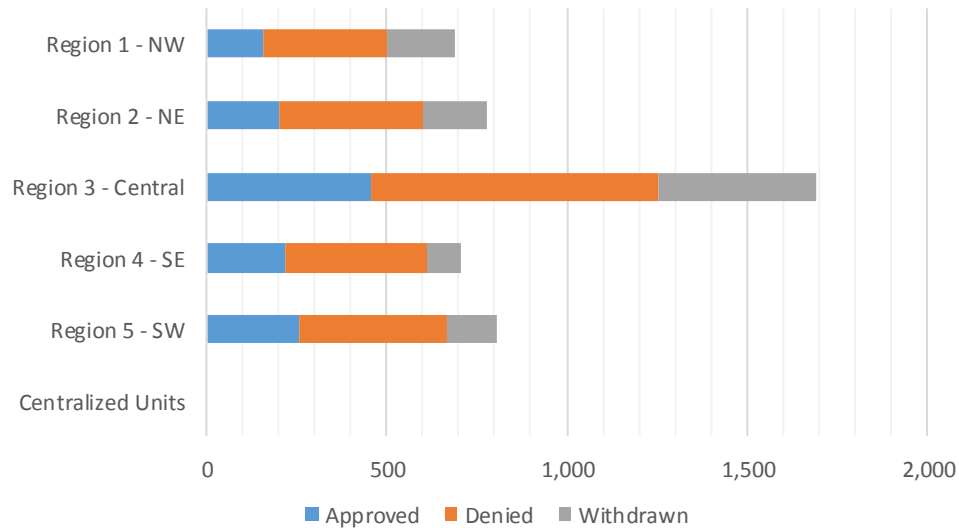


Cash Assistance Applications by Field Office^{4,11}
December 2018

Office	Approved	Denied	Withdrawn	Total Cases Processed
Chaves County ISD	41	97	29	167
Cibola County ISD	17	25	13	55
Colfax County ISD	12	8	8	28
Curry County ISD	61	116	29	206
East Dona Ana County ISD	55	90	34	179
Eddy Artesia County ISD	21	19	1	41
Eddy Carlsbad County ISD	22	50	13	85
Grant County ISD	29	40	8	77
Guadalupe County ISD	1	7	3	11
Hidalgo County ISD	0	0	0	0
Lea County ISD	60	79	19	158
Lincoln County ISD	14	28	5	47
Luna County ISD	24	28	11	63
McKinley County ISD	12	62	36	110
Northeast Bernalillo County ISD	132	216	151	499
Northwest Bernalillo County ISD	91	206	128	425
Otero County ISD	27	68	36	131
Quay County ISD	7	5	5	17
Rio Arriba County ISD	46	43	26	115
Roosevelt County ISD	0	2		2
San Juan County ISD	57	156	100	313
San Miguel County ISD	22	41	16	79
Sandoval County ISD	51	123	54	228
Santa Fe County ISD	44	127	46	217
Sierra County ISD	3	13	10	26
Socorro County ISD	14	10	8	32
South Dona Ana ISD	53	49	15	117
Southeast Bernalillo County ISD	85	153	66	304
Southwest Bernalillo County ISD	120	180	77	377
Taos County ISD	18	44	19	81
Torrance County ISD	27	47	16	90
Valencia North County ISD	53	77	25	155
Valencia South County ISD	0	0		0
West Dona Ana County ISD	72	131	38	241
Centralized Units	0	0	0	0
Statewide Total	1,291	2,340	1,045	4,676

Cash Assistance Applications by Region^{4,11} December 2018

	Approved	Denied	Withdrawn	Total Cases Processed
Region				
Region 1 - NW	156	343	192	691
Region 2 - NE	201	398	177	776
Region 3 - Central	455	802	438	1,695
Region 4 - SE	219	391	96	706
Region 5 - SW	260	406	142	808
Centralized Units	0	0	0	0
Statewide Total	1,291	2,340	1,045	4,676



**Children Youth and Families Department
Children Receiving Child Care Assistance Subsidies By County**

County	Dec 2017	Jan 2018	Feb 2018	Mar 2018	Apr 2018	May 2018	June 2018	July 2018	Aug 2018	Sept 2018	Oct 2018	Nov 2018	Dec 2018	Change Fr. Last Year Cases	Percent
<i>Bernalillo</i>	7,903	7,801	7,739	7,824	7,853	7,925	8,146	7,735	7,741	8,041	7,753	7,741	7,584	-319	-4.0%
Catron	5	5	0	0	0	0	0	0	0	0	0	0	0	-5	0.0%
<i>Chaves</i>	855	843	823	807	791	819	865	837	828	861	817	836	814	-41	-4.8%
Cibola	296	291	289	277	291	286	295	289	278	312	316	315	302	6	2.0%
<i>Colfax</i>	42	47	50	51	56	57	59	56	56	59	62	60	57	15	35.7%
Curry	470	493	514	517	536	538	535	539	538	592	543	548	517	47	10.0%
<i>De Baca</i>	10	10	8	4	4	4	4	4	4	4	4	1	1	-9	-90.0%
Dona Ana	4,492	4,349	4,382	4,322	4,349	4,369	4,455	4,260	4,219	4,403	4,311	4,304	4,191	-301	-6.7%
<i>Eddy</i>	263	256	257	240	242	234	245	264	259	268	267	257	259	-4	-1.5%
Grant	159	139	127	133	140	138	142	110	111	134	133	139	126	-33	-20.8%
<i>Guadalupe</i>	16	14	11	15	14	14	14	14	18	11	16	14	12	-4	-25.0%
Harding	0	0	0	0	1	1	1	1	1	1	1	1	1	1	0.0%
<i>Hidalgo</i>	32	32	36	40	35	37	36	37	37	36	35	32	28	-4	-12.5%
Lea	833	824	827	855	805	817	817	806	813	877	840	851	821	-12	-1.4%
<i>Lincoln</i>	132	129	129	128	130	133	129	129	131	107	104	100	97	-35	-26.5%
Los Alamos	13	13	14	15	17	18	22	27	30	26	31	34	34	21	161.5%
<i>Luna</i>	171	167	161	166	166	163	162	143	149	153	142	145	153	-18	-10.5%
McKinley	166	168	156	158	162	168	176	168	157	188	173	173	168	2	1.2%
<i>Mora</i>	21	20	18	20	18	21	21	26	31	29	25	18	16	-5	-23.8%
Otero	531	519	533	532	518	504	502	490	496	520	505	525	501	-30	-5.6%
<i>Out of State</i>	3	9	12	8	5	7	8	6	6	4	4	4	5	2	66.7%
Quay	35	35	36	36	35	33	33	38	37	33	35	34	33	-2	-5.7%
<i>Rio Arriba</i>	165	154	151	152	148	146	147	146	143	139	141	146	142	-23	-13.9%
Roosevelt	127	119	117	113	109	101	102	94	88	101	106	112	121	-6	-4.7%
<i>San Juan</i>	1,039	1,005	1,036	1,026	1,053	1,030	1,059	928	892	1,020	954	955	926	-113	-10.9%
San Miguel	372	357	353	362	370	378	376	375	361	375	364	357	345	-27	-7.3%
<i>Sandoval</i>	836	794	774	765	782	765	798	739	756	763	693	697	708	-128	-15.3%
Santa Fe	526	514	523	506	514	531	545	533	511	497	448	470	460	-66	-12.5%
<i>Sierra</i>	77	59	76	67	69	70	62	53	50	64	62	60	57	-20	-26.0%
Socorro	70	70	70	73	75	73	68	55	63	62	65	64	63	-7	-10.0%
<i>Taos</i>	141	141	139	139	138	135	135	138	126	111	111	112	102	-39	-27.7%
Torrance	115	114	110	104	116	115	120	109	104	112	92	94	88	-27	-23.5%
<i>Union</i>	5	5	5	5	5	5	5	5	5	5	5	5	5	0	0.0%
Valencia	678	651	640	634	612	624	644	615	621	664	604	611	610	-68	-10.0%
Totals	20,599	20,147	20,116	20,094	20,159	20,259	20,728	19,769	19,660	20,572	19,762	19,815	19,347	-1,252	-6.1%

CHILDREN YOUTH AND FAMILIES DEPARTMENT CHILD CARE ASSISTANCE ELIGIBILITY PROGRAMS

MONTH	JAN'18	FEB'18	MAR'18	APR'18	May'18	June'18	July'18	Aug'18	Sept'18	Oct'18	Nov'18	Dec'18
TANF (Child Care Priority 1 Clients)												
CLIENTS	2,240	2,153	2,178	2,175	2,118	2,164	2,074	2,124	2,221	2,197	2,202	2,149
COST	\$1,317,716	\$1,272,232	\$1,325,003	\$1,300,872	\$1,244,115	\$1,242,370	\$1,255,788	\$1,288,094	\$1,238,106	\$1,335,587	\$1,313,281	\$1,274,570
TANF AVERAGE COST	\$588	\$591	\$608	\$598	\$587	\$574	\$605	\$606	\$557	\$608	\$596	\$593
TRANSITION OFF TANF (Child Care Priority 2 Clients)												
CLIENTS	141	138	142	148	169	172	161	170	165	157	145	134
COST	\$74,507	\$72,696	\$77,354	\$80,098	\$93,823	\$96,261	\$97,664	\$97,412	\$89,581	\$87,146	\$81,849	\$78,119
TRAN OFF TANF AVG COST	\$528	\$527	\$545	\$541	\$555	\$560	\$607	\$573	\$543	\$555	\$564	\$583
TANF ELIGIBLE (Child Care Priority 1B Clients at or below 100% of the Federal Poverty Level)												
CLIENTS	8,435	8,374	8,373	8,382	8,570	8,816	8,404	8,352	8,755	8,505	8,452	8,269
COST	\$4,722,370	\$4,675,492	\$4,802,863	\$4,766,353	\$4,896,651	\$4,879,475	\$4,946,700	\$4,973,346	\$4,776,708	\$4,957,788	\$4,970,667	\$4,870,464
TANF ELIGIBLE AVG COST	\$560	\$558	\$574	\$569	\$571	\$553	\$589	\$595	\$546	\$583	\$588	\$589
INCOME ELIGIBLE (Child Care Priority 3, and Priority 4 Clients)												
CLIENTS	7,665	7,868	7,944	8,059	8,099	8,261	7,808	7,743	8,122	7,686	7,752	7,567
COST	\$3,785,466	\$3,929,313	\$4,010,729	\$4,051,487	\$4,104,126	\$4,096,260	\$4,133,552	\$4,208,252	\$3,980,270	\$4,056,059	\$4,049,318	\$3,991,789
INCOME ELIG AVG COST	\$494	\$499	\$505	\$503	\$507	\$496	\$529	\$543	\$490	\$528	\$522	\$528
AT-RISK CHILD PROTECTIVE SERVICES CHILD CARE PILOT (Priority 5 Clients)												
CLIENTS	772	689	578	516	424	393	405	355	364	326	351	344
COST	\$509,028	\$486,780	\$381,318	\$337,243	\$276,746	\$265,193	\$270,783	\$228,483	\$224,486	\$213,687	\$217,475	\$234,222
CPS AVG COST	\$659	\$707	\$660	\$654	\$653	\$675	\$669	\$644	\$617	\$655	\$620	\$681
CHILD PROTECTIVE SERVICES (Child Care CPS Clients)												
CLIENTS	894	894	879	879	879	942	917	916	945	891	913	884
COST	\$583,824	\$602,246	\$605,523	\$564,253	\$619,678	\$600,858	\$597,105	\$637,227	\$581,981	\$613,927	\$641,871	\$607,486
CPS AVG COST	\$653	\$674	\$689	\$642	\$705	\$638	\$651	\$696	\$616	\$689	\$703	\$687
GRAND TOTAL - ALL CHILD CARE PROGRAMS												
CLIENTS	20,147	20,116	20,094	20,159	20,259	20,748	19,769	19,660	20,572	19,762	19,815	19,347
COST	\$10,992,912	\$11,038,760	\$11,202,789	\$11,100,307	\$11,235,139	\$11,180,418	\$11,301,592	\$11,432,813	\$10,891,133	\$11,264,194	\$11,274,461	\$11,056,650
ALL PROGRAMS AVG COST	\$546	\$549	\$558	\$551	\$555	\$539	\$572	\$582	\$529	\$570	\$569	\$571

Income Eligibility Guidelines: October 1, 2018- September 30, 2019

Federal Poverty Guidelines (FPG) Monthly Income Standards

Supplemental Nutrition Program (SNAP)					
Household Size	100% FPG Net Income	130% FPG Gross Income	165% FPG Gross Income for Categorical Eligibility	Maximum SNAP Monthly Allotment	LIHEAP 150% FPG
1	\$1,012	\$1,316	\$1,670	\$192	\$1,518
2	\$1,372	\$1,784	\$2,264	\$353	\$2,058
3	\$1,732	\$2,252	\$2,858	\$505	\$2,598
4	\$2,092	\$2,720	\$3,452	\$642	\$3,138
5	\$2,452	\$3,188	\$4,046	\$762	\$3,678
6	\$2,812	\$3,656	\$4,640	\$914	\$4,218
7	\$3,172	\$4,124	\$5,234	\$1,011	\$4,758
8	\$3,532	\$4,592	\$5,828	\$1,155	\$5,298
+1	+\$60	+\$468	+\$594	+\$144	+\$540
Minimum Allotment of \$15 effective from 10/1/2017 - 9/30/2018					
DEDUCTIONS: Standard Deduction: For HH size 1-3 = \$164; 4 = \$174; 5 = \$204; 6 or more = \$234; Excess Shelter Deduction Limit: \$552; Heating and Cooling Standard Utility Allowance: \$344 (HCSUA) – Limited Utility Allowance: \$ 139 (LUA); Telephone Standard: \$52; Dependent Care: Actual Amount (No Limit); Earned Income Deduction: 20%; Homeless Shelter Standard: \$143					

CASH Assistance & Support Services					
Household Size	Federal Poverty Guidelines (FPG) Monthly Income Standards			Maximum Monthly Benefit	
	100% FPG Net Income	85% FPG Gross Limit	NM Works Cash Net Income	Maximum Monthly Benefit	General Assistance
1	\$1,012	\$860	\$266	\$244	\$245
2	\$1,372	\$1,166	\$357	\$327	\$329
3	\$1,732	\$1,472	\$447	\$409	\$412
4	\$2,092	\$1,778	\$539	\$493	\$496
5	\$2,452	\$2,084	\$630	\$576	\$580
6	\$2,812	\$2,390	\$721	\$659	\$664
7	\$3,172	\$2,696	\$812	\$743	\$748
8	\$3,532	\$3,002	\$922	\$843	\$849
+1	+\$360	+\$306	+\$91	+\$83	+\$84
Deductions- Dependent Care: For a child under age 2 = \$200; For a child age 2 and over = \$175. Work Incentives- Earned Income Disregard: Single parent = \$125 & ½ remainder; Two parent = \$225 & ½ remainder.					

ISD 017 Revised 08/13/2018

Medical Assistance Division					
Federal Poverty Guidelines New Mexico Affordable Care Eligibility Groups Effective April 01, 2018 thru March 31, 2019 Monthly Guidelines					
HH SIZE	PERCENT OF POVERTY				
	138%	190%	240%	250%	300%
1	\$1,397	\$1,923	\$2,428	\$2,530	\$3,035
2	\$1,893	\$2,607	\$3,292	\$3,430	\$4,115
3	\$2,390	\$3,291	\$4,156	\$4,330	\$5,195
4	\$2,887	\$3,975	\$5,020	\$5,230	\$6,275
5	\$3,384	\$4,659	\$5,884	\$6,130	\$7,355
6	\$3,881	\$5,343	\$6,748	\$7,030	\$8,435
7	\$4,377	\$6,027	\$7,612	\$7,930	\$9,515
8	\$4,874	\$6,711	\$8,476	\$8,830	\$10,595
138% Adult Expansion, 190% Children ages 6 to 19 (Medicaid), 240% Children ages 0 to 6 (Medicaid); ages 6 to 19 (CHIP), 250% Pregnancy Related Services Only, 300% Children 0 to 6 (CHIP)					

Medical Assistance Division					
Federal Poverty Guidelines New Mexico Affordable Care Eligibility Groups Effective April 01, 2018 thru March 31, 2019 Annual Guidelines					
HH SIZE	PERCENT OF POVERTY				
	138%	190%	240%	250%	300%
1	\$16,764	\$23,076	\$29,136	\$30,360	\$36,420
2	\$22,716	\$31,284	\$39,504	\$41,160	\$49,380
3	\$28,680	\$39,492	\$49,872	\$51,960	\$62,340
4	\$34,644	\$47,700	\$60,240	\$62,760	\$75,300
5	\$40,608	\$55,908	\$70,608	\$73,560	\$88,260
6	\$46,572	\$64,116	\$80,976	\$84,360	\$101,220
7	\$52,524	\$72,324	\$91,344	\$95,160	\$114,180
8	\$58,488	\$80,532	\$101,712	\$105,960	\$127,140
138% Adult Expansion, 190% Children ages 6 to 19 (Medicaid), 240% Children ages 0 to 6 (Medicaid); ages 6 to 19 (CHIP), 250% Pregnancy Related Services Only, 300% Children 0 to 6 (CHIP)					

References

- ¹ *Medicaid Expenditures* (Omnicaid, Medicare Buy-Ins, Lump Sum Payments), Received on January 16, 2018
- ² *ASPEN Business Intelligence Tool: Eligibility*, Retrieved on January 13, 2018
- ³ New Mexico Human Services Department, *Medicaid Eligibility Reports*, Retrieved from <http://www.hsd.state.nm.us/LookingForInformation/medicaid-eligibility.aspx> on January 13, 2018
- ⁴ *ASPEN Business Intelligence Tool: Application Tracking*, Retrieved on January 13, 2018
- ⁵ Fidelity Information Services, *EBT Daily Statistical Report* (for 12/31/2017, 11/30/2018, and 12/31/2018), Retrieved on January 13, 2018
- ⁶ *ASPEN Report DQ-180: Length of Time Cases are Open* (for 12/01/2017-12/31/2017, 11/01/2018-11/30/2018, 12/01/2018-12/31/2018), Retrieved on January 16, 2018
- ⁷ *ASPEN Report EY-180: Individual Demographics by State and Age* (for 12/01/2017-12/31/2017, 11/01/2018-11/30/2018, 12/01/2018-12/31/2018), Retrieved January 16, 2018
- ⁸ *ASPEN Business Intelligence Tool: Benefit Issuance*, Retrieved on January 13, 2018
- ⁹ Fidelity Information Services, *EBT Daily Statistical Reports* (Month End), Retrieved on January 13, 2018
- ¹⁰ *ASPEN Report EY-180R: Individual Demographics by State, Race, Ethnicity and Gender* (for 11/01/2018-11/30/2018), Retrieved on January 16, 2018
- ¹¹ SQL Queries from ASPEN, completed January 2018
- ¹² JP Morgan, *New Mexico – NM EBT System- Monthly Benefit Draw Down Totals*
- ¹³ *ASPEN Business Intelligence Tool: Application Tracking* (w/Parameters: SNAP, Expedite, Approved), Retrieved on January 13, 2018
- ¹⁴ SL Start, *As of Today Report 12.31.18*, received January 10, 2018
- ¹⁵ SL Start, *Statewide Employment Report 12.01.18*, received January 10, 2018

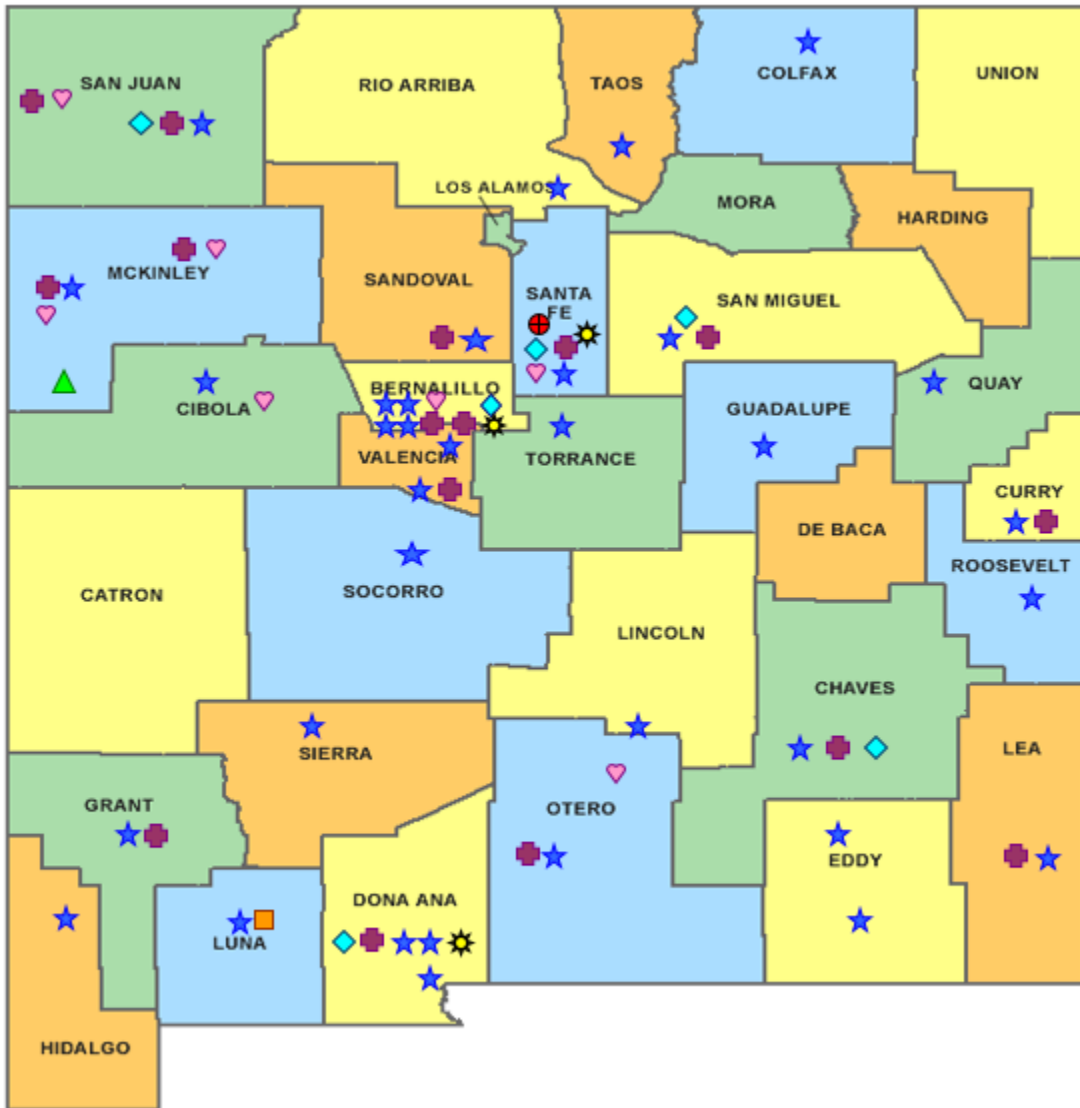

¹⁶SSIAR Payments, received January 2, 2018

¹⁷ Children, Youth, and Families Department, *Children Receiving Child Care Assistance Subsidies by County*, Received on January 10, 2018

¹⁸ Children, Youth, and Families Department, *Child Care Assistance Eligibility Programs*, Received on January 10, 2018









¹⁹ EDG is defined as an Eligibility Determination Group

²⁰SQL Query from ASPEN, completed January 28, 2018

HUMAN SERVICES
DEPARTMENT

New Mexico Human Services Department
Field Offices

-  Central Office (1)
-  Income Support Division County Office (35)
-  Income Support Division Satellite Office (2)
-  Child Support Enforcement Regional Office (16)
-  Child Support Enforcement Satellite Office (1)
-  Quality Control Office (8)
-  Indian Health Services (7)
-  Hospital Site (3)