



Monthly Statistical Report

August 2019

There were 825,335 individuals that received Medicaid in August 2019, a 0.7% decrease from one year ago. The count of Medicaid recipients has increased by 1,309, or 0.16%, since last month.

The SNAP caseload in August 2019 was 223,668, a 0.4% increase from one year ago. The SNAP caseload has increased by 1,473 cases, or 0.7%, since last month.

The TANF caseload was 10,544 in August 2019, a decrease of 6.4% from August 2018. The TANF caseload had 204 more cases compared to July 2019, an increase of 2.0%.

The caseload for General Assistance was 2,424 in August 2019, a decrease of 16.7% from one year ago and an increase of 13 cases from last month.

Michelle Lujan Grisham, Governor
David Scrase, M.D., Secretary

Contents	Page
Summary	3-5
Medicaid	6-20
SNAP	21-41
Cash Assistance	42-56
Child Care Assistance	57-58
Income Eligibility Guidelines	59-60

Regions are reported as follows:

Region 1		
Catron	San Juan	Valencia
Cibola	Sierra	
McKinley	Socorro	
Region 2		
Colfax	Mora	Santa Fe
De Baca	Quay	Taos
Guadalupe	Rio Arriba	Union
Harding	Sandoval	
Los Alamos	San Miguel	
Region 3		
Bernalillo	Torrance	
Region 4		
Chaves	Eddy	Lincoln
Curry	Lea	Roosevelt
Region 5		
Dona Ana	Hidalgo	Otero
Grant	Luna	

The Mission of the Human Services Department

To transform lives. Working with our partners, we design and deliver innovative, high quality health and human services that improve the security and promote independence for New Mexicans in their communities.

Angela Medrano, Deputy Secretary
 Russell Toal, Deputy Secretary

Prepared by Income Support Division
 PO Box 2348
 Santa Fe, NM 87504-2348
 505-827-7250

Karmela Martinez, Director
 Vida Tapia-Sanchez, Deputy Director
 Shanita Harrison, Deputy Director
 Judith Parks, Deputy Director

<http://www.hsd.state.nm.us/monthly-statistical-reports.aspx>

Program Summary for August 2019

Medicaid				Percent Change	
	Aug-18	Jul-19	Aug-19	Aug-18- Aug-19	Jul-19- Aug-19
Expenditures¹	\$485,661,467	\$464,362,183	\$479,359,445	-1.3%	3.2%
Cases²	488,487	491,906	492,718	0.9%	0.2%
Expenditures/Case	\$994	\$944	\$973	-2.1%	3.1%
Recipients³	831,391	824,026	825,335	-0.7%	0.16%
<i>Adults</i>	473,397	468,989	469,346	-0.9%	0.08%
<i>Children</i>	357,994	355,037	355,989	-0.6%	0.27%
Recipients /Case	1.70	1.68	1.68	-1.6%	0.0%
Cases Processed⁴	14,030	11,729	9,505	-32.3%	-19.0%
<i>Approvals⁴</i>	11,114	8,996	6,763	-39.1%	-24.8%

Supplemental Nutrition Assistance Program (SNAP)				Percent Change	
	Aug-18	Jul-19	Aug-19	Aug-18- Aug-19	Jul-19- Aug-19
Expenditures⁵	\$53,045,612	\$52,743,702	\$52,778,694	-0.50%	0.1%
Cases⁶	222,814	222,195	223,668	0.4%	0.7%
Expenditures/Case	\$238	\$237	\$236	-0.9%	-0.6%
Recipients⁷	456,581	448,253	450,602	-1.3%	0.5%
<i>Adults</i>	263,799	261,980	263,415	-0.1%	0.5%
<i>Children</i>	192,782	186,273	187,187	-2.9%	0.5%
Recipients /Case	2.05	2.02	2.01	-1.7%	-0.1%
Cases Processed⁴	19,472	18,672	17,370	-10.8%	-7.0%
<i>Approvals⁴</i>	15,717	15,528	13,922	-11.4%	-10.3%

Cash Assistance Programs				Percent Change	
	Aug-18	Jul-19	Aug-19	Aug-18- Aug-19	Jul-19- Aug-19
Expenditures⁵	\$5,735,012	\$4,101,435	\$5,284,117	-7.9%	28.8%
Cases⁶	14,323	12,888	13,101	-8.5%	1.7%
Expenditures/Case	\$400	\$318	\$403	0.7%	26.7%
Recipients⁷	32,287	29,036	29,670	-8.1%	2.2%
<i>Adults</i>	10,288	9,075	9,306	-9.5%	2.5%
<i>Children</i>	21,999	19,961	20,364	-7.4%	2.0%
Recipients /Case	2.25	2.25	2.26	0.5%	0.5%
Cases Processed⁴	5,871	4,540	4,490	-23.5%	-1.1%
<i>Approvals⁴</i>	1,867	1,719	1,621	-13.2%	-5.7%

Low Income Home Energy Assistance Program (LIHEAP)				Percent Change	
	Aug-18	Jul-19	Aug-19	Aug-18- Aug-19	Jul-19- Aug-19
Expenditures⁸	\$743,067	\$677,800	\$753,830	1.4%	11.2%
Cases⁸	3,075	2,430	2,671	-13.1%	9.9%
Expenditures/Case	\$242	\$279	\$282	16.8%	1.2%
Recipients⁸	7,883	6,134	6,710	-14.9%	9.4%
<i>Adults</i>	4,074	3,265	3,525	-13.5%	8.0%
<i>Children</i>	3,809	2,869	3,185	-16.4%	11.0%
Recipients /Case	2.56	2.52	2.51	-2.0%	-0.5%
Cases Processed⁴	5,115	4,100	4,780	-6.5%	16.6%
<i>Approvals⁴</i>	3,096	2,490	2,739	-11.5%	10.0%

Cash Assistance Summary for August 2019

Temporary Assistance for Needy Families (TANF)

	Aug-18	Jul-19	Aug-19	Percent Change	
				Aug-18- Aug-19	Jul-19- Aug-19
Expenditures ⁵	\$4,923,705	\$3,442,956	\$4,604,841	-6.5%	33.7%
Cases ⁶	11,261	10,340	10,544	-6.4%	2.0%
Expenditures/Case	\$437	\$333	\$437	-0.1%	31.2%
Recipients ⁷	28,980	26,346	26,976	-6.9%	2.4%
<i>Adults</i>	7,395	6,721	6,963	-5.8%	3.6%
<i>Children</i>	21,585	19,625	20,013	-7.3%	2.0%
Approvals ⁴	1,571	1,493	1,378	-12.3%	-7.7%

General Assistance (GA)

	Aug-18	Jul-19	Aug-19	Percent Change	
				Aug-18- Aug-19	Jul-19- Aug-19
Expenditures ⁵	\$749,780	\$618,683	\$632,093	-15.7%	2.2%
Cases ⁶	2,910	2,411	2,424	-16.7%	0.5%
Expenditures/Case	\$258	\$257	\$261	1.2%	1.6%
Recipients ⁷	2,948	2,436	2,430	-17.6%	-0.2%
<i>Adults</i>	2,729	2,213	2,202	-19.3%	-0.5%
<i>Children</i>	219	223	228	4.1%	2.2%
Approvals ⁴	251	177	197	-21.5%	11.3%

Education Works

	Aug-18	Jul-19	Aug-19	Percent Change	
				Aug-18- Aug-19	Jul-19- Aug-19
Expenditures ⁵	\$52,893	\$24,045	\$32,785	-38.0%	36.3%
Cases ⁶	105	62	64	-39.0%	3.2%
Expenditures/Case	\$504	\$388	\$512	1.7%	32.1%
Recipients ⁷	312	178	194	-37.8%	9.0%
<i>Adults</i>	117	65	71	-39.3%	9.2%
<i>Children</i>	195	113	123	-36.9%	8.8%
Approvals ⁴	2	0	0	-100.0%	N/A

Refugee Cash (RCA)

	Aug-18	Jul-19	Aug-19	Percent Change	
				Aug-18- Aug-19	Jul-19- Aug-19
Expenditures ⁵	\$6,434	\$13,851	\$12,497	94.2%	-9.8%
Cases ⁶	25	55	50	100.0%	-9.1%
Expenditures/Case	\$257	\$252	\$250	-2.9%	-0.8%
Recipients ⁷	25	57	51	104.0%	-10.5%
<i>Adults</i>	25	57	51	104.0%	-10.5%
<i>Children</i>	0	0	0	N/A	N/A

State Supplement for Residential Care

	Aug-18	Jul-19	Aug-19	Percent Change	
				Aug-18- Aug-19	Jul-19- Aug-19
Expenditures ⁵	\$2,200	\$1,900	\$1,900	-13.6%	0.0%
Cases ⁶	22	20	19	-13.6%	-5.0%
Expenditures/Case	\$100	\$95	\$100	0.0%	5.3%
Recipients ⁷	22	19	19	-13.6%	0.0%
<i>Adults</i>	22	19	19	-13.6%	0.0%
<i>Children</i>	0	0	0	N/A	N/A

Expenditures YTD			
	SFY 2020	FFY 2019	CY 2019
Medicaid ¹	\$943,721,628	\$5,133,895,499	\$3,697,475,871
Supplemental Nutrition Assistance Program ⁹	\$105,522,396	\$579,788,641	\$419,528,507
Temporary Assistance for Needy Families ⁹	\$8,047,797	\$37,612,997	\$27,488,459
General Assistance ⁹	\$1,250,776	\$7,312,618	\$5,190,314
Education Work ⁹	\$56,830	\$481,485	\$309,791
LIHEAP ⁸	\$1,431,630	\$19,479,915	\$8,650,395

Average Caseload YTD			
	SFY 2020	FFY 2019	CY 2019
Medicaid ²	492,312	491,434	492,156
Supplemental Nutrition Assistance Program ⁶	222,932	221,631	221,208
Temporary Assistance for Needy Families ⁶	10,442	10,479	10,301
General Assistance ⁶	2,418	2,644	2,567
Education Work ⁶	63	108	95
LIHEAP ⁸	2,551	5,899	3,724

Demographic Profile- August 2019					
	SNAP	TANF	GA	Education Works	RCA
<i>Gender of Recipients</i> ¹⁰					
Male	203,641	11,431	1,393	79	37
Female	246,961	15,545	1,037	115	14
<i>Ethnicity</i> ¹⁰					
Hispanic	247,448	17,978	1,297	120	31
Non-Hispanic	203,154	8,998	1,133	74	20
<i>Race</i> ¹⁰					
Native American or Alaskan Native	77,568	2,263	224	17	0
Asian	4,061	193	18	3	0
African American or Black	11,683	1,210	102	16	11
Native Hawaiian or Pacific Islander	803	25	1	0	0
White	346,338	22,477	2,034	157	38
Unknown / Not Declared	3,858	212	21	0	0
More than One Race	6,291	596	30	1	2

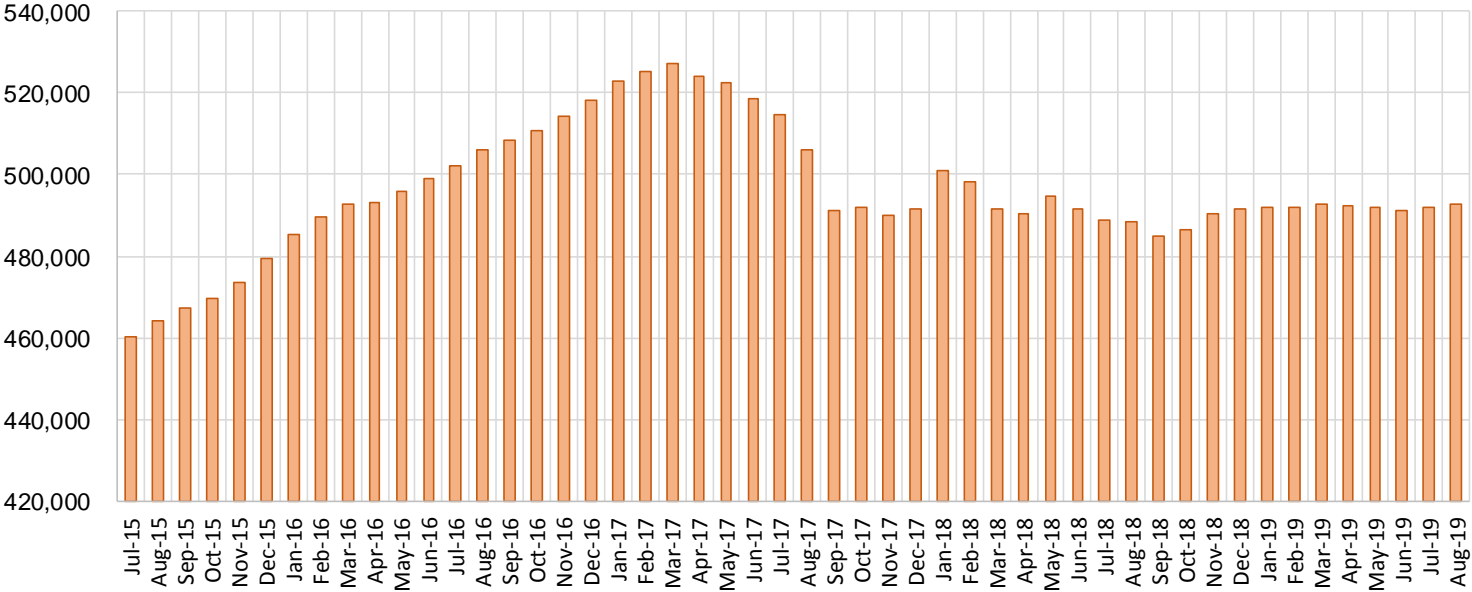
Medicaid Cases by Field Office²

Office				Percent Change	
	Aug-18	Jul-19	Aug-19	Aug-18- Aug-19	Jul-19- Aug-19
Chaves County ISD	15,902	15,938	15,983	0.5%	0.3%
Cibola County ISD	7,452	7,515	7,450	0.0%	-0.9%
Colfax County ISD	3,592	3,581	3,575	-0.5%	-0.2%
Curry County ISD	13,940	14,724	14,777	6.0%	0.4%
East Dona Ana County ISD	17,559	17,884	17,854	1.7%	-0.2%
Eddy Artesia County ISD	3,833	3,811	3,827	-0.2%	0.4%
Eddy Carlsbad County ISD	7,605	7,571	7,594	-0.1%	0.3%
Grant County ISD	6,687	7,797	7,822	17.0%	0.3%
Guadalupe County ISD	1,702	1,609	1,597	-6.2%	-0.7%
Hidalgo County ISD	954	50	47	-95.1%	-6.0%
Lea County ISD	14,245	14,508	14,549	2.1%	0.3%
Lincoln County ISD	4,247	4,323	4,299	1.2%	-0.6%
Luna County ISD	8,583	8,613	8,654	0.8%	0.5%
McKinley County ISD	22,617	22,054	22,197	-1.9%	0.6%
Northeast Bernalillo County ISD	42,825	42,806	42,946	0.3%	0.3%
Northwest Bernalillo County ISD	49,602	52,015	52,236	5.3%	0.4%
Otero County ISD	11,818	12,100	12,121	2.6%	0.2%
Quay County ISD	2,564	2,487	2,502	-2.4%	0.6%
Rio Arriba County ISD	13,881	13,339	13,346	-3.9%	0.1%
Roosevelt County ISD	16	9	13	-18.8%	44.4%
San Juan County ISD	29,638	30,296	30,348	2.4%	0.2%
San Miguel County ISD	9,000	9,111	9,155	1.7%	0.5%
Sandoval County ISD	25,353	23,253	23,256	-8.3%	0.0%
Santa Fe County ISD	24,493	24,261	24,234	-1.1%	-0.1%
Sierra County ISD	5,312	5,278	5,274	-0.7%	-0.1%
Socorro County ISD	5,251	5,268	5,258	0.1%	-0.2%
South Dona Ana ISD	19,595	19,661	19,688	0.5%	0.1%
Southeast Bernalillo County ISD	24,986	24,822	24,837	-0.6%	0.1%
Southwest Bernalillo County ISD	38,331	39,845	39,757	3.7%	-0.2%
Taos County ISD	9,202	9,160	9,131	-0.8%	-0.3%
Torrance County ISD	7,576	7,841	7,864	3.8%	0.3%
Valencia North County ISD	18,229	18,281	18,375	0.8%	0.5%
Valencia South County ISD	106	111	89	-16.0%	-19.8%
West Dona Ana County ISD	21,787	21,981	22,061	1.3%	0.4%
Centralized Units	4	2	1	-75.0%	-50.0%
Statewide Total	488,487	491,905	492,717	0.9%	0.2%

Medicaid Cases by Region²

Region	Percent Change				
	Aug-18	Jul-19	Aug-19	Aug-18- Aug-19	Jul-19- Aug-19
Region 1 - NW	88,605	88,803	88,991	0.4%	0.2%
Region 2 - NE	89,787	86,801	86,796	-3.3%	0.0%
Region 3 - Central	163,320	167,329	167,640	2.6%	0.2%
Region 4 - SE	59,788	60,884	61,042	2.1%	0.3%
Region 5 - SW	86,983	88,086	88,247	1.5%	0.2%
Centralized Units	4	2	1	-75.0%	-50.0%
Statewide Total	488,487	491,905	492,717	0.9%	0.2%

Medicaid Caseload: SFY-16 to Current



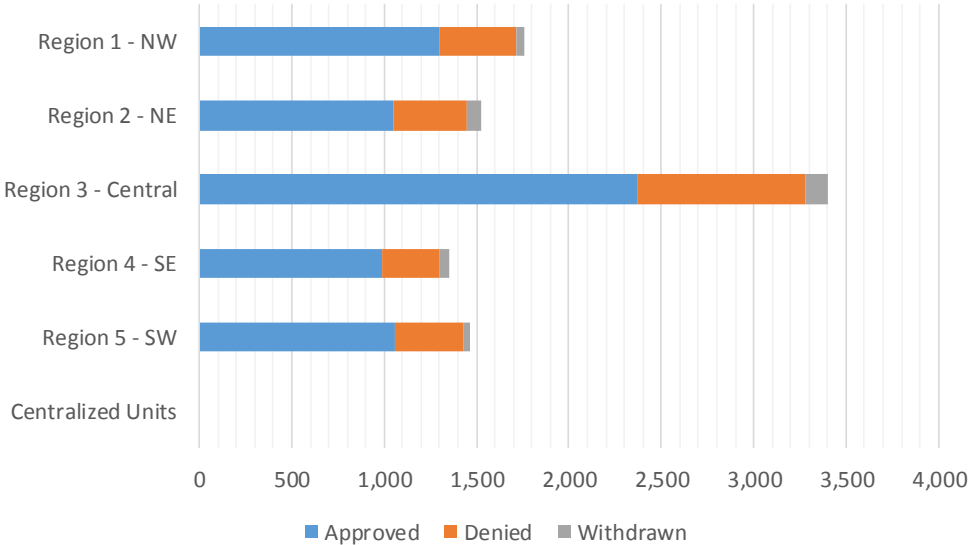
Medicaid Initial Applications by Field Office^{4,11}
August 2019

Office	Approved	Denied	Withdrawn	Total Cases Processed
Chaves County ISD	245	78	18	341
Cibola County ISD	123	39	1	163
Colfax County ISD	44	20	2	66
Curry County ISD	238	77	12	327
East Dona Ana County ISD	243	76	15	334
Eddy Artesia County ISD	49	16	3	68
Eddy Carlsbad County ISD	141	47	4	192
Grant County ISD	79	37	0	116
Guadalupe County ISD	26	10	0	36
Hidalgo County ISD	0	0	0	0
Lea County ISD	250	69	11	330
Lincoln County ISD	64	23	6	93
Luna County ISD	99	52	1	152
McKinley County ISD	331	93	10	434
Northeast Bernalillo County ISD	656	289	31	976
Northwest Bernalillo County ISD	548	213	27	788
Otero County ISD	139	50	1	190
Quay County ISD	25	8	1	34
Rio Arriba County ISD	122	42	14	178
Roosevelt County ISD	0	0	0	0
San Juan County ISD	476	174	19	669
San Miguel County ISD	118	32	10	160
Sandoval County ISD	318	114	24	456
Santa Fe County ISD	285	123	26	434
Sierra County ISD	55	20	7	82
Socorro County ISD	59	27	0	86
South Dona Ana ISD	217	89	2	308
Southeast Bernalillo County ISD	593	230	20	843
Southwest Bernalillo County ISD	487	148	40	675
Taos County ISD	113	46	4	163
Torrance County ISD	85	29	5	119
Valencia North County ISD	256	64	6	326
Valencia South County ISD	0	0	0	0
West Dona Ana County ISD	279	74	13	366
Centralized Units	0	0	0	0
Statewide Total	6,763	2,409	333	9,505

Medicaid Initial Applications by Region^{4,11}
August 2019

	Approved	Denied	Withdrawn	Total Cases Processed
Region				
Region 1 - NW	1,300	417	43	1,760
Region 2 - NE	1,051	395	81	1,527
Region 3 - Central	2,369	909	123	3,401
Region 4 - SE	987	310	54	1,351
Region 5 - SW	1,056	378	32	1,466
Centralized Units	0	0	0	0

Statewide Total	6,763	2,409	333	9,505
-----------------	-------	-------	-----	-------



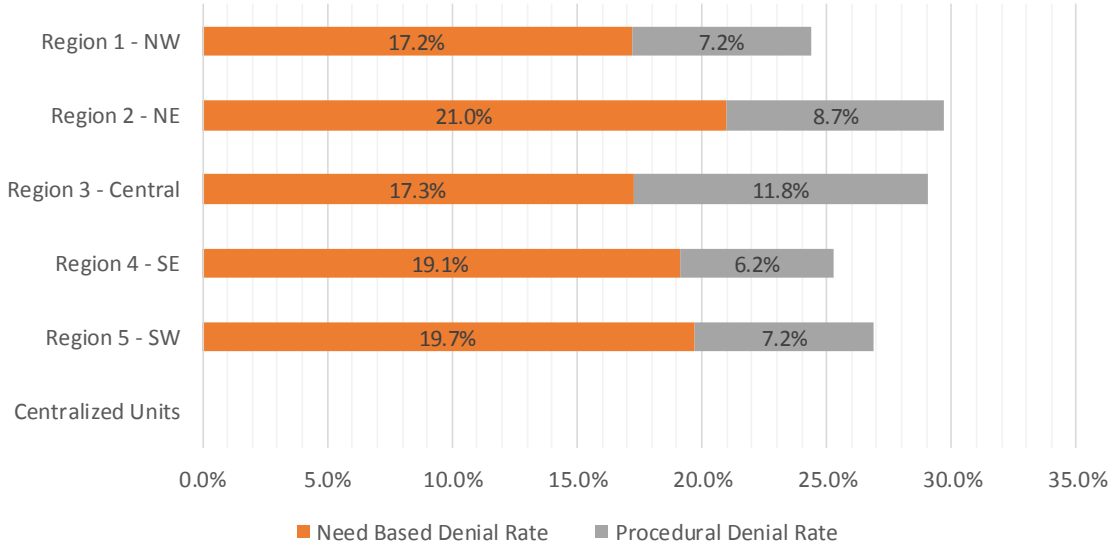
Medicaid EDG Initial Disposition Rates by Field Office^{4,11,19}
August 2019

Office	Approval Rate	Denial Rate	Need Based Denial Rate	Procedural Denial Rate
Chaves County ISD	74.5%	25.5%	20.0%	5.5%
Cibola County ISD	77.8%	22.2%	15.2%	7.0%
Colfax County ISD	66.7%	33.3%	27.2%	6.1%
Curry County ISD	73.9%	26.1%	20.8%	5.3%
East Dona Ana County ISD	74.8%	25.2%	19.0%	6.2%
Eddy Artesia County ISD	70.0%	30.0%	21.4%	8.6%
Eddy Carlsbad County ISD	74.6%	25.4%	16.9%	8.5%
Grant County ISD	68.7%	31.3%	24.3%	7.0%
Guadalupe County ISD	76.5%	23.5%	20.6%	2.9%
Hidalgo County ISD	0.0%	0.0%	0.0%	0.0%
Lea County ISD	77.9%	22.1%	16.2%	5.9%
Lincoln County ISD	70.3%	29.7%	23.1%	6.6%
Luna County ISD	66.9%	33.1%	24.3%	8.8%
McKinley County ISD	78.3%	21.7%	15.1%	6.6%
Northeast Bernalillo County ISD	68.2%	31.8%	16.2%	15.6%
Northwest Bernalillo County ISD	71.1%	28.9%	14.5%	14.4%
Otero County ISD	76.0%	24.0%	15.3%	8.7%
Quay County ISD	75.8%	24.2%	24.2%	0.0%
Rio Arriba County ISD	70.1%	29.9%	20.1%	9.8%
Roosevelt County ISD	0.0%	0.0%	0.0%	0.0%
San Juan County ISD	72.9%	27.1%	18.2%	8.9%
San Miguel County ISD	74.2%	25.8%	17.0%	8.8%
Sandoval County ISD	71.9%	28.1%	20.0%	8.1%
Santa Fe County ISD	67.1%	32.9%	21.6%	11.3%
Sierra County ISD	66.3%	33.7%	25.3%	8.4%
Socorro County ISD	68.6%	31.4%	19.8%	11.6%
South Dona Ana ISD	71.1%	28.9%	23.7%	5.2%
Southeast Bernalillo County ISD	70.8%	29.2%	20.1%	9.1%
Southwest Bernalillo County ISD	74.0%	26.0%	19.2%	6.8%
Taos County ISD	70.2%	29.8%	23.6%	6.2%
Torrance County ISD	73.9%	26.1%	16.5%	9.6%
Valencia North County ISD	81.0%	19.0%	16.2%	2.8%
Valencia South County ISD	0.0%	0.0%	0.0%	0.0%
West Dona Ana County ISD	75.8%	24.2%	15.8%	8.4%
Centralized Units	0.0%	0.0%	0.0%	0.0%
Statewide Total	72.5%	27.5%	18.6%	8.9%

Medicaid EDG Initial Disposition Rates by Region ^{4,11,19}
August 2019

Region	Approval Rate	Denial Rate	Need Based Denial Rate	Procedural Denial Rate
Region 1 - NW	75.6%	24.4%	17.2%	7.2%
Region 2 - NE	70.3%	29.7%	21.0%	8.7%
Region 3 - Central	70.9%	29.1%	17.3%	11.8%
Region 4 - SE	74.7%	25.3%	19.1%	6.2%
Region 5 - SW	73.1%	26.9%	19.7%	7.2%
Centralized Units				

Statewide Total	72.5%	27.5%	18.6%	8.9%
-----------------	-------	-------	-------	------



Medicaid: Percentage of Initial EDG Approvals Processed Timely by Field Office ^{13,19}

	Oct-18	Nov-18	Dec-18	Jan-19	Feb-19	Mar-19	Apr-19	May-19	Jun-19	Jul-19	Aug-19	Sep-19	Average
Cibola	100.0%	98.8%	96.8%	98.9%	99.5%	95.7%	99.1%	99.0%	99.0%	100.0%	100.0%		98.8%
McKinley	99.5%	99.4%	99.1%	99.3%	98.1%	98.6%	99.4%	99.4%	98.6%	100.0%	99.0%		99.1%
San Juan	98.9%	98.9%	99.2%	99.0%	99.3%	98.6%	99.1%	98.6%	97.9%	99.4%	99.7%		99.0%
Sierra	97.4%	99.3%	96.2%	99.2%	100.0%	100.0%	100.0%	99.1%	99.2%	100.0%	100.0%		99.1%
Socorro	100.0%	100.0%	100.0%	99.3%	99.3%	100.0%	100.0%	98.4%	98.2%	98.1%	99.1%		99.3%
Valencia North	98.9%	99.2%	99.3%	99.8%	99.1%	98.1%	100.0%	97.2%	98.4%	99.2%	99.7%		99.0%
Valencia South	100.0%	100.0%	100.0%	100.0%	100.0%	100.0%		100.0%	100.0%	100.0%			100.0%
NW Region 1 Total	99.1%	99.1%	99.0%	99.3%	99.0%	98.7%	99.4%	98.6%	98.4%	99.5%	99.5%		99.1%
Colfax	99.1%	97.4%	97.3%	96.2%	100.0%	98.6%	100.0%	98.5%	100.0%	99.0%	100.0%		98.7%
Guadalupe	96.8%	100.0%	100.0%	100.0%	100.0%	100.0%	100.0%	96.0%	97.1%	100.0%	97.9%		98.9%
Quay	98.6%	100.0%	100.0%	100.0%	98.0%	100.0%	100.0%	96.7%	93.9%	100.0%	100.0%		98.8%
Rio Arriba	99.7%	99.4%	98.9%	98.9%	98.6%	98.3%	99.6%	98.3%	99.0%	99.2%	98.8%		99.0%
San Miguel	99.7%	100.0%	99.3%	99.7%	100.0%	99.0%	100.0%	100.0%	100.0%	100.0%	99.3%		99.7%
Sandoval	98.2%	99.2%	98.6%	98.7%	99.7%	98.0%	100.0%	98.5%	98.0%	99.5%	99.6%		98.9%
Santa Fe	99.0%	99.0%	99.7%	99.2%	99.0%	98.3%	99.2%	97.2%	98.2%	99.8%	98.6%		98.8%
Taos	100.0%	98.8%	99.0%	100.0%	99.6%	97.7%	99.6%	100.0%	98.1%	99.3%	100.0%		99.3%
NE Region 2 Total	99.0%	99.2%	99.1%	99.0%	99.4%	98.7%	99.7%	98.4%	98.4%	99.6%	99.2%		99.1%
NE Bernalillo	97.5%	98.5%	98.5%	97.9%	98.5%	97.9%	98.5%	97.4%	98.0%	99.1%	98.7%		98.2%
NW Bernalillo	98.6%	99.5%	99.4%	98.7%	99.0%	98.2%	99.0%	98.2%	98.7%	99.5%	99.1%		98.9%
SE Bernalillo	98.4%	98.7%	98.7%	98.6%	98.7%	97.4%	99.3%	97.4%	96.8%	98.0%	98.9%		98.3%
SW Bernalillo	98.7%	97.9%	98.6%	97.6%	99.5%	98.3%	98.6%	99.5%	98.0%	98.7%	98.7%		98.6%
Torrance	99.3%	97.8%	99.6%	98.2%	96.9%	98.3%	100.0%	97.9%	100.0%	98.3%	97.5%		98.5%
Gen. Region 3 Total	98.3%	98.6%	98.9%	98.2%	98.8%	98.0%	98.9%	99.0%	98.0%	98.8%	98.8%		98.6%
Chaves	99.5%	99.2%	98.3%	99.6%	99.8%	97.9%	99.8%	96.5%	98.9%	99.8%	99.2%		99.0%
Curry	98.5%	98.9%	99.1%	98.5%	98.5%	98.2%	99.4%	98.3%	98.5%	99.6%	99.7%		98.8%
Eddy Artesia	100.0%	97.7%	99.0%	98.6%	98.1%	98.5%	100.0%	97.9%	99.1%	99.0%	100.0%		98.9%
Eddy Carlsbad	98.0%	97.9%	99.6%	98.8%	97.0%	97.7%	99.3%	97.9%	96.8%	100.0%	100.0%		98.5%
Lea	99.3%	99.5%	99.4%	99.4%	99.4%	98.4%	100.0%	97.5%	98.5%	99.7%	99.3%		99.1%
Lincoln	99.3%	99.5%	98.1%	98.7%	100.0%	97.5%	100.0%	100.0%	98.0%	100.0%	100.0%		99.2%
Roosevelt	100.0%	100.0%	100.0%	100.0%	100.0%	98.1%			100.0%	100.0%			99.8%
SE Region 4 Total	99.0%	99.0%	98.9%	99.1%	98.9%	98.0%	99.7%	97.8%	98.4%	99.7%	99.6%		98.9%
East Dona Ana	99.7%	97.3%	98.7%	99.0%	97.9%	97.1%	99.0%	97.8%	98.7%	99.6%	99.4%		98.6%
Grant	98.4%	99.2%	98.6%	98.9%	95.3%	98.9%	99.0%	97.0%	98.8%	100.0%	99.1%		98.5%
Luna	97.5%	100.0%	100.0%	99.6%	100.0%	100.0%	98.5%	99.0%	99.4%	99.6%	99.3%		99.4%
Otero	98.4%	98.9%	99.1%	98.3%	99.3%	98.6%	99.6%	97.5%	97.3%	99.4%	99.5%		98.7%
South Dona Ana	99.6%	99.2%	99.1%	98.9%	99.6%	98.7%	99.1%	97.3%	98.2%	99.2%	99.2%		98.9%
West Dona Ana	98.9%	99.2%	100.0%	98.9%	99.3%	98.9%	99.7%	97.6%	97.5%	99.3%	99.7%		99.0%
SW Region 5 Total	99.0%	98.8%	99.2%	98.9%	98.8%	98.7%	99.2%	97.6%	98.2%	99.5%	99.4%		98.8%
STATE TOTAL	98.8%	98.9%	99.0%	98.8%	98.9%	98.5%	99.3%	98.1%	98.2%	99.3%	99.2%		98.8%

Medicaid: Percentage of Initial EDG Denials Processed Timely by Field Office ^{13,19}

	Oct-18	Nov-18	Dec-18	Jan-19	Feb-19	Mar-19	Apr-19	May-19	Jun-19	Jul-19	Aug-19	Sep-19	Average
Cibola	90.2%	93.8%	97.1%	100.0%	96.6%	98.3%	100.0%	83.3%	100.0%	91.4%	100.0%		95.5%
McKinley	95.2%	97.7%	97.2%	96.7%	94.2%	94.2%	96.3%	96.4%	99.3%	99.0%	92.1%		96.2%
San Juan	92.1%	87.2%	96.8%	97.5%	96.2%	96.4%	97.5%	96.1%	97.3%	97.5%	98.7%		95.8%
Sierra	92.3%	100.0%	100.0%	100.0%	100.0%	100.0%	96.2%	100.0%	100.0%	100.0%	100.0%		99.0%
Socorro	88.6%	97.6%	100.0%	100.0%	96.8%	100.0%	94.9%	94.3%	100.0%	100.0%	90.7%		96.6%
Valencia North	96.8%	98.0%	94.4%	96.3%	98.4%	95.6%	100.0%	99.1%	100.0%	95.4%	95.6%		97.2%
Valencia South	100.0%	100.0%	100.0%			100.0%		100.0%		100.0%			100.0%
NW Region 1 Total	93.2%	93.9%	96.8%	97.5%	96.5%	97.8%	97.6%	96.0%	98.7%	97.3%	96.5%		96.5%
Colfax	100.0%	100.0%	100.0%	98.1%	85.7%	100.0%	97.5%	100.0%	100.0%	84.1%	100.0%		96.9%
Guadalupe	100.0%	100.0%	100.0%	84.6%	100.0%	100.0%	100.0%	100.0%	100.0%	100.0%	100.0%		98.6%
Quay	91.7%	95.0%	100.0%	100.0%	100.0%	100.0%	100.0%	97.7%	100.0%	100.0%	100.0%		98.6%
Rio Arriba	82.2%	94.8%	89.6%	100.0%	98.9%	99.0%	99.0%	92.3%	96.3%	91.6%	98.6%		94.8%
San Miguel	97.9%	100.0%	99.0%	97.9%	97.0%	97.6%	100.0%	98.6%	98.4%	100.0%	98.4%		98.6%
Sandoval	90.0%	97.1%	98.4%	98.0%	99.2%	94.7%	96.2%	99.0%	96.6%	96.3%	97.7%		96.7%
Santa Fe	92.7%	93.4%	96.1%	98.0%	96.2%	94.3%	97.7%	97.9%	98.2%	97.4%	97.9%		96.3%
Taos	96.4%	98.0%	100.0%	96.5%	99.0%	96.5%	93.5%	98.5%	100.0%	96.2%	97.0%		97.4%
NE Region 2 Total	91.9%	96.2%	97.0%	97.8%	97.5%	97.8%	97.4%	97.6%	97.7%	95.8%	98.1%		96.8%
NE Bernalillo	91.1%	93.3%	96.9%	95.7%	92.6%	92.7%	92.4%	96.8%	96.3%	94.7%	98.1%		94.6%
NW Bernalillo	89.6%	97.4%	95.6%	98.0%	95.3%	93.2%	95.7%	97.4%	96.5%	97.7%	97.2%		95.8%
SE Bernalillo	95.0%	95.1%	96.3%	93.1%	90.6%	94.5%	98.2%	96.0%	97.5%	97.7%	96.7%		95.5%
SW Bernalillo	83.6%	97.8%	98.6%	97.7%	93.9%	96.0%	95.5%	98.4%	95.2%	92.6%	97.4%		95.2%
Torrance	94.0%	96.2%	100.0%	95.8%	98.9%	97.3%	100.0%	96.7%	100.0%	96.8%	100.0%		97.8%
Gen. Region 3 Total	90.1%	95.6%	96.9%	96.4%	93.6%	94.7%	95.4%	97.1%	96.5%	95.7%	97.5%		95.4%
Chaves	98.2%	98.0%	96.8%	98.2%	96.3%	99.5%	97.8%	98.9%	98.6%	99.0%	100.0%		98.3%
Curry	92.0%	90.8%	97.7%	94.5%	96.6%	97.9%	94.5%	97.2%	97.5%	99.2%	98.1%		96.0%
Eddy Artesia	97.7%	97.6%	96.2%	98.4%	100.0%	97.2%	100.0%	100.0%	100.0%	100.0%	100.0%		98.8%
Eddy Carlsbad	90.1%	95.0%	96.0%	97.7%	94.1%	98.6%	98.9%	97.1%	97.5%	97.8%	100.0%		96.6%
Lea	90.8%	98.6%	97.0%	97.1%	93.2%	97.0%	97.5%	97.8%	98.7%	98.7%	98.6%		96.8%
Lincoln	92.5%	98.2%	98.0%	95.8%	90.1%	100.0%	98.0%	100.0%	100.0%	92.3%	100.0%		96.8%
Roosevelt	100.0%	100.0%				100.0%		100.0%		100.0%			100.0%
SE Region 4 Total	93.3%	96.6%	97.0%	96.9%	94.8%	98.6%	97.4%	98.2%	98.4%	98.4%	99.2%		97.2%
East Dona Ana	96.6%	94.0%	97.7%	97.8%	97.9%	98.5%	98.2%	94.6%	98.5%	98.3%	99.4%		97.4%
Grant	96.2%	100.0%	98.5%	98.6%	98.6%	100.0%	100.0%	100.0%	97.1%	100.0%	97.9%		98.8%
Luna	96.4%	100.0%	100.0%	91.8%	100.0%	97.8%	100.0%	97.1%	100.0%	97.6%	97.8%		98.0%
Otero	96.1%	98.8%	93.9%	96.2%	90.5%	95.7%	99.0%	97.9%	94.8%	98.1%	94.9%		96.0%
South Dona Ana	100.0%	99.2%	99.4%	97.1%	98.8%	98.9%	96.7%	100.0%	95.8%	100.0%	100.0%		98.7%
West Dona Ana	97.5%	97.2%	100.0%	96.7%	96.5%	99.2%	96.4%	98.6%	99.3%	99.2%	99.2%		98.2%
SW Region 5 Total	97.4%	97.7%	98.3%	96.6%	97.4%	98.4%	97.8%	97.8%	97.6%	98.8%	98.7%		97.9%
STATE TOTAL	92.6%	96.0%	97.1%	97.0%	95.5%	97.6%	96.8%	97.3%	97.5%	97.0%	97.9%		96.6%

Medicaid: Percentage of Initial EDG Approvals and Denials Combined Processed Timely by Field Office ^{13,19}

	Oct-18	Nov-18	Dec-18	Jan-19	Feb-19	Mar-19	Apr-19	May-19	Jun-19	Jul-19	Aug-19	Sep-19	Average
Cibola	98.6%	97.9%	96.8%	99.1%	98.8%	96.4%	99.3%	96.3%	99.2%	98.2%	100.0 %		98.2%
McKinley	98.7%	99.1%	98.8%	98.7%	97.2%	97.7%	98.8%	98.8%	98.7%	99.8%	97.5 %		98.5%
San Juan	97.8%	97.1%	98.7%	98.7%	98.5%	98.1%	98.7%	98.1%	97.8%	98.9%	99.4 %		98.3%
Sierra	97.0%	99.4%	96.9%	99.4%	100.0%	100.0%	99.2%	99.3%	99.4%	100.0%	100.0 %		99.1%
Socorro	96.6%	99.4%	100.0%	99.5%	98.8%	100.0%	98.8%	97.2%	98.6%	98.7%	96.7 %		98.6%
Valencia North	98.6%	99.0%	98.3%	99.0%	98.9%	97.5%	100.0%	97.6%	98.7%	98.3%	98.7 %		98.6%
Valencia South	100.0%	100.0%	100.0%	100.0%	100.0%	100.0%		100.0%	100.0%	100.0%			100.0%
NW Region 1 Total	98.1%	98.3%	98.5%	98.8%	98.4%	98.5%	99.0%	98.1%	98.4%	99.0%	98.7 %		98.5%
Colfax	99.2%	98.1%	98.1%	96.8%	95.7%	98.9%	99.4%	99.1%	100.0%	94.3%	100.0 %		98.1%
Guadalupe	96.8%	100.0%	100.0%	96.7%	100.0%	100.0%	100.0%	97.2%	97.2%	100.0%	98.3 %		98.7%
Quay	97.6%	98.0%	100.0%	100.0%	98.5%	100.0%	100.0%	97.1%	95.0%	100.0%	100.0 %		98.7%
Rio Arriba	97.6%	98.3%	96.3%	99.1%	98.7%	98.5%	99.4%	96.6%	98.4%	97.1%	98.7 %		98.1%
San Miguel	99.5%	100.0%	99.3%	99.3%	99.3%	98.7%	100.0%	99.7%	99.7%	100.0%	99.0 %		99.5%
Sandoval	97.0%	98.8%	98.6%	98.5%	99.5%	97.1%	99.1%	98.6%	97.6%	98.8%	99.1 %		98.4%
Santa Fe	97.8%	97.7%	98.9%	98.7%	98.0%	97.1%	98.9%	97.4%	98.2%	99.1%	98.4 %		98.2%
Taos	99.7%	98.7%	99.3%	98.8%	99.4%	97.5%	98.3%	99.6%	98.6%	98.6%	99.1 %		98.9%
NE Region 2 Total	98.0%	98.5%	98.6%	98.7%	98.8%	98.5%	99.1%	98.2%	98.2%	98.6%	98.5 %		98.5%
NE Bernalillo	96.1%	97.2%	98.1%	97.3%	96.5%	96.5%	96.8%	97.2%	97.5%	97.9%	98.5 %		97.2%
NW Bernalillo	96.8%	99.1%	98.4%	98.5%	97.9%	96.9%	98.2%	98.0%	98.2%	99.0%	98.4 %		98.1%
SE Bernalillo	97.6%	97.8%	98.1%	97.1%	96.3%	96.5%	99.0%	97.0%	97.0%	97.9%	98.2 %		97.5%
SW Bernalillo	96.1%	97.9%	98.6%	97.6%	97.9%	97.7%	97.8%	98.3%	97.3%	97.2%	98.3 %		97.7%
Torrance	98.4%	97.6%	99.7%	97.5%	97.5%	98.1%	100.0%	98.8%	100.0%	97.9%	98.3 %		98.5%
Gen. Region 3 Total	96.7%	98.0%	98.4%	97.6%	97.2%	97.1%	97.9%	97.7%	97.6%	98.0%	98.4 %		97.7%
Chaves	99.2%	99.0%	97.8%	99.2%	98.7%	98.5%	99.2%	98.9%	98.9%	99.6%	99.4 %		98.9%
Curry	97.3%	97.9%	98.7%	97.4%	98.0%	98.2%	98.5%	96.6%	98.3%	99.5%	99.2 %		98.2%
Eddy Artesia	99.5%	97.6%	98.5%	98.5%	98.5%	98.2%	100.0%	98.7%	99.3%	99.2%	100.0 %		98.9%
Eddy Carlsbad	96.5%	97.1%	98.7%	98.5%	96.0%	97.9%	99.2%	97.7%	97.0%	99.4%	100.0 %		98.0%
Lea	97.2%	99.3%	98.8%	98.7%	97.5%	98.1%	99.4%	97.9%	98.5%	99.5%	99.1 %		98.5%
Lincoln	97.5%	99.2%	98.1%	97.8%	96.2%	98.2%	99.5%	98.4%	98.4%	97.8%	100.0 %		98.3%
Roosevelt	100.0%	100.0%	100.0%	100.0%	100.0%	100.0%		100.0%	100.0%	100.0%			100.0%
SE Region 4 Total	97.7%	98.5%	98.4%	98.5%	97.6%	98.4%	99.2%	97.9%	98.4%	99.4%	99.5 %		98.5%
East Dona Ana	99.1%	96.7%	98.4%	98.7%	97.9%	97.5%	98.8%	97.0%	98.6%	99.3%	99.4 %		98.3%
Grant	97.9%	99.4%	98.6%	98.8%	96.3%	99.1%	99.2%	97.8%	98.5%	100.0%	98.8 %		98.6%
Luna	97.3%	100.0%	100.0%	97.6%	100.0%	99.4%	98.9%	98.5%	99.5%	99.0%	98.8 %		99.0%
Otero	98.1%	98.9%	97.8%	97.7%	97.6%	97.9%	99.5%	97.6%	96.7%	99.1%	98.2 %		98.1%
South Dona Ana	99.7%	99.2%	99.2%	98.3%	99.4%	98.8%	98.4%	98.0%	97.6%	99.4%	99.4 %		98.9%
West Dona Ana	98.7%	98.9%	100.0%	98.3%	98.6%	99.0%	98.9%	97.8%	97.9%	99.3%	99.6 %		98.8%
SW Region 5 Total	98.7%	98.6%	99.0%	98.3%	98.4%	98.6%	98.9%	97.7%	98.0%	99.3%	99.2 %		98.6%
STATE TOTAL	97.7%	98.3%	98.6%	98.3%	98.0%	98.3%	98.7%	97.9%	98.1%	98.7%	98.8 %		98.3%

Medicaid Renewal Disposition Counts by Field Office^{4,11}
August 2019

Office	Approvals	Closures	Need Based Closures	Procedural Closures
Chaves County ISD	2,878	488	279	209
Cibola County ISD	1,396	192	118	74
Colfax County ISD	486	107	36	71
Curry County ISD	2,905	479	269	210
East Dona Ana County ISD	3,159	544	310	234
Eddy Artesia County ISD	755	129	73	56
Eddy Carlsbad County ISD	1,184	285	127	158
Grant County ISD	1,208	179	111	68
Guadalupe County ISD	201	54	18	36
Hidalgo County ISD	0	0	0	0
Lea County ISD	2,724	554	292	262
Lincoln County ISD	754	141	72	69
Luna County ISD	1,632	187	127	60
McKinley County ISD	4,619	663	353	310
Northeast Bernalillo County ISD	6,595	1081	600	481
Northwest Bernalillo County ISD	5,458	913	438	475
Otero County ISD	2,152	330	202	128
Quay County ISD	447	57	32	25
Rio Arriba County ISD	2,067	347	167	180
Roosevelt County ISD	1	0	0	0
San Juan County ISD	5,629	1033	534	499
San Miguel County ISD	1,236	208	131	77
Sandoval County ISD	4,438	729	360	369
Santa Fe County ISD	3,209	700	285	415
Sierra County ISD	817	147	77	70
Socorro County ISD	890	122	78	44
South Dona Ana ISD	4,151	609	363	246
Southeast Bernalillo County ISD	3,337	513	322	191
Southwest Bernalillo County ISD	8,242	1236	778	458
Taos County ISD	1,230	244	115	129
Torrance County ISD	1,116	210	115	95
Valencia North County ISD	3,370	401	278	123
Valencia South County ISD	0	0	0	0
West Dona Ana County ISD	3,799	497	292	205
Centralized Units	0	0	0	0

Statewide Total	82,085	13,379	7,352	6,027
-----------------	--------	--------	-------	-------

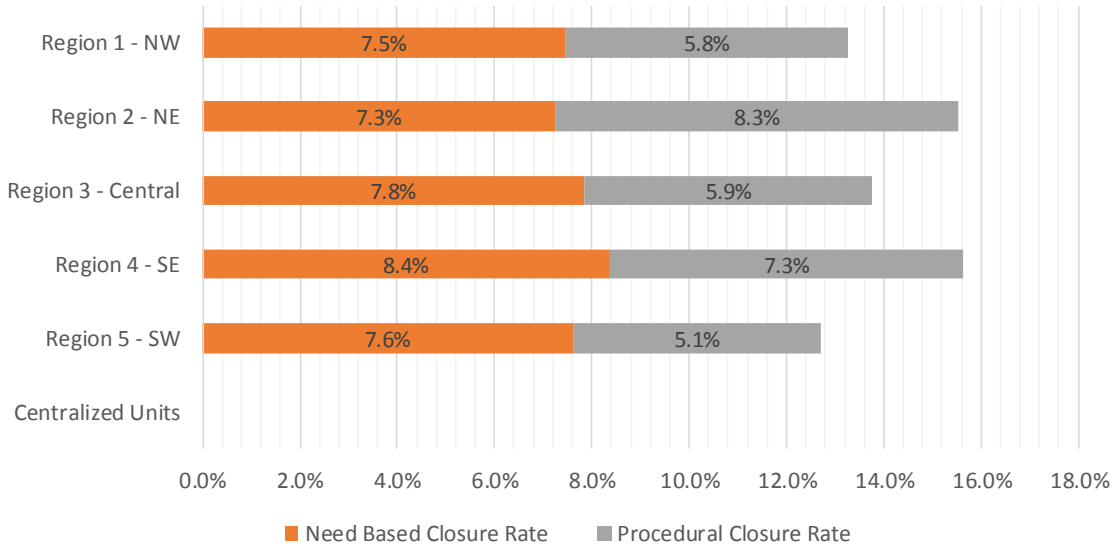
Medicaid Renewal Disposition Rates by Field Office²⁰
August 2019

Office	Approval Rate	Closure Rate	Need Based Closure Rate	Procedural Closure Rate
Chaves County ISD	85.5%	14.5%	8.3%	6.2%
Cibola County ISD	87.9%	12.1%	7.4%	4.7%
Colfax County ISD	82.0%	18.0%	6.1%	12.0%
Curry County ISD	85.8%	14.2%	7.9%	6.2%
East Dona Ana County ISD	85.3%	14.7%	8.4%	6.3%
Eddy Artesia County ISD	85.4%	14.6%	8.3%	6.3%
Eddy Carlsbad County ISD	80.6%	19.4%	8.6%	10.8%
Grant County ISD	87.1%	12.9%	8.0%	4.9%
Guadalupe County ISD	78.8%	21.2%	7.1%	14.1%
Hidalgo County ISD	0.0%	0.0%	0.0%	0.0%
Lea County ISD	83.1%	16.9%	8.9%	8.0%
Lincoln County ISD	84.2%	15.8%	8.0%	7.7%
Luna County ISD	89.7%	10.3%	7.0%	3.3%
McKinley County ISD	87.4%	12.6%	6.7%	5.9%
Northeast Bernalillo County ISD	85.9%	14.1%	7.8%	6.3%
Northwest Bernalillo County ISD	85.7%	14.3%	6.9%	7.5%
Otero County ISD	86.7%	13.3%	8.1%	5.2%
Quay County ISD	88.7%	11.3%	6.3%	5.0%
Rio Arriba County ISD	85.6%	14.4%	6.9%	7.5%
Roosevelt County ISD	100.0%	0.0%	0.0%	0.0%
San Juan County ISD	84.5%	15.5%	8.0%	7.5%
San Miguel County ISD	85.6%	14.4%	9.1%	5.3%
Sandoval County ISD	85.9%	14.1%	7.0%	7.1%
Santa Fe County ISD	82.1%	17.9%	7.3%	10.6%
Sierra County ISD	84.8%	15.2%	8.0%	7.3%
Socorro County ISD	87.9%	12.1%	7.7%	4.3%
South Dona Ana ISD	87.2%	12.8%	7.6%	5.2%
Southeast Bernalillo County ISD	86.7%	13.3%	8.4%	5.0%
Southwest Bernalillo County ISD	87.0%	13.0%	8.2%	4.8%
Taos County ISD	83.4%	16.6%	7.8%	8.8%
Torrance County ISD	84.2%	15.8%	8.7%	7.2%
Valencia North County ISD	89.4%	10.6%	7.4%	3.3%
Valencia South County ISD	0.0%	0.0%	0.0%	0.0%
West Dona Ana County ISD	88.4%	11.6%	6.8%	4.8%
Centralized Units	0.0%	0.0%	0.0%	0.0%
Statewide Total	86.0%	14.0%	7.7%	6.3%

Medicaid Renewal Disposition Rates by Region²⁰
August 2019

Region	Approval Rate	Closure Rate	Need Based Closure Rate	Procedural Closure Rate
Region 1 - NW	86.7%	13.3%	7.5%	5.8%
Region 2 - NE	84.5%	15.5%	7.3%	8.3%
Region 3 - Central	86.2%	13.8%	7.8%	5.9%
Region 4 - SE	84.4%	15.6%	8.4%	7.3%
Region 5 - SW	87.3%	12.7%	7.6%	5.1%
Centralized Units				

Statewide Total	86.0%	14.0%	7.7%	6.3%
-----------------	-------	-------	------	------



Medicaid: Percentage of Approved Renewal EDGs Processed by Certification Date ¹¹

	Oct-18	Nov-18	Dec-18	Jan-19	Feb-19	Mar-19	Apr-19	May-19	Jun-19	Jul-19	Aug-19	Sep-19	Average
Cibola	99.7%	97.1%	97.8%	98.2%	98.2%	98.2%	98.6%	98.3%	98.4%	97.7%	98.2%		98.2%
McKinley	99.4%	97.5%	98.9%	99.1%	97.7%	98.2%	98.8%	99.0%	98.4%	97.5%	97.8%		98.4%
San Juan	99.2%	97.3%	99.0%	98.2%	99.0%	98.6%	98.9%	98.7%	99.0%	98.2%	98.5%		98.6%
Sierra	98.8%	97.6%	99.1%	98.7%	97.7%	97.0%	98.4%	97.4%	99.5%	97.6%	96.8%		98.1%
Socorro	99.2%	96.2%	96.8%	99.3%	98.8%	98.1%	98.5%	97.9%	98.6%	98.3%	98.7%		98.2%
Valencia North	99.0%	96.6%	97.9%	98.1%	98.4%	97.7%	97.4%	97.3%	97.4%	96.0%	96.8%		97.5%
Valencia South													
NW Region 1 Total	99.2%	97.1%	98.2%	98.6%	98.3%	98.0%	98.4%	98.1%	98.6%	97.6%	97.8%		98.2%
Colfax	99.2%	97.5%	97.6%	99.5%	98.0%	98.9%	99.2%	98.0%	98.9%	98.3%	97.6%		98.4%
Guadalupe	99.6%	96.9%	99.2%	100.0%	99.5%	99.6%	99.6%	99.6%	98.6%	98.5%	96.6%		98.9%
Quay	98.4%	97.0%	99.1%	99.0%	96.1%	97.6%	98.0%	97.8%	96.1%	98.2%	98.2%		97.8%
Rio Arriba	98.6%	97.1%	98.6%	97.7%	97.0%	96.3%	97.6%	97.3%	97.7%	95.8%	97.2%		97.3%
San Miguel	99.5%	97.3%	99.7%	99.3%	99.3%	99.1%	99.4%	99.8%	99.3%	99.5%	98.0%		99.1%
Sandoval	98.6%	97.1%	97.7%	98.4%	97.8%	98.9%	97.8%	99.0%	98.6%	98.2%	98.1%		98.2%
Santa Fe	97.9%	95.8%	98.1%	96.9%	97.7%	97.3%	95.9%	98.0%	97.9%	96.8%	96.9%		97.2%
Taos	98.2%	97.1%	99.1%	99.1%	98.1%	98.1%	97.8%	99.6%	98.6%	97.2%	98.6%		98.3%
NE Region 2 Total	98.8%	97.0%	98.7%	98.7%	97.9%	98.2%	98.2%	98.6%	98.2%	97.8%	97.7%		98.2%
NE Bernalillo	98.1%	96.7%	98.3%	98.2%	98.4%	98.6%	98.7%	98.5%	98.0%	97.1%	97.4%		98.0%
NW Bernalillo	97.9%	97.2%	98.5%	98.2%	98.9%	98.0%	98.1%	97.9%	98.2%	98.2%	98.1%		98.1%
SE Bernalillo	98.5%	96.9%	98.8%	98.7%	98.5%	98.8%	98.3%	98.6%	98.4%	97.5%	98.2%		98.3%
SW Bernalillo	98.2%	96.7%	98.3%	98.5%	97.8%	98.0%	97.6%	97.4%	97.7%	96.5%	96.8%		97.6%
Torrance	99.5%	98.0%	98.8%	99.2%	99.8%	99.4%	99.0%	98.8%	98.6%	99.1%	98.4%		99.0%
Gen. Region 3 Total	98.5%	97.1%	98.5%	98.6%	98.7%	98.6%	98.3%	98.2%	98.2%	97.7%	97.8%		98.2%
Chaves	98.8%	97.1%	98.8%	99.2%	98.1%	99.2%	98.6%	98.4%	98.6%	97.9%	97.9%		98.4%
Curry	98.9%	97.5%	98.7%	98.7%	98.2%	98.8%	98.2%	98.7%	99.3%	98.7%	99.0%		98.6%
Eddy Artesia	98.2%	96.9%	98.2%	99.5%	97.4%	98.4%	96.5%	98.0%	97.7%	98.4%	96.9%		97.8%
Eddy Carlsbad	98.9%	96.6%	97.0%	98.1%	97.2%	98.0%	98.0%	97.7%	98.8%	97.7%	98.1%		97.8%
Lea	98.9%	97.8%	99.2%	99.4%	99.3%	98.5%	98.4%	98.9%	98.1%	98.6%	98.2%		98.7%
Lincoln	98.6%	95.2%	98.6%	96.3%	98.3%	98.1%	97.6%	96.9%	99.2%	99.2%	97.0%		97.7%
Roosevelt	100.0%												100.0%
SE Region 4 Total	98.9%	96.9%	98.4%	98.6%	98.1%	98.5%	97.9%	98.1%	98.6%	98.4%	97.9%		98.2%
East Dona Ana	99.3%	97.1%	99.5%	99.3%	99.3%	99.2%	99.2%	99.2%	99.1%	98.8%	98.8%		99.0%
Grant	99.1%	97.4%	99.1%	99.8%	98.7%	99.0%	99.3%	99.4%	98.8%	97.0%	98.6%		98.7%
Luna	99.2%	97.2%	99.3%	99.6%	97.9%	98.5%	99.0%	98.5%	98.8%	98.4%	99.6%		98.7%
Otero	98.3%	96.6%	96.9%	97.6%	99.0%	97.7%	97.8%	97.9%	97.6%	97.1%	96.9%		97.6%
South Dona Ana	97.9%	97.4%	98.3%	97.7%	97.9%	97.9%	97.8%	98.1%	98.1%	97.4%	97.9%		97.9%
West Dona Ana	99.6%	98.0%	99.4%	99.2%	99.3%	99.1%	98.7%	100.0%	99.4%	98.8%	99.2%		99.2%
SW Region 5 Total	98.9%	97.3%	98.8%	98.9%	98.7%	98.6%	98.6%	98.9%	98.6%	97.9%	98.5%		98.5%
STATE TOTAL	98.9%	97.0%	98.5%	98.7%	98.3%	98.3%	98.3%	98.4%	98.4%	97.9%	97.9%		98.2%

Administrative, Annual, and Auto Renewals are included

Medicaid: Percentage of Closures EDGs Processed by Certification End Date¹¹

	Oct-18	Nov-18	Dec-18	Jan-19	Feb-19	Mar-19	Apr-19	May-19	Jun-19	Jul-19	Aug-19	Sep-19	Average
Cibola	96.0%	97.9%	98.2%	94.0%	94.9%	98.0%	97.8%	98.2%	96.9%	94.8%	96.5%		96.7%
McKinley	98.6%	98.9%	97.3%	98.3%	98.0%	99.0%	97.1%	96.9%	97.1%	97.5%	95.1%		97.6%
San Juan	97.1%	97.0%	96.2%	97.5%	97.3%	97.7%	97.6%	97.0%	97.1%	97.5%	95.0%		97.0%
Sierra	98.5%	95.6%	97.7%	97.5%	96.7%	97.0%	96.8%	97.5%	95.4%	97.0%	95.5%		96.8%
Socorro	96.0%	99.4%	93.8%	98.9%	95.3%	99.5%	96.6%	89.3%	94.8%	97.9%	95.3%		96.1%
Valencia North	98.3%	98.7%	97.0%	96.9%	98.3%	98.0%	98.5%	96.1%	96.6%	96.5%	91.3%		96.9%
Valencia South													
NW Region 1 Total	97.4%	97.9%	96.7%	97.2%	96.7%	98.2%	97.4%	95.8%	96.3%	96.9%	94.8%		96.9%
Colfax	96.3%	97.8%	95.0%	98.9%	93.3%	100.0%	98.5%	100.0%	95.0%	98.5%	98.2%		97.4%
Guadalupe	98.3%	100.0%	100.0%	100.0%	100.0%	96.7%	100.0%	94.6%	95.8%	96.3%	98.2%		98.2%
Quay	96.6%	97.0%	100.0%	100.0%	95.7%	100.0%	94.9%	96.0%	95.7%	95.1%	100.0%		97.4%
Rio Arriba	98.6%	98.1%	96.6%	98.4%	97.9%	98.7%	97.8%	97.9%	97.2%	92.3%	95.9%		97.2%
San Miguel	100.0%	98.8%	98.4%	98.6%	98.0%	98.0%	99.6%	98.2%	96.8%	96.1%	98.6%		98.3%
Sandoval	98.2%	98.1%	97.4%	95.0%	97.1%	97.8%	98.4%	98.3%	97.7%	96.9%	96.0%		97.3%
Santa Fe	98.0%	98.5%	95.3%	96.9%	96.5%	98.7%	97.6%	96.8%	96.1%	93.7%	95.6%		96.7%
Taos	97.4%	98.8%	95.2%	99.1%	98.5%	99.5%	97.7%	97.0%	96.0%	96.1%	95.3%		97.3%
NE Region 2 Total	97.9%	98.4%	97.2%	98.4%	97.1%	98.7%	98.1%	97.4%	96.3%	95.6%	97.2%		97.5%
NE Bernalillo	98.3%	97.6%	97.3%	97.0%	97.1%	98.5%	97.4%	97.4%	96.8%	96.1%	95.1%		97.2%
NW Bernalillo	98.2%	98.5%	96.5%	97.4%	97.1%	98.3%	97.6%	96.8%	96.9%	96.9%	95.2%		97.2%
SE Bernalillo	95.8%	98.4%	96.0%	97.3%	96.2%	98.8%	98.7%	97.7%	97.0%	94.9%	93.6%		96.8%
SW Bernalillo	97.8%	98.3%	95.9%	96.3%	97.0%	98.4%	97.6%	96.3%	96.7%	96.2%	94.5%		96.8%
Torrance	97.8%	98.5%	97.6%	99.1%	97.7%	98.9%	98.3%	95.3%	97.1%	98.7%	95.0%		97.6%
Gen. Region 3 Total	97.6%	98.3%	96.7%	97.4%	97.0%	98.6%	97.9%	96.7%	96.9%	96.6%	94.7%		97.1%
Chaves	98.2%	98.9%	98.2%	98.5%	98.3%	97.6%	98.7%	96.5%	97.9%	97.9%	94.0%		97.7%
Curry	98.9%	98.1%	98.2%	97.6%	99.2%	99.5%	98.4%	99.0%	98.6%	98.8%	98.4%		98.6%
Eddy Artesia	98.9%	97.3%	98.7%	95.4%	97.6%	98.9%	96.6%	94.7%	94.7%	93.8%	97.0%		96.7%
Eddy Carlsbad	99.1%	99.3%	99.0%	97.3%	97.0%	98.9%	98.1%	97.2%	97.4%	96.3%	96.6%		97.8%
Lea	97.7%	98.6%	98.6%	97.8%	96.2%	99.4%	98.4%	97.3%	98.6%	97.1%	95.4%		97.7%
Lincoln	99.5%	99.5%	98.1%	96.0%	97.6%	98.2%	98.4%	93.7%	99.5%	94.9%	93.4%		97.2%
Roosevelt	100.0%												100.0%
SE Region 4 Total	98.9%	98.6%	98.5%	97.1%	97.7%	98.8%	98.1%	96.4%	97.8%	96.5%	95.8%		97.6%
East Dona Ana	98.1%	97.9%	98.9%	98.1%	99.0%	99.5%	98.8%	96.4%	98.8%	97.5%	98.2%		98.3%
Grant	97.6%	97.4%	97.3%	96.5%	96.7%	98.9%	99.2%	99.6%	99.3%	97.4%	98.4%		98.0%
Luna	99.1%	98.5%	100.0%	99.5%	99.3%	99.3%	96.3%	99.7%	97.6%	99.3%	98.9%		98.9%
Otero	98.5%	98.9%	99.0%	99.6%	98.4%	97.9%	98.7%	98.7%	97.9%	97.2%	97.6%		98.4%
South Dona Ana	97.9%	98.1%	98.3%	98.8%	98.0%	98.1%	96.5%	98.1%	96.3%	97.2%	98.4%		97.8%
West Dona Ana	98.2%	98.4%	99.2%	97.8%	98.2%	99.3%	98.7%	97.5%	97.7%	98.3%	97.1%		98.2%
SW Region 5 Total	98.2%	98.2%	98.8%	98.4%	98.2%	98.8%	98.0%	98.3%	97.9%	97.8%	98.1%		98.3%
STATE TOTAL	98.0%	98.3%	97.6%	97.7%	97.3%	98.6%	97.9%	97.0%	97.0%	96.6%	96.2%		97.6%

Annual and Auto Renewals are included

Medicaid: Percentage of Approved and Terminated Renewal EDGs Combined Processed by Certification Date ¹¹

	Oct-18	Nov-18	Dec-18	Jan-19	Feb-19	Mar-19	Apr-19	May-19	Jun-19	Jul-19	Aug-19	Sep-19	Average
Cibola	99.1%	97.2%	97.8%	97.7%	97.7%	98.2%	98.5%	98.3%	98.1%	97.2%	98.0%		98.0%
McKinley	99.3%	97.7%	98.6%	99.0%	97.8%	98.3%	98.5%	98.6%	98.2%	97.5%	97.5%		98.3%
San Juan	98.8%	97.3%	98.5%	98.1%	98.7%	98.4%	98.7%	98.3%	98.6%	98.0%	97.9%		98.3%
Sierra	98.8%	97.4%	98.9%	98.6%	97.6%	97.0%	98.2%	97.4%	98.7%	97.5%	96.6%		97.9%
Socorro	98.6%	96.6%	96.3%	99.2%	98.3%	98.4%	98.2%	96.1%	97.9%	98.2%	98.3%		97.8%
Valencia North	98.9%	96.8%	97.7%	98.0%	98.3%	97.8%	97.6%	97.0%	97.3%	96.1%	96.2%		97.4%
Valencia South													
NW Region 1 Total	98.9%	97.2%	98.0%	98.4%	98.1%	98.0%	98.3%	97.6%	98.1%	97.4%	97.4%		97.9%
Colfax	98.6%	97.6%	97.2%	99.4%	97.3%	99.1%	99.1%	98.5%	98.3%	98.4%	97.7%		98.3%
Guadalupe	99.4%	97.3%	99.3%	100.0%	99.6%	99.0%	99.7%	98.6%	98.1%	98.0%	97.0%		98.7%
Quay	98.1%	97.0%	99.2%	99.1%	96.1%	98.0%	97.5%	97.6%	96.0%	97.7%	98.4%		97.7%
Rio Arriba	98.6%	97.2%	98.3%	97.8%	97.2%	96.9%	97.7%	97.4%	97.6%	95.0%	97.0%		97.3%
San Miguel	99.6%	97.4%	99.5%	99.2%	99.1%	98.8%	99.4%	99.5%	98.8%	98.9%	98.1%		98.9%
Sandoval	98.6%	97.2%	97.6%	97.9%	97.7%	98.6%	97.9%	98.9%	98.4%	97.9%	97.8%		98.0%
Santa Fe	98.0%	96.3%	97.5%	96.9%	97.5%	97.7%	96.3%	97.8%	97.5%	96.2%	96.6%		97.1%
Taos	98.0%	97.4%	98.3%	99.1%	98.2%	98.4%	97.7%	99.0%	98.0%	97.0%	98.1%		98.1%
NE Region 2 Total	98.6%	97.2%	98.4%	98.7%	97.8%	98.3%	98.2%	98.4%	97.8%	97.4%	97.6%		98.0%
NE Bernalillo	98.1%	96.9%	98.1%	98.0%	98.1%	98.6%	98.4%	98.2%	97.7%	96.9%	97.1%		97.8%
NW Bernalillo	98.0%	97.4%	98.2%	98.1%	98.6%	98.1%	98.0%	97.7%	98.0%	97.9%	97.6%		98.0%
SE Bernalillo	98.0%	97.1%	98.4%	98.5%	98.1%	98.8%	98.3%	98.5%	98.1%	97.0%	97.6%		98.0%
SW Bernalillo	98.1%	96.9%	97.9%	98.2%	97.6%	98.1%	97.6%	97.2%	97.5%	96.5%	96.5%		97.5%
Torrance	99.2%	98.1%	98.5%	99.2%	99.6%	99.3%	98.9%	98.1%	98.3%	99.1%	97.9%		98.7%
Gen. Region 3 Total	98.3%	97.3%	98.2%	98.4%	98.4%	98.6%	98.2%	97.9%	97.9%	97.5%	97.3%		98.0%
Chaves	98.7%	97.3%	98.7%	99.1%	98.1%	98.8%	98.6%	98.1%	98.5%	97.9%	97.3%		98.3%
Curry	98.9%	97.6%	98.6%	98.6%	98.4%	98.9%	98.2%	98.7%	99.2%	98.7%	98.9%		98.6%
Eddy Artesia	98.4%	97.0%	98.3%	98.9%	97.4%	98.6%	96.5%	97.3%	97.0%	97.4%	96.9%		97.6%
Eddy Carlsbad	99.0%	97.1%	97.6%	98.0%	97.2%	98.2%	98.0%	97.6%	98.4%	97.4%	97.8%		97.8%
Lea	98.6%	97.9%	99.0%	99.2%	98.7%	98.7%	98.4%	98.5%	98.2%	98.3%	97.7%		98.5%
Lincoln	98.8%	95.9%	98.5%	96.3%	98.1%	98.2%	97.8%	96.2%	99.3%	98.2%	96.4%		97.6%
Roosevelt	100.0%												100.0%
SE Region 4 Total	98.9%	97.1%	98.5%	98.3%	98.0%	98.6%	97.9%	97.7%	98.4%	98.0%	97.5%		98.1%
East Dona Ana	99.1%	97.2%	99.4%	99.1%	99.2%	99.3%	99.1%	98.6%	99.0%	98.6%	98.7%		98.9%
Grant	98.9%	97.4%	98.9%	99.4%	98.4%	98.9%	99.3%	99.4%	98.9%	97.1%	98.6%		98.6%
Luna	99.2%	97.4%	99.4%	99.6%	98.1%	98.7%	98.5%	98.7%	98.6%	98.5%	99.5%		98.7%
Otero	98.3%	96.9%	97.2%	97.9%	98.9%	97.8%	98.0%	98.1%	97.7%	97.1%	97.0%		97.7%
South Dona Ana	97.9%	97.5%	98.3%	97.8%	97.9%	97.9%	97.6%	98.1%	97.8%	97.3%	97.9%		97.8%
West Dona Ana	99.4%	98.0%	99.4%	99.1%	99.1%	99.1%	98.7%	98.9%	99.1%	98.8%	99.0%		99.0%
SW Region 5 Total	98.8%	97.4%	98.8%	98.8%	98.6%	98.6%	98.5%	98.6%	98.5%	97.9%	98.5%		98.5%
STATE TOTAL	98.7%	97.2%	98.4%	98.5%	98.1%	98.4%	98.2%	98.1%	98.2%	97.6%	97.7%		98.1%

Administrative, Annual, and Auto Renewals are included

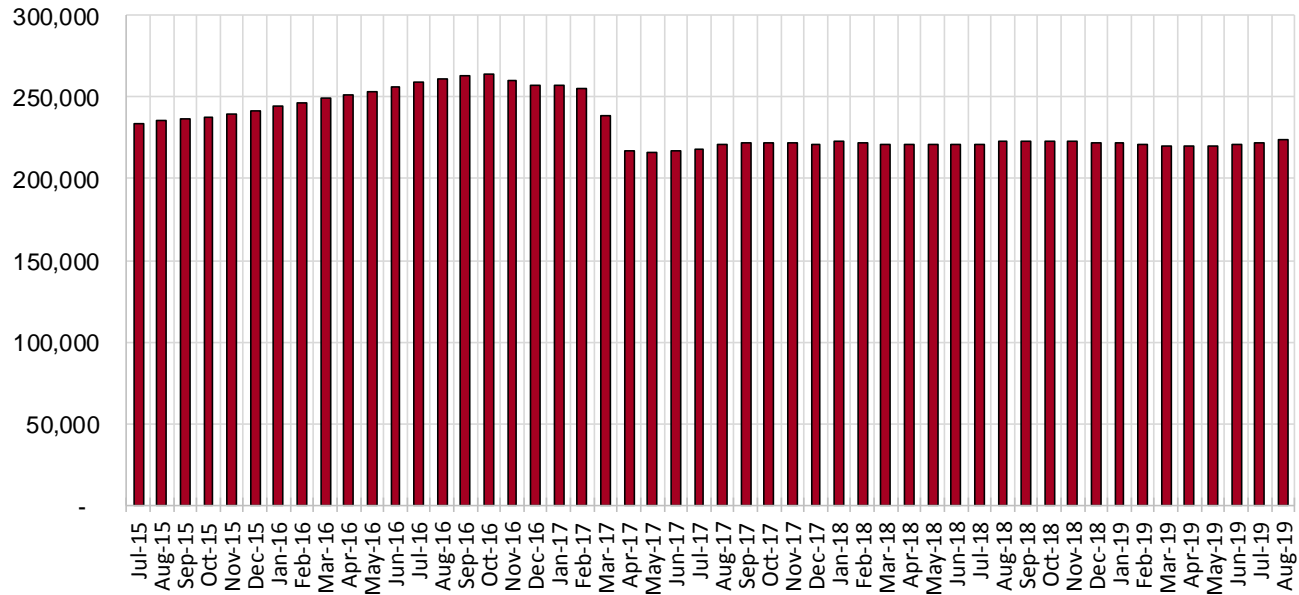
SNAP Cases by Field Office⁶

Office				Percent Change	
	Aug-18	Jul-19	Aug-19	Aug-18- Aug-19	Jul-19- Aug-19
Chaves County ISD	7,089	6,996	7,036	-0.7%	0.6%
Cibola County ISD	3,700	3,611	3,639	-1.6%	0.8%
Colfax County ISD	1,635	1,685	1,625	-0.6%	-3.6%
Curry County ISD	6,823	7,204	7,346	7.7%	2.0%
East Dona Ana County ISD	8,069	8,013	8,033	-0.4%	0.2%
Eddy Artesia County ISD	1,636	1,540	1,564	-4.4%	1.6%
Eddy Carlsbad County ISD	2,904	2,914	2,956	1.8%	1.4%
Grant County ISD	3,442	3,944	3,994	16.0%	1.3%
Guadalupe County ISD	715	688	683	-4.5%	-0.7%
Hidalgo County ISD	455	15	13	-97.1%	-13.3%
Lea County ISD	5,698	5,618	5,669	-0.5%	0.9%
Lincoln County ISD	1,843	1,873	1,870	1.5%	-0.2%
Luna County ISD	4,168	4,230	4,270	2.4%	0.9%
McKinley County ISD	9,949	10,211	10,315	3.7%	1.0%
Northeast Bernalillo County ISD	20,514	20,268	20,484	-0.1%	1.1%
Northwest Bernalillo County ISD	19,792	19,947	20,187	2.0%	1.2%
Otero County ISD	5,598	5,695	5,747	2.7%	0.9%
Quay County ISD	1,268	1,254	1,272	0.3%	1.4%
Rio Arriba County ISD	6,748	6,471	6,500	-3.7%	0.4%
Roosevelt County ISD	0	1	1	N/A	0.0%
San Juan County ISD	13,628	13,857	13,986	2.6%	0.9%
San Miguel County ISD	4,937	5,032	5,053	2.3%	0.4%
Sandoval County ISD	11,153	9,838	9,900	-11.2%	0.6%
Santa Fe County ISD	9,570	9,436	9,426	-1.5%	-0.1%
Sierra County ISD	2,657	2,543	2,541	-4.4%	-0.1%
Socorro County ISD	2,758	2,769	2,785	1.0%	0.6%
South Dona Ana ISD	8,554	8,489	8,490	-0.7%	0.0%
Southeast Bernalillo County ISD	11,769	11,924	11,934	1.4%	0.1%
Southwest Bernalillo County ISD	18,774	19,327	19,406	3.4%	0.4%
Taos County ISD	4,175	4,158	4,196	0.5%	0.9%
Torrance County ISD	3,435	3,595	3,556	3.5%	-1.1%
Valencia North County ISD	8,485	8,329	8,408	-0.9%	0.9%
Valencia South County ISD	1	6	0	-100.0%	-100.0%
West Dona Ana County ISD	10,842	10,696	10,778	-0.6%	0.8%
Centralized Units	30	18	5	-83.3%	-72.2%
Statewide Total	222,814	222,195	223,668	0.4%	0.7%

SNAP Cases by Region⁶

Region				Percent Change	
	Aug-18	Jul-19	Aug-19	Aug-18- Aug-19	Jul-19- Aug-19
Region 1 - NW	41,178	41,326	41,674	1.2%	0.8%
Region 2 - NE	40,201	38,562	38,655	-3.8%	0.2%
Region 3 - Central	74,284	75,061	75,567	1.7%	0.7%
Region 4 - SE	25,993	26,146	26,442	1.7%	1.1%
Region 5 - SW	41,128	41,082	41,325	0.5%	0.6%
Centralized Units	30	18	5	-83.3%	-72.2%
Statewide Total	222,814	222,195	223,668	0.4%	0.7%

SNAP Caseload: SFY-16 to Current

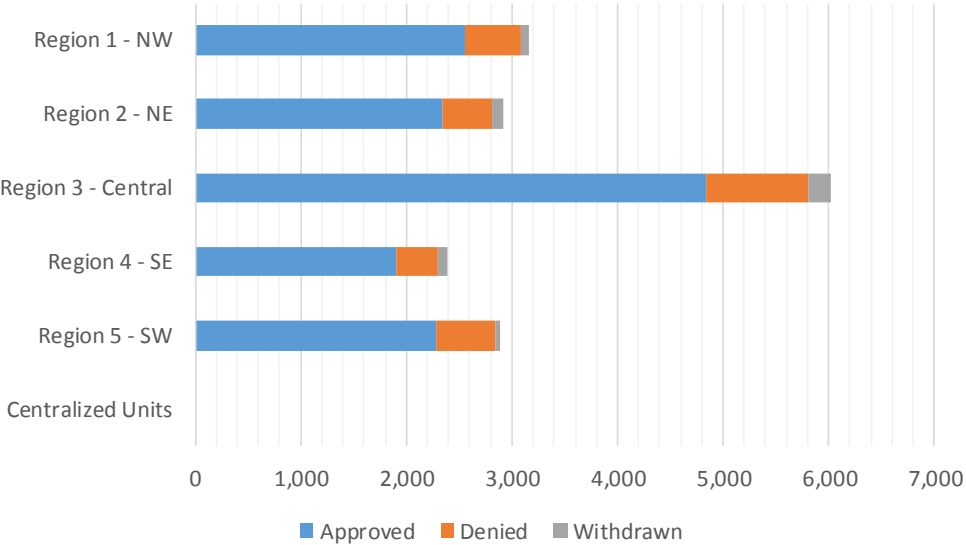


SNAP Initial Applications by Field Office^{4,11}
August 2019

Office	Approved	Denied	Withdrawn	Total Cases Processed
Chaves County ISD	443	96	34	573
Cibola County ISD	206	32	5	243
Colfax County ISD	85	19	3	107
Curry County ISD	532	105	16	653
East Dona Ana County ISD	462	159	13	634
Eddy Artesia County ISD	108	21	5	134
Eddy Carlsbad County ISD	261	63	6	330
Grant County ISD	252	52	1	305
Guadalupe County ISD	35	8	0	43
Hidalgo County ISD	0	0	0	0
Lea County ISD	444	96	15	555
Lincoln County ISD	112	22	7	141
Luna County ISD	244	31	10	285
McKinley County ISD	585	89	12	686
Northeast Bernalillo County ISD	1,461	345	54	1,860
Northwest Bernalillo County ISD	1,220	260	60	1,540
Otero County ISD	316	86	8	410
Quay County ISD	67	10	4	81
Rio Arriba County ISD	377	54	22	453
Roosevelt County ISD	0	0	0	0
San Juan County ISD	1,040	223	37	1,300
San Miguel County ISD	313	58	11	382
Sandoval County ISD	664	171	31	866
Santa Fe County ISD	532	120	24	676
Sierra County ISD	121	27	6	154
Socorro County ISD	148	41	3	192
South Dona Ana ISD	361	68	5	434
Southeast Bernalillo County ISD	809	148	24	981
Southwest Bernalillo County ISD	1,163	175	68	1,406
Taos County ISD	270	33	10	313
Torrance County ISD	194	35	7	236
Valencia North County ISD	456	110	13	579
Valencia South County ISD	0	0	0	0
West Dona Ana County ISD	641	164	13	818
Centralized Units	0	0	0	0
Statewide Total	13,922	2,921	527	17,370

SNAP Initial Applications by Region^{4,11}
August 2019

Region	Approved	Denied	Withdrawn	Total Cases Processed
Region 1 - NW	2,556	522	76	3,154
Region 2 - NE	2,343	473	105	2,921
Region 3 - Central	4,847	963	213	6,023
Region 4 - SE	1,900	403	83	2,386
Region 5 - SW	2,276	560	50	2,886
Centralized Units	0	0	0	0
Statewide Total	13,922	2,921	527	17,370

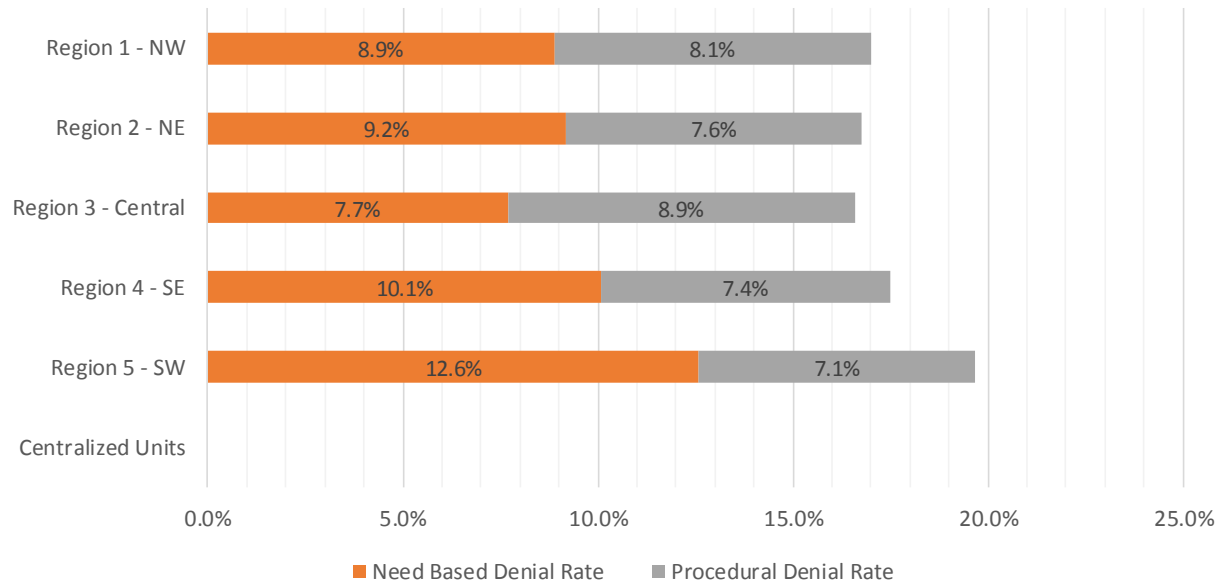


SNAP Initial Disposition Rates by Field Office^{4,11}
August 2019

Office	Approval Rate	Denial Rate	Need Based Denial Rate	Procedural Denial Rate
Chaves County ISD	82.2%	17.8%	10.2%	7.6%
Cibola County ISD	86.6%	13.4%	5.0%	8.4%
Colfax County ISD	81.7%	18.3%	11.6%	6.7%
Curry County ISD	83.5%	16.5%	11.2%	5.3%
East Dona Ana County ISD	74.4%	25.6%	15.6%	10.0%
Eddy Artesia County ISD	83.7%	16.3%	8.5%	7.8%
Eddy Carlsbad County ISD	80.6%	19.4%	9.5%	9.9%
Grant County ISD	82.9%	17.1%	10.5%	6.6%
Guadalupe County ISD	81.4%	18.6%	11.6%	7.0%
Hidalgo County ISD	0.0%	0.0%	0.0%	0.0%
Lea County ISD	82.2%	17.8%	10.0%	7.8%
Lincoln County ISD	83.6%	16.4%	8.2%	8.2%
Luna County ISD	88.7%	11.3%	5.8%	5.5%
McKinley County ISD	86.8%	13.2%	8.2%	5.0%
Northeast Bernalillo County ISD	80.9%	19.1%	8.0%	11.1%
Northwest Bernalillo County ISD	82.4%	17.6%	7.5%	10.1%
Otero County ISD	78.6%	21.4%	11.4%	10.0%
Quay County ISD	87.0%	13.0%	7.8%	5.2%
Rio Arriba County ISD	87.5%	12.5%	4.6%	7.9%
Roosevelt County ISD	0.0%	100.0%	100.0%	0.0%
San Juan County ISD	82.3%	17.7%	8.4%	9.3%
San Miguel County ISD	84.4%	15.6%	10.5%	5.1%
Sandoval County ISD	79.5%	20.5%	11.6%	8.9%
Santa Fe County ISD	81.6%	18.4%	9.7%	8.7%
Sierra County ISD	81.8%	18.2%	14.8%	3.4%
Socorro County ISD	78.3%	21.7%	11.6%	10.1%
South Dona Ana ISD	84.1%	15.9%	10.5%	5.4%
Southeast Bernalillo County ISD	84.5%	15.5%	8.9%	6.6%
Southwest Bernalillo County ISD	86.9%	13.1%	6.5%	6.6%
Taos County ISD	89.1%	10.9%	5.9%	5.0%
Torrance County ISD	84.7%	15.3%	9.2%	6.1%
Valencia North County ISD	80.6%	19.4%	10.0%	9.4%
Valencia South County ISD	0.0%	0.0%	0.0%	0.0%
West Dona Ana County ISD	79.6%	20.4%	15.3%	5.1%
Centralized Units	0.0%	0.0%	0.0%	0.0%
Statewide Total	82.7%	17.3%	9.3%	8.0%

SNAP Initial Disposition Rates by Region^{4,11}
August 2019

Region	Approval Rate	Denial Rate	Need Based Denial Rate	Procedural Denial Rate
Region 1 - NW	83.0%	17.0%	8.9%	8.1%
Region 2 - NE	83.2%	16.8%	9.2%	7.6%
Region 3 - Central	83.4%	16.6%	7.7%	8.9%
Region 4 - SE	82.5%	17.5%	10.1%	7.4%
Region 5 - SW	80.3%	19.7%	12.6%	7.1%
Centralized Units	0.0%	0.0%	0.0%	0.0%
Statewide Total	82.7%	17.3%	9.3%	8.0%



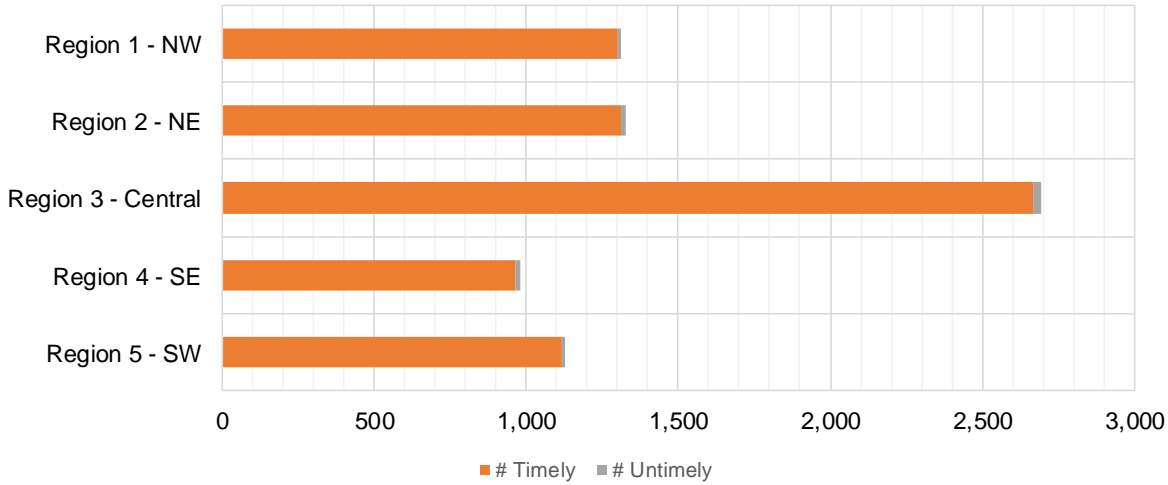
SNAP Expedite Timeliness by Field Office¹³
August 2019

Office Name	Total Expedited Approvals	# Timely	# Untimely	Percentage Timely
Chaves County ISD	187	185	2	98.9 %
Cibola County ISD	96	95	1	99.0 %
Colfax County ISD	43	43	0	100.0 %
Curry County ISD	293	288	5	98.3 %
East Dona Ana County ISD	209	206	3	98.6 %
Eddy Artesia County ISD	53	53	0	100.0 %
Eddy Carlsbad County ISD	156	152	4	97.4 %
Grant County ISD	139	139	0	100.0 %
Guadalupe County ISD	15	15	0	100.0 %
Lea County ISD	241	240	1	99.6 %
Lincoln County ISD	48	47	1	97.9 %
Luna County ISD	128	128	0	100.0 %
McKinley County ISD	307	306	1	99.7 %
Northeast Bernalillo County ISD	807	792	15	98.1 %
Northwest Bernalillo County ISD	735	731	4	99.5 %
Otero County ISD	160	157	3	98.1 %
Quay County ISD	22	21	1	95.5 %
Rio Arriba County ISD	246	244	2	99.2 %
Roosevelt County ISD	0	0	0	N/A
San Juan County ISD	577	574	3	99.5 %
San Miguel County ISD	185	183	2	98.9 %
Sandoval County ISD	359	354	5	98.6 %
Santa Fe County ISD	300	296	4	98.7 %
Sierra County ISD	49	49	0	100.0 %
Socorro County ISD	74	74	0	100.0 %
South Dona Ana ISD	162	159	3	98.1 %
Southeast Bernalillo County ISD	429	426	3	99.3 %
Southwest Bernalillo County ISD	637	633	4	99.4 %
Taos County ISD	156	155	1	99.4 %
Torrance County ISD	88	88	0	100.0 %
Valencia North County ISD	206	202	4	98.1 %
West Dona Ana County ISD	328	328	0	100.0 %
Statewide Total	7,435	7,363	72	99.0 %

SNAP Expedite Timeliness by Region¹³
August 2019

Region	Total Expedited Approvals	# Timely	# Untimely	Percentage Timely
Region 1 - NW	1,309	1,300	9	99.3%
Region 2 - NE	1,326	1,311	15	98.9%
Region 3 - Central	2,696	2,670	26	99.0%
Region 4 - SE	978	965	13	98.7%
Region 5 - SW	1,126	1,117	9	99.2%
Statewide Total	7,435	7,363	72	99.0%

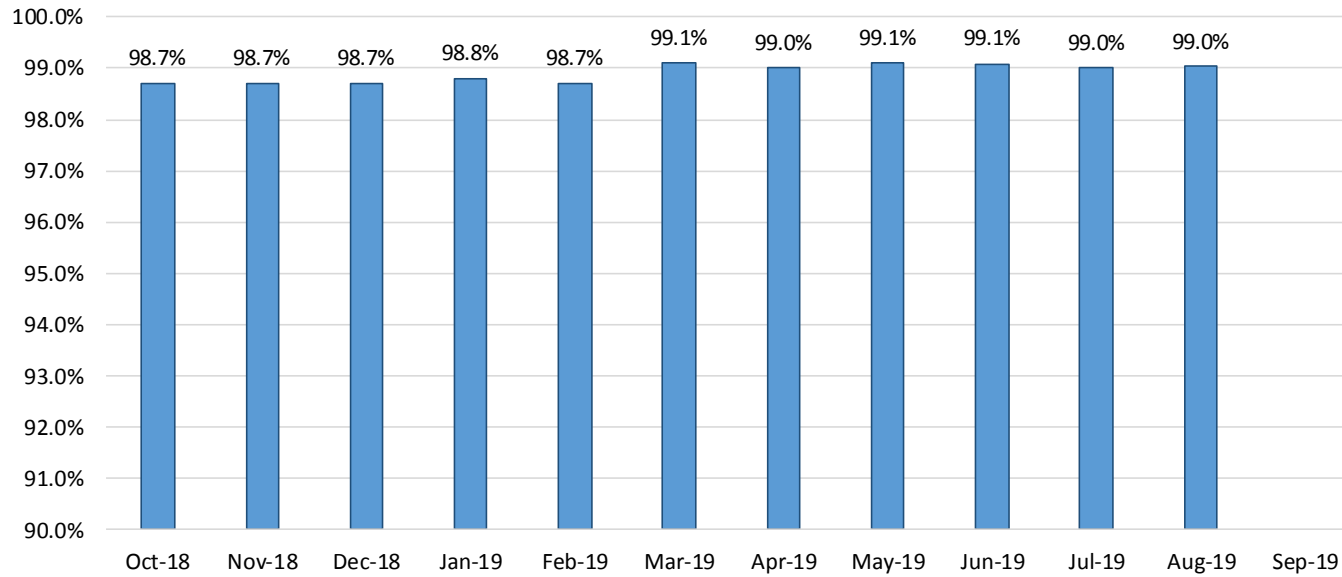
SNAP Expedite - Timeliness



SNAP: Percentage of Applications Processed Timely ¹³

	Oct-18	Nov-18	Dec-18	Jan-19	Feb-19	Mar-19	Apr-19	May-19	Jun-19	Jul-19	Aug-19	Sep-19	Average
APT	98.7%	98.7%	98.7%	98.8%	98.7%	99.1%	99.0%	99.1%	99.1%	99.0%	99.0%		98.9%

SNAP Application Processing Timeliness (APT)



SNAP Non-Expedite: Percentage of Initial Applications Processed Timely by Field Office¹³

	Oct-18	Nov-18	Dec-18	Jan-19	Feb-19	Mar-19	Apr-19	May-19	Jun-19	Jul-19	Aug-19	Sep-19	Average
Cibola	100.0%	99.0%	99.0%	97.5%	98.6%	98.5%	98.8%	99.3%	97.9%	98.8%	97.3%		98.6%
McKinley	98.8%	98.4%	98.9%	100.0%	96.6%	98.8%	99.3%	98.9%	98.8%	99.3%	99.0%		98.8%
San Juan	99.6%	99.2%	98.8%	99.1%	99.0%	98.8%	99.1%	99.1%	99.0%	98.6%	99.3%		99.1%
Sierra	98.9%	100.0%	100.0%	100.0%	100.0%	100.0%	100.0%	99.1%	100.0%	100.0%	100.0%		99.8%
Socorro	100.0%	98.4%	100.0%	100.0%	100.0%	100.0%	99.0%	100.0%	99.1%	100.0%	98.4%		99.5%
Valencia North	99.7%	99.3%	99.2%	100.0%	100.0%	99.7%	99.5%	99.5%	99.1%	98.9%	99.2%		99.5%
Valencia South													
NW Region 1 Total	99.4%	99.1%	99.1%	99.5%	98.8%	99.1%	99.2%	99.2%	99.0%	99.0%	99.0%		99.1%
Colfax	100.0%	100.0%	100.0%	100.0%	100.0%	100.0%	100.0%	100.0%	100.0%	100.0%	100.0%		100.0%
Guadalupe	100.0%	100.0%	96.3%	100.0%	100.0%	100.0%	100.0%	100.0%	100.0%	100.0%	100.0%		99.7%
Quay	100.0%	97.3%	100.0%	100.0%	100.0%	97.7%	100.0%	100.0%	100.0%	100.0%	100.0%		99.5%
Rio Arriba	100.0%	99.5%	98.1%	99.4%	98.9%	98.0%	98.0%	97.9%	98.6%	99.1%	97.6%		98.6%
San Miguel	100.0%	99.3%	99.2%	100.0%	100.0%	100.0%	100.0%	100.0%	100.0%	100.0%	100.0%		99.9%
Sandoval	99.5%	99.2%	99.6%	99.7%	99.6%	99.3%	99.4%	99.1%	99.8%	99.5%	99.1%		99.4%
Santa Fe	99.4%	98.6%	100.0%	99.3%	100.0%	99.7%	99.5%	98.8%	99.1%	99.5%	99.5%		99.4%
Taos	100.0%	98.4%	99.3%	98.9%	100.0%	100.0%	100.0%	100.0%	98.7%	100.0%	100.0%		99.6%
NE Region 2 Total	98.9%	99.0%	99.3%	99.5%	99.8%	99.4%	99.4%	99.1%	99.4%	99.6%	99.3%		99.3%
NE Bernalillo	98.9%	98.8%	98.8%	99.2%	99.4%	97.9%	98.5%	98.5%	98.0%	97.7%	98.6%		98.6%
NW Bernalillo	98.0%	99.3%	99.6%	99.0%	98.9%	97.4%	98.0%	98.5%	98.8%	98.7%	98.6%		98.6%
SE Bernalillo	99.6%	98.7%	99.0%	98.5%	99.3%	99.0%	99.3%	98.6%	97.9%	98.6%	98.7%		98.8%
SW Bernalillo	99.3%	99.5%	98.6%	99.6%	98.6%	98.8%	98.8%	99.1%	99.5%	98.6%	99.4%		99.1%
Torrance	100.0%	97.2%	97.3%	99.2%	97.7%	98.1%	99.4%	100.0%	99.1%	96.5%	100.0%		98.6%
Gen. Region 3 Total	98.9%	99.0%	98.9%	99.2%	99.0%	98.2%	98.6%	98.7%	98.6%	98.3%	98.9%		98.8%
Chaves	100.0%	99.6%	98.8%	99.7%	99.5%	99.4%	99.5%	99.0%	99.2%	99.0%	99.2%		99.4%
Curry	97.9%	98.4%	98.9%	98.4%	100.0%	100.0%	99.4%	100.0%	99.3%	99.5%	98.9%		99.2%
Eddy Artesia	100.0%	100.0%	100.0%	100.0%	100.0%	98.6%	100.0%	100.0%	96.5%	98.7%	98.8%		99.3%
Eddy Carlsbad	100.0%	99.1%	99.0%	100.0%	100.0%	99.3%	99.5%	99.4%	99.4%	97.9%	98.9%		99.3%
Lea	99.1%	99.5%	99.0%	97.8%	97.8%	99.2%	99.7%	99.1%	97.6%	99.2%	99.4%		98.9%
Lincoln	100.0%	98.8%	97.1%	98.8%	100.0%	99.2%	100.0%	100.0%	98.9%	96.9%	100.0%		99.1%
Roosevelt		100.0%		100.0%			100.0%	100.0%	100.0%	100.0%	100.0%		100.0%
SE Region 4 Total	98.2%	99.2%	98.8%	99.0%	99.4%	99.4%	99.6%	99.4%	98.7%	98.9%	99.2%		99.1%
East Dona Ana	99.7%	100.0%	99.3%	98.8%	100.0%	100.0%	98.7%	99.3%	99.7%	99.5%	99.1%		99.5%
Grant	100.0%	100.0%	99.0%	100.0%	100.0%	99.2%	99.4%	99.3%	99.3%	100.0%	98.2%		99.5%
Luna	100.0%	99.4%	99.3%	100.0%	100.0%	99.4%	100.0%	99.4%	97.1%	100.0%	98.8%		99.4%
Otero	99.2%	100.0%	99.3%	99.5%	100.0%	98.1%	99.3%	99.2%	99.2%	98.5%	98.8%		99.2%
South Dona Ana	99.6%	99.6%	98.4%	100.0%	100.0%	99.7%	99.7%	100.0%	100.0%	99.4%	99.6%		99.6%
West Dona Ana	99.5%	100.0%	99.3%	99.7%	100.0%	99.3%	99.4%	99.8%	99.8%	99.2%	99.2%		99.6%
SW Region 5 Total	99.4%	99.8%	99.1%	99.6%	100.0%	99.4%	99.3%	99.6%	99.4%	99.4%	99.1%		99.5%
STATE TOTAL	99.0%	99.2%	99.0%	99.3%	99.3%	98.9%	99.1%	99.1%	99.0%	98.9%	99.0%		99.1%

SNAP Expedite: Percentage of Initial Applications Processed Timely by Field Office¹³

	Oct-18	Nov-18	Dec-18	Jan-19	Feb-19	Mar-19	Apr-19	May-19	Jun-19	Jul-19	Aug-19	Sep-19	Average
Cibola	100.0%	99.2%	100.0%	97.8%	96.9%	96.1%	99.2%	98.2%	99.1%	97.9%	99.0%		98.5%
McKinley	98.8%	98.6%	100.0%	99.7%	99.3%	99.7%	99.1%	99.1%	99.7%	98.2%	99.7%		99.3%
San Juan	99.3%	99.5%	99.0%	99.4%	99.5%	99.8%	98.2%	99.6%	99.0%	99.4%	99.5%		99.3%
Sierra	100.0%	98.6%	100.0%	97.8%	100.0%	100.0%	97.9%	96.1%	100.0%	98.4%	100.0%		99.0%
Socorro	100.0%	98.6%	100.0%	100.0%	100.0%	100.0%	100.0%	100.0%	97.6%	100.0%	100.0%		99.7%
Valencia North	99.6%	99.6%	99.0%	99.2%	98.6%	100.0%	98.8%	99.2%	99.2%	98.3%	98.1%		99.1%
Valencia South				100.0%									
NW Region 1 Total	99.6%	99.2%	99.4%	99.3%	99.2%	99.5%	98.7%	99.2%	99.2%	98.7%	99.3%		99.2%
Colfax	100.0%	100.0%	100.0%	100.0%	100.0%	100.0%	100.0%	100.0%	100.0%	100.0%	100.0%		100.0%
Guadalupe	95.2%	100.0%	100.0%	100.0%	100.0%	100.0%	100.0%	100.0%	100.0%	100.0%	100.0%		99.6%
Quay	100.0%	100.0%	100.0%	97.6%	100.0%	100.0%	96.3%	97.4%	100.0%	96.3%	95.5%		98.5%
Rio Arriba	98.6%	97.9%	99.6%	98.0%	97.6%	99.5%	98.4%	100.0%	99.2%	99.1%	99.2%		98.8%
San Miguel	100.0%	100.0%	100.0%	99.1%	100.0%	98.9%	100.0%	98.8%	97.5%	98.6%	98.9%		99.3%
Sandoval	99.0%	98.5%	99.0%	98.8%	98.1%	99.0%	97.5%	98.2%	99.2%	99.7%	98.7%		98.7%
Santa Fe	98.5%	98.1%	99.2%	97.6%	99.1%	99.2%	99.2%	98.5%	99.1%	99.4%	98.7%		98.8%
Taos	98.8%	97.0%	94.3%	99.3%	99.0%	100.0%	98.7%	99.3%	99.1%	100.0%	98.7%		98.6%
NE Region 2 Total	98.8%	98.4%	98.9%	98.5%	98.7%	99.3%	98.7%	98.9%	99.1%	99.4%	98.8%		98.9%
NE Bernalillo	98.8%	98.5%	98.4%	98.1%	97.8%	98.5%	98.8%	98.1%	99.0%	99.0%	98.1%		98.5%
NW Bernalillo	99.0%	99.6%	99.4%	99.4%	99.3%	99.4%	99.1%	99.5%	99.5%	99.5%	99.6%		99.4%
SE Bernalillo	99.2%	99.1%	99.4%	99.6%	97.7%	98.8%	99.4%	99.8%	99.1%	98.5%	99.3%		99.1%
SW Bernalillo	98.7%	99.2%	97.5%	98.6%	98.9%	98.9%	99.3%	98.9%	99.6%	98.9%	99.4%		98.9%
Torrance	98.3%	100.0%	98.1%	100.0%	99.1%	98.3%	99.1%	98.2%	100.0%	99.1%	100.0%		99.1%
Gen. Region 3 Total	98.8%	99.1%	98.7%	98.9%	98.5%	98.8%	99.1%	98.9%	99.3%	99.0%	99.1%		98.9%
Chaves	98.8%	99.1%	100.0%	99.2%	100.0%	100.0%	99.6%	99.6%	97.8%	98.7%	98.9%		99.2%
Curry	98.1%	98.6%	98.4%	98.9%	97.6%	99.6%	99.4%	99.3%	99.6%	98.9%	98.3%		98.8%
Eddy Artesia	96.1%	100.0%	100.0%	100.0%	97.7%	94.7%	98.6%	100.0%	98.2%	100.0%	100.0%		98.7%
Eddy Carlsbad	97.0%	100.0%	98.6%	99.2%	98.9%	97.8%	100.0%	99.4%	100.0%	99.5%	96.9%		98.8%
Lea	98.7%	99.2%	99.1%	98.0%	100.0%	99.6%	100.0%	98.3%	99.1%	99.3%	99.6%		99.2%
Lincoln	100.0%	95.8%	98.2%	100.0%	100.0%	100.0%	98.2%	100.0%	98.3%	100.0%	97.9%		98.9%
Roosevelt	100.0%	100.0%	100.0%	100.0%	100.0%	100.0%	100.0%	100.0%	100.0%	100.0%	100.0%		100.0%
SE Region 4 Total	98.4%	98.9%	99.0%	98.9%	99.0%	99.2%	99.5%	99.2%	99.0%	99.2%	98.6%		99.0%
East Dona Ana	99.6%	99.0%	99.5%	99.3%	100.0%	100.0%	99.6%	99.5%	99.5%	99.6%	98.6%		99.5%
Grant	97.7%	99.3%	100.0%	99.4%	98.8%	100.0%	99.3%	99.3%	100.0%	99.4%	100.0%		99.4%
Luna	100.0%	100.0%	98.9%	98.4%	100.0%	100.0%	100.0%	97.5%	99.3%	100.0%	100.0%		99.5%
Otero	98.5%	99.5%	98.3%	98.9%	97.5%	99.5%	99.5%	99.5%	99.5%	99.5%	98.2%		98.9%
South Dona Ana	99.4%	100.0%	100.0%	100.0%	99.1%	100.0%	99.3%	100.0%	100.0%	99.4%	98.2%		99.6%
West Dona Ana	100.0%	100.0%	99.6%	99.7%	98.8%	100.0%	100.0%	99.7%	100.0%	100.0%	100.0%		99.8%
SW Region 5 Total	99.2%	99.6%	99.4%	99.4%	98.9%	99.9%	99.7%	99.4%	99.7%	99.7%	99.2%		99.5%
STATE TOTAL	98.9%	99.1%	99.0%	99.0%	98.8%	99.2%	99.1%	99.1%	99.3%	99.1%	99.0%		99.1%

SNAP: Percentage of Denied Initial Applications Processed Within 30 Days by Field Office¹³

	Oct-18	Nov-18	Dec-18	Jan-19	Feb-19	Mar-19	Apr-19	May-19	Jun-19	Jul-19	Aug-19	Sep-19	Average
Cibola	94.4%	92.3%	95.1%	93.9%	97.7%	100.0%	100.0%	100.0%	97.7%	100.0%	100.0%		97.4%
McKinley	96.2%	97.6%	95.2%	99.0%	96.4%	95.5%	100.0%	96.4%	96.6%	98.9%	100.0%		97.4%
San Juan	96.4%	93.2%	93.3%	94.9%	91.5%	99.0%	97.4%	98.9%	97.1%	98.1%	99.2%		96.3%
Sierra	100.0%	93.9%	100.0%	100.0%	100.0%	100.0%	100.0%	100.0%	100.0%	100.0%	100.0%		99.4%
Socorro	100.0%	100.0%	96.8%	97.4%	96.2%	100.0%	100.0%	100.0%	100.0%	100.0%	95.5%		98.7%
Valencia North	100.0%	98.4%	100.0%	99.3%	97.8%	99.1%	100.0%	99.0%	97.7%	97.1%	98.4%		98.8%
Valencia South													
NW Region 1 Total	97.3%	95.7%	95.8%	97.0%	94.9%	98.9%	99.6%	99.1%	98.2%	99.0%	98.9%		97.7%
Colfax	100.0%	96.3%	100.0%	100.0%	100.0%	100.0%	100.0%	100.0%	100.0%	100.0%	100.0%		99.7%
Guadalupe	100.0%	100.0%	100.0%	100.0%	100.0%	100.0%	100.0%	100.0%	100.0%	100.0%	100.0%		100.0%
Quay	100.0%	100.0%	100.0%	92.3%	100.0%	91.7%	100.0%	100.0%	100.0%	100.0%	100.0%		98.5%
Rio Arriba	94.6%	89.7%	93.2%	98.5%	95.6%	94.6%	95.7%	96.7%	96.6%	98.4%	98.7%		95.7%
San Miguel	100.0%	100.0%	100.0%	100.0%	100.0%	100.0%	100.0%	100.0%	100.0%	100.0%	100.0%		100.0%
Sandoval	98.4%	99.5%	99.4%	97.0%	98.1%	98.2%	100.0%	98.2%	99.4%	98.9%	98.0%		98.6%
Santa Fe	96.6%	96.7%	96.7%	97.3%	99.3%	99.2%	100.0%	99.3%	97.1%	100.0%	99.3%		98.3%
Taos	98.0%	98.3%	100.0%	95.2%	97.9%	100.0%	100.0%	100.0%	94.9%	100.0%	100.0%		98.6%
NE Region 2 Total	97.6%	97.4%	98.1%	97.4%	98.4%	98.0%	99.5%	99.3%	98.5%	99.7%	99.5%		98.5%
NE Bernalillo	94.8%	97.3%	93.5%	96.0%	98.6%	96.6%	97.0%	97.3%	96.5%	94.6%	97.7%		96.4%
NW Bernalillo	95.6%	96.8%	97.3%	95.6%	94.9%	95.8%	96.2%	97.3%	98.6%	98.3%	97.2%		96.7%
SE Bernalillo	94.1%	95.5%	96.3%	96.2%	96.5%	99.4%	98.7%	97.4%	97.4%	98.4%	98.3%		97.1%
SW Bernalillo	97.1%	97.0%	98.3%	97.8%	98.6%	97.9%	96.7%	98.9%	99.2%	97.5%	99.2%		98.0%
Torrance	93.2%	95.2%	96.6%	93.3%	100.0%	93.0%	98.1%	100.0%	96.9%	94.7%	100.0%		96.5%
Gen. Region 3 Total	95.3%	96.7%	96.2%	96.2%	97.4%	96.5%	97.3%	98.2%	97.7%	96.7%	98.5%		97.0%
Chaves	98.6%	95.7%	100.0%	99.2%	98.1%	100.0%	98.9%	97.1%	99.1%	100.0%	100.0%		98.8%
Curry	97.8%	96.7%	96.6%	94.5%	99.0%	100.0%	98.9%	100.0%	97.5%	98.0%	98.3%		97.9%
Eddy Artesia	92.6%	93.1%	100.0%	95.8%	96.0%	95.5%	100.0%	100.0%	87.5%	100.0%	100.0%		96.4%
Eddy Carlsbad	96.9%	97.0%	98.6%	100.0%	97.1%	98.2%	97.9%	98.4%	100.0%	95.3%	98.6%		98.0%
Lea	95.7%	97.1%	95.2%	99.1%	99.0%	100.0%	98.7%	98.1%	95.3%	97.3%	99.1%		97.7%
Lincoln	97.4%	93.5%	95.2%	96.6%	96.6%	100.0%	100.0%	100.0%	96.3%	100.0%	100.0%		97.8%
Roosevelt		100.0%											100.0%
SE Region 4 Total	97.1%	96.0%	97.6%	97.9%	98.2%	99.0%	99.1%	98.9%	96.0%	98.4%	99.3%		98.0%
East Dona Ana	97.3%	100.0%	99.2%	97.5%	99.1%	100.0%	97.4%	100.0%	99.2%	99.2%	100.0%		99.0%
Grant	95.8%	93.8%	97.6%	100.0%	97.9%	100.0%	100.0%	97.8%	100.0%	100.0%	96.2%		98.1%
Luna	100.0%	100.0%	98.1%	100.0%	97.6%	100.0%	100.0%	97.6%	95.3%	100.0%	97.6%		98.7%
Otero	100.0%	98.9%	100.0%	97.6%	97.4%	98.9%	96.9%	100.0%	98.9%	98.9%	98.9%		98.8%
South Dona Ana	100.0%	98.4%	98.7%	98.9%	98.6%	100.0%	98.8%	100.0%	100.0%	100.0%	98.6%		99.3%
West Dona Ana	98.2%	98.9%	99.3%	100.0%	98.4%	99.3%	97.8%	100.0%	100.0%	99.4%	97.7%		99.0%
SW Region 5 Total	98.3%	98.8%	99.1%	98.9%	98.3%	99.7%	98.5%	99.2%	98.9%	99.6%	98.2%		98.9%
STATE TOTAL	96.8%	97.0%	97.1%	97.3%	97.4%	98.4%	98.9%	99.0%	97.9%	98.8%	98.9%		98.0%

SNAP: Combined Approvals and Denials Percentage of Initial Applications Processed Timely by Field Office¹³

	Oct-18	Nov-18	Dec-18	Jan-19	Feb-19	Mar-19	Apr-19	May-19	Jun-19	Jul-19	Aug-19	Sep-19	Average
Cibola	99.4%	98.1%	98.9%	97.2%	97.8%	97.5%	99.0%	98.8%	98.4%	98.3%	97.9%		98.3%
McKinley	98.4%	98.4%	99.0%	99.8%	97.6%	99.2%	99.2%	99.1%	99.2%	98.7%	99.3%		98.9%
San Juan	98.9%	98.4%	98.0%	98.5%	97.6%	99.2%	98.6%	99.3%	99.0%	99.0%	99.4%		98.7%
Sierra	99.4%	98.6%	100.0%	99.0%	100.0%	100.0%	99.3%	98.7%	100.0%	99.4%	100.0%		99.5%
Socorro	100.0%	98.8%	99.4%	99.5%	99.1%	100.0%	99.4%	100.0%	98.4%	100.0%	99.0%		99.4%
Valencia North	99.7%	99.3%	99.3%	99.5%	99.1%	99.8%	99.2%	99.5%	99.2%	98.7%	98.8%		99.3%
Valencia South				100.0%				100.0%					100.0%
NW Region 1 Total	99.1%	98.6%	98.7%	99.0%	98.1%	99.3%	99.1%	99.3%	99.0%	99.0%	99.1%		98.9%
Colfax	100.0%	99.3%	100.0%	100.0%	100.0%	100.0%	100.0%	100.0%	100.0%	100.0%	100.0%		99.9%
Guadalupe	98.4%	100.0%	97.7%	100.0%	100.0%	100.0%	100.0%	100.0%	100.0%	100.0%	100.0%		99.6%
Quay	100.0%	98.6%	100.0%	97.9%	100.0%	98.6%	98.5%	98.9%	100.0%	98.7%	98.8%		99.1%
Rio Arriba	98.3%	97.4%	98.2%	98.5%	97.6%	98.8%	98.4%	99.0%	98.9%	99.3%	98.5%		98.4%
San Miguel	100.0%	99.7%	99.7%	99.5%	100.0%	99.4%	100.0%	99.5%	99.0%	99.3%	99.5%		99.6%
Sandoval	99.1%	99.0%	99.3%	98.9%	98.6%	99.2%	98.7%	98.7%	99.5%	99.6%	98.8%		99.0%
Santa Fe	98.5%	98.0%	99.0%	98.2%	99.4%	99.5%	99.3%	98.8%	99.1%	99.5%	99.1%		98.9%
Taos	99.2%	97.7%	97.5%	98.5%	99.2%	100.0%	99.4%	99.7%	98.9%	100.0%	99.7%		99.1%
NE Region 2 Total	99.0%	98.5%	98.9%	98.7%	99.0%	99.4%	99.3%	99.3%	99.4%	99.6%	99.3%		99.1%
NE Bernalillo	98.1%	98.4%	97.6%	98.1%	98.4%	98.2%	98.8%	98.3%	98.4%	98.3%	98.4%		98.3%
NW Bernalillo	98.0%	98.9%	99.0%	98.5%	98.2%	98.3%	98.5%	99.1%	99.1%	99.1%	99.0%		98.7%
SE Bernalillo	98.5%	98.3%	98.6%	98.6%	98.0%	98.9%	99.3%	99.2%	98.5%	98.6%	99.1%		98.7%
SW Bernalillo	98.7%	98.9%	98.1%	98.9%	98.7%	98.9%	99.1%	99.0%	99.6%	98.7%	99.4%		98.9%
Torrance	97.9%	98.2%	97.5%	98.4%	98.8%	98.2%	99.3%	99.1%	99.5%	97.7%	100.0%		98.6%
Gen. Region 3 Total	98.3%	98.6%	98.3%	98.5%	98.4%	98.5%	99.0%	98.9%	99.0%	98.5%	99.2%		98.7%
Chaves	99.3%	98.6%	99.4%	99.4%	99.3%	99.6%	99.5%	99.2%	98.8%	99.1%	99.1%		99.2%
Curry	98.0%	98.2%	98.3%	97.9%	98.7%	99.8%	99.4%	99.7%	99.5%	99.2%	98.6%		98.8%
Eddy Artesia	97.0%	98.5%	100.0%	99.3%	98.2%	96.9%	99.3%	100.0%	97.4%	99.2%	99.3%		98.6%
Eddy Carlsbad	98.0%	99.1%	98.7%	99.7%	98.7%	98.6%	99.7%	99.4%	99.7%	98.6%	98.5%		99.0%
Lea	98.1%	98.9%	98.4%	98.1%	99.0%	99.4%	99.8%	98.7%	98.2%	99.2%	99.5%		98.8%
Lincoln	99.5%	96.4%	97.0%	99.0%	99.2%	99.4%	99.4%	100.0%	98.6%	98.1%	99.3%		98.7%
Roosevelt	100.0%	100.0%	100.0%	100.0%	100.0%	100.0%	100.0%	100.0%	100.0%	100.0%			100.0%
SE Region 4 Total	98.4%	98.5%	98.7%	98.8%	98.9%	99.1%	99.6%	99.6%	98.9%	99.1%	99.1%		99.0%
East Dona Ana	99.2%	99.7%	99.3%	98.7%	99.8%	100.0%	99.2%	99.4%	99.7%	99.5%	98.9%		99.4%
Grant	98.1%	98.7%	99.2%	99.7%	99.0%	99.6%	99.3%	99.3%	99.6%	99.7%	99.0%		99.2%
Luna	100.0%	99.7%	98.9%	99.5%	99.5%	99.6%	100.0%	98.6%	98.1%	100.0%	99.3%		99.4%
Otero	99.0%	99.6%	99.0%	99.0%	98.4%	98.8%	99.4%	99.4%	99.3%	99.1%	98.5%		99.0%
South Dona Ana	99.6%	99.6%	99.0%	99.8%	99.4%	99.8%	99.6%	100.0%	100.0%	99.6%	99.1%		99.6%
West Dona Ana	99.5%	99.8%	99.4%	99.8%	99.2%	99.6%	99.6%	99.8%	99.9%	99.5%	99.5%		99.6%
SW Region 5 Total	99.3%	99.6%	99.2%	99.4%	99.2%	99.6%	99.5%	99.4%	99.4%	99.6%	99.1%		99.4%
STATE TOTAL	98.7%	98.7%	98.7%	98.8%	98.7%	99.2%	99.3%	99.3%	99.2%	99.2%	99.1%		99.0%

SNAP Renewals Processed by Field Office²⁰
August 2019

Office	Approvals	Closures	Need Based Closures	Procedural Closures
Chaves County ISD	201	90	7	83
Cibola County ISD	105	58	4	54
Coffax County ISD	36	22	7	15
Curry County ISD	191	127	12	115
East Dona Ana County ISD	249	90	21	69
Eddy Artesia County ISD	47	16	4	12
Eddy Carlsbad County ISD	68	47	4	43
Grant County ISD	113	56	2	54
Guadalupe County ISD	22	11	1	10
Hidalgo County ISD	0	0	0	0
Lea County ISD	154	96	16	80
Lincoln County ISD	52	31	6	25
Luna County ISD	129	60	1	59
McKinley County ISD	360	136	13	123
Northeast Bernalillo County ISD	494	309	37	272
Northwest Bernalillo County ISD	489	281	28	253
Otero County ISD	144	80	9	71
Quay County ISD	40	13	0	12
Rio Arriba County ISD	201	97	4	93
Roosevelt County ISD	0	0	0	0
San Juan County ISD	362	230	19	211
San Miguel County ISD	152	65	9	56
Sandoval County ISD	279	147	24	123
Santa Fe County ISD	277	166	13	153
Sierra County ISD	77	43	3	40
Socorro County ISD	98	40	2	38
South Dona Ana ISD	340	118	17	101
Southeast Bernalillo County ISD	325	200	17	183
Southwest Bernalillo County ISD	679	345	38	307
Taos County ISD	120	56	2	54
Torrance County ISD	93	53	4	49
Valencia North County ISD	256	125	5	120
Valencia South County ISD	0	0	0	0
West Dona Ana County ISD	356	160	29	131
Centralized Units	0	0	0	0
Statewide Total	6,509	3,368	358	3,009

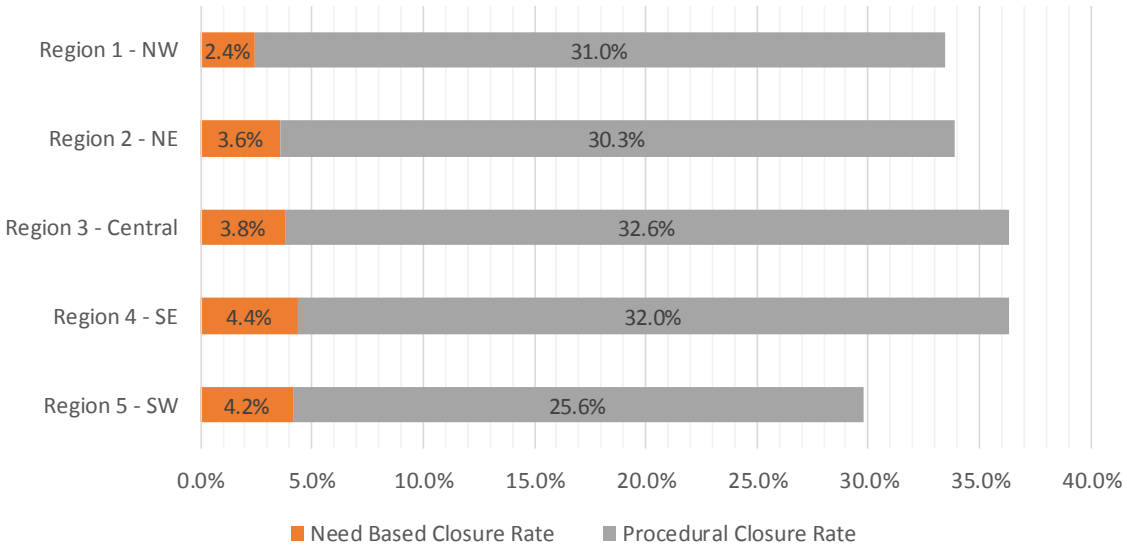
SNAP Renewal Disposition Rates by Field Office²⁰
August 2019

Office	Approval Rate	Closure Rate	Need Based Closure Rate	Procedural Closure Rate
Chaves County ISD	69.1%	30.9%	2.4%	28.5%
Cibola County ISD	64.4%	35.6%	2.5%	33.1%
Colfax County ISD	62.1%	37.9%	12.1%	25.9%
Curry County ISD	60.1%	39.9%	3.8%	36.2%
East Dona Ana County ISD	73.5%	26.5%	6.2%	20.4%
Eddy Artesia County ISD	74.6%	25.4%	6.3%	19.0%
Eddy Carlsbad County ISD	59.1%	40.9%	3.5%	37.4%
Grant County ISD	66.9%	33.1%	1.2%	32.0%
Guadalupe County ISD	66.7%	33.3%	3.0%	30.3%
Hidalgo County ISD	0.0%	0.0%	0.0%	0.0%
Lea County ISD	61.6%	38.4%	6.4%	32.0%
Lincoln County ISD	62.7%	37.3%	7.2%	30.1%
Luna County ISD	68.3%	31.7%	0.5%	31.2%
McKinley County ISD	72.6%	27.4%	2.6%	24.8%
Northeast Bernalillo County ISD	61.5%	38.5%	4.6%	33.9%
Northwest Bernalillo County ISD	63.5%	36.5%	3.6%	32.9%
Otero County ISD	64.3%	35.7%	4.0%	31.7%
Quay County ISD	75.5%	24.5%	1.9%	22.6%
Rio Arriba County ISD	67.4%	32.6%	1.3%	31.2%
Roosevelt County ISD	0.0%	0.0%	0.0%	0.0%
San Juan County ISD	61.1%	38.9%	3.2%	35.6%
San Miguel County ISD	70.0%	30.0%	4.1%	25.8%
Sandoval County ISD	65.5%	34.5%	5.6%	28.9%
Santa Fe County ISD	62.5%	37.5%	2.9%	34.5%
Sierra County ISD	64.2%	35.8%	2.5%	33.3%
Socorro County ISD	71.0%	29.0%	1.4%	27.5%
South Dona Ana ISD	74.2%	25.8%	3.7%	22.1%
Southeast Bernalillo County ISD	61.9%	38.1%	3.2%	34.9%
Southwest Bernalillo County ISD	66.3%	33.7%	3.7%	30.0%
Taos County ISD	68.2%	31.8%	1.1%	30.7%
Torrance County ISD	63.7%	36.3%	2.7%	33.6%
Valencia North County ISD	67.2%	32.8%	1.3%	31.5%
Valencia South County ISD	0.0%	0.0%	0.0%	0.0%
West Dona Ana County ISD	69.0%	31.0%	5.6%	25.4%
Centralized Units	0.0%	0.0%	0.0%	0.0%
Statewide Total	65.9%	34.1%	3.6%	30.5%

SNAP Renewal Disposition Rates by Region²⁰
August 2019

Region	Approval Rate	Closure Rate	Need Based Closure Rate	Procedural Closure Rate
Region 1 - NW	66.6%	33.4%	2.4%	31.0%
Region 2 - NE	66.1%	33.9%	3.6%	30.3%
Region 3 - Central	63.6%	36.4%	3.8%	32.6%
Region 4 - SE	63.7%	36.3%	4.4%	32.0%
Region 5 - SW	70.2%	29.8%	4.2%	25.6%
Centralized Units				

Statewide Total	65.9%	34.1%	3.6%	30.5%
-----------------	-------	-------	------	-------



SNAP: Percentage of Approved Renewal Applications Processed¹¹

	Oct-18	Nov-18	Dec-18	Jan-19	Feb-19	Mar-19	Apr-19	May-19	Jun-19	Jul-19	Aug-19	Sep-19	Average
Cibola	96.4%	97.6%	99.2%	100.0%	100.0%	95.3%	98.2%	96.3%	96.4%	97.0%	94.6%		97.4%
McKinley	98.9%	98.0%	97.1%	100.0%	98.2%	97.2%	98.7%	98.2%	98.1%	97.8%	97.8%		98.2%
San Juan	98.5%	95.8%	96.8%	99.3%	95.3%	97.2%	98.3%	98.6%	96.2%	95.9%	94.3%		96.9%
Sierra	99.1%	100.0%	98.8%	100.0%	98.8%	100.0%	100.0%	100.0%	98.7%	100.0%	100.0%		99.6%
Socorro	98.3%	96.3%	100.0%	100.0%	96.6%	100.0%	100.0%	100.0%	99.0%	99.1%	97.0%		98.8%
Valencia North	99.1%	99.2%	98.6%	99.6%	95.4%	97.7%	99.3%	99.6%	98.7%	98.6%	99.2%		98.6%
Valencia South													
NW Region 1 Total	98.4%	97.8%	98.4%	99.8%	97.4%	97.9%	99.1%	98.8%	97.9%	98.1%	97.2%		98.2%
Colfax	100.0%	92.2%	98.4%	100.0%	100.0%	100.0%	100.0%	100.0%	100.0%	98.3%	97.3%		98.7%
Guadalupe	100.0%	90.5%	100.0%	100.0%	100.0%	100.0%	100.0%	100.0%	100.0%	100.0%	95.7%		98.7%
Quay	100.0%	98.2%	95.9%	100.0%	100.0%	100.0%	100.0%	97.9%	100.0%	100.0%	100.0%		99.3%
Rio Arriba	96.8%	97.4%	96.7%	100.0%	98.5%	98.6%	100.0%	99.0%	98.0%	99.5%	99.0%		98.5%
San Miguel	97.3%	99.4%	98.8%	100.0%	97.4%	98.6%	100.0%	100.0%	98.0%	98.8%	98.7%		98.8%
Sandoval	99.0%	99.2%	98.0%	99.7%	100.0%	97.9%	99.0%	99.1%	98.8%	99.1%	99.6%		99.0%
Santa Fe	98.9%	99.3%	97.8%	100.0%	98.8%	98.5%	97.7%	99.6%	97.7%	98.7%	99.6%		98.8%
Taos	98.5%	99.2%	99.2%	100.0%	100.0%	99.2%	99.1%	97.8%	94.7%	95.0%	100.0%		98.4%
NE Region 2 Total	98.8%	96.9%	98.1%	100.0%	99.3%	99.1%	99.5%	99.2%	98.4%	98.7%	98.7%		98.8%
NE Bernalillo	98.7%	97.9%	97.3%	98.6%	98.1%	96.5%	97.9%	99.2%	98.1%	97.7%	96.7%		97.9%
NW Bernalillo	98.8%	98.0%	98.3%	97.6%	98.2%	96.5%	98.7%	99.2%	97.0%	99.1%	97.0%		98.0%
SE Bernalillo	98.7%	98.0%	98.3%	99.7%	98.2%	99.0%	98.8%	98.4%	97.2%	95.6%	94.8%		97.9%
SW Bernalillo	99.4%	99.3%	98.8%	99.7%	99.1%	99.4%	99.9%	99.0%	98.7%	98.5%	99.3%		99.2%
Torrance	99.1%	97.0%	96.0%	99.4%	97.9%	96.5%	100.0%	99.2%	99.0%	98.2%	95.9%		98.0%
Gen. Region 3 Total	99.0%	98.1%	97.7%	99.0%	98.3%	97.6%	99.1%	99.0%	98.0%	97.8%	96.7%		98.2%
Chaves	99.1%	98.7%	98.7%	99.5%	100.0%	98.0%	97.7%	99.5%	98.1%	97.9%	99.5%		98.8%
Curry	97.9%	96.1%	93.7%	100.0%	99.1%	98.6%	98.5%	100.0%	98.6%	99.0%	100.0%		98.3%
Eddy Artesia	100.0%	92.7%	90.9%	100.0%	100.0%	100.0%	100.0%	100.0%	98.1%	95.9%	100.0%		98.0%
Eddy Carlsbad	100.0%	98.5%	100.0%	100.0%	98.4%	100.0%	100.0%	100.0%	98.5%	98.7%	100.0%		99.5%
Lea	98.7%	98.1%	98.4%	98.8%	98.8%	99.4%	100.0%	98.5%	98.7%	100.0%	100.0%		99.0%
Lincoln	100.0%	96.1%	100.0%	100.0%	97.8%	100.0%	94.9%	100.0%	100.0%	98.5%	98.1%		98.7%
Roosevelt													
SE Region 4 Total	99.3%	96.7%	96.9%	99.7%	99.0%	99.3%	98.5%	99.7%	98.7%	98.3%	99.6%		98.7%
East Dona Ana	99.6%	100.0%	100.0%	100.0%	99.6%	100.0%	100.0%	100.0%	100.0%	100.0%	100.0%		99.9%
Grant	99.3%	99.3%	100.0%	100.0%	100.0%	100.0%	99.2%	99.2%	99.2%	99.2%	99.1%		99.5%
Luna	98.3%	99.3%	99.4%	100.0%	98.4%	99.2%	98.3%	98.6%	98.3%	99.4%	99.2%		98.9%
Otero	99.5%	100.0%	100.0%	100.0%	99.4%	100.0%	99.4%	99.4%	100.0%	98.8%	98.6%		99.6%
South Dona Ana	100.0%	99.4%	100.0%	100.0%	100.0%	99.7%	100.0%	100.0%	99.7%	99.8%	99.4%		99.8%
West Dona Ana	99.5%	99.1%	99.4%	100.0%	99.7%	99.4%	100.0%	99.7%	99.7%	100.0%	99.4%		99.6%
SW Region 5 Total	99.4%	99.5%	99.8%	100.0%	99.5%	99.7%	99.5%	99.5%	99.5%	99.5%	99.3%		99.6%
STATE TOTAL	99.0%	97.7%	98.2%	99.7%	98.8%	98.8%	99.1%	99.2%	98.5%	98.5%	98.4%		98.7%

If a renewal packet was received on or before 15th of the renewal month, the case shall be considered timely if the case was processed by renewal due date

SNAP: Percentage of Approved Renewal Applications Processed¹¹

	Oct-18	Nov-18	Dec-18	Jan-19	Feb-19	Mar-19	Apr-19	May-19	Jun-19	Jul-19	Aug-19	Sep-19	Average
Cibola	95.8%	97.4%	99.1%	100.0%	100.0%	100.0%	94.4%	93.8%	100.0%	100.0%	100.0%		98.2%
McKinley	98.8%	97.7%	96.7%	100.0%	98.1%	100.0%	100.0%	98.0%	100.0%	97.7%	100.0%		98.8%
San Juan	98.5%	95.4%	96.5%	99.5%	94.7%	98.2%	100.0%	98.2%	97.5%	92.9%	96.2%		97.0%
Sierra	98.9%	100.0%	98.6%	100.0%	98.6%	100.0%	100.0%	100.0%	100.0%	100.0%	100.0%		99.6%
Socorro	97.9%	96.1%	100.0%	100.0%	96.1%	100.0%	100.0%	100.0%	100.0%	100.0%	100.0%		99.1%
Valencia North	99.0%	99.1%	98.5%	99.6%	94.6%	95.2%	100.0%	100.0%	100.0%	98.1%	100.0%		98.5%
Valencia South													
NW Region 1 Total	98.1%	97.6%	98.2%	99.8%	97.0%	98.9%	99.1%	98.3%	99.6%	98.1%	99.4%		98.6%
Colfax	100.0%	91.1%	98.2%	100.0%	100.0%	100.0%	100.0%	100.0%	100.0%	100.0%	75.0%		96.8%
Guadalupe	100.0%	89.5%	100.0%	100.0%	100.0%	100.0%	100.0%	100.0%	100.0%	100.0%	100.0%		99.0%
Quay	100.0%	98.0%	95.7%	100.0%	100.0%	100.0%	100.0%	100.0%	100.0%	100.0%	100.0%		99.4%
Rio Arriba	96.4%	97.0%	96.1%	100.0%	98.3%	100.0%	100.0%	100.0%	100.0%	100.0%	100.0%		98.9%
San Miguel	96.9%	99.3%	98.6%	100.0%	97.0%	100.0%	100.0%	100.0%	100.0%	100.0%	96.0%		98.9%
Sandoval	98.9%	99.1%	97.7%	99.7%	100.0%	95.6%	100.0%	96.7%	100.0%	98.4%	100.0%		98.7%
Santa Fe	98.8%	99.3%	97.5%	100.0%	98.6%	97.9%	97.6%	100.0%	100.0%	100.0%	100.0%		99.1%
Taos	98.3%	99.1%	99.1%	100.0%	100.0%	100.0%	100.0%	100.0%	100.0%	93.8%	100.0%		99.1%
NE Region 2 Total	98.6%	96.5%	97.9%	100.0%	99.2%	99.2%	99.7%	99.6%	100.0%	99.0%	96.4%		98.7%
NE Bernalillo	98.5%	97.8%	96.9%	98.4%	97.9%	97.6%	98.9%	100.0%	98.5%	96.2%	97.4%		98.0%
NW Bernalillo	98.5%	97.7%	98.1%	97.3%	97.9%	97.8%	95.9%	100.0%	100.0%	98.3%	97.5%		98.1%
SE Bernalillo	98.5%	97.8%	98.0%	99.7%	98.1%	100.0%	100.0%	96.4%	100.0%	94.3%	94.9%		98.0%
SW Bernalillo	99.3%	99.2%	98.6%	99.7%	98.9%	98.3%	100.0%	100.0%	100.0%	98.0%	97.6%		99.1%
Torrance	98.9%	96.3%	95.5%	99.3%	97.7%	100.0%	100.0%	100.0%	100.0%	100.0%	92.3%		98.2%
Gen. Region 3 Total	98.8%	97.8%	97.4%	98.9%	98.1%	98.7%	99.0%	99.3%	99.7%	97.4%	95.9%		98.3%
Chaves	99.0%	98.5%	98.5%	99.5%	100.0%	97.1%	100.0%	100.0%	100.0%	97.4%	100.0%		99.1%
Curry	97.5%	95.5%	92.6%	100.0%	98.9%	100.0%	95.3%	100.0%	100.0%	100.0%	100.0%		98.2%
Eddy Artesia	100.0%	91.7%	87.1%	100.0%	100.0%	100.0%	100.0%	100.0%	100.0%	100.0%	100.0%		98.1%
Eddy Carlsbad	100.0%	98.2%	100.0%	100.0%	98.0%	100.0%	100.0%	100.0%	93.8%	92.3%	100.0%		98.4%
Lea	98.5%	98.0%	98.1%	98.6%	98.6%	95.8%	100.0%	94.7%	100.0%	100.0%	100.0%		98.4%
Lincoln	100.0%	97.7%	100.0%	100.0%	97.5%	100.0%	100.0%	100.0%	100.0%	100.0%	80.0%		97.7%
Roosevelt													
SE Region 4 Total	99.2%	96.6%	96.0%	99.7%	98.8%	98.8%	99.2%	99.1%	99.0%	98.3%	96.7%		98.3%
East Dona Ana	99.6%	100.0%	100.0%	100.0%	99.5%	100.0%	100.0%	100.0%	100.0%	100.0%	100.0%		99.9%
Grant	99.3%	99.2%	100.0%	100.0%	100.0%	100.0%	100.0%	100.0%	100.0%	96.0%	100.0%		99.5%
Luna	98.0%	100.0%	99.2%	100.0%	98.1%	100.0%	94.4%	100.0%	100.0%	100.0%	100.0%		99.1%
Otero	99.5%	100.0%	100.0%	100.0%	99.4%	100.0%	100.0%	100.0%	100.0%	100.0%	100.0%		99.9%
South Dona Ana	100.0%	99.4%	100.0%	100.0%	100.0%	100.0%	100.0%	100.0%	100.0%	100.0%	100.0%		99.9%
West Dona Ana	99.5%	99.0%	99.4%	100.0%	99.7%	98.5%	100.0%	100.0%	98.1%	100.0%	100.0%		99.5%
SW Region 5 Total	99.3%	99.6%	99.8%	100.0%	99.4%	99.8%	99.1%	100.0%	99.7%	99.3%	100.0%		99.6%
STATE TOTAL	98.8%	97.5%	97.9%	99.7%	98.6%	99.1%	99.2%	99.3%	99.6%	98.5%	97.6%		98.7%

Only includes cases in which the Renewal Packet was received by the 15th of the month

SNAP: Percentage of Terminations Renewal Applications Processed¹¹

	Oct-18	Nov-18	Dec-18	Jan-19	Feb-19	Mar-19	Apr-19	May-19	Jun-19	Jul-19	Aug-19	Sep-19	Average
Cibola	97.5%	94.7%	98.6%	100.0%	98.6%	98.6%	97.7%	95.9%	95.5%	96.9%	98.3%		97.5%
McKinley	98.3%	95.2%	95.0%	98.6%	100.0%	97.2%	98.4%	97.7%	98.0%	95.2%	98.6%		97.5%
San Juan	96.9%	96.0%	94.5%	96.6%	98.0%	96.6%	96.5%	97.8%	96.9%	96.1%	95.4%		96.5%
Sierra	100.0%	98.3%	100.0%	100.0%	100.0%	97.3%	97.7%	98.2%	97.5%	100.0%	100.0%		99.0%
Socorro	100.0%	95.1%	96.5%	100.0%	100.0%	100.0%	100.0%	97.7%	95.1%	97.8%	100.0%		98.4%
Valencia North	98.6%	98.8%	99.0%	98.8%	98.6%	97.0%	97.6%	98.6%	99.2%	99.0%	99.2%		98.6%
Valencia South													
NW Region 1 Total	98.6%	96.3%	97.3%	99.0%	99.2%	97.8%	98.0%	97.7%	97.0%	97.5%	98.6%		97.9%
Colfax	96.9%	96.6%	93.3%	95.8%	91.7%	92.6%	100.0%	100.0%	100.0%	100.0%	100.0%		97.0%
Guadalupe	100.0%	93.8%	100.0%	100.0%	100.0%	100.0%	100.0%	100.0%	100.0%	100.0%	100.0%		99.4%
Quay	100.0%	100.0%	100.0%	100.0%	100.0%	100.0%	100.0%	100.0%	100.0%	100.0%	100.0%		100.0%
Rio Arriba	97.3%	99.2%	98.6%	100.0%	97.9%	98.5%	99.1%	100.0%	98.0%	100.0%	99.0%		98.9%
San Miguel	95.4%	98.8%	100.0%	100.0%	98.6%	95.1%	97.7%	100.0%	100.0%	98.1%	97.0%		98.3%
Sandoval	99.0%	97.3%	97.3%	99.1%	100.0%	95.8%	98.3%	99.1%	97.6%	100.0%	98.0%		98.3%
Santa Fe	98.7%	99.4%	98.3%	97.4%	95.8%	98.9%	97.9%	97.9%	96.8%	97.2%	98.2%		97.9%
Taos	100.0%	96.8%	97.7%	100.0%	97.0%	100.0%	97.2%	98.5%	95.9%	98.8%	98.2%		98.2%
NE Region 2 Total	98.4%	97.7%	98.2%	99.0%	97.6%	97.6%	98.8%	99.4%	98.5%	99.3%	98.8%		98.5%
NE Bernalillo	97.3%	97.9%	95.8%	97.0%	98.9%	97.0%	99.0%	96.9%	96.1%	97.4%	96.3%		97.2%
NW Bernalillo	98.1%	97.5%	97.3%	97.0%	97.0%	97.9%	97.8%	98.8%	95.2%	97.1%	96.9%		97.3%
SE Bernalillo	98.0%	95.0%	98.1%	95.8%	97.7%	98.3%	98.6%	99.1%	96.5%	97.8%	94.3%		97.2%
SW Bernalillo	98.1%	98.3%	98.8%	98.1%	98.5%	98.7%	99.2%	97.1%	97.7%	98.2%	99.1%		98.3%
Torrance	98.9%	98.5%	90.7%	97.5%	98.6%	98.3%	100.0%	100.0%	98.1%	96.5%	88.3%		96.9%
Gen. Region 3 Total	98.1%	97.4%	96.1%	97.1%	98.1%	98.0%	98.9%	98.4%	96.7%	97.4%	95.0%		97.4%
Chaves	98.6%	95.1%	97.9%	97.9%	97.8%	96.0%	98.6%	97.4%	99.1%	99.4%	93.8%		97.4%
Curry	99.2%	100.0%	93.3%	100.0%	100.0%	97.6%	98.8%	100.0%	100.0%	98.5%	96.2%		98.5%
Eddy Artesia	96.7%	94.7%	93.1%	96.4%	100.0%	100.0%	100.0%	100.0%	97.0%	96.6%	100.0%		97.7%
Eddy Carlsbad	100.0%	98.1%	100.0%	94.4%	100.0%	98.5%	98.6%	100.0%	92.1%	98.3%	97.9%		98.0%
Lea	97.8%	97.4%	96.4%	98.8%	96.9%	100.0%	97.7%	96.9%	99.1%	99.3%	97.0%		97.9%
Lincoln	95.6%	94.3%	97.8%	100.0%	100.0%	100.0%	100.0%	97.2%	100.0%	97.2%	96.9%		98.1%
Roosevelt													
SE Region 4 Total	98.0%	96.6%	96.4%	97.9%	99.1%	98.7%	99.0%	98.6%	97.9%	98.2%	97.0%		97.9%
East Dona Ana	98.6%	99.2%	98.0%	100.0%	97.8%	100.0%	99.3%	99.4%	99.2%	99.2%	98.9%		99.1%
Grant	97.1%	98.6%	100.0%	100.0%	100.0%	100.0%	100.0%	95.8%	97.1%	100.0%	96.6%		98.7%
Luna	100.0%	98.6%	98.9%	100.0%	100.0%	100.0%	100.0%	97.1%	98.2%	98.9%	96.8%		99.0%
Otero	99.1%	99.2%	99.2%	100.0%	100.0%	98.4%	99.2%	99.0%	96.8%	100.0%	100.0%		99.2%
South Dona Ana	100.0%	100.0%	100.0%	98.9%	100.0%	100.0%	100.0%	100.0%	99.3%	100.0%	99.2%		99.8%
West Dona Ana	100.0%	99.3%	99.5%	100.0%	99.4%	97.9%	99.1%	98.9%	99.3%	98.1%	100.0%		99.2%
SW Region 5 Total	99.1%	99.2%	99.3%	99.8%	99.5%	99.4%	99.6%	98.4%	98.3%	99.4%	98.6%		99.1%
STATE TOTAL	98.4%	97.5%	97.5%	98.7%	98.7%	98.3%	98.8%	98.5%	97.8%	98.4%	97.7%		98.2%

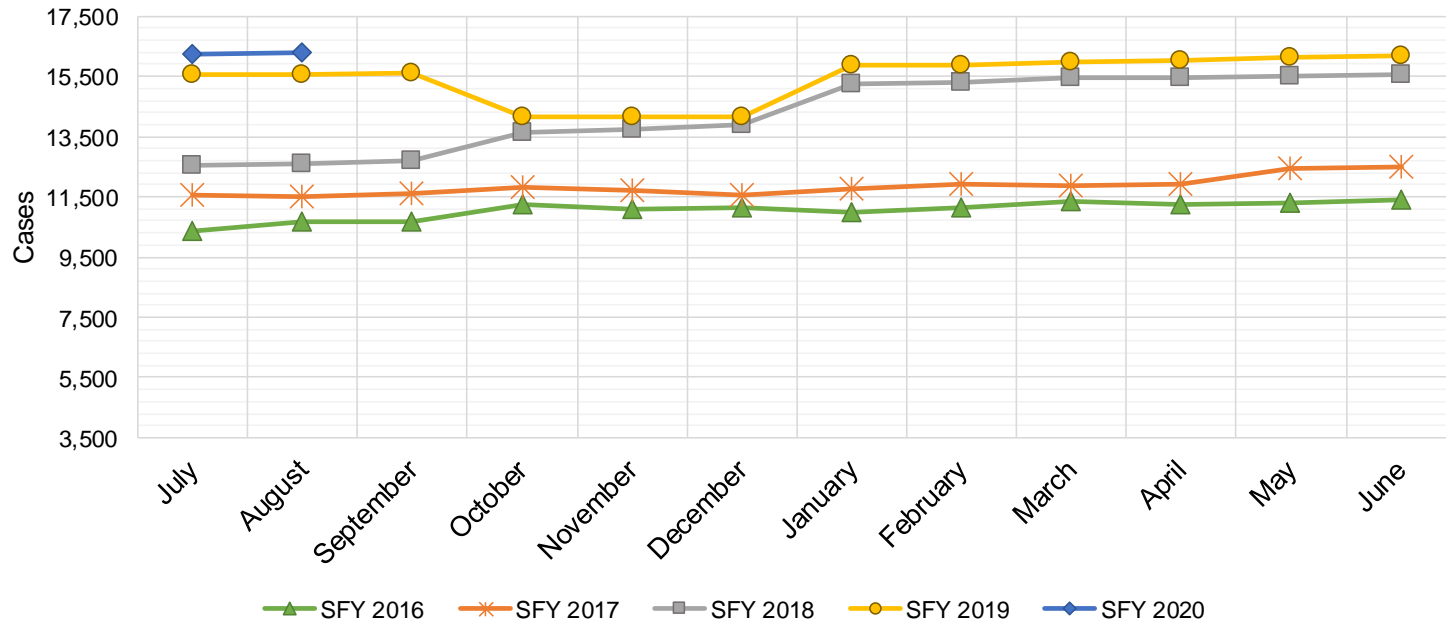
Includes cases for which no renewal application was received.

SNAP: Combined Percentage of Approved and Terminated Renewal Applications Processed¹¹

	Oct-18	Nov-18	Dec-18	Jan-19	Feb-19	Mar-19	Apr-19	May-19	Jun-19	Jul-19	Aug-19	Sep-19	Average
Cibola	96.8%	96.7%	99.0%	100.0%	99.4%	96.4%	98.0%	96.1%	96.1%	97.0%	95.9%		97.4%
McKinley	98.8%	97.3%	96.3%	99.7%	98.8%	97.2%	98.6%	98.1%	98.1%	96.9%	98.0%		98.0%
San Juan	97.9%	95.9%	95.9%	98.5%	96.5%	96.9%	97.5%	98.3%	96.5%	96.0%	94.7%		96.8%
Sierra	99.4%	99.3%	99.2%	100.0%	99.2%	99.2%	99.2%	99.3%	98.3%	100.0%	100.0%		99.4%
Socorro	98.8%	95.9%	98.7%	100.0%	97.6%	100.0%	100.0%	99.2%	97.9%	98.7%	97.9%		98.6%
Valencia North	99.0%	99.1%	98.8%	99.4%	96.6%	97.4%	98.7%	99.2%	98.9%	98.7%	99.2%		98.6%
Valencia South													
NW Region 1 Total	98.4%	97.4%	98.0%	99.6%	98.0%	97.9%	98.7%	98.4%	97.6%	97.9%	97.6%		98.1%
Colfax	99.0%	93.8%	96.8%	98.7%	97.2%	97.6%	100.0%	100.0%	100.0%	99.0%	98.3%		98.2%
Guadalupe	100.0%	91.9%	100.0%	100.0%	100.0%	100.0%	100.0%	100.0%	100.0%	100.0%	97.1%		99.0%
Quay	100.0%	98.7%	96.8%	100.0%	100.0%	100.0%	100.0%	98.6%	100.0%	100.0%	100.0%		99.5%
Rio Arriba	96.9%	98.0%	97.4%	100.0%	98.3%	98.6%	99.7%	99.4%	98.0%	99.7%	99.0%		98.6%
San Miguel	96.7%	99.2%	99.2%	100.0%	97.8%	97.3%	99.2%	100.0%	98.7%	98.5%	98.2%		98.6%
Sandoval	99.0%	98.5%	97.7%	99.5%	100.0%	97.2%	98.7%	99.1%	98.3%	99.5%	99.1%		98.8%
Santa Fe	98.9%	99.3%	98.0%	99.2%	97.8%	98.7%	97.8%	99.0%	97.4%	98.1%	99.1%		98.5%
Taos	99.1%	98.4%	98.6%	100.0%	98.9%	99.5%	98.4%	98.0%	95.2%	96.4%	99.4%		98.4%
NE Region 2 Total	98.7%	97.2%	98.1%	99.7%	98.7%	98.6%	99.2%	99.3%	98.5%	98.9%	98.8%		98.7%
NE Bernalillo	98.1%	97.9%	96.7%	98.1%	98.4%	96.7%	98.4%	98.2%	97.3%	97.5%	96.5%		97.6%
NW Bernalillo	98.5%	97.8%	97.9%	97.4%	97.8%	97.1%	98.3%	99.0%	96.3%	98.3%	97.0%		97.8%
SE Bernalillo	98.4%	97.0%	98.2%	98.6%	98.0%	98.7%	98.7%	98.7%	97.0%	96.6%	94.6%		97.7%
SW Bernalillo	99.0%	99.0%	98.8%	99.3%	98.9%	99.2%	99.6%	98.4%	98.4%	98.4%	99.2%		98.9%
Torrance	99.0%	97.5%	93.8%	99.0%	98.1%	97.1%	100.0%	99.5%	98.7%	97.5%	93.0%		97.6%
Gen. Region 3 Total	98.6%	97.8%	97.1%	98.5%	98.3%	97.8%	99.0%	98.8%	97.5%	97.7%	96.1%		97.9%
Chaves	98.9%	97.4%	98.4%	99.0%	99.0%	97.2%	98.1%	98.6%	98.4%	98.5%	97.7%		98.3%
Curry	98.3%	97.4%	93.5%	100.0%	99.4%	98.2%	98.6%	100.0%	99.1%	98.8%	98.5%		98.3%
Eddy Artesia	98.7%	93.5%	91.7%	98.6%	100.0%	100.0%	100.0%	100.0%	97.7%	96.2%	100.0%		97.9%
Eddy Carlsbad	100.0%	98.3%	100.0%	98.1%	99.1%	99.2%	99.3%	100.0%	96.2%	98.5%	99.1%		98.9%
Lea	98.3%	97.8%	97.5%	98.8%	97.9%	99.6%	98.9%	97.8%	98.9%	99.7%	98.8%		98.5%
Lincoln	98.0%	95.3%	98.9%	100.0%	98.7%	100.0%	96.8%	98.9%	100.0%	98.0%	97.6%		98.4%
Roosevelt													
SE Region 4 Total	98.7%	96.6%	96.7%	99.1%	99.0%	99.0%	98.6%	99.2%	98.4%	98.3%	98.6%		98.4%
East Dona Ana	99.3%	99.8%	99.3%	100.0%	99.0%	100.0%	99.8%	99.8%	99.7%	99.8%	99.7%		99.7%
Grant	98.6%	99.1%	100.0%	100.0%	100.0%	100.0%	99.5%	97.9%	98.4%	99.5%	98.3%		99.2%
Luna	98.8%	99.1%	99.2%	100.0%	99.0%	99.5%	98.9%	98.1%	98.3%	99.2%	98.4%		98.9%
Otero	99.4%	99.7%	99.7%	100.0%	99.6%	99.3%	99.3%	99.2%	98.9%	99.3%	99.1%		99.4%
South Dona Ana	100.0%	99.6%	100.0%	99.8%	100.0%	99.8%	100.0%	100.0%	99.6%	99.8%	99.3%		99.8%
West Dona Ana	99.7%	99.2%	99.4%	100.0%	99.6%	98.9%	99.7%	99.4%	99.6%	99.4%	99.6%		99.5%
SW Region 5 Total	99.3%	99.4%	99.6%	100.0%	99.5%	99.6%	99.5%	99.1%	99.1%	99.5%	99.1%		99.4%
STATE TOTAL	98.7%	97.7%	97.9%	99.4%	98.7%	98.6%	99.0%	99.0%	98.3%	98.5%	98.1%		98.5%

State SNAP Supplement

SFY 2016 ^{12,9}			SFY 2017 ⁹			SFY 2018 ⁹			SFY 2019 ⁹			SFY 2020 ⁹		
	Cases	Expenditures		Cases	Expenditures		Cases	Expenditures		Cases	Expenditures		Cases	Expenditures
Jul-15	10,345	\$86,143	Jul-16	11,537	\$95,553	Jul-17	12,526	\$97,568	Jul-18	15,555	\$141,711	Jul-19	16,260	\$145,023
Aug-15	10,669	\$88,197	Aug-16	11,522	\$95,107	Aug-17	12,589	\$98,954	Aug-18	15,584	\$139,719	Aug-19	16,314	\$145,706
Sep-15	10,676	\$88,426	Sep-16	11,613	\$94,472	Sep-17	12,679	\$97,546	Sep-18	15,631	\$140,768	Sep-19		
Oct-15	11,262	\$96,758	Oct-16	11,797	\$96,679	Oct-17	13,628	\$117,343	Oct-18	14,161	\$125,737	Oct-19		
Nov-15	11,099	\$91,996	Nov-16	11,735	\$93,689	Nov-17	13,748	\$119,055	Nov-18	14,160	\$125,401	Nov-19		
Dec-15	11,125	\$90,771	Dec-16	11,556	\$93,739	Dec-17	13,877	\$120,585	Dec-18	14,163	\$126,263	Dec-19		
Jan-16	10,977	\$92,760	Jan-17	11,763	\$96,074	Jan-18	15,246	\$135,993	Jan-19	15,890	\$141,357	Jan-20		
Feb-16	11,153	\$95,363	Feb-17	11,907	\$98,251	Feb-18	15,308	\$137,296	Feb-19	15,882	\$142,396	Feb-20		
Mar-16	11,332	\$96,751	Mar-17	11,853	\$96,693	Mar-18	15,482	\$139,132	Mar-19	15,970	\$142,427	Mar-20		
Apr-16	11,222	\$93,959	Apr-17	11,944	\$97,060	Apr-18	15,466	\$139,202	Apr-19	16,032	\$143,982	Apr-20		
May-16	11,283	\$95,271	May-17	12,457	\$96,940	May-18	15,525	\$139,397	May-19	16,126	\$143,697	May-20		
Jun-16	11,389	\$93,061	Jun-17	12,498	\$97,405	Jun-18	15,577	\$140,802	Jun-19	16,182	\$143,128	Jun-20		
TOTAL	132,532	\$1,109,455		142,182	\$1,151,662		171,651	\$1,482,874		185,336	\$1,656,584		32,574	\$290,730
AVERAGE	11,044	\$92,455		11,849	\$95,972		14,304	\$123,573		15,445	\$138,049		16,287	\$145,365



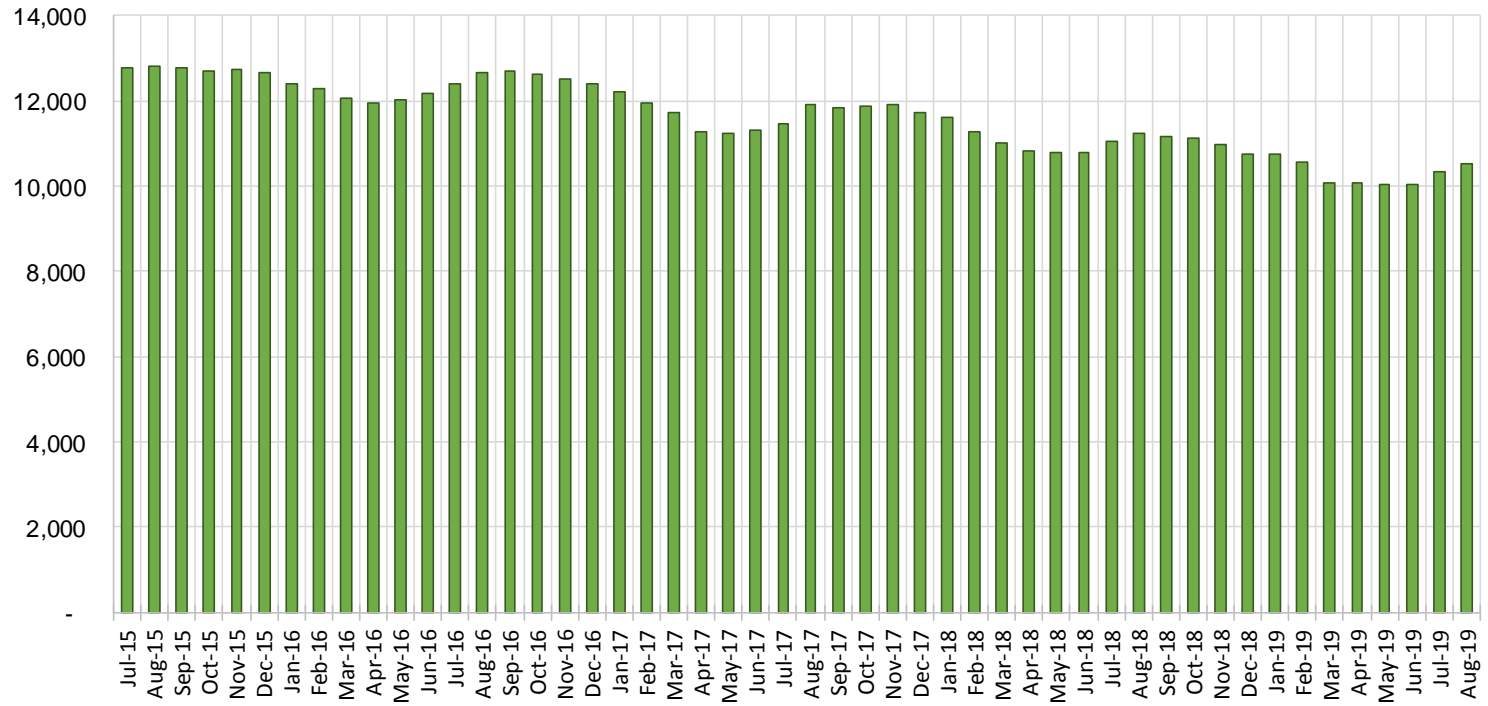
TANF Cases by Field Office⁶

Office	Aug-18	Jul-19	Aug-19	Percent Change	
				Aug-18- Aug-19	Jul-19- Aug-19
Chaves County ISD	468	419	422	-9.8%	0.7%
Cibola County ISD	156	130	119	-23.7%	-8.5%
Colfax County ISD	80	88	92	15.0%	4.5%
Curry County ISD	690	630	632	-8.4%	0.3%
East Dona Ana County ISD	450	423	440	-2.2%	4.0%
Eddy Artesia County ISD	114	84	84	-26.3%	0.0%
Eddy Carlsbad County ISD	138	124	138	0.0%	11.3%
Grant County ISD	159	183	192	20.8%	4.9%
Guadalupe County ISD	22	29	25	13.6%	-13.8%
Hidalgo County ISD	26	0	0	-100.0%	N/A
Lea County ISD	379	341	352	-7.1%	3.2%
Lincoln County ISD	95	91	86	-9.5%	-5.5%
Luna County ISD	231	205	206	-10.8%	0.5%
McKinley County ISD	70	79	81	15.7%	2.5%
Northeast Bernalillo County ISD	986	890	913	-7.4%	2.6%
Northwest Bernalillo County ISD	835	819	808	-3.2%	-1.3%
Otero County ISD	293	269	294	0.3%	9.3%
Quay County ISD	62	77	82	32.3%	6.5%
Rio Arriba County ISD	388	364	375	-3.4%	3.0%
Roosevelt County ISD	0	0	0	NA	N/A
San Juan County ISD	299	287	293	-2.0%	2.1%
San Miguel County ISD	199	191	191	-4.0%	0.0%
Sandoval County ISD	578	462	452	-21.8%	-2.2%
Santa Fe County ISD	415	372	395	-4.8%	6.2%
Sierra County ISD	81	72	74	-8.6%	2.8%
Socorro County ISD	85	76	80	-5.9%	5.3%
South Dona Ana ISD	690	611	607	-12.0%	-0.7%
Southeast Bernalillo County ISD	603	567	588	-2.5%	3.7%
Southwest Bernalillo County ISD	1,149	1,053	1,074	-6.5%	2.0%
Taos County ISD	138	151	157	13.8%	4.0%
Torrance County ISD	188	177	177	-5.9%	0.0%
Valencia North County ISD	455	426	446	-2.0%	4.7%
Valencia South County ISD	0	0	0	N/A	N/A
West Dona Ana County ISD	734	650	669	-8.9%	2.9%
Centralized Units	5	0	0	-100.0%	N/A
Statewide Total	11,261	10,340	10,544	-6.4%	2.0%

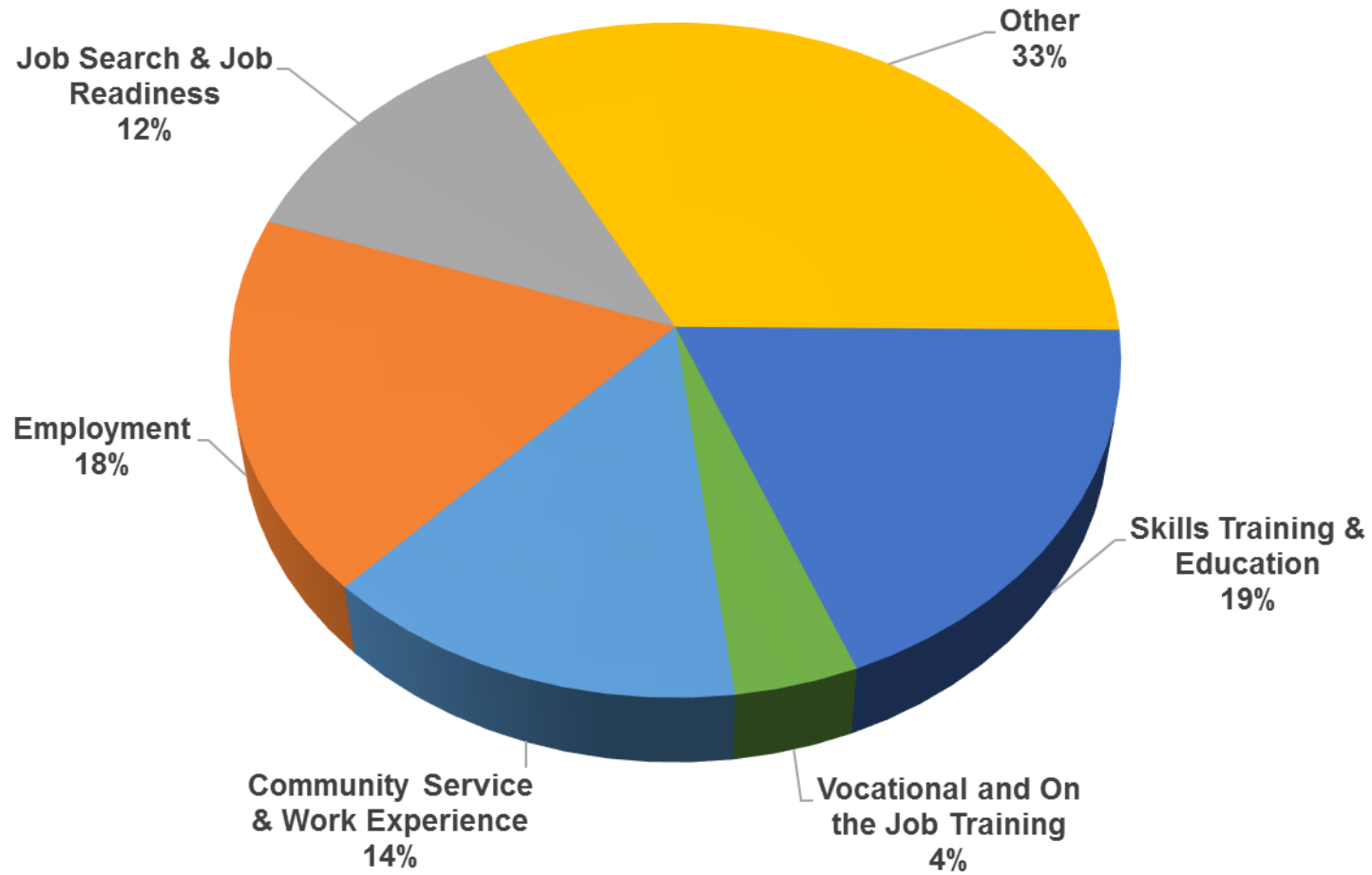
TANF Cases by Region⁶

Region	Aug-18	Jul-19	Aug-19	Percent Change	
				Aug-18- Aug-19	Jul-19- Aug-19
Region 1- NW	1,146	1,070	1,093	-4.6%	2.1%
Region 2- NE	1,882	1,734	1,769	-6.0%	2.0%
Region 3- Central	3,761	3,506	3,560	-5.3%	1.5%
Region 4- SE	1,884	1,689	1,714	-9.0%	1.5%
Region 5- SW	2,583	2,341	2,408	-6.8%	2.9%
Centralized Units	5	0	0	-100.0%	N/A
Statewide Total	11,261	10,340	10,544	-6.4%	2.0%

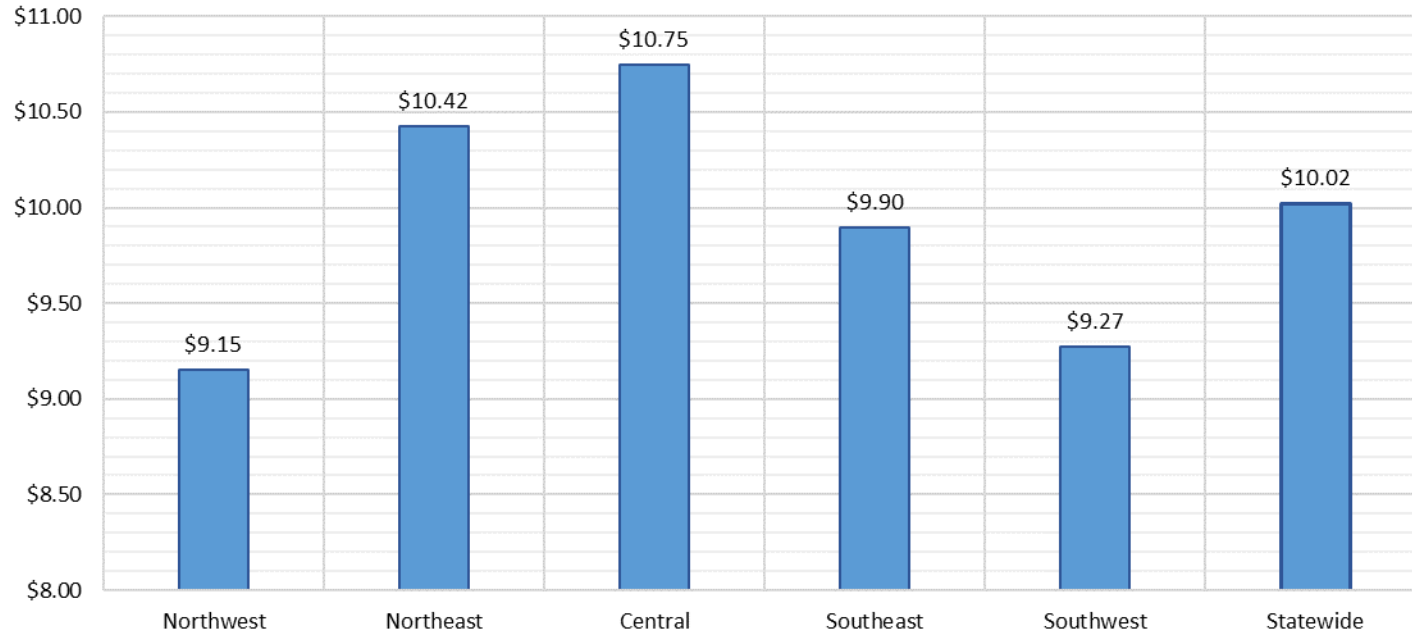
TANF Caseload: SFY-16 to Current



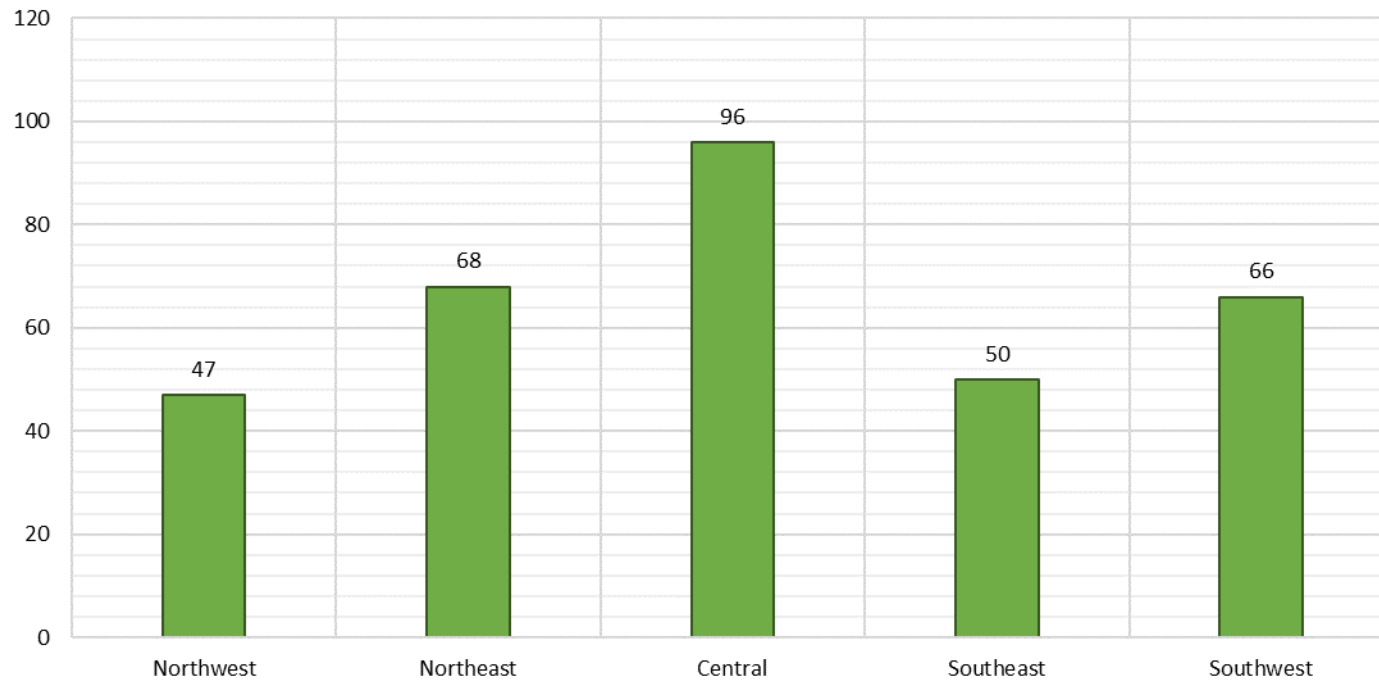
NM Works Activity Placements on August 31, 2019 as reported by SL Start¹⁴



Average Starting Hourly Wage of August 2019 TANF Employments
as reported by SL Start¹⁵



Number of New Employments in August 2019 by Region
as reported by SL Start¹⁵
Statewide Total: 327



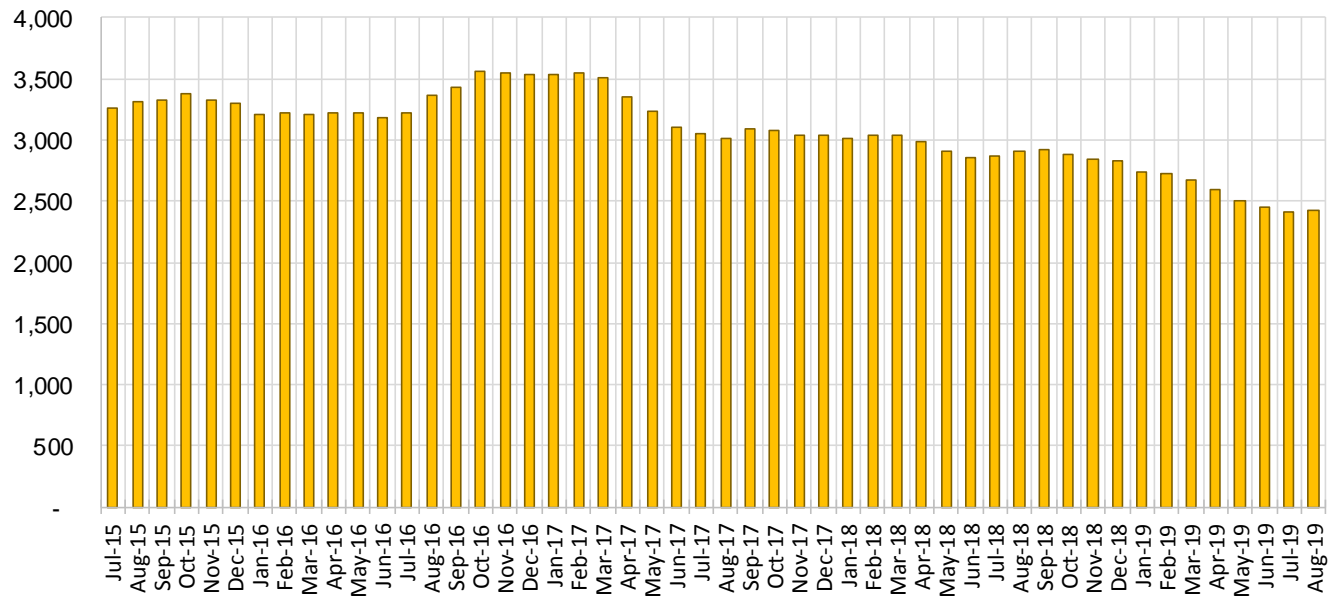
General Assistance Cases by Field Office⁶

Office				Percent Change	
	Aug-18	Jul-19	Aug-19	Aug-18- Aug-19	Jul-19- Aug-19
Chaves County ISD	133	100	98	-26.3%	-2.0%
Cibola County ISD	40	41	39	-2.5%	-4.9%
Colfax County ISD	21	21	21	0.0%	0.0%
Curry County ISD	84	83	77	-8.3%	-7.2%
East Dona Ana County ISD	112	89	88	-21.4%	-1.1%
Eddy Artesia County ISD	22	22	21	-4.5%	-4.5%
Eddy Carlsbad County ISD	75	41	44	-41.3%	7.3%
Grant County ISD	54	69	65	20.4%	-5.8%
Guadalupe County ISD	16	9	9	-43.8%	0.0%
Hidalgo County ISD	13	0	0	-100.0%	N/A
Lea County ISD	82	65	64	-22.0%	-1.5%
Lincoln County ISD	30	29	31	3.3%	6.9%
Luna County ISD	55	53	60	9.1%	13.2%
McKinley County ISD	52	52	59	13.5%	13.5%
Northeast Bernalillo County ISD	338	251	253	-25.1%	0.8%
Northwest Bernalillo County ISD	290	229	221	-23.8%	-3.5%
Otero County ISD	73	63	66	-9.6%	4.8%
Quay County ISD	24	31	26	8.3%	-16.1%
Rio Arriba County ISD	79	58	54	-31.6%	-6.9%
Roosevelt County ISD	0	0	0	N/A	N/A
San Juan County ISD	132	120	114	-13.6%	-5.0%
San Miguel County ISD	79	63	69	-12.7%	9.5%
Sandoval County ISD	122	78	81	-33.6%	3.8%
Santa Fe County ISD	126	98	98	-22.2%	0.0%
Sierra County ISD	28	31	32	14.3%	3.2%
Socorro County ISD	35	41	46	31.4%	12.2%
South Dona Ana ISD	63	50	53	-15.9%	6.0%
Southeast Bernalillo County ISD	167	133	132	-21.0%	-0.8%
Southwest Bernalillo County ISD	185	187	197	6.5%	5.3%
Taos County ISD	42	30	30	-28.6%	0.0%
Torrance County ISD	39	42	39	0.0%	-7.1%
Valencia North County ISD	120	84	82	-31.7%	-2.4%
Valencia South County ISD	0	0	0	N/A	N/A
West Dona Ana County ISD	179	148	155	-13.4%	4.7%
Centralized Units	0	0	0	N/A	N/A
Statewide Total	2,910	2,411	2,424	-16.7%	0.5%

General Assistance Cases by Region⁶

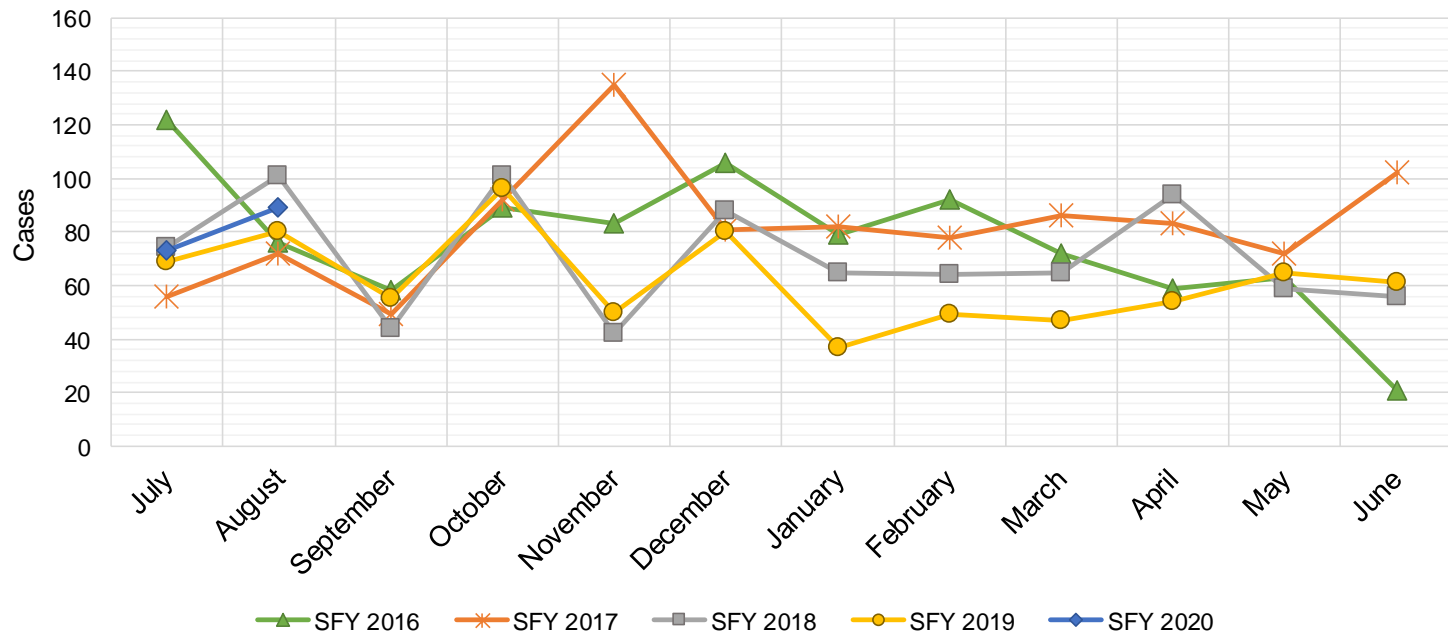
Region	Aug-18	Jul-19	Aug-19	Percent Change	
				Aug-18- Aug-19	Jul-19- Aug-19
Region 1 - NW	407	369	372	-8.6%	0.8%
Region 2 - NE	509	388	388	-23.8%	0.0%
Region 3 - Central	1,019	842	842	-17.4%	0.0%
Region 4 - SE	426	340	335	-21.4%	-1.5%
Region 5 - SW	549	472	487	-11.3%	3.2%
Centralized Units	0	0	0	N/A	N/A
Statewide Total	2,910	2,411	2,424	-16.7%	0.5%

General Assistance Caseload: SFY-16 to Current



General Assistance Interim Assistance Reimbursements¹⁶

SFY 2016			SFY 2017			SFY 2018			SFY 2019			SFY 2020		
	Cases	Expenditures		Cases	Expenditures		Cases	Expenditures		Cases	Expenditures		Cases	Expenditures
Jul-15	122	\$342,648	Jul-16	56	\$164,970	Jul-17	74	\$241,438	Jul-18	69	\$228,333	Jul-19	73	\$303,584
Aug-15	76	\$245,236	Aug-16	72	\$223,182	Aug-17	101	\$339,301	Aug-18	80	\$241,292	Aug-19	89	\$310,047
Sep-15	58	\$170,093	Sep-16	49	\$158,027	Sep-17	44	\$131,229	Sep-18	55	\$188,192	Sep-19		
Oct-15	89	\$277,912	Oct-16	92	\$257,830	Oct-17	101	\$335,752	Oct-18	96	\$298,502	Oct-19		
Nov-15	83	\$238,948	Nov-16	135	\$402,305	Nov-17	42	\$139,572	Nov-18	50	\$148,641	Nov-19		
Dec-15	106	\$388,102	Dec-16	81	\$227,569	Dec-17	88	\$245,453	Dec-18	80	\$246,422	Dec-19		
Jan-16	79	\$239,263	Jan-17	82	\$274,050	Jan-18	65	\$258,239	Jan-19	37	\$106,081	Jan-20		
Feb-16	92	\$296,332	Feb-17	78	\$227,569	Feb-18	64	\$195,815	Feb-19	49	\$119,300	Feb-20		
Mar-16	72	\$254,360	Mar-17	86	\$278,219	Mar-18	65	\$172,188	Mar-19	47	\$137,296	Mar-20		
Apr-16	59	\$208,631	Apr-17	83	\$267,187	Apr-18	94	\$312,340	Apr-19	54	\$173,772	Apr-20		
May-16	63	\$182,241	May-17	72	\$232,836	May-18	59	\$155,406	May-19	65	\$237,979	May-20		
Jun-16	21	\$51,760	Jun-17	102	\$306,228	Jun-18	56	\$159,268	Jun-19	61	\$214,497	Jun-20		
TOTAL	920	\$2,895,525	988	\$3,019,972	853	\$2,686,001	743	\$2,340,307	162	\$613,632				
AVERAGE	77	\$241,294	82	\$251,664	71	\$223,833	62	\$195,026	81	\$306,816				



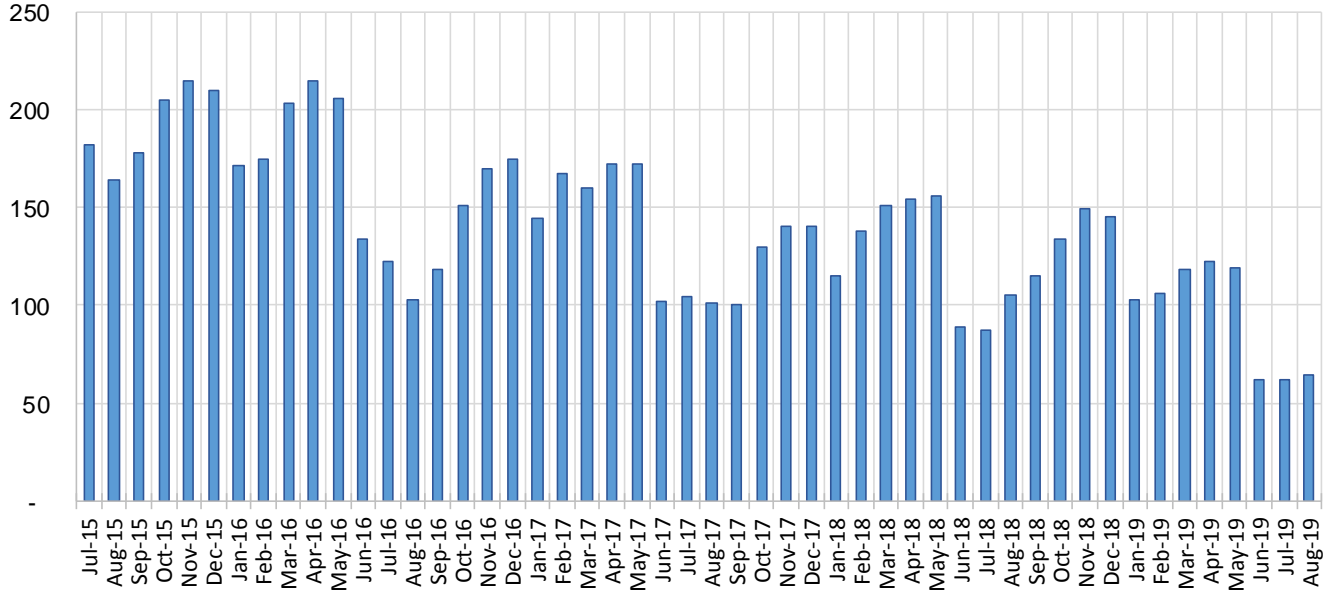
Education Works Cases by Field Office⁶

Office				Percent Change	
	Aug-18	Jul-19	Aug-19	Aug-18- Aug-19	Jul-19- Aug-19
Chaves County ISD	0	1	1	N/A	0.0%
Cibola County ISD	0	0	0	N/A	N/A
Colfax County ISD	0	0	0	N/A	N/A
Curry County ISD	2	2	1	-50.0%	-50.0%
East Dona Ana County ISD	13	2	3	-76.9%	50.0%
Eddy Artesia County ISD	1	1	1	0.0%	0.0%
Eddy Carlsbad County ISD	2	1	1	-50.0%	0.0%
Grant County ISD	7	0	1	-85.7%	N/A
Guadalupe County ISD	0	0	0	N/A	N/A
Hidalgo County ISD	0	0	0	N/A	N/A
Lea County ISD	3	1	0	-100.0%	-100.0%
Lincoln County ISD	0	0	0	N/A	N/A
Luna County ISD	1	2	2	100.0%	0.0%
McKinley County ISD	0	0	0	N/A	N/A
Northeast Bernalillo County ISD	8	3	4	-50.0%	33.3%
Northwest Bernalillo County ISD	10	5	3	-70.0%	-40.0%
Otero County ISD	1	1	1	0.0%	0.0%
Quay County ISD	0	0	0	N/A	N/A
Rio Arriba County ISD	3	0	0	-100.0%	N/A
Roosevelt County ISD	0	0	0	N/A	N/A
San Juan County ISD	1	3	3	200.0%	0.0%
San Miguel County ISD	2	1	0	-100.0%	-100.0%
Sandoval County ISD	7	5	4	-42.9%	-20.0%
Santa Fe County ISD	6	7	10	66.7%	42.9%
Sierra County ISD	0	1	1	N/A	0.0%
Socorro County ISD	0	0	0	N/A	N/A
South Dona Ana ISD	18	8	10	-44.4%	25.0%
Southeast Bernalillo County ISD	4	6	5	25.0%	-16.7%
Southwest Bernalillo County ISD	11	5	6	-45.5%	20.0%
Taos County ISD	1	0	0	-100.0%	N/A
Torrance County ISD	0	0	0	N/A	N/A
Valencia North County ISD	0	0	0	N/A	N/A
Valencia South County ISD	0	0	0	N/A	N/A
West Dona Ana County ISD	4	7	7	75.0%	0.0%
Centralized Units	0	0	0	N/A	N/A
Statewide Total	105	62	64	-39.0%	3.2%

Education Works Cases by Region⁶

				Percent Change	
Region	Aug-18	Jul-19	Aug-19	Aug-18- Aug-19	Jul-19- Aug-19
Region 1 - NW	1	4	4	300.0%	0.0%
Region 2 - NE	19	13	14	-26.3%	7.7%
Region 3 - Central	33	19	18	-45.5%	-5.3%
Region 4 - SE	8	6	4	-50.0%	-33.3%
Region 5 - SW	44	20	24	-45.5%	20.0%
Centralized Units	0	0	0	N/A	N/A
Statewide Total	105	62	64	-39.0%	3.2%

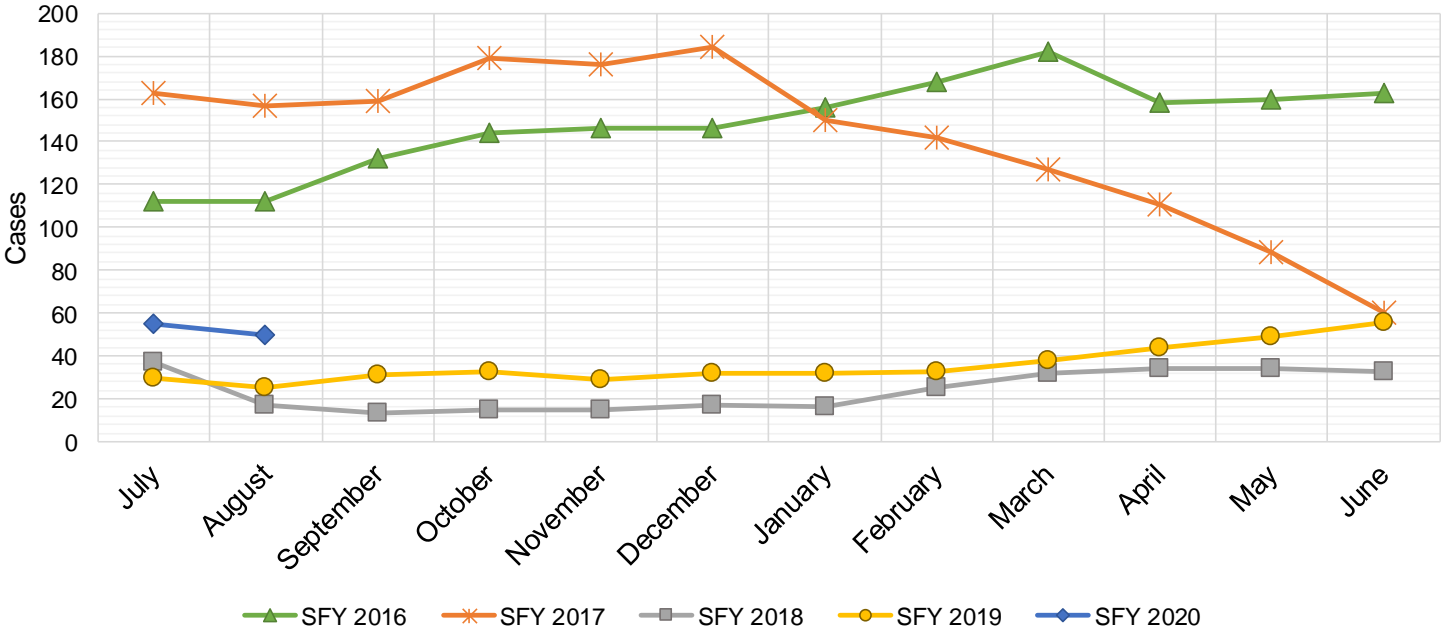
Education Works Caseload: SFY-16 to Current



Refugee Cash Assistance

SFY 2016 ^{8,12,9}			SFY 2017 ^{8,9}			SFY 2018 ^{8,9}			SFY 2019 ^{8,9}			SFY 2020 ^{8,9}		
	Cases	Expenditures		Cases	Expenditures		Cases	Expenditures		Cases	Expenditures		Cases	Expenditures
Jul-15	112	\$27,516	Jul-16	163	\$39,756	Jul-17	37	\$9,981	Jul-18	30	\$7,408	Jul-19	55	\$13,851
Aug-15	112	\$27,438	Aug-16	157	\$40,115	Aug-17	17	\$4,704	Aug-18	25	\$6,434	Aug-19	50	\$12,497
Sep-15	132	\$31,321	Sep-16	159	\$39,359	Sep-17	13	\$3,159	Sep-18	31	\$6,947	Sep-19		
Oct-15	144	\$36,153	Oct-16	179	\$41,520	Oct-17	15	\$3,543	Oct-18	33	\$6,323	Oct-19		
Nov-15	146	\$36,515	Nov-16	176	\$45,434	Nov-17	15	\$4,263	Nov-18	29	\$7,036	Nov-19		
Dec-15	146	\$35,763	Dec-16	184	\$46,673	Dec-17	17	\$4,795	Dec-18	32	\$7,300	Dec-19		
Jan-16	156	\$38,686	Jan-17	150	\$38,790	Jan-18	16	\$4,166	Jan-19	32	\$7,418	Jan-20		
Feb-16	168	\$41,368	Feb-17	142	\$37,956	Feb-18	25	\$5,723	Feb-19	33	\$8,591	Feb-20		
Mar-16	182	\$45,307	Mar-17	127	\$33,066	Mar-18	32	\$7,636	Mar-19	38	\$9,165	Mar-20		
Apr-16	158	\$41,143	Apr-17	111	\$29,183	Apr-18	34	\$8,827	Apr-19	44	\$10,648	Apr-20		
May-16	160	\$38,332	May-17	88	\$23,343	May-18	34	\$8,939	May-19	49	\$11,823	May-20		
Jun-16	163	\$39,856	Jun-17	60	\$15,538	Jun-18	33	\$8,513	Jun-19	56	\$13,558	Jun-20		

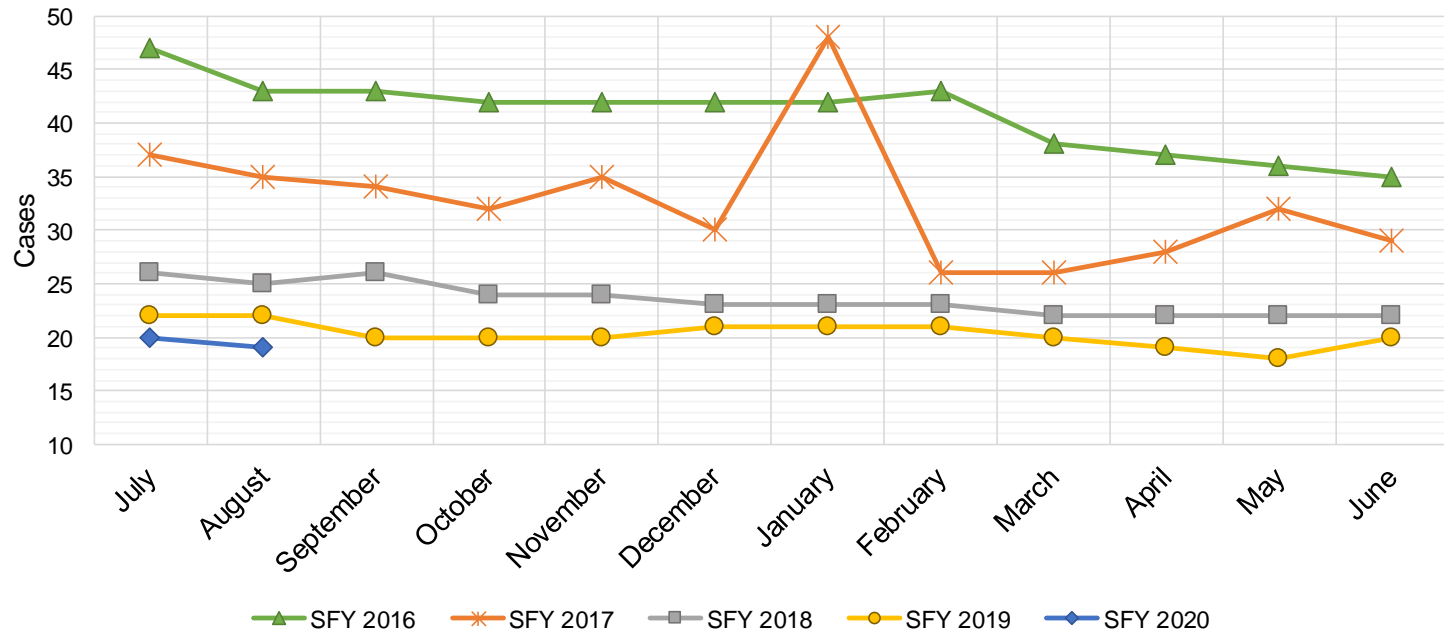
TOTAL	1,779	\$439,397	1,696	\$430,732	288	\$74,249	432	\$102,651	105	\$26,348
AVERAGE	148	\$36,616	141	\$35,894	24	\$6,187	36	\$8,554	53	\$13,174



State Supplement for Residential Care

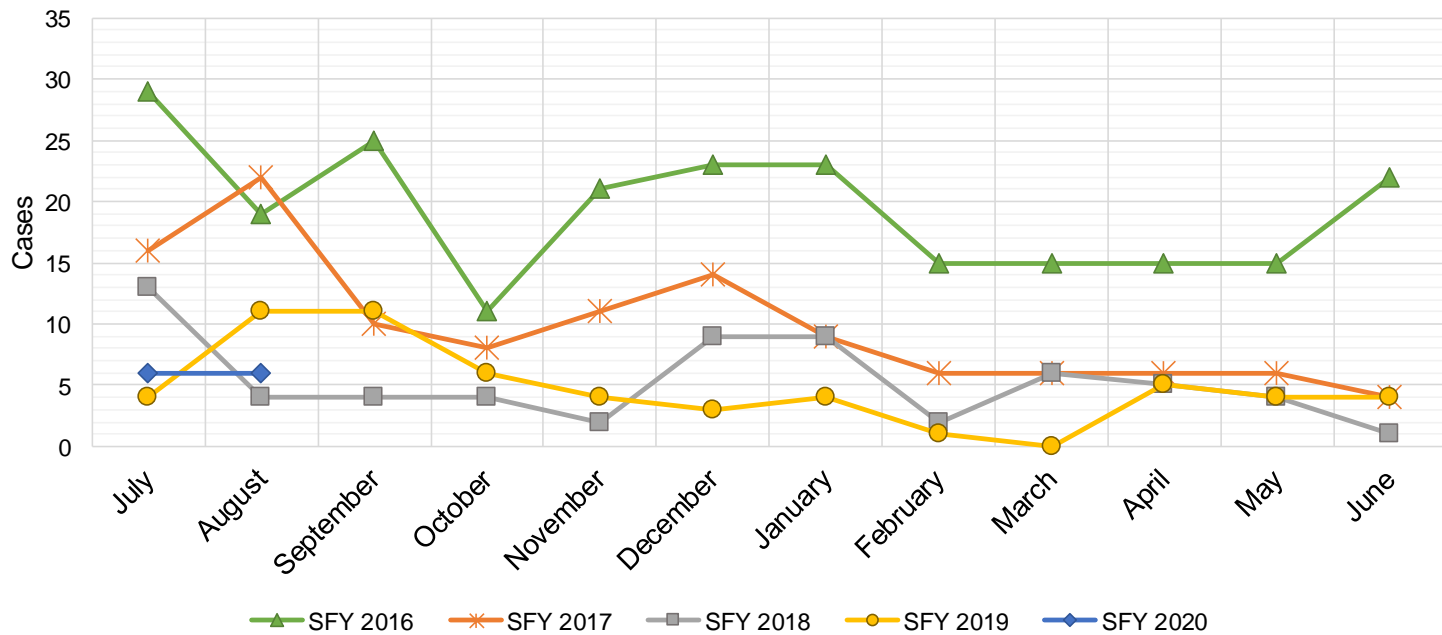
SFY 2016 ^{12,9}			SFY 2017 ⁹			SFY 2018 ⁹			SFY 2019 ⁹			SFY 2020 ⁹		
	Cases	Expenditures		Cases	Expenditures		Cases	Expenditures		Cases	Expenditures		Cases	Expenditures
Jul-15	47	\$4,700	Jul-16	37	\$3,700	Jul-17	26	\$2,700	Jul-18	22	\$2,200	Jul-19	20	\$1,900
Aug-15	43	\$4,900	Aug-16	35	\$3,500	Aug-17	25	\$2,500	Aug-18	22	\$2,200	Aug-19	19	\$1,900
Sep-15	43	\$4,500	Sep-16	34	\$3,400	Sep-17	26	\$2,700	Sep-18	20	\$2,000	Sep-19		
Oct-15	42	\$4,400	Oct-16	32	\$3,200	Oct-17	24	\$2,500	Oct-18	20	\$2,000	Oct-19		
Nov-15	42	\$4,200	Nov-16	35	\$3,500	Nov-17	24	\$2,400	Nov-18	20	\$2,000	Nov-19		
Dec-15	42	\$4,200	Dec-16	30	\$3,000	Dec-17	23	\$2,200	Dec-18	21	\$2,100	Dec-19		
Jan-16	42	\$4,200	Jan-17	48	\$4,800	Jan-18	23	\$2,400	Jan-19	21	\$2,000	Jan-20		
Feb-16	43	\$4,300	Feb-17	26	\$2,600	Feb-18	23	\$2,300	Feb-19	21	\$2,200	Feb-20		
Mar-16	38	\$3,800	Mar-17	26	\$2,600	Mar-18	22	\$2,400	Mar-19	20	\$1,900	Mar-20		
Apr-16	37	\$3,700	Apr-17	28	\$2,800	Apr-18	22	\$2,200	Apr-19	19	\$1,800	Apr-20		
May-16	36	\$3,600	May-17	32	\$3,200	May-18	22	\$2,200	May-19	18	\$1,800	May-20		
Jun-16	35	\$3,500	Jun-17	29	\$2,900	Jun-18	22	\$2,200	Jun-19	20	\$2,000	Jun-20		

TOTAL	490	\$50,000	392	\$39,200	282	\$28,700	244	\$24,200	39	\$3,800
AVERAGE	41	\$4,167	33	\$3,267	24	\$2,392	20	\$2,017	20	\$1,900



TANF Diversion Payments

SFY 2016 ^{12,9}			SFY 2017 ⁹			SFY 2018 ⁹			SFY 2019 ⁹			SFY 2020 ⁹		
	Cases	Expenditures		Cases	Expenditures		Cases	Expenditures		Cases	Expenditures		Cases	Expenditures
Jul-15	29	\$62,074	Jul-16	16	\$30,843	Jul-17	13	\$26,500	Jul-18	4	\$3,000	Jul-19	6	\$18,500
Aug-15	19	\$33,584	Aug-16	22	\$42,731	Aug-17	4	\$12,000	Aug-18	11	\$18,583	Aug-19	6	\$16,500
Sep-15	25	\$47,977	Sep-16	10	\$21,000	Sep-17	4	\$4,000	Sep-18	11	\$20,999	Sep-19		
Oct-15	11	\$20,500	Oct-16	8	\$16,744	Oct-17	4	\$16,000	Oct-18	6	\$10,499	Oct-19		
Nov-15	21	\$45,500	Nov-16	11	\$24,500	Nov-17	2	\$15,500	Nov-18	4	\$7,499	Nov-19		
Dec-15	23	\$45,389	Dec-16	14	\$26,611	Dec-17	9	\$17,500	Dec-18	3	\$2,499	Dec-19		
Jan-16	23	\$41,874	Jan-17	9	\$18,500	Jan-18	9	\$21,731	Jan-19	4	\$5,999	Jan-20		
Feb-16	15	\$28,500	Feb-17	6	\$12,000	Feb-18	2	\$7,731	Feb-19	1	\$1,678	Feb-20		
Mar-16	15	\$27,008	Mar-17	6	\$11,000	Mar-18	6	\$8,496	Mar-19	0	\$3,000	Mar-20		
Apr-16	15	\$31,389	Apr-17	6	\$12,000	Apr-18	5	\$13,500	Apr-19	5	\$6,500	Apr-20		
May-16	15	\$31,916	May-17	6	\$11,500	May-18	4	\$12,500	May-19	4	\$16,000	May-20		
Jun-16	22	\$43,000	Jun-17	4	\$13,500	Jun-18	1	\$5,389	Jun-19	4	\$8,000	Jun-20		
TOTAL	233	\$458,711		118	\$240,929		63	\$160,847		57	\$104,256		12	\$35,000
AVERAGE	19	\$38,226		10	\$20,077		5	\$13,404		5	\$8,688		6	\$17,500

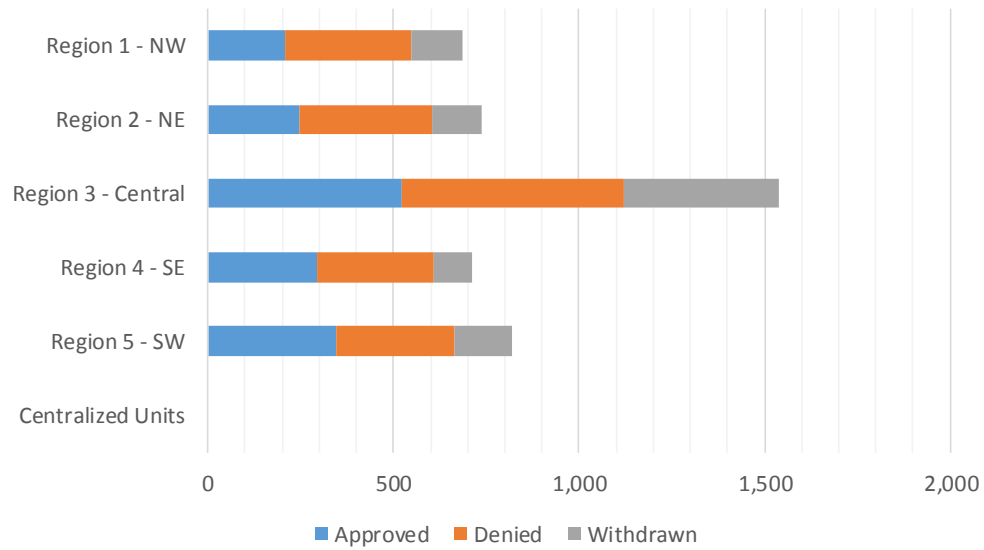


Cash Assistance Applications by Field Office^{4,11}
August 2019

Office	Approved	Denied	Withdrawn	Total Cases Processed
Chaves County ISD	58	75	27	160
Cibola County ISD	17	31	5	53
Colfax County ISD	16	13	9	38
Curry County ISD	91	79	37	207
East Dona Ana County ISD	69	67	33	169
Eddy Artesia County ISD	18	16	4	38
Eddy Carlsbad County ISD	50	40	14	104
Grant County ISD	30	38	11	79
Guadalupe County ISD	3	3	2	8
Hidalgo County ISD	0	0	0	0
Lea County ISD	65	86	20	171
Lincoln County ISD	12	17	3	32
Luna County ISD	34	20	18	72
McKinley County ISD	20	55	21	96
Northeast Bernalillo County ISD	144	198	115	457
Northwest Bernalillo County ISD	106	101	134	341
Otero County ISD	55	48	23	126
Quay County ISD	12	5	7	24
Rio Arriba County ISD	43	46	18	107
Roosevelt County ISD	0	0	0	0
San Juan County ISD	62	152	71	285
San Miguel County ISD	35	44	16	95
Sandoval County ISD	60	104	45	209
Santa Fe County ISD	57	114	25	196
Sierra County ISD	13	11	9	33
Socorro County ISD	18	30	4	52
South Dona Ana ISD	64	40	19	123
Southeast Bernalillo County ISD	98	110	74	282
Southwest Bernalillo County ISD	153	165	84	402
Taos County ISD	23	28	8	59
Torrance County ISD	20	28	9	57
Valencia North County ISD	79	62	25	166
Valencia South County ISD	0	0	0	0
West Dona Ana County ISD	96	105	48	249
Centralized Units	0	0	0	0
Statewide Total	1,621	1,931	938	4,490

Cash Assistance Applications by Region^{4,11}
August 2019

	Approved	Denied	Withdrawn	Total Cases Processed
Region				
Region 1 - NW	209	341	135	685
Region 2 - NE	249	357	130	736
Region 3 - Central	521	602	416	1,539
Region 4 - SE	294	313	105	712
Region 5 - SW	348	318	152	818
Centralized Units	0	0	0	0
Statewide Total	1,621	1,931	938	4,490



Children Youth and Families Department
Children Receiving Child Care Assistance Subsidies By County

County	Aug 2018	Sept 2018	Oct 2018	Nov 2018	Dec 2018	Jan 2019	Feb 2019	Mar 2019	Apr 2019	May 2019	June 2019	July 2019	Aug 2019	Change Fr. Cases	Last Year Percent
Bernalillo	7,741	8,041	7,753	7,741	7,584	7,545	7,563	7,831	7,997	8,226	8,692	7,702	7,885	144	1.9%
Catron	0	0	0	0	0	0	0	0	0	0	0	0	0	0	0.0%
Chaves	828	861	817	836	814	812	834	878	868	868	875	830	824	-4	-0.5%
Cibola	278	312	316	315	302	287	285	289	306	286	292	283	277	-1	-0.4%
Colfax	56	59	62	60	57	62	57	59	52	50	44	38	40	-16	-28.6%
Curry	538	592	543	548	517	492	489	524	548	542	590	597	613	75	13.9%
De Baca	4	4	4	1	1	1	1	1	0	1	1	1	1	-3	-75.0%
Dona Ana	4,219	4,403	4,311	4,304	4,191	4,198	4,351	4,453	4,413	4,536	4,751	4,360	4,384	165	3.9%
Eddy	259	268	267	257	259	248	243	245	214	225	240	240	226	-33	-12.7%
Grant	111	134	133	139	126	125	134	131	127	130	136	133	115	4	3.6%
Guadalupe	18	11	16	14	12	11	11	11	11	11	11	10	10	-8	-44.4%
Harding	1	1	1	1	1	1	1	0	0	0	0	0	0	-1	0.0%
Hidalgo	37	36	35	32	28	23	26	24	20	27	27	27	27	-10	-27.0%
Lea	813	877	840	851	821	829	823	831	815	808	798	770	752	-61	-7.5%
Lincoln	131	107	104	100	97	97	102	104	104	100	104	103	103	-28	-21.4%
Los Alamos	30	26	31	34	34	34	34	34	36	40	40	37	37	7	23.3%
Luna	149	153	142	145	153	150	176	180	176	190	191	172	160	11	7.4%
McKinley	157	188	173	173	168	162	158	168	154	158	169	146	141	-16	-10.2%
Mora	31	29	25	18	16	16	13	11	11	13	9	9	10	-21	-67.7%
Otero	496	520	505	525	501	531	506	507	512	506	530	499	538	42	8.5%
Out of State	6	4	4	4	5	3	4	1	2	0	1	0	0	-6	-100.0%
Quay	37	33	35	34	33	34	32	34	33	33	38	34	38	1	2.7%
Rio Arriba	143	139	141	146	142	134	137	132	141	151	155	158	151	8	5.6%
Roosevelt	88	101	106	112	121	118	118	118	121	119	130	129	138	50	56.8%
San Juan	892	1,020	954	955	926	913	942	935	958	966	961	905	897	5	0.6%
San Miguel	361	375	364	357	345	317	316	319	332	349	373	363	357	-4	-1.1%
Sandoval	756	763	693	697	708	741	734	744	758	751	802	765	806	50	6.6%
Santa Fe	511	497	448	470	460	461	481	503	499	520	541	557	562	51	10.0%
Sierra	50	64	62	60	57	49	51	48	42	40	50	48	47	-3	-6.0%
Socorro	63	62	65	64	63	58	51	58	55	54	57	53	53	-10	-15.9%
Taos	126	111	111	112	102	115	118	117	124	125	136	138	149	23	18.3%
Torrance	104	112	92	94	88	90	85	79	69	67	82	68	67	-37	-35.6%
Union	5	5	5	5	5	5	5	5	3	3	4	3	3	-2	-40.0%
Valencia	621	664	604	611	610	614	604	589	591	607	656	559	569	-52	-8.4%
Totals	19,660	20,572	19,762	19,815	19,347	19,276	19,485	19,963	20,092	20,502	21,486	19,737	19,980	320	1.6%

CHILDREN YOUTH AND FAMILIES DEPARTMENT

CHILD CARE ASSISTANCE ELIGIBILITY PROGRAMS

MONTH	Sept'18	Oct'18	Nov'18	Dec'18	Jan'19	Feb'19	Mar'19	Apr'19	May'19	June'19	July'19	Aug'19
TANF (Child Care Priority 1 Clients)												
CLIENTS	2,221	2,197	2,202	2,149	2,131	2,107	2,138	2,147	2,140	2,253	2,054	2,033
COST	\$1,238,106	\$1,335,587	\$1,313,281	\$1,274,570	\$1,281,263	\$1,264,626	\$1,284,582	\$1,286,044	\$1,278,678	\$1,305,024	\$1,273,209	\$1,263,930
TANF AVERAGE COST	\$557	\$608	\$596	\$593	\$601	\$600	\$601	\$599	\$598	\$579	\$620	\$622
TRANSITION OFF TANF (Child Care Priority 2 Clients)												
CLIENTS	165	157	145	134	129	125	124	119	111	112	120	132
COST	\$89,581	\$87,146	\$81,849	\$78,119	\$81,456	\$75,852	\$73,930	\$71,395	\$69,505	\$74,593	\$74,688	\$88,189
TRAN OFF TANF AVG COST	\$543	\$555	\$564	\$583	\$631	\$607	\$596	\$600	\$626	\$666	\$622	\$668
TANF ELIGIBLE (Child Care Priority 1B Clients at or below 100% of the Federal Poverty Level)												
CLIENTS	8,755	8,505	8,452	8,269	8,227	8,125	8,248	8,275	8,494	8,777	8,104	8,220
COST	\$4,776,708	\$4,957,788	\$4,970,667	\$4,870,464	\$4,796,096	\$4,662,397	\$4,825,487	\$4,845,578	\$4,939,239	\$5,047,497	\$4,909,110	\$5,038,735
TANF ELIGIBLE AVG COST	\$546	\$583	\$588	\$589	\$583	\$574	\$585	\$586	\$581	\$575	\$606	\$613
INCOME ELIGIBLE (Child Care Priority 3, and Priority 4 Clients)												
CLIENTS	8,122	7,686	7,752	7,567	7,606	7,932	8,262	8,382	8,610	9,149	8,313	8,429
COST	\$3,980,270	\$4,056,059	\$4,049,318	\$3,991,789	\$3,956,942	\$4,144,807	\$4,325,025	\$4,401,790	\$4,546,220	\$4,693,955	\$4,573,196	\$4,729,292
INCOME ELIG AVG COST	\$490	\$528	\$522	\$528	\$520	\$523	\$523	\$525	\$528	\$513	\$550	\$561
AT-RISK CHILD PROTECTIVE SERVICES CHILD CARE PILOT (Priority 5 Clients)												
CLIENTS	364	326	351	344	338	336	342	322	303	321	297	270
COST	\$224,486	\$213,687	\$217,475	\$234,222	\$239,514	\$210,812	\$223,510	\$203,584	\$204,504	\$206,998	\$200,185	\$201,432
CPS AVG COST	\$617	\$655	\$620	\$681	\$709	\$627	\$654	\$632	\$675	\$645	\$674	\$746
CHILD PROTECTIVE SERVICES (Child Care CPS Clients)												
CLIENTS	945	891	913	884	845	860	849	847	844	874	849	896
COST	\$581,981	\$613,927	\$641,871	\$607,486	\$585,379	\$576,818	\$551,507	\$594,790	\$587,750	\$612,880	\$608,184	\$644,539
CPS AVG COST	\$616	\$689	\$703	\$687	\$693	\$671	\$650	\$702	\$696	\$701	\$716	\$719
GRAND TOTAL - ALL CHILD CARE PROGRAMS												
CLIENTS	20,572	19,762	19,815	19,347	19,276	19,485	19,963	20,092	20,502	21,486	19,737	19,980
COST	\$10,891,133	\$11,264,194	\$11,274,461	\$11,056,650	\$10,940,651	\$10,935,312	\$11,284,041	\$11,403,180	\$11,625,897	\$11,940,948	\$11,638,571	\$11,966,117
ALL PROGRAMS AVG COST	\$529	\$570	\$569	\$571	\$568	\$561	\$565	\$568	\$567	\$556	\$590	\$599

Income Eligibility Guidelines: October 1, 2018- September 30, 2019

Federal Poverty Guidelines (FPG) Monthly Income Standards

Supplemental Nutrition Program (SNAP)					
Household Size	100% FPG Net Income	130% FPG Gross Income	165% FPG Gross Income for Categorical Eligibility	Maximum SNAP Monthly Allotment	LIHEAP 150% FPG
1	\$1,012	\$1,316	\$1,670	\$192	\$1,518
2	\$1,372	\$1,784	\$2,264	\$353	\$2,058
3	\$1,732	\$2,252	\$2,858	\$505	\$2,598
4	\$2,092	\$2,720	\$3,452	\$642	\$3,138
5	\$2,452	\$3,188	\$4,046	\$762	\$3,678
6	\$2,812	\$3,656	\$4,640	\$914	\$4,218
7	\$3,172	\$4,124	\$5,234	\$1,011	\$4,758
8	\$3,532	\$4,592	\$5,828	\$1,155	\$5,298
+1	+\$60	+\$468	+\$594	+\$144	+\$540
Minimum Allotment of \$15 effective from 10/1/2017 - 9/30/2018					
DEDUCTIONS: Standard Deduction: For HH size 1-3 = \$164; 4 = \$174; 5 = \$204; 6 or more = \$234; Excess Shelter Deduction Limit: \$552; Heating and Cooling Standard Utility Allowance: \$344 (HCSUA) – Limited Utility Allowance: \$139 (LUA); Telephone Standard: \$52; Dependent Care: Actual Amount (No Limit); Earned Income Deduction: 20%; Homeless Shelter Standard: \$143					

CASH Assistance & Support Services					
Household Size	Federal Poverty Guidelines (FPG) Monthly Income Standards			Maximum Monthly Benefit	
	100% FPG Net Income	85% FPG Gross Limit	NM Works Cash Net Income	Maximum Monthly Benefit	General Assistance
1	\$1,012	\$860	\$266	\$244	\$245
2	\$1,372	\$1,166	\$357	\$327	\$329
3	\$1,732	\$1,472	\$447	\$409	\$412
4	\$2,092	\$1,778	\$539	\$493	\$496
5	\$2,452	\$2,084	\$630	\$576	\$580
6	\$2,812	\$2,390	\$721	\$659	\$664
7	\$3,172	\$2,696	\$812	\$743	\$748
8	\$3,532	\$3,002	\$922	\$843	\$849
+1	+\$360	+\$306	+\$91	+\$83	+\$84
Deductions- Dependent Care: For a child under age 2 = \$200; For a child age 2 and over = \$175. Work Incentives- Earned Income Disregard: Single parent = \$125 & ½ remainder; Two parent = \$225 & ½ remainder.					

ISD 017 Revised 08/13/2018

Medical Assistance Division					
Federal Poverty Guidelines New Mexico Affordable Care Eligibility Groups Effective April 01, 2019 thru March 31, 2020 Monthly Guidelines					
HH SIZE	PERCENT OF POVERTY				
	138%	190%	240%	250%	300%
1	\$1,437	\$1,978	\$2,498	\$2,603	\$3,123
2	\$1,945	\$2,678	\$3,382	\$3,523	\$4,228
3	\$2,453	\$3,378	\$4,266	\$4,444	\$5,333
4	\$2,962	\$4,078	\$5,150	\$5,365	\$6,438
5	\$3,470	\$4,777	\$6,034	\$6,286	\$7,543
6	\$3,978	\$5,477	\$6,918	\$7,207	\$8,648
7	\$4,487	\$6,177	\$7,802	\$8,128	\$9,753
8	\$4,995	\$6,877	\$8,686	\$9,048	\$10,858
138% Adult Expansion, 190% Children ages 6 to 19 (Medicaid), 240% Children ages 0 to 6 (Medicaid); ages 6 to 19 (CHIP), 250% Pregnancy Related Services Only, 300% Children 0 to 6 (CHIP)					

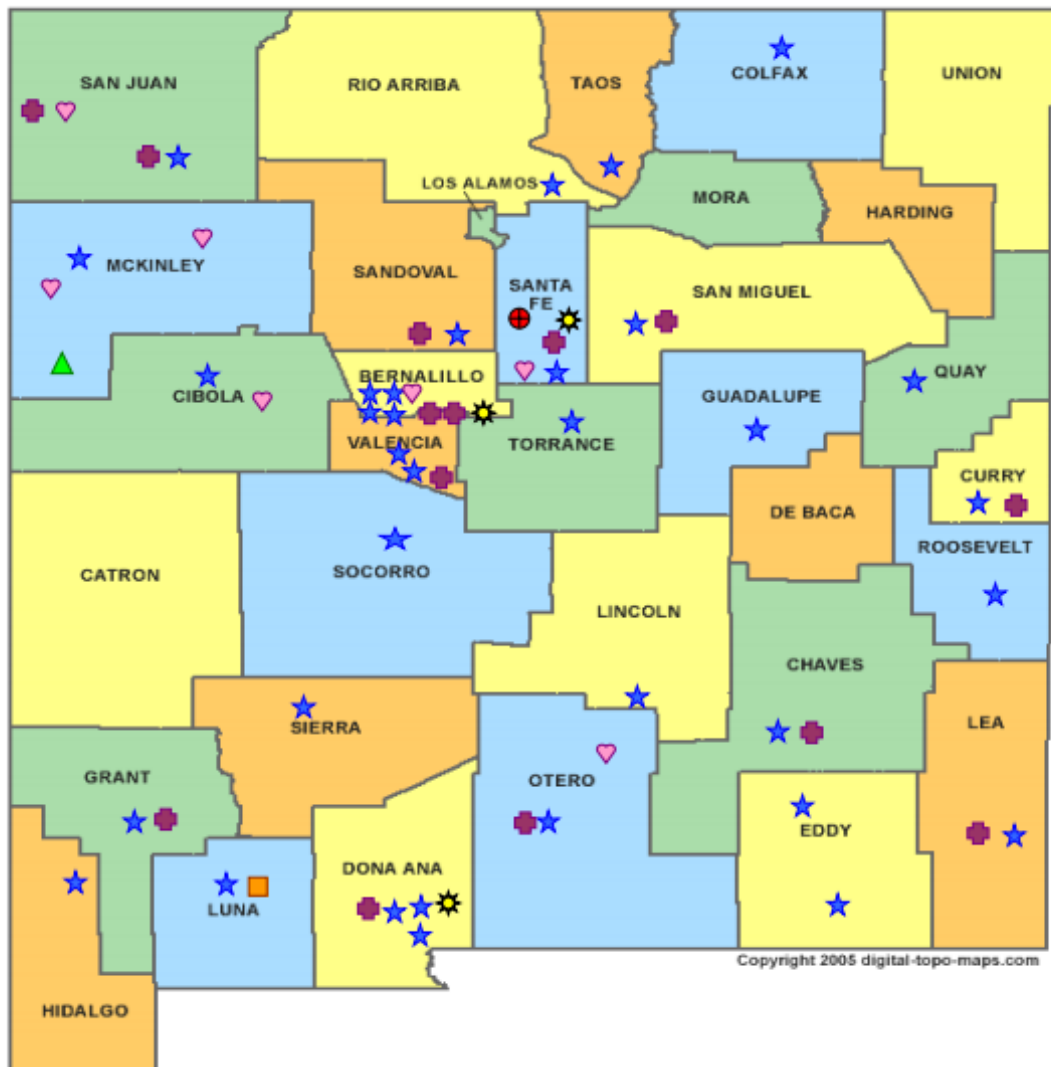
Medical Assistance Division					
Federal Poverty Guidelines New Mexico Affordable Care Eligibility Groups Effective April 01, 2019 thru March 31, 2020 Annual Guidelines					
HH SIZE	PERCENT OF POVERTY				
	138%	190%	240%	250%	300%
1	\$17,244	\$23,736	\$29,976	\$31,236	\$37,476
2	\$23,340	\$32,136	\$40,584	\$42,276	\$50,736
3	\$29,436	\$40,536	\$51,192	\$53,328	\$63,996
4	\$35,544	\$48,936	\$61,800	\$64,380	\$77,256
5	\$41,640	\$57,324	\$72,408	\$75,432	\$90,516
6	\$47,736	\$65,724	\$83,016	\$86,484	\$103,776
7	\$53,844	\$74,124	\$93,624	\$97,536	\$117,036
8	\$59,940	\$82,524	\$104,232	\$108,576	\$130,296
138% Adult Expansion, 190% Children ages 6 to 19 (Medicaid), 240% Children ages 0 to 6 (Medicaid); ages 6 to 19 (CHIP), 250% Pregnancy Related Services Only, 300% Children 0 to 6 (CHIP)					

References

- ¹ *Medicaid Expenditures* (Omnicaid, Medicare Buy-Ins, Lump Sum Payments)
- ² *ASPEN Business Intelligence Tool: Eligibility*
- ³ New Mexico Human Services Department, *Medicaid Eligibility Reports*, Retrieved from <http://www.hsd.state.nm.us/LookingForInformation/medicaid-eligibility.aspx> (for reporting month)
- ⁴ *ASPEN Business Intelligence Tool: Application Tracking*
- ⁵ Fidelity Information Services, *EBT Daily Statistical Report* (for reporting month)
- ⁶ *ASPEN Report DQ-180: Length of Time Cases are Open* (for reporting month)
- ⁷ *ASPEN Report EY-180: Individual Demographics by State and Age* (for reporting month)
- ⁸ *ASPEN Business Intelligence Tool: Benefit Issuance*
- ⁹ Fidelity Information Services, *EBT Daily Statistical Reports* (Month End)
- ¹⁰ *ASPEN Report EY-180R: Individual Demographics by State, Race, Ethnicity and Gender* (for reporting month)
- ¹¹ SQL Queries from ASPEN
- ¹² JP Morgan, *New Mexico – NM EBT System- Monthly Benefit Draw Down Totals*
- ¹³ *ASPEN Business Intelligence Tool: Application Tracking* (w/Parameters: SNAP, Expedite, Approved)
- ¹⁴ SL Start, *As of Today Report*
- ¹⁵ SL Start, *Statewide Employment Report*
- ¹⁶ *SSIAR Payments*
- ¹⁷ Children, Youth, and Families Department, *Children Receiving Child Care Assistance Subsidies by County*
- ¹⁸ Children, Youth, and Families Department, *Child Care Assistance Eligibility Programs*

¹⁹ EDG is defined as an Eligibility Determination Group

²⁰SQL Query from ASPEN



HUMAN SERVICES
DEPARTMENT

New Mexico Human Services Department
Field Offices

- Central Office (1)
- Income Support Division County Office (35)
- Income Support Division Satellite Office (2)
- Child Support Enforcement Regional Office (16)
- Child Support Enforcement Satellite Office (1)
- Indian Health Services (7)
- Hospital Site (3)

For a complete listing of field offices and other government and community resources:
http://www.hsd.state.nm.us/LookingForAssistance/Field_Offices_1.aspx