



# Monthly Statistical Report

## August 2018

There were 831,391 individuals that received Medicaid in August 2018, a 5.2% decrease from one year ago. The count of Medicaid recipients has decreased by 1,208, or 0.1%, since last month.

The SNAP caseload in August 2018 was 222,814, a 0.8% increase from one year ago. The SNAP caseload has increased by 1,619 cases, or 0.7%, since last month.

The TANF caseload was 11,261 in August 2018, a decrease of 5.4% from August 2017. The TANF caseload had 202 more cases compared to July 2018, an increase of 1.8%.

The caseload for General Assistance was 2,910 in August 2018, a decrease of 3.3% from one year ago and an increase of 43 cases from last month.

Susana Martinez, Governor  
Brent Earnest, Cabinet Secretary

<b>Contents</b>	<b>Page</b>
Summary	3-5
Medicaid	6-18
SNAP	19-37
Cash Assistance	38-52
Child Care Assistance	53-54
Income Eligibility Guidelines	55-56

**Regions are reported as follows:**

<b>Region 1</b>		
Catron	San Juan	Valencia
Cibola	Sierra	
McKinley	Socorro	
<b>Region 2</b>		
Colfax	Mora	Santa Fe
De Baca	Quay	Taos
Guadalupe	Rio Arriba	Union
Harding	Sandoval	
Los Alamos	San Miguel	
<b>Region 3</b>		
Bernalillo	Torrance	
<b>Region 4</b>		
Chaves	Eddy	Lincoln
Curry	Lea	Roosevelt
<b>Region 5</b>		
Dona Ana	Hidalgo	Otero
Grant	Luna	

***The Mission of the Human Services Department***

*To reduce the impact of poverty on people living in New Mexico by providing support services that help families break the cycle of dependency on public assistance*

Christopher Collins, Deputy Secretary  
Michael Nelson, Deputy Secretary

Prepared by Income Support Division  
PO Box 2348  
Santa Fe, NM 87504-2348 ☐  
505-827-7250

Mary Brogdon, Director  
Vida Tapia-Sanchez, Deputy Director  
Shanita Harrison, Deputy Director  
Judith Parks, Deputy Director

<http://www.hsd.state.nm.us/monthly-statistical-reports.aspx>

## Program Summary for August 2018

Medicaid				Percent Change	
	Aug-17	Jul-18	Aug-18	Aug-17- Aug-18	Jul-18- Aug-18
<b>Expenditures<sup>1</sup></b>	\$287,375,278	\$451,227,729	\$485,661,467	69.0%	7.6%
<b>Cases<sup>2</sup></b>	506,069	488,871	488,487	-3.5%	-0.1%
<b>Expenditures/Case</b>	\$568	\$923	\$994	75.1%	7.7%
<b>Recipients<sup>3</sup></b>	877,413	832,599	831,391	-5.2%	-0.1%
<i>Adults</i>	499,874	474,045	473,397	-5.3%	-0.1%
<i>Children</i>	377,539	358,554	357,994	-5.2%	-0.2%
<b>Recipients /Case</b>	1.73	1.70	1.70	-1.8%	-0.1%
<b>Cases Processed<sup>4</sup></b>	17,795	12,118	14,030	-21.2%	15.8%
<i>Approvals<sup>4</sup></i>	13,322	9,545	11,114	-16.6%	16.4%

Supplemental Nutrition Assistance Program (SNAP)				Percent Change	
	Aug-17	Jul-18	Aug-18	Aug-17- Aug-18	Jul-18- Aug-18
<b>Expenditures<sup>5</sup></b>	\$55,608,651	\$52,761,380	\$53,045,612	-4.6%	0.5%
<b>Cases<sup>6</sup></b>	221,035	221,195	222,814	0.8%	0.7%
<b>Expenditures/Case</b>	\$252	\$239	\$238	-5.4%	-0.2%
<b>Recipients<sup>7</sup></b>	464,102	453,169	456,581	-1.6%	0.8%
<i>Adults</i>	264,816	261,714	263,799	-0.4%	0.8%
<i>Children</i>	199,286	191,455	192,782	-3.3%	0.7%
<b>Recipients /Case</b>	2.10	2.05	2.05	-2.4%	0.0%
<b>Cases Processed<sup>4</sup></b>	21,692	18,847	20,092	-7.4%	6.6%
<i>Approvals<sup>4</sup></i>	16,908	15,510	15,717	-7.0%	1.3%

Cash Assistance Programs				Percent Change	
	Aug-17	Jul-18	Aug-18	Aug-17- Aug-18	Jul-18- Aug-18
<b>Expenditures<sup>5</sup></b>	\$5,681,888	\$4,292,123	\$5,735,012	0.9%	33.6%
<b>Cases<sup>6</sup></b>	15,050	14,065	14,323	-4.8%	1.8%
<b>Expenditures/Case</b>	\$378	\$305	\$400	6.1%	31.2%
<b>Recipients<sup>7</sup></b>	34,750	31,656	32,287	-7.1%	2.0%
<i>Adults</i>	11,247	10,049	10,288	-8.5%	2.4%
<i>Children</i>	23,503	21,607	21,999	-6.4%	1.8%
<b>Recipients /Case</b>	2.31	2.25	2.25	-2.4%	0.2%
<b>Cases Processed<sup>4</sup></b>	6,813	5,570	5,871	-13.8%	5.4%
<i>Approvals<sup>4</sup></i>	1,982	1,784	1,867	-5.8%	4.7%

Low Income Home Energy Assistance Program (LIHEAP)				Percent Change	
	Aug-17	Jul-18	Aug-18	Aug-17- Aug-18	Jul-18- Aug-18
<b>Expenditures<sup>8</sup></b>	\$802,916	\$617,934	\$743,067	-7.5%	20.3%
<b>Cases<sup>8</sup></b>	3,274	2,547	3,075	-6.1%	20.7%
<b>Expenditures/Case</b>	\$245	\$243	\$242	-1.5%	-0.4%
<b>Recipients<sup>8</sup></b>	8,520	6,604	7,883	-7.5%	19.4%
<i>Adults</i>	4,408	3,388	4,074	-7.6%	20.2%
<i>Children</i>	4,112	3,216	3,809	-7.4%	18.4%
<b>Recipients /Case</b>	2.60	2.59	2.56	-1.5%	-1.1%
<b>Cases Processed<sup>4</sup></b>	5,630	4,061	5,115	-9.1%	26.0%
<i>Approvals<sup>4</sup></i>	2,557	2,558	3,096	21.1%	21.0%

## Cash Assistance Summary for August 2018

### Temporary Assistance for Needy Families (TANF)

	Aug-17	Jul-18	Aug-18	Percent Change	
				Aug-17- Aug-18	Jul-18- Aug-18
Expenditures <sup>5</sup>	\$4,871,504	\$3,547,715	\$4,923,705	1.1%	38.8%
Cases <sup>6</sup>	11,899	11,059	11,261	-5.4%	1.8%
Expenditures/Case	\$409	\$321	\$437	6.8%	36.3%
Recipients <sup>7</sup>	31,332	28,473	28,980	-7.5%	1.8%
<i>Adults</i>	8,258	7,232	7,395	-10.5%	2.3%
<i>Children</i>	23,074	21,241	21,585	-6.5%	1.6%
Approvals <sup>4</sup>	1,637	1,563	1,571	-4.0%	0.5%

### General Assistance (GA)

	Aug-17	Jul-18	Aug-18	Percent Change	
				Aug-17- Aug-18	Jul-18- Aug-18
Expenditures <sup>5</sup>	\$756,953	\$700,091	\$749,780	-0.9%	7.1%
Cases <sup>6</sup>	3,008	2,867	2,910	-3.3%	1.5%
Expenditures/Case	\$252	\$244	\$258	2.4%	5.5%
Recipients <sup>7</sup>	3,079	2,878	2,948	-4.3%	2.4%
<i>Adults</i>	2,830	2,669	2,729	-3.6%	2.2%
<i>Children</i>	249	209	219	-12.0%	4.8%
Approvals <sup>4</sup>	262	199	251	-4.2%	26.1%

### Education Works

	Aug-17	Jul-18	Aug-18	Percent Change	
				Aug-17- Aug-18	Jul-18- Aug-18
Expenditures <sup>5</sup>	\$46,227	\$34,710	\$52,893	14.4%	52.4%
Cases <sup>6</sup>	101	87	105	4.0%	20.7%
Expenditures/Case	\$458	\$399	\$504	10.1%	26.3%
Recipients <sup>7</sup>	295	252	312	5.8%	23.8%
<i>Adults</i>	115	95	117	1.7%	23.2%
<i>Children</i>	180	157	195	8.3%	24.2%
Approvals <sup>4</sup>	5	15	2	-60.0%	-86.7%

### Refugee Cash (RCA)

	Aug-17	Jul-18	Aug-18	Percent Change	
				Aug-17- Aug-18	Jul-18- Aug-18
Expenditures <sup>5</sup>	\$4,704	\$7,408	\$6,434	36.8%	-13.1%
Cases <sup>6</sup>	17	30	25	47.1%	-16.7%
Expenditures/Case	\$277	\$247	\$257	-7.0%	4.2%
Recipients <sup>7</sup>	19	31	25	31.6%	-19.4%
<i>Adults</i>	19	31	25	31.6%	-19.4%
<i>Children</i>	0	0	0	N/A	N/A

### State Supplement for Residential Care

	Aug-17	Jul-18	Aug-18	Percent Change	
				Aug-17- Aug-18	Jul-18- Aug-18
Expenditures <sup>5</sup>	\$2,500	\$2,200	\$2,200	-12.0%	0.0%
Cases <sup>6</sup>	25	22	22	-12.0%	0.0%
Expenditures/Case	\$100	\$100	\$100	0.0%	0.0%
Recipients <sup>7</sup>	25	22	22	-12.0%	0.0%
<i>Adults</i>	25	22	22	-12.0%	0.0%
<i>Children</i>	0	0	0	N/A	N/A

<b>Expenditures YTD</b>			
	SFY 2019	FFY 2018	CY 2018
Medicaid <sup>1</sup>	\$936,889,196	\$5,052,727,305	\$3,693,886,638
Supplemental Nutrition Assistance Program <sup>9</sup>	\$105,806,992	\$585,350,408	\$423,880,758
Temporary Assistance for Needy Families <sup>9</sup>	\$8,471,420	\$38,816,046	\$28,417,194
General Assistance <sup>9</sup>	\$1,449,871	\$8,056,454	\$5,795,356
Education Work <sup>9</sup>	\$87,603	\$528,272	\$383,968
LIHEAP <sup>8</sup>	\$1,361,001	\$16,483,847	\$7,987,096

<b>Average Caseload YTD</b>			
	SFY 2019	FFY 2018	CY 2018
Medicaid <sup>2</sup>	488,679	492,565	493,098
Supplemental Nutrition Assistance Program <sup>6</sup>	222,005	221,742	221,770
Temporary Assistance for Needy Families <sup>6</sup>	11,160	11,289	11,081
General Assistance <sup>6</sup>	2,889	2,979	2,952
Education Work <sup>6</sup>	96	128	124
LIHEAP <sup>8</sup>	2,811	5,681	3,946

<b>Demographic Profile- August 2018</b>					
	SNAP	TANF	GA	Education Works	RCA
<b>Gender of Recipients<sup>10</sup></b>					
Male	206,243	12,320	1,644	113	18
Female	250,338	16,660	1,304	199	7
<b>Ethnicity<sup>10</sup></b>					
Hispanic	252,319	19,620	1,517	204	10
Non-Hispanic	204,262	9,360	1,431	108	15
<b>Race<sup>10</sup></b>					
Native American or Alaskan Native	76,737	2,434	244	23	0
Asian	4,363	247	26	0	0
African American or Black	11,399	1,249	114	15	10
Native Hawaiian or Pacific Islander	876	38	3	0	0
White	353,287	24,163	2,497	268	13
Unknown / Not Declared	4,820	320	33	0	0
More than One Race	5,099	529	31	6	2

Medicaid demographic data can be found here: <http://www.hsd.state.nm.us/LookingForInformation/medicaid-eligibility.aspx>

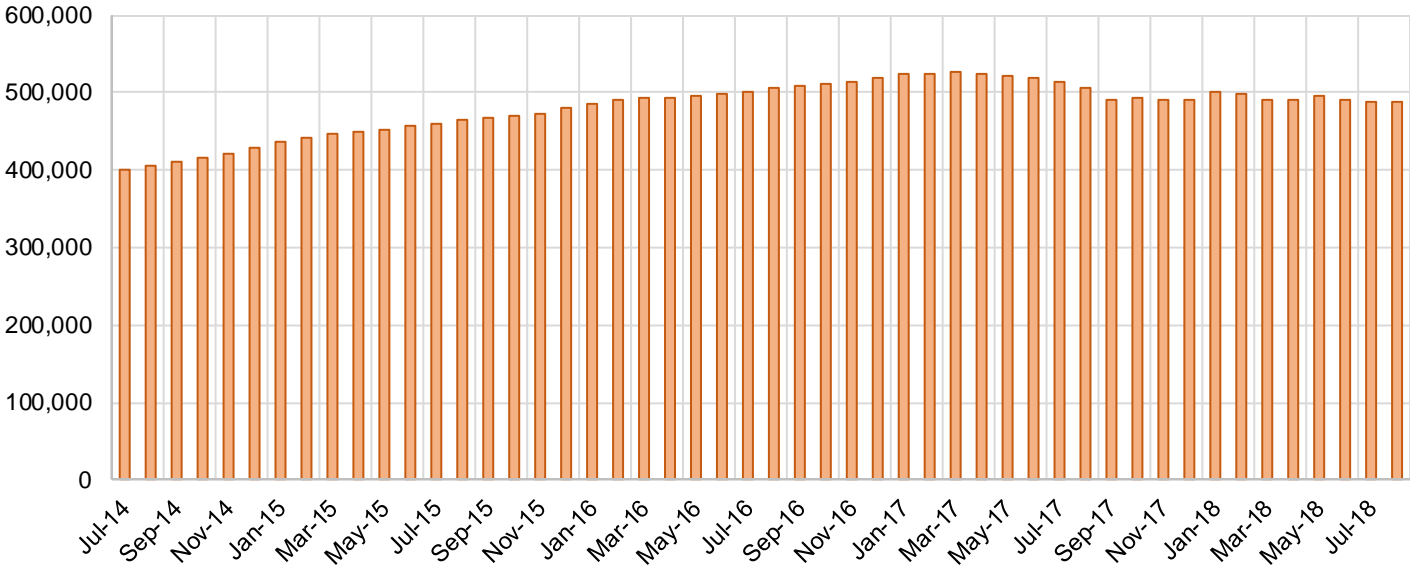
## Medicaid Cases by Field Office<sup>2</sup>

Office	Aug-17	Jul-18	Aug-18	Percent Change	
				Aug-17- Aug-18	Jul-18- Aug-18
Chaves County ISD	16,288	15,908	15,902	-2.4%	0.0%
Cibola County ISD	7,536	7,423	7,452	-1.1%	0.4%
Colfax County ISD	3,438	3,580	3,592	4.5%	0.3%
Curry County ISD	9,973	13,861	13,940	39.8%	0.6%
East Dona Ana County ISD	17,829	17,492	17,559	-1.5%	0.4%
Eddy Artesia County ISD	3,861	3,825	3,833	-0.7%	0.2%
Eddy Carlsbad County ISD	8,005	7,650	7,605	-5.0%	-0.6%
Grant County ISD	6,854	6,675	6,687	-2.4%	0.2%
Guadalupe County ISD	1,659	1,719	1,702	2.6%	-1.0%
Hidalgo County ISD	971	964	954	-1.8%	-1.0%
Lea County ISD	14,236	14,309	14,245	0.1%	-0.4%
Lincoln County ISD	4,366	4,275	4,247	-2.7%	-0.7%
Luna County ISD	8,752	8,553	8,583	-1.9%	0.4%
McKinley County ISD	22,236	22,713	22,617	1.7%	-0.4%
Northeast Bernalillo County ISD	46,322	42,775	42,825	-7.5%	0.1%
Northwest Bernalillo County ISD	50,794	49,524	49,602	-2.3%	0.2%
Otero County ISD	11,943	11,829	11,818	-1.0%	-0.1%
Quay County ISD	2,602	2,564	2,564	-1.5%	0.0%
Rio Arriba County ISD	14,461	13,894	13,881	-4.0%	-0.1%
Roosevelt County ISD	3,949	20	16	-99.6%	-20.0%
San Juan County ISD	30,607	29,744	29,638	-3.2%	-0.4%
San Miguel County ISD	9,340	9,027	9,000	-3.6%	-0.3%
Sandoval County ISD	25,674	25,314	25,353	-1.3%	0.2%
Santa Fe County ISD	25,864	24,583	24,493	-5.3%	-0.4%
Sierra County ISD	5,609	5,312	5,312	-5.3%	0.0%
Socorro County ISD	5,540	5,262	5,251	-5.2%	-0.2%
South Dona Ana ISD	19,979	19,597	19,595	-1.9%	0.0%
Southeast Bernalillo County ISD	29,724	25,030	24,986	-15.9%	-0.2%
Southwest Bernalillo County ISD	39,164	38,465	38,331	-2.1%	-0.3%
Taos County ISD	9,634	9,249	9,202	-4.5%	-0.5%
Torrance County ISD	7,973	7,567	7,576	-5.0%	0.1%
Valencia North County ISD	18,351	18,235	18,229	-0.7%	0.0%
Valencia South County ISD	80	109	106	32.5%	-2.8%
West Dona Ana County ISD	22,453	21,820	21,787	-3.0%	-0.2%
Centralized Units	2	4	4	100.0%	0.0%
<b>Statewide Total</b>	<b>506,069</b>	<b>488,871</b>	<b>488,487</b>	<b>-3.5%</b>	<b>-0.1%</b>

## Medicaid Cases by Region<sup>2</sup>

Region				Percent Change	
	Aug-17	Jul-18	Aug-18	Aug-17- Aug-18	Jul-18- Aug-18
Region 1 - NW	89,959	88,798	88,605	-1.5%	-0.2%
Region 2 - NE	92,672	89,930	89,787	-3.1%	-0.2%
Region 3 - Central	173,977	163,361	163,320	-6.1%	0.0%
Region 4 - SE	60,678	59,848	59,788	-1.5%	-0.1%
Region 5 - SW	88,781	86,930	86,983	-2.0%	0.1%
Centralized Units	2	4	4	100.0%	0.0%
Statewide Total	506,069	488,871	488,487	-3.5%	-0.1%

### Medicaid Caseload: SFY-15 to Current



**Medicaid Initial Applications by Field Office<sup>4,11</sup>**  
**August 2018**

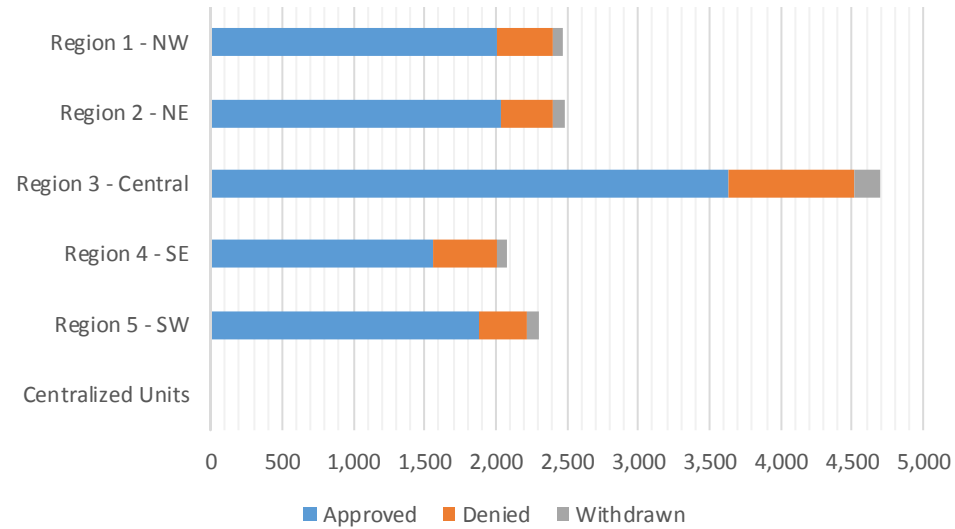
Office	Approved	Denied	Withdrawn	Total Cases Processed
Chaves County ISD	365	89	10	464
Cibola County ISD	161	26	3	190
Colfax County ISD	80	16	3	99
Curry County ISD	395	102	13	510
East Dona Ana County ISD	438	87	25	550
Eddy Artesia County ISD	103	34	5	142
Eddy Carlsbad County ISD	206	52	13	271
Grant County ISD	173	29	6	208
Guadalupe County ISD	36	4		40
Hidalgo County ISD	0	0	0	0
Lea County ISD	396	150	17	563
Lincoln County ISD	88	30	3	121
Luna County ISD	163	42	7	212
McKinley County ISD	519	90	16	625
Northeast Bernalillo County ISD	1,035	238	56	1,329
Northwest Bernalillo County ISD	922	223	35	1,180
Otero County ISD	221	37	6	264
Quay County ISD	50	16	2	68
Rio Arriba County ISD	261	53	8	322
Roosevelt County ISD	1	0		1
San Juan County ISD	766	167	35	968
San Miguel County ISD	301	27	8	336
Sandoval County ISD	570	105	39	714
Santa Fe County ISD	503	113	25	641
Sierra County ISD	111	15	4	130
Socorro County ISD	89	22	4	115
South Dona Ana ISD	396	69	13	478
Southeast Bernalillo County ISD	680	217	30	927
Southwest Bernalillo County ISD	825	169	62	1,056
Taos County ISD	234	28	8	270
Torrance County ISD	174	28	8	210
Valencia North County ISD	364	69	6	439
Valencia South County ISD	1	1		2
West Dona Ana County ISD	487	82	16	585
Centralized Units	0	0	0	0
<b>Statewide Total</b>	<b>11,114</b>	<b>2,430</b>	<b>486</b>	<b>14,030</b>



## Medicaid Initial Applications by Region<sup>4,11</sup> August 2018

	Approved	Denied	Withdrawn	Total Cases Processed
Region				
Region 1 - NW	2,011	390	68	2,469
Region 2 - NE	2,035	362	93	2,490
Region 3 - Central	3,636	875	191	4,702
Region 4 - SE	1,554	457	61	2,072
Region 5 - SW	1,878	346	73	2,297
Centralized Units	0	0	0	0

Statewide Total	11,114	2,430	486	14,030
-----------------	--------	-------	-----	--------

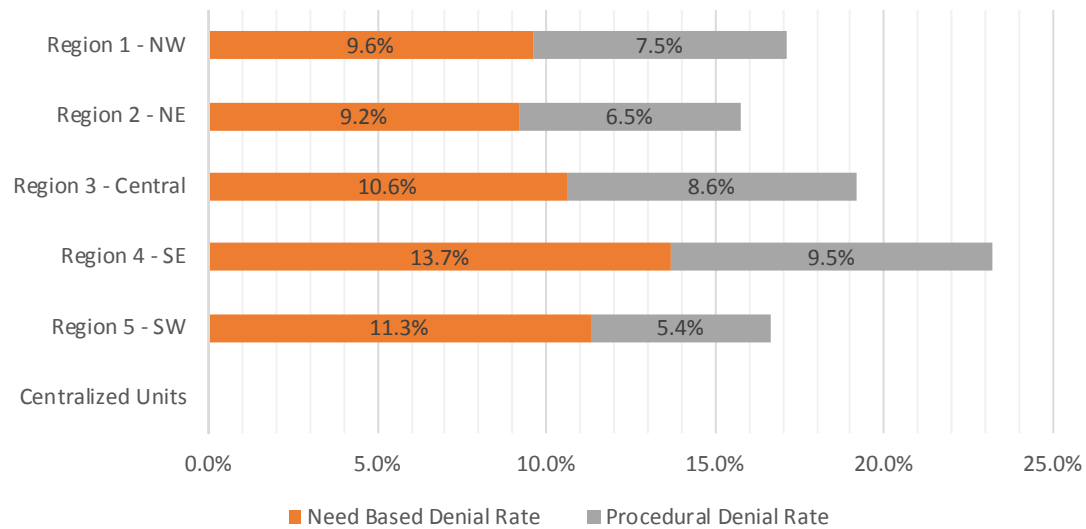


**Medicaid EDG Initial Disposition Rates by Field Office<sup>4,11,19</sup>**  
**August 2018**

Office	Approval Rate	Denial Rate	Need Based Denial Rate	Procedural Denial Rate
Chaves County ISD	80.4%	19.6%	11.1%	8.5%
Cibola County ISD	88.3%	11.7%	5.7%	6.0%
Colfax County ISD	81.5%	18.5%	10.2%	8.3%
Curry County ISD	81.5%	18.5%	6.8%	11.7%
East Dona Ana County ISD	82.5%	17.5%	12.7%	4.8%
Eddy Artesia County ISD	68.9%	31.1%	25.6%	5.5%
Eddy Carlsbad County ISD	76.1%	23.9%	12.6%	11.3%
Grant County ISD	86.1%	13.9%	5.3%	8.6%
Guadalupe County ISD	93.5%	6.5%	4.9%	1.6%
Hidalgo County ISD	0.0%	0.0%	0.0%	0.0%
Lea County ISD	73.1%	26.9%	18.6%	8.3%
Lincoln County ISD	74.3%	25.7%	15.5%	10.2%
Luna County ISD	79.9%	20.1%	16.4%	3.7%
McKinley County ISD	85.2%	14.8%	9.6%	5.2%
Northeast Bernalillo County ISD	80.1%	19.9%	10.5%	9.4%
Northwest Bernalillo County ISD	79.9%	20.1%	10.0%	10.1%
Otero County ISD	83.7%	16.3%	7.5%	8.8%
Quay County ISD	70.8%	29.2%	18.4%	10.8%
Rio Arriba County ISD	82.7%	17.3%	9.7%	7.6%
Roosevelt County ISD	100.0%	0.0%	0.0%	0.0%
San Juan County ISD	80.4%	19.6%	9.8%	9.8%
San Miguel County ISD	91.5%	8.5%	3.3%	5.2%
Sandoval County ISD	83.3%	16.7%	10.3%	6.4%
Santa Fe County ISD	81.6%	18.4%	11.2%	7.2%
Sierra County ISD	84.6%	15.4%	11.9%	3.5%
Socorro County ISD	76.7%	23.3%	11.1%	12.2%
South Dona Ana ISD	83.7%	16.3%	14.7%	1.6%
Southeast Bernalillo County ISD	77.1%	22.9%	14.7%	8.2%
Southwest Bernalillo County ISD	83.7%	16.3%	9.4%	6.9%
Taos County ISD	90.9%	9.1%	4.8%	4.3%
Torrance County ISD	87.7%	12.3%	6.1%	6.2%
Valencia North County ISD	84.0%	16.0%	9.6%	6.4%
Valencia South County ISD	50.0%	50.0%	50.0%	0.0%
West Dona Ana County ISD	83.9%	16.1%	8.8%	7.3%
Centralized Units	0.0%	0.0%	0.0%	0.0%
<b>Statewide Total</b>	<b>81.6%</b>	<b>18.4%</b>	<b>10.8%</b>	<b>7.6%</b>

**Medicaid EDG Initial Disposition Rates by Region<sup>4,11,19</sup>**  
**August 2018**

Region	Approval Rate	Denial Rate	Need Based Denial Rate	Procedural Denial Rate
Region 1 - NW	82.9%	17.1%	9.6%	7.5%
Region 2 - NE	84.3%	15.7%	9.2%	6.5%
Region 3 - Central	80.8%	19.2%	10.6%	8.6%
Region 4 - SE	76.8%	23.2%	13.7%	9.5%
Region 5 - SW	83.3%	16.7%	11.3%	5.4%
Centralized Units				
<b>Statewide Total</b>	<b>81.6%</b>	<b>18.4%</b>	<b>10.8%</b>	<b>7.6%</b>



**Medicaid: Percentage of Initial EDG Approvals Processed Timely by Field Office<sup>13,19</sup>**

	Oct-17	Nov-17	Dec-17	Jan-18	Feb-18	Mar-18	Apr-18	May-18	Jun-18	Jul-18	Aug-18	Sep-18	Average
Cibola	92.2%	94.4%	94.6%	98.5%	98.0%	98.9%	99.0%	97.1%	98.1%	99.5%	98.5%		97.2%
McKinley	95.6%	97.4%	96.9%	97.9%	98.3%	98.8%	99.3%	96.2%	99.1%	99.6%	97.9%		97.9%
San Juan	93.4%	92.0%	94.3%	94.7%	94.8%	95.9%	96.2%	97.1%	97.9%	98.3%	97.7%		95.7%
Sierra	95.8%	98.6%	96.9%	97.3%	99.4%	100.0%	99.1%	100.0%	99.4%	100.0%	98.8%		98.7%
Socorro	95.4%	98.7%	96.7%	97.0%	95.7%	95.9%	98.0%	99.3%	99.2%	100.0%	97.2%		97.6%
Valencia North	93.2%	94.1%	94.0%	95.2%	97.7%	98.9%	98.2%	99.6%	99.6%	99.8%	97.4%		97.1%
Valencia South	100.0%	100.0%	100.0%	100.0%		100.0%	100.0%	100.0%	100.0%		100.0%		100.0%
<b>NW Region 1 Total</b>	<b>94.0%</b>	<b>94.7%</b>	<b>95.2%</b>	<b>96.2%</b>	<b>96.8%</b>	<b>97.7%</b>	<b>97.8%</b>	<b>97.7%</b>	<b>98.7%</b>	<b>99.2%</b>	<b>97.8%</b>		<b>96.9%</b>
Colfax	93.9%	98.4%	97.4%	98.4%	95.1%	100.0%	98.1%	100.0%	99.4%	99.1%	98.5%		98.0%
Guadalupe	97.9%	100.0%	96.6%	100.0%	100.0%	100.0%	100.0%	100.0%	100.0%	100.0%	96.6%		99.2%
Quay	98.0%	94.9%	94.6%	97.2%	97.1%	93.7%	97.4%	95.8%	100.0%	100.0%	98.8%		97.0%
Rio Arriba	96.9%	94.7%	91.1%	96.9%	95.7%	97.3%	99.1%	96.2%	99.7%	99.0%	96.7%		96.7%
San Miguel	97.3%	98.9%	99.0%	98.4%	98.0%	99.3%	99.0%	99.0%	99.3%	99.2%	99.2%		98.8%
Sandoval	97.0%	97.0%	96.8%	97.9%	96.8%	97.7%	97.5%	99.0%	99.2%	98.3%	98.4%		97.8%
Santa Fe	96.1%	95.7%	96.6%	95.2%	95.5%	98.4%	98.2%	98.4%	97.4%	98.6%	97.9%		97.1%
Taos	98.3%	98.8%	98.2%	96.8%	97.0%	95.9%	98.7%	99.6%	97.9%	99.7%	98.7%		98.0%
<b>NE Region 2 Total</b>	<b>96.8%</b>	<b>96.6%</b>	<b>96.6%</b>	<b>97.1%</b>	<b>96.4%</b>	<b>97.9%</b>	<b>98.3%</b>	<b>98.5%</b>	<b>98.7%</b>	<b>98.8%</b>	<b>98.2%</b>		<b>97.6%</b>
NE Bernalillo	95.1%	93.6%	93.9%	94.5%	97.1%	96.7%	97.1%	97.7%	98.7%	98.5%	98.4%		96.5%
NW Bernalillo	96.3%	95.4%	94.6%	94.7%	96.4%	96.9%	98.1%	98.0%	98.1%	98.9%	98.4%		96.9%
SE Bernalillo	88.2%	90.8%	94.4%	92.2%	95.8%	95.9%	95.3%	96.4%	98.3%	97.3%	97.4%		94.7%
SW Bernalillo	95.8%	96.2%	95.2%	94.9%	95.1%	97.1%	97.7%	97.7%	98.2%	98.0%	98.4%		96.8%
Torrance	95.5%	95.1%	95.2%	94.8%	91.1%	99.2%	96.4%	97.5%	100.0%	98.1%	96.0%		96.3%
<b>Gen. Region 3 Total</b>	<b>94.3%</b>	<b>94.3%</b>	<b>94.5%</b>	<b>94.2%</b>	<b>95.9%</b>	<b>96.8%</b>	<b>97.2%</b>	<b>97.5%</b>	<b>98.4%</b>	<b>98.3%</b>	<b>98.1%</b>		<b>96.3%</b>
Chaves	96.4%	96.6%	97.1%	98.6%	97.4%	98.1%	98.6%	98.9%	98.8%	99.4%	98.6%		98.0%
Curry	94.8%	94.2%	98.4%	98.3%	96.5%	97.3%	98.3%	98.0%	99.3%	98.9%	98.6%		97.5%
Eddy Artesia	95.3%	94.9%	96.4%	93.2%	96.4%	98.2%	98.3%	100.0%	100.0%	99.2%	96.0%		97.1%
Eddy Carlsbad	93.2%	98.4%	97.6%	94.8%	98.5%	96.6%	96.7%	98.3%	98.6%	99.6%	98.3%		97.3%
Lea	96.1%	94.7%	94.0%	96.5%	99.5%	96.5%	97.5%	96.6%	99.4%	98.6%	99.0%		97.1%
Lincoln	95.7%	94.7%	97.1%	97.4%	97.3%	99.4%	97.1%	98.4%	98.0%	98.3%	99.3%		97.5%
Roosevelt	94.6%	94.2%	93.4%	94.9%		83.3%	100.0%	100.0%	100.0%	100.0%	100.0%		96.0%
<b>SE Region 4 Total</b>	<b>95.4%</b>	<b>95.5%</b>	<b>96.3%</b>	<b>96.9%</b>	<b>97.7%</b>	<b>97.4%</b>	<b>97.9%</b>	<b>98.1%</b>	<b>99.1%</b>	<b>99.0%</b>	<b>98.6%</b>		<b>97.4%</b>
East Dona Ana	96.1%	97.1%	97.5%	97.3%	97.1%	95.0%	97.5%	98.6%	99.0%	99.1%	98.1%		97.5%
Grant	93.9%	96.8%	99.3%	97.5%	98.4%	97.0%	99.5%	99.4%	98.5%	98.5%	98.6%		98.0%
Luna	96.8%	97.8%	97.4%	98.8%	98.2%	97.9%	99.2%	97.1%	98.6%	99.2%	99.0%		98.2%
Otero	97.6%	96.4%	98.0%	96.3%	95.0%	97.6%	97.9%	98.1%	97.8%	99.7%	99.2%		97.6%
South Dona Ana	97.2%	98.3%	98.0%	97.5%	98.6%	98.6%	99.4%	97.8%	99.3%	100.0%	96.8%		98.3%
West Dona Ana	97.4%	96.7%	98.3%	98.5%	98.4%	98.6%	98.1%	98.7%	99.9%	98.2%	98.4%		98.3%
<b>SW Region 5 Total</b>	<b>96.7%</b>	<b>97.2%</b>	<b>98.0%</b>	<b>97.6%</b>	<b>97.7%</b>	<b>97.5%</b>	<b>98.5%</b>	<b>98.3%</b>	<b>99.1%</b>	<b>99.1%</b>	<b>98.1%</b>		<b>98.0%</b>
<b>STATE TOTAL</b>	<b>95.3%</b>	<b>95.4%</b>	<b>95.8%</b>	<b>96.0%</b>	<b>96.7%</b>	<b>97.4%</b>	<b>97.8%</b>	<b>97.9%</b>	<b>98.7%</b>	<b>98.8%</b>	<b>98.1%</b>		<b>97.1%</b>

**Medicaid: Percentage of Initial EDG Denials Processed Timely by Field Office<sup>13,19</sup>**

	Oct-17	Nov-17	Dec-17	Jan-18	Feb-18	Mar-18	Apr-18	May-18	Jun-18	Jul-18	Aug-18	Sep-18	Average
Cibola	51.4%	41.2%	76.0%	78.3%	72.7%	64.5%	88.2%	84.1%	94.4%	100.0%	100.0%		77.3%
McKinley	54.4%	59.7%	54.4%	51.6%	59.3%	69.4%	74.4%	91.6%	92.4%	89.1%	96.2%		72.0%
San Juan	53.1%	57.1%	45.5%	43.6%	44.9%	58.6%	63.1%	89.6%	93.7%	89.4%	96.3%		66.8%
Sierra	92.9%	95.0%	96.3%	33.3%	30.8%	77.8%	80.0%	100.0%	100.0%	100.0%	100.0%		82.4%
Socorro	57.5%	80.0%	96.3%	95.8%	100.0%	71.1%	77.1%	100.0%	92.9%	94.1%	95.6%		87.3%
Valencia North	55.8%	52.1%	42.3%	38.3%	55.6%	64.4%	89.8%	91.0%	92.7%	95.9%	94.1%		70.2%
Valencia South	66.7%							100.0%		100.0%	100.0%		91.7%
<b>NW Region 1 Total</b>	<b>55.0%</b>	<b>57.7%</b>	<b>53.2%</b>	<b>51.0%</b>	<b>53.0%</b>	<b>64.5%</b>	<b>73.5%</b>	<b>90.9%</b>	<b>93.6%</b>	<b>91.6%</b>	<b>96.2%</b>		<b>70.9%</b>
Colfax	90.6%	95.8%	100.0%	92.9%	94.3%	88.0%	84.6%	100.0%	93.8%	92.9%	96.8%		93.6%
Guadalupe	90.0%	11.1%	75.0%	72.7%	76.5%	44.4%	66.7%	88.9%	100.0%	100.0%	100.0%		75.0%
Quay	72.7%	33.3%	54.5%	78.6%	58.8%	58.3%	81.8%	100.0%	93.3%	50.0%	88.6%		70.0%
Rio Arriba	71.4%	56.3%	53.2%	71.9%	49.6%	44.3%	64.6%	83.5%	91.7%	90.9%	88.5%		69.6%
San Miguel	59.5%	67.3%	76.5%	78.8%	82.1%	71.4%	77.3%	74.5%	87.9%	95.6%	97.2%		78.9%
Sandoval	43.6%	51.2%	63.7%	74.3%	75.9%	72.8%	83.7%	93.2%	95.3%	95.2%	90.2%		76.3%
Santa Fe	59.1%	53.7%	37.8%	48.1%	64.7%	71.3%	89.3%	91.0%	99.1%	93.2%	91.8%		72.6%
Taos	47.4%	76.5%	75.9%	87.9%	65.7%	56.5%	56.1%	91.4%	91.8%	98.4%	98.0%		76.9%
<b>NE Region 2 Total</b>	<b>57.2%</b>	<b>56.4%</b>	<b>55.2%</b>	<b>64.0%</b>	<b>67.8%</b>	<b>67.2%</b>	<b>80.0%</b>	<b>90.0%</b>	<b>94.5%</b>	<b>94.4%</b>	<b>91.8%</b>		<b>74.4%</b>
NE Bernalillo	45.7%	38.4%	35.2%	50.0%	67.6%	74.1%	70.3%	77.9%	88.5%	88.9%	89.4%		66.0%
NW Bernalillo	39.2%	40.9%	41.8%	36.0%	42.4%	48.5%	68.1%	83.5%	92.0%	83.2%	93.6%		60.8%
SE Bernalillo	56.6%	46.6%	67.6%	80.6%	79.3%	81.1%	80.0%	84.7%	91.6%	86.6%	95.5%		77.3%
SW Bernalillo	68.5%	68.1%	80.1%	88.4%	80.8%	78.7%	86.2%	83.0%	91.8%	89.6%	93.3%		82.6%
Torrance	56.8%	42.1%	43.8%	38.5%	42.7%	56.8%	89.3%	91.7%	94.7%	98.1%	97.7%		68.4%
<b>Gen. Region 3 Total</b>	<b>52.5%</b>	<b>48.0%</b>	<b>53.3%</b>	<b>59.5%</b>	<b>65.0%</b>	<b>70.0%</b>	<b>75.5%</b>	<b>82.7%</b>	<b>91.0%</b>	<b>87.3%</b>	<b>92.9%</b>		<b>70.7%</b>
Chaves	72.3%	60.2%	79.9%	83.6%	79.6%	83.9%	77.8%	93.6%	98.6%	93.6%	99.3%		83.9%
Curry	61.4%	59.0%	65.6%	84.3%	73.0%	78.8%	64.9%	95.3%	91.8%	94.4%	96.0%		78.6%
Eddy Artesia	65.6%	53.3%	81.3%	76.4%	82.9%	84.1%	88.6%	85.2%	84.2%	95.7%	91.2%		80.8%
Eddy Carlsbad	51.8%	35.8%	61.7%	79.3%	83.8%	67.2%	71.2%	97.7%	91.3%	88.5%	94.9%		74.8%
Lea	72.7%	69.6%	70.0%	88.0%	85.3%	85.6%	82.3%	93.4%	95.5%	94.4%	95.6%		84.8%
Lincoln	35.9%	63.8%	77.3%	91.3%	85.4%	90.5%	55.9%	86.4%	75.0%	100.0%	100.0%		78.3%
Roosevelt	36.4%	46.4%	64.5%	64.6%		100.0%			100.0%				68.7%
<b>SE Region 4 Total</b>	<b>61.3%</b>	<b>56.6%</b>	<b>70.5%</b>	<b>83.1%</b>	<b>80.7%</b>	<b>82.0%</b>	<b>74.1%</b>	<b>94.0%</b>	<b>93.2%</b>	<b>93.8%</b>	<b>96.2%</b>		<b>80.5%</b>
East Dona Ana	80.0%	74.3%	73.1%	94.5%	67.5%	70.7%	85.7%	94.0%	93.0%	88.9%	98.0%		83.6%
Grant	76.7%	32.4%	85.9%	79.7%	67.4%	83.3%	77.2%	97.1%	80.5%	86.7%	100.0%		78.8%
Luna	47.7%	64.9%	41.8%	62.9%	61.5%	70.6%	73.8%	90.4%	89.4%	98.4%	98.7%		72.7%
Otero	61.9%	48.3%	67.7%	62.8%	71.6%	80.6%	82.4%	83.0%	81.8%	92.4%	86.3%		74.4%
South Dona Ana	86.3%	73.0%	86.6%	91.8%	82.3%	83.8%	90.1%	86.8%	97.9%	99.3%	98.6%		88.8%
West Dona Ana	66.9%	67.0%	80.6%	94.7%	82.0%	84.0%	86.2%	96.2%	93.7%	91.2%	97.8%		85.5%
<b>SW Region 5 Total</b>	<b>73.8%</b>	<b>64.3%</b>	<b>76.4%</b>	<b>85.1%</b>	<b>74.8%</b>	<b>78.5%</b>	<b>84.7%</b>	<b>90.6%</b>	<b>91.7%</b>	<b>93.2%</b>	<b>96.9%</b>		<b>82.7%</b>
<b>STATE TOTAL</b>	<b>58.4%</b>	<b>54.6%</b>	<b>59.5%</b>	<b>66.4%</b>	<b>66.9%</b>	<b>72.0%</b>	<b>77.3%</b>	<b>88.3%</b>	<b>92.5%</b>	<b>91.3%</b>	<b>94.6%</b>		<b>74.7%</b>

**Medicaid Renewal Disposition Counts by Field Office<sup>4,11</sup>**  
**August 2018**

Office	Approvals	Closures	Need Based Closures	Procedural Closures
Chaves County ISD	2,550	833	268	565
Cibola County ISD	1,377	414	128	286
Colfax County ISD	460	131	61	70
Curry County ISD	2,528	741	291	450
East Dona Ana County ISD	3,197	876	392	484
Eddy Artesia County ISD	679	230	89	141
Eddy Carlsbad County ISD	1,016	515	150	365
Grant County ISD	1,035	291	114	177
Guadalupe County ISD	217	99	19	80
Hidalgo County ISD	145	21	13	8
Lea County ISD	2,351	843	311	532
Lincoln County ISD	648	196	66	130
Luna County ISD	1,424	327	118	209
McKinley County ISD	4,240	1206	439	767
Northeast Bernalillo County ISD	5,906	2273	729	1544
Northwest Bernalillo County ISD	5,197	1887	563	1324
Otero County ISD	1,918	499	209	290
Quay County ISD	401	113	37	76
Rio Arriba County ISD	2,022	654	219	435
Roosevelt County ISD				
San Juan County ISD	5,312	1697	654	1043
San Miguel County ISD	1,121	284	117	167
Sandoval County ISD	4,156	1390	469	921
Santa Fe County ISD	3,345	1252	303	949
Sierra County ISD	796	246	88	158
Socorro County ISD	810	219	76	143
South Dona Ana ISD	4,291	888	374	514
Southeast Bernalillo County ISD	3,211	1084	320	764
Southwest Bernalillo County ISD	7,880	2373	950	1423
Taos County ISD	1,145	373	118	255
Torrance County ISD	1,206	358	115	243
Valencia North County ISD	3,097	814	342	472
Valencia South County ISD		1	1	0
West Dona Ana County ISD	3,943	868	352	516
Centralized Units				
<b>Statewide Total</b>	<b>77,624</b>	<b>23,996</b>	<b>8,495</b>	<b>15,501</b>

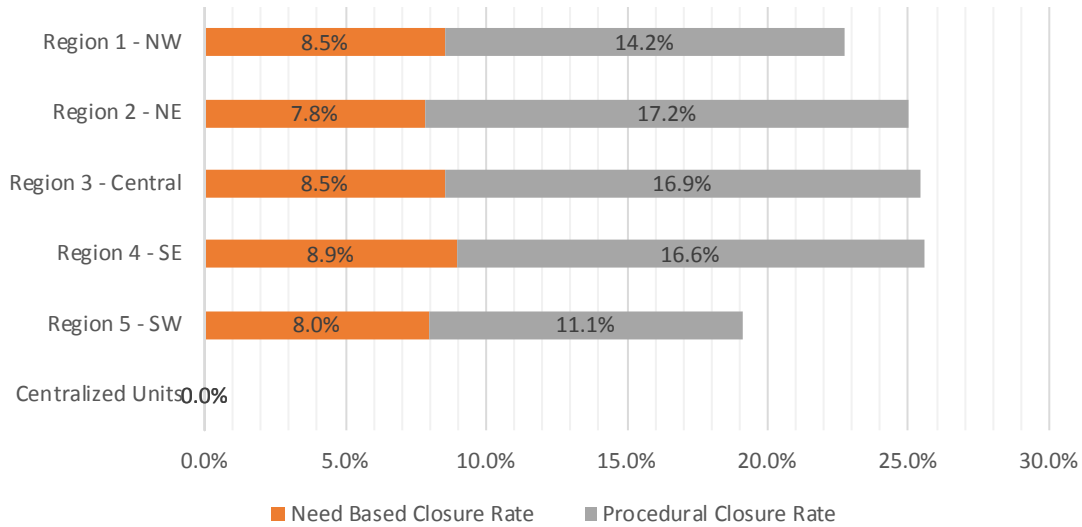
*Determinations at Administrative, Annual, and Auto Renewals are included*

**Medicaid Renewal Disposition Rates by Field Office<sup>20</sup>**  
**August 2018**

Office	Approval Rate	Closure Rate	Need Based Closure Rate	Procedural Closure Rate
Chaves County ISD	75.4%	24.6%	7.9%	16.7%
Cibola County ISD	76.9%	23.1%	7.1%	16.0%
Colfax County ISD	77.8%	22.2%	10.3%	11.8%
Curry County ISD	77.3%	22.7%	8.9%	13.8%
East Dona Ana County ISD	78.5%	21.5%	9.6%	11.9%
Eddy Artesia County ISD	74.7%	25.3%	9.8%	15.5%
Eddy Carlsbad County ISD	66.4%	33.6%	9.8%	23.8%
Grant County ISD	78.1%	21.9%	8.6%	13.3%
Guadalupe County ISD	68.7%	31.3%	6.0%	25.3%
Hidalgo County ISD	87.3%	12.7%	7.8%	4.8%
Lea County ISD	73.6%	26.4%	9.7%	16.7%
Lincoln County ISD	76.8%	23.2%	7.8%	15.4%
Luna County ISD	81.3%	18.7%	6.7%	11.9%
McKinley County ISD	77.9%	22.1%	8.1%	14.1%
Northeast Bernalillo County ISD	72.2%	27.8%	8.9%	18.9%
Northwest Bernalillo County ISD	73.4%	26.6%	7.9%	18.7%
Otero County ISD	79.4%	20.6%	8.6%	12.0%
Quay County ISD	78.0%	22.0%	7.2%	14.8%
Rio Arriba County ISD	75.6%	24.4%	8.2%	16.3%
Roosevelt County ISD	0.0%	0.0%	0.0%	0.0%
San Juan County ISD	75.8%	24.2%	9.3%	14.9%
San Miguel County ISD	79.8%	20.2%	8.3%	11.9%
Sandoval County ISD	74.9%	25.1%	8.5%	16.6%
Santa Fe County ISD	72.8%	27.2%	6.6%	20.6%
Sierra County ISD	76.4%	23.6%	8.4%	15.2%
Socorro County ISD	78.7%	21.3%	7.4%	13.9%
South Dona Ana ISD	82.9%	17.1%	7.2%	9.9%
Southeast Bernalillo County ISD	74.8%	25.2%	7.5%	17.8%
Southwest Bernalillo County ISD	76.9%	23.1%	9.3%	13.9%
Taos County ISD	75.4%	24.6%	7.8%	16.8%
Torrance County ISD	77.1%	22.9%	7.4%	15.5%
Valencia North County ISD	79.2%	20.8%	8.7%	12.1%
Valencia South County ISD	0.0%	100.0%	100.0%	0.0%
West Dona Ana County ISD	82.0%	18.0%	7.3%	10.7%
Centralized Units	0.0%	0.0%	0.0%	0.0%
Statewide Total	76.4%	23.6%	8.4%	15.3%

**Medicaid Renewal Disposition Rates by Region<sup>20</sup>**  
**August 2018**

Region	Approval Rate	Closure Rate	Need Based Closure Rate	Procedural Closure Rate
Region 1 - NW	77.3%	22.7%	8.5%	14.2%
Region 2 - NE	75.0%	25.0%	7.8%	17.2%
Region 3 - Central	74.6%	25.4%	8.5%	16.9%
Region 4 - SE	74.4%	25.6%	8.9%	16.6%
Region 5 - SW	80.9%	19.1%	8.0%	11.1%
Centralized Units				
<b>Statewide Total</b>	<b>76.4%</b>	<b>23.6%</b>	<b>8.4%</b>	<b>15.3%</b>





**Medicaid: Percentage of Approved Renewal EDGs Processed by Certification Date <sup>11</sup>**

	Oct-17	Nov-17	Dec-17	Jan-18	Feb-18	Mar-18	Apr-18	May-18	Jun-18	Jul-18	Aug-18	Sep-18	Average
Cibola		98.9%	98.5%	99.3%	98.5%	98.9%	98.3%	98.2%	98.7%	98.4%	97.6%		98.5%
McKinley		98.9%	99.3%	98.7%	99.1%	98.7%	98.8%	98.9%	98.8%	98.5%	98.6%		98.8%
San Juan		98.9%	98.4%	98.6%	98.4%	98.8%	97.8%	99.2%	99.2%	98.8%	98.4%		98.7%
Sierra		99.1%	99.5%	99.0%	99.6%	98.7%	99.5%	99.4%	99.5%	99.4%	99.6%		99.3%
Socorro		99.5%	99.1%	99.0%	99.2%	98.9%	98.7%	99.2%	98.6%	98.8%	99.2%		99.0%
Valencia North		98.5%	98.7%	98.1%	98.8%	98.7%	98.5%	98.5%	99.3%	98.3%	97.3%		98.5%
Valencia South													
<b>NW Region 1 Total</b>		<b>99.0%</b>	<b>98.9%</b>	<b>98.8%</b>	<b>98.9%</b>	<b>98.8%</b>	<b>98.6%</b>	<b>98.9%</b>	<b>99.0%</b>	<b>98.7%</b>	<b>98.5%</b>		<b>98.8%</b>
Colfax		98.7%	99.6%	97.3%	99.4%	98.2%	99.8%	99.1%	99.2%	98.5%	97.3%		98.7%
Guadalupe		99.2%	98.5%	96.6%	99.6%	99.5%	98.9%	99.6%	98.8%	98.1%	99.5%		98.8%
Quay		99.0%	99.0%	98.9%	97.6%	99.3%	95.4%	99.3%	98.7%	98.1%	98.6%		98.4%
Rio Arriba		98.4%	97.8%	97.1%	98.1%	98.4%	97.7%	97.6%	98.1%	99.0%	97.5%		98.0%
San Miguel		99.5%	98.3%	98.9%	98.9%	97.7%	99.3%	99.8%	99.2%	99.3%	99.5%		99.0%
Sandoval		98.4%	98.6%	98.3%	98.3%	98.6%	97.3%	98.3%	98.5%	96.8%	97.2%		98.0%
Santa Fe		95.6%	95.7%	95.5%	96.7%	97.1%	97.2%	97.2%	98.4%	98.1%	96.9%		96.8%
Taos		98.7%	98.6%	98.6%	96.9%	98.8%	98.0%	98.0%	98.3%	98.3%	98.0%		98.2%
<b>NE Region 2 Total</b>		<b>98.5%</b>	<b>98.2%</b>	<b>97.6%</b>	<b>98.2%</b>	<b>98.4%</b>	<b>98.0%</b>	<b>98.6%</b>	<b>98.6%</b>	<b>98.3%</b>	<b>98.1%</b>		<b>98.3%</b>
NE Bernalillo		97.8%	97.0%	96.9%	97.5%	97.7%	98.4%	98.3%	98.5%	97.0%	97.3%		97.6%
NW Bernalillo		97.6%	97.8%	97.4%	98.5%	98.3%	98.6%	98.1%	97.9%	98.4%	98.6%		98.1%
SE Bernalillo		86.5%	96.2%	97.5%	98.1%	99.0%	97.4%	98.1%	99.2%	98.3%	98.7%		96.9%
SW Bernalillo		98.8%	96.0%	97.0%	97.8%	97.9%	98.2%	97.8%	98.0%	96.8%	97.3%		97.6%
Torrance		98.8%	96.9%	96.5%	98.0%	97.4%	98.2%	99.1%	99.8%	99.3%	99.6%		98.4%
<b>Cen. Region 3 Total</b>		<b>95.9%</b>	<b>96.8%</b>	<b>97.1%</b>	<b>98.0%</b>	<b>98.0%</b>	<b>98.2%</b>	<b>98.3%</b>	<b>98.7%</b>	<b>98.0%</b>	<b>98.3%</b>		<b>97.7%</b>
Chaves		98.7%	98.5%	98.6%	98.5%	98.2%	98.7%	99.7%	99.5%	99.2%	98.5%		98.8%
Curry		99.0%	98.7%	98.7%	99.0%	98.7%	98.9%	99.1%	99.2%	99.2%	99.4%		99.0%
Eddy Artesia		99.2%	97.5%	97.1%	96.9%	98.6%	98.8%	98.9%	99.9%	98.8%	97.1%		98.3%
Eddy Carlsbad		97.7%	98.8%	97.2%	98.2%	98.1%	98.0%	99.0%	98.8%	98.5%	97.8%		98.2%
Lea		98.8%	97.8%	98.7%	98.6%	98.7%	97.1%	98.9%	99.0%	98.8%	99.0%		98.5%
Lincoln		98.2%	97.5%	97.6%	97.7%	98.8%	97.9%	99.2%	97.7%	97.8%	98.0%		98.1%
Roosevelt		99.4%	97.9%							100.0%			99.1%
<b>SE Region 4 Total</b>		<b>98.7%</b>	<b>98.1%</b>	<b>98.0%</b>	<b>98.2%</b>	<b>98.5%</b>	<b>98.2%</b>	<b>99.2%</b>	<b>99.0%</b>	<b>98.9%</b>	<b>98.3%</b>		<b>98.5%</b>
East Dona Ana		98.9%	97.9%	98.6%	99.0%	98.6%	98.5%	99.7%	99.1%	98.7%	98.5%		98.7%
Grant		98.5%	98.7%	98.5%	99.1%	98.9%	97.4%	98.7%	99.5%	98.8%	98.4%		98.7%
Luna		99.1%	98.2%	98.1%	98.5%	98.3%	98.2%	99.2%	99.1%	97.7%	99.0%		98.5%
Otero		98.9%	97.6%	98.0%	97.2%	97.5%	97.5%	98.0%	97.9%	96.8%	98.5%		97.8%
South Dona Ana		98.2%	97.4%	98.1%	98.9%	98.5%	97.1%	97.8%	97.9%	96.7%	97.8%		97.8%
West Dona Ana		99.2%	99.0%	98.7%	98.7%	98.3%	98.3%	98.9%	99.4%	99.1%	98.5%		98.8%
<b>SW Region 5 Total</b>		<b>98.8%</b>	<b>98.1%</b>	<b>98.3%</b>	<b>98.6%</b>	<b>98.3%</b>	<b>97.8%</b>	<b>98.7%</b>	<b>98.8%</b>	<b>98.0%</b>	<b>98.4%</b>		<b>98.4%</b>
<b>STATE TOTAL</b>		<b>97.8%</b>	<b>97.8%</b>	<b>97.9%</b>	<b>98.3%</b>	<b>98.3%</b>	<b>98.1%</b>	<b>98.5%</b>	<b>98.7%</b>	<b>98.7%</b>	<b>98.3%</b>		<b>98.2%</b>

Administrative, Annual, and Auto Renewals are included  
 No data available for October 2017

Medicaid: Percentage of Closures EDGs Processed by Certification End Date <sup>11</sup>													
	Oct-17	Nov-17	Dec-17	Jan-18	Feb-18	Mar-18	Apr-18	May-18	Jun-18	Jul-18	Aug-18	Sep-18	Average
Cibola		37.6%	27.5%	14.6%	21.3%	39.8%	28.8%	69.4%	99.5%	97.5%	98.6%		53.5%
McKinley		23.9%	21.0%	21.7%	30.7%	39.5%	31.1%	61.0%	98.2%	97.6%	98.8%		52.4%
San Juan		36.7%	19.9%	39.0%	39.1%	48.1%	24.2%	61.6%	98.8%	96.1%	97.9%		56.2%
Sierra		45.6%	22.7%	26.7%	37.9%	34.3%	21.0%	70.1%	97.1%	97.6%	98.4%		55.1%
Socorro		33.0%	20.7%	50.0%	40.0%	37.8%	62.8%	95.9%	97.5%	92.3%	97.3%		62.7%
Valencia North		34.6%	30.5%	53.8%	38.6%	40.7%	50.6%	93.2%	99.1%	97.0%	98.2%		63.6%
Valencia South													
<b>NW Region 1 Total</b>		<b>35.2%</b>	<b>23.7%</b>	<b>34.3%</b>	<b>34.6%</b>	<b>40.1%</b>	<b>36.4%</b>	<b>66.8%</b>	<b>98.4%</b>	<b>96.4%</b>	<b>98.2%</b>		<b>56.4%</b>
Colfax		49.3%	27.8%	26.2%	21.5%	23.6%	36.9%	55.0%	99.4%	95.8%	97.7%		53.3%
Guadalupe		28.6%	57.9%	27.1%	26.3%	41.7%	22.2%	77.4%	100.0%	100.0%	99.0%		58.0%
Quay		24.7%	26.5%	17.1%	40.0%	54.1%	60.5%	96.8%	100.0%	98.5%	95.6%		61.4%
Rio Arriba		23.3%	26.1%	24.9%	29.5%	32.3%	23.0%	54.7%	99.2%	99.1%	98.0%		51.0%
San Miguel		19.4%	21.8%	23.6%	26.9%	44.3%	26.2%	53.4%	98.6%	94.4%	98.6%		50.7%
Sandoval		20.5%	25.9%	21.6%	21.5%	39.2%	44.5%	95.1%	98.0%	96.8%	97.6%		56.1%
Santa Fe		22.0%	22.6%	23.2%	33.1%	38.4%	29.3%	55.1%	98.7%	97.5%	98.6%		51.9%
Taos		24.4%	21.5%	44.9%	24.4%	34.9%	32.5%	62.6%	98.9%	95.7%	98.7%		53.9%
<b>NE Region 2 Total</b>		<b>26.5%</b>	<b>28.8%</b>	<b>26.1%</b>	<b>27.9%</b>	<b>38.6%</b>	<b>34.4%</b>	<b>65.7%</b>	<b>99.1%</b>	<b>97.4%</b>	<b>98.0%</b>		<b>54.2%</b>
NE Bernalillo		20.3%	16.0%	16.1%	26.4%	28.4%	35.9%	58.6%	98.3%	94.4%	98.0%		49.3%
NW Bernalillo		16.2%	20.8%	24.8%	30.1%	47.5%	33.1%	46.4%	97.9%	97.2%	98.3%		51.2%
SE Bernalillo		18.7%	21.5%	27.2%	26.7%	44.1%	22.2%	49.7%	98.4%	97.2%	98.3%		50.4%
SW Bernalillo		24.5%	28.2%	34.9%	33.9%	46.2%	76.7%	90.2%	98.1%	96.6%	97.5%		62.7%
Torrance		25.4%	21.9%	33.9%	24.7%	37.8%	54.0%	97.6%	96.2%	96.8%	99.4%		58.8%
<b>Gen. Region 3 Total</b>		<b>21.0%</b>	<b>21.7%</b>	<b>27.4%</b>	<b>28.3%</b>	<b>40.8%</b>	<b>44.4%</b>	<b>61.5%</b>	<b>98.1%</b>	<b>96.5%</b>	<b>98.3%</b>		<b>53.8%</b>
Chaves		34.4%	24.7%	28.7%	22.0%	36.7%	50.4%	97.0%	99.0%	96.3%	98.7%		58.8%
Curry		27.2%	25.2%	19.7%	27.3%	38.7%	36.4%	65.9%	99.6%	98.5%	98.1%		53.6%
Eddy Artesia		31.1%	24.0%	21.3%	20.0%	29.9%	62.4%	97.1%	97.7%	98.3%	97.4%		57.9%
Eddy Carlsbad		26.9%	23.2%	19.9%	27.2%	26.7%	27.7%	59.6%	96.2%	95.3%	98.4%		50.1%
Lea		24.6%	21.4%	26.4%	20.4%	35.1%	20.0%	61.7%	98.1%	95.1%	98.6%		50.1%
Lincoln		23.1%	31.9%	16.9%	20.0%	45.8%	46.6%	66.2%	99.0%	89.4%	98.5%		53.7%
Roosevelt		24.3%	14.5%	0.0%									12.9%
<b>SE Region 4 Total</b>		<b>27.4%</b>	<b>23.6%</b>	<b>19.0%</b>	<b>22.8%</b>	<b>35.5%</b>	<b>40.6%</b>	<b>70.9%</b>	<b>98.2%</b>	<b>95.5%</b>	<b>98.3%</b>		<b>53.2%</b>
East Dona Ana		28.5%	31.6%	28.5%	37.3%	35.6%	41.8%	95.7%	99.4%	97.5%	98.9%		59.5%
Grant		38.7%	27.7%	18.1%	30.7%	33.2%	49.3%	65.9%	100.0%	96.1%	97.6%		55.7%
Luna		37.1%	38.5%	26.9%	47.7%	43.2%	27.4%	51.5%	99.0%	96.9%	98.5%		56.7%
Otero		37.3%	31.9%	28.1%	38.4%	32.8%	32.0%	52.8%	97.9%	99.0%	99.0%		54.9%
South Dona Ana		41.6%	35.7%	27.7%	32.6%	37.6%	56.0%	93.3%	98.9%	97.9%	98.8%		62.0%
West Dona Ana		35.1%	29.6%	37.4%	41.5%	39.3%	19.9%	62.5%	99.2%	97.7%	98.0%		56.0%
<b>SW Region 5 Total</b>		<b>36.4%</b>	<b>32.5%</b>	<b>27.8%</b>	<b>38.0%</b>	<b>37.0%</b>	<b>37.7%</b>	<b>69.3%</b>	<b>98.9%</b>	<b>97.2%</b>	<b>98.4%</b>		<b>57.3%</b>
<b>STATE TOTAL</b>		<b>25.8%</b>	<b>24.2%</b>	<b>26.3%</b>	<b>30.1%</b>	<b>38.6%</b>	<b>42.1%</b>	<b>66.1%</b>	<b>98.5%</b>	<b>98.5%</b>	<b>98.2%</b>		<b>54.8%</b>

Annual and Auto Renewals are included  
No data available for October 2017

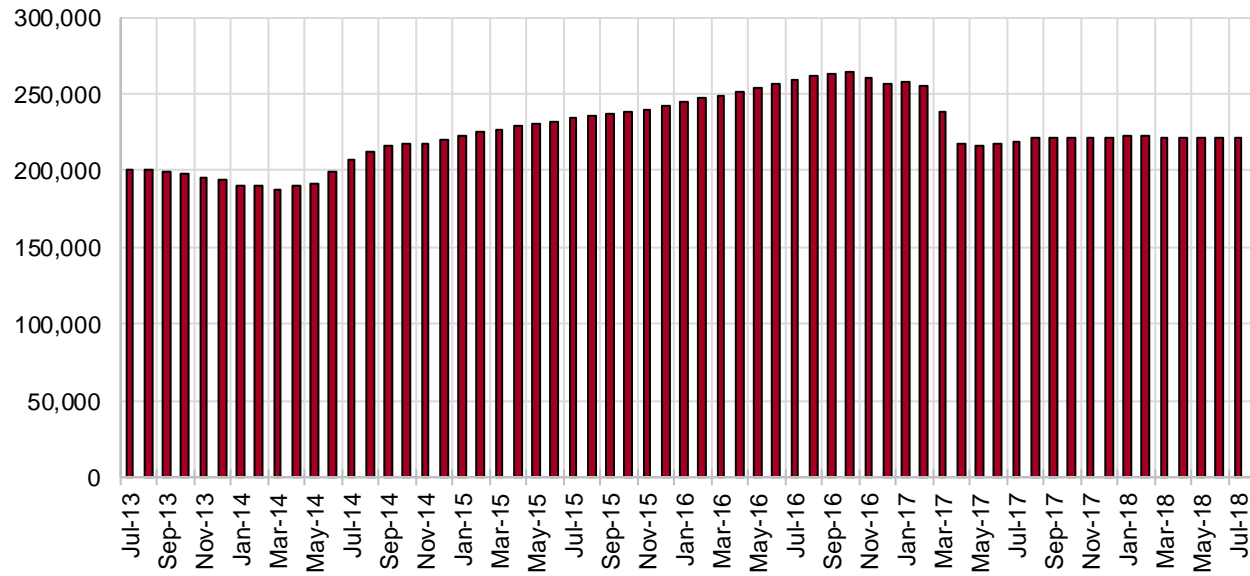
## SNAP Cases by Field Office<sup>6</sup>

Office				Percent Change	
	Aug-17	Jul-18	Aug-18	Aug-17- Aug-18	Jul-18- Aug-18
Chaves County ISD	7,225	7,044	7,089	-1.9%	0.6%
Cibola County ISD	3,676	3,655	3,700	0.7%	1.2%
Colfax County ISD	1,572	1,623	1,635	4.0%	0.7%
Curry County ISD	4,737	6,722	6,823	44.0%	1.5%
East Dona Ana County ISD	8,125	7,983	8,069	-0.7%	1.1%
Eddy Artesia County ISD	1,730	1,628	1,636	-5.4%	0.5%
Eddy Carlsbad County ISD	3,346	2,917	2,904	-13.2%	-0.4%
Grant County ISD	3,597	3,411	3,442	-4.3%	0.9%
Guadalupe County ISD	710	700	715	0.7%	2.1%
Hidalgo County ISD	422	451	455	7.8%	0.9%
Lea County ISD	5,817	5,611	5,698	-2.0%	1.6%
Lincoln County ISD	1,904	1,853	1,843	-3.2%	-0.5%
Luna County ISD	4,266	4,142	4,168	-2.3%	0.6%
McKinley County ISD	9,677	9,807	9,949	2.8%	1.4%
Northeast Bernalillo County ISD	19,970	20,226	20,514	2.7%	1.4%
Northwest Bernalillo County ISD	18,151	19,645	19,792	9.0%	0.7%
Otero County ISD	5,542	5,541	5,598	1.0%	1.0%
Quay County ISD	1,282	1,264	1,268	-1.1%	0.3%
Rio Arriba County ISD	6,852	6,689	6,748	-1.5%	0.9%
Roosevelt County ISD	1,690	0	0	-100.0%	N/A
San Juan County ISD	13,389	13,468	13,628	1.8%	1.2%
San Miguel County ISD	5,017	4,913	4,937	-1.6%	0.5%
Sandoval County ISD	10,940	11,025	11,153	1.9%	1.2%
Santa Fe County ISD	10,185	9,622	9,570	-6.0%	-0.5%
Sierra County ISD	2,659	2,665	2,657	-0.1%	-0.3%
Socorro County ISD	2,835	2,740	2,758	-2.7%	0.7%
South Dona Ana ISD	8,682	8,512	8,554	-1.5%	0.5%
Southeast Bernalillo County ISD	12,188	11,834	11,769	-3.4%	-0.5%
Southwest Bernalillo County ISD	18,383	18,661	18,774	2.1%	0.6%
Taos County ISD	4,082	4,150	4,175	2.3%	0.6%
Torrance County ISD	3,341	3,403	3,435	2.8%	0.9%
Valencia North County ISD	8,313	8,447	8,485	2.1%	0.4%
Valencia South County ISD	5	2	1	-80.0%	-50.0%
West Dona Ana County ISD	10,696	10,797	10,842	1.4%	0.4%
Centralized Units	29	44	30	3.4%	-31.8%
Statewide Total	221,035	221,195	222,814	0.8%	0.7%

## SNAP Cases by Region<sup>6</sup>

Region	Aug-17	Jul-18	Aug-18	Percent Change	
				Aug-17- Aug-18	Jul-18- Aug-18
Region 1 - NW	40,554	40,784	41,178	1.5%	1.0%
Region 2 - NE	40,640	39,986	40,201	-1.1%	0.5%
Region 3 - Central	72,033	73,769	74,284	3.1%	0.7%
Region 4 - SE	26,449	25,775	25,993	-1.7%	0.8%
Region 5 - SW	41,330	40,837	41,128	-0.5%	0.7%
Centralized Units	29	44	30	3.4%	-31.8%
<b>Statewide Total</b>	<b>221,035</b>	<b>221,195</b>	<b>222,814</b>	<b>0.8%</b>	<b>0.7%</b>

## SNAP Caseload: SFY-14 to Current



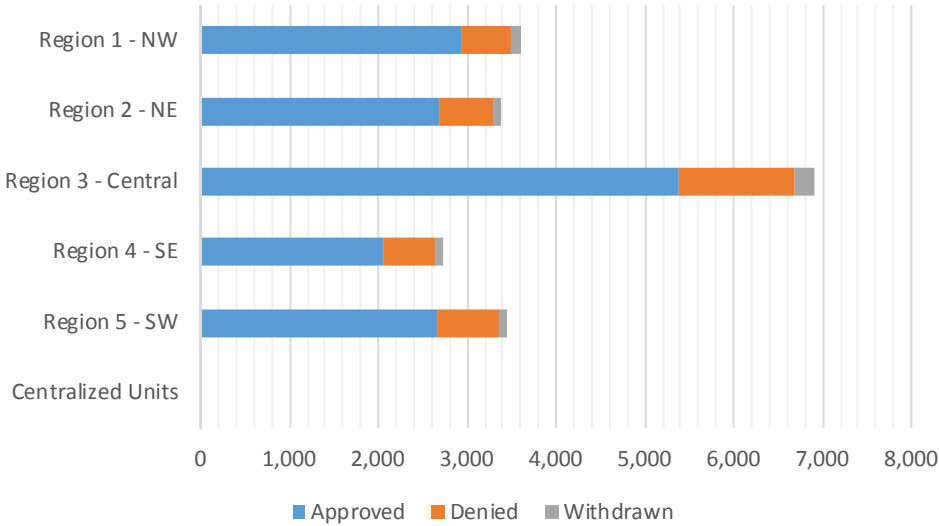
**SNAP Initial Applications by Field Office<sup>4,11</sup>  
August 2018**

Office	Approved	Denied	Withdrawn	Total Cases Processed
Chaves County ISD	498	144	25	667
Cibola County ISD	275	54	5	334
Colfax County ISD	105	20		125
Curry County ISD	559	143	23	725
East Dona Ana County ISD	577	184	30	791
Eddy Artesia County ISD	119	29	4	152
Eddy Carlsbad County ISD	267	92	10	369
Grant County ISD	281	62	9	352
Guadalupe County ISD	51	5	2	58
Hidalgo County ISD	0	0	0	0
Lea County ISD	485	139	18	642
Lincoln County ISD	119	42	6	167
Luna County ISD	250	50	9	309
McKinley County ISD	683	108	24	815
Northeast Bernalillo County ISD	1,702	398	74	2,174
Northwest Bernalillo County ISD	1,318	352	53	1,723
Otero County ISD	333	91	6	430
Quay County ISD	73	15	3	91
Rio Arriba County ISD	441	91	14	546
Roosevelt County ISD	6	1		7
San Juan County ISD	1,117	240	47	1,404
San Miguel County ISD	305	48	8	361
Sandoval County ISD	810	202	47	1,059
Santa Fe County ISD	624	157	16	797
Sierra County ISD	131	22	4	157
Socorro County ISD	174	31	6	211
South Dona Ana ISD	468	96	17	581
Southeast Bernalillo County ISD	849	213	32	1,094
Southwest Bernalillo County ISD	1,295	290	60	1,645
Taos County ISD	281	57	13	351
Torrance County ISD	219	51	8	278
Valencia North County ISD	542	124	22	688
Valencia South County ISD	0	0		0
West Dona Ana County ISD	760	204	25	989
Centralized Units	0	0	0	0
<b>Statewide Total</b>	<b>15,717</b>	<b>3,755</b>	<b>620</b>	<b>20,092</b>

**SNAP Initial Applications by Region<sup>4,11</sup>**  
**August 2018**

Region	Approved	Denied	Withdrawn	Total Cases Processed
Region 1 - NW	2,922	579	108	3,609
Region 2 - NE	2,690	595	103	3,388
Region 3 - Central	5,383	1,304	227	6,914
Region 4 - SE	2,053	590	86	2,729
Region 5 - SW	2,669	687	96	3,452
Centralized Units	0	0	0	0

Statewide Total	15,717	3,755	620	20,092
-----------------	--------	-------	-----	--------

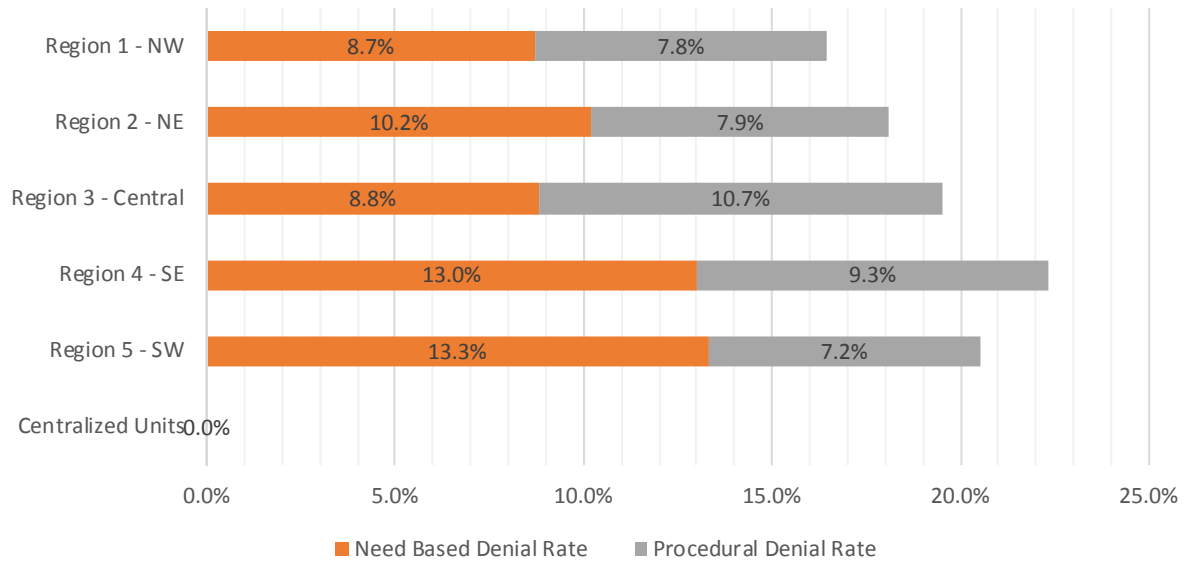


**SNAP Initial Disposition Rates by Field Office<sup>4,11</sup>**  
**August 2018**

Office	Approval Rate	Denial Rate	Need Based Denial Rate	Procedural Denial Rate
Chaves County ISD	77.6%	22.4%	12.4%	10.0%
Cibola County ISD	83.6%	16.4%	7.9%	8.5%
Colfax County ISD	84.0%	16.0%	10.4%	5.6%
Curry County ISD	79.6%	20.4%	13.4%	7.0%
East Dona Ana County ISD	75.8%	24.2%	15.5%	8.7%
Eddy Artesia County ISD	80.4%	19.6%	10.8%	8.8%
Eddy Carlsbad County ISD	74.4%	25.6%	13.9%	11.7%
Grant County ISD	81.9%	18.1%	11.4%	6.7%
Guadalupe County ISD	91.1%	8.9%	5.3%	3.6%
Hidalgo County ISD	0.0%	100.0%	100.0%	0.0%
Lea County ISD	77.7%	22.3%	12.7%	9.6%
Lincoln County ISD	73.9%	26.1%	14.3%	11.8%
Luna County ISD	83.3%	16.7%	10.0%	6.7%
McKinley County ISD	86.3%	13.7%	8.5%	5.2%
Northeast Bernalillo County ISD	81.0%	19.0%	7.9%	11.1%
Northwest Bernalillo County ISD	78.9%	21.1%	10.6%	10.5%
Otero County ISD	78.5%	21.5%	14.7%	6.8%
Quay County ISD	83.0%	17.0%	7.9%	9.1%
Rio Arriba County ISD	82.9%	17.1%	7.9%	9.2%
Roosevelt County ISD	85.7%	14.3%	14.3%	0.0%
San Juan County ISD	82.3%	17.7%	9.1%	8.6%
San Miguel County ISD	86.4%	13.6%	9.6%	4.0%
Sandoval County ISD	80.0%	20.0%	11.5%	8.5%
Santa Fe County ISD	79.9%	20.1%	11.5%	8.6%
Sierra County ISD	85.6%	14.4%	9.8%	4.6%
Socorro County ISD	84.9%	15.1%	11.2%	3.9%
South Dona Ana ISD	83.0%	17.0%	11.7%	5.3%
Southeast Bernalillo County ISD	79.9%	20.1%	8.0%	12.1%
Southwest Bernalillo County ISD	81.7%	18.3%	8.3%	10.0%
Taos County ISD	83.1%	16.9%	8.9%	8.0%
Torrance County ISD	81.1%	18.9%	10.8%	8.1%
Valencia North County ISD	81.4%	18.6%	7.9%	10.7%
Valencia South County ISD	0.0%	100.0%	100.0%	0.0%
West Dona Ana County ISD	78.8%	21.2%	13.4%	7.8%
Centralized Units				
Statewide Total	80.7%	19.3%	10.4%	8.9%

**SNAP Initial Disposition Rates by Region<sup>4,11</sup>**  
**August 2018**

Region	Approval Rate	Denial Rate	Need Based Denial Rate	Procedural Denial Rate
Region 1 - NW	83.5%	16.5%	8.7%	7.8%
Region 2 - NE	81.9%	18.1%	10.2%	7.9%
Region 3 - Central	80.5%	19.5%	8.8%	10.7%
Region 4 - SE	77.7%	22.3%	13.0%	9.3%
Region 5 - SW	79.5%	20.5%	13.3%	7.2%
Centralized Units				
Statewide Total	80.7%	19.3%	10.4%	8.9%





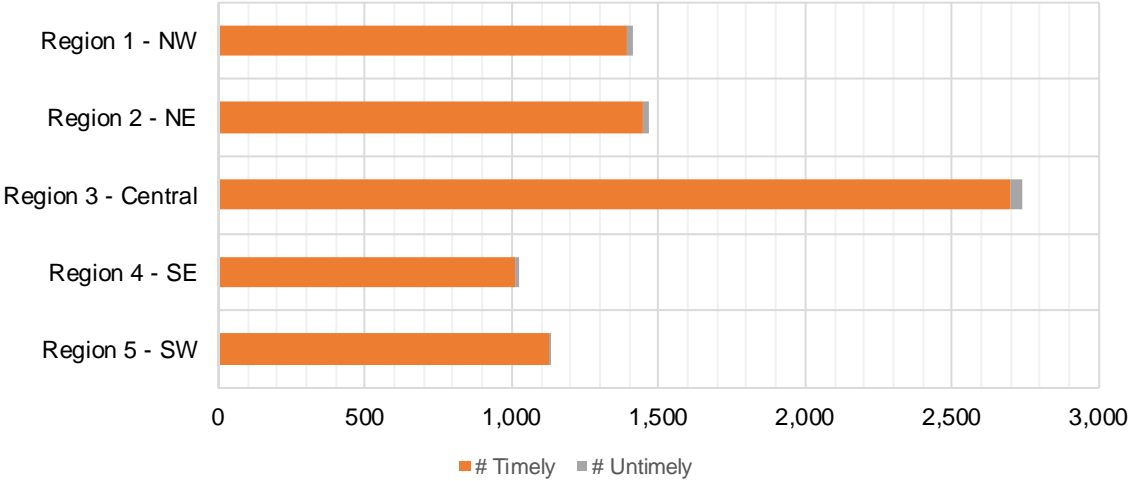
**SNAP Expedite Timeliness by Field Office<sup>13</sup>**  
**August 2018**

Office Name	Total Expedited Approvals	# Timely	# Untimely	Percentage Timely
Chaves County ISD	218	218	0	100.0 %
Cibola County ISD	137	137	0	100.0 %
Colfax County ISD	51	51	0	100.0 %
Curry County ISD	292	288	4	98.6 %
East Dona Ana County ISD	239	237	2	99.2 %
Eddy Artesia County ISD	57	56	1	98.2 %
Eddy Carlsbad County ISD	145	142	3	97.9 %
Grant County ISD	107	106	1	99.1 %
Guadalupe County ISD	11	11	0	100.0 %
Lea County ISD	252	251	1	99.6 %
Lincoln County ISD	56	55	1	98.2 %
Luna County ISD	103	103	0	100.0 %
McKinley County ISD	300	294	6	98.0 %
Northeast Bernalillo County ISD	838	816	22	97.4 %
Northwest Bernalillo County ISD	709	697	12	98.3 %
Otero County ISD	170	169	1	99.4 %
Quay County ISD	42	42	0	100.0 %
Rio Arriba County ISD	268	258	10	96.3 %
Roosevelt County ISD	4	4	0	100.0 %
San Juan County ISD	596	585	11	98.2 %
San Miguel County ISD	185	183	2	98.9 %
Sandoval County ISD	393	389	4	99.0 %
Santa Fe County ISD	357	353	4	98.9 %
Sierra County ISD	59	59	0	100.0 %
Socorro County ISD	67	67	0	100.0 %
South Dona Ana ISD	158	158	0	100.0 %
Southeast Bernalillo County ISD	458	458	0	100.0 %
Southwest Bernalillo County ISD	631	620	11	98.3 %
Taos County ISD	163	161	2	98.8 %
Torrance County ISD	106	106	0	100.0 %
Valencia North County ISD	252	248	4	98.4 %
West Dona Ana County ISD	359	357	2	99.4 %
<b>Statewide Total</b>	<b>7,783</b>	<b>7,679</b>	<b>104</b>	<b>98.7 %</b>

**SNAP Expedite Timeliness by Region<sup>13</sup>**  
**August 2018**

Region	Total Expedited Approvals	# Timely	# Untimely	Percentage Timely
Region 1 - NW	1,411	1,390	21	98.5%
Region 2 - NE	1,470	1,448	22	98.5%
Region 3 - Central	2,742	2,697	45	98.4%
Region 4 - SE	1,024	1,014	10	99.0%
Region 5 - SW	1,136	1,130	6	99.5%
Statewide Total	7,783	7,679	104	98.7%

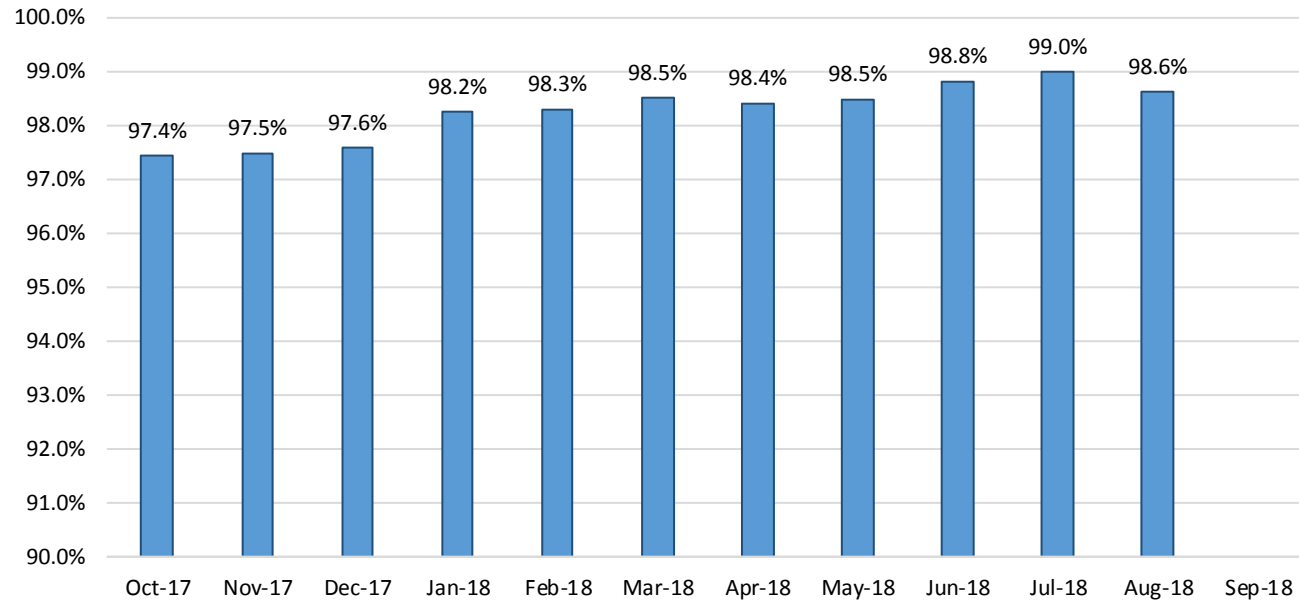
**SNAP Expedite - Timeliness**



### SNAP: Percentage of Applications Processed Timely<sup>13</sup>

	Oct-17	Nov-17	Dec-17	Jan-18	Feb-18	Mar-18	Apr-18	May-18	Jun-18	Jul-18	Aug-18	Sep-18	Average
APT	97.4%	97.5%	97.6%	98.2%	98.3%	98.5%	98.4%	98.5%	98.8%	99.0%	98.6%		98.3%

### SNAP Application Processing Timeliness (APT)



**SNAP Non-Expedite: Percentage of Initial Applications Processed Timely by Field Office<sup>13</sup>**

	Oct-17	Nov-17	Dec-17	Jan-18	Feb-18	Mar-18	Apr-18	May-18	Jun-18	Jul-18	Aug-18	Sep-18	Average
Cibola	96.8%	97.2%	96.7%	92.9%	97.3%	100.0%	98.2%	100.0%	98.5%	99.4%	99.3%		97.8%
McKinley	97.4%	98.8%	98.6%	99.3%	99.3%	99.6%	100.0%	99.1%	99.4%	99.7%	99.2%		99.1%
San Juan	94.8%	93.5%	98.0%	97.8%	97.7%	97.9%	98.4%	98.4%	99.1%	99.4%	98.7%		97.6%
Sierra	100.0%	100.0%	100.0%	100.0%	100.0%	100.0%	100.0%	98.7%	100.0%	100.0%	100.0%		99.9%
Socorro	100.0%	96.8%	100.0%	98.9%	100.0%	98.8%	100.0%	100.0%	98.7%	100.0%	100.0%		99.4%
Valencia North	96.5%	96.3%	96.6%	96.9%	99.6%	97.2%	98.5%	99.3%	99.3%	98.2%	99.7%		98.0%
Valencia South	100.0%						100.0%						100.0%
<b>NW Region 1 Total</b>	<b>96.5%</b>	<b>96.4%</b>	<b>98.0%</b>	<b>97.9%</b>	<b>98.7%</b>	<b>98.5%</b>	<b>99.0%</b>	<b>99.0%</b>	<b>99.2%</b>	<b>99.3%</b>	<b>99.2%</b>		<b>98.3%</b>
Colfax	100.0%	100.0%	98.2%	98.2%	100.0%	100.0%	100.0%	98.5%	100.0%	100.0%	100.0%		99.5%
Guadalupe	100.0%	100.0%	100.0%	100.0%	100.0%	100.0%	100.0%	95.7%	100.0%	100.0%	100.0%		99.6%
Quay	97.2%	100.0%	100.0%	100.0%	97.1%	100.0%	97.9%	100.0%	100.0%	100.0%	100.0%		99.3%
Rio Arriba	97.0%	99.4%	91.2%	95.3%	97.7%	98.5%	97.5%	97.0%	100.0%	100.0%	99.4%		97.5%
San Miguel	100.0%	98.5%	100.0%	99.4%	99.3%	99.2%	100.0%	100.0%	100.0%	100.0%	100.0%		99.7%
Sandoval	98.2%	98.6%	97.8%	98.8%	98.9%	99.2%	99.2%	99.0%	98.5%	99.8%	99.5%		98.9%
Santa Fe	97.6%	97.5%	99.6%	98.4%	99.3%	99.7%	98.4%	99.4%	98.9%	99.0%	100.0%		98.9%
Taos	98.7%	98.7%	98.7%	99.2%	100.0%	98.3%	100.0%	98.6%	98.0%	98.0%	97.8%		98.7%
<b>NE Region 2 Total</b>	<b>98.2%</b>	<b>98.6%</b>	<b>97.8%</b>	<b>98.4%</b>	<b>99.0%</b>	<b>99.2%</b>	<b>99.0%</b>	<b>98.8%</b>	<b>99.0%</b>	<b>99.5%</b>	<b>99.5%</b>		<b>98.8%</b>
NE Bernalillo	95.4%	95.7%	94.9%	97.1%	98.1%	97.4%	98.3%	97.2%	99.1%	99.3%	98.8%		97.4%
NW Bernalillo	97.6%	95.1%	96.7%	98.0%	97.0%	98.7%	97.7%	98.5%	99.0%	99.0%	98.5%		97.8%
SE Bernalillo	96.0%	96.8%	97.4%	96.8%	99.7%	98.6%	99.0%	99.1%	99.0%	98.6%	99.2%		98.2%
SW Bernalillo	97.9%	97.3%	99.1%	96.6%	96.8%	97.7%	99.2%	99.5%	99.5%	99.5%	99.3%		98.4%
Torrance	98.9%	98.2%	96.6%	99.0%	97.1%	100.0%	100.0%	98.1%	100.0%	98.4%	98.3%		98.6%
<b>Gen. Region 3 Total</b>	<b>96.9%</b>	<b>96.3%</b>	<b>96.9%</b>	<b>97.2%</b>	<b>97.7%</b>	<b>98.1%</b>	<b>98.6%</b>	<b>98.5%</b>	<b>99.2%</b>	<b>99.1%</b>	<b>98.9%</b>		<b>97.9%</b>
Chaves	99.3%	98.9%	98.5%	99.7%	98.5%	99.3%	99.6%	100.0%	99.7%	99.3%	99.6%		99.3%
Curry	95.7%	97.1%	97.9%	99.4%	99.1%	98.4%	98.1%	98.5%	98.0%	99.2%	99.6%		98.3%
Eddy Artesia	100.0%	97.2%	100.0%	100.0%	98.5%	100.0%	95.4%	98.5%	98.5%	98.7%	98.5%		98.7%
Eddy Carlsbad	94.8%	97.3%	100.0%	100.0%	96.8%	99.0%	100.0%	100.0%	100.0%	99.2%	98.4%		98.7%
Lea	97.0%	98.3%	99.5%	98.5%	99.5%	98.0%	100.0%	98.6%	99.0%	99.0%	99.1%		98.8%
Lincoln	97.8%	98.9%	100.0%	100.0%	100.0%	98.3%	98.4%	100.0%	98.4%	100.0%	100.0%		99.3%
Roosevelt	100.0%	98.6%	100.0%	98.5%	100.0%	100.0%	100.0%	100.0%	100.0%	100.0%	100.0%		99.7%
<b>SE Region 4 Total</b>	<b>97.6%</b>	<b>98.2%</b>	<b>99.1%</b>	<b>99.4%</b>	<b>98.8%</b>	<b>98.7%</b>	<b>99.0%</b>	<b>99.2%</b>	<b>99.0%</b>	<b>99.2%</b>	<b>99.3%</b>		<b>98.9%</b>
East Dona Ana	99.6%	98.9%	100.0%	99.7%	99.6%	100.0%	100.0%	99.3%	99.7%	100.0%	99.1%		99.6%
Grant	100.0%	99.0%	97.9%	100.0%	99.1%	99.0%	100.0%	99.0%	100.0%	98.4%	100.0%		99.3%
Luna	100.0%	99.4%	100.0%	97.7%	97.9%	99.2%	99.4%	100.0%	99.3%	100.0%	100.0%		99.4%
Otero	100.0%	98.9%	99.4%	100.0%	100.0%	100.0%	98.2%	99.5%	100.0%	98.4%	100.0%		99.5%
South Dona Ana	100.0%	99.6%	100.0%	100.0%	99.6%	100.0%	99.6%	99.7%	98.6%	100.0%	100.0%		99.7%
West Dona Ana	99.2%	98.7%	99.0%	100.0%	99.4%	99.5%	99.7%	99.5%	99.5%	99.5%	99.2%		99.4%
<b>SW Region 5 Total</b>	<b>99.7%</b>	<b>99.0%</b>	<b>99.5%</b>	<b>99.7%</b>	<b>99.4%</b>	<b>99.7%</b>	<b>99.5%</b>	<b>99.5%</b>	<b>99.4%</b>	<b>99.5%</b>	<b>99.6%</b>		<b>99.5%</b>
<b>STATE TOTAL</b>	<b>97.7%</b>	<b>97.5%</b>	<b>98.1%</b>	<b>98.3%</b>	<b>98.6%</b>	<b>98.7%</b>	<b>99.0%</b>	<b>99.0%</b>	<b>99.2%</b>	<b>99.3%</b>	<b>99.3%</b>		<b>98.6%</b>

**SNAP Expedite: Percentage of Initial Applications Processed Timely by Field Office<sup>13</sup>**

	Oct-17	Nov-17	Dec-17	Jan-18	Feb-18	Mar-18	Apr-18	May-18	Jun-18	Jul-18	Aug-18	Sep-18	Average
Cibola	94.1%	100.0%	92.2%	98.5%	98.2%	94.5%	96.3%	97.3%	97.9%	100.0%	99.2%		97.1%
McKinley	99.4%	99.4%	97.8%	97.3%	99.2%	99.7%	99.7%	99.7%	99.7%	98.0%	99.1%		99.0%
San Juan	95.8%	94.2%	96.5%	96.7%	97.0%	97.1%	97.4%	96.6%	95.7%	98.2%	98.1%		96.7%
Sierra	98.3%	100.0%	100.0%	100.0%	100.0%	100.0%	98.1%	100.0%	100.0%	100.0%	98.4%		99.5%
Socorro	98.9%	100.0%	94.4%	98.0%	97.4%	100.0%	100.0%	97.4%	98.6%	100.0%	97.6%		98.4%
Valencia North	97.1%	93.3%	97.1%	97.7%	98.2%	98.0%	99.0%	98.5%	98.3%	98.4%	97.1%		97.5%
Valencia South	100.0%	100.0%				100.0%							100.0%
<b>NW Region 1 Total</b>	<b>97.0%</b>	<b>96.4%</b>	<b>96.6%</b>	<b>97.4%</b>	<b>97.9%</b>	<b>97.9%</b>	<b>98.3%</b>	<b>97.9%</b>	<b>97.6%</b>	<b>98.5%</b>	<b>98.3%</b>		<b>97.6%</b>
Colfax	98.6%	100.0%	100.0%	100.0%	100.0%	100.0%	100.0%	100.0%	100.0%	100.0%	100.0%		99.9%
Guadalupe	100.0%	100.0%	100.0%	100.0%	100.0%	100.0%	100.0%	100.0%	100.0%	100.0%	100.0%		100.0%
Quay	100.0%	100.0%	100.0%	94.9%	92.6%	97.4%	96.3%	100.0%	97.3%	100.0%	100.0%		98.0%
Rio Arriba	94.6%	97.3%	97.6%	97.3%	95.7%	99.0%	97.6%	99.2%	98.6%	96.3%	99.6%		97.5%
San Miguel	99.1%	98.3%	99.4%	98.1%	97.5%	99.5%	98.0%	99.0%	100.0%	98.9%	100.0%		98.9%
Sandoval	98.2%	98.3%	97.9%	98.4%	98.4%	99.5%	98.9%	98.4%	97.5%	99.0%	98.0%		98.4%
Santa Fe	97.5%	97.7%	96.7%	98.1%	97.4%	98.6%	98.5%	98.6%	99.5%	98.9%	98.5%		98.2%
Taos	98.7%	97.8%	95.7%	98.3%	98.7%	95.6%	97.5%	98.7%	98.4%	98.8%	100.0%		98.0%
<b>NE Region 2 Total</b>	<b>97.5%</b>	<b>98.0%</b>	<b>97.7%</b>	<b>98.1%</b>	<b>97.5%</b>	<b>98.7%</b>	<b>98.3%</b>	<b>98.8%</b>	<b>98.7%</b>	<b>98.5%</b>	<b>99.0%</b>		<b>98.3%</b>
NE Bernalillo	94.6%	96.4%	94.7%	98.2%	96.6%	96.5%	96.7%	98.3%	97.2%	97.4%			96.8%
NW Bernalillo	97.6%	95.6%	95.6%	97.1%	96.3%	97.4%	96.7%	95.1%	99.0%	98.3%	99.7%		97.1%
SE Bernalillo	96.5%	95.7%	95.2%	96.6%	96.4%	97.7%	97.1%	96.6%	97.8%	100.0%	99.4%		97.2%
SW Bernalillo	96.6%	96.4%	96.9%	97.8%	97.8%	96.8%	97.9%	97.9%	99.1%	98.3%	98.9%		97.7%
Torrance	96.9%	96.5%	99.2%	97.7%	99.1%	95.5%	100.0%	97.9%	100.0%	100.0%	96.0%		98.1%
<b>Gen. Region 3 Total</b>	<b>96.3%</b>	<b>96.1%</b>	<b>95.7%</b>	<b>97.6%</b>	<b>96.8%</b>	<b>96.9%</b>	<b>97.1%</b>	<b>97.1%</b>	<b>98.3%</b>	<b>98.4%</b>	<b>98.7%</b>		<b>97.2%</b>
Chaves	98.1%	98.6%	99.2%	98.6%	99.5%	99.6%	98.2%	97.6%	99.6%	100.0%	99.1%		98.9%
Curry	96.0%	98.7%	98.1%	98.3%	98.8%	97.3%	97.8%	99.3%	96.9%	98.6%	99.3%		98.1%
Eddy Artesia	100.0%	98.4%	100.0%	95.9%	100.0%	98.1%	98.1%	96.2%	96.6%	98.2%	96.2%		98.0%
Eddy Carlsbad	98.5%	98.6%	98.3%	99.4%	97.4%	98.7%	97.2%	98.2%	96.8%	97.9%	98.7%		98.2%
Lea	98.4%	98.4%	98.3%	97.1%	96.1%	98.7%	96.8%	97.7%	99.5%	99.6%	97.7%		98.0%
Lincoln	96.7%	98.6%	98.4%	100.0%	97.0%	100.0%	98.2%	100.0%	100.0%	98.2%	100.0%		98.8%
Roosevelt	92.7%	100.0%	96.2%	100.0%	100.0%	100.0%	100.0%	100.0%	100.0%	100.0%	100.0%		99.0%
<b>SE Region 4 Total</b>	<b>97.4%</b>	<b>98.7%</b>	<b>98.4%</b>	<b>98.3%</b>	<b>98.1%</b>	<b>98.6%</b>	<b>97.6%</b>	<b>98.3%</b>	<b>98.2%</b>	<b>99.0%</b>	<b>98.7%</b>		<b>98.3%</b>
East Dona Ana	99.0%	98.8%	98.7%	99.7%	100.0%	99.2%	100.0%	98.9%	100.0%	99.2%	99.6%		99.4%
Grant	97.9%	100.0%	100.0%	98.0%	100.0%	100.0%	99.4%	100.0%	99.3%	99.1%	100.0%		99.4%
Luna	99.3%	100.0%	100.0%	99.3%	100.0%	100.0%	99.0%	100.0%	100.0%	100.0%	100.0%		99.8%
Otero	98.8%	98.4%	98.5%	98.4%	98.7%	98.9%	99.1%	99.5%	98.9%	99.4%	100.0%		99.0%
South Dona Ana	100.0%	99.4%	98.8%	99.0%	100.0%	99.3%	98.8%	99.4%	99.3%	100.0%	99.0%		99.4%
West Dona Ana	99.5%	99.5%	98.6%	99.1%	99.7%	100.0%	99.5%	99.5%	100.0%	99.4%	99.2%		99.5%
<b>SW Region 5 Total</b>	<b>99.1%</b>	<b>99.3%</b>	<b>99.0%</b>	<b>98.9%</b>	<b>99.7%</b>	<b>99.6%</b>	<b>99.4%</b>	<b>99.4%</b>	<b>99.6%</b>	<b>99.5%</b>	<b>99.5%</b>		<b>99.4%</b>
<b>STATE TOTAL</b>	<b>97.2%</b>	<b>97.3%</b>	<b>97.0%</b>	<b>97.9%</b>	<b>97.7%</b>	<b>98.0%</b>	<b>98.0%</b>	<b>98.0%</b>	<b>98.4%</b>	<b>98.7%</b>	<b>98.8%</b>		<b>97.9%</b>

**SNAP: Percentage of Denied Initial Applications Processed Within 30 Days by Field Office<sup>13</sup>**

	Oct-17	Nov-17	Dec-17	Jan-18	Feb-18	Mar-18	Apr-18	May-18	Jun-18	Jul-18	Aug-18	Sep-18	Average
Cibola	66.7%	50.0%	66.7%	65.9%	88.1%	77.1%	76.9%	93.0%	97.7%	87.8%	89.7%		78.1%
McKinley	59.0%	57.8%	65.9%	47.9%	81.7%	66.2%	87.0%	95.6%	97.3%	93.6%	96.4%		77.1%
San Juan	35.7%	51.8%	46.5%	66.8%	77.3%	83.0%	89.0%	90.8%	94.3%	95.3%	96.1%		75.1%
Sierra	95.5%	90.9%	90.5%	91.7%	100.0%	100.0%	85.0%	100.0%	100.0%	95.2%	100.0%		95.3%
Socorro	69.6%	68.2%	94.3%	100.0%	96.2%	87.5%	95.2%	100.0%	100.0%	100.0%	97.0%		91.6%
Valencia North	45.9%	41.8%	45.0%	44.1%	78.8%	73.2%	90.8%	96.8%	98.0%	100.0%	100.0%		74.0%
Valencia South													
<b>NW Region 1 Total</b>	<b>48.3%</b>	<b>53.2%</b>	<b>55.5%</b>	<b>61.8%</b>	<b>80.5%</b>	<b>78.8%</b>	<b>88.6%</b>	<b>93.9%</b>	<b>96.5%</b>	<b>95.4%</b>	<b>96.6%</b>		<b>77.2%</b>
Colfax	100.0%	100.0%	100.0%	100.0%	95.2%	100.0%	95.2%	95.7%	95.2%	100.0%	100.0%		98.3%
Guadalupe	73.3%	75.0%	90.0%	92.3%	75.0%	20.0%	80.0%	87.5%	100.0%	100.0%	100.0%		81.2%
Quay	83.3%	33.3%	66.7%	70.6%	100.0%	44.4%	87.5%	100.0%	100.0%	100.0%	93.8%		80.0%
Rio Arriba	70.1%	56.3%	43.0%	69.1%	72.3%	76.9%	82.5%	96.7%	92.2%	93.2%	95.8%		77.1%
San Miguel	66.2%	77.3%	90.0%	92.1%	90.0%	85.5%	84.3%	94.4%	96.2%	100.0%	100.0%		88.7%
Sandoval	70.8%	69.2%	74.6%	66.2%	85.8%	84.1%	92.3%	98.4%	100.0%	98.6%	96.7%		85.1%
Santa Fe	64.7%	70.6%	62.1%	44.3%	79.6%	73.0%	82.5%	99.1%	96.9%	100.0%	96.9%		79.1%
Taos	77.8%	79.2%	84.1%	84.4%	87.8%	82.9%	80.5%	95.0%	96.4%	97.7%	96.6%		87.5%
<b>NE Region 2 Total</b>	<b>70.8%</b>	<b>69.7%</b>	<b>68.8%</b>	<b>66.1%</b>	<b>83.3%</b>	<b>79.4%</b>	<b>86.6%</b>	<b>97.4%</b>	<b>97.3%</b>	<b>98.5%</b>	<b>96.9%</b>		<b>83.2%</b>
NE Bernalillo	43.5%	40.5%	44.9%	47.0%	84.7%	70.1%	86.1%	88.3%	94.3%	94.4%	96.0%		71.8%
NW Bernalillo	41.7%	42.8%	48.7%	50.0%	78.9%	84.5%	85.1%	87.0%	95.9%	97.3%	96.7%		73.5%
SE Bernalillo	52.3%	52.0%	74.2%	60.9%	93.5%	82.9%	83.5%	96.0%	94.5%	97.0%	96.0%		80.3%
SW Bernalillo	63.9%	62.9%	50.9%	67.3%	95.3%	88.0%	90.3%	93.8%	95.2%	96.7%	98.4%		82.1%
Torrance	60.4%	68.2%	51.0%	54.4%	84.8%	85.4%	93.1%	100.0%	97.8%	100.0%	94.6%		80.9%
<b>Gen. Region 3 Total</b>	<b>49.7%</b>	<b>50.0%</b>	<b>53.4%</b>	<b>55.5%</b>	<b>87.5%</b>	<b>80.8%</b>	<b>86.5%</b>	<b>91.1%</b>	<b>95.1%</b>	<b>96.3%</b>	<b>96.7%</b>		<b>76.6%</b>
Chaves	86.4%	85.7%	89.3%	91.5%	91.7%	81.3%	73.4%	93.5%	95.7%	100.0%	99.3%		89.8%
Curry	63.5%	60.3%	80.9%	87.5%	95.0%	83.8%	89.4%	92.9%	98.8%	96.5%	98.0%		86.1%
Eddy Artesia	75.8%	58.1%	76.9%	96.0%	86.7%	89.7%	92.0%	100.0%	96.3%	100.0%	90.0%		87.4%
Eddy Carlsbad	60.7%	67.6%	76.4%	85.7%	94.8%	74.5%	86.3%	94.2%	92.9%	95.6%	97.0%		84.1%
Lea	86.3%	63.8%	68.0%	82.6%	94.3%	87.0%	86.1%	94.4%	93.9%	98.2%	97.9%		86.6%
Lincoln	55.0%	78.4%	94.9%	88.6%	89.3%	82.1%	93.3%	100.0%	83.3%	89.3%	95.5%		86.3%
Roosevelt	77.1%	68.1%	88.4%	91.5%		100.0%	0.0%		100.0%	33.3%	100.0%		73.2%
<b>SE Region 4 Total</b>	<b>74.4%</b>	<b>69.2%</b>	<b>81.2%</b>	<b>88.3%</b>	<b>93.0%</b>	<b>83.2%</b>	<b>84.9%</b>	<b>94.4%</b>	<b>94.7%</b>	<b>97.1%</b>	<b>97.6%</b>		<b>87.1%</b>
East Dona Ana	81.2%	77.6%	72.7%	91.2%	92.1%	82.9%	83.8%	96.6%	97.6%	97.6%	96.9%		88.2%
Grant	73.5%	81.1%	72.1%	80.0%	92.6%	96.3%	90.2%	97.4%	97.8%	91.5%	98.5%		88.3%
Luna	55.8%	51.1%	65.9%	65.3%	90.2%	70.6%	89.1%	95.2%	96.4%	100.0%	100.0%		80.0%
Otero	40.3%	38.6%	47.9%	40.7%	81.1%	84.1%	87.9%	98.8%	98.8%	96.4%	98.9%		74.0%
South Dona Ana	70.8%	68.1%	63.2%	80.6%	81.1%	79.8%	92.9%	97.9%	98.8%	96.6%	98.1%		84.4%
West Dona Ana	65.6%	55.7%	70.5%	79.5%	85.2%	86.4%	94.8%	98.4%	98.7%	97.6%	98.1%		84.6%
<b>SW Region 5 Total</b>	<b>66.6%</b>	<b>62.3%</b>	<b>66.5%</b>	<b>75.4%</b>	<b>86.4%</b>	<b>83.5%</b>	<b>89.8%</b>	<b>97.6%</b>	<b>98.2%</b>	<b>96.9%</b>	<b>98.1%</b>		<b>83.7%</b>
<b>STATE TOTAL</b>	<b>59.5%</b>	<b>58.9%</b>	<b>62.6%</b>	<b>66.5%</b>	<b>86.1%</b>	<b>80.9%</b>	<b>87.3%</b>	<b>94.1%</b>	<b>96.2%</b>	<b>96.7%</b>	<b>97.1%</b>		<b>80.5%</b>

**SNAP Renewals Processed by Field Office<sup>20</sup>**  
**August 2018**

Office	Approvals	Closures	Need Based Closures	Procedural Closures
Chaves County ISD	212	119	15	104
Cibola County ISD	149	63	6	57
Colfax County ISD	48	29	1	28
Curry County ISD	208	80	9	71
East Dona Ana County ISD	280	119	24	95
Eddy Artesia County ISD	33	25	2	23
Eddy Carlsbad County ISD	86	56	7	49
Grant County ISD	116	38	5	33
Guadalupe County ISD	29	9	1	8
Hidalgo County ISD	13	4	0	4
Lea County ISD	168	94	12	82
Lincoln County ISD	64	44	5	39
Luna County ISD	133	73	10	63
McKinley County ISD	364	122	11	111
Northeast Bernalillo County ISD	577	356	25	331
Northwest Bernalillo County ISD	537	263	36	227
Otero County ISD	169	95	8	87
Quay County ISD	48	16	2	14
Rio Arriba County ISD	217	110	4	106
Roosevelt County ISD	0	0	0	0
San Juan County ISD	387	238	20	218
San Miguel County ISD	165	72	5	67
Sandoval County ISD	349	169	21	148
Santa Fe County ISD	293	179	13	166
Sierra County ISD	90	30	2	28
Socorro County ISD	101	40	4	36
South Dona Ana ISD	382	112	17	95
Southeast Bernalillo County ISD	405	210	17	193
Southwest Bernalillo County ISD	766	329	34	295
Taos County ISD	129	69	2	67
Torrance County ISD	120	52	4	48
Valencia North County ISD	293	136	23	113
Valencia South County ISD	0	0	0	0
West Dona Ana County ISD	414	133	20	113
Centralized Units	0	0	0	0
<b>Statewide Total</b>	<b>7,345</b>	<b>3,484</b>	<b>365</b>	<b>3,119</b>

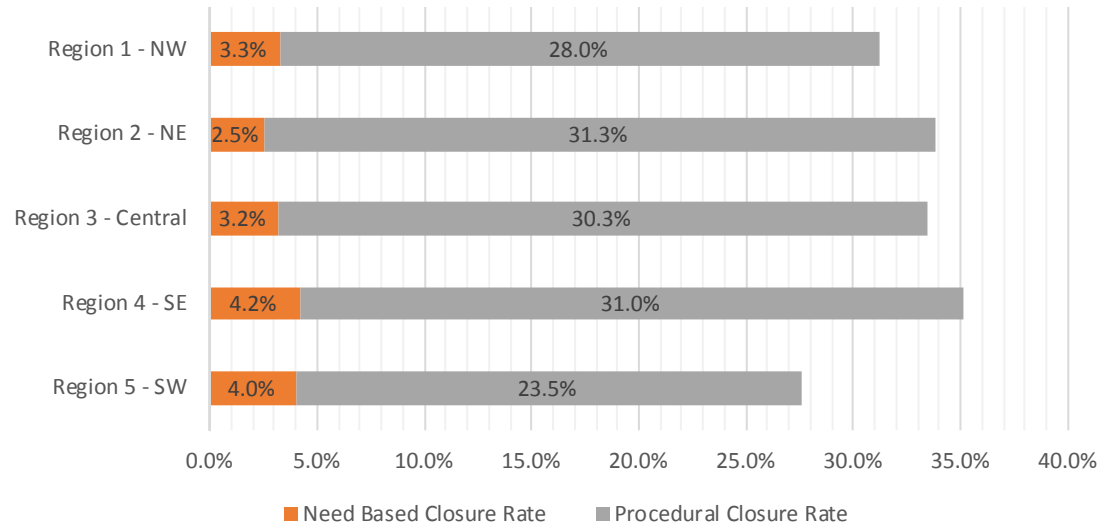
**SNAP Renewal Disposition Rates by Field Office<sup>20</sup>**  
**August 2018**

Office	Approval Rate	Closure Rate	Need Based Closure Rate	Procedural Closure Rate
Chaves County ISD	64.0%	36.0%	4.5%	31.4%
Cibola County ISD	70.3%	29.7%	2.8%	26.9%
Colfax County ISD	62.3%	37.7%	1.3%	36.4%
Curry County ISD	72.2%	27.8%	3.1%	24.7%
East Dona Ana County ISD	70.2%	29.8%	6.0%	23.8%
Eddy Artesia County ISD	56.9%	43.1%	3.4%	39.7%
Eddy Carlsbad County ISD	60.6%	39.4%	4.9%	34.5%
Grant County ISD	75.3%	24.7%	3.2%	21.4%
Guadalupe County ISD	76.3%	23.7%	2.6%	21.1%
Hidalgo County ISD	76.5%	23.5%	0.0%	23.5%
Lea County ISD	64.1%	35.9%	4.6%	31.3%
Lincoln County ISD	59.3%	40.7%	4.6%	36.1%
Luna County ISD	64.6%	35.4%	4.9%	30.6%
McKinley County ISD	74.9%	25.1%	2.3%	22.8%
Northeast Bernalillo County ISD	61.8%	38.2%	2.7%	35.5%
Northwest Bernalillo County ISD	67.1%	32.9%	4.5%	28.4%
Otero County ISD	64.0%	36.0%	3.0%	33.0%
Quay County ISD	75.0%	25.0%	3.1%	21.9%
Rio Arriba County ISD	66.4%	33.6%	1.2%	32.4%
Roosevelt County ISD	0.0%	0.0%	0.0%	0.0%
San Juan County ISD	61.9%	38.1%	3.2%	34.9%
San Miguel County ISD	69.6%	30.4%	2.1%	28.3%
Sandoval County ISD	67.4%	32.6%	4.1%	28.6%
Santa Fe County ISD	62.1%	37.9%	2.8%	35.2%
Sierra County ISD	75.0%	25.0%	1.7%	23.3%
Socorro County ISD	71.6%	28.4%	2.8%	25.5%
South Dona Ana ISD	77.3%	22.7%	3.4%	19.2%
Southeast Bernalillo County ISD	65.9%	34.1%	2.8%	31.4%
Southwest Bernalillo County ISD	70.0%	30.0%	3.1%	26.9%
Taos County ISD	65.2%	34.8%	1.0%	33.8%
Torrance County ISD	69.8%	30.2%	2.3%	27.9%
Valencia North County ISD	68.3%	31.7%	5.4%	26.3%
Valencia South County ISD	0.0%	0.0%	0.0%	0.0%
West Dona Ana County ISD	75.7%	24.3%	3.7%	20.7%
Centralized Units	0.0%	0.0%	0.0%	0.0%
Statewide Total	67.8%	32.2%	3.4%	28.8%



**SNAP Renewal Disposition Rates by Region<sup>20</sup>**  
**August 2018**

Region	Approval Rate	Closure Rate	Need Based Closure Rate	Procedural Closure Rate
Region 1 - NW	68.8%	31.2%	3.3%	28.0%
Region 2 - NE	66.2%	33.8%	2.5%	31.3%
Region 3 - Central	66.5%	33.5%	3.2%	30.3%
Region 4 - SE	64.8%	35.2%	4.2%	31.0%
Region 5 - SW	72.4%	27.6%	4.0%	23.5%
Centralized Units				
Statewide Total	67.8%	32.2%	3.4%	28.8%



SNAP: Percentage of Approved Renewal Applications Processed by Normal Accessibility Date <sup>11</sup>													
	Oct-17	Nov-17	Dec-17	Jan-18	Feb-18	Mar-18	Apr-18	May-18	Jun-18	Jul-18	Aug-18	Sep-18	Average
Cibola		71.2%	73.1%	79.4%	90.4%	88.0%	93.1%	94.7%	92.6%	95.8%	95.3%		87.4%
McKinley		90.4%	92.0%	95.6%	98.3%	96.4%	98.5%	98.0%	97.7%	97.5%	97.0%		96.1%
San Juan		85.9%	80.5%	89.6%	94.2%	93.2%	96.5%	96.8%	92.9%	95.6%	97.2%		92.2%
Sierra		98.1%	93.6%	92.8%	99.0%	99.0%	100.0%	100.0%	100.0%	96.2%	96.7%		97.5%
Socorro		92.5%	89.7%	93.8%	100.0%	90.7%	94.3%	94.5%	99.0%	97.3%	95.0%		94.7%
Valencia North		84.1%	86.9%	95.8%	98.6%	92.6%	96.0%	94.3%	94.0%	94.4%	94.2%		93.1%
Valencia South													
<b>NW Region 1 Total</b>		<b>87.1%</b>	<b>86.0%</b>	<b>91.2%</b>	<b>96.8%</b>	<b>93.3%</b>	<b>96.4%</b>	<b>96.4%</b>	<b>96.0%</b>	<b>96.1%</b>	<b>95.9%</b>		<b>93.5%</b>
Colfax		87.8%	82.5%	97.9%	100.0%	91.2%	91.1%	95.9%	95.9%	100.0%	97.9%		94.0%
Guadalupe		94.4%	93.1%	100.0%	95.8%	100.0%	100.0%	100.0%	90.9%	100.0%	93.1%		96.7%
Quay		94.3%	89.5%	100.0%	100.0%	88.0%	89.4%	98.1%	92.0%	95.1%	87.5%		93.4%
Rio Arriba		79.7%	71.9%	94.2%	90.0%	88.3%	93.1%	90.3%	91.6%	86.4%	92.2%		87.8%
San Miguel		90.4%	95.7%	98.5%	96.5%	97.4%	100.0%	98.5%	97.3%	98.6%	97.0%		97.0%
Sandoval		90.1%	93.8%	96.2%	96.3%	96.3%	95.5%	94.5%	93.8%	96.1%	94.8%		94.8%
Santa Fe		87.1%	92.0%	95.7%	96.9%	97.1%	98.1%	95.8%	96.4%	96.3%	91.8%		94.7%
Taos		90.8%	91.5%	94.6%	97.0%	94.4%	98.3%	97.7%	97.9%	97.3%	99.2%		95.9%
<b>NE Region 2 Total</b>		<b>89.3%</b>	<b>88.8%</b>	<b>97.1%</b>	<b>96.6%</b>	<b>94.1%</b>	<b>95.7%</b>	<b>96.4%</b>	<b>94.5%</b>	<b>96.2%</b>	<b>94.2%</b>		<b>94.3%</b>
NE Bernalillo		71.8%	72.1%	85.0%	91.2%	92.6%	96.0%	95.1%	94.3%	95.2%	92.2%		88.6%
NW Bernalillo		85.5%	80.4%	93.0%	96.1%	94.9%	96.8%	92.1%	95.1%	95.2%	93.5%		92.3%
SE Bernalillo		79.7%	81.6%	91.7%	96.5%	96.5%	96.7%	93.6%	97.2%	97.1%	96.0%		92.7%
SW Bernalillo		83.4%	89.0%	91.8%	96.1%	94.6%	96.3%	95.0%	96.9%	95.5%	96.1%		93.5%
Torrance		74.5%	74.3%	90.3%	92.4%	95.7%	93.1%	97.4%	98.1%	98.0%	93.3%		90.7%
<b>Gen. Region 3 Total</b>		<b>79.0%</b>	<b>79.5%</b>	<b>90.3%</b>	<b>94.4%</b>	<b>94.9%</b>	<b>95.8%</b>	<b>94.6%</b>	<b>96.3%</b>	<b>96.2%</b>	<b>94.2%</b>		<b>91.5%</b>
Chaves		91.2%	92.0%	95.3%	98.6%	98.4%	100.0%	99.1%	97.8%	99.6%	98.1%		97.0%
Curry		94.1%	81.9%	94.9%	94.6%	97.6%	98.9%	98.9%	97.9%	98.9%	97.1%		95.5%
Eddy Artesia		94.1%	91.9%	95.2%	98.5%	98.3%	94.0%	92.3%	98.1%	98.1%	100.0%		96.1%
Eddy Carlsbad		75.8%	90.8%	90.1%	93.6%	94.6%	96.4%	98.4%	98.4%	95.1%	98.8%		93.2%
Lea		91.8%	90.9%	94.0%	95.8%	96.0%	98.8%	97.0%	96.3%	97.0%	97.6%		95.5%
Lincoln		87.5%	92.6%	95.1%	100.0%	100.0%	100.0%	100.0%	96.2%	93.2%	98.4%		96.3%
Roosevelt		93.6%	86.7%										90.1%
<b>SE Region 4 Total</b>		<b>89.7%</b>	<b>89.5%</b>	<b>94.1%</b>	<b>96.8%</b>	<b>97.5%</b>	<b>98.0%</b>	<b>97.6%</b>	<b>97.5%</b>	<b>97.0%</b>	<b>98.4%</b>		<b>95.6%</b>
East Dona Ana		94.8%	93.1%	96.5%	98.2%	98.0%	97.5%	97.7%	96.6%	96.9%	99.6%		96.9%
Grant		90.5%	93.5%	100.0%	96.7%	90.1%	94.1%	96.3%	92.1%	93.8%	97.4%		94.5%
Luna		91.7%	84.0%	91.4%	95.1%	92.2%	95.7%	95.7%	94.2%	97.8%	97.0%		93.5%
Otero		87.3%	86.5%	97.5%	93.5%	92.2%	93.5%	97.4%	88.6%	95.6%	91.7%		92.4%
South Dona Ana		94.3%	93.1%	99.4%	99.1%	93.0%	93.9%	95.2%	96.8%	97.9%	96.9%		96.0%
West Dona Ana		97.4%	95.0%	97.9%	98.9%	97.7%	99.2%	98.2%	98.1%	98.9%	97.3%		97.9%
<b>SW Region 5 Total</b>		<b>92.7%</b>	<b>90.9%</b>	<b>97.1%</b>	<b>96.9%</b>	<b>93.9%</b>	<b>95.7%</b>	<b>96.7%</b>	<b>94.4%</b>	<b>96.8%</b>	<b>96.7%</b>		<b>95.2%</b>
<b>STATE TOTAL</b>		<b>86.4%</b>	<b>86.3%</b>	<b>93.6%</b>	<b>95.9%</b>	<b>94.7%</b>	<b>96.5%</b>	<b>95.7%</b>	<b>95.7%</b>	<b>95.7%</b>	<b>95.6%</b>		<b>93.6%</b>

Includes cases in which the Renewal Packet was received after the 15th of the month, the due date for uninterrupted benefits.  
No data available for October 2017

SNAP: Percentage of Approved Renewal Applications Processed by Normal Accessibility Date <sup>11</sup>													
	Oct-17	Nov-17	Dec-17	Jan-18	Feb-18	Mar-18	Apr-18	May-18	Jun-18	Jul-18	Aug-18	Sep-18	Average
Cibola		72.8%	86.1%	82.3%	92.7%	96.6%	100.0%	100.0%	100.0%	99.0%	98.3%		92.8%
McKinley		92.8%	93.9%	97.6%	99.0%	99.1%	99.7%	99.7%	99.7%	98.1%	98.8%		97.8%
San Juan		89.0%	85.1%	92.8%	96.4%	97.4%	99.7%	99.4%	97.9%	98.6%	99.4%		95.6%
Sierra		100.0%	97.5%	97.1%	100.0%	100.0%	100.0%	100.0%	100.0%	100.0%	100.0%		99.5%
Socorro		94.7%	95.7%	96.9%	100.0%	100.0%	100.0%	98.9%	100.0%	100.0%	100.0%		98.6%
Valencia North		89.1%	93.1%	96.3%	98.8%	98.7%	100.0%	99.5%	99.2%	100.0%	98.8%		97.4%
Valencia South													
<b>NW Region 1 Total</b>		<b>89.8%</b>	<b>91.9%</b>	<b>93.8%</b>	<b>97.8%</b>	<b>98.6%</b>	<b>99.9%</b>	<b>99.6%</b>	<b>99.4%</b>	<b>99.3%</b>	<b>99.2%</b>		<b>96.9%</b>
Colfax		95.1%	91.2%	100.0%	100.0%	100.0%	100.0%	97.6%	100.0%	100.0%	100.0%		98.4%
Guadalupe		96.7%	92.9%	100.0%	100.0%	100.0%	100.0%	100.0%	100.0%	100.0%	100.0%		99.0%
Quay		100.0%	95.6%	100.0%	100.0%	100.0%	100.0%	100.0%	100.0%	100.0%	100.0%		99.6%
Rio Arriba		90.5%	84.5%	95.6%	94.6%	95.0%	100.0%	99.0%	98.3%	97.1%	100.0%		95.5%
San Miguel		93.6%	96.9%	100.0%	96.5%	99.3%	100.0%	100.0%	99.2%	100.0%	100.0%		98.5%
Sandoval		93.1%	97.0%	98.7%	98.5%	97.9%	100.0%	99.4%	99.7%	99.3%	99.3%		98.3%
Santa Fe		91.6%	97.0%	97.8%	97.9%	99.7%	99.6%	99.6%	99.6%	100.0%	98.8%		98.2%
Taos		95.8%	94.8%	96.8%	98.9%	98.4%	98.9%	99.1%	98.7%	100.0%	99.1%		98.0%
<b>NE Region 2 Total</b>		<b>94.6%</b>	<b>93.7%</b>	<b>98.6%</b>	<b>98.3%</b>	<b>98.8%</b>	<b>99.8%</b>	<b>99.3%</b>	<b>99.4%</b>	<b>99.6%</b>	<b>99.6%</b>		<b>98.2%</b>
NE Bernalillo		75.7%	77.9%	90.1%	93.2%	96.9%	99.8%	98.5%	98.8%	99.6%	99.5%		93.0%
NW Bernalillo		88.7%	84.5%	95.0%	97.5%	98.7%	99.0%	97.5%	99.5%	99.7%	99.1%		95.9%
SE Bernalillo		85.2%	87.3%	94.9%	97.7%	98.8%	99.0%	98.7%	99.4%	99.7%	99.4%		96.0%
SW Bernalillo		88.9%	93.5%	95.2%	98.6%	98.1%	99.7%	99.1%	99.7%	99.6%	99.7%		97.2%
Torrance		83.1%	80.7%	97.2%	95.5%	98.0%	99.0%	99.0%	100.0%	100.0%	98.9%		95.1%
<b>Gen. Region 3 Total</b>		<b>84.3%</b>	<b>84.8%</b>	<b>94.5%</b>	<b>96.5%</b>	<b>98.1%</b>	<b>99.3%</b>	<b>98.6%</b>	<b>99.5%</b>	<b>99.7%</b>	<b>99.3%</b>		<b>95.5%</b>
Chaves		92.0%	92.0%	96.8%	99.5%	99.1%	100.0%	100.0%	98.0%	100.0%	99.5%		97.7%
Curry		94.6%	85.4%	96.7%	96.3%	98.3%	100.0%	100.0%	99.4%	99.1%	98.4%		96.8%
Eddy Artesia		100.0%	96.0%	100.0%	100.0%	98.2%	97.6%	100.0%	100.0%	100.0%	100.0%		99.2%
Eddy Carlsbad		80.3%	94.4%	95.7%	94.1%	97.4%	97.1%	100.0%	100.0%	100.0%	100.0%		95.9%
Lea		94.6%	94.2%	97.5%	97.6%	97.8%	98.6%	98.7%	99.4%	99.4%	99.3%		97.7%
Lincoln		88.5%	95.7%	95.9%	100.0%	100.0%	100.0%	100.0%	95.5%	95.3%	100.0%		97.1%
Roosevelt		92.9%	85.0%										88.9%
<b>SE Region 4 Total</b>		<b>91.8%</b>	<b>91.8%</b>	<b>97.1%</b>	<b>97.9%</b>	<b>98.5%</b>	<b>98.9%</b>	<b>99.8%</b>	<b>98.7%</b>	<b>99.0%</b>	<b>99.5%</b>		<b>97.3%</b>
East Dona Ana		96.8%	97.8%	99.0%	99.2%	99.2%	100.0%	99.6%	99.6%	99.6%	99.6%		99.0%
Grant		94.2%	99.1%	100.0%	100.0%	98.8%	100.0%	100.0%	100.0%	96.9%	100.0%		98.9%
Luna		96.9%	90.2%	92.9%	96.5%	97.6%	98.3%	99.1%	96.7%	100.0%	100.0%		96.8%
Otero		96.2%	96.4%	100.0%	97.8%	100.0%	99.2%	100.0%	98.8%	100.0%	100.0%		98.8%
South Dona Ana		97.4%	97.4%	100.0%	99.7%	99.6%	100.0%	99.3%	100.0%	100.0%	100.0%		99.3%
West Dona Ana		99.1%	98.2%	99.1%	100.0%	99.3%	100.0%	99.7%	99.6%	100.0%	99.7%		99.5%
<b>SW Region 5 Total</b>		<b>96.8%</b>	<b>96.5%</b>	<b>98.5%</b>	<b>98.9%</b>	<b>99.1%</b>	<b>99.6%</b>	<b>99.6%</b>	<b>99.1%</b>	<b>99.4%</b>	<b>99.9%</b>		<b>98.7%</b>
<b>STATE TOTAL</b>		<b>90.4%</b>	<b>91.3%</b>	<b>96.2%</b>	<b>97.6%</b>	<b>98.4%</b>	<b>99.6%</b>	<b>99.2%</b>	<b>99.3%</b>	<b>99.3%</b>	<b>99.4%</b>		<b>97.1%</b>

Only includes cases in which the Renewal Packet was received by the 15th of the month, the due date for uninterrupted benefits.  
No data available for October 2017

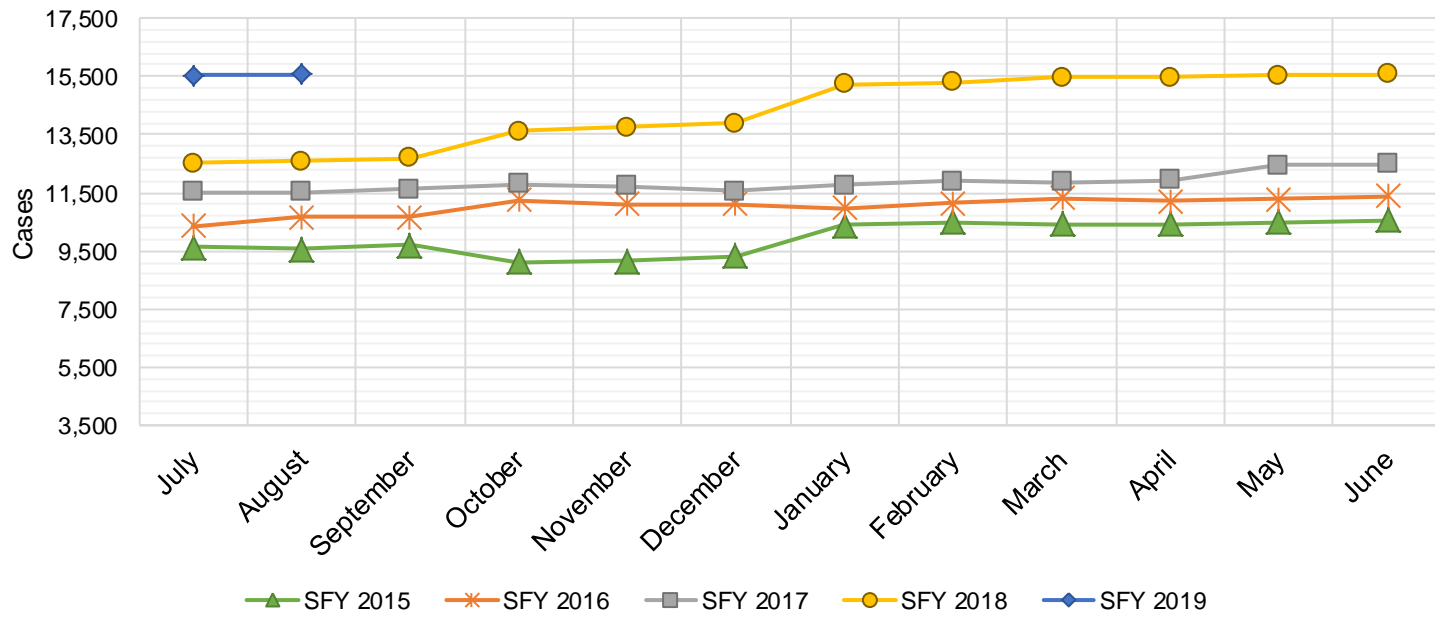
SNAP: Percentage of Closures at Renewal Processed by Certification End Date <sup>11</sup>													
	Oct-17	Nov-17	Dec-17	Jan-18	Feb-18	Mar-18	Apr-18	May-18	Jun-18	Jul-18	Aug-18	Sep-18	Average
Cibola		6.8%	3.3%	2.5%	9.1%	3.5%	10.0%	70.2%	95.2%	95.8%	95.2%		39.2%
McKinley		3.7%	6.7%	6.8%	7.8%	6.1%	15.2%	85.4%	92.1%	92.5%	95.9%		41.2%
San Juan		7.0%	5.1%	5.7%	8.0%	7.8%	32.5%	89.7%	93.3%	91.7%	93.3%		43.4%
Sierra		19.2%	17.1%	8.8%	25.0%	15.6%	91.7%	100.0%	96.7%	73.5%	100.0%		54.8%
Socorro		11.8%	4.3%	0.0%	7.7%	15.2%	77.3%	66.7%	100.0%	90.0%	97.5%		47.0%
Valencia North		6.2%	9.8%	4.8%	10.5%	6.9%	75.4%	81.1%	94.7%	93.5%	94.9%		47.8%
Valencia South													
<b>NW Region 1 Total</b>		9.1%	7.7%	4.8%	11.4%	9.2%	50.3%	82.2%	95.3%	89.5%	96.1%		45.6%
Colfax		6.3%	11.1%	10.0%	3.4%	0.0%	51.9%	80.8%	84.2%	86.4%	96.6%		43.1%
Guadalupe		7.7%	0.0%	0.0%	33.3%	0.0%	88.9%	75.0%	83.3%	93.3%	100.0%		48.2%
Quay		15.8%	6.7%	0.0%	4.2%	7.7%	72.0%	80.0%	100.0%	100.0%	87.5%		47.4%
Rio Arriba		6.1%	3.9%	2.9%	13.7%	3.8%	49.5%	70.3%	94.4%	91.9%	94.5%		43.1%
San Miguel		4.7%	9.0%	8.6%	5.7%	6.8%	79.7%	88.7%	94.4%	100.0%	93.1%		49.1%
Sandoval		12.9%	12.8%	3.0%	10.3%	7.1%	71.7%	81.0%	94.4%	92.5%	95.3%		48.1%
Santa Fe		3.0%	5.8%	9.9%	4.9%	8.5%	77.5%	89.0%	93.6%	94.8%	94.4%		48.1%
Taos		4.1%	3.7%	6.7%	3.3%	21.1%	52.7%	91.3%	91.5%	87.0%	97.1%		45.8%
<b>NE Region 2 Total</b>		7.6%	6.6%	5.1%	9.9%	6.9%	68.0%	82.0%	92.0%	93.2%	94.8%		46.6%
NE Bernalillo		3.0%	5.7%	3.5%	8.5%	9.4%	33.8%	86.3%	91.9%	94.7%	94.1%		43.1%
NW Bernalillo		3.4%	3.8%	20.4%	51.8%	11.6%	60.9%	78.8%	96.0%	96.1%	93.9%		51.7%
SE Bernalillo		4.1%	6.1%	4.2%	7.5%	7.7%	26.3%	84.2%	95.5%	94.6%	93.3%		42.4%
SW Bernalillo		7.2%	6.6%	6.6%	7.5%	8.3%	77.0%	74.3%	91.1%	91.5%	94.5%		46.5%
Torrance		3.6%	7.6%	5.1%	5.1%	20.5%	81.0%	92.4%	94.0%	92.5%	90.4%		49.2%
<b>Gen. Region 3 Total</b>		4.3%	6.0%	8.0%	16.1%	11.5%	55.8%	83.2%	93.7%	93.9%	93.3%		46.6%
Chaves		7.7%	12.2%	8.2%	13.9%	15.7%	94.5%	93.8%	93.3%	94.3%	94.1%		52.8%
Curry		8.0%	3.8%	5.1%	5.8%	14.4%	44.5%	95.3%	92.1%	87.8%	95.0%		45.2%
Eddy Artesia		6.9%	10.0%	10.0%	9.1%	11.1%	83.9%	75.0%	100.0%	91.2%	96.0%		49.3%
Eddy Carlsbad		8.6%	4.7%	3.8%	6.8%	12.7%	8.7%	92.5%	95.4%	94.7%	94.6%		42.3%
Lea		5.3%	14.8%	2.2%	7.0%	13.7%	31.9%	90.6%	90.8%	92.9%	92.6%		44.2%
Lincoln		2.9%	9.3%	15.4%	10.3%	13.6%	24.2%	97.4%	85.7%	88.1%	95.5%		44.2%
Roosevelt		15.0%	5.4%	0.0%									6.8%
<b>SE Region 4 Total</b>		7.8%	8.6%	6.4%	8.8%	13.6%	48.0%	90.8%	92.9%	91.5%	94.6%		46.3%
East Dona Ana		12.9%	9.1%	5.6%	9.9%	14.6%	83.2%	84.4%	98.1%	89.5%	97.5%		50.5%
Grant		6.0%	4.7%	3.4%	1.7%	10.9%	9.3%	86.2%	97.9%	96.3%	97.4%		41.4%
Luna		5.6%	1.4%	3.2%	7.0%	9.1%	6.0%	85.9%	89.2%	95.2%	100.0%		40.3%
Otero		2.9%	5.5%	3.5%	9.6%	2.8%	51.1%	74.1%	95.8%	95.4%	97.9%		43.9%
South Dona Ana		13.8%	7.6%	14.3%	16.8%	8.3%	67.2%	71.4%	96.9%	98.2%	94.6%		48.9%
West Dona Ana		8.9%	8.4%	6.8%	11.4%	8.8%	15.6%	89.5%	94.5%	92.2%	95.5%		43.2%
<b>SW Region 5 Total</b>		8.3%	6.1%	6.1%	9.4%	9.1%	38.7%	81.9%	95.4%	94.5%	97.1%		44.7%
<b>STATE TOTAL</b>		6.6%	7.1%	6.9%	12.3%	9.5%	52.2%	83.8%	93.8%	93.8%	94.7%		46.1%

Includes cases for which no renewal application was received.  
No data available for October 2017

## State SNAP Supplement

SFY 2015 <sup>12</sup>			SFY 2016 <sup>12,9</sup>			SFY 2017 <sup>9</sup>			SFY 2018 <sup>9</sup>			SFY 2019 <sup>9</sup>		
	Cases	Expenditures		Cases	Expenditures		Cases	Expenditures		Cases	Expenditures		Cases	Expenditures
Jul-14	9,635	\$88,859	Jul-15	10,345	\$86,143	Jul-16	11,537	\$95,553	Jul-17	12,526	\$97,568	Jul-18	15,555	\$141,711
Aug-14	9,559	\$87,757	Aug-15	10,669	\$88,197	Aug-16	11,522	\$95,107	Aug-17	12,589	\$98,954	Aug-18	15,584	\$139,719
Sep-14	9,688	\$87,372	Sep-15	10,676	\$88,426	Sep-16	11,613	\$94,472	Sep-17	12,679	\$97,546	Sep-18		
Oct-14	9,136	\$70,490	Oct-15	11,262	\$96,758	Oct-16	11,797	\$96,679	Oct-17	13,628	\$117,343	Oct-18		
Nov-14	9,152	\$69,955	Nov-15	11,099	\$91,996	Nov-16	11,735	\$93,689	Nov-17	13,748	\$119,055	Nov-18		
Dec-14	9,322	\$73,226	Dec-15	11,125	\$90,771	Dec-16	11,556	\$93,739	Dec-17	13,877	\$120,585	Dec-18		
Jan-15	10,384	\$84,578	Jan-16	10,977	\$92,760	Jan-17	11,763	\$96,074	Jan-18	15,246	\$135,993	Jan-19		
Feb-15	10,477	\$82,901	Feb-16	11,153	\$95,363	Feb-17	11,907	\$98,251	Feb-18	15,308	\$137,296	Feb-19		
Mar-15	10,423	\$87,461	Mar-16	11,332	\$96,751	Mar-17	11,853	\$96,693	Mar-18	15,482	\$139,132	Mar-19		
Apr-15	10,440	\$79,605	Apr-16	11,222	\$93,959	Apr-17	11,944	\$97,060	Apr-18	15,466	\$139,202	Apr-19		
May-15	10,491	\$82,511	May-16	11,283	\$95,271	May-17	12,457	\$96,940	May-18	15,525	\$139,397	May-19		
Jun-15	10,575	\$85,134	Jun-16	11,389	\$93,061	Jun-17	12,498	\$97,405	Jun-18	15,577	\$140,802	Jun-19		

TOTAL	119,282	\$979,850	132,532	\$1,109,455	142,182	\$1,151,662	171,651	\$1,482,874	31,139	\$281,430
AVERAGE	9,940	\$81,654	11,044	\$92,455	11,849	\$95,972	14,304	\$123,573	15,570	\$140,715



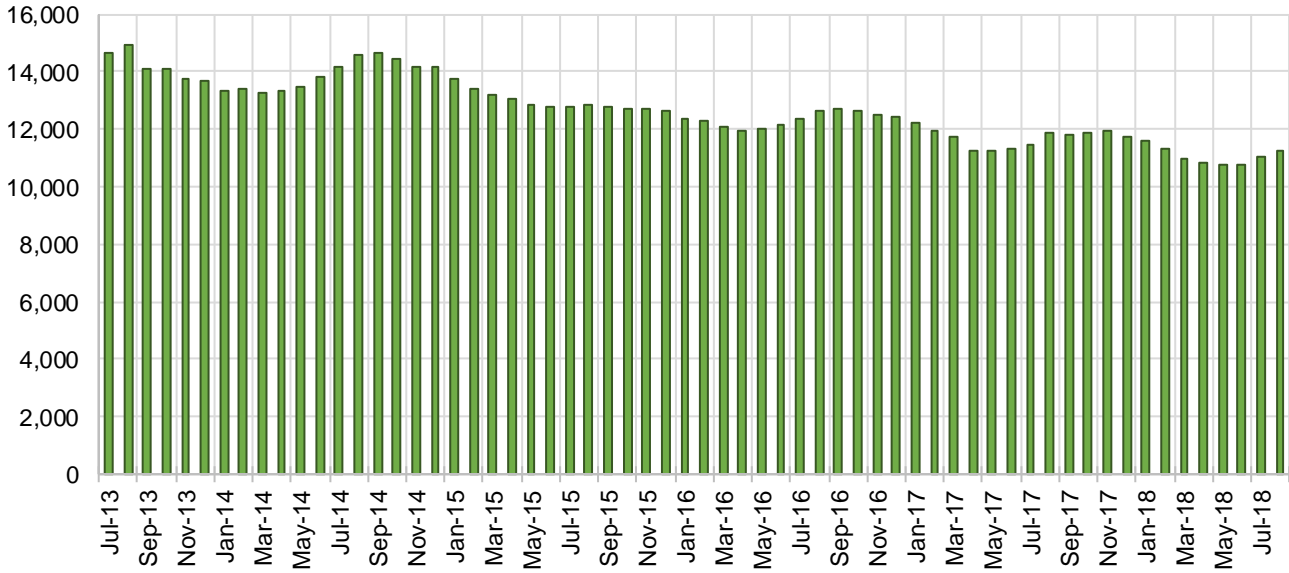
## TANF Cases by Field Office<sup>6</sup>

Office	Aug-17	Jul-18	Aug-18	Percent Change	
				Aug-17- Aug-18	Jul-18- Aug-18
Chaves County ISD	568	466	468	-17.6%	0.4%
Cibola County ISD	140	152	156	11.4%	2.6%
Colfax County ISD	83	84	80	-3.6%	-4.8%
Curry County ISD	521	678	690	32.4%	1.8%
East Dona Ana County ISD	502	439	450	-10.4%	2.5%
Eddy Artesia County ISD	125	103	114	-8.8%	10.7%
Eddy Carlsbad County ISD	186	136	138	-25.8%	1.5%
Grant County ISD	220	159	159	-27.7%	0.0%
Guadalupe County ISD	32	24	22	-31.3%	-8.3%
Hidalgo County ISD	20	23	26	30.0%	13.0%
Lea County ISD	441	358	379	-14.1%	5.9%
Lincoln County ISD	99	96	95	-4.0%	-1.0%
Luna County ISD	221	218	231	4.5%	6.0%
McKinley County ISD	66	58	70	6.1%	20.7%
Northeast Bernalillo County ISD	1,023	969	986	-3.6%	1.8%
Northwest Bernalillo County ISD	810	790	835	3.1%	5.7%
Otero County ISD	309	292	293	-5.2%	0.3%
Quay County ISD	90	59	62	-31.1%	5.1%
Rio Arriba County ISD	427	400	388	-9.1%	-3.0%
Roosevelt County ISD	171	0	0	-100.0%	N/A
San Juan County ISD	325	305	299	-8.0%	-2.0%
San Miguel County ISD	219	209	199	-9.1%	-4.8%
Sandoval County ISD	562	569	578	2.8%	1.6%
Santa Fe County ISD	434	414	415	-4.4%	0.2%
Sierra County ISD	81	79	81	0.0%	2.5%
Socorro County ISD	99	96	85	-14.1%	-11.5%
South Dona Ana ISD	759	659	690	-9.1%	4.7%
Southeast Bernalillo County ISD	670	604	603	-10.0%	-0.2%
Southwest Bernalillo County ISD	1,093	1,120	1,149	5.1%	2.6%
Taos County ISD	128	140	138	7.8%	-1.4%
Torrance County ISD	194	183	188	-3.1%	2.7%
Valencia North County ISD	496	454	455	-8.3%	0.2%
Valencia South County ISD	1	2	0	-100.0%	-100.0%
West Dona Ana County ISD	783	716	734	-6.3%	2.5%
Centralized Units	1	5	5	400.0%	0.0%
Statewide Total	11,899	11,059	11,261	-5.4%	1.8%

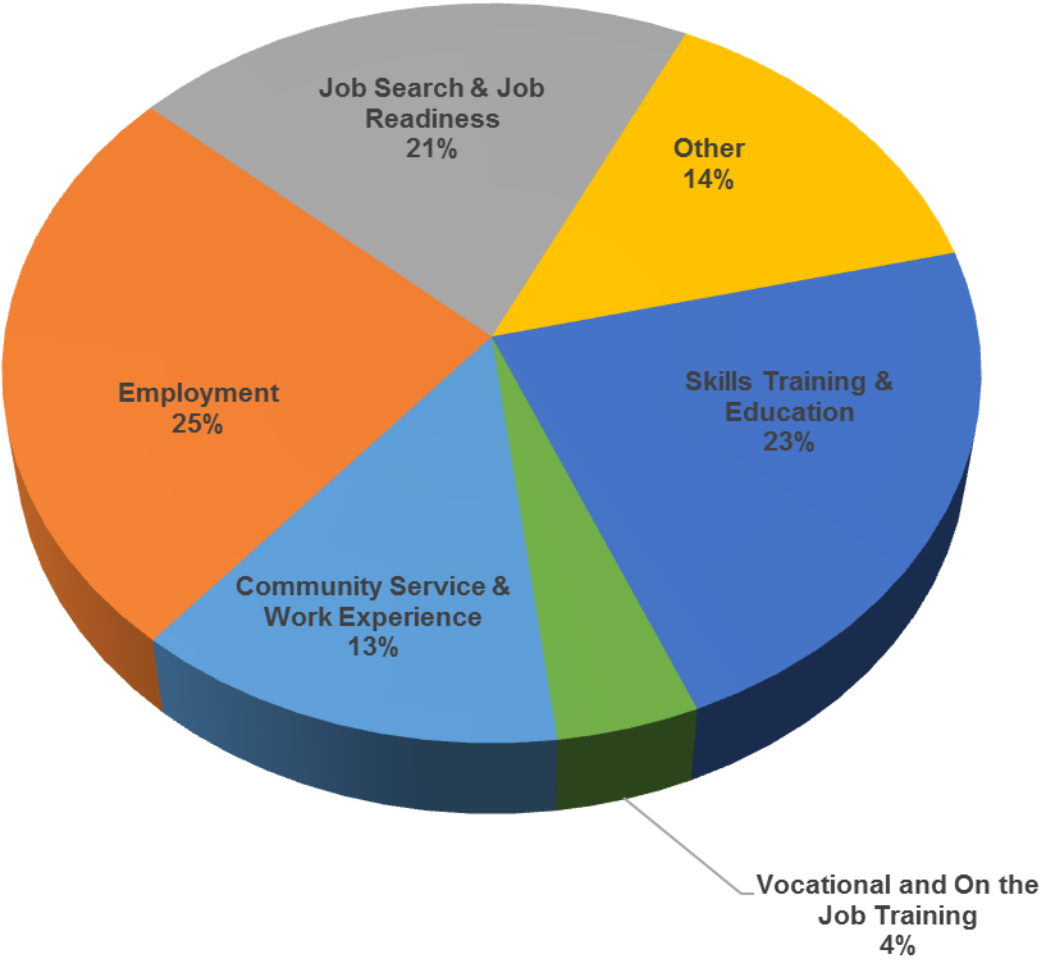
## TANF Cases by Region<sup>6</sup>

				Percent Change	
Region	Aug-17	Jul-18	Aug-18	Aug-17- Aug-18	Jul-18- Aug-18
Region 1- NW	1,208	1,146	1,146	-5.1%	0.0%
Region 2- NE	1,975	1,899	1,882	-4.7%	-0.9%
Region 3- Central	3,790	3,666	3,761	-0.8%	2.6%
Region 4- SE	2,111	1,837	1,884	-10.8%	2.6%
Region 5- SW	2,814	2,506	2,583	-8.2%	3.1%
Centralized Units	1	5	5	400.0%	0.0%
Statewide Total	11,899	11,059	11,261	-5.4%	1.8%

**TANF Caseload: SFY-14 to Current**

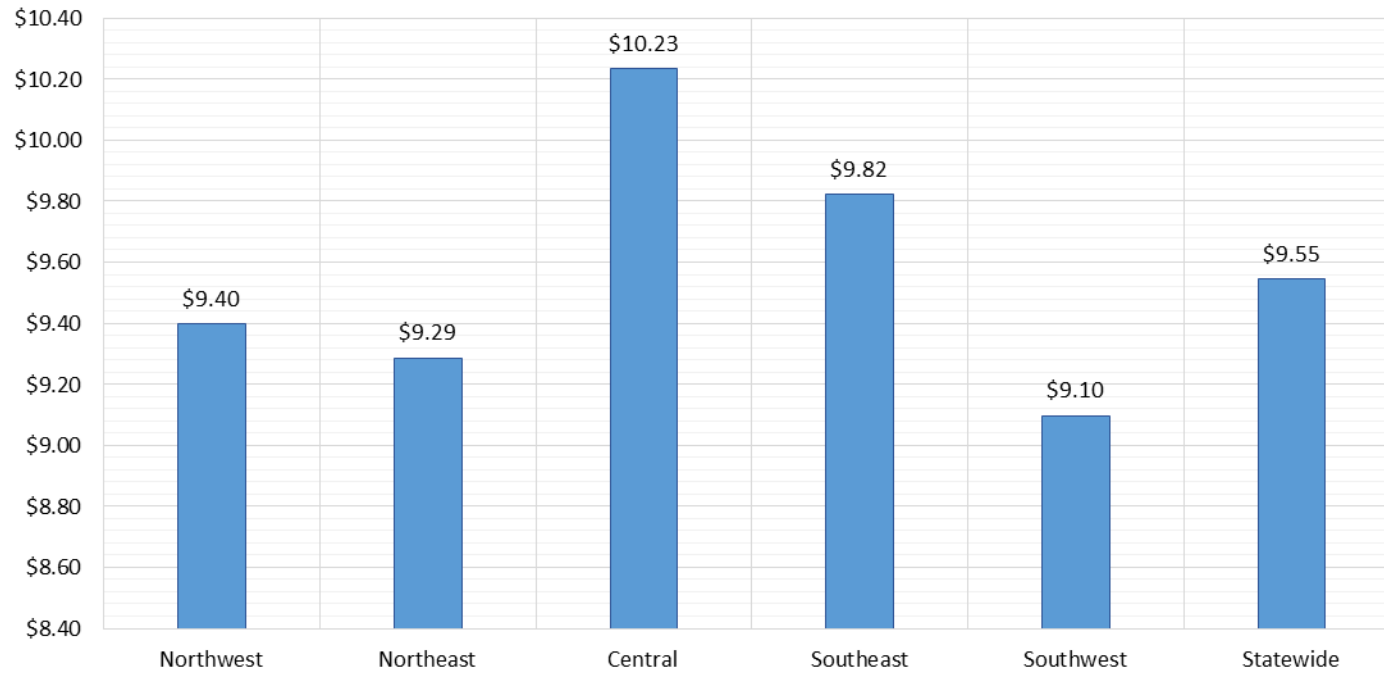


**NM Works Activity Placements on August 31, 2018  
as reported by SL Start<sup>14</sup>**

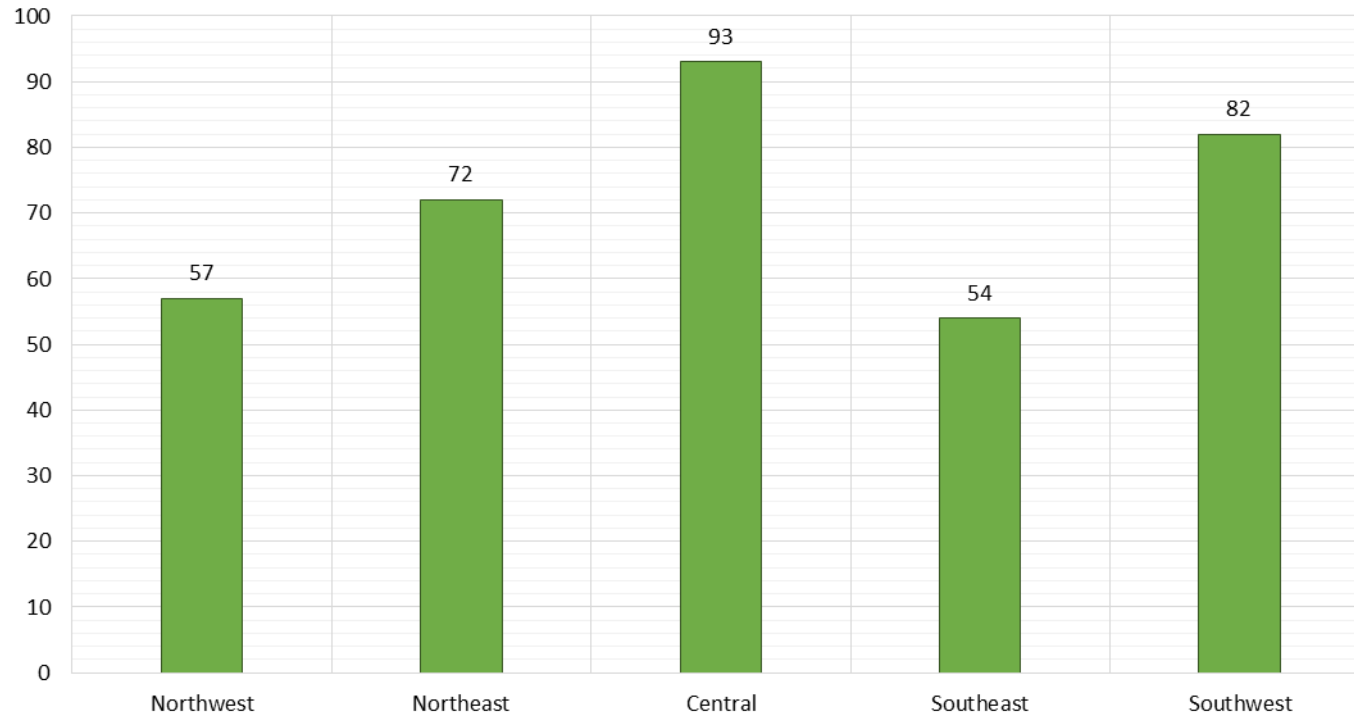




### Average Starting Hourly Wage of August 2018 TANF Employments as reported by SL Start<sup>15</sup>



Number of New Employments in August 2018 by Region  
as reported by SL Start<sup>15</sup>  
Statewide Total: 358



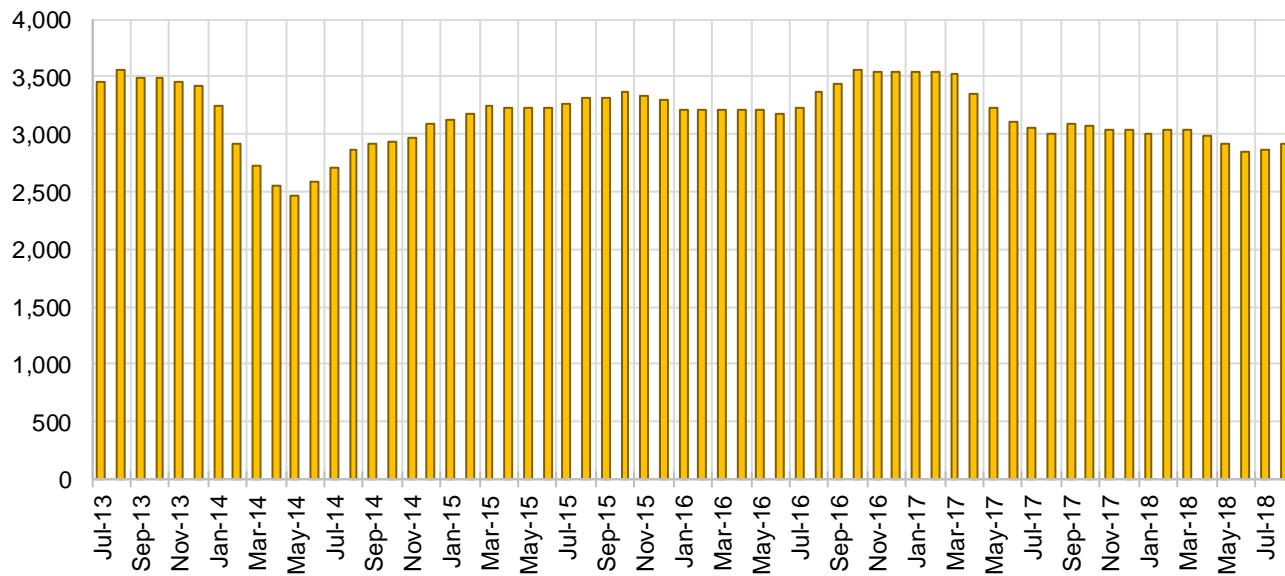
## General Assistance Cases by Field Office<sup>6</sup>

Office				Percent Change	
	Aug-17	Jul-18	Aug-18	Aug-17- Aug-18	Jul-18- Aug-18
Chaves County ISD	128	120	133	3.9%	10.8%
Cibola County ISD	51	34	40	-21.6%	17.6%
Colfax County ISD	23	20	21	-8.7%	5.0%
Curry County ISD	64	78	84	31.3%	7.7%
East Dona Ana County ISD	105	110	112	6.7%	1.8%
Eddy Artesia County ISD	25	24	22	-12.0%	-8.3%
Eddy Carlsbad County ISD	66	74	75	13.6%	1.4%
Grant County ISD	72	49	54	-25.0%	10.2%
Guadalupe County ISD	15	16	16	6.7%	0.0%
Hidalgo County ISD	11	12	13	18.2%	8.3%
Lea County ISD	84	78	82	-2.4%	5.1%
Lincoln County ISD	33	30	30	-9.1%	0.0%
Luna County ISD	61	53	55	-9.8%	3.8%
McKinley County ISD	38	54	52	36.8%	-3.7%
Northeast Bernalillo County ISD	359	332	338	-5.8%	1.8%
Northwest Bernalillo County ISD	290	292	290	0.0%	-0.7%
Otero County ISD	98	78	73	-25.5%	-6.4%
Quay County ISD	30	27	24	-20.0%	-11.1%
Rio Arriba County ISD	87	83	79	-9.2%	-4.8%
Roosevelt County ISD	20	0	0	-100.0%	N/A
San Juan County ISD	111	135	132	18.9%	-2.2%
San Miguel County ISD	75	75	79	5.3%	5.3%
Sandoval County ISD	122	122	122	0.0%	0.0%
Santa Fe County ISD	157	131	126	-19.7%	-3.8%
Sierra County ISD	33	28	28	-15.2%	0.0%
Socorro County ISD	46	32	35	-23.9%	9.4%
South Dona Ana ISD	57	60	63	10.5%	5.0%
Southeast Bernalillo County ISD	153	161	167	9.2%	3.7%
Southwest Bernalillo County ISD	203	176	185	-8.9%	5.1%
Taos County ISD	63	43	42	-33.3%	-2.3%
Torrance County ISD	49	40	39	-20.4%	-2.5%
Valencia North County ISD	111	118	120	8.1%	1.7%
Valencia South County ISD	0	0	0	N/A	N/A
West Dona Ana County ISD	168	182	179	6.5%	-1.6%
Centralized Units	0	0	0	N/A	N/A
Statewide Total	3,008	2,867	2,910	-3.3%	1.5%

## General Assistance Cases by Region<sup>6</sup>

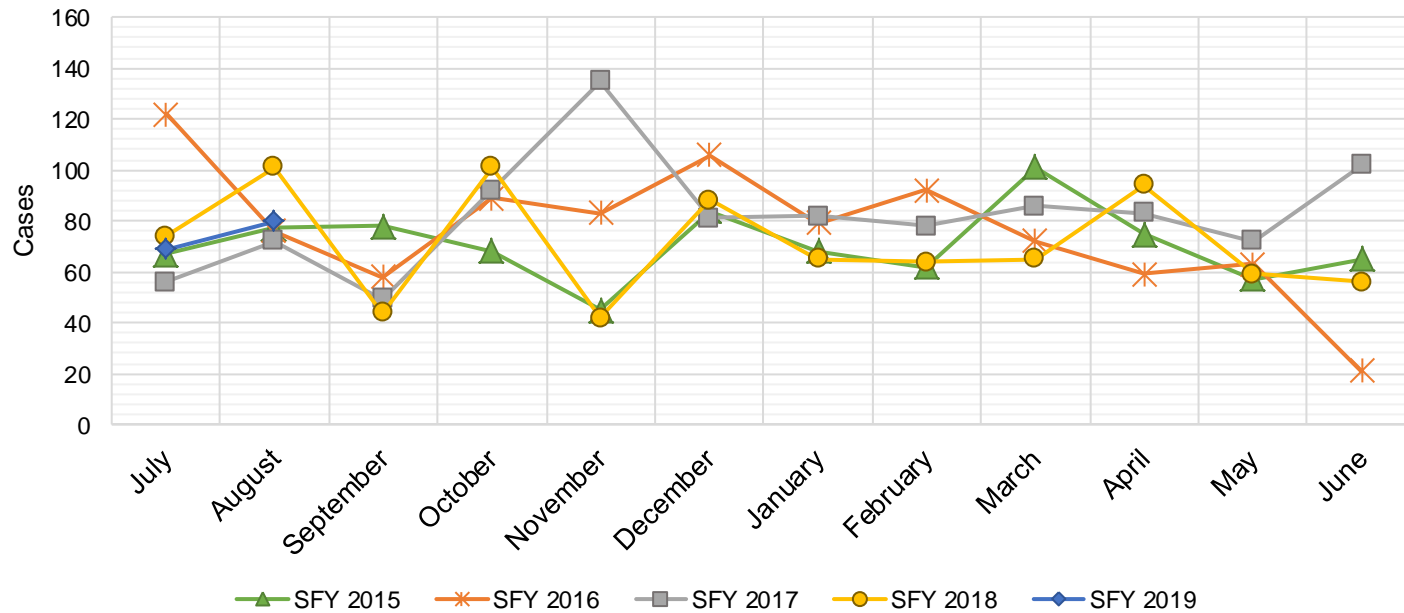
Region	Aug-17	Jul-18	Aug-18	Percent Change	
				Aug-17-Aug-18	Jul-18-Aug-18
Region 1 - NW	390	401	407	4.4%	1.5%
Region 2 - NE	572	517	509	-11.0%	-1.5%
Region 3 - Central	1,054	1,001	1,019	-3.3%	1.8%
Region 4 - SE	420	404	426	1.4%	5.4%
Region 5 - SW	572	544	549	-4.0%	0.9%
Centralized Units	0	0	0	N/A	N/A
<b>Statewide Total</b>	<b>3,008</b>	<b>2,867</b>	<b>2,910</b>	<b>-3.3%</b>	<b>1.5%</b>

## General Assistance Caseload: SFY-14 to Current



## General Assistance Interim Assistance Reimbursements<sup>16</sup>

SFY 2015			SFY 2016			SFY 2017			SFY 2018			SFY 2019		
	Cases	Expenditures		Cases	Expenditures		Cases	Expenditures		Cases	Expenditures		Cases	Expenditures
Jul-14	67	\$144,679	Jul-15	122	\$342,648	Jul-16	56	\$164,970	Jul-17	74	\$241,438	Jul-18	69	\$228,333
Aug-14	77	\$244,233	Aug-15	76	\$245,236	Aug-16	72	\$223,182	Aug-17	101	\$339,301	Aug-18	80	\$241,292
Sep-14	78	\$168,421	Sep-15	58	\$170,093	Sep-16	49	\$158,027	Sep-17	44	\$131,229	Sep-18		
Oct-14	68	\$182,265	Oct-15	89	\$277,912	Oct-16	92	\$257,830	Oct-17	101	\$335,752	Oct-18		
Nov-14	45	\$134,482	Nov-15	83	\$238,948	Nov-16	135	\$402,305	Nov-17	42	\$139,572	Nov-18		
Dec-14	84	\$239,926	Dec-15	106	\$388,102	Dec-16	81	\$227,569	Dec-17	88	\$245,453	Dec-18		
Jan-15	68	\$227,066	Jan-16	79	\$239,263	Jan-17	82	\$274,050	Jan-18	65	\$258,239	Jan-19		
Feb-15	62	\$159,564	Feb-16	92	\$296,332	Feb-17	78	\$227,569	Feb-18	64	\$195,815	Feb-19		
Mar-15	101	\$317,899	Mar-16	72	\$254,360	Mar-17	86	\$278,219	Mar-18	65	\$172,188	Mar-19		
Apr-15	75	\$199,038	Apr-16	59	\$208,631	Apr-17	83	\$267,187	Apr-18	94	\$312,340	Apr-19		
May-15	57	\$167,383	May-16	63	\$182,241	May-17	72	\$232,836	May-18	59	\$155,406	May-19		
Jun-15	65	\$188,159	Jun-16	21	\$51,760	Jun-17	102	\$306,228	Jun-18	56	\$159,268	Jun-19		
<b>TOTAL</b>	<b>847</b>	<b>\$2,373,115</b>	<b>920</b>	<b>\$2,895,525</b>	<b>988</b>	<b>\$3,019,972</b>	<b>853</b>	<b>\$2,686,001</b>	<b>149</b>	<b>\$469,625</b>				
<b>AVERAGE</b>	<b>71</b>	<b>\$197,760</b>	<b>77</b>	<b>\$241,294</b>	<b>82</b>	<b>\$251,664</b>	<b>71</b>	<b>\$223,833</b>	<b>75</b>	<b>\$234,812</b>				



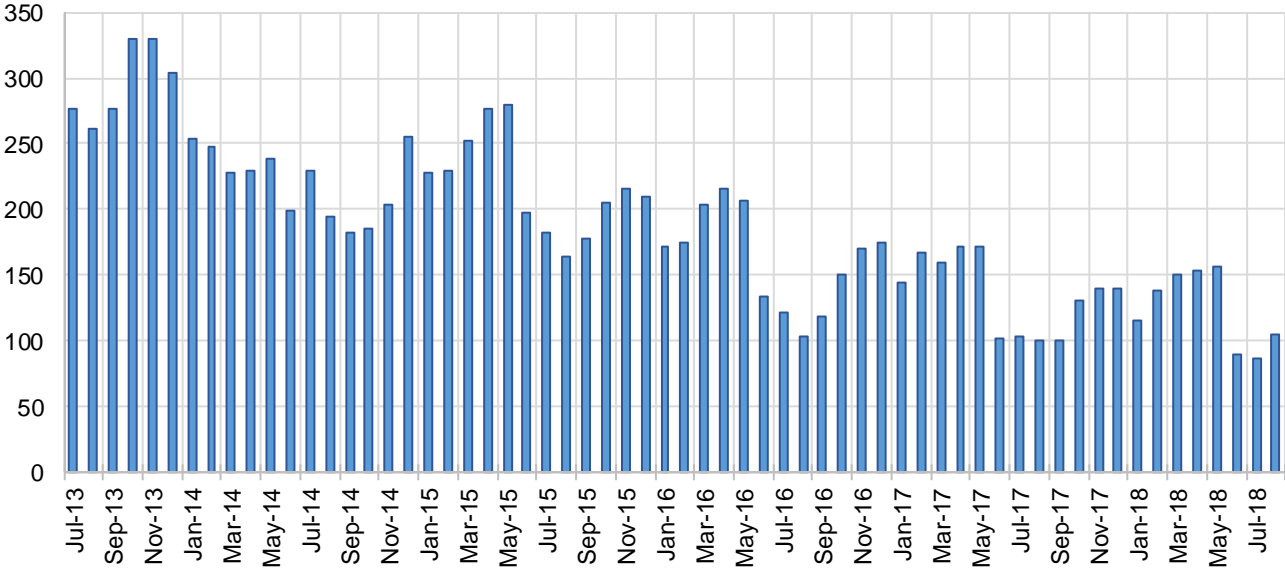
## Education Works Cases by Field Office<sup>6</sup>

Office	Aug-17	Jul-18	Aug-18	Percent Change	
				Aug-17- Aug-18	Jul-18- Aug-18
Chaves County ISD	1	0	0	-100.0%	N/A
Cibola County ISD	0	0	0	N/A	N/A
Colfax County ISD	0	0	0	N/A	N/A
Curry County ISD	1	3	2	100.0%	-33.3%
East Dona Ana County ISD	2	7	13	550.0%	85.7%
Eddy Artesia County ISD	0	1	1	N/A	0.0%
Eddy Carlsbad County ISD	1	2	2	100.0%	0.0%
Grant County ISD	8	7	7	-12.5%	0.0%
Guadalupe County ISD	1	0	0	-100.0%	N/A
Hidalgo County ISD	0	0	0	N/A	N/A
Lea County ISD	6	1	3	-50.0%	200.0%
Lincoln County ISD	0	0	0	N/A	N/A
Luna County ISD	0	1	1	N/A	0.0%
McKinley County ISD	0	0	0	N/A	N/A
Northeast Bernalillo County ISD	13	5	8	-38.5%	60.0%
Northwest Bernalillo County ISD	7	10	10	42.9%	0.0%
Otero County ISD	0	1	1	N/A	0.0%
Quay County ISD	0	0	0	N/A	N/A
Rio Arriba County ISD	2	3	3	50.0%	0.0%
Roosevelt County ISD	1	0	0	-100.0%	N/A
San Juan County ISD	3	1	1	-66.7%	0.0%
San Miguel County ISD	4	3	2	-50.0%	-33.3%
Sandoval County ISD	8	6	7	-12.5%	16.7%
Santa Fe County ISD	9	5	6	-33.3%	20.0%
Sierra County ISD	0	0	0	N/A	N/A
Socorro County ISD	1	0	0	-100.0%	N/A
South Dona Ana ISD	15	14	18	20.0%	28.6%
Southeast Bernalillo County ISD	1	2	4	300.0%	100.0%
Southwest Bernalillo County ISD	9	11	11	22.2%	0.0%
Taos County ISD	2	1	1	-50.0%	0.0%
Torrance County ISD	1	0	0	-100.0%	N/A
Valencia North County ISD	1	0	0	-100.0%	N/A
Valencia South County ISD	0	0	0	N/A	N/A
West Dona Ana County ISD	4	3	4	0.0%	33.3%
Centralized Units	0	0	0	N/A	N/A
Statewide Total	101	87	105	4.0%	20.7%

### Education Works Cases by Region<sup>6</sup>

				Percent Change	
Region	Aug-17	Jul-18	Aug-18	Aug-17- Aug-18	Jul-18- Aug-18
Region 1 - NW	5	1	1	-80.0%	0.0%
Region 2 - NE	26	18	19	-26.9%	5.6%
Region 3 - Central	31	28	33	6.5%	17.9%
Region 4 - SE	10	7	8	-20.0%	14.3%
Region 5 - SW	29	33	44	51.7%	33.3%
Centralized Units	0	0	0	N/A	N/A
Statewide Total	101	87	105	4.0%	20.7%

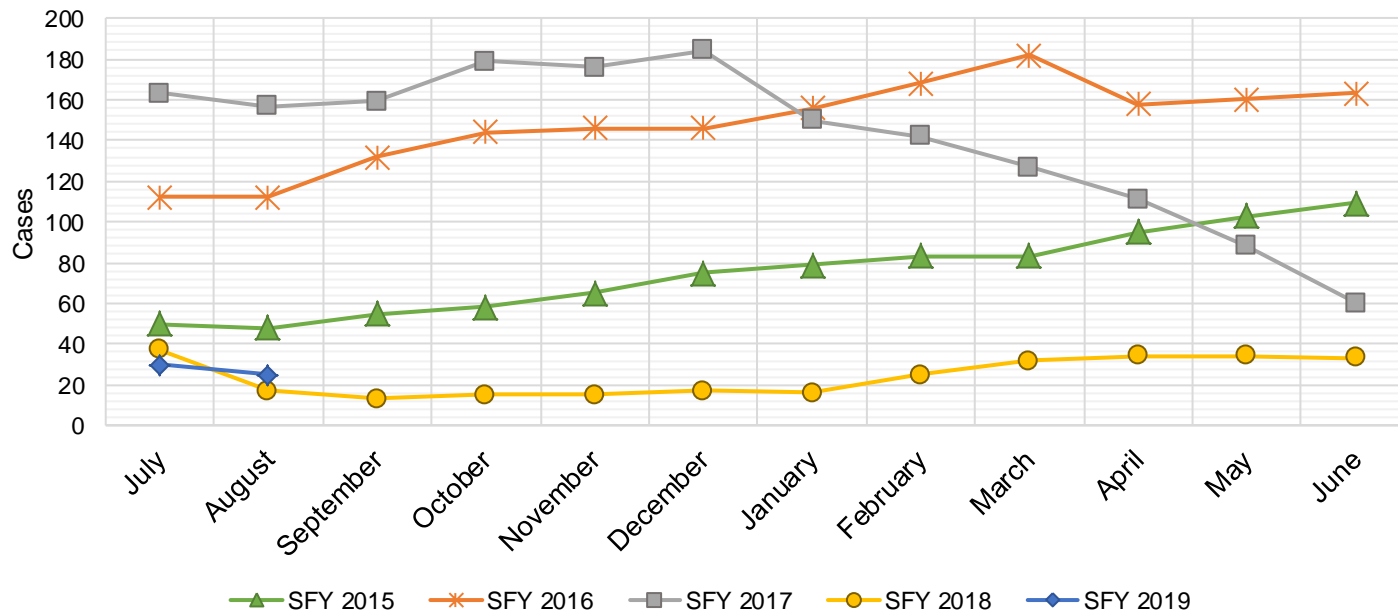
**Education Works Caseload: SFY-14 to Current**



## Refugee Cash Assistance

SFY 2015 <sup>12</sup>			SFY 2016 <sup>8,12,9</sup>			SFY 2017 <sup>8,9</sup>			SFY 2018 <sup>8,9</sup>			SFY 2019 <sup>8,9</sup>		
	Cases	Expenditures		Cases	Expenditures		Cases	Expenditures		Cases	Expenditures		Cases	Expenditures
Jul-14	50	\$11,679	Jul-15	112	\$27,516	Jul-16	163	\$39,756	Jul-17	37	\$9,981	Jul-18	30	\$7,408
Aug-14	48	\$11,760	Aug-15	112	\$27,438	Aug-16	157	\$40,115	Aug-17	17	\$4,704	Aug-18	25	\$6,434
Sep-14	55	\$13,094	Sep-15	132	\$31,321	Sep-16	159	\$39,359	Sep-17	13	\$3,159	Sep-18		
Oct-14	58	\$13,726	Oct-15	144	\$36,153	Oct-16	179	\$41,520	Oct-17	15	\$3,543	Oct-18		
Nov-14	65	\$16,461	Nov-15	146	\$36,515	Nov-16	176	\$45,434	Nov-17	15	\$4,263	Nov-18		
Dec-14	75	\$18,699	Dec-15	146	\$35,763	Dec-16	184	\$46,673	Dec-17	17	\$4,795	Dec-18		
Jan-15	79	\$19,009	Jan-16	156	\$38,686	Jan-17	150	\$38,790	Jan-18	16	\$4,166	Jan-19		
Feb-15	83	\$21,349	Feb-16	168	\$41,368	Feb-17	142	\$37,956	Feb-18	25	\$5,723	Feb-19		
Mar-15	83	\$20,730	Mar-16	182	\$45,307	Mar-17	127	\$33,066	Mar-18	32	\$7,636	Mar-19		
Apr-15	95	\$23,495	Apr-16	158	\$41,143	Apr-17	111	\$29,183	Apr-18	34	\$8,827	Apr-19		
May-15	103	\$25,363	May-16	160	\$38,332	May-17	88	\$23,343	May-18	34	\$8,939	May-19		
Jun-15	109	\$27,958	Jun-16	163	\$39,856	Jun-17	60	\$15,538	Jun-18	33	\$8,513	Jun-19		

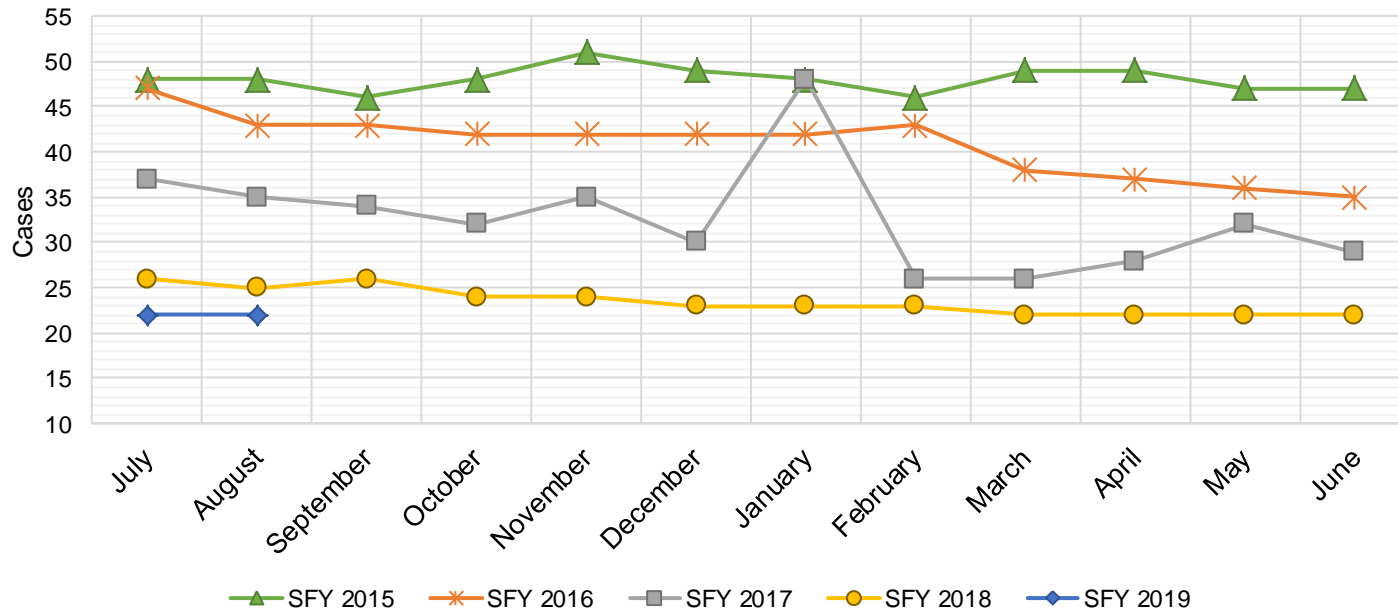
TOTAL	903	\$223,323	1,779	\$439,397	1,696	\$430,732	288	\$74,249	55	\$13,842
AVERAGE	75	\$18,610	148	\$36,616	141	\$35,894	24	\$6,187	28	\$6,921





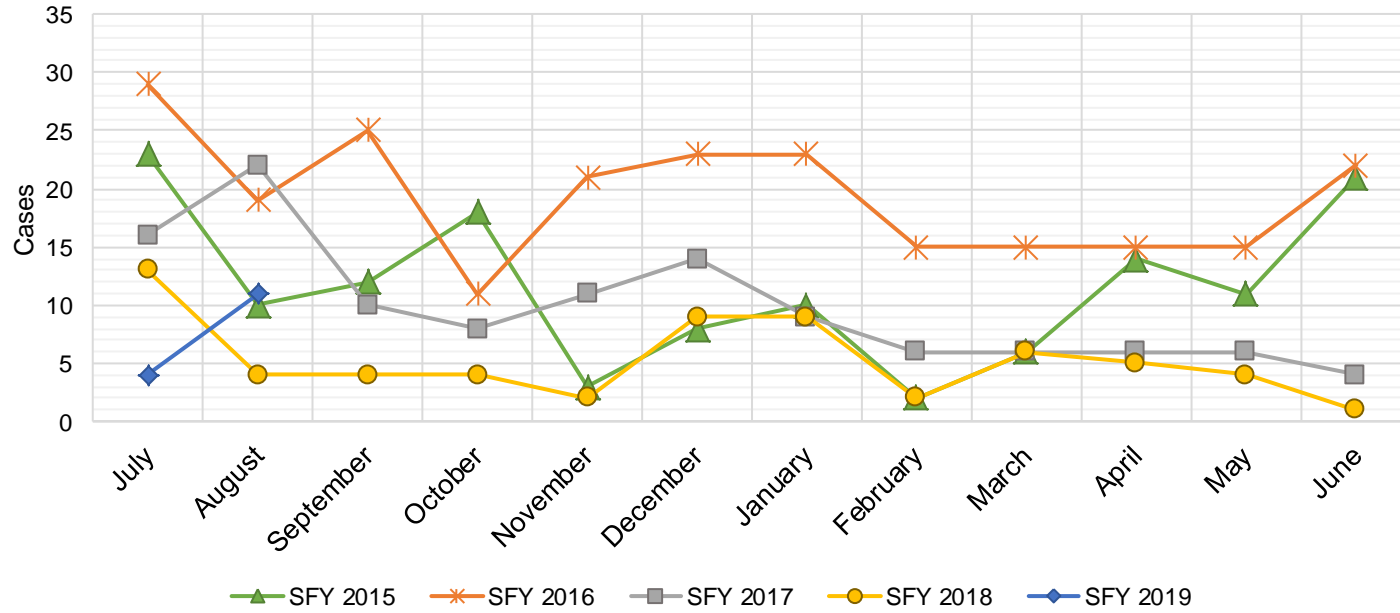
## State Supplement for Residential Care

SFY 2015 <sup>12</sup>			SFY 2016 <sup>12,9</sup>			SFY 2017 <sup>9</sup>			SFY 2018 <sup>9</sup>			SFY 2019 <sup>9</sup>		
	Cases	Expenditures		Cases	Expenditures		Cases	Expenditures		Cases	Expenditures		Cases	Expenditures
Jul-14	48	\$4,700	Jul-15	47	\$4,700	Jul-16	37	\$3,700	Jul-17	26	\$2,700	Jul-18	22	\$2,200
Aug-14	48	\$5,000	Aug-15	43	\$4,900	Aug-16	35	\$3,500	Aug-17	25	\$2,500	Aug-18	22	\$2,200
Sep-14	46	\$4,600	Sep-15	43	\$4,500	Sep-16	34	\$3,400	Sep-17	26	\$2,700	Sep-18		
Oct-14	48	\$4,600	Oct-15	42	\$4,400	Oct-16	32	\$3,200	Oct-17	24	\$2,500	Oct-18		
Nov-14	51	\$5,600	Nov-15	42	\$4,200	Nov-16	35	\$3,500	Nov-17	24	\$2,400	Nov-18		
Dec-14	49	\$5,000	Dec-15	42	\$4,200	Dec-16	30	\$3,000	Dec-17	23	\$2,200	Dec-18		
Jan-15	48	\$4,900	Jan-16	42	\$4,200	Jan-17	48	\$4,800	Jan-18	23	\$2,400	Jan-19		
Feb-15	46	\$4,800	Feb-16	43	\$4,300	Feb-17	26	\$2,600	Feb-18	23	\$2,300	Feb-19		
Mar-15	49	\$4,800	Mar-16	38	\$3,800	Mar-17	26	\$2,600	Mar-18	22	\$2,400	Mar-19		
Apr-15	49	\$5,400	Apr-16	37	\$3,700	Apr-17	28	\$2,800	Apr-18	22	\$2,200	Apr-19		
May-15	47	\$4,700	May-16	36	\$3,600	May-17	32	\$3,200	May-18	22	\$2,200	May-19		
Jun-15	47	\$5,300	Jun-16	35	\$3,500	Jun-17	29	\$2,900	Jun-18	22	\$2,200	Jun-19		
<b>TOTAL</b>	<b>576</b>	<b>\$59,400</b>	<b>490</b>	<b>\$50,000</b>	<b>392</b>	<b>\$39,200</b>	<b>282</b>	<b>\$28,700</b>	<b>44</b>	<b>\$4,400</b>				
<b>AVERAGE</b>	<b>48</b>	<b>\$4,950</b>	<b>41</b>	<b>\$4,167</b>	<b>33</b>	<b>\$3,267</b>	<b>24</b>	<b>\$2,392</b>	<b>22</b>	<b>\$2,200</b>				



## TANF Diversion Payments

SFY 2015 <sup>12</sup>			SFY 2016 <sup>12,9</sup>			SFY 2017 <sup>9</sup>			SFY 2018 <sup>9</sup>			SFY 2019 <sup>9</sup>		
	Cases	Expenditures		Cases	Expenditures		Cases	Expenditures		Cases	Expenditures		Cases	Expenditures
Jul-14	23	\$48,098	Jul-15	29	\$62,074	Jul-16	16	\$30,843	Jul-17	13	\$26,500	Jul-18	4	\$3,000
Aug-14	10	\$21,810	Aug-15	19	\$33,584	Aug-16	22	\$42,731	Aug-17	4	\$12,000	Aug-18	11	\$18,583
Sep-14	12	\$23,500	Sep-15	25	\$47,977	Sep-16	10	\$21,000	Sep-17	4	\$4,000	Sep-18		
Oct-14	18	\$30,589	Oct-15	11	\$20,500	Oct-16	8	\$16,744	Oct-17	4	\$16,000	Oct-18		
Nov-14	3	\$4,411	Nov-15	21	\$45,500	Nov-16	11	\$24,500	Nov-17	2	\$15,500	Nov-18		
Dec-14	8	\$14,634	Dec-15	23	\$45,389	Dec-16	14	\$26,611	Dec-17	9	\$17,500	Dec-18		
Jan-15	10	\$18,000	Jan-16	23	\$41,874	Jan-17	9	\$18,500	Jan-18	9	\$21,731	Jan-19		
Feb-15	2	\$5,500	Feb-16	15	\$28,500	Feb-17	6	\$12,000	Feb-18	2	\$7,731	Feb-19		
Mar-15	6	\$12,000	Mar-16	15	\$27,008	Mar-17	6	\$11,000	Mar-18	6	\$8,496	Mar-19		
Apr-15	14	\$26,000	Apr-16	15	\$31,389	Apr-17	6	\$12,000	Apr-18	5	\$13,500	Apr-19		
May-15	11	\$21,500	May-16	15	\$31,916	May-17	6	\$11,500	May-18	4	\$12,500	May-19		
Jun-15	21	\$40,039	Jun-16	22	\$43,000	Jun-17	4	\$13,500	Jun-18	1	\$5,389	Jun-19		
<b>TOTAL</b>	<b>138</b>	<b>\$266,081</b>	<b>233</b>	<b>\$458,711</b>	<b>118</b>	<b>\$240,929</b>	<b>63</b>	<b>\$160,847</b>	<b>15</b>	<b>\$21,583</b>				
<b>AVERAGE</b>	<b>12</b>	<b>\$22,173</b>	<b>19</b>	<b>\$38,226</b>	<b>10</b>	<b>\$20,077</b>	<b>5</b>	<b>\$13,404</b>	<b>8</b>	<b>\$10,792</b>				

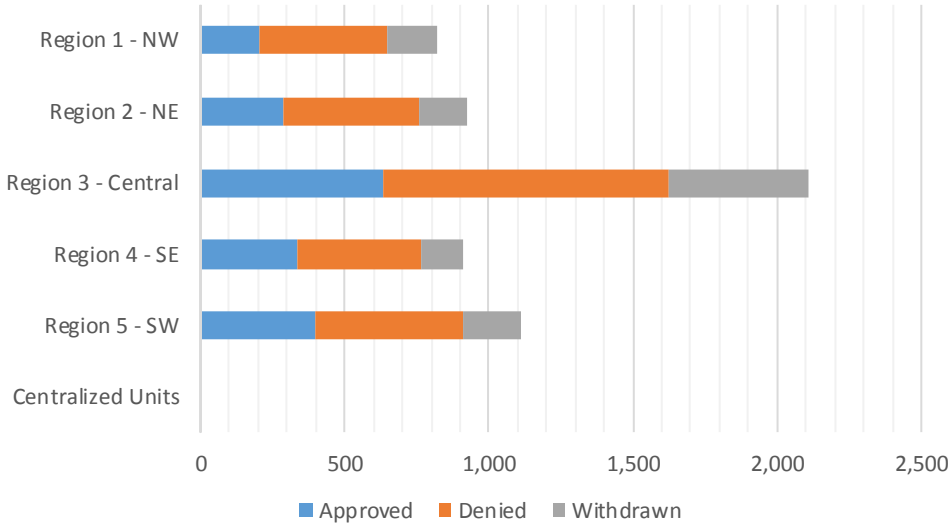


**Cash Assistance Applications by Field Office<sup>4,11</sup>**  
**August 2018**

Office	Approved	Denied	Withdrawn	Total Cases Processed
Chaves County ISD	88	87	36	211
Cibola County ISD	29	33	12	74
Colfax County ISD	16	17	3	36
Curry County ISD	87	123	47	257
East Dona Ana County ISD	82	121	46	249
Eddy Artesia County ISD	27	31	8	66
Eddy Carlsbad County ISD	32	59	19	110
Grant County ISD	34	52	20	106
Guadalupe County ISD	2	5	3	10
Hidalgo County ISD	0	0	0	0
Lea County ISD	86	99	29	214
Lincoln County ISD	18	27	6	51
Luna County ISD	30	30	16	76
McKinley County ISD	17	86	39	142
Northeast Bernalillo County ISD	169	332	168	669
Northwest Bernalillo County ISD	154	268	157	579
Otero County ISD	29	82	36	147
Quay County ISD	10	11	5	26
Rio Arriba County ISD	49	76	15	140
Roosevelt County ISD	0	0		0
San Juan County ISD	61	183	74	318
San Miguel County ISD	24	38	18	80
Sandoval County ISD	94	158	72	324
Santa Fe County ISD	72	119	34	225
Sierra County ISD	16	22	5	43
Socorro County ISD	14	18	8	40
South Dona Ana ISD	103	82	35	220
Southeast Bernalillo County ISD	105	118	69	292
Southwest Bernalillo County ISD	173	218	77	468
Taos County ISD	22	42	20	84
Torrance County ISD	35	53	12	100
Valencia North County ISD	70	98	32	200
Valencia South County ISD	0	1		1
West Dona Ana County ISD	119	144	50	313
Centralized Units	0	0	0	0
<b>Statewide Total</b>	<b>1,867</b>	<b>2,833</b>	<b>1,171</b>	<b>5,871</b>

**Cash Assistance Applications by Region<sup>4,11</sup>**  
**August 2018**

	Approved	Denied	Withdrawn	Total Cases Processed
Region				
Region 1 - NW	207	441	170	818
Region 2 - NE	289	466	170	925
Region 3 - Central	636	989	483	2,108
Region 4 - SE	338	426	145	909
Region 5 - SW	397	511	203	1,111
Centralized Units	0	0	0	0
<b>Statewide Total</b>	<b>1,867</b>	<b>2,833</b>	<b>1,171</b>	<b>5,871</b>



**Children Youth and Families Department  
Children Receiving Child Care Assistance Subsidies By County**

County	Aug	Sep	Oct	Nov	Dec	Jan	Feb	Mar	Apr	May	June	July	Aug	Change Last Year	
	2017	2017	2017	2017	2017	2018	2018	2018	2018	2018	2018	2018	2018	Cases	Percent
Bernalillo	7,616	8,154	7,848	7,985	7,903	7,801	7,739	7,824	7,853	7,925	8,146	7,735	7,741	125	1.6%
<b>Catron</b>	<b>0</b>	<b>0</b>	<b>0</b>	<b>0</b>	<b>5</b>	<b>5</b>	<b>0</b>	<b>0</b>	<b>0</b>	<b>0</b>	<b>0</b>	<b>0</b>	<b>0</b>	<b>0</b>	<b>0.0%</b>
Chaves	821	889	884	870	855	843	823	807	791	819	865	837	828	7	0.9%
<b>Cibola</b>	<b>294</b>	<b>311</b>	<b>304</b>	<b>303</b>	<b>296</b>	<b>291</b>	<b>289</b>	<b>277</b>	<b>291</b>	<b>286</b>	<b>295</b>	<b>289</b>	<b>278</b>	<b>-16</b>	<b>-5.4%</b>
Colfax	41	44	41	42	42	47	50	51	56	57	59	56	56	15	36.6%
<b>Curry</b>	<b>459</b>	<b>422</b>	<b>446</b>	<b>467</b>	<b>470</b>	<b>493</b>	<b>514</b>	<b>517</b>	<b>536</b>	<b>538</b>	<b>535</b>	<b>539</b>	<b>538</b>	<b>79</b>	<b>17.2%</b>
De Baca	11	11	9	11	10	10	8	4	4	4	4	4	4	-7	-63.6%
<b>Dona Ana</b>	<b>4,473</b>	<b>4,693</b>	<b>4,585</b>	<b>4,581</b>	<b>4,492</b>	<b>4,349</b>	<b>4,382</b>	<b>4,322</b>	<b>4,349</b>	<b>4,369</b>	<b>4,455</b>	<b>4,260</b>	<b>4,219</b>	<b>-254</b>	<b>-5.7%</b>
Eddy	287	313	297	297	263	256	257	240	242	234	245	264	259	-28	-9.8%
<b>Grant</b>	<b>114</b>	<b>164</b>	<b>161</b>	<b>157</b>	<b>159</b>	<b>139</b>	<b>127</b>	<b>133</b>	<b>140</b>	<b>138</b>	<b>142</b>	<b>110</b>	<b>111</b>	<b>-3</b>	<b>-2.6%</b>
Guadalupe	16	15	16	16	16	14	11	15	14	14	14	14	18	2	12.5%
<b>Harding</b>	<b>0</b>	<b>0</b>	<b>0</b>	<b>0</b>	<b>0</b>	<b>0</b>	<b>0</b>	<b>0</b>	<b>1</b>	<b>1</b>	<b>1</b>	<b>1</b>	<b>1</b>	<b>1</b>	<b>0.0%</b>
Hidalgo	37	39	39	35	32	32	36	40	35	37	36	37	37	0	0.0%
<b>Lea</b>	<b>856</b>	<b>954</b>	<b>909</b>	<b>895</b>	<b>833</b>	<b>824</b>	<b>827</b>	<b>855</b>	<b>805</b>	<b>817</b>	<b>817</b>	<b>806</b>	<b>813</b>	<b>-43</b>	<b>-5.0%</b>
Lincoln	145	150	147	136	132	129	129	128	130	133	129	129	131	-14	-9.7%
<b>Los Alamos</b>	<b>16</b>	<b>19</b>	<b>18</b>	<b>14</b>	<b>13</b>	<b>13</b>	<b>14</b>	<b>15</b>	<b>17</b>	<b>18</b>	<b>22</b>	<b>27</b>	<b>30</b>	<b>14</b>	<b>87.5%</b>
Luna	176	177	177	166	171	167	161	166	166	163	162	143	149	-27	-15.3%
<b>McKinley</b>	<b>136</b>	<b>161</b>	<b>165</b>	<b>167</b>	<b>166</b>	<b>168</b>	<b>156</b>	<b>158</b>	<b>162</b>	<b>168</b>	<b>176</b>	<b>168</b>	<b>157</b>	<b>21</b>	<b>15.4%</b>
Mora	18	19	18	20	21	20	18	20	18	21	21	26	31	13	72.2%
<b>Otero</b>	<b>491</b>	<b>530</b>	<b>525</b>	<b>518</b>	<b>531</b>	<b>519</b>	<b>533</b>	<b>532</b>	<b>518</b>	<b>504</b>	<b>502</b>	<b>490</b>	<b>496</b>	<b>5</b>	<b>1.0%</b>
Out of State	11	12	14	12	3	9	12	8	5	7	8	6	6	-5	-45.5%
<b>Quay</b>	<b>36</b>	<b>39</b>	<b>35</b>	<b>35</b>	<b>35</b>	<b>35</b>	<b>36</b>	<b>36</b>	<b>35</b>	<b>33</b>	<b>33</b>	<b>38</b>	<b>37</b>	<b>1</b>	<b>2.8%</b>
Rio Arriba	145	159	163	166	165	154	151	152	148	146	147	146	143	-2	-1.4%
<b>Roosevelt</b>	<b>125</b>	<b>137</b>	<b>120</b>	<b>120</b>	<b>127</b>	<b>119</b>	<b>117</b>	<b>113</b>	<b>109</b>	<b>101</b>	<b>102</b>	<b>94</b>	<b>88</b>	<b>-37</b>	<b>-29.6%</b>
San Juan	960	1,132	1,050	1,043	1,039	1,005	1,036	1,026	1,053	1,030	1,059	928	892	-68	-7.1%
<b>San Miguel</b>	<b>356</b>	<b>362</b>	<b>368</b>	<b>371</b>	<b>372</b>	<b>357</b>	<b>353</b>	<b>362</b>	<b>370</b>	<b>378</b>	<b>376</b>	<b>375</b>	<b>361</b>	<b>5</b>	<b>1.4%</b>
Sandoval	948	974	859	839	836	794	774	765	782	765	798	739	756	-192	-20.3%
<b>Santa Fe</b>	<b>520</b>	<b>580</b>	<b>554</b>	<b>547</b>	<b>526</b>	<b>514</b>	<b>523</b>	<b>506</b>	<b>514</b>	<b>531</b>	<b>545</b>	<b>533</b>	<b>511</b>	<b>-9</b>	<b>-1.7%</b>
Sierra	76	79	86	80	77	59	76	67	69	70	62	53	50	-26	-34.2%
<b>Socorro</b>	<b>63</b>	<b>63</b>	<b>68</b>	<b>66</b>	<b>70</b>	<b>70</b>	<b>70</b>	<b>73</b>	<b>75</b>	<b>73</b>	<b>68</b>	<b>55</b>	<b>63</b>	<b>0</b>	<b>0.0%</b>
Taos	137	145	139	142	141	141	139	139	138	135	135	138	126	-11	-8.0%
<b>Torrance</b>	<b>117</b>	<b>106</b>	<b>99</b>	<b>115</b>	<b>115</b>	<b>114</b>	<b>110</b>	<b>104</b>	<b>116</b>	<b>115</b>	<b>120</b>	<b>109</b>	<b>104</b>	<b>-13</b>	<b>-11.1%</b>
Union	5	5	4	6	5	5	5	5	5	5	5	5	5	0	0.0%
<b>Valencia</b>	<b>677</b>	<b>714</b>	<b>723</b>	<b>713</b>	<b>678</b>	<b>651</b>	<b>640</b>	<b>634</b>	<b>612</b>	<b>624</b>	<b>644</b>	<b>615</b>	<b>621</b>	<b>-56</b>	<b>-8.3%</b>
<b>Totals</b>	<b>20,183</b>	<b>21,572</b>	<b>20,871</b>	<b>20,935</b>	<b>20,599</b>	<b>20,147</b>	<b>20,116</b>	<b>20,094</b>	<b>20,159</b>	<b>20,259</b>	<b>20,728</b>	<b>19,769</b>	<b>19,660</b>	<b>-523</b>	<b>-2.6%</b>

## CHILDREN YOUTH AND FAMILIES DEPARTMENT CHILD CARE ASSISTANCE ELIGIBILITY PROGRAMS

MONTH	SEP'17	OCT'17	NOV'17	DEC'17	JAN'18	FEB'18	MAR'18	APR'18	May'18	June'18	July'18	Aug'18
<b>TANF (Child Care Priority 1 Clients)</b>												
CLIENTS	2,455	2,419	2,374	2,315	2,240	2,153	2,178	2,175	2,118	2,164	2,074	2,124
COST	\$1,364,956	\$1,423,748	\$1,411,060	\$1,382,073	\$1,317,716	\$1,272,232	\$1,325,003	\$1,300,872	\$1,244,115	\$1,242,370	\$1,255,788	\$1,288,094
TANF AVERAGE COST	\$556	\$589	\$594	\$597	\$588	\$591	\$608	\$598	\$587	\$574	\$605	\$606
<b>TRANSITION OFF TANF (Child Care Priority 2 Clients)</b>												
CLIENTS	179	181	154	152	141	138	142	148	169	172	161	170
COST	\$93,119	\$96,629	\$81,975	\$81,337	\$74,507	\$72,696	\$77,354	\$80,098	\$93,823	\$96,261	\$97,664	\$97,412
TRAN OFF TANF AVG COST	\$520	\$534	\$532	\$535	\$528	\$527	\$545	\$541	\$555	\$560	\$607	\$573
<b>TANF ELIGIBLE (Child Care Priority 1B Clients at or below 100% of the Federal Poverty Level)</b>												
CLIENTS	9,064	8,899	8,900	8,729	8,435	8,374	8,373	8,382	8,570	8,816	8,404	8,352
COST	\$4,755,691	\$5,021,574	\$5,099,212	\$4,994,373	\$4,722,370	\$4,675,492	\$4,802,863	\$4,766,353	\$4,896,651	\$4,879,475	\$4,946,700	\$4,973,346
TANF ELIGIBLE AVG COST	\$525	\$564	\$573	\$572	\$560	\$558	\$574	\$569	\$571	\$553	\$589	\$595
<b>INCOME ELIGIBLE (Child Care Priority 3, and Priority 4 Clients )</b>												
CLIENTS	7,749	7,464	7,578	7,580	7,665	7,868	7,944	8,059	8,099	8,261	7,808	7,743
COST	\$3,779,202	\$3,760,398	\$3,838,169	\$3,824,777	\$3,785,466	\$3,929,313	\$4,010,729	\$4,051,487	\$4,104,126	\$4,096,260	\$4,133,552	\$4,208,252
INCOME ELIG AVG COST	\$488	\$504	\$506	\$505	\$494	\$499	\$505	\$503	\$507	\$496	\$529	\$543
<b>AT-RISK CHILD PROTECTIVE SERVICES CHILD CARE PILOT (Priority 5 Clients)</b>												
CLIENTS	1,152	1,032	1,027	935	772	689	578	516	424	393	405	355
COST	\$723,334	\$684,194	\$678,258	\$628,399	\$509,028	\$486,780	\$381,318	\$337,243	\$276,746	\$265,193	\$270,783	\$228,483
CPS AVG COST	\$628	\$663	\$660	\$672	\$659	\$707	\$660	\$654	\$653	\$675	\$669	\$644
<b>CHILD PROTECTIVE SERVICES (Child Care CPS Clients)</b>												
CLIENTS	973	876	902	888	894	894	879	879	879	942	917	916
COST	\$623,416	\$567,608	\$585,009	\$573,312	\$583,824	\$602,246	\$605,523	\$564,253	\$619,678	\$600,858	\$597,105	\$637,227
CPS AVG COST	\$641	\$648	\$649	\$646	\$653	\$674	\$689	\$642	\$705	\$638	\$651	\$696
<b>GRAND TOTAL - ALL CHILD CARE PROGRAMS</b>												
CLIENTS	20,183	20,871	20,935	20,599	20,147	20,116	20,094	20,159	20,259	20,748	19,769	19,660
COST	\$11,331,194	\$11,554,151	\$11,693,682	\$11,484,272	\$10,992,912	\$11,038,760	\$11,202,789	\$11,100,307	\$11,235,139	\$11,180,418	\$11,301,592	\$11,432,811
ALL PROGRAMS AVG COST	\$524	\$547	\$561	\$558	\$546	\$549	\$558	\$551	\$555	\$539	\$572	\$582

## Income Eligibility Guidelines: October 1, 2017 - September 30, 2018

### Federal Poverty Guidelines (FPG) Monthly Income Standards

Supplemental Nutrition Program (SNAP)					
Household Size	100% FPG Net Income	130% FPG Gross Income	165% FPG Gross Income for Categorical Eligibility	Maximum SNAP Monthly Allotment	LIHEAP 150% FPG
1	\$1,005	\$1,307	\$1,659	\$192	\$1,508
2	\$1,354	\$1,760	\$2,233	\$352	\$2,031
3	\$1,702	\$2,213	\$2,808	\$504	\$2,553
4	\$2,050	\$2,665	\$3,383	\$640	\$3,075
5	\$2,399	\$3,118	\$3,958	\$760	\$3,599
6	\$2,747	\$3,571	\$4,532	\$913	\$4,121
7	\$3,095	\$4,024	\$5,107	\$1,009	\$4,643
8	\$3,444	\$4,477	\$5,682	\$1,153	\$5,166
+1	+\$349	+\$453	+\$575	+\$144	+\$523
Minimum Allotment of \$15 effective from 10/1/2017 - 9/30/2018					
DEDUCTIONS: Standard Deduction: For HH size 1-3 = \$160; 4 = \$170; 5 = \$199; 6 or more = \$228; Excess Shelter Deduction Limit: \$535; Heating and Cooling Standard Utility Allowance: \$320 (HCSUA) – Limited Utility Allowance: \$127 (LUA); Telephone Standard: \$42; Dependent Care: Actual Amount (No Limit); Earned Income Deduction: 20%; Homeless Shelter Standard: \$143					

CASH Assistance & Support Services					
Household Size	Federal Poverty Guidelines (FPG) Monthly Income Standards			Maximum Monthly Benefit	
	100% FPG Net Income	85% FPG Gross Limit	NM Works Cash Net Income	Maximum Monthly Benefit	General Assistance
1	\$1,005	\$854	\$266	\$244	\$245
2	\$1,354	\$1,151	\$357	\$327	\$329
3	\$1,702	\$1,447	\$447	\$409	\$412
4	\$2,050	\$1,743	\$539	\$493	\$496
5	\$2,399	\$2,039	\$630	\$576	\$580
6	\$2,747	\$2,335	\$721	\$659	\$664
7	\$3,095	\$2,631	\$812	\$743	\$748
8	\$3,444	\$2,927	\$922	\$843	\$849
+1	+\$349	+\$296	+\$91	+\$83	+\$84
Deductions- Dependent Care: For a child under age 2 = \$200; For a child age 2 and over = \$175. Work Incentives- Earned Income Disregard: Single parent = \$125 & ½ remainder; Two parent = \$225 & ½ remainder.					

ISD 017 Revised 08/9/2017

<b>Medical Assistance Division</b>					
Federal Poverty Guidelines New Mexico Affordable Care Eligibility Groups Effective April 01, 2018 thru March 31, 2019 <b>Monthly Guidelines</b>					
HH SIZE	PERCENT OF POVERTY				
	138%	190%	240%	250%	300%
1	\$1,397	\$1,923	\$2,428	\$2,530	\$3,035
2	\$1,893	\$2,607	\$3,292	\$3,430	\$4,115
3	\$2,390	\$3,291	\$4,156	\$4,330	\$5,195
4	\$2,887	\$3,975	\$5,020	\$5,230	\$6,275
5	\$3,384	\$4,659	\$5,884	\$6,130	\$7,355
6	\$3,881	\$5,343	\$6,748	\$7,030	\$8,435
7	\$4,377	\$6,027	\$7,612	\$7,930	\$9,515
8	\$4,874	\$6,711	\$8,476	\$8,830	\$10,595

138% Adult Expansion, 190% Children ages 6 to 19 (Medicaid), 240% Children ages 0 to 6 (Medicaid); ages 6 to 19 (CHIP), 250% Pregnancy Related Services Only, 300% Children 0 to 6 (CHIP)

<b>Medical Assistance Division</b>					
Federal Poverty Guidelines New Mexico Affordable Care Eligibility Groups Effective April 01, 2018 thru March 31, 2019 <b>Annual Guidelines</b>					
HH SIZE	PERCENT OF POVERTY				
	138%	190%	240%	250%	300%
1	\$16,764	\$23,076	\$29,136	\$30,360	\$36,420
2	\$22,716	\$31,284	\$39,504	\$41,160	\$49,380
3	\$28,680	\$39,492	\$49,872	\$51,960	\$62,340
4	\$34,644	\$47,700	\$60,240	\$62,760	\$75,300
5	\$40,608	\$55,908	\$70,608	\$73,560	\$88,260
6	\$46,572	\$64,116	\$80,976	\$84,360	\$101,220
7	\$52,524	\$72,324	\$91,344	\$95,160	\$114,180
8	\$58,488	\$80,532	\$101,712	\$105,960	\$127,140

138% Adult Expansion, 190% Children ages 6 to 19 (Medicaid), 240% Children ages 0 to 6 (Medicaid); ages 6 to 19 (CHIP), 250% Pregnancy Related Services Only, 300% Children 0 to 6 (CHIP)



## References

- <sup>1</sup> *Medicaid Expenditures (Omnicaid, Medicare Buy-Ins, Lump Sum Payments)*, Received on September 16, 2018
- <sup>2</sup> *ASPEN Business Intelligence Tool: Eligibility*, Retrieved on September 13, 2018
- <sup>3</sup> New Mexico Human Services Department, *Medicaid Eligibility Reports*, Retrieved from <http://www.hsd.state.nm.us/LookingForInformation/medicaid-eligibility.aspx> on September 13, 2018
- <sup>4</sup> *ASPEN Business Intelligence Tool: Application Tracking*, Retrieved on September 13, 2018
- <sup>5</sup> Fidelity Information Services, *EBT Daily Statistical Report (for 08/31/2017, 07/31/2018, and 08/31/2018)*, Retrieved on September 13, 2018
- <sup>6</sup> *ASPEN Report DQ-180: Length of Time Cases are Open (for 08/01/2017-08/31/2017, 07/01/2018-07/31/2018, 08/01/2018-08/31/2018)*, Retrieved on September 16, 2018
- <sup>7</sup> *ASPEN Report EY-180: Individual Demographics by State and Age (for 08/01/2017-08/31/2017, 07/01/2018-07/31/2018, 08/01/2018-08/31/2018)*, Retrieved September 16, 2018
- <sup>8</sup> *ASPEN Business Intelligence Tool: Benefit Issuance*, Retrieved on September 13, 2018
- <sup>9</sup> Fidelity Information Services, *EBT Daily Statistical Reports (Month End)*, Retrieved on September 13, 2018
- <sup>10</sup> *ASPEN Report EY-180R: Individual Demographics by State, Race, Ethnicity and Gender (for 08/01/2018-08/31/2018)*, Retrieved on September 16, 2018
- <sup>11</sup> SQL Queries from ASPEN, completed September 2018
- <sup>12</sup> JP Morgan, *New Mexico – NM EBT System- Monthly Benefit Draw Down Totals*
- <sup>13</sup> *ASPEN Business Intelligence Tool: Application Tracking (w/Parameters: SNAP, Expedite, Approved)*, Retrieved on September 13, 2018
- <sup>14</sup> SL Start, *As of Today Report 08.31.18*, received September 10, 2018
- <sup>15</sup> SL Start, *Statewide Employment Report 08.01.18*, received September 10, 2018

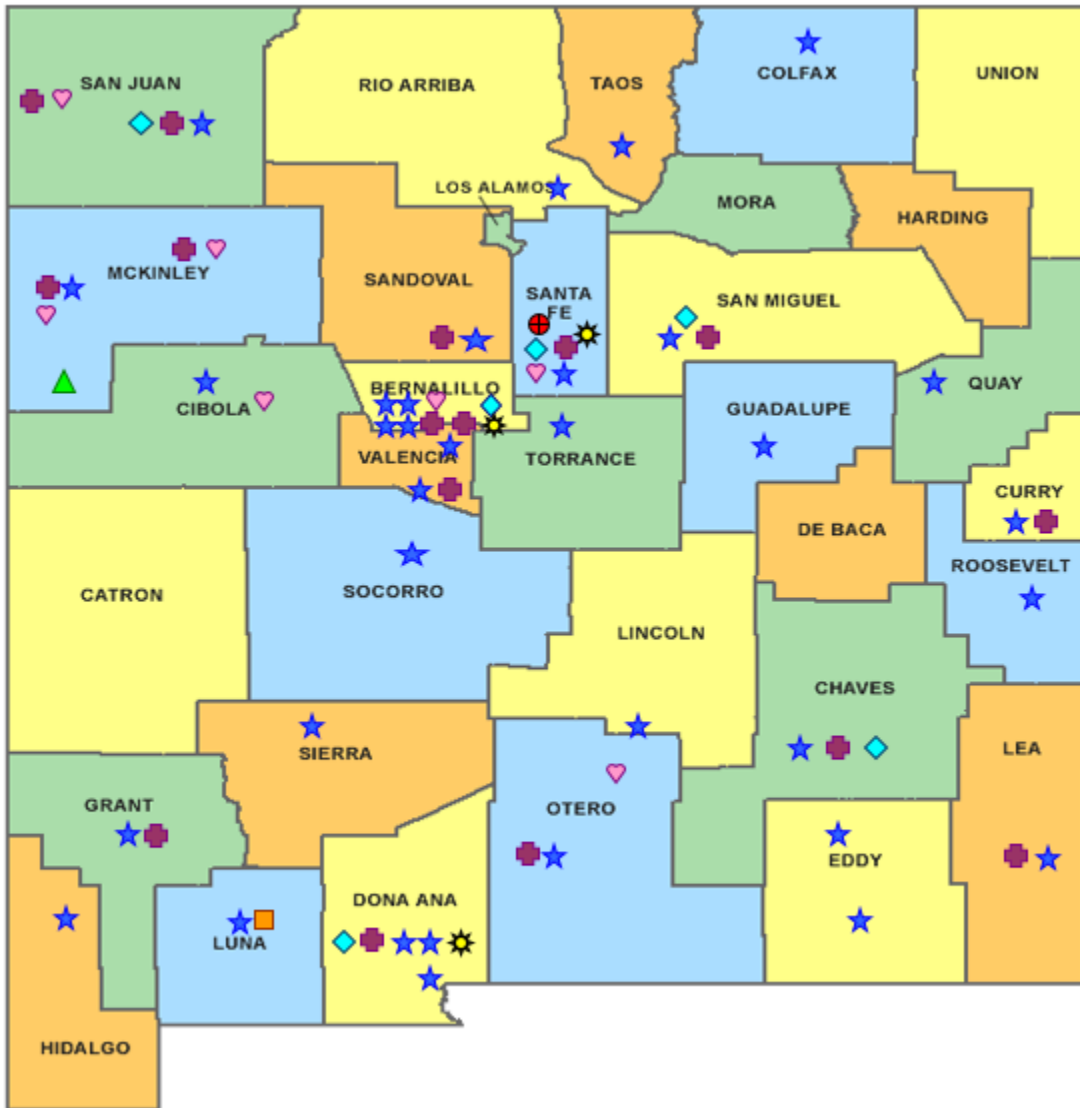

<sup>16</sup>SSIAR Payments, received September 2, 2018

<sup>17</sup> Children, Youth, and Families Department, *Children Receiving Child Care Assistance Subsidies by County*, Received on September 10, 2018

<sup>18</sup> Children, Youth, and Families Department, *Child Care Assistance Eligibility Programs*, Received on September 10, 2018









<sup>19</sup> EDG is defined as an Eligibility Determination Group

<sup>20</sup>SQL Query from ASPEN, completed September 25, 2018

**HUMAN SERVICES**  
DEPARTMENT

New Mexico Human Services Department  
Field Offices

-  Central Office (1)
-  Income Support Division County Office (35)
-  Income Support Division Satellite Office (2)
-  Child Support Enforcement Regional Office (16)
-  Child Support Enforcement Satellite Office (1)
-  Quality Control Office (8)
-  Indian Health Services (7)
-  Hospital Site (3)