



Monthly Statistical Report

April 2020

There were 842,645 individuals that received Medicaid in April 2020, a 1.57% increase from one year ago. The count of Medicaid recipients has increased by 11,643, or 1.40%, since last month.

The SNAP caseload in April 2020 was 242,383, a 10.27% increase from one year ago. The SNAP caseload has increased by 16,813 cases, or 7.45%, since last month.

The TANF caseload was 11,413 in April 2020, a increase of 13.30% from April 2019. The TANF caseload had 1,421 more cases compared to March 2020, an increase of 14.2%.

The caseload for General Assistance was 2,602 in April 2020, an increase of 0.04% from one year ago and an increase of 21 cases from last month.

Michelle Lujan Grisham, Governor
David Scrase, M.D., Secretary

Note: COVID 19 Health Emergency became effective March 12, 2020 and as a result, Medicaid, SNAP, TANF, and Child Care programs has undergone changes to policies which may be reflected in some of the tables and figures in this report. Please see end of report for details of policy changes.

Contents	Page
Summary	3-5
Medicaid	6-20
SNAP	21-41
Cash Assistance	42-56
Child Care Assistance	57-58
SNAP EA and P-EBT	59
Income Eligibility Guidelines	60-61

Regions are reported as follows:

Region 1		
Catron	San Juan	Valencia
Cibola	Sierra	
McKinley	Socorro	
Region 2		
Colfax	Mora	Santa Fe
De Baca	Quay	Taos
Guadalupe	Rio Arriba	Union
Harding	Sandoval	
Los Alamos	San Miguel	
Region 3		
Bernalillo	Torrance	
Region 4		
Chaves	Eddy	Lincoln
Curry	Lea	Roosevelt
Region 5		
Dona Ana	Hidalgo	Otero
Grant	Luna	

The Mission of the Human Services Department

To transform lives. Working with our partners, we design and deliver innovative, high quality health and human services that improve the security and promote independence for New Mexicans in their communities.

Angela Medrano, Deputy Secretary
Kari Armijo, Deputy Secretary

Prepared by Income Support Division
PO Box 2348
Santa Fe, NM 87504-2348
505-827-7250

Karmela Martinez, Director
Vida Tapia-Sanchez, Deputy Director
Shanita Harrison, Deputy Director
Judith Parks, Deputy Director

<http://www.hsd.state.nm.us/monthly-statistical-reports.aspx>

Program Summary for April 2020

SNAP, TANF and GA-Unrelated Child Program interviews are waived. Recertification periods are automatically extended for households with an Interim Review due in March and April for 6 months to the month recertification due. SNAP expenditures and cases include Emergency Allotments. SNAP Emergency Allotments and Pandemic EBT can be found at the end of this report.

Medicaid				Percent Change	
	Apr-19	Mar-20	Apr-20	Apr-19- Apr-20	Mar-20- Apr-20
Expenditures¹	\$455,065,923	\$589,733,599	\$613,868,720	34.90%	4.09%
Cases²	492,528	501,806	508,452	3.23%	1.32%
Expenditures/Case	\$924	\$1,175	\$1,207	30.63%	2.72%
Recipients³	829,652	831,002	842,645	1.57%	1.40%
<i>Adults</i>	472,890	473,495	481,895	1.90%	1.77%
<i>Children</i>	356,762	357,507	360,750	1.12%	0.91%
Recipients /Case	1.68	1.66	1.66	-1.19%	0.00%
Cases Processed⁴	11,144	10,537	11,985	7.55%	13.74%
<i>Approvals⁴</i>	8,554	7,737	9,225	7.84%	19.23%

Supplemental Nutrition Assistance Program (SNAP)				Percent Change	
	Apr-19	Mar-20	Apr-20	Apr-19- Apr-20	Mar-20- Apr-20
Expenditures⁵	\$52,090,228	\$52,828,100	\$107,640,865	106.64%	103.76%
Cases⁶	219,801	225,570	242,383	10.27%	7.45%
Expenditures/Case	\$237	\$234	\$444	87.34%	89.74%
Recipients⁷	445,005	447,427	480,715	8.02%	7.44%
<i>Adults</i>	259,412	263,511	285,746	10.15%	8.44%
<i>Children</i>	185,593	183,916	194,969	5.05%	6.01%
Recipients /Case	2.02	1.98	1.98	-1.98%	0.00%
Cases Processed⁴	18,004	18,668	26,272	45.92%	40.73%
<i>Approvals⁴</i>	15,305	15,684	20,882	36.44%	33.14%

Cash Assistance Programs				Percent Change	
	Apr-19	Mar-20	Apr-20	Apr-19- Apr-20	Mar-20- Apr-20
Expenditures⁵	\$3,912,639	\$3,803,632	\$4,471,508	14.28%	17.56%
Cases⁶	12,859	12,743	14,192	10.37%	11.37%
Expenditures/Case	\$304	\$298	\$315	3.62%	5.70%
Recipients⁷	28,710	28,442	32,758	14.10%	15.17%
<i>Adults</i>	9,087	9,112	10,927	20.25%	19.92%
<i>Children</i>	19,623	19,330	21,831	11.25%	12.94%
Recipients /Case	2.23	2.23	2.31	3.59%	3.59%
Cases Processed⁴	3,800	5,542	8,288	118.11%	49.55%
<i>Approvals⁴</i>	1,449	1,565	2,211	52.59%	41.28%

Low Income Home Energy Assistance Program (LIHEAP)				Percent Change	
	Apr-19	Mar-20	Apr-20	Apr-19- Apr-20	Mar-20- Apr-20
Expenditures⁸	\$828,960	\$1,067,000	\$1,101,840	32.92%	3.27%
Cases⁸	2,893	3,700	4,194	44.97%	13.35%
Expenditures/Case	\$287	\$288	\$263	-8.36%	-8.68%
Recipients⁸	6,745	8,231	9,795	45.22%	19.00%
<i>Adults</i>	3,802	4,824	5,798	52.50%	20.19%
<i>Children</i>	2,943	3,407	3,997	35.81%	17.32%
Recipients /Case	2.33	2.22	2.34	0.43%	5.41%
Cases Processed⁴	4,087	5,202	6,040	47.79%	16.11%
<i>Approvals⁴</i>	2,861	3,638	4,079	42.57%	12.12%

Cash Assistance Summary for April 2020

Temporary Assistance for Needy Families (TANF)

	Apr-19	Mar-20	Apr-20	Percent Change	
				Apr-19- Apr-20	Mar-20- Apr-20
Expenditures ⁵	\$3,198,375	\$3,107,017	\$3,733,124	16.72%	20.15%
Cases ⁶	10,073	9,992	11,413	13.30%	14.22%
Expenditures/Case	\$318	\$311	\$327	2.83%	5.14%
Recipients ⁷	25,662	25,500	29,707	15.76%	16.50%
<i>Adults</i>	6,473	6,637	8,342	28.87%	25.69%
<i>Children</i>	19,189	18,863	21,365	11.34%	13.26%
Approvals ⁴	1,268	1,356	1,915	51.03%	41.22%

General Assistance (GA)

	Apr-19	Mar-20	Apr-20	Percent Change	
				Apr-19- Apr-20	Mar-20- Apr-20
Expenditures ⁵	\$653,612	\$634,133	\$674,838	3.25%	6.42%
Cases ⁶	2,601	2,581	2,602	0.04%	0.81%
Expenditures/Case	\$251	\$246	\$259	3.19%	5.28%
Recipients ⁷	2,633	2,516	2,606	-1.03%	3.58%
<i>Adults</i>	2,417	2,290	2,393	-0.99%	4.50%
<i>Children</i>	216	226	213	-1.39%	-5.75%
Approvals ⁴	131	171	219	67.18%	28.07%

Education Works

	Apr-19	Mar-20	Apr-20	Percent Change	
				Apr-19- Apr-20	Mar-20- Apr-20
Expenditures ⁵	\$48,204	\$54,482	\$57,199	18.66%	4.99%
Cases ⁶	122	135	143	17.21%	5.93%
Expenditures/Case	\$395	\$404	\$400	1.27%	-0.99%
Recipients ⁷	352	392	411	16.76%	4.85%
<i>Adults</i>	134	151	158	17.91%	4.64%
<i>Children</i>	218	241	253	16.06%	4.98%

Refugee Cash (RCA)

	Apr-19	Mar-20	Apr-20	Percent Change	
				Apr-19- Apr-20	Mar-20- Apr-20
Expenditures ⁵	\$10,648	\$6,500	\$4,847	-54.48%	-25.43%
Cases ⁶	44	19	19	-56.82%	0.00%
Expenditures/Case	\$242	\$342	\$255	5.37%	-25.44%
Recipients ⁷	45	19	19	-57.78%	0.00%

State Supplement for Residential Care

	Apr-19	Mar-20	Apr-20	Percent Change	
				Apr-19- Apr-20	Mar-20- Apr-20
Expenditures ⁵	\$1,800	\$1,500	\$1,500	-16.67%	0.00%
Cases ⁶	19	16	15	-21.05%	-6.25%
Expenditures/Case	\$95	\$94	\$100	5.26%	6.38%
Recipients ⁷	18	15	15	-16.67%	0.00%

Expenditures YTD			
	SFY 2020	FFY 2020	CY 2020
Medicaid ¹	\$5,213,988,551	\$3,773,127,784	\$2,256,798,840
Supplemental Nutrition Assistance Program ⁹	\$583,860,149	\$425,240,334	\$265,446,635
Temporary Assistance for Needy Families ⁹	\$35,399,249	\$23,953,136	\$13,908,693
General Assistance ⁹	\$6,391,832	\$4,531,853	\$2,615,910
Education Work ⁹	\$402,843	\$321,122	\$239,853
LIHEAP ⁸	\$19,407,750	\$17,241,640	\$5,951,520

Average Caseload YTD			
	SFY 2020	FFY 2020	CY 2020
Medicaid ²	497,994	500,069	502,509
Supplemental Nutrition Assistance Program ⁶	225,335	226,214	228,400
Temporary Assistance for Needy Families ⁶	10,471	10,458	10,443
General Assistance ⁶	2,485	2,515	2,550
Education Work ⁶	99	114	118
LIHEAP ⁸	6,499	8,181	5,186

Demographic Profile- April 2020					
	SNAP	TANF	GA	Education Works	RCA
<i>Gender of Recipients</i> ¹⁰					
Male	218,311	12,597	1,461	145	12
Female	262,404	17,110	1,145	266	7
<i>Ethnicity</i> ¹⁰					
Hispanic	266,468	19,672	1,376	214	11
Non-Hispanic	214,247	10,035	1,230	197	8
<i>Race</i> ¹⁰					
Native American or Alaskan Native	80,871	2,546	252	52	0
Asian	4,266	263	21	5	0
African American or Black	13,056	1,320	95	33	5
Native Hawaiian or Pacific Islander	901	55	2	5	0
White	368,710	24,481	2,162	308	12
Unknown / Not Declared	3,495	211	22	2	0
More than One Race	9,416	831	52	6	2

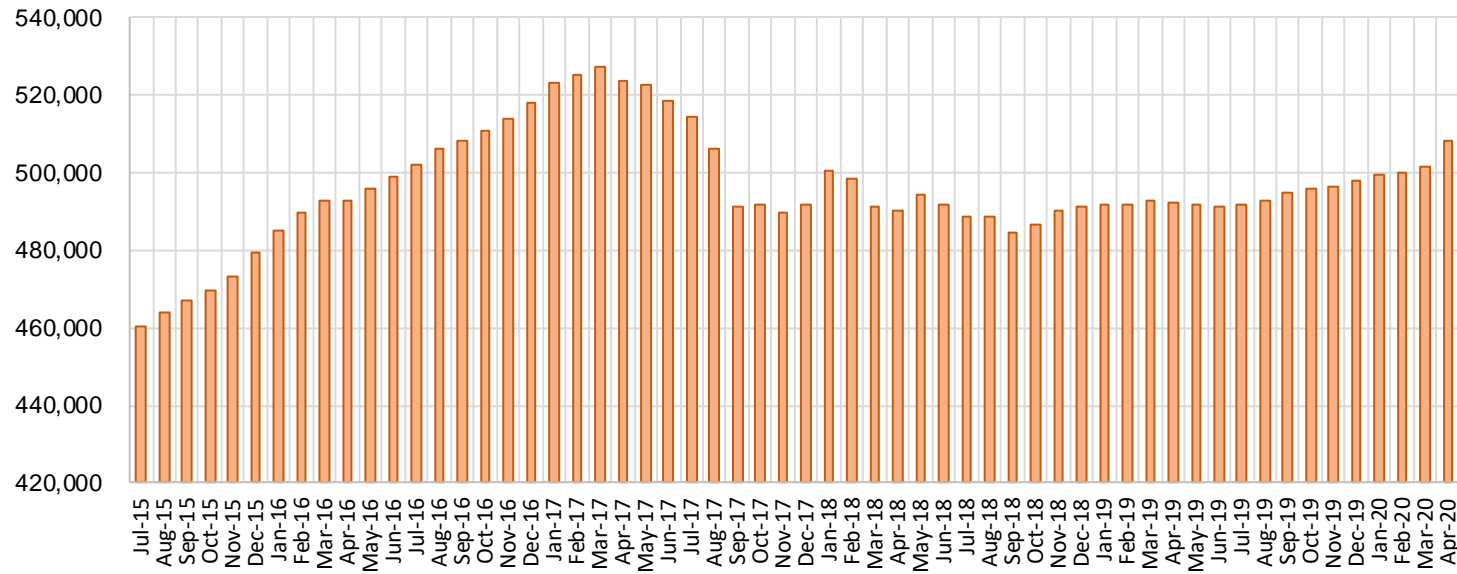
Medicaid Cases by Field Office²

Office				Percent Change	
	Apr-19	Mar-20	Apr-20	Apr-19- Apr-20	Mar-20- Apr-20
Chaves County ISD	15,904	16,931	17,298	8.77%	2.17%
Cibola County ISD	7,593	7,568	7,634	0.54%	0.87%
Colfax County ISD	3,613	3,616	3,653	1.11%	1.02%
Curry County ISD	14,595	15,283	15,457	5.91%	1.14%
East Dona Ana County ISD	17,847	18,510	18,876	5.77%	1.98%
Eddy Artesia County ISD	3,847	3,970	4,018	4.45%	1.21%
Eddy Carlsbad County ISD	7,557	7,731	7,886	4.35%	2.00%
Grant County ISD	7,742	7,940	8,025	3.66%	1.07%
Guadalupe County ISD	1,627	1,566	1,577	-3.07%	0.70%
Hidalgo County ISD	51	56	55	7.84%	-1.79%
Lea County ISD	14,459	15,185	15,547	7.52%	2.38%
Lincoln County ISD	4,316	4,384	4,462	3.38%	1.78%
Luna County ISD	8,595	8,902	9,013	4.86%	1.25%
McKinley County ISD	21,934	22,694	22,924	4.51%	1.01%
Northeast Bernalillo County ISD	42,995	43,691	44,345	3.14%	1.50%
Northwest Bernalillo County ISD	51,807	54,126	54,929	6.03%	1.48%
Otero County ISD	12,036	12,337	12,487	3.75%	1.22%
Quay County ISD	2,507	2,723	2,805	11.89%	3.01%
Rio Arriba County ISD	13,456	13,593	13,787	2.46%	1.43%
Roosevelt County ISD	9	9	10	11.11%	11.11%
San Juan County ISD	30,276	32,238	32,980	8.93%	2.30%
San Miguel County ISD	9,128	9,230	9,299	1.87%	0.75%
Sandoval County ISD	23,462	22,965	23,141	-1.37%	0.77%
Santa Fe County ISD	24,598	23,480	23,832	-3.11%	1.50%
Sierra County ISD	5,324	5,206	5,188	-2.55%	-0.35%
Socorro County ISD	5,319	5,345	5,390	1.33%	0.84%
South Dona Ana ISD	19,808	19,845	19,937	0.65%	0.46%
Southeast Bernalillo County ISD	25,056	23,254	23,129	-7.69%	-0.54%
Southwest Bernalillo County ISD	39,676	41,549	42,386	6.83%	2.01%
Taos County ISD	9,265	9,149	9,243	-0.24%	1.03%
Torrance County ISD	7,881	7,981	8,052	2.17%	0.89%
Valencia North County ISD	18,238	18,178	18,206	-0.18%	0.15%
Valencia South County ISD	94	127	163	73.40%	28.35%
West Dona Ana County ISD	21,911	22,443	22,717	3.68%	1.22%
Centralized Units	2	1	1	-50.00%	0.00%
Statewide Total	492,528	501,806	508,452	3.23%	1.32%

Medicaid Cases by Region²

Region	Percent Change				
	Apr-19	Mar-20	Apr-20	Apr-19- Apr-20	Mar-20- Apr-20
Region 1 - NW	88,778	91,356	92,485	4.18%	1.24%
Region 2 - NE	87,656	86,322	87,337	-0.36%	1.18%
Region 3 - Central	167,415	170,601	172,841	3.24%	1.31%
Region 4 - SE	60,687	63,493	64,678	6.58%	1.87%
Region 5 - SW	87,990	90,033	91,110	3.55%	1.20%
Centralized Units	2	1	1	-50.00%	0.00%
Statewide Total	492,528	501,806	508,452	3.2%	1.32%

Medicaid Caseload: SFY-16 to Current



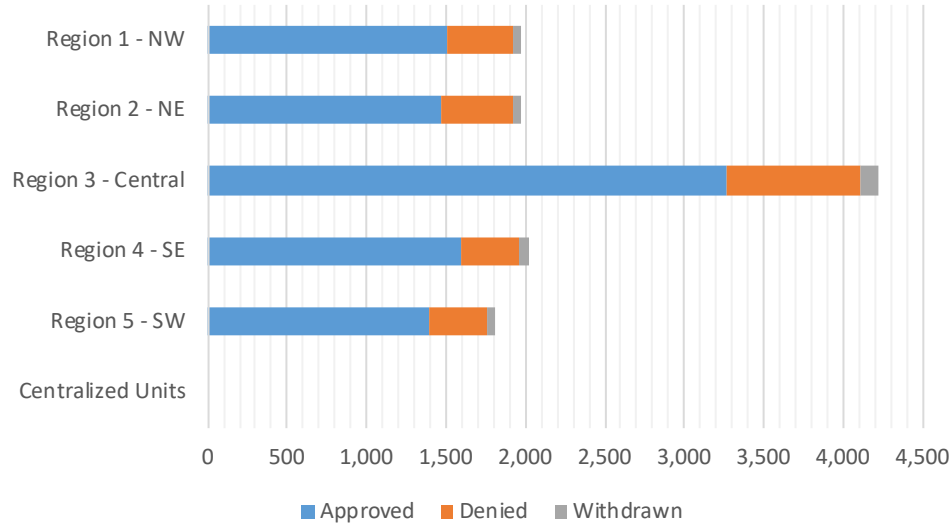
Medicaid Initial Applications by Field Office^{4,11}
April 2020

Office	Approved	Denied	Withdrawn	Total Cases Processed
Chaves County ISD	424	83	25	532
Cibola County ISD	100	26	1	127
Colfax County ISD	47	21	0	68
Curry County ISD	272	66	11	349
East Dona Ana County ISD	404	78	18	500
Eddy Artesia County ISD	84	20	7	111
Eddy Carlsbad County ISD	216	57	12	285
Grant County ISD	98	40	4	142
Guadalupe County ISD	17	2	2	21
Hidalgo County ISD	0	0	0	0
Lea County ISD	499	99	9	607
Lincoln County ISD	96	39	3	138
Luna County ISD	111	46	7	164
McKinley County ISD	331	68	9	408
Northeast Bernalillo County ISD	959	224	21	1,204
Northwest Bernalillo County ISD	861	202	38	1,101
Otero County ISD	194	47	2	243
Quay County ISD	90	21	0	111
Rio Arriba County ISD	181	66	2	249
Roosevelt County ISD	0	0	0	0
San Juan County ISD	771	223	20	1,014
San Miguel County ISD	217	66	4	287
Sandoval County ISD	300	85	15	400
Santa Fe County ISD	474	150	19	643
Sierra County ISD	55	22	3	80
Socorro County ISD	71	23	4	98
South Dona Ana ISD	224	69	7	300
Southeast Bernalillo County ISD	476	189	14	679
Southwest Bernalillo County ISD	824	190	33	1,047
Taos County ISD	143	43	4	190
Torrance County ISD	143	43	3	189
Valencia North County ISD	173	52	6	231
Valencia South County ISD	11	1	0	12
West Dona Ana County ISD	359	83	13	455
Centralized Units	0	0	0	0
Statewide Total	9,225	2,444	316	11,985

Medicaid Initial Applications by Region^{4,11}
April 2020

	Approved	Denied	Withdrawn	Total Cases Processed
Region				
Region 1 - NW	1,512	415	43	1,970
Region 2 - NE	1,469	454	46	1,969
Region 3 - Central	3,263	848	109	4,220
Region 4 - SE	1,591	364	67	2,022
Region 5 - SW	1,390	363	51	1,804
Centralized Units	0	0	0	0

Statewide Total	9,225	2,444	316	11,985
-----------------	-------	-------	-----	--------

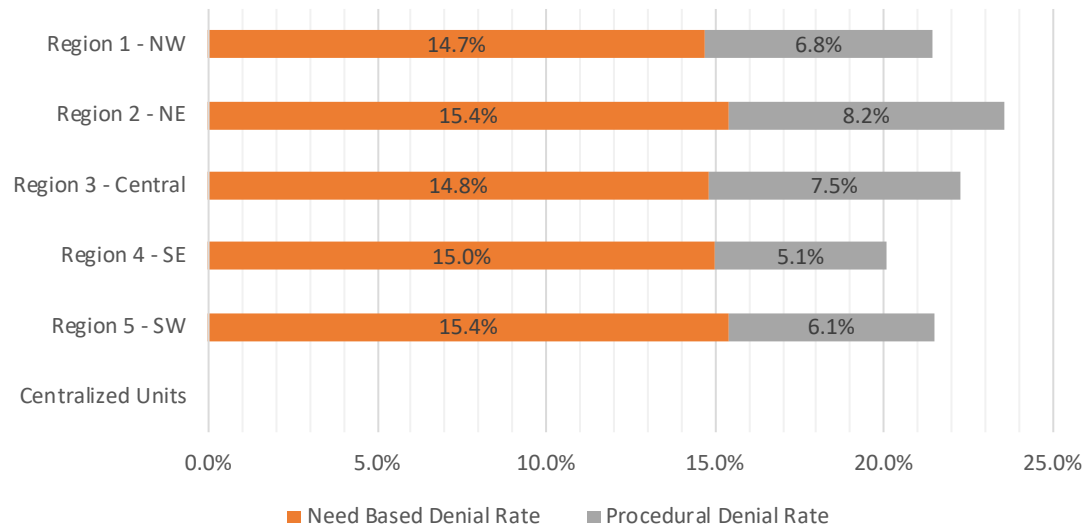


Medicaid EDG Initial Disposition Rates by Field Office^{4,11,19}
April 2020

Office	Approval Rate	Denial Rate	Need Based Denial Rate	Procedural Denial Rate
Chaves County ISD	80.5%	19.5%	14.8%	4.7%
Cibola County ISD	80.0%	20.0%	11.2%	8.8%
Colfax County ISD	73.4%	26.6%	21.9%	4.7%
Curry County ISD	78.8%	21.2%	15.1%	6.1%
East Dona Ana County ISD	81.8%	18.2%	12.3%	5.9%
Eddy Artesia County ISD	73.7%	26.3%	19.3%	7.0%
Eddy Carlsbad County ISD	78.5%	21.5%	13.9%	7.6%
Grant County ISD	72.1%	27.9%	20.5%	7.4%
Guadalupe County ISD	81.0%	19.0%	9.5%	9.5%
Hidalgo County ISD	0.0%	0.0%	0.0%	0.0%
Lea County ISD	84.6%	15.4%	12.2%	3.2%
Lincoln County ISD	69.1%	30.9%	25.9%	5.0%
Luna County ISD	71.6%	28.4%	23.9%	4.5%
McKinley County ISD	83.0%	17.0%	10.7%	6.3%
Northeast Bernalillo County ISD	80.3%	19.7%	11.8%	7.9%
Northwest Bernalillo County ISD	78.3%	21.7%	14.1%	7.6%
Otero County ISD	79.5%	20.5%	13.5%	7.0%
Quay County ISD	83.3%	16.7%	14.8%	1.9%
Rio Arriba County ISD	75.7%	24.3%	13.8%	10.5%
Roosevelt County ISD	0.0%	0.0%	0.0%	0.0%
San Juan County ISD	77.9%	22.1%	14.8%	7.3%
San Miguel County ISD	83.8%	16.2%	8.1%	8.1%
Sandoval County ISD	72.8%	27.2%	18.0%	9.2%
Santa Fe County ISD	75.1%	24.9%	17.0%	7.9%
Sierra County ISD	71.4%	28.6%	26.0%	2.6%
Socorro County ISD	73.2%	26.8%	19.6%	7.2%
South Dona Ana ISD	77.5%	22.5%	17.0%	5.5%
Southeast Bernalillo County ISD	69.7%	30.3%	19.3%	11.0%
Southwest Bernalillo County ISD	79.3%	20.7%	15.2%	5.5%
Taos County ISD	75.3%	24.7%	16.3%	8.4%
Torrance County ISD	79.4%	20.6%	18.4%	2.2%
Valencia North County ISD	77.6%	22.4%	16.6%	5.8%
Valencia South County ISD	78.6%	21.4%	21.4%	0.0%
West Dona Ana County ISD	79.4%	20.6%	14.2%	6.4%
Centralized Units	0.0%	0.0%	0.0%	0.0%
Statewide Total	78.1%	21.9%	15.0%	6.9%

Medicaid EDG Initial Disposition Rates by Region^{4,11,19}
April 2020

Region	Approval Rate	Denial Rate	Need Based Denial Rate	Procedural Denial Rate
Region 1 - NW	78.5%	21.5%	14.7%	6.8%
Region 2 - NE	76.4%	23.6%	15.4%	8.2%
Region 3 - Central	77.7%	22.3%	14.8%	7.5%
Region 4 - SE	79.9%	20.1%	15.0%	5.1%
Region 5 - SW	78.5%	21.5%	15.4%	6.1%
Centralized Units				
Statewide Total	78.1%	21.9%	15.0%	6.9%



Medicaid: Percentage of Initial EDG Approvals Processed Timely by Field Office^{13,19}

	Oct-19	Nov-19	Dec-19	Jan-20	Feb-20	Mar-20	Apr-20	May-20	Jun-20	Jul-20	Aug-20	Sep-20	Average
Cibola	99.5 %	97.3 %	99.4 %	99.4 %	100.0 %	100.0 %	99.6 %						99.3%
McKinley	99.3 %	99.0 %	99.8 %	99.8 %	99.2 %	97.8 %	99.8 %						99.2%
San Juan	98.9 %	98.7 %	99.7 %	99.4 %	99.2 %	99.5 %	99.5 %						99.3%
Sierra	96.4 %	99.0 %	99.1 %	100.0 %	100.0 %	100.0 %	98.1 %						98.9%
Socorro	100.0 %	96.9 %	98.9 %	98.2 %	98.8 %	100.0 %	100.0 %						99.0%
Valencia North	99.7 %	99.1 %	99.4 %	99.2 %	98.8 %	99.7 %	99.5 %						99.4%
Valencia South	100.0 %	100.0 %	100.0 %	100.0 %	100.0 %	100.0 %	100.0 %						100.0%
NW Region 1 Total	99.2 %	98.6 %	99.6 %	99.4 %	99.2 %	99.2 %	99.4 %						99.2%
Colfax	100.0 %	100.0 %	100.0 %	98.9 %	100.0 %	100.0 %	100.0 %						99.8%
Guadalupe	100.0 %	100.0 %	100.0 %	100.0 %	100.0 %	100.0 %	100.0 %						100.0%
Quay	98.4 %	100.0 %	100.0 %	100.0 %	100.0 %	100.0 %	100.0 %						99.8%
Rio Arriba	99.6 %	100.0 %	99.3 %	93.0 %	98.4 %	99.0 %	100.0 %						98.5%
San Miguel	100.0 %	100.0 %	100.0 %	99.6 %	98.2 %	98.8 %	100.0 %						99.5%
Sandoval	99.4 %	100.0 %	99.5 %	98.5 %	99.8 %	99.2 %	99.3 %						99.4%
Santa Fe	99.0 %	97.9 %	99.0 %	98.2 %	98.4 %	99.2 %	98.3 %						98.6%
Taos	98.7 %	100.0 %	99.7 %	99.5 %	98.7 %	99.4 %	99.6 %						99.4%
NE Region 2 Total	99.3 %	99.4 %	99.5 %	97.9 %	98.9 %	99.2 %	99.5 %						99.1%
NE Bernalillo	98.4 %	99.5 %	99.0 %	98.8 %	98.5 %	98.3 %	98.7 %						98.8%
NW Bernalillo	98.9 %	98.9 %	99.0 %	97.4 %	98.8 %	99.2 %	99.7 %						98.9%
SE Bernalillo	97.4 %	95.8 %	98.3 %	98.1 %	97.8 %	97.5 %	98.4 %						97.6%
SW Bernalillo	98.2 %	97.9 %	99.2 %	98.8 %	98.8 %	98.8 %	99.5 %						98.7%
Torrance	100.0 %	100.0 %	98.3 %	100.0 %	99.4 %	100.0 %	99.8 %						99.6%
Gen. Region 3 Total	98.3 %	98.3 %	98.9 %	98.4 %	98.5 %	98.6 %	99.1 %						98.6%
Chaves	100.0 %	99.1 %	99.4 %	98.8 %	98.2 %	99.8 %	99.4 %						99.3%
Curry	98.8 %	98.9 %	99.2 %	99.1 %	98.8 %	98.7 %	99.8 %						99.1%
Eddy Artesia	98.3 %	97.6 %	100.0 %	99.1 %	98.7 %	100.0 %	99.5 %						99.0%
Eddy Carlsbad	99.1 %	99.5 %	99.1 %	97.8 %	100.0 %	99.6 %	100.0 %						99.3%
Lea	99.3 %	100.0 %	99.0 %	98.7 %	99.8 %	99.8 %	98.6 %						99.3%
Lincoln	99.3 %	98.7 %	97.4 %	100.0 %	99.0 %	98.1 %	100.0 %						98.9%
Roosevelt	100.0 %	100.0 %	100.0 %		100.0 %	100.0 %	92.0 %						98.7%
SE Region 4 Total	99.2 %	99.3 %	99.1 %	98.8 %	99.2 %	99.4 %	99.2 %						99.2%
East Dona Ana	98.0 %	99.3 %	99.6 %	99.1 %	99.7 %	100.0 %	99.2 %						99.3%
Grant	100.0 %	99.3 %	99.4 %	98.9 %	100.0 %	99.4 %	100.0 %						99.6%
Luna	99.5 %	99.5 %	100.0 %	100.0 %	99.5 %	98.9 %	100.0 %						99.6%
Otero	99.6 %	99.6 %	98.1 %	100.0 %	100.0 %	99.6 %	99.7 %						99.5%
South Dona Ana	99.7 %	99.7 %	99.7 %	99.8 %	100.0 %	99.5 %	99.8 %						99.8%
West Dona Ana	99.5 %	97.5 %	100.0 %	99.4 %	99.4 %	99.3 %	99.6 %						99.2%
SW Region 5 Total	99.2 %	99.0 %	99.5 %	99.5 %	99.7 %	99.5 %	99.6 %						99.5%
STATE TOTAL	98.9 %	98.8 %	99.3 %	98.8 %	99.0 %	99.1 %	99.3 %						99.0%

Medicaid: Percentage of Initial EDG Denials Processed Timely by Field Office^{13,19}

	Oct-19	Nov-19	Dec-19	Jan-20	Feb-20	Mar-20	Apr-20	May-20	Jun-20	Jul-20	Aug-20	Sep-20	Average
Cibola	97.8 %	98.7 %	97.7 %	93.3 %	95.6 %	98.5 %	98.5 %						97.2%
McKinley	92.7 %	95.5 %	93.8 %	96.3 %	94.3 %	85.9 %	95.4 %						93.4%
San Juan	95.4 %	98.4 %	97.8 %	94.0 %	93.8 %	97.1 %	97.6 %						96.3%
Sierra	100.0 %	94.1 %	97.4 %	100.0 %	90.9 %	97.1 %	97.9 %						96.8%
Socorro	95.9 %	94.2 %	100.0 %	95.3 %	93.0 %	88.0 %	97.7 %						94.9%
Valencia North	98.5 %	97.4 %	96.4 %	98.9 %	94.7 %	91.3 %	95.4 %						96.1%
Valencia South	100.0 %	100.0 %			100.0 %	100.0 %	100.0 %						100.0%
NW Region 1 Total	95.8 %	97.1 %	96.7 %	95.7 %	94.0 %	93.9 %	97.0 %						95.8%
Colfax	94.7 %	97.3 %	95.5 %	98.4 %	87.0 %	97.2 %	100.0 %						95.7%
Guadalupe	100.0 %	100.0 %	91.7 %	100.0 %	100.0 %	100.0 %	100.0 %						98.8%
Quay	92.9 %	94.4 %	100.0 %	100.0 %	94.1 %	100.0 %	100.0 %						97.3%
Rio Arriba	94.8 %	97.5 %	98.4 %	94.8 %	90.0 %	92.3 %	98.8 %						95.2%
San Miguel	100.0 %	100.0 %	99.3 %	96.4 %	98.2 %	98.8 %	98.2 %						98.7%
Sandoval	98.0 %	98.7 %	96.7 %	92.9 %	96.2 %	97.8 %	97.8 %						96.9%
Santa Fe	98.3 %	94.7 %	95.3 %	94.8 %	92.1 %	89.6 %	89.8 %						93.5%
Taos	100.0 %	100.0 %	96.2 %	97.2 %	98.2 %	98.4 %	97.1 %						98.2%
NE Region 2 Total	97.7 %	97.6 %	96.8 %	94.9 %	93.6 %	94.9 %	96.7 %						96.0%
NE Bernalillo	97.5 %	97.1 %	97.2 %	94.3 %	94.0 %	94.3 %	94.6 %						95.6%
NW Bernalillo	96.8 %	97.4 %	97.7 %	95.0 %	95.2 %	93.1 %	93.4 %						95.5%
SE Bernalillo	93.9 %	96.6 %	95.0 %	96.1 %	97.9 %	94.7 %	97.8 %						96.0%
SW Bernalillo	95.5 %	97.5 %	97.5 %	94.8 %	96.1 %	94.9 %	92.7 %						95.6%
Torrance	97.3 %	96.7 %	97.2 %	100.0 %	95.2 %	95.0 %	97.4 %						97.0%
Gen. Region 3 Total	96.1 %	97.2 %	96.9 %	95.2 %	95.7 %	94.2 %	95.1 %						95.8%
Chaves	97.9 %	100.0 %	97.8 %	98.4 %	94.9 %	92.3 %	98.3 %						97.1%
Curry	97.3 %	97.8 %	97.4 %	97.6 %	98.4 %	97.1 %	92.1 %						96.8%
Eddy Artesia	82.7 %	100.0 %	91.5 %	100.0 %	92.7 %	94.2 %	98.6 %						94.2%
Eddy Carlsbad	79.6 %	100.0 %	93.6 %	96.9 %	98.9 %	87.0 %	95.2 %						93.0%
Lea	95.4 %	97.1 %	97.9 %	96.2 %	96.0 %	92.2 %	93.0 %						95.4%
Lincoln	98.2 %	98.2 %	100.0 %	97.4 %	95.3 %	84.2 %	100.0 %						96.2%
Roosevelt	95.6 %						83.3 %						89.5%
SE Region 4 Total	93.1 %	98.5 %	97.1 %	97.5 %	96.4 %	92.0 %	95.5 %						95.7%
East Dona Ana	95.6 %	98.5 %	96.8 %	97.8 %	96.0 %	93.6 %	97.5 %						96.5%
Grant	98.4 %	91.6 %	98.9 %	96.8 %	100.0 %	90.9 %	97.8 %						96.3%
Luna	94.9 %	96.3 %	99.2 %	100.0 %	100.0 %	95.5 %	99.0 %						97.8%
Otero	100.0 %	94.8 %	100.0 %	98.8 %	96.4 %	96.3 %	96.4 %						97.5%
South Dona Ana	97.3 %	99.4 %	98.9 %	98.0 %	99.4 %	94.7 %	98.6 %						98.0%
West Dona Ana	99.3 %	96.6 %	98.2 %	94.4 %	95.9 %	91.4 %	94.3 %						95.7%
SW Region 5 Total	97.6 %	96.8 %	98.4 %	97.5 %	97.6 %	93.7 %	97.1 %						96.9%
STATE TOTAL	96.2 %	97.4 %	97.1 %	95.9 %	95.4 %	93.8 %	96.2 %						96.0%

Medicaid: Percentage of Initial EDG Approvals and Denials Combined Processed Timely by Field Office^{13,19}

	Oct-19	Nov-19	Dec-19	Jan-20	Feb-20	Mar-20	Apr-20	May-20	Jun-20	Jul-20	Aug-20	Sep-20	Average
Cibola	99.1 %	97.7 %	98.8 %	97.9 %	99.2 %	99.6 %	99.3 %						98.8%
McKinley	98.0 %	98.0 %	98.0 %	98.9 %	98.1 %	95.2 %	98.7 %						97.8%
San Juan	97.8 %	98.6 %	99.2 %	97.7 %	97.6 %	98.8 %	99.0 %						98.4%
Sierra	97.5 %	97.8 %	98.7 %	100.0 %	97.2 %	99.4 %	98.1 %						98.4%
Socorro	98.4 %	95.9 %	99.3 %	97.0 %	96.8 %	97.5 %	99.4 %						97.8%
Valencia North	99.4 %	98.7 %	98.5 %	99.1 %	97.8 %	97.5 %	98.6 %						98.5%
Valencia South	100.0 %	100.0 %	100.0 %	100.0 %	100.0 %	100.0 %	100.0 %						100.0%
NW Region 1 Total	98.3 %	98.2 %	98.7 %	98.3 %	97.9 %	97.9 %	98.8 %						98.3%
Colfax	98.5 %	98.8 %	98.1 %	98.7 %	95.5 %	99.0 %	100.0 %						98.4%
Guadalupe	100.0 %	100.0 %	97.1 %	100.0 %	100.0 %	100.0 %	100.0 %						99.6%
Quay	96.7 %	98.0 %	100.0 %	100.0 %	98.2 %	100.0 %	100.0 %						99.0%
Rio Arriba	98.1 %	99.1 %	99.0 %	93.7 %	96.0 %	97.5 %	99.7 %						97.6%
San Miguel	100.0 %	100.0 %	99.8 %	98.8 %	98.2 %	98.8 %	99.5 %						99.3%
Sandoval	99.0 %	99.5 %	98.5 %	96.2 %	98.7 %	98.7 %	99.0 %						98.5%
Santa Fe	98.7 %	96.8 %	97.5 %	96.5 %	96.0 %	96.4 %	95.8 %						96.8%
Taos	99.0 %	100.0 %	98.6 %	98.5 %	98.6 %	99.1 %	98.8 %						98.9%
NE Region 2 Total	98.8 %	98.8 %	98.6 %	96.7 %	97.3 %	97.9 %	98.7 %						98.1%
NE Bernalillo	98.1 %	98.7 %	98.4 %	97.0 %	97.2 %	97.2 %	97.6 %						97.8%
NW Bernalillo	98.3 %	98.4 %	98.6 %	96.4 %	97.8 %	97.4 %	98.0 %						97.9%
SE Bernalillo	96.5 %	96.1 %	97.2 %	97.4 %	97.8 %	96.5 %	98.3 %						97.1%
SW Bernalillo	97.5 %	97.8 %	98.6 %	97.5 %	98.0 %	97.8 %	97.7 %						97.9%
Torrance	97.5 %	98.9 %	98.0 %	100.0 %	98.1 %	98.5 %	99.2 %						98.6%
Gen. Region 3 Total	97.7 %	97.9 %	98.2 %	97.2 %	97.7 %	97.3 %	98.1 %						97.7%
Chaves	99.5 %	99.4 %	98.9 %	98.7 %	97.3 %	97.7 %	99.1 %						98.6%
Curry	98.5 %	98.5 %	98.7 %	98.7 %	98.7 %	98.3 %	98.2 %						98.5%
Eddy Artesia	93.5 %	98.3 %	97.5 %	99.4 %	96.6 %	98.3 %	99.3 %						97.5%
Eddy Carlsbad	93.0 %	99.7 %	97.3 %	97.5 %	99.7 %	96.0 %	98.6 %						97.4%
Lea	98.1 %	99.2 %	98.7 %	98.0 %	98.8 %	97.5 %	97.4 %						98.2%
Lincoln	99.0 %	98.5 %	98.5 %	98.7 %	98.0 %	93.3 %	100.0 %						98.0%
Roosevelt	100.0 %	100.0 %	100.0 %			100.0 %	89.5 %						97.9%
SE Region 4 Total	97.6 %	99.1 %	98.4 %	98.4 %	98.4 %	97.3 %	98.3 %						98.2%
East Dona Ana	97.3 %	99.1 %	98.6 %	98.6 %	98.4 %	98.1 %	98.8 %						98.4%
Grant	99.5 %	96.3 %	99.2 %	98.0 %	100.0 %	96.8 %	99.2 %						98.4%
Luna	98.4 %	98.6 %	99.7 %	100.0 %	99.6 %	97.8 %	99.7 %						99.1%
Otero	99.7 %	97.9 %	98.7 %	99.6 %	98.9 %	98.8 %	99.0 %						98.9%
South Dona Ana	99.1 %	99.6 %	99.5 %	99.1 %	98.9 %	98.2 %	99.5 %						99.1%
West Dona Ana	99.4 %	97.2 %	99.4 %	97.8 %	98.1 %	97.4 %	98.3 %						98.2%
SW Region 5 Total	98.8 %	98.3 %	99.1 %	98.8 %	99.1 %	97.9 %	99.0 %						98.7%
STATE TOTAL	98.2 %	98.4 %	98.6 %	97.7 %	99.1 %	97.6 %	99.0 %						98.4%

Medicaid Renewal Disposition Counts by Field Office^{4,11}
April 2020

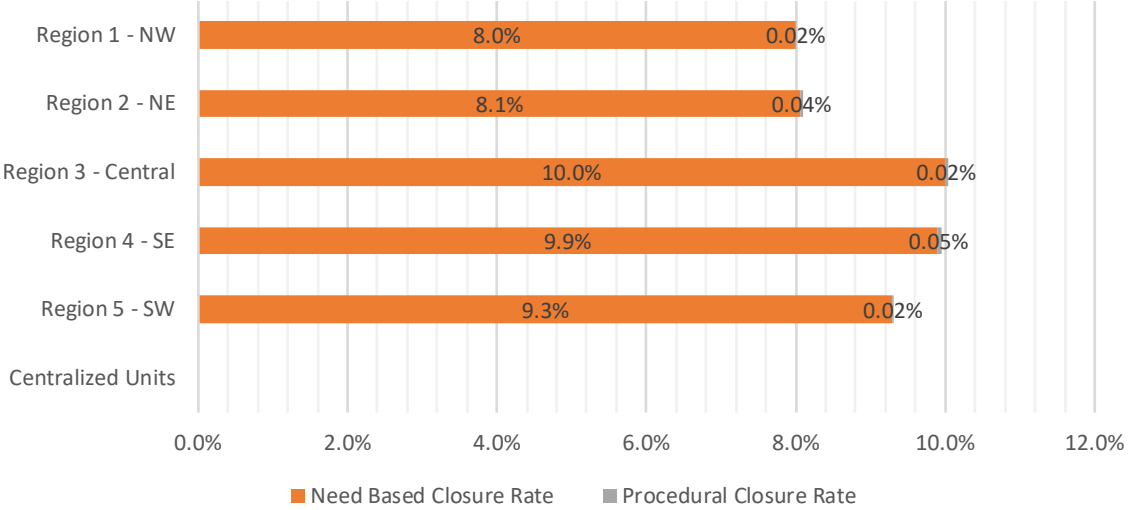
Office	Approvals	Closures	Need Based Closures	Procedural Closures
Chaves County ISD	3,652	440	438	2
Cibola County ISD	1,269	84	84	0
Colfax County ISD	505	63	63	0
Curry County ISD	2,733	233	233	0
East Dona Ana County ISD	3,781	442	442	0
Eddy Artesia County ISD	712	94	94	0
Eddy Carlsbad County ISD	1,201	147	147	0
Grant County ISD	1,293	123	123	0
Guadalupe County ISD	209	13	13	0
Hidalgo County ISD	6	0	0	0
Lea County ISD	3,032	312	307	5
Lincoln County ISD	905	125	125	0
Luna County ISD	1,595	109	109	0
McKinley County ISD	4,344	335	333	2
Northeast Bernalillo County ISD	6,729	814	813	1
Northwest Bernalillo County ISD	6,076	684	683	1
Otero County ISD	2,289	316	316	0
Quay County ISD	588	39	39	0
Rio Arriba County ISD	1,968	142	141	1
Roosevelt County ISD	0	0	0	0
San Juan County ISD	6,532	661	660	1
San Miguel County ISD	1,108	104	102	2
Sandoval County ISD	3,990	356	354	2
Santa Fe County ISD	3,346	311	311	0
Sierra County ISD	735	69	69	0
Socorro County ISD	753	65	65	0
South Dona Ana ISD	4,105	327	325	2
Southeast Bernalillo County ISD	2,581	208	207	1
Southwest Bernalillo County ISD	8,998	1039	1036	3
Taos County ISD	1,160	107	107	0
Torrance County ISD	1,348	125	124	1
Valencia North County ISD	2,618	201	201	0
Valencia South County ISD	0	1	1	0
West Dona Ana County ISD	3,945	431	429	2
Centralized Units	0	0		0
Statewide Total	84,106	8,520	8,494	26

Medicaid Renewal Disposition Rates by Field Office²⁰
April 2020

Office	Approval Rate	Closure Rate	Need Based Closure Rate	Procedural Closure Rate
Chaves County ISD	89.2%	10.8%	10.7%	0.05%
Cibola County ISD	93.8%	6.2%	6.2%	0.00%
Colfax County ISD	88.9%	11.1%	11.1%	0.00%
Curry County ISD	92.1%	7.9%	7.9%	0.00%
East Dona Ana County ISD	89.5%	10.5%	10.5%	0.00%
Eddy Artesia County ISD	88.3%	11.7%	11.7%	0.00%
Eddy Carlsbad County ISD	89.1%	10.9%	10.9%	0.00%
Grant County ISD	91.3%	8.7%	8.7%	0.00%
Guadalupe County ISD	94.1%	5.9%	5.9%	0.00%
Hidalgo County ISD	100.0%	0.0%	0.0%	0.00%
Lea County ISD	90.7%	9.3%	9.2%	0.15%
Lincoln County ISD	87.9%	12.1%	12.1%	0.00%
Luna County ISD	93.6%	6.4%	6.4%	0.00%
McKinley County ISD	92.8%	7.2%	7.1%	0.04%
Northeast Bernalillo County ISD	89.2%	10.8%	10.8%	0.01%
Northwest Bernalillo County ISD	89.9%	10.1%	10.1%	0.01%
Otero County ISD	87.9%	12.1%	12.1%	0.00%
Quay County ISD	93.8%	6.2%	6.2%	0.00%
Rio Arriba County ISD	93.3%	6.7%	6.7%	0.05%
Roosevelt County ISD	0.0%	0.0%	0.0%	0.00%
San Juan County ISD	90.8%	9.2%	9.2%	0.01%
San Miguel County ISD	91.4%	8.6%	8.4%	0.17%
Sandoval County ISD	91.8%	8.2%	8.1%	0.05%
Santa Fe County ISD	91.5%	8.5%	8.5%	0.00%
Sierra County ISD	91.4%	8.6%	8.6%	0.00%
Socorro County ISD	92.1%	7.9%	7.9%	0.00%
South Dona Ana ISD	92.6%	7.4%	7.3%	0.05%
Southeast Bernalillo County ISD	92.5%	7.5%	7.4%	0.04%
Southwest Bernalillo County ISD	89.6%	10.4%	10.3%	0.03%
Taos County ISD	91.6%	8.4%	8.4%	0.00%
Torrance County ISD	91.5%	8.5%	8.4%	0.07%
Valencia North County ISD	92.9%	7.1%	7.1%	0.00%
Valencia South County ISD	0.0%	100.0%	100.0%	0.00%
West Dona Ana County ISD	90.2%	9.8%	9.8%	0.05%
Centralized Units	0.0%	0.0%	0.0%	0.00%
Statewide Total	90.8%	9.2%	9.2%	0.03%

Medicaid Renewal Disposition Rates by Region²⁰
April 2020

Region	Approval Rate	Closure Rate	Need Based Closure Rate	Procedural Closure Rate
Region 1 - NW	92.0%	8.0%	8.0%	0.02%
Region 2 - NE	91.9%	8.1%	8.1%	0.04%
Region 3 - Central	90.0%	10.0%	10.0%	0.02%
Region 4 - SE	90.1%	9.9%	9.9%	0.05%
Region 5 - SW	90.7%	9.3%	9.3%	0.02%
Centralized Units	0.0%	0.0%	0.0%	0.00%
Statewide Total	90.8%	9.2%	9.2%	0.03%



Medicaid: Percentage of Approved Renewal EDGs Processed by Certification Date ¹¹

	Oct-19	Nov-19	Dec-19	Jan-20	Feb-20	Mar-20	Apr-20	May-20	Jun-20	Jul-20	Aug-20	Sep-20	Average
Cibola	99.5%	99.4%	98.2%	98.3%	94.5%	98.2%	99.9%						98.3%
McKinley	98.4%	98.8%	98.4%	99.1%	95.7%	98.5%	99.9%						98.4%
San Juan	98.8%	98.6%	98.5%	99.1%	96.0%	98.8%	99.8%						98.5%
Sierra	99.2%	96.9%	98.3%	98.7%	97.6%	98.3%	100.0%						98.4%
Socorro	98.6%	98.3%	97.7%	98.8%	94.4%	96.7%	99.7%						97.7%
Valencia North	99.1%	98.4%	98.1%	98.9%	94.5%	98.3%	99.9%						98.2%
Valencia South			100.0%	100.0%	100.0%	100.0%	0.0%						80.0%
NW Region 1 Total	98.9%	98.4%	98.5%	99.0%	96.1%	98.4%	85.6%						96.4%
Colfax	98.5%	98.1%	98.8%	98.8%	95.1%	96.8%	99.6%						98.0%
Guadalupe	99.6%	98.2%	99.6%	99.1%	100.0%	99.6%	100.0%						99.4%
Quay	98.7%	99.0%	97.2%	98.6%	100.0%	98.4%	99.7%						98.8%
Rio Arriba	98.2%	97.2%	98.4%	98.9%	97.0%	99.2%	99.9%						98.4%
San Miguel	98.3%	99.1%	99.4%	99.4%	93.2%	98.5%	99.9%						98.3%
Sandoval	99.0%	98.7%	98.9%	98.5%	96.6%	98.9%	99.8%						98.6%
Santa Fe	97.4%	97.5%	96.8%	97.1%	93.6%	97.3%	99.5%						97.0%
Taos	97.3%	98.8%	98.5%	98.3%	93.9%	97.5%	99.1%						97.6%
NE Region 2 Total	98.4%	98.3%	98.5%	98.6%	96.2%	98.3%	99.7%						98.3%
NE Bernalillo	98.2%	98.5%	97.9%	98.3%	93.8%	98.7%	99.7%						97.9%
NW Bernalillo	97.5%	97.8%	98.2%	98.4%	91.3%	98.8%	99.7%						97.4%
SE Bernalillo	98.1%	98.4%	97.9%	98.7%	94.8%	98.6%	99.9%						98.1%
SW Bernalillo	97.5%	97.2%	97.3%	97.2%	94.4%	98.7%	99.6%						97.4%
Torrance	98.0%	98.3%	98.9%	99.3%	93.3%	98.6%	99.9%						98.0%
Gen. Region 3 Total	97.8%	98.1%	98.0%	98.4%	93.5%	98.7%	99.8%						97.7%
Chaves	99.7%	99.6%	98.8%	98.9%	94.8%	99.5%	99.9%						98.7%
Curry	98.8%	99.3%	99.0%	99.4%	97.8%	99.2%	99.9%						99.1%
Eddy Artesia	98.0%	97.3%	98.8%	99.5%	94.9%	98.8%	100.0%						98.2%
Eddy Carlsbad	98.5%	98.7%	99.1%	99.4%	97.2%	99.0%	99.6%						98.8%
Lea	98.3%	98.7%	99.0%	99.1%	97.6%	99.6%	99.9%						98.9%
Lincoln	96.5%	98.1%	97.3%	97.8%	93.7%	99.3%	100.0%						97.5%
Roosevelt													
SE Region 4 Total	98.3%	98.6%	98.7%	99.0%	96.0%	99.2%	99.9%						98.5%
East Dona Ana	99.4%	99.1%	99.1%	98.9%	97.8%	99.3%	99.9%						99.1%
Grant	98.4%	99.0%	98.9%	99.7%	98.0%	99.0%	99.9%						99.0%
Luna	98.9%	99.4%	99.0%	99.1%	96.2%	99.3%	99.6%						98.8%
Otero	98.5%	98.8%	98.8%	98.9%	95.1%	98.6%	99.7%						98.3%
South Dona Ana	98.4%	99.2%	99.5%	99.5%	99.4%	98.7%	99.9%						99.2%
West Dona Ana	99.3%	98.7%	99.0%	98.9%	99.1%	99.7%	99.8%						99.2%
SW Region 5 Total	98.8%	99.0%	99.1%	99.2%	97.6%	99.1%	99.8%						98.9%
STATE TOTAL	98.5%	98.5%	98.5%	98.8%	96.0%	98.7%	96.7%						98.0%

Administrative, Annual, and Auto Renewals are included

Medicaid: Percentage of Closures EDGs Processed by Certification End Date¹¹

	Oct-19	Nov-19	Dec-19	Jan-20	Feb-20	Mar-20	Apr-20	May-20	Jun-20	Jul-20	Aug-20	Sep-20	Average
Cibola	97.3%	95.3%	94.8%	95.4%	94.5%	91.6%	95.5%						94.9%
McKinley	94.2%	96.5%	93.2%	97.2%	95.7%	96.8%	97.4%						95.9%
San Juan	96.9%	95.7%	95.4%	96.2%	96.0%	94.0%	95.4%						95.7%
Sierra	94.4%	97.0%	98.2%	97.1%	97.6%	94.7%	98.6%						96.8%
Socorro	96.1%	95.0%	88.1%	93.5%	94.4%	84.3%	92.9%						92.0%
Valencia North	97.1%	96.3%	92.7%	96.6%	94.5%	96.2%	95.7%						95.6%
Valencia South			100.0%	100.0%	100.0%	100.0%	100.0%						100.0%
NW Region 1 Total	96.0%	96.0%	94.6%	96.6%	96.1%	93.9%	96.5%						95.7%
Colfax	94.7%	93.8%	95.2%	98.0%	95.1%	92.5%	100.0%						95.6%
Guadalupe	93.8%	96.0%	96.4%	100.0%	100.0%	100.0%	100.0%						98.0%
Quay	96.4%	98.7%	98.4%	100.0%	100.0%	92.6%	97.5%						97.7%
Rio Arriba	95.3%	96.8%	95.9%	93.2%	97.0%	96.9%	97.3%						96.1%
San Miguel	95.3%	92.9%	91.4%	96.8%	93.2%	93.6%	99.0%						94.6%
Sandoval	96.7%	96.8%	96.7%	96.1%	96.6%	97.1%	95.7%						96.5%
Santa Fe	94.6%	94.4%	93.6%	94.4%	93.6%	92.7%	95.7%						94.1%
Taos	95.9%	97.5%	94.7%	98.6%	93.9%	95.7%	96.4%						96.1%
NE Region 2 Total	95.3%	95.9%	95.3%	97.1%	96.2%	95.1%	97.7%						96.1%
NE Bernalillo	96.0%	96.5%	95.4%	93.8%	93.8%	95.0%	95.3%						95.1%
NW Bernalillo	94.7%	95.4%	95.6%	95.4%	91.3%	92.3%	94.9%						94.2%
SE Bernalillo	96.1%	97.1%	96.4%	92.9%	94.8%	95.4%	98.1%						95.8%
SW Bernalillo	95.8%	95.5%	93.0%	94.9%	94.4%	92.8%	96.7%						94.7%
Torrance	96.4%	98.0%	97.4%	94.3%	93.3%	96.2%	96.9%						96.1%
Gen. Region 3 Total	95.8%	96.5%	95.6%	94.3%	93.5%	94.3%	96.4%						95.2%
Chaves	97.7%	97.1%	93.0%	98.2%	94.8%	93.0%	97.6%						95.9%
Curry	97.8%	98.1%	96.1%	95.8%	97.8%	98.3%	98.3%						97.5%
Eddy Artesia	94.9%	95.8%	97.1%	100.0%	94.9%	92.8%	97.9%						96.2%
Eddy Carlsbad	96.4%	96.7%	98.0%	97.5%	97.2%	94.4%	94.2%						96.3%
Lea	97.7%	95.9%	94.2%	96.6%	97.6%	95.6%	95.1%						96.1%
Lincoln	91.2%	95.5%	94.0%	100.0%	93.7%	95.0%	94.7%						94.9%
Roosevelt			100.0%										100.0%
SE Region 4 Total	96.0%	96.5%	96.1%	98.0%	96.0%	94.9%	96.3%						96.2%
East Dona Ana	96.9%	97.0%	95.4%	96.0%	97.8%	96.5%	96.7%						96.6%
Grant	93.9%	97.1%	94.8%	96.8%	98.0%	95.3%	97.6%						96.2%
Luna	95.9%	98.5%	95.2%	98.1%	96.2%	98.5%	95.6%						96.9%
Otero	99.0%	97.4%	97.1%	97.7%	95.1%	94.8%	95.2%						96.6%
South Dona Ana	99.3%	98.5%	98.2%	98.7%	99.4%	97.9%	97.0%						98.4%
West Dona Ana	98.0%	97.8%	97.7%	96.8%	99.1%	98.9%	96.9%						97.9%
SW Region 5 Total	97.2%	97.7%	96.4%	97.4%	97.6%	97.0%	96.5%						97.1%
STATE TOTAL	96.0%	96.5%	95.6%	96.8%	96.0%	95.0%	96.7%						96.2%

Annual and Auto Renewals are included

Medicaid: Percentage of Approved and Terminated Renewal EDGs Combined Processed by Certification Date ¹¹

	Oct-19	Nov-19	Dec-19	Jan-20	Feb-20	Mar-20	Apr-20	May-20	Jun-20	Jul-20	Aug-20	Sep-20	Average
Cibola	98.9%	98.7%	97.7%	97.8%	98.3%	97.6%	99.6%						98.4%
McKinley	98.8%	98.4%	97.6%	98.8%	98.5%	98.3%	99.2%						98.5%
San Juan	98.4%	98.1%	98.0%	98.6%	98.2%	98.2%	99.8%						98.5%
Sierra	98.8%	96.9%	98.3%	98.4%	98.5%	98.0%	99.4%						98.3%
Socorro	99.0%	97.8%	96.2%	98.1%	97.0%	94.9%	98.9%						97.4%
Valencia North	98.5%	98.1%	97.3%	98.5%	97.5%	98.1%	99.9%						98.3%
Valencia South	100.0%		100.0%	100.0%	100.0%	100.0%	96.9%						99.5%
NW Region 1 Total	98.9%	98.0%	97.9%	98.6%	98.3%	97.9%	99.1%						98.4%
Colfax	99.8%	97.4%	98.1%	98.7%	97.3%	96.1%	99.6%						98.1%
Guadalupe	99.2%	97.8%	99.1%	99.3%	99.7%	99.6%	100.0%						99.2%
Quay	98.2%	98.9%	97.4%	98.8%	98.2%	97.8%	99.2%						98.4%
Rio Arriba	98.1%	97.1%	97.9%	98.0%	98.0%	98.9%	98.8%						98.1%
San Miguel	98.6%	98.1%	98.3%	98.9%	97.0%	97.9%	98.9%						98.2%
Sandoval	98.5%	98.3%	98.5%	98.1%	98.0%	98.7%	99.4%						98.5%
Santa Fe	98.3%	96.8%	96.2%	96.6%	95.8%	96.7%	99.5%						97.1%
Taos	98.3%	98.5%	97.8%	98.4%	97.1%	97.3%	98.9%						98.0%
NE Region 2 Total	98.6%	97.9%	97.9%	98.4%	97.6%	97.9%	99.3%						98.2%
NE Bernalillo	98.5%	98.1%	97.4%	97.4%	97.1%	98.2%	99.2%						98.0%
NW Bernalillo	98.0%	97.4%	97.6%	97.8%	96.6%	97.9%	99.5%						97.8%
SE Bernalillo	98.7%	98.1%	97.6%	97.7%	97.2%	98.2%	99.0%						98.1%
SW Bernalillo	98.0%	96.9%	96.5%	96.7%	97.2%	98.0%	99.6%						97.6%
Torrance	98.1%	98.3%	98.6%	98.5%	96.7%	98.3%	99.3%						98.3%
Gen. Region 3 Total	98.3%	97.8%	97.5%	97.6%	97.0%	98.1%	99.3%						97.9%
Chaves	98.3%	99.1%	97.8%	98.8%	98.4%	98.6%	99.6%						98.7%
Curry	99.0%	99.1%	98.5%	98.9%	98.7%	99.1%	99.7%						99.0%
Eddy Artesia	97.1%	97.1%	98.6%	99.6%	97.6%	97.8%	99.8%						98.2%
Eddy Carlsbad	98.6%	98.2%	98.9%	99.0%	99.0%	98.4%	99.0%						98.7%
Lea	98.9%	98.2%	98.1%	98.6%	99.1%	99.0%	99.7%						98.8%
Lincoln	97.2%	97.7%	96.7%	98.2%	97.9%	98.7%	99.5%						98.0%
Roosevelt			100.0%										100.0%
SE Region 4 Total	98.2%	98.2%	98.4%	98.9%	98.5%	98.6%	99.6%						98.6%
East Dona Ana	98.7%	98.7%	98.4%	98.5%	98.5%	98.9%	99.5%						98.7%
Grant	98.5%	98.7%	98.3%	99.3%	98.9%	98.6%	99.7%						98.9%
Luna	98.5%	99.3%	98.3%	98.9%	98.7%	99.2%	99.2%						98.9%
Otero	98.8%	98.6%	98.5%	98.7%	98.4%	98.1%	99.7%						98.7%
South Dona Ana	98.0%	99.1%	99.3%	99.4%	99.5%	98.6%	99.8%						99.1%
West Dona Ana	99.5%	98.5%	98.8%	98.7%	99.0%	99.6%	97.3%						98.8%
SW Region 5 Total	98.7%	98.8%	98.6%	98.9%	98.8%	98.8%	99.2%						98.8%
STATE TOTAL	98.6%	98.1%	98.1%	98.5%	98.1%	98.2%	99.3%						98.4%

Administrative, Annual, and Auto Renewals are included

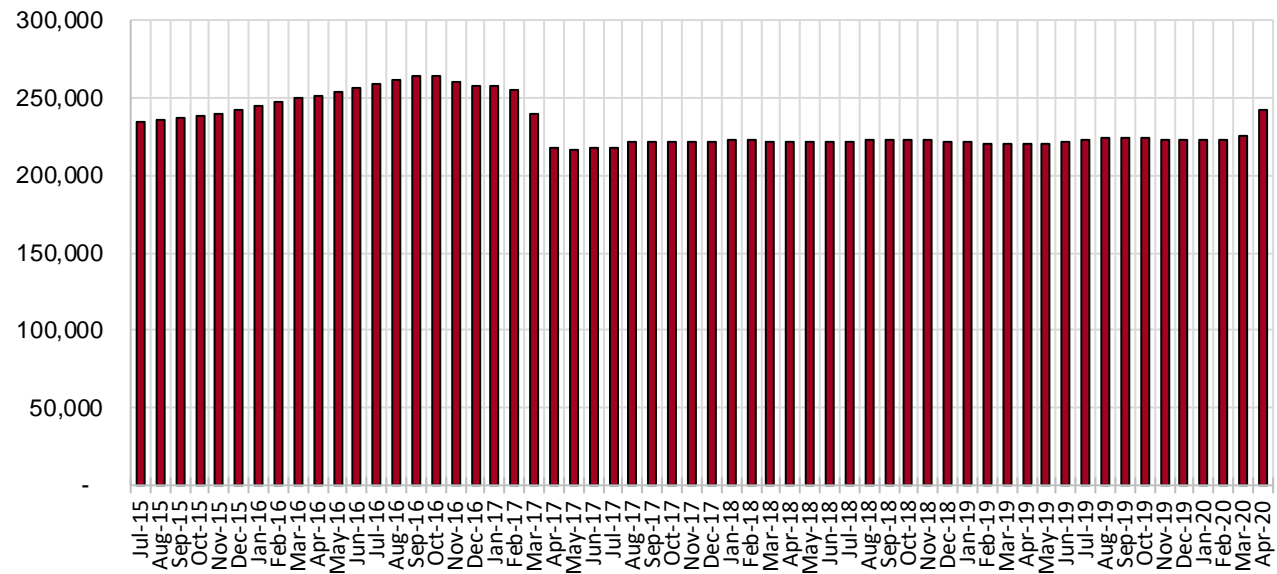
SNAP Cases by Field Office⁶

Office				Percent Change	
	Apr-19	Mar-20	Apr-20	Apr-19- Apr-20	Mar-20- Apr-20
Chaves County ISD	6,852	7,478	8,419	22.87%	12.58%
Cibola County ISD	3,625	3,562	3,747	3.37%	5.19%
Colfax County ISD	1,656	1,638	1,744	5.31%	6.47%
Curry County ISD	7,047	7,453	7,912	12.27%	6.16%
East Dona Ana County ISD	7,901	8,218	8,951	13.29%	8.92%
Eddy Artesia County ISD	1,544	1,603	1,750	13.34%	9.17%
Eddy Carlsbad County ISD	2,765	3,046	3,353	21.27%	10.08%
Grant County ISD	3,910	3,988	4,194	7.26%	5.17%
Guadalupe County ISD	697	659	710	1.87%	7.74%
Hidalgo County ISD	16	4	8	-50.00%	100.00%
Lea County ISD	5,453	6,000	6,764	24.04%	12.73%
Lincoln County ISD	1,850	1,901	2,089	12.92%	9.89%
Luna County ISD	4,160	4,371	4,658	11.97%	6.57%
McKinley County ISD	9,857	10,303	10,841	9.98%	5.22%
Northeast Bernalillo County ISD	20,297	20,785	22,628	11.48%	8.87%
Northwest Bernalillo County ISD	19,661	20,941	22,760	15.76%	8.69%
Otero County ISD	5,623	5,753	6,158	9.51%	7.04%
Quay County ISD	1,237	1,439	1,584	28.05%	10.08%
Rio Arriba County ISD	6,507	6,516	6,940	6.65%	6.51%
Roosevelt County ISD	0	0	1	N/A	N/A
San Juan County ISD	13,661	14,864	16,580	21.37%	11.54%
San Miguel County ISD	4,999	4,997	5,232	4.66%	4.70%
Sandoval County ISD	9,803	9,731	10,121	3.24%	4.01%
Santa Fe County ISD	9,536	8,947	9,696	1.68%	8.37%
Sierra County ISD	2,630	2,497	2,560	-2.66%	2.52%
Socorro County ISD	2,741	2,803	2,946	7.48%	5.10%
South Dona Ana ISD	8,458	8,337	8,678	2.60%	4.09%
Southeast Bernalillo County ISD	11,845	10,954	11,043	-6.77%	0.81%
Southwest Bernalillo County ISD	18,910	20,054	22,142	17.09%	10.41%
Taos County ISD	4,111	4,190	4,482	9.02%	6.97%
Torrance County ISD	3,614	3,575	3,839	6.23%	7.4%
Valencia North County ISD	8,242	8,121	8,373	1.59%	3.10%
Valencia South County ISD	1	8	18	1700.0%	125.00%
West Dona Ana County ISD	10,581	10,825	11,448	8.19%	5.76%
Centralized Units	11	9	14	27.27%	55.56%
Statewide Total	219,801	225,570	242,383	10.27%	7.5%

SNAP Cases by Region⁶

Region	Apr-19	Mar-20	Apr-20	Percent Change	
				Apr-19- Apr-20	Mar-20- Apr-20
Region 1 - NW	40,757	42,158	45,065	10.6%	6.9%
Region 2 - NE	38,546	38,117	40,509	5.1%	6.3%
Region 3 - Central	74,327	76,309	82,412	10.9%	8.0%
Region 4 - SE	25,511	27,481	30,288	18.7%	10.2%
Region 5 - SW	40,649	41,496	44,095	8.5%	6.3%
Centralized Units	11	9	14	27.3%	55.6%
Statewide Total	219,801	225,570	242,383	10.27%	7.5%

SNAP Caseload: SFY-16 to Current



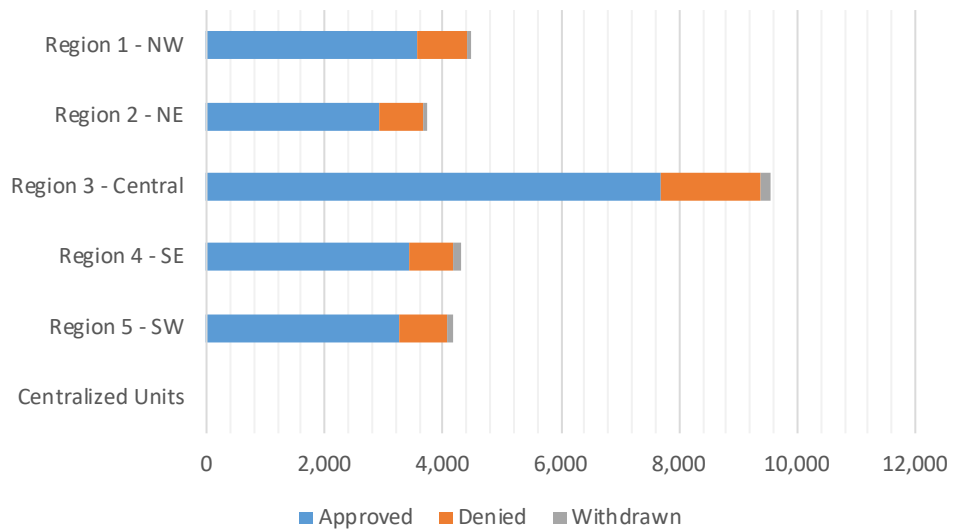
Note: Caseload higher due to COVID 19 emergency

SNAP Initial Applications by Field Office^{4,11}
April 2020

Office	Approved	Denied	Withdrawn	Total Cases Processed
Chaves County ISD	1,100	192	39	1,331
Cibola County ISD	220	44	4	268
Colfax County ISD	135	26	5	166
Curry County ISD	580	161	15	756
East Dona Ana County ISD	877	230	39	1,146
Eddy Artesia County ISD	191	56	12	259
Eddy Carlsbad County ISD	421	102	17	540
Grant County ISD	268	71	5	344
Guadalupe County ISD	47	8	0	55
Hidalgo County ISD	0	0	0	0
Lea County ISD	884	174	39	1,097
Lincoln County ISD	263	61	4	328
Luna County ISD	327	72	5	404
McKinley County ISD	656	138	15	809
Northeast Bernalillo County ISD	2,345	554	39	2,938
Northwest Bernalillo County ISD	2,195	523	12	2,730
Otero County ISD	499	103	17	619
Quay County ISD	221	40	5	266
Rio Arriba County ISD	508	112	17	637
Roosevelt County ISD	0	0	0	0
San Juan County ISD	1,933	467	46	2,446
San Miguel County ISD	293	106	9	408
Sandoval County ISD	544	180	15	739
Santa Fe County ISD	879	209	20	1,108
Sierra County ISD	118	44	2	164
Socorro County ISD	213	42	5	260
South Dona Ana ISD	469	90	11	570
Southeast Bernalillo County ISD	462	124	6	592
Southwest Bernalillo County ISD	2,354	438	100	2,892
Taos County ISD	303	57	7	367
Torrance County ISD	325	71	8	404
Valencia North County ISD	418	111	10	539
Valencia South County ISD	2	1	0	3
West Dona Ana County ISD	832	229	26	1,087
Centralized Units	0	0	0	0
Statewide Total	20,882	4,836	554	26,272

SNAP Initial Applications by Region^{4,11}
April 2020

Region	Approved	Denied	Withdrawn	Total Cases Processed
Region 1 - NW	3,560	847	82	4,489
Region 2 - NE	2,930	738	78	3,746
Region 3 - Central	7,681	1,710	165	9,556
Region 4 - SE	3,439	746	126	4,311
Region 5 - SW	3,272	795	103	4,170
Centralized Units	0	0	0	0
Statewide Total	20,882	4,836	554	26,272

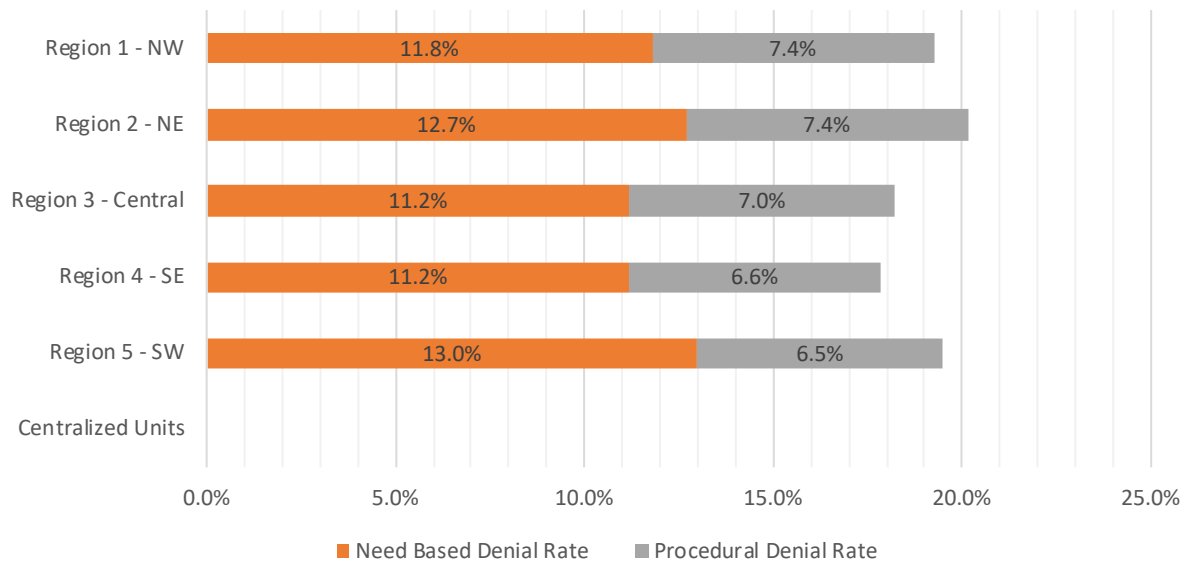


SNAP Initial Disposition Rates by Field Office^{4,11}
April 2020

Office	Approval Rate	Denial Rate	Need Based Denial Rate	Procedural Denial Rate
Chaves County ISD	85.1%	14.9%	9.0%	5.9%
Cibola County ISD	83.3%	16.7%	8.7%	8.0%
Colfax County ISD	83.9%	16.1%	10.5%	5.6%
Curry County ISD	78.3%	21.7%	13.9%	7.8%
East Dona Ana County ISD	79.2%	20.8%	14.0%	6.8%
Eddy Artesia County ISD	77.3%	22.7%	12.2%	10.5%
Eddy Carlsbad County ISD	80.5%	19.5%	11.1%	8.4%
Grant County ISD	79.1%	20.9%	13.2%	7.7%
Guadalupe County ISD	85.5%	14.5%	7.2%	7.3%
Hidalgo County ISD	0.0%	0.0%	0.0%	0.0%
Lea County ISD	83.6%	16.4%	11.4%	5.0%
Lincoln County ISD	81.2%	18.8%	12.6%	6.2%
Luna County ISD	82.0%	18.0%	14.7%	3.3%
McKinley County ISD	82.6%	17.4%	10.9%	6.5%
Northeast Bernalillo County ISD	80.9%	19.1%	10.2%	8.9%
Northwest Bernalillo County ISD	80.8%	19.2%	11.7%	7.5%
Otero County ISD	82.9%	17.1%	9.0%	8.1%
Quay County ISD	84.7%	15.3%	12.2%	3.1%
Rio Arriba County ISD	81.9%	18.1%	9.7%	8.4%
Roosevelt County ISD	0.0%	0.0%	0.0%	0.0%
San Juan County ISD	80.5%	19.5%	11.6%	7.9%
San Miguel County ISD	73.4%	26.6%	19.6%	7.0%
Sandoval County ISD	75.1%	24.9%	15.6%	9.3%
Santa Fe County ISD	80.8%	19.2%	12.0%	7.2%
Sierra County ISD	72.8%	27.2%	19.2%	8.0%
Socorro County ISD	83.5%	16.5%	11.4%	5.1%
South Dona Ana ISD	83.9%	16.1%	11.1%	5.0%
Southeast Bernalillo County ISD	78.8%	21.2%	14.2%	7.0%
Southwest Bernalillo County ISD	84.3%	15.7%	10.9%	4.8%
Taos County ISD	84.2%	15.8%	8.3%	7.5%
Torrance County ISD	82.1%	17.9%	12.1%	5.8%
Valencia North County ISD	79.0%	21.0%	13.4%	7.6%
Valencia South County ISD	66.7%	33.3%	33.3%	0.0%
West Dona Ana County ISD	78.4%	21.6%	14.7%	6.9%
Centralized Units	0.0%	0.0%	0.0%	0.0%
Statewide Total	81.2%	18.8%	11.8%	7.0%

SNAP Initial Disposition Rates by Region^{4,11}
April 2020

Region	Approval Rate	Denial Rate	Need Based Denial Rate	Procedural Denial Rate
Region 1 - NW	80.8%	19.2%	11.8%	7.4%
Region 2 - NE	79.9%	20.1%	12.7%	7.4%
Region 3 - Central	81.8%	18.2%	11.2%	7.0%
Region 4 - SE	82.2%	17.8%	11.2%	6.6%
Region 5 - SW	80.5%	19.5%	13.0%	6.5%
Centralized Units	0.0%	0.0%	0.0%	0.0%
Statewide Total	81.2%	18.8%	11.8%	7.0%



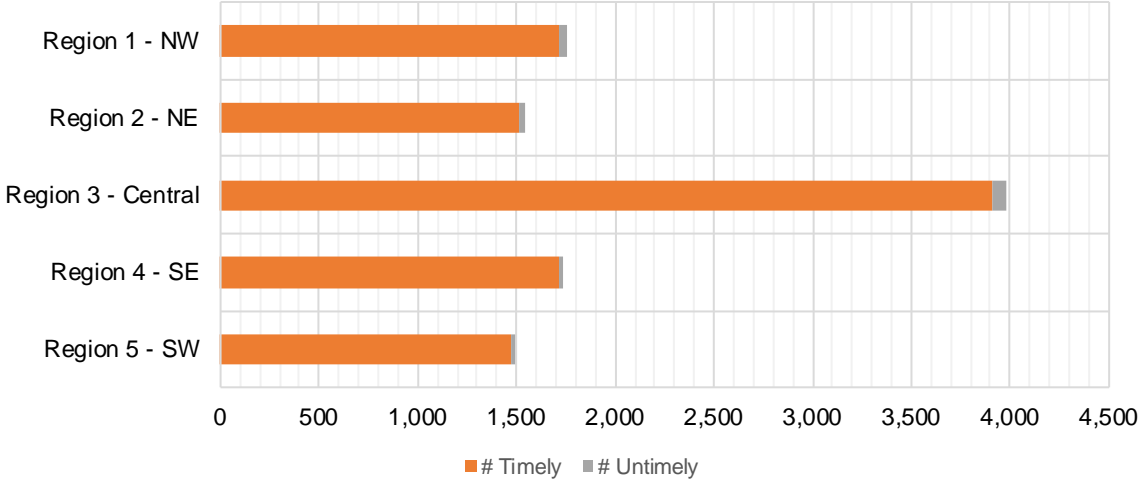
SNAP Expedite Timeliness by Field Office¹³
April 2020

Office Name	Total Expedited Approvals	# Timely	# Untimely	Percentage Timely
Chaves County ISD	537	533	4	99.3 %
Cibola County ISD	107	102	5	95.3 %
Colfax County ISD	66	66	0	100.0 %
Curry County ISD	292	285	7	97.6 %
East Dona Ana County ISD	378	374	4	98.9 %
Eddy Artesia County ISD	77	76	1	98.7 %
Eddy Carlsbad County ISD	225	220	5	97.8 %
Grant County ISD	142	140	2	98.6 %
Guadalupe County ISD	20	18	2	90.0 %
Lea County ISD	500	496	4	99.2 %
Lincoln County ISD	107	103	4	96.3 %
Luna County ISD	156	156	0	100.0 %
McKinley County ISD	347	338	9	97.4 %
Northeast Bernalillo County ISD	1,192	1,171	21	98.2 %
Northwest Bernalillo County ISD	1,171	1,160	11	99.1 %
Otero County ISD	254	253	1	99.6 %
Quay County ISD	101	100	1	99.0 %
Rio Arriba County ISD	268	263	5	98.1 %
Roosevelt County ISD	0	0	0	N/A
San Juan County ISD	978	966	12	98.8 %
San Miguel County ISD	175	172	3	98.3 %
Sandoval County ISD	247	246	1	99.6 %
Santa Fe County ISD	496	481	15	97.0 %
Sierra County ISD	53	51	2	96.2 %
Socorro County ISD	100	100	0	100.0 %
South Dona Ana ISD	187	186	1	99.5 %
Southeast Bernalillo County ISD	216	213	3	98.6 %
Southwest Bernalillo County ISD	1,232	1,207	25	98.0 %
Taos County ISD	169	167	2	98.8 %
Torrance County ISD	169	164	5	97.0 %
Valencia North County ISD	168	160	8	95.2 %
West Dona Ana County ISD	373	367	6	98.4 %
Statewide Total	10,503	10,334	169	98.4 %

SNAP Expedite Timeliness by Region¹³
April 2020

Region	Total Expedited Approvals	# Timely	# Untimely	Percentage Timely
Region 1 - NW	1,753	1,717	36	97.9%
Region 2 - NE	1,542	1,513	29	98.1%
Region 3 - Central	3,980	3,915	65	98.4%
Region 4 - SE	1,738	1,713	25	98.6%
Region 5 - SW	1,490	1,476	14	99.1%
Statewide Total	10,503	10,334	169	98.4%

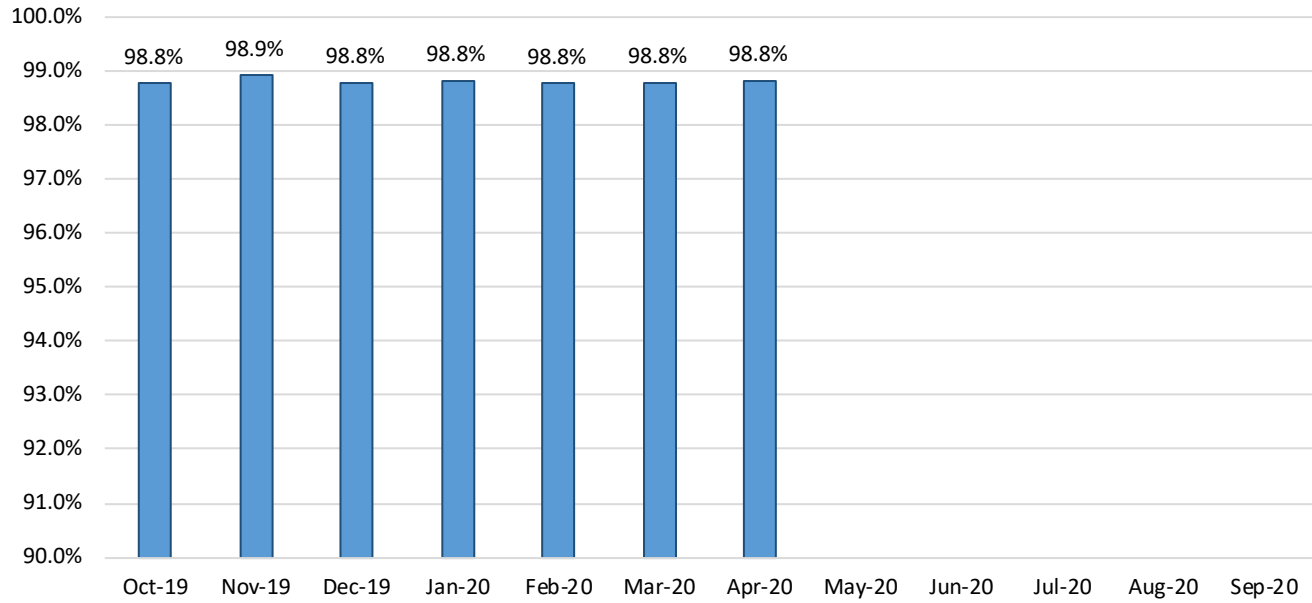
SNAP Expedite - Timeliness



SNAP: Percentage of Applications Processed Timely¹³

	Oct-19	Nov-19	Dec-19	Jan-20	Feb-20	Mar-20	Apr-20	May-20	Jun-20	Jul-20	Aug-20	Sep-20	Average
APT	98.8%	98.9%	98.8%	98.8%	98.8%	98.8%	98.8%						98.8%

SNAP Application Processing Timeliness (APT)



SNAP Non-Expedite: Percentage of Initial Applications Processed Timely by Field Office¹³

	Oct-19	Nov-19	Dec-19	Jan-20	Feb-20	Mar-20	Apr-20	May-20	Jun-20	Jul-20	Aug-20	Sep-20	Average
Cibola	99.2%	96.9%	98.0%	96.3%	99.4%	99.3%	98.8%						98.3%
McKinley	99.0%	98.5%	98.4%	98.9%	98.7%	99.0%	98.9%						98.8%
San Juan	98.1%	98.4%	99.1%	99.2%	98.0%	99.3%	98.7%						98.7%
Sierra	98.0%	100.0%	100.0%	100.0%	98.9%	100.0%	98.3%						99.3%
Socorro	97.9%	100.0%	100.0%	99.1%	100.0%	98.2%	100.0%						99.3%
Valencia North	99.0%	99.4%	99.5%	99.5%	99.7%	99.5%	99.2%						99.4%
Valencia South													
NW Region 1 Total	98.5%	98.7%	99.0%	99.0%	98.8%	99.2%	98.9%						98.9%
Colfax	98.8%	98.8%	100.0%	98.7%	100.0%	100.0%	100.0%						99.5%
Guadalupe	100.0%	100.0%	100.0%	100.0%	100.0%	100.0%	100.0%						100.0%
Quay	100.0%	100.0%	100.0%	100.0%	100.0%	100.0%	100.0%						100.0%
Rio Arriba	98.2%	99.5%	98.6%	98.9%	99.2%	99.6%	99.2%						99.0%
San Miguel	98.1%	98.9%	100.0%	98.7%	99.5%	100.0%	99.2%						99.2%
Sandoval	99.5%	98.7%	98.8%	99.6%	99.0%	99.6%	99.2%						99.2%
Santa Fe	97.7%	98.4%	97.7%	99.7%	98.6%	98.6%	98.9%						98.5%
Taos	100.0%	98.9%	99.4%	99.0%	100.0%	99.5%	100.0%						99.5%
NE Region 2 Total	98.8%	98.9%	98.8%	99.3%	99.2%	99.4%	99.3%						99.1%
NE Bernalillo	98.5%	98.9%	98.5%	97.9%	97.6%	96.7%	98.9%						98.1%
NW Bernalillo	98.5%	98.1%	97.5%	98.4%	98.3%	98.1%	99.4%						98.3%
SE Bernalillo	98.8%	98.2%	98.9%	99.3%	98.4%	98.1%	97.4%						98.4%
SW Bernalillo	99.0%	99.2%	98.3%	99.1%	99.0%	99.6%	98.6%						99.0%
Torrance	99.4%	100.0%	98.2%	100.0%	98.3%	99.4%	99.6%						99.3%
Gen. Region 3 Total	98.7%	98.7%	98.3%	98.7%	98.3%	98.2%	98.9%						98.5%
Chaves	99.7%	99.7%	98.1%	99.5%	99.0%	99.5%	99.0%						99.2%
Curry	98.7%	99.0%	98.1%	97.1%	98.6%	98.4%	99.4%						98.5%
Eddy Artesia	100.0%	98.5%	97.6%	100.0%	100.0%	98.9%	99.5%						99.2%
Eddy Carlsbad	99.4%	99.3%	99.4%	98.3%	100.0%	99.0%	99.4%						99.3%
Lea	99.6%	99.3%	98.9%	99.7%	99.4%	98.3%	99.5%						99.2%
Lincoln	99.1%	100.0%	97.0%	99.3%	98.2%	97.5%	99.1%						98.6%
Roosevelt	100.0%	100.0%		100.0%		100.0%							100.0%
SE Region 4 Total	99.4%	99.3%	98.3%	98.8%	99.1%	98.7%	99.3%						99.0%
East Dona Ana	99.5%	99.5%	99.2%	99.2%	99.5%	99.1%	99.2%						99.3%
Grant	99.3%	98.7%	100.0%	98.3%	100.0%	98.6%	100.0%						99.3%
Luna	99.4%	100.0%	98.8%	98.9%	100.0%	99.5%	99.2%						99.4%
Otero	98.9%	99.6%	99.2%	99.6%	98.0%	98.5%	99.5%						99.0%
South Dona Ana	100.0%	99.6%	99.6%	100.0%	99.6%	99.6%	99.7%						99.7%
West Dona Ana	98.7%	99.6%	99.6%	99.1%	100.0%	99.4%	99.3%						99.4%
SW Region 5 Total	99.3%	99.5%	99.4%	99.2%	99.5%	99.2%	99.4%						99.4%
STATE TOTAL	98.9%	99.0%	98.7%	99.0%	98.8%	98.8%	99.1%						98.9%

SNAP Expedite: Percentage of Initial Applications Processed Timely by Field Office¹³

	Oct-19	Nov-19	Dec-19	Jan-20	Feb-20	Mar-20	Apr-20	May-20	Jun-20	Jul-20	Aug-20	Sep-20	Average
Cibola	96.7%	100.0%	95.5%	98.5%	100.0%	98.2%	95.3%						97.7%
McKinley	98.2%	99.0%	99.0%	98.6%	98.4%	98.9%	97.5%						98.5%
San Juan	98.9%	99.1%	98.4%	99.0%	99.0%	99.1%	98.8%						98.9%
Sierra	95.5%	98.1%	100.0%	96.8%	97.9%	98.3%	96.3%						97.6%
Socorro	100.0%	95.0%	98.5%	100.0%	97.4%	100.0%	100.0%						98.7%
Valencia North	98.4%	99.1%	99.1%	97.6%	98.1%	98.6%	95.3%						98.0%
Valencia South													
NW Region 1 Total	98.4%	98.9%	98.5%	98.6%	98.6%	98.9%	98.0%						98.6%
Colfax	100.0%	100.0%	98.4%	100.0%	100.0%	97.9%	100.0%						99.5%
Guadalupe	93.8%	100.0%	100.0%	95.0%	100.0%	100.0%	90.5%						97.0%
Quay	96.9%	100.0%	100.0%	100.0%	95.5%	100.0%	99.0%						98.8%
Rio Arriba	99.2%	97.1%	98.3%	98.1%	100.0%	99.0%	98.2%						98.6%
San Miguel	98.9%	100.0%	100.0%	98.8%	97.9%	98.6%	98.3%						98.9%
Sandoval	97.9%	98.9%	98.7%	98.7%	97.9%	100.0%	99.6%						98.8%
Santa Fe	98.8%	98.1%	98.1%	98.3%	97.4%	98.2%	97.0%						98.0%
Taos	97.7%	97.9%	98.6%	100.0%	98.5%	97.9%	98.8%						98.5%
NE Region 2 Total	98.5%	98.5%	98.6%	98.7%	98.2%	98.8%	98.1%						98.5%
NE Bernalillo	98.7%	98.5%	98.7%	98.7%	98.2%	97.8%	98.3%						98.4%
NW Bernalillo	99.6%	98.6%	99.5%	98.3%	99.5%	99.4%	99.1%						99.1%
SE Bernalillo	98.5%	98.6%	99.3%	98.6%	98.9%	98.5%	98.7%						98.7%
SW Bernalillo	99.0%	98.1%	98.5%	99.0%	99.1%	98.5%	98.0%						98.6%
Torrance	99.2%	100.0%	99.3%	97.1%	99.1%	99.2%	97.1%						98.7%
Gen. Region 3 Total	99.0%	98.5%	99.0%	98.7%	98.8%	98.6%	98.4%						98.7%
Chaves	98.2%	97.7%	98.7%	98.2%	98.8%	99.0%	99.3%						98.6%
Curry	97.7%	97.6%	98.6%	97.7%	99.1%	99.3%	97.7%						98.2%
Eddy Artesia	96.4%	100.0%	98.5%	100.0%	100.0%	100.0%	98.7%						99.1%
Eddy Carlsbad	99.3%	97.7%	97.3%	98.8%	98.6%	99.4%	98.3%						98.5%
Lea	98.3%	98.6%	100.0%	98.5%	99.1%	99.0%	99.2%						99.0%
Lincoln	95.8%	96.0%	95.7%	96.0%	97.6%	97.4%	96.4%						96.4%
Roosevelt	100.0%	100.0%		100.0%	100.0%	100.0%	100.0%						100.0%
SE Region 4 Total	98.0%	97.9%	98.6%	98.2%	98.9%	99.1%	98.7%						98.5%
East Dona Ana	98.5%	99.5%	100.0%	99.6%	98.3%	98.8%	99.0%						99.1%
Grant	99.2%	100.0%	98.5%	97.7%	98.3%	100.0%	98.6%						98.9%
Luna	99.2%	100.0%	98.2%	99.3%	100.0%	99.1%	100.0%						99.4%
Otero	99.4%	99.5%	98.8%	99.5%	98.2%	99.4%	99.6%						99.2%
South Dona Ana	97.9%	98.6%	99.2%	100.0%	96.6%	97.8%	99.5%						98.5%
West Dona Ana	99.1%	99.4%	99.7%	100.0%	99.3%	98.7%	98.4%						99.2%
SW Region 5 Total	98.9%	99.4%	99.3%	99.5%	98.6%	98.9%	99.1%						99.1%
STATE TOTAL	98.7%	98.6%	98.8%	98.7%	98.7%	98.8%	98.4%						98.7%

SNAP: Percentage of Denied Initial Applications Processed Within 30 Days by Field Office¹³

	Oct-19	Nov-19	Dec-19	Jan-20	Feb-20	Mar-20	Apr-20	May-20	Jun-20	Jul-20	Aug-20	Sep-20	Average
Cibola	97.3%	100.0%	100.0%	98.1%	98.0%	100.0%	97.9%						98.8%
McKinley	100.0%	94.4%	96.1%	99.0%	99.0%	97.8%	98.7%						97.9%
San Juan	97.6%	98.2%	98.6%	97.7%	96.6%	98.3%	98.2%						97.9%
Sierra	96.0%	100.0%	100.0%	100.0%	95.7%	100.0%	97.8%						98.5%
Socorro	100.0%	100.0%	100.0%	100.0%	100.0%	96.8%	100.0%						99.5%
Valencia North	99.0%	97.7%	98.4%	100.0%	99.1%	99.0%	99.2%						98.9%
Valencia South					100.0%		100.0%						100.0%
NW Region 1 Total	98.3%	98.4%	98.9%	99.1%	98.3%	98.7%	98.8%						98.6%
Colfax	96.8%	94.1%	100.0%	100.0%	100.0%	100.0%	100.0%						98.7%
Guadalupe	100.0%	100.0%	100.0%	100.0%	100.0%	100.0%	100.0%						100.0%
Quay	100.0%	100.0%	100.0%	100.0%	100.0%	100.0%	100.0%						100.0%
Rio Arriba	95.8%	98.6%	94.7%	96.0%	98.7%	98.6%	98.4%						97.3%
San Miguel	100.0%	98.5%	100.0%	98.6%	100.0%	100.0%	98.3%						99.3%
Sandoval	98.5%	98.9%	98.8%	100.0%	99.5%	98.7%	100.0%						99.2%
Santa Fe	96.4%	98.2%	96.2%	99.1%	97.4%	94.9%	98.7%						97.3%
Taos	100.0%	98.4%	100.0%	100.0%	100.0%	100.0%	100.0%						99.8%
NE Region 2 Total	98.4%	98.3%	98.7%	99.2%	99.5%	99.0%	99.4%						98.9%
NE Bernalillo	98.2%	97.8%	96.8%	94.7%	95.3%	91.7%	97.8%						96.0%
NW Bernalillo	96.4%	96.7%	96.6%	97.9%	97.0%	96.0%	98.9%						97.1%
SE Bernalillo	97.8%	95.0%	98.4%	99.0%	97.0%	95.7%	97.7%						97.2%
SW Bernalillo	97.7%	98.0%	96.8%	96.8%	98.8%	98.7%	97.2%						97.7%
Torrance	98.2%	100.0%	96.5%	100.0%	98.2%	100.0%	100.0%						99.0%
Gen. Region 3 Total	97.7%	97.5%	97.0%	97.7%	97.3%	96.4%	98.3%						97.4%
Chaves	100.0%	100.0%	95.0%	98.1%	98.0%	98.9%	98.7%						98.4%
Curry	97.2%	97.2%	94.8%	96.9%	99.0%	96.2%	98.9%						97.2%
Eddy Artesia	100.0%	96.3%	100.0%	100.0%	100.0%	100.0%	98.5%						99.3%
Eddy Carlsbad	98.2%	100.0%	98.3%	97.7%	98.5%	98.4%	98.3%						98.5%
Lea	100.0%	99.0%	97.0%	100.0%	100.0%	97.8%	99.5%						99.0%
Lincoln	97.6%	100.0%	94.9%	100.0%	97.4%	97.5%	100.0%						98.2%
Roosevelt		100.0%				100.0%							100.0%
SE Region 4 Total	98.8%	98.9%	96.7%	98.8%	98.8%	98.4%	99.0%						98.5%
East Dona Ana	99.4%	98.7%	98.5%	98.0%	99.3%	99.2%	99.6%						99.0%
Grant	97.4%	98.1%	100.0%	93.3%	100.0%	94.6%	100.0%						97.6%
Luna	97.7%	100.0%	95.3%	98.0%	100.0%	100.0%	98.7%						98.5%
Otero	98.9%	98.8%	97.1%	98.8%	95.9%	98.5%	99.2%						98.2%
South Dona Ana	100.0%	100.0%	100.0%	100.0%	100.0%	98.5%	100.0%						99.8%
West Dona Ana	97.5%	99.4%	99.2%	98.8%	100.0%	97.9%	98.4%						98.7%
SW Region 5 Total	98.5%	99.2%	98.4%	97.8%	99.2%	98.1%	99.3%						98.6%
STATE TOTAL	98.4%	98.5%	98.0%	98.6%	98.7%	98.2%	99.0%						98.5%

SNAP: Combined Approvals and Denials Percentage of Initial Applications Processed Timely by Field Office¹³

	Oct-19	Nov-19	Dec-19	Jan-20	Feb-20	Mar-20	Apr-20	May-20	Jun-20	Jul-20	Aug-20	Sep-20	Average
Cibola	98.0%	98.5%	97.7%	97.6%	99.6%	98.8%	97.4%						98.2%
McKinley	98.8%	98.7%	98.8%	98.7%	98.8%	99.1%	98.3%						98.7%
San Juan	98.5%	98.8%	98.8%	99.1%	98.6%	99.2%	98.7%						98.8%
Sierra	97.3%	99.4%	100.0%	98.8%	98.5%	99.3%	97.6%						98.7%
Socorro	98.9%	98.3%	99.4%	99.5%	98.8%	98.9%	100.0%						99.1%
Valencia North	98.7%	99.1%	99.4%	98.7%	99.1%	99.1%	98.0%						98.9%
Valencia South		100.0%		100.0%			100.0%						100.0%
NW Region 1 Total	98.4%	99.0%	99.0%	98.9%	98.9%	99.1%	98.6%						98.8%
Colfax	99.3%	99.2%	99.2%	99.3%	100.0%	99.1%	100.0%						99.4%
Guadalupe	98.2%	100.0%	100.0%	97.6%	97.6%	100.0%	96.4%						98.5%
Quay	98.6%	100.0%	100.0%	100.0%	99.6%	100.0%	99.6%						99.7%
Rio Arriba	98.7%	98.3%	98.5%	98.5%	98.8%	99.3%	98.7%						98.7%
San Miguel	98.5%	99.4%	100.0%	98.7%	98.8%	99.5%	98.8%						99.1%
Sandoval	98.9%	98.7%	98.9%	99.2%	98.0%	99.7%	99.3%						99.0%
Santa Fe	98.2%	98.3%	97.9%	99.0%	99.3%	98.3%	98.1%						98.4%
Taos	99.0%	98.5%	99.0%	99.4%	99.3%	99.1%	99.5%						99.1%
NE Region 2 Total	98.7%	99.1%	99.2%	99.0%	98.9%	99.4%	98.8%						99.0%
NE Bernalillo	98.6%	98.7%	98.7%	98.3%	97.9%	97.3%	98.6%						98.3%
NW Bernalillo	99.0%	98.3%	98.6%	98.4%	98.8%	98.8%	99.2%						98.7%
SE Bernalillo	98.7%	98.2%	99.3%	99.0%	98.5%	98.2%	97.8%						98.5%
SW Bernalillo	98.9%	98.5%	98.4%	99.0%	99.1%	99.1%	98.3%						98.8%
Torrance	99.3%	100.0%	98.7%	98.7%	98.6%	99.7%	98.5%						99.1%
Gen. Region 3 Total	98.9%	98.7%	98.7%	98.7%	98.6%	98.6%	98.5%						98.7%
Chaves	99.1%	98.9%	98.3%	99.0%	98.9%	99.3%	99.1%						98.9%
Curry	98.3%	98.4%	98.3%	97.5%	99.0%	98.9%	98.7%						98.4%
Eddy Artesia	98.6%	99.1%	98.0%	100.0%	100.0%	99.3%	99.2%						99.2%
Eddy Carlsbad	99.3%	98.6%	98.4%	98.5%	99.1%	99.4%	98.7%						98.9%
Lea	99.0%	99.0%	99.4%	99.1%	99.2%	98.7%	99.4%						99.1%
Lincoln	97.5%	98.4%	96.6%	98.4%	98.0%	97.9%	98.2%						97.9%
Roosevelt		100.0%	100.0%	100.0%	100.0%	100.0%							100.0%
SE Region 4 Total	98.6%	98.9%	98.4%	98.9%	99.2%	99.1%	98.9%						98.9%
East Dona Ana	99.2%	99.5%	99.5%	99.3%	99.1%	99.0%	99.1%						99.2%
Grant	99.3%	99.2%	99.3%	97.7%	99.2%	99.2%	99.4%						99.0%
Luna	99.3%	100.0%	98.6%	99.1%	100.0%	99.3%	99.5%						99.4%
Otero	99.3%	99.6%	99.0%	99.6%	98.0%	98.9%	99.5%						99.1%
South Dona Ana	99.3%	99.3%	99.4%	100.0%	98.9%	99.0%	99.8%						99.4%
West Dona Ana	98.9%	99.5%	99.6%	99.4%	99.7%	99.0%	99.1%						99.3%
SW Region 5 Total	99.2%	99.5%	99.2%	99.2%	99.2%	99.1%	99.4%						99.3%
STATE TOTAL	98.7%	99.0%	98.9%	98.9%	99.0%	99.1%	98.8%						98.9%

SNAP Renewals Processed by Field Office²⁰
April 2020

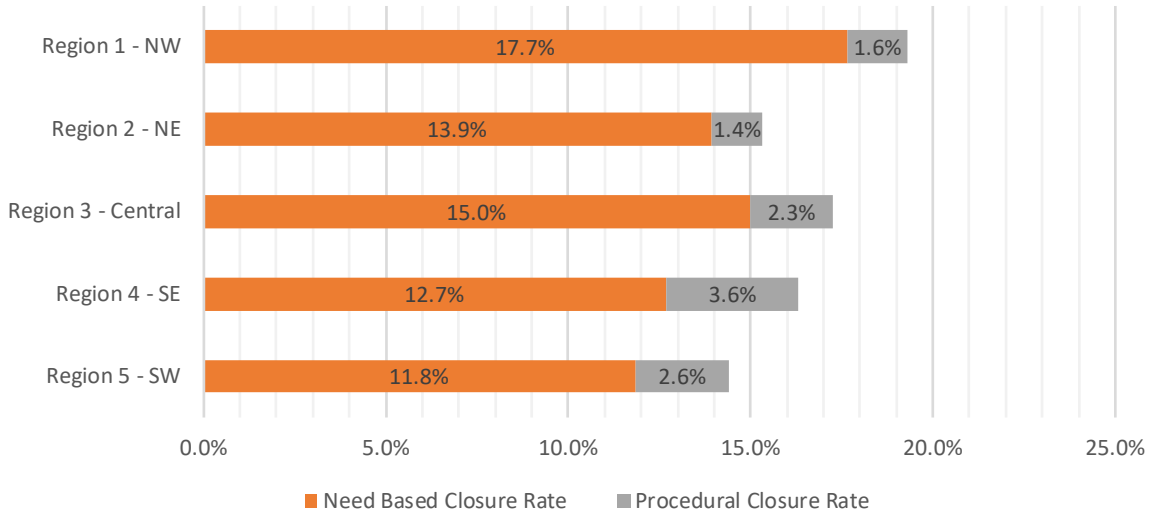
Office	Approvals	Closures	Need Based Closures	Procedural Closures
Chaves County ISD	304	43	33	10
Cibola County ISD	126	23	23	0
Colfax County ISD	49	8	8	0
Curry County ISD	226	35	23	12
East Dona Ana County ISD	281	72	60	12
Eddy Artesia County ISD	36	16	15	1
Eddy Carlsbad County ISD	83	22	21	1
Grant County ISD	141	24	20	4
Guadalupe County ISD	12	5	5	0
Hidalgo County ISD	0	0	0	0
Lea County ISD	187	47	38	9
Lincoln County ISD	41	8	3	5
Luna County ISD	152	29	28	1
McKinley County ISD	397	75	70	5
Northeast Bernalillo County ISD	572	147	135	12
Northwest Bernalillo County ISD	502	102	86	16
Otero County ISD	219	33	28	5
Quay County ISD	65	8	7	1
Rio Arriba County ISD	204	33	32	1
Roosevelt County ISD	0	0	0	0
San Juan County ISD	497	141	130	11
San Miguel County ISD	163	34	34	0
Sandoval County ISD	310	56	47	9
Santa Fe County ISD	285	47	40	7
Sierra County ISD	66	9	9	0
Socorro County ISD	89	22	21	1
South Dona Ana ISD	371	50	36	14
Southeast Bernalillo County ISD	263	38	35	3
Southwest Bernalillo County ISD	908	175	148	27
Taos County ISD	127	29	27	2
Torrance County ISD	105	28	22	6
Valencia North County ISD	218	63	52	11
Valencia South County ISD	0	0	0	0
West Dona Ana County ISD	397	55	44	11
Centralized Units	0	0	0	0
Statewide Total	7,396	1,477	1,280	197

SNAP Renewal Disposition Rates by Field Office²⁰
April 2020

Office	Approval Rate	Closure Rate	Need Based Closure Rate	Procedural Closure Rate
Chaves County ISD	87.6%	12.4%	9.5%	2.9%
Cibola County ISD	84.6%	15.4%	15.4%	0.0%
Colfax County ISD	86.0%	14.0%	14.0%	0.0%
Curry County ISD	86.6%	13.4%	8.8%	4.6%
East Dona Ana County ISD	79.6%	20.4%	17.0%	3.4%
Eddy Artesia County ISD	69.2%	30.8%	28.8%	1.9%
Eddy Carlsbad County ISD	79.0%	21.0%	20.0%	1.0%
Grant County ISD	85.5%	14.5%	12.1%	2.4%
Guadalupe County ISD	70.6%	29.4%	29.4%	0.0%
Hidalgo County ISD	0.0%	0.0%	0.0%	0.0%
Lea County ISD	79.9%	20.1%	16.2%	3.8%
Lincoln County ISD	83.7%	16.3%	6.1%	10.2%
Luna County ISD	84.0%	16.0%	15.5%	0.6%
McKinley County ISD	84.1%	15.9%	14.8%	1.1%
Northeast Bernalillo County ISD	79.6%	20.4%	18.8%	1.7%
Northwest Bernalillo County ISD	83.1%	16.9%	14.2%	2.6%
Otero County ISD	86.9%	13.1%	11.1%	2.0%
Quay County ISD	89.0%	11.0%	9.6%	1.4%
Rio Arriba County ISD	86.1%	13.9%	13.5%	0.4%
Roosevelt County ISD	0.0%	0.0%	0.0%	0.0%
San Juan County ISD	77.9%	22.1%	20.4%	1.7%
San Miguel County ISD	82.7%	17.3%	17.3%	0.0%
Sandoval County ISD	84.7%	15.3%	12.8%	2.5%
Santa Fe County ISD	85.8%	14.2%	12.0%	2.1%
Sierra County ISD	88.0%	12.0%	12.0%	0.0%
Socorro County ISD	80.2%	19.8%	18.9%	0.9%
South Dona Ana ISD	88.1%	11.9%	8.6%	3.3%
Southeast Bernalillo County ISD	87.4%	12.6%	11.6%	1.0%
Southwest Bernalillo County ISD	83.8%	16.2%	13.7%	2.5%
Taos County ISD	81.4%	18.6%	17.3%	1.3%
Torrance County ISD	78.9%	21.1%	16.5%	4.5%
Valencia North County ISD	77.6%	22.4%	18.5%	3.9%
Valencia South County ISD	0.0%	0.0%	0.0%	0.0%
West Dona Ana County ISD	87.8%	12.2%	9.7%	2.4%
Centralized Units	0.0%	0.0%	0.0%	0.0%
Statewide Total	83.4%	16.6%	14.4%	2.2%

SNAP Renewal Disposition Rates by Region²⁰
April 2020

Region	Approval Rate	Closure Rate	Need Based Closure Rate	Procedural Closure Rate
Region 1 - NW	80.7%	19.3%	17.7%	1.6%
Region 2 - NE	84.7%	15.3%	13.9%	1.4%
Region 3 - Central	82.7%	17.3%	15.0%	2.3%
Region 4 - SE	83.7%	16.3%	12.7%	3.6%
Region 5 - SW	85.6%	14.4%	11.8%	2.6%
Centralized Units				
Statewide Total	83.4%	16.6%	14.4%	2.2%



SNAP: Percentage of Approved Renewal Applications Processed¹¹

	Oct-19	Nov-19	Dec-19	Jan-20	Feb-20	Mar-20	Apr-20	May-20	Jun-20	Jul-20	Aug-20	Sep-20	Average
Cibola	94.2%	97.9%	95.4%	94.4%	96.7%	100.0%	100.0%						96.9%
McKinley	99.0%	94.2%	97.5%	97.4%	98.0%	100.0%	100.0%						98.0%
San Juan	95.3%	93.9%	97.1%	97.8%	97.4%	100.0%	100.0%						97.4%
Sierra	97.2%	95.3%	96.8%	98.9%	97.8%	100.0%	100.0%						98.0%
Socorro	98.0%	97.2%	97.2%	98.7%	98.9%	100.0%	100.0%						98.6%
Valencia North	98.3%	97.2%	95.7%	98.2%	99.6%	100.0%	100.0%						98.4%
Valencia South						100.0%							100.0%
NW Region 1 Total	97.0%	96.0%	96.6%	97.6%	98.1%	100.0%	100.0%						97.9%
Colfax	100.0%	97.6%	98.4%	100.0%	100.0%	100.0%	100.0%						99.4%
Guadalupe	94.7%	100.0%	100.0%	100.0%	100.0%	100.0%	100.0%						99.2%
Quay	100.0%	98.2%	100.0%	100.0%	100.0%	100.0%	100.0%						99.7%
Rio Arriba	99.1%	96.4%	95.8%	97.1%	100.0%	100.0%	100.0%						98.3%
San Miguel	94.4%	95.9%	99.5%	97.6%	97.5%	100.0%	100.0%						97.8%
Sandoval	99.5%	98.6%	98.5%	99.3%	99.4%	100.0%	100.0%						99.3%
Santa Fe	95.3%	92.6%	96.5%	93.0%	94.7%	100.0%	100.0%						96.0%
Taos	97.9%	95.0%	100.0%	97.6%	97.6%	100.0%	100.0%						98.3%
NE Region 2 Total	97.6%	96.8%	98.6%	98.1%	98.7%	100.0%	100.0%						98.5%
NE Bernalillo	98.6%	96.6%	96.8%	93.1%	96.4%	100.0%	100.0%						97.4%
NW Bernalillo	96.2%	96.2%	95.4%	93.9%	97.7%	100.0%	100.0%						97.1%
SE Bernalillo	97.2%	94.8%	96.6%	92.5%	98.4%	100.0%	100.0%						97.1%
SW Bernalillo	97.0%	96.9%	97.2%	95.1%	99.4%	100.0%	100.0%						97.9%
Torrance	95.6%	95.0%	99.1%	96.4%	98.5%	100.0%	100.0%						97.8%
Gen. Region 3 Total	96.9%	95.9%	97.0%	94.2%	98.1%	100.0%	100.0%						97.4%
Chaves	98.8%	98.7%	97.8%	99.0%	98.7%	100.0%	100.0%						99.0%
Curry	98.8%	98.4%	97.9%	99.5%	99.6%	100.0%	100.0%						99.2%
Eddy Artesia	100.0%	100.0%	100.0%	96.4%	100.0%	100.0%	100.0%						99.5%
Eddy Carlsbad	100.0%	98.6%	100.0%	100.0%	98.6%	100.0%	100.0%						99.6%
Lea	98.8%	98.9%	97.0%	95.4%	100.0%	100.0%	100.0%						98.6%
Lincoln	95.8%	96.9%	96.8%	96.6%	96.4%	100.0%	100.0%						97.5%
Roosevelt													
SE Region 4 Total	98.7%	98.6%	98.3%	97.8%	98.9%	100.0%	100.0%						98.9%
East Dona Ana	97.8%	97.5%	97.5%	98.5%	100.0%	100.0%	100.0%						98.8%
Grant	98.1%	100.0%	96.1%	97.1%	99.3%	100.0%	100.0%						98.7%
Luna	100.0%	97.6%	99.4%	99.2%	99.2%	100.0%	100.0%						99.3%
Otero	99.1%	99.0%	100.0%	97.2%	99.5%	100.0%	100.0%						99.3%
South Dona Ana	100.0%	99.7%	100.0%	99.7%	100.0%	100.0%	100.0%						99.9%
West Dona Ana	100.0%	98.4%	99.5%	100.0%	99.7%	100.0%	100.0%						99.7%
SW Region 5 Total	99.2%	98.7%	98.8%	98.6%	99.6%	100.0%	100.0%						99.3%
STATE TOTAL	97.9%	97.2%	97.9%	97.4%	98.7%	100.0%	100.0%						98.4%

If a renewal packet was received on or before 15th of the renewal month, the case shall be considered timely if the case was processed by renewal due date

Recertifications – If a Recertification cannot be processed under normal processing, ASPEN will automatically extend certification periods for households scheduled to recertify in March, April, May and June 2020, for 6 months until September, October and November 2020.

SNAP: Percentage of Approved Renewal Applications Processed¹¹

	Oct-19	Nov-19	Dec-19	Jan-20	Feb-20	Mar-20	Apr-20	May-20	Jun-20	Jul-20	Aug-20	Sep-20	Average
Cibola	87.5%	91.7%	100.0%	100.0%	100.0%	100.0%	100.0%						97.0%
McKinley	97.6%	95.5%	100.0%	93.9%	100.0%	100.0%	100.0%						98.1%
San Juan	94.6%	91.3%	98.4%	100.0%	95.1%	100.0%	100.0%						97.1%
Sierra	96.8%	100.0%	92.3%	100.0%	100.0%	100.0%	100.0%						98.4%
Socorro	96.4%	96.2%	100.0%	100.0%	100.0%	100.0%	100.0%						98.9%
Valencia North	98.4%	94.4%	100.0%	100.0%	100.0%	100.0%	100.0%						99.0%
Valencia South						100.0%							100.0%
NW Region 1 Total	95.2%	94.9%	98.5%	99.0%	99.2%	100.0%	100.0%						98.1%
Colfax	100.0%	100.0%	100.0%	100.0%	100.0%	100.0%	100.0%						100.0%
Guadalupe	100.0%	100.0%	100.0%	100.0%	100.0%	100.0%	100.0%						100.0%
Quay	100.0%	100.0%	100.0%	100.0%	100.0%	100.0%	100.0%						100.0%
Rio Arriba	98.4%	93.3%	90.9%	100.0%	100.0%	100.0%	100.0%						97.5%
San Miguel	92.9%	100.0%	100.0%	100.0%	100.0%	100.0%	100.0%						99.0%
Sandoval	100.0%	97.9%	100.0%	100.0%	100.0%	100.0%	100.0%						99.7%
Santa Fe	91.3%	95.8%	98.1%	93.9%	100.0%	100.0%	100.0%						97.0%
Taos	87.5%	100.0%	100.0%	100.0%	100.0%	100.0%	100.0%						98.2%
NE Region 2 Total	96.3%	98.4%	98.6%	99.2%	100.0%	100.0%	100.0%						98.9%
NE Bernalillo	100.0%	94.6%	98.8%	94.0%	100.0%	100.0%	100.0%						98.2%
NW Bernalillo	98.0%	96.9%	98.8%	95.2%	100.0%	100.0%	100.0%						98.4%
SE Bernalillo	97.8%	100.0%	98.5%	93.6%	97.8%	100.0%	100.0%						98.2%
SW Bernalillo	98.0%	96.3%	100.0%	97.5%	100.0%	100.0%	100.0%						98.8%
Torrance	96.2%	81.8%	100.0%	100.0%	100.0%	100.0%	100.0%						96.9%
Gen. Region 3 Total	98.0%	93.9%	99.2%	96.1%	99.6%	100.0%	100.0%						98.1%
Chaves	100.0%	100.0%	96.6%	93.9%	100.0%	100.0%	100.0%						98.6%
Curry	100.0%	96.3%	100.0%	100.0%	100.0%	100.0%	100.0%						99.5%
Eddy Artesia	100.0%	100.0%	100.0%	100.0%	100.0%	100.0%	100.0%						100.0%
Eddy Carlsbad	100.0%	88.9%	100.0%	100.0%	100.0%	100.0%	100.0%						98.4%
Lea	97.1%	100.0%	100.0%	93.5%	100.0%	100.0%	100.0%						98.7%
Lincoln	92.9%	100.0%	100.0%	100.0%	100.0%	100.0%	100.0%						99.0%
Roosevelt													
SE Region 4 Total	98.3%	97.5%	99.4%	97.9%	100.0%	100.0%	100.0%						99.0%
East Dona Ana	98.4%	98.1%	100.0%	100.0%	100.0%	100.0%	100.0%						99.5%
Grant	96.2%	100.0%	100.0%	100.0%	100.0%	100.0%	100.0%						99.5%
Luna	100.0%	100.0%	100.0%	100.0%	100.0%	100.0%	100.0%						100.0%
Otero	100.0%	100.0%	100.0%	100.0%	100.0%	100.0%	100.0%						100.0%
South Dona Ana	100.0%	100.0%	100.0%	100.0%	100.0%	100.0%	100.0%						100.0%
West Dona Ana	100.0%	97.9%	98.2%	100.0%	100.0%	100.0%	100.0%						99.4%
SW Region 5 Total	99.1%	99.3%	99.7%	100.0%	100.0%	100.0%	100.0%						99.7%
STATE TOTAL	97.3%	97.0%	99.1%	98.6%	99.8%	100.0%	100.0%						98.8%

Only includes cases in which the Renewal Packet was received by the 15th of the month

Recertifications – If a Recertification cannot be processed under normal processing, ASPEN will automatically extend certification periods for households scheduled to recertify in March, April, May and June 2020, for 6 months until September, October and November 2020.

SNAP: Percentage of Terminations Renewal Applications Processed ¹¹													
	Oct-19	Nov-19	Dec-19	Jan-20	Feb-20	Mar-20	Apr-20	May-20	Jun-20	Jul-20	Aug-20	Sep-20	Average
Cibola	98.8%	93.8%	96.6%	96.5%	95.8%	100.0%	100.0%						97.4%
McKinley	97.1%	91.8%	98.0%	97.5%	97.5%	100.0%	100.0%						97.4%
San Juan	96.5%	94.6%	97.4%	95.6%	95.6%	100.0%	100.0%						97.1%
Sierra	98.5%	96.2%	93.3%	93.5%	100.0%	100.0%	100.0%						97.4%
Socorro	100.0%	92.2%	100.0%	100.0%	100.0%	100.0%	100.0%						98.9%
Valencia North	97.8%	93.5%	97.0%	97.5%	97.4%	100.0%	100.0%						97.6%
Valencia South													
NW Region 1 Total	98.1%	93.7%	97.1%	96.8%	97.7%	100.0%	100.0%						97.6%
Colfax	100.0%	100.0%	100.0%	92.9%	100.0%	100.0%	100.0%						99.0%
Guadalupe	100.0%	90.9%	100.0%	100.0%	92.9%	100.0%	100.0%						97.7%
Quay	100.0%	100.0%	100.0%	96.0%	96.3%	100.0%	100.0%						98.9%
Rio Arriba	98.2%	93.7%	96.5%	94.9%	99.2%	100.0%	100.0%						97.5%
San Miguel	92.9%	97.6%	100.0%	95.1%	87.7%	100.0%	100.0%						96.2%
Sandoval	98.0%	96.6%	96.8%	98.9%	99.0%	100.0%	100.0%						98.5%
Santa Fe	97.0%	95.4%	97.3%	93.3%	94.1%	100.0%	100.0%						96.7%
Taos	98.8%	96.3%	98.8%	94.4%	98.5%	100.0%	100.0%						98.1%
NE Region 2 Total	98.1%	96.3%	98.7%	95.7%	96.0%	100.0%	100.0%						97.8%
NE Bernalillo	95.0%	94.9%	96.3%	94.6%	96.1%	100.0%	100.0%						96.7%
NW Bernalillo	95.1%	95.0%	94.4%	94.2%	98.0%	100.0%	100.0%						96.7%
SE Bernalillo	95.2%	96.1%	93.7%	95.6%	96.9%	100.0%	100.0%						96.8%
SW Bernalillo	97.3%	98.2%	97.2%	93.2%	98.1%	100.0%	100.0%						97.7%
Torrance	100.0%	97.8%	94.2%	95.4%	96.6%	100.0%	100.0%						97.7%
Gen. Region 3 Total	96.5%	96.4%	95.2%	94.6%	97.1%	100.0%	100.0%						97.1%
Chaves	96.8%	94.9%	94.5%	95.6%	99.2%	100.0%	100.0%						97.3%
Curry	98.7%	97.9%	98.3%	99.1%	98.3%	100.0%	100.0%						98.9%
Eddy Artesia	92.3%	100.0%	100.0%	95.7%	95.3%	100.0%	100.0%						97.6%
Eddy Carlsbad	100.0%	97.6%	97.2%	93.9%	100.0%	100.0%	100.0%						98.4%
Lea	97.6%	95.9%	98.6%	97.8%	99.0%	100.0%	100.0%						98.4%
Lincoln	95.3%	91.7%	87.5%	96.2%	97.4%	100.0%	100.0%						95.4%
Roosevelt													
SE Region 4 Total	96.8%	96.3%	96.0%	96.4%	98.2%	100.0%	100.0%						97.7%
East Dona Ana	98.7%	97.5%	99.0%	99.3%	97.6%	100.0%	100.0%						98.9%
Grant	100.0%	98.1%	95.9%	91.7%	100.0%	100.0%	100.0%						98.0%
Luna	100.0%	97.5%	96.7%	98.5%	100.0%	100.0%	100.0%						99.0%
Otero	100.0%	99.0%	97.7%	99.1%	98.1%	100.0%	100.0%						99.1%
South Dona Ana	100.0%	100.0%	100.0%	99.2%	98.7%	100.0%	100.0%						99.7%
West Dona Ana	97.9%	99.0%	99.1%	100.0%	100.0%	100.0%	100.0%						99.4%
SW Region 5 Total	99.4%	98.5%	98.1%	98.0%	99.1%	100.0%	100.0%						99.0%
STATE TOTAL	97.9%	96.2%	97.2%	96.3%	97.5%	100.0%	100.0%						97.9%

Includes cases for which no renewal application was received.

Recertifications – If a Recertification cannot be processed under normal processing, ASPEN will automatically extend certification periods for households scheduled to recertify in March, April, May and June 2020, for 6 months until September, October and November 2020.

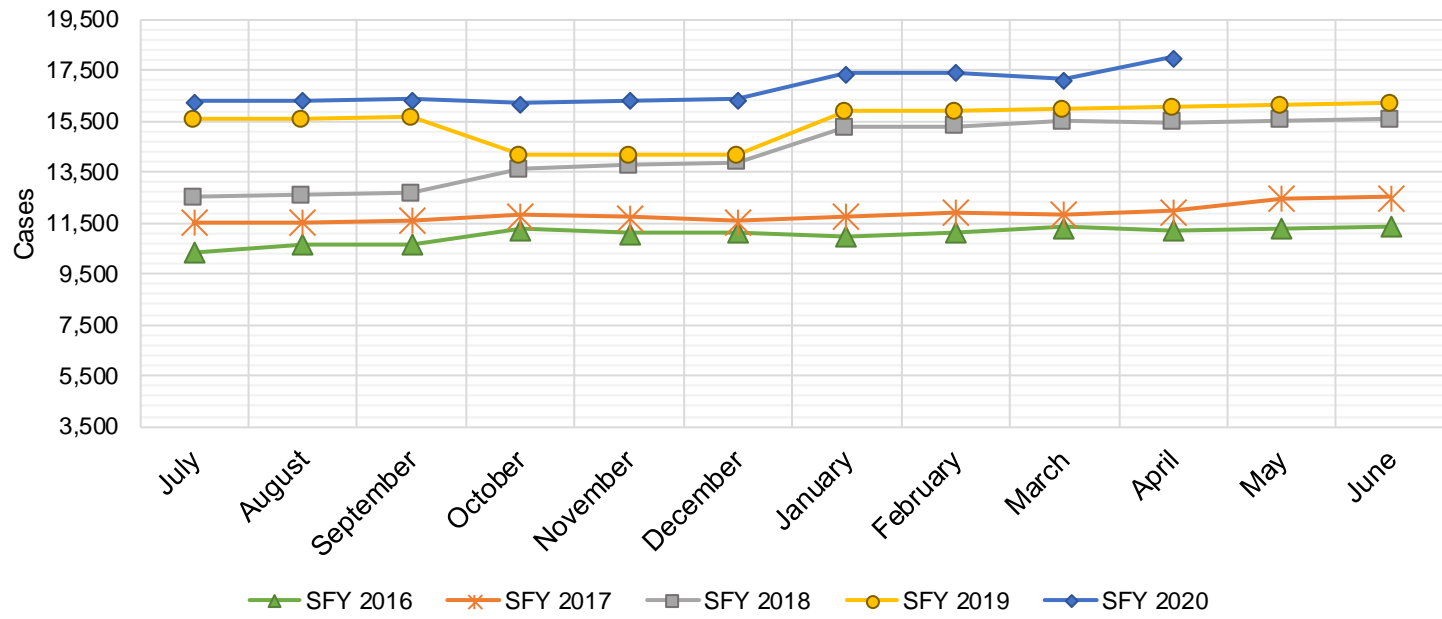
SNAP: Combined Percentage of Approved and Terminated Renewal Applications Processed¹¹

	Oct-19	Nov-19	Dec-19	Jan-20	Feb-20	Mar-20	Apr-20	May-20	Jun-20	Jul-20	Aug-20	Sep-20	Average
Cibola	96.1%	96.4%	95.9%	95.2%	96.4%	100.0%	100.0%						97.1%
McKinley	98.4%	93.4%	97.6%	97.4%	97.9%	100.0%	100.0%						97.8%
San Juan	95.8%	94.1%	97.2%	97.0%	96.6%	100.0%	100.0%						97.2%
Sierra	97.7%	95.7%	95.9%	97.5%	98.4%	100.0%	100.0%						97.9%
Socorro	98.7%	95.6%	98.1%	99.2%	99.2%	100.0%	100.0%						98.7%
Valencia North	98.1%	95.8%	96.2%	97.9%	98.8%	100.0%	100.0%						98.1%
Valencia South													
NW Region 1 Total	97.5%	95.2%	96.8%	97.4%	97.9%	100.0%	100.0%						97.8%
Colfax	100.0%	98.6%	99.0%	98.3%	100.0%	100.0%	100.0%						99.4%
Guadalupe	97.1%	97.3%	100.0%	100.0%	96.9%	100.0%	100.0%						98.8%
Quay	100.0%	98.8%	100.0%	98.3%	98.6%	100.0%	100.0%						99.4%
Rio Arriba	98.8%	95.1%	96.1%	96.2%	99.7%	100.0%	100.0%						98.0%
San Miguel	93.9%	96.5%	99.6%	96.6%	94.6%	100.0%	100.0%						97.3%
Sandoval	99.0%	97.8%	97.9%	99.1%	99.2%	100.0%	100.0%						99.0%
Santa Fe	96.0%	93.7%	96.8%	93.1%	94.5%	100.0%	100.0%						96.3%
Taos	98.2%	95.5%	99.6%	96.3%	97.9%	100.0%	100.0%						98.2%
NE Region 2 Total	97.9%	96.7%	98.6%	97.2%	97.7%	100.0%	100.0%						98.3%
NE Bernalillo	97.1%	96.0%	96.6%	93.7%	96.3%	100.0%	100.0%						97.1%
NW Bernalillo	95.7%	95.7%	95.0%	94.0%	97.9%	100.0%	100.0%						96.9%
SE Bernalillo	96.3%	95.3%	95.5%	93.7%	97.8%	100.0%	100.0%						96.9%
SW Bernalillo	97.1%	97.3%	97.2%	94.4%	99.0%	100.0%	100.0%						97.9%
Torrance	97.5%	96.3%	96.9%	96.0%	97.9%	100.0%	100.0%						97.8%
Gen. Region 3 Total	96.7%	96.1%	96.2%	94.4%	97.8%	100.0%	100.0%						97.3%
Chaves	98.1%	97.4%	96.9%	97.7%	98.9%	100.0%	100.0%						98.4%
Curry	98.8%	98.2%	98.0%	99.3%	99.2%	100.0%	100.0%						99.1%
Eddy Artesia	97.1%	100.0%	100.0%	96.2%	97.8%	100.0%	100.0%						98.7%
Eddy Carlsbad	100.0%	98.2%	98.5%	97.5%	99.1%	100.0%	100.0%						99.0%
Lea	98.3%	97.6%	97.7%	96.2%	99.6%	100.0%	100.0%						98.5%
Lincoln	95.7%	95.0%	93.6%	96.5%	96.8%	100.0%	100.0%						96.8%
Roosevelt													
SE Region 4 Total	98.0%	97.7%	97.5%	97.2%	98.6%	100.0%	100.0%						98.4%
East Dona Ana	98.1%	97.5%	98.2%	98.8%	99.3%	100.0%	100.0%						98.8%
Grant	98.7%	99.4%	96.0%	95.4%	99.5%	100.0%	100.0%						98.4%
Luna	100.0%	97.6%	98.4%	99.0%	99.5%	100.0%	100.0%						99.2%
Otero	99.4%	99.0%	99.1%	98.1%	99.0%	100.0%	100.0%						99.2%
South Dona Ana	100.0%	99.8%	100.0%	99.6%	99.6%	100.0%	100.0%						99.9%
West Dona Ana	99.3%	98.6%	99.3%	100.0%	99.8%	100.0%	100.0%						99.6%
SW Region 5 Total	99.3%	98.7%	98.5%	98.5%	99.5%	100.0%	100.0%						99.2%
STATE TOTAL	97.9%	96.9%	97.6%	97.0%	98.2%	100.0%	100.0%						98.2%

State SNAP Supplement

SFY 2016 ^{12,9}			SFY 2017 ⁹			SFY 2018 ⁹			SFY 2019 ⁹			SFY 2020 ⁹		
	Cases	Expenditures		Cases	Expenditures		Cases	Expenditures		Cases	Expenditures		Cases	Expenditures
Jul-15	10,345	\$86,143	Jul-16	11,537	\$95,553	Jul-17	12,526	\$97,568	Jul-18	15,555	\$141,711	Jul-19	16,260	\$145,023
Aug-15	10,669	\$88,197	Aug-16	11,522	\$95,107	Aug-17	12,589	\$98,954	Aug-18	15,584	\$139,719	Aug-19	16,314	\$145,706
Sep-15	10,676	\$88,426	Sep-16	11,613	\$94,472	Sep-17	12,679	\$97,546	Sep-18	15,631	\$140,768	Sep-19	16,362	\$145,767
Oct-15	11,262	\$96,758	Oct-16	11,797	\$96,679	Oct-17	13,628	\$117,343	Oct-18	14,161	\$125,737	Oct-19	16,182	\$139,741
Nov-15	11,099	\$91,996	Nov-16	11,735	\$93,689	Nov-17	13,748	\$119,055	Nov-18	14,160	\$125,401	Nov-19	16,331	\$138,583
Dec-15	11,125	\$90,771	Dec-16	11,556	\$93,739	Dec-17	13,877	\$120,585	Dec-18	14,163	\$126,263	Dec-19	16,373	\$137,440
Jan-16	10,977	\$92,760	Jan-17	11,763	\$96,074	Jan-18	15,246	\$135,993	Jan-19	15,890	\$141,357	Jan-20	17,360	\$145,696
Feb-16	11,153	\$95,363	Feb-17	11,907	\$98,251	Feb-18	15,308	\$137,296	Feb-19	15,882	\$142,396	Feb-20	17,429	\$154,849
Mar-16	11,332	\$96,751	Mar-17	11,853	\$96,693	Mar-18	15,482	\$139,132	Mar-19	15,970	\$142,427	Mar-20	17,131	\$150,568
Apr-16	11,222	\$93,959	Apr-17	11,944	\$97,060	Apr-18	15,466	\$139,202	Apr-19	16,032	\$143,982	Apr-20	18,017	\$157,944
May-16	11,283	\$95,271	May-17	12,457	\$96,940	May-18	15,525	\$139,397	May-19	16,126	\$143,697	May-20		
Jun-16	11,389	\$93,061	Jun-17	12,498	\$97,405	Jun-18	15,577	\$140,802	Jun-19	16,182	\$143,128	Jun-20		

TOTAL	132,532	\$1,109,455	142,182	\$1,151,662	171,651	\$1,482,874	185,336	\$1,656,584	167,759	\$1,461,318
AVERAGE	11,044	\$92,455	11,849	\$95,972	14,304	\$123,573	15,445	\$138,049	16,776	\$146,132



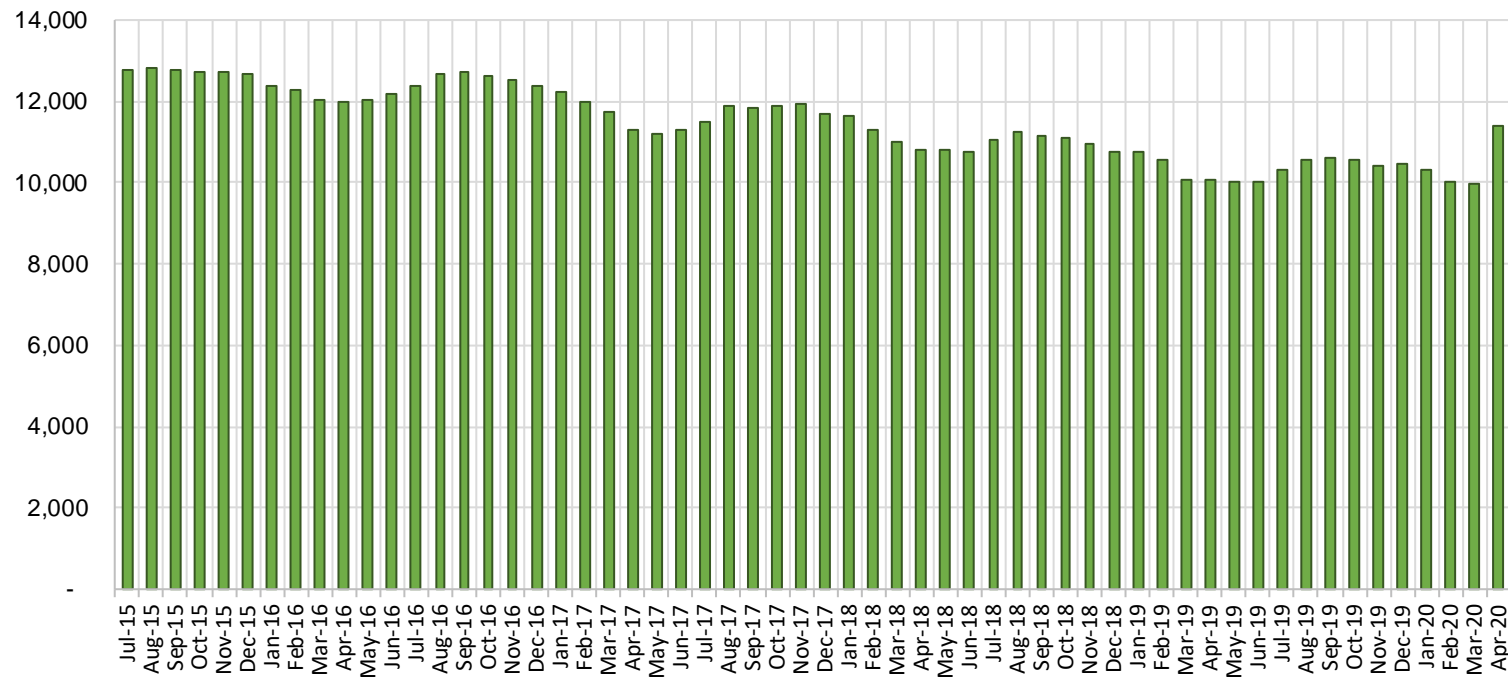
TANF Cases by Field Office⁶

Office				Percent Change	
	Apr-19	Mar-20	Apr-20	Apr-19- Apr-20	Mar-20- Apr-20
Chaves County ISD	378	400	547	44.71%	36.75%
Cibola County ISD	136	105	116	-14.71%	10.48%
Colfax County ISD	82	90	98	19.51%	8.89%
Curry County ISD	613	597	614	0.16%	2.85%
East Dona Ana County ISD	412	406	480	16.50%	18.23%
Eddy Artesia County ISD	79	81	100	26.58%	23.46%
Eddy Carlsbad County ISD	127	150	169	33.07%	12.67%
Grant County ISD	185	185	212	14.59%	14.59%
Guadalupe County ISD	27	25	31	14.81%	24.00%
Hidalgo County ISD	0	0	0	NA	N/A
Lea County ISD	297	356	443	49.16%	24.44%
Lincoln County ISD	105	76	92	-12.38%	21.05%
Luna County ISD	222	197	211	-4.95%	7.11%
McKinley County ISD	70	65	74	5.71%	13.85%
Northeast Bernalillo County ISD	882	918	1,090	23.58%	18.74%
Northwest Bernalillo County ISD	779	779	914	17.33%	17.33%
Otero County ISD	244	264	305	25.00%	15.53%
Quay County ISD	64	74	95	48.44%	28.38%
Rio Arriba County ISD	347	339	381	9.80%	12.39%
Roosevelt County ISD	0	0	0	NA	N/A
San Juan County ISD	275	315	410	49.09%	30.16%
San Miguel County ISD	173	181	194	12.14%	7.18%
Sandoval County ISD	453	431	461	1.77%	6.96%
Santa Fe County ISD	369	350	396	7.32%	13.14%
Sierra County ISD	64	68	75	17.19%	10.29%
Socorro County ISD	85	76	85	0.00%	11.84%
South Dona Ana ISD	620	543	570	-8.06%	4.97%
Southeast Bernalillo County ISD	577	473	483	-16.29%	2.11%
Southwest Bernalillo County ISD	1,030	1,098	1,285	24.76%	17.03%
Taos County ISD	150	135	149	-0.67%	10.37%
Torrance County ISD	191	179	195	2.09%	8.94%
Valencia North County ISD	394	404	442	12.18%	9.41%
Valencia South County ISD	0	0	2	N/A	N/A
West Dona Ana County ISD	642	631	694	8.10%	9.98%
Centralized Units	1	1	0	-100.00%	-100.00%
Statewide Total	10,073	9,992	11,413	13.30%	14.22%

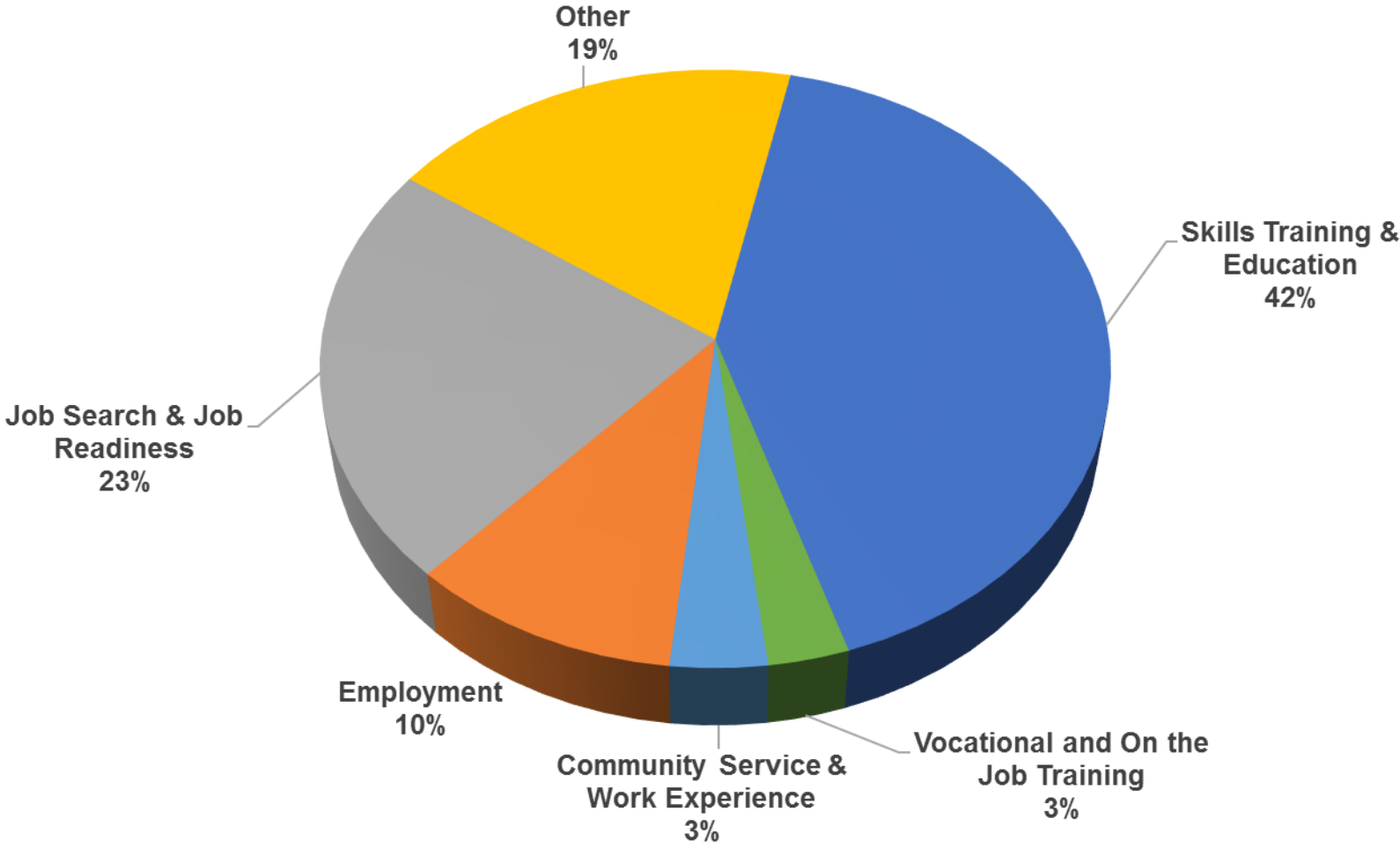
TANF Cases by Region⁶

Region				Percent Change	
	Apr-19	Mar-20	Apr-20	Apr-19- Apr-20	Mar-20- Apr-20
Region 1- NW	1,024	1,033	1,204	17.58%	16.55%
Region 2- NE	1,665	1,625	1,805	8.41%	11.08%
Region 3- Central	3,459	3,447	3,967	14.69%	15.09%
Region 4- SE	1,599	1,660	1,965	22.89%	18.37%
Region 5- SW	2,325	2,226	2,472	6.32%	11.05%
Centralized Units	1	1	0	-100.0%	-100.0%
Statewide Total	10,073	9,992	11,413	13.30%	14.22%

TANF Caseload: SFY-16 to Current

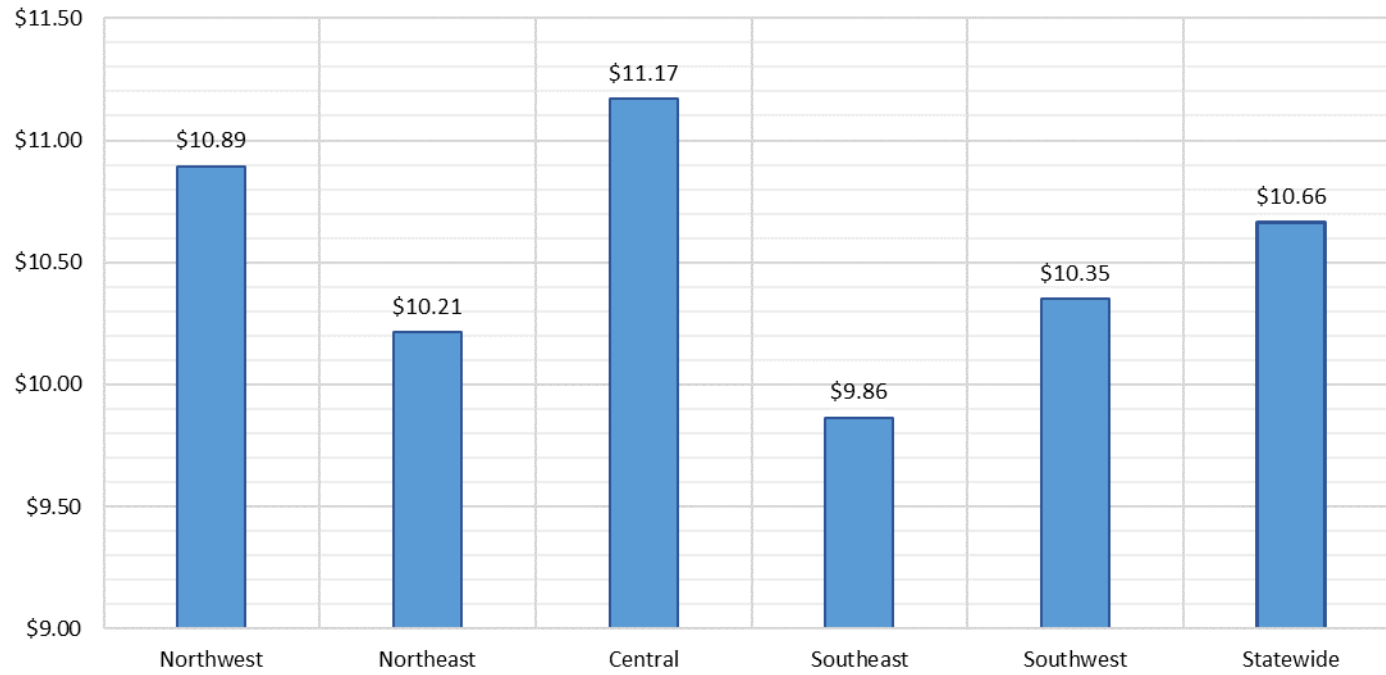


**NM Works Activity Placements on April 30, 2020
as reported by SL Start¹⁴**

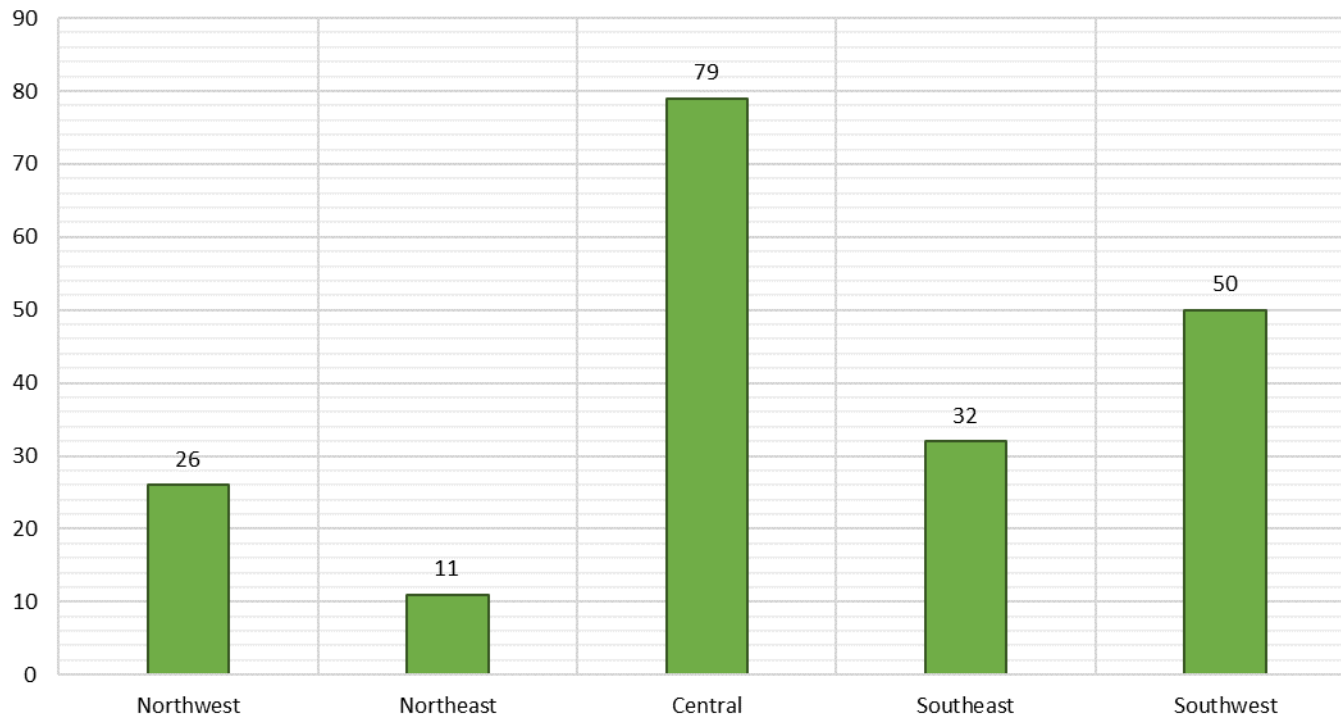


Employment, Vocational Training and Community Service and Work Experience might be reduced due to COVID 19 circumstances.

Average Starting Hourly Wage of April 2020 TANF Employments
as reported by SL Start¹⁵



Number of New Employments in April 2020 by Region
as reported by SL Start¹⁵
Statewide Total: 198



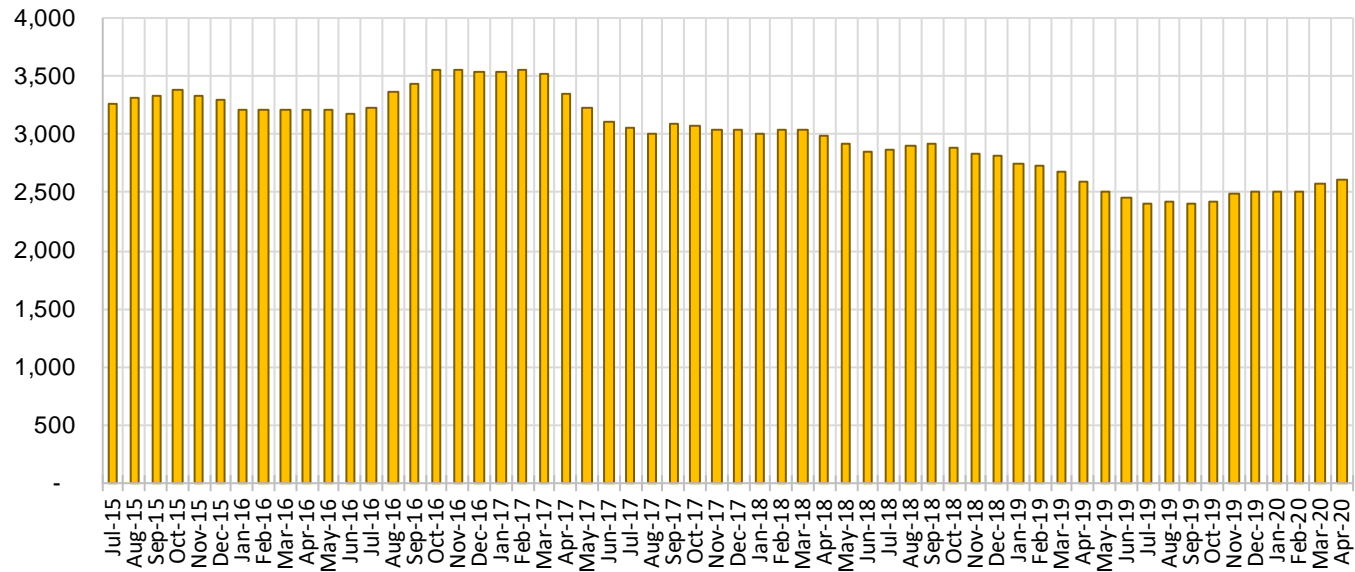
General Assistance Cases by Field Office⁶

Office				Percent Change	
	Apr-19	Mar-20	Apr-20	Apr-19- Apr-20	Mar-20- Apr-20
Chaves County ISD	101	120	119	17.82%	-0.83%
Cibola County ISD	49	41	40	-18.37%	-2.44%
Colfax County ISD	17	21	21	23.53%	0.00%
Curry County ISD	86	97	96	11.63%	-1.03%
East Dona Ana County ISD	108	96	99	-8.33%	3.13%
Eddy Artesia County ISD	30	27	28	-6.67%	3.70%
Eddy Carlsbad County ISD	53	57	60	13.21%	5.26%
Grant County ISD	65	77	76	16.92%	-1.30%
Guadalupe County ISD	14	8	7	-50.00%	-12.50%
Hidalgo County ISD	0	0	0	N/A	N/A
Lea County ISD	71	63	69	-2.82%	9.52%
Lincoln County ISD	27	29	31	14.81%	6.90%
Luna County ISD	52	54	55	5.77%	1.85%
McKinley County ISD	56	66	60	7.14%	-9.09%
Northeast Bernalillo County ISD	271	231	239	-11.81%	3.46%
Northwest Bernalillo County ISD	238	249	238	0.00%	-4.42%
Otero County ISD	60	69	66	10.00%	-4.35%
Quay County ISD	34	29	30	-11.76%	3.45%
Rio Arriba County ISD	72	67	73	1.39%	8.96%
Roosevelt County ISD	0	0	0	N/A	N/A
San Juan County ISD	118	144	138	16.95%	-4.17%
San Miguel County ISD	69	59	59	-14.49%	0.00%
Sandoval County ISD	92	79	80	-13.04%	1.27%
Santa Fe County ISD	107	97	93	-13.08%	-4.12%
Sierra County ISD	34	40	43	26.47%	7.50%
Socorro County ISD	39	42	41	5.13%	-2.38%
South Dona Ana ISD	51	58	60	17.65%	3.45%
Southeast Bernalillo County ISD	150	126	131	-12.67%	3.97%
Southwest Bernalillo County ISD	187	194	200	6.95%	3.09%
Taos County ISD	37	32	34	-8.11%	6.25%
Torrance County ISD	48	48	46	-4.17%	-4.17%
Valencia North County ISD	95	90	91	-4.21%	1.11%
Valencia South County ISD	0	0	0	N/A	N/A
West Dona Ana County ISD	170	171	179	5.29%	4.68%
Centralized Units	0	0	0	N/A	N/A
Statewide Total	2,601	2,581	2,602	0.04%	0.81%

General Assistance Cases by Region⁶

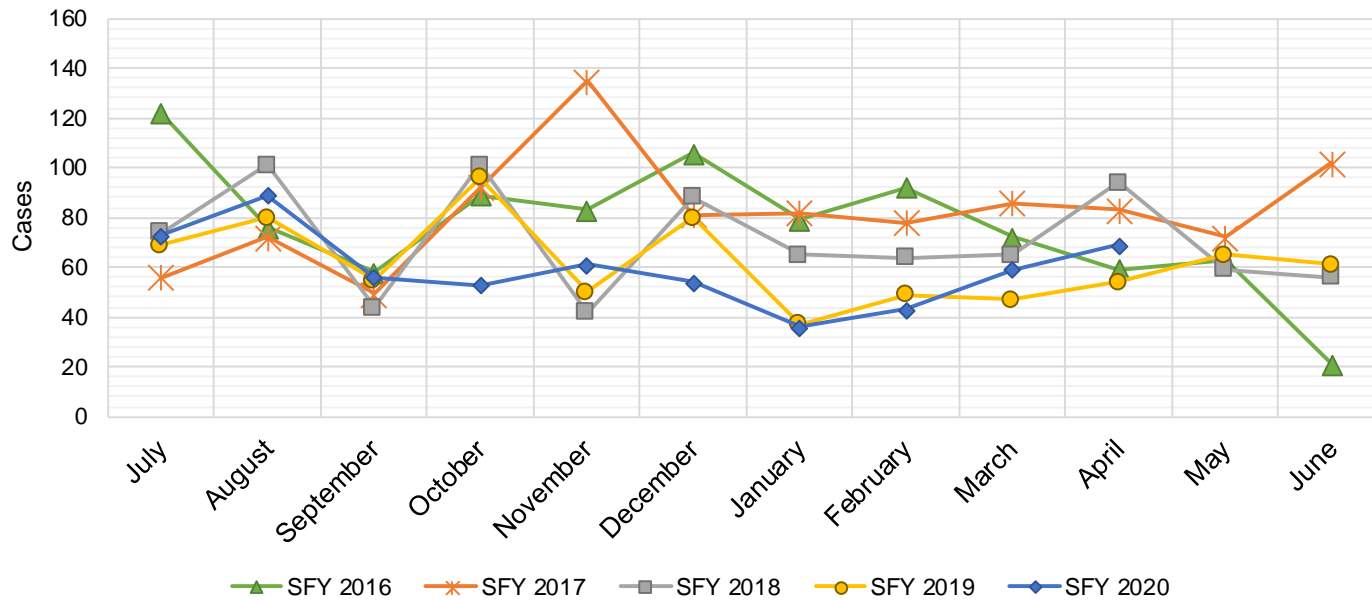
Region				Percent Change	
	Apr-19	Mar-20	Apr-20	Apr-19- Apr-20	Mar-20-Apr- 20
Region 1 - NW	391	423	413	5.63%	-2.36%
Region 2 - NE	442	392	397	-10.18%	1.28%
Region 3 - Central	894	848	854	-4.47%	0.71%
Region 4 - SE	368	393	403	9.51%	2.54%
Region 5 - SW	506	525	535	5.73%	1.90%
Centralized Units	0	0	0	N/A	N/A
Statewide Total	2,601	2,581	2,602	0.04%	0.81%

General Assistance Caseload: SFY-16 to Current



General Assistance Interim Assistance Reimbursements¹⁶

SFY 2016			SFY 2017			SFY 2018			SFY 2019			SFY 2020		
	Cases	Expenditures		Cases	Expenditures		Cases	Expenditures		Cases	Expenditures		Cases	Expenditures
Jul-15	122	\$342,648	Jul-16	56	\$164,970	Jul-17	74	\$241,438	Jul-18	69	\$228,333	Jul-19	73	\$303,584
Aug-15	76	\$245,236	Aug-16	72	\$223,182	Aug-17	101	\$339,301	Aug-18	80	\$241,292	Aug-19	89	\$310,047
Sep-15	58	\$170,093	Sep-16	49	\$158,027	Sep-17	44	\$131,229	Sep-18	55	\$188,192	Sep-19	56	\$172,016
Oct-15	89	\$277,912	Oct-16	92	\$257,830	Oct-17	101	\$335,752	Oct-18	96	\$298,502	Oct-19	53	\$168,461
Nov-15	83	\$238,948	Nov-16	135	\$402,305	Nov-17	42	\$139,572	Nov-18	50	\$148,641	Nov-19	61	\$171,883
Dec-15	106	\$388,102	Dec-16	81	\$227,569	Dec-17	88	\$245,453	Dec-18	80	\$246,422	Dec-19	54	\$164,045
Jan-16	79	\$239,263	Jan-17	82	\$274,050	Jan-18	65	\$258,239	Jan-19	37	\$106,081	Jan-20	36	\$96,668
Feb-16	92	\$296,332	Feb-17	78	\$227,569	Feb-18	64	\$195,815	Feb-19	49	\$119,300	Feb-20	43	\$126,743
Mar-16	72	\$254,360	Mar-17	86	\$278,219	Mar-18	65	\$172,188	Mar-19	47	\$137,296	Mar-20	59	\$169,363
Apr-16	59	\$208,631	Apr-17	83	\$267,187	Apr-18	94	\$312,340	Apr-19	54	\$173,772	Apr-20	69	\$199,975
May-16	63	\$182,241	May-17	72	\$232,836	May-18	59	\$155,406	May-19	65	\$237,979	May-20		
Jun-16	21	\$51,760	Jun-17	102	\$306,228	Jun-18	56	\$159,268	Jun-19	61	\$214,497	Jun-20		
TOTAL	920	\$2,895,525	988	\$3,019,972	853	\$2,686,001	743	\$2,340,307	593	\$1,882,787				
AVERAGE	77	\$241,294	82	\$251,664	71	\$223,833	62	\$195,026	59	\$188,279				



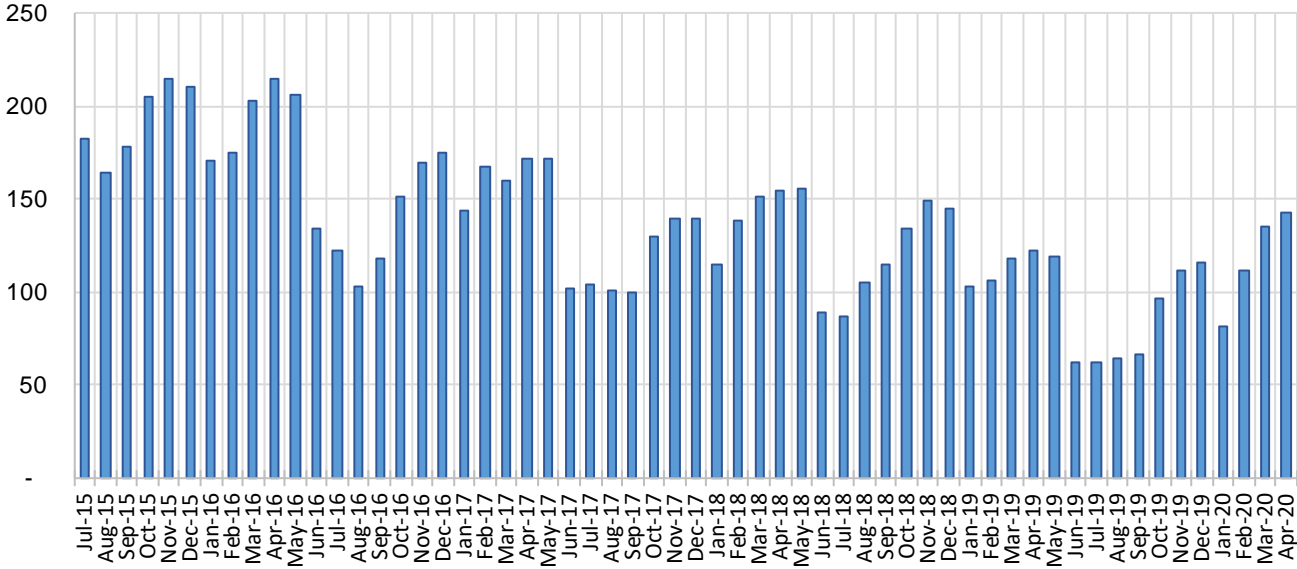
Education Works Cases by Field Office⁶

Office	Percent Change				
	Apr-19	Mar-20	Apr-20	Apr-19- Apr-20	Mar-20- Apr-20
Chaves County ISD	1	3	5	400.0%	66.7%
Cibola County ISD	0	1	1	N/A	0.0%
Colfax County ISD	0	0	0	N/A	N/A
Curry County ISD	5	7	11	120.0%	57.1%
East Dona Ana County ISD	13	10	10	-23.1%	0.0%
Eddy Artesia County ISD	2	1	1	-50.0%	0.0%
Eddy Carlsbad County ISD	3	0	1	-66.7%	N/A
Grant County ISD	3	1	2	-33.3%	100.0%
Guadalupe County ISD	0	0	0	N/A	N/A
Hidalgo County ISD	0	0	0	N/A	N/A
Lea County ISD	2	2	2	0.0%	0.0%
Lincoln County ISD	0	0	0	N/A	N/A
Luna County ISD	2	2	2	0.0%	0.0%
McKinley County ISD	0	1	1	N/A	0.0%
Northeast Bernalillo County ISD	12	9	9	-25.0%	0.0%
Northwest Bernalillo County ISD	8	18	18	125.0%	0.0%
Otero County ISD	1	0	0	-100.0%	N/A
Quay County ISD	0	0	0	N/A	N/A
Rio Arriba County ISD	1	3	3	200.0%	0.0%
Roosevelt County ISD	0	0	0	N/A	N/A
San Juan County ISD	4	3	3	-25.0%	0.0%
San Miguel County ISD	6	4	4	-33.3%	0.0%
Sandoval County ISD	10	10	11	10.0%	10.0%
Santa Fe County ISD	9	8	8	-11.1%	0.0%
Sierra County ISD	1	1	1	0.0%	0.0%
Socorro County ISD	0	0	0	N/A	N/A
South Dona Ana ISD	12	6	6	-50.0%	0.0%
Southeast Bernalillo County ISD	7	13	11	57.1%	-15.4%
Southwest Bernalillo County ISD	6	9	10	66.7%	11.1%
Taos County ISD	0	0	0	N/A	N/A
Torrance County ISD	0	2	2	N/A	0.0%
Valencia North County ISD	1	2	2	100.0%	0.0%
Valencia South County ISD	0	0	0	N/A	N/A
West Dona Ana County ISD	13	19	19	46.2%	0.0%
Centralized Units	0	0	0	N/A	N/A
Statewide Total	122	135	143	17.2%	5.9%

Education Works Cases by Region⁶

Region				Percent Change	
	Apr-19	Mar-20	Apr-20	Apr-19- Apr-20	Mar-20- Apr-20
Region 1 - NW	6	8	8	33.33%	0.00%
Region 2 - NE	26	25	26	0.00%	4.00%
Region 3 - Central	33	51	50	51.52%	-1.96%
Region 4 - SE	13	13	20	53.85%	53.85%
Region 5 - SW	44	38	39	-11.36%	2.63%
Centralized Units	0	0	0	N/A	N/A
Statewide Total	122	135	143	17.21%	5.93%

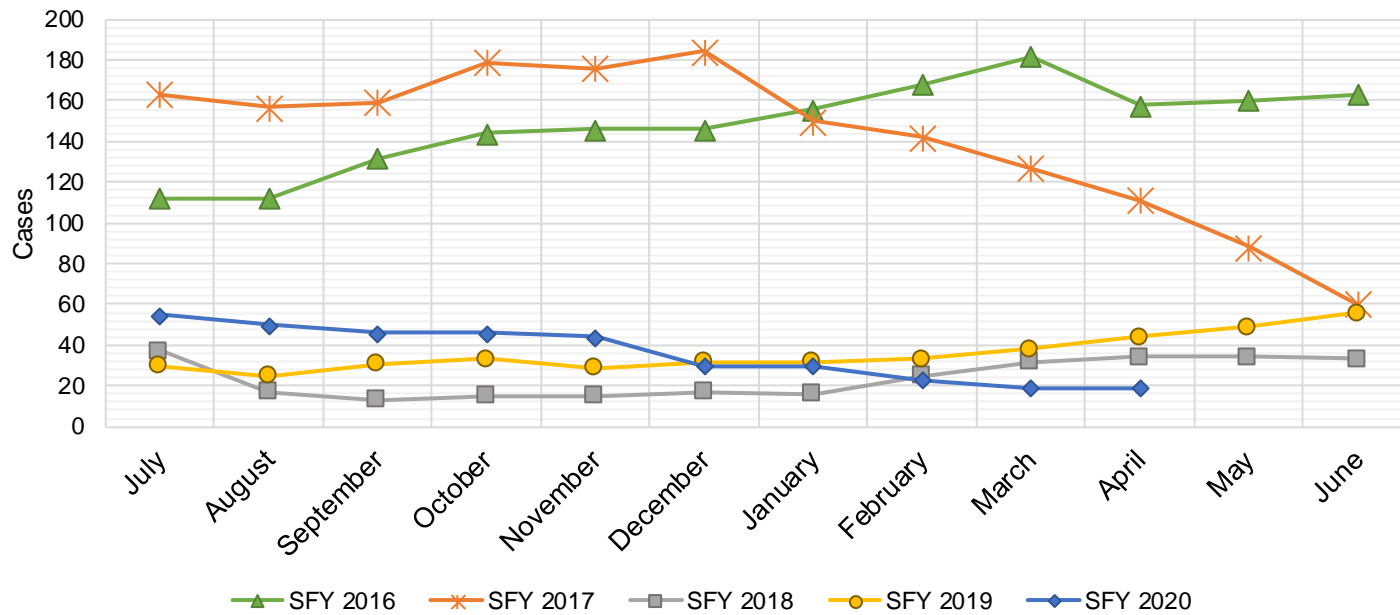
Education Works Caseload: SFY-16 to Current



Refugee Cash Assistance

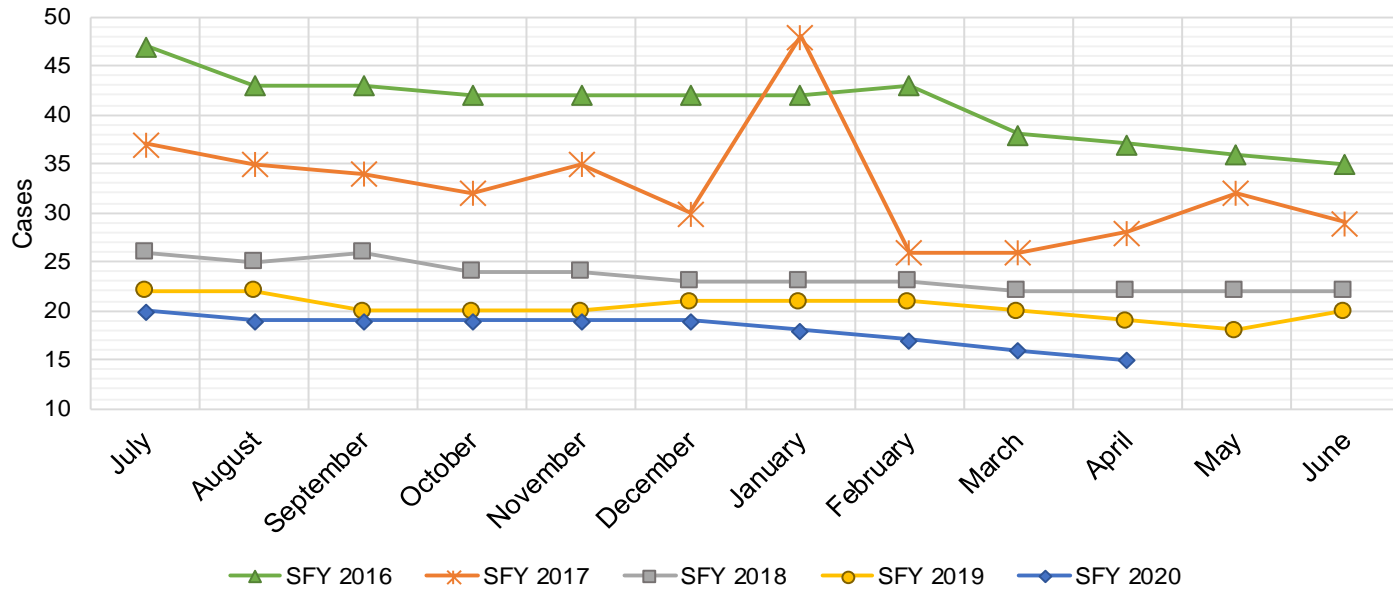
SFY 2016 ^{8,12,9}			SFY 2017 ^{8,9}			SFY 2018 ^{8,9}			SFY 2019 ^{8,9}			SFY 2020 ^{8,9}		
	Cases	Expenditures		Cases	Expenditures		Cases	Expenditures		Cases	Expenditures		Cases	Expenditures
Jul-15	112	\$27,516	Jul-16	163	\$39,756	Jul-17	37	\$9,981	Jul-18	30	\$7,408	Jul-19	55	\$13,851
Aug-15	112	\$27,438	Aug-16	157	\$40,115	Aug-17	17	\$4,704	Aug-18	25	\$6,434	Aug-19	50	\$12,497
Sep-15	132	\$31,321	Sep-16	159	\$39,359	Sep-17	13	\$3,159	Sep-18	31	\$6,947	Sep-19	46	\$11,473
Oct-15	144	\$36,153	Oct-16	179	\$41,520	Oct-17	15	\$3,543	Oct-18	33	\$6,323	Oct-19	46	\$11,341
Nov-15	146	\$36,515	Nov-16	176	\$45,434	Nov-17	15	\$4,263	Nov-18	29	\$7,036	Nov-19	44	\$11,296
Dec-15	146	\$35,763	Dec-16	184	\$46,673	Dec-17	17	\$4,795	Dec-18	32	\$7,300	Dec-19	30	\$7,679
Jan-16	156	\$38,686	Jan-17	150	\$38,790	Jan-18	16	\$4,166	Jan-19	32	\$7,418	Jan-20	30	\$7,407
Feb-16	168	\$41,368	Feb-17	142	\$37,956	Feb-18	25	\$5,723	Feb-19	33	\$8,591	Feb-20	23	\$7,577
Mar-16	182	\$45,307	Mar-17	127	\$33,066	Mar-18	32	\$7,636	Mar-19	38	\$9,165	Mar-20	19	\$6,500
Apr-16	158	\$41,143	Apr-17	111	\$29,183	Apr-18	34	\$8,827	Apr-19	44	\$10,648	Apr-20	19	\$4,847
May-16	160	\$38,332	May-17	88	\$23,343	May-18	34	\$8,939	May-19	49	\$11,823	May-20		
Jun-16	163	\$39,856	Jun-17	60	\$15,538	Jun-18	33	\$8,513	Jun-19	56	\$13,558	Jun-20		

TOTAL	1,779	\$439,397	1,696	\$430,732	288	\$74,249	432	\$102,651	362	\$94,468
AVERAGE	148	\$36,616	141	\$35,894	24	\$6,187	36	\$8,554	36	\$9,447



State Supplement for Residential Care

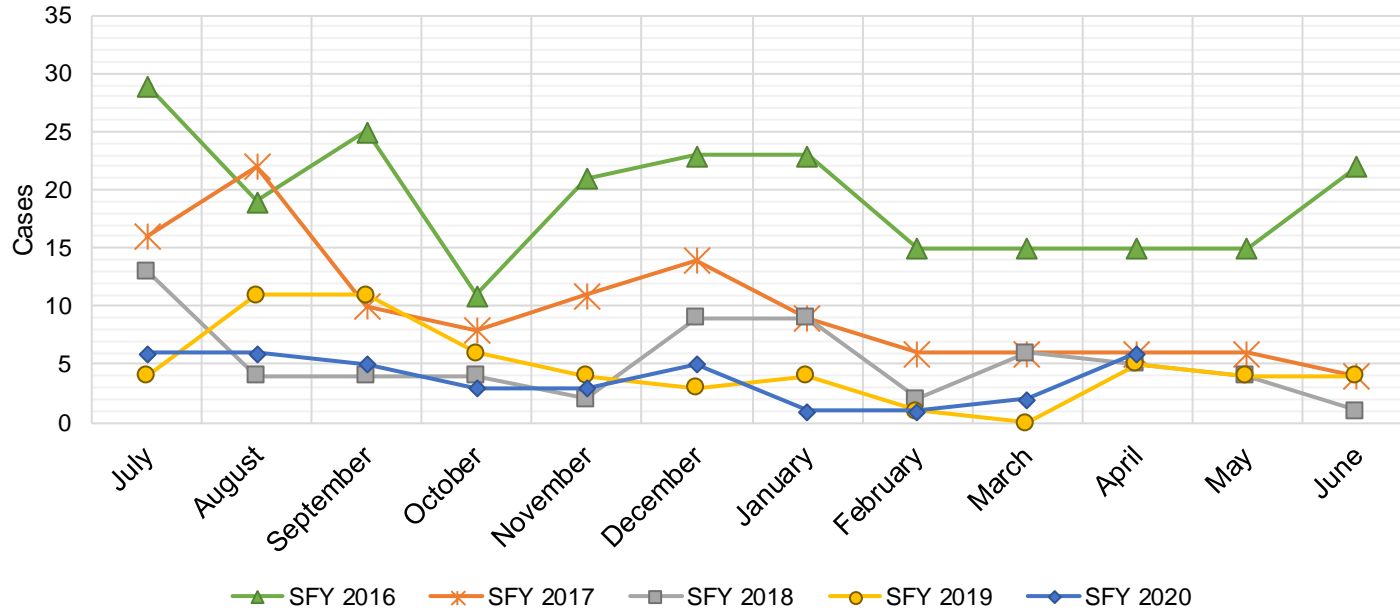
SFY 2016 ^{12,9}			SFY 2017 ⁹			SFY 2018 ⁹			SFY 2019 ⁹			SFY 2020 ⁹		
	Cases	Expenditures		Cases	Expenditures		Cases	Expenditures		Cases	Expenditures		Cases	Expenditures
Jul-15	47	\$4,700	Jul-16	37	\$3,700	Jul-17	26	\$2,700	Jul-18	22	\$2,200	Jul-19	20	\$1,900
Aug-15	43	\$4,900	Aug-16	35	\$3,500	Aug-17	25	\$2,500	Aug-18	22	\$2,200	Aug-19	19	\$1,900
Sep-15	43	\$4,500	Sep-16	34	\$3,400	Sep-17	26	\$2,700	Sep-18	20	\$2,000	Sep-19	19	\$1,900
Oct-15	42	\$4,400	Oct-16	32	\$3,200	Oct-17	24	\$2,500	Oct-18	20	\$2,000	Oct-19	19	\$1,900
Nov-15	42	\$4,200	Nov-16	35	\$3,500	Nov-17	24	\$2,400	Nov-18	20	\$2,000	Nov-19	19	\$1,900
Dec-15	42	\$4,200	Dec-16	30	\$3,000	Dec-17	23	\$2,200	Dec-18	21	\$2,100	Dec-19	19	\$1,900
Jan-16	42	\$4,200	Jan-17	48	\$4,800	Jan-18	23	\$2,400	Jan-19	21	\$2,000	Jan-20	18	\$1,800
Feb-16	43	\$4,300	Feb-17	26	\$2,600	Feb-18	23	\$2,300	Feb-19	21	\$2,200	Feb-20	17	\$1,600
Mar-16	38	\$3,800	Mar-17	26	\$2,600	Mar-18	22	\$2,400	Mar-19	20	\$1,900	Mar-20	16	\$1,500
Apr-16	37	\$3,700	Apr-17	28	\$2,800	Apr-18	22	\$2,200	Apr-19	19	\$1,800	Apr-20	15	\$1,500
May-16	36	\$3,600	May-17	32	\$3,200	May-18	22	\$2,200	May-19	18	\$1,800	May-20		
Jun-16	35	\$3,500	Jun-17	29	\$2,900	Jun-18	22	\$2,200	Jun-19	20	\$2,000	Jun-20		
TOTAL	490	\$50,000	392	\$39,200	282	\$28,700	244	\$24,200	181	\$17,800				
AVERAGE	41	\$4,167	33	\$3,267	24	\$2,392	20	\$2,017	18	\$1,780				



TANF Diversion Payments

SFY 2016 ^{12,9}			SFY 2017 ⁹			SFY 2018 ⁹			SFY 2019 ⁹			SFY 2020 ⁹		
Cases		Expenditures	Cases		Expenditures	Cases		Expenditures	Cases		Expenditures	Cases		Expenditures
Jul-15	29	\$62,074	Jul-16	16	\$30,843	Jul-17	13	\$26,500	Jul-18	4	\$3,000	Jul-19	6	\$18,500
Aug-15	19	\$33,584	Aug-16	22	\$42,731	Aug-17	4	\$12,000	Aug-18	11	\$18,583	Aug-19	6	\$16,500
Sep-15	25	\$47,977	Sep-16	10	\$21,000	Sep-17	4	\$4,000	Sep-18	11	\$20,999	Sep-19	5	\$11,000
Oct-15	11	\$20,500	Oct-16	8	\$16,744	Oct-17	4	\$16,000	Oct-18	6	\$10,499	Oct-19	3	\$3,000
Nov-15	21	\$45,500	Nov-16	11	\$24,500	Nov-17	2	\$15,500	Nov-18	4	\$7,499	Nov-19	3	\$16,180
Dec-15	23	\$45,389	Dec-16	14	\$26,611	Dec-17	9	\$17,500	Dec-18	3	\$2,499	Dec-19	5	\$14,000
Jan-16	23	\$41,874	Jan-17	9	\$18,500	Jan-18	9	\$21,731	Jan-19	4	\$5,999	Jan-20	1	\$1,500
Feb-16	15	\$28,500	Feb-17	6	\$12,000	Feb-18	2	\$7,731	Feb-19	1	\$1,678	Feb-20	1	\$1,857
Mar-16	15	\$27,008	Mar-17	6	\$11,000	Mar-18	6	\$8,496	Mar-19	0	\$3,000	Mar-20	2	\$5,920
Apr-16	15	\$31,389	Apr-17	6	\$12,000	Apr-18	5	\$13,500	Apr-19	5	\$6,500	Apr-20	6	\$14,905
May-16	15	\$31,916	May-17	6	\$11,500	May-18	4	\$12,500	May-19	4	\$16,000	May-20		
Jun-16	22	\$43,000	Jun-17	4	\$13,500	Jun-18	1	\$5,389	Jun-19	4	\$8,000	Jun-20		

TOTAL	233	\$458,711	118	\$240,929	63	\$160,847	57	\$104,256	38	\$103,362
AVERAGE	19	\$38,226	10	\$20,077	5	\$13,404	5	\$8,688	4	\$10,336

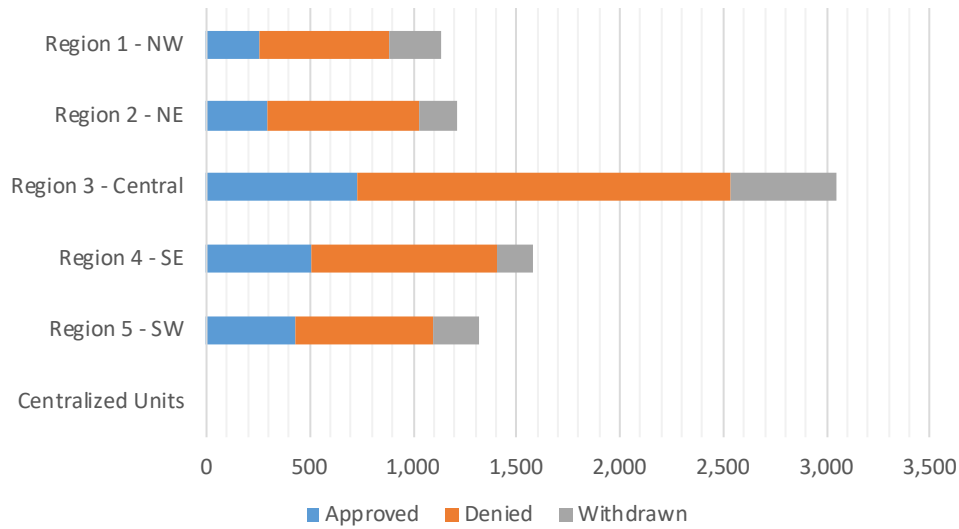


Cash Assistance Applications by Field Office^{4,11}
April 2020

Office	Approved	Denied	Withdrawn	Total Cases Processed
Chaves County ISD	182	287	46	515
Cibola County ISD	21	43	15	79
Colfax County ISD	14	36	5	55
Curry County ISD	87	173	33	293
East Dona Ana County ISD	107	199	65	371
Eddy Artesia County ISD	35	53	7	95
Eddy Carlsbad County ISD	46	86	30	162
Grant County ISD	41	52	18	111
Guadalupe County ISD	7	8	2	17
Hidalgo County ISD	0	0	0	0
Lea County ISD	126	223	48	397
Lincoln County ISD	28	76	12	116
Luna County ISD	37	35	19	91
McKinley County ISD	23	105	41	169
Northeast Bernalillo County ISD	215	654	152	1,021
Northwest Bernalillo County ISD	195	443	172	810
Otero County ISD	67	120	33	220
Quay County ISD	34	53	15	102
Rio Arriba County ISD	64	130	22	216
Roosevelt County ISD	0	0	0	0
San Juan County ISD	130	322	159	611
San Miguel County ISD	24	85	19	128
Sandoval County ISD	65	115	44	224
Santa Fe County ISD	63	242	51	356
Sierra County ISD	16	31	4	51
Socorro County ISD	18	42	16	76
South Dona Ana ISD	69	67	41	177
Southeast Bernalillo County ISD	41	126	27	194
Southwest Bernalillo County ISD	245	513	132	890
Taos County ISD	21	66	25	112
Torrance County ISD	35	69	25	129
Valencia North County ISD	49	82	18	149
Valencia South County ISD	0	0	0	0
West Dona Ana County ISD	106	193	51	350
Centralized Units	0	0	0	0
Statewide Total	2,211	4,729	1,347	8,287

Cash Assistance Applications by Region^{4,11}
April 2020

Region	Approved	Denied	Withdrawn	Total Cases Processed
Region 1 - NW	257	625	253	1,135
Region 2 - NE	292	735	183	1,210
Region 3 - Central	731	1,805	508	3,044
Region 4 - SE	504	898	176	1,578
Region 5 - SW	427	666	227	1,320
Centralized Units	0	0	0	0
Statewide Total	2,211	4,729	1,347	8,287



**Children Youth and Families Department
Children Receiving Child Care Assistance Subsidies By County**

County	Apr 2019	May 2019	June 2019	July 2019	Aug 2019	Sept 2019	Oct 2019	Nov 2019	Dec 2019	Jan 2020	Feb 2020	Mar 2020	Apr 2020	Change Fr. Last Year Cases	Percent
<i>Bernalillo</i>	7,997	8,226	8,692	7,702	7,885	8,295	7,690	7,759	7,591	7,673	7,779	7,975	8,683	686	8.6%
Catron	0	0	0	0	0	0	0	0	0	0	0	0	0	0	0.0%
<i>Chaves</i>	868	868	875	830	824	886	811	891	827	835	830	830	911	43	5.0%
Cibola	306	286	292	283	277	275	250	238	247	224	226	227	271	-35	-11.4%
<i>Colfax</i>	52	50	44	38	40	33	43	34	31	32	32	26	28	-24	-46.2%
Curry	548	542	590	597	613	625	563	596	587	605	613	600	669	121	22.1%
<i>De Baca</i>	0	1	1	1	1	1	1	1	1	0	0	0	0	0	0.0%
Dona Ana	4,413	4,536	4,751	4,360	4,384	4,575	4,429	4,493	4,348	4,350	4,313	4,388	4,806	393	8.9%
<i>Eddy</i>	214	225	240	240	226	224	244	239	234	225	227	231	235	21	9.8%
Grant	127	130	136	133	115	157	138	133	145	143	146	132	159	32	25.2%
<i>Guadalupe</i>	11	11	11	10	10	10	7	7	7	7	7	8	9	-2	-18.2%
Harding	0	0	0	0	0	0	0	0	0	0	0	0	0	0	0.0%
<i>Hidalgo</i>	20	27	27	27	27	26	21	28	28	28	27	24	23	3	15.0%
Lea	815	808	798	770	752	761	770	753	741	736	785	767	828	13	1.6%
<i>Lincoln</i>	104	100	104	103	103	108	101	97	86	89	89	88	100	-4	-3.8%
Los Alamos	36	40	40	37	37	47	38	42	40	42	38	37	48	12	33.3%
<i>Luna</i>	176	190	191	172	160	173	160	148	155	158	163	164	196	20	11.4%
McKinley	154	158	169	146	141	165	176	172	172	170	171	166	185	31	20.1%
<i>Mora</i>	11	13	9	9	10	12	12	11	11	11	11	12	13	2	18.2%
Otero	512	506	530	499	538	547	488	510	501	506	511	520	578	66	12.9%
<i>Out of State</i>	2	0	1	0	0	0	0	0	0	0	0	0	0	-2	-100.0%
Quay	33	33	38	34	38	37	33	34	35	32	34	37	42	9	27.3%
<i>Rio Arriba</i>	141	151	155	158	151	150	147	153	155	152	153	149	160	19	13.5%
Roosevelt	121	119	130	129	138	148	140	134	133	131	132	131	146	25	20.7%
<i>San Juan</i>	958	966	961	905	897	1,018	932	926	958	928	951	979	1,231	273	28.5%
San Miguel	332	349	373	363	357	363	375	356	353	349	361	373	412	80	24.1%
<i>Sandoval</i>	758	751	802	765	806	827	783	803	770	738	765	736	897	139	18.3%
Santa Fe	499	520	541	557	562	606	534	567	537	533	522	537	601	102	20.4%
<i>Sierra</i>	42	40	50	48	47	58	54	56	63	61	52	55	67	25	59.5%
Socorro	55	54	57	53	53	59	54	53	48	43	40	41	46	-9	-16.4%
<i>Taos</i>	124	125	136	138	149	135	118	125	126	126	117	139	156	32	25.8%
Torrance	69	67	82	68	67	73	57	57	63	68	63	71	78	9	13.0%
<i>Union</i>	3	3	4	3	3	3	3	3	3	3	3	3	3	0	0.0%
Valencia	591	607	656	559	569	625	602	595	573	564	533	547	628	37	6.3%
Totals	20,092	20,502	21,486	19,737	19,980	21,022	19,774	20,014	19,569	19,562	19,694	19,993	22,209	2,117	10.5%

CHILDREN YOUTH AND FAMILIES DEPARTMENT

CHILD CARE ASSISTANCE ELIGIBILITY PROGRAMS

MONTH	May'19	June'19	July'19	Aug'19	Sept'19	Oct'19	Nov'19	Dec'19	Jan'20	Feb'20	Mar'20	Apr'20
TANF (Child Care Priority 1 Clients)												
CLIENTS	2,140	2,253	2,054	2,033	2,165	2,053	2,120	2,055	2,030	2,001	2,031	2,005
COST	\$1,278,678	\$1,305,024	\$1,273,209	\$1,263,930	\$1,184,381	\$1,233,005	\$1,284,683	\$1,239,407	\$1,257,977	\$1,195,404	\$1,280,286	\$1,306,318
TANF AVERAGE COST	\$598	\$579	\$620	\$622	\$547	\$601	\$606	\$603	\$620	\$597	\$630	\$652
TRANSITION OFF TANF (Child Care Priority 2 Clients)												
CLIENTS	111	112	120	132	163	166	167	178	196	209	209	223
COST	\$69,505	\$74,593	\$74,688	\$88,189	\$90,271	\$107,532	\$107,596	\$111,325	\$120,862	\$136,239	\$127,986	\$144,617
TRAN OFF TANF AVG COST	\$626	\$666	\$622	\$668	\$554	\$648	\$644	\$625	\$617	\$652	\$612	\$649
TANF ELIGIBLE (Child Care Priority 1B Clients at or below 100% of the Federal Poverty Level)												
CLIENTS	8,494	8,777	8,104	8,220	8,523	8,152	8,135	7,830	7,697	7,671	7,857	7,797
COST	\$4,939,239	\$5,047,497	\$4,909,110	\$5,038,735	\$4,665,509	\$4,833,260	\$4,922,197	\$4,694,761	\$4,551,874	\$4,539,530	\$4,868,148	\$4,955,752
TANF ELIGIBLE AVG COST	\$581	\$575	\$606	\$613	\$547	\$593	\$605	\$600	\$591	\$592	\$620	\$636
INCOME ELIGIBLE (Child Care Priority 3, and Priority 4 Clients)												
CLIENTS	8,610	9,149	8,313	8,429	9,032	8,410	8,595	8,520	8,701	8,848	8,978	10,600
COST	\$4,546,220	\$4,693,955	\$4,573,196	\$4,729,292	\$4,390,092	\$4,436,376	\$4,557,011	\$4,488,101	\$4,573,609	\$4,700,981	\$4,891,611	\$10,456,494
INCOME ELIG AVG COST	\$528	\$513	\$550	\$561	\$486	\$528	\$530	\$527	\$526	\$531	\$545	\$986
AT-RISK CHILD PROTECTIVE SERVICES CHILD CARE PILOT (Priority 5 Clients)												
CLIENTS	303	321	297	270	240	232	200	187	190	182	144	829
COST	\$204,504	\$206,998	\$200,185	\$201,432	\$161,487	\$162,255	\$159,520	\$137,644	\$145,544	\$136,364	\$99,487	\$357,417
CPS AVG COST	\$675	\$645	\$674	\$746	\$673	\$699	\$798	\$736	\$766	\$749	\$691	\$431
CHILD PROTECTIVE SERVICES (Child Care CPS Clients)												
CLIENTS	844	874	849	896	899	761	797	799	748	783	774	755
COST	\$587,750	\$612,880	\$608,184	\$644,539	\$597,788	\$520,249	\$583,911	\$539,629	\$501,038	\$520,094	\$547,029	\$490,287
CPS AVG COST	\$696	\$701	\$716	\$719	\$665	\$684	\$733	\$675	\$670	\$664	\$707	\$649
GRAND TOTAL - ALL CHILD CARE PROGRAMS												
CLIENTS	20,502	21,486	19,737	19,980	21,022	19,774	20,014	19,569	19,562	19,694	19,993	22,209
COST	\$11,625,897	\$11,940,948	\$11,638,571	\$11,966,117	\$11,089,528	\$11,292,678	\$11,614,917	\$11,210,867	\$11,150,904	\$11,228,612	\$11,814,547	\$17,710,886
ALL PROGRAMS AVG COST	\$567	\$556	\$590	\$599	\$528	\$571	\$580	\$573	\$570	\$570	\$591	\$797

SNAP Emergency Allotment and Pandemic EBT: Expenditures, Cases, and Recipients

Note: Pandemic EBT will start to be issued in May 2020

Date	Expenditures		Cases		Recipients	
	Pandemic EBT	Emergency Allotment	Pandemic EBT	Emergency Allotment	Pandemic EBT	Emergency Allotment
Apr-20	—	\$50,524,646	—	158,060	—	340,960
May-20						
Jun-20						
Jul-20						
Aug-20						
Sep-20						
Oct-20						
Nov-20						
Dec-20						
Total to Date		\$50,524,646		158,060		340,960

Income Eligibility Guidelines: October 1, 2019 - September 30, 2020

Federal Poverty Guidelines (FPG) Monthly Income Standards

Supplemental Nutrition Program (SNAP)					
Household Size	100% FPG Net Income	130% FPG Gross Income	165% FPG Gross Income for Categorical Eligibility	Maximum SNAP Monthly Allotment	LIHEAP 150% FPG
1	\$1,041	\$1,354	\$1,718	\$194	\$1,561
2	\$1,410	\$1,832	\$2,326	\$355	\$2,114
3	\$1,778	\$2,311	\$2,933	\$509	\$2,666
4	\$2,146	\$2,790	\$3,541	\$646	\$3,219
5	\$2,515	\$3,269	\$4,149	\$768	\$3,771
6	\$2,883	\$3,748	\$4,757	\$921	\$4,324
7	\$3,251	\$4,227	\$5,364	\$1,018	\$4,876
8	\$3,620	\$4,705	\$5,972	\$1,164	\$5,429
+1	+\$369	+\$479	+\$608	+\$146	+\$553
Minimum Allotment of \$16 effective from 10/1/2019 - 9/30/2020					
DEDUCTIONS: Standard Deduction: For HH size 1-3 = \$167; 4 = \$178; 5 = \$209; 6 or more = \$240; Excess Shelter Deduction Limit: \$569; Heating and Cooling Standard Utility Allowance: \$340 (HCSUA) – Limited Utility Allowance: \$ 136 (LUA); Telephone Standard: \$44; Dependent Care: Actual Amount (No Limit); Earned Income Deduction: 20%; Homeless Shelter Standard: \$152.06, LIHEAP (only) Energy Standard Allowance (ESA): \$204					

CASH Assistance & Support Services				
Household Size	Federal Poverty Guidelines (FPG) Monthly Income Standards		Maximum Monthly Benefit	
	100% FPG Net Income	85% FPG Gross Limit	New Mexico Works Cash Assistance	General Assistance
1	\$1,041	\$885	\$266	\$245
2	\$1,410	\$1,199	\$357	\$329
3	\$1,778	\$1,511	\$447	\$412
4	\$2,146	\$1,824	\$539	\$496
5	\$2,515	\$2,138	\$630	\$580
6	\$2,883	\$2,451	\$721	\$664
7	\$3,251	\$2,763	\$812	\$748
8	\$3,620	\$3,077	\$922	\$849
+1	+\$369	+\$314	+\$91	+\$84
Deductions- Dependent Care: For a child under age 2 = \$200; For a child age 2 and over = \$175. Work Incentives- Earned Income Disregard: Single parent = \$125 & ½ remainder; Two parent = \$225 & ½ remainder.				

ISD 017 Revised 11/26/2019

Medical Assistance Division					
Federal Poverty Guidelines New Mexico Affordable Care Eligibility Groups Effective April 01, 2020 thru March 31, 2021 Monthly Guidelines					
HH SIZE	PERCENT OF POVERTY				
	138%	190%	240%	250%	300%
1	\$1,468	\$2,021	\$2,552	\$2,659	\$3,190
2	\$1,983	\$2,730	\$3,449	\$3,592	\$4,311
3	\$2,498	\$3,439	\$4,344	\$4,525	\$5,430
4	\$3,013	\$4,149	\$5,240	\$5,459	\$6,550
5	\$3,529	\$4,858	\$6,137	\$6,392	\$7,671
6	\$4,044	\$5,567	\$7,032	\$7,325	\$8,790
7	\$4,559	\$6,277	\$7,928	\$8,259	\$9,910
8	\$5,074	\$6,986	\$8,825	\$9,192	\$11,031
138% Adult Expansion, 190% Children ages 6 to 19 (Medicaid), 240% Children ages 0 to 6 (Medicaid); ages 6 to 19 (CHIP), 250% Pregnancy Related Services Only, 300% Children 0 to 6 (CHIP)					

Medical Assistance Division					
Federal Poverty Guidelines New Mexico Affordable Care Eligibility Groups Effective April 01, 2020 thru March 31, 2021 Annual Guidelines					
HH SIZE	PERCENT OF POVERTY				
	138%	190%	240%	250%	300%
1	\$17,616	\$24,252	\$30,624	\$31,908	\$38,280
2	\$23,796	\$32,760	\$41,388	\$43,104	\$51,732
3	\$29,976	\$41,268	\$52,128	\$54,300	\$65,160
4	\$36,156	\$49,788	\$62,880	\$65,508	\$78,600
5	\$42,348	\$58,296	\$73,644	\$76,704	\$92,052
6	\$48,528	\$66,804	\$84,384	\$87,900	\$105,480
7	\$54,708	\$75,324	\$95,136	\$99,108	\$118,920
8	\$60,888	\$83,832	\$105,900	\$110,304	\$132,372
138% Adult Expansion, 190% Children ages 6 to 19 (Medicaid), 240% Children ages 0 to 6 (Medicaid); ages 6 to 19 (CHIP), 250% Pregnancy Related Services Only, 300% Children 0 to 6 (CHIP)					

References

¹ *Medicaid Expenditures* (Omnicaid, Medicare Buy-Ins, Lump Sum Payments)

² *ASPEN Business Intelligence Tool: Eligibility*

³ New Mexico Human Services Department, *Medicaid Eligibility Reports*, Retrieved from <http://www.hsd.state.nm.us/LookingForInformation/medicaid-eligibility.aspx> (for reporting month)

⁴ *ASPEN Business Intelligence Tool: Application Tracking*

⁵ Fidelity Information Services, *EBT Daily Statistical Report* (for reporting month)

⁶ *ASPEN Report DQ-180: Length of Time Cases are Open* (for reporting month)

⁷ *ASPEN Report EY-180: Individual Demographics by State and Age* (for reporting month)

⁸ *ASPEN Business Intelligence Tool: Benefit Issuance*

⁹ Fidelity Information Services, *EBT Daily Statistical Reports* (Month End)

¹⁰ *ASPEN Report EY-180R: Individual Demographics by State, Race, Ethnicity and Gender* (for reporting month)

¹¹ SQL Queries from ASPEN

¹² JP Morgan, *New Mexico – NM EBT System- Monthly Benefit Draw Down Totals*

¹³ *ASPEN Business Intelligence Tool: Application Tracking* (w/Parameters: SNAP, Expedite, Approved)

¹⁴ SL Start, *As of Today Report*

¹⁵ SL Start, *Statewide Employment Report*

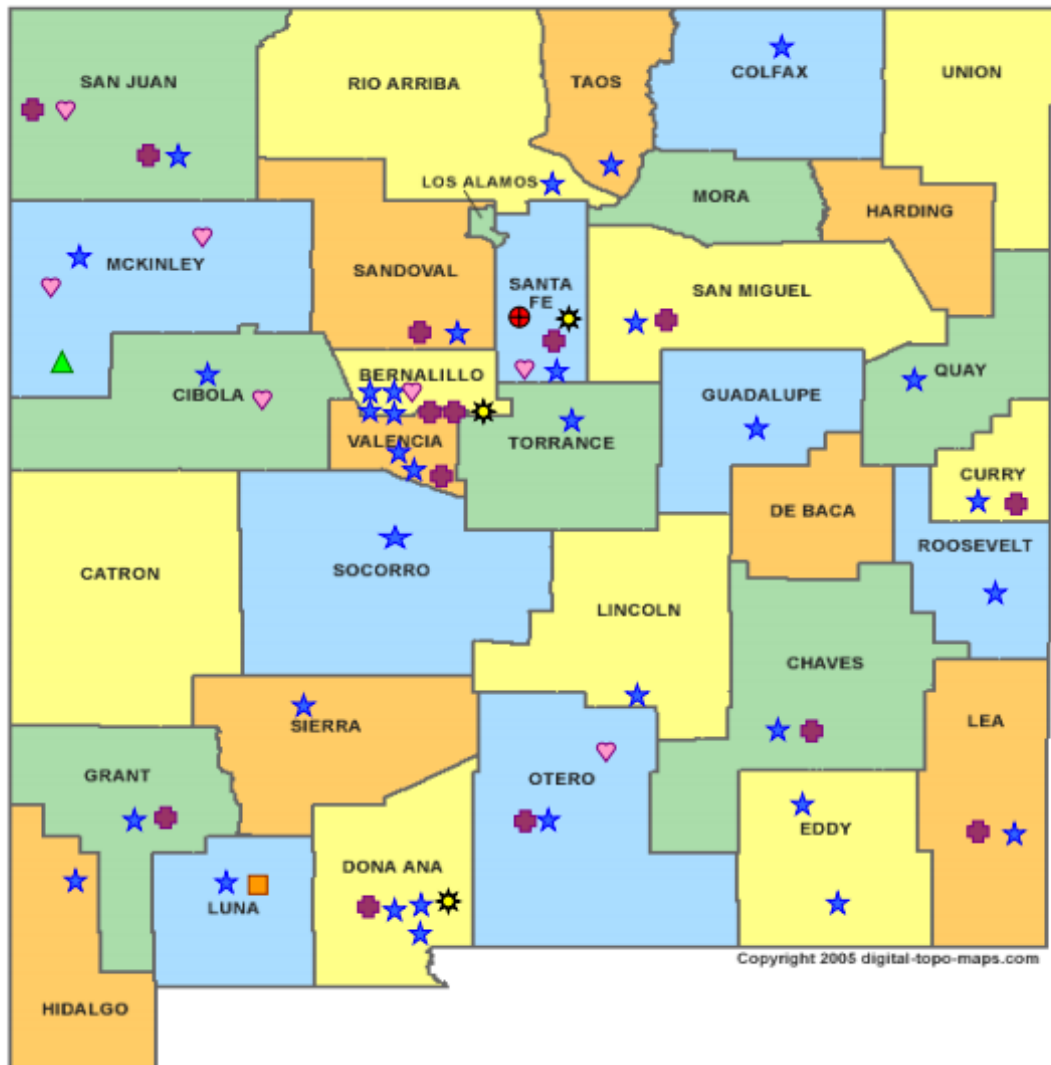
¹⁶ *SSIAR Payments*

¹⁷ Children, Youth, and Families Department, *Children Receiving Child Care Assistance Subsidies by County*

¹⁸ Children, Youth, and Families Department, *Child Care Assistance Eligibility Programs*

¹⁹ EDG is defined as an Eligibility Determination Group

²⁰SQL Query from ASPEN



HUMAN SERVICES
DEPARTMENT

New Mexico Human Services Department
Field Offices

- Central Office (1)
- Income Support Division County Office (35)
- Income Support Division Satellite Office (2)
- Child Support Enforcement Regional Office (16)
- Child Support Enforcement Satellite Office (1)
- Indian Health Services (7)
- Hospital Site (3)

For a complete listing of field offices and other government and community resources:
http://www.hsd.state.nm.us/LookingForAssistance/Field_Offices_1.aspx

Medicaid Policy Changes Due to COVID-19

Already implemented:

1. **Three month renewal extensions**-MAGI Medicaid renewals are extended three months for individuals who fail to complete the 12-month recertification process after going through the automated administrative renewal process, the manual administrative renewal process, and issuance of the MAD 608 renewal form. Individuals who normally would have closed March 31, 2020 due to failure to recertify had their certification period extended through June 30, 2020. This same process will occur for April and May renewals. This may continue for later months if the emergency continues. Applies to non-MAGI Medicaid categories also that failed to recertify. Implemented in ASPEN on March 31st.

2. **Increase Presumptive Eligibility (PE) Determiner scope and qualified entities**-Most PE determiners are limited to approving PE for MAGI Children/CHIP and MAGI Pregnancy Services. Change was made to allow HSD employees to approve PE and to allow most PE determiners to approve all MAGI Medicaid categories of eligibility. Change was implemented on April 07, 2020.

3. **Reopen and Sustain Medicaid Cases**-The requirement is that anyone receiving Medicaid March 18th and ongoing for the duration of the emergency continue to be covered at the same level of coverage. There are three exceptions: client requested closure, deceased individuals, and moved out of state. April 2020 closures were reopened and sustained through July 31, 2020 and can be extended if the emergency continues. Implemented into ASPEN on April 26, 2020.

In process (not implemented yet):

4. **Accept self-attestation for Medicaid**-Accept self-attestation for all factors of Medicaid except for citizenship/immigration. Process Medicaid applications for MAGI and non-MAGI categories based on self-attestation of 2 income and resources. Excludes IC/Waiver/PACE categories. For those cases not reasonably compatible approve and issue a 90 day HUMAD.

5. **New COVID-19 testing category**-This will be implemented in Omnicaid and not ASPEN. New uninsured category which will cover COVID-19 testing and related services. Applications will be sent to and processed by Conduent staff to allow for fee-for-service payments to providers for COVID-19 testing and related services.

6. **Exclusion of \$600 weekly unemployment benefit stimulus payments**-Medicaid excludes \$600 weekly unemployment benefit stimulus payments. ASPEN solution being developed across programs that treat the handling of unemployment monies differently as well as regular unemployment benefit extensions.

Cases closed for procedural reasons show low timeliness percentages due to the requirement to maintain Medicaid from March 18, 2020 for the duration of the COVID-19 emergency. To maintain Medicaid many March 2020 cases had to be reinstated manually by ISD field workers so there would not be a gap in coverage. To maintain Medicaid eligibility for April 2020 cases also required a manual reinstatement effort by ISD field workers as the ASPEN system fix to maintain Medicaid for the duration of the emergency still resulted in exceptions that had to be resolved manually.

SNAP Policy Changes During COVID-19

1. Suspension of SNAP Employment and Training (E&T) Program

- House of Representatives passed H.R. 6201, the Families First Coronavirus Response Act.
- ISD has chosen to suspend the SNAP E&T Program until further notice.
- interim policy and procedure for 8.139.410.13 NMAC “SUPPLEMENTAL NUTRITION ASSISTANCE PROGRAM (SNAP) EMPLOYMENT AND TRAINING PROGRAM (E&T).”

2. Amendment to Waiver - Interview Process for SNAP and TANF and Waiver - Recertification Waiver Process for SNAP, TANF, and Medicaid

- FNS approved a blanket waiver for all states to utilize.
- Interim policy and procedures for the following:
 - General Operating Policies – Application 8.100.110 NMAC.
 - Interviews in accordance with 8.139.110.11 NMAC and 8.102.110 NMAC.
 - Interim Reports (IRs) in accordance with 8.139.120.9B NMAC. and 8.102.120.11C NMAC.
 - Recertifications in accordance with 8.139.120.8, 8.102.120.9B NMAC 8.106.120.9 and 8.106.120.10 NMAC.
- Waives all SNAP, TANF and GA-Unrelated Child interviews, if all mandatory verification standards are met. o GA-Disability is excluded from this waiver; an interview must be conducted for GA as medical documentation is needed. Allows us to waive the requirement of having to offer a face-to-face and to conduct all interviews by phone.
- IR's - If an IR cannot be processed under normal processing, ASPEN will automatically extend certification periods for households with an IR due in March, and April for 6 months to the month the customers recertification is due. May and June IRs will be suspended and not mailed.
- Recertifications – If a Recertification cannot be processed under normal processing, ASPEN will automatically extend certification periods for households scheduled to recertify in March, April, May and June 2020, for 6 months until September, October and November 2020.
- IPP 20-06 in regards to the policy change can be found on the HSD website at:

3. SNAP Supplement Waiver

- State applied for a waiver through FNS.
- New Mexico has requested and been approved by FNS to provide an emergency allotment to address temporary food needs to households by bringing all households up to the maximum benefit due to pandemic related economic conditions. States that have already received FNS approval this supplemental issuance in March and April, or April and May, are approved to continue issuing full benefits each month.
- Interim policy and procedure for 8.139.610.12 NMAC.

4. Suspension of SNAP General Work Requirements

- House of Representatives passed H.R. 6201, the Families First Coronavirus Response Act.
- During the declared public health emergency, SNAP recipients who would otherwise be mandatory to comply with the SNAP general work requirements will be waived from this requirement and will not experience any type of disqualification for noncompliance during this time.
- Interim policy and procedure guidance for SNAP General Work Requirements set forth in 8.139.410.12 C and D NMAC.

5. Telephonic Signature Waiver

- State applied for a waiver through FNS
- If a customer calls to apply for benefits and does not have a paper application on file Conduent will accept a telephonic application and telephonic signature for applications by completing an online application through YesNM.
- Interim policy and procedures for 8.100.110.9A NMAC Submission of Forms.

TANF Policy Changes During COVID-19

1. Good cause exemptions from work requirements for TANF	TANF Non-Compliance Process Suspension of Non-Compliance for NMW Participants	
2. Increased cash benefit levels for TANF cash assistance recipients	Process as normal	
3. 60-month time limit	IPP Hardship	Hardship extensions will allow individuals impacted by COVID-19 to apply for a TANF hardship or continue to receive TANF beyond their 60 th month
4. Work Participation Rate	Process as normal	The state will still need to meet the WPR. However, States can use Good Cause that is outlined in CFR and not be penalized for not meeting WPR due to the emergency
5. CARES Act Direct Payment	CARES Act Direct Payment	Guidance is to exclude as income and as a resource
6. UCB under CARES Act	Only to exclude UCB benefits under CARES Act	ACF Guidance is to <i>EXCLUDE</i> all UCB income at this time. New Mexico choose to exclude only CARES Act UCB

Children Youth and Families Department Policy Changes During COVID-19

NM Children Youth and Families Department received \$29.5 million in emergency funds, which resulted in the following changes:

1. Waiver of copay for families which paid for by CYFD
2. Payment of \$250 per child premium for children who are still in care (emergency, first responders and essential personnel)
3. Streamlining of licensing of new facilities that provide emergency child care
4. Payment to the original and temporary child care provider for children of emergency, first responders and essential personnel, whose child care Program closed due to COVID-19

Additional Changes Anticipated

1. Hazardous pay for child care providers currently operating
2. Compensation for programs that are losing their funding due to private pay