



HUMAN SERVICES
DEPARTMENT

Monthly Statistical Report December 2014

Highlights

- The SNAP caseload in December 2014 was 219,991, a 9.3 percent increase from one year ago. SNAP caseload has risen by 2,140 cases, or 1.0 percent, since last month.
- The TANF caseload was 14,151 in December 2014, a 3.4 percent increase from December 2013. The TANF caseload had 9 cases less than November 2014, a decrease of 0.1 percent.
- The caseload for General Assistance was 3,089 in December 2014, a decrease of 13.2 percent from one year ago and an increase of 114 cases from last month.

Susana Martinez, Governor
Brent Earnest, Cabinet Secretary-Designate

CONTENTS	PAGE
Summary	3-4
SNAP	5-6
State SNAP Benefits Supplement	7
TANF	8-9
ICARE	10
NMWorks	11-12
Diversion	13
Education Works	14-15
General Assistance	16-17
GA Interim Assistance Reimbursements	18
Refugee Assistance	19
State Supplement for Residential Care	20
Applications	21-23
Child Support Enforcement	24-25
Child Care Assistance	26-27

Centralized Units include the following offices: Albuquerque Indian Hospital; ASD Restitutions; Customer Service; Mescalero; Quality Assessment Bureau; San Miguel County CSU; SIPI; SMU Torrance; St. Vincent's Hospital.

Tallies include data from ISD2 (through February 2014) and ASPEN (beginning July 2013).

***The Mission of the Human Services
Department***

*To reduce the impact of poverty on
people living in New Mexico by
providing support services that help
families break the cycle of
dependency on public assistance*

Sean Pearson, Acting Deputy Secretary

**Prepared by Income Support Division
PO Box 2348
Santa Fe, NM 87504-2348
505-827-7250**

**Marilyn Martinez, Acting Division Director
Vida Tapia-Sanchez, Deputy Director
Laura Galindo, Deputy Director**

We've moved!

<http://www.hsd.state.nm.us/monthly-statistical-reports.aspx>

Program Summary for December 2014

			Percent Change					Percent Change			
	Dec-13	Nov-14	Dec-14	Dec 13 – Dec 14	Nov 14 – Dec 14		Dec-13	Nov-14	Dec-14	Dec 13 – Dec 14	Nov 14 – Dec 14
Supplemental Nutrition Assistance Program (SNAP)						State SNAP Benefits Supplement					
Expenditures	\$51,340,577	\$56,104,002	\$56,889,395	10.8%	1.4%	Expenditures	\$71,839	\$69,955	\$73,226	-1.9%	4.7%
Cases*	193,622	217,851	219,991	13.6%	1.0%	Cases	8,310	9,152	9,322	12.2%	1.9%
Individuals*	429,745	474,393	475,722	10.7%	0.3%						
Adults*	235,223	261,472	263,143	11.8%	0.6%	Education Works					
Children*	194,522	212,921	212,579	9.3%	-0.2%	Expenditures	\$100,678	\$66,649	\$82,508	-18.1%	25.6%
Apps processed	13,844	7,464	8,611	-37.8%	15.4%	Cases	304	203	255	-16.1%	25.6%
Approvals	10,895	6,858	7,925	-27.3%	15.6%	Individuals	866	596	717	-17.2%	20.3%
						Adults	341	232	279	-18.2%	20.3%
Temporary Assistance to Needy Families (TANF)						Children	525	364	438	-16.6%	20.3%
Expenditures	\$3,878,344	\$3,805,758	\$3,804,432	-1.9%	0.0%	State Supplement for Residential Care					
Cases	13,683	14,160	14,151	3.4%	-0.1%	Expenditures	\$4,600	\$5,600	\$5,000	8.7%	-10.7%
Individuals	34,593	36,983	36,767	6.3%	-0.6%	Cases	46	51	49	6.5%	-3.9%
Adults	11,790	10,236	10,197	-13.5%	-0.4%	Individuals	46	51	49	6.5%	-3.9%
Children	22,803	26,747	26,570	16.5%	-0.7%	Adults	46	51	49	6.5%	-3.9%
Apps Processed	2,460	1,487	1,902	-22.7%	27.9%	Refugee Assistance					
Approvals	1,172	912	1,158	-1.2%	27.0%	Expenditures	\$22,053	\$16,461	\$18,699	-15.2%	13.6%
General Assistance (GA)						Cases	73	91	102	39.7%	12.1%
Expenditures	\$855,031	\$752,144	\$783,134	-8.4%	4.1%	Individuals	84	96	108	28.6%	12.5%
Cases	3,426	2,975	3,089	-9.8%	3.8%	Adults	84	96	108	28.6%	12.5%
Individuals	3,517	3,053	3,165	-10.0%	3.7%						
Adults	3,312	2,849	2,961	-10.6%	3.9%						
Children	205	204	204	-0.5%	0.0%						
Apps Processed	652	182	270	-58.6%	48.4%	Medicaid					
Approvals	169	112	161	-4.7%	43.8%				Percent Change		
							Dec-13	Nov-14	Dec-14	Dec 13 – Dec 14	Nov 14 – Dec 14
						Expenditures**	\$288,332,754	\$405,207,473	\$403,967,121	40.5%	-0.3%
						Eligible	562,978	743,058	756,086	34.3%	1.8%
						Adults	226,651	388,543	398,494	75.8%	2.6%
						Children	336,327	354,515	357,592	6.3%	0.9%

All expenditures are unreconciled and subject to change.

* Includes active cases with zero benefits

**Medicaid expenditures as of date of payment.

Expenditures Year to Date			
	SFY 2015	FFY 2015	CY 2014
Supplemental Nutrition Assistance Program (SNAP)	\$331,874,423	\$168,821,249	\$638,531,181
Temporary Assistance for Needy Families (TANF)	\$24,061,100	\$11,490,809	\$46,284,731
General Assistance	\$4,413,420	\$2,272,749	\$8,559,409
Education Works	\$409,542	\$208,931	\$869,351

DEMOGRAPHIC PROFILE FOR DECEMBER 2014					
	SNAP*	TANF	General Assistance	Education Works	Refugee Cash Assistance
Average # persons per case:	2.16	2.60	1.02	2.81	1.06
Gender of Recipients:					
Male	215,852	15,525	1,833	253	70
Female	259,870	21,242	1,332	464	38
Ethnicity:					
Hispanic	272,068	25,858	1,773	433	67
Not Hispanic	203,654	10,909	1,392	284	41
Race:					
Native American or Alaskan Native	76,885	2,805	180	80	-
Asian	5,429	394	33	8	1
African American	11,571	1,344	107	29	9
Native Hawaiian or Pacific Islander	878	51	1	-	-
White	375,425	31,675	2,807	591	57
Unknown/not declared	3,313	187	14	4	10
More than one race	2,221	311	23	5	31

* Includes active cases with zero benefits

Supplemental Nutrition Assistance Program (SNAP) Cases** by Administrative Office

Office	Dec-13	Nov-14	Dec-14	Dec 13 – Dec 14		Nov 14 – Dec 14	
				# change	% change	# change	% change
Chaves	6,778	7,327	7,337	559	8.2%	10	0.1%
Cibola	3,284	3,303	3,336	52	1.6%	33	1.0%
Colfax	1,215	1,606	1,603	388	31.9%	-3	-0.2%
Curry	3,732	4,463	4,505	773	20.7%	42	0.9%
East Dona Ana	7,033	8,048	8,063	1,030	14.6%	15	0.2%
Eddy Artesia	1,301	1,365	1,381	80	6.1%	16	1.2%
Eddy Carlsbad	2,725	3,117	3,171	446	16.4%	54	1.7%
Grant	3,148	3,524	3,584	436	13.9%	60	1.7%
Guadalupe	756	802	806	50	6.6%	4	0.5%
Hidalgo	350	361	342	-8	-2.3%	-19	-5.3%
Lea	3,853	4,481	4,539	686	17.8%	58	1.3%
Lincoln	1,653	1,803	1,811	158	9.6%	8	0.4%
Luna	3,604	4,478	4,508	904	25.1%	30	0.7%
McKinley*	8,798	9,962	9,947	1,149	13.1%	-15	-0.2%
Northeast Bernalillo	17,913	19,106	19,555	1,642	9.2%	449	2.4%
Northwest Bernalillo	15,063	13,467	13,826	-1,237	-8.2%	359	2.7%
Otero	4,221	5,114	5,173	952	22.6%	59	1.2%
Quay	1,223	1,289	1,286	63	5.2%	-3	-0.2%
Rio Arriba	6,842	7,362	7,396	554	8.1%	34	0.5%
Roosevelt	1,283	1,577	1,621	338	26.3%	44	2.8%
San Juan	10,925	11,654	11,719	794	7.3%	65	0.6%
San Miguel	4,937	5,238	5,273	336	6.8%	35	0.7%
Sandoval	8,919	10,517	10,609	1,690	18.9%	92	0.9%
Santa Fe	9,513	11,149	11,261	1,748	18.4%	112	1.0%
Sierra	2,464	2,702	2,730	266	10.8%	28	1.0%
Socorro	2,662	2,888	2,868	206	7.7%	-20	-0.7%
South Dona Ana	7,061	8,230	8,289	1,228	17.4%	59	0.7%
Southeast Bernalillo	11,479	15,004	15,215	3,736	32.5%	211	1.4%
Southwest Bernalillo	16,133	20,199	20,278	4,145	25.7%	79	0.4%
Taos	3,838	4,181	4,217	379	9.9%	36	0.9%
Torrance	2,455	3,287	3,285	830	33.8%	-2	-0.1%
Union	200	-	-	-200	-100.0%	0	N/A
Valencia North	5,413	6,183	6,283	870	16.1%	100	1.6%
Valencia South	3,043	3,364	3,387	344	11.3%	23	0.7%
West Dona Ana	9,412	10,660	10,763	1,351	14.4%	103	1.0%
Centralized Units^	393	40	24	-369	-93.9%	-16	-40.0%
TOTAL	193,622	217,851	219,991	26,369	13.6%	2,140	1.0%

* Cases from Zuni Office are included in the McKinley Office count

** Includes active cases with zero benefits

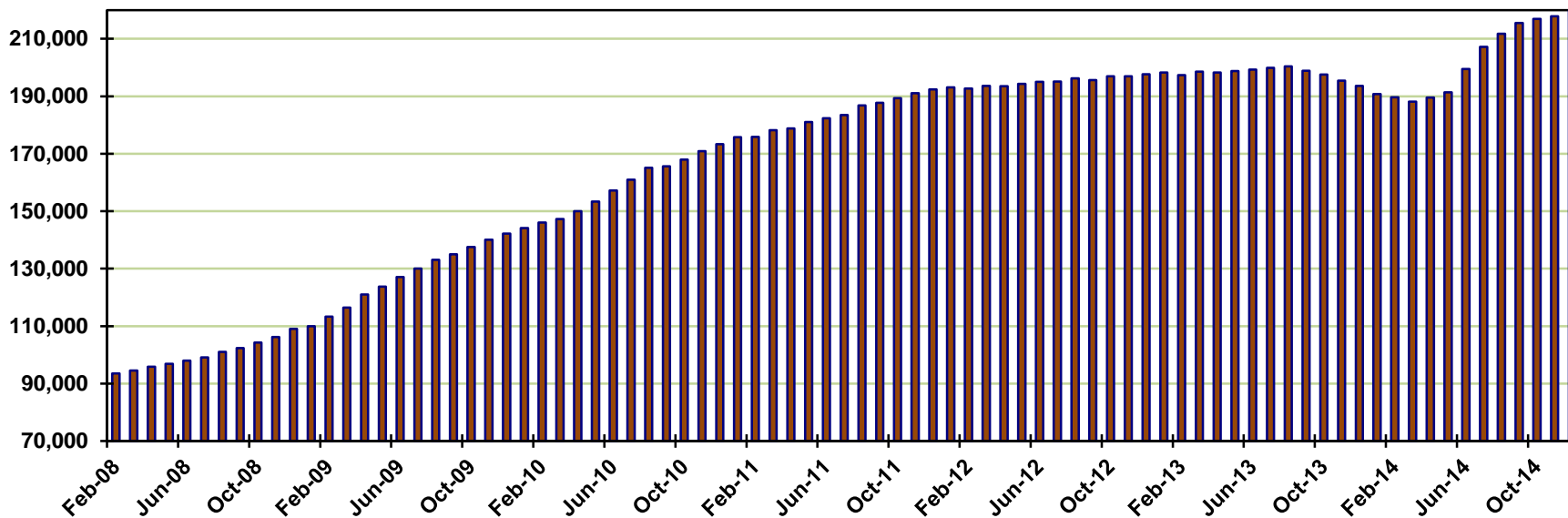
^Centralized units were incorporated into field office in 2014.

Supplemental Nutrition Assistance Program (SNAP) Cases** by Region

Region	Dec-13	Nov-14	Dec-14	Dec 13 – Dec 14		Nov 14 – Dec 14	
				# change	% change	# change	% change
NW Region 1	40,382	34,466	34,672	-5,710	-14.1%	206	0.6%
NE Region 2	26,545	40,053	40,359	13,814	52.0%	306	0.8%
Central Region 3	63,043	71,063	72,159	9,116	14.5%	1,096	1.5%
SE Region 4	21,651	24,421	24,646	2,995	13.8%	225	0.9%
SW Region 5	41,608	47,808	48,131	6,523	15.7%	323	0.7%
Centralized Units	393	40	24	-369	-93.9%	-16	-40.0%
TOTAL	193,622	217,851	219,991	26,369	13.6%	2,140	1.0%

** Includes active cases with zero benefits

SNAP Cases per Month

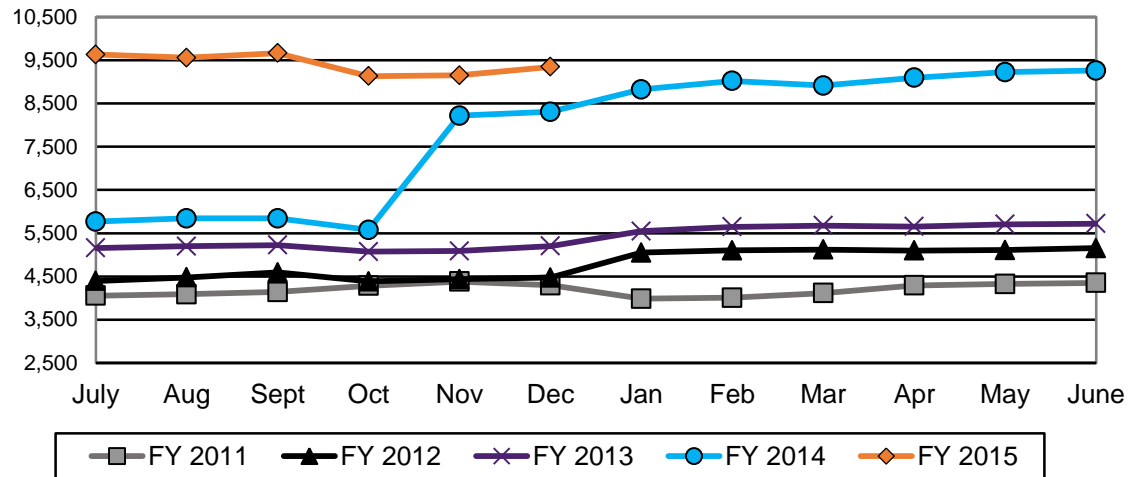


Beginning September 2014, Sandoval County ISD Office cases are counted in NE Region 2.

State SNAP Benefits Supplement

	SFY 2011		SFY 2012		SFY 2013		SFY 2014		SFY 2015	
	Cases	Expenditures	Cases	Expenditures	Cases	Expenditures	Cases	Expenditures	Cases	Expenditures
<i>July</i>	4,056	\$50,241	4,395	\$34,773	5,157	\$42,552	5,767	\$48,040	9,635	\$88,859
Aug	4,088	\$50,502	4,477	\$35,360	5,200	\$42,797	5,841	\$48,417	9,559	\$87,757
<i>Sept</i>	4,139	\$50,946	4,591	\$36,455	5,223	\$43,023	5,841	\$48,732	9,688	\$87,372
Oct	4,284	\$52,530	4,384	\$34,850	5,071	\$41,752	5,575	\$46,610	9,136	\$70,490
<i>Nov</i>	4,381	\$53,820	4,436	\$35,260	5,088	\$42,074	8,219	\$69,564	9,152	\$69,955
Dec	4,296	\$52,649	4,474	\$35,619	5,202	\$42,829	8,310	\$71,839	9,322	\$73,226
<i>Jan</i>	3,984	\$31,897	5,050	\$41,519	5,548	\$45,769	8,826	\$77,933		
Feb	4,006	\$31,970	5,102	\$41,900	5,645	\$46,700	9,024	\$84,758		
<i>Mar</i>	4,113	\$33,226	5,119	\$41,960	5,677	\$47,117	8,916	\$80,597		
April	4,290	\$34,599	5,099	\$41,988	5,654	\$47,118	9,098	\$84,599		
<i>May</i>	4,236	\$34,892	5,109	\$43,587	5,706	\$47,528	9,226	\$85,035		
June	4,351	\$29,199	5,154	\$42,442	5,720	\$47,625	9,264	\$84,239		
TOTAL	50,314	\$528,062	57,390	\$465,713	64,891	\$536,884	93,907	\$830,454	56,492	\$477,659
Monthly average	4,193	\$44,005	4,783	\$38,809	5,408	\$44,740	7,526	\$69,204	9,415	\$79,610

State SNAP Benefits Supplement Cases by State Fiscal Year



Temporary Assistance of Needy Families (TANF) Cases by Administrative Office

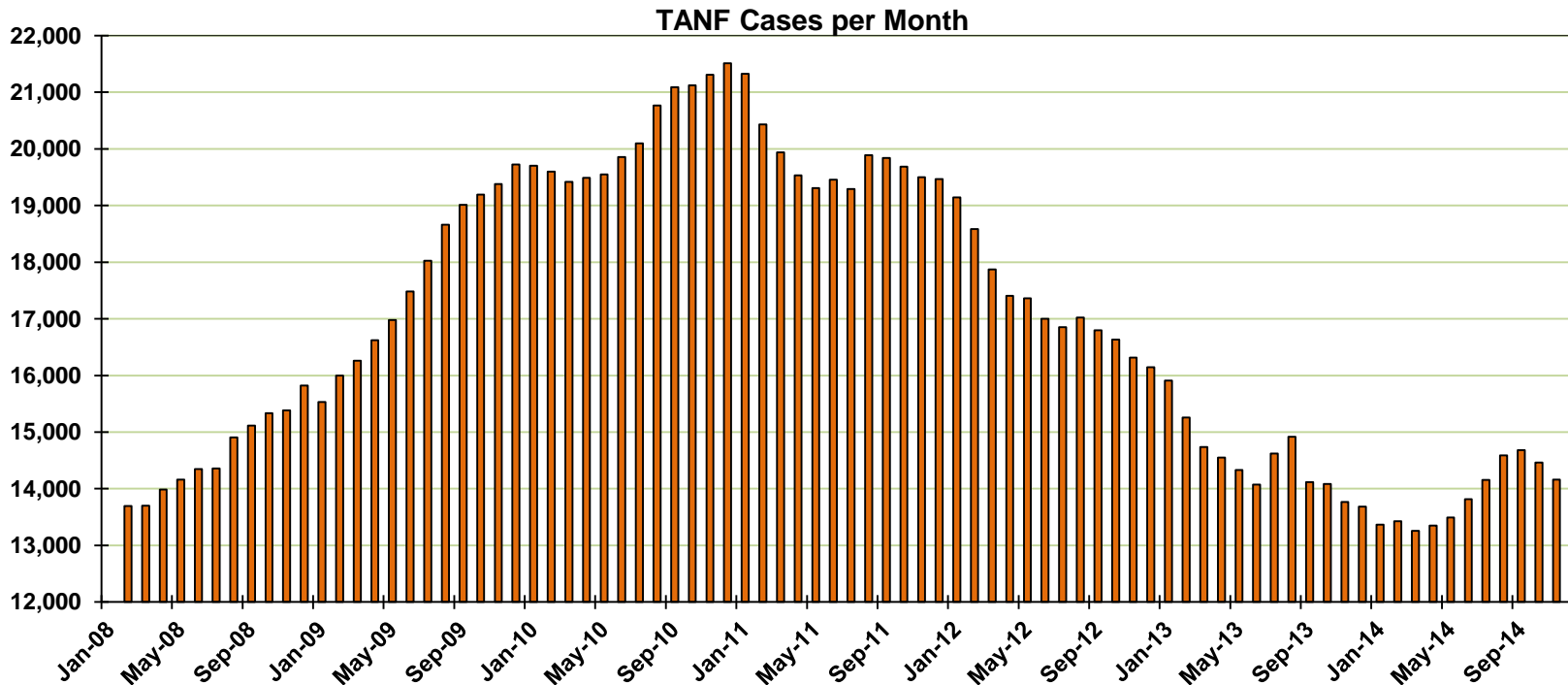
Office	Dec-13	Nov-14	Dec-14	Dec 13 – Dec 14		Nov 14 – Dec 14	
				# change	% change	# change	% change
Chaves	570	610	610	40	7.0%	0	0.0%
Cibola	228	224	221	-7	-3.1%	-3	-1.3%
Colfax	97	94	99	2	2.1%	5	5.3%
Curry	430	562	574	144	33.5%	12	2.1%
East Dona Ana	662	650	621	-41	-6.2%	-29	-4.5%
Eddy Artesia	128	118	114	-14	-10.9%	-4	-3.4%
Eddy Carlsbad	232	255	268	36	15.5%	13	5.1%
Grant	220	238	262	42	19.1%	24	10.1%
Guadalupe	43	42	41	-2	-4.7%	-1	-2.4%
Hidalgo	24	22	20	-4	-16.7%	-2	-9.1%
Lea	372	396	406	34	9.1%	10	2.5%
Lincoln	143	108	104	-39	-27.3%	-4	-3.7%
Luna	316	268	276	-40	-12.7%	8	3.0%
McKinley*	88	110	108	20	22.7%	-2	-1.8%
Northeast Bernalillo	1,106	1,144	1,155	49	4.4%	11	1.0%
Northwest Bernalillo	949	871	874	-75	-7.9%	3	0.3%
Otero	275	288	281	6	2.2%	-7	-2.4%
Quay	90	89	84	-6	-6.7%	-5	-5.6%
Rio Arriba	527	479	499	-28	-5.3%	20	4.2%
Roosevelt	109	149	152	43	39.4%	3	2.0%
San Juan	218	222	227	9	4.1%	5	2.3%
San Miguel	276	283	294	18	6.5%	11	3.9%
Sandoval	542	677	660	118	21.8%	-17	-2.5%
Santa Fe	577	644	638	61	10.6%	-6	-0.9%
Sierra	126	106	112	-14	-11.1%	6	5.7%
Socorro	149	159	140	-9	-6.0%	-19	-11.9%
South Dona Ana	970	913	913	-57	-5.9%	0	0.0%
Southeast Bernalillo	928	954	938	10	1.1%	-16	-1.7%
Southwest Bernalillo	1,294	1,525	1,521	227	17.5%	-4	-0.3%
Taos	164	173	178	14	8.5%	5	2.9%
Torrance	236	208	204	-32	-13.6%	-4	-1.9%
Union	14	0	0	-14	-100.0%	0	N/A
Valencia North	355	439	439	84	23.7%	0	0.0%
Valencia South	213	227	226	13	6.1%	-1	-0.4%
West Dona Ana	995	907	891	-104	-10.5%	-16	-1.8%
Centralized Units^	17	6	1	-16	-94.1%	-5	-83.3%
TOTAL	13,683	14,160	14,151	468	3.4%	-9	-0.1%

*Cases from Zuni Office are included in the McKinley Office count.

^Centralized units were incorporated into field office in 2014.

Temporary Assistance of Needy Families (TANF) Cases by Region

Region	Dec-13	Nov-14	Dec-14	Dec 13 – Dec 14		Nov 14 – Dec 14	
				# change	% change	# change	% change
NW Region 1	1,644	1,222	1,221	-423	-25.7%	-1	-0.1%
NE Region 2	1,655	2,350	2,368	713	43.1%	18	0.8%
Central Region 3	4,513	4,702	4,692	179	4.0%	-10	-0.2%
SE Region 4	1,974	2,221	2,249	275	13.9%	28	1.3%
SW Region 5	3,880	3,659	3,620	-260	-6.7%	-39	-1.1%
Centralized Units	17	6	1	-16	-94.1%	-5	-83.3%
TOTAL	13,683	14,160	14,151	468	3.4%	-9	-0.1%



Beginning September 2014, Sandoval County ISD Office cases are counted in NE Region 2.

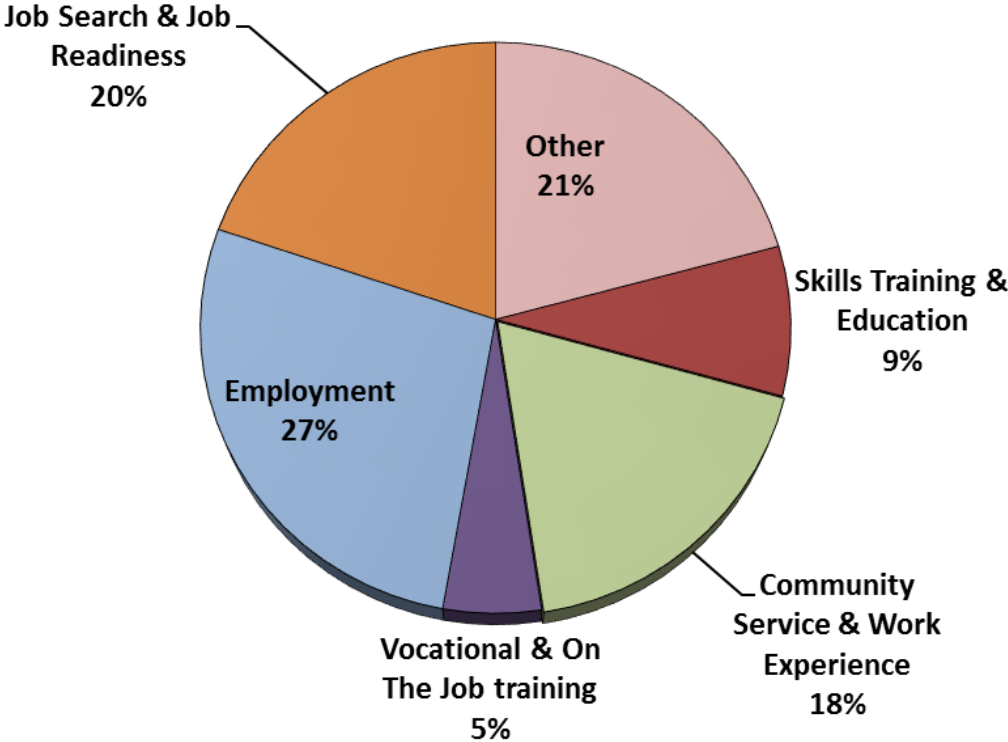
Intensive Case Management, Recovery and Employment (ICARE)

The ICARE program began as a pilot program in Albuquerque and is designed to address substance use barriers to employment in TANF Recipients. The ICARE program now provides services in Albuquerque and Rio Arriba County.

It is a new approach that combines 12 weeks of Intensive Case Management with job readiness classes and job development. TANF recipients identified as having substance use issues that prevent them from obtaining and retaining employment are referred to the ICARE program. The program includes motivational interviewing to motivate change and decrease substance use; relapse prevention to build skills; family management to improve family functioning; job readiness classes to enhance employment skills and increase retention; and job development to secure employment. A program evaluation component will be used to determine the effectiveness of this program in addressing substance use disorders among TANF recipients.

	Jan-14	Feb-14	Mar-14	Apr-14	May-14	Jun-14	Jul-14	Aug-14	Sep-14	Oct-14	Nov-14	Dec-14
ICARE Expenditures	\$27,677	\$148,154	\$70,063	\$152,947	\$96,771	\$222,332	\$51,805	\$78,513	\$75,415	\$75,354	\$128,591	\$131,348
# of Screenings for Substance Use	508	390	523	587	451	16	489	333	387	343	274	373
# of Referrals to ICARE resulting from screenings	22	22	55	110	27	8	5	13	14	18	10	32

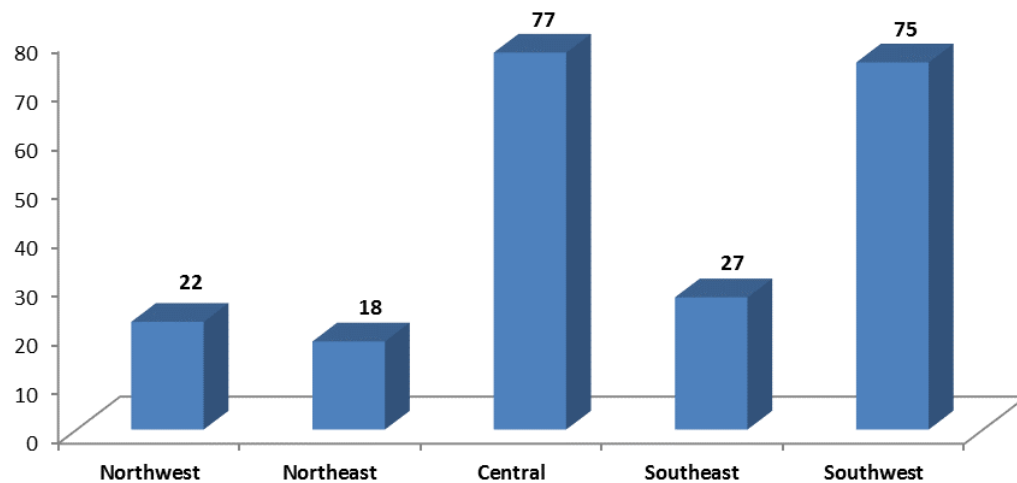
NM Works Activity Placements on December 31, 2014 as reported by SL Start **



**Data preliminary and subject to later revision.

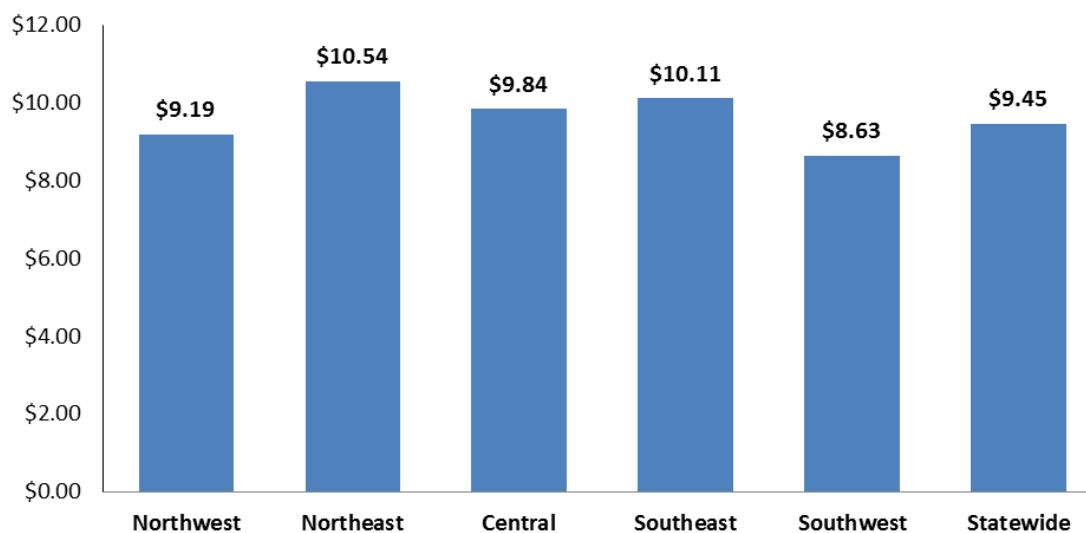
Placements may be duplicated as some individuals may work more than one activity or job.

Number of New Employments in December, by region, as reported by SL Start
Statewide Total: 219



Employment placements may be duplicated as some individuals may work more than one job.

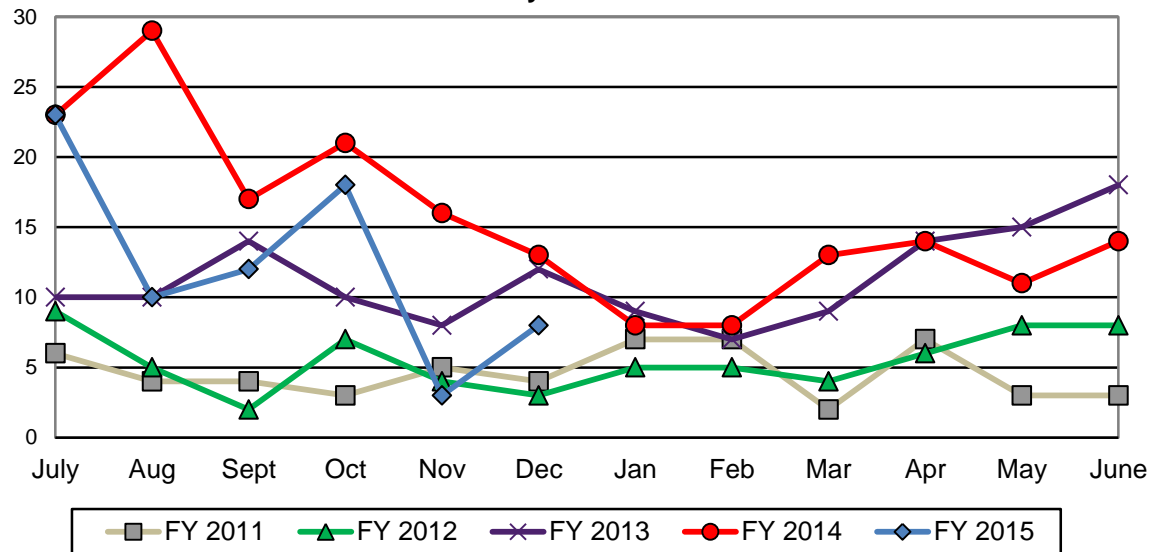
Average Starting Hourly Wage of December TANF Employments, as reported by SL Start



TANF Diversion Payments

	SFY 2011		SFY 2012		SFY 2013		SFY 2014		SFY 2015	
	Cases	Expenditures	Cases	Expenditures	Cases	Expenditures	Cases	Expenditures	Cases	Expenditures
July	6	\$12,000	9	\$19,500	10	\$20,000	23	\$46,500	23	\$48,098
Aug	4	\$8,000	5	\$12,500	10	\$19,000	29	\$54,500	10	\$21,810
Sept	4	\$7,000	2	\$4,000	14	\$31,500	17	\$36,500	11	\$23,500
Oct	3	\$4,500	7	\$12,500	10	\$18,000	21	\$42,500	18	\$30,589
Nov	5	\$9,500	4	\$7,000	8	\$15,000	16	\$28,953	3	\$4,411
Dec	4	\$10,000	3	\$5,500	12	\$25,000	13	\$25,500	8	\$14,634
Jan	7	\$13,500	5	\$10,500	9	\$17,500	8	\$16,000		
Feb	7	\$13,500	5	\$11,500	7	\$13,500	8	\$16,994		
Mar	2	\$4,000	4	\$7,000	9	\$17,500	13	\$27,396		
April	7	\$14,350	6	\$10,000	14	\$30,000	14	\$28,000		
May	3	\$4,500	8	\$17,000	15	\$30,500	11	\$20,500		
June	3	\$6,500	8	\$20,000	18	\$37,000	14	\$29,911		
TOTAL	55	\$107,350	66	\$137,000	136	\$274,500	187	\$283,254	73	\$143,042
Monthly average	5	\$8,946	6	\$11,417	11	\$22,875	16	\$31,938	12	\$23,840

Diversion Cases by State Fiscal Year



Education Works Cases by Administrative Office

Office	Dec-13	Nov-14	Dec-14	Dec 13 – Dec 14		Nov 14 – Dec 14	
				# change	% change	# change	% change
Chaves	0	3	4	4	N/A	1	33%
Cibola	4	3	6	2	50%	3	100%
Colfax	4	1	2	-2	-50%	1	100%
Curry	1	3	3	2	200%	0	0%
East Dona Ana	19	13	13	-6	-32%	0	0%
Eddy Artesia	1	0	0	-1	-100%	0	N/A
Eddy Carlsbad	1	3	4	3	300%	1	33%
Grant	7	12	11	4	57%	-1	-8%
Guadalupe	1	0	0	-1	-100%	0	N/A
Hidalgo	0	0	0	0	N/A	0	N/A
Lea	2	0	0	-2	-100%	0	N/A
Lincoln	0	0	0	0	N/A	0	N/A
Luna	4	4	6	2	50%	2	50%
McKinley	1	0	1	0	0%	1	N/A
Northeast Bernalillo	50	22	23	-27	-54%	1	5%
Northwest Bernalillo	30	19	28	-2	-7%	9	47%
Otero	5	3	4	-1	-20%	1	33%
Quay	2	0	0	-2	-100%	0	N/A
Rio Arriba	3	2	3	0	0%	1	50%
Roosevelt	1	0	2	1	100%	2	N/A
San Juan	2	3	4	2	100%	1	33%
San Miguel	19	11	15	-4	-21%	4	36%
Sandoval	31	9	17	-14	-45%	8	89%
Santa Fe	7	8	11	4	57%	3	38%
Sierra	2	0	1	-1	-50%	1	N/A
Socorro	1	1	2	1	100%	1	100%
South Dona Ana	5	11	14	9	180%	3	27%
Southeast Bernalillo	36	22	25	-11	-31%	3	14%
Southwest Bernalillo	24	14	11	-13	-54%	-3	-21%
Taos	3	4	3	0	0%	-1	-25%
Torrance	10	7	6	-4	-40%	-1	-14%
Union	0	0	0	0	N/A	0	N/A
Valencia North	4	3	4	0	0%	1	33%
Valencia South	5	0	3	-2	-40%	3	N/A
West Dona Ana	19	22	29	10	53%	7	32%
Centralized Units	0	0	0	0	N/A	0	N/A
TOTAL	304	203	255	-49	-16%	52	26%

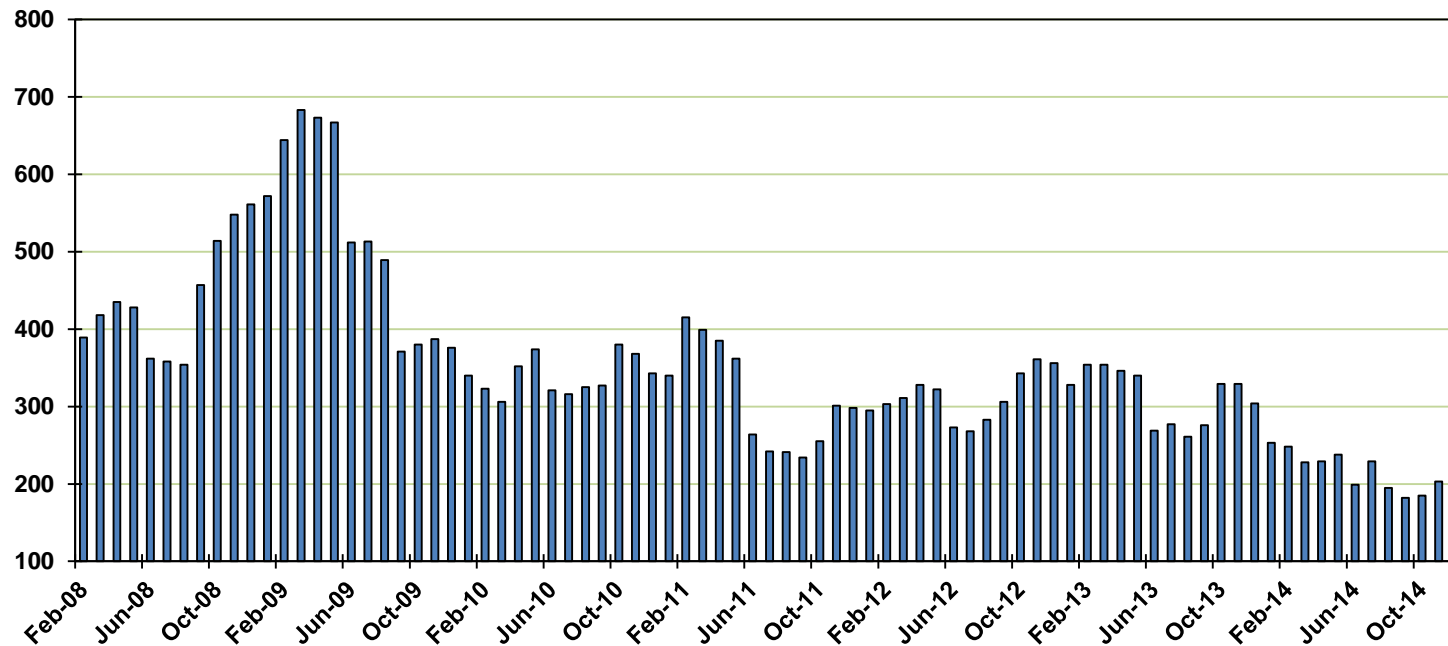
*Cases from Zuni Office are included in the McKinley Office count.

^Centralized units were incorporated into field office in 2014.

Education Works Cases by Region

Region	Dec-13	Nov-14	Dec-14	Dec 13 – Dec 14		Nov 14 –Dec 14	
				# change	% change	# change	% change
NW Region 1	47	4	24	-23	-49%	20	500%
NE Region 2	36	40	45	9	25%	5	13%
Central Region 3	150	84	93	-57	-38%	9	11%
SE Region 4	9	9	13	4	44%	4	44%
SW Region 5	62	66	80	18	29%	14	21%
Centralized Units	0	0	0	0	N/A	0	N/A
TOTAL	304	203	255	-49	-16%	52	26%

Education Works Cases per Month



Beginning September 2014, Sandoval County ISD Office cases are counted in NE Region 2.

General Assistance (GA) Cases by Administrative Office

Office	Dec-13	Nov-14	Dec-14	Dec 13 – Dec 14		Nov 14 – Dec 14	
				# change	% change	# change	% change
Chaves	96	103	101	5	5%	-2	-2%
Cibola	65	47	49	-16	-25%	2	4%
Colfax	37	46	46	9	24%	0	0%
Curry	67	66	72	5	7%	6	9%
East Dona Ana	83	95	93	10	12%	-2	-2%
Eddy Artesia	18	14	17	-1	-6%	3	21%
Eddy Carlsbad	72	68	76	4	6%	8	12%
Grant	67	74	76	9	13%	2	3%
Guadalupe	28	31	30	2	7%	-1	-3%
Hidalgo	12	7	3	-9	-75%	-4	-57%
Lea	46	45	48	2	4%	3	7%
Lincoln	32	21	27	-5	-16%	6	29%
Luna	43	40	41	-2	-5%	1	2%
McKinley	19	15	15	-4	-21%	0	0%
Northeast Bernalillo	474	341	357	-117	-25%	16	5%
Northwest Bernalillo	351	212	232	-119	-34%	20	9%
Otero	70	41	46	-24	-34%	5	12%
Quay	36	29	31	-5	-14%	2	7%
Rio Arriba	144	130	131	-13	-9%	1	1%
Roosevelt	16	12	13	-3	-19%	1	8%
San Juan	76	65	72	-4	-5%	7	11%
San Miguel	133	129	128	-5	-4%	-1	-1%
Sandoval	128	134	135	7	5%	1	1%
Santa Fe	283	213	217	-66	-23%	4	2%
Sierra	26	24	26	0	0%	2	8%
Socorro	58	57	59	1	2%	2	4%
South Dona Ana	53	39	39	-14	-26%	0	0%
Southeast Bernalillo	195	231	222	27	14%	-9	-4%
Southwest Bernalillo	237	250	261	24	10%	11	4%
Taos	115	63	72	-43	-37%	9	14%
Torrance	34	61	61	27	79%	0	0%
Union	8	0	0	-8	-100%	0	N/A
Valencia North	90	68	72	-18	-20%	4	6%
Valencia South	59	56	65	6	10%	9	16%
West Dona Ana	150	146	155	5	3%	9	6%
Centralized Units	5	2	1	1	N/A	-1	-50%
TOTAL	3,426	2,975	3,089	-337	-10%	114	4%

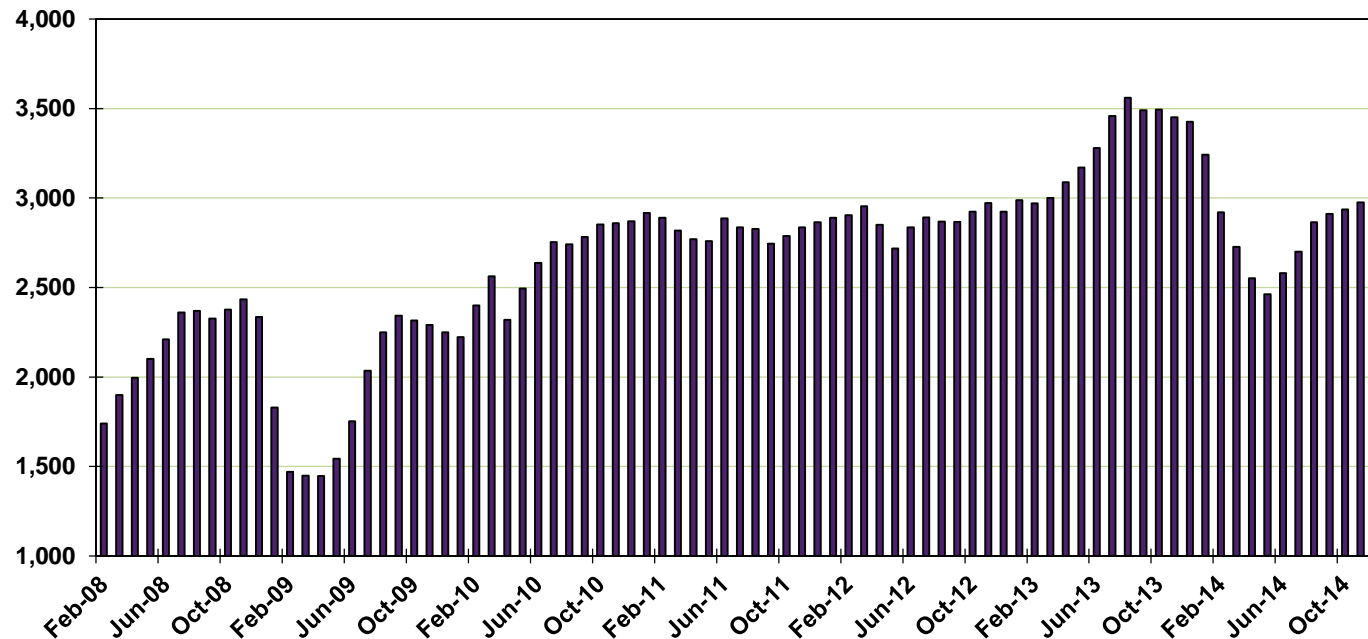
*Cases from Zuni Office are included in the McKinley Office count.

^Centralized units were incorporated into field office in 2014.

General Assistance (GA) Cases by Region

Region	Dec-13	Nov-14	Dec-14	Dec 13 – Dec 14		Nov 14 – Dec 14	
				# change	% change	# change	% change
NW Region 1	442	251	273	-169	-38%	22	9%
NE Region 2	720	715	729	9	1%	14	2%
Central Region 3	1,291	1,095	1,133	-158	-12%	38	3%
SE Region 4	379	368	388	9	2%	20	5%
SW Region 5	594	544	565	-29	-5%	21	4%
Centralized Units	0	2	1	1	N/A	-1	-50%
TOTAL	3,426	2,975	3,089	-337	-10%	114	4%

General Assistance Cases per Month

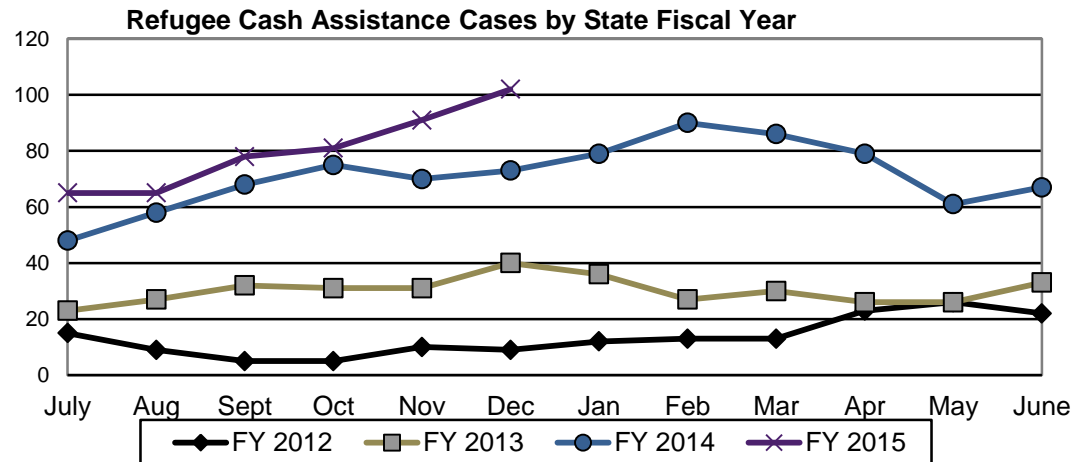


Beginning September 2014, Sandoval County ISD Office is considered to be a part of Region 2.

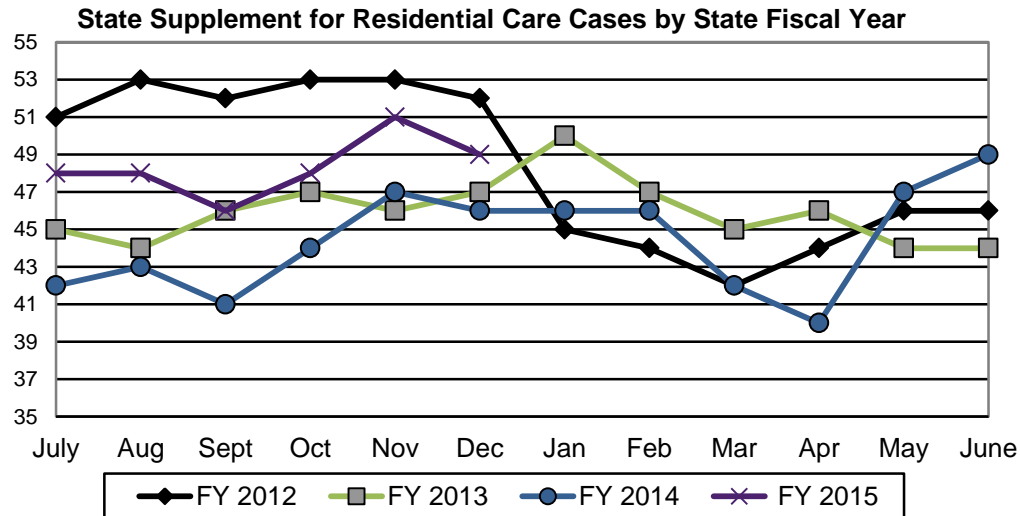
GA Interim Assistance Reimbursements								
	SFY 12		SFY 13		SFY 14		SFY 15	
	Cases	Amount	Cases	Amount	Cases	Amount	Cases	Amount
<i>July</i>	77	\$224,022	105	\$254,087	87	\$185,368	67	\$144,679
August	100	\$256,766	88	\$248,471	70	\$184,639	77	\$244,233
<i>September</i>	68	\$159,712	101	\$233,341	102	\$268,243	78	\$168,421
October	60	\$158,539	101	\$293,784	87	\$165,578	68	\$182,265
<i>November</i>	60	\$158,596	72	\$193,152	65	\$139,197	45	\$134,482
December	74	\$183,600	84	\$236,221	49	\$147,853	84	\$239,926
<i>January</i>	91	\$341,348	79	\$209,922	63	\$178,944		
February	113	\$307,090	77	\$178,441	53	\$130,352		
<i>March</i>	77	\$186,834	85	\$229,599	79	\$176,756		
April	102	\$357,392	92	\$240,540	56	\$155,245		
<i>May</i>	90	\$230,243	126	\$346,079	62	\$138,827		
June	57	\$215,729	90	\$225,355	108	\$241,016		
SFY Total	969	\$2,779,871	1,100	\$2,888,992	881	\$2,112,017	419	\$1,114,006
Monthly Average	81	\$231,656	92	\$240,749	73	\$176,001	70	\$185,668

IAR case figures reflect those with expected reimbursement amounts above \$0. Figures unreconciled and subject to change.

Refugee Cash Assistance								
	SFY 12		SFY 13		SFY 14		SFY 15	
	Cases	Payments	Cases	Payments	Cases	Payments	Cases	Payments
July	15	\$6,428	23	\$7,155	48	\$12,013	65	\$11,679
August	9	\$4,433	27	\$7,742	58	\$16,129	65	\$11,760
September	5	\$2,930	32	\$8,267	68	\$19,061	78	\$13,094
October	5	\$1,519	31	\$9,803	75	\$20,962	81	\$13,726
November	10	\$2,675	31	\$9,552	70	\$21,880	91	\$16,461
December	9	\$3,380	40	\$10,435	73	\$22,053	102	\$18,699
January	12	\$3,285	36	\$11,489	79	\$22,670		
February	13	\$3,210	27	\$11,107	90	\$23,227		
March	13	\$3,739	30	\$8,678	86	\$21,808		
April	23	\$5,654	26	\$9,410	79	\$20,109		
May	26	\$7,579	26	\$8,901	61	\$15,703		
June	22	\$7,496	33	\$9,535	67	\$14,783		
SFY Total	162	\$52,328	363	\$112,074	854	\$230,398	482	\$85,419
Monthly Average	14	\$4,361	30	\$9,340	71	\$19,200	80	\$14,237



State Supplement for Residential Care								
	SFY 12		SFY 13		SFY 14		SFY15	
	Cases	Payments	Cases	Payments	Cases	Payments	Cases	Payments
July	51	\$5,300	45	\$4,600	42	\$4,400	48	\$4,700
August	53	\$5,500	44	\$4,600	43	\$4,300	48	\$5,000
September	52	\$5,300	46	\$4,800	41	\$4,700	46	\$4,600
October	53	\$5,400	47	\$4,700	44	\$4,500	48	\$4,600
November	53	\$5,300	46	\$4,900	47	\$4,700	51	\$5,600
December	52	\$5,400	47	\$5,200	46	\$4,600	49	\$5,000
January	45	\$5,600	50	\$5,100	46	\$4,700		
February	44	\$4,700	47	\$4,900	46	\$4,700		
March	42	\$4,400	45	\$4,800	42	\$4,500		
April	44	\$4,400	46	\$4,700	40	\$4,200		
May	46	\$4,800	44	\$4,600	47	\$5,000		
June	46	\$4,600	44	\$4,400	49	\$4,900		
SFY Total	581	\$60,700	551	\$57,300	533	\$55,100	290	\$29,500
Monthly Average	48	\$5,058	46	\$4,775	44	\$4,592	48	\$4,917



SNAP Applications Processed by Administrative Office: December 2014

Office	Approved	Denied	With-drawn	Total
Chaves	307	5	11	323
Cibola	163	2	8	173
Colfax	46	1	2	49
Curry	165	8	9	182
East Dona Ana	267	20	18	305
Eddy Artesia	50	2	1	53
Eddy Carlsbad	131	2	10	143
Grant	151	5	10	166
Guadalupe	23	0	0	23
Hidalgo	18	1	1	20
Lea	177	2	16	195
Lincoln	67	0	3	70
Luna	155	4	10	169
McKinley	255	8	11	274
Northeast Bernalillo	710	18	32	760
Northwest Bernalillo	588	25	28	641
Otero	187	5	3	195
Quay	36	0	0	36

Office	Approved	Denied	With-drawn	Total
Rio Arriba	271	3	6	280
Roosevelt	79	2	4	85
San Juan	447	15	28	490
San Miguel	180	5	8	193
Sandoval	407	8	34	449
Santa Fe	361	13	14	388
Sierra	116	1	2	119
Socorro	89	5	6	100
South Dona Ana	205	10	16	231
Southeast Bernalillo	533	26	48	607
Southwest Bernalillo	652	21	47	720
Taos	220	4	9	233
Torrance	117	5	7	129
Union	0	0	0	0
Valencia North	192	11	9	212
Valencia South	122	0	4	126
West Dona Ana	436	10	24	470
Centralized Units	2	0	0	2
TOTAL	7,925	247	439	8,611

SNAP Applications Processed by Region: December 2014

Region	Approved	Denied	Withdrawn	Total
NW Region 1	1179	36	60	1275
NE Region 2	1485	34	73	1592
Central Region 3	2600	95	162	2857
SE Region 4	968	21	51	1040
SW Region 5	1691	61	93	1845
Centralized Units	2	0	0	2
TOTAL	7,925	247	439	8,611

Applications processed = applications approved + denied + withdrawn

TANF Applications Processed by Administrative Office: December 2014

Office	Approved	Denied	With- drawn	Total
Chaves	45	6	15	66
Cibola	20	2	9	31
Colfax	8	1	5	14
Curry	56	5	4	65
East Dona Ana	43	13	23	79
Eddy Artesia	8	1	9	18
Eddy Carlsbad	22	0	8	30
Grant	24	7	14	45
Guadalupe	3	0	1	4
Hidalgo	3	0	4	7
Lea	36	7	8	51
Lincoln	5	1	8	14
Luna	26	3	15	44
McKinley	9	3	12	24
Northeast Bernalillo	75	14	72	161
Northwest Bernalillo	76	22	55	153
Otero	23	2	20	45
Quay	12	1	2	15

Office	Approved	Denied	With- drawn	Total
Rio Arriba	52	8	11	71
Roosevelt	10	4	6	20
San Juan	25	5	15	45
San Miguel	45	5	7	57
Sandoval	59	8	28	95
Santa Fe	56	13	12	81
Sierra	12	1	9	22
Socorro	9	2	3	14
South Dona Ana	49	3	12	64
Southeast Bernalillo	78	13	55	146
Southwest Bernalillo	89	24	29	142
Taos	34	3	18	55
Torrance	11	3	17	31
Union	0	0	0	0
Valencia North	45	3	7	55
Valencia South	30	2	9	41
West Dona Ana	60	6	30	96
Centralized Units	0	1	0	1
TOTAL	1,158	192	552	1,902

TANF Applications Processed by Region: December 2014

Region	Approved	Denied	Withdrawn	Total
NW Region 1	129	15	52	196
NE Region 2	254	38	81	373
Central Region 3	329	76	228	633
SE Region 4	192	24	53	269
SW Region 5	254	38	138	430
Centralized Units	0	1	0	1
TOTAL	1,158	192	552	1,902

Applications processed = applications approved + denied + withdrawn

Beginning September 2014, Sandoval County ISD Office applications are counted in NE Region 2.

GA Applications Processed by Administrative Office: December 2014

Office	Approved	Denied	With- drawn	Total
Chaves	3	2	1	6
Cibola	3	1	1	5
Colfax	0	0	1	1
Curry	10	3	0	13
East Dona Ana	2	5	1	8
Eddy Artesia	2	1	0	3
Eddy Carlsbad	9	0	2	11
Grant	4	0	0	4
Guadalupe	2	0	0	2
Hidalgo	0	0	0	0
Lea	4	2	0	6
Lincoln	0	2	0	2
Luna	1	0	1	2
McKinley	0	1	0	1
Northeast Bernalillo	17	11	6	34
Northwest Bernalillo	9	10	0	19
Otero	4	2	0	6
Quay	0	1	0	1

Office	Approved	Denied	With- drawn	Total
Rio Arriba	7	6	1	14
Roosevelt	0	0	0	0
San Juan	7	0	0	7
San Miguel	6	3	1	10
Sandoval	10	3	0	13
Santa Fe	14	8	1	23
Sierra	0	1	0	1
Socorro	2	2	0	4
South Dona Ana	4	1	0	5
Southeast Bernalillo	6	4	1	11
Southwest Bernalillo	11	6	1	18
Taos	1	3	1	5
Torrance	4	0	1	5
Union	0	0	0	0
Valencia North	5	5	0	10
Valencia South	5	0	1	6
West Dona Ana	9	3	2	14
Centralized Units	0	0	0	0
TOTAL	161	86	23	270

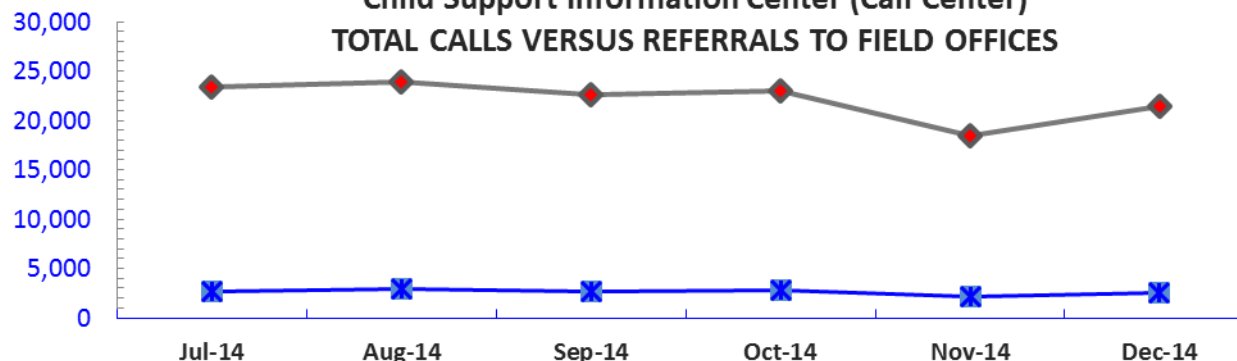
GA Applications Processed by Region: December 2014

Region	Approved	Denied	Withdrawn	Total
NW Region 1	20	7	2	29
NE Region 2	38	23	5	66
Central Region 3	47	31	9	87
SE Region 4	30	9	3	42
SW Region 5	26	16	4	46
Centralized Units	0	0	0	0
TOTAL	161	86	23	270

Beginning September 2014, Sandoval County ISD Office applications are counted in NE Region 2.

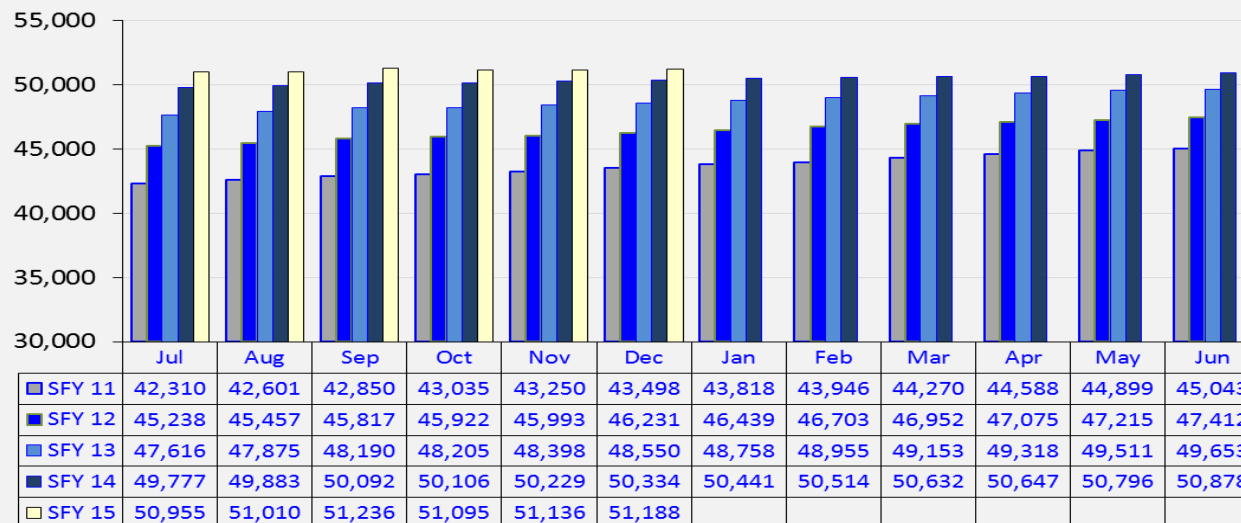
Applications processed = applications approved + denied + withdrawn

Child Support Information Center (Call Center) TOTAL CALLS VERSUS REFERRALS TO FIELD OFFICES

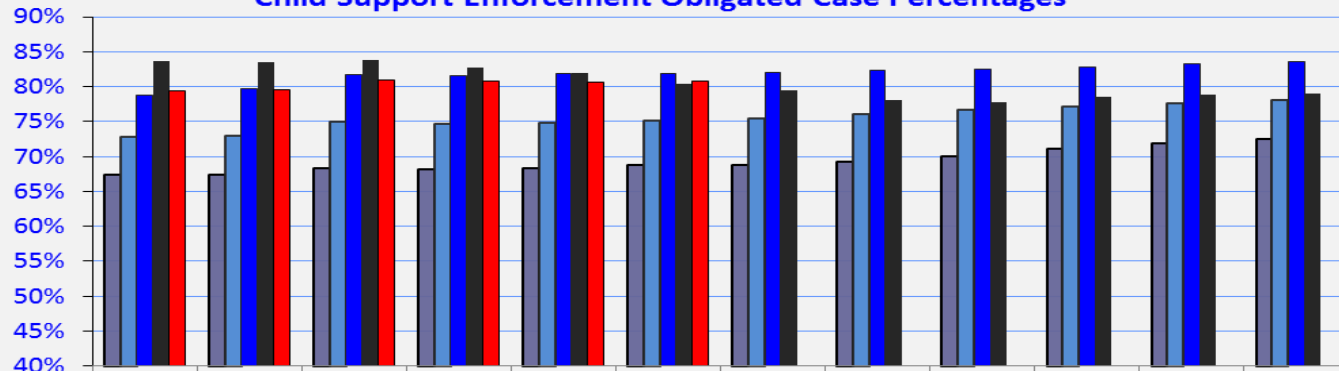


	Jul-14	Aug-14	Sep-14	Oct-14	Nov-14	Dec-14
—◆— Calls	23,363	23,959	22,656	23,063	18,440	21,390
—x— Referrals	2,701	2,926	2,703	2,746	2,156	2,539
Percent	11.56%	12.21%	11.93%	11.91%	11.69%	11.87%

Child Support Enforcement Obligated Cases

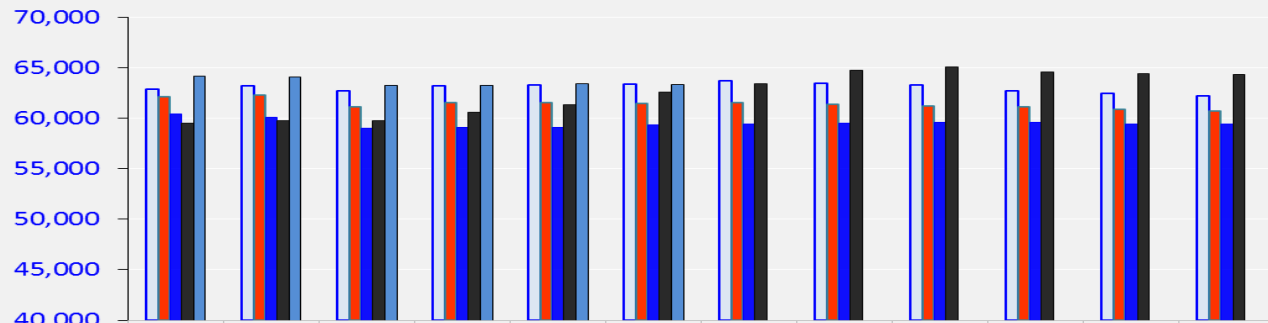


Child Support Enforcement Obligated Case Percentages



	Jul	Aug	Sep	Oct	Nov	Dec	Jan	Feb	Mar	Apr	May	Jun
SFY 11	67.30%	67.40%	68.30%	68.10%	68.30%	68.70%	68.80%	69.20%	70.00%	71.10%	71.90%	72.50%
SFY 12	72.80%	73.02%	74.90%	74.60%	74.75%	75.20%	75.48%	76.09%	76.70%	77.07%	77.53%	78.11%
SFY 13	78.80%	79.71%	81.70%	81.56%	81.94%	81.86%	82.06%	82.27%	82.47%	82.74%	83.28%	83.52%
SFY 14	83.64%	83.48%	83.84%	82.66%	81.92%	80.39%	79.50%	78.05%	77.80%	78.47%	78.87%	79.04%
SFY 15	79.44%	79.58%	81.01%	80.76%	80.68%	80.85%						

Child Support Enforcement Open Cases



	Jul	Aug	Sep	Oct	Nov	Dec	Jan	Feb	Mar	Apr	May	Jun
SFY 11	62,841	63,237	62,699	63,174	63,309	63,355	63,684	63,479	63,273	62,709	62,418	62,167
SFY 12	62,102	62,252	61,106	61,537	61,530	61,474	61,522	61,380	61,217	61,118	60,897	60,702
SFY 13	60,423	60,059	58,985	59,104	59,064	59,306	59,417	59,507	59,599	59,604	59,454	59,451
SFY 14	59,511	59,756	59,744	60,618	61,318	62,614	63,449	64,720	65,079	64,545	64,403	64,370
SFY 15	64,142	64,098	63,243	63,267	63,382	63,312						

**Children Youth and Families Department
Children Receiving Child Care Assistance Subsidies By County**

County	Dec 2013	Jan 2014	Feb 2014	Mar 2014	Apr 2014	May 2014	June 2014	July 2014	Aug 2014	Sep 2014	Oct 2014	Nov 2014	Dec 2014	Change Fr. Cases	Last Year Percent
Bernalillo	6,628	6,379	6,307	6,269	6,403	6,441	6,506	6,074	6,005	6,490	6,363	6,522	6,494	-134	-2.0%
Catron	2	2	0	0	0	0	0	0	0	0	0	0	0	-2	0.0%
Chaves	728	690	703	700	694	688	741	660	664	718	685	673	684	-44	-6.0%
Cibola	255	244	236	224	224	216	225	201	193	231	242	264	247	-8	-3.1%
Colfax	59	57	57	54	61	58	63	54	56	58	63	68	66	7	11.9%
Curry	449	423	388	399	397	399	408	411	413	416	393	397	380	-69	-15.4%
De Baca	22	15	13	17	19	15	13	9	9	18	23	21	24	2	9.1%
Dona Ana	4,637	4,520	4,310	4,389	4,373	4,391	4,438	3,777	3,729	3,938	4,003	4,068	4,004	-633	-13.7%
Eddy	253	242	221	229	249	230	250	238	255	260	233	219	213	-40	-15.8%
Grant	305	302	257	283	284	263	275	186	188	245	209	217	206	-99	-32.5%
Guadalupe	25	24	28	25	25	24	26	25	34	32	33	33	34	9	36.0%
Harding	0	0	0	0	0	0	0	0	0	0	0	0	0	0	0.0%
Hidalgo	32	33	29	31	30	29	27	24	21	22	22	16	17	-15	-46.9%
Lea	607	588	590	567	565	578	604	540	558	623	573	581	533	-74	-12.2%
Lincoln	151	154	138	132	133	122	135	111	110	121	141	133	130	-21	-13.9%
Los Alamos	16	16	14	15	15	14	13	11	11	12	11	12	10	-6	-37.5%
Luna	166	152	156	160	155	154	162	146	142	157	149	141	146	-20	-12.0%
McKinley	217	209	187	185	174	171	176	125	133	180	178	178	187	-30	-13.8%
Mora	17	20	19	19	17	15	17	17	17	19	20	22	15	-2	-11.8%
Otero	459	488	481	490	490	491	481	428	435	464	480	471	463	4	0.9%
Out of State	3	4	4	3	3	7	3	3	3	3	1	1	1	-2	-66.7%
Quay	12	19	15	15	19	18	19	22	25	23	29	35	32	20	166.7%
Rio Arriba	116	113	102	102	105	110	119	123	123	133	114	117	127	11	9.5%
Roosevelt	156	145	128	127	126	133	129	120	126	131	117	118	114	-42	-26.9%
San Juan	676	658	654	680	681	696	695	636	605	756	699	723	732	56	8.3%
San Miguel	382	375	355	351	354	354	337	319	310	286	343	365	357	-25	-6.5%
Sandoval	738	702	680	658	674	689	729	686	670	713	645	646	656	-82	-11.1%
Santa Fe	415	397	368	395	407	398	416	333	320	374	383	419	411	-4	-1.0%
Sierra	67	69	60	67	72	73	79	65	63	51	47	48	65	-2	-3.0%
Socorro	60	59	44	42	42	42	48	39	47	52	51	44	48	-12	-20.0%
Taos	96	96	92	97	105	102	108	91	89	100	90	96	95	-1	-1.0%
Torrance	69	66	73	69	73	74	81	73	77	67	73	74	70	1	1.4%
Union	6	6	8	8	9	9	8	7	7	7	7	8	9	3	50.0%
Valencia	596	584	577	557	557	572	572	502	480	532	502	517	514	-82	-13.8%
Totals	18,420	17,851	17,294	17,359	17,535	17,576	17,903	16,056	15,918	17,232	16,922	17,247	17,084	-1,336	-7.3%

Source: Children Youth and Families Department

Child Care Assistance Eligibility Programs

MONTH	JAN'14	FEB'14	MAR'14	APR'14	MAY'14	JUNE'14	JULY'14	AUG'14	SEP'14	OCT'14	NOV'14	DEC'14
TANF (Child Care Priority 1 Clients)												
CLIENTS	2,123	1,983	1,904	1,899	1,847	1,828	1,735	1,694	1,887	1,893	1,890	1,861
COST	\$663,661	\$684,343	\$700,476	\$712,766	\$688,357	\$625,723	\$701,198	\$764,547	\$763,225	\$846,366	\$837,139	\$828,334
TANF AVERAGE COST	\$313	\$345	\$368	\$375	\$373	\$342	\$404	\$451	\$404	\$447	\$443	\$445
TRANSITION OFF TANF (Child Care Priority 2 Clients)												
CLIENTS	281	264	233	205	189	169	124	139	139	134	153	155
COST	\$87,214	\$86,531	\$82,137	\$69,991	\$64,610	\$54,026	\$47,325	\$62,594	\$51,195	\$59,203	\$65,672	\$69,196
TRAN OFF TANF AVG COST	\$310	\$328	\$353	\$341	\$342	\$320	\$382	\$450	\$368	\$442	\$429	\$446
TANF ELIGIBLE (Child Care Priority 1B Clients at or below 100% of the Federal Poverty Level)												
CLIENTS	8,656	8,201	8,233	8,388	8,442	8,654	7,404	7,330	8,105	7,951	8,089	7,943
COST	\$2,727,874	\$2,802,076	\$2,988,010	\$3,037,173	\$3,075,650	\$2,875,589	\$2,983,688	\$3,252,127	\$3,088,000	\$3,518,430	\$3,514,892	\$3,466,510
TANF ELIGIBLE AVG COST	\$315	\$342	\$363	\$362	\$364	\$332	\$403	\$444	\$381	\$443	\$435	\$436
INCOME ELIGIBLE (Child Care Priority 3, and Priority 4 Clients)												
CLIENTS	6,079	6,160	6,256	6,305	6,309	6,427	5,918	5,850	6,194	6,069	6,228	6,270
COST	\$1,790,368	\$1,900,390	\$1,952,541	\$1,981,965	\$1,986,620	\$2,034,462	\$2,149,148	\$2,369,758	\$2,168,501	\$2,295,516	\$2,333,389	\$2,379,418
INCOME ELIG AVG COST	\$295	\$309	\$312	\$314	\$315	\$317	\$363	\$405	\$350	\$378	\$375	\$379
CHILD PROTECTIVE SERVICES (Child Care CPS Clients)												
CLIENTS	712	686	733	738	789	825	875	905	907	875	887	855
COST	\$311,201	\$303,886	\$314,658	\$332,742	\$354,961	\$356,258	\$395,879	\$459,913	\$463,513	\$459,023	\$456,941	\$448,469
CPS AVG COST	\$437	\$443	\$429	\$451	\$450	\$432	\$452	\$508	\$511	\$525	\$515	\$525
GRAND TOTAL - ALL CHILD CARE PROGRAMS												
CLIENTS	17,851	17,294	17,359	17,535	17,576	17,903	16,056	15,918	17,232	16,922	17,247	17,084
COST	\$5,580,317	\$5,777,227	\$6,037,822	\$6,134,637	\$6,170,197	\$5,946,058	\$6,277,239	\$6,908,940	\$6,534,435	\$7,178,539	\$7,208,033	\$7,191,927
ALL PROGRAMS AVG COST	\$313	\$334	\$348	\$350	\$351	\$332	\$391	\$434	\$379	\$424	\$418	\$421

Notes:

1. This table is provided by the Children, Youth and Families Department.
2. All costs in the table are average costs
3. Clients served and cost reflects total CYFD program funds and are not limited to funding provided by the Human Services Department.

Income Eligibility Guidelines, October 1, 2014 – September 30, 2015

Supplemental Nutrition Assistance Program - SNAP

Household Size	Federal Poverty Guidelines (FPG) Monthly Income Standards			Maximum SNAP Monthly Allotment	LIHEAP 150% FPG
	100% FPG Net Income	130% FPG Gross Income	165% FPG Gross Income for Categorical Eligibility		
1	\$973	\$1,265	\$1,605	\$194	\$1,460
2	\$1,311	\$1,705	\$2,163	\$357	\$1,967
3	\$1,650	\$2,144	\$2,722	\$511	\$2,475
4	\$1,988	\$2,584	\$3,280	\$649	\$2,982
5	\$2,326	\$3,024	\$3,838	\$771	\$3,489
6	\$2,665	\$3,464	\$4,396	\$925	\$3,998
7	\$3,003	\$3,904	\$4,955	\$1,022	\$4,505
8	\$3,341	\$4,344	\$5,513	\$1,169	\$5,012
+ 1	+\$339	+\$440	+\$559	+\$146	+\$509

Minimum Allotment \$16 effective from 10/1/2014 through 09/30/2015

DEDUCTIONS: Standard Deduction: For HH size 1-3 = \$155; 4 = \$165; 5 = \$193; 6 or more = \$221; Excess Shelter Deduction Limit: \$490; Heating and Cooling Standard Utility Allowance: \$319 (HCSUA) – Limited Utility Allowance: \$ 116 (LUA); Telephone Standard: \$39; Dependent Care: Actual Amount (No Limit); Earned Income Deduction: 20%; Homeless Shelter Standard: \$143

Cash Assistance & Support Services

Household Size	Federal Poverty Guidelines (FPG) Monthly Income Standards			Maximum Monthly Benefit		
	100% FPG Limit	85% FPG Gross Limit	NM Works Cash Net Income	15% NMW Budgetary Adjustment*	Maximum Monthly Benefit	General Assistance
1	\$973	\$827	\$266	\$39	\$227	\$245
2	\$1,311	\$1,114	\$357	\$53	\$304	\$329
3	\$1,650	\$1,403	\$447	\$67	\$380	\$412
4	\$1,988	\$1,690	\$539	\$80	\$459	\$496
5	\$2,326	\$1,977	\$630	\$94	\$536	\$580
6	\$2,665	\$2,265	\$721	\$108	\$613	\$664
7	\$3,003	\$2,553	\$812	\$121	\$691	\$748
8	\$3,341	\$2,840	\$922	\$138	\$784	\$849
+ 1	+\$339	+\$288	+\$91	+\$14	+\$77	+\$84

Deductions: Dependent Care: For a child under age 2 = \$200; For a child age 2 and over = \$175.

Work Incentives: Earned Income Disregard: Single parent = \$125 & 1/2 remainder; Two-parent = \$225 & 1/2 remainder

*15% Budgetary Adjustment is subtracted from the eligible NMW amount to determine maximum monthly benefit.

Eligibility Guidelines for Medicaid

FEDERAL POVERTY LEVEL (FPL) GUIDELINES

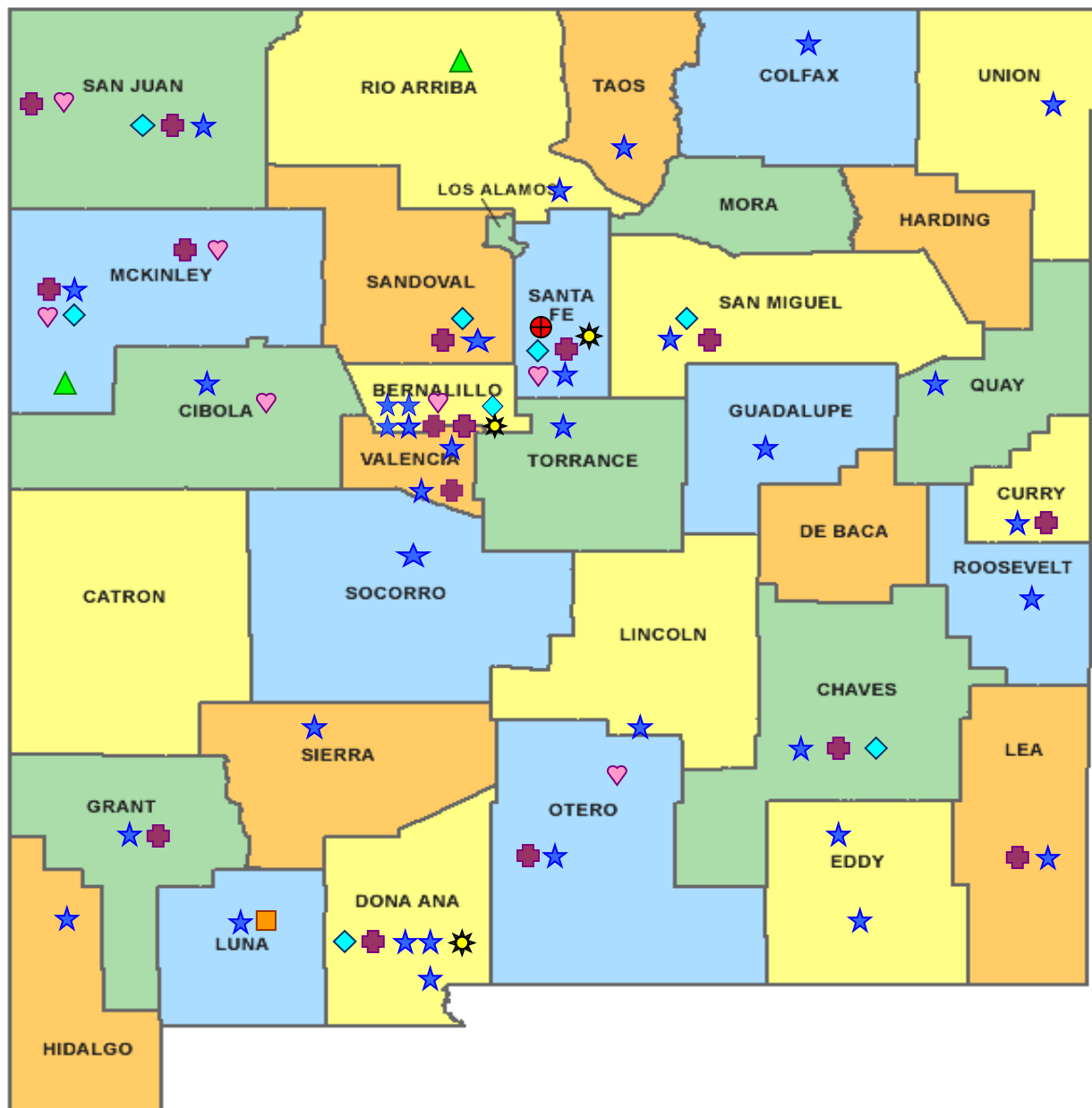
Effective April 1, 2014 thru March 31, 2015

Percent of Poverty

Family Size	138%	190%	240%	250%	300%
1	1,343.00	1,848.00	2,334.00	2,432.00	2,918.00
2	1,809.00	2,491.00	3,146.00	3,278.00	3,933.00
3	2,276.00	3,134.00	3,959.00	4,123.00	4,948.00
4	2,743.00	3,777.00	4,770.00	4,969.00	5,963.00
5	3,210.00	4,420.00	5,582.00	5,815.00	6,978.00
6	3,677.00	5,062.00	6,395.00	6,661.00	7,993.00
7	4,144.00	5,705.00	7,206.00	7,507.00	9,008.00
8	4,611.00	6,348.00	8,018.00	8,353.00	10,023.00









- 138% Adult Expansion
Full Medicaid Pregnant Women
- 190% Children ages 6 up to 19 (Medicaid)
- 240% Children ages 0 up to 6 (Medicaid)
Children ages 6 up to 19 (CHIP)
- 250% Pregnancy Related Services Only
- 300% Children ages 0 up to 6 (CHIP)

Source: http://www.hsd.state.nm.us/LookingForInformation/Federal_Poverty_Level_Guidelines.aspx



HUMAN SERVICES DEPARTMENT

New Mexico Human Services Department Field Offices

-  Central Office (1)
-  Income Support Division County Office (35)
-  Income Support Division Satellite Office (2)
-  Child Support Enforcement Regional Office (16)
-  Child Support Enforcement Satellite Office (1)
-  Quality Control Office (8)
-  Indian Health Services (7)
-  Hospital Site (3)

For a complete listing of field offices and other government and community resources:
http://www.hsd.state.nm.us/LookingForAssistance/Field_Offices_1.aspx