



HUMAN SERVICES  
DEPARTMENT

# Monthly Statistical Report October 2014

## Highlights

- The SNAP caseload in October 2014 was 216,959, a 9.8 percent increase from one year ago. SNAP caseload has risen by 1,437 cases, or 0.7 percent, since last month.
- The TANF caseload was 14,462 in October 2014, a 2.7 percent increase from October 2013. The TANF caseload had 220 cases less than September 2014, a decrease of 1.5 percent.
- The caseload for General Assistance was 2,937 in October 2014, a decrease of 16.0 percent from one year ago and an increase of 25 cases from last month.

***Susana Martinez, Governor***  
***Sidonie Squier, Cabinet Secretary***

<b>CONTENTS</b>	<b>PAGE</b>
Summary	3-4
SNAP	5-6
State SNAP Benefits Supplement	7
TANF	8-9
ICARE	10
NMWorks	11-12
Diversion	13
Education Works	14-15
General Assistance	16-17
GA Interim Assistance Reimbursements	18
Refugee Assistance	19
State Supplement for Residential Care	20
Applications	21-23
Child Support Enforcement	24-25
Child Care Assistance	26-27

Centralized Units include the following offices: Albuquerque Indian Hospital; ASD Restitutions; CSED; Customer Service; Lincoln County CSU; Mescalero; MRP; North Processing Center; Quality Assessment Bureau; San Miguel County CSU; SIPI; SMU Lincoln; SMU Torrance; South Processing Center; St. Vincent's; Torrance County CSU.

Tallies include data from ISD2 and ASPEN.

***The Mission of the Human Services  
Department***

*To reduce the impact of poverty on  
people living in New Mexico by  
providing support services that help  
families break the cycle of  
dependency on public assistance*

**Sean Pearson, Acting Deputy Secretary  
Brent Earnest, Deputy Secretary**

**Prepared by Income Support Division  
PO Box 2348  
Santa Fe, NM 87504-2348  
505-827-7250**

**Marilyn Martinez, Acting Division Director  
Vida Tapia-Sanchez, Deputy Director  
Laura Galindo, Deputy Director**

**We've moved!**

<http://www.hsd.state.nm.us/monthly-statistical-reports.aspx>

## Program Summary for October 2014

			Percent Change					Percent Change			
	Oct-13	Sep-14	Oct-14	Oct 13 – Oct 14	Sep 14 – Oct 14		Oct-13	Sep-14	Oct-14	Oct 13 – Oct 14	Sep 14 – Oct 14
<b>Supplemental Nutrition Assistance Program (SNAP)</b>						<b>State SNAP Benefits Supplement</b>					
Expenditures	\$56,394,999	\$54,318,049	\$55,827,853	-1.0%	2.8%	Expenditures	\$46,610	\$87,372	\$70,490	51.2%	-19.3%
Cases*	197,596	215,522	216,959	9.8%	0.7%	Cases	5,575	9,688	9,136	63.9%	-5.7%
Individuals*	441,413	470,131	472,373	7.0%	0.5%	<b>Education Works</b>					
Adults*	242,267	259,206	260,479	7.5%	0.5%	Expenditures	\$114,222	\$57,963	\$59,774	-47.7%	3.1%
Children*	199,146	210,925	211,894	6.4%	0.5%	Cases	329	182	185	-43.8%	1.6%
Apps processed	13,869	9,848	8,777	-36.7%	-10.9%	Individuals	930	522	528	-43.2%	1.1%
Approvals	11,097	9,081	8,057	-27.4%	-11.3%	Adults	361	208	209	-42.1%	0.5%
<b>Temporary Assistance to Needy Families (TANF)</b>						<b>State Supplement for Residential Care</b>					
Expenditures	\$4,045,778	\$3,974,454	\$3,880,619	-4.1%	-2.4%	Expenditures	\$4,500	\$4,600	\$4,600	2.2%	0.0%
Cases	14,082	14,682	14,462	2.7%	-1.5%	Cases	44	46	48	9.1%	4.3%
Individuals	35,297	38,542	37,849	7.2%	-1.8%	Individuals	44	46	48	9.1%	4.3%
Adults	11,348	10,779	10,588	-6.7%	-1.8%	Adults	44	46	48	9.1%	4.3%
Children	23,949	27,763	27,261	13.8%	-1.8%	<b>Refugee Assistance</b>					
Apps Processed	3,142	1,859	1,777	-43.4%	-4.4%	Expenditures	\$20,962	\$13,094	\$13,726	-34.5%	4.8%
Approvals	1,388	1,140	1,055	-24.0%	-7.5%	Cases	75	78	81	8.0%	3.8%
<b>General Assistance (GA)</b>						<b>Medicaid</b>					
Expenditures	\$905,403	\$723,356	\$737,471	-18.5%	2.0%				<b>Percent Change</b>		
Cases	3,495	2,912	2,937	-16.0%	0.9%	<b>Oct-13</b>	<b>Sep-14</b>	<b>Oct-14</b>	<b>Oct 13 – Oct 14</b>	<b>Sep 14 – Oct 14</b>	
Individuals	3,661	2,983	3,017	-17.6%	1.1%	Expenditures**	\$333,272,093	\$417,439,730	\$423,632,383	27.1%	1.5%
Adults	3,427	2,787	2,815	-17.9%	1.0%	Eligible	540,809	729,722	735,558	36.0%	0.8%
Children	234	196	202	-13.7%	3.1%	Adults	205,128	377,228	382,456	86.4%	1.4%
Apps Processed	1,022	236	221	-78.4%	-6.4%	Children	335,681	352,494	353,102	5.2%	0.2%
Approvals	232	128	131	-43.5%	2.3%						

All expenditures are unreconciled and subject to change.

\* Includes active cases with zero benefits

\*\*Medicaid expenditures as of date of payment.

<b>Expenditures Year to Date</b>			
	<b>SFY 2015</b>	<b>FFY 2015</b>	<b>CY 2014</b>
Supplemental Nutrition Assistance Program (SNAP)	\$218,881,027	\$55,827,853	\$525,537,784
Temporary Assistance for Needy Families (TANF)	\$16,450,910	\$3,880,619	\$38,674,541
General Assistance	\$2,878,143	\$737,471	\$7,024,131
Education Works	\$260,385	\$59,774	\$720,194

<b>DEMOGRAPHIC PROFILE</b>					
	<b>SNAP*</b>	<b>TANF</b>	<b>General Assistance</b>	<b>Education Works</b>	<b>Refugee Cash Assistance</b>
<b>Average # persons per case:</b>	2.18	2.62	1.03	2.85	1.05
<b>Gender of Recipients:</b>					
Male	214,246	15,931	1,743	181	58
Female	258,127	21,918	1,274	347	27
<b>Ethnicity:</b>					
Hispanic	272,291	26,653	1,722	319	53
Not Hispanic	200,082	11,196	1,295	209	32
<b>Race:</b>					
Native American or Alaskan Native	76,737	2,944	182	55	0
Asian	5,489	437	33	6	1
African American	11,467	1,423	102	24	7
Native Hawaiian or Pacific Islander	709	27	2	0	0
White	372,711	32,590	2,657	433	52
Unknown/not declared	3,248	168	16	5	5
More than one race	2,012	260	25	5	20

\* Includes active cases with zero benefits

### Supplemental Nutrition Assistance Program (SNAP) Cases\*\* by Administrative Office

Office	Oct-13	Sep-14	Oct-14	Oct 13 – Oct 14		Sep 14 – Oct 14	
				# change	% change	# change	% change
Chaves	6,641	7,380	7,325	684	10.3%	-55	-0.7%
Cibola	3,294	3,296	3,313	19	0.6%	17	0.5%
Colfax	1,222	1,591	1,589	367	30.0%	-2	-0.1%
Curry	3,843	4,357	4,420	577	15.0%	63	1.4%
East Dona Ana	7,002	7,869	7,965	963	13.8%	96	1.2%
Eddy Artesia	1,343	1,356	1,368	25	1.9%	12	0.9%
Eddy Carlsbad	2,798	3,119	3,118	320	11.4%	-1	0.0%
Grant	2,984	3,303	3,396	412	13.8%	93	2.8%
Guadalupe	731	804	803	72	9.8%	-1	-0.1%
Hidalgo	427	497	448	21	4.9%	-49	-9.9%
Lea	3,910	4,342	4,414	504	12.9%	72	1.7%
Lincoln	1,646	1,807	1,816	170	10.3%	9	0.5%
Luna	3,543	4,396	4,399	856	24.2%	3	0.1%
McKinley*	9,190	10,017	9,969	779	8.5%	-48	-0.5%
Northeast Bernalillo	18,608	18,384	18,844	236	1.3%	460	2.5%
Northwest Bernalillo	15,176	13,114	13,351	-1,825	-12.0%	237	1.8%
Otero	4,269	4,985	5,073	804	18.8%	88	1.8%
Quay	1,225	1,289	1,288	63	5.1%	-1	-0.1%
Rio Arriba	6,857	7,358	7,383	526	7.7%	25	0.3%
Roosevelt	1,384	1,524	1,533	149	10.8%	9	0.6%
San Juan	11,269	11,524	11,618	349	3.1%	94	0.8%
San Miguel	4,952	5,199	5,228	276	5.6%	29	0.6%
Sandoval	9,271	10,463	10,526	1,255	13.5%	63	0.6%
Santa Fe	9,786	11,131	11,105	1,319	13.5%	-26	-0.2%
Sierra	2,395	2,741	2,710	315	13.2%	-31	-1.1%
Socorro	2,678	2,941	2,908	230	8.6%	-33	-1.1%
South Dona Ana	7,291	8,132	8,209	918	12.6%	77	0.9%
Southeast Bernalillo	11,834	14,967	14,986	3,152	26.6%	19	0.1%
Southwest Bernalillo	16,792	20,190	20,237	3,445	20.5%	47	0.2%
Taos	3,933	4,127	4,152	219	5.6%	25	0.6%
Torrance	2,473	3,239	3,296	823	33.3%	57	1.8%
Union	210	-	1	-209	-99.5%	1	N/A
Valencia North	5,569	5,997	6,096	527	9.5%	99	1.7%
Valencia South	3,059	3,421	3,378	319	10.4%	-43	-1.3%
West Dona Ana	9,705	10,610	10,641	936	9.6%	31	0.3%
Centralized Units	286	52	53	-233	-81.5%	1	1.9%
<b>TOTAL</b>	<b>197,596</b>	<b>215,522</b>	<b>216,959</b>	<b>19,363</b>	<b>9.8%</b>	<b>1,437</b>	<b>0.7%</b>

\* Cases from Zuni Office are included in the McKinley Office count

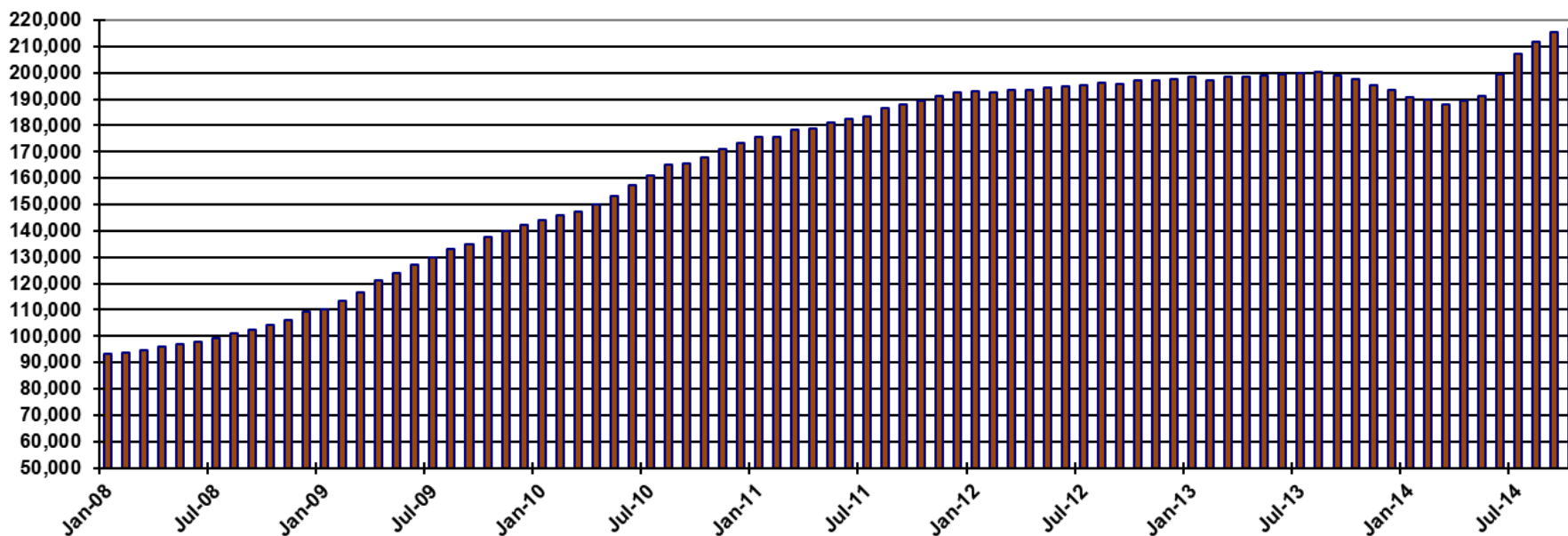
\*\* Includes active cases with zero benefits

**Supplemental Nutrition Assistance Program (SNAP) Cases\*\* by Region**

Region	Oct-13	Sep-14	Oct-14	Oct 13 – Oct 14		Sep 14 – Oct 14	
				# change	% change	# change	% change
NW Region 1	41,652	34,255	34,374	-7,278	-17.5%	119	0.3%
NE Region 2	26,960	39,869	39,984	13,024	48.3%	115	0.3%
Central Region 3	64,883	69,894	70,714	5,831	9.0%	820	1.2%
SE Region 4	21,875	24,171	24,269	2,394	10.9%	98	0.4%
SW Region 5	41,940	47,281	47,565	5,625	13.4%	284	0.6%
Centralized Units	286	52	53	-233	-81.5%	1	1.9%
<b>TOTAL</b>	<b>197,596</b>	<b>215,522</b>	<b>216,959</b>	<b>19,363</b>	<b>9.8%</b>	<b>1,437</b>	<b>0.7%</b>

\*\* Includes active cases with zero benefits

**SNAP Cases Per Month**

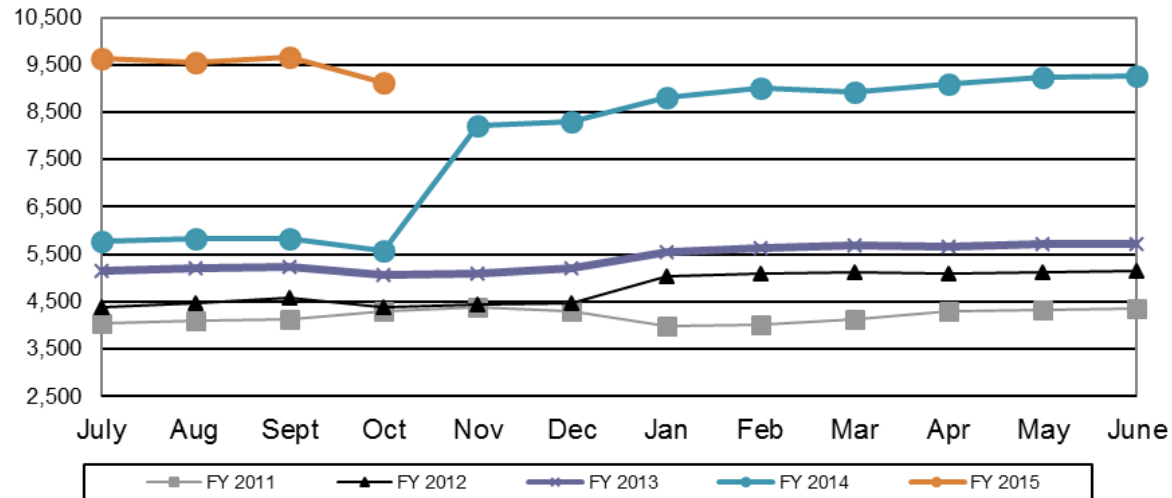


Beginning September 2014, Sandoval County ISD Office cases are counted in NE Region 2.

### State SNAP Benefits Supplement

	SFY 2011		SFY 2012		SFY 2013		SFY 2014		SFY 2015	
	Cases	Expenditures	Cases	Expenditures	Cases	Expenditures	Cases	Expenditures	Cases	Expenditures
<i>July</i>	4,056	\$50,241	4,395	\$34,773	5,157	\$42,552	5,767	\$48,040	9,635	\$88,859
<b>Aug</b>	<b>4,088</b>	<b>\$50,502</b>	<b>4,477</b>	<b>\$35,360</b>	<b>5,200</b>	<b>\$42,797</b>	<b>5,841</b>	<b>\$48,417</b>	<b>9,559</b>	<b>\$87,757</b>
<i>Sept</i>	4,139	\$50,946	4,591	\$36,455	5,223	\$43,023	5,841	\$48,732	9,688	\$87,372
<b>Oct</b>	<b>4,284</b>	<b>\$52,530</b>	<b>4,384</b>	<b>\$34,850</b>	<b>5,071</b>	<b>\$41,752</b>	<b>5,575</b>	<b>\$46,610</b>	<b>9,136</b>	<b>\$70,490</b>
<i>Nov</i>	4,381	\$53,820	4,436	\$35,260	5,088	\$42,074	8,219	\$69,564		
<b>Dec</b>	<b>4,296</b>	<b>\$52,649</b>	<b>4,474</b>	<b>\$35,619</b>	<b>5,202</b>	<b>\$42,829</b>	<b>8,310</b>	<b>\$71,839</b>		
<i>Jan</i>	3,984	\$31,897	5,050	\$41,519	5,548	\$45,769	8,826	\$77,933		
<b>Feb</b>	<b>4,006</b>	<b>\$31,970</b>	<b>5,102</b>	<b>\$41,900</b>	<b>5,645</b>	<b>\$46,700</b>	<b>9,024</b>	<b>\$84,758</b>		
<i>Mar</i>	4,113	\$33,226	5,119	\$41,960	5,677	\$47,117	8,916	\$80,597		
<b>April</b>	<b>4,290</b>	<b>\$34,599</b>	<b>5,099</b>	<b>\$41,988</b>	<b>5,654</b>	<b>\$47,118</b>	<b>9,098</b>	<b>\$84,599</b>		
<i>May</i>	4,236	\$34,892	5,109	\$43,587	5,706	\$47,528	9,226	\$85,035		
<b>June</b>	<b>4,351</b>	<b>\$29,199</b>	<b>5,154</b>	<b>\$42,442</b>	<b>5,720</b>	<b>\$47,625</b>	<b>9,264</b>	<b>\$84,239</b>		
<b>TOTAL</b>	<b>50,314</b>	<b>\$528,062</b>	<b>57,390</b>	<b>\$465,713</b>	<b>64,891</b>	<b>\$536,884</b>	<b>93,907</b>	<b>\$830,454</b>	<b>38,018</b>	<b>\$334,478</b>
<b>Monthly average</b>	<b>4,193</b>	<b>\$44,005</b>	<b>4,783</b>	<b>\$38,809</b>	<b>5,408</b>	<b>\$44,740</b>	<b>7,526</b>	<b>\$69,204</b>	<b>9,505</b>	<b>\$83,620</b>

**State SNAP Benefits Supplement Cases by State Fiscal Year**



### Temporary Assistance of Needy Families (TANF) Cases by Administrative Office

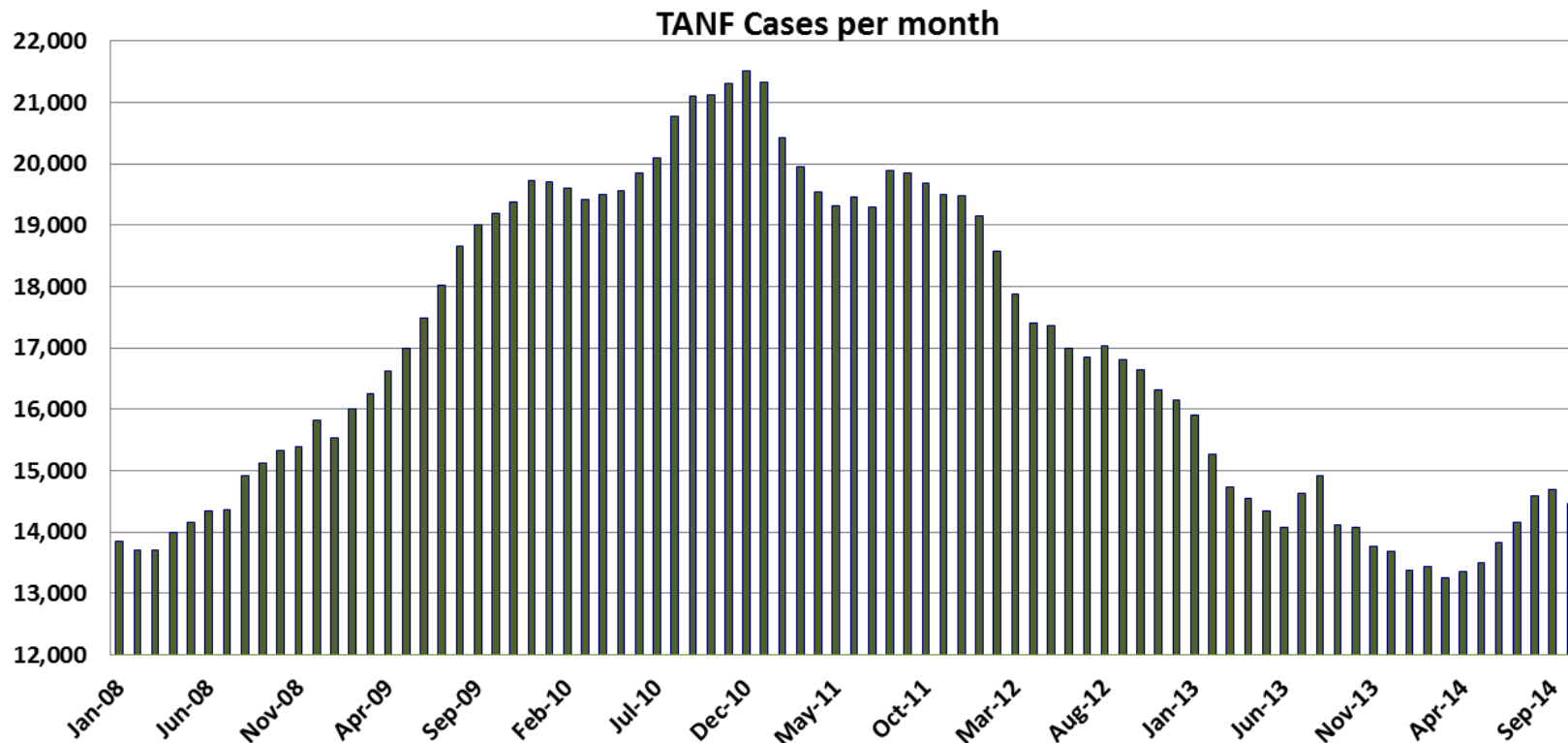
Office	Oct-13	Sep-14	Oct-14	Oct 13 – Oct 14		Sep 14 – Oct 14	
				# change	% change	# change	% change
Chaves	588	635	615	27	4.6%	-20	-3.1%
Cibola	229	218	231	2	0.9%	13	6.0%
Colfax	94	101	103	9	9.6%	2	2.0%
Curry	430	555	573	143	33.3%	18	3.2%
East Dona Ana	675	685	676	1	0.1%	-9	-1.3%
Eddy Artesia	132	117	122	-10	-7.6%	5	4.3%
Eddy Carlsbad	261	275	264	3	1.1%	-11	-4.0%
Grant	194	216	228	34	17.5%	12	5.6%
Guadalupe	46	38	41	-5	-10.9%	3	7.9%
Hidalgo	36	36	28	-8	-22.2%	-8	-22.2%
Lea	395	400	393	-2	-0.5%	-7	-1.8%
Lincoln	148	136	111	-37	-25.0%	-25	-18.4%
Luna	304	291	282	-22	-7.2%	-9	-3.1%
McKinley*	100	116	115	15	15.0%	-1	-0.9%
Northeast Bernalillo	1,152	1,136	1,144	-8	-0.7%	8	0.7%
Northwest Bernalillo	1,022	938	910	-112	-11.0%	-28	-3.0%
Otero	301	308	293	-8	-2.7%	-15	-4.9%
Quay	80	102	91	11	13.8%	-11	-10.8%
Rio Arriba	527	487	473	-54	-10.2%	-14	-2.9%
Roosevelt	113	159	154	41	36.3%	-5	-3.1%
San Juan	237	221	224	-13	-5.5%	3	1.4%
San Miguel	282	280	275	-7	-2.5%	-5	-1.8%
Sandoval	564	703	676	112	19.9%	-27	-3.8%
Santa Fe	590	669	677	87	14.7%	8	1.2%
Sierra	124	115	114	-10	-8.1%	-1	-0.9%
Socorro	155	174	160	5	3.2%	-14	-8.0%
South Dona Ana	1,028	962	932	-96	-9.3%	-30	-3.1%
Southeast Bernalillo	979	1,036	986	7	0.7%	-50	-4.8%
Southwest Bernalillo	1,340	1,516	1,534	194	14.5%	18	1.2%
Taos	147	167	181	34	23.1%	14	8.4%
Torrance	217	217	215	-2	-0.9%	-2	-0.9%
Union	19	0	0	-19	-100.0%	0	N/A
Valencia North	378	455	455	77	20.4%	0	0.0%
Valencia South	179	239	231	52	29.1%	-8	-3.3%
West Dona Ana	995	979	954	-41	-4.1%	-25	-2.6%
Centralized Units	21	0	1	-20	-95.2%	1	N/A
<b>TOTAL</b>	<b>14,082</b>	<b>14,682</b>	<b>14,462</b>	<b>380</b>	<b>2.7%</b>	<b>-220</b>	<b>-1.5%</b>

\*Cases from Zuni Office are included in the McKinley Office count.



### Temporary Assistance of Needy Families (TANF) Cases by Region

Region	Sep-13	Aug-14	Sep-14	Oct 13 – Oct 14		Sep 14 – Oct 14	
				# change	% change	# change	% change
NW Region 1	1,687	1,249	1,256	-431	-25.5%	7	0.6%
NE Region 2	1,659	2,407	2,385	726	43.8%	-22	-0.9%
Central Region 3	4,710	4,843	4,789	79	1.7%	-54	-1.1%
SE Region 4	2,045	2,281	2,253	208	10.2%	-28	-1.2%
SW Region 5	3,960	3,902	3,778	-182	-4.6%	-124	-3.2%
Centralized Units	21	0	1	-20	-95.2%	1	N/A
<b>TOTAL</b>	<b>14,082</b>	<b>14,682</b>	<b>14,462</b>	<b>380</b>	<b>2.7%</b>	<b>-220</b>	<b>-1.5%</b>



Beginning September 2014, Sandoval County ISD Office cases are counted in NE Region 2.

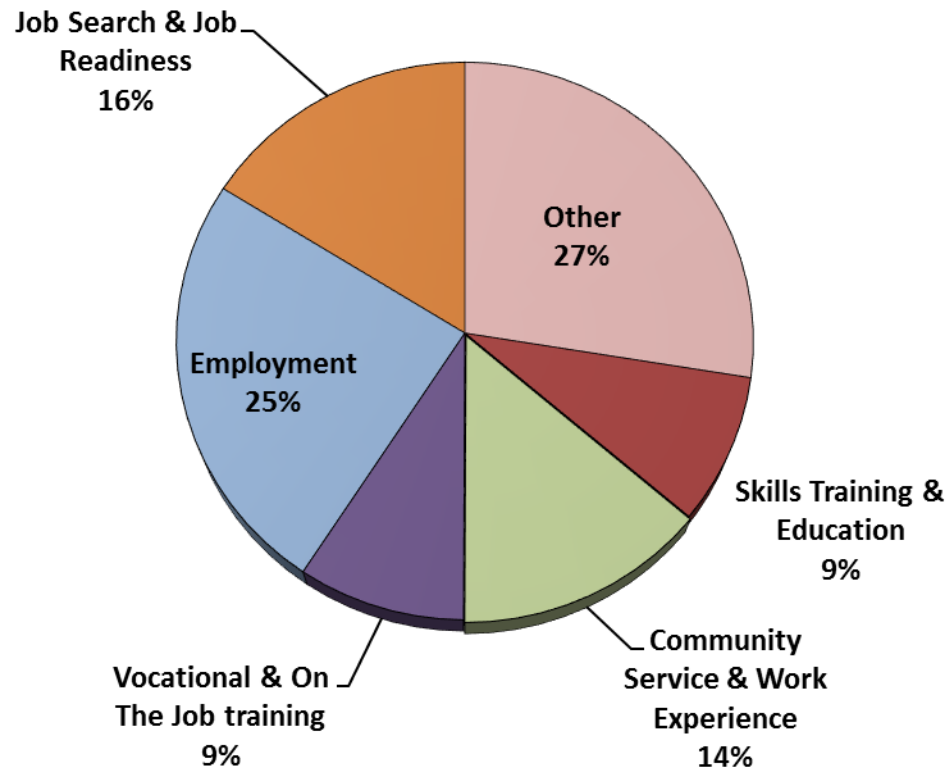
**Intensive Case Management, Recovery and Employment (ICARE)**

The ICARE program began as a pilot program in Albuquerque and is designed to address substance use barriers to employment in TANF Recipients. The ICARE program now provides services in Albuquerque and Rio Arriba County.

It is a new approach that combines 12 weeks of Intensive Case Management with job readiness classes and job development. TANF recipients identified as having substance use issues that prevent them from obtaining and retaining employment are referred to the ICARE program. The program includes motivational interviewing to motivate change and decrease substance use; relapse prevention to build skills; family management to improve family functioning; job readiness classes to enhance employment skills and increase retention; and job development to secure employment. A program evaluation component will be used to determine the effectiveness of this program in addressing substance use disorders among TANF recipients.

	<b>Nov-13</b>	<b>Dec-13</b>	<b>Jan-14</b>	<b>Feb-14</b>	<b>Mar-14</b>	<b>Apr-14</b>	<b>May-14</b>	<b>Jun-14</b>	<b>Jul-14</b>	<b>Aug-14</b>	<b>Sep-14</b>	<b>Oct-14</b>
<b>ICARE Expenditures</b>	\$142,633	\$95,664	\$27,677	\$148,154	\$70,063	\$152,947	\$96,771	\$222,332	\$51,805	\$78,513	\$75,415	\$75,354
<b># of Screenings for Substance Use</b>	509	520	508	390	523	587	451	16	489	333	387	343
<b># of Referrals to ICARE resulting from screenings</b>	23	16	22	22	55	110	27	8	5	13	14	18

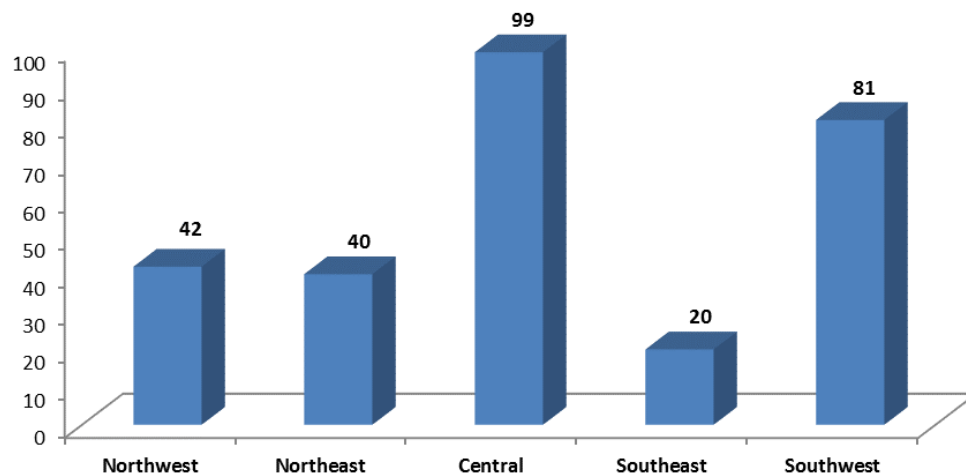
**NM Works Activity Placements on October 31, 2014  
as reported by SL Start \*\***



\*\*Data preliminary and subject to later revision.

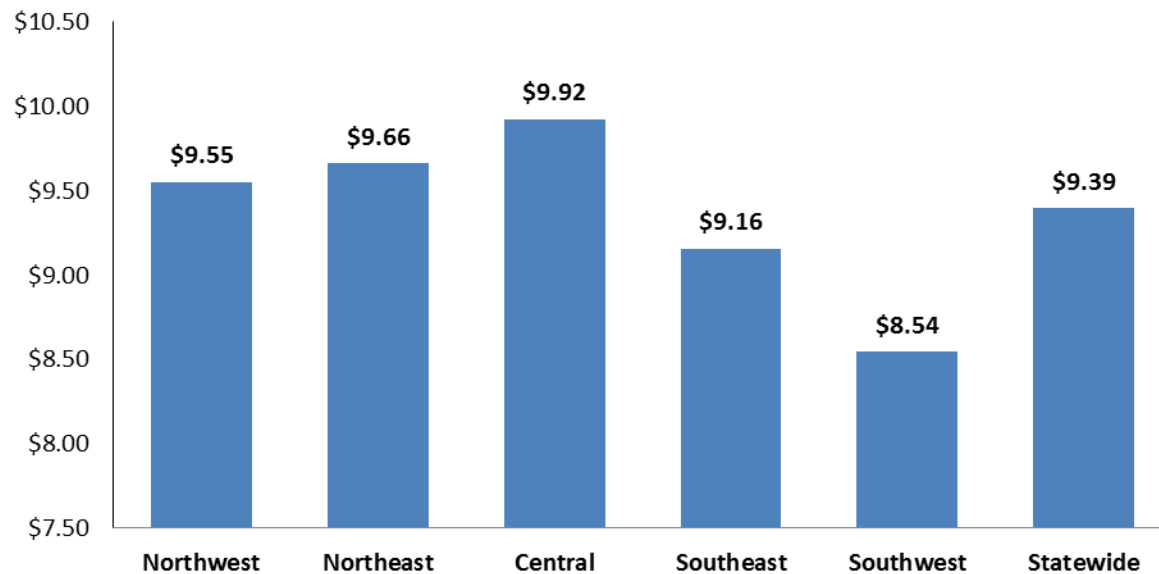
Placements may be duplicated as some individuals may work more than one activity or job.

**Number of New Employments in October, by region, as reported by SL Start**  
**Statewide Total: 282**



Employment placements may be duplicated as some individuals may work more than one job.

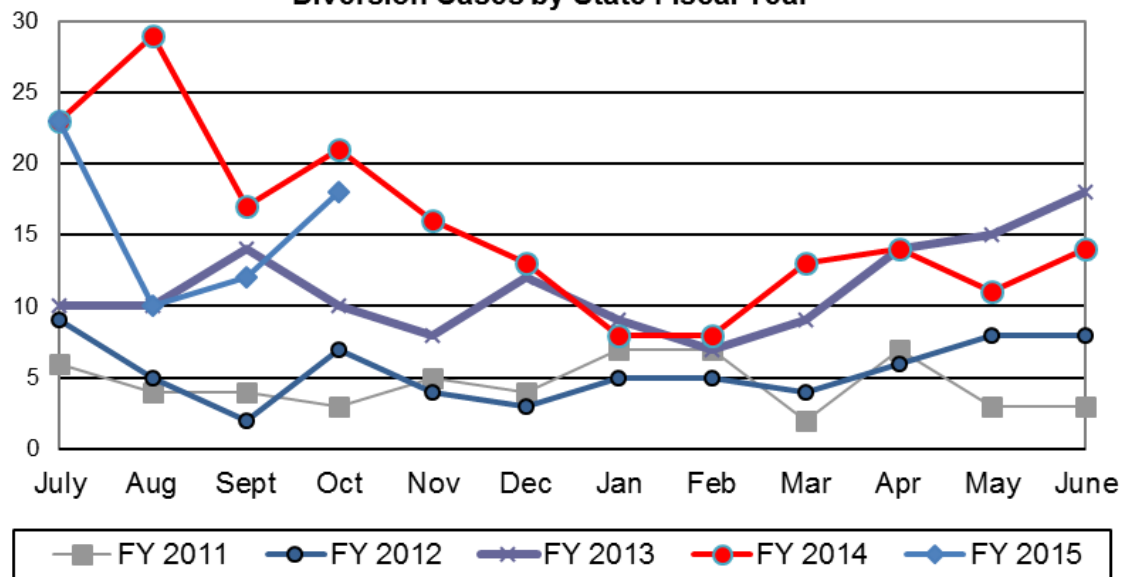
**Average Starting Hourly Wage of October TANF Employments, as reported by SL Start**



### TANF Diversion Payments

	SFY 2011		SFY 2012		SFY 2013		SFY 2014		SFY 2015	
	Cases	Expenditures	Cases	Expenditures	Cases	Expenditures	Cases	Expenditures	Cases	Expenditures
July	6	\$12,000	9	\$19,500	10	\$20,000	23	\$46,500	23	\$48,098
Aug	4	\$8,000	5	\$12,500	10	\$19,000	29	\$54,500	10	\$21,810
Sept	4	\$7,000	2	\$4,000	14	\$31,500	17	\$36,500	11	\$23,500
Oct	3	\$4,500	7	\$12,500	10	\$18,000	21	\$42,500	18	\$30,589
Nov	5	\$9,500	4	\$7,000	8	\$15,000	16	\$28,953		
Dec	4	\$10,000	3	\$5,500	12	\$25,000	13	\$25,500		
Jan	7	\$13,500	5	\$10,500	9	\$17,500	8	\$16,000		
Feb	7	\$13,500	5	\$11,500	7	\$13,500	8	\$16,994		
Mar	2	\$4,000	4	\$7,000	9	\$17,500	13	\$27,396		
April	7	\$14,350	6	\$10,000	14	\$30,000	14	\$28,000		
May	3	\$4,500	8	\$17,000	15	\$30,500	11	\$20,500		
June	3	\$6,500	8	\$20,000	18	\$37,000	14	\$29,911		
<b>TOTAL</b>	<b>55</b>	<b>\$107,350</b>	<b>66</b>	<b>\$137,000</b>	<b>136</b>	<b>\$274,500</b>	<b>187</b>	<b>\$283,254</b>	<b>62</b>	<b>\$123,997</b>
<b>Monthly average</b>	<b>5</b>	<b>\$8,946</b>	<b>6</b>	<b>\$11,417</b>	<b>11</b>	<b>\$22,875</b>	<b>16</b>	<b>\$31,938</b>	<b>16</b>	<b>\$30,999</b>

**Diversion Cases by State Fiscal Year**



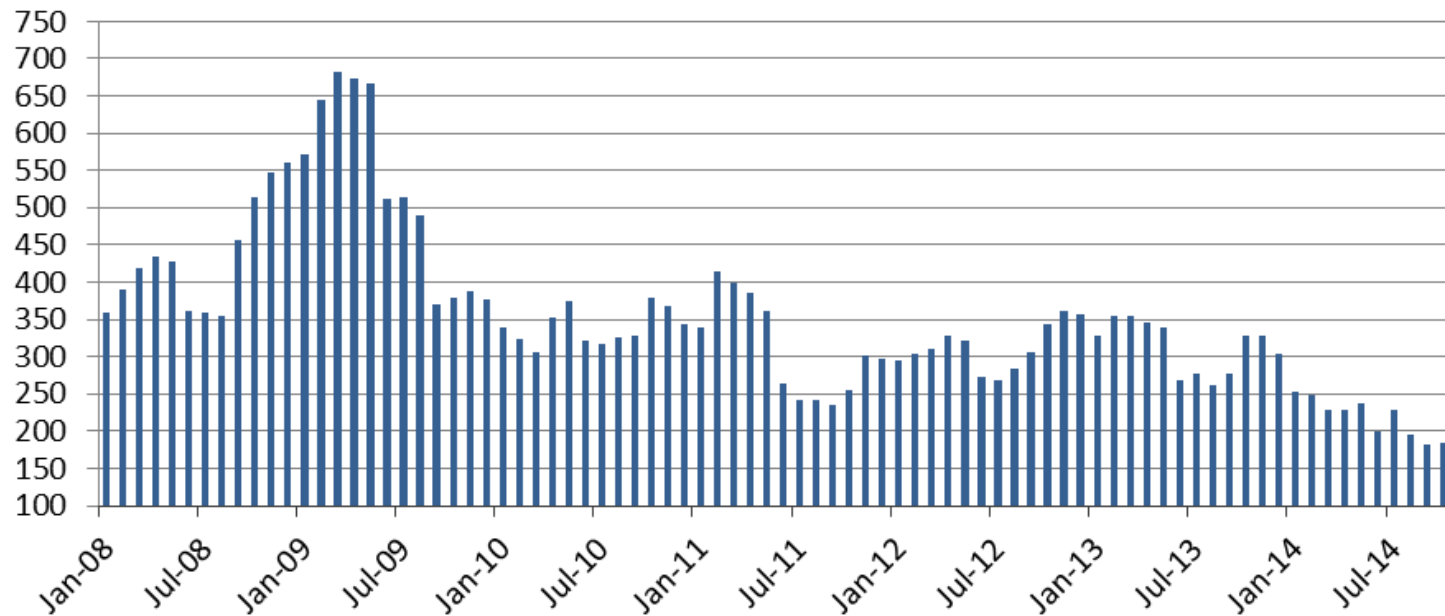
## Education Works Cases by Administrative Office

Office	Oct-13	Sep-14	Oct-14	Oct 13 – Oct 14		Sep 14 – Oct 14	
				# change	% change	# change	% change
Chaves	0	3	4	4	N/A	1	33%
Cibola	5	2	2	-3	-60%	0	0%
Colfax	6	1	1	-5	-83%	0	0%
Curry	3	3	4	1	33%	1	33%
East Dona Ana	16	7	10	-6	-38%	3	43%
Eddy Artesia	2	0	0	-2	-100%	0	N/A
Eddy Carlsbad	3	1	2	-1	-33%	1	100%
Grant	9	7	9	0	0%	2	29%
Guadalupe	1	0	0	-1	-100%	0	N/A
Hidalgo	0	0	0	0	N/A	0	N/A
Lea	3	0	0	-3	-100%	0	N/A
Lincoln	0	0	0	0	N/A	0	N/A
Luna	2	7	4	2	100%	-3	-43%
McKinley	1	0	0	-1	-100%	0	N/A
Northeast Bernalillo	56	20	19	-37	-66%	-1	-5%
Northwest Bernalillo	29	24	20	-9	-31%	-4	-17%
Otero	7	0	1	-6	-86%	1	N/A
Quay	2	1	1	-1	-50%	0	0%
Rio Arriba	4	3	3	-1	-25%	0	0%
Roosevelt	1	0	0	-1	-100%	0	N/A
San Juan	2	3	4	2	100%	1	33%
San Miguel	17	12	12	-5	-29%	0	0%
Sandoval	29	10	10	-19	-66%	0	0%
Santa Fe	8	8	6	-2	-25%	-2	-25%
Sierra	2	1	1	-1	-50%	0	0%
Socorro	2	0	1	-1	-50%	1	N/A
South Dona Ana	8	8	11	3	38%	3	38%
Southeast Bernalillo	34	18	19	-15	-44%	1	6%
Southwest Bernalillo	25	15	11	-14	-56%	-4	-27%
Taos	4	1	1	-3	-75%	0	0%
Torrance	11	7	7	-4	-36%	0	0%
Union	0	0	0	0	N/A	0	N/A
Valencia North	7	3	3	-4	-57%	0	0%
Valencia South	6	0	0	-6	-100%	0	N/A
West Dona Ana	24	17	19	-5	-21%	2	12%
Centralized Units	0	0	0	0	N/A	0	N/A
<b>TOTAL</b>	<b>329</b>	<b>182</b>	<b>185</b>	<b>-144</b>	<b>-44%</b>	<b>3</b>	<b>2%</b>

### Education Works Cases by Region

Region	Oct-13	Sep-14	Oct-14	Oct 13 – Oct 14		Sep 14 – Oct 14	
				# change	% change	# change	% change
NW Region 1	50	8	8	-42	-84%	0	0%
NE Region 2	39	35	34	-5	-13%	-1	-3%
Central Region 3	155	84	76	-79	-51%	-8	-10%
SE Region 4	15	8	11	-4	-27%	3	38%
SW Region 5	70	47	56	-14	-20%	9	19%
Centralized Units	0	0	0	0	N/A	0	N/A
<b>TOTAL</b>	<b>329</b>	<b>182</b>	<b>185</b>	<b>-144</b>	<b>-44%</b>	<b>3</b>	<b>2%</b>

### Education Works Cases by month



Beginning September 2014, Sandoval County ISD Office cases are counted in NE Region 2.

## General Assistance (GA) Cases by Administrative Office

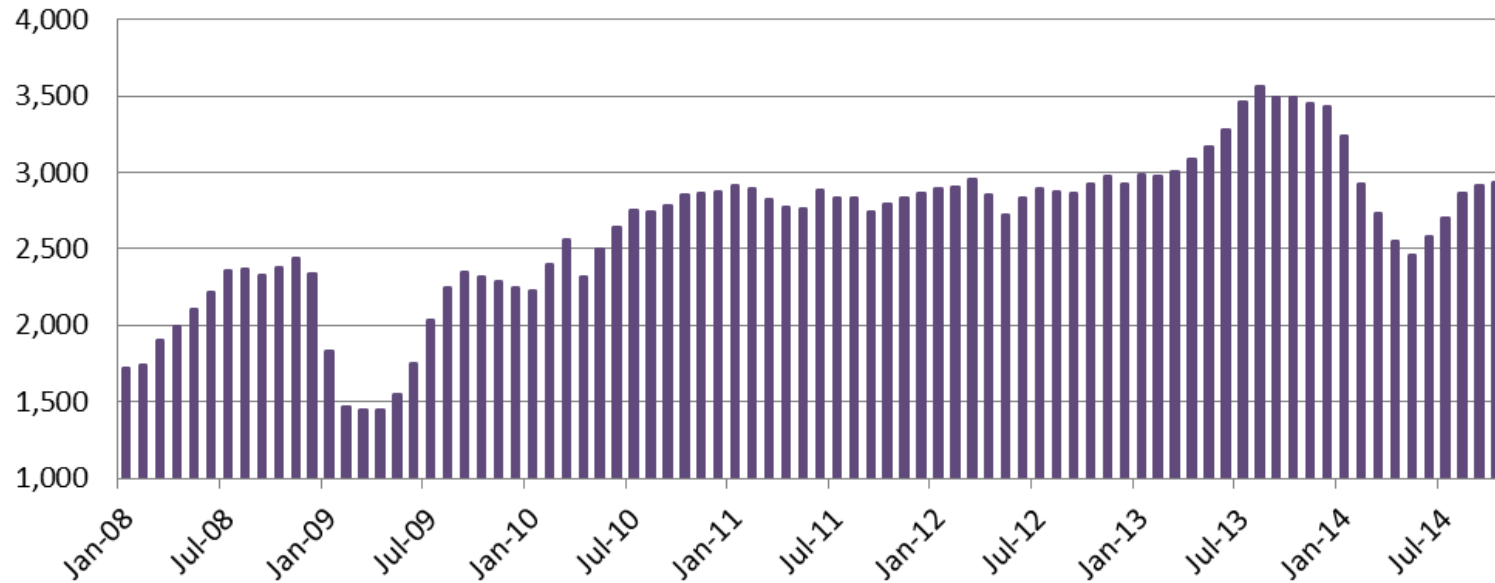
Office	Oct-13	Sep-14	Oct-14	Oct 13 – Oct 14		Sep 14 – Oct 14	
				# change	% change	# change	% change
Chaves	107	89	95	-12	-11%	6	7%
Cibola	68	47	50	-18	-26%	3	6%
Colfax	31	51	52	21	68%	1	2%
Curry	85	63	64	-21	-25%	1	2%
East Dona Ana	92	94	98	6	7%	4	4%
Eddy Artesia	27	16	17	-10	-37%	1	6%
Eddy Carlsbad	79	67	71	-8	-10%	4	6%
Grant	72	67	71	-1	-1%	4	6%
Guadalupe	24	28	29	5	21%	1	4%
Hidalgo	13	9	8	-5	-38%	-1	-11%
Lea	48	45	49	1	2%	4	9%
Lincoln	37	20	18	-19	-51%	-2	-10%
Luna	46	42	39	-7	-15%	-3	-7%
McKinley	20	14	13	-7	-35%	-1	-7%
Northeast Bernalillo	470	318	321	-149	-32%	3	1%
Northwest Bernalillo	352	191	203	-149	-42%	12	6%
Otero	80	45	42	-38	-48%	-3	-7%
Quay	35	28	28	-7	-20%	0	0%
Rio Arriba	142	141	129	-13	-9%	-12	-9%
Roosevelt	18	11	10	-8	-44%	-1	-9%
San Juan	73	60	61	-12	-16%	1	2%
San Miguel	126	120	120	-6	-5%	0	0%
Sandoval	132	136	134	2	2%	-2	-1%
Santa Fe	274	222	218	-56	-20%	-4	-2%
Sierra	41	22	24	-17	-41%	2	9%
Socorro	65	60	59	-6	-9%	-1	-2%
South Dona Ana	58	45	41	-17	-29%	-4	-9%
Southeast Bernalillo	189	245	245	56	30%	0	0%
Southwest Bernalillo	237	232	241	4	2%	9	4%
Taos	104	62	60	-44	-42%	-2	-3%
Torrance	32	58	57	25	78%	-1	-2%
Union	7	0	0	-7	-100%	0	N/A
Valencia North	85	65	64	-21	-25%	-1	-2%
Valencia South	49	53	56	7	14%	3	6%
West Dona Ana	173	146	149	-24	-14%	3	2%
Centralized Units	4	0	1	-3	-75%	1	N/A
<b>TOTAL</b>	<b>3,495</b>	<b>2,912</b>	<b>2,937</b>	<b>-558</b>	<b>-16%</b>	<b>25</b>	<b>1%</b>



### General Assistance (GA) Cases by Region

Region	Oct-13	Sep-14	Oct-14	Oct 13 – Oct 14		Sep 14 – Oct 14	
				# change	% change	# change	% change
NW Region 1	427	239	244	-183	-43%	5	2%
NE Region 2	684	732	713	29	4%	-19	-3%
Central Region 3	1,280	1,044	1,067	-213	-17%	23	2%
SE Region 4	423	347	363	-60	-14%	16	5%
SW Region 5	677	550	549	-128	-19%	-1	0%
Centralized Units	4	0	1	-3	-75%	1	N/A
<b>TOTAL</b>	<b>3,495</b>	<b>2,912</b>	<b>2,937</b>	<b>-558</b>	<b>-16%</b>	<b>25</b>	<b>1%</b>

### General Assistance Cases per Month



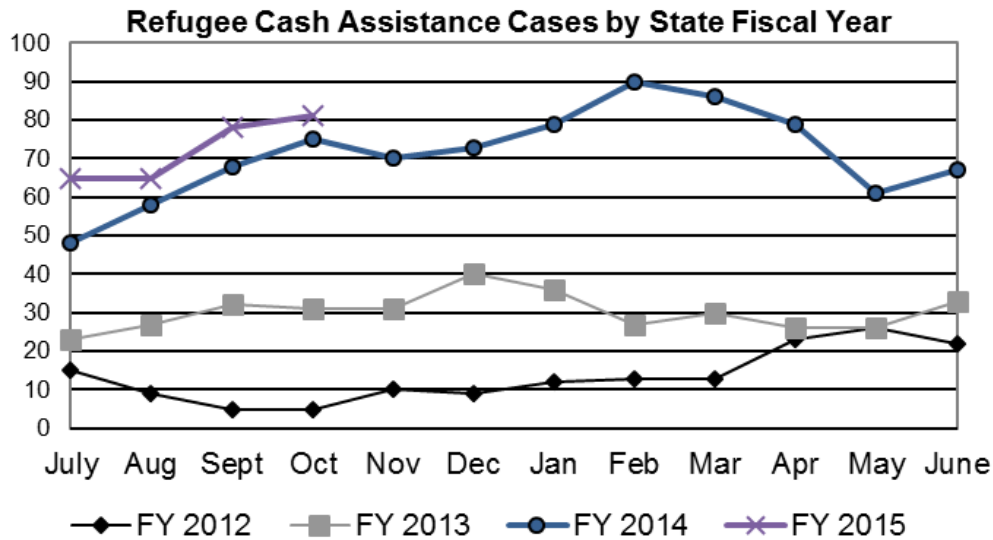
Beginning September 2014, Sandoval County ISD Office is considered to be a part of Region 2.

GA Interim Assistance Reimbursements								
	SFY 12		SFY 13		SFY 14		SFY 15	
	Cases	Amount	Cases	Amount	Cases	Amount	Cases	Amount
<i>July</i>	77	\$224,022	105	\$254,087	87	\$185,368	67	\$144,679
<b>August</b>	<b>100</b>	<b>\$256,766</b>	<b>88</b>	<b>\$248,471</b>	<b>70</b>	<b>\$184,639</b>	<b>77</b>	<b>\$244,233</b>
<i>September</i>	68	\$159,712	101	\$233,341	102	\$268,243	78	\$168,421
<b>October</b>	<b>60</b>	<b>\$158,539</b>	<b>101</b>	<b>\$293,784</b>	<b>87</b>	<b>\$165,578</b>	<b>62</b>	<b>\$182,265</b>
<i>November</i>	60	\$158,596	72	\$193,152	65	\$139,197		
<b>December</b>	<b>74</b>	<b>\$183,600</b>	<b>84</b>	<b>\$236,221</b>	<b>49</b>	<b>\$147,853</b>		
<i>January</i>	91	\$341,348	79	\$209,922	63	\$178,944		
<b>February</b>	<b>113</b>	<b>\$307,090</b>	<b>77</b>	<b>\$178,441</b>	<b>53</b>	<b>\$130,352</b>		
<i>March</i>	77	\$186,834	85	\$229,599	79	\$176,756		
<b>April</b>	<b>102</b>	<b>\$357,392</b>	<b>92</b>	<b>\$240,540</b>	<b>56</b>	<b>\$155,245</b>		
<i>May</i>	90	\$230,243	126	\$346,079	62	\$138,827		
<b>June</b>	<b>57</b>	<b>\$215,729</b>	<b>90</b>	<b>\$225,355</b>	<b>108</b>	<b>\$241,016</b>		
<b>SFY Total</b>	<b>969</b>	<b>\$2,779,871</b>	<b>1,100</b>	<b>\$2,888,992</b>	<b>881</b>	<b>\$2,112,017</b>	<b>290</b>	<b>\$739,598</b>
<b>Monthly Average</b>	<b>81</b>	<b>\$231,656</b>	<b>92</b>	<b>\$240,749</b>	<b>73</b>	<b>\$176,001</b>	<b>73</b>	<b>\$184,900</b>

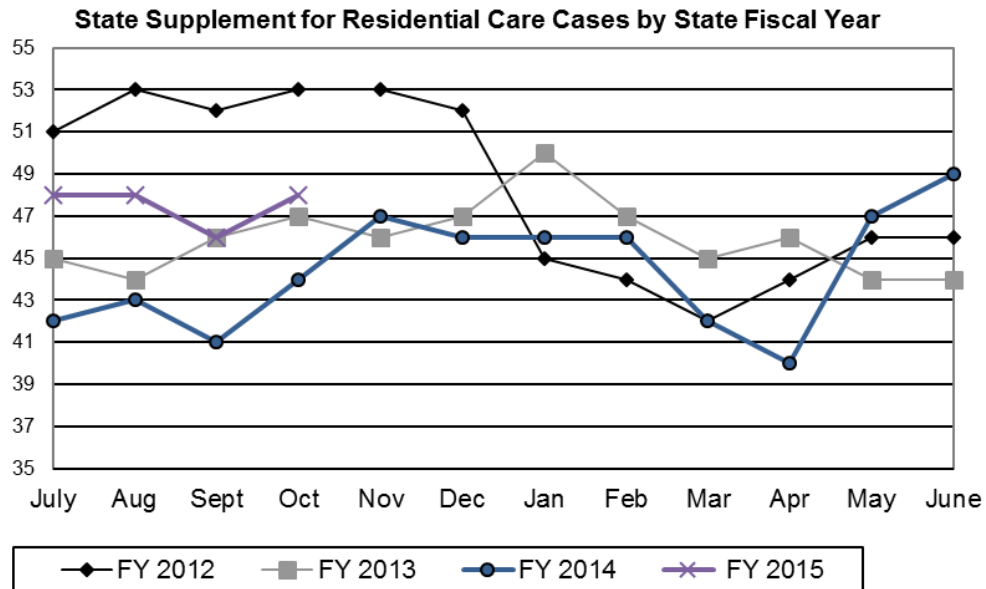
IAR case figures reflect those with expected reimbursement amounts above \$0. Figures unreconciled and subject to change.

### Refugee Cash Assistance

	SFY 12		SFY 13		SFY 14		SFY 15	
	Cases	Payments	Cases	Payments	Cases	Payments	Cases	Payments
<i>July</i>	15	\$6,428	23	\$7,155	48	\$12,013	65	\$11,679
<b>August</b>	<b>9</b>	<b>\$4,433</b>	<b>27</b>	<b>\$7,742</b>	<b>58</b>	<b>\$16,129</b>	<b>65</b>	<b>\$11,760</b>
<i>September</i>	5	\$2,930	32	\$8,267	68	\$19,061	78	\$13,094
<b>October</b>	<b>5</b>	<b>\$1,519</b>	<b>31</b>	<b>\$9,803</b>	<b>75</b>	<b>\$20,962</b>	<b>81</b>	<b>\$13,726</b>
<i>November</i>	10	\$2,675	31	\$9,552	70	\$21,880		
<b>December</b>	<b>9</b>	<b>\$3,380</b>	<b>40</b>	<b>\$10,435</b>	<b>73</b>	<b>\$22,053</b>		
<i>January</i>	12	\$3,285	36	\$11,489	79	\$22,670		
<b>February</b>	<b>13</b>	<b>\$3,210</b>	<b>27</b>	<b>\$11,107</b>	<b>90</b>	<b>\$23,227</b>		
<i>March</i>	13	\$3,739	30	\$8,678	86	\$21,808		
<b>April</b>	<b>23</b>	<b>\$5,654</b>	<b>26</b>	<b>\$9,410</b>	<b>79</b>	<b>\$20,109</b>		
<i>May</i>	26	\$7,579	26	\$8,901	61	\$15,703		
<b>June</b>	<b>22</b>	<b>\$7,496</b>	<b>33</b>	<b>\$9,535</b>	<b>67</b>	<b>\$14,783</b>		
<b>SFY Total</b>	<b>162</b>	<b>\$52,328</b>	<b>363</b>	<b>\$112,074</b>	<b>854</b>	<b>\$230,398</b>	<b>289</b>	<b>\$50,259</b>
<b>Monthly Average</b>	<b>14</b>	<b>\$4,361</b>	<b>30</b>	<b>\$9,340</b>	<b>71</b>	<b>\$19,200</b>	<b>72</b>	<b>\$12,565</b>



State Supplement for Residential Care								
	SFY 12		SFY 13		SFY 14		SFY15	
	Cases	Payments	Cases	Payments	Cases	Payments	Cases	Payments
July	51	\$5,300	45	\$4,600	42	\$4,400	48	\$4,700
August	53	\$5,500	44	\$4,600	43	\$4,300	48	\$5,000
September	52	\$5,300	46	\$4,800	41	\$4,700	46	\$4,600
October	53	\$5,400	47	\$4,700	44	\$4,500	48	\$4,600
November	53	\$5,300	46	\$4,900	47	\$4,700		
December	52	\$5,400	47	\$5,200	46	\$4,600		
January	45	\$5,600	50	\$5,100	46	\$4,700		
February	44	\$4,700	47	\$4,900	46	\$4,700		
March	42	\$4,400	45	\$4,800	42	\$4,500		
April	44	\$4,400	46	\$4,700	40	\$4,200		
May	46	\$4,800	44	\$4,600	47	\$5,000		
June	46	\$4,600	44	\$4,400	49	\$4,900		
SFY Total	581	\$60,700	551	\$57,300	533	\$55,100	190	\$18,900
Monthly Average	48	\$5,058	46	\$4,775	44	\$4,592	48	\$4,725



### SNAP Applications Processed by Administrative Office: October 2014

Office	Approved	Denied	With-drawn	Total
Chaves	335	5	31	371
Cibola	127	5	11	143
Colfax	76	1	7	84
Curry	208	9	8	225
East Dona Ana	343	8	15	366
Eddy Artesia	55	3	3	61
Eddy Carlsbad	125	1	6	132
Grant	170	5	23	198
Guadalupe	18	0	0	18
Hidalgo	19	1	1	21
Lea	219	5	7	231
Lincoln	67	4	3	74
Luna	170	4	11	185
McKinley	257	4	26	287
Northeast Bernalillo	753	23	48	824
Northwest Bernalillo	562	26	35	623
Otero	218	2	11	231
Quay	43	2	1	46

Office	Approved	Denied	With-drawn	Total
Rio Arriba	215	2	8	225
Roosevelt	46	5	4	55
San Juan	427	15	18	460
San Miguel	208	7	4	219
Sandoval	383	14	26	423
Santa Fe	364	15	14	393
Sierra	95	1	1	97
Socorro	84	5	5	94
South Dona Ana	250	16	4	270
Southeast Bernalillo	488	20	41	549
Southwest Bernalillo	691	36	40	767
Taos	174	3	1	178
Torrance	83	0	5	88
Union	1	0	0	1
Valencia North	244	3	14	261
Valencia South	88	3	2	93
West Dona Ana	404	11	20	435
Centralized Units	47	0	2	49
<b>TOTAL</b>	<b>8,057</b>	<b>264</b>	<b>456</b>	<b>8,777</b>

### SNAP Applications Processed by Region: October 2014

Region	Approved	Denied	Withdrawn	Total
NW Region 1	1,143	30	71	1,244
NE Region 2	1,421	42	60	1,523
Central Region 3	2,577	105	169	2,851
SE Region 4	1,049	30	60	1,139
SW Region 5	1,820	57	94	1,971
Centralized Units	47	0	2	49
<b>TOTAL</b>	<b>8,057</b>	<b>264</b>	<b>456</b>	<b>8,777</b>

Applications processed = applications approved + denied + withdrawn

**TANF Applications Processed by Administrative Office: October 2014**

Office	Approved	Denied	With- drawn	Total
Chaves	51	8	26	85
Cibola	22	5	3	30
Colfax	10	2	3	15
Curry	39	4	15	58
East Dona Ana	64	9	19	92
Eddy Artesia	5	2	4	11
Eddy Carlsbad	15	1	4	20
Grant	28	2	8	38
Guadalupe	1	0	2	3
Hidalgo	4	0	1	5
Lea	27	4	20	51
Lincoln	8	0	4	12
Luna	20	5	9	34
McKinley	8	7	8	23
Northeast Bernalillo	85	12	70	167
Northwest Bernalillo	65	15	41	121
Otero	26	7	27	60
Quay	5	1	4	10

Office	Approved	Denied	With- drawn	Total
Rio Arriba	32	3	12	47
Roosevelt	2	2	1	5
San Juan	25	10	34	69
San Miguel	12	3	13	28
Sandoval	43	8	13	64
Santa Fe	69	13	22	104
Sierra	9	0	1	10
Socorro	16	1	3	20
South Dona Ana	43	9	14	66
Southeast Bernalillo	58	10	44	112
Southwest Bernalillo	96	22	46	164
Taos	23	2	10	35
Torrance	11	0	8	19
Union	0	0	0	0
Valencia North	52	6	26	84
Valencia South	22	2	5	29
West Dona Ana	58	5	22	85
Centralized Units	1	0	0	1
<b>TOTAL</b>	<b>1,055</b>	<b>180</b>	<b>542</b>	<b>1,777</b>

**TANF Applications Processed by Region: October 2014**

Region	Approved	Denied	Withdrawn	Total
NW Region 1	129	30	76	235
NE Region 2	189	31	73	293
Central Region 3	315	59	209	583
SE Region 4	145	22	76	243
SW Region 5	276	38	108	422
Centralized Units	1	0	0	1
<b>TOTAL</b>	<b>1,055</b>	<b>180</b>	<b>542</b>	<b>1,777</b>

Applications processed = applications approved + denied + withdrawn

Beginning September 2014, Sandoval County ISD Office applications are counted in NE Region 2.

### GA Applications Processed by Administrative Office: October 2014

Office	Approved	Denied	With- drawn	Total
Chaves	6	2	0	8
Cibola	2	0	0	2
Colfax	3	2	2	7
Curry	8	6	0	14
East Dona Ana	8	3	0	11
Eddy Artesia	1	1	0	2
Eddy Carlsbad	4	0	0	4
Grant	4	0	1	5
Guadalupe	2	0	0	2
Hidalgo	1	1	0	2
Lea	5	1	0	6
Lincoln	2	0	0	2
Luna	3	2	1	6
McKinley	0	1	0	1
Northeast Bernalillo	11	5	3	19
Northwest Bernalillo	6	6	1	13
Otero	3	1	1	5
Quay	0	0	1	1

Office	Approved	Denied	With- drawn	Total
Rio Arriba	2	2	0	4
Roosevelt	0	0	0	0
San Juan	5	1	1	7
San Miguel	4	1	1	6
Sandoval	3	5	2	10
Santa Fe	3	2	1	6
Sierra	1	1	1	3
Socorro	3	1	0	4
South Dona Ana	1	3	3	7
Southeast Bernalillo	9	3	1	13
Southwest Bernalillo	11	5	3	19
Taos	0	3	1	4
Torrance	2	1	0	3
Union	0	0	0	0
Valencia North	3	3	1	7
Valencia South	6	1	0	7
West Dona Ana	9	2	0	11
Centralized Units	0	0	0	0
<b>TOTAL</b>	<b>131</b>	<b>65</b>	<b>25</b>	<b>221</b>

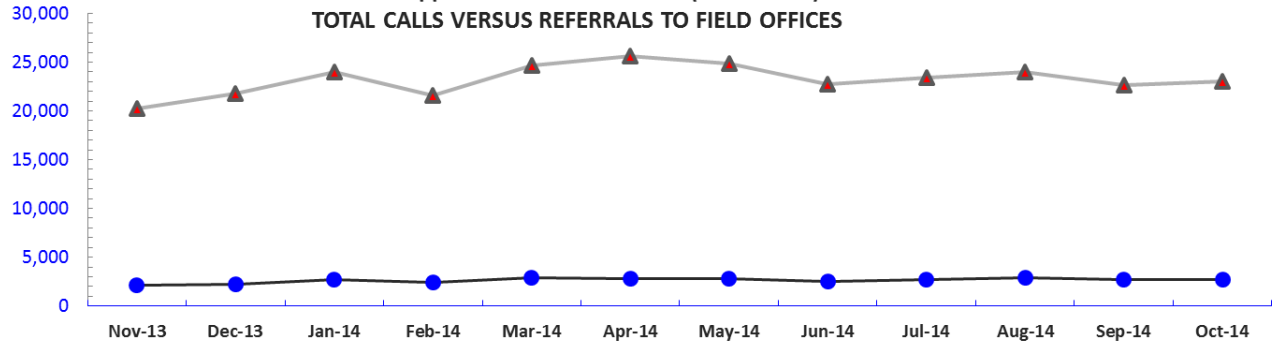
### GA Applications Processed by Region: October 2014

Region	Approved	Denied	Withdrawn	Total
NW Region 1	16	6	2	24
NE Region 2	15	15	7	37
Central Region 3	39	20	8	67
SE Region 4	26	10	1	37
SW Region 5	35	14	7	56
Centralized Units	0	0	0	0
<b>TOTAL</b>	<b>131</b>	<b>65</b>	<b>25</b>	<b>221</b>

Beginning September 2014, Sandoval County ISD Office applications are counted in NE Region 2.

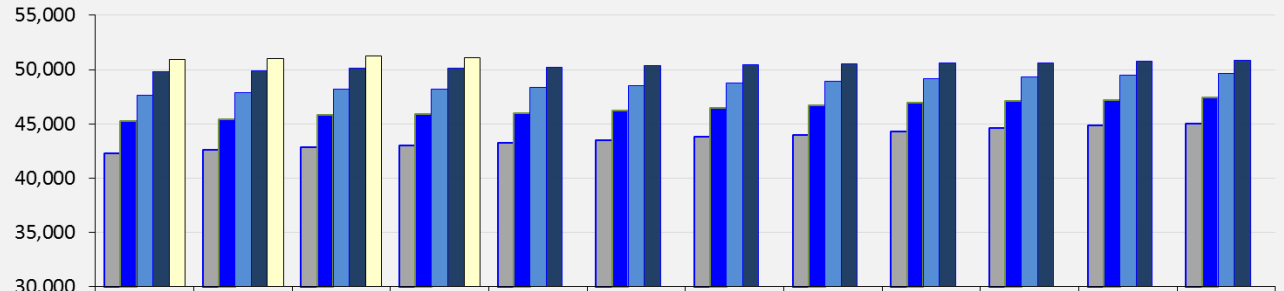
Applications processed = applications approved + denied + withdrawn

**Child Support Information Center (Call Center)  
TOTAL CALLS VERSUS REFERRALS TO FIELD OFFICES**



	Nov-13	Dec-13	Jan-14	Feb-14	Mar-14	Apr-14	May-14	Jun-14	Jul-14	Aug-14	Sep-14	Oct-14
Calls	20,232	21,756	23,987	21,562	24,685	25,648	24,837	22,700	23,363	23,959	22,656	23,063
Referrals	2,178	2,225	2,737	2,380	2,934	2,831	2,817	2,556	2,701	2,926	2,703	2,746
Percent	10.77%	10.27%	11.41%	11.04%	11.89%	11.04%	11.34%	11.26%	11.56%	12.21%	11.93%	11.91%

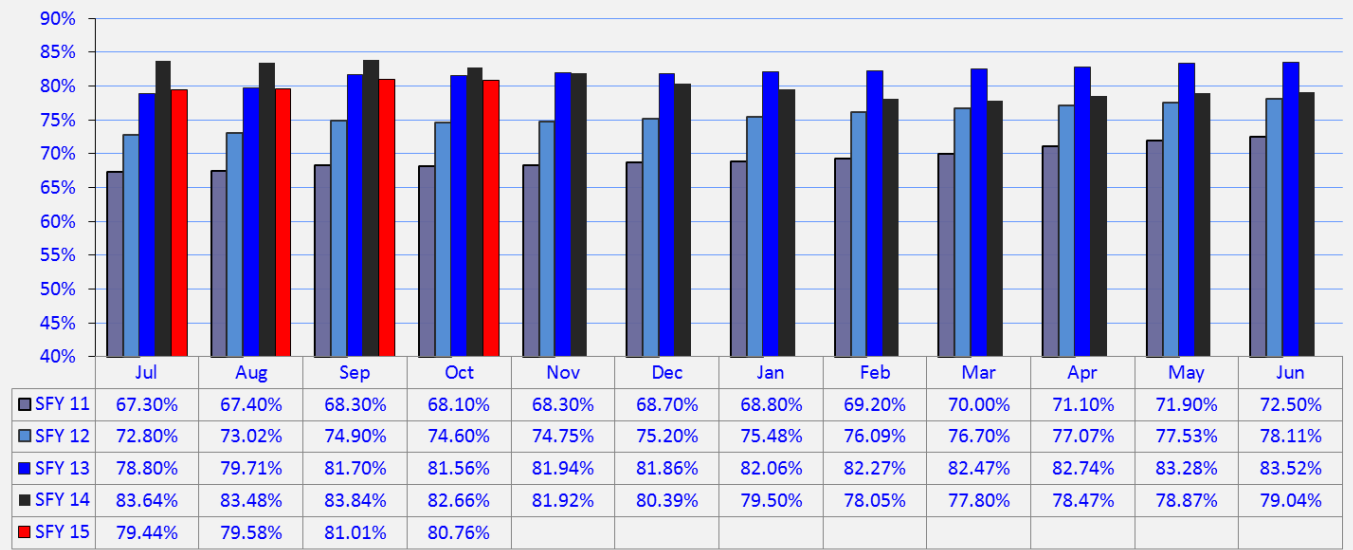
**Child Support Enforcement Obligated Cases**



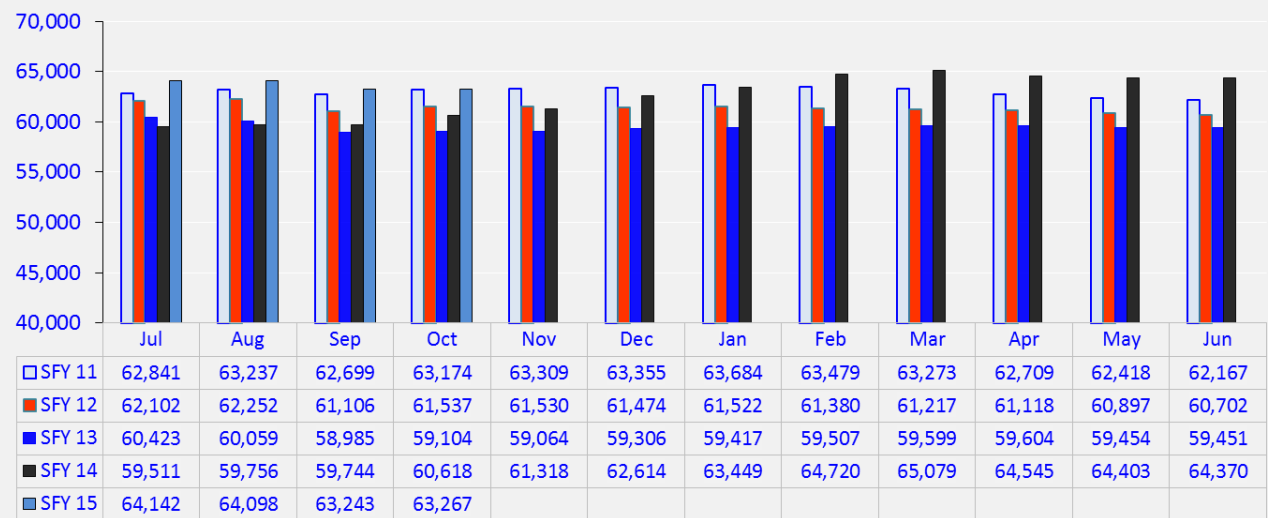
	Jul	Aug	Sep	Oct	Nov	Dec	Jan	Feb	Mar	Apr	May	Jun
SFY 11	42,310	42,601	42,850	43,035	43,250	43,498	43,818	43,946	44,270	44,588	44,899	45,043
SFY 12	45,238	45,457	45,817	45,922	45,993	46,231	46,439	46,703	46,952	47,075	47,215	47,412
SFY 13	47,616	47,875	48,190	48,205	48,398	48,550	48,758	48,955	49,153	49,318	49,511	49,653
SFY 14	49,777	49,883	50,092	50,106	50,229	50,334	50,441	50,514	50,632	50,647	50,796	50,878
SFY 15	50,955	51,010	51,236	51,095								



**Child Support Enforcement Obligated Case Percentages**



**Child Support Enforcement Open Cases**



## Children Receiving Child Care Assistance Subsidies By County

### Children Youth and Families Department Children Receiving Child Care Assistance Subsidies By County

County	Oct 2013	Nov 2013	Dec 2013	Jan 2014	Feb 2014	Mar 2014	Apr 2014	May 2014	June 2014	July 2014	Aug 2014	Sep 2014	Oct 2014	Change Fr. Last Year Cases	Percent
Bernalillo	6,810	6,657	6,628	6,379	6,307	6,269	6,403	6,441	6,506	6,074	6,005	6,490	6,363	-447	-6.6%
Catron	0	2	2	2	0	0	0	0	0	0	0	0	0	0	0.0%
Chaves	726	741	728	690	703	700	694	688	741	660	664	718	685	-41	-5.6%
Cibola	264	259	255	244	236	224	224	216	225	201	193	231	242	-22	-8.3%
Colfax	55	64	59	57	57	54	61	58	63	54	56	58	63	8	14.5%
Curry	449	455	449	423	388	399	397	399	408	411	413	416	393	-56	-12.5%
De Baca	12	23	22	15	13	17	19	15	13	9	9	18	23	11	91.7%
Dona Ana	4,463	4,724	4,637	4,520	4,310	4,389	4,373	4,391	4,438	3,777	3,729	3,938	4,003	-460	-10.3%
Eddy	266	252	253	242	221	229	249	230	250	238	255	260	233	-33	-12.4%
Grant	280	306	305	302	257	283	284	263	275	186	188	245	209	-71	-25.4%
Guadalupe	24	26	25	24	28	25	25	24	26	25	34	32	33	9	37.5%
Harding	0	0	0	0	0	0	0	0	0	0	0	0	0	0	0.0%
Hidalgo	29	28	32	33	29	31	30	29	27	24	21	22	22	-7	-24.1%
Lea	604	616	607	588	590	567	565	578	604	540	558	623	573	-31	-5.1%
Lincoln	142	149	151	154	138	132	133	122	135	111	110	121	141	-1	-0.7%
Los Alamos	9	12	16	16	14	15	15	14	13	11	11	12	11	2	22.2%
Luna	166	157	166	152	156	160	155	154	162	146	142	157	149	-17	-10.2%
McKinley	266	231	217	209	187	185	174	171	176	125	133	180	178	-88	-33.1%
Mora	19	18	17	20	19	19	17	15	17	17	17	19	20	1	5.3%
Otero	486	482	459	488	481	490	490	491	481	428	435	464	480	-6	-1.2%
Out of State	8	3	3	4	4	3	3	7	3	3	3	3	1	-7	-87.5%
Quay	16	10	12	19	15	15	19	18	19	22	25	23	29	13	81.3%
Rio Arriba	113	116	116	113	102	102	105	110	119	123	123	133	114	1	0.9%
Roosevelt	180	168	156	145	128	127	126	133	129	120	126	131	117	-63	-35.0%
San Juan	661	677	676	658	654	680	681	696	695	636	605	756	699	38	5.7%
San Miguel	351	387	382	375	355	351	354	354	337	319	310	286	343	-8	-2.3%
Sandoval	781	739	738	702	680	658	674	689	729	686	670	713	645	-136	-17.4%
Santa Fe	440	414	415	397	368	395	407	398	416	333	320	374	383	-57	-13.0%
Sierra	69	76	67	69	60	67	72	73	79	65	63	51	47	-22	-31.9%
Socorro	55	62	60	59	44	42	42	42	48	39	47	52	51	-4	-7.3%
Taos	97	91	96	96	92	97	105	102	108	91	89	100	90	-7	-7.2%
Torrance	66	68	69	66	73	69	73	74	81	73	77	67	73	7	10.6%
Union	6	6	6	6	8	8	9	9	8	7	7	7	7	1	16.7%
Valencia	629	612	596	584	577	557	557	572	572	502	480	532	502	-127	-20.2%
<b>Totals</b>	<b>18,542</b>	<b>18,631</b>	<b>18,420</b>	<b>17,851</b>	<b>17,294</b>	<b>17,359</b>	<b>17,535</b>	<b>17,576</b>	<b>17,903</b>	<b>16,056</b>	<b>15,918</b>	<b>17,232</b>	<b>16,922</b>	<b>-1,620</b>	<b>-8.7%</b>

Source: Children Youth and Families Department

## Child Care Assistance Eligibility Programs

MONTH	NOV'13	DEC'13	JAN'14	FEB'14	MAR'14	APR'14	MAY'14	JUNE'14	JULY'14	AUG'14	SEP'14	OCT'14
<b>TANF (Child Care Priority 1 Clients)</b>												
CLIENTS	2,482	2,350	2,123	1,983	1,904	1,899	1,847	1,828	1,735	1,694	1,887	1,893
COST	\$857,095	\$809,829	\$663,661	\$684,343	\$700,476	\$712,766	\$688,357	\$625,723	\$701,198	\$764,547	\$763,225	\$846,366
TANF AVERAGE COST	\$345	\$345	\$313	\$345	\$368	\$375	\$373	\$342	\$404	\$451	\$404	\$447
<b>TRANSITION OFF TANF (Child Care Priority 2 Clients)</b>												
CLIENTS	321	297	281	264	233	205	189	169	124	139	139	134
COST	\$105,831	\$97,289	\$87,214	\$86,531	\$82,137	\$69,991	\$64,610	\$54,026	\$47,325	\$62,594	\$51,195	\$59,203
TRAN OFF TANF AVG COST	\$330	\$328	\$310	\$328	\$353	\$341	\$342	\$320	\$382	\$450	\$368	\$442
<b>TANF ELIGIBLE (Child Care Priority 1B Clients at or below 100% of the Federal Poverty Level)</b>												
CLIENTS	9,103	8,967	8,656	8,201	8,233	8,388	8,442	8,654	7,404	7,330	8,105	7,951
COST	\$3,187,198	\$3,138,875	\$2,727,874	\$2,802,076	\$2,988,010	\$3,037,173	\$3,075,650	\$2,875,589	\$2,983,688	\$3,252,127	\$3,088,000	\$3,518,430
TANF ELIGIBLE AVG COST	\$350	\$350	\$315	\$342	\$363	\$362	\$364	\$332	\$403	\$444	\$381	\$443
<b>INCOME ELIGIBLE (Child Care Priority 3, and Priority 4 Clients )</b>												
CLIENTS	5,986	6,041	6,079	6,160	6,256	6,305	6,309	6,427	5,918	5,850	6,194	6,069
COST	\$1,768,821	\$1,796,100	\$1,790,368	\$1,900,390	\$1,952,541	\$1,981,965	\$1,986,620	\$2,034,462	\$2,149,148	\$2,369,758	\$2,168,501	\$2,295,516
INCOME ELIG AVG COST	\$295	\$297	\$295	\$309	\$312	\$314	\$315	\$317	\$363	\$405	\$350	\$378
<b>CHILD PROTECTIVE SERVICES (Child Care CPS Clients)</b>												
CLIENTS	741	765	712	686	733	738	789	825	875	905	907	875
COST	\$326,303	\$336,993	\$311,201	\$303,886	\$314,658	\$332,742	\$354,961	\$356,258	\$395,879	\$459,913	\$463,513	\$459,023
CPS AVG COST	\$440	\$441	\$437	\$443	\$429	\$451	\$450	\$432	\$452	\$508	\$511	\$525
<b>GRAND TOTAL - ALL CHILD CARE PROGRAMS</b>												
CLIENTS	18,633	18,420	17,851	17,294	17,359	17,535	17,576	17,903	16,056	15,918	17,232	16,922
COST	\$6,245,248	\$6,179,085	\$5,580,317	\$5,777,227	\$6,037,822	\$6,134,637	\$6,170,197	\$5,946,058	\$6,277,239	\$6,908,940	\$6,534,435	\$7,178,539
ALL PROGRAMS AVG COST	\$335	\$335	\$313	\$334	\$348	\$350	\$351	\$332	\$391	\$434	\$379	\$424

Notes: 1. This table is provided by the Children, Youth and Families Department. 2. All costs in the table are average costs  
 3. Clients served and cost reflects total CYFD program funds and are not limited to funding provided by the Human Services Department.

## Income Eligibility Guidelines, October 1, 2014 – September 30, 2015

### Supplemental Nutrition Assistance Program - SNAP

Household Size	Federal Poverty Guidelines (FPG) Monthly Income Standards			Maximum SNAP Monthly Allotment	LIHEAP 150% FPG
	100% FPG Net Income	130% FPG Gross Income	165% FPG Gross Income for Categorical Eligibility		
1	\$973	\$1,265	\$1,605	\$194	\$1,460
2	\$1,311	\$1,705	\$2,163	\$357	\$1,967
3	\$1,650	\$2,144	\$2,722	\$511	\$2,475
4	\$1,988	\$2,584	\$3,280	\$649	\$2,982
5	\$2,326	\$3,024	\$3,838	\$771	\$3,489
6	\$2,665	\$3,464	\$4,396	\$925	\$3,998
7	\$3,003	\$3,904	\$4,955	\$1,022	\$4,505
8	\$3,341	\$4,344	\$5,513	\$1,169	\$5,012
+ 1	+\$339	+\$440	+\$559	+\$146	+\$509

Minimum Allotment \$16 effective from 10/1/2014 through 09/30/2015

DEDUCTIONS: Standard Deduction: For HH size 1-3 = \$155; 4 = \$165; 5 = \$193; 6 or more = \$221; Excess Shelter Deduction Limit: \$490; Heating and Cooling Standard Utility Allowance: \$319 (HCSUA) – Limited Utility Allowance: \$ 116 (LUA); Telephone Standard: \$39; Dependent Care: Actual Amount (No Limit); Earned Income Deduction: 20%; Homeless Shelter Standard: \$143

### Cash Assistance & Support Services

Household Size	Federal Poverty Guidelines (FPG) Monthly Income Standards			Maximum Monthly Benefit		
	100% FPG Limit	85% FPG Gross Limit	NM Works Cash Net Income	15% NMW Budgetary Adjustment*	Maximum Monthly Benefit	General Assistance
1	\$973	\$827	\$266	\$39	\$227	\$245
2	\$1,311	\$1,114	\$357	\$53	\$304	\$329
3	\$1,650	\$1,403	\$447	\$67	\$380	\$412
4	\$1,988	\$1,690	\$539	\$80	\$459	\$496
5	\$2,326	\$1,977	\$630	\$94	\$536	\$580
6	\$2,665	\$2,265	\$721	\$108	\$613	\$664
7	\$3,003	\$2,553	\$812	\$121	\$691	\$748
8	\$3,341	\$2,840	\$922	\$138	\$784	\$849
+ 1	+\$339	+\$288	+\$91	+\$14	+\$77	+\$84

Deductions: Dependent Care: For a child under age 2 = \$200; For a child age 2 and over = \$175.

Work Incentives: Earned Income Disregard: Single parent = \$125 & 1/2 remainder; Two-parent = \$225 & 1/2 remainder

\*15% Budgetary Adjustment is subtracted from the eligible NMW amount to determine maximum monthly benefit.

## Eligibility Guidelines for Medicaid

### FEDERAL POVERTY LEVEL (FPL) GUIDELINES

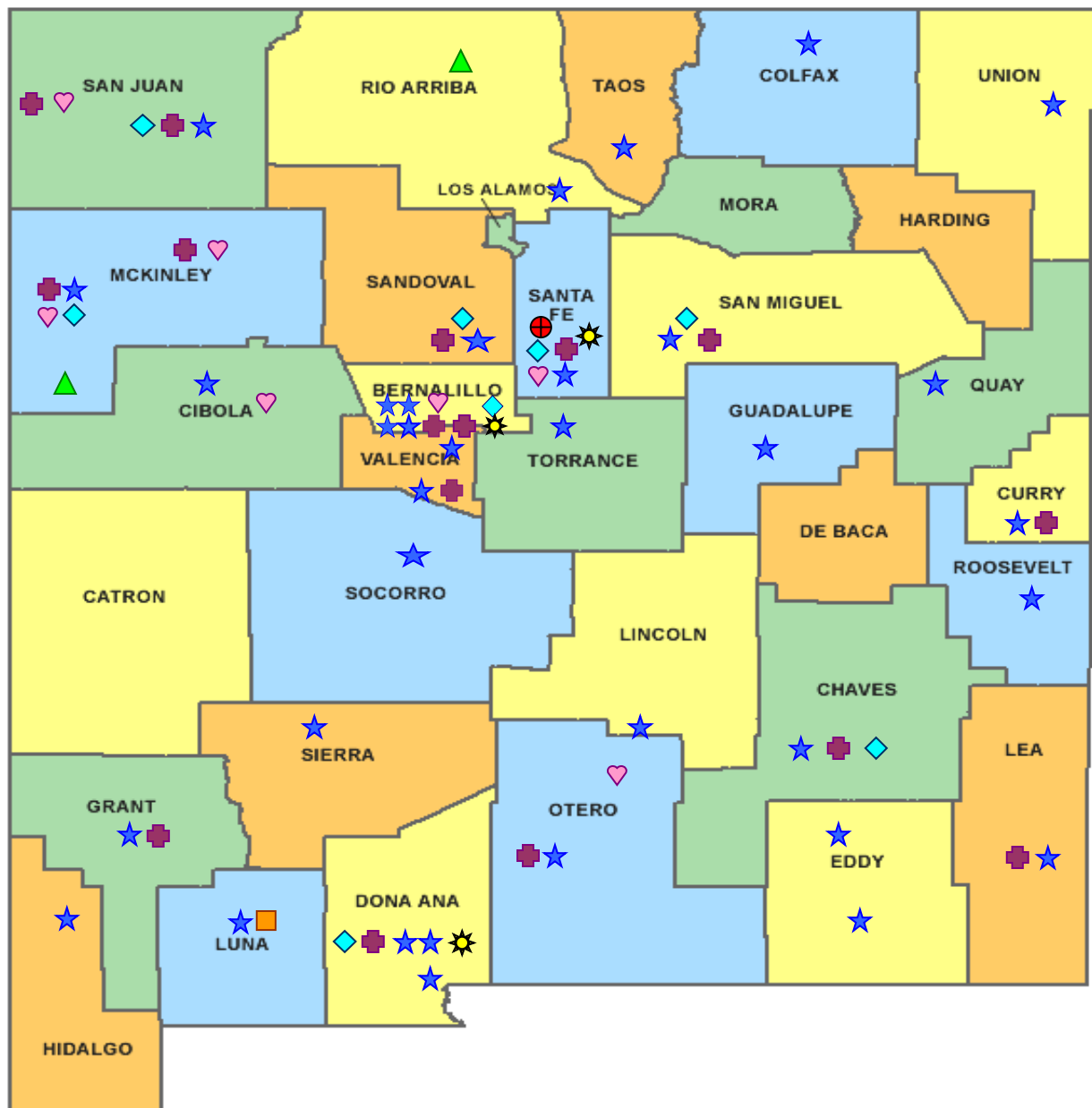

Effective April 1, 2014 thru March 31, 2015

#### Percent of Poverty

Family Size	138%	190%	240%	250%	300%
1	1,343.00	1,848.00	2,334.00	2,432.00	2,918.00
2	1,809.00	2,491.00	3,146.00	3,278.00	3,933.00
3	2,276.00	3,134.00	3,959.00	4,123.00	4,948.00
4	2,743.00	3,777.00	4,770.00	4,969.00	5,963.00
5	3,210.00	4,420.00	5,582.00	5,815.00	6,978.00
6	3,677.00	5,062.00	6,395.00	6,661.00	7,993.00
7	4,144.00	5,705.00	7,206.00	7,507.00	9,008.00
8	4,611.00	6,348.00	8,018.00	8,353.00	10,023.00









- 138% Adult Expansion  
Full Medicaid Pregnant Women
- 190% Children ages 6 up to 19 (Medicaid)
- 240% Children ages 0 up to 6 (Medicaid)  
Children ages 6 up to 19 (CHIP)
- 250% Pregnancy Related Services Only
- 300% Children ages 0 up to 6 (CHIP)

Source: [http://www.hsd.state.nm.us/LookingForInformation/Federal\\_Poverty\\_Level\\_Guidelines.aspx](http://www.hsd.state.nm.us/LookingForInformation/Federal_Poverty_Level_Guidelines.aspx)

**HUMAN SERVICES**  
DEPARTMENT

New Mexico Human Services Department  
Field Offices

-  Central Office (1)
-  Income Support Division County Office (35)
-  Income Support Division Satellite Office (2)
-  Child Support Enforcement Regional Office (16)
-  Child Support Enforcement Satellite Office (1)
-  Quality Control Office (8)
-  Indian Health Services (7)
-  Hospital Site (3)

For a complete listing of field offices and other government and community resources:  
[http://www.hsd.state.nm.us/LookingForAssistance/Field\\_Offices\\_1.aspx](http://www.hsd.state.nm.us/LookingForAssistance/Field_Offices_1.aspx)