



HUMAN SERVICES
DEPARTMENT

Monthly Statistical Report
April 2013

Highlights

- The SNAP caseload was 198,283 in April 2013, a 2.5% increase from April 2012. Caseload decreased by 250, a 0.1% decrease from March 2013. HSD processed 15,322 SNAP applications this month, approving 12,689.
- The TANF caseload was 14,549 in April 2013, a 16.4% decrease from April 2012. The TANF caseload had 188 fewer cases than March 2013, a decrease of 1.3%. HSD processed 3,809 TANF applications, approving 1,766.
- The caseload for General Assistance was 3,088 in April 2013, an increase of 8.4% from April 2012. There were 88 more cases than March 2013, a 2.9% increase. HSD processed 1,514 applications for GA, approving 409.

Susana Martinez, Governor
Sidonie Squier, Cabinet Secretary

CONTENTS	PAGE
Summary	3-4
SNAP	5-10
State SNAP Benefits Supplement	11
TANF	12-24
Education Works	25-26
General Assistance	27-29
GA Interim Assistance Reimbursements	30
State Funded Legal Aliens	30
Refugee Assistance	31
State Supplement for Residential Care (SSRC)	31
LIHEAP	32-34
Medicaid	35-39
Timeliness	40
Workload	41-42
Applications	43-45
Child Support Enforcement	46-47
Child Care Assistance	48-49

Please note that changes were made to the number of ISD caseworkers listed on pages 41 and 42.

CAP and SCI workers in both Bernalillo and Dona Ana have been combined into the *Central Processing Units* listed on the bottom of page 42. These units also include workers from the QMB/SLMB Recert Unit.

Excluded from the table is the number of workers in the following areas: Medicaid Renewal Project; Change Processing Unit; Citizenship Verification Unit.

***The Mission of the Human Services
Department***

*To reduce the impact of poverty on
people living in New Mexico by
providing support services that help
families break the cycle of
dependency on public assistance*

**Charissa Saavedra, Deputy Secretary
Brent Earnest, Deputy Secretary**

**Prepared by Income Support Division
PO Box 2348
Santa Fe, NM 87504-2348
505-827-7250**

**Ted Roth, Division Director
Penny Jimerson, Deputy Director
Marilyn Martinez, Deputy Director**

We're on the web!
www.hsd.state.nm.us/isd/reports.html

Program Summary

			Percent Change					Percent Change			
	Apr-12	Mar-13	Apr-13	Apr 12 – Apr 13	Mar 13 – Apr 13		Apr-12	Mar-13	Apr-13	Apr 12 – Apr 13	Mar 13 – Apr 13
Supplemental Nutrition Assistance Program (SNAP)						State SNAP Benefits Supplement					
Expenditures	\$55,980,072	\$56,775,944	\$56,283,996	0.5%	-0.9%	Expenditures	\$41,988	\$47,117	\$47,118	12.2%	0.0%
Cases	193,464	198,533	198,283	2.5%	-0.1%	Cases	5,099	5,677	5,654	10.9%	-0.4%
Individuals	437,267	442,302	441,550	1.0%	-0.2%						
Adults	240,203	245,362	244,951	2.0%	-0.2%	Education Works					
Children	197,064	196,940	196,599	-0.2%	-0.2%	Expenditures	\$115,060	\$114,764	\$113,519	-1.3%	-1.1%
Apps processed	13,835	14,576	15,322	10.7%	5.1%	Cases	328	354	346	5.5%	-2.3%
Approvals	11,332	11,938	12,689	12.0%	6.3%	Individuals	1,021	1,004	972	-4.8%	-3.2%
Closures	11,515	10,728	12,939	12.4%	20.6%	Adults	376	388	373	-0.8%	-3.9%
						Children	645	616	599	-7.1%	-2.8%
Temporary Assistance to Needy Families (TANF)						State Supplement for Residential Care (SSRC)					
Expenditures	\$5,065,047	\$4,319,575	\$4,224,782	-16.6%	-2.2%	Expenditures	\$4,400	\$4,800	\$4,700	6.8%	-2.1%
Cases	17,406	14,737	14,549	-16.4%	-1.3%	Cases	44	45	46	4.5%	2.2%
Individuals	42,553	35,418	34,824	-18.2%	-1.7%	Individuals	44	45	46	4.5%	2.2%
Adults	15,832	13,116	12,899	-18.5%	-1.7%	Adults	44	45	46	4.5%	2.2%
Children	26,721	22,302	21,925	-17.9%	-1.7%	Refugee Assistance					
Apps Processed	3,663	3,371	3,809	4.0%	13.0%	Expenditures	\$5,654	\$8,678	\$9,410	66.4%	8.4%
Approvals	1,799	1,551	1,766	-1.8%	13.9%	Cases	23	30	26	13.0%	-13.3%
Closures	2,264	2,073	1,954	-13.7%	-5.7%	Individuals	28	33	29	3.6%	-12.1%
General Assistance						Adults	28	33	29	3.6%	-12.1%
Expenditures	\$806,293	\$835,238	\$854,532	6.0%	2.3%						
Cases	2,850	3,000	3,088	8.4%	2.9%	Medicaid					
Individuals	3,064	3,243	3,316	8.2%	2.3%				Percent Change		
Adults	2,868	3,017	3,104	8.2%	2.9%		Jan-12	Dec-12	Jan-13	Jan 12 – Jan 13	Dec 12 – Jan 13
Children	196	226	212	8.2%	-6.2%	Expenditures*	\$269,682,352	\$267,798,109	\$290,418,917	7.7%	8.4%
Apps Processed	1,061	1,255	1,514	42.7%	20.6%	Eligibles	513,868	524,622	526,957	2.5%	0.4%
Approvals	200	314	409	104.5%	30.3%	Adults	177,168	186,925	188,308	6.3%	0.7%
Closures	304	285	321	5.6%	12.6%	Children	336,700	337,697	338,649	0.6%	0.3%

All expenditures are unreconciled and subject to change.

*Medicaid expenditures as of date of payment.

Expenditures Year to Date			
	SFY 2013	FFY 2013	CY 2013
Supplemental Nutrition Assistance Program (SNAP)	\$565,305,847	\$396,071,375	\$225,888,808
Temporary Assistance for Needy Families (TANF)	\$47,493,159	\$31,946,559	\$17,634,225
General Assistance	\$8,300,552	\$5,901,488	\$3,402,422
Education Works	\$1,070,442	\$784,214	\$437,542
State SNAP	\$441,731	\$313,359	\$186,704

DEMOGRAPHIC PROFILE					
	SNAP	TANF	General Assistance	SSRC	Refugee Assistance
Average # persons per case:	2.23	2.39	1.07	1.00	1.12
Age & Gender of Recipients:					
Adults (18 and Over)	55.5%	37.0%	93.6%	100.0%	100.0%
Children (Under 18)	44.5%	63.0%	6.4%	0.0%	0.0%
Male	44.4%	36.4%	56.2%	63.0%	62.1%
Female	55.6%	63.6%	43.8%	37.0%	37.9%
Ethnicity of Head of Household:					
Hispanic	59.0%	71.2%	57.2%	60.9%	38.5%
Not Hispanic	41.0%	28.8%	42.8%	39.1%	61.5%
Race of Head of Household:					
African American	2.6%	3.1%	3.8%	2.2%	11.5%
Asian/Pacific Islander	1.4%	1.2%	1.3%	0.0%	19.2%
Native American	13.1%	6.1%	5.9%	4.3%	0.0%
White	82.3%	89.1%	88.1%	93.5%	65.5%
More than one race or no race declared	0.6%	0.5%	0.9%	0.0%	3.8%

Supplemental Nutrition Assistance Program (SNAP) Cases by County

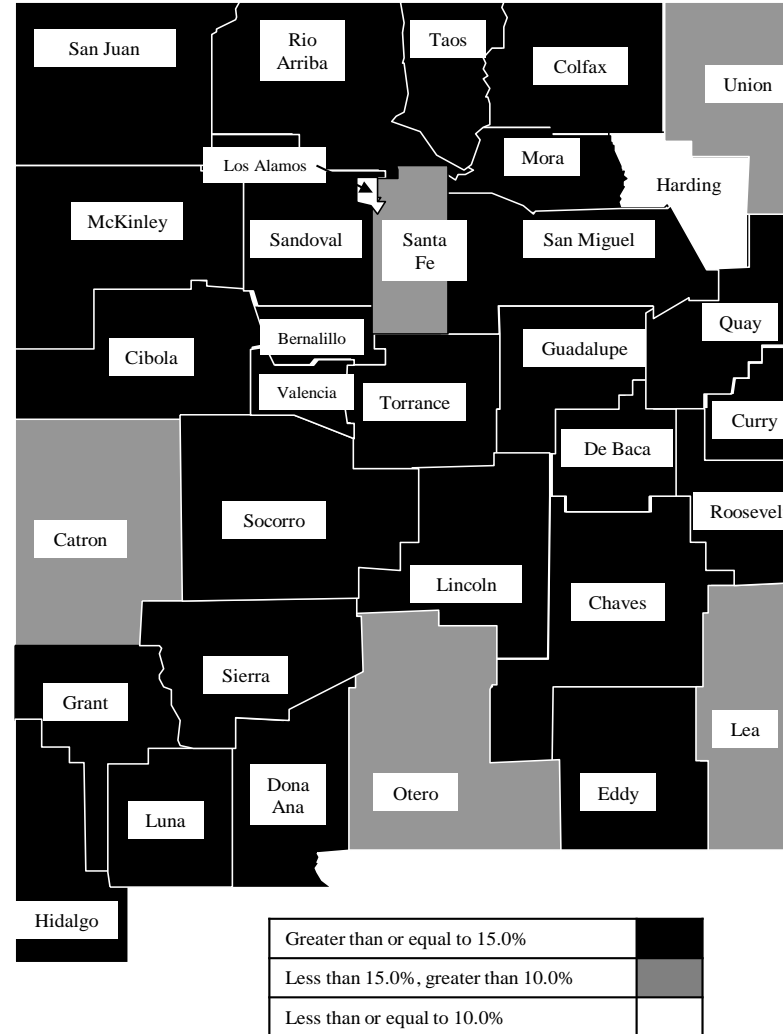
County	Apr-12	Mar-13	Apr-13	Apr 12 – Apr 13		Mar 13 – Apr 13	
				# change	% change	# change	% change
Bernalillo	63,188	62,991	62,739	-449	-0.7%	-252	-0.4%
Catron	209	199	204	-5	-2.4%	5	2.5%
Chaves	6,283	6,539	6,569	286	4.6%	30	0.5%
Cibola	3,128	3,229	3,205	77	2.5%	-24	-0.7%
Colfax	1,186	1,211	1,226	40	3.4%	15	1.2%
Curry	4,019	4,021	3,984	-35	-0.9%	-37	-0.9%
De Baca	160	157	162	2	1.3%	5	3.2%
Dona Ana	24,038	24,941	24,974	936	3.9%	33	0.1%
Eddy	4,144	4,262	4,176	32	0.8%	-86	-2.0%
Grant	3,025	3,045	3,025	0	0.0%	-20	-0.7%
Guadalupe	550	567	572	22	4.0%	5	0.9%
Harding	32	23	23	-9	-28.1%	0	0.0%
Hidalgo	494	485	488	-6	-1.2%	3	0.6%
Lea	3,861	3,921	3,951	90	2.3%	30	0.8%
Lincoln	1,657	1,704	1,708	51	3.1%	4	0.2%
Los Alamos	211	248	253	42	19.9%	5	2.0%
Luna	3,747	3,764	3,757	10	0.3%	-7	-0.2%
McKinley	8,604	8,767	8,734	130	1.5%	-33	-0.4%
Mora	562	478	469	-93	-16.5%	-9	-1.9%
Otero	4,272	4,295	4,333	61	1.4%	38	0.9%
Quay	1,213	1,258	1,248	35	2.9%	-10	-0.8%
Rio Arriba	6,232	6,605	6,597	365	5.9%	-8	-0.1%
Roosevelt	1,316	1,418	1,417	101	7.7%	-1	-0.1%
Sandoval	8,789	9,221	9,253	464	5.3%	32	0.3%
San Juan	10,328	10,880	10,921	593	5.7%	41	0.4%
San Miguel	4,596	4,825	4,778	182	4.0%	-47	-1.0%
Santa Fe	9,117	9,861	9,889	772	8.5%	28	0.3%
Sierra	1,725	1,819	1,821	96	5.6%	2	0.1%
Socorro	2,258	2,421	2,440	182	8.1%	19	0.8%
Taos	3,547	3,838	3,887	340	9.6%	49	1.3%
Torrance	2,437	2,657	2,625	188	7.7%	-32	-1.2%
Union	241	218	212	-29	-12.0%	-6	-2.8%
Valencia	8,295	8,665	8,643	348	4.2%	-22	-0.3%
TOTAL	193,464	198,533	198,283	4,819	2.5%	-250	-0.1%

Supplemental Nutrition Assistance Program (SNAP) Recipients by County

County	Apr-12	Mar-13	Apr-13	Apr 12 – Apr 13		Mar 13 – Apr 13	
				# change	% change	# change	% change
Bernalillo	130,349	128,555	128,085	-2,264	-1.7%	-470	-0.4%
Catron	430	423	433	3	0.7%	10	2.4%
Chaves	14,961	15,353	15,407	446	3.0%	54	0.4%
Cibola	8,227	8,352	8,235	8	0.1%	-117	-1.4%
Colfax	2,683	2,609	2,625	-58	-2.2%	16	0.6%
Curry	9,708	9,740	9,664	-44	-0.5%	-76	-0.8%
De Baca	343	330	331	-12	-3.5%	1	0.3%
Dona Ana	57,788	59,275	59,232	1,444	2.5%	-43	-0.1%
Eddy	9,456	9,635	9,407	-49	-0.5%	-228	-2.4%
Grant	6,530	6,367	6,380	-150	-2.3%	13	0.2%
Guadalupe	1,118	1,110	1,135	17	1.5%	25	2.3%
Harding	51	39	39	-12	-23.5%	0	0.0%
Hidalgo	1,064	994	1,007	-57	-5.4%	13	1.3%
Lea	9,545	9,724	9,812	267	2.8%	88	0.9%
Lincoln	3,684	3,799	3,833	149	4.0%	34	0.9%
Los Alamos	409	491	498	89	21.8%	7	1.4%
Luna	8,962	8,762	8,738	-224	-2.5%	-24	-0.3%
McKinley	25,984	25,740	25,604	-380	-1.5%	-136	-0.5%
Mora	1,060	878	861	-199	-18.8%	-17	-1.9%
Otero	9,744	9,514	9,592	-152	-1.6%	78	0.8%
Quay	2,461	2,556	2,550	89	3.6%	-6	-0.2%
Rio Arriba	12,623	13,274	13,230	607	4.8%	-44	-0.3%
Roosevelt	3,400	3,527	3,527	127	3.7%	0	0.0%
Sandoval	22,006	22,631	22,720	714	3.2%	89	0.4%
San Juan	27,761	28,335	28,333	572	2.1%	-2	0.0%
San Miguel	8,902	9,084	8,989	87	1.0%	-95	-1.0%
Santa Fe	18,086	19,566	19,625	1,539	8.5%	59	0.3%
Sierra	3,209	3,412	3,406	197	6.1%	-6	-0.2%
Socorro	4,975	5,252	5,268	293	5.9%	16	0.3%
Taos	6,937	7,409	7,488	551	7.9%	79	1.1%
Torrance	5,456	5,810	5,751	295	5.4%	-59	-1.0%
Union	523	507	491	-32	-6.1%	-16	-3.2%
Valencia	18,832	19,249	19,254	422	2.2%	5	0.0%
TOTAL	437,267	442,302	441,550	4,283	1.0%	-752	-0.2%

Rank	County	Estimated Population	SNAP Recipients	Rate
1	Torrance	16,021	5,751	35.9%
2	McKinley	73,016	25,604	35.1%
3	Luna	25,041	8,738	34.9%
4	Rio Arriba	40,318	13,230	32.8%
5	San Miguel	28,891	8,989	31.1%
6	Cibola	27,334	8,235	30.1%
7	Socorro	17,603	5,268	29.9%
8	Quay	8,769	2,550	29.1%
9	Sierra	11,895	3,406	28.6%
10	Dona Ana	214,445	59,232	27.6%
11	Valencia	76,631	19,254	25.1%
12	Guadalupe	4,603	1,135	24.7%
13	Chaves	65,784	15,407	23.4%
14	Taos	32,779	7,488	22.8%
15	San Juan	128,529	28,333	22.0%
16	Grant	29,388	6,380	21.7%
17	Hidalgo	4,794	1,007	21.0%
18	Colfax	13,223	2,625	19.9%
19	Curry	49,938	9,664	19.4%
20	Bernalillo	673,460	128,085	19.0%
21	Lincoln	20,309	3,833	18.9%
22	Mora	4,705	861	18.3%
23	Eddy	54,419	9,407	17.3%
24	Roosevelt	20,419	3,527	17.3%
25	De Baca	1,927	331	17.2%
26	Sandoval	135,588	22,720	16.8%
27	Lea	66,338	9,812	14.8%
28	Otero	66,041	9,592	14.5%
29	Santa Fe	146,375	19,625	13.4%
30	Catron	3,658	433	11.8%
31	Union	4,431	491	11.1%
32	Harding	707	39	5.5%
33	Los Alamos	18,159	498	2.7%
STATE TOTAL		2,085,538	441,550	21.2%

SNAP Reciprocity Rate



Population Source: U.S. Census Bureau, 2012 Population
 Reciprocity rate is the percent of individuals who receive Supplemental Nutrition Assistance

Supplemental Nutrition Assistance Program (SNAP) Cases by Administrative Office

Office #	Office	Apr-12	Mar-13	Apr-13	Apr 12 – Apr 13		Mar 13 – Apr 13	
					# change	% change	# change	% change
1	SE Bernalillo	11,409	11,041	11,023	-386	-3.4%	-18	-0.2%
3	Chaves	6,283	6,539	6,569	286	4.6%	30	0.5%
4	Colfax	1,186	1,211	1,226	40	3.4%	15	1.2%
3104	Union	241	218	212	-29	-12.0%	-6	-2.8%
5	Curry	4,022	4,022	3,986	-36	-0.9%	-36	-0.9%
7	West Dona Ana	9,243	9,688	9,754	511	5.5%	66	0.7%
8	Eddy	2,900	2,943	2,884	-16	-0.6%	-59	-2.0%
9	Grant	3,064	3,065	3,046	-18	-0.6%	-19	-0.6%
1209	Hidalgo	494	485	488	-6	-1.2%	3	0.6%
10	Guadalupe	710	724	734	24	3.4%	10	1.4%
13	Lea	3,861	3,921	3,951	90	2.3%	30	0.8%
14	Lincoln	1,656	1,703	1,706	50	3.0%	3	0.2%
16	Luna	3,734	3,761	3,754	20	0.5%	-7	-0.2%
17	McKinley	8,618	8,777	8,745	127	1.5%	-32	-0.4%
19	Otero	4,273	4,296	4,335	62	1.5%	39	0.9%
20	Quay	1,212	1,258	1,248	36	3.0%	-10	-0.8%
21	Rio Arriba	6,554	6,951	6,950	396	6.0%	-1	0.0%
22	Roosevelt	1,314	1,417	1,415	101	7.7%	-2	-0.1%
23	Sandoval	8,789	9,221	9,253	464	5.3%	32	0.3%
24	San Juan	10,328	10,880	10,921	593	5.7%	41	0.4%
25	San Miguel	5,163	5,299	5,242	79	1.5%	-57	-1.1%
26	Santa Fe	9,033	9,790	9,817	784	8.7%	27	0.3%
27	Sierra	2,460	2,542	2,523	63	2.6%	-19	-0.7%
28	Socorro	2,441	2,602	2,625	184	7.5%	23	0.9%
29	Taos	3,547	3,838	3,887	340	9.6%	49	1.3%
30	Torrance	2,436	2,655	2,623	187	7.7%	-32	-1.2%
32	S Valencia	2,976	3,140	3,107	131	4.4%	-33	-1.1%
33	Cibola	3,114	3,219	3,194	80	2.6%	-25	-0.8%
34	Eddy/Artesia	1,244	1,319	1,292	48	3.9%	-27	-2.0%
35	NW Bernalillo	14,260	15,007	14,941	681	4.8%	-66	-0.4%
36	SW Bernalillo	17,292	17,100	17,038	-254	-1.5%	-62	-0.4%
37	East Dona Ana	6,604	6,886	6,889	285	4.3%	3	0.0%
38	S Dona Ana	7,456	7,644	7,629	173	2.3%	-15	-0.2%
39	NE Bernalillo	20,228	19,845	19,739	-489	-2.4%	-106	-0.5%
42	N Valencia	5,319	5,526	5,537	218	4.1%	11	0.2%
	TOTAL	193,464	198,533	198,283	4,819	2.5%	-250	-0.1%

Supplemental Nutrition Assistance Program (SNAP) Recipients by Administrative Office

Office #	Office	Apr-12	Mar-13	Apr-13	Apr 12 – Apr 13		Mar 13 – Apr 13	
					# change	% change	# change	% change
1	SE Bernalillo	23,108	22,398	22,405	-703	-3.0%	7	0.0%
3	Chaves	14,961	15,353	15,407	446	3.0%	54	0.4%
4	Colfax	2,683	2,609	2,625	-58	-2.2%	16	0.6%
3104	Union	523	507	491	-32	-6.1%	-16	-3.2%
5	Curry	9,711	9,742	9,667	-44	-0.5%	-75	-0.8%
7	West Dona Ana	19,453	20,340	20,414	961	4.9%	74	0.4%
8	Eddy	6,549	6,518	6,382	-167	-2.6%	-136	-2.1%
9	Grant	6,600	6,400	6,414	-186	-2.8%	14	0.2%
1209	Hidalgo	1,064	994	1,007	-57	-5.4%	13	1.3%
10	Guadalupe	1,461	1,440	1,466	5	0.3%	26	1.8%
13	Lea	9,545	9,724	9,812	267	2.8%	88	0.9%
14	Lincoln	3,683	3,798	3,831	148	4.0%	33	0.9%
16	Luna	8,941	8,759	8,735	-206	-2.3%	-24	-0.3%
17	McKinley	26,014	25,758	25,623	-391	-1.5%	-135	-0.5%
19	Otero	9,745	9,515	9,594	-151	-1.5%	79	0.8%
20	Quay	2,460	2,556	2,550	90	3.7%	-6	-0.2%
21	Rio Arriba	13,260	13,948	13,916	656	4.9%	-32	-0.2%
22	Roosevelt	3,398	3,525	3,524	126	3.7%	-1	0.0%
23	Sandoval	22,006	22,631	22,720	714	3.2%	89	0.4%
24	San Juan	27,761	28,335	28,333	572	2.1%	-2	0.0%
25	San Miguel	9,967	9,954	9,838	-129	-1.3%	-116	-1.2%
26	Santa Fe	17,904	19,430	19,488	1,584	8.8%	58	0.3%
27	Sierra	5,191	5,345	5,277	86	1.7%	-68	-1.3%
28	Socorro	5,356	5,644	5,669	313	5.8%	25	0.4%
29	Taos	6,937	7,409	7,488	551	7.9%	79	1.1%
30	Torrance	5,455	5,806	5,747	292	5.4%	-59	-1.0%
32	S Valencia	6,501	6,683	6,657	156	2.4%	-26	-0.4%
33	Cibola	8,197	8,334	8,216	19	0.2%	-118	-1.4%
34	Eddy/Artesia	2,907	3,117	3,025	118	4.1%	-92	-3.0%
35	NW Bernalillo	29,516	30,308	30,223	707	2.4%	-85	-0.3%
36	SW Bernalillo	39,175	38,179	37,961	-1,214	-3.1%	-218	-0.6%
37	East Dona Ana	15,695	16,117	16,144	449	2.9%	27	0.2%
38	S Dona Ana	20,658	20,885	20,803	145	0.7%	-82	-0.4%
39	NE Bernalillo	38,551	37,674	37,500	-1,051	-2.7%	-174	-0.5%
42	N Valencia	12,331	12,567	12,598	267	2.2%	31	0.2%
	TOTAL	437,267	442,302	441,550	4,283	1.0%	-752	-0.2%

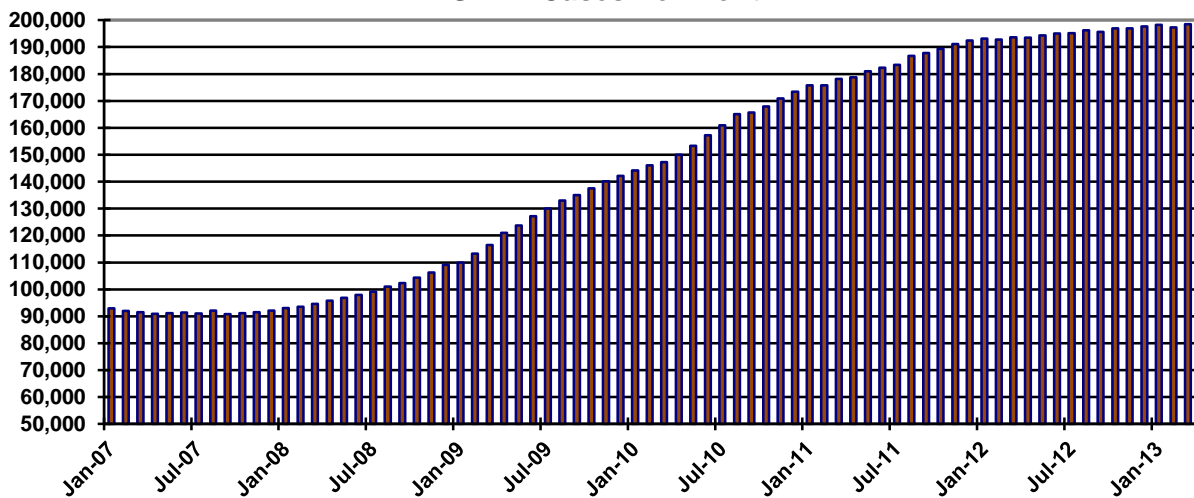
Supplemental Nutrition Assistance Program (SNAP) Cases by Region

	Apr-12	Mar-13	Apr-13	Apr 12 – Apr 13		Mar 13 – Apr 13	
				# change	% change	# change	% change
NW Region 1	39,144	40,763	40,757	1,613	4.1%	-6	0.0%
NE Region 2	25,724	27,307	27,334	1,610	6.3%	27	0.1%
Central Region 3	65,625	65,648	65,364	-261	-0.4%	-284	-0.4%
SE Region 4	21,546	22,143	22,079	533	2.5%	-64	-0.3%
SW Region 5	41,425	42,672	42,749	1,324	3.2%	77	0.2%
TOTAL	193,464	198,533	198,283	4,819	2.5%	-250	-0.1%

Supplemental Nutrition Assistance Program (SNAP) Recipients by Region

	Apr-12	Mar-13	Apr-13	Apr 12 – Apr 13		Mar 13 – Apr 13	
				# change	% change	# change	% change
NW Region 1	102,810	104,308	104,147	1,337	1.3%	-161	-0.2%
NE Region 2	51,274	53,857	53,846	2,572	5.0%	-11	0.0%
Central Region 3	135,805	134,365	133,836	-1,969	-1.4%	-529	-0.4%
SE Region 4	50,992	51,975	51,833	841	1.6%	-142	-0.3%
SW Region 5	96,386	97,797	97,888	1,502	1.6%	91	0.1%
TOTAL	437,267	442,302	441,550	4,283	1.0%	-752	-0.2%

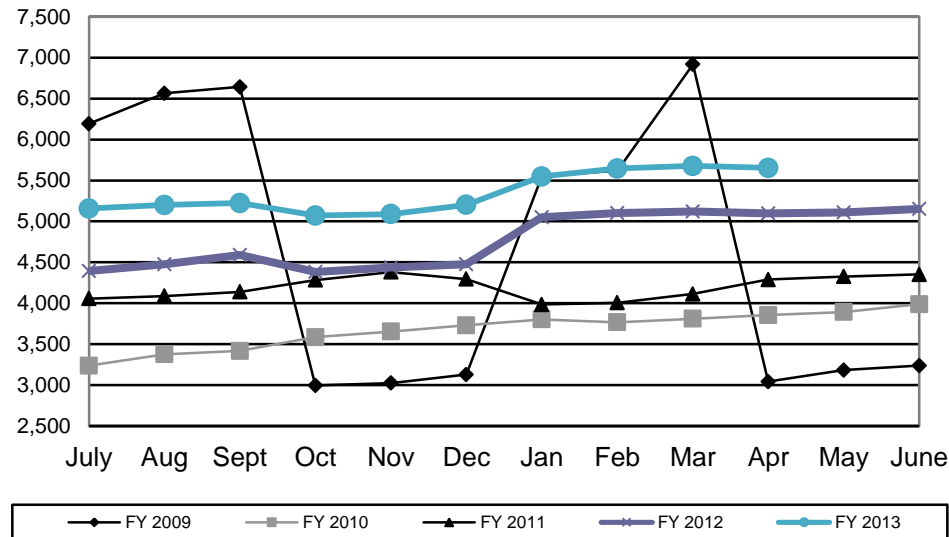
SNAP Cases Per Month



State SNAP Benefits Supplement

	SFY 2009		SFY 2010		SFY 2011		SFY 2012		SFY 2013	
	Cases	Expenditures	Cases	Expenditures	Cases	Expenditures	Cases	Expenditures	Cases	Expenditures
<i>July</i>	6,193	\$59,840	3,237	\$38,216	4,056	\$50,241	4,395	\$34,773	5,157	\$42,552
Aug	6,300	\$54,356	3,376	\$39,476	4,088	\$50,502	4,477	\$35,360	5,200	\$42,797
<i>Sept</i>	6,643	\$59,039	3,418	\$39,790	4,139	\$50,946	4,591	\$36,455	5,223	\$43,023
Oct	2,996	\$16,032	3,585	\$43,887	4,284	\$52,530	4,384	\$34,850	5,071	\$41,752
<i>Nov</i>	3,025	\$15,789	3,655	\$44,952	4,381	\$53,820	4,436	\$35,260	5,088	\$42,074
Dec	3,129	\$16,411	3,731	\$45,855	4,296	\$52,649	4,474	\$35,619	5,202	\$42,829
<i>Jan</i>	5,553	\$30,388	3,802	\$46,338	3,984	\$31,897	5,050	\$41,519	5,548	\$45,769
Feb	5,621	\$30,696	3,767	\$46,156	4,006	\$31,970	5,102	\$41,900	5,645	\$46,700
<i>Mar</i>	6,918	\$98,305	3,810	\$46,502	4,113	\$33,226	5,119	\$41,960	5,677	\$47,117
April	3,043	\$38,332	3,856	\$43,830	4,290	\$34,599	5,099	\$41,988	5,654	\$47,118
<i>May</i>	3,184	\$36,698	3,856	\$43,830	4,326	\$34,892	5,109	\$43,587		
June	3,237	\$37,297	3,988	\$49,230	4,351	\$28,199	5,154	\$42,442		
TOTAL	55,842	\$493,183	44,081	\$528,062	50,314	\$505,470	57,390	\$465,713	56,465	\$441,731
Monthly average	4,654	\$41,099	3,673	\$44,005	4,193	\$42,123	4,783	\$38,809	5,347	\$44,173

State SNAP Benefits Supplement Cases by State Fiscal Year



Temporary Assistance of Needy Families (TANF) Cases by County

County	Apr-12	Mar-13	Apr-13	Apr 12 – Apr 13		Mar 13 – Apr 13	
				# change	% change	# change	% change
Bernalillo	5,953	4,921	4,814	-1,139	-19.1%	-107	-2.2%
Catron	15	13	13	-2	-13.3%	0	0.0%
Chaves	638	503	512	-126	-19.7%	9	1.8%
Cibola	251	239	244	-7	-2.8%	5	2.1%
Colfax	109	106	104	-5	-4.6%	-2	-1.9%
Curry	547	490	474	-73	-13.3%	-16	-3.3%
De Baca	17	12	12	-5	-29.4%	0	0.0%
Dona Ana	3,138	2,793	2,773	-365	-11.6%	-20	-0.7%
Eddy	443	393	385	-58	-13.1%	-8	-2.0%
Grant	266	179	167	-99	-37.2%	-12	-6.7%
Guadalupe	51	36	37	-14	-27.5%	1	2.8%
Harding	1	0	0	-1	-100.0%	0	NA
Hidalgo	48	39	40	-8	-16.7%	1	2.6%
Lea	440	380	401	-39	-8.9%	21	5.5%
Lincoln	178	167	169	-9	-5.1%	2	1.2%
Los Alamos	17	14	18	1	5.9%	4	28.6%
Luna	413	336	320	-93	-22.5%	-16	-4.8%
McKinley	135	95	95	-40	-29.6%	0	0.0%
Mora	33	21	21	-12	-36.4%	0	0.0%
Otero	399	320	326	-73	-18.3%	6	1.9%
Quay	118	91	87	-31	-26.3%	-4	-4.4%
Rio Arriba	601	501	464	-137	-22.8%	-37	-7.4%
Roosevelt	103	119	114	11	10.7%	-5	-4.2%
Sandoval	657	569	548	-109	-16.6%	-21	-3.7%
San Juan	285	248	249	-36	-12.6%	1	0.4%
San Miguel	357	296	277	-80	-22.4%	-19	-6.4%
Santa Fe	649	586	585	-64	-9.9%	-1	-0.2%
Sierra	108	90	93	-15	-13.9%	3	3.3%
Socorro	141	126	130	-11	-7.8%	4	3.2%
Taos	158	120	130	-28	-17.7%	10	8.3%
Torrance	272	250	253	-19	-7.0%	3	1.2%
Union	17	13	12	-5	-29.4%	-1	-7.7%
Valencia	848	671	682	-166	-19.6%	11	1.6%
TOTAL	17,406	14,737	14,549	-2,857	-16.4%	-188	-1.3%

Temporary Assistance of Needy Families (TANF) Recipients by County

County	Apr-12	Mar-13	Apr-13	Apr 12 – Apr 13		Mar 13 – Apr 13	
				# change	% change	# change	% change
Bernalillo	14,111	11,638	11,360	-2,751	-19.5%	-278	-2.4%
Catron	43	38	39	-4	-9.3%	1	2.6%
Chaves	1,522	1,158	1,187	-335	-22.0%	29	2.5%
Cibola	681	627	644	-37	-5.4%	17	2.7%
Colfax	288	272	260	-28	-9.7%	-12	-4.4%
Curry	1,372	1,233	1,177	-195	-14.2%	-56	-4.5%
De Baca	38	26	24	-14	-36.8%	-2	-7.7%
Dona Ana	7,937	6,957	6,907	-1,030	-13.0%	-50	-0.7%
Eddy	1,063	912	884	-179	-16.8%	-28	-3.1%
Grant	665	417	395	-270	-40.6%	-22	-5.3%
Guadalupe	124	99	98	-26	-21.0%	-1	-1.0%
Harding	3	0	0	-3	-100.0%	0	NA
Hidalgo	121	80	86	-35	-28.9%	6	7.5%
Lea	1,142	915	962	-180	-15.8%	47	5.1%
Lincoln	462	425	428	-34	-7.4%	3	0.7%
Los Alamos	36	28	38	2	5.6%	10	35.7%
Luna	1,022	857	805	-217	-21.2%	-52	-6.1%
McKinley	362	242	243	-119	-32.9%	1	0.4%
Mora	70	43	43	-27	-38.6%	0	0.0%
Otero	1,084	812	830	-254	-23.4%	18	2.2%
Quay	265	216	205	-60	-22.6%	-11	-5.1%
Rio Arriba	1,418	1,094	987	-431	-30.4%	-107	-9.8%
Roosevelt	247	291	272	25	10.1%	-19	-6.5%
Sandoval	1,668	1,496	1,410	-258	-15.5%	-86	-5.7%
San Juan	753	594	578	-175	-23.2%	-16	-2.7%
San Miguel	849	676	630	-219	-25.8%	-46	-6.8%
Santa Fe	1,452	1,322	1,287	-165	-11.4%	-35	-2.6%
Sierra	250	200	206	-44	-17.6%	6	3.0%
Socorro	335	299	303	-32	-9.6%	4	1.3%
Taos	369	269	293	-76	-20.6%	24	8.9%
Torrance	696	640	656	-40	-5.7%	16	2.5%
Union	48	37	34	-14	-29.2%	-3	-8.1%
Valencia	2,057	1,505	1,553	-504	-24.5%	48	3.2%
TOTAL	42,553	35,418	34,824	-7,729	-18.2%	-594	-1.7%

Temporary Assistance of Needy Families (TANF) Cases by Administrative Office

Office #	Office	Apr-12	Mar-13	Apr-13	Apr 12 – Apr 13		Mar 13 – Apr 13	
					# change	% change	# change	% change
1	SE Bernalillo	1,258	988	981	-277	-22.0%	-7	-0.7%
3	Chaves	638	503	512	-126	-19.7%	9	1.8%
4	Colfax	109	106	104	-5	-4.6%	-2	-1.9%
3104	Union	17	13	12	-5	-29.4%	-1	-7.7%
5	Curry	547	490	474	-73	-13.3%	-16	-3.3%
7	West Dona Ana	1,108	1,000	994	-114	-10.3%	-6	-0.6%
8	Eddy	295	266	266	-29	-9.8%	0	0.0%
9	Grant	268	179	167	-101	-37.7%	-12	-6.7%
1209	Hidalgo	48	39	40	-8	-16.7%	1	2.6%
10	Guadalupe	68	48	49	-19	-27.9%	1	2.1%
13	Lea	440	380	401	-39	-8.9%	21	5.5%
14	Lincoln	178	167	169	-9	-5.1%	2	1.2%
16	Luna	413	336	320	-93	-22.5%	-16	-4.8%
17	McKinley	135	96	96	-39	-28.9%	0	0.0%
19	Otero	399	320	326	-73	-18.3%	6	1.9%
20	Quay	118	91	87	-31	-26.3%	-4	-4.4%
21	Rio Arriba	631	522	488	-143	-22.7%	-34	-6.5%
22	Roosevelt	103	119	114	11	10.7%	-5	-4.2%
23	Sandoval	657	569	548	-109	-16.6%	-21	-3.7%
24	San Juan	285	248	249	-36	-12.6%	1	0.4%
25	San Miguel	390	317	298	-92	-23.6%	-19	-6.0%
26	Santa Fe	637	579	579	-58	-9.1%	0	0.0%
27	Sierra	170	136	138	-32	-18.8%	2	1.5%
28	Socorro	154	139	143	-11	-7.1%	4	2.9%
29	Taos	158	120	130	-28	-17.7%	10	8.3%
30	Torrance	272	250	253	-19	-7.0%	3	1.2%
32	S Valencia	277	227	235	-42	-15.2%	8	3.5%
33	Cibola	251	238	243	-8	-3.2%	5	2.1%
34	Eddy/Artesia	148	127	119	-29	-19.6%	-8	-6.3%
35	NW Bernalillo	1,197	1,105	1,113	-84	-7.0%	8	0.7%
36	SW Bernalillo	1,914	1,537	1,485	-429	-22.4%	-52	-3.4%
37	East Dona Ana	715	650	650	-65	-9.1%	0	0.0%
38	S Dona Ana	1,253	1,097	1,084	-169	-13.5%	-13	-1.2%
39	NE Bernalillo	1,584	1,291	1,235	-349	-22.0%	-56	-4.3%
42	N Valencia	571	444	447	-124	-21.7%	3	0.7%
	TOTAL	17,406	14,737	14,549	-2,857	-16.4%	-188	-1.3%

Temporary Assistance of Needy Families (TANF) Recipients by Administrative Office

Office #	Office	Apr-12	Mar-13	Apr-13	Apr 12 – Apr 13		Mar 13 – Apr 13	
					# change	% change	# change	% change
1	SE Bernalillo	2,947	2,361	2,355	-592	-20.1%	-6	-0.3%
3	Chaves	1,522	1,158	1,187	-335	-22.0%	29	2.5%
4	Colfax	288	272	260	-28	-9.7%	-12	-4.4%
3104	Union	48	37	34	-14	-29.2%	-3	-8.1%
5	Curry	1,372	1,233	1,177	-195	-14.2%	-56	-4.5%
7	West Dona Ana	2,740	2,481	2,443	-297	-10.8%	-38	-1.5%
8	Eddy	706	619	609	-97	-13.7%	-10	-1.6%
9	Grant	670	417	395	-275	-41.0%	-22	-5.3%
1209	Hidalgo	121	80	86	-35	-28.9%	6	7.5%
10	Guadalupe	162	125	122	-40	-24.7%	-3	-2.4%
13	Lea	1,142	915	962	-180	-15.8%	47	5.1%
14	Lincoln	462	425	428	-34	-7.4%	3	0.7%
16	Luna	1,022	857	805	-217	-21.2%	-52	-6.1%
17	McKinley	362	244	245	-117	-32.3%	1	0.4%
19	Otero	1,084	812	830	-254	-23.4%	18	2.2%
20	Quay	265	216	205	-60	-22.6%	-11	-5.1%
21	Rio Arriba	1,496	1,139	1,039	-457	-30.5%	-100	-8.8%
22	Roosevelt	247	291	272	25	10.1%	-19	-6.5%
23	Sandoval	1,668	1,496	1,410	-258	-15.5%	-86	-5.7%
24	San Juan	753	594	578	-175	-23.2%	-16	-2.7%
25	San Miguel	920	719	673	-247	-26.8%	-46	-6.4%
26	Santa Fe	1,412	1,305	1,273	-139	-9.8%	-32	-2.5%
27	Sierra	401	307	306	-95	-23.7%	-1	-0.3%
28	Socorro	373	337	342	-31	-8.3%	5	1.5%
29	Taos	369	269	293	-76	-20.6%	24	8.9%
30	Torrance	696	640	656	-40	-5.7%	16	2.5%
32	S Valencia	646	492	525	-121	-18.7%	33	6.7%
33	Cibola	681	625	642	-39	-5.7%	17	2.7%
34	Eddy/Artesia	357	293	275	-82	-23.0%	-18	-6.1%
35	NW Bernalillo	2,939	2,592	2,624	-315	-10.7%	32	1.2%
36	SW Bernalillo	4,470	3,512	3,385	-1,085	-24.3%	-127	-3.6%
37	East Dona Ana	1,794	1,597	1,597	-197	-11.0%	0	0.0%
38	S Dona Ana	3,252	2,772	2,767	-485	-14.9%	-5	-0.2%
39	NE Bernalillo	3,755	3,173	2,996	-759	-20.2%	-177	-5.6%
42	N Valencia	1,411	1,013	1,028	-383	-27.1%	15	1.5%
	TOTAL	42,553	35,418	34,824	-7,729	-18.2%	-594	-1.7%

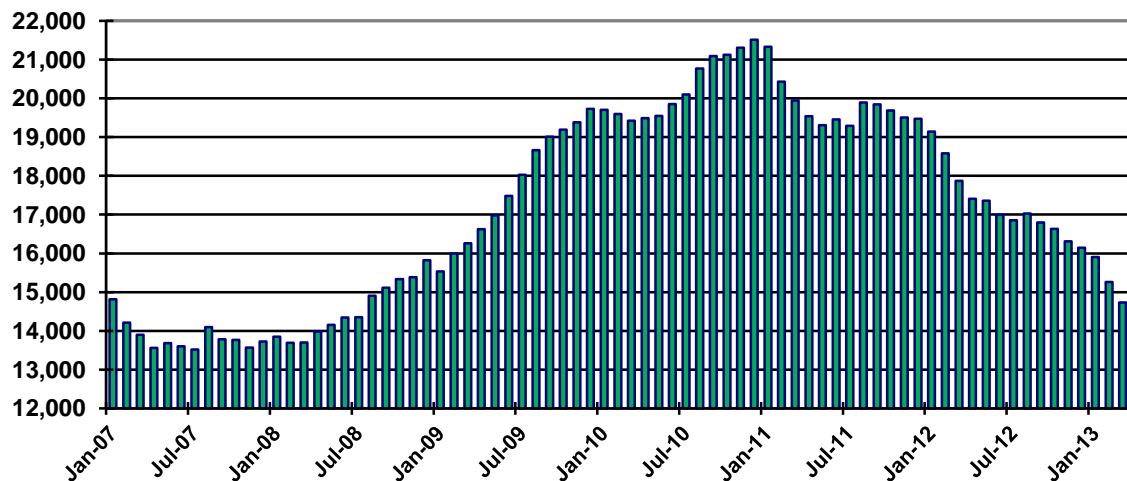
Temporary Assistance of Needy Families (TANF) Cases by Region

	Apr-12	Mar-13	Apr-13	Apr 12 – Apr 13		Mar 13 – Apr 13	
				# change	% change	# change	% change
NW Region 1	2,176	1,822	1,818	-358	-16.5%	-4	-0.2%
NE Region 2	1,942	1,657	1,611	-331	-17.0%	-46	-2.8%
Central Region 3	6,225	5,171	5,067	-1,158	-18.6%	-104	-2.0%
SE Region 4	2,357	2,024	2,022	-335	-14.2%	-2	-0.1%
SW Region 5	4,706	4,063	4,031	-675	-14.3%	-32	-0.8%
TOTAL	17,406	14,737	14,549	-2,857	-16.4%	-188	-1.3%

Temporary Assistance of Needy Families (TANF) Recipients by Region

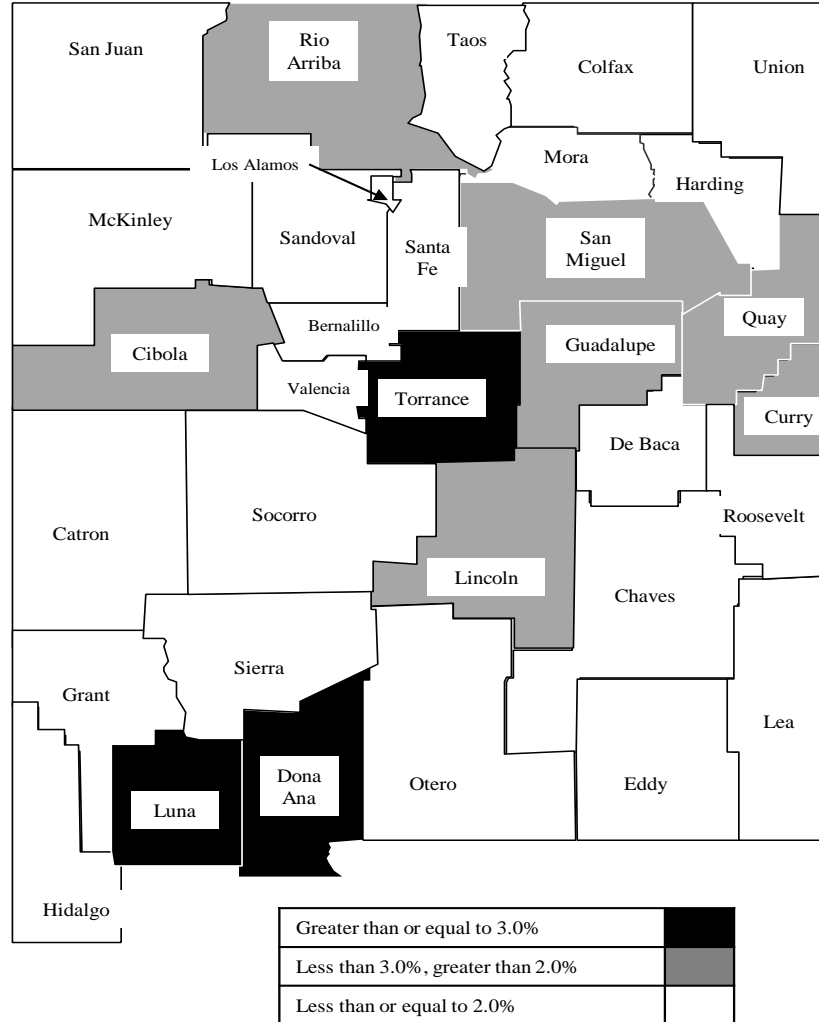
	Apr-12	Mar-13	Apr-13	Apr 12 – Apr 13		Mar 13 – Apr 13	
				# change	% change	# change	% change
NW Region 1	5,521	4,464	4,428	-1,093	-19.8%	-36	-0.8%
NE Region 2	4,533	3,741	3,572	-961	-21.2%	-169	-4.5%
Central Region 3	14,807	12,278	12,016	-2,791	-18.8%	-262	-2.1%
SE Region 4	5,773	4,850	4,809	-964	-16.7%	-41	-0.8%
SW Region 5	11,919	10,085	9,999	-1,920	-16.1%	-86	-0.9%
TOTAL	42,553	35,418	34,824	-7,729	-18.2%	-594	-1.7%

TANF Cases per month



Rank	County	Estimated Population	TANF Recipients	Rate
1	Torrance	16,021	656	4.1%
2	Dona Ana	214,445	6,907	3.2%
3	Luna	25,041	805	3.2%
4	Rio Arriba	40,318	987	2.4%
5	Curry	49,938	1,177	2.4%
6	Cibola	27,334	644	2.4%
7	Quay	8,769	205	2.3%
8	San Miguel	28,891	630	2.2%
9	Guadalupe	4,603	98	2.1%
10	Lincoln	20,309	428	2.1%
11	Valencia	76,631	1,553	2.0%
12	Colfax	13,223	260	2.0%
13	Chaves	65,784	1,187	1.8%
14	Hidalgo	4,794	86	1.8%
15	Sierra	11,895	206	1.7%
16	Socorro	17,603	303	1.7%
17	Bernalillo	673,460	11,360	1.7%
18	Eddy	54,419	884	1.6%
19	Lea	66,338	962	1.5%
20	Grant	29,388	395	1.3%
21	Roosevelt	20,419	272	1.3%
22	Otero	66,041	830	1.3%
23	De Baca	1,927	24	1.2%
24	Catron	3,658	39	1.1%
25	Sandoval	135,588	1,410	1.0%
26	Mora	4,705	43	0.9%
27	Taos	32,779	293	0.9%
28	Santa Fe	146,375	1,287	0.9%
29	Union	4,431	34	0.8%
30	San Juan	128,529	578	0.4%
31	McKinley	73,016	243	0.3%
32	Los Alamos	18,159	38	0.2%
33	Harding	707	0	0.0%
STATE TOTAL		2,085,538	34,824	1.7%

TANF Reciprocity Rate



Population Source: U.S. Census Bureau, 2012 Population.

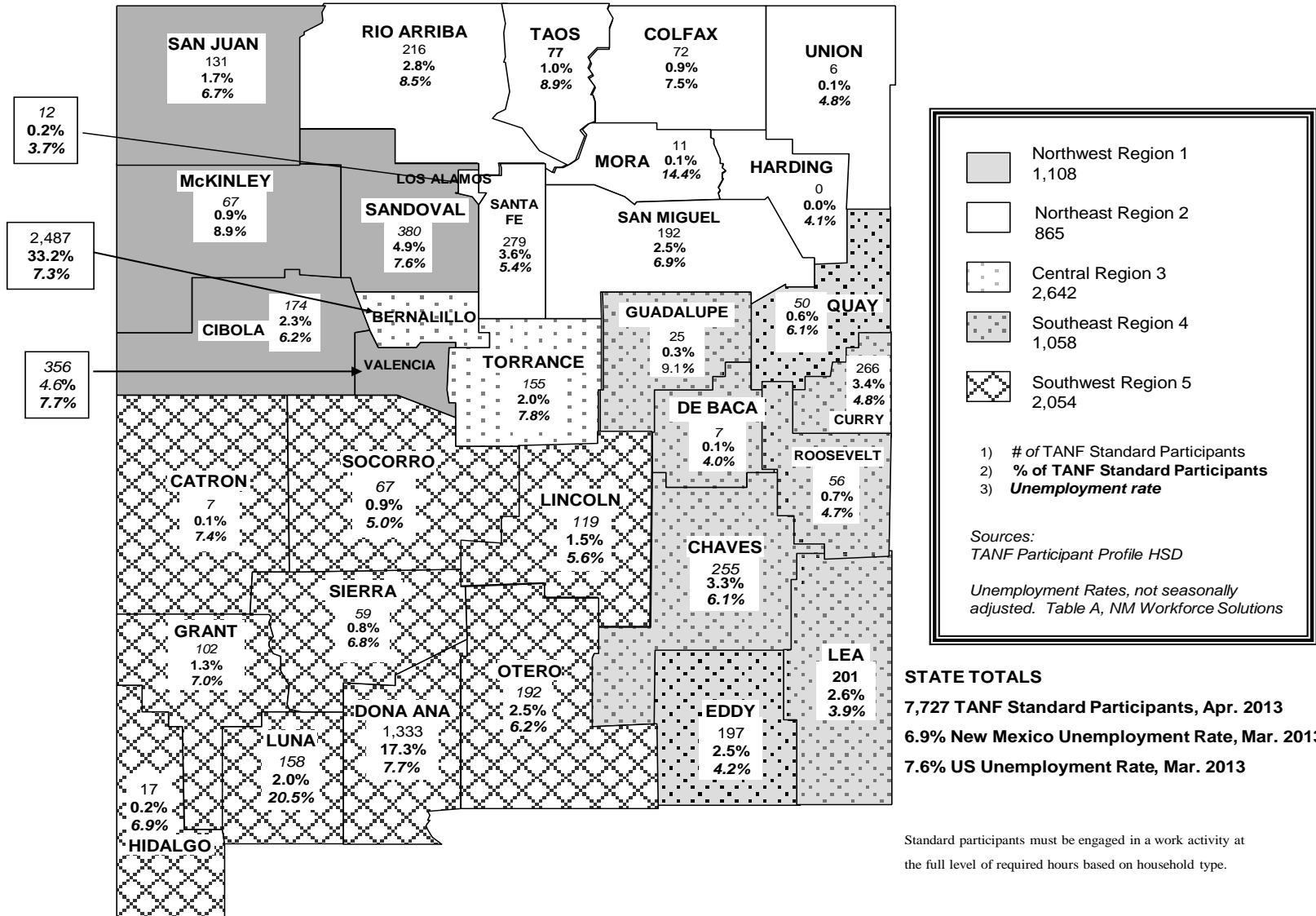
Reciprocity rate is the percent of individuals living in the State or County who receive TANF.

TANF Standard Participants by Administrative Office

Office #	Office	Apr-12	Mar-13	Apr-13	Apr 12 – Apr 13		Mar 13 – Apr 13	
					# change	% change	# change	% change
1	SE Bernalillo	587	401	415	-172	-29.3%	14	3.5%
3	Chaves	341	254	255	-86	-25.2%	1	0.4%
4	Colfax	77	74	72	-5	-6.5%	-2	-2.7%
3104	Union	5	6	6	1	20.0%	0	0.0%
5	Curry	306	283	266	-40	-13.1%	-17	-6.0%
7	West Dona Ana	616	547	545	-71	-11.5%	-2	-0.4%
8	Eddy	145	131	133	-12	-8.3%	2	1.5%
9	Grant	154	105	102	-52	-33.8%	-3	-2.9%
1209	Hidalgo	30	14	17	-13	-43.3%	3	21.4%
10	Guadalupe	48	33	32	-16	-33.3%	-1	-3.0%
13	Lea	252	177	201	-51	-20.2%	24	13.6%
14	Lincoln	126	116	119	-7	-5.6%	3	2.6%
16	Luna	202	174	158	-44	-21.8%	-16	-9.2%
17	McKinley	110	70	68	-42	-38.2%	-2	-2.9%
19	Otero	261	177	192	-69	-26.4%	15	8.5%
20	Quay	69	58	50	-19	-27.5%	-8	-13.8%
21	Rio Arriba	408	264	230	-178	-43.6%	-34	-12.9%
22	Roosevelt	53	64	56	3	5.7%	-8	-12.5%
23	Sandoval	516	406	380	-136	-26.4%	-26	-6.4%
24	San Juan	161	125	131	-30	-18.6%	6	4.8%
25	San Miguel	305	218	203	-102	-33.4%	-15	-6.9%
26	Santa Fe	327	296	277	-50	-15.3%	-19	-6.4%
27	Sierra	102	74	72	-30	-29.4%	-2	-2.7%
28	Socorro	93	68	74	-19	-20.4%	6	8.8%
29	Taos	96	65	77	-19	-19.8%	12	18.5%
30	Torrance	186	157	155	-31	-16.7%	-2	-1.3%
32	S Valencia	175	106	117	-58	-33.1%	11	10.4%
33	Cibola	188	162	173	-15	-8.0%	11	6.8%
34	Eddy/Artesia	90	66	65	-25	-27.8%	-1	-1.5%
35	NW Bernalillo	759	689	657	-102	-13.4%	-32	-4.6%
36	SW Bernalillo	960	681	623	-337	-35.1%	-58	-8.5%
37	East Dona Ana	421	376	383	-38	-9.0%	7	1.9%
38	S Dona Ana	497	389	392	-105	-21.1%	3	0.8%
39	NE Bernalillo	1,100	858	792	-308	-28.0%	-66	-7.7%
42	N Valencia	357	236	239	-118	-33.1%	3	1.3%
	TOTAL	10,123	7,920	7,727	-2,396	-23.7%	-193	-2.4%

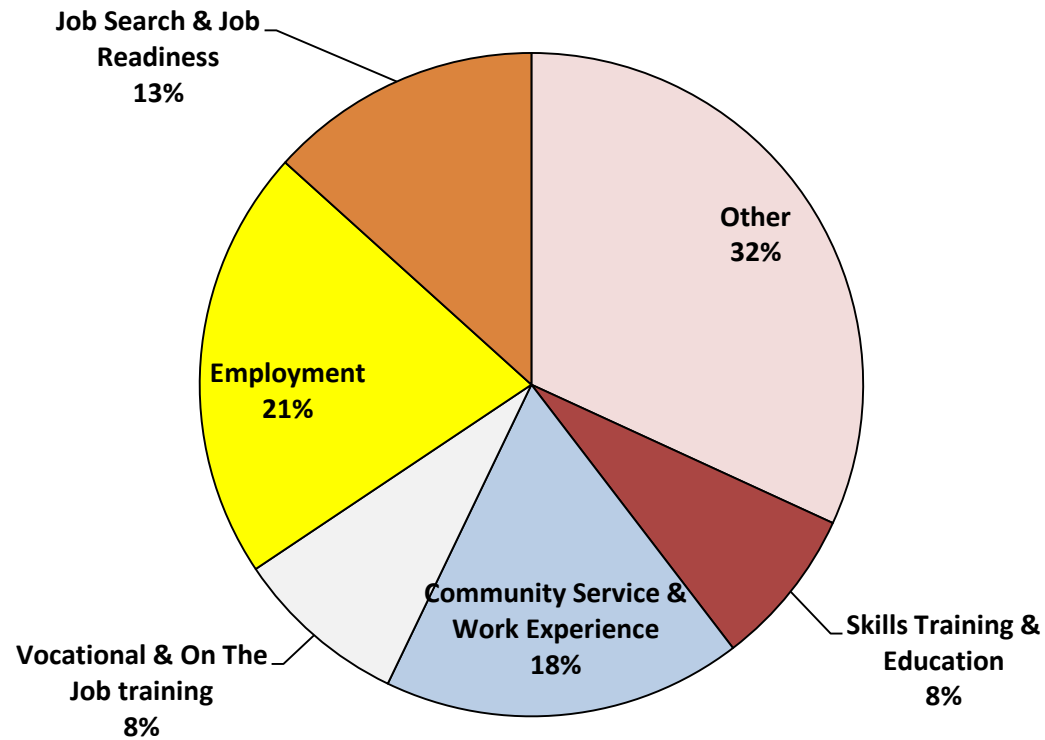
Standard participants must be engaged in a work activity at the full level of required hours based on household type.

TANF STANDARD PARTICIPANTS and UNEMPLOYMENT RATE COMPARISON BY REGION



Standard participants must be engaged in a work activity at the full level of required hours based on household type.

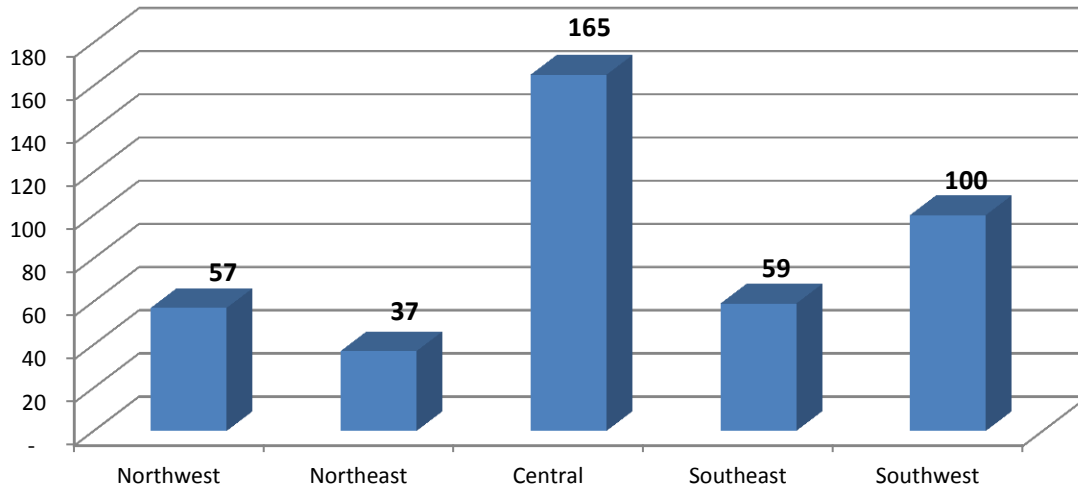
NM Works Activity Placements on April 30, 2013 as reported by SL Start **



**Data preliminary and subject to later revision.

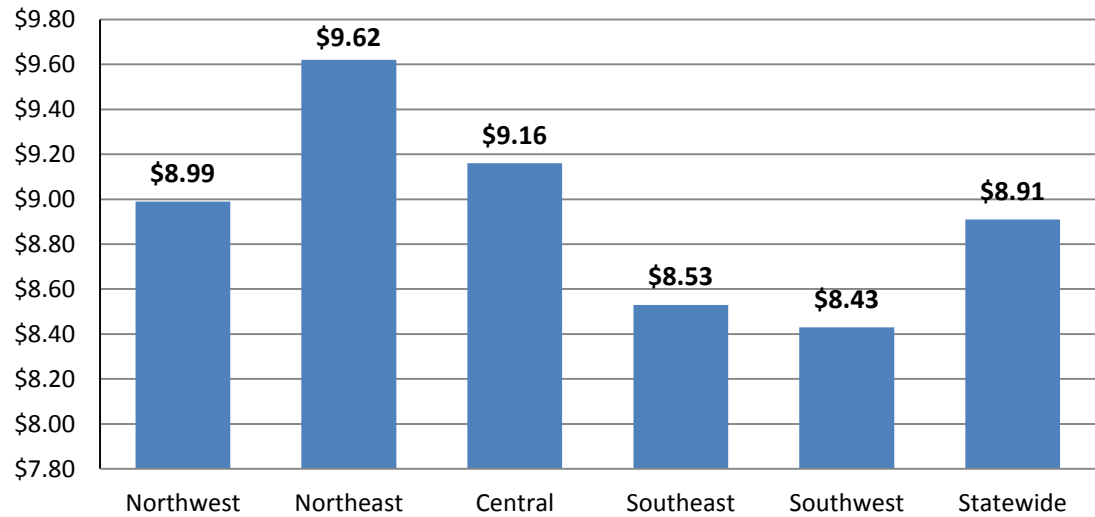
Placements may be duplicated as some individuals may work more than one activity or job.

Number of New Employments in April, by region, as reported by SL Start
Statewide Total: 418



Employment placements may be duplicated as some individuals may work more than one job.

Average Starting Hourly Wage of April TANF Employments, as reported by SL Start



TANF Sanctions by Administrative Office

Office #	Office	Non Reporting	Child Support Sanctions			Work Programs Sanctions			TOTAL
			1 st	2 nd	3 rd	1 st	2 nd	3 rd	
1	SE Bernalillo	0	6	0	0	35	9	48	98
3	Chaves	0	0	0	0	19	8	16	43
4	Colfax	0	1	0	0	4	3	3	11
3104	Union	0	0	0	0	1	0	0	1
5	Curry	0	4	3	0	17	3	21	48
7	West Dona Ana	0	7	0	1	27	15	35	85
8	Eddy	0	1	0	0	2	3	7	13
9	Grant	0	0	0	0	9	2	10	21
1209	Hidalgo	0	0	0	0	3	0	1	4
10	Guadalupe	0	0	0	0	3	1	0	4
13	Lea	0	1	0	1	23	4	9	38
14	Lincoln	0	0	0	0	8	4	5	17
16	Luna	0	5	0	0	14	4	11	34
17	McKinley	0	0	0	0	2	4	3	9
19	Otero	0	3	0	1	17	7	21	49
20	Quay	0	2	0	0	5	1	3	11
21	Rio Arriba	0	3	0	0	27	5	35	70
22	Roosevelt	0	2	0	0	6	0	5	13
23	Sandoval	0	6	0	0	23	9	25	63
24	San Juan	0	2	0	0	20	5	9	36
25	San Miguel	0	0	0	0	21	3	5	29
26	Santa Fe	0	5	0	0	20	8	26	59
27	Sierra	0	0	0	0	4	2	4	10
28	Socorro	0	2	0	0	4	4	7	17
29	Taos	0	2	0	0	5	2	8	17
30	Torrance	0	1	0	0	5	4	9	19
32	S Valencia	0	1	0	0	14	6	18	39
33	Cibola	0	1	0	0	5	1	9	16
34	Eddy/Artesia	0	2	0	0	6	5	3	16
35	NW Bernalillo	0	4	0	1	41	22	47	115
36	SW Bernalillo	0	5	0	1	40	26	70	142
37	East Dona Ana	0	1	1	0	30	8	23	63
38	S Dona Ana	0	0	0	2	25	11	29	67
39	NE Bernalillo	0	8	0	0	87	34	52	181
42	N Valencia	0	5	0	0	13	14	20	52
	TOTAL	0	80	4	7	585	237	597	1,510

TANF Diversion Payments by Administrative Office and Region

	Apr 2013	SFY 13 Cumulative total
NW Region (1)		
Cibola	\$4,000	\$35,500
<i>McKinley</i>	\$0	\$0
Sandoval	\$0	\$0
<i>San Juan</i>	\$2,500	\$5,000
Valencia North	\$10,500	\$123,500
<i>Valencia South</i>	\$6,500	\$12,000
NW Region Total	\$23,500	\$176,000
NE Region (2)		
<i>Colfax</i>	\$0	\$0
Los Alamos	\$0	\$0
<i>Mora</i>	\$0	\$0
Rio Arriba	\$0	\$0
<i>San Miguel</i>	\$0	\$0
Santa Fe	\$0	\$0
<i>Taos</i>	\$0	\$0
NE Region Total	\$0	\$0
Central Region (3)		
<i>Bernalillo NE</i>	\$2,500	\$9,500
Bernalillo NW	\$1,500	\$1,500
<i>Bernalillo SE</i>	\$0	\$0
Bernalillo SW	\$0	\$1,500
<i>Torrance</i>	\$0	\$5,500
Central Region Total	\$4,000	\$18,000

	Apr 2013	SFY 13 Cumulative total
SE Region Four (4)		
Chaves	\$0	\$0
<i>Curry</i>	\$0	\$0
De Baca	\$0	\$0
<i>Eddy</i>	\$0	\$6,500
Guadalupe	\$0	\$0
<i>Harding</i>	\$0	\$0
Lea	\$0	\$0
<i>Quay</i>	\$0	\$0
Roosevelt	\$0	\$0
<i>Union</i>	\$0	\$0
SE Region Total	\$0	\$6,500
SW Region (5)		
Catron	\$0	\$0
<i>Doña Ana West</i>	\$0	\$1,500
Doña Ana East	\$0	\$0
<i>Doña Ana Southern</i>	\$0	\$0
Grant	\$0	\$0
<i>Hidalgo</i>	\$0	\$0
Lincoln	\$0	\$0
<i>Otero</i>	\$0	\$0
Luna	\$0	\$0
<i>Sierra</i>	\$0	\$0
Socorro	\$2,500	\$5,000
SW Region Total	\$2,500	\$6,500
State TOTAL	\$30,000	\$207,000

Note: Effective November 2007, households with one or two persons receives \$1,500, households with three or more members receive \$2,500.

**Number of Active TANF Cases Extended Beyond 60 Month Time Limit
By Type of Extension as of Apr 2013**

Admin By Region	Hardship Extension	Support Services, State	Support Services, Federal	Tribal	Total
NW Region (1)					
Cibola	5	6	0	0	11
McKinley	2	0	0	0	2
San Juan	1	0	0	0	1
Sandoval	12	15	10	0	37
Valencia North	7	7	1	0	15
Valencia South	4	4	0	0	8
NW Region	31	32	11	0	74
NE Region (2)					
Colfax	2	2	0	0	4
Union	1	0	0	0	1
Rio Arriba	9	14	3	0	26
San Miguel	8	4	2	0	14
Santa Fe	23	13	3	0	39
Taos	6	0	0	0	6
NE Region	49	33	8	0	90
Central Region (3)					
NE Bernalillo	23	17	3	0	43
NW Bernalillo	25	20	11	0	56
SE Bernalillo	14	6	2	0	22
SW Bernalillo	20	36	10	0	66
Torrance	9	5	0	0	14
Central Region	91	84	26	0	201

Admin By Region	Hardship Extension	Support Services, State	Support Services, Federal	Tribal	Total
SE Region (4)					
Chaves	2	3	1	0	6
Curry	3	1	0	0	4
Eddy	8	6	0	0	14
Eddy Artesia	0	3	1	0	4
Guadalupe	3	1	0	0	4
Lea	0	1	0	0	1
Quay	3	5	1	0	9
Roosevelt	0	0	0	0	0
SE Region	19	20	3	0	42
SW Region (5)					
East Doña Ana	15	10	10	0	35
West Doña Ana	27	25	16	0	68
South Doña Ana	8	6	10	0	24
Grant	2	2	0	0	4
Hidalgo	2	0	0	0	2
Lincoln	1	0	1	0	2
Luna	3	1	1	0	5
Otero	4	0	3	0	7
Sierra	1	1	0	0	2
Socorro	10	3	0	0	13
SW Region	73	48	41	0	162
State Total	263	217	89	0	569

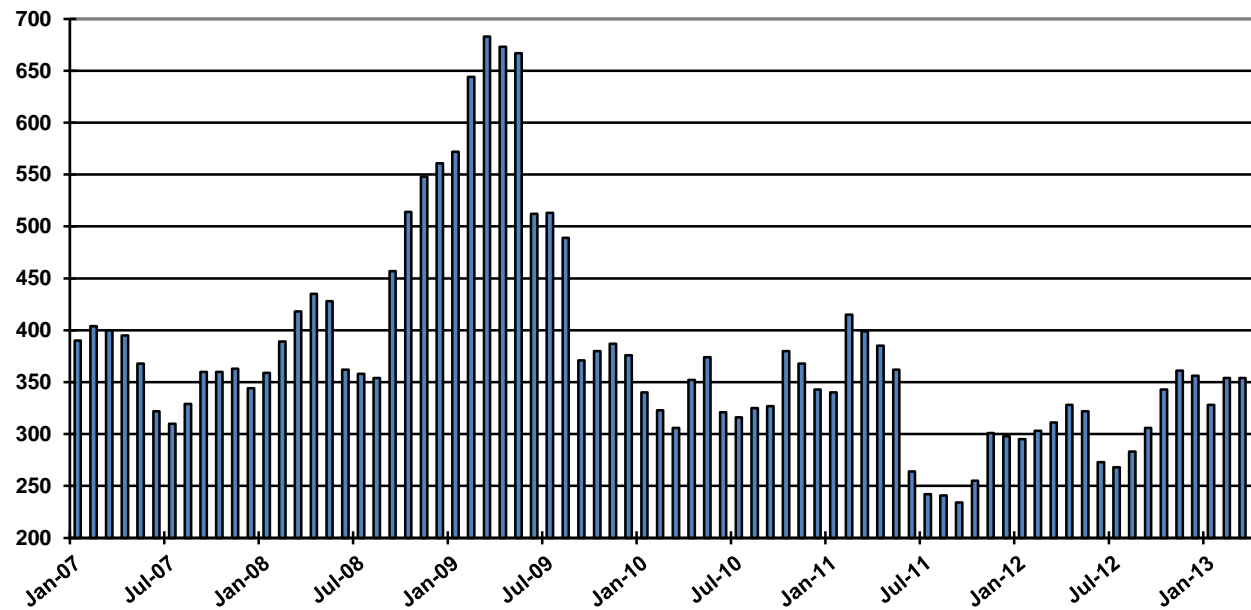
Education Works Cases by Administrative Office

Office #	Office	Apr-12	Mar-13	Apr-13	Apr 12 – Apr 13		Mar 13 – Apr 13	
					# change	% change	# change	% change
1	SE Bernalillo	30	31	31	1	3.3%	0	0.0%
3	Chaves	1	5	5	4	400.0%	0	0.0%
4	Colfax	6	4	4	-2	-33.3%	0	0.0%
3104	Union	0	0	0	0	NA	0	NA
5	Curry	5	3	6	1	20.0%	3	100.0%
7	West Dona Ana	23	25	25	2	8.7%	0	0.0%
8	Eddy	5	4	5	0	0.0%	1	25.0%
9	Grant	14	14	13	-1	-7.1%	-1	-7.1%
1209	Hidalgo	0	0	0	0	NA	0	NA
10	Guadalupe	0	0	0	0	NA	0	NA
13	Lea	2	5	5	3	150.0%	0	0.0%
14	Lincoln	0	0	0	0	NA	0	NA
16	Luna	1	4	5	4	400.0%	1	25.0%
17	McKinley	0	1	1	1	NA	0	0.0%
19	Otero	3	3	2	-1	-33.3%	-1	-33.3%
20	Quay	3	5	5	2	66.7%	0	0.0%
21	Rio Arriba	7	5	4	-3	-42.9%	-1	-20.0%
22	Roosevelt	1	2	3	2	200.0%	1	50.0%
23	Sandoval	14	29	28	14	100.0%	-1	-3.4%
24	San Juan	2	1	1	-1	-50.0%	0	0.0%
25	San Miguel	18	15	13	-5	-27.8%	-2	-13.3%
26	Santa Fe	18	14	12	-6	-33.3%	-2	-14.3%
27	Sierra	0	2	1	1	NA	-1	-50.0%
28	Socorro	1	1	2	1	100.0%	1	100.0%
29	Taos	11	11	11	0	0.0%	0	0.0%
30	Torrance	10	9	8	-2	-20.0%	-1	-11.1%
32	S Valencia	4	6	6	2	50.0%	0	0.0%
33	Cibola	6	4	4	-2	-33.3%	0	0.0%
34	Eddy/Artesia	2	3	3	1	50.0%	0	0.0%
35	NW Bernalillo	24	26	26	2	8.3%	0	0.0%
36	SW Bernalillo	12	18	18	6	50.0%	0	0.0%
37	East Dona Ana	24	24	23	-1	-4.2%	-1	-4.2%
38	S Dona Ana	19	21	17	-2	-10.5%	-4	-19.0%
39	NE Bernalillo	54	53	54	0	0.0%	1	1.9%
42	N Valencia	8	6	5	-3	-37.5%	-1	-16.7%
	TOTAL	328	354	346	18	5.5%	-8	-2.3%

Education Works Cases by Region

	Apr-12	Mar-13	Apr-13	Apr 12 – Apr 13		Mar 13 – Apr 13	
				# change	% change	# change	% change
NW Region 1	34	47	45	11	32.4%	-2	-4.3%
NE Region 2	60	49	44	-16	-26.7%	-5	-10.2%
Central Region 3	130	137	137	7	5.4%	0	0.0%
SE Region 4	19	27	32	13	68.4%	5	18.5%
SW Region 5	85	94	88	3	3.5%	-6	-6.4%
TOTAL	328	354	346	18	5.5%	-8	-2.3%

Education Works Cases, by Month



General Assistance (GA) Cases by County

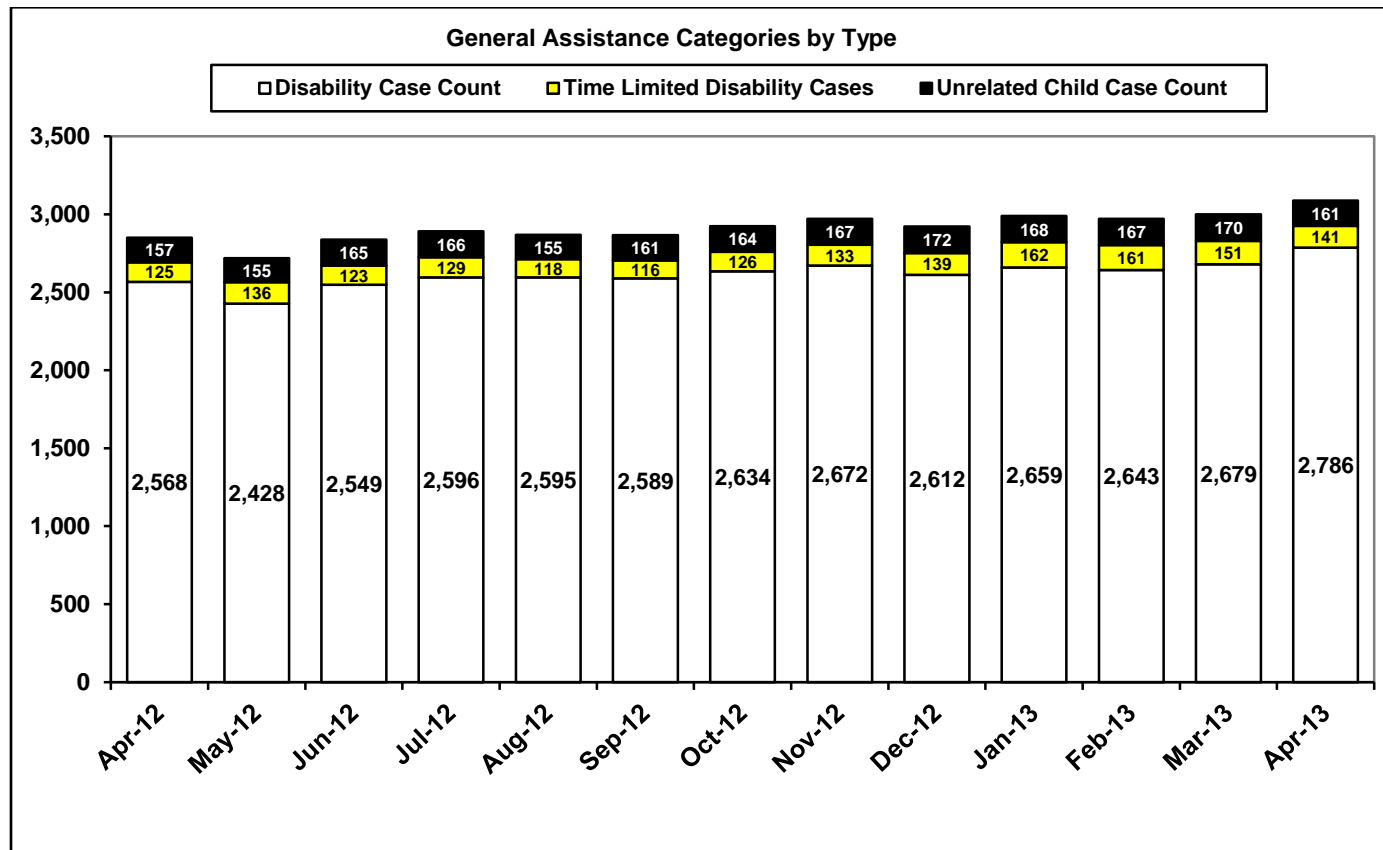
County	Apr-12	Mar-13	Apr-13	Apr 12 – Apr 13		Mar 13 – Apr 13	
				# change	% change	# change	% change
Bernalillo	1,104	1,050	1,094	-10	-0.9%	44	4.2%
Catron	5	2	2	-3	-60.0%	0	0.0%
Chaves	102	100	99	-3	-2.9%	-1	-1.0%
Cibola	64	76	75	11	17.2%	-1	-1.3%
Colfax	26	25	29	3	11.5%	4	16.0%
Curry	71	70	69	-2	-2.8%	-1	-1.4%
De Baca	5	5	5	0	0.0%	0	0.0%
Dona Ana	224	260	274	50	22.3%	14	5.4%
Eddy	123	109	103	-20	-16.3%	-6	-5.5%
Grant	66	64	56	-10	-15.2%	-8	-12.5%
Guadalupe	12	15	15	3	25.0%	0	0.0%
Harding	1	1	1	0	0.0%	0	0.0%
Hidalgo	15	15	16	1	6.7%	1	6.7%
Lea	45	41	38	-7	-15.6%	-3	-7.3%
Lincoln	33	26	28	-5	-15.2%	2	7.7%
Los Alamos	4	7	7	3	75.0%	0	0.0%
Luna	42	43	43	1	2.4%	0	0.0%
McKinley	16	15	14	-2	-12.5%	-1	-6.7%
Mora	13	6	4	-9	-69.2%	-2	-33.3%
Otero	52	54	60	8	15.4%	6	11.1%
Quay	35	39	41	6	17.1%	2	5.1%
Rio Arriba	103	140	142	39	37.9%	2	1.4%
Roosevelt	9	9	9	0	0.0%	0	0.0%
Sandoval	77	101	102	25	32.5%	1	1.0%
San Juan	67	63	66	-1	-1.5%	3	4.8%
San Miguel	102	100	103	1	1.0%	3	3.0%
Santa Fe	165	221	242	77	46.7%	21	9.5%
Sierra	20	36	37	17	85.0%	1	2.8%
Socorro	40	47	46	6	15.0%	-1	-2.1%
Taos	67	76	88	21	31.3%	12	15.8%
Torrance	33	32	31	-2	-6.1%	-1	-3.1%
Union	8	10	9	1	12.5%	-1	-10.0%
Valencia	101	142	140	39	38.6%	-2	-1.4%
TOTAL	2,850	3,000	3,088	238	8.4%	88	2.9%

General Assistance (GA) Cases by Administrative Office

Office #	Office	Apr-12	Mar-13	Apr-13	Apr 12 – Apr 13		Mar 13 – Apr 13	
					# change	% change	# change	% change
1	SE Bernalillo	193	159	152	-41	-21.2%	-7	-4.4%
3	Chaves	102	100	99	-3	-2.9%	-1	-1.0%
4	Colfax	26	25	29	3	11.5%	4	16.0%
3104	Union	8	10	9	1	12.5%	-1	-10.0%
5	Curry	71	70	69	-2	-2.8%	-1	-1.4%
7	West Dona Ana	119	132	138	19	16.0%	6	4.5%
8	Eddy	93	74	71	-22	-23.7%	-3	-4.1%
9	Grant	67	64	56	-11	-16.4%	-8	-12.5%
1209	Hidalgo	15	15	16	1	6.7%	1	6.7%
10	Guadalupe	17	20	20	3	17.6%	0	0.0%
13	Lea	45	41	38	-7	-15.6%	-3	-7.3%
14	Lincoln	33	26	28	-5	-15.2%	2	7.7%
16	Luna	41	43	43	2	4.9%	0	0.0%
17	McKinley	16	15	14	-2	-12.5%	-1	-6.7%
19	Otero	52	54	60	8	15.4%	6	11.1%
20	Quay	35	39	41	6	17.1%	2	5.1%
21	Rio Arriba	110	148	150	40	36.4%	2	1.4%
22	Roosevelt	9	9	9	0	0.0%	0	0.0%
23	Sandoval	77	101	102	25	32.5%	1	1.0%
24	San Juan	67	63	66	-1	-1.5%	3	4.8%
25	San Miguel	115	105	106	-9	-7.8%	1	1.0%
26	Santa Fe	163	222	243	80	49.1%	21	9.5%
27	Sierra	23	37	38	15	65.2%	1	2.7%
28	Socorro	45	49	48	3	6.7%	-1	-2.0%
29	Taos	67	76	88	21	31.3%	12	15.8%
30	Torrance	33	32	31	-2	-6.1%	-1	-3.1%
32	S Valencia	33	48	48	15	45.5%	0	0.0%
33	Cibola	64	76	75	11	17.2%	-1	-1.3%
34	Eddy/Artesia	30	35	32	2	6.7%	-3	-8.6%
35	NW Bernalillo	274	293	313	39	14.2%	20	6.8%
36	SW Bernalillo	201	207	207	6	3.0%	0	0.0%
37	East Dona Ana	71	80	84	13	18.3%	4	5.0%
38	S Dona Ana	31	47	51	20	64.5%	4	8.5%
39	NE Bernalillo	436	391	422	-14	-3.2%	31	7.9%
42	N Valencia	68	94	92	24	35.3%	-2	-2.1%
	TOTAL	2,850	3,000	3,088	238	8.4%	88	2.9%

General Assistance (GA) Cases by Region

	Apr-12	Mar-13	Apr-13	Apr 12 – Apr 13		Mar 13 – Apr 13	
				# change	% change	# change	% change
NW Region 1	325	397	397	72	22.2%	0	0.0%
NE Region 2	489	586	625	136	27.8%	39	6.7%
Central Region 3	1,137	1,082	1,125	-12	-1.1%	43	4.0%
SE Region 4	402	388	379	-23	-5.7%	-9	-2.3%
SW Region 5	497	547	562	65	13.1%	15	2.7%
TOTAL	2,850	3,000	3,088	238	8.4%	88	2.9%



GA Interim Assistance Reimbursements				
	SFY 12		SFY 13	
	Cases	Amount	Cases	Amount
<i>July</i>	77	\$224,022	105	\$254,087
August	100	\$256,766	88	\$248,471
<i>September</i>	68	\$159,712	101	\$233,341
October	60	\$158,539	101	\$293,784
<i>November</i>	60	\$158,596	72	\$193,152
December	74	\$183,600	84	\$236,221
<i>January</i>	91	\$341,348	79	\$209,922
February	113	\$307,090	77	\$178,441
<i>March</i>	77	\$186,834	85	\$229,599
April	102	\$357,392	92	\$240,540
<i>May</i>	90	\$230,243		
June	57	\$215,729		
SFY Total	969	\$2,779,871	884	\$2,317,558
Monthly Average	81	\$231,656	88	\$231,756

State Funded Legal Aliens				
	SFY 12		SFY 13	
	Participants	Payments	Participants	Payments
<i>July</i>	110	\$6,644	83	\$5,029
August	113	\$8,612	83	\$6,132
<i>September</i>	107	\$7,302	81	\$4,863
October	93	\$6,292	74	\$4,270
<i>November</i>	94	\$5,741	65	\$4,131
December	94	\$6,593	73	\$4,040
<i>January</i>	91	\$5,307	60	\$3,561
February	83	\$5,614	67	\$3,796
<i>March</i>	69	\$4,406	73	\$4,046
April	73	\$3,862	64	\$2,771
<i>May</i>	78	\$5,371		
June	80	\$4,689		
SFY Total	1,085	\$70,433	723	\$42,639
Monthly Average	90	\$5,869	72	\$4,264

IAR case figures reflect those with expected reimbursement amounts above \$0. Figures unreconciled and subject to change.

Refugee Cash Assistance				
	SFY 12		SFY 13	
	Cases	Payments	Cases	Payments
<i>July</i>	15	\$6,428	23	\$7,155
August	9	\$4,433	27	\$7,742
<i>September</i>	5	\$2,930	32	\$8,267
October	5	\$1,519	32	\$9,803
<i>November</i>	10	\$2,675	31	\$9,552
December	9	\$3,380	40	\$10,435
<i>January</i>	12	\$3,285	36	\$11,489
February	13	\$3,210	27	\$11,107
<i>March</i>	13	\$3,739	30	\$8,678
April	23	\$5,654	26	\$9,410
<i>May</i>	26	\$7,579		
June	22	\$7,496		
SFY Total	162	\$52,328	304	\$93,638
Monthly Average	14	\$4,361	30	\$9,364

State Supplement for Residential Care (SSRC)				
	SFY 12		SFY 13	
	Cases	Payments	Cases	Payments
<i>July</i>	51	\$5,300	45	\$4,600
August	53	\$5,500	44	\$4,600
<i>September</i>	52	\$5,300	46	\$4,800
October	53	\$5,400	47	\$4,700
<i>November</i>	53	\$5,300	46	\$4,900
December	52	\$5,400	47	\$5,200
<i>January</i>	45	\$5,600	50	\$5,100
February	44	\$4,700	47	\$4,900
<i>March</i>	42	\$4,400	45	\$4,800
April	44	\$4,400	46	\$4,700
<i>May</i>	46	\$4,800		
June	46	\$4,600		
SFY Total	581	\$60,700	463	\$48,300
Monthly Average	48	\$5,058	46	\$4,830

Low Income Home Energy Assistance Program (LIHEAP) Payments by Administrative Office

Cumulative, For Federal Fiscal Year 2013

Office #	Office	Payments	Number of Households Paid
1	SE Bernalillo	\$310,592	2,684
3	Chaves	\$303,248	2,465
4	Colfax	\$80,528	659
3104	Union	\$15,232	116
5	Curry	\$150,256	1,248
7	West Dona Ana	\$391,568	3,285
8	Eddy	\$97,104	801
9	Grant	\$144,544	1,173
1209	Hidalgo	\$23,904	197
10	Guadalupe	\$72,784	525
13	Lea	\$113,360	909
14	Lincoln	\$56,992	475
16	Luna	\$167,728	1,311
17	McKinley	\$83,312	706
19	Otero	\$69,424	634
20	Quay	\$65,392	529
21	Rio Arriba	\$385,312	3,158
22	Roosevelt	\$71,504	585

Office #	Office	Payments	Number of Households Paid
23	Sandoval	\$207,872	1,865
24	San Juan	\$265,856	2,197
25	San Miguel	\$350,224	2,606
26	Santa Fe	\$278,976	2,381
27	Sierra	\$126,240	970
28	Socorro	\$134,800	1,030
29	Taos	\$252,720	1,983
30	Torrance	\$129,456	1,026
32	S Valencia	\$161,808	1,307
33	Cibola	\$134,656	1,101
34	Eddy/Artesia	\$38,976	322
35	NW Bernalillo	\$353,552	3,136
36	SW Bernalillo	\$499,216	4,329
37	East Dona Ana	\$277,776	2,347
38	S Dona Ana	\$321,376	2,648
39	NE Bernalillo	\$557,168	4,922
42	N Valencia	\$276,960	2,282
	TOTAL	\$6,970,416	57,912

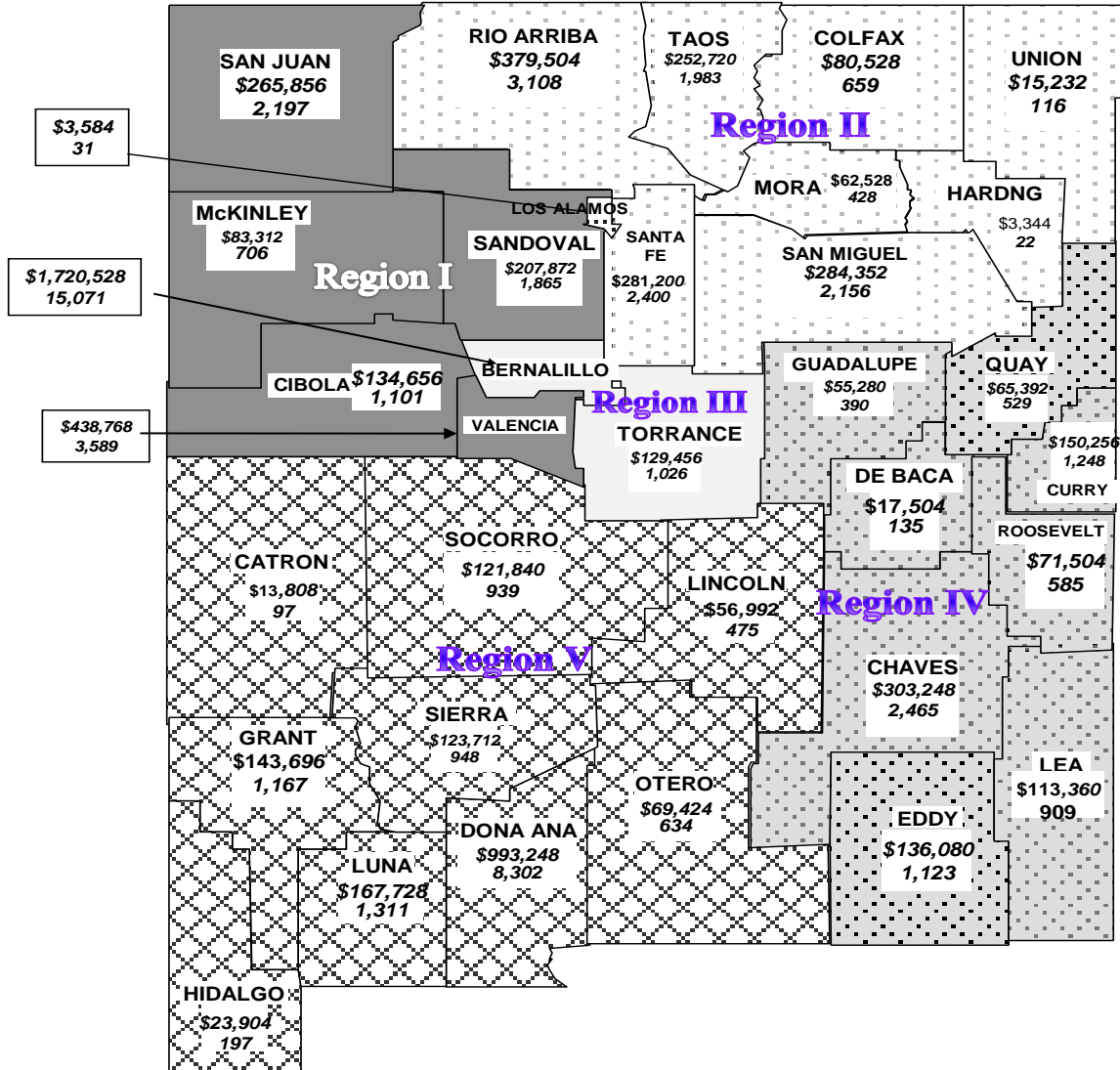
LIHEAP Payments by Region

Cumulative, For Federal Fiscal Year 2013

Region	Payments	Number of Households Paid
NW Region 1	\$1,130,464	9,458
NE Region 2	\$1,362,992	10,903
Central Region 3	\$1,849,984	16,097
SE Region 4	\$912,624	7,384
SW Region 5	\$1,714,352	14,070
TOTAL	\$6,970,416	57,912

Note: Five Sandoval Indian Pueblos, Inc., Jemez Pueblo, The Jicarilla Nation, Laguna Pueblo, Nambé Pueblo, The Navajo Nation, and Zuni Pueblo administer their own LIHEAP programs. LIHEAP does not process new applications received during the month of September until the following Federal fiscal year.

LIHEAP PAYMENTS BY COUNTY

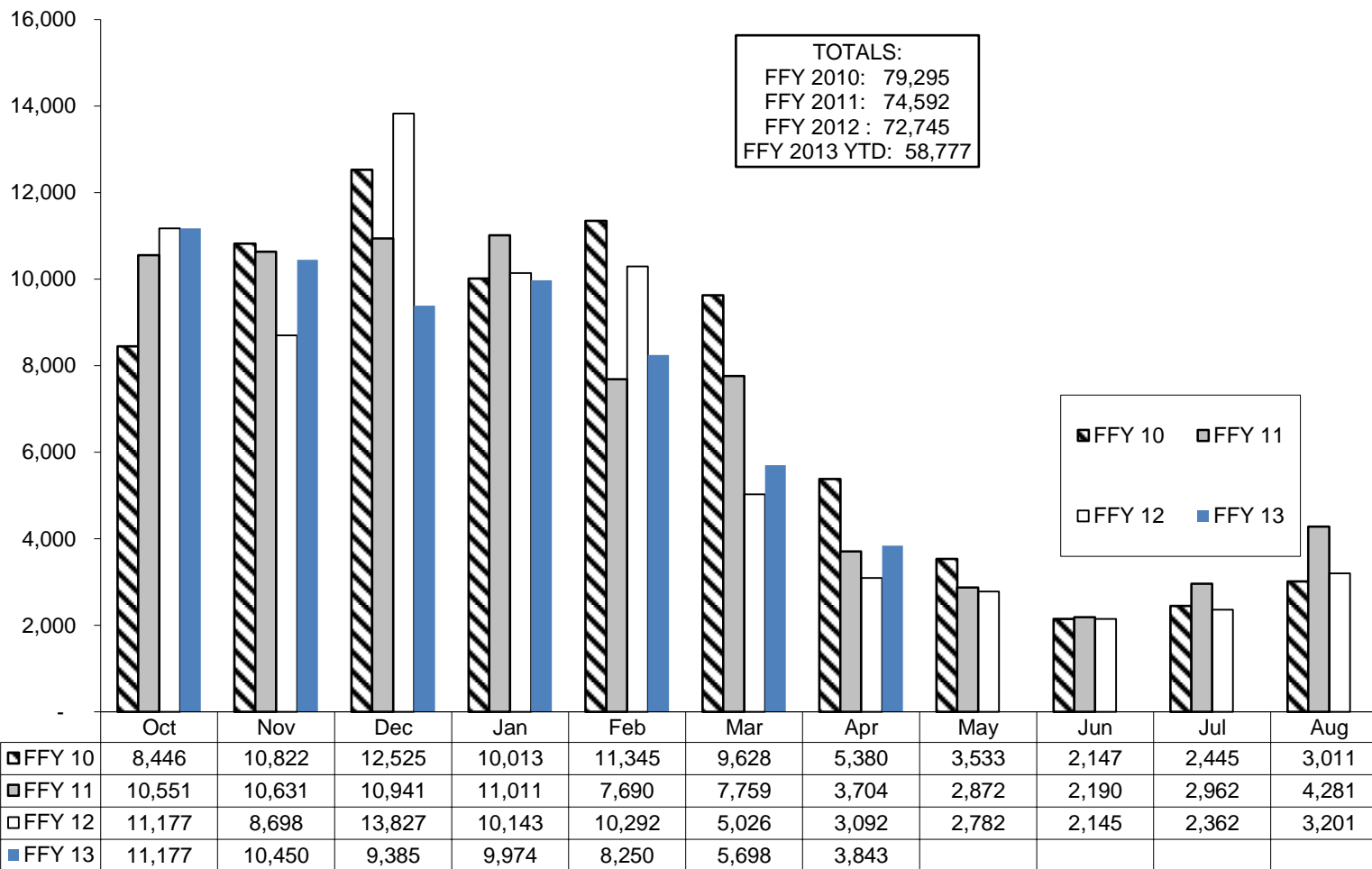


Region Totals		
Region	Payment	Households
Region I	\$1,130,464	9,458
Region II	\$1,362,991	10,903
Region III	\$1,849,984	16,097
Region IV	\$912,624	7,384
Region V	\$1,714,352	14,070
State total	\$6,970,416	57,912

Legend

1. \$ Payments
2. # of households paid

LIHEAP Application Approvals



Medicaid Eligibles by County

County	Jan-12	Dec-12	Jan -13	Jan 12 –Jan 13		Dec 12 – Jan 13	
				# change	% change	# change	% change
Bernalillo	144,044	147,154	147,743	3,699	2.6%	589	0.4%
Catron	506	496	507	1	0.2%	11	2.2%
Chaves	20,288	20,555	20,652	364	1.8%	97	0.5%
Cibola	8,531	8,797	8,866	335	3.9%	69	0.8%
Colfax	3,244	2,878	2,859	-385	-11.9%	-19	-0.7%
Curry	13,208	13,176	13,237	29	0.2%	61	0.5%
De Baca	470	457	455	-15	-3.2%	-2	-0.4%
Dona Ana	67,009	68,218	68,563	1,554	2.3%	345	0.5%
Eddy	13,551	13,591	13,645	94	0.7%	54	0.4%
Grant	7,147	6,930	6,953	-194	-2.7%	23	0.3%
Guadalupe	1,300	1,346	1,364	64	4.9%	18	1.3%
Harding	61	57	57	-4	-6.6%	0	0.0%
Hidalgo	1,236	1,205	1,218	-18	-1.5%	13	1.1%
Lea	16,176	16,586	16,688	512	3.2%	102	0.6%
Lincoln	4,285	4,540	4,608	323	7.5%	68	1.5%
Los Alamos	562	659	669	107	19.0%	10	1.5%
Luna	9,210	9,580	9,672	462	5.0%	92	1.0%
McKinley	29,633	30,218	30,152	519	1.8%	-66	-0.2%
Mora	1,174	1,106	1,087	-87	-7.4%	-19	-1.7%
Otero	11,639	11,687	11,701	62	0.5%	14	0.1%
Quay	2,613	2,681	2,722	109	4.2%	41	1.5%
Rio Arriba	14,100	14,687	14,724	624	4.4%	37	0.3%
Roosevelt	4,920	4,844	4,875	-45	-0.9%	31	0.6%
Sandoval	26,148	27,122	27,259	1,111	4.2%	137	0.5%
San Juan	35,458	36,740	36,938	1,480	4.2%	198	0.5%
San Miguel	9,098	9,398	9,394	296	3.3%	-4	0.0%
Santa Fe	23,563	24,676	24,827	1,264	5.4%	151	0.6%
Sierra	3,415	3,596	3,618	203	5.9%	22	0.6%
Socorro	5,132	5,381	5,423	291	5.7%	42	0.8%
Taos	8,057	8,280	8,351	294	3.6%	71	0.9%
Torrance	5,961	5,931	5,995	34	0.6%	64	1.1%
Union	1,087	820	810	-277	-25.5%	-10	-1.2%
Valencia	20,488	20,678	20,781	293	1.4%	103	0.5%
Unspecified	554	552	544	-10	-1.8%	-8	-1.4%
TOTAL	513,868	524,622	526,957	13,089	2.5%	2,335	0.4%

Note: All figures are updated historically to include retroactive eligibility, retroactive closures and other late reporting eligibility changes. Excludes clients in: SLIMB, QI1, SCI and Adult Expansion, PAK, PAM & SEIP. Source: <http://www.hsd.state.nm.us/mad/RMedicaidEligibility.html>

Medicaid Cases by County

County	Apr-12	Mar-13	Apr-13	Apr 12 – Apr 13		Mar 13 – Apr 13	
				# change	% change	# change	% change
Bernalillo	89,728	91,237	91,558	1,830	2.0%	321	0.4%
Catron	336	322	318	-18	-5.4%	-4	-1.2%
Chaves	11,939	12,070	12,097	158	1.3%	27	0.2%
Cibola	4,391	4,494	4,495	104	2.4%	1	0.0%
Colfax	1,833	1,668	1,671	-162	-8.8%	3	0.2%
Curry	7,019	7,077	7,067	48	0.7%	-10	-0.1%
De Baca	273	288	279	6	2.2%	-9	-3.1%
Dona Ana	38,855	39,847	39,937	1,082	2.8%	90	0.2%
Eddy	7,972	8,077	8,087	115	1.4%	10	0.1%
Grant	4,346	4,275	4,331	-15	-0.3%	56	1.3%
Guadalupe	789	771	781	-8	-1.0%	10	1.3%
Harding	46	36	36	-10	-21.7%	0	0.0%
Hidalgo	810	791	751	-59	-7.3%	-40	-5.1%
Lea	8,655	8,902	8,913	258	3.0%	11	0.1%
Lincoln	2,961	3,140	3,142	181	6.1%	2	0.1%
Los Alamos	337	426	422	85	25.2%	-4	-0.9%
Luna	5,453	5,484	5,520	67	1.2%	36	0.7%
McKinley	13,775	13,982	13,923	148	1.1%	-59	-0.4%
Mora	710	611	610	-100	-14.1%	-1	-0.2%
Otero	7,311	7,127	7,194	-117	-1.6%	67	0.9%
Quay	1,635	1,580	1,578	-57	-3.5%	-2	-0.1%
Rio Arriba	8,835	9,013	9,013	178	2.0%	0	0.0%
Roosevelt	2,720	2,684	2,667	-53	-1.9%	-17	-0.6%
Sandoval	15,021	16,088	16,143	1,122	7.5%	55	0.3%
San Juan	17,386	18,039	18,197	811	4.7%	158	0.9%
San Miguel	5,272	5,314	5,225	-47	-0.9%	-89	-1.7%
Santa Fe	14,625	15,678	15,700	1,075	7.4%	22	0.1%
Sierra	2,136	2,223	2,242	106	5.0%	19	0.9%
Socorro	2,507	2,593	2,575	68	2.7%	-18	-0.7%
Taos	5,428	5,558	5,560	132	2.4%	2	0.0%
Torrance	3,667	3,816	3,821	154	4.2%	5	0.1%
Union	573	412	418	-155	-27.1%	6	1.5%
Valencia	11,913	12,604	12,577	664	5.6%	-27	-0.2%
TOTAL	299,257	306,227	306,848	7,591	2.5%	621	0.2%

SCI cases are included in the client's county of residence.

Medicaid Cases by Administrative Office

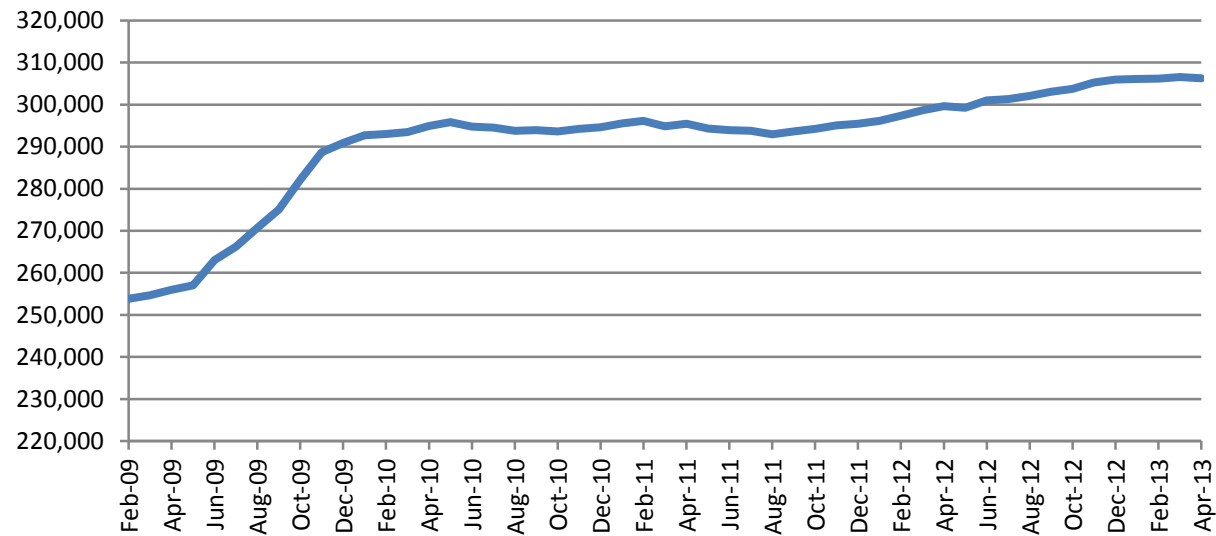
Office #	Office	Apr-12	Mar-13	Apr-13	Apr 12 – Apr 13		Mar 13 – Apr 13	
					# change	% change	# change	% change
1	SE Bernalillo	14,303	14,194	14,225	-78	-0.5%	31	0.2%
3	Chaves	10,160	10,453	10,495	335	3.3%	42	0.4%
4	Colfax	1,581	1,458	1,466	-115	-7.3%	8	0.5%
3104	Union	528	376	382	-146	-27.7%	6	1.6%
5	Curry	6,102	6,239	6,234	132	2.2%	-5	-0.1%
7	West Dona Ana	9,925	10,925	10,893	968	9.8%	-32	-0.3%
8	Eddy	4,454	4,551	4,602	148	3.3%	51	1.1%
9	Grant	3,681	3,572	3,614	-67	-1.8%	42	1.2%
1209	Hidalgo	629	606	592	-37	-5.9%	-14	-2.3%
10	Guadalupe	891	906	903	12	1.3%	-3	-0.3%
13	Lea	7,972	8,304	8,320	348	4.4%	16	0.2%
14	Lincoln	2,264	2,511	2,520	256	11.3%	9	0.4%
16	Luna	4,497	4,756	4,793	296	6.6%	37	0.8%
17	McKinley	13,221	13,462	13,411	190	1.4%	-51	-0.4%
19	Otero	5,970	5,897	5,973	3	0.1%	76	1.3%
20	Quay	1,354	1,318	1,319	-35	-2.6%	1	0.1%
21	Rio Arriba	8,008	8,384	8,388	380	4.7%	4	0.0%
22	Roosevelt	2,308	2,309	2,295	-13	-0.6%	-14	-0.6%
23	Sandoval	13,320	14,138	14,217	897	6.7%	79	0.6%
24	San Juan	16,862	17,572	17,732	870	5.2%	160	0.9%
25	San Miguel	5,049	5,074	5,004	-45	-0.9%	-70	-1.4%
26	Santa Fe	12,584	13,768	13,798	1,214	9.6%	30	0.2%
27	Sierra	2,840	2,937	2,943	103	3.6%	6	0.2%
28	Socorro	2,436	2,558	2,543	107	4.4%	-15	-0.6%
29	Taos	4,342	4,554	4,561	219	5.0%	7	0.2%
30	Torrance	2,928	3,047	3,060	132	4.5%	13	0.4%
32	S Valencia	3,205	3,361	3,320	115	3.6%	-41	-1.2%
33	Cibola	4,109	4,233	4,235	126	3.1%	2	0.0%
34	Eddy/Artesia	2,280	2,399	2,372	92	4.0%	-27	-1.1%
35	NW Bernalillo	20,331	21,144	21,296	965	4.7%	152	0.7%
36	SW Bernalillo	20,764	21,166	21,209	445	2.1%	43	0.2%
37	East Dona Ana	9,971	10,040	10,158	187	1.9%	118	1.2%
38	S Dona Ana	11,982	12,417	12,484	502	4.2%	67	0.5%
39	NE Bernalillo	21,262	21,891	22,067	805	3.8%	176	0.8%
42	N Valencia	7,154	7,328	7,366	212	3.0%	38	0.5%
	SCI	39,990	38,379	38,058	-1,932	-4.8%	-321	-0.8%
	TOTAL	299,257	306,227	306,848	7,591	2.5%	621	0.2%

Medicaid Cases by Region

	Apr-12	Mar-13	Apr-13	Apr 12 – Apr 13		Mar 13 – Apr 13	
				# change	% change	# change	% change
NW Region 1	57,871	60,094	60,281	2,410	4.2%	187	0.3%
NE Region 2	32,092	33,614	33,599	1,507	4.7%	-15	0.0%
Central Region 3	79,588	81,442	81,857	2,269	2.9%	415	0.5%
SE Region 4	35,521	36,479	36,540	1,019	2.9%	61	0.2%
SW Region 5	94,185	94,598	94,571	386	0.4%	-27	0.0%
TOTAL	299,257	306,227	306,848	7,591	2.5%	621	0.2%

SCI cases are included in Region 5.

Medicaid Cases



Medicaid Cases by Category

Cat #	Category Description	Cases
Medicaid Extension		
001	Medicaid Extension for Aged	33
003	Medicaid Extension for Blind	6
004	Medicaid Extension for Disabled	525
Medicaid Extension Total		564
<hr/>		
Medicaid for Women, Children, and Low Income Families		
072	JUL Medicaid with Cash Assistance	7,683
072	JUL Medicaid without Cash Assistance	30,584
030	Full Coverage Medicaid for Pregnant Women	367
031	Newborns	14,286
032	Children (Up to 185% Federal Poverty)	101,167
032c	Children - SCHIP (Up to 235% Federal Poverty)	4,677
035f	Family Planning (Up to 185% Federal Poverty)	47,261
035p	Pregnancy (Up to 185% Federal Poverty)	6,724
052	Breast Cancer and Cervical Cancer	389
Medicaid for Women, Children, and Low Income Families Total		213,138
<hr/>		
Post-JUL Medicaid		
027	4-Month Medicaid due to Increased Child Support	0
028	12-Month Medicaid due to Increased Earnings	8,430
Post-JUL Medicaid Total		8,430
<hr/>		
Special Medicaid Programs		
040	Medicaid for Qualified Medicare Beneficiaries	21,974
045	Medicaid for Special Low Income Medicare Beneficiaries	8,266
045	Medicaid for Qualifying Individuals 1	3,147
043	Working Disabled Individuals	1,816
049	Medical Assistance for Single Adult Refugees	99
Special Medicaid Programs Total		35,302

Cat #	Category Description	Cases
State Funded Special Medical Needs		
051	Medical Assistance for Aged and Seriously ill	0
053	Medical Assistance for Blind and Seriously ill	0
054	Medical Assistance for Disabled and Seriously ill	1
State Funded Special Medical Needs Total		1
<hr/>		
Institutional Care Medicaid		
081	Institutional Care Medicaid for Aged	3,124
083	Institutional Care Medicaid for Blind	0
084	Institutional Care Medicaid for Disabled	884
Institutional Care Medicaid Total		4,008
<hr/>		
Home and Community-Based Waivers Medicaid		
090	Medicaid Waiver for HIV/AIDS	21
091	Medicaid Waiver for Aged	1,464
092	Brain Injury	290
093	Medicaid Waiver for Blind	5
094	Medicaid Waiver for Disabled	1,354
095	Medicaid Waiver for Medically Fragile Children	213
096	Medicaid Waiver for Developmentally Disabled	4,000
097	Non-Medicaid Waiver for Aged	0
098	Non-Medicaid Waiver for Blind	0
099	Non-Medicaid Waiver for Disabled	0
Home and Community-Based Waivers Medicaid Total		7,347
<hr/>		
Health Insurance Flexibility & Accountability (HIFA) Waiver		
062	State Coverage Insurance *	
(HIFA) Waiver Total		38,058
		38,058

Total Medicaid Cases 306,848

* Category 062 (Insure New Mexico Program) reflects all registered cases determined eligible at the end of the benefit month. Of the cases determined eligible for this month 43,141 were enrolled in the program. This table includes preliminary data that is subject to change.

SNAP Timeliness Rates (Percent of Cases Processed Timely)

Admin By Region	SNAP	SNAP (Expedited)
NW Region (1)		
Cibola	99.6%	98.7%
<i>McKinley</i>	<i>99.7%</i>	<i>99.0%</i>
Sandoval	95.8%	97.8%
<i>San Juan</i>	<i>99.8%</i>	<i>99.6%</i>
Valencia South	100.0%	100.0%
<i>Valencia North</i>	<i>99.7%</i>	<i>100.0%</i>
NW Region Total	98.8%	99.0%
NE Region (2)		
<i>Colfax</i>	<i>99.0%</i>	<i>100.0%</i>
Rio Arriba	99.7%	100.0%
<i>San Miguel</i>	<i>99.6%</i>	<i>99.2%</i>
Santa Fe	96.6%	95.1%
<i>Taos</i>	<i>98.9%</i>	<i>100.0%</i>
NE Region Total	98.3%	97.9%
Central Region (3)		
NE Bernalillo	99.6%	99.7%
<i>NW Bernalillo</i>	<i>99.6%</i>	<i>99.1%</i>
SE Bernalillo	99.8%	100.0%
<i>SW Bernalillo</i>	<i>99.5%</i>	<i>99.2%</i>
Torrance	99.4%	98.5%
Central Region Total	99.6%	99.5%

Admin By Region	SNAP	SNAP (Expedited)
SE Region (4)		
Chaves	99.8%	99.4%
<i>Curry</i>	<i>98.6%</i>	<i>97.5%</i>
Guadalupe	100.0%	100.0%
<i>Eddy</i>	<i>98.9%</i>	<i>97.8%</i>
Eddy Artesia	98.2%	97.1%
<i>Lea</i>	<i>99.0%</i>	<i>98.7%</i>
Quay	100.0%	100.0%
<i>Roosevelt</i>	<i>100.0%</i>	<i>100.0%</i>
SE Region Total	99.2%	98.5%
SW Region (5)		
<i>West Doña Ana</i>	<i>99.9%</i>	<i>100.0%</i>
East Doña Ana	99.8%	100.0%
<i>Doña Ana (Southern)</i>	<i>99.8%</i>	<i>100.0%</i>
Grant	99.6%	99.0%
<i>Lincoln</i>	<i>100.0%</i>	<i>100.0%</i>
Luna	99.6%	100.0%
<i>Otero</i>	<i>100.0%</i>	<i>100.0%</i>
Sierra	100.0%	100.0%
<i>Socorro</i>	<i>98.7%</i>	<i>96.7%</i>
SW Region Total	99.8%	99.7%
State Total	99.3%	99.2%

Timeliness of CAP cases is reflected in the appropriate administrative office.

Income Support Division Caseloads by County and Region

County (Administrative office)	SNAP Cases	TANF Cases	Education Works Cases	General Assistance Cases	Medical Assistance Cases *	SSRC Cases	Refugee Assistance Cases	Total Cases	Authorized FAA Case Workers	Cases per Authorized FAA Case Worker	Actual FAA Case Workers	Cases per Actual Case Worker
Cibola	3,174	243	4	75	4,206	0	0	7,702	8	969	8	969
<i>Navajo (Cibola)</i>	<i>19</i>	<i>0</i>	<i>0</i>	<i>0</i>	<i>26</i>	<i>0</i>	<i>0</i>	<i>45</i>	<i>0</i>	<i>-</i>	<i>0</i>	<i>-</i>
Zuni (Cibola)	1	0	0	0	3	0	0	4	0	-	0	-
<i>McKinley</i>	<i>1,481</i>	<i>65</i>	<i>0</i>	<i>9</i>	<i>2,568</i>	<i>0</i>	<i>0</i>	<i>4,123</i>	<i>24</i>	<i>928</i>	<i>21</i>	<i>1,060</i>
Cibola (McKinley)	11	1	0	0	8	0	0	20	0	-	0	-
<i>Navajo (McKinley)</i>	<i>6,216</i>	<i>29</i>	<i>1</i>	<i>5</i>	<i>9,263</i>	<i>0</i>	<i>0</i>	<i>15,514</i>	<i>0</i>	<i>-</i>	<i>0</i>	<i>-</i>
Zuni (McKinley)	1,037	1	0	0	1,572	0	0	2,610	0	-	0	-
<i>San Juan</i>	<i>10,255</i>	<i>249</i>	<i>1</i>	<i>66</i>	<i>17,194</i>	<i>0</i>	<i>0</i>	<i>27,765</i>	<i>27</i>	<i>1,073</i>	<i>24</i>	<i>1,207</i>
Navajo (San Juan)	666	0	0	0	538	0	0	1,204	0	-	0	-
<i>Sandoval</i>	<i>9,173</i>	<i>548</i>	<i>28</i>	<i>102</i>	<i>14,161</i>	<i>0</i>	<i>0</i>	<i>24,012</i>	<i>24</i>	<i>1,006</i>	<i>20</i>	<i>1,207</i>
Navajo (Sandoval)	80	0	0	0	56	0	0	136	0	-	0	-
<i>Valencia North (Los Lunas)</i>	<i>5,537</i>	<i>447</i>	<i>5</i>	<i>92</i>	<i>7,366</i>	<i>5</i>	<i>0</i>	<i>13,452</i>	<i>15</i>	<i>897</i>	<i>14</i>	<i>961</i>
Torrance (Valencia)	0	0	0	0	0	0	0	0	0	-	0	-
<i>Valencia South (Belen)</i>	<i>3,106</i>	<i>235</i>	<i>6</i>	<i>48</i>	<i>3,320</i>	<i>0</i>	<i>0</i>	<i>6,715</i>	<i>4</i>	<i>1,679</i>	<i>4</i>	<i>1,679</i>
Socorro (Valencia)	1	0	0	0	0	0	0	1	0	-	0	-
<i>N/A Outreach</i>	<i>0</i>	<i>0</i>	<i>0</i>	<i>0</i>	<i>0</i>	<i>0</i>	<i>0</i>	<i>0</i>	<i>6</i>	<i>-</i>	<i>4</i>	<i>-</i>
NW Region (1) Total	40,757	1,818	45	397	60,281	5	0	103,303	102	1,013	91	1,135
Colfax	1,226	104	4	29	1,466	0	0	2,829	4	707	3	943
<i>Union (Colfax)</i>	<i>212</i>	<i>12</i>	<i>0</i>	<i>9</i>	<i>382</i>	<i>0</i>	<i>0</i>	<i>615</i>	<i>1</i>	<i>615</i>	<i>1</i>	<i>615</i>
Rio Arriba	6,597	464	4	142	7,897	0	0	15,104	17	940	14	1,141
<i>Los Alamos (Rio Arriba)</i>	<i>253</i>	<i>18</i>	<i>0</i>	<i>7</i>	<i>381</i>	<i>0</i>	<i>0</i>	<i>659</i>	<i>0</i>	<i>-</i>	<i>0</i>	<i>-</i>
Santa Fe (Rio Arriba)	100	6	0	1	110	0	0	217	0	-	0	-
<i>San Miguel</i>	<i>4,750</i>	<i>277</i>	<i>13</i>	<i>101</i>	<i>4,493</i>	<i>26</i>	<i>0</i>	<i>9,660</i>	<i>18</i>	<i>594</i>	<i>17</i>	<i>629</i>
Harding (San Miguel)	23	0	0	1	33	0	0	57	0	-	0	-
<i>Mora (San Miguel)</i>	<i>469</i>	<i>21</i>	<i>0</i>	<i>4</i>	<i>478</i>	<i>0</i>	<i>0</i>	<i>972</i>	<i>0</i>	<i>-</i>	<i>0</i>	<i>-</i>
Santa Fe	9,789	579	12	241	13,782	5	0	24,408	23	1,019	21	1,164
<i>San Miguel (Santa Fe)</i>	<i>28</i>	<i>0</i>	<i>0</i>	<i>2</i>	<i>16</i>	<i>0</i>	<i>0</i>	<i>46</i>	<i>0</i>	<i>-</i>	<i>0</i>	<i>-</i>
Taos	3,887	130	11	88	4,561	0	0	8,677	9	964	9	964
<i>N/A Outreach</i>	<i>0</i>	<i>0</i>	<i>0</i>	<i>0</i>	<i>0</i>	<i>0</i>	<i>0</i>	<i>0</i>	<i>1</i>	<i>-</i>	<i>0</i>	<i>-</i>
NE Region (2) Total	27,334	1,611	44	625	33,599	31	0	63,244	73	866	65	973
NE Bernalillo	19,739	1,235	54	422	22,067	0	12	43,529	43	1,012	39	1,116
<i>Navajo (NE Bernalillo)</i>	<i>0</i>	<i>0</i>	<i>0</i>	<i>0</i>	<i>0</i>	<i>0</i>	<i>0</i>	<i>0</i>	<i>0</i>	<i>-</i>	<i>0</i>	<i>-</i>
NW Bernalillo	14,941	1,113	26	313	21,296	1	0	37,690	42	877	40	942
<i>Navajo (NW Bernalillo)</i>	<i>0</i>	<i>0</i>	<i>0</i>	<i>0</i>	<i>0</i>	<i>0</i>	<i>0</i>	<i>0</i>	<i>0</i>	<i>-</i>	<i>0</i>	<i>-</i>
SE Bernalillo	11,021	981	31	152	14,224	0	14	26,423	31	852	29	911
<i>Torrance (SE Bernalillo)</i>	<i>2</i>	<i>0</i>	<i>0</i>	<i>0</i>	<i>1</i>	<i>0</i>	<i>0</i>	<i>3</i>	<i>0</i>	<i>-</i>	<i>0</i>	<i>-</i>
SW Bernalillo	17,037	1,485	18	207	21,208	3	0	39,958	42	951	38	1,052
<i>Navajo (SW Bernalillo)</i>	<i>1</i>	<i>0</i>	<i>0</i>	<i>0</i>	<i>1</i>	<i>0</i>	<i>0</i>	<i>2</i>	<i>0</i>	<i>-</i>	<i>0</i>	<i>-</i>
N/A Outreach	0	0	0	0	0	0	0	0	1	-	0	-
<i>Torrance</i>	<i>2,623</i>	<i>253</i>	<i>8</i>	<i>31</i>	<i>3,060</i>	<i>0</i>	<i>0</i>	<i>5,975</i>	<i>11</i>	<i>543</i>	<i>10</i>	<i>598</i>
Central Region (3) Total	65,364	5,067	137	1,125	81,857	4	26	153,580	170	903	156	984

Income Support Division Caseloads by County and Region (Continued)

County (Administrative office)	SNAP Cases	TANF Cases	Education Works Cases	General Assistance Cases	Medical Assistance Cases *	SSRC Cases	Refugee Assistance Cases	Total Cases	Authorized FAA Case Workers	Cases per Authorized FAA Case Worker	Actual FAA Case Workers	Cases per Actual Case Worker
Chaves	6,569	512	5	99	10,495	0	0	17,680	22	804	18	982
<i>Curry</i>	<i>3,984</i>	<i>474</i>	<i>6</i>	<i>69</i>	<i>6,231</i>	<i>0</i>	<i>0</i>	<i>10,764</i>	<i>12</i>	<i>897</i>	<i>11</i>	<i>979</i>
De Baca (Curry)	0	0	0	0	0	0	0	0	0	-	0	-
<i>Quay (Curry)</i>	<i>0</i>	<i>0</i>	<i>0</i>	<i>0</i>	<i>0</i>	<i>0</i>	<i>0</i>	<i>0</i>	<i>0</i>	<i>-</i>	<i>0</i>	<i>-</i>
Roosevelt (Curry)	2	0	0	0	3	0	0	5	0	-	0	-
<i>Guadalupe</i>	<i>572</i>	<i>37</i>	<i>0</i>	<i>15</i>	<i>665</i>	<i>6</i>	<i>0</i>	<i>1,295</i>	<i>2</i>	<i>856</i>	<i>2</i>	<i>856</i>
De Baca (Guadalupe)	162	12	0	5	238	0	0	417	0	-	0	-
<i>Quay</i>	<i>1,248</i>	<i>87</i>	<i>5</i>	<i>41</i>	<i>1,319</i>	<i>0</i>	<i>0</i>	<i>2,700</i>	<i>4</i>	<i>675</i>	<i>4</i>	<i>675</i>
Eddy	2,884	266	5	71	4,602	0	0	7,828	9	870	7	1,118
<i>Eddy (Artesia)</i>	<i>1,292</i>	<i>119</i>	<i>3</i>	<i>32</i>	<i>2,372</i>	<i>0</i>	<i>0</i>	<i>3,818</i>	<i>5</i>	<i>764</i>	<i>5</i>	<i>764</i>
Lea	3,951	401	5	38	8,320	0	0	12,715	14	908	13	978
<i>Roosevelt</i>	<i>1,415</i>	<i>114</i>	<i>3</i>	<i>9</i>	<i>2,295</i>	<i>0</i>	<i>0</i>	<i>3,836</i>	<i>5</i>	<i>767</i>	<i>5</i>	<i>767</i>
SE Region (4) Total	22,079	2,022	32	379	36,540	6	0	61,058	73	836	65	939
West Doña Ana	9,754	994	25	138	10,893	0	0	21,804	22	991	22	991
<i>East Doña Ana</i>	<i>6,889</i>	<i>650</i>	<i>23</i>	<i>84</i>	<i>10,158</i>	<i>0</i>	<i>0</i>	<i>17,804</i>	<i>20</i>	<i>890</i>	<i>20</i>	<i>890</i>
Doña Ana (Southern)	7,629	1,084	17	51	12,484	0	0	21,265	21	1,013	21	1,013
Grant	3,025	167	13	56	3,580	0	0	6,841	8	862	8	862
<i>Catron (Grant)</i>	<i>18</i>	<i>0</i>	<i>0</i>	<i>0</i>	<i>20</i>	<i>0</i>	<i>0</i>	<i>38</i>	<i>0</i>	<i>-</i>	<i>0</i>	<i>-</i>
Hidalgo (Grant)	488	40	0	16	592	0	0	1,136	2	568	2	568
<i>Luna (Grant)</i>	<i>3</i>	<i>0</i>	<i>0</i>	<i>0</i>	<i>14</i>	<i>0</i>	<i>0</i>	<i>17</i>	<i>0</i>	<i>-</i>	<i>0</i>	<i>-</i>
Lincoln	1,706	169	0	28	2,520	0	0	4,423	11	402	10	442
<i>Luna</i>	<i>3,754</i>	<i>320</i>	<i>5</i>	<i>43</i>	<i>4,793</i>	<i>0</i>	<i>0</i>	<i>8,915</i>	<i>9</i>	<i>991</i>	<i>5</i>	<i>1,783</i>
Otero	4,333	326	2	60	5,972	0	0	10,693	11	891	11	891
<i>Lincoln (Otero)</i>	<i>2</i>	<i>0</i>	<i>0</i>	<i>0</i>	<i>1</i>	<i>0</i>	<i>0</i>	<i>3</i>	<i>0</i>	<i>-</i>	<i>0</i>	<i>-</i>
Sierra	1,821	93	1	37	1,991	0	0	3,943	7	806	7	806
<i>Doña Ana (Sierra)</i>	<i>702</i>	<i>45</i>	<i>0</i>	<i>1</i>	<i>952</i>	<i>0</i>	<i>0</i>	<i>1,700</i>	<i>0</i>	<i>-</i>	<i>0</i>	<i>-</i>
Socorro	1,956	127	2	41	1,865	0	0	3,991	7	766	7	766
<i>Catron (Socorro)</i>	<i>186</i>	<i>13</i>	<i>0</i>	<i>2</i>	<i>243</i>	<i>0</i>	<i>0</i>	<i>444</i>	<i>0</i>	<i>-</i>	<i>0</i>	<i>-</i>
Navajo (Socorro)	483	3	0	5	435	0	0	926	0	-	0	-
<i>N/A Outreach</i>	<i>0</i>	<i>0</i>	<i>0</i>	<i>0</i>	<i>0</i>	<i>0</i>	<i>0</i>	<i>0</i>	<i>1</i>	<i>-</i>	<i>1</i>	<i>-</i>
SW Region (5) Total	42,749	4,031	88	562	56,513	0	0	103,943	119	873	114	912
<i>Central Processing Units Total</i>	<i>0</i>	<i>0</i>	<i>0</i>	<i>0</i>	<i>38,058</i>	<i>0</i>	<i>0</i>	<i>38,058</i>	<i>30</i>	<i>1,269</i>	<i>29</i>	<i>1,312</i>
State Total	198,283	14,549	346	3,088	306,848	46	26	523,186	567	923	520	1,006

NOTE: The Central Processing Units (North and South) include workers from CAP, QMB/SLMB Recert Unit, SCI Bernalillo and SCI Dona Ana. CAP cases are reflected in the appropriate administrative office. A dash (-) indicates the caseload is included in the cases per authorized worker and cases per actual worker for its associated administrative office. This table excludes the number of FAA workers in the following areas: Medicaid Renewal Project; Change Processing Unit; Citizenship Verification Unit.

SNAP Applications Processed by Administrative Office

Office #	Office	Approved	Denied	With-drawn	Total	Office #	Office	Approved	Denied	With-drawn	Total
1	SE Bernalillo	780	124	8	912	23	Sandoval	624	153	6	783
3	Chaves	384	67	8	459	24	San Juan	857	218	7	1,082
4	Colfax	77	10	4	91	25	San Miguel	255	31	1	287
3104	Union	4	2	0	6	26	Santa Fe	549	115	3	667
5	Curry	250	48	4	302	27	Sierra	122	8	0	130
7	West Dona Ana	637	121	12	770	28	Socorro	138	17	1	156
8	Eddy	237	40	1	278	29	Taos	236	32	5	273
9	Grant	190	32	3	225	30	Torrance	141	23	1	165
1209	Hidalgo	19	5	0	24	32	S Valencia	152	28	3	183
10	Guadalupe	25	4	0	29	33	Cibola	192	34	2	228
13	Lea	336	66	6	408	34	Eddy/Artesia	88	23	1	112
14	Lincoln	125	18	0	143	35	NW Bernalillo	1,003	178	20	1,201
16	Luna	200	39	4	243	36	SW Bernalillo	1,145	190	12	1,347
17	McKinley	472	129	5	606	37	East Dona Ana	420	92	5	517
19	Otero	345	57	0	402	38	S Dona Ana	375	62	15	452
20	Quay	55	5	1	61	39	NE Bernalillo	1,539	386	15	1,940
21	Rio Arriba	337	57	3	397	42	N Valencia	309	50	3	362
22	Roosevelt	71	6	4	81		TOTAL	12,689	2,470	163	15,322

SNAP Applications Processed by Region

Region	Approved	Denied	Withdrawn	Total
NW Region 1	2,606	612	26	3,244
NE Region 2	1,458	247	16	1,721
Central Region 3	4,608	901	56	5,565
SE Region 4	1,446	259	25	1,730
SW Region 5	2,571	451	40	3,062
TOTAL	12,689	2,470	163	15,322

CAP cases are reflected in the appropriate administrative office.

TANF Applications Processed by Office

Office #	Office	Approved	Denied	With-drawn	Total	Office #	Office	Approved	Denied	With-drawn	Total
1	SE Bernalillo	110	99	33	242	23	Sandoval	71	81	24	176
3	Chaves	68	65	29	162	24	San Juan	28	46	19	93
4	Colfax	12	13	7	32	25	San Miguel	35	4	1	40
3104	Union	3	0	0	3	26	Santa Fe	71	63	32	166
5	Curry	51	40	9	100	27	Sierra	22	6	1	29
7	West Dona Ana	101	42	34	177	28	Socorro	22	12	0	34
8	Eddy	39	41	7	87	29	Taos	27	10	11	48
9	Grant	35	12	9	56	30	Torrance	33	21	1	55
1209	Hidalgo	4	0	0	4	32	S Valencia	26	25	3	54
10	Guadalupe	5	3	1	9	33	Cibola	27	13	14	54
13	Lea	67	50	17	134	34	Eddy/Artesia	17	8	3	28
14	Lincoln	25	11	13	49	35	NW Bernalillo	145	93	71	309
16	Luna	36	31	12	79	36	SW Bernalillo	158	159	30	347
17	McKinley	6	29	8	43	37	East Dona Ana	76	78	18	172
19	Otero	64	35	11	110	38	S Dona Ana	99	27	33	159
20	Quay	16	7	3	26	39	NE Bernalillo	146	289	46	481
21	Rio Arriba	51	45	10	106	42	N Valencia	60	51	12	123
22	Roosevelt	10	5	7	22		TOTAL	1,766	1,514	529	3,809

TANF Applications Processed by Region

Region	Approved	Denied	Withdrawn	Total
NW Region 1	218	245	80	543
NE Region 2	199	135	61	395
Central Region 3	592	661	181	1,434
SE Region 4	273	219	76	568
SW Region 5	484	254	131	869
TOTAL	1,766	1,514	529	3,809

General Assistance Applications Processed by office

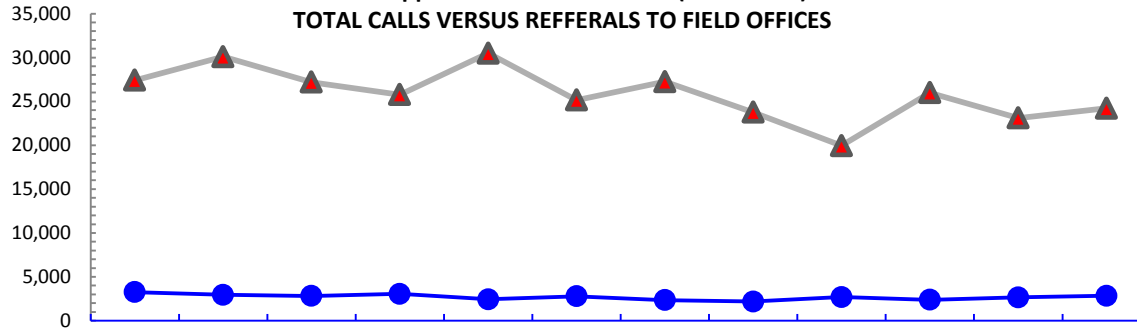
Office #	Office	Approved	Denied	With-drawn	Total
1	SE Bernalillo	22	64	11	97
3	Chaves	12	13	2	27
4	Colfax	4	3	1	8
3104	Union	0	1	0	1
5	Curry	3	21	8	32
7	West Dona Ana	19	44	30	93
8	Eddy	7	14	2	23
9	Grant	3	17	8	28
1209	Hidalgo	3	4	0	7
10	Guadalupe	2	5	0	7
13	Lea	4	3	1	8
14	Lincoln	3	12	0	15
16	Luna	5	11	4	20
17	McKinley	2	8	12	22
19	Otero	13	45	7	65
20	Quay	4	8	2	14
21	Rio Arriba	15	20	0	35
22	Roosevelt	0	1	0	1

Office #	Office	Approved	Denied	With-drawn	Total
23	Sandoval	19	58	18	95
24	San Juan	11	37	8	56
25	San Miguel	16	17	1	34
26	Santa Fe	34	83	14	131
27	Sierra	5	5	0	10
28	Socorro	4	11	0	15
29	Taos	15	31	3	49
30	Torrance	3	7	0	10
32	S Valencia	5	14	1	20
33	Cibola	4	16	0	20
34	Eddy/Artesia	1	3	0	4
35	NW Bernalillo	44	69	43	156
36	SW Bernalillo	30	73	21	124
37	East Dona Ana	11	11	1	23
38	S Dona Ana	7	7	17	31
39	NE Bernalillo	67	108	20	195
42	N Valencia	12	24	2	38
	TOTAL	409	868	237	1,514

General Assistance Applications Processed by Region

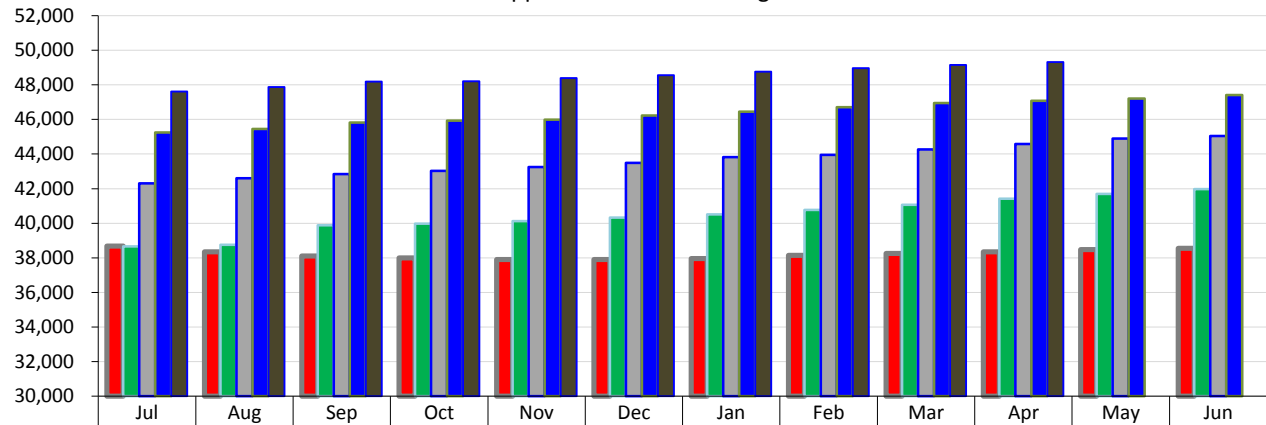
Region	Approved	Denied	Withdrawn	Total
NW Region 1	53	157	41	251
NE Region 2	84	155	19	258
Central Region 3	166	321	95	582
SE Region 4	33	68	15	116
SW Region 5	73	167	67	307
TOTAL	409	868	237	1,514

**Child Support Information Center (Call Center)
TOTAL CALLS VERSUS REFFERALS TO FIELD OFFICES**



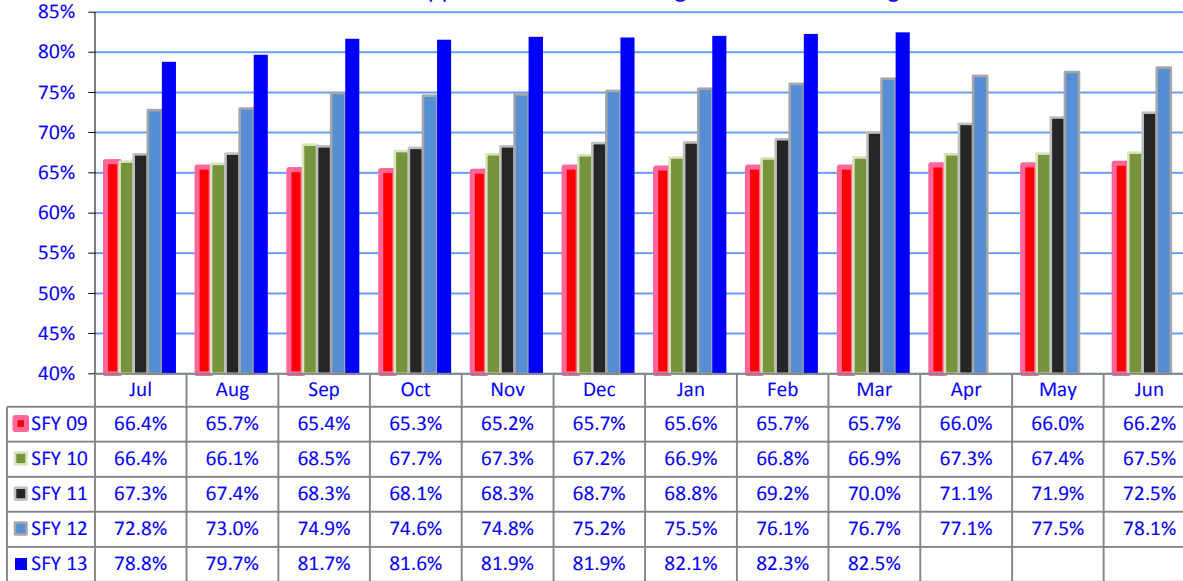
	May-12	Jun-12	Jul-12	Aug-12	Sep-12	Oct-12	Nov-12	Dec-12	Jan-13	Feb-13	Mar-13	Apr-13
▲ Calls	27,413	30,083	27,188	25,774	30,492	25,151	27,246	23,759	19,953	25,978	23,098	24,221
● Referrals	3,260	2,944	2,828	3,051	2,432	2,785	2,355	2,179	2,693	2,382	2,660	2,846
Percent	11.0%	10.8%	10.8%	11.0%	10.0%	9.7%	10.2%	9.9%	10.9%	10.4%	10.3%	11.0%

Child Support Enforcement Obligated Cases

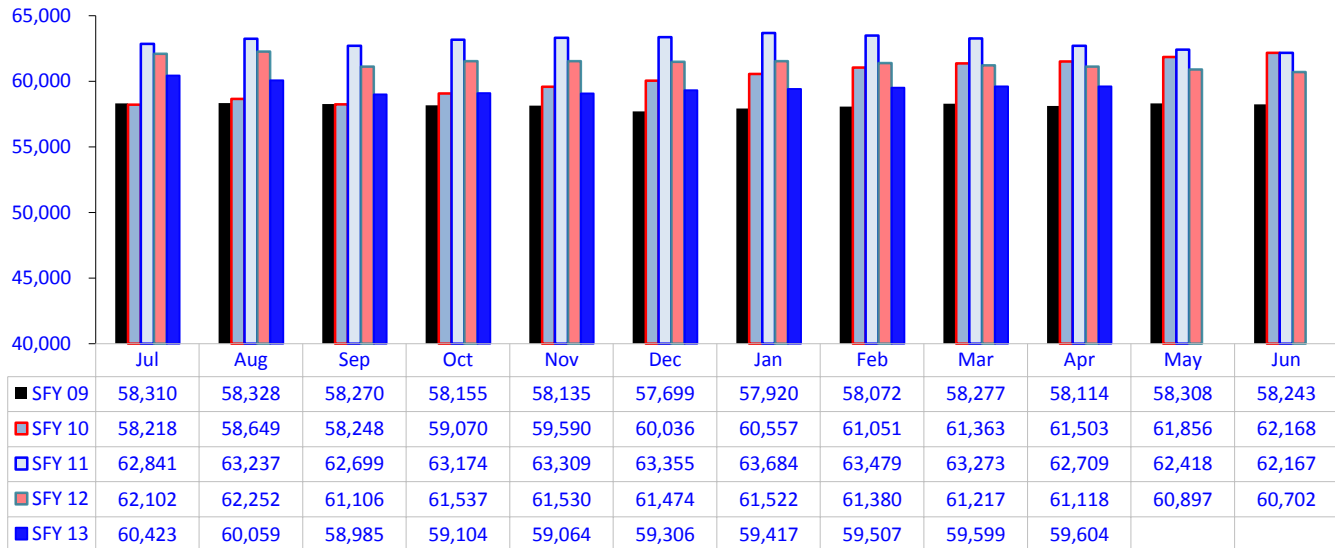


	Jul	Aug	Sep	Oct	Nov	Dec	Jan	Feb	Mar	Apr	May	Jun
SFY 09	38,689	38,347	38,106	37,999	37,895	37,906	37,967	38,143	38,260	38,343	38,475	38,558
SFY 10	38,655	38,763	39,891	39,976	40,116	40,326	40,507	40,770	41,069	41,410	41,698	41,974
SFY 11	42,310	42,601	42,850	43,035	43,250	43,498	43,818	43,946	44,270	44,588	44,899	45,043
SFY 12	45,238	45,457	45,817	45,922	45,993	46,231	46,439	46,703	46,952	47,075	47,215	47,412
SFY 13	47,616	47,875	48,190	48,205	48,398	48,550	48,758	48,955	49,153	49,318		

Child Support Enforcement Obligated Case Percentages



Child Support Enforcement Open Cases



Children Receiving Child Care Assistance Subsidies By County

County	Apr	May	Jun	Jul	Aug	Sep	Oct	Nov	Dec	Jan	Feb	Mar	Apr	Year over year change	
	2012	2012	2012	2012	2012	2012	2012	2012	2012	2013	2013	2013	2013	Cases	Percent
Bernalillo	7,796	7,744	7,852	7,490	7,272	7,755	7,423	7,454	7,382	7,266	7,217	7,229	7,264	-532	-6.8%
Catron	2	2	2	2	2	2	0	0	0	0	0	0	0	-2	-100.0%
Chaves	701	723	751	707	715	737	714	736	718	721	694	695	681	-20	-2.9%
Cibola	277	273	272	241	225	287	283	299	281	262	251	260	248	-29	-10.5%
Colfax	61	63	61	58	60	65	54	53	57	58	53	51	52	-9	-14.8%
Curry	559	569	573	510	521	564	539	550	541	516	490	496	510	-49	-8.8%
De Baca	10	12	14	11	9	18	17	13	12	9	7	10	14	4	40.0%
Dona Ana	5,062	5,167	5,339	4,793	4,677	5,064	5,011	4,999	4,964	4,894	4,787	4,782	4,804	-258	-5.1%
Eddy	301	332	346	339	327	344	350	334	321	294	289	276	263	-38	-12.6%
Grant	389	393	396	282	289	334	342	361	362	358	315	323	323	-66	-17.0%
Guadalupe	26	27	29	21	20	18	23	22	20	20	17	19	20	-6	-23.1%
Harding	0	0	0	0	0	0	0	0	0	0	0	0	0	0	NA
Hidalgo	23	23	24	25	28	34	27	24	31	32	31	33	34	11	47.8%
Lea	581	601	626	569	543	639	609	655	642	628	598	578	562	-19	-3.3%
Lincoln	219	213	220	198	193	203	190	191	178	190	167	185	175	-44	-20.1%
Los	11	11	12	11	10	8	8	8	8	8	8	10	12	1	9.1%
Luna	260	245	257	222	222	248	218	224	225	210	205	214	217	-43	-16.5%
McKinley	329	331	327	257	231	294	273	283	287	269	250	264	263	-66	-20.1%
Mora	15	14	16	14	14	12	10	14	17	14	13	10	10	-5	-33.3%
Otero	558	564	585	535	540	578	580	562	538	536	492	503	493	-65	-11.6%
Out of State	8	6	7	8	8	9	8	6	7	5	5	6	5	-3	-37.5%
Quay	32	32	28	29	27	24	24	25	25	23	22	24	26	-6	-18.8%
Rio Arriba	102	115	122	96	93	105	96	99	104	101	100	104	99	-3	-2.9%
Roosevelt	186	192	192	151	149	189	195	197	191	189	179	179	185	-1	-0.5%
San Juan	684	686	710	630	609	746	718	720	715	692	694	702	717	33	4.8%
San Miguel	403	422	433	341	335	366	388	393	376	364	314	351	358	-45	-11.2%
Sandoval	809	818	866	814	786	827	795	785	768	759	706	717	722	-87	-10.8%
Santa Fe	502	515	523	507	485	522	452	463	452	435	439	440	433	-69	-13.7%
Sierra	84	85	99	88	87	85	73	83	83	89	90	89	81	-3	-3.6%
Socorro	58	62	61	52	46	55	61	63	66	62	52	53	53	-5	-8.6%
Taos	144	142	151	97	102	110	121	124	123	116	105	105	114	-30	-20.8%
Torrance	84	82	88	75	81	74	66	67	64	69	81	76	73	-11	-13.1%
Union	8	7	8	7	7	12	9	8	9	9	9	9	9	1	12.5%
Valencia	746	755	766	682	704	722	717	719	721	695	668	694	710	-36	-4.8%
Totals	21,030	21,226	21,756	19,862	19,417	21,050	20,394	20,534	20,288	19,893	19,348	19,487	19,530	-1,500	-7.1%

Source: Children, Youth and Families Department.

Child Care Assistance Eligibility Programs

MONTH	APR'12	MAY'12	JUN'12	JUL'12	AUG'12	SEP'12	OCT'12	NOV'12	DEC'12	JAN'13	FEB'13	MAR'13	APR'13
TANF (Child Care Priority 1 Clients)													
CLIENTS	3,535	3,443	3,551	3,220	3,103	3,340	3,182	3,131	2,999	2,859	2,714	2,732	2,729
COST	\$1,218,303	\$1,181,592	\$1,063,904	\$1,017,372	\$1,128,732	\$1,041,813	\$1,125,046	\$1,134,547	\$1,080,411	\$906,557	\$871,356	\$927,613	\$941,904
TANF AVERAGE COST	\$345	\$343	\$300	\$316	\$364	\$312	\$354	\$362	\$360	\$317	\$321	\$340	\$345
TRANSITION OFF TANF (Child Care Priority 2 Clients)													
CLIENTS	410	419	417	381	374	381	368	379	373	365	341	319	347
COST	\$139,080	\$135,169	\$134,108	\$125,253	\$129,561	\$129,933	\$132,174	\$135,318	\$130,153	\$118,069	\$113,013	\$105,768	\$117,349
TRAN OFF TANF AVG COST	\$339	\$323	\$322	\$329	\$346	\$341	\$359	\$357	\$349	\$323	\$331	\$332	\$338
TANF ELIGIBLE (Child Care Priority 1B Clients at or below 100% of the Federal Poverty Level)													
CLIENTS	11,017	11,152	11,469	10,258	10,120	11,259	11,080	11,250	11,179	10,910	10,502	10,624	10,603
COST	\$3,839,297	\$3,881,358	\$3,636,254	\$3,618,933	\$3,721,237	\$3,625,943	\$4,118,093	\$4,141,082	\$4,108,993	\$3,609,624	\$3,604,677	\$3,676,351	\$3,684,738
TANF ELIGIBLE AVG COST	\$348	\$348	\$317	\$353	\$368	\$322	\$372	\$368	\$368	\$331	\$343	\$346	\$348
INCOME ELIGIBLE (Child Care Priority 3, and Priority 4 Clients)													
CLIENTS	4,952	5,173	5,290	5,060	4,920	5,089	4,846	4,810	4,817	4,861	4,944	4,950	5,014
COST	\$1,485,614	\$1,533,393	\$1,570,429	\$1,813,867	\$1,606,535	\$1,591,509	\$1,585,741	\$1,572,320	\$1,558,272	\$1,529,136	\$1,543,444	\$1,507,551	\$1,505,608
INCOME ELIG AVG COST	\$300	\$296	\$297	\$358	\$327	\$313	\$327	\$327	\$323	\$315	\$312	\$305	\$300
EMPLOYMENT & TRAINING (Child Care Priority 1A Clients)													
CLIENTS	470	403	352	262	221	239	245	260	257	259	213	199	157
COST	\$160,692	\$160,692	\$96,255	\$82,770	\$70,593	\$63,934	\$89,494	\$94,363	\$93,751	\$72,052	\$70,881	\$66,891	\$52,114
E & T AVG COST	\$342	\$399	\$273	\$316	\$319	\$268	\$365	\$363	\$365	\$278	\$333	\$336	\$332
CHILD PROTECTIVE SERVICES (Child Care CPS Clients)													
CLIENTS	646	636	677	681	679	742	673	704	663	639	634	663	680
COST	\$261,639	\$256,004	\$273,771	\$272,616	\$276,210	\$295,847	\$280,001	\$286,909	\$269,654	\$258,888	\$276,254	\$263,618	\$285,288
E & T AVG COST	\$405	\$403	\$404	\$400	\$407	\$399	\$416	\$408	\$407	\$405	\$436	\$398	\$420
GRAND TOTAL - ALL CHILD CARE PROGRAMS													
CLIENTS	21,030	21,226	21,756	19,862	19,417	21,050	20,394	20,534	20,288	19,893	19,348	19,487	19,530
COST	\$7,104,625	\$7,148,208	\$6,774,719	\$6,930,812	\$6,932,868	\$6,748,978	\$7,330,549	\$7,364,538	\$7,241,234	\$6,494,326	\$6,479,624	\$6,547,793	\$6,587,001
ALL PROGRAMS AVG COST	\$338	\$337	\$311	\$349	\$357	\$321	\$359	\$359	\$357	\$326	\$335	\$336	\$337

Notes: 1. This table is provided by the Children, Youth and Families Department. 2. All costs in the table are average costs
3. Clients served and cost reflects total CYFD program funds and are not limited to funding provided by the Human Services Department.

2012 Monthly Federal Poverty & Income Eligibility Guidelines for SNAP, Cash Assistance & LIHEAP

2012 Federal Poverty Guidelines (FPG) (100%) Effective Oct 1, 2012 – Sept 30, 2013					
Family Size	Monthly Amounts	Family Size	Monthly Amounts	Family Size	Monthly Amounts
1	\$931	4	\$1,921	7	\$2,911
2	\$1,261	5	\$2,251	8	\$3,241
3	\$1,591	6	\$2,581	+ 1	+ \$330

Family Size	85% FPG TANF Poverty Gross Limit for Cash	100% FPG TANF & SNAP Net Income Eligibility Standard	130% FPG SNAP Gross Income Eligibility Standards	150% FPG LIHEAP	165% FPG SNAP Gross Income Categorically Eligibility; Elderly/Disabled Separate Status	General Assistance Max Standard of Need	NM Works Max Standard of Need	NM Works 15% Budgetary Adjustment*	NM Works Max Standard of Need with Budgetary Adjustment*	Maximum SNAP Monthly Allotments
1	\$791	\$931	\$1,211	\$1,397	\$1,536	\$245	\$266	-\$ 39	\$227	\$200
2	\$1,072	\$1,261	\$1,640	\$1,892	\$2,081	\$329	\$357	-\$ 53	\$304	\$367
3	\$1,352	\$1,591	\$2,069	\$2,387	\$2,625	\$412	\$447	-\$ 67	\$380	\$526
4	\$1,633	\$1,921	\$2,498	\$2,882	\$3,170	\$496	\$539	-\$ 80	\$459	\$668
5	\$1,913	\$2,251	\$2,927	\$3,377	\$3,714	\$580	\$630	-\$ 94	\$536	\$793
6	\$2,194	\$2,581	\$3,356	\$3,872	\$4,259	\$664	\$721	-\$108	\$613	\$952
7	\$2,474	\$2,911	\$3,785	\$4,367	\$4,803	\$748	\$812	-\$121	\$691	\$1,052
8	\$2,755	\$3,241	\$4,214	\$4,862	\$5,348	\$849	\$922	-\$138	\$784	\$1,202
+1	+ \$281	+ \$330	+ \$429	+ \$495	+ \$545	+ \$84	+ \$91	- \$ 14	+ \$77	+ \$150

The 2012 Federal Poverty Guidelines are used for the determination of LIHEAP, SNAP and TANF eligibility from October 1, 2012 through September 30, 2013. The Maximum SNAP allotment does not take deductions into account. All figures monthly amounts.

* 15% Budgetary Adjustment is subtracted from eligible NMW benefit amount to determine monthly payment starting January 1, 2011

2013 Monthly Federal Poverty & Income Eligibility Guidelines for Medicaid,
Effective April 1, 2013 - March 31, 2014

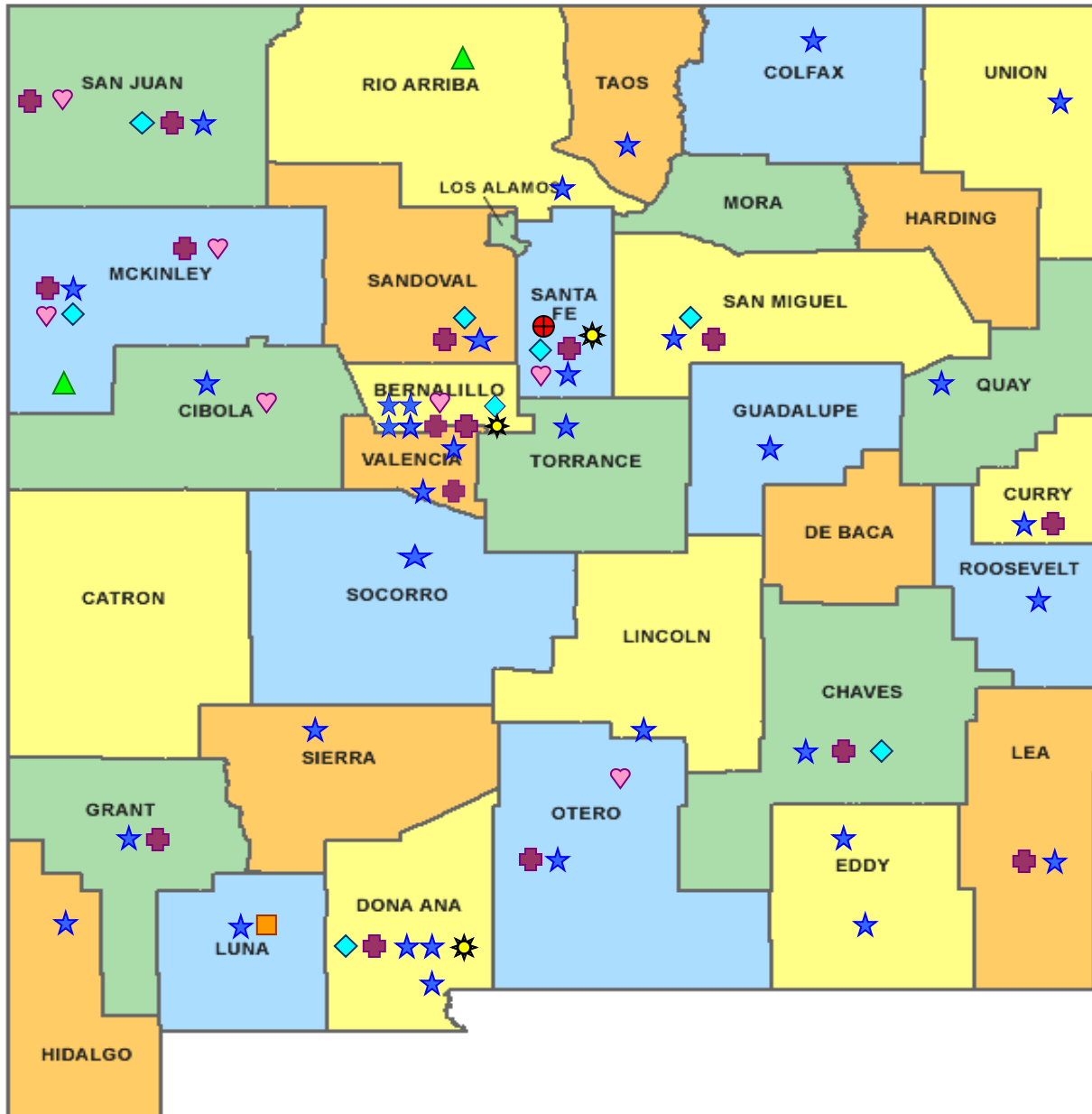
Family Size	2013 Federal Poverty Guidelines (FPG) (100%) Monthly Amounts	185% FPG Medicaid for Children (Cat 032) Medicaid for Pregnant Women-Pregnancy-Related Services Only or Family Planning Services (Cat 035) and Presumptive Eligibility for Pregnant Women	200% FPG State Coverage Insurance (SCI) (Cat 062) & Qualified Disabled Working Individuals (Cat 042) for family size 1 & 2	235% FPG SCHIP (State Children's Health Insurance Program) (Cat 071)
1	\$958	\$1,772	\$1,915	\$2,251
2	\$1,293	\$2,392	\$2,585	\$3,038
3	\$1,628	\$3,011	\$3,255	\$3,825
4	\$1,963	\$3,631	\$3,925	\$4,612
5	\$2,298	\$4,251	\$4,595	\$5,400
6	\$2,633	\$4,871	\$5,265	\$6,187
7	\$2,968	\$5,490	\$5,935	\$6,974
8	\$3,303	\$6,110	\$6,605	\$7,761
+1	+\$335	+620	+\$670	+\$788

Social Security Related	
Family Size	Program and Range ¹
Qualified Medicare Beneficiaries (Cat 040)	
1	\$0 – \$958
2	\$0 – \$1,293
Specified Low Income Medicare Beneficiaries (Cat 045)	
1	\$958 – \$1,149
2	\$1,293 – \$1,551
Qualified Individuals	
1	\$1,149 – \$1,293
2	\$1,551 – \$1,745









All figures monthly amounts. Source: <http://www.hsd.state.nm.us/mad/CEligibility.html>

The 2013 Federal Poverty Guidelines are used for the determination of Medicaid eligibility from April 1, 2013 – March 31, 2014

¹ Cost of living adjustments made to SSI and Social Security income at the beginning of the calendar year are not used to determine eligibility of QMB, QI or SLIMB until the following April of that same year.



New Mexico Human Services Department
Field Offices

-  Central Office (1)
-  Income Support Division County Office (35)
-  Income Support Division Satellite Office (2)
-  Child Support Enforcement Regional Office (16)
-  Child Support Enforcement Satellite Office (1)
-  Quality Control Office (8)
-  Indian Health Services (7)
-  Hospital Site (3)

For a complete listing of field offices and other government and community resources:
<http://www.hsd.state.nm.us/isd/fieldoffices.html>