



HUMAN SERVICES
DEPARTMENT

Monthly Statistical Report March 2013

Highlights

- The SNAP caseload was 198,533 in March 2013, a 2.5% increase from March 2012. Caseload increased by 1,210, a 0.6% increase from February 2013. HSD processed 14,576 SNAP applications this month, approving 11,938.
- The TANF caseload was 14,737 in March 2013, a 17.5% decrease from March 2012. The TANF caseload had 522 fewer cases than February 2013, a decrease of 3.4%. HSD processed 3,371 TANF applications, approving 1,551.
- The caseload for General Assistance was 3,000 in March 2013, an increase of 1.6% from March 2012. There were 29 more cases than February 2013, a 1.0% increase. HSD processed 1,255 applications for GA, approving 314.

Susana Martinez, Governor
Sidonie Squier, Cabinet Secretary

| CONTENTS | PAGE |
|--|-------------|
| Summary | 3-4 |
| SNAP | 5-10 |
| State SNAP Benefits Supplement | 11 |
| TANF | 12-24 |
| Education Works | 25-26 |
| General Assistance | 27-29 |
| GA Interim Assistance Reimbursements | 30 |
| State Funded Legal Aliens | 30 |
| Refugee Assistance | 31 |
| State Supplement for Residential Care (SSRC) | 31 |
| LIHEAP | 32-34 |
| Medicaid | 35-39 |
| Timeliness | 40 |
| Workload | 41-42 |
| Applications | 43-45 |
| Child Support Enforcement | 46-47 |
| Child Care Assistance | 48-49 |

***The Mission of the Human Services
Department***

*To reduce the impact of poverty on
people living in New Mexico by
providing support services that help
families break the cycle of
dependency on public assistance*

**Charissa Saavedra, Deputy Secretary
Brent Earnest, Deputy Secretary**

**Prepared by Income Support Division
PO Box 2348
Santa Fe, NM 87504-2348
505-827-7250**

**Ted Roth, Division Director
Penny Jimerson, Deputy Director
Marilyn Martinez, Deputy Director**

**We're on the web!
www.hsd.state.nm.us/isd/reports.html**

Program Summary

| | Mar-12 | Feb-13 | Mar-13 | Percent Change | | | Mar-12 | Feb-13 | Mar-13 | Percent Change | |
|---|--------------|--------------|--------------|-----------------|-----------------|---|---------------|---------------|---------------|------------------------|------------------------|
| | | | | Mar 12 – Mar 13 | Feb 13 – Mar 13 | | | | | Mar 12 – Mar 13 | Feb 13 – Mar 13 |
| Supplemental Nutrition Assistance Program (SNAP) | | | | | | State SNAP Benefits Supplement | | | | | |
| Expenditures | \$56,310,281 | \$56,372,327 | \$56,775,944 | 0.8% | 0.7% | Expenditures | \$41,960 | \$46,700 | \$47,117 | 12.3% | 0.9% |
| Cases | 193,647 | 197,323 | 198,533 | 2.5% | 0.6% | Cases | 5,119 | 5,645 | 5,677 | 10.9% | 0.6% |
| Individuals | 438,145 | 440,872 | 442,302 | 0.9% | 0.3% | | | | | | |
| Adults | 240,239 | 244,395 | 245,362 | 2.1% | 0.4% | Education Works | | | | | |
| Children | 197,906 | 196,477 | 196,940 | -0.5% | 0.2% | Expenditures | \$103,887 | \$106,762 | \$114,764 | 10.5% | 7.5% |
| Apps processed | 13,797 | 14,214 | 14,576 | 5.6% | 2.5% | Cases | 311 | 354 | 354 | 13.8% | 0.0% |
| Approvals | 11,348 | 11,270 | 11,938 | 5.2% | 5.9% | Individuals | 963 | 1,003 | 1,004 | 4.3% | 0.1% |
| Closures | 10,442 | 12,261 | 10,728 | 2.7% | -12.5% | Adults | 358 | 395 | 388 | 8.4% | -1.8% |
| | | | | | | Children | 605 | 608 | 616 | 1.8% | 1.3% |
| Temporary Assistance to Needy Families (TANF) | | | | | | State Supplement for Residential Care (SSRC) | | | | | |
| Expenditures | \$5,257,158 | \$4,475,767 | \$4,319,575 | -17.8% | -3.5% | Expenditures | \$4,400 | \$4,900 | \$4,800 | 9.1% | -2.0% |
| Cases | 17,871 | 15,259 | 14,737 | -17.5% | -3.4% | Cases | 42 | 47 | 45 | 7.1% | -4.3% |
| Individuals | 43,863 | 36,848 | 35,418 | -19.3% | -3.9% | Individuals | 42 | 47 | 45 | 7.1% | -4.3% |
| Adults | 16,262 | 13,673 | 13,116 | -19.3% | -4.1% | Adults | 42 | 47 | 45 | 7.1% | -4.3% |
| Children | 27,601 | 23,175 | 22,302 | -19.2% | -3.8% | | | | | | |
| Apps Processed | 3,696 | 3,465 | 3,371 | -8.8% | -2.7% | Refugee Assistance | | | | | |
| Approvals | 1,781 | 1,496 | 1,551 | -12.9% | 3.7% | Expenditures | \$3,739 | \$11,107 | \$8,678 | 132.1% | -21.9% |
| Closures | 2,493 | 2,147 | 2,073 | -16.8% | -3.4% | Cases | 13 | 27 | 30 | 130.8% | 11.1% |
| | | | | | | Individuals | 14 | 29 | 33 | 135.7% | 13.8% |
| General Assistance | | | | | | Adults | 14 | 29 | 33 | 135.7% | 13.8% |
| Expenditures | \$836,777 | \$859,796 | \$835,238 | -0.2% | -2.9% | | | | | | |
| Cases | 2,954 | 2,971 | 3,000 | 1.6% | 1.0% | | | | | | |
| Individuals | 3,176 | 3,211 | 3,243 | 2.1% | 1.0% | | | | | | |
| Adults | 2,973 | 2,989 | 3,017 | 1.5% | 0.9% | Medicaid | | | | | |
| Children | 203 | 222 | 226 | 11.3% | 1.8% | | | | | Percent Change | |
| Apps Processed | 1,341 | 1,259 | 1,255 | -6.4% | -0.3% | | Dec-11 | Nov-12 | Dec-12 | Dec 11 – Dec 12 | Nov 12 – Dec 12 |
| Approvals | 275 | 283 | 314 | 14.2% | 11.0% | Expenditures* | \$307,179,628 | \$290,306,651 | \$267,798,109 | -12.8% | -7.8% |
| Closures | 225 | 301 | 285 | 26.7% | -5.3% | Eligibles | 511,086 | 525,102 | 524,085 | 2.5% | -0.2% |
| | | | | | | Adults | 175,460 | 186,355 | 186,553 | 6.3% | 0.1% |
| | | | | | | Children | 335,626 | 338,747 | 337,532 | 0.6% | -0.4% |

All expenditures are unreconciled and subject to change.

*Medicaid expenditures as of date of payment.

| Expenditures Year to Date | | | |
|--|-----------------|-----------------|----------------|
| | SFY 2013 | FFY 2013 | CY 2013 |
| Supplemental Nutrition Assistance Program (SNAP) | \$509,021,851 | \$339,787,379 | \$169,604,812 |
| Temporary Assistance for Needy Families (TANF) | \$43,268,377 | \$27,721,777 | \$13,409,443 |
| General Assistance | \$7,446,020 | \$5,046,956 | \$2,547,890 |
| Education Works | \$956,923 | \$670,695 | \$324,023 |
| State SNAP | \$394,613 | \$266,241 | \$139,586 |

| DEMOGRAPHIC PROFILE | | | | | |
|--|-------------|-------------|---------------------------|-------------|---------------------------|
| | SNAP | TANF | General Assistance | SSRC | Refugee Assistance |
| Average # persons per case: | 2.23 | 2.40 | 1.08 | 1.00 | 1.10 |
| Age & Gender of Recipients: | | | | | |
| Adults (18 and Over) | 55.5% | 37.0% | 93.0% | 100.0% | 100.0% |
| Children (Under 18) | 44.5% | 63.0% | 7.0% | 0.0% | 0.0% |
| Male | 44.4% | 36.6% | 56.0% | 62.2% | 57.6% |
| Female | 55.6% | 63.4% | 44.0% | 37.8% | 42.4% |
| Ethnicity of Head of Household: | | | | | |
| Hispanic | 59.1% | 71.2% | 56.2% | 60.0% | 53.3% |
| Not Hispanic | 40.9% | 28.8% | 43.8% | 40.0% | 46.7% |
| Race of Head of Household: | | | | | |
| African American | 2.5% | 3.0% | 3.7% | 2.2% | 3.3% |
| Asian/Pacific Islander | 1.4% | 1.3% | 1.3% | 0.0% | 20.0% |
| Native American | 13.0% | 6.2% | 5.9% | 4.4% | 0.0% |
| White | 82.5% | 89.0% | 88.1% | 93.4% | 73.4% |
| More than one race or no race declared | 0.6% | 0.5% | 1.0% | 0.0% | 3.3% |

Supplemental Nutrition Assistance Program (SNAP) Cases by County

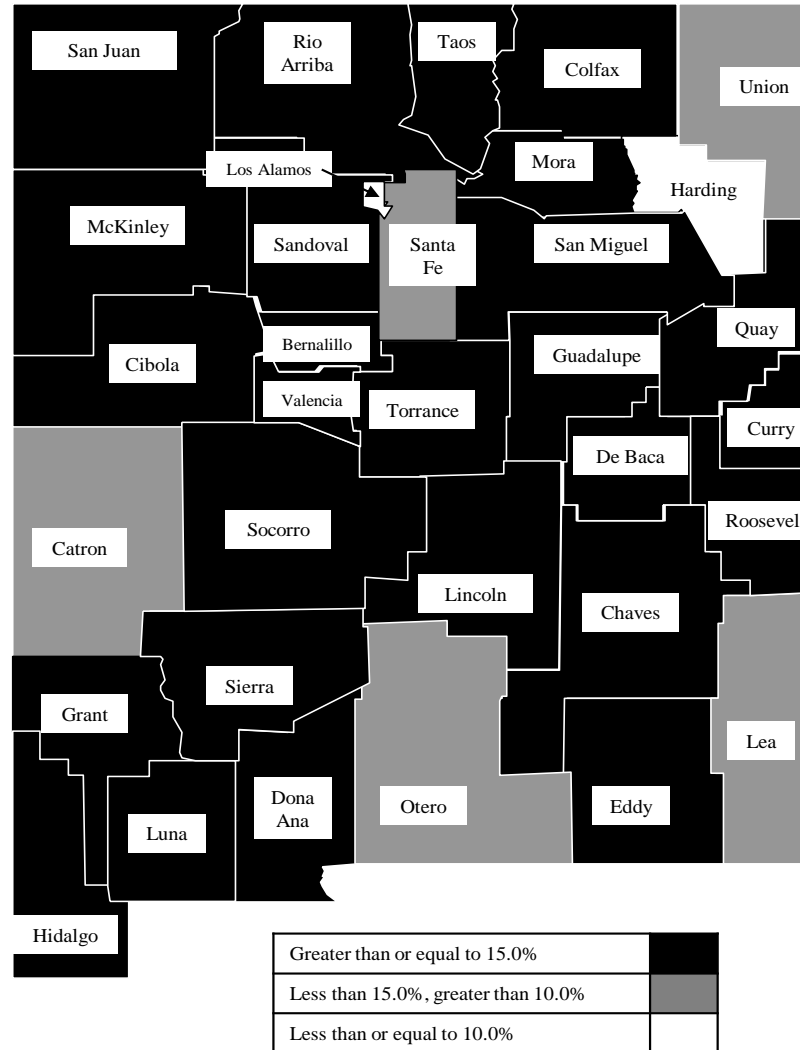
| County | Mar-12 | Feb-13 | Mar-13 | Mar 12 – Mar 13 | | Feb 13 – Mar 13 | |
|--------------|----------------|----------------|----------------|-----------------|-------------|-----------------|-------------|
| | | | | # change | % change | # change | % change |
| Bernalillo | 63,075 | 62,228 | 62,991 | -84 | -0.1% | 763 | 1.2% |
| Catron | 211 | 195 | 199 | -12 | -5.7% | 4 | 2.1% |
| Chaves | 6,307 | 6,561 | 6,539 | 232 | 3.7% | -22 | -0.3% |
| Cibola | 3,141 | 3,248 | 3,229 | 88 | 2.8% | -19 | -0.6% |
| Colfax | 1,219 | 1,207 | 1,211 | -8 | -0.7% | 4 | 0.3% |
| Curry | 4,035 | 3,977 | 4,021 | -14 | -0.3% | 44 | 1.1% |
| De Baca | 159 | 159 | 157 | -2 | -1.3% | -2 | -1.3% |
| Dona Ana | 24,068 | 24,624 | 24,941 | 873 | 3.6% | 317 | 1.3% |
| Eddy | 4,220 | 4,168 | 4,262 | 42 | 1.0% | 94 | 2.3% |
| Grant | 3,030 | 3,181 | 3,045 | 15 | 0.5% | -136 | -4.3% |
| Guadalupe | 568 | 562 | 567 | -1 | -0.2% | 5 | 0.9% |
| Harding | 30 | 24 | 23 | -7 | -23.3% | -1 | -4.2% |
| Hidalgo | 491 | 489 | 485 | -6 | -1.2% | -4 | -0.8% |
| Lea | 3,907 | 3,935 | 3,921 | 14 | 0.4% | -14 | -0.4% |
| Lincoln | 1,687 | 1,676 | 1,704 | 17 | 1.0% | 28 | 1.7% |
| Los Alamos | 215 | 231 | 248 | 33 | 15.3% | 17 | 7.4% |
| Luna | 3,765 | 3,734 | 3,764 | -1 | 0.0% | 30 | 0.8% |
| McKinley | 8,606 | 8,755 | 8,767 | 161 | 1.9% | 12 | 0.1% |
| Mora | 568 | 483 | 478 | -90 | -15.8% | -5 | -1.0% |
| Otero | 4,239 | 4,283 | 4,295 | 56 | 1.3% | 12 | 0.3% |
| Quay | 1,205 | 1,258 | 1,258 | 53 | 4.4% | 0 | 0.0% |
| Rio Arriba | 6,173 | 6,541 | 6,605 | 432 | 7.0% | 64 | 1.0% |
| Roosevelt | 1,325 | 1,404 | 1,418 | 93 | 7.0% | 14 | 1.0% |
| Sandoval | 8,806 | 9,092 | 9,221 | 415 | 4.7% | 129 | 1.4% |
| San Juan | 10,215 | 10,740 | 10,880 | 665 | 6.5% | 140 | 1.3% |
| San Miguel | 4,617 | 4,854 | 4,825 | 208 | 4.5% | -29 | -0.6% |
| Santa Fe | 9,104 | 9,765 | 9,861 | 757 | 8.3% | 96 | 1.0% |
| Sierra | 1,721 | 1,965 | 1,819 | 98 | 5.7% | -146 | -7.4% |
| Socorro | 2,245 | 2,524 | 2,421 | 176 | 7.8% | -103 | -4.1% |
| Taos | 3,519 | 3,825 | 3,838 | 319 | 9.1% | 13 | 0.3% |
| Torrance | 2,487 | 2,606 | 2,657 | 170 | 6.8% | 51 | 2.0% |
| Union | 373 | 490 | 218 | -155 | -41.6% | -272 | -55.5% |
| Valencia | 8,316 | 8,539 | 8,665 | 349 | 4.2% | 126 | 1.5% |
| TOTAL | 193,647 | 197,323 | 198,533 | 4,886 | 2.5% | 1,210 | 0.6% |

Supplemental Nutrition Assistance Program (SNAP) Recipients by County

| County | Mar-12 | Feb-13 | Mar-13 | Mar 12 – Mar 13 | | Feb 13 – Mar 13 | |
|------------|---------|---------|---------|-----------------|----------|-----------------|----------|
| | | | | # change | % change | # change | % change |
| Bernalillo | 130,251 | 127,438 | 128,555 | -1,696 | -1.3% | 1,117 | 0.9% |
| Catron | 443 | 417 | 423 | -20 | -4.5% | 6 | 1.4% |
| Chaves | 14,986 | 15,497 | 15,353 | 367 | 2.4% | -144 | -0.9% |
| Cibola | 8,227 | 8,404 | 8,352 | 125 | 1.5% | -52 | -0.6% |
| Colfax | 2,752 | 2,608 | 2,609 | -143 | -5.2% | 1 | 0.0% |
| Curry | 9,729 | 9,661 | 9,740 | 11 | 0.1% | 79 | 0.8% |
| De Baca | 336 | 331 | 330 | -6 | -1.8% | -1 | -0.3% |
| Dona Ana | 57,895 | 58,441 | 59,275 | 1,380 | 2.4% | 834 | 1.4% |
| Eddy | 9,715 | 9,489 | 9,635 | -80 | -0.8% | 146 | 1.5% |
| Grant | 6,576 | 6,730 | 6,367 | -209 | -3.2% | -363 | -5.4% |
| Guadalupe | 1,152 | 1,107 | 1,110 | -42 | -3.6% | 3 | 0.3% |
| Harding | 48 | 40 | 39 | -9 | -18.8% | -1 | -2.5% |
| Hidalgo | 1,075 | 1,020 | 994 | -81 | -7.5% | -26 | -2.5% |
| Lea | 9,710 | 9,798 | 9,724 | 14 | 0.1% | -74 | -0.8% |
| Lincoln | 3,756 | 3,756 | 3,799 | 43 | 1.1% | 43 | 1.1% |
| Los Alamos | 407 | 460 | 491 | 84 | 20.6% | 31 | 6.7% |
| Luna | 8,983 | 8,680 | 8,762 | -221 | -2.5% | 82 | 0.9% |
| McKinley | 25,981 | 25,718 | 25,740 | -241 | -0.9% | 22 | 0.1% |
| Mora | 1,071 | 884 | 878 | -193 | -18.0% | -6 | -0.7% |
| Otero | 9,641 | 9,477 | 9,514 | -127 | -1.3% | 37 | 0.4% |
| Quay | 2,450 | 2,589 | 2,556 | 106 | 4.3% | -33 | -1.3% |
| Rio Arriba | 12,549 | 13,186 | 13,274 | 725 | 5.8% | 88 | 0.7% |
| Roosevelt | 3,455 | 3,518 | 3,527 | 72 | 2.1% | 9 | 0.3% |
| Sandoval | 21,999 | 22,460 | 22,631 | 632 | 2.9% | 171 | 0.8% |
| San Juan | 27,516 | 27,965 | 28,335 | 819 | 3.0% | 370 | 1.3% |
| San Miguel | 8,947 | 9,230 | 9,084 | 137 | 1.5% | -146 | -1.6% |
| Santa Fe | 18,143 | 19,448 | 19,566 | 1,423 | 7.8% | 118 | 0.6% |
| Sierra | 3,204 | 3,846 | 3,412 | 208 | 6.5% | -434 | -11.3% |
| Socorro | 4,966 | 5,456 | 5,252 | 286 | 5.8% | -204 | -3.7% |
| Taos | 6,888 | 7,396 | 7,409 | 521 | 7.6% | 13 | 0.2% |
| Torrance | 5,570 | 5,723 | 5,810 | 240 | 4.3% | 87 | 1.5% |
| Union | 803 | 1,070 | 507 | -296 | -36.9% | -563 | -52.6% |
| Valencia | 18,921 | 19,029 | 19,249 | 328 | 1.7% | 220 | 1.2% |
| TOTAL | 438,145 | 440,872 | 442,302 | 4,157 | 0.9% | 1,430 | 0.3% |

| Rank | County | Estimated Population | SNAP Recipients | Rate |
|--------------------|-------------------|----------------------|-----------------|--------------|
| 1 | Torrance | 16,021 | 5,810 | 36.3% |
| 2 | McKinley | 73,016 | 25,740 | 35.3% |
| 3 | Luna | 25,041 | 8,762 | 35.0% |
| 4 | Rio Arriba | 40,318 | 13,274 | 32.9% |
| 5 | San Miguel | 28,891 | 9,084 | 31.4% |
| 6 | Cibola | 27,334 | 8,352 | 30.6% |
| 7 | Socorro | 17,603 | 5,252 | 29.8% |
| 8 | Quay | 8,769 | 2,556 | 29.1% |
| 9 | Sierra | 11,895 | 3,412 | 28.7% |
| 10 | Dona Ana | 214,445 | 59,275 | 27.6% |
| 11 | Valencia | 76,631 | 19,249 | 25.1% |
| 12 | Guadalupe | 4,603 | 1,110 | 24.1% |
| 13 | Chaves | 65,784 | 15,353 | 23.3% |
| 14 | Taos | 32,779 | 7,409 | 22.6% |
| 15 | San Juan | 128,529 | 28,335 | 22.0% |
| 16 | Grant | 29,388 | 6,367 | 21.7% |
| 17 | Hidalgo | 4,794 | 994 | 20.7% |
| 18 | Colfax | 13,223 | 2,609 | 19.7% |
| 19 | Curry | 49,938 | 9,740 | 19.5% |
| 20 | Bernalillo | 673,460 | 128,555 | 19.1% |
| 21 | Lincoln | 20,309 | 3,799 | 18.7% |
| 22 | Mora | 4,705 | 878 | 18.7% |
| 23 | Eddy | 54,419 | 9,635 | 17.7% |
| 24 | Roosevelt | 20,419 | 3,527 | 17.3% |
| 25 | De Baca | 1,927 | 330 | 17.1% |
| 26 | Sandoval | 135,588 | 22,631 | 16.7% |
| 27 | Lea | 66,338 | 9,724 | 14.7% |
| 28 | Otero | 66,041 | 9,514 | 14.4% |
| 29 | Santa Fe | 146,375 | 19,566 | 13.4% |
| 30 | Catron | 3,658 | 423 | 11.6% |
| 31 | Union | 4,431 | 507 | 11.4% |
| 32 | Harding | 707 | 39 | 5.5% |
| 33 | Los Alamos | 18,159 | 491 | 2.7% |
| STATE TOTAL | | 2,085,538 | 442,302 | 21.2% |

SNAP Recipiency Rate



Population Source: U.S. Census Bureau, 2012 Population
 Recipiency rate is the percent of individuals who receive Supplemental Nutrition Assistance

Supplemental Nutrition Assistance Program (SNAP) Cases by Administrative Office

| Office # | Office | Mar-12 | Feb-13 | Mar-13 | Mar 12 – Mar 13 | | Feb 13 – Mar 13 | |
|----------|---------------|---------|---------|---------|-----------------|----------|-----------------|----------|
| | | | | | # change | % change | # change | % change |
| 1 | SE Bernalillo | 11,488 | 10,897 | 11,041 | -447 | -3.9% | 144 | 1.3% |
| 3 | Chaves | 6,307 | 6,561 | 6,539 | 232 | 3.7% | -22 | -0.3% |
| 4 | Colfax | 1,219 | 1,207 | 1,211 | -8 | -0.7% | 4 | 0.3% |
| 3104 | Union | 373 | 490 | 218 | -155 | -41.6% | -272 | -55.5% |
| 5 | Curry | 4,038 | 3,977 | 4,022 | -16 | -0.4% | 45 | 1.1% |
| 7 | West Dona Ana | 9,215 | 9,524 | 9,688 | 473 | 5.1% | 164 | 1.7% |
| 8 | Eddy | 2,935 | 2,863 | 2,943 | 8 | 0.3% | 80 | 2.8% |
| 9 | Grant | 3,071 | 3,201 | 3,065 | -6 | -0.2% | -136 | -4.2% |
| 1209 | Hidalgo | 491 | 489 | 485 | -6 | -1.2% | -4 | -0.8% |
| 10 | Guadalupe | 727 | 721 | 724 | -3 | -0.4% | 3 | 0.4% |
| 13 | Lea | 3,907 | 3,935 | 3,921 | 14 | 0.4% | -14 | -0.4% |
| 14 | Lincoln | 1,684 | 1,675 | 1,703 | 19 | 1.1% | 28 | 1.7% |
| 16 | Luna | 3,749 | 3,731 | 3,761 | 12 | 0.3% | 30 | 0.8% |
| 17 | McKinley | 8,619 | 8,768 | 8,777 | 158 | 1.8% | 9 | 0.1% |
| 19 | Otero | 4,242 | 4,284 | 4,296 | 54 | 1.3% | 12 | 0.3% |
| 20 | Quay | 1,204 | 1,258 | 1,258 | 54 | 4.5% | 0 | 0.0% |
| 21 | Rio Arriba | 6,504 | 6,875 | 6,951 | 447 | 6.9% | 76 | 1.1% |
| 22 | Roosevelt | 1,323 | 1,404 | 1,417 | 94 | 7.1% | 13 | 0.9% |
| 23 | Sandoval | 8,806 | 9,092 | 9,221 | 415 | 4.7% | 129 | 1.4% |
| 24 | San Juan | 10,215 | 10,740 | 10,880 | 665 | 6.5% | 140 | 1.3% |
| 25 | San Miguel | 5,192 | 5,331 | 5,299 | 107 | 2.1% | -32 | -0.6% |
| 26 | Santa Fe | 9,011 | 9,692 | 9,790 | 779 | 8.6% | 98 | 1.0% |
| 27 | Sierra | 2,452 | 2,694 | 2,542 | 90 | 3.7% | -152 | -5.6% |
| 28 | Socorro | 2,431 | 2,701 | 2,602 | 171 | 7.0% | -99 | -3.7% |
| 29 | Taos | 3,519 | 3,825 | 3,838 | 319 | 9.1% | 13 | 0.3% |
| 30 | Torrance | 2,486 | 2,604 | 2,655 | 169 | 6.8% | 51 | 2.0% |
| 32 | S Valencia | 2,976 | 3,054 | 3,140 | 164 | 5.5% | 86 | 2.8% |
| 33 | Cibola | 3,128 | 3,235 | 3,219 | 91 | 2.9% | -16 | -0.5% |
| 34 | Eddy/Artesia | 1,285 | 1,305 | 1,319 | 34 | 2.6% | 14 | 1.1% |
| 35 | NW Bernalillo | 14,216 | 14,664 | 15,007 | 791 | 5.6% | 343 | 2.3% |
| 36 | SW Bernalillo | 17,297 | 16,939 | 17,100 | -197 | -1.1% | 161 | 1.0% |
| 37 | East Dona Ana | 6,603 | 6,902 | 6,886 | 283 | 4.3% | -16 | -0.2% |
| 38 | S Dona Ana | 7,519 | 7,469 | 7,644 | 125 | 1.7% | 175 | 2.3% |
| 39 | NE Bernalillo | 20,075 | 19,730 | 19,845 | -230 | -1.1% | 115 | 0.6% |
| 42 | N Valencia | 5,340 | 5,486 | 5,526 | 186 | 3.5% | 40 | 0.7% |
| | TOTAL | 193,647 | 197,323 | 198,533 | 4,886 | 2.5% | 1,210 | 0.6% |

Supplemental Nutrition Assistance Program (SNAP) Recipients by Administrative Office

| Office # | Office | Mar-12 | Feb-13 | Mar-13 | Mar 12 – Mar 13 | | Feb 13 – Mar 13 | |
|----------|---------------|----------------|----------------|----------------|-----------------|-------------|-----------------|-------------|
| | | | | | # change | % change | # change | % change |
| 1 | SE Bernalillo | 23,317 | 22,199 | 22,398 | -919 | -3.9% | 199 | 0.9% |
| 3 | Chaves | 14,986 | 15,497 | 15,353 | 367 | 2.4% | -144 | -0.9% |
| 4 | Colfax | 2,752 | 2,608 | 2,609 | -143 | -5.2% | 1 | 0.0% |
| 3104 | Union | 803 | 1,070 | 507 | -296 | -36.9% | -563 | -52.6% |
| 5 | Curry | 9,732 | 9,661 | 9,742 | 10 | 0.1% | 81 | 0.8% |
| 7 | West Dona Ana | 19,344 | 19,950 | 20,340 | 996 | 5.1% | 390 | 2.0% |
| 8 | Eddy | 6,667 | 6,403 | 6,518 | -149 | -2.2% | 115 | 1.8% |
| 9 | Grant | 6,652 | 6,763 | 6,400 | -252 | -3.8% | -363 | -5.4% |
| 1209 | Hidalgo | 1,075 | 1,020 | 994 | -81 | -7.5% | -26 | -2.5% |
| 10 | Guadalupe | 1,488 | 1,438 | 1,440 | -48 | -3.2% | 2 | 0.1% |
| 13 | Lea | 9,710 | 9,798 | 9,724 | 14 | 0.1% | -74 | -0.8% |
| 14 | Lincoln | 3,752 | 3,755 | 3,798 | 46 | 1.2% | 43 | 1.1% |
| 16 | Luna | 8,956 | 8,677 | 8,759 | -197 | -2.2% | 82 | 0.9% |
| 17 | McKinley | 26,010 | 25,740 | 25,758 | -252 | -1.0% | 18 | 0.1% |
| 19 | Otero | 9,645 | 9,478 | 9,515 | -130 | -1.3% | 37 | 0.4% |
| 20 | Quay | 2,449 | 2,589 | 2,556 | 107 | 4.4% | -33 | -1.3% |
| 21 | Rio Arriba | 13,199 | 13,842 | 13,948 | 749 | 5.7% | 106 | 0.8% |
| 22 | Roosevelt | 3,453 | 3,518 | 3,525 | 72 | 2.1% | 7 | 0.2% |
| 23 | Sandoval | 21,999 | 22,460 | 22,631 | 632 | 2.9% | 171 | 0.8% |
| 24 | San Juan | 27,516 | 27,965 | 28,335 | 819 | 3.0% | 370 | 1.3% |
| 25 | San Miguel | 10,025 | 10,105 | 9,954 | -71 | -0.7% | -151 | -1.5% |
| 26 | Santa Fe | 17,941 | 19,301 | 19,430 | 1,489 | 8.3% | 129 | 0.7% |
| 27 | Sierra | 5,175 | 5,803 | 5,345 | 170 | 3.3% | -458 | -7.9% |
| 28 | Socorro | 5,360 | 5,842 | 5,644 | 284 | 5.3% | -198 | -3.4% |
| 29 | Taos | 6,888 | 7,396 | 7,409 | 521 | 7.6% | 13 | 0.2% |
| 30 | Torrance | 5,569 | 5,719 | 5,806 | 237 | 4.3% | 87 | 1.5% |
| 32 | S Valencia | 6,483 | 6,505 | 6,683 | 200 | 3.1% | 178 | 2.7% |
| 33 | Cibola | 8,198 | 8,382 | 8,334 | 136 | 1.7% | -48 | -0.6% |
| 34 | Eddy/Artesia | 3,048 | 3,086 | 3,117 | 69 | 2.3% | 31 | 1.0% |
| 35 | NW Bernalillo | 29,487 | 29,747 | 30,308 | 821 | 2.8% | 561 | 1.9% |
| 36 | SW Bernalillo | 39,172 | 37,902 | 38,179 | -993 | -2.5% | 277 | 0.7% |
| 37 | East Dona Ana | 15,735 | 16,112 | 16,117 | 382 | 2.4% | 5 | 0.0% |
| 38 | S Dona Ana | 20,845 | 20,422 | 20,885 | 40 | 0.2% | 463 | 2.3% |
| 39 | NE Bernalillo | 38,276 | 37,594 | 37,674 | -602 | -1.6% | 80 | 0.2% |
| 42 | N Valencia | 12,438 | 12,525 | 12,567 | 129 | 1.0% | 42 | 0.3% |
| | TOTAL | 438,145 | 440,872 | 442,302 | 4,157 | 0.9% | 1,430 | 0.3% |

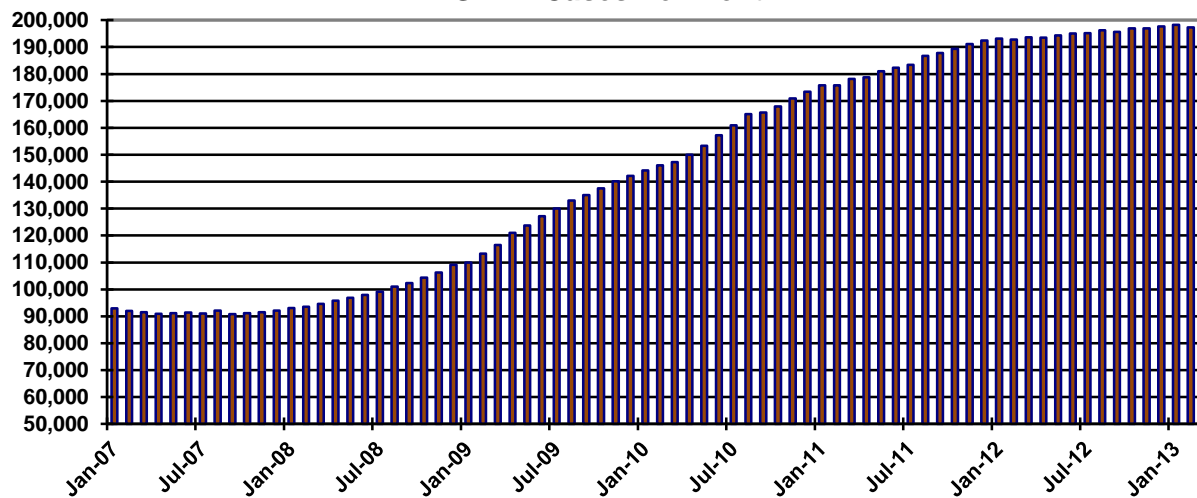
Supplemental Nutrition Assistance Program (SNAP) Cases by Region

| | Mar-12 | Feb-13 | Mar-13 | Mar 12 – Mar 13 | | Feb 13 – Mar 13 | |
|------------------|----------------|----------------|----------------|-----------------|-------------|-----------------|-------------|
| | | | | # change | % change | # change | % change |
| NW Region 1 | 39,084 | 40,375 | 40,763 | 1,679 | 4.3% | 388 | 1.0% |
| NE Region 2 | 25,818 | 27,420 | 27,307 | 1,489 | 5.8% | -113 | -0.4% |
| Central Region 3 | 65,562 | 64,834 | 65,648 | 86 | 0.1% | 814 | 1.3% |
| SE Region 4 | 21,726 | 22,024 | 22,143 | 417 | 1.9% | 119 | 0.5% |
| SW Region 5 | 41,457 | 42,670 | 42,672 | 1,215 | 2.9% | 2 | 0.0% |
| TOTAL | 193,647 | 197,323 | 198,533 | 4,886 | 2.5% | 1,210 | 0.6% |

Supplemental Nutrition Assistance Program (SNAP) Recipients by Region

| | Mar-12 | Feb-13 | Mar-13 | Mar 12 – Mar 13 | | Feb 13 – Mar 13 | |
|------------------|----------------|----------------|----------------|-----------------|-------------|-----------------|-------------|
| | | | | # change | % change | # change | % change |
| NW Region 1 | 102,644 | 103,577 | 104,308 | 1,664 | 1.6% | 731 | 0.7% |
| NE Region 2 | 51,608 | 54,322 | 53,857 | 2,249 | 4.4% | -465 | -0.9% |
| Central Region 3 | 135,821 | 133,161 | 134,365 | -1,456 | -1.1% | 1,204 | 0.9% |
| SE Region 4 | 51,533 | 51,990 | 51,975 | 442 | 0.9% | -15 | 0.0% |
| SW Region 5 | 96,539 | 97,822 | 97,797 | 1,258 | 1.3% | -25 | 0.0% |
| TOTAL | 438,145 | 440,872 | 442,302 | 4,157 | 0.9% | 1,430 | 0.3% |

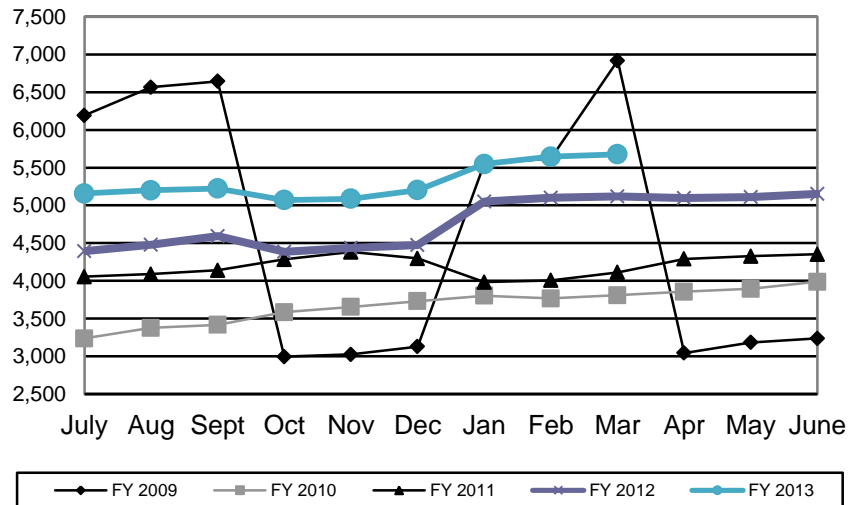
SNAP Cases Per Month



State SNAP Benefits Supplement

| | SFY 2009 | | SFY 2010 | | SFY 2011 | | SFY 2012 | | SFY 2013 | |
|------------------------|---------------|------------------|---------------|------------------|---------------|------------------|---------------|------------------|---------------|------------------|
| | Cases | Expenditures | Cases | Expenditures | Cases | Expenditures | Cases | Expenditures | Cases | Expenditures |
| <i>July</i> | 6,193 | \$59,840 | 3,237 | \$38,216 | 4,056 | \$50,241 | 4,395 | \$34,773 | 5,157 | \$42,552 |
| Aug | 6,300 | \$54,356 | 3,376 | \$39,476 | 4,088 | \$50,502 | 4,477 | \$35,360 | 5,200 | \$42,797 |
| <i>Sept</i> | 6,643 | \$59,039 | 3,418 | \$39,790 | 4,139 | \$50,946 | 4,591 | \$36,455 | 5,223 | \$43,023 |
| Oct | 2,996 | \$16,032 | 3,585 | \$43,887 | 4,284 | \$52,530 | 4,384 | \$34,850 | 5,071 | \$41,752 |
| <i>Nov</i> | 3,025 | \$15,789 | 3,655 | \$44,952 | 4,381 | \$53,820 | 4,436 | \$35,260 | 5,088 | \$42,074 |
| Dec | 3,129 | \$16,411 | 3,731 | \$45,855 | 4,296 | \$52,649 | 4,474 | \$35,619 | 5,202 | \$42,829 |
| <i>Jan</i> | 5,553 | \$30,388 | 3,802 | \$46,338 | 3,984 | \$31,897 | 5,050 | \$41,519 | 5,548 | \$45,769 |
| Feb | 5,621 | \$30,696 | 3,767 | \$46,156 | 4,006 | \$31,970 | 5,102 | \$41,900 | 5,645 | \$46,700 |
| <i>Mar</i> | 6,918 | \$98,305 | 3,810 | \$46,502 | 4,113 | \$33,226 | 5,119 | \$41,960 | 5,677 | \$47,117 |
| April | 3,043 | \$38,332 | 3,856 | \$43,830 | 4,290 | \$34,599 | 5,099 | \$41,988 | | |
| <i>May</i> | 3,184 | \$36,698 | 3,856 | \$43,830 | 4,326 | \$34,892 | 5,109 | \$43,587 | | |
| June | 3,237 | \$37,297 | 3,988 | \$49,230 | 4,351 | \$28,199 | 5,154 | \$42,442 | | |
| TOTAL | 55,842 | \$493,183 | 44,081 | \$528,062 | 50,314 | \$505,470 | 57,390 | \$465,713 | 47,811 | \$394,613 |
| Monthly average | 4,654 | \$41,099 | 3,673 | \$44,005 | 4,193 | \$42,123 | 4,783 | \$38,809 | 5,312 | \$43,846 |

State SNAP Benefits Supplement Cases by State Fiscal Year



Temporary Assistance of Needy Families (TANF) Cases by County

| County | Mar-12 | Feb-13 | Mar-13 | Mar 12 – Mar 13 | | Feb 13 – Mar 13 | |
|--------------|---------------|---------------|---------------|-----------------|---------------|-----------------|--------------|
| | | | | # change | % change | # change | % change |
| Bernalillo | 6,092 | 5,044 | 4,921 | -1,171 | -19.2% | -123 | -2.4% |
| Catron | 18 | 12 | 13 | -5 | -27.8% | 1 | 8.3% |
| Chaves | 683 | 539 | 503 | -180 | -26.4% | -36 | -6.7% |
| Cibola | 256 | 262 | 239 | -17 | -6.6% | -23 | -8.8% |
| Colfax | 106 | 111 | 106 | 0 | 0.0% | -5 | -4.5% |
| Curry | 555 | 499 | 490 | -65 | -11.7% | -9 | -1.8% |
| De Baca | 21 | 8 | 12 | -9 | -42.9% | 4 | 50.0% |
| Dona Ana | 3,217 | 2,827 | 2,793 | -424 | -13.2% | -34 | -1.2% |
| Eddy | 461 | 409 | 393 | -68 | -14.8% | -16 | -3.9% |
| Grant | 268 | 212 | 179 | -89 | -33.2% | -33 | -15.6% |
| Guadalupe | 48 | 36 | 36 | -12 | -25.0% | 0 | 0.0% |
| Harding | 1 | 0 | 0 | -1 | -100.0% | 0 | NA |
| Hidalgo | 46 | 40 | 39 | -7 | -15.2% | -1 | -2.5% |
| Lea | 457 | 399 | 380 | -77 | -16.8% | -19 | -4.8% |
| Lincoln | 186 | 167 | 167 | -19 | -10.2% | 0 | 0.0% |
| Los Alamos | 18 | 15 | 14 | -4 | -22.2% | -1 | -6.7% |
| Luna | 426 | 347 | 336 | -90 | -21.1% | -11 | -3.2% |
| McKinley | 133 | 90 | 95 | -38 | -28.6% | 5 | 5.6% |
| Mora | 35 | 21 | 21 | -14 | -40.0% | 0 | 0.0% |
| Otero | 413 | 339 | 320 | -93 | -22.5% | -19 | -5.6% |
| Quay | 121 | 99 | 91 | -30 | -24.8% | -8 | -8.1% |
| Rio Arriba | 617 | 504 | 501 | -116 | -18.8% | -3 | -0.6% |
| Roosevelt | 110 | 121 | 119 | 9 | 8.2% | -2 | -1.7% |
| Sandoval | 696 | 589 | 569 | -127 | -18.2% | -20 | -3.4% |
| San Juan | 276 | 266 | 248 | -28 | -10.1% | -18 | -6.8% |
| San Miguel | 350 | 310 | 296 | -54 | -15.4% | -14 | -4.5% |
| Santa Fe | 687 | 602 | 586 | -101 | -14.7% | -16 | -2.7% |
| Sierra | 119 | 126 | 90 | -29 | -24.4% | -36 | -28.6% |
| Socorro | 136 | 143 | 126 | -10 | -7.4% | -17 | -11.9% |
| Taos | 157 | 124 | 120 | -37 | -23.6% | -4 | -3.2% |
| Torrance | 286 | 261 | 250 | -36 | -12.6% | -11 | -4.2% |
| Union | 25 | 38 | 13 | -12 | -48.0% | -25 | -65.8% |
| Valencia | 851 | 699 | 671 | -180 | -21.2% | -28 | -4.0% |
| TOTAL | 17,871 | 15,259 | 14,737 | -3,134 | -17.5% | -522 | -3.4% |

Temporary Assistance of Needy Families (TANF) Recipients by County

| County | Mar-12 | Feb-13 | Mar-13 | Mar 12 – Mar 13 | | Feb 13 – Mar 13 | |
|--------------|---------------|---------------|---------------|-----------------|---------------|-----------------|--------------|
| | | | | # change | % change | # change | % change |
| Bernalillo | 14,525 | 11,903 | 11,638 | -2,887 | -19.9% | -265 | -2.2% |
| Catron | 50 | 27 | 38 | -12 | -24.0% | 11 | 40.7% |
| Chaves | 1,675 | 1,269 | 1,158 | -517 | -30.9% | -111 | -8.7% |
| Cibola | 696 | 685 | 627 | -69 | -9.9% | -58 | -8.5% |
| Colfax | 268 | 292 | 272 | 4 | 1.5% | -20 | -6.8% |
| Curry | 1,419 | 1,267 | 1,233 | -186 | -13.1% | -34 | -2.7% |
| De Baca | 48 | 17 | 26 | -22 | -45.8% | 9 | 52.9% |
| Dona Ana | 8,041 | 7,086 | 6,957 | -1,084 | -13.5% | -129 | -1.8% |
| Eddy | 1,126 | 952 | 912 | -214 | -19.0% | -40 | -4.2% |
| Grant | 669 | 509 | 417 | -252 | -37.7% | -92 | -18.1% |
| Guadalupe | 118 | 106 | 99 | -19 | -16.1% | -7 | -6.6% |
| Harding | 3 | 0 | 0 | -3 | -100.0% | 0 | NA |
| Hidalgo | 117 | 78 | 80 | -37 | -31.6% | 2 | 2.6% |
| Lea | 1,174 | 975 | 915 | -259 | -22.1% | -60 | -6.2% |
| Lincoln | 477 | 420 | 425 | -52 | -10.9% | 5 | 1.2% |
| Los Alamos | 36 | 35 | 28 | -8 | -22.2% | -7 | -20.0% |
| Luna | 1,057 | 873 | 857 | -200 | -18.9% | -16 | -1.8% |
| McKinley | 351 | 218 | 242 | -109 | -31.1% | 24 | 11.0% |
| Mora | 66 | 42 | 43 | -23 | -34.8% | 1 | 2.4% |
| Otero | 1,123 | 847 | 812 | -311 | -27.7% | -35 | -4.1% |
| Quay | 275 | 234 | 216 | -59 | -21.5% | -18 | -7.7% |
| Rio Arriba | 1,510 | 1,110 | 1,094 | -416 | -27.5% | -16 | -1.4% |
| Roosevelt | 258 | 303 | 291 | 33 | 12.8% | -12 | -4.0% |
| Sandoval | 1,828 | 1,580 | 1,496 | -332 | -18.2% | -84 | -5.3% |
| San Juan | 753 | 675 | 594 | -159 | -21.1% | -81 | -12.0% |
| San Miguel | 824 | 716 | 676 | -148 | -18.0% | -40 | -5.6% |
| Santa Fe | 1,563 | 1,389 | 1,322 | -241 | -15.4% | -67 | -4.8% |
| Sierra | 275 | 288 | 200 | -75 | -27.3% | -88 | -30.6% |
| Socorro | 302 | 334 | 299 | -3 | -1.0% | -35 | -10.5% |
| Taos | 362 | 279 | 269 | -93 | -25.7% | -10 | -3.6% |
| Torrance | 738 | 673 | 640 | -98 | -13.3% | -33 | -4.9% |
| Union | 70 | 85 | 37 | -33 | -47.1% | -48 | -56.5% |
| Valencia | 2,066 | 1,581 | 1,505 | -561 | -27.2% | -76 | -4.8% |
| TOTAL | 43,863 | 36,848 | 35,418 | -8,445 | -19.3% | -1,430 | -3.9% |

Temporary Assistance of Needy Families (TANF) Cases by Administrative Office

| Office # | Office | Mar-12 | Feb-13 | Mar-13 | Mar 12 – Mar 13 | | Feb 13 – Mar 13 | |
|----------|---------------|--------|--------|--------|-----------------|----------|-----------------|----------|
| | | | | | # change | % change | # change | % change |
| 1 | SE Bernalillo | 1,300 | 994 | 988 | -312 | -24.0% | -6 | -0.6% |
| 3 | Chaves | 683 | 539 | 503 | -180 | -26.4% | -36 | -6.7% |
| 4 | Colfax | 106 | 111 | 106 | 0 | 0.0% | -5 | -4.5% |
| 3104 | Union | 25 | 38 | 13 | -12 | -48.0% | -25 | -65.8% |
| 5 | Curry | 556 | 499 | 490 | -66 | -11.9% | -9 | -1.8% |
| 7 | West Dona Ana | 1,149 | 1,006 | 1,000 | -149 | -13.0% | -6 | -0.6% |
| 8 | Eddy | 326 | 278 | 266 | -60 | -18.4% | -12 | -4.3% |
| 9 | Grant | 271 | 212 | 179 | -92 | -33.9% | -33 | -15.6% |
| 1209 | Hidalgo | 46 | 40 | 39 | -7 | -15.2% | -1 | -2.5% |
| 10 | Guadalupe | 69 | 44 | 48 | -21 | -30.4% | 4 | 9.1% |
| 13 | Lea | 457 | 399 | 380 | -77 | -16.8% | -19 | -4.8% |
| 14 | Lincoln | 186 | 167 | 167 | -19 | -10.2% | 0 | 0.0% |
| 16 | Luna | 425 | 347 | 336 | -89 | -20.9% | -11 | -3.2% |
| 17 | McKinley | 133 | 91 | 96 | -37 | -27.8% | 5 | 5.5% |
| 19 | Otero | 413 | 339 | 320 | -93 | -22.5% | -19 | -5.6% |
| 20 | Quay | 120 | 99 | 91 | -29 | -24.2% | -8 | -8.1% |
| 21 | Rio Arriba | 647 | 526 | 522 | -125 | -19.3% | -4 | -0.8% |
| 22 | Roosevelt | 110 | 121 | 119 | 9 | 8.2% | -2 | -1.7% |
| 23 | Sandoval | 696 | 589 | 569 | -127 | -18.2% | -20 | -3.4% |
| 24 | San Juan | 276 | 266 | 248 | -28 | -10.1% | -18 | -6.8% |
| 25 | San Miguel | 385 | 330 | 317 | -68 | -17.7% | -13 | -3.9% |
| 26 | Santa Fe | 676 | 596 | 579 | -97 | -14.3% | -17 | -2.9% |
| 27 | Sierra | 181 | 175 | 136 | -45 | -24.9% | -39 | -22.3% |
| 28 | Socorro | 152 | 155 | 139 | -13 | -8.6% | -16 | -10.3% |
| 29 | Taos | 157 | 124 | 120 | -37 | -23.6% | -4 | -3.2% |
| 30 | Torrance | 286 | 261 | 250 | -36 | -12.6% | -11 | -4.2% |
| 32 | S Valencia | 264 | 230 | 227 | -37 | -14.0% | -3 | -1.3% |
| 33 | Cibola | 256 | 261 | 238 | -18 | -7.0% | -23 | -8.8% |
| 34 | Eddy/Artesia | 135 | 131 | 127 | -8 | -5.9% | -4 | -3.1% |
| 35 | NW Bernalillo | 1,211 | 1,130 | 1,105 | -106 | -8.8% | -25 | -2.2% |
| 36 | SW Bernalillo | 1,953 | 1,583 | 1,537 | -416 | -21.3% | -46 | -2.9% |
| 37 | East Dona Ana | 733 | 681 | 650 | -83 | -11.3% | -31 | -4.6% |
| 38 | S Dona Ana | 1,273 | 1,091 | 1,097 | -176 | -13.8% | 6 | 0.5% |
| 39 | NE Bernalillo | 1,628 | 1,337 | 1,291 | -337 | -20.7% | -46 | -3.4% |
| 42 | N Valencia | 587 | 469 | 444 | -143 | -24.4% | -25 | -5.3% |
| | TOTAL | 17,871 | 15,259 | 14,737 | -3,134 | -17.5% | -522 | -3.4% |

Temporary Assistance of Needy Families (TANF) Recipients by Administrative Office

| Office # | Office | Mar-12 | Feb-13 | Mar-13 | Mar 12 – Mar 13 | | Feb 13 – Mar 13 | |
|----------|---------------|---------------|---------------|---------------|-----------------|---------------|-----------------|--------------|
| | | | | | # change | % change | # change | % change |
| 1 | SE Bernalillo | 3,043 | 2,360 | 2,361 | -682 | -22.4% | 1 | 0.0% |
| 3 | Chaves | 1,675 | 1,269 | 1,158 | -517 | -30.9% | -111 | -8.7% |
| 4 | Colfax | 268 | 292 | 272 | 4 | 1.5% | -20 | -6.8% |
| 3104 | Union | 70 | 85 | 37 | -33 | -47.1% | -48 | -56.5% |
| 5 | Curry | 1,421 | 1,267 | 1,233 | -188 | -13.2% | -34 | -2.7% |
| 7 | West Dona Ana | 2,804 | 2,502 | 2,481 | -323 | -11.5% | -21 | -0.8% |
| 8 | Eddy | 801 | 636 | 619 | -182 | -22.7% | -17 | -2.7% |
| 9 | Grant | 679 | 509 | 417 | -262 | -38.6% | -92 | -18.1% |
| 1209 | Hidalgo | 117 | 78 | 80 | -37 | -31.6% | 2 | 2.6% |
| 10 | Guadalupe | 166 | 123 | 125 | -41 | -24.7% | 2 | 1.6% |
| 13 | Lea | 1,174 | 975 | 915 | -259 | -22.1% | -60 | -6.2% |
| 14 | Lincoln | 477 | 420 | 425 | -52 | -10.9% | 5 | 1.2% |
| 16 | Luna | 1,052 | 873 | 857 | -195 | -18.5% | -16 | -1.8% |
| 17 | McKinley | 351 | 220 | 244 | -107 | -30.5% | 24 | 10.9% |
| 19 | Otero | 1,123 | 847 | 812 | -311 | -27.7% | -35 | -4.1% |
| 20 | Quay | 273 | 234 | 216 | -57 | -20.9% | -18 | -7.7% |
| 21 | Rio Arriba | 1,585 | 1,163 | 1,139 | -446 | -28.1% | -24 | -2.1% |
| 22 | Roosevelt | 258 | 303 | 291 | 33 | 12.8% | -12 | -4.0% |
| 23 | Sandoval | 1,828 | 1,580 | 1,496 | -332 | -18.2% | -84 | -5.3% |
| 24 | San Juan | 753 | 675 | 594 | -159 | -21.1% | -81 | -12.0% |
| 25 | San Miguel | 891 | 756 | 719 | -172 | -19.3% | -37 | -4.9% |
| 26 | Santa Fe | 1,526 | 1,373 | 1,305 | -221 | -14.5% | -68 | -5.0% |
| 27 | Sierra | 422 | 402 | 307 | -115 | -27.3% | -95 | -23.6% |
| 28 | Socorro | 347 | 361 | 337 | -10 | -2.9% | -24 | -6.6% |
| 29 | Taos | 362 | 279 | 269 | -93 | -25.7% | -10 | -3.6% |
| 30 | Torrance | 738 | 673 | 640 | -98 | -13.3% | -33 | -4.9% |
| 32 | S Valencia | 602 | 502 | 492 | -110 | -18.3% | -10 | -2.0% |
| 33 | Cibola | 696 | 683 | 625 | -71 | -10.2% | -58 | -8.5% |
| 34 | Eddy/Artesia | 325 | 316 | 293 | -32 | -9.8% | -23 | -7.3% |
| 35 | NW Bernalillo | 2,972 | 2,647 | 2,592 | -380 | -12.8% | -55 | -2.1% |
| 36 | SW Bernalillo | 4,624 | 3,673 | 3,512 | -1,112 | -24.0% | -161 | -4.4% |
| 37 | East Dona Ana | 1,805 | 1,671 | 1,597 | -208 | -11.5% | -74 | -4.4% |
| 38 | S Dona Ana | 3,285 | 2,799 | 2,772 | -513 | -15.6% | -27 | -1.0% |
| 39 | NE Bernalillo | 3,886 | 3,223 | 3,173 | -713 | -18.3% | -50 | -1.6% |
| 42 | N Valencia | 1,464 | 1,079 | 1,013 | -451 | -30.8% | -66 | -6.1% |
| | TOTAL | 43,863 | 36,848 | 35,418 | -8,445 | -19.3% | -1,430 | -3.9% |

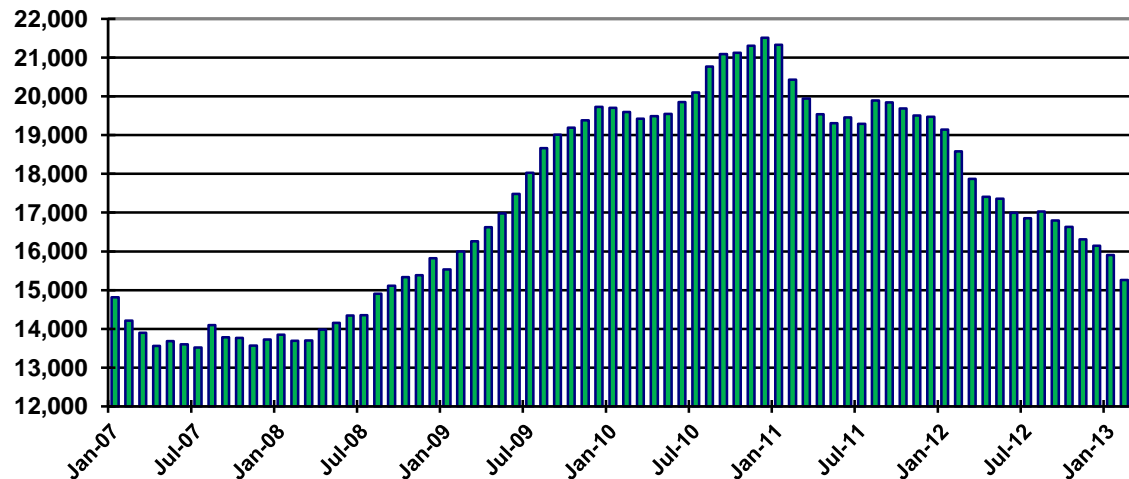
Temporary Assistance of Needy Families (TANF) Cases by Region

| | Mar-12 | Feb-13 | Mar-13 | Mar 12 – Mar 13 | | Feb 13 – Mar 13 | |
|------------------|---------------|---------------|---------------|-----------------|---------------|-----------------|--------------|
| | | | | # change | % change | # change | % change |
| NW Region 1 | 2,212 | 1,906 | 1,822 | -390 | -17.6% | -84 | -4.4% |
| NE Region 2 | 1,996 | 1,725 | 1,657 | -339 | -17.0% | -68 | -3.9% |
| Central Region 3 | 6,378 | 5,305 | 5,171 | -1,207 | -18.9% | -134 | -2.5% |
| SE Region 4 | 2,456 | 2,110 | 2,024 | -432 | -17.6% | -86 | -4.1% |
| SW Region 5 | 4,829 | 4,213 | 4,063 | -766 | -15.9% | -150 | -3.6% |
| TOTAL | 17,871 | 15,259 | 14,737 | -3,134 | -17.5% | -522 | -3.4% |

Temporary Assistance of Needy Families (TANF) Recipients by Region

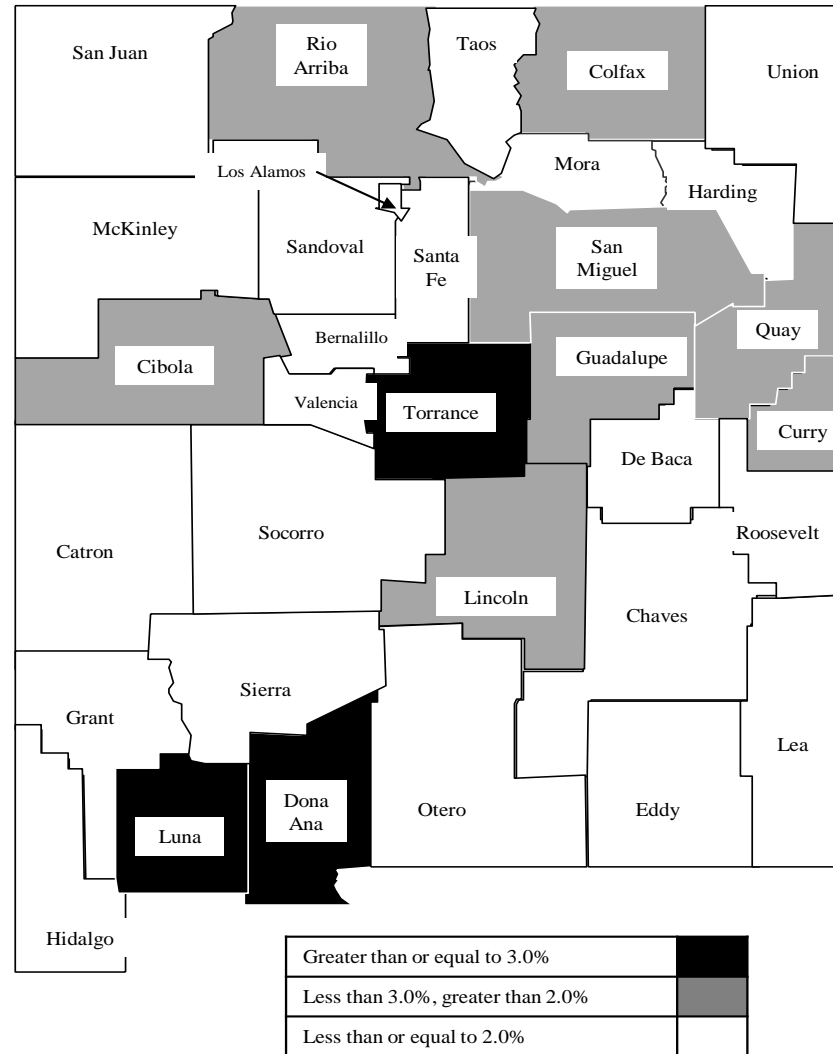
| | Mar-12 | Feb-13 | Mar-13 | Mar 12 – Mar 13 | | Feb 13 – Mar 13 | |
|------------------|---------------|---------------|---------------|-----------------|---------------|-----------------|--------------|
| | | | | # change | % change | # change | % change |
| NW Region 1 | 5,694 | 4,739 | 4,464 | -1,230 | -21.6% | -275 | -5.8% |
| NE Region 2 | 4,702 | 3,948 | 3,741 | -961 | -20.4% | -207 | -5.2% |
| Central Region 3 | 15,263 | 12,576 | 12,278 | -2,985 | -19.6% | -298 | -2.4% |
| SE Region 4 | 6,093 | 5,123 | 4,850 | -1,243 | -20.4% | -273 | -5.3% |
| SW Region 5 | 12,111 | 10,462 | 10,085 | -2,026 | -16.7% | -377 | -3.6% |
| TOTAL | 43,863 | 36,848 | 35,418 | -8,445 | -19.3% | -1,430 | -3.9% |

TANF Cases per month



| Rank | County | Estimated Population | TANF Recipients | Rate |
|--------------------|------------|----------------------|-----------------|-------------|
| 1 | Torrance | 16,021 | 640 | 4.0% |
| 2 | Luna | 25,041 | 857 | 3.4% |
| 3 | Dona Ana | 214,445 | 6,957 | 3.2% |
| 4 | Rio Arriba | 40,318 | 1,094 | 2.7% |
| 6 | Curry | 49,938 | 1,233 | 2.5% |
| 5 | Quay | 8,769 | 216 | 2.5% |
| 8 | San Miguel | 28,891 | 676 | 2.3% |
| 7 | Cibola | 27,334 | 627 | 2.3% |
| 10 | Guadalupe | 4,603 | 99 | 2.2% |
| 12 | Lincoln | 20,309 | 425 | 2.1% |
| 11 | Colfax | 13,223 | 272 | 2.1% |
| 13 | Valencia | 76,631 | 1,505 | 2.0% |
| 14 | Chaves | 65,784 | 1,158 | 1.8% |
| 17 | Bernalillo | 673,460 | 11,638 | 1.7% |
| 16 | Socorro | 17,603 | 299 | 1.7% |
| 9 | Sierra | 11,895 | 200 | 1.7% |
| 18 | Eddy | 54,419 | 912 | 1.7% |
| 20 | Hidalgo | 4,794 | 80 | 1.7% |
| 22 | Roosevelt | 20,419 | 291 | 1.4% |
| 19 | Grant | 29,388 | 417 | 1.4% |
| 21 | Lea | 66,338 | 915 | 1.4% |
| 27 | De Baca | 1,927 | 26 | 1.3% |
| 23 | Otero | 66,041 | 812 | 1.2% |
| 24 | Sandoval | 135,588 | 1,496 | 1.1% |
| 29 | Catron | 3,658 | 38 | 1.0% |
| 26 | Mora | 4,705 | 43 | 0.9% |
| 25 | Santa Fe | 146,375 | 1,322 | 0.9% |
| 15 | Union | 4,431 | 37 | 0.8% |
| 28 | Taos | 32,779 | 269 | 0.8% |
| 30 | San Juan | 128,529 | 594 | 0.5% |
| 31 | McKinley | 73,016 | 242 | 0.3% |
| 32 | Los Alamos | 18,159 | 28 | 0.2% |
| 33 | Harding | 707 | 0 | 0.0% |
| STATE TOTAL | | 2,085,538 | 35,418 | 1.7% |

TANF Recipiency Rate



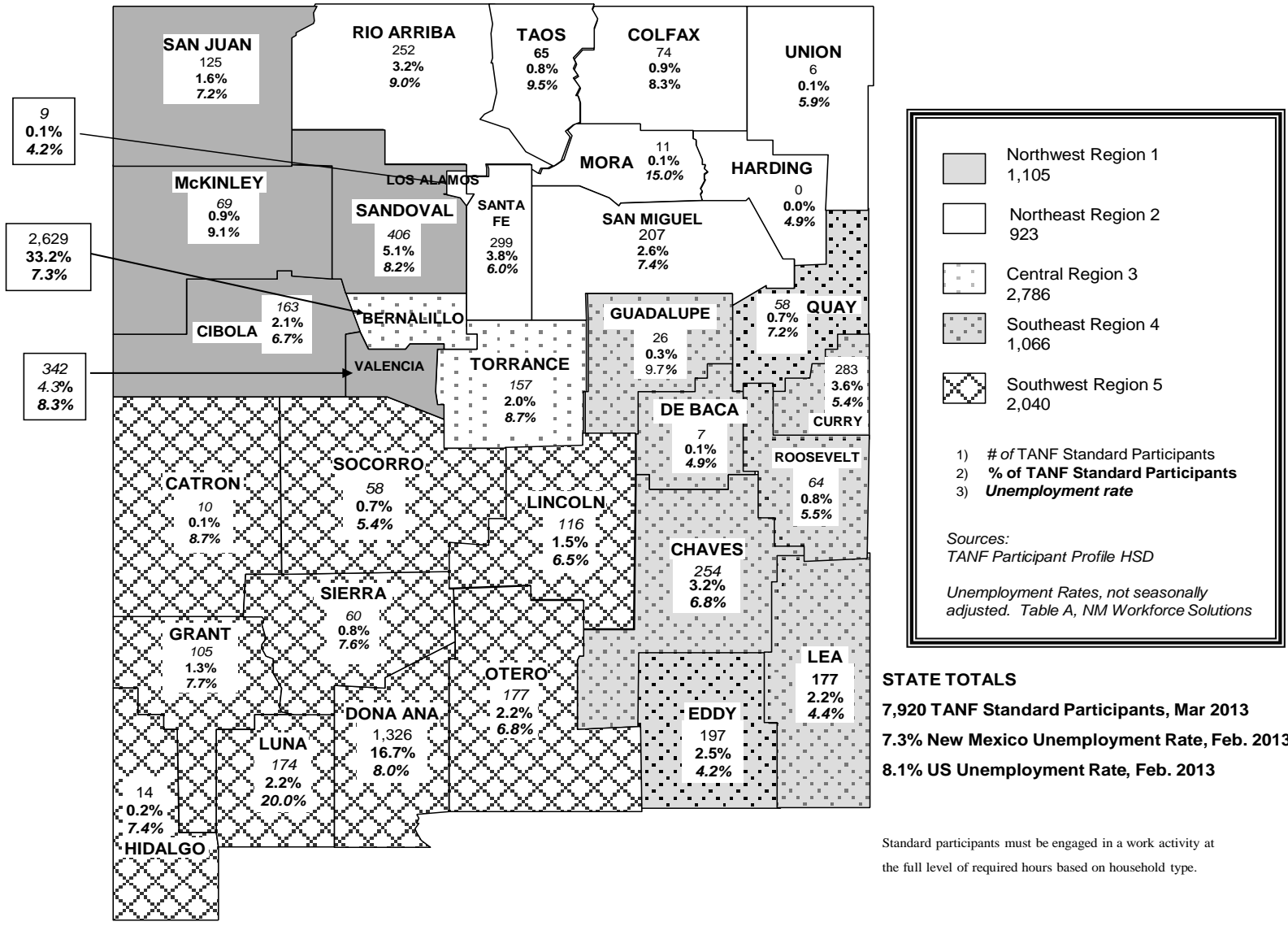
Population Source: U.S. Census Bureau, 2012 Population.
 Recipiency rate is the percent of individuals living in the State or County who receive TANF.

TANF Standard Participants by Administrative Office

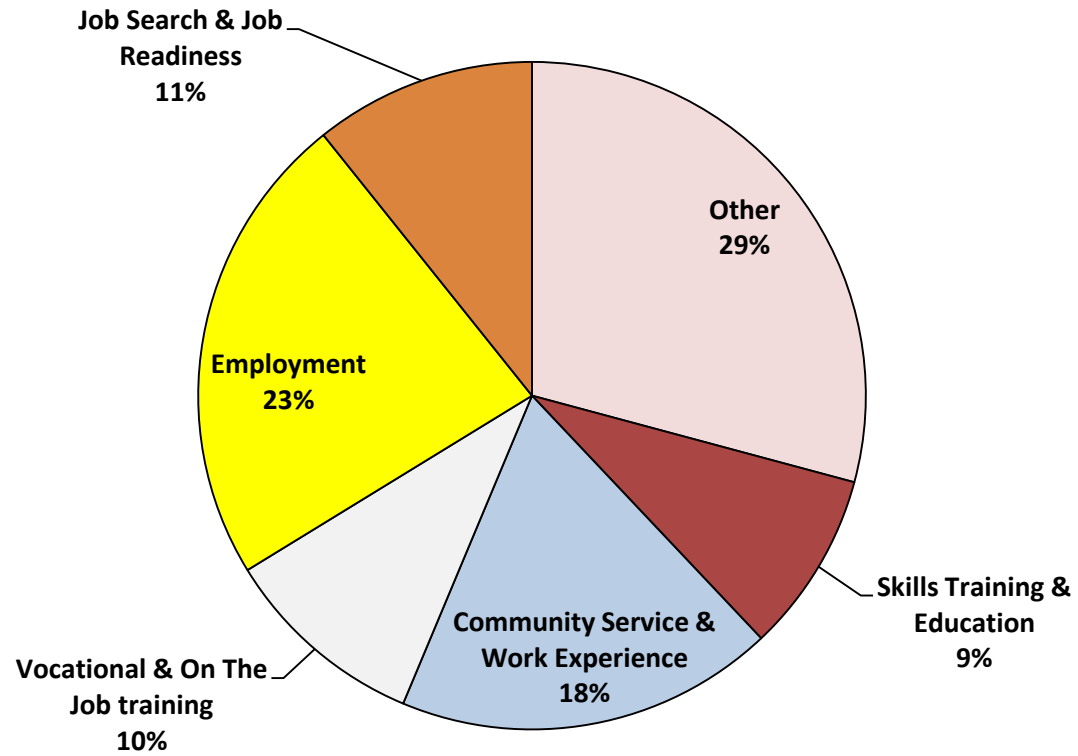
| Office # | Office | Mar-12 | Feb-13 | Mar-13 | Mar 12 – Mar 13 | | Feb 13 – Mar 13 | |
|----------|---------------|--------|--------|--------|-----------------|----------|-----------------|----------|
| | | | | | # change | % change | # change | % change |
| 1 | SE Bernalillo | 611 | 403 | 401 | -210 | -34.4% | -2 | -0.5% |
| 3 | Chaves | 392 | 306 | 254 | -138 | -35.2% | -52 | -17.0% |
| 4 | Colfax | 70 | 74 | 74 | 4 | 5.7% | 0 | 0.0% |
| 3104 | Union | 14 | 17 | 6 | -8 | -57.1% | -11 | -64.7% |
| 5 | Curry | 301 | 294 | 283 | -18 | -6.0% | -11 | -3.7% |
| 7 | West Dona Ana | 650 | 561 | 547 | -103 | -15.8% | -14 | -2.5% |
| 8 | Eddy | 165 | 135 | 131 | -34 | -20.6% | -4 | -3.0% |
| 9 | Grant | 149 | 130 | 105 | -44 | -29.5% | -25 | -19.2% |
| 1209 | Hidalgo | 28 | 16 | 14 | -14 | -50.0% | -2 | -12.5% |
| 10 | Guadalupe | 46 | 29 | 33 | -13 | -28.3% | 4 | 13.8% |
| 13 | Lea | 273 | 186 | 177 | -96 | -35.2% | -9 | -4.8% |
| 14 | Lincoln | 135 | 111 | 116 | -19 | -14.1% | 5 | 4.5% |
| 16 | Luna | 219 | 180 | 174 | -45 | -20.5% | -6 | -3.3% |
| 17 | McKinley | 100 | 63 | 70 | -30 | -30.0% | 7 | 11.1% |
| 19 | Otero | 278 | 187 | 177 | -101 | -36.3% | -10 | -5.3% |
| 20 | Quay | 66 | 63 | 58 | -8 | -12.1% | -5 | -7.9% |
| 21 | Rio Arriba | 434 | 266 | 264 | -170 | -39.2% | -2 | -0.8% |
| 22 | Roosevelt | 50 | 62 | 64 | 14 | 28.0% | 2 | 3.2% |
| 23 | Sandoval | 571 | 422 | 406 | -165 | -28.9% | -16 | -3.8% |
| 24 | San Juan | 150 | 135 | 125 | -25 | -16.7% | -10 | -7.4% |
| 25 | San Miguel | 282 | 223 | 218 | -64 | -22.7% | -5 | -2.2% |
| 26 | Santa Fe | 345 | 311 | 296 | -49 | -14.2% | -15 | -4.8% |
| 27 | Sierra | 107 | 96 | 74 | -33 | -30.8% | -22 | -22.9% |
| 28 | Socorro | 80 | 67 | 68 | -12 | -15.0% | 1 | 1.5% |
| 29 | Taos | 89 | 68 | 65 | -24 | -27.0% | -3 | -4.4% |
| 30 | Torrance | 205 | 179 | 157 | -48 | -23.4% | -22 | -12.3% |
| 32 | S Valencia | 159 | 112 | 106 | -53 | -33.3% | -6 | -5.4% |
| 33 | Cibola | 190 | 187 | 162 | -28 | -14.7% | -25 | -13.4% |
| 34 | Eddy/Artesia | 74 | 71 | 66 | -8 | -10.8% | -5 | -7.0% |
| 35 | NW Bernalillo | 759 | 690 | 689 | -70 | -9.2% | -1 | -0.1% |
| 36 | SW Bernalillo | 1,028 | 743 | 681 | -347 | -33.8% | -62 | -8.3% |
| 37 | East Dona Ana | 425 | 413 | 376 | -49 | -11.5% | -37 | -9.0% |
| 38 | S Dona Ana | 494 | 410 | 389 | -105 | -21.3% | -21 | -5.1% |
| 39 | NE Bernalillo | 1,087 | 880 | 858 | -229 | -21.1% | -22 | -2.5% |
| 42 | N Valencia | 378 | 261 | 236 | -142 | -37.6% | -25 | -9.6% |
| | TOTAL | 10,404 | 8,351 | 7,920 | -2,484 | -23.9% | -431 | -5.2% |

Standard participants must be engaged in a work activity at the full level of required hours based on household type.

TANF STANDARD PARTICIPANTS and UNEMPLOYMENT RATE COMPARISON BY REGION



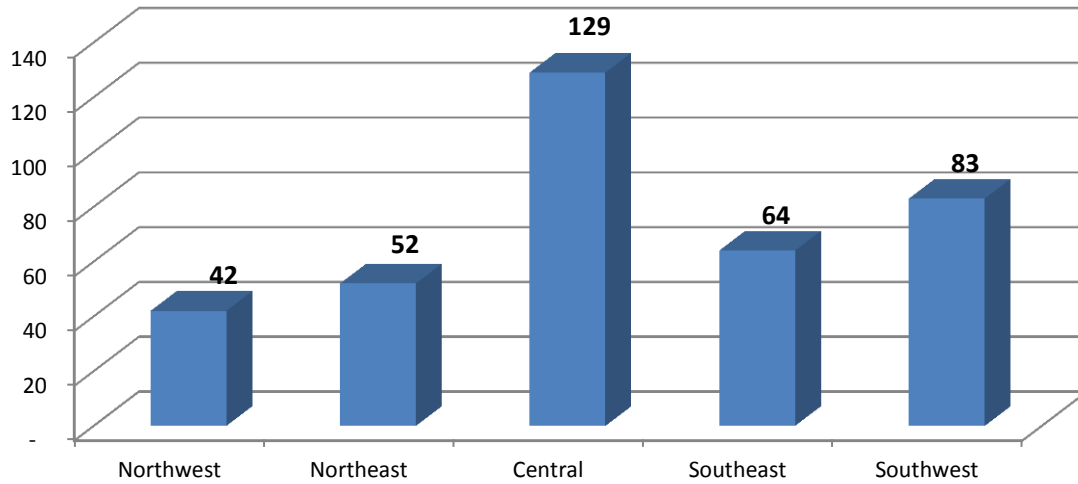
NM Works Activity Placements on March 31, 2013 as reported by SL Start **



**Data preliminary and subject to later revision.

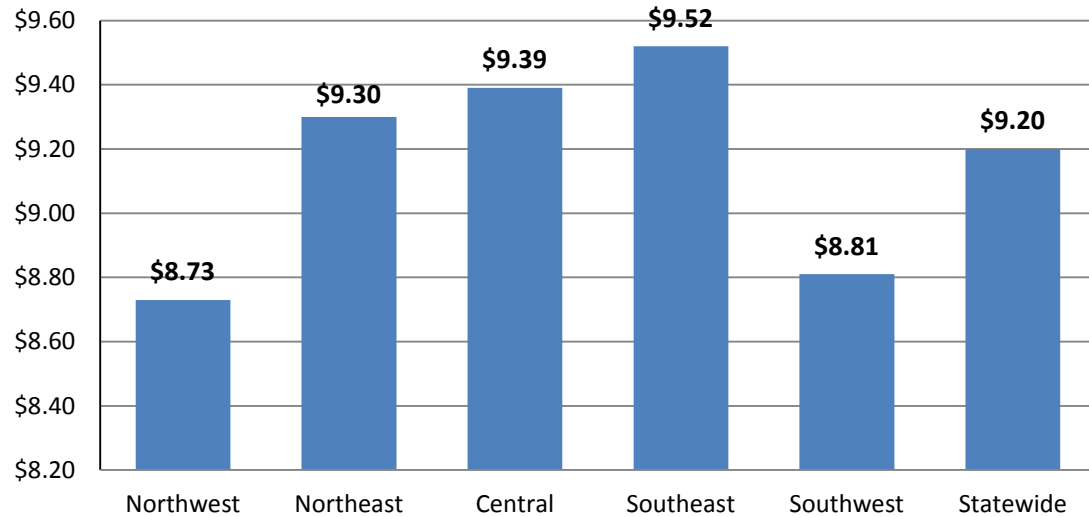
Placements may be duplicated as some individuals may work more than one activity or job.

Number of New Employments in March, by region, as reported by SL Start
Statewide Total: 370



Employment placements may be duplicated as some individuals may work more than one job.

Average Starting Hourly Wage of March TANF Employments, as reported by SL Start



TANF Sanctions by Administrative Office

| Office # | Office | Non Reporting | Child Support Sanctions | | | Work Programs Sanctions | | | TOTAL |
|----------|---------------|---------------|-------------------------|-----------------|-----------------|-------------------------|-----------------|-----------------|-------|
| | | | 1 st | 2 nd | 3 rd | 1 st | 2 nd | 3 rd | |
| 1 | SE Bernalillo | 0 | 7 | 0 | 0 | 33 | 13 | 33 | 86 |
| 3 | Chaves | 0 | 3 | 0 | 0 | 26 | 11 | 26 | 66 |
| 4 | Colfax | 0 | 0 | 1 | 1 | 6 | 4 | 6 | 18 |
| 3104 | Union | 0 | 0 | 0 | 0 | 1 | 0 | 0 | 1 |
| 5 | Curry | 0 | 0 | 0 | 0 | 18 | 6 | 18 | 42 |
| 7 | West Dona Ana | 0 | 1 | 0 | 0 | 28 | 13 | 27 | 69 |
| 8 | Eddy | 0 | 1 | 0 | 0 | 8 | 4 | 8 | 21 |
| 9 | Grant | 0 | 0 | 0 | 0 | 9 | 4 | 12 | 25 |
| 1209 | Hidalgo | 0 | 0 | 0 | 0 | 0 | 1 | 1 | 2 |
| 10 | Guadalupe | 0 | 1 | 0 | 0 | 4 | 0 | 4 | 9 |
| 13 | Lea | 0 | 7 | 1 | 0 | 18 | 2 | 5 | 33 |
| 14 | Lincoln | 0 | 0 | 0 | 0 | 10 | 0 | 8 | 18 |
| 16 | Luna | 0 | 5 | 0 | 0 | 9 | 5 | 11 | 30 |
| 17 | McKinley | 0 | 0 | 0 | 0 | 2 | 2 | 1 | 5 |
| 19 | Otero | 0 | 1 | 0 | 0 | 8 | 3 | 24 | 36 |
| 20 | Quay | 0 | 0 | 0 | 0 | 6 | 3 | 10 | 19 |
| 21 | Rio Arriba | 0 | 3 | 1 | 0 | 21 | 12 | 39 | 76 |
| 22 | Roosevelt | 0 | 0 | 0 | 0 | 4 | 2 | 2 | 8 |
| 23 | Sandoval | 0 | 5 | 0 | 0 | 43 | 11 | 35 | 94 |
| 24 | San Juan | 0 | 9 | 0 | 0 | 14 | 8 | 4 | 35 |
| 25 | San Miguel | 0 | 0 | 1 | 0 | 23 | 5 | 4 | 33 |
| 26 | Santa Fe | 0 | 10 | 1 | 1 | 41 | 15 | 24 | 92 |
| 27 | Sierra | 0 | 3 | 0 | 0 | 4 | 2 | 6 | 15 |
| 28 | Socorro | 0 | 1 | 0 | 0 | 7 | 2 | 3 | 13 |
| 29 | Taos | 0 | 1 | 0 | 0 | 6 | 0 | 4 | 11 |
| 30 | Torrance | 0 | 1 | 0 | 0 | 4 | 0 | 12 | 17 |
| 32 | S Valencia | 0 | 0 | 0 | 0 | 10 | 6 | 5 | 21 |
| 33 | Cibola | 0 | 0 | 0 | 0 | 14 | 8 | 6 | 28 |
| 34 | Eddy/Artesia | 0 | 0 | 0 | 0 | 5 | 3 | 3 | 11 |
| 35 | NW Bernalillo | 0 | 8 | 0 | 0 | 33 | 14 | 56 | 111 |
| 36 | SW Bernalillo | 0 | 8 | 0 | 0 | 46 | 22 | 73 | 149 |
| 37 | East Dona Ana | 0 | 4 | 1 | 0 | 23 | 12 | 29 | 69 |
| 38 | S Dona Ana | 0 | 3 | 0 | 1 | 7 | 9 | 15 | 35 |
| 39 | NE Bernalillo | 0 | 6 | 0 | 0 | 48 | 26 | 56 | 136 |
| 42 | N Valencia | 0 | 1 | 0 | 0 | 14 | 9 | 24 | 48 |
| | TOTAL | 0 | 89 | 6 | 3 | 553 | 237 | 594 | 1,482 |

TANF Diversion Payments by Administrative Office and Region

| | Mar 2013 | SFY 13 Cumulative total |
|-----------------------------|-----------------|----------------------------|
| NW Region (1) | | |
| Cibola | \$0 | \$31,500 |
| <i>McKinley</i> | \$0 | \$0 |
| Sandoval | \$0 | \$0 |
| <i>San Juan</i> | \$2,500 | \$2,500 |
| Valencia North | \$11,000 | \$113,000 |
| <i>Valencia South</i> | \$2,500 | \$5,500 |
| NW Region Total | \$16,000 | \$152,500 |
| NE Region (2) | | |
| <i>Colfax</i> | \$0 | \$0 |
| Los Alamos | \$0 | \$0 |
| <i>Mora</i> | \$0 | \$0 |
| Rio Arriba | \$0 | \$0 |
| <i>San Miguel</i> | \$0 | \$0 |
| Santa Fe | \$0 | \$0 |
| <i>Taos</i> | \$0 | \$0 |
| NE Region Total | \$0 | \$0 |
| Central Region (3) | | |
| <i>Bernalillo NE</i> | \$0 | \$7,000 |
| Bernalillo NW | \$0 | \$0 |
| <i>Bernalillo SE</i> | \$0 | \$0 |
| Bernalillo SW | \$0 | \$1,500 |
| <i>Torrance</i> | \$0 | \$5,500 |
| Central Region Total | \$0 | \$14,000 |

| | Mar 2013 | SFY 13 Cumulative total |
|---------------------------|-----------------|----------------------------|
| SE Region Four (4) | | |
| Chaves | \$0 | \$0 |
| <i>Curry</i> | \$0 | \$0 |
| De Baca | \$0 | \$0 |
| <i>Eddy</i> | \$0 | \$6,500 |
| Guadalupe | \$0 | \$0 |
| <i>Harding</i> | \$0 | \$0 |
| Lea | \$0 | \$0 |
| <i>Quay</i> | \$0 | \$0 |
| Roosevelt | \$0 | \$0 |
| <i>Union</i> | \$0 | \$0 |
| SE Region Total | \$0 | \$6,500 |
| SW Region (5) | | |
| Catron | \$0 | \$0 |
| <i>Doña Ana West</i> | \$1,500 | \$1,500 |
| Doña Ana East | \$0 | \$0 |
| <i>Doña Ana Southern</i> | \$0 | \$0 |
| Grant | \$0 | \$0 |
| <i>Hidalgo</i> | \$0 | \$0 |
| Lincoln | \$0 | \$0 |
| <i>Otero</i> | \$0 | \$0 |
| Luna | \$0 | \$0 |
| <i>Sierra</i> | \$0 | \$0 |
| Socorro | \$0 | \$2,500 |
| SW Region Total | \$1,500 | \$4,000 |
| State TOTAL | \$17,500 | \$177,000 |

Note: Effective November 2007, households with one or two persons receives \$1,500, households with three or more members receive \$2,500.

Number of Active TANF Cases Extended Beyond 60 Month Time Limit By Type of Extension as of Mar 2013

| Admin By Region | Hardship Extension | Support Services, State | Support Services, Federal | Tribal | Total |
|---------------------------|--------------------|-------------------------|---------------------------|----------|------------|
| NW Region (1) | | | | | |
| Cibola | 6 | 5 | 0 | 0 | 11 |
| McKinley | 2 | 0 | 0 | 0 | 2 |
| San Juan | 0 | 1 | 0 | 0 | 1 |
| Sandoval | 13 | 16 | 10 | 0 | 39 |
| Valencia North | 6 | 7 | 2 | 0 | 15 |
| Valencia South | 6 | 3 | 0 | 0 | 9 |
| NW Region | 33 | 32 | 12 | 0 | 77 |
| NE Region (2) | | | | | |
| Colfax | 2 | 1 | 1 | 0 | 4 |
| Union | 0 | 0 | 0 | 0 | 0 |
| Rio Arriba | 8 | 19 | 4 | 0 | 31 |
| San Miguel | 9 | 3 | 2 | 0 | 14 |
| Santa Fe | 25 | 11 | 2 | 0 | 38 |
| Taos | 6 | 1 | 0 | 0 | 7 |
| NE Region | 50 | 35 | 9 | 0 | 94 |
| Central Region (3) | | | | | |
| NE Bernalillo | 21 | 15 | 2 | 0 | 38 |
| NW Bernalillo | 22 | 25 | 7 | 0 | 54 |
| SE Bernalillo | 18 | 10 | 1 | 0 | 29 |
| SW Bernalillo | 18 | 30 | 20 | 0 | 68 |
| Torrance | 9 | 4 | 1 | 0 | 14 |
| Central Region | 88 | 84 | 31 | 0 | 203 |

| Admin By Region | Hardship Extension | Support Services, State | Support Services, Federal | Tribal | Total |
|----------------------|--------------------|-------------------------|---------------------------|----------|------------|
| SE Region (4) | | | | | |
| Chaves | 2 | 7 | 2 | 0 | 11 |
| Curry | 4 | 1 | 0 | 0 | 5 |
| Eddy | 8 | 3 | 0 | 0 | 11 |
| Eddy Artesia | 0 | 3 | 1 | 0 | 4 |
| Guadalupe | 3 | 1 | 0 | 0 | 4 |
| Lea | 0 | 1 | 0 | 0 | 1 |
| Quay | 4 | 4 | 1 | 0 | 9 |
| Roosevelt | 0 | 1 | 0 | 0 | 1 |
| SE Region | 21 | 21 | 4 | 0 | 46 |
| SW Region (5) | | | | | |
| East Doña Ana | 14 | 11 | 11 | 0 | 36 |
| West Doña Ana | 26 | 28 | 20 | 0 | 74 |
| South Doña Ana | 8 | 3 | 8 | 0 | 19 |
| Grant | 2 | 2 | 0 | 0 | 4 |
| Hidalgo | 1 | 1 | 1 | 0 | 3 |
| Lincoln | 1 | 1 | 1 | 0 | 3 |
| Luna | 5 | 1 | 2 | 0 | 8 |
| Otero | 5 | 0 | 3 | 0 | 8 |
| Sierra | 1 | 1 | 0 | 0 | 2 |
| Socorro | 8 | 4 | 0 | 0 | 12 |
| SW Region | 71 | 52 | 46 | 0 | 169 |
| State Total | 263 | 224 | 102 | 0 | 589 |

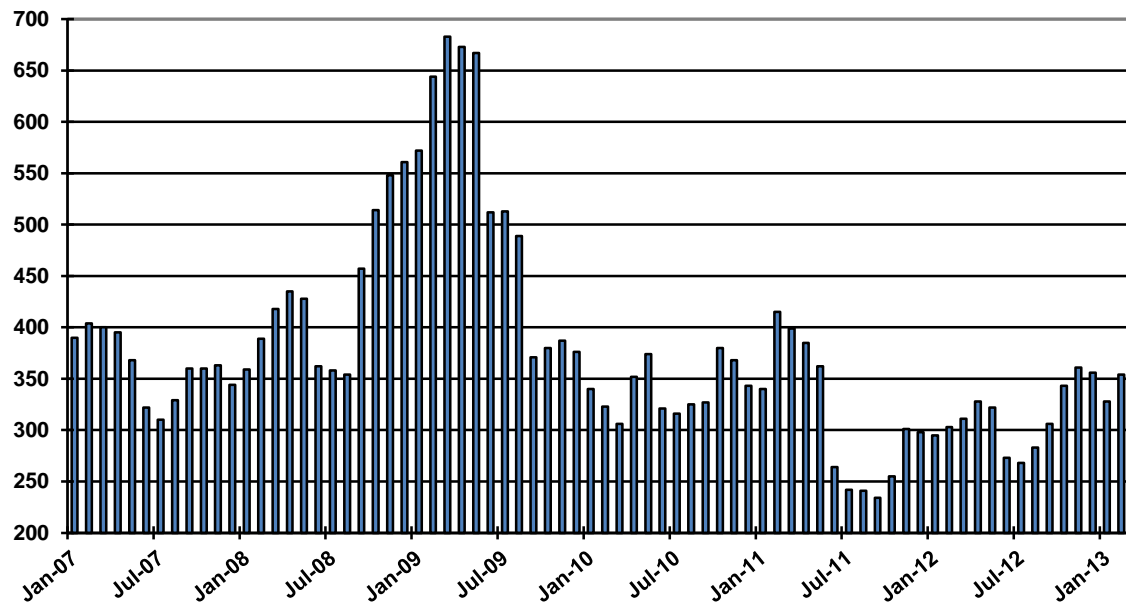
Education Works Cases by Administrative Office

| Office # | Office | Mar-12 | Feb-13 | Mar-13 | Mar 12 – Mar 13 | | Feb 13 – Mar 13 | |
|----------|---------------|------------|------------|------------|-----------------|--------------|-----------------|-------------|
| | | | | | # change | % change | # change | % change |
| 1 | SE Bernalillo | 28 | 31 | 31 | 3 | 10.7% | 0 | 0.0% |
| 3 | Chaves | 1 | 5 | 5 | 4 | 400.0% | 0 | 0.0% |
| 4 | Colfax | 5 | 4 | 4 | -1 | -20.0% | 0 | 0.0% |
| 3104 | Union | 0 | 0 | 0 | 0 | NA | 0 | NA |
| 5 | Curry | 5 | 2 | 3 | -2 | -40.0% | 1 | 50.0% |
| 7 | West Dona Ana | 21 | 22 | 25 | 4 | 19.0% | 3 | 13.6% |
| 8 | Eddy | 4 | 4 | 4 | 0 | 0.0% | 0 | 0.0% |
| 9 | Grant | 14 | 12 | 14 | 0 | 0.0% | 2 | 16.7% |
| 1209 | Hidalgo | 1 | 0 | 0 | -1 | -100.0% | 0 | NA |
| 10 | Guadalupe | 1 | 0 | 0 | -1 | -100.0% | 0 | NA |
| 13 | Lea | 4 | 5 | 5 | 1 | 25.0% | 0 | 0.0% |
| 14 | Lincoln | 0 | 0 | 0 | 0 | NA | 0 | NA |
| 16 | Luna | 1 | 3 | 4 | 3 | 300.0% | 1 | 33.3% |
| 17 | McKinley | 0 | 1 | 4 | 4 | NA | 3 | 300.0% |
| 19 | Otero | 4 | 4 | 3 | -1 | -25.0% | -1 | -25.0% |
| 20 | Quay | 5 | 6 | 5 | 0 | 0.0% | -1 | -16.7% |
| 21 | Rio Arriba | 5 | 5 | 5 | 0 | 0.0% | 0 | 0.0% |
| 22 | Roosevelt | 1 | 1 | 2 | 1 | 100.0% | 1 | 100.0% |
| 23 | Sandoval | 16 | 30 | 29 | 13 | 81.3% | -1 | -3.3% |
| 24 | San Juan | 2 | 1 | 1 | -1 | -50.0% | 0 | 0.0% |
| 25 | San Miguel | 17 | 15 | 15 | -2 | -11.8% | 0 | 0.0% |
| 26 | Santa Fe | 11 | 14 | 14 | 3 | 27.3% | 0 | 0.0% |
| 27 | Sierra | 0 | 3 | 2 | 2 | MA | -1 | -33.3% |
| 28 | Socorro | 1 | 1 | 1 | 0 | 0.0% | 0 | 0.0% |
| 29 | Taos | 11 | 13 | 11 | 0 | 0.0% | -2 | -15.4% |
| 30 | Torrance | 10 | 9 | 9 | -1 | -10.0% | 0 | 0.0% |
| 32 | S Valencia | 4 | 4 | 6 | 2 | 50.0% | 2 | 50.0% |
| 33 | Cibola | 6 | 4 | 1 | -5 | -83.3% | -3 | -75.0% |
| 34 | Eddy/Artesia | 2 | 3 | 3 | 1 | 50.0% | 0 | 0.0% |
| 35 | NW Bernalillo | 21 | 28 | 26 | 5 | 23.8% | -2 | -7.1% |
| 36 | SW Bernalillo | 11 | 17 | 18 | 7 | 63.6% | 1 | 5.9% |
| 37 | East Dona Ana | 21 | 25 | 24 | 3 | 14.3% | -1 | -4.0% |
| 38 | S Dona Ana | 19 | 21 | 21 | 2 | 10.5% | 0 | 0.0% |
| 39 | NE Bernalillo | 51 | 57 | 53 | 2 | 3.9% | -4 | -7.0% |
| 42 | N Valencia | 8 | 4 | 6 | -2 | -25.0% | 2 | 50.0% |
| | TOTAL | 311 | 354 | 354 | 43 | 13.8% | 0 | 0.0% |

Education Works Cases by Region

| | Mar-12 | Feb-13 | Mar-13 | Mar 12 – Mar 13 | | Feb 13 – Mar 13 | |
|------------------|------------|------------|------------|-----------------|--------------|-----------------|-------------|
| | | | | # change | % change | # change | % change |
| NW Region 1 | 36 | 44 | 47 | 11 | 30.6% | 3 | 6.8% |
| NE Region 2 | 49 | 51 | 49 | 0 | 0.0% | -2 | -3.9% |
| Central Region 3 | 121 | 142 | 137 | 16 | 13.2% | -5 | -3.5% |
| SE Region 4 | 23 | 26 | 27 | 4 | 17.4% | 1 | 3.8% |
| SW Region 5 | 82 | 91 | 94 | 12 | 14.6% | 3 | 3.3% |
| TOTAL | 311 | 354 | 354 | 43 | 13.8% | 0 | 0.0% |

Education Works Cases, by Month



General Assistance (GA) Cases by County

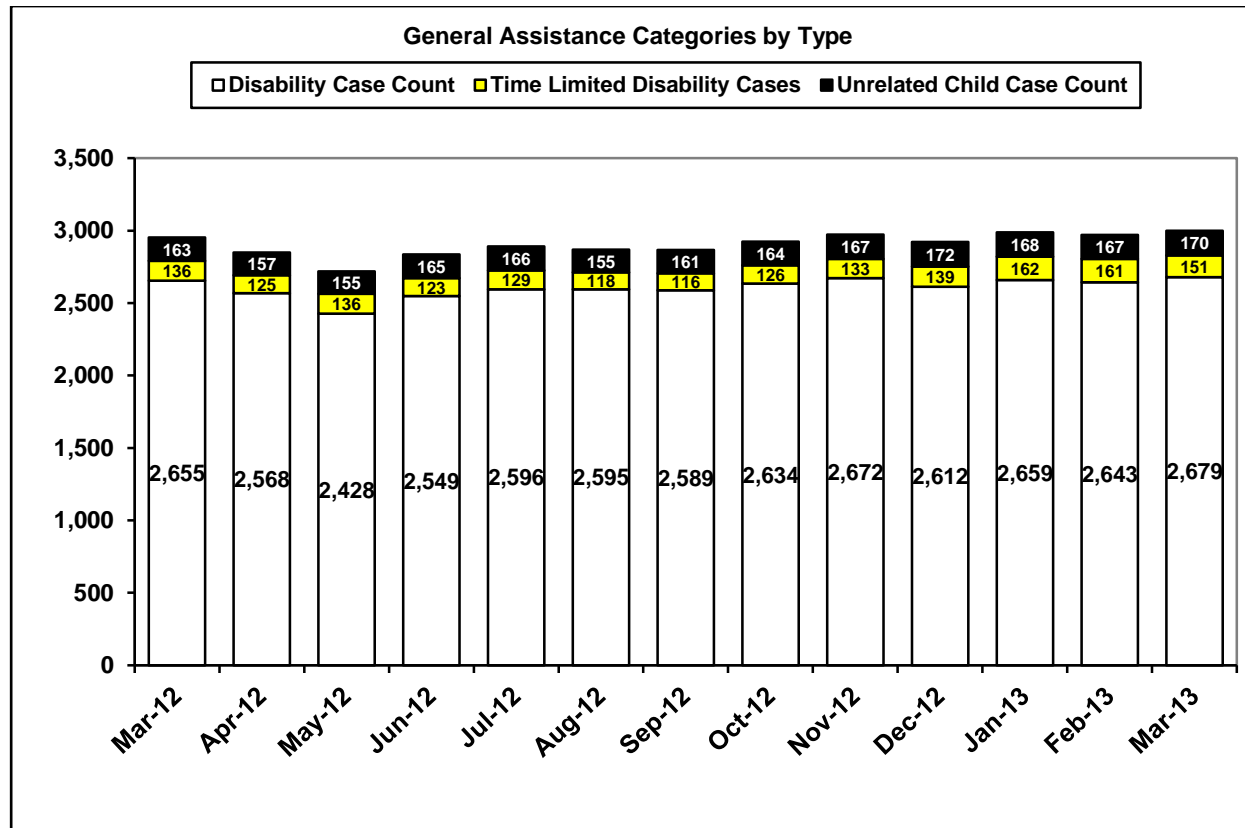
| County | Mar-12 | Feb-13 | Mar-13 | Mar 12 – Mar 13 | | Feb 13 – Mar 13 | |
|--------------|--------------|--------------|--------------|-----------------|-------------|-----------------|-------------|
| | | | | # change | % change | # change | % change |
| Bernalillo | 1,161 | 1,019 | 1,050 | -111 | -9.6% | 31 | 3.0% |
| Catron | 4 | 2 | 2 | -2 | -50.0% | 0 | 0.0% |
| Chaves | 101 | 98 | 100 | -1 | -1.0% | 2 | 2.0% |
| Cibola | 66 | 74 | 76 | 10 | 15.2% | 2 | 2.7% |
| Colfax | 25 | 23 | 25 | 0 | 0.0% | 2 | 8.7% |
| Curry | 72 | 69 | 70 | -2 | -2.8% | 1 | 1.4% |
| De Baca | 5 | 5 | 5 | 0 | 0.0% | 0 | 0.0% |
| Dona Ana | 229 | 269 | 260 | 31 | 13.5% | -9 | -3.3% |
| Eddy | 127 | 112 | 109 | -18 | -14.2% | -3 | -2.7% |
| Grant | 65 | 60 | 64 | -1 | -1.5% | 4 | 6.7% |
| Guadalupe | 12 | 16 | 15 | 3 | 25.0% | -1 | -6.3% |
| Harding | 1 | 1 | 1 | 0 | 0.0% | 0 | 0.0% |
| Hidalgo | 16 | 20 | 15 | -1 | -6.3% | -5 | -25.0% |
| Lea | 49 | 39 | 41 | -8 | -16.3% | 2 | 5.1% |
| Lincoln | 31 | 29 | 26 | -5 | -16.1% | -3 | -10.3% |
| Los Alamos | 4 | 6 | 7 | 3 | 75.0% | 1 | 16.7% |
| Luna | 44 | 45 | 43 | -1 | -2.3% | -2 | -4.4% |
| McKinley | 22 | 18 | 15 | -7 | -31.8% | -3 | -16.7% |
| Mora | 14 | 7 | 6 | -8 | -57.1% | -1 | -14.3% |
| Otero | 53 | 52 | 54 | 1 | 1.9% | 2 | 3.8% |
| Quay | 33 | 38 | 39 | 6 | 18.2% | 1 | 2.6% |
| Rio Arriba | 111 | 135 | 140 | 29 | 26.1% | 5 | 3.7% |
| Roosevelt | 9 | 12 | 9 | 0 | 0.0% | -3 | -25.0% |
| Sandoval | 80 | 106 | 101 | 21 | 26.3% | -5 | -4.7% |
| San Juan | 64 | 66 | 63 | -1 | -1.6% | -3 | -4.5% |
| San Miguel | 114 | 103 | 100 | -14 | -12.3% | -3 | -2.9% |
| Santa Fe | 177 | 204 | 221 | 44 | 24.9% | 17 | 8.3% |
| Sierra | 19 | 36 | 36 | 17 | 89.5% | 0 | 0.0% |
| Socorro | 43 | 49 | 47 | 4 | 9.3% | -2 | -4.1% |
| Taos | 67 | 72 | 76 | 9 | 13.4% | 4 | 5.6% |
| Torrance | 32 | 33 | 32 | 0 | 0.0% | -1 | -3.0% |
| Union | 8 | 9 | 10 | 2 | 25.0% | 1 | 11.1% |
| Valencia | 96 | 144 | 142 | 46 | 47.9% | -2 | -1.4% |
| TOTAL | 2,954 | 2,971 | 3,000 | 46 | 1.6% | 29 | 1.0% |

General Assistance (GA) Cases by Administrative Office

| Office # | Office | Mar-12 | Feb-13 | Mar-13 | Mar 12 – Mar 13 | | Feb 13 – Mar 13 | |
|----------|---------------|--------|--------|--------|-----------------|----------|-----------------|----------|
| | | | | | # change | % change | # change | % change |
| 1 | SE Bernalillo | 209 | 149 | 159 | -50 | -23.9% | 10 | 6.7% |
| 3 | Chaves | 101 | 98 | 100 | -1 | -1.0% | 2 | 2.0% |
| 4 | Colfax | 25 | 23 | 25 | 0 | 0.0% | 2 | 8.7% |
| 3104 | Union | 8 | 9 | 10 | 2 | 25.0% | 1 | 11.1% |
| 5 | Curry | 72 | 69 | 70 | -2 | -2.8% | 1 | 1.4% |
| 7 | West Dona Ana | 119 | 134 | 132 | 13 | 10.9% | -2 | -1.5% |
| 8 | Eddy | 87 | 75 | 74 | -13 | -14.9% | -1 | -1.3% |
| 9 | Grant | 66 | 60 | 64 | -2 | -3.0% | 4 | 6.7% |
| 1209 | Hidalgo | 16 | 20 | 15 | -1 | -6.3% | -5 | -25.0% |
| 10 | Guadalupe | 17 | 21 | 20 | 3 | 17.6% | -1 | -4.8% |
| 13 | Lea | 49 | 39 | 41 | -8 | -16.3% | 2 | 5.1% |
| 14 | Lincoln | 31 | 29 | 26 | -5 | -16.1% | -3 | -10.3% |
| 16 | Luna | 43 | 45 | 43 | 0 | 0.0% | -2 | -4.4% |
| 17 | McKinley | 22 | 18 | 15 | -7 | -31.8% | -3 | -16.7% |
| 19 | Otero | 53 | 52 | 54 | 1 | 1.9% | 2 | 3.8% |
| 20 | Quay | 33 | 38 | 39 | 6 | 18.2% | 1 | 2.6% |
| 21 | Rio Arriba | 117 | 142 | 148 | 31 | 26.5% | 6 | 4.2% |
| 22 | Roosevelt | 9 | 12 | 9 | 0 | 0.0% | -3 | -25.0% |
| 23 | Sandoval | 80 | 106 | 101 | 21 | 26.3% | -5 | -4.7% |
| 24 | San Juan | 64 | 66 | 63 | -1 | -1.6% | -3 | -4.5% |
| 25 | San Miguel | 129 | 109 | 105 | -24 | -18.6% | -4 | -3.7% |
| 26 | Santa Fe | 175 | 205 | 222 | 47 | 26.9% | 17 | 8.3% |
| 27 | Sierra | 22 | 39 | 37 | 15 | 68.2% | -2 | -5.1% |
| 28 | Socorro | 47 | 51 | 49 | 2 | 4.3% | -2 | -3.9% |
| 29 | Taos | 67 | 72 | 76 | 9 | 13.4% | 4 | 5.6% |
| 30 | Torrance | 32 | 33 | 32 | 0 | 0.0% | -1 | -3.0% |
| 32 | S Valencia | 30 | 49 | 48 | 18 | 60.0% | -1 | -2.0% |
| 33 | Cibola | 66 | 74 | 76 | 10 | 15.2% | 2 | 2.7% |
| 34 | Eddy/Artesia | 40 | 37 | 35 | -5 | -12.5% | -2 | -5.4% |
| 35 | NW Bernalillo | 296 | 286 | 293 | -3 | -1.0% | 7 | 2.4% |
| 36 | SW Bernalillo | 204 | 186 | 207 | 3 | 1.5% | 21 | 11.3% |
| 37 | East Dona Ana | 76 | 83 | 80 | 4 | 5.3% | -3 | -3.6% |
| 38 | S Dona Ana | 31 | 49 | 47 | 16 | 51.6% | -2 | -4.1% |
| 39 | NE Bernalillo | 452 | 398 | 391 | -61 | -13.5% | -7 | -1.8% |
| 42 | N Valencia | 66 | 95 | 94 | 28 | 42.4% | -1 | -1.1% |
| | TOTAL | 2,954 | 2,971 | 3,000 | 46 | 1.6% | 29 | 1.0% |

General Assistance (GA) Cases by Region

| | Mar-12 | Feb-13 | Mar-13 | Mar 12 – Mar 13 | | Feb 13 – Mar 13 | |
|------------------|--------------|--------------|--------------|-----------------|-------------|-----------------|-------------|
| | | | | # change | % change | # change | % change |
| NW Region 1 | 328 | 408 | 397 | 69 | 21.0% | -11 | -2.7% |
| NE Region 2 | 521 | 560 | 586 | 65 | 12.5% | 26 | 4.6% |
| Central Region 3 | 1,193 | 1,052 | 1,082 | -111 | -9.3% | 30 | 2.9% |
| SE Region 4 | 408 | 389 | 388 | -20 | -4.9% | -1 | -0.3% |
| SW Region 5 | 504 | 562 | 547 | 43 | 8.5% | -15 | -2.7% |
| TOTAL | 2,954 | 2,971 | 3,000 | 46 | 1.6% | 29 | 1.0% |



| GA Interim Assistance Reimbursements | | | | |
|---|------------|--------------------|------------|--------------------|
| | SFY 12 | | SFY 13 | |
| | Cases | Amount | Cases | Amount |
| <i>July</i> | 77 | \$224,022 | 105 | \$254,087 |
| August | 100 | \$256,766 | 88 | \$248,471 |
| <i>September</i> | 68 | \$159,712 | 101 | \$233,341 |
| October | 60 | \$158,539 | 101 | \$293,784 |
| <i>November</i> | 60 | \$158,596 | 72 | \$193,152 |
| December | 74 | \$183,600 | 84 | \$236,221 |
| <i>January</i> | 91 | \$341,348 | 79 | \$209,922 |
| February | 113 | \$307,090 | 77 | \$178,441 |
| <i>March</i> | 77 | \$186,834 | 85 | \$229,599 |
| April | 102 | \$357,392 | | |
| <i>May</i> | 90 | \$230,243 | | |
| June | 57 | \$215,729 | | |
| SFY Total | 969 | \$2,779,871 | 792 | \$2,077,018 |
| Monthly Average | 81 | \$231,656 | 88 | \$230,780 |

| State Funded Legal Aliens | | | | |
|----------------------------------|--------------|-----------------|--------------|-----------------|
| | SFY 12 | | SFY 13 | |
| | Participants | Payments | Participants | Payments |
| <i>July</i> | 110 | \$6,644 | 83 | \$5,029 |
| August | 113 | \$8,612 | 83 | \$6,132 |
| <i>September</i> | 107 | \$7,302 | 81 | \$4,863 |
| October | 93 | \$6,292 | 74 | \$4,270 |
| <i>November</i> | 94 | \$5,741 | 65 | \$4,131 |
| December | 94 | \$6,593 | 73 | \$4,040 |
| <i>January</i> | 91 | \$5,307 | 60 | \$3,561 |
| February | 83 | \$5,614 | 67 | \$3,796 |
| <i>March</i> | 69 | \$4,406 | 73 | \$4,046 |
| April | 73 | \$3,862 | | |
| <i>May</i> | 78 | \$5,371 | | |
| June | 80 | \$4,689 | | |
| SFY Total | 1,085 | \$70,433 | 659 | \$39,868 |
| Monthly Average | 90 | \$5,869 | 73 | \$4,430 |

IAR case figures reflect those with expected reimbursement amounts above \$0. Figures unreconciled and subject to change.

| Refugee Cash Assistance | | | | |
|--------------------------------|---------------|-----------------|---------------|-----------------|
| | SFY 12 | | SFY 13 | |
| | Cases | Payments | Cases | Payments |
| <i>July</i> | 15 | \$6,428 | 23 | \$7,155 |
| August | 9 | \$4,433 | 27 | \$7,742 |
| <i>September</i> | 5 | \$2,930 | 32 | \$8,267 |
| October | 5 | \$1,519 | 32 | \$9,803 |
| <i>November</i> | 10 | \$2,675 | 31 | \$9,552 |
| December | 9 | \$3,380 | 40 | \$10,435 |
| <i>January</i> | 12 | \$3,285 | 36 | \$11,489 |
| February | 13 | \$3,210 | 27 | \$11,107 |
| <i>March</i> | 13 | \$3,739 | 30 | \$8,678 |
| April | 23 | \$5,654 | | |
| <i>May</i> | 26 | \$7,579 | | |
| June | 22 | \$7,496 | | |
| SFY Total | 162 | \$52,328 | 278 | \$84,228 |
| Monthly Average | 14 | \$4,361 | 31 | \$9,359 |

| State Supplement for Residential Care (SSRC) | | | | |
|---|---------------|-----------------|---------------|-----------------|
| | SFY 12 | | SFY 13 | |
| | Cases | Payments | Cases | Payments |
| <i>July</i> | 51 | \$5,300 | 45 | \$4,600 |
| August | 53 | \$5,500 | 44 | \$4,600 |
| <i>September</i> | 52 | \$5,300 | 46 | \$4,800 |
| October | 53 | \$5,400 | 47 | \$4,700 |
| <i>November</i> | 53 | \$5,300 | 46 | \$4,900 |
| December | 52 | \$5,400 | 47 | \$5,200 |
| <i>January</i> | 45 | \$5,600 | 50 | \$5,100 |
| February | 44 | \$4,700 | 47 | \$4,900 |
| <i>March</i> | 42 | \$4,400 | 45 | \$4,800 |
| April | 44 | \$4,400 | | |
| <i>May</i> | 46 | \$4,800 | | |
| June | 46 | \$4,600 | | |
| SFY Total | 581 | \$60,700 | 417 | \$43,600 |
| Monthly Average | 48 | \$5,058 | 46 | \$4,844 |

Low Income Home Energy Assistance Program (LIHEAP) Payments by Administrative Office

Cumulative, For Federal Fiscal Year 2013

| Office # | Office | Payments | Number of Households Paid |
|----------|---------------|-----------|---------------------------|
| 1 | SE Bernalillo | \$283,968 | 2,443 |
| 3 | Chaves | \$288,496 | 2,333 |
| 4 | Colfax | \$75,552 | 618 |
| 3104 | Union | \$14,544 | 110 |
| 5 | Curry | \$134,864 | 1,118 |
| 7 | West Dona Ana | \$372,768 | 3,116 |
| 8 | Eddy | \$89,152 | 730 |
| 9 | Grant | \$137,792 | 1,116 |
| 1209 | Hidalgo | \$22,752 | 186 |
| 10 | Guadalupe | \$70,368 | 507 |
| 13 | Lea | \$103,120 | 821 |
| 14 | Lincoln | \$52,496 | 434 |
| 16 | Luna | \$161,408 | 1,258 |
| 17 | McKinley | \$77,856 | 657 |
| 19 | Otero | \$61,456 | 560 |
| 20 | Quay | \$64,592 | 521 |
| 21 | Rio Arriba | \$372,800 | 3,051 |
| 22 | Roosevelt | \$66,896 | 545 |

| Office # | Office | Payments | Number of Households Paid |
|----------|---------------|--------------------|---------------------------|
| 23 | Sandoval | \$176,384 | 1,579 |
| 24 | San Juan | \$230,992 | 1,894 |
| 25 | San Miguel | \$334,928 | 2,483 |
| 26 | Santa Fe | \$255,456 | 2,175 |
| 27 | Sierra | \$120,672 | 926 |
| 28 | Socorro | \$130,048 | 992 |
| 29 | Taos | \$239,072 | 1,870 |
| 30 | Torrance | \$122,192 | 964 |
| 32 | S Valencia | \$156,480 | 1,257 |
| 33 | Cibola | \$129,568 | 1,057 |
| 34 | Eddy/Artesia | \$36,512 | 299 |
| 35 | NW Bernalillo | \$319,376 | 2,822 |
| 36 | SW Bernalillo | \$455,536 | 3,940 |
| 37 | East Dona Ana | \$261,664 | 2,206 |
| 38 | S Dona Ana | \$302,864 | 2,484 |
| 39 | NE Bernalillo | \$514,592 | 4,541 |
| 42 | N Valencia | \$262,144 | 2,145 |
| | TOTAL | \$6,499,360 | 53,758 |

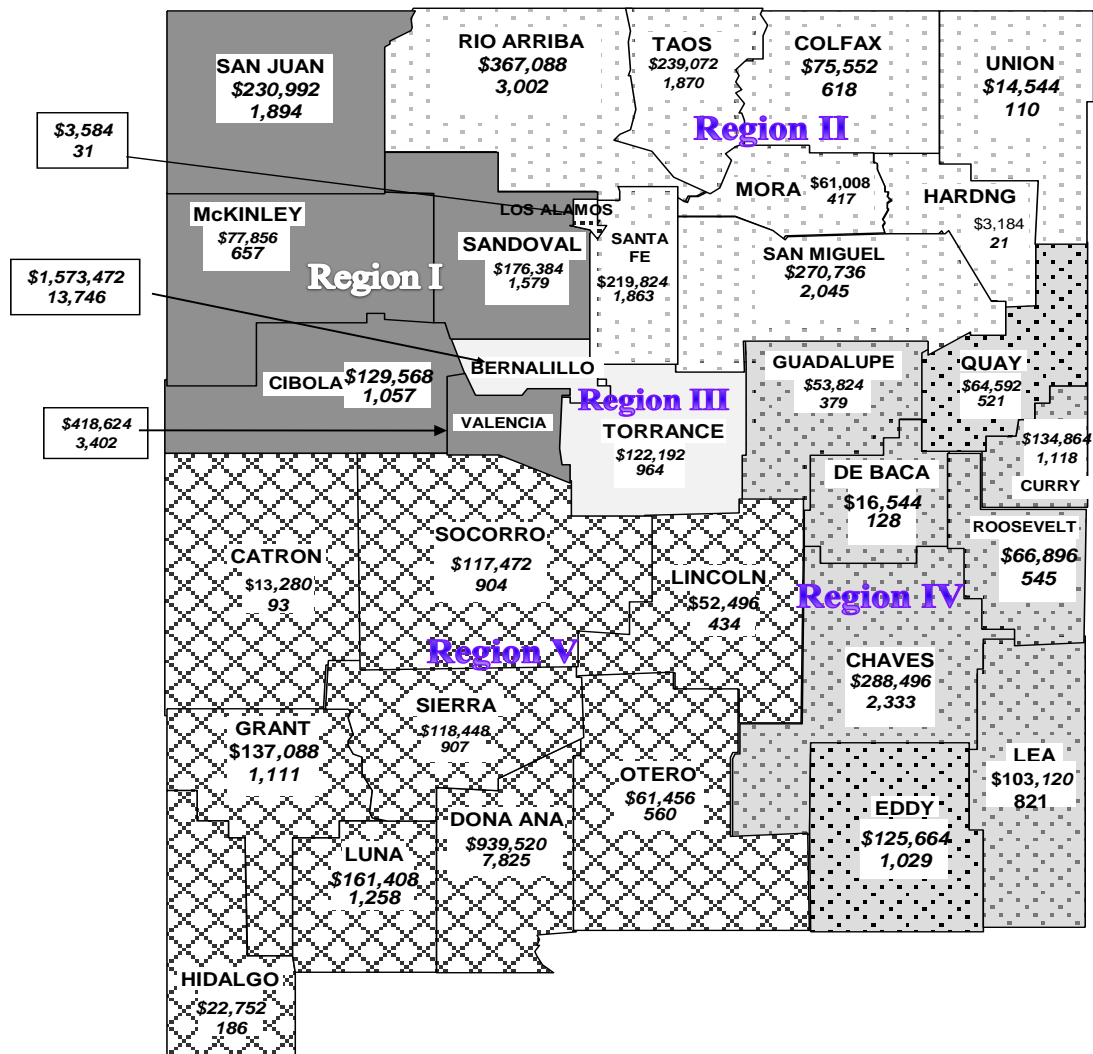
LIHEAP Payments by Region

Cumulative, For Federal Fiscal Year 2013

| Region | Payments | Number of Households Paid |
|------------------|--------------------|---------------------------|
| NW Region 1 | \$1,033,424 | 8,589 |
| NE Region 2 | \$1,292,352 | 10,307 |
| Central Region 3 | \$1,695,664 | 14,710 |
| SE Region 4 | \$854,000 | 6,874 |
| SW Region 5 | \$1,623,920 | 13,278 |
| TOTAL | \$6,499,360 | 53,758 |

Note: Five Sandoval Indian Pueblos, Inc., Jemez Pueblo, The Jicarilla Nation, Laguna Pueblo, Nambé Pueblo, The Navajo Nation, and Zuni Pueblo administer their own LIHEAP programs. LIHEAP does not process new applications received during the month of September until the following Federal fiscal year.

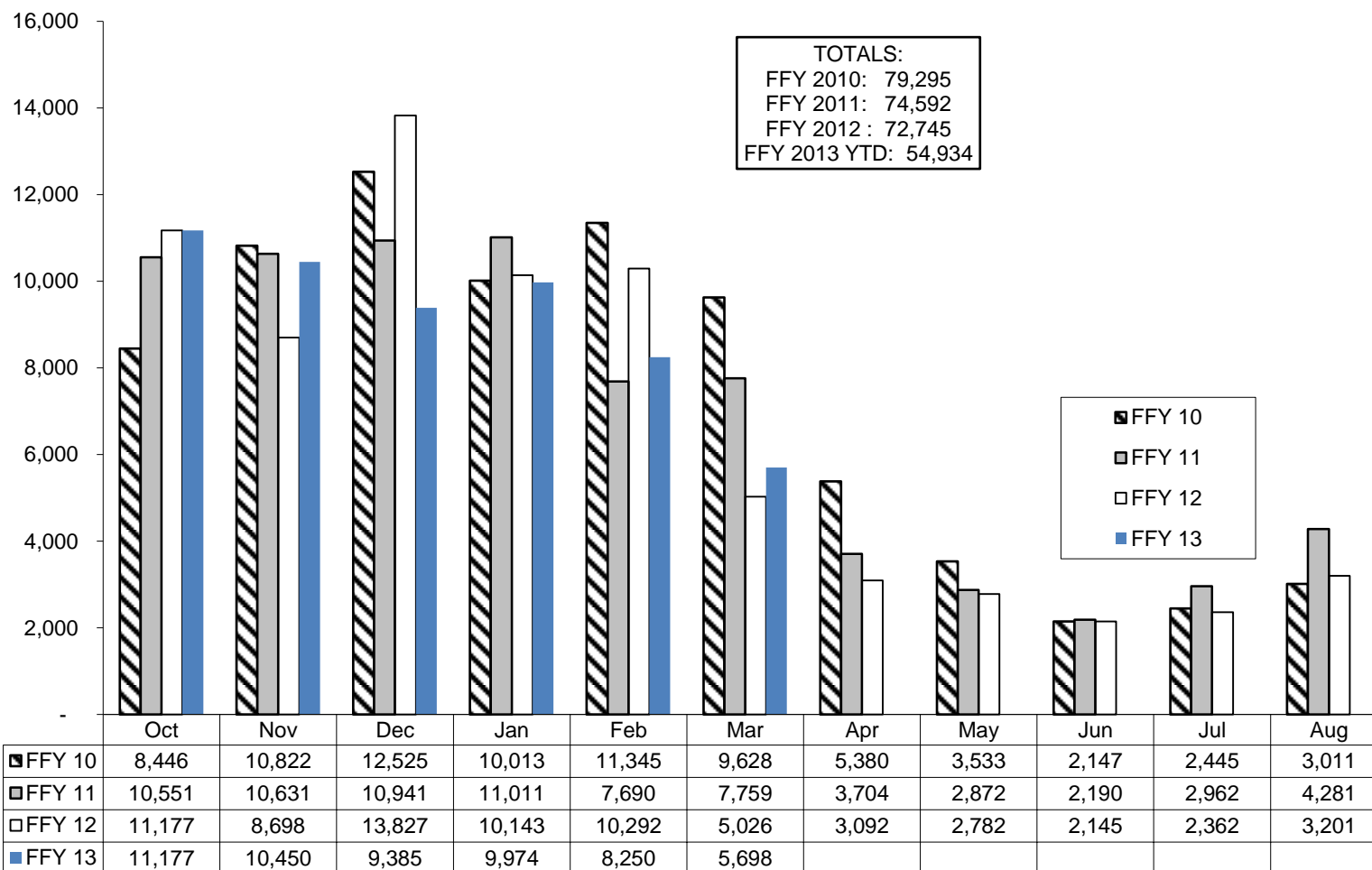
LIHEAP PAYMENTS BY COUNTY



| Region Totals | | |
|--------------------|--------------------|---------------|
| Region | Payment | Households |
| Region I | \$1,033,424 | 8,589 |
| Region II | \$1,292,352 | 10,307 |
| Region III | \$1,695,664 | 14,710 |
| Region IV | \$854,000 | 6,874 |
| Region V | \$1,623,920 | 13,278 |
| State total | \$6,499,360 | 53,758 |

Legend
 1. \$ Payments
 2. # of households paid

LIHEAP Application Approvals



Medicaid Eligibles by County

| County | Dec-11 | Nov-12 | Dec-12 | Dec 11 – Dec 12 | | Nov 12 – Dec 12 | |
|--------------|----------------|----------------|----------------|-----------------|-------------|-----------------|--------------|
| | | | | # change | % change | # change | % change |
| Bernalillo | 143,783 | 146,627 | 146,554 | 2,771 | 1.9% | -73 | 0.0% |
| Catron | 515 | 502 | 501 | -14 | -2.7% | -1 | -0.2% |
| Chaves | 20,102 | 20,477 | 20,487 | 385 | 1.9% | 10 | 0.0% |
| Cibola | 8,567 | 8,886 | 8,848 | 281 | 3.3% | -38 | -0.4% |
| Colfax | 3,634 | 3,457 | 3,482 | -152 | -4.2% | 25 | 0.7% |
| Curry | 13,144 | 13,188 | 13,138 | -6 | 0.0% | -50 | -0.4% |
| De Baca | 495 | 475 | 470 | -25 | -5.1% | -5 | -1.1% |
| Dona Ana | 66,749 | 68,240 | 68,118 | 1,369 | 2.1% | -122 | -0.2% |
| Eddy | 13,533 | 13,668 | 13,586 | 53 | 0.4% | -82 | -0.6% |
| Grant | 7,161 | 7,013 | 6,904 | -257 | -3.6% | -109 | -1.6% |
| Guadalupe | 1,304 | 1,351 | 1,344 | 40 | 3.1% | -7 | -0.5% |
| Harding | 60 | 53 | 53 | -7 | -11.7% | 0 | 0.0% |
| Hidalgo | 1,263 | 1,193 | 1,193 | -70 | -5.5% | 0 | 0.0% |
| Lea | 15,822 | 16,507 | 16,474 | 652 | 4.1% | -33 | -0.2% |
| Lincoln | 4,256 | 4,553 | 4,551 | 295 | 6.9% | -2 | 0.0% |
| Los Alamos | 498 | 628 | 628 | 130 | 26.1% | 0 | 0.0% |
| Luna | 9,144 | 9,593 | 9,531 | 387 | 4.2% | -62 | -0.6% |
| McKinley | 29,414 | 30,207 | 29,977 | 563 | 1.9% | -230 | -0.8% |
| Mora | 1,259 | 1,118 | 1,111 | -148 | -11.8% | -7 | -0.6% |
| Otero | 11,560 | 11,578 | 11,636 | 76 | 0.7% | 58 | 0.5% |
| Quay | 2,658 | 2,710 | 2,692 | 34 | 1.3% | -18 | -0.7% |
| Rio Arriba | 13,942 | 14,733 | 14,651 | 709 | 5.1% | -82 | -0.6% |
| Roosevelt | 4,907 | 4,871 | 4,851 | -56 | -1.1% | -20 | -0.4% |
| Sandoval | 25,580 | 26,840 | 26,924 | 1,344 | 5.3% | 84 | 0.3% |
| San Juan | 34,895 | 36,254 | 36,275 | 1,380 | 4.0% | 21 | 0.1% |
| San Miguel | 9,336 | 9,967 | 10,071 | 735 | 7.9% | 104 | 1.0% |
| Santa Fe | 23,280 | 24,782 | 24,710 | 1,430 | 6.1% | -72 | -0.3% |
| Sierra | 3,381 | 3,519 | 3,603 | 222 | 6.6% | 84 | 2.4% |
| Socorro | 5,162 | 5,391 | 5,374 | 212 | 4.1% | -17 | -0.3% |
| Taos | 8,012 | 8,242 | 8,269 | 257 | 3.2% | 27 | 0.3% |
| Torrance | 5,897 | 5,917 | 5,910 | 13 | 0.2% | -7 | -0.1% |
| Union | 831 | 1,245 | 1,117 | 286 | 34.4% | -128 | -10.3% |
| Valencia | 20,455 | 20,803 | 20,540 | 85 | 0.4% | -263 | -1.3% |
| Unspecified | 487 | 514 | 512 | 25 | 5.1% | -2 | -0.4% |
| TOTAL | 511,086 | 525,102 | 524,085 | 12,999 | 2.5% | -1,017 | -0.2% |

Note: All figures are updated historically to include retroactive eligibility, retroactive closures and other late reporting eligibility changes. Excludes clients in: SLIMB, QI1, SCI and Adult Expansion, PAK, PAM & SEIP. Source: <http://www.hsd.state.nm.us/mad/RMedicaidEligibility.html>

Medicaid Cases by County

| County | Mar-12 | Feb-13 | Mar-13 | Mar 12 – Mar 13 | | Feb 13 – Mar 13 | |
|------------|---------|---------|---------|-----------------|----------|-----------------|----------|
| | | | | # change | % change | # change | % change |
| Bernalillo | 89,864 | 91,314 | 91,237 | 1,373 | 1.5% | -77 | -0.1% |
| Catron | 337 | 323 | 322 | -15 | -4.5% | -1 | -0.3% |
| Chaves | 11,996 | 12,101 | 12,070 | 74 | 0.6% | -31 | -0.3% |
| Cibola | 4,405 | 4,530 | 4,494 | 89 | 2.0% | -36 | -0.8% |
| Colfax | 1,784 | 1,642 | 1,668 | -116 | -6.5% | 26 | 1.6% |
| Curry | 7,050 | 7,137 | 7,077 | 27 | 0.4% | -60 | -0.8% |
| De Baca | 275 | 288 | 288 | 13 | 4.7% | 0 | 0.0% |
| Dona Ana | 38,900 | 39,731 | 39,847 | 947 | 2.4% | 116 | 0.3% |
| Eddy | 8,063 | 8,091 | 8,077 | 14 | 0.2% | -14 | -0.2% |
| Grant | 4,427 | 4,318 | 4,275 | -152 | -3.4% | -43 | -1.0% |
| Guadalupe | 786 | 762 | 771 | -15 | -1.9% | 9 | 1.2% |
| Harding | 47 | 36 | 36 | -11 | -23.4% | 0 | 0.0% |
| Hidalgo | 824 | 766 | 791 | -33 | -4.0% | 25 | 3.3% |
| Lea | 8,655 | 8,982 | 8,902 | 247 | 2.9% | -80 | -0.9% |
| Lincoln | 2,993 | 3,130 | 3,140 | 147 | 4.9% | 10 | 0.3% |
| Los Alamos | 334 | 406 | 426 | 92 | 27.5% | 20 | 4.9% |
| Luna | 5,374 | 5,468 | 5,484 | 110 | 2.0% | 16 | 0.3% |
| McKinley | 13,833 | 14,090 | 13,982 | 149 | 1.1% | -108 | -0.8% |
| Mora | 720 | 627 | 611 | -109 | -15.1% | -16 | -2.6% |
| Otero | 7,363 | 7,214 | 7,127 | -236 | -3.2% | -87 | -1.2% |
| Quay | 1,623 | 1,597 | 1,580 | -43 | -2.6% | -17 | -1.1% |
| Rio Arriba | 8,819 | 9,011 | 9,013 | 194 | 2.2% | 2 | 0.0% |
| Roosevelt | 2,735 | 2,696 | 2,684 | -51 | -1.9% | -12 | -0.4% |
| Sandoval | 14,987 | 16,078 | 16,088 | 1,101 | 7.3% | 10 | 0.1% |
| San Juan | 17,376 | 17,960 | 18,039 | 663 | 3.8% | 79 | 0.4% |
| San Miguel | 5,350 | 5,410 | 5,314 | -36 | -0.7% | -96 | -1.8% |
| Santa Fe | 14,616 | 15,636 | 15,678 | 1,062 | 7.3% | 42 | 0.3% |
| Sierra | 2,144 | 2,220 | 2,223 | 79 | 3.7% | 3 | 0.1% |
| Socorro | 2,509 | 2,617 | 2,593 | 84 | 3.3% | -24 | -0.9% |
| Taos | 5,424 | 5,528 | 5,558 | 134 | 2.5% | 30 | 0.5% |
| Torrance | 3,682 | 3,811 | 3,816 | 134 | 3.6% | 5 | 0.1% |
| Union | 446 | 426 | 412 | -34 | -7.6% | -14 | -3.3% |
| Valencia | 11,926 | 12,599 | 12,604 | 678 | 5.7% | 5 | 0.0% |
| TOTAL | 299,667 | 306,545 | 306,227 | 6,560 | 2.2% | -318 | -0.1% |

SCI cases are included in the client's county of residence.

Medicaid Cases by Administrative Office

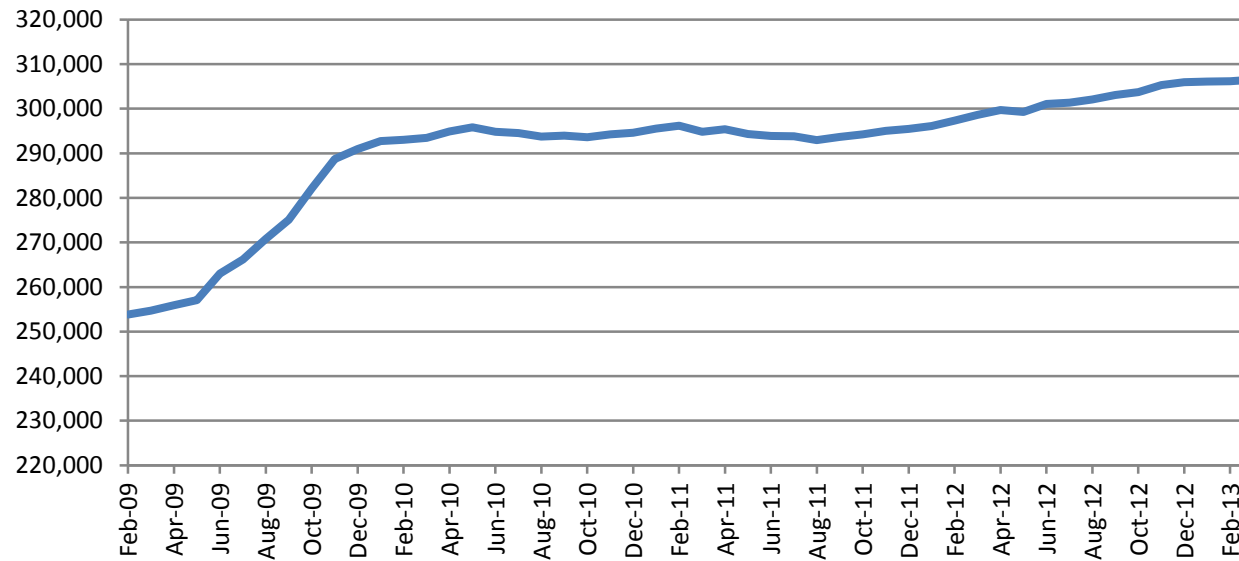
| Office # | Office | Mar-12 | Feb-13 | Mar-13 | Mar 12 – Mar 13 | | Feb 13 – Mar 13 | |
|----------|---------------|----------------|----------------|----------------|-----------------|-------------|-----------------|--------------|
| | | | | | # change | % change | # change | % change |
| 1 | SE Bernalillo | 14,419 | 14,278 | 14,194 | -225 | -1.6% | -84 | -0.6% |
| 3 | Chaves | 10,201 | 10,474 | 10,453 | 252 | 2.5% | -21 | -0.2% |
| 4 | Colfax | 1,545 | 1,429 | 1,458 | -87 | -5.6% | 29 | 2.0% |
| 3104 | Union | 405 | 389 | 376 | -29 | -7.2% | -13 | -3.3% |
| 5 | Curry | 6,125 | 6,292 | 6,239 | 114 | 1.9% | -53 | -0.8% |
| 7 | West Dona Ana | 9,925 | 10,883 | 10,925 | 1,000 | 10.1% | 42 | 0.4% |
| 8 | Eddy | 4,509 | 4,547 | 4,551 | 42 | 0.9% | 4 | 0.1% |
| 9 | Grant | 3,700 | 3,597 | 3,572 | -128 | -3.5% | -25 | -0.7% |
| 1209 | Hidalgo | 638 | 602 | 606 | -32 | -5.0% | 4 | 0.7% |
| 10 | Guadalupe | 888 | 896 | 906 | 18 | 2.0% | 10 | 1.1% |
| 13 | Lea | 7,967 | 8,379 | 8,304 | 337 | 4.2% | -75 | -0.9% |
| 14 | Lincoln | 2,290 | 2,493 | 2,511 | 221 | 9.7% | 18 | 0.7% |
| 16 | Luna | 4,474 | 4,734 | 4,756 | 282 | 6.3% | 22 | 0.5% |
| 17 | McKinley | 13,259 | 13,569 | 13,462 | 203 | 1.5% | -107 | -0.8% |
| 19 | Otero | 6,017 | 5,976 | 5,897 | -120 | -2.0% | -79 | -1.3% |
| 20 | Quay | 1,343 | 1,335 | 1,318 | -25 | -1.9% | -17 | -1.3% |
| 21 | Rio Arriba | 7,974 | 8,342 | 8,384 | 410 | 5.1% | 42 | 0.5% |
| 22 | Roosevelt | 2,318 | 2,319 | 2,309 | -9 | -0.4% | -10 | -0.4% |
| 23 | Sandoval | 13,314 | 14,106 | 14,138 | 824 | 6.2% | 32 | 0.2% |
| 24 | San Juan | 16,841 | 17,490 | 17,572 | 731 | 4.3% | 82 | 0.5% |
| 25 | San Miguel | 5,127 | 5,171 | 5,074 | -53 | -1.0% | -97 | -1.9% |
| 26 | Santa Fe | 12,551 | 13,716 | 13,768 | 1,217 | 9.7% | 52 | 0.4% |
| 27 | Sierra | 2,854 | 2,935 | 2,937 | 83 | 2.9% | 2 | 0.1% |
| 28 | Socorro | 2,431 | 2,582 | 2,558 | 127 | 5.2% | -24 | -0.9% |
| 29 | Taos | 4,334 | 4,518 | 4,554 | 220 | 5.1% | 36 | 0.8% |
| 30 | Torrance | 2,943 | 3,033 | 3,047 | 104 | 3.5% | 14 | 0.5% |
| 32 | S Valencia | 3,230 | 3,346 | 3,361 | 131 | 4.1% | 15 | 0.4% |
| 33 | Cibola | 4,103 | 4,267 | 4,233 | 130 | 3.2% | -34 | -0.8% |
| 34 | Eddy/Artesia | 2,306 | 2,409 | 2,399 | 93 | 4.0% | -10 | -0.4% |
| 35 | NW Bernalillo | 20,405 | 21,101 | 21,144 | 739 | 3.6% | 43 | 0.2% |
| 36 | SW Bernalillo | 20,749 | 21,065 | 21,166 | 417 | 2.0% | 101 | 0.5% |
| 37 | East Dona Ana | 9,927 | 9,952 | 10,040 | 113 | 1.1% | 88 | 0.9% |
| 38 | S Dona Ana | 12,037 | 12,399 | 12,417 | 380 | 3.2% | 18 | 0.1% |
| 39 | NE Bernalillo | 21,261 | 21,927 | 21,891 | 630 | 3.0% | -36 | -0.2% |
| 42 | N Valencia | 7,156 | 7,312 | 7,328 | 172 | 2.4% | 16 | 0.2% |
| | SCI | 40,101 | 38,682 | 38,379 | -1,722 | -4.3% | -303 | -0.8% |
| | TOTAL | 299,667 | 306,545 | 306,227 | 6,560 | 2.2% | -318 | -0.1% |

Medicaid Cases by Region

| | Mar-12 | Feb-13 | Mar-13 | Mar 12 – Mar 13 | | Feb 13 – Mar 13 | |
|------------------|----------------|----------------|----------------|-----------------|-------------|-----------------|--------------|
| | | | | # change | % change | # change | % change |
| NW Region 1 | 57,903 | 60,090 | 60,094 | 2,191 | 3.8% | 4 | 0.0% |
| NE Region 2 | 31,936 | 33,565 | 33,614 | 1,678 | 5.3% | 49 | 0.1% |
| Central Region 3 | 79,777 | 81,404 | 81,442 | 1,665 | 2.1% | 38 | 0.0% |
| SE Region 4 | 35,657 | 36,651 | 36,479 | 822 | 2.3% | -172 | -0.5% |
| SW Region 5 | 94,394 | 94,835 | 94,598 | 204 | 0.2% | -237 | -0.2% |
| TOTAL | 299,667 | 306,545 | 306,227 | 6,560 | 2.2% | -318 | -0.1% |

SCI cases are included in Region 5.

Medicaid Cases



Medicaid Cases by Category

| Cat # | Category Description | Cases | Cat # | Category Description | Cases |
|--|--|----------------|--|---|----------------|
| Medicaid Extension | | | State Funded Special Medical Needs | | |
| 001 | Medicaid Extension for Aged | 34 | 051 | Medical Assistance for Aged and Seriously ill | 0 |
| 003 | Medicaid Extension for Blind | 6 | 053 | Medical Assistance for Blind and Seriously ill | 0 |
| 004 | Medicaid Extension for Disabled | 544 | 054 | Medical Assistance for Disabled and Seriously ill | 1 |
| Medicaid Extension Total | | 584 | State Funded Special Medical Needs Total | | 1 |
| Medicaid for Women, Children, and Low Income Families | | | Institutional Care Medicaid | | |
| 072 | JUL Medicaid with Cash Assistance | 7,756 | 081 | Institutional Care Medicaid for Aged | 3,115 |
| 072 | JUL Medicaid without Cash Assistance | 30,532 | 083 | Institutional Care Medicaid for Blind | 0 |
| 030 | Full Coverage Medicaid for Pregnant Women | 372 | 084 | Institutional Care Medicaid for Disabled | 888 |
| 031 | Newborns | 14,307 | Institutional Care Medicaid Total | | 4,003 |
| 032 | Children (Up to 185% Federal Poverty) | 101,197 | Home and Community-Based Waivers Medicaid | | |
| 032c | Children - SCHIP (Up to 235% Federal Poverty) | 4,667 | 090 | Medicaid Waiver for HIV/AIDS | 21 |
| 035f | Family Planning (Up to 185% Federal Poverty) | 46,487 | 091 | Medicaid Waiver for Aged | 1,457 |
| 035p | Pregnancy (Up to 185% Federal Poverty) | 6,618 | 092 | Brain Injury | 292 |
| 052 | Breast Cancer and Cervical Cancer | 386 | 093 | Medicaid Waiver for Blind | 5 |
| Medicaid for Women, Children, and Low Income Families Total | | 212,322 | 094 | Medicaid Waiver for Disabled | 1,333 |
| Post-JUL Medicaid | | | 095 | Medicaid Waiver for Medically Fragile Children | 215 |
| 027 | 4-Month Medicaid due to Increased Child Support | 0 | 096 | Medicaid Waiver for Developmentally Disabled | 3,993 |
| 028 | 12-Month Medicaid due to Increased Earnings | 8,388 | 097 | Non-Medicaid Waiver for Aged | 0 |
| Post-JUL Medicaid Total | | 8,388 | 098 | Non-Medicaid Waiver for Blind | 0 |
| Special Medicaid Programs | | | 099 | Non-Medicaid Waiver for Disabled | 0 |
| 040 | Medicaid for Qualified Medicare Beneficiaries | 21,890 | Home and Community-Based Waivers Medicaid Total | | 7,316 |
| 045 | Medicaid for Special Low Income Medicare Beneficiaries | 8,569 | Health Insurance Flexibility & Accountability (HIFA) Waiver | | |
| 045 | Medicaid for Qualifying Individuals 1 | 2,836 | 062 | State Coverage Insurance * | |
| 043 | Working Disabled Individuals | 1,844 | (HIFA) Waiver Total | | 38,379 |
| 049 | Medical Assistance for Single Adult Refugees | 95 | | | |
| Special Medicaid Programs Total | | 35,234 | Total Medicaid Cases | | 306,227 |

* Category 062 (Insure New Mexico Program) reflects all registered cases determined eligible at the end of the benefit month. Of the cases determined eligible for this month 38,266 were enrolled in the program. This table includes preliminary data that is subject to change.

SNAP Timeliness Rates (Percent of Cases Processed Timely)

| Admin By Region | SNAP | SNAP (Expedited) |
|-----------------------------|---------------|---------------------|
| NW Region (1) | | |
| Cibola | 99.4% | 100.0% |
| <i>McKinley</i> | <i>99.6%</i> | <i>98.9%</i> |
| Sandoval | 98.7% | 98.7% |
| <i>San Juan</i> | <i>99.8%</i> | <i>100.0%</i> |
| Valencia South | 100.0% | 100.0% |
| <i>Valencia North</i> | <i>100.0%</i> | <i>100.0%</i> |
| NW Region Total | 99.5% | 99.4% |
| NE Region (2) | | |
| <i>Colfax</i> | <i>100.0%</i> | <i>100.0%</i> |
| Rio Arriba | 99.4% | 99.4% |
| <i>San Miguel</i> | <i>99.3%</i> | <i>98.2%</i> |
| Santa Fe | 98.8% | 98.8% |
| <i>Taos</i> | <i>99.6%</i> | <i>100.0%</i> |
| NE Region Total | 99.2% | 99.1% |
| Central Region (3) | | |
| NE Bernalillo | 99.3% | 99.1% |
| <i>NW Bernalillo</i> | <i>98.7%</i> | <i>99.3%</i> |
| SE Bernalillo | 99.4% | 99.8% |
| <i>SW Bernalillo</i> | <i>99.2%</i> | <i>99.3%</i> |
| Torrance | 100.0% | 100.0% |
| Central Region Total | 99.2% | 99.3% |

| Admin By Region | SNAP | SNAP (Expedited) |
|----------------------------|---------------|---------------------|
| SE Region (4) | | |
| Chaves | 99.3% | 98.7% |
| <i>Curry</i> | <i>99.0%</i> | <i>100.0%</i> |
| Guadalupe | 100.0% | 100.0% |
| <i>Eddy</i> | <i>98.9%</i> | <i>97.9%</i> |
| Eddy Artesia | 100.0% | 100.0% |
| <i>Lea</i> | <i>99.1%</i> | <i>100.0%</i> |
| Quay | 100.0% | 100.0% |
| <i>Roosevelt</i> | <i>100.0%</i> | <i>100.0%</i> |
| SE Region Total | 99.3% | 99.2% |
| SW Region (5) | | |
| <i>West Doña Ana</i> | <i>100.0%</i> | <i>100.0%</i> |
| East Doña Ana | 99.3% | 100.0% |
| <i>Doña Ana (Southern)</i> | <i>99.7%</i> | <i>100.0%</i> |
| Grant | 99.6% | 100.0% |
| <i>Lincoln</i> | <i>100.0%</i> | <i>100.0%</i> |
| Luna | 100.0% | 100.0% |
| <i>Otero</i> | <i>100.0%</i> | <i>100.0%</i> |
| Sierra | 99.1% | 100.0% |
| <i>Socorro</i> | <i>99.3%</i> | <i>100.0%</i> |
| SW Region Total | 99.7% | 100.0% |
| State Total | 99.4% | 99.4% |

Timeliness of CAP cases is reflected in the appropriate administrative office.

Income Support Division Caseloads by County and Region *

| County (Administrative office) | SNAP Cases | TANF Cases | Education Works Cases | General Assistance Cases | Medical Assistance Cases * | SSRC Cases | Refugee Assistance Cases | Total Cases | Authorized FAA Case Workers | Cases per Authorized FAA Case Worker | Actual FAA Case Workers | Cases per Actual Case Worker |
|-----------------------------------|---------------|---------------|-----------------------------|--------------------------------|----------------------------------|---------------|--------------------------------|----------------|-----------------------------------|---|-------------------------------|---------------------------------------|
| Cibola *** | 3,197 | 238 | 1 | 76 | 4,202 | 0 | 0 | 7,714 | 8 | 971 | 8 | 971 |
| <i>Navajo (Cibola)</i> | <i>21</i> | <i>0</i> | <i>0</i> | <i>0</i> | <i>28</i> | <i>0</i> | <i>0</i> | <i>49</i> | <i>0</i> | <i>-</i> | <i>0</i> | <i>-</i> |
| Zuni (Cibola) | 1 | 0 | 0 | 0 | 3 | 0 | 0 | 4 | 0 | - | 0 | - |
| <i>McKinley</i> | <i>1,500</i> | <i>65</i> | <i>0</i> | <i>10</i> | <i>2,532</i> | <i>0</i> | <i>0</i> | <i>4,107</i> | <i>24</i> | <i>931</i> | <i>21</i> | <i>1,064</i> |
| Cibola (McKinley) | 10 | 1 | 4 | 0 | 8 | 0 | 0 | 23 | 0 | - | 0 | - |
| <i>Navajo (McKinley)</i> | <i>6,225</i> | <i>29</i> | <i>0</i> | <i>5</i> | <i>9,341</i> | <i>0</i> | <i>0</i> | <i>15,600</i> | <i>0</i> | <i>-</i> | <i>0</i> | <i>-</i> |
| Zuni (McKinley) | 1,042 | 1 | 0 | 0 | 1,581 | 0 | 0 | 2,624 | 0 | - | 0 | - |
| <i>San Juan</i> | <i>10,189</i> | <i>248</i> | <i>1</i> | <i>63</i> | <i>17,030</i> | <i>0</i> | <i>0</i> | <i>27,531</i> | <i>27</i> | <i>1,065</i> | <i>22</i> | <i>1,307</i> |
| Navajo (San Juan) | 691 | 0 | 0 | 0 | 542 | 0 | 0 | 1,233 | 0 | - | 0 | - |
| <i>Sandoval</i> | <i>9,137</i> | <i>569</i> | <i>29</i> | <i>101</i> | <i>14,081</i> | <i>0</i> | <i>0</i> | <i>23,917</i> | <i>24</i> | <i>1,002</i> | <i>22</i> | <i>1,094</i> |
| Navajo (Sandoval) | 84 | 0 | 0 | 0 | 57 | 0 | 0 | 141 | 0 | - | 0 | - |
| <i>Valencia North (Los Lunas)</i> | <i>5,526</i> | <i>444</i> | <i>6</i> | <i>94</i> | <i>7,328</i> | <i>5</i> | <i>0</i> | <i>13,403</i> | <i>15</i> | <i>894</i> | <i>14</i> | <i>957</i> |
| Torrance (Valencia) | 0 | 0 | 0 | 0 | 0 | 0 | 0 | 0 | 0 | - | 0 | - |
| <i>Valencia South (Belen)</i> | <i>3,139</i> | <i>227</i> | <i>6</i> | <i>48</i> | <i>3,361</i> | <i>0</i> | <i>0</i> | <i>6,781</i> | <i>5</i> | <i>1,356</i> | <i>5</i> | <i>1,356</i> |
| Socorro (Valencia) | 1 | 0 | 0 | 0 | 0 | 0 | 0 | 1 | 0 | - | 0 | - |
| <i>N/A Outreach</i> | <i>0</i> | <i>0</i> | <i>0</i> | <i>0</i> | <i>0</i> | <i>0</i> | <i>0</i> | <i>0</i> | <i>6</i> | <i>-</i> | <i>4</i> | <i>-</i> |
| CAP Central Unit ** | 0 | 0 | 0 | 0 | 0 | 0 | 0 | 0 | 4 | 0 | 3 | 0 |
| NW Region (1) Total | 40,763 | 1,822 | 47 | 397 | 60,094 | 5 | 0 | 103,128 | 107 | 964 | 95 | 1,086 |
| Colfax | 1,211 | 106 | 4 | 25 | 1,458 | 0 | 0 | 2,804 | 4 | 701 | 3 | 935 |
| <i>Union (Colfax)</i> | <i>218</i> | <i>13</i> | <i>0</i> | <i>10</i> | <i>376</i> | <i>0</i> | <i>0</i> | <i>617</i> | <i>1</i> | <i>617</i> | <i>1</i> | <i>617</i> |
| Rio Arriba | 6,605 | 501 | 5 | 140 | 7,888 | 0 | 0 | 15,139 | 17 | 942 | 13 | 1,232 |
| <i>Los Alamos (Rio Arriba)</i> | <i>248</i> | <i>14</i> | <i>0</i> | <i>7</i> | <i>384</i> | <i>0</i> | <i>0</i> | <i>653</i> | <i>0</i> | <i>-</i> | <i>0</i> | <i>-</i> |
| Santa Fe (Rio Arriba) | 98 | 7 | 0 | 1 | 112 | 0 | 0 | 218 | 0 | - | 0 | - |
| <i>San Miguel</i> | <i>4,798</i> | <i>296</i> | <i>15</i> | <i>98</i> | <i>4,561</i> | <i>26</i> | <i>0</i> | <i>9,794</i> | <i>18</i> | <i>602</i> | <i>18</i> | <i>602</i> |
| Harding (San Miguel) | 23 | 0 | 0 | 1 | 33 | 0 | 0 | 57 | 0 | - | 0 | - |
| <i>Mora (San Miguel)</i> | <i>478</i> | <i>21</i> | <i>0</i> | <i>6</i> | <i>480</i> | <i>0</i> | <i>0</i> | <i>985</i> | <i>0</i> | <i>-</i> | <i>0</i> | <i>-</i> |
| Santa Fe | 9,763 | 579 | 14 | 220 | 13,751 | 5 | 0 | 24,332 | 23 | 1,016 | 20 | 1,219 |
| <i>San Miguel (Santa Fe)</i> | <i>27</i> | <i>0</i> | <i>0</i> | <i>2</i> | <i>17</i> | <i>0</i> | <i>0</i> | <i>46</i> | <i>0</i> | <i>-</i> | <i>0</i> | <i>-</i> |
| Taos | 3,838 | 120 | 11 | 76 | 4,554 | 0 | 0 | 8,599 | 9 | 955 | 8 | 1,075 |
| <i>N/A Outreach</i> | <i>0</i> | <i>0</i> | <i>0</i> | <i>0</i> | <i>0</i> | <i>0</i> | <i>0</i> | <i>0</i> | <i>1</i> | <i>-</i> | <i>0</i> | <i>-</i> |
| NE Region (2) Total | 27,307 | 1,657 | 49 | 586 | 33,614 | 31 | 0 | 63,244 | 73 | 866 | 63 | 1,004 |
| NE Bernalillo | 19,845 | 1,291 | 53 | 391 | 21,891 | 0 | 15 | 43,486 | 43 | 1,011 | 35 | 1,242 |
| <i>Navajo (NE Bernalillo)</i> | <i>0</i> | <i>0</i> | <i>0</i> | <i>0</i> | <i>0</i> | <i>0</i> | <i>0</i> | <i>0</i> | <i>0</i> | <i>-</i> | <i>0</i> | <i>-</i> |
| NW Bernalillo | 15,007 | 1,105 | 26 | 293 | 21,144 | 1 | 0 | 37,576 | 42 | 874 | 34 | 1,105 |
| <i>Navajo (NW Bernalillo)</i> | <i>0</i> | <i>0</i> | <i>0</i> | <i>0</i> | <i>0</i> | <i>0</i> | <i>0</i> | <i>0</i> | <i>0</i> | <i>-</i> | <i>0</i> | <i>-</i> |
| SE Bernalillo | 11,039 | 988 | 31 | 159 | 14,193 | 0 | 15 | 26,425 | 31 | 853 | 28 | 944 |
| <i>Torrance (SE Bernalillo)</i> | <i>2</i> | <i>0</i> | <i>0</i> | <i>0</i> | <i>1</i> | <i>0</i> | <i>0</i> | <i>3</i> | <i>0</i> | <i>-</i> | <i>0</i> | <i>-</i> |
| SW Bernalillo | 17,099 | 1,537 | 18 | 207 | 21,165 | 3 | 0 | 40,029 | 43 | 931 | 41 | 976 |
| <i>Navajo (SW Bernalillo)</i> | <i>1</i> | <i>0</i> | <i>0</i> | <i>0</i> | <i>1</i> | <i>0</i> | <i>0</i> | <i>2</i> | <i>0</i> | <i>-</i> | <i>0</i> | <i>-</i> |
| N/A Outreach | 0 | 0 | 0 | 0 | 0 | 0 | 0 | 0 | 1 | - | 0 | - |
| <i>Torrance</i> | <i>2,655</i> | <i>250</i> | <i>9</i> | <i>32</i> | <i>3,047</i> | <i>0</i> | <i>0</i> | <i>5,993</i> | <i>11</i> | <i>545</i> | <i>9</i> | <i>666</i> |
| Central Region (3) Total | 65,648 | 5,171 | 137 | 1,082 | 81,442 | 4 | 30 | 153,514 | 171 | 898 | 147 | 1,044 |

Income Support Division Caseloads by County and Region (Continued) *

| County (Administrative office) | SNAP Cases | TANF Cases | Education Works Cases | General Assistance Cases | Medical Assistance Cases * | SSRC Cases | Refugee Assistance Cases | Total Cases | Authorized FAA Case Workers | Cases per Authorized FAA Case Worker | Actual FAA Case Workers | Cases per Actual Case Worker |
|-----------------------------------|----------------|---------------|-----------------------------|--------------------------------|----------------------------------|---------------|--------------------------------|----------------|-----------------------------------|---|-------------------------------|---------------------------------------|
| Chaves | 6,539 | 503 | 5 | 100 | 10,453 | 0 | 0 | 17,600 | 22 | 800 | 19 | 926 |
| <i>Curry</i> | <i>4,021</i> | <i>490</i> | <i>3</i> | <i>70</i> | <i>6,237</i> | <i>0</i> | <i>0</i> | <i>10,821</i> | <i>12</i> | <i>902</i> | <i>11</i> | <i>984</i> |
| De Baca (Curry) | 0 | 0 | 0 | 0 | 0 | 0 | 0 | 0 | 0 | - | 0 | - |
| <i>Quay (Curry)</i> | <i>0</i> | <i>0</i> | <i>0</i> | <i>0</i> | <i>0</i> | <i>0</i> | <i>0</i> | <i>0</i> | <i>0</i> | <i>-</i> | <i>0</i> | <i>-</i> |
| Roosevelt (Curry) | 1 | 0 | 0 | 0 | 2 | 0 | 0 | 3 | 0 | - | 0 | - |
| <i>Guadalupe</i> | <i>567</i> | <i>36</i> | <i>0</i> | <i>15</i> | <i>659</i> | <i>5</i> | <i>0</i> | <i>1,282</i> | <i>2</i> | <i>852</i> | <i>2</i> | <i>852</i> |
| De Baca (Guadalupe) | 157 | 12 | 0 | 5 | 247 | 0 | 0 | 421 | 0 | - | 0 | - |
| <i>Quay</i> | <i>1,258</i> | <i>91</i> | <i>5</i> | <i>39</i> | <i>1,318</i> | <i>0</i> | <i>0</i> | <i>2,711</i> | <i>4</i> | <i>678</i> | <i>4</i> | <i>678</i> |
| Eddy | 2,943 | 266 | 4 | 74 | 4,551 | 0 | 0 | 7,838 | 9 | 871 | 8 | 980 |
| <i>Eddy (Artesia)</i> | <i>1,319</i> | <i>127</i> | <i>3</i> | <i>35</i> | <i>2,399</i> | <i>0</i> | <i>0</i> | <i>3,883</i> | <i>5</i> | <i>777</i> | <i>5</i> | <i>777</i> |
| Lea | 3,921 | 380 | 5 | 41 | 8,304 | 0 | 0 | 12,651 | 14 | 904 | 13 | 973 |
| <i>Roosevelt</i> | <i>1,417</i> | <i>119</i> | <i>2</i> | <i>9</i> | <i>2,309</i> | <i>0</i> | <i>0</i> | <i>3,856</i> | <i>5</i> | <i>771</i> | <i>5</i> | <i>771</i> |
| SE Region (4) Total | 22,143 | 2,024 | 27 | 388 | 36,479 | 5 | 0 | 61,066 | 73 | 837 | 67 | 911 |
| West Doña Ana | 9,688 | 1,000 | 25 | 132 | 10,925 | 0 | 0 | 21,770 | 22 | 990 | 21 | 1,037 |
| <i>East Doña Ana</i> | <i>6,886</i> | <i>650</i> | <i>24</i> | <i>80</i> | <i>10,040</i> | <i>0</i> | <i>0</i> | <i>17,680</i> | <i>20</i> | <i>884</i> | <i>18</i> | <i>982</i> |
| Doña Ana (Southern) | 7,644 | 1,097 | 21 | 47 | 12,417 | 0 | 0 | 21,226 | 21 | 1,011 | 19 | 1,117 |
| <i>SCI Unit</i> | <i>0</i> | <i>0</i> | <i>0</i> | <i>0</i> | <i>38,379</i> | <i>0</i> | <i>0</i> | <i>38,379</i> | <i>22</i> | <i>1,745</i> | <i>19</i> | <i>2,020</i> |
| Grant | 3,045 | 179 | 14 | 64 | 3,536 | 0 | 0 | 6,838 | 8 | 862 | 8 | 862 |
| <i>Catron (Grant)</i> | <i>17</i> | <i>0</i> | <i>0</i> | <i>0</i> | <i>22</i> | <i>0</i> | <i>0</i> | <i>39</i> | <i>0</i> | <i>-</i> | <i>0</i> | <i>-</i> |
| Hidalgo (Grant) | 485 | 39 | 0 | 15 | 606 | 0 | 0 | 1,145 | 2 | 573 | 2 | 573 |
| <i>Luna (Grant)</i> | <i>3</i> | <i>0</i> | <i>0</i> | <i>0</i> | <i>14</i> | <i>0</i> | <i>0</i> | <i>17</i> | <i>0</i> | <i>-</i> | <i>0</i> | <i>-</i> |
| Lincoln | 1,703 | 167 | 0 | 26 | 2,511 | 0 | 0 | 4,407 | 11 | 401 | 10 | 441 |
| <i>Luna</i> | <i>3,761</i> | <i>336</i> | <i>4</i> | <i>43</i> | <i>4,756</i> | <i>0</i> | <i>0</i> | <i>8,900</i> | <i>9</i> | <i>989</i> | <i>6</i> | <i>1,483</i> |
| Otero | 4,295 | 320 | 3 | 54 | 5,896 | 0 | 0 | 10,568 | 11 | 881 | 11 | 881 |
| <i>Lincoln (Otero)</i> | <i>1</i> | <i>0</i> | <i>0</i> | <i>0</i> | <i>1</i> | <i>0</i> | <i>0</i> | <i>2</i> | <i>0</i> | <i>-</i> | <i>0</i> | <i>-</i> |
| Sierra | 1,819 | 90 | 2 | 36 | 1,971 | 0 | 0 | 3,918 | 7 | 808 | 7 | 808 |
| <i>Doña Ana (Sierra)</i> | <i>723</i> | <i>46</i> | <i>0</i> | <i>1</i> | <i>966</i> | <i>0</i> | <i>0</i> | <i>1,736</i> | <i>0</i> | <i>-</i> | <i>0</i> | <i>-</i> |
| Socorro | 1,942 | 123 | 1 | 41 | 1,873 | 0 | 0 | 3,980 | 7 | 764 | 7 | 764 |
| <i>Catron (Socorro)</i> | <i>182</i> | <i>13</i> | <i>0</i> | <i>2</i> | <i>245</i> | <i>0</i> | <i>0</i> | <i>442</i> | <i>0</i> | <i>-</i> | <i>0</i> | <i>-</i> |
| Navajo (Socorro) | 478 | 3 | 0 | 6 | 440 | 0 | 0 | 927 | 0 | - | 0 | - |
| <i>N/A Outreach</i> | <i>0</i> | <i>0</i> | <i>0</i> | <i>0</i> | <i>0</i> | <i>0</i> | <i>0</i> | <i>0</i> | <i>1</i> | <i>-</i> | <i>1</i> | <i>-</i> |
| SW Region (5) Total | 42,672 | 4,063 | 94 | 547 | 94,598 | 0 | 0 | 141,974 | 141 | 1,007 | 129 | 1,101 |
| State Total | 198,533 | 14,737 | 354 | 3,000 | 306,227 | 45 | 30 | 522,926 | 565 | 926 | 501 | 1,044 |

* All State Coverage Insurance Cases, category 062, are being reported in the SCI unit in the SW region. It is included in calculating the case per worker for the state. ** CAP cases are now reflected in the appropriate administrative office. *** Cases per authorized and actual caseworkers for Cibola are computed using outreach workers in that area only.

Note: (-) indicates the caseload for part of the county is included in the cases per authorized worker and cases per actual worker for its associated administrative county.

SNAP Applications Processed by Administrative Office

| Office # | Office | Approved | Denied | With-drawn | Total | Office # | Office | Approved | Denied | With-drawn | Total |
|----------|---------------|----------|--------|------------|-------|----------|---------------|---------------|--------------|------------|---------------|
| 1 | SE Bernalillo | 685 | 128 | 7 | 820 | 23 | Sandoval | 611 | 164 | 3 | 778 |
| 3 | Chaves | 370 | 63 | 1 | 434 | 24 | San Juan | 754 | 215 | 7 | 976 |
| 4 | Colfax | 54 | 13 | 1 | 68 | 25 | San Miguel | 260 | 48 | 0 | 308 |
| 3104 | Union | 14 | 1 | 0 | 15 | 26 | Santa Fe | 554 | 125 | 7 | 686 |
| 5 | Curry | 267 | 42 | 6 | 315 | 27 | Sierra | 94 | 16 | 2 | 112 |
| 7 | West Dona Ana | 589 | 100 | 12 | 701 | 28 | Socorro | 128 | 16 | 2 | 146 |
| 8 | Eddy | 231 | 43 | 5 | 279 | 29 | Taos | 205 | 31 | 5 | 241 |
| 9 | Grant | 177 | 41 | 2 | 220 | 30 | Torrance | 133 | 33 | 4 | 170 |
| 1209 | Hidalgo | 21 | 0 | 0 | 21 | 32 | S Valencia | 169 | 22 | 5 | 196 |
| 10 | Guadalupe | 38 | 2 | 0 | 40 | 33 | Cibola | 151 | 16 | 2 | 169 |
| 13 | Lea | 271 | 54 | 3 | 328 | 34 | Eddy/Artesia | 58 | 16 | 0 | 74 |
| 14 | Lincoln | 115 | 10 | 1 | 126 | 35 | NW Bernalillo | 958 | 154 | 13 | 1,125 |
| 16 | Luna | 201 | 49 | 7 | 257 | 36 | SW Bernalillo | 1,164 | 237 | 9 | 1,410 |
| 17 | McKinley | 422 | 133 | 10 | 565 | 37 | East Dona Ana | 350 | 94 | 3 | 447 |
| 19 | Otero | 293 | 66 | 0 | 359 | 38 | S Dona Ana | 332 | 68 | 8 | 408 |
| 20 | Quay | 53 | 11 | 2 | 66 | 39 | NE Bernalillo | 1,525 | 347 | 13 | 1,885 |
| 21 | Rio Arriba | 310 | 55 | 3 | 368 | 42 | N Valencia | 293 | 60 | 2 | 355 |
| 22 | Roosevelt | 88 | 17 | 3 | 108 | | TOTAL | 11,938 | 2,490 | 148 | 14,576 |

SNAP Applications Processed by Region

| Region | Approved | Denied | Withdrawn | Total |
|------------------|---------------|--------------|------------|---------------|
| NW Region 1 | 2,400 | 610 | 29 | 3,039 |
| NE Region 2 | 1,397 | 273 | 16 | 1,686 |
| Central Region 3 | 4,465 | 899 | 46 | 5,410 |
| SE Region 4 | 1,376 | 248 | 20 | 1,644 |
| SW Region 5 | 2,300 | 460 | 37 | 2,797 |
| TOTAL | 11,938 | 2,490 | 148 | 14,576 |

CAP cases are reflected in the appropriate administrative office.

TANF Applications Processed by Office

| Office # | Office | Approved | Denied | With-drawn | Total | Office # | Office | Approved | Denied | With-drawn | Total |
|----------|---------------|----------|--------|------------|-------|----------|---------------|--------------|--------------|------------|--------------|
| 1 | SE Bernalillo | 111 | 115 | 25 | 251 | 23 | Sandoval | 71 | 78 | 24 | 173 |
| 3 | Chaves | 58 | 47 | 15 | 120 | 24 | San Juan | 27 | 48 | 13 | 88 |
| 4 | Colfax | 11 | 3 | 1 | 15 | 25 | San Miguel | 23 | 12 | 5 | 40 |
| 3104 | Union | 0 | 2 | 0 | 2 | 26 | Santa Fe | 54 | 64 | 24 | 142 |
| 5 | Curry | 46 | 27 | 4 | 77 | 27 | Sierra | 14 | 12 | 3 | 29 |
| 7 | West Dona Ana | 107 | 34 | 20 | 161 | 28 | Socorro | 19 | 7 | 1 | 27 |
| 8 | Eddy | 33 | 34 | 6 | 73 | 29 | Taos | 14 | 8 | 15 | 37 |
| 9 | Grant | 15 | 13 | 12 | 40 | 30 | Torrance | 27 | 18 | 4 | 49 |
| 1209 | Hidalgo | 3 | 0 | 0 | 3 | 32 | S Valencia | 25 | 19 | 10 | 54 |
| 10 | Guadalupe | 9 | 4 | 1 | 14 | 33 | Cibola | 23 | 27 | 5 | 55 |
| 13 | Lea | 57 | 40 | 13 | 110 | 34 | Eddy/Artesia | 13 | 14 | 0 | 27 |
| 14 | Lincoln | 11 | 9 | 6 | 26 | 35 | NW Bernalillo | 117 | 95 | 47 | 259 |
| 16 | Luna | 34 | 19 | 9 | 62 | 36 | SW Bernalillo | 164 | 147 | 29 | 340 |
| 17 | McKinley | 15 | 27 | 17 | 59 | 37 | East Dona Ana | 70 | 64 | 16 | 150 |
| 19 | Otero | 24 | 34 | 12 | 70 | 38 | S Dona Ana | 76 | 27 | 22 | 125 |
| 20 | Quay | 16 | 4 | 2 | 22 | 39 | NE Bernalillo | 143 | 242 | 44 | 429 |
| 21 | Rio Arriba | 62 | 46 | 5 | 113 | 42 | N Valencia | 45 | 54 | 11 | 110 |
| 22 | Roosevelt | 14 | 3 | 2 | 19 | | TOTAL | 1,551 | 1,397 | 423 | 3,371 |

TANF Applications Processed by Region

| Region | Approved | Denied | Withdrawn | Total |
|------------------|--------------|--------------|------------|--------------|
| NW Region 1 | 206 | 253 | 80 | 539 |
| NE Region 2 | 164 | 135 | 50 | 349 |
| Central Region 3 | 562 | 617 | 149 | 1,328 |
| SE Region 4 | 246 | 173 | 43 | 462 |
| SW Region 5 | 373 | 219 | 101 | 693 |
| TOTAL | 1,551 | 1,397 | 423 | 3,371 |

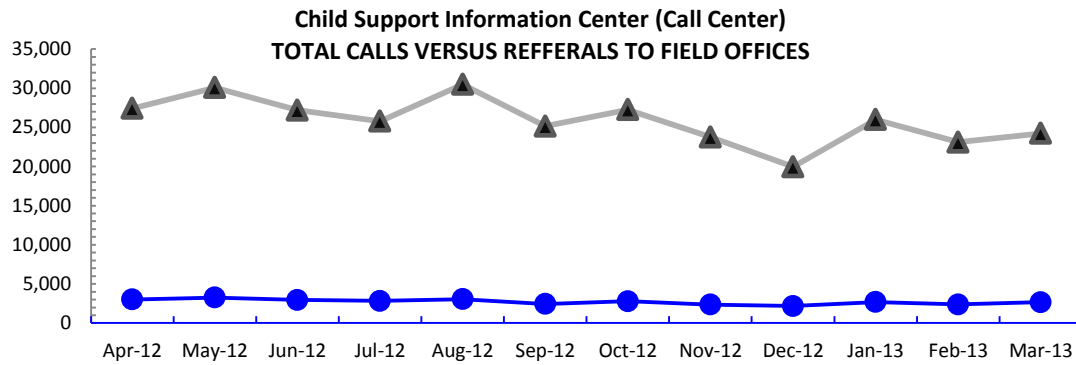
General Assistance Applications Processed by office

| Office # | Office | Approved | Denied | With-drawn | Total |
|----------|---------------|----------|--------|------------|-------|
| 1 | SE Bernalillo | 20 | 35 | 6 | 61 |
| 3 | Chaves | 11 | 14 | 4 | 29 |
| 4 | Colfax | 4 | 11 | 2 | 17 |
| 3104 | Union | 1 | 0 | 0 | 1 |
| 5 | Curry | 6 | 8 | 4 | 18 |
| 7 | West Dona Ana | 17 | 30 | 27 | 74 |
| 8 | Eddy | 6 | 12 | 3 | 21 |
| 9 | Grant | 11 | 11 | 8 | 30 |
| 1209 | Hidalgo | 0 | 1 | 1 | 2 |
| 10 | Guadalupe | 1 | 2 | 2 | 5 |
| 13 | Lea | 5 | 8 | 2 | 15 |
| 14 | Lincoln | 3 | 7 | 0 | 10 |
| 16 | Luna | 3 | 19 | 4 | 26 |
| 17 | McKinley | 0 | 6 | 8 | 14 |
| 19 | Otero | 8 | 44 | 10 | 62 |
| 20 | Quay | 5 | 8 | 0 | 13 |
| 21 | Rio Arriba | 15 | 26 | 1 | 42 |
| 22 | Roosevelt | 0 | 3 | 0 | 3 |

| Office # | Office | Approved | Denied | With-drawn | Total |
|----------|---------------|------------|------------|------------|--------------|
| 23 | Sandoval | 12 | 45 | 38 | 95 |
| 24 | San Juan | 6 | 37 | 9 | 52 |
| 25 | San Miguel | 12 | 16 | 1 | 29 |
| 26 | Santa Fe | 26 | 63 | 4 | 93 |
| 27 | Sierra | 4 | 3 | 1 | 8 |
| 28 | Socorro | 1 | 5 | 0 | 6 |
| 29 | Taos | 8 | 11 | 6 | 25 |
| 30 | Torrance | 3 | 14 | 1 | 18 |
| 32 | S Valencia | 2 | 10 | 2 | 14 |
| 33 | Cibola | 10 | 9 | 1 | 20 |
| 34 | Eddy/Artesia | 0 | 5 | 0 | 5 |
| 35 | NW Bernalillo | 36 | 59 | 44 | 139 |
| 36 | SW Bernalillo | 26 | 61 | 17 | 104 |
| 37 | East Dona Ana | 4 | 13 | 0 | 17 |
| 38 | S Dona Ana | 3 | 4 | 7 | 14 |
| 39 | NE Bernalillo | 36 | 98 | 12 | 146 |
| 42 | N Valencia | 9 | 13 | 5 | 27 |
| | TOTAL | 314 | 711 | 230 | 1,255 |

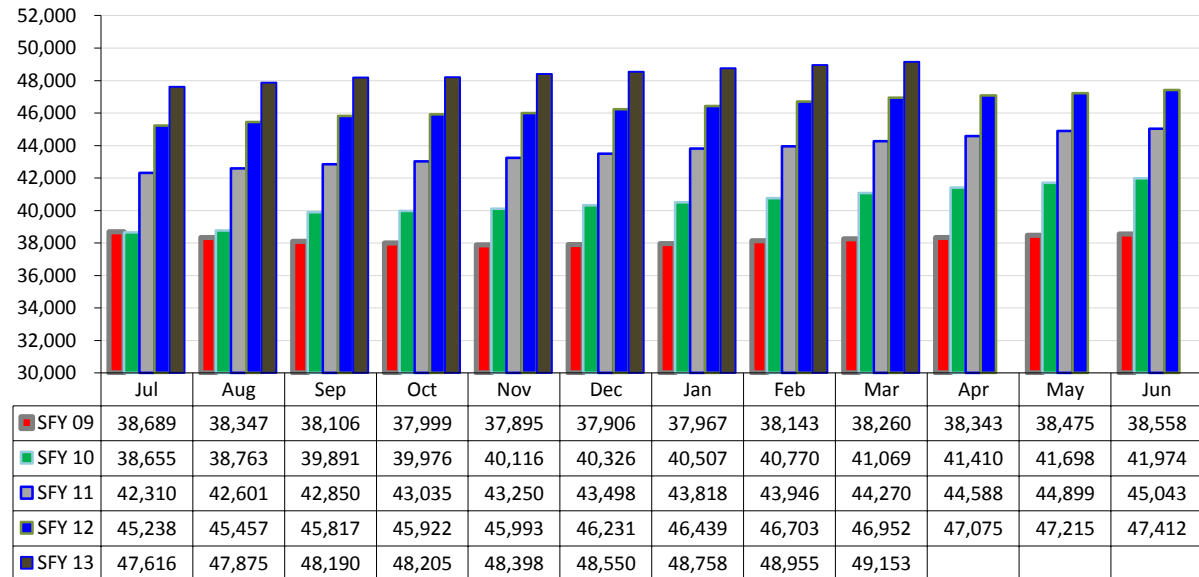
General Assistance Applications Processed by Region

| Region | Approved | Denied | Withdrawn | Total |
|------------------|------------|------------|------------|--------------|
| NW Region 1 | 39 | 120 | 63 | 222 |
| NE Region 2 | 66 | 127 | 14 | 207 |
| Central Region 3 | 121 | 267 | 80 | 468 |
| SE Region 4 | 34 | 60 | 15 | 109 |
| SW Region 5 | 54 | 137 | 58 | 249 |
| TOTAL | 314 | 711 | 230 | 1,255 |

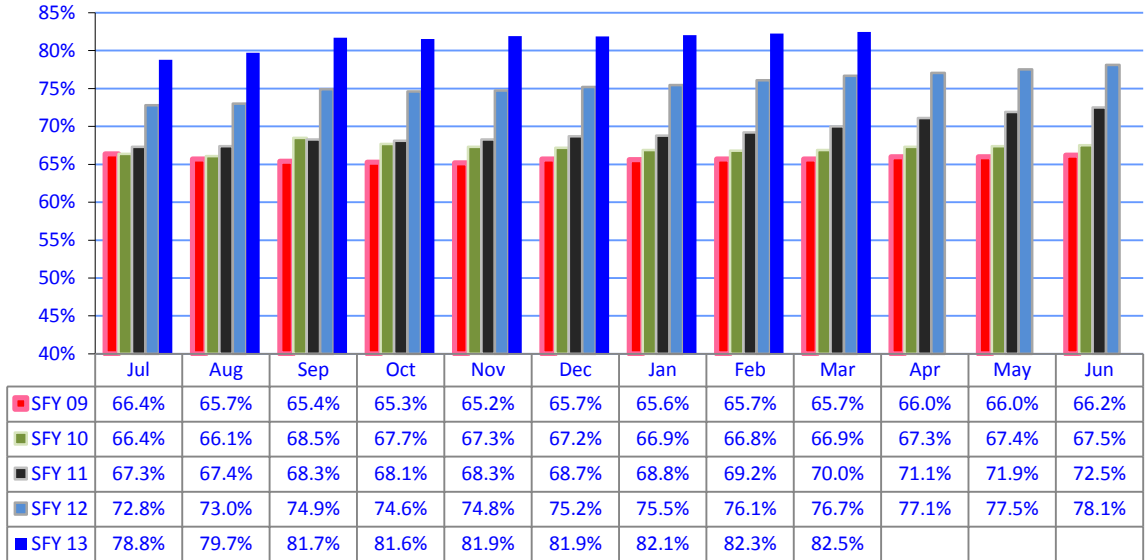


| | Apr-12 | May-12 | Jun-12 | Jul-12 | Aug-12 | Sep-12 | Oct-12 | Nov-12 | Dec-12 | Jan-13 | Feb-13 | Mar-13 |
|-------------|--------|--------|--------|--------|--------|--------|--------|--------|--------|--------|--------|--------|
| ▲ Calls | 27,413 | 30,083 | 27,188 | 25,774 | 30,492 | 25,151 | 27,246 | 23,759 | 19,953 | 25,978 | 23,098 | 24,221 |
| ● Referrals | 3,014 | 3,260 | 2,944 | 2,828 | 3,051 | 2,432 | 2,785 | 2,355 | 2,179 | 2,693 | 2,382 | 2,660 |
| Percent | 11.0% | 10.8% | 10.8% | 11.0% | 10.0% | 9.7% | 10.2% | 9.9% | 10.9% | 10.4% | 10.3% | 11.0% |

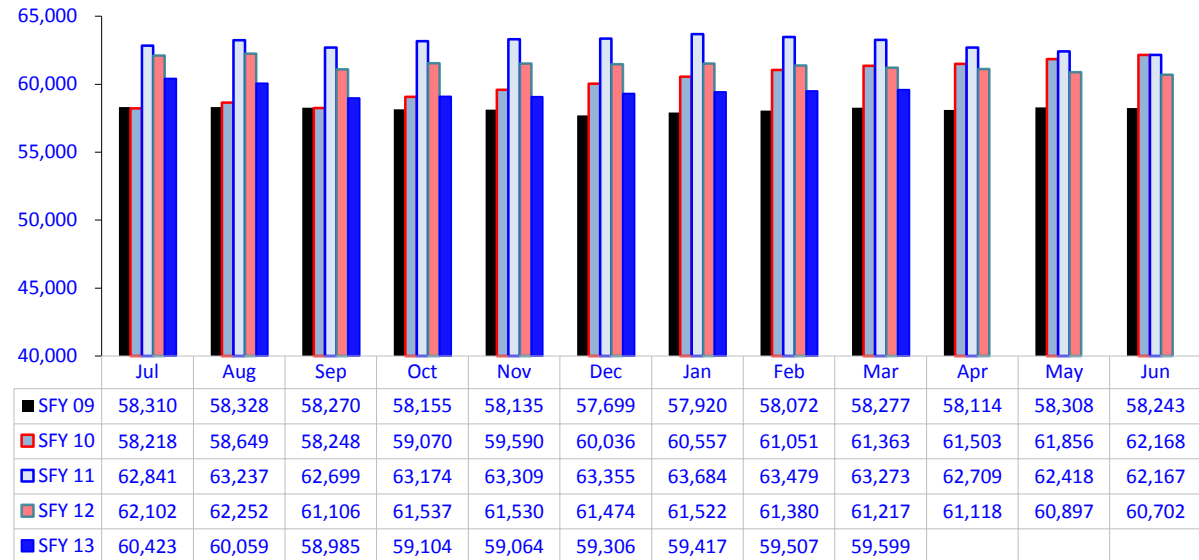
Child Support Enforcement Obligated Cases



Child Support Enforcement Obligated Case Percentages



Child Support Enforcement Open Cases



Children Receiving Child Care Assistance Subsidies By County

| County | Mar | Apr | May | Jun | Jul | Aug | Sep | Oct | Nov | Dec | Jan | Feb | Mar | Year over year change | |
|---------------|---------------|---------------|---------------|---------------|---------------|---------------|---------------|---------------|---------------|---------------|---------------|---------------|---------------|-----------------------|--------------|
| | 2012 | 2012 | 2012 | 2012 | 2012 | 2012 | 2012 | 2012 | 2012 | 2012 | 2013 | 2013 | 2013 | Cases | Percent |
| Bernalillo | 7,657 | 7,796 | 7,744 | 7,852 | 7,490 | 7,272 | 7,755 | 7,423 | 7,454 | 7,382 | 7,266 | 7,217 | 7,229 | -428 | -5.6% |
| Catron | 2 | 2 | 2 | 2 | 2 | 2 | 2 | 0 | 0 | 0 | 0 | 0 | 0 | -2 | -100.0% |
| Chaves | 671 | 701 | 723 | 751 | 707 | 715 | 737 | 714 | 736 | 718 | 721 | 694 | 695 | 24 | 3.6% |
| Cibola | 262 | 277 | 273 | 272 | 241 | 225 | 287 | 283 | 299 | 281 | 262 | 251 | 260 | -2 | -0.8% |
| Colfax | 63 | 61 | 63 | 61 | 58 | 60 | 65 | 54 | 53 | 57 | 58 | 53 | 51 | -12 | -19.0% |
| Curry | 568 | 559 | 569 | 573 | 510 | 521 | 564 | 539 | 550 | 541 | 516 | 490 | 496 | -72 | -12.7% |
| De Baca | 12 | 10 | 12 | 14 | 11 | 9 | 18 | 17 | 13 | 12 | 9 | 7 | 10 | -2 | -16.7% |
| Dona Ana | 5,040 | 5,062 | 5,167 | 5,339 | 4,793 | 4,677 | 5,064 | 5,011 | 4,999 | 4,964 | 4,894 | 4,787 | 4,782 | -258 | -5.1% |
| Eddy | 317 | 301 | 332 | 346 | 339 | 327 | 344 | 350 | 334 | 321 | 294 | 289 | 276 | -41 | -12.9% |
| Grant | 397 | 389 | 393 | 396 | 282 | 289 | 334 | 342 | 361 | 362 | 358 | 315 | 323 | -74 | -18.6% |
| Guadalupe | 31 | 26 | 27 | 29 | 21 | 20 | 18 | 23 | 22 | 20 | 20 | 17 | 19 | -12 | -38.7% |
| Harding | 0 | 0 | 0 | 0 | 0 | 0 | 0 | 0 | 0 | 0 | 0 | 0 | 0 | 0 | NA |
| Hidalgo | 24 | 23 | 23 | 24 | 25 | 28 | 34 | 27 | 24 | 31 | 32 | 31 | 33 | 9 | 37.5% |
| Lea | 589 | 581 | 601 | 626 | 569 | 543 | 639 | 609 | 655 | 642 | 628 | 598 | 578 | -11 | -1.9% |
| Lincoln | 214 | 219 | 213 | 220 | 198 | 193 | 203 | 190 | 191 | 178 | 190 | 167 | 185 | -29 | -13.6% |
| Los | 11 | 11 | 11 | 12 | 11 | 10 | 8 | 8 | 8 | 8 | 8 | 8 | 10 | -1 | -9.1% |
| Luna | 255 | 260 | 245 | 257 | 222 | 222 | 248 | 218 | 224 | 225 | 210 | 205 | 214 | -41 | -16.1% |
| McKinley | 335 | 329 | 331 | 327 | 257 | 231 | 294 | 273 | 283 | 287 | 269 | 250 | 264 | -71 | -21.2% |
| Mora | 15 | 15 | 14 | 16 | 14 | 14 | 12 | 10 | 14 | 17 | 14 | 13 | 10 | -5 | -33.3% |
| Otero | 548 | 558 | 564 | 585 | 535 | 540 | 578 | 580 | 562 | 538 | 536 | 492 | 503 | -45 | -8.2% |
| Out of State | 8 | 8 | 6 | 7 | 8 | 8 | 9 | 8 | 6 | 7 | 5 | 5 | 6 | -2 | -25.0% |
| Quay | 33 | 32 | 32 | 28 | 29 | 27 | 24 | 24 | 25 | 25 | 23 | 22 | 24 | -9 | -27.3% |
| Rio Arriba | 113 | 102 | 115 | 122 | 96 | 93 | 105 | 96 | 99 | 104 | 101 | 100 | 104 | -9 | -8.0% |
| Roosevelt | 177 | 186 | 192 | 192 | 151 | 149 | 189 | 195 | 197 | 191 | 189 | 179 | 179 | 2 | 1.1% |
| San Juan | 690 | 684 | 686 | 710 | 630 | 609 | 746 | 718 | 720 | 715 | 692 | 694 | 702 | 12 | 1.7% |
| San Miguel | 390 | 403 | 422 | 433 | 341 | 335 | 366 | 388 | 393 | 376 | 364 | 314 | 351 | -39 | -10.0% |
| Sandoval | 811 | 809 | 818 | 866 | 814 | 786 | 827 | 795 | 785 | 768 | 759 | 706 | 717 | -94 | -11.6% |
| Santa Fe | 486 | 502 | 515 | 523 | 507 | 485 | 522 | 452 | 463 | 452 | 435 | 439 | 440 | -46 | -9.5% |
| Sierra | 74 | 84 | 85 | 99 | 88 | 87 | 85 | 73 | 83 | 83 | 89 | 90 | 89 | 15 | 20.3% |
| Socorro | 61 | 58 | 62 | 61 | 52 | 46 | 55 | 61 | 63 | 66 | 62 | 52 | 53 | -8 | -13.1% |
| Taos | 144 | 144 | 142 | 151 | 97 | 102 | 110 | 121 | 124 | 123 | 116 | 105 | 105 | -39 | -27.1% |
| Torrance | 76 | 84 | 82 | 88 | 75 | 81 | 74 | 66 | 67 | 64 | 69 | 81 | 76 | 0 | 0.0% |
| Union | 11 | 8 | 7 | 8 | 7 | 7 | 12 | 9 | 8 | 9 | 9 | 9 | 9 | -2 | -18.2% |
| Valencia | 729 | 746 | 755 | 766 | 682 | 704 | 722 | 717 | 719 | 721 | 695 | 668 | 694 | -35 | -4.8% |
| Totals | 20,814 | 21,030 | 21,226 | 21,756 | 19,862 | 19,417 | 21,050 | 20,394 | 20,534 | 20,288 | 19,893 | 19,348 | 19,487 | -1,327 | -6.4% |

Source: Children, Youth and Families Department.

Child Care Assistance Eligibility Programs

| MONTH | MAR'12 | APR'12 | MAY'12 | JUN'12 | JUL'12 | AUG'12 | SEP'12 | OCT'12 | NOV'12 | DEC'12 | JAN'13 | FEB'13 | MAR'13 |
|---|--------------|--------------|--------------|--------------|--------------|--------------|--------------|--------------|--------------|--------------|--------------|--------------|--------------|
| TANF (Child Care Priority 1 Clients) | | | | | | | | | | | | | |
| CLIENTS | 3,541 | 3,535 | 3,443 | 3,551 | 3,220 | 3,103 | 3,340 | 3,182 | 3,131 | 2,999 | 2,859 | 2,714 | 2,732 |
| COST | \$1,219,862 | \$1,218,303 | \$1,181,592 | \$1,063,904 | \$1,017,372 | \$1,128,732 | \$1,041,813 | \$1,125,046 | \$1,134,547 | \$1,080,411 | \$906,557 | \$871,356 | \$927,613 |
| TANF AVERAGE COST | \$344 | \$345 | \$343 | \$300 | \$316 | \$364 | \$312 | \$354 | \$362 | \$360 | \$317 | \$321 | \$340 |
| TRANSITION OFF TANF (Child Care Priority 2 Clients) | | | | | | | | | | | | | |
| CLIENTS | 404 | 410 | 419 | 417 | 381 | 374 | 381 | 368 | 379 | 373 | 365 | 341 | 319 |
| COST | \$134,794 | \$139,080 | \$135,169 | \$134,108 | \$125,253 | \$129,561 | \$129,933 | \$132,174 | \$135,318 | \$130,153 | \$118,069 | \$113,013 | \$105,768 |
| TRAN OFF TANF AVG COST | \$334 | \$339 | \$323 | \$322 | \$329 | \$346 | \$341 | \$359 | \$357 | \$349 | \$323 | \$331 | \$332 |
| TANF ELIGIBLE (Child Care Priority 1B Clients at or below 100% of the Federal Poverty Level) | | | | | | | | | | | | | |
| CLIENTS | 10,805 | 11,017 | 11,152 | 11,469 | 10,258 | 10,120 | 11,259 | 11,080 | 11,250 | 11,179 | 10,910 | 10,502 | 10,624 |
| COST | \$3,768,442 | \$3,839,297 | \$3,881,358 | \$3,636,254 | \$3,618,933 | \$3,721,237 | \$3,625,943 | \$4,118,093 | \$4,141,082 | \$4,108,993 | \$3,609,624 | \$3,604,677 | \$3,676,351 |
| TANF ELIGIBLE AVG COST | \$349 | \$348 | \$348 | \$317 | \$353 | \$368 | \$322 | \$372 | \$368 | \$368 | \$331 | \$343 | \$346 |
| INCOME ELIGIBLE (Child Care Priority 3, and Priority 4 Clients) | | | | | | | | | | | | | |
| CLIENTS | 4,951 | 4,952 | 5,173 | 5,290 | 5,060 | 4,920 | 5,089 | 4,846 | 4,810 | 4,817 | 4,861 | 4,944 | 4,950 |
| COST | \$1,484,022 | \$1,485,614 | \$1,533,393 | \$1,570,429 | \$1,813,867 | \$1,606,535 | \$1,591,509 | \$1,585,741 | \$1,572,320 | \$1,558,272 | \$1,529,136 | \$1,543,444 | \$1,507,551 |
| INCOME ELIG AVG COST | \$300 | \$300 | \$296 | \$297 | \$358 | \$327 | \$313 | \$327 | \$327 | \$323 | \$315 | \$312 | \$305 |
| EMPLOYMENT & TRAINING (Child Care Priority 1A Clients) | | | | | | | | | | | | | |
| CLIENTS | 503 | 470 | 403 | 352 | 262 | 221 | 239 | 245 | 260 | 257 | 259 | 213 | 199 |
| COST | \$161,862 | \$160,692 | \$160,692 | \$96,255 | \$82,770 | \$70,593 | \$63,934 | \$89,494 | \$94,363 | \$93,751 | \$72,052 | \$70,881 | \$66,891 |
| E & T AVG COST | \$322 | \$342 | \$399 | \$273 | \$316 | \$319 | \$268 | \$365 | \$363 | \$365 | \$278 | \$333 | \$336 |
| CHILD PROTECTIVE SERVICES (Child Care CPS Clients) | | | | | | | | | | | | | |
| CLIENTS | 610 | 646 | 636 | 677 | 681 | 679 | 742 | 673 | 704 | 663 | 639 | 634 | 663 |
| COST | \$239,152 | \$261,639 | \$256,004 | \$273,771 | \$272,616 | \$276,210 | \$295,847 | \$280,001 | \$286,909 | \$269,654 | \$258,888 | \$276,254 | \$263,618 |
| E & T AVG COST | \$392 | \$405 | \$403 | \$404 | \$400 | \$407 | \$399 | \$416 | \$408 | \$407 | \$405 | \$436 | \$398 |
| GRAND TOTAL - ALL CHILD CARE PROGRAMS | | | | | | | | | | | | | |
| CLIENTS | 20,814 | 21,030 | 21,226 | 21,756 | 19,862 | 19,417 | 21,050 | 20,394 | 20,534 | 20,288 | 19,893 | 19,348 | 19,487 |
| COST | \$7,008,133 | \$7,104,625 | \$7,148,208 | \$6,774,719 | \$6,930,812 | \$6,932,868 | \$6,748,978 | \$7,330,549 | \$7,364,538 | \$7,241,234 | \$6,494,326 | \$6,479,624 | \$6,547,793 |
| ALL PROGRAMS AVG COST | \$337 | \$338 | \$337 | \$311 | \$349 | \$357 | \$321 | \$359 | \$359 | \$357 | \$326 | \$335 | \$336 |

Notes: 1. This table is provided by the Children, Youth and Families Department. 2. All costs in the table are average costs
3. Clients served and cost reflects total CYFD program funds and are not limited to funding provided by the Human Services Department.

2012 Monthly Federal Poverty & Income Eligibility Guidelines for SNAP, Cash Assistance & LIHEAP

| 2012 Federal Poverty Guidelines (FPG) (100%) Effective Oct 1, 2012 – Sept 30, 2013 | | | | | |
|--|-----------------|-------------|-----------------|-------------|-----------------|
| Family Size | Monthly Amounts | Family Size | Monthly Amounts | Family Size | Monthly Amounts |
| 1 | \$931 | 4 | \$1,921 | 7 | \$2,911 |
| 2 | \$1,261 | 5 | \$2,251 | 8 | \$3,241 |
| 3 | \$1,591 | 6 | \$2,581 | + 1 | + \$330 |

| Family Size | 85% FPG TANF Poverty Gross Limit for Cash | 100% FPG TANF & SNAP Net Income Eligibility Standard | 130% FPG SNAP Gross Income Eligibility Standards | 150% FPG LIHEAP | 165% FPG SNAP Gross Income Categorically Eligibility; Elderly/Disabled Separate Status | General Assistance Max Standard of Need | NM Works Max Standard of Need | NM Works 15% Budgetary Adjustment* | NM Works Max Standard of Need with Budgetary Adjustment* | Maximum SNAP Monthly Allotments |
|-------------|--|---|---|--------------------|--|---|--|---|--|--|
| 1 | \$791 | \$931 | \$1,211 | \$1,397 | \$1,536 | \$245 | \$266 | -\$ 39 | \$227 | \$200 |
| 2 | \$1,072 | \$1,261 | \$1,640 | \$1,892 | \$2,081 | \$329 | \$357 | -\$ 53 | \$304 | \$367 |
| 3 | \$1,352 | \$1,591 | \$2,069 | \$2,387 | \$2,625 | \$412 | \$447 | -\$ 67 | \$380 | \$526 |
| 4 | \$1,633 | \$1,921 | \$2,498 | \$2,882 | \$3,170 | \$496 | \$539 | -\$ 80 | \$459 | \$668 |
| 5 | \$1,913 | \$2,251 | \$2,927 | \$3,377 | \$3,714 | \$580 | \$630 | -\$ 94 | \$536 | \$793 |
| 6 | \$2,194 | \$2,581 | \$3,356 | \$3,872 | \$4,259 | \$664 | \$721 | -\$108 | \$613 | \$952 |
| 7 | \$2,474 | \$2,911 | \$3,785 | \$4,367 | \$4,803 | \$748 | \$812 | -\$121 | \$691 | \$1,052 |
| 8 | \$2,755 | \$3,241 | \$4,214 | \$4,862 | \$5,348 | \$849 | \$922 | -\$138 | \$784 | \$1,202 |
| +1 | + \$281 | + \$330 | + \$429 | + \$495 | + \$545 | + \$84 | + \$91 | - \$ 14 | + \$77 | + \$150 |

The 2012 Federal Poverty Guidelines are used for the determination of LIHEAP, SNAP and TANF eligibility from October 1, 2012 through September 30, 2013. The Maximum SNAP allotment does not take deductions into account. All figures monthly amounts.

* 15% Budgetary Adjustment is subtracted from eligible NMW benefit amount to determine monthly payment starting January 1, 2011

2012 Monthly Federal Poverty & Income Eligibility Guidelines for Medicaid,
Effective April 1, 2012 - March 31, 2013

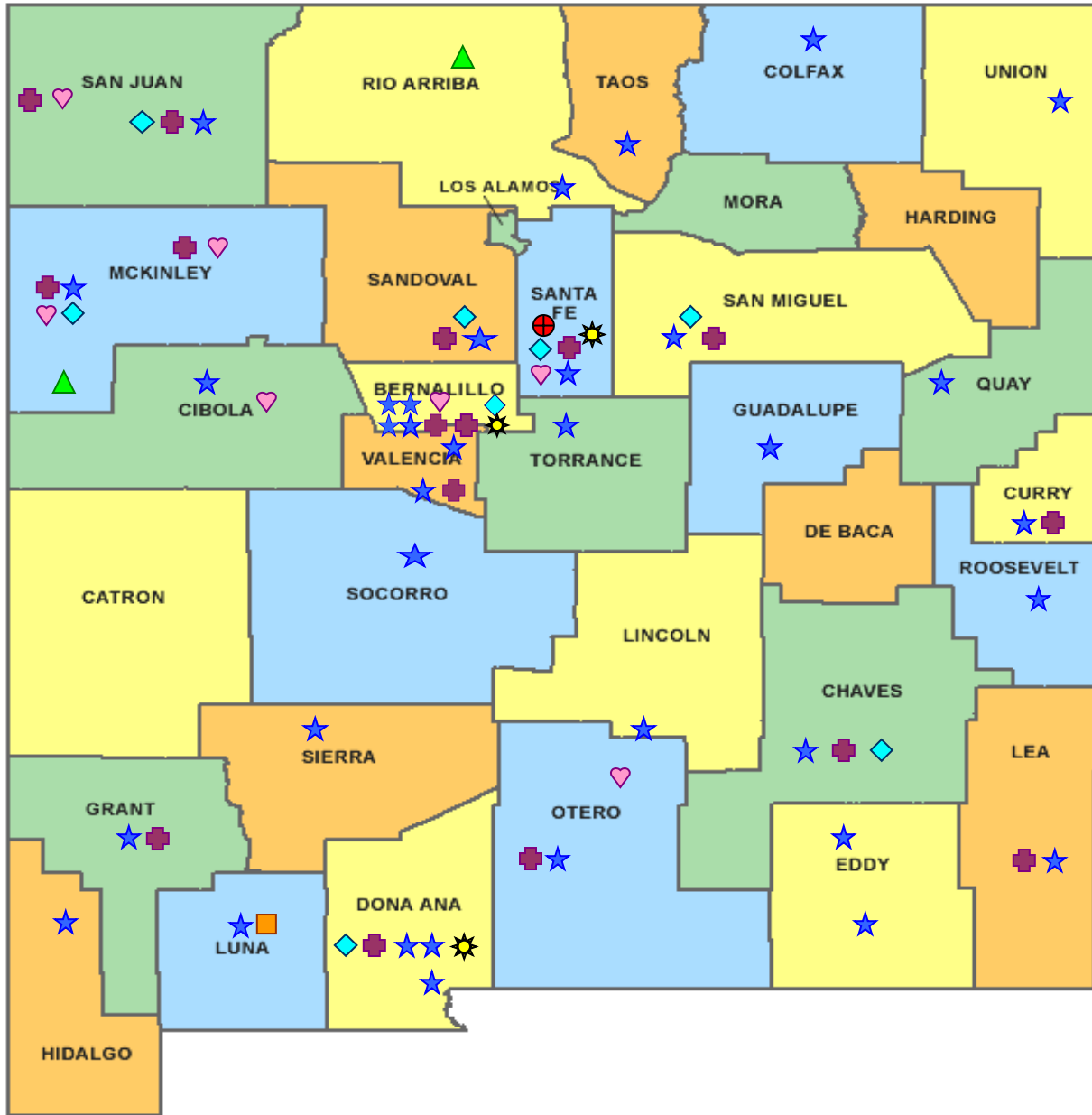
| Family Size | 2012 Federal Poverty Guidelines (FPG) (100%) Monthly Amounts | 185% FPG Medicaid for Children (Cat 032) Medicaid for Pregnant Women- Pregnancy-Related Services Only or Family Planning Services (Cat 035) and Presumptive Eligibility for Pregnant Women | 200% FPG State Coverage Insurance (SCI) (Cat 062) & Qualified Disabled Working Individuals (Cat 042) for family size 1 & 2 | 235% FPG SCHIP (State Children's Health Insurance Program) (Cat 071) | 250% FPG Working Disabled Individuals (Cat 043) |
|--------------------|---|--|--|--|---|
| 1 | \$931 | \$1,723 | \$1,862 | \$2,188 | \$2,328 |
| 2 | \$1,261 | \$2,333 | \$2,522 | \$2,963 | |
| 3 | \$1,591 | \$2,944 | \$3,182 | \$3,739 | |
| 4 | \$1,921 | \$3,554 | \$3,842 | \$4,514 | |
| 5 | \$2,251 | \$4,165 | \$4,502 | \$5,290 | |
| 6 | \$2,581 | \$4,775 | \$5,162 | \$6,065 | |
| 7 | \$2,911 | \$5,386 | \$5,822 | \$6,841 | |
| 8 | \$3,241 | \$5,996 | \$6,482 | \$7,616 | |
| +1 | +\$330 | +\$610 | +\$660 | +\$775 | |

| Social Security Related | |
|--|---------------------------------------|
| Family Size | Program and Range ¹ |
| Qualified Medicare Beneficiaries (Cat 040) | |
| 1 | \$0 – \$931 |
| 2 | \$0 – \$1,261 |
| Specified Low Income Medicare Beneficiaries (Cat 045) | |
| 1 | \$931 – \$1,117 |
| 2 | \$1,261 – \$1,513 |
| Qualified Individuals | |
| 1 | \$1,117 – \$1,257 |
| 2 | \$1,513 – \$1,703 |









All figures monthly amounts. Source: <http://www.hsd.state.nm.us/mad/CEligibility.html>

The 2012 Federal Poverty Guidelines are used for the determination of Medicaid eligibility from April 1, 2012 – March 31, 2013.

¹ Cost of living adjustments made to SSI and Social Security income at the beginning of the calendar year are not used to determine eligibility of QMB, QI or SLIMB until the following April of that same year.



New Mexico Human Services Department
Field Offices

-  Central Office (1)
-  Income Support Division County Office (35)
-  Income Support Division Satellite Office (2)
-  Child Support Enforcement Regional Office (16)
-  Child Support Enforcement Satellite Office (1)
-  Quality Control Office (8)
-  Indian Health Services (7)
-  Hospital Site (3)

For a complete listing of field offices and other government and community resources:
<http://www.hsd.state.nm.us/isd/fieldoffices.html>