



HUMAN SERVICES
DEPARTMENT

Monthly Statistical Report February 2014

Highlights

- The SNAP caseload in February 2014 was 189,700, a 3.9 percent decrease from one year ago. SNAP caseload has fallen by 1,067 cases, or 0.6 percent, since last month.
- The TANF caseload was 13,428 in February 2014, a 12 percent decrease February 2013. The TANF caseload had 63 more cases than January 2014, an increase of 0.5 percent.
- The caseload for General Assistance was 2,920 in February 2014, a decrease of 1.7 percent from one year ago and a decrease of 322 cases from last month.

Susana Martinez, Governor
Sidonie Squier, Cabinet Secretary

CONTENTS	PAGE
Summary	3-4
SNAP	5-6
State SNAP Benefits Supplement	7
TANF	8-9
ICARE	10
NMWorks	11-12
Diversion	13
Education Works	14-15
General Assistance	16-17
GA Interim Assistance Reimbursements	18
Refugee Assistance	19
LIHEAP	20-21
Medicaid Eligibles	22
Applications	23-25
Child Support Enforcement	26-27
Child Care Assistance	28-29

Centralized Units include the following offices: Albuquerque Indian Hospital; ASD Restitutions; CSED; Customer Service; Lincoln County CSU; Mescalero; MRP; North Processing Center; Quality Assessment Bureau; San Miguel County CSU; SIPI; SMU Lincoln; SMU Torrance; South Processing Center; Torrance County CSU; Zuni.

Tallies include data from ISD2 and aspen.

***The Mission of the Human Services
Department***

*To reduce the impact of poverty on
people living in New Mexico by
providing support services that help
families break the cycle of
dependency on public assistance*

**Charissa Saavedra, Deputy Secretary
Brent Earnest, Deputy Secretary**

**Prepared by Income Support Division
PO Box 2348
Santa Fe, NM 87504-2348
505-827-7250**

**Marilyn Martinez, Acting Division Director
Vida Tapia-Sanchez, Deputy Director
Laura Galindo, Deputy Director**

We've moved!

<http://www.hsd.state.nm.us/monthly-statistical-reports.aspx>

Program Summary for February 2014

						Percent Change					
			Percent Change					Percent Change			
	Feb 13	Jan 14	Feb 14	Feb 13 – Feb 14	Jan 14 – Feb 14		Feb 13	Jan 14	Feb 14	Feb 13 – Feb 14	Jan 14 – Feb 14
Supplemental Nutrition Assistance Program (SNAP)						State SNAP Benefits Supplement					
Expenditures	\$56,372,327	\$50,370,793	\$50,581,173	-10.3%	0.4%	Expenditures	\$46,700	\$77,933	\$84,758	81.5%	8.8%
Cases	197,323	190,767	189,700	-3.9%	-0.6%	Cases	5,645	8,826	9,024	59.9%	2.2%
Individuals	440,872	416,175	419,938	-4.7%	0.9%						
Adults	244,395	225,997	228,449	-6.5%	1.1%						
Children	196,477	190,178	191,489	-2.5%	0.7%	Education Works					
Apps processed	14,214	16,172	11,946	-16.0%	-26.1%	Expenditures	\$106,762	\$79,717	\$82,085	-23.1%	3.0%
Approvals	11,270	12,394	9,240	-18.0%	-25.4%	Cases	354	253	248	-29.9%	-2.0%
						Individuals	1,003	736	723	-27.9%	-1.7%
Temporary Assistance to Needy Families (TANF)						Adults	395	277	273	-30.8%	-1.4%
Expenditures	\$4,475,767	\$3,735,563	\$3,738,665	-16.5%	0.1%	Children	608	459	450	-26.0%	-1.9%
Cases	15,259	13,365	13,428	-12.0%	0.5%						
Individuals	36,848	33,612	34,818	-5.5%	3.6%	Refugee Assistance					
Adults	13,673	8,975	9,347	-31.6%	4.1%	Expenditures	\$11,107	\$22,670	\$23,227	109.1%	2.5%
Children	23,175	24,637	25,471	9.9%	3.4%	Cases	27	79	90	233.3%	13.9%
Apps Processed	3,465	2,878	1,798	-48.1%	-37.5%	Individuals	29	86	98	237.9%	14.0%
Approvals	1,496	1,385	907	-39.4%	-34.5%	Adults	29	86	98	237.9%	14.0%
General Assistance											
Expenditures	\$859,796	\$802,133	\$723,655	-15.8%	-9.8%						
Cases	2,971	3,242	2,920	-1.7%	-9.9%	Medicaid					
Individuals	3,211	3,307	2,987	-7.0%	-9.7%		Oct 12	Sep 13	Oct 13	Oct 12 – Oct 13	Sep 13 – Oct 13
Adults	2,989	3,119	2,797	-6.4%	-10.3%	Expenditures*	\$327,893,750	\$267,071,740	\$333,272,093	1.6%	24.8%
Children	222	188	190	-14.4%	1.1%	Eligibles	526,097	528,023	535,956	1.9%	1.5%
Apps Processed	1,259	609	278	-77.9%	-54.4%	Adults	187,005	194,490	201,206	7.6%	3.5%
Approvals	283	147	109	-61.5%	-25.9%	Children	339,092	333,533	334,750	-1.3%	0.4%

All expenditures are unreconciled and subject to change.

*Medicaid expenditures as of date of payment.

Expenditures Year to Date			
	SFY 2014	FFY 2014	CY 2014
Supplemental Nutrition Assistance Program (SNAP)	\$430,295,336	\$260,391,948	\$100,951,966
Temporary Assistance for Needy Families (TANF)	\$32,517,182	\$19,325,968	\$7,474,228
General Assistance	\$6,820,597	\$4,157,837	\$1,525,788
Education Works	\$780,392	\$486,458	\$161,802

DEMOGRAPHIC PROFILE					
	SNAP	TANF	General Assistance	Education Works	Refugee Cash Assistance
Average # persons per case:	2.21	2.59	1.02	2.92	1.09
Gender of Recipients:					
Male	190,370	2,715	1,752	275	65
Female	229,568	32,104	1,235	448	33
Ethnicity:					
Hispanic	245,824	25,039	1,716	409	72
Not Hispanic	174,114	9,779	1,271	314	26
Race:					
Native American or Alaskan Native	68,306	2,569	179	75	0
Asian	5,302	457	37	12	1
African American	9,830	1,241	111	29	6
Native Hawaiian or Pacific Islander	612	6	2	0	0
White	332,131	30,263	2,579	602	91
Unknown/not declared	2,695	174	70	2	0
More than one race	1,063	107	9	2	0

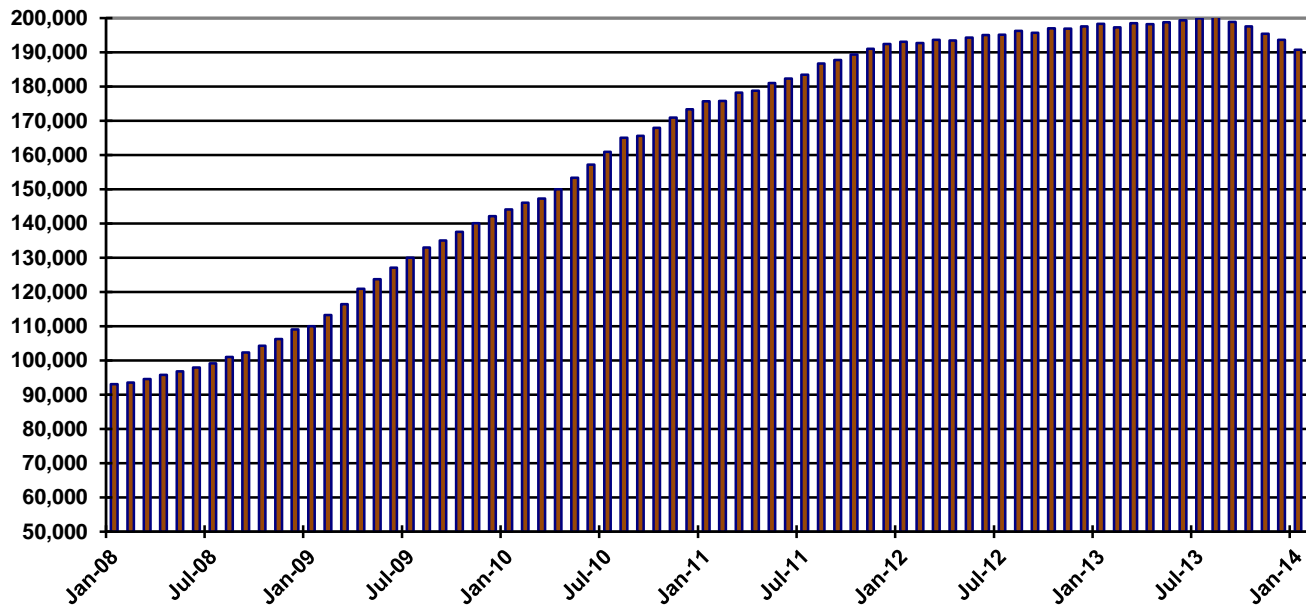
Supplemental Nutrition Assistance Program (SNAP) Cases by Administrative Office

Office	Feb-13	Jan-14	Feb-14	Feb 13 – Feb 14		Jan 14 – Feb 14	
				# change	% change	# change	% change
Chaves	6,561	6,753	6,658	97	1.5%	-95	-1.4%
Cibola	3,235	3,303	3,238	3	0.1%	-65	-2.0%
Colfax	1,207	1,222	1,230	23	1.9%	8	0.7%
Curry	3,977	3,756	3,750	-227	-5.7%	-6	-0.2%
East Dona Ana	6,902	6,985	6,963	61	0.9%	-22	-0.3%
Eddy Artesia	1,305	1,283	1,245	-60	-4.6%	-38	-3.0%
Eddy Carlsbad	2,863	2,705	2,711	-152	-5.3%	6	0.2%
Grant	3,201	3,111	3,109	-92	-2.9%	-2	-0.1%
Guadalupe	721	799	781	60	8.3%	-18	-2.3%
Hidalgo	489	378	377	-112	-22.9%	-1	-0.3%
Lea	3,935	3,726	3,562	-373	-9.5%	-164	-4.4%
Lincoln	1,675	1,613	1,591	-84	-5.0%	-22	-1.4%
Luna	3,731	3,640	3,635	-96	-2.6%	-5	-0.1%
McKinley	8,768	8,286	7,694	-1,074	-12.2%	-592	-7.1%
Northeast Bernalillo	19,730	17,419	16,971	-2,759	-14.0%	-448	-2.6%
Northwest Bernalillo	14,664	14,794	14,718	54	0.4%	-76	-0.5%
Otero	4,284	4,189	4,234	-50	-1.2%	45	1.1%
Quay	1,258	1,219	1,215	-43	-3.4%	-4	-0.3%
Rio Arriba	6,875	6,972	6,975	100	1.5%	3	0.0%
Roosevelt	1,404	1,256	1,273	-131	-9.3%	17	1.4%
San Juan	10,740	10,672	10,402	-338	-3.1%	-270	-2.5%
San Miguel	5,331	4,874	4,825	-506	-9.5%	-49	-1.0%
Sandoval	9,092	8,788	8,764	-328	-3.6%	-24	-0.3%
Santa Fe	9,692	9,469	9,502	-190	-2.0%	33	0.3%
Sierra	2,694	2,523	2,527	-167	-6.2%	4	0.2%
Socorro	2,701	2,663	2,717	16	0.6%	54	2.0%
South Dona Ana	7,469	6,754	6,903	-566	-7.6%	149	2.2%
Southeast Bernalillo	10,897	11,302	11,312	415	3.8%	10	0.1%
Southwest Bernalillo	16,939	15,377	15,275	-1,664	-9.8%	-102	-0.7%
Taos	3,825	3,896	3,969	144	3.8%	73	1.9%
Torrance	2,604	2,488	2,517	-87	-3.3%	29	1.2%
Union	490	193	196	-294	-60.0%	3	1.6%
Valencia North	5,486	5,421	5,439	-47	-0.9%	18	0.3%
Valencia South	3,054	3,036	3,055	1	0.0%	19	0.6%
West Dona Ana	9,524	9,204	9,070	-454	-4.8%	-134	-1.5%
Centralized Units	0	698	1,297	1,297	-	599	85.8%
TOTAL	197,323	190,767	189,700	-7,623	-3.9%	-1,067	-0.6%

Supplemental Nutrition Assistance Program (SNAP) Cases by Region

Region	Feb-13	Jan-14	Feb-14	Feb 13 – Feb 14		Jan 14 – Feb 14	
				# change	% change	# change	% change
NW Region 1	40,375	39,506	38,592	-1,783	-4.4%	-914	-2.3%
NE Region 2	27,420	26,626	26,697	-723	-2.6%	71	0.3%
Central Region 3	64,834	61,380	60,793	-4,041	-6.2%	-587	-1.0%
SE Region 4	22,024	21,497	21,195	-829	-3.8%	-302	-1.4%
SW Region 5	42,670	41,060	41,126	-1,544	-3.6%	66	0.2%
Centralized Units	0	698	1,297	1,297	-	599	85.8%
TOTAL	197,323	190,767	189,700	-7,623	-3.9%	-1,067	-0.6%

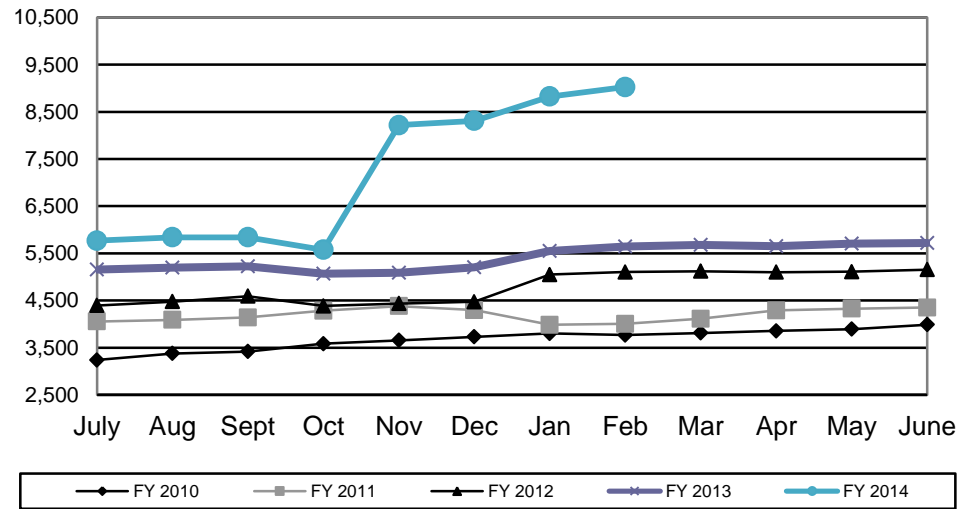
SNAP Cases Per Month



State SNAP Benefits Supplement

	SFY 2010		SFY 2011		SFY 2012		SFY 2013		SFY 2014	
	Cases	Expenditures	Cases	Expenditures	Cases	Expenditures	Cases	Expenditures	Cases	Expenditures
July	3,237	\$38,216	4,056	\$50,241	4,395	\$34,773	5,157	\$42,552	5,767	\$48,040
Aug	3,376	\$39,476	4,088	\$50,502	4,477	\$35,360	5,200	\$42,797	5,841	\$48,417
Sept	3,418	\$39,790	4,139	\$50,946	4,591	\$36,455	5,223	\$43,023	5,841	\$48,732
Oct	3,585	\$43,887	4,284	\$52,530	4,384	\$34,850	5,071	\$41,752	5,575	\$46,610
Nov	3,655	\$44,952	4,381	\$53,820	4,436	\$35,260	5,088	\$42,074	8,219	\$69,564
Dec	3,731	\$45,855	4,296	\$52,649	4,474	\$35,619	5,202	\$42,829	8,310	\$71,839
Jan	3,802	\$46,338	3,984	\$31,897	5,050	\$41,519	5,548	\$45,769	8,826	\$77,933
Feb	3,767	\$46,156	4,006	\$31,970	5,102	\$41,900	5,645	\$46,700	9,024	\$84,758
Mar	3,810	\$46,502	4,113	\$33,226	5,119	\$41,960	5,677	\$47,117		
April	3,856	\$43,830	4,290	\$34,599	5,099	\$41,988	5,654	\$47,118		
May	3,856	\$43,830	4,326	\$34,892	5,109	\$43,587	5,706	\$47,528		
June	3,988	\$49,230	4,351	\$28,199	5,154	\$42,442	5,720	\$47,625		
TOTAL	44,081	\$528,062	50,314	\$505,470	57,390	\$465,713	64,891	\$536,884	57,403	\$495,893
Monthly average	3,673	\$44,005	4,193	\$42,123	4,783	\$38,809	5,408	\$44,740	7,175	\$61,987

State SNAP Benefits Supplement Cases by State Fiscal Year



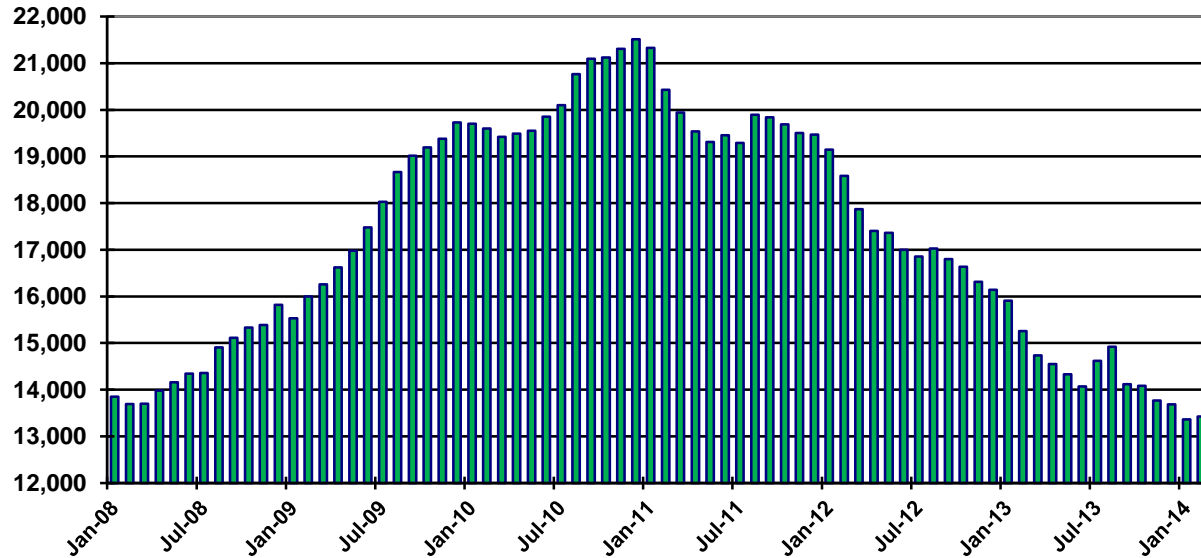
Temporary Assistance of Needy Families (TANF) Cases by Administrative Office

Office	Feb-13	Jan-14	Feb-14	Feb 13 – Feb 14		Jan 14 – Feb 14	
				# change	% change	# change	% change
Chaves	539	565	555	16	3.0%	-10	-1.8%
Cibola	261	224	220	-41	-15.7%	-4	-1.8%
Colfax	111	94	95	-16	-14.4%	1	1.1%
Curry	499	429	425	-74	-14.8%	-4	-0.9%
East Dona Ana	681	648	653	-28	-4.1%	5	0.8%
Eddy Artesia	131	130	121	-10	-7.6%	-9	-6.9%
Eddy Carlsbad	278	245	244	-34	-12.2%	-1	-0.4%
Grant	212	209	211	-1	-0.5%	2	1.0%
Guadalupe	44	51	49	5	11.4%	-2	-3.9%
Hidalgo	40	26	22	-18	-45.0%	-4	-15.4%
Lea	399	361	325	-74	-18.5%	-36	-10.0%
Lincoln	167	141	134	-33	-19.8%	-7	-5.0%
Luna	347	310	296	-51	-14.7%	-14	-4.5%
McKinley	91	77	82	-9	-9.9%	5	6.5%
Northeast Bernalillo	1,337	986	1,043	-294	-22.0%	57	5.8%
Northwest Bernalillo	1,130	951	1,047	-83	-7.3%	96	10.1%
Otero	339	292	280	-59	-17.4%	-12	-4.1%
Quay	99	97	100	1	1.0%	3	3.1%
Rio Arriba	526	516	488	-38	-7.2%	-28	-5.4%
Roosevelt	121	106	101	-20	-16.5%	-5	-4.7%
San Juan	266	236	223	-43	-16.2%	-13	-5.5%
San Miguel	330	286	279	-51	-15.5%	-7	-2.4%
Sandoval	589	558	564	-25	-4.2%	6	1.1%
Santa Fe	596	560	583	-13	-2.2%	23	4.1%
Sierra	175	131	125	-50	-28.6%	-6	-4.6%
Socorro	155	159	164	9	5.8%	5	3.1%
South Dona Ana	1,091	940	899	-192	-17.6%	-41	-4.4%
Southeast Bernalillo	994	875	885	-109	-11.0%	10	1.1%
Southwest Bernalillo	1,583	1,154	1,178	-405	-25.6%	24	2.1%
Taos	124	154	157	33	26.6%	3	1.9%
Torrance	261	247	236	-25	-9.6%	-11	-4.5%
Union	38	16	19	-19	-50.0%	3	18.8%
Valencia North	469	377	365	-104	-22.2%	-12	-3.2%
Valencia South	230	213	204	-26	-11.3%	-9	-4.2%
West Dona Ana	1,006	974	980	-26	-2.6%	6	0.6%
Centralized Units	0	27	76	76	-	49	181.5%
TOTAL	15,259	13,365	13,428	-1,831	-12.0%	63	0.5%

Temporary Assistance of Needy Families (TANF) Cases by Region

Region	Feb-13	Jan-14	Feb-14	Feb 13 – Feb 14		Jan 14 – Feb 14	
				# change	% change	# change	% change
NW Region 1	1,906	1,685	1,658	-248	-13.0%	-27	-1.6%
NE Region 2	1,725	1,626	1,621	-104	-6.0%	-5	-0.3%
Central Region 3	5,305	3,966	4,153	-1,152	-21.7%	187	4.7%
SE Region 4	2,110	1,984	1,920	-190	-9.0%	-64	-3.2%
SW Region 5	4,213	4,077	4,000	-213	-5.1%	-77	-1.9%
Centralized Units	0	27	76	76	-	49	181.5%
TOTAL	15,259	13,365	13,428	-1,831	-12.0%	63	0.5%

TANF Cases per month



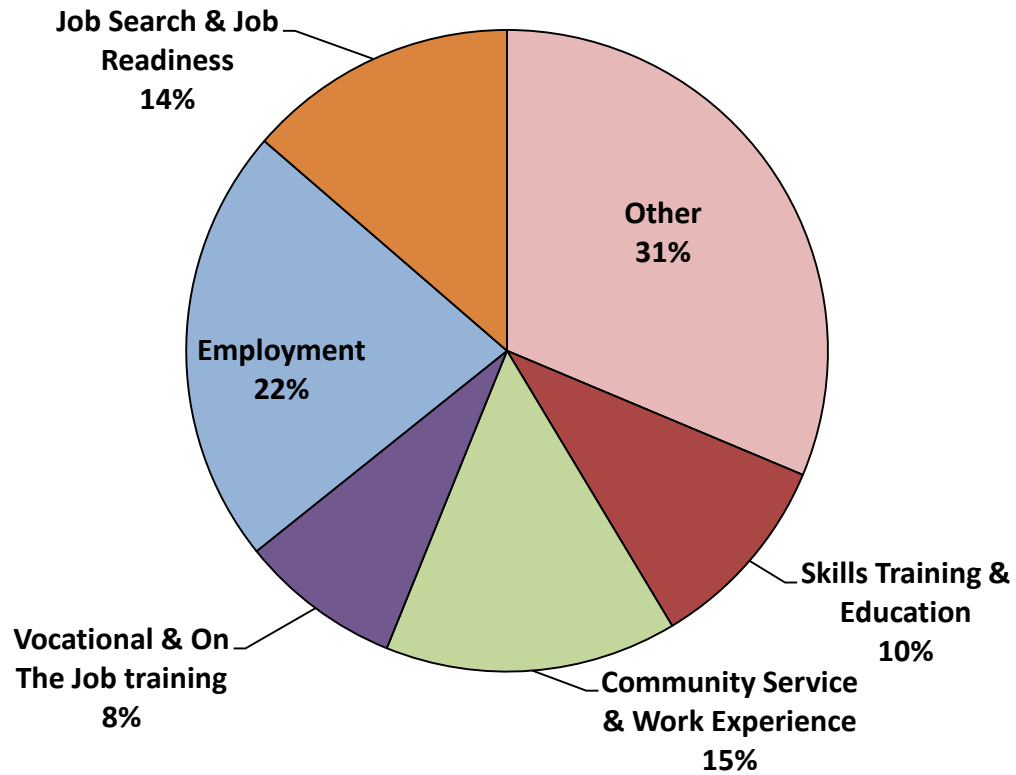
Intensive Case Management, Recovery and Employment (ICARE)

The ICARE program is a pilot program in Albuquerque which is designed to address substance use barriers to employment in TANF Recipients.

It is a new approach that combines 12 weeks of Intensive Case Management with job readiness classes and job development. TANF recipients identified as having substance use issues that prevent them from obtaining and retaining employment are referred to the ICARE program. The program includes motivational interviewing to motivate change and decrease substance use; relapse prevention to build skills; family management to improve family functioning; job readiness classes to enhance employment skills and increase retention; and job development to secure employment. A program evaluation component will be used to determine the effectiveness of this program in addressing substance use disorders among TANF recipients.

	Jul 13	Aug 13	Sep 13	Oct 13	Nov 13	Dec 13	Jan 14	Feb 14
ICARE Expenditures	\$28,055.51	\$66,750.77	\$107,403.28	\$34,785.52	\$142,632.64	\$18,924.30	\$22,281.05	\$148,154.40
# of Screenings for Substance Use	501	1,222	693	936	509	520	508	390
# of Referrals to ICARE resulting from screenings	37	76	62	38	23	16	22	22

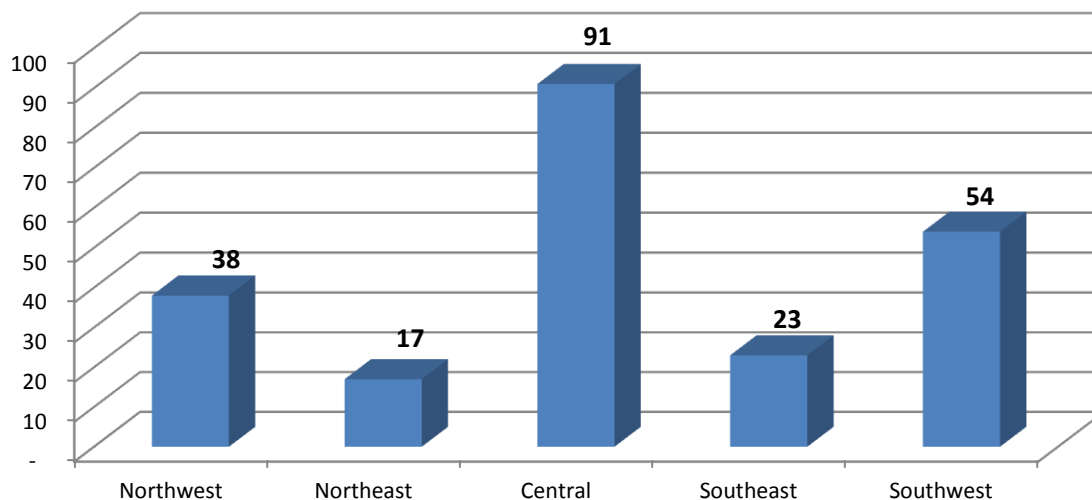
**NM Works Activity Placements on February 28, 2014 as reported by SL
Start ****



**Data preliminary and subject to later revision.

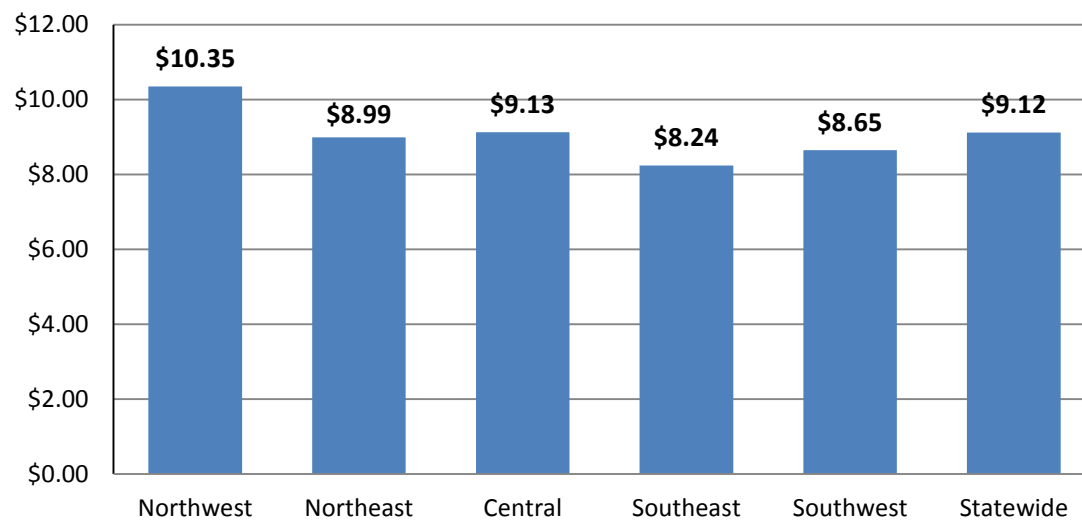
Placements may be duplicated as some individuals may work more than one activity or job.

Number of New Employments in Feb, by region, as reported by SL Start
Statewide Total: 223



Employment placements may be duplicated as some individuals may work more than one job.

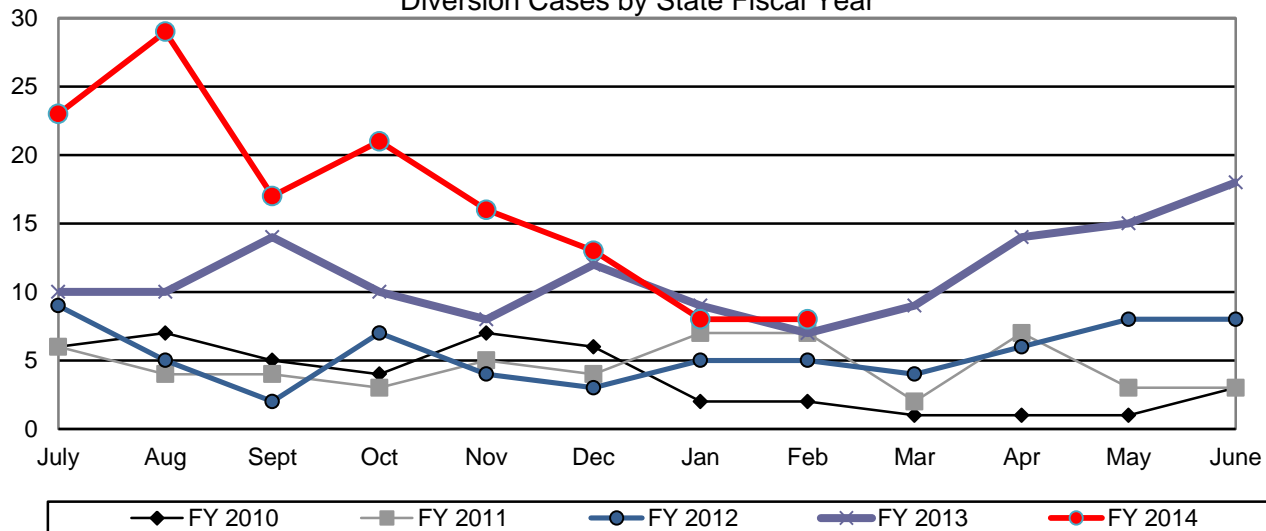
Average Starting Hourly Wage of Feb TANF Employments, as reported by SL Start



TANF Diversion Payments

	SFY 2010		SFY 2011		SFY 2012		SFY 2013		SFY 2014	
	Cases	Expenditures	Cases	Expenditures	Cases	Expenditures	Cases	Expenditures	Cases	Expenditures
July	6	\$10,000	6	\$12,000	9	\$19,500	10	\$20,000	23	\$46,500
Aug	7	\$10,500	4	\$8,000	5	\$12,500	10	\$19,000	29	\$54,500
Sept	5	\$9,500	4	\$7,000	2	\$4,000	14	\$31,500	17	\$36,500
Oct	4	\$6,000	3	\$4,500	7	\$12,500	10	\$18,000	21	\$42,500
Nov	7	\$10,500	5	\$9,500	4	\$7,000	8	\$15,000	16	\$28,953
Dec	6	\$12,000	4	\$10,000	3	\$5,500	12	\$25,000	13	\$25,500
Jan	2	\$5,000	7	\$13,500	5	\$10,500	9	\$17,500	8	\$16,000
Feb	2	\$5,000	7	\$13,500	5	\$11,500	7	\$13,500	8	\$16,994
Mar	1	\$1,500	2	\$4,000	4	\$7,000	9	\$17,500		
April	1	\$2,500	7	\$14,350	6	\$10,000	14	\$30,000		
May	1	\$1,500	3	\$4,500	8	\$17,000	15	\$30,500		
June	3	\$5,500	3	\$6,500	8	\$20,000	18	\$37,000		
TOTAL	45	\$79,500	55	\$107,350	66	\$137,000	136	\$274,500	135	\$267,447
Monthly average	4	\$6,625	5	\$8,946	6	\$11,417	11	\$22,875	17	\$33,431

Diversion Cases by State Fiscal Year



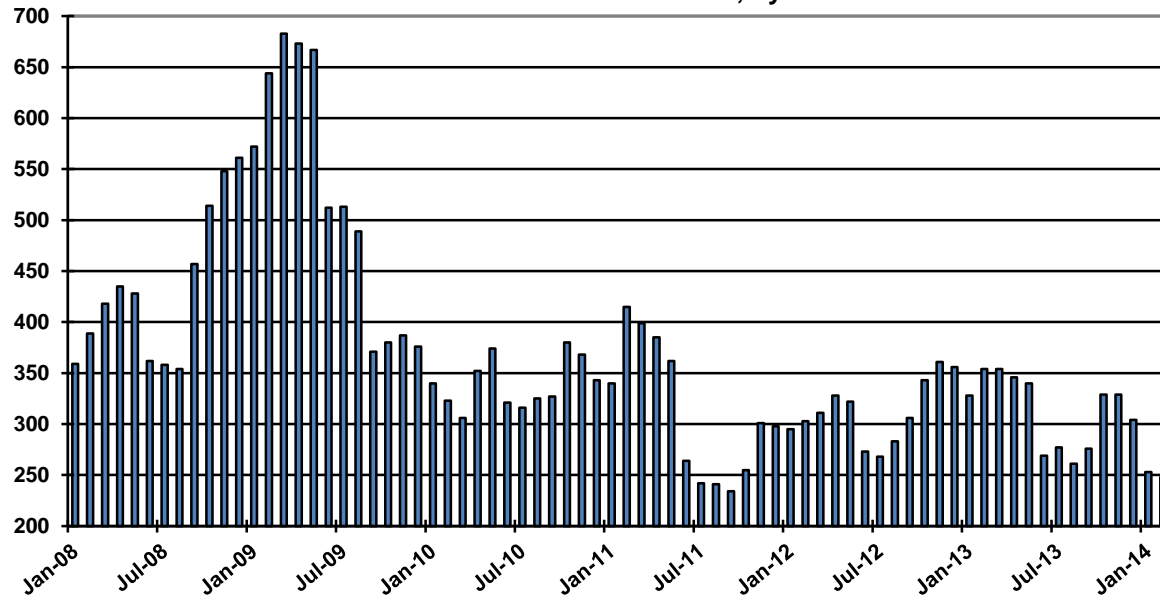
Education Works Cases by Administrative Office

Office	Feb-13	Jan-14	Feb-14	Feb 13 – Feb 14		Jan 14 – Feb 14	
				# change	% change	# change	% change
Chaves	5	0	0	-5	-100.0%	0	-
Cibola	4	4	4	0	0.0%	0	0.0%
Colfax	4	2	2	-2	-50.0%	0	0.0%
Curry	2	1	1	-1	-50.0%	0	0.0%
East Dona Ana	25	12	11	-14	-56.0%	-1	-8.3%
Eddy Artesia	3	1	0	-3	-100.0%	-1	-100.0%
Eddy Carlsbad	4	1	1	-3	-75.0%	0	0.0%
Grant	12	8	8	-4	-33.3%	0	0.0%
Guadalupe	0	0	0	0	-	0	-
Hidalgo	0	0	0	0	-	0	-
Lea	5	0	0	-5	-100.0%	0	-
Lincoln	0	0	0	0	-	0	-
Luna	3	6	7	4	133.3%	1	16.7%
McKinley	1	0	0	-1	-100.0%	0	-
Northeast Bernalillo	57	54	56	-1	-1.8%	2	3.7%
Northwest Bernalillo	28	26	30	2	7.1%	4	15.4%
Otero	4	3	3	-1	-25.0%	0	0.0%
Quay	6	0	0	-6	-100.0%	0	-
Rio Arriba	5	3	3	-2	-40.0%	0	0.0%
Roosevelt	1	0	0	-1	-100.0%	0	-
San Juan	1	2	2	1	100.0%	0	0.0%
San Miguel	15	15	13	-2	-13.3%	-2	-13.3%
Sandoval	30	24	18	-12	-40.0%	-6	-25.0%
Santa Fe	14	7	6	-8	-57.1%	-1	-14.3%
Sierra	3	1	1	-2	-66.7%	0	0.0%
Socorro	1	2	2	1	100.0%	0	0.0%
South Dona Ana	21	4	5	-16	-76.2%	1	25.0%
Southeast Bernalillo	31	27	29	-2	-6.5%	2	7.4%
Southwest Bernalillo	17	20	20	3	17.6%	0	0.0%
Taos	13	1	1	-12	-92.3%	0	0.0%
Torrance	9	5	6	-3	-33.3%	1	20.0%
Union	0	0	0	0	-	0	-
Valencia North	4	4	3	-1	-25.0%	-1	-25.0%
Valencia South	4	4	4	0	0.0%	0	0.0%
West Dona Ana	22	15	11	-11	-50.0%	-4	-26.7%
Centralized Units	0	1	1	1	-	0	0.0%
TOTAL	354	253	248	-106	-29.9%	-5	-2.0%

Education Works Cases by Region

Region	Feb-13	Jan-14	Feb-14	Feb 13 – Feb 14		Jan 14 – Feb 14	
				# change	% change	# change	% change
NW Region 1	44	38	31	-13	-29.5%	-7	-18.4%
NE Region 2	51	28	25	-26	-51.0%	-3	-10.7%
Central Region 3	142	132	141	-1	-0.7%	9	6.8%
SE Region 4	26	3	2	-24	-92.3%	-1	-33.3%
SW Region 5	91	51	48	-43	-47.3%	-3	-5.9%
Centralized Units	0	1	1	1	-	0	0.0%
TOTAL	354	253	248	-106	-29.9%	-5	-2.0%

Education Works Cases, by Month



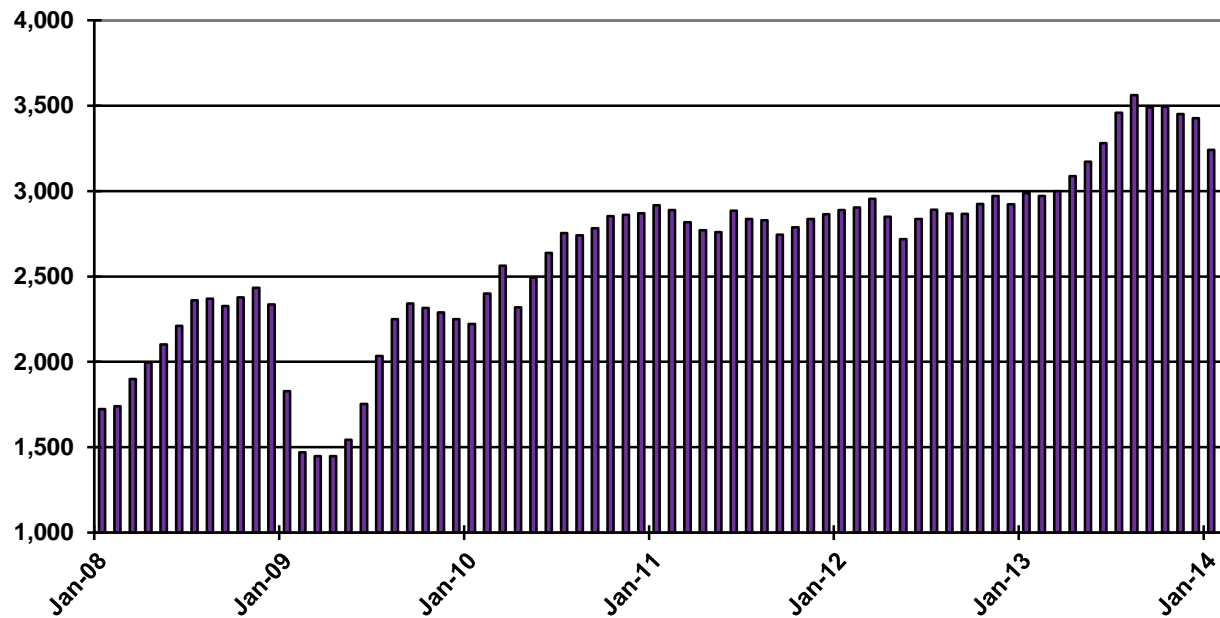
General Assistance (GA) Cases by Administrative Office

Office	Feb-13	Jan-14	Feb-14	Feb 13 – Feb 14		Jan 14 – Feb 14	
				# change	% change	# change	% change
Chaves	98	82	72	-26	-26.5%	-10	-12.2%
Cibola	74	51	31	-43	-58.1%	-20	-39.2%
Colfax	23	39	36	13	56.5%	-3	-7.7%
Curry	69	60	50	-19	-27.5%	-10	-16.7%
East Dona Ana	83	85	79	-4	-4.8%	-6	-7.1%
Eddy Artesia	37	16	12	-25	-67.6%	-4	-25.0%
Eddy Carlsbad	75	59	49	-26	-34.7%	-10	-16.9%
Grant	60	54	49	-11	-18.3%	-5	-9.3%
Guadalupe	21	29	21	0	0.0%	-8	-27.6%
Hidalgo	20	12	12	-8	-40.0%	0	0.0%
Lea	39	47	49	10	25.6%	2	4.3%
Lincoln	29	21	18	-11	-37.9%	-3	-14.3%
Luna	45	39	36	-9	-20.0%	-3	-7.7%
McKinley	18	21	19	1	5.6%	-2	-9.5%
Northeast Bernalillo	398	470	433	35	8.8%	-37	-7.9%
Northwest Bernalillo	286	353	340	54	18.9%	-13	-3.7%
Otero	52	51	47	-5	-9.6%	-4	-7.8%
Quay	38	36	30	-8	-21.1%	-6	-16.7%
Rio Arriba	142	137	130	-12	-8.5%	-7	-5.1%
Roosevelt	12	14	11	-1	-8.3%	-3	-21.4%
San Juan	66	70	61	-5	-7.6%	-9	-12.9%
San Miguel	109	127	111	2	1.8%	-16	-12.6%
Sandoval	106	127	105	-1	-0.9%	-22	-17.3%
Santa Fe	205	265	214	9	4.4%	-51	-19.2%
Sierra	39	32	24	-15	-38.5%	-8	-25.0%
Socorro	51	56	49	-2	-3.9%	-7	-12.5%
South Dona Ana	49	37	36	-13	-26.5%	-1	-2.7%
Southeast Bernalillo	149	200	186	37	24.8%	-14	-7.0%
Southwest Bernalillo	186	239	222	36	19.4%	-17	-7.1%
Taos	72	93	77	5	6.9%	-16	-17.2%
Torrance	33	33	27	-6	-18.2%	-6	-18.2%
Union	9	8	7	-2	-22.2%	-1	-12.5%
Valencia North	95	89	64	-31	-32.6%	-25	-28.1%
Valencia South	49	56	51	2	4.1%	-5	-8.9%
West Dona Ana	134	125	128	-6	-4.5%	3	2.4%
Centralized Units	0	9	34	34	-	25	277.8%
TOTAL	2,971	3,242	2,920	-51	-1.7%	-322	-9.9%

General Assistance (GA) Cases by Region

Region	Feb-13	Jan-14	Feb-14	Feb 13 – Feb 14		Jan 14 – Feb 14	
				# change	% change	# change	% change
NW Region 1	400	437	414	14	3.5%	-23	-5.3%
NE Region 2	559	720	669	110	19.7%	-51	-7.1%
Central Region 3	1,067	1,291	1,295	228	21.4%	4	0.3%
SE Region 4	396	379	343	-53	-13.4%	-36	-9.5%
SW Region 5	567	594	512	-55	-9.7%	-82	-13.8%
Centralized Units	0	5	9	9	-	4	80.0%
TOTAL	2,989	3,426	3,242	253	8.5%	-184	-5.4%

General Assistance Cases per Month

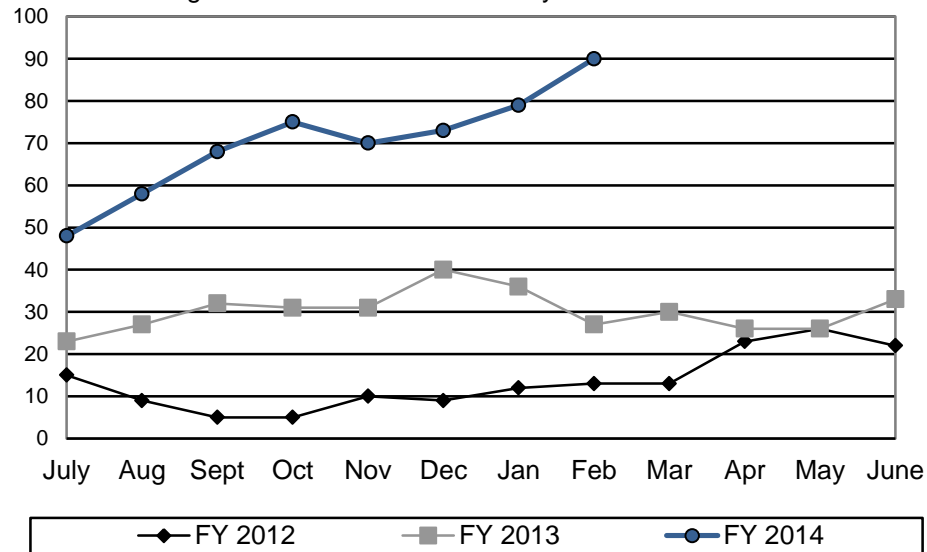


GA Interim Assistance Reimbursements						
	SFY 12		SFY 13		SFY 14	
	Cases	Amount	Cases	Amount	Cases	Amount
<i>July</i>	77	\$224,022	105	\$254,087	87	\$185,368
August	100	\$256,766	88	\$248,471	70	\$184,639
<i>September</i>	68	\$159,712	101	\$233,341	102	\$268,243
October	60	\$158,539	101	\$293,784	87	\$165,578
<i>November</i>	60	\$158,596	72	\$193,152	65	\$139,197
December	74	\$183,600	84	\$236,221	49	\$147,853
<i>January</i>	91	\$341,348	79	\$209,922	63	\$178,944
February	113	\$307,090	77	\$178,441	53	\$130,352
<i>March</i>	77	\$186,834	85	\$229,599		
April	102	\$357,392	92	\$240,540		
<i>May</i>	90	\$230,243	126	\$346,079		
June	57	\$215,729	90	\$225,355		
SFY Total	969	\$2,779,871	1,100	\$2,888,992	576	\$1,400,174
Monthly Average	81	\$231,656	92	\$240,749	72	\$175,022

IAR case figures reflect those with expected reimbursement amounts above \$0. Figures unreconciled and subject to change.

Refugee Cash Assistance						
	SFY 12		SFY 13		SFY 14	
	Cases	Payments	Cases	Payments	Cases	Payments
July	15	\$6,428	23	\$7,155	48	\$12,013
August	9	\$4,433	27	\$7,742	58	\$16,129
September	5	\$2,930	32	\$8,267	68	\$19,061
October	5	\$1,519	31	\$9,803	75	\$20,962
November	10	\$2,675	31	\$9,552	70	\$21,880
December	9	\$3,380	40	\$10,435	73	\$22,053
January	12	\$3,285	36	\$11,489	79	\$22,670
February	13	\$3,210	27	\$11,107	90	\$23,227
March	13	\$3,739	30	\$8,678		
April	23	\$5,654	26	\$9,410		
May	26	\$7,579	26	\$8,901		
June	22	\$7,496	33	\$9,535		
SFY Total	162	\$52,328	363	\$112,074	561	\$157,995
Monthly Average	14	\$4,361	30	\$9,340	70	\$19,749

Refugee Cash Assistance Cases by State Fiscal Year



Low Income Home Energy Assistance Program (LIHEAP) Payments by Administrative Office

Cumulative, For Federal Fiscal Year 2014

Office	Payments	Number of Households Paid
Chaves	\$291,728	1,974
Cibola	\$162,752	1,148
Colfax	\$94,096	572
Curry	\$140,192	677
East Dona Ana	\$236,816	1,597
Eddy Artesia	\$63,616	277
Eddy Carlsbad	\$140,272	598
Grant	\$114,432	831
Guadalupe	\$96,912	609
Hidalgo	\$9,504	75
Lea	\$92,368	566
Lincoln	\$75,584	347
Luna	\$252,576	1,052
McKinley	\$92,304	593
Northeast Bernalillo	\$505,760	4,167
Northwest Bernalillo	\$500,816	4,122
Otero	\$220,240	1,030
Quay	\$86,496	562

Office	Payments	Number of Households Paid
Rio Arriba	\$376,208	2,553
Roosevelt	\$69,344	336
San Juan	\$302,464	2,079
San Miguel	\$451,824	3,039
Sandoval	\$237,008	1,612
Santa Fe	\$252,304	1,776
Sierra	\$112,752	798
Socorro	\$147,536	914
South Dona Ana	\$209,616	1,588
Southeast Bernalillo	\$340,928	2,659
Southwest Bernalillo	\$456,064	3,674
Taos	\$341,808	2,230
Torrance	\$179,168	1,076
Union	\$15,472	115
Valencia North	\$282,432	1,895
Valencia South	\$174,432	1,254
West Dona Ana	\$312,064	1,612
Centralized Units	\$16,288	109
TOTAL	\$7,454,176	50,116

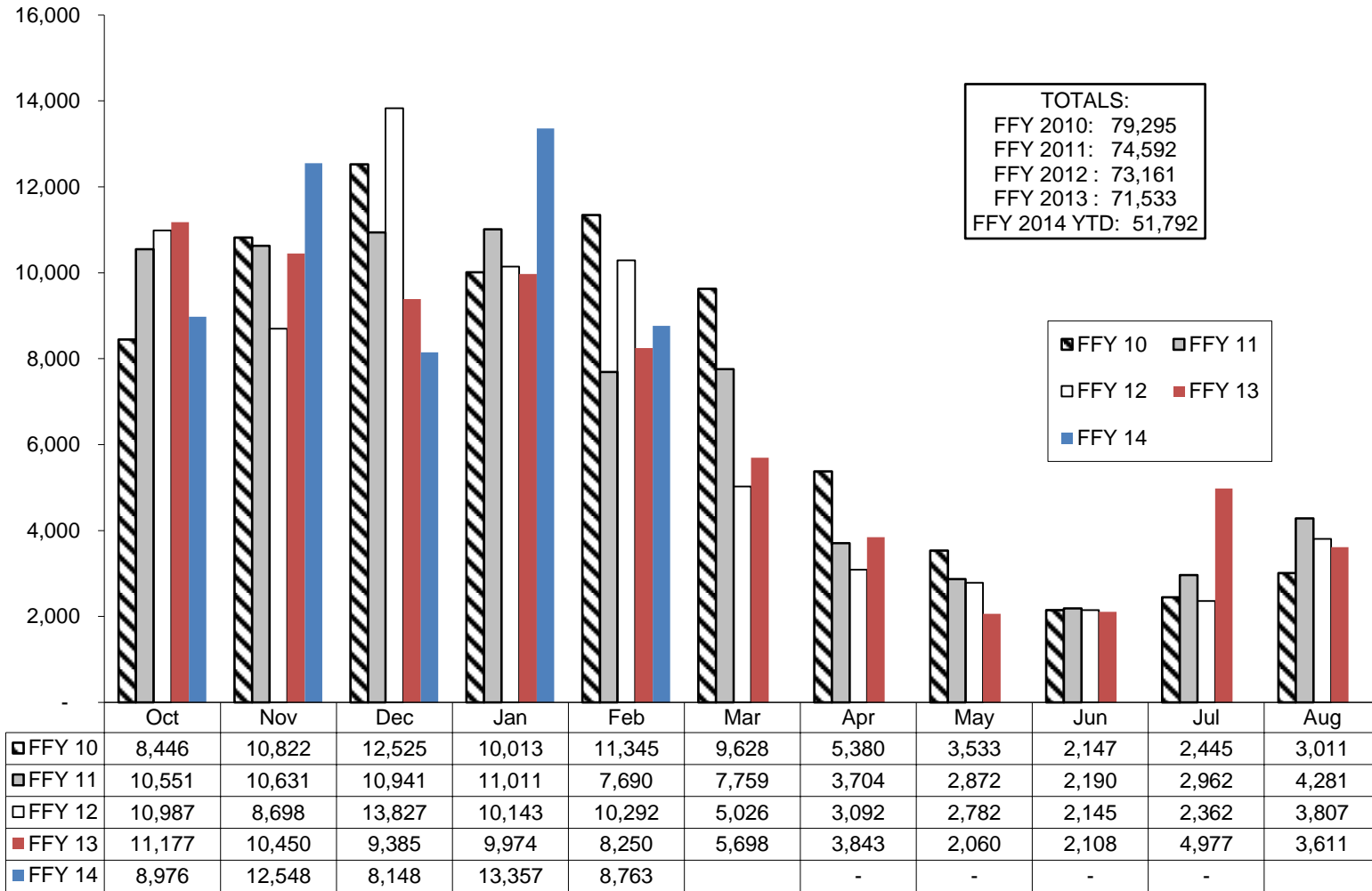
LIHEAP Payments by Region

Cumulative, For Federal Fiscal Year 2014

Region	Payments	Number of Households Paid
NW Region 1	\$1,251,392	8,581
NE Region 2	\$1,531,712	10,285
Central Region 3	\$1,982,736	15,698
SE Region 4	\$980,928	5,599
SW Region 5	\$1,691,120	9,844
Centralized Units	\$16,288	109
TOTAL	\$7,454,176	50,116

Note: Five Sandoval Indian Pueblos, Inc., Jemez Pueblo, The Jicarilla Nation, Laguna Pueblo, Nambé Pueblo, The Navajo Nation, and Zuni Pueblo administer their own LIHEAP programs. LIHEAP does not process new applications received during the month of September until the following Federal fiscal year.

LIHEAP Application Approvals & Certifications



Medicaid Eligibles by County

County	Oct-12	Sep-13	Oct-13	Oct 12 –Oct 13		Sep 13 –Oct 13	
				# change	% change	# change	% change
Bernalillo	147,840	148,206	149,019	1,179	0.8%	813	0.5%
Catron	494	491	517	23	4.7%	26	5.3%
Chaves	20,643	20,631	21,295	652	3.2%	664	3.2%
Cibola	8,812	8,817	8,821	9	0.1%	4	0.0%
Colfax	3,026	2,883	2,897	-129	-4.3%	14	0.5%
Curry	13,262	13,033	13,417	155	1.2%	384	2.9%
De Baca	480	468	477	-3	-0.6%	9	1.9%
Dona Ana	68,437	68,692	70,801	2,364	3.5%	2,109	3.1%
Eddy	13,708	13,730	14,271	563	4.1%	541	3.9%
Grant	7,042	6,922	7,267	225	3.2%	345	5.0%
Guadalupe	1,382	1,415	1,426	44	3.2%	11	0.8%
Harding	58	54	56	-2	-3.4%	2	3.7%
Hidalgo	1,237	1,168	1,209	-28	-2.3%	41	3.5%
Lea	16,616	16,777	17,331	715	4.3%	554	3.3%
Lincoln	4,485	4,665	4,905	420	9.4%	240	5.1%
Los Alamos	627	619	639	12	1.9%	20	3.2%
Luna	9,596	9,608	10,004	408	4.3%	396	4.1%
McKinley	30,423	30,033	29,932	-491	-1.6%	-101	-0.3%
Mora	1,108	1,002	982	-126	-11.4%	-20	-2.0%
Otero	11,649	11,558	12,027	378	3.2%	469	4.1%
Quay	2,674	2,572	2,639	-35	-1.3%	67	2.6%
Rio Arriba	14,826	15,593	15,656	830	5.6%	63	0.4%
Roosevelt	4,982	4,942	5,129	147	3.0%	187	3.8%
Sandoval	27,077	27,729	27,804	727	2.7%	75	0.3%
San Juan	36,793	36,962	37,004	211	0.6%	42	0.1%
San Miguel	9,116	8,894	9,009	-107	-1.2%	115	1.3%
Santa Fe	24,494	24,797	24,935	441	1.8%	138	0.6%
Sierra	3,605	3,671	3,877	272	7.5%	206	5.6%
Socorro	5,391	5,381	5,630	239	4.4%	249	4.6%
Taos	8,256	8,517	8,585	329	4.0%	68	0.8%
Torrance	5,881	6,127	6,279	398	6.8%	152	2.5%
Union	881	799	785	-96	-10.9%	-14	-1.8%
Valencia	20,569	20,639	20,676	107	0.5%	37	0.2%
Unspecified	627	628	655	28	4.5%	27	4.3%
TOTAL	526,097	528,023	535,956	9,859	1.9%	7,933	1.5%

Note: All figures are updated historically to include retroactive eligibility, retroactive closures and other late reporting eligibility changes. Excludes clients in SLIMB & Q11.
 Source: <http://www.hsd.state.nm.us/LookingForInformation/medicaid-eligibility.aspx>

SNAP Applications Processed by Administrative Office

Office	Approved	Denied	With- drawn	Total
Chaves	365	13	62	440
Cibola	216	8	30	254
Colfax	50	0	15	65
Curry	197	1	102	300
East Dona Ana	375	7	51	433
Eddy Artesia	52	3	21	76
Eddy Carlsbad	163	3	53	219
Grant	224	4	47	275
Guadalupe	22	0	19	41
Hidalgo	40	1	7	48
Lea	175	1	46	222
Lincoln	84	1	42	127
Luna	208	0	50	258
McKinley	207	37	70	314
Northeast Bernalillo	681	158	155	994
Northwest Bernalillo	627	40	70	737
Otero	249	2	118	369
Quay	53	2	22	77

Office	Approved	Denied	With- drawn	Total
Rio Arriba	449	2	69	520
Roosevelt	44	2	51	97
San Juan	486	10	123	619
San Miguel	206	1	24	231
Sandoval	396	7	108	511
Santa Fe	502	15	158	675
Sierra	141	10	10	161
Socorro	165	5	17	187
South Dona Ana	380	2	98	480
Southeast Bernalillo	464	46	51	561
Southwest Bernalillo	508	32	80	620
Taos	223	4	43	270
Torrance	135	6	31	172
Union	8	0	6	14
Valencia North	292	13	48	353
Valencia South	150	6	21	177
West Dona Ana	578	7	102	687
Centralized Units	125	1	236	362
TOTAL	9,240	450	2,256	11,946

SNAP Applications Processed by Region

Region	Approved	Denied	Withdrawn	Total
NW Region 1	1,747	81	400	2,228
NE Region 2	1,438	22	315	1,775
Central Region 3	2,415	282	387	3,084
SE Region 4	1,071	25	376	1,472
SW Region 5	2,444	39	542	3,025
Centralized Units	125	1	236	362
TOTAL	9,240	450	2,256	11,946

Applications processed = applications approved + denied + withdrawn

TANF Applications Processed by Administrative Office

Office	Approved	Denied	With- drawn	Total
Chaves	48	10	15	73
Cibola	18	6	11	35
Colfax	4	0	5	9
Curry	25	2	27	54
East Dona Ana	48	8	9	65
Eddy Artesia	7	1	6	14
Eddy Carlsbad	15	3	16	34
Grant	24	5	13	42
Guadalupe	1	1	1	3
Hidalgo	1	1	3	5
Lea	15	3	28	46
Lincoln	4	1	16	21
Luna	15	1	14	30
McKinley	4	4	12	20
Northeast Bernalillo	79	65	65	209
Northwest Bernalillo	59	21	48	128
Otero	12	3	32	47
Quay	9	1	6	16

Office	Approved	Denied	With- drawn	Total
Rio Arriba	39	3	15	57
Roosevelt	3	1	12	16
San Juan	12	9	34	55
San Miguel	20	1	7	28
Sandoval	35	4	30	69
Santa Fe	50	7	19	76
Sierra	12	1	3	16
Socorro	14	1	2	17
South Dona Ana	48	5	30	83
Southeast Bernalillo	63	25	20	108
Southwest Bernalillo	46	23	28	97
Taos	23	3	8	34
Torrance	13	4	9	26
Union	2	0	1	3
Valencia North	38	6	15	59
Valencia South	18	4	12	34
West Dona Ana	79	4	33	116
Centralized Units	4	4	45	53
TOTAL	907	241	650	1,798

TANF Applications Processed by Region

Region	Approved	Denied	Withdrawn	Total
NW Region 1	125	33	114	272
NE Region 2	138	14	55	207
Central Region 3	260	138	170	568
SE Region 4	123	22	111	256
SW Region 5	257	30	155	442
Centralized Units	4	4	45	53
TOTAL	907	241	650	1,798

GA Applications Processed by Administrative Office

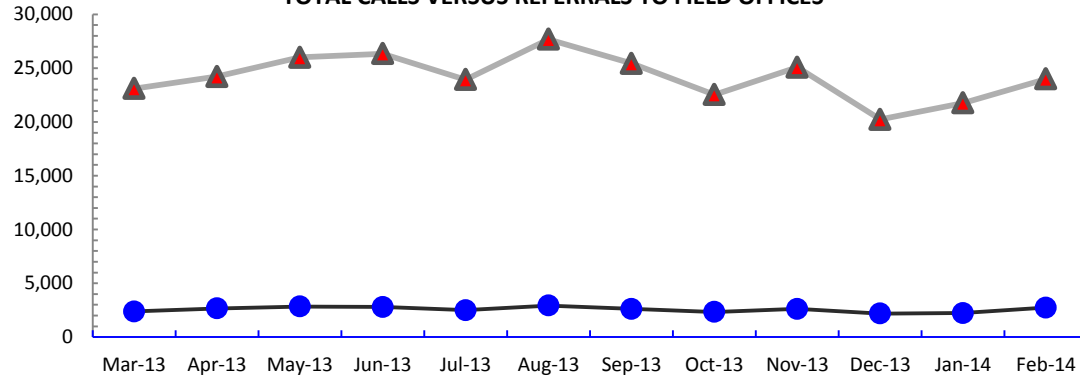
Office	Approved	Denied	With- drawn	Total
Chaves	4	1	0	5
Cibola	1	2	0	3
Colfax	0	0	0	0
Curry	1	2	0	3
East Dona Ana	3	5	2	10
Eddy Artesia	0	0	1	1
Eddy Carlsbad	2	1	0	3
Grant	3	2	1	6
Guadalupe	0	3	1	4
Hidalgo	1	1	0	2
Lea	4	0	0	4
Lincoln	0	0	0	0
Luna	2	0	1	3
McKinley	1	2	1	4
Northeast Bernalillo	8	42	6	56
Northwest Bernalillo	7	19	1	27
Otero	2	0	0	2
Quay	2	3	0	5

Office	Approved	Denied	With- drawn	Total
Rio Arriba	5	1	1	7
Roosevelt	0	0	0	0
San Juan	3	2	0	5
San Miguel	7	1	0	8
Sandoval	3	3	3	9
Santa Fe	5	5	1	11
Sierra	3	0	0	3
Socorro	3	2	0	5
South Dona Ana	5	0	1	6
Southeast Bernalillo	6	13	1	20
Southwest Bernalillo	4	14	1	19
Taos	10	0	1	11
Torrance	2	3	0	5
Union	0	0	0	0
Valencia North	3	8	0	11
Valencia South	1	7	0	8
West Dona Ana	7	2	2	11
Centralized Units	1	0	0	1
TOTAL	109	144	25	278

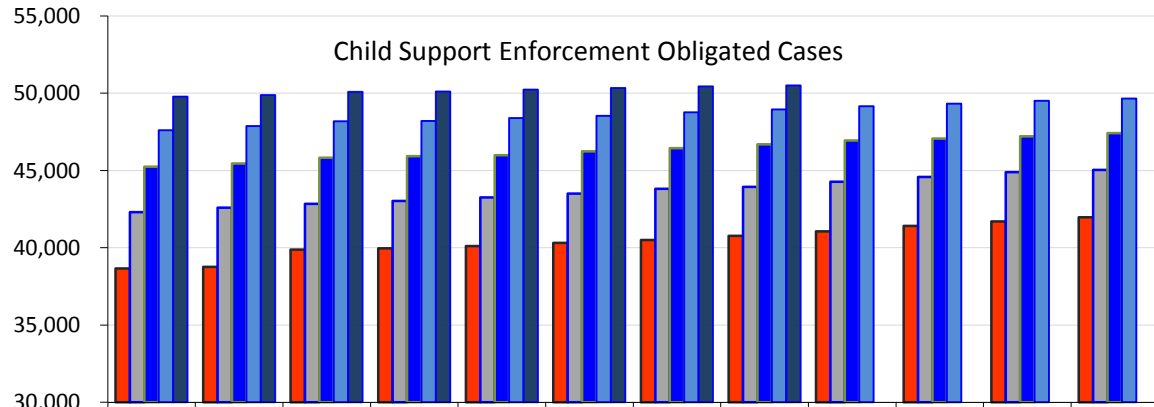
GA Applications Processed by Region

Region	Approved	Denied	Withdrawn	Total
NW Region 1	12	24	4	40
NE Region 2	27	7	3	37
Central Region 3	27	91	9	127
SE Region 4	13	10	2	25
SW Region 5	29	12	7	48
Centralized Units	1	0	0	1
TOTAL	109	144	25	278

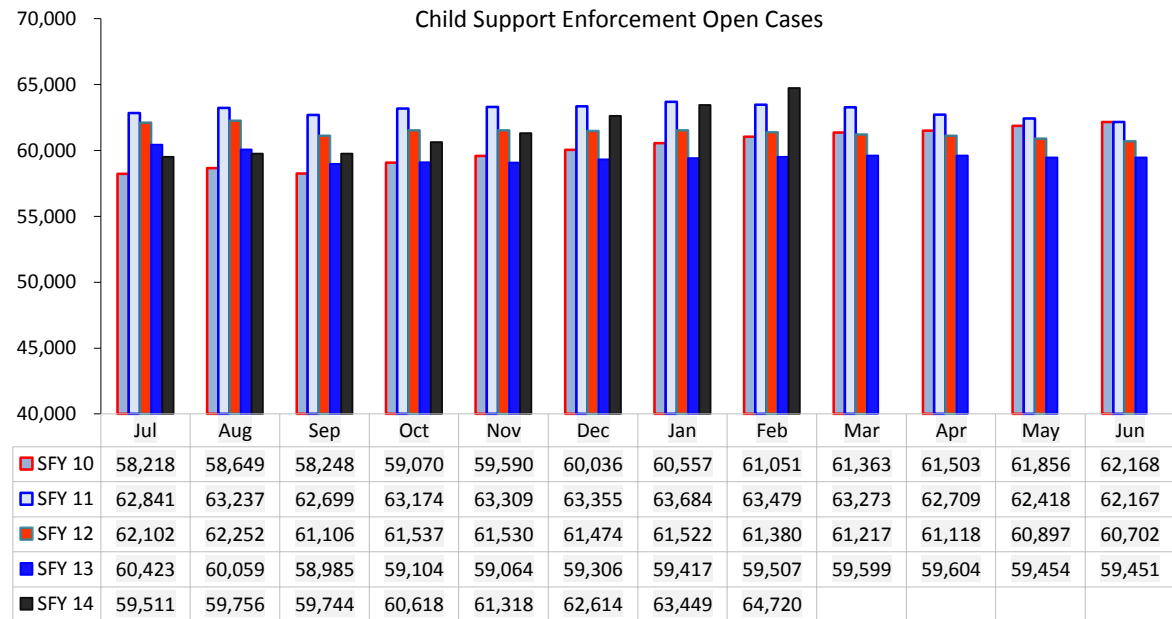
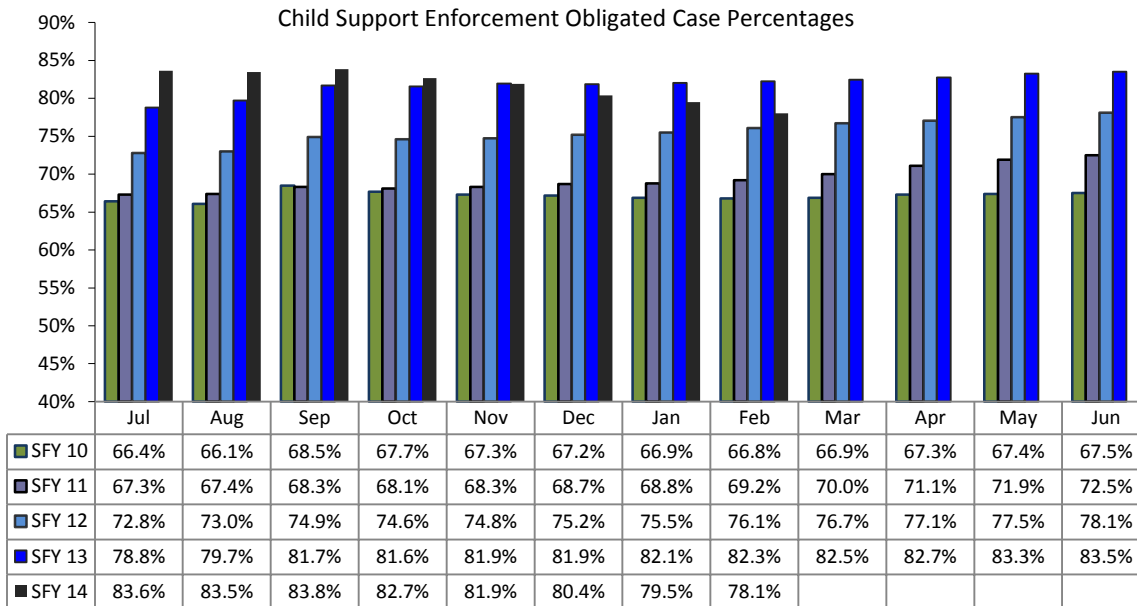
**Child Support Information Center (Call Center)
TOTAL CALLS VERSUS REFERRALS TO FIELD OFFICES**



	Mar-13	Apr-13	May-13	Jun-13	Jul-13	Aug-13	Sep-13	Oct-13	Nov-13	Dec-13	Jan-14	Feb-14
Calls	23,098	24,221	26,003	26,346	23,929	27,681	25,440	22,530	25,077	20,232	21,756	23,987
Referrals	2,382	2,660	2,846	2,798	2,490	2,932	2,617	2,328	2,611	2,178	2,225	2,737
Percent	10.98%	10.95%	10.62%	10.41%	11.07%	10.28%	10.33%	10.41%	10.77%	10.27%	11.41%	11.04%



	Jul	Aug	Sep	Oct	Nov	Dec	Jan	Feb	Mar	Apr	May	Jun
SFY 10	38,655	38,763	39,891	39,976	40,116	40,326	40,507	40,770	41,069	41,410	41,698	41,974
SFY 11	42,310	42,601	42,850	43,035	43,250	43,498	43,818	43,946	44,270	44,588	44,899	45,043
SFY 12	45,238	45,457	45,817	45,922	45,993	46,231	46,439	46,703	46,952	47,075	47,215	47,412
SFY 13	47,616	47,875	48,190	48,205	48,398	48,550	48,758	48,955	49,153	49,318	49,511	49,653
SFY 14	49,777	49,883	50,092	50,106	50,229	50,334	50,441	50,514				



Children Receiving Child Care Assistance Subsidies By County

County	Feb	Mar	Apr	May	Jun	Jul	Aug	Sep	Oct	Nov	Dec	Jan	Feb	Year over year change	
	2013	2013	2013	2013	2013	2013	2013	2013	2013	2013	2013	2014	2014	Cases	Percent
Bernalillo	7,266	7,217	7,229	7,264	7,257	7,143	6,540	6,440	6,810	6,657	6,628	6,379	6,307	-959	-13.2%
Catron	0	0	0	0	0	0	0	0	0	2	2	2	0	0	200.0%
Chaves	721	694	695	681	709	753	673	674	726	741	728	690	703	-18	-2.5%
Cibola	262	251	260	248	247	254	218	242	264	259	255	244	236	-26	-9.9%
Colfax	58	53	51	52	52	53	49	51	55	64	59	57	57	-1	-1.7%
Curry	516	490	496	510	513	504	463	443	449	455	449	423	388	-128	-24.8%
De Baca	9	7	10	14	13	12	10	8	12	23	22	15	13	4	44.4%
Dona Ana	4,894	4,787	4,782	4,804	4,784	4,805	4,135	4,126	4,463	4,724	4,637	4,520	4,310	-584	-11.9%
Eddy	294	289	276	263	271	259	254	263	266	252	253	242	221	-73	-24.8%
Grant	358	315	323	323	345	315	235	247	280	306	305	302	257	-101	-28.2%
Guadalupe	20	17	19	20	23	24	22	25	24	26	25	24	28	8	40.0%
Harding	0	0	0	0	0	0	0	0	0	0	0	0	0	0	0.0%
Hidalgo	32	31	33	34	36	35	27	33	29	28	32	33	29	-3	-9.4%
Lea	628	598	578	562	583	567	517	522	604	616	607	588	590	-38	-6.1%
Lincoln	190	167	185	175	168	165	153	139	142	149	151	154	138	-52	-27.4%
Los	8	8	10	12	10	10	9	5	9	12	16	16	14	6	75.0%
Luna	210	205	214	217	219	207	191	171	166	157	166	152	156	-54	-25.7%
McKinley	269	250	264	263	268	264	196	206	266	231	217	209	187	-82	-30.5%
Mora	14	13	10	10	11	16	18	18	19	18	17	20	19	5	35.7%
Otero	536	492	503	493	509	501	459	445	486	482	459	488	481	-55	-10.3%
Out of State	5	5	6	5	5	8	8	5	8	3	3	4	4	-1	-20.0%
Quay	23	22	24	26	22	23	15	17	16	10	12	19	15	-8	-34.8%
Rio Arriba	101	100	104	99	98	113	96	88	113	116	116	113	102	1	1.0%
Roosevelt	189	179	179	185	187	187	141	157	180	168	156	145	128	-61	-32.3%
San Juan	692	694	702	717	722	721	535	537	661	677	676	658	654	-38	-5.5%
San Miguel	364	314	351	358	368	366	323	328	351	387	382	375	355	-9	-2.5%
Sandoval	759	706	717	722	741	741	707	737	781	739	738	702	680	-79	-10.4%
Santa Fe	435	439	440	433	430	431	369	394	440	414	415	397	368	-67	-15.4%
Sierra	89	90	89	81	68	84	76	74	69	76	67	69	60	-29	-32.6%
Socorro	62	52	53	53	56	59	47	44	55	62	60	59	44	-18	-29.0%
Taos	116	105	105	114	110	102	80	83	97	91	96	96	92	-24	-20.7%
Torrance	69	81	76	73	76	65	59	71	66	68	69	66	73	4	5.8%
Union	9	9	9	9	9	7	7	7	6	6	6	6	8	-1	-11.1%
Valencia	695	668	694	710	700	670	544	571	629	612	596	584	577	-118	-17.0%
Totals	19,893	19,348	19,487	19,530	19,610	19,464	17,176	17,171	18,542	18,631	18,420	17,851	17,294	-2,599	-13.1%

Source: Children Youth and Families Department

Child Care Assistance Eligibility Programs

MONTH	MAR 13	APR 13	MAY 13	JUN 13	JUL 13	AUG 13	SEP 13	OCT 13	NOV 13	DEC 13	JAN 14	FEB 14
TANF (Child Care Priority 1 Clients)												
CLIENTS	2,732	2,729	2,681	2,602	2,394	2,282	2,488	2,381	2,482	2,350	2,123	1,983
COST	\$927,613	\$941,904	\$923,440	\$761,525	\$786,090	\$829,356	\$752,194	\$830,838	\$857,095	\$809,829	\$663,661	\$684,343
TANF AVERAGE COST	\$340	\$340	\$344	\$293	\$328	\$363	\$302	\$349	\$345	\$345	\$313	\$345
TRANSITION OFF TANF (Child Care Priority 2 Clients)												
CLIENTS	319	347	359	376	345	354	337	305	321	297	281	264
COST	\$105,768	\$117,349	\$119,416	\$115,426	\$131,305	\$126,584	\$113,454	\$98,314	\$105,831	\$97,289	\$87,214	\$86,531
TRAN OFF TANF AVG COST	\$332	\$332	\$333	\$307	\$381	\$358	\$337	\$322	\$330	\$328	\$310	\$328
TANF ELIGIBLE (Child Care Priority 1B Clients at or below 100% of the Federal Poverty Level)												
CLIENTS	10,624	10,603	10,531	10,399	8,810	8,799	9,539	8,977	9,103	8,967	8,656	8,201
COST	\$3,676,351	\$3,684,738	\$3,626,278	\$3,153,346	\$3,248,882	\$3,287,030	\$2,915,474	\$3,154,371	\$3,187,198	\$3,138,875	\$2,727,874	\$2,802,076
TANF ELIGIBLE AVG COST	\$346	\$346	\$344	\$303	\$369	\$374	\$306	\$351	\$350	\$350	\$315	\$342
INCOME ELIGIBLE (Child Care Priority 3, and Priority 4 Clients)												
CLIENTS	4,950	5,014	5,199	5,368	4,913	5,015	5,393	5,610	5,986	6,041	6,079	6,160
COST	\$1,507,551	\$1,505,608	\$1,551,405	\$1,543,349	\$1,579,650	\$1,637,143	\$1,571,202	\$1,652,253	\$1,768,821	\$1,796,100	\$1,790,368	\$1,900,390
INCOME ELIG AVG COST	\$305	\$305	\$298	\$288	\$322	\$326	\$291	\$295	\$295	\$297	\$295	\$309
EMPLOYMENT & TRAINING (Child Care Priority 1A Clients)												
CLIENTS	199	157	128	0	0	0	0	0	0	0	0	0
COST	\$66,891	\$52,114	\$44,900	\$0	\$0	\$0	\$0	\$0	\$0	\$0	\$0	\$0
E & T AVG COST	\$336	\$336	\$351	\$0	\$0	\$0	\$0	\$0	\$0	\$0	\$0	\$0
CHILD PROTECTIVE SERVICES (Child Care CPS Clients)												
CLIENTS	663	680	712	719	714	721	785	748	741	765	712	686
COST	\$263,618	\$285,288	\$313,341	\$288,427	\$293,458	\$317,891	\$327,312	\$322,840	\$326,303	\$336,993	\$311,201	\$303,886
E & T AVG COST	\$398	\$398	\$440	\$401	\$411	\$441	\$417	\$432	\$440	\$441	\$437	\$443
GRAND TOTAL - ALL CHILD CARE PROGRAMS												
CLIENTS	19,487	19,487	19,610	19,464	17,176	17,171	18,542	18,021	18,633	18,420	17,851	17,294
COST	\$6,547,793	\$6,547,793	\$6,578,781	\$5,862,073	\$6,039,385	\$6,198,003	\$5,679,637	\$6,058,615	\$6,245,248	\$6,179,085	\$5,580,317	\$5,777,227
ALL PROGRAMS AVG COST	\$336	\$336	\$335	\$301	\$352	\$361	\$306	\$336	\$335	\$335	\$313	\$334

Notes: 1. This table is provided by the Children, Youth and Families Department. 2. All costs in the table are average costs
3. Clients served and cost reflects total CYFD program funds and are not limited to funding provided by the Human Services Department.

Income Eligibility Guidelines, November 1, 2013 – September 30, 2014

Supplemental Nutrition Assistance Program - SNAP

Household Size	Federal Poverty Guidelines (FPG) Monthly Income Standards			Maximum SNAP Monthly Allotment	LIHEAP 150% FPG
	100% FPG Net Income	130% FPG Gross Income	165% FPG Gross Income for Categorical Eligibility		
1	\$958	\$1,245	\$1,580	\$189	\$1,437
2	\$1,293	\$1,681	\$2,133	\$347	\$1,940
3	\$1,628	\$2,116	\$2,686	\$497	\$2,442
4	\$1,963	\$2,552	\$3,239	\$632	\$2,945
5	\$2,298	\$2,987	\$3,791	\$750	\$3,447
6	\$2,633	\$3,423	\$4,344	\$900	\$3,950
7	\$2,968	\$3,858	\$4,897	\$995	\$4,452
8	\$3,303	\$4,294	\$5,450	\$1,137	\$4,955
+ 1	+\$335	+\$436	+\$553	+\$142	+\$503

Minimum Allotment \$15 effective from 11/1/2013 through 09/30/2014

DEDUCTIONS: Standard Deduction: For HH size 1-3 = \$152; 4 = \$163; 5 = \$191; 6 or more = \$219; Excess Shelter Deduction Limit: \$478; Heating and Cooling Standard Utility Allowance: \$314 (HCSUA) – Limited Utility Allowance: \$ 123 (LUA); Telephone Standard: \$33; Dependent Care: Actual Amount (No Limit); Earned Income Deduction: 20%; Homeless Shelter Standard: \$143

Cash Assistance & Support Services

Household Size	Federal Poverty Guidelines (FPG) Monthly Income Standards			Maximum Monthly Benefit		
	100% FPG Limit	85% FPG Gross Limit	NM Works Cash Net Income	15% NMW Budgetary Adjustment*	Maximum Monthly Benefit	General Assistance
1	\$958	\$814	\$266	\$39	\$227	\$245
2	\$1,293	\$1,099	\$357	\$53	\$304	\$329
3	\$1,628	\$1,384	\$447	\$67	\$380	\$412
4	\$1,963	\$1,669	\$539	\$80	\$459	\$496
5	\$2,298	\$1,953	\$630	\$94	\$536	\$580
6	\$2,633	\$2,238	\$721	\$108	\$613	\$664
7	\$2,968	\$2,523	\$812	\$121	\$691	\$748
8	\$3,303	\$2,808	\$922	\$138	\$784	\$849
+ 1	+\$335	+\$285	+\$91	+\$14	+\$77	+\$84

Deductions: Dependent Care: For a child under age 2 = \$200; For a child age 2 and over = \$175.

Work Incentives: Earned Income Disregard: Single parent = \$125 & 1/2 remainder; Two-parent = \$225 & 1/2 remainder

*15% Budgetary Adjustment is subtracted from the eligible NMW amount to determine maximum monthly benefit.

Eligibility Guidelines for Centennial Care

FEDERAL POVERTY LEVEL (FPL) GUIDELINES

Effective April 1, 2013

Percent of Poverty

Family Size	33%	75%	100%	133%	138%	185%	200%	235%
1	\$316	\$719	\$958	\$1,274	\$1,322	\$1,772	\$1,915	\$2,251
2	\$427	\$970	\$1,293	\$1,720	\$1,784	\$2,392	\$2,585	\$3,038
3	\$538	\$1,221	\$1,628	\$2,165	\$2,246	\$3,011	\$3,255	\$3,825
4	\$648	\$1,472	\$1,963	\$2,611	\$2,709	\$3,631	\$3,925	\$4,612
5	\$759	\$1,724	\$2,298	\$3,056	\$3,171	\$4,251	\$4,595	\$5,400
6	\$869	\$1,975	\$2,633	\$3,502	\$3,633	\$4,871	\$5,265	\$6,187
7	\$980	\$2,226	\$2,968	\$3,947	\$4,096	\$5,490	\$5,935	\$6,974
8	\$1,090	\$2,477	\$3,303	\$4,393	\$4,558	\$6,110	\$6,605	\$7,761

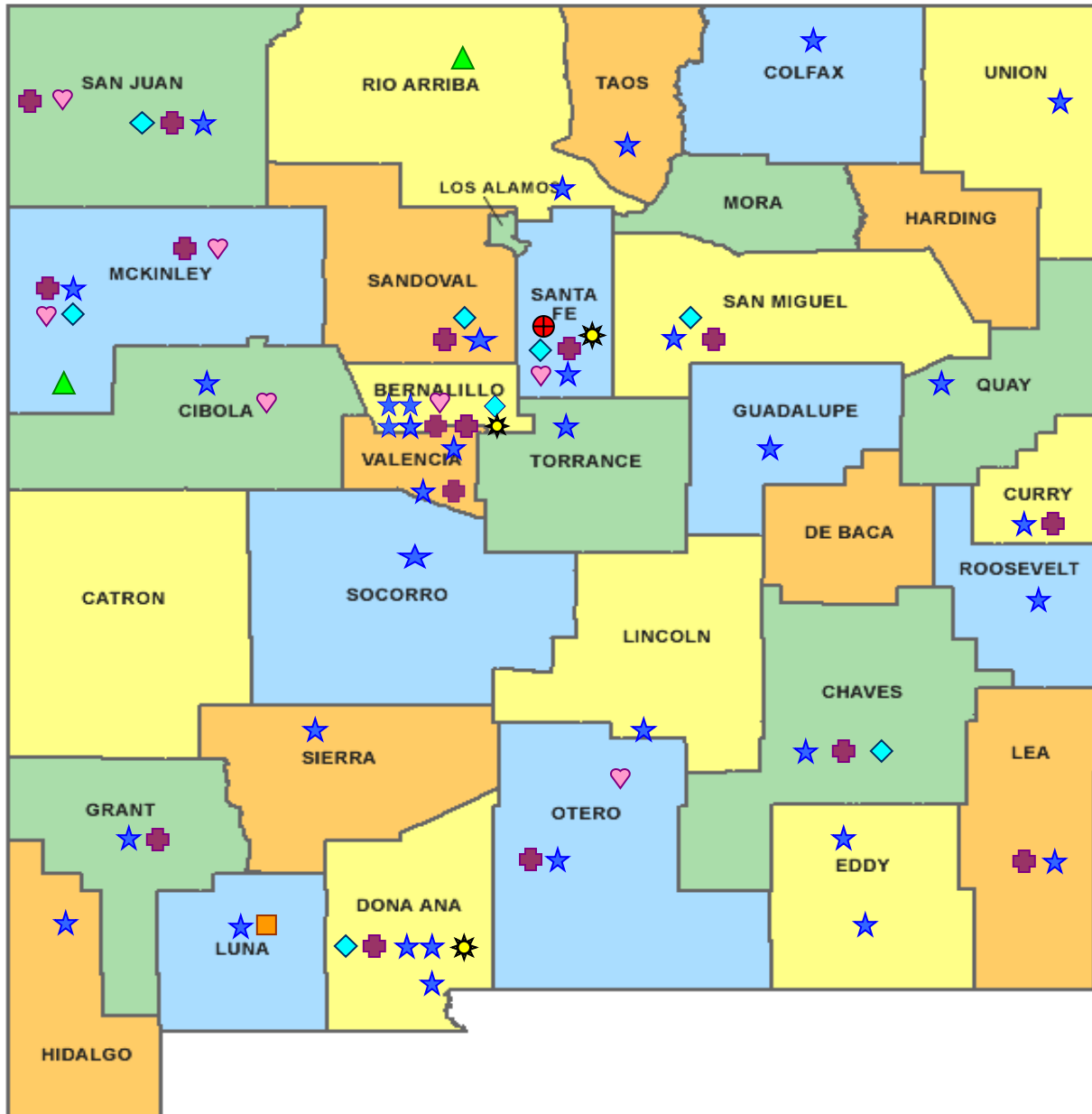
Insure New Mexico! Health Care Coverage Guidelines

185%: New MexiKids, New MexiTeens, Family Planning & Pregnancy









200%: State Coverage Insurance (SCI)

235%: Children's Health Insurance Program (CHIP)

Source: http://www.hsd.state.nm.us/LookingForInformation/Federal_Poverty_Level_Guidelines.aspx



New Mexico Human Services Department
Field Offices

-  Central Office (1)
-  Income Support Division County Office (35)
-  Income Support Division Satellite Office (2)
-  Child Support Enforcement Regional Office (16)
-  Child Support Enforcement Satellite Office (1)
-  Quality Control Office (8)
-  Indian Health Services (7)
-  Hospital Site (3)

For a complete listing of field offices and other government and community resources:
http://www.hsd.state.nm.us/LookingForAssistance/Field_Offices_1.aspx