



HUMAN SERVICES
DEPARTMENT

Monthly Statistical Report February 2013

Highlights

- The SNAP caseload was 197,323 in February 2013, a 2.4% increase from February 2012. Caseload decreased 991 cases, a 0.5% decrease from January 2013. HSD processed 14,214 SNAP applications this month, approving 11,270.
- The TANF caseload was 15,259 in February 2013, a 17.9% decrease from February 2012. The TANF caseload had 651 fewer cases than January 2013, a decrease of 4.1%. HSD processed 3,465 TANF applications, approving 1,496.
- The caseload for General Assistance was 2,971 in February 2013, an increase of 2.3% from February 2012. There were 18 fewer cases than January 2013, a 0.6% decrease. HSD processed 1,259 applications for GA, approving 283.

Susana Martinez, Governor
Sidonie Squier, Cabinet Secretary

CONTENTS	PAGE
Summary	3-4
SNAP	5-10
State SNAP Benefits Supplement	11
TANF	12-24
Education Works	25-26
General Assistance	27-29
GA Interim Assistance Reimbursements	30
State Funded Legal Aliens	30
Refugee Assistance	31
State Supplement for Residential Care (SSRC)	31
LIHEAP	32-34
Medicaid	35-39
Timeliness	40
Workload	41-42
Applications	43-45
Child Support Enforcement	46-47
Child Care Assistance	48-49

***The Mission of the Human Services
Department***

*To reduce the impact of poverty on
people living in New Mexico by
providing support services that help
families break the cycle of
dependency on public assistance*

**Charissa Saavedra, Deputy Secretary
Brent Earnest, Deputy Secretary**

**Prepared by Income Support Division
PO Box 2348
Santa Fe, NM 87504-2348
505-827-7250**

**Ted Roth, Division Director
Penny Jimerson, Deputy Director
Marilyn Martinez, Deputy Director**

**We're on the web!
www.hsd.state.nm.us/isd/reports.html**

Program Summary

			Percent Change					Percent Change			
	Feb-12	Jan-13	Feb-13	Feb 12 – Feb 13	Jan 13 – Feb 13		Feb-12	Jan-13	Feb-13	Feb 12 – Feb 13	Jan 13 – Feb 13
Supplemental Nutrition Assistance Program (SNAP)						State SNAP Benefits Supplement					
Expenditures	\$56,027,506	\$56,456,541	\$56,372,327	0.6%	-0.1%	Expenditures	\$41,900	\$45,769	\$46,700	11.5%	2.0%
Cases	192,741	198,314	197,323	2.4%	-0.5%	Cases	5,102	5,548	5,645	10.6%	1.7%
Individuals	437,424	442,753	440,872	0.8%	-0.4%						
Adults	239,474	244,874	244,395	2.1%	-0.2%	Education Works					
Children	197,950	197,879	196,477	-0.7%	-0.7%	Expenditures	\$103,525	\$102,497	\$106,762	3.1%	4.2%
Apps processed	13,321	16,203	14,214	6.7%	-12.3%	Cases	303	328	354	16.8%	7.9%
Approvals	10,461	13,488	11,270	7.7%	-16.4%	Individuals	933	936	1,003	7.5%	7.2%
Closures	10,842	12,803	12,261	13.1%	-4.2%	Adults	350	363	395	12.9%	8.8%
						Children	583	573	608	4.3%	6.1%
Temporary Assistance to Needy Families (TANF)						State Supplement for Residential Care (SSRC)					
Expenditures	\$5,543,150	\$4,614,101	\$4,475,767	-19.3%	-3.0%	Expenditures	\$4,700	\$5,100	\$4,900	4.3%	-3.9%
Cases	18,583	15,910	15,259	-17.9%	-4.1%	Cases	44	50	47	6.8%	-6.0%
Individuals	45,949	38,712	36,848	-19.8%	-4.8%	Individuals	44	50	47	6.8%	-6.0%
Adults	17,056	14,310	13,673	-19.8%	-4.5%	Adults	44	50	47	6.8%	-6.0%
Children	28,893	24,402	23,175	-19.8%	-5.0%	Refugee Assistance					
Apps Processed	3,656	3,914	3,465	-5.2%	-11.5%	Expenditures	\$3,210	\$11,489	\$11,107	246.0%	-3.3%
Approvals	1,632	1,830	1,496	-8.3%	-18.3%	Cases	13	36	27	107.7%	-25.0%
Closures	2,193	2,064	2,147	-2.1%	4.0%	Individuals	13	46	29	231.1%	-37.0%
General Assistance						Adults	13	41	29	231.1%	-29.3%
Expenditures	\$834,384	\$852,856	\$859,796	3.0%	0.8%						
Cases	2,904	2,989	2,971	2.3%	-0.6%	Medicaid					
Individuals	3,133	3,235	3,211	2.5%	-0.7%				Percent Change		
Adults	2,923	3,008	2,989	2.3%	-0.6%		Nov-11	Oct-12	Nov-12	Nov 11 – Nov 12	Oct 12 – Nov 12
Children	210	227	222	5.7%	-2.2%	Expenditures*	\$352,530,874	\$327,893,750	\$290,306,651	-17.7%	-11.5%
Apps Processed	1,208	1,356	1,259	4.2%	-7.2%	Eligibles	511,324	524,658	524,616	2.6%	0.0%
Approvals	257	323	283	10.1%	-12.4%	Adults	174,765	185,739	186,004	6.4%	0.1%
Closures	242	257	301	24.4%	17.1%	Children	336,559	338,919	338,612	0.6%	-0.1%

All expenditures are unreconciled and subject to change.

*Medicaid expenditures as of date of payment.

Expenditures Year to Date			
	SFY 2013	FFY 2013	CY 2013
Supplemental Nutrition Assistance Program (SNAP)	\$452,245,907	\$283,011,435	\$112,828,868
Temporary Assistance for Needy Families (TANF)	\$38,948,802	\$23,402,202	\$9,089,868
General Assistance	\$6,610,782	\$4,211,718	\$1,712,652
Education Works	\$842,159	\$555,931	\$209,259
State SNAP	\$347,496	\$219,124	\$92,469

DEMOGRAPHIC PROFILE					
	SNAP	TANF	General Assistance	SSRC	Refugee Assistance
Average # persons per case:	2.23	2.41	1.08	1.00	1.07
Age & Gender of Recipients:					
Adults (18 and Over)	55.4%	37.1%	93.1%	100.0%	100.0%
Children (Under 18)	44.6%	62.9%	6.9%	0.0%	0.0%
Male	44.4%	36.9%	55.5%	59.6%	58.6%
Female	55.6%	63.1%	44.5%	40.4%	41.4%
Ethnicity of Head of Household:					
Hispanic	59.1%	71.4%	56.6%	61.7%	55.6%
Not Hispanic	40.9%	28.6%	43.4%	38.3%	44.4%
Race of Head of Household:					
African American	2.5%	3.0%	3.7%	2.1%	7.4%
Asian/Pacific Islander	1.4%	1.4%	1.1%	0.0%	11.1%
Native American	13.0%	6.2%	5.8%	4.3%	0.0%
White	82.5%	88.9%	88.6%	93.6%	81.5%
More than one race or no race declared	0.6%	0.5%	0.8%	0.0%	0.0%

Supplemental Nutrition Assistance Program (SNAP) Cases by County

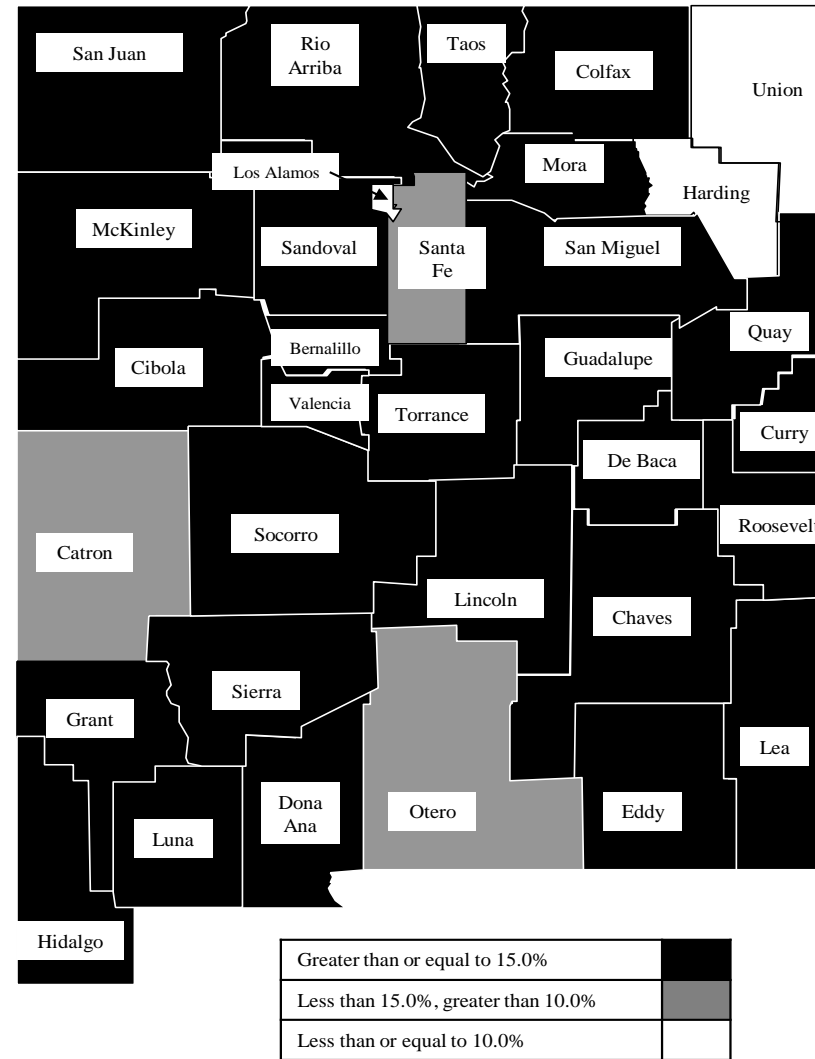
County	Feb-12	Jan-13	Feb-13	Feb 12 – Feb 13		Jan 13 – Feb 13	
				# change	% change	# change	% change
Bernalillo	62,665	62,906	62,228	-437	-0.7%	-678	-1.1%
Catron	206	197	195	-11	-5.3%	-2	-1.0%
Chaves	6,317	6,576	6,561	244	3.9%	-15	-0.2%
Cibola	3,108	3,284	3,248	140	4.5%	-36	-1.1%
Colfax	1,249	1,195	1,207	-42	-3.4%	12	1.0%
Curry	4,084	4,070	3,977	-107	-2.6%	-93	-2.3%
De Baca	164	163	159	-5	-3.0%	-4	-2.5%
Dona Ana	24,064	24,908	24,624	560	2.3%	-284	-1.1%
Eddy	4,256	4,221	4,168	-88	-2.1%	-53	-1.3%
Grant	3,032	3,063	3,181	149	4.9%	118	3.9%
Guadalupe	561	566	562	1	0.2%	-4	-0.7%
Harding	27	27	24	-3	-11.1%	-3	-11.1%
Hidalgo	486	486	489	3	0.6%	3	0.6%
Lea	3,917	3,932	3,935	18	0.5%	3	0.1%
Lincoln	1,645	1,670	1,676	31	1.9%	6	0.4%
Los Alamos	208	217	231	23	11.1%	14	6.5%
Luna	3,694	3,796	3,734	40	1.1%	-62	-1.6%
McKinley	8,541	8,757	8,755	214	2.5%	-2	0.0%
Mora	571	491	483	-88	-15.4%	-8	-1.6%
Otero	4,253	4,295	4,283	30	0.7%	-12	-0.3%
Quay	1,201	1,262	1,258	57	4.7%	-4	-0.3%
Rio Arriba	6,086	6,568	6,541	455	7.5%	-27	-0.4%
Roosevelt	1,322	1,410	1,404	82	6.2%	-6	-0.4%
Sandoval	8,716	9,155	9,092	376	4.3%	-63	-0.7%
San Juan	10,096	10,722	10,740	644	6.4%	18	0.2%
San Miguel	4,621	4,940	4,854	233	5.0%	-86	-1.7%
Santa Fe	9,158	9,794	9,765	607	6.6%	-29	-0.3%
Sierra	1,730	1,808	1,965	235	13.6%	157	8.7%
Socorro	2,237	2,412	2,524	287	12.8%	112	4.6%
Taos	3,466	3,826	3,825	359	10.4%	-1	0.0%
Torrance	2,443	2,590	2,606	163	6.7%	16	0.6%
Union	420	389	490	70	16.7%	101	26.0%
Valencia	8,197	8,618	8,539	342	4.2%	-79	-0.9%
TOTAL	192,741	198,314	197,323	4,582	2.4%	-991	-0.5%

Supplemental Nutrition Assistance Program (SNAP) Recipients by County

County	Feb-12	Jan-13	Feb-13	Feb 12 – Feb 13		Jan 13 – Feb 13	
				# change	% change	# change	% change
Bernalillo	129,615	128,585	127,438	-2,177	-1.7%	-1,147	-0.9%
Catron	448	414	417	-31	-6.9%	3	0.7%
Chaves	15,129	15,581	15,497	368	2.4%	-84	-0.5%
Cibola	8,179	8,533	8,404	225	2.8%	-129	-1.5%
Colfax	2,828	2,558	2,608	-220	-7.8%	50	2.0%
Curry	9,893	9,862	9,661	-232	-2.3%	-201	-2.0%
De Baca	349	346	331	-18	-5.2%	-15	-4.3%
Dona Ana	57,964	59,135	58,441	477	0.8%	-694	-1.2%
Eddy	9,795	9,575	9,489	-306	-3.1%	-86	-0.9%
Grant	6,586	6,431	6,730	144	2.2%	299	4.6%
Guadalupe	1,129	1,107	1,107	-22	-1.9%	0	0.0%
Harding	43	43	40	-3	-7.0%	-3	-7.0%
Hidalgo	1,072	1,020	1,020	-52	-4.9%	0	0.0%
Lea	9,758	9,806	9,798	40	0.4%	-8	-0.1%
Lincoln	3,671	3,759	3,756	85	2.3%	-3	-0.1%
Los Alamos	394	438	460	66	16.8%	22	5.0%
Luna	8,828	8,848	8,680	-148	-1.7%	-168	-1.9%
McKinley	25,853	25,753	25,718	-135	-0.5%	-35	-0.1%
Mora	1,078	897	884	-194	-18.0%	-13	-1.4%
Otero	9,756	9,496	9,477	-279	-2.9%	-19	-0.2%
Quay	2,452	2,583	2,589	137	5.6%	6	0.2%
Rio Arriba	12,387	13,223	13,186	799	6.5%	-37	-0.3%
Roosevelt	3,467	3,549	3,518	51	1.5%	-31	-0.9%
Sandoval	21,920	22,519	22,460	540	2.5%	-59	-0.3%
San Juan	27,335	27,910	27,965	630	2.3%	55	0.2%
San Miguel	9,057	9,483	9,230	173	1.9%	-253	-2.7%
Santa Fe	18,282	19,487	19,448	1,166	6.4%	-39	-0.2%
Sierra	3,211	3,389	3,846	635	19.8%	457	13.5%
Socorro	4,912	5,235	5,456	544	11.1%	221	4.2%
Taos	6,835	7,373	7,396	561	8.2%	23	0.3%
Torrance	5,520	5,735	5,723	203	3.7%	-12	-0.2%
Union	958	866	1,070	112	11.7%	204	23.6%
Valencia	18,720	19,214	19,029	309	1.7%	-185	-1.0%
TOTAL	437,424	442,753	440,872	3,448	0.8%	-1,881	-0.4%

Rank	County	Estimated Population	SNAP Recipients	Rate
1	Torrance	16,345	6,793	41.6%
2	McKinley	73,664	25,718	34.9%
3	Luna	25,281	8,680	34.3%
4	Rio Arriba	40,446	13,186	32.6%
5	Sierra	11,943	3,846	32.2%
6	San Miguel	29,301	9,230	31.5%
7	Socorro	17,873	5,456	30.5%
8	Cibola	27,658	8,404	30.4%
9	Quay	9,026	2,589	28.7%
10	Dona Ana	213,598	58,441	27.4%
11	Valencia	77,070	19,029	24.7%
12	Guadalupe	4,619	1,107	24.0%
13	Chaves	65,890	15,497	23.5%
14	Grant	29,380	6,730	22.9%
15	Taos	32,917	7,396	22.5%
16	San Juan	128,200	27,965	21.8%
17	Hidalgo	4,861	1,020	21.0%
18	Curry	49,649	9,661	19.5%
19	Colfax	13,640	2,608	19.1%
20	Bernalillo	670,968	127,438	19.0%
21	Mora	4,773	884	18.5%
22	Lincoln	20,454	3,756	18.4%
23	Eddy	54,152	9,489	17.5%
24	Roosevelt	20,446	3,518	17.2%
25	De Baca	1,945	331	17.0%
26	Sandoval	134,259	22,460	16.7%
27	Lea	65,423	9,798	15.0%
28	Otero	65,703	9,477	14.4%
29	Santa Fe	145,648	19,448	13.4%
30	Catron	3,733	417	11.2%
31	Harding	704	40	5.7%
32	Los Alamos	18,222	460	2.5%
33	Union	4,433	0	0.0%
STATE TOTAL		2,082,224	440,872	21.2%

SNAP Reciprocity Rate



Population Source: U.S. Census Bureau, 2011 Population
 Reciprocity rate is the percent of individuals who receive Supplemental Nutrition Assistance

Supplemental Nutrition Assistance Program (SNAP) Cases by Administrative Office

Office #	Office	Feb-12	Jan-13	Feb-13	Feb 12 – Feb 13		Jan 13 – Feb 13	
					# change	% change	# change	% change
1	SE Bernalillo	11,489	11,102	10,897	-592	-5.2%	-205	-1.8%
3	Chaves	6,317	6,576	6,561	244	3.9%	-15	-0.2%
4	Colfax	1,249	1,195	1,207	-42	-3.4%	12	1.0%
3104	Union	420	389	490	70	16.7%	101	26.0%
5	Curry	4,088	4,070	3,977	-111	-2.7%	-93	-2.3%
7	West Dona Ana	9,169	9,594	9,524	355	3.9%	-70	-0.7%
8	Eddy	2,954	2,910	2,863	-91	-3.1%	-47	-1.6%
9	Grant	3,068	3,084	3,201	133	4.3%	117	3.8%
1209	Hidalgo	486	486	489	3	0.6%	3	0.6%
10	Guadalupe	725	729	721	-4	-0.6%	-8	-1.1%
13	Lea	3,917	3,932	3,935	18	0.5%	3	0.1%
14	Lincoln	1,642	1,666	1,675	33	2.0%	9	0.5%
16	Luna	3,678	3,793	3,731	53	1.4%	-62	-1.6%
17	McKinley	8,556	8,770	8,768	212	2.5%	-2	0.0%
19	Otero	4,256	4,299	4,284	28	0.7%	-15	-0.3%
20	Quay	1,198	1,262	1,258	60	5.0%	-4	-0.3%
21	Rio Arriba	6,414	6,886	6,875	461	7.2%	-11	-0.2%
22	Roosevelt	1,321	1,410	1,404	83	6.3%	-6	-0.4%
23	Sandoval	8,716	9,155	9,092	376	4.3%	-63	-0.7%
24	San Juan	10,096	10,722	10,740	644	6.4%	18	0.2%
25	San Miguel	5,195	5,429	5,331	136	2.6%	-98	-1.8%
26	Santa Fe	9,062	9,722	9,692	630	7.0%	-30	-0.3%
27	Sierra	2,465	2,540	2,694	229	9.3%	154	6.1%
28	Socorro	2,423	2,590	2,701	278	11.5%	111	4.3%
29	Taos	3,466	3,826	3,825	359	10.4%	-1	0.0%
30	Torrance	2,441	2,589	2,604	163	6.7%	15	0.6%
32	S Valencia	2,970	3,115	3,054	84	2.8%	-61	-2.0%
33	Cibola	3,093	3,271	3,235	142	4.6%	-36	-1.1%
34	Eddy/Artesia	1,302	1,311	1,305	3	0.2%	-6	-0.5%
35	NW Bernalillo	14,029	14,890	14,664	635	4.5%	-226	-1.5%
36	SW Bernalillo	17,191	17,062	16,939	-252	-1.5%	-123	-0.7%
37	East Dona Ana	6,628	6,946	6,902	274	4.1%	-44	-0.6%
38	S Dona Ana	7,532	7,636	7,469	-63	-0.8%	-167	-2.2%
39	NE Bernalillo	19,957	19,853	19,730	-227	-1.1%	-123	-0.6%
42	N Valencia	5,228	5,504	5,486	258	4.9%	-18	-0.3%
	TOTAL	192,741	198,314	197,323	4,582	2.4%	-991	-0.5%

Supplemental Nutrition Assistance Program (SNAP) Recipients by Administrative Office

Office #	Office	Feb-12	Jan-13	Feb-13	Feb 12 – Feb 13		Jan 13 – Feb 13	
					# change	% change	# change	% change
1	SE Bernalillo	23,283	22,474	22,199	-1,084	-4.7%	-275	-1.2%
3	Chaves	15,129	15,581	15,497	368	2.4%	-84	-0.5%
4	Colfax	2,828	2,558	2,608	-220	-7.8%	50	2.0%
3104	Union	958	866	1,070	112	11.7%	204	23.6%
5	Curry	9,898	9,862	9,661	-237	-2.4%	-201	-2.0%
7	West Dona Ana	19,248	19,982	19,950	702	3.6%	-32	-0.2%
8	Eddy	6,708	6,459	6,403	-305	-4.5%	-56	-0.9%
9	Grant	6,653	6,467	6,763	110	1.7%	296	4.6%
1209	Hidalgo	1,072	1,020	1,020	-52	-4.9%	0	0.0%
10	Guadalupe	1,478	1,453	1,438	-40	-2.7%	-15	-1.0%
13	Lea	9,758	9,806	9,798	40	0.4%	-8	-0.1%
14	Lincoln	3,663	3,753	3,755	92	2.5%	2	0.1%
16	Luna	8,802	8,845	8,677	-125	-1.4%	-168	-1.9%
17	McKinley	25,883	25,775	25,740	-143	-0.6%	-35	-0.1%
19	Otero	9,764	9,502	9,478	-286	-2.9%	-24	-0.3%
20	Quay	2,448	2,583	2,589	141	5.8%	6	0.2%
21	Rio Arriba	13,039	13,855	13,842	803	6.2%	-13	-0.1%
22	Roosevelt	3,466	3,549	3,518	52	1.5%	-31	-0.9%
23	Sandoval	21,920	22,519	22,460	540	2.5%	-59	-0.3%
24	San Juan	27,335	27,910	27,965	630	2.3%	55	0.2%
25	San Miguel	10,137	10,375	10,105	-32	-0.3%	-270	-2.6%
26	Santa Fe	18,065	19,341	19,301	1,236	6.8%	-40	-0.2%
27	Sierra	5,212	5,362	5,803	591	11.3%	441	8.2%
28	Socorro	5,319	5,615	5,842	523	9.8%	227	4.0%
29	Taos	6,835	7,373	7,396	561	8.2%	23	0.3%
30	Torrance	5,518	5,732	5,719	201	3.6%	-13	-0.2%
32	S Valencia	6,450	6,651	6,505	55	0.9%	-146	-2.2%
33	Cibola	8,149	8,511	8,382	233	2.9%	-129	-1.5%
34	Eddy/Artesia	3,087	3,116	3,086	-1	0.0%	-30	-1.0%
35	NW Bernalillo	29,140	30,156	29,747	607	2.1%	-409	-1.4%
36	SW Bernalillo	39,041	38,133	37,902	-1,139	-2.9%	-231	-0.6%
37	East Dona Ana	15,818	16,269	16,112	294	1.9%	-157	-1.0%
38	S Dona Ana	20,897	20,911	20,422	-475	-2.3%	-489	-2.3%
39	NE Bernalillo	38,152	37,825	37,594	-558	-1.5%	-231	-0.6%
42	N Valencia	12,271	12,564	12,525	254	2.1%	-39	-0.3%
	TOTAL	437,424	442,753	440,872	3,448	0.8%	-1,881	-0.4%

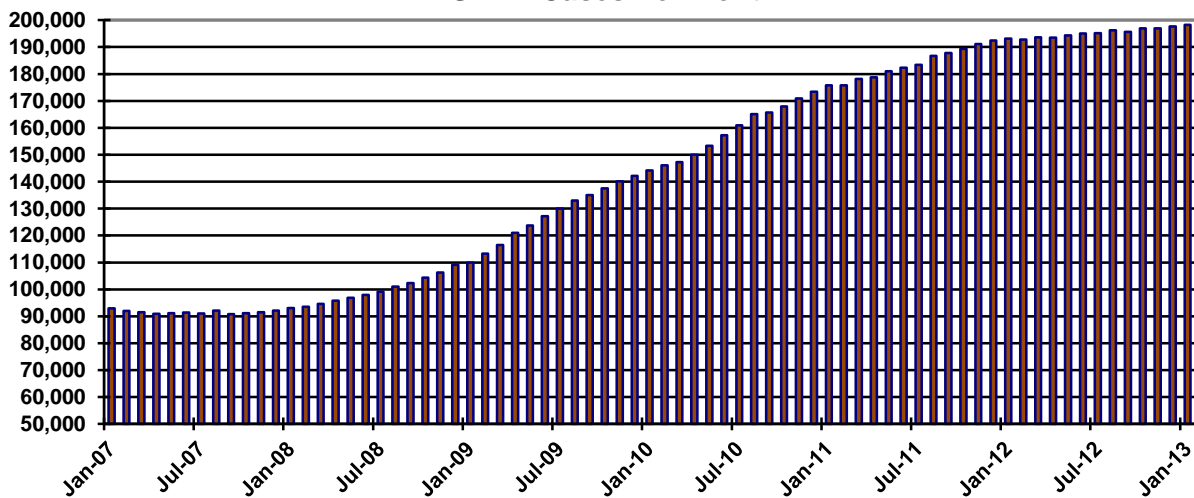
Supplemental Nutrition Assistance Program (SNAP) Cases by Region

	Feb-12	Jan-13	Feb-13	Feb 12 – Feb 13		Jan 13 – Feb 13	
				# change	% change	# change	% change
NW Region 1	38,659	40,537	40,375	1,716	4.4%	-162	-0.4%
NE Region 2	25,806	27,447	27,420	1,614	6.3%	-27	-0.1%
Central Region 3	65,107	65,496	64,834	-273	-0.4%	-662	-1.0%
SE Region 4	21,822	22,200	22,024	202	0.9%	-176	-0.8%
SW Region 5	41,347	42,634	42,670	1,323	3.2%	36	0.1%
TOTAL	192,741	198,314	197,323	4,582	2.4%	-991	-0.5%

Supplemental Nutrition Assistance Program (SNAP) Recipients by Region

	Feb-12	Jan-13	Feb-13	Feb 12 – Feb 13		Jan 13 – Feb 13	
				# change	% change	# change	% change
NW Region 1	102,008	103,930	103,577	1,569	1.5%	-353	-0.3%
NE Region 2	51,862	54,368	54,322	2,460	4.7%	-46	-0.1%
Central Region 3	135,134	134,320	133,161	-1,973	-1.5%	-1,159	-0.9%
SE Region 4	51,972	52,409	51,990	18	0.0%	-419	-0.8%
SW Region 5	96,448	97,726	97,822	1,374	1.4%	96	0.1%
TOTAL	437,424	442,753	440,872	3,448	0.8%	-1,881	-0.4%

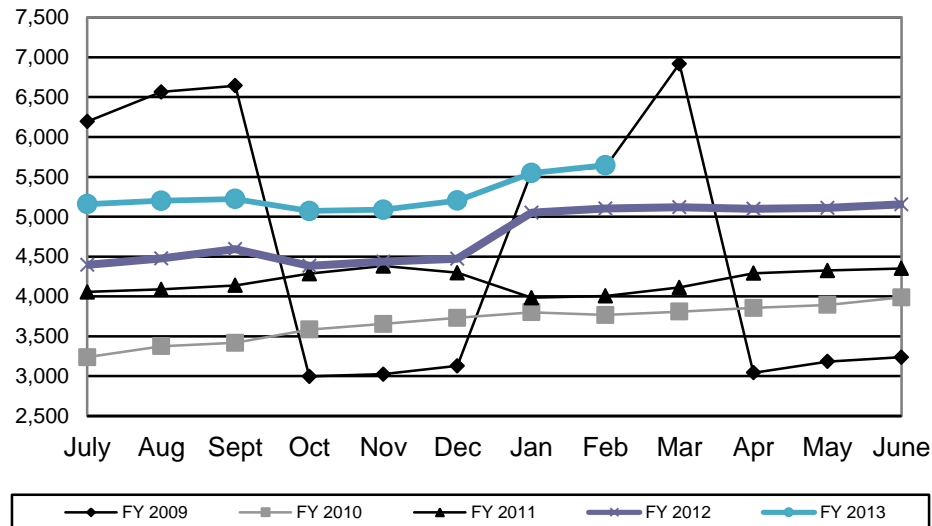
SNAP Cases Per Month



State SNAP Benefits Supplement

	SFY 2009		SFY 2010		SFY 2011		SFY 2012		SFY 2013	
	Cases	Expenditures	Cases	Expenditures	Cases	Expenditures	Cases	Expenditures	Cases	Expenditures
July	6,193	\$59,840	3,237	\$38,216	4,056	\$50,241	4,395	\$34,773	5,157	\$42,552
Aug	6,300	\$54,356	3,376	\$39,476	4,088	\$50,502	4,477	\$35,360	5,200	\$42,797
Sept	6,643	\$59,039	3,418	\$39,790	4,139	\$50,946	4,591	\$36,455	5,223	\$43,023
Oct	2,996	\$16,032	3,585	\$43,887	4,284	\$52,530	4,384	\$34,850	5,071	\$41,752
Nov	3,025	\$15,789	3,655	\$44,952	4,381	\$53,820	4,436	\$35,260	5,088	\$42,074
Dec	3,129	\$16,411	3,731	\$45,855	4,296	\$52,649	4,474	\$35,619	5,202	\$42,829
Jan	5,553	\$30,388	3,802	\$46,338	3,984	\$31,897	5,050	\$41,519	5,548	\$45,769
Feb	5,621	\$30,696	3,767	\$46,156	4,006	\$31,970	5,102	\$41,900	5,645	\$46,700
Mar	6,918	\$98,305	3,810	\$46,502	4,113	\$33,226	5,119	\$41,960		
April	3,043	\$38,332	3,856	\$43,830	4,290	\$34,599	5,099	\$41,988		
May	3,184	\$36,698	3,856	\$43,830	4,326	\$34,892	5,109	\$43,587		
June	3,237	\$37,297	3,988	\$49,230	4,351	\$28,199	5,154	\$42,442		
TOTAL	55,842	\$493,183	44,081	\$528,062	50,314	\$505,470	57,390	\$465,713	42,134	\$347,496
Monthly average	4,654	\$41,099	3,673	\$44,005	4,193	\$42,123	4,783	\$38,809	5,267	\$43,437

State SNAP Benefits Supplement Cases by State Fiscal Year



Temporary Assistance of Needy Families (TANF) Cases by County

County	Feb-12	Jan-13	Feb-13	Feb 12 – Feb 13		Jan 13 – Feb 13	
				# change	% change	# change	% change
Bernalillo	6,378	5,306	5,044	-1,334	-20.9%	-262	-4.9%
Catron	17	13	12	-5	-29.4%	-1	-7.7%
Chaves	728	581	539	-189	-26.0%	-42	-7.2%
Cibola	275	267	262	-13	-4.7%	-5	-1.9%
Colfax	115	109	111	-4	-3.5%	2	1.8%
Curry	570	529	499	-71	-12.5%	-30	-5.7%
De Baca	22	7	8	-14	-63.6%	1	14.3%
Dona Ana	3,287	3,014	2,827	-460	-14.0%	-187	-6.2%
Eddy	470	424	409	-61	-13.0%	-15	-3.5%
Grant	298	206	212	-86	-28.9%	6	2.9%
Guadalupe	55	36	36	-19	-34.5%	0	0.0%
Harding	1	0	0	-1	-100.0%	0	NA
Hidalgo	53	42	40	-13	-24.5%	-2	-4.8%
Lea	474	430	399	-75	-15.8%	-31	-7.2%
Lincoln	193	159	167	-26	-13.5%	8	5.0%
Los Alamos	17	14	15	-2	-11.8%	1	7.1%
Luna	445	357	347	-98	-22.0%	-10	-2.8%
McKinley	133	93	90	-43	-32.3%	-3	-3.2%
Mora	36	23	21	-15	-41.7%	-2	-8.7%
Otero	437	346	339	-98	-22.4%	-7	-2.0%
Quay	122	110	99	-23	-18.9%	-11	-10.0%
Rio Arriba	627	531	504	-123	-19.6%	-27	-5.1%
Roosevelt	109	120	121	12	11.0%	1	0.8%
Sandoval	732	595	589	-143	-19.5%	-6	-1.0%
San Juan	274	282	266	-8	-2.9%	-16	-5.7%
San Miguel	380	326	310	-70	-18.4%	-16	-4.9%
Santa Fe	706	614	602	-104	-14.7%	-12	-2.0%
Sierra	134	89	126	-8	-6.0%	37	41.6%
Socorro	139	138	143	4	2.9%	5	3.6%
Taos	153	132	124	-29	-19.0%	-8	-6.1%
Torrance	293	264	261	-32	-10.9%	-3	-1.1%
Union	29	18	38	9	31.0%	20	111.1%
Valencia	881	735	699	-182	-20.7%	-36	-4.9%
TOTAL	18,583	15,910	15,259	-3,324	-17.9%	-651	-4.1%

Temporary Assistance of Needy Families (TANF) Recipients by County

County	Feb-12	Jan-13	Feb-13	Feb 12 – Feb 13		Jan 13 – Feb 13	
				# change	% change	# change	% change
Bernalillo	15,309	12,654	11,903	-3,406	-22.2%	-751	-5.9%
Catron	53	32	27	-26	-49.1%	-5	-15.6%
Chaves	1,818	1,386	1,269	-549	-30.2%	-117	-8.4%
Cibola	767	698	685	-82	-10.7%	-13	-1.9%
Colfax	293	286	292	-1	-0.3%	6	2.1%
Curry	1,496	1,353	1,267	-229	-15.3%	-86	-6.4%
De Baca	51	13	17	-34	-66.7%	4	30.8%
Dona Ana	8,243	7,575	7,086	-1,157	-14.0%	-489	-6.5%
Eddy	1,154	1,000	952	-202	-17.5%	-48	-4.8%
Grant	752	468	509	-243	-32.3%	41	8.8%
Guadalupe	144	97	106	-38	-26.4%	9	9.3%
Harding	3	0	0	-3	-100.0%	0	NA
Hidalgo	141	91	78	-63	-44.7%	-13	-14.3%
Lea	1,210	1,064	975	-235	-19.4%	-89	-8.4%
Lincoln	488	403	420	-68	-13.9%	17	4.2%
Los Alamos	33	31	35	2	6.1%	4	12.9%
Luna	1,126	919	873	-253	-22.5%	-46	-5.0%
McKinley	364	227	218	-146	-40.1%	-9	-4.0%
Mora	72	44	42	-30	-41.7%	-2	-4.5%
Otero	1,176	887	847	-329	-28.0%	-40	-4.5%
Quay	287	255	234	-53	-18.5%	-21	-8.2%
Rio Arriba	1,539	1,209	1,110	-429	-27.9%	-99	-8.2%
Roosevelt	265	297	303	38	14.3%	6	2.0%
Sandoval	1,911	1,579	1,580	-331	-17.3%	1	0.1%
San Juan	748	724	675	-73	-9.8%	-49	-6.8%
San Miguel	916	741	716	-200	-21.8%	-25	-3.4%
Santa Fe	1,597	1,407	1,389	-208	-13.0%	-18	-1.3%
Sierra	324	202	288	-36	-11.1%	86	42.6%
Socorro	318	320	334	16	5.0%	14	4.4%
Taos	347	303	279	-68	-19.6%	-24	-7.9%
Torrance	760	684	673	-87	-11.4%	-11	-1.6%
Union	76	49	85	9	11.8%	36	73.5%
Valencia	2,168	1,714	1,581	-587	-27.1%	-133	-7.8%
TOTAL	45,949	38,712	36,848	-9,101	-19.8%	-1,864	-4.8%

Temporary Assistance of Needy Families (TANF) Cases by Administrative Office

Office #	Office	Feb-12	Jan-13	Feb-13	Feb 12 – Feb 13		Jan 13 – Feb 13	
					# change	% change	# change	% change
1	SE Bernalillo	1,355	1,034	994	-361	-26.6%	-40	-3.9%
3	Chaves	728	581	539	-189	-26.0%	-42	-7.2%
4	Colfax	115	109	111	-4	-3.5%	2	1.8%
3104	Union	29	18	38	9	31.0%	20	111.1%
5	Curry	571	529	499	-72	-12.6%	-30	-5.7%
7	West Dona Ana	1,178	1,060	1,006	-172	-14.6%	-54	-5.1%
8	Eddy	335	283	278	-57	-17.0%	-5	-1.8%
9	Grant	299	206	212	-87	-29.1%	6	2.9%
1209	Hidalgo	53	42	40	-13	-24.5%	-2	-4.8%
10	Guadalupe	77	43	44	-33	-42.9%	1	2.3%
13	Lea	474	430	399	-75	-15.8%	-31	-7.2%
14	Lincoln	193	159	167	-26	-13.5%	8	5.0%
16	Luna	445	357	347	-98	-22.0%	-10	-2.8%
17	McKinley	133	94	91	-42	-31.6%	-3	-3.2%
19	Otero	437	346	339	-98	-22.4%	-7	-2.0%
20	Quay	121	110	99	-22	-18.2%	-11	-10.0%
21	Rio Arriba	656	552	526	-130	-19.8%	-26	-4.7%
22	Roosevelt	109	120	121	12	11.0%	1	0.8%
23	Sandoval	732	595	589	-143	-19.5%	-6	-1.0%
24	San Juan	274	282	266	-8	-2.9%	-16	-5.7%
25	San Miguel	416	347	330	-86	-20.7%	-17	-4.9%
26	Santa Fe	695	609	596	-99	-14.2%	-13	-2.1%
27	Sierra	199	139	175	-24	-12.1%	36	25.9%
28	Socorro	155	151	155	0	0.0%	4	2.6%
29	Taos	153	132	124	-29	-19.0%	-8	-6.1%
30	Torrance	293	264	261	-32	-10.9%	-3	-1.1%
32	S Valencia	274	249	230	-44	-16.1%	-19	-7.6%
33	Cibola	275	266	261	-14	-5.1%	-5	-1.9%
34	Eddy/Artesia	135	141	131	-4	-3.0%	-10	-7.1%
35	NW Bernalillo	1,246	1,203	1,130	-116	-9.3%	-73	-6.1%
36	SW Bernalillo	2,081	1,634	1,583	-498	-23.9%	-51	-3.1%
37	East Dona Ana	747	727	681	-66	-8.8%	-46	-6.3%
38	S Dona Ana	1,297	1,177	1,091	-206	-15.9%	-86	-7.3%
39	NE Bernalillo	1,696	1,435	1,337	-359	-21.2%	-98	-6.8%
42	N Valencia	607	486	469	-138	-22.7%	-17	-3.5%
	TOTAL	18,583	15,910	15,259	-3,324	-17.9%	-651	-4.1%

Temporary Assistance of Needy Families (TANF) Recipients by Administrative Office

Office #	Office	Feb-12	Jan-13	Feb-13	Feb 12 – Feb 13		Jan 13 – Feb 13	
					# change	% change	# change	% change
1	SE Bernalillo	3,198	2,464	2,360	-838	-26.2%	-104	-4.2%
3	Chaves	1,818	1,386	1,269	-549	-30.2%	-117	-8.4%
4	Colfax	293	286	292	-1	-0.3%	6	2.1%
3104	Union	76	49	85	9	11.8%	36	73.5%
5	Curry	1,498	1,353	1,267	-231	-15.4%	-86	-6.4%
7	West Dona Ana	2,911	2,637	2,502	-409	-14.1%	-135	-5.1%
8	Eddy	824	663	636	-188	-22.8%	-27	-4.1%
9	Grant	755	468	509	-246	-32.6%	41	8.8%
1209	Hidalgo	141	91	78	-63	-44.7%	-13	-14.3%
10	Guadalupe	195	110	123	-72	-36.9%	13	11.8%
13	Lea	1,210	1,064	975	-235	-19.4%	-89	-8.4%
14	Lincoln	488	403	420	-68	-13.9%	17	4.2%
16	Luna	1,126	919	873	-253	-22.5%	-46	-5.0%
17	McKinley	364	229	220	-144	-39.6%	-9	-3.9%
19	Otero	1,176	887	847	-329	-28.0%	-40	-4.5%
20	Quay	285	255	234	-51	-17.9%	-21	-8.2%
21	Rio Arriba	1,611	1,260	1,163	-448	-27.8%	-97	-7.7%
22	Roosevelt	265	297	303	38	14.3%	6	2.0%
23	Sandoval	1,911	1,579	1,580	-331	-17.3%	1	0.1%
24	San Juan	748	724	675	-73	-9.8%	-49	-6.8%
25	San Miguel	989	780	756	-233	-23.6%	-24	-3.1%
26	Santa Fe	1,560	1,392	1,373	-187	-12.0%	-19	-1.4%
27	Sierra	475	323	402	-73	-15.4%	79	24.5%
28	Socorro	368	352	361	-7	-1.9%	9	2.6%
29	Taos	347	303	279	-68	-19.6%	-24	-7.9%
30	Torrance	760	684	673	-87	-11.4%	-11	-1.6%
32	S Valencia	623	548	502	-121	-19.4%	-46	-8.4%
33	Cibola	767	696	683	-84	-11.0%	-13	-1.9%
34	Eddy/Artesia	330	337	316	-14	-4.2%	-21	-6.2%
35	NW Bernalillo	3,029	2,843	2,647	-382	-12.6%	-196	-6.9%
36	SW Bernalillo	5,031	3,814	3,673	-1,358	-27.0%	-141	-3.7%
37	East Dona Ana	1,841	1,802	1,671	-170	-9.2%	-131	-7.3%
38	S Dona Ana	3,340	3,015	2,799	-541	-16.2%	-216	-7.2%
39	NE Bernalillo	4,051	3,533	3,223	-828	-20.4%	-310	-8.8%
42	N Valencia	1,545	1,166	1,079	-466	-30.2%	-87	-7.5%
	TOTAL	45,949	38,712	36,848	-9,101	-19.8%	-1,864	-4.8%

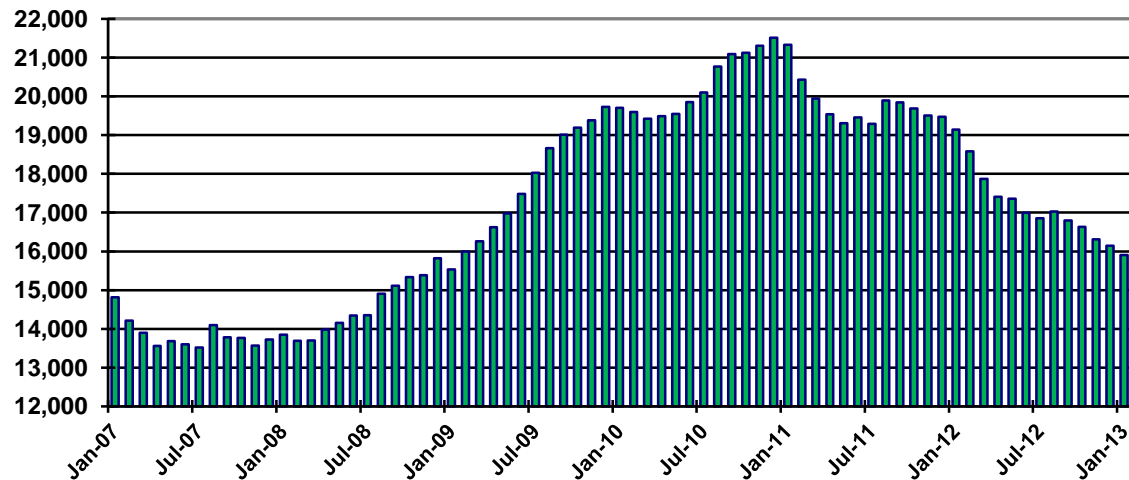
Temporary Assistance of Needy Families (TANF) Cases by Region

	Feb-12	Jan-13	Feb-13	Feb 12 – Feb 13		Jan 13 – Feb 13	
				# change	% change	# change	% change
NW Region 1	2,295	1,972	1,906	-389	-16.9%	-66	-3.3%
NE Region 2	2,064	1,767	1,725	-339	-16.4%	-42	-2.4%
Central Region 3	6,671	5,570	5,305	-1,366	-20.5%	-265	-4.8%
SE Region 4	2,550	2,237	2,110	-440	-17.3%	-127	-5.7%
SW Region 5	5,003	4,364	4,213	-790	-15.8%	-151	-3.5%
TOTAL	18,583	15,910	15,259	-3,324	-17.9%	-651	-4.1%

Temporary Assistance of Needy Families (TANF) Recipients by Region

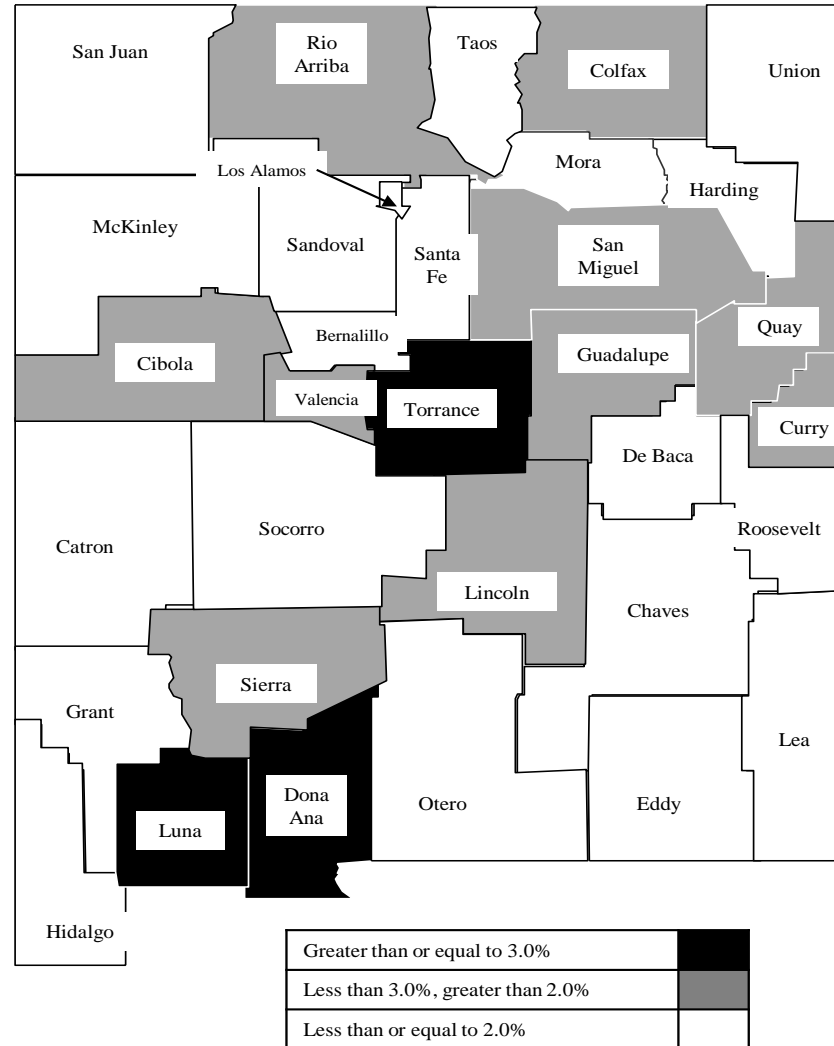
	Feb-12	Jan-13	Feb-13	Feb 12 – Feb 13		Jan 13 – Feb 13	
				# change	% change	# change	% change
NW Region 1	5,958	4,942	4,739	-1,219	-20.5%	-203	-4.1%
NE Region 2	4,876	4,070	3,948	-928	-19.0%	-122	-3.0%
Central Region 3	16,069	13,338	12,576	-3,493	-21.7%	-762	-5.7%
SE Region 4	6,425	5,465	5,123	-1,302	-20.3%	-342	-6.3%
SW Region 5	12,621	10,897	10,462	-2,159	-17.1%	-435	-4.0%
TOTAL	45,949	38,712	36,848	-9,101	-19.8%	-1,864	-4.8%

TANF Cases per month



Rank	County	Estimated Population	TANF Recipients	Rate
1	Torrance	16,345	673	4.1%
2	Luna	25,281	873	3.5%
3	Dona Ana	213,598	7,086	3.3%
4	Rio Arriba	40,446	1,110	2.7%
5	Quay	9,026	234	2.6%
6	Curry	49,649	1,267	2.6%
7	Cibola	27,658	685	2.5%
8	San Miguel	29,301	716	2.4%
9	Sierra	11,943	288	2.4%
10	Guadalupe	4,619	106	2.3%
11	Colfax	13,640	292	2.1%
12	Lincoln	20,454	420	2.1%
13	Valencia	77,070	1,581	2.1%
14	Chaves	65,890	1,269	1.9%
15	Union	4,433	85	1.9%
16	Socorro	17,873	334	1.9%
17	Bernalillo	670,968	11,903	1.8%
18	Eddy	54,152	952	1.8%
19	Grant	29,380	509	1.7%
20	Hidalgo	4,861	78	1.6%
21	Lea	65,423	975	1.5%
22	Roosevelt	20,446	303	1.5%
23	Otero	65,703	847	1.3%
24	Sandoval	134,259	1,580	1.2%
25	Santa Fe	145,648	1,389	1.0%
26	Mora	4,773	42	0.9%
27	De Baca	1,945	17	0.9%
28	Taos	32,917	279	0.8%
29	Catron	3,733	27	0.7%
30	San Juan	128,200	675	0.5%
31	McKinley	73,664	218	0.3%
32	Los Alamos	18,222	35	0.2%
33	Harding	704	0	0.0%
STATE TOTAL		2,082,224	36,848	1.8%

TANF Reciprocity Rate



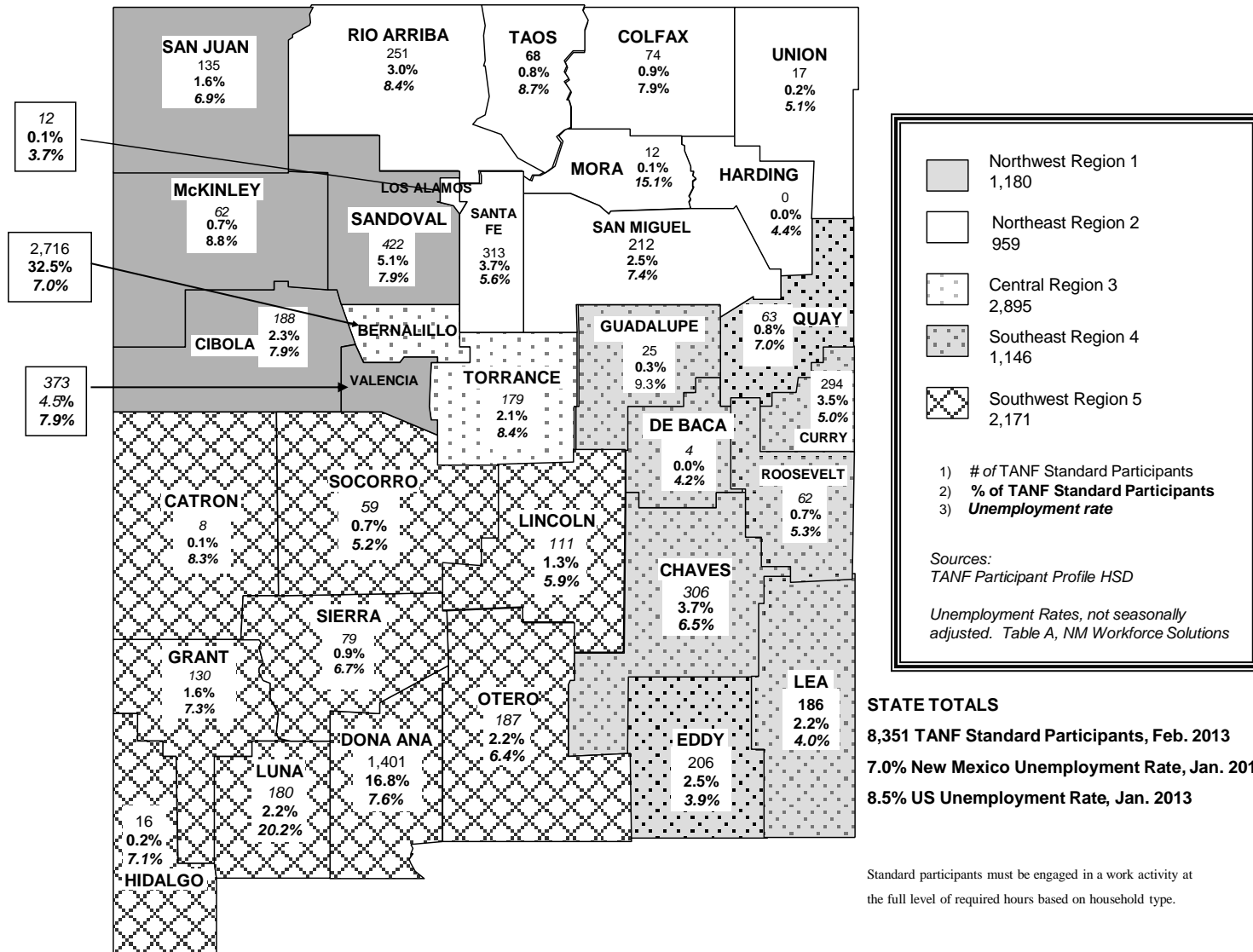
Population Source: U.S. Census Bureau, 2011 Population.
 Reciprocity rate is the percent of individuals living in the State or County who receive TANF.

TANF Standard Participants by Administrative Office

Office #	Office	Feb-12	Jan-13	Feb-13	Feb 12 – Feb 13		Jan 13 – Feb 13	
					# change	% change	# change	% change
1	SE Bernalillo	625	431	403	-222	-35.5%	-28	-6.5%
3	Chaves	408	348	306	-102	-25.0%	-42	-12.1%
4	Colfax	72	77	74	2	2.8%	-3	-3.9%
3104	Union	15	9	17	2	13.3%	8	88.9%
5	Curry	315	329	294	-21	-6.7%	-35	-10.6%
7	West Dona Ana	683	589	561	-122	-17.9%	-28	-4.8%
8	Eddy	185	139	135	-50	-27.0%	-4	-2.9%
9	Grant	183	133	130	-53	-29.0%	-3	-2.3%
1209	Hidalgo	36	23	16	-20	-55.6%	-7	-30.4%
10	Guadalupe	54	31	29	-25	-46.3%	-2	-6.5%
13	Lea	282	216	186	-96	-34.0%	-30	-13.9%
14	Lincoln	126	110	111	-15	-11.9%	1	0.9%
16	Luna	248	192	180	-68	-27.4%	-12	-6.3%
17	McKinley	97	70	63	-34	-35.1%	-7	-10.0%
19	Otero	281	198	187	-94	-33.5%	-11	-5.6%
20	Quay	68	71	63	-5	-7.4%	-8	-11.3%
21	Rio Arriba	419	272	266	-153	-36.5%	-6	-2.2%
22	Roosevelt	47	62	62	15	31.9%	0	0.0%
23	Sandoval	617	425	422	-195	-31.6%	-3	-0.7%
24	San Juan	150	148	135	-15	-10.0%	-13	-8.8%
25	San Miguel	322	248	223	-99	-30.7%	-25	-10.1%
26	Santa Fe	353	331	311	-42	-11.9%	-20	-6.0%
27	Sierra	126	82	96	-30	-23.8%	14	17.1%
28	Socorro	90	79	67	-23	-25.6%	-12	-15.2%
29	Taos	83	72	68	-15	-18.1%	-4	-5.6%
30	Torrance	197	187	179	-18	-9.1%	-8	-4.3%
32	S Valencia	164	128	112	-52	-31.7%	-16	-12.5%
33	Cibola	210	183	187	-23	-11.0%	4	2.2%
34	Eddy/Artesia	73	78	71	-2	-2.7%	-7	-9.0%
35	NW Bernalillo	788	767	690	-98	-12.4%	-77	-10.0%
36	SW Bernalillo	1,158	806	743	-415	-35.8%	-63	-7.8%
37	East Dona Ana	434	457	413	-21	-4.8%	-44	-9.6%
38	S Dona Ana	511	453	410	-101	-19.8%	-43	-9.5%
39	NE Bernalillo	1,138	959	880	-258	-22.7%	-79	-8.2%
42	N Valencia	385	272	261	-124	-32.2%	-11	-4.0%
	TOTAL	10,943	8,975	8,351	-2,592	-23.7%	-624	-7.0%

Standard participants must be engaged in a work activity at the full level of required hours based on household type.

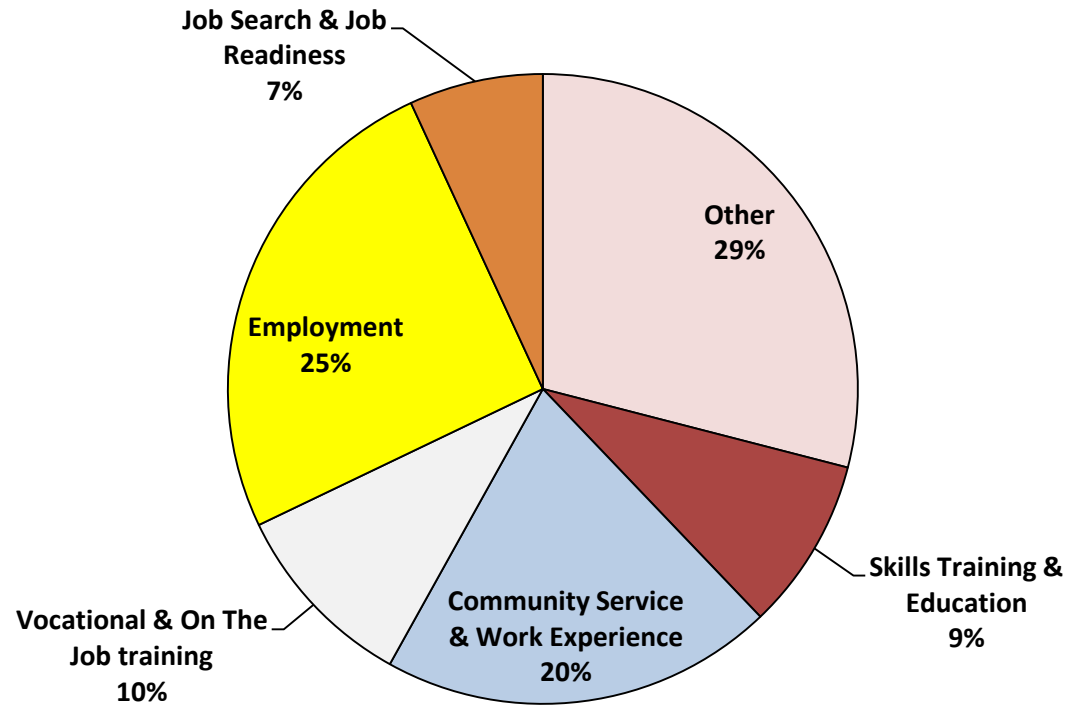
TANF STANDARD PARTICIPANTS and UNEMPLOYMENT RATE COMPARISON BY REGION



STATE TOTALS
8,351 TANF Standard Participants, Feb. 2013
7.0% New Mexico Unemployment Rate, Jan. 2013
8.5% US Unemployment Rate, Jan. 2013

Standard participants must be engaged in a work activity at the full level of required hours based on household type.

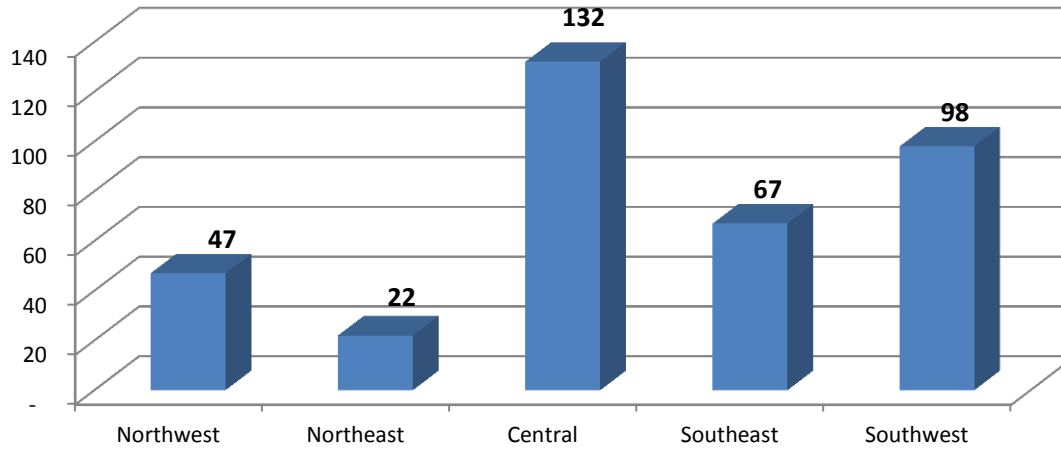
NM Works Activity Placements on Feb 28, 2013 as reported by SL Start **



**Data preliminary and subject to later revision.

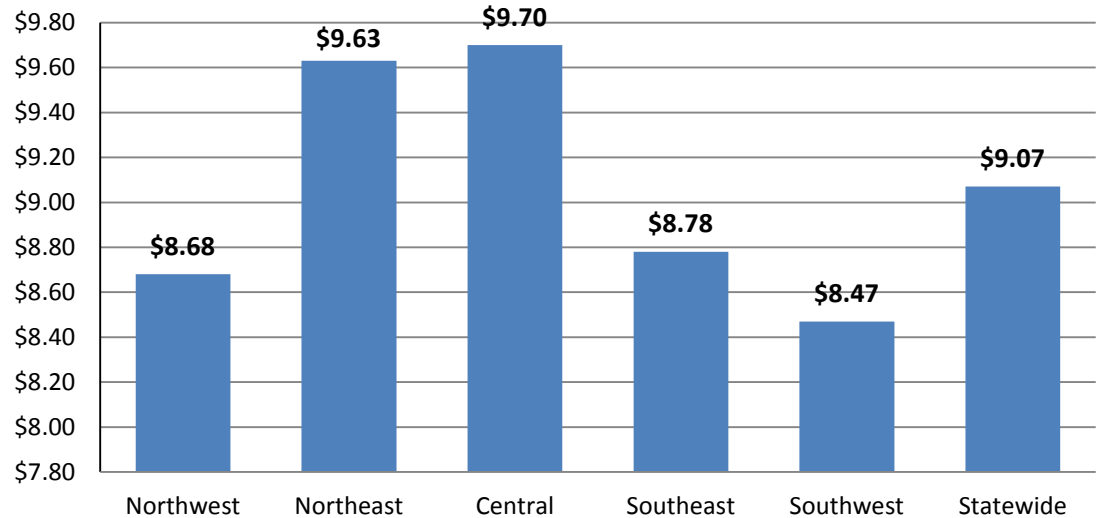
Placements may be duplicated as some individuals may work more than one activity or job.

Number of New Employments in February, by region, as reported by SL Start
Statewide Total: 366



Employment placements may be duplicated as some individuals may work more than one job.

Average Starting Hourly Wage of Feb TANF Employments, as reported by SL Start



TANF Sanctions by Administrative Office

Office #	Office	Non Reporting	Child Support Sanctions			Work Programs Sanctions			TOTAL
			1 st	2 nd	3 rd	1 st	2 nd	3 rd	
1	SE Bernalillo	0	5	0	2	18	11	32	68
3	Chaves	0	2	0	0	21	13	25	61
4	Colfax	0	1	0	0	2	3	2	8
3104	Union	0	2	0	0	1	0	0	3
5	Curry	0	0	0	1	18	4	16	39
7	West Dona Ana	0	0	1	1	22	12	33	69
8	Eddy	0	1	0	0	7	4	5	17
9	Grant	0	0	0	0	5	7	17	29
1209	Hidalgo	0	0	0	0	1	0	0	1
10	Guadalupe	0	1	0	0	4	1	1	7
13	Lea	0	8	0	0	7	4	16	35
14	Lincoln	0	0	0	0	5	0	1	6
16	Luna	0	1	0	0	11	4	11	27
17	McKinley	0	0	0	1	1	3	2	7
19	Otero	0	2	0	0	9	5	22	38
20	Quay	0	2	1	0	4	0	5	12
21	Rio Arriba	0	4	0	1	13	4	30	52
22	Roosevelt	0	0	0	0	5	0	4	9
23	Sandoval	0	8	0	0	29	15	40	92
24	San Juan	0	5	0	0	26	9	11	51
25	San Miguel	0	0	0	0	32	8	3	43
26	Santa Fe	0	1	0	0	35	15	18	69
27	Sierra	0	0	0	0	3	1	8	12
28	Socorro	0	0	0	1	3	2	2	8
29	Taos	0	2	0	0	10	2	1	15
30	Torrance	0	1	0	2	12	1	14	30
32	S Valencia	0	0	0	0	15	6	15	36
33	Cibola	0	1	0	1	5	9	15	31
34	Eddy/Artesia	0	3	0	0	8	4	7	22
35	NW Bernalillo	0	8	1	3	44	17	50	123
36	SW Bernalillo	0	4	0	1	40	33	83	161
37	East Dona Ana	0	5	1	0	28	11	31	76
38	S Dona Ana	0	7	0	1	30	16	34	88
39	NE Bernalillo	0	8	1	0	37	24	42	112
42	N Valencia	0	0	0	0	22	9	24	55
	TOTAL	0	82	5	15	533	257	620	1,512

TANF Diversion Payments by Administrative Office and Region

	Feb 2013	SFY 13 Cumulative total
NW Region (1)		
Cibola	\$4,000	\$31,500
<i>McKinley</i>	\$0	\$0
Sandoval	\$0	\$0
<i>San Juan</i>	\$0	\$0
Valencia North	\$9,500	\$102,000
<i>Valencia South</i>	\$0	\$3,000
NW Region Total	\$13,500	\$136,500
NE Region (2)		
<i>Colfax</i>	\$0	\$0
Los Alamos	\$0	\$0
<i>Mora</i>	\$0	\$0
Rio Arriba	\$0	\$0
<i>San Miguel</i>	\$0	\$0
Santa Fe	\$0	\$0
<i>Taos</i>	\$0	\$0
NE Region Total	\$0	\$0
Central Region (3)		
<i>Bernalillo NE</i>	\$0	\$7,000
Bernalillo NW	\$0	\$0
<i>Bernalillo SE</i>	\$0	\$0
Bernalillo SW	\$0	\$1,500
<i>Torrance</i>	\$0	\$5,500
Central Region Total	\$0	\$14,000

	Feb 2013	SFY 13 Cumulative total
SE Region Four (4)		
Chaves	\$0	\$0
<i>Curry</i>	\$0	\$0
De Baca	\$0	\$0
<i>Eddy</i>	\$0	\$6,500
Guadalupe	\$0	\$0
<i>Harding</i>	\$0	\$0
Lea	\$0	\$0
<i>Quay</i>	\$0	\$0
Roosevelt	\$0	\$0
<i>Union</i>	\$0	\$0
SE Region Total	\$0	\$6,500
SW Region (5)		
Catron	\$0	\$0
<i>Doña Ana West</i>	\$0	\$0
Doña Ana East	\$0	\$0
<i>Doña Ana Southern</i>	\$0	\$0
Grant	\$0	\$0
<i>Hidalgo</i>	\$0	\$0
Lincoln	\$0	\$0
<i>Otero</i>	\$0	\$0
Luna	\$0	\$0
<i>Sierra</i>	\$0	\$0
Socorro	\$0	\$2,500
SW Region Total	\$0	\$2,500
State TOTAL	\$13,500	\$159,500

Note: Effective November 2007, households with one or two persons receives \$1,500, households with three or more members receive \$2,500.

**Number of Active TANF Cases Extended Beyond 60 Month Time Limit
By Type of Extension as of Feb 2013**

Admin By Region	Hardship Extension	Support Services, State	Support Services, Federal	Tribal	Total
NW Region (1)					
Cibola	6	6	0	0	12
<i>McKinley</i>	1	0	0	0	1
San Juan	0	0	1	0	1
<i>Sandoval</i>	12	17	10	0	39
Valencia North	6	6	1	0	13
<i>Valencia South</i>	6	3	1	0	10
NW Region	31	32	13	0	76
NE Region (2)					
Colfax	2	1	1	0	4
Union	0	0	0	0	0
Rio Arriba	8	15	4	0	27
<i>San Miguel</i>	9	2	3	0	14
Santa Fe	23	16	2	0	41
<i>Taos</i>	5	1	1	0	7
NE Region	47	35	11	0	93
Central Region (3)					
NE Bernalillo	24	15	2	0	41
<i>NW Bernalillo</i>	22	25	6	0	53
SE Bernalillo	18	12	2	0	32
<i>SW Bernalillo</i>	19	31	22	0	72
Torrance	8	1	0	0	9
Central Region	91	84	32	0	207

Admin By Region	Hardship Extension	Support Services, State	Support Services, Federal	Tribal	Total
SE Region (4)					
Chaves	6	9	1	0	16
<i>Curry</i>	5	2	0	0	7
Eddy	9	3	0	0	12
<i>Eddy Artesia</i>	0	1	0	0	1
Guadalupe	2	1	0	0	3
<i>Lea</i>	0	2	1	0	3
Quay	5	1	1	0	7
<i>Roosevelt</i>	0	2	0	0	2
SE Region	27	21	3	0	51
SW Region (5)					
East Doña Ana	15	9	11	0	35
<i>West Doña Ana</i>	28	29	23	0	80
South Doña Ana	8	4	8	0	20
Grant	5	2	0	0	7
Hidalgo	1	0	3	0	4
<i>Lincoln</i>	1	2	2	0	5
Luna	5	1	4	0	10
<i>Otero</i>	2	2	3	0	7
Sierra	1	1	0	0	2
<i>Socorro</i>	13	1	0	0	14
SW Region	79	51	54	0	184
State Total	275	223	113	0	611

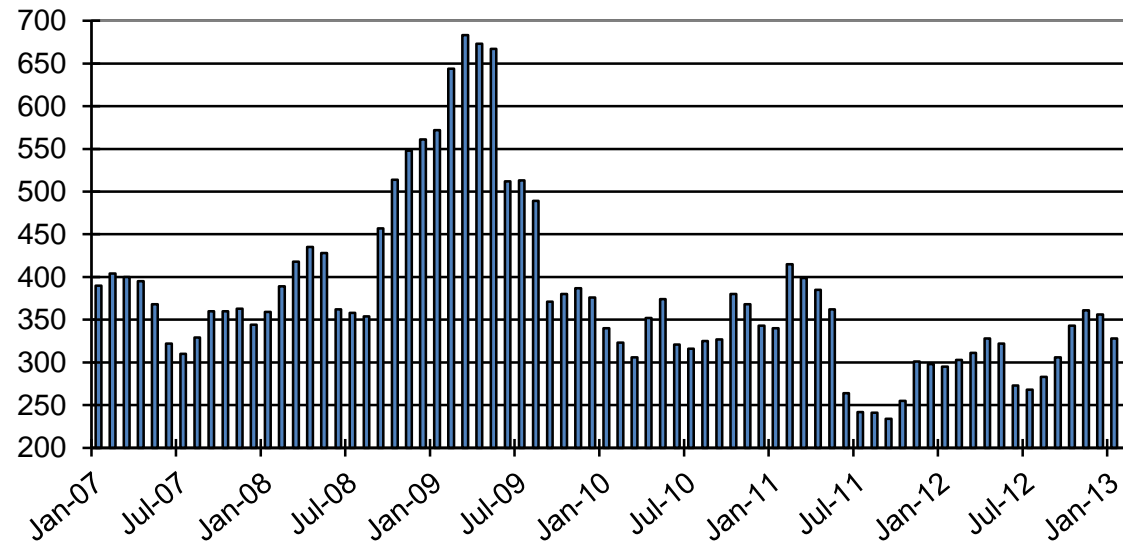
Education Works Cases by Administrative Office

Office #	Office	Feb-12	Jan-13	Feb-13	Feb 12 – Feb 13		Jan 13 – Feb 13	
					# change	% change	# change	% change
1	SE Bernalillo	27	30	31	4	14.8%	1	3.3%
3	Chaves	1	3	5	4	400.0%	2	66.7%
4	Colfax	4	5	4	0	0.0%	-1	-20.0%
3104	Union	0	0	0	0	NA	0	NA
5	Curry	4	1	2	-2	-50.0%	1	100.0%
7	West Dona Ana	21	23	22	1	4.8%	-1	-4.3%
8	Eddy	3	3	4	1	33.3%	1	33.3%
9	Grant	9	11	12	3	33.3%	1	9.1%
1209	Hidalgo	1	0	0	-1	-100.0%	0	NA
10	Guadalupe	1	0	0	-1	-100.0%	0	NA
13	Lea	3	4	5	2	66.7%	1	25.0%
14	Lincoln	0	0	0	0	NA	0	NA
16	Luna	2	4	3	1	50.0%	-1	-25.0%
17	McKinley	0	0	1	1	NA	1	NA
19	Otero	3	4	4	1	33.3%	0	0.0%
20	Quay	3	6	6	3	100.0%	0	0.0%
21	Rio Arriba	6	6	5	-1	-16.7%	-1	-16.7%
22	Roosevelt	1	1	1	0	0.0%	0	0.0%
23	Sandoval	16	25	30	14	87.5%	5	20.0%
24	San Juan	2	1	1	-1	-50.0%	0	0.0%
25	San Miguel	19	17	15	-4	-21.1%	-2	-11.8%
26	Santa Fe	12	13	14	2	16.7%	1	7.7%
27	Sierra	0	2	3	3	NA	1	50.0%
28	Socorro	1	1	1	0	0.0%	0	0.0%
29	Taos	12	12	13	1	8.3%	1	8.3%
30	Torrance	8	8	9	1	12.5%	1	12.5%
32	S Valencia	5	4	4	-1	-20.0%	0	0.0%
33	Cibola	6	3	4	-2	-33.3%	1	33.3%
34	Eddy/Artesia	1	2	3	2	200.0%	1	50.0%
35	NW Bernalillo	22	25	28	6	27.3%	3	12.0%
36	SW Bernalillo	13	16	17	4	30.8%	1	6.3%
37	East Dona Ana	20	18	25	5	25.0%	7	38.9%
38	S Dona Ana	17	20	21	4	23.5%	1	5.0%
39	NE Bernalillo	51	54	57	6	11.8%	3	5.6%
42	N Valencia	9	6	4	-5	-55.6%	-2	-33.3%
	TOTAL	303	328	354	51	16.8%	26	7.9%

Education Works Cases by Region

	Feb-12	Jan-13	Feb-13	Feb 12 – Feb 13		Jan 13 – Feb 13	
				# change	% change	# change	% change
NW Region 1	38	39	44	6	15.8%	5	12.8%
NE Region 2	53	53	51	-2	-3.8%	-2	-3.8%
Central Region 3	121	133	142	21	17.4%	9	6.8%
SE Region 4	17	20	26	9	52.9%	6	30.0%
SW Region 5	74	83	91	17	23.0%	8	9.6%
TOTAL	303	328	354	51	16.8%	26	7.9%

Education Works Cases, by Month



General Assistance (GA) Cases by County

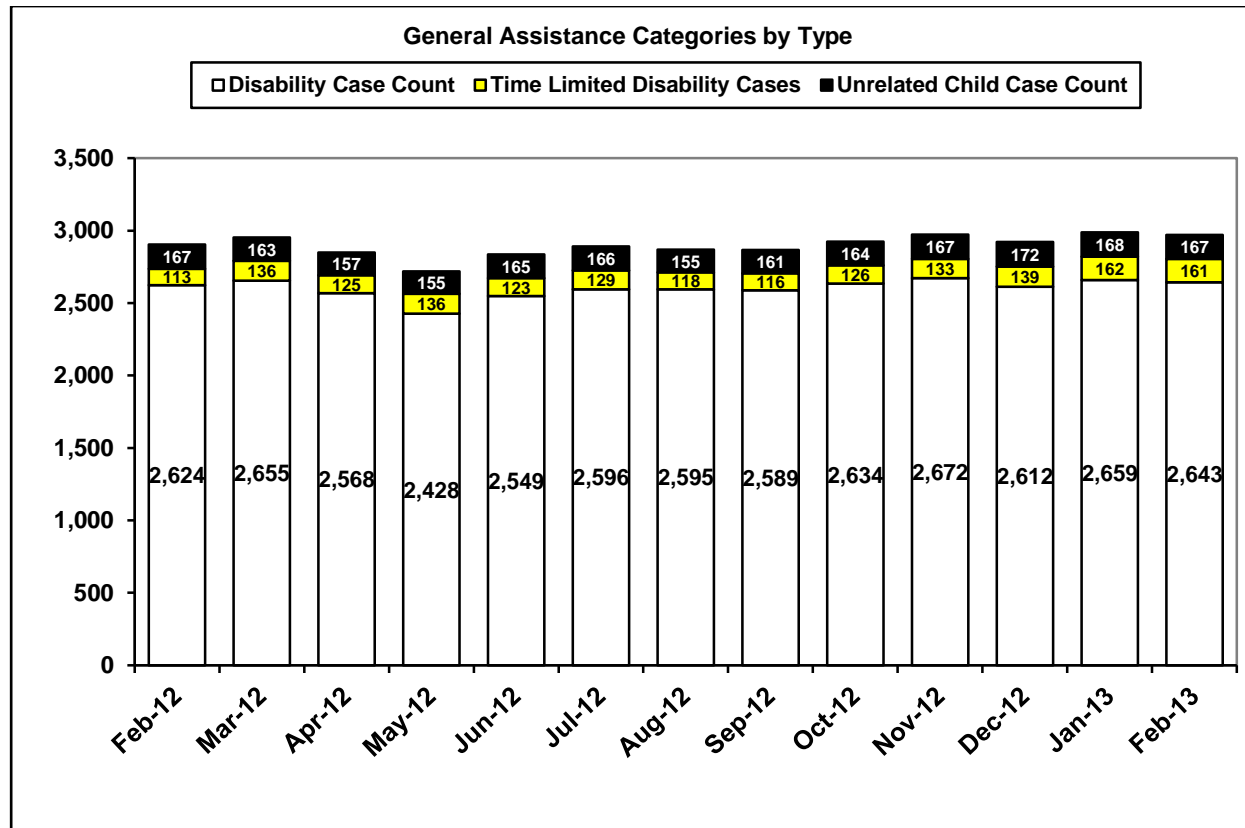
County	Feb-12	Jan-13	Feb-13	Feb 12 – Feb 13		Jan 13 – Feb 13	
				# change	% change	# change	% change
Bernalillo	1,133	1,034	1,019	-114	-10.1%	-15	-1.5%
Catron	4	2	2	-2	-50.0%	0	0.0%
Chaves	99	99	98	-1	-1.0%	-1	-1.0%
Cibola	66	73	74	8	12.1%	1	1.4%
Colfax	26	24	23	-3	-11.5%	-1	-4.2%
Curry	77	70	69	-8	-10.4%	-1	-1.4%
De Baca	5	5	5	0	0.0%	0	0.0%
Dona Ana	224	265	269	45	20.1%	4	1.5%
Eddy	130	116	112	-18	-13.8%	-4	-3.4%
Grant	65	59	60	-5	-7.7%	1	1.7%
Guadalupe	12	15	16	4	33.3%	1	6.7%
Harding	1	1	1	0	0.0%	0	0.0%
Hidalgo	14	19	20	6	42.9%	1	5.3%
Lea	45	41	39	-6	-13.3%	-2	-4.9%
Lincoln	30	34	29	-1	-3.3%	-5	-14.7%
Los Alamos	5	6	6	1	20.0%	0	0.0%
Luna	46	42	45	-1	-2.2%	3	7.1%
McKinley	20	19	18	-2	-10.0%	-1	-5.3%
Mora	14	7	7	-7	-50.0%	0	0.0%
Otero	54	54	52	-2	-3.7%	-2	-3.7%
Quay	38	41	38	0	0.0%	-3	-7.3%
Rio Arriba	108	124	135	27	25.0%	11	8.9%
Roosevelt	10	9	12	2	20.0%	3	33.3%
Sandoval	86	106	106	20	23.3%	0	0.0%
San Juan	55	62	66	11	20.0%	4	6.5%
San Miguel	115	104	103	-12	-10.4%	-1	-1.0%
Santa Fe	165	207	204	39	23.6%	-3	-1.4%
Sierra	19	38	36	17	89.5%	-2	-5.3%
Socorro	37	54	49	12	32.4%	-5	-9.3%
Taos	67	75	72	5	7.5%	-3	-4.0%
Torrance	30	33	33	3	10.0%	0	0.0%
Union	9	11	9	0	0.0%	-2	-18.2%
Valencia	95	140	144	49	51.6%	4	2.9%
TOTAL	2,904	2,989	2,971	67	2.3%	-18	-0.6%

General Assistance (GA) Cases by Administrative Office

Office #	Office	Feb-12	Jan-13	Feb-13	Feb 12 – Feb 13		Jan 13 – Feb 13	
					# change	% change	# change	% change
1	SE Bernalillo	206	161	149	-57	-27.7%	-12	-7.5%
3	Chaves	99	99	98	-1	-1.0%	-1	-1.0%
4	Colfax	26	24	23	-3	-11.5%	-1	-4.2%
3104	Union	9	11	9	0	0.0%	-2	-18.2%
5	Curry	77	70	69	-8	-10.4%	-1	-1.4%
7	West Dona Ana	116	130	134	18	15.5%	4	3.1%
8	Eddy	90	79	75	-15	-16.7%	-4	-5.1%
9	Grant	65	59	60	-5	-7.7%	1	1.7%
1209	Hidalgo	14	19	20	6	42.9%	1	5.3%
10	Guadalupe	17	20	21	4	23.5%	1	5.0%
13	Lea	45	41	39	-6	-13.3%	-2	-4.9%
14	Lincoln	30	34	29	-1	-3.3%	-5	-14.7%
16	Luna	46	42	45	-1	-2.2%	3	7.1%
17	McKinley	20	19	18	-2	-10.0%	-1	-5.3%
19	Otero	54	54	52	-2	-3.7%	-2	-3.7%
20	Quay	38	41	38	0	0.0%	-3	-7.3%
21	Rio Arriba	115	131	142	27	23.5%	11	8.4%
22	Roosevelt	10	9	12	2	20.0%	3	33.3%
23	Sandoval	86	106	106	20	23.3%	0	0.0%
24	San Juan	55	62	66	11	20.0%	4	6.5%
25	San Miguel	130	110	109	-21	-16.2%	-1	-0.9%
26	Santa Fe	163	208	205	42	25.8%	-3	-1.4%
27	Sierra	21	43	39	18	85.7%	-4	-9.3%
28	Socorro	41	56	51	10	24.4%	-5	-8.9%
29	Taos	67	75	72	5	7.5%	-3	-4.0%
30	Torrance	30	33	33	3	10.0%	0	0.0%
32	S Valencia	31	45	49	18	58.1%	4	8.9%
33	Cibola	66	73	74	8	12.1%	1	1.4%
34	Eddy/Artesia	40	37	37	-3	-7.5%	0	0.0%
35	NW Bernalillo	281	289	286	5	1.8%	-3	-1.0%
36	SW Bernalillo	211	187	186	-25	-11.8%	-1	-0.5%
37	East Dona Ana	75	81	83	8	10.7%	2	2.5%
38	S Dona Ana	31	49	49	18	58.1%	0	0.0%
39	NE Bernalillo	435	397	398	-37	-8.5%	1	0.3%
42	N Valencia	64	95	95	31	48.4%	0	0.0%
	TOTAL	2,904	2,989	2,971	67	2.3%	-18	-0.6%

General Assistance (GA) Cases by Region

	Feb-12	Jan-13	Feb-13	Feb 12 – Feb 13		Jan 13 – Feb 13	
				# change	% change	# change	% change
NW Region 1	322	400	408	86	26.7%	8	2.0%
NE Region 2	510	559	560	50	9.8%	1	0.2%
Central Region 3	1,163	1,067	1,052	-111	-9.5%	-15	-1.4%
SE Region 4	416	396	389	-27	-6.5%	-7	-1.8%
SW Region 5	493	567	562	69	14.0%	-5	-0.9%
TOTAL	2,904	2,989	2,971	67	2.3%	-18	-0.6%



GA Interim Assistance Reimbursements				
	SFY 12		SFY 13	
	Cases	Amount	Cases	Amount
<i>July</i>	77	\$224,022	105	\$254,087
August	100	\$256,766	88	\$248,471
<i>September</i>	68	\$159,712	101	\$233,341
October	60	\$158,539	101	\$293,784
<i>November</i>	60	\$158,596	72	\$193,152
December	74	\$183,600	84	\$236,221
<i>January</i>	91	\$341,348	79	\$209,922
February	113	\$307,090	77	\$178,441
<i>March</i>	77	\$186,834		
April	102	\$357,392		
<i>May</i>	90	\$230,243		
June	57	\$215,729		
SFY Total	969	\$2,779,871	707	\$1,847,419
Monthly Average	81	\$231,656	88	\$230,927

State Funded Legal Aliens				
	SFY 12		SFY 13	
	Participants	Payments	Participants	Payments
<i>July</i>	110	\$6,644	83	\$5,029
August	113	\$8,612	83	\$6,132
<i>September</i>	107	\$7,302	81	\$4,863
October	93	\$6,292	74	\$4,270
<i>November</i>	94	\$5,741	65	\$4,131
December	94	\$6,593	73	\$4,040
<i>January</i>	91	\$5,307	60	\$3,561
February	83	\$5,614	67	\$3,796
<i>March</i>	69	\$4,406		
April	73	\$3,862		
<i>May</i>	78	\$5,371		
June	80	\$4,689		
SFY Total	1,085	\$70,433	586	\$35,822
Monthly Average	90	\$5,869	73	\$4,478

IAR case figures reflect those with expected reimbursement amounts above \$0. Figures unreconciled and subject to change.

Refugee Cash Assistance				
	SFY 12		SFY 13	
	Cases	Payments	Cases	Payments
<i>July</i>	15	\$6,428	23	\$7,155
August	9	\$4,433	27	\$7,742
<i>September</i>	5	\$2,930	32	\$8,267
October	5	\$1,519	32	\$9,803
<i>November</i>	10	\$2,675	31	\$9,552
December	9	\$3,380	40	\$10,435
<i>January</i>	12	\$3,285	36	\$11,489
February	13	\$3,210	27	\$11,107
<i>March</i>	13	\$3,739		
April	23	\$5,654		
<i>May</i>	26	\$7,579		
June	22	\$7,496		
SFY Total	162	\$52,328	248	\$75,550
Monthly Average	14	\$4,361	31	\$9,444

State Supplement for Residential Care (SSRC)				
	SFY 12		SFY 13	
	Cases	Payments	Cases	Payments
<i>July</i>	51	\$5,300	45	\$4,600
August	53	\$5,500	44	\$4,600
<i>September</i>	52	\$5,300	46	\$4,800
October	53	\$5,400	47	\$4,700
<i>November</i>	53	\$5,300	46	\$4,900
December	52	\$5,400	47	\$5,200
<i>January</i>	45	\$5,600	50	\$5,100
February	44	\$4,700	47	\$4,900
<i>March</i>	42	\$4,400		
April	44	\$4,400		
<i>May</i>	46	\$4,800		
June	46	\$4,600		
SFY Total	581	\$60,700	372	\$38,800
Monthly Average	48	\$5,058	47	\$4,850

Low Income Home Energy Assistance Program (LIHEAP) Payments by Administrative Office

Cumulative, For Federal Fiscal Year 2013

Office #	Office	Payments	Number of Households Paid
1	SE Bernalillo	\$243,440	2,090
3	Chaves	\$270,896	2,186
4	Colfax	\$70,096	570
3104	Union	\$13,056	99
5	Curry	\$112,752	932
7	West Dona Ana	\$342,800	2,864
8	Eddy	\$81,072	667
9	Grant	\$129,344	1,041
1209	Hidalgo	\$21,136	172
10	Guadalupe	\$66,992	477
13	Lea	\$94,736	754
14	Lincoln	\$47,856	392
16	Luna	\$148,464	1,156
17	McKinley	\$72,720	612
19	Otero	\$51,984	474
20	Quay	\$62,224	500
21	Rio Arriba	\$335,168	2,729
22	Roosevelt	\$63,440	517

Office #	Office	Payments	Number of Households Paid
23	Sandoval	\$146,512	1,317
24	San Juan	\$178,448	1,457
25	San Miguel	\$306,960	2,267
26	Santa Fe	\$218,080	1,848
27	Sierra	\$112,560	861
28	Socorro	\$125,552	954
29	Taos	\$224,432	1,752
30	Torrance	\$112,928	889
32	S Valencia	\$147,952	1,185
33	Cibola	\$122,512	1,000
34	Eddy/Artesia	\$34,400	280
35	NW Bernalillo	\$275,760	2,437
36	SW Bernalillo	\$387,024	3,346
37	East Dona Ana	\$238,048	2,000
38	S Dona Ana	\$277,248	2,267
39	NE Bernalillo	\$453,728	4,002
42	N Valencia	\$240,192	1,953
	TOTAL	\$5,830,512	48,047

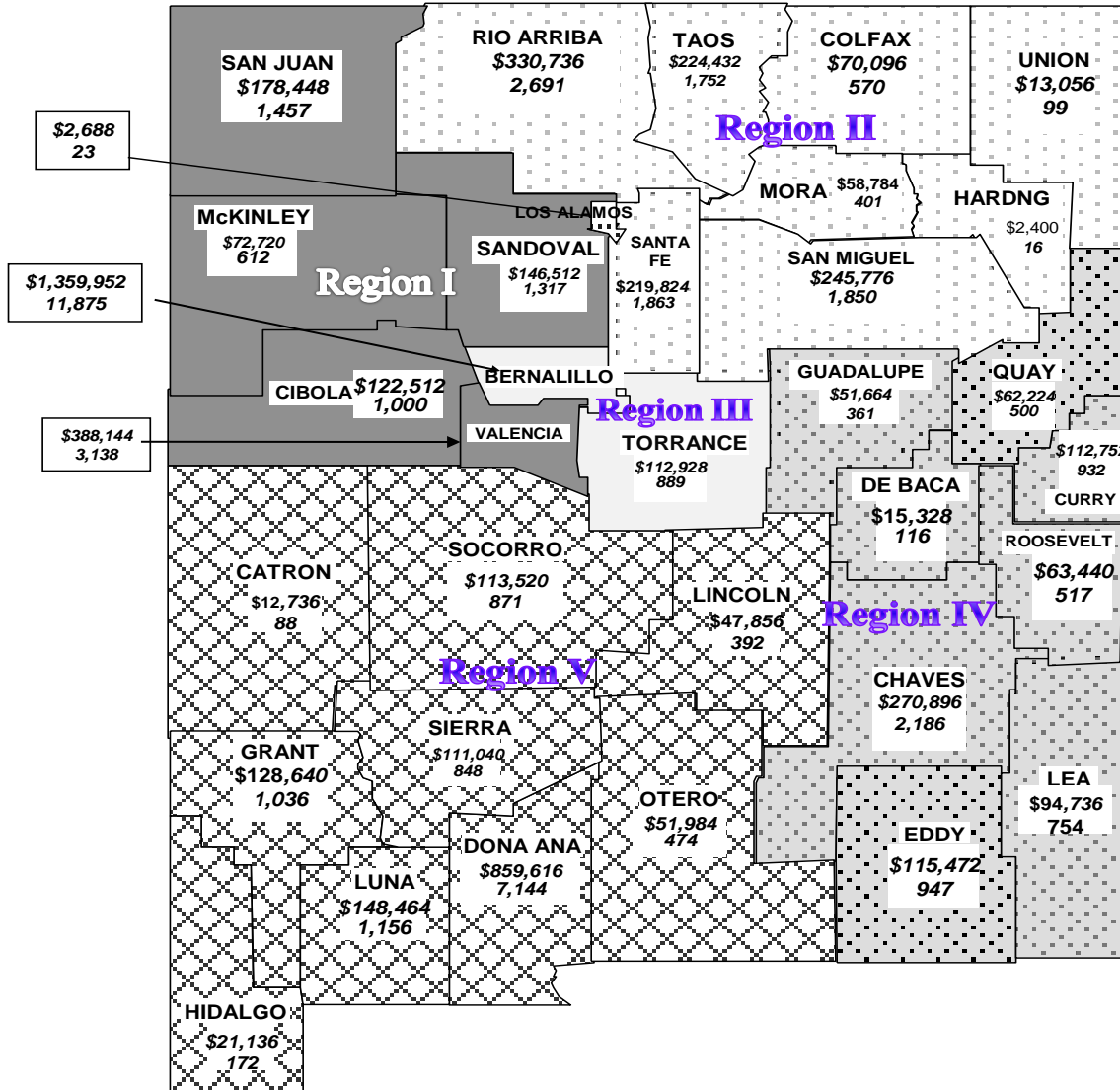
LIHEAP Payments by Region

Cumulative, For Federal Fiscal Year 2013

Region	Payments	Number of Households Paid
NW Region 1	\$908,336	7,524
NE Region 2	\$1,167,792	9,265
Central Region 3	\$1,472,880	12,764
SE Region 4	\$786,512	6,313
SW Region 5	\$1,494,992	12,181
TOTAL	\$5,830,512	48,047

Note: Five Sandoval Indian Pueblos, Inc., Jemez Pueblo, The Jicarilla Nation, Laguna Pueblo, Nambé Pueblo, The Navajo Nation, and Zuni Pueblo administer their own LIHEAP programs. LIHEAP does not process new applications received during the month of September until the following Federal fiscal year.

LIHEAP PAYMENTS BY COUNTY

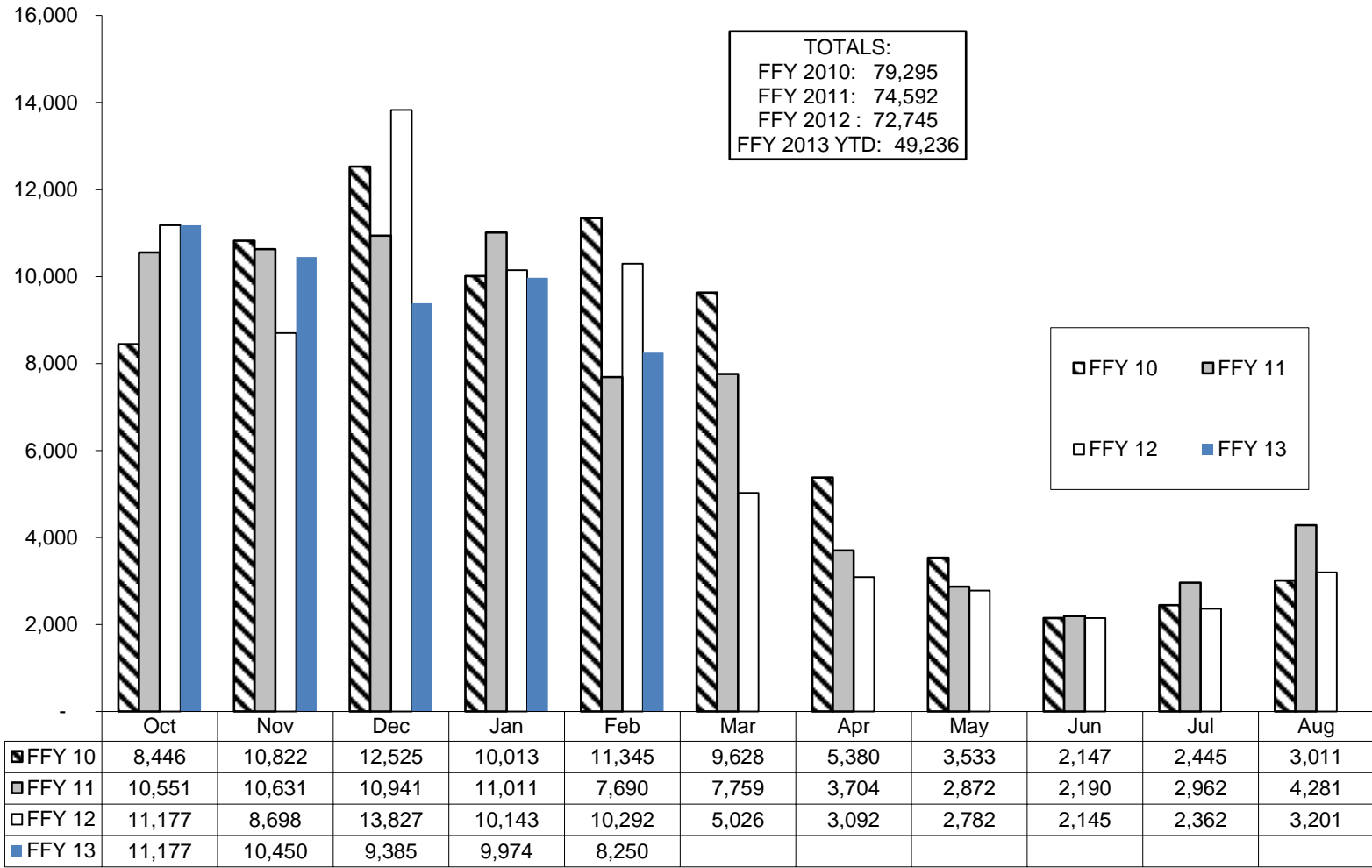


Region Totals		
Region	Payment	Households
Region I	\$908,336	7,524
Region II	\$1,167,792	9,265
Region III	\$1,472,880	12,764
Region IV	\$786,512	6,313
Region V	\$1,494,992	12,181
State total	\$5,830,512	48,047

Legend

1. \$ Payments
2. # of households paid

LIHEAP Application Approvals



Medicaid Eligibles by County

County	Nov-11	Oct-12	Nov-12	Nov 11 – Nov 12		Oct 12 – Nov 12	
				# change	% change	# change	% change
Bernalillo	143,409	146,881	146,484	3,075	2.1%	-397	-0.3%
Catron	514	503	502	-12	-2.3%	-1	-0.2%
Chaves	20,112	20,507	20,460	348	1.7%	-47	-0.2%
Cibola	8,532	8,865	8,881	349	4.1%	16	0.2%
Colfax	4,238	3,684	3,452	-786	-18.5%	-232	-6.3%
Curry	13,162	13,154	13,181	19	0.1%	27	0.2%
De Baca	496	476	474	-22	-4.4%	-2	-0.4%
Dona Ana	66,911	68,331	68,203	1,292	1.9%	-128	-0.2%
Eddy	13,534	13,637	13,662	128	0.9%	25	0.2%
Grant	7,203	7,008	7,007	-196	-2.7%	-1	0.0%
Guadalupe	1,313	1,363	1,351	38	2.9%	-12	-0.9%
Harding	59	56	53	-6	-10.2%	-3	-5.4%
Hidalgo	1,265	1,222	1,190	-75	-5.9%	-32	-2.6%
Lea	15,792	16,423	16,486	694	4.4%	63	0.4%
Lincoln	4,253	4,477	4,547	294	6.9%	70	1.6%
Los Alamos	501	629	627	126	25.1%	-2	-0.3%
Luna	9,200	9,649	9,591	391	4.3%	-58	-0.6%
McKinley	29,435	30,172	30,182	747	2.5%	10	0.0%
Mora	1,221	1,136	1,115	-106	-8.7%	-21	-1.8%
Otero	11,557	11,582	11,572	15	0.1%	-10	-0.1%
Quay	2,678	2,687	2,705	27	1.0%	18	0.7%
Rio Arriba	13,912	14,634	14,715	803	5.8%	81	0.6%
Roosevelt	4,917	4,871	4,869	-48	-1.0%	-2	0.0%
Sandoval	25,542	26,525	26,816	1,274	5.0%	291	1.1%
San Juan	34,816	36,284	36,188	1,372	3.9%	-96	-0.3%
San Miguel	9,137	9,691	9,957	820	9.0%	266	2.7%
Santa Fe	23,207	24,503	24,751	1,544	6.7%	248	1.0%
Sierra	3,374	3,486	3,514	140	4.1%	28	0.8%
Socorro	5,162	5,340	5,385	223	4.3%	45	0.8%
Taos	7,964	8,210	8,231	267	3.4%	21	0.3%
Torrance	5,985	5,917	5,915	-70	-1.2%	-2	0.0%
Union	1,114	1,522	1,246	132	11.8%	-276	-18.1%
Valencia	20,331	20,705	20,788	457	2.2%	83	0.4%
Unspecified	478	528	516	38	7.9%	-12	-2.3%
TOTAL	511,324	524,658	524,616	13,292	2.6%	-42	0.0%

Note: All figures are updated historically to include retroactive eligibility, retroactive closures and other late reporting eligibility changes. Excludes clients in: SLIMB, QI1, SCI and Adult Expansion, PAK, PAM & SEIP. Source: <http://www.hsd.state.nm.us/mad/RMedicaidEligibility.html>

Medicaid Cases by County

County	Feb-12	Jan-13	Feb-13	Feb 12 – Feb 13		Jan 13 – Feb 13	
				# change	% change	# change	% change
Bernalillo	89,302	91,033	91,314	2,012	2.3%	281	0.3%
Catron	333	315	323	-10	-3.0%	8	2.5%
Chaves	11,946	12,104	12,101	155	1.3%	-3	0.0%
Cibola	4,356	4,574	4,530	174	4.0%	-44	-1.0%
Colfax	1,756	1,649	1,642	-114	-6.5%	-7	-0.4%
Curry	7,053	7,108	7,137	84	1.2%	29	0.4%
De Baca	271	292	288	17	6.3%	-4	-1.4%
Dona Ana	38,944	39,358	39,731	787	2.0%	373	0.9%
Eddy	8,086	8,021	8,091	5	0.1%	70	0.9%
Grant	4,437	4,417	4,318	-119	-2.7%	-99	-2.2%
Guadalupe	794	770	762	-32	-4.0%	-8	-1.0%
Harding	48	39	36	-12	-25.0%	-3	-7.7%
Hidalgo	836	778	766	-70	-8.4%	-12	-1.5%
Lea	8,629	9,004	8,982	353	4.1%	-22	-0.2%
Lincoln	2,993	3,111	3,130	137	4.6%	19	0.6%
Los Alamos	324	395	406	82	25.3%	11	2.8%
Luna	5,328	5,417	5,468	140	2.6%	51	0.9%
McKinley	13,868	13,996	14,090	222	1.6%	94	0.7%
Mora	720	626	627	-93	-12.9%	1	0.2%
Otero	7,342	7,195	7,214	-128	-1.7%	19	0.3%
Quay	1,614	1,623	1,597	-17	-1.1%	-26	-1.6%
Rio Arriba	8,743	9,004	9,011	268	3.1%	7	0.1%
Roosevelt	2,723	2,692	2,696	-27	-1.0%	4	0.1%
Sandoval	14,807	15,973	16,078	1,271	8.6%	105	0.7%
San Juan	17,318	17,934	17,960	642	3.7%	26	0.1%
San Miguel	5,301	5,477	5,410	109	2.1%	-67	-1.2%
Santa Fe	14,541	15,596	15,636	1,095	7.5%	40	0.3%
Sierra	2,142	2,429	2,220	78	3.6%	-209	-8.6%
Socorro	2,515	2,696	2,617	102	4.1%	-79	-2.9%
Taos	5,449	5,535	5,528	79	1.4%	-7	-0.1%
Torrance	3,703	3,778	3,811	108	2.9%	33	0.9%
Union	537	670	426	-111	-20.7%	-244	-36.4%
Valencia	11,877	12,567	12,599	722	6.1%	32	0.3%
TOTAL	298,636	306,176	306,545	7,909	2.6%	369	0.1%

SCI cases are included in the client's county of residence.

Medicaid Cases by Administrative Office

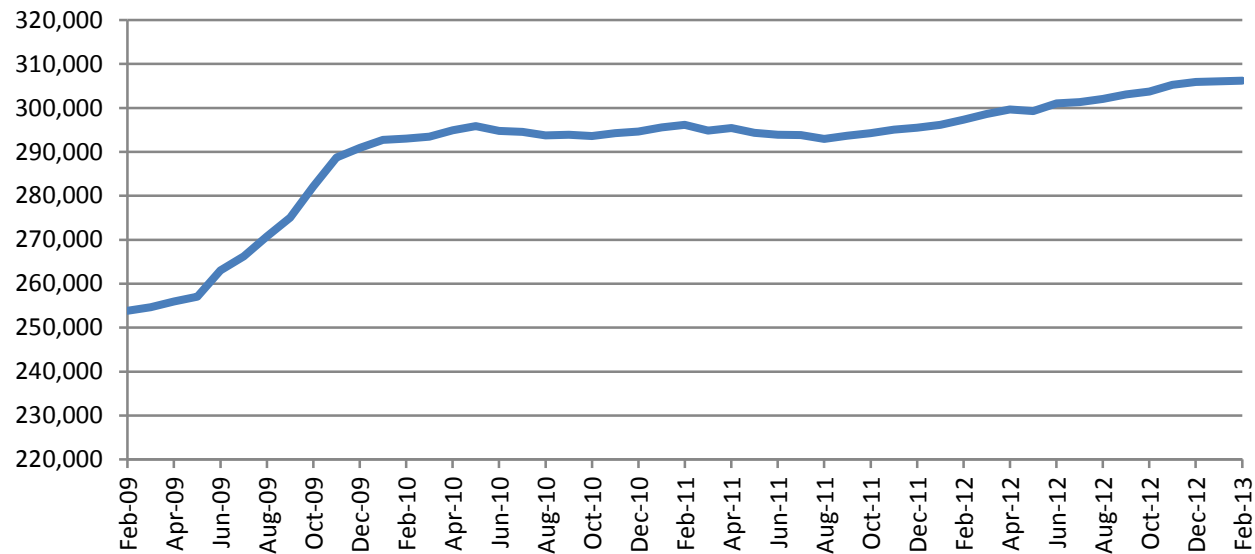
Office #	Office	Feb-12	Jan-13	Feb-13	Feb 12 – Feb 13		Jan 13 – Feb 13	
					# change	% change	# change	% change
1	SE Bernalillo	14,337	14,216	14,278	-59	-0.4%	62	0.4%
3	Chaves	10,135	10,462	10,474	339	3.3%	12	0.1%
4	Colfax	1,517	1,432	1,429	-88	-5.8%	-3	-0.2%
3104	Union	489	606	389	-100	-20.4%	-217	-35.8%
5	Curry	6,121	6,259	6,292	171	2.8%	33	0.5%
7	West Dona Ana	9,876	10,749	10,883	1,007	10.2%	134	1.2%
8	Eddy	4,500	4,511	4,547	47	1.0%	36	0.8%
9	Grant	3,706	3,675	3,597	-109	-2.9%	-78	-2.1%
1209	Hidalgo	645	611	602	-43	-6.7%	-9	-1.5%
10	Guadalupe	890	906	896	6	0.7%	-10	-1.1%
13	Lea	7,933	8,395	8,379	446	5.6%	-16	-0.2%
14	Lincoln	2,277	2,475	2,493	216	9.5%	18	0.7%
16	Luna	4,419	4,685	4,734	315	7.1%	49	1.0%
17	McKinley	13,286	13,476	13,569	283	2.1%	93	0.7%
19	Otero	5,975	5,951	5,976	1	0.0%	25	0.4%
20	Quay	1,325	1,357	1,335	10	0.8%	-22	-1.6%
21	Rio Arriba	7,874	8,320	8,342	468	5.9%	22	0.3%
22	Roosevelt	2,305	2,314	2,319	14	0.6%	5	0.2%
23	Sandoval	13,147	13,979	14,106	959	7.3%	127	0.9%
24	San Juan	16,773	17,459	17,490	717	4.3%	31	0.2%
25	San Miguel	5,070	5,214	5,171	101	2.0%	-43	-0.8%
26	Santa Fe	12,436	13,664	13,716	1,280	10.3%	52	0.4%
27	Sierra	2,852	3,133	2,935	83	2.9%	-198	-6.3%
28	Socorro	2,429	2,639	2,582	153	6.3%	-57	-2.2%
29	Taos	4,341	4,521	4,518	177	4.1%	-3	-0.1%
30	Torrance	2,974	2,991	3,033	59	2.0%	42	1.4%
32	S Valencia	3,218	3,332	3,346	128	4.0%	14	0.4%
33	Cibola	4,055	4,309	4,267	212	5.2%	-42	-1.0%
34	Eddy/Artesia	2,317	2,373	2,409	92	4.0%	36	1.5%
35	NW Bernalillo	20,327	20,991	21,101	774	3.8%	110	0.5%
36	SW Bernalillo	20,583	20,932	21,065	482	2.3%	133	0.6%
37	East Dona Ana	9,956	9,910	9,952	-4	0.0%	42	0.4%
38	S Dona Ana	12,028	12,191	12,399	371	3.1%	208	1.7%
39	NE Bernalillo	20,993	21,930	21,927	934	4.4%	-3	0.0%
42	N Valencia	7,133	7,284	7,312	179	2.5%	28	0.4%
	SCI	40,394	38,924	38,682	-1,712	-4.2%	-242	-0.6%
	TOTAL	298,636	306,176	306,545	7,909	2.6%	369	0.1%

Medicaid Cases by Region

	Feb-12	Jan-13	Feb-13	Feb 12 – Feb 13		Jan 13 – Feb 13	
				# change	% change	# change	% change
NW Region 1	57,612	59,839	60,090	2,478	4.3%	251	0.4%
NE Region 2	31,727	33,757	33,565	1,838	5.8%	-192	-0.6%
Central Region 3	79,214	81,060	81,404	2,190	2.8%	344	0.4%
SE Region 4	35,526	36,577	36,651	1,125	3.2%	74	0.2%
SW Region 5	94,557	94,943	94,835	278	0.3%	-108	-0.1%
TOTAL	298,636	306,176	306,545	7,909	2.6%	369	0.1%

SCI cases are included in Region 5.

Medicaid Cases



Medicaid Cases by Category

Cat #	Category Description	Cases	Cat #	Category Description	Cases
Medicaid Extension			State Funded Special Medical Needs		
001	Medicaid Extension for Aged	33	051	Medical Assistance for Aged and Seriously ill	0
003	Medicaid Extension for Blind	6	053	Medical Assistance for Blind and Seriously ill	0
004	Medicaid Extension for Disabled	538	054	Medical Assistance for Disabled and Seriously ill	1
Medicaid Extension Total			State Funded Special Medical Needs Total		
577			1		
Medicaid for Women, Children, and Low Income Families			Institutional Care Medicaid		
072	JUL Medicaid with Cash Assistance	7,972	081	Institutional Care Medicaid for Aged	3,199
072	JUL Medicaid without Cash Assistance	30,554	083	Institutional Care Medicaid for Blind	1
030	Full Coverage Medicaid for Pregnant Women	353	084	Institutional Care Medicaid for Disabled	897
031	Newborns	14,278	Institutional Care Medicaid Total		
032	Children (Up to 185% Federal Poverty)	101,502	4,097		
032c	Children - SCHIP (Up to 235% Federal Poverty)	4,684	Home and Community-Based Waivers Medicaid		
035f	Family Planning (Up to 185% Federal Poverty)	46,038	090	Medicaid Waiver for HIV/AIDS	24
035p	Pregnancy (Up to 185% Federal Poverty)	6,672	091	Medicaid Waiver for Aged	1,478
052	Breast Cancer and Cervical Cancer	388	092	Brain Injury	295
Medicaid for Women, Children, and Low Income Families Total			093	Medicaid Waiver for Blind	5
212,441			094	Medicaid Waiver for Disabled	1,299
Post-JUL Medicaid			095	Medicaid Waiver for Medically Fragile Children	215
027	4-Month Medicaid due to Increased Child Support	0	096	Medicaid Waiver for Developmentally Disabled	3,982
028	12-Month Medicaid due to Increased Earnings	8,327	097	Non-Medicaid Waiver for Aged	0
Post-JUL Medicaid Total			098	Non-Medicaid Waiver for Blind	0
8,327			099	Non-Medicaid Waiver for Disabled	0
Special Medicaid Programs			Home and Community-Based Waivers Medicaid Total		
040	Medicaid for Qualified Medicare Beneficiaries	21,837	7,298		
045	Medicaid for Special Low Income Medicare Beneficiaries	7,610	Health Insurance Flexibility & Accountability (HIFA) Waiver		
045	Medicaid for Qualifying Individuals 1	3,749	062	State Coverage Insurance *	
043	Working Disabled Individuals	1,844	(HIFA) Waiver Total		
049	Medical Assistance for Single Adult Refugees	82	38,682		
Special Medicaid Programs Total			Total Medicaid Cases		
35,122			306,545		

* Category 062 (Insure New Mexico Program) reflects all registered cases determined eligible at the end of the benefit month. Of the cases determined eligible for this month 38,609 were enrolled in the program. This table includes preliminary data that is subject to change.

SNAP Timeliness Rates (Percent of Cases Processed Timely)

Admin By Region	SNAP	SNAP (Expedited)
NW Region (1)		
Cibola	98.3%	100.0%
<i>McKinley</i>	<i>99.6%</i>	<i>99.5%</i>
Sandoval	98.7%	98.2%
<i>San Juan</i>	<i>99.4%</i>	<i>99.5%</i>
Valencia South	100.0%	100.0%
<i>Valencia North</i>	<i>100.0%</i>	<i>100.0%</i>
NW Region Total	99.3%	99.2%

NE Region (2)		
<i>Colfax</i>	<i>100.0%</i>	<i>100.0%</i>
Rio Arriba	99.2%	99.5%
<i>San Miguel</i>	<i>98.1%</i>	<i>96.6%</i>
Santa Fe	98.6%	98.0%
<i>Taos</i>	<i>98.5%</i>	<i>98.4%</i>
NE Region Total	98.7%	98.3%

Central Region (3)		
NE Bernalillo	99.6%	99.7%
<i>NW Bernalillo</i>	<i>99.3%</i>	<i>99.6%</i>
SE Bernalillo	99.1%	99.6%
<i>SW Bernalillo</i>	<i>99.3%</i>	<i>99.3%</i>
Torrance	99.4%	100.0%
Central Region Total	99.4%	99.6%

Admin By Region	SNAP	SNAP (Expedited)
SE Region (4)		
Chaves	99.3%	98.4%
<i>Curry</i>	<i>99.6%</i>	<i>100.0%</i>
Guadalupe	100.0%	100.0%
<i>Eddy</i>	<i>98.0%</i>	<i>95.9%</i>
Eddy Artesia	100.0%	100.0%
<i>Lea</i>	<i>99.7%</i>	<i>100.0%</i>
Quay	100.0%	100.0%
<i>Roosevelt</i>	<i>100.0%</i>	<i>100.0%</i>
SE Region Total	99.3%	98.8%

SW Region (5)		
<i>West Doña Ana</i>	<i>100.0%</i>	<i>100.0%</i>
East Doña Ana	100.0%	100.0%
<i>Doña Ana (Southern)</i>	<i>100.0%</i>	<i>100.0%</i>
Grant	100.0%	100.0%
<i>Lincoln</i>	<i>99.2%</i>	<i>100.0%</i>
Luna	100.0%	100.0%
<i>Otero</i>	<i>99.7%</i>	<i>100.0%</i>
Sierra	100.0%	100.0%
<i>Socorro</i>	<i>100.0%</i>	<i>100.0%</i>
SW Region Total	99.9%	100.0%

State Total	99.4%	99.4%
--------------------	--------------	--------------

Timeliness of CAP cases is reflected in the appropriate administrative office.

Income Support Division Caseloads by County and Region *

County (Administrative office)	SNAP Cases	TANF Cases	Education Works Cases	General Assistance Cases	Medical Assistance Cases *	SSRC Cases	Refugee Assistance Cases	Total Cases	Authorized FAA Case Workers	Cases per Authorized FAA Case Worker	Actual FAA Case Workers	Cases per Actual Case Worker
Cibola ***	3,210	261	4	74	4,236	0	0	7,785	8	980	8	980
<i>Navajo (Cibola)</i>	<i>24</i>	<i>0</i>	<i>0</i>	<i>0</i>	<i>28</i>	<i>0</i>	<i>0</i>	<i>52</i>	<i>0</i>	<i>-</i>	<i>0</i>	<i>-</i>
Zuni (Cibola)	1	0	0	0	3	0	0	4	0	-	0	-
<i>McKinley</i>	<i>1,492</i>	<i>60</i>	<i>0</i>	<i>13</i>	<i>2,535</i>	<i>0</i>	<i>0</i>	<i>4,100</i>	<i>24</i>	<i>935</i>	<i>21</i>	<i>1,069</i>
Cibola (McKinley)	13	1	0	0	8	0	0	22	0	-	0	-
<i>Navajo (McKinley)</i>	<i>6,221</i>	<i>30</i>	<i>1</i>	<i>5</i>	<i>9,424</i>	<i>0</i>	<i>0</i>	<i>15,681</i>	<i>0</i>	<i>-</i>	<i>0</i>	<i>-</i>
Zuni (McKinley)	1,042	0	0	0	1,602	0	0	2,644	0	-	0	-
<i>San Juan</i>	<i>10,026</i>	<i>266</i>	<i>1</i>	<i>66</i>	<i>16,927</i>	<i>0</i>	<i>0</i>	<i>27,286</i>	<i>27</i>	<i>1,058</i>	<i>24</i>	<i>1,190</i>
Navajo (San Juan)	714	0	0	0	563	0	0	1,277	0	-	0	-
<i>Sandoval</i>	<i>9,006</i>	<i>589</i>	<i>30</i>	<i>106</i>	<i>14,048</i>	<i>0</i>	<i>0</i>	<i>23,779</i>	<i>24</i>	<i>997</i>	<i>23</i>	<i>1,040</i>
Navajo (Sandoval)	86	0	0	0	58	0	0	144	0	-	0	-
<i>Valencia North (Los Lunas)</i>	<i>5,486</i>	<i>469</i>	<i>4</i>	<i>95</i>	<i>7,312</i>	<i>7</i>	<i>0</i>	<i>13,373</i>	<i>15</i>	<i>892</i>	<i>14</i>	<i>955</i>
Torrance (Valencia)	0	0	0	0	0	0	0	0	0	-	0	-
<i>Valencia South (Belen)</i>	<i>3,053</i>	<i>230</i>	<i>4</i>	<i>49</i>	<i>3,346</i>	<i>0</i>	<i>0</i>	<i>6,682</i>	<i>5</i>	<i>1,337</i>	<i>4</i>	<i>1,671</i>
Socorro (Valencia)	1	0	0	0	0	0	0	1	0	-	0	-
<i>N/A Outreach</i>	<i>0</i>	<i>0</i>	<i>0</i>	<i>0</i>	<i>0</i>	<i>0</i>	<i>0</i>	<i>0</i>	<i>6</i>	<i>-</i>	<i>4</i>	<i>-</i>
CAP Central Unit **	0	0	0	0	0	0	0	0	4	0	3	0
NW Region (1) Total	40,375	1,906	44	408	60,090	7	0	102,830	107	961	97	1,060
Colfax	1,207	111	4	23	1,429	0	0	2,774	4	694	3	925
<i>Union (Colfax)</i>	<i>490</i>	<i>38</i>	<i>0</i>	<i>9</i>	<i>389</i>	<i>0</i>	<i>0</i>	<i>926</i>	<i>1</i>	<i>926</i>	<i>1</i>	<i>926</i>
Rio Arriba	6,541	504	5	135	7,875	0	0	15,060	17	935	14	1,135
<i>Los Alamos (Rio Arriba)</i>	<i>231</i>	<i>15</i>	<i>0</i>	<i>6</i>	<i>364</i>	<i>0</i>	<i>0</i>	<i>616</i>	<i>0</i>	<i>-</i>	<i>0</i>	<i>-</i>
Santa Fe (Rio Arriba)	103	7	0	1	103	0	0	214	0	-	0	-
<i>San Miguel</i>	<i>4,824</i>	<i>309</i>	<i>15</i>	<i>101</i>	<i>4,642</i>	<i>26</i>	<i>0</i>	<i>9,917</i>	<i>18</i>	<i>610</i>	<i>18</i>	<i>610</i>
Harding (San Miguel)	24	0	0	1	33	0	0	58	0	-	0	-
<i>Mora (San Miguel)</i>	<i>483</i>	<i>21</i>	<i>0</i>	<i>7</i>	<i>496</i>	<i>0</i>	<i>0</i>	<i>1,007</i>	<i>0</i>	<i>-</i>	<i>0</i>	<i>-</i>
Santa Fe	9,662	595	14	203	13,700	5	0	24,179	23	1,010	19	1,275
<i>San Miguel (Santa Fe)</i>	<i>30</i>	<i>1</i>	<i>0</i>	<i>2</i>	<i>16</i>	<i>0</i>	<i>0</i>	<i>49</i>	<i>0</i>	<i>-</i>	<i>0</i>	<i>-</i>
Taos	3,825	124	13	72	4,518	0	0	8,552	9	950	6	1,425
<i>N/A Outreach</i>	<i>0</i>	<i>0</i>	<i>0</i>	<i>0</i>	<i>0</i>	<i>0</i>	<i>0</i>	<i>0</i>	<i>1</i>	<i>-</i>	<i>0</i>	<i>-</i>
NE Region (2) Total	27,420	1,725	51	560	33,565	31	0	63,352	73	868	61	1,039
NE Bernalillo	19,730	1,337	57	398	21,927	0	11	43,460	43	1,011	40	1,087
<i>Navajo (NE Bernalillo)</i>	<i>0</i>	<i>0</i>	<i>0</i>	<i>0</i>	<i>0</i>	<i>0</i>	<i>0</i>	<i>0</i>	<i>0</i>	<i>-</i>	<i>0</i>	<i>-</i>
NW Bernalillo	14,664	1,130	28	286	21,101	1	0	37,210	42	865	36	1,034
<i>Navajo (NW Bernalillo)</i>	<i>0</i>	<i>0</i>	<i>0</i>	<i>0</i>	<i>0</i>	<i>0</i>	<i>0</i>	<i>0</i>	<i>0</i>	<i>-</i>	<i>0</i>	<i>-</i>
SE Bernalillo	10,895	994	31	149	14,277	0	16	26,362	31	850	29	909
<i>Torrance (SE Bernalillo)</i>	<i>2</i>	<i>0</i>	<i>0</i>	<i>0</i>	<i>1</i>	<i>0</i>	<i>0</i>	<i>3</i>	<i>0</i>	<i>-</i>	<i>0</i>	<i>-</i>
SW Bernalillo	16,938	1,583	17	186	21,064	3	0	39,791	43	925	38	1,047
<i>Navajo (SW Bernalillo)</i>	<i>1</i>	<i>0</i>	<i>0</i>	<i>0</i>	<i>1</i>	<i>0</i>	<i>0</i>	<i>2</i>	<i>0</i>	<i>-</i>	<i>0</i>	<i>-</i>
N/A Outreach	0	0	0	0	0	0	0	0	1	-	0	-
<i>Torrance</i>	<i>2,604</i>	<i>261</i>	<i>9</i>	<i>33</i>	<i>3,033</i>	<i>0</i>	<i>0</i>	<i>5,940</i>	<i>11</i>	<i>540</i>	<i>9</i>	<i>660</i>
Central Region (3) Total	64,834	5,305	142	1,052	81,404	4	27	152,768	171	893	152	1,005

Income Support Division Caseloads by County and Region (Continued) *

County (Administrative office)	SNAP Cases	TANF Cases	Education Works Cases	General Assistance Cases	Medical Assistance Cases *	SSRC Cases	Refugee Assistance Cases	Total Cases	Authorized FAA Case Workers	Cases per Authorized FAA Case Worker	Actual FAA Case Workers	Cases per Actual Case Worker
Chaves	6,561	539	5	98	10,474	0	0	17,677	22	804	19	930
<i>Curry</i>	<i>3,977</i>	<i>499</i>	<i>2</i>	<i>69</i>	<i>6,291</i>	<i>0</i>	<i>0</i>	<i>10,838</i>	<i>12</i>	<i>903</i>	<i>11</i>	<i>985</i>
De Baca (Curry)	0	0	0	0	0	0	0	0	0	-	0	-
<i>Quay (Curry)</i>	<i>0</i>	<i>0</i>	<i>0</i>	<i>0</i>	<i>0</i>	<i>0</i>	<i>0</i>	<i>0</i>	<i>0</i>	<i>-</i>	<i>0</i>	<i>-</i>
Roosevelt (Curry)	0	0	0	0	1	0	0	1	0	-	0	-
<i>Guadalupe</i>	<i>562</i>	<i>36</i>	<i>0</i>	<i>16</i>	<i>649</i>	<i>5</i>	<i>0</i>	<i>1,268</i>	<i>2</i>	<i>844</i>	<i>2</i>	<i>844</i>
De Baca (Guadalupe)	159	8	0	5	247	0	0	419	0	-	0	-
<i>Quay</i>	<i>1,258</i>	<i>99</i>	<i>6</i>	<i>38</i>	<i>1,335</i>	<i>0</i>	<i>0</i>	<i>2,736</i>	<i>4</i>	<i>684</i>	<i>4</i>	<i>684</i>
Eddy	2,863	278	4	75	4,547	0	0	7,767	9	863	7	1,110
<i>Eddy (Artesia)</i>	<i>1,305</i>	<i>131</i>	<i>3</i>	<i>37</i>	<i>2,409</i>	<i>0</i>	<i>0</i>	<i>3,885</i>	<i>5</i>	<i>777</i>	<i>5</i>	<i>777</i>
Lea	3,935	399	5	39	8,379	0	0	12,757	14	911	12	1,063
<i>Roosevelt</i>	<i>1,404</i>	<i>121</i>	<i>1</i>	<i>12</i>	<i>2,319</i>	<i>0</i>	<i>0</i>	<i>3,857</i>	<i>5</i>	<i>771</i>	<i>5</i>	<i>771</i>
SE Region (4) Total	22,024	2,110	26	389	36,651	5	0	61,205	73	838	65	942
West Doña Ana	9,524	1,006	22	134	10,883	0	0	21,569	22	980	20	1,078
<i>East Doña Ana</i>	<i>6,902</i>	<i>681</i>	<i>25</i>	<i>83</i>	<i>9,952</i>	<i>0</i>	<i>0</i>	<i>17,643</i>	<i>20</i>	<i>882</i>	<i>20</i>	<i>882</i>
Doña Ana (Southern)	7,469	1,091	21	49	12,399	0	0	21,029	21	1,001	19	1,107
<i>SCI Unit</i>	<i>0</i>	<i>0</i>	<i>0</i>	<i>0</i>	<i>38,682</i>	<i>0</i>	<i>0</i>	<i>38,682</i>	<i>22</i>	<i>1,758</i>	<i>19</i>	<i>2,036</i>
Grant	3,181	212	12	60	3,558	0	0	7,023	8	885	7	1,012
<i>Catron (Grant)</i>	<i>17</i>	<i>0</i>	<i>0</i>	<i>0</i>	<i>22</i>	<i>0</i>	<i>0</i>	<i>39</i>	<i>0</i>	<i>-</i>	<i>0</i>	<i>-</i>
Hidalgo (Grant)	489	40	0	20	602	0	0	1,151	2	576	2	576
<i>Luna (Grant)</i>	<i>3</i>	<i>0</i>	<i>0</i>	<i>0</i>	<i>17</i>	<i>0</i>	<i>0</i>	<i>20</i>	<i>0</i>	<i>-</i>	<i>0</i>	<i>-</i>
Lincoln	1,675	167	0	29	2,493	0	0	4,364	11	397	10	436
<i>Luna</i>	<i>3,731</i>	<i>347</i>	<i>3</i>	<i>45</i>	<i>4,734</i>	<i>0</i>	<i>0</i>	<i>8,860</i>	<i>9</i>	<i>984</i>	<i>7</i>	<i>1,266</i>
Otero	4,283	339	4	52	5,975	0	0	10,653	11	888	11	888
<i>Lincoln (Otero)</i>	<i>1</i>	<i>0</i>	<i>0</i>	<i>0</i>	<i>1</i>	<i>0</i>	<i>0</i>	<i>2</i>	<i>0</i>	<i>-</i>	<i>0</i>	<i>-</i>
Sierra	1,965	126	3	36	1,962	0	0	4,092	7	835	7	835
<i>Doña Ana (Sierra)</i>	<i>729</i>	<i>49</i>	<i>0</i>	<i>3</i>	<i>973</i>	<i>0</i>	<i>0</i>	<i>1,754</i>	<i>0</i>	<i>-</i>	<i>0</i>	<i>-</i>
Socorro	2,044	140	1	44	1,896	0	0	4,125	7	784	6	915
<i>Catron (Socorro)</i>	<i>178</i>	<i>12</i>	<i>0</i>	<i>2</i>	<i>246</i>	<i>0</i>	<i>0</i>	<i>438</i>	<i>0</i>	<i>-</i>	<i>0</i>	<i>-</i>
Navajo (Socorro)	479	3	0	5	440	0	0	927	0	-	0	-
<i>N/A Outreach</i>	<i>0</i>	<i>0</i>	<i>0</i>	<i>0</i>	<i>0</i>	<i>0</i>	<i>0</i>	<i>0</i>	<i>1</i>	<i>-</i>	<i>1</i>	<i>-</i>
SW Region (5) Total	42,670	4,213	91	562	94,835	0	0	142,371	141	1,010	129	1,104
State Total	197,323	15,259	354	2,971	306,545	47	27	522,526	565	925	504	1,037

* All State Coverage Insurance Cases, category 062, are being reported in the SCI unit in the SW region. It is included in calculating the case per worker for the state. ** CAP cases are now reflected in the appropriate administrative office. *** Cases per authorized and actual caseworkers for Cibola are computed using outreach workers in that area only.

Note: (-) indicates the caseload for part of the county is included in the cases per authorized worker and cases per actual worker for its associated administrative county.

SNAP Applications Processed by Administrative Office

Office #	Office	Approved	Denied	With-drawn	Total
1	SE Bernalillo	667	148	12	827
3	Chaves	330	90	3	423
4	Colfax	64	16	0	80
3104	Union	7	0	0	7
5	Curry	194	62	3	259
7	West Dona Ana	581	106	5	692
8	Eddy	206	40	5	251
9	Grant	189	23	5	217
1209	Hidalgo	32	6	0	38
10	Guadalupe	24	6	0	30
13	Lea	242	84	6	332
14	Lincoln	112	14	0	126
16	Luna	162	41	4	207
17	McKinley	420	139	5	564
19	Otero	320	73	2	395
20	Quay	67	10	0	77
21	Rio Arriba	348	53	2	403
22	Roosevelt	70	15	4	89

Office #	Office	Approved	Denied	With-drawn	Total
23	Sandoval	548	159	6	713
24	San Juan	649	320	8	977
25	San Miguel	275	40	1	316
26	Santa Fe	497	108	3	608
27	Sierra	96	17	0	113
28	Socorro	117	13	0	130
29	Taos	230	42	4	276
30	Torrance	150	32	2	184
32	S Valencia	136	33	2	171
33	Cibola	148	25	2	175
34	Eddy/Artesia	73	14	1	88
35	NW Bernalillo	900	172	11	1,083
36	SW Bernalillo	1,076	267	7	1,350
37	East Dona Ana	361	126	3	490
38	S Dona Ana	326	65	10	401
39	NE Bernalillo	1,416	406	8	1,830
42	N Valencia	237	52	3	292
	TOTAL	11,270	2,817	127	14,214

SNAP Applications Processed by Region

Region	Approved	Denied	Withdrawn	Total
NW Region 1	2,138	728	26	2,892
NE Region 2	1,421	259	10	1,690
Central Region 3	4,209	1,025	40	5,274
SE Region 4	1,206	321	22	1,549
SW Region 5	2,296	484	29	2,809
TOTAL	11,270	2,817	127	14,214

CAP cases are reflected in the appropriate administrative office.

TANF Applications Processed by Office

Office #	Office	Approved	Denied	With-drawn	Total	Office #	Office	Approved	Denied	With-drawn	Total
1	SE Bernalillo	89	123	34	246	23	Sandoval	83	88	28	199
3	Chaves	54	59	19	132	24	San Juan	24	43	13	80
4	Colfax	6	9	1	16	25	San Miguel	32	14	2	48
3104	Union	1	0	0	1	26	Santa Fe	68	85	21	174
5	Curry	37	30	8	75	27	Sierra	17	4	4	25
7	West Dona Ana	74	41	14	129	28	Socorro	16	2	4	22
8	Eddy	37	40	8	85	29	Taos	8	10	9	27
9	Grant	27	7	10	44	30	Torrance	28	27	3	58
1209	Hidalgo	2	4	1	7	32	S Valencia	22	16	12	50
10	Guadalupe	6	1	1	8	33	Cibola	35	13	8	56
13	Lea	46	54	10	110	34	Eddy/Artesia	13	7	5	25
14	Lincoln	26	23	6	55	35	NW Bernalillo	92	89	44	225
16	Luna	34	10	7	51	36	SW Bernalillo	181	170	25	376
17	McKinley	10	24	12	46	37	East Dona Ana	59	80	15	154
19	Otero	47	39	22	108	38	S Dona Ana	73	30	38	141
20	Quay	9	8	1	18	39	NE Bernalillo	136	270	47	453
21	Rio Arriba	54	44	9	107	42	N Valencia	40	47	8	95
22	Roosevelt	10	3	6	19		TOTAL	1,496	1,514	455	3,465

TANF Applications Processed by Region

Region	Approved	Denied	Withdrawn	Total
NW Region 1	214	231	81	526
NE Region 2	169	162	42	373
Central Region 3	526	679	153	1,358
SE Region 4	212	202	58	472
SW Region 5	375	240	121	736
TOTAL	1,496	1,514	455	3,465

General Assistance Applications Processed by office

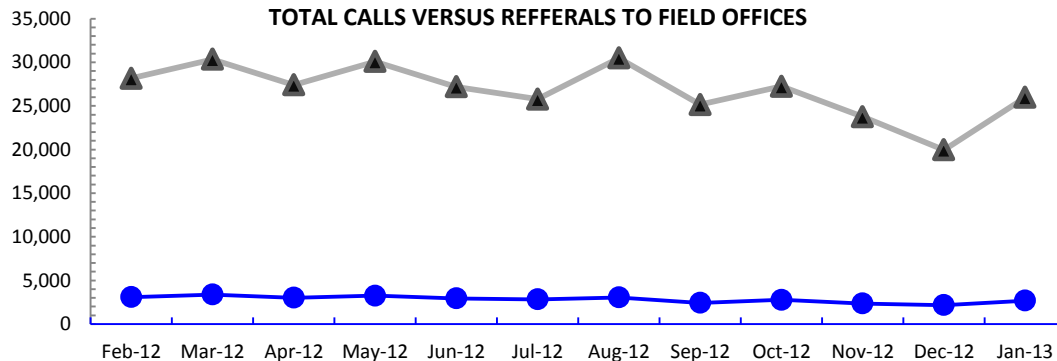
Office #	Office	Approved	Denied	With-drawn	Total
1	SE Bernalillo	9	39	8	56
3	Chaves	9	17	1	27
4	Colfax	1	6	0	7
3104	Union	0	0	0	0
5	Curry	6	8	2	16
7	West Dona Ana	10	39	19	68
8	Eddy	5	16	1	22
9	Grant	6	11	13	30
1209	Hidalgo	1	1	1	3
10	Guadalupe	1	1	0	2
13	Lea	2	13	2	17
14	Lincoln	1	12	1	14
16	Luna	4	21	0	25
17	McKinley	1	12	14	27
19	Otero	3	37	9	49
20	Quay	0	5	1	6
21	Rio Arriba	18	25	1	44
22	Roosevelt	3	1	2	6

Office #	Office	Approved	Denied	With-drawn	Total
23	Sandoval	10	47	23	80
24	San Juan	9	23	10	42
25	San Miguel	8	14	2	24
26	Santa Fe	13	74	9	96
27	Sierra	1	2	0	3
28	Socorro	5	12	0	17
29	Taos	8	20	5	33
30	Torrance	4	6	1	11
32	S Valencia	5	14	4	23
33	Cibola	8	9	1	18
34	Eddy/Artesia	4	3	0	7
35	NW Bernalillo	35	52	35	122
36	SW Bernalillo	21	82	16	119
37	East Dona Ana	13	12	1	26
38	S Dona Ana	2	2	6	10
39	NE Bernalillo	47	118	11	176
42	N Valencia	10	20	3	33
	TOTAL	283	774	202	1,259

General Assistance Applications Processed by Region

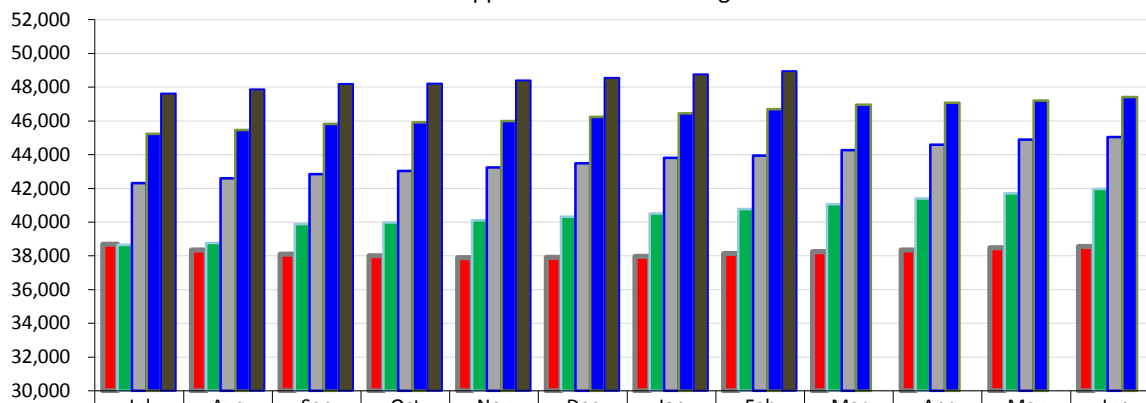
Region	Approved	Denied	Withdrawn	Total
NW Region 1	43	125	55	223
NE Region 2	48	139	17	204
Central Region 3	116	297	71	484
SE Region 4	30	64	9	103
SW Region 5	46	149	50	245
TOTAL	283	774	202	1,259

**Child Support Information Center (Call Center)
TOTAL CALLS VERSUS REFFERALS TO FIELD OFFICES**



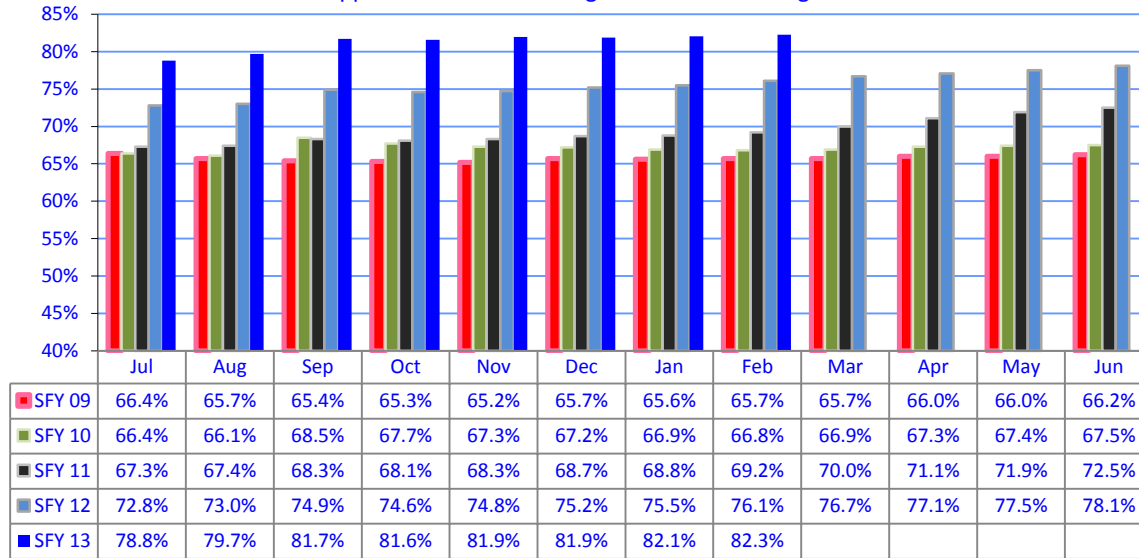
	Feb-12	Mar-12	Apr-12	May-12	Jun-12	Jul-12	Aug-12	Sep-12	Oct-12	Nov-12	Dec-12	Jan-13
▲ Calls	28,149	30,333	27,413	30,083	27,188	25,774	30,492	25,151	27,246	23,759	19,953	25,978
● Referrals	3,091	3,375	3,014	3,260	2,944	2,828	3,051	2,432	2,785	2,355	2,179	2,693
Percent	11.0%	11.1%	11.0%	10.8%	10.8%	11.0%	10.0%	9.7%	10.2%	9.9%	10.9%	10.4%

Child Support Enforcement Obligated Cases

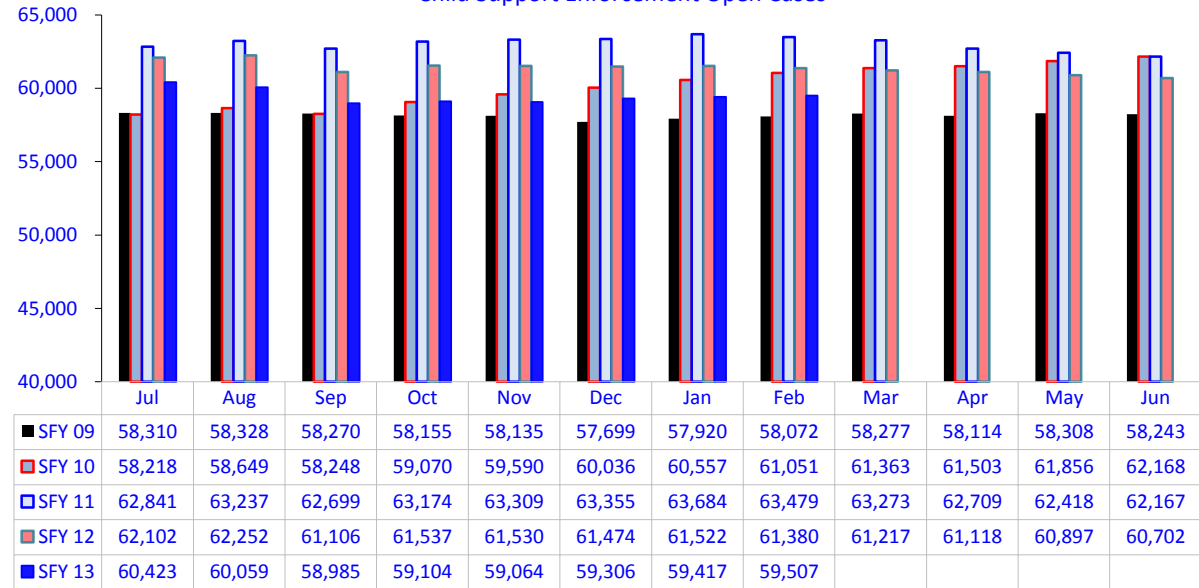


	Jul	Aug	Sep	Oct	Nov	Dec	Jan	Feb	Mar	Apr	May	Jun
SFY 09	38,689	38,347	38,106	37,999	37,895	37,906	37,967	38,143	38,260	38,343	38,475	38,558
SFY 10	38,655	38,763	39,891	39,976	40,116	40,326	40,507	40,770	41,069	41,410	41,698	41,974
SFY 11	42,310	42,601	42,850	43,035	43,250	43,498	43,818	43,946	44,270	44,588	44,899	45,043
SFY 12	45,238	45,457	45,817	45,922	45,993	46,231	46,439	46,703	46,952	47,075	47,215	47,412
SFY 13	47,616	47,875	48,190	48,205	48,398	48,550	48,758	48,955				

Child Support Enforcement Obligated Case Percentages



Child Support Enforcement Open Cases



Children Receiving Child Care Assistance Subsidies By County

County	Feb	Mar	Apr	May	Jun	Jul	Aug	Sep	Oct	Nov	Dec	Jan	Feb	Year over year change	
	2012	2012	2012	2012	2012	2012	2012	2012	2012	2012	2012	2013	2013	Cases	Percent
Bernalillo	7,341	7,657	7,796	7,744	7,852	7,490	7,272	7,755	7,423	7,454	7,382	7,266	7,217	-124	-1.7%
Catron	3	2	2	2	2	2	2	2	0	0	0	0	0	-3	-100.0%
Chaves	675	671	701	723	751	707	715	737	714	736	718	721	694	19	2.8%
Cibola	272	262	277	273	272	241	225	287	283	299	281	262	251	-21	-7.7%
Colfax	61	63	61	63	61	58	60	65	54	53	57	58	53	-8	-13.1%
Curry	584	568	559	569	573	510	521	564	539	550	541	516	490	-94	-16.1%
De Baca	16	12	10	12	14	11	9	18	17	13	12	9	7	-9	-56.3%
Dona Ana	4,939	5,040	5,062	5,167	5,339	4,793	4,677	5,064	5,011	4,999	4,964	4,894	4,787	-152	-3.1%
Eddy	309	317	301	332	346	339	327	344	350	334	321	294	289	-20	-6.5%
Grant	386	397	389	393	396	282	289	334	342	361	362	358	315	-71	-18.4%
Guadalupe	29	31	26	27	29	21	20	18	23	22	20	20	17	-12	-41.4%
Harding	0	0	0	0	0	0	0	0	0	0	0	0	0	0	0.0%
Hidalgo	21	24	23	23	24	25	28	34	27	24	31	32	31	10	47.6%
Lea	582	589	581	601	626	569	543	639	609	655	642	628	598	16	2.7%
Lincoln	213	214	219	213	220	198	193	203	190	191	178	190	167	-46	-21.6%
Los	11	11	11	11	12	11	10	8	8	8	8	8	8	-3	-27.3%
Luna	224	255	260	245	257	222	222	248	218	224	225	210	205	-19	-8.5%
McKinley	318	335	329	331	327	257	231	294	273	283	287	269	250	-68	-21.4%
Mora	13	15	15	14	16	14	14	12	10	14	17	14	13	0	0.0%
Otero	544	548	558	564	585	535	540	578	580	562	538	536	492	-52	-9.6%
Out of State	7	8	8	6	7	8	8	9	8	6	7	5	5	-2	-28.6%
Quay	28	33	32	32	28	29	27	24	24	25	25	23	22	-6	-21.4%
Rio Arriba	104	113	102	115	122	96	93	105	96	99	104	101	100	-4	-3.8%
Roosevelt	173	177	186	192	192	151	149	189	195	197	191	189	179	6	3.5%
San Juan	686	690	684	686	710	630	609	746	718	720	715	692	694	8	1.2%
San Miguel	358	390	403	422	433	341	335	366	388	393	376	364	314	-44	-12.3%
Sandoval	769	811	809	818	866	814	786	827	795	785	768	759	706	-63	-8.2%
Santa Fe	475	486	502	515	523	507	485	522	452	463	452	435	439	-36	-7.6%
Sierra	70	74	84	85	99	88	87	85	73	83	83	89	90	20	28.6%
Socorro	59	61	58	62	61	52	46	55	61	63	66	62	52	-7	-11.9%
Taos	145	144	144	142	151	97	102	110	121	124	123	116	105	-40	-27.6%
Torrance	60	76	84	82	88	75	81	74	66	67	64	69	81	21	35.0%
Union	10	11	8	7	8	7	7	12	9	8	9	9	9	-1	-10.0%
Valencia	697	729	746	755	766	682	704	722	717	719	721	695	668	-29	-4.2%
Totals	20,182	20,814	21,030	21,226	21,756	19,862	19,417	21,050	20,394	20,534	20,288	19,893	19,348	-834	-4.1%

Source: Children, Youth and Families Department.

Child Care Assistance Eligibility Programs

MONTH	FEB'12	MAR'12	APR'12	MAY'12	JUN'12	JUL'12	AUG'12	SEP'12	OCT'12	NOV'12	DEC'12	JAN'13	FEB'13
TANF (Child Care Priority 1 Clients)													
CLIENTS	3,546	3,541	3,535	3,443	3,551	3,220	3,103	3,340	3,182	3,131	2,999	2,859	2,714
COST	\$1,132,788	\$1,219,862	\$1,218,303	\$1,181,592	\$1,063,904	\$1,017,372	\$1,128,732	\$1,041,813	\$1,125,046	\$1,134,547	\$1,080,411	\$906,557	\$871,356
TANF AVERAGE COST	\$319	\$344	\$345	\$343	\$300	\$316	\$364	\$312	\$354	\$362	\$360	\$317	\$321
TRANSITION OFF TANF (Child Care Priority 2 Clients)													
CLIENTS	435	404	410	419	417	381	374	381	368	379	373	365	341
COST	\$142,330	\$134,794	\$139,080	\$135,169	\$134,108	\$125,253	\$129,561	\$129,933	\$132,174	\$135,318	\$130,153	\$118,069	\$113,013
TRAN OFF TANF AVG COST	\$327	\$334	\$339	\$323	\$322	\$329	\$346	\$341	\$359	\$357	\$349	\$323	\$331
TANF ELIGIBLE (Child Care Priority 1B Clients at or below 100% of the Federal Poverty Level)													
CLIENTS	10,258	10,805	11,017	11,152	11,469	10,258	10,120	11,259	11,080	11,250	11,179	10,910	10,502
COST	\$3,355,460	\$3,768,442	\$3,839,297	\$3,881,358	\$3,636,254	\$3,618,933	\$3,721,237	\$3,625,943	\$4,118,093	\$4,141,082	\$4,108,993	\$3,609,624	\$3,604,677
TANF ELIGIBLE AVG COST	\$327	\$349	\$348	\$348	\$317	\$353	\$368	\$322	\$372	\$368	\$368	\$331	\$343
INCOME ELIGIBLE (Child Care Priority 3, and Priority 4 Clients)													
CLIENTS	4,860	4,951	4,952	5,173	5,290	5,060	4,920	5,089	4,846	4,810	4,817	4,861	4,944
COST	\$1,415,687	\$1,484,022	\$1,485,614	\$1,533,393	\$1,570,429	\$1,813,867	\$1,606,535	\$1,591,509	\$1,585,741	\$1,572,320	\$1,558,272	\$1,529,136	\$1,543,444
INCOME ELIG AVG COST	\$291	\$300	\$300	\$296	\$297	\$358	\$327	\$313	\$327	\$327	\$323	\$315	\$312
EMPLOYMENT & TRAINING (Child Care Priority 1A Clients)													
CLIENTS	493	503	470	403	352	262	221	239	245	260	257	259	213
COST	\$149,380	\$161,862	\$160,692	\$160,692	\$96,255	\$82,770	\$70,593	\$63,934	\$89,494	\$94,363	\$93,751	\$72,052	\$70,881
E & T AVG COST	\$303	\$322	\$342	\$399	\$273	\$316	\$319	\$268	\$365	\$363	\$365	\$278	\$333
CHILD PROTECTIVE SERVICES (Child Care CPS Clients)													
CLIENTS	590	610	646	636	677	681	679	742	673	704	663	639	634
COST	\$239,178	\$239,152	\$261,639	\$256,004	\$273,771	\$272,616	\$276,210	\$295,847	\$280,001	\$286,909	\$269,654	\$258,888	\$276,254
E & T AVG COST	\$405	\$392	\$405	\$403	\$404	\$400	\$407	\$399	\$416	\$408	\$407	\$405	\$436
GRAND TOTAL - ALL CHILD CARE PROGRAMS													
CLIENTS	20,182	20,814	21,030	21,226	21,756	19,862	19,417	21,050	20,394	20,534	20,288	19,893	19,348
COST	\$6,434,823	\$7,008,133	\$7,104,625	\$7,148,208	\$6,774,719	\$6,930,812	\$6,932,868	\$6,748,978	\$7,330,549	\$7,364,538	\$7,241,234	\$6,494,326	\$6,479,624
ALL PROGRAMS AVG COST	\$319	\$337	\$338	\$337	\$311	\$349	\$357	\$321	\$359	\$359	\$357	\$326	\$335

Notes: 1. This table is provided by the Children, Youth and Families Department. 2. All costs in the table are average costs
3. Clients served and cost reflects total CYFD program funds and are not limited to funding provided by the Human Services Department.

2012 Monthly Federal Poverty & Income Eligibility Guidelines for SNAP, Cash Assistance & LIHEAP

2012 Federal Poverty Guidelines (FPG) (100%) Effective Oct 1, 2012 – Sept 30, 2013					
Family Size	Monthly Amounts	Family Size	Monthly Amounts	Family Size	Monthly Amounts
1	\$931	4	\$1,921	7	\$2,911
2	\$1,261	5	\$2,251	8	\$3,241
3	\$1,591	6	\$2,581	+ 1	+ \$330

Family Size	85% FPG TANF Poverty Gross Limit for Cash	100% FPG TANF & SNAP Net Income Eligibility Standard	130% FPG SNAP Gross Income Eligibility Standards	150% FPG LIHEAP	165% FPG SNAP Gross Income Categorically Eligibility; Elderly/Disabled Separate Status	General Assistance Max Standard of Need	NM Works Max Standard of Need	NM Works 15% Budgetary Adjustment*	NM Works Max Standard of Need with Budgetary Adjustment*	Maximum SNAP Monthly Allotments
1	\$791	\$931	\$1,211	\$1,397	\$1,536	\$245	\$266	-\$ 39	\$227	\$200
2	\$1,072	\$1,261	\$1,640	\$1,892	\$2,081	\$329	\$357	-\$ 53	\$304	\$367
3	\$1,352	\$1,591	\$2,069	\$2,387	\$2,625	\$412	\$447	-\$ 67	\$380	\$526
4	\$1,633	\$1,921	\$2,498	\$2,882	\$3,170	\$496	\$539	-\$ 80	\$459	\$668
5	\$1,913	\$2,251	\$2,927	\$3,377	\$3,714	\$580	\$630	-\$ 94	\$536	\$793
6	\$2,194	\$2,581	\$3,356	\$3,872	\$4,259	\$664	\$721	-\$108	\$613	\$952
7	\$2,474	\$2,911	\$3,785	\$4,367	\$4,803	\$748	\$812	-\$121	\$691	\$1,052
8	\$2,755	\$3,241	\$4,214	\$4,862	\$5,348	\$849	\$922	-\$138	\$784	\$1,202
+1	+ \$281	+ \$330	+ \$429	+ \$495	+ \$545	+ \$84	+ \$91	- \$ 14	+ \$77	+ \$150

The 2012 Federal Poverty Guidelines are used for the determination of LIHEAP, SNAP and TANF eligibility from October 1, 2012 through September 30, 2013. The Maximum SNAP allotment does not take deductions into account. All figures monthly amounts.

* 15% Budgetary Adjustment is subtracted from eligible NMW benefit amount to determine monthly payment starting January 1, 2011

2012 Monthly Federal Poverty & Income Eligibility Guidelines for Medicaid,
Effective April 1, 2012 - March 31, 2013

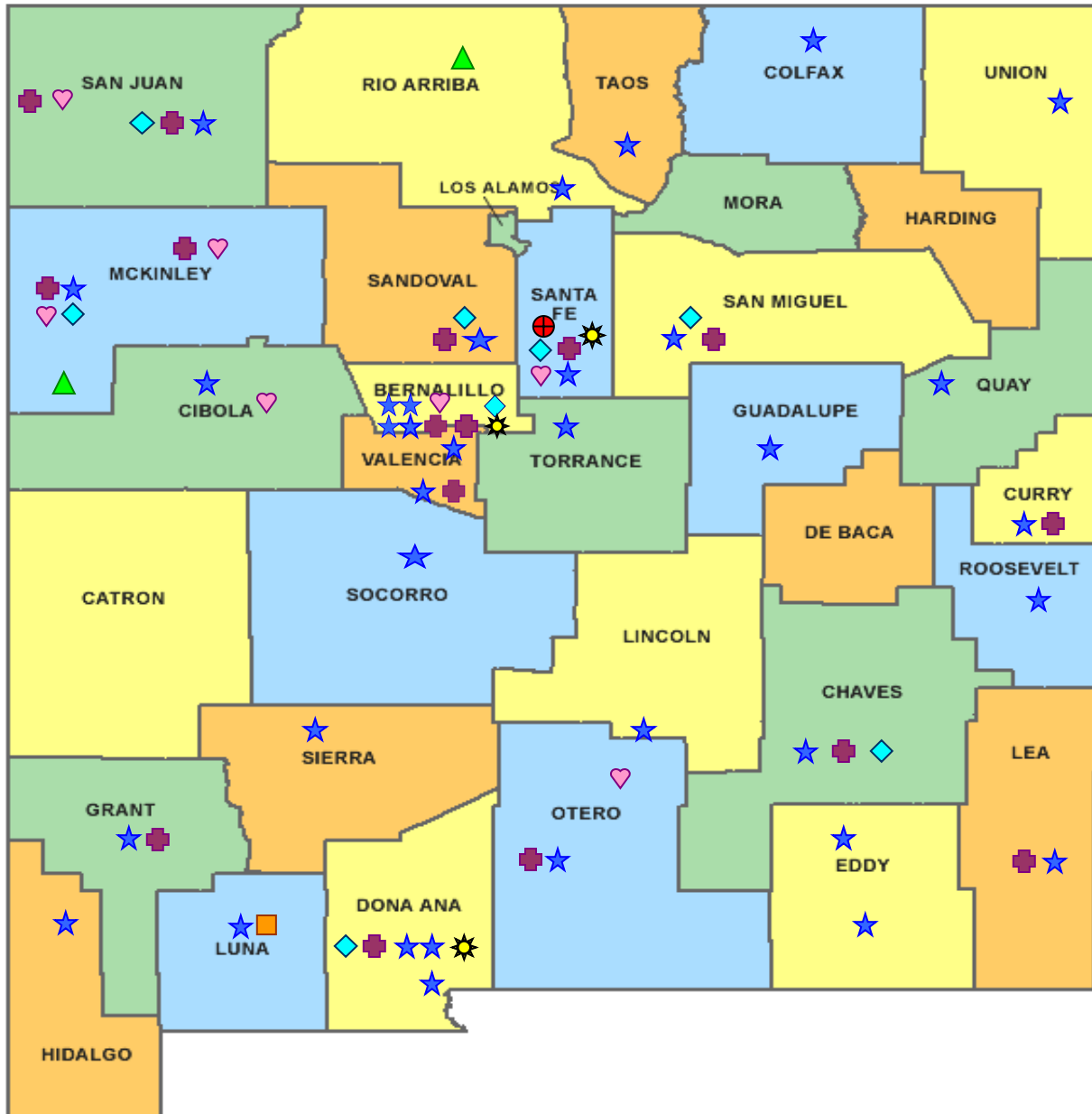
Family Size	2012 Federal Poverty Guidelines (FPG) (100%) Monthly Amounts	185% FPG Medicaid for Children (Cat 032) Medicaid for Pregnant Women- Pregnancy-Related Services Only or Family Planning Services (Cat 035) and Presumptive Eligibility for Pregnant Women	200% FPG State Coverage Insurance (SCI) (Cat 062) & Qualified Disabled Working Individuals (Cat 042) for family size 1 & 2	235% FPG SCHIP (State Children's Health Insurance Program) (Cat 071)	250% FPG Working Disabled Individuals (Cat 043)
1	\$931	\$1,723	\$1,862	\$2,188	\$2,328
2	\$1,261	\$2,333	\$2,522	\$2,963	
3	\$1,591	\$2,944	\$3,182	\$3,739	
4	\$1,921	\$3,554	\$3,842	\$4,514	
5	\$2,251	\$4,165	\$4,502	\$5,290	
6	\$2,581	\$4,775	\$5,162	\$6,065	
7	\$2,911	\$5,386	\$5,822	\$6,841	
8	\$3,241	\$5,996	\$6,482	\$7,616	
+1	+\$330	+\$610	+\$660	+\$775	

Social Security Related	
Family Size	Program and Range ¹
Qualified Medicare Beneficiaries (Cat 040)	
1	\$0 – \$931
2	\$0 – \$1,261
Specified Low Income Medicare Beneficiaries (Cat 045)	
1	\$931 – \$1,117
2	\$1,261 – \$1,513
Qualified Individuals	
1	\$1,117 – \$1,257
2	\$1,513 – \$1,703









All figures monthly amounts. Source: <http://www.hsd.state.nm.us/mad/CEligibility.html>

The 2012 Federal Poverty Guidelines are used for the determination of Medicaid eligibility from April 1, 2012 – March 31, 2013.

¹ Cost of living adjustments made to SSI and Social Security income at the beginning of the calendar year are not used to determine eligibility of QMB, QI or SLIMB until the following April of that same year.



New Mexico Human Services Department
Field Offices

-  Central Office (1)
-  Income Support Division County Office (35)
-  Income Support Division Satellite Office (2)
-  Child Support Enforcement Regional Office (16)
-  Child Support Enforcement Satellite Office (1)
-  Quality Control Office (8)
-  Indian Health Services (7)
-  Hospital Site (3)

For a complete listing of field offices and other government and community resources:
<http://www.hsd.state.nm.us/isd/fieldoffices.html>