



HUMAN SERVICES
DEPARTMENT

Monthly Statistical Report January 2013

Highlights

- The SNAP caseload was 198,314 in January 2013, a 2.7% increase from January 2012. Caseload increased 685 cases, a 0.4% increase from December 2012. HSD processed 16,203 SNAP applications this month, approving 13,488.
- The TANF caseload was 15,910 in January 2012, a 16.9% decrease from January 2012. The TANF caseload had 234 fewer cases than December 2012, a decrease of 1.4%. HSD processed 3,914 TANF applications, approving 1,830.
- The caseload for General Assistance was 2,989 in January 2013, an increase of 3.5% from January 2012. There were 66 more cases than December 2012, a 2.3% increase. HSD processed 1,356 applications for GA, approving 323.

Susana Martinez, Governor
Sidonie Squier, Cabinet Secretary

CONTENTS	PAGE
Summary	3-4
SNAP	5-10
State SNAP Benefits Supplement	11
TANF	12-24
Education Works	25-26
General Assistance	27-29
GA Interim Assistance Reimbursements	30
State Funded Legal Aliens	30
Refugee Assistance	31
State Supplement for Residential Care (SSRC)	31
LIHEAP	32-34
Medicaid	35-39
Timeliness	40
Workload	41-42
Applications	43-45
Child Support Enforcement	46-47
Child Care Assistance	48-49

In previous MSRs the maps on pages 19 & 33 show Otero and Lincoln counties in Region 4. This is incorrect. They are in Region 5 and have been corrected in this edition.

The data, however, correctly included Otero and Lincoln counties in the total for Region 5.

We apologize and regret the error.

***The Mission of the Human Services
Department***

*To reduce the impact of poverty on
people living in New Mexico by
providing support services that help
families break the cycle of
dependency on public assistance*

**Charissa Saavedra, Deputy Secretary
Brent Earnest, Deputy Secretary**

**Prepared by Income Support Division
PO Box 2348
Santa Fe, NM 87504-2348
505-827-7250**

**Ted Roth, Division Director
Penny Jimerson, Deputy Director
Marilyn Martinez, Deputy Director**

**We're on the web!
www.hsd.state.nm.us/isd/reports.html**

Program Summary

	Jan-12	Dec-12	Jan-13	Percent Change			Jan-12	Dec-12	Jan-13	Percent Change	
				Jan 12 – Jan 13	Dec 12 – Jan 13					Jan 12 – Jan 13	Dec 12 – Jan 13
Supplemental Nutrition Assistance Program (SNAP)						State SNAP Benefits Supplement					
Expenditures	\$55,863,456	\$56,796,828	\$56,456,541	1.1%	-0.6%	Expenditures	\$41,519	\$42,829	\$45,769	10.2%	6.9%
Cases	193,122	197,629	198,314	2.7%	0.3%	Cases	5,050	5,202	5,548	9.9%	6.7%
Individuals	438,455	442,631	442,753	1.0%	0.0%						
Adults	239,212	244,239	244,874	2.4%	0.3%	Education Works					
Children	199,243	198,392	197,879	-0.7%	-0.3%	Expenditures	\$94,407	\$120,354	\$102,497	8.6%	-14.8%
Apps processed	14,953	14,072	16,203	8.4%	15.1%	Cases	295	356	328	11.2%	-7.9%
Approvals	12,184	11,300	13,488	10.7%	19.4%	Individuals	910	1,033	936	2.9%	-9.4%
Closures	11,480	10,588	12,803	11.5%	20.9%	Adults	337	405	363	7.7%	-10.4%
						Children	573	628	573	0.0%	-8.8%
Temporary Assistance to Needy Families (TANF)						State Supplement for Residential Care (SSRC)					
Expenditures	\$5,676,395	\$4,735,644	\$4,614,101	-18.7%	-2.6%	Expenditures	\$5,600	\$5,200	\$5,100	-8.9%	-1.9%
Cases	19,144	16,144	15,910	-16.9%	-1.4%	Cases	45	47	50	11.1%	6.4%
Individuals	47,740	39,377	38,712	-18.9%	-1.7%	Individuals	45	47	50	11.1%	6.4%
Adults	17,725	14,496	14,310	-19.3%	-1.3%	Adults	45	47	50	11.1%	6.4%
Children	30,015	24,881	24,402	-18.7%	-1.9%						
Apps Processed	4,008	3,801	3,914	-2.3%	3.0%	Refugee Assistance					
Approvals	1,861	1,679	1,830	-1.7%	9.0%	Expenditures	\$3,285	\$10,435	\$11,489	249.7%	10.1%
Closures	2,187	1,849	2,064	-5.6%	11.6%	Cases	12	40	36	200.0%	-10.0%
						Individuals	12	46	46	283.3%	0.0%
General Assistance						Adults	12	45	41	241.7%	-8.9%
Expenditures	\$864,654	\$838,467	\$852,856	-1.4%	1.7%						
Cases	2,889	2,923	2,989	3.5%	2.3%						
Individuals	3,119	3,174	3,235	3.7%	1.9%						
Adults	2,908	2,944	3,008	3.4%	2.2%	Medicaid					
Children	211	230	227	7.6%	-1.3%				Percent Change		
Apps Processed	1,280	1,077	1,356	5.9%	25.9%	Oct-11	Sep-12	Oct-12	Oct 11 – Oct 12	Sep 12 – Oct 12	
Approvals	260	224	323	24.2%	44.2%	Expenditures*	\$274,082,770	\$282,784,738	\$327,893,750	19.6%	16.0%
Closures	236	273	257	8.9%	-5.9%	Eligibles	510,557	522,839	524,236	2.7%	0.3%
						Adults	173,717	184,408	185,449	6.8%	0.6%
						Children	336,840	338,431	338,787	0.6%	0.1%

All expenditures are unreconciled and subject to change.

*Medicaid expenditures as of date of payment.

Expenditures Year to Date			
	SFY 2013	FFY 2013	CY 2012
Supplemental Nutrition Assistance Program (SNAP)	\$395,873,580	\$226,639,108	\$56,456,541
Temporary Assistance for Needy Families (TANF)	\$34,473,035	\$18,926,435	\$4,614,101
General Assistance	\$5,750,986	\$3,351,922	\$852,856
Education Works	\$735,397	\$449,169	\$102,497
State SNAP	\$300,796	\$172,424	\$45,769

DEMOGRAPHIC PROFILE					
	SNAP	TANF	General Assistance	SSRC	Refugee Assistance
Average # persons per case:	2.23	2.43	1.08	1.00	1.28
Age & Gender of Recipients:					
Adults (18 and Over)	55.3%	37.0%	93.0%	100.0%	89.1%
Children (Under 18)	44.7%	63.0%	7.0%	0.0%	10.9%
Male	44.3%	36.7%	55.3%	58.0%	54.3%
Female	55.7%	63.3%	44.7%	42.0%	45.7%
Ethnicity of Head of Household:					
Hispanic	59.1%	71.2%	56.7%	62.0%	55.6%
Not Hispanic	40.9%	28.8%	43.3%	38.0%	44.4%
Race of Head of Household:					
African American	2.6%	3.1%	3.5%	2.0%	16.7%
Asian/Pacific Islander	1.4%	1.3%	1.2%	0.0%	11.1%
Native American	13.0%	6.4%	5.9%	4.0%	0.0%
White	82.4%	88.7%	88.6%	94.0%	69.4%
More than one race or no race declared	0.6%	0.5%	0.8%	0.0%	2.8%

Supplemental Nutrition Assistance Program (SNAP) Cases by County

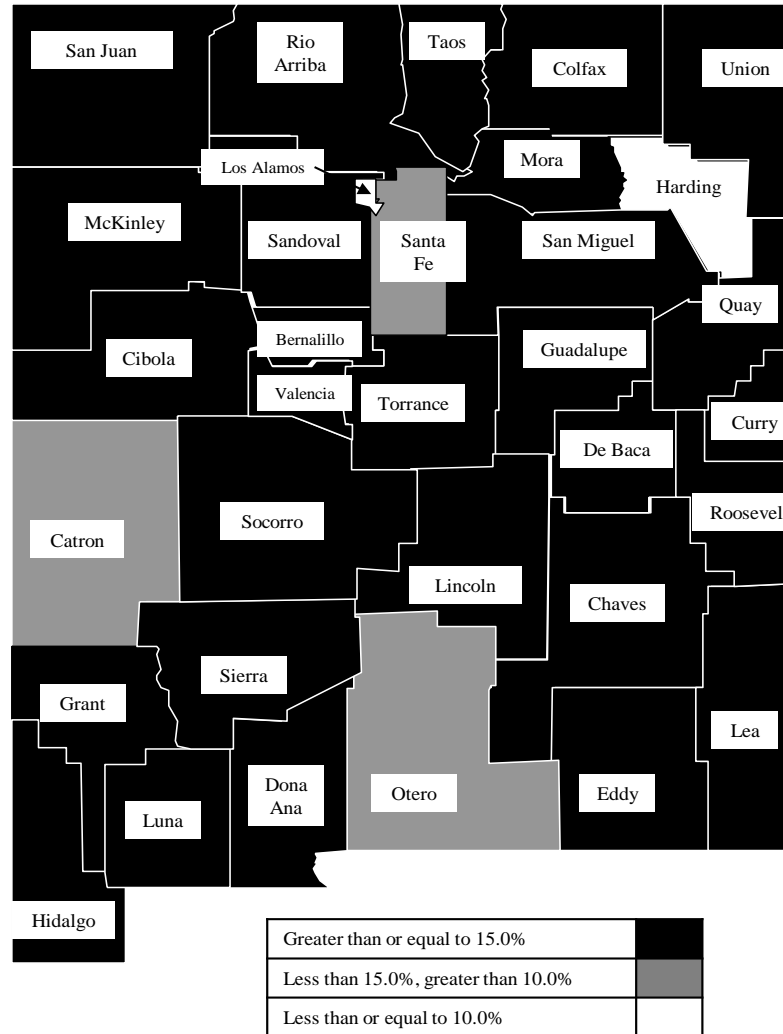
County	Jan-12	Dec-12	Jan-13	Jan 12 – Jan 13		Dec 12 – Jan 13	
				# change	% change	# change	% change
Bernalillo	62,910	62,985	62,906	-4	0.0%	-79	-0.1%
Catron	203	193	197	-6	-3.0%	4	2.1%
Chaves	6,414	6,536	6,576	162	2.5%	40	0.6%
Cibola	3,119	3,270	3,284	165	5.3%	14	0.4%
Colfax	1,318	1,164	1,195	-123	-9.3%	31	2.7%
Curry	4,121	4,064	4,070	-51	-1.2%	6	0.1%
De Baca	168	171	163	-5	-3.0%	-8	-4.7%
Dona Ana	24,218	24,836	24,908	690	2.8%	72	0.3%
Eddy	4,294	4,236	4,221	-73	-1.7%	-15	-0.4%
Grant	3,061	3,056	3,063	2	0.1%	7	0.2%
Guadalupe	560	569	566	6	1.1%	-3	-0.5%
Harding	29	28	27	-2	-6.9%	-1	-3.6%
Hidalgo	486	478	486	0	0.0%	8	1.7%
Lea	3,970	3,950	3,932	-38	-1.0%	-18	-0.5%
Lincoln	1,647	1,679	1,670	23	1.4%	-9	-0.5%
Los Alamos	202	218	217	15	7.4%	-1	-0.5%
Luna	3,651	3,789	3,796	145	4.0%	7	0.2%
McKinley	8,530	8,829	8,757	227	2.7%	-72	-0.8%
Mora	572	506	491	-81	-14.2%	-15	-3.0%
Otero	4,237	4,261	4,295	58	1.4%	34	0.8%
Quay	1,183	1,241	1,262	79	6.7%	21	1.7%
Rio Arriba	6,073	6,525	6,568	495	8.2%	43	0.7%
Roosevelt	1,322	1,410	1,410	88	6.7%	0	0.0%
Sandoval	8,602	9,113	9,155	553	6.4%	42	0.5%
San Juan	10,055	10,677	10,722	667	6.6%	45	0.4%
San Miguel	4,550	4,819	4,940	390	8.6%	121	2.5%
Santa Fe	9,237	9,566	9,794	557	6.0%	228	2.4%
Sierra	1,724	1,791	1,808	84	4.9%	17	0.9%
Socorro	2,222	2,382	2,412	190	8.6%	30	1.3%
Taos	3,468	3,744	3,826	358	10.3%	82	2.2%
Torrance	2,461	2,593	2,590	129	5.2%	-3	-0.1%
Union	292	372	389	97	33.2%	17	4.6%
Valencia	8,223	8,578	8,618	395	4.8%	40	0.5%
TOTAL	193,122	197,629	198,314	5,192	2.7%	685	0.3%

Supplemental Nutrition Assistance Program (SNAP) Recipients by County

County	Jan-12	Dec-12	Jan-13	Jan 12 – Jan 13		Dec 12 – Jan 13	
				# change	% change	# change	% change
Bernalillo	130,031	129,183	128,585	-1,446	-1.1%	-598	-0.5%
Catron	440	398	414	-26	-5.9%	16	4.0%
Chaves	15,336	15,506	15,581	245	1.6%	75	0.5%
Cibola	8,199	8,531	8,533	334	4.1%	2	0.0%
Colfax	3,051	2,511	2,558	-493	-16.2%	47	1.9%
Curry	10,032	9,830	9,862	-170	-1.7%	32	0.3%
De Baca	367	355	346	-21	-5.7%	-9	-2.5%
Dona Ana	58,382	59,176	59,135	753	1.3%	-41	-0.1%
Eddy	9,925	9,628	9,575	-350	-3.5%	-53	-0.6%
Grant	6,610	6,456	6,431	-179	-2.7%	-25	-0.4%
Guadalupe	1,120	1,111	1,107	-13	-1.2%	-4	-0.4%
Harding	49	44	43	-6	-12.2%	-1	-2.3%
Hidalgo	1,085	1,000	1,020	-65	-6.0%	20	2.0%
Lea	9,872	9,898	9,806	-66	-0.7%	-92	-0.9%
Lincoln	3,676	3,811	3,759	83	2.3%	-52	-1.4%
Los Alamos	373	433	438	65	17.4%	5	1.2%
Luna	8,733	8,826	8,848	115	1.3%	22	0.2%
McKinley	25,760	25,933	25,753	-7	0.0%	-180	-0.7%
Mora	1,079	932	897	-182	-16.9%	-35	-3.8%
Otero	9,679	9,445	9,496	-183	-1.9%	51	0.5%
Quay	2,427	2,538	2,583	156	6.4%	45	1.8%
Rio Arriba	12,342	13,185	13,223	881	7.1%	38	0.3%
Roosevelt	3,465	3,538	3,549	84	2.4%	11	0.3%
Sandoval	21,720	22,551	22,519	799	3.7%	-32	-0.1%
San Juan	27,281	27,878	27,910	629	2.3%	32	0.1%
San Miguel	8,964	9,240	9,483	519	5.8%	243	2.6%
Santa Fe	18,395	19,127	19,487	1,092	5.9%	360	1.9%
Sierra	3,213	3,386	3,389	176	5.5%	3	0.1%
Socorro	4,938	5,170	5,235	297	6.0%	65	1.3%
Taos	6,861	7,241	7,373	512	7.5%	132	1.8%
Torrance	5,558	5,703	5,735	177	3.2%	32	0.6%
Union	673	889	866	193	28.7%	-23	-2.6%
Valencia	18,819	19,178	19,214	395	2.1%	36	0.2%
TOTAL	438,455	442,631	442,753	4,298	1.0%	122	0.0%

Rank	County	Estimated Population	SNAP Recipients	Rate
1	Torrance	16,345	5,735	35.1%
2	Luna	25,281	8,848	35.0%
3	McKinley	73,664	25,753	35.0%
4	Rio Arriba	40,446	13,223	32.7%
5	San Miguel	29,301	9,483	32.4%
6	Cibola	27,658	8,533	30.9%
7	Socorro	17,873	5,235	29.3%
8	Quay	9,026	2,583	28.6%
9	Sierra	11,943	3,389	28.4%
10	Dona Ana	213,598	59,135	27.7%
11	Valencia	77,070	19,214	24.9%
12	Guadalupe	4,619	1,107	24.0%
13	Chaves	65,890	15,581	23.6%
14	Taos	32,917	7,373	22.4%
15	Grant	29,380	6,431	2.9%
16	San Juan	128,200	27,910	21.8%
17	Hidalgo	4,861	1,020	21.0%
18	Curry	49,649	9,862	19.9%
19	Union	4,433	866	19.5%
20	Bernalillo	670,968	128,585	19.2%
21	Mora	4,773	897	18.8%
22	Colfax	13,640	2,558	18.8%
23	Lincoln	20,454	3,759	18.4%
24	De Baca	1,945	346	17.8%
25	Eddy	54,152	9,575	17.7%
26	Roosevelt	20,446	3,549	17.4%
27	Sandoval	134,259	22,519	16.8%
28	Lea	65,423	9,806	15.0%
29	Otero	65,703	9,496	14.5%
30	Santa Fe	145,648	19,487	13.4%
31	Catron	3,733	414	11.1%
32	Harding	704	43	6.1%
33	Los Alamos	18,222	438	2.4%
STATE TOTAL		2,082,224	442,753	21.3%

SNAP Reciprocity Rate



Population Source: U.S. Census Bureau, 2011 Population
 Reciprocity rate is the percent of individuals who receive Supplemental Nutrition Assistance

Supplemental Nutrition Assistance Program (SNAP) Cases by Administrative Office

Office #	Office	Jan-12	Dec-12	Jan-13	Jan 12 – Jan 13		Dec 12 – Jan 13	
					# change	% change	# change	% change
1	SE Bernalillo	11,571	11,216	11,102	-469	-4.1%	-114	-1.0%
3	Chaves	6,414	6,536	6,576	162	2.5%	40	0.6%
4	Colfax	1,318	1,164	1,195	-123	-9.3%	31	2.7%
3104	Union	292	372	389	97	33.2%	17	4.6%
5	Curry	4,125	4,064	4,070	-55	-1.3%	6	0.1%
7	West Dona Ana	9,158	9,573	9,594	436	4.8%	21	0.2%
8	Eddy	3,015	2,910	2,910	-105	-3.5%	0	0.0%
9	Grant	3,092	3,077	3,084	-8	-0.3%	7	0.2%
1209	Hidalgo	486	478	486	0	0.0%	8	1.7%
10	Guadalupe	728	740	729	1	0.1%	-11	-1.5%
13	Lea	3,970	3,950	3,932	-38	-1.0%	-18	-0.5%
14	Lincoln	1,642	1,677	1,666	24	1.5%	-11	-0.7%
16	Luna	3,639	3,785	3,793	154	4.2%	8	0.2%
17	McKinley	8,541	8,844	8,770	229	2.7%	-74	-0.8%
19	Otero	4,242	4,263	4,299	57	1.3%	36	0.8%
20	Quay	1,181	1,241	1,262	81	6.9%	21	1.7%
21	Rio Arriba	6,394	6,843	6,886	492	7.7%	43	0.6%
22	Roosevelt	1,320	1,410	1,410	90	6.8%	0	0.0%
23	Sandoval	8,602	9,113	9,155	553	6.4%	42	0.5%
24	San Juan	10,055	10,677	10,722	667	6.6%	45	0.4%
25	San Miguel	5,126	5,322	5,429	303	5.9%	107	2.0%
26	Santa Fe	9,143	9,497	9,722	579	6.3%	225	2.4%
27	Sierra	2,438	2,511	2,540	102	4.2%	29	1.2%
28	Socorro	2,406	2,557	2,590	184	7.6%	33	1.3%
29	Taos	3,468	3,744	3,826	358	10.3%	82	2.2%
30	Torrance	2,460	2,592	2,589	129	5.2%	-3	-0.1%
32	S Valencia	2,962	3,084	3,115	153	5.2%	31	1.0%
33	Cibola	3,108	3,255	3,271	163	5.2%	16	0.5%
34	Eddy/Artesia	1,279	1,326	1,311	32	2.5%	-15	-1.1%
35	NW Bernalillo	14,185	14,896	14,890	705	5.0%	-6	0.0%
36	SW Bernalillo	17,135	17,027	17,062	-73	-0.4%	35	0.2%
37	East Dona Ana	6,728	6,904	6,946	218	3.2%	42	0.6%
38	S Dona Ana	7,618	7,639	7,636	18	0.2%	-3	0.0%
39	NE Bernalillo	20,020	19,847	19,853	-167	-0.8%	6	0.0%
42	N Valencia	5,261	5,495	5,504	243	4.6%	9	0.2%
	TOTAL	193,122	197,629	198,314	5,192	2.7%	685	0.3%

Supplemental Nutrition Assistance Program (SNAP) Recipients by Administrative Office

Office #	Office	Jan-12	Dec-12	Jan-13	Jan 12 – Jan 13		Dec 12 – Jan 13	
					# change	% change	# change	% change
1	SE Bernalillo	23,470	22,623	22,474	-996	-4.2%	-149	-0.7%
3	Chaves	15,336	15,506	15,581	245	1.6%	75	0.5%
4	Colfax	3,051	2,511	2,558	-493	-16.2%	47	1.9%
3104	Union	673	889	866	193	28.7%	-23	-2.6%
5	Curry	10,038	9,830	9,862	-176	-1.8%	32	0.3%
7	West Dona Ana	19,227	20,003	19,982	755	3.9%	-21	-0.1%
8	Eddy	6,874	6,430	6,459	-415	-6.0%	29	0.5%
9	Grant	6,669	6,492	6,467	-202	-3.0%	-25	-0.4%
1209	Hidalgo	1,085	1,000	1,020	-65	-6.0%	20	2.0%
10	Guadalupe	1,487	1,466	1,453	-34	-2.3%	-13	-0.9%
13	Lea	9,872	9,898	9,806	-66	-0.7%	-92	-0.9%
14	Lincoln	3,661	3,807	3,753	92	2.5%	-54	-1.4%
16	Luna	8,713	8,822	8,845	132	1.5%	23	0.3%
17	McKinley	25,778	25,957	25,775	-3	0.0%	-182	-0.7%
19	Otero	9,694	9,449	9,502	-192	-2.0%	53	0.6%
20	Quay	2,425	2,538	2,583	158	6.5%	45	1.8%
21	Rio Arriba	12,971	13,813	13,855	884	6.8%	42	0.3%
22	Roosevelt	3,461	3,538	3,549	88	2.5%	11	0.3%
23	Sandoval	21,720	22,551	22,519	799	3.7%	-32	-0.1%
24	San Juan	27,281	27,878	27,910	629	2.3%	32	0.1%
25	San Miguel	10,046	10,166	10,375	329	3.3%	209	2.1%
26	Santa Fe	18,185	18,982	19,341	1,156	6.4%	359	1.9%
27	Sierra	5,175	5,341	5,362	187	3.6%	21	0.4%
28	Socorro	5,339	5,535	5,615	276	5.2%	80	1.4%
29	Taos	6,861	7,241	7,373	512	7.5%	132	1.8%
30	Torrance	5,557	5,702	5,732	175	3.1%	30	0.5%
32	S Valencia	6,465	6,558	6,651	186	2.9%	93	1.4%
33	Cibola	8,181	8,507	8,511	330	4.0%	4	0.0%
34	Eddy/Artesia	3,051	3,198	3,116	65	2.1%	-82	-2.6%
35	NW Bernalillo	29,465	30,448	30,156	691	2.3%	-292	-1.0%
36	SW Bernalillo	38,809	38,153	38,133	-676	-1.7%	-20	-0.1%
37	East Dona Ana	16,051	16,234	16,269	218	1.4%	35	0.2%
38	S Dona Ana	21,142	20,984	20,911	-231	-1.1%	-73	-0.3%
39	NE Bernalillo	38,288	37,960	37,825	-463	-1.2%	-135	-0.4%
42	N Valencia	12,354	12,621	12,564	210	1.7%	-57	-0.5%
	TOTAL	438,455	442,631	442,753	4,298	1.0%	122	0.0%

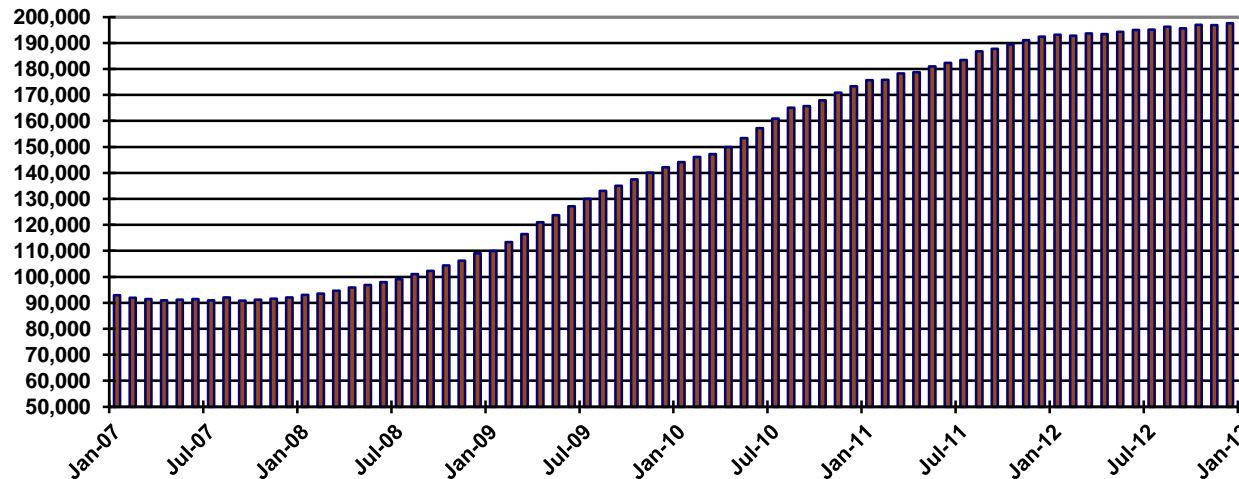
Supplemental Nutrition Assistance Program (SNAP) Cases by Region

	Jan-12	Dec-12	Jan-13	Jan 12 – Jan 13		Dec 12 – Jan 13	
				# change	% change	# change	% change
NW Region 1	38,529	40,468	40,537	2,008	5.2%	69	0.2%
NE Region 2	25,741	26,942	27,447	1,706	6.6%	505	1.9%
Central Region 3	65,371	65,578	65,496	125	0.2%	-82	-0.1%
SE Region 4	22,032	22,177	22,200	168	0.8%	23	0.1%
SW Region 5	41,449	42,464	42,634	1,185	2.9%	170	0.4%
TOTAL	193,122	197,629	198,314	5,192	2.7%	685	0.3%

Supplemental Nutrition Assistance Program (SNAP) Recipients by Region

	Jan-12	Dec-12	Jan-13	Jan 12 – Jan 13		Dec 12 – Jan 13	
				# change	% change	# change	% change
NW Region 1	101,779	104,072	103,930	2,151	2.1%	-142	-0.1%
NE Region 2	51,787	53,602	54,368	2,581	5.0%	766	1.4%
Central Region 3	135,589	134,886	134,320	-1,269	-0.9%	-566	-0.4%
SE Region 4	52,544	52,404	52,409	-135	-0.3%	5	0.0%
SW Region 5	96,756	97,667	97,726	970	1.0%	59	0.1%
TOTAL	438,455	442,631	442,753	4,298	1.0%	122	0.0%

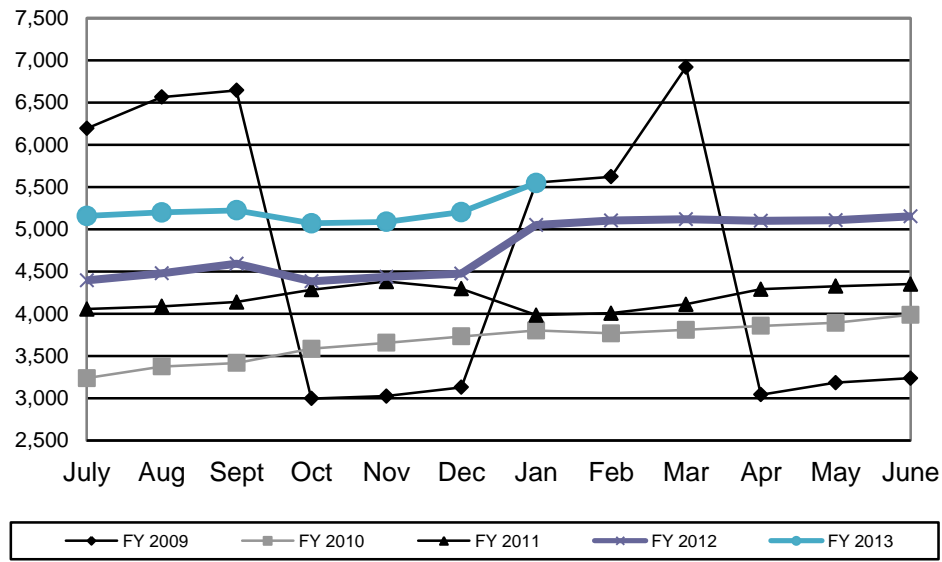
SNAP Cases Per Month



State SNAP Benefits Supplement

	SFY 2009		SFY 2010		SFY 2011		SFY 2012		SFY 2013	
	Cases	Expenditures	Cases	Expenditures	Cases	Expenditures	Cases	Expenditures	Cases	Expenditures
<i>July</i>	6,193	\$59,840	3,237	\$38,216	4,056	\$50,241	4,395	\$34,773	5,157	\$42,552
Aug	6,300	\$54,356	3,376	\$39,476	4,088	\$50,502	4,477	\$35,360	5,200	\$42,797
<i>Sept</i>	6,643	\$59,039	3,418	\$39,790	4,139	\$50,946	4,591	\$36,455	5,223	\$43,023
Oct	2,996	\$16,032	3,585	\$43,887	4,284	\$52,530	4,384	\$34,850	5,071	\$41,752
<i>Nov</i>	3,025	\$15,789	3,655	\$44,952	4,381	\$53,820	4,436	\$35,260	5,088	\$42,074
Dec	3,129	\$16,411	3,731	\$45,855	4,296	\$52,649	4,474	\$35,619	5,202	\$42,829
<i>Jan</i>	5,553	\$30,388	3,802	\$46,338	3,984	\$31,897	5,050	\$41,519	5,548	\$45,769
Feb	5,621	\$30,696	3,767	\$46,156	4,006	\$31,970	5,102	\$41,900		
<i>Mar</i>	6,918	\$98,305	3,810	\$46,502	4,113	\$33,226	5,119	\$41,960		
April	3,043	\$38,332	3,856	\$43,830	4,290	\$34,599	5,099	\$41,988		
<i>May</i>	3,184	\$36,698	3,856	\$43,830	4,326	\$34,892	5,109	\$43,587		
June	3,237	\$37,297	3,988	\$49,230	4,351	\$28,199	5,154	\$42,442		
TOTAL	55,842	\$493,183	44,081	\$528,062	50,314	\$505,470	57,390	\$465,713	36,489	\$300,796
Monthly average	4,654	\$41,099	3,673	\$44,005	4,193	\$42,123	4,783	\$38,809	5,213	\$42,971

State SNAP Benefits Supplement Cases by State Fiscal Year



Temporary Assistance of Needy Families (TANF) Cases by County

County	Jan-12	Dec-12	Jan-13	Jan 12 – Jan 13		Dec 12 – Jan 13	
				# change	% change	# change	% change
Bernalillo	6,547	5,435	5,306	-1,241	-19.0%	-129	-2.4%
Catron	19	10	13	-6	-31.6%	3	30.0%
Chaves	757	607	581	-176	-23.2%	-26	-4.3%
Cibola	280	269	267	-13	-4.6%	-2	-0.7%
Colfax	114	104	109	-5	-4.4%	5	4.8%
Curry	609	537	529	-80	-13.1%	-8	-1.5%
De Baca	22	8	7	-15	-68.2%	-1	-12.5%
Dona Ana	3,415	3,034	3,014	-401	-11.7%	-20	-0.7%
Eddy	506	430	424	-82	-16.2%	-6	-1.4%
Grant	317	213	206	-111	-35.0%	-7	-3.3%
Guadalupe	59	39	36	-23	-39.0%	-3	-7.7%
Harding	1	0	0	-1	-100.0%	0	NA
Hidalgo	55	41	42	-13	-23.6%	1	2.4%
Lea	484	446	430	-54	-11.2%	-16	-3.6%
Lincoln	199	166	159	-40	-20.1%	-7	-4.2%
Los Alamos	14	12	14	0	0.0%	2	16.7%
Luna	441	364	357	-84	-19.0%	-7	-1.9%
McKinley	137	96	93	-44	-32.1%	-3	-3.1%
Mora	39	24	23	-16	-41.0%	-1	-4.2%
Otero	448	349	346	-102	-22.8%	-3	-0.9%
Quay	122	116	110	-12	-9.8%	-6	-5.2%
Rio Arriba	664	542	531	-133	-20.0%	-11	-2.0%
Roosevelt	109	126	120	11	10.1%	-6	-4.8%
Sandoval	744	604	595	-149	-20.0%	-9	-1.5%
San Juan	261	290	282	21	8.0%	-8	-2.8%
San Miguel	397	324	326	-71	-17.9%	2	0.6%
Santa Fe	740	586	614	-126	-17.0%	28	4.8%
Sierra	127	88	89	-38	-29.9%	1	1.1%
Socorro	146	147	138	-8	-5.5%	-9	-6.1%
Taos	171	144	132	-39	-22.8%	-12	-8.3%
Torrance	291	265	264	-27	-9.3%	-1	-0.4%
Union	27	17	18	-9	-33.3%	1	5.9%
Valencia	882	711	735	-147	-16.7%	24	3.4%
TOTAL	19,144	16,144	15,910	-3,234	-16.9%	-234	-1.4%

Temporary Assistance of Needy Families (TANF) Recipients by County

County	Jan-12	Dec-12	Jan-13	Jan 12 – Jan 13		Dec 12 – Jan 13	
				# change	% change	# change	% change
Bernalillo	15,784	12,939	12,654	-3,130	-19.8%	-285	-2.2%
Catron	57	24	32	-25	-43.9%	8	33.3%
Chaves	1,910	1,495	1,386	-524	-27.4%	-109	-7.3%
Cibola	776	712	698	-78	-10.1%	-14	-2.0%
Colfax	296	270	286	-10	-3.4%	16	5.9%
Curry	1,608	1,363	1,353	-255	-15.9%	-10	-0.7%
De Baca	53	19	13	-40	-75.5%	-6	-31.6%
Dona Ana	8,708	7,642	7,575	-1,133	-13.0%	-67	-0.9%
Eddy	1,250	1,011	1,000	-250	-20.0%	-11	-1.1%
Grant	790	476	468	-322	-40.8%	-8	-1.7%
Guadalupe	162	102	97	-65	-40.1%	-5	-4.9%
Harding	3	0	0	-3	-100.0%	0	NA
Hidalgo	138	94	91	-47	-34.1%	-3	-3.2%
Lea	1,236	1,104	1,064	-172	-13.9%	-40	-3.6%
Lincoln	512	419	403	-109	-21.3%	-16	-3.8%
Los Alamos	26	23	31	5	19.2%	8	34.8%
Luna	1,099	930	919	-180	-16.4%	-11	-1.2%
McKinley	382	246	227	-155	-40.6%	-19	-7.7%
Mora	80	52	44	-36	-45.0%	-8	-15.4%
Otero	1,222	884	887	-335	-27.4%	3	0.3%
Quay	300	270	255	-45	-15.0%	-15	-5.6%
Rio Arriba	1,657	1,235	1,209	-448	-27.0%	-26	-2.1%
Roosevelt	269	318	297	28	10.4%	-21	-6.6%
Sandoval	1,988	1,635	1,579	-409	-20.6%	-56	-3.4%
San Juan	705	743	724	19	2.7%	-19	-2.6%
San Miguel	946	732	741	-205	-21.7%	9	1.2%
Santa Fe	1,722	1,351	1,407	-315	-18.3%	56	4.1%
Sierra	305	200	202	-103	-33.8%	2	1.0%
Socorro	345	337	320	-25	-7.2%	-17	-5.0%
Taos	397	349	303	-94	-23.7%	-46	-13.2%
Torrance	760	685	684	-76	-10.0%	-1	-0.1%
Union	72	50	49	-23	-31.9%	-1	-2.0%
Valencia	2,182	1,667	1,714	-468	-21.4%	47	2.8%
TOTAL	47,740	39,377	38,712	-9,028	-18.9%	-665	-1.7%

Temporary Assistance of Needy Families (TANF) Cases by Administrative Office

Office #	Office	Jan-12	Dec-12	Jan-13	Jan 12 – Jan 13		Dec 12 – Jan 13	
					# change	% change	# change	% change
1	SE Bernalillo	1,386	1,079	1,034	-352	-25.4%	-45	-4.2%
3	Chaves	757	607	581	-176	-23.2%	-26	-4.3%
4	Colfax	114	104	109	-5	-4.4%	5	4.8%
3104	Union	27	17	18	-9	-33.3%	1	5.9%
5	Curry	609	537	529	-80	-13.1%	-8	-1.5%
7	West Dona Ana	1,216	1,065	1,060	-156	-12.8%	-5	-0.5%
8	Eddy	363	284	283	-80	-22.0%	-1	-0.4%
9	Grant	318	213	206	-112	-35.2%	-7	-3.3%
1209	Hidalgo	55	41	42	-13	-23.6%	1	2.4%
10	Guadalupe	81	47	43	-38	-46.9%	-4	-8.5%
13	Lea	484	446	430	-54	-11.2%	-16	-3.6%
14	Lincoln	199	166	159	-40	-20.1%	-7	-4.2%
16	Luna	441	364	357	-84	-19.0%	-7	-1.9%
17	McKinley	137	97	94	-43	-31.4%	-3	-3.1%
19	Otero	448	349	346	-102	-22.8%	-3	-0.9%
20	Quay	122	116	110	-12	-9.8%	-6	-5.2%
21	Rio Arriba	689	562	552	-137	-19.9%	-10	-1.8%
22	Roosevelt	109	126	120	11	10.1%	-6	-4.8%
23	Sandoval	744	604	595	-149	-20.0%	-9	-1.5%
24	San Juan	261	290	282	21	8.0%	-8	-2.8%
25	San Miguel	436	346	347	-89	-20.4%	1	0.3%
26	Santa Fe	730	580	609	-121	-16.6%	29	5.0%
27	Sierra	199	136	139	-60	-30.2%	3	2.2%
28	Socorro	164	157	151	-13	-7.9%	-6	-3.8%
29	Taos	171	144	132	-39	-22.8%	-12	-8.3%
30	Torrance	291	264	264	-27	-9.3%	0	0.0%
32	S Valencia	263	230	249	-14	-5.3%	19	8.3%
33	Cibola	280	268	266	-14	-5.0%	-2	-0.7%
34	Eddy/Artesia	143	146	141	-2	-1.4%	-5	-3.4%
35	NW Bernalillo	1,276	1,198	1,203	-73	-5.7%	5	0.4%
36	SW Bernalillo	2,116	1,668	1,634	-482	-22.8%	-34	-2.0%
37	East Dona Ana	794	732	727	-67	-8.4%	-5	-0.7%
38	S Dona Ana	1,333	1,189	1,177	-156	-11.7%	-12	-1.0%
39	NE Bernalillo	1,769	1,491	1,435	-334	-18.9%	-56	-3.8%
42	N Valencia	619	481	486	-133	-21.5%	5	1.0%
	TOTAL	19,144	16,144	15,910	-3,234	-16.9%	-234	-1.4%

Temporary Assistance of Needy Families (TANF) Recipients by Administrative Office

Office #	Office	Jan-12	Dec-12	Jan-13	Jan 12 – Jan 13		Dec 12 – Jan 13	
					# change	% change	# change	% change
1	SE Bernalillo	3,350	2,571	2,464	-886	-26.4%	-107	-4.2%
3	Chaves	1,910	1,495	1,386	-524	-27.4%	-109	-7.3%
4	Colfax	296	270	286	-10	-3.4%	16	5.9%
3104	Union	72	50	49	-23	-31.9%	-1	-2.0%
5	Curry	1,608	1,363	1,353	-255	-15.9%	-10	-0.7%
7	West Dona Ana	3,062	2,656	2,637	-425	-13.9%	-19	-0.7%
8	Eddy	898	672	663	-235	-26.2%	-9	-1.3%
9	Grant	793	476	468	-325	-41.0%	-8	-1.7%
1209	Hidalgo	138	94	91	-47	-34.1%	-3	-3.2%
10	Guadalupe	215	121	110	-105	-48.8%	-11	-9.1%
13	Lea	1,236	1,104	1,064	-172	-13.9%	-40	-3.6%
14	Lincoln	512	419	403	-109	-21.3%	-16	-3.8%
16	Luna	1,099	930	919	-180	-16.4%	-11	-1.2%
17	McKinley	382	248	229	-153	-40.1%	-19	-7.7%
19	Otero	1,222	884	887	-335	-27.4%	3	0.3%
20	Quay	300	270	255	-45	-15.0%	-15	-5.6%
21	Rio Arriba	1,713	1,283	1,260	-453	-26.4%	-23	-1.8%
22	Roosevelt	269	318	297	28	10.4%	-21	-6.6%
23	Sandoval	1,988	1,635	1,579	-409	-20.6%	-56	-3.4%
24	San Juan	705	743	724	19	2.7%	-19	-2.6%
25	San Miguel	1,027	778	780	-247	-24.1%	2	0.3%
26	Santa Fe	1,694	1,332	1,392	-302	-17.8%	60	4.5%
27	Sierra	472	311	323	-149	-31.6%	12	3.9%
28	Socorro	399	361	352	-47	-11.8%	-9	-2.5%
29	Taos	397	349	303	-94	-23.7%	-46	-13.2%
30	Torrance	760	682	684	-76	-10.0%	2	0.3%
32	S Valencia	614	482	548	-66	-10.7%	66	13.7%
33	Cibola	776	710	696	-80	-10.3%	-14	-2.0%
34	Eddy/Artesia	352	339	337	-15	-4.3%	-2	-0.6%
35	NW Bernalillo	3,020	2,840	2,843	-177	-5.9%	3	0.1%
36	SW Bernalillo	5,180	3,918	3,814	-1,366	-26.4%	-104	-2.7%
37	East Dona Ana	2,003	1,827	1,802	-201	-10.0%	-25	-1.4%
38	S Dona Ana	3,476	3,048	3,015	-461	-13.3%	-33	-1.1%
39	NE Bernalillo	4,234	3,613	3,533	-701	-16.6%	-80	-2.2%
42	N Valencia	1,568	1,185	1,166	-402	-25.6%	-19	-1.6%
	TOTAL	47,740	39,377	38,712	-9,028	-18.9%	-665	-1.7%

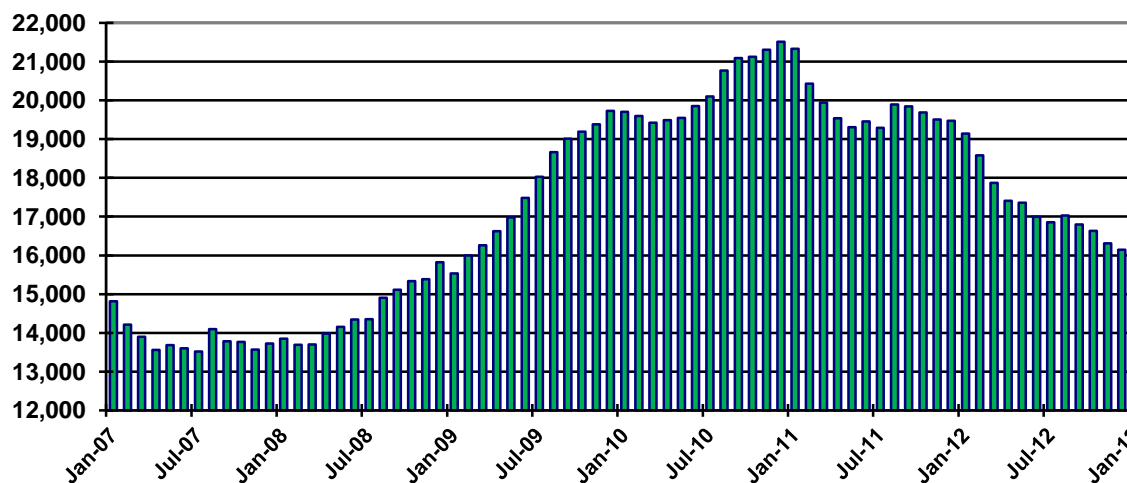
Temporary Assistance of Needy Families (TANF) Cases by Region

	Jan-12	Dec-12	Jan-13	Jan 12 – Jan 13		Dec 12 – Jan 13	
				# change	% change	# change	% change
NW Region 1	2,304	1,970	1,972	-332	-14.4%	2	0.1%
NE Region 2	2,167	1,753	1,767	-400	-18.5%	14	0.8%
Central Region 3	6,838	5,700	5,570	-1,268	-18.5%	-130	-2.3%
SE Region 4	2,668	2,309	2,237	-431	-16.2%	-72	-3.1%
SW Region 5	5,167	4,412	4,364	-803	-15.5%	-48	-1.1%
TOTAL	19,144	16,144	15,910	-3,234	-16.9%	-234	-1.4%

Temporary Assistance of Needy Families (TANF) Recipients by Region

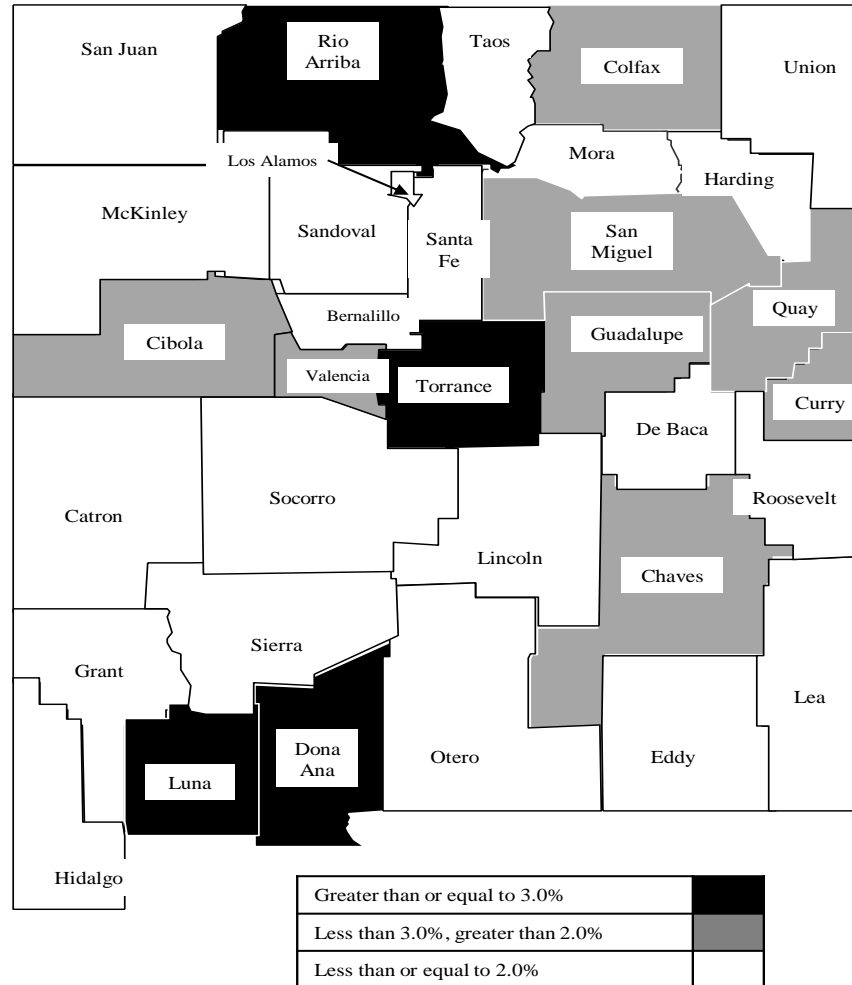
	Jan-12	Dec-12	Jan-13	Jan 12 – Jan 13		Dec 12 – Jan 13	
				# change	% change	# change	% change
NW Region 1	6,033	5,003	4,942	-1,091	-18.1%	-61	-1.2%
NE Region 2	5,199	4,062	4,070	-1,129	-21.7%	8	0.2%
Central Region 3	16,544	13,624	13,338	-3,206	-19.4%	-286	-2.1%
SE Region 4	6,788	5,682	5,465	-1,323	-19.5%	-217	-3.8%
SW Region 5	13,176	11,006	10,897	-2,279	-17.3%	-109	-1.0%
TOTAL	47,740	39,377	38,712	-9,028	-18.9%	-665	-1.7%

TANF Cases per month



Rank	County	Estimated Population	TANF Recipients	Rate
1	Torrance	16,345	684	4.2%
2	Luna	25,281	919	3.6%
3	Dona Ana	213,598	7,575	3.5%
4	Rio Arriba	40,446	1,209	3.0%
5	Quay	9,026	255	2.8%
6	Curry	49,649	1,353	2.7%
7	San Miguel	29,301	698	2.5%
8	Cibola	27,658	712	2.6%
9	Valencia	77,070	1,714	2.2%
10	Chaves	65,890	1,386	2.1%
11	Guadalupe	4,619	97	2.1%
12	Colfax	13,640	286	2.1%
13	Lincoln	20,454	403	2.0%
14	Bernalillo	670,968	12,654	1.9%
15	Hidalgo	4,861	91	1.9%
16	Eddy	54,152	1,00	1.8%
17	Socorro	17,873	320	1.8%
18	Sierra	11,943	202	1.7%
19	Lea	65,423	1,064	1.6%
20	Grant	29,380	468	1.6%
21	Roosevelt	20,446	297	1.5%
22	Otero	65,703	887	1.4%
23	Sandoval	134,259	1,579	1.2%
24	Union	4,433	49	1.1%
25	Santa Fe	145,648	1,407	1.0%
26	Mora	4,773	44	0.9%
27	Taos	32,917	303	0.9%
28	Catron	3,733	32	0.9%
29	De Baca	1,945	13	0.7%
30	San Juan	128,200	724	0.6%
31	McKinley	73,664	227	0.3%
32	Los Alamos	18,222	31	0.2%
33	Harding	704	0	0.0%
STATE TOTAL		2,082,224	38,712	1.9%

TANF Reciprocity Rate



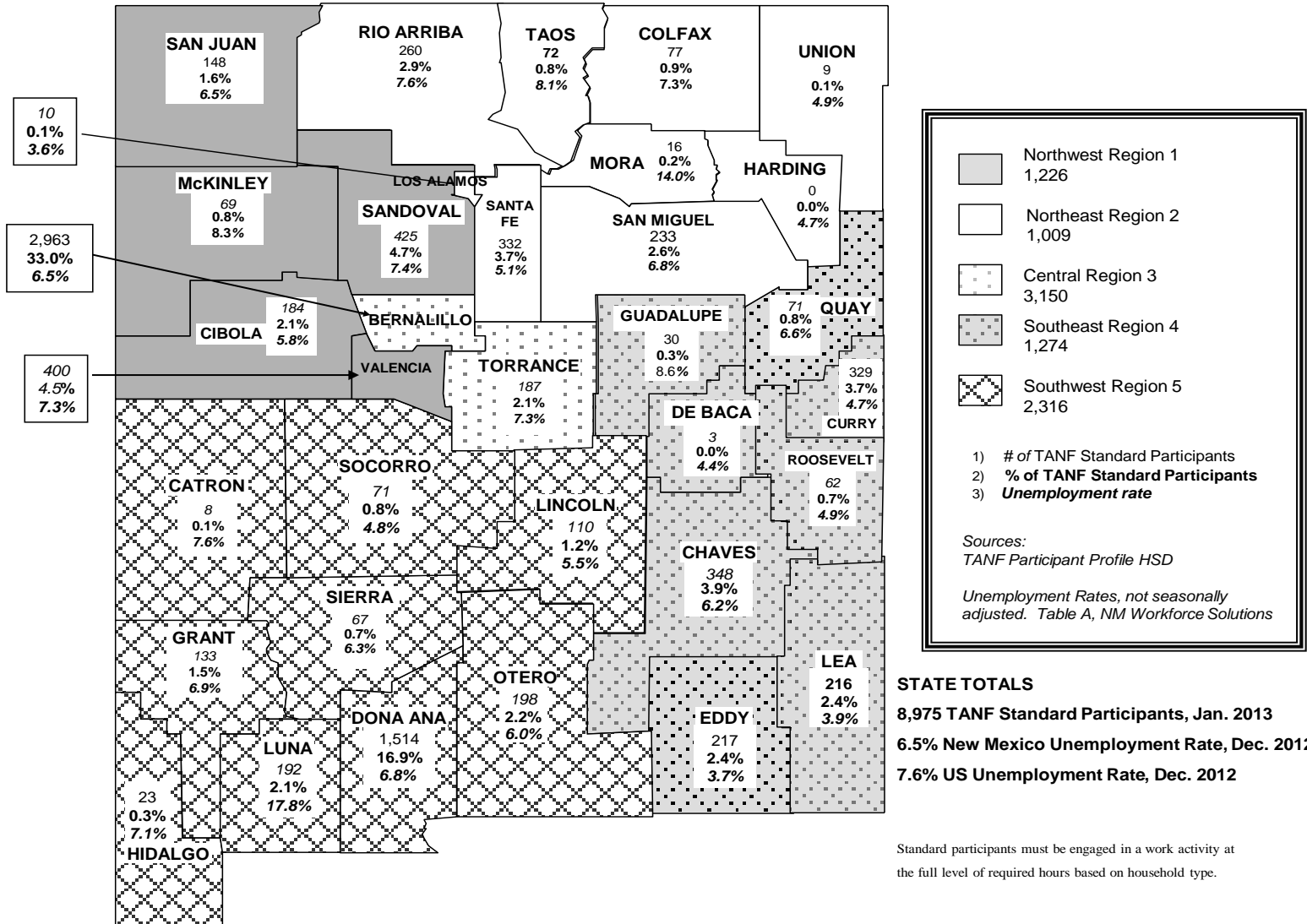
Population Source: U.S. Census Bureau, 2011 Population.
 Reciprocity rate is the percent of individuals living in the State or County who receive TANF.

TANF Standard Participants by Administrative Office

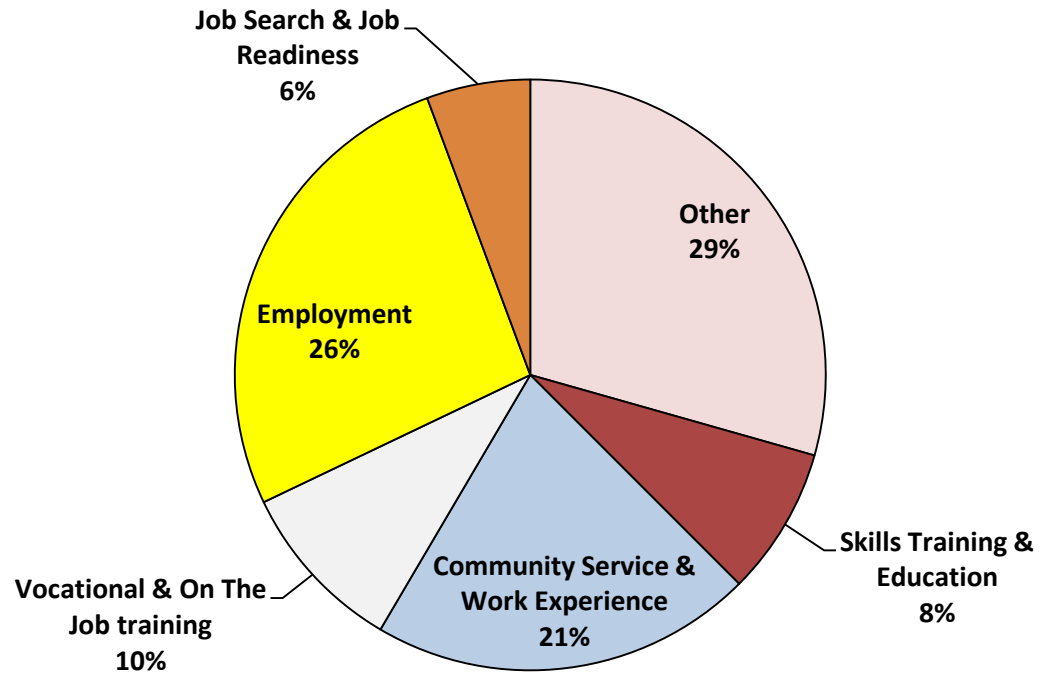
Office #	Office	Jan-12	Dec-12	Jan-13	Jan 12 – Jan 13		Dec 12 – Jan 13	
					# change	% change	# change	% change
1	SE Bernalillo	658	455	431	-227	-34.5%	-24	-5.3%
3	Chaves	422	379	348	-74	-17.5%	-31	-8.2%
4	Colfax	74	71	77	3	4.1%	6	8.5%
3104	Union	15	8	9	-6	-40.0%	1	12.5%
5	Curry	344	336	329	-15	-4.4%	-7	-2.1%
7	West Dona Ana	746	590	589	-157	-21.0%	-1	-0.2%
8	Eddy	205	138	139	-66	-32.2%	1	0.7%
9	Grant	201	141	133	-68	-33.8%	-8	-5.7%
1209	Hidalgo	31	20	23	-8	-25.8%	3	15.0%
10	Guadalupe	58	34	31	-27	-46.6%	-3	-8.8%
13	Lea	277	217	216	-61	-22.0%	-1	-0.5%
14	Lincoln	121	111	110	-11	-9.1%	-1	-0.9%
16	Luna	254	184	192	-62	-24.4%	8	4.3%
17	McKinley	103	71	70	-33	-32.0%	-1	-1.4%
19	Otero	297	200	198	-99	-33.3%	-2	-1.0%
20	Quay	73	69	71	-2	-2.7%	2	2.9%
21	Rio Arriba	436	274	272	-164	-37.6%	-2	-0.7%
22	Roosevelt	47	68	62	15	31.9%	-6	-8.8%
23	Sandoval	613	451	425	-188	-30.7%	-26	-5.8%
24	San Juan	134	163	148	14	10.4%	-15	-9.2%
25	San Miguel	321	258	248	-73	-22.7%	-10	-3.9%
26	Santa Fe	420	283	331	-89	-21.2%	48	17.0%
27	Sierra	125	77	82	-43	-34.4%	5	6.5%
28	Socorro	100	85	79	-21	-21.0%	-6	-7.1%
29	Taos	90	87	72	-18	-20.0%	-15	-17.2%
30	Torrance	186	180	187	1	0.5%	7	3.9%
32	S Valencia	162	113	128	-34	-21.0%	15	13.3%
33	Cibola	208	195	183	-25	-12.0%	-12	-6.2%
34	Eddy/Artesia	82	79	78	-4	-4.9%	-1	-1.3%
35	NW Bernalillo	787	752	767	-20	-2.5%	15	2.0%
36	SW Bernalillo	1,225	846	806	-419	-34.2%	-40	-4.7%
37	East Dona Ana	472	459	457	-15	-3.2%	-2	-0.4%
38	S Dona Ana	527	461	453	-74	-14.0%	-8	-1.7%
39	NE Bernalillo	1,223	1,013	959	-264	-21.6%	-54	-5.3%
42	N Valencia	389	282	272	-117	-30.1%	-10	-3.5%
	TOTAL	11,426	9,150	8,975	-2,451	-21.5%	-175	-1.9%

Standard participants must be engaged in a work activity at the full level of required hours based on household type.

TANF STANDARD PARTICIPANTS and UNEMPLOYMENT RATE COMPARISON BY REGION



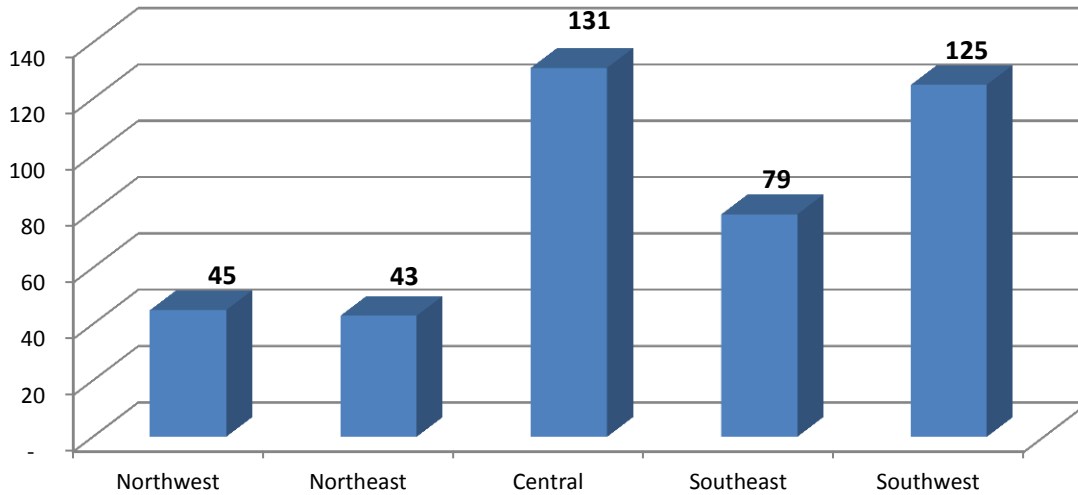
NM Works Activity Placements on Feb 1, 2013 as reported by SL Start **



**Data preliminary and subject to later revision.

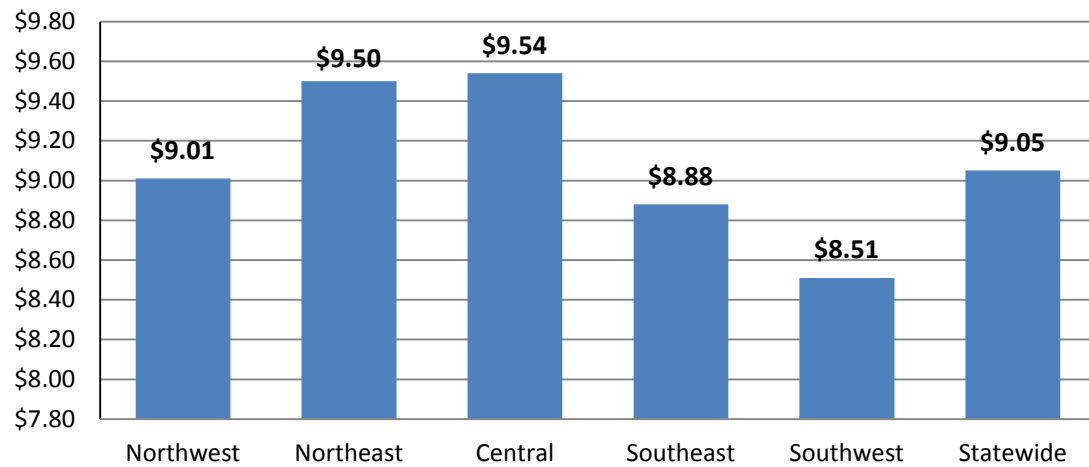
Placements may be duplicated as some individuals may work more than one activity or job.

Number of New Employments in January, by region, as reported by SL Start
Statewide Total: 423



Employment placements may be duplicated as some individuals may work more than one job.

Average Starting Hourly Wage of January TANF Employments, as reported by SL Start



TANF Sanctions by Administrative Office

Office #	Office	Non Reporting	Child Support Sanctions			Work Programs Sanctions			TOTAL
			1 st	2 nd	3 rd	1 st	2 nd	3 rd	
1	SE Bernalillo	0	0	0	0	44	12	50	106
3	Chaves	0	2	0	0	10	10	23	45
4	Colfax	0	1	0	0	3	2	1	7
3104	Union	0	0	0	0	1	1	0	2
5	Curry	0	0	1	2	10	5	20	38
7	West Dona Ana	0	0	1	0	24	20	34	79
8	Eddy	0	3	0	0	12	4	7	26
9	Grant	0	1	0	0	9	5	7	22
1209	Hidalgo	0	0	0	0	0	1	2	3
10	Guadalupe	0	0	0	0	1	0	0	1
13	Lea	0	9	0	0	19	5	11	44
14	Lincoln	0	0	0	0	12	4	2	18
16	Luna	0	1	0	0	11	5	9	26
17	McKinley	0	0	0	0	3	1	2	6
19	Otero	0	1	1	0	15	3	22	42
20	Quay	0	1	0	0	5	2	4	12
21	Rio Arriba	0	1	0	1	24	14	40	80
22	Roosevelt	0	0	0	0	2	1	1	4
23	Sandoval	0	9	1	0	19	8	21	58
24	San Juan	0	1	0	0	12	11	4	28
25	San Miguel	0	1	0	0	29	4	6	40
26	Santa Fe	0	3	2	1	13	12	18	49
27	Sierra	0	2	0	0	9	0	5	16
28	Socorro	0	1	0	1	5	4	8	19
29	Taos	0	2	0	0	5	3	3	13
30	Torrance	0	0	0	0	6	6	4	16
32	S Valencia	0	1	0	0	5	4	16	26
33	Cibola	0	2	0	0	7	7	11	27
34	Eddy/Artesia	0	0	0	0	3	1	6	10
35	NW Bernalillo	0	6	2	2	42	24	64	140
36	SW Bernalillo	0	4	0	0	45	28	76	153
37	East Dona Ana	0	2	1	1	24	8	37	73
38	S Dona Ana	0	6	0	1	29	13	23	72
39	NE Bernalillo	0	8	1	0	70	20	75	174
42	N Valencia	0	0	0	0	31	4	23	58
	TOTAL	0	68	10	9	559	252	635	1,533

TANF Diversion Payments by Administrative Office and Region

	Jan 2013	SFY 13 Cumulative total
NW Region (1)		
Cibola	\$5,000	\$27,500
<i>McKinley</i>	\$0	\$0
Sandoval	\$0	\$0
<i>San Juan</i>	\$0	\$0
Valencia North	\$7,000	\$92,500
<i>Valencia South</i>	\$1,500	\$3,000
NW Region Total	\$13,500	\$123,000
NE Region (2)		
<i>Colfax</i>	\$0	\$0
Los Alamos	\$0	\$0
<i>Mora</i>	\$0	\$0
Rio Arriba	\$0	\$0
<i>San Miguel</i>	\$0	\$0
Santa Fe	\$0	\$0
<i>Taos</i>	\$0	\$0
NE Region Total	\$0	\$0
Central Region (3)		
<i>Bernalillo (NE)</i>	\$1,500	\$7,000
Bernalillo (NW)	\$0	\$0
<i>Bernalillo (SE)</i>	\$0	\$0
Bernalillo (SW)	\$0	\$1,500
<i>Torrance</i>	\$0	\$5,500
Central Region Total	\$1,500	\$14,000

	Jan 2013	SFY 13 Cumulative total
SE Region Four (4)		
Chaves	\$0	\$0
<i>Curry</i>	\$0	\$0
De Baca	\$0	\$0
<i>Eddy</i>	\$2,500	\$6,500
Guadalupe	\$0	\$0
<i>Harding</i>	\$0	\$0
Lea	\$0	\$0
<i>Quay</i>	\$0	\$0
Roosevelt	\$0	\$0
<i>Union</i>	\$0	\$0
SE Region Total	\$2,500	\$6,500
SW Region (5)		
Catron	\$0	\$0
<i>Doña Ana (West)</i>	\$0	\$0
Doña Ana (East)	\$0	\$0
<i>Doña Ana (Southern)</i>	\$0	\$0
Grant	\$0	\$0
<i>Hidalgo</i>	\$0	\$0
Lincoln	\$0	\$0
<i>Otero</i>	\$0	\$0
Luna	\$0	\$0
<i>Sierra</i>	\$0	\$0
Socorro	\$0	\$2,500
SW Region Total	\$0	\$2,500
State TOTAL	\$17,500	\$146,000

Note: Effective November 2007, households with one or two persons receives \$1,500, households with three or more members receive \$2,500.

**Number of Active TANF Cases Extended Beyond 60 Month Time Limit
By Type of Extension as of Jan 2013**

Admin By Region	Hardship Extension	Support Services, State	Support Services, Federal	Tribal	Total
NW Region (1)					
Cibola	7	6	0	0	13
McKinley	1	0	0	0	1
San Juan	0	0	0	0	0
Sandoval	14	17	10	0	41
Valencia North	8	8	1	0	17
Valencia South	6	1	1	0	8
NW Region	36	32	12	0	80
NE Region (2)					
Colfax	3	3	1	0	7
Union	0	0	0	0	0
Rio Arriba	10	15	3	0	28
San Miguel	10	4	3	0	17
Santa Fe	27	14	4	0	45
Taos	5	3	1	0	9
NE Region	55	39	12	0	106
Central Region (3)					
NE Bernalillo	24	9	2	0	35
NW Bernalillo	25	28	9	0	62
SE Bernalillo	22	10	3	0	35
SW Bernalillo	18	30	20	0	68
Torrance	7	1	0	0	8
Central Region	96	78	34	0	208

Admin By Region	Hardship Extension	Support Services, State	Support Services, Federal	Tribal	Total
SE Region (4)					
Chaves	7	9	1	0	17
Curry	5	2	1	0	8
Eddy	9	4	0	0	13
Eddy Artesia	0	3	0	0	3
Guadalupe	2	0	0	0	2
Lea	0	2	2	0	4
Quay	5	1	1	0	7
Roosevelt	0	2	0	0	2
SE Region	28	23	5	0	56
SW Region (5)					
East Doña Ana	15	12	12	0	39
West Doña Ana	27	31	21	0	79
South Doña Ana	8	4	6	0	18
Grant	3	5	0	0	8
Hidalgo	2	0	3	0	5
Lincoln	1	2	2	0	5
Luna	9	3	3	0	15
Otero	3	2	4	0	9
Sierra	1	1	1	0	3
Socorro	11	4	0	0	15
SW Region	80	64	52	0	196
State Total	295	236	115	0	646

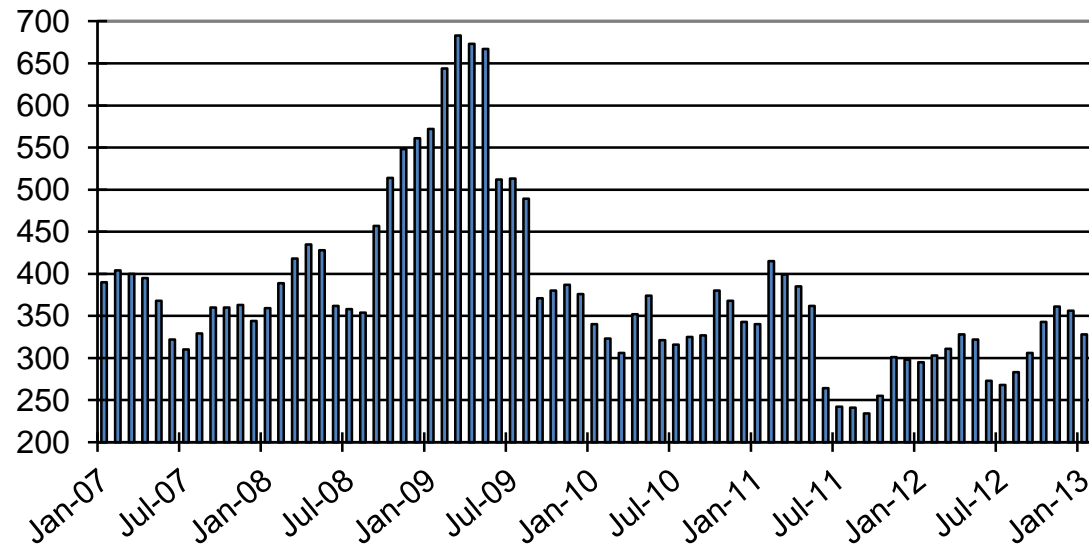
Education Works Cases by Administrative Office

Office #	Office	Jan-12	Dec-12	Jan-13	Jan 12 – Jan 13		Dec 12 – Jan 13	
					# change	% change	# change	% change
1	SE Bernalillo	18	34	30	12	66.7%	-4	-11.8%
3	Chaves	1	2	3	2	200.0%	1	50.0%
4	Colfax	5	6	5	0	0.0%	-1	-16.7%
3104	Union	0	0	0	0	NA	0	NA
5	Curry	4	2	1	-3	-75.0%	-1	-50.0%
7	West Dona Ana	22	25	23	1	4.5%	-2	-8.0%
8	Eddy	3	3	3	0	0.0%	0	0.0%
9	Grant	10	14	11	1	10.0%	-3	-21.4%
1209	Hidalgo	1	0	0	-1	-100.0%	0	NA
10	Guadalupe	2	0	0	-2	-100.0%	0	NA
13	Lea	4	4	4	0	0.0%	0	0.0%
14	Lincoln	0	0	0	0	NA	0	NA
16	Luna	2	2	4	2	100.0%	2	100.0%
17	McKinley	0	0	0	0	NA	0	NA
19	Otero	2	4	4	2	100.0%	0	0.0%
20	Quay	4	4	6	2	50.0%	2	50.0%
21	Rio Arriba	5	6	6	1	20.0%	0	0.0%
22	Roosevelt	1	1	1	0	0.0%	0	0.0%
23	Sandoval	17	30	25	8	47.1%	-5	-16.7%
24	San Juan	3	1	1	-2	-66.7%	0	0.0%
25	San Miguel	18	20	17	-1	-5.6%	-3	-15.0%
26	Santa Fe	12	16	13	1	8.3%	-3	-18.8%
27	Sierra	1	3	2	1	100.0%	-1	-33.3%
28	Socorro	1	1	1	0	0.0%	0	0.0%
29	Taos	9	13	12	3	33.3%	-1	-7.7%
30	Torrance	9	9	8	-1	-11.1%	-1	-11.1%
32	S Valencia	6	3	4	-2	-33.3%	1	33.3%
33	Cibola	6	5	3	-3	-50.0%	-2	-40.0%
34	Eddy/Artesia	1	2	2	1	100.0%	0	0.0%
35	NW Bernalillo	22	26	25	3	13.6%	-1	-3.8%
36	SW Bernalillo	10	16	16	6	60.0%	0	0.0%
37	East Dona Ana	19	21	18	-1	-5.3%	-3	-14.3%
38	S Dona Ana	14	22	20	6	42.9%	-2	-9.1%
39	NE Bernalillo	53	53	54	1	1.9%	1	1.9%
42	N Valencia	10	8	6	-4	-40.0%	-2	-25.0%
	TOTAL	295	356	328	33	11.2%	-28	-7.9%

Education Works Cases by Region

	Jan-12	Dec-12	Jan-13	Jan 12 – Jan 13		Dec 12 – Jan 13	
				# change	% change	# change	% change
NW Region 1	42	47	39	-3	-7.1%	-8	-17.0%
NE Region 2	49	61	53	4	8.2%	-8	-13.1%
Central Region 3	112	138	133	21	18.8%	-5	-3.6%
SE Region 4	20	18	20	0	0.0%	2	11.1%
SW Region 5	72	92	83	11	15.3%	-9	-9.8%
TOTAL	295	356	328	33	11.2%	-28	-7.9%

Education Works Cases, by Month



General Assistance (GA) Cases by County

County	Jan-12	Dec-12	Jan-13	Jan 12 – Jan 13		Dec 12 – Jan 13	
				# change	% change	# change	% change
Bernalillo	1,133	1,021	1,034	-99	-8.7%	13	1.3%
Catron	2	2	2	0	0.0%	0	0.0%
Chaves	100	93	99	-1	-1.0%	6	6.5%
Cibola	59	65	73	14	23.7%	8	12.3%
Colfax	30	26	24	-6	-20.0%	-2	-7.7%
Curry	86	65	70	-16	-18.6%	5	7.7%
De Baca	5	5	5	0	0.0%	0	0.0%
Dona Ana	226	258	265	39	17.3%	7	2.7%
Eddy	125	117	116	-9	-7.2%	-1	-0.9%
Grant	63	59	59	-4	-6.3%	0	0.0%
Guadalupe	14	15	15	1	7.1%	0	0.0%
Harding	0	0	1	1	NA	1	NA
Hidalgo	13	19	19	6	46.2%	0	0.0%
Lea	46	41	41	-5	-10.9%	0	0.0%
Lincoln	27	34	34	7	25.9%	0	0.0%
Los Alamos	4	7	6	2	50.0%	-1	-14.3%
Luna	46	42	42	-4	-8.7%	0	0.0%
McKinley	23	19	19	-4	-17.4%	0	0.0%
Mora	10	7	7	-3	-30.0%	0	0.0%
Otero	52	48	54	2	3.8%	6	12.5%
Quay	39	38	41	2	5.1%	3	7.9%
Rio Arriba	104	134	124	20	19.2%	-10	-7.5%
Roosevelt	8	7	9	1	12.5%	2	28.6%
Sandoval	88	98	106	18	20.5%	8	8.2%
San Juan	60	67	62	2	3.3%	-5	-7.5%
San Miguel	110	103	104	-6	-5.5%	1	1.0%
Santa Fe	162	196	207	45	27.8%	11	5.6%
Sierra	18	31	38	20	111.1%	7	22.6%
Socorro	39	50	54	15	38.5%	4	8.0%
Taos	67	75	75	8	11.9%	0	0.0%
Torrance	29	35	33	4	13.8%	-2	-5.7%
Union	5	5	11	6	120.0%	6	120.0%
Valencia	96	141	140	44	45.8%	-1	-0.7%
TOTAL	2,889	2,923	2,989	100	3.5%	66	2.3%

General Assistance (GA) Cases by Administrative Office

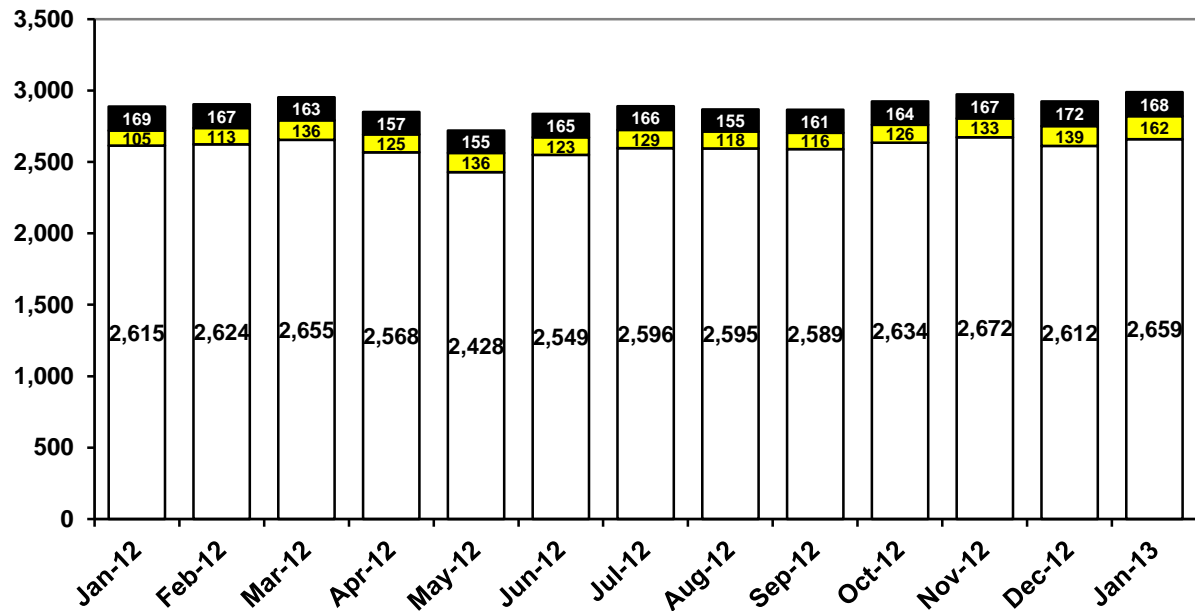
Office #	Office	Jan-12	Dec-12	Jan-13	Jan 12 – Jan 13		Dec 12 – Jan 13	
					# change	% change	# change	% change
1	SE Bernalillo	206	163	161	-45	-21.8%	-2	-1.2%
3	Chaves	100	93	99	-1	-1.0%	6	6.5%
4	Colfax	30	26	24	-6	-20.0%	-2	-7.7%
3104	Union	5	5	11	6	120.0%	6	120.0%
5	Curry	86	65	70	-16	-18.6%	5	7.7%
7	West Dona Ana	115	130	130	15	13.0%	0	0.0%
8	Eddy	85	80	79	-6	-7.1%	-1	-1.3%
9	Grant	63	59	59	-4	-6.3%	0	0.0%
1209	Hidalgo	13	19	19	6	46.2%	0	0.0%
10	Guadalupe	19	20	20	1	5.3%	0	0.0%
13	Lea	46	41	41	-5	-10.9%	0	0.0%
14	Lincoln	27	34	34	7	25.9%	0	0.0%
16	Luna	46	42	42	-4	-8.7%	0	0.0%
17	McKinley	23	19	19	-4	-17.4%	0	0.0%
19	Otero	52	48	54	2	3.8%	6	12.5%
20	Quay	39	38	41	2	5.1%	3	7.9%
21	Rio Arriba	110	142	131	21	19.1%	-11	-7.7%
22	Roosevelt	8	7	9	1	12.5%	2	28.6%
23	Sandoval	88	98	106	18	20.5%	8	8.2%
24	San Juan	60	67	62	2	3.3%	-5	-7.5%
25	San Miguel	120	109	110	-10	-8.3%	1	0.9%
26	Santa Fe	160	196	208	48	30.0%	12	6.1%
27	Sierra	20	39	43	23	115.0%	4	10.3%
28	Socorro	41	52	56	15	36.6%	4	7.7%
29	Taos	67	75	75	8	11.9%	0	0.0%
30	Torrance	29	35	33	4	13.8%	-2	-5.7%
32	S Valencia	28	44	45	17	60.7%	1	2.3%
33	Cibola	59	65	73	14	23.7%	8	12.3%
34	Eddy/Artesia	40	37	37	-3	-7.5%	0	0.0%
35	NW Bernalillo	284	272	289	5	1.8%	17	6.3%
36	SW Bernalillo	214	189	187	-27	-12.6%	-2	-1.1%
37	East Dona Ana	76	76	81	5	6.6%	5	6.6%
38	S Dona Ana	33	44	49	16	48.5%	5	11.4%
39	NE Bernalillo	429	397	397	-32	-7.5%	0	0.0%
42	N Valencia	68	97	95	27	39.7%	-2	-2.1%
	TOTAL	2,889	2,923	2,989	100	3.5%	66	2.3%

General Assistance (GA) Cases by Region

	Jan-12	Dec-12	Jan-13	Jan 12 – Jan 13		Dec 12 – Jan 13	
				# change	% change	# change	% change
NW Region 1	326	390	400	74	22.7%	10	2.6%
NE Region 2	492	553	559	67	13.6%	6	1.1%
Central Region 3	1,162	1,056	1,067	-95	-8.2%	11	1.0%
SE Region 4	423	381	396	-27	-6.4%	15	3.9%
SW Region 5	486	543	567	81	16.7%	24	4.4%
TOTAL	2,889	2,923	2,989	100	3.5%	66	2.3%

General Assistance Categories by Type

Disability Case Count
 Time Limited Disability Cases
 Unrelated Child Case Count



GA Interim Assistance Reimbursements				
	SFY 12		SFY 13	
	Cases	Amount	Cases	Amount
<i>July</i>	77	\$224,022	105	\$254,087
August	100	\$256,766	88	\$248,471
<i>September</i>	68	\$159,712	101	\$233,341
October	60	\$158,539	101	\$293,784
<i>November</i>	60	\$158,596	72	\$193,152
December	74	\$183,600	84	\$236,221
<i>January</i>	91	\$341,348	79	\$209,922
February	113	\$307,090		
<i>March</i>	77	\$186,834		
April	102	\$357,392		
<i>May</i>	90	\$230,243		
June	57	\$215,729		
SFY Total	969	\$2,779,871	630	\$1,668,978
Monthly Average	81	\$231,656	90	\$238,425

State Funded Legal Aliens				
	SFY 12		SFY 13	
	Participants	Payments	Participants	Payments
<i>July</i>	110	\$6,644	83	\$5,029
August	113	\$8,612	83	\$6,132
<i>September</i>	107	\$7,302	81	\$4,863
October	93	\$6,292	74	\$4,270
<i>November</i>	94	\$5,741	65	\$4,131
December	94	\$6,593	73	\$4,040
<i>January</i>	91	\$5,307	60	\$3,561
February	83	\$5,614		
<i>March</i>	69	\$4,406		
April	73	\$3,862		
<i>May</i>	78	\$5,371		
June	80	\$4,689		
SFY Total	1,085	\$70,433	519	\$32,026
Monthly Average	90	\$5,869	74	\$4,575

IAR case figures reflect those with expected reimbursement amounts above \$0. Figures unreconciled and subject to change.

Refugee Cash Assistance				
	SFY 12		SFY 13	
	Cases	Payments	Cases	Payments
<i>July</i>	15	\$6,428	23	\$7,155
August	9	\$4,433	27	\$7,742
<i>September</i>	5	\$2,930	32	\$8,267
October	5	\$1,519	32	\$9,803
<i>November</i>	10	\$2,675	31	\$9,552
December	9	\$3,380	40	\$10,435
<i>January</i>	12	\$3,285	36	\$11,489
February	13	\$3,210		
<i>March</i>	13	\$3,739		
April	23	\$5,654		
<i>May</i>	26	\$7,579		
June	22	\$7,496		
SFY Total	162	\$52,328	221	\$64,443
Monthly Average	14	\$4,361	32	\$9,206

State Supplement for Residential Care (SSRC)				
	SFY 12		SFY 13	
	Cases	Payments	Cases	Payments
<i>July</i>	51	\$5,300	45	\$4,600
August	53	\$5,500	44	\$4,600
<i>September</i>	52	\$5,300	46	\$4,800
October	53	\$5,400	47	\$4,700
<i>November</i>	53	\$5,300	46	\$4,900
December	52	\$5,400	47	\$5,200
<i>January</i>	45	\$5,600	50	\$5,100
February	44	\$4,700		
<i>March</i>	42	\$4,400		
April	44	\$4,400		
<i>May</i>	46	\$4,800		
June	46	\$4,600		
SFY Total	581	\$60,700	326	\$33,900
Monthly Average	48	\$5,058	46	\$4,843

Low Income Home Energy Assistance Program (LIHEAP) Payments by Administrative Office

Cumulative, For Federal Fiscal Year 2013

Office #	Office	Payments	Number of Households Paid
1	SE Bernalillo	\$192,688	1,655
3	Chaves	\$245,296	1,967
4	Colfax	\$59,120	476
3104	Union	\$10,320	76
5	Curry	\$89,504	739
7	West Dona Ana	\$281,232	2,346
8	Eddy	\$67,184	551
9	Grant	\$112,912	900
1209	Hidalgo	\$19,296	157
10	Guadalupe	\$63,504	450
13	Lea	\$81,376	650
14	Lincoln	\$39,552	321
16	Luna	\$119,568	929
17	McKinley	\$60,064	503
19	Otero	\$43,168	396
20	Quay	\$56,208	448
21	Rio Arriba	\$288,176	2,333
22	Roosevelt	\$48,336	392

Office #	Office	Payments	Number of Households Paid
23	Sandoval	\$113,792	1,025
24	San Juan	\$130,896	1,074
25	San Miguel	\$254,704	1,869
26	Santa Fe	\$176,784	1,489
27	Sierra	\$88,672	668
28	Socorro	\$109,152	828
29	Taos	\$183,824	1,425
30	Torrance	\$95,824	753
32	S Valencia	\$129,136	1,020
33	Cibola	\$103,696	835
34	Eddy/Artesia	\$30,928	252
35	NW Bernalillo	\$229,904	2,029
36	SW Bernalillo	\$289,872	2,493
37	East Dona Ana	\$204,864	1,713
38	S Dona Ana	\$226,288	1,858
39	NE Bernalillo	\$334,624	2,947
42	N Valencia	\$207,056	1,673
	TOTAL	\$4,787,520	39,240

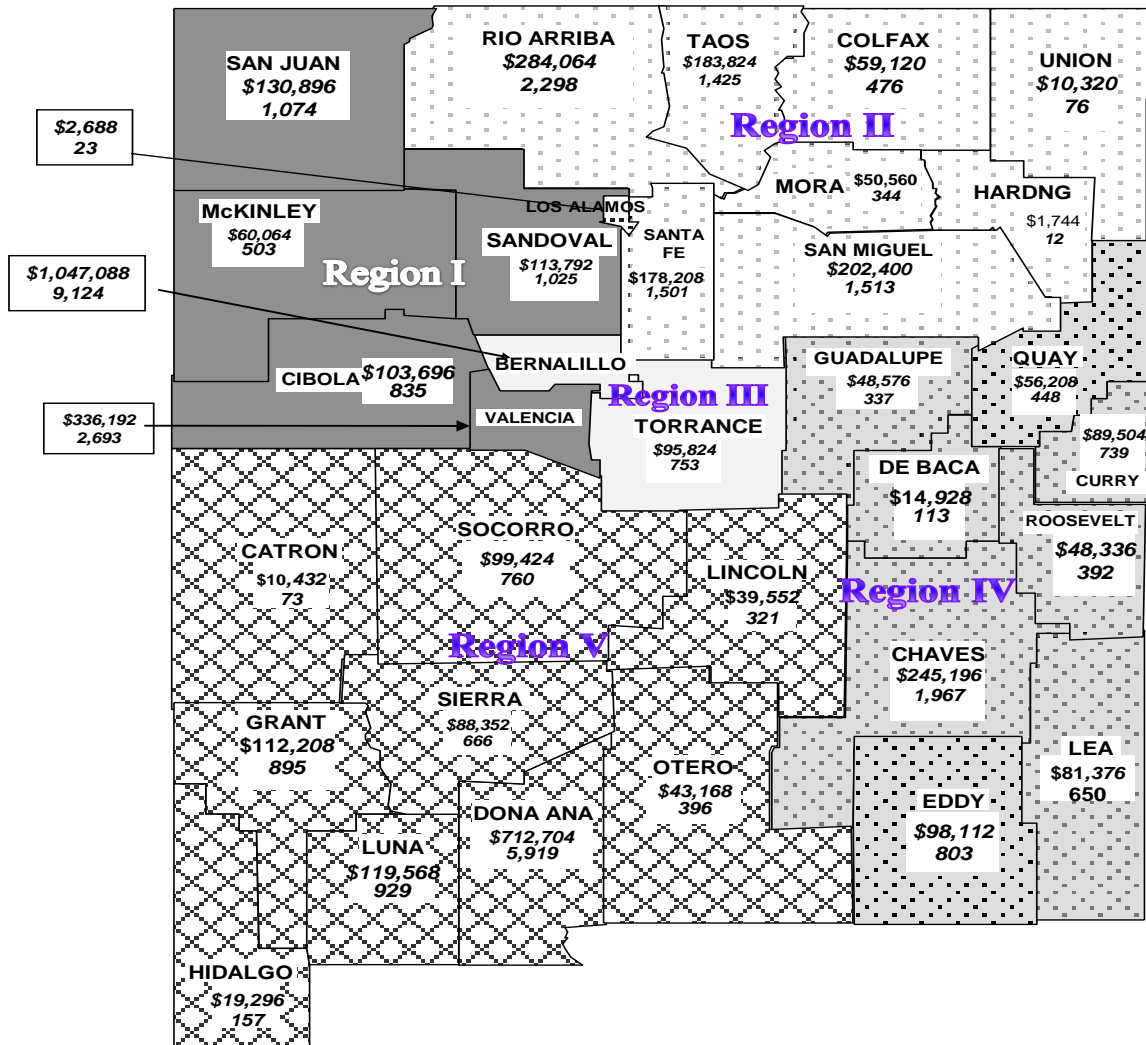
LIHEAP Payments by Region

Cumulative, For Federal Fiscal Year 2013

Region	Payments	Number of Households Paid
NW Region 1	\$744,640	6,130
NE Region 2	\$972,928	7,668
Central Region 3	\$1,142,912	9,877
SE Region 4	\$682,336	5,449
SW Region 5	\$1,244,704	10,116
TOTAL	\$4,787,520	39,240

Note: Five Sandoval Indian Pueblos, Inc., Jemez Pueblo, The Jicarilla Nation, Laguna Pueblo, Nambé Pueblo, The Navajo Nation, and Zuni Pueblo administer their own LIHEAP programs. LIHEAP does not process new applications received during the month of September until the following Federal fiscal year.

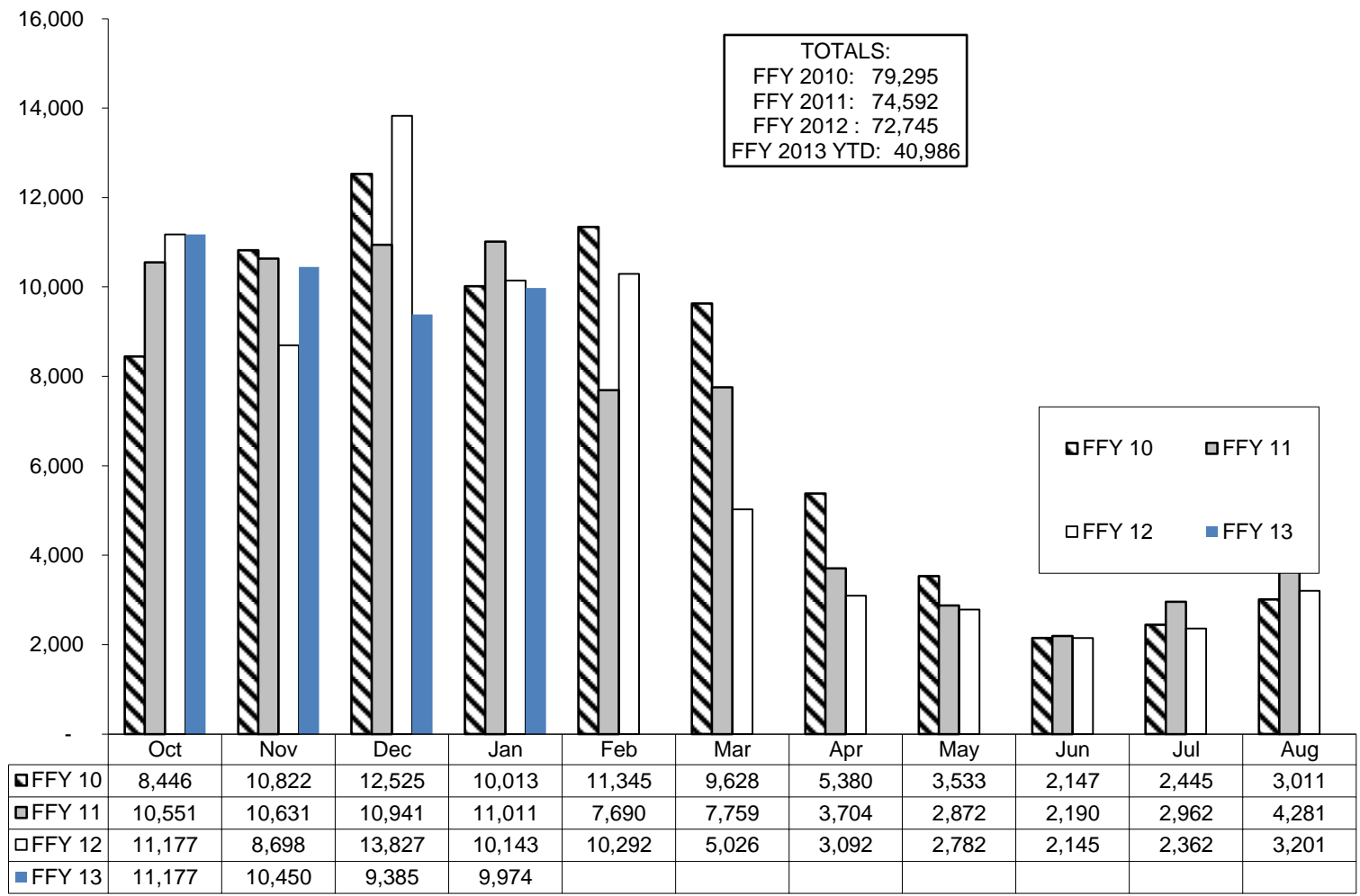
LIHEAP PAYMENTS BY COUNTY



Region Totals		
Region	Payment	Households
Region I	\$744,640	6,130
Region II	\$972,928	7,668
Region III	\$1,142,912	9,877
Region IV	\$682,336	5,449
Region V	\$928,736	10,116
State total	\$4,787,520	39,240

Legend
 1. \$ Payments
 2. # of households paid

LIHEAP Application Approvals



Medicaid Eligibles by County

County	Oct-11	Sep-12	Oct-12	Oct 11 – Oct 12		Sep 12 – Oct 12	
				# change	% change	# change	% change
Bernalillo	143,614	146,351	146,753	3,139	2.2%	402	0.3%
Catron	515	496	502	-13	-2.5%	6	1.2%
Chaves	20,009	20,318	20,492	483	2.4%	174	0.9%
Cibola	8,567	8,844	8,867	300	3.5%	23	0.3%
Colfax	3,300	3,648	3,680	380	11.5%	32	0.9%
Curry	13,110	13,168	13,140	30	0.2%	-28	-0.2%
De Baca	496	469	476	-20	-4.0%	7	1.5%
Dona Ana	66,731	68,137	68,296	1,565	2.3%	159	0.2%
Eddy	13,514	13,596	13,632	118	0.9%	36	0.3%
Grant	7,168	7,014	7,002	-166	-2.3%	-12	-0.2%
Guadalupe	1,297	1,350	1,363	66	5.1%	13	1.0%
Harding	67	53	56	-11	-16.4%	3	5.7%
Hidalgo	1,254	1,229	1,221	-33	-2.6%	-8	-0.7%
Lea	15,780	16,333	16,409	629	4.0%	76	0.5%
Lincoln	4,302	4,390	4,472	170	4.0%	82	1.9%
Los Alamos	502	612	629	127	25.3%	17	2.8%
Luna	9,167	9,614	9,647	480	5.2%	33	0.3%
McKinley	29,778	30,047	30,149	371	1.2%	102	0.3%
Mora	1,269	1,153	1,135	-134	-10.6%	-18	-1.6%
Otero	11,539	11,613	11,574	35	0.3%	-39	-0.3%
Quay	2,701	2,672	2,687	-14	-0.5%	15	0.6%
Rio Arriba	13,874	14,543	14,623	749	5.4%	80	0.6%
Roosevelt	4,951	4,897	4,871	-80	-1.6%	-26	-0.5%
Sandoval	25,360	26,481	26,493	1,133	4.5%	12	0.0%
San Juan	35,253	35,994	36,232	979	2.8%	238	0.7%
San Miguel	9,262	9,742	9,680	418	4.5%	-62	-0.6%
Santa Fe	22,874	24,417	24,468	1,594	7.0%	51	0.2%
Sierra	3,357	3,465	3,483	126	3.8%	18	0.5%
Socorro	5,191	5,306	5,338	147	2.8%	32	0.6%
Taos	8,018	8,219	8,206	188	2.3%	-13	-0.2%
Torrance	6,077	5,865	5,914	-163	-2.7%	49	0.8%
Union	873	1,523	1,522	649	74.3%	-1	-0.1%
Valencia	20,303	20,755	20,696	393	1.9%	-59	-0.3%
Unspecified	484	525	528	44	9.1%	3	0.6%
TOTAL	510,557	522,839	524,236	13,679	2.7%	1,397	0.3%

Note: All figures are updated historically to include retroactive eligibility, retroactive closures and other late reporting eligibility changes. Excludes clients in: SLIMB, QI1, SCI and Adult Expansion, PAK, PAM & SEIP. Source: <http://www.hsd.state.nm.us/mad/RMedicaidEligibility.html>

Medicaid Cases by County

County	Jan-12	Dec-12	Jan-13	Jan 12 – Jan 13		Dec 12 – Jan 13	
				# change	% change	# change	% change
Bernalillo	88,521	91,166	91,033	2,512	2.8%	-133	-0.1%
Catron	330	326	315	-15	-4.5%	-11	-3.4%
Chaves	11,874	12,130	12,104	230	1.9%	-26	-0.2%
Cibola	4,327	4,587	4,574	247	5.7%	-13	-0.3%
Colfax	1,982	1,651	1,649	-333	-16.8%	-2	-0.1%
Curry	7,015	7,099	7,108	93	1.3%	9	0.1%
De Baca	275	291	292	17	6.2%	1	0.3%
Dona Ana	38,940	39,553	39,358	418	1.1%	-195	-0.5%
Eddy	8,090	8,022	8,021	-69	-0.9%	-1	0.0%
Grant	4,472	4,275	4,417	-55	-1.2%	142	3.3%
Guadalupe	779	785	770	-9	-1.2%	-15	-1.9%
Harding	47	41	39	-8	-17.0%	-2	-4.9%
Hidalgo	840	782	778	-62	-7.4%	-4	-0.5%
Lea	8,541	9,022	9,004	463	5.4%	-18	-0.2%
Lincoln	2,981	3,058	3,111	130	4.4%	53	1.7%
Los Alamos	310	398	395	85	27.4%	-3	-0.8%
Luna	5,241	5,487	5,417	176	3.4%	-70	-1.3%
McKinley	13,728	13,992	13,996	268	2.0%	4	0.0%
Mora	741	638	626	-115	-15.5%	-12	-1.9%
Otero	7,322	7,209	7,195	-127	-1.7%	-14	-0.2%
Quay	1,622	1,605	1,623	1	0.1%	18	1.1%
Rio Arriba	8,681	9,035	9,004	323	3.7%	-31	-0.3%
Roosevelt	2,701	2,679	2,692	-9	-0.3%	13	0.5%
Sandoval	14,707	16,003	15,973	1,266	8.6%	-30	-0.2%
San Juan	17,313	17,972	17,934	621	3.6%	-38	-0.2%
San Miguel	5,306	5,539	5,477	171	3.2%	-62	-1.1%
Santa Fe	14,420	15,515	15,596	1,176	8.2%	81	0.5%
Sierra	2,132	2,183	2,429	297	13.9%	246	11.3%
Socorro	2,521	2,577	2,696	175	6.9%	119	4.6%
Taos	5,438	5,503	5,535	97	1.8%	32	0.6%
Torrance	3,692	3,799	3,778	86	2.3%	-21	-0.6%
Union	611	576	670	59	9.7%	94	16.3%
Valencia	11,831	12,570	12,567	736	6.2%	-3	0.0%
TOTAL	297,331	306,068	306,176	8,845	3.0%	108	0.0%

SCI cases are included in the client's county of residence.

Medicaid Cases by Administrative Office

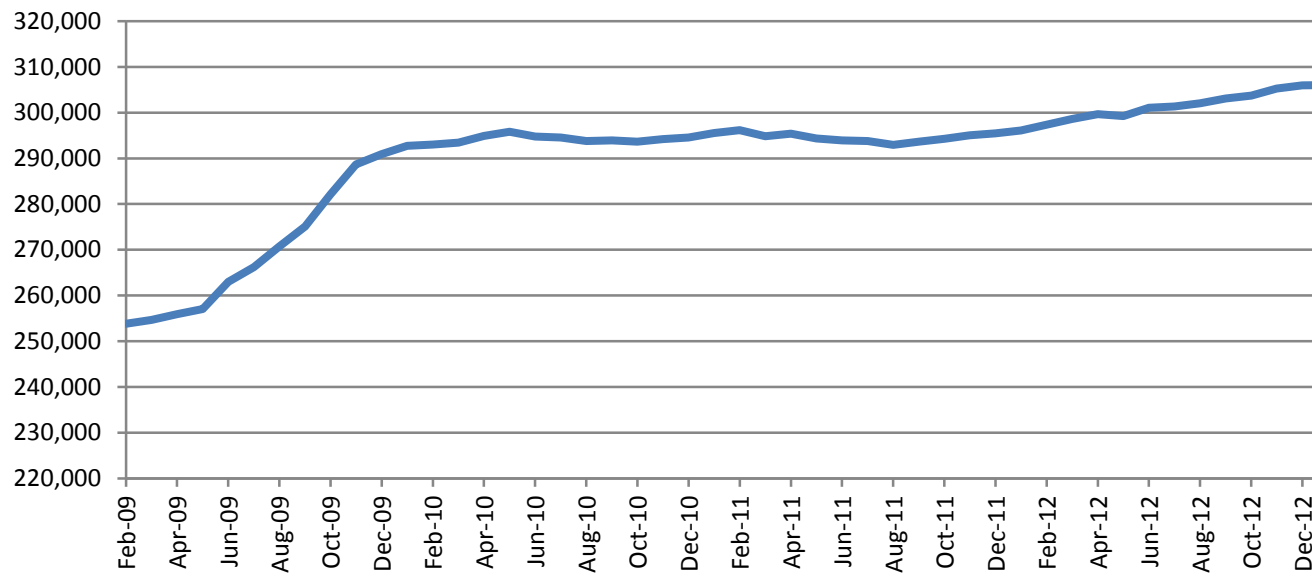
Office #	Office	Jan-12	Dec-12	Jan-13	Jan 12 – Jan 13		Dec 12 – Jan 13	
					# change	% change	# change	% change
1	SE Bernalillo	14,288	14,295	14,216	-72	-0.5%	-79	-0.6%
3	Chaves	10,054	10,467	10,462	408	4.1%	-5	0.0%
4	Colfax	1,722	1,436	1,432	-290	-16.8%	-4	-0.3%
3104	Union	557	519	606	49	8.8%	87	16.8%
5	Curry	6,070	6,240	6,259	189	3.1%	19	0.3%
7	West Dona Ana	9,749	10,688	10,749	1,000	10.3%	61	0.6%
8	Eddy	4,458	4,504	4,511	53	1.2%	7	0.2%
9	Grant	3,726	3,550	3,675	-51	-1.4%	125	3.5%
1209	Hidalgo	650	610	611	-39	-6.0%	1	0.2%
10	Guadalupe	877	914	906	29	3.3%	-8	-0.9%
13	Lea	7,841	8,402	8,395	554	7.1%	-7	-0.1%
14	Lincoln	2,258	2,417	2,475	217	9.6%	58	2.4%
16	Luna	4,325	4,742	4,685	360	8.3%	-57	-1.2%
17	McKinley	13,148	13,465	13,476	328	2.5%	11	0.1%
19	Otero	5,939	5,949	5,951	12	0.2%	2	0.0%
20	Quay	1,326	1,343	1,357	31	2.3%	14	1.0%
21	Rio Arriba	7,784	8,349	8,320	536	6.9%	-29	-0.3%
22	Roosevelt	2,283	2,294	2,314	31	1.4%	20	0.9%
23	Sandoval	13,023	13,988	13,979	956	7.3%	-9	-0.1%
24	San Juan	16,757	17,493	17,459	702	4.2%	-34	-0.2%
25	San Miguel	5,080	5,275	5,214	134	2.6%	-61	-1.2%
26	Santa Fe	12,298	13,553	13,664	1,366	11.1%	111	0.8%
27	Sierra	2,860	2,917	3,133	273	9.5%	216	7.4%
28	Socorro	2,432	2,538	2,639	207	8.5%	101	4.0%
29	Taos	4,320	4,484	4,521	201	4.7%	37	0.8%
30	Torrance	2,958	3,009	2,991	33	1.1%	-18	-0.6%
32	S Valencia	3,223	3,327	3,332	109	3.4%	5	0.2%
33	Cibola	4,022	4,318	4,309	287	7.1%	-9	-0.2%
34	Eddy/Artesia	2,352	2,372	2,373	21	0.9%	1	0.0%
35	NW Bernalillo	19,996	21,009	20,991	995	5.0%	-18	-0.1%
36	SW Bernalillo	20,320	20,917	20,932	612	3.0%	15	0.1%
37	East Dona Ana	9,979	9,909	9,910	-69	-0.7%	1	0.0%
38	S Dona Ana	12,063	12,362	12,191	128	1.1%	-171	-1.4%
39	NE Bernalillo	20,820	21,879	21,930	1,110	5.3%	51	0.2%
42	N Valencia	7,080	7,273	7,284	204	2.9%	11	0.2%
	SCI	40,693	39,261	38,924	-1,769	-4.3%	-337	-0.9%
	TOTAL	297,331	306,068	306,176	8,845	3.0%	108	0.0%

Medicaid Cases by Region

	Jan-12	Dec-12	Jan-13	Jan 12 – Jan 13		Dec 12 – Jan 13	
				# change	% change	# change	% change
NW Region 1	57,253	59,864	59,839	2,586	4.5%	-25	0.0%
NE Region 2	31,761	33,616	33,757	1,996	6.3%	141	0.4%
Central Region 3	78,382	81,109	81,060	2,678	3.4%	-49	-0.1%
SE Region 4	35,261	36,536	36,577	1,316	3.7%	41	0.1%
SW Region 5	94,674	94,943	94,943	269	0.3%	0	0.0%
TOTAL	297,331	306,068	306,176	8,845	3.0%	108	0.0%

SCI cases are included in Region 5.

Medicaid Cases



Medicaid Cases by Category

Cat #	Category Description	Cases
Medicaid Extension		
001	Medicaid Extension for Aged	35
003	Medicaid Extension for Blind	6
004	Medicaid Extension for Disabled	540
Medicaid Extension Total		581

Medicaid for Women, Children, and Low Income Families		
072	JUL Medicaid with Cash Assistance	8,381
072	JUL Medicaid without Cash Assistance	30,270
030	Full Coverage Medicaid for Pregnant Women	360
031	Newborns	14,200
032	Children (Up to 185% Federal Poverty)	101,555
032c	Children - SCHIP (Up to 235% Federal Poverty)	4,721
035f	Family Planning (Up to 185% Federal Poverty)	45,480
035p	Pregnancy (Up to 185% Federal Poverty)	6,601
052	Breast Cancer and Cervical Cancer	386
Medicaid for Women, Children, and Low Income Families Total		211,954

Post-JUL Medicaid		
027	4-Month Medicaid due to Increased Child Support	0
028	12-Month Medicaid due to Increased Earnings	8,399
Post-JUL Medicaid Total		8,399

Special Medicaid Programs		
040	Medicaid for Qualified Medicare Beneficiaries	21,745
045	Medicaid for Special Low Income Medicare Beneficiaries	7,604
045	Medicaid for Qualifying Individuals 1	3,716
043	Working Disabled Individuals	1,842
049	Medical Assistance for Single Adult Refugees	89
Special Medicaid Programs Total		34,996

Cat #	Category Description	Cases
State Funded Special Medical Needs		
051	Medical Assistance for Aged and Seriously ill	0
053	Medical Assistance for Blind and Seriously ill	0
054	Medical Assistance for Disabled and Seriously ill	1
State Funded Special Medical Needs Total		1

Institutional Care Medicaid		
081	Institutional Care Medicaid for Aged	3,187
083	Institutional Care Medicaid for Blind	2
084	Institutional Care Medicaid for Disabled	877
Institutional Care Medicaid Total		4,066

Home and Community-Based Waivers Medicaid		
090	Medicaid Waiver for HIV/AIDS	24
091	Medicaid Waiver for Aged	1,468
092	Brain Injury	296
093	Medicaid Waiver for Blind	5
094	Medicaid Waiver for Disabled	1,277
095	Medicaid Waiver for Medically Fragile Children	215
096	Medicaid Waiver for Developmentally Disabled	3,970
097	Non-Medicaid Waiver for Aged	0
098	Non-Medicaid Waiver for Blind	0
099	Non-Medicaid Waiver for Disabled	0
Home and Community-Based Waivers Medicaid Total		7,255

Health Insurance Flexibility & Accountability (HIFA) Waiver		
062	State Coverage Insurance *	38,924
(HIFA) Waiver Total		38,924

Total Medicaid Cases 306,176

* Category 062 (Insure New Mexico Program) reflects all registered cases determined eligible at the end of the benefit month. Of the cases determined eligible for this month 38,906 were enrolled in the program. This table includes preliminary data that is subject to change.

SNAP Timeliness Rates (Percent of Cases Processed Timely)

Admin By Region	SNAP	SNAP (Expedited)
NW Region (1)		
Cibola	100.0%	100.0%
<i>McKinley</i>	98.9%	99.0%
Sandoval	99.1%	99.3%
<i>San Juan</i>	99.2%	99.4%
Valencia South	100.0%	100.0%
<i>Valencia North</i>	99.0%	100.0%
NW Region Total	99.2%	99.5%

NE Region (2)		
<i>Colfax</i>	100.0%	100.0%
Rio Arriba	99.8%	99.6%
<i>San Miguel</i>	98.2%	96.3%
Santa Fe	98.7%	98.5%
<i>Taos</i>	98.9%	98.4%
NE Region Total	99.0%	98.6%

Central Region (3)		
NE Bernalillo	99.1%	99.3%
<i>NW Bernalillo</i>	98.8%	98.6%
SE Bernalillo	99.1%	99.6%
<i>SW Bernalillo</i>	99.3%	99.3%
Torrance	99.5%	100.0%
Central Region Total	99.1%	99.2%

Admin By Region	SNAP	SNAP (Expedited)
SE Region (4)		
Chaves	99.2%	99.0%
<i>Curry</i>	99.4%	99.2%
Guadalupe	100.0%	100.0%
<i>Eddy</i>	100.0%	100.0%
Eddy Artesia	98.9%	97.4%
<i>Lea</i>	99.1%	99.2%
Quay	100.0%	100.0%
<i>Roosevelt</i>	100.0%	100.0%
SE Region Total	99.4%	99.3%

SW Region (5)		
<i>West Doña Ana</i>	99.9%	99.7%
East Doña Ana	99.7%	99.6%
<i>Doña Ana (Southern)</i>	99.3%	98.4%
Grant	99.2%	99.0%
<i>Lincoln</i>	100.0%	100.0%
Luna	100.0%	100.0%
<i>Otero</i>	100.0%	100.0%
Sierra	100.0%	100.0%
<i>Socorro</i>	100.0%	100.0%
SW Region Total	99.7%	99.6%

State Total	99.3%	99.3%
--------------------	--------------	--------------

Timeliness of CAP cases is reflected in the appropriate administrative office.

Income Support Division Caseloads by County and Region *

County (Administrative office)	SNAP Cases	TANF Cases	Education Works Cases	General Assistance Cases	Medical Assistance Cases *	SSRC Cases	Refugee Assistance Cases	Total Cases	Authorized FAA Case Workers	Cases per Authorized FAA Case Worker	Actual FAA Case Workers	Cases per Actual Case Worker
Cibola ***	3,244	266	3	73	4,277	0	0	7,863	8	990	7	1,132
<i>Navajo (Cibola)</i>	<i>25</i>	<i>0</i>	<i>0</i>	<i>0</i>	<i>29</i>	<i>0</i>	<i>0</i>	<i>54</i>	<i>0</i>	<i>-</i>	<i>0</i>	<i>-</i>
Zuni (Cibola)	2	0	0	0	3	0	0	5	0	-	0	-
<i>McKinley</i>	<i>1,503</i>	<i>63</i>	<i>0</i>	<i>12</i>	<i>2,493</i>	<i>0</i>	<i>0</i>	<i>4,071</i>	<i>24</i>	<i>932</i>	<i>22</i>	<i>1,016</i>
Cibola (McKinley)	13	1	0	0	9	0	0	23	0	-	0	-
<i>Navajo (McKinley)</i>	<i>6,215</i>	<i>30</i>	<i>0</i>	<i>7</i>	<i>9,380</i>	<i>0</i>	<i>0</i>	<i>15,632</i>	<i>0</i>	<i>-</i>	<i>0</i>	<i>-</i>
Zuni (McKinley)	1,039	0	0	0	1,594	0	0	2,633	0	-	0	-
<i>San Juan</i>	<i>10,012</i>	<i>282</i>	<i>1</i>	<i>62</i>	<i>16,885</i>	<i>0</i>	<i>0</i>	<i>27,242</i>	<i>27</i>	<i>1,057</i>	<i>22</i>	<i>1,297</i>
Navajo (San Juan)	710	0	0	0	574	0	0	1,284	0	-	0	-
<i>Sandoval</i>	<i>9,063</i>	<i>595</i>	<i>25</i>	<i>106</i>	<i>13,922</i>	<i>0</i>	<i>0</i>	<i>23,711</i>	<i>24</i>	<i>994</i>	<i>24</i>	<i>994</i>
Navajo (Sandoval)	92	0	0	0	57	0	0	149	0	-	0	-
<i>Valencia North (Los Lunas)</i>	<i>5,504</i>	<i>486</i>	<i>6</i>	<i>95</i>	<i>7,284</i>	<i>7</i>	<i>0</i>	<i>13,382</i>	<i>15</i>	<i>892</i>	<i>14</i>	<i>956</i>
Torrance (Valencia)	0	0	0	0	0	0	0	0	0	-	0	-
<i>Valencia South (Belen)</i>	<i>3,114</i>	<i>249</i>	<i>4</i>	<i>45</i>	<i>3,332</i>	<i>0</i>	<i>0</i>	<i>6,744</i>	<i>5</i>	<i>1,349</i>	<i>5</i>	<i>1,349</i>
Socorro (Valencia)	1	0	0	0	0	0	0	1	0	-	0	-
<i>N/A Outreach</i>	<i>0</i>	<i>0</i>	<i>0</i>	<i>0</i>	<i>0</i>	<i>0</i>	<i>0</i>	<i>0</i>	<i>6</i>	<i>-</i>	<i>4</i>	<i>-</i>
CAP Central Unit **	0	0	0	0	0	0	0	0	4	0	3	0
NW Region (1) Total	40,537	1,972	39	400	59,839	7	0	102,794	107	961	97	1,060
Colfax	1,195	109	5	24	1,432	0	0	2,765	4	691	3	922
<i>Union (Colfax)</i>	<i>389</i>	<i>18</i>	<i>0</i>	<i>11</i>	<i>606</i>	<i>0</i>	<i>0</i>	<i>1,024</i>	<i>1</i>	<i>1,024</i>	<i>1</i>	<i>1,024</i>
Rio Arriba	6,568	531	6	124	7,862	0	0	15,091	17	935	15	1,060
<i>Los Alamos (Rio Arriba)</i>	<i>217</i>	<i>14</i>	<i>0</i>	<i>6</i>	<i>355</i>	<i>0</i>	<i>0</i>	<i>592</i>	<i>0</i>	<i>-</i>	<i>0</i>	<i>-</i>
Santa Fe (Rio Arriba)	101	7	0	1	103	0	0	212	0	-	0	-
<i>San Miguel</i>	<i>4,911</i>	<i>324</i>	<i>17</i>	<i>102</i>	<i>4,681</i>	<i>25</i>	<i>0</i>	<i>10,060</i>	<i>18</i>	<i>619</i>	<i>17</i>	<i>655</i>
Harding (San Miguel)	27	0	0	1	36	0	0	64	0	-	0	-
<i>Mora (San Miguel)</i>	<i>491</i>	<i>23</i>	<i>0</i>	<i>7</i>	<i>497</i>	<i>0</i>	<i>0</i>	<i>1,018</i>	<i>0</i>	<i>-</i>	<i>0</i>	<i>-</i>
Santa Fe	9,693	607	13	206	13,645	7	0	24,171	23	1,009	19	1,275
<i>San Miguel (Santa Fe)</i>	<i>29</i>	<i>2</i>	<i>0</i>	<i>2</i>	<i>19</i>	<i>0</i>	<i>0</i>	<i>52</i>	<i>0</i>	<i>-</i>	<i>0</i>	<i>-</i>
Taos	3,826	132	12	75	4,521	0	0	8,566	9	952	6	1,428
<i>N/A Outreach</i>	<i>0</i>	<i>0</i>	<i>0</i>	<i>0</i>	<i>0</i>	<i>0</i>	<i>0</i>	<i>0</i>	<i>1</i>	<i>-</i>	<i>0</i>	<i>-</i>
NE Region (2) Total	27,447	1,767	53	559	33,757	32	0	63,615	73	871	61	1,043
NE Bernalillo	19,853	1,435	54	397	21,930	0	9	43,678	43	1,016	41	1,065
<i>Navajo (NE Bernalillo)</i>	<i>0</i>	<i>0</i>	<i>0</i>	<i>0</i>	<i>0</i>	<i>0</i>	<i>0</i>	<i>0</i>	<i>0</i>	<i>-</i>	<i>0</i>	<i>-</i>
NW Bernalillo	14,890	1,203	25	289	20,991	1	0	37,399	42	870	37	1,011
<i>Navajo (NW Bernalillo)</i>	<i>0</i>	<i>0</i>	<i>0</i>	<i>0</i>	<i>0</i>	<i>0</i>	<i>0</i>	<i>0</i>	<i>0</i>	<i>-</i>	<i>0</i>	<i>-</i>
SE Bernalillo	11,101	1,034	30	161	14,215	0	26	26,567	31	857	24	1,107
<i>Torrance (SE Bernalillo)</i>	<i>1</i>	<i>0</i>	<i>0</i>	<i>0</i>	<i>1</i>	<i>0</i>	<i>0</i>	<i>2</i>	<i>0</i>	<i>-</i>	<i>0</i>	<i>-</i>
SW Bernalillo	17,061	1,634	16	187	20,931	3	1	39,833	43	926	38	1,048
<i>Navajo (SW Bernalillo)</i>	<i>1</i>	<i>0</i>	<i>0</i>	<i>0</i>	<i>1</i>	<i>0</i>	<i>0</i>	<i>2</i>	<i>0</i>	<i>-</i>	<i>0</i>	<i>-</i>
N/A Outreach	0	0	0	0	0	0	0	0	1	-	0	-
<i>Torrance</i>	<i>2,589</i>	<i>264</i>	<i>8</i>	<i>33</i>	<i>2,991</i>	<i>0</i>	<i>0</i>	<i>5,885</i>	<i>11</i>	<i>535</i>	<i>8</i>	<i>736</i>
Central Region (3) Total	65,496	5,570	133	1,067	81,060	4	36	153,366	171	897	148	1,036

Income Support Division Caseloads by County and Region (Continued) *

County (Administrative office)	SNAP Cases	TANF Cases	Education Works Cases	General Assistance Cases	Medical Assistance Cases *	SSRC Cases	Refugee Assistance Cases	Total Cases	Authorized FAA Case Workers	Cases per Authorized FAA Case Worker	Actual FAA Case Workers	Cases per Actual Case Worker
Chaves	6,576	581	3	99	10,462	0	0	17,721	22	806	20	886
<i>Curry</i>	<i>4,070</i>	<i>529</i>	<i>1</i>	<i>70</i>	<i>6,258</i>	<i>0</i>	<i>0</i>	<i>10,928</i>	<i>12</i>	<i>911</i>	<i>10</i>	<i>1,093</i>
De Baca (Curry)	0	0	0	0	0	0	0	0	0	-	0	-
<i>Quay (Curry)</i>	<i>0</i>	<i>0</i>	<i>0</i>	<i>0</i>	<i>0</i>	<i>0</i>	<i>0</i>	<i>0</i>	<i>0</i>	<i>-</i>	<i>0</i>	<i>-</i>
Roosevelt (Curry)	0	0	0	0	1	0	0	1	0	-	0	-
<i>Guadalupe</i>	<i>566</i>	<i>36</i>	<i>0</i>	<i>15</i>	<i>656</i>	<i>7</i>	<i>0</i>	<i>1,280</i>	<i>2</i>	<i>853</i>	<i>2</i>	<i>853</i>
De Baca (Guadalupe)	163	7	0	5	250	0	0	425	0	-	0	-
<i>Quay</i>	<i>1,262</i>	<i>110</i>	<i>6</i>	<i>41</i>	<i>1,357</i>	<i>0</i>	<i>0</i>	<i>2,776</i>	<i>4</i>	<i>694</i>	<i>4</i>	<i>694</i>
Eddy	2,910	283	3	79	4,511	0	0	7,786	9	865	8	973
<i>Eddy (Artesia)</i>	<i>1,311</i>	<i>141</i>	<i>2</i>	<i>37</i>	<i>2,373</i>	<i>0</i>	<i>0</i>	<i>3,864</i>	<i>5</i>	<i>773</i>	<i>5</i>	<i>773</i>
Lea	3,932	430	4	41	8,395	0	0	12,802	14	914	12	1,067
<i>Roosevelt</i>	<i>1,410</i>	<i>120</i>	<i>1</i>	<i>9</i>	<i>2,314</i>	<i>0</i>	<i>0</i>	<i>3,854</i>	<i>5</i>	<i>771</i>	<i>5</i>	<i>771</i>
SE Region (4) Total	22,200	2,237	20	396	36,577	7	0	61,437	73	842	66	931
West Doña Ana	9,594	1,060	23	130	10,749	0	0	21,556	22	980	20	1,078
<i>East Doña Ana</i>	<i>6,946</i>	<i>727</i>	<i>18</i>	<i>81</i>	<i>9,910</i>	<i>0</i>	<i>0</i>	<i>17,682</i>	<i>20</i>	<i>884</i>	<i>20</i>	<i>884</i>
Doña Ana (Southern)	7,636	1,177	20	49	12,191	0	0	21,073	21	1,003	21	1,003
<i>SCI Unit</i>	<i>0</i>	<i>0</i>	<i>0</i>	<i>0</i>	<i>38,924</i>	<i>0</i>	<i>0</i>	<i>38,924</i>	<i>22</i>	<i>1,769</i>	<i>19</i>	<i>2,049</i>
Grant	3,063	206	11	59	3,636	0	0	6,975	8	879	7	1,005
<i>Catron (Grant)</i>	<i>18</i>	<i>0</i>	<i>0</i>	<i>0</i>	<i>22</i>	<i>0</i>	<i>0</i>	<i>40</i>	<i>0</i>	<i>-</i>	<i>0</i>	<i>-</i>
Hidalgo (Grant)	486	42	0	19	611	0	0	1,158	2	579	2	579
<i>Luna (Grant)</i>	<i>3</i>	<i>0</i>	<i>0</i>	<i>0</i>	<i>17</i>	<i>0</i>	<i>0</i>	<i>20</i>	<i>0</i>	<i>-</i>	<i>0</i>	<i>-</i>
Lincoln	1,666	159	0	34	2,475	0	0	4,334	11	394	10	433
<i>Luna</i>	<i>3,793</i>	<i>357</i>	<i>4</i>	<i>42</i>	<i>4,685</i>	<i>0</i>	<i>0</i>	<i>8,881</i>	<i>9</i>	<i>987</i>	<i>8</i>	<i>1,110</i>
Otero	4,295	346	4	54	5,950	0	0	10,649	11	888	11	888
<i>Lincoln (Otero)</i>	<i>4</i>	<i>0</i>	<i>0</i>	<i>0</i>	<i>1</i>	<i>0</i>	<i>0</i>	<i>5</i>	<i>0</i>	<i>-</i>	<i>0</i>	<i>-</i>
Sierra	1,808	89	2	38	2,149	0	0	4,086	7	837	7	837
<i>Doña Ana (Sierra)</i>	<i>732</i>	<i>50</i>	<i>0</i>	<i>5</i>	<i>984</i>	<i>0</i>	<i>0</i>	<i>1,771</i>	<i>0</i>	<i>-</i>	<i>0</i>	<i>-</i>
Socorro	1,931	136	1	48	1,962	0	0	4,078	7	777	6	906
<i>Catron (Socorro)</i>	<i>179</i>	<i>13</i>	<i>0</i>	<i>2</i>	<i>238</i>	<i>0</i>	<i>0</i>	<i>432</i>	<i>0</i>	<i>-</i>	<i>0</i>	<i>-</i>
Navajo (Socorro)	480	2	0	6	439	0	0	927	0	-	0	-
<i>N/A Outreach</i>	<i>0</i>	<i>0</i>	<i>0</i>	<i>0</i>	<i>0</i>	<i>0</i>	<i>0</i>	<i>0</i>	<i>1</i>	<i>-</i>	<i>1</i>	<i>-</i>
SW Region (5) Total	42,634	4,364	83	567	94,943	0	0	142,591	141	1,011	132	1,080
State Total	198,314	15,910	328	2,989	306,176	50	36	523,803	565	927	504	1,039

* All State Coverage Insurance Cases, category 062, are being reported in the SCI unit in the SW region. It is included in calculating the case per worker for the state. ** CAP cases are now reflected in the appropriate administrative office. *** Cases per authorized and actual caseworkers for Cibola are computed using outreach workers in that area only.

Note: (-) indicates the caseload for part of the county is included in the cases per authorized worker and cases per actual worker for its associated administrative county.

SNAP Applications Processed by Administrative Office

Office #	Office	Approved	Denied	With-drawn	Total
1	SE Bernalillo	759	135	7	901
3	Chaves	429	80	5	514
4	Colfax	71	11	2	84
3104	Union	15	2	0	17
5	Curry	279	58	6	343
7	West Dona Ana	706	147	4	857
8	Eddy	218	53	4	275
9	Grant	189	30	3	222
1209	Hidalgo	27	3	0	30
10	Guadalupe	26	1	0	27
13	Lea	276	81	3	360
14	Lincoln	97	18	1	116
16	Luna	215	37	3	255
17	McKinley	463	100	4	567
19	Otero	322	75	1	398
20	Quay	84	13	1	98
21	Rio Arriba	462	57	0	519
22	Roosevelt	101	12	3	116

Office #	Office	Approved	Denied	With-drawn	Total
23	Sandoval	606	122	8	736
24	San Juan	806	233	8	1,047
25	San Miguel	287	46	1	334
26	Santa Fe	681	123	6	810
27	Sierra	158	15	0	173
28	Socorro	156	16	0	172
29	Taos	253	29	3	285
30	Torrance	171	36	1	208
32	S Valencia	208	41	6	255
33	Cibola	221	27	3	251
34	Eddy/Artesia	75	13	3	91
35	NW Bernalillo	1,060	148	11	1,219
36	SW Bernalillo	1,292	240	6	1,538
37	East Dona Ana	466	124	7	597
38	S Dona Ana	375	52	16	443
39	NE Bernalillo	1,596	329	18	1,943
42	N Valencia	338	56	8	402
	TOTAL	13,488	2,563	152	16,203

SNAP Applications Processed by Region

Region	Approved	Denied	Withdrawn	Total
NW Region 1	2,642	579	37	3,258
NE Region 2	1,769	268	12	2,049
Central Region 3	4,878	888	43	5,809
SE Region 4	1,488	311	25	1,824
SW Region 5	2,711	517	35	3,263
TOTAL	13,488	2,563	152	16,203

CAP cases are reflected in the appropriate administrative office.

TANF Applications Processed by Office

Office #	Office	Approved	Denied	With-drawn	Total
1	SE Bernalillo	89	93	26	208
3	Chaves	71	64	27	162
4	Colfax	16	9	2	27
3104	Union	3	2	0	5
5	Curry	69	51	13	133
7	West Dona Ana	125	63	16	204
8	Eddy	34	49	7	90
9	Grant	34	12	7	53
1209	Hidalgo	4	4	0	8
10	Guadalupe	2	1	0	3
13	Lea	47	43	22	112
14	Lincoln	15	9	0	24
16	Luna	37	17	6	60
17	McKinley	6	28	14	48
19	Otero	40	48	19	107
20	Quay	19	13	7	39
21	Rio Arriba	73	67	4	144
22	Roosevelt	12	4	12	28

Office #	Office	Approved	Denied	With-drawn	Total
23	Sandoval	66	76	28	170
24	San Juan	32	52	19	103
25	San Miguel	32	14	2	48
26	Santa Fe	84	99	33	216
27	Sierra	14	8	2	24
28	Socorro	21	5	7	33
29	Taos	14	6	9	29
30	Torrance	33	24	5	62
32	S Valencia	39	36	17	92
33	Cibola	25	16	7	48
34	Eddy/Artesia	13	14	8	35
35	NW Bernalillo	147	78	32	257
36	SW Bernalillo	186	161	23	370
37	East Dona Ana	93	84	19	196
38	S Dona Ana	96	26	31	153
39	NE Bernalillo	174	241	43	458
42	N Valencia	65	82	18	165
	TOTAL	1,830	1,599	485	3,914

TANF Applications Processed by Region

Region	Approved	Denied	Withdrawn	Total
NW Region 1	233	290	103	626
NE Region 2	222	197	50	469
Central Region 3	629	597	129	1,355
SE Region 4	267	239	96	602
SW Region 5	479	276	107	862
TOTAL	1,830	1,599	485	3,914

General Assistance Applications Processed by office

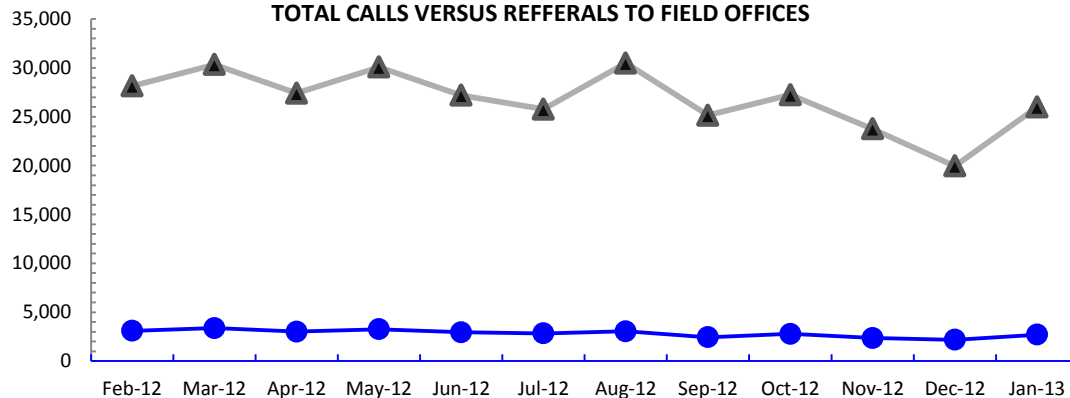
Office #	Office	Approved	Denied	With-drawn	Total
1	SE Bernalillo	14	34	12	60
3	Chaves	14	20	2	36
4	Colfax	1	8	0	9
3104	Union	3	0	0	3
5	Curry	8	8	5	21
7	West Dona Ana	14	47	32	93
8	Eddy	9	18	3	30
9	Grant	4	6	10	20
1209	Hidalgo	2	2	0	4
10	Guadalupe	1	3	0	4
13	Lea	4	11	2	17
14	Lincoln	4	19	1	24
16	Luna	6	16	5	27
17	McKinley	1	6	6	13
19	Otero	6	43	13	62
20	Quay	5	4	2	11
21	Rio Arriba	9	27	2	38
22	Roosevelt	2	1	0	3

Office #	Office	Approved	Denied	With-drawn	Total
23	Sandoval	13	49	24	86
24	San Juan	8	37	6	51
25	San Miguel	7	21	1	29
26	Santa Fe	30	80	7	117
27	Sierra	5	4	0	9
28	Socorro	6	13	0	19
29	Taos	11	22	16	49
30	Torrance	1	6	3	10
32	S Valencia	4	13	2	19
33	Cibola	13	10	0	23
34	Eddy/Artesia	3	4	2	9
35	NW Bernalillo	34	59	31	124
36	SW Bernalillo	16	75	22	113
37	East Dona Ana	8	19	1	28
38	S Dona Ana	8	4	4	16
39	NE Bernalillo	42	104	13	159
42	N Valencia	7	13	0	20
	TOTAL	323	806	227	1,356

General Assistance Applications Processed by Region

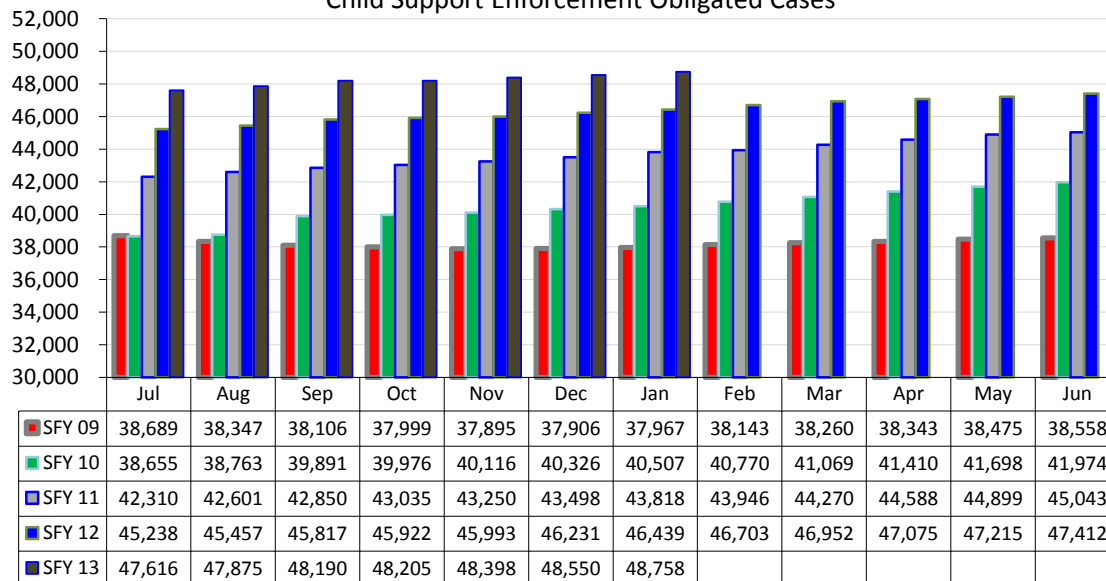
Region	Approved	Denied	Withdrawn	Total
NW Region 1	46	128	38	212
NE Region 2	61	158	26	245
Central Region 3	107	278	81	466
SE Region 4	46	69	16	131
SW Region 5	63	173	66	302
TOTAL	323	806	227	1,356

**Child Support Information Center (Call Center)
TOTAL CALLS VERSUS REFFERALS TO FIELD OFFICES**

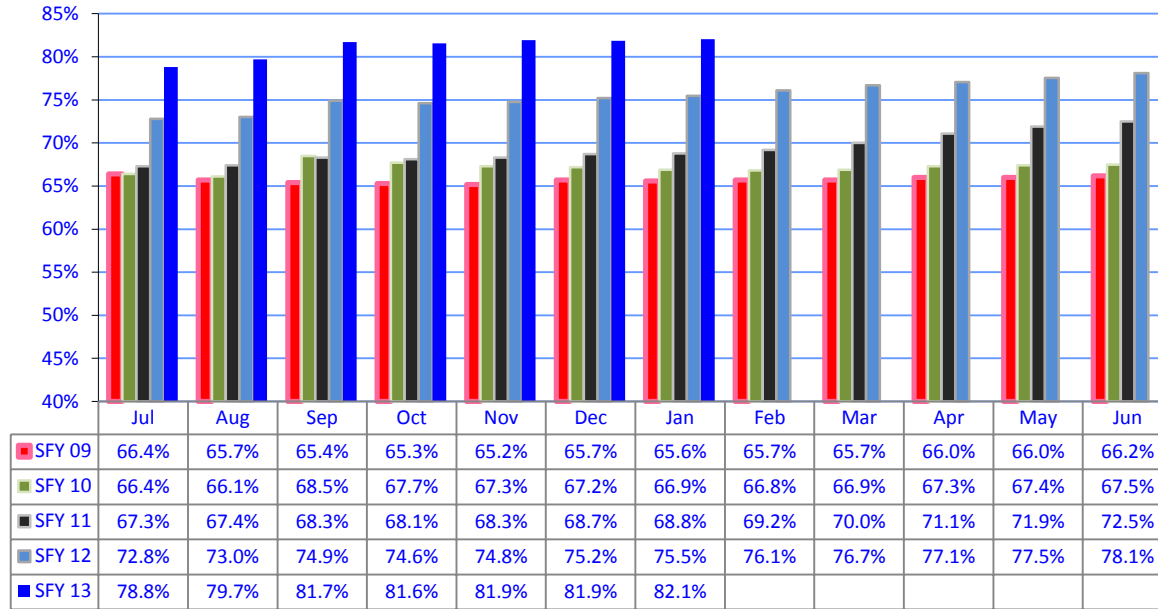


	Feb-12	Mar-12	Apr-12	May-12	Jun-12	Jul-12	Aug-12	Sep-12	Oct-12	Nov-12	Dec-12	Jan-13
▲ Calls	28,149	30,333	27,413	30,083	27,188	25,774	30,492	25,151	27,246	23,759	19,953	25,978
● Referrals	3,091	3,375	3,014	3,260	2,944	2,828	3,051	2,432	2,785	2,355	2,179	2,693
Percent	11.0%	11.1%	11.0%	10.8%	10.8%	11.0%	10.0%	9.7%	10.2%	9.9%	10.9%	10.4%

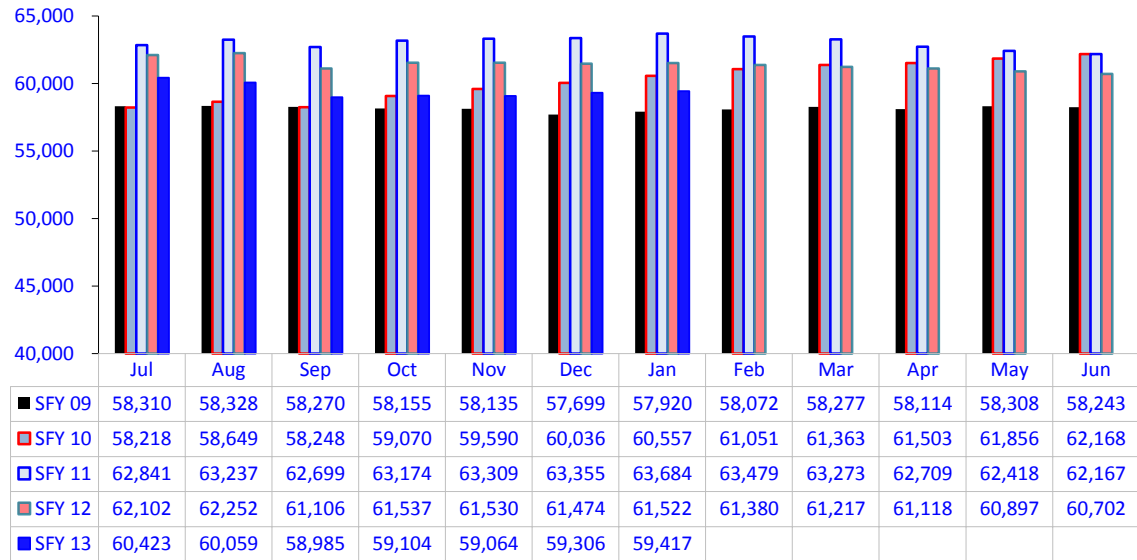
Child Support Enforcement Obligated Cases



Child Support Enforcement Obligated Case Percentages



Child Support Enforcement Open Cases



Children Receiving Child Care Assistance Subsidies By County

County	Jan	Feb	Mar	Apr	May	Jun	Jul	Aug	Sep	Oct	Nov	Dec	Jan	Year over year change	
	2012	2012	2012	2012	2012	2012	2012	2012	2012	2012	2012	2012	2013	Cases	Percent
Bernalillo	7,334	7,341	7,657	7,796	7,744	7,852	7,490	7,272	7,755	7,423	7,454	7,382	7,266	-68	-0.9%
Catron	2	3	2	2	2	2	2	2	2	0	0	0	0	-2	-100.0%
Chaves	718	675	671	701	723	751	707	715	737	714	736	718	721	3	0.4%
Cibola	275	272	262	277	273	272	241	225	287	283	299	281	262	-13	-4.7%
Colfax	69	61	63	61	63	61	58	60	65	54	53	57	58	-11	-15.9%
Curry	590	584	568	559	569	573	510	521	564	539	550	541	516	-74	-12.5%
De Baca	14	16	12	10	12	14	11	9	18	17	13	12	9	-5	-35.7%
Dona Ana	5,096	4,939	5,040	5,062	5,167	5,339	4,793	4,677	5,064	5,011	4,999	4,964	4,894	-202	-4.0%
Eddy	310	309	317	301	332	346	339	327	344	350	334	321	294	-16	-5.2%
Grant	417	386	397	389	393	396	282	289	334	342	361	362	358	-59	-14.1%
Guadalupe	32	29	31	26	27	29	21	20	18	23	22	20	20	-12	-37.5%
Harding	0	0	0	0	0	0	0	0	0	0	0	0	0	0	NA
Hidalgo	25	21	24	23	23	24	25	28	34	27	24	31	32	7	28.0%
Lea	596	582	589	581	601	626	569	543	639	609	655	642	628	32	5.4%
Lincoln	219	213	214	219	213	220	198	193	203	190	191	178	190	-29	-13.2%
Los	11	11	11	11	11	12	11	10	8	8	8	8	8	-3	-27.3%
Luna	232	224	255	260	245	257	222	222	248	218	224	225	210	-22	-9.5%
McKinley	332	318	335	329	331	327	257	231	294	273	283	287	269	-63	-19.0%
Mora	15	13	15	15	14	16	14	14	12	10	14	17	14	-1	-6.7%
Otero	536	544	548	558	564	585	535	540	578	580	562	538	536	0	0.0%
Out of State	9	7	8	8	6	7	8	8	9	8	6	7	5	-4	-44.4%
Quay	32	28	33	32	32	28	29	27	24	24	25	25	23	-9	-28.1%
Rio Arriba	98	104	113	102	115	122	96	93	105	96	99	104	101	3	3.1%
Roosevelt	197	173	177	186	192	192	151	149	189	195	197	191	189	-8	-4.1%
San Juan	682	686	690	684	686	710	630	609	746	718	720	715	692	10	1.5%
San Miguel	407	358	390	403	422	433	341	335	366	388	393	376	364	-43	-10.6%
Sandoval	780	769	811	809	818	866	814	786	827	795	785	768	759	-21	-2.7%
Santa Fe	503	475	486	502	515	523	507	485	522	452	463	452	435	-68	-13.5%
Sierra	72	70	74	84	85	99	88	87	85	73	83	83	89	17	23.6%
Socorro	67	59	61	58	62	61	52	46	55	61	63	66	62	-5	-7.5%
Taos	151	145	144	144	142	151	97	102	110	121	124	123	116	-35	-23.2%
Torrance	61	60	76	84	82	88	75	81	74	66	67	64	69	8	13.1%
Union	10	10	11	8	7	8	7	7	12	9	8	9	9	-1	-10.0%
Valencia	702	697	729	746	755	766	682	704	722	717	719	721	695	-7	-1.0%
Totals	20,594	20,182	20,814	21,030	21,226	21,756	19,862	19,417	21,050	20,394	20,534	20,288	19,893	-701	-3.4%

Source: Children, Youth and Families Department.

Child Care Assistance Eligibility Programs

MONTH	JAN'12	FEB'12	MAR'12	APR'12	MAY'12	JUN'12	JUL'12	AUG'12	SEP'12	OCT'12	NOV'12	DEC'12	JAN'13
TANF (Child Care Priority 1 Clients)													
CLIENTS	3,713	3,546	3,541	3,535	3,443	3,551	3,220	3,103	3,340	3,182	3,131	2,999	2,859
COST	\$1,110,336	\$1,132,788	\$1,219,862	\$1,218,303	\$1,181,592	\$1,063,904	\$1,017,372	\$1,128,732	\$1,041,813	\$1,125,046	\$1,134,547	\$1,080,411	\$906,557
TANF AVERAGE COST	\$299	\$319	\$344	\$345	\$343	\$300	\$316	\$364	\$312	\$354	\$362	\$360	\$317
TRANSITION OFF TANF (Child Care Priority 2 Clients)													
CLIENTS	487	435	404	410	419	417	381	374	381	368	379	373	365
COST	\$162,820	\$142,330	\$134,794	\$139,080	\$135,169	\$134,108	\$125,253	\$129,561	\$129,933	\$132,174	\$135,318	\$130,153	\$118,069
TRAN OFF TANF AVG COST	\$334	\$327	\$334	\$339	\$323	\$322	\$329	\$346	\$341	\$359	\$357	\$349	\$323
TANF ELIGIBLE (Child Care Priority 1B Clients at or below 100% of the Federal Poverty Level)													
CLIENTS	10,282	10,258	10,805	11,017	11,152	11,469	10,258	10,120	11,259	11,080	11,250	11,179	10,910
COST	\$3,206,129	\$3,355,460	\$3,768,442	\$3,839,297	\$3,881,358	\$3,636,254	\$3,618,933	\$3,721,237	\$3,625,943	\$4,118,093	\$4,141,082	\$4,108,993	\$3,609,624
TANF ELIGIBLE AVG COST	\$312	\$327	\$349	\$348	\$348	\$317	\$353	\$368	\$322	\$372	\$368	\$368	\$331
INCOME ELIGIBLE (Child Care Priority 3, and Priority 4 Clients)													
CLIENTS	4,893	4,860	4,951	4,952	5,173	5,290	5,060	4,920	5,089	4,846	4,810	4,817	4,861
COST	\$1,421,183	\$1,415,687	\$1,484,022	\$1,485,614	\$1,533,393	\$1,570,429	\$1,813,867	\$1,606,535	\$1,591,509	\$1,585,741	\$1,572,320	\$1,558,272	\$1,529,136
INCOME ELIG AVG COST	\$290	\$291	\$300	\$300	\$296	\$297	\$358	\$327	\$313	\$327	\$327	\$323	\$315
EMPLOYMENT & TRAINING (Child Care Priority 1A Clients)													
CLIENTS	635	493	503	470	403	352	262	221	239	245	260	257	259
COST	\$163,211	\$149,380	\$161,862	\$160,692	\$160,692	\$96,255	\$82,770	\$70,593	\$63,934	\$89,494	\$94,363	\$93,751	\$72,052
E & T AVG COST	\$257	\$303	\$322	\$342	\$399	\$273	\$316	\$319	\$268	\$365	\$363	\$365	\$278
CHILD PROTECTIVE SERVICES (Child Care CPS Clients)													
CLIENTS	584	590	610	646	636	677	681	679	742	673	704	663	639
COST	\$227,045	\$239,178	\$239,152	\$261,639	\$256,004	\$273,771	\$272,616	\$276,210	\$295,847	\$280,001	\$286,909	\$269,654	\$258,888
E & T AVG COST	\$389	\$405	\$392	\$405	\$403	\$404	\$400	\$407	\$399	\$416	\$408	\$407	\$405
GRAND TOTAL - ALL CHILD CARE PROGRAMS													
CLIENTS	20,594	20,182	20,814	21,030	21,226	21,756	19,862	19,417	21,050	20,394	20,534	20,288	19,893
COST	\$6,290,723	\$6,434,823	\$7,008,133	\$7,104,625	\$7,148,208	\$6,774,719	\$6,930,812	\$6,932,868	\$6,748,978	\$7,330,549	\$7,364,538	\$7,241,234	\$6,494,326
ALL PROGRAMS AVG COST	\$305	\$319	\$337	\$338	\$337	\$311	\$349	\$357	\$321	\$359	\$359	\$357	\$326

Notes: 1. This table is provided by the Children, Youth and Families Department. 2. All costs in the table are average costs
3. Clients served and cost reflects total CYFD program funds and are not limited to funding provided by the Human Services Department.

2012 Monthly Federal Poverty & Income Eligibility Guidelines for SNAP, Cash Assistance & LIHEAP

2012 Federal Poverty Guidelines (FPG) (100%) Effective Oct 1, 2012 – Sept 30, 2013					
Family Size	Monthly Amounts	Family Size	Monthly Amounts	Family Size	Monthly Amounts
1	\$931	4	\$1,921	7	\$2,911
2	\$1,261	5	\$2,251	8	\$3,241
3	\$1,591	6	\$2,581	+ 1	+ \$330

Family Size	85% FPG TANF Poverty Gross Limit for Cash	100% FPG TANF & SNAP Net Income Eligibility Standard	130% FPG SNAP Gross Income Eligibility Standards	150% FPG LIHEAP	165% FPG SNAP Gross Income Categorically Eligibility; Elderly/Disabled Separate Status	General Assistance Max Standard of Need	NM Works Max Standard of Need	NM Works 15% Budgetary Adjustment*	NM Works Max Standard of Need with Budgetary Adjustment*	Maximum SNAP Monthly Allotments
1	\$791	\$931	\$1,211	\$1,397	\$1,536	\$245	\$266	-\$ 39	\$227	\$200
2	\$1,072	\$1,261	\$1,640	\$1,892	\$2,081	\$329	\$357	-\$ 53	\$304	\$367
3	\$1,352	\$1,591	\$2,069	\$2,387	\$2,625	\$412	\$447	-\$ 67	\$380	\$526
4	\$1,633	\$1,921	\$2,498	\$2,882	\$3,170	\$496	\$539	-\$ 80	\$459	\$668
5	\$1,913	\$2,251	\$2,927	\$3,377	\$3,714	\$580	\$630	-\$ 94	\$536	\$793
6	\$2,194	\$2,581	\$3,356	\$3,872	\$4,259	\$664	\$721	-\$108	\$613	\$952
7	\$2,474	\$2,911	\$3,785	\$4,367	\$4,803	\$748	\$812	-\$121	\$691	\$1,052
8	\$2,755	\$3,241	\$4,214	\$4,862	\$5,348	\$849	\$922	-\$138	\$784	\$1,202
+1	+ \$281	+ \$330	+ \$429	+ \$495	+ \$545	+ \$84	+ \$91	- \$ 14	+ \$77	+ \$150

The 2012 Federal Poverty Guidelines are used for the determination of LIHEAP, SNAP and TANF eligibility from October 1, 2012 through September 30, 2013. The Maximum SNAP allotment does not take deductions into account. All figures monthly amounts.

* 15% Budgetary Adjustment is subtracted from eligible NMW benefit amount to determine monthly payment starting January 1, 2011

2012 Monthly Federal Poverty & Income Eligibility Guidelines for Medicaid,
Effective April 1, 2012 - March 31, 2013

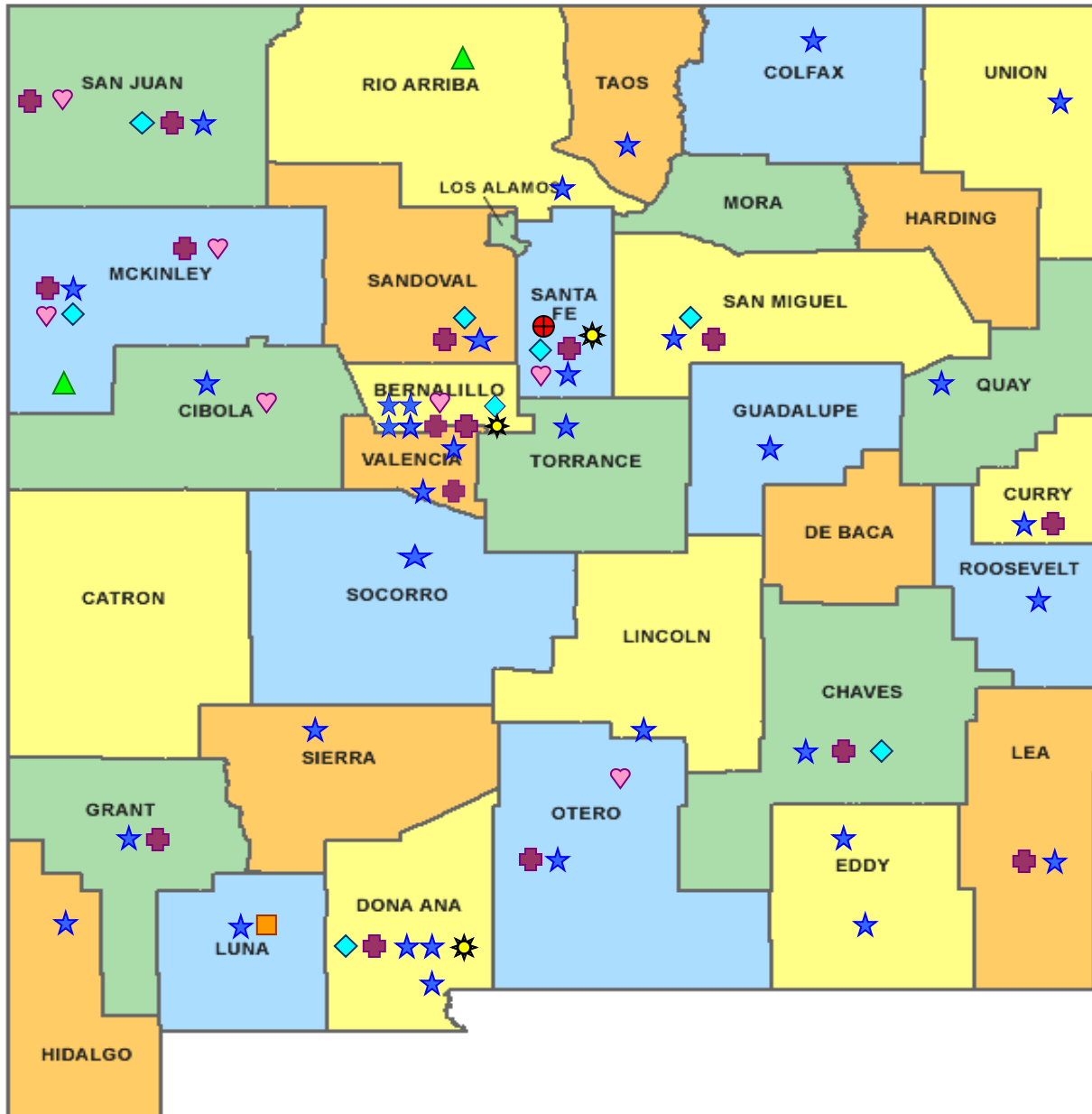
Family Size	2012 Federal Poverty Guidelines (FPG) (100%) Monthly Amounts	185% FPG Medicaid for Children (Cat 032) Medicaid for Pregnant Women- Pregnancy-Related Services Only or Family Planning Services (Cat 035) and Presumptive Eligibility for Pregnant Women	200% FPG State Coverage Insurance (SCI) (Cat 062) & Qualified Disabled Working Individuals (Cat 042) for family size 1 & 2	235% FPG SCHIP (State Children's Health Insurance Program) (Cat 071)	250% FPG Working Disabled Individuals (Cat 043)
1	\$931	\$1,723	\$1,862	\$2,188	\$2,328
2	\$1,261	\$2,333	\$2,522	\$2,963	
3	\$1,591	\$2,944	\$3,182	\$3,739	
4	\$1,921	\$3,554	\$3,842	\$4,514	
5	\$2,251	\$4,165	\$4,502	\$5,290	
6	\$2,581	\$4,775	\$5,162	\$6,065	
7	\$2,911	\$5,386	\$5,822	\$6,841	
8	\$3,241	\$5,996	\$6,482	\$7,616	
+1	+\$330	+\$610	+\$660	+\$775	

Social Security Related	
Family Size	Program and Range ¹
Qualified Medicare Beneficiaries (Cat 040)	
1	\$0 – \$931
2	\$0 – \$1,261
Specified Low Income Medicare Beneficiaries (Cat 045)	
1	\$931 – \$1,117
2	\$1,261 – \$1,513
Qualified Individuals	
1	\$1,117 – \$1,257
2	\$1,513 – \$1,703









All figures monthly amounts. Source: <http://www.hsd.state.nm.us/mad/CEligibility.html>

The 2012 Federal Poverty Guidelines are used for the determination of Medicaid eligibility from April 1, 2012 – March 31, 2013.

¹ Cost of living adjustments made to SSI and Social Security income at the beginning of the calendar year are not used to determine eligibility of QMB, QI or SLIMB until the following April of that same year.



New Mexico Human Services Department
Field Offices

-  Central Office (1)
-  Income Support Division County Office (35)
-  Income Support Division Satellite Office (2)
-  Child Support Enforcement Regional Office (16)
-  Child Support Enforcement Satellite Office (1)
-  Quality Control Office (8)
-  Indian Health Services (7)
-  Hospital Site (3)

For a complete listing of field offices and other government and community resources:
<http://www.hsd.state.nm.us/isd/fieldoffices.html>