



HUMAN SERVICES
DEPARTMENT

Monthly Statistical Report July 2013 - January 2014

Highlights

- The SNAP caseload in January 2014 was 190,767, a 3.8 percent decrease from one year ago. SNAP caseload has fallen by 9,611 cases, or 4.8 percent, since the all time high of 200,378 cases in August 2013.
- The TANF caseload was 13,230 in January 2014, a 15.5 percent decrease from January 2013. The TANF caseload had 1,389 fewer cases than July 2013, a decrease of 9.5 percent.
- The caseload for General Assistance was 3,242 in January 2014, an increase of 8.5 percent from one year ago but a decrease of 217 case from July 2013.

Susana Martinez, Governor
Sidonie Squier, Cabinet Secretary

CONTENTS	PAGE
Summary	3-4
SNAP	5-6
State SNAP Benefits Supplement	7
TANF	8-9
ICARE	10
NMWorks	11-12
Diversion	13
Education Works	14-15
General Assistance	16-17
GA Interim Assistance Reimbursements	18
Refugee Assistance	19
LIHEAP	20-21
Medicaid Eligibles	22
Timeliness	23-24
Applications	25-29
Child Support Enforcement	30-31
Child Care Assistance	32-33

Centralized Units include the following offices: Albuquerque Indian Hospital; ASD Restitutions; CSED; Customer Service; Lincoln County CSU; Mescalero; MRP; North Processing Center; Quality Assessment Bureau; San Miguel County CSU; SIPI; SMU Lincoln; SMU Torrance; South Processing Center; Torrance County CSU; Zuni.

Tallies include data from ISD2 and aspen.

***The Mission of the Human Services
Department***

*To reduce the impact of poverty on
people living in New Mexico by
providing support services that help
families break the cycle of
dependency on public assistance*

**Charissa Saavedra, Deputy Secretary
Brent Earnest, Deputy Secretary**

**Prepared by Income Support Division
PO Box 2348
Santa Fe, NM 87504-2348
505-827-7250**

**Marilyn Martinez, Acting Division Director
Penny Jimerson, Deputy Director
Vida Tapia-Sanchez, Acting Deputy Director**

We've moved!

<http://www.hsd.state.nm.us/monthly-statistical-reports.aspx>

Program Summary for January 2014

			Percent Change					Percent Change			
	Jan 13	Dec 13	Jan 14	Jan 13 – Jan 14	Dec 13 – Jan 14		Jan 13	Dec 13	Jan 14	Jan 13 – Jan 14	Dec 13 – Jan 14
Supplemental Nutrition Assistance Program (SNAP)						State SNAP Benefits Supplement					
Expenditures	\$56,456,541	\$51,340,577	\$50,370,793	-10.8%	-1.9%	Expenditures	\$45,769	\$71,839	\$77,933	70.3%	8.5%
Cases	198,314	193,622	190,767	-3.8%	-1.5%	Cases	5,548	8,310	8,826	59.1%	6.2%
Individuals	442,753	429,745	416,175	-6.0%	-3.2%						
Adults	244,874	235,223	225,997	-7.7%	-3.9%						
Children	197,879	194,522	190,178	-3.9%	-2.2%	Education Works					
Apps processed	16,203	13,844	16,172	-0.2%	16.8%	Expenditures	\$102,497	\$100,678	\$79,717	-22.2%	-20.8%
Approvals	13,488	10,896	12,394	-8.1%	13.7%	Cases	328	304	253	-22.9%	-16.8%
Temporary Assistance to Needy Families (TANF)						Individuals	936	866	736	-21.4%	-15.1%
Expenditures	\$4,614,101	\$3,878,344	\$3,735,563	-19.0%	-3.7%	Adults	404	396	365	-9.80%	-7.90%
Cases	15,910	13,683	13,365	-16.0%	-2.3%	Children	573	525	459	-20.0%	-12.7%
Individuals	38,712	34,593	33,612	-13.2%	-2.8%	Refugee Assistance					
Adults	14,310	11,790	8,975	-37.3%	-23.9%	Expenditures	\$11,489	\$22,053	\$22,670	97.3%	2.8%
Children	24,402	22,803	24,637	1.0%	8.0%	Cases	36	73	79	119.4%	8.2%
Apps Processed	3,914	2,466	2,878	-26.5%	16.7%	Individuals	46	84	86	87.0%	2.4%
Approvals	1,830	1,172	1,385	-24.3%	18.2%	Adults	41	84	86	109.8%	2.4%
General Assistance											
Expenditures	\$852,856	\$855,031	\$802,133	-5.9%	-6.2%	Medicaid					Percent Change
Cases	2,989	3,426	3,242	8.5%	-5.4%		Oct 12	Sep 13	Oct 13	Oct 12 – Oct 13	Sep 13 – Oct 13
Individuals	3,235	3,517	3,307	2.2%	-6.0%	Expenditures*	\$327,893,750	\$267,071,740	\$333,272,093	1.6%	24.8%
Adults	3,008	3,312	3,119	3.7%	-5.8%	Eligibles	526,097	528,023	535,956	1.9%	1.5%
Children	227	205	188	-17.2%	-8.3%	Adults	187,005	194,490	201,206	7.6%	3.5%
Apps Processed	1,356	652	609	-55.1%	-6.6%	Children	339,092	333,533	334,750	-1.3%	0.4%
Approvals	323	169	147	-54.5%	-13.0%						

All expenditures are unreconciled and subject to change.

*Medicaid expenditures as of date of payment.

Expenditures							
	Jul-13	Aug-13	Sep-13	Oct-13	Nov-13	Dec-13	Jan-14
Supplemental Nutrition Assistance Program (SNAP)	\$56,618,469	\$56,847,460	\$56,437,459	\$56,394,999	\$51,704,406	\$51,340,577	\$50,370,793
Temporary Assistance for Needy Families (TANF)	\$4,107,532	\$4,987,757	\$4,095,925	\$4,045,778	\$3,927,618	\$3,878,344	\$3,735,563
General Assistance	\$868,094	\$892,737	\$901,929	\$905,403	\$871,615	\$855,031	\$802,133
Education Works	\$86,240	\$99,736	\$107,958	\$114,222	\$109,756	\$100,678	\$79,717

DEMOGRAPHIC PROFILE JANUARY 2014 ONLY					
	SNAP	TANF	General Assistance	Education Works	Refugee Cash Assistance
Average # persons per case:	2.18	2.54	1.02	2.91	1.09
Gender of Recipients:					
Male	188,716	14,217	1,936	279	58
Female	227,459	19,395	1,371	457	28
Ethnicity:					
Hispanic	243,173	24,190	1,903	410	67
Not Hispanic	173,002	9,422	1,404	326	19
Race:					
Native American or Alaskan Native	68,547	2,426	201	76	0
Asian	5,311	410	45	12	1
African American	9,671	1,191	122	31	3
Native Hawaiian or Pacific Islander	599	3	1	0	0
White	328,561	29,326	2,862	614	82
Unknown/not declared	2,570	169	67	1	0
More than one race	916	87	9	2	0

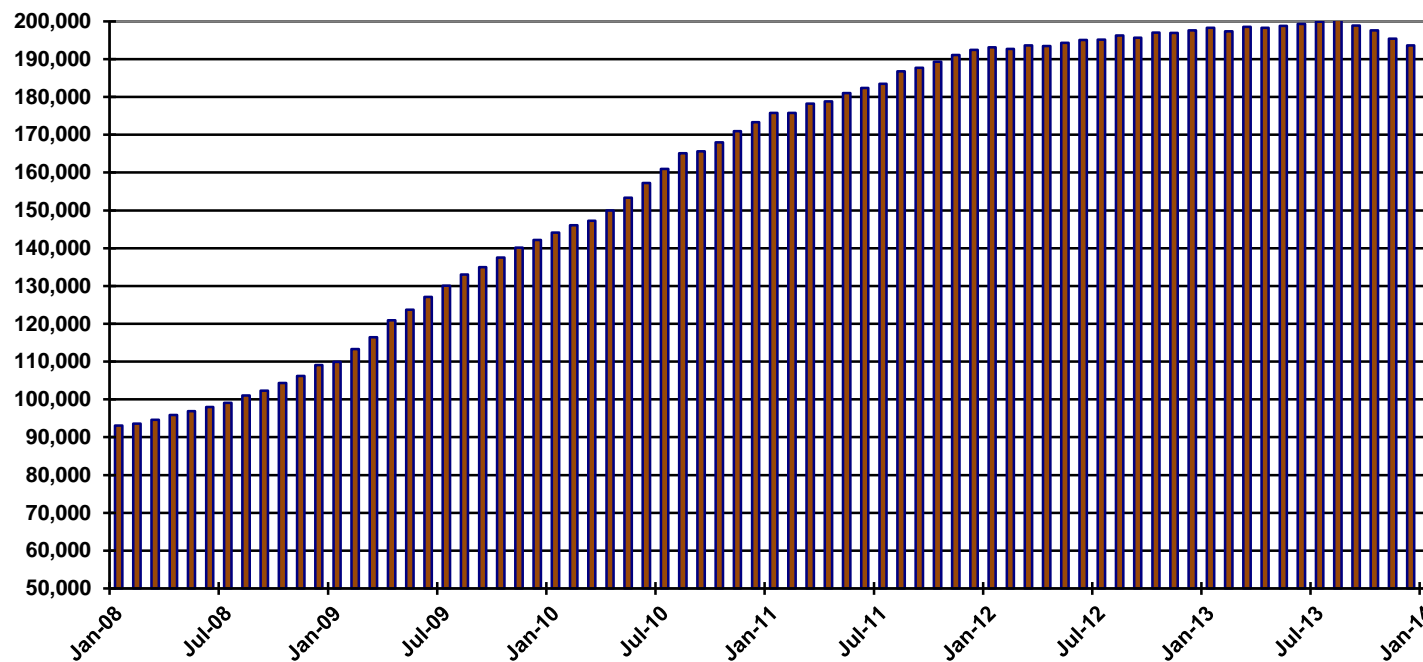
Supplemental Nutrition Assistance Program (SNAP) Cases by Administrative Office

Office	Jul-13	Aug-13	Sep-13	Oct-13	Nov-13	Dec-13	Jan-14
Chaves	6,648	6,701	6,403	6,641	6,724	6,778	6,753
Cibola	3,282	3,291	3,308	3,294	3,293	3,284	3,303
Colfax	1,225	1,225	1,223	1,222	1,244	1,215	1,222
Curry	4,027	4,073	3,834	3,843	3,698	3,732	3,756
East Dona Ana	7,025	7,065	6,877	7,002	7,025	7,033	6,985
Eddy Artesia	1,295	1,314	1,265	1,343	1,310	1,301	1,283
Eddy Carlsbad	2,916	2,888	2,698	2,798	2,770	2,725	2,705
Grant	3,064	3,101	2,922	2,984	3,022	3,148	3,111
Guadalupe	724	731	728	731	736	756	799
Hidalgo	471	454	431	427	409	350	378
Lea	4,011	4,061	3,883	3,910	3,909	3,853	3,726
Lincoln	1,715	1,739	1,680	1,646	1,656	1,653	1,613
Luna	3,734	3,734	3,544	3,543	3,561	3,604	3,640
McKinley	9,107	9,241	9,264	9,190	9,008	8,798	8,286
Northeast Bernalillo	19,163	18,995	18,876	18,608	18,233	17,913	17,419
Northwest Bernalillo	15,025	15,048	15,138	15,176	15,112	15,063	14,794
Otero	4,383	4,386	4,302	4,269	4,254	4,221	4,189
Quay	1,212	1,208	1,224	1,225	1,232	1,223	1,219
Rio Arriba	7,147	7,275	6,803	6,857	6,840	6,842	6,972
Roosevelt	1,403	1,436	1,324	1,384	1,339	1,283	1,256
San Juan	11,140	11,243	11,298	11,269	11,073	10,925	10,672
San Miguel	5,038	5,045	5,005	4,952	4,989	4,937	4,874
Sandoval	9,286	9,298	9,301	9,271	8,935	8,919	8,788
Santa Fe	9,880	9,820	9,810	9,786	9,550	9,513	9,469
Sierra	2,449	2,437	2,327	2,395	2,423	2,464	2,523
Socorro	2,668	2,694	2,587	2,678	2,688	2,662	2,663
South Dona Ana	7,632	7,616	7,173	7,291	7,195	7,061	6,754
Southeast Bernalillo	11,840	11,813	11,873	11,834	11,587	11,479	11,302
Southwest Bernalillo	17,147	17,055	16,976	16,792	16,521	16,133	15,377
Taos	3,915	3,958	3,938	3,933	3,812	3,838	3,896
Torrance	2,596	2,610	2,562	2,473	88	2,455	2,488
Union	213	220	208	210	208	200	193
Valencia North	5,588	5,626	5,584	5,569	5,499	5,413	5,421
Valencia South	3,088	3,093	3,091	3,059	3,109	3,043	3,036
West Dona Ana	9,821	9,877	9,730	9,705	9,538	9,412	9,204
Centralized Units	22	7	1,715	286	2,809	393	698
TOTAL	199,900	200,378	198,905	197,596	195,399	193,622	190,767

Supplemental Nutrition Assistance Program (SNAP) Cases by Region

Region	Jul-13	Aug-13	Sep-13	Oct-13	Nov-13	Dec-13	Jan-14
NW Region 1	41,491	41,792	41,846	41,652	40,917	40,382	39,506
NE Region 2	27,418	27,543	26,987	26,960	26,643	26,545	26,626
Central Region 3	65,771	65,521	65,425	64,883	61,541	63,043	61,380
SE Region 4	22,236	22,412	21,359	21,875	21,718	21,651	21,497
SW Region 5	42,962	43,103	41,573	41,940	41,771	41,608	41,060
Centralized Units	22	7	1,715	286	2,809	393	698
TOTAL	199,900	200,378	198,905	197,596	195,399	193,622	190,767

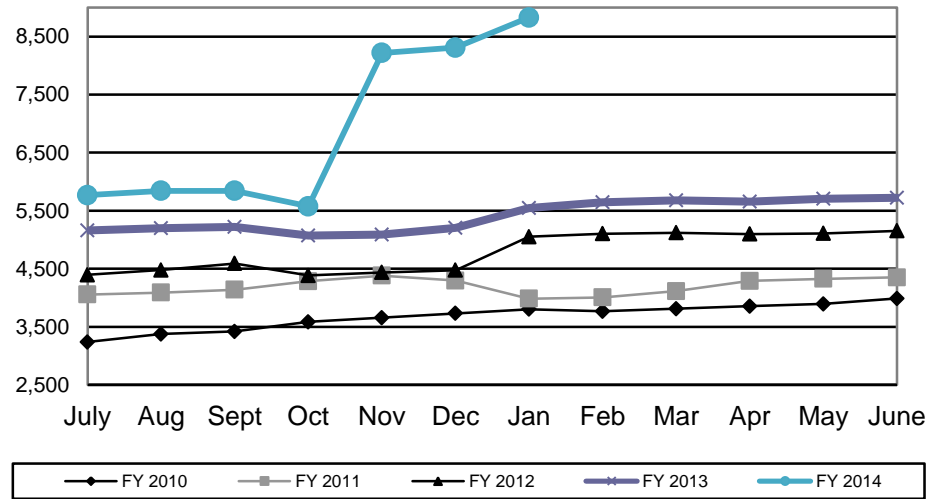
SNAP Cases Per Month



State SNAP Benefits Supplement

	SFY 2010		SFY 2011		SFY 2012		SFY 2013		SFY 2014	
	Cases	Expenditures	Cases	Expenditures	Cases	Expenditures	Cases	Expenditures	Cases	Expenditures
July	3,237	\$38,216	4,056	\$50,241	4,395	\$34,773	5,157	\$42,552	5,767	\$48,040
Aug	3,376	\$39,476	4,088	\$50,502	4,477	\$35,360	5,200	\$42,797	5,841	\$48,417
Sept	3,418	\$39,790	4,139	\$50,946	4,591	\$36,455	5,223	\$43,023	5,841	\$48,732
Oct	3,585	\$43,887	4,284	\$52,530	4,384	\$34,850	5,071	\$41,752	5,575	\$46,610
Nov	3,655	\$44,952	4,381	\$53,820	4,436	\$35,260	5,088	\$42,074	8,219	\$69,564
Dec	3,731	\$45,855	4,296	\$52,649	4,474	\$35,619	5,202	\$42,829	8,310	\$71,839
Jan	3,802	\$46,338	3,984	\$31,897	5,050	\$41,519	5,548	\$45,769	8,826	\$77,933
Feb	3,767	\$46,156	4,006	\$31,970	5,102	\$41,900	5,645	\$46,700		
Mar	3,810	\$46,502	4,113	\$33,226	5,119	\$41,960	5,677	\$47,117		
April	3,856	\$43,830	4,290	\$34,599	5,099	\$41,988	5,654	\$47,118		
May	3,856	\$43,830	4,326	\$34,892	5,109	\$43,587	5,706	\$47,528		
June	3,988	\$49,230	4,351	\$28,199	5,154	\$42,442	5,720	\$47,625		
TOTAL	44,081	\$528,062	50,314	\$505,470	57,390	\$465,713	64,891	\$536,884	48,379	\$411,135
Monthly average	3,673	\$44,005	4,193	\$42,123	4,783	\$38,809	5,408	\$44,740	6,911	\$58,734

State SNAP Benefits Supplement Cases by State Fiscal Year



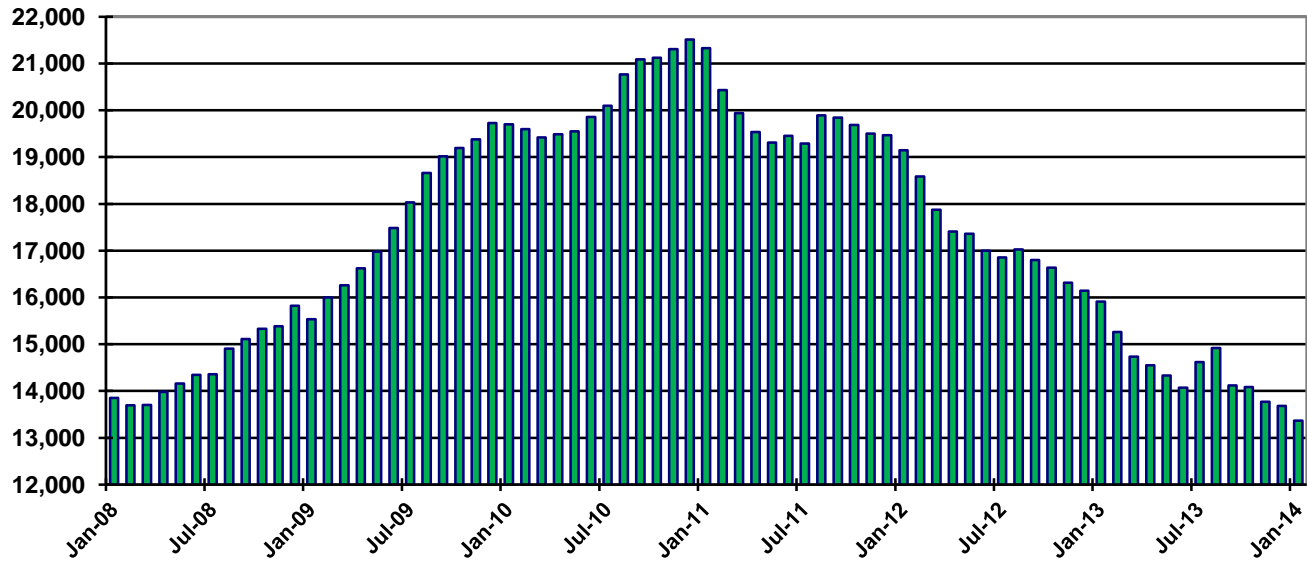
Temporary Assistance of Needy Families (TANF) Cases by Administrative Office

Office	Jul-13	Aug-13	Sep-13	Oct-13	Nov-13	Dec-13	Jan-14
Chaves	582	599	575	588	567	570	565
Cibola	239	228	225	229	219	228	224
Colfax	97	97	90	94	96	97	94
Curry	447	459	450	430	411	430	429
East Dona Ana	623	637	651	675	651	662	648
Eddy Artesia	137	139	136	132	135	128	130
Eddy Carlsbad	281	287	273	261	257	232	245
Grant	178	174	172	194	201	220	209
Guadalupe	49	48	42	46	49	43	51
Hidalgo	40	37	38	36	34	24	26
Lea	398	406	413	395	387	372	361
Lincoln	159	160	150	148	148	143	141
Luna	309	306	291	304	294	316	310
McKinley	99	104	101	100	99	88	77
Northeast Bernalillo	1,147	1,171	1,190	1,152	1,140	1,106	986
Northwest Bernalillo	1,047	1,040	1,018	1,022	971	949	951
Otero	306	300	316	301	284	275	292
Quay	94	80	80	80	78	90	97
Rio Arriba	853	984	543	527	527	527	516
Roosevelt	115	127	125	113	110	109	106
San Juan	233	244	233	237	212	218	236
San Miguel	317	317	295	282	279	276	286
Sandoval	560	583	552	564	517	542	558
Santa Fe	590	576	577	590	573	577	560
Sierra	134	127	116	124	123	126	131
Socorro	153	142	144	155	143	149	159
South Dona Ana	1,041	1,058	1,059	1,028	1,006	970	940
Southeast Bernalillo	998	1,028	1,009	979	956	928	875
Southwest Bernalillo	1,425	1,431	1,354	1,340	1,331	1,294	1,154
Taos	139	145	147	147	144	164	154
Torrance	232	238	225	217	13	236	247
Union	18	20	20	19	14	14	16
Valencia North	393	401	381	378	357	355	377
Valencia South	205	206	187	179	203	213	213
West Dona Ana	981	1,021	940	995	1,011	995	974
Centralized Units	-	-	-	21	227	17	27
TOTAL	14,619	14,920	14,118	14,082	13,767	13,683	13,365

Temporary Assistance of Needy Families (TANF) Cases by Region

Region	Jul-13	Aug-13	Sep-13	Oct-13	Nov-13	Dec-13	Jan-14
NW Region 1	1,729	1,766	1,679	1,687	1,607	1,644	1,685
NE Region 2	2,014	2,139	1,672	1,659	1,633	1,655	1,626
Central Region 3	4,617	4,670	4,571	4,493	4,398	4,277	3,966
SE Region 4	2,103	2,145	2,094	2,045	1,994	1,974	1,984
SW Region 5	4,156	4,200	4,102	4,177	3,908	4,116	4,077
Centralized Units	-	-	-	21	227	17	27
TOTAL	14,619	14,920	14,118	14,082	13,767	13,683	13,365

TANF Cases per month



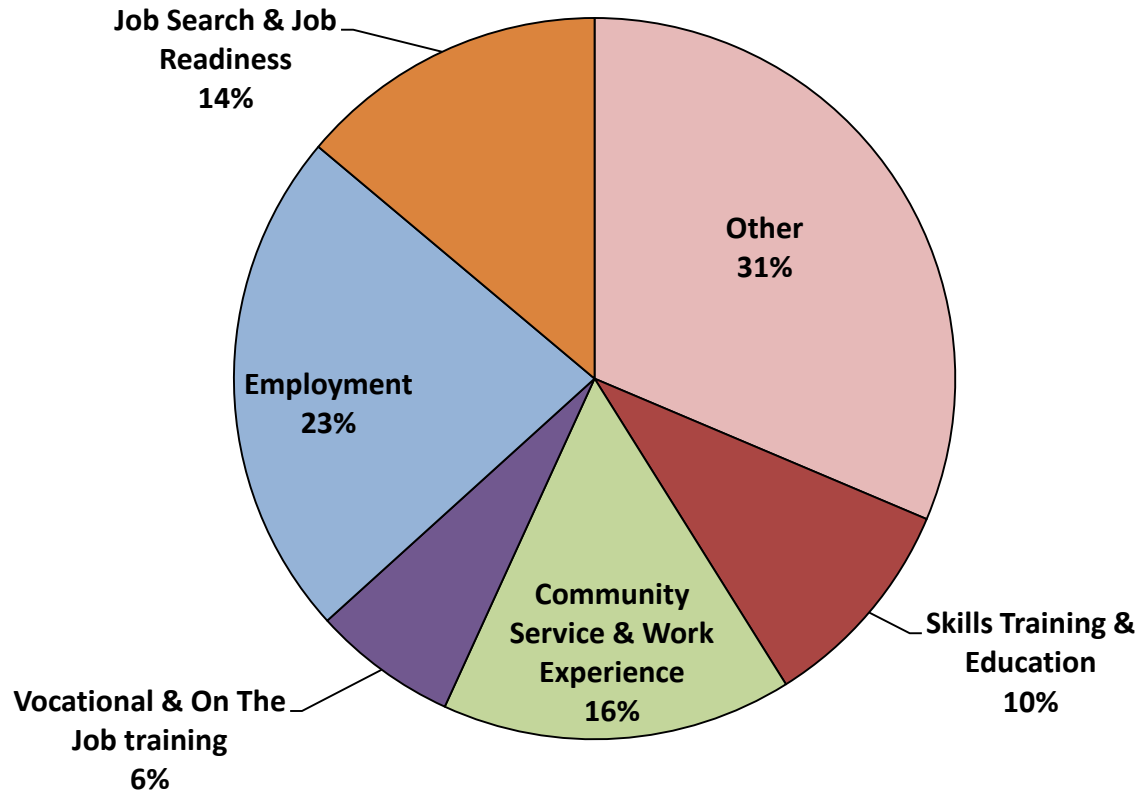
Intensive Case Management, Recovery and Employment (ICARE)

The ICARE program is a pilot program in Albuquerque which is designed to address substance use barriers to employment in TANF Recipients.

It is a new approach that combines 12 weeks of Intensive Case Management with job readiness classes and job development. TANF recipients identified as having substance use issues that prevent them from obtaining and retaining employment are referred to the ICARE program. The program includes motivational interviewing to motivate change and decrease substance use; relapse prevention to build skills; family management to improve family functioning; job readiness classes to enhance employment skills and increase retention; and job development to secure employment. A program evaluation component will be used to determine the effectiveness of this program in addressing substance use disorders among TANF recipients.

	Jul 13	Aug 13	Sep 13	Oct 13	Nov 13	Dec 13	Jan 14
ICARE Expenditures	\$28,055.51	\$66,750.77	\$107,403.28	\$34,785.52	\$142,632.64	\$18,924.30	\$22,281.05
# of Screenings for Substance Use	501	1,222	693	936	509	520	508
# of Referrals to ICARE resulting from screenings	37	76	62	38	23	16	22

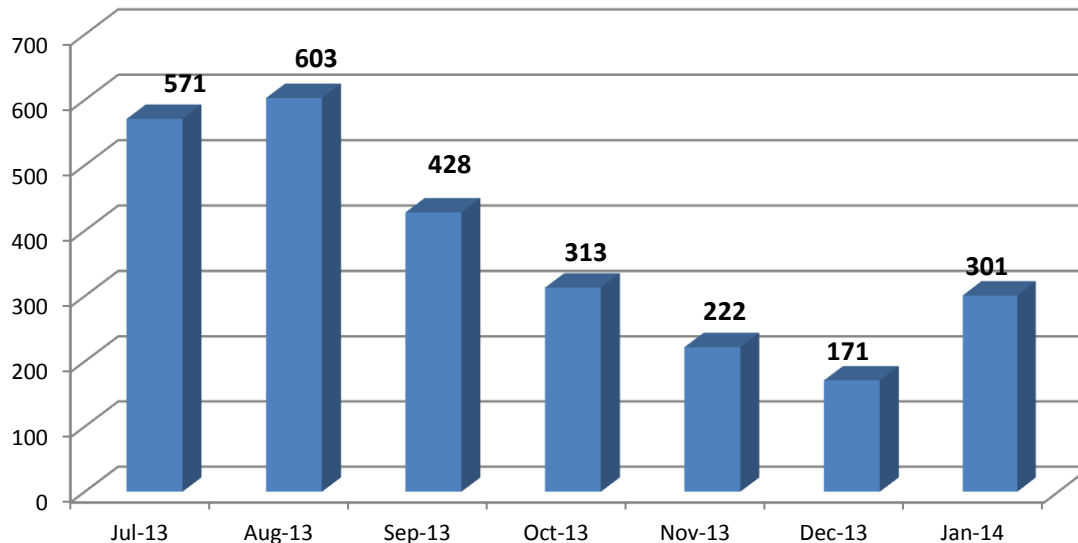
NM Works Activity Placements on January 31, 2014 as reported by SL Start **



**Data preliminary and subject to later revision.

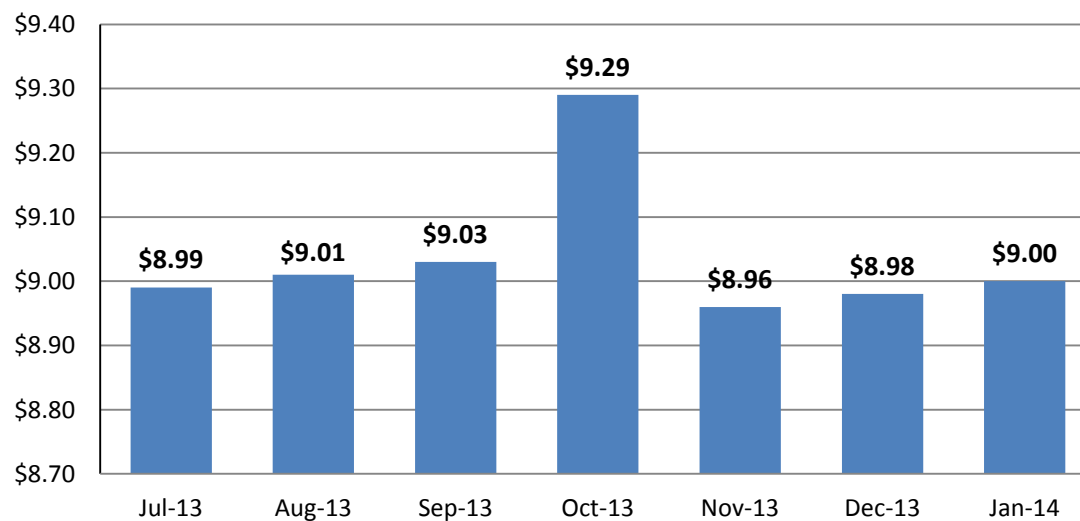
Placements may be duplicated as some individuals may work more than one activity or job.

Number of New Employments Statewide, as reported by SL Start



Employment placements may be duplicated as some individuals may work more than one job.

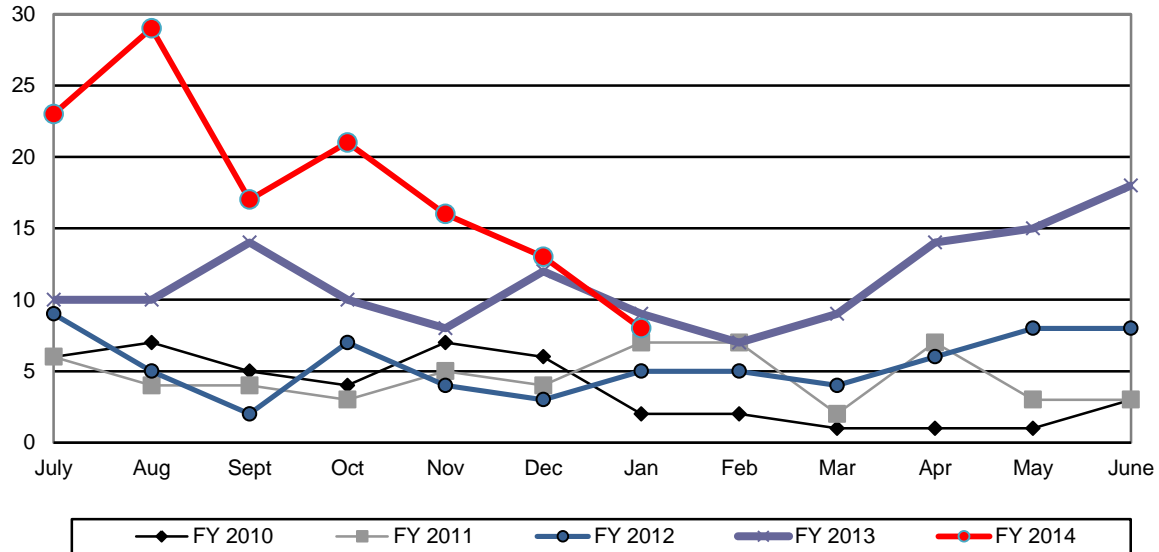
Average Starting Hourly Wage of TANF Employments Statewide, as reported by SL Start



TANF Diversion Payments

	SFY 2010		SFY 2011		SFY 2012		SFY 2013		SFY 2014	
	Cases	Expenditures	Cases	Expenditures	Cases	Expenditures	Cases	Expenditures	Cases	Expenditures
July	6	\$10,000	6	\$12,000	9	\$19,500	10	\$20,000	23	\$46,500
Aug	7	\$10,500	4	\$8,000	5	\$12,500	10	\$19,000	29	\$54,500
Sept	5	\$9,500	4	\$7,000	2	\$4,000	14	\$31,500	17	\$36,500
Oct	4	\$6,000	3	\$4,500	7	\$12,500	10	\$18,000	21	\$42,500
Nov	7	\$10,500	5	\$9,500	4	\$7,000	8	\$15,000	16	\$28,953
Dec	6	\$12,000	4	\$10,000	3	\$5,500	12	\$25,000	13	\$25,500
Jan	2	\$5,000	7	\$13,500	5	\$10,500	9	\$17,500	8	\$16,000
Feb	2	\$5,000	7	\$13,500	5	\$11,500	7	\$13,500		
Mar	1	\$1,500	2	\$4,000	4	\$7,000	9	\$17,500		
April	1	\$2,500	7	\$14,350	6	\$10,000	14	\$30,000		
May	1	\$1,500	3	\$4,500	8	\$17,000	15	\$30,500		
June	3	\$5,500	3	\$6,500	8	\$20,000	18	\$37,000		
TOTAL	45	\$79,500	55	\$107,350	66	\$137,000	136	\$274,500	127	\$250,453
Monthly average	4	\$6,625	5	\$8,946	6	\$11,417	11	\$22,875	18	\$35,779

Diversion Cases by State Fiscal Year



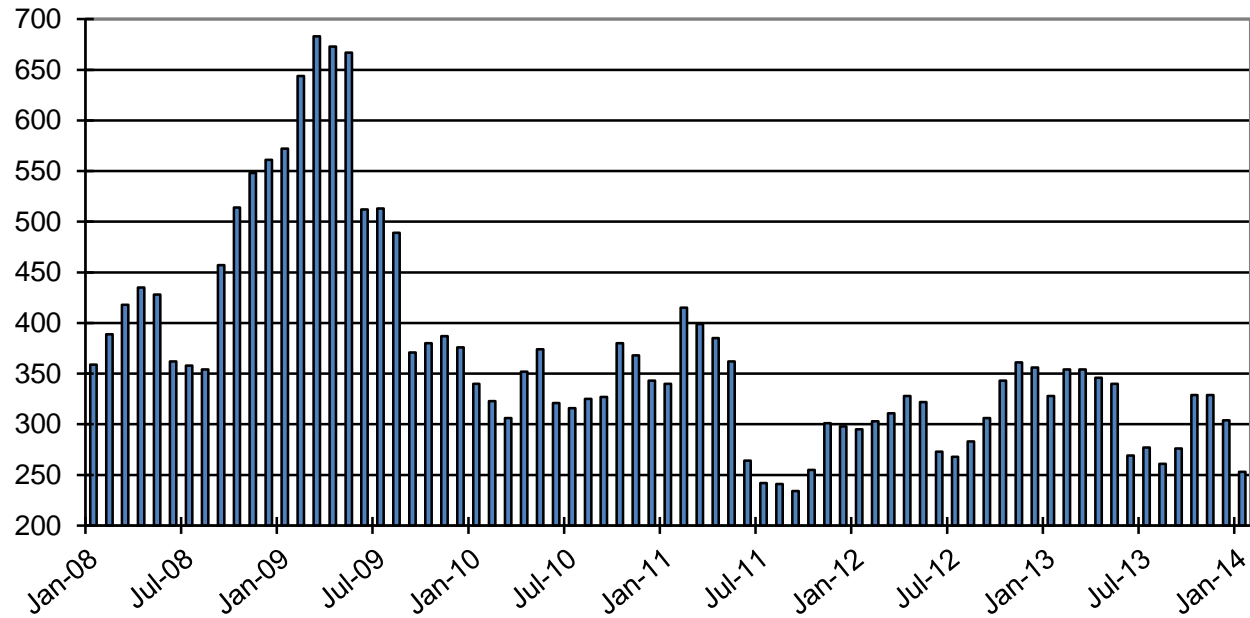
Education Works Cases by Administrative Office

Office	Jul-13	Aug-13	Sep-13	Oct-13	Nov-13	Dec-13	Jan-14
Chaves	-	-	-	-	-	-	-
Cibola	4	4	5	5	4	4	4
Colfax	3	4	6	6	5	4	2
Curry	2	1	2	3	3	1	1
East Dona Ana	14	17	11	16	19	19	12
Eddy Artesia	-	-	1	2	1	1	1
Eddy Carlsbad	5	3	4	3	2	1	1
Grant	8	9	7	9	7	7	8
Guadalupe	-	-	-	1	1	1	-
Hidalgo	-	-	-	-	-	-	-
Lea	5	3	2	3	2	2	-
Lincoln	-	-	-	-	-	-	-
Luna	4	5	3	2	4	4	6
McKinley	-	1	1	1	1	1	-
Northeast Bernalillo	59	40	48	56	56	50	54
Northwest Bernalillo	26	22	30	29	32	30	26
Otero	1	4	5	7	4	5	3
Quay	-	1	2	2	2	2	-
Rio Arriba	4	4	1	4	1	3	3
Roosevelt	1	2	1	1	1	1	-
San Juan	1	1	1	2	2	2	2
San Miguel	4	6	16	17	21	19	15
Sandoval	26	26	28	29	33	31	24
Santa Fe	4	11	7	8	7	7	7
Sierra	-	2	2	2	2	2	1
Socorro	3	1	2	2	1	1	2
South Dona Ana	3	9	8	8	7	5	4
Southeast Bernalillo	38	26	29	34	38	36	27
Southwest Bernalillo	16	15	23	25	24	24	20
Taos	4	3	4	4	4	3	1
Torrance	10	11	10	11	10	10	5
Union	-	-	-	-	-	-	-
Valencia North	5	7	6	7	7	4	4
Valencia South	4	4	5	6	5	5	4
West Dona Ana	23	19	6	24	23	19	15
Centralized Units	-	-	-	-	-	-	1
TOTAL	277	261	276	329	329	304	253

Education Works Cases by Region

Region	Jul-13	Aug-13	Sep-13	Oct-13	Nov-13	Dec-13	Jan-14
NW Region 1	40	43	46	50	52	47	38
NE Region 2	19	28	34	39	38	36	28
Central Region 3	149	114	140	155	160	150	132
SE Region 4	13	10	12	15	12	9	3
SW Region 5	56	66	44	70	67	62	51
Centralized Units	-	-	-	-	-	-	1
TOTAL	277	261	276	329	329	304	253

Education Works Cases, by Month



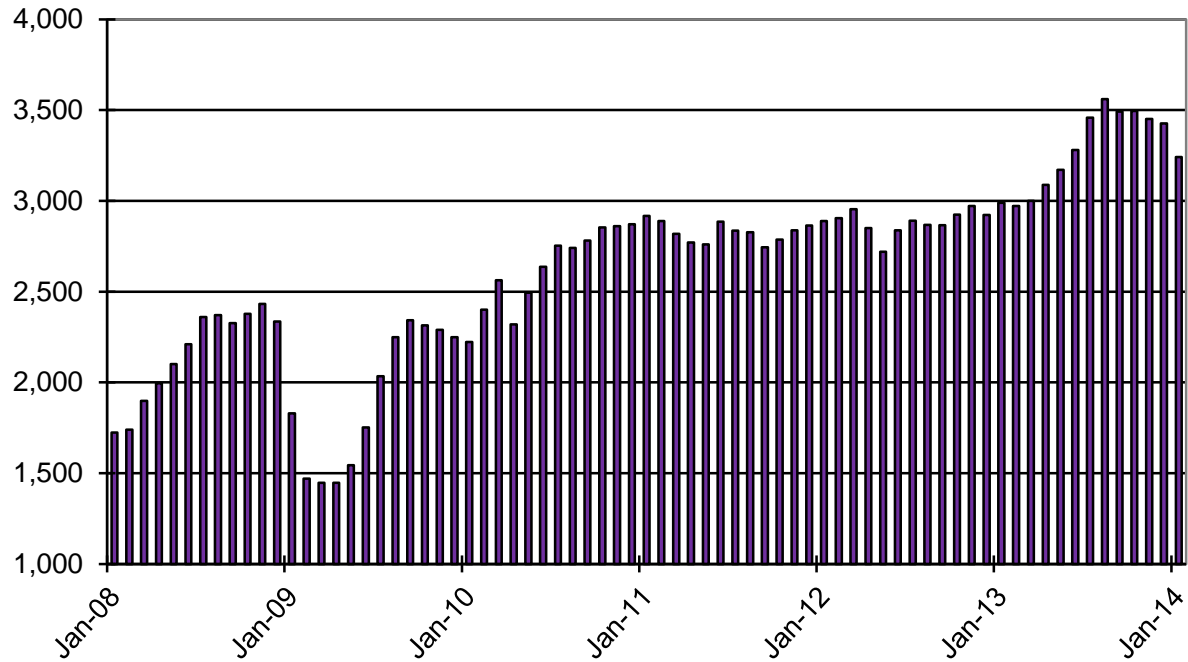
General Assistance (GA) Cases by Administrative Office

Office	Jul-13	Aug-13	Sep-13	Oct-13	Nov-13	Dec-13	Jan-14
Chaves	101	102	108	107	98	96	82
Cibola	73	71	72	68	67	65	51
Colfax	30	29	31	31	38	37	39
Curry	80	86	87	85	73	67	60
East Dona Ana	88	86	85	92	85	83	85
Eddy Artesia	31	27	30	27	22	18	16
Eddy Carlsbad	80	76	79	79	74	72	59
Grant	68	72	74	72	63	67	54
Guadalupe	26	25	25	24	28	28	29
Hidalgo	11	12	12	13	12	12	12
Lea	43	45	49	48	47	46	47
Lincoln	36	37	40	37	32	32	21
Luna	44	47	45	46	44	43	39
McKinley	18	19	18	20	20	19	21
Northeast Bernalillo	421	441	457	470	467	474	470
Northwest Bernalillo	334	347	359	352	349	351	353
Otero	66	72	75	80	75	70	51
Quay	34	35	35	35	34	36	36
Rio Arriba	312	344	142	142	144	144	137
Roosevelt	13	16	18	18	17	16	14
San Juan	75	76	76	73	77	76	70
San Miguel	115	117	122	126	128	133	127
Sandoval	120	125	133	132	130	128	127
Santa Fe	251	258	271	274	279	283	265
Sierra	40	39	38	41	28	26	32
Socorro	57	58	61	65	60	58	56
South Dona Ana	46	47	53	58	56	53	37
Southeast Bernalillo	176	178	191	189	191	195	200
Southwest Bernalillo	233	240	240	237	244	237	239
Taos	95	97	100	104	110	115	93
Torrance	26	32	35	32	33	34	33
Union	8	8	7	7	7	8	8
Valencia North	104	95	98	85	91	90	89
Valencia South	43	45	48	49	59	59	56
West Dona Ana	161	157	177	173	161	150	125
Centralized Units	-	-	-	4	8	5	9
TOTAL	3,459	3,561	3,491	3,495	3,451	3,426	3,242

General Assistance (GA) Cases by Region

Region	Jul-13	Aug-13	Sep-13	Oct-13	Nov-13	Dec-13	Jan-14
NW Region 1	433	431	445	427	444	437	414
NE Region 2	811	853	673	684	706	720	669
Central Region 3	1,190	1,238	1,282	1,280	1,284	1,291	1,295
SE Region 4	408	412	431	423	393	379	343
SW Region 5	617	627	660	677	616	594	512
Centralized Units	-	-	-	4	8	5	9
TOTAL	3,459	3,561	3,491	3,495	3,451	3,426	3,242

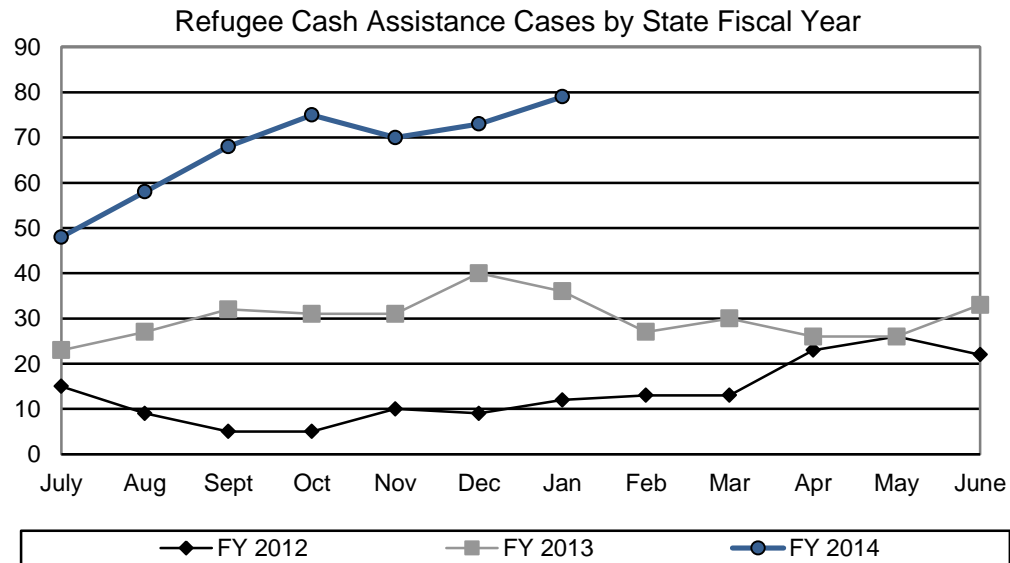
General Assistance Cases per Month



GA Interim Assistance Reimbursements						
	SFY 12		SFY 13		SFY 14	
	Cases	Amount	Cases	Amount	Cases	Amount
<i>July</i>	77	\$224,022	105	\$254,087	87	\$185,368
August	100	\$256,766	88	\$248,471	70	\$184,639
<i>September</i>	68	\$159,712	101	\$233,341	102	\$268,243
October	60	\$158,539	101	\$293,784	87	\$165,578
<i>November</i>	60	\$158,596	72	\$193,152	65	\$139,197
December	74	\$183,600	84	\$236,221	49	\$147,853
<i>January</i>	91	\$341,348	79	\$209,922	63	\$178,944
February	113	\$307,090	77	\$178,441		
<i>March</i>	77	\$186,834	85	\$229,599		
April	102	\$357,392	92	\$240,540		
<i>May</i>	90	\$230,243	126	\$346,079		
June	57	\$215,729	90	\$225,355		
SFY Total	969	\$2,779,871	1,100	\$2,888,992	523	\$1,269,822
Monthly Average	81	\$231,656	92	\$240,749	75	\$181,403

IAR case figures reflect those with expected reimbursement amounts above \$0. Figures unreconciled and subject to change.

Refugee Cash Assistance						
	SFY 12		SFY 13		SFY 14	
	Cases	Payments	Cases	Payments	Cases	Payments
July	15	\$6,428	23	\$7,155	48	\$12,013
August	9	\$4,433	27	\$7,742	58	\$16,129
September	5	\$2,930	32	\$8,267	68	\$19,061
October	5	\$1,519	31	\$9,803	75	\$20,962
November	10	\$2,675	31	\$9,552	70	\$21,880
December	9	\$3,380	40	\$10,435	73	\$22,053
January	12	\$3,285	36	\$11,489	79	\$22,670
February	13	\$3,210	27	\$11,107		
March	13	\$3,739	30	\$8,678		
April	23	\$5,654	26	\$9,410		
May	26	\$7,579	26	\$8,901		
June	22	\$7,496	33	\$9,535		
SFY Total	162	\$52,328	363	\$112,074	471	\$134,768
Monthly Average	14	\$4,361	30	\$9,340	67	\$19,253



Low Income Home Energy Assistance Program (LIHEAP) Payments by Administrative Office

Cumulative, For Federal Fiscal Year 2014

Office	Payments	Number of Households Paid
Chaves	\$219,520	1,676
Cibola	\$124,128	987
Colfax	\$58,800	463
Curry	\$66,224	521
East Dona Ana	\$165,840	1,342
Eddy Artesia	\$30,064	227
Eddy Carlsbad	\$58,720	470
Grant	\$81,904	633
Guadalupe	\$76,256	517
Hidalgo	\$6,784	53
Lea	\$54,528	410
Lincoln	\$38,080	286
Luna	\$110,528	822
McKinley	\$64,000	511
Northeast Bernalillo	\$426,352	3,608
Northwest Bernalillo	\$419,264	3,560
Otero	\$88,560	698
Quay	\$63,856	489

Office	Payments	Number of Households Paid
Rio Arriba	\$277,648	2,148
Roosevelt	\$30,944	237
San Juan	\$204,288	1,613
San Miguel	\$366,736	2,658
Sandoval	\$141,488	1,214
Santa Fe	\$169,888	1,368
Sierra	\$89,328	652
Socorro	\$105,952	780
South Dona Ana	\$133,744	1,082
Southeast Bernalillo	\$264,224	2,224
Southwest Bernalillo	\$380,448	3,196
Taos	\$254,960	1,856
Torrance	\$105,248	793
Union	\$11,360	87
Valencia North	\$197,616	1,541
Valencia South	\$142,928	1,070
West Dona Ana	\$156,960	1,261
Centralized Units	\$5,344	46
TOTAL	\$5,192,512	41,099

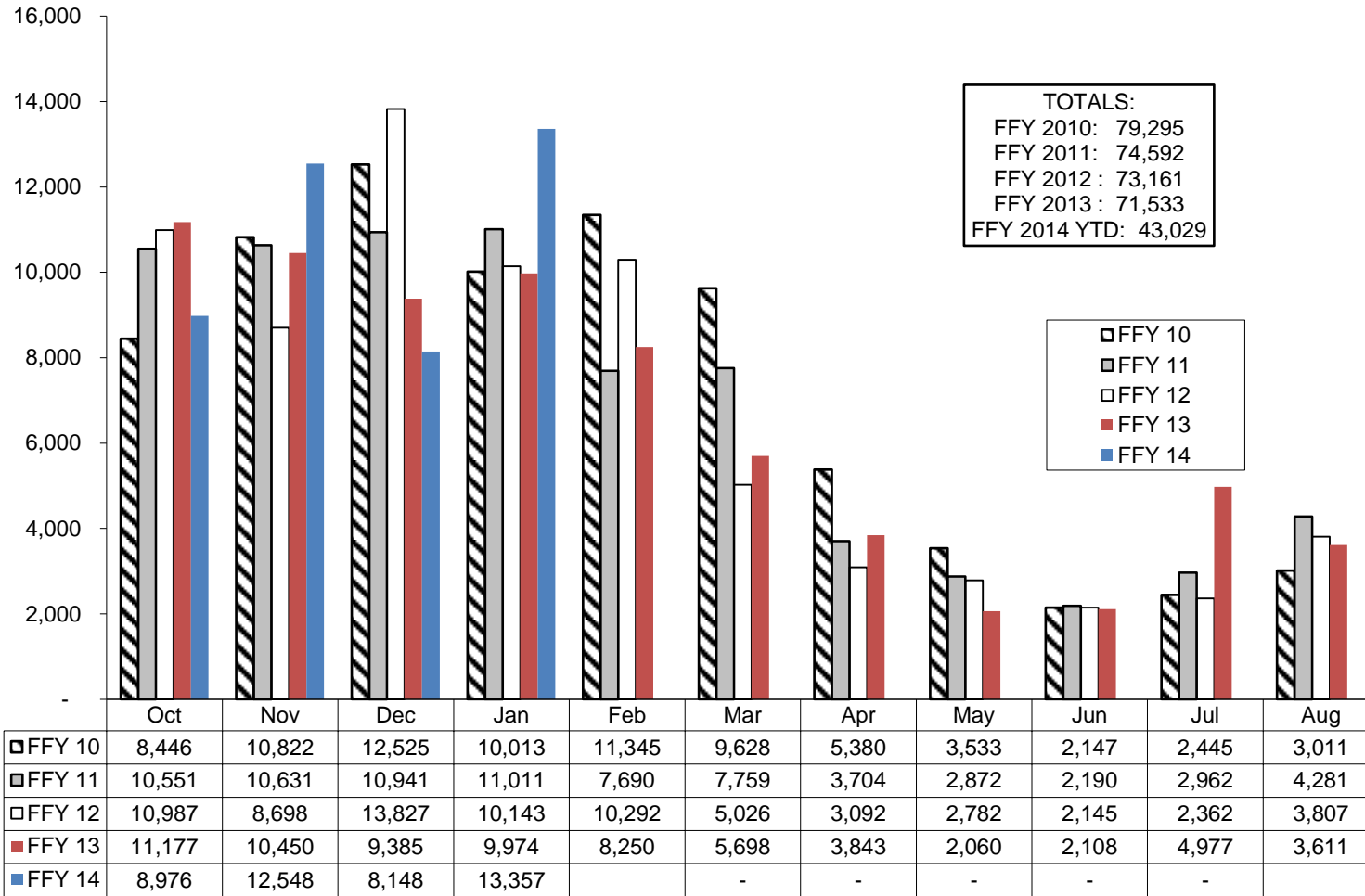
LIHEAP Payments by Region

Cumulative, For Federal Fiscal Year 2014

Region	Payments	Number of Households Paid
NW Region 1	\$874,448	6,936
NE Region 2	\$1,139,392	8,580
Central Region 3	\$1,595,536	13,381
SE Region 4	\$600,112	4,547
SW Region 5	\$977,680	7,609
Centralized Units	\$5,344	46
TOTAL	\$5,192,512	41,099

Note: Five Sandoval Indian Pueblos, Inc., Jemez Pueblo, The Jicarilla Nation, Laguna Pueblo, Nambe Pueblo, The Navajo Nation, and Zuni Pueblo administer their own LIHEAP programs. LIHEAP does not process new applications received during the month of September until the following Federal fiscal year.

LIHEAP Application Approvals & Certifications



Medicaid Eligibles by County

County	Oct-12	Sep-13	Oct-13	Oct 12 –Oct 13		Sep 13 –Oct 13	
				# change	% change	# change	% change
Bernalillo	147,840	148,206	149,019	1,179	0.8%	813	0.5%
Catron	494	491	517	23	4.7%	26	5.3%
Chaves	20,643	20,631	21,295	652	3.2%	664	3.2%
Cibola	8,812	8,817	8,821	9	0.1%	4	0.0%
Colfax	3,026	2,883	2,897	-129	-4.3%	14	0.5%
Curry	13,262	13,033	13,417	155	1.2%	384	2.9%
De Baca	480	468	477	-3	-0.6%	9	1.9%
Dona Ana	68,437	68,692	70,801	2,364	3.5%	2,109	3.1%
Eddy	13,708	13,730	14,271	563	4.1%	541	3.9%
Grant	7,042	6,922	7,267	225	3.2%	345	5.0%
Guadalupe	1,382	1,415	1,426	44	3.2%	11	0.8%
Harding	58	54	56	-2	-3.4%	2	3.7%
Hidalgo	1,237	1,168	1,209	-28	-2.3%	41	3.5%
Lea	16,616	16,777	17,331	715	4.3%	554	3.3%
Lincoln	4,485	4,665	4,905	420	9.4%	240	5.1%
Los Alamos	627	619	639	12	1.9%	20	3.2%
Luna	9,596	9,608	10,004	408	4.3%	396	4.1%
McKinley	30,423	30,033	29,932	-491	-1.6%	-101	-0.3%
Mora	1,108	1,002	982	-126	-11.4%	-20	-2.0%
Otero	11,649	11,558	12,027	378	3.2%	469	4.1%
Quay	2,674	2,572	2,639	-35	-1.3%	67	2.6%
Rio Arriba	14,826	15,593	15,656	830	5.6%	63	0.4%
Roosevelt	4,982	4,942	5,129	147	3.0%	187	3.8%
Sandoval	27,077	27,729	27,804	727	2.7%	75	0.3%
San Juan	36,793	36,962	37,004	211	0.6%	42	0.1%
San Miguel	9,116	8,894	9,009	-107	-1.2%	115	1.3%
Santa Fe	24,494	24,797	24,935	441	1.8%	138	0.6%
Sierra	3,605	3,671	3,877	272	7.5%	206	5.6%
Socorro	5,391	5,381	5,630	239	4.4%	249	4.6%
Taos	8,256	8,517	8,585	329	4.0%	68	0.8%
Torrance	5,881	6,127	6,279	398	6.8%	152	2.5%
Union	881	799	785	-96	-10.9%	-14	-1.8%
Valencia	20,569	20,639	20,676	107	0.5%	37	0.2%
Unspecified	627	628	655	28	4.5%	27	4.3%
TOTAL	526,097	528,023	535,956	9,859	1.9%	7,933	1.5%

Note: All figures are updated historically to include retroactive eligibility, retroactive closures and other late reporting eligibility changes. Excludes clients in SLIMB & Q11.
 Source: <http://www.hsd.state.nm.us/LookingForInformation/medicaid-eligibility.aspx>

SNAP Timeliness Rates: Percent of Cases Processed Timely

Region & Administrative office	<i>Non-Expedited</i>				<i>Expedited</i>			
	Jul 2013	Aug 2013	Sep 2013	Oct 2013	Jul 2013	Aug 2013	Sep 2013	Oct 2013
<u>NW Region (1)</u>								
Cibola	97.5%	99.0%	100.0%	99.0%	100.0%	98.9%	100.0%	100.0%
<i>McKinley</i>	97.0%	97.8%	99.6%	98.9%	96.8%	100.0%	99.0%	99.5%
Sandoval	96.6%	96.7%	99.2%	98.4%	99.2%	99.4%	99.1%	99.7%
<i>San Juan</i>	98.9%	99.8%	99.6%	98.2%	98.8%	100.0%	100.0%	98.9%
Valencia South	98.6%	97.8%	97.5%	97.5%	100.0%	100.0%	100.0%	100.0%
<i>Valencia North</i>	100.0%	98.8%	99.2%	98.6%	98.6%	100.0%	97.8%	98.9%
NW Region Total	98.0%	98.5%	99.4%	98.5%	98.7%	99.7%	99.3%	99.4%
<u>NE Region (2)</u>								
<i>Colfax</i>	100.0%	100.0%	100.0%	100.0%	100.0%	100.0%	100.0%	100.0%
Rio Arriba	94.9%	98.9%	95.4%	95.0%	100.0%	94.3%	87.7%	98.5%
<i>San Miguel</i>	100.0%	100.0%	100.0%	100.0%	100.0%	99.2%	100.0%	97.5%
Santa Fe	99.2%	99.6%	100.0%	100.0%	97.7%	97.8%	98.9%	97.9%
<i>Taos</i>	98.7%	99.0%	100.0%	100.0%	100.0%	100.0%	100.0%	97.0%
NE Region Total	99.0%	99.5%	99.0%	98.7%	98.6%	97.4%	96.4%	97.8%
<u>Central Region (3)</u>								
<i>NE Bernalillo</i>	99.4%	99.8%	99.4%	99.2%	99.6%	99.3%	99.1%	98.7%
NW Bernalillo	98.4%	99.2%	98.5%	97.8%	99.0%	98.4%	99.6%	97.6%
<i>SE Bernalillo</i>	99.1%	98.9%	99.6%	99.2%	98.9%	99.8%	99.5%	98.9%
SW Bernalillo	98.7%	98.1%	97.2%	99.8%	98.9%	99.5%	99.3%	98.7%
<i>Torrance</i>	98.7%	98.8%	96.4%	100.0%	100.0%	97.0%	100.0%	100.0%
Central Region Total	98.9%	99.0%	98.5%	99.0%	99.1%	99.2%	99.4%	98.5%

SNAP Timeliness Rates: Percent of Cases Processed Timely

Region & Administrative office	<i>Non-Expedited</i>				<i>Expedited</i>			
	Jul 2013	Aug 2013	Sep 2013	Oct 2013	Jul 2013	Aug 2013	Sep 2013	Oct 2013
<u>SE Region Four (4)</u>								
Chaves	99.3%	99.6%	100.0%	96.6%	99.5%	99.5%	96.4%	97.2%
<i>Curry</i>	99.2%	96.8%	96.6%	100.0%	99.4%	99.2%	100.0%	90.0%
Guadalupe	100.0%	100.0%	100.0%	100.0%	100.0%	100.0%	100.0%	100.0%
<i>Eddy Carlsbad</i>	96.9%	96.9%	87.0%	98.0%	99.2%	100.0%	95.8%	75.0%
Eddy Artesia	100.0%	98.0%	83.3%	100.0%	100.0%	100.0%	100.0%	94.4%
<i>Lea</i>	98.8%	98.4%	93.3%	92.2%	98.7%	98.8%	100.0%	89.1%
Quay	100.0%	100.0%	100.0%	100.0%	100.0%	100.0%	100.0%	100.0%
<i>Roosevelt</i>	100.0%	100.0%	100.0%	91.7%	100.0%	100.0%	100.0%	89.5%
SE Region Total	99.0%	98.4%	96.5%	96.7%	99.4%	99.5%	98.4%	89.2%
<u>SW Region (5)</u>								
<i>West Doña Ana</i>	97.9%	99.4%	98.6%	97.8%	99.7%	99.4%	100.0%	89.5%
East Doña Ana	100.0%	100.0%	95.7%	98.6%	99.5%	99.3%	96.7%	90.9%
<i>Southern Doña Ana</i>	99.5%	99.6%	97.7%	96.8%	99.3%	99.1%	96.2%	92.1%
Grant	100.0%	99.2%	100.0%	100.0%	100.0%	100.0%	100.0%	91.3%
<i>Lincoln</i>	98.6%	98.5%	91.7%	100.0%	100.0%	100.0%	100.0%	80.8%
Luna	98.2%	100.0%	100.0%	94.4%	97.9%	100.0%	84.0%	81.3%
<i>Otero</i>	100.0%	94.9%	100.0%	97.6%	100.0%	99.4%	100.0%	75.0%
Sierra	100.0%	100.0%	100.0%	100.0%	100.0%	100.0%	90.9%	100.0%
<i>Socorro</i>	100.0%	100.0%	100.0%	100.0%	100.0%	98.3%	100.0%	94.4%
SW Region Total	99.3%	99.1%	97.8%	98.1%	99.6%	99.3%	97.4%	87.5%
<u>Central Offices</u>								
<i>CAP</i>	100.0%	90.0%	-	100.0%	-	-	-	100.0%
South Processing Unit	-	-	-	100.0%	-	-	-	21.7%
<i>North Processing Unit</i>	-	-	-	66.7%	-	-	-	33.3%
State Total	98.8%	98.9%	98.7%	98.4%	99.1%	99.1%	98.7%	95.4%

SNAP Applications Processed by Administrative Office

Office	Jul-13	Aug-13	Sep-13	Oct-13	Nov-13	Dec-13	Jan-14
Chaves	594	532	523	395	473	476	598
Cibola	256	239	221	217	247	247	296
Colfax	80	70	79	75	78	47	130
Curry	352	400	338	164	144	225	317
East Dona Ana	594	509	599	419	428	529	554
Eddy Artesia	130	133	140	82	69	97	95
Eddy Carlsbad	346	314	307	163	143	179	248
Grant	216	245	230	217	251	309	342
Guadalupe	44	45	43	31	36	29	74
Hidalgo	40	40	33	13	17	25	30
Lea	443	464	435	283	305	313	338
Lincoln	157	143	140	98	110	108	168
Luna	280	260	228	218	311	300	330
McKinley	703	654	572	616	684	592	506
Northeast Bernalillo	1,660	1,580	1,810	1,745	1,504	1,748	1,875
Northwest Bernalillo	1,217	1,166	1,088	1,107	933	1,122	1,317
Otero	425	407	503	322	298	356	450
Quay	99	78	68	74	73	80	87
Rio Arriba	579	433	462	442	366	456	664
Roosevelt	110	109	116	82	61	69	113
San Juan	1,152	1,102	1,042	894	1,117	646	732
San Miguel	242	316	296	290	269	260	310
Sandoval	898	786	782	768	693	539	592
Santa Fe	769	685	609	623	663	568	761
Sierra	157	146	131	141	146	198	207
Socorro	170	166	167	173	167	153	216
South Dona Ana	441	471	476	401	384	411	509
Southeast Bernalillo	1,240	957	846	833	665	778	886
Southwest Bernalillo	1,284	1,364	1,361	1,280	1,131	1,141	1,141
Taos	210	247	224	245	252	230	316
Torrance	160	190	166	177	138	157	218
Union	14	17	12	13	15	9	19
Valencia North	372	401	295	330	421	313	475
Valencia South	214	193	193	189	196	166	217
West Dona Ana	772	848	767	578	640	810	874
Centralized Units	1	1	1	171	278	158	167
TOTAL	16,421	15,711	15,303	13,869	13,706	13,844	16,172

Applications processed = applications approved + denied + withdrawn

TANF Applications Processed by Administrative Office

Office	Jul-13	Aug-13	Sep-13	Oct-13	Nov-13	Dec-13	Jan-14
Chaves	205	182	168	106	86	99	115
Cibola	41	50	47	56	54	25	41
Colfax	39	21	24	23	19	11	18
Curry	125	145	130	46	33	51	60
East Dona Ana	199	205	193	106	81	105	106
Eddy Artesia	55	47	54	16	10	20	10
Eddy Carlsbad	156	109	103	40	37	23	51
Grant	53	75	55	41	42	46	51
Guadalupe	14	12	6	13	6	5	7
Hidalgo	8	10	7	3	2	1	1
Lea	151	137	138	68	63	57	72
Lincoln	51	55	52	25	15	22	45
Luna	82	76	61	38	44	62	57
McKinley	56	77	65	66	43	28	35
Northeast Bernalillo	496	425	500	440	342	379	373
Northwest Bernalillo	308	313	293	325	181	235	281
Otero	128	116	141	78	42	43	70
Quay	27	21	24	21	10	15	19
Rio Arriba	158	97	89	69	62	88	98
Roosevelt	28	29	37	14	13	11	19
San Juan	136	125	121	95	87	41	72
San Miguel	63	57	51	37	49	32	45
Sandoval	250	232	199	213	173	86	104
Santa Fe	175	151	152	117	112	78	93
Sierra	46	28	26	20	16	16	19
Socorro	54	33	29	16	13	29	48
South Dona Ana	182	211	200	111	94	98	124
Southeast Bernalillo	308	309	238	212	135	171	171
Southwest Bernalillo	332	368	376	318	237	252	253
Taos	42	48	47	33	29	28	37
Torrance	64	68	44	69	40	37	53
Union	4	4	4	2	1	1	8
Valencia North	137	146	108	92	90	54	100
Valencia South	55	68	41	60	52	28	48
West Dona Ana	219	249	197	132	102	153	149
Centralized Units	0	0	0	21	57	30	25
TOTAL	4,447	4,299	4,020	3,142	2,472	2,460	2,878

GA Applications Processed by Administrative Office

Office	Jul-13	Aug-13	Sep-13	Oct-13	Nov-13	Dec-13	Jan-14
Chaves	27	27	24	14	20	10	11
Cibola	18	14	12	9	17	10	6
Colfax	6	6	12	2	8	11	1
Curry	30	35	34	27	8	3	2
East Dona Ana	30	19	31	32	15	5	13
Eddy Artesia	7	11	12	5	0	4	0
Eddy Carlsbad	28	21	19	22	10	1	4
Grant	23	19	22	11	4	10	14
Guadalupe	8	7	4	5	3	2	0
Hidalgo	12	6	6	3	2	2	0
Lea	15	20	16	11	5	10	3
Lincoln	10	12	14	5	2	3	4
Luna	34	23	28	18	4	3	8
McKinley	19	17	21	30	11	11	8
Northeast Bernalillo	155	157	170	184	111	143	127
Northwest Bernalillo	116	112	114	93	57	91	76
Otero	63	47	41	23	10	9	12
Quay	7	16	10	9	9	7	5
Rio Arriba	23	14	19	17	13	14	16
Roosevelt	3	3	6	4	1	1	4
San Juan	43	44	45	44	22	16	9
San Miguel	33	33	35	33	18	11	17
Sandoval	56	51	70	53	40	26	22
Santa Fe	80	75	91	81	70	39	36
Sierra	6	11	2	6	3	7	5
Socorro	15	12	16	14	5	7	9
South Dona Ana	17	15	20	10	6	7	10
Southeast Bernalillo	85	97	74	65	42	56	61
Southwest Bernalillo	104	97	99	83	75	62	64
Taos	27	25	34	21	25	19	8
Torrance	14	14	15	10	4	7	6
Union	0	1	0	1	0	2	1
Valencia North	26	21	25	26	26	14	19
Valencia South	12	13	20	13	16	9	9
West Dona Ana	76	71	77	36	22	18	18
Centralized Units	0	0	2	2	3	2	1
TOTAL	1,228	1,166	1,240	1,022	687	652	609

SNAP Applications Processed by Region

Region	Jul-13	Aug-13	Sep-13	Oct-13	Nov-13	Dec-13	Jan-14
NW Region 1	3,595	3,375	3,105	3,014	3,358	2,503	2,818
NE Region 2	1,894	1,768	1,682	1,688	1,643	1,570	2,200
Central Region 3	5,561	5,257	5,271	5,142	4,371	4,946	5,437
SE Region 4	2,118	2,075	1,970	1,274	1,304	1,468	1,870
SW Region 5	3,252	3,235	3,274	2,580	2,752	3,199	3,680
Centralized Units	1	1	1	171	278	158	167
TOTAL	16,421	15,711	15,303	13,869	13,706	13,844	16,172

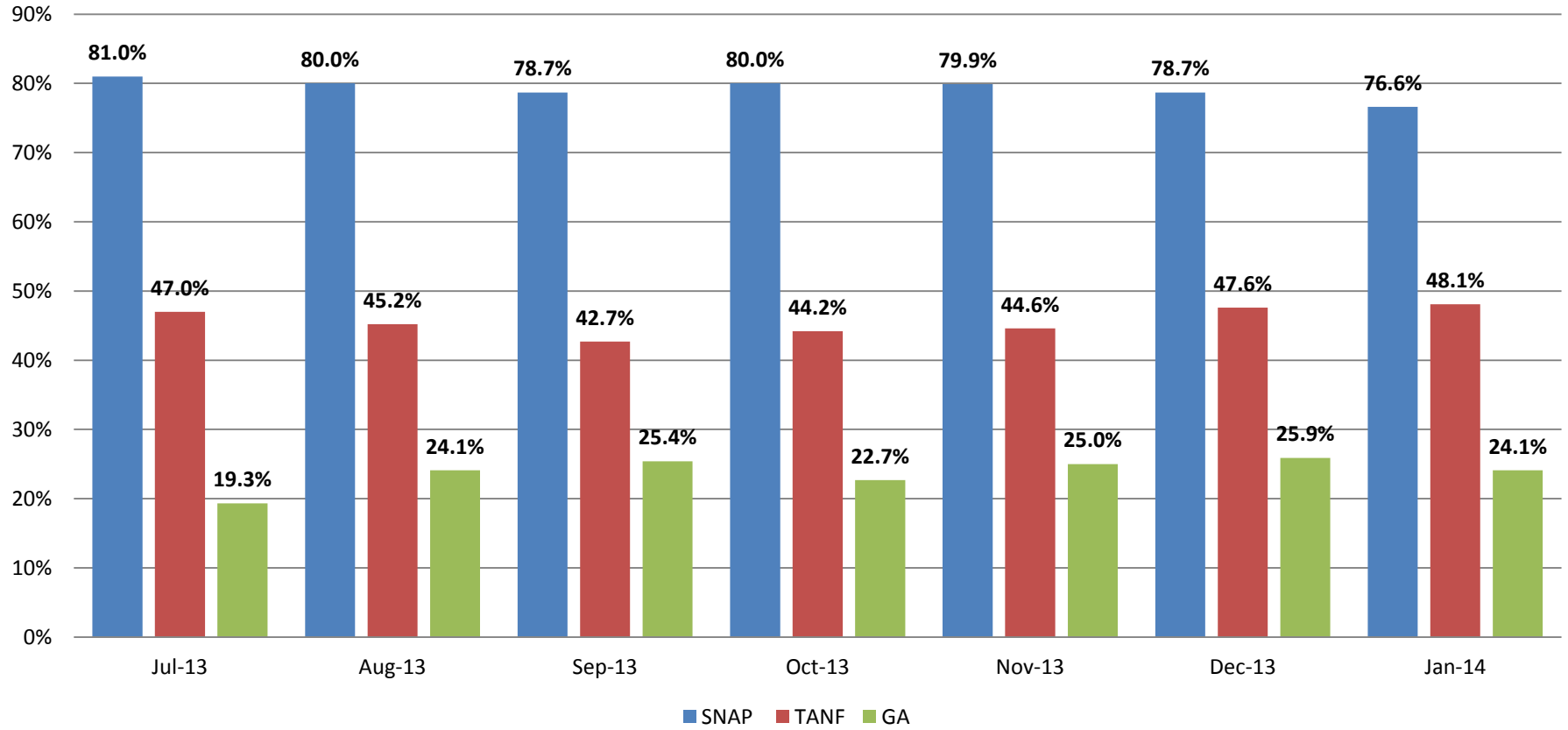
TANF Applications Processed by Region

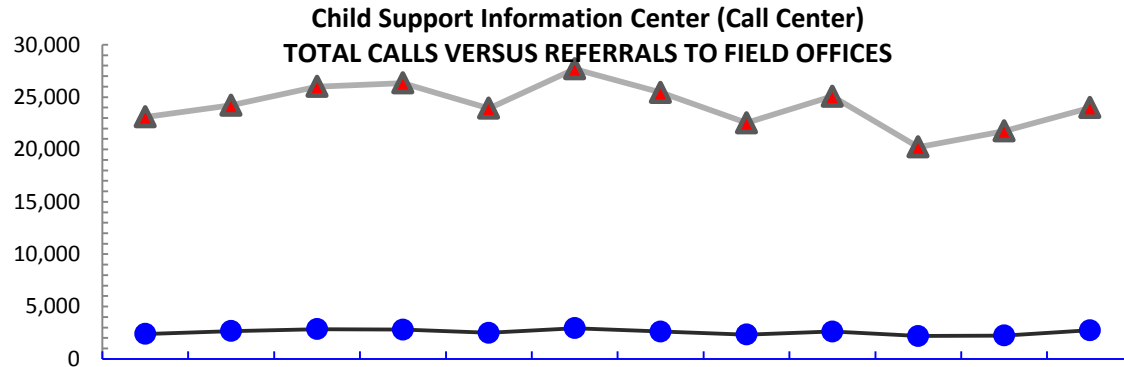
Region	Jul-13	Aug-13	Sep-13	Oct-13	Nov-13	Dec-13	Jan-14
NW Region 1	675	698	581	582	499	262	400
NE Region 2	481	378	367	281	272	238	299
Central Region 3	1,508	1,483	1,451	1,364	935	1,074	1,131
SE Region 4	761	682	660	324	258	281	353
SW Region 5	1,022	1,058	961	570	451	575	670
Centralized Units	-	-	-	21	57	30	25
TOTAL	4,447	4,299	4,020	3,142	2,472	2,460	2,878

GA Applications Processed by Region

Region	Jul-13	Aug-13	Sep-13	Oct-13	Nov-13	Dec-13	Jan-14
NW Region 1	174	160	193	175	132	86	73
NE Region 2	169	154	191	155	134	96	79
Central Region 3	474	477	472	435	289	359	334
SE Region 4	125	140	125	97	56	38	29
SW Region 5	286	235	257	158	73	71	93
Centralized Units	-	-	2	2	3	2	1
TOTAL	1,228	1,166	1,240	1,022	687	652	609

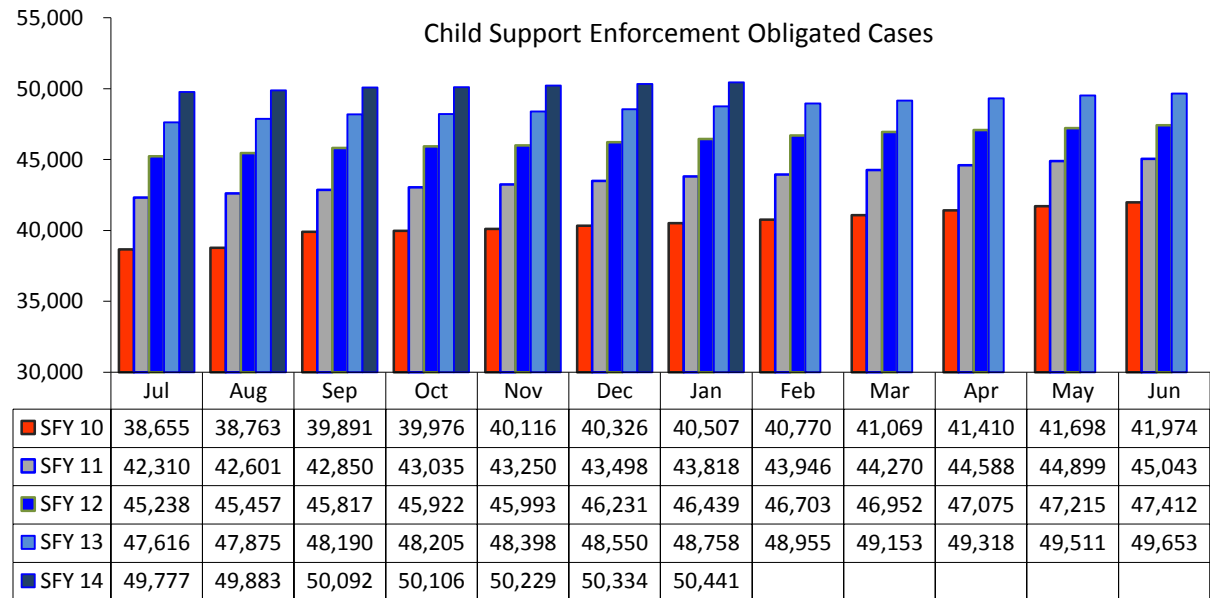
Application Approval rate



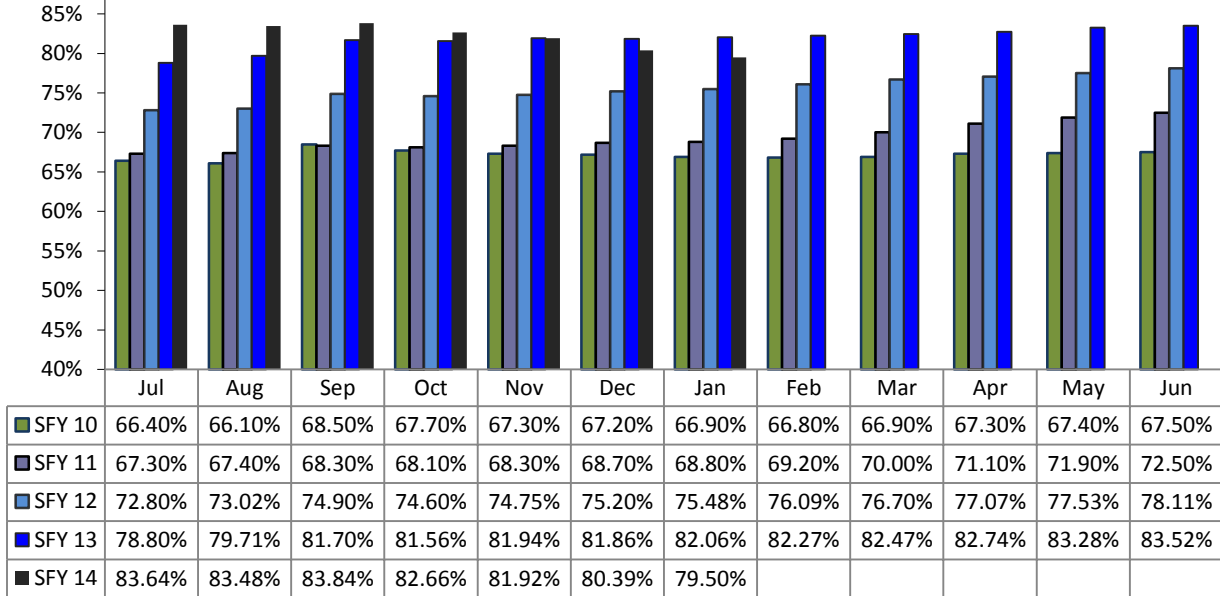


	Feb-13	Mar-13	Apr-13	May-13	Jun-13	Jul-13	Aug-13	Sep-13	Oct-13	Nov-13	Dec-13	Jan-14
▲ Calls	23,098	24,221	26,003	26,346	23,929	27,681	25,440	22,530	25,077	20,232	21,756	23,987
● Referrals	2,382	2,660	2,846	2,798	2,490	2,932	2,617	2,328	2,611	2,178	2,225	2,737
Percent	10.31%	10.98%	10.95%	10.62%	10.41%	11.07%	10.28%	10.33%	10.41%	10.77%	10.27%	11.41%

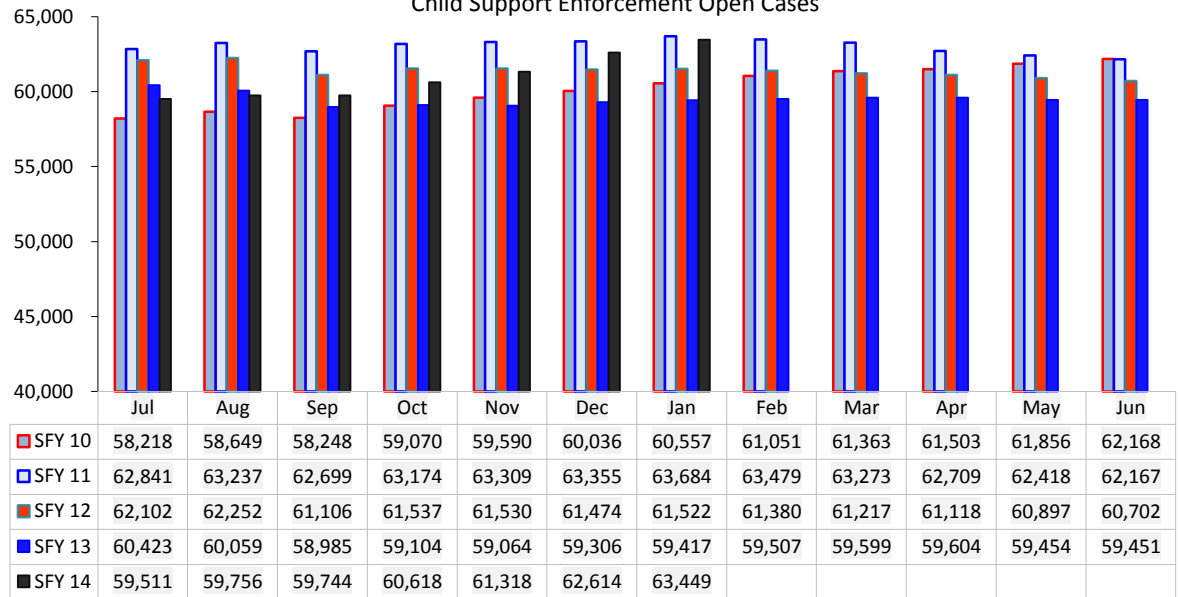
Child Support Enforcement Obligated Cases



Child Support Enforcement Obligated Case Percentages



Child Support Enforcement Open Cases



Children Receiving Child Care Assistance Subsidies By County

County	Jan	Feb	Mar	Apr	May	Jun	Jul	Aug	Sep	Oct	Nov	Dec	Jan	Year over year change
	2013	2013	2013	2013	2013	2013	2013	2013	2013	2013	2013	2013	2014	Cases Percent
Bernalillo	7,382	7,266	7,217	7,229	7,264	7,257	7,143	6,540	6,440	6,810	6,657	6,628	6,379	-1,003 -13.6%
Catron	0	0	0	0	0	0	0	0	0	0	2	2	2	2 200.0%
Chaves	718	721	694	695	681	709	753	673	674	726	741	728	690	-28 -3.9%
Cibola	281	262	251	260	248	247	254	218	242	264	259	255	244	-37 -13.2%
Colfax	57	58	53	51	52	52	53	49	51	55	64	59	57	0 0.0%
Curry	541	516	490	496	510	513	504	463	443	449	455	449	423	-118 -21.8%
De Baca	12	9	7	10	14	13	12	10	8	12	23	22	15	3 25.0%
Dona Ana	4,964	4,894	4,787	4,782	4,804	4,784	4,805	4,135	4,126	4,463	4,724	4,637	4,520	-444 -8.9%
Eddy	321	294	289	276	263	271	259	254	263	266	252	253	242	-79 -24.6%
Grant	362	358	315	323	323	345	315	235	247	280	306	305	302	-60 -16.6%
Guadalupe	20	20	17	19	20	23	24	22	25	24	26	25	24	4 20.0%
Harding	0	0	0	0	0	0	0	0	0	0	0	0	0	0 0.0%
Hidalgo	31	32	31	33	34	36	35	27	33	29	28	32	33	2 6.5%
Lea	642	628	598	578	562	583	567	517	522	604	616	607	588	-54 -8.4%
Lincoln	178	190	167	185	175	168	165	153	139	142	149	151	154	-24 -13.5%
Los	8	8	8	10	12	10	10	9	5	9	12	16	16	8 100.0%
Luna	225	210	205	214	217	219	207	191	171	166	157	166	152	-73 -32.4%
McKinley	287	269	250	264	263	268	264	196	206	266	231	217	209	-78 -27.2%
Mora	17	14	13	10	10	11	16	18	18	19	18	17	20	3 17.6%
Otero	538	536	492	503	493	509	501	459	445	486	482	459	488	-50 -9.3%
Out of State	7	5	5	6	5	5	8	8	5	8	3	3	4	-3 -42.9%
Quay	25	23	22	24	26	22	23	15	17	16	10	12	19	-6 -24.0%
Rio Arriba	104	101	100	104	99	98	113	96	88	113	116	116	113	9 8.7%
Roosevelt	191	189	179	179	185	187	187	141	157	180	168	156	145	-46 -24.1%
San Juan	715	692	694	702	717	722	721	535	537	661	677	676	658	-57 -8.0%
San Miguel	376	364	314	351	358	368	366	323	328	351	387	382	375	-1 -0.3%
Sandoval	768	759	706	717	722	741	741	707	737	781	739	738	702	-66 -8.6%
Santa Fe	452	435	439	440	433	430	431	369	394	440	414	415	397	-55 -12.2%
Sierra	83	89	90	89	81	68	84	76	74	69	76	67	69	-14 -16.9%
Socorro	66	62	52	53	53	56	59	47	44	55	62	60	59	-7 -10.6%
Taos	123	116	105	105	114	110	102	80	83	97	91	96	96	-27 -22.0%
Torrance	64	69	81	76	73	76	65	59	71	66	68	69	66	2 3.1%
Union	9	9	9	9	9	9	7	7	7	6	6	6	6	-3 -33.3%
Valencia	721	695	668	694	710	700	670	544	571	629	612	596	584	-137 -19.0%
Totals	20,288	19,893	19,348	19,487	19,530	19,610	19,464	17,176	17,171	18,542	18,631	18,420	17,851	-2,437 -12.0%

Source: Children, Youth and Families Department.

Child Care Assistance Eligibility Programs

MONTH	FEB 13	MAR 13	APR 13	MAY 13	JUN 13	JUL 13	AUG 13	SEP 13	OCT 13	NOV 13	DEC 13	JAN 14
TANF (Child Care Priority 1 Clients)												
CLIENTS	2,714	2,732	2,729	2,681	2,602	2,394	2,282	2,488	2,381	2,482	2,350	2,123
COST	\$871,356	\$927,613	\$941,904	\$923,440	\$761,525	\$786,090	\$829,356	\$752,194	\$830,838	\$857,095	\$809,829	\$663,661
TANF AVERAGE COST	\$321	\$340	\$340	\$344	\$293	\$328	\$363	\$302	\$349	\$345	\$345	\$313
TRANSITION OFF TANF (Child Care Priority 2 Clients)												
CLIENTS	341	319	347	359	376	345	354	337	305	321	297	281
COST	\$113,013	\$105,768	\$117,349	\$119,416	\$115,426	\$131,305	\$126,584	\$113,454	\$98,314	\$105,831	\$97,289	\$87,214
TRAN OFF TANF AVG COST	\$331	\$332	\$332	\$333	\$307	\$381	\$358	\$337	\$322	\$330	\$328	\$310
TANF ELIGIBLE (Child Care Priority 1B Clients at or below 100% of the Federal Poverty Level)												
CLIENTS	10,502	10,624	10,603	10,531	10,399	8,810	8,799	9,539	8,977	9,103	8,967	8,656
COST	\$3,604,677	\$3,676,351	\$3,684,738	\$3,626,278	\$3,153,346	\$3,248,882	\$3,287,030	\$2,915,474	\$3,154,371	\$3,187,198	\$3,138,875	\$2,727,874
TANF ELIGIBLE AVG COST	\$343	\$346	\$346	\$344	\$303	\$369	\$374	\$306	\$351	\$350	\$350	\$315
INCOME ELIGIBLE (Child Care Priority 3, and Priority 4 Clients)												
CLIENTS	4,944	4,950	5,014	5,199	5,368	4,913	5,015	5,393	5,610	5,986	6,041	6,079
COST	\$1,543,444	\$1,507,551	\$1,505,608	\$1,551,405	\$1,543,349	\$1,579,650	\$1,637,143	\$1,571,202	\$1,652,253	\$1,768,821	\$1,796,100	\$1,790,368
INCOME ELIG AVG COST	\$312	\$305	\$305	\$298	\$288	\$322	\$326	\$291	\$295	\$295	\$297	\$295
EMPLOYMENT & TRAINING (Child Care Priority 1A Clients)												
CLIENTS	213	199	157	128	0	0	0	0	0	0	0	0
COST	\$70,881	\$66,891	\$52,114	\$44,900	\$0	\$0	\$0	\$0	\$0	\$0	\$0	\$0
E & T AVG COST	\$333	\$336	\$336	\$351	\$0	\$0	\$0	\$0	\$0	\$0	\$0	\$0
CHILD PROTECTIVE SERVICES (Child Care CPS Clients)												
CLIENTS	634	663	680	712	719	714	721	785	748	741	765	712
COST	\$276,254	\$263,618	\$285,288	\$313,341	\$288,427	\$293,458	\$317,891	\$327,312	\$322,840	\$326,303	\$336,993	\$311,201
E & T AVG COST	\$436	\$398	\$398	\$440	\$401	\$411	\$441	\$417	\$432	\$440	\$441	\$437
GRAND TOTAL - ALL CHILD CARE PROGRAMS												
CLIENTS	19,348	19,487	19,487	19,610	19,464	17,176	17,171	18,542	18,021	18,633	18,420	17,851
COST	\$6,479,624	\$6,547,793	\$6,547,793	\$6,578,781	\$5,862,073	\$6,039,385	\$6,198,003	\$5,679,637	\$6,058,615	\$6,245,248	\$6,179,085	\$5,580,317
ALL PROGRAMS AVG COST	\$335	\$336	\$336	\$335	\$301	\$352	\$361	\$306	\$336	\$335	\$335	\$313

Notes: 1. This table is provided by the Children, Youth and Families Department. 2. All costs in the table are average costs
3. Clients served and cost reflects total CYFD program funds and are not limited to funding provided by the Human Services Department.

Income Eligibility Guidelines, November 1, 2013 – September 30, 2014

Supplemental Nutrition Assistance Program - SNAP

Household Size	Federal Poverty Guidelines (FPG) Monthly Income Standards			Maximum SNAP Monthly Allotment	LIHEAP 150% FPG
	100% FPG Net Income	130% FPG Gross Income	165% FPG Gross Income for Categorical Eligibility		
1	\$958	\$1,245	\$1,580	\$189	\$1,437
2	\$1,293	\$1,681	\$2,133	\$347	\$1,940
3	\$1,628	\$2,116	\$2,686	\$497	\$2,442
4	\$1,963	\$2,552	\$3,239	\$632	\$2,945
5	\$2,298	\$2,987	\$3,791	\$750	\$3,447
6	\$2,633	\$3,423	\$4,344	\$900	\$3,950
7	\$2,968	\$3,858	\$4,897	\$995	\$4,452
8	\$3,303	\$4,294	\$5,450	\$1,137	\$4,955
+ 1	+\$335	+\$436	+\$553	+\$142	+\$503

Minimum Allotment \$15 effective from 11/1/2013 through 09/30/2014

DEDUCTIONS: Standard Deduction: For HH size 1-3 = \$152; 4 = \$163; 5 = \$191; 6 or more = \$219; Excess Shelter Deduction Limit: \$478; Heating and Cooling Standard Utility Allowance: \$314 (HCSUA) – Limited Utility Allowance: \$ 123 (LUA); Telephone Standard: \$33; Dependent Care: Actual Amount (No Limit); Earned Income Deduction: 20%; Homeless Shelter Standard: \$143

Cash Assistance & Support Services

Household Size	Federal Poverty Guidelines (FPG) Monthly Income Standards			Maximum Monthly Benefit		
	100% FPG Limit	85% FPG Gross Limit	NM Works Cash Net Income	15% NMW Budgetary Adjustment*	Maximum Monthly Benefit	General Assistance
1	\$958	\$814	\$266	\$39	\$227	\$245
2	\$1,293	\$1,099	\$357	\$53	\$304	\$329
3	\$1,628	\$1,384	\$447	\$67	\$380	\$412
4	\$1,963	\$1,669	\$539	\$80	\$459	\$496
5	\$2,298	\$1,953	\$630	\$94	\$536	\$580
6	\$2,633	\$2,238	\$721	\$108	\$613	\$664
7	\$2,968	\$2,523	\$812	\$121	\$691	\$748
8	\$3,303	\$2,808	\$922	\$138	\$784	\$849
+ 1	+\$335	+\$285	+\$91	+\$14	+\$77	+\$84

Deductions: Dependent Care: For a child under age 2 = \$200; For a child age 2 and over = \$175.

Work Incentives: Earned Income Disregard: Single parent = \$125 & 1/2 remainder; Two-parent = \$225 & 1/2 remainder

*15% Budgetary Adjustment is subtracted from the eligible NMW amount to determine maximum monthly benefit.

Eligibility Guidelines for Centennial Care

FEDERAL POVERTY LEVEL (FPL) GUIDELINES

Effective April 1, 2013

Percent of Poverty

Family Size	33%	75%	100%	133%	138%	185%	200%	235%
1	\$316	\$719	\$958	\$1,274	\$1,322	\$1,772	\$1,915	\$2,251
2	\$427	\$970	\$1,293	\$1,720	\$1,784	\$2,392	\$2,585	\$3,038
3	\$538	\$1,221	\$1,628	\$2,165	\$2,246	\$3,011	\$3,255	\$3,825
4	\$648	\$1,472	\$1,963	\$2,611	\$2,709	\$3,631	\$3,925	\$4,612
5	\$759	\$1,724	\$2,298	\$3,056	\$3,171	\$4,251	\$4,595	\$5,400
6	\$869	\$1,975	\$2,633	\$3,502	\$3,633	\$4,871	\$5,265	\$6,187
7	\$980	\$2,226	\$2,968	\$3,947	\$4,096	\$5,490	\$5,935	\$6,974
8	\$1,090	\$2,477	\$3,303	\$4,393	\$4,558	\$6,110	\$6,605	\$7,761

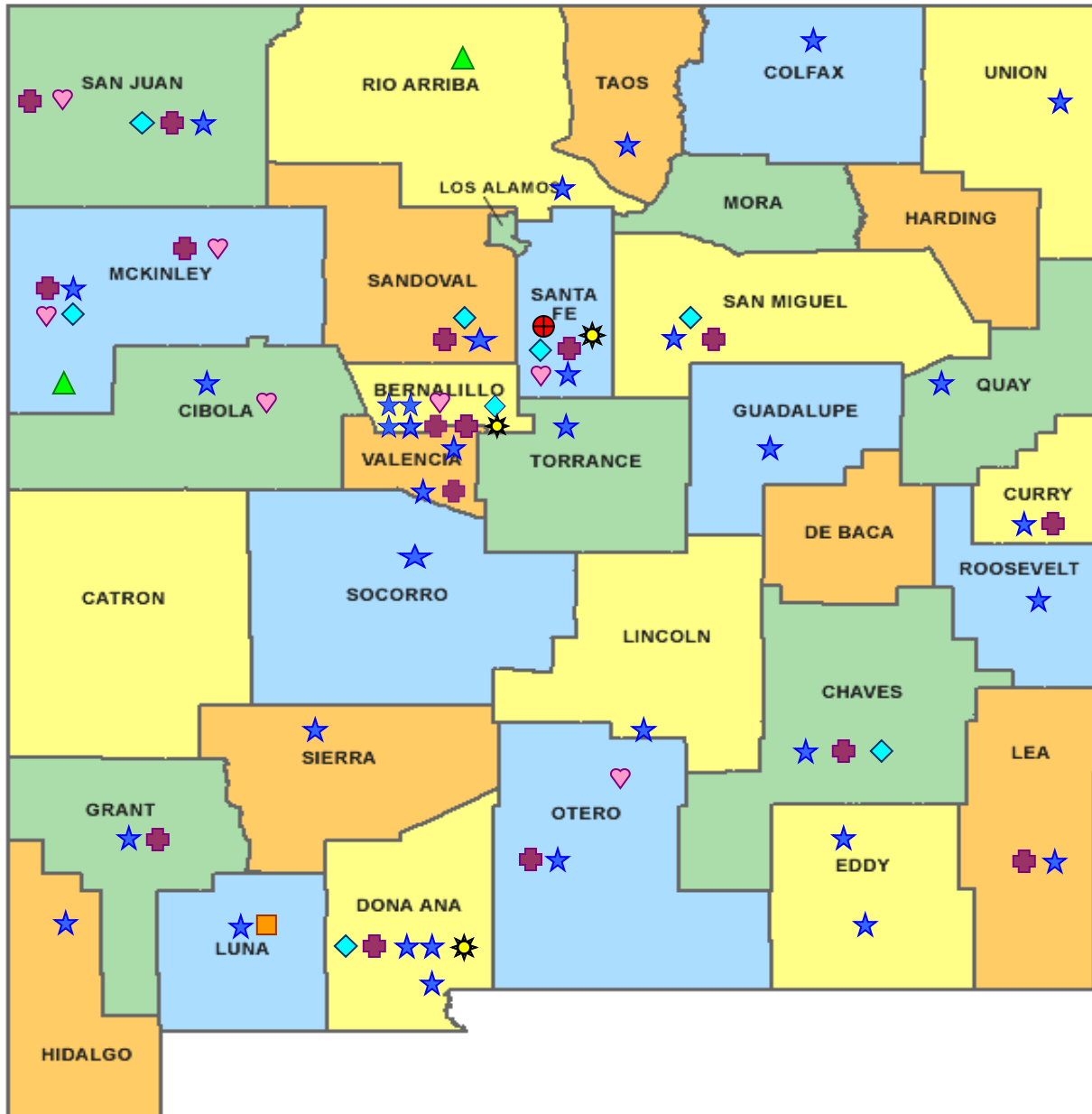
Insure New Mexico! Health Care Coverage Guidelines

185%: New MexiKids, New MexiTeens, Family Planning & Pregnancy









200%: State Coverage Insurance (SCI)

235%: Children's Health Insurance Program (CHIP)

Source: http://www.hsd.state.nm.us/LookingForInformation/Federal_Poverty_Level_Guidelines.aspx



New Mexico Human Services Department
Field Offices

-  Central Office (1)
-  Income Support Division County Office (35)
-  Income Support Division Satellite Office (2)
-  Child Support Enforcement Regional Office (16)
-  Child Support Enforcement Satellite Office (1)
-  Quality Control Office (8)
-  Indian Health Services (7)
-  Hospital Site (3)

For a complete listing of field offices and other government and community resources:
http://www.hsd.state.nm.us/LookingForAssistance/Field_Offices_1.aspx