



Monthly Statistical Report

January 2018

There were 857,309 individuals that received Medicaid in January 2018, a 4.6% decrease from one year ago. The count of Medicaid recipients has increased by 3,448, or 0.4%, since last month.

The SNAP caseload in January 2018 was 222,846, a 13.4% decrease from one year ago. The SNAP caseload has increased by 1,470 cases, or 0.7%, since last month.

The TANF caseload was 11,632 in January 2018, a decrease of 4.9% from January 2017. The TANF caseload had 85 fewer cases compared to December 2017, a decrease of 0.7%.

The caseload for General Assistance was 3,007 in January 2018, a decrease of 15.1% from one year ago and a decrease of 31 cases from last month.

Susana Martinez, Governor
Brent Earnest, Cabinet Secretary

Contents	Page
Summary	3-5
Medicaid	6-18
SNAP	19-37
Cash Assistance	38-52
Child Care Assistance	53-54
Income Eligibility Guidelines	55-56

Regions are reported as follows:

Region 1		
Catron	San Juan	Valencia
Cibola	Sierra	
McKinley	Socorro	
Region 2		
Colfax	Mora	Santa Fe
De Baca	Quay	Taos
Guadalupe	Rio Arriba	Union
Harding	Sandoval	
Los Alamos	San Miguel	
Region 3		
Bernalillo	Torrance	
Region 4		
Chaves	Eddy	Lincoln
Curry	Lea	Roosevelt
Region 5		
Dona Ana	Hidalgo	Otero
Grant	Luna	

The Mission of the Human Services Department

To reduce the impact of poverty on people living in New Mexico by providing support services that help families break the cycle of dependency on public assistance

Christopher Collins, Deputy Secretary
Michael Nelson, Deputy Secretary

Prepared by Income Support Division
PO Box 2348
Santa Fe, NM 87504-2348
505-827-7250

Mary Brogdon, Director
Vida Tapia-Sanchez, Deputy Director
Shanita Harrison, Deputy Director

<http://www.hsd.state.nm.us/monthly-statistical-reports.aspx>

Program Summary for January 2018

Medicaid				Percent Change	
				Jan-17- Jan-18	Dec-17- Jan-18
	Jan-17	Dec-17	Jan-18	Jan-17- Jan-18	Dec-17- Jan-18
Expenditures¹	\$376,321,137	\$491,788,693	\$467,785,463	24.3%	-4.9%
Cases²	523,016	491,576	500,812	-4.2%	1.9%
Expenditures/Case	\$720	\$1,000	\$934	29.8%	-6.6%
Recipients³	898,976	853,861	857,309	-4.6%	0.4%
<i>Adults</i>	509,813	484,410	486,759	-4.5%	0.5%
<i>Children</i>	389,163	369,451	370,550	-4.8%	0.3%
Recipients /Case	1.72	1.74	1.71	-0.4%	-1.4%
Cases Processed⁴	15,346	17,862	20,276	32.1%	13.5%
<i>Approvals⁴</i>	10,088	12,741	14,276	41.5%	12.0%

Supplemental Nutrition Assistance Program (SNAP)				Percent Change	
				Jan-17- Jan-18	Dec-17- Jan-18
	Jan-17	Dec-17	Jan-18	Jan-17- Jan-18	Dec-17- Jan-18
Expenditures⁵	\$55,717,006	\$53,542,385	\$53,693,601	-3.6%	0.3%
Cases⁶	257,452	221,376	222,846	-13.4%	0.7%
Expenditures/Case	\$216	\$242	\$241	11.3%	-0.4%
Recipients⁷	524,701	458,955	460,514	-12.2%	0.3%
<i>Adults</i>	306,402	262,816	264,151	-13.8%	0.5%
<i>Children</i>	218,299	196,139	196,363	-10.0%	0.1%
Recipients /Case	2.04	2.07	2.07	1.4%	-0.3%
Cases Processed⁴	21,011	18,814	21,328	1.5%	13.4%
<i>Approvals⁴</i>	15,164	15,300	17,395	14.7%	13.7%

Cash Assistance Programs				Percent Change	
				Jan-17- Jan-18	Dec-17- Jan-18
	Jan-17	Dec-17	Jan-18	Jan-17- Jan-18	Dec-17- Jan-18
Expenditures⁵	\$5,222,268	\$4,220,860	\$4,793,968	-8.2%	13.6%
Cases⁶	16,118	14,935	14,793	-8.2%	-1.0%
Expenditures/Case	\$324	\$283	\$324	0.0%	14.7%
Recipients⁷	36,597	34,058	33,580	-8.2%	-1.4%
<i>Adults</i>	12,306	11,019	10,875	-11.6%	-1.3%
<i>Children</i>	24,291	23,039	22,705	-6.5%	-1.4%
Recipients /Case	2.27	2.28	2.27	0.0%	-0.5%
Cases Processed⁴	4,873	5,500	6,020	23.5%	9.5%
<i>Approvals⁴</i>	1,609	1,555	1,628	1.2%	4.7%

Low Income Home Energy Assistance Program (LIHEAP)				Percent Change	
				Jan-17- Jan-18	Dec-17- Jan-18
	Jan-17	Dec-17	Jan-18	Jan-17- Jan-18	Dec-17- Jan-18
Expenditures⁸	\$1,962,040	\$2,168,285	\$2,202,095	12.2%	1.6%
Cases⁸	7,433	7,737	8,443	13.6%	9.1%
Expenditures/Case	\$264	\$280	\$261	-1.2%	-6.9%
Recipients⁸	17,426	17,707	19,843	13.9%	12.1%
<i>Adults</i>	9,798	10,180	11,130	13.6%	9.3%
<i>Children</i>	7,628	7,527	8,713	14.2%	15.8%
Recipients /Case	2.34	2.29	2.35	0.2%	2.7%
Cases Processed⁴	10,150	10,051	10,724	5.7%	6.7%
<i>Approvals⁴</i>	7,471	7,852	8,227	10.1%	4.8%

Cash Assistance Summary for January 2018

Temporary Assistance for Needy Families (TANF)

	Jan-17	Dec-17	Jan-18	Percent Change	
				Jan-17- Jan-18	Dec-17- Jan-18
Expenditures ⁵	\$4,248,691	\$3,423,107	\$3,989,552	-6.1%	16.5%
Cases ⁶	12,235	11,717	11,632	-4.9%	-0.7%
Expenditures/Case	\$347	\$292	\$343	-1.2%	17.4%
Recipients ⁷	32,328	30,581	30,140	-6.8%	-1.4%
<i>Adults</i>	8,544	8,025	7,877	-7.8%	-1.8%
<i>Children</i>	23,784	22,556	22,263	-6.4%	-1.3%
Approvals ⁴	1,224	1,252	1,303	6.5%	4.1%

General Assistance (GA)

	Jan-17	Dec-17	Jan-18	Percent Change	
				Jan-17- Jan-18	Dec-17- Jan-18
Expenditures ⁵	\$876,920	\$741,084	\$753,287	-14.1%	1.6%
Cases ⁶	3,541	3,038	3,007	-15.1%	-1.0%
Expenditures/Case	\$248	\$244	\$251	1.2%	2.7%
Recipients ⁷	3,646	3,032	3,055	-16.2%	0.8%
<i>Adults</i>	3,396	2,794	2,825	-16.8%	1.1%
<i>Children</i>	250	238	230	-8.0%	-3.4%
Approvals ⁴	307	231	269	-12.4%	16.5%

Education Works

	Jan-17	Dec-17	Jan-18	Percent Change	
				Jan-17- Jan-18	Dec-17- Jan-18
Expenditures ⁵	\$53,067	\$49,674	\$44,564	-16.0%	-10.3%
Cases ⁶	144	140	115	-20.1%	-17.9%
Expenditures/Case	\$369	\$355	\$388	5.2%	9.2%
Recipients ⁷	419	403	343	-18.1%	-14.9%
<i>Adults</i>	162	158	131	-19.1%	-17.1%
<i>Children</i>	257	245	212	-17.5%	-13.5%
Approvals ⁴	18	4	14	-22.2%	250.0%

Refugee Cash (RCA)

	Jan-17	Dec-17	Jan-18	Percent Change	
				Jan-17- Jan-18	Dec-17- Jan-18
Expenditures ⁵	\$38,790	\$4,795	\$4,166	-89.3%	-13.1%
Cases ⁶	150	17	16	-89.3%	-5.9%
Expenditures/Case	\$259	\$282	\$260	0.7%	-7.7%
Recipients ⁷	156	20	19	-87.8%	-5.0%
<i>Adults</i>	156	20	19	-87.8%	-5.0%
<i>Children</i>	0	0	0	N/A	N/A

State Supplement for Residential Care

	Jan-17	Dec-17	Jan-18	Percent Change	
				Jan-17- Jan-18	Dec-17- Jan-18
Expenditures ⁵	\$4,800	\$2,200	\$2,400	-50.0%	9.1%
Cases ⁶	48	23	23	-52.1%	0.0%
Expenditures/Case	\$100	\$96	\$104	4.3%	9.1%
Recipients ⁷	48	22	23	-52.1%	4.5%
<i>Adults</i>	48	22	23	-52.1%	4.5%
<i>Children</i>	0	0	0	N/A	N/A

Expenditures YTD			
	SFY 2018	FFY 2018	CY 2018
Medicaid ¹	\$3,052,782,095	\$1,826,626,131	\$467,785,463
Supplemental Nutrition Assistance Program ⁹	\$381,457,366	\$215,163,251	\$53,693,601
Temporary Assistance for Needy Families ⁹	\$26,141,794	\$14,388,404	\$3,989,552
General Assistance ⁹	\$5,261,687	\$3,014,385	\$753,287
Education Work ⁹	\$307,094	\$188,868	\$44,564
LIHEAP ⁸	\$12,734,318	\$10,698,846	\$2,202,095

Average Caseload YTD			
	SFY 2018	FFY 2018	CY 2018
Medicaid ²	498,032	493,561	500,812
Supplemental Nutrition Assistance Program ⁶	221,275	221,961	222,846
Temporary Assistance for Needy Families ⁶	11,768	11,791	11,632
General Assistance ⁶	3,044	3,040	3,007
Education Work ⁶	119	131	115
LIHEAP ⁸	6,256	9,841	8,443

Demographic Profile- January 2018					
	SNAP	TANF	GA	Education Works	RCA
Gender of Recipients¹⁰					
Male	208,458	12,894	1,728	126	13
Female	252,056	17,246	1,327	217	6
Ethnicity¹⁰					
Hispanic	257,269	20,670	1,607	201	11
Non-Hispanic	203,245	9,470	1,448	142	8
Race¹⁰					
Native American or Alaskan Native	75,887	2,441	250	28	0
Asian	4,542	269	36	4	0
African American or Black	11,218	1,187	124	13	4
Native Hawaiian or Pacific Islander	884	41	5	1	0
White	358,994	25,485	2,593	290	10
Unknown / Not Declared	4,882	264	23	3	1
More than One Race	4,107	453	24	4	4

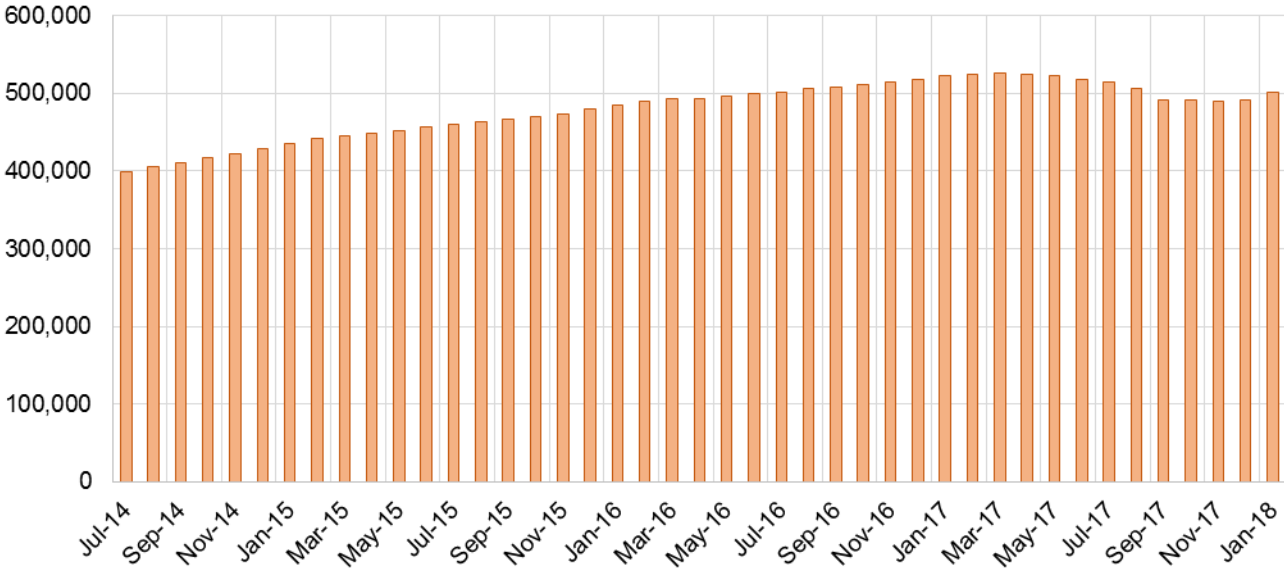
Medicaid Cases by Field Office²

Office				Percent Change	
	Jan-17	Dec-17	Jan-18	Jan-17- Jan-18	Dec-17- Jan-18
Chaves County ISD	17,032	16,077	16,392	-3.8%	2.0%
Cibola County ISD	7,602	7,513	7,616	0.2%	1.4%
Colfax County ISD	3,558	3,476	3,535	-0.6%	1.7%
Curry County ISD	10,564	9,906	13,954	32.1%	40.9%
East Dona Ana County ISD	18,692	17,824	18,116	-3.1%	1.6%
Eddy Artesia County ISD	3,990	3,879	3,966	-0.6%	2.2%
Eddy Carlsbad County ISD	8,494	7,934	8,007	-5.7%	0.9%
Grant County ISD	7,250	6,813	6,909	-4.7%	1.4%
Guadalupe County ISD	1,645	1,760	1,783	8.4%	1.3%
Hidalgo County ISD	1,066	960	974	-8.6%	1.5%
Lea County ISD	14,985	14,313	14,623	-2.4%	2.2%
Lincoln County ISD	4,709	4,354	4,415	-6.2%	1.4%
Luna County ISD	9,100	8,770	8,882	-2.4%	1.3%
McKinley County ISD	23,507	22,296	23,413	-0.4%	5.0%
Northeast Bernalillo County ISD	46,164	42,952	44,171	-4.3%	2.8%
Northwest Bernalillo County ISD	52,054	47,467	48,393	-7.0%	2.0%
Otero County ISD	12,187	11,901	12,135	-0.4%	2.0%
Quay County ISD	2,655	2,559	2,619	-1.4%	2.3%
Rio Arriba County ISD	15,203	14,316	14,654	-3.6%	2.4%
Roosevelt County ISD	4,163	3,903	30	-99.3%	-99.2%
San Juan County ISD	31,133	30,091	30,793	-1.1%	2.3%
San Miguel County ISD	9,749	9,184	9,289	-4.7%	1.1%
Sandoval County ISD	27,100	25,627	26,094	-3.7%	1.8%
Santa Fe County ISD	27,172	25,109	25,545	-6.0%	1.7%
Sierra County ISD	5,627	5,540	5,556	-1.3%	0.3%
Socorro County ISD	5,810	5,434	5,497	-5.4%	1.2%
South Dona Ana ISD	20,658	19,891	19,980	-3.3%	0.4%
Southeast Bernalillo County ISD	29,271	25,829	26,037	-11.0%	0.8%
Southwest Bernalillo County ISD	41,979	38,923	39,394	-6.2%	1.2%
Taos County ISD	9,841	9,392	9,539	-3.1%	1.6%
Torrance County ISD	7,989	7,600	7,713	-3.5%	1.5%
Valencia North County ISD	18,976	17,707	18,157	-4.3%	2.5%
Valencia South County ISD	4	19	119	2875.0%	526.3%
West Dona Ana County ISD	23,084	22,253	22,508	-2.5%	1.1%
Centralized Units	3	4	4	33.3%	0.0%
Statewide Total	523,016	491,576	500,812	-4.2%	1.9%

Medicaid Cases by Region²

Region				Percent Change	
	Jan-17	Dec-17	Jan-18	Jan-17- Jan-18	Dec-17- Jan-18
Region 1 - NW	92,659	88,600	91,151	-1.6%	2.9%
Region 2 - NE	96,923	91,423	93,058	-4.0%	1.8%
Region 3 - Central	177,457	162,771	165,708	-6.6%	1.8%
Region 4 - SE	63,937	60,366	61,387	-4.0%	1.7%
Region 5 - SW	92,037	88,412	89,504	-2.8%	1.2%
Centralized Units	3	4	4	33.3%	0.0%
Statewide Total	523,016	491,576	500,812	-4.2%	1.9%

Medicaid Caseload: SFY-15 to Current

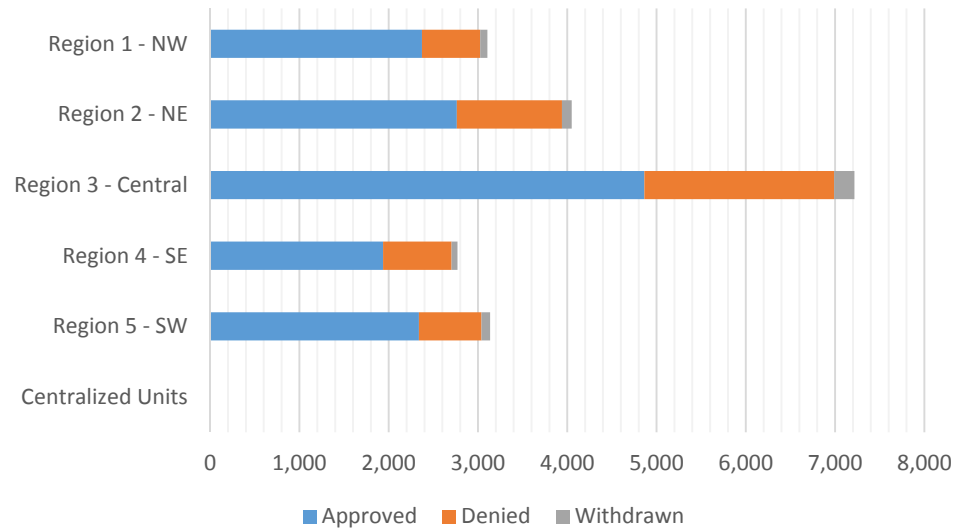


Medicaid Initial Applications by Field Office^{4,11}
January 2018

Office	Approved	Denied	Withdrawn	Total Cases Processed
Chaves County ISD	484	161	20	665
Cibola County ISD	176	61	2	239
Colfax County ISD	99	28	11	138
Curry County ISD	364	142	12	518
East Dona Ana County ISD	554	173	27	754
Eddy Artesia County ISD	92	47	5	144
Eddy Carlsbad County ISD	254	103	6	363
Grant County ISD	200	61	5	266
Guadalupe County ISD	36	9	1	46
Hidalgo County ISD	0	0	0	0
Lea County ISD	469	188	20	677
Lincoln County ISD	150	70	3	223
Luna County ISD	243	75	1	319
McKinley County ISD	630	163	15	808
Northeast Bernalillo County ISD	1,446	635	53	2,134
Northwest Bernalillo County ISD	1,184	460	87	1,731
Otero County ISD	313	87	12	412
Quay County ISD	60	18	5	83
Rio Arriba County ISD	349	117	17	483
Roosevelt County ISD	124	56	0	180
San Juan County ISD	836	192	31	1,059
San Miguel County ISD	417	181	2	600
Sandoval County ISD	771	269	28	1,068
Santa Fe County ISD	774	474	36	1,284
Sierra County ISD	118	35	8	161
Socorro County ISD	146	61	6	213
South Dona Ana ISD	441	146	20	607
Southeast Bernalillo County ISD	1,042	506	15	1,563
Southwest Bernalillo County ISD	977	410	60	1,447
Taos County ISD	257	81	9	347
Torrance County ISD	215	114	12	341
Valencia North County ISD	459	139	19	617
Valencia South County ISD	8	0	0	8
West Dona Ana County ISD	588	158	32	778
Centralized Units	0	0	0	0
Statewide Total	14,276	5,420	580	20,276

Medicaid Initial Applications by Region^{4,11} January 2018

Region	Approved	Denied	Withdrawn	Total Cases Processed
Region 1 - NW	2,373	651	81	3,105
Region 2 - NE	2,763	1,177	109	4,049
Region 3 - Central	4,864	2,125	227	7,216
Region 4 - SE	1,937	767	66	2,770
Region 5 - SW	2,339	700	97	3,136
Centralized Units	0	0	0	0
Statewide Total	14,276	5,420	580	20,276

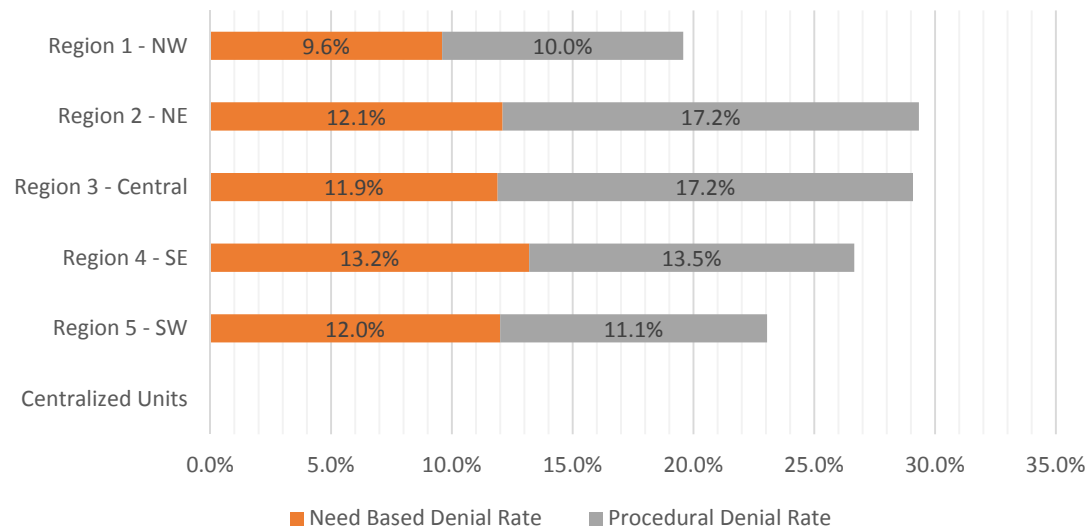


Medicaid EDG Initial Disposition Rates by Field Office^{4,11,19}
January 2018

Office	Approval Rate	Denial Rate	Need Based Denial Rate	Procedural Denial Rate
Chaves County ISD	77.5%	22.5%	13.9%	8.6%
Cibola County ISD	79.9%	20.1%	8.2%	11.9%
Colfax County ISD	75.0%	25.0%	16.7%	8.3%
Curry County ISD	77.2%	22.8%	10.3%	12.5%
East Dona Ana County ISD	76.2%	23.8%	11.8%	12.0%
Eddy Artesia County ISD	67.0%	33.0%	17.9%	15.1%
Eddy Carlsbad County ISD	72.2%	27.8%	9.7%	18.1%
Grant County ISD	79.2%	20.8%	4.2%	16.6%
Guadalupe County ISD	72.8%	27.2%	7.4%	19.8%
Hidalgo County ISD	0.0%	0.0%	0.0%	0.0%
Lea County ISD	72.1%	27.9%	16.5%	11.4%
Lincoln County ISD	65.1%	34.9%	12.9%	22.0%
Luna County ISD	78.8%	21.2%	12.8%	8.4%
McKinley County ISD	83.4%	16.6%	9.1%	7.5%
Northeast Bernalillo County ISD	67.6%	32.4%	11.9%	20.5%
Northwest Bernalillo County ISD	73.1%	26.9%	7.6%	19.3%
Otero County ISD	75.9%	24.1%	9.2%	14.9%
Quay County ISD	83.7%	16.3%	8.2%	8.1%
Rio Arriba County ISD	75.8%	24.2%	11.8%	12.4%
Roosevelt County ISD	69.3%	30.7%	9.7%	21.0%
San Juan County ISD	81.2%	18.8%	9.6%	9.2%
San Miguel County ISD	83.2%	16.8%	8.9%	7.9%
Sandoval County ISD	74.5%	25.5%	11.8%	13.7%
Santa Fe County ISD	57.1%	42.9%	14.6%	28.3%
Sierra County ISD	84.8%	15.2%	6.4%	8.8%
Socorro County ISD	73.4%	26.6%	10.4%	16.2%
South Dona Ana ISD	73.9%	26.1%	17.4%	8.7%
Southeast Bernalillo County ISD	75.3%	24.7%	12.3%	12.4%
Southwest Bernalillo County ISD	70.5%	29.5%	15.8%	13.7%
Taos County ISD	77.7%	22.3%	8.3%	14.0%
Torrance County ISD	66.1%	33.9%	14.1%	19.8%
Valencia North County ISD	76.1%	23.9%	11.6%	12.3%
Valencia South County ISD	100.0%	0.0%	0.0%	0.0%
West Dona Ana County ISD	79.2%	20.8%	11.9%	8.9%
Centralized Units	0.0%	0.0%	0.0%	0.0%
Statewide Total	73.7%	26.3%	11.8%	14.5%

Medicaid EDG Initial Disposition Rates by Region^{4,11,19}
January 2018

Region	Approval Rate	Denial Rate	Need Based Denial Rate	Procedural Denial Rate
Region 1 - NW	80.4%	19.6%	9.6%	10.0%
Region 2 - NE	70.7%	29.3%	12.1%	17.2%
Region 3 - Central	70.9%	29.1%	11.9%	17.2%
Region 4 - SE	73.3%	26.7%	13.2%	13.5%
Region 5 - SW	76.9%	23.1%	12.0%	11.1%
Centralized Units				
Statewide Total	73.7%	26.3%	11.8%	14.5%



Medicaid: Percentage of Initial EDG Approvals Processed Timely by Field Office^{13,19}

	Oct-17	Nov-17	Dec-17	Jan-18	Feb-18	Mar-18	Apr-18	May-18	Jun-18	Jul-18	Aug-18	Sep-18	Average
Cibola	92.2%	94.4%	94.6%	98.5%									94.9%
McKinley	95.6%	97.4%	96.9%	97.9%									96.9%
San Juan	93.4%	92.0%	94.3%	94.7%									93.6%
Sierra	95.8%	98.6%	96.9%	97.3%									97.2%
Socorro	95.4%	98.7%	96.7%	97.0%									97.0%
Valencia North	93.2%	94.1%	94.0%	95.2%									94.1%
Valencia South	100.0%	100.0%	100.0%	100.0%									100.0%
NW Region 1 Total	94.0%	94.7%	95.2%	96.2%									95.0%
Colfax	93.9%	98.4%	97.4%	98.4%									97.0%
Guadalupe	97.9%	100.0%	96.6%	100.0%									98.6%
Quay	98.0%	94.9%	94.6%	97.2%									96.2%
Rio Arriba	96.9%	94.7%	91.1%	96.9%									94.9%
San Miguel	97.3%	98.9%	99.0%	98.4%									98.4%
Sandoval	97.0%	97.0%	96.8%	97.9%									97.2%
Santa Fe	96.1%	95.7%	96.6%	95.2%									95.9%
Taos	98.3%	96.8%	98.2%	96.8%									97.5%
NE Region 2 Total	96.8%	96.6%	96.6%	97.1%									96.8%
NE Bernalillo	95.1%	93.6%	93.9%	94.5%									94.3%
NW Bernalillo	96.3%	95.4%	94.6%	94.7%									95.2%
SE Bernalillo	88.2%	90.8%	94.4%	92.2%									91.4%
SW Bernalillo	95.8%	96.2%	95.2%	94.9%									95.5%
Torrance	95.5%	95.1%	95.2%	94.8%									95.1%
Gen. Region 3 Total	94.3%	94.3%	94.5%	94.2%									94.3%
Chaves	96.4%	96.6%	97.1%	98.6%									97.2%
Curry	94.8%	94.2%	98.4%	98.3%									96.4%
Eddy Artesia	95.3%	94.9%	96.4%	93.2%									95.0%
Eddy Carlsbad	93.2%	98.4%	97.6%	94.8%									96.0%
Lea	96.1%	94.7%	94.0%	96.5%									95.3%
Lincoln	95.7%	94.7%	97.1%	97.4%									96.2%
Roosevelt	94.6%	94.2%	93.4%	94.9%									94.3%
SE Region 4 Total	95.4%	95.5%	96.3%	96.9%									96.0%
East Dona Ana	96.1%	97.1%	97.5%	97.3%									97.0%
Grant	93.9%	96.8%	99.3%	97.5%									96.9%
Luna	96.8%	97.8%	97.4%	98.8%									97.7%
Otero	97.6%	96.4%	98.0%	96.3%									97.1%
South Dona Ana	97.2%	98.3%	98.0%	97.5%									97.8%
West Dona Ana	97.4%	96.7%	98.3%	98.5%									97.7%
SW Region 5 Total	96.7%	97.2%	98.0%	97.6%									97.4%
STATE TOTAL	95.3%	95.4%	95.8%	96.0%									95.6%

Medicaid: Percentage of Initial EDG Denials Processed Timely by Field Office^{13,19}

	Oct-17	Nov-17	Dec-17	Jan-18	Feb-18	Mar-18	Apr-18	May-18	Jun-18	Jul-18	Aug-18	Sep-18	Average
Cibola	51.4%	41.2%	76.0%	78.3%									61.7%
McKinley	54.4%	59.7%	54.4%	51.6%									55.0%
San Juan	53.1%	57.1%	45.5%	43.6%									49.8%
Sierra	92.9%	95.0%	96.3%	33.3%									79.4%
Socorro	57.5%	80.0%	96.3%	95.8%									82.4%
Valencia North	55.8%	52.1%	42.3%	38.3%									47.1%
Valencia South	66.7%												66.7%
NW Region 1 Total	55.0%	57.7%	53.2%	51.0%									54.2%
Colfax	90.6%	95.8%	100.0%	92.9%									94.8%
Guadalupe	90.0%	11.1%	75.0%	72.7%									62.2%
Quay	72.7%	33.3%	54.5%	78.6%									59.8%
Rio Arriba	71.4%	56.3%	53.2%	71.9%									63.2%
San Miguel	59.5%	67.3%	76.5%	78.8%									70.5%
Sandoval	43.6%	51.2%	63.7%	74.3%									58.2%
Santa Fe	59.1%	53.7%	37.8%	48.1%									49.7%
Taos	47.4%	76.5%	75.9%	87.9%									71.9%
NE Region 2 Total	57.2%	56.4%	55.2%	64.0%									58.2%
NE Bernalillo	45.7%	38.4%	35.2%	50.0%									42.3%
NW Bernalillo	39.2%	40.9%	41.8%	36.0%									39.5%
SE Bernalillo	56.6%	46.6%	67.6%	80.6%									62.8%
SW Bernalillo	68.5%	68.1%	80.1%	88.4%									76.3%
Torrance	56.8%	42.1%	43.8%	38.5%									45.3%
Gen. Region 3 Total	52.5%	48.0%	53.3%	59.5%									53.3%
Chaves	72.3%	60.2%	79.9%	83.6%									74.0%
Curry	61.4%	59.0%	65.6%	84.3%									67.6%
Eddy Artesia	65.6%	53.3%	81.3%	76.4%									69.2%
Eddy Carlsbad	51.8%	35.8%	61.7%	79.3%									57.2%
Lea	72.7%	69.6%	70.0%	88.0%									75.1%
Lincoln	35.9%	63.8%	77.3%	91.3%									67.1%
Roosevelt	36.4%	46.4%	64.5%	64.6%									53.0%
SE Region 4 Total	61.3%	56.6%	70.5%	83.1%									67.9%
East Dona Ana	80.0%	74.3%	73.1%	94.5%									80.5%
Grant	76.7%	32.4%	85.9%	79.7%									68.7%
Luna	47.7%	64.9%	41.8%	62.9%									54.3%
Otero	61.9%	48.3%	67.7%	62.8%									60.2%
South Dona Ana	86.3%	73.0%	86.6%	91.8%									84.4%
West Dona Ana	66.9%	67.0%	80.6%	94.7%									77.3%
SW Region 5 Total	73.8%	64.3%	76.4%	85.1%									74.9%
STATE TOTAL	58.4%	54.6%	59.5%	66.4%									59.7%

Medicaid Renewal Disposition Counts by Field Office^{4,11}
January 2018

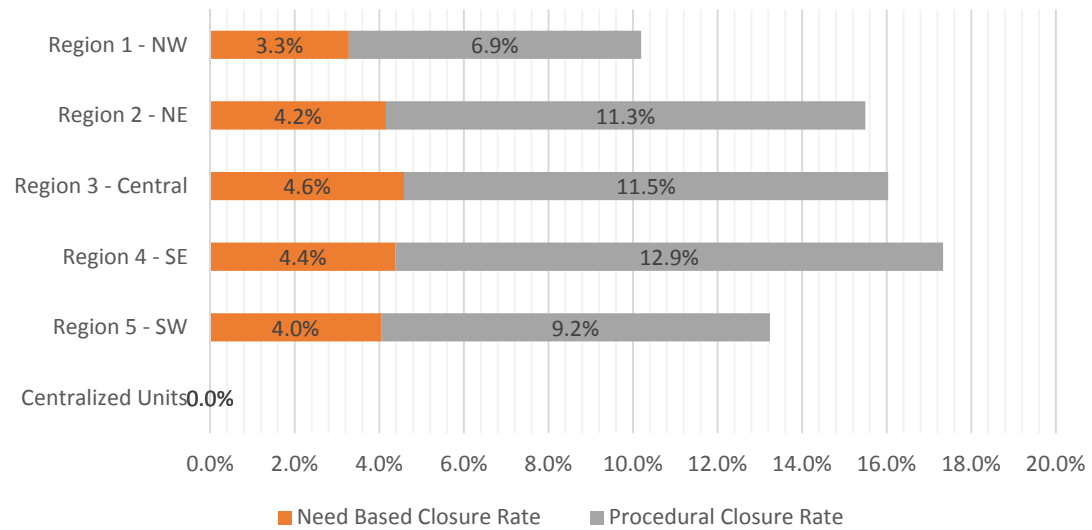
Office	Approvals	Closures	Need Based Closures	Procedural Closures
Chaves County ISD	2,486	481	143	338
Cibola County ISD	1,383	302	46	256
Colfax County ISD	514	103	27	76
Curry County ISD	2,575	488	103	385
East Dona Ana County ISD	3,344	523	160	363
Eddy Artesia County ISD	547	141	30	111
Eddy Carlsbad County ISD	1,011	261	57	204
Grant County ISD	1,050	248	51	197
Guadalupe County ISD	295	70	19	51
Hidalgo County ISD	141	28	5	23
Lea County ISD	2,197	484	146	338
Lincoln County ISD	742	148	28	120
Luna County ISD	1,560	197	57	140
McKinley County ISD	4,022	621	145	476
Northeast Bernalillo County ISD	5,623	1383	277	1106
Northwest Bernalillo County ISD	4,780	775	209	566
Otero County ISD	1,813	360	106	254
Quay County ISD	365	70	14	56
Rio Arriba County ISD	2,480	406	113	293
Roosevelt County ISD	0	1	0	1
San Juan County ISD	5,631	467	191	276
San Miguel County ISD	1,219	161	39	122
Sandoval County ISD	4,094	816	207	609
Santa Fe County ISD	3,566	764	200	564
Sierra County ISD	936	116	31	85
Socorro County ISD	791	42	21	21
South Dona Ana ISD	3,901	570	164	406
Southeast Bernalillo County ISD	3,813	600	184	416
Southwest Bernalillo County ISD	6,178	1168	443	725
Taos County ISD	1,147	118	54	64
Torrance County ISD	1,135	186	63	123
Valencia North County ISD	3,284	273	152	121
Valencia South County ISD	0	0	0	0
West Dona Ana County ISD	4,266	527	206	321
Centralized Units	28	0	0	0
Statewide Total	76,917	12,898	3,691	9,207

Medicaid Renewal Disposition Rates by Field Office²⁰
January 2018

Office	Approval Rate	Closure Rate	Need Based Closure Rate	Procedural Closure Rate
Chaves County ISD	83.8%	16.2%	4.8%	11.4%
Cibola County ISD	82.1%	17.9%	2.7%	15.2%
Colfax County ISD	83.3%	16.7%	4.4%	12.3%
Curry County ISD	84.1%	15.9%	3.4%	12.6%
East Dona Ana County ISD	86.5%	13.5%	4.1%	9.4%
Eddy Artesia County ISD	79.5%	20.5%	4.4%	16.1%
Eddy Carlsbad County ISD	79.5%	20.5%	4.5%	16.0%
Grant County ISD	80.9%	19.1%	3.9%	15.2%
Guadalupe County ISD	80.8%	19.2%	5.2%	14.0%
Hidalgo County ISD	83.4%	16.6%	3.0%	13.6%
Lea County ISD	81.9%	18.1%	5.4%	12.6%
Lincoln County ISD	83.4%	16.6%	3.1%	13.5%
Luna County ISD	88.8%	11.2%	3.2%	8.0%
McKinley County ISD	86.6%	13.4%	3.1%	10.3%
Northeast Bernalillo County ISD	80.3%	19.7%	4.0%	15.8%
Northwest Bernalillo County ISD	86.0%	14.0%	3.8%	10.2%
Otero County ISD	83.4%	16.6%	4.9%	11.7%
Quay County ISD	83.9%	16.1%	3.2%	12.9%
Rio Arriba County ISD	85.9%	14.1%	3.9%	10.2%
Roosevelt County ISD	0.0%	100.0%	0.0%	100.0%
San Juan County ISD	92.3%	7.7%	3.1%	4.5%
San Miguel County ISD	88.3%	11.7%	2.8%	8.8%
Sandoval County ISD	83.4%	16.6%	4.2%	12.4%
Santa Fe County ISD	82.4%	17.6%	4.6%	13.0%
Sierra County ISD	89.0%	11.0%	2.9%	8.1%
Socorro County ISD	95.0%	5.0%	2.5%	2.5%
South Dona Ana ISD	87.3%	12.7%	3.7%	9.1%
Southeast Bernalillo County ISD	86.4%	13.6%	4.2%	9.4%
Southwest Bernalillo County ISD	84.1%	15.9%	6.0%	9.9%
Taos County ISD	90.7%	9.3%	4.3%	5.1%
Torrance County ISD	85.9%	14.1%	4.8%	9.3%
Valencia North County ISD	92.3%	7.7%	4.3%	3.4%
Valencia South County ISD	0.0%	0.0%	0.0%	0.0%
West Dona Ana County ISD	89.0%	11.0%	4.3%	6.7%
Centralized Units	100.0%	0.0%	0.0%	0.0%
Statewide Total	85.6%	14.4%	4.1%	10.3%

Medicaid Renewal Disposition Rates by Region²⁰ January 2018

Region	Approval Rate	Closure Rate	Need Based Closure Rate	Procedural Closure Rate
Region 1 - NW	89.8%	10.2%	3.3%	6.9%
Region 2 - NE	84.5%	15.5%	4.2%	11.3%
Region 3 - Central	84.0%	16.0%	4.6%	11.5%
Region 4 - SE	82.7%	17.3%	4.4%	12.9%
Region 5 - SW	86.8%	13.2%	4.0%	9.2%
Centralized Units	100.0%	0.0%	0.0%	0.0%
Statewide Total	85.6%	14.4%	4.1%	10.3%



Medicaid: Percentage of Approved Renewal EDGs Processed by Certification Date ¹¹

	Oct-17	Nov-17	Dec-17	Jan-18	Feb-18	Mar-18	Apr-18	May-18	Jun-18	Jul-18	Aug-18	Sep-18	Average
Cibola		98.9%	98.5%	99.3%									98.9%
McKinley		98.9%	99.3%	98.7%									99.0%
San Juan		98.9%	98.4%	98.6%									98.6%
Sierra		99.1%	99.5%	99.0%									99.2%
Socorro		99.5%	99.1%	99.0%									99.2%
Valencia North		98.5%	98.7%	98.1%									98.5%
Valencia South													
NW Region 1 Total		99.0%	98.9%	98.8%									98.9%
Colfax		98.7%	99.6%	97.3%									98.5%
Guadalupe		99.2%	98.5%	96.6%									98.1%
Quay		99.0%	99.0%	98.9%									99.0%
Rio Arriba		98.4%	97.8%	97.1%									97.8%
San Miguel		99.5%	98.3%	98.9%									98.9%
Sandoval		98.4%	98.6%	98.3%									98.4%
Santa Fe		95.6%	95.7%	95.5%									95.6%
Taos		98.7%	98.6%	98.6%									98.6%
NE Region 2 Total		98.5%	98.2%	97.6%									98.1%
NE Bernalillo		97.8%	97.0%	96.9%									97.3%
NW Bernalillo		97.6%	97.8%	97.4%									97.6%
SE Bernalillo		86.5%	96.2%	97.5%									93.4%
SW Bernalillo		98.8%	96.0%	97.0%									97.3%
Torrance		98.8%	96.9%	96.5%									97.4%
Cen. Region 3 Total		95.9%	96.8%	97.1%									96.6%
Chaves		98.7%	98.5%	98.6%									98.6%
Curry		99.0%	98.7%	98.7%									98.8%
Eddy Artesia		99.2%	97.5%	97.1%									97.9%
Eddy Carlsbad		97.7%	98.8%	97.2%									97.9%
Lea		98.8%	97.8%	98.7%									98.4%
Lincoln		98.2%	97.5%	97.6%									97.8%
Roosevelt		99.4%	97.9%										98.7%
SE Region 4 Total		98.7%	98.1%	98.0%									98.3%
East Dona Ana		98.9%	97.9%	98.6%									98.5%
Grant		98.5%	98.7%	98.5%									98.6%
Luna		99.1%	98.2%	98.1%									98.5%
Otero		98.9%	97.6%	98.0%									98.2%
South Dona Ana		98.2%	97.4%	98.1%									97.9%
West Dona Ana		99.2%	99.0%	98.7%									99.0%
SW Region 5 Total		98.8%	98.1%	98.3%									98.4%
STATE TOTAL		97.8%	97.8%	97.9%									97.8%

Administrative, Annual, and Auto Renewals are included
 No data available for October 2017

Medicaid: Percentage of Closures EDGs Processed by Certification End Date ¹¹													
	Oct-17	Nov-17	Dec-17	Jan-18	Feb-18	Mar-18	Apr-18	May-18	Jun-18	Jul-18	Aug-18	Sep-18	Average
Cibola		37.6%	27.5%	14.6%									26.6%
McKinley		23.9%	21.0%	21.7%									22.2%
San Juan		36.7%	19.9%	39.0%									31.9%
Sierra		45.6%	22.7%	26.7%									31.7%
Socorro		33.0%	20.7%	50.0%									34.6%
Valencia North		34.6%	30.5%	53.8%									39.6%
Valencia South													
NW Region 1 Total		35.2%	23.7%	34.3%									31.1%
Colfax		49.3%	27.8%	26.2%									34.5%
Guadalupe		28.6%	57.9%	27.1%									37.9%
Quay		24.7%	26.5%	17.1%									22.8%
Rio Arriba		23.3%	26.1%	24.9%									24.8%
San Miguel		19.4%	21.8%	23.6%									21.6%
Sandoval		20.5%	25.9%	21.6%									22.7%
Santa Fe		22.0%	22.6%	23.2%									22.6%
Taos		24.4%	21.5%	44.9%									30.3%
NE Region 2 Total		26.5%	28.8%	26.1%									27.1%
NE Bernalillo		20.3%	16.0%	16.1%									17.5%
NW Bernalillo		16.2%	20.8%	24.8%									20.6%
SE Bernalillo		18.7%	21.5%	27.2%									22.5%
SW Bernalillo		24.5%	28.2%	34.9%									29.2%
Torrance		25.4%	21.9%	33.9%									27.0%
Gen. Region 3 Total		21.0%	21.7%	27.4%									23.4%
Chaves		34.4%	24.7%	28.7%									29.3%
Curry		27.2%	25.2%	19.7%									24.0%
Eddy Artesia		31.1%	24.0%	21.3%									25.5%
Eddy Carlsbad		26.9%	23.2%	19.9%									23.4%
Lea		24.6%	21.4%	26.4%									24.1%
Lincoln		23.1%	31.9%	16.9%									24.0%
Roosevelt		24.3%	14.5%	0.0%									12.9%
SE Region 4 Total		27.4%	23.6%	19.0%									23.3%
East Dona Ana		28.5%	31.6%	28.5%									29.5%
Grant		38.7%	27.7%	18.1%									28.2%
Luna		37.1%	38.5%	26.9%									34.2%
Otero		37.3%	31.9%	28.1%									32.4%
South Dona Ana		41.6%	35.7%	27.7%									35.0%
West Dona Ana		35.1%	29.6%	37.4%									34.0%
SW Region 5 Total		36.4%	32.5%	27.8%									32.2%
STATE TOTAL		25.8%	24.2%	26.3%									25.4%

Annual and Auto Renewals are included
No data available for October 2017

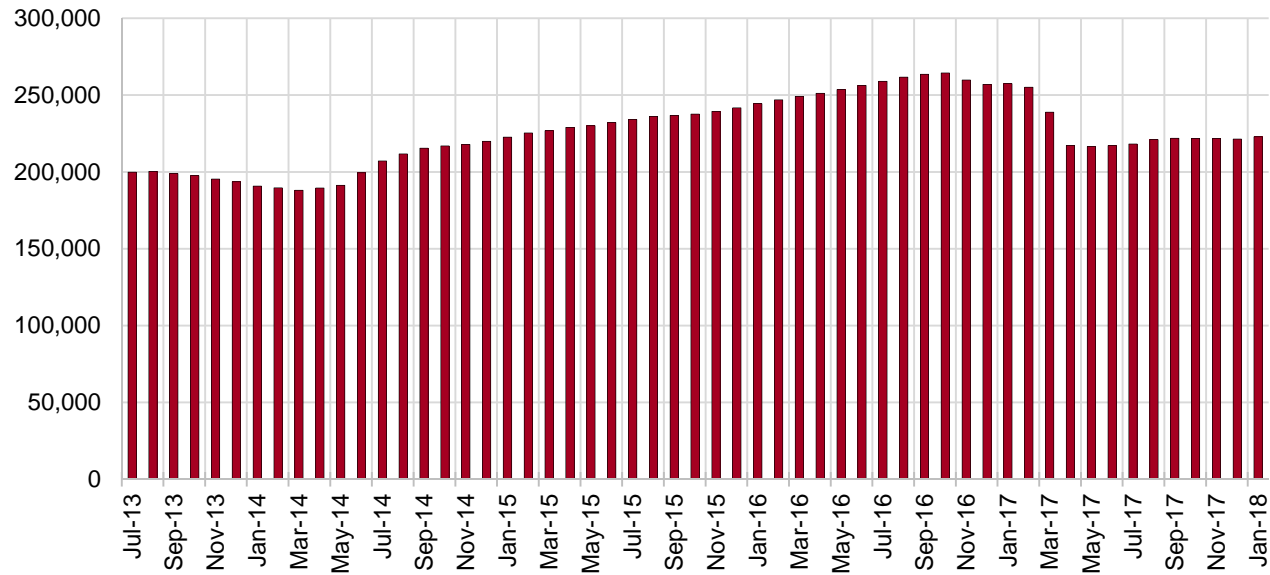
SNAP Cases by Field Office⁶

Office	Jan-17	Dec-17	Jan-18	Percent Change	
				Jan-17- Jan-18	Dec-17- Jan-18
Chaves County ISD	8,217	7,165	7,215	-12.2%	0.7%
Cibola County ISD	3,886	3,644	3,666	-5.7%	0.6%
Colfax County ISD	1,862	1,609	1,645	-11.7%	2.2%
Curry County ISD	5,272	4,769	6,533	23.9%	37.0%
East Dona Ana County ISD	9,408	7,981	7,989	-15.1%	0.1%
Eddy Artesia County ISD	1,973	1,710	1,703	-13.7%	-0.4%
Eddy Carlsbad County ISD	4,086	3,274	3,222	-21.1%	-1.6%
Grant County ISD	3,946	3,530	3,594	-8.9%	1.8%
Guadalupe County ISD	755	716	702	-7.0%	-2.0%
Hidalgo County ISD	488	436	447	-8.4%	2.5%
Lea County ISD	7,045	5,815	5,864	-16.8%	0.8%
Lincoln County ISD	2,180	1,961	1,973	-9.5%	0.6%
Luna County ISD	4,905	4,300	4,352	-11.3%	1.2%
McKinley County ISD	10,398	9,657	9,736	-6.4%	0.8%
Northeast Bernalillo County ISD	23,621	20,009	20,278	-14.2%	1.3%
Northwest Bernalillo County ISD	21,530	18,824	19,005	-11.7%	1.0%
Otero County ISD	6,005	5,589	5,621	-6.4%	0.6%
Quay County ISD	1,324	1,247	1,267	-4.3%	1.6%
Rio Arriba County ISD	7,903	6,750	6,783	-14.2%	0.5%
Roosevelt County ISD	1,979	1,672	2	-99.9%	-99.9%
San Juan County ISD	15,375	13,288	13,456	-12.5%	1.3%
San Miguel County ISD	5,828	4,965	4,989	-14.4%	0.5%
Sandoval County ISD	12,897	10,972	11,070	-14.2%	0.9%
Santa Fe County ISD	12,889	9,882	9,934	-22.9%	0.5%
Sierra County ISD	3,066	2,700	2,712	-11.5%	0.4%
Socorro County ISD	3,125	2,865	2,839	-9.2%	-0.9%
South Dona Ana ISD	9,144	8,607	8,620	-5.7%	0.2%
Southeast Bernalillo County ISD	15,512	11,985	11,993	-22.7%	0.1%
Southwest Bernalillo County ISD	21,779	18,708	18,747	-13.9%	0.2%
Taos County ISD	4,661	4,160	4,201	-9.9%	1.0%
Torrance County ISD	3,931	3,426	3,441	-12.5%	0.4%
Valencia North County ISD	9,620	8,378	8,424	-12.4%	0.5%
Valencia South County ISD	2	5	0	-100.0%	-100.0%
West Dona Ana County ISD	12,814	10,715	10,774	-15.9%	0.6%
Centralized Units	26	62	49	88.5%	-21.0%
Statewide Total	257,452	221,376	222,846	-13.4%	0.7%

SNAP Cases by Region⁶

Region				Percent Change	
	Jan-17	Dec-17	Jan-18	Jan-17- Jan-18	Dec-17- Jan-18
Region 1 - NW	45,472	40,537	40,833	-10.2%	0.7%
Region 2 - NE	48,119	40,301	40,591	-15.6%	0.7%
Region 3 - Central	86,373	72,952	73,464	-14.9%	0.7%
Region 4 - SE	30,752	26,366	26,512	-13.8%	0.6%
Region 5 - SW	46,710	41,158	41,397	-11.4%	0.6%
Centralized Units	26	62	49	88.5%	-21.0%
Statewide Total	257,452	221,376	222,846	-13.4%	0.7%

SNAP Caseload: SFY-14 to Current

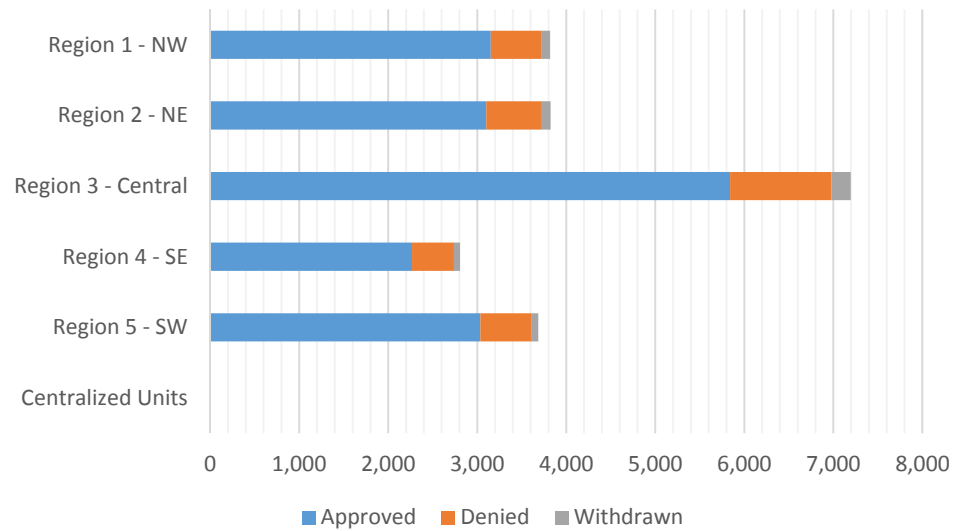


SNAP Initial Applications by Field Office^{4,11}
January 2018

Office	Approved	Denied	Withdrawn	Total Cases Processed
Chaves County ISD	574	142	25	741
Cibola County ISD	246	44	9	299
Colfax County ISD	120	15	13	148
Curry County ISD	464	64	10	538
East Dona Ana County ISD	590	136	26	752
Eddy Artesia County ISD	126	25	9	160
Eddy Carlsbad County ISD	283	49	6	338
Grant County ISD	368	30	2	400
Guadalupe County ISD	53	13	1	67
Hidalgo County ISD	0	0	0	0
Lea County ISD	514	109	14	637
Lincoln County ISD	163	35	3	201
Luna County ISD	320	49	9	378
McKinley County ISD	783	96	11	890
Northeast Bernalillo County ISD	1,813	302	55	2,170
Northwest Bernalillo County ISD	1,500	294	81	1,875
Otero County ISD	437	86	6	529
Quay County ISD	79	17	3	99
Rio Arriba County ISD	472	81	19	572
Roosevelt County ISD	144	47	0	191
San Juan County ISD	1,154	244	54	1,452
San Miguel County ISD	377	63	11	451
Sandoval County ISD	908	213	32	1,153
Santa Fe County ISD	786	167	14	967
Sierra County ISD	185	24	7	216
Socorro County ISD	191	39	2	232
South Dona Ana ISD	472	93	13	578
Southeast Bernalillo County ISD	1,006	230	21	1,257
Southwest Bernalillo County ISD	1,293	257	39	1,589
Taos County ISD	307	45	15	367
Torrance County ISD	228	57	19	304
Valencia North County ISD	592	127	10	729
Valencia South County ISD	0	0	0	0
West Dona Ana County ISD	847	176	25	1,048
Centralized Units	0	0	0	0
Statewide Total	17,395	3,369	564	21,328

SNAP Initial Applications by Region^{4,11} January 2018

Region	Approved	Denied	Withdrawn	Total Cases Processed
Region 1 - NW	3,151	574	93	3,818
Region 2 - NE	3,102	614	108	3,824
Region 3 - Central	5,840	1,140	215	7,195
Region 4 - SE	2,268	471	67	2,806
Region 5 - SW	3,034	570	81	3,685
Centralized Units	0	0	0	0
Statewide Total	17,395	3,369	564	21,328

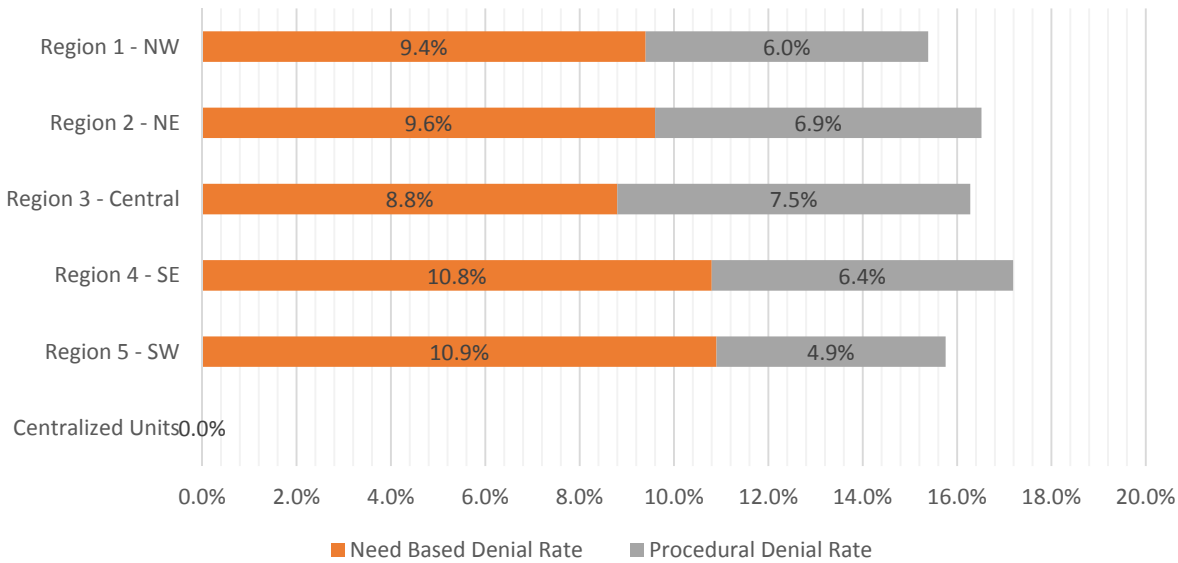


SNAP Initial Disposition Rates by Field Office^{4,11}
January 2018

Office	Approval Rate	Denial Rate	Need Based Denial Rate	Procedural Denial Rate
Chaves County ISD	80.2%	19.8%	13.7%	6.1%
Cibola County ISD	84.8%	15.2%	11.1%	4.1%
Colfax County ISD	88.9%	11.1%	8.1%	3.0%
Curry County ISD	87.9%	12.1%	8.3%	3.8%
East Dona Ana County ISD	81.3%	18.7%	12.6%	6.1%
Eddy Artesia County ISD	83.4%	16.6%	11.3%	5.3%
Eddy Carlsbad County ISD	85.2%	14.8%	8.8%	6.0%
Grant County ISD	92.5%	7.5%	5.5%	2.0%
Guadalupe County ISD	80.3%	19.7%	16.7%	3.0%
Hidalgo County ISD	0.0%	100.0%	100.0%	0.0%
Lea County ISD	82.5%	17.5%	9.2%	8.3%
Lincoln County ISD	82.3%	17.7%	10.6%	7.1%
Luna County ISD	86.7%	13.3%	9.8%	3.5%
McKinley County ISD	89.1%	10.9%	6.3%	4.6%
Northeast Bernalillo County ISD	85.7%	14.3%	7.2%	7.1%
Northwest Bernalillo County ISD	83.6%	16.4%	9.0%	7.4%
Otero County ISD	83.6%	16.4%	8.4%	8.0%
Quay County ISD	82.3%	17.7%	12.5%	5.2%
Rio Arriba County ISD	85.4%	14.6%	8.5%	6.1%
Roosevelt County ISD	75.4%	24.6%	15.7%	8.9%
San Juan County ISD	82.5%	17.5%	11.0%	6.5%
San Miguel County ISD	85.7%	14.3%	9.1%	5.2%
Sandoval County ISD	81.0%	19.0%	11.1%	7.9%
Santa Fe County ISD	82.5%	17.5%	9.5%	8.0%
Sierra County ISD	88.5%	11.5%	10.1%	1.4%
Socorro County ISD	83.0%	17.0%	9.2%	7.8%
South Dona Ana ISD	83.5%	16.5%	13.7%	2.8%
Southeast Bernalillo County ISD	81.4%	18.6%	8.7%	9.9%
Southwest Bernalillo County ISD	83.4%	16.6%	10.3%	6.3%
Taos County ISD	87.2%	12.8%	5.7%	7.1%
Torrance County ISD	80.0%	20.0%	13.3%	6.7%
Valencia North County ISD	82.3%	17.7%	9.5%	8.2%
Valencia South County ISD	0.0%	100.0%	100.0%	0.0%
West Dona Ana County ISD	82.8%	17.2%	12.1%	5.1%
Centralized Units				
Statewide Total	83.8%	16.2%	9.7%	6.5%

SNAP Initial Disposition Rates by Region^{4,11}
January 2018

Region	Approval Rate	Denial Rate	Need Based Denial Rate	Procedural Denial Rate
Region 1 - NW	84.6%	15.4%	9.4%	6.0%
Region 2 - NE	83.5%	16.5%	9.6%	6.9%
Region 3 - Central	83.7%	16.3%	8.8%	7.5%
Region 4 - SE	82.8%	17.2%	10.8%	6.4%
Region 5 - SW	84.2%	15.8%	10.9%	4.9%
Centralized Units				
Statewide Total	83.8%	16.2%	9.7%	6.5%



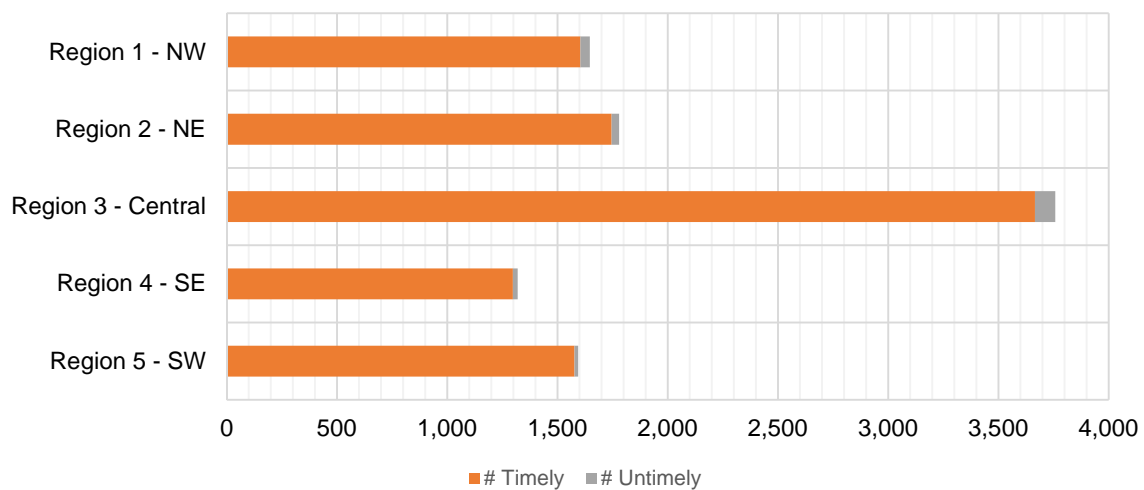
SNAP Expedite Timeliness by Field Office¹³
January 2018

Office Name	Total Expedited Approvals	# Timely	# Untimely	Percentage Timely
Chaves County ISD	285	281	4	98.6 %
Cibola County ISD	133	131	2	98.5 %
Colfax County ISD	63	63	0	100.0 %
Curry County ISD	287	282	5	98.3 %
East Dona Ana County ISD	296	295	1	99.7 %
Eddy Artesia County ISD	73	70	3	95.9 %
Eddy Carlsbad County ISD	181	180	1	99.4 %
Grant County ISD	255	250	5	98.0 %
Guadalupe County ISD	18	18	0	100.0 %
Lea County ISD	313	304	9	97.1 %
Lincoln County ISD	90	90	0	100.0 %
Luna County ISD	148	147	1	99.3 %
McKinley County ISD	367	357	10	97.3 %
Northeast Bernalillo County ISD	1,271	1,248	23	98.2 %
Northwest Bernalillo County ISD	1,035	1,005	30	97.1 %
Otero County ISD	243	239	4	98.4 %
Quay County ISD	39	37	2	94.9 %
Rio Arriba County ISD	299	291	8	97.3 %
Roosevelt County ISD	91	91	0	100.0 %
San Juan County ISD	659	637	22	96.7 %
San Miguel County ISD	216	212	4	98.1 %
Sandoval County ISD	498	490	8	98.4 %
Santa Fe County ISD	472	463	9	98.1 %
Sierra County ISD	81	81	0	100.0 %
Socorro County ISD	99	97	2	98.0 %
South Dona Ana ISD	198	196	2	99.0 %
Southeast Bernalillo County ISD	563	544	19	96.6 %
Southwest Bernalillo County ISD	757	740	17	97.8 %
Taos County ISD	175	172	3	98.3 %
Torrance County ISD	132	129	3	97.7 %
Valencia North County ISD	308	301	7	97.7 %
West Dona Ana County ISD	454	450	4	99.1 %
Statewide Total	10,099	9,891	208	97.9 %

SNAP Expedite Timeliness by Region¹³ January 2018

Region	Total Expedited Approvals	# Timely	# Untimely	Percentage Timely
Region 1 - NW	1,647	1,604	43	97.4%
Region 2 - NE	1,780	1,746	34	98.1%
Region 3 - Central	3,758	3,666	92	97.6%
Region 4 - SE	1,320	1,298	22	98.3%
Region 5 - SW	1,594	1,577	17	98.9%
Statewide Total	10,099	9,891	208	97.9%

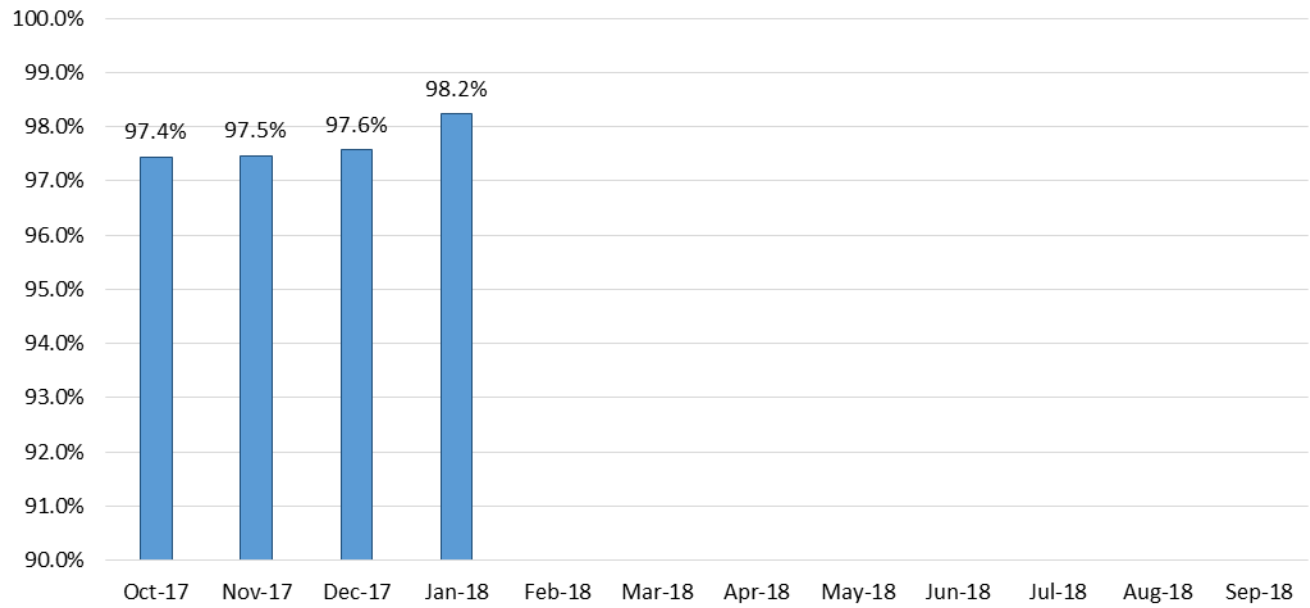
SNAP Expedite - Timeliness



SNAP: Percentage of Applications Processed Timely¹³

	Oct-17	Nov-17	Dec-17	Jan-18	Feb-18	Mar-18	Apr-18	May-18	Jun-18	Jul-18	Aug-18	Sep-18	Average
APT	97.4%	97.5%	97.6%	98.2%									97.7%

SNAP Application Processing Timeliness (APT)



SNAP Non-Expedite: Percentage of Initial Applications Processed Timely by Field Office¹³

	Oct-17	Nov-17	Dec-17	Jan-18	Feb-18	Mar-18	Apr-18	May-18	Jun-18	Jul-18	Aug-18	Sep-18	Average
Cibola	96.8%	97.2%	96.7%	92.9%									95.9%
McKinley	97.4%	98.8%	98.6%	99.3%									98.5%
San Juan	94.8%	93.5%	98.0%	97.8%									96.0%
Sierra	100.0%	100.0%	100.0%	100.0%									100.0%
Socorro	100.0%	96.8%	100.0%	98.9%									98.9%
Valencia North	96.5%	96.3%	96.6%	96.9%									96.6%
Valencia South	100.0%												100.0%
NW Region 1 Total	96.5%	96.4%	98.0%	97.9%									97.2%
Colfax	100.0%	100.0%	98.2%	98.2%									99.1%
Guadalupe	100.0%	100.0%	100.0%	100.0%									100.0%
Quay	97.2%	100.0%	100.0%	100.0%									99.3%
Rio Arriba	97.0%	99.4%	91.2%	95.3%									95.7%
San Miguel	100.0%	98.5%	100.0%	99.4%									99.5%
Sandoval	98.2%	98.6%	97.8%	98.8%									98.4%
Santa Fe	97.6%	97.5%	99.6%	98.4%									98.3%
Taos	98.7%	98.7%	98.7%	99.2%									98.8%
NE Region 2 Total	98.2%	98.6%	97.8%	98.4%									98.3%
NE Bernalillo	95.4%	95.7%	94.9%	97.1%									95.8%
NW Bernalillo	97.6%	95.1%	96.7%	98.0%									96.9%
SE Bernalillo	96.0%	96.8%	97.4%	96.8%									96.8%
SW Bernalillo	97.9%	97.3%	99.1%	96.6%									97.7%
Torrance	98.9%	98.2%	96.6%	99.0%									98.2%
Gen. Region 3 Total	96.9%	96.3%	96.9%	97.2%									96.8%
Chaves	99.3%	98.9%	98.5%	99.7%									99.1%
Curry	95.7%	97.1%	97.9%	99.4%									97.5%
Eddy Artesia	100.0%	97.2%	100.0%	100.0%									99.3%
Eddy Carlsbad	94.8%	97.3%	100.0%	100.0%									98.0%
Lea	97.0%	98.3%	99.5%	98.5%									98.3%
Lincoln	97.8%	98.9%	100.0%	100.0%									99.2%
Roosevelt	100.0%	98.6%	100.0%	98.5%									99.3%
SE Region 4 Total	97.6%	98.2%	99.1%	99.4%									98.6%
East Dona Ana	99.6%	98.9%	100.0%	99.7%									99.6%
Grant	100.0%	99.0%	97.9%	100.0%									99.2%
Luna	100.0%	99.4%	100.0%	97.7%									99.3%
Otero	100.0%	98.9%	99.4%	100.0%									99.6%
South Dona Ana	100.0%	99.6%	100.0%	100.0%									99.9%
West Dona Ana	99.2%	98.7%	99.0%	100.0%									99.2%
SW Region 5 Total	99.7%	99.0%	99.5%	99.7%									99.5%
STATE TOTAL	97.7%	97.5%	98.1%	98.3%									97.9%

SNAP Expedite: Percentage of Initial Applications Processed Timely by Field Office¹³

	Oct-17	Nov-17	Dec-17	Jan-18	Feb-18	Mar-18	Apr-18	May-18	Jun-18	Jul-18	Aug-18	Sep-18	Average
Cibola	94.1%	100.0%	92.2%	98.5%									96.2%
McKinley	99.4%	99.4%	97.8%	97.3%									98.5%
San Juan	95.8%	94.2%	96.5%	96.7%									95.8%
Sierra	98.3%	100.0%	100.0%	100.0%									99.6%
Socorro	98.9%	100.0%	94.4%	98.0%									97.8%
Valencia North	97.1%	93.3%	97.1%	97.7%									96.3%
Valencia South	100.0%	100.0%											100.0%
NW Region 1 Total	97.0%	96.4%	96.6%	97.4%									96.9%
Colfax	98.6%	100.0%	100.0%	100.0%									99.7%
Guadalupe	100.0%	100.0%	100.0%	100.0%									100.0%
Quay	100.0%	100.0%	100.0%	94.9%									98.7%
Rio Arriba	94.6%	97.3%	97.6%	97.3%									96.7%
San Miguel	99.1%	98.3%	99.4%	98.1%									98.7%
Sandoval	98.2%	98.3%	97.9%	98.4%									98.2%
Santa Fe	97.5%	97.7%	96.7%	98.1%									97.5%
Taos	98.7%	97.8%	95.7%	98.3%									97.6%
NE Region 2 Total	97.5%	98.0%	97.7%	98.1%									97.8%
NE Bernalillo	94.6%	96.4%	94.7%	98.2%									96.0%
NW Bernalillo	97.6%	95.6%	95.6%	97.1%									96.5%
SE Bernalillo	96.5%	95.7%	95.2%	96.6%									96.0%
SW Bernalillo	96.6%	96.4%	96.9%	97.8%									96.9%
Torrance	96.9%	96.5%	99.2%	97.7%									97.6%
Cen. Region 3 Total	96.3%	96.1%	95.7%	97.6%									96.4%
Chaves	98.1%	98.6%	99.2%	98.6%									98.6%
Curry	96.0%	98.7%	98.1%	98.3%									97.8%
Eddy Artesia	100.0%	98.4%	100.0%	95.9%									98.6%
Eddy Carlsbad	98.5%	98.6%	98.3%	99.4%									98.7%
Lea	98.4%	98.4%	98.3%	97.1%									98.1%
Lincoln	96.7%	98.6%	98.4%	100.0%									98.4%
Roosevelt	92.7%	100.0%	96.2%	100.0%									97.2%
SE Region 4 Total	97.4%	98.7%	98.4%	98.3%									98.2%
East Dona Ana	99.0%	98.8%	98.7%	99.7%									99.1%
Grant	97.9%	100.0%	100.0%	98.0%									99.0%
Luna	99.3%	100.0%	100.0%	99.3%									99.7%
Otero	98.8%	98.4%	98.5%	98.4%									98.5%
South Dona Ana	100.0%	99.4%	98.8%	99.0%									99.3%
West Dona Ana	99.5%	99.5%	98.6%	99.1%									99.2%
SW Region 5 Total	99.1%	99.3%	99.0%	98.9%									99.1%
STATE TOTAL	97.2%	97.3%	97.0%	97.9%									97.4%

SNAP: Percentage of Denied Initial Applications Processed Within 30 Days by Field Office¹³

	Oct-17	Nov-17	Dec-17	Jan-18	Feb-18	Mar-18	Apr-18	May-18	Jun-18	Jul-18	Aug-18	Sep-18	Average
Cibola	66.7%	50.0%	66.7%	65.9%									62.3%
McKinley	59.0%	57.8%	65.9%	47.9%									57.6%
San Juan	35.7%	51.8%	46.5%	66.8%									50.2%
Sierra	95.5%	90.9%	90.5%	91.7%									92.1%
Socorro	69.6%	68.2%	94.3%	100.0%									83.0%
Valencia North	45.9%	41.8%	45.0%	44.1%									44.2%
Valencia South													
NW Region 1 Total	48.3%	53.2%	55.5%	61.8%									54.7%
Colfax	100.0%	100.0%	100.0%	100.0%									100.0%
Guadalupe	73.3%	75.0%	90.0%	92.3%									82.7%
Quay	83.3%	33.3%	66.7%	70.6%									63.5%
Rio Arriba	70.1%	56.3%	43.0%	69.1%									59.6%
San Miguel	66.2%	77.3%	90.0%	92.1%									81.4%
Sandoval	70.8%	69.2%	74.6%	66.2%									70.2%
Santa Fe	64.7%	70.6%	62.1%	44.3%									60.4%
Taos	77.8%	79.2%	84.1%	84.4%									81.4%
NE Region 2 Total	70.8%	69.7%	68.8%	66.1%									68.9%
NE Bernalillo	43.5%	40.5%	44.9%	47.0%									44.0%
NW Bernalillo	41.7%	42.8%	48.7%	50.0%									45.8%
SE Bernalillo	52.3%	52.0%	74.2%	60.9%									59.8%
SW Bernalillo	63.9%	62.9%	50.9%	67.3%									61.3%
Torrance	60.4%	68.2%	51.0%	54.4%									58.5%
Gen. Region 3 Total	49.7%	50.0%	53.4%	55.5%									52.2%
Chaves	86.4%	85.7%	89.3%	91.5%									88.2%
Curry	63.5%	60.3%	80.9%	87.5%									73.1%
Eddy Artesia	75.8%	58.1%	76.9%	96.0%									76.7%
Eddy Carlsbad	60.7%	67.6%	76.4%	85.7%									72.6%
Lea	86.3%	63.8%	68.0%	82.6%									75.2%
Lincoln	55.0%	78.4%	94.9%	88.6%									79.2%
Roosevelt	77.1%	68.1%	88.4%	91.5%									81.3%
SE Region 4 Total	74.4%	69.2%	81.2%	88.3%									78.3%
East Dona Ana	81.2%	77.6%	72.7%	91.2%									80.7%
Grant	73.5%	81.1%	72.1%	80.0%									76.7%
Luna	55.8%	51.1%	65.9%	65.3%									59.5%
Otero	40.3%	38.6%	47.9%	40.7%									41.9%
South Dona Ana	70.8%	68.1%	63.2%	80.6%									70.7%
West Dona Ana	65.6%	55.7%	70.5%	79.5%									67.8%
SW Region 5 Total	66.6%	62.3%	66.5%	75.4%									67.7%
STATE TOTAL	59.5%	58.9%	62.6%	66.5%									61.9%

SNAP Renewals Processed by Field Office²⁰
January 2018

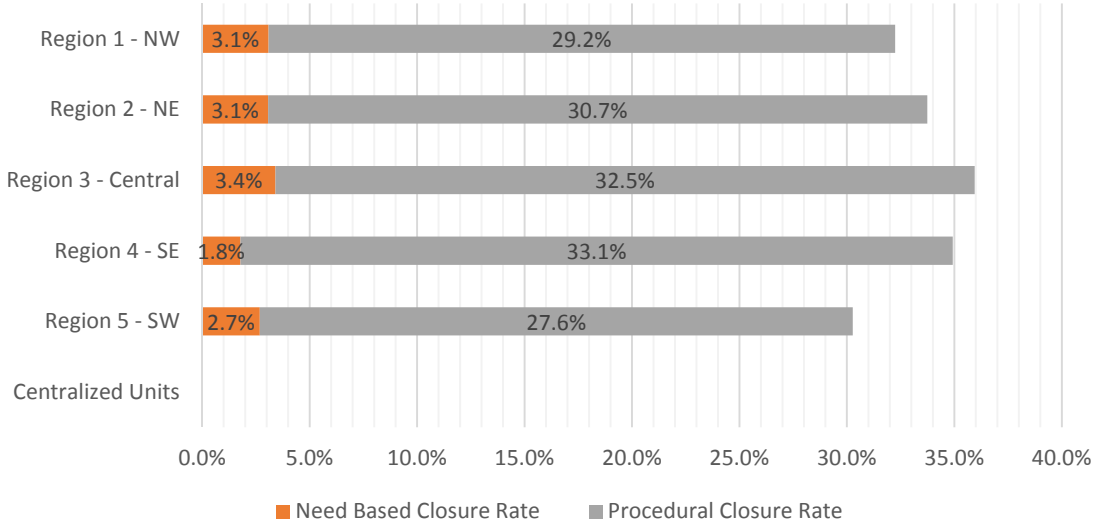
Office	Approvals	Closures	Need Based Closures	Procedural Closures
Chaves County ISD	193	97	7	90
Cibola County ISD	107	40	2	38
Colfax County ISD	47	20	5	15
Curry County ISD	157	78	4	74
East Dona Ana County ISD	289	107	16	91
Eddy Artesia County ISD	42	30	3	27
Eddy Carlsbad County ISD	91	53	3	50
Grant County ISD	112	59	1	58
Guadalupe County ISD	21	0	0	0
Hidalgo County ISD	17	0	0	0
Lea County ISD	151	89	1	88
Lincoln County ISD	61	26	1	25
Luna County ISD	140	62	5	57
McKinley County ISD	252	117	9	108
Northeast Bernalillo County ISD	466	311	26	285
Northwest Bernalillo County ISD	399	245	31	214
Otero County ISD	119	85	8	77
Quay County ISD	32	0	0	0
Rio Arriba County ISD	156	105	4	101
Roosevelt County ISD	0	0	0	0
San Juan County ISD	346	228	21	207
San Miguel County ISD	130	70	4	66
Sandoval County ISD	289	132	10	122
Santa Fe County ISD	232	141	18	123
Sierra County ISD	97	34	4	30
Socorro County ISD	80	0	3	-3
South Dona Ana ISD	346	112	11	101
Southeast Bernalillo County ISD	265	144	16	128
Southwest Bernalillo County ISD	582	274	19	255
Taos County ISD	130	60	7	53
Torrance County ISD	93	39	4	35
Valencia North County ISD	259	124	13	111
Valencia South County ISD	0	0	0	0
West Dona Ana County ISD	329	162	11	151
Centralized Units	0	0	0	0
Statewide Total	6,030	3,044	267	2,777

SNAP Renewal Disposition Rates by Field Office²⁰
January 2018

Office	Approval Rate	Closure Rate	Need Based Closure Rate	Procedural Closure Rate
Chaves County ISD	66.6%	33.4%	2.4%	31.0%
Cibola County ISD	72.8%	27.2%	1.4%	25.9%
Colfax County ISD	70.1%	29.9%	7.5%	22.4%
Curry County ISD	66.8%	33.2%	1.7%	31.5%
East Dona Ana County ISD	73.0%	27.0%	4.0%	23.0%
Eddy Artesia County ISD	58.3%	41.7%	4.2%	37.5%
Eddy Carlsbad County ISD	63.2%	36.8%	2.1%	34.7%
Grant County ISD	65.5%	34.5%	0.6%	33.9%
Guadalupe County ISD	100.0%	0.0%	0.0%	0.0%
Hidalgo County ISD	100.0%	0.0%	0.0%	0.0%
Lea County ISD	62.9%	37.1%	0.4%	36.7%
Lincoln County ISD	70.1%	29.9%	1.1%	28.7%
Luna County ISD	69.3%	30.7%	2.5%	28.2%
McKinley County ISD	68.3%	31.7%	2.4%	29.3%
Northeast Bernalillo County ISD	60.0%	40.0%	3.3%	36.7%
Northwest Bernalillo County ISD	62.0%	38.0%	4.8%	33.2%
Otero County ISD	58.3%	41.7%	3.9%	37.7%
Quay County ISD	100.0%	0.0%	0.0%	0.0%
Rio Arriba County ISD	59.8%	40.2%	1.5%	38.7%
Roosevelt County ISD	0.0%	0.0%	0.0%	0.0%
San Juan County ISD	60.3%	39.7%	3.7%	36.1%
San Miguel County ISD	65.0%	35.0%	2.0%	33.0%
Sandoval County ISD	68.6%	31.4%	2.4%	29.0%
Santa Fe County ISD	62.2%	37.8%	4.8%	33.0%
Sierra County ISD	74.0%	26.0%	3.1%	22.9%
Socorro County ISD	100.0%	0.0%	3.8%	-3.8%
South Dona Ana ISD	75.5%	24.5%	2.4%	22.1%
Southeast Bernalillo County ISD	64.8%	35.2%	3.9%	31.3%
Southwest Bernalillo County ISD	68.0%	32.0%	2.2%	29.8%
Taos County ISD	68.4%	31.6%	3.7%	27.9%
Torrance County ISD	70.5%	29.5%	3.0%	26.5%
Valencia North County ISD	67.6%	32.4%	3.4%	29.0%
Valencia South County ISD	0.0%	0.0%	0.0%	0.0%
West Dona Ana County ISD	67.0%	33.0%	2.2%	30.8%
Centralized Units	0.0%	0.0%	0.0%	0.0%
Statewide Total	66.5%	33.5%	2.9%	30.6%

SNAP Renewal Disposition Rates by Region²⁰
January 2018

Region	Approval Rate	Closure Rate	Need Based Closure Rate	Procedural Closure Rate
Region 1 - NW	67.8%	32.2%	3.1%	29.2%
Region 2 - NE	66.3%	33.7%	3.1%	30.7%
Region 3 - Central	64.1%	35.9%	3.4%	32.5%
Region 4 - SE	65.1%	34.9%	1.8%	33.1%
Region 5 - SW	69.7%	30.3%	2.7%	27.6%
Centralized Units				
Statewide Total	66.5%	33.5%	2.9%	30.6%



SNAP: Percentage of Approved Renewal Applications Processed by Normal Accessibility Date ¹¹													
	Oct-17	Nov-17	Dec-17	Jan-18	Feb-18	Mar-18	Apr-18	May-18	Jun-18	Jul-18	Aug-18	Sep-18	Average
Cibola		71.2%	73.1%	79.4%									74.6%
McKinley		90.4%	92.0%	95.6%									92.7%
San Juan		85.9%	80.5%	89.6%									85.4%
Sierra		98.1%	93.6%	92.8%									94.8%
Socorro		92.5%	89.7%	93.8%									92.0%
Valencia North		84.1%	86.9%	95.8%									88.9%
Valencia South													
NW Region 1 Total		87.1%	86.0%	91.2%									88.1%
Colfax		87.8%	82.5%	97.9%									89.4%
Guadalupe		94.4%	93.1%	100.0%									95.8%
Quay		94.3%	89.5%	100.0%									94.6%
Rio Arriba		79.7%	71.9%	94.2%									82.0%
San Miguel		90.4%	95.7%	98.5%									94.9%
Sandoval		90.1%	93.8%	96.2%									93.4%
Santa Fe		87.1%	92.0%	95.7%									91.6%
Taos		90.8%	91.5%	94.6%									92.3%
NE Region 2 Total		89.3%	88.8%	97.1%									91.7%
NE Bernalillo		71.8%	72.1%	85.0%									76.3%
NW Bernalillo		85.5%	80.4%	93.0%									86.3%
SE Bernalillo		79.7%	81.6%	91.7%									84.4%
SW Bernalillo		83.4%	89.0%	91.8%									88.1%
Torrance		74.5%	74.3%	90.3%									79.7%
Gen. Region 3 Total		79.0%	79.5%	90.3%									82.9%
Chaves		91.2%	92.0%	95.3%									92.8%
Curry		94.1%	81.9%	94.9%									90.3%
Eddy Artesia		94.1%	91.9%	95.2%									93.8%
Eddy Carlsbad		75.8%	90.8%	90.1%									85.6%
Lea		91.8%	90.9%	94.0%									92.2%
Lincoln		87.5%	92.6%	95.1%									91.7%
Roosevelt		93.6%	86.7%										90.1%
SE Region 4 Total		89.7%	89.5%	94.1%									91.1%
East Dona Ana		94.8%	93.1%	96.5%									94.8%
Grant		90.5%	93.5%	100.0%									94.7%
Luna		91.7%	84.0%	91.4%									89.0%
Otero		87.3%	86.5%	97.5%									90.4%
South Dona Ana		94.3%	93.1%	99.4%									95.6%
West Dona Ana		97.4%	95.0%	97.9%									96.8%
SW Region 5 Total		92.7%	90.9%	97.1%									93.6%
STATE TOTAL		86.4%	86.3%	93.6%									88.8%

*Includes cases in which the Renewal Packet was received after the 15th of the month, the due date for uninterrupted benefits.
No data available for October 2017*

SNAP: Percentage of Approved Renewal Applications Processed by Normal Accessibility Date ¹¹													
	Oct-17	Nov-17	Dec-17	Jan-18	Feb-18	Mar-18	Apr-18	May-18	Jun-18	Jul-18	Aug-18	Sep-18	Average
Cibola		72.8%	86.1%	82.3%									80.4%
McKinley		92.8%	93.9%	97.6%									94.8%
San Juan		89.0%	85.1%	92.8%									89.0%
Sierra		100.0%	97.5%	97.1%									98.2%
Socorro		94.7%	95.7%	96.9%									95.8%
Valencia North		89.1%	93.1%	96.3%									92.9%
Valencia South													
NW Region 1 Total		89.8%	91.9%	93.8%									91.8%
Colfax		95.1%	91.2%	100.0%									95.4%
Guadalupe		96.7%	92.9%	100.0%									96.5%
Quay		100.0%	95.6%	100.0%									98.5%
Rio Arriba		90.5%	84.5%	95.6%									90.2%
San Miguel		93.6%	96.9%	100.0%									96.8%
Sandoval		93.1%	97.0%	98.7%									96.3%
Santa Fe		91.6%	97.0%	97.8%									95.5%
Taos		95.8%	94.8%	96.8%									95.8%
NE Region 2 Total		94.6%	93.7%	98.6%									95.6%
NE Bernalillo		75.7%	77.9%	90.1%									81.2%
NW Bernalillo		88.7%	84.5%	95.0%									89.4%
SE Bernalillo		85.2%	87.3%	94.9%									89.1%
SW Bernalillo		88.9%	93.5%	95.2%									92.5%
Torrance		83.1%	80.7%	97.2%									87.0%
Gen. Region 3 Total		84.3%	84.8%	94.5%									87.9%
Chaves		92.0%	92.0%	96.8%									93.6%
Curry		94.6%	85.4%	96.7%									92.3%
Eddy Artesia		100.0%	96.0%	100.0%									98.7%
Eddy Carlsbad		80.3%	94.4%	95.7%									90.1%
Lea		94.6%	94.2%	97.5%									95.5%
Lincoln		88.5%	95.7%	95.9%									93.3%
Roosevelt		92.9%	85.0%										88.9%
SE Region 4 Total		91.8%	91.8%	97.1%									93.6%
East Dona Ana		96.8%	97.8%	99.0%									97.9%
Grant		94.2%	99.1%	100.0%									97.8%
Luna		96.9%	90.2%	92.9%									93.3%
Otero		96.2%	96.4%	100.0%									97.6%
South Dona Ana		97.4%	97.4%	100.0%									98.3%
West Dona Ana		99.1%	98.2%	99.1%									98.8%
SW Region 5 Total		96.8%	96.5%	98.5%									97.3%
STATE TOTAL		90.4%	91.3%	96.2%									92.6%

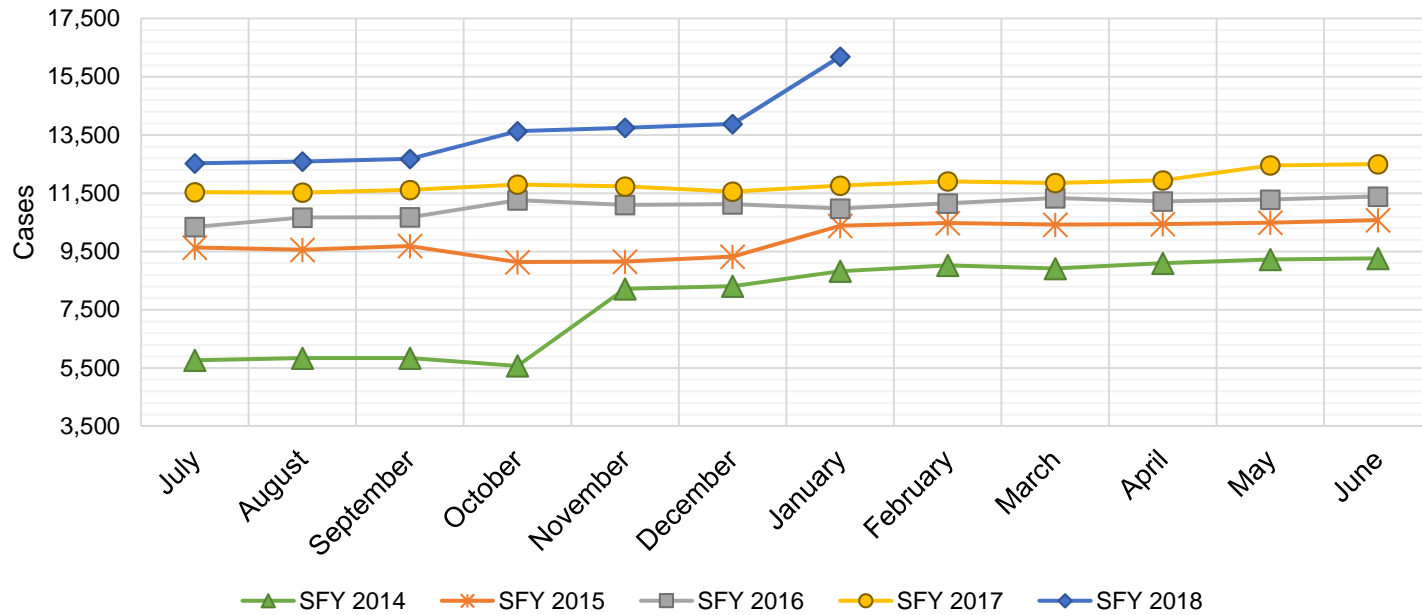
Only includes cases in which the Renewal Packet was received by the 15th of the month, the due date for uninterrupted benefits.
No data available for October 2017

SNAP: Percentage of Closures at Renewal Processed by Certification End Date ¹¹													
	Oct-17	Nov-17	Dec-17	Jan-18	Feb-18	Mar-18	Apr-18	May-18	Jun-18	Jul-18	Aug-18	Sep-18	Average
Cibola		6.8%	3.3%	2.5%									4.2%
McKinley		3.7%	6.7%	6.8%									5.7%
San Juan		7.0%	5.1%	5.7%									6.0%
Sierra		19.2%	17.1%	8.8%									15.1%
Socorro		11.8%	4.3%	0.0%									5.4%
Valencia North		6.2%	9.8%	4.8%									6.9%
Valencia South													
NW Region 1 Total		9.1%	7.7%	4.8%									7.2%
Colfax		6.3%	11.1%	10.0%									9.1%
Guadalupe		7.7%	0.0%	0.0%									2.6%
Quay		15.8%	6.7%	0.0%									7.5%
Rio Arriba		6.1%	3.9%	2.9%									4.3%
San Miguel		4.7%	9.0%	8.6%									7.4%
Sandoval		12.9%	12.8%	3.0%									9.6%
Santa Fe		3.0%	5.8%	9.9%									6.3%
Taos		4.1%	3.7%	6.7%									4.8%
NE Region 2 Total		7.6%	6.6%	5.1%									6.4%
NE Bernalillo		3.0%	5.7%	3.5%									4.1%
NW Bernalillo		3.4%	3.8%	20.4%									9.2%
SE Bernalillo		4.1%	6.1%	4.2%									4.8%
SW Bernalillo		7.2%	6.6%	6.6%									6.8%
Torrance		3.6%	7.6%	5.1%									5.4%
Gen. Region 3 Total		4.3%	6.0%	8.0%									6.1%
Chaves		7.7%	12.2%	8.2%									9.4%
Curry		8.0%	3.8%	5.1%									5.7%
Eddy Artesia		6.9%	10.0%	10.0%									9.0%
Eddy Carlsbad		8.6%	4.7%	3.8%									5.7%
Lea		5.3%	14.8%	2.2%									7.5%
Lincoln		2.9%	9.3%	15.4%									9.2%
Roosevelt		15.0%	5.4%	0.0%									6.8%
SE Region 4 Total		7.8%	8.6%	6.4%									7.6%
East Dona Ana		12.9%	9.1%	5.6%									9.2%
Grant		6.0%	4.7%	3.4%									4.7%
Luna		5.6%	1.4%	3.2%									3.4%
Otero		2.9%	5.5%	3.5%									4.0%
South Dona Ana		13.8%	7.6%	14.3%									11.9%
West Dona Ana		8.9%	8.4%	6.8%									8.0%
SW Region 5 Total		8.3%	6.1%	6.1%									6.9%
STATE TOTAL		6.6%	7.1%	6.9%									6.9%

*Includes cases for which no renewal application was received.
No data available for October 2017*

State SNAP Supplement

SFY 2014 ¹²			SFY 2015 ^{12,9}			SFY 2016 ⁹			SFY 2017 ⁹			SFY 2018 ⁹		
	Cases	Expenditures		Cases	Expenditures		Cases	Expenditures		Cases	Expenditures		Cases	Expenditures
Jul-13	5,767	\$48,040	Jul-14	9,635	\$88,859	Jul-15	10,345	\$86,143	Jul-16	11,537	\$95,553	Jul-17	12,526	\$97,568
Aug-13	5,841	\$48,417	Aug-14	9,559	\$87,757	Aug-15	10,669	\$88,197	Aug-16	11,522	\$95,107	Aug-17	12,589	\$98,954
Sep-13	5,841	\$48,732	Sep-14	9,688	\$87,372	Sep-15	10,676	\$88,426	Sep-16	11,613	\$94,472	Sep-17	12,679	\$97,546
Oct-13	5,575	\$46,610	Oct-14	9,136	\$70,490	Oct-15	11,262	\$96,758	Oct-16	11,797	\$96,679	Oct-17	13,628	\$117,343
Nov-13	8,219	\$69,564	Nov-14	9,152	\$69,955	Nov-15	11,099	\$91,996	Nov-16	11,735	\$93,689	Nov-17	13,748	\$119,055
Dec-13	8,310	\$71,839	Dec-14	9,322	\$73,226	Dec-15	11,125	\$90,771	Dec-16	11,556	\$93,739	Dec-17	13,877	\$120,585
Jan-14	8,826	\$77,933	Jan-15	10,384	\$84,578	Jan-16	10,977	\$92,760	Jan-17	11,763	\$96,074	Jan-18	16,188	\$135,993
Feb-14	9,024	\$84,758	Feb-15	10,477	\$82,901	Feb-16	11,153	\$95,363	Feb-17	11,907	\$98,251	Feb-18		
Mar-14	8,916	\$80,597	Mar-15	10,423	\$87,461	Mar-16	11,332	\$96,751	Mar-17	11,853	\$96,693	Mar-18		
Apr-14	9,098	\$84,599	Apr-15	10,440	\$79,605	Apr-16	11,222	\$93,959	Apr-17	11,944	\$97,060	Apr-18		
May-14	9,226	\$85,035	May-15	10,491	\$82,511	May-16	11,283	\$95,271	May-17	12,457	\$96,940	May-18		
Jun-14	9,264	\$84,329	Jun-15	10,575	\$85,134	Jun-16	11,389	\$93,061	Jun-17	12,498	\$97,405	Jun-18		
TOTAL	93,907	\$830,453		119,282	\$979,850		132,532	\$1,109,455		142,182	\$1,151,662		95,235	\$787,045
AVERAGE	7,826	\$69,204		9,940	\$81,654		11,044	\$92,455		11,849	\$95,972		13,605	\$112,435



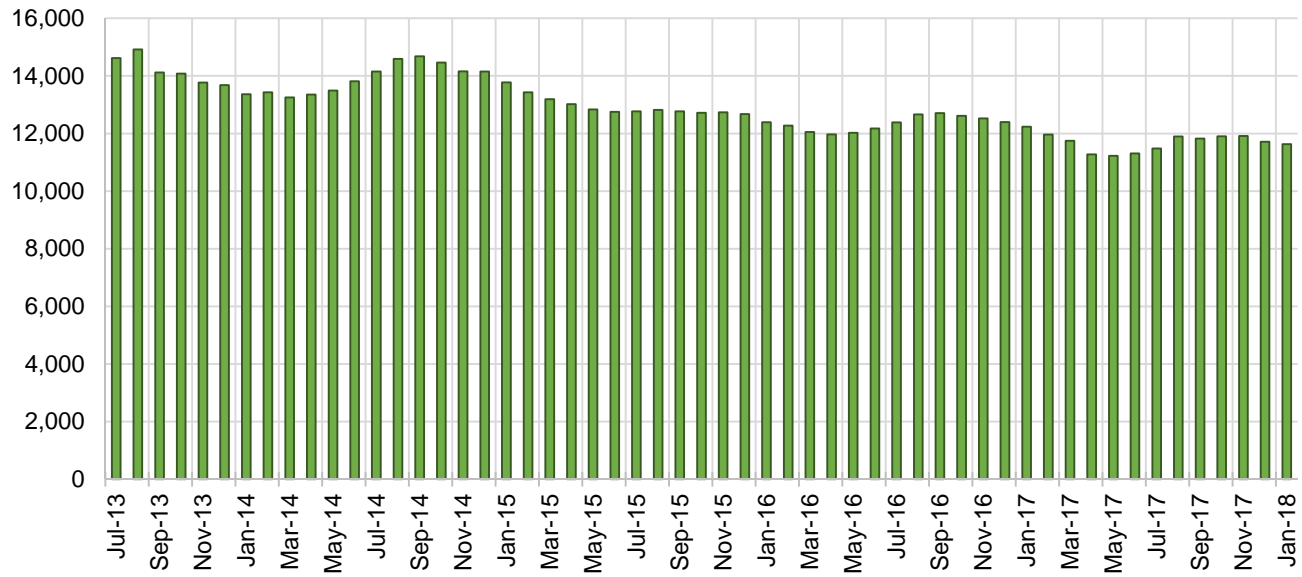
TANF Cases by Field Office⁶

Office				Percent Change	
	Jan-17	Dec-17	Jan-18	Jan-17- Jan-18	Dec-17- Jan-18
Chaves County ISD	594	544	540	-9.1%	-0.7%
Cibola County ISD	151	153	154	2.0%	0.7%
Colfax County ISD	74	76	74	0.0%	-2.6%
Curry County ISD	514	522	700	36.2%	34.1%
East Dona Ana County ISD	505	503	496	-1.8%	-1.4%
Eddy Artesia County ISD	146	128	126	-13.7%	-1.6%
Eddy Carlsbad County ISD	218	157	154	-29.4%	-1.9%
Grant County ISD	195	184	188	-3.6%	2.2%
Guadalupe County ISD	27	30	32	18.5%	6.7%
Hidalgo County ISD	23	25	25	8.7%	0.0%
Lea County ISD	508	443	442	-13.0%	-0.2%
Lincoln County ISD	103	102	103	0.0%	1.0%
Luna County ISD	222	221	228	2.7%	3.2%
McKinley County ISD	65	63	61	-6.2%	-3.2%
Northeast Bernalillo County ISD	975	962	970	-0.5%	0.8%
Northwest Bernalillo County ISD	819	823	813	-0.7%	-1.2%
Otero County ISD	292	313	313	7.2%	0.0%
Quay County ISD	83	73	72	-13.3%	-1.4%
Rio Arriba County ISD	450	409	409	-9.1%	0.0%
Roosevelt County ISD	164	168	1	-99.4%	-99.4%
San Juan County ISD	333	300	306	-8.1%	2.0%
San Miguel County ISD	221	206	201	-9.0%	-2.4%
Sandoval County ISD	549	582	571	4.0%	-1.9%
Santa Fe County ISD	530	444	453	-14.5%	2.0%
Sierra County ISD	92	79	74	-19.6%	-6.3%
Socorro County ISD	108	89	100	-7.4%	12.4%
South Dona Ana ISD	732	714	695	-5.1%	-2.7%
Southeast Bernalillo County ISD	713	646	638	-10.5%	-1.2%
Southwest Bernalillo County ISD	1,153	1,168	1,161	0.7%	-0.6%
Taos County ISD	150	151	150	0.0%	-0.7%
Torrance County ISD	190	190	192	1.1%	1.1%
Valencia North County ISD	523	498	488	-6.7%	-2.0%
Valencia South County ISD	0	1	0	N/A	-100.0%
West Dona Ana County ISD	811	745	701	-13.6%	-5.9%
Centralized Units	2	5	1	-50.0%	-80.0%
Statewide Total	12,235	11,717	11,632	-4.9%	-0.7%

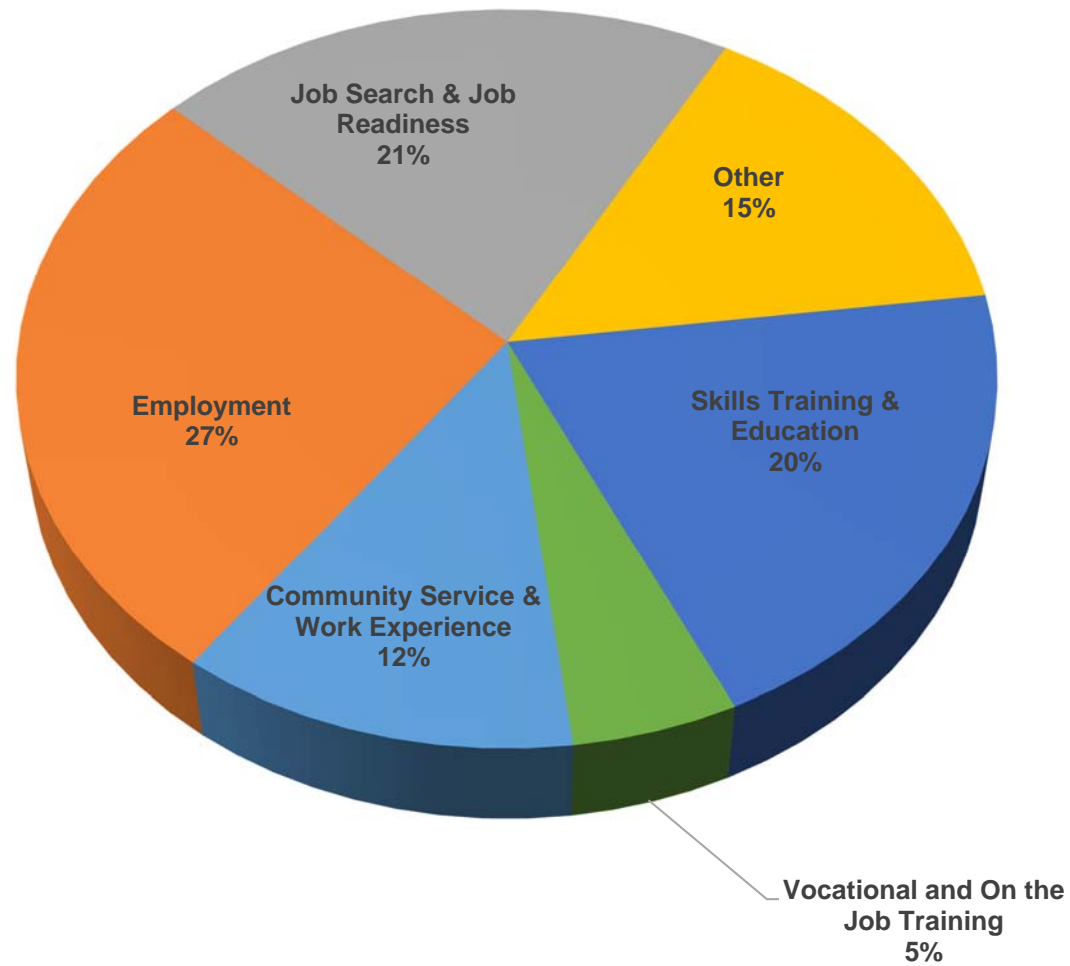
TANF Cases by Region⁶

Region	Jan-17	Dec-17	Jan-18	Percent Change	
				Jan-17- Jan-18	Dec-17- Jan-18
Region 1- NW	1,272	1,183	1,183	-7.0%	0.0%
Region 2- NE	2,084	1,971	1,962	-5.9%	-0.5%
Region 3- Central	3,850	3,789	3,774	-2.0%	-0.4%
Region 4- SE	2,247	2,064	2,066	-8.1%	0.1%
Region 5- SW	2,780	2,705	2,646	-4.8%	-2.2%
Centralized Units	2	5	1	-50.0%	-80.0%
Statewide Total	12,235	11,717	11,632	-4.9%	-0.7%

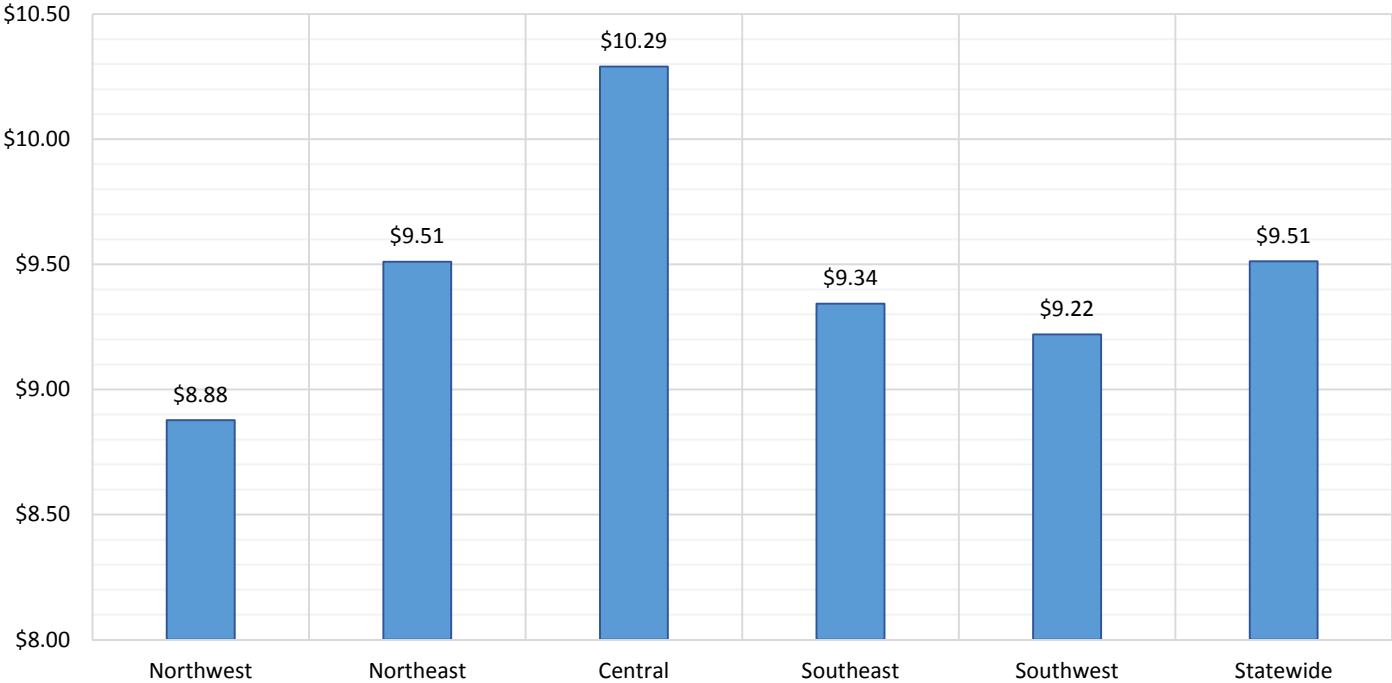
TANF Caseload: SFY-14 to Current



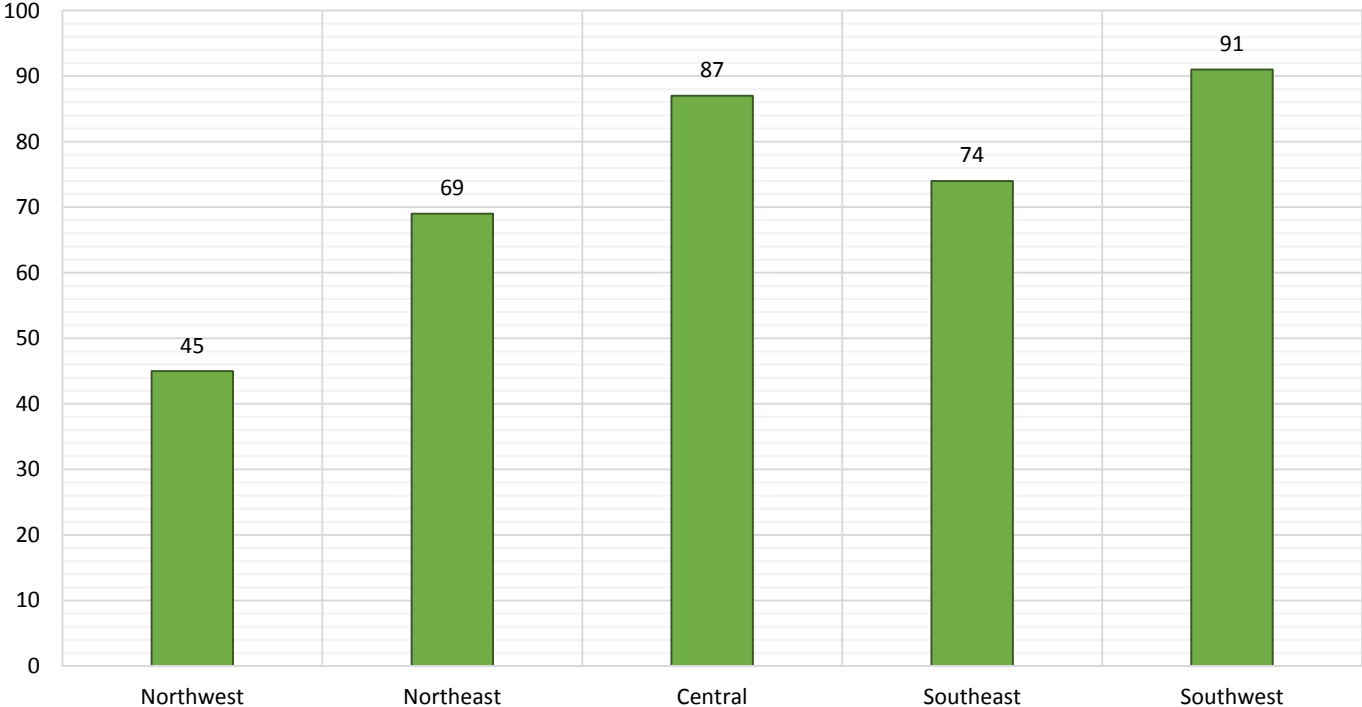
NM Works Activity Placements on January 31, 2018 as reported by SL Start¹⁴



Average Starting Hourly Wage of January 2018 TANF Employments
as reported by SL Start¹⁵



Number of New Employments in January 2018 by Region
as reported by SL Start¹⁵
Statewide Total: 366



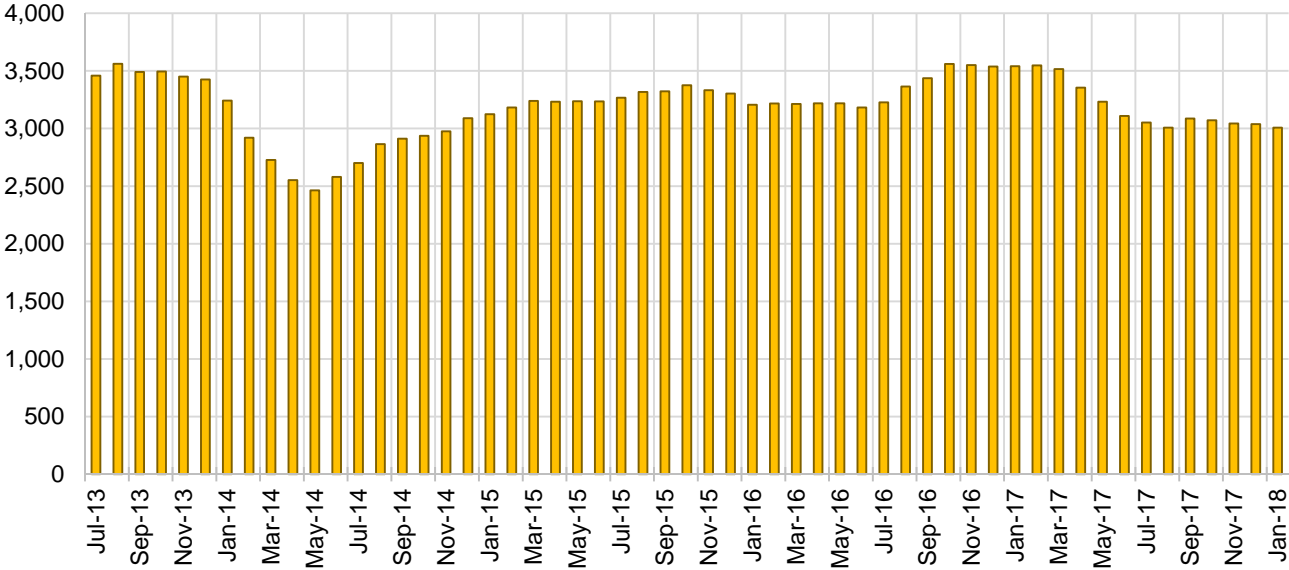
General Assistance Cases by Field Office⁶

Office				Percent Change	
	Jan-17	Dec-17	Jan-18	Jan-17- Jan-18	Dec-17- Jan-18
Chaves County ISD	144	128	131	-9.0%	2.3%
Cibola County ISD	43	50	48	11.6%	-4.0%
Colfax County ISD	33	20	19	-42.4%	-5.0%
Curry County ISD	92	65	77	-16.3%	18.5%
East Dona Ana County ISD	121	115	114	-5.8%	-0.9%
Eddy Artesia County ISD	25	27	27	8.0%	0.0%
Eddy Carlsbad County ISD	87	65	66	-24.1%	1.5%
Grant County ISD	80	66	65	-18.8%	-1.5%
Guadalupe County ISD	12	18	16	33.3%	-11.1%
Hidalgo County ISD	15	12	11	-26.7%	-8.3%
Lea County ISD	99	84	80	-19.2%	-4.8%
Lincoln County ISD	46	27	30	-34.8%	11.1%
Luna County ISD	59	59	58	-1.7%	-1.7%
McKinley County ISD	26	48	47	80.8%	-2.1%
Northeast Bernalillo County ISD	374	347	344	-8.0%	-0.9%
Northwest Bernalillo County ISD	344	290	298	-13.4%	2.8%
Otero County ISD	98	100	95	-3.1%	-5.0%
Quay County ISD	32	20	22	-31.3%	10.0%
Rio Arriba County ISD	112	86	86	-23.2%	0.0%
Roosevelt County ISD	21	16	0	-100.0%	-100.0%
San Juan County ISD	95	131	135	42.1%	3.1%
San Miguel County ISD	86	77	75	-12.8%	-2.6%
Sandoval County ISD	150	118	119	-20.7%	0.8%
Santa Fe County ISD	204	140	138	-32.4%	-1.4%
Sierra County ISD	38	29	28	-26.3%	-3.4%
Socorro County ISD	50	44	41	-18.0%	-6.8%
South Dona Ana ISD	56	57	61	8.9%	7.0%
Southeast Bernalillo County ISD	223	186	174	-22.0%	-6.5%
Southwest Bernalillo County ISD	283	217	214	-24.4%	-1.4%
Taos County ISD	69	57	54	-21.7%	-5.3%
Torrance County ISD	72	47	47	-34.7%	0.0%
Valencia North County ISD	135	115	112	-17.0%	-2.6%
Valencia South County ISD	0	0	0	N/A	N/A
West Dona Ana County ISD	217	177	175	-19.4%	-1.1%
Centralized Units	0	0	0	N/A	N/A
Statewide Total	3,541	3,038	3,007	-15.1%	-1.0%

General Assistance Cases by Region⁶

Region	Jan-17	Dec-17	Jan-18	Percent Change	
				Jan-17- Jan-18	Dec-17- Jan-18
Region 1 - NW	387	417	411	6.2%	-1.4%
Region 2 - NE	698	536	529	-24.2%	-1.3%
Region 3 - Central	1,296	1,087	1,077	-16.9%	-0.9%
Region 4 - SE	514	412	411	-20.0%	-0.2%
Region 5 - SW	646	586	579	-10.4%	-1.2%
Centralized Units	0	0	0	N/A	N/A
Statewide Total	3,541	3,038	3,007	-15.1%	-1.0%

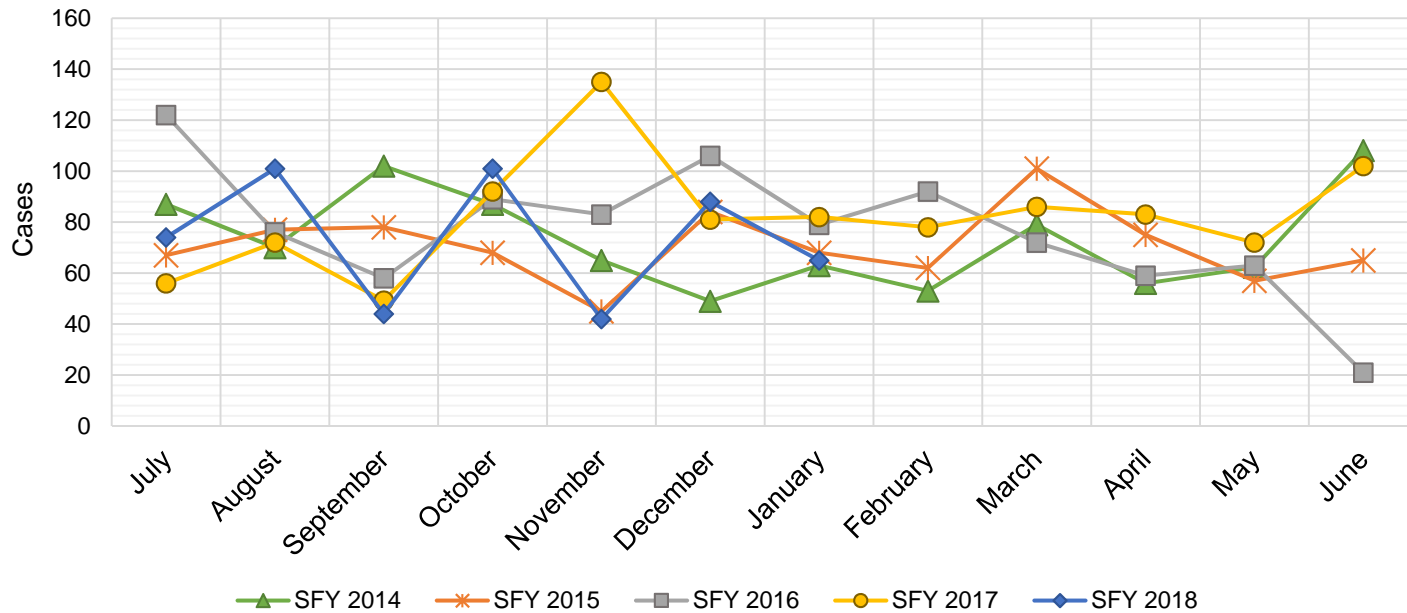
General Assistance Caseload: SFY-14 to Current



General Assistance Interim Assistance Reimbursements¹⁶

SFY 2014			SFY 2015			SFY 2016			SFY 2017			SFY 2018		
	Cases	Expenditures		Cases	Expenditures		Cases	Expenditures		Cases	Expenditures		Cases	Expenditures
Jul-13	87	\$185,368	Jul-14	67	\$144,679	Jul-15	122	\$342,648	Jul-16	56	\$164,970	Jul-17	74	\$241,438
Aug-13	70	\$184,639	Aug-14	77	\$244,233	Aug-15	76	\$245,236	Aug-16	72	\$223,182	Aug-17	101	\$339,301
Sep-13	102	\$268,243	Sep-14	78	\$168,421	Sep-15	58	\$170,093	Sep-16	49	\$158,027	Sep-17	44	\$131,229
Oct-13	87	\$165,578	Oct-14	68	\$182,265	Oct-15	89	\$277,912	Oct-16	92	\$257,830	Oct-17	101	\$335,752
Nov-13	65	\$139,197	Nov-14	45	\$134,482	Nov-15	83	\$238,948	Nov-16	135	\$402,305	Nov-17	42	\$139,572
Dec-13	49	\$147,853	Dec-14	84	\$239,926	Dec-15	106	\$388,102	Dec-16	81	\$227,569	Dec-17	88	\$245,453
Jan-14	63	\$178,944	Jan-15	68	\$227,066	Jan-16	79	\$239,263	Jan-17	82	\$274,050	Jan-18	65	\$258,239
Feb-14	53	\$130,352	Feb-15	62	\$159,564	Feb-16	92	\$296,332	Feb-17	78	\$227,569	Feb-18		
Mar-14	79	\$176,756	Mar-15	101	\$317,899	Mar-16	72	\$254,360	Mar-17	86	\$278,219	Mar-18		
Apr-14	56	\$155,245	Apr-15	75	\$199,038	Apr-16	59	\$208,631	Apr-17	83	\$267,187	Apr-18		
May-14	62	\$138,827	May-15	57	\$167,383	May-16	63	\$182,241	May-17	72	\$232,836	May-18		
Jun-14	108	\$241,016	Jun-15	65	\$188,159	Jun-16	21	\$51,760	Jun-17	102	\$306,228	Jun-18		

TOTAL	881	\$2,112,017	847	\$2,373,115	920	\$2,895,525	988	\$3,019,972	515	\$1,690,985
AVERAGE	73	\$176,001	71	\$197,760	77	\$241,294	82	\$251,664	74	\$241,569



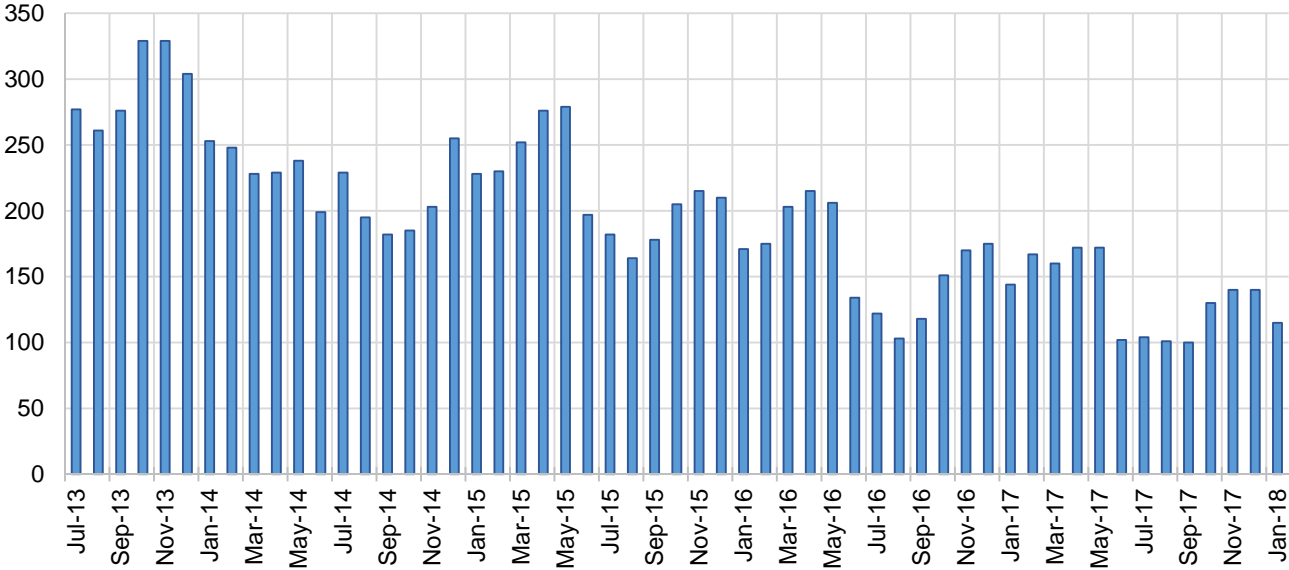
Education Works Cases by Field Office⁶

Office				Percent Change	
	Jan-17	Dec-17	Jan-18	Jan-17- Jan-18	Dec-17- Jan-18
Chaves County ISD	2	3	2	0.0%	-33.3%
Cibola County ISD	1	0	1	0.0%	N/A
Colfax County ISD	1	0	0	-100.0%	N/A
Curry County ISD	0	3	5	N/A	66.7%
East Dona Ana County ISD	5	7	8	60.0%	14.3%
Eddy Artesia County ISD	1	2	2	100.0%	0.0%
Eddy Carlsbad County ISD	2	2	2	0.0%	0.0%
Grant County ISD	4	12	8	100.0%	-33.3%
Guadalupe County ISD	0	1	0	N/A	-100.0%
Hidalgo County ISD	0	0	0	N/A	N/A
Lea County ISD	6	6	2	-66.7%	-66.7%
Lincoln County ISD	0	0	0	N/A	N/A
Luna County ISD	0	3	3	N/A	0.0%
McKinley County ISD	0	0	0	N/A	N/A
Northeast Bernalillo County ISD	28	13	8	-71.4%	-38.5%
Northwest Bernalillo County ISD	13	11	8	-38.5%	-27.3%
Otero County ISD	2	2	2	0.0%	0.0%
Quay County ISD	0	0	0	N/A	N/A
Rio Arriba County ISD	2	3	1	-50.0%	-66.7%
Roosevelt County ISD	2	2	1	-50.0%	-50.0%
San Juan County ISD	3	2	3	0.0%	50.0%
San Miguel County ISD	4	6	1	-75.0%	-83.3%
Sandoval County ISD	16	10	10	-37.5%	0.0%
Santa Fe County ISD	3	14	11	266.7%	-21.4%
Sierra County ISD	0	0	0	N/A	N/A
Socorro County ISD	1	1	2	100.0%	100.0%
South Dona Ana ISD	16	17	17	6.3%	0.0%
Southeast Bernalillo County ISD	6	4	4	-33.3%	0.0%
Southwest Bernalillo County ISD	12	5	6	-50.0%	20.0%
Taos County ISD	0	1	1	N/A	0.0%
Torrance County ISD	1	0	0	-100.0%	N/A
Valencia North County ISD	3	0	0	-100.0%	N/A
Valencia South County ISD	0	0	0	N/A	N/A
West Dona Ana County ISD	10	10	7	-30.0%	-30.0%
Centralized Units	0	0	0	N/A	N/A
Statewide Total	144	140	115	-20.1%	-17.9%

Education Works Cases by Region⁶

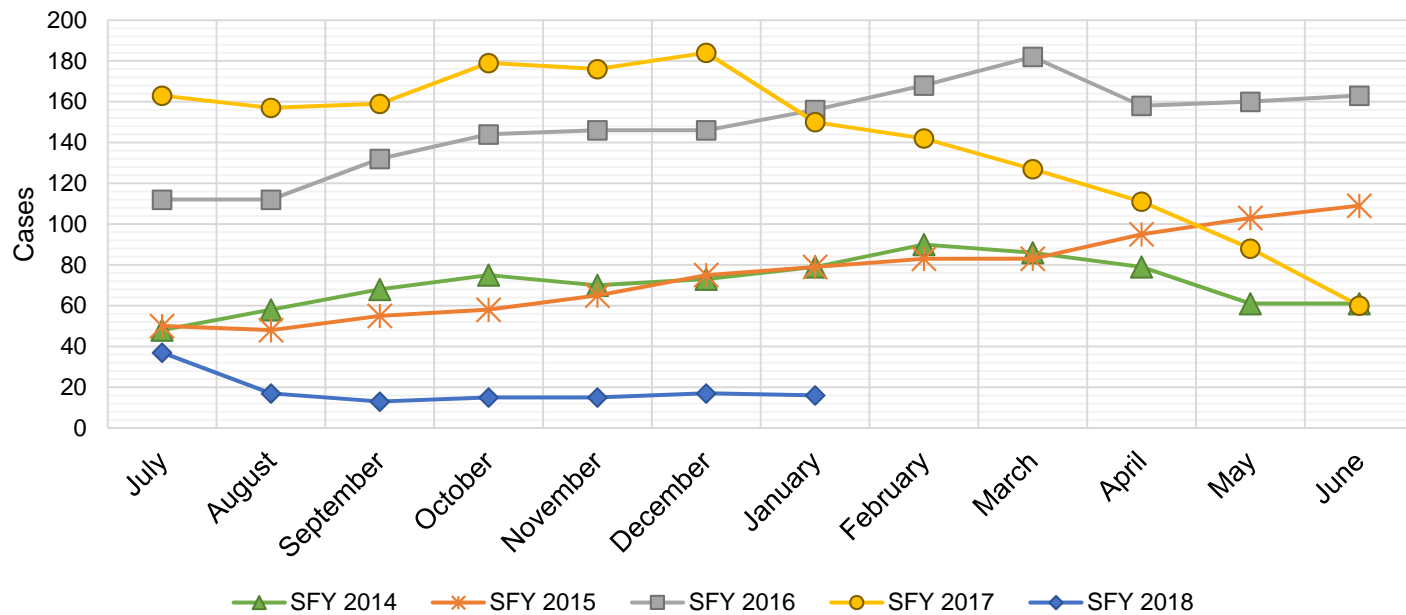
Region	Percent Change				
	Jan-17	Dec-17	Jan-18	Jan-17- Jan-18	Dec-17- Jan-18
Region 1 - NW	8	3	6	-25.0%	100.0%
Region 2 - NE	26	35	24	-7.7%	-31.4%
Region 3 - Central	60	33	26	-56.7%	-21.2%
Region 4 - SE	13	18	14	7.7%	-22.2%
Region 5 - SW	37	51	45	21.6%	-11.8%
Centralized Units	0	0	0	N/A	N/A
Statewide Total	144	140	115	-20.1%	-17.9%

Education Works Caseload: SFY-14 to Current



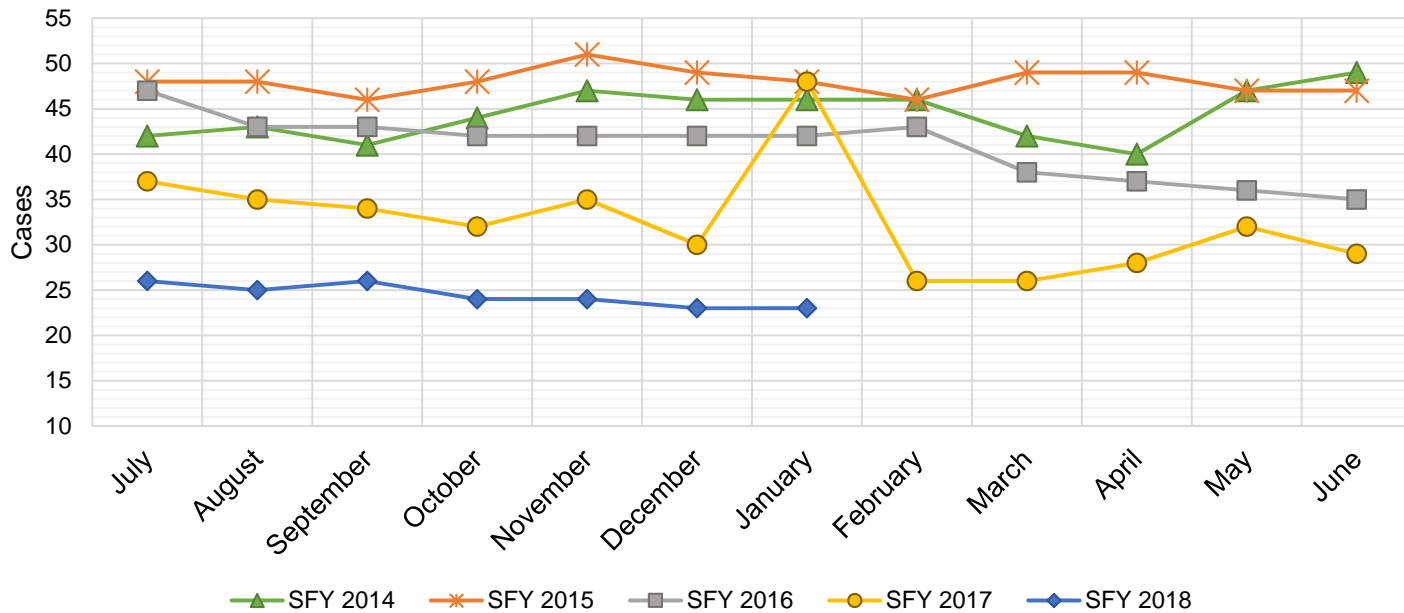
Refugee Cash Assistance

SFY 2014 ¹²			SFY 2015 ^{8,12,9}			SFY 2016 ^{8,9}			SFY 2017 ^{8,9}			SFY 2018 ^{8,9}		
	Cases	Expenditures		Cases	Expenditures		Cases	Expenditures		Cases	Expenditures		Cases	Expenditures
Jul-13	48	\$12,013	Jul-14	50	\$11,679	Jul-15	112	\$27,516	Jul-16	163	\$39,756	Jul-17	37	\$9,981
Aug-13	58	\$16,129	Aug-14	48	\$11,760	Aug-15	112	\$27,438	Aug-16	157	\$40,115	Aug-17	17	\$4,704
Sep-13	68	\$19,061	Sep-14	55	\$13,094	Sep-15	132	\$31,321	Sep-16	159	\$39,359	Sep-17	13	\$3,159
Oct-13	75	\$20,962	Oct-14	58	\$13,726	Oct-15	144	\$36,153	Oct-16	179	\$41,520	Oct-17	15	\$3,543
Nov-13	70	\$21,880	Nov-14	65	\$16,461	Nov-15	146	\$36,515	Nov-16	176	\$45,434	Nov-17	15	\$4,263
Dec-13	73	\$22,053	Dec-14	75	\$18,699	Dec-15	146	\$35,763	Dec-16	184	\$46,673	Dec-17	17	\$4,795
Jan-14	79	\$22,670	Jan-15	79	\$19,009	Jan-16	156	\$38,686	Jan-17	150	\$38,790	Jan-18	16	\$4,166
Feb-14	90	\$23,227	Feb-15	83	\$21,349	Feb-16	168	\$41,368	Feb-17	142	\$37,956	Feb-18		
Mar-14	86	\$21,808	Mar-15	83	\$20,730	Mar-16	182	\$45,307	Mar-17	127	\$33,066	Mar-18		
Apr-14	79	\$20,109	Apr-15	95	\$23,495	Apr-16	158	\$41,143	Apr-17	111	\$29,183	Apr-18		
May-14	61	\$15,703	May-15	103	\$25,363	May-16	160	\$38,332	May-17	88	\$23,343	May-18		
Jun-14	61	\$14,783	Jun-15	109	\$27,958	Jun-16	163	\$39,856	Jun-17	60	\$15,538	Jun-18		
TOTAL	848	\$230,398	903	\$223,323	1,779	\$439,397	1,696	\$430,732	130	\$34,611				
AVERAGE	71	\$19,200	75	\$18,610	148	\$36,616	141	\$35,894	19	\$4,944				



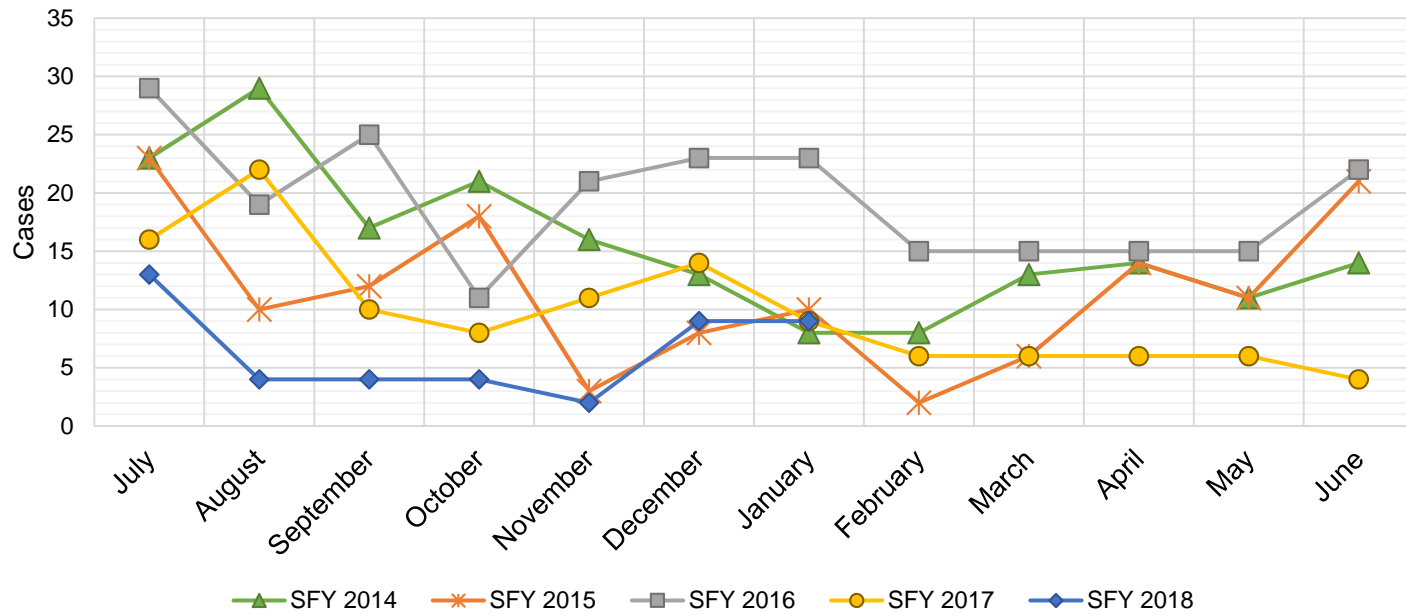
State Supplement for Residential Care

SFY 2014 ¹²			SFY 2015 ^{12,9}			SFY 2016 ⁹			SFY 2017 ⁹			SFY 2018 ⁹		
	Cases	Expenditures		Cases	Expenditures		Cases	Expenditures		Cases	Expenditures		Cases	Expenditures
Jul-13	42	\$4,400	Jul-14	48	\$4,700	Jul-15	47	\$4,700	Jul-16	37	\$3,700	Jul-17	26	\$2,700
Aug-13	43	\$4,300	Aug-14	48	\$5,000	Aug-15	43	\$4,900	Aug-16	35	\$3,500	Aug-17	25	\$2,500
Sep-13	41	\$4,700	Sep-14	46	\$4,600	Sep-15	43	\$4,500	Sep-16	34	\$3,400	Sep-17	26	\$2,700
Oct-13	44	\$4,500	Oct-14	48	\$4,600	Oct-15	42	\$4,400	Oct-16	32	\$3,200	Oct-17	24	\$2,500
Nov-13	47	\$4,700	Nov-14	51	\$5,600	Nov-15	42	\$4,200	Nov-16	35	\$3,500	Nov-17	24	\$2,400
Dec-13	46	\$4,600	Dec-14	49	\$5,000	Dec-15	42	\$4,200	Dec-16	30	\$3,000	Dec-17	23	\$2,200
Jan-14	46	\$4,700	Jan-15	48	\$4,900	Jan-16	42	\$4,200	Jan-17	48	\$4,800	Jan-18	23	\$2,400
Feb-14	46	\$4,700	Feb-15	46	\$4,800	Feb-16	43	\$4,300	Feb-17	26	\$2,600	Feb-18		
Mar-14	42	\$4,500	Mar-15	49	\$4,800	Mar-16	38	\$3,800	Mar-17	26	\$2,600	Mar-18		
Apr-14	40	\$4,200	Apr-15	49	\$5,400	Apr-16	37	\$3,700	Apr-17	28	\$2,800	Apr-18		
May-14	47	\$5,000	May-15	47	\$4,700	May-16	36	\$3,600	May-17	32	\$3,200	May-18		
Jun-14	49	\$4,900	Jun-15	47	\$5,300	Jun-16	35	\$3,500	Jun-17	29	\$2,900	Jun-18		
TOTAL	533	\$55,200	576	\$59,400	490	\$50,000	392	\$39,200	171	\$17,400				
AVERAGE	44	\$4,600	48	\$4,950	41	\$4,167	33	\$3,267	24	\$2,486				



TANF Diversion Payments

SFY 2014 ¹²			SFY 2015 ^{12,9}			SFY 2016 ⁹			SFY 2017 ⁹			SFY 2018 ⁹		
Cases	Expenditures		Cases	Expenditures		Cases	Expenditures		Cases	Expenditures		Cases	Expenditures	
Jul-13	23	\$46,500	Jul-14	23	\$48,098	Jul-15	29	\$62,074	Jul-16	16	\$30,843	Jul-17	13	\$26,500
Aug-13	29	\$54,500	Aug-14	10	\$21,810	Aug-15	19	\$33,584	Aug-16	22	\$42,731	Aug-17	4	\$12,000
Sep-13	17	\$36,500	Sep-14	12	\$23,500	Sep-15	25	\$47,977	Sep-16	10	\$21,000	Sep-17	4	\$4,000
Oct-13	21	\$42,500	Oct-14	18	\$30,589	Oct-15	11	\$20,500	Oct-16	8	\$16,744	Oct-17	4	\$16,000
Nov-13	16	\$28,953	Nov-14	3	\$4,411	Nov-15	21	\$45,500	Nov-16	11	\$24,500	Nov-17	2	\$15,500
Dec-13	13	\$25,500	Dec-14	8	\$14,634	Dec-15	23	\$45,389	Dec-16	14	\$26,611	Dec-17	9	\$17,500
Jan-14	8	\$16,000	Jan-15	10	\$18,000	Jan-16	23	\$41,874	Jan-17	9	\$18,500	Jan-18	9	\$21,731
Feb-14	8	\$16,994	Feb-15	2	\$5,500	Feb-16	15	\$28,500	Feb-17	6	\$12,000	Feb-18		
Mar-14	13	\$27,396	Mar-15	6	\$12,000	Mar-16	15	\$27,008	Mar-17	6	\$11,000	Mar-18		
Apr-14	14	\$28,000	Apr-15	14	\$26,000	Apr-16	15	\$31,389	Apr-17	6	\$12,000	Apr-18		
May-14	11	\$20,500	May-15	11	\$21,500	May-16	15	\$31,916	May-17	6	\$11,500	May-18		
Jun-14	14	\$29,911	Jun-15	21	\$40,039	Jun-16	22	\$43,000	Jun-17	4	\$13,500	Jun-18		
TOTAL	187	\$373,254	138	\$266,081		233	\$458,711		118	\$240,929		45	\$113,231	
AVERAGE	16	\$31,105	12	\$22,173		19	\$38,226		10	\$20,077		6	\$16,176	

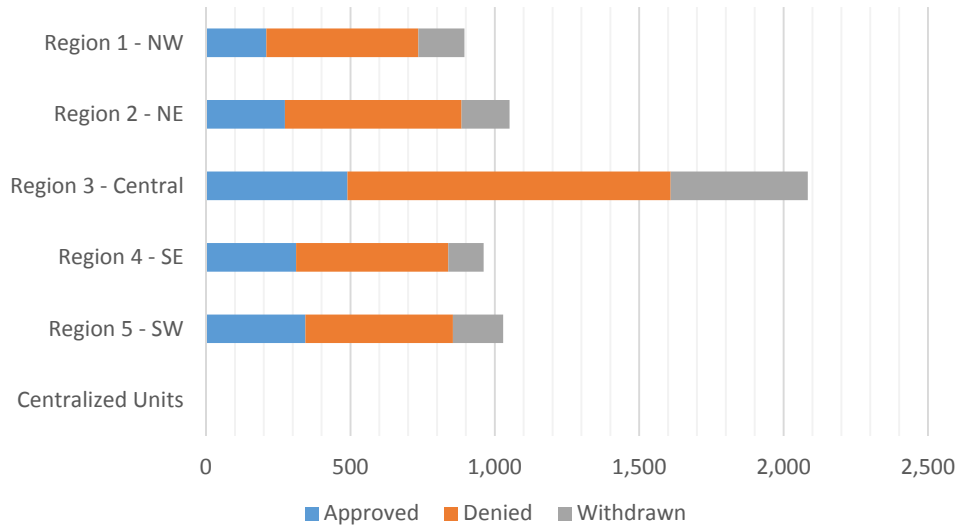


Cash Assistance Applications by Field Office^{4,11}
January 2018

Office	Approved	Denied	Withdrawn	Total Cases Processed
Chaves County ISD	76	132	28	236
Cibola County ISD	28	47	6	81
Colfax County ISD	9	27	12	48
Curry County ISD	70	89	39	198
East Dona Ana County ISD	73	117	43	233
Eddy Artesia County ISD	24	36	3	63
Eddy Carlsbad County ISD	27	72	27	126
Grant County ISD	36	53	17	106
Guadalupe County ISD	4	6	1	11
Hidalgo County ISD	0	0	0	0
Lea County ISD	73	123	17	213
Lincoln County ISD	17	41	8	66
Luna County ISD	34	28	14	76
McKinley County ISD	13	85	35	133
Northeast Bernalillo County ISD	147	406	133	686
Northwest Bernalillo County ISD	116	270	141	527
Otero County ISD	46	71	28	145
Quay County ISD	10	18	6	34
Rio Arriba County ISD	57	93	23	173
Roosevelt County ISD	25	34	0	59
San Juan County ISD	65	232	68	365
San Miguel County ISD	30	75	16	121
Sandoval County ISD	78	182	44	304
Santa Fe County ISD	67	166	50	283
Sierra County ISD	15	21	5	41
Socorro County ISD	11	31	4	46
South Dona Ana ISD	64	68	26	158
Southeast Bernalillo County ISD	71	193	82	346
Southwest Bernalillo County ISD	134	194	101	429
Taos County ISD	18	45	14	77
Torrance County ISD	22	56	18	96
Valencia North County ISD	77	110	42	229
Valencia South County ISD	0	0	0	0
West Dona Ana County ISD	91	174	46	311
Centralized Units	0	0	0	0
Statewide Total	1,628	3,295	1,097	6,020

Cash Assistance Applications by Region^{4,11} January 2018

Region	Approved	Denied	Withdrawn	Total Cases Processed
Region 1 - NW	209	526	160	895
Region 2 - NE	273	612	166	1,051
Region 3 - Central	490	1,119	475	2,084
Region 4 - SE	312	527	122	961
Region 5 - SW	344	511	174	1,029
Centralized Units	0	0	0	0
Statewide Total	1,628	3,295	1,097	6,020



**Children Youth and Families Department
Children Receiving Child Care Assistance Subsidies By County**

County	Jan 2017	Feb 2017	Mar 2017	Apr 2017	May 2017	June 2017	July 2017	Aug 2017	Sep 2017	Oct 2017	Nov 2017	Dec 2017	Jan 2018	Change Fr. Last Year Cases	Percent
<i>Bernalillo</i>	7,043	7,068	7,170	7,385	7,519	7,895	7,547	7,616	8,154	7,848	7,985	7,903	7,801	758	10.8%
Catron	0	0	0	0	0	0	0	0	0	0	0	5	5	5	0.0%
<i>Chaves</i>	744	756	759	768	796	860	826	821	889	884	870	855	843	99	13.3%
Cibola	271	284	282	294	299	305	293	294	311	304	303	296	291	20	7.4%
<i>Colfax</i>	42	40	41	38	39	46	46	41	44	41	42	42	47	5	11.9%
Curry	413	398	398	437	445	480	486	459	422	446	467	470	493	80	19.4%
<i>De Baca</i>	11	10	12	13	14	14	12	11	11	9	11	10	10	-1	-9.1%
Dona Ana	4,003	4,047	4,084	4,217	4,309	4,499	4,509	4,473	4,693	4,585	4,581	4,492	4,349	346	8.6%
<i>Eddy</i>	271	275	283	294	301	306	292	287	313	297	297	263	256	-15	-5.5%
Grant	142	135	142	153	159	161	134	114	164	161	157	159	139	-3	-2.1%
<i>Guadalupe</i>	16	16	17	17	16	16	16	16	15	16	16	16	14	-2	-12.5%
Harding	0	0	0	0	0	0	0	0	0	0	0	0	0	0	0.0%
<i>Hidalgo</i>	35	35	35	35	39	40	37	37	39	39	35	32	32	-3	-8.6%
Lea	698	715	729	748	781	818	837	856	954	909	895	833	824	126	18.1%
<i>Lincoln</i>	132	139	135	141	136	147	146	145	150	147	136	132	129	-3	-2.3%
Los Alamos	16	15	13	15	16	16	17	16	19	18	14	13	13	-3	-18.8%
<i>Luna</i>	159	154	159	164	177	188	165	176	177	177	166	171	167	8	5.0%
McKinley	159	164	171	182	170	171	145	136	161	165	167	166	168	9	5.7%
<i>Mora</i>	18	20	20	21	21	21	18	18	19	18	20	21	20	2	11.1%
Otero	440	442	416	481	498	532	500	491	530	525	518	531	519	79	18.0%
<i>Out of State</i>	11	12	14	12	11	10	14	11	12	14	12	3	9	-2	-18.2%
Quay	33	38	40	38	35	39	35	36	39	35	35	35	35	2	6.1%
<i>Rio Arriba</i>	135	147	144	137	140	149	144	145	159	163	166	165	154	19	14.1%
Roosevelt	124	120	125	123	118	134	123	125	137	120	120	127	119	-5	-4.0%
<i>San Juan</i>	919	911	911	946	956	997	979	960	1,132	1,050	1,043	1,039	1,005	86	9.4%
San Miguel	371	374	373	366	367	382	366	356	362	368	371	372	357	-14	-3.8%
<i>Sandoval</i>	880	852	873	878	890	938	932	948	974	859	839	836	794	-86	-9.8%
Santa Fe	472	487	477	490	499	536	534	520	580	554	547	526	514	42	8.9%
<i>Sierra</i>	51	50	52	52	58	69	74	76	79	86	80	77	59	8	15.7%
Socorro	65	62	61	59	59	58	56	63	63	68	66	70	70	5	7.7%
<i>Taos</i>	116	114	112	118	120	127	132	137	145	139	142	141	141	25	21.6%
Torrance	79	83	87	91	96	101	107	117	106	99	115	115	114	35	44.3%
<i>Union</i>	5	5	5	5	4	4	5	5	5	4	6	5	5	0	0.0%
Valencia	593	585	583	629	658	678	642	677	714	723	713	678	651	58	9.8%
Totals	18,467	18,553	18,723	19,347	19,746	20,737	20,169	20,183	21,572	20,871	20,935	20,599	20,147	1,680	9.1%

CHILDREN YOUTH AND FAMILIES DEPARTMENT
CHILD CARE ASSISTANCE ELIGIBILITY PROGRAMS

MONTH	FEB'17	MAR'17	APR'17	MAY'17	JUNE'17	JULY'17	AUG'17	SEP'17	OCT'17	NOV'17	DEC'17	JAN'18
TANF (Child Care Priority 1 Clients)												
CLIENTS	1,930	1,994	2,047	2,121	2,300	2,302	2,353	2,455	2,419	2,374	2,315	2,240
COST	\$1,005,906	\$1,096,473	\$1,148,841	\$1,186,719	\$1,271,336	\$1,323,182	\$1,381,202	\$1,364,956	\$1,423,748	\$1,411,060	\$1,382,073	\$1,317,716
TANF AVERAGE COST	\$521	\$550	\$561	\$560	\$553	\$575	\$587	\$556	\$589	\$594	\$597	\$588
TRANSITION OFF TANF (Child Care Priority 2 Clients)												
CLIENTS	212	197	202	205	213	197	189	179	181	154	152	141
COST	\$102,062	\$102,582	\$101,314	\$104,115	\$111,219	\$106,835	\$103,813	\$93,119	\$96,629	\$81,975	\$81,337	\$74,507
TRAN OFF TANF AVG COST	\$481	\$521	\$502	\$508	\$522	\$542	\$549	\$520	\$534	\$532	\$535	\$528
TANF ELIGIBLE (Child Care Priority 1B Clients at or below 100% of the Federal Poverty Level)												
CLIENTS	7,420	7,442	7,819	8,075	8,472	8,193	8,254	9,064	8,899	8,900	8,729	8,435
COST	\$3,662,965	\$3,957,431	\$4,194,223	\$4,302,207	\$4,448,742	\$4,521,900	\$4,657,974	\$4,755,691	\$5,021,574	\$5,099,212	\$4,994,373	\$4,722,370
TANF ELIGIBLE AVG COST	\$494	\$532	\$536	\$533	\$525	\$552	\$564	\$525	\$564	\$573	\$572	\$560
INCOME ELIGIBLE (Child Care Priority 3, and Priority 4 Clients)												
CLIENTS	7,514	7,559	7,612	7,632	7,832	7,426	7,337	7,749	7,464	7,578	7,580	7,665
COST	\$3,386,741	\$3,683,902	\$3,733,797	\$3,757,012	\$3,843,887	\$3,805,939	\$3,838,152	\$3,779,202	\$3,760,398	\$3,838,169	\$3,824,777	\$3,785,466
INCOME ELIG AVG COST	\$451	\$487	\$491	\$492	\$491	\$513	\$523	\$488	\$504	\$506	\$505	\$494
AT-RISK CHILD PROTECTIVE SERVICES CHILD CARE PILOT (Priority 5 Clients)												
CLIENTS	518	553	679	733	881	1,021	1,073	1,152	1,032	1,027	935	772
COST	\$305,785	\$335,795	\$396,799	\$449,007	\$535,980	\$622,872	\$686,919	\$723,334	\$684,194	\$678,258	\$628,399	\$509,028
CPS AVG COST	\$590	\$607	\$584	\$613	\$608	\$610	\$640	\$628	\$663	\$660	\$672	\$659
CHILD PROTECTIVE SERVICES (Child Care CPS Clients)												
CLIENTS	959	978	988	980	1,039	1,030	977	973	876	902	888	894
COST	\$559,627	\$607,288	\$652,529	\$627,325	\$649,417	\$652,471	\$663,134	\$623,416	\$567,608	\$585,009	\$573,312	\$583,824
CPS AVG COST	\$584	\$621	\$660	\$640	\$625	\$633	\$679	\$641	\$648	\$649	\$646	\$653
GRAND TOTAL - ALL CHILD CARE PROGRAMS												
CLIENTS	18,467	18,553	18,723	19,347	19,746	20,737	20,169	20,183	20,871	20,935	20,599	20,147
COST	\$8,697,313	\$9,023,086	\$9,783,471	\$10,227,503	\$10,426,385	\$10,860,581	\$11,033,199	\$11,331,194	\$11,554,151	\$11,693,682	\$11,484,272	\$10,992,912
ALL PROGRAMS AVG COST	\$471	\$486	\$523	\$529	\$528	\$524	\$547	\$561	\$554	\$559	\$558	\$546

Income Eligibility Guidelines: October 1, 2017 - September 30, 2018

Federal Poverty Guidelines (FPG) Monthly Income Standards

Supplemental Nutrition Program (SNAP)					
Household Size	100% FPG Net Income	130% FPG Gross Income	165% FPG Gross Income for Categorical Eligibility	Maximum SNAP Monthly Allotment	LIHEAP 150% FPG
1	\$1,005	\$1,307	\$1,659	\$192	\$1,508
2	\$1,354	\$1,760	\$2,233	\$352	\$2,031
3	\$1,702	\$2,213	\$2,808	\$504	\$2,553
4	\$2,050	\$2,665	\$3,383	\$640	\$3,075
5	\$2,399	\$3,118	\$3,958	\$760	\$3,599
6	\$2,747	\$3,571	\$4,532	\$913	\$4,121
7	\$3,095	\$4,024	\$5,107	\$1,009	\$4,643
8	\$3,444	\$4,477	\$5,682	\$1,153	\$5,166
+1	+\$349	+\$453	+\$575	+\$144	+\$523
Minimum Allotment of \$15 effective from 10/1/2017 - 9/30/2018					
DEDUCTIONS: Standard Deduction: For HH size 1-3 = \$160; 4 = \$170; 5 = \$199; 6 or more = \$228; Excess Shelter Deduction Limit: \$535; Heating and Cooling Standard Utility Allowance: \$320 (HCSUA) – Limited Utility Allowance: \$ 127 (LUA); Telephone Standard: \$42; Dependent Care: Actual Amount (No Limit); Earned Income Deduction: 20%; Homeless Shelter Standard: \$143					

CASH Assistance & Support Services					
Household Size	Federal Poverty Guidelines (FPG) Monthly Income Standards			Maximum Monthly Benefit	
	100% FPG Net Income	85% FPG Gross Limit	NM Works Cash Net Income	Maximum Monthly Benefit	General Assistance
1	\$1,005	\$854	\$266	\$244	\$245
2	\$1,354	\$1,151	\$357	\$327	\$329
3	\$1,702	\$1,447	\$447	\$409	\$412
4	\$2,050	\$1,743	\$539	\$493	\$496
5	\$2,399	\$2,039	\$630	\$576	\$580
6	\$2,747	\$2,335	\$721	\$659	\$664
7	\$3,095	\$2,631	\$812	\$743	\$748
8	\$3,444	\$2,927	\$922	\$843	\$849
+1	+\$349	+\$296	+\$91	+\$83	+\$84
Deductions- Dependent Care: For a child under age 2 = \$200; For a child age 2 and over = \$175. Work Incentives- Earned Income Disregard: Single parent = \$125 & ½ remainder; Two parent = \$225 & ½ remainder.					

Medical Assistance Division					
Federal Poverty Guidelines New Mexico Affordable Care Eligibility Groups Effective April 01, 2017 thru March 31, 2018 Monthly Guidelines					
HH SIZE	PERCENT OF POVERTY				
	138%	190%	240%	250%	300%
1	\$1,387	\$1,910	\$2,412	\$2,513	\$3,015
2	\$1,868	\$2,572	\$3,248	\$3,384	\$4,060
3	\$2,349	\$3,234	\$4,084	\$4,255	\$5,105
4	\$2,829	\$3,895	\$4,920	\$5,125	\$6,150
5	\$3,310	\$4,557	\$5,756	\$5,996	\$7,195
6	\$3,791	\$5,219	\$6,592	\$6,867	\$8,240
7	\$4,272	\$5,881	\$7,428	\$7,738	\$9,285
8	\$4,752	\$6,543	\$8,264	\$8,609	\$10,330
138% Adult Expansion, 190% Children ages 6 to 19 (Medicaid), 240% Children ages 0 to 6 (Medicaid); ages 6 to 19 (CHIP), 250% Pregnancy Related Services Only, 300% Children 0 to 6 (CHIP)					

Medical Assistance Division					
Federal Poverty Guidelines New Mexico Affordable Care Eligibility Groups Effective April 01, 2017 thru March 31, 2018 Annual Guidelines					
HH SIZE	PERCENT OF POVERTY				
	138%	190%	240%	250%	300%
1	\$16,644	\$22,920	\$28,944	\$30,156	\$36,180
2	\$22,416	\$30,864	\$38,976	\$40,608	\$48,720
3	\$28,188	\$38,808	\$49,008	\$51,060	\$61,260
4	\$33,948	\$46,740	\$59,040	\$61,500	\$73,800
5	\$39,720	\$54,684	\$69,072	\$71,952	\$86,340
6	\$45,492	\$62,628	\$79,104	\$82,404	\$98,880
7	\$51,264	\$70,572	\$89,136	\$92,856	\$111,420
8	\$57,024	\$78,516	\$99,168	\$103,308	\$123,960
138% Adult Expansion, 190% Children ages 6 to 19 (Medicaid), 240% Children ages 0 to 6 (Medicaid); ages 6 to 19 (CHIP), 250% Pregnancy Related Services Only, 300% Children 0 to 6 (CHIP)					

References

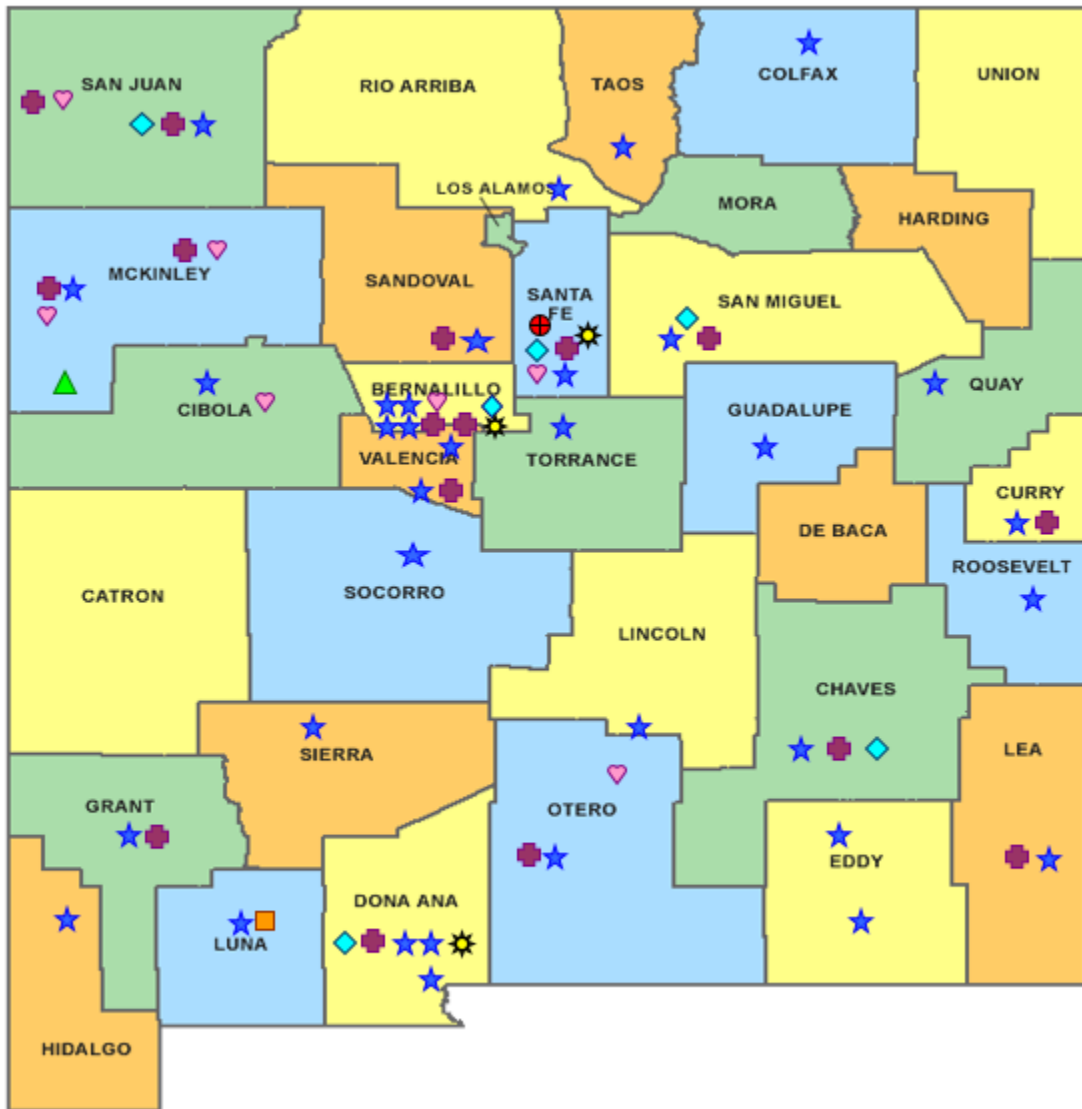
- ¹ *Medicaid Expenditures* (Omnicaid, Medicare Buy-Ins, Lump Sum Payments), Received on Retrieved on February 19, 2018
- ² *ASPEN Business Intelligence Tool: Eligibility*, Retrieved on February 16, 2018
- ³ New Mexico Human Services Department, *Medicaid Eligibility Reports*, Retrieved from <http://www.hsd.state.nm.us/LookingForInformation/medicaid-eligibility.aspx> on February 12, 2018
- ⁴ *ASPEN Business Intelligence Tool: Application Tracking*, Retrieved on February 16, 2018
- ⁵ Fidelity Information Services, *EBT Daily Statistical Report* (for 01/31/2017, 12/31/2017, and 01/31/2018), Retrieved on February 8, 2018
- ⁶ *ASPEN Report DQ-180: Length of Time Cases are Open* (for 01/01/2017-01/31/2017, 12/01/2017-12/31/2017, 01/01/2018-01/31/2018), Retrieved on February 16, 2018
- ⁷ *ASPEN Report EY-180: Individual Demographics by State and Age* (for 01/01/2017-01/31/2017, 12/01/2017-12/31/2017, 01/01/2018-01/31/2018), Retrieved February 16, 2018
- ⁸ *ASPEN Business Intelligence Tool: Benefit Issuance*, Retrieved on February 16, 2018
- ⁹ Fidelity Information Services, *EBT Daily Statistical Reports* (Month End), Retrieved on February 8, 2018
- ¹⁰ *ASPEN Report EY-180R: Individual Demographics by State, Race, Ethnicity and Gender* (for 01/01/2018-01/31/2018), February 16, 2018
- ¹¹ SQL Queries from ASPEN, completed February 2018
- ¹² JP Morgan, *New Mexico – NM EBT System- Monthly Benefit Draw Down Totals*
- ¹³ *ASPEN Business Intelligence Tool: Application Tracking* (w/Parameters: SNAP, Expedite, Approved), Retrieved on February 16, 2018
- ¹⁴ SL Start, *As of Today Report 1.31.18*, received February 12, 2017
- ¹⁵ SL Start, *Statewide Employment Report 01.01.18*, received February 12, 2017
- ¹⁶ *SSIAR Payments*, Received February 2, 2018

¹⁷ Children, Youth, and Families Department, *Children Receiving Child Care Assistance Subsidies by County*, Received on February 8, 2018

¹⁸ Children, Youth, and Families Department, *Child Care Assistance Eligibility Programs*, Received on February 8, 2018









¹⁹ EDG is defined as an Eligibility Determination Group

²⁰ SQL Query from ASPEN, completed February 23, 2018



HUMAN SERVICES DEPARTMENT

New Mexico Human Services Department
Field Offices

-  Central Office (1)
-  Income Support Division County Office (35)
-  Income Support Division Satellite Office (2)
-  Child Support Enforcement Regional Office (16)
-  Child Support Enforcement Satellite Office (1)
-  Quality Control Office (8)
-  Indian Health Services (7)
-  Hospital Site (3)

For a complete listing of field offices and other government and community resources:
http://www.hsd.state.nm.us/LookingForAssistance/Field_Offices_1.aspx