



# Monthly Statistical Report

## February 2018

There were 855,032 individuals that received Medicaid in February 2018, a 5.4% decrease from one year ago. The count of Medicaid recipients has decreased by 2,277, or 0.3%, since last month.

The SNAP caseload in February 2018 was 222,265, a 12.9% decrease from one year ago. The SNAP caseload has decreased by 581 cases, or 0.3%, since last month.

The TANF caseload was 11,294 in February 2018, a decrease of 5.6% from February 2017. The TANF caseload had 338 fewer cases compared to January 2018, a decrease of 2.9%.

The caseload for General Assistance was 3,043 in February 2018, a decrease of 14.2% from one year ago and an increase of 36 cases from last month.

Susana Martinez, Governor  
Brent Earnest, Cabinet Secretary

# Program Summary for February 2018

Medicaid				Percent Change	
	Feb-17	Jan-18	Feb-18	Feb-17- Feb-18	Jan-18- Feb-18
<b>Expenditures<sup>1</sup></b>	\$387,574,906	\$467,785,463	\$456,578,431	17.8%	-2.4%
<b>Cases<sup>2</sup></b>	525,390	500,812	498,369	-5.1%	-0.5%
<b>Expenditures/Case</b>	\$738	\$934	\$916	24.2%	-1.9%
<b>Recipients<sup>3</sup></b>	904,258	857,309	855,032	-5.4%	-0.3%
<i>Adults</i>	514,208	486,759	485,113	-5.7%	-0.3%
<i>Children</i>	390,050	370,550	369,919	-5.2%	-0.2%
<b>Recipients /Case</b>	1.72	1.71	1.72	-0.3%	0.2%
<b>Cases Processed<sup>4</sup></b>	16,106	20,276	17,149	6.5%	-15.4%
<i>Approvals<sup>4</sup></i>	10,250	14,276	12,392	20.9%	-13.2%

Supplemental Nutrition Assistance Program (SNAP)				Percent Change	
	Feb-17	Jan-18	Feb-18	Feb-17- Feb-18	Jan-18- Feb-18
<b>Expenditures<sup>5</sup></b>	\$55,937,134	\$53,693,601	\$52,979,666	-5.3%	-1.3%
<b>Cases<sup>6</sup></b>	255,189	222,846	222,265	-12.9%	-0.3%
<b>Expenditures/Case</b>	\$219	\$241	\$238	8.7%	-1.1%
<b>Recipients<sup>7</sup></b>	520,387	460,514	459,000	-11.8%	-0.3%
<i>Adults</i>	303,813	264,151	263,607	-13.2%	-0.2%
<i>Children</i>	216,574	196,363	195,393	-9.8%	-0.5%
<b>Recipients /Case</b>	2.04	2.07	2.07	1.3%	-0.1%
<b>Cases Processed<sup>4</sup></b>	19,600	21,328	18,331	-6.5%	-14.1%
<i>Approvals<sup>4</sup></i>	13,577	17,395	14,636	7.8%	-15.9%

Cash Assistance Programs				Percent Change	
	Feb-17	Jan-18	Feb-18	Feb-17- Feb-18	Jan-18- Feb-18
<b>Expenditures<sup>5</sup></b>	\$4,504,823	\$4,793,968	\$4,098,871	-9.0%	-14.5%
<b>Cases<sup>6</sup></b>	15,848	14,793	14,523	-8.4%	-1.8%
<b>Expenditures/Case</b>	\$284	\$324	\$282	-0.7%	-12.9%
<b>Recipients<sup>7</sup></b>	35,761	33,580	32,639	-8.7%	-2.8%
<i>Adults</i>	12,029	10,875	10,581	-12.0%	-2.7%
<i>Children</i>	23,732	22,705	22,058	-7.1%	-2.8%
<b>Recipients /Case</b>	2.26	2.27	2.25	-0.4%	-1.0%
<b>Cases Processed<sup>4</sup></b>	4,536	6,020	5,210	14.9%	-13.5%
<i>Approvals<sup>4</sup></i>	1,524	1,628	1,343	-11.9%	-17.5%

Low Income Home Energy Assistance Program (LIHEAP)				Percent Change	
	Feb-17	Jan-18	Feb-18	Feb-17- Feb-18	Jan-18- Feb-18
<b>Expenditures<sup>8</sup></b>	\$1,737,336	\$2,202,095	\$1,542,520	-11.2%	-30.0%
<b>Cases<sup>8</sup></b>	6,632	8,443	6,021	-9.2%	-28.7%
<b>Expenditures/Case</b>	\$262	\$261	\$256	-2.2%	-1.8%
<b>Recipients<sup>8</sup></b>	15,299	19,843	13,925	-9.0%	-29.8%
<i>Adults</i>	8,663	11,130	7,887	-9.0%	-29.1%
<i>Children</i>	6,636	8,713	6,038	-9.0%	-30.7%
<b>Recipients /Case</b>	2.31	2.35	2.31	0.3%	-1.6%
<b>Cases Processed<sup>4</sup></b>	9,418	10,724	8,886	-5.6%	-17.1%
<i>Approvals<sup>4</sup></i>	6,247	8,227	6,034	-3.4%	-26.7%

# Cash Assistance Summary for February 2018

## Temporary Assistance for Needy Families (TANF)

	Feb-17	Jan-18	Feb-18	Percent Change	
				Feb-17- Feb-18	Jan-18- Feb-18
Expenditures <sup>5</sup>	\$3,546,827	\$3,989,552	\$3,306,422	-6.8%	-17.1%
Cases <sup>6</sup>	11,966	11,632	11,294	-5.6%	-2.9%
Expenditures/Case	\$296	\$343	\$293	-1.2%	-14.6%
Recipients <sup>7</sup>	31,461	30,140	29,110	-7.5%	-3.4%
<i>Adults</i>	8,270	7,877	7,532	-8.9%	-4.4%
<i>Children</i>	23,191	22,263	21,578	-7.0%	-3.1%
Approvals <sup>4</sup>	1,139	1,303	1,054	-7.5%	-19.1%

## General Assistance (GA)

	Feb-17	Jan-18	Feb-18	Percent Change	
				Feb-17- Feb-18	Jan-18- Feb-18
Expenditures <sup>5</sup>	\$859,711	\$753,287	\$732,255	-14.8%	-2.8%
Cases <sup>6</sup>	3,547	3,007	3,043	-14.2%	1.2%
Expenditures/Case	\$242	\$251	\$241	-0.7%	-3.9%
Recipients <sup>7</sup>	3,646	3,055	3,067	-15.9%	0.4%
<i>Adults</i>	3,403	2,825	2,839	-16.6%	0.5%
<i>Children</i>	243	230	228	-6.2%	-0.9%
Approvals <sup>4</sup>	291	269	242	-16.8%	-10.0%

## Education Works

	Feb-17	Jan-18	Feb-18	Percent Change	
				Feb-17- Feb-18	Jan-18- Feb-18
Expenditures <sup>5</sup>	\$57,729	\$44,564	\$52,171	-9.6%	17.1%
Cases <sup>6</sup>	167	115	138	-17.4%	20.0%
Expenditures/Case	\$346	\$388	\$378	9.4%	-2.4%
Recipients <sup>7</sup>	481	343	411	-14.6%	19.8%
<i>Adults</i>	183	131	159	-13.1%	21.4%
<i>Children</i>	298	212	252	-15.4%	18.9%
Approvals <sup>4</sup>	9	14	6	-33.3%	-57.1%

## Refugee Cash (RCA)

	Feb-17	Jan-18	Feb-18	Percent Change	
				Feb-17- Feb-18	Jan-18- Feb-18
Expenditures <sup>5</sup>	\$37,956	\$4,166	\$5,723	-84.9%	37.4%
Cases <sup>6</sup>	142	16	25	-82.4%	56.3%
Expenditures/Case	\$267	\$260	\$229	-14.4%	-12.1%
Recipients <sup>7</sup>	147	19	28	-81.0%	47.4%
<i>Adults</i>	147	19	28	-81.0%	47.4%
<i>Children</i>	0	0	0	N/A	N/A

## State Supplement for Residential Care

	Feb-17	Jan-18	Feb-18	Percent Change	
				Feb-17- Feb-18	Jan-18- Feb-18
Expenditures <sup>5</sup>	\$2,600	\$2,400	\$2,300	-11.5%	-4.2%
Cases <sup>6</sup>	26	23	23	-11.5%	0.0%
Expenditures/Case	\$100	\$104	\$100	0.0%	-4.2%
Recipients <sup>7</sup>	26	23	23	-11.5%	0.0%
<i>Adults</i>	26	23	23	-11.5%	0.0%
<i>Children</i>	0	0	0	N/A	N/A

<b>Contents</b>	<b>Page</b>
Summary	3-5
Medicaid	6-18
SNAP	19-37
Cash Assistance	38-52
Child Care Assistance	53-54
Income Eligibility Guidelines	55-56

**Regions are reported as follows:**

<b>Region 1</b>		
Catron	San Juan	Valencia
Cibola	Sierra	
McKinley	Socorro	
<b>Region 2</b>		
Colfax	Mora	Santa Fe
De Baca	Quay	Taos
Guadalupe	Rio Arriba	Union
Harding	Sandoval	
Los Alamos	San Miguel	
<b>Region 3</b>		
Bernalillo	Torrance	
<b>Region 4</b>		
Chaves	Eddy	Lincoln
Curry	Lea	Roosevelt
<b>Region 5</b>		
Dona Ana	Hidalgo	Otero
Grant	Luna	

***The Mission of the Human Services Department***

*To reduce the impact of poverty on people living in New Mexico by providing support services that help families break the cycle of dependency on public assistance*

Christopher Collins, Deputy Secretary  
Michael Nelson, Deputy Secretary

Prepared by Income Support Division  
PO Box 2348  
Santa Fe, NM 87504-2348  
505-827-7250

Mary Brogdon, Director  
Vida Tapia-Sanchez, Deputy Director  
Shanita Harrison, Deputy Director

<http://www.hsd.state.nm.us/monthly-statistical-reports.aspx>

<b>Expenditures YTD</b>			
	SFY 2018	FFY 2018	CY 2018
Medicaid <sup>1</sup>	\$3,509,360,526	\$2,283,204,562	\$924,363,894
Supplemental Nutrition Assistance Program <sup>9</sup>	\$434,437,031	\$268,142,916	\$106,673,267
Temporary Assistance for Needy Families <sup>9</sup>	\$29,448,216	\$17,694,826	\$7,295,973
General Assistance <sup>9</sup>	\$5,993,942	\$3,746,640	\$1,485,542
Education Work <sup>9</sup>	\$359,265	\$241,039	\$96,735
LIHEAP <sup>8</sup>	\$14,276,838	\$12,241,366	\$3,744,615

<b>Average Caseload YTD</b>			
	SFY 2018	FFY 2018	CY 2018
Medicaid <sup>2</sup>	498,074	494,522	499,591
Supplemental Nutrition Assistance Program <sup>6</sup>	221,399	222,022	222,556
Temporary Assistance for Needy Families <sup>6</sup>	11,709	11,692	11,463
General Assistance <sup>6</sup>	3,044	3,041	3,025
Education Work <sup>6</sup>	121	133	127
LIHEAP <sup>8</sup>	6,230	9,077	7,232

<b>Demographic Profile- February 2018</b>					
	SNAP	TANF	GA	Education Works	RCA
<b>Gender of Recipients<sup>10</sup></b>					
Male	208,050	12,476	1,739	159	19
Female	250,950	16,634	1,328	252	9
<b>Ethnicity<sup>10</sup></b>					
Hispanic	256,194	20,024	1,597	247	14
Non-Hispanic	202,806	9,086	1,470	164	14
<b>Race<sup>10</sup></b>					
Native American or Alaskan Native	75,637	2,364	253	32	0
Asian	4,510	272	33	2	0
African American or Black	11,212	1,113	126	16	8
Native Hawaiian or Pacific Islander	878	38	3	1	0
White	357,628	24,606	2,604	351	12
Unknown / Not Declared	4,888	264	24	4	1
More than One Race	4,247	453	24	5	7

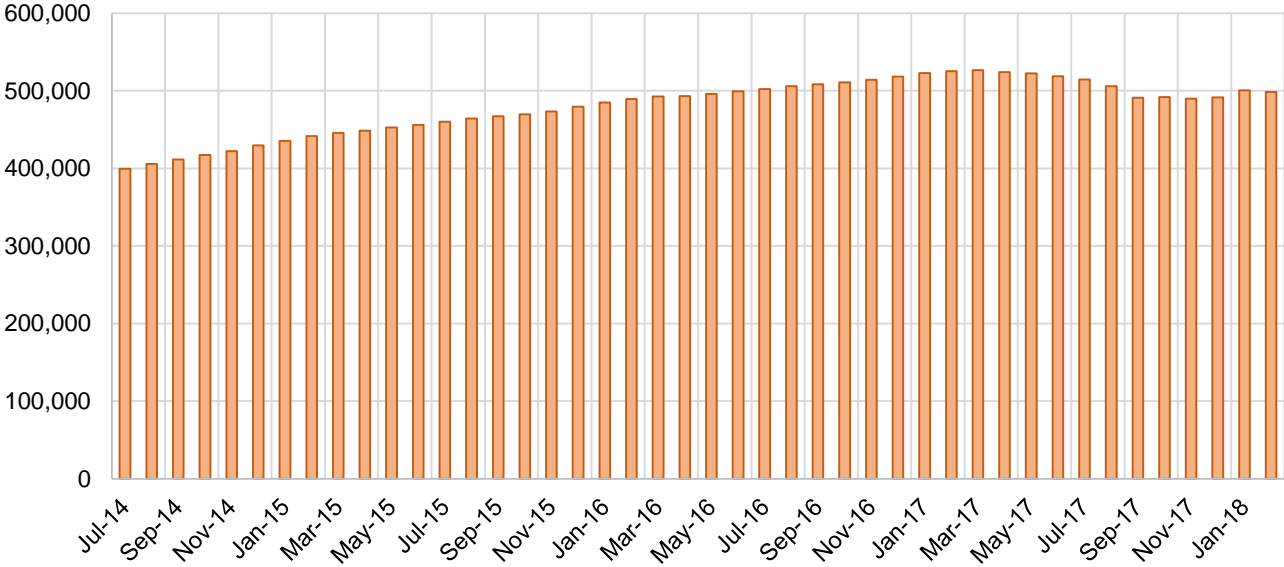
## Medicaid Cases by Field Office<sup>2</sup>

Office				Percent Change	
	Feb-17	Jan-18	Feb-18	Feb-17- Feb-18	Jan-18- Feb-18
Chaves County ISD	17,089	16,392	16,341	-4.4%	-0.3%
Cibola County ISD	7,665	7,616	7,563	-1.3%	-0.7%
Colfax County ISD	3,575	3,535	3,520	-1.5%	-0.4%
Curry County ISD	10,596	13,954	13,945	31.6%	-0.1%
East Dona Ana County ISD	18,816	18,116	18,058	-4.0%	-0.3%
Eddy Artesia County ISD	4,019	3,966	3,941	-1.9%	-0.6%
Eddy Carlsbad County ISD	8,536	8,007	7,995	-6.3%	-0.1%
Grant County ISD	7,184	6,909	6,870	-4.4%	-0.6%
Guadalupe County ISD	1,669	1,783	1,772	6.2%	-0.6%
Hidalgo County ISD	1,045	974	973	-6.9%	-0.1%
Lea County ISD	15,078	14,623	14,642	-2.9%	0.1%
Lincoln County ISD	4,726	4,415	4,400	-6.9%	-0.3%
Luna County ISD	9,117	8,882	8,842	-3.0%	-0.5%
McKinley County ISD	23,394	23,413	23,139	-1.1%	-1.2%
Northeast Bernalillo County ISD	46,589	44,171	43,442	-6.8%	-1.7%
Northwest Bernalillo County ISD	52,532	48,393	48,677	-7.3%	0.6%
Otero County ISD	12,210	12,135	12,071	-1.1%	-0.5%
Quay County ISD	2,649	2,619	2,590	-2.2%	-1.1%
Rio Arriba County ISD	15,213	14,654	14,454	-5.0%	-1.4%
Roosevelt County ISD	4,212	30	29	-99.3%	-3.3%
San Juan County ISD	31,330	30,793	30,599	-2.3%	-0.6%
San Miguel County ISD	9,768	9,289	9,250	-5.3%	-0.4%
Sandoval County ISD	27,228	26,094	25,959	-4.7%	-0.5%
Santa Fe County ISD	27,406	25,545	25,220	-8.0%	-1.3%
Sierra County ISD	5,652	5,556	5,526	-2.2%	-0.5%
Socorro County ISD	5,807	5,497	5,525	-4.9%	0.5%
South Dona Ana ISD	20,700	19,980	19,946	-3.6%	-0.2%
Southeast Bernalillo County ISD	29,292	26,037	25,749	-12.1%	-1.1%
Southwest Bernalillo County ISD	42,146	39,394	39,302	-6.7%	-0.2%
Taos County ISD	9,875	9,539	9,482	-4.0%	-0.6%
Torrance County ISD	8,001	7,713	7,678	-4.0%	-0.5%
Valencia North County ISD	19,075	18,157	18,271	-4.2%	0.6%
Valencia South County ISD	3	119	110	3566.7%	-7.6%
West Dona Ana County ISD	23,191	22,508	22,484	-3.0%	-0.1%
Centralized Units	2	4	4	100.0%	0.0%
Statewide Total	525,390	500,812	498,369	-5.1%	-0.5%

## Medicaid Cases by Region<sup>2</sup>

Region				Percent Change	
	Feb-17	Jan-18	Feb-18	Feb-17- Feb-18	Jan-18- Feb-18
Region 1 - NW	92,926	91,151	90,733	-2.4%	-0.5%
Region 2 - NE	97,383	93,058	92,247	-5.3%	-0.9%
Region 3 - Central	178,560	165,708	164,848	-7.7%	-0.5%
Region 4 - SE	64,256	61,387	61,293	-4.6%	-0.2%
Region 5 - SW	92,263	89,504	89,244	-3.3%	-0.3%
Centralized Units	2	4	4	100.0%	0.0%
Statewide Total	525,390	500,812	498,369	-5.1%	-0.5%

**Medicaid Caseload: SFY-15 to Current**



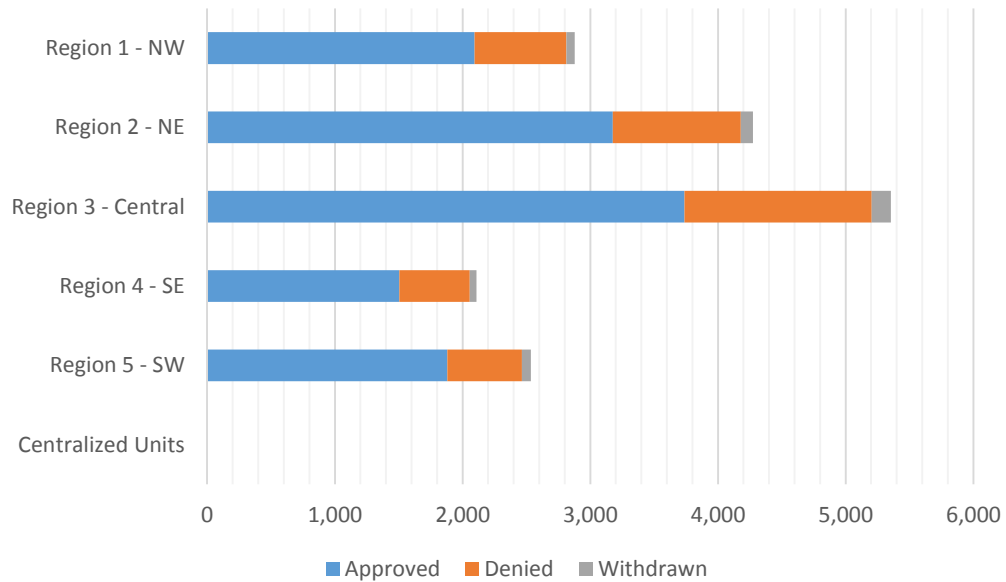
**Medicaid Initial Applications by Field Office<sup>4,11</sup>**  
**February 2018**

Office	Approved	Denied	Withdrawn	Total Cases Processed
Chaves County ISD	362	144	8	514
Cibola County ISD	187	75	1	263
Colfax County ISD	79	24	4	107
Curry County ISD	299	106	17	422
East Dona Ana County ISD	558	157	17	732
Eddy Artesia County ISD	178	69	1	248
Eddy Carlsbad County ISD	161	63	7	231
Grant County ISD	152	49	11	212
Guadalupe County ISD	42	15	3	60
Hidalgo County ISD	0	0	0	0
Lea County ISD	244	66	14	324
Lincoln County ISD	143	51	4	198
Luna County ISD	136	47	10	193
McKinley County ISD	515	177	18	710
Northeast Bernalillo County ISD	1,114	405	37	1,556
Northwest Bernalillo County ISD	942	310	46	1,298
Otero County ISD	226	73	6	305
Quay County ISD	126	31	4	161
Rio Arriba County ISD	301	134	9	444
Roosevelt County ISD	117	54	0	171
San Juan County ISD	745	283	31	1,059
San Miguel County ISD	850	184	12	1,046
Sandoval County ISD	842	258	32	1,132
Santa Fe County ISD	649	258	24	931
Sierra County ISD	112	19	4	135
Socorro County ISD	127	42	6	175
South Dona Ana ISD	376	131	15	522
Southeast Bernalillo County ISD	820	429	18	1,267
Southwest Bernalillo County ISD	642	256	47	945
Taos County ISD	287	100	5	392
Torrance County ISD	219	67	3	289
Valencia North County ISD	375	84	6	465
Valencia South County ISD	33	39	0	72
West Dona Ana County ISD	433	126	11	570
Centralized Units	0	0	0	0
<b>Statewide Total</b>	<b>12,392</b>	<b>4,326</b>	<b>431</b>	<b>17,149</b>



**Medicaid Initial Applications by Region<sup>4,11</sup>**  
**February 2018**

	Approved	Denied	Withdrawn	Total Cases Processed
Region				
Region 1 - NW	2,094	719	66	2,879
Region 2 - NE	3,176	1,004	93	4,273
Region 3 - Central	3,737	1,467	151	5,355
Region 4 - SE	1,504	553	51	2,108
Region 5 - SW	1,881	583	70	2,534
Centralized Units	0	0	0	0
<b>Statewide Total</b>	<b>12,392</b>	<b>4,326</b>	<b>431</b>	<b>17,149</b>

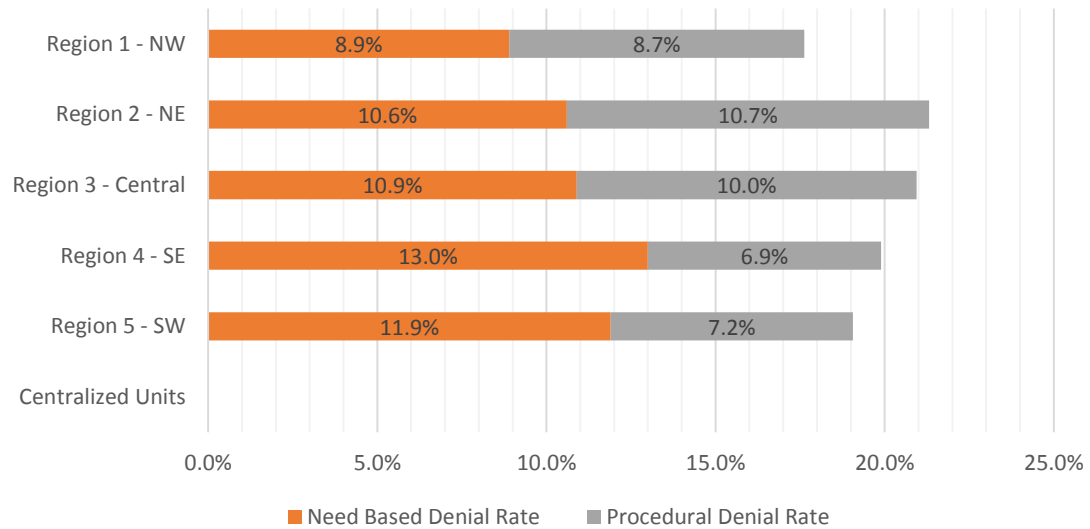


**Medicaid EDG Initial Disposition Rates by Field Office<sup>4,11,19</sup>**  
**February 2018**

Office	Approval Rate	Denial Rate	Need Based Denial Rate	Procedural Denial Rate
Chaves County ISD	82.4%	17.6%	11.5%	6.1%
Cibola County ISD	90.2%	9.8%	3.9%	5.9%
Colfax County ISD	74.5%	25.5%	16.0%	9.5%
Curry County ISD	79.9%	20.1%	12.3%	7.8%
East Dona Ana County ISD	81.3%	18.7%	11.8%	6.9%
Eddy Artesia County ISD	80.1%	19.9%	12.1%	7.8%
Eddy Carlsbad County ISD	80.3%	19.7%	12.6%	7.1%
Grant County ISD	85.6%	14.4%	6.7%	7.7%
Guadalupe County ISD	75.7%	24.3%	18.6%	5.7%
Hidalgo County ISD	0.0%	0.0%	0.0%	0.0%
Lea County ISD	79.3%	20.7%	14.9%	5.8%
Lincoln County ISD	75.5%	24.5%	15.8%	8.7%
Luna County ISD	80.7%	19.3%	12.2%	7.1%
McKinley County ISD	84.7%	15.3%	7.7%	7.6%
Northeast Bernalillo County ISD	83.3%	16.7%	9.0%	7.7%
Northwest Bernalillo County ISD	77.5%	22.5%	8.3%	14.2%
Otero County ISD	81.3%	18.7%	8.6%	10.1%
Quay County ISD	80.2%	19.8%	11.7%	8.1%
Rio Arriba County ISD	78.0%	22.0%	11.1%	10.9%
Roosevelt County ISD	0.0%	0.0%	0.0%	0.0%
San Juan County ISD	76.9%	23.1%	11.8%	11.3%
San Miguel County ISD	86.5%	13.5%	4.8%	8.7%
Sandoval County ISD	80.4%	19.6%	10.8%	8.8%
Santa Fe County ISD	74.7%	25.3%	11.0%	14.3%
Sierra County ISD	92.9%	7.1%	2.8%	4.3%
Socorro County ISD	83.9%	16.1%	5.2%	10.9%
South Dona Ana ISD	75.1%	24.9%	16.8%	8.1%
Southeast Bernalillo County ISD	73.1%	26.9%	16.9%	10.0%
Southwest Bernalillo County ISD	79.7%	20.3%	12.0%	8.3%
Taos County ISD	81.9%	18.1%	8.7%	9.4%
Torrance County ISD	80.3%	19.7%	9.2%	10.5%
Valencia North County ISD	84.7%	15.3%	8.7%	6.6%
Valencia South County ISD	0.0%	0.0%	0.0%	0.0%
West Dona Ana County ISD	83.8%	16.2%	11.3%	4.9%
Centralized Units	0.0%	0.0%	0.0%	0.0%
Statewide Total	80.1%	19.9%	10.9%	9.0%

**Medicaid EDG Initial Disposition Rates by Region<sup>4,11,19</sup>**  
**February 2018**

Region	Approval Rate	Denial Rate	Need Based Denial Rate	Procedural Denial Rate
Region 1 - NW	82.4%	17.6%	8.9%	8.7%
Region 2 - NE	78.7%	21.3%	10.6%	10.7%
Region 3 - Central	79.1%	20.9%	10.9%	10.0%
Region 4 - SE	80.1%	19.9%	13.0%	6.9%
Region 5 - SW	80.9%	19.1%	11.9%	7.2%
Centralized Units				
<b>Statewide Total</b>	<b>80.1%</b>	<b>19.9%</b>	<b>10.9%</b>	<b>9.0%</b>



**Medicaid: Percentage of Initial EDG Approvals Processed Timely by Field Office** <sup>13,19</sup>

	Oct-17	Nov-17	Dec-17	Jan-18	Feb-18	Mar-18	Apr-18	May-18	Jun-18	Jul-18	Aug-18	Sep-18	Average
Cibola	92.2%	94.4%	94.6%	98.5%	98.0%								95.5%
McKinley	95.6%	97.4%	96.9%	97.9%	98.3%								97.2%
San Juan	93.4%	92.0%	94.3%	94.7%	94.8%								93.8%
Sierra	95.8%	98.6%	96.9%	97.3%	99.4%								97.6%
Socorro	95.4%	98.7%	96.7%	97.0%	95.7%								96.7%
Valencia North	93.2%	94.1%	94.0%	95.2%	97.7%								94.8%
Valencia South	100.0%	100.0%	100.0%	100.0%									100.0%
<b>NW Region 1 Total</b>	<b>94.0%</b>	<b>94.7%</b>	<b>95.2%</b>	<b>96.2%</b>	<b>96.8%</b>								<b>95.4%</b>
Colfax	93.9%	98.4%	97.4%	98.4%	95.1%								96.6%
Guadalupe	97.9%	100.0%	96.6%	100.0%	100.0%								98.9%
Quay	98.0%	94.9%	94.6%	97.2%	97.1%								96.4%
Rio Arriba	96.9%	94.7%	91.1%	96.9%	95.7%								95.1%
San Miguel	97.3%	98.9%	99.0%	98.4%	98.0%								98.3%
Sandoval	97.0%	97.0%	96.8%	97.9%	96.8%								97.1%
Santa Fe	96.1%	95.7%	96.6%	95.2%	95.5%								95.8%
Taos	98.3%	96.8%	98.2%	96.8%	97.0%								97.4%
<b>NE Region 2 Total</b>	<b>96.8%</b>	<b>96.6%</b>	<b>96.6%</b>	<b>97.1%</b>	<b>96.4%</b>								<b>96.7%</b>
NE Bernalillo	95.1%	93.6%	93.9%	94.5%	97.1%								94.8%
NW Bernalillo	96.3%	95.4%	94.6%	94.7%	96.4%								95.5%
SE Bernalillo	88.2%	90.8%	94.4%	92.2%	95.8%								92.3%
SW Bernalillo	95.8%	96.2%	95.2%	94.9%	95.1%								95.4%
Torrance	95.5%	95.1%	95.2%	94.8%	91.1%								94.3%
<b>Gen. Region 3 Total</b>	<b>94.3%</b>	<b>94.3%</b>	<b>94.5%</b>	<b>94.2%</b>	<b>95.9%</b>								<b>94.6%</b>
Chaves	96.4%	96.6%	97.1%	98.6%	97.4%								97.2%
Curry	94.8%	94.2%	98.4%	98.3%	96.5%								96.4%
Eddy Artesia	95.3%	94.9%	96.4%	93.2%	96.4%								95.2%
Eddy Carlsbad	93.2%	98.4%	97.6%	94.8%	98.5%								96.5%
Lea	96.1%	94.7%	94.0%	96.5%	99.5%								96.2%
Lincoln	95.7%	94.7%	97.1%	97.4%	97.3%								96.4%
Roosevelt	94.6%	94.2%	93.4%	94.9%									94.3%
<b>SE Region 4 Total</b>	<b>95.4%</b>	<b>95.5%</b>	<b>96.3%</b>	<b>96.9%</b>	<b>97.7%</b>								<b>96.4%</b>
East Dona Ana	96.1%	97.1%	97.5%	97.3%	97.1%								97.0%
Grant	93.9%	96.8%	99.3%	97.5%	98.4%								97.2%
Luna	96.8%	97.8%	97.4%	98.8%	98.2%								97.8%
Otero	97.6%	96.4%	98.0%	96.3%	95.0%								96.7%
South Dona Ana	97.2%	98.3%	98.0%	97.5%	98.6%								97.9%
West Dona Ana	97.4%	96.7%	98.3%	98.5%	98.4%								97.9%
<b>SW Region 5 Total</b>	<b>96.7%</b>	<b>97.2%</b>	<b>98.0%</b>	<b>97.6%</b>	<b>97.7%</b>								<b>97.4%</b>
<b>STATE TOTAL</b>	<b>95.3%</b>	<b>95.4%</b>	<b>95.8%</b>	<b>96.0%</b>	<b>96.7%</b>								<b>95.8%</b>

**Medicaid: Percentage of Initial EDG Denials Processed Timely by Field Office<sup>13,19</sup>**

	Oct-17	Nov-17	Dec-17	Jan-18	Feb-18	Mar-18	Apr-18	May-18	Jun-18	Jul-18	Aug-18	Sep-18	Average
Cibola	51.4%	41.2%	76.0%	78.3%	72.7%								63.9%
McKinley	54.4%	59.7%	54.4%	51.6%	59.3%								55.9%
San Juan	53.1%	57.1%	45.5%	43.6%	44.9%								48.8%
Sierra	92.9%	95.0%	96.3%	33.3%	30.8%								69.7%
Socorro	57.5%	80.0%	96.3%	95.8%	100.0%								85.9%
Valencia North	55.8%	52.1%	42.3%	38.3%	55.6%								48.8%
Valencia South	66.7%												66.7%
<b>NW Region 1 Total</b>	<b>55.0%</b>	<b>57.7%</b>	<b>53.2%</b>	<b>51.0%</b>	<b>53.0%</b>								<b>54.0%</b>
Colfax	90.6%	95.8%	100.0%	92.9%	94.3%								94.7%
Guadalupe	90.0%	11.1%	75.0%	72.7%	76.5%								65.1%
Quay	72.7%	33.3%	54.5%	78.6%	58.8%								59.6%
Rio Arriba	71.4%	56.3%	53.2%	71.9%	49.6%								60.5%
San Miguel	59.5%	67.3%	76.5%	78.8%	82.1%								72.8%
Sandoval	43.6%	51.2%	63.7%	74.3%	75.9%								61.7%
Santa Fe	59.1%	53.7%	37.8%	48.1%	64.7%								52.7%
Taos	47.4%	76.5%	75.9%	87.9%	65.7%								70.7%
<b>NE Region 2 Total</b>	<b>57.2%</b>	<b>56.4%</b>	<b>55.2%</b>	<b>64.0%</b>	<b>67.8%</b>								<b>60.1%</b>
NE Bernalillo	45.7%	38.4%	35.2%	50.0%	67.6%								47.4%
NW Bernalillo	39.2%	40.9%	41.8%	36.0%	42.4%								40.1%
SE Bernalillo	56.6%	46.6%	67.6%	80.6%	79.3%								66.1%
SW Bernalillo	68.5%	68.1%	80.1%	88.4%	80.8%								77.2%
Torrance	56.8%	42.1%	43.8%	38.5%	42.7%								44.8%
<b>Gen. Region 3 Total</b>	<b>52.5%</b>	<b>48.0%</b>	<b>53.3%</b>	<b>59.5%</b>	<b>65.0%</b>								<b>55.7%</b>
Chaves	72.3%	60.2%	79.9%	83.6%	79.6%								75.1%
Curry	61.4%	59.0%	65.6%	84.3%	73.0%								68.7%
Eddy Artesia	65.6%	53.3%	81.3%	76.4%	82.9%								71.9%
Eddy Carlsbad	51.8%	35.8%	61.7%	79.3%	83.8%								62.5%
Lea	72.7%	69.6%	70.0%	88.0%	85.3%								77.1%
Lincoln	35.9%	63.8%	77.3%	91.3%	85.4%								70.7%
Roosevelt	36.4%	46.4%	64.5%	64.6%									53.0%
<b>SE Region 4 Total</b>	<b>61.3%</b>	<b>56.6%</b>	<b>70.5%</b>	<b>83.1%</b>	<b>80.7%</b>								<b>70.4%</b>
East Dona Ana	80.0%	74.3%	73.1%	94.5%	67.5%								77.9%
Grant	76.7%	32.4%	85.9%	79.7%	67.4%								68.4%
Luna	47.7%	64.9%	41.8%	62.9%	61.5%								55.8%
Otero	61.9%	48.3%	67.7%	62.8%	71.6%								62.5%
South Dona Ana	86.3%	73.0%	86.6%	91.8%	82.3%								84.0%
West Dona Ana	66.9%	67.0%	80.6%	94.7%	82.0%								78.2%
<b>SW Region 5 Total</b>	<b>73.8%</b>	<b>64.3%</b>	<b>76.4%</b>	<b>85.1%</b>	<b>74.8%</b>								<b>74.9%</b>
<b>STATE TOTAL</b>	<b>58.4%</b>	<b>54.6%</b>	<b>59.5%</b>	<b>66.4%</b>	<b>66.9%</b>								<b>61.2%</b>

**Medicaid Renewal Disposition Counts by Field Office<sup>4,11</sup>**  
**February 2018**

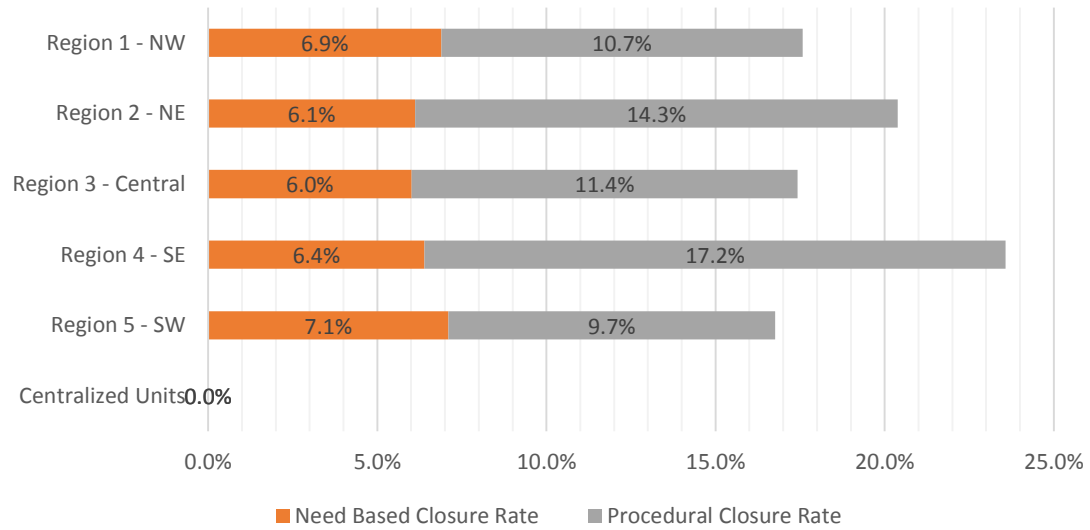
Office	Approvals	Closures	Need Based Closures	Procedural Closures
Chaves County ISD	2,738	797	201	596
Cibola County ISD	1,375	314	85	229
Colfax County ISD	487	121	26	95
Curry County ISD	2,231	578	173	405
East Dona Ana County ISD	2,955	624	268	356
Eddy Artesia County ISD	642	210	60	150
Eddy Carlsbad County ISD	1,063	378	115	263
Grant County ISD	812	189	66	123
Guadalupe County ISD	241	57	15	42
Hidalgo County ISD	126	29	12	17
Lea County ISD	2,235	824	211	613
Lincoln County ISD	711	180	45	135
Luna County ISD	1,556	256	135	121
McKinley County ISD	3,975	827	287	540
Northeast Bernalillo County ISD	6,116	1575	503	1072
Northwest Bernalillo County ISD	5,571	1134	380	754
Otero County ISD	1,745	411	170	241
Quay County ISD	289	85	38	47
Rio Arriba County ISD	2,052	400	130	270
Roosevelt County ISD	0	0	0	0
San Juan County ISD	4,929	1081	462	619
San Miguel County ISD	1,115	253	73	180
Sandoval County ISD	3,580	1142	278	864
Santa Fe County ISD	2,940	683	259	424
Sierra County ISD	768	190	78	112
Socorro County ISD	799	155	71	84
South Dona Ana ISD	3,536	748	283	465
Southeast Bernalillo County ISD	3,564	629	212	417
Southwest Bernalillo County ISD	8,045	1521	599	922
Taos County ISD	1,216	311	97	214
Torrance County ISD	1,226	316	92	224
Valencia North County ISD	2,781	552	240	312
Valencia South County ISD	0	0	0	0
West Dona Ana County ISD	3,303	569	263	306
Centralized Units	0	0	0	0
<b>Statewide Total</b>	<b>74,722</b>	<b>17,139</b>	<b>5,927</b>	<b>11,212</b>

**Medicaid Renewal Disposition Rates by Field Office<sup>20</sup>**  
**February 2018**

Office	Approval Rate	Closure Rate	Need Based Closure Rate	Procedural Closure Rate
Chaves County ISD	77.5%	22.5%	5.7%	16.9%
Cibola County ISD	81.4%	18.6%	5.0%	13.6%
Colfax County ISD	80.1%	19.9%	4.3%	15.6%
Curry County ISD	79.4%	20.6%	6.2%	14.4%
East Dona Ana County ISD	82.6%	17.4%	7.5%	9.9%
Eddy Artesia County ISD	75.4%	24.6%	7.0%	17.6%
Eddy Carlsbad County ISD	73.8%	26.2%	8.0%	18.3%
Grant County ISD	81.1%	18.9%	6.6%	12.3%
Guadalupe County ISD	80.9%	19.1%	5.0%	14.1%
Hidalgo County ISD	81.3%	18.7%	7.7%	11.0%
Lea County ISD	73.1%	26.9%	6.9%	20.0%
Lincoln County ISD	79.8%	20.2%	5.1%	15.2%
Luna County ISD	85.9%	14.1%	7.5%	6.7%
McKinley County ISD	82.8%	17.2%	6.0%	11.2%
Northeast Bernalillo County ISD	79.5%	20.5%	6.5%	13.9%
Northwest Bernalillo County ISD	83.1%	16.9%	5.7%	11.2%
Otero County ISD	80.9%	19.1%	7.9%	11.2%
Quay County ISD	77.3%	22.7%	10.2%	12.6%
Rio Arriba County ISD	83.7%	16.3%	5.3%	11.0%
Roosevelt County ISD	0.0%	0.0%	0.0%	0.0%
San Juan County ISD	82.0%	18.0%	7.7%	10.3%
San Miguel County ISD	81.5%	18.5%	5.3%	13.2%
Sandoval County ISD	75.8%	24.2%	5.9%	18.3%
Santa Fe County ISD	81.1%	18.9%	7.1%	11.7%
Sierra County ISD	80.2%	19.8%	8.1%	11.7%
Socorro County ISD	83.8%	16.2%	7.4%	8.8%
South Dona Ana ISD	82.5%	17.5%	6.6%	10.9%
Southeast Bernalillo County ISD	85.0%	15.0%	5.1%	9.9%
Southwest Bernalillo County ISD	84.1%	15.9%	6.3%	9.6%
Taos County ISD	79.6%	20.4%	6.4%	14.0%
Torrance County ISD	79.5%	20.5%	6.0%	14.5%
Valencia North County ISD	83.4%	16.6%	7.2%	9.4%
Valencia South County ISD	0.0%	0.0%	0.0%	0.0%
West Dona Ana County ISD	85.3%	14.7%	6.8%	7.9%
Centralized Units	0.0%	0.0%	0.0%	0.0%
Statewide Total	81.3%	18.7%	6.5%	12.2%

**Medicaid Renewal Disposition Rates by Region<sup>20</sup>**  
**February 2018**

Region	Approval Rate	Closure Rate	Need Based Closure Rate	Procedural Closure Rate
Region 1 - NW	82.4%	17.6%	6.9%	10.7%
Region 2 - NE	79.6%	20.4%	6.1%	14.3%
Region 3 - Central	82.6%	17.4%	6.0%	11.4%
Region 4 - SE	76.4%	23.6%	6.4%	17.2%
Region 5 - SW	83.2%	16.8%	7.1%	9.7%
Centralized Units				
<b>Statewide Total</b>	<b>81.3%</b>	<b>18.7%</b>	<b>6.5%</b>	<b>12.2%</b>





**Medicaid: Percentage of Approved Renewal EDGs Processed by Certification Date <sup>11</sup>**

	Oct-17	Nov-17	Dec-17	Jan-18	Feb-18	Mar-18	Apr-18	May-18	Jun-18	Jul-18	Aug-18	Sep-18	Average
Cibola		98.9%	98.5%	99.3%	98.5%								98.8%
McKinley		98.9%	99.3%	98.7%	99.1%								99.0%
San Juan		98.9%	98.4%	98.6%	98.4%								98.6%
Sierra		99.1%	99.5%	99.0%	99.6%								99.3%
Socorro		99.5%	99.1%	99.0%	99.2%								99.2%
Valencia North		98.5%	98.7%	98.1%	98.8%								98.5%
Valencia South													
<b>NW Region 1 Total</b>		<b>99.0%</b>	<b>98.9%</b>	<b>98.8%</b>	<b>98.9%</b>								<b>98.9%</b>
Colfax		98.7%	99.6%	97.3%	99.4%								98.7%
Guadalupe		99.2%	98.5%	96.6%	99.6%								98.5%
Quay		99.0%	99.0%	98.9%	97.6%								98.6%
Rio Arriba		98.4%	97.8%	97.1%	98.1%								97.9%
San Miguel		99.5%	98.3%	98.9%	98.9%								98.9%
Sandoval		98.4%	98.6%	98.3%	98.3%								98.4%
Santa Fe		95.6%	95.7%	95.5%	96.7%								95.9%
Taos		98.7%	98.6%	98.6%	96.9%								98.2%
<b>NE Region 2 Total</b>		<b>98.5%</b>	<b>98.2%</b>	<b>97.6%</b>	<b>98.2%</b>								<b>98.1%</b>
NE Bernalillo		97.8%	97.0%	96.9%	97.5%								97.3%
NW Bernalillo		97.6%	97.8%	97.4%	98.5%								97.8%
SE Bernalillo		86.5%	96.2%	97.5%	98.1%								94.6%
SW Bernalillo		98.8%	96.0%	97.0%	97.8%								97.4%
Torrance		98.8%	96.9%	96.5%	98.0%								97.6%
<b>Gen. Region 3 Total</b>		<b>95.9%</b>	<b>96.8%</b>	<b>97.1%</b>	<b>98.0%</b>								<b>96.9%</b>
Chaves		98.7%	98.5%	98.6%	98.5%								98.6%
Curry		99.0%	98.7%	98.7%	99.0%								98.9%
Eddy Artesia		99.2%	97.5%	97.1%	96.9%								97.7%
Eddy Carlsbad		97.7%	98.8%	97.2%	98.2%								98.0%
Lea		98.8%	97.8%	98.7%	98.6%								98.5%
Lincoln		98.2%	97.5%	97.6%	97.7%								97.8%
Roosevelt		99.4%	97.9%										98.7%
<b>SE Region 4 Total</b>		<b>98.7%</b>	<b>98.1%</b>	<b>98.0%</b>	<b>98.2%</b>								<b>98.2%</b>
East Dona Ana		98.9%	97.9%	98.6%	99.0%								98.6%
Grant		98.5%	98.7%	98.5%	99.1%								98.7%
Luna		99.1%	98.2%	98.1%	98.5%								98.5%
Otero		98.9%	97.6%	98.0%	97.2%								97.9%
South Dona Ana		98.2%	97.4%	98.1%	98.9%								98.1%
West Dona Ana		99.2%	99.0%	98.7%	98.7%								98.9%
<b>SW Region 5 Total</b>		<b>98.8%</b>	<b>98.1%</b>	<b>98.3%</b>	<b>98.6%</b>								<b>98.5%</b>
<b>STATE TOTAL</b>		<b>97.8%</b>	<b>97.8%</b>	<b>97.9%</b>	<b>98.3%</b>								<b>98.0%</b>

Administrative, Annual, and Auto Renewals are included  
 No data available for October 2017

Medicaid: Percentage of Closures EDGs Processed by Certification End Date <sup>11</sup>													
	Oct-17	Nov-17	Dec-17	Jan-18	Feb-18	Mar-18	Apr-18	May-18	Jun-18	Jul-18	Aug-18	Sep-18	Average
Cibola		37.6%	27.5%	14.6%	21.3%								25.2%
McKinley		23.9%	21.0%	21.3%	30.7%								24.2%
San Juan		36.7%	19.9%	37.9%	39.1%								33.4%
Sierra		45.6%	22.7%	25.9%	37.9%								33.0%
Socorro		33.0%	20.7%	47.6%	40.0%								35.3%
Valencia North		34.6%	30.5%	52.4%	38.6%								39.0%
Valencia South													
<b>NW Region 1 Total</b>		<b>35.2%</b>	<b>23.7%</b>	<b>33.3%</b>	<b>34.6%</b>								<b>31.7%</b>
Colfax		49.3%	27.8%	25.2%	21.5%								31.0%
Guadalupe		28.6%	57.9%	27.1%	26.3%								35.0%
Quay		24.7%	26.5%	17.1%	40.0%								27.1%
Rio Arriba		23.3%	26.1%	24.6%	29.5%								25.9%
San Miguel		19.4%	21.8%	23.6%	26.9%								22.9%
Sandoval		20.5%	25.9%	21.0%	21.5%								22.2%
Santa Fe		22.0%	22.6%	22.3%	33.1%								25.0%
Taos		24.4%	21.5%	44.1%	24.4%								28.6%
<b>NE Region 2 Total</b>		<b>26.5%</b>	<b>28.8%</b>	<b>25.6%</b>	<b>27.9%</b>								<b>27.2%</b>
NE Bernalillo		20.3%	16.0%	15.8%	26.4%								19.6%
NW Bernalillo		16.2%	20.8%	24.4%	30.1%								22.9%
SE Bernalillo		18.7%	21.5%	27.0%	26.7%								23.5%
SW Bernalillo		24.5%	28.2%	34.4%	33.9%								30.3%
Torrance		25.4%	21.9%	33.9%	24.7%								26.4%
<b>Gen. Region 3 Total</b>		<b>21.0%</b>	<b>21.7%</b>	<b>27.1%</b>	<b>28.3%</b>								<b>24.5%</b>
Chaves		34.4%	24.7%	28.7%	22.0%								27.4%
Curry		27.2%	25.2%	19.7%	27.3%								24.8%
Eddy Artesia		31.1%	24.0%	21.3%	20.0%								24.1%
Eddy Carlsbad		26.9%	23.2%	18.4%	27.2%								23.9%
Lea		24.6%	21.4%	26.0%	20.4%								23.1%
Lincoln		23.1%	31.9%	16.9%	20.0%								23.0%
Roosevelt		24.3%	14.5%	0.0%									12.9%
<b>SE Region 4 Total</b>		<b>27.4%</b>	<b>23.6%</b>	<b>18.7%</b>	<b>22.8%</b>								<b>23.1%</b>
East Dona Ana		28.5%	31.6%	28.3%	37.3%								31.4%
Grant		38.7%	27.7%	18.1%	30.7%								28.8%
Luna		37.1%	38.5%	26.9%	47.7%								37.5%
Otero		37.3%	31.9%	27.8%	38.4%								33.9%
South Dona Ana		41.6%	35.7%	27.5%	32.6%								34.4%
West Dona Ana		35.1%	29.6%	37.0%	41.5%								35.8%
<b>SW Region 5 Total</b>		<b>36.4%</b>	<b>32.5%</b>	<b>27.6%</b>	<b>38.0%</b>								<b>33.6%</b>
<b>STATE TOTAL</b>		<b>25.8%</b>	<b>24.2%</b>	<b>26.3%</b>	<b>30.1%</b>								<b>26.6%</b>

Annual and Auto Renewals are included  
No data available for October 2017

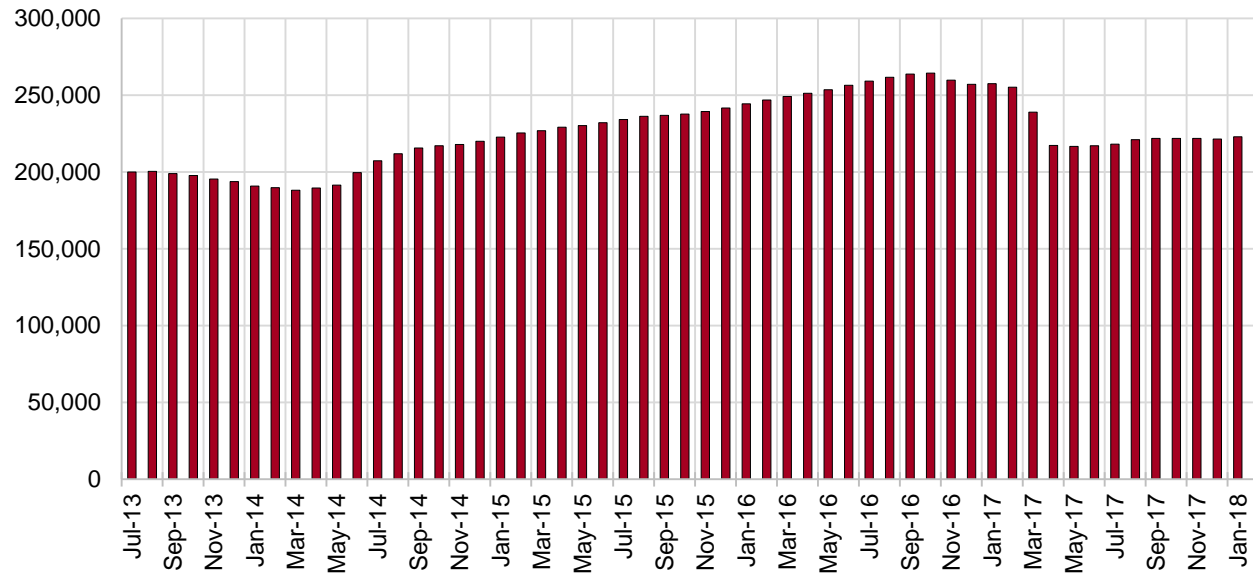
## SNAP Cases by Field Office<sup>6</sup>

Office				Percent Change	
	Feb-17	Jan-18	Feb-18	Feb-17- Feb-18	Jan-18- Feb-18
Chaves County ISD	8,151	7,215	7,138	-12.4%	-1.1%
Cibola County ISD	3,826	3,666	3,632	-5.1%	-0.9%
Colfax County ISD	1,860	1,645	1,646	-11.5%	0.1%
Curry County ISD	5,345	6,533	6,548	22.5%	0.2%
East Dona Ana County ISD	9,335	7,989	7,998	-14.3%	0.1%
Eddy Artesia County ISD	2,002	1,703	1,670	-16.6%	-1.9%
Eddy Carlsbad County ISD	4,058	3,222	3,160	-22.1%	-1.9%
Grant County ISD	3,963	3,594	3,604	-9.1%	0.3%
Guadalupe County ISD	758	702	702	-7.4%	0.0%
Hidalgo County ISD	490	447	442	-9.8%	-1.1%
Lea County ISD	6,875	5,864	5,817	-15.4%	-0.8%
Lincoln County ISD	2,186	1,973	1,968	-10.0%	-0.3%
Luna County ISD	4,903	4,352	4,322	-11.8%	-0.7%
McKinley County ISD	10,313	9,736	9,686	-6.1%	-0.5%
Northeast Bernalillo County ISD	22,687	20,278	20,332	-10.4%	0.3%
Northwest Bernalillo County ISD	21,394	19,005	19,110	-10.7%	0.6%
Otero County ISD	6,072	5,621	5,567	-8.3%	-1.0%
Quay County ISD	1,311	1,267	1,267	-3.4%	0.0%
Rio Arriba County ISD	7,841	6,783	6,764	-13.7%	-0.3%
Roosevelt County ISD	1,979	2	0	-100.0%	-100.0%
San Juan County ISD	15,223	13,456	13,379	-12.1%	-0.6%
San Miguel County ISD	5,826	4,989	4,934	-15.3%	-1.1%
Sandoval County ISD	12,927	11,070	11,023	-14.7%	-0.4%
Santa Fe County ISD	12,966	9,934	9,918	-23.5%	-0.2%
Sierra County ISD	3,064	2,712	2,703	-11.8%	-0.3%
Socorro County ISD	3,063	2,839	2,843	-7.2%	0.1%
South Dona Ana ISD	9,145	8,620	8,559	-6.4%	-0.7%
Southeast Bernalillo County ISD	15,461	11,993	11,994	-22.4%	0.0%
Southwest Bernalillo County ISD	21,498	18,747	18,733	-12.9%	-0.1%
Taos County ISD	4,674	4,201	4,216	-9.8%	0.4%
Torrance County ISD	3,954	3,441	3,432	-13.2%	-0.3%
Valencia North County ISD	9,621	8,424	8,415	-12.5%	-0.1%
Valencia South County ISD	2	0	0	-100.0%	N/A
West Dona Ana County ISD	12,398	10,774	10,700	-13.7%	-0.7%
Centralized Units	18	49	43	138.9%	-12.2%
Statewide Total	255,189	222,846	222,265	-12.9%	-0.3%

## SNAP Cases by Region<sup>6</sup>

Region	Feb-17	Jan-18	Feb-18	Percent Change	
				Feb-17- Feb-18	Jan-18- Feb-18
Region 1 - NW	45,112	40,833	40,658	-9.9%	-0.4%
Region 2 - NE	48,163	40,591	40,470	-16.0%	-0.3%
Region 3 - Central	84,994	73,464	73,601	-13.4%	0.2%
Region 4 - SE	30,596	26,512	26,301	-14.0%	-0.8%
Region 5 - SW	46,306	41,397	41,192	-11.0%	-0.5%
Centralized Units	18	49	43	138.9%	-12.2%
<b>Statewide Total</b>	<b>255,189</b>	<b>222,846</b>	<b>222,265</b>	<b>-12.9%</b>	<b>-0.3%</b>

## SNAP Caseload: SFY-14 to Current

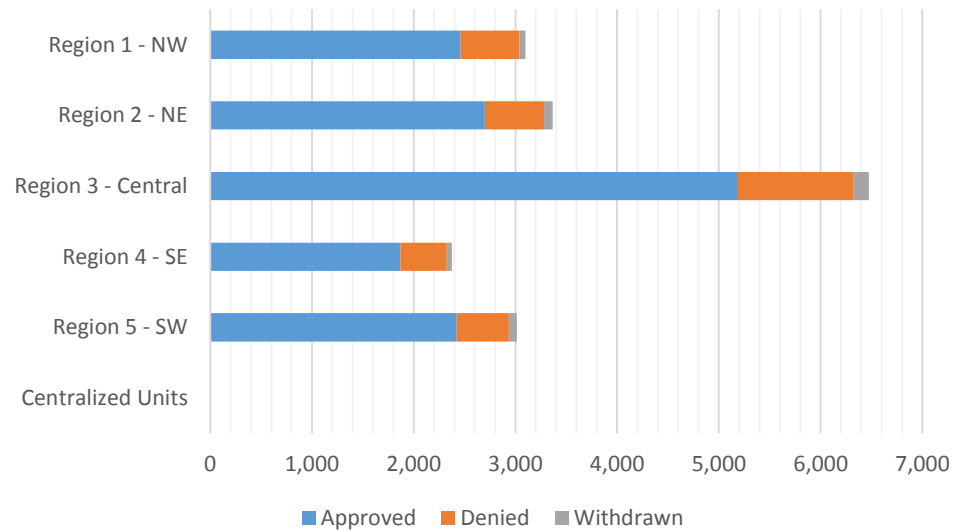


**SNAP Initial Applications by Field Office<sup>4,11</sup>**  
**February 2018**

Office	Approved	Denied	Withdrawn	Total Cases Processed
Chaves County ISD	464	133	12	609
Cibola County ISD	219	42	4	265
Colfax County ISD	111	21	5	137
Curry County ISD	497	101	12	610
East Dona Ana County ISD	491	127	28	646
Eddy Artesia County ISD	111	30	2	143
Eddy Carlsbad County ISD	247	58	7	312
Grant County ISD	298	27	3	328
Guadalupe County ISD	51	12	1	64
Hidalgo County ISD	0	0	0	0
Lea County ISD	423	106	14	543
Lincoln County ISD	128	28	3	159
Luna County ISD	240	41	10	291
McKinley County ISD	520	104	13	637
Northeast Bernalillo County ISD	1,615	300	33	1,948
Northwest Bernalillo County ISD	1,323	294	43	1,660
Otero County ISD	326	74	8	408
Quay County ISD	61	6	1	68
Rio Arriba County ISD	425	83	12	520
Roosevelt County ISD	0	0	0	0
San Juan County ISD	933	264	25	1,222
San Miguel County ISD	306	70	26	402
Sandoval County ISD	745	204	15	964
Santa Fe County ISD	727	137	21	885
Sierra County ISD	124	11	2	137
Socorro County ISD	169	26	3	198
South Dona Ana ISD	376	95	12	483
Southeast Bernalillo County ISD	817	216	26	1,059
Southwest Bernalillo County ISD	1,222	279	46	1,547
Taos County ISD	272	49	6	327
Torrance County ISD	209	46	6	261
Valencia North County ISD	494	132	13	639
Valencia South County ISD	0	0	0	0
West Dona Ana County ISD	692	149	18	859
Centralized Units	0	0	0	0
<b>Statewide Total</b>	<b>14,636</b>	<b>3,265</b>	<b>430</b>	<b>18,331</b>

**SNAP Initial Applications by Region<sup>4,11</sup>**  
**February 2018**

Region	Approved	Denied	Withdrawn	Total Cases Processed
Region 1 - NW	2,459	579	60	3,098
Region 2 - NE	2,698	582	87	3,367
Region 3 - Central	5,186	1,135	154	6,475
Region 4 - SE	1,870	456	50	2,376
Region 5 - SW	2,423	513	79	3,015
Centralized Units	0	0	0	0
<b>Statewide Total</b>	<b>14,636</b>	<b>3,265</b>	<b>430</b>	<b>18,331</b>

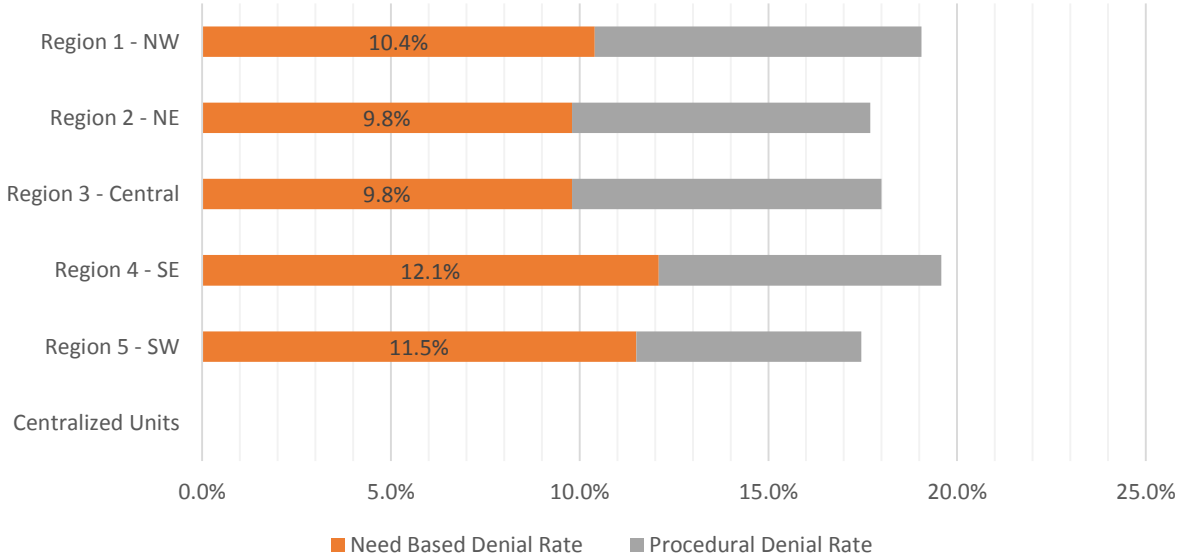


**SNAP Initial Disposition Rates by Field Office<sup>4,11</sup>**  
**February 2018**

Office	Approval Rate	Denial Rate	Need Based Denial Rate	Procedural Denial Rate
Chaves County ISD	77.7%	22.3%	14.6%	7.7%
Cibola County ISD	83.9%	16.1%	8.1%	8.0%
Colfax County ISD	84.1%	15.9%	6.8%	9.1%
Curry County ISD	83.1%	16.9%	9.2%	7.7%
East Dona Ana County ISD	79.4%	20.6%	13.6%	7.0%
Eddy Artesia County ISD	78.7%	21.3%	13.5%	7.8%
Eddy Carlsbad County ISD	81.0%	19.0%	13.4%	5.6%
Grant County ISD	91.7%	8.3%	4.9%	3.4%
Guadalupe County ISD	81.0%	19.0%	12.7%	6.3%
Hidalgo County ISD	0.0%	100.0%	100.0%	0.0%
Lea County ISD	80.0%	20.0%	11.9%	8.1%
Lincoln County ISD	82.1%	17.9%	10.8%	7.1%
Luna County ISD	85.4%	14.6%	9.6%	5.0%
McKinley County ISD	83.3%	16.7%	9.5%	7.2%
Northeast Bernalillo County ISD	84.3%	15.7%	8.6%	7.1%
Northwest Bernalillo County ISD	81.8%	18.2%	9.2%	9.0%
Otero County ISD	81.5%	18.5%	10.0%	8.5%
Quay County ISD	91.0%	9.0%	7.5%	1.5%
Rio Arriba County ISD	83.7%	16.3%	8.4%	7.9%
Roosevelt County ISD	0.0%	100.0%	100.0%	0.0%
San Juan County ISD	77.9%	22.1%	11.2%	10.9%
San Miguel County ISD	81.4%	18.6%	9.8%	8.8%
Sandoval County ISD	78.5%	21.5%	11.9%	9.6%
Santa Fe County ISD	84.1%	15.9%	9.3%	6.6%
Sierra County ISD	91.9%	8.1%	6.6%	1.5%
Socorro County ISD	86.7%	13.3%	8.2%	5.1%
South Dona Ana ISD	79.8%	20.2%	14.5%	5.7%
Southeast Bernalillo County ISD	79.1%	20.9%	11.3%	9.6%
Southwest Bernalillo County ISD	81.4%	18.6%	10.5%	8.1%
Taos County ISD	84.7%	15.3%	8.8%	6.5%
Torrance County ISD	82.0%	18.0%	11.3%	6.7%
Valencia North County ISD	78.9%	21.1%	12.3%	8.8%
Valencia South County ISD	0.0%	100.0%	100.0%	0.0%
West Dona Ana County ISD	82.3%	17.7%	12.2%	5.5%
Centralized Units				
Statewide Total	81.8%	18.2%	10.4%	7.8%

**SNAP Initial Disposition Rates by Region<sup>4,11</sup>**  
**February 2018**

Region	Approval Rate	Denial Rate	Need Based Denial Rate	Procedural Denial Rate
Region 1 - NW	80.9%	19.1%	10.4%	8.7%
Region 2 - NE	82.3%	17.7%	9.8%	7.9%
Region 3 - Central	82.0%	18.0%	9.8%	8.2%
Region 4 - SE	80.4%	19.6%	12.1%	7.5%
Region 5 - SW	82.5%	17.5%	11.5%	6.0%
Centralized Units				
Statewide Total	81.8%	18.2%	10.4%	7.8%





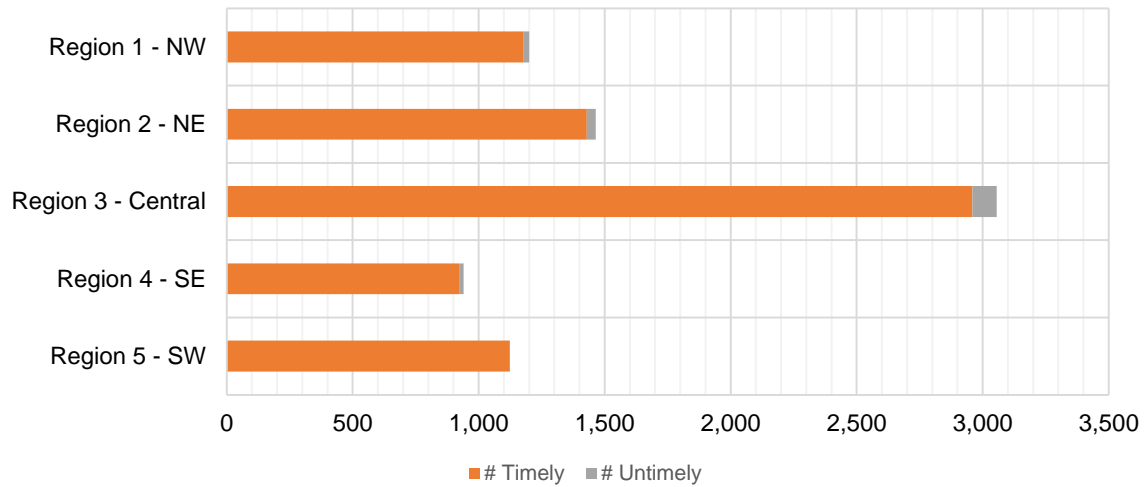
**SNAP Expedite Timeliness by Field Office<sup>13</sup>**  
**February 2018**

Office Name	Total Expedited Approvals	# Timely	# Untimely	Percentage Timely
Chaves County ISD	205	204	1	99.5 %
Cibola County ISD	110	108	2	98.2 %
Colfax County ISD	52	52	0	100.0 %
Curry County ISD	266	263	3	98.9 %
East Dona Ana County ISD	210	210	0	100.0 %
Eddy Artesia County ISD	45	45	0	100.0 %
Eddy Carlsbad County ISD	153	149	4	97.4 %
Grant County ISD	183	183	0	100.0 %
Guadalupe County ISD	22	22	0	100.0 %
Lea County ISD	203	195	8	96.1 %
Lincoln County ISD	67	65	2	97.0 %
Luna County ISD	100	100	0	100.0 %
McKinley County ISD	238	236	2	99.2 %
Northeast Bernalillo County ISD	1,029	994	35	96.6 %
Northwest Bernalillo County ISD	864	832	32	96.3 %
Otero County ISD	155	153	2	98.7 %
Quay County ISD	27	25	2	92.6 %
Rio Arriba County ISD	254	243	11	95.7 %
Roosevelt County ISD	1	1	0	100.0 %
San Juan County ISD	496	481	15	97.0 %
San Miguel County ISD	160	156	4	97.5 %
Sandoval County ISD	372	366	6	98.4 %
Santa Fe County ISD	428	417	11	97.4 %
Sierra County ISD	57	57	0	100.0 %
Socorro County ISD	76	74	2	97.4 %
South Dona Ana ISD	140	140	0	100.0 %
Southeast Bernalillo County ISD	420	405	15	96.4 %
Southwest Bernalillo County ISD	636	622	14	97.8 %
Taos County ISD	150	148	2	98.7 %
Torrance County ISD	107	106	1	99.1 %
Valencia North County ISD	224	220	4	98.2 %
West Dona Ana County ISD	336	335	1	99.7 %
<b>Statewide Total</b>	<b>7,786</b>	<b>7,607</b>	<b>179</b>	<b>97.7 %</b>

## SNAP Expedite Timeliness by Region<sup>13</sup> February 2018

Region	Total Expedited Approvals	# Timely	# Untimely	Percentage Timely
Region 1 - NW	1,201	1,176	25	97.9%
Region 2 - NE	1,465	1,429	36	97.5%
Region 3 - Central	3,056	2,959	97	96.8%
Region 4 - SE	940	922	18	98.1%
Region 5 - SW	1,124	1,121	3	99.7%
Statewide Total	7,786	7,607	179	97.7%

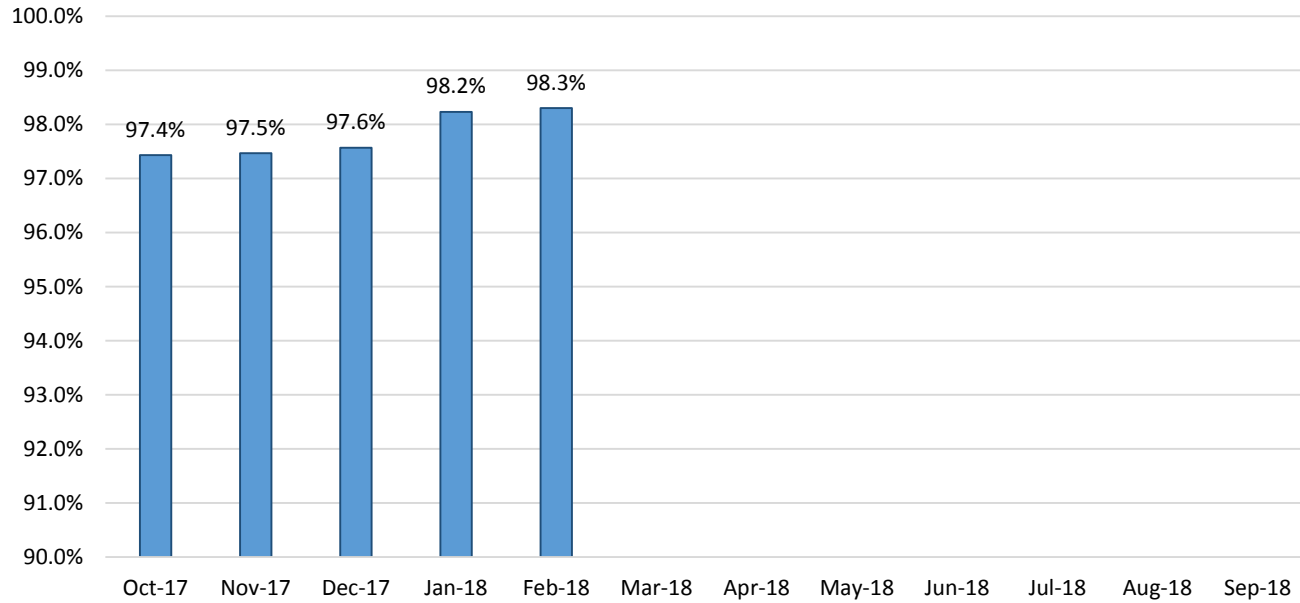
### SNAP Expedite - Timeliness



### SNAP: Percentage of Applications Processed Timely <sup>13</sup>

	Oct-17	Nov-17	Dec-17	Jan-18	Feb-18	Mar-18	Apr-18	May-18	Jun-18	Jul-18	Aug-18	Sep-18	Average
APT	97.4%	97.5%	97.6%	98.2%	98.3%								97.8%

### SNAP Application Processing Timeliness (APT)



**SNAP Non-Expedite: Percentage of Initial Applications Processed Timely by Field Office<sup>13</sup>**

	Oct-17	Nov-17	Dec-17	Jan-18	Feb-18	Mar-18	Apr-18	May-18	Jun-18	Jul-18	Aug-18	Sep-18	Average
Cibola	96.8%	97.2%	96.7%	92.9%	97.3%								96.2%
McKinley	97.4%	98.8%	98.6%	99.3%	99.3%								98.7%
San Juan	94.8%	93.5%	98.0%	97.8%	97.7%								96.4%
Sierra	100.0%	100.0%	100.0%	100.0%	100.0%								100.0%
Socorro	100.0%	96.8%	100.0%	98.9%	100.0%								99.1%
Valencia North	96.5%	96.3%	96.6%	96.9%	99.6%								97.2%
Valencia South	100.0%												100.0%
<b>NW Region 1 Total</b>	<b>96.5%</b>	<b>96.4%</b>	<b>98.0%</b>	<b>97.9%</b>	<b>98.7%</b>								<b>97.5%</b>
Colfax	100.0%	100.0%	98.2%	98.2%	100.0%								99.3%
Guadalupe	100.0%	100.0%	100.0%	100.0%	100.0%								100.0%
Quay	97.2%	100.0%	100.0%	100.0%	97.1%								98.9%
Rio Arriba	97.0%	99.4%	91.2%	95.3%	97.7%								96.1%
San Miguel	100.0%	98.5%	100.0%	99.4%	99.3%								99.4%
Sandoval	98.2%	98.6%	97.8%	98.8%	98.9%								98.5%
Santa Fe	97.6%	97.5%	99.6%	98.4%	99.3%								98.5%
Taos	98.7%	98.7%	98.7%	99.2%	100.0%								99.1%
<b>NE Region 2 Total</b>	<b>98.2%</b>	<b>98.6%</b>	<b>97.8%</b>	<b>98.4%</b>	<b>99.0%</b>								<b>98.4%</b>
NE Bernalillo	95.4%	95.7%	94.9%	97.1%	98.1%								96.2%
NW Bernalillo	97.6%	95.1%	96.7%	98.0%	97.0%								96.9%
SE Bernalillo	96.0%	96.8%	97.4%	96.8%	99.7%								97.3%
SW Bernalillo	97.9%	97.3%	99.1%	96.6%	96.8%								97.5%
Torrance	98.9%	98.2%	96.6%	99.0%	97.1%								98.0%
<b>Gen. Region 3 Total</b>	<b>96.9%</b>	<b>96.3%</b>	<b>96.9%</b>	<b>97.2%</b>	<b>97.7%</b>								<b>97.0%</b>
Chaves	99.3%	98.9%	98.5%	99.7%	98.5%								99.0%
Curry	95.7%	97.1%	97.9%	99.4%	99.1%								97.8%
Eddy Artesia	100.0%	97.2%	100.0%	100.0%	98.5%								99.1%
Eddy Carlsbad	94.8%	97.3%	100.0%	100.0%	96.8%								97.8%
Lea	97.0%	98.3%	99.5%	98.5%	99.5%								98.6%
Lincoln	97.8%	98.9%	100.0%	100.0%	100.0%								99.3%
Roosevelt	100.0%	98.6%	100.0%	98.5%	100.0%								99.4%
<b>SE Region 4 Total</b>	<b>97.6%</b>	<b>98.2%</b>	<b>99.1%</b>	<b>99.4%</b>	<b>98.8%</b>								<b>98.6%</b>
East Dona Ana	99.6%	98.9%	100.0%	99.7%	99.6%								99.6%
Grant	100.0%	99.0%	97.9%	100.0%	99.1%								99.2%
Luna	100.0%	99.4%	100.0%	97.7%	97.9%								99.0%
Otero	100.0%	98.9%	99.4%	100.0%	100.0%								99.7%
South Dona Ana	100.0%	99.6%	100.0%	100.0%	99.6%								99.8%
West Dona Ana	99.2%	98.7%	99.0%	100.0%	99.4%								99.3%
<b>SW Region 5 Total</b>	<b>99.7%</b>	<b>99.0%</b>	<b>99.5%</b>	<b>99.7%</b>	<b>99.4%</b>								<b>99.5%</b>
<b>STATE TOTAL</b>	<b>97.7%</b>	<b>97.5%</b>	<b>98.1%</b>	<b>98.3%</b>	<b>98.6%</b>								<b>98.0%</b>

**SNAP Expedite: Percentage of Initial Applications Processed Timely by Field Office<sup>13</sup>**

	Oct-17	Nov-17	Dec-17	Jan-18	Feb-18	Mar-18	Apr-18	May-18	Jun-18	Jul-18	Aug-18	Sep-18	Average
Cibola	94.1%	100.0%	92.2%	98.5%	98.2%								96.6%
McKinley	99.4%	99.4%	97.8%	97.3%	99.2%								98.6%
San Juan	95.8%	94.2%	96.5%	96.7%	97.0%								96.0%
Sierra	98.3%	100.0%	100.0%	100.0%	100.0%								99.7%
Socorro	98.9%	100.0%	94.4%	98.0%	97.4%								97.7%
Valencia North	97.1%	93.3%	97.1%	97.7%	98.2%								96.7%
Valencia South	100.0%	100.0%											100.0%
<b>NW Region 1 Total</b>	<b>97.0%</b>	<b>96.4%</b>	<b>96.6%</b>	<b>97.4%</b>	<b>97.9%</b>								<b>97.1%</b>
Colfax	98.6%	100.0%	100.0%	100.0%	100.0%								99.7%
Guadalupe	100.0%	100.0%	100.0%	100.0%	100.0%								100.0%
Quay	100.0%	100.0%	100.0%	94.9%	92.6%								97.5%
Rio Arriba	94.6%	97.3%	97.6%	97.3%	95.7%								96.5%
San Miguel	99.1%	98.3%	99.4%	98.1%	97.5%								98.5%
Sandoval	98.2%	98.3%	97.9%	98.4%	98.4%								98.2%
Santa Fe	97.5%	97.7%	96.7%	98.1%	97.4%								97.5%
Taos	98.7%	97.8%	95.7%	98.3%	98.7%								97.8%
<b>NE Region 2 Total</b>	<b>97.5%</b>	<b>98.0%</b>	<b>97.7%</b>	<b>98.1%</b>	<b>97.5%</b>								<b>97.8%</b>
NE Bernalillo	94.6%	96.4%	94.7%	98.2%	96.6%								96.1%
NW Bernalillo	97.6%	95.6%	95.6%	97.1%	96.3%								96.4%
SE Bernalillo	96.5%	95.7%	95.2%	96.6%	96.4%								96.1%
SW Bernalillo	96.6%	96.4%	96.9%	97.8%	97.8%								97.1%
Torrance	96.9%	96.5%	99.2%	97.7%	99.1%								97.9%
<b>Cen. Region 3 Total</b>	<b>96.3%</b>	<b>96.1%</b>	<b>95.7%</b>	<b>97.6%</b>	<b>96.8%</b>								<b>96.5%</b>
Chaves	98.1%	98.6%	99.2%	98.6%	99.5%								98.8%
Curry	96.0%	98.7%	98.1%	98.3%	98.8%								98.0%
Eddy Artesia	100.0%	98.4%	100.0%	95.9%	100.0%								98.9%
Eddy Carlsbad	98.5%	98.6%	98.3%	99.4%	97.4%								98.4%
Lea	98.4%	98.4%	98.3%	97.1%	96.1%								97.7%
Lincoln	96.7%	98.6%	98.4%	100.0%	97.0%								98.1%
Roosevelt	92.7%	100.0%	96.2%	100.0%	100.0%								97.8%
<b>SE Region 4 Total</b>	<b>97.4%</b>	<b>98.7%</b>	<b>98.4%</b>	<b>98.3%</b>	<b>98.1%</b>								<b>98.2%</b>
East Dona Ana	99.0%	98.8%	98.7%	99.7%	100.0%								99.2%
Grant	97.9%	100.0%	100.0%	98.0%	100.0%								99.2%
Luna	99.3%	100.0%	100.0%	99.3%	100.0%								99.7%
Otero	98.8%	98.4%	98.5%	98.4%	98.7%								98.6%
South Dona Ana	100.0%	99.4%	98.8%	99.0%	100.0%								99.4%
West Dona Ana	99.5%	99.5%	98.6%	99.1%	99.7%								99.3%
<b>SW Region 5 Total</b>	<b>99.1%</b>	<b>99.3%</b>	<b>99.0%</b>	<b>98.9%</b>	<b>99.7%</b>								<b>99.2%</b>
<b>STATE TOTAL</b>	<b>97.2%</b>	<b>97.3%</b>	<b>97.0%</b>	<b>97.9%</b>	<b>97.7%</b>								<b>97.4%</b>

**SNAP: Percentage of Denied Initial Applications Processed Within 30 Days by Field Office<sup>13</sup>**

	Oct-17	Nov-17	Dec-17	Jan-18	Feb-18	Mar-18	Apr-18	May-18	Jun-18	Jul-18	Aug-18	Sep-18	Average
Cibola	66.7%	50.0%	66.7%	65.9%	88.1%								67.5%
McKinley	59.0%	57.8%	65.9%	47.9%	81.7%								62.5%
San Juan	35.7%	51.8%	46.5%	66.8%	77.3%								55.6%
Sierra	95.5%	90.9%	90.5%	91.7%	100.0%								93.7%
Socorro	69.6%	68.2%	94.3%	100.0%	96.2%								85.6%
Valencia North	45.9%	41.8%	45.0%	44.1%	78.8%								51.1%
Valencia South													
<b>NW Region 1 Total</b>	<b>48.3%</b>	<b>53.2%</b>	<b>55.5%</b>	<b>61.8%</b>	<b>80.5%</b>								<b>59.9%</b>
Colfax	100.0%	100.0%	100.0%	100.0%	95.2%								99.0%
Guadalupe	73.3%	75.0%	90.0%	92.3%	75.0%								81.1%
Quay	83.3%	33.3%	66.7%	70.6%	100.0%								70.8%
Rio Arriba	70.1%	56.3%	43.0%	69.1%	72.3%								62.2%
San Miguel	66.2%	77.3%	90.0%	92.1%	90.0%								83.1%
Sandoval	70.8%	69.2%	74.6%	66.2%	85.8%								73.3%
Santa Fe	64.7%	70.6%	62.1%	44.3%	79.6%								64.3%
Taos	77.8%	79.2%	84.1%	84.4%	87.8%								82.6%
<b>NE Region 2 Total</b>	<b>70.8%</b>	<b>69.7%</b>	<b>68.8%</b>	<b>66.1%</b>	<b>83.3%</b>								<b>71.7%</b>
NE Bernalillo	43.5%	40.5%	44.9%	47.0%	84.7%								52.1%
NW Bernalillo	41.7%	42.8%	48.7%	50.0%	78.9%								52.4%
SE Bernalillo	52.3%	52.0%	74.2%	60.9%	93.5%								66.6%
SW Bernalillo	63.9%	62.9%	50.9%	67.3%	95.3%								68.1%
Torrance	60.4%	68.2%	51.0%	54.4%	84.8%								63.8%
<b>Gen. Region 3 Total</b>	<b>49.7%</b>	<b>50.0%</b>	<b>53.4%</b>	<b>55.5%</b>	<b>87.5%</b>								<b>59.2%</b>
Chaves	86.4%	85.7%	89.3%	91.5%	91.7%								88.9%
Curry	63.5%	60.3%	80.9%	87.5%	95.0%								77.4%
Eddy Artesia	75.8%	58.1%	76.9%	96.0%	86.7%								78.7%
Eddy Carlsbad	60.7%	67.6%	76.4%	85.7%	94.8%								77.0%
Lea	86.3%	63.8%	68.0%	82.6%	94.3%								79.0%
Lincoln	55.0%	78.4%	94.9%	88.6%	89.3%								81.2%
Roosevelt	77.1%	68.1%	88.4%	91.5%									81.3%
<b>SE Region 4 Total</b>	<b>74.4%</b>	<b>69.2%</b>	<b>81.2%</b>	<b>88.3%</b>	<b>93.0%</b>								<b>81.2%</b>
East Dona Ana	81.2%	77.6%	72.7%	91.2%	92.1%								83.0%
Grant	73.5%	81.1%	72.1%	80.0%	92.6%								79.9%
Luna	55.8%	51.1%	65.9%	65.3%	90.2%								65.7%
Otero	40.3%	38.6%	47.9%	40.7%	81.1%								49.7%
South Dona Ana	70.8%	68.1%	63.2%	80.6%	81.1%								72.8%
West Dona Ana	65.6%	55.7%	70.5%	79.5%	85.2%								71.3%
<b>SW Region 5 Total</b>	<b>66.6%</b>	<b>62.3%</b>	<b>66.5%</b>	<b>75.4%</b>	<b>86.4%</b>								<b>71.4%</b>
<b>STATE TOTAL</b>	<b>59.5%</b>	<b>58.9%</b>	<b>62.6%</b>	<b>66.5%</b>	<b>86.1%</b>								<b>66.7%</b>

**SNAP Renewals Processed by Field Office<sup>20</sup>**  
**February 2018**

Office	Approvals	Closures	Need Based Closures	Procedural Closures
Chaves County ISD	219	115	19	96
Cibola County ISD	135	66	13	53
Colfax County ISD	41	29	1	28
Curry County ISD	222	86	6	80
East Dona Ana County ISD	281	121	10	111
Eddy Artesia County ISD	67	33	5	28
Eddy Carlsbad County ISD	78	74	17	57
Grant County ISD	120	60	5	55
Guadalupe County ISD	24	3	1	2
Hidalgo County ISD	14	5	0	5
Lea County ISD	189	115	11	104
Lincoln County ISD	55	29	3	26
Luna County ISD	163	71	4	67
McKinley County ISD	417	166	13	153
Northeast Bernalillo County ISD	681	377	39	338
Northwest Bernalillo County ISD	538	303	31	272
Otero County ISD	169	115	14	101
Quay County ISD	40	24	2	22
Rio Arriba County ISD	271	95	18	77
Roosevelt County ISD	0	0	0	0
San Juan County ISD	485	238	24	214
San Miguel County ISD	199	88	4	84
Sandoval County ISD	380	155	16	139
Santa Fe County ISD	422	182	15	167
Sierra County ISD	102	36	8	28
Socorro County ISD	84	39	3	36
South Dona Ana ISD	351	137	21	116
Southeast Bernalillo County ISD	424	199	22	177
Southwest Bernalillo County ISD	893	281	30	251
Taos County ISD	134	61	9	52
Torrance County ISD	145	59	6	53
Valencia North County ISD	293	114	11	103
Valencia South County ISD	0	0	0	0
West Dona Ana County ISD	365	166	18	148
Centralized Units	0	0	0	0
<b>Statewide Total</b>	<b>8,001</b>	<b>3,642</b>	<b>399</b>	<b>3,243</b>

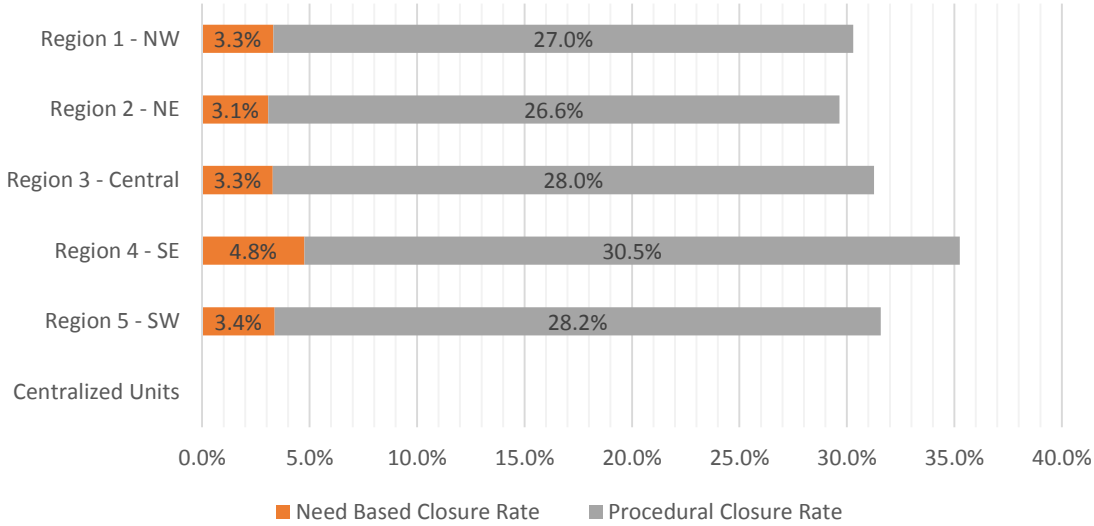
**SNAP Renewal Disposition Rates by Field Office<sup>20</sup>**  
**February 2018**

Office	Approval Rate	Closure Rate	Need Based Closure Rate	Procedural Closure Rate
Chaves County ISD	65.6%	34.4%	5.7%	28.7%
Cibola County ISD	67.2%	32.8%	6.5%	26.4%
Colfax County ISD	58.6%	41.4%	1.4%	40.0%
Curry County ISD	72.1%	27.9%	1.9%	26.0%
East Dona Ana County ISD	69.9%	30.1%	2.5%	27.6%
Eddy Artesia County ISD	67.0%	33.0%	5.0%	28.0%
Eddy Carlsbad County ISD	51.3%	48.7%	11.2%	37.5%
Grant County ISD	66.7%	33.3%	2.8%	30.6%
Guadalupe County ISD	88.9%	11.1%	3.7%	7.4%
Hidalgo County ISD	73.7%	26.3%	0.0%	26.3%
Lea County ISD	62.2%	37.8%	3.6%	34.2%
Lincoln County ISD	65.5%	34.5%	3.6%	31.0%
Luna County ISD	69.7%	30.3%	1.7%	28.6%
McKinley County ISD	71.5%	28.5%	2.2%	26.2%
Northeast Bernalillo County ISD	64.4%	35.6%	3.7%	31.9%
Northwest Bernalillo County ISD	64.0%	36.0%	3.7%	32.3%
Otero County ISD	59.5%	40.5%	4.9%	35.6%
Quay County ISD	62.5%	37.5%	3.1%	34.4%
Rio Arriba County ISD	74.0%	26.0%	4.9%	21.0%
Roosevelt County ISD	0.0%	0.0%	0.0%	0.0%
San Juan County ISD	67.1%	32.9%	3.3%	29.6%
San Miguel County ISD	69.3%	30.7%	1.4%	29.3%
Sandoval County ISD	71.0%	29.0%	3.0%	26.0%
Santa Fe County ISD	69.9%	30.1%	2.5%	27.6%
Sierra County ISD	73.9%	26.1%	5.8%	20.3%
Socorro County ISD	68.3%	31.7%	2.4%	29.3%
South Dona Ana ISD	71.9%	28.1%	4.3%	23.8%
Southeast Bernalillo County ISD	68.1%	31.9%	3.5%	28.4%
Southwest Bernalillo County ISD	76.1%	23.9%	2.6%	21.4%
Taos County ISD	68.7%	31.3%	4.6%	26.7%
Torrance County ISD	71.1%	28.9%	2.9%	26.0%
Valencia North County ISD	72.0%	28.0%	2.7%	25.3%
Valencia South County ISD	0.0%	0.0%	0.0%	0.0%
West Dona Ana County ISD	68.7%	31.3%	3.4%	27.9%
Centralized Units	0.0%	0.0%	0.0%	0.0%
Statewide Total	68.7%	31.3%	3.4%	27.9%



**SNAP Renewal Disposition Rates by Region<sup>20</sup>**  
**February 2018**

Region	Approval Rate	Closure Rate	Need Based Closure Rate	Procedural Closure Rate
Region 1 - NW	69.7%	30.3%	3.3%	27.0%
Region 2 - NE	70.3%	29.7%	3.1%	26.6%
Region 3 - Central	68.7%	31.3%	3.3%	28.0%
Region 4 - SE	64.7%	35.3%	4.8%	30.5%
Region 5 - SW	68.4%	31.6%	3.4%	28.2%
Centralized Units				
Statewide Total	68.7%	31.3%	3.4%	27.9%



SNAP: Percentage of Approved Renewal Applications Processed by Normal Accessibility Date <sup>11</sup>													
	Oct-17	Nov-17	Dec-17	Jan-18	Feb-18	Mar-18	Apr-18	May-18	Jun-18	Jul-18	Aug-18	Sep-18	Average
Cibola		71.2%	73.1%	79.4%	90.4%								78.5%
McKinley		90.4%	92.0%	95.6%	98.3%								94.1%
San Juan		85.9%	80.5%	89.6%	94.2%								87.6%
Sierra		98.1%	93.6%	92.8%	99.0%								95.9%
Socorro		92.5%	89.7%	93.8%	100.0%								94.0%
Valencia North		84.1%	86.9%	95.8%	98.6%								91.3%
Valencia South													
<b>NW Region 1 Total</b>		<b>87.1%</b>	<b>86.0%</b>	<b>91.2%</b>	<b>96.8%</b>								<b>90.2%</b>
Colfax		87.8%	82.5%	97.9%	100.0%								92.0%
Guadalupe		94.4%	93.1%	100.0%	95.8%								95.8%
Quay		94.3%	89.5%	100.0%	100.0%								95.9%
Rio Arriba		79.7%	71.9%	94.2%	90.0%								84.0%
San Miguel		90.4%	95.7%	98.5%	96.5%								95.3%
Sandoval		90.1%	93.8%	96.2%	96.3%								94.1%
Santa Fe		87.1%	92.0%	95.7%	96.9%								92.9%
Taos		90.8%	91.5%	94.6%	97.0%								93.5%
<b>NE Region 2 Total</b>		<b>89.3%</b>	<b>88.8%</b>	<b>97.1%</b>	<b>96.6%</b>								<b>92.9%</b>
NE Bernalillo		71.8%	72.1%	85.0%	91.2%								80.0%
NW Bernalillo		85.5%	80.4%	93.0%	96.1%								88.7%
SE Bernalillo		79.7%	81.6%	91.7%	96.5%								87.4%
SW Bernalillo		83.4%	89.0%	91.8%	96.1%								90.1%
Torrance		74.5%	74.3%	90.3%	92.4%								82.9%
<b>Gen. Region 3 Total</b>		<b>79.0%</b>	<b>79.5%</b>	<b>90.3%</b>	<b>94.4%</b>								<b>85.8%</b>
Chaves		91.2%	92.0%	95.3%	98.6%								94.3%
Curry		94.1%	81.9%	94.9%	94.6%								91.4%
Eddy Artesia		94.1%	91.9%	95.2%	98.5%								94.9%
Eddy Carlsbad		75.8%	90.8%	90.1%	93.6%								87.6%
Lea		91.8%	90.9%	94.0%	95.8%								93.1%
Lincoln		87.5%	92.6%	95.1%	100.0%								93.8%
Roosevelt		93.6%	86.7%										90.1%
<b>SE Region 4 Total</b>		<b>89.7%</b>	<b>89.5%</b>	<b>94.1%</b>	<b>96.8%</b>								<b>92.6%</b>
East Dona Ana		94.8%	93.1%	96.5%	98.2%								95.7%
Grant		90.5%	93.5%	100.0%	96.7%								95.2%
Luna		91.7%	84.0%	91.4%	95.1%								90.6%
Otero		87.3%	86.5%	97.5%	93.5%								91.2%
South Dona Ana		94.3%	93.1%	99.4%	99.1%								96.5%
West Dona Ana		97.4%	95.0%	97.9%	98.9%								97.3%
<b>SW Region 5 Total</b>		<b>92.7%</b>	<b>90.9%</b>	<b>97.1%</b>	<b>96.9%</b>								<b>94.4%</b>
<b>STATE TOTAL</b>		<b>86.4%</b>	<b>86.3%</b>	<b>93.6%</b>	<b>95.9%</b>								<b>90.6%</b>

*Includes cases in which the Renewal Packet was received after the 15th of the month, the due date for uninterrupted benefits.  
No data available for October 2017*

SNAP: Percentage of Approved Renewal Applications Processed by Normal Accessibility Date <sup>11</sup>													
	Oct-17	Nov-17	Dec-17	Jan-18	Feb-18	Mar-18	Apr-18	May-18	Jun-18	Jul-18	Aug-18	Sep-18	Average
Cibola		72.8%	86.1%	82.3%	92.7%								83.5%
McKinley		92.8%	93.9%	97.6%	99.0%								95.8%
San Juan		89.0%	85.1%	92.8%	96.4%								90.8%
Sierra		100.0%	97.5%	97.1%	100.0%								98.7%
Socorro		94.7%	95.7%	96.9%	100.0%								96.8%
Valencia North		89.1%	93.1%	96.3%	98.8%								94.4%
Valencia South													
<b>NW Region 1 Total</b>		<b>89.8%</b>	<b>91.9%</b>	<b>93.8%</b>	<b>97.8%</b>								<b>93.3%</b>
Colfax		95.1%	91.2%	100.0%	100.0%								96.6%
Guadalupe		96.7%	92.9%	100.0%	100.0%								97.4%
Quay		100.0%	95.6%	100.0%	100.0%								98.9%
Rio Arriba		90.5%	84.5%	95.6%	94.6%								91.3%
San Miguel		93.6%	96.9%	100.0%	96.5%								96.7%
Sandoval		93.1%	97.0%	98.7%	98.5%								96.8%
Santa Fe		91.6%	97.0%	97.8%	97.9%								96.1%
Taos		95.8%	94.8%	96.8%	98.9%								96.6%
<b>NE Region 2 Total</b>		<b>94.6%</b>	<b>93.7%</b>	<b>98.6%</b>	<b>98.3%</b>								<b>96.3%</b>
NE Bernalillo		75.7%	77.9%	90.1%	93.2%								84.2%
NW Bernalillo		88.7%	84.5%	95.0%	97.5%								91.4%
SE Bernalillo		85.2%	87.3%	94.9%	97.7%								91.3%
SW Bernalillo		88.9%	93.5%	95.2%	98.6%								94.0%
Torrance		83.1%	80.7%	97.2%	95.5%								89.1%
<b>Gen. Region 3 Total</b>		<b>84.3%</b>	<b>84.8%</b>	<b>94.5%</b>	<b>96.5%</b>								<b>90.0%</b>
Chaves		92.0%	92.0%	96.8%	99.5%								95.1%
Curry		94.6%	85.4%	96.7%	96.3%								93.3%
Eddy Artesia		100.0%	96.0%	100.0%	100.0%								99.0%
Eddy Carlsbad		80.3%	94.4%	95.7%	94.1%								91.1%
Lea		94.6%	94.2%	97.5%	97.6%								96.0%
Lincoln		88.5%	95.7%	95.9%	100.0%								95.0%
Roosevelt		92.9%	85.0%										88.9%
<b>SE Region 4 Total</b>		<b>91.8%</b>	<b>91.8%</b>	<b>97.1%</b>	<b>97.9%</b>								<b>94.7%</b>
East Dona Ana		96.8%	97.8%	99.0%	99.2%								98.2%
Grant		94.2%	99.1%	100.0%	100.0%								98.3%
Luna		96.9%	90.2%	92.9%	96.5%								94.1%
Otero		96.2%	96.4%	100.0%	97.8%								97.6%
South Dona Ana		97.4%	97.4%	100.0%	99.7%								98.6%
West Dona Ana		99.1%	98.2%	99.1%	100.0%								99.1%
<b>SW Region 5 Total</b>		<b>96.8%</b>	<b>96.5%</b>	<b>98.5%</b>	<b>98.9%</b>								<b>97.7%</b>
<b>STATE TOTAL</b>		<b>90.4%</b>	<b>91.3%</b>	<b>96.2%</b>	<b>97.6%</b>								<b>93.9%</b>

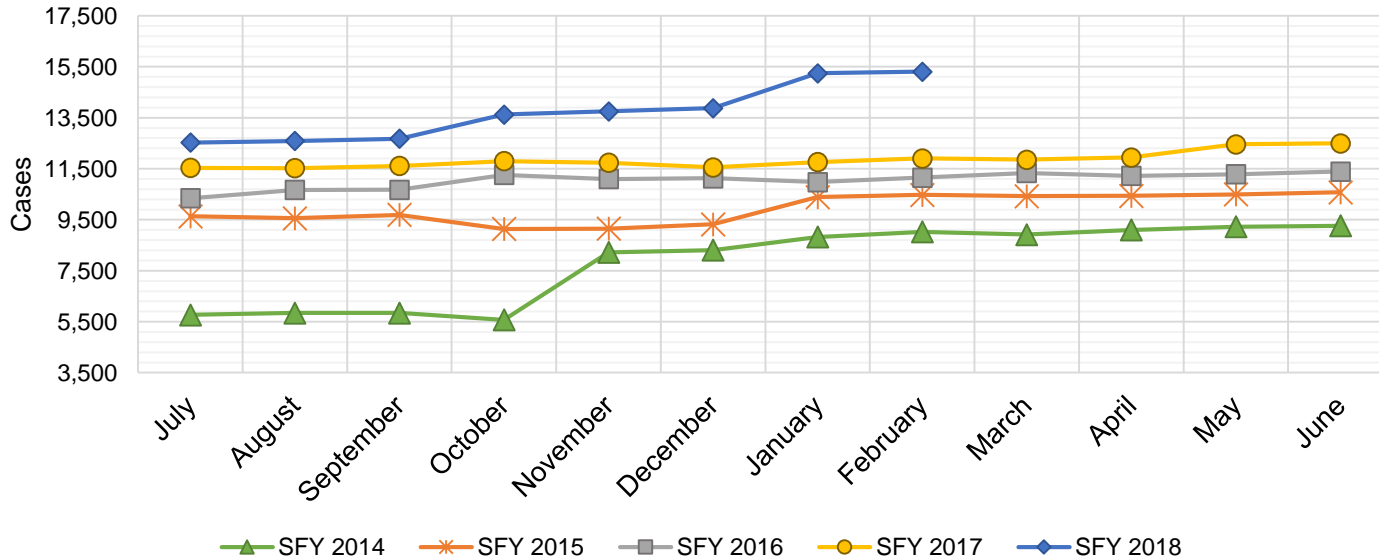
Only includes cases in which the Renewal Packet was received by the 15th of the month, the due date for uninterrupted benefits.  
No data available for October 2017

SNAP: Percentage of Closures at Renewal Processed by Certification End Date <sup>11</sup>													
	Oct-17	Nov-17	Dec-17	Jan-18	Feb-18	Mar-18	Apr-18	May-18	Jun-18	Jul-18	Aug-18	Sep-18	Average
Cibola		6.8%	3.3%	2.5%	9.1%								5.4%
McKinley		3.7%	6.7%	6.8%	7.8%								6.3%
San Juan		7.0%	5.1%	5.7%	8.0%								6.5%
Sierra		19.2%	17.1%	8.8%	25.0%								17.5%
Socorro		11.8%	4.3%	0.0%	7.7%								6.0%
Valencia North		6.2%	9.8%	4.8%	10.5%								7.8%
Valencia South													
<b>NW Region 1 Total</b>		<b>9.1%</b>	<b>7.7%</b>	<b>4.8%</b>	<b>11.4%</b>								<b>8.2%</b>
Colfax		6.3%	11.1%	10.0%	3.4%								7.7%
Guadalupe		7.7%	0.0%	0.0%	33.3%								10.3%
Quay		15.8%	6.7%	0.0%	4.2%								6.7%
Rio Arriba		6.1%	3.9%	2.9%	13.7%								6.6%
San Miguel		4.7%	9.0%	8.6%	5.7%								7.0%
Sandoval		12.9%	12.8%	3.0%	10.3%								9.8%
Santa Fe		3.0%	5.8%	9.9%	4.9%								5.9%
Taos		4.1%	3.7%	6.7%	3.3%								4.4%
<b>NE Region 2 Total</b>		<b>7.6%</b>	<b>6.6%</b>	<b>5.1%</b>	<b>9.9%</b>								<b>7.3%</b>
NE Bernalillo		3.0%	5.7%	3.5%	8.5%								5.2%
NW Bernalillo		3.4%	3.8%	20.4%	51.8%								19.9%
SE Bernalillo		4.1%	6.1%	4.2%	7.5%								5.5%
SW Bernalillo		7.2%	6.6%	6.6%	7.5%								7.0%
Torrance		3.6%	7.6%	5.1%	5.1%								5.4%
<b>Cen. Region 3 Total</b>		<b>4.3%</b>	<b>6.0%</b>	<b>8.0%</b>	<b>16.1%</b>								<b>8.6%</b>
Chaves		7.7%	12.2%	8.2%	13.9%								10.5%
Curry		8.0%	3.8%	5.1%	5.8%								5.7%
Eddy Artesia		6.9%	10.0%	10.0%	9.1%								9.0%
Eddy Carlsbad		8.6%	4.7%	3.8%	6.8%								5.9%
Lea		5.3%	14.8%	2.2%	7.0%								7.3%
Lincoln		2.9%	9.3%	15.4%	10.3%								9.5%
Roosevelt		15.0%	5.4%	0.0%									6.8%
<b>SE Region 4 Total</b>		<b>7.8%</b>	<b>8.6%</b>	<b>6.4%</b>	<b>8.8%</b>								<b>7.9%</b>
East Dona Ana		12.9%	9.1%	5.6%	9.9%								9.4%
Grant		6.0%	4.7%	3.4%	1.7%								3.9%
Luna		5.6%	1.4%	3.2%	7.0%								4.3%
Otero		2.9%	5.5%	3.5%	9.6%								5.4%
South Dona Ana		13.8%	7.6%	14.3%	16.8%								13.1%
West Dona Ana		8.9%	8.4%	6.8%	11.4%								8.9%
<b>SW Region 5 Total</b>		<b>8.3%</b>	<b>6.1%</b>	<b>6.1%</b>	<b>9.4%</b>								<b>7.5%</b>
<b>STATE TOTAL</b>		<b>6.6%</b>	<b>7.1%</b>	<b>6.9%</b>	<b>12.3%</b>								<b>8.2%</b>

*Includes cases for which no renewal application was received.  
No data available for October 2017*

## State SNAP Supplement

SFY 2014 <sup>12</sup>			SFY 2015 <sup>12,9</sup>			SFY 2016 <sup>9</sup>			SFY 2017 <sup>9</sup>			SFY 2018 <sup>9</sup>		
	Cases	Expenditures		Cases	Expenditures		Cases	Expenditures		Cases	Expenditures		Cases	Expenditures
Jul-13	5,767	\$48,040	Jul-14	9,635	\$88,859	Jul-15	10,345	\$86,143	Jul-16	11,537	\$95,553	Jul-17	12,526	\$97,568
Aug-13	5,841	\$48,417	Aug-14	9,559	\$87,757	Aug-15	10,669	\$88,197	Aug-16	11,522	\$95,107	Aug-17	12,589	\$98,954
Sep-13	5,841	\$48,732	Sep-14	9,688	\$87,372	Sep-15	10,676	\$88,426	Sep-16	11,613	\$94,472	Sep-17	12,679	\$97,546
Oct-13	5,575	\$46,610	Oct-14	9,136	\$70,490	Oct-15	11,262	\$96,758	Oct-16	11,797	\$96,679	Oct-17	13,628	\$117,343
Nov-13	8,219	\$69,564	Nov-14	9,152	\$69,955	Nov-15	11,099	\$91,996	Nov-16	11,735	\$93,689	Nov-17	13,748	\$119,055
Dec-13	8,310	\$71,839	Dec-14	9,322	\$73,226	Dec-15	11,125	\$90,771	Dec-16	11,556	\$93,739	Dec-17	13,877	\$120,585
Jan-14	8,826	\$77,933	Jan-15	10,384	\$84,578	Jan-16	10,977	\$92,760	Jan-17	11,763	\$96,074	Jan-18	15,246	\$135,993
Feb-14	9,024	\$84,758	Feb-15	10,477	\$82,901	Feb-16	11,153	\$95,363	Feb-17	11,907	\$98,251	Feb-18	15,308	\$137,296
Mar-14	8,916	\$80,597	Mar-15	10,423	\$87,461	Mar-16	11,332	\$96,751	Mar-17	11,853	\$96,693	Mar-18		
Apr-14	9,098	\$84,599	Apr-15	10,440	\$79,605	Apr-16	11,222	\$93,959	Apr-17	11,944	\$97,060	Apr-18		
May-14	9,226	\$85,035	May-15	10,491	\$82,511	May-16	11,283	\$95,271	May-17	12,457	\$96,940	May-18		
Jun-14	9,264	\$84,329	Jun-15	10,575	\$85,134	Jun-16	11,389	\$93,061	Jun-17	12,498	\$97,405	Jun-18		
<b>TOTAL</b>	<b>93,907</b>	<b>\$830,453</b>		<b>119,282</b>	<b>\$979,850</b>		<b>132,532</b>	<b>\$1,109,455</b>		<b>142,182</b>	<b>\$1,151,662</b>		<b>109,601</b>	<b>\$924,341</b>
<b>AVERAGE</b>	<b>7,826</b>	<b>\$69,204</b>		<b>9,940</b>	<b>\$81,654</b>		<b>11,044</b>	<b>\$92,455</b>		<b>11,849</b>	<b>\$95,972</b>		<b>13,700</b>	<b>\$115,543</b>



\* January 2018 case count corrected from January 2018 MSR

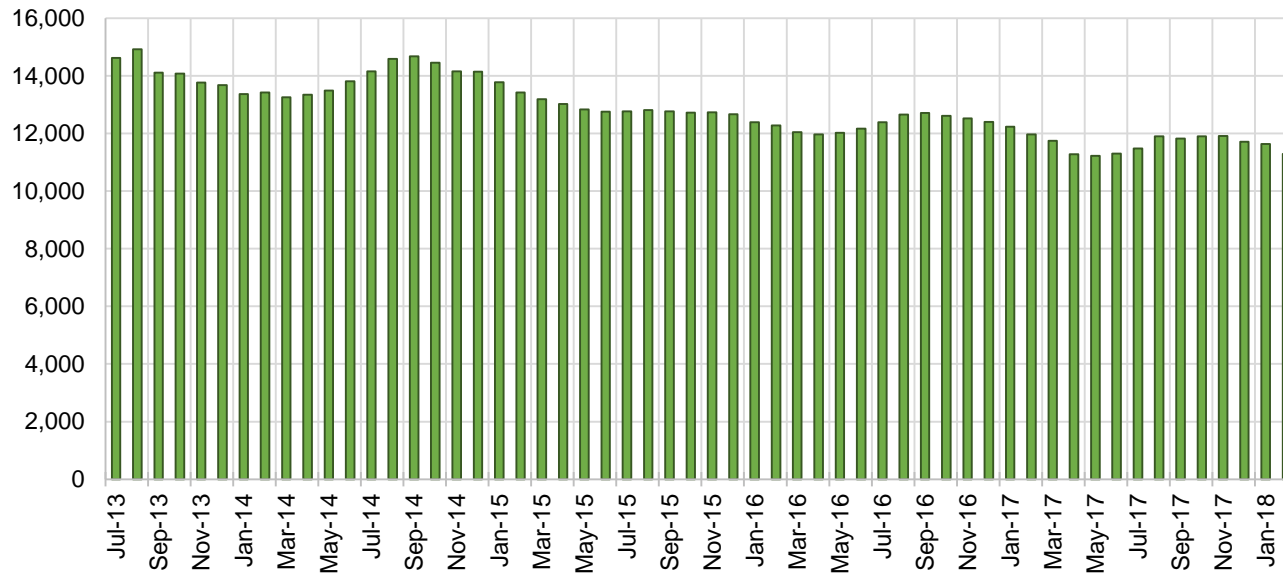
## TANF Cases by Field Office<sup>6</sup>

Office				Percent Change	
	Feb-17	Jan-18	Feb-18	Feb-17- Feb-18	Jan-18- Feb-18
Chaves County ISD	585	540	507	-13.3%	-6.1%
Cibola County ISD	141	154	149	5.7%	-3.2%
Colfax County ISD	69	74	74	7.2%	0.0%
Curry County ISD	507	700	691	36.3%	-1.3%
East Dona Ana County ISD	493	496	475	-3.7%	-4.2%
Eddy Artesia County ISD	144	126	123	-14.6%	-2.4%
Eddy Carlsbad County ISD	218	154	150	-31.2%	-2.6%
Grant County ISD	196	188	185	-5.6%	-1.6%
Guadalupe County ISD	25	32	35	40.0%	9.4%
Hidalgo County ISD	23	25	24	4.3%	-4.0%
Lea County ISD	481	442	390	-18.9%	-11.8%
Lincoln County ISD	101	103	98	-3.0%	-4.9%
Luna County ISD	225	228	220	-2.2%	-3.5%
McKinley County ISD	66	61	59	-10.6%	-3.3%
Northeast Bernalillo County ISD	946	970	958	1.3%	-1.2%
Northwest Bernalillo County ISD	796	813	790	-0.8%	-2.8%
Otero County ISD	292	313	287	-1.7%	-8.3%
Quay County ISD	77	72	68	-11.7%	-5.6%
Rio Arriba County ISD	437	409	409	-6.4%	0.0%
Roosevelt County ISD	147	1	0	-100.0%	-100.0%
San Juan County ISD	318	306	313	-1.6%	2.3%
San Miguel County ISD	223	201	187	-16.1%	-7.0%
Sandoval County ISD	542	571	550	1.5%	-3.7%
Santa Fe County ISD	518	453	436	-15.8%	-3.8%
Sierra County ISD	93	74	69	-25.8%	-6.8%
Socorro County ISD	101	100	96	-5.0%	-4.0%
South Dona Ana ISD	737	695	677	-8.1%	-2.6%
Southeast Bernalillo County ISD	699	638	622	-11.0%	-2.5%
Southwest Bernalillo County ISD	1,127	1,161	1,134	0.6%	-2.3%
Taos County ISD	142	150	149	4.9%	-0.7%
Torrance County ISD	185	192	201	8.6%	4.7%
Valencia North County ISD	509	488	471	-7.5%	-3.5%
Valencia South County ISD	1	0	0	-100.0%	N/A
West Dona Ana County ISD	800	701	692	-13.5%	-1.3%
Centralized Units	2	1	5	150.0%	400.0%
Statewide Total	11,966	11,632	11,294	-5.6%	-2.9%

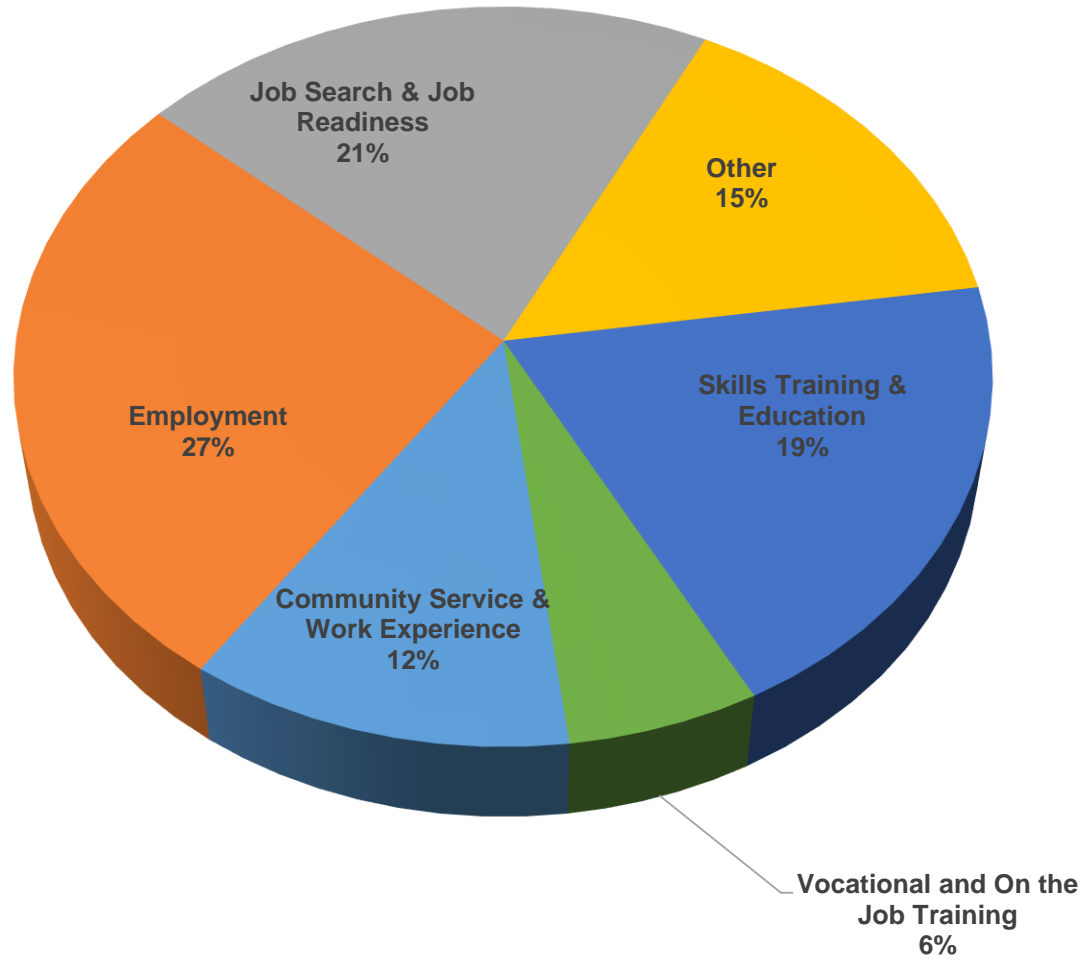
## TANF Cases by Region<sup>6</sup>

Region	Feb-17	Jan-18	Feb-18	Percent Change	
				Feb-17- Feb-18	Jan-18- Feb-18
Region 1- NW	1,229	1,183	1,157	-5.9%	-2.2%
Region 2- NE	2,033	1,962	1,908	-6.1%	-2.8%
Region 3- Central	3,753	3,774	3,705	-1.3%	-1.8%
Region 4- SE	2,183	2,066	1,959	-10.3%	-5.2%
Region 5- SW	2,766	2,646	2,560	-7.4%	-3.3%
Centralized Units	2	1	5	150.0%	400.0%
<b>Statewide Total</b>	<b>11,966</b>	<b>11,632</b>	<b>11,294</b>	<b>-5.6%</b>	<b>-2.9%</b>

### TANF Caseload: SFY-14 to Current

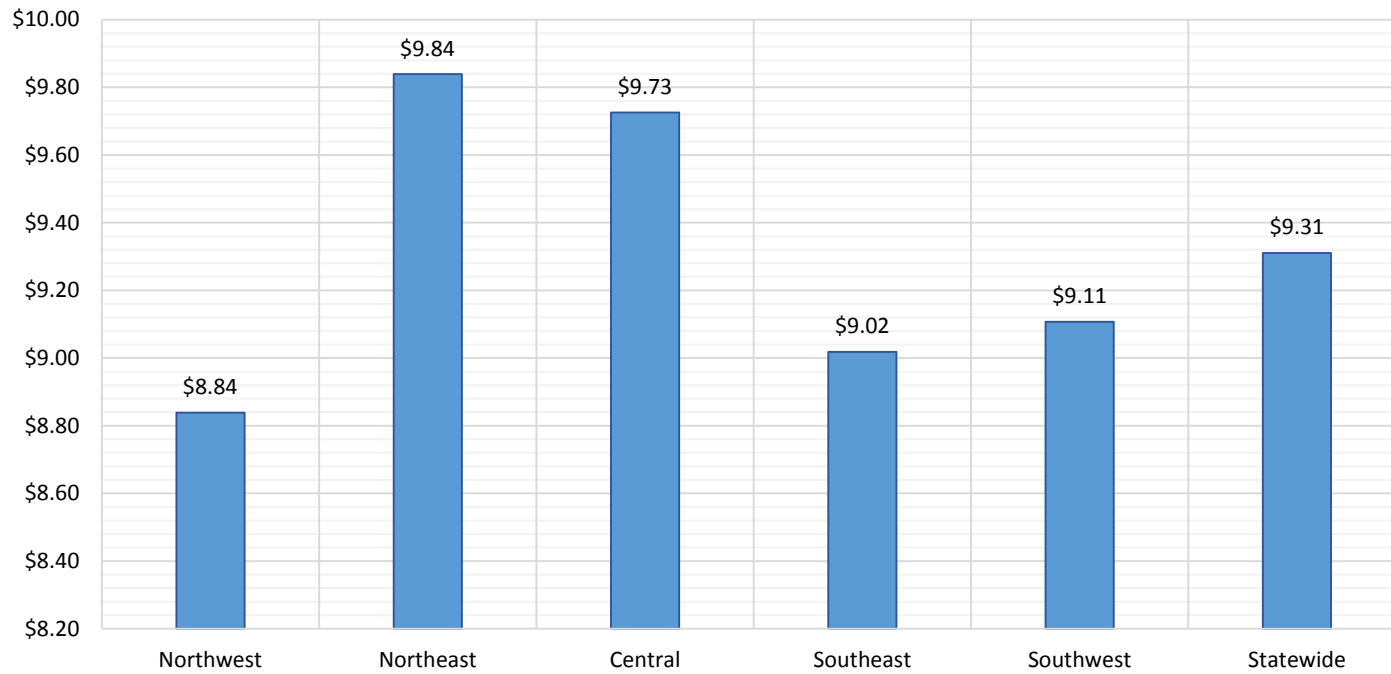


## NM Works Activity Placements on February 28, 2018 as reported by SL Start<sup>14</sup>

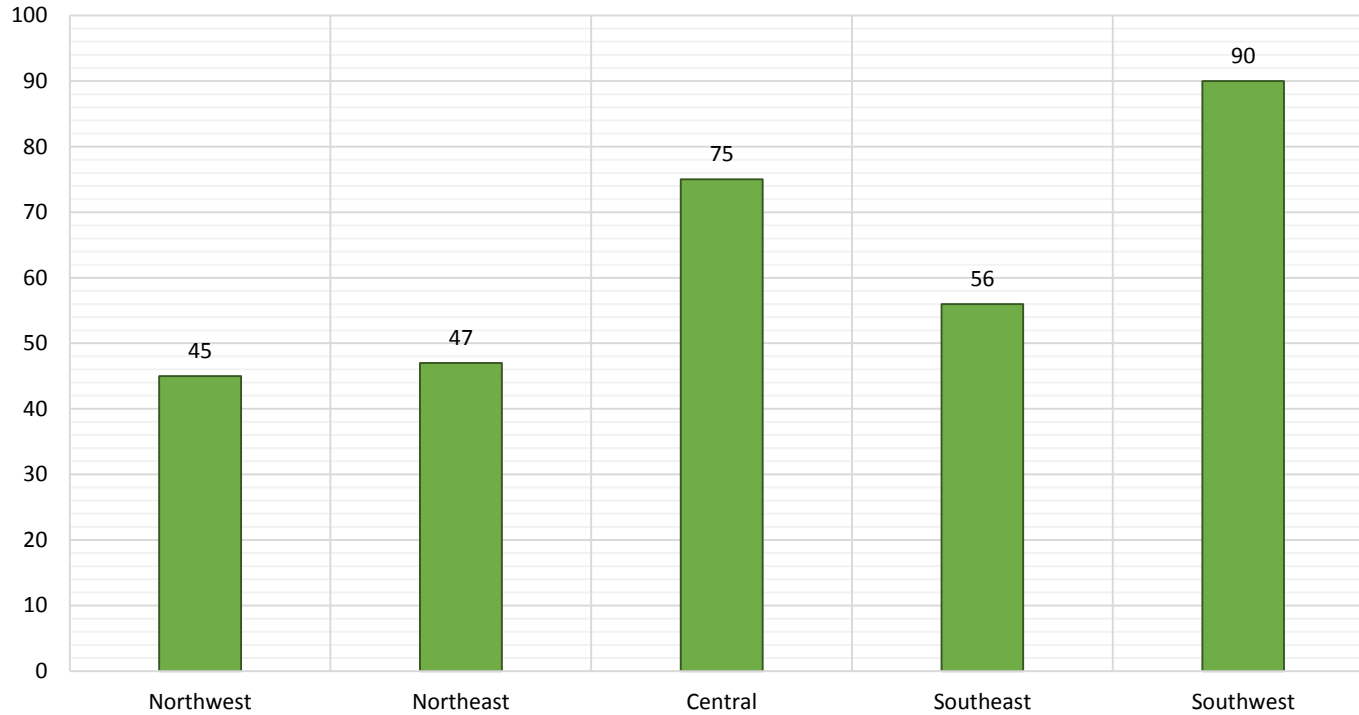




Average Starting Hourly Wage of February 2018 TANF Employments  
as reported by SL Start<sup>15</sup>



Number of New Employments in February 2018 by Region  
as reported by SL Start<sup>15</sup>  
Statewide Total: 313



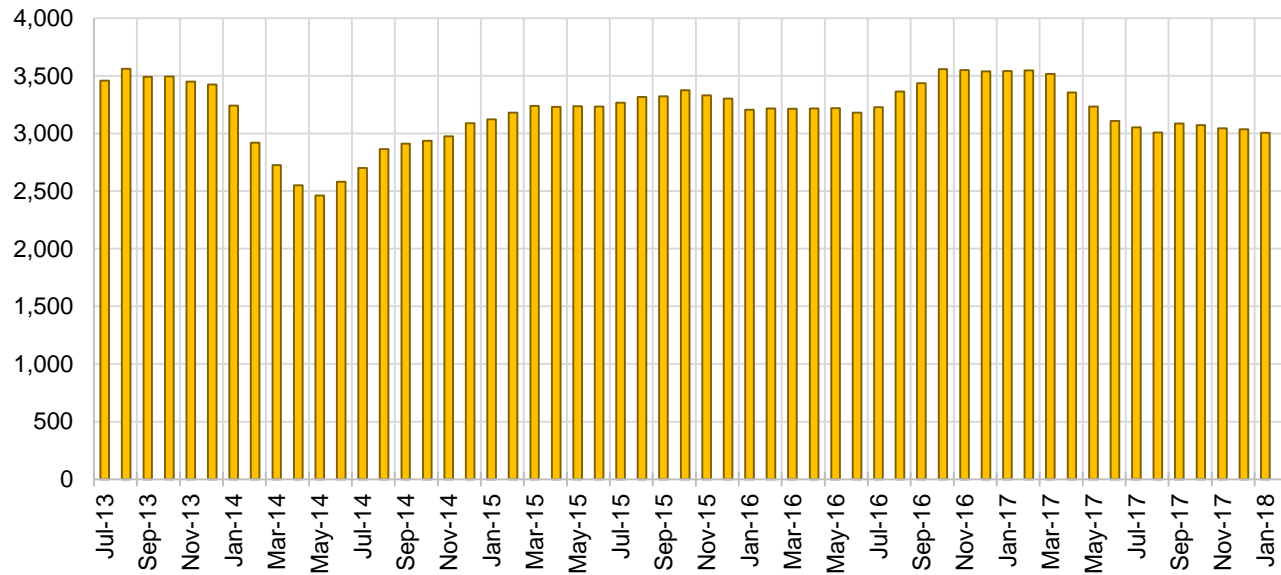
## General Assistance Cases by Field Office<sup>6</sup>

Office	Feb-17	Jan-18	Feb-18	Percent Change	
				Feb-17- Feb-18	Jan-18- Feb-18
Chaves County ISD	143	131	134	-6.3%	2.3%
Cibola County ISD	49	48	46	-6.1%	-4.2%
Colfax County ISD	36	19	25	-30.6%	31.6%
Curry County ISD	94	77	78	-17.0%	1.3%
East Dona Ana County ISD	119	114	122	2.5%	7.0%
Eddy Artesia County ISD	23	27	25	8.7%	-7.4%
Eddy Carlsbad County ISD	83	66	72	-13.3%	9.1%
Grant County ISD	82	65	66	-19.5%	1.5%
Guadalupe County ISD	14	16	15	7.1%	-6.3%
Hidalgo County ISD	16	11	13	-18.8%	18.2%
Lea County ISD	100	80	78	-22.0%	-2.5%
Lincoln County ISD	46	30	30	-34.8%	0.0%
Luna County ISD	58	58	56	-3.4%	-3.4%
McKinley County ISD	28	47	49	75.0%	4.3%
Northeast Bernalillo County ISD	386	344	354	-8.3%	2.9%
Northwest Bernalillo County ISD	334	298	309	-7.5%	3.7%
Otero County ISD	99	95	95	-4.0%	0.0%
Quay County ISD	30	22	24	-20.0%	9.1%
Rio Arriba County ISD	109	86	79	-27.5%	-8.1%
Roosevelt County ISD	20	0	0	-100.0%	N/A
San Juan County ISD	102	135	136	33.3%	0.7%
San Miguel County ISD	87	75	76	-12.6%	1.3%
Sandoval County ISD	157	119	120	-23.6%	0.8%
Santa Fe County ISD	210	138	139	-33.8%	0.7%
Sierra County ISD	39	28	26	-33.3%	-7.1%
Socorro County ISD	50	41	39	-22.0%	-4.9%
South Dona Ana ISD	64	61	56	-12.5%	-8.2%
Southeast Bernalillo County ISD	204	174	171	-16.2%	-1.7%
Southwest Bernalillo County ISD	272	214	209	-23.2%	-2.3%
Taos County ISD	70	54	56	-20.0%	3.7%
Torrance County ISD	71	47	49	-31.0%	4.3%
Valencia North County ISD	132	112	112	-15.2%	0.0%
Valencia South County ISD	0	0	0	N/A	N/A
West Dona Ana County ISD	220	175	184	-16.4%	5.1%
Centralized Units	0	0	0	N/A	N/A
<b>Statewide Total</b>	<b>3,547</b>	<b>3,007</b>	<b>3,043</b>	<b>-14.2%</b>	<b>1.2%</b>

## General Assistance Cases by Region<sup>6</sup>

Region	Feb-17	Jan-18	Feb-18	Percent Change	
				Feb-17- Feb-18	Jan-18- Feb-18
Region 1 - NW	400	411	408	2.0%	-0.7%
Region 2 - NE	713	529	534	-25.1%	0.9%
Region 3 - Central	1,267	1,077	1,092	-13.8%	1.4%
Region 4 - SE	509	411	417	-18.1%	1.5%
Region 5 - SW	658	579	592	-10.0%	2.2%
Centralized Units	0	0	0	N/A	N/A
Statewide Total	3,547	3,007	3,043	-14.2%	1.2%

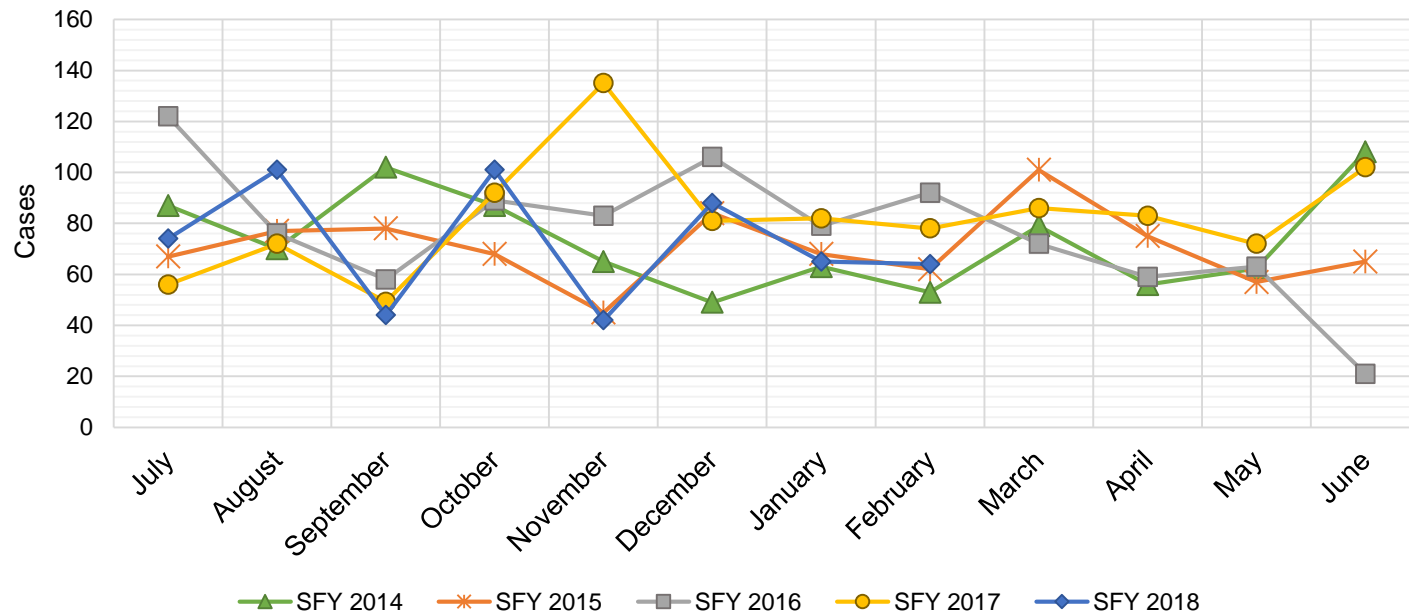
### General Assistance Caseload: SFY-14 to Current



## General Assistance Interim Assistance Reimbursements<sup>16</sup>

SFY 2014			SFY 2015			SFY 2016			SFY 2017			SFY 2018		
	Cases	Expenditures		Cases	Expenditures		Cases	Expenditures		Cases	Expenditures		Cases	Expenditures
Jul-13	87	\$185,368	Jul-14	67	\$144,679	Jul-15	122	\$342,648	Jul-16	56	\$164,970	Jul-17	74	\$241,438
Aug-13	70	\$184,639	Aug-14	77	\$244,233	Aug-15	76	\$245,236	Aug-16	72	\$223,182	Aug-17	101	\$339,301
Sep-13	102	\$268,243	Sep-14	78	\$168,421	Sep-15	58	\$170,093	Sep-16	49	\$158,027	Sep-17	44	\$131,229
Oct-13	87	\$165,578	Oct-14	68	\$182,265	Oct-15	89	\$277,912	Oct-16	92	\$257,830	Oct-17	101	\$335,752
Nov-13	65	\$139,197	Nov-14	45	\$134,482	Nov-15	83	\$238,948	Nov-16	135	\$402,305	Nov-17	42	\$139,572
Dec-13	49	\$147,853	Dec-14	84	\$239,926	Dec-15	106	\$388,102	Dec-16	81	\$227,569	Dec-17	88	\$245,453
Jan-14	63	\$178,944	Jan-15	68	\$227,066	Jan-16	79	\$239,263	Jan-17	82	\$274,050	Jan-18	65	\$258,239
Feb-14	53	\$130,352	Feb-15	62	\$159,564	Feb-16	92	\$296,332	Feb-17	78	\$227,569	Feb-18	64	\$195,815
Mar-14	79	\$176,756	Mar-15	101	\$317,899	Mar-16	72	\$254,360	Mar-17	86	\$278,219	Mar-18		
Apr-14	56	\$155,245	Apr-15	75	\$199,038	Apr-16	59	\$208,631	Apr-17	83	\$267,187	Apr-18		
May-14	62	\$138,827	May-15	57	\$167,383	May-16	63	\$182,241	May-17	72	\$232,836	May-18		
Jun-14	108	\$241,016	Jun-15	65	\$188,159	Jun-16	21	\$51,760	Jun-17	102	\$306,228	Jun-18		

TOTAL	881	\$2,112,017	847	\$2,373,115	920	\$2,895,525	988	\$3,019,972	579	\$1,886,799
AVERAGE	73	\$176,001	71	\$197,760	77	\$241,294	82	\$251,664	72	\$235,850



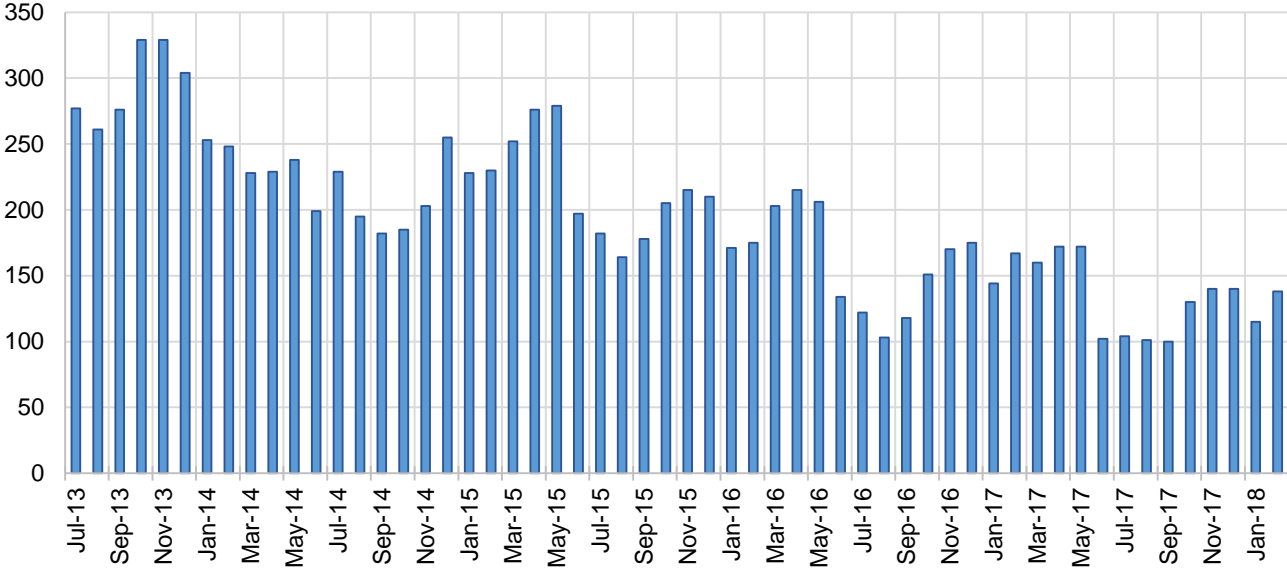
## Education Works Cases by Field Office<sup>6</sup>

Office	Feb-17	Jan-18	Feb-18	Percent Change	
				Feb-17- Feb-18	Jan-18- Feb-18
Chaves County ISD	4	2	2	-50.0%	0.0%
Cibola County ISD	0	1	1	N/A	0.0%
Colfax County ISD	1	0	0	-100.0%	N/A
Curry County ISD	2	5	5	150.0%	0.0%
East Dona Ana County ISD	6	8	11	83.3%	37.5%
Eddy Artesia County ISD	0	2	3	N/A	50.0%
Eddy Carlsbad County ISD	2	2	2	0.0%	0.0%
Grant County ISD	4	8	10	150.0%	25.0%
Guadalupe County ISD	0	0	0	N/A	N/A
Hidalgo County ISD	0	0	0	N/A	N/A
Lea County ISD	7	2	4	-42.9%	100.0%
Lincoln County ISD	0	0	1	N/A	N/A
Luna County ISD	2	3	3	50.0%	0.0%
McKinley County ISD	0	0	0	N/A	N/A
Northeast Bernalillo County ISD	29	8	12	-58.6%	50.0%
Northwest Bernalillo County ISD	14	8	9	-35.7%	12.5%
Otero County ISD	2	2	3	50.0%	50.0%
Quay County ISD	2	0	0	-100.0%	N/A
Rio Arriba County ISD	2	1	2	0.0%	100.0%
Roosevelt County ISD	2	1	0	-100.0%	-100.0%
San Juan County ISD	4	3	3	-25.0%	0.0%
San Miguel County ISD	8	1	2	-75.0%	100.0%
Sandoval County ISD	16	10	13	-18.8%	30.0%
Santa Fe County ISD	5	11	13	160.0%	18.2%
Sierra County ISD	0	0	0	N/A	N/A
Socorro County ISD	2	2	2	0.0%	0.0%
South Dona Ana ISD	17	17	18	5.9%	5.9%
Southeast Bernalillo County ISD	9	4	4	-55.6%	0.0%
Southwest Bernalillo County ISD	12	6	7	-41.7%	16.7%
Taos County ISD	0	1	1	N/A	0.0%
Torrance County ISD	1	0	0	-100.0%	N/A
Valencia North County ISD	1	0	0	-100.0%	N/A
Valencia South County ISD	0	0	0	N/A	N/A
West Dona Ana County ISD	13	7	7	-46.2%	0.0%
Centralized Units	0	0	0	N/A	N/A
Statewide Total	167	115	138	-17.4%	20.0%

## Education Works Cases by Region<sup>6</sup>

				Percent Change	
Region	Feb-17	Jan-18	Feb-18	Feb-17- Feb-18	Jan-18- Feb-18
Region 1 - NW	7	6	6	-14.3%	0.0%
Region 2 - NE	34	24	31	-8.8%	29.2%
Region 3 - Central	65	26	32	-50.8%	23.1%
Region 4 - SE	17	14	17	0.0%	21.4%
Region 5 - SW	44	45	52	18.2%	15.6%
Centralized Units	0	0	0	N/A	N/A
Statewide Total	167	115	138	-17.4%	20.0%

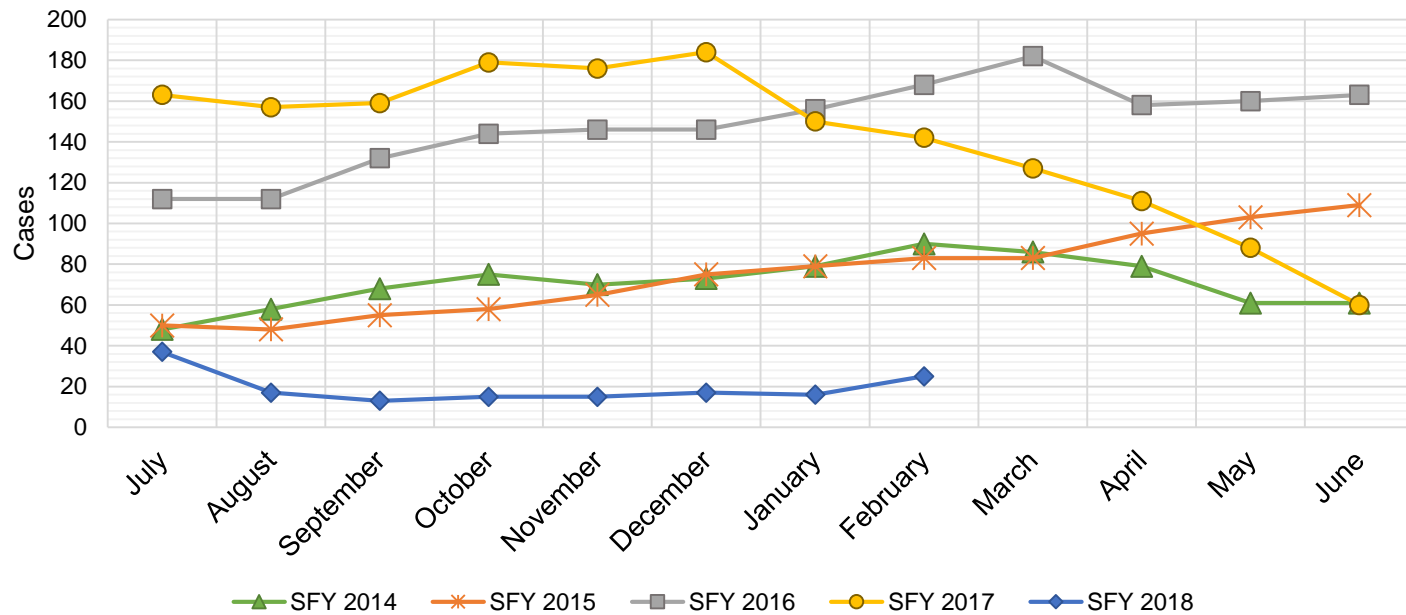
**Education Works Caseload: SFY-14 to Current**



## Refugee Cash Assistance

SFY 2014 <sup>12</sup>			SFY 2015 <sup>8,12,9</sup>			SFY 2016 <sup>8,9</sup>			SFY 2017 <sup>8,9</sup>			SFY 2018 <sup>8,9</sup>		
Cases	Expenditures		Cases	Expenditures		Cases	Expenditures		Cases	Expenditures		Cases	Expenditures	
Jul-13	48	\$12,013	Jul-14	50	\$11,679	Jul-15	112	\$27,516	Jul-16	163	\$39,756	Jul-17	37	\$9,981
Aug-13	58	\$16,129	Aug-14	48	\$11,760	Aug-15	112	\$27,438	Aug-16	157	\$40,115	Aug-17	17	\$4,704
Sep-13	68	\$19,061	Sep-14	55	\$13,094	Sep-15	132	\$31,321	Sep-16	159	\$39,359	Sep-17	13	\$3,159
Oct-13	75	\$20,962	Oct-14	58	\$13,726	Oct-15	144	\$36,153	Oct-16	179	\$41,520	Oct-17	15	\$3,543
Nov-13	70	\$21,880	Nov-14	65	\$16,461	Nov-15	146	\$36,515	Nov-16	176	\$45,434	Nov-17	15	\$4,263
Dec-13	73	\$22,053	Dec-14	75	\$18,699	Dec-15	146	\$35,763	Dec-16	184	\$46,673	Dec-17	17	\$4,795
Jan-14	79	\$22,670	Jan-15	79	\$19,009	Jan-16	156	\$38,686	Jan-17	150	\$38,790	Jan-18	16	\$4,166
Feb-14	90	\$23,227	Feb-15	83	\$21,349	Feb-16	168	\$41,368	Feb-17	142	\$37,956	Feb-18	25	\$5,723
Mar-14	86	\$21,808	Mar-15	83	\$20,730	Mar-16	182	\$45,307	Mar-17	127	\$33,066	Mar-18		
Apr-14	79	\$20,109	Apr-15	95	\$23,495	Apr-16	158	\$41,143	Apr-17	111	\$29,183	Apr-18		
May-14	61	\$15,703	May-15	103	\$25,363	May-16	160	\$38,332	May-17	88	\$23,343	May-18		
Jun-14	61	\$14,783	Jun-15	109	\$27,958	Jun-16	163	\$39,856	Jun-17	60	\$15,538	Jun-18		

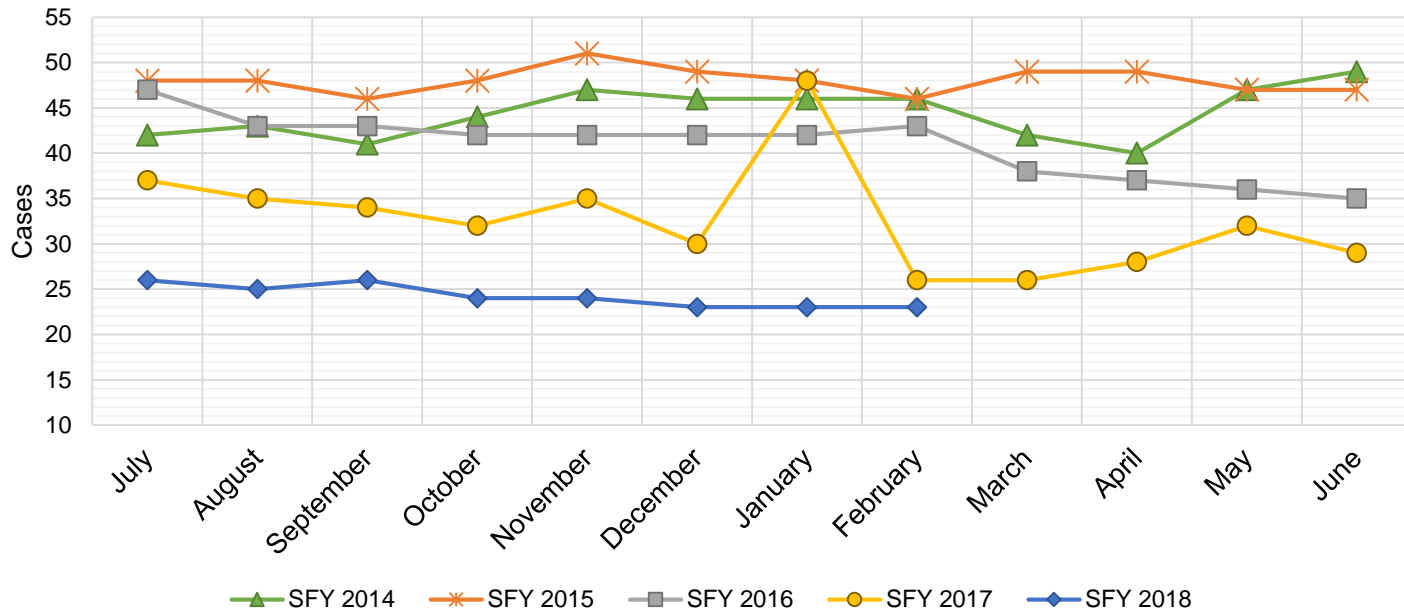
TOTAL	848	\$230,398	903	\$223,323	1,779	\$439,397	1,696	\$430,732	155	\$40,334
AVERAGE	71	\$19,200	75	\$18,610	148	\$36,616	141	\$35,894	19	\$5,042





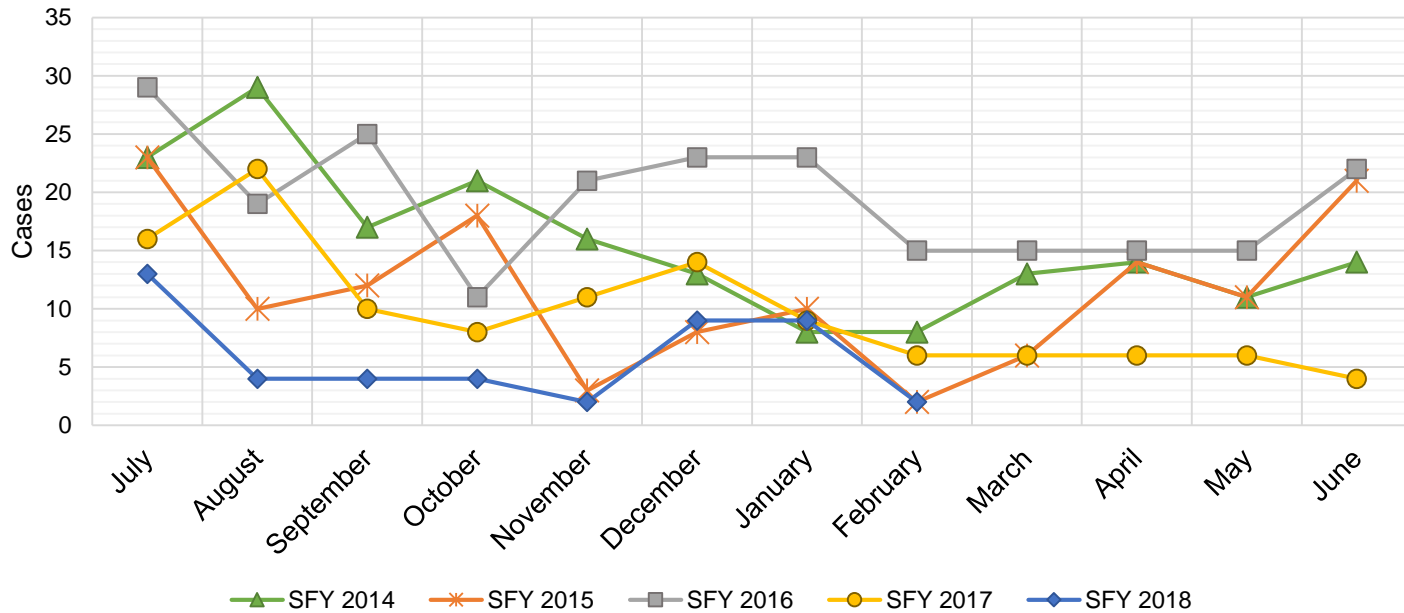
## State Supplement for Residential Care

SFY 2014 <sup>12</sup>			SFY 2015 <sup>12,9</sup>			SFY 2016 <sup>9</sup>			SFY 2017 <sup>9</sup>			SFY 2018 <sup>9</sup>		
Cases	Expenditures		Cases	Expenditures		Cases	Expenditures		Cases	Expenditures		Cases	Expenditures	
Jul-13	42	\$4,400	Jul-14	48	\$4,700	Jul-15	47	\$4,700	Jul-16	37	\$3,700	Jul-17	26	\$2,700
Aug-13	43	\$4,300	Aug-14	48	\$5,000	Aug-15	43	\$4,900	Aug-16	35	\$3,500	Aug-17	25	\$2,500
Sep-13	41	\$4,700	Sep-14	46	\$4,600	Sep-15	43	\$4,500	Sep-16	34	\$3,400	Sep-17	26	\$2,700
Oct-13	44	\$4,500	Oct-14	48	\$4,600	Oct-15	42	\$4,400	Oct-16	32	\$3,200	Oct-17	24	\$2,500
Nov-13	47	\$4,700	Nov-14	51	\$5,600	Nov-15	42	\$4,200	Nov-16	35	\$3,500	Nov-17	24	\$2,400
Dec-13	46	\$4,600	Dec-14	49	\$5,000	Dec-15	42	\$4,200	Dec-16	30	\$3,000	Dec-17	23	\$2,200
Jan-14	46	\$4,700	Jan-15	48	\$4,900	Jan-16	42	\$4,200	Jan-17	48	\$4,800	Jan-18	23	\$2,400
Feb-14	46	\$4,700	Feb-15	46	\$4,800	Feb-16	43	\$4,300	Feb-17	26	\$2,600	Feb-18	23	\$2,300
Mar-14	42	\$4,500	Mar-15	49	\$4,800	Mar-16	38	\$3,800	Mar-17	26	\$2,600	Mar-18		
Apr-14	40	\$4,200	Apr-15	49	\$5,400	Apr-16	37	\$3,700	Apr-17	28	\$2,800	Apr-18		
May-14	47	\$5,000	May-15	47	\$4,700	May-16	36	\$3,600	May-17	32	\$3,200	May-18		
Jun-14	49	\$4,900	Jun-15	47	\$5,300	Jun-16	35	\$3,500	Jun-17	29	\$2,900	Jun-18		
<b>TOTAL</b>	<b>533</b>	<b>\$55,200</b>	<b>576</b>	<b>\$59,400</b>	<b>490</b>	<b>\$50,000</b>	<b>392</b>	<b>\$39,200</b>	<b>194</b>	<b>\$19,700</b>				
<b>AVERAGE</b>	<b>44</b>	<b>\$4,600</b>	<b>48</b>	<b>\$4,950</b>	<b>41</b>	<b>\$4,167</b>	<b>33</b>	<b>\$3,267</b>	<b>24</b>	<b>\$2,463</b>				



## TANF Diversion Payments

SFY 2014 <sup>12</sup>			SFY 2015 <sup>12,9</sup>			SFY 2016 <sup>9</sup>			SFY 2017 <sup>9</sup>			SFY 2018 <sup>9</sup>		
	Cases	Expenditures		Cases	Expenditures		Cases	Expenditures		Cases	Expenditures		Cases	Expenditures
Jul-13	23	\$46,500	Jul-14	23	\$48,098	Jul-15	29	\$62,074	Jul-16	16	\$30,843	Jul-17	13	\$26,500
Aug-13	29	\$54,500	Aug-14	10	\$21,810	Aug-15	19	\$33,584	Aug-16	22	\$42,731	Aug-17	4	\$12,000
Sep-13	17	\$36,500	Sep-14	12	\$23,500	Sep-15	25	\$47,977	Sep-16	10	\$21,000	Sep-17	4	\$4,000
Oct-13	21	\$42,500	Oct-14	18	\$30,589	Oct-15	11	\$20,500	Oct-16	8	\$16,744	Oct-17	4	\$16,000
Nov-13	16	\$28,953	Nov-14	3	\$4,411	Nov-15	21	\$45,500	Nov-16	11	\$24,500	Nov-17	2	\$15,500
Dec-13	13	\$25,500	Dec-14	8	\$14,634	Dec-15	23	\$45,389	Dec-16	14	\$26,611	Dec-17	9	\$17,500
Jan-14	8	\$16,000	Jan-15	10	\$18,000	Jan-16	23	\$41,874	Jan-17	9	\$18,500	Jan-18	9	\$21,731
Feb-14	8	\$16,994	Feb-15	2	\$5,500	Feb-16	15	\$28,500	Feb-17	6	\$12,000	Feb-18	2	\$7,731
Mar-14	13	\$27,396	Mar-15	6	\$12,000	Mar-16	15	\$27,008	Mar-17	6	\$11,000	Mar-18		
Apr-14	14	\$28,000	Apr-15	14	\$26,000	Apr-16	15	\$31,389	Apr-17	6	\$12,000	Apr-18		
May-14	11	\$20,500	May-15	11	\$21,500	May-16	15	\$31,916	May-17	6	\$11,500	May-18		
Jun-14	14	\$29,911	Jun-15	21	\$40,039	Jun-16	22	\$43,000	Jun-17	4	\$13,500	Jun-18		
<b>TOTAL</b>	<b>187</b>	<b>\$373,254</b>	<b>138</b>	<b>\$266,081</b>	<b>233</b>	<b>\$458,711</b>	<b>118</b>	<b>\$240,929</b>	<b>47</b>	<b>\$120,962</b>				
<b>AVERAGE</b>	<b>16</b>	<b>\$31,105</b>	<b>12</b>	<b>\$22,173</b>	<b>19</b>	<b>\$38,226</b>	<b>10</b>	<b>\$20,077</b>	<b>6</b>	<b>\$15,120</b>				

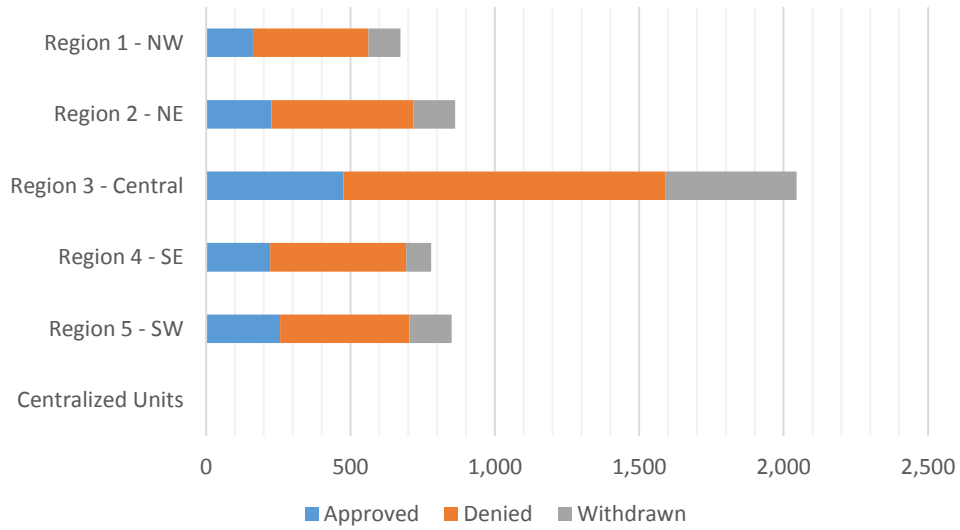


**Cash Assistance Applications by Field Office<sup>4,11</sup>**  
**February 2018**

Office	Approved	Denied	Withdrawn	Total Cases Processed
Chaves County ISD	59	108	26	193
Cibola County ISD	17	44	11	72
Colfax County ISD	12	24	5	41
Curry County ISD	63	113	18	194
East Dona Ana County ISD	53	82	31	166
Eddy Artesia County ISD	22	26	1	49
Eddy Carlsbad County ISD	32	75	17	124
Grant County ISD	29	50	13	92
Guadalupe County ISD	5	6	0	11
Hidalgo County ISD	0	0	0	0
Lea County ISD	34	126	19	179
Lincoln County ISD	12	23	5	40
Luna County ISD	18	22	18	58
McKinley County ISD	12	55	24	91
Northeast Bernalillo County ISD	123	343	172	638
Northwest Bernalillo County ISD	130	306	124	560
Otero County ISD	31	81	29	141
Quay County ISD	8	10	7	25
Rio Arriba County ISD	40	82	18	140
Roosevelt County ISD	0	0	0	0
San Juan County ISD	60	176	41	277
San Miguel County ISD	21	52	8	81
Sandoval County ISD	65	138	53	256
Santa Fe County ISD	56	145	38	239
Sierra County ISD	5	14	2	21
Socorro County ISD	10	25	5	40
South Dona Ana ISD	50	66	21	137
Southeast Bernalillo County ISD	78	189	67	334
Southwest Bernalillo County ISD	118	229	68	415
Taos County ISD	20	34	16	70
Torrance County ISD	27	49	22	98
Valencia North County ISD	58	86	28	172
Valencia South County ISD	0	0	0	0
West Dona Ana County ISD	75	147	34	256
Centralized Units	0	0	0	0
<b>Statewide Total</b>	<b>1,343</b>	<b>2,926</b>	<b>941</b>	<b>5,210</b>

**Cash Assistance Applications by Region<sup>4,11</sup>**  
**February 2018**

	Approved	Denied	Withdrawn	Total Cases Processed
Region				
Region 1 - NW	162	400	111	673
Region 2 - NE	227	491	145	863
Region 3 - Central	476	1,116	453	2,045
Region 4 - SE	222	471	86	779
Region 5 - SW	256	448	146	850
Centralized Units	0	0	0	0
<b>Statewide Total</b>	<b>1,343</b>	<b>2,926</b>	<b>941</b>	<b>5,210</b>



**Children Youth and Families Department**  
**Children Receiving Child Care Assistance Subsidies By County**

County	Feb 2017	Mar 2017	Apr 2017	May 2017	June 2017	July 2017	Aug 2017	Sep 2017	Oct 2017	Nov 2017	Dec 2017	Jan 2018	Feb 2018	Change Fr. Cases	Last Year Percent
Bernalillo	7,068	7,170	7,385	7,519	7,895	7,547	7,616	8,154	7,848	7,985	7,903	7,801	7,739	671	9.5%
Catron	0	0	0	0	0	0	0	0	0	0	5	5	0	0	0.0%
Chaves	756	759	768	796	860	826	821	889	884	870	855	843	823	67	8.9%
Cibola	284	282	294	299	305	293	294	311	304	303	296	291	289	5	1.8%
Colfax	40	41	38	39	46	46	41	44	41	42	42	47	50	10	25.0%
Curry	398	398	437	445	480	486	459	422	446	467	470	493	514	116	29.1%
De Baca	10	12	13	14	14	12	11	11	9	11	10	10	8	-2	-20.0%
Dona Ana	4,047	4,084	4,217	4,309	4,499	4,509	4,473	4,693	4,585	4,581	4,492	4,349	4,382	335	8.3%
Eddy	275	283	294	301	306	292	287	313	297	297	263	256	257	-18	-6.5%
Grant	135	142	153	159	161	134	114	164	161	157	159	139	127	-8	-5.9%
Guadalupe	16	17	17	16	16	16	16	15	16	16	16	14	11	-5	-31.3%
Harding	0	0	0	0	0	0	0	0	0	0	0	0	0	0	0.0%
Hidalgo	35	35	35	39	40	37	37	39	39	35	32	32	36	1	2.9%
Lea	715	729	748	781	818	837	856	954	909	895	833	824	827	112	15.7%
Lincoln	139	135	141	136	147	146	145	150	147	136	132	129	129	-10	-7.2%
Los Alamos	15	13	15	16	16	17	16	19	18	14	13	13	14	-1	-6.7%
Luna	154	159	164	177	188	165	176	177	177	166	171	167	161	7	4.5%
McKinley	164	171	182	170	171	145	136	161	165	167	166	168	156	-8	-4.9%
Mora	20	20	21	21	21	18	18	19	18	20	21	20	18	-2	-10.0%
Otero	442	416	481	498	532	500	491	530	525	518	531	519	533	91	20.6%
Out of State	12	14	12	11	10	14	11	12	14	12	3	9	12	0	0.0%
Quay	38	40	38	35	39	35	36	39	35	35	35	35	36	-2	-5.3%
Rio Arriba	147	144	137	140	149	144	145	159	163	166	165	154	151	4	2.7%
Roosevelt	120	125	123	118	134	123	125	137	120	120	127	119	117	-3	-2.5%
San Juan	911	911	946	956	997	979	960	1,132	1,050	1,043	1,039	1,005	1,036	125	13.7%
San Miguel	374	373	366	367	382	366	356	362	368	371	372	357	353	-21	-5.6%
Sandoval	852	873	878	890	938	932	948	974	859	839	836	794	774	-78	-9.2%
Santa Fe	487	477	490	499	536	534	520	580	554	547	526	514	523	36	7.4%
Sierra	50	52	52	58	69	74	76	79	86	80	77	59	76	26	52.0%
Socorro	62	61	59	59	58	56	63	63	68	66	70	70	70	8	12.9%
Taos	114	112	118	120	127	132	137	145	139	142	141	141	139	25	21.9%
Torrance	83	87	91	96	101	107	117	106	99	115	115	114	110	27	32.5%
Union	5	5	5	4	4	5	5	5	4	6	5	5	5	0	0.0%
Valencia	585	583	629	658	678	642	677	714	723	713	678	651	640	55	9.4%
<b>Totals</b>	<b>18,553</b>	<b>18,723</b>	<b>19,347</b>	<b>19,746</b>	<b>20,737</b>	<b>20,169</b>	<b>20,183</b>	<b>21,572</b>	<b>20,871</b>	<b>20,935</b>	<b>20,599</b>	<b>20,147</b>	<b>20,116</b>	<b>1,563</b>	<b>8.4%</b>

**CHILDREN YOUTH AND FAMILIES DEPARTMENT  
CHILD CARE ASSISTANCE ELIGIBILITY PROGRAMS**

MONTH	MAR'17	APR'17	MAY'17	JUNE'17	JULY'17	AUG'17	SEP'17	OCT'17	NOV'17	DEC'17	JAN'18	FEB'18
<b>TANF (Child Care Priority 1 Clients)</b>												
CLIENTS	1,994	2,047	2,121	2,300	2,302	2,353	2,455	2,419	2,374	2,315	2,240	2,153
COST	\$1,096,473	\$1,148,841	\$1,186,719	\$1,271,336	\$1,323,182	\$1,381,202	\$1,364,956	\$1,423,748	\$1,411,060	\$1,382,073	\$1,317,716	\$1,272,232
TANF AVERAGE COST	\$550	\$561	\$560	\$553	\$575	\$587	\$556	\$589	\$594	\$597	\$588	\$591
<b>TRANSITION OFF TANF (Child Care Priority 2 Clients)</b>												
CLIENTS	197	202	205	213	197	189	179	181	154	152	141	138
COST	\$102,582	\$101,314	\$104,115	\$111,219	\$106,835	\$103,813	\$93,119	\$96,629	\$81,975	\$81,337	\$74,507	\$72,696
TRAN OFF TANF AVG COST	\$521	\$502	\$508	\$522	\$542	\$549	\$520	\$534	\$532	\$535	\$528	\$527
<b>TANF ELIGIBLE (Child Care Priority 1B Clients at or below 100% of the Federal Poverty Level)</b>												
CLIENTS	7,442	7,819	8,075	8,472	8,193	8,254	9,064	8,899	8,900	8,729	8,435	8,374
COST	\$3,957,431	\$4,194,223	\$4,302,207	\$4,448,742	\$4,521,900	\$4,657,974	\$4,755,691	\$5,021,574	\$5,099,212	\$4,994,373	\$4,722,370	\$4,675,492
TANF ELIGIBLE AVG COST	\$532	\$536	\$533	\$525	\$552	\$564	\$525	\$564	\$573	\$572	\$560	\$558
<b>INCOME ELIGIBLE (Child Care Priority 3, and Priority 4 Clients )</b>												
CLIENTS	7,559	7,612	7,632	7,832	7,426	7,337	7,749	7,464	7,578	7,580	7,665	7,868
COST	\$3,683,902	\$3,733,797	\$3,757,012	\$3,843,887	\$3,805,939	\$3,838,152	\$3,779,202	\$3,760,398	\$3,838,169	\$3,824,777	\$3,785,466	\$3,929,313
INCOME ELIG AVG COST	\$487	\$491	\$492	\$491	\$513	\$523	\$488	\$504	\$506	\$505	\$494	\$499
<b>AT-RISK CHILD PROTECTIVE SERVICES CHILD CARE PILOT (Priority 5 Clients)</b>												
CLIENTS	553	679	733	881	1,021	1,073	1,152	1,032	1,027	935	772	689
COST	\$335,795	\$396,799	\$449,007	\$535,980	\$622,872	\$686,919	\$723,334	\$684,194	\$678,258	\$628,399	\$509,028	\$486,780
CPS AVG COST	\$607	\$584	\$613	\$608	\$610	\$640	\$628	\$663	\$660	\$672	\$659	\$707
<b>CHILD PROTECTIVE SERVICES (Child Care CPS Clients)</b>												
CLIENTS	978	988	980	1,039	1,030	977	973	876	902	888	894	894
COST	\$607,288	\$652,529	\$627,325	\$649,417	\$652,471	\$663,134	\$623,416	\$567,608	\$585,009	\$573,312	\$583,824	\$602,246
CPS AVG COST	\$621	\$660	\$640	\$625	\$633	\$679	\$641	\$648	\$649	\$646	\$653	\$674
<b>GRAND TOTAL - ALL CHILD CARE PROGRAMS</b>												
CLIENTS	18,553	18,723	19,347	19,746	20,737	20,169	20,183	20,871	20,935	20,599	20,147	20,116
COST	\$9,023,086	\$9,783,471	\$10,227,503	\$10,426,385	\$10,860,581	\$11,033,199	\$11,331,194	\$11,554,151	\$11,693,682	\$11,484,272	\$10,992,912	\$11,038,760
ALL PROGRAMS AVG COST	\$486	\$523	\$529	\$528	\$524	\$547	\$561	\$554	\$559	\$558	\$546	\$549

## Income Eligibility Guidelines: October 1, 2017 - September 30, 2018

### Federal Poverty Guidelines (FPG) Monthly Income Standards

Supplemental Nutrition Program (SNAP)					
Household Size	100% FPG Net Income	130% FPG Gross Income	165% FPG Gross Income for Categorical Eligibility	Maximum SNAP Monthly Allotment	LIHEAP 150% FPG
1	\$1,005	\$1,307	\$1,659	\$192	\$1,508
2	\$1,354	\$1,760	\$2,233	\$352	\$2,031
3	\$1,702	\$2,213	\$2,808	\$504	\$2,553
4	\$2,050	\$2,665	\$3,383	\$640	\$3,075
5	\$2,399	\$3,118	\$3,958	\$760	\$3,599
6	\$2,747	\$3,571	\$4,532	\$913	\$4,121
7	\$3,095	\$4,024	\$5,107	\$1,009	\$4,643
8	\$3,444	\$4,477	\$5,682	\$1,153	\$5,166
+1	+\$349	+\$453	+\$575	+\$144	+\$523
Minimum Allotment of \$15 effective from 10/1/2017 - 9/30/2018					
DEDUCTIONS: Standard Deduction: For HH size 1-3 = \$160; 4 = \$170; 5 = \$199; 6 or more = \$228; Excess Shelter Deduction Limit: \$535; Heating and Cooling Standard Utility Allowance: \$320 (HCSUA) – Limited Utility Allowance: \$127 (LUA); Telephone Standard: \$42; Dependent Care: Actual Amount (No Limit); Earned Income Deduction: 20%; Homeless Shelter Standard: \$143					

CASH Assistance & Support Services					
Household Size	Federal Poverty Guidelines (FPG) Monthly Income Standards			Maximum Monthly Benefit	
	100% FPG Net Income	85% FPG Gross Limit	NM Works Cash Net Income	Maximum Monthly Benefit	General Assistance
1	\$1,005	\$854	\$266	\$244	\$245
2	\$1,354	\$1,151	\$357	\$327	\$329
3	\$1,702	\$1,447	\$447	\$409	\$412
4	\$2,050	\$1,743	\$539	\$493	\$496
5	\$2,399	\$2,039	\$630	\$576	\$580
6	\$2,747	\$2,335	\$721	\$659	\$664
7	\$3,095	\$2,631	\$812	\$743	\$748
8	\$3,444	\$2,927	\$922	\$843	\$849
+1	+\$349	+\$296	+\$91	+\$83	+\$84
Deductions- Dependent Care: For a child under age 2 = \$200; For a child age 2 and over = \$175. Work Incentives- Earned Income Disregard: Single parent = \$125 & ½ remainder; Two parent = \$225 & ½ remainder.					

<b>Medical Assistance Division</b>					
Federal Poverty Guidelines New Mexico Affordable Care Eligibility Groups Effective April 01, 2017 thru March 31, 2018 <b>Monthly Guidelines</b>					
HH SIZE	PERCENT OF POVERTY				
	138%	190%	240%	250%	300%
1	\$1,387	\$1,910	\$2,412	\$2,513	\$3,015
2	\$1,868	\$2,572	\$3,248	\$3,384	\$4,060
3	\$2,349	\$3,234	\$4,084	\$4,255	\$5,105
4	\$2,829	\$3,895	\$4,920	\$5,125	\$6,150
5	\$3,310	\$4,557	\$5,756	\$5,996	\$7,195
6	\$3,791	\$5,219	\$6,592	\$6,867	\$8,240
7	\$4,272	\$5,881	\$7,428	\$7,738	\$9,285
8	\$4,752	\$6,543	\$8,264	\$8,609	\$10,330
138% Adult Expansion, 190% Children ages 6 to 19 (Medicaid), 240% Children ages 0 to 6 (Medicaid); ages 6 to 19 (CHIP), 250% Pregnancy Related Services Only, 300% Children 0 to 6 (CHIP)					

<b>Medical Assistance Division</b>					
Federal Poverty Guidelines New Mexico Affordable Care Eligibility Groups Effective April 01, 2017 thru March 31, 2018 <b>Annual Guidelines</b>					
HH SIZE	PERCENT OF POVERTY				
	138%	190%	240%	250%	300%
1	\$16,644	\$22,920	\$28,944	\$30,156	\$36,180
2	\$22,416	\$30,864	\$38,976	\$40,608	\$48,720
3	\$28,188	\$38,808	\$49,008	\$51,060	\$61,260
4	\$33,948	\$46,740	\$59,040	\$61,500	\$73,800
5	\$39,720	\$54,684	\$69,072	\$71,952	\$86,340
6	\$45,492	\$62,628	\$79,104	\$82,404	\$98,880
7	\$51,264	\$70,572	\$89,136	\$92,856	\$111,420
8	\$57,024	\$78,516	\$99,168	\$103,308	\$123,960
138% Adult Expansion, 190% Children ages 6 to 19 (Medicaid), 240% Children ages 0 to 6 (Medicaid); ages 6 to 19 (CHIP), 250% Pregnancy Related Services Only, 300% Children 0 to 6 (CHIP)					



## References

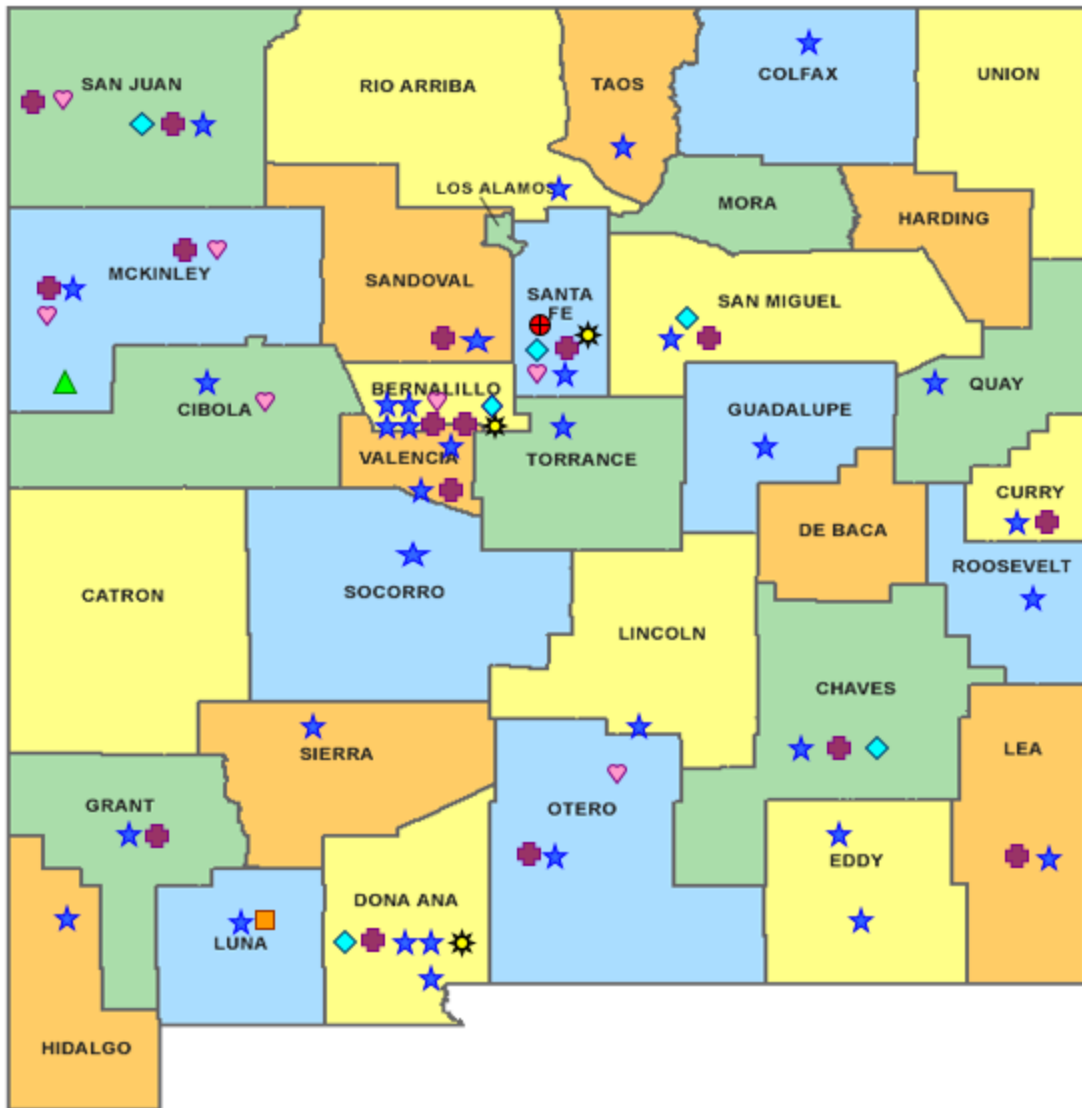
- <sup>1</sup> *Medicaid Expenditures* (Omnicaid, Medicare Buy-Ins, Lump Sum Payments), Received on Retrieved on March 19, 2018
- <sup>2</sup> *ASPEN Business Intelligence Tool: Eligibility*, Retrieved on March 14, 2018
- <sup>3</sup> New Mexico Human Services Department, *Medicaid Eligibility Reports*, Retrieved from <http://www.hsd.state.nm.us/LookingForInformation/medicaid-eligibility.aspx> on March 14, 2018
- <sup>4</sup> *ASPEN Business Intelligence Tool: Application Tracking*, Retrieved on March 14, 2018
- <sup>5</sup> Fidelity Information Services, *EBT Daily Statistical Report* (for 02/28/2017, 01/31/2018, and 02/28/2018), Retrieved on March 12, 2018
- <sup>6</sup> *ASPEN Report DQ-180: Length of Time Cases are Open* (for 02/01/2017-02/28/2017, 01/01/2018-01/31/2018, 02/01/2018-02/28/2018), Retrieved on March 14, 2018
- <sup>7</sup> *ASPEN Report EY-180: Individual Demographics by State and Age* (for 02/01/2017-02/28/2017, 01/01/2018-01/31/2018, 02/01/2018-02/28/2018), Retrieved March 14, 2018
- <sup>8</sup> *ASPEN Business Intelligence Tool: Benefit Issuance*, Retrieved on March 14, 2018
- <sup>9</sup> Fidelity Information Services, *EBT Daily Statistical Reports* (Month End), Retrieved on March 12, 2018
- <sup>10</sup> *ASPEN Report EY-180R: Individual Demographics by State, Race, Ethnicity and Gender* (for 02/01/2018-02/28/2018), Retrieved on March 14, 2018
- <sup>11</sup> SQL Queries from ASPEN, completed March 2018
- <sup>12</sup> JP Morgan, *New Mexico – NM EBT System- Monthly Benefit Draw Down Totals*
- <sup>13</sup> *ASPEN Business Intelligence Tool: Application Tracking* (w/Parameters: SNAP, Expedite, Approved), Retrieved on March 14, 2018
- <sup>14</sup> SL Start, *As of Today Report 1.31.18*, received March 16, 2018
- <sup>15</sup> SL Start, *Statewide Employment Report 01.01.18*, received March 16, 2018
- <sup>16</sup> *SSIAR Payments*, received March 2, 2018

<sup>17</sup> Children, Youth, and Families Department, *Children Receiving Child Care Assistance Subsidies by County*, Received on March 9, 2018

<sup>18</sup> Children, Youth, and Families Department, *Child Care Assistance Eligibility Programs*, Received on March 9, 2018









<sup>19</sup> EDG is defined as an Eligibility Determination Group

<sup>20</sup>SQL Query from ASPEN, completed March 23, 2018



# HUMAN SERVICES DEPARTMENT

New Mexico Human Services Department  
Field Offices

-  Central Office (1)
-  Income Support Division County Office (35)
-  Income Support Division Satellite Office (2)
-  Child Support Enforcement Regional Office (16)
-  Child Support Enforcement Satellite Office (1)
-  Quality Control Office (8)
-  Indian Health Services (7)
-  Hospital Site (3)

For a complete listing of field offices and other government and community resources:  
[http://www.hsd.state.nm.us/LookingForAssistance/Field\\_Offices\\_1.aspx](http://www.hsd.state.nm.us/LookingForAssistance/Field_Offices_1.aspx)