



Monthly Statistical Report

December 2017

There were 853,861 individuals that received Medicaid in December 2017, a 4.4% decrease from one year ago. The count of Medicaid recipients has increased by 1,487, or 0.2%, since last month.

The SNAP caseload in December 2017 was 221,376, a 13.9% decrease from one year ago. The SNAP caseload has decreased by 369 cases, or 0.2%, since last month.

The TANF caseload was 11,717 in December 2017, a decrease of 5.5% from December 2016. The TANF caseload had 198 fewer cases compared to November 2017, a decrease of 1.7%.

The caseload for General Assistance was 3,038 in December 2017, a decrease of 14.1% from one year ago and a decrease of 6 cases from last month.

Susana Martinez, Governor
Brent Earnest, Cabinet Secretary

Contents	Page
Summary	3-5
Medicaid	6-18
SNAP	19-37
Cash Assistance	38-52
Child Care Assistance	53-54
Income Eligibility Guidelines	55-56

Regions are reported as follows:

Region 1		
Catron	San Juan	Valencia
Cibola	Sierra	
McKinley	Socorro	
Region 2		
Colfax	Mora	Santa Fe
De Baca	Quay	Taos
Guadalupe	Rio Arriba	Union
Harding	Sandoval	
Los Alamos	San Miguel	
Region 3		
Bernalillo	Torrance	
Region 4		
Chaves	Eddy	Lincoln
Curry	Lea	Roosevelt
Region 5		
Dona Ana	Hidalgo	Otero
Grant	Luna	

The Mission of the Human Services Department

To reduce the impact of poverty on people living in New Mexico by providing support services that help families break the cycle of dependency on public assistance

Christopher Collins, Deputy Secretary
Michael Nelson, Deputy Secretary

Prepared by Income Support Division
PO Box 2348
Santa Fe, NM 87504-2348
505-827-7250

Mary Brogdon, Director
Vida Tapia-Sanchez, Deputy Director
Shanita Harrison, Deputy Director

<http://www.hsd.state.nm.us/monthly-statistical-reports.aspx>

Program Summary for December 2017

Medicaid				Percent Change	
	Dec-16	Nov-17	Dec-17	Dec-16- Dec-17	Nov-17- Dec-17
Expenditures¹	\$455,575,274	\$427,736,768	\$491,788,693	7.9%	15.0%
Cases²	518,205	489,917	491,576	-5.1%	0.3%
Expenditures/Case	\$879	\$873	\$1,000	13.8%	14.6%
Recipients³	893,623	852,374	853,861	-4.4%	0.2%
<i>Adults</i>	505,582	483,085	484,410	-4.2%	0.3%
<i>Children</i>	388,041	369,289	369,451	-4.8%	0.0%
Recipients /Case	1.72	1.74	1.74	0.7%	-0.2%
Cases Processed⁴	10,490	15,497	17,862	70.3%	15.3%
<i>Approvals⁴</i>	8,516	11,730	12,741	49.6%	8.6%

Supplemental Nutrition Assistance Program (SNAP)				Percent Change	
	Dec-16	Nov-17	Dec-17	Dec-16- Dec-17	Nov-17- Dec-17
Expenditures⁵	\$55,901,844	\$53,623,068	\$53,542,385	-4.2%	-0.2%
Cases⁶	257,010	221,745	221,376	-13.9%	-0.2%
Expenditures/Case	\$218	\$242	\$242	11.2%	0.0%
Recipients⁷	525,538	461,268	458,955	-12.7%	-0.5%
<i>Adults</i>	306,106	263,750	262,816	-14.1%	-0.4%
<i>Children</i>	219,432	197,518	196,139	-10.6%	-0.7%
Recipients /Case	2.04	2.08	2.07	1.4%	-0.3%
Cases Processed⁴	17,544	19,862	18,814	7.2%	-5.3%
<i>Approvals⁴</i>	14,132	16,390	15,300	8.3%	-6.7%

Cash Assistance Programs				Percent Change	
	Dec-16	Nov-17	Dec-17	Dec-16- Dec-17	Nov-17- Dec-17
Expenditures⁵	\$4,693,983	\$4,299,165	\$4,220,860	-10.1%	-1.8%
Cases⁶	16,327	15,138	14,935	-8.5%	-1.3%
Expenditures/Case	\$287	\$284	\$283	-1.7%	-0.5%
Recipients⁷	37,313	34,941	34,058	-8.7%	-2.5%
<i>Adults</i>	12,519	11,329	11,019	-12.0%	-2.7%
<i>Children</i>	24,794	23,612	23,039	-7.1%	-2.4%
Recipients /Case	2.29	2.31	2.28	-0.2%	-1.2%
Cases Processed⁴	4,947	5,690	5,500	11.2%	-3.3%
<i>Approvals⁴</i>	1,812	1,716	1,555	-14.2%	-9.4%

Low Income Home Energy Assistance Program (LIHEAP)				Percent Change	
	Dec-16	Nov-17	Dec-17	Dec-16- Dec-17	Nov-17- Dec-17
Expenditures⁸	\$2,281,946	\$2,523,278	\$2,168,285	-5.0%	-14.1%
Cases⁸	8,512	9,362	7,737	-9.1%	-17.4%
Expenditures/Case	\$268	\$270	\$280	4.5%	4.0%
Recipients⁸	19,544	21,108	17,707	-9.4%	-16.1%
<i>Adults</i>	11,236	12,213	10,180	-9.4%	-16.6%
<i>Children</i>	8,308	8,895	7,527	-9.4%	-15.4%
Recipients /Case	2.30	2.25	2.29	-0.3%	1.5%
Cases Processed⁴	12,279	11,606	10,051	-18.1%	-13.4%
<i>Approvals⁴</i>	8,107	9,593	7,852	-3.1%	-18.1%

Cash Assistance Summary for December 2017

Temporary Assistance for Needy Families (TANF)

	Dec-16	Nov-17	Dec-17	Percent Change	
				Dec-16- Dec-17	Nov-17- Dec-17
Expenditures ⁵	\$3,697,053	\$3,486,390	\$3,423,107	-7.4%	-1.8%
Cases ⁶	12,400	11,915	11,717	-5.5%	-1.7%
Expenditures/Case	\$298	\$293	\$292	-2.0%	-0.2%
Recipients ⁷	32,938	31,410	30,581	-7.2%	-2.6%
<i>Adults</i>	8,706	8,283	8,025	-7.8%	-3.1%
<i>Children</i>	24,232	23,127	22,556	-6.9%	-2.5%
Approvals ⁴	1,357	1,369	1,252	-7.7%	-8.5%

General Assistance (GA)

	Dec-16	Nov-17	Dec-17	Percent Change	
				Dec-16- Dec-17	Nov-17- Dec-17
Expenditures ⁵	\$884,415	\$757,191	\$741,084	-16.2%	-2.1%
Cases ⁶	3,538	3,044	3,038	-14.1%	-0.2%
Expenditures/Case	\$250	\$249	\$244	-2.4%	-1.9%
Recipients ⁷	3,644	3,089	3,032	-16.8%	-1.8%
<i>Adults</i>	3,391	2,847	2,794	-17.6%	-1.9%
<i>Children</i>	253	242	238	-5.9%	-1.7%
Approvals ⁴	338	283	231	-31.7%	-18.4%

Education Works

	Dec-16	Nov-17	Dec-17	Percent Change	
				Dec-16- Dec-17	Nov-17- Dec-17
Expenditures ⁵	\$62,842	\$48,921	\$49,674	-21.0%	1.5%
Cases ⁶	175	140	140	-20.0%	0.0%
Expenditures/Case	\$359	\$349	\$355	-1.2%	1.5%
Recipients ⁷	508	400	403	-20.7%	0.8%
<i>Adults</i>	199	157	158	-20.6%	0.6%
<i>Children</i>	309	243	245	-20.7%	0.8%
Approvals ⁴	9	2	4	-55.6%	100.0%

Refugee Cash (RCA)

	Dec-16	Nov-17	Dec-17	Percent Change	
				Dec-16- Dec-17	Nov-17- Dec-17
Expenditures ⁵	\$46,673	\$4,263	\$4,795	-89.7%	12.5%
Cases ⁶	184	15	17	-90.8%	13.3%
Expenditures/Case	\$254	\$284	\$282	11.2%	-0.8%
Recipients ⁷	193	18	20	-89.6%	11.1%
<i>Adults</i>	193	18	20	-89.6%	11.1%
<i>Children</i>	0	0	0	N/A	N/A

State Supplement for Residential Care

	Dec-16	Nov-17	Dec-17	Percent Change	
				Dec-16- Dec-17	Nov-17- Dec-17
Expenditures ⁵	\$3,000	\$2,400	\$2,200	-26.7%	-8.3%
Cases ⁶	30	24	23	-23.3%	-4.2%
Expenditures/Case	\$100	\$100	\$96	-4.3%	-4.3%
Recipients ⁷	30	24	22	-26.7%	-8.3%
<i>Adults</i>	30	24	22	-26.7%	-8.3%
<i>Children</i>	0	0	0	N/A	N/A

Expenditures YTD			
	SFY 2018	FFY 2018	CY 2017
Medicaid ¹	\$2,584,996,632	\$1,358,840,668	\$5,204,917,649
Supplemental Nutrition Assistance Program ⁹	\$327,763,764	\$161,469,650	\$660,452,363
Temporary Assistance for Needy Families ⁹	\$22,152,243	\$10,398,852	\$43,415,400
General Assistance ⁹	\$4,508,400	\$2,261,098	\$9,406,429
Education Work ⁹	\$262,530	\$144,304	\$584,275
LIHEAP ⁸	\$10,532,223	\$8,496,751	\$17,359,100

Average Caseload YTD			
	SFY 2018	FFY 2018	CY 2017
Medicaid ²	497,569	491,144	510,399
Supplemental Nutrition Assistance Program ⁶	221,013	221,666	227,379
Temporary Assistance for Needy Families ⁶	11,791	11,844	11,708
General Assistance ⁶	3,050	3,051	3,217
Education Work ⁶	119	137	136
LIHEAP ⁸	5,943	10,307	5,448

Demographic Profile- December 2017					
	SNAP	TANF	GA	Education Works	RCA
<i>Gender of Recipients¹⁰</i>					
Male	207,560	12,994	1,708	153	13
Female	251,395	17,587	1,324	250	7
<i>Ethnicity¹⁰</i>					
Hispanic	256,831	21,003	1,597	245	12
Non-Hispanic	202,124	9,578	1,435	158	8
<i>Race¹⁰</i>					
Native American or Alaskan Native	75,229	2,433	246	26	0
Asian	4,544	264	33	3	0
African American or Black	11,108	1,203	123	12	3
Native Hawaiian or Pacific Islander	886	42	5	1	0
White	358,341	25,928	2,582	344	10
Unknown / Not Declared	4,885	270	20	8	1
More than One Race	3,962	441	23	9	6

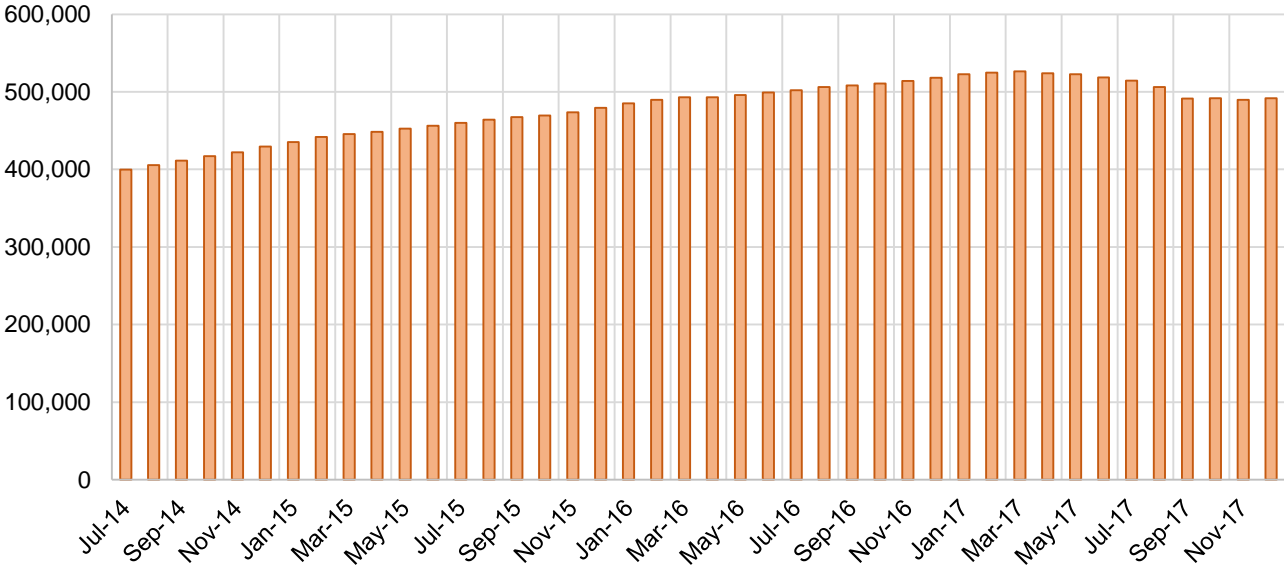
Medicaid Cases by Field Office²

Office				Percent Change	
	Dec-16	Nov-17	Dec-17	Dec-16- Dec-17	Nov-17- Dec-17
Chaves County ISD	16,883	16,057	16,077	-4.8%	0.1%
Cibola County ISD	7,558	7,510	7,513	-0.6%	0.0%
Colfax County ISD	3,538	3,445	3,476	-1.8%	0.9%
Curry County ISD	10,530	9,896	9,906	-5.9%	0.1%
East Dona Ana County ISD	18,486	17,672	17,824	-3.6%	0.9%
Eddy Artesia County ISD	3,964	3,872	3,879	-2.1%	0.2%
Eddy Carlsbad County ISD	8,396	7,934	7,934	-5.5%	0.0%
Grant County ISD	7,255	6,791	6,813	-6.1%	0.3%
Guadalupe County ISD	1,637	1,756	1,760	7.5%	0.2%
Hidalgo County ISD	1,061	942	960	-9.5%	1.9%
Lea County ISD	14,819	14,204	14,313	-3.4%	0.8%
Lincoln County ISD	4,669	4,333	4,354	-6.7%	0.5%
Luna County ISD	9,043	8,745	8,770	-3.0%	0.3%
McKinley County ISD	23,374	22,320	22,296	-4.6%	-0.1%
Northeast Bernalillo County ISD	45,665	42,609	42,952	-5.9%	0.8%
Northwest Bernalillo County ISD	51,392	47,130	47,467	-7.6%	0.7%
Otero County ISD	12,049	11,897	11,901	-1.2%	0.0%
Quay County ISD	2,636	2,572	2,559	-2.9%	-0.5%
Rio Arriba County ISD	15,119	14,320	14,316	-5.3%	0.0%
Roosevelt County ISD	4,063	3,897	3,903	-3.9%	0.2%
San Juan County ISD	30,805	29,912	30,091	-2.3%	0.6%
San Miguel County ISD	9,713	9,194	9,184	-5.4%	-0.1%
Sandoval County ISD	26,851	25,518	25,627	-4.6%	0.4%
Santa Fe County ISD	26,936	24,961	25,109	-6.8%	0.6%
Sierra County ISD	5,581	5,542	5,540	-0.7%	0.0%
Socorro County ISD	5,788	5,414	5,434	-6.1%	0.4%
South Dona Ana ISD	20,190	19,829	19,891	-1.5%	0.3%
Southeast Bernalillo County ISD	29,213	26,052	25,829	-11.6%	-0.9%
Southwest Bernalillo County ISD	41,763	38,856	38,923	-6.8%	0.2%
Taos County ISD	9,745	9,323	9,392	-3.6%	0.7%
Torrance County ISD	7,910	7,448	7,600	-3.9%	2.0%
Valencia North County ISD	18,775	17,681	17,707	-5.7%	0.1%
Valencia South County ISD	20	5	19	-5.0%	280.0%
West Dona Ana County ISD	22,775	22,277	22,253	-2.3%	-0.1%
Centralized Units	3	3	4	33.3%	33.3%
Statewide Total	518,205	489,917	491,576	-5.1%	0.3%

Medicaid Cases by Region²

Region				Percent Change	
	Dec-16	Nov-17	Dec-17	Dec-16- Dec-17	Nov-17- Dec-17
Region 1 - NW	91,901	88,384	88,600	-3.6%	0.2%
Region 2 - NE	96,175	91,089	91,423	-4.9%	0.4%
Region 3 - Central	175,943	162,095	162,771	-7.5%	0.4%
Region 4 - SE	63,324	60,193	60,366	-4.7%	0.3%
Region 5 - SW	90,859	88,153	88,412	-2.7%	0.3%
Centralized Units	3	3	4	33.3%	33.3%
Statewide Total	518,205	489,917	491,576	-5.1%	0.3%

Medicaid Caseload: SFY-15 to Current

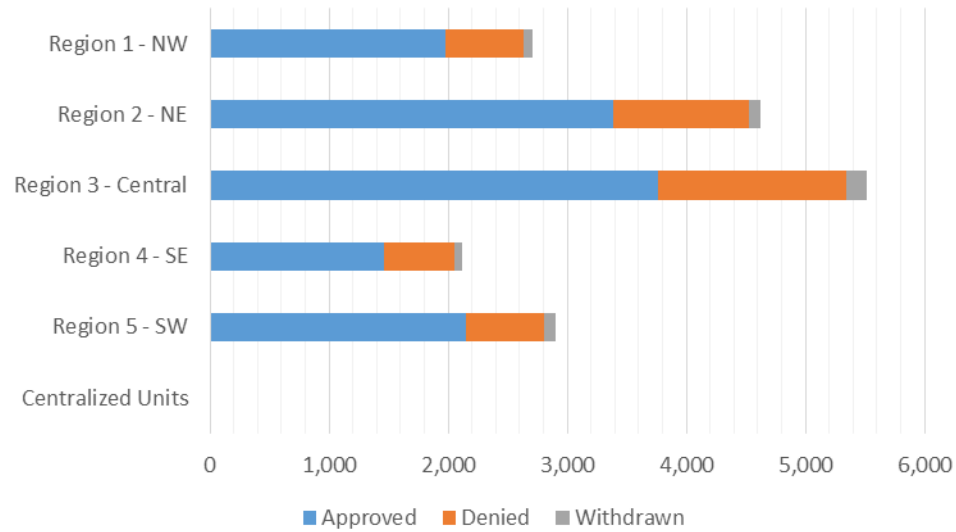


Medicaid Initial Applications by Field Office^{4,11}
December 2017

Office	Approved	Denied	Withdrawn	Total Cases Processed
Chaves County ISD	383	134	20	537
Cibola County ISD	127	43	2	172
Colfax County ISD	84	18	11	113
Curry County ISD	265	93	9	367
East Dona Ana County ISD	565	178	26	769
Eddy Artesia County ISD	162	72	5	239
Eddy Carlsbad County ISD	146	84	6	236
Grant County ISD	181	54	5	240
Guadalupe County ISD	24	10	1	35
Hidalgo County ISD	0	0	0	0
Lea County ISD	268	93	20	381
Lincoln County ISD	126	56	3	185
Luna County ISD	182	67	1	250
McKinley County ISD	520	169	13	702
Northeast Bernalillo County ISD	951	304	54	1,309
Northwest Bernalillo County ISD	912	360	53	1,325
Otero County ISD	260	73	13	346
Quay County ISD	74	24	5	103
Rio Arriba County ISD	216	62	8	286
Roosevelt County ISD	116	55	4	175
San Juan County ISD	706	252	30	988
San Miguel County ISD	729	356	3	1,088
Sandoval County ISD	1,069	294	25	1,388
Santa Fe County ISD	650	266	34	950
Sierra County ISD	110	14	9	133
Socorro County ISD	111	46	6	163
South Dona Ana ISD	425	131	19	575
Southeast Bernalillo County ISD	940	495	13	1,448
Southwest Bernalillo County ISD	728	356	36	1,120
Taos County ISD	538	114	9	661
Torrance County ISD	231	70	12	313
Valencia North County ISD	388	70	18	476
Valencia South County ISD	18	54	0	72
West Dona Ana County ISD	536	148	33	717
Centralized Units	0	0	0	0
Statewide Total	12,741	4,615	506	17,862

Medicaid Initial Applications by Region^{4,11}
December 2017

	Approved	Denied	Withdrawn	Total Cases Processed
Region				
Region 1 - NW	1,980	648	78	2,706
Region 2 - NE	3,384	1,144	96	4,624
Region 3 - Central	3,762	1,585	168	5,515
Region 4 - SE	1,466	587	67	2,120
Region 5 - SW	2,149	651	97	2,897
Centralized Units	0	0	0	0
Statewide Total	12,741	4,615	506	17,862

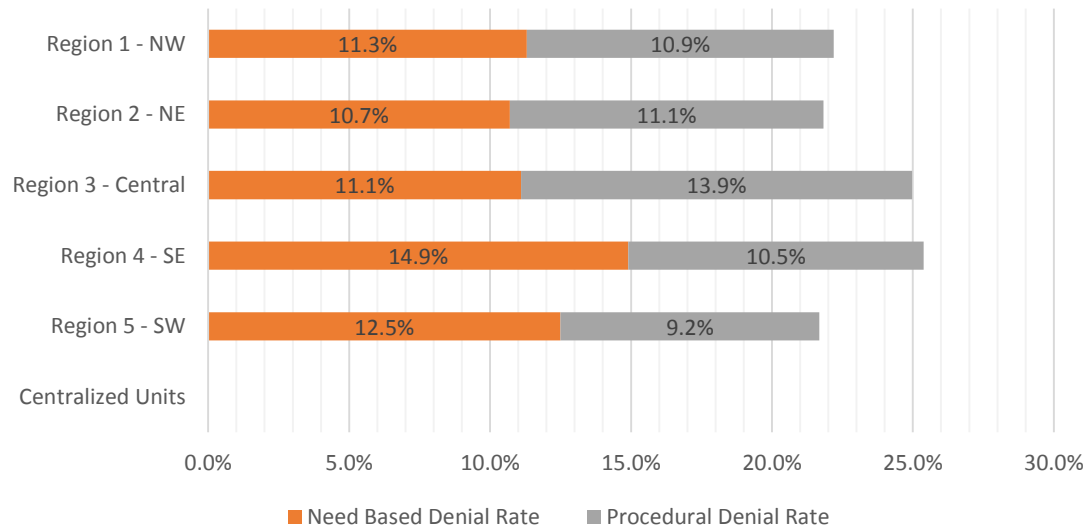


Medicaid EDG Initial Disposition Rates by Field Office^{4,11,19}
December 2017

Office	Approval Rate	Denial Rate	Need Based Denial Rate	Procedural Denial Rate
Chaves County ISD	78.2%	21.8%	14.7%	7.1%
Cibola County ISD	82.9%	17.1%	9.2%	7.9%
Colfax County ISD	92.1%	7.9%	5.5%	2.4%
Curry County ISD	82.4%	17.6%	8.4%	9.2%
East Dona Ana County ISD	79.1%	20.9%	13.8%	7.1%
Eddy Artesia County ISD	81.1%	18.9%	10.0%	8.9%
Eddy Carlsbad County ISD	71.4%	28.6%	14.6%	14.0%
Grant County ISD	81.3%	18.7%	8.5%	10.2%
Guadalupe County ISD	78.4%	21.6%	10.8%	10.8%
Hidalgo County ISD	0.0%	0.0%	0.0%	0.0%
Lea County ISD	67.2%	32.8%	25.0%	7.8%
Lincoln County ISD	67.5%	32.5%	12.8%	19.7%
Luna County ISD	80.8%	19.2%	8.1%	11.1%
McKinley County ISD	84.0%	16.0%	7.3%	8.7%
Northeast Bernalillo County ISD	75.7%	24.3%	10.3%	14.0%
Northwest Bernalillo County ISD	73.5%	26.5%	8.3%	18.2%
Otero County ISD	79.2%	20.8%	9.0%	11.8%
Quay County ISD	87.1%	12.9%	7.0%	5.9%
Rio Arriba County ISD	80.8%	19.2%	11.2%	8.0%
Roosevelt County ISD	77.3%	22.7%	6.2%	16.5%
San Juan County ISD	73.8%	26.2%	12.7%	13.5%
San Miguel County ISD	83.8%	16.2%	10.2%	6.0%
Sandoval County ISD	75.7%	24.3%	9.8%	14.5%
Santa Fe County ISD	71.8%	28.2%	13.8%	14.4%
Sierra County ISD	82.5%	17.5%	16.9%	0.6%
Socorro County ISD	73.9%	26.1%	13.1%	13.0%
South Dona Ana ISD	74.4%	25.6%	17.9%	7.7%
Southeast Bernalillo County ISD	75.3%	24.7%	13.2%	11.5%
Southwest Bernalillo County ISD	74.1%	25.9%	13.7%	12.2%
Taos County ISD	90.6%	9.4%	5.9%	3.5%
Torrance County ISD	80.5%	19.5%	11.2%	8.3%
Valencia North County ISD	76.1%	23.9%	12.7%	11.2%
Valencia South County ISD	100.0%	0.0%	0.0%	0.0%
West Dona Ana County ISD	78.3%	21.7%	11.8%	9.9%
Centralized Units	0.0%	0.0%	0.0%	0.0%
Statewide Total	76.5%	23.5%	11.9%	11.6%

Medicaid EDG Initial Disposition Rates by Region^{4,11,19}
December 2017

Region	Approval Rate	Denial Rate	Need Based Denial Rate	Procedural Denial Rate
Region 1 - NW	77.8%	22.2%	11.3%	10.9%
Region 2 - NE	78.2%	21.8%	10.7%	11.1%
Region 3 - Central	75.0%	25.0%	11.1%	13.9%
Region 4 - SE	74.6%	25.4%	14.9%	10.5%
Region 5 - SW	78.3%	21.7%	12.5%	9.2%
Centralized Units				
Statewide Total	76.5%	23.5%	11.9%	11.6%



Medicaid: Percentage of Initial EDG Approvals Processed Timely by Field Office ^{13,19}

	Oct-17	Nov-17	Dec-17	Jan-18	Feb-18	Mar-18	Apr-18	May-18	Jun-18	Jul-18	Aug-18	Sep-18	Average
Cibola	92.2%	94.4%	94.6%										93.7%
McKinley	95.6%	97.4%	96.9%										96.6%
San Juan	93.4%	92.0%	94.3%										93.2%
Sierra	95.8%	98.6%	96.9%										97.1%
Socorro	95.4%	98.7%	96.7%										96.9%
Valencia North	93.2%	94.1%	94.0%										93.8%
Valencia South	100.0%	100.0%	100.0%										100.0%
NW Region 1 Total	94.0%	94.7%	95.2%										94.6%
Colfax	93.9%	98.4%	97.4%										96.6%
Guadalupe	97.9%	100.0%	96.6%										98.2%
Quay	98.0%	94.9%	94.6%										95.8%
Rio Arriba	96.9%	94.7%	91.1%										94.2%
San Miguel	97.3%	98.9%	99.0%										98.4%
Sandoval	97.0%	97.0%	96.8%										96.9%
Santa Fe	96.1%	95.7%	96.6%										96.1%
Taos	98.3%	96.8%	98.2%										97.8%
NE Region 2 Total	96.8%	96.6%	96.6%										96.7%
NE Bernalillo	95.1%	93.6%	93.9%										94.2%
NW Bernalillo	96.3%	95.4%	94.6%										95.4%
SE Bernalillo	88.2%	90.8%	94.4%										91.1%
SW Bernalillo	95.8%	96.2%	95.2%										95.7%
Torrance	95.5%	95.1%	95.2%										95.3%
Gen. Region 3 Total	94.3%	94.3%	94.5%										94.4%
Chaves	96.4%	96.6%	97.1%										96.7%
Curry	94.8%	94.2%	98.4%										95.8%
Eddy Artesia	95.3%	94.9%	96.4%										95.5%
Eddy Carlsbad	93.2%	98.4%	97.6%										96.4%
Lea	96.1%	94.7%	94.0%										94.9%
Lincoln	95.7%	94.7%	97.1%										95.8%
Roosevelt	94.6%	94.2%	93.4%										94.1%
SE Region 4 Total	95.4%	95.5%	96.3%										95.7%
East Dona Ana	96.1%	97.1%	97.5%										96.9%
Grant	93.9%	96.8%	99.3%										96.7%
Luna	96.8%	97.8%	97.4%										97.3%
Otero	97.6%	96.4%	98.0%										97.3%
South Dona Ana	97.2%	98.3%	98.0%										97.8%
West Dona Ana	97.4%	96.7%	98.3%										97.5%
SW Region 5 Total	96.7%	97.2%	98.0%										97.3%
STATE TOTAL	95.3%	95.4%	95.8%										95.5%

Medicaid: Percentage of Initial EDG Denials Processed Timely by Field Office^{13,19}

	Oct-17	Nov-17	Dec-17	Jan-18	Feb-18	Mar-18	Apr-18	May-18	Jun-18	Jul-18	Aug-18	Sep-18	Average
Cibola	51.4%	41.2%	76.0%										56.2%
McKinley	54.4%	59.7%	54.4%										56.2%
San Juan	53.1%	57.1%	45.5%										51.9%
Sierra	92.9%	95.0%	96.3%										94.7%
Socorro	57.5%	80.0%	96.3%										77.9%
Valencia North	55.8%	52.1%	42.3%										50.1%
Valencia South	66.7%												66.7%
NW Region 1 Total	55.0%	57.7%	53.2%										55.3%
Colfax	90.6%	95.8%	100.0%										95.5%
Guadalupe	90.0%	11.1%	75.0%										58.7%
Quay	72.7%	33.3%	54.5%										53.5%
Rio Arriba	71.4%	56.3%	53.2%										60.3%
San Miguel	59.5%	67.3%	76.5%										67.8%
Sandoval	43.6%	51.2%	63.7%										52.8%
Santa Fe	59.1%	53.7%	37.8%										50.2%
Taos	47.4%	76.5%	75.9%										66.6%
NE Region 2 Total	57.2%	56.4%	55.2%										56.3%
NE Bernalillo	45.7%	38.4%	35.2%										39.8%
NW Bernalillo	39.2%	40.9%	41.8%										40.6%
SE Bernalillo	56.6%	46.6%	67.6%										56.9%
SW Bernalillo	68.5%	68.1%	80.1%										72.2%
Torrance	56.8%	42.1%	43.8%										47.6%
Gen. Region 3 Total	52.5%	48.0%	53.3%										51.3%
Chaves	72.3%	60.2%	79.9%										70.8%
Curry	61.4%	59.0%	65.6%										62.0%
Eddy Artesia	65.6%	53.3%	81.3%										66.7%
Eddy Carlsbad	51.8%	35.8%	61.7%										49.8%
Lea	72.7%	69.6%	70.0%										70.8%
Lincoln	35.9%	63.8%	77.3%										59.0%
Roosevelt	36.4%	46.4%	64.5%										49.1%
SE Region 4 Total	61.3%	56.6%	70.5%										62.8%
East Dona Ana	80.0%	74.3%	73.1%										75.8%
Grant	76.7%	32.4%	85.9%										65.0%
Luna	47.7%	64.9%	41.8%										51.5%
Otero	61.9%	48.3%	67.7%										59.3%
South Dona Ana	86.3%	73.0%	86.6%										82.0%
West Dona Ana	66.9%	67.0%	80.6%										71.5%
SW Region 5 Total	73.8%	64.3%	76.4%										71.5%
STATE TOTAL	58.4%	54.6%	59.5%										57.5%

Medicaid Renewal Disposition Counts by Field Office^{4,11}
December 2017

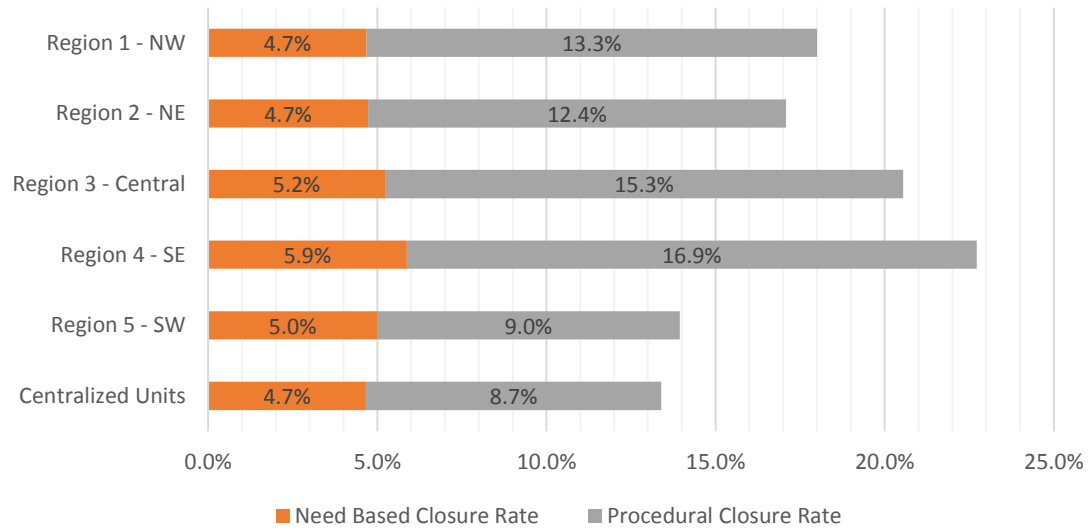
Office	Approvals	Closures	Need Based Closures	Procedural Closures
Chaves County ISD	2,664	721	192	529
Cibola County ISD	1,409	276	79	197
Colfax County ISD	468	115	34	81
Curry County ISD	1,559	449	122	327
East Dona Ana County ISD	2,971	545	201	344
Eddy Artesia County ISD	636	167	51	116
Eddy Carlsbad County ISD	1,093	426	110	316
Grant County ISD	1,034	191	60	131
Guadalupe County ISD	202	19	11	8
Hidalgo County ISD	172	32	3	29
Lea County ISD	2,277	641	154	487
Lincoln County ISD	637	163	56	107
Luna County ISD	1,638	231	99	132
McKinley County ISD	3,948	816	186	630
Northeast Bernalillo County ISD	6,152	1593	328	1265
Northwest Bernalillo County ISD	4,683	1146	265	881
Otero County ISD	1,869	357	121	236
Quay County ISD	381	83	25	58
Rio Arriba County ISD	1,958	375	108	267
Roosevelt County ISD	614	220	35	185
San Juan County ISD	4,809	1386	322	1064
San Miguel County ISD	1,294	197	52	145
Sandoval County ISD	4,248	919	265	654
Santa Fe County ISD	2,849	598	159	439
Sierra County ISD	804	119	31	88
Socorro County ISD	837	184	46	138
South Dona Ana ISD	3,907	575	223	352
Southeast Bernalillo County ISD	2,807	749	180	569
Southwest Bernalillo County ISD	5,992	1583	513	1070
Taos County ISD	1,171	284	63	221
Torrance County ISD	1,054	279	75	204
Valencia North County ISD	3,311	538	199	339
Valencia South County ISD	0	0	0	0
West Dona Ana County ISD	3,148	457	148	309
Centralized Units	446	69	24	45
Statewide Total	73,042	16,503	4,540	11,963

Medicaid Renewal Disposition Rates by Field Office²⁰
December 2017

Office	Approval Rate	Closure Rate	Need Based Closure Rate	Procedural Closure Rate
Chaves County ISD	78.7%	21.3%	5.7%	15.6%
Cibola County ISD	83.6%	16.4%	4.7%	11.7%
Colfax County ISD	80.3%	19.7%	5.8%	13.9%
Curry County ISD	77.6%	22.4%	6.1%	16.3%
East Dona Ana County ISD	84.5%	15.5%	5.7%	9.8%
Eddy Artesia County ISD	79.2%	20.8%	6.4%	14.4%
Eddy Carlsbad County ISD	72.0%	28.0%	7.2%	20.8%
Grant County ISD	84.4%	15.6%	4.9%	10.7%
Guadalupe County ISD	91.4%	8.6%	5.0%	3.6%
Hidalgo County ISD	84.3%	15.7%	1.5%	14.2%
Lea County ISD	78.0%	22.0%	5.3%	16.7%
Lincoln County ISD	79.6%	20.4%	7.0%	13.4%
Luna County ISD	87.6%	12.4%	5.3%	7.1%
McKinley County ISD	82.9%	17.1%	3.9%	13.2%
Northeast Bernalillo County ISD	79.4%	20.6%	4.2%	16.3%
Northwest Bernalillo County ISD	80.3%	19.7%	4.5%	15.1%
Otero County ISD	84.0%	16.0%	5.4%	10.6%
Quay County ISD	82.1%	17.9%	5.4%	12.5%
Rio Arriba County ISD	83.9%	16.1%	4.6%	11.4%
Roosevelt County ISD	73.6%	26.4%	4.2%	22.2%
San Juan County ISD	77.6%	22.4%	5.2%	17.2%
San Miguel County ISD	86.8%	13.2%	3.5%	9.7%
Sandoval County ISD	82.2%	17.8%	5.1%	12.7%
Santa Fe County ISD	82.7%	17.3%	4.6%	12.7%
Sierra County ISD	87.1%	12.9%	3.4%	9.5%
Socorro County ISD	82.0%	18.0%	4.5%	13.5%
South Dona Ana ISD	87.2%	12.8%	5.0%	7.9%
Southeast Bernalillo County ISD	78.9%	21.1%	5.1%	16.0%
Southwest Bernalillo County ISD	79.1%	20.9%	6.8%	14.1%
Taos County ISD	80.5%	19.5%	4.3%	15.2%
Torrance County ISD	79.1%	20.9%	5.6%	15.3%
Valencia North County ISD	86.0%	14.0%	5.2%	8.8%
Valencia South County ISD	0.0%	0.0%	0.0%	0.0%
West Dona Ana County ISD	87.3%	12.7%	4.1%	8.6%
Centralized Units	86.6%	13.4%	4.7%	8.7%
Statewide Total	81.6%	18.4%	5.1%	13.4%

Medicaid Renewal Disposition Rates by Region²⁰
December 2017

Region	Approval Rate	Closure Rate	Need Based Closure Rate	Procedural Closure Rate
Region 1 - NW	82.0%	18.0%	4.7%	13.3%
Region 2 - NE	82.9%	17.1%	4.7%	12.4%
Region 3 - Central	79.5%	20.5%	5.2%	15.3%
Region 4 - SE	77.3%	22.7%	5.9%	16.9%
Region 5 - SW	86.1%	13.9%	5.0%	9.0%
Centralized Units	86.6%	13.4%	4.7%	8.7%
Statewide Total	81.6%	18.4%	5.1%	13.4%



Medicaid: Percentage of Approved Renewal EDGs Processed by Certification Date ¹¹

	Oct-17	Nov-17	Dec-17	Jan-18	Feb-18	Mar-18	Apr-18	May-18	Jun-18	Jul-18	Aug-18	Sep-18	Average
Cibola		98.9%	98.5%										98.7%
McKinley		98.9%	99.3%										99.1%
San Juan		98.9%	98.4%										98.6%
Sierra		99.1%	99.5%										99.3%
Socorro		99.5%	99.1%										99.3%
Valencia North		98.5%	98.7%										98.6%
Valencia South													
NW Region 1 Total		99.0%	98.9%										98.9%
Colfax		98.7%	99.6%										99.1%
Guadalupe		99.2%	98.5%										98.9%
Quay		99.0%	99.0%										99.0%
Rio Arriba		98.4%	97.8%										98.1%
San Miguel		99.5%	98.3%										98.9%
Sandoval		98.4%	98.6%										98.5%
Santa Fe		95.6%	95.7%										95.6%
Taos		98.7%	98.6%										98.6%
NE Region 2 Total		98.5%	98.2%										98.3%
NE Bernalillo		97.8%	97.0%										97.4%
NW Bernalillo		97.6%	97.8%										97.7%
SE Bernalillo		86.5%	96.2%										91.4%
SW Bernalillo		98.8%	96.0%										97.4%
Torrance		98.8%	96.9%										97.8%
Gen. Region 3 Total		95.9%	96.8%										96.4%
Chaves		98.7%	98.5%										98.6%
Curry		99.0%	98.7%										98.8%
Eddy Artesia		99.2%	97.5%										98.4%
Eddy Carlsbad		97.7%	98.8%										98.3%
Lea		98.8%	97.8%										98.3%
Lincoln		98.2%	97.5%										97.9%
Roosevelt		99.4%	97.9%										98.7%
SE Region 4 Total		98.7%	98.1%										98.4%
East Dona Ana		98.9%	97.9%										98.4%
Grant		98.5%	98.7%										98.6%
Luna		99.1%	98.2%										98.7%
Otero		98.9%	97.6%										98.3%
South Dona Ana		98.2%	97.4%										97.8%
West Dona Ana		99.2%	99.0%										99.1%
SW Region 5 Total		98.8%	98.1%										98.5%
STATE TOTAL		97.8%	97.8%										97.8%

Administrative, Annual, and Auto Renewals are included
 No data available for October 2017

Medicaid: Percentage of Closures EDGs Processed by Certification End Date ¹¹													
	Oct-17	Nov-17	Dec-17	Jan-18	Feb-18	Mar-18	Apr-18	May-18	Jun-18	Jul-18	Aug-18	Sep-18	Average
Cibola		37.6%	27.5%										32.5%
McKinley		23.9%	21.0%										22.4%
San Juan		36.7%	19.9%										28.3%
Sierra		45.6%	22.7%										34.2%
Socorro		33.0%	20.7%										26.8%
Valencia North		34.6%	30.5%										32.5%
Valencia South													
NW Region 1 Total		35.2%	23.7%										29.5%
Colfax		49.3%	27.8%										38.6%
Guadalupe		28.6%	57.9%										43.2%
Quay		24.7%	26.5%										25.6%
Rio Arriba		23.3%	26.1%										24.7%
San Miguel		19.4%	21.8%										20.6%
Sandoval		20.5%	25.9%										23.2%
Santa Fe		22.0%	22.6%										22.3%
Taos		24.4%	21.5%										23.0%
NE Region 2 Total		26.5%	28.8%										27.7%
NE Bernalillo		20.3%	16.0%										18.2%
NW Bernalillo		16.2%	20.8%										18.5%
SE Bernalillo		18.7%	21.5%										20.1%
SW Bernalillo		24.5%	28.2%										26.4%
Torrance		25.4%	21.9%										23.6%
Gen. Region 3 Total		21.0%	21.7%										21.4%
Chaves		34.4%	24.7%										29.5%
Curry		27.2%	25.2%										26.2%
Eddy Artesia		31.1%	24.0%										27.5%
Eddy Carlsbad		26.9%	23.2%										25.1%
Lea		24.6%	21.4%										23.0%
Lincoln		23.1%	31.9%										27.5%
Roosevelt		24.3%	14.5%										19.4%
SE Region 4 Total		27.4%	23.6%										25.5%
East Dona Ana		28.5%	31.6%										30.1%
Grant		38.7%	27.7%										33.2%
Luna		37.1%	38.5%										37.8%
Otero		37.3%	31.9%										34.6%
South Dona Ana		41.6%	35.7%										38.6%
West Dona Ana		35.1%	29.6%										32.3%
SW Region 5 Total		36.4%	32.5%										34.4%
STATE TOTAL		25.8%	24.2%										25.0%

Annual and Auto Renewals are included
No data available for October 2017

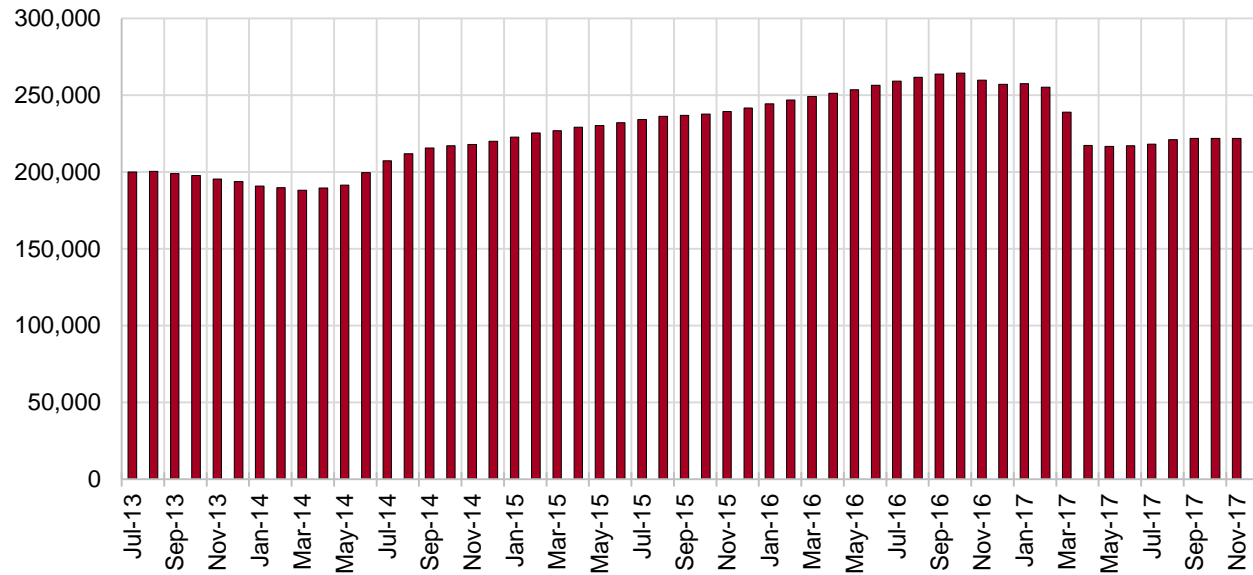
SNAP Cases by Field Office⁶

Office	Dec-16	Nov-17	Dec-17	Percent Change	
				Dec-16- Dec-17	Nov-17- Dec-17
Chaves County ISD	8,136	7,160	7,165	-11.9%	0.1%
Cibola County ISD	3,973	3,677	3,644	-8.3%	-0.9%
Colfax County ISD	1,839	1,598	1,609	-12.5%	0.7%
Curry County ISD	5,339	4,768	4,769	-10.7%	0.0%
East Dona Ana County ISD	9,431	7,983	7,981	-15.4%	0.0%
Eddy Artesia County ISD	1,956	1,719	1,710	-12.6%	-0.5%
Eddy Carlsbad County ISD	4,062	3,303	3,274	-19.4%	-0.9%
Grant County ISD	3,979	3,567	3,530	-11.3%	-1.0%
Guadalupe County ISD	752	712	716	-4.8%	0.6%
Hidalgo County ISD	507	420	436	-14.0%	3.8%
Lea County ISD	7,022	5,839	5,815	-17.2%	-0.4%
Lincoln County ISD	2,142	1,953	1,961	-8.5%	0.4%
Luna County ISD	4,876	4,293	4,300	-11.8%	0.2%
McKinley County ISD	10,484	9,683	9,657	-7.9%	-0.3%
Northeast Bernalillo County ISD	23,421	20,064	20,009	-14.6%	-0.3%
Northwest Bernalillo County ISD	21,386	18,595	18,824	-12.0%	1.2%
Otero County ISD	5,926	5,573	5,589	-5.7%	0.3%
Quay County ISD	1,365	1,268	1,247	-8.6%	-1.7%
Rio Arriba County ISD	7,911	6,818	6,750	-14.7%	-1.0%
Roosevelt County ISD	2,014	1,695	1,672	-17.0%	-1.4%
San Juan County ISD	15,372	13,372	13,288	-13.6%	-0.6%
San Miguel County ISD	5,812	5,004	4,965	-14.6%	-0.8%
Sandoval County ISD	12,921	11,003	10,972	-15.1%	-0.3%
Santa Fe County ISD	12,789	9,983	9,882	-22.7%	-1.0%
Sierra County ISD	3,010	2,690	2,700	-10.3%	0.4%
Socorro County ISD	3,136	2,890	2,865	-8.6%	-0.9%
South Dona Ana ISD	9,161	8,651	8,607	-6.0%	-0.5%
Southeast Bernalillo County ISD	15,553	12,048	11,985	-22.9%	-0.5%
Southwest Bernalillo County ISD	21,780	18,699	18,708	-14.1%	0.0%
Taos County ISD	4,616	4,137	4,160	-9.9%	0.6%
Torrance County ISD	3,980	3,367	3,426	-13.9%	1.8%
Valencia North County ISD	9,537	8,445	8,378	-12.2%	-0.8%
Valencia South County ISD	0	1	5	0.0%	400.0%
West Dona Ana County ISD	12,784	10,710	10,715	-16.2%	0.0%
Centralized Units	38	57	62	63.2%	8.8%
Statewide Total	257,010	221,745	221,376	-13.9%	-0.2%

SNAP Cases by Region⁶

Region				Percent Change	
	Dec-16	Nov-17	Dec-17	Dec-16- Dec-17	Nov-17- Dec-17
Region 1 - NW	45,512	40,758	40,537	-10.9%	-0.5%
Region 2 - NE	48,005	40,523	40,301	-16.0%	-0.5%
Region 3 - Central	86,120	72,773	72,952	-15.3%	0.2%
Region 4 - SE	30,671	26,437	26,366	-14.0%	-0.3%
Region 5 - SW	46,664	41,197	41,158	-11.8%	-0.1%
Centralized Units	38	57	62	63.2%	8.8%
Statewide Total	257,010	221,745	221,376	-13.9%	-0.2%

SNAP Caseload: SFY-14 to Current

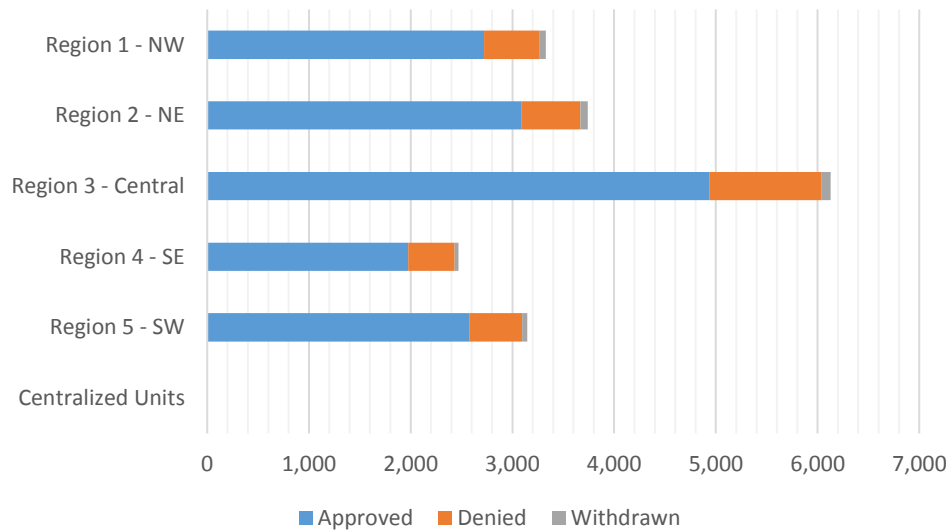


SNAP Initial Applications by Field Office^{4,11}
December 2017

Office	Approved	Denied	Withdrawn	Total Cases Processed
Chaves County ISD	563	112	9	684
Cibola County ISD	227	36	5	268
Colfax County ISD	101	13	5	119
Curry County ISD	344	68	5	417
East Dona Ana County ISD	545	143	16	704
Eddy Artesia County ISD	182	26	3	211
Eddy Carlsbad County ISD	234	72	3	309
Grant County ISD	280	43	1	324
Guadalupe County ISD	36	10	2	48
Hidalgo County ISD	0	0	0	0
Lea County ISD	355	97	8	460
Lincoln County ISD	161	39	6	206
Luna County ISD	272	41	7	320
McKinley County ISD	664	88	8	760
Northeast Bernalillo County ISD	1,451	303	15	1,769
Northwest Bernalillo County ISD	1,201	261	18	1,480
Otero County ISD	330	73	1	404
Quay County ISD	87	12	1	100
Rio Arriba County ISD	382	86	13	481
Roosevelt County ISD	137	43	2	182
San Juan County ISD	963	241	24	1,228
San Miguel County ISD	297	40	5	342
Sandoval County ISD	1,139	209	23	1,371
Santa Fe County ISD	718	169	17	904
Sierra County ISD	180	21	3	204
Socorro County ISD	146	35	9	190
South Dona Ana ISD	471	87	10	568
Southeast Bernalillo County ISD	864	221	30	1,115
Southwest Bernalillo County ISD	1,156	265	19	1,440
Taos County ISD	325	44	6	375
Torrance County ISD	267	51	6	324
Valencia North County ISD	528	120	20	668
Valencia South County ISD	12	0	0	12
West Dona Ana County ISD	682	129	16	827
Centralized Units	0	0	0	0
Statewide Total	15,300	3,198	316	18,814

SNAP Initial Applications by Region^{4,11}
December 2017

Region	Approved	Denied	Withdrawn	Total Cases Processed
Region 1 - NW	2,720	541	69	3,330
Region 2 - NE	3,085	583	72	3,740
Region 3 - Central	4,939	1,101	88	6,128
Region 4 - SE	1,976	457	36	2,469
Region 5 - SW	2,580	516	51	3,147
Centralized Units	0	0	0	0
Statewide Total	15,300	3,198	316	18,814

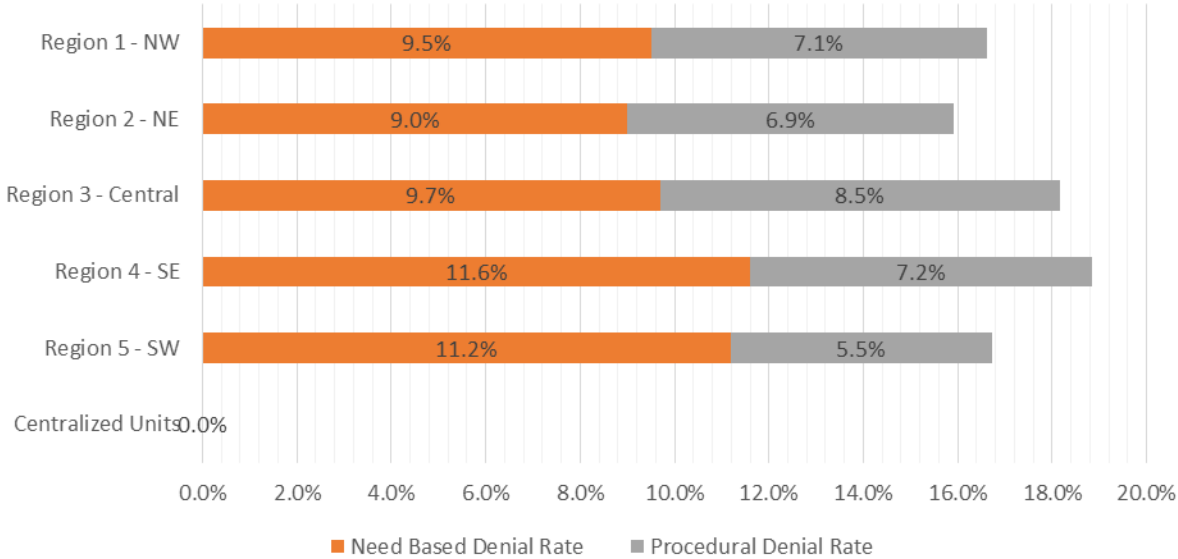


SNAP Initial Disposition Rates by Field Office^{4,11}
December 2017

Office	Approval Rate	Denial Rate	Need Based Denial Rate	Procedural Denial Rate
Chaves County ISD	83.4%	16.6%	10.4%	6.2%
Cibola County ISD	86.3%	13.7%	5.7%	8.0%
Colfax County ISD	88.6%	11.4%	9.6%	1.8%
Curry County ISD	83.5%	16.5%	8.7%	7.8%
East Dona Ana County ISD	79.2%	20.8%	13.1%	7.7%
Eddy Artesia County ISD	87.5%	12.5%	8.2%	4.3%
Eddy Carlsbad County ISD	76.5%	23.5%	13.7%	9.8%
Grant County ISD	86.7%	13.3%	10.5%	2.8%
Guadalupe County ISD	78.3%	21.7%	15.2%	6.5%
Hidalgo County ISD	0.0%	100.0%	100.0%	0.0%
Lea County ISD	78.5%	21.5%	13.8%	7.7%
Lincoln County ISD	80.5%	19.5%	12.0%	7.5%
Luna County ISD	86.9%	13.1%	7.3%	5.8%
McKinley County ISD	88.3%	11.7%	6.9%	4.8%
Northeast Bernalillo County ISD	82.7%	17.3%	9.0%	8.3%
Northwest Bernalillo County ISD	82.1%	17.9%	10.2%	7.7%
Otero County ISD	81.9%	18.1%	10.4%	7.7%
Quay County ISD	87.9%	12.1%	7.0%	5.1%
Rio Arriba County ISD	81.6%	18.4%	10.3%	8.1%
Roosevelt County ISD	76.1%	23.9%	16.7%	7.2%
San Juan County ISD	80.0%	20.0%	11.1%	8.9%
San Miguel County ISD	88.1%	11.9%	8.3%	3.6%
Sandoval County ISD	84.5%	15.5%	8.7%	6.8%
Santa Fe County ISD	80.9%	19.1%	10.2%	8.9%
Sierra County ISD	89.6%	10.4%	9.4%	1.0%
Socorro County ISD	80.7%	19.3%	13.2%	6.1%
South Dona Ana ISD	84.4%	15.6%	12.0%	3.6%
Southeast Bernalillo County ISD	79.6%	20.4%	10.8%	9.6%
Southwest Bernalillo County ISD	81.4%	18.6%	9.5%	9.1%
Taos County ISD	88.1%	11.9%	5.7%	6.2%
Torrance County ISD	84.0%	16.0%	9.4%	6.6%
Valencia North County ISD	81.5%	18.5%	10.0%	8.5%
Valencia South County ISD	100.0%	0.0%	0.0%	0.0%
West Dona Ana County ISD	84.1%	15.9%	11.0%	4.9%
Centralized Units				
Statewide Total	82.7%	17.3%	10.0%	7.3%

SNAP Initial Disposition Rates by Region^{4,11}
December 2017

Region	Approval Rate	Denial Rate	Need Based Denial Rate	Procedural Denial Rate
Region 1 - NW	83.4%	16.6%	9.5%	7.1%
Region 2 - NE	84.1%	15.9%	9.0%	6.9%
Region 3 - Central	81.8%	18.2%	9.7%	8.5%
Region 4 - SE	81.2%	18.8%	11.6%	7.2%
Region 5 - SW	83.3%	16.7%	11.2%	5.5%
Centralized Units				
Statewide Total	82.7%	17.3%	10.0%	7.3%



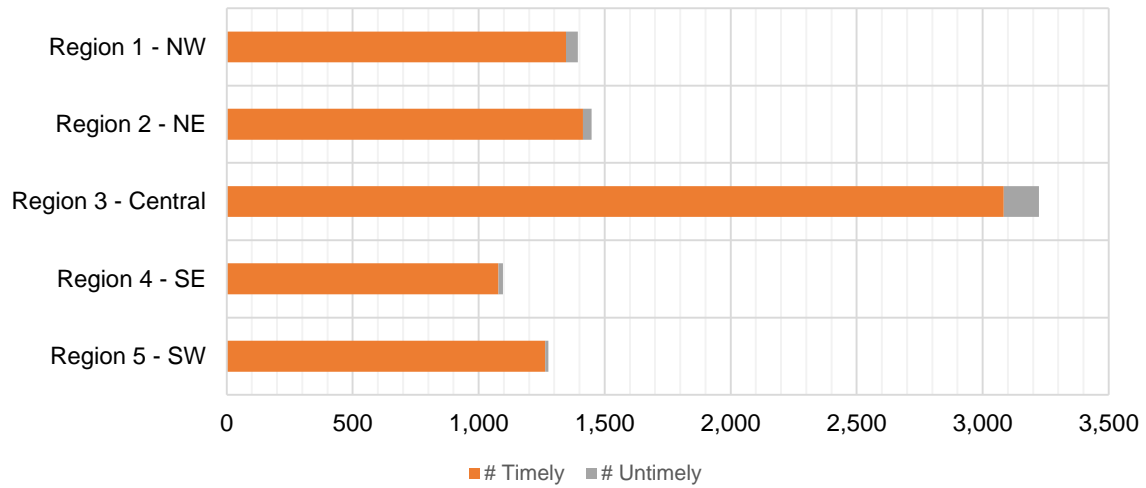
SNAP Expedite Timeliness by Field Office¹³
December 2017

Office Name	Total Expedited Approvals	# Timely	# Untimely	Percentage Timely
Chaves County ISD	258	256	2	99.2 %
Cibola County ISD	116	107	9	92.2 %
Colfax County ISD	49	49	0	100.0 %
Curry County ISD	214	210	4	98.1 %
East Dona Ana County ISD	227	224	3	98.7 %
Eddy Artesia County ISD	70	70	0	100.0 %
Eddy Carlsbad County ISD	176	173	3	98.3 %
Grant County ISD	191	191	0	100.0 %
Guadalupe County ISD	16	16	0	100.0 %
Lea County ISD	236	232	4	98.3 %
Lincoln County ISD	63	62	1	98.4 %
Luna County ISD	123	123	0	100.0 %
McKinley County ISD	320	313	7	97.8 %
Northeast Bernalillo County ISD	1,041	985	56	94.6 %
Northwest Bernalillo County ISD	848	811	37	95.6 %
Otero County ISD	205	202	3	98.5 %
Quay County ISD	45	45	0	100.0 %
Rio Arriba County ISD	253	247	6	97.6 %
Roosevelt County ISD	79	76	3	96.2 %
San Juan County ISD	549	530	19	96.5 %
San Miguel County ISD	167	166	1	99.4 %
Sandoval County ISD	387	379	8	97.9 %
Santa Fe County ISD	369	357	12	96.7 %
Sierra County ISD	65	65	0	100.0 %
Socorro County ISD	71	67	4	94.4 %
South Dona Ana ISD	161	159	2	98.8 %
Southeast Bernalillo County ISD	499	474	25	95.0 %
Southwest Bernalillo County ISD	704	683	21	97.0 %
Taos County ISD	162	155	7	95.7 %
Torrance County ISD	132	131	1	99.2 %
Valencia North County ISD	273	265	8	97.1 %
West Dona Ana County ISD	370	365	5	98.6 %
Statewide Total	8,439	8,188	251	97.0 %

SNAP Expedite Timeliness by Region¹³
December 2017

Region	Total Expedited Approvals	# Timely	# Untimely	Percentage Timely
Region 1 - NW	1,394	1,347	47	96.6%
Region 2 - NE	1,448	1,414	34	97.7%
Region 3 - Central	3,224	3,084	140	95.7%
Region 4 - SE	1,096	1,079	17	98.4%
Region 5 - SW	1,277	1,264	13	99.0%
Statewide Total	8,439	8,188	251	97.0%

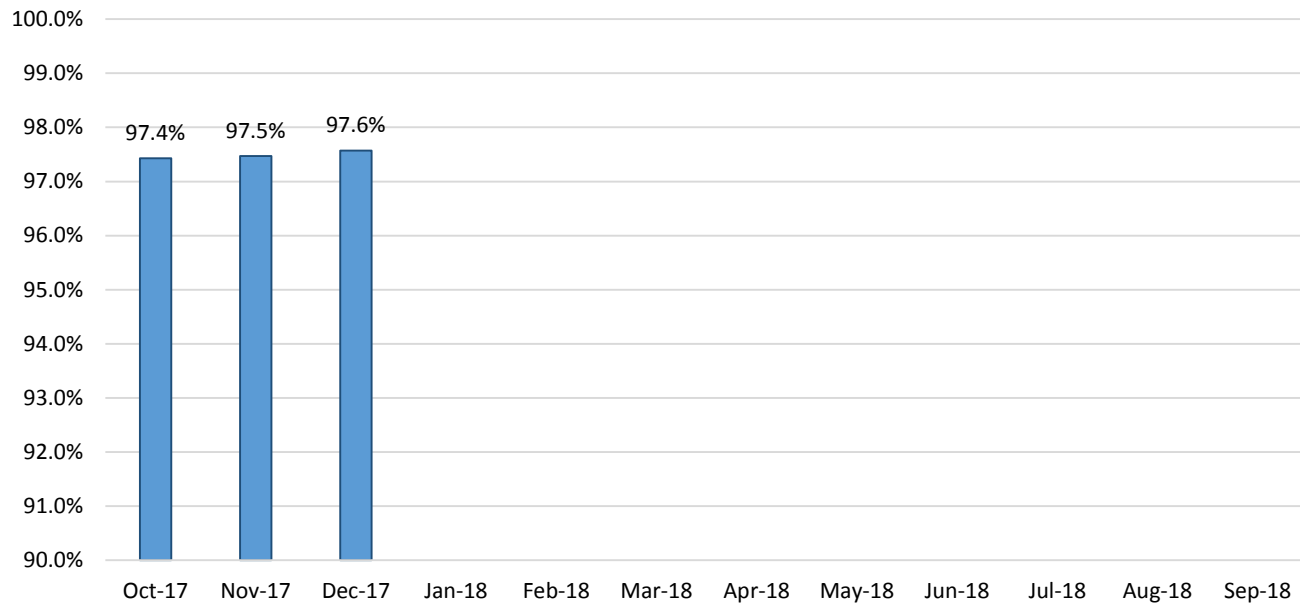
SNAP Expedite - Timeliness



SNAP: Percentage of Applications Processed Timely ¹³

	Oct-17	Nov-17	Dec-17	Jan-18	Feb-18	Mar-18	Apr-18	May-18	Jun-18	Jul-18	Aug-18	Sep-18	Average
APT	97.4%	97.5%	97.6%										97.5%

SNAP Application Processing Timeliness (APT)



SNAP Non-Expedite: Percentage of Initial Applications Processed Timely by Field Office¹³

	Oct-17	Nov-17	Dec-17	Jan-18	Feb-18	Mar-18	Apr-18	May-18	Jun-18	Jul-18	Aug-18	Sep-18	Average
Cibola	96.8%	97.2%	96.7%										96.9%
McKinley	97.4%	98.8%	98.6%										98.3%
San Juan	94.8%	93.5%	98.0%										95.4%
Sierra	100.0%	100.0%	100.0%										100.0%
Socorro	100.0%	96.8%	100.0%										98.9%
Valencia North	96.5%	96.3%	96.6%										96.5%
Valencia South	100.0%												100.0%
NW Region 1 Total	96.5%	96.4%	98.0%										97.0%
Colfax	100.0%	100.0%	98.2%										99.4%
Guadalupe	100.0%	100.0%	100.0%										100.0%
Quay	97.2%	100.0%	100.0%										99.1%
Rio Arriba	97.0%	99.4%	91.2%										95.9%
San Miguel	100.0%	98.5%	100.0%										99.5%
Sandoval	98.2%	98.6%	97.8%										98.2%
Santa Fe	97.6%	97.5%	99.6%										98.2%
Taos	98.7%	98.7%	98.7%										98.7%
NE Region 2 Total	98.2%	98.6%	97.8%										98.2%
NE Bernalillo	95.4%	95.7%	94.9%										95.3%
NW Bernalillo	97.6%	95.1%	96.7%										96.5%
SE Bernalillo	96.0%	96.8%	97.4%										96.7%
SW Bernalillo	97.9%	97.3%	99.1%										98.1%
Torrance	98.9%	98.2%	96.6%										97.9%
Gen. Region 3 Total	96.9%	96.3%	96.9%										96.7%
Chaves	99.3%	98.9%	98.5%										98.9%
Curry	95.7%	97.1%	97.9%										96.9%
Eddy Artesia	100.0%	97.2%	100.0%										99.1%
Eddy Carlsbad	94.8%	97.3%	100.0%										97.4%
Lea	97.0%	98.3%	99.5%										98.3%
Lincoln	97.8%	98.9%	100.0%										98.9%
Roosevelt	100.0%	98.6%	100.0%										99.5%
SE Region 4 Total	97.6%	98.2%	99.1%										98.3%
East Dona Ana	99.6%	98.9%	100.0%										99.5%
Grant	100.0%	99.0%	97.9%										99.0%
Luna	100.0%	99.4%	100.0%										99.8%
Otero	100.0%	98.9%	99.4%										99.4%
South Dona Ana	100.0%	99.6%	100.0%										99.9%
West Dona Ana	99.2%	98.7%	99.0%										99.0%
SW Region 5 Total	99.7%	99.0%	99.5%										99.4%
STATE TOTAL	97.7%	97.5%	98.1%										97.8%

SNAP Expedite: Percentage of Initial Applications Processed Timely by Field Office¹³

	Oct-17	Nov-17	Dec-17	Jan-18	Feb-18	Mar-18	Apr-18	May-18	Jun-18	Jul-18	Aug-18	Sep-18	Average
Cibola	94.1%	100.0%	92.2%										95.4%
McKinley	99.4%	99.4%	97.8%										98.9%
San Juan	95.8%	94.2%	96.5%										95.5%
Sierra	98.3%	100.0%	100.0%										99.4%
Socorro	98.9%	100.0%	94.4%										97.8%
Valencia North	97.1%	93.3%	97.1%										95.8%
Valencia South	100.0%	100.0%											100.0%
NW Region 1 Total	97.0%	96.4%	96.6%										96.7%
Colfax	98.6%	100.0%	100.0%										99.5%
Guadalupe	100.0%	100.0%	100.0%										100.0%
Quay	100.0%	100.0%	100.0%										100.0%
Rio Arriba	94.6%	97.3%	97.6%										96.5%
San Miguel	99.1%	98.3%	99.4%										98.9%
Sandoval	98.2%	98.3%	97.9%										98.1%
Santa Fe	97.5%	97.7%	96.7%										97.3%
Taos	98.7%	97.8%	95.7%										97.4%
NE Region 2 Total	97.5%	98.0%	97.7%										97.7%
NE Bernalillo	94.6%	96.4%	94.7%										95.2%
NW Bernalillo	97.6%	95.6%	95.6%										96.3%
SE Bernalillo	96.5%	95.7%	95.2%										95.8%
SW Bernalillo	96.6%	96.4%	96.9%										96.6%
Torrance	96.9%	96.5%	99.2%										97.5%
Gen. Region 3 Total	96.3%	96.1%	95.7%										96.0%
Chaves	98.1%	98.6%	99.2%										98.6%
Curry	96.0%	98.7%	98.1%										97.6%
Eddy Artesia	100.0%	98.4%	100.0%										99.5%
Eddy Carlsbad	98.5%	98.6%	98.3%										98.5%
Lea	98.4%	98.4%	98.3%										98.4%
Lincoln	96.7%	98.6%	98.4%										97.9%
Roosevelt	92.7%	100.0%	96.2%										96.3%
SE Region 4 Total	97.4%	98.7%	98.4%										98.2%
East Dona Ana	99.0%	98.8%	98.7%										98.8%
Grant	97.9%	100.0%	100.0%										99.3%
Luna	99.3%	100.0%	100.0%										99.8%
Otero	98.8%	98.4%	98.5%										98.6%
South Dona Ana	100.0%	99.4%	98.8%										99.4%
West Dona Ana	99.5%	99.5%	98.6%										99.2%
SW Region 5 Total	99.1%	99.3%	99.0%										99.1%
STATE TOTAL	97.2%	97.3%	97.0%										97.2%

SNAP: Percentage of Denied Initial Applications Processed Within 30 Days by Field Office¹³

	Oct-17	Nov-17	Dec-17	Jan-18	Feb-18	Mar-18	Apr-18	May-18	Jun-18	Jul-18	Aug-18	Sep-18	Average
Cibola	66.7%	50.0%	66.7%										61.1%
McKinley	59.0%	57.8%	65.9%										60.9%
San Juan	35.7%	51.8%	46.5%										44.7%
Sierra	95.5%	90.9%	90.5%										92.3%
Socorro	69.6%	68.2%	94.3%										77.3%
Valencia North	45.9%	41.8%	45.0%										44.3%
Valencia South													
NW Region 1 Total	48.3%	53.2%	55.5%										52.3%
Colfax	100.0%	100.0%	100.0%										100.0%
Guadalupe	73.3%	75.0%	90.0%										79.4%
Quay	83.3%	33.3%	66.7%										61.1%
Rio Arriba	70.1%	56.3%	43.0%										56.5%
San Miguel	66.2%	77.3%	90.0%										77.8%
Sandoval	70.8%	69.2%	74.6%										71.5%
Santa Fe	64.7%	70.6%	62.1%										65.8%
Taos	77.8%	79.2%	84.1%										80.3%
NE Region 2 Total	70.8%	69.7%	68.8%										69.8%
NE Bernalillo	43.5%	40.5%	44.9%										43.0%
NW Bernalillo	41.7%	42.8%	48.7%										44.4%
SE Bernalillo	52.3%	52.0%	74.2%										59.5%
SW Bernalillo	63.9%	62.9%	50.9%										59.2%
Torrance	60.4%	68.2%	51.0%										59.9%
Gen. Region 3 Total	49.7%	50.0%	53.4%										51.1%
Chaves	86.4%	85.7%	89.3%										87.1%
Curry	63.5%	60.3%	80.9%										68.2%
Eddy Artesia	75.8%	58.1%	76.9%										70.2%
Eddy Carlsbad	60.7%	67.6%	76.4%										68.2%
Lea	86.3%	63.8%	68.0%										72.7%
Lincoln	55.0%	78.4%	94.9%										76.1%
Roosevelt	77.1%	68.1%	88.4%										77.9%
SE Region 4 Total	74.4%	69.2%	81.2%										74.9%
East Dona Ana	81.2%	77.6%	72.7%										77.2%
Grant	73.5%	81.1%	72.1%										75.6%
Luna	55.8%	51.1%	65.9%										57.6%
Otero	40.3%	38.6%	47.9%										42.2%
South Dona Ana	70.8%	68.1%	63.2%										67.4%
West Dona Ana	65.6%	55.7%	70.5%										63.9%
SW Region 5 Total	66.6%	62.3%	66.5%										65.1%
STATE TOTAL	59.5%	58.9%	62.6%										60.4%

SNAP Renewals Processed by Field Office²⁰
December 2017

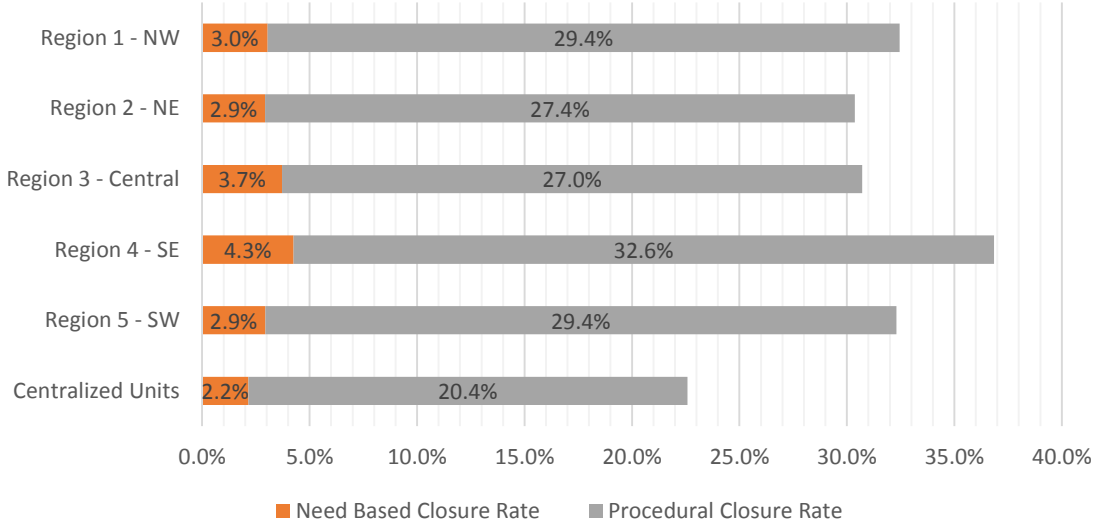
Office	Approvals	Closures	Need Based Closures	Procedural Closures
Chaves County ISD	257	131	20	111
Cibola County ISD	193	61	7	54
Colfax County ISD	66	18	4	14
Curry County ISD	139	78	5	73
East Dona Ana County ISD	318	143	17	126
Eddy Artesia County ISD	52	30	2	28
Eddy Carlsbad County ISD	106	64	8	56
Grant County ISD	141	85	7	78
Guadalupe County ISD	26	8	0	8
Hidalgo County ISD	18	9	1	8
Lea County ISD	205	128	15	113
Lincoln County ISD	70	43	7	36
Luna County ISD	167	69	2	67
McKinley County ISD	412	195	16	179
Northeast Bernalillo County ISD	704	315	48	267
Northwest Bernalillo County ISD	490	237	34	203
Otero County ISD	212	109	10	99
Quay County ISD	48	15	0	15
Rio Arriba County ISD	252	102	7	95
Roosevelt County ISD	47	37	2	35
San Juan County ISD	502	311	28	283
San Miguel County ISD	173	77	9	68
Sandoval County ISD	422	180	26	154
Santa Fe County ISD	334	189	15	174
Sierra County ISD	74	35	1	34
Socorro County ISD	92	46	5	41
South Dona Ana ISD	396	132	14	118
Southeast Bernalillo County ISD	406	213	15	198
Southwest Bernalillo County ISD	849	316	36	280
Taos County ISD	153	54	1	53
Torrance County ISD	139	66	6	60
Valencia North County ISD	438	174	20	154
Valencia South County ISD	0	0	0	0
West Dona Ana County ISD	294	191	16	175
Centralized Units	72	21	2	19
Statewide Total	8,267	3,882	406	3,476

SNAP Renewal Disposition Rates by Field Office²⁰
December 2017

Office	Approval Rate	Closure Rate	Need Based Closure Rate	Procedural Closure Rate
Chaves County ISD	66.2%	33.8%	5.2%	28.6%
Cibola County ISD	76.0%	24.0%	2.8%	21.3%
Colfax County ISD	78.6%	21.4%	4.8%	16.7%
Curry County ISD	64.1%	35.9%	2.3%	33.6%
East Dona Ana County ISD	69.0%	31.0%	3.7%	27.3%
Eddy Artesia County ISD	63.4%	36.6%	2.4%	34.1%
Eddy Carlsbad County ISD	62.4%	37.6%	4.7%	32.9%
Grant County ISD	62.4%	37.6%	3.1%	34.5%
Guadalupe County ISD	76.5%	23.5%	0.0%	23.5%
Hidalgo County ISD	66.7%	33.3%	3.7%	29.6%
Lea County ISD	61.6%	38.4%	4.5%	33.9%
Lincoln County ISD	61.9%	38.1%	6.2%	31.9%
Luna County ISD	70.8%	29.2%	0.8%	28.4%
McKinley County ISD	67.9%	32.1%	2.6%	29.5%
Northeast Bernalillo County ISD	69.1%	30.9%	4.7%	26.2%
Northwest Bernalillo County ISD	67.4%	32.6%	4.7%	27.9%
Otero County ISD	66.0%	34.0%	3.1%	30.8%
Quay County ISD	76.2%	23.8%	0.0%	23.8%
Rio Arriba County ISD	71.2%	28.8%	2.0%	26.8%
Roosevelt County ISD	56.0%	44.0%	2.4%	41.7%
San Juan County ISD	61.7%	38.3%	3.4%	34.8%
San Miguel County ISD	69.2%	30.8%	3.6%	27.2%
Sandoval County ISD	70.1%	29.9%	4.3%	25.6%
Santa Fe County ISD	63.9%	36.1%	2.9%	33.3%
Sierra County ISD	67.9%	32.1%	0.9%	31.2%
Socorro County ISD	66.7%	33.3%	3.6%	29.7%
South Dona Ana ISD	75.0%	25.0%	2.7%	22.3%
Southeast Bernalillo County ISD	65.6%	34.4%	2.4%	32.0%
Southwest Bernalillo County ISD	72.9%	27.1%	3.1%	24.0%
Taos County ISD	73.9%	26.1%	0.5%	25.6%
Torrance County ISD	67.8%	32.2%	2.9%	29.3%
Valencia North County ISD	71.6%	28.4%	3.3%	25.2%
Valencia South County ISD	0.0%	0.0%	0.0%	0.0%
West Dona Ana County ISD	60.6%	39.4%	3.3%	36.1%
Centralized Units	77.4%	22.6%	2.2%	20.4%
Statewide Total	68.0%	32.0%	3.3%	28.6%

SNAP Renewal Disposition Rates by Region²⁰
December 2017

Region	Approval Rate	Closure Rate	Need Based Closure Rate	Procedural Closure Rate
Region 1 - NW	67.5%	32.5%	3.0%	29.4%
Region 2 - NE	69.6%	30.4%	2.9%	27.4%
Region 3 - Central	69.3%	30.7%	3.7%	27.0%
Region 4 - SE	63.2%	36.8%	4.3%	32.6%
Region 5 - SW	67.7%	32.3%	2.9%	29.4%
Centralized Units	77.4%	22.6%	2.2%	20.4%
Statewide Total	68.0%	32.0%	3.3%	28.6%



SNAP: Percentage of Approved Renewal Applications Processed by Normal Accessibility Date ¹¹													
	Oct-17	Nov-17	Dec-17	Jan-18	Feb-18	Mar-18	Apr-18	May-18	Jun-18	Jul-18	Aug-18	Sep-18	Average
Cibola		71.2%	73.1%										72.2%
McKinley		90.4%	92.0%										91.2%
San Juan		85.9%	80.5%										83.2%
Sierra		98.1%	93.6%										95.9%
Socorro		92.5%	89.7%										91.1%
Valencia North		84.1%	86.9%										85.5%
Valencia South													
NW Region 1 Total		87.1%	86.0%										86.5%
Colfax		87.8%	82.5%										85.1%
Guadalupe		94.4%	93.1%										93.8%
Quay		94.3%	89.5%										91.9%
Rio Arriba		79.7%	71.9%										75.8%
San Miguel		90.4%	95.7%										93.1%
Sandoval		90.1%	93.8%										92.0%
Santa Fe		87.1%	92.0%										89.5%
Taos		90.8%	91.5%										91.1%
NE Region 2 Total		89.3%	88.8%										89.0%
NE Bernalillo		71.8%	72.1%										72.0%
NW Bernalillo		85.5%	80.4%										82.9%
SE Bernalillo		79.7%	81.6%										80.7%
SW Bernalillo		83.4%	89.0%										86.2%
Torrance		74.5%	74.3%										74.4%
Gen. Region 3 Total		79.0%	79.5%										79.2%
Chaves		91.2%	92.0%										91.6%
Curry		94.1%	81.9%										88.0%
Eddy Artesia		94.1%	91.9%										93.0%
Eddy Carlsbad		75.8%	90.8%										83.3%
Lea		91.8%	90.9%										91.3%
Lincoln		87.5%	92.6%										90.0%
Roosevelt		93.6%	86.7%										90.1%
SE Region 4 Total		89.7%	89.5%										89.6%
East Dona Ana		94.8%	93.1%										94.0%
Grant		90.5%	93.5%										92.0%
Luna		91.7%	84.0%										87.9%
Otero		87.3%	86.5%										86.9%
South Dona Ana		94.3%	93.1%										93.7%
West Dona Ana		97.4%	95.0%										96.2%
SW Region 5 Total		92.7%	90.9%										91.8%
STATE TOTAL		86.4%	86.3%										86.4%

*Includes cases in which the Renewal Packet was received after the 15th of the month, the due date for uninterrupted benefits.
No data available for October 2017*

SNAP: Percentage of Approved Renewal Applications Processed by Normal Accessibility Date ¹¹													
	Oct-17	Nov-17	Dec-17	Jan-18	Feb-18	Mar-18	Apr-18	May-18	Jun-18	Jul-18	Aug-18	Sep-18	Average
Cibola		72.8%	86.1%										79.5%
McKinley		92.8%	93.9%										93.4%
San Juan		89.0%	85.1%										87.0%
Sierra		100.0%	97.5%										98.8%
Socorro		94.7%	95.7%										95.2%
Valencia North		89.1%	93.1%										91.1%
Valencia South													
NW Region 1 Total		89.8%	91.9%										90.8%
Colfax		95.1%	91.2%										93.1%
Guadalupe		96.7%	92.9%										94.8%
Quay		100.0%	95.6%										97.8%
Rio Arriba		90.5%	84.5%										87.5%
San Miguel		93.6%	96.9%										95.2%
Sandoval		93.1%	97.0%										95.1%
Santa Fe		91.6%	97.0%										94.3%
Taos		95.8%	94.8%										95.3%
NE Region 2 Total		94.6%	93.7%										94.1%
NE Bernalillo		75.7%	77.9%										76.8%
NW Bernalillo		88.7%	84.5%										86.6%
SE Bernalillo		85.2%	87.3%										86.3%
SW Bernalillo		88.9%	93.5%										91.2%
Torrance		83.1%	80.7%										81.9%
Gen. Region 3 Total		84.3%	84.8%										84.5%
Chaves		92.0%	92.0%										92.0%
Curry		94.6%	85.4%										90.0%
Eddy Artesia		100.0%	96.0%										98.0%
Eddy Carlsbad		80.3%	94.4%										87.4%
Lea		94.6%	94.2%										94.4%
Lincoln		88.5%	95.7%										92.1%
Roosevelt		92.9%	85.0%										88.9%
SE Region 4 Total		91.8%	91.8%										91.8%
East Dona Ana		96.8%	97.8%										97.3%
Grant		94.2%	99.1%										96.7%
Luna		96.9%	90.2%										93.5%
Otero		96.2%	96.4%										96.3%
South Dona Ana		97.4%	97.4%										97.4%
West Dona Ana		99.1%	98.2%										98.6%
SW Region 5 Total		96.8%	96.5%										96.6%
STATE TOTAL		90.4%	91.3%										90.8%

Only includes cases in which the Renewal Packet was received by the 15th of the month, the due date for uninterrupted benefits.
No data available for October 2017

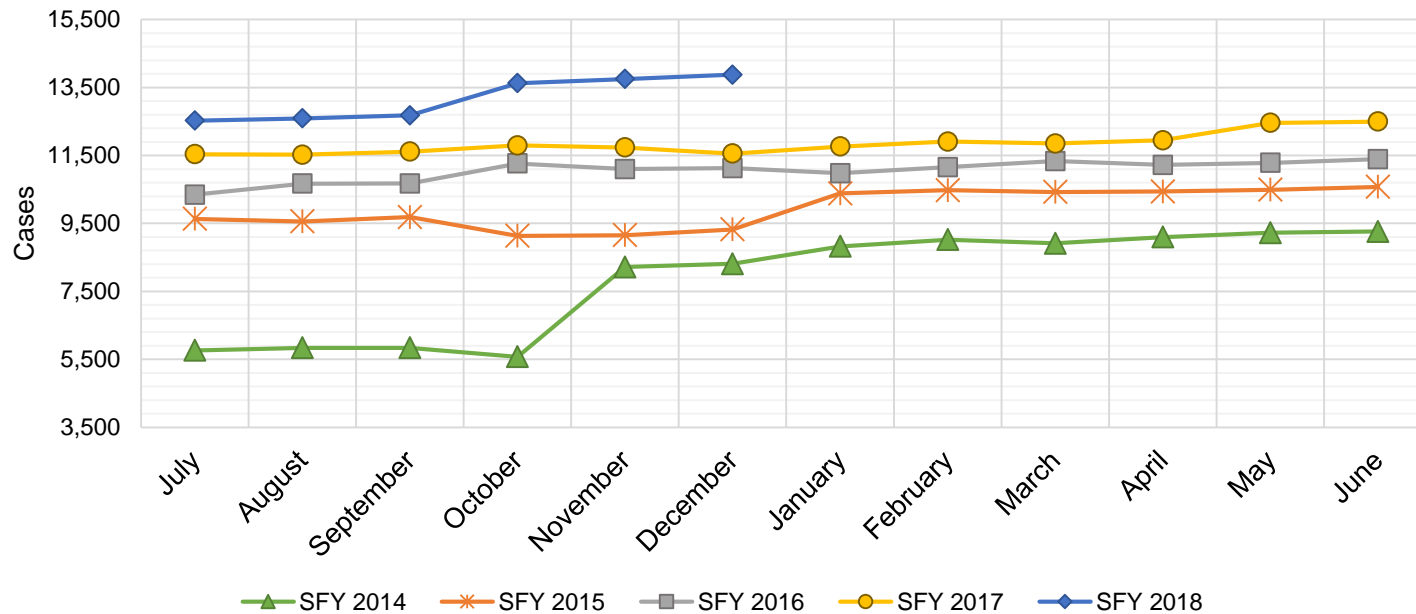
SNAP: Percentage of Closures at Renewal Processed by Certification End Date ¹¹													
	Oct-17	Nov-17	Dec-17	Jan-18	Feb-18	Mar-18	Apr-18	May-18	Jun-18	Jul-18	Aug-18	Sep-18	Average
Cibola		6.8%	3.3%										5.0%
McKinley		3.7%	6.7%										5.2%
San Juan		7.0%	5.1%										6.1%
Sierra		19.2%	17.1%										18.2%
Socorro		11.8%	4.3%										8.1%
Valencia North		6.2%	9.8%										8.0%
Valencia South													
NW Region 1 Total		9.1%	7.7%										8.4%
Colfax		6.3%	11.1%										8.7%
Guadalupe		7.7%	0.0%										3.8%
Quay		15.8%	6.7%										11.2%
Rio Arriba		6.1%	3.9%										5.0%
San Miguel		4.7%	9.0%										6.8%
Sandoval		12.9%	12.8%										12.8%
Santa Fe		3.0%	5.8%										4.4%
Taos		4.1%	3.7%										3.9%
NE Region 2 Total		7.6%	6.6%										7.1%
NE Bernalillo		3.0%	5.7%										4.4%
NW Bernalillo		3.4%	3.8%										3.6%
SE Bernalillo		4.1%	6.1%										5.1%
SW Bernalillo		7.2%	6.6%										6.9%
Torrance		3.6%	7.6%										5.6%
Gen. Region 3 Total		4.3%	6.0%										5.1%
Chaves		7.7%	12.2%										10.0%
Curry		8.0%	3.8%										5.9%
Eddy Artesia		6.9%	10.0%										8.4%
Eddy Carlsbad		8.6%	4.7%										6.6%
Lea		5.3%	14.8%										10.1%
Lincoln		2.9%	9.3%										6.1%
Roosevelt		15.0%	5.4%										10.2%
SE Region 4 Total		7.8%	8.6%										8.2%
East Dona Ana		12.9%	9.1%										11.0%
Grant		6.0%	4.7%										5.3%
Luna		5.6%	1.4%										3.5%
Otero		2.9%	5.5%										4.2%
South Dona Ana		13.8%	7.6%										10.7%
West Dona Ana		8.9%	8.4%										8.7%
SW Region 5 Total		8.3%	6.1%										7.2%
STATE TOTAL		6.6%	7.1%										6.9%

*Includes cases for which no renewal application was received.
No data available for October 2017*

State SNAP Supplement

SFY 2014 ¹²			SFY 2015 ^{12,9}			SFY 2016 ⁹			SFY 2017 ⁹			SFY 2018 ⁹		
	Cases	Expenditures		Cases	Expenditures		Cases	Expenditures		Cases	Expenditures		Cases	Expenditures
Jul-13	5,767	\$48,040	Jul-14	9,635	\$88,859	Jul-15	10,345	\$86,143	Jul-16	11,537	\$95,553	Jul-17	12,526	\$97,568
Aug-13	5,841	\$48,417	Aug-14	9,559	\$87,757	Aug-15	10,669	\$88,197	Aug-16	11,522	\$95,107	Aug-17	12,589	\$98,954
Sep-13	5,841	\$48,732	Sep-14	9,688	\$87,372	Sep-15	10,676	\$88,426	Sep-16	11,613	\$94,472	Sep-17	12,679	\$97,546
Oct-13	5,575	\$46,610	Oct-14	9,136	\$70,490	Oct-15	11,262	\$96,758	Oct-16	11,797	\$96,679	Oct-17	13,628	\$117,343
Nov-13	8,219	\$69,564	Nov-14	9,152	\$69,955	Nov-15	11,099	\$91,996	Nov-16	11,735	\$93,689	Nov-17	13,748	\$119,055
Dec-13	8,310	\$71,839	Dec-14	9,322	\$73,226	Dec-15	11,125	\$90,771	Dec-16	11,556	\$93,739	Dec-17	13,877	\$120,585
Jan-14	8,826	\$77,933	Jan-15	10,384	\$84,578	Jan-16	10,977	\$92,760	Jan-17	11,763	\$96,074	Jan-18		
Feb-14	9,024	\$84,758	Feb-15	10,477	\$82,901	Feb-16	11,153	\$95,363	Feb-17	11,907	\$98,251	Feb-18		
Mar-14	8,916	\$80,597	Mar-15	10,423	\$87,461	Mar-16	11,332	\$96,751	Mar-17	11,853	\$96,693	Mar-18		
Apr-14	9,098	\$84,599	Apr-15	10,440	\$79,605	Apr-16	11,222	\$93,959	Apr-17	11,944	\$97,060	Apr-18		
May-14	9,226	\$85,035	May-15	10,491	\$82,511	May-16	11,283	\$95,271	May-17	12,457	\$96,940	May-18		
Jun-14	9,264	\$84,329	Jun-15	10,575	\$85,134	Jun-16	11,389	\$93,061	Jun-17	12,498	\$97,405	Jun-18		

TOTAL	93,907	\$830,453	119,282	\$979,850	132,532	\$1,109,455	142,182	\$1,151,662	79,047	\$651,052
AVERAGE	7,826	\$69,204	9,940	\$81,654	11,044	\$92,455	11,849	\$95,972	13,175	\$108,509



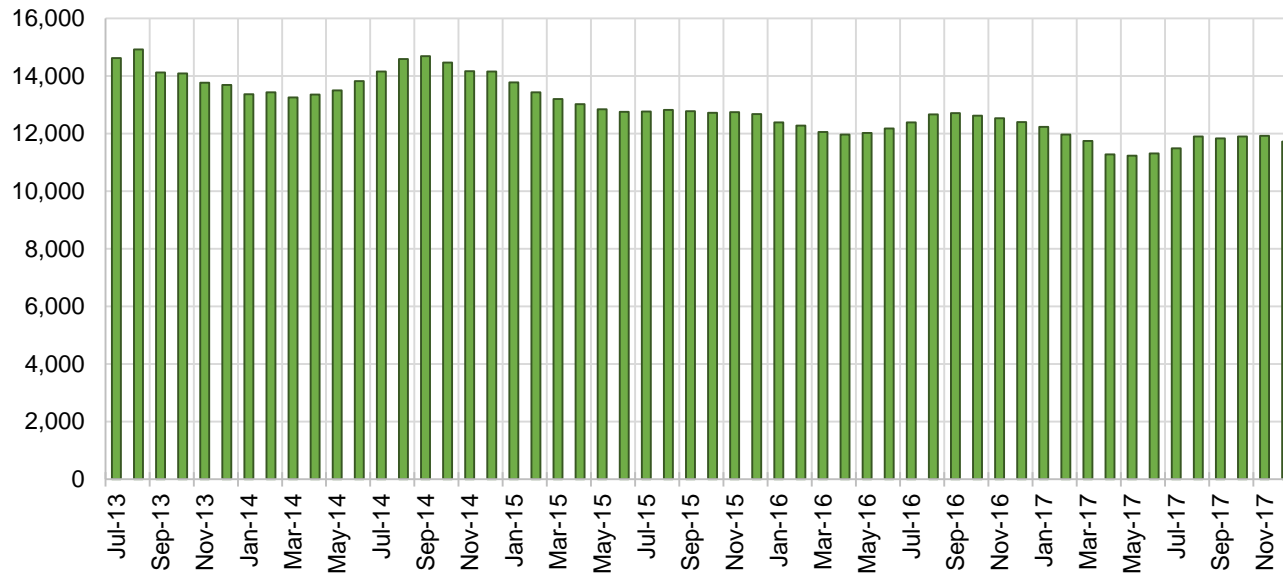
TANF Cases by Field Office⁶

Office	Dec-16	Nov-17	Dec-17	Percent Change	
				Dec-16- Dec-17	Nov-17- Dec-17
Chaves County ISD	618	564	544	-12.0%	-3.5%
Cibola County ISD	169	145	153	-9.5%	5.5%
Colfax County ISD	76	80	76	0.0%	-5.0%
Curry County ISD	515	527	522	1.4%	-0.9%
East Dona Ana County ISD	529	514	503	-4.9%	-2.1%
Eddy Artesia County ISD	153	127	128	-16.3%	0.8%
Eddy Carlsbad County ISD	229	167	157	-31.4%	-6.0%
Grant County ISD	200	190	184	-8.0%	-3.2%
Guadalupe County ISD	24	32	30	25.0%	-6.3%
Hidalgo County ISD	25	23	25	0.0%	8.7%
Lea County ISD	511	448	443	-13.3%	-1.1%
Lincoln County ISD	112	102	102	-8.9%	0.0%
Luna County ISD	205	217	221	7.8%	1.8%
McKinley County ISD	65	56	63	-3.1%	12.5%
Northeast Bernalillo County ISD	988	1,000	962	-2.6%	-3.8%
Northwest Bernalillo County ISD	836	829	823	-1.6%	-0.7%
Otero County ISD	291	331	313	7.6%	-5.4%
Quay County ISD	83	78	73	-12.0%	-6.4%
Rio Arriba County ISD	465	399	409	-12.0%	2.5%
Roosevelt County ISD	165	162	168	1.8%	3.7%
San Juan County ISD	335	323	300	-10.4%	-7.1%
San Miguel County ISD	225	207	206	-8.4%	-0.5%
Sandoval County ISD	546	595	582	6.6%	-2.2%
Santa Fe County ISD	546	452	444	-18.7%	-1.8%
Sierra County ISD	89	83	79	-11.2%	-4.8%
Socorro County ISD	104	91	89	-14.4%	-2.2%
South Dona Ana ISD	725	722	714	-1.5%	-1.1%
Southeast Bernalillo County ISD	730	654	646	-11.5%	-1.2%
Southwest Bernalillo County ISD	1,189	1,186	1,168	-1.8%	-1.5%
Taos County ISD	141	143	151	7.1%	5.6%
Torrance County ISD	196	184	190	-3.1%	3.3%
Valencia North County ISD	527	512	498	-5.5%	-2.7%
Valencia South County ISD	0	0	1	N/A	N/A
West Dona Ana County ISD	787	767	745	-5.3%	-2.9%
Centralized Units	1	5	5	400.0%	0.0%
Statewide Total	12,400	11,915	11,717	-5.5%	-1.7%

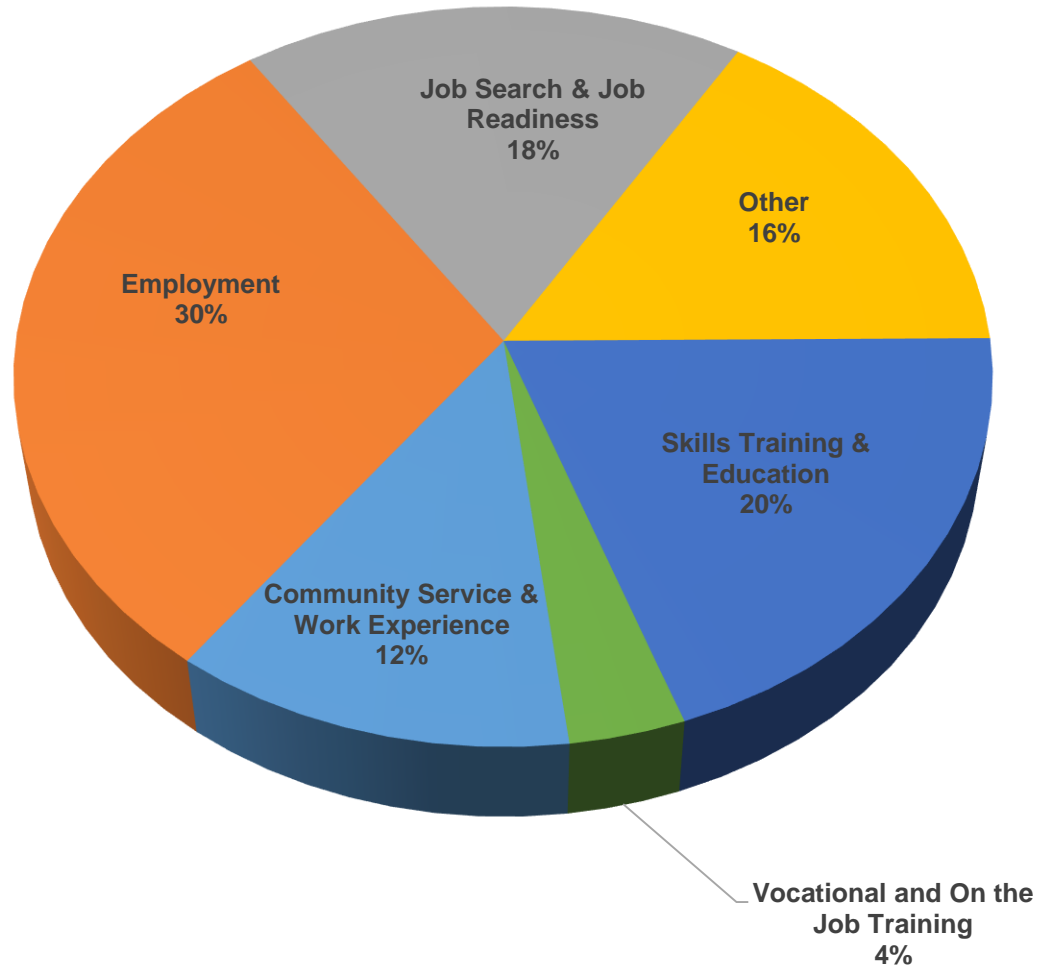
TANF Cases by Region⁶

Region	Dec-16	Nov-17	Dec-17	Percent Change	
				Dec-16- Dec-17	Nov-17- Dec-17
Region 1- NW	1,289	1,210	1,183	-8.2%	-2.2%
Region 2- NE	2,106	1,986	1,971	-6.4%	-0.8%
Region 3- Central	3,939	3,853	3,789	-3.8%	-1.7%
Region 4- SE	2,303	2,097	2,064	-10.4%	-1.6%
Region 5- SW	2,762	2,764	2,705	-2.1%	-2.1%
Centralized Units	1	5	5	400.0%	0.0%
Statewide Total	12,400	11,915	11,717	-5.5%	-1.7%

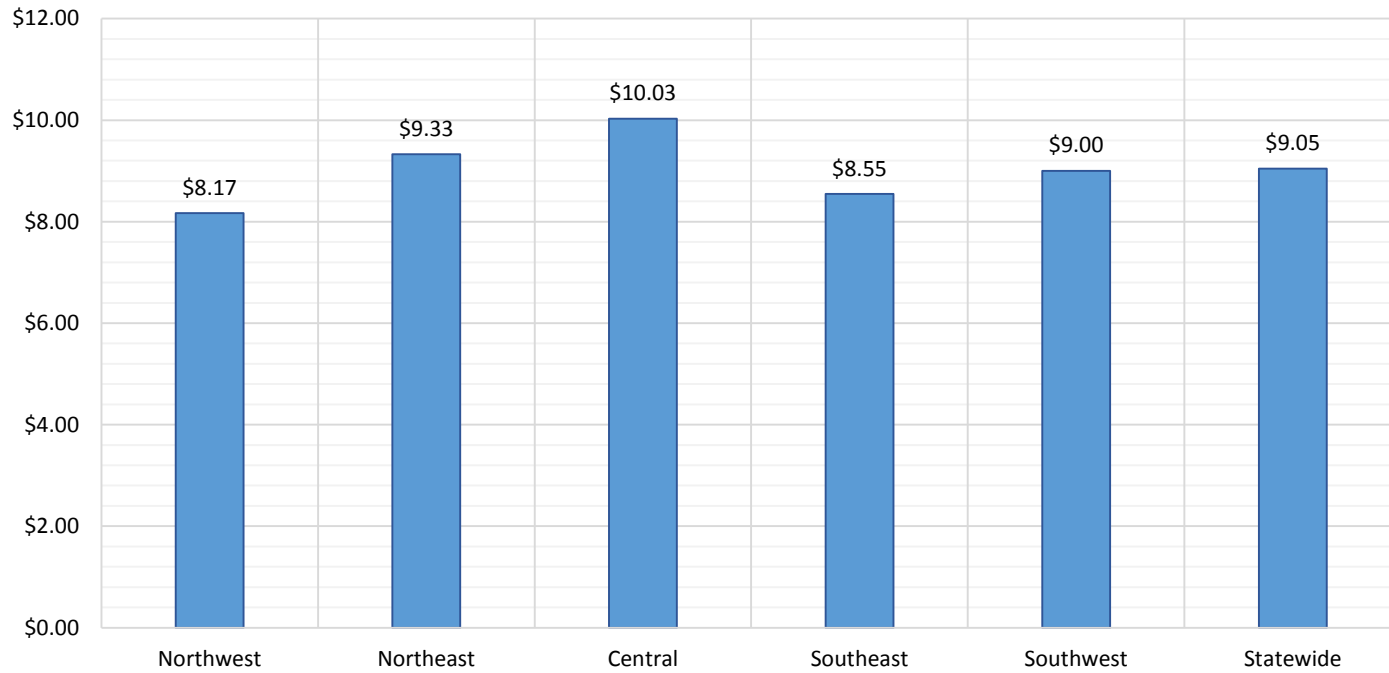
TANF Caseload: SFY-14 to Current



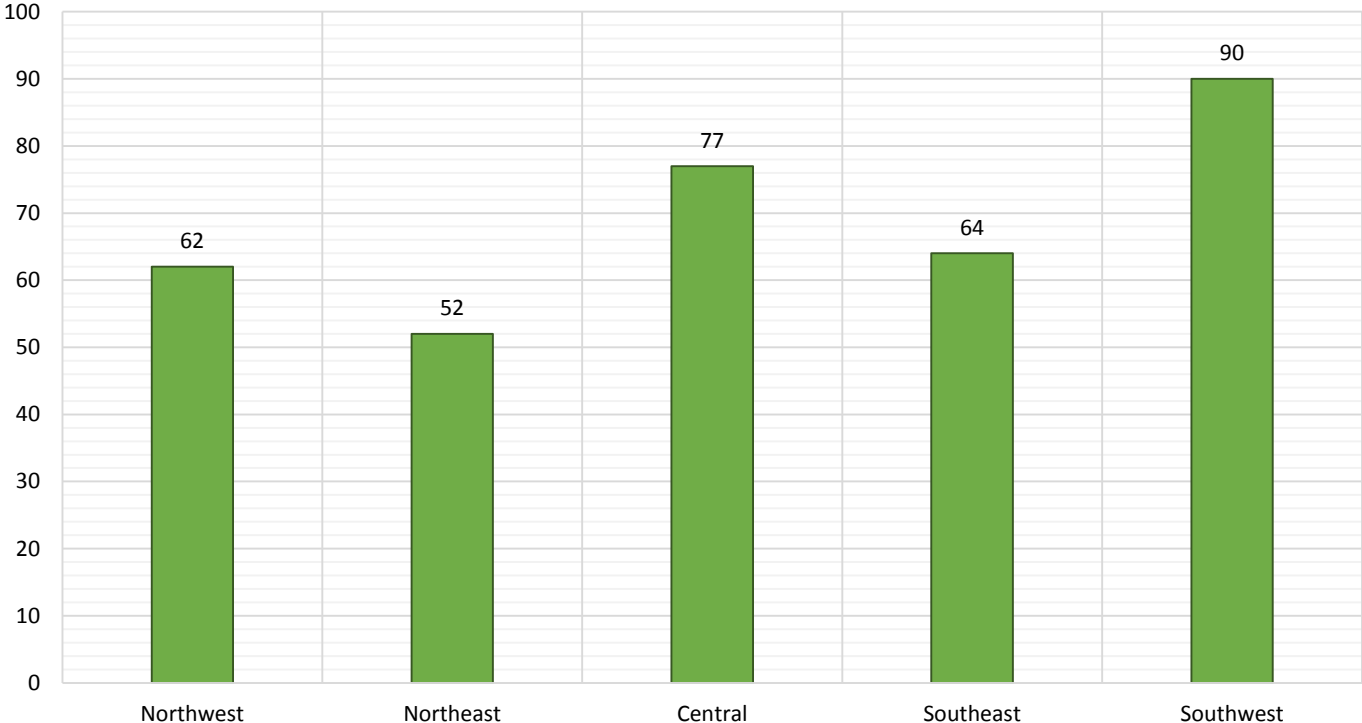
NM Works Activity Placements on December 31, 2017 as reported by SL Start¹⁴



Average Starting Hourly Wage of December 2017 TANF Employments
as reported by SL Start¹⁵



Number of New Employments in December 2017 by Region
as reported by SL Start¹⁵
Statewide Total: 345



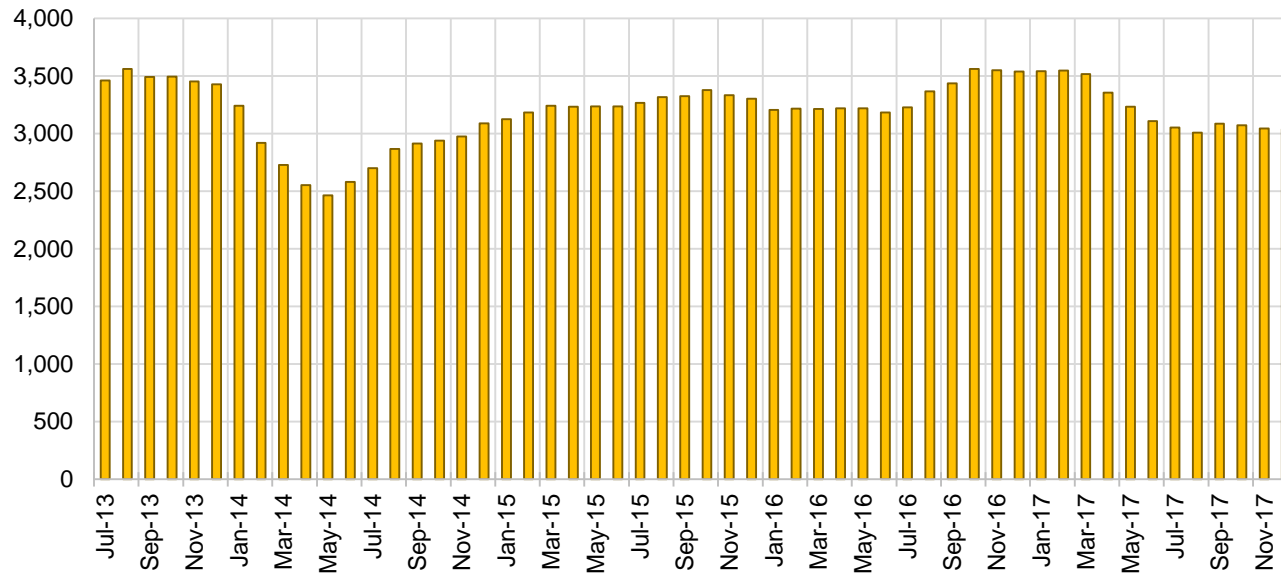
General Assistance Cases by Field Office⁶

Office	Dec-16	Nov-17	Dec-17	Percent Change	
				Dec-16- Dec-17	Nov-17- Dec-17
Chaves County ISD	145	130	128	-11.7%	-1.5%
Cibola County ISD	43	49	50	16.3%	2.0%
Colfax County ISD	32	24	20	-37.5%	-16.7%
Curry County ISD	87	65	65	-25.3%	0.0%
East Dona Ana County ISD	119	115	115	-3.4%	0.0%
Eddy Artesia County ISD	25	30	27	8.0%	-10.0%
Eddy Carlsbad County ISD	83	66	65	-21.7%	-1.5%
Grant County ISD	83	70	66	-20.5%	-5.7%
Guadalupe County ISD	13	20	18	38.5%	-10.0%
Hidalgo County ISD	15	11	12	-20.0%	9.1%
Lea County ISD	100	86	84	-16.0%	-2.3%
Lincoln County ISD	41	26	27	-34.1%	3.8%
Luna County ISD	55	57	59	7.3%	3.5%
McKinley County ISD	29	49	48	65.5%	-2.0%
Northeast Bernalillo County ISD	380	360	347	-8.7%	-3.6%
Northwest Bernalillo County ISD	341	287	290	-15.0%	1.0%
Otero County ISD	98	100	100	2.0%	0.0%
Quay County ISD	29	20	20	-31.0%	0.0%
Rio Arriba County ISD	114	87	86	-24.6%	-1.1%
Roosevelt County ISD	22	15	16	-27.3%	6.7%
San Juan County ISD	95	129	131	37.9%	1.6%
San Miguel County ISD	87	73	77	-11.5%	5.5%
Sandoval County ISD	156	122	118	-24.4%	-3.3%
Santa Fe County ISD	207	144	140	-32.4%	-2.8%
Sierra County ISD	34	27	29	-14.7%	7.4%
Socorro County ISD	51	45	44	-13.7%	-2.2%
South Dona Ana ISD	53	60	57	7.5%	-5.0%
Southeast Bernalillo County ISD	230	171	186	-19.1%	8.8%
Southwest Bernalillo County ISD	276	213	217	-21.4%	1.9%
Taos County ISD	69	63	57	-17.4%	-9.5%
Torrance County ISD	71	46	47	-33.8%	2.2%
Valencia North County ISD	135	114	115	-14.8%	0.9%
Valencia South County ISD	0	0	0	N/A	N/A
West Dona Ana County ISD	220	170	177	-19.5%	4.1%
Centralized Units	0	0	0	N/A	N/A
Statewide Total	3,538	3,044	3,038	-14.1%	-0.2%

General Assistance Cases by Region⁶

Region	Dec-16	Nov-17	Dec-17	Percent Change	
				Dec-16- Dec-17	Nov-17- Dec-17
Region 1 - NW	387	413	417	7.8%	1.0%
Region 2 - NE	707	553	536	-24.2%	-3.1%
Region 3 - Central	1,298	1,077	1,087	-16.3%	0.9%
Region 4 - SE	503	418	412	-18.1%	-1.4%
Region 5 - SW	643	583	586	-8.9%	0.5%
Centralized Units	0	0	0	N/A	N/A
Statewide Total	3,538	3,044	3,038	-14.1%	-0.2%

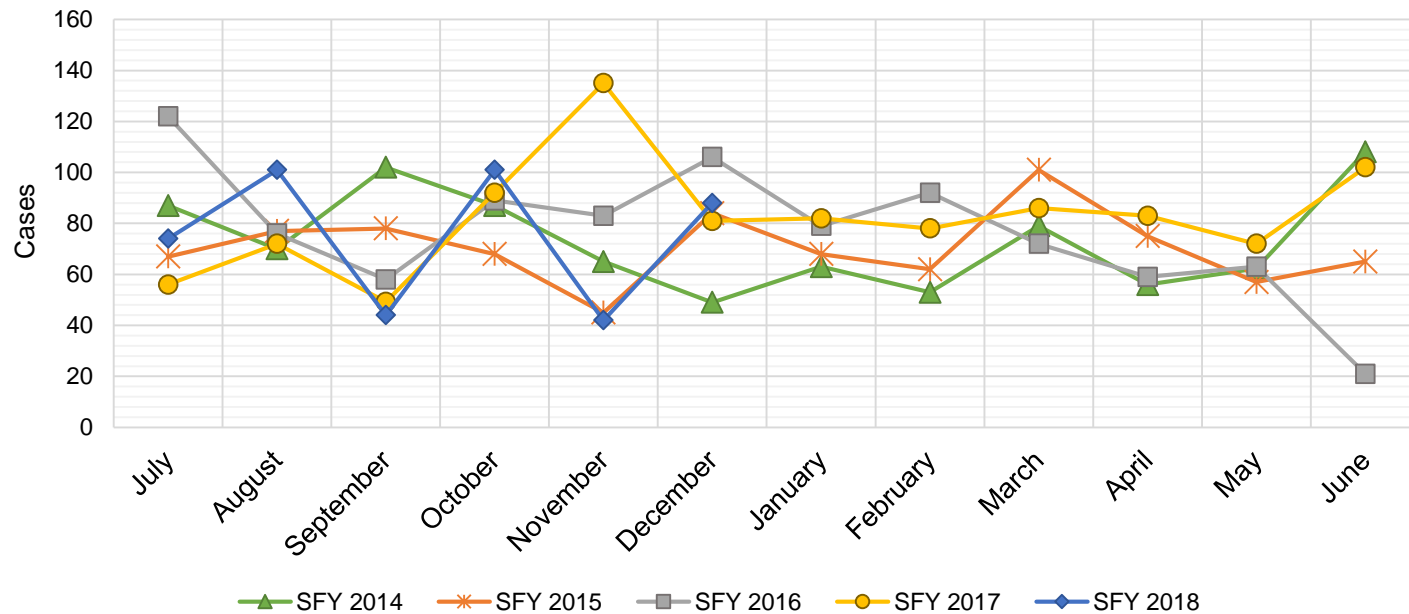
General Assistance Caseload: SFY-14 to Current



General Assistance Interim Assistance Reimbursements¹⁶

SFY 2014			SFY 2015			SFY 2016			SFY 2017			SFY 2018		
	Cases	Expenditures		Cases	Expenditures		Cases	Expenditures		Cases	Expenditures		Cases	Expenditures
Jul-13	87	\$185,368	Jul-14	67	\$144,679	Jul-15	122	\$342,648	Jul-16	56	\$164,970	Jul-17	74	\$241,438
Aug-13	70	\$184,639	Aug-14	77	\$244,233	Aug-15	76	\$245,236	Aug-16	72	\$223,182	Aug-17	101	\$339,301
Sep-13	102	\$268,243	Sep-14	78	\$168,421	Sep-15	58	\$170,093	Sep-16	49	\$158,027	Sep-17	44	\$131,229
Oct-13	87	\$165,578	Oct-14	68	\$182,265	Oct-15	89	\$277,912	Oct-16	92	\$257,830	Oct-17	101	\$335,752
Nov-13	65	\$139,197	Nov-14	45	\$134,482	Nov-15	83	\$238,948	Nov-16	135	\$402,305	Nov-17	42	\$139,572
Dec-13	49	\$147,853	Dec-14	84	\$239,926	Dec-15	106	\$388,102	Dec-16	81	\$227,569	Dec-17	88	\$245,453
Jan-14	63	\$178,944	Jan-15	68	\$227,066	Jan-16	79	\$239,263	Jan-17	82	\$274,050	Jan-18		
Feb-14	53	\$130,352	Feb-15	62	\$159,564	Feb-16	92	\$296,332	Feb-17	78	\$227,569	Feb-18		
Mar-14	79	\$176,756	Mar-15	101	\$317,899	Mar-16	72	\$254,360	Mar-17	86	\$278,219	Mar-18		
Apr-14	56	\$155,245	Apr-15	75	\$199,038	Apr-16	59	\$208,631	Apr-17	83	\$267,187	Apr-18		
May-14	62	\$138,827	May-15	57	\$167,383	May-16	63	\$182,241	May-17	72	\$232,836	May-18		
Jun-14	108	\$241,016	Jun-15	65	\$188,159	Jun-16	21	\$51,760	Jun-17	102	\$306,228	Jun-18		

TOTAL	881	\$2,112,017	847	\$2,373,115	920	\$2,895,525	988	\$3,019,972	450	\$1,432,745
AVERAGE	73	\$176,001	71	\$197,760	77	\$241,294	82	\$251,664	75	\$238,791



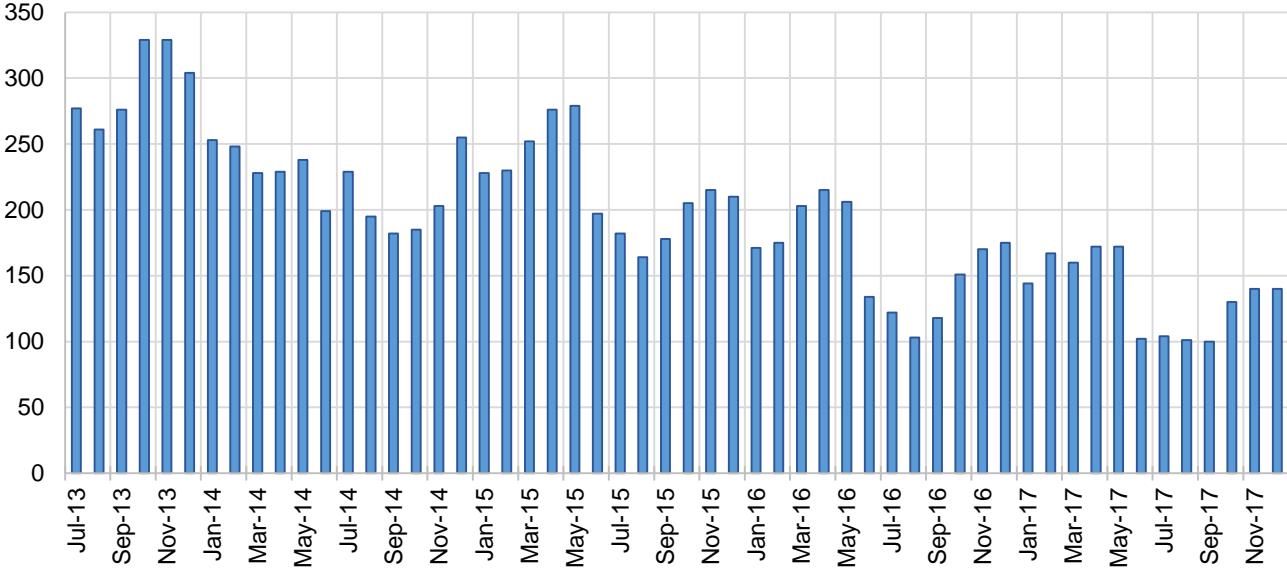
Education Works Cases by Field Office⁶

Office	Dec-16	Nov-17	Dec-17	Percent Change	
				Dec-16- Dec-17	Nov-17- Dec-17
Chaves County ISD	3	3	3	0.0%	0.0%
Cibola County ISD	1	0	0	-100.0%	N/A
Colfax County ISD	2	0	0	-100.0%	N/A
Curry County ISD	1	3	3	200.0%	0.0%
East Dona Ana County ISD	3	5	7	133.3%	40.0%
Eddy Artesia County ISD	0	1	2	N/A	100.0%
Eddy Carlsbad County ISD	1	2	2	100.0%	0.0%
Grant County ISD	5	12	12	140.0%	0.0%
Guadalupe County ISD	1	1	1	0.0%	0.0%
Hidalgo County ISD	1	0	0	-100.0%	N/A
Lea County ISD	8	7	6	-25.0%	-14.3%
Lincoln County ISD	0	0	0	N/A	N/A
Luna County ISD	1	2	3	200.0%	50.0%
McKinley County ISD	0	0	0	N/A	N/A
Northeast Bernalillo County ISD	29	13	13	-55.2%	0.0%
Northwest Bernalillo County ISD	15	10	11	-26.7%	10.0%
Otero County ISD	2	2	2	0.0%	0.0%
Quay County ISD	1	0	0	-100.0%	N/A
Rio Arriba County ISD	1	3	3	200.0%	0.0%
Roosevelt County ISD	2	2	2	0.0%	0.0%
San Juan County ISD	4	3	2	-50.0%	-33.3%
San Miguel County ISD	6	6	6	0.0%	0.0%
Sandoval County ISD	17	12	10	-41.2%	-16.7%
Santa Fe County ISD	7	12	14	100.0%	16.7%
Sierra County ISD	0	0	0	N/A	N/A
Socorro County ISD	1	1	1	0.0%	0.0%
South Dona Ana ISD	17	17	17	0.0%	0.0%
Southeast Bernalillo County ISD	9	5	4	-55.6%	-20.0%
Southwest Bernalillo County ISD	16	6	5	-68.8%	-16.7%
Taos County ISD	1	2	1	0.0%	-50.0%
Torrance County ISD	0	1	0	N/A	-100.0%
Valencia North County ISD	6	0	0	-100.0%	N/A
Valencia South County ISD	0	0	0	N/A	N/A
West Dona Ana County ISD	14	9	10	-28.6%	11.1%
Centralized Units	0	0	0	N/A	N/A
Statewide Total	175	140	140	-20.0%	0.0%

Education Works Cases by Region⁶

Region				Percent Change	
	Dec-16	Nov-17	Dec-17	Dec-16- Dec-17	Nov-17- Dec-17
Region 1 - NW	12	4	3	-75.0%	-25.0%
Region 2 - NE	36	36	35	-2.8%	-2.8%
Region 3 - Central	69	35	33	-52.2%	-5.7%
Region 4 - SE	15	18	18	20.0%	0.0%
Region 5 - SW	43	47	51	18.6%	8.5%
Centralized Units	0	0	0	N/A	N/A
Statewide Total	175	140	140	-20.0%	0.0%

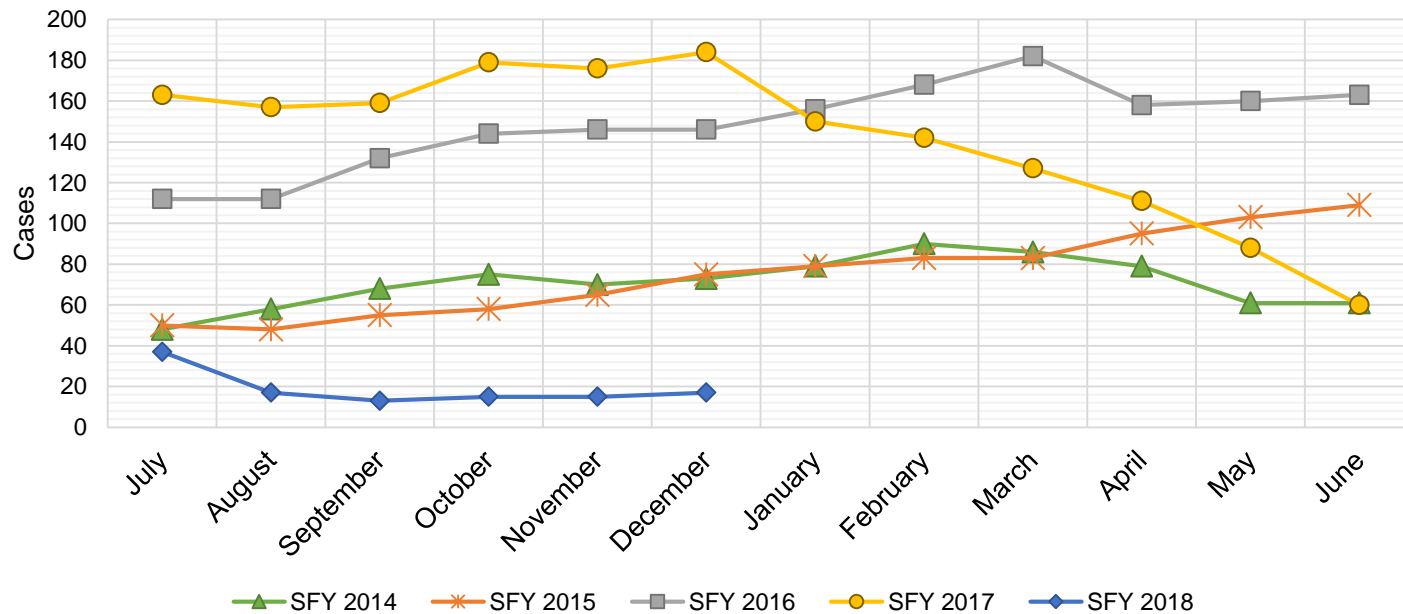
Education Works Caseload: SFY-14 to Current



Refugee Cash Assistance

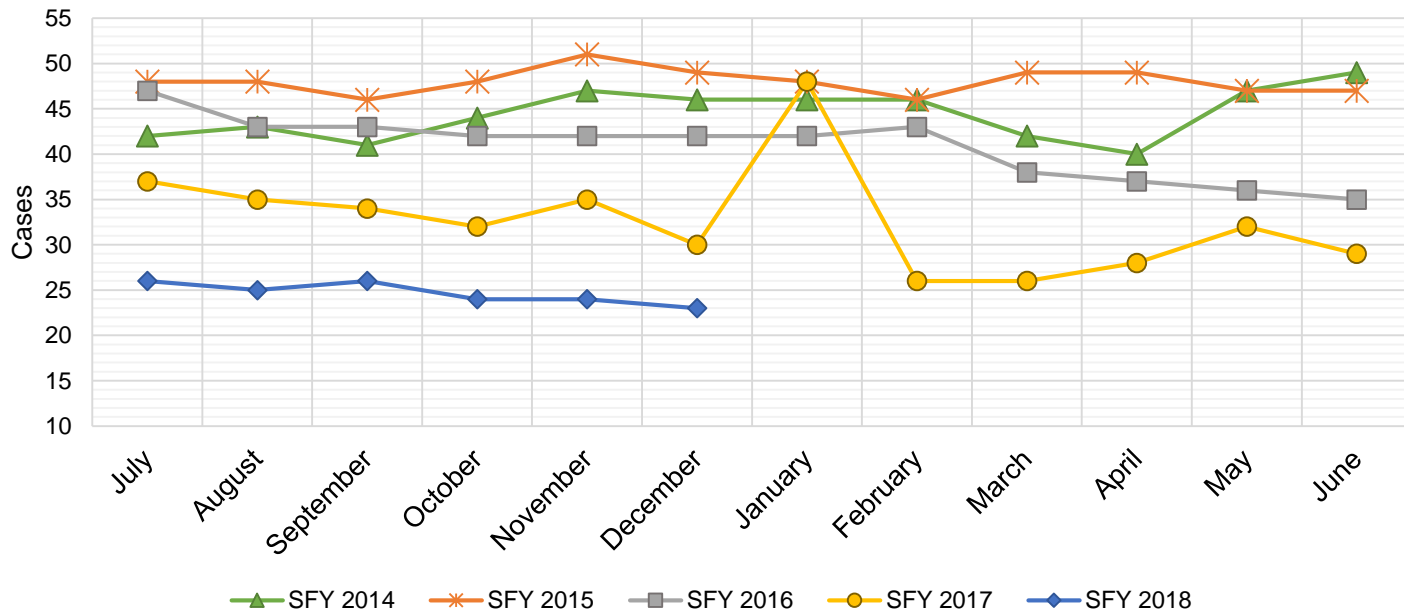
SFY 2014 ¹²			SFY 2015 ^{8,12,9}			SFY 2016 ^{8,9}			SFY 2017 ^{8,9}			SFY 2018 ^{8,9}		
Cases	Expenditures		Cases	Expenditures		Cases	Expenditures		Cases	Expenditures		Cases	Expenditures	
Jul-13	48	\$12,013	Jul-14	50	\$11,679	Jul-15	112	\$27,516	Jul-16	163	\$39,756	Jul-17	37	\$9,981
Aug-13	58	\$16,129	Aug-14	48	\$11,760	Aug-15	112	\$27,438	Aug-16	157	\$40,115	Aug-17	17	\$4,704
Sep-13	68	\$19,061	Sep-14	55	\$13,094	Sep-15	132	\$31,321	Sep-16	159	\$39,359	Sep-17	13	\$3,159
Oct-13	75	\$20,962	Oct-14	58	\$13,726	Oct-15	144	\$36,153	Oct-16	179	\$41,520	Oct-17	15	\$3,543
Nov-13	70	\$21,880	Nov-14	65	\$16,461	Nov-15	146	\$36,515	Nov-16	176	\$45,434	Nov-17	15	\$4,263
Dec-13	73	\$22,053	Dec-14	75	\$18,699	Dec-15	146	\$35,763	Dec-16	184	\$46,673	Dec-17	17	\$4,795
Jan-14	79	\$22,670	Jan-15	79	\$19,009	Jan-16	156	\$38,686	Jan-17	150	\$38,790	Jan-18		
Feb-14	90	\$23,227	Feb-15	83	\$21,349	Feb-16	168	\$41,368	Feb-17	142	\$37,956	Feb-18		
Mar-14	86	\$21,808	Mar-15	83	\$20,730	Mar-16	182	\$45,307	Mar-17	127	\$33,066	Mar-18		
Apr-14	79	\$20,109	Apr-15	95	\$23,495	Apr-16	158	\$41,143	Apr-17	111	\$29,183	Apr-18		
May-14	61	\$15,703	May-15	103	\$25,363	May-16	160	\$38,332	May-17	88	\$23,343	May-18		
Jun-14	61	\$14,783	Jun-15	109	\$27,958	Jun-16	163	\$39,856	Jun-17	60	\$15,538	Jun-18		

TOTAL	848	\$230,398	903	\$223,323	1,779	\$439,397	1,696	\$430,732	114	\$30,445
AVERAGE	71	\$19,200	75	\$18,610	148	\$36,616	141	\$35,894	19	\$5,074



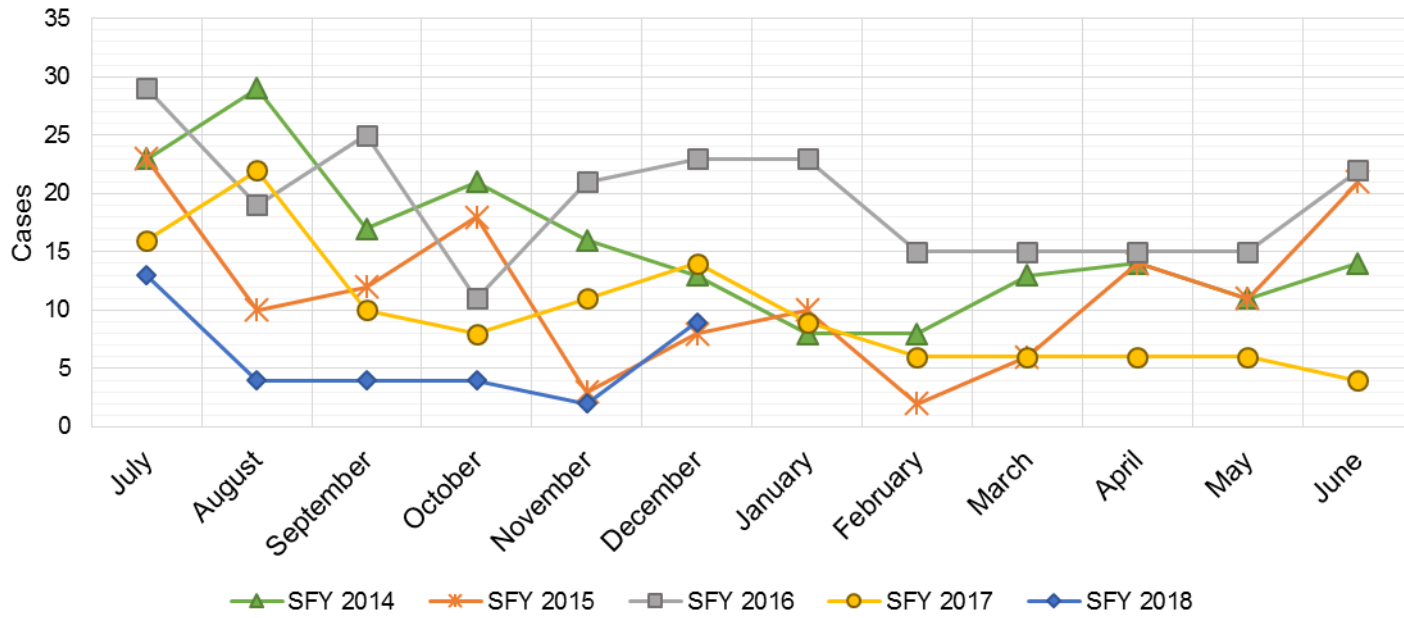
State Supplement for Residential Care

SFY 2014 ¹²			SFY 2015 ^{12,9}			SFY 2016 ⁹			SFY 2017 ⁹			SFY 2018 ⁹		
Cases	Expenditures		Cases	Expenditures		Cases	Expenditures		Cases	Expenditures		Cases	Expenditures	
Jul-13	42	\$4,400	Jul-14	48	\$4,700	Jul-15	47	\$4,700	Jul-16	37	\$3,700	Jul-17	26	\$2,700
Aug-13	43	\$4,300	Aug-14	48	\$5,000	Aug-15	43	\$4,900	Aug-16	35	\$3,500	Aug-17	25	\$2,500
Sep-13	41	\$4,700	Sep-14	46	\$4,600	Sep-15	43	\$4,500	Sep-16	34	\$3,400	Sep-17	26	\$2,700
Oct-13	44	\$4,500	Oct-14	48	\$4,600	Oct-15	42	\$4,400	Oct-16	32	\$3,200	Oct-17	24	\$2,500
Nov-13	47	\$4,700	Nov-14	51	\$5,600	Nov-15	42	\$4,200	Nov-16	35	\$3,500	Nov-17	24	\$2,400
Dec-13	46	\$4,600	Dec-14	49	\$5,000	Dec-15	42	\$4,200	Dec-16	30	\$3,000	Dec-17	23	\$2,200
Jan-14	46	\$4,700	Jan-15	48	\$4,900	Jan-16	42	\$4,200	Jan-17	48	\$4,800	Jan-18		
Feb-14	46	\$4,700	Feb-15	46	\$4,800	Feb-16	43	\$4,300	Feb-17	26	\$2,600	Feb-18		
Mar-14	42	\$4,500	Mar-15	49	\$4,800	Mar-16	38	\$3,800	Mar-17	26	\$2,600	Mar-18		
Apr-14	40	\$4,200	Apr-15	49	\$5,400	Apr-16	37	\$3,700	Apr-17	28	\$2,800	Apr-18		
May-14	47	\$5,000	May-15	47	\$4,700	May-16	36	\$3,600	May-17	32	\$3,200	May-18		
Jun-14	49	\$4,900	Jun-15	47	\$5,300	Jun-16	35	\$3,500	Jun-17	29	\$2,900	Jun-18		
TOTAL	533	\$55,200	576	\$59,400		490	\$50,000		392	\$39,200		148	\$15,000	
AVERAGE	44	\$4,600	48	\$4,950		41	\$4,167		33	\$3,267		25	\$2,500	



TANF Diversion Payments

SFY 2014 ¹²			SFY 2015 ^{12,9}			SFY 2016 ⁹			SFY 2017 ⁹			SFY 2018 ⁹		
	Cases	Expenditures		Cases	Expenditures		Cases	Expenditures		Cases	Expenditures		Cases	Expenditures
Jul-13	23	\$46,500	Jul-14	23	\$48,098	Jul-15	29	\$62,074	Jul-16	16	\$30,843	Jul-17	13	\$26,500
Aug-13	29	\$54,500	Aug-14	10	\$21,810	Aug-15	19	\$33,584	Aug-16	22	\$42,731	Aug-17	4	\$12,000
Sep-13	17	\$36,500	Sep-14	12	\$23,500	Sep-15	25	\$47,977	Sep-16	10	\$21,000	Sep-17	4	\$4,000
Oct-13	21	\$42,500	Oct-14	18	\$30,589	Oct-15	11	\$20,500	Oct-16	8	\$16,744	Oct-17	4	\$16,000
Nov-13	16	\$28,953	Nov-14	3	\$4,411	Nov-15	21	\$45,500	Nov-16	11	\$24,500	Nov-17	2	\$15,500
Dec-13	13	\$25,500	Dec-14	8	\$14,634	Dec-15	23	\$45,389	Dec-16	14	\$26,611	Dec-17	9	\$17,500
Jan-14	8	\$16,000	Jan-15	10	\$18,000	Jan-16	23	\$41,874	Jan-17	9	\$18,500	Jan-18		
Feb-14	8	\$16,994	Feb-15	2	\$5,500	Feb-16	15	\$28,500	Feb-17	6	\$12,000	Feb-18		
Mar-14	13	\$27,396	Mar-15	6	\$12,000	Mar-16	15	\$27,008	Mar-17	6	\$11,000	Mar-18		
Apr-14	14	\$28,000	Apr-15	14	\$26,000	Apr-16	15	\$31,389	Apr-17	6	\$12,000	Apr-18		
May-14	11	\$20,500	May-15	11	\$21,500	May-16	15	\$31,916	May-17	6	\$11,500	May-18		
Jun-14	14	\$29,911	Jun-15	21	\$40,039	Jun-16	22	\$43,000	Jun-17	4	\$13,500	Jun-18		
TOTAL	187	\$373,254	138	\$266,081	233	\$458,711	118	\$240,929	36	\$91,500				
AVERAGE	16	\$31,105	12	\$22,173	19	\$38,226	10	\$20,077	6	\$15,250				

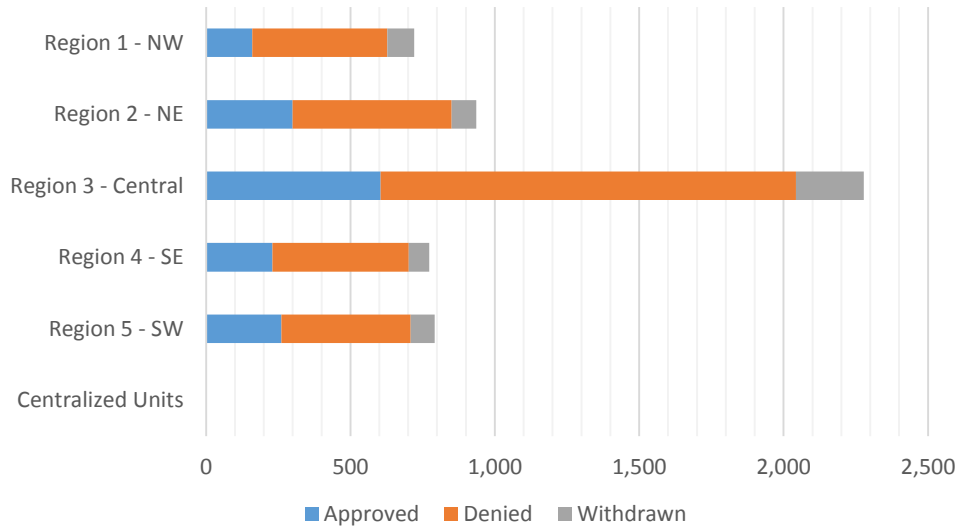


Cash Assistance Applications by Field Office^{4,11}
December 2017

Office	Approved	Denied	Withdrawn	Total Cases Processed
Chaves County ISD	66	119	18	203
Cibola County ISD	27	34	7	68
Colfax County ISD	10	22	6	38
Curry County ISD	39	95	11	145
East Dona Ana County ISD	63	86	28	177
Eddy Artesia County ISD	28	45	5	78
Eddy Carlsbad County ISD	19	60	12	91
Grant County ISD	20	42	13	75
Guadalupe County ISD	3	3	1	7
Hidalgo County ISD	0	0	0	0
Lea County ISD	43	70	13	126
Lincoln County ISD	16	40	7	63
Luna County ISD	16	36	8	60
McKinley County ISD	7	76	29	112
Northeast Bernalillo County ISD	104	261	66	431
Northwest Bernalillo County ISD	66	220	69	355
Otero County ISD	36	73	23	132
Quay County ISD	9	13	2	24
Rio Arriba County ISD	48	57	17	122
Roosevelt County ISD	19	43	5	67
San Juan County ISD	39	213	29	281
San Miguel County ISD	24	51	7	82
Sandoval County ISD	132	218	25	375
Santa Fe County ISD	52	132	24	208
Sierra County ISD	13	24	2	39
Socorro County ISD	18	13	8	39
South Dona Ana ISD	54	72	11	137
Southeast Bernalillo County ISD	78	191	48	317
Southwest Bernalillo County ISD	330	693	36	1,059
Taos County ISD	22	55	3	80
Torrance County ISD	26	74	16	116
Valencia North County ISD	56	79	17	152
Valencia South County ISD	0	29	1	30
West Dona Ana County ISD	72	139	0	211
Centralized Units	0	0	0	0
Statewide Total	1,555	3,378	567	5,500

Cash Assistance Applications by Region^{4,11}
December 2017

	Approved	Denied	Withdrawn	Total Cases Processed
Region				
Region 1 - NW	160	468	93	721
Region 2 - NE	300	551	85	936
Region 3 - Central	604	1,439	235	2,278
Region 4 - SE	230	472	71	773
Region 5 - SW	261	448	83	792
Centralized Units	0	0	0	0
Statewide Total	1,555	3,378	567	5,500



Children Youth and Families Department
Children Receiving Child Care Assistance Subsidies By County

County	Dec 2016	Jan 2017	Feb 2017	Mar 2017	Apr 2017	May 2017	June 2017	July 2017	Aug 2017	Sep 2017	Oct 2017	Nov 2017	Dec 2017	Change Fr. Cases	Last Year Percent
<i>Bernalillo</i>	7,134	7,043	7,068	7,170	7,385	7,519	7,895	7,547	7,616	8,154	7,848	7,985	7,903	769	10.8%
Catron	0	0	0	0	0	0	0	0	0	0	0	0	5	5	0.0%
<i>Chaves</i>	744	744	756	759	768	796	860	826	821	889	884	870	855	111	14.9%
Cibola	269	271	284	282	294	299	305	293	294	311	304	303	296	27	10.0%
<i>Colfax</i>	47	42	40	41	38	39	46	46	41	44	41	42	42	-5	-10.6%
Curry	394	413	398	398	437	445	480	486	459	422	446	467	470	76	19.3%
<i>De Baca</i>	11	11	10	12	13	14	14	12	11	11	9	11	10	-1	-9.1%
Dona Ana	3,976	4,003	4,047	4,084	4,217	4,309	4,499	4,509	4,473	4,693	4,585	4,581	4,492	516	13.0%
<i>Eddy</i>	277	271	275	283	294	301	306	292	287	313	297	297	263	-14	-5.1%
Grant	151	142	135	142	153	159	161	134	114	164	161	157	159	8	5.3%
<i>Guadalupe</i>	15	16	16	17	17	16	16	16	16	15	16	16	16	1	6.7%
Harding	0	0	0	0	0	0	0	0	0	0	0	0	0	0	0.0%
<i>Hidalgo</i>	34	35	35	35	35	39	40	37	37	39	39	35	32	-2	-5.9%
Lea	722	698	715	729	748	781	818	837	856	954	909	895	833	111	15.4%
<i>Lincoln</i>	135	132	139	135	141	136	147	146	145	150	147	136	132	-3	-2.2%
Los Alamos	15	16	15	13	15	16	16	17	16	19	18	14	13	-2	-13.3%
<i>Luna</i>	149	159	154	159	164	177	188	165	176	177	177	166	171	22	14.8%
McKinley	153	159	164	171	182	170	171	145	136	161	165	167	166	13	8.5%
<i>Mora</i>	20	18	20	20	21	21	21	18	18	19	18	20	21	1	5.0%
Otero	450	440	442	416	481	498	532	500	491	530	525	518	531	81	18.0%
<i>Out of State</i>	10	11	12	14	12	11	10	14	11	12	14	12	3	-7	-70.0%
Quay	34	33	38	40	38	35	39	35	36	39	35	35	35	1	2.9%
<i>Rio Arriba</i>	145	135	147	144	137	140	149	144	145	159	163	166	165	20	13.8%
Roosevelt	135	124	120	125	123	118	134	123	125	137	120	120	127	-8	-5.9%
<i>San Juan</i>	928	919	911	911	946	956	997	979	960	1,132	1,050	1,043	1,039	111	12.0%
San Miguel	375	371	374	373	366	367	382	366	356	362	368	371	372	-3	-0.8%
<i>Sandoval</i>	870	880	852	873	878	890	938	932	948	974	859	839	836	-34	-3.9%
Santa Fe	478	472	487	477	490	499	536	534	520	580	554	547	526	48	10.0%
<i>Sierra</i>	46	51	50	52	52	58	69	74	76	79	86	80	77	31	67.4%
Socorro	58	65	62	61	59	59	58	56	63	63	68	66	70	12	20.7%
<i>Taos</i>	114	116	114	112	118	120	127	132	137	145	139	142	141	27	23.7%
Torrance	77	79	83	87	91	96	101	107	117	106	99	115	115	38	49.4%
<i>Union</i>	5	5	5	5	5	4	4	5	5	5	4	6	5	0	0.0%
Valencia	602	593	585	583	629	658	678	642	677	714	723	713	678	76	12.6%
Totals	18,573	18,467	18,553	18,723	19,347	19,746	20,737	20,169	20,183	21,572	20,871	20,935	20,599	2,026	10.9%

CHILDREN YOUTH AND FAMILIES DEPARTMENT CHILD CARE ASSISTANCE ELIGIBILITY PROGRAMS

MONTH	JAN'17	FEB'17	MAR'17	APR'17	MAY'17	JUNE'17	JULY'17	AUG'17	SEP'17	OCT'17	NOV'17	DEC'17
TANF (Child Care Priority 1 Clients)												
CLIENTS	1,797	1,930	1,994	2,047	2,121	2,300	2,302	2,353	2,455	2,419	2,374	2,315
COST	\$914,933	\$1,005,906	\$1,096,473	\$1,148,841	\$1,186,719	\$1,271,336	\$1,323,182	\$1,381,202	\$1,364,956	\$1,423,748	\$1,411,060	\$1,382,073
TANF AVERAGE COST	\$509	\$521	\$550	\$561	\$560	\$553	\$575	\$587	\$556	\$589	\$594	\$597
TRANSITION OFF TANF (Child Care Priority 2 Clients)												
CLIENTS	202	212	197	202	205	213	197	189	179	181	154	152
COST	\$95,662	\$102,062	\$102,582	\$101,314	\$104,115	\$111,219	\$106,835	\$103,813	\$93,119	\$96,629	\$81,975	\$81,337
TRAN OFF TANF AVG COST	\$474	\$481	\$521	\$502	\$508	\$522	\$542	\$549	\$520	\$534	\$532	\$535
TANF ELIGIBLE (Child Care Priority 1B Clients at or below 100% of the Federal Poverty Level)												
CLIENTS	7,538	7,420	7,442	7,819	8,075	8,472	8,193	8,254	9,064	8,899	8,900	8,729
COST	\$3,557,568	\$3,662,965	\$3,957,431	\$4,194,223	\$4,302,207	\$4,448,742	\$4,521,900	\$4,657,974	\$4,755,691	\$5,021,574	\$5,099,212	\$4,994,373
TANF ELIGIBLE AVG COST	\$472	\$494	\$532	\$536	\$533	\$525	\$552	\$564	\$525	\$564	\$573	\$572
INCOME ELIGIBLE (Child Care Priority 3, and Priority 4 Clients)												
CLIENTS	7,527	7,514	7,559	7,612	7,632	7,832	7,426	7,337	7,749	7,464	7,578	7,580
COST	\$3,294,431	\$3,386,741	\$3,683,902	\$3,733,797	\$3,757,012	\$3,843,887	\$3,805,939	\$3,838,152	\$3,779,202	\$3,760,398	\$3,838,169	\$3,824,777
INCOME ELIG AVG COST	\$438	\$451	\$487	\$491	\$492	\$491	\$513	\$523	\$488	\$504	\$506	\$505
AT-RISK CHILD PROTECTIVE SERVICES CHILD CARE PILOT (Priority 5 Clients)												
CLIENTS	431	518	553	679	733	881	1,021	1,073	1,152	1,032	1,027	935
COST	\$266,739	\$305,785	\$335,795	\$396,799	\$449,007	\$535,980	\$622,872	\$686,919	\$723,334	\$684,194	\$678,258	\$628,399
CPS AVG COST	\$619	\$590	\$607	\$584	\$613	\$608	\$610	\$640	\$628	\$663	\$660	\$672
CHILD PROTECTIVE SERVICES (Child Care CPS Clients)												
CLIENTS	972	959	978	988	980	1,039	1,030	977	973	876	902	888
COST	\$567,980	\$559,627	\$607,288	\$652,529	\$627,325	\$649,417	\$652,471	\$663,134	\$623,416	\$567,608	\$585,009	\$573,312
CPS AVG COST	\$584	\$584	\$621	\$660	\$640	\$625	\$633	\$679	\$641	\$648	\$649	\$646
GRAND TOTAL - ALL CHILD CARE PROGRAMS												
CLIENTS	18,573	18,467	18,553	18,723	19,347	19,746	20,737	20,169	20,183	20,871	20,935	20,599
COST	\$9,239,639	\$8,697,313	\$9,023,086	\$9,783,471	\$10,227,503	\$10,426,385	\$10,860,581	\$11,033,199	\$11,331,194	\$11,554,151	\$11,693,682	\$11,484,272
ALL PROGRAMS AVG COST	\$497	\$471	\$486	\$523	\$529	\$528	\$524	\$547	\$561	\$554	\$559	\$558

Income Eligibility Guidelines: October 1, 2017 - September 30, 2018

Federal Poverty Guidelines (FPG) Monthly Income Standards

Supplemental Nutrition Program (SNAP)					
Household Size	100% FPG Net Income	130% FPG Gross Income	165% FPG Gross Income for Categorical Eligibility	Maximum SNAP Monthly Allotment	LIHEAP 150% FPG
1	\$1,005	\$1,307	\$1,659	\$192	\$1,508
2	\$1,354	\$1,760	\$2,233	\$352	\$2,031
3	\$1,702	\$2,213	\$2,808	\$504	\$2,553
4	\$2,050	\$2,665	\$3,383	\$640	\$3,075
5	\$2,399	\$3,118	\$3,958	\$760	\$3,599
6	\$2,747	\$3,571	\$4,532	\$913	\$4,121
7	\$3,095	\$4,024	\$5,107	\$1,009	\$4,643
8	\$3,444	\$4,477	\$5,682	\$1,153	\$5,166
+1	+\$349	+\$453	+\$575	+\$144	+\$523
Minimum Allotment of \$15 effective from 10/1/2017 - 9/30/2018					
DEDUCTIONS: Standard Deduction: For HH size 1-3 = \$160; 4 = \$170; 5 = \$199; 6 or more = \$228; Excess Shelter Deduction Limit: \$535; Heating and Cooling Standard Utility Allowance: \$320 (HCSUA) – Limited Utility Allowance: \$127 (LUA); Telephone Standard: \$42; Dependent Care: Actual Amount (No Limit); Earned Income Deduction: 20%; Homeless Shelter Standard: \$143					

CASH Assistance & Support Services					
Household Size	Federal Poverty Guidelines (FPG) Monthly Income Standards			Maximum Monthly Benefit	
	100% FPG Net Income	85% FPG Gross Limit	NM Works Cash Net Income	Maximum Monthly Benefit	General Assistance
1	\$1,005	\$854	\$266	\$244	\$245
2	\$1,354	\$1,151	\$357	\$327	\$329
3	\$1,702	\$1,447	\$447	\$409	\$412
4	\$2,050	\$1,743	\$539	\$493	\$496
5	\$2,399	\$2,039	\$630	\$576	\$580
6	\$2,747	\$2,335	\$721	\$659	\$664
7	\$3,095	\$2,631	\$812	\$743	\$748
8	\$3,444	\$2,927	\$922	\$843	\$849
+1	+\$349	+\$296	+\$91	+\$83	+\$84
Deductions- Dependent Care: For a child under age 2 = \$200; For a child age 2 and over = \$175. Work Incentives- Earned Income Disregard: Single parent = \$125 & ½ remainder; Two parent = \$225 & ½ remainder.					

Medical Assistance Division					
Federal Poverty Guidelines New Mexico Affordable Care Eligibility Groups Effective April 01, 2017 thru March 31, 2018 Monthly Guidelines					
HH SIZE	PERCENT OF POVERTY				
	138%	190%	240%	250%	300%
1	\$1,387	\$1,910	\$2,412	\$2,513	\$3,015
2	\$1,868	\$2,572	\$3,248	\$3,384	\$4,060
3	\$2,349	\$3,234	\$4,084	\$4,255	\$5,105
4	\$2,829	\$3,895	\$4,920	\$5,125	\$6,150
5	\$3,310	\$4,557	\$5,756	\$5,996	\$7,195
6	\$3,791	\$5,219	\$6,592	\$6,867	\$8,240
7	\$4,272	\$5,881	\$7,428	\$7,738	\$9,285
8	\$4,752	\$6,543	\$8,264	\$8,609	\$10,330
138% Adult Expansion, 190% Children ages 6 to 19 (Medicaid), 240% Children ages 0 to 6 (Medicaid); ages 6 to 19 (CHIP), 250% Pregnancy Related Services Only, 300% Children 0 to 6 (CHIP)					

Medical Assistance Division					
Federal Poverty Guidelines New Mexico Affordable Care Eligibility Groups Effective April 01, 2017 thru March 31, 2018 Annual Guidelines					
HH SIZE	PERCENT OF POVERTY				
	138%	190%	240%	250%	300%
1	\$16,644	\$22,920	\$28,944	\$30,156	\$36,180
2	\$22,416	\$30,864	\$38,976	\$40,608	\$48,720
3	\$28,188	\$38,808	\$49,008	\$51,060	\$61,260
4	\$33,948	\$46,740	\$59,040	\$61,500	\$73,800
5	\$39,720	\$54,684	\$69,072	\$71,952	\$86,340
6	\$45,492	\$62,628	\$79,104	\$82,404	\$98,880
7	\$51,264	\$70,572	\$89,136	\$92,856	\$111,420
8	\$57,024	\$78,516	\$99,168	\$103,308	\$123,960
138% Adult Expansion, 190% Children ages 6 to 19 (Medicaid), 240% Children ages 0 to 6 (Medicaid); ages 6 to 19 (CHIP), 250% Pregnancy Related Services Only, 300% Children 0 to 6 (CHIP)					

References

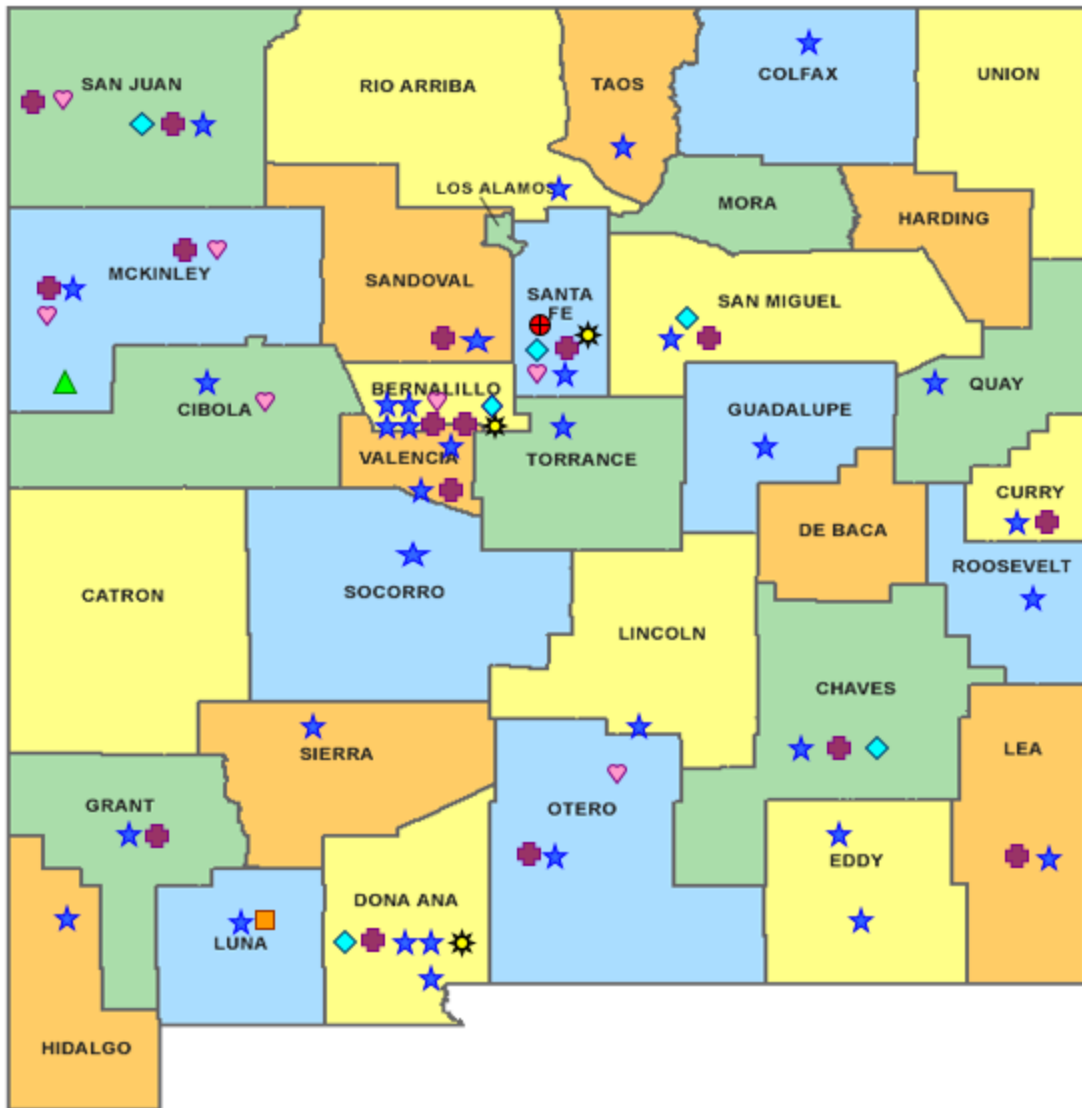
- ¹ *Medicaid Expenditures* (Omnicaid, Medicare Buy-Ins, Lump Sum Payments), Received on January 22, 2017
- ² *ASPEN Business Intelligence Tool: Eligibility*, Retrieved on January 18, 2017
- ³ New Mexico Human Services Department, *Medicaid Eligibility Reports*, Retrieved from <http://www.hsd.state.nm.us/LookingForInformation/medicaid-eligibility.aspx> on January 18, 2017
- ⁴ *ASPEN Business Intelligence Tool: Application Tracking*, Retrieved on January 18, 2017
- ⁵ Fidelity Information Services, *EBT Daily Statistical Report* (for 12/31/2016, 11/30/2017, and 12/31/2017), Retrieved on January 16, 2017
- ⁶ *ASPEN Report DQ-180: Length of Time Cases are Open* (for 12/01/2016-12/31/2016, 11/01/2017-11/30/2017, 12/01/2017-12/31/2017), Retrieved on January 18, 2017
- ⁷ *ASPEN Report EY-180: Individual Demographics by State and Age* (for 12/01/2016-12/31/2016, 11/01/2017-11/30/2017, 12/01/2017-12/31/2017), Retrieved January 18, 2017
- ⁸ *ASPEN Business Intelligence Tool: Benefit Issuance*, Retrieved on January 18, 2017
- ⁹ Fidelity Information Services, *EBT Daily Statistical Reports* (Month End), Retrieved on January 16, 2017
- ¹⁰ *ASPEN Report EY-180R: Individual Demographics by State, Race, Ethnicity and Gender* (for 12/01/2017-12/31/2017), Retrieved on January 18, 2017
- ¹¹ SQL Queries from ASPEN, completed January 2018
- ¹² JP Morgan, *New Mexico – NM EBT System- Monthly Benefit Draw Down Totals*
- ¹³ *ASPEN Business Intelligence Tool: Application Tracking* (w/Parameters: SNAP, Expedite, Approved), Retrieved on January 18, 2017
- ¹⁴ SL Start, *As of Today Report 11.30.17*, received January 16, 2017
- ¹⁵ SL Start, *Statewide Employment Report 11.01.17*, received January 16, 2017
- ¹⁶ *SSIAR Payments*, Received January 3, 2018

¹⁷ Children, Youth, and Families Department, *Children Receiving Child Care Assistance Subsidies by County*, Received on January 10, 2018

¹⁸ Children, Youth, and Families Department, *Child Care Assistance Eligibility Programs*, Received on January 10, 2018









¹⁹ EDG is defined as an Eligibility Determination Group

²⁰SQL Query from ASPEN, completed January 26, 2018



HUMAN SERVICES DEPARTMENT

New Mexico Human Services Department
Field Offices

-  Central Office (1)
-  Income Support Division County Office (35)
-  Income Support Division Satellite Office (2)
-  Child Support Enforcement Regional Office (16)
-  Child Support Enforcement Satellite Office (1)
-  Quality Control Office (8)
-  Indian Health Services (7)
-  Hospital Site (3)

For a complete listing of field offices and other government and community resources:
http://www.hsd.state.nm.us/LookingForAssistance/Field_Offices_1.aspx