



# Monthly Statistical Report

## August 2017

There were 877,413 individuals that received Medicaid in August 2017, a 0.3% decrease from one year ago. The count of Medicaid recipients has decreased by 12,279, or 1.4%, since last month.

The SNAP caseload in August 2017 was 221,034, a 15.5% decrease from one year ago. The SNAP caseload has increased by 2,896 cases, or 1.3%, since last month.

The TANF caseload was 11,899 in August 2017, a decrease of 6.0% from August 2016. The TANF caseload had 416 more cases compared to July 2017, an increase of 3.6%.

The caseload for General Assistance was 3,008 in August 2017, a decrease of 10.6% from one year ago and a decrease of 44 cases from last month.

Susana Martinez, Governor  
Brent Earnest, Cabinet Secretary

<b>Contents</b>	<b>Page</b>
Summary	3-5
Medicaid	6-13
SNAP	14-26
Cash Assistance	27-41
Child Care Assistance	42-43
Income Eligibility Guidelines	45-46

**Regions are reported as follows:**

<b>Region 1</b>		
Catron	San Juan	Valencia
Cibola	Sierra	
McKinley	Socorro	
<b>Region 2</b>		
Colfax	Mora	Santa Fe
De Baca	Quay	Taos
Guadalupe	Rio Arriba	Union
Harding	Sandoval	
Los Alamos	San Miguel	
<b>Region 3</b>		
Bernalillo	Torrance	
<b>Region 4</b>		
Chaves	Eddy	Lincoln
Curry	Lea	Roosevelt
<b>Region 5</b>		
Dona Ana	Hidalgo	Otero
Grant	Luna	

***The Mission of the Human Services Department***

*To reduce the impact of poverty on people living in New Mexico by providing support services that help families break the cycle of dependency on public assistance*

Sean Pearson, Deputy Secretary  
Michael Nelson, Deputy Secretary

Prepared by Income Support Division  
PO Box 2348  
Santa Fe, NM 87504-2348  
505-827-7250

Mary Brogdon, Director  
Vida Tapia-Sanchez, Deputy Director  
Shanita Harrison, Deputy Director

<http://www.hsd.state.nm.us/monthly-statistical-reports.aspx>

# Program Summary for August 2017

<b>Medicaid</b>				Percent Change	
	Aug-16	Jul-17	Aug-17	Aug-16- Aug-17	Jul-17- Aug-17
<b>Expenditures<sup>1</sup></b>	\$463,283,659	\$457,508,319	\$287,375,278	-38.0%	-37.2%
<b>Cases<sup>2</sup></b>	506,178	514,674	506,069	0.0%	-1.7%
<b>Expenditures/Case</b>	\$915	\$889	\$568	-38.0%	-36.1%
<b>Recipients<sup>3</sup></b>	879,625	889,692	877,413	-0.3%	-1.4%
<i>Adults</i>	493,661	507,390	499,874	1.3%	-1.5%
<i>Children</i>	385,964	382,302	377,539	-2.2%	-1.2%
<b>Recipients /Case</b>	1.74	1.73	1.73	-0.2%	0.3%
<b>Cases Processed<sup>4</sup></b>	11,745	15,193	17,795	51.5%	17.1%
<i>Approvals<sup>4</sup></i>	9,960	10,661	13,322	33.8%	25.0%

<b>Supplemental Nutrition Assistance Program (SNAP)</b>				Percent Change	
	Aug-16	Jul-17	Aug-17	Aug-16- Aug-17	Jul-17- Aug-17
<b>Expenditures<sup>5</sup></b>	\$59,158,250	\$54,873,752	\$55,608,651	-6.0%	1.3%
<b>Cases<sup>6</sup></b>	261,699	218,138	221,034	-15.5%	1.3%
<b>Expenditures/Case</b>	\$226	\$252	\$252	11.3%	0.0%
<b>Recipients<sup>7</sup></b>	539,652	457,798	464,102	-14.0%	1.4%
<i>Adults</i>	312,965	260,956	264,816	-15.4%	1.5%
<i>Children</i>	226,687	196,842	199,286	-12.1%	1.2%
<b>Recipients /Case</b>	2.06	2.10	2.10	1.8%	0.0%
<b>Cases Processed<sup>4</sup></b>	12,950	19,424	21,692	67.5%	11.7%
<i>Approvals<sup>4</sup></i>	10,532	15,331	16,908	60.5%	10.3%

<b>Cash Assistance Programs</b>				Percent Change	
	Aug-16	Jul-17	Aug-17	Aug-16- Aug-17	Jul-17- Aug-17
<b>Expenditures<sup>5</sup></b>	\$6,151,116	\$4,161,858	\$5,681,888	-7.6%	36.5%
<b>Cases<sup>6</sup></b>	16,323	14,702	15,050	-7.8%	2.4%
<b>Expenditures/Case</b>	\$377	\$283	\$378	0.2%	33.4%
<b>Recipients<sup>7</sup></b>	37,477	33,590	34,750	-7.3%	3.5%
<i>Adults</i>	12,478	10,865	11,247	-9.9%	3.5%
<i>Children</i>	24,999	22,725	23,503	-6.0%	3.4%
<b>Recipients /Case</b>	2.30	2.28	2.31	0.6%	1.1%
<b>Cases Processed<sup>4</sup></b>	5,303	5,927	6,813	28.5%	14.9%
<i>Approvals<sup>4</sup></i>	2,198	1,660	1,982	-9.8%	19.4%

<b>Low Income Home Energy Assistance Program (LIHEAP)</b>				Percent Change	
	Aug-16	Jul-17	Aug-17	Aug-16- Aug-17	Jul-17- Aug-17
<b>Expenditures<sup>8</sup></b>	\$654,210	\$622,237	\$802,916	22.7%	29.0%
<b>Cases<sup>8</sup></b>	3,086	2,527	3,274	6.1%	29.6%
<b>Expenditures/Case</b>	\$212	\$246	\$245	15.7%	-0.4%
<b>Recipients<sup>8</sup></b>	8,039	6,513	8,520	6.0%	30.8%
<i>Adults</i>	4,150	3,372	4,408	6.2%	30.7%
<i>Children</i>	3,889	3,141	4,112	5.7%	30.9%
<b>Recipients /Case</b>	2.60	2.58	2.60	-0.1%	1.0%
<b>Cases Processed<sup>4</sup></b>	5,571	4,406	5,630	1.1%	27.8%
<i>Approvals<sup>4</sup></i>	2,605	2,466	2,557	-1.8%	3.7%

# Cash Assistance Summary for August 2017

## Temporary Assistance for Needy Families (TANF)

	Aug-16	Jul-17	Aug-17	Percent Change	
				Aug-16- Aug-17	Jul-17- Aug-17
Expenditures <sup>5</sup>	\$5,168,070	\$3,383,382	\$4,871,504	-5.7%	44.0%
Cases <sup>6</sup>	12,663	11,483	11,899	-6.0%	3.6%
Expenditures/Case	\$408	\$295	\$409	0.3%	38.9%
Recipients <sup>7</sup>	33,503	30,149	31,332	-6.5%	3.9%
<i>Adults</i>	8,945	7,845	8,258	-7.7%	5.3%
<i>Children</i>	24,558	22,304	23,074	-6.0%	3.5%
Approvals <sup>4</sup>	1,678	1,378	1,637	-2.4%	18.8%

## General Assistance (GA)

	Aug-16	Jul-17	Aug-17	Percent Change	
				Aug-16- Aug-17	Jul-17- Aug-17
Expenditures <sup>5</sup>	\$891,963	\$729,031	\$756,953	-15.1%	3.8%
Cases <sup>6</sup>	3,365	3,052	3,008	-10.6%	-1.4%
Expenditures/Case	\$265	\$239	\$252	-5.1%	5.3%
Recipients <sup>7</sup>	3,462	3,079	3,079	-11.1%	0.0%
<i>Adults</i>	3,216	2,842	2,830	-12.0%	-0.4%
<i>Children</i>	246	237	249	1.2%	5.1%
Approvals <sup>4</sup>	376	217	262	-30.3%	20.7%

## Education Works

	Aug-16	Jul-17	Aug-17	Percent Change	
				Aug-16- Aug-17	Jul-17- Aug-17
Expenditures <sup>5</sup>	\$47,468	\$36,764	\$46,227	-2.6%	25.7%
Cases <sup>6</sup>	103	104	101	-1.9%	-2.9%
Expenditures/Case	\$461	\$354	\$458	-0.7%	29.5%
Recipients <sup>7</sup>	310	297	295	-4.8%	-0.7%
<i>Adults</i>	115	113	115	0.0%	1.8%
<i>Children</i>	195	184	180	-7.7%	-2.2%
Approvals <sup>4</sup>	23	1	5	-78.3%	400.0%

## Refugee Cash (RCA)

	Aug-16	Jul-17	Aug-17	Percent Change	
				Aug-16- Aug-17	Jul-17- Aug-17
Expenditures <sup>5</sup>	\$40,115	\$9,981	\$4,704	-88.3%	-52.9%
Cases <sup>6</sup>	157	37	17	-89.2%	-54.1%
Expenditures/Case	\$256	\$270	\$277	8.3%	2.6%
Recipients <sup>7</sup>	167	39	19	-88.6%	-51.3%
<i>Adults</i>	167	39	19	-88.6%	-51.3%
<i>Children</i>	0	0	0	N/A	N/A

## State Supplement for Residential Care

	Aug-16	Jul-17	Aug-17	Percent Change	
				Aug-16- Aug-17	Jul-17- Aug-17
Expenditures <sup>5</sup>	\$3,500	\$2,700	\$2,500	-28.6%	-7.4%
Cases <sup>6</sup>	35	26	25	-28.6%	-3.8%
Expenditures/Case	\$100	\$104	\$100	0.0%	-3.7%
Recipients <sup>7</sup>	35	26	25	-28.6%	-3.8%
<i>Adults</i>	35	26	25	-28.6%	-3.8%
<i>Children</i>	0	0	0	N/A	N/A

<b>Expenditures YTD</b>			
	SFY 2018	FFY 2017	CY 2017
Medicaid <sup>1</sup>	\$744,883,597	\$4,718,155,328	\$3,364,804,614
Supplemental Nutrition Assistance Program <sup>9</sup>	\$110,482,403	\$613,831,492	\$443,171,002
Temporary Assistance for Needy Families <sup>9</sup>	\$8,254,886	\$40,674,510	\$29,518,043
General Assistance <sup>9</sup>	\$1,485,985	\$9,080,735	\$6,384,013
Education Work <sup>9</sup>	\$82,991	\$583,261	\$404,736
LIHEAP <sup>8</sup>	\$1,425,153	\$16,228,497	\$8,252,030

<b>Average Caseload YTD</b>			
	SFY 2018	FFY 2017	CY 2017
Medicaid <sup>2</sup>	510,372	518,467	520,014
Supplemental Nutrition Assistance Program <sup>6</sup>	219,586	238,443	230,204
Temporary Assistance for Needy Families <sup>6</sup>	11,691	11,880	11,642
General Assistance <sup>6</sup>	3,030	3,364	3,295
Education Work <sup>6</sup>	103	147	140
LIHEAP <sup>8</sup>	2,729	5,573	3,995

<b>Demographic Profile- August 2017</b>					
	SNAP	TANF	GA	Education Works	RCA
<b>Gender of Recipients<sup>10</sup></b>					
Male	210,017	13,298	1,731	113	12
Female	254,085	18,034	1,348	182	7
<b>Ethnicity<sup>10</sup></b>					
Hispanic	259,504	21,656	1,641	187	14
Non-Hispanic	204,598	9,676	1,438	108	5
<b>Race<sup>10</sup></b>					
Native American or Alaskan Native	76,891	2,406	229	18	0
Asian	4,583	313	28	2	0
African American or Black	11,220	1,280	115	6	2
Native Hawaiian or Pacific Islander	886	46	3	1	0
White	361,788	26,544	2,653	253	10
Unknown / Not Declared	4,776	297	28	7	1
More than One Race	3,958	446	23	8	6

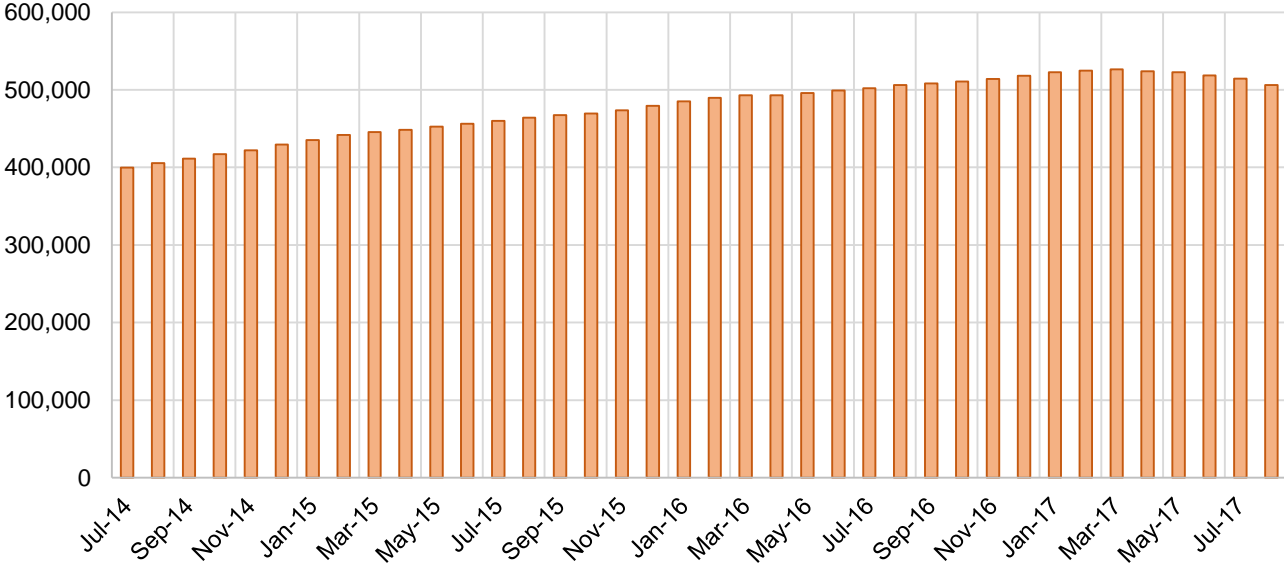
## Medicaid Cases by Field Office<sup>2</sup>

Office	Aug-16	Jul-17	Aug-17	Percent Change	
				Aug-16- Aug-17	Jul-17- Aug-17
Chaves County ISD	16,628	16,382	16,288	-2.0%	-0.6%
Cibola County ISD	7,430	7,582	7,536	1.4%	-0.6%
Colfax County ISD	3,470	3,473	3,438	-0.9%	-1.0%
Curry County ISD	10,223	10,214	9,973	-2.4%	-2.4%
East Dona Ana County ISD	17,982	17,827	17,829	-0.9%	0.0%
Eddy Artesia County ISD	3,820	3,876	3,861	1.1%	-0.4%
Eddy Carlsbad County ISD	8,105	8,203	8,005	-1.2%	-2.4%
Grant County ISD	7,090	6,872	6,854	-3.3%	-0.3%
Guadalupe County ISD	1,624	1,664	1,659	2.2%	-0.3%
Hidalgo County ISD	1,035	970	971	-6.2%	0.1%
Lea County ISD	14,241	14,474	14,236	0.0%	-1.6%
Lincoln County ISD	4,519	4,411	4,366	-3.4%	-1.0%
Luna County ISD	8,909	8,782	8,752	-1.8%	-0.3%
McKinley County ISD	22,969	22,822	22,236	-3.2%	-2.6%
Northeast Bernalillo County ISD	44,290	46,430	46,322	4.6%	-0.2%
Northwest Bernalillo County ISD	49,900	50,454	50,794	1.8%	0.7%
Otero County ISD	11,688	11,912	11,943	2.2%	0.3%
Quay County ISD	2,593	2,626	2,602	0.3%	-0.9%
Rio Arriba County ISD	14,838	14,526	14,461	-2.5%	-0.4%
Roosevelt County ISD	3,931	3,992	3,949	0.5%	-1.1%
San Juan County ISD	29,891	31,675	30,607	2.4%	-3.4%
San Miguel County ISD	9,524	9,497	9,340	-1.9%	-1.7%
Sandoval County ISD	26,249	26,525	25,674	-2.2%	-3.2%
Santa Fe County ISD	26,368	26,983	25,864	-1.9%	-4.1%
Sierra County ISD	5,511	5,587	5,609	1.8%	0.4%
Socorro County ISD	5,745	5,628	5,540	-3.6%	-1.6%
South Dona Ana ISD	19,757	20,049	19,979	1.1%	-0.3%
Southeast Bernalillo County ISD	29,216	29,854	29,724	1.7%	-0.4%
Southwest Bernalillo County ISD	40,894	41,809	39,164	-4.2%	-6.3%
Taos County ISD	9,505	9,841	9,634	1.4%	-2.1%
Torrance County ISD	7,611	7,997	7,973	4.8%	-0.3%
Valencia North County ISD	18,370	19,047	18,351	-0.1%	-3.7%
Valencia South County ISD	20	71	80	300.0%	12.7%
West Dona Ana County ISD	22,229	22,615	22,453	1.0%	-0.7%
Centralized Units	3	4	2	-33.3%	-50.0%
Statewide Total	506,178	514,674	506,069	0.0%	-1.7%

## Medicaid Cases by Region<sup>2</sup>

Region	Aug-16	Jul-17	Aug-17	Percent Change	
				Aug-16- Aug-17	Jul-17- Aug-17
Region 1 - NW	89,936	92,412	89,959	0.0%	-2.7%
Region 2 - NE	94,171	95,135	92,672	-1.6%	-2.6%
Region 3 - Central	171,911	176,544	173,977	1.2%	-1.5%
Region 4 - SE	61,467	61,552	60,678	-1.3%	-1.4%
Region 5 - SW	88,690	89,027	88,781	0.1%	-0.3%
Centralized Units	3	4	2	-33.3%	-50.0%
Statewide Total	506,178	514,674	506,069	0.0%	-1.7%

**Medicaid Caseload: SFY-15 to Current**



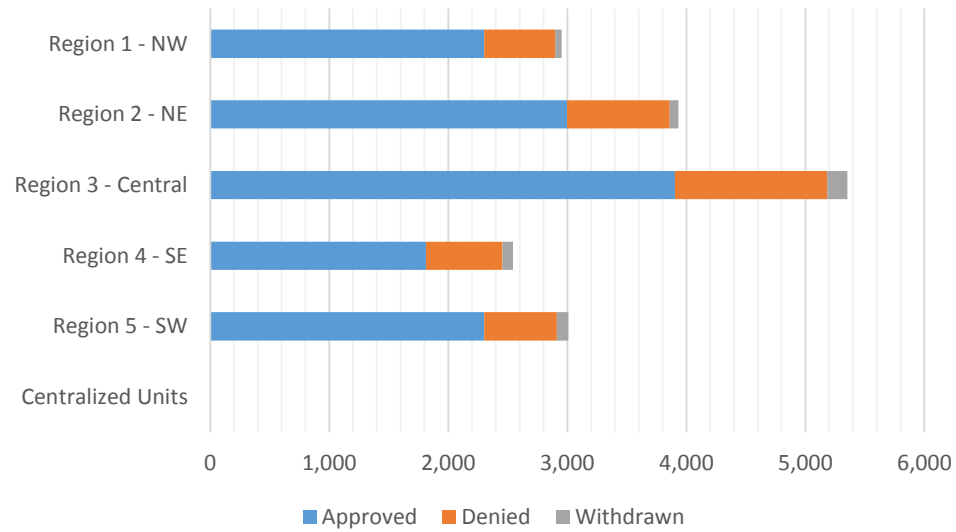
**Medicaid Initial Applications by Field Office<sup>4,11</sup>**  
**August 2017**

Office	Approved	Denied	Withdrawn	Total Cases Processed
Chaves County ISD	545	181	17	743
Cibola County ISD	196	32	8	236
Colfax County ISD	81	22	2	105
Curry County ISD	284	98	18	400
East Dona Ana County ISD	575	174	24	773
Eddy Artesia County ISD	198	57	6	261
Eddy Carlsbad County ISD	215	82	19	316
Grant County ISD	217	48	5	270
Guadalupe County ISD	57	16	1	74
Hidalgo County ISD	0	0	0	0
Lea County ISD	274	121	14	409
Lincoln County ISD	173	51	6	230
Luna County ISD	201	52	11	264
McKinley County ISD	539	168	14	721
Northeast Bernalillo County ISD	1,024	304	61	1,389
Northwest Bernalillo County ISD	1,039	219	41	1,299
Otero County ISD	274	58	11	343
Quay County ISD	147	48	1	196
Rio Arriba County ISD	349	100	9	458
Roosevelt County ISD	125	51	10	186
San Juan County ISD	840	206	26	1,072
San Miguel County ISD	442	140	2	584
Sandoval County ISD	1,090	241	24	1,355
Santa Fe County ISD	550	237	28	815
Sierra County ISD	92	16	1	109
Socorro County ISD	130	19	4	153
South Dona Ana ISD	508	125	15	648
Southeast Bernalillo County ISD	721	366	26	1,113
Southwest Bernalillo County ISD	902	334	36	1,272
Taos County ISD	283	59	4	346
Torrance County ISD	218	56	7	281
Valencia North County ISD	458	136	0	594
Valencia South County ISD	47	21	0	68
West Dona Ana County ISD	528	151	33	712
Centralized Units	0	0	0	0
<b>Statewide Total</b>	<b>13,322</b>	<b>3,989</b>	<b>484</b>	<b>17,795</b>



## Medicaid Initial Applications by Region<sup>4,11</sup> August 2017

Region	Approved	Denied	Withdrawn	Total Cases Processed
Region 1 - NW	2,302	598	53	2,953
Region 2 - NE	2,999	863	71	3,933
Region 3 - Central	3,904	1,279	171	5,354
Region 4 - SE	1,814	641	90	2,545
Region 5 - SW	2,303	608	99	3,010
Centralized Units	0	0	0	0
<b>Statewide Total</b>	<b>13,322</b>	<b>3,989</b>	<b>484</b>	<b>17,795</b>

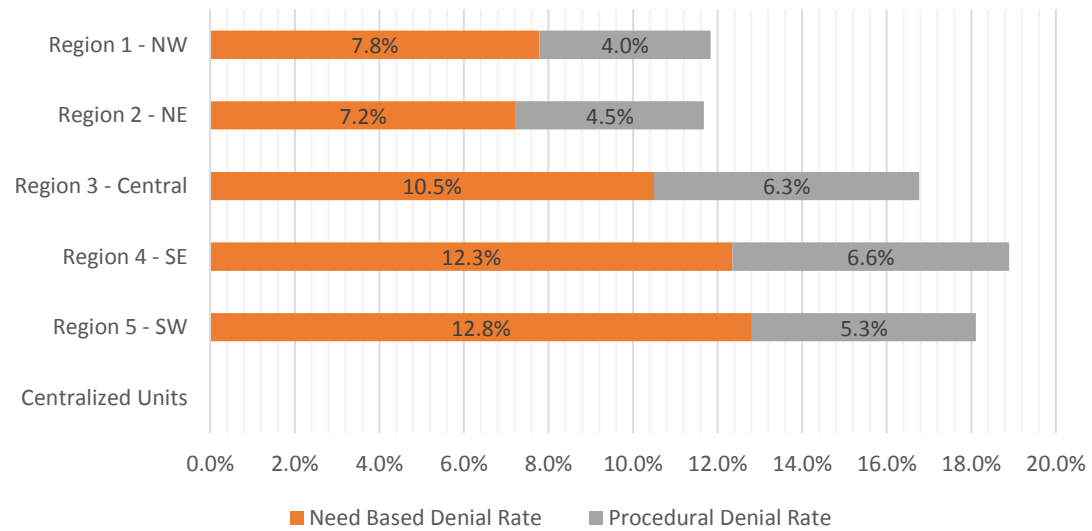


**Medicaid EDG Initial Disposition Rates by Field Office<sup>4,11,19</sup>**  
**August 2017**

Office	Approval Rate	Denial Rate	Need Based Denial Rate	Procedural Denial Rate
Chaves County ISD	84.1%	15.9%	11.3%	4.6%
Cibola County ISD	91.6%	8.4%	5.9%	2.5%
Colfax County ISD	85.4%	14.6%	14.6%	0.0%
Curry County ISD	83.1%	16.9%	10.0%	6.9%
East Dona Ana County ISD	81.6%	18.4%	14.7%	3.7%
Eddy Artesia County ISD	92.3%	7.7%	4.9%	2.7%
Eddy Carlsbad County ISD	79.9%	20.1%	12.7%	7.4%
Grant County ISD	86.0%	14.0%	8.7%	5.3%
Guadalupe County ISD	90.9%	9.1%	8.0%	1.1%
Hidalgo County ISD	0.0%	0.0%	0.0%	0.0%
Lea County ISD	67.2%	32.8%	21.8%	11.0%
Lincoln County ISD	85.5%	14.5%	6.9%	7.5%
Luna County ISD	81.8%	18.2%	10.8%	7.4%
McKinley County ISD	87.2%	12.8%	7.1%	5.7%
Northeast Bernalillo County ISD	82.5%	17.5%	10.8%	6.7%
Northwest Bernalillo County ISD	88.2%	11.8%	6.9%	5.0%
Otero County ISD	79.1%	20.9%	11.2%	9.7%
Quay County ISD	91.9%	8.1%	7.4%	0.8%
Rio Arriba County ISD	88.7%	11.3%	6.1%	5.2%
Roosevelt County ISD	82.3%	17.7%	13.2%	4.5%
San Juan County ISD	87.3%	12.7%	8.5%	4.3%
San Miguel County ISD	92.9%	7.1%	4.3%	2.8%
Sandoval County ISD	90.0%	10.0%	6.2%	3.8%
Santa Fe County ISD	79.7%	20.3%	11.3%	9.0%
Sierra County ISD	89.9%	10.1%	8.8%	1.4%
Socorro County ISD	92.9%	7.1%	4.4%	2.7%
South Dona Ana ISD	80.9%	19.1%	15.6%	3.5%
Southeast Bernalillo County ISD	77.0%	23.0%	12.8%	10.2%
Southwest Bernalillo County ISD	82.7%	17.3%	12.8%	4.5%
Taos County ISD	92.0%	8.0%	5.4%	2.6%
Torrance County ISD	87.4%	12.6%	7.2%	5.4%
Valencia North County ISD	86.9%	13.1%	9.6%	3.5%
Valencia South County ISD	98.8%	1.2%	0.0%	1.2%
West Dona Ana County ISD	83.2%	16.8%	11.3%	5.4%
Centralized Units	0.0%	0.0%	0.0%	0.0%
Statewide Total	84.6%	15.4%	10.0%	5.4%

**Medicaid EDG Initial Disposition Rates by Region<sup>4,11,19</sup>**  
**August 2017**

Region	Approval Rate	Denial Rate	Need Based Denial Rate	Procedural Denial Rate
Region 1 - NW	88.2%	11.8%	7.8%	4.0%
Region 2 - NE	88.3%	11.7%	7.2%	4.5%
Region 3 - Central	83.2%	16.8%	10.5%	6.3%
Region 4 - SE	81.1%	18.9%	12.3%	6.6%
Region 5 - SW	81.9%	18.1%	12.8%	5.3%
Centralized Units				
<b>Statewide Total</b>	<b>84.6%</b>	<b>15.4%</b>	<b>10.0%</b>	<b>5.4%</b>



**Medicaid: Percentage of Initial EDG Approvals Processed Timely by Field Office<sup>13,19</sup>**

	Oct-16	Nov-16	Dec-16	Jan-17	Feb-17	Mar-17	Apr-17	May-17	Jun-17	Jul-17	Aug-17	Sep-17	Average
Cibola	84.1%	92.0%	90.9%	96.3%	85.6%	93.6%	95.3%	92.1%	94.0%	92.3%	97.7%		92.2%
McKinley	86.7%	90.4%	93.0%	87.4%	82.3%	89.8%	94.2%	92.2%	94.5%	95.5%	94.6%		91.0%
San Juan	87.0%	86.3%	86.1%	82.3%	80.6%	74.5%	86.2%	82.1%	92.4%	93.1%	93.2%		85.8%
Sierra	86.5%	91.8%	84.3%	87.9%	92.1%	88.8%	97.0%	92.6%	98.0%	95.3%	95.9%		91.8%
Socorro	88.4%	83.3%	91.0%	87.5%	87.2%	94.3%	95.8%	97.5%	95.1%	96.3%	93.8%		91.8%
Valencia North	89.7%	88.8%	89.0%	83.9%	83.9%	80.0%	84.4%	89.0%	88.5%	93.6%	95.1%		87.8%
Valencia South	100.0%	95.8%	100.0%	100.0%	50.0%	100.0%	100.0%	100.0%	80.0%		100.0%		92.6%
<b>NW Region 1 Total</b>	<b>87.2%</b>	<b>88.4%</b>	<b>88.8%</b>	<b>86.1%</b>	<b>83.0%</b>	<b>88.7%</b>	<b>89.9%</b>	<b>88.7%</b>	<b>92.6%</b>	<b>94.0%</b>	<b>94.5%</b>		<b>89.3%</b>
Colfax	90.0%	79.5%	95.2%	83.7%	78.7%	89.8%	93.2%	83.3%	93.4%	98.0%	95.4%		89.1%
Guadalupe	100.0%	97.6%	85.7%	94.7%	95.6%	90.5%	100.0%	100.0%	94.4%	92.6%	100.0%		95.6%
Quay	86.3%	96.0%	86.8%	91.1%	96.6%	89.5%	96.4%	92.2%	98.5%	95.5%	95.0%		93.1%
Rio Arriba	92.1%	88.8%	91.5%	89.6%	79.5%	91.5%	92.6%	83.6%	93.6%	91.8%	94.9%		90.0%
San Miguel	92.4%	89.2%	96.6%	96.4%	97.5%	97.7%	96.7%	89.4%	95.6%	98.3%	98.9%		95.3%
Sandoval	83.5%	91.6%	89.2%	90.9%	82.1%	85.9%	88.3%	82.3%	93.9%	95.4%	96.9%		89.1%
Santa Fe	90.1%	88.8%	93.4%	82.5%	81.7%	88.2%	92.8%	82.6%	92.8%	90.7%	93.4%		88.8%
Taos	90.4%	95.2%	90.6%	89.1%	88.1%	88.4%	91.5%	78.8%	96.0%	94.6%	98.1%		91.0%
<b>NE Region 2 Total</b>	<b>88.3%</b>	<b>90.3%</b>	<b>91.8%</b>	<b>89.7%</b>	<b>87.2%</b>	<b>90.2%</b>	<b>92.2%</b>	<b>83.0%</b>	<b>94.2%</b>	<b>94.1%</b>	<b>96.1%</b>		<b>90.6%</b>
NE Bernalillo	81.0%	83.3%	85.5%	75.0%	73.1%	76.6%	80.4%	82.2%	83.7%	89.6%	94.0%		82.2%
NW Bernalillo	87.6%	87.3%	88.6%	87.5%	84.8%	80.5%	81.3%	82.2%	91.2%	91.6%	97.2%		87.3%
SE Bernalillo	83.0%	75.5%	77.2%	79.8%	72.7%	68.6%	82.1%	77.4%	78.7%	86.0%	92.2%		79.4%
SW Bernalillo	89.3%	87.6%	88.5%	84.5%	76.6%	86.8%	85.1%	85.1%	93.6%	94.3%	96.7%		88.0%
Torrance	83.7%	83.6%	87.4%	80.9%	83.6%	86.2%	96.8%	91.9%	95.7%	90.2%	96.7%		88.8%
<b>Gen. Region 3 Total</b>	<b>85.0%</b>	<b>83.4%</b>	<b>85.2%</b>	<b>81.1%</b>	<b>77.0%</b>	<b>79.7%</b>	<b>82.8%</b>	<b>82.4%</b>	<b>87.7%</b>	<b>90.8%</b>	<b>95.5%</b>		<b>84.6%</b>
Chaves	85.3%	87.1%	91.9%	89.3%	90.8%	93.2%	89.7%	91.5%	92.9%	93.8%	97.3%		91.2%
Curry	86.2%	80.8%	85.2%	84.1%	70.2%	81.6%	88.9%	86.6%	92.5%	94.3%	97.0%		86.1%
Eddy Artesia	91.1%	83.6%	90.2%	82.6%	89.0%	85.6%	91.3%	92.2%	97.1%	96.9%	96.4%		90.5%
Eddy Carlsbad	85.5%	87.2%	86.7%	84.7%	85.6%	83.3%	90.4%	83.3%	82.0%	93.5%	92.6%		86.8%
Lea	88.4%	90.4%	90.4%	83.1%	72.5%	87.7%	93.5%	85.4%	90.1%	91.6%	91.9%		87.7%
Lincoln	89.6%	87.8%	94.3%	84.6%	84.6%	96.3%	95.1%	88.3%	96.2%	96.2%	97.8%		91.9%
Roosevelt	89.7%	89.8%	88.9%	80.8%	82.9%	89.7%	95.5%	90.2%	94.9%	94.4%	96.4%		90.3%
<b>SE Region 4 Total</b>	<b>87.3%</b>	<b>87.0%</b>	<b>89.6%</b>	<b>85.0%</b>	<b>80.9%</b>	<b>88.2%</b>	<b>91.6%</b>	<b>87.8%</b>	<b>91.4%</b>	<b>93.6%</b>	<b>95.2%</b>		<b>88.9%</b>
East Dona Ana	86.0%	88.9%	90.1%	89.8%	87.9%	84.7%	92.5%	90.1%	95.9%	91.1%	95.2%		90.2%
Grant	94.6%	93.5%	88.1%	87.4%	83.9%	87.6%	88.2%	90.6%	94.8%	88.3%	97.0%		90.4%
Luna	87.5%	87.9%	88.9%	88.4%	90.8%	90.4%	93.8%	91.4%	96.3%	96.9%	98.0%		91.8%
Otero	79.7%	74.7%	88.3%	81.6%	78.3%	86.5%	91.0%	88.5%	89.5%	95.8%	97.3%		86.5%
South Dona Ana	87.6%	88.4%	90.7%	88.5%	88.5%	87.0%	95.0%	94.8%	95.7%	97.5%	97.6%		91.9%
West Dona Ana	88.8%	82.5%	91.6%	86.7%	82.5%	93.1%	94.5%	91.3%	93.9%	96.5%	97.4%		90.8%
<b>SW Region 5 Total</b>	<b>87.1%</b>	<b>85.4%</b>	<b>90.0%</b>	<b>87.2%</b>	<b>85.3%</b>	<b>88.2%</b>	<b>93.0%</b>	<b>91.4%</b>	<b>94.5%</b>	<b>94.8%</b>	<b>96.9%</b>		<b>90.3%</b>
<b>STATE TOTAL</b>	<b>86.7%</b>	<b>86.6%</b>	<b>88.6%</b>	<b>85.6%</b>	<b>82.3%</b>	<b>87.0%</b>	<b>89.1%</b>	<b>86.4%</b>	<b>91.6%</b>	<b>93.2%</b>	<b>95.6%</b>		<b>88.4%</b>

**Medicaid: Percentage of Initial EDG Denials Processed Timely by Field Office<sup>13,19</sup>**

	Oct-16	Nov-16	Dec-16	Jan-17	Feb-17	Mar-17	Apr-17	May-17	Jun-17	Jul-17	Aug-17	Sep-17	Average
Cibola	38.5%	45.5%	70.0%	43.3%	18.8%	10.8%	41.2%	23.5%	67.9%	34.5%	70.0%		42.2%
McKinley	42.3%	60.6%	68.6%	21.4%	12.8%	30.9%	45.1%	48.6%	58.7%	43.6%	59.8%		44.8%
San Juan	54.0%	38.2%	57.1%	18.4%	4.3%	25.4%	25.7%	23.3%	37.6%	49.4%	66.5%		36.4%
Sierra	52.4%	43.8%	61.5%	76.9%	83.3%	30.0%	100.0%	94.4%	100.0%	29.0%	86.7%		68.9%
Socorro	42.9%	20.0%	52.6%	44.7%	25.4%	41.9%	62.1%	78.6%	68.3%	44.8%	75.0%		50.6%
Valencia North	50.0%	52.1%	57.7%	11.8%	47.5%	21.7%	11.0%	46.1%	58.7%	59.2%	70.9%		44.2%
Valencia South	100.0%	100.0%	100.0%						100.0%		0.0%		80.0%
<b>NW Region 1 Total</b>	<b>48.3%</b>	<b>43.2%</b>	<b>60.5%</b>	<b>20.4%</b>	<b>11.5%</b>	<b>26.8%</b>	<b>27.2%</b>	<b>40.0%</b>	<b>55.8%</b>	<b>47.6%</b>	<b>66.7%</b>		<b>40.7%</b>
Colfax	45.7%	19.0%	70.6%	58.3%	27.1%	58.3%	55.6%	40.0%	90.0%	45.0%	90.9%		54.6%
Guadalupe	44.4%	12.9%	40.0%	30.8%	58.3%	14.3%	33.3%	20.0%	71.4%	66.7%	75.0%		42.5%
Quay	72.5%	26.4%	69.2%	42.9%	81.6%	40.9%	76.0%	64.3%	91.3%	63.2%	85.7%		64.9%
Rio Arriba	53.4%	67.3%	42.9%	11.0%	21.1%	50.7%	54.2%	37.0%	53.0%	47.6%	55.2%		44.9%
San Miguel	60.0%	19.9%	47.6%	59.0%	43.4%	28.4%	60.5%	17.6%	43.3%	52.6%	75.0%		46.1%
Sandoval	56.6%	59.8%	58.6%	38.7%	5.6%	22.8%	54.7%	10.0%	51.5%	66.7%	60.5%		44.1%
Santa Fe	58.6%	70.7%	64.2%	12.2%	47.2%	52.2%	65.5%	10.2%	45.6%	39.6%	59.6%		47.8%
Taos	48.8%	13.7%	47.2%	46.4%	62.5%	30.2%	56.4%	17.0%	31.6%	50.9%	64.9%		42.7%
<b>NE Region 2 Total</b>	<b>56.6%</b>	<b>38.8%</b>	<b>55.8%</b>	<b>19.5%</b>	<b>20.6%</b>	<b>37.2%</b>	<b>59.8%</b>	<b>14.2%</b>	<b>51.6%</b>	<b>49.4%</b>	<b>63.1%</b>		<b>42.4%</b>
NE Bernalillo	47.8%	36.4%	57.7%	9.6%	9.3%	44.0%	35.6%	20.6%	18.5%	38.0%	51.7%		33.6%
NW Bernalillo	49.5%	39.4%	63.4%	36.8%	14.7%	10.1%	8.2%	16.2%	29.8%	18.5%	55.8%		31.1%
SE Bernalillo	53.7%	34.8%	44.1%	31.7%	25.8%	21.4%	42.1%	14.2%	20.0%	26.5%	51.9%		33.3%
SW Bernalillo	48.0%	42.7%	53.7%	48.9%	11.4%	34.2%	41.3%	39.9%	60.8%	36.7%	71.9%		44.5%
Torrance	57.1%	16.5%	33.3%	19.3%	20.0%	11.3%	77.3%	29.8%	66.7%	20.5%	52.9%		36.8%
<b>Gen. Region 3 Total</b>	<b>49.8%</b>	<b>36.3%</b>	<b>53.3%</b>	<b>20.3%</b>	<b>13.6%</b>	<b>24.2%</b>	<b>23.8%</b>	<b>18.9%</b>	<b>27.6%</b>	<b>28.1%</b>	<b>57.9%</b>		<b>32.2%</b>
Chaves	52.0%	48.1%	65.6%	81.1%	42.3%	23.9%	37.7%	27.5%	44.5%	59.7%	68.2%		50.1%
Curry	41.4%	44.8%	61.8%	56.9%	10.4%	16.3%	45.0%	17.9%	57.3%	53.9%	68.8%		43.1%
Eddy Artesia	75.6%	54.8%	52.0%	27.7%	28.0%	44.0%	57.1%	53.3%	50.0%	40.0%	67.9%		50.0%
Eddy Carlsbad	55.0%	35.3%	68.3%	18.6%	29.3%	20.9%	60.9%	33.7%	40.7%	54.0%	64.4%		43.7%
Lea	43.9%	68.7%	67.6%	67.0%	18.2%	25.4%	76.7%	32.3%	55.9%	65.4%	65.9%		53.4%
Lincoln	57.1%	55.0%	76.2%	11.3%	32.7%	47.8%	17.4%	37.8%	44.4%	61.8%	37.5%		43.5%
Roosevelt	41.4%	51.4%	56.5%	9.1%	25.0%	27.5%	36.5%	46.3%	60.4%	65.3%	81.4%		45.5%
<b>SE Region 4 Total</b>	<b>49.7%</b>	<b>52.8%</b>	<b>64.7%</b>	<b>34.2%</b>	<b>21.6%</b>	<b>29.4%</b>	<b>50.3%</b>	<b>29.5%</b>	<b>51.1%</b>	<b>59.8%</b>	<b>65.8%</b>		<b>46.3%</b>
East Dona Ana	56.6%	30.8%	52.1%	20.6%	25.0%	32.5%	28.9%	50.4%	56.2%	50.0%	71.7%		43.2%
Grant	61.9%	42.2%	70.8%	25.0%	55.6%	31.3%	46.9%	59.3%	29.7%	35.3%	62.3%		47.3%
Luna	55.6%	44.3%	55.6%	19.5%	38.4%	22.2%	76.5%	69.6%	61.5%	44.9%	66.2%		50.4%
Otero	38.8%	14.0%	40.0%	8.3%	18.0%	33.3%	50.0%	36.2%	45.5%	36.6%	57.1%		34.3%
South Dona Ana	56.7%	47.9%	60.2%	27.8%	49.5%	33.6%	69.5%	81.5%	78.0%	77.0%	80.6%		60.2%
West Dona Ana	46.3%	31.6%	50.0%	20.7%	19.1%	42.4%	62.1%	64.5%	61.9%	64.8%	68.2%		48.3%
<b>SW Region 5 Total</b>	<b>52.2%</b>	<b>31.9%</b>	<b>53.1%</b>	<b>19.9%</b>	<b>30.5%</b>	<b>32.6%</b>	<b>51.5%</b>	<b>61.7%</b>	<b>61.5%</b>	<b>58.2%</b>	<b>69.9%</b>		<b>47.5%</b>
<b>STATE TOTAL</b>	<b>51.1%</b>	<b>39.5%</b>	<b>56.5%</b>	<b>22.0%</b>	<b>18.5%</b>	<b>30.0%</b>	<b>37.9%</b>	<b>24.8%</b>	<b>42.8%</b>	<b>43.5%</b>	<b>63.9%</b>		<b>39.1%</b>

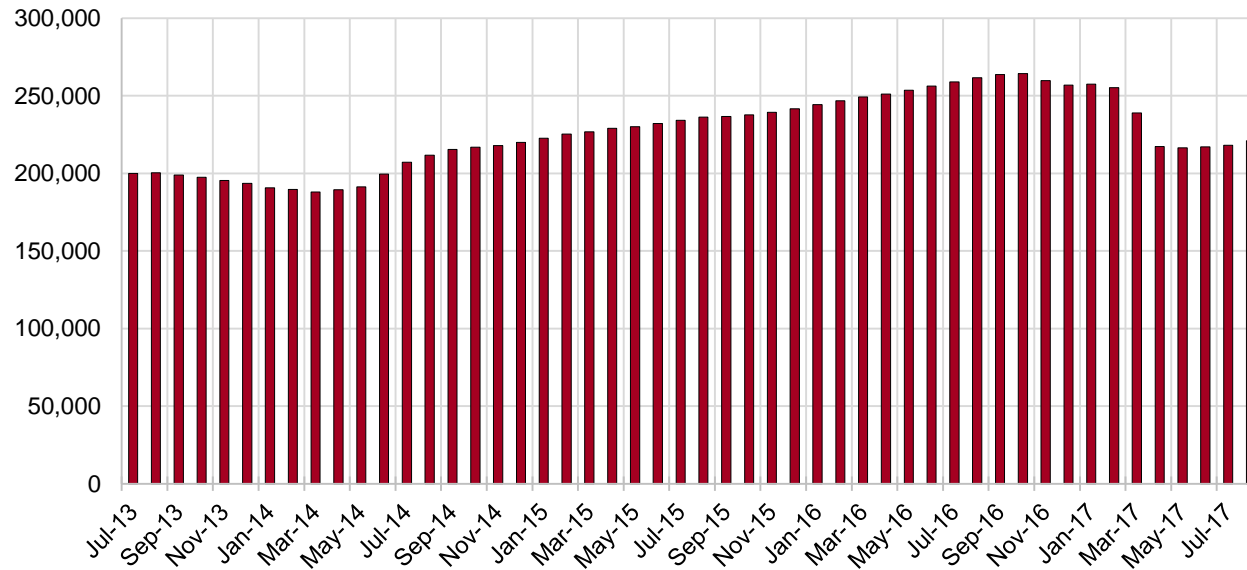
## SNAP Cases by Field Office<sup>6</sup>

Office				Percent Change	
	Aug-16	Jul-17	Aug-17	Aug-16- Aug-17	Jul-17- Aug-17
Chaves County ISD	8,367	7,111	7,225	-13.6%	1.6%
Cibola County ISD	4,158	3,647	3,676	-11.6%	0.8%
Colfax County ISD	1,857	1,576	1,572	-15.3%	-0.3%
Curry County ISD	5,502	4,639	4,737	-13.9%	2.1%
East Dona Ana County ISD	9,605	8,029	8,125	-15.4%	1.2%
Eddy Artesia County ISD	1,921	1,699	1,730	-9.9%	1.8%
Eddy Carlsbad County ISD	3,997	3,336	3,346	-16.3%	0.3%
Grant County ISD	4,127	3,500	3,597	-12.8%	2.8%
Guadalupe County ISD	791	706	710	-10.2%	0.6%
Hidalgo County ISD	546	411	422	-22.7%	2.7%
Lea County ISD	7,097	5,678	5,817	-18.0%	2.4%
Lincoln County ISD	2,168	1,900	1,904	-12.2%	0.2%
Luna County ISD	5,065	4,227	4,266	-15.8%	0.9%
McKinley County ISD	11,042	9,492	9,677	-12.4%	1.9%
Northeast Bernalillo County ISD	23,710	19,600	19,970	-15.8%	1.9%
Northwest Bernalillo County ISD	21,141	17,825	18,151	-14.1%	1.8%
Otero County ISD	6,081	5,416	5,542	-8.9%	2.3%
Quay County ISD	1,428	1,244	1,282	-10.2%	3.1%
Rio Arriba County ISD	8,197	6,792	6,852	-16.4%	0.9%
Roosevelt County ISD	2,087	1,675	1,690	-19.0%	0.9%
San Juan County ISD	15,392	13,230	13,389	-13.0%	1.2%
San Miguel County ISD	5,813	4,940	5,017	-13.7%	1.6%
Sandoval County ISD	13,040	10,783	10,940	-16.1%	1.5%
Santa Fe County ISD	12,987	10,178	10,185	-21.6%	0.1%
Sierra County ISD	3,016	2,671	2,659	-11.8%	-0.4%
Socorro County ISD	3,333	2,827	2,835	-14.9%	0.3%
South Dona Ana ISD	9,471	8,602	8,682	-8.3%	0.9%
Southeast Bernalillo County ISD	16,236	12,109	12,188	-24.9%	0.7%
Southwest Bernalillo County ISD	22,066	18,054	18,383	-16.7%	1.8%
Taos County ISD	4,717	4,043	4,082	-13.5%	1.0%
Torrance County ISD	4,030	3,316	3,341	-17.1%	0.8%
Valencia North County ISD	7,070	8,227	8,313	17.6%	1.0%
Valencia South County ISD	2,849	6	5	-99.8%	-16.7%
West Dona Ana County ISD	12,765	10,630	10,696	-16.2%	0.6%
Centralized Units	27	19	28	3.7%	47.4%
Statewide Total	261,699	218,138	221,034	-15.5%	1.3%

## SNAP Cases by Region<sup>6</sup>

Region	Aug-16	Jul-17	Aug-17	Percent Change	
				Aug-16- Aug-17	Jul-17- Aug-17
Region 1 - NW	46,860	40,100	40,554	-13.5%	1.1%
Region 2 - NE	48,830	40,262	40,640	-16.8%	0.9%
Region 3 - Central	87,183	70,904	72,033	-17.4%	1.6%
Region 4 - SE	31,139	26,038	26,449	-15.1%	1.6%
Region 5 - SW	47,660	40,815	41,330	-13.3%	1.3%
Centralized Units	27	19	28	3.7%	47.4%
<b>Statewide Total</b>	<b>261,699</b>	<b>218,138</b>	<b>221,034</b>	<b>-15.5%</b>	<b>1.3%</b>

## SNAP Caseload: SFY-14 to Current



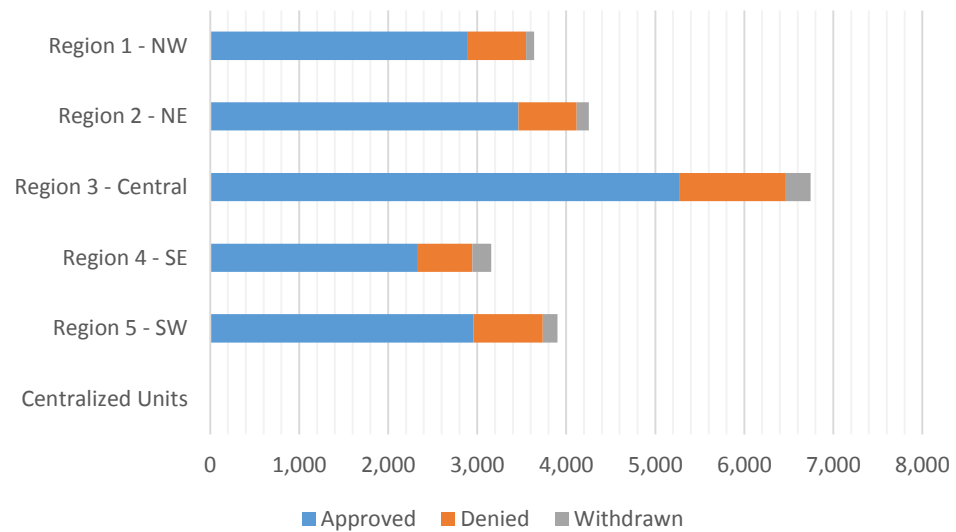
**SNAP Initial Applications by Field Office<sup>4,11</sup>**  
**August 2017**

Office	Approved	Denied	Withdrawn	Total Cases Processed
Chaves County ISD	596	162	37	795
Cibola County ISD	264	74	9	347
Colfax County ISD	107	28	6	141
Curry County ISD	420	102	98	620
East Dona Ana County ISD	612	212	52	876
Eddy Artesia County ISD	214	73	10	297
Eddy Carlsbad County ISD	335	94	23	452
Grant County ISD	325	66	7	398
Guadalupe County ISD	53	9	1	63
Hidalgo County ISD	0	0	0	0
Lea County ISD	440	101	20	561
Lincoln County ISD	171	40	3	214
Luna County ISD	301	58	17	376
McKinley County ISD	663	136	21	820
Northeast Bernalillo County ISD	1,573	291	99	1,963
Northwest Bernalillo County ISD	1,245	330	74	1,649
Otero County ISD	383	107	28	518
Quay County ISD	119	14	5	138
Rio Arriba County ISD	497	81	33	611
Roosevelt County ISD	147	49	23	219
San Juan County ISD	1,052	238	48	1,338
San Miguel County ISD	347	50	10	407
Sandoval County ISD	1,248	275	39	1,562
Santa Fe County ISD	790	153	32	975
Sierra County ISD	141	23	3	167
Socorro County ISD	170	26	7	203
South Dona Ana ISD	576	115	19	710
Southeast Bernalillo County ISD	940	213	44	1,197
Southwest Bernalillo County ISD	1,254	285	57	1,596
Taos County ISD	303	42	10	355
Torrance County ISD	254	71	14	339
Valencia North County ISD	564	105	0	669
Valencia South County ISD	41	53	0	94
West Dona Ana County ISD	763	217	42	1,022
Centralized Units	0	0	0	0
<b>Statewide Total</b>	<b>16,908</b>	<b>3,893</b>	<b>891</b>	<b>21,692</b>



## SNAP Initial Applications by Region<sup>4,11</sup> August 2017

Region	Approved	Denied	Withdrawn	Total Cases Processed
Region 1 - NW	2,895	655	88	3,638
Region 2 - NE	3,464	652	136	4,252
Region 3 - Central	5,266	1,190	288	6,744
Region 4 - SE	2,323	621	214	3,158
Region 5 - SW	2,960	775	165	3,900
Centralized Units	0	0	0	0
<b>Statewide Total</b>	<b>16,908</b>	<b>3,893</b>	<b>891</b>	<b>21,692</b>

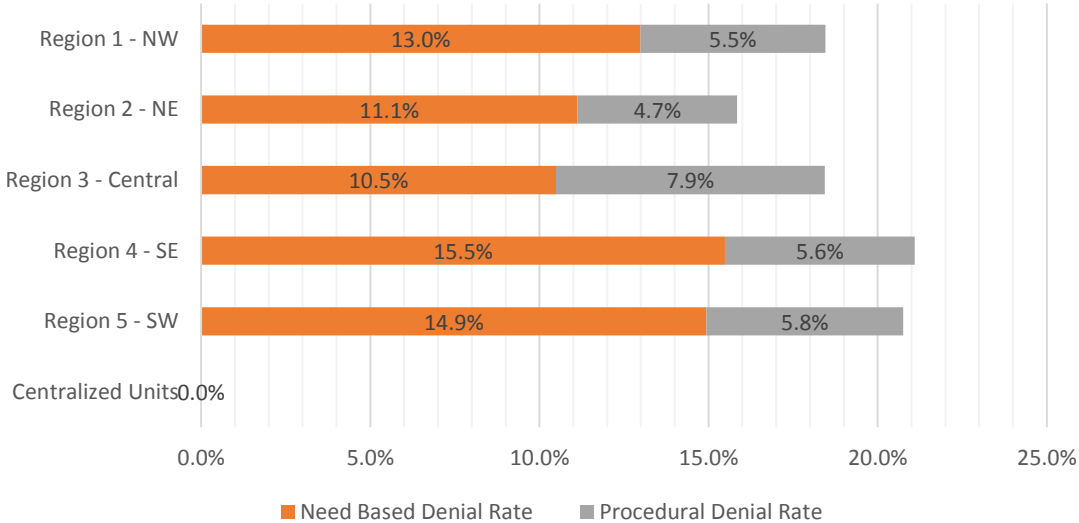


**SNAP Initial Disposition Rates by Field Office<sup>4,11</sup>**  
**August 2017**

Office	Approval Rate	Denial Rate	Need Based Denial Rate	Procedural Denial Rate
Chaves County ISD	78.6%	21.4%	16.6%	4.7%
Cibola County ISD	78.1%	21.9%	17.2%	4.7%
Colfax County ISD	79.3%	20.7%	16.3%	4.4%
Curry County ISD	80.5%	19.5%	14.9%	4.6%
East Dona Ana County ISD	74.3%	25.7%	17.7%	8.0%
Eddy Artesia County ISD	74.6%	25.4%	22.6%	2.8%
Eddy Carlsbad County ISD	78.1%	21.9%	14.9%	7.0%
Grant County ISD	83.1%	16.9%	12.0%	4.9%
Guadalupe County ISD	85.5%	14.5%	11.3%	3.2%
Hidalgo County ISD	0.0%	100.0%	100.0%	0.0%
Lea County ISD	81.3%	18.7%	9.4%	9.2%
Lincoln County ISD	81.0%	19.0%	14.7%	4.3%
Luna County ISD	83.8%	16.2%	7.8%	8.4%
McKinley County ISD	83.0%	17.0%	12.3%	4.8%
Northeast Bernalillo County ISD	84.4%	15.6%	8.0%	7.6%
Northwest Bernalillo County ISD	79.0%	21.0%	11.1%	9.8%
Otero County ISD	78.2%	21.8%	14.1%	7.8%
Quay County ISD	89.5%	10.5%	9.0%	1.5%
Rio Arriba County ISD	86.0%	14.0%	8.5%	5.5%
Roosevelt County ISD	75.0%	25.0%	20.9%	4.1%
San Juan County ISD	81.6%	18.4%	11.6%	6.8%
San Miguel County ISD	87.4%	12.6%	10.3%	2.3%
Sandoval County ISD	81.9%	18.1%	12.3%	5.7%
Santa Fe County ISD	83.8%	16.2%	11.2%	5.0%
Sierra County ISD	86.0%	14.0%	13.4%	0.6%
Socorro County ISD	86.7%	13.3%	9.7%	3.6%
South Dona Ana ISD	83.4%	16.6%	13.7%	2.9%
Southeast Bernalillo County ISD	81.5%	18.5%	11.5%	6.9%
Southwest Bernalillo County ISD	81.5%	18.5%	10.5%	8.1%
Taos County ISD	87.8%	12.2%	9.6%	2.6%
Torrance County ISD	78.2%	21.8%	18.2%	3.7%
Valencia North County ISD	84.3%	15.7%	9.1%	6.6%
Valencia South County ISD	43.6%	56.4%	56.4%	0.0%
West Dona Ana County ISD	77.9%	22.1%	17.7%	4.5%
Centralized Units				
Statewide Total	81.3%	18.7%	12.5%	6.2%

**SNAP Initial Disposition Rates by Region<sup>4,11</sup>**  
**August 2017**

Region	Approval Rate	Denial Rate	Need Based Denial Rate	Procedural Denial Rate
Region 1 - NW	81.5%	18.5%	13.0%	5.5%
Region 2 - NE	84.2%	15.8%	11.1%	4.7%
Region 3 - Central	81.6%	18.4%	10.5%	7.9%
Region 4 - SE	78.9%	21.1%	15.5%	5.6%
Region 5 - SW	79.3%	20.7%	14.9%	5.8%
Centralized Units				
<b>Statewide Total</b>	<b>81.3%</b>	<b>18.7%</b>	<b>12.5%</b>	<b>6.2%</b>



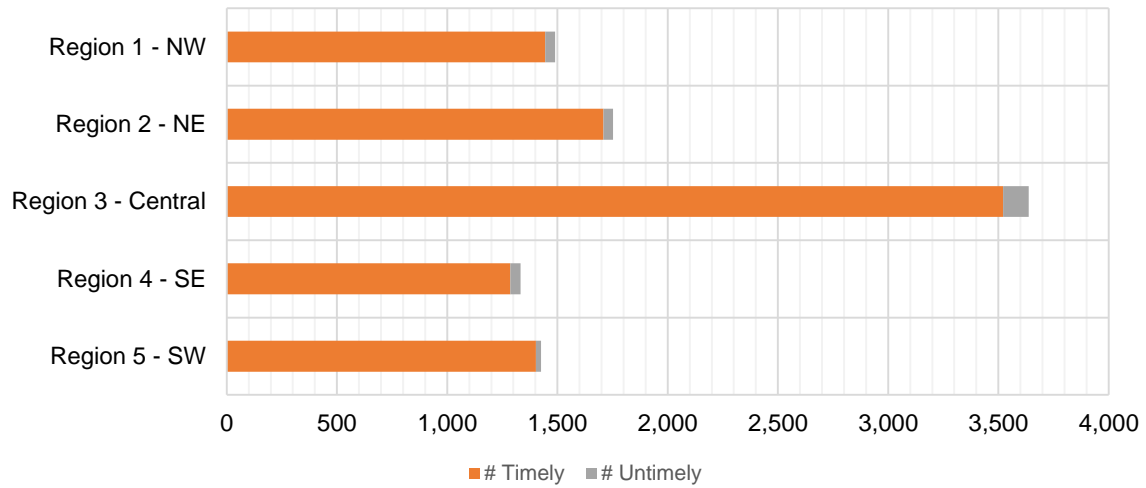
**SNAP Expedite Timeliness by Field Office<sup>13</sup>**  
**August 2017**

Office Name	Total Expedited Approvals	# Timely	# Untimely	Percentage Timely
Chaves County ISD	254	249	5	98.0 %
Cibola County ISD	113	111	2	98.2 %
Colfax County ISD	54	54	0	100.0 %
Curry County ISD	267	263	4	98.5 %
East Dona Ana County ISD	254	245	9	96.5 %
Eddy Artesia County ISD	86	84	2	97.7 %
Eddy Carlsbad County ISD	216	207	9	95.8 %
Grant County ISD	210	206	4	98.1 %
Guadalupe County ISD	20	20	0	100.0 %
Lea County ISD	353	329	24	93.2 %
Lincoln County ISD	65	64	1	98.5 %
Luna County ISD	164	164	0	100.0 %
McKinley County ISD	314	310	4	98.7 %
Northeast Bernalillo County ISD	1,204	1,165	39	96.8 %
Northwest Bernalillo County ISD	943	919	24	97.5 %
Otero County ISD	233	231	2	99.1 %
Quay County ISD	45	44	1	97.8 %
Rio Arriba County ISD	339	333	6	98.2 %
Roosevelt County ISD	92	91	1	98.9 %
San Juan County ISD	638	610	28	95.6 %
San Miguel County ISD	192	188	4	97.9 %
Sandoval County ISD	475	459	16	96.6 %
Santa Fe County ISD	481	469	12	97.5 %
Sierra County ISD	67	64	3	95.5 %
Socorro County ISD	76	74	2	97.4 %
South Dona Ana ISD	207	203	4	98.1 %
Southeast Bernalillo County ISD	540	517	23	95.7 %
Southwest Bernalillo County ISD	824	796	28	96.6 %
Taos County ISD	146	141	5	96.6 %
Torrance County ISD	127	125	2	98.4 %
Valencia North County ISD	282	276	6	97.9 %
West Dona Ana County ISD	357	353	4	98.9 %
<b>Statewide Total</b>	<b>9,638</b>	<b>9,364</b>	<b>274</b>	<b>97.2 %</b>

**SNAP Expedite Timeliness by Region<sup>13</sup>**  
**August 2017**

Region	Total Expedited Approvals	# Timely	# Untimely	Percentage Timely
Region 1 - NW	1,490	1,445	45	97.0%
Region 2 - NE	1,752	1,708	44	97.5%
Region 3 - Central	3,638	3,522	116	96.8%
Region 4 - SE	1,333	1,287	46	96.5%
Region 5 - SW	1,425	1,402	23	98.4%
Statewide Total	9,638	9,364	274	97.2%

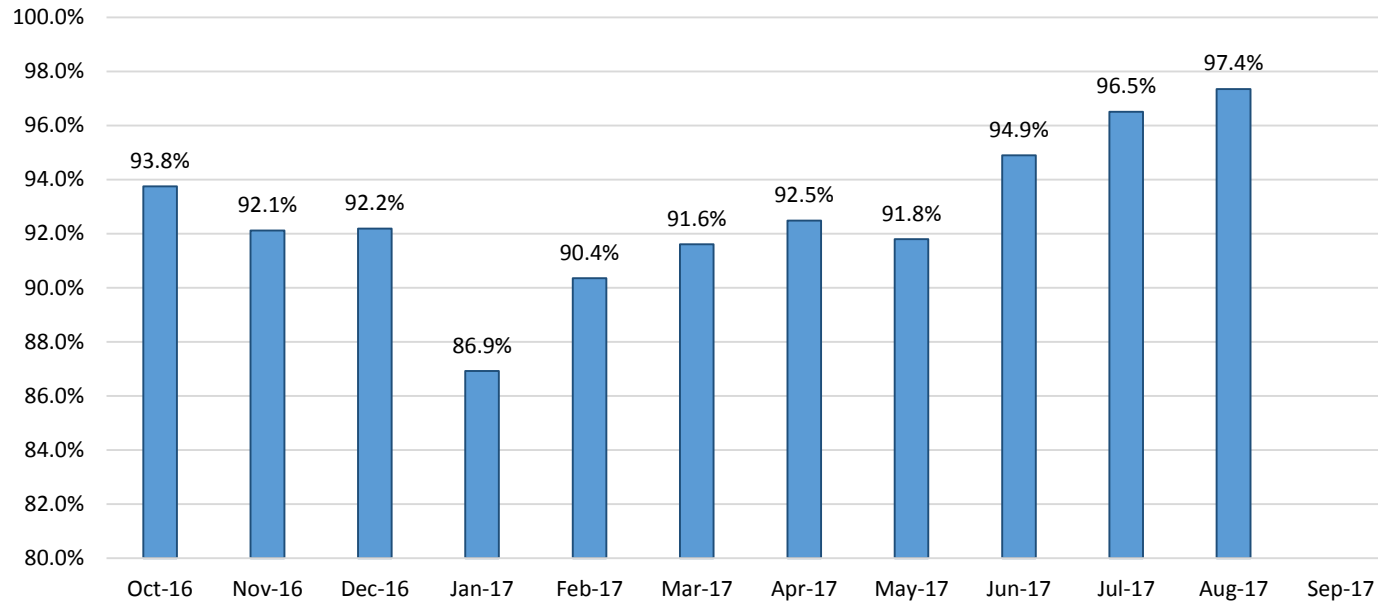
**SNAP Expedite - Timeliness**



### SNAP: Percentage of Applications Processed Timely <sup>13</sup>

	Oct-16	Nov-16	Dec-16	Jan-17	Feb-17	Mar-17	Apr-17	May-17	Jun-17	Jul-17	Aug-17	Sep-17	Avg. Cumulative
APT	93.8%	92.1%	92.2%	86.9%	90.4%	91.6%	92.5%	91.8%	94.9%	96.5%	97.4%		92.7%

### SNAP Application Processing Timeliness (APT)



**SNAP Non-Expedite: Percentage of Initial Applications Processed Timely by Field Office<sup>13</sup>**

	Oct-16	Nov-16	Dec-16	Jan-17	Feb-17	Mar-17	Apr-17	May-17	Jun-17	Jul-17	Aug-17	Sep-17	Average
Cibola	93.5%	94.7%	93.4%	94.7%	92.9%	93.9%	95.2%	97.9%	95.6%	98.0%	97.2%		95.2%
McKinley	90.9%	95.3%	92.9%	94.4%	85.8%	94.0%	96.8%	98.6%	97.9%	97.7%	97.1%		94.7%
San Juan	88.2%	86.3%	86.8%	88.0%	83.9%	79.9%	82.2%	85.3%	90.8%	89.7%	94.4%		86.9%
Sierra	98.6%	100.0%	100.0%	100.0%	100.0%	100.0%	98.4%	100.0%	100.0%	100.0%	100.0%		99.7%
Socorro	95.4%	97.1%	98.1%	100.0%	98.8%	94.4%	98.7%	100.0%	98.0%	98.8%	99.0%		98.0%
Valencia North	90.9%	94.3%	89.4%	91.2%	90.8%	89.2%	94.9%	97.3%	93.6%	93.2%	97.0%		92.9%
Valencia South	100.0%	100.0%				100.0%							100.0%
<b>NW Region 1 Total</b>	<b>91.4%</b>	<b>93.0%</b>	<b>91.4%</b>	<b>92.9%</b>	<b>88.6%</b>	<b>89.0%</b>	<b>91.9%</b>	<b>94.4%</b>	<b>94.5%</b>	<b>94.3%</b>	<b>96.5%</b>		<b>92.5%</b>
Colfax	97.4%	98.6%	97.7%	97.9%	100.0%	100.0%	98.3%	100.0%	100.0%	100.0%	100.0%		99.1%
Guadalupe	100.0%	89.3%	100.0%	100.0%	100.0%	92.9%	92.9%	94.7%	100.0%	100.0%	100.0%		97.3%
Quay	90.9%	91.7%	90.2%	100.0%	96.9%	92.9%	97.4%	100.0%	100.0%	100.0%	100.0%		96.4%
Rio Arriba	97.7%	92.9%	96.2%	96.8%	97.0%	92.6%	93.0%	96.2%	94.8%	97.0%	96.8%		95.5%
San Miguel	97.5%	97.8%	97.8%	95.8%	97.4%	99.2%	99.3%	99.3%	98.7%	100.0%	100.0%		98.4%
Sandoval	93.0%	98.6%	95.9%	97.0%	98.1%	98.0%	98.1%	97.9%	99.3%	97.1%	98.3%		97.4%
Santa Fe	88.7%	96.1%	96.5%	94.7%	96.0%	93.1%	96.2%	98.3%	98.2%	95.9%	97.8%		95.6%
Taos	91.7%	96.6%	96.4%	95.1%	94.8%	91.9%	99.2%	99.3%	99.2%	99.1%	100.0%		96.7%
<b>NE Region 2 Total</b>	<b>93.1%</b>	<b>96.2%</b>	<b>96.3%</b>	<b>96.3%</b>	<b>97.1%</b>	<b>95.2%</b>	<b>97.1%</b>	<b>98.2%</b>	<b>98.3%</b>	<b>97.5%</b>	<b>98.5%</b>		<b>96.7%</b>
NE Bernalillo	79.9%	90.6%	85.6%	85.7%	73.2%	76.4%	76.0%	93.5%	94.1%	94.5%	95.8%		85.9%
NW Bernalillo	90.1%	91.3%	94.2%	88.2%	87.9%	88.8%	93.9%	95.9%	87.0%	91.3%	96.6%		91.4%
SE Bernalillo	89.6%	93.8%	91.6%	85.6%	76.4%	70.0%	77.5%	82.1%	91.8%	93.3%	97.9%		86.3%
SW Bernalillo	90.9%	95.4%	93.1%	88.7%	84.0%	77.6%	78.3%	80.4%	92.3%	95.4%	96.9%		88.5%
Torrance	84.4%	83.1%	95.4%	93.4%	95.0%	95.2%	91.2%	95.5%	98.1%	98.8%	96.6%		93.3%
<b>Gen. Region 3 Total</b>	<b>87.5%</b>	<b>92.4%</b>	<b>91.1%</b>	<b>87.4%</b>	<b>80.4%</b>	<b>79.4%</b>	<b>81.8%</b>	<b>88.4%</b>	<b>97.7%</b>	<b>94.0%</b>	<b>96.7%</b>		<b>88.8%</b>
Chaves	94.8%	95.0%	98.4%	97.3%	95.8%	96.3%	96.8%	100.0%	99.7%	98.8%	99.1%		97.5%
Curry	90.3%	98.1%	94.1%	93.1%	90.9%	86.8%	94.9%	98.7%	96.9%	95.5%	98.3%		94.3%
Eddy Artesia	92.1%	86.5%	94.8%	92.9%	98.4%	96.0%	94.6%	97.7%	98.6%	96.8%	98.4%		95.2%
Eddy Carlsbad	79.5%	94.8%	92.0%	90.9%	91.3%	94.9%	97.0%	96.6%	98.3%	95.4%	97.0%		93.4%
Lea	89.6%	94.0%	93.6%	87.1%	94.2%	90.4%	90.6%	94.4%	94.6%	97.3%	96.6%		92.9%
Lincoln	94.2%	98.7%	100.0%	98.4%	94.4%	94.7%	98.3%	93.4%	98.9%	97.1%	96.8%		96.8%
Roosevelt	100.0%	94.3%	100.0%	97.8%	95.0%	91.3%	100.0%	98.3%	97.0%	98.6%	100.0%		97.5%
<b>SE Region 4 Total</b>	<b>91.4%</b>	<b>95.0%</b>	<b>95.9%</b>	<b>93.9%</b>	<b>93.9%</b>	<b>92.9%</b>	<b>95.3%</b>	<b>97.5%</b>	<b>97.7%</b>	<b>97.2%</b>	<b>98.0%</b>		<b>95.3%</b>
East Dona Ana	92.7%	95.0%	98.3%	98.6%	99.6%	98.7%	98.6%	99.3%	99.7%	97.1%	97.9%		97.8%
Grant	96.3%	98.8%	97.8%	98.9%	100.0%	95.5%	98.9%	98.1%	98.5%	98.3%	97.0%		98.0%
Luna	89.7%	97.8%	95.7%	94.7%	97.8%	97.3%	100.0%	100.0%	100.0%	100.0%	97.9%		97.4%
Otero	91.6%	92.4%	97.1%	96.3%	100.0%	99.4%	100.0%	99.5%	98.8%	98.9%	99.5%		97.6%
South Dona Ana	93.6%	92.9%	99.2%	98.9%	97.6%	98.8%	98.7%	99.7%	99.0%	100.0%	100.0%		98.0%
West Dona Ana	95.9%	93.4%	96.7%	96.9%	98.2%	99.4%	99.7%	99.5%	99.4%	99.7%	99.5%		98.0%
<b>SW Region 5 Total</b>	<b>93.6%</b>	<b>94.2%</b>	<b>97.6%</b>	<b>97.4%</b>	<b>98.6%</b>	<b>98.6%</b>	<b>99.3%</b>	<b>99.4%</b>	<b>99.3%</b>	<b>99.0%</b>	<b>98.9%</b>		<b>97.8%</b>
<b>STATE TOTAL</b>	<b>91.0%</b>	<b>93.9%</b>	<b>94.0%</b>	<b>93.2%</b>	<b>91.0%</b>	<b>89.6%</b>	<b>91.7%</b>	<b>94.8%</b>	<b>95.6%</b>	<b>96.1%</b>	<b>97.6%</b>		<b>93.5%</b>

**SNAP Expedite: Percentage of Initial Applications Processed Timely by Field Office<sup>13</sup>**

	Oct-16	Nov-16	Dec-16	Jan-17	Feb-17	Mar-17	Apr-17	May-17	Jun-17	Jul-17	Aug-17	Sep-17	Average
Cibola	97.7%	98.2%	97.7%	94.4%	97.9%	92.1%	97.3%	96.8%	96.6%	98.4%	98.2%		96.8%
McKinley	97.8%	95.1%	92.8%	95.8%	93.5%	98.7%	99.3%	97.8%	98.4%	98.6%	98.7%		97.0%
San Juan	95.3%	85.8%	86.8%	86.1%	84.8%	88.1%	89.4%	93.5%	91.4%	89.3%	95.6%		89.6%
Sierra	96.3%	100.0%	100.0%	97.6%	100.0%	98.2%	100.0%	100.0%	100.0%	98.5%	95.5%		98.7%
Socorro	97.8%	96.6%	95.8%	97.4%	97.2%	97.4%	96.7%	96.9%	97.4%	97.8%	97.4%		97.1%
Valencia North	98.5%	94.6%	94.7%	95.0%	93.7%	93.2%	95.5%	95.4%	96.0%	95.7%	97.9%		95.5%
Valencia South	100.0%	100.0%		100.0%	100.0%	100.0%							100.0%
<b>NW Region 1 Total</b>	<b>96.9%</b>	<b>92.8%</b>	<b>91.9%</b>	<b>92.0%</b>	<b>90.9%</b>	<b>93.0%</b>	<b>94.5%</b>	<b>95.5%</b>	<b>95.1%</b>	<b>94.5%</b>	<b>97.0%</b>		<b>94.0%</b>
Colfax	100.0%	100.0%	97.6%	100.0%	95.0%	97.9%	98.3%	98.1%	100.0%	100.0%	100.0%		98.8%
Guadalupe	100.0%	100.0%	100.0%	100.0%	100.0%	100.0%	100.0%	100.0%	100.0%	100.0%	100.0%		100.0%
Quay	100.0%	98.3%	98.0%	100.0%	100.0%	97.1%	97.6%	95.8%	100.0%	97.1%	97.8%		98.3%
Rio Arriba	98.3%	95.5%	97.7%	95.3%	98.0%	98.3%	98.4%	96.9%	97.6%	97.4%	98.2%		97.4%
San Miguel	99.0%	99.3%	97.8%	98.7%	100.0%	96.5%	97.7%	96.9%	98.8%	99.5%	97.9%		98.4%
Sandoval	96.5%	97.1%	98.0%	97.5%	95.6%	96.8%	97.6%	94.7%	96.5%	97.7%	96.6%		96.8%
Santa Fe	97.6%	95.3%	95.7%	96.8%	96.1%	96.6%	95.6%	97.3%	96.9%	96.4%	97.5%		96.5%
Taos	96.8%	98.6%	95.1%	95.4%	96.4%	95.0%	95.2%	97.1%	94.5%	99.2%	96.6%		96.4%
<b>NE Region 2 Total</b>	<b>97.7%</b>	<b>96.8%</b>	<b>97.0%</b>	<b>97.0%</b>	<b>96.8%</b>	<b>96.9%</b>	<b>97.0%</b>	<b>96.5%</b>	<b>97.1%</b>	<b>97.7%</b>	<b>97.5%</b>		<b>97.1%</b>
NE Bernalillo	90.9%	63.3%	86.9%	62.9%	93.3%	95.5%	93.9%	93.4%	95.6%	97.9%	96.8%		88.2%
NW Bernalillo	96.7%	93.0%	75.5%	47.0%	69.5%	92.2%	83.4%	61.2%	84.7%	96.9%	97.5%		81.6%
SE Bernalillo	94.1%	93.3%	86.3%	84.2%	90.4%	88.7%	90.7%	88.9%	91.9%	95.1%	95.7%		90.8%
SW Bernalillo	92.3%	76.8%	72.0%	54.9%	79.2%	77.5%	72.7%	62.5%	89.6%	96.8%	96.6%		79.2%
Torrance	88.5%	92.8%	94.5%	94.7%	99.2%	91.0%	94.2%	93.8%	90.9%	98.3%	98.4%		94.2%
<b>Gen. Region 3 Total</b>	<b>93.4%</b>	<b>81.3%</b>	<b>81.2%</b>	<b>60.8%</b>	<b>83.9%</b>	<b>89.3%</b>	<b>86.3%</b>	<b>77.6%</b>	<b>90.8%</b>	<b>96.9%</b>	<b>96.8%</b>		<b>85.3%</b>
Chaves	98.8%	97.3%	98.1%	97.6%	98.0%	97.3%	98.7%	99.6%	97.8%	98.1%	98.0%		98.1%
Curry	98.3%	97.3%	97.3%	78.2%	88.0%	94.9%	95.1%	95.7%	89.0%	99.0%	98.5%		93.8%
Eddy Artesia	95.8%	98.6%	100.0%	96.8%	91.1%	94.5%	96.2%	92.6%	98.4%	100.0%	97.7%		96.5%
Eddy Carlsbad	93.8%	94.1%	95.0%	95.8%	90.8%	93.1%	96.3%	98.6%	95.8%	97.4%	95.8%		95.1%
Lea	97.8%	92.7%	96.8%	89.3%	72.7%	88.2%	93.9%	87.0%	94.7%	93.9%	93.2%		90.9%
Lincoln	98.3%	97.5%	98.6%	98.6%	96.0%	100.0%	98.8%	95.9%	98.3%	100.0%	98.5%		98.2%
Roosevelt	96.8%	91.5%	98.3%	94.8%	90.2%	98.4%	98.6%	97.7%	100.0%	98.6%	98.9%		96.7%
<b>SE Region 4 Total</b>	<b>97.3%</b>	<b>95.5%</b>	<b>97.3%</b>	<b>91.8%</b>	<b>88.1%</b>	<b>94.0%</b>	<b>96.4%</b>	<b>95.1%</b>	<b>95.2%</b>	<b>97.3%</b>	<b>96.5%</b>		<b>95.0%</b>
East Dona Ana	97.8%	95.1%	91.3%	97.8%	95.1%	95.1%	97.9%	96.8%	97.5%	94.8%	96.5%		96.0%
Grant	96.7%	99.3%	98.0%	96.5%	98.6%	97.0%	98.1%	96.4%	96.8%	96.5%	98.1%		97.5%
Luna	98.9%	98.6%	98.8%	99.3%	100.0%	99.1%	100.0%	100.0%	100.0%	99.3%	100.0%		99.5%
Otero	96.7%	95.6%	93.8%	95.8%	96.7%	97.5%	99.0%	97.9%	97.5%	97.6%	99.1%		97.0%
South Dona Ana	97.5%	95.4%	97.0%	96.7%	96.4%	96.7%	96.6%	98.2%	99.5%	97.1%	98.1%		97.2%
West Dona Ana	94.7%	97.0%	95.8%	97.3%	97.0%	98.7%	98.4%	98.8%	98.6%	98.1%	98.9%		97.6%
<b>SW Region 5 Total</b>	<b>96.7%</b>	<b>96.7%</b>	<b>95.4%</b>	<b>97.2%</b>	<b>96.9%</b>	<b>97.4%</b>	<b>98.3%</b>	<b>98.1%</b>	<b>98.2%</b>	<b>97.2%</b>	<b>98.4%</b>		<b>97.3%</b>
<b>STATE TOTAL</b>	<b>95.9%</b>	<b>90.8%</b>	<b>90.8%</b>	<b>82.7%</b>	<b>89.9%</b>	<b>93.1%</b>	<b>93.1%</b>	<b>89.6%</b>	<b>94.3%</b>	<b>96.8%</b>	<b>97.2%</b>		<b>92.2%</b>



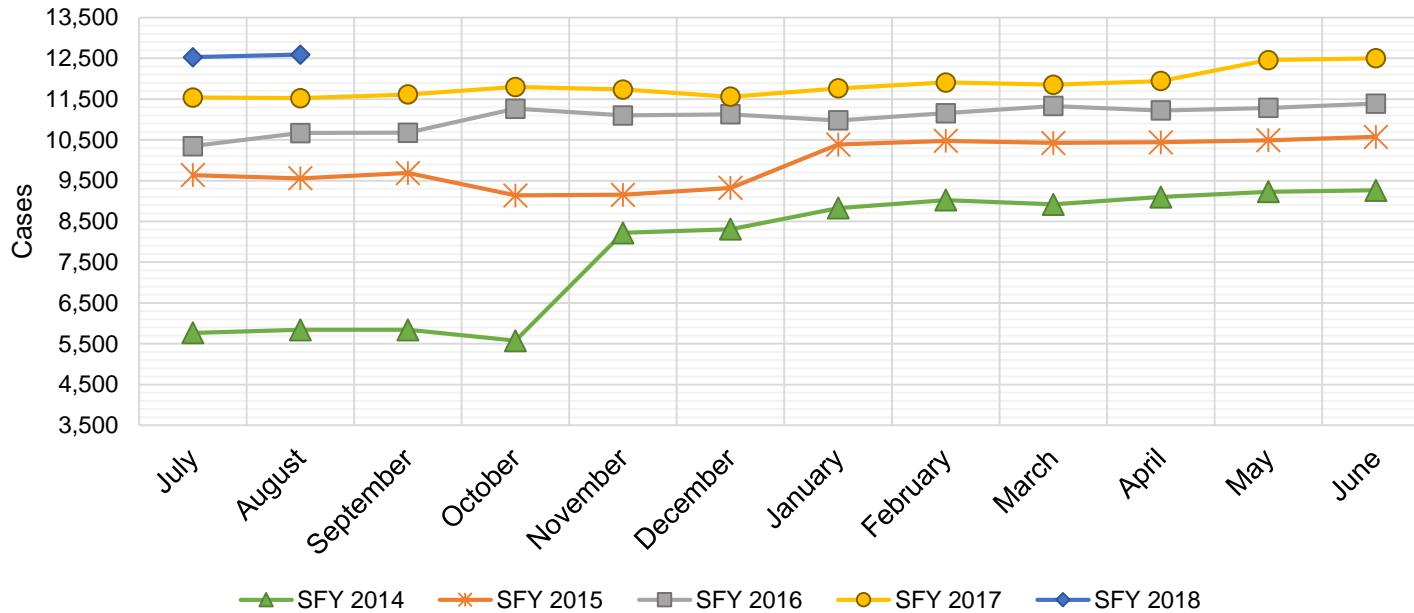
**SNAP: Percentage of Denied Initial Applications Processed Within 30 Days by Field Office <sup>13</sup>**

	<i>Aug-17</i>	<i>Sep-17</i>	<i>Average</i>
Cibola	71.7%		71.7%
McKinley	70.7%		70.7%
San Juan	53.6%		53.6%
Sierra	95.0%		95.0%
Socorro	81.5%		81.5%
Valencia North	54.8%		54.8%
Valencia South			
<b>NW Region 1 Total</b>	<b>62.1%</b>		<b>62.1%</b>
Colfax	100.0%		100.0%
Guadalupe	100.0%		100.0%
Quay	85.7%		85.7%
Rio Arriba	65.8%		65.8%
San Miguel	83.7%		83.7%
Sandoval	84.5%		84.5%
Santa Fe	65.1%		65.1%
Taos	83.3%		83.3%
<b>NE Region 2 Total</b>	<b>77.5%</b>		<b>77.5%</b>
NE Bernalillo	59.2%		59.2%
NW Bernalillo	40.3%		40.3%
SE Bernalillo	59.9%		59.9%
SW Bernalillo	47.9%		47.9%
Torrance	66.1%		66.1%
<b>Gen. Region 3 Total</b>	<b>51.6%</b>		<b>51.6%</b>
Chaves	96.8%		96.8%
Curry	74.0%		74.0%
Eddy Artesia	50.0%		50.0%
Eddy Carlsbad	74.4%		74.4%
Lea	60.7%		60.7%
Lincoln	51.4%		51.4%
Roosevelt	73.9%		73.9%
<b>SE Region 4 Total</b>	<b>72.9%</b>		<b>72.9%</b>
East Dona Ana	64.7%		64.7%
Grant	79.0%		79.0%
Luna	40.7%		40.7%
Otero	50.0%		50.0%
South Dona Ana	73.1%		73.1%
West Dona Ana	65.4%		65.4%
<b>SW Region 5 Total</b>	<b>63.4%</b>		<b>63.4%</b>
<b>STATE TOTAL</b>	<b>62.9%</b>		<b>62.9%</b>

## State SNAP Supplement

SFY 2014 <sup>12</sup>			SFY 2015 <sup>12,9</sup>			SFY 2016 <sup>9</sup>			SFY 2017 <sup>9</sup>			SFY 2018 <sup>9</sup>		
	Cases	Expenditures		Cases	Expenditures		Cases	Expenditures		Cases	Expenditures		Cases	Expenditures
Jul-13	5,767	\$48,040	Jul-14	9,635	\$88,859	Jul-15	10,345	\$86,143	Jul-16	11,537	\$95,553	Jul-17	12,526	\$97,568
Aug-13	5,841	\$48,417	Aug-14	9,559	\$87,757	Aug-15	10,669	\$88,197	Aug-16	11,522	\$95,107	Aug-17	12,589	\$98,954
Sep-13	5,841	\$48,732	Sep-14	9,688	\$87,372	Sep-15	10,676	\$88,426	Sep-16	11,613	\$94,472	Sep-17		
Oct-13	5,575	\$46,610	Oct-14	9,136	\$70,490	Oct-15	11,262	\$96,758	Oct-16	11,797	\$96,679	Oct-17		
Nov-13	8,219	\$69,564	Nov-14	9,152	\$69,955	Nov-15	11,099	\$91,996	Nov-16	11,735	\$93,689	Nov-17		
Dec-13	8,310	\$71,839	Dec-14	9,322	\$73,226	Dec-15	11,125	\$90,771	Dec-16	11,556	\$93,739	Dec-17		
Jan-14	8,826	\$77,933	Jan-15	10,384	\$84,578	Jan-16	10,977	\$92,760	Jan-17	11,763	\$96,074	Jan-18		
Feb-14	9,024	\$84,758	Feb-15	10,477	\$82,901	Feb-16	11,153	\$95,363	Feb-17	11,907	\$98,251	Feb-18		
Mar-14	8,916	\$80,597	Mar-15	10,423	\$87,461	Mar-16	11,332	\$96,751	Mar-17	11,853	\$96,693	Mar-18		
Apr-14	9,098	\$84,599	Apr-15	10,440	\$79,605	Apr-16	11,222	\$93,959	Apr-17	11,944	\$97,060	Apr-18		
May-14	9,226	\$85,035	May-15	10,491	\$82,511	May-16	11,283	\$95,271	May-17	12,457	\$96,940	May-18		
Jun-14	9,264	\$84,329	Jun-15	10,575	\$85,134	Jun-16	11,389	\$93,061	Jun-17	12,498	\$97,405	Jun-18		

TOTAL	93,907	\$830,453	119,282	\$979,850	132,532	\$1,109,455	142,182	\$1,151,662	25,115	\$196,522
AVERAGE	7,826	\$69,204	9,940	\$81,654	11,044	\$92,455	11,849	\$95,972	12,558	\$98,261



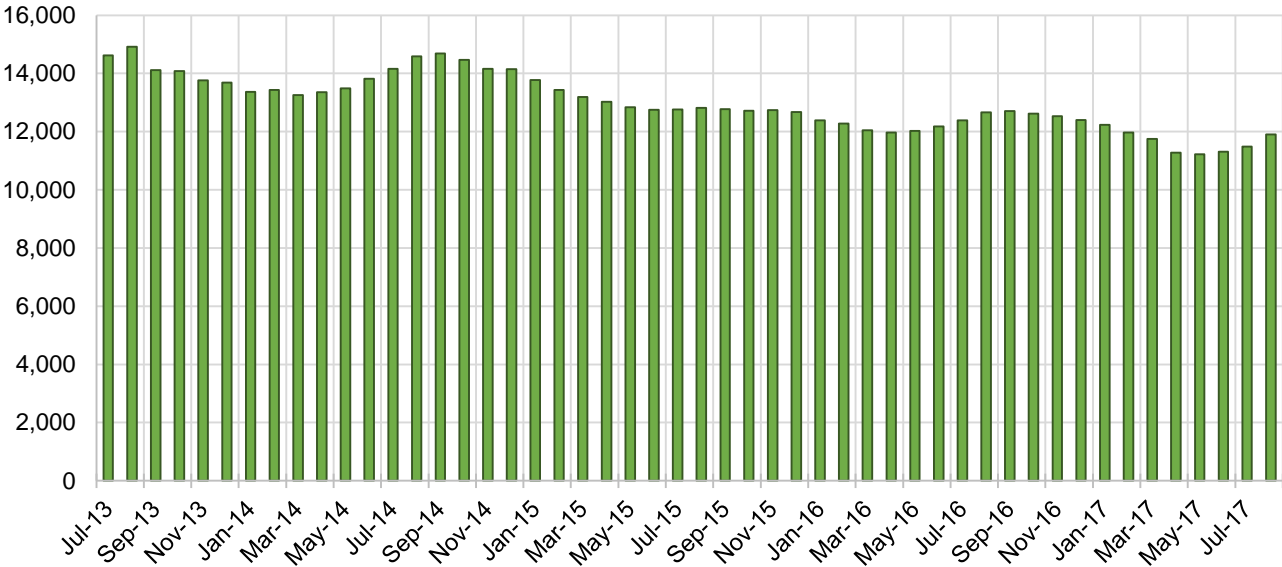
## TANF Cases by Field Office<sup>6</sup>

Office				Percent Change	
	Aug-16	Jul-17	Aug-17	Aug-16- Aug-17	Jul-17- Aug-17
Chaves County ISD	619	547	568	-8.2%	3.8%
Cibola County ISD	173	132	140	-19.1%	6.1%
Colfax County ISD	86	78	83	-3.5%	6.4%
Curry County ISD	549	495	521	-5.1%	5.3%
East Dona Ana County ISD	539	482	502	-6.9%	4.1%
Eddy Artesia County ISD	143	125	125	-12.6%	0.0%
Eddy Carlsbad County ISD	218	182	186	-14.7%	2.2%
Grant County ISD	187	202	220	17.6%	8.9%
Guadalupe County ISD	32	30	32	0.0%	6.7%
Hidalgo County ISD	25	20	20	-20.0%	0.0%
Lea County ISD	519	420	441	-15.0%	5.0%
Lincoln County ISD	89	107	99	11.2%	-7.5%
Luna County ISD	235	219	221	-6.0%	0.9%
McKinley County ISD	63	65	66	4.8%	1.5%
Northeast Bernalillo County ISD	991	985	1,023	3.2%	3.9%
Northwest Bernalillo County ISD	857	790	810	-5.5%	2.5%
Otero County ISD	227	279	309	36.1%	10.8%
Quay County ISD	80	85	90	12.5%	5.9%
Rio Arriba County ISD	484	408	427	-11.8%	4.7%
Roosevelt County ISD	165	167	171	3.6%	2.4%
San Juan County ISD	356	300	325	-8.7%	8.3%
San Miguel County ISD	261	216	219	-16.1%	1.4%
Sandoval County ISD	620	538	562	-9.4%	4.5%
Santa Fe County ISD	572	434	434	-24.1%	0.0%
Sierra County ISD	85	78	81	-4.7%	3.8%
Socorro County ISD	116	92	99	-14.7%	7.6%
South Dona Ana ISD	733	741	759	3.5%	2.4%
Southeast Bernalillo County ISD	772	640	670	-13.2%	4.7%
Southwest Bernalillo County ISD	1,222	1,061	1,093	-10.6%	3.0%
Taos County ISD	146	134	128	-12.3%	-4.5%
Torrance County ISD	191	196	194	1.6%	-1.0%
Valencia North County ISD	389	464	496	27.5%	6.9%
Valencia South County ISD	136	1	1	-99.3%	0.0%
West Dona Ana County ISD	779	770	783	0.5%	1.7%
Centralized Units	4	0	1	-75.0%	N/A
Statewide Total	12,663	11,483	11,899	-6.0%	3.6%

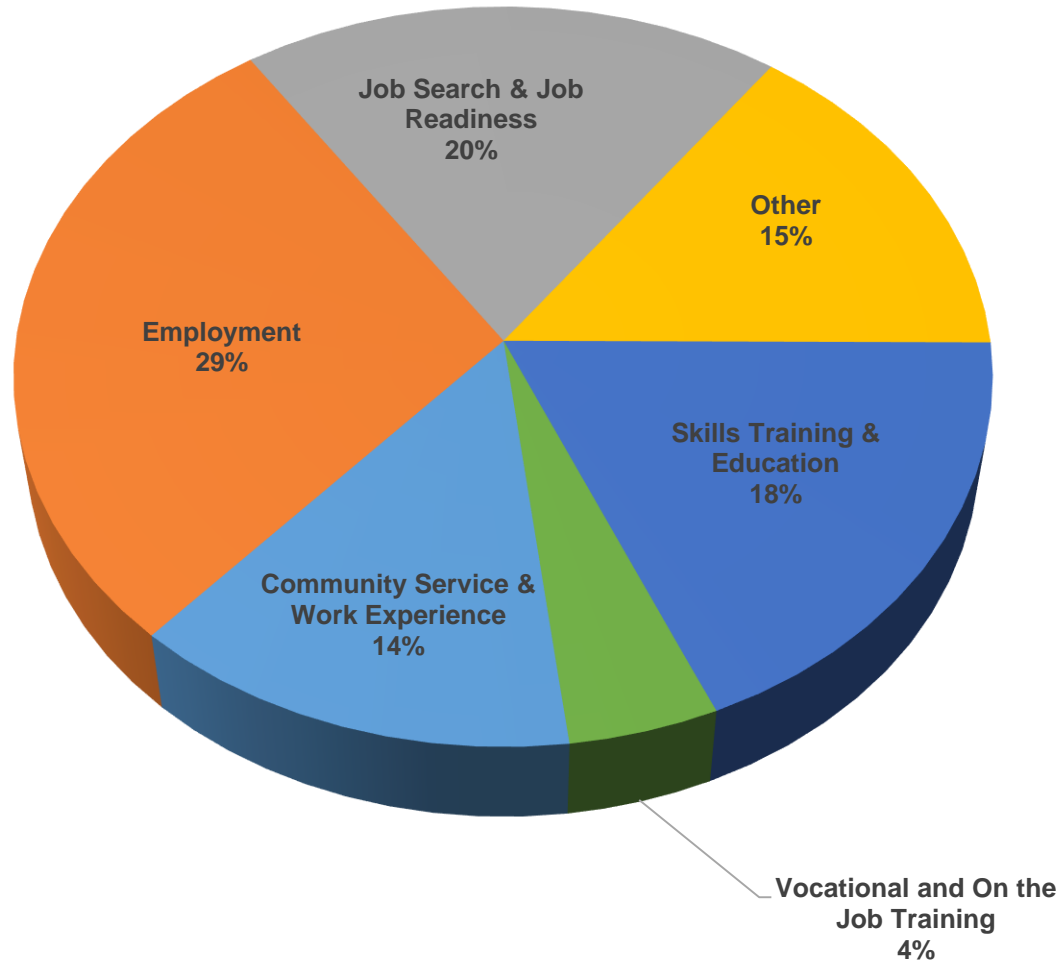
## TANF Cases by Region<sup>6</sup>

Region	Aug-16	Jul-17	Aug-17	Percent Change	
				Aug-16- Aug-17	Jul-17- Aug-17
Region 1- NW	1,318	1,132	1,208	-8.3%	6.7%
Region 2- NE	2,281	1,923	1,975	-13.4%	2.7%
Region 3- Central	4,033	3,672	3,790	-6.0%	3.2%
Region 4- SE	2,302	2,043	2,111	-8.3%	3.3%
Region 5- SW	2,725	2,713	2,814	3.3%	3.7%
Centralized Units	4	0	1	-75.0%	N/A
Statewide Total	12,663	11,483	11,899	-6.0%	3.6%

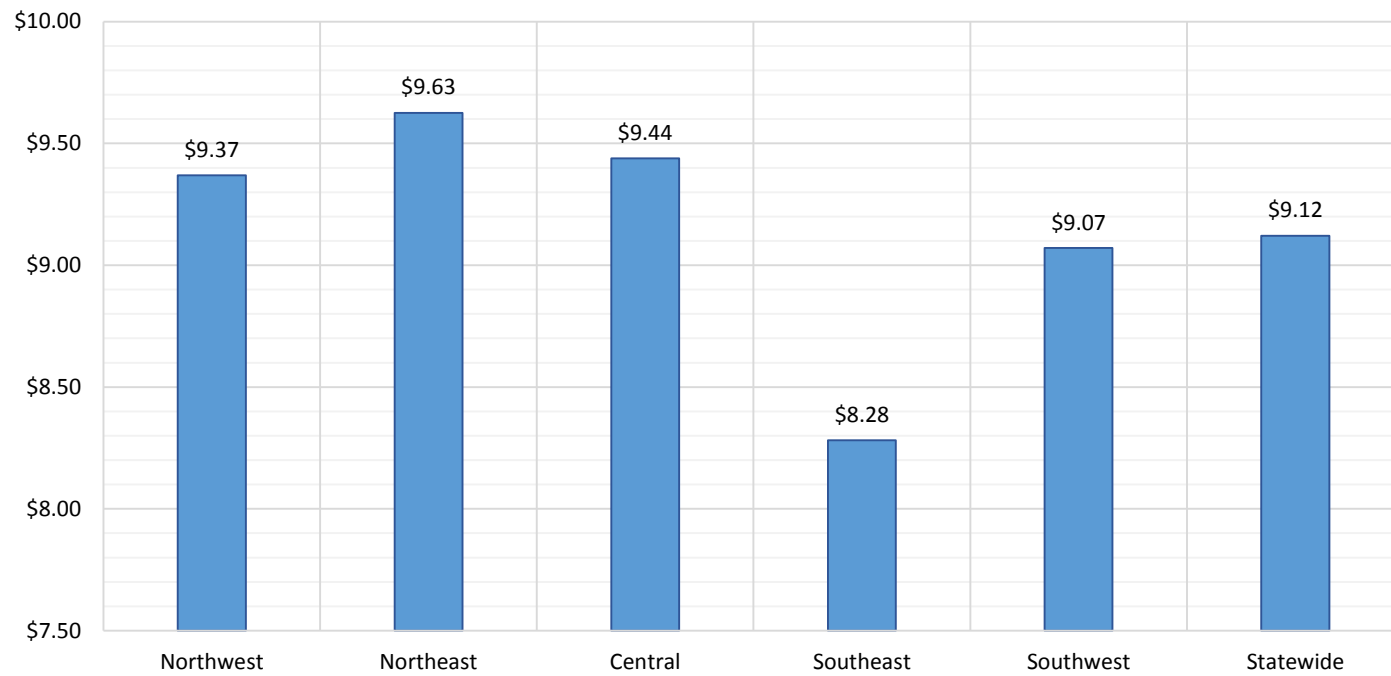
**TANF Caseload: SFY-14 to Current**



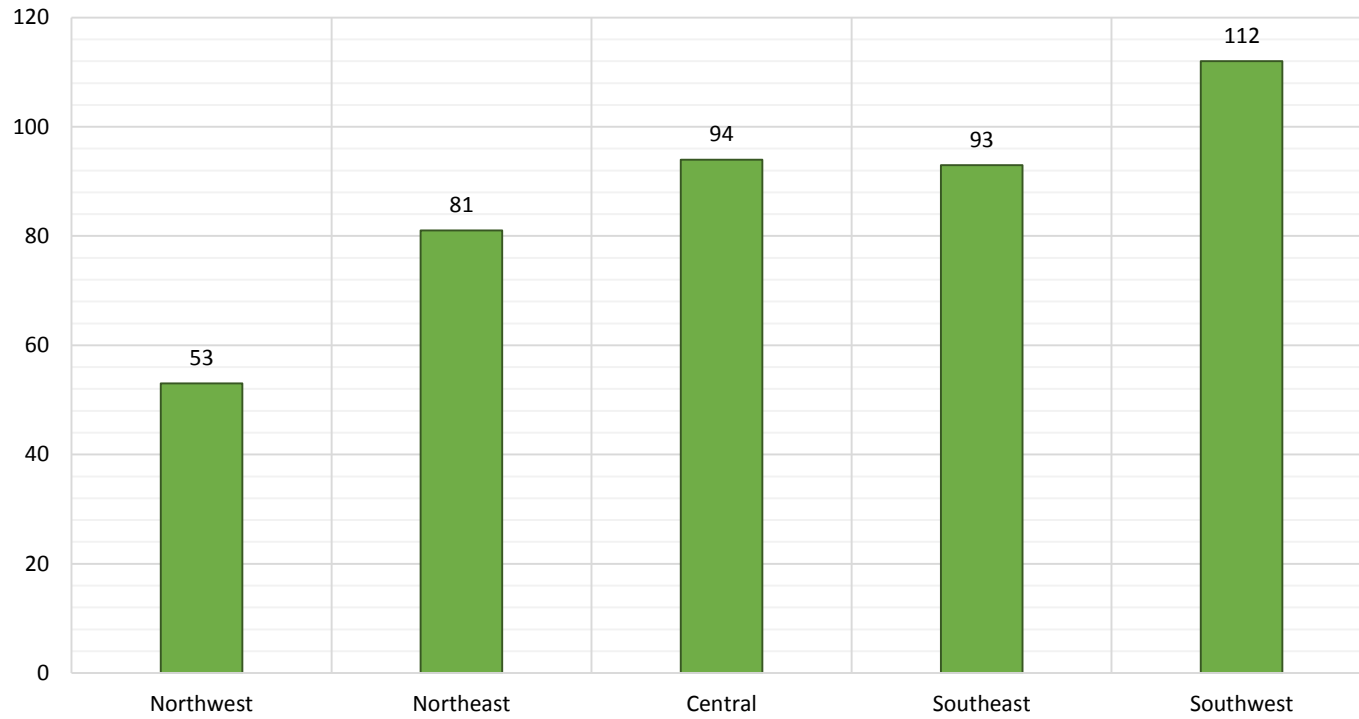
# NM Works Activity Placements on August 31, 2017 as reported by SL Start<sup>14</sup>



### Average Starting Hourly Wage of August 2017 TANF Employments as reported by SL Start<sup>15</sup>



Number of New Employments in August 2017 by Region  
as reported by SL Start<sup>15</sup>  
Statewide Total: 433



## General Assistance Cases by Field Office<sup>6</sup>

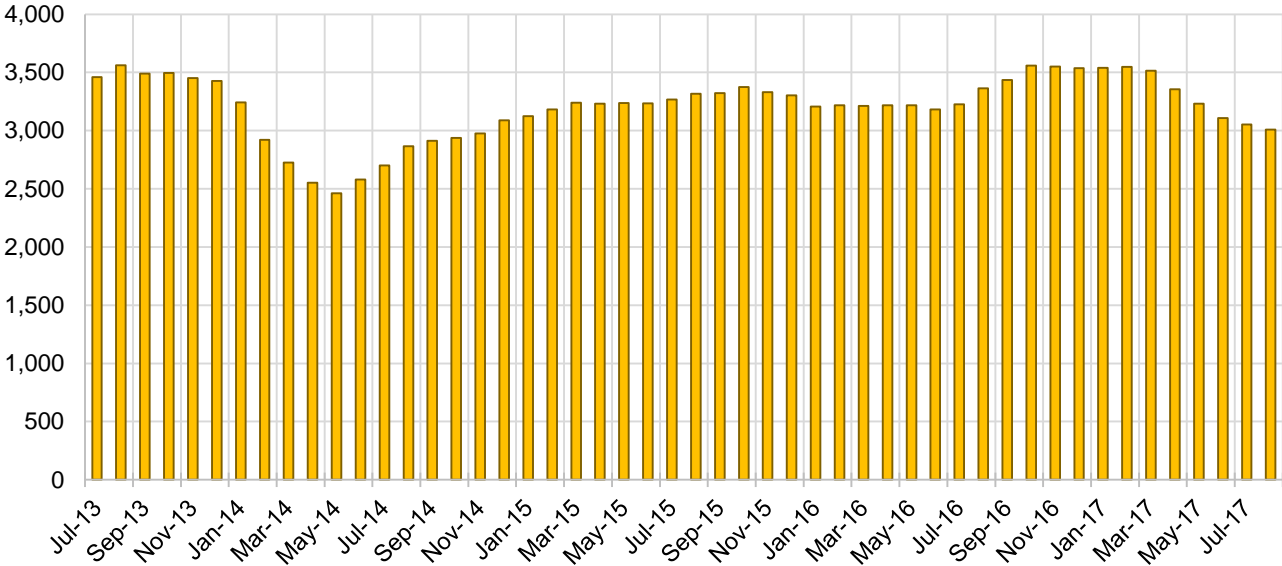
Office	Aug-16	Jul-17	Aug-17	Percent Change	
				Aug-16- Aug-17	Jul-17- Aug-17
Chaves County ISD	130	130	128	-1.5%	-1.5%
Cibola County ISD	45	50	51	13.3%	2.0%
Colfax County ISD	30	26	23	-23.3%	-11.5%
Curry County ISD	74	66	64	-13.5%	-3.0%
East Dona Ana County ISD	115	112	105	-8.7%	-6.3%
Eddy Artesia County ISD	22	22	25	13.6%	13.6%
Eddy Carlsbad County ISD	65	71	66	1.5%	-7.0%
Grant County ISD	73	75	72	-1.4%	-4.0%
Guadalupe County ISD	14	14	15	7.1%	7.1%
Hidalgo County ISD	12	12	11	-8.3%	-8.3%
Lea County ISD	88	87	84	-4.5%	-3.4%
Lincoln County ISD	28	31	33	17.9%	6.5%
Luna County ISD	56	64	61	8.9%	-4.7%
McKinley County ISD	36	38	38	5.6%	0.0%
Northeast Bernalillo County ISD	370	358	359	-3.0%	0.3%
Northwest Bernalillo County ISD	320	289	290	-9.4%	0.3%
Otero County ISD	81	101	98	21.0%	-3.0%
Quay County ISD	26	31	30	15.4%	-3.2%
Rio Arriba County ISD	111	89	87	-21.6%	-2.2%
Roosevelt County ISD	23	20	20	-13.0%	0.0%
San Juan County ISD	81	110	111	37.0%	0.9%
San Miguel County ISD	97	76	75	-22.7%	-1.3%
Sandoval County ISD	145	122	122	-15.9%	0.0%
Santa Fe County ISD	224	165	157	-29.9%	-4.8%
Sierra County ISD	38	33	33	-13.2%	0.0%
Socorro County ISD	53	45	46	-13.2%	2.2%
South Dona Ana ISD	56	62	57	1.8%	-8.1%
Southeast Bernalillo County ISD	241	154	153	-36.5%	-0.6%
Southwest Bernalillo County ISD	259	202	203	-21.6%	0.5%
Taos County ISD	72	61	63	-12.5%	3.3%
Torrance County ISD	79	56	49	-38.0%	-12.5%
Valencia North County ISD	85	114	111	30.6%	-2.6%
Valencia South County ISD	33	0	0	-100.0%	N/A
West Dona Ana County ISD	183	166	168	-8.2%	1.2%
Centralized Units	0	0	0	N/A	N/A
<b>Statewide Total</b>	<b>3,365</b>	<b>3,052</b>	<b>3,008</b>	<b>-10.6%</b>	<b>-1.4%</b>



### General Assistance Cases by Region<sup>6</sup>

Region	Aug-16	Jul-17	Aug-17	Percent Change	
				Aug-16- Aug-17	Jul-17- Aug-17
Region 1 - NW	371	390	390	5.1%	0.0%
Region 2 - NE	719	584	572	-20.4%	-2.1%
Region 3 - Central	1,269	1,059	1,054	-16.9%	-0.5%
Region 4 - SE	430	427	420	-2.3%	-1.6%
Region 5 - SW	576	592	572	-0.7%	-3.4%
Centralized Units	0	0	0	N/A	N/A
Statewide Total	3,365	3,052	3,008	-10.6%	-1.4%

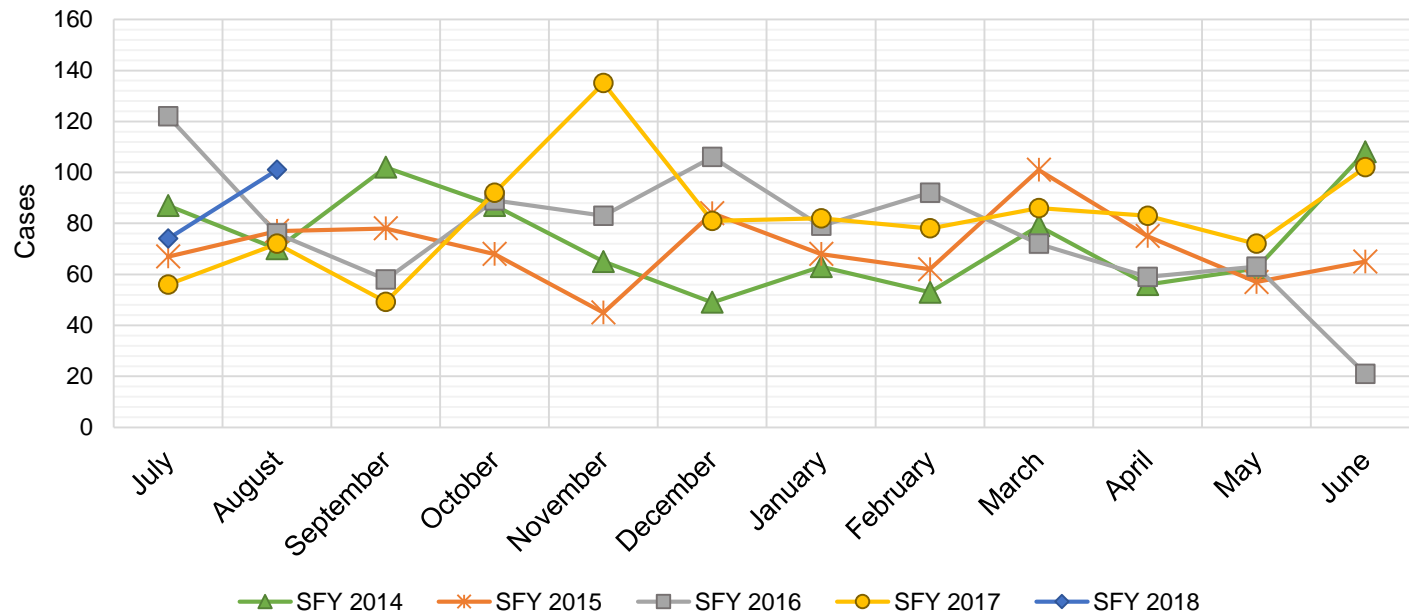
### General Assistance Caseload: SFY-14 to Current



## General Assistance Interim Assistance Reimbursements<sup>16</sup>

SFY 2014			SFY 2015			SFY 2016			SFY 2017			SFY 2018		
	Cases	Expenditures		Cases	Expenditures		Cases	Expenditures		Cases	Expenditures		Cases	Expenditures
Jul-13	87	\$185,368	Jul-14	67	\$144,679	Jul-15	122	\$342,648	Jul-16	56	\$164,970	Jul-17	74	\$241,438
Aug-13	70	\$184,639	Aug-14	77	\$244,233	Aug-15	76	\$245,236	Aug-16	72	\$223,182	Aug-17	101	\$339,301
Sep-13	102	\$268,243	Sep-14	78	\$168,421	Sep-15	58	\$170,093	Sep-16	49	\$158,027	Sep-17		
Oct-13	87	\$165,578	Oct-14	68	\$182,265	Oct-15	89	\$277,912	Oct-16	92	\$257,830	Oct-17		
Nov-13	65	\$139,197	Nov-14	45	\$134,482	Nov-15	83	\$238,948	Nov-16	135	\$402,305	Nov-17		
Dec-13	49	\$147,853	Dec-14	84	\$239,926	Dec-15	106	\$388,102	Dec-16	81	\$227,569	Dec-17		
Jan-14	63	\$178,944	Jan-15	68	\$227,066	Jan-16	79	\$239,263	Jan-17	82	\$274,050	Jan-18		
Feb-14	53	\$130,352	Feb-15	62	\$159,564	Feb-16	92	\$296,332	Feb-17	78	\$227,569	Feb-18		
Mar-14	79	\$176,756	Mar-15	101	\$317,899	Mar-16	72	\$254,360	Mar-17	86	\$278,219	Mar-18		
Apr-14	56	\$155,245	Apr-15	75	\$199,038	Apr-16	59	\$208,631	Apr-17	83	\$267,187	Apr-18		
May-14	62	\$138,827	May-15	57	\$167,383	May-16	63	\$182,241	May-17	72	\$232,836	May-18		
Jun-14	108	\$241,016	Jun-15	65	\$188,159	Jun-16	21	\$51,760	Jun-17	102	\$306,228	Jun-18		

TOTAL	881	\$2,112,017	847	\$2,373,115	920	\$2,895,525	988	\$3,019,972	175	\$580,738
AVERAGE	73	\$176,001	71	\$197,760	77	\$241,294	82	\$251,664	88	\$290,369



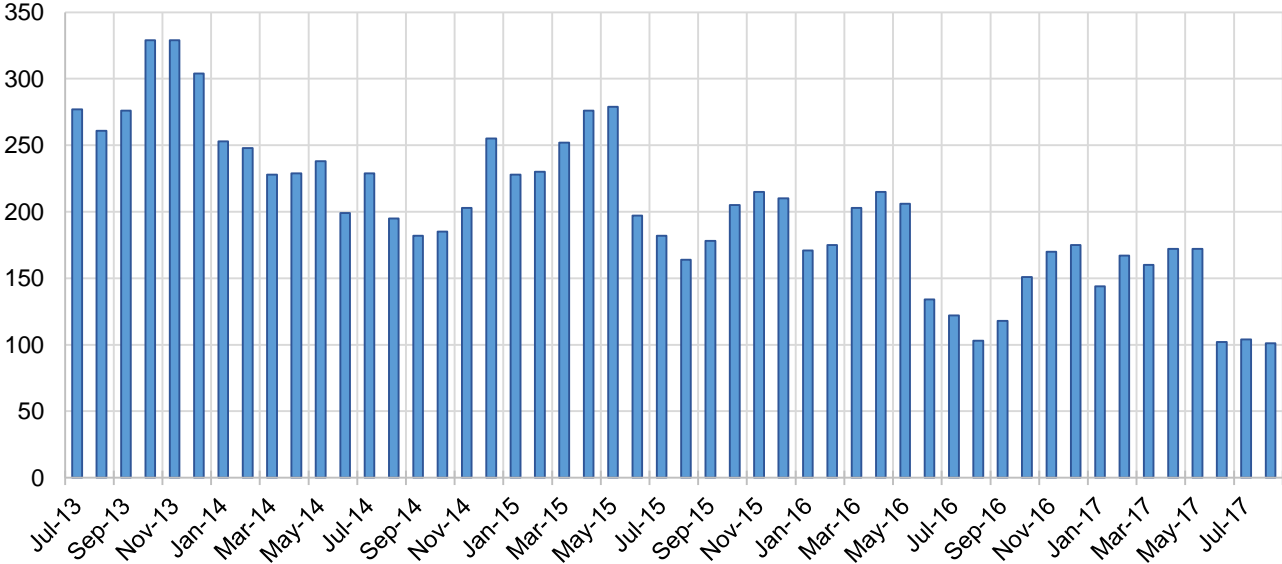
## Education Works Cases by Field Office<sup>6</sup>

Office	Aug-16	Jul-17	Aug-17	Percent Change	
				Aug-16- Aug-17	Jul-17- Aug-17
Chaves County ISD	1	1	1	0.0%	0.0%
Cibola County ISD	2	0	0	-100.0%	N/A
Colfax County ISD	3	0	0	-100.0%	N/A
Curry County ISD	1	1	1	0.0%	0.0%
East Dona Ana County ISD	5	1	2	-60.0%	100.0%
Eddy Artesia County ISD	0	1	0	N/A	-100.0%
Eddy Carlsbad County ISD	2	1	1	-50.0%	0.0%
Grant County ISD	1	8	8	700.0%	0.0%
Guadalupe County ISD	0	1	1	N/A	0.0%
Hidalgo County ISD	0	0	0	N/A	N/A
Lea County ISD	2	6	6	200.0%	0.0%
Lincoln County ISD	0	0	0	N/A	N/A
Luna County ISD	1	0	0	-100.0%	N/A
McKinley County ISD	0	0	0	N/A	N/A
Northeast Bernalillo County ISD	20	15	13	-35.0%	-13.3%
Northwest Bernalillo County ISD	10	7	7	-30.0%	0.0%
Otero County ISD	0	0	0	N/A	N/A
Quay County ISD	0	0	0	N/A	N/A
Rio Arriba County ISD	0	2	2	N/A	0.0%
Roosevelt County ISD	2	1	1	-50.0%	0.0%
San Juan County ISD	0	3	3	N/A	0.0%
San Miguel County ISD	1	8	4	300.0%	-50.0%
Sandoval County ISD	6	8	8	33.3%	0.0%
Santa Fe County ISD	4	8	9	125.0%	12.5%
Sierra County ISD	0	0	0	N/A	N/A
Socorro County ISD	1	1	1	0.0%	0.0%
South Dona Ana ISD	6	12	15	150.0%	25.0%
Southeast Bernalillo County ISD	6	3	1	-83.3%	-66.7%
Southwest Bernalillo County ISD	16	10	9	-43.8%	-10.0%
Taos County ISD	1	2	2	100.0%	0.0%
Torrance County ISD	1	0	1	0.0%	N/A
Valencia North County ISD	2	1	1	-50.0%	0.0%
Valencia South County ISD	0	0	0	N/A	N/A
West Dona Ana County ISD	9	3	4	-55.6%	33.3%
Centralized Units	0	0	0	N/A	N/A
Statewide Total	103	104	101	-1.9%	-2.9%

### Education Works Cases by Region<sup>6</sup>

				Percent Change	
Region	Aug-16	Jul-17	Aug-17	Aug-16- Aug-17	Jul-17- Aug-17
Region 1 - NW	5	5	5	0.0%	0.0%
Region 2 - NE	15	29	26	73.3%	-10.3%
Region 3 - Central	53	35	31	-41.5%	-11.4%
Region 4 - SE	8	11	10	25.0%	-9.1%
Region 5 - SW	22	24	29	31.8%	20.8%
Centralized Units	0	0	0	N/A	N/A
Statewide Total	103	104	101	-1.9%	-2.9%

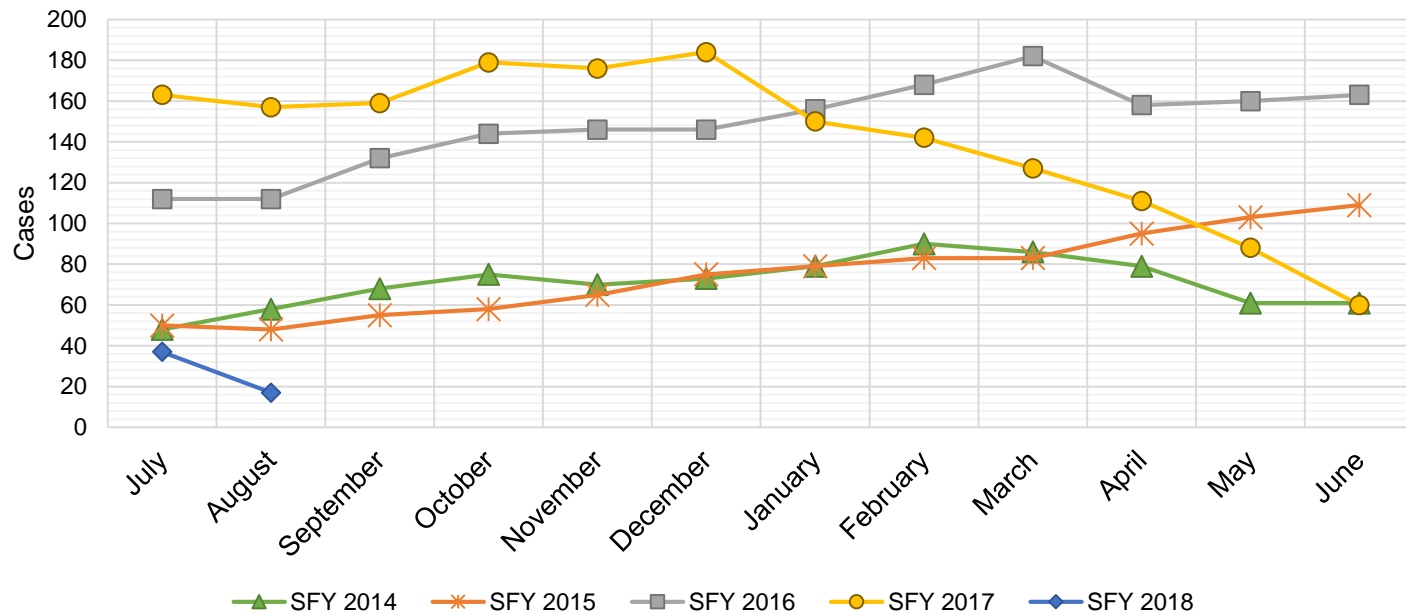
**Education Works Caseload: SFY-14 to Current**



## Refugee Cash Assistance

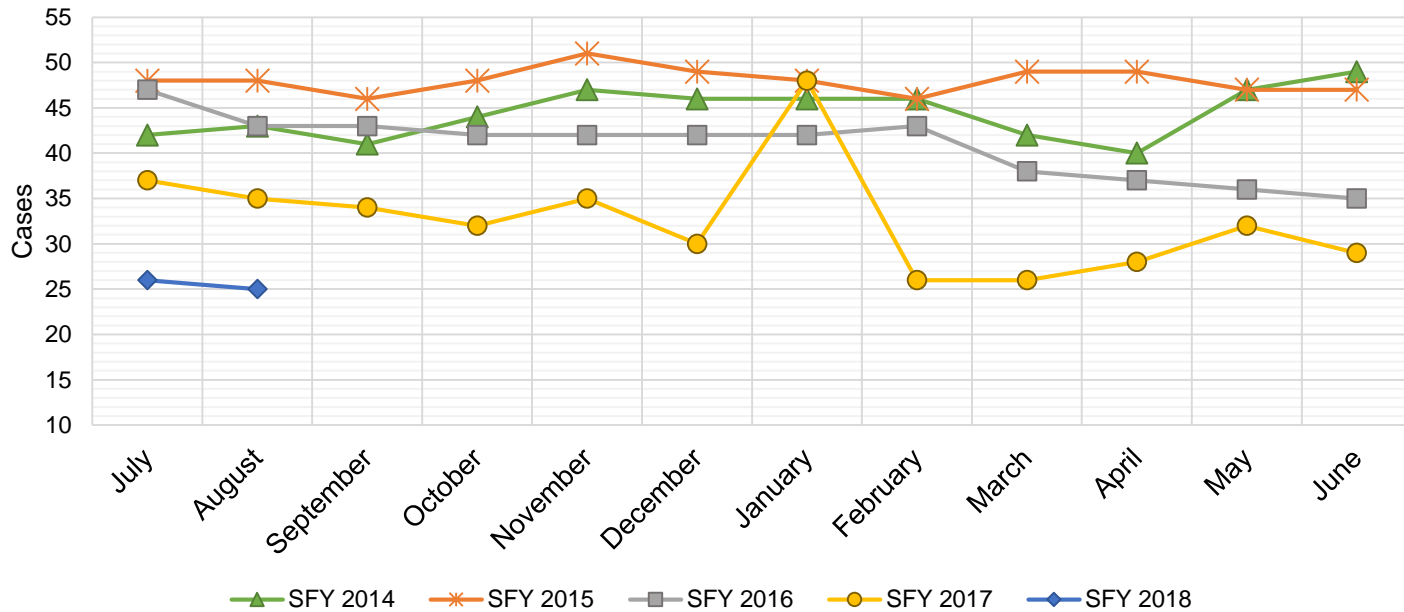
SFY 2014 <sup>12</sup>			SFY 2015 <sup>8,12,9</sup>			SFY 2016 <sup>8,9</sup>			SFY 2017 <sup>8,9</sup>			SFY 2018 <sup>8,9</sup>		
Cases	Expenditures		Cases	Expenditures		Cases	Expenditures		Cases	Expenditures		Cases	Expenditures	
Jul-13	48	\$12,013	Jul-14	50	\$11,679	Jul-15	112	\$27,516	Jul-16	163	\$39,756	Jul-17	37	\$9,981
Aug-13	58	\$16,129	Aug-14	48	\$11,760	Aug-15	112	\$27,438	Aug-16	157	\$40,115	Aug-17	17	\$4,704
Sep-13	68	\$19,061	Sep-14	55	\$13,094	Sep-15	132	\$31,321	Sep-16	159	\$39,359	Sep-17		
Oct-13	75	\$20,962	Oct-14	58	\$13,726	Oct-15	144	\$36,153	Oct-16	179	\$41,520	Oct-17		
Nov-13	70	\$21,880	Nov-14	65	\$16,461	Nov-15	146	\$36,515	Nov-16	176	\$45,434	Nov-17		
Dec-13	73	\$22,053	Dec-14	75	\$18,699	Dec-15	146	\$35,763	Dec-16	184	\$46,673	Dec-17		
Jan-14	79	\$22,670	Jan-15	79	\$19,009	Jan-16	156	\$38,686	Jan-17	150	\$38,790	Jan-18		
Feb-14	90	\$23,227	Feb-15	83	\$21,349	Feb-16	168	\$41,368	Feb-17	142	\$37,956	Feb-18		
Mar-14	86	\$21,808	Mar-15	83	\$20,730	Mar-16	182	\$45,307	Mar-17	127	\$33,066	Mar-18		
Apr-14	79	\$20,109	Apr-15	95	\$23,495	Apr-16	158	\$41,143	Apr-17	111	\$29,183	Apr-18		
May-14	61	\$15,703	May-15	103	\$25,363	May-16	160	\$38,332	May-17	88	\$23,343	May-18		
Jun-14	61	\$14,783	Jun-15	109	\$27,958	Jun-16	163	\$39,856	Jun-17	60	\$15,538	Jun-18		

TOTAL	848	\$230,398	903	\$223,323	1,779	\$439,397	1,696	\$430,732	54	\$14,685
AVERAGE	71	\$19,200	75	\$18,610	148	\$36,616	141	\$35,894	27	\$7,343



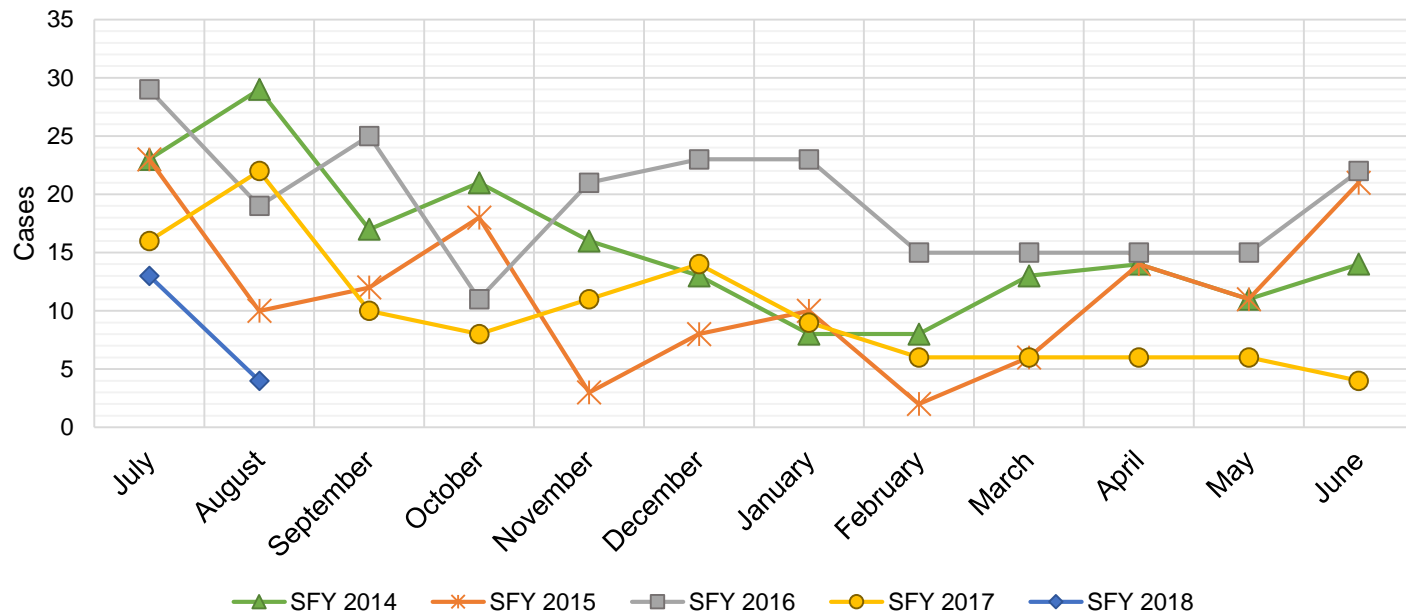
## State Supplement for Residential Care

SFY 2014 <sup>12</sup>			SFY 2015 <sup>12,9</sup>			SFY 2016 <sup>9</sup>			SFY 2017 <sup>9</sup>			SFY 2018 <sup>9</sup>		
Cases	Expenditures		Cases	Expenditures		Cases	Expenditures		Cases	Expenditures		Cases	Expenditures	
Jul-13	42	\$4,400	Jul-14	48	\$4,700	Jul-15	47	\$4,700	Jul-16	37	\$3,700	Jul-17	26	\$2,700
Aug-13	43	\$4,300	Aug-14	48	\$5,000	Aug-15	43	\$4,900	Aug-16	35	\$3,500	Aug-17	25	\$2,500
Sep-13	41	\$4,700	Sep-14	46	\$4,600	Sep-15	43	\$4,500	Sep-16	34	\$3,400	Sep-17		
Oct-13	44	\$4,500	Oct-14	48	\$4,600	Oct-15	42	\$4,400	Oct-16	32	\$3,200	Oct-17		
Nov-13	47	\$4,700	Nov-14	51	\$5,600	Nov-15	42	\$4,200	Nov-16	35	\$3,500	Nov-17		
Dec-13	46	\$4,600	Dec-14	49	\$5,000	Dec-15	42	\$4,200	Dec-16	30	\$3,000	Dec-17		
Jan-14	46	\$4,700	Jan-15	48	\$4,900	Jan-16	42	\$4,200	Jan-17	48	\$4,800	Jan-18		
Feb-14	46	\$4,700	Feb-15	46	\$4,800	Feb-16	43	\$4,300	Feb-17	26	\$2,600	Feb-18		
Mar-14	42	\$4,500	Mar-15	49	\$4,800	Mar-16	38	\$3,800	Mar-17	26	\$2,600	Mar-18		
Apr-14	40	\$4,200	Apr-15	49	\$5,400	Apr-16	37	\$3,700	Apr-17	28	\$2,800	Apr-18		
May-14	47	\$5,000	May-15	47	\$4,700	May-16	36	\$3,600	May-17	32	\$3,200	May-18		
Jun-14	49	\$4,900	Jun-15	47	\$5,300	Jun-16	35	\$3,500	Jun-17	29	\$2,900	Jun-18		
<b>TOTAL</b>	<b>533</b>	<b>\$55,200</b>	<b>576</b>	<b>\$59,400</b>		<b>490</b>	<b>\$50,000</b>		<b>392</b>	<b>\$39,200</b>		<b>51</b>	<b>\$5,200</b>	
<b>AVERAGE</b>	<b>44</b>	<b>\$4,600</b>	<b>48</b>	<b>\$4,950</b>		<b>41</b>	<b>\$4,167</b>		<b>33</b>	<b>\$3,267</b>		<b>26</b>	<b>\$2,600</b>	



## TANF Diversion Payments

SFY 2014 <sup>12</sup>			SFY 2015 <sup>12,9</sup>			SFY 2016 <sup>9</sup>			SFY 2017 <sup>9</sup>			SFY 2018 <sup>9</sup>		
	Cases	Expenditures		Cases	Expenditures		Cases	Expenditures		Cases	Expenditures		Cases	Expenditures
Jul-13	23	\$46,500	Jul-14	23	\$48,098	Jul-15	29	\$62,074	Jul-16	16	\$30,843	Jul-17	13	\$26,500
Aug-13	29	\$54,500	Aug-14	10	\$21,810	Aug-15	19	\$33,584	Aug-16	22	\$42,731	Aug-17	4	\$12,000
Sep-13	17	\$36,500	Sep-14	12	\$23,500	Sep-15	25	\$47,977	Sep-16	10	\$21,000	Sep-17		
Oct-13	21	\$42,500	Oct-14	18	\$30,589	Oct-15	11	\$20,500	Oct-16	8	\$16,744	Oct-17		
Nov-13	16	\$28,953	Nov-14	3	\$4,411	Nov-15	21	\$45,500	Nov-16	11	\$24,500	Nov-17		
Dec-13	13	\$25,500	Dec-14	8	\$14,634	Dec-15	23	\$45,389	Dec-16	14	\$26,611	Dec-17		
Jan-14	8	\$16,000	Jan-15	10	\$18,000	Jan-16	23	\$41,874	Jan-17	9	\$18,500	Jan-18		
Feb-14	8	\$16,994	Feb-15	2	\$5,500	Feb-16	15	\$28,500	Feb-17	6	\$12,000	Feb-18		
Mar-14	13	\$27,396	Mar-15	6	\$12,000	Mar-16	15	\$27,008	Mar-17	6	\$11,000	Mar-18		
Apr-14	14	\$28,000	Apr-15	14	\$26,000	Apr-16	15	\$31,389	Apr-17	6	\$12,000	Apr-18		
May-14	11	\$20,500	May-15	11	\$21,500	May-16	15	\$31,916	May-17	6	\$11,500	May-18		
Jun-14	14	\$29,911	Jun-15	21	\$40,039	Jun-16	22	\$43,000	Jun-17	4	\$13,500	Jun-18		
<b>TOTAL</b>	<b>187</b>	<b>\$373,254</b>	<b>138</b>	<b>\$266,081</b>	<b>233</b>	<b>\$458,711</b>	<b>118</b>	<b>\$240,929</b>	<b>17</b>	<b>\$38,500</b>				
<b>AVERAGE</b>	<b>16</b>	<b>\$31,105</b>	<b>12</b>	<b>\$22,173</b>	<b>19</b>	<b>\$38,226</b>	<b>10</b>	<b>\$20,077</b>	<b>9</b>	<b>\$19,250</b>				



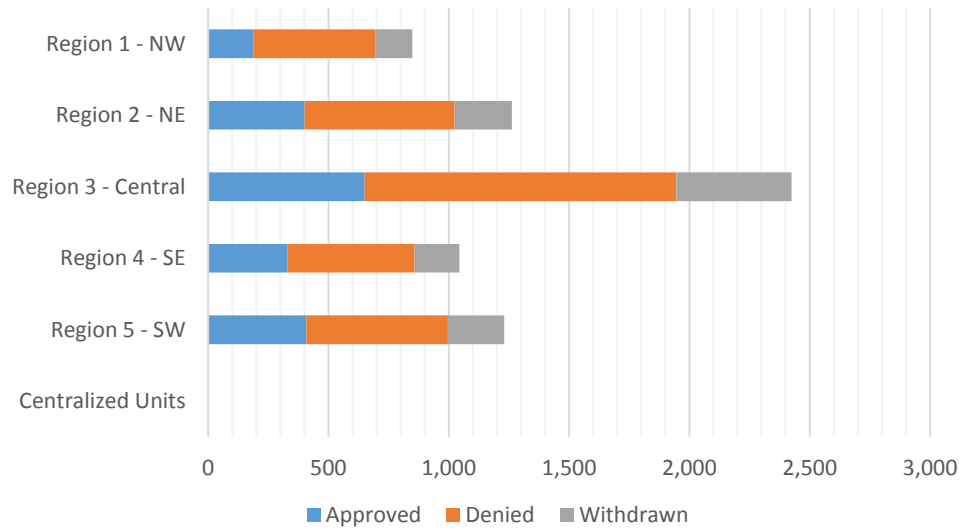
**Cash Assistance Applications by Field Office<sup>4,11</sup>**  
**August 2017**

Office	Approved	Denied	Withdrawn	Total Cases Processed
Chaves County ISD	101	134	37	272
Cibola County ISD	19	43	17	79
Colfax County ISD	12	23	6	41
Curry County ISD	62	115	27	204
East Dona Ana County ISD	73	140	54	267
Eddy Artesia County ISD	37	54	17	108
Eddy Carlsbad County ISD	29	78	40	147
Grant County ISD	33	63	15	111
Guadalupe County ISD	9	8	1	18
Hidalgo County ISD	0	0	0	0
Lea County ISD	65	84	44	193
Lincoln County ISD	20	26	11	57
Luna County ISD	26	42	25	93
McKinley County ISD	6	80	48	134
Northeast Bernalillo County ISD	124	305	175	604
Northwest Bernalillo County ISD	93	216	114	423
Otero County ISD	53	91	48	192
Quay County ISD	20	15	4	39
Rio Arriba County ISD	58	93	34	185
Roosevelt County ISD	17	36	11	64
San Juan County ISD	56	250	76	382
San Miguel County ISD	32	46	20	98
Sandoval County ISD	169	265	83	517
Santa Fe County ISD	80	138	64	282
Sierra County ISD	14	14	5	33
Socorro County ISD	14	17	8	39
South Dona Ana ISD	90	92	40	222
Southeast Bernalillo County ISD	58	138	82	278
Southwest Bernalillo County ISD	350	574	91	1,015
Taos County ISD	21	35	27	83
Torrance County ISD	26	62	17	105
Valencia North County ISD	81	82	0	163
Valencia South County ISD	0	19	0	19
West Dona Ana County ISD	134	159	53	346
Centralized Units	0	0	0	0
<b>Statewide Total</b>	<b>1,982</b>	<b>3,537</b>	<b>1,294</b>	<b>6,813</b>



## Cash Assistance Applications by Region<sup>4,11</sup> August 2017

	Approved	Denied	Withdrawn	Total Cases Processed
Region				
Region 1 - NW	190	505	154	849
Region 2 - NE	401	623	239	1,263
Region 3 - Central	651	1,295	479	2,425
Region 4 - SE	331	527	187	1,045
Region 5 - SW	409	587	235	1,231
Centralized Units	0	0	0	0
<b>Statewide Total</b>	<b>1,982</b>	<b>3,537</b>	<b>1,294</b>	<b>6,813</b>



**Children Youth and Families Department  
Children Receiving Child Care Assistance Subsidies By County**

County	Aug 2016	Sep 2016	Oct 2016	Nov 2016	Dec 2016	Jan 2017	Feb 2017	Mar 2017	Apr 2017	May 2017	June 2017	July 2017	Aug 2017	Change Fr. Last Year Cases	Percent
<i>Bernalillo</i>	6,696	7,237	7,030	7,092	7,134	7,043	7,068	7,170	7,385	7,519	7,895	7,547	7,616	920	13.7%
<b>Catron</b>	<b>2</b>	<b>2</b>	<b>0</b>	<b>0</b>	<b>0</b>	<b>0</b>	<b>0</b>	<b>0</b>	<b>0</b>	<b>0</b>	<b>0</b>	<b>0</b>	<b>0</b>	<b>-2</b>	<b>0.0%</b>
<i>Chaves</i>	682	739	737	733	744	744	756	759	768	796	860	826	821	139	20.4%
<b>Cibola</b>	<b>266</b>	<b>278</b>	<b>269</b>	<b>272</b>	<b>269</b>	<b>271</b>	<b>284</b>	<b>282</b>	<b>294</b>	<b>299</b>	<b>305</b>	<b>293</b>	<b>294</b>	<b>28</b>	<b>10.5%</b>
<i>Colfax</i>	45	46	50	49	47	42	40	41	38	39	46	46	41	-4	-8.9%
<b>Curry</b>	<b>386</b>	<b>389</b>	<b>361</b>	<b>384</b>	<b>394</b>	<b>413</b>	<b>398</b>	<b>398</b>	<b>437</b>	<b>445</b>	<b>480</b>	<b>486</b>	<b>459</b>	<b>73</b>	<b>18.9%</b>
<i>De Baca</i>	12	12	12	11	11	11	10	12	13	14	14	12	11	-1	-8.3%
<b>Dona Ana</b>	<b>3,687</b>	<b>3,957</b>	<b>3,915</b>	<b>4,005</b>	<b>3,976</b>	<b>4,003</b>	<b>4,047</b>	<b>4,084</b>	<b>4,217</b>	<b>4,309</b>	<b>4,499</b>	<b>4,509</b>	<b>4,473</b>	<b>786</b>	<b>21.3%</b>
<i>Eddy</i>	263	285	265	263	277	271	275	283	294	301	306	292	287	24	9.1%
<b>Grant</b>	<b>128</b>	<b>170</b>	<b>152</b>	<b>152</b>	<b>151</b>	<b>142</b>	<b>135</b>	<b>142</b>	<b>153</b>	<b>159</b>	<b>161</b>	<b>134</b>	<b>114</b>	<b>-14</b>	<b>-10.9%</b>
<i>Guadalupe</i>	13	15	12	11	15	16	16	17	17	16	16	16	16	3	23.1%
<b>Harding</b>	<b>0</b>	<b>0</b>	<b>0</b>	<b>0</b>	<b>0</b>	<b>0</b>	<b>0</b>	<b>0</b>	<b>0</b>	<b>0</b>	<b>0</b>	<b>0</b>	<b>0</b>	<b>0</b>	<b>0.0%</b>
<i>Hidalgo</i>	25	33	28	33	34	35	35	35	35	39	40	37	37	12	48.0%
<b>Lea</b>	<b>620</b>	<b>716</b>	<b>702</b>	<b>731</b>	<b>722</b>	<b>698</b>	<b>715</b>	<b>729</b>	<b>748</b>	<b>781</b>	<b>818</b>	<b>837</b>	<b>856</b>	<b>236</b>	<b>38.1%</b>
<i>Lincoln</i>	135	135	129	130	135	132	139	135	141	136	147	146	145	10	7.4%
<b>Los Alamos</b>	<b>11</b>	<b>7</b>	<b>7</b>	<b>14</b>	<b>15</b>	<b>16</b>	<b>15</b>	<b>13</b>	<b>15</b>	<b>16</b>	<b>16</b>	<b>17</b>	<b>16</b>	<b>5</b>	<b>45.5%</b>
<i>Luna</i>	151	152	163	173	149	159	154	159	164	177	188	165	176	25	16.6%
<b>McKinley</b>	<b>132</b>	<b>175</b>	<b>163</b>	<b>156</b>	<b>153</b>	<b>159</b>	<b>164</b>	<b>171</b>	<b>182</b>	<b>170</b>	<b>171</b>	<b>145</b>	<b>136</b>	<b>4</b>	<b>3.0%</b>
<i>Mora</i>	17	19	19	19	20	18	20	20	21	21	21	18	18	1	5.9%
<b>Otero</b>	<b>426</b>	<b>474</b>	<b>472</b>	<b>449</b>	<b>450</b>	<b>440</b>	<b>442</b>	<b>416</b>	<b>481</b>	<b>498</b>	<b>532</b>	<b>500</b>	<b>491</b>	<b>65</b>	<b>15.3%</b>
<i>Out of State</i>	3	5	5	11	10	11	12	14	12	11	10	14	11	8	266.7%
<b>Quay</b>	<b>40</b>	<b>39</b>	<b>40</b>	<b>36</b>	<b>34</b>	<b>33</b>	<b>38</b>	<b>40</b>	<b>38</b>	<b>35</b>	<b>39</b>	<b>35</b>	<b>36</b>	<b>-4</b>	<b>-10.0%</b>
<i>Rio Arriba</i>	146	130	132	137	145	135	147	144	137	140	149	144	145	-1	-0.7%
<b>Roosevelt</b>	<b>108</b>	<b>116</b>	<b>122</b>	<b>132</b>	<b>135</b>	<b>124</b>	<b>120</b>	<b>125</b>	<b>123</b>	<b>118</b>	<b>134</b>	<b>123</b>	<b>125</b>	<b>17</b>	<b>15.7%</b>
<i>San Juan</i>	793	951	923	926	928	919	911	911	946	956	997	979	960	167	21.1%
<b>San Miguel</b>	<b>375</b>	<b>390</b>	<b>395</b>	<b>387</b>	<b>375</b>	<b>371</b>	<b>374</b>	<b>373</b>	<b>366</b>	<b>367</b>	<b>382</b>	<b>366</b>	<b>356</b>	<b>-19</b>	<b>-5.1%</b>
<i>Sandoval</i>	868	927	859	868	870	880	852	873	878	890	938	932	948	80	9.2%
<b>Santa Fe</b>	<b>434</b>	<b>473</b>	<b>461</b>	<b>469</b>	<b>478</b>	<b>472</b>	<b>487</b>	<b>477</b>	<b>490</b>	<b>499</b>	<b>536</b>	<b>534</b>	<b>520</b>	<b>86</b>	<b>19.8%</b>
<i>Sierra</i>	60	57	63	59	46	51	50	52	52	58	69	74	76	16	26.7%
<b>Socorro</b>	<b>54</b>	<b>62</b>	<b>59</b>	<b>59</b>	<b>58</b>	<b>65</b>	<b>62</b>	<b>61</b>	<b>59</b>	<b>59</b>	<b>58</b>	<b>56</b>	<b>63</b>	<b>9</b>	<b>16.7%</b>
<i>Taos</i>	120	113	115	109	114	116	114	112	118	120	127	132	137	17	14.2%
<b>Torrance</b>	<b>78</b>	<b>81</b>	<b>80</b>	<b>82</b>	<b>77</b>	<b>79</b>	<b>83</b>	<b>87</b>	<b>91</b>	<b>96</b>	<b>101</b>	<b>107</b>	<b>117</b>	<b>39</b>	<b>50.0%</b>
<i>Union</i>	5	3	5	5	5	5	5	5	5	4	4	5	5	0	0.0%
<b>Valencia</b>	<b>543</b>	<b>583</b>	<b>593</b>	<b>608</b>	<b>602</b>	<b>593</b>	<b>585</b>	<b>583</b>	<b>629</b>	<b>658</b>	<b>678</b>	<b>642</b>	<b>677</b>	<b>134</b>	<b>24.7%</b>
<b>Totals</b>	<b>17,324</b>	<b>18,771</b>	<b>18,338</b>	<b>18,565</b>	<b>18,573</b>	<b>18,467</b>	<b>18,553</b>	<b>18,723</b>	<b>19,347</b>	<b>19,746</b>	<b>20,737</b>	<b>20,169</b>	<b>20,183</b>	<b>2,859</b>	<b>16.5%</b>

## CHILDREN YOUTH AND FAMILIES DEPARTMENT CHILD CARE ASSISTANCE ELIGIBILITY PROGRAMS

MONTH	SEP'16	OCT'16	NOV'16	DEC'16	JAN'17	FEB'17	MAR'17	APR'17	MAY'17	JUNE'17	JULY'17	AUG'17
<b>TANF (Child Care Priority 1 Clients)</b>												
CLIENTS	1,756	1,775	1,801	1,829	1,797	1,930	1,994	2,047	2,121	2,300	2,302	2,353
COST	\$831,259	\$882,251	\$920,189	\$936,139	\$914,933	\$1,005,906	\$1,096,473	\$1,148,841	\$1,186,719	\$1,271,336	\$1,323,182	\$1,381,202
TANF AVERAGE COST	\$473	\$497	\$511	\$512	\$509	\$521	\$550	\$561	\$560	\$553	\$575	\$587
<b>TRANSITION OFF TANF (Child Care Priority 2 Clients)</b>												
CLIENTS	179	180	193	212	202	212	197	202	205	213	197	189
COST	\$80,066	\$81,750	\$90,646	\$101,388	\$95,662	\$102,062	\$102,582	\$101,314	\$104,115	\$111,219	\$106,835	\$103,813
TRAN OFF TANF AVG COST	\$447	\$454	\$470	\$478	\$474	\$481	\$521	\$502	\$508	\$522	\$542	\$549
<b>TANF ELIGIBLE (Child Care Priority 1B Clients at or below 100% of the Federal Poverty Level)</b>												
CLIENTS	7,690	7,570	7,649	7,614	7,538	7,420	7,442	7,819	8,075	8,472	8,193	8,254
COST	\$3,390,070	\$3,746,796	\$3,824,118	\$3,904,245	\$3,557,568	\$3,662,965	\$3,957,431	\$4,194,223	\$4,302,207	\$4,448,742	\$4,521,900	\$4,657,974
TANF ELIGIBLE AVG COST	\$441	\$495	\$500	\$513	\$472	\$494	\$532	\$536	\$533	\$525	\$552	\$564
<b>INCOME ELIGIBLE (Child Care Priority 3, and Priority 4 Clients)</b>												
CLIENTS	7,798	7,507	7,569	7,539	7,527	7,514	7,559	7,612	7,632	7,832	7,426	7,337
COST	\$3,265,029	\$3,352,594	\$3,404,386	\$3,460,624	\$3,294,431	\$3,386,741	\$3,683,902	\$3,733,797	\$3,757,012	\$3,843,887	\$3,805,939	\$3,838,152
INCOME ELIG AVG COST	\$419	\$447	\$450	\$459	\$438	\$451	\$487	\$491	\$492	\$491	\$513	\$523
<b>AT-RISK CHILD PROTECTIVE SERVICES CHILD CARE PILOT (Priority 5 Clients)</b>												
CLIENTS	323	343	378	397	431	518	553	679	733	881	1,021	1,073
COST	\$193,530	\$214,804	\$232,406	\$257,933	\$266,739	\$305,785	\$335,795	\$396,799	\$449,007	\$535,980	\$622,872	\$686,919
CPS AVG COST	\$599	\$626	\$615	\$650	\$619	\$590	\$607	\$584	\$613	\$608	\$610	\$640
<b>CHILD PROTECTIVE SERVICES (Child Care CPS Clients)</b>												
CLIENTS	1,025	963	975	982	972	959	978	988	980	1,039	1,030	977
COST	\$577,908	\$555,413	\$600,010	\$579,310	\$567,980	\$559,627	\$607,288	\$652,529	\$627,325	\$649,417	\$652,471	\$663,134
CPS AVG COST	\$564	\$577	\$615	\$590	\$584	\$584	\$621	\$660	\$640	\$625	\$633	\$679
<b>GRAND TOTAL - ALL CHILD CARE PROGRAMS</b>												
CLIENTS	18,771	18,338	18,565	18,573	18,467	18,553	18,723	19,347	19,746	20,737	20,169	20,183
COST	\$8,337,862	\$8,833,608	\$9,071,755	\$9,239,639	\$8,697,313	\$9,023,086	\$9,783,471	\$10,227,503	\$10,426,385	\$10,860,581	\$11,033,199	\$11,331,194
ALL PROGRAMS AVG COST	\$444	\$482	\$489	\$497	\$471	\$486	\$523	\$529	\$528	\$524	\$547	\$561

## Income Eligibility Guidelines: October 1, 2016 - September 30, 2017

### Federal Poverty Guidelines (FPG) Monthly Income Standards

Supplemental Nutrition Program (SNAP)					
Household Size	100% FPG Net Income	130% FPG Gross Income	165% FPG Gross Income for Categorical Eligibility	Maximum SNAP Monthly Allotment	LIHEAP 150% FPG
1	\$990	\$1,287	\$1,634	\$194	\$1,485
2	\$1,335	\$1,736	\$2,203	\$357	\$2,003
3	\$1,680	\$2,184	\$2,772	\$511	\$2,520
4	\$2,025	\$2,633	\$3,342	\$649	\$3,038
5	\$2,370	\$3,081	\$3,911	\$771	\$3,555
6	\$2,715	\$3,530	\$4,480	\$925	\$4,073
7	\$3,061	\$3,980	\$5,051	\$1,022	\$4,592
8	\$3,408	\$4,430	\$5,623	\$1,169	\$5,112
+1	+\$347	+\$481	+\$572	+\$146	+\$521
Minimum Allotment of \$16 effective from 10/1/2016 - 9/30/2017					
DEDUCTIONS: Standard Deduction: For HH size 1-3 = \$157; 4 = \$168; 5 = \$197; 6 or more = \$226; Excess Shelter Deduction Limit: \$517; Heating and Cooling Standard Utility Allowance: \$325 (HCSUA) – Limited Utility Allowance: \$125 (LUA); Telephone Standard: \$40; Dependent Care: Actual Amount (No Limit); Earned Income Deduction: 20%; Homeless Shelter Standard: \$143					

CASH Assistance & Support Services					
Household Size	Federal Poverty Guidelines (FPG) Monthly Income Standards			Maximum Monthly Benefit	
	100% FPG Net Income	85% FPG Gross Limit	NM Works Cash Net Income	Maximum Monthly Benefit	General Assistance
1	\$990	\$842	\$266	\$244	\$245
2	\$1,335	\$1,135	\$357	\$327	\$329
3	\$1,680	\$1,428	\$447	\$409	\$412
4	\$2,025	\$1,721	\$539	\$493	\$496
5	\$2,370	\$2,015	\$630	\$576	\$580
6	\$2,715	\$2,308	\$721	\$659	\$664
7	\$3,061	\$2,602	\$812	\$743	\$748
8	\$3,408	\$2,897	\$922	\$843	\$849
+1	\$347	+\$295	+\$91	+\$83	+\$84
Deductions- Dependent Care: For a child under age 2 = \$200; For a child age 2 and over = \$175. Work Incentives- Earned Income Disregard: Single parent = \$125 & ½ remainder; Two parent = \$225 & ½ remainder.					

<b>Medical Assistance Division</b>					
Federal Poverty Guidelines New Mexico Affordable Care Eligibility Groups Effective April 01, 2017 thru March 31, 2018 <b>Monthly Guidelines</b>					
HH SIZE	PERCENT OF POVERTY				
	138%	190%	240%	250%	300%
1	\$1,387	\$1,910	\$2,412	\$2,513	\$3,015
2	\$1,868	\$2,572	\$3,248	\$3,384	\$4,060
3	\$2,349	\$3,234	\$4,084	\$4,255	\$5,105
4	\$2,829	\$3,895	\$4,920	\$5,125	\$6,150
5	\$3,310	\$4,557	\$5,756	\$5,996	\$7,195
6	\$3,791	\$5,219	\$6,592	\$6,867	\$8,240
7	\$4,272	\$5,881	\$7,428	\$7,738	\$9,285
8	\$4,752	\$6,543	\$8,264	\$8,609	\$10,330
138% Adult Expansion, 190% Children ages 6 to 19 (Medicaid), 240% Children ages 0 to 6 (Medicaid); ages 6 to 19 (CHIP), 250% Pregnancy Related Services Only, 300% Children 0 to 6 (CHIP)					

<b>Medical Assistance Division</b>					
Federal Poverty Guidelines New Mexico Affordable Care Eligibility Groups Effective April 01, 2017 thru March 31, 2018 <b>Annual Guidelines</b>					
HH SIZE	PERCENT OF POVERTY				
	138%	190%	240%	250%	300%
1	\$16,644	\$22,920	\$28,944	\$30,156	\$36,180
2	\$22,416	\$30,864	\$38,976	\$40,608	\$48,720
3	\$28,188	\$38,808	\$49,008	\$51,060	\$61,260
4	\$33,948	\$46,740	\$59,040	\$61,500	\$73,800
5	\$39,720	\$54,684	\$69,072	\$71,952	\$86,340
6	\$45,492	\$62,628	\$79,104	\$82,404	\$98,880
7	\$51,264	\$70,572	\$89,136	\$92,856	\$111,420
8	\$57,024	\$78,516	\$99,168	\$103,308	\$123,960
138% Adult Expansion, 190% Children ages 6 to 19 (Medicaid), 240% Children ages 0 to 6 (Medicaid); ages 6 to 19 (CHIP), 250% Pregnancy Related Services Only, 300% Children 0 to 6 (CHIP)					

## References

- <sup>1</sup> *Medicaid Expenditures (Omnicaid, Medicare Buy-Ins, Lump Sum Payments)*, Received on September 1, 2017
- <sup>2</sup> *ASPEN Business Intelligence Tool: Eligibility*, Retrieved on September 12, 2017
- <sup>3</sup> New Mexico Human Services Department, *Medicaid Eligibility Reports*, Retrieved from <http://www.hsd.state.nm.us/LookingForInformation/medicaid-eligibility.aspx> on September 12, 2017
- <sup>4</sup> *ASPEN Business Intelligence Tool: Application Tracking*, Retrieved on September 12, 2017
- <sup>5</sup> Fidelity Information Services, *EBT Daily Statistical Report (for 08/31/2016, 07/31/2017, and 08/31/2017)*, Retrieved on September 4, 2017
- <sup>6</sup> *ASPEN Report DQ-180: Length of Time Cases are Open (for 08/01/2016-08/31/2016, 07/01/2017-07/31/2017, 08/01/2017-08/31/2017)*, Retrieved on September 11, 2017
- <sup>7</sup> *ASPEN Report EY-180: Individual Demographics by State and Age (for 08/01/2016-08/31/2016, 07/01/2017-07/31/2017, 08/01/2017-08/31/2017)*, Retrieved September 11, 2017
- <sup>8</sup> *ASPEN Business Intelligence Tool: Benefit Issuance*, Retrieved on September 12, 2017
- <sup>9</sup> Fidelity Information Services, *EBT Daily Statistical Reports (Month End)*, Retrieved September 4, 2017
- <sup>10</sup> *ASPEN Report EY-180R: Individual Demographics by State, Race, Ethnicity and Gender (for 08/01/2017-08/31/2017)*, Retrieved on September 12, 2017
- <sup>11</sup> SQL Query from ASPEN, completed September 14, 2017 (Note: Withdrawn Applications, & Denial Reasons)
- <sup>12</sup> JP Morgan, *New Mexico – NM EBT System- Monthly Benefit Draw Down Totals*
- <sup>13</sup> *ASPEN Business Intelligence Tool: Application Tracking (w/Parameters: SNAP, Expedite, Approved)*, Retrieved on September 12, 2017
- <sup>14</sup> SL Start, *As of Today Report 07.31.17*, received September 13, 2017

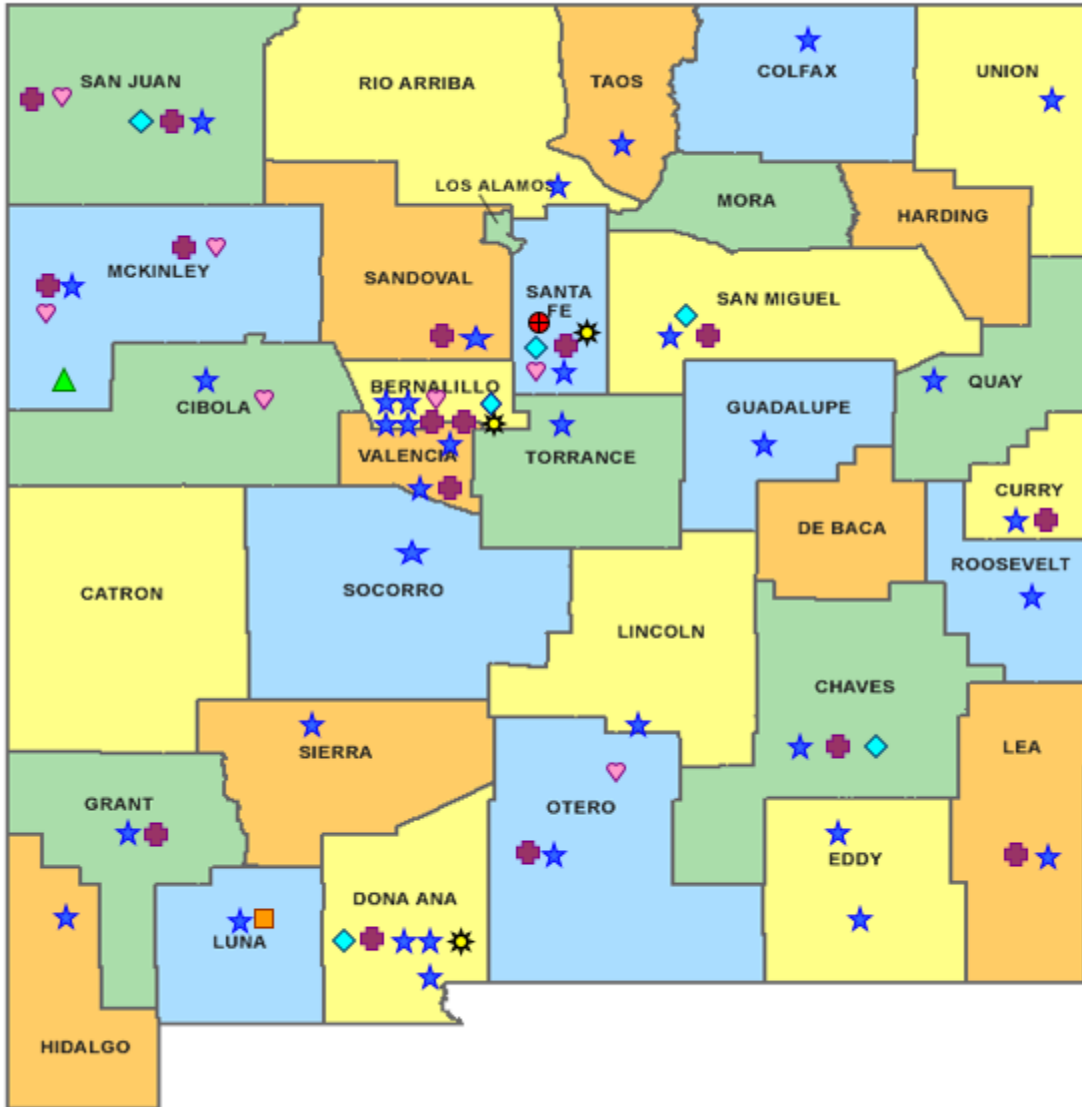
<sup>15</sup>SL Start, *Statewide Employment Report 08.01.17*, September 13, 2017

<sup>16</sup>*SSIAR Payments*, Received September 11, 2017

<sup>17</sup>Children, Youth, and Families Department, *Children Receiving Child Care Assistance Subsidies by County*, Received August 8, 2017

<sup>18</sup>Children, Youth, and Families Department, *Child Care Assistance Eligibility Programs*, Received September 8, 2017

<sup>18</sup>EDG is defined as an Eligibility Determination Group



**HUMAN SERVICES**  
DEPARTMENT

New Mexico Human Services Department  
Field Offices

- Central Office (1)
- ★ Income Support Division County Office (35)
- ▲ Income Support Division Satellite Office (2)
- ⊕ Child Support Enforcement Regional Office (16)
- ◻ Child Support Enforcement Satellite Office (1)
- ◊ Quality Control Office (8)
- ♥ Indian Health Services (7)
- ★ Hospital Site (3)

For a complete listing of field offices and other government and community resources:  
[http://www.hsd.state.nm.us/LookingForAssistance/Field\\_Offices\\_1.aspx](http://www.hsd.state.nm.us/LookingForAssistance/Field_Offices_1.aspx)