



# Monthly Statistical Report

## December 2020

There were 905,778 individuals that received Medicaid in December 2020, a 9.30% increase from one year ago. The count of Medicaid recipients has increased by 9,580, or 1.07%, since last month.

The SNAP caseload in December 2020 was 255,483, a 14.62% increase from one year ago. The SNAP caseload has increased by 7,749 cases, or 3.13%, since last month.

The TANF caseload was 12,611 in December 2020 an increase of 20.75% from December 2019. The TANF caseload had 458 more cases compared to November 2020, an increase of 3.8%.

The caseload for General Assistance was 1,860 in December 2020, a decrease of 25.63% from one year ago and a decrease of 12 cases from last month.

Michelle Lujan Grisham, Governor  
David Scrase, M.D., Secretary

1 Note: COVID 19 Health Emergency became effective March 12, 2020 and as a result, Medicaid, SNAP, TANF, and Child Care programs has undergone changes to policies which may be reflected in some of the tables and figures in this report. Please see end of report for details of policy changes.

<b>Contents</b>	<b>Page</b>
Summary	3-5
Medicaid	6-20
SNAP	21-41
Cash Assistance	42-56
Child Care Assistance	57-58
SNAP EA and P-EBT	59
Income Eligibility Guidelines	60-61

**Regions are reported as follows:**

<b>Region 1</b>		
Catron	San Juan	Valencia
Cibola	Sierra	
McKinley	Socorro	
<b>Region 2</b>		
Colfax	Mora	Santa Fe
De Baca	Quay	Taos
Guadalupe	Rio Arriba	Union
Harding	Sandoval	
Los Alamos	San Miguel	
<b>Region 3</b>		
Bernalillo	Torrance	
<b>Region 4</b>		
Chaves	Eddy	Lincoln
Curry	Lea	Roosevelt
<b>Region 5</b>		
Dona Ana	Hidalgo	Otero
Grant	Luna	

***The Mission of the Human Services Department***

*To transform lives. Working with our partners, we design and deliver innovative, high quality health and human services that improve the security and promote independence for New Mexicans in their communities.*

Angela Medrano, Deputy Secretary  
Kari Armijo, Deputy Secretary

Prepared by Income Support Division  
PO Box 2348  
Santa Fe, NM 87504-2348  
505-827-7250

Karmela Martinez, Director  
Vida Tapia-Sanchez, Deputy Director

<http://www.hsd.state.nm.us/monthly-statistical-reports.aspx>

# Program Summary for December 2020

SNAP, TANF and GA-Unrelated Child Program interviews are waived. Recertification periods are automatically extended for households with an Interim Review due in March and April for 6 months to the month recertification due. SNAP expenditures and cases include Emergency Allotments. SNAP Emergency Allotments and Pandemic EBT can be found at the end of this report.

<b>Medicaid</b>					
	Dec-19	Nov-20	Dec-20	Percent Change	
				Dec-19- Dec-20	Nov-20- Dec-20
<b>Expenditures<sup>1</sup></b>	\$531,904,987	\$564,205,466	\$656,626,453	23.4%	16.4%
<b>Cases<sup>2</sup></b>	498,109	541,936	548,164	10.05%	1.15%
<b>Expenditures/Case</b>	\$1,068	\$1,041	\$1,198	12.2%	15.1%
<b>Recipients<sup>3</sup></b>	828,690	896,198	905,778	9.30%	1.07%
<i>Adults</i>	471,858	521,777	529,453	12.21%	1.47%
<i>Children</i>	356,832	374,421	376,325	5.46%	0.51%
<b>Recipients /Case</b>	1.66	1.65	1.65	-0.60%	0.00%
<b>Cases Processed<sup>4</sup></b>	11,985	8,860	11,376	-5.08%	28.40%
<i>Approvals<sup>4</sup></i>	8,290	5,887	7,331	-11.57%	24.53%

<b>Supplemental Nutrition Assistance Program (SNAP)</b>					
	Dec-19	Nov-20	Dec-20	Percent Change	
				Dec-19- Dec-20	Nov-20- Dec-20
<b>Expenditures<sup>5</sup></b>	\$53,077,372	\$89,706,329	\$92,994,588	75.21%	3.67%
<b>Cases<sup>6</sup></b>	222,902	247,734	255,483	14.62%	3.13%
<b>Expenditures/Case</b>	\$238	\$362	\$364	52.94%	0.55%
<b>Recipients<sup>7</sup></b>	446,531	492,388	506,658	13.47%	2.90%
<i>Adults</i>	261,798	293,389	303,267	15.84%	3.37%
<i>Children</i>	184,733	198,999	203,391	10.10%	2.21%
<b>Recipients /Case</b>	2.00	1.99	1.98	-1.00%	-0.50%
<b>Cases Processed<sup>4</sup></b>	16,558	17,976	17,561	6.06%	-2.31%
<i>Approvals<sup>4</sup></i>	13,677	11,582	10,737	-21.50%	-7.30%

<b>Cash Assistance Programs</b>					
	Dec-19	Nov-20	Dec-20	Percent Change	
				Dec-19- Dec-20	Nov-20- Dec-20
<b>Expenditures<sup>5</sup></b>	\$4,035,456	\$4,675,638	\$4,855,059	20.31%	3.84%
<b>Cases<sup>6</sup></b>	13,110	14,161	14,609	11.43%	3.16%
<b>Expenditures/Case</b>	\$308	\$330	\$332	7.79%	0.61%
<b>Recipients<sup>7</sup></b>	29,743	34,688	36,058	21.23%	3.95%
<i>Adults</i>	9,513	11,124	11,684	22.82%	5.03%
<i>Children</i>	20,230	23,564	24,374	20.48%	3.44%
<b>Recipients /Case</b>	2.27	2.45	2.47	8.81%	0.82%
<b>Cases Processed<sup>4</sup></b>	4,342	4,866	5,437	25.22%	11.73%
<i>Approvals<sup>4</sup></i>	1,429	945	1,080	-24.42%	14.29%

<b>Low Income Home Energy Assistance Program (LIHEAP)</b>					
	Dec-19	Nov-20	Dec-20	Percent Change	
				Dec-19- Dec-20	Nov-20- Dec-20
<b>Expenditures<sup>8</sup></b>	\$2,490,920	\$2,869,640	\$5,621,740	125.69%	95.90%
<b>Cases<sup>8</sup></b>	8,267	9,518	18,137	119.39%	90.55%
<b>Expenditures/Case</b>	\$301	\$301	\$310	2.99%	2.99%
<b>Recipients<sup>8</sup></b>	19,172	21,821	44,364	131.40%	103.31%
<i>Adults</i>	10,791	12,510	24,899	130.74%	99.03%
<i>Children</i>	8,381	9,311	19,465	132.25%	109.05%
<b>Recipients /Case</b>	2.32	2.29	2.45	5.60%	6.99%
<b>Cases Processed<sup>4</sup></b>	9,213	10,536	11,186	21.42%	6.17%
<i>Approvals<sup>4</sup></i>	8,180	9,118	9,330	14.06%	2.33%

Note: December 2020 expenditures include the LIHEAP \$300 supplement payments that were tied to prior months since May 2020. The additional expenditures are reflected in the total cases and recipients reported.

## Cash Assistance Summary for December 2020

### Temporary Assistance for Needy Families (TANF)

	Dec-19	Nov-20	Dec-20	Percent Change	
				Dec-19- Dec-20	Nov-20- Dec-20
Expenditures <sup>5</sup>	\$3,340,882	\$4,164,499	\$4,327,998	29.55%	3.93%
Cases <sup>6</sup>	10,444	12,153	12,611	20.75%	3.77%
Expenditures/Case	\$320	\$343	\$343	7.19%	0.00%
Recipients <sup>7</sup>	26,855	32,451	33,833	25.98%	4.26%
<i>Adults</i>	7,037	9,268	9,841	39.85%	6.18%
<i>Children</i>	19,818	23,183	23,992	21.06%	3.49%
Approvals <sup>4</sup>	1,226	866	956	-22.02%	10.39%

### Education Works

	Dec-19	Nov-20	Dec-20	Percent Change	
				Dec-19- Dec-20	Nov-20- Dec-20
Expenditures <sup>5</sup>	\$45,728	\$40,238	\$38,031	-16.83%	-5.48%
Cases <sup>6</sup>	116	96	96	-17.24%	0.00%
Expenditures/Case	\$394	\$419	\$396	0.51%	-5.49%
Recipients <sup>7</sup>	323	278	275	-14.86%	-1.08%
<i>Adults</i>	128	108	107	-16.41%	-0.93%
<i>Children</i>	195	170	168	-13.85%	-1.18%

### State Supplement for Residential Care

	Dec-19	Nov-20	Dec-20	Percent Change	
				Dec-19- Dec-20	Nov-20- Dec-20
Expenditures <sup>5</sup>	\$1,900	\$900	\$900	-52.63%	0.00%
Cases <sup>6</sup>	19	9	9	-52.63%	0.00%
Expenditures/Case	\$100	\$100	\$100	0.00%	0.00%
Recipients <sup>7</sup>	18	9	9	-50.00%	0.00%

### General Assistance (GA)

	Dec-19	Nov-20	Dec-20	Percent Change	
				Dec-19- Dec-20	Nov-20- Dec-20
Expenditures <sup>5</sup>	\$639,267	\$458,114	\$476,666	-25.44%	4.05%
Cases <sup>6</sup>	2,501	1,872	1,860	-25.63%	-0.64%
Expenditures/Case	\$256	\$245	\$256	0.00%	4.49%
Recipients <sup>7</sup>	2,518	1,920	1,906	-24.31%	-0.73%
<i>Adults</i>	2,301	1,709	1,692	-26.47%	-0.99%
<i>Children</i>	217	211	214	-1.38%	1.42%
Approvals <sup>4</sup>	170	49	81	-52.35%	65.31%

### Refugee Cash (RCA)

	Dec-19	Nov-20	Dec-20	Percent Change	
				Dec-19- Dec-20	Nov-20- Dec-20
Expenditures <sup>5</sup>	\$7,679	\$11,886	\$11,464	49.29%	-3.55%
Cases <sup>6</sup>	30	31	33	10.00%	6.45%
Expenditures/Case	\$256	\$383	\$347	35.55%	-9.40%
Recipients <sup>7</sup>	29	30	35	20.69%	16.67%

<b>Expenditures YTD</b>			
	SFY 2021	FFY 2021	CY 2020
Medicaid <sup>1</sup>	\$3,511,216,189	\$1,794,660,625	\$6,878,360,521
Supplemental Nutrition Assistance Program <sup>9</sup>	\$525,403,979	\$269,321,783	\$960,801,164
Temporary Assistance for Needy Families <sup>9</sup>	\$26,197,671	\$12,462,788	\$48,368,174
General Assistance <sup>9</sup>	\$3,140,292	\$1,404,750	\$7,057,741
Education Work <sup>9</sup>	\$221,042	\$111,007	\$562,822
LIHEAP <sup>8</sup>	\$14,771,580	\$12,759,820	\$21,731,660

<b>Average Caseload YTD</b>			
	SFY 2021	FFY 2021	CY 2020
Medicaid <sup>2</sup>	535,397	542,426	521,222
Supplemental Nutrition Assistance Program <sup>6</sup>	244,282	246,561	239,694
Temporary Assistance for Needy Families <sup>6</sup>	12,034	12,129	11,496
General Assistance <sup>6</sup>	2,107	1,890	2,333
Education Work <sup>6</sup>	89	92	105
LIHEAP <sup>8</sup>	8,135	13,810	6,101

<b>Demographic Profile- December 2020</b>					
	SNAP	TANF	GA	Education Works	RCA
<i>Gender of Recipients</i> <sup>10</sup>					
Male	230,183	14,190	1,056	93	25
Female	276,475	19,643	850	182	10
<i>Ethnicity</i> <sup>10</sup>					
Hispanic	283,315	22,824	976	154	24
Non-Hispanic	223,343	11,009	930	121	11
<i>Race</i> <sup>10</sup>					
Native American or Alaskan Native	86,044	3,112	217	32	0
Asian	4,392	257	11	1	0
African American or Black	13,994	1,529	73	17	10
Native Hawaiian or Pacific Islander	994	61	2	1	0
White	385,136	27,621	1,537	213	23
Unknown / Not Declared	3,666	223	16	3	0
More than One Race	12,432	1,030	50	8	2

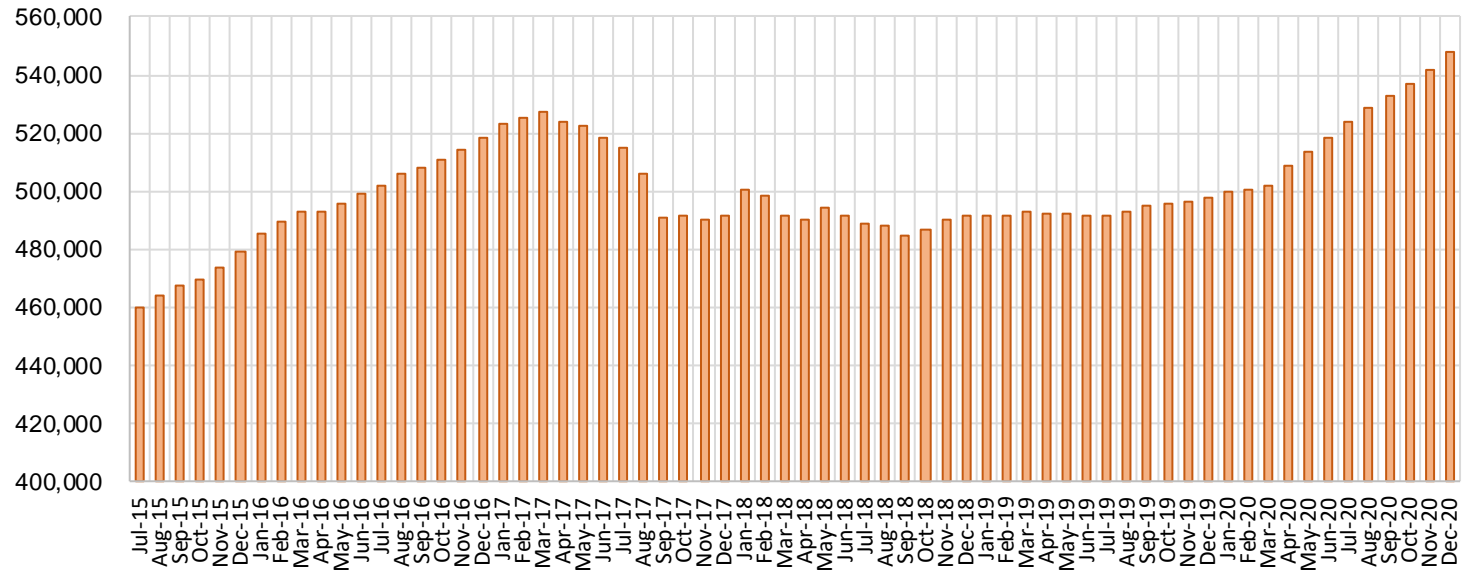
## Medicaid Cases by Field Office<sup>2</sup>

Office				Percent Change	
	Dec-19	Nov-20	Dec-20	Dec-19- Dec-20	Nov-20- Dec-20
Chaves County ISD	16,156	23,498	23,494	45.42%	-0.02%
Cibola County ISD	7,481	7,359	7,296	-2.47%	-0.86%
Colfax County ISD	3,604	3,821	3,859	7.08%	0.99%
Curry County ISD	15,014	16,080	16,184	7.79%	0.65%
East Dona Ana County ISD	18,075	20,927	21,176	17.16%	1.19%
Eddy Artesia County ISD	3,905	4,207	4,228	8.27%	0.50%
Eddy Carlsbad County ISD	7,626	8,481	8,555	12.18%	0.87%
Grant County ISD	7,883	8,544	8,642	9.63%	1.15%
Guadalupe County ISD	1,599	1,670	1,708	6.82%	2.28%
Hidalgo County ISD	51	33	39	-23.53%	18.18%
Lea County ISD	14,849	16,560	16,826	13.31%	1.61%
Lincoln County ISD	4,355	4,681	4,801	10.24%	2.56%
Luna County ISD	8,857	9,476	9,570	8.05%	0.99%
McKinley County ISD	22,452	23,027	23,014	2.50%	-0.06%
Northeast Bernalillo County ISD	43,493	48,688	50,053	15.08%	2.80%
Northwest Bernalillo County ISD	53,526	60,691	60,161	12.40%	-0.87%
Otero County ISD	12,222	13,151	13,169	7.75%	0.14%
Quay County ISD	2,523	3,593	3,494	38.49%	-2.76%
Rio Arriba County ISD	13,450	14,512	14,662	9.01%	1.03%
Roosevelt County ISD	9	13	9	0.00%	-30.77%
San Juan County ISD	30,599	42,947	44,548	45.59%	3.73%
San Miguel County ISD	9,161	9,959	10,081	10.04%	1.23%
Sandoval County ISD	23,500	20,864	21,635	-7.94%	3.70%
Santa Fe County ISD	24,219	23,996	24,461	1.00%	1.94%
Sierra County ISD	5,283	4,814	4,903	-7.19%	1.85%
Socorro County ISD	5,271	5,414	5,369	1.86%	-0.83%
South Dona Ana ISD	19,883	20,444	20,729	4.25%	1.39%
Southeast Bernalillo County ISD	24,875	18,545	18,300	-26.43%	-1.32%
Southwest Bernalillo County ISD	39,835	49,618	50,654	27.16%	2.09%
Taos County ISD	9,300	9,074	9,359	0.63%	3.14%
Torrance County ISD	8,061	7,646	7,298	-9.47%	-4.55%
Valencia North County ISD	18,562	16,476	16,391	-11.70%	-0.52%
Valencia South County ISD	102	180	261	155.88%	45.00%
West Dona Ana County ISD	22,327	22,946	23,234	4.06%	1.26%
Centralized Units	1	1	1	0.00%	0.00%
<b>Statewide Total</b>	<b>498,109</b>	<b>541,936</b>	<b>548,164</b>	<b>10.05%</b>	<b>1.15%</b>

## Medicaid Cases by Region<sup>2</sup>

Region	Dec-19	Nov-20	Dec-20	Percent Change	
				Dec-19- Dec-20	Nov-20- Dec-20
Region 1 - NW	89,750	100,217	101,782	13.41%	1.56%
Region 2 - NE	87,356	87,489	89,259	2.18%	2.02%
Region 3 - Central	169,790	185,188	186,466	9.82%	0.69%
Region 4 - SE	61,914	73,520	74,097	19.68%	0.78%
Region 5 - SW	89,298	95,521	96,559	8.13%	1.09%
Centralized Units	1	1	1	0.00%	0.00%
Statewide Total	498,109	541,936	548,164	10.0%	1.15%

## Medicaid Caseload: SFY-16 to Current



**Medicaid Initial Applications by Field Office<sup>4,11</sup>**  
**December 2020**

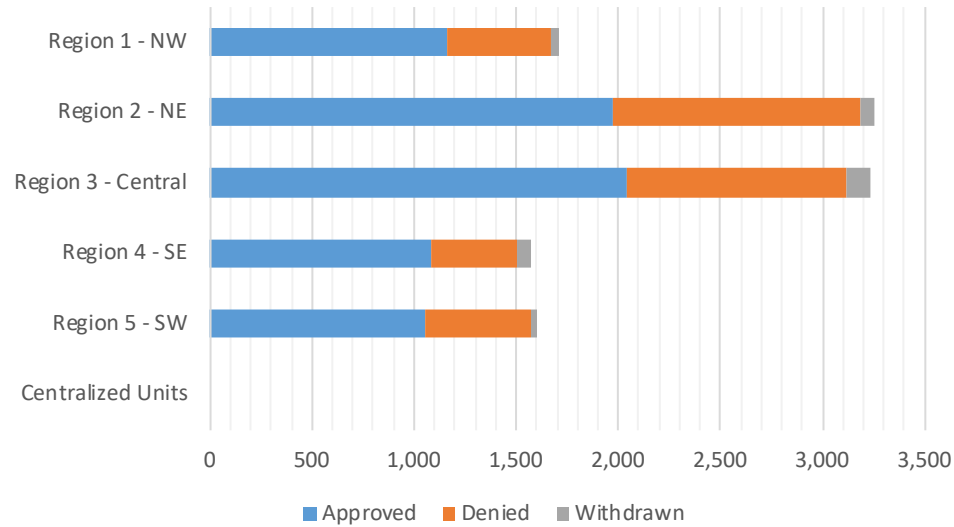
Office	Approved	Denied	Withdrawn	Total Cases Processed
Chaves County ISD	396	137	36	569
Cibola County ISD	50	25	0	75
Colfax County ISD	35	18	2	55
Curry County ISD	174	74	8	256
East Dona Ana County ISD	235	126	13	374
Eddy Artesia County ISD	39	14	4	57
Eddy Carlsbad County ISD	91	44	5	140
Grant County ISD	102	44	4	150
Guadalupe County ISD	14	11	0	25
Hidalgo County ISD	0	0	0	0
Lea County ISD	319	92	16	427
Lincoln County ISD	65	55	2	122
Luna County ISD	95	62	4	161
McKinley County ISD	133	54	5	192
Northeast Bernalillo County ISD	658	328	40	1,026
Northwest Bernalillo County ISD	571	278	38	887
Otero County ISD	146	73	2	221
Quay County ISD	50	22	4	76
Rio Arriba County ISD	119	55	7	181
Roosevelt County ISD	3	1	0	4
San Juan County ISD	794	313	25	1,132
San Miguel County ISD	1,177	737	7	1,921
Sandoval County ISD	151	114	14	279
Santa Fe County ISD	342	192	25	559
Sierra County ISD	45	21	5	71
Socorro County ISD	22	25	0	47
South Dona Ana ISD	231	115	4	350
Southeast Bernalillo County ISD	240	190	6	436
Southwest Bernalillo County ISD	542	254	32	828
Taos County ISD	90	58	6	154
Torrance County ISD	35	21	4	60
Valencia North County ISD	100	63	3	166
Valencia South County ISD	17	9	0	26
West Dona Ana County ISD	250	89	10	349
Centralized Units	0	0	0	0
<b>Statewide Total</b>	<b>7,331</b>	<b>3,714</b>	<b>331</b>	<b>11,376</b>



**Medicaid Initial Applications by Region<sup>4,11</sup>**  
**December 2020**

	Approved	Denied	Withdrawn	Total Cases Processed
Region				
Region 1 - NW	1,161	510	38	1,709
Region 2 - NE	1,978	1,207	65	3,250
Region 3 - Central	2,046	1,071	120	3,237
Region 4 - SE	1,087	417	71	1,575
Region 5 - SW	1,059	509	37	1,605
Centralized Units	0	0	0	0

Statewide Total	7,331	3,714	331	11,376
-----------------	-------	-------	-----	--------

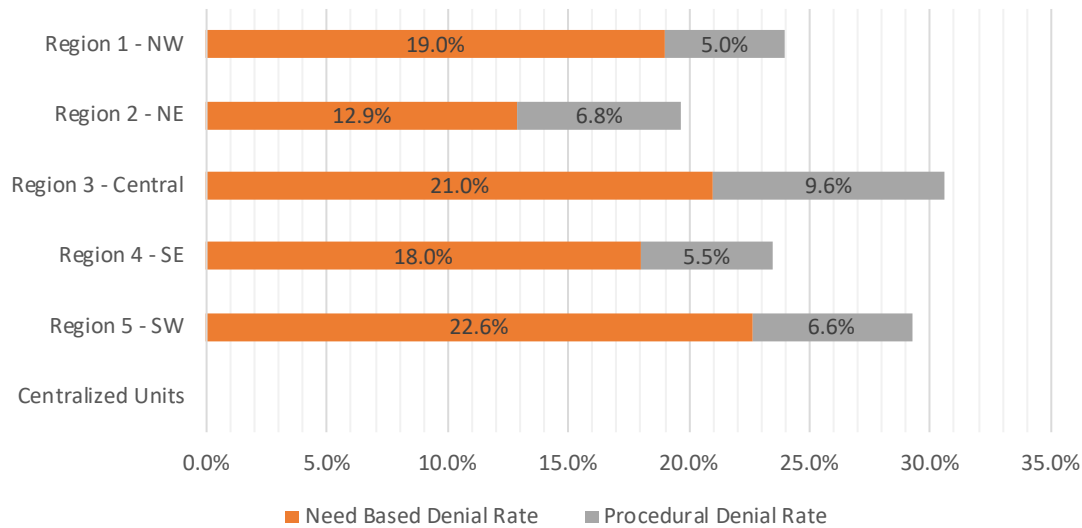


**Medicaid EDG Initial Disposition Rates by Field Office**<sup>4,11,19</sup>  
December 2020

Office	Approval Rate	Denial Rate	Need Based Denial Rate	Procedural Denial Rate
Chaves County ISD	77.6%	22.4%	18.3%	4.1%
Cibola County ISD	79.4%	20.6%	12.7%	7.9%
Colfax County ISD	72.9%	27.1%	14.6%	12.5%
Curry County ISD	76.3%	23.7%	18.0%	5.7%
East Dona Ana County ISD	66.2%	33.8%	23.9%	9.9%
Eddy Artesia County ISD	70.9%	29.1%	21.8%	7.3%
Eddy Carlsbad County ISD	70.5%	29.5%	17.1%	12.4%
Grant County ISD	73.9%	26.1%	21.0%	5.1%
Guadalupe County ISD	63.6%	36.4%	18.2%	18.2%
Hidalgo County ISD	0.0%	100.0%	100.0%	0.0%
Lea County ISD	82.4%	17.6%	14.0%	3.6%
Lincoln County ISD	60.2%	39.8%	30.5%	9.3%
Luna County ISD	68.3%	31.7%	27.4%	4.3%
McKinley County ISD	71.5%	28.5%	22.0%	6.5%
Northeast Bernalillo County ISD	69.3%	30.7%	22.8%	7.9%
Northwest Bernalillo County ISD	71.4%	28.6%	17.0%	11.6%
Otero County ISD	69.9%	30.1%	22.9%	7.2%
Quay County ISD	79.4%	20.6%	15.8%	4.8%
Rio Arriba County ISD	70.8%	29.2%	19.7%	9.5%
Roosevelt County ISD	100.0%	0.0%	0.0%	0.0%
San Juan County ISD	79.4%	20.6%	17.5%	3.1%
San Miguel County ISD	97.0%	3.0%	2.1%	0.9%
Sandoval County ISD	57.9%	42.1%	25.2%	16.9%
Santa Fe County ISD	62.5%	37.5%	25.4%	12.1%
Sierra County ISD	73.8%	26.2%	19.6%	6.6%
Socorro County ISD	56.4%	43.6%	30.8%	12.8%
South Dona Ana ISD	70.6%	29.4%	23.3%	6.1%
Southeast Bernalillo County ISD	63.0%	37.0%	27.0%	10.0%
Southwest Bernalillo County ISD	72.1%	27.9%	18.5%	9.4%
Taos County ISD	64.3%	35.7%	23.6%	12.1%
Torrance County ISD	52.2%	47.8%	38.8%	9.0%
Valencia North County ISD	64.9%	35.1%	22.8%	12.3%
Valencia South County ISD	68.0%	32.0%	32.0%	0.0%
West Dona Ana County ISD	76.7%	23.3%	18.4%	4.9%
Centralized Units	0.0%	0.0%	0.0%	0.0%
Statewide Total	74.4%	25.6%	18.5%	7.1%

**Medicaid EDG Initial Disposition Rates by Region<sup>4,11,19</sup>**  
**December 2020**

Region	Approval Rate	Denial Rate	Need Based Denial Rate	Procedural Denial Rate
Region 1 - NW	76.0%	24.0%	19.0%	5.0%
Region 2 - NE	80.3%	19.7%	12.9%	6.8%
Region 3 - Central	69.4%	30.6%	21.0%	9.6%
Region 4 - SE	76.5%	23.5%	18.0%	5.5%
Region 5 - SW	70.8%	29.2%	22.6%	6.6%
Centralized Units				
<b>Statewide Total</b>	<b>74.4%</b>	<b>25.6%</b>	<b>18.5%</b>	<b>7.1%</b>



**Medicaid: Percentage of Initial EDG Approvals Processed Timely by Field Office** <sup>13,19</sup>

	Oct-20	Nov-20	Dec-20	Jan-21	Feb-21	Mar-21	Apr-21	May-21	Jun-21	Jul-21	Aug-21	Sep-21	Average
Cibola	100.0 %	100.0 %	100.0 %										100.0%
McKinley	99.0 %	98.8 %	97.1 %										98.3%
San Juan	98.8 %	99.1 %	99.3 %										99.1%
Sierra	97.7 %	97.8 %	100.0 %										98.5%
Socorro	100.0 %	100.0 %	100.0 %										100.0%
Valencia North	100.0 %	100.0 %	99.4 %										99.8%
Valencia South	100.0 %	100.0 %	100.0 %										100.0%
<b>NW Region 1 Total</b>	<b>99.0 %</b>	<b>99.2 %</b>	<b>99.1 %</b>										<b>99.1%</b>
Colfax	100.0 %	100.0 %	100.0 %										100.0%
Guadalupe	100.0 %	100.0 %	100.0 %										100.0%
Quay	100.0 %	100.0 %	100.0 %										100.0%
Rio Arriba	97.8 %	100.0 %	99.3 %										99.0%
San Miguel	100.0 %	99.8 %	98.9 %										99.6%
Sandoval	99.4 %	99.4 %	99.1 %										99.3%
Santa Fe	99.3 %	99.0 %	98.7 %										99.0%
Taos	100.0 %	100.0 %	100.0 %										100.0%
<b>NE Region 2 Total</b>	<b>99.4 %</b>	<b>99.7 %</b>	<b>99.0 %</b>										<b>99.4%</b>
NE Bernalillo	99.0 %	98.7 %	98.7 %										98.8%
NW Bernalillo	99.8 %	99.4 %	99.0 %										99.4%
SE Bernalillo	98.7 %	93.5 %	95.6 %										95.9%
SW Bernalillo	97.7 %	98.7 %	98.1 %										98.2%
Torrance	100.0 %	100.0 %	100.0 %										100.0%
<b>Cen. Region 3 Total</b>	<b>98.9 %</b>	<b>98.4 %</b>	<b>98.3 %</b>										<b>98.5%</b>
Chaves	99.5 %	98.4 %	97.5 %										98.5%
Curry	99.1 %	99.0 %	96.0 %										98.0%
Eddy Artesia	100.0 %	100.0 %	98.4 %										99.5%
Eddy Carlsbad	98.8 %	100.0 %	99.3 %										99.4%
Lea	99.1 %	99.0 %	98.6 %										98.9%
Lincoln	98.6 %	100.0 %	97.8 %										98.8%
Roosevelt	100.0 %	100.0 %	100.0 %										100.0%
<b>SE Region 4 Total</b>	<b>99.2 %</b>	<b>99.0 %</b>	<b>97.8 %</b>										<b>98.7%</b>
East Dona Ana	98.6 %	99.3 %	99.4 %										99.1%
Grant	99.2 %	99.2 %	98.6 %										99.0%
Luna	100.0 %	99.1 %	100.0 %										99.7%
Otero	100.0 %	99.5 %	100.0 %										99.8%
South Dona Ana	99.6 %	97.4 %	98.4 %										98.5%
West Dona Ana	98.5 %	99.3 %	100.0 %										99.3%
<b>SW Region 5 Total</b>	<b>99.2 %</b>	<b>98.9 %</b>	<b>99.3 %</b>										<b>99.1%</b>
<b>STATE TOTAL</b>	<b>99.1 %</b>	<b>98.9 %</b>	<b>98.7 %</b>										<b>98.9%</b>

**Medicaid: Percentage of Initial EDG Denials Processed Timely by Field Office**<sup>13,19</sup>

	Oct-20	Nov-20	Dec-20	Jan-21	Feb-21	Mar-21	Apr-21	May-21	Jun-21	Jul-21	Aug-21	Sep-21	Average
Cibola	100.0 %	97.7 %	97.0 %										98.2%
McKinley	95.7 %	89.6 %	91.9 %										92.4%
San Juan	96.9 %	94.6 %	94.4 %										95.3%
Sierra	100.0 %	93.9 %	100.0 %										98.0%
Socorro	90.0 %	90.6 %	87.1 %										89.2%
Valencia North	93.5 %	97.1 %	99.1 %										96.6%
Valencia South	100.0 %	100.0 %	100.0 %										100.0%
<b>NW Region 1 Total</b>	<b>96.5 %</b>	<b>94.4 %</b>	<b>94.9 %</b>										<b>95.2%</b>
Colfax	100.0 %	100.0 %	100.0 %										100.0%
Guadalupe	100.0 %	100.0 %	100.0 %										100.0%
Quay	100.0 %	96.7 %	100.0 %										98.9%
Rio Arriba	97.1 %	94.9 %	95.0 %										95.7%
San Miguel	100.0 %	100.0 %	96.7 %										98.9%
Sandoval	97.5 %	95.2 %	95.9 %										96.2%
Santa Fe	90.3 %	92.1 %	95.2 %										92.5%
Taos	100.0 %	98.1 %	96.9 %										98.3%
<b>NE Region 2 Total</b>	<b>95.9 %</b>	<b>96.6 %</b>	<b>96.5 %</b>										<b>96.3%</b>
NE Bernalillo	92.1 %	95.2 %	94.4 %										93.9%
NW Bernalillo	94.4 %	94.3 %	95.1 %										94.6%
SE Bernalillo	96.4 %	98.4 %	94.8 %										96.5%
SW Bernalillo	95.3 %	97.2 %	94.7 %										95.7%
Torrance	98.3 %	89.6 %	100.0 %										96.0%
<b>Gen. Region 3 Total</b>	<b>94.4 %</b>	<b>95.6 %</b>	<b>94.9 %</b>										<b>95.0%</b>
Chaves	97.3 %	98.3 %	95.1 %										96.9%
Curry	94.7 %	90.8 %	97.7 %										94.4%
Eddy Artesia	100.0 %	94.6 %	96.8 %										97.1%
Eddy Carlsbad	98.7 %	94.4 %	92.1 %										95.1%
Lea	92.2 %	97.7 %	94.4 %										94.8%
Lincoln	97.8 %	96.8 %	98.8 %										97.8%
Roosevelt		100.0 %	100.0 %										
<b>SE Region 4 Total</b>	<b>96.1 %</b>	<b>96.2 %</b>	<b>95.5 %</b>										<b>95.9%</b>
East Dona Ana	98.9 %	96.0 %	94.2 %										96.4%
Grant	100.0 %	95.7 %	100.0 %										98.6%
Luna	100.0 %	97.9 %	96.8 %										98.2%
Otero	94.9 %	96.3 %	95.9 %										95.7%
South Dona Ana	99.4 %	100.0 %	97.5 %										99.0%
West Dona Ana	91.6 %	90.8 %	98.9 %										93.7%
<b>SW Region 5 Total</b>	<b>97.6 %</b>	<b>96.3 %</b>	<b>96.9 %</b>										<b>96.9%</b>
<b>STATE TOTAL</b>	<b>95.9 %</b>	<b>95.8 %</b>	<b>95.8 %</b>										<b>95.8%</b>

**Medicaid: Percentage of Initial EDG Approvals and Denials Combined Processed Timely by Field Office<sup>13,19</sup>**

	Oct-20	Nov-20	Dec-20	Jan-21	Feb-21	Mar-21	Apr-21	May-21	Jun-21	Jul-21	Aug-21	Sep-21	Average
Cibola	100.0 %	99.2 %	99.1 %										99.4%
McKinley	97.7 %	95.4 %	95.5 %										96.2%
San Juan	98.3 %	97.8 %	97.7 %										98.0%
Sierra	98.9 %	96.2 %	100.0 %										98.4%
Socorro	96.6 %	96.3 %	93.8 %										95.6%
Valencia North	97.4 %	98.7 %	99.2 %										98.4%
Valencia South	100.0 %	100.0 %	100.0 %										100.0%
<b>NW Region 1 Total</b>	<b>98.2 %</b>	<b>97.6 %</b>	<b>97.7 %</b>										<b>97.8%</b>
Colfax	100.0 %	100.0 %	100.0 %										100.0%
Guadalupe	100.0 %	100.0 %	100.0 %										100.0%
Quay	100.0 %	99.0 %	100.0 %										99.7%
Rio Arriba	97.5 %	98.3 %	97.8 %										97.9%
San Miguel	100.0 %	99.9 %	98.0 %										99.3%
Sandoval	98.8 %	97.8 %	97.5 %										98.0%
Santa Fe	96.1 %	96.0 %	97.2 %										96.4%
Taos	100.0 %	99.4 %	98.7 %										99.4%
<b>NE Region 2 Total</b>	<b>98.2 %</b>	<b>98.5 %</b>	<b>97.9 %</b>										<b>98.2%</b>
NE Bernalillo	96.6 %	97.4 %	97.1 %										97.0%
NW Bernalillo	98.0 %	97.6 %	97.5 %										97.7%
SE Bernalillo	97.7 %	95.5 %	95.2 %										96.1%
SW Bernalillo	96.9 %	98.2 %	96.9 %										97.3%
Torrance	99.3 %	94.4 %	100.0 %										97.9%
<b>Gen. Region 3 Total</b>	<b>97.2 %</b>	<b>97.3 %</b>	<b>97.0 %</b>										<b>97.2%</b>
Chaves	98.8 %	98.4 %	96.7 %										98.0%
Curry	97.6 %	96.4 %	96.5 %										96.8%
Eddy Artesia	100.0 %	98.2 %	97.8 %										98.7%
Eddy Carlsbad	98.8 %	98.4 %	96.5 %										97.9%
Lea	96.8 %	98.7 %	97.4 %										97.6%
Lincoln	98.3 %	98.8 %	98.3 %										98.5%
Roosevelt	100.0 %	100.0 %	100.0 %										100.0%
<b>SE Region 4 Total</b>	<b>98.2 %</b>	<b>98.2 %</b>	<b>97.0 %</b>										<b>97.8%</b>
East Dona Ana	98.7 %	98.0 %	97.2 %										98.0%
Grant	99.5 %	98.2 %	99.1 %										98.9%
Luna	100.0 %	98.8 %	98.8 %										99.2%
Otero	98.5 %	98.4 %	98.3 %										98.4%
South Dona Ana	99.6 %	98.3 %	98.1 %										98.7%
West Dona Ana	96.3 %	96.6 %	99.6 %										97.5%
<b>SW Region 5 Total</b>	<b>98.7 %</b>	<b>98.0 %</b>	<b>98.4 %</b>										<b>98.4%</b>
<b>STATE TOTAL</b>	<b>98.0 %</b>	<b>97.8 %</b>	<b>97.6 %</b>										<b>97.8%</b>

**Medicaid Renewal Disposition Counts by Field Office<sup>4,11</sup>**  
**December 2020**

Office	Approvals	Closures	Need Based Closures	Procedural Closures
Chaves County ISD	3,413	186	183	3
Cibola County ISD	744	55	55	0
Colfax County ISD	409	16	16	0
Curry County ISD	1,853	87	86	1
East Dona Ana County ISD	3,087	149	145	4
Eddy Artesia County ISD	431	17	17	0
Eddy Carlsbad County ISD	804	52	52	0
Grant County ISD	1,133	55	55	0
Guadalupe County ISD	281	7	7	0
Hidalgo County ISD	1	0	0	0
Lea County ISD	1,834	108	106	2
Lincoln County ISD	567	43	42	1
Luna County ISD	1,348	60	59	1
McKinley County ISD	2,207	125	125	0
Northeast Bernalillo County ISD	4,746	272	271	1
Northwest Bernalillo County ISD	4,605	230	230	0
Otero County ISD	1,742	91	91	0
Quay County ISD	378	23	23	0
Rio Arriba County ISD	1,605	67	67	0
Roosevelt County ISD	0	0	0	0
San Juan County ISD	6,462	284	284	0
San Miguel County ISD	1,162	49	49	0
Sandoval County ISD	2,905	95	95	0
Santa Fe County ISD	2,258	101	101	0
Sierra County ISD	527	33	33	0
Socorro County ISD	518	21	21	0
South Dona Ana ISD	3,311	154	152	2
Southeast Bernalillo County ISD	1,191	55	55	0
Southwest Bernalillo County ISD	7,404	504	504	0
Taos County ISD	883	44	44	0
Torrance County ISD	416	31	31	0
Valencia North County ISD	1,574	82	82	0
Valencia South County ISD	34	2	2	0
West Dona Ana County ISD	0	135	135	0
Centralized Units	0	0	0	0
<b>Statewide Total</b>	<b>59,833</b>	<b>3,233</b>	<b>3,218</b>	<b>15</b>

*Determinations at Administrative, Annual, and Auto Renewals are included*

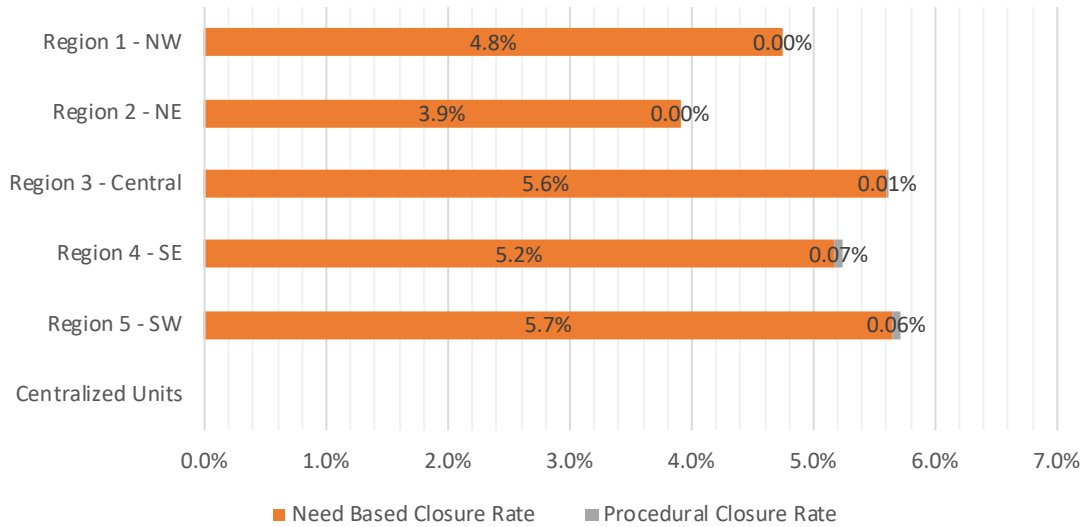
**Medicaid Renewal Disposition Rates by Field Office<sup>20</sup>**  
**December 2020**

Office	Approval Rate	Closure Rate	Need Based Closure Rate	Procedural Closure Rate
Chaves County ISD	94.8%	5.2%	5.1%	0.08%
Cibola County ISD	93.1%	6.9%	6.9%	0.00%
Colfax County ISD	96.2%	3.8%	3.8%	0.00%
Curry County ISD	95.5%	4.5%	4.4%	0.05%
East Dona Ana County ISD	95.4%	4.6%	4.5%	0.12%
Eddy Artesia County ISD	96.2%	3.8%	3.8%	0.00%
Eddy Carlsbad County ISD	93.9%	6.1%	6.1%	0.00%
Grant County ISD	95.4%	4.6%	4.6%	0.00%
Guadalupe County ISD	97.6%	2.4%	2.4%	0.00%
Hidalgo County ISD	100.0%	0.0%	0.0%	0.00%
Lea County ISD	94.4%	5.6%	5.5%	0.10%
Lincoln County ISD	93.0%	7.0%	6.9%	0.16%
Luna County ISD	95.7%	4.3%	4.2%	0.07%
McKinley County ISD	94.6%	5.4%	5.4%	0.00%
Northeast Bernalillo County ISD	94.6%	5.4%	5.4%	0.02%
Northwest Bernalillo County ISD	95.2%	4.8%	4.8%	0.00%
Otero County ISD	95.0%	5.0%	5.0%	0.00%
Quay County ISD	94.3%	5.7%	5.7%	0.00%
Rio Arriba County ISD	96.0%	4.0%	4.0%	0.00%
Roosevelt County ISD	0.0%	0.0%	0.0%	0.00%
San Juan County ISD	95.8%	4.2%	4.2%	0.00%
San Miguel County ISD	96.0%	4.0%	4.0%	0.00%
Sandoval County ISD	96.8%	3.2%	3.2%	0.00%
Santa Fe County ISD	95.7%	4.3%	4.3%	0.00%
Sierra County ISD	94.1%	5.9%	5.9%	0.00%
Socorro County ISD	96.1%	3.9%	3.9%	0.00%
South Dona Ana ISD	95.6%	4.4%	4.4%	0.06%
Southeast Bernalillo County ISD	95.6%	4.4%	4.4%	0.00%
Southwest Bernalillo County ISD	93.6%	6.4%	6.4%	0.00%
Taos County ISD	95.3%	4.7%	4.7%	0.00%
Torrance County ISD	93.1%	6.9%	6.9%	0.00%
Valencia North County ISD	95.0%	5.0%	5.0%	0.00%
Valencia South County ISD	94.4%	5.6%	5.6%	0.00%
West Dona Ana County ISD	0.0%	100.0%	100.0%	0.00%
Centralized Units	0.0%	0.0%	0.0%	0.00%
<b>Statewide Total</b>	<b>94.9%</b>	<b>5.1%</b>	<b>5.1%</b>	<b>0.02%</b>



**Medicaid Renewal Disposition Rates by Region<sup>20</sup>**  
**December 2020**

Region	Approval Rate	Closure Rate	Need Based Closure Rate	Procedural Closure Rate
Region 1 - NW	95.2%	4.8%	4.8%	0.00%
Region 2 - NE	96.1%	3.9%	3.9%	0.00%
Region 3 - Central	94.4%	5.6%	5.6%	0.01%
Region 4 - SE	94.8%	5.2%	5.2%	0.07%
Region 5 - SW	94.3%	5.7%	5.7%	0.06%
Centralized Units	0.0%	0.0%	0.0%	0.00%
<b>Statewide Total</b>	<b>94.9%</b>	<b>5.1%</b>	<b>5.1%</b>	<b>0.02%</b>



**Medicaid: Percentage of Approved Renewal EDGs Processed by Certification Date <sup>11</sup>**

	Oct-20	Nov-20	Dec-20	Jan-21	Feb-21	Mar-21	Apr-21	May-21	Jun-21	Jul-21	Aug-21	Sep-21	Average
Cibola	100.0%	100.0%	100.0%										100.0%
McKinley	100.0%	99.9%	100.0%										100.0%
San Juan	100.0%	100.0%	100.0%										100.0%
Sierra	100.0%	100.0%	99.8%										99.9%
Socorro	100.0%	99.8%	100.0%										99.9%
Valencia North	100.0%	99.9%	100.0%										100.0%
Valencia South	100.0%		100.0%										100.0%
<b>NW Region 1 Total</b>	<b>100.0%</b>	<b>99.9%</b>	<b>100.0%</b>										<b>100.0%</b>
Colfax	100.0%	100.0%	100.0%										100.0%
Guadalupe	100.0%	100.0%	100.0%										100.0%
Quay	100.0%	100.0%	100.0%										100.0%
Rio Arriba	100.0%	100.0%	100.0%										100.0%
San Miguel	100.0%	100.0%	100.0%										100.0%
Sandoval	100.0%	99.9%	100.0%										100.0%
Santa Fe	100.0%	100.0%	100.0%										100.0%
Taos	100.0%	99.9%	99.8%										99.9%
<b>NE Region 2 Total</b>	<b>100.0%</b>	<b>100.0%</b>	<b>100.0%</b>										<b>100.0%</b>
NE Bernalillo	100.0%	100.0%	100.0%										100.0%
NW Bernalillo	100.0%	100.0%	100.0%										100.0%
SE Bernalillo	100.0%	100.0%	100.0%										100.0%
SW Bernalillo	100.0%	99.9%	100.0%										100.0%
Torrance	100.0%	100.0%	100.0%										100.0%
<b>Gen. Region 3 Total</b>	<b>100.0%</b>	<b>100.0%</b>	<b>100.0%</b>										<b>100.0%</b>
Chaves	100.0%	99.9%	100.0%										100.0%
Curry	100.0%	99.9%	100.0%										100.0%
Eddy Artesia	100.0%	100.0%	99.8%										99.9%
Eddy Carlsbad	100.0%	100.0%	99.5%										99.8%
Lea	100.0%	100.0%	100.0%										100.0%
Lincoln	100.0%	100.0%	100.0%										100.0%
Roosevelt	100.0%												
<b>SE Region 4 Total</b>	<b>100.0%</b>	<b>100.0%</b>	<b>100.0%</b>										<b>100.0%</b>
East Dona Ana	100.0%	100.0%	99.9%										100.0%
Grant	99.9%	100.0%	100.0%										100.0%
Luna	100.0%	100.0%	100.0%										100.0%
Otero	100.0%	100.0%	100.0%										100.0%
South Dona Ana	99.9%	100.0%	100.0%										100.0%
West Dona Ana	100.0%												100.0%
<b>SW Region 5 Total</b>	<b>100.0%</b>	<b>100.0%</b>	<b>100.0%</b>										<b>100.0%</b>
<b>STATE TOTAL</b>	<b>100.0%</b>	<b>100.0%</b>	<b>100.0%</b>										<b>100.0%</b>

Administrative, Annual, and Auto Renewals are included

**Medicaid: Percentage of Closures EDGs Processed by Certification End Date<sup>11</sup>**

	Oct-20	Nov-20	Dec-20	Jan-21	Feb-21	Mar-21	Apr-21	May-21	Jun-21	Jul-21	Aug-21	Sep-21	Average
Cibola	100.0%	97.6%	98.2%										98.6%
McKinley	94.2%	97.1%	96.2%										95.8%
San Juan	96.6%	96.7%	96.6%										96.6%
Sierra	100.0%	100.0%	91.7%										97.2%
Socorro	100.0%	97.4%	91.3%										96.2%
Valencia North	91.3%	98.7%	96.5%										95.5%
Valencia South		100.0%	100.0%										
<b>NW Region 1 Total</b>	<b>97.0%</b>	<b>98.2%</b>	<b>95.8%</b>										<b>97.0%</b>
Colfax	100.0%	75.0%	100.0%										91.7%
Guadalupe	100.0%	100.0%	100.0%										100.0%
Quay	96.8%	100.0%	100.0%										98.9%
Rio Arriba	100.0%	100.0%	94.4%										98.1%
San Miguel	97.3%	98.5%	96.1%										97.3%
Sandoval	100.0%	97.0%	97.9%										98.3%
Santa Fe	92.9%	96.8%	95.3%										95.0%
Taos	92.3%	97.4%	97.8%										95.8%
<b>NE Region 2 Total</b>	<b>97.4%</b>	<b>95.6%</b>	<b>97.7%</b>										<b>96.9%</b>
NE Bernalillo	93.2%	94.7%	94.1%										94.0%
NW Bernalillo	95.6%	95.8%	95.8%										95.7%
SE Bernalillo	100.0%	97.9%	100.0%										99.3%
SW Bernalillo	96.1%	98.1%	97.7%										97.3%
Torrance	100.0%	100.0%	96.9%										99.0%
<b>Gen. Region 3 Total</b>	<b>97.0%</b>	<b>97.3%</b>	<b>96.9%</b>										<b>97.1%</b>
Chaves	94.5%	93.7%	98.4%										95.5%
Curry	98.9%	97.6%	97.8%										98.1%
Eddy Artesia	100.0%	100.0%	89.5%										96.5%
Eddy Carlsbad	95.9%	100.0%	96.3%										97.4%
Lea	95.3%	98.2%	98.2%										97.2%
Lincoln	97.0%	87.8%	100.0%										94.9%
Roosevelt													
<b>SE Region 4 Total</b>	<b>96.9%</b>	<b>96.2%</b>	<b>96.7%</b>										<b>96.6%</b>
East Dona Ana	95.2%	98.6%	95.5%										96.4%
Grant	96.2%	98.4%	98.2%										97.6%
Luna	100.0%	98.9%	98.4%										99.1%
Otero	93.9%	95.5%	95.8%										95.1%
South Dona Ana	97.7%	95.4%	95.7%										96.3%
West Dona Ana	97.2%	96.2%	98.5%										97.3%
<b>SW Region 5 Total</b>	<b>96.7%</b>	<b>97.2%</b>	<b>97.0%</b>										<b>97.0%</b>
<b>STATE TOTAL</b>	<b>97.0%</b>	<b>96.8%</b>	<b>96.8%</b>										<b>96.8%</b>

Annual and Auto Renewals are included

**Medicaid: Percentage of Approved and Terminated Renewal EDGs Combined Processed by Certification Date <sup>11</sup>**

	Oct-20	Nov-20	Dec-20	Jan-21	Feb-21	Mar-21	Apr-21	May-21	Jun-21	Jul-21	Aug-21	Sep-21	Average
Cibola	100.0%	99.9%	99.9%										99.9%
McKinley	99.8%	99.8%	99.8%										99.8%
San Juan	99.9%	99.7%	99.9%										99.8%
Sierra	100.0%	100.0%	99.3%										99.8%
Socorro	100.0%	99.7%	99.6%										99.8%
Valencia North	99.7%	99.9%	99.8%										99.8%
Valencia South	100.0%	100.0%	100.0%										100.0%
<b>NW Region 1 Total</b>	<b>99.9%</b>	<b>99.9%</b>	<b>99.8%</b>										<b>99.8%</b>
Colfax	100.0%	99.5%	100.0%										99.8%
Guadalupe	100.0%	100.0%	100.0%										100.0%
Quay	99.8%	100.0%	100.0%										99.9%
Rio Arriba	100.0%	100.0%	99.8%										99.9%
San Miguel	99.9%	99.9%	99.8%										99.9%
Sandoval	100.0%	99.8%	99.9%										99.9%
Santa Fe	99.8%	99.8%	99.8%										99.8%
Taos	99.7%	99.7%	99.7%										99.7%
<b>NE Region 2 Total</b>	<b>99.9%</b>	<b>99.8%</b>	<b>99.9%</b>										<b>99.9%</b>
NE Bernalillo	99.7%	99.7%	99.6%										99.7%
NW Bernalillo	99.8%	99.8%	99.8%										99.8%
SE Bernalillo	100.0%	99.9%	100.0%										100.0%
SW Bernalillo	99.8%	99.8%	99.8%										99.8%
Torrance	100.0%	100.0%	99.8%										99.9%
<b>Gen. Region 3 Total</b>	<b>99.9%</b>	<b>99.8%</b>	<b>99.8%</b>										<b>99.8%</b>
Chaves	99.8%	99.5%	99.9%										99.7%
Curry	100.0%	99.8%	99.9%										99.9%
Eddy Artesia	100.0%	100.0%	99.3%										99.8%
Eddy Carlsbad	99.7%	100.0%	99.3%										99.7%
Lea	99.7%	99.9%	99.9%										99.8%
Lincoln	99.8%	99.0%	100.0%										99.6%
Roosevelt	100.0%												100.0%
<b>SE Region 4 Total</b>	<b>99.9%</b>	<b>99.7%</b>	<b>99.7%</b>										<b>99.8%</b>
East Dona Ana	99.8%	99.9%	99.7%										99.8%
Grant	99.8%	99.9%	99.9%										99.9%
Luna	100.0%	99.9%	99.9%										99.9%
Otero	99.7%	99.7%	99.8%										99.7%
South Dona Ana	99.8%	99.7%	99.8%										99.8%
West Dona Ana	99.9%	96.2%	98.5%										98.2%
<b>SW Region 5 Total</b>	<b>99.8%</b>	<b>99.2%</b>	<b>99.6%</b>										<b>99.6%</b>
<b>STATE TOTAL</b>	<b>99.9%</b>	<b>99.7%</b>	<b>99.8%</b>										<b>99.8%</b>

Administrative, Annual, and Auto Renewals are in

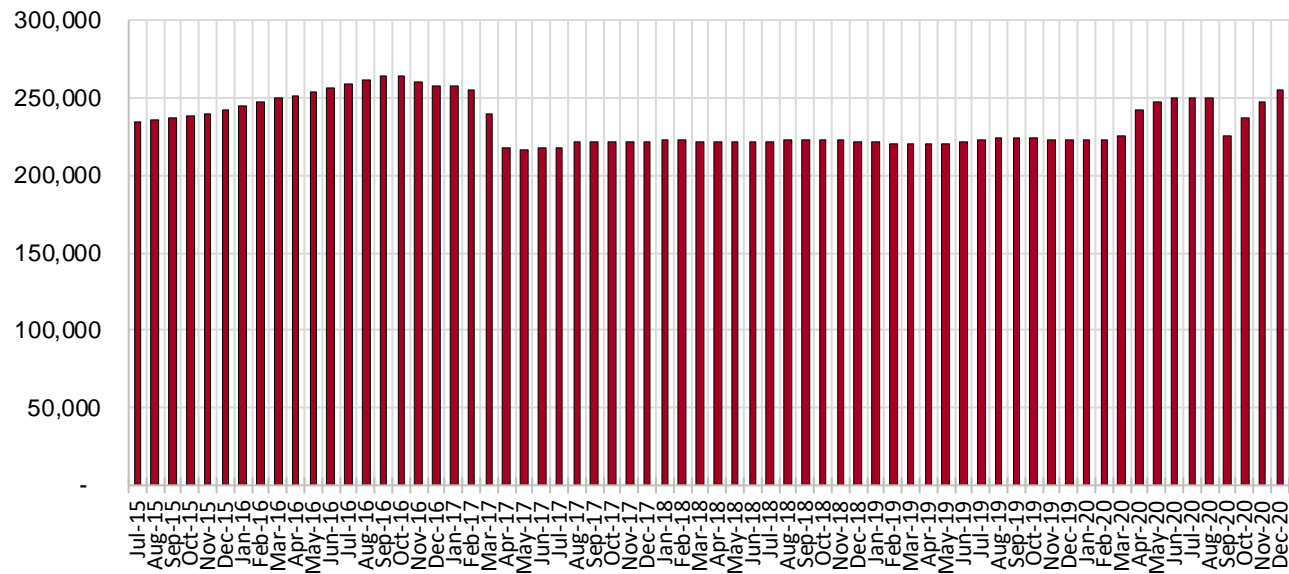
## SNAP Cases by Field Office<sup>6</sup>

Office				Percent Change	
	Dec-19	Nov-20	Dec-20	Dec-19- Dec-20	Nov-20-Dec- 20
Chaves County ISD	7,121	12,645	12,679	78.05%	0.27%
Cibola County ISD	3,580	3,287	3,288	-8.16%	0.03%
Colfax County ISD	1,627	1,738	1,784	9.65%	2.65%
Curry County ISD	7,350	7,938	8,100	10.20%	2.04%
East Dona Ana County ISD	7,964	9,732	9,975	25.25%	2.50%
Eddy Artesia County ISD	1,602	1,860	1,897	18.41%	1.99%
Eddy Carlsbad County ISD	2,989	3,624	3,738	25.06%	3.15%
Grant County ISD	3,985	4,312	4,404	10.51%	2.13%
Guadalupe County ISD	685	741	770	12.41%	3.91%
Hidalgo County ISD	10	7	9	-10.00%	28.57%
Lea County ISD	5,777	7,227	7,412	28.30%	2.56%
Lincoln County ISD	1,851	2,064	2,133	15.24%	3.34%
Luna County ISD	4,359	4,774	4,872	11.77%	2.05%
McKinley County ISD	10,268	10,613	10,688	4.09%	0.71%
Northeast Bernalillo County ISD	20,532	23,454	24,516	19.40%	4.53%
Northwest Bernalillo County ISD	20,557	23,562	24,387	18.63%	3.50%
Otero County ISD	5,776	6,297	6,397	10.75%	1.59%
Quay County ISD	1,323	2,127	2,050	54.95%	-3.62%
Rio Arriba County ISD	6,422	7,061	7,261	13.06%	2.83%
Roosevelt County ISD	0	2	0	N/A	-100.00%
San Juan County ISD	13,970	23,032	24,565	75.84%	6.66%
San Miguel County ISD	4,973	5,327	5,473	10.05%	2.74%
Sandoval County ISD	9,758	7,233	7,928	-18.75%	9.61%
Santa Fe County ISD	9,033	8,613	8,894	-1.54%	3.26%
Sierra County ISD	2,564	2,027	2,150	-16.15%	6.07%
Socorro County ISD	2,776	2,705	2,710	-2.38%	0.18%
South Dona Ana ISD	8,403	8,716	8,946	6.46%	2.64%
Southeast Bernalillo County ISD	11,730	6,601	6,515	-44.46%	-1.30%
Southwest Bernalillo County ISD	19,031	25,986	27,072	42.25%	4.18%
Taos County ISD	4,175	3,733	3,976	-4.77%	6.51%
Torrance County ISD	3,621	3,123	2,961	-18.23%	-5.2%
Valencia North County ISD	8,304	6,379	6,358	-23.43%	-0.33%
Valencia South County ISD	8	60	94	1075.0%	56.67%
West Dona Ana County ISD	10,751	11,133	11,481	6.79%	3.13%
Centralized Units	27	1	0	-100.00%	-100.00%
Statewide Total	222,902	247,734	255,483	14.62%	3.1%

## SNAP Cases by Region<sup>6</sup>

Region	Dec-19	Nov-20	Dec-20	Percent Change	
				Dec-19- Dec-20	Nov-20- Dec-20
Region 1 - NW	41,470	48,103	49,853	20.2%	3.6%
Region 2 - NE	37,996	36,573	38,136	0.4%	4.3%
Region 3 - Central	75,471	82,726	85,451	13.2%	3.3%
Region 4 - SE	26,690	35,360	35,959	34.7%	1.7%
Region 5 - SW	41,248	44,971	46,084	11.7%	2.5%
Centralized Units	27	1	0	-100.0%	-100.0%
<b>Statewide Total</b>	<b>222,902</b>	<b>247,734</b>	<b>255,483</b>	<b>14.62%</b>	<b>3.1%</b>

## SNAP Caseload: SFY-16 to Current



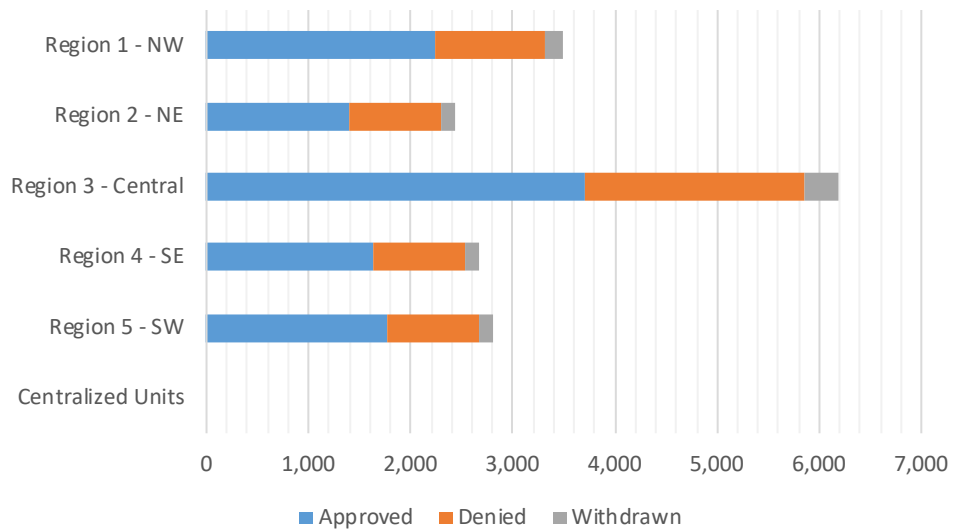
Note: Caseload higher due to COVID 19 emergency

**SNAP Initial Applications by Field Office<sup>4,11</sup>**  
**December 2020**

Office	Approved	Denied	Withdrawn	Total Cases Processed
Chaves County ISD	720	311	58	1,089
Cibola County ISD	66	51	7	124
Colfax County ISD	65	33	7	105
Curry County ISD	284	173	22	479
East Dona Ana County ISD	402	215	22	639
Eddy Artesia County ISD	78	54	6	138
Eddy Carlsbad County ISD	170	106	13	289
Grant County ISD	154	75	13	242
Guadalupe County ISD	30	18	3	51
Hidalgo County ISD	0	0	0	0
Lea County ISD	285	186	34	505
Lincoln County ISD	91	61	5	157
Luna County ISD	160	84	15	259
McKinley County ISD	250	117	15	382
Northeast Bernalillo County ISD	1,183	809	103	2,095
Northwest Bernalillo County ISD	1,026	607	92	1,725
Otero County ISD	255	146	25	426
Quay County ISD	85	36	4	125
Rio Arriba County ISD	268	126	27	421
Roosevelt County ISD	2	1	0	3
San Juan County ISD	1,584	698	121	2,403
San Miguel County ISD	211	132	26	369
Sandoval County ISD	154	187	20	361
Santa Fe County ISD	441	265	32	738
Sierra County ISD	107	46	0	153
Socorro County ISD	65	24	7	96
South Dona Ana ISD	317	161	15	493
Southeast Bernalillo County ISD	147	58	10	215
Southwest Bernalillo County ISD	1,338	668	119	2,125
Taos County ISD	144	106	11	261
Torrance County ISD	20	2	0	22
Valencia North County ISD	146	150	19	315
Valencia South County ISD	15	2	1	18
West Dona Ana County ISD	474	218	46	738
Centralized Units	0	0	0	0
<b>Statewide Total</b>	<b>10,737</b>	<b>5,926</b>	<b>898</b>	<b>17,561</b>

**SNAP Initial Applications by Region<sup>4,11</sup>**  
**December 2020**

Region	Approved	Denied	Withdrawn	Total Cases Processed
Region 1 - NW	2,233	1,088	170	3,491
Region 2 - NE	1,398	903	130	2,431
Region 3 - Central	3,714	2,144	324	6,182
Region 4 - SE	1,630	892	138	2,660
Region 5 - SW	1,762	899	136	2,797
Centralized Units	0	0	0	0
<b>Statewide Total</b>	<b>10,737</b>	<b>5,926</b>	<b>898</b>	<b>17,561</b>



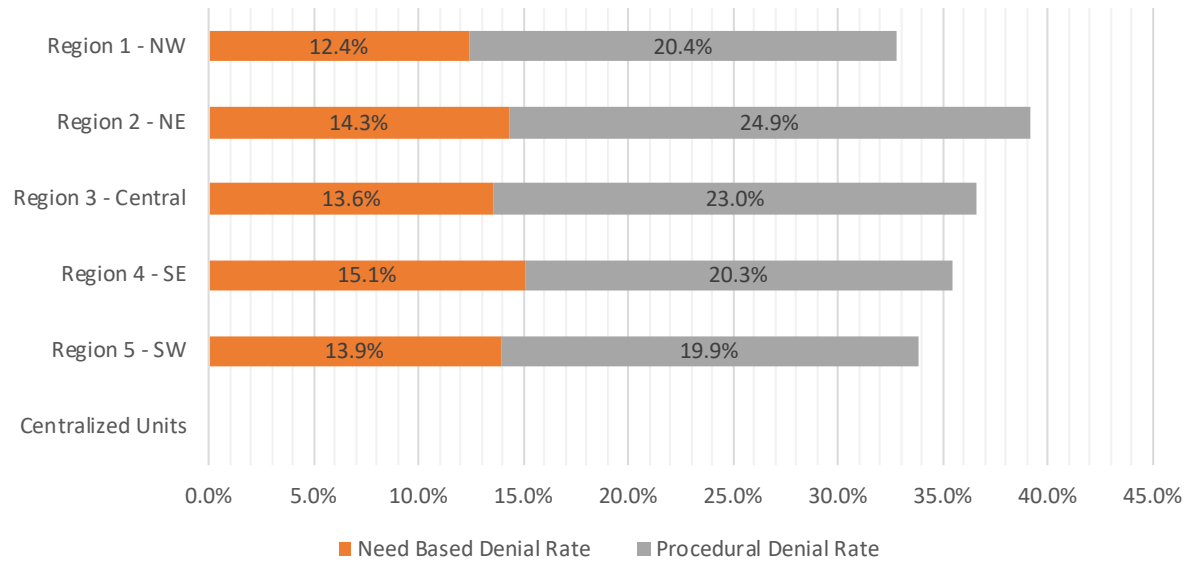


**SNAP Initial Disposition Rates by Field Office<sup>4,11</sup>**  
**December 2020**

Office	Approval Rate	Denial Rate	Need Based Denial Rate	Procedural Denial Rate
Chaves County ISD	69.8%	30.2%	15.1%	15.1%
Cibola County ISD	56.4%	43.6%	8.6%	35.0%
Colfax County ISD	66.3%	33.7%	13.3%	20.4%
Curry County ISD	62.1%	37.9%	14.5%	23.4%
East Dona Ana County ISD	65.2%	34.8%	16.6%	18.2%
Eddy Artesia County ISD	59.1%	40.9%	17.4%	23.5%
Eddy Carlsbad County ISD	61.6%	38.4%	15.9%	22.5%
Grant County ISD	67.2%	32.8%	8.8%	24.0%
Guadalupe County ISD	62.5%	37.5%	16.7%	20.8%
Hidalgo County ISD	0.0%	0.0%	0.0%	0.0%
Lea County ISD	60.5%	39.5%	14.0%	25.5%
Lincoln County ISD	59.9%	40.1%	16.4%	23.7%
Luna County ISD	65.6%	34.4%	12.3%	22.1%
McKinley County ISD	68.1%	31.9%	13.9%	18.0%
Northeast Bernalillo County ISD	59.4%	40.6%	13.8%	26.8%
Northwest Bernalillo County ISD	62.8%	37.2%	14.7%	22.5%
Otero County ISD	63.6%	36.4%	14.5%	21.9%
Quay County ISD	70.2%	29.8%	14.1%	15.7%
Rio Arriba County ISD	68.0%	32.0%	14.5%	17.5%
Roosevelt County ISD	66.7%	33.3%	33.3%	0.0%
San Juan County ISD	69.4%	30.6%	12.9%	17.7%
San Miguel County ISD	61.5%	38.5%	18.1%	20.4%
Sandoval County ISD	45.2%	54.8%	12.6%	42.2%
Santa Fe County ISD	62.5%	37.5%	15.4%	22.1%
Sierra County ISD	69.9%	30.1%	9.8%	20.3%
Socorro County ISD	73.0%	27.0%	0.0%	27.0%
South Dona Ana ISD	66.3%	33.7%	16.1%	17.6%
Southeast Bernalillo County ISD	71.7%	28.3%	18.5%	9.8%
Southwest Bernalillo County ISD	66.7%	33.3%	12.2%	21.1%
Taos County ISD	57.6%	42.4%	8.8%	33.6%
Torrance County ISD	90.9%	9.1%	-4.5%	13.6%
Valencia North County ISD	49.3%	50.7%	12.9%	37.8%
Valencia South County ISD	88.2%	11.8%	11.8%	0.0%
West Dona Ana County ISD	68.5%	31.5%	11.7%	19.8%
Centralized Units	0.0%	0.0%	0.0%	0.0%
Statewide Total	64.4%	35.6%	13.8%	21.8%

**SNAP Initial Disposition Rates by Region<sup>4,11</sup>**  
**December 2020**

Region	Approval Rate	Denial Rate	Need Based Denial Rate	Procedural Denial Rate
Region 1 - NW	67.2%	32.8%	12.4%	20.4%
Region 2 - NE	60.8%	39.2%	14.3%	24.9%
Region 3 - Central	63.4%	36.6%	13.6%	23.0%
Region 4 - SE	64.6%	35.4%	15.1%	20.3%
Region 5 - SW	66.2%	33.8%	13.9%	19.9%
Centralized Units	0.0%	0.0%	0.0%	0.0%
Statewide Total	64.4%	35.6%	13.8%	21.8%



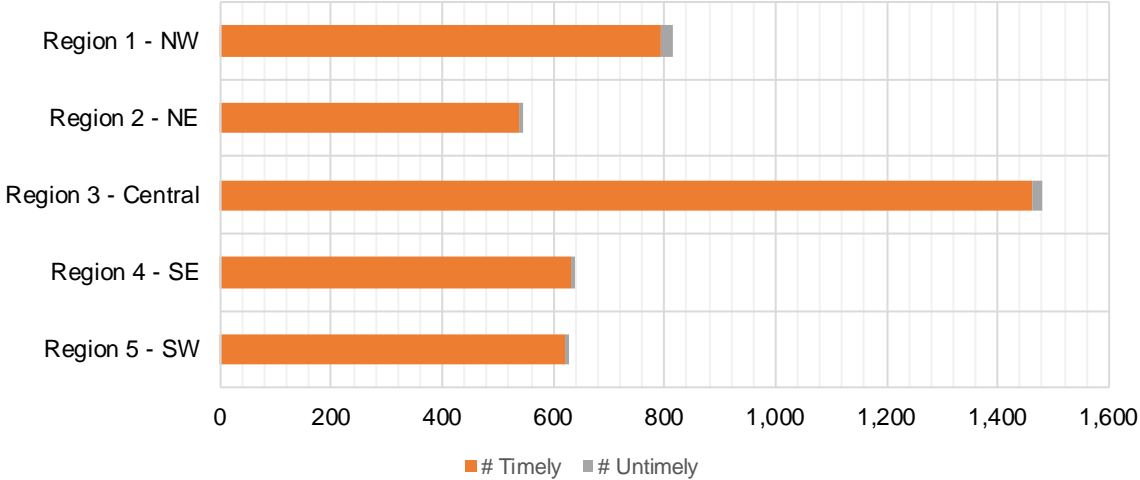
**SNAP Expedite Timeliness by Field Office<sup>13</sup>**  
**December 2020**

Office Name	Total Expedited Approvals	# Timely	# Untimely	Percentage Timely
Chaves County ISD	269	265	4	98.5 %
Cibola County ISD	14	14	0	100.0 %
Colfax County ISD	24	24	0	100.0 %
Curry County ISD	118	117	1	99.2 %
East Dona Ana County ISD	137	135	2	98.5 %
Eddy Artesia County ISD	29	29	0	100.0 %
Eddy Carlsbad County ISD	77	77	0	100.0 %
Grant County ISD	50	49	1	98.0 %
Guadalupe County ISD	7	7	0	100.0 %
Lea County ISD	118	116	2	98.3 %
Lincoln County ISD	29	28	1	96.6 %
Luna County ISD	66	66	0	100.0 %
McKinley County ISD	83	79	4	95.2 %
Northeast Bernalillo County ISD	450	442	8	98.2 %
Northwest Bernalillo County ISD	424	421	3	99.3 %
Otero County ISD	90	89	1	98.9 %
Quay County ISD	25	24	1	96.0 %
Rio Arriba County ISD	125	124	1	99.2 %
Roosevelt County ISD	0	0	0	N/A
San Juan County ISD	619	608	11	98.2 %
San Miguel County ISD	74	72	2	97.3 %
Sandoval County ISD	62	59	3	95.2 %
Santa Fe County ISD	185	182	3	98.4 %
Sierra County ISD	34	33	1	97.1 %
Socorro County ISD	18	17	1	94.4 %
South Dona Ana ISD	109	107	2	98.2 %
Southeast Bernalillo County ISD	62	61	1	98.4 %
Southwest Bernalillo County ISD	535	528	7	98.7 %
Taos County ISD	45	45	0	100.0 %
Torrance County ISD	9	9	0	100.0 %
Valencia North County ISD	46	43	3	93.5 %
West Dona Ana County ISD	177	175	2	98.9 %
<b>Statewide Total</b>	<b>4,110</b>	<b>4,045</b>	<b>65</b>	<b>98.4 %</b>

**SNAP Expedite Timeliness by Region<sup>13</sup>**  
**December 2020**

Region	Total Expedited Approvals	# Timely	# Untimely	Percentage Timely
Region 1 - NW	814	794	20	97.5%
Region 2 - NE	547	537	10	98.2%
Region 3 - Central	1,480	1,461	19	98.7%
Region 4 - SE	640	632	8	98.8%
Region 5 - SW	629	621	8	98.7%
Statewide Total	4,110	4,045	65	98.4%

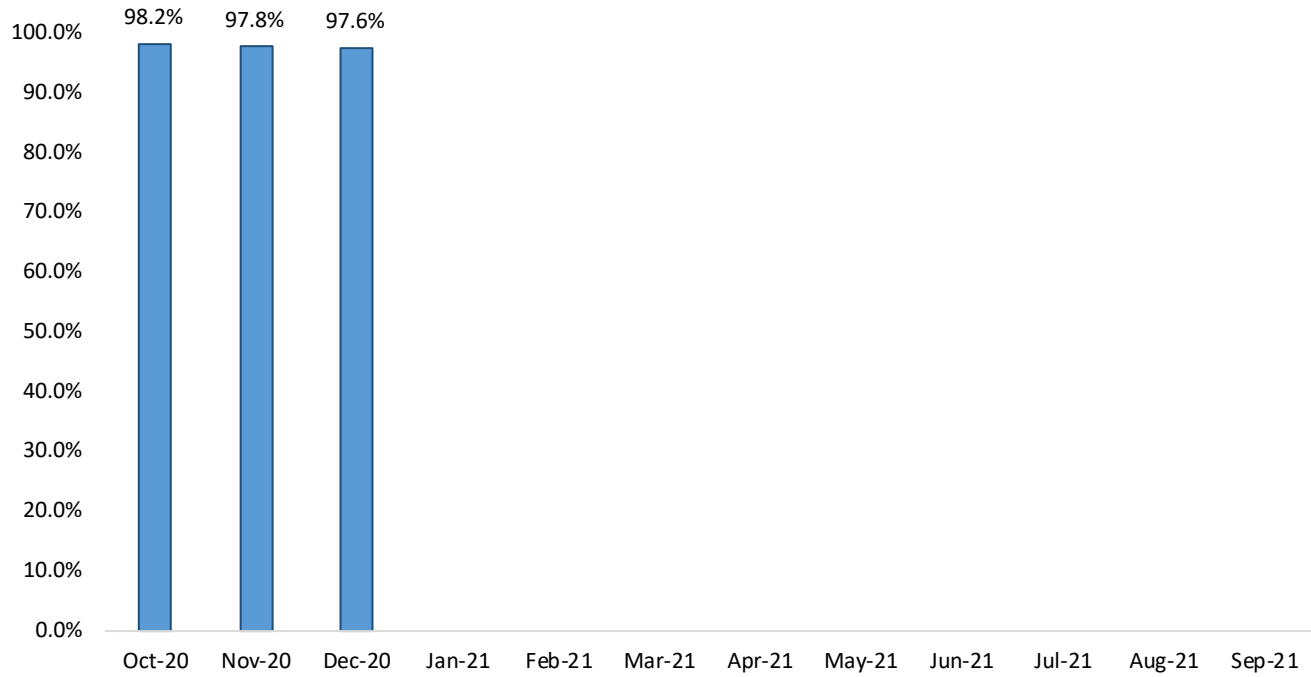
**SNAP Expedite - Timeliness**



**SNAP: Percentage of Applications Processed Timely<sup>13</sup>**

	Oct-20	Nov-20	Dec-20	Jan-21	Feb-21	Mar-21	Apr-21	May-21	Jun-21	Jul-21	Aug-21	Sep-21	Average
APT	98.2%	97.8%	97.6%										97.9%

**SNAP Application Processing Timeliness (APT)**



**SNAP Non-Expedite: Percentage of Initial Applications Processed Timely by Field Office<sup>13</sup>**

	Oct-20	Nov-20	Dec-20	Jan-21	Feb-21	Mar-21	Apr-21	May-21	Jun-21	Jul-21	Aug-21	Sep-21	Average
Cibola	98.6%	96.9%	97.2%										97.6%
McKinley	97.7%	95.5%	93.9%										95.7%
San Juan	98.4%	97.7%	97.8%										98.0%
Sierra	97.8%	93.5%	96.4%										95.9%
Socorro	97.7%	95.5%	95.1%										96.1%
Valencia North	97.9%	100.0%	98.1%										98.7%
Valencia South	100.0%	100.0%	100.0%										
<b>NW Region 1 Total</b>	<b>98.2%</b>	<b>97.0%</b>	<b>97.2%</b>										<b>97.5%</b>
Colfax	99.1%	100.0%	98.7%										99.3%
Guadalupe	96.3%	100.0%	97.6%										98.0%
Quay	99.1%	98.3%	97.0%										98.1%
Rio Arriba	97.5%	97.4%	98.0%										97.6%
San Miguel	97.8%	96.7%	95.8%										96.8%
Sandoval	99.0%	97.5%	96.2%										97.6%
Santa Fe	95.2%	97.8%	98.0%										97.0%
Taos	98.2%	98.6%	97.6%										98.1%
<b>NE Region 2 Total</b>	<b>97.4%</b>	<b>97.8%</b>	<b>97.3%</b>										<b>97.5%</b>
NE Bernalillo	97.5%	96.2%	95.9%										96.5%
NW Bernalillo	98.2%	97.9%	97.9%										98.0%
SE Bernalillo	97.7%	96.6%	98.5%										97.6%
SW Bernalillo	98.5%	97.5%	97.1%										97.7%
Torrance	97.9%	96.6%	100.0%										98.2%
<b>Gen. Region 3 Total</b>	<b>98.0%</b>	<b>97.1%</b>	<b>96.9%</b>										<b>97.3%</b>
Chaves	98.5%	98.4%	99.1%										98.7%
Curry	98.1%	97.1%	96.1%										97.1%
Eddy Artesia	96.9%	98.4%	97.3%										97.5%
Eddy Carlsbad	98.3%	97.8%	97.6%										97.9%
Lea	98.1%	97.0%	98.7%										97.9%
Lincoln	98.1%	100.0%	95.5%										97.9%
Roosevelt	100.0%	100.0%	100.0%										100.0%
<b>SE Region 4 Total</b>	<b>98.2%</b>	<b>98.2%</b>	<b>98.0%</b>										<b>98.1%</b>
East Dona Ana	98.7%	98.6%	98.2%										98.5%
Grant	99.2%	98.2%	97.9%										98.4%
Luna	98.9%	97.2%	97.9%										98.0%
Otero	99.5%	99.1%	97.9%										98.8%
South Dona Ana	99.3%	98.0%	98.4%										98.6%
West Dona Ana	99.1%	98.0%	98.0%										98.4%
<b>SW Region 5 Total</b>	<b>99.1%</b>	<b>98.2%</b>	<b>98.1%</b>										<b>98.5%</b>
<b>STATE TOTAL</b>	<b>98.2%</b>	<b>97.5%</b>	<b>97.4%</b>										<b>97.7%</b>

**SNAP Expedite: Percentage of Initial Applications Processed Timely by Field Office<sup>13</sup>**

	Oct-20	Nov-20	Dec-20	Jan-21	Feb-21	Mar-21	Apr-21	May-21	Jun-21	Jul-21	Aug-21	Sep-21	Average
Cibola	100.0%	92.0%	100.0%										97.3%
McKinley	96.2%	94.5%	95.3%										95.3%
San Juan	97.7%	98.9%	98.2%										98.3%
Sierra	100.0%	83.3%	97.1%										93.5%
Socorro	96.9%	100.0%	95.0%										97.3%
Valencia North	97.9%	93.6%	93.5%										95.0%
Valencia South	100.0%		100%										
<b>NW Region 1 Total</b>	<b>97.7%</b>	<b>97.5%</b>	<b>97.6%</b>										<b>97.6%</b>
Colfax	100.0%	100.0%	100.0%										100.0%
Guadalupe	100.0%	100.0%	100.0%										100.0%
Quay	95.6%	100.0%	96.9%										97.5%
Rio Arriba	98.8%	98.5%	99.2%										98.8%
San Miguel	99.2%	100.0%	97.2%										98.8%
Sandoval	96.4%	98.1%	94.7%										96.4%
Santa Fe	96.0%	98.1%	98.4%										97.5%
Taos	91.5%	98.2%	100.0%										96.6%
<b>NE Region 2 Total</b>	<b>97.2%</b>	<b>98.7%</b>	<b>98.2%</b>										<b>98.0%</b>
NE Bernalillo	98.3%	98.5%	98.2%										98.3%
NW Bernalillo	98.3%	99.5%	99.0%										98.9%
SE Bernalillo	100.0%	100.0%	98.3%										99.4%
SW Bernalillo	99.7%	98.9%	98.7%										99.1%
Torrance	100.0%	100.0%	100.0%										100.0%
<b>Gen. Region 3 Total</b>	<b>98.9%</b>	<b>99.0%</b>	<b>98.6%</b>										<b>98.8%</b>
Chaves	99.1%	99.3%	98.5%										99.0%
Curry	96.6%	98.4%	99.2%										98.1%
Eddy Artesia	94.9%	100.0%	100.0%										98.3%
Eddy Carlsbad	98.1%	97.3%	100.0%										98.5%
Lea	98.0%	97.4%	98.2%										97.9%
Lincoln	100.0%	100.0%	96.7%										98.9%
Roosevelt	100.0%	100.0%	100.0%										100.0%
<b>SE Region 4 Total</b>	<b>98.1%</b>	<b>98.6%</b>	<b>98.8%</b>										<b>98.5%</b>
East Dona Ana	98.3%	98.6%	98.6%										98.5%
Grant	100.0%	95.7%	97.9%										97.9%
Luna	100.0%	100.0%	100.0%										100.0%
Otero	97.7%	99.3%	98.8%										98.6%
South Dona Ana	99.3%	99.2%	98.3%										98.9%
West Dona Ana	98.8%	98.5%	98.9%										98.7%
<b>SW Region 5 Total</b>	<b>98.8%</b>	<b>98.7%</b>	<b>98.7%</b>										<b>98.7%</b>
<b>STATE TOTAL</b>	<b>98.3%</b>	<b>98.6%</b>	<b>98.4%</b>										<b>98.4%</b>

**SNAP: Percentage of Denied Initial Applications Processed Within 30 Days by Field Office<sup>13</sup>**

	Oct-20	Nov-20	Dec-20	Jan-21	Feb-21	Mar-21	Apr-21	May-21	Jun-21	Jul-21	Aug-21	Sep-21	Average
Cibola	100.0%	98.5%	96.6%										98.4%
McKinley	95.8%	94.3%	93.2%										94.4%
San Juan	98.1%	96.9%	97.8%										97.6%
Sierra	97.3%	93.3%	93.5%										94.7%
Socorro	97.4%	92.3%	93.5%										94.4%
Valencia North	97.9%	93.7%	97.6%										96.4%
Valencia South	100.0%	100.0%	100.0%										100.0%
<b>NW Region 1 Total</b>	<b>98.1%</b>	<b>95.6%</b>	<b>96.0%</b>										<b>96.6%</b>
Colfax	100.0%	100.0%	100.0%										100.0%
Guadalupe	95.2%	100.0%	100.0%										98.4%
Quay	96.6%	100.0%	92.5%										96.4%
Rio Arriba	95.5%	95.2%	96.7%										95.8%
San Miguel	99.2%	97.7%	94.3%										97.1%
Sandoval	99.1%	98.0%	97.6%										98.2%
Santa Fe	91.8%	97.2%	98.7%										95.9%
Taos	96.7%	98.8%	97.4%										97.6%
<b>NE Region 2 Total</b>	<b>96.8%</b>	<b>98.4%</b>	<b>97.2%</b>										<b>97.4%</b>
NE Bernalillo	94.6%	95.0%	94.4%										94.7%
NW Bernalillo	96.7%	97.8%	97.4%										97.3%
SE Bernalillo	95.8%	93.8%	97.1%										95.6%
SW Bernalillo	98.5%	97.6%	95.9%										97.3%
Torrance	97.6%	97.0%	100.0%										98.2%
<b>Gen. Region 3 Total</b>	<b>96.6%</b>	<b>96.2%</b>	<b>97.0%</b>										<b>96.6%</b>
Chaves	96.8%	98.3%	98.6%										97.9%
Curry	95.3%	95.6%	96.4%										95.8%
Eddy Artesia	94.8%	98.3%	96.7%										96.6%
Eddy Carlsbad	97.6%	95.8%	96.6%										96.7%
Lea	97.4%	99.5%	98.2%										98.4%
Lincoln	96.8%	95.7%	93.9%										95.5%
Roosevelt	100.0%		100.0%										100.0%
<b>SE Region 4 Total</b>	<b>97.0%</b>	<b>97.2%</b>	<b>97.2%</b>										<b>97.1%</b>
East Dona Ana	98.3%	98.6%	97.9%										98.3%
Grant	100.0%	97.6%	96.6%										98.1%
Luna	96.9%	95.6%	96.0%										96.2%
Otero	99.3%	98.0%	96.5%										97.9%
South Dona Ana	99.2%	97.0%	98.3%										98.2%
West Dona Ana	98.2%	97.4%	97.7%										97.8%
<b>SW Region 5 Total</b>	<b>98.7%</b>	<b>97.4%</b>	<b>97.2%</b>										<b>97.7%</b>
<b>STATE TOTAL</b>	<b>97.4%</b>	<b>97.0%</b>	<b>96.9%</b>										<b>97.1%</b>



**SNAP: Combined Approvals and Denials Percentage of Initial Applications Processed Timely by Field Office<sup>13</sup>**

	Oct-20	Nov-20	Dec-20	Jan-21	Feb-21	Mar-21	Apr-21	May-21	Jun-21	Jul-21	Aug-21	Sep-21	Average
Cibola	98.9%	96.1%	97.6%										97.5%
McKinley	97.3%	95.1%	94.2%										95.5%
San Juan	98.3%	97.9%	98.0%										98.1%
Sierra	98.1%	93.6%	96.7%										96.1%
Socorro	97.4%	94.3%	94.8%										95.5%
Valencia North	97.9%	95.0%	97.5%										96.8%
Valencia South	100.0%	100.0%	100.0%										100.0%
<b>NW Region 1 Total</b>	<b>98.3%</b>	<b>96.0%</b>	<b>97.0%</b>										<b>97.1%</b>
Colfax	99.3%	100.0%	99.0%										99.4%
Guadalupe	96.8%	100.0%	98.0%										98.3%
Quay	98.1%	98.8%	96.8%										97.9%
Rio Arriba	97.9%	97.6%	98.6%										98.0%
San Miguel	98.2%	98.0%	95.7%										97.3%
Sandoval	98.3%	97.8%	96.1%										97.4%
Santa Fe	95.3%	98.0%	98.1%										97.1%
Taos	96.7%	98.8%	98.1%										97.9%
<b>NE Region 2 Total</b>	<b>97.6%</b>	<b>98.6%</b>	<b>97.6%</b>										<b>97.9%</b>
NE Bernalillo	97.6%	96.9%	96.4%										97.0%
NW Bernalillo	98.2%	98.3%	98.2%										98.2%
SE Bernalillo	98.7%	97.5%	98.6%										98.3%
SW Bernalillo	98.9%	97.9%	97.5%										98.1%
Torrance	98.3%	96.8%	100.0%										98.4%
<b>Gen. Region 3 Total</b>	<b>98.3%</b>	<b>97.5%</b>	<b>98.1%</b>										<b>98.0%</b>
Chaves	98.6%	98.6%	99.0%										98.7%
Curry	97.7%	97.4%	97.3%										97.5%
Eddy Artesia	96.4%	98.6%	97.8%										97.6%
Eddy Carlsbad	98.2%	97.4%	98.3%										98.0%
Lea	98.0%	99.2%	98.4%										98.5%
Lincoln	98.4%	97.5%	95.5%										97.1%
Roosevelt	100.0%	100.0%	100.0%										100.0%
<b>SE Region 4 Total</b>	<b>98.2%</b>	<b>98.4%</b>	<b>98.0%</b>										<b>98.2%</b>
East Dona Ana	98.6%	98.6%	98.3%										98.5%
Grant	99.4%	97.5%	97.9%										98.3%
Luna	99.1%	98.0%	98.5%										98.5%
Otero	99.0%	98.9%	98.1%										98.7%
South Dona Ana	99.2%	98.3%	98.4%										98.6%
West Dona Ana	99.0%	98.2%	98.0%										98.4%
<b>SW Region 5 Total</b>	<b>99.1%</b>	<b>98.3%</b>	<b>98.2%</b>										<b>98.5%</b>
<b>STATE TOTAL</b>	<b>98.2%</b>	<b>97.8%</b>	<b>97.7%</b>										<b>97.9%</b>

**SNAP Renewals Processed by Field Office<sup>20</sup>**  
**December 2020**

Office	Approvals	Closures	Need Based Closures	Procedural Closures
Chaves County ISD	252	284	265	19
Cibola County ISD	88	136	136	0
Colfax County ISD	57	44	42	2
Curry County ISD	154	232	223	9
East Dona Ana County ISD	277	160	147	13
Eddy Artesia County ISD	38	35	30	5
Eddy Carlsbad County ISD	76	71	66	5
Grant County ISD	134	59	55	4
Guadalupe County ISD	33	15	13	2
Hidalgo County ISD	0	0	0	0
Lea County ISD	137	224	210	14
Lincoln County ISD	51	42	39	3
Luna County ISD	167	57	53	4
McKinley County ISD	266	492	491	1
Northeast Bernalillo County ISD	297	789	776	13
Northwest Bernalillo County ISD	336	617	595	22
Otero County ISD	196	94	87	7
Quay County ISD	46	26	25	1
Rio Arriba County ISD	193	168	166	2
Roosevelt County ISD	0	0	0	0
San Juan County ISD	531	715	699	16
San Miguel County ISD	151	170	166	4
Sandoval County ISD	347	162	155	7
Santa Fe County ISD	183	197	194	3
Sierra County ISD	40	68	67	1
Socorro County ISD	54	91	90	1
South Dona Ana ISD	335	154	137	17
Southeast Bernalillo County ISD	112	233	232	1
Southwest Bernalillo County ISD	630	673	644	29
Taos County ISD	68	119	116	3
Torrance County ISD	8	87	87	0
Valencia North County ISD	123	235	233	2
Valencia South County ISD	3	1	1	0
West Dona Ana County ISD	392	181	172	9
Centralized Units	0	0	0	0

Statewide Total	5,775	6,631	6,412	219
-----------------	-------	-------	-------	-----

*Note: Renewal approvals based on COVID-19 extensions for periodic reviews are not included in total.*

**SNAP Renewal Disposition Rates by Field Office<sup>20</sup>**  
**December 2020**

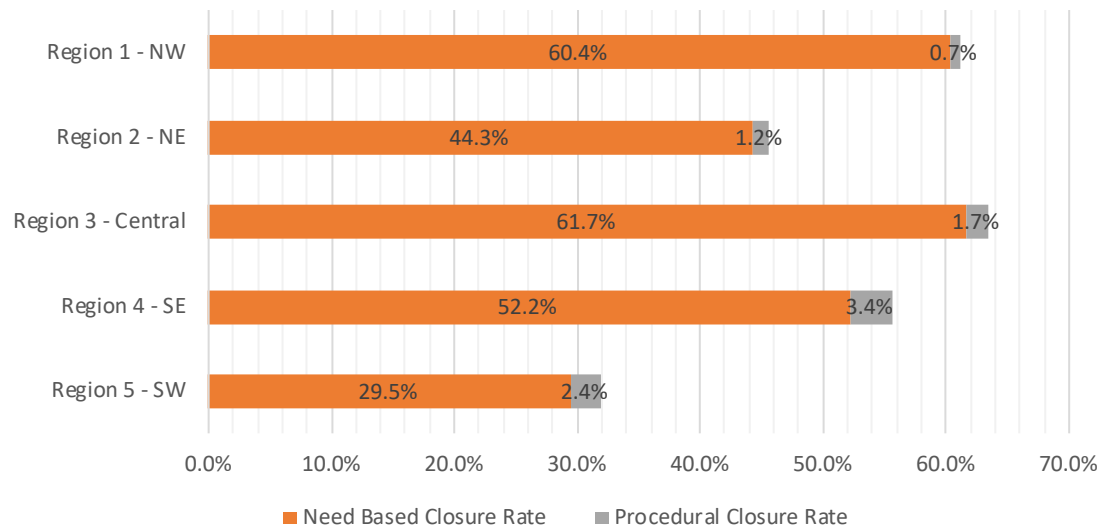
Office	Approval Rate	Closure Rate	Need Based Closure Rate	Procedural Closure Rate
Chaves County ISD	47.0%	53.0%	49.4%	3.5%
Cibola County ISD	39.3%	60.7%	60.7%	0.0%
Colfax County ISD	56.4%	43.6%	41.6%	2.0%
Curry County ISD	39.9%	60.1%	57.8%	2.3%
East Dona Ana County ISD	63.4%	36.6%	33.6%	3.0%
Eddy Artesia County ISD	52.1%	47.9%	41.1%	6.8%
Eddy Carlsbad County ISD	51.7%	48.3%	44.9%	3.4%
Grant County ISD	69.4%	30.6%	28.5%	2.1%
Guadalupe County ISD	68.8%	31.3%	27.1%	4.2%
Hidalgo County ISD	0.0%	0.0%	0.0%	0.0%
Lea County ISD	38.0%	62.0%	58.2%	3.9%
Lincoln County ISD	54.8%	45.2%	41.9%	3.2%
Luna County ISD	74.6%	25.4%	23.7%	1.8%
McKinley County ISD	35.1%	64.9%	64.8%	0.1%
Northeast Bernalillo County ISD	27.3%	72.7%	71.5%	1.2%
Northwest Bernalillo County ISD	35.3%	64.7%	62.4%	2.3%
Otero County ISD	67.6%	32.4%	30.0%	2.4%
Quay County ISD	63.9%	36.1%	34.7%	1.4%
Rio Arriba County ISD	53.5%	46.5%	46.0%	0.6%
Roosevelt County ISD	0.0%	0.0%	0.0%	0.0%
San Juan County ISD	42.6%	57.4%	56.1%	1.3%
San Miguel County ISD	47.0%	53.0%	51.7%	1.2%
Sandoval County ISD	68.2%	31.8%	30.5%	1.4%
Santa Fe County ISD	48.2%	51.8%	51.1%	0.8%
Sierra County ISD	37.0%	63.0%	62.0%	0.9%
Socorro County ISD	37.2%	62.8%	62.1%	0.7%
South Dona Ana ISD	68.5%	31.5%	28.0%	3.5%
Southeast Bernalillo County ISD	32.5%	67.5%	67.2%	0.3%
Southwest Bernalillo County ISD	48.3%	51.7%	49.4%	2.2%
Taos County ISD	36.4%	63.6%	62.0%	1.6%
Torrance County ISD	8.4%	91.6%	91.6%	0.0%
Valencia North County ISD	34.4%	65.6%	65.1%	0.6%
Valencia South County ISD	75.0%	25.0%	25.0%	0.0%
West Dona Ana County ISD	68.4%	31.6%	30.0%	1.6%
Centralized Units	0.0%	0.0%	0.0%	0.0%

Statewide Total	46.6%	53.4%	51.7%	1.8%
-----------------	-------	-------	-------	------

*Note: Renewal approvals based on COVID-19 extensions for periodic reviews are not included in total.*

**SNAP Renewal Disposition Rates by Region<sup>20</sup>**  
**December 2020**

Region	Approval Rate	Closure Rate	Need Based Closure Rate	Procedural Closure Rate
Region 1 - NW	38.9%	61.1%	60.4%	0.7%
Region 2 - NE	54.5%	45.5%	44.3%	1.2%
Region 3 - Central	36.6%	63.4%	61.7%	1.7%
Region 4 - SE	44.4%	55.6%	52.2%	3.4%
Region 5 - SW	68.0%	32.0%	29.5%	2.4%
Centralized Units				
<b>Statewide Total</b>	<b>46.6%</b>	<b>53.4%</b>	<b>51.7%</b>	<b>1.8%</b>



**SNAP: Percentage of Approved Renewal Applications Processed<sup>11</sup>**

	Oct-20	Nov-20	Dec-20	Jan-21	Feb-21	Mar-21	Apr-21	May-21	Jun-21	Jul-21	Aug-21	Sep-21	Average
Cibola	100.0%	100.0%	100.0%										100.0%
McKinley	100.0%	100.0%	100.0%										100.0%
San Juan	100.0%	100.0%	100.0%										100.0%
Sierra	100.0%	100.0%	100.0%										100.0%
Socorro	100.0%	100.0%	100.0%										100.0%
Valencia North	100.0%	100.0%	100.0%										100.0%
Valencia South	100.0%	100.0%	100.0%										100.0%
<b>NW Region 1 Total</b>	<b>100.0%</b>	<b>100.0%</b>	<b>100.0%</b>										<b>100.0%</b>
Colfax	100.0%	100.0%	100.0%										100.0%
Guadalupe	100.0%	100.0%	100.0%										100.0%
Quay	100.0%	100.0%	100.0%										100.0%
Rio Arriba	100.0%	100.0%	100.0%										100.0%
San Miguel	100.0%	100.0%	100.0%										100.0%
Sandoval	100.0%	100.0%	100.0%										100.0%
Santa Fe	100.0%	100.0%	100.0%										100.0%
Taos	100.0%	100.0%	100.0%										100.0%
<b>NE Region 2 Total</b>	<b>100.0%</b>	<b>100.0%</b>	<b>100.0%</b>										<b>100.0%</b>
NE Bernalillo	100.0%	100.0%	100.0%										100.0%
NW Bernalillo	100.0%	100.0%	100.0%										100.0%
SE Bernalillo	100.0%	100.0%	100.0%										100.0%
SW Bernalillo	100.0%	100.0%	100.0%										100.0%
Torrance	100.0%	100.0%	100.0%										100.0%
<b>Gen. Region 3 Total</b>	<b>100.0%</b>	<b>100.0%</b>	<b>100.0%</b>										<b>100.0%</b>
Chaves	100.0%	100.0%	100.0%										100.0%
Curry	100.0%	100.0%	100.0%										100.0%
Eddy Artesia	100.0%	100.0%	100.0%										100.0%
Eddy Carlsbad	100.0%	100.0%	100.0%										100.0%
Lea	100.0%	100.0%	100.0%										100.0%
Lincoln	100.0%	100.0%	100.0%										100.0%
Roosevelt													
<b>SE Region 4 Total</b>	<b>100.0%</b>	<b>100.0%</b>	<b>100.0%</b>										<b>100.0%</b>
East Dona Ana	100.0%	100.0%	100.0%										100.0%
Grant	100.0%	100.0%	100.0%										100.0%
Luna	100.0%	100.0%	100.0%										100.0%
Otero	100.0%	100.0%	100.0%										100.0%
South Dona Ana	100.0%	100.0%	100.0%										100.0%
West Dona Ana	100.0%	100.0%	100.0%										100.0%
<b>SW Region 5 Total</b>	<b>100.0%</b>	<b>100.0%</b>	<b>100.0%</b>										<b>100.0%</b>
<b>STATE TOTAL</b>	<b>100.0%</b>	<b>100.0%</b>	<b>100.0%</b>										<b>100.0%</b>

*If a renewal packet was received on or before 15th of the renewal month, the case shall be considered timely if the case was processed by renewal due date*

Recertifications – If a Recertification cannot be processed under normal processing, ASPEN will automatically extend certification periods for households scheduled to recertify in March, April, May and June 2020, for 6 months until September, October and November 2020.

**SNAP: Percentage of Approved Renewal Applications Processed<sup>11</sup>**

	Oct-20	Nov-20	Dec-20	Jan-21	Feb-21	Mar-21	Apr-21	May-21	Jun-21	Jul-21	Aug-21	Sep-21	Average
Cibola	100.0%	100.0%	100.0%										100.0%
McKinley	100.0%	100.0%	100.0%										100.0%
San Juan	100.0%	100.0%	100.0%										100.0%
Sierra	100.0%	100.0%	100.0%										100.0%
Socorro	100.0%		100.0%										100.0%
Valencia North	100.0%	100.0%	100.0%										100.0%
Valencia South	100.0%		100.0%										100.0%
<b>NW Region 1 Total</b>	<b>100.0%</b>	<b>100.0%</b>	<b>100.0%</b>										<b>100.0%</b>
Colfax	100.0%	100.0%	100.0%										100.0%
Guadalupe	100.0%	100.0%	100.0%										100.0%
Quay	100.0%	100.0%	100.0%										100.0%
Rio Arriba	100.0%	100.0%	100.0%										100.0%
San Miguel	100.0%	100.0%	100.0%										100.0%
Sandoval	100.0%	100.0%	100.0%										100.0%
Santa Fe	100.0%	100.0%	100.0%										100.0%
Taos	100.0%	100.0%	100.0%										100.0%
<b>NE Region 2 Total</b>	<b>100.0%</b>	<b>100.0%</b>	<b>100.0%</b>										<b>100.0%</b>
NE Bernalillo	100.0%	100.0%	100.0%										100.0%
NW Bernalillo	100.0%	100.0%	100.0%										100.0%
SE Bernalillo	100.0%	100.0%	100.0%										100.0%
SW Bernalillo	100.0%	100.0%	100.0%										100.0%
Torrance	100.0%	100.0%											100.0%
<b>Gen. Region 3 Total</b>	<b>100.0%</b>	<b>100.0%</b>	<b>100.0%</b>										<b>100.0%</b>
Chaves	100.0%	100.0%	100.0%										100.0%
Curry	100.0%	100.0%	100.0%										100.0%
Eddy Artesia	100.0%	100.0%	100.0%										100.0%
Eddy Carlsbad	100.0%	100.0%	100.0%										100.0%
Lea	100.0%	100.0%	100.0%										100.0%
Lincoln	100.0%	100.0%	100.0%										100.0%
Roosevelt													
<b>SE Region 4 Total</b>	<b>100.0%</b>	<b>100.0%</b>	<b>100.0%</b>										<b>100.0%</b>
East Dona Ana	100.0%	100.0%	100.0%										100.0%
Grant	100.0%	100.0%	100.0%										100.0%
Luna	100.0%	100.0%	100.0%										100.0%
Otero	100.0%	100.0%	100.0%										100.0%
South Dona Ana	100.0%	100.0%	100.0%										100.0%
West Dona Ana	100.0%	100.0%	100.0%										100.0%
<b>SW Region 5 Total</b>	<b>100.0%</b>	<b>100.0%</b>	<b>100.0%</b>										<b>100.0%</b>
<b>STATE TOTAL</b>	<b>100.0%</b>	<b>100.0%</b>	<b>100.0%</b>										<b>100.0%</b>

*Only includes cases in which the Renewal Packet was received by the 15th of the month*

Recertifications – If a Recertification cannot be processed under normal processing, ASPEN will automatically extend certification periods for households scheduled to recertify in March, April, May and June 2020, for 6 months until September, October and November 2020.

SNAP: Percentage of Terminations Renewal Applications Processed <sup>11</sup>													
	Oct-20	Nov-20	Dec-20	Jan-21	Feb-21	Mar-21	Apr-21	May-21	Jun-21	Jul-21	Aug-21	Sep-21	Average
Cibola	100.0%	100.0%	100.0%										100.0%
McKinley	100.0%	100.0%	100.0%										100.0%
San Juan	100.0%	100.0%	100.0%										100.0%
Sierra	100.0%	100.0%	100.0%										100.0%
Socorro	100.0%	100.0%	100.0%										100.0%
Valencia North	100.0%	100.0%	100.0%										100.0%
Valencia South	100.0%	100.0%	100.0%										100.0%
<b>NW Region 1 Total</b>	<b>100.0%</b>	<b>100.0%</b>	<b>100.0%</b>										<b>100.0%</b>
Colfax	100.0%	100.0%	100.0%										100.0%
Guadalupe	100.0%	100.0%	100.0%										100.0%
Quay	100.0%	100.0%	100.0%										100.0%
Rio Arriba	100.0%	100.0%	100.0%										100.0%
San Miguel	100.0%	100.0%	100.0%										100.0%
Sandoval	100.0%	100.0%	100.0%										100.0%
Santa Fe	100.0%	100.0%	100.0%										100.0%
Taos	100.0%	100.0%	100.0%										100.0%
<b>NE Region 2 Total</b>	<b>100.0%</b>	<b>100.0%</b>	<b>100.0%</b>										<b>100.0%</b>
NE Bernalillo	100.0%	100.0%	100.0%										100.0%
NW Bernalillo	100.0%	100.0%	100.0%										100.0%
SE Bernalillo	100.0%	100.0%	100.0%										100.0%
SW Bernalillo	100.0%	100.0%	100.0%										100.0%
Torrance	100.0%	100.0%	100.0%										100.0%
<b>Gen. Region 3 Total</b>	<b>100.0%</b>	<b>100.0%</b>	<b>100.0%</b>										<b>100.0%</b>
Chaves	100.0%	100.0%	100.0%										100.0%
Curry	100.0%	100.0%	100.0%										100.0%
Eddy Artesia	100.0%	100.0%	100.0%										100.0%
Eddy Carlsbad	100.0%	100.0%	100.0%										100.0%
Lea	100.0%	100.0%	100.0%										100.0%
Lincoln	100.0%	100.0%	100.0%										100.0%
Roosevelt													
<b>SE Region 4 Total</b>	<b>100.0%</b>	<b>100.0%</b>	<b>100.0%</b>										<b>100.0%</b>
East Dona Ana	100.0%	100.0%	100.0%										100.0%
Grant	100.0%	100.0%	100.0%										100.0%
Luna	100.0%	100.0%	100.0%										100.0%
Otero	100.0%	100.0%	100.0%										100.0%
South Dona Ana	100.0%	100.0%	100.0%										100.0%
West Dona Ana	100.0%	100.0%	100.0%										100.0%
<b>SW Region 5 Total</b>	<b>100.0%</b>	<b>100.0%</b>	<b>100.0%</b>										<b>100.0%</b>
<b>STATE TOTAL</b>	<b>100.0%</b>	<b>100.0%</b>	<b>100.0%</b>										<b>100.0%</b>

Includes cases for which no renewal application was received.

Recertifications – If a Recertification cannot be processed under normal processing, ASPEN will automatically extend certification periods for households scheduled to recertify in March, April, May and June 2020, for 6 months until September, October and November 2020.

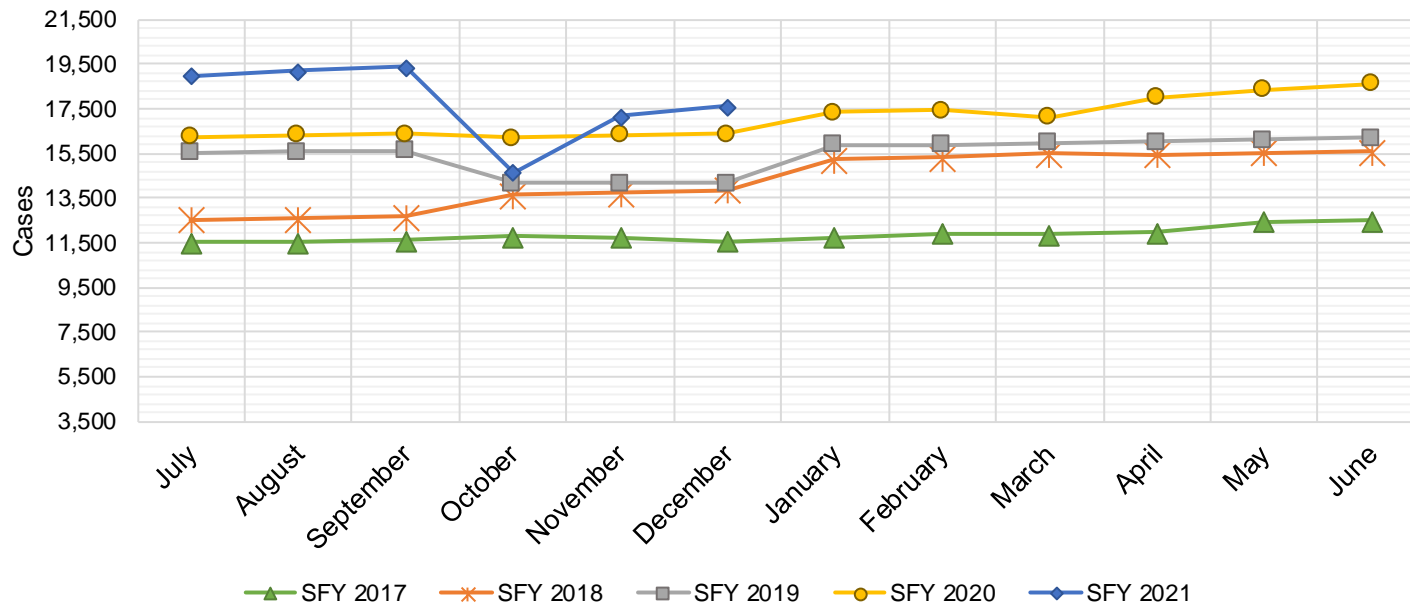
**SNAP: Combined Percentage of Approved and Terminated Renewal Applications Processed<sup>11</sup>**

	Oct-20	Nov-20	Dec-20	Jan-21	Feb-21	Mar-21	Apr-21	May-21	Jun-21	Jul-21	Aug-21	Sep-21	Average
Cibola	100.0%	100.0%	100.0%										100.0%
McKinley	100.0%	100.0%	100.0%										100.0%
San Juan	100.0%	100.0%	100.0%										100.0%
Sierra	100.0%	100.0%	100.0%										100.0%
Socorro	100.0%	100.0%	100.0%										100.0%
Valencia North	100.0%	100.0%	100.0%										100.0%
Valencia South	100.0%	100.0%	100.0%										100.0%
<b>NW Region 1 Total</b>	<b>100.0%</b>	<b>100.0%</b>	<b>100.0%</b>										<b>100.0%</b>
Colfax	100.0%	100.0%	100.0%										100.0%
Guadalupe	100.0%	100.0%	100.0%										100.0%
Quay	100.0%	100.0%	100.0%										100.0%
Rio Arriba	100.0%	100.0%	100.0%										100.0%
San Miguel	99.7%	100.0%	100.0%										99.9%
Sandoval	100.0%	100.0%	100.0%										100.0%
Santa Fe	100.0%	100.0%	100.0%										100.0%
Taos	100.0%	100.0%	100.0%										100.0%
<b>NE Region 2 Total</b>	<b>100.0%</b>	<b>100.0%</b>	<b>100.0%</b>										<b>100.0%</b>
NE Bernalillo	100.0%	100.0%	100.0%										100.0%
NW Bernalillo	100.0%	100.0%	100.0%										100.0%
SE Bernalillo	100.0%	100.0%	100.0%										100.0%
SW Bernalillo	100.0%	100.0%	100.0%										100.0%
Torrance	100.0%	100.0%	100.0%										100.0%
<b>Gen. Region 3 Total</b>	<b>100.0%</b>	<b>100.0%</b>	<b>100.0%</b>										<b>100.0%</b>
Chaves	100.0%	100.0%	100.0%										100.0%
Curry	100.0%	100.0%	100.0%										100.0%
Eddy Artesia	100.0%	100.0%	100.0%										100.0%
Eddy Carlsbad	100.0%	100.0%	100.0%										100.0%
Lea	100.0%	100.0%	100.0%										100.0%
Lincoln	100.0%	100.0%	100.0%										100.0%
Roosevelt													
<b>SE Region 4 Total</b>	<b>100.0%</b>	<b>100.0%</b>	<b>100.0%</b>										<b>100.0%</b>
East Dona Ana	100.0%	100.0%	100.0%										100.0%
Grant	100.0%	100.0%	100.0%										100.0%
Luna	100.0%	100.0%	100.0%										100.0%
Otero	100.0%	100.0%	100.0%										100.0%
South Dona Ana	100.0%	100.0%	100.0%										100.0%
West Dona Ana	100.0%	100.0%	100.0%										100.0%
<b>SW Region 5 Total</b>	<b>100.0%</b>	<b>100.0%</b>	<b>100.0%</b>										<b>100.0%</b>
<b>STATE TOTAL</b>	<b>100.0%</b>	<b>100.0%</b>	<b>100.0%</b>										<b>100.0%</b>



## State SNAP Supplement

SFY 2017 <sup>9</sup>			SFY 2018 <sup>9</sup>			SFY 2019 <sup>9</sup>			SFY 2020 <sup>9</sup>			SFY 2021 <sup>9</sup>		
	Cases	Expenditures		Cases	Expenditures		Cases	Expenditures		Cases	Expenditures		Cases	Expenditures
Jul-16	11,537	\$95,553	Jul-17	12,526	\$97,568	Jul-18	15,555	\$141,711	Jul-19	16,260	\$145,023	Jul-20	18,957	\$161,862
Aug-16	11,522	\$95,107	Aug-17	12,589	\$98,954	Aug-18	15,584	\$139,719	Aug-19	16,314	\$145,706	Aug-20	19,196	\$165,904
Sep-16	11,613	\$94,472	Sep-17	12,679	\$97,546	Sep-18	15,631	\$140,768	Sep-19	16,362	\$145,767	Sep-20	19,379	\$166,738
Oct-16	11,797	\$96,679	Oct-17	13,628	\$117,343	Oct-18	14,161	\$125,737	Oct-19	16,182	\$139,741	Oct-20	14,634	\$137,621
Nov-16	11,735	\$93,689	Nov-17	13,748	\$119,055	Nov-18	14,160	\$125,401	Nov-19	16,331	\$138,583	Nov-20	17,169	\$139,917
Dec-16	11,556	\$93,739	Dec-17	13,877	\$120,585	Dec-18	14,163	\$126,263	Dec-19	16,373	\$137,440	Dec-20	17,597	\$144,966
Jan-17	11,763	\$96,074	Jan-18	15,246	\$135,993	Jan-19	15,890	\$141,357	Jan-20	17,360	\$145,696	Jan-21		
Feb-17	11,907	\$98,251	Feb-18	15,308	\$137,296	Feb-19	15,882	\$142,396	Feb-20	17,429	\$154,849	Feb-21		
Mar-17	11,853	\$96,693	Mar-18	15,482	\$139,132	Mar-19	15,970	\$142,427	Mar-20	17,131	\$150,568	Mar-21		
Apr-17	11,944	\$97,060	Apr-18	15,466	\$139,202	Apr-19	16,032	\$143,982	Apr-20	18,017	\$157,944	Apr-21		
May-17	12,457	\$96,940	May-18	15,525	\$139,397	May-19	16,126	\$143,697	May-20	18,368	\$157,089	May-21		
Jun-17	12,498	\$97,405	Jun-18	15,577	\$140,802	Jun-19	16,182	\$143,128	Jun-20	18,645	\$158,748	Jun-21		
<b>TOTAL</b>	<b>142,182</b>	<b>\$1,151,662</b>	<b>171,651</b>	<b>\$1,482,874</b>	<b>185,336</b>	<b>\$1,656,584</b>	<b>204,772</b>	<b>\$1,777,156</b>	<b>106,932</b>	<b>\$917,009</b>				
<b>AVERAGE</b>	<b>11,849</b>	<b>\$95,972</b>	<b>14,304</b>	<b>\$123,573</b>	<b>15,445</b>	<b>\$138,049</b>	<b>17,064</b>	<b>\$148,096</b>	<b>17,822</b>	<b>\$152,835</b>				



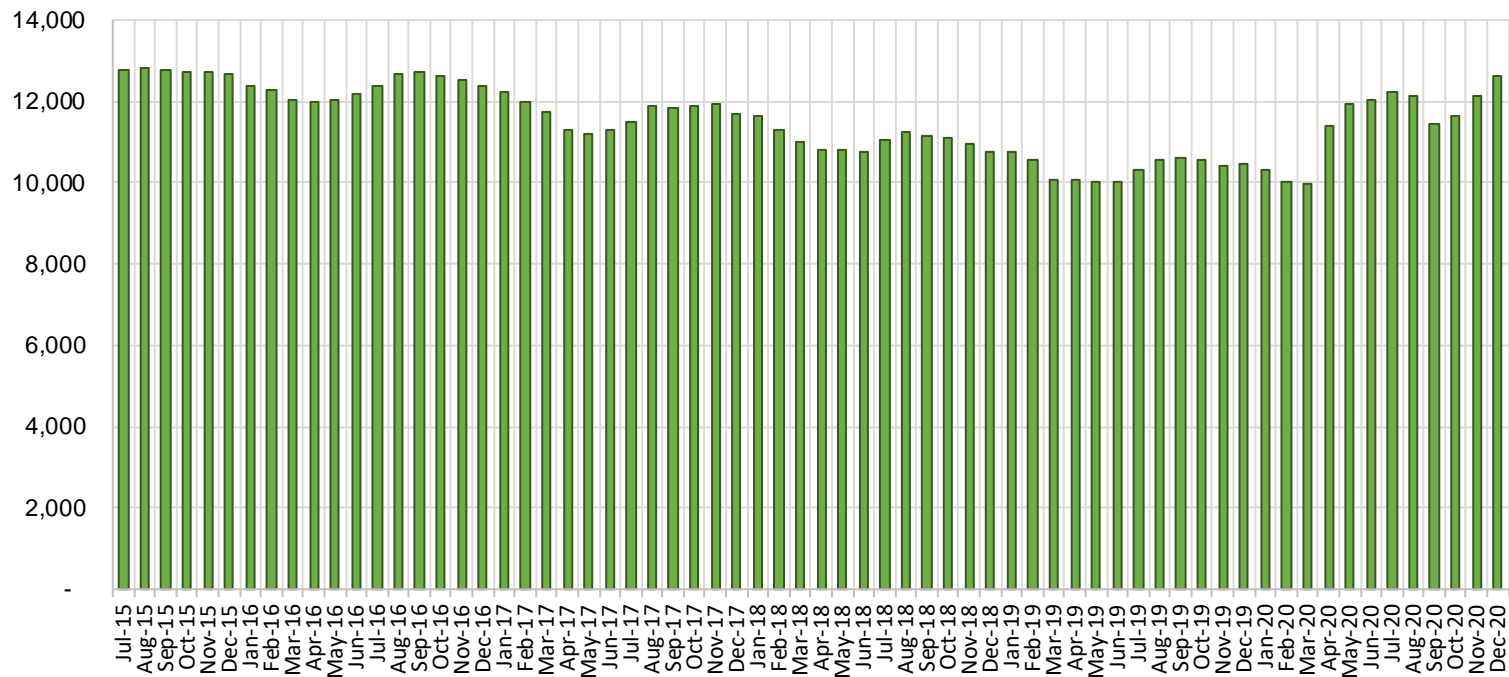
## TANF Cases by Field Office<sup>6</sup>

Office				Percent Change	
	Dec-19	Nov-20	Dec-20	Dec-19- Dec-20	Nov-20- Dec-20
Chaves County ISD	406	871	890	119.21%	2.18%
Cibola County ISD	100	129	133	33.00%	3.10%
Colfax County ISD	88	110	107	21.59%	-2.73%
Curry County ISD	616	623	667	8.28%	7.06%
East Dona Ana County ISD	414	582	579	39.86%	-0.52%
Eddy Artesia County ISD	83	112	114	37.35%	1.79%
Eddy Carlsbad County ISD	159	216	227	42.77%	5.09%
Grant County ISD	186	214	230	23.66%	7.48%
Guadalupe County ISD	26	30	32	23.08%	6.67%
Hidalgo County ISD	0	0	0	NA	N/A
Lea County ISD	375	518	541	44.27%	4.44%
Lincoln County ISD	72	101	101	40.28%	0.00%
Luna County ISD	208	238	249	19.71%	4.62%
McKinley County ISD	73	88	90	23.29%	2.27%
Northeast Bernalillo County ISD	920	1,127	1,192	29.57%	5.77%
Northwest Bernalillo County ISD	843	964	1,005	19.22%	4.25%
Otero County ISD	287	354	354	23.34%	0.00%
Quay County ISD	80	139	132	65.00%	-5.04%
Rio Arriba County ISD	359	410	414	15.32%	0.98%
Roosevelt County ISD	0	0	0	NA	N/A
San Juan County ISD	278	542	571	105.40%	5.35%
San Miguel County ISD	193	227	236	22.28%	3.96%
Sandoval County ISD	432	308	343	-20.60%	11.36%
Santa Fe County ISD	374	325	342	-8.56%	5.23%
Sierra County ISD	70	72	76	8.57%	5.56%
Socorro County ISD	82	85	89	8.54%	4.71%
South Dona Ana ISD	598	619	643	7.53%	3.88%
Southeast Bernalillo County ISD	562	221	215	-61.74%	-2.71%
Southwest Bernalillo County ISD	1,148	1,580	1,661	44.69%	5.13%
Taos County ISD	139	119	133	-4.32%	11.76%
Torrance County ISD	183	163	146	-20.22%	-10.43%
Valencia North County ISD	423	379	396	-6.38%	4.49%
Valencia South County ISD	0	2	2	N/A	0.0%
West Dona Ana County ISD	663	685	701	5.73%	2.34%
Centralized Units	4	0	0	-100.00%	N/A
<b>Statewide Total</b>	<b>10,444</b>	<b>12,153</b>	<b>12,611</b>	<b>20.75%</b>	<b>3.77%</b>

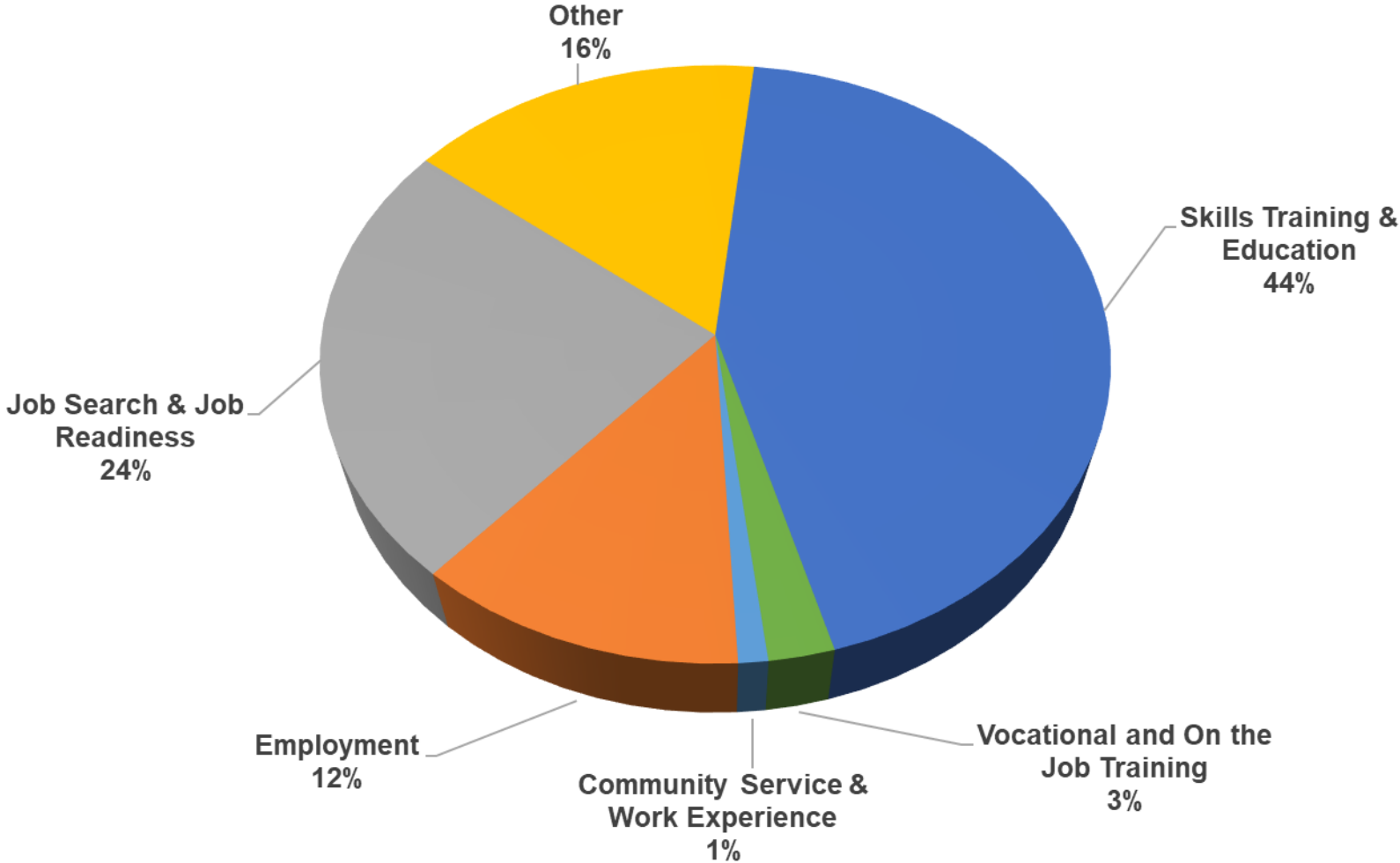
## TANF Cases by Region<sup>6</sup>

Region				Percent Change	
	Dec-19	Nov-20	Dec-20	Dec-19- Dec-20	Nov-20- Dec-20
Region 1- NW	1,026	1,297	1,357	32.26%	4.63%
Region 2- NE	1,691	1,668	1,739	2.84%	4.26%
Region 3- Central	3,656	4,055	4,219	15.40%	4.04%
Region 4- SE	1,711	2,441	2,540	48.45%	4.06%
Region 5- SW	2,356	2,692	2,756	16.98%	2.38%
Centralized Units	4	0	0	-100.0%	N/A
<b>Statewide Total</b>	<b>10,444</b>	<b>12,153</b>	<b>12,611</b>	<b>20.75%</b>	<b>3.77%</b>

## TANF Caseload: SFY-16 to Current

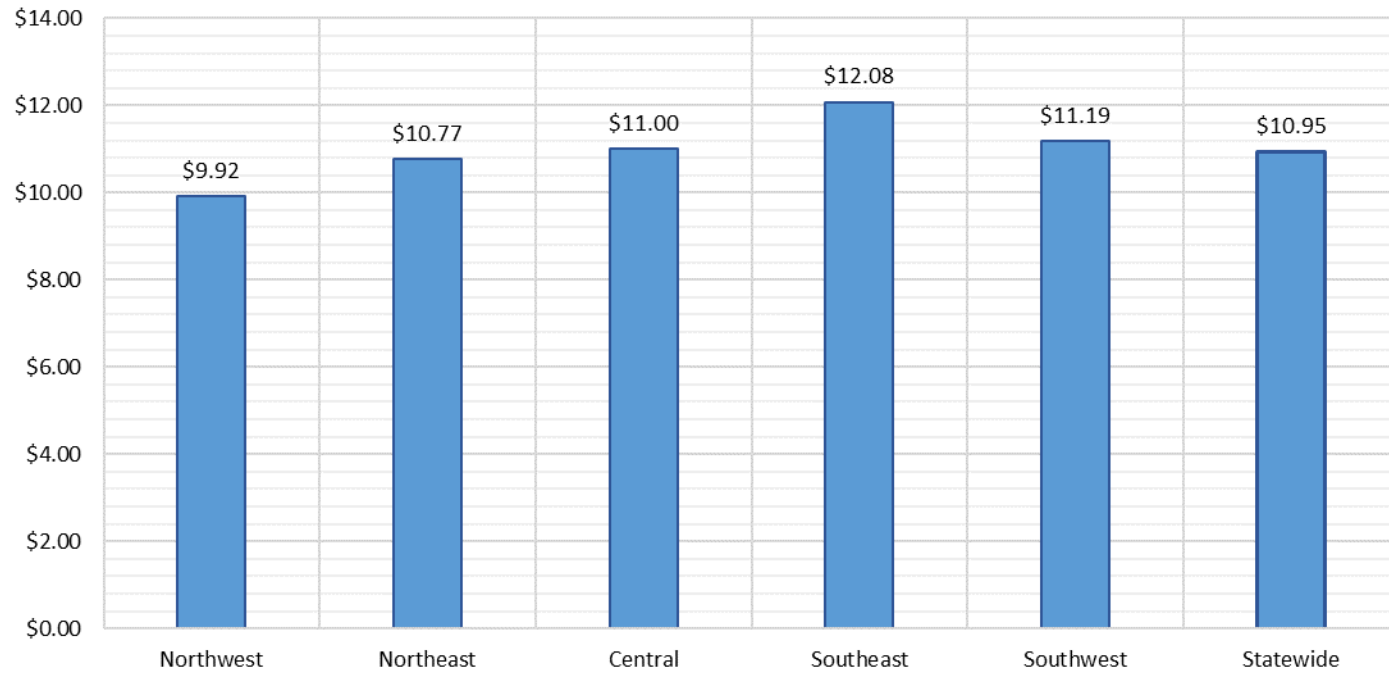


# NM Works Activity Placements on December 31, 2020 as reported by SL Start<sup>14</sup>

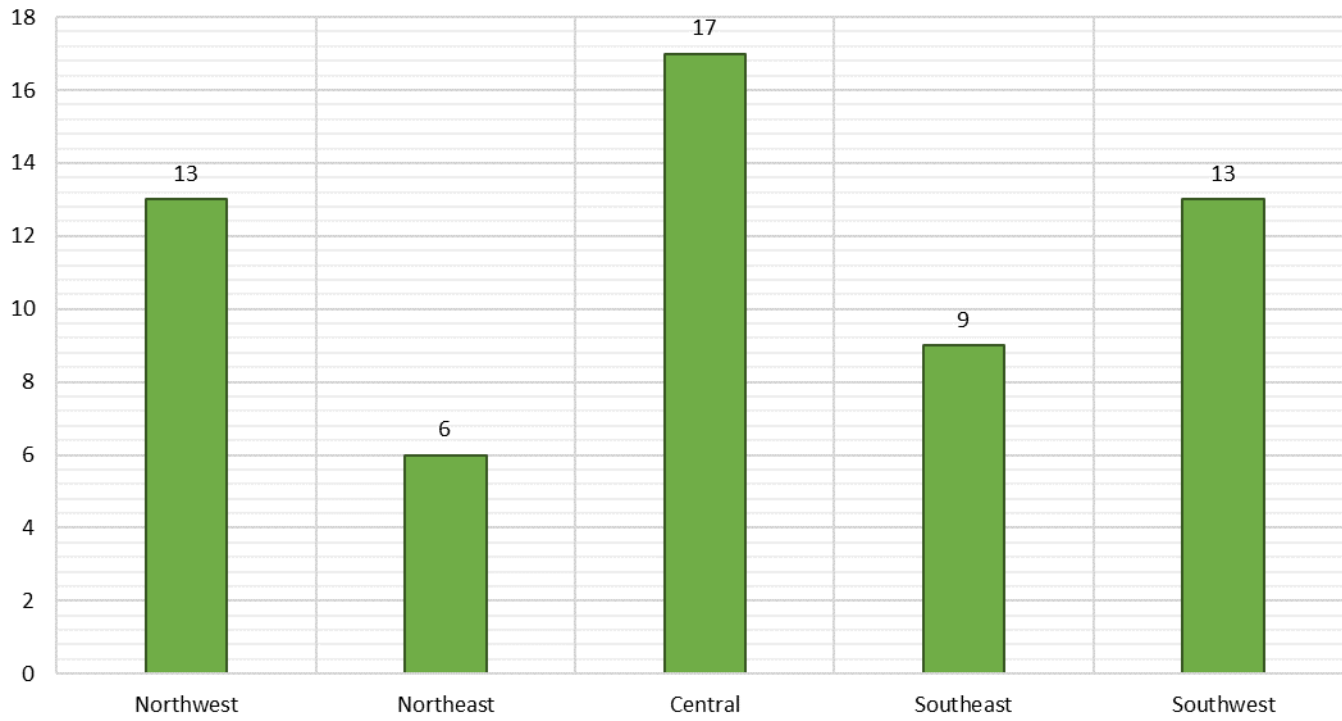


Employment, Vocational Training and Community Service and Work Experience might be reduced due to COVID 19 circumstances.

### Average Starting Hourly Wage of Dec 2020 TANF Employments as reported by SL Start<sup>15</sup>



Number of New Employments in December 2020 by Region  
as reported by SL Start<sup>15</sup>  
Statewide Total: 58



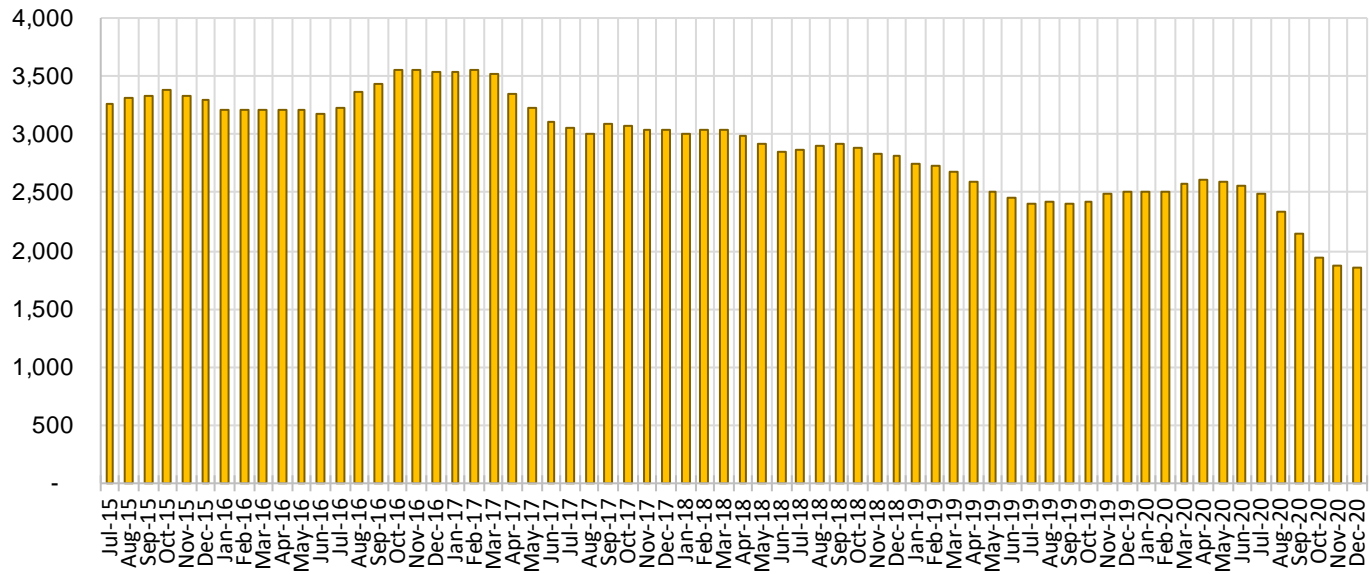
## General Assistance Cases by Field Office<sup>6</sup>

Office				Percent Change	
	Dec-19	Nov-20	Dec-20	Dec-19- Dec-20	Nov-20- Dec-20
Chaves County ISD	114	104	117	2.63%	12.50%
Cibola County ISD	33	24	26	-21.21%	8.33%
Colfax County ISD	23	20	23	0.00%	15.00%
Curry County ISD	79	65	61	-22.78%	-6.15%
East Dona Ana County ISD	97	82	80	-17.53%	-2.44%
Eddy Artesia County ISD	23	19	19	-17.39%	0.00%
Eddy Carlsbad County ISD	46	45	42	-8.70%	-6.67%
Grant County ISD	70	56	53	-24.29%	-5.36%
Guadalupe County ISD	10	6	7	-30.00%	16.67%
Hidalgo County ISD	0	0	0	N/A	N/A
Lea County ISD	61	45	41	-32.79%	-8.89%
Lincoln County ISD	30	24	25	-16.67%	4.17%
Luna County ISD	57	41	38	-33.33%	-7.32%
McKinley County ISD	65	49	47	-27.69%	-4.08%
Northeast Bernalillo County ISD	228	170	177	-22.37%	4.12%
Northwest Bernalillo County ISD	242	170	165	-31.82%	-2.94%
Otero County ISD	73	44	41	-43.84%	-6.82%
Quay County ISD	31	19	22	-29.03%	15.79%
Rio Arriba County ISD	60	52	49	-18.33%	-5.77%
Roosevelt County ISD	0	0	0	N/A	N/A
San Juan County ISD	119	160	160	34.45%	0.00%
San Miguel County ISD	64	44	40	-37.50%	-9.09%
Sandoval County ISD	78	31	30	-61.54%	-3.23%
Santa Fe County ISD	94	59	53	-43.62%	-10.17%
Sierra County ISD	37	23	27	-27.03%	17.39%
Socorro County ISD	43	27	28	-34.88%	3.70%
South Dona Ana ISD	57	31	32	-43.86%	3.23%
Southeast Bernalillo County ISD	149	57	54	-63.76%	-5.26%
Southwest Bernalillo County ISD	197	194	204	3.55%	5.15%
Taos County ISD	32	20	19	-40.63%	-5.00%
Torrance County ISD	41	26	22	-46.34%	-15.38%
Valencia North County ISD	84	51	45	-46.43%	-11.76%
Valencia South County ISD	0	0	2	N/A	N/A
West Dona Ana County ISD	164	114	111	-32.32%	-2.63%
Centralized Units	0	0	0	N/A	N/A
Statewide Total	2,501	1,872	1,860	-25.63%	-0.64%

## General Assistance Cases by Region<sup>6</sup>

Region	Dec-19	Nov-20	Dec-20	Percent Change	
				Dec-19- Dec-20	Nov-20-Dec- 20
Region 1 - NW	381	334	335	-12.07%	0.30%
Region 2 - NE	392	251	243	-38.01%	-3.19%
Region 3 - Central	857	617	622	-27.42%	0.81%
Region 4 - SE	353	302	305	-13.60%	0.99%
Region 5 - SW	518	368	355	-31.47%	-3.53%
Centralized Units	0	0	0	N/A	N/A
<b>Statewide Total</b>	<b>2,501</b>	<b>1,872</b>	<b>1,860</b>	<b>-25.63%</b>	<b>-0.64%</b>

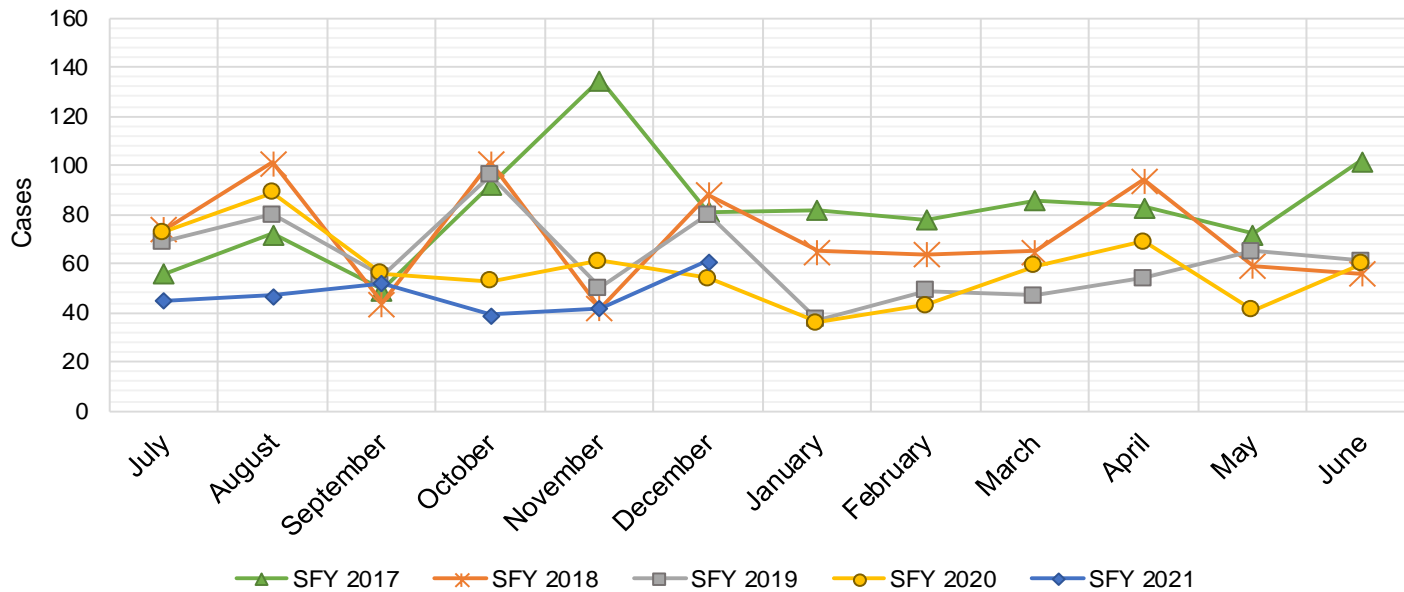
## General Assistance Caseload: SFY-16 to Current





## General Assistance Interim Assistance Reimbursements<sup>16</sup>

SFY 2017			SFY 2018			SFY 2019			SFY 2020			SFY 2021		
	Cases	Expenditures		Cases	Expenditures		Cases	Expenditures		Cases	Expenditures		Cases	Expenditures
Jul-16	56	\$164,970	Jul-17	74	\$241,438	Jul-18	69	\$228,333	Jul-19	73	\$303,584	Jul-20	45	\$135,037
Aug-16	72	\$223,182	Aug-17	101	\$339,301	Aug-18	80	\$241,292	Aug-19	89	\$310,047	Aug-20	47	\$154,783
Sep-16	49	\$158,027	Sep-17	44	\$131,229	Sep-18	55	\$188,192	Sep-19	56	\$172,016	Sep-20	52	\$168,200
Oct-16	92	\$257,830	Oct-17	101	\$335,752	Oct-18	96	\$298,502	Oct-19	53	\$168,461	Oct-20	39	\$124,285
Nov-16	135	\$402,305	Nov-17	42	\$139,572	Nov-18	50	\$148,641	Nov-19	61	\$171,883	Nov-20	42	\$116,498
Dec-16	81	\$227,569	Dec-17	88	\$245,453	Dec-18	80	\$246,422	Dec-19	54	\$164,045	Dec-20	61	\$196,035
Jan-17	82	\$274,050	Jan-18	65	\$258,239	Jan-19	37	\$106,081	Jan-20	36	\$96,668	Jan-21		
Feb-17	78	\$227,569	Feb-18	64	\$195,815	Feb-19	49	\$119,300	Feb-20	43	\$126,743	Feb-21		
Mar-17	86	\$278,219	Mar-18	65	\$172,188	Mar-19	47	\$137,296	Mar-20	59	\$169,363	Mar-21		
Apr-17	83	\$267,187	Apr-18	94	\$312,340	Apr-19	54	\$173,772	Apr-20	69	\$199,975	Apr-21		
May-17	72	\$232,836	May-18	59	\$155,406	May-19	65	\$237,979	May-20	41	\$129,317	May-21		
Jun-17	102	\$306,228	Jun-18	56	\$159,268	Jun-19	61	\$214,497	Jun-20	60	\$184,603	Jun-21		
<b>TOTAL</b>	<b>988</b>	<b>\$3,019,972</b>		<b>853</b>	<b>\$2,686,001</b>		<b>743</b>	<b>\$2,340,307</b>		<b>694</b>	<b>\$2,196,707</b>		<b>286</b>	<b>\$894,838</b>
<b>AVERAGE</b>	<b>82</b>	<b>\$251,664</b>		<b>71</b>	<b>\$223,833</b>		<b>62</b>	<b>\$195,026</b>		<b>58</b>	<b>\$183,059</b>		<b>48</b>	<b>\$149,140</b>



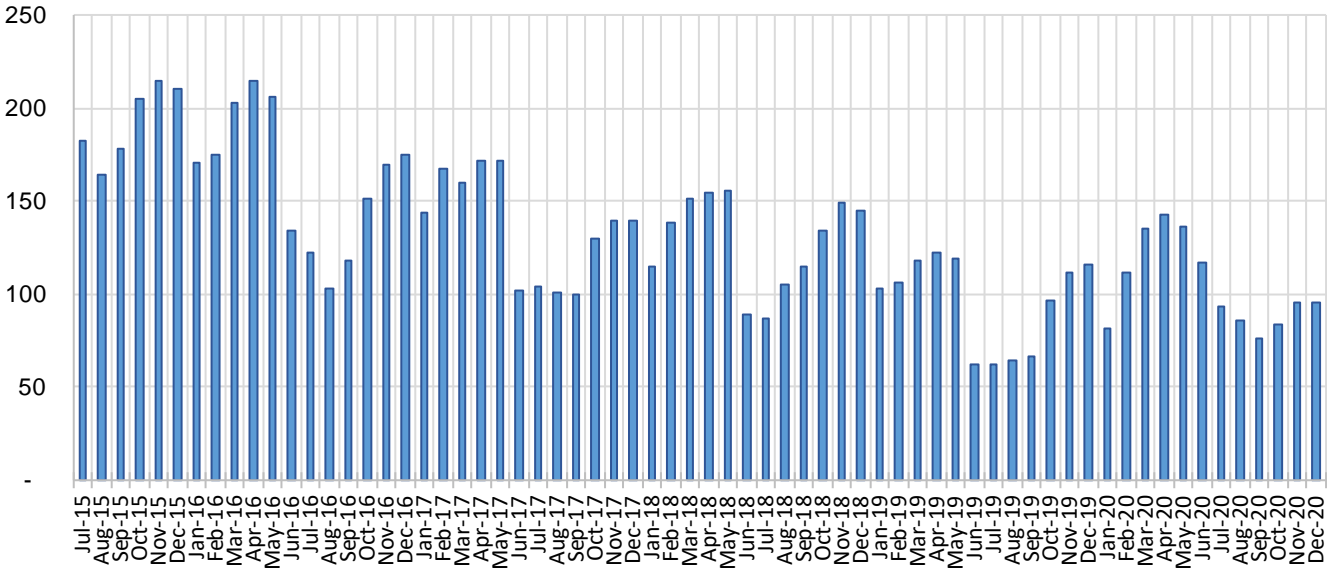
## Education Works Cases by Field Office<sup>6</sup>

Office				Percent Change	
	Dec-19	Nov-20	Dec-20	Dec-19- Dec-20	Nov-20- Dec-20
Chaves County ISD	3	3	4	33.3%	33.3%
Cibola County ISD	1	0	0	-100.0%	N/A
Colfax County ISD	0	0	0	N/A	N/A
Curry County ISD	6	4	4	-33.3%	0.0%
East Dona Ana County ISD	8	9	9	12.5%	0.0%
Eddy Artesia County ISD	3	1	1	-66.7%	0.0%
Eddy Carlsbad County ISD	1	0	0	-100.0%	N/A
Grant County ISD	1	3	2	100.0%	-33.3%
Guadalupe County ISD	0	1	1	N/A	0.0%
Hidalgo County ISD	0	0	0	N/A	N/A
Lea County ISD	1	2	2	100.0%	0.0%
Lincoln County ISD	0	0	0	N/A	N/A
Luna County ISD	2	0	0	-100.0%	N/A
McKinley County ISD	1	1	1	0.0%	0.0%
Northeast Bernalillo County ISD	6	9	8	33.3%	-11.1%
Northwest Bernalillo County ISD	13	7	7	-46.2%	0.0%
Otero County ISD	0	1	1	N/A	0.0%
Quay County ISD	0	1	1	N/A	0.0%
Rio Arriba County ISD	2	1	1	-50.0%	0.0%
Roosevelt County ISD	0	0	0	N/A	N/A
San Juan County ISD	2	3	4	100.0%	33.3%
San Miguel County ISD	6	4	4	-33.3%	0.0%
Sandoval County ISD	10	7	7	-30.0%	0.0%
Santa Fe County ISD	10	6	5	-50.0%	-16.7%
Sierra County ISD	1	0	0	-100.0%	N/A
Socorro County ISD	0	0	0	N/A	N/A
South Dona Ana ISD	8	2	2	-75.0%	0.0%
Southeast Bernalillo County ISD	6	2	2	-66.7%	0.0%
Southwest Bernalillo County ISD	9	10	11	22.2%	10.0%
Taos County ISD	0	0	0	N/A	N/A
Torrance County ISD	4	1	2	-50.0%	100.0%
Valencia North County ISD	1	1	1	0.0%	0.0%
Valencia South County ISD	0	0	0	N/A	N/A
West Dona Ana County ISD	11	17	16	45.5%	-5.9%
Centralized Units	0	0	0	N/A	N/A
<b>Statewide Total</b>	<b>116</b>	<b>96</b>	<b>96</b>	<b>-17.2%</b>	<b>0.0%</b>

### Education Works Cases by Region<sup>6</sup>

Region	Percent Change				
	Dec-19	Nov-20	Dec-20	Dec-19- Dec-20	Nov-20- Dec-20
Region 1 - NW	6	5	6	0.00%	20.00%
Region 2 - NE	28	20	19	-32.14%	-5.00%
Region 3 - Central	38	29	30	-21.05%	3.45%
Region 4 - SE	14	10	11	-21.43%	10.00%
Region 5 - SW	30	32	30	0.00%	-6.25%
Centralized Units	0	0	0	N/A	N/A
Statewide Total	116	96	96	-17.24%	0.00%

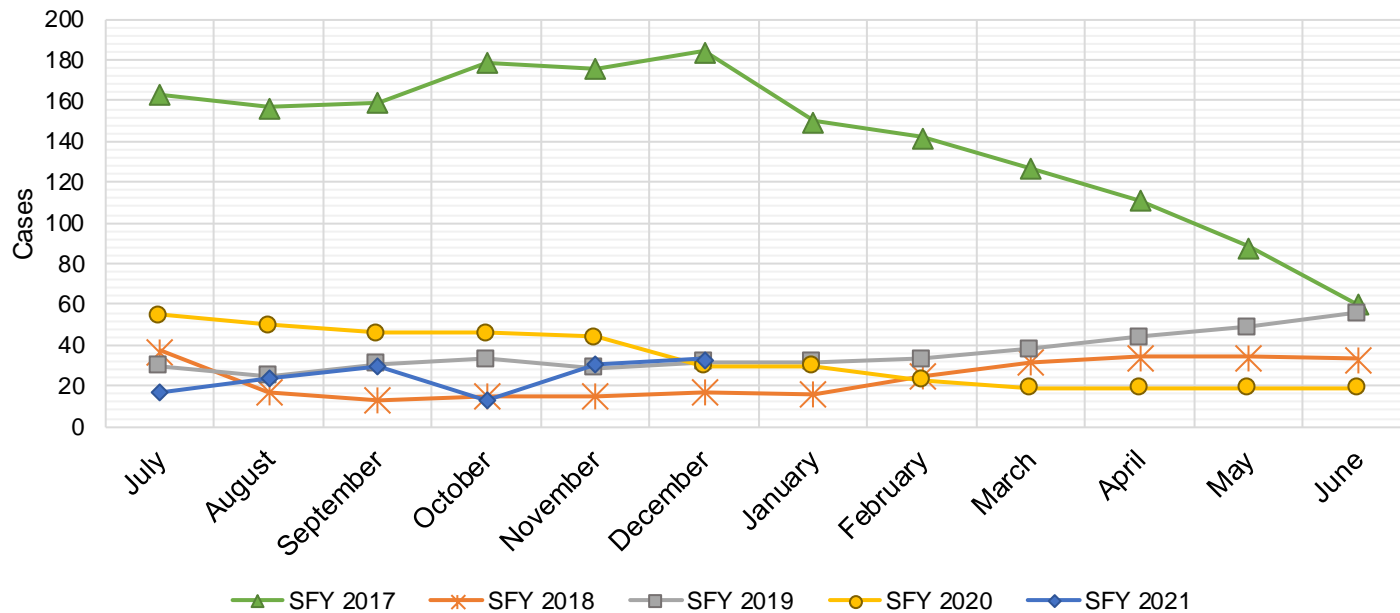
### Education Works Caseload: SFY-16 to Current



## Refugee Cash Assistance

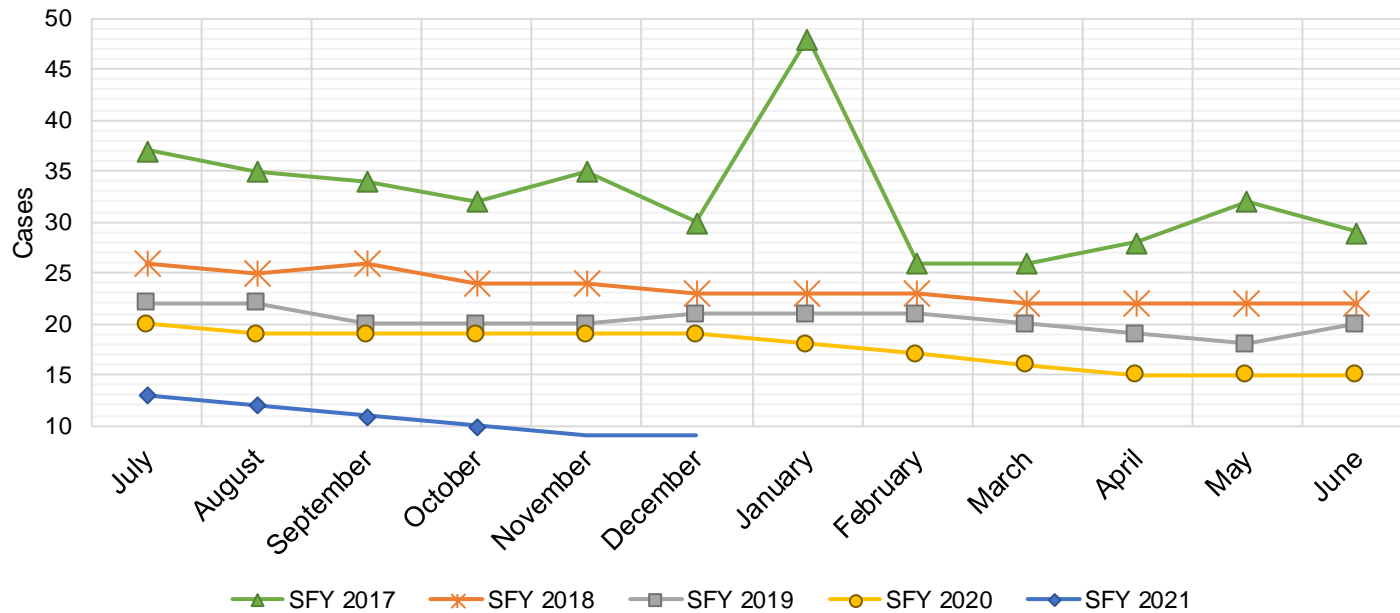
SFY 2017 <sup>8,9</sup>			SFY 2018 <sup>8,9</sup>			SFY 2019 <sup>8,9</sup>			SFY 2020 <sup>8,9</sup>			SFY 2021 <sup>8,9</sup>		
	Cases	Expenditures		Cases	Expenditures		Cases	Expenditures		Cases	Expenditures		Cases	Expenditures
Jul-16	163	\$39,756	Jul-17	37	\$9,981	Jul-18	30	\$7,408	Jul-19	55	\$13,851	Jul-20	17	\$9,650
Aug-16	157	\$40,115	Aug-17	17	\$4,704	Aug-18	25	\$6,434	Aug-19	50	\$12,497	Aug-20	24	\$12,930
Sep-16	159	\$39,359	Sep-17	13	\$3,159	Sep-18	31	\$6,947	Sep-19	46	\$11,473	Sep-20	30	\$16,276
Oct-16	179	\$41,520	Oct-17	15	\$3,543	Oct-18	33	\$6,323	Oct-19	46	\$11,341	Oct-20	13	\$4,103
Nov-16	176	\$45,434	Nov-17	15	\$4,263	Nov-18	29	\$7,036	Nov-19	44	\$11,296	Nov-20	31	\$11,886
Dec-16	184	\$46,673	Dec-17	17	\$4,795	Dec-18	32	\$7,300	Dec-19	30	\$7,679	Dec-20	33	\$11,464
Jan-17	150	\$38,790	Jan-18	16	\$4,166	Jan-19	32	\$7,418	Jan-20	30	\$7,407	Jan-21		
Feb-17	142	\$37,956	Feb-18	25	\$5,723	Feb-19	33	\$8,591	Feb-20	23	\$7,577	Feb-21		
Mar-17	127	\$33,066	Mar-18	32	\$7,636	Mar-19	38	\$9,165	Mar-20	19	\$6,500	Mar-21		
Apr-17	111	\$29,183	Apr-18	34	\$8,827	Apr-19	44	\$10,648	Apr-20	19	\$4,847	Apr-21		
May-17	88	\$23,343	May-18	34	\$8,939	May-19	49	\$11,823	May-20	19	\$4,908	May-21		
Jun-17	60	\$15,538	Jun-18	33	\$8,513	Jun-19	56	\$13,558	Jun-20	19	\$5,386	Jun-21		

TOTAL	1,696	\$430,732	288	\$74,249	432	\$102,651	400	\$104,762	148	\$66,309
AVERAGE	141	\$35,894	24	\$6,187	36	\$8,554	33	\$8,730	25	\$11,052



## State Supplement for Residential Care

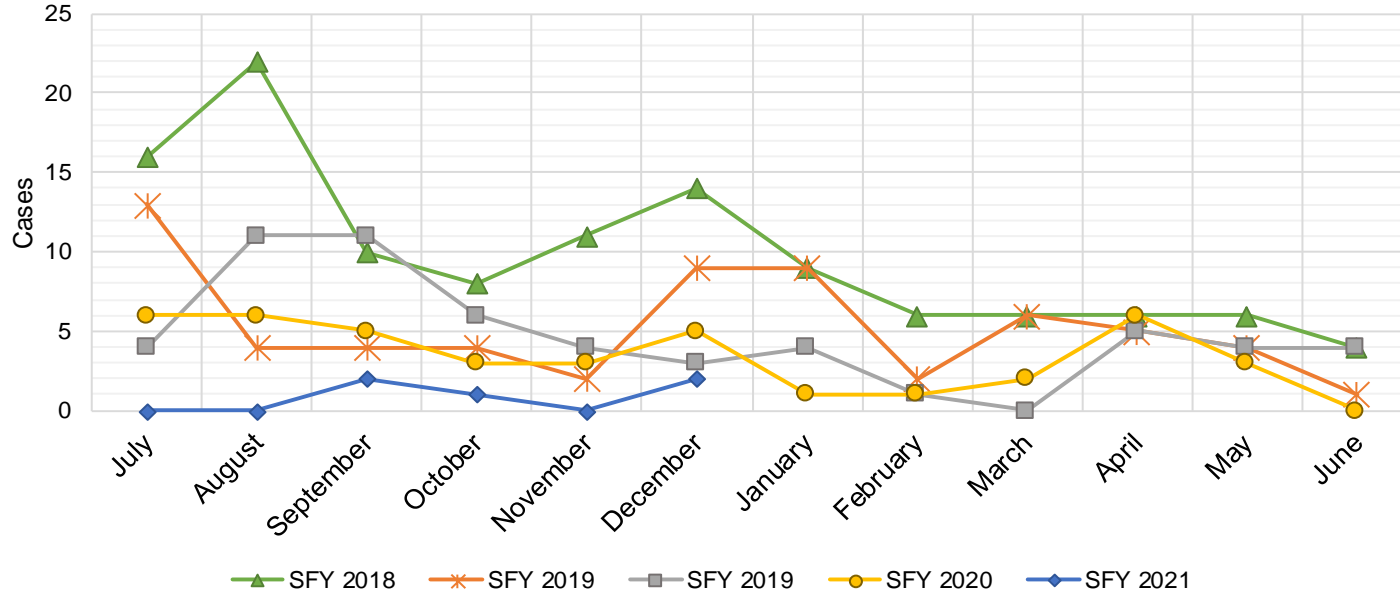
SFY 2017 <sup>9</sup>			SFY 2018 <sup>9</sup>			SFY 2019 <sup>9</sup>			SFY 2020 <sup>9</sup>			SFY 2021 <sup>9</sup>		
	Cases	Expenditures		Cases	Expenditures		Cases	Expenditures		Cases	Expenditures		Cases	Expenditures
Jul-16	37	\$3,700	Jul-17	26	\$2,700	Jul-18	22	\$2,200	Jul-19	20	\$1,900	Jul-20	13	\$1,300
Aug-16	35	\$3,500	Aug-17	25	\$2,500	Aug-18	22	\$2,200	Aug-19	19	\$1,900	Aug-20	12	\$1,200
Sep-16	34	\$3,400	Sep-17	26	\$2,700	Sep-18	20	\$2,000	Sep-19	19	\$1,900	Sep-20	11	\$1,200
Oct-16	32	\$3,200	Oct-17	24	\$2,500	Oct-18	20	\$2,000	Oct-19	19	\$1,900	Oct-20	10	\$1,000
Nov-16	35	\$3,500	Nov-17	24	\$2,400	Nov-18	20	\$2,000	Nov-19	19	\$1,900	Nov-20	9	\$900
Dec-16	30	\$3,000	Dec-17	23	\$2,200	Dec-18	21	\$2,100	Dec-19	19	\$1,900	Dec-20	9	\$900
Jan-17	48	\$4,800	Jan-18	23	\$2,400	Jan-19	21	\$2,000	Jan-20	18	\$1,800	Jan-21		
Feb-17	26	\$2,600	Feb-18	23	\$2,300	Feb-19	21	\$2,200	Feb-20	17	\$1,600	Feb-21		
Mar-17	26	\$2,600	Mar-18	22	\$2,400	Mar-19	20	\$1,900	Mar-20	16	\$1,500	Mar-21		
Apr-17	28	\$2,800	Apr-18	22	\$2,200	Apr-19	19	\$1,800	Apr-20	15	\$1,500	Apr-21		
May-17	32	\$3,200	May-18	22	\$2,200	May-19	18	\$1,800	May-20	15	\$1,500	May-21		
Jun-17	29	\$2,900	Jun-18	22	\$2,200	Jun-19	20	\$2,000	Jun-20	15	\$1,500	Jun-21		
<b>TOTAL</b>	<b>392</b>	<b>\$39,200</b>	<b>282</b>	<b>\$28,700</b>	<b>244</b>	<b>\$24,200</b>	<b>211</b>	<b>\$20,800</b>	<b>64</b>	<b>\$6,500</b>				
<b>AVERAGE</b>	<b>33</b>	<b>\$3,267</b>	<b>24</b>	<b>\$2,392</b>	<b>20</b>	<b>\$2,017</b>	<b>18</b>	<b>\$1,733</b>	<b>11</b>	<b>\$1,083</b>				



## TANF Diversion Payments

SFY 2018 <sup>9</sup>			SFY 2019 <sup>9</sup>			SFY 2019 <sup>9</sup>			SFY 2020 <sup>9</sup>			SFY 2021 <sup>9</sup>		
Cases		Expenditures	Cases		Expenditures	Cases		Expenditures	Cases		Expenditures	Cases		Expenditures
Jul-16	16	\$30,843	Jul-17	13	\$26,500	Jul-18	4	\$3,000	Jul-19	6	\$18,500	Jul-20	0	\$0
Aug-16	22	\$42,731	Aug-17	4	\$12,000	Aug-18	11	\$18,583	Aug-19	6	\$16,500	Aug-20	0	\$1,500
Sep-16	10	\$21,000	Sep-17	4	\$4,000	Sep-18	11	\$20,999	Sep-19	5	\$11,000	Sep-20	2	\$1,500
Oct-16	8	\$16,744	Oct-17	4	\$16,000	Oct-18	6	\$10,499	Oct-19	3	\$3,000	Oct-20	1	\$1,500
Nov-16	11	\$24,500	Nov-17	2	\$15,500	Nov-18	4	\$7,499	Nov-19	3	\$16,180	Nov-20	0	\$1,500
Dec-16	14	\$26,611	Dec-17	9	\$17,500	Dec-18	3	\$2,499	Dec-19	5	\$14,000	Dec-20	2	\$4,000
Jan-17	9	\$18,500	Jan-18	9	\$21,731	Jan-19	4	\$5,999	Jan-20	1	\$1,500	Jan-21		
Feb-17	6	\$12,000	Feb-18	2	\$7,731	Feb-19	1	\$1,678	Feb-20	1	\$1,857	Feb-21		
Mar-17	6	\$11,000	Mar-18	6	\$8,496	Mar-19	0	\$3,000	Mar-20	2	\$5,920	Mar-21		
Apr-17	6	\$12,000	Apr-18	5	\$13,500	Apr-19	5	\$6,500	Apr-20	6	\$14,905	Apr-21		
May-17	6	\$11,500	May-18	4	\$12,500	May-19	4	\$16,000	May-20	3	\$8,000	May-21		
Jun-17	4	\$13,500	Jun-18	1	\$5,389	Jun-19	4	\$8,000	Jun-20	0	\$0	Jun-21		

TOTAL	118	\$240,929	63	\$160,847	57	\$104,256	41	\$111,362	5	\$10,000
AVERAGE	10	\$20,077	5	\$13,404	5	\$8,688	3	\$9,280	1	\$1,667



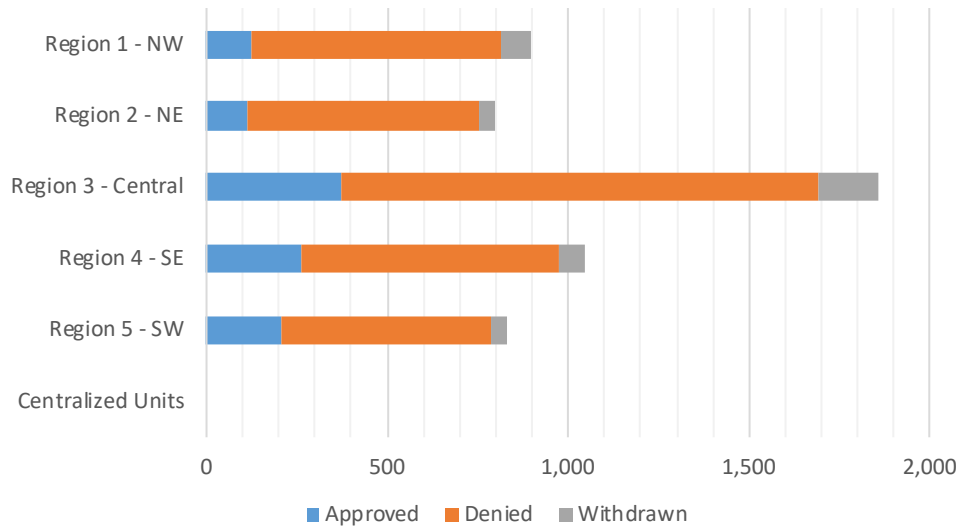
**Cash Assistance Applications by Field Office<sup>4,11</sup>**  
**December 2020**

Office	Approved	Denied	Withdrawn	Total Cases Processed
Chaves County ISD	118	280	28	426
Cibola County ISD	14	31	1	46
Colfax County ISD	9	41	3	53
Curry County ISD	60	161	8	229
East Dona Ana County ISD	35	126	12	173
Eddy Artesia County ISD	9	33	4	46
Eddy Carlsbad County ISD	25	82	9	116
Grant County ISD	24	63	4	91
Guadalupe County ISD	6	16	0	22
Hidalgo County ISD	0	0	0	0
Lea County ISD	41	109	19	169
Lincoln County ISD	8	45	4	57
Luna County ISD	26	46	5	77
McKinley County ISD	11	83	6	100
Northeast Bernalillo County ISD	120	517	45	682
Northwest Bernalillo County ISD	93	361	38	492
Otero County ISD	25	117	6	148
Quay County ISD	9	32	5	46
Rio Arriba County ISD	20	107	7	134
Roosevelt County ISD	0	1	0	1
San Juan County ISD	52	438	73	563
San Miguel County ISD	15	115	17	147
Sandoval County ISD	22	84	3	109
Santa Fe County ISD	24	185	7	216
Sierra County ISD	7	25	2	34
Socorro County ISD	7	26	2	35
South Dona Ana ISD	43	87	5	135
Southeast Bernalillo County ISD	8	33	1	42
Southwest Bernalillo County ISD	149	399	82	630
Taos County ISD	9	57	6	72
Torrance County ISD	3	9	1	13
Valencia North County ISD	34	82	2	118
Valencia South County ISD	2	0	0	2
West Dona Ana County ISD	52	140	17	209
Centralized Units	0	0	0	0
<b>Statewide Total</b>	<b>1,080</b>	<b>3,931</b>	<b>422</b>	<b>5,433</b>

**Cash Assistance Applications by Region<sup>4,11</sup>**  
**December 2020**

	Approved	Denied	Withdrawn	Total Cases Processed
Region				
Region 1 - NW	127	685	86	898
Region 2 - NE	114	637	48	799
Region 3 - Central	373	1,319	167	1,859
Region 4 - SE	261	711	72	1,044
Region 5 - SW	205	579	49	833
Centralized Units	0	0	0	0

Statewide Total	1,080	3,931	422	5,433
-----------------	-------	-------	-----	-------





**Early Childhood Education and Care Department  
Children Receiving Child Care Assistance Subsidies By County**

County	Dec 2019	Jan 2020	Feb 2020	Mar 2020	Apr 2020	May 2020	June 2020	July 2020	Aug 2020	Sept 2020	Oct 2020	Nov 2020	Dec 2020	Change Fr. Cases	Last Year Percent
Bernalillo	7,591	7,673	7,779	7,975	8,683	8,506	8,061	7,316	5,905	5,462	5,001	4,935	4,802	-2,789	-36.7%
Catron	0	0	0	0	0	0	0	0	0	0	0	0	0	0	0.0%
Chaves	827	835	830	830	911	918	857	852	683	650	662	634	657	-170	-20.6%
Cibola	247	224	226	227	271	263	256	247	184	199	185	190	167	-80	-32.4%
Colfax	31	32	32	26	28	29	28	28	30	22	23	24	23	-8	-25.8%
Curry	587	605	613	600	669	668	613	625	482	444	435	448	436	-151	-25.7%
De Baca	1	0	0	0	0	0	0	0	0	0	0	0	0	-1	-100.0%
Dona Ana	4,348	4,350	4,313	4,388	4,806	4,691	4,466	4,363	3,306	3,084	2,994	3,056	2,902	-1,446	-33.3%
Eddy	234	225	227	231	235	233	213	226	200	184	165	172	171	-63	-26.9%
Grant	145	143	146	132	159	157	160	135	63	78	80	92	93	-52	-35.9%
Guadalupe	7	7	7	8	9	8	8	10	10	10	10	11	8	1	14.3%
Harding	0	0	0	0	0	0	0	0	0	0	0	0	0	0	0.0%
Hidalgo	28	28	27	24	23	20	17	23	14	19	20	18	18	-10	-35.7%
Lea	741	736	785	767	828	839	798	779	683	596	572	558	534	-207	-27.9%
Lincoln	86	89	89	88	100	99	88	87	66	47	50	55	63	-23	-26.7%
Los Alamos	40	42	38	37	48	48	44	45	28	27	24	25	26	-14	-35.0%
Luna	155	158	163	164	196	216	189	188	143	148	144	138	140	-15	-9.7%
McKinley	172	170	171	166	185	169	172	155	56	72	88	84	74	-98	-57.0%
Mora	11	11	11	12	13	12	12	12	10	14	11	17	15	4	36.4%
Otero	501	506	511	520	578	592	564	564	413	446	352	383	382	-119	-23.8%
Out of State	0	0	0	0	0	0	0	0	0	0	0	0	0	0	0.0%
Quay	35	32	34	37	42	41	39	40	28	27	22	27	26	-9	-25.7%
Rio Arriba	155	152	153	149	160	155	153	144	99	84	79	83	86	-69	-44.5%
Roosevelt	133	131	132	131	146	178	168	143	97	98	107	105	105	-28	-21.1%
San Juan	958	928	951	979	1,231	1,252	1,221	1,144	737	781	785	796	788	-170	-17.7%
San Miguel	353	349	361	373	412	403	399	405	326	339	330	349	326	-27	-7.6%
Sandoval	770	738	765	736	897	902	865	865	570	551	529	509	514	-256	-33.2%
Santa Fe	537	533	522	537	601	616	605	580	354	358	392	367	359	-178	-33.1%
Sierra	63	61	52	55	67	67	78	84	51	49	44	41	38	-25	-39.7%
Socorro	48	43	40	41	46	46	43	38	29	27	27	25	23	-25	-52.1%
Taos	126	126	117	139	156	149	141	115	89	77	85	93	89	-37	-29.4%
Torrance	63	68	63	71	78	86	74	78	63	55	47	50	52	-11	-17.5%
Union	3	3	3	3	3	3	3	3	2	2	2	2	2	-1	-33.3%
Valencia	573	564	533	547	628	620	632	566	457	467	448	475	460	-113	-19.7%
<b>Totals</b>	<b>19,569</b>	<b>19,562</b>	<b>19,694</b>	<b>19,993</b>	<b>22,209</b>	<b>21,986</b>	<b>20,967</b>	<b>19,860</b>	<b>15,178</b>	<b>14,417</b>	<b>13,713</b>	<b>13,762</b>	<b>13,379</b>	<b>-6,190</b>	<b>-31.6%</b>

# EARLY CHILDHOOD EDUCATION AND CARE DEPARTMENT CHILD CARE ASSISTANCE ELIGIBILITY PROGRAMS

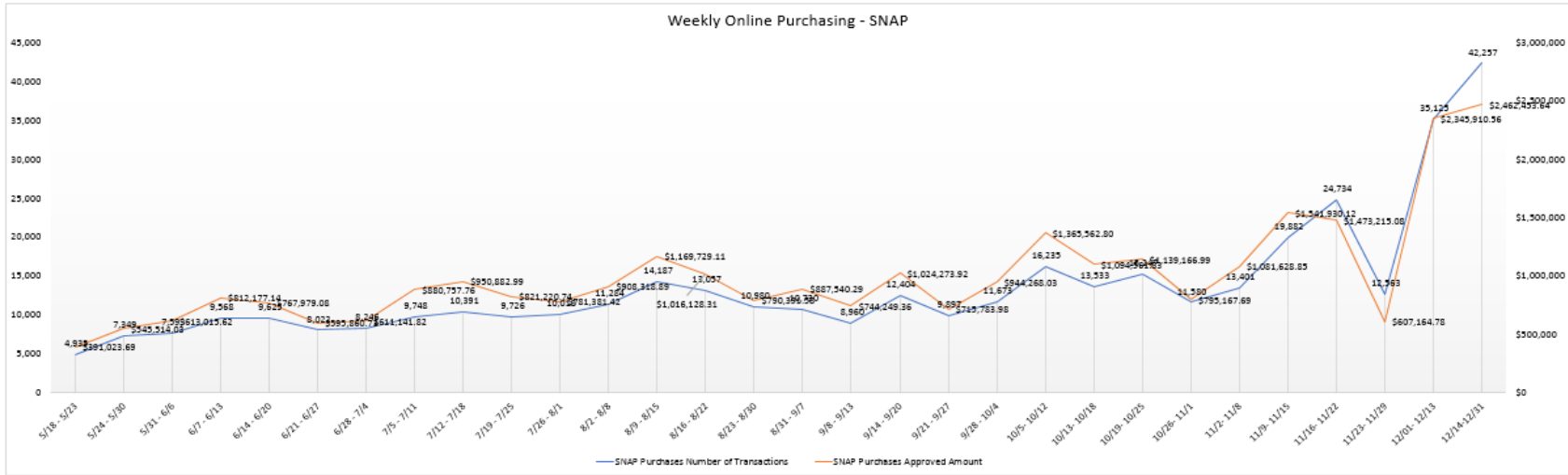
MONTH	Jan'20	Feb'20	Mar'20	Apr'20	May'20	June'20	July'20	Aug'20	Sept'20	Oct'20	Nov'20	Dec'20
<b>TANF (Child Care Priority 1 Clients)</b>												
CLIENTS	2,030	2,001	2,031	2,005	1,941	1,943	1,866	1,453	1,317	1,239	1,181	1,133
COST	\$1,257,977	\$1,195,404	\$1,280,286	\$1,306,318	\$1,304,392	\$1,292,773	\$1,249,411	\$954,523	\$846,281	\$829,004	\$814,035	\$795,611
TANF AVERAGE COST	\$620	\$597	\$630	\$652	\$672	\$665	\$670	\$657	\$643	\$669	\$689	\$700
<b>TRANSITION OFF TANF (Child Care Priority 2 Clients)</b>												
CLIENTS	196	209	209	223	211	199	174	159	146	134	148	140
COST	\$120,862	\$136,239	\$127,986	\$144,617	\$142,374	\$136,509	\$109,243	\$99,130	\$87,238	\$87,914	\$107,570	\$101,133
TRAN OFF TANF AVG COST	\$617	\$652	\$612	\$649	\$675	\$686	\$628	\$623	\$88	\$88	\$88	\$88
<b>TANF ELIGIBLE (Child Care Priority 1B Clients at or below 100% of the Federal Poverty Level)</b>												
CLIENTS	7,697	7,671	7,857	7,797	7,634	7,597	7,258	5,827	5,333	4,957	4,956	4,769
COST	\$4,551,874	\$4,539,530	\$4,868,148	\$4,955,752	\$5,017,736	\$4,897,618	\$4,696,062	\$3,702,155	\$3,227,351	\$3,349,454	\$3,330,950	\$3,178,720
TANF ELIGIBLE AVG COST	\$591	\$592	\$620	\$636	\$657	\$645	\$647	\$635	\$605	\$676	\$672	\$667
<b>INCOME ELIGIBLE (Child Care Priority 3, and Priority 4 Clients)</b>												
CLIENTS	8,701	8,848	8,978	10,600	10,132	8,870	8,084	6,945	6,857	6,578	6,684	6,573
COST	\$4,573,609	\$4,700,981	\$4,891,611	\$10,456,494	\$10,002,092	\$5,863,605	\$4,768,416	\$4,041,977	\$3,734,881	\$4,705,258	\$4,714,528	\$4,629,625
INCOME ELIG AVG COST	\$526	\$531	\$545	\$986	\$987	\$661	\$590	\$582	\$545	\$715	\$705	\$704
<b>AT-RISK CHILD PROTECTIVE SERVICES CHILD CARE PILOT (Priority 5 Clients)</b>												
CLIENTS	190	182	144	829	1,379	1,699	1,796	145	137	159	175	192
COST	\$145,544	\$136,364	\$99,487	\$357,417	\$941,656	\$1,216,142	\$1,292,805	\$91,596	\$96,923	\$104,888	\$123,602	\$134,511
CPS AVG COST	\$766	\$749	\$691	\$431	\$683	\$716	\$720	\$632	\$707	\$660	\$706	\$701
<b>CHILD PROTECTIVE SERVICES (Child Care CPS Clients)</b>												
CLIENTS	748	783	774	755	689	659	682	649	627	646	618	569
COST	\$501,038	\$520,094	\$547,029	\$490,287	\$633,230	\$616,005	\$455,989	\$455,542	\$419,097	\$483,711	\$437,483	\$495,401
CPS AVG COST	\$670	\$664	\$707	\$649	\$919	\$935	\$669	\$702	\$668	\$749	\$708	\$871
<b>GRAND TOTAL - ALL CHILD CARE PROGRAMS</b>												
CLIENTS	19,562	19,694	19,993	22,209	21,986	20,967	19,860	15,178	14,417	13,713	13,762	13,379
COST	\$11,150,904	\$11,228,612	\$11,814,547	\$17,710,886	\$18,041,480	\$14,022,651	\$12,571,928	\$9,344,924	\$8,411,771	\$9,560,229	\$9,528,168	\$9,335,003
ALL PROGRAMS AVG COST	\$570	\$570	\$591	\$797	\$821	\$669	\$633	\$616	\$583	\$697	\$692	\$698

## SNAP Emergency Allotment and Pandemic EBT: Expenditures, Cases, and Recipients

Note: Pandemic EBT will start to be issued in May 2020

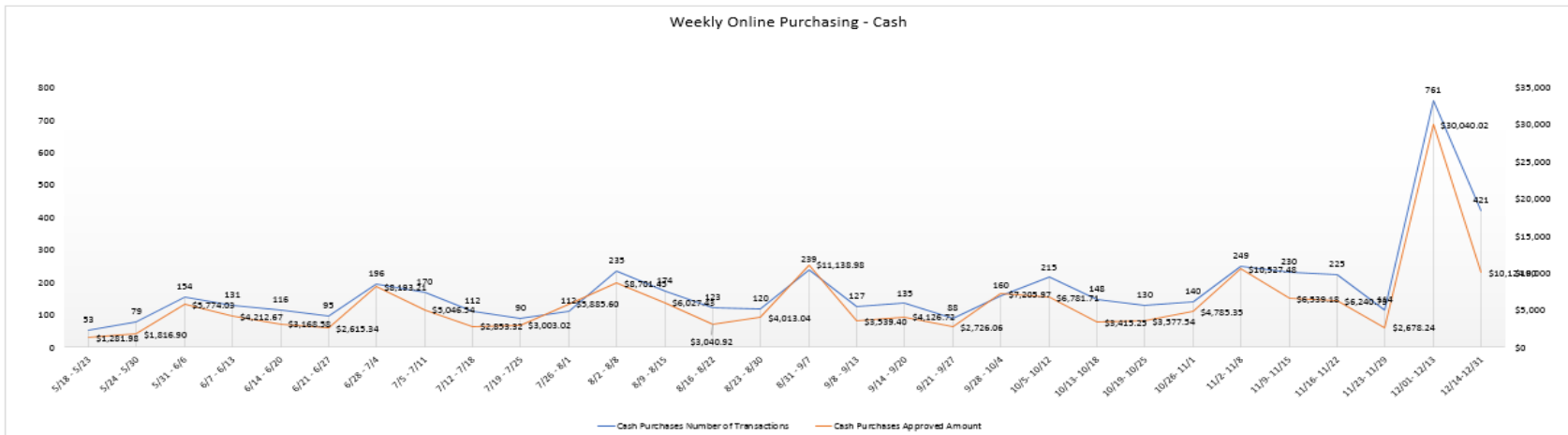
Date	Expenditures		Cases Processed		Recipients Served		Average Expenditures Per Case Processed		Average Expenditures Per Recipient Served	
	Pandemic EBT	Emergency Allotment	Pandemic EBT	Emergency Allotment	Pandemic EBT	Emergency Allotment	Pandemic EBT	Emergency Allotment	Pandemic EBT	Emergency Allotment
Apr-20	—	\$50,524,646	—	158,060	—	340,960	—	\$319.65	—	\$148.18
May-20	\$24,456,957	\$24,802,215	44,236	137,797	68,815	247,857	\$552.87	\$179.99	\$355.40	\$100.07
Jun-20	\$74,641,557	\$24,058,493	96,197	134,557	186,959	297,304	\$775.92	\$178.80	\$399.24	\$80.92
Jul-20	\$2,172,555	\$24,722,792	5,440	136,783	5,440	299,330	\$399.37	\$180.74	\$399.37	\$82.59
Aug-20	\$356,706	\$26,012,689	894	140,924	894	309,638	\$399.00	\$184.59	\$399.00	\$84.01
Sep-20	\$46,820,023	\$24,462,456	251,491	134,896	251,491	296,936	\$186.17	\$181.34	\$186.17	\$82.38
Oct-20	\$0.00	\$24,425,558	0	132,520	0	290,479	\$0.00	\$184.32	\$0.00	\$84.09
Nov-20	\$0.00	\$25,951,251	0	139,390	0	306,779	\$0.00	\$186.18	\$0.00	\$84.59
Dec-20	\$408,460	\$28,589,001	2,147	152,818	2,147	332,842	\$190.25	\$187.08	\$190.25	\$85.89
Jan-21										
Feb-21										
Mar-21										
Apr-21										
May-21										
Jun-21										
<b>Total to Date</b>	<b>\$148,856,257</b>	<b>\$50,524,646</b>	<b>400,405</b>	<b>1,267,745</b>	<b>515,746</b>	<b>2,722,125</b>	<b>\$371.76</b>	<b>\$39.85</b>	<b>\$288.62</b>	<b>\$18.56</b>

Reporting Date – Dec 31<sup>st</sup>, 2020



Data Source: ISD/ FIS

Reporting Date – Dec 31<sup>st</sup>, 2020



Data Source: ISD/ FIS

## Income Eligibility Guidelines: October 1, 2020 - September 30, 2021

### Federal Poverty Guidelines (FPG) Monthly Income Standards

Supplemental Nutrition Program (SNAP)					
Household Size	100% FPG Net Income	130% FPG Gross Income	165% FPG Gross Income for Categorical Eligibility	Maximum SNAP Monthly Allotment	LIHEAP 150% FPG
1	\$1,064	\$1,383	\$1,755	\$204	\$1,596
2	\$1,437	\$1,868	\$2,371	\$374	\$2,156
3	\$1,810	\$2,353	\$2,987	\$535	\$2,715
4	\$2,184	\$2,839	\$3,603	\$680	\$3,276
5	\$2,557	\$3,324	\$4,219	\$807	\$3,836
6	\$2,930	\$3,809	\$4,835	\$969	\$4,395
7	\$3,304	\$4,295	\$5,451	\$1,071	\$4,956
8	\$3,677	\$4,780	\$6,067	\$1,224	\$5,516
+1	+\$374	+\$486	+\$616	+\$153	+\$561
Minimum Allotment of \$16 effective from 10/1/2019 - 9/30/2020					
Deduction Limit: \$586, Heating and Cooling Standard Utility Allowance (HCSUA): \$348, Limited Utility Allowance (LUA): \$140, Telephone Standard: \$48, Dependent Care: Actual Amount (No Limit), Earned Income Deduction: 20%, Homeless Shelter Standard: \$156.74, LIHEAP (only) Energy Standard Allowance (ESA): \$208, A45, Cash Assistance & Support Services October 1, 2020 – September 30, 2021, House- hold Size, Federal Poverty Guidelines (FPG) Monthly Income					

### CASH Assistance & Support Services

Household Size	Federal Poverty Guidelines (FPG) Monthly Income Standards		Maximum Monthly Benefit	
	100% FPG Net Income	85% FPG Gross Limit	New Mexico Works Cash Assistance	General Assistance
1	\$1,064	\$904	\$266	\$245
2	\$1,437	\$1,221	\$357	\$329
3	\$1,810	\$1,539	\$447	\$412
4	\$2,184	\$1,856	\$539	\$496
5	\$2,557	\$2,173	\$630	\$580
6	\$2,930	\$2,491	\$721	\$664
7	\$3,304	\$2,808	\$812	\$748
8	\$3,677	\$3,125	\$922	\$849
+1	+\$374	+\$318	+\$91	+\$84
Deductions- Dependent Care: For a child under age 2 = \$200; For a child age 2 and over = \$175. Work Incentives- Earned Income Disregard: Single parent = \$125 & ½ remainder; Two parent = \$225 & ½ remainder.				

<b>Medical Assistance Division</b>					
Federal Poverty Guidelines New Mexico Affordable Care Eligibility Groups Effective April 01, 2020 thru March 31, 2021 <b>Monthly Guidelines</b>					
HH SIZE	PERCENT OF POVERTY				
	138%	190%	240%	250%	300%
1	\$1,468	\$2,021	\$2,552	\$2,659	\$3,190
2	\$1,983	\$2,730	\$3,449	\$3,592	\$4,311
3	\$2,498	\$3,439	\$4,344	\$4,525	\$5,430
4	\$3,013	\$4,149	\$5,240	\$5,459	\$6,550
5	\$3,529	\$4,858	\$6,137	\$6,392	\$7,671
6	\$4,044	\$5,567	\$7,032	\$7,325	\$8,790
7	\$4,559	\$6,277	\$7,928	\$8,259	\$9,910
8	\$5,074	\$6,986	\$8,825	\$9,192	\$11,031
138% Adult Expansion, 190% Children ages 6 to 19 (Medicaid), 240% Children ages 0 to 6 (Medicaid); ages 6 to 19 (CHIP), 250% Pregnancy Related Services Only, 300% Children 0 to 6 (CHIP)					

<b>Medical Assistance Division</b>					
Federal Poverty Guidelines New Mexico Affordable Care Eligibility Groups Effective April 01, 2020 thru March 31, 2021 <b>Annual Guidelines</b>					
HH SIZE	PERCENT OF POVERTY				
	138%	190%	240%	250%	300%
1	\$17,616	\$24,252	\$30,624	\$31,908	\$38,280
2	\$23,796	\$32,760	\$41,388	\$43,104	\$51,732
3	\$29,976	\$41,268	\$52,128	\$54,300	\$65,160
4	\$36,156	\$49,788	\$62,880	\$65,508	\$78,600
5	\$42,348	\$58,296	\$73,644	\$76,704	\$92,052
6	\$48,528	\$66,804	\$84,384	\$87,900	\$105,480
7	\$54,708	\$75,324	\$95,136	\$99,108	\$118,920
8	\$60,888	\$83,832	\$105,900	\$110,304	\$132,372
138% Adult Expansion, 190% Children ages 6 to 19 (Medicaid), 240% Children ages 0 to 6 (Medicaid); ages 6 to 19 (CHIP), 250% Pregnancy Related Services Only, 300% Children 0 to 6 (CHIP)					

## References

<sup>1</sup> *Medicaid Expenditures* (Omnicaid, Medicare Buy-Ins, Lump Sum Payments)

<sup>2</sup> *ASPEN Business Intelligence Tool: Eligibility*

<sup>3</sup> New Mexico Human Services Department, *Medicaid Eligibility Reports*, Retrieved from <http://www.hsd.state.nm.us/LookingForInformation/medicaid-eligibility.aspx> (for reporting month)

<sup>4</sup> *ASPEN Business Intelligence Tool: Application Tracking*

<sup>5</sup> Fidelity Information Services, *EBT Daily Statistical Report* (for reporting month)

<sup>6</sup> *ASPEN Report DQ-180: Length of Time Cases are Open* (for reporting month)

<sup>7</sup> *ASPEN Report EY-180: Individual Demographics by State and Age* (for reporting month)

<sup>8</sup> *ASPEN Business Intelligence Tool: Benefit Issuance*

<sup>9</sup> Fidelity Information Services, *EBT Daily Statistical Reports* (Month End)

<sup>10</sup> *ASPEN Report EY-180R: Individual Demographics by State, Race, Ethnicity and Gender* (for reporting month)

<sup>11</sup> SQL Queries from ASPEN

<sup>12</sup> JP Morgan, *New Mexico – NM EBT System- Monthly Benefit Draw Down Totals*

<sup>13</sup> *ASPEN Business Intelligence Tool: Application Tracking* (w/Parameters: SNAP, Expedite, Approved)

<sup>14</sup> SL Start, *As of Today Report*

<sup>15</sup> SL Start, *Statewide Employment Report*

<sup>16</sup> *SSIAR Payments*

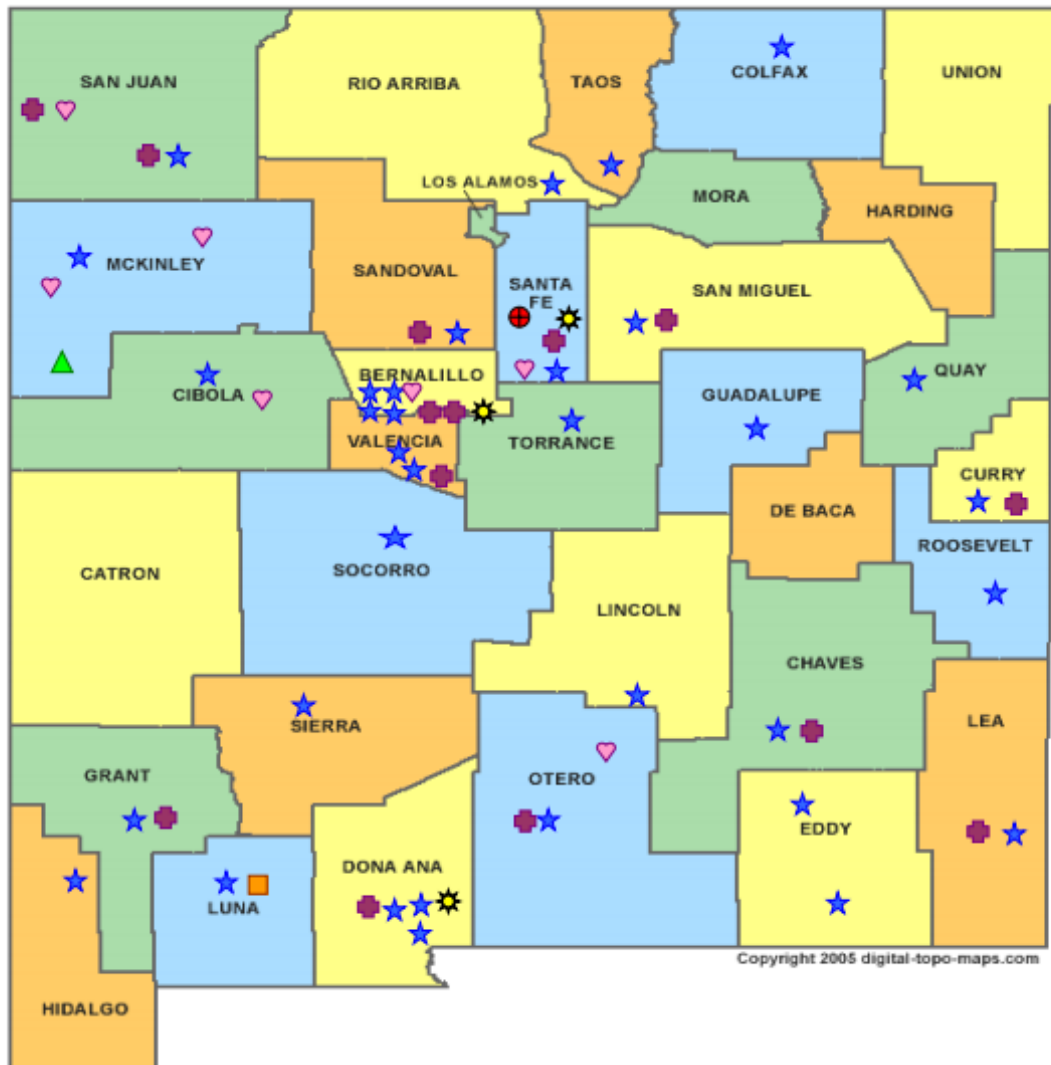
<sup>17</sup> Children, Youth, and Families Department, *Children Receiving Child Care Assistance Subsidies by County*

<sup>18</sup> Children, Youth, and Families Department, *Child Care Assistance Eligibility Programs*

<sup>19</sup> EDG is defined as an Eligibility Determination Group

<sup>20</sup>SQL Query from ASPEN





**HUMAN SERVICES**  
DEPARTMENT

New Mexico Human Services Department  
Field Offices

- Central Office (1)
- Income Support Division County Office (35)
- Income Support Division Satellite Office (2)
- Child Support Enforcement Regional Office (16)
- Child Support Enforcement Satellite Office (1)
- Indian Health Services (7)
- Hospital Site (3)

For a complete listing of field offices and other government and community resources:  
[http://www.hsd.state.nm.us/LookingForAssistance/Field\\_Offices\\_1.aspx](http://www.hsd.state.nm.us/LookingForAssistance/Field_Offices_1.aspx)

## Medicaid Policy Changes Due to COVID-19

### Already implemented:

1. **Three month renewal extensions**-MAGI Medicaid renewals are extended three months for individuals who fail to complete the 12-month recertification process after going through the automated administrative renewal process, the manual administrative renewal process, and issuance of the MAD 608 renewal form. Individuals who normally would have closed March 31, 2020 due to failure to recertify had their certification period extended through June 30, 2020. This same process will occur for April and May renewals. This may continue for later months if the emergency continues. Applies to non-MAGI Medicaid categories also that failed to recertify. Implemented in ASPEN on March 31st.

2. **Increase Presumptive Eligibility (PE) Determiner scope and qualified entities**-Most PE determiners are limited to approving PE for MAGI Children/CHIP and MAGI Pregnancy Services. Change was made to allow HSD employees to approve PE and to allow most PE determiners to approve all MAGI Medicaid categories of eligibility. Change was implemented on April 07, 2020.

3. **Reopen and Sustain Medicaid Cases**-The requirement is that anyone receiving Medicaid March 18th and ongoing for the duration of the emergency continue to be covered at the same level of coverage. There are three exceptions: client requested closure, deceased individuals, and moved out of state. April 2020 closures were reopened and sustained through July 31, 2020 and can be extended if the emergency continues. Implemented into ASPEN on April 26, 2020.

### In process (not implemented yet):

4. **Accept self-attestation for Medicaid**-Accept self-attestation for all factors of Medicaid except for citizenship/immigration. Process Medicaid applications for MAGI and non-MAGI categories based on self-attestation of 2 income and resources. Excludes IC/Waiver/PACE categories. For those cases not reasonably compatible approve and issue a 90 day HUMAD.

5. **New COVID-19 testing category**-This will be implemented in Omnicaid and not ASPEN. New uninsured category which will cover COVID-19 testing and related services. Applications will be sent to and processed by Conduent staff to allow for fee-for-service payments to providers for COVID-19 testing and related services.

6. **Exclusion of \$600 weekly unemployment benefit stimulus payments**-Medicaid excludes \$600 weekly unemployment benefit stimulus payments. ASPEN solution being developed across programs that treat the handling of unemployment monies differently as well as regular unemployment benefit extensions.

Cases closed for procedural reasons show low timeliness percentages due to the requirement to maintain Medicaid from March 18, 2020 for the duration of the COVID-19 emergency. To maintain Medicaid many March 2020 cases had to be reinstated manually by ISD field workers so there would not be a gap in coverage. To maintain Medicaid eligibility for April 2020 cases also required a manual reinstatement effort by ISD field workers as the ASPEN system fix to maintain Medicaid for the duration of the emergency still resulted in exceptions that had to be resolved manually.

## **SNAP Policy Changes During COVID-19**

### **1. Suspension of SNAP Employment and Training (E&T) Program**

- House of Representatives passed H.R. 6201, the Families First Coronavirus Response Act.
- ISD has chosen to suspend the SNAP E&T Program until further notice.
- interim policy and procedure for 8.139.410.13 NMAC “SUPPLEMENTAL NUTRITION ASSISTANCE PROGRAM (SNAP) EMPLOYMENT AND TRAINING PROGRAM (E&T).”

### **2. Amendment to Waiver - Interview Process for SNAP and TANF and Waiver - Recertification Waiver Process for SNAP, TANF, and Medicaid**

- FNS approved a blanket waiver for all states to utilize.
- Interim policy and procedures for the following:
  - General Operating Policies – Application 8.100.110 NMAC.
  - Interviews in accordance with 8.139.110.11 NMAC and 8.102.110 NMAC.
  - Interim Reports (IRs) in accordance with 8.139.120.9B NMAC. and 8.102.120.11C NMAC.
  - Recertifications in accordance with 8.139.120.8, 8.102.120.9B NMAC 8.106.120.9 and 8.106.120.10 NMAC.
- Waives all SNAP, TANF and GA-Unrelated Child interviews, if all mandatory verification standards are met. o GA-Disability is excluded from this waiver; an interview must be conducted for GA as medical documentation is needed. Allows us to waive the requirement of having to offer a face-to-face and to conduct all interviews by phone.
- IR's - If an IR cannot be processed under normal processing, ASPEN will automatically extend certification periods for households with an IR due in March, and April for 6 months to the month the customers recertification is due. May and June IRs will be suspended and not mailed.
- Recertifications – If a Recertification cannot be processed under normal processing, ASPEN will automatically extend certification periods for households scheduled to recertify in March, April, May and June 2020, for 6 months until September, October and November 2020.
- IPP 20-06 in regards to the policy change can be found on the HSD website at:

### **3. SNAP Supplement Waiver**

- State applied for a waiver through FNS.
- New Mexico has requested and been approved by FNS to provide an emergency allotment to address temporary food needs to households by bringing all households up to the maximum benefit due to pandemic related economic conditions. States that have already received FNS approval this supplemental issuance in March and April, or April and May, are approved to continue issuing full benefits each month.
- Interim policy and procedure for 8.139.610.12 NMAC.

### **4. Suspension of SNAP General Work Requirements**

- House of Representatives passed H.R. 6201, the Families First Coronavirus Response Act.
- During the declared public health emergency, SNAP recipients who would otherwise be mandatory to comply with the SNAP general work requirements will be waived from this requirement and will not experience any type of disqualification for noncompliance during this time.
- Interim policy and procedure guidance for SNAP General Work Requirements set forth in 8.139.410.12 C and D NMAC.

### **5. Telephonic Signature Waiver**

- State applied for a waiver through FNS
- If a customer calls to apply for benefits and does not have a paper application on file Conduent will accept a telephonic application and telephonic signature for applications by completing an online application through YesNM.
- Interim policy and procedures for 8.100.110.9A NMAC Submission of Forms.

### TANF Policy Changes During COVID-19

1. Good cause exemptions from work requirements for TANF	TANF Non-Compliance Process Suspension of Non-Compliance for NMW Participants	
2. Increased cash benefit levels for TANF cash assistance recipients	Process as normal	
3. 60-month time limit	IPP Hardship	Hardship extensions will allow individuals impacted by COVID-19 to apply for a TANF hardship or continue to receive TANF beyond their 60 <sup>th</sup> month
4. Work Participation Rate	Process as normal	The state will still need to meet the WPR. However, States can use Good Cause that is outlined in CFR and not be penalized for not meeting WPR due to the emergency
5. CARES Act Direct Payment	CARES Act Direct Payment	Guidance is to exclude as income and as a resource
6. UCB under CARES Act	Only to exclude UCB benefits under CARES Act	ACF Guidance is to <b><i>EXCLUDE</i></b> all UCB income at this time. New Mexico choose to exclude only CARES Act UCB

## **Children Youth and Families Department Policy Changes During COVID-19**

**NM Children Youth and Families Department received \$29.5 million in emergency funds, which resulted in the following changes:**

1. Waiver of copay for families which paid for by CYFD
2. Payment of \$250 per child premium for children who are still in care (emergency, first responders and essential personnel)
3. Streamlining of licensing of new facilities that provide emergency child care
4. Payment to the original and temporary child care provider for children of emergency, first responders and essential personnel, whose child care Program closed due to COVID-19

### **Additional Changes Anticipated**

1. Hazardous pay for child care providers currently operating
2. Compensation for programs that are losing their funding due to private pay