

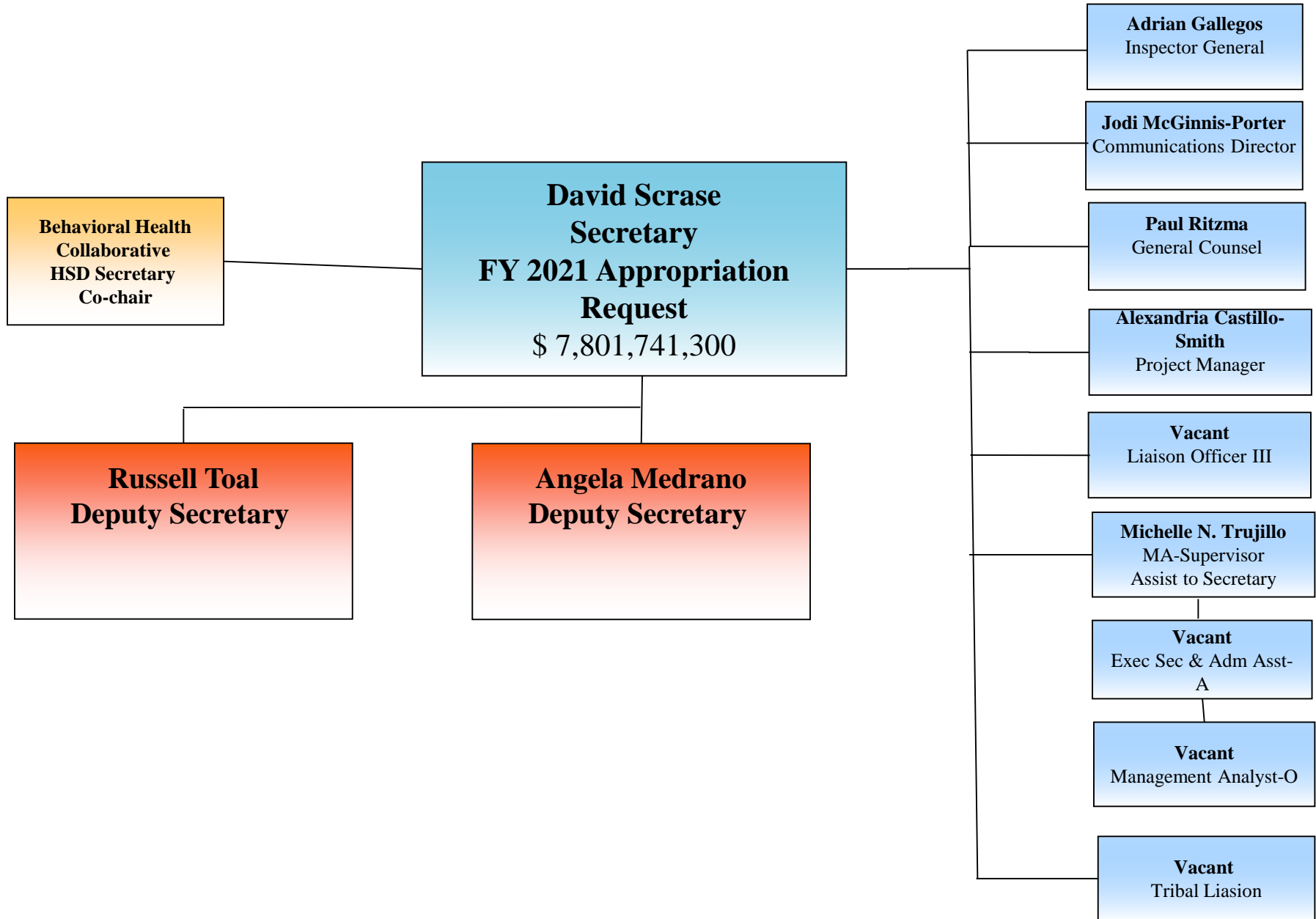


New Mexico Human Services Department

(\$ Represent FY2021 Appropriation Request as of September 1, 2019)

September 2019

Office of the Secretary





New Mexico Human Services Department

(\$ Represent FY2021 Appropriation Request as of September 1, 2019)

HSD Programs

David Scrase
Secretary
\$7,801,741,300

Russell Toal
Deputy Secretary

Angela Medrano
Deputy Secretary

Child Support Enforcement Division
Jeremy Toulouse
Director
\$33,375,800

Medical Assistance Division
Nicole Comeaux
Director
Admin-\$96,801,500
Medicaid-\$6,037,119,000
BHS Med-\$545,531,000

Behavioral Health Services Division
Vacant
Director
\$71,871,600

Income Support Division
Karmela Martinez
Director
Admin-\$98,193,300
Prog-\$853,385,400

- Child Support – Establishment
- Child Support – Enforcement
 - Bench Warrant Project
 - Specialized Enforcement
 - Fresh Start Program/ Arrears Management
 - Medical Support Notices
 - New Hires Reporting
- Paternity Establishment Services
 - 12 County Offices
 - 2 Satellite Offices

- Medicaid - Managed Care & Fee For Service
 - 54 total Medicaid
 - categories of eligibility
- Centennial Care
- School Based Health Services
- Working Disabled Individual Program (WDI)
 - Home & Community Based Services
- Breast and Cervical Cancer Program

- Substance Abuse & Mental Health block grant
 - Prevention & treatment services
- Co-occurring disorder services
 - Sexual assault services
- Specialized women's services
- Office of Consumer Affairs
- Staffs the Behavioral Health Planning Council
 - EBP Training & Technical Assistance

- Supplemental Nutrition Assistance
 - Program (SNAP)
- Temporary Assistance for Needy Families (TANF)
 - General Assistance (GA)
- Low Income Home Energy Assistance Program (LIHEAP)
- The Emergency Food Assistance Program (TEFAP)
 - Refugee Resettlement Program
- Community Services Block Grant (CSBG)
 - 36 Field Offices



New Mexico Human Services Department

(\$ Represent FY2021 Appropriation Request as of September 1, 2019)

HSD Program Support

