



# Monthly Statistical Report

## May 2018

There were 845,278 individuals that received Medicaid in May 2018, a 6.4% decrease from one year ago. The count of Medicaid recipients has decreased by 6,828, or 0.8%, since last month.

The SNAP caseload in May 2018 was 221,110, a 2.1% increase from one year ago. The SNAP caseload has decreased by 29 cases, or 0.0%, since last month.

The TANF caseload was 10,790 in May 2018, a decrease of 3.9% from May 2017. The TANF caseload had 41 fewer cases compared to April 2018, a decrease of 0.4%.

The caseload for General Assistance was 2,912 in May 2018, a decrease of 9.9% from one year ago and a decrease of 71 cases from last month.

Susana Martinez, Governor  
Brent Earnest, Cabinet Secretary

<b>Contents</b>	<b>Page</b>
Summary	3-5
Medicaid	6-18
SNAP	19-37
Cash Assistance	38-52
Child Care Assistance	53-54
Income Eligibility Guidelines	55-56

**Regions are reported as follows:**

<b>Region 1</b>		
Catron	San Juan	Valencia
Cibola	Sierra	
McKinley	Socorro	
<b>Region 2</b>		
Colfax	Mora	Santa Fe
De Baca	Quay	Taos
Guadalupe	Rio Arriba	Union
Harding	Sandoval	
Los Alamos	San Miguel	
<b>Region 3</b>		
Bernalillo	Torrance	
<b>Region 4</b>		
Chaves	Eddy	Lincoln
Curry	Lea	Roosevelt
<b>Region 5</b>		
Dona Ana	Hidalgo	Otero
Grant	Luna	

***The Mission of the Human Services Department***

*To reduce the impact of poverty on people living in New Mexico by providing support services that help families break the cycle of dependency on public assistance*

Christopher Collins, Deputy Secretary  
Michael Nelson, Deputy Secretary

Prepared by Income Support Division  
PO Box 2348  
Santa Fe, NM 87504-2348  
505-827-7250

Mary Brogdon, Director  
Vida Tapia-Sanchez, Deputy Director  
Shanita Harrison, Deputy Director  
Judith Parks, Deputy Director

<http://www.hsd.state.nm.us/monthly-statistical-reports.aspx>

# Program Summary for May 2018

Medicaid				Percent Change	
	May-17	Apr-18	May-18	May-17- May-18	Apr-18- May-18
<b>Expenditures<sup>1</sup></b>	\$401,515,425	\$479,371,511	\$433,115,285	7.9%	-9.6%
<b>Cases<sup>2</sup></b>	522,542	490,431	494,575	-5.4%	0.8%
<b>Expenditures/Case</b>	\$768	\$977	\$876	14.0%	-10.4%
<b>Recipients<sup>3</sup></b>	902,860	852,106	845,278	-6.4%	-0.8%
<i>Adults</i>	514,934	484,015	480,220	-6.7%	-0.8%
<i>Children</i>	387,926	368,091	365,058	-5.9%	-0.8%
<b>Recipients /Case</b>	1.73	1.74	1.71	-1.1%	-1.6%
<b>Cases Processed<sup>4</sup></b>	14,411	12,180	11,720	-18.7%	-3.8%
<i>Approvals<sup>4</sup></i>	9,293	9,603	8,994	-3.2%	-6.3%

Supplemental Nutrition Assistance Program (SNAP)				Percent Change	
	May-17	Apr-18	May-18	May-17- May-18	Apr-18- May-18
<b>Expenditures<sup>5</sup></b>	\$54,983,197	\$52,928,465	\$52,647,664	-4.2%	-0.5%
<b>Cases<sup>6</sup></b>	216,559	221,139	221,110	2.1%	0.0%
<b>Expenditures/Case</b>	\$254	\$239	\$238	-6.2%	-0.5%
<b>Recipients<sup>7</sup></b>	455,529	454,779	454,158	-0.3%	-0.1%
<i>Adults</i>	259,292	262,242	262,249	1.1%	0.0%
<i>Children</i>	196,237	192,537	191,909	-2.2%	-0.3%
<b>Recipients /Case</b>	2.10	2.06	2.05	-2.4%	-0.1%
<b>Cases Processed<sup>4</sup></b>	20,388	18,275	19,153	-6.1%	4.8%
<i>Approvals<sup>4</sup></i>	16,437	15,020	15,562	-5.3%	3.6%

Cash Assistance Programs				Percent Change	
	May-17	Apr-18	May-18	May-17- May-18	Apr-18- May-18
<b>Expenditures<sup>5</sup></b>	\$4,176,777	\$3,952,778	\$3,932,330	-5.9%	-0.5%
<b>Cases<sup>6</sup></b>	14,751	14,024	13,914	-5.7%	-0.8%
<b>Expenditures/Case</b>	\$283	\$282	\$283	-0.2%	0.3%
<b>Recipients<sup>7</sup></b>	33,193	31,219	31,010	-6.6%	-0.7%
<i>Adults</i>	11,015	10,093	9,968	-9.5%	-1.2%
<i>Children</i>	22,178	21,126	21,042	-5.1%	-0.4%
<b>Recipients /Case</b>	2.25	2.23	2.23	-1.0%	0.1%
<b>Cases Processed<sup>4</sup></b>	6,030	5,159	5,460	-9.5%	5.8%
<i>Approvals<sup>4</sup></i>	1,634	1,575	1,646	0.7%	4.5%

Low Income Home Energy Assistance Program (LIHEAP)				Percent Change	
	May-17	Apr-18	May-18	May-17- May-18	Apr-18- May-18
<b>Expenditures<sup>8</sup></b>	\$587,515	\$672,175	\$597,415	1.7%	-11.1%
<b>Cases<sup>8</sup></b>	2,362	2,694	2,394	1.4%	-11.1%
<b>Expenditures/Case</b>	\$249	\$250	\$250	0.3%	0.0%
<b>Recipients<sup>8</sup></b>	5,945	6,352	5,769	-3.0%	-9.2%
<i>Adults</i>	3,111	3,559	3,155	1.4%	-11.4%
<i>Children</i>	2,834	2,793	2,614	-7.8%	-6.4%
<b>Recipients /Case</b>	2.52	2.36	2.41	-4.3%	2.2%
<b>Cases Processed<sup>4</sup></b>	4,252	4,113	3,715	-12.6%	-9.7%
<i>Approvals<sup>4</sup></i>	2,523	2,786	2,532	0.4%	-9.1%

# Cash Assistance Summary for May 2018

## Temporary Assistance for Needy Families (TANF)

	May-17	Apr-18	May-18	Percent Change	
				May-17- May-18	Apr-18- May-18
Expenditures <sup>5</sup>	\$3,321,193	\$3,167,033	\$3,149,273	-5.2%	-0.6%
Cases <sup>6</sup>	11,226	10,831	10,790	-3.9%	-0.4%
Expenditures/Case	\$296	\$292	\$292	-1.3%	-0.2%
Recipients <sup>7</sup>	29,285	27,693	27,550	-5.9%	-0.5%
<i>Adults</i>	7,644	7,051	6,982	-8.7%	-1.0%
<i>Children</i>	21,641	20,642	20,568	-5.0%	-0.4%
Approvals <sup>4</sup>	1,333	1,279	1,370	2.8%	7.1%

## General Assistance (GA)

	May-17	Apr-18	May-18	Percent Change	
				May-17- May-18	Apr-18- May-18
Expenditures <sup>5</sup>	\$767,418	\$719,731	\$715,178	-6.8%	-0.6%
Cases <sup>6</sup>	3,233	2,983	2,912	-9.9%	-2.4%
Expenditures/Case	\$237	\$241	\$246	3.5%	1.8%
Recipients <sup>7</sup>	3,288	3,022	2,960	-10.0%	-2.1%
<i>Adults</i>	3,061	2,807	2,752	-10.1%	-2.0%
<i>Children</i>	227	215	208	-8.4%	-3.3%
Approvals <sup>4</sup>	237	247	205	-13.5%	-17.0%

## Education Works

	May-17	Apr-18	May-18	Percent Change	
				May-17- May-18	Apr-18- May-18
Expenditures <sup>5</sup>	\$61,623	\$54,986	\$56,740	-7.9%	3.2%
Cases <sup>6</sup>	172	154	156	-9.3%	1.3%
Expenditures/Case	\$358	\$357	\$364	1.5%	1.9%
Recipients <sup>7</sup>	497	445	442	-11.1%	-0.7%
<i>Adults</i>	187	176	176	-5.9%	0.0%
<i>Children</i>	310	269	266	-14.2%	-1.1%
Approvals <sup>4</sup>	2	3	1	-50.0%	-66.7%

## Refugee Cash (RCA)

	May-17	Apr-18	May-18	Percent Change	
				May-17- May-18	Apr-18- May-18
Expenditures <sup>5</sup>	\$23,343	\$8,827	\$8,939	-61.7%	1.3%
Cases <sup>6</sup>	88	34	34	-61.4%	0.0%
Expenditures/Case	\$265	\$260	\$263	-0.9%	1.3%
Recipients <sup>7</sup>	94	37	36	-61.7%	-2.7%
<i>Adults</i>	94	37	36	-61.7%	-2.7%
<i>Children</i>	0	0	0	N/A	N/A

## State Supplement for Residential Care

	May-17	Apr-18	May-18	Percent Change	
				May-17- May-18	Apr-18- May-18
Expenditures <sup>5</sup>	\$3,200	\$2,200	\$2,200	-31.3%	0.0%
Cases <sup>6</sup>	32	22	22	-31.3%	0.0%
Expenditures/Case	\$100	\$100	\$100	0.0%	0.0%
Recipients <sup>7</sup>	29	22	22	-24.1%	0.0%
<i>Adults</i>	29	22	22	-24.1%	0.0%
<i>Children</i>	0	0	0	N/A	N/A

<b>Expenditures YTD</b>			
	SFY 2018	FFY 2018	CY 2018
Medicaid <sup>1</sup>	\$4,899,722,704	\$3,673,566,740	\$2,314,726,072
Supplemental Nutrition Assistance Program <sup>9</sup>	\$593,160,703	\$426,866,588	\$265,396,938
Temporary Assistance for Needy Families <sup>9</sup>	\$38,970,502	\$27,217,112	\$16,818,260
General Assistance <sup>9</sup>	\$8,164,613	\$5,917,311	\$3,656,213
Education Work <sup>9</sup>	\$526,714	\$408,488	\$264,184
LIHEAP <sup>8</sup>	\$16,566,958	\$14,531,486	\$6,034,735

<b>Average Caseload YTD</b>			
	SFY 2018	FFY 2018	CY 2018
Medicaid <sup>2</sup>	496,462	493,637	495,133
Supplemental Nutrition Assistance Program <sup>6</sup>	221,362	221,738	221,781
Temporary Assistance for Needy Families <sup>6</sup>	11,481	11,385	11,109
General Assistance <sup>6</sup>	3,026	3,018	2,997
Education Work <sup>6</sup>	130	141	143
LIHEAP <sup>8</sup>	5,429	6,809	4,710

<b>Demographic Profile- May 2018</b>					
	SNAP	TANF	GA	Education Works	RCA
<i>Gender of Recipients<sup>10</sup></i>					
Male	205,684	11,844	1,649	155	22
Female	248,474	15,706	1,311	287	14
<i>Ethnicity<sup>10</sup></i>					
Hispanic	252,343	18,830	1,518	293	11
Non-Hispanic	201,815	8,720	1,442	149	25
<i>Race<sup>10</sup></i>					
Native American or Alaskan Native	75,493	2,255	246	26	0
Asian	4,420	259	35	3	0
African American or Black	11,247	1,175	126	21	18
Native Hawaiian or Pacific Islander	866	33	5	0	0
White	352,775	23,075	2,496	386	13
Unknown / Not Declared	4,857	329	27	3	0
More than One Race	4,500	424	25	3	5

Medicaid demographic data can be found here: <http://www.hsd.state.nm.us/LookingForInformation/medicaid-eligibility.aspx>

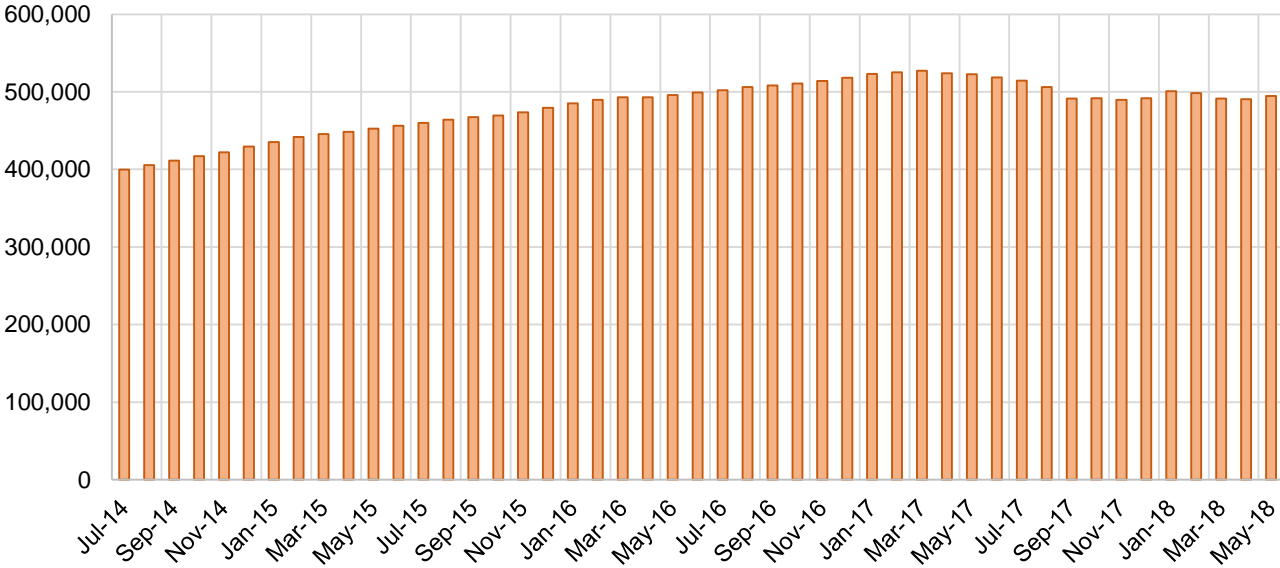
## Medicaid Cases by Field Office<sup>2</sup>

Office				Percent Change	
	May-17	Apr-18	May-18	May-17- May-18	Apr-18- May-18
Chaves County ISD	16,593	15,901	16,070	-3.2%	1.1%
Cibola County ISD	7,639	7,392	7,458	-2.4%	0.9%
Colfax County ISD	3,581	3,545	3,620	1.1%	2.1%
Curry County ISD	10,571	13,815	13,993	32.4%	1.3%
East Dona Ana County ISD	18,621	17,798	17,705	-4.9%	-0.5%
Eddy Artesia County ISD	4,067	3,777	3,842	-5.5%	1.7%
Eddy Carlsbad County ISD	8,389	7,761	7,850	-6.4%	1.1%
Grant County ISD	7,205	6,743	6,873	-4.6%	1.9%
Guadalupe County ISD	1,673	1,744	1,752	4.7%	0.5%
Hidalgo County ISD	1,054	963	977	-7.3%	1.5%
Lea County ISD	15,021	14,310	14,528	-3.3%	1.5%
Lincoln County ISD	4,632	4,264	4,348	-6.1%	2.0%
Luna County ISD	9,161	8,754	8,808	-3.9%	0.6%
McKinley County ISD	23,349	22,189	23,083	-1.1%	4.0%
Northeast Bernalillo County ISD	46,085	42,727	43,320	-6.0%	1.4%
Northwest Bernalillo County ISD	50,379	48,816	49,783	-1.2%	2.0%
Otero County ISD	12,199	11,890	12,112	-0.7%	1.9%
Quay County ISD	2,646	2,552	2,551	-3.6%	0.0%
Rio Arriba County ISD	15,048	13,936	14,082	-6.4%	1.0%
Roosevelt County ISD	4,149	22	21	-99.5%	-4.5%
San Juan County ISD	31,542	29,932	30,064	-4.7%	0.4%
San Miguel County ISD	9,813	9,034	9,123	-7.0%	1.0%
Sandoval County ISD	27,168	25,483	25,497	-6.2%	0.1%
Santa Fe County ISD	27,706	25,029	25,047	-9.6%	0.1%
Sierra County ISD	5,697	5,381	5,404	-5.1%	0.4%
Socorro County ISD	5,743	5,356	5,327	-7.2%	-0.5%
South Dona Ana ISD	20,465	19,831	19,724	-3.6%	-0.5%
Southeast Bernalillo County ISD	30,113	25,470	25,445	-15.5%	-0.1%
Southwest Bernalillo County ISD	42,006	38,925	38,784	-7.7%	-0.4%
Taos County ISD	10,007	9,335	9,433	-5.7%	1.0%
Torrance County ISD	7,997	7,427	7,525	-5.9%	1.3%
Valencia North County ISD	18,936	18,083	18,128	-4.3%	0.2%
Valencia South County ISD	66	3	108	63.6%	3500.0%
West Dona Ana County ISD	23,217	22,239	22,186	-4.4%	-0.2%
Centralized Units	4	4	4	0.0%	0.0%
Statewide Total	522,542	490,431	494,575	-5.4%	0.8%

## Medicaid Cases by Region<sup>2</sup>

				Percent Change	
Region	May-17	Apr-18	May-18	May-17- May-18	Apr-18- May-18
Region 1 - NW	92,972	88,336	89,572	-3.7%	1.4%
Region 2 - NE	97,642	90,658	91,105	-6.7%	0.5%
Region 3 - Central	176,580	163,365	164,857	-6.6%	0.9%
Region 4 - SE	63,422	59,850	60,652	-4.4%	1.3%
Region 5 - SW	91,922	88,218	88,385	-3.8%	0.2%
Centralized Units	4	4	4	0.0%	0.0%
Statewide Total	522,542	490,431	494,575	-5.4%	0.8%

**Medicaid Caseload: SFY-15 to Current**



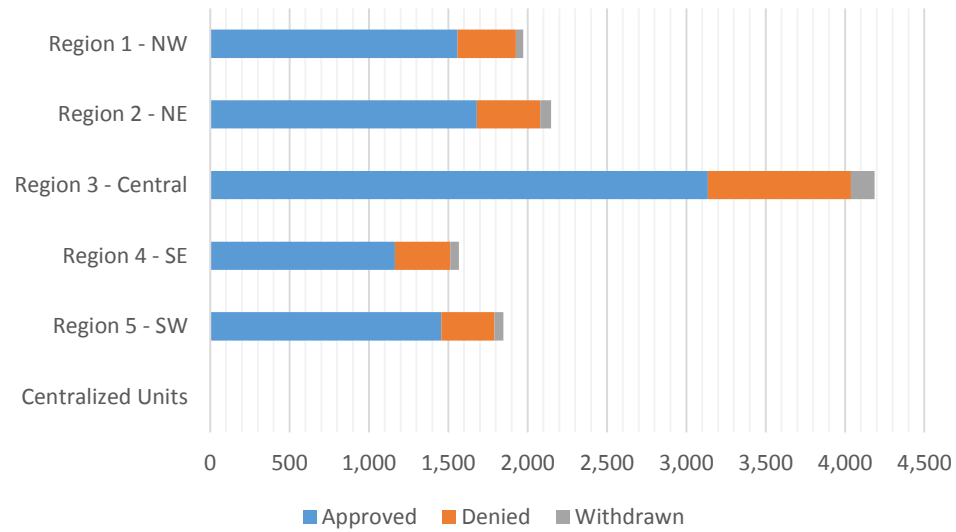
**Medicaid Initial Applications by Field Office<sup>4,11</sup>**  
**May 2018**

Office	Approved	Denied	Withdrawn	Total Cases Processed
Chaves County ISD	292	72	7	371
Cibola County ISD	143	27	4	174
Colfax County ISD	63	37	4	104
Curry County ISD	306	107	26	439
East Dona Ana County ISD	359	71	14	444
Eddy Artesia County ISD	58	16	5	79
Eddy Carlsbad County ISD	149	45	4	198
Grant County ISD	102	23	4	129
Guadalupe County ISD	27	9	0	36
Hidalgo County ISD	0	0	0	0
Lea County ISD	271	92	13	376
Lincoln County ISD	84	17	0	101
Luna County ISD	133	47	6	186
McKinley County ISD	372	90	16	478
Northeast Bernalillo County ISD	819	204	50	1,073
Northwest Bernalillo County ISD	757	231	37	1,025
Otero County ISD	216	46	4	266
Quay County ISD	47	3	1	51
Rio Arriba County ISD	197	70	10	277
Roosevelt County ISD	3	0	0	3
San Juan County ISD	550	141	15	706
San Miguel County ISD	271	32	8	311
Sandoval County ISD	468	93	18	579
Santa Fe County ISD	433	100	16	549
Sierra County ISD	77	12	2	91
Socorro County ISD	87	21	2	110
South Dona Ana ISD	298	71	11	380
Southeast Bernalillo County ISD	696	238	10	944
Southwest Bernalillo County ISD	746	198	44	988
Taos County ISD	174	56	10	240
Torrance County ISD	117	31	8	156
Valencia North County ISD	328	74	7	409
Valencia South County ISD	2	2	0	4
West Dona Ana County ISD	349	77	17	443
Centralized Units	0	0	0	0
<b>Statewide Total</b>	<b>8,994</b>	<b>2,353</b>	<b>373</b>	<b>11,720</b>



## Medicaid Initial Applications by Region<sup>4,11</sup> May 2018

Region	Approved	Denied	Withdrawn	Total Cases Processed
Region 1 - NW	1,559	367	46	1,972
Region 2 - NE	1,680	400	67	2,147
Region 3 - Central	3,135	902	149	4,186
Region 4 - SE	1,163	349	55	1,567
Region 5 - SW	1,457	335	56	1,848
Centralized Units	0	0	0	0
<b>Statewide Total</b>	<b>8,994</b>	<b>2,353</b>	<b>373</b>	<b>11,720</b>

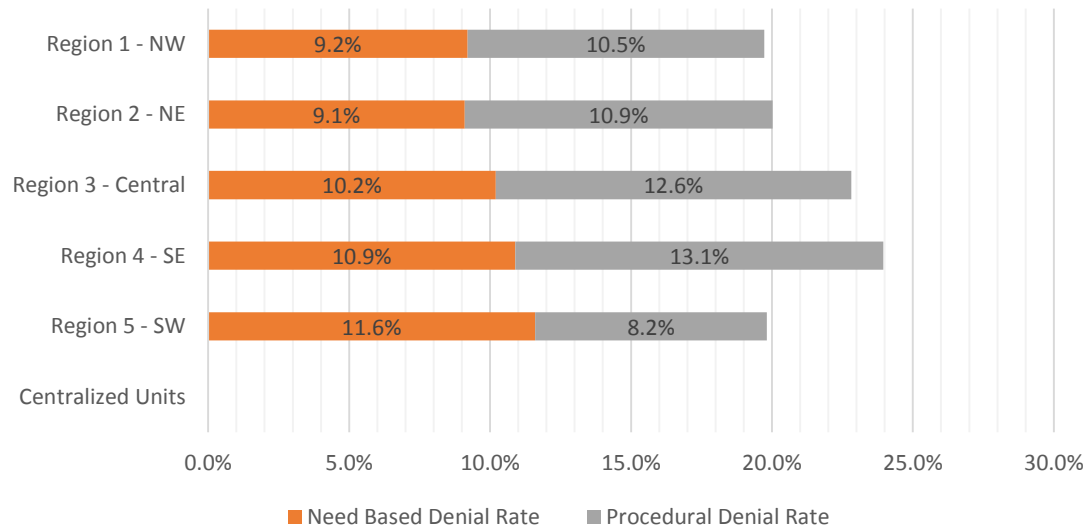


**Medicaid EDG Initial Disposition Rates by Field Office**<sup>4,11,19</sup>  
**May 2018**

Office	Approval Rate	Denial Rate	Need Based Denial Rate	Procedural Denial Rate
Chaves County ISD	81.1%	18.9%	11.5%	7.4%
Cibola County ISD	82.3%	17.7%	8.0%	9.7%
Colfax County ISD	60.7%	39.3%	8.6%	30.7%
Curry County ISD	72.8%	27.2%	11.7%	15.5%
East Dona Ana County ISD	82.7%	17.3%	10.7%	6.6%
Eddy Artesia County ISD	80.3%	19.7%	10.2%	9.5%
Eddy Carlsbad County ISD	73.3%	26.7%	5.6%	21.1%
Grant County ISD	82.4%	17.6%	7.8%	9.8%
Guadalupe County ISD	68.4%	31.6%	28.1%	3.5%
Hidalgo County ISD	0.0%	0.0%	0.0%	0.0%
Lea County ISD	72.4%	27.6%	14.6%	13.0%
Lincoln County ISD	85.1%	14.9%	3.4%	11.5%
Luna County ISD	74.2%	25.8%	14.8%	11.0%
McKinley County ISD	80.1%	19.9%	9.6%	10.3%
Northeast Bernalillo County ISD	77.9%	22.1%	10.1%	12.0%
Northwest Bernalillo County ISD	75.0%	25.0%	7.0%	18.0%
Otero County ISD	78.4%	21.6%	11.8%	9.8%
Quay County ISD	92.3%	7.7%	1.3%	6.4%
Rio Arriba County ISD	76.6%	23.4%	6.7%	16.7%
Roosevelt County ISD	100.0%	0.0%	0.0%	0.0%
San Juan County ISD	78.4%	21.6%	8.4%	13.2%
San Miguel County ISD	85.8%	14.2%	5.6%	8.6%
Sandoval County ISD	82.8%	17.2%	9.0%	8.2%
Santa Fe County ISD	81.2%	18.8%	11.9%	6.9%
Sierra County ISD	86.0%	14.0%	11.1%	2.9%
Socorro County ISD	82.0%	18.0%	2.8%	15.2%
South Dona Ana ISD	79.4%	20.6%	13.1%	7.5%
Southeast Bernalillo County ISD	76.3%	23.7%	14.0%	9.7%
Southwest Bernalillo County ISD	79.4%	20.6%	10.1%	10.5%
Taos County ISD	76.3%	23.7%	8.2%	15.5%
Torrance County ISD	77.1%	22.9%	11.4%	11.5%
Valencia North County ISD	81.7%	18.3%	12.0%	6.3%
Valencia South County ISD	50.0%	50.0%	0.0%	50.0%
West Dona Ana County ISD	81.8%	18.2%	10.3%	7.9%
Centralized Units	0.0%	0.0%	0.0%	0.0%
Statewide Total	78.6%	21.4%	10.1%	11.3%

**Medicaid EDG Initial Disposition Rates by Region<sup>4,11,19</sup>**  
**May 2018**

Region	Approval Rate	Denial Rate	Need Based Denial Rate	Procedural Denial Rate
Region 1 - NW	80.3%	19.7%	9.2%	10.5%
Region 2 - NE	80.0%	20.0%	9.1%	10.9%
Region 3 - Central	77.2%	22.8%	10.2%	12.6%
Region 4 - SE	76.0%	24.0%	10.9%	13.1%
Region 5 - SW	80.2%	19.8%	11.6%	8.2%
Centralized Units				
<b>Statewide Total</b>	<b>78.6%</b>	<b>21.4%</b>	<b>10.1%</b>	<b>11.3%</b>



**Medicaid: Percentage of Initial EDG Approvals Processed Timely by Field Office <sup>13,19</sup>**

	Oct-17	Nov-17	Dec-17	Jan-18	Feb-18	Mar-18	Apr-18	May-18	Jun-18	Jul-18	Aug-18	Sep-18	Average
Cibola	92.2%	94.4%	94.6%	98.5%	98.0%	98.9%	99.0%	97.1%					96.6%
McKinley	95.6%	97.4%	96.9%	97.9%	98.3%	98.8%	99.3%	96.2%					97.5%
San Juan	93.4%	92.0%	94.3%	94.7%	94.8%	95.9%	96.2%	97.1%					94.8%
Sierra	95.8%	98.6%	96.9%	97.3%	99.4%	100.0%	99.1%	100.0%					98.4%
Socorro	95.4%	98.7%	96.7%	97.0%	95.7%	95.9%	98.0%	99.3%					97.1%
Valencia North	93.2%	94.1%	94.0%	95.2%	97.7%	98.9%	98.2%	99.6%					96.4%
Valencia South	100.0%	100.0%	100.0%	100.0%		100.0%	100.0%	100.0%					100.0%
<b>NW Region 1 Total</b>	<b>94.0%</b>	<b>94.7%</b>	<b>95.2%</b>	<b>96.2%</b>	<b>96.8%</b>	<b>97.7%</b>	<b>97.8%</b>	<b>97.7%</b>					<b>96.3%</b>
Colfax	93.9%	98.4%	97.4%	98.4%	95.1%	100.0%	98.1%	100.0%					97.7%
Guadalupe	97.9%	100.0%	96.6%	100.0%	100.0%	100.0%	100.0%	100.0%					99.3%
Quay	98.0%	94.9%	94.6%	97.2%	97.1%	93.7%	97.4%	95.8%					96.1%
Rio Arriba	96.9%	94.7%	91.1%	96.9%	95.7%	97.3%	99.1%	96.2%					96.0%
San Miguel	97.3%	98.9%	99.0%	98.4%	98.0%	99.3%	99.0%	99.0%					98.6%
Sandoval	97.0%	97.0%	96.8%	97.9%	96.8%	97.7%	97.5%	99.0%					97.5%
Santa Fe	96.1%	95.7%	96.6%	95.2%	95.5%	98.4%	98.2%	98.4%					96.8%
Taos	98.3%	96.8%	98.2%	96.8%	97.0%	95.9%	98.7%	99.6%					97.7%
<b>NE Region 2 Total</b>	<b>96.8%</b>	<b>96.6%</b>	<b>96.6%</b>	<b>97.1%</b>	<b>96.4%</b>	<b>97.9%</b>	<b>98.3%</b>	<b>98.5%</b>					<b>97.3%</b>
NE Bernalillo	95.1%	93.6%	93.9%	94.5%	97.1%	96.7%	97.1%	97.7%					95.7%
NW Bernalillo	96.3%	95.4%	94.6%	94.7%	96.4%	96.9%	98.1%	98.0%					96.3%
SE Bernalillo	88.2%	90.8%	94.4%	92.2%	95.8%	95.9%	95.3%	96.4%					93.6%
SW Bernalillo	95.8%	96.2%	95.2%	94.9%	95.1%	97.1%	97.7%	97.7%					96.2%
Torrance	95.5%	95.1%	95.2%	94.8%	91.1%	99.2%	96.4%	97.5%					95.6%
<b>Gen. Region 3 Total</b>	<b>94.3%</b>	<b>94.3%</b>	<b>94.5%</b>	<b>94.2%</b>	<b>95.9%</b>	<b>96.8%</b>	<b>97.2%</b>	<b>97.5%</b>					<b>95.6%</b>
Chaves	96.4%	96.6%	97.1%	98.6%	97.4%	98.1%	98.6%	98.9%					97.7%
Curry	94.8%	94.2%	98.4%	98.3%	96.5%	97.3%	98.3%	98.0%					97.0%
Eddy Artesia	95.3%	94.9%	96.4%	93.2%	96.4%	98.2%	98.3%	100.0%					96.6%
Eddy Carlsbad	93.2%	98.4%	97.6%	94.8%	98.5%	96.6%	96.7%	98.3%					96.8%
Lea	96.1%	94.7%	94.0%	96.5%	99.5%	96.5%	97.5%	96.6%					96.4%
Lincoln	95.7%	94.7%	97.1%	97.4%	97.3%	99.4%	97.1%	98.4%					97.1%
Roosevelt	94.6%	94.2%	93.4%	94.9%		83.3%	100.0%	100.0%					94.4%
<b>SE Region 4 Total</b>	<b>95.4%</b>	<b>95.5%</b>	<b>96.3%</b>	<b>96.9%</b>	<b>97.7%</b>	<b>97.4%</b>	<b>97.9%</b>	<b>98.1%</b>					<b>96.9%</b>
East Dona Ana	96.1%	97.1%	97.5%	97.3%	97.1%	95.0%	97.5%	98.6%					97.0%
Grant	93.9%	96.8%	99.3%	97.5%	98.4%	97.0%	99.5%	99.4%					97.7%
Luna	96.8%	97.8%	97.4%	98.8%	98.2%	97.9%	99.2%	97.1%					97.9%
Otero	97.6%	96.4%	98.0%	96.3%	95.0%	97.6%	97.9%	98.1%					97.1%
South Dona Ana	97.2%	98.3%	98.0%	97.5%	98.6%	98.6%	99.4%	97.8%					98.2%
West Dona Ana	97.4%	96.7%	98.3%	98.5%	98.4%	98.6%	98.1%	98.7%					98.1%
<b>SW Region 5 Total</b>	<b>96.7%</b>	<b>97.2%</b>	<b>98.0%</b>	<b>97.6%</b>	<b>97.7%</b>	<b>97.5%</b>	<b>98.5%</b>	<b>98.3%</b>					<b>97.7%</b>
<b>STATE TOTAL</b>	<b>95.3%</b>	<b>95.4%</b>	<b>95.8%</b>	<b>96.0%</b>	<b>96.7%</b>	<b>97.4%</b>	<b>97.8%</b>	<b>97.9%</b>					<b>96.5%</b>

**Medicaid: Percentage of Initial EDG Denials Processed Timely by Field Office<sup>13,19</sup>**

	Oct-17	Nov-17	Dec-17	Jan-18	Feb-18	Mar-18	Apr-18	May-18	Jun-18	Jul-18	Aug-18	Sep-18	Average
Cibola	51.4%	41.2%	76.0%	78.3%	72.7%	64.5%	88.2%	84.1%					69.5%
McKinley	54.4%	59.7%	54.4%	51.6%	59.3%	69.4%	74.4%	91.6%					64.3%
San Juan	53.1%	57.1%	45.5%	43.6%	44.9%	58.6%	63.1%	89.6%					56.9%
Sierra	92.9%	95.0%	96.3%	33.3%	30.8%	77.8%	80.0%	100.0%					75.8%
Socorro	57.5%	80.0%	96.3%	95.8%	100.0%	71.1%	77.1%	100.0%					84.7%
Valencia North	55.8%	52.1%	42.3%	38.3%	55.6%	64.4%	89.8%	91.0%					61.2%
Valencia South	66.7%							100.0%					83.4%
<b>NW Region 1 Total</b>	<b>55.0%</b>	<b>57.7%</b>	<b>53.2%</b>	<b>51.0%</b>	<b>53.0%</b>	<b>64.5%</b>	<b>73.5%</b>	<b>90.9%</b>					<b>62.4%</b>
Colfax	90.6%	95.8%	100.0%	92.9%	94.3%	88.0%	84.6%	100.0%					93.3%
Guadalupe	90.0%	11.1%	75.0%	72.7%	76.5%	44.4%	66.7%	88.9%					65.7%
Quay	72.7%	33.3%	54.5%	78.6%	58.8%	58.3%	81.8%	100.0%					67.3%
Rio Arriba	71.4%	56.3%	53.2%	71.9%	49.6%	44.3%	64.6%	83.5%					61.9%
San Miguel	59.5%	67.3%	76.5%	78.8%	82.1%	71.4%	77.3%	74.5%					73.4%
Sandoval	43.6%	51.2%	63.7%	74.3%	75.9%	72.8%	83.7%	93.2%					69.8%
Santa Fe	59.1%	53.7%	37.8%	48.1%	64.7%	71.3%	89.3%	91.0%					64.4%
Taos	47.4%	76.5%	75.9%	87.9%	65.7%	56.5%	56.1%	91.4%					69.7%
<b>NE Region 2 Total</b>	<b>57.2%</b>	<b>56.4%</b>	<b>55.2%</b>	<b>64.0%</b>	<b>67.8%</b>	<b>67.2%</b>	<b>80.0%</b>	<b>90.0%</b>					<b>67.2%</b>
NE Bernalillo	45.7%	38.4%	35.2%	50.0%	67.6%	74.1%	70.3%	77.9%					57.4%
NW Bernalillo	39.2%	40.9%	41.8%	36.0%	42.4%	48.5%	68.1%	83.5%					50.1%
SE Bernalillo	56.6%	46.6%	67.6%	80.6%	79.3%	81.1%	80.0%	84.7%					72.1%
SW Bernalillo	68.5%	68.1%	80.1%	88.4%	80.8%	78.7%	86.2%	83.0%					79.2%
Torrance	56.8%	42.1%	43.8%	38.5%	42.7%	56.8%	89.3%	91.7%					57.7%
<b>Gen. Region 3 Total</b>	<b>52.5%</b>	<b>48.0%</b>	<b>53.3%</b>	<b>59.5%</b>	<b>65.0%</b>	<b>70.0%</b>	<b>75.5%</b>	<b>82.7%</b>					<b>63.3%</b>
Chaves	72.3%	60.2%	79.9%	83.6%	79.6%	83.9%	77.8%	93.6%					78.9%
Curry	61.4%	59.0%	65.6%	84.3%	73.0%	78.8%	64.9%	95.3%					72.8%
Eddy Artesia	65.6%	53.3%	81.3%	76.4%	82.9%	84.1%	88.6%	85.2%					77.2%
Eddy Carlsbad	51.8%	35.8%	61.7%	79.3%	83.8%	67.2%	71.2%	97.7%					68.6%
Lea	72.7%	69.6%	70.0%	88.0%	85.3%	85.6%	82.3%	93.4%					80.9%
Lincoln	35.9%	63.8%	77.3%	91.3%	85.4%	90.5%	55.9%	86.4%					73.3%
Roosevelt	36.4%	46.4%	64.5%	64.6%		100.0%							62.4%
<b>SE Region 4 Total</b>	<b>61.3%</b>	<b>56.6%</b>	<b>70.5%</b>	<b>83.1%</b>	<b>80.7%</b>	<b>82.0%</b>	<b>74.1%</b>	<b>94.0%</b>					<b>75.3%</b>
East Dona Ana	80.0%	74.3%	73.1%	94.5%	67.5%	70.7%	85.7%	94.0%					80.0%
Grant	76.7%	32.4%	85.9%	79.7%	67.4%	83.3%	77.2%	97.1%					75.0%
Luna	47.7%	64.9%	41.8%	62.9%	61.5%	70.6%	73.8%	90.4%					64.2%
Otero	61.9%	48.3%	67.7%	62.8%	71.6%	80.6%	82.4%	83.0%					69.8%
South Dona Ana	86.3%	73.0%	86.6%	91.8%	82.3%	83.8%	90.1%	86.8%					85.1%
West Dona Ana	66.9%	67.0%	80.6%	94.7%	82.0%	84.0%	86.2%	96.2%					82.2%
<b>SW Region 5 Total</b>	<b>73.8%</b>	<b>64.3%</b>	<b>76.4%</b>	<b>85.1%</b>	<b>74.8%</b>	<b>78.5%</b>	<b>84.7%</b>	<b>90.6%</b>					<b>78.5%</b>
<b>STATE TOTAL</b>	<b>58.4%</b>	<b>54.6%</b>	<b>59.5%</b>	<b>66.4%</b>	<b>66.9%</b>	<b>72.0%</b>	<b>77.3%</b>	<b>88.3%</b>					<b>67.9%</b>

**Medicaid Renewal Disposition Counts by Field Office<sup>4,11</sup>**  
**May 2018**

Office	Approvals	Closures	Need Based Closures	Procedural Closures
Chaves County ISD	2,680	463	135	328
Cibola County ISD	1,484	327	67	260
Colfax County ISD	443	160	24	136
Curry County ISD	2,568	718	109	609
East Dona Ana County ISD	3,043	535	94	441
Eddy Artesia County ISD	662	172	21	151
Eddy Carlsbad County ISD	1,128	423	64	359
Grant County ISD	1,012	372	29	343
Guadalupe County ISD	267	53	9	44
Hidalgo County ISD	144	51	7	44
Lea County ISD	2,500	770	114	656
Lincoln County ISD	660	228	31	197
Luna County ISD	1,570	476	56	420
McKinley County ISD	4,535	1138	195	943
Northeast Bernalillo County ISD	6,066	1825	259	1566
Northwest Bernalillo County ISD	5,056	1795	239	1556
Otero County ISD	2,014	676	75	601
Quay County ISD	432	62	27	35
Rio Arriba County ISD	2,285	574	70	504
Roosevelt County ISD	0	0	0	0
San Juan County ISD	5,601	1473	243	1230
San Miguel County ISD	1,208	324	30	294
Sandoval County ISD	4,452	748	166	582
Santa Fe County ISD	3,611	1053	147	906
Sierra County ISD	961	214	37	177
Socorro County ISD	957	121	47	74
South Dona Ana ISD	3,804	566	152	414
Southeast Bernalillo County ISD	3,576	857	155	702
Southwest Bernalillo County ISD	7,701	1283	339	944
Taos County ISD	1,244	422	50	372
Torrance County ISD	1,197	167	48	119
Valencia North County ISD	3,212	352	131	221
Valencia South County ISD	0	0	0	0
West Dona Ana County ISD	3,581	998	177	821
Centralized Units	41	4	1	3
<b>Statewide Total</b>	<b>79,695</b>	<b>19,400</b>	<b>3,348</b>	<b>16,052</b>

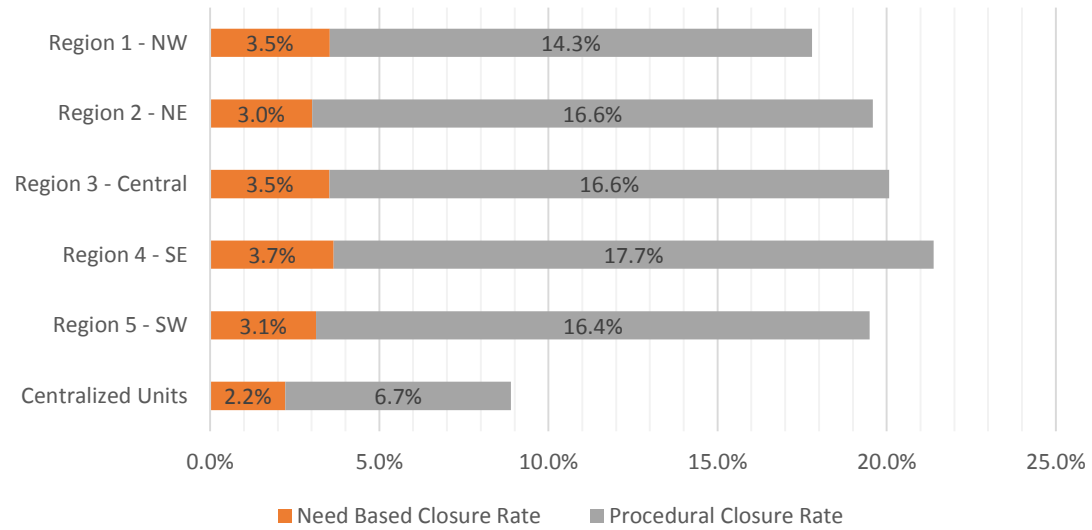
*Determinations at Administrative, Annual, and Auto Renewals are included*

**Medicaid Renewal Disposition Rates by Field Office<sup>20</sup>**  
**May 2018**

Office	Approval Rate	Closure Rate	Need Based Closure Rate	Procedural Closure Rate
Chaves County ISD	85.3%	14.7%	4.3%	10.4%
Cibola County ISD	81.9%	18.1%	3.7%	14.4%
Colfax County ISD	73.5%	26.5%	4.0%	22.6%
Curry County ISD	78.1%	21.9%	3.3%	18.5%
East Dona Ana County ISD	85.0%	15.0%	2.6%	12.3%
Eddy Artesia County ISD	79.4%	20.6%	2.5%	18.1%
Eddy Carlsbad County ISD	72.7%	27.3%	4.1%	23.1%
Grant County ISD	73.1%	26.9%	2.1%	24.8%
Guadalupe County ISD	83.4%	16.6%	2.8%	13.8%
Hidalgo County ISD	73.8%	26.2%	3.6%	22.6%
Lea County ISD	76.5%	23.5%	3.5%	20.1%
Lincoln County ISD	74.3%	25.7%	3.5%	22.2%
Luna County ISD	76.7%	23.3%	2.7%	20.5%
McKinley County ISD	79.9%	20.1%	3.4%	16.6%
Northeast Bernalillo County ISD	76.9%	23.1%	3.3%	19.8%
Northwest Bernalillo County ISD	73.8%	26.2%	3.5%	22.7%
Otero County ISD	74.9%	25.1%	2.8%	22.3%
Quay County ISD	87.4%	12.6%	5.5%	7.1%
Rio Arriba County ISD	79.9%	20.1%	2.4%	17.6%
Roosevelt County ISD	0.0%	0.0%	0.0%	0.0%
San Juan County ISD	79.2%	20.8%	3.4%	17.4%
San Miguel County ISD	78.9%	21.1%	2.0%	19.2%
Sandoval County ISD	85.6%	14.4%	3.2%	11.2%
Santa Fe County ISD	77.4%	22.6%	3.2%	19.4%
Sierra County ISD	81.8%	18.2%	3.1%	15.1%
Socorro County ISD	88.8%	11.2%	4.4%	6.9%
South Dona Ana ISD	87.0%	13.0%	3.5%	9.5%
Southeast Bernalillo County ISD	80.7%	19.3%	3.5%	15.8%
Southwest Bernalillo County ISD	85.7%	14.3%	3.8%	10.5%
Taos County ISD	74.7%	25.3%	3.0%	22.3%
Torrance County ISD	87.8%	12.2%	3.5%	8.7%
Valencia North County ISD	90.1%	9.9%	3.7%	6.2%
Valencia South County ISD	0.0%	0.0%	0.0%	0.0%
West Dona Ana County ISD	78.2%	21.8%	3.9%	17.9%
Centralized Units	91.1%	8.9%	2.2%	6.7%
Statewide Total	80.4%	19.6%	3.4%	16.2%

## Medicaid Renewal Disposition Rates by Region<sup>20</sup> May 2018

Region	Approval Rate	Closure Rate	Need Based Closure Rate	Procedural Closure Rate
Region 1 - NW	82.2%	17.8%	3.5%	14.3%
Region 2 - NE	80.4%	19.6%	3.0%	16.6%
Region 3 - Central	79.9%	20.1%	3.5%	16.6%
Region 4 - SE	78.6%	21.4%	3.7%	17.7%
Region 5 - SW	80.5%	19.5%	3.1%	16.4%
Centralized Units	91.1%	8.9%	2.2%	6.7%
<b>Statewide Total</b>	<b>80.4%</b>	<b>19.6%</b>	<b>3.4%</b>	<b>16.2%</b>





**Medicaid: Percentage of Approved Renewal EDGs Processed by Certification Date <sup>11</sup>**

	Oct-17	Nov-17	Dec-17	Jan-18	Feb-18	Mar-18	Apr-18	May-18	Jun-18	Jul-18	Aug-18	Sep-18	Average
Cibola		98.9%	98.5%	99.3%	98.5%	98.9%	98.3%	98.2%					98.6%
McKinley		98.9%	99.3%	98.7%	99.1%	98.7%	98.8%	98.9%					98.9%
San Juan		98.9%	98.4%	98.6%	98.4%	98.8%	97.8%	99.2%					98.6%
Sierra		99.1%	99.5%	99.0%	99.6%	98.7%	99.5%	99.4%					99.3%
Socorro		99.5%	99.1%	99.0%	99.2%	98.9%	98.7%	99.2%					99.1%
Valencia North		98.5%	98.7%	98.1%	98.8%	98.7%	98.5%	98.5%					98.6%
Valencia South													
<b>NW Region 1 Total</b>		<b>99.0%</b>	<b>98.9%</b>	<b>98.8%</b>	<b>98.9%</b>	<b>98.8%</b>	<b>98.6%</b>	<b>98.9%</b>					<b>98.8%</b>
Colfax		98.7%	99.6%	97.3%	99.4%	98.2%	99.8%	99.1%					98.9%
Guadalupe		99.2%	98.5%	96.6%	99.6%	99.5%	98.9%	99.6%					98.8%
Quay		99.0%	99.0%	98.9%	97.6%	99.3%	95.4%	99.3%					98.4%
Rio Arriba		98.4%	97.8%	97.1%	98.1%	98.4%	97.7%	97.6%					97.9%
San Miguel		99.5%	98.3%	98.9%	98.9%	97.7%	99.3%	99.8%					98.9%
Sandoval		98.4%	98.6%	98.3%	98.3%	98.6%	97.3%	98.3%					98.2%
Santa Fe		95.6%	95.7%	95.5%	96.7%	97.1%	97.2%	97.2%					96.4%
Taos		98.7%	98.6%	98.6%	96.9%	98.8%	98.0%	98.0%					98.2%
<b>NE Region 2 Total</b>		<b>98.5%</b>	<b>98.2%</b>	<b>97.6%</b>	<b>98.2%</b>	<b>98.4%</b>	<b>98.0%</b>	<b>98.6%</b>					<b>98.2%</b>
NE Bernalillo		97.8%	97.0%	96.9%	97.5%	97.7%	98.4%	98.3%					97.7%
NW Bernalillo		97.6%	97.8%	97.4%	98.5%	98.3%	98.6%	98.1%					98.1%
SE Bernalillo		86.5%	96.2%	97.5%	98.1%	99.0%	97.4%	98.1%					96.1%
SW Bernalillo		98.8%	96.0%	97.0%	97.8%	97.9%	98.2%	97.8%					97.7%
Torrance		98.8%	96.9%	96.5%	98.0%	97.4%	98.2%	99.1%					97.8%
<b>Gen. Region 3 Total</b>		<b>95.9%</b>	<b>96.8%</b>	<b>97.1%</b>	<b>98.0%</b>	<b>98.0%</b>	<b>98.2%</b>	<b>98.3%</b>					<b>97.5%</b>
Chaves		98.7%	98.5%	98.6%	98.5%	98.2%	98.7%	99.7%					98.7%
Curry		99.0%	98.7%	98.7%	99.0%	98.7%	98.9%	99.1%					98.9%
Eddy Artesia		99.2%	97.5%	97.1%	96.9%	98.6%	98.8%	98.9%					98.2%
Eddy Carlsbad		97.7%	98.8%	97.2%	98.2%	98.1%	98.0%	99.0%					98.2%
Lea		98.8%	97.8%	98.7%	98.6%	98.7%	97.1%	98.9%					98.4%
Lincoln		98.2%	97.5%	97.6%	97.7%	98.8%	97.9%	99.2%					98.1%
Roosevelt		99.4%	97.9%										98.7%
<b>SE Region 4 Total</b>		<b>98.7%</b>	<b>98.1%</b>	<b>98.0%</b>	<b>98.2%</b>	<b>98.5%</b>	<b>98.2%</b>	<b>99.2%</b>					<b>98.4%</b>
East Dona Ana		98.9%	97.9%	98.6%	99.0%	98.6%	98.5%	99.7%					98.7%
Grant		98.5%	98.7%	98.5%	99.1%	98.9%	97.4%	98.7%					98.5%
Luna		99.1%	98.2%	98.1%	98.5%	98.3%	98.2%	99.2%					98.5%
Otero		98.9%	97.6%	98.0%	97.2%	97.5%	97.5%	98.0%					97.8%
South Dona Ana		98.2%	97.4%	98.1%	98.9%	98.5%	97.1%	97.8%					98.0%
West Dona Ana		99.2%	99.0%	98.7%	98.7%	98.3%	98.3%	98.9%					98.7%
<b>SW Region 5 Total</b>		<b>98.8%</b>	<b>98.1%</b>	<b>98.3%</b>	<b>98.6%</b>	<b>98.3%</b>	<b>97.8%</b>	<b>98.7%</b>					<b>98.4%</b>
<b>STATE TOTAL</b>		<b>97.8%</b>	<b>97.8%</b>	<b>97.9%</b>	<b>98.3%</b>	<b>98.3%</b>	<b>98.1%</b>	<b>98.5%</b>					<b>98.1%</b>

Administrative, Annual, and Auto Renewals are included  
 No data available for October 2017

Medicaid: Percentage of Closures EDGs Processed by Certification End Date <sup>11</sup>													
	Oct-17	Nov-17	Dec-17	Jan-18	Feb-18	Mar-18	Apr-18	May-18	Jun-18	Jul-18	Aug-18	Sep-18	Average
Cibola		37.6%	27.5%	14.6%	21.3%	39.8%	28.8%	69.4%					34.2%
McKinley		23.9%	21.0%	21.7%	30.7%	39.5%	31.1%	61.0%					32.7%
San Juan		36.7%	19.9%	39.0%	39.1%	48.1%	24.2%	61.6%					38.4%
Sierra		45.6%	22.7%	26.7%	37.9%	34.3%	21.0%	70.1%					36.9%
Socorro		33.0%	20.7%	50.0%	40.0%	37.8%	62.8%	95.9%					48.6%
Valencia North		34.6%	30.5%	53.8%	38.6%	40.7%	50.6%	93.2%					48.9%
Valencia South													
<b>NW Region 1 Total</b>		<b>35.2%</b>	<b>23.7%</b>	<b>34.3%</b>	<b>34.6%</b>	<b>40.1%</b>	<b>36.4%</b>	<b>66.8%</b>					<b>38.7%</b>
Colfax		49.3%	27.8%	26.2%	21.5%	23.6%	36.9%	55.0%					34.3%
Guadalupe		28.6%	57.9%	27.1%	26.3%	41.7%	22.2%	77.4%					40.2%
Quay		24.7%	26.5%	17.1%	40.0%	54.1%	60.5%	96.8%					45.7%
Rio Arriba		23.3%	26.1%	24.9%	29.5%	32.3%	23.0%	54.7%					30.5%
San Miguel		19.4%	21.8%	23.6%	26.9%	44.3%	26.2%	53.4%					30.8%
Sandoval		20.5%	25.9%	21.6%	21.5%	39.2%	44.5%	95.1%					38.3%
Santa Fe		22.0%	22.6%	23.2%	33.1%	38.4%	29.3%	55.1%					32.0%
Taos		24.4%	21.5%	44.9%	24.4%	34.9%	32.5%	62.6%					35.0%
<b>NE Region 2 Total</b>		<b>26.5%</b>	<b>28.8%</b>	<b>26.1%</b>	<b>27.9%</b>	<b>38.6%</b>	<b>34.4%</b>	<b>65.7%</b>					<b>35.4%</b>
NE Bernalillo		20.3%	16.0%	16.1%	26.4%	28.4%	35.9%	58.6%					28.8%
NW Bernalillo		16.2%	20.8%	24.8%	30.1%	47.5%	33.1%	46.4%					31.3%
SE Bernalillo		18.7%	21.5%	27.2%	26.7%	44.1%	22.2%	49.7%					30.0%
SW Bernalillo		24.5%	28.2%	34.9%	33.9%	46.2%	76.7%	90.2%					47.8%
Torrance		25.4%	21.9%	33.9%	24.7%	37.8%	54.0%	97.6%					42.2%
<b>Gen. Region 3 Total</b>		<b>21.0%</b>	<b>21.7%</b>	<b>27.4%</b>	<b>28.3%</b>	<b>40.8%</b>	<b>44.4%</b>	<b>61.5%</b>					<b>35.0%</b>
Chaves		34.4%	24.7%	28.7%	22.0%	36.7%	50.4%	97.0%					42.0%
Curry		27.2%	25.2%	19.7%	27.3%	38.7%	36.4%	65.9%					34.3%
Eddy Artesia		31.1%	24.0%	21.3%	20.0%	29.9%	62.4%	97.1%					40.8%
Eddy Carlsbad		26.9%	23.2%	19.9%	27.2%	26.7%	27.7%	59.6%					30.2%
Lea		24.6%	21.4%	26.4%	20.4%	35.1%	20.0%	61.7%					29.9%
Lincoln		23.1%	31.9%	16.9%	20.0%	45.8%	46.6%	66.2%					35.8%
Roosevelt		24.3%	14.5%	0.0%									12.9%
<b>SE Region 4 Total</b>		<b>27.4%</b>	<b>23.6%</b>	<b>19.0%</b>	<b>22.8%</b>	<b>35.5%</b>	<b>40.6%</b>	<b>70.9%</b>					<b>34.2%</b>
East Dona Ana		28.5%	31.6%	28.5%	37.3%	35.6%	41.8%	95.7%					42.7%
Grant		38.7%	27.7%	18.1%	30.7%	33.2%	49.3%	65.9%					37.7%
Luna		37.1%	38.5%	26.9%	47.7%	43.2%	27.4%	51.5%					38.9%
Otero		37.3%	31.9%	28.1%	38.4%	32.8%	32.0%	52.8%					36.2%
South Dona Ana		41.6%	35.7%	27.7%	32.6%	37.6%	56.0%	93.3%					46.4%
West Dona Ana		35.1%	29.6%	37.4%	41.5%	39.3%	19.9%	62.5%					37.9%
<b>SW Region 5 Total</b>		<b>36.4%</b>	<b>32.5%</b>	<b>27.8%</b>	<b>38.0%</b>	<b>37.0%</b>	<b>37.7%</b>	<b>69.3%</b>					<b>39.8%</b>
<b>STATE TOTAL</b>		<b>25.8%</b>	<b>24.2%</b>	<b>26.3%</b>	<b>30.1%</b>	<b>38.6%</b>	<b>42.1%</b>	<b>66.1%</b>					<b>36.2%</b>

Annual and Auto Renewals are included  
No data available for October 2017

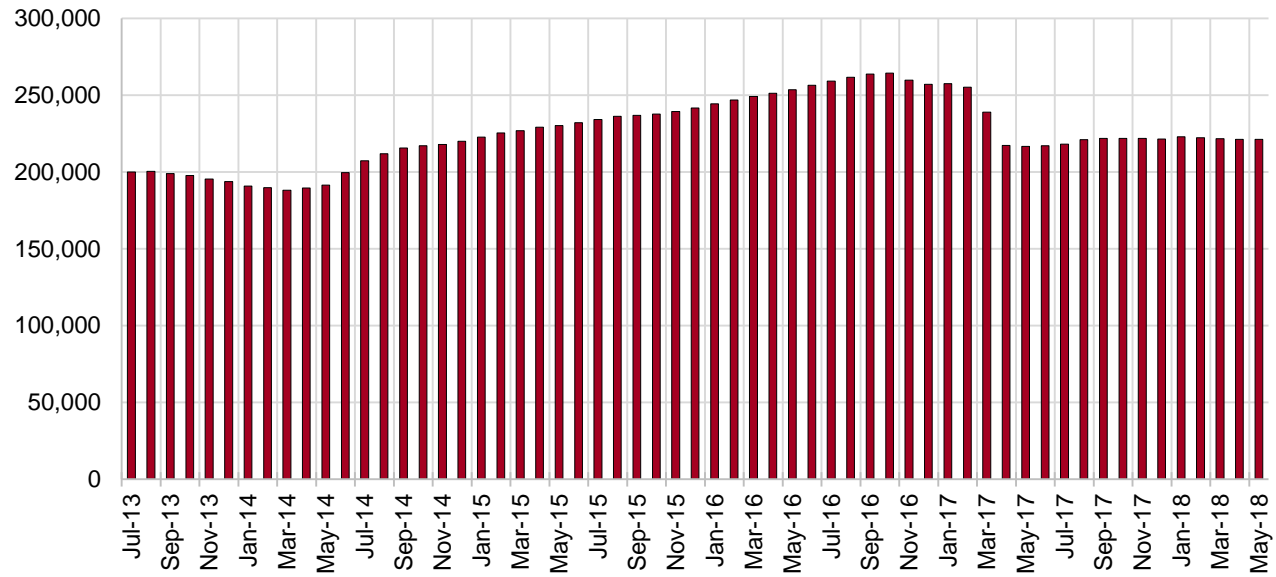
## SNAP Cases by Field Office<sup>6</sup>

Office	May-17	Apr-18	May-18	Percent Change	
				May-17- May-18	Apr-18- May-18
Chaves County ISD	7,153	7,106	7,096	-0.8%	-0.1%
Cibola County ISD	3,599	3,590	3,600	0.0%	0.3%
Colfax County ISD	1,569	1,636	1,631	4.0%	-0.3%
Curry County ISD	4,626	6,579	6,590	42.5%	0.2%
East Dona Ana County ISD	7,930	7,942	7,956	0.3%	0.2%
Eddy Artesia County ISD	1,690	1,615	1,611	-4.7%	-0.2%
Eddy Carlsbad County ISD	3,378	3,029	2,994	-11.4%	-1.2%
Grant County ISD	3,446	3,529	3,498	1.5%	-0.9%
Guadalupe County ISD	714	714	710	-0.6%	-0.6%
Hidalgo County ISD	422	434	437	3.6%	0.7%
Lea County ISD	5,674	5,694	5,670	-0.1%	-0.4%
Lincoln County ISD	1,897	1,916	1,921	1.3%	0.3%
Luna County ISD	4,254	4,272	4,214	-0.9%	-1.4%
McKinley County ISD	9,325	9,670	9,714	4.2%	0.5%
Northeast Bernalillo County ISD	19,240	20,379	20,358	5.8%	-0.1%
Northwest Bernalillo County ISD	17,554	19,333	19,348	10.2%	0.1%
Otero County ISD	5,401	5,578	5,535	2.5%	-0.8%
Quay County ISD	1,235	1,255	1,247	1.0%	-0.6%
Rio Arriba County ISD	6,756	6,714	6,704	-0.8%	-0.1%
Roosevelt County ISD	1,663	0	2	-99.9%	N/A
San Juan County ISD	13,150	13,357	13,333	1.4%	-0.2%
San Miguel County ISD	4,916	4,872	4,901	-0.3%	0.6%
Sandoval County ISD	10,619	10,960	10,914	2.8%	-0.4%
Santa Fe County ISD	10,362	9,763	9,750	-5.9%	-0.1%
Sierra County ISD	2,679	2,654	2,650	-1.1%	-0.2%
Socorro County ISD	2,815	2,805	2,777	-1.3%	-1.0%
South Dona Ana ISD	8,504	8,490	8,514	0.1%	0.3%
Southeast Bernalillo County ISD	12,152	11,895	11,908	-2.0%	0.1%
Southwest Bernalillo County ISD	17,764	18,603	18,687	5.2%	0.5%
Taos County ISD	4,054	4,223	4,205	3.7%	-0.4%
Torrance County ISD	3,320	3,425	3,420	3.0%	-0.1%
Valencia North County ISD	8,119	8,401	8,436	3.9%	0.4%
Valencia South County ISD	3	3	0	-100.0%	-100.0%
West Dona Ana County ISD	10,566	10,659	10,743	1.7%	0.8%
Centralized Units	10	44	36	260.0%	-18.2%
Statewide Total	216,559	221,139	221,110	2.1%	0.0%

## SNAP Cases by Region<sup>6</sup>

Region	May-17	Apr-18	May-18	Percent Change	
				May-17- May-18	Apr-18- May-18
Region 1 - NW	39,690	40,480	40,510	2.1%	0.1%
Region 2 - NE	40,225	40,137	40,062	-0.4%	-0.2%
Region 3 - Central	70,030	73,635	73,721	5.3%	0.1%
Region 4 - SE	26,081	25,939	25,884	-0.8%	-0.2%
Region 5 - SW	40,523	40,904	40,897	0.9%	0.0%
Centralized Units	10	44	36	260.0%	-18.2%
<b>Statewide Total</b>	<b>216,559</b>	<b>221,139</b>	<b>221,110</b>	<b>2.1%</b>	<b>0.0%</b>

## SNAP Caseload: SFY-14 to Current

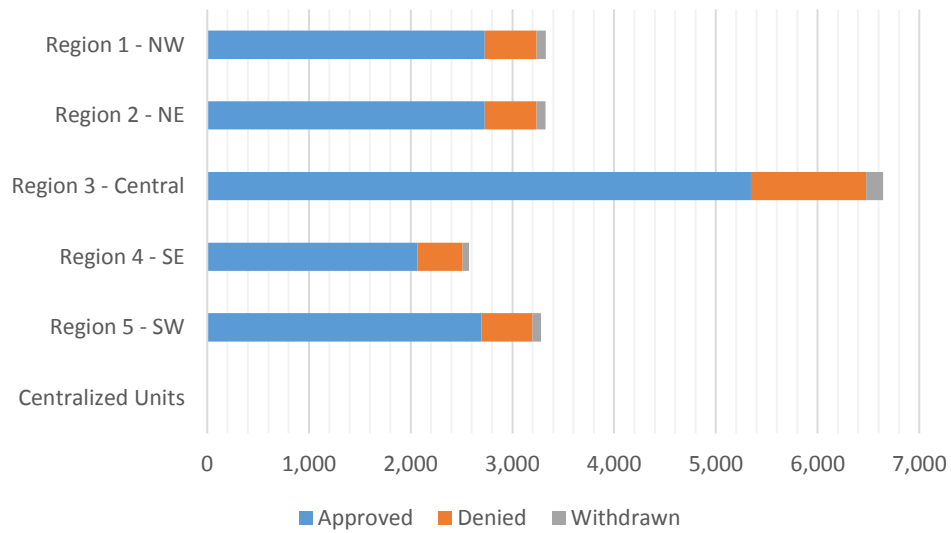


**SNAP Initial Applications by Field Office<sup>4,11</sup>**  
**May 2018**

Office	Approved	Denied	Withdrawn	Total Cases Processed
Chaves County ISD	522	124	16	662
Cibola County ISD	248	43	9	300
Colfax County ISD	104	23	5	132
Curry County ISD	562	113	24	699
East Dona Ana County ISD	562	119	26	707
Eddy Artesia County ISD	119	17	6	142
Eddy Carlsbad County ISD	273	52	4	329
Grant County ISD	235	38	4	277
Guadalupe County ISD	39	8	0	47
Hidalgo County ISD	0	0	0	0
Lea County ISD	444	107	11	562
Lincoln County ISD	135	31	3	169
Luna County ISD	213	42	12	267
McKinley County ISD	616	91	24	731
Northeast Bernalillo County ISD	1,594	282	50	1,926
Northwest Bernalillo County ISD	1,406	331	46	1,783
Otero County ISD	379	82	3	464
Quay County ISD	68	13	0	81
Rio Arriba County ISD	414	61	9	484
Roosevelt County ISD	11	0	0	11
San Juan County ISD	1,001	218	34	1,253
San Miguel County ISD	318	36	8	362
Sandoval County ISD	743	192	31	966
Santa Fe County ISD	743	116	18	877
Sierra County ISD	142	11	3	156
Socorro County ISD	152	23	5	180
South Dona Ana ISD	478	94	12	584
Southeast Bernalillo County ISD	857	200	21	1,078
Southwest Bernalillo County ISD	1,287	272	42	1,601
Taos County ISD	300	60	17	377
Torrance County ISD	201	47	7	255
Valencia North County ISD	568	125	17	710
Valencia South County ISD	0	0	0	0
West Dona Ana County ISD	828	126	27	981
Centralized Units	0	0	0	0
<b>Statewide Total</b>	<b>15,562</b>	<b>3,097</b>	<b>494</b>	<b>19,153</b>

**SNAP Initial Applications by Region<sup>4,11</sup>**  
**May 2018**

Region	Approved	Denied	Withdrawn	Total Cases Processed
Region 1 - NW	2,727	511	92	3,330
Region 2 - NE	2,729	509	88	3,326
Region 3 - Central	5,345	1,132	166	6,643
Region 4 - SE	2,066	444	64	2,574
Region 5 - SW	2,695	501	84	3,280
Centralized Units	0	0	0	0
<b>Statewide Total</b>	<b>15,562</b>	<b>3,097</b>	<b>494</b>	<b>19,153</b>

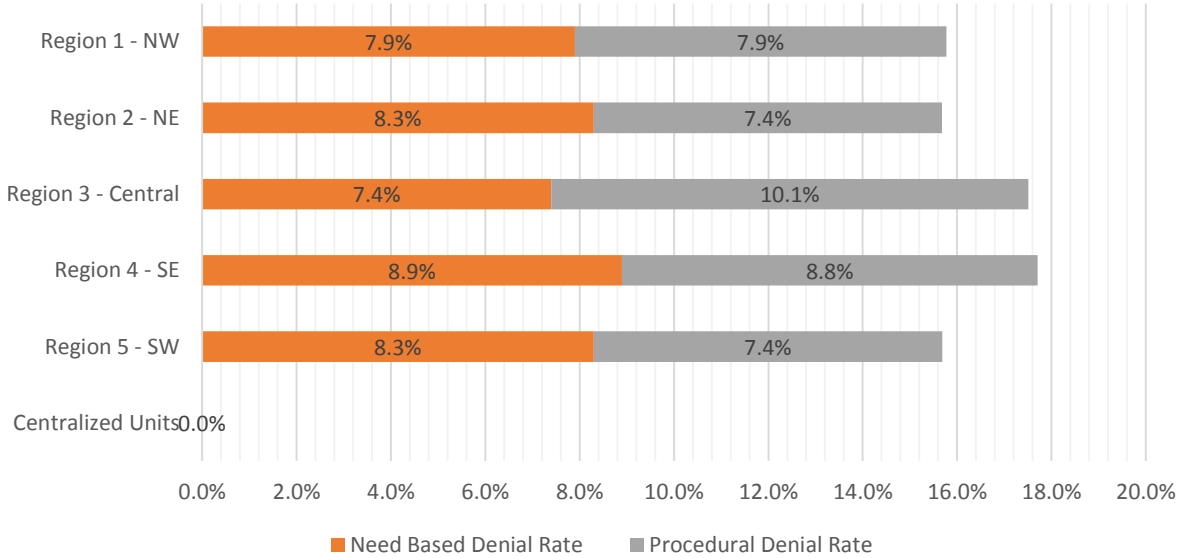


**SNAP Initial Disposition Rates by Field Office<sup>4,11</sup>**  
**May 2018**

Office	Approval Rate	Denial Rate	Need Based Denial Rate	Procedural Denial Rate
Chaves County ISD	80.8%	19.2%	9.8%	9.4%
Cibola County ISD	85.2%	14.8%	6.6%	8.2%
Colfax County ISD	81.9%	18.1%	7.9%	10.2%
Curry County ISD	83.3%	16.7%	9.1%	7.6%
East Dona Ana County ISD	82.5%	17.5%	9.4%	8.1%
Eddy Artesia County ISD	87.5%	12.5%	8.8%	3.7%
Eddy Carlsbad County ISD	84.0%	16.0%	8.6%	7.4%
Grant County ISD	86.1%	13.9%	8.0%	5.9%
Guadalupe County ISD	83.0%	17.0%	12.7%	4.3%
Hidalgo County ISD	0.0%	100.0%	100.0%	0.0%
Lea County ISD	80.6%	19.4%	8.1%	11.3%
Lincoln County ISD	81.3%	18.7%	7.9%	10.8%
Luna County ISD	83.5%	16.5%	7.5%	9.0%
McKinley County ISD	87.1%	12.9%	6.7%	6.2%
Northeast Bernalillo County ISD	85.0%	15.0%	6.0%	9.0%
Northwest Bernalillo County ISD	80.9%	19.1%	7.5%	11.6%
Otero County ISD	82.2%	17.8%	7.8%	10.0%
Quay County ISD	84.0%	16.0%	6.1%	9.9%
Rio Arriba County ISD	87.2%	12.8%	7.1%	5.7%
Roosevelt County ISD	100.0%	0.0%	0.0%	0.0%
San Juan County ISD	82.1%	17.9%	8.5%	9.4%
San Miguel County ISD	89.8%	10.2%	6.0%	4.2%
Sandoval County ISD	79.5%	20.5%	10.6%	9.9%
Santa Fe County ISD	86.5%	13.5%	7.3%	6.2%
Sierra County ISD	92.8%	7.2%	5.2%	2.0%
Socorro County ISD	86.9%	13.1%	7.4%	5.7%
South Dona Ana ISD	83.6%	16.4%	9.4%	7.0%
Southeast Bernalillo County ISD	81.1%	18.9%	7.6%	11.3%
Southwest Bernalillo County ISD	82.6%	17.4%	8.4%	9.0%
Taos County ISD	83.3%	16.7%	8.9%	7.8%
Torrance County ISD	81.0%	19.0%	8.5%	10.5%
Valencia North County ISD	82.0%	18.0%	9.3%	8.7%
Valencia South County ISD	0.0%	100.0%	100.0%	0.0%
West Dona Ana County ISD	86.8%	13.2%	7.3%	5.9%
Centralized Units				
Statewide Total	83.4%	16.6%	8.0%	8.6%

**SNAP Initial Disposition Rates by Region<sup>4,11</sup>**  
**May 2018**

Region	Approval Rate	Denial Rate	Need Based Denial Rate	Procedural Denial Rate
Region 1 - NW	84.2%	15.8%	7.9%	7.9%
Region 2 - NE	84.3%	15.7%	8.3%	7.4%
Region 3 - Central	82.5%	17.5%	7.4%	10.1%
Region 4 - SE	82.3%	17.7%	8.9%	8.8%
Region 5 - SW	84.3%	15.7%	8.3%	7.4%
Centralized Units				
<b>Statewide Total</b>	<b>83.4%</b>	<b>16.6%</b>	<b>8.0%</b>	<b>8.6%</b>





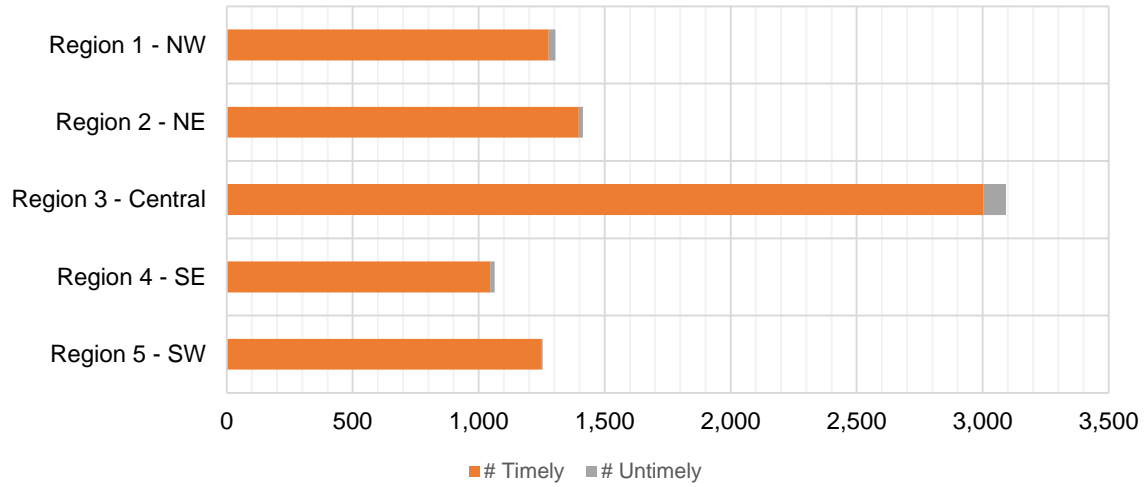
**SNAP Expedite Timeliness by Field Office<sup>13</sup>**  
**May 2018**

Office Name	Total Expedited Approvals	# Timely	# Untimely	Percentage Timely
Chaves County ISD	250	244	6	97.6 %
Cibola County ISD	110	107	3	97.3 %
Colfax County ISD	39	39	0	100.0 %
Curry County ISD	292	290	2	99.3 %
East Dona Ana County ISD	264	261	3	98.9 %
Eddy Artesia County ISD	52	50	2	96.2 %
Eddy Carlsbad County ISD	164	161	3	98.2 %
Grant County ISD	134	134	0	100.0 %
Guadalupe County ISD	16	16	0	100.0 %
Lea County ISD	222	217	5	97.7 %
Lincoln County ISD	75	75	0	100.0 %
Luna County ISD	65	65	0	100.0 %
McKinley County ISD	291	290	1	99.7 %
Northeast Bernalillo County ISD	1,040	1,022	18	98.3 %
Northwest Bernalillo County ISD	855	813	42	95.1 %
Otero County ISD	193	192	1	99.5 %
Quay County ISD	28	28	0	100.0 %
Rio Arriba County ISD	246	244	2	99.2 %
Roosevelt County ISD	8	8	0	100.0 %
San Juan County ISD	505	488	17	96.6 %
San Miguel County ISD	191	189	2	99.0 %
Sandoval County ISD	321	316	5	98.4 %
Santa Fe County ISD	415	409	6	98.6 %
Sierra County ISD	62	62	0	100.0 %
Socorro County ISD	77	75	2	97.4 %
South Dona Ana ISD	166	165	1	99.4 %
Southeast Bernalillo County ISD	392	379	13	96.7 %
Southwest Bernalillo County ISD	710	695	15	97.9 %
Taos County ISD	158	156	2	98.7 %
Torrance County ISD	96	94	2	97.9 %
Valencia North County ISD	260	256	4	98.5 %
West Dona Ana County ISD	432	430	2	99.5 %
<b>Statewide Total</b>	<b>8,129</b>	<b>7,970</b>	<b>159</b>	<b>98.0 %</b>

**SNAP Expedite Timeliness by Region<sup>13</sup>**  
**May 2018**

Region	Total Expedited Approvals	# Timely	# Untimely	Percentage Timely
Region 1 - NW	1,305	1,278	27	97.9%
Region 2 - NE	1,414	1,397	17	98.8%
Region 3 - Central	3,093	3,003	90	97.1%
Region 4 - SE	1,063	1,045	18	98.3%
Region 5 - SW	1,254	1,247	7	99.4%
Statewide Total	8,129	7,970	159	98.0%

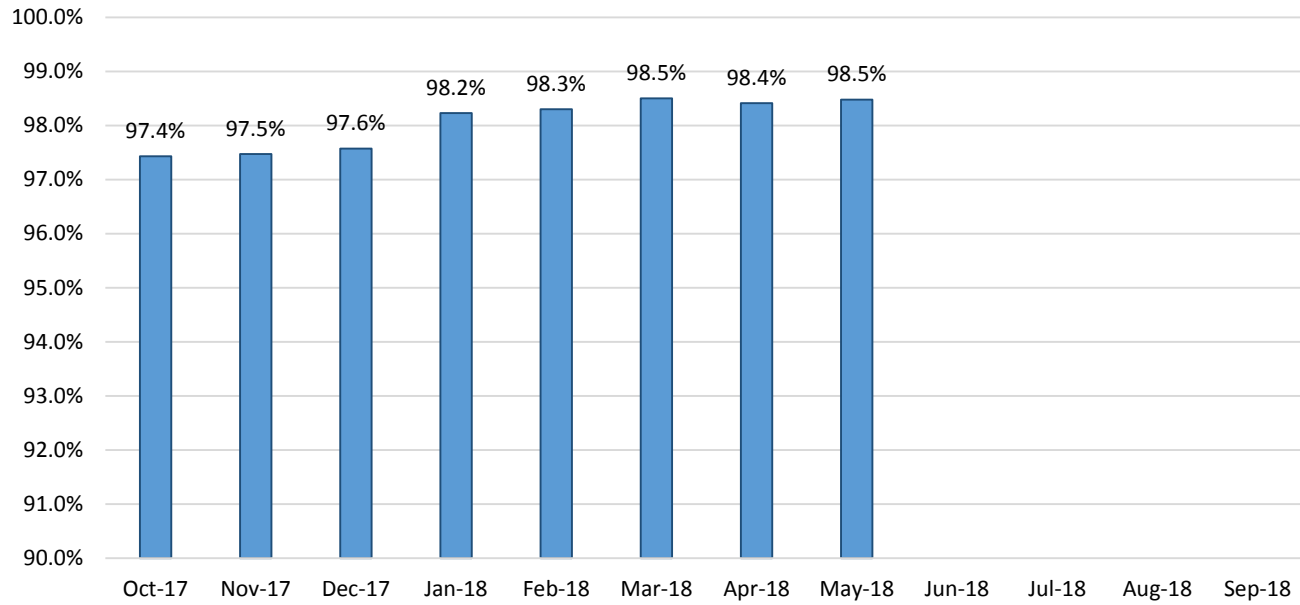
**SNAP Expedite - Timeliness**



## SNAP: Percentage of Applications Processed Timely <sup>13</sup>

	Oct-17	Nov-17	Dec-17	Jan-18	Feb-18	Mar-18	Apr-18	May-18	Jun-18	Jul-18	Aug-18	Sep-18	Average
APT	97.4%	97.5%	97.6%	98.2%	98.3%	98.5%	98.4%	98.5%					98.0%

### SNAP Application Processing Timeliness (APT)



**SNAP Non-Expedite: Percentage of Initial Applications Processed Timely by Field Office<sup>13</sup>**

	Oct-17	Nov-17	Dec-17	Jan-18	Feb-18	Mar-18	Apr-18	May-18	Jun-18	Jul-18	Aug-18	Sep-18	Average
Cibola	96.8%	97.2%	96.7%	92.9%	97.3%	100.0%	98.2%	100.0%					97.4%
McKinley	97.4%	98.8%	98.6%	99.3%	99.3%	99.6%	100.0%	99.1%					99.0%
San Juan	94.8%	93.5%	98.0%	97.8%	97.7%	97.9%	98.4%	98.4%					97.1%
Sierra	100.0%	100.0%	100.0%	100.0%	100.0%	100.0%	100.0%	98.7%					99.8%
Socorro	100.0%	96.8%	100.0%	98.9%	100.0%	98.8%	100.0%	100.0%					99.3%
Valencia North	96.5%	96.3%	96.6%	96.9%	99.6%	97.2%	98.5%	99.3%					97.6%
Valencia South	100.0%						100.0%						100.0%
<b>NW Region 1 Total</b>	<b>96.5%</b>	<b>96.4%</b>	<b>98.0%</b>	<b>97.9%</b>	<b>98.7%</b>	<b>98.5%</b>	<b>99.0%</b>	<b>99.0%</b>					<b>98.0%</b>
Colfax	100.0%	100.0%	98.2%	98.2%	100.0%	100.0%	100.0%	98.5%					99.4%
Guadalupe	100.0%	100.0%	100.0%	100.0%	100.0%	100.0%	100.0%	95.7%					99.5%
Quay	97.2%	100.0%	100.0%	100.0%	97.1%	100.0%	97.9%	100.0%					99.0%
Rio Arriba	97.0%	99.4%	91.2%	95.3%	97.7%	98.5%	97.5%	97.0%					96.7%
San Miguel	100.0%	98.5%	100.0%	99.4%	99.3%	99.2%	100.0%	100.0%					99.6%
Sandoval	98.2%	98.6%	97.8%	98.8%	98.9%	99.2%	99.2%	99.0%					98.7%
Santa Fe	97.6%	97.5%	99.6%	98.4%	99.3%	99.7%	98.4%	99.4%					98.7%
Taos	98.7%	98.7%	98.7%	99.2%	100.0%	98.3%	100.0%	98.6%					99.0%
<b>NE Region 2 Total</b>	<b>98.2%</b>	<b>98.6%</b>	<b>97.8%</b>	<b>98.4%</b>	<b>99.0%</b>	<b>99.2%</b>	<b>99.0%</b>	<b>98.8%</b>					<b>98.6%</b>
NE Bernalillo	95.4%	95.7%	94.9%	97.1%	98.1%	97.4%	98.3%	97.2%					96.8%
NW Bernalillo	97.6%	95.1%	96.7%	98.0%	97.0%	98.7%	97.7%	98.5%					97.4%
SE Bernalillo	96.0%	96.8%	97.4%	96.8%	99.7%	98.6%	99.0%	99.1%					97.9%
SW Bernalillo	97.9%	97.3%	99.1%	96.6%	96.8%	97.7%	99.2%	99.5%					98.0%
Torrance	98.9%	98.2%	96.6%	99.0%	97.1%	100.0%	100.0%	98.1%					98.5%
<b>Gen. Region 3 Total</b>	<b>96.9%</b>	<b>96.3%</b>	<b>96.9%</b>	<b>97.2%</b>	<b>97.7%</b>	<b>98.1%</b>	<b>98.6%</b>	<b>98.5%</b>					<b>97.5%</b>
Chaves	99.3%	98.9%	98.5%	99.7%	98.5%	99.3%	99.6%	100.0%					99.2%
Curry	95.7%	97.1%	97.9%	99.4%	99.1%	98.4%	98.1%	98.5%					98.0%
Eddy Artesia	100.0%	97.2%	100.0%	100.0%	98.5%	100.0%	95.4%	98.5%					98.7%
Eddy Carlsbad	94.8%	97.3%	100.0%	100.0%	96.8%	99.0%	100.0%	100.0%					98.5%
Lea	97.0%	98.3%	99.5%	98.5%	99.5%	98.0%	100.0%	98.6%					98.7%
Lincoln	97.8%	98.9%	100.0%	100.0%	100.0%	98.3%	98.4%	100.0%					99.2%
Roosevelt	100.0%	98.6%	100.0%	98.5%	100.0%	100.0%	100.0%	100.0%					99.6%
<b>SE Region 4 Total</b>	<b>97.6%</b>	<b>98.2%</b>	<b>99.1%</b>	<b>99.4%</b>	<b>98.8%</b>	<b>98.7%</b>	<b>99.0%</b>	<b>99.2%</b>					<b>98.8%</b>
East Dona Ana	99.6%	98.9%	100.0%	99.7%	99.6%	100.0%	100.0%	99.3%					99.6%
Grant	100.0%	99.0%	97.9%	100.0%	99.1%	99.0%	100.0%	99.0%					99.3%
Luna	100.0%	99.4%	100.0%	97.7%	97.9%	99.2%	99.4%	100.0%					99.2%
Otero	100.0%	98.9%	99.4%	100.0%	100.0%	100.0%	98.2%	99.5%					99.5%
South Dona Ana	100.0%	99.6%	100.0%	100.0%	99.6%	100.0%	99.6%	99.7%					99.8%
West Dona Ana	99.2%	98.7%	99.0%	100.0%	99.4%	99.5%	99.7%	99.5%					99.4%
<b>SW Region 5 Total</b>	<b>99.7%</b>	<b>99.0%</b>	<b>99.5%</b>	<b>99.7%</b>	<b>99.4%</b>	<b>99.7%</b>	<b>99.5%</b>	<b>99.5%</b>					<b>99.5%</b>
<b>STATE TOTAL</b>	<b>97.7%</b>	<b>97.5%</b>	<b>98.1%</b>	<b>98.3%</b>	<b>98.6%</b>	<b>98.7%</b>	<b>99.0%</b>	<b>99.0%</b>					<b>98.4%</b>

**SNAP Expedite: Percentage of Initial Applications Processed Timely by Field Office<sup>13</sup>**

	Oct-17	Nov-17	Dec-17	Jan-18	Feb-18	Mar-18	Apr-18	May-18	Jun-18	Jul-18	Aug-18	Sep-18	Average
Cibola	94.1%	100.0%	92.2%	98.5%	98.2%	94.5%	96.3%	97.3%					96.4%
McKinley	99.4%	99.4%	97.8%	97.3%	99.2%	99.7%	99.7%	99.7%					99.0%
San Juan	95.8%	94.2%	96.5%	96.7%	97.0%	97.1%	97.4%	96.6%					96.4%
Sierra	98.3%	100.0%	100.0%	100.0%	100.0%	100.0%	98.1%	100.0%					99.6%
Socorro	98.9%	100.0%	94.4%	98.0%	97.4%	100.0%	100.0%	97.4%					98.3%
Valencia North	97.1%	93.3%	97.1%	97.7%	98.2%	98.0%	99.0%	98.5%					97.4%
Valencia South	100.0%	100.0%				100.0%							100.0%
<b>NW Region 1 Total</b>	<b>97.0%</b>	<b>96.4%</b>	<b>96.6%</b>	<b>97.4%</b>	<b>97.9%</b>	<b>97.9%</b>	<b>98.3%</b>	<b>97.9%</b>					<b>97.4%</b>
Colfax	98.6%	100.0%	100.0%	100.0%	100.0%	100.0%	100.0%	100.0%					99.8%
Guadalupe	100.0%	100.0%	100.0%	100.0%	100.0%	100.0%	100.0%	100.0%					100.0%
Quay	100.0%	100.0%	100.0%	94.9%	92.6%	97.4%	96.3%	100.0%					97.6%
Rio Arriba	94.6%	97.3%	97.6%	97.3%	95.7%	99.0%	97.6%	99.2%					97.3%
San Miguel	99.1%	98.3%	99.4%	98.1%	97.5%	99.5%	98.0%	99.0%					98.6%
Sandoval	98.2%	98.3%	97.9%	98.4%	98.4%	99.5%	98.9%	98.4%					98.5%
Santa Fe	97.5%	97.7%	96.7%	98.1%	97.4%	98.6%	98.5%	98.6%					97.9%
Taos	98.7%	97.8%	95.7%	98.3%	98.7%	95.6%	97.5%	98.7%					97.6%
<b>NE Region 2 Total</b>	<b>97.5%</b>	<b>98.0%</b>	<b>97.7%</b>	<b>98.1%</b>	<b>97.5%</b>	<b>98.7%</b>	<b>98.3%</b>	<b>98.8%</b>					<b>98.1%</b>
NE Bernalillo	94.6%	96.4%	94.7%	98.2%	96.6%	96.5%	96.7%	98.3%					96.5%
NW Bernalillo	97.6%	95.6%	95.6%	97.1%	96.3%	97.4%	96.7%	95.1%					96.4%
SE Bernalillo	96.5%	95.7%	95.2%	96.6%	96.4%	97.7%	97.1%	96.6%					96.5%
SW Bernalillo	96.6%	96.4%	96.9%	97.8%	97.8%	96.8%	97.9%	97.9%					97.3%
Torrance	96.9%	96.5%	99.2%	97.7%	99.1%	95.5%	100.0%	97.9%					97.9%
<b>Gen. Region 3 Total</b>	<b>96.3%</b>	<b>96.1%</b>	<b>95.7%</b>	<b>97.6%</b>	<b>96.8%</b>	<b>96.9%</b>	<b>97.1%</b>	<b>97.1%</b>					<b>96.7%</b>
Chaves	98.1%	98.6%	99.2%	98.6%	99.5%	99.6%	98.2%	97.6%					98.7%
Curry	96.0%	98.7%	98.1%	98.3%	98.8%	97.3%	97.8%	99.3%					98.0%
Eddy Artesia	100.0%	98.4%	100.0%	95.9%	100.0%	98.1%	98.1%	96.2%					98.3%
Eddy Carlsbad	98.5%	98.6%	98.3%	99.4%	97.4%	98.7%	97.2%	98.2%					98.3%
Lea	98.4%	98.4%	98.3%	97.1%	96.1%	98.7%	96.8%	97.7%					97.7%
Lincoln	96.7%	98.6%	98.4%	100.0%	97.0%	100.0%	98.2%	100.0%					98.6%
Roosevelt	92.7%	100.0%	96.2%	100.0%	100.0%	100.0%	100.0%	100.0%					98.6%
<b>SE Region 4 Total</b>	<b>97.4%</b>	<b>98.7%</b>	<b>98.4%</b>	<b>98.3%</b>	<b>98.1%</b>	<b>98.6%</b>	<b>97.6%</b>	<b>98.3%</b>					<b>98.2%</b>
East Dona Ana	99.0%	98.8%	98.7%	99.7%	100.0%	99.2%	100.0%	98.9%					99.3%
Grant	97.9%	100.0%	100.0%	98.0%	100.0%	100.0%	99.4%	100.0%					99.4%
Luna	99.3%	100.0%	100.0%	99.3%	100.0%	100.0%	99.0%	100.0%					99.7%
Otero	98.8%	98.4%	98.5%	98.4%	98.7%	98.9%	99.1%	99.5%					98.8%
South Dona Ana	100.0%	99.4%	98.8%	99.0%	100.0%	99.3%	98.8%	99.4%					99.3%
West Dona Ana	99.5%	99.5%	98.6%	99.1%	99.7%	100.0%	99.5%	99.5%					99.4%
<b>SW Region 5 Total</b>	<b>99.1%</b>	<b>99.3%</b>	<b>99.0%</b>	<b>98.9%</b>	<b>99.7%</b>	<b>99.6%</b>	<b>99.4%</b>	<b>99.4%</b>					<b>99.3%</b>
<b>STATE TOTAL</b>	<b>97.2%</b>	<b>97.3%</b>	<b>97.0%</b>	<b>97.9%</b>	<b>97.7%</b>	<b>98.0%</b>	<b>98.0%</b>	<b>98.0%</b>					<b>97.6%</b>

**SNAP: Percentage of Denied Initial Applications Processed Within 30 Days by Field Office<sup>13</sup>**

	Oct-17	Nov-17	Dec-17	Jan-18	Feb-18	Mar-18	Apr-18	May-18	Jun-18	Jul-18	Aug-18	Sep-18	Average
Cibola	66.7%	50.0%	66.7%	65.9%	88.1%	77.1%	76.9%	93.0%					73.1%
McKinley	59.0%	57.8%	65.9%	47.9%	81.7%	66.2%	87.0%	95.6%					70.1%
San Juan	35.7%	51.8%	46.5%	66.8%	77.3%	83.0%	89.0%	90.8%					67.6%
Sierra	95.5%	90.9%	90.5%	91.7%	100.0%	100.0%	85.0%	100.0%					94.2%
Socorro	69.6%	68.2%	94.3%	100.0%	96.2%	87.5%	95.2%	100.0%					88.9%
Valencia North	45.9%	41.8%	45.0%	44.1%	78.8%	73.2%	90.8%	96.8%					64.6%
Valencia South													
<b>NW Region 1 Total</b>	<b>48.3%</b>	<b>53.2%</b>	<b>55.5%</b>	<b>61.8%</b>	<b>80.5%</b>	<b>78.8%</b>	<b>88.6%</b>	<b>93.9%</b>					<b>70.1%</b>
Colfax	100.0%	100.0%	100.0%	100.0%	95.2%	100.0%	95.2%	95.7%					98.3%
Guadalupe	73.3%	75.0%	90.0%	92.3%	75.0%	20.0%	80.0%	87.5%					74.1%
Quay	83.3%	33.3%	66.7%	70.6%	100.0%	44.4%	87.5%	100.0%					73.2%
Rio Arriba	70.1%	56.3%	43.0%	69.1%	72.3%	76.9%	82.5%	96.7%					70.9%
San Miguel	66.2%	77.3%	90.0%	92.1%	90.0%	85.5%	84.3%	94.4%					85.0%
Sandoval	70.8%	69.2%	74.6%	66.2%	85.8%	84.1%	92.3%	98.4%					80.2%
Santa Fe	64.7%	70.6%	62.1%	44.3%	79.6%	73.0%	82.5%	99.1%					72.0%
Taos	77.8%	79.2%	84.1%	84.4%	87.8%	82.9%	80.5%	95.0%					84.0%
<b>NE Region 2 Total</b>	<b>70.8%</b>	<b>69.7%</b>	<b>68.8%</b>	<b>66.1%</b>	<b>83.3%</b>	<b>79.4%</b>	<b>86.6%</b>	<b>97.4%</b>					<b>77.8%</b>
NE Bernalillo	43.5%	40.5%	44.9%	47.0%	84.7%	70.1%	86.1%	88.3%					63.1%
NW Bernalillo	41.7%	42.8%	48.7%	50.0%	78.9%	84.5%	85.1%	87.0%					64.8%
SE Bernalillo	52.3%	52.0%	74.2%	60.9%	93.5%	82.9%	83.5%	96.0%					74.4%
SW Bernalillo	63.9%	62.9%	50.9%	67.3%	95.3%	88.0%	90.3%	93.8%					76.6%
Torrance	60.4%	68.2%	51.0%	54.4%	84.8%	85.4%	93.1%	100.0%					74.7%
<b>Gen. Region 3 Total</b>	<b>49.7%</b>	<b>50.0%</b>	<b>53.4%</b>	<b>55.5%</b>	<b>87.5%</b>	<b>80.8%</b>	<b>86.5%</b>	<b>91.1%</b>					<b>69.3%</b>
Chaves	86.4%	85.7%	89.3%	91.5%	91.7%	81.3%	73.4%	93.5%					86.6%
Curry	63.5%	60.3%	80.9%	87.5%	95.0%	83.8%	89.4%	92.9%					81.7%
Eddy Artesia	75.8%	58.1%	76.9%	96.0%	86.7%	89.7%	92.0%	100.0%					84.4%
Eddy Carlsbad	60.7%	67.6%	76.4%	85.7%	94.8%	74.5%	86.3%	94.2%					80.0%
Lea	86.3%	63.8%	68.0%	82.6%	94.3%	87.0%	86.1%	94.4%					82.8%
Lincoln	55.0%	78.4%	94.9%	88.6%	89.3%	82.1%	93.3%	100.0%					85.2%
Roosevelt	77.1%	68.1%	88.4%	91.5%		100.0%	0.0%						70.8%
<b>SE Region 4 Total</b>	<b>74.4%</b>	<b>69.2%</b>	<b>81.2%</b>	<b>88.3%</b>	<b>93.0%</b>	<b>83.2%</b>	<b>84.9%</b>	<b>94.4%</b>					<b>83.6%</b>
East Dona Ana	81.2%	77.6%	72.7%	91.2%	92.1%	82.9%	83.8%	96.6%					84.8%
Grant	73.5%	81.1%	72.1%	80.0%	92.6%	96.3%	90.2%	97.4%					85.4%
Luna	55.8%	51.1%	65.9%	65.3%	90.2%	70.6%	89.1%	95.2%					72.9%
Otero	40.3%	38.6%	47.9%	40.7%	81.1%	84.1%	87.9%	98.8%					64.9%
South Dona Ana	70.8%	68.1%	63.2%	80.6%	81.1%	79.8%	92.9%	97.9%					79.3%
West Dona Ana	65.6%	55.7%	70.5%	79.5%	85.2%	86.4%	94.8%	98.4%					79.5%
<b>SW Region 5 Total</b>	<b>66.6%</b>	<b>62.3%</b>	<b>66.5%</b>	<b>75.4%</b>	<b>86.4%</b>	<b>83.5%</b>	<b>89.8%</b>	<b>97.6%</b>					<b>78.5%</b>
<b>STATE TOTAL</b>	<b>59.5%</b>	<b>58.9%</b>	<b>62.6%</b>	<b>66.5%</b>	<b>86.1%</b>	<b>80.9%</b>	<b>87.3%</b>	<b>94.1%</b>					<b>74.5%</b>

**SNAP Renewals Processed by Field Office<sup>20</sup>**  
**May 2018**

Office	Approvals	Closures	Need Based Closures	Procedural Closures
Chaves County ISD	215	129	11	118
Cibola County ISD	151	47	4	43
Colfax County ISD	49	26	1	25
Curry County ISD	184	128	12	116
East Dona Ana County ISD	304	128	15	113
Eddy Artesia County ISD	52	28	4	24
Eddy Carlsbad County ISD	64	67	6	61
Grant County ISD	108	58	7	51
Guadalupe County ISD	20	4	0	4
Hidalgo County ISD	12	9	1	8
Lea County ISD	169	106	9	97
Lincoln County ISD	61	39	1	38
Luna County ISD	138	64	7	57
McKinley County ISD	348	123	14	109
Northeast Bernalillo County ISD	669	408	39	369
Northwest Bernalillo County ISD	518	269	21	248
Otero County ISD	152	81	11	70
Quay County ISD	54	15	4	11
Rio Arriba County ISD	248	118	6	112
Roosevelt County ISD	0	0	0	0
San Juan County ISD	407	263	19	244
San Miguel County ISD	130	71	3	68
Sandoval County ISD	403	221	14	207
Santa Fe County ISD	307	146	8	138
Sierra County ISD	115	26	3	23
Socorro County ISD	109	39	6	33
South Dona Ana ISD	356	112	12	100
Southeast Bernalillo County ISD	393	241	17	224
Southwest Bernalillo County ISD	814	358	35	323
Taos County ISD	128	80	9	71
Torrance County ISD	116	66	3	63
Valencia North County ISD	265	127	13	114
Valencia South County ISD	0	0	0	0
West Dona Ana County ISD	390	172	31	141
Centralized Units	2	1	0	1
<b>Statewide Total</b>	<b>7,451</b>	<b>3,770</b>	<b>346</b>	<b>3,424</b>

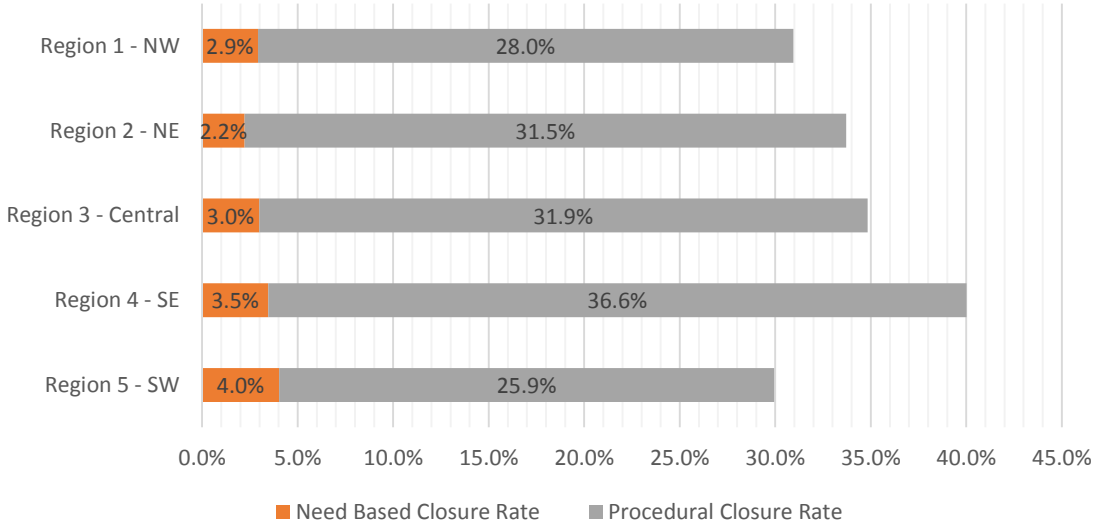
**SNAP Renewal Disposition Rates by Field Office<sup>20</sup>**  
**May 2018**

Office	Approval Rate	Closure Rate	Need Based Closure Rate	Procedural Closure Rate
Chaves County ISD	62.5%	37.5%	3.2%	34.3%
Cibola County ISD	76.3%	23.7%	2.0%	21.7%
Colfax County ISD	65.3%	34.7%	1.3%	33.3%
Curry County ISD	59.0%	41.0%	3.8%	37.2%
East Dona Ana County ISD	70.4%	29.6%	3.5%	26.2%
Eddy Artesia County ISD	65.0%	35.0%	5.0%	30.0%
Eddy Carlsbad County ISD	48.9%	51.1%	4.6%	46.6%
Grant County ISD	65.1%	34.9%	4.2%	30.7%
Guadalupe County ISD	83.3%	16.7%	0.0%	16.7%
Hidalgo County ISD	57.1%	42.9%	4.8%	38.1%
Lea County ISD	61.5%	38.5%	3.3%	35.3%
Lincoln County ISD	61.0%	39.0%	1.0%	38.0%
Luna County ISD	68.3%	31.7%	3.5%	28.2%
McKinley County ISD	73.9%	26.1%	3.0%	23.1%
Northeast Bernalillo County ISD	62.1%	37.9%	3.6%	34.3%
Northwest Bernalillo County ISD	65.8%	34.2%	2.7%	31.5%
Otero County ISD	65.2%	34.8%	4.7%	30.0%
Quay County ISD	78.3%	21.7%	5.8%	15.9%
Rio Arriba County ISD	67.8%	32.2%	1.6%	30.6%
Roosevelt County ISD	0.0%	0.0%	0.0%	0.0%
San Juan County ISD	60.7%	39.3%	2.8%	36.4%
San Miguel County ISD	64.7%	35.3%	1.5%	33.8%
Sandoval County ISD	64.6%	35.4%	2.2%	33.2%
Santa Fe County ISD	67.8%	32.2%	1.8%	30.5%
Sierra County ISD	81.6%	18.4%	2.1%	16.3%
Socorro County ISD	73.6%	26.4%	4.1%	22.3%
South Dona Ana ISD	76.1%	23.9%	2.6%	21.4%
Southeast Bernalillo County ISD	62.0%	38.0%	2.7%	35.3%
Southwest Bernalillo County ISD	69.5%	30.5%	3.0%	27.6%
Taos County ISD	61.5%	38.5%	4.3%	34.1%
Torrance County ISD	63.7%	36.3%	1.6%	34.6%
Valencia North County ISD	67.6%	32.4%	3.3%	29.1%
Valencia South County ISD	0.0%	0.0%	0.0%	0.0%
West Dona Ana County ISD	69.4%	30.6%	5.5%	25.1%
Centralized Units	66.7%	33.3%	0.0%	33.3%
Statewide Total	66.4%	33.6%	3.1%	30.5%



**SNAP Renewal Disposition Rates by Region<sup>20</sup>**  
**May 2018**

Region	Approval Rate	Closure Rate	Need Based Closure Rate	Procedural Closure Rate
Region 1 - NW	69.1%	30.9%	2.9%	28.0%
Region 2 - NE	66.3%	33.7%	2.2%	31.5%
Region 3 - Central	65.2%	34.8%	3.0%	31.9%
Region 4 - SE	60.0%	40.0%	3.5%	36.6%
Region 5 - SW	70.1%	29.9%	4.0%	25.9%
Centralized Units	66.7%	33.3%	0.0%	33.3%
Statewide Total	66.4%	33.6%	3.1%	30.5%



SNAP: Percentage of Approved Renewal Applications Processed by Normal Accessibility Date <sup>11</sup>													
	Oct-17	Nov-17	Dec-17	Jan-18	Feb-18	Mar-18	Apr-18	May-18	Jun-18	Jul-18	Aug-18	Sep-18	Average
Cibola		71.2%	73.1%	79.4%	90.4%	88.0%	93.1%	94.7%					84.3%
McKinley		90.4%	92.0%	95.6%	98.3%	96.4%	98.5%	98.0%					95.6%
San Juan		85.9%	80.5%	89.6%	94.2%	93.2%	96.5%	96.8%					91.0%
Sierra		98.1%	93.6%	92.8%	99.0%	99.0%	100.0%	100.0%					97.5%
Socorro		92.5%	89.7%	93.8%	100.0%	90.7%	94.3%	94.5%					93.7%
Valencia North		84.1%	86.9%	95.8%	98.6%	92.6%	96.0%	94.3%					92.6%
Valencia South													
<b>NW Region 1 Total</b>		<b>87.1%</b>	<b>86.0%</b>	<b>91.2%</b>	<b>96.8%</b>	<b>93.3%</b>	<b>96.4%</b>	<b>96.4%</b>					<b>92.4%</b>
Colfax		87.8%	82.5%	97.9%	100.0%	91.2%	91.1%	95.9%					92.3%
Guadalupe		94.4%	93.1%	100.0%	95.8%	100.0%	100.0%	100.0%					97.6%
Quay		94.3%	89.5%	100.0%	100.0%	88.0%	89.4%	98.1%					94.2%
Rio Arriba		79.7%	71.9%	94.2%	90.0%	88.3%	93.1%	90.3%					86.8%
San Miguel		90.4%	95.7%	98.5%	96.5%	97.4%	100.0%	98.5%					96.7%
Sandoval		90.1%	93.8%	96.2%	96.3%	96.3%	95.5%	94.5%					94.7%
Santa Fe		87.1%	92.0%	95.7%	96.9%	97.1%	98.1%	95.8%					94.7%
Taos		90.8%	91.5%	94.6%	97.0%	94.4%	98.3%	97.7%					94.9%
<b>NE Region 2 Total</b>		<b>89.3%</b>	<b>88.8%</b>	<b>97.1%</b>	<b>96.6%</b>	<b>94.1%</b>	<b>95.7%</b>	<b>96.4%</b>					<b>94.0%</b>
NE Bernalillo		71.8%	72.1%	85.0%	91.2%	92.6%	96.0%	95.1%					86.3%
NW Bernalillo		85.5%	80.4%	93.0%	96.1%	94.9%	96.8%	92.1%					91.2%
SE Bernalillo		79.7%	81.6%	91.7%	96.5%	96.5%	96.7%	93.6%					90.9%
SW Bernalillo		83.4%	89.0%	91.8%	96.1%	94.6%	96.3%	95.0%					92.3%
Torrance		74.5%	74.3%	90.3%	92.4%	95.7%	93.1%	97.4%					88.2%
<b>Gen. Region 3 Total</b>		<b>79.0%</b>	<b>79.5%</b>	<b>90.3%</b>	<b>94.4%</b>	<b>94.9%</b>	<b>95.8%</b>	<b>94.6%</b>					<b>89.8%</b>
Chaves		91.2%	92.0%	95.3%	98.6%	98.4%	100.0%	99.1%					96.4%
Curry		94.1%	81.9%	94.9%	94.6%	97.6%	98.9%	98.9%					94.4%
Eddy Artesia		94.1%	91.9%	95.2%	98.5%	98.3%	94.0%	92.3%					94.9%
Eddy Carlsbad		75.8%	90.8%	90.1%	93.6%	94.6%	96.4%	98.4%					91.4%
Lea		91.8%	90.9%	94.0%	95.8%	96.0%	98.8%	97.0%					94.9%
Lincoln		87.5%	92.6%	95.1%	100.0%	100.0%	100.0%	100.0%					96.5%
Roosevelt		93.6%	86.7%										90.1%
<b>SE Region 4 Total</b>		<b>89.7%</b>	<b>89.5%</b>	<b>94.1%</b>	<b>96.8%</b>	<b>97.5%</b>	<b>98.0%</b>	<b>97.6%</b>					<b>94.8%</b>
East Dona Ana		94.8%	93.1%	96.5%	98.2%	98.0%	97.5%	97.7%					96.6%
Grant		90.5%	93.5%	100.0%	96.7%	90.1%	94.1%	96.3%					94.5%
Luna		91.7%	84.0%	91.4%	95.1%	92.2%	95.7%	95.7%					92.3%
Otero		87.3%	86.5%	97.5%	93.5%	92.2%	93.5%	97.4%					92.6%
South Dona Ana		94.3%	93.1%	99.4%	99.1%	93.0%	93.9%	95.2%					95.4%
West Dona Ana		97.4%	95.0%	97.9%	98.9%	97.7%	99.2%	98.2%					97.8%
<b>SW Region 5 Total</b>		<b>92.7%</b>	<b>90.9%</b>	<b>97.1%</b>	<b>96.9%</b>	<b>93.9%</b>	<b>95.7%</b>	<b>96.7%</b>					<b>94.8%</b>
<b>STATE TOTAL</b>		<b>86.4%</b>	<b>86.3%</b>	<b>93.6%</b>	<b>95.9%</b>	<b>94.7%</b>	<b>96.5%</b>	<b>95.7%</b>					<b>92.7%</b>

*Includes cases in which the Renewal Packet was received after the 15th of the month, the due date for uninterrupted benefits.  
No data available for October 2017*

SNAP: Percentage of Approved Renewal Applications Processed by Normal Accessibility Date <sup>11</sup>													
	Oct-17	Nov-17	Dec-17	Jan-18	Feb-18	Mar-18	Apr-18	May-18	Jun-18	Jul-18	Aug-18	Sep-18	Average
Cibola		72.8%	86.1%	82.3%	92.7%	96.6%	100.0%	100.0%					90.1%
McKinley		92.8%	93.9%	97.6%	99.0%	99.1%	99.7%	99.7%					97.4%
San Juan		89.0%	85.1%	92.8%	96.4%	97.4%	99.7%	99.4%					94.3%
Sierra		100.0%	97.5%	97.1%	100.0%	100.0%	100.0%	100.0%					99.2%
Socorro		94.7%	95.7%	96.9%	100.0%	100.0%	100.0%	98.9%					98.0%
Valencia North		89.1%	93.1%	96.3%	98.8%	98.7%	100.0%	99.5%					96.5%
Valencia South													
<b>NW Region 1 Total</b>		<b>89.8%</b>	<b>91.9%</b>	<b>93.8%</b>	<b>97.8%</b>	<b>98.6%</b>	<b>99.9%</b>	<b>99.6%</b>					<b>95.9%</b>
Colfax		95.1%	91.2%	100.0%	100.0%	100.0%	100.0%	97.6%					97.7%
Guadalupe		96.7%	92.9%	100.0%	100.0%	100.0%	100.0%	100.0%					98.5%
Quay		100.0%	95.6%	100.0%	100.0%	100.0%	100.0%	100.0%					99.4%
Rio Arriba		90.5%	84.5%	95.6%	94.6%	95.0%	100.0%	99.0%					94.2%
San Miguel		93.6%	96.9%	100.0%	96.5%	99.3%	100.0%	100.0%					98.0%
Sandoval		93.1%	97.0%	98.7%	98.5%	97.9%	100.0%	99.4%					97.8%
Santa Fe		91.6%	97.0%	97.8%	97.9%	99.7%	99.6%	99.6%					97.6%
Taos		95.8%	94.8%	96.8%	98.9%	98.4%	98.9%	99.1%					97.5%
<b>NE Region 2 Total</b>		<b>94.6%</b>	<b>93.7%</b>	<b>98.6%</b>	<b>98.3%</b>	<b>98.8%</b>	<b>99.8%</b>	<b>99.3%</b>					<b>97.6%</b>
NE Bernalillo		75.7%	77.9%	90.1%	93.2%	96.9%	99.8%	98.5%					90.3%
NW Bernalillo		88.7%	84.5%	95.0%	97.5%	98.7%	99.0%	97.5%					94.4%
SE Bernalillo		85.2%	87.3%	94.9%	97.7%	98.8%	99.0%	98.7%					94.5%
SW Bernalillo		88.9%	93.5%	95.2%	98.6%	98.1%	99.7%	99.1%					96.1%
Torrance		83.1%	80.7%	97.2%	95.5%	98.0%	99.0%	99.0%					93.2%
<b>Gen. Region 3 Total</b>		<b>84.3%</b>	<b>84.8%</b>	<b>94.5%</b>	<b>96.5%</b>	<b>98.1%</b>	<b>99.3%</b>	<b>98.6%</b>					<b>93.7%</b>
Chaves		92.0%	92.0%	96.8%	99.5%	99.1%	100.0%	100.0%					97.1%
Curry		94.6%	85.4%	96.7%	96.3%	98.3%	100.0%	100.0%					95.9%
Eddy Artesia		100.0%	96.0%	100.0%	100.0%	98.2%	97.6%	100.0%					98.8%
Eddy Carlsbad		80.3%	94.4%	95.7%	94.1%	97.4%	97.1%	100.0%					94.1%
Lea		94.6%	94.2%	97.5%	97.6%	97.8%	98.6%	98.7%					97.0%
Lincoln		88.5%	95.7%	95.9%	100.0%	100.0%	100.0%	100.0%					97.1%
Roosevelt		92.9%	85.0%										88.9%
<b>SE Region 4 Total</b>		<b>91.8%</b>	<b>91.8%</b>	<b>97.1%</b>	<b>97.9%</b>	<b>98.5%</b>	<b>98.9%</b>	<b>99.8%</b>					<b>96.5%</b>
East Dona Ana		96.8%	97.8%	99.0%	99.2%	99.2%	100.0%	99.6%					98.8%
Grant		94.2%	99.1%	100.0%	100.0%	98.8%	100.0%	100.0%					98.9%
Luna		96.9%	90.2%	92.9%	96.5%	97.6%	98.3%	99.1%					95.9%
Otero		96.2%	96.4%	100.0%	97.8%	100.0%	99.2%	100.0%					98.5%
South Dona Ana		97.4%	97.4%	100.0%	99.7%	99.6%	100.0%	99.3%					99.1%
West Dona Ana		99.1%	98.2%	99.1%	100.0%	99.3%	100.0%	99.7%					99.3%
<b>SW Region 5 Total</b>		<b>96.8%</b>	<b>96.5%</b>	<b>98.5%</b>	<b>98.9%</b>	<b>99.1%</b>	<b>99.6%</b>	<b>99.6%</b>					<b>98.4%</b>
<b>STATE TOTAL</b>		<b>90.4%</b>	<b>91.3%</b>	<b>96.2%</b>	<b>97.6%</b>	<b>98.4%</b>	<b>99.6%</b>	<b>99.2%</b>					<b>96.1%</b>

Only includes cases in which the Renewal Packet was received by the 15th of the month, the due date for uninterrupted benefits.  
No data available for October 2017

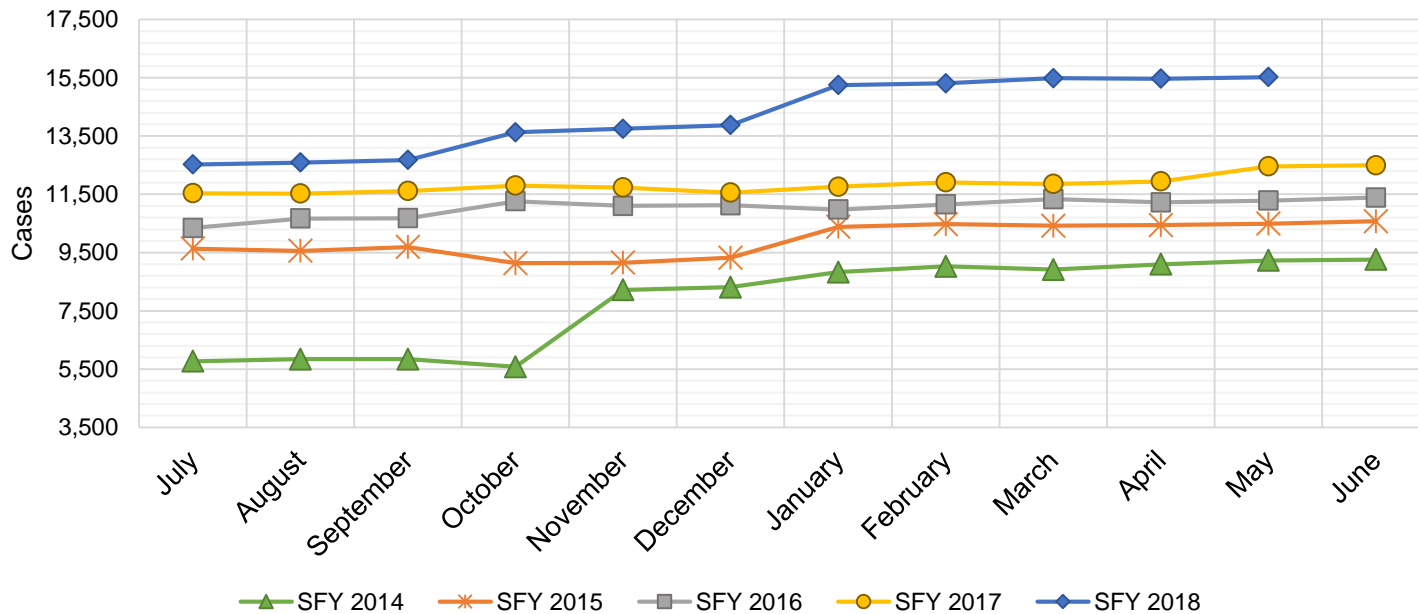
SNAP: Percentage of Closures at Renewal Processed by Certification End Date <sup>11</sup>													
	Oct-17	Nov-17	Dec-17	Jan-18	Feb-18	Mar-18	Apr-18	May-18	Jun-18	Jul-18	Aug-18	Sep-18	Average
Cibola		6.8%	3.3%	2.5%	9.1%	3.5%	10.0%	70.2%					15.0%
McKinley		3.7%	6.7%	6.8%	7.8%	6.1%	15.2%	85.4%					18.8%
San Juan		7.0%	5.1%	5.7%	8.0%	7.8%	32.5%	89.7%					22.3%
Sierra		19.2%	17.1%	8.8%	25.0%	15.6%	91.7%	100.0%					39.6%
Socorro		11.8%	4.3%	0.0%	7.7%	15.2%	77.3%	66.7%					26.1%
Valencia North		6.2%	9.8%	4.8%	10.5%	6.9%	75.4%	81.1%					27.8%
Valencia South													
<b>NW Region 1 Total</b>		<b>9.1%</b>	<b>7.7%</b>	<b>4.8%</b>	<b>11.4%</b>	<b>9.2%</b>	<b>50.3%</b>	<b>82.2%</b>					<b>25.0%</b>
Colfax		6.3%	11.1%	10.0%	3.4%	0.0%	51.9%	80.8%					23.3%
Guadalupe		7.7%	0.0%	0.0%	33.3%	0.0%	88.9%	75.0%					29.3%
Quay		15.8%	6.7%	0.0%	4.2%	7.7%	72.0%	80.0%					26.6%
Rio Arriba		6.1%	3.9%	2.9%	13.7%	3.8%	49.5%	70.3%					21.5%
San Miguel		4.7%	9.0%	8.6%	5.7%	6.8%	79.7%	88.7%					29.0%
Sandoval		12.9%	12.8%	3.0%	10.3%	7.1%	71.7%	81.0%					28.4%
Santa Fe		3.0%	5.8%	9.9%	4.9%	8.5%	77.5%	89.0%					28.4%
Taos		4.1%	3.7%	6.7%	3.3%	21.1%	52.7%	91.3%					26.1%
<b>NE Region 2 Total</b>		<b>7.6%</b>	<b>6.6%</b>	<b>5.1%</b>	<b>9.9%</b>	<b>6.9%</b>	<b>68.0%</b>	<b>82.0%</b>					<b>26.6%</b>
NE Bernalillo		3.0%	5.7%	3.5%	8.5%	9.4%	33.8%	86.3%					21.5%
NW Bernalillo		3.4%	3.8%	20.4%	51.8%	11.6%	60.9%	78.8%					33.0%
SE Bernalillo		4.1%	6.1%	4.2%	7.5%	7.7%	26.3%	84.2%					20.0%
SW Bernalillo		7.2%	6.6%	6.6%	7.5%	8.3%	77.0%	74.3%					26.8%
Torrance		3.6%	7.6%	5.1%	5.1%	20.5%	81.0%	92.4%					30.8%
<b>Cen. Region 3 Total</b>		<b>4.3%</b>	<b>6.0%</b>	<b>8.0%</b>	<b>16.1%</b>	<b>11.5%</b>	<b>55.8%</b>	<b>83.2%</b>					<b>26.4%</b>
Chaves		7.7%	12.2%	8.2%	13.9%	15.7%	94.5%	93.8%					35.2%
Curry		8.0%	3.8%	5.1%	5.8%	14.4%	44.5%	95.3%					25.3%
Eddy Artesia		6.9%	10.0%	10.0%	9.1%	11.1%	83.9%	75.0%					29.4%
Eddy Carlsbad		8.6%	4.7%	3.8%	6.8%	12.7%	8.7%	92.5%					19.7%
Lea		5.3%	14.8%	2.2%	7.0%	13.7%	31.9%	90.6%					23.7%
Lincoln		2.9%	9.3%	15.4%	10.3%	13.6%	24.2%	97.4%					24.7%
Roosevelt		15.0%	5.4%	0.0%									6.8%
<b>SE Region 4 Total</b>		<b>7.8%</b>	<b>8.6%</b>	<b>6.4%</b>	<b>8.8%</b>	<b>13.6%</b>	<b>48.0%</b>	<b>90.8%</b>					<b>26.3%</b>
East Dona Ana		12.9%	9.1%	5.6%	9.9%	14.6%	83.2%	84.4%					31.4%
Grant		6.0%	4.7%	3.4%	1.7%	10.9%	9.3%	86.2%					17.4%
Luna		5.6%	1.4%	3.2%	7.0%	9.1%	6.0%	85.9%					16.9%
Otero		2.9%	5.5%	3.5%	9.6%	2.8%	51.1%	74.1%					21.3%
South Dona Ana		13.8%	7.6%	14.3%	16.8%	8.3%	67.2%	71.4%					28.5%
West Dona Ana		8.9%	8.4%	6.8%	11.4%	8.8%	15.6%	89.5%					21.4%
<b>SW Region 5 Total</b>		<b>8.3%</b>	<b>6.1%</b>	<b>6.1%</b>	<b>9.4%</b>	<b>9.1%</b>	<b>38.7%</b>	<b>81.9%</b>					<b>22.8%</b>
<b>STATE TOTAL</b>		<b>6.6%</b>	<b>7.1%</b>	<b>6.9%</b>	<b>12.3%</b>	<b>9.5%</b>	<b>52.2%</b>	<b>83.8%</b>					<b>25.5%</b>

*Includes cases for which no renewal application was received.  
No data available for October 2017*

## State SNAP Supplement

SFY 2014 <sup>12</sup>			SFY 2015 <sup>12,9</sup>			SFY 2016 <sup>9</sup>			SFY 2017 <sup>9</sup>			SFY 2018 <sup>9</sup>		
	Cases	Expenditures		Cases	Expenditures		Cases	Expenditures		Cases	Expenditures		Cases	Expenditures
Jul-13	5,767	\$48,040	Jul-14	9,635	\$88,859	Jul-15	10,345	\$86,143	Jul-16	11,537	\$95,553	Jul-17	12,526	\$97,568
Aug-13	5,841	\$48,417	Aug-14	9,559	\$87,757	Aug-15	10,669	\$88,197	Aug-16	11,522	\$95,107	Aug-17	12,589	\$98,954
Sep-13	5,841	\$48,732	Sep-14	9,688	\$87,372	Sep-15	10,676	\$88,426	Sep-16	11,613	\$94,472	Sep-17	12,679	\$97,546
Oct-13	5,575	\$46,610	Oct-14	9,136	\$70,490	Oct-15	11,262	\$96,758	Oct-16	11,797	\$96,679	Oct-17	13,628	\$117,343
Nov-13	8,219	\$69,564	Nov-14	9,152	\$69,955	Nov-15	11,099	\$91,996	Nov-16	11,735	\$93,689	Nov-17	13,748	\$119,055
Dec-13	8,310	\$71,839	Dec-14	9,322	\$73,226	Dec-15	11,125	\$90,771	Dec-16	11,556	\$93,739	Dec-17	13,877	\$120,585
Jan-14	8,826	\$77,933	Jan-15	10,384	\$84,578	Jan-16	10,977	\$92,760	Jan-17	11,763	\$96,074	Jan-18	15,246	\$135,993
Feb-14	9,024	\$84,758	Feb-15	10,477	\$82,901	Feb-16	11,153	\$95,363	Feb-17	11,907	\$98,251	Feb-18	15,308	\$137,296
Mar-14	8,916	\$80,597	Mar-15	10,423	\$87,461	Mar-16	11,332	\$96,751	Mar-17	11,853	\$96,693	Mar-18	15,482	\$139,132
Apr-14	9,098	\$84,599	Apr-15	10,440	\$79,605	Apr-16	11,222	\$93,959	Apr-17	11,944	\$97,060	Apr-18	15,466	\$139,202
May-14	9,226	\$85,035	May-15	10,491	\$82,511	May-16	11,283	\$95,271	May-17	12,457	\$96,940	May-18	15,525	\$139,397
Jun-14	9,264	\$84,329	Jun-15	10,575	\$85,134	Jun-16	11,389	\$93,061	Jun-17	12,498	\$97,405	Jun-18		

TOTAL	93,907	\$830,453	119,282	\$979,850	132,532	\$1,109,455	142,182	\$1,151,662	156,074	\$1,342,071
AVERAGE	7,826	\$69,204	9,940	\$81,654	11,044	\$92,455	11,849	\$95,972	14,189	\$122,006



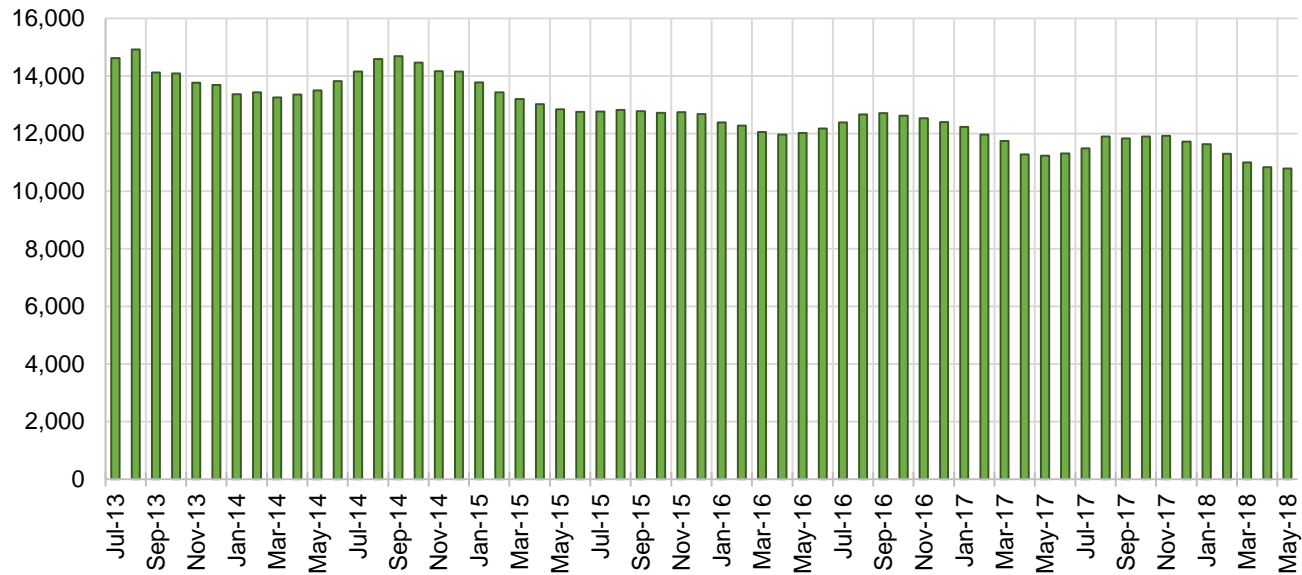
## TANF Cases by Field Office<sup>6</sup>

Office				Percent Change	
	May-17	Apr-18	May-18	May-17- May-18	Apr-18- May-18
Chaves County ISD	551	480	470	-14.7%	-2.1%
Cibola County ISD	141	146	148	5.0%	1.4%
Colfax County ISD	66	77	79	19.7%	2.6%
Curry County ISD	484	663	670	38.4%	1.1%
East Dona Ana County ISD	500	414	413	-17.4%	-0.2%
Eddy Artesia County ISD	135	89	95	-29.6%	6.7%
Eddy Carlsbad County ISD	173	134	121	-30.1%	-9.7%
Grant County ISD	191	174	168	-12.0%	-3.4%
Guadalupe County ISD	29	31	31	6.9%	0.0%
Hidalgo County ISD	20	21	23	15.0%	9.5%
Lea County ISD	425	379	360	-15.3%	-5.0%
Lincoln County ISD	91	97	93	2.2%	-4.1%
Luna County ISD	213	211	221	3.8%	4.7%
McKinley County ISD	55	58	65	18.2%	12.1%
Northeast Bernalillo County ISD	951	949	948	-0.3%	-0.1%
Northwest Bernalillo County ISD	766	788	783	2.2%	-0.6%
Otero County ISD	280	271	274	-2.1%	1.1%
Quay County ISD	82	65	60	-26.8%	-7.7%
Rio Arriba County ISD	382	410	397	3.9%	-3.2%
Roosevelt County ISD	150	0	0	-100.0%	N/A
San Juan County ISD	285	295	283	-0.7%	-4.1%
San Miguel County ISD	197	183	185	-6.1%	1.1%
Sandoval County ISD	512	544	536	4.7%	-1.5%
Santa Fe County ISD	444	443	428	-3.6%	-3.4%
Sierra County ISD	82	63	75	-8.5%	19.0%
Socorro County ISD	84	91	92	9.5%	1.1%
South Dona Ana ISD	713	634	638	-10.5%	0.6%
Southeast Bernalillo County ISD	637	582	601	-5.7%	3.3%
Southwest Bernalillo County ISD	1,040	1,071	1,080	3.8%	0.8%
Taos County ISD	144	145	148	2.8%	2.1%
Torrance County ISD	186	186	172	-7.5%	-7.5%
Valencia North County ISD	455	444	446	-2.0%	0.5%
Valencia South County ISD	1	0	0	-100.0%	N/A
West Dona Ana County ISD	758	691	685	-9.6%	-0.9%
Centralized Units	3	2	2	-33.3%	0.0%
Statewide Total	11,226	10,831	10,790	-3.9%	-0.4%

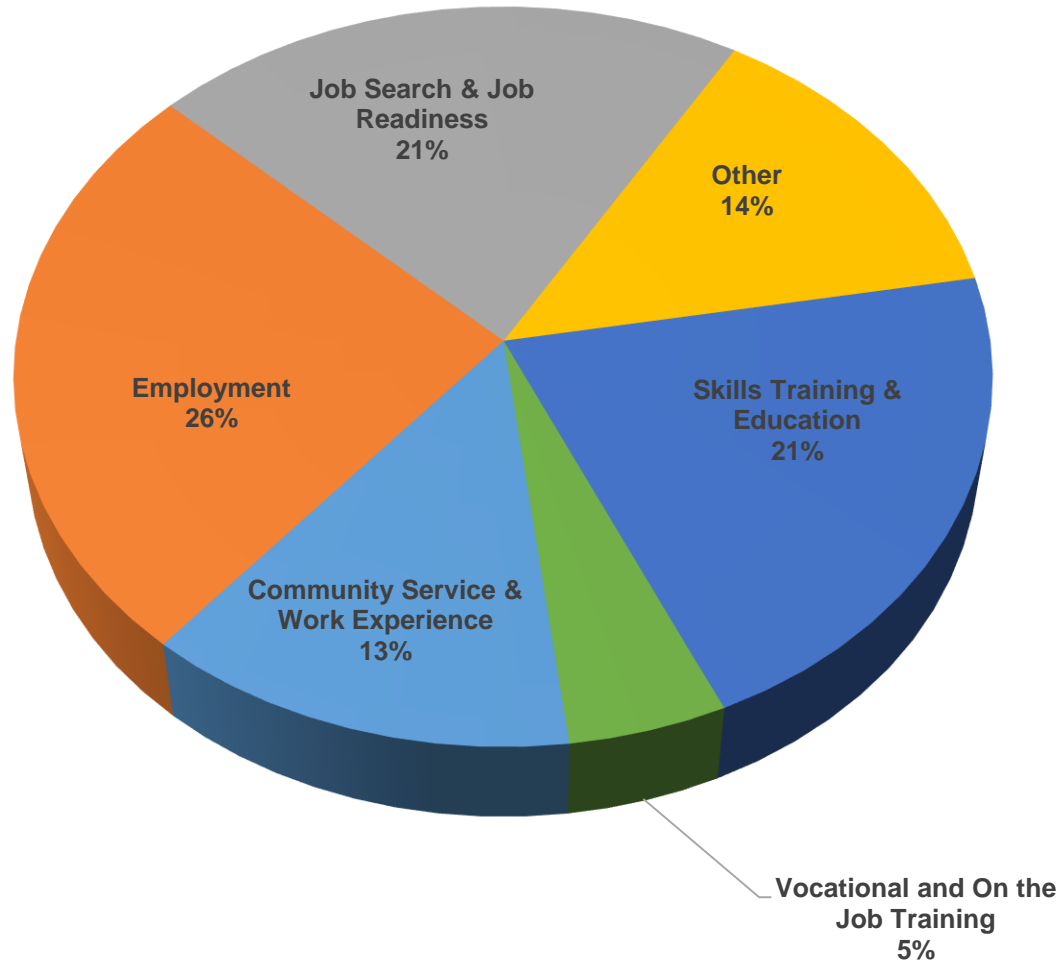
## TANF Cases by Region<sup>6</sup>

Region	May-17	Apr-18	May-18	Percent Change	
				May-17- May-18	Apr-18- May-18
Region 1- NW	1,103	1,097	1,109	0.5%	1.1%
Region 2- NE	1,856	1,898	1,864	0.4%	-1.8%
Region 3- Central	3,580	3,576	3,584	0.1%	0.2%
Region 4- SE	2,009	1,842	1,809	-10.0%	-1.8%
Region 5- SW	2,675	2,416	2,422	-9.5%	0.2%
Centralized Units	3	2	2	-33.3%	0.0%
<b>Statewide Total</b>	<b>11,226</b>	<b>10,831</b>	<b>10,790</b>	<b>-3.9%</b>	<b>-0.4%</b>

## TANF Caseload: SFY-14 to Current

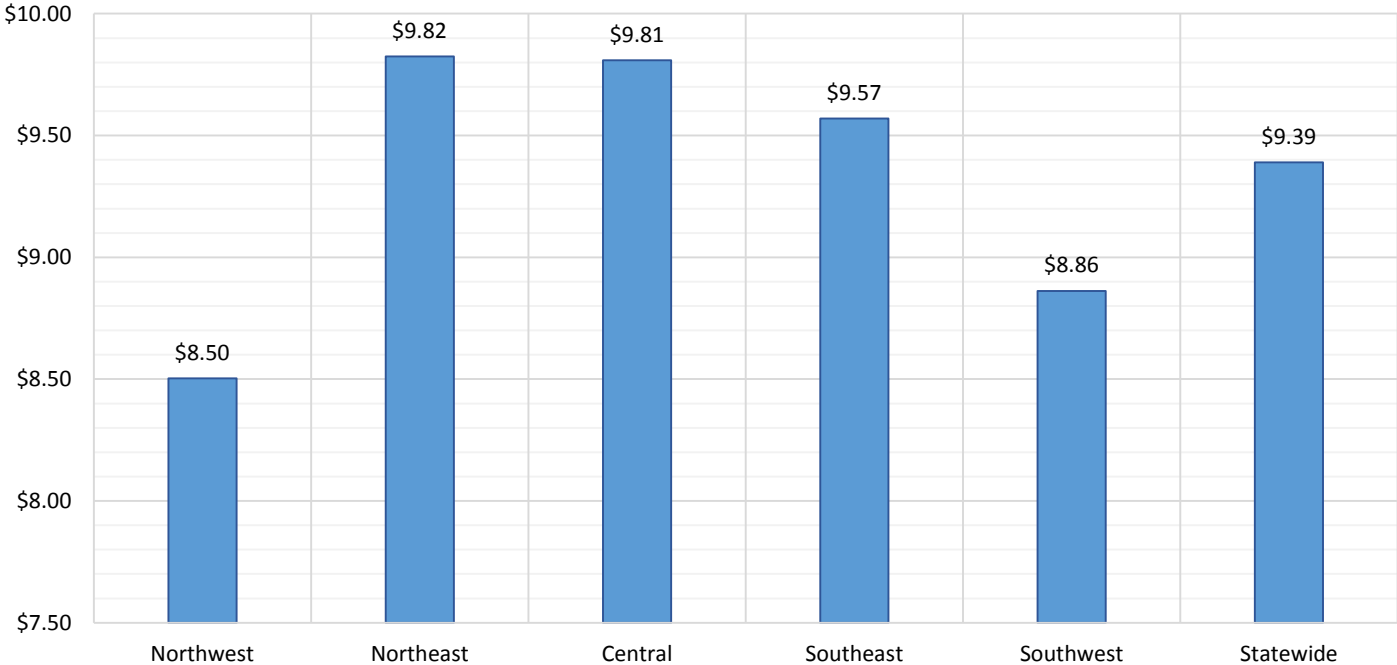


## NM Works Activity Placements on May 31, 2018 as reported by SL Start<sup>14</sup>

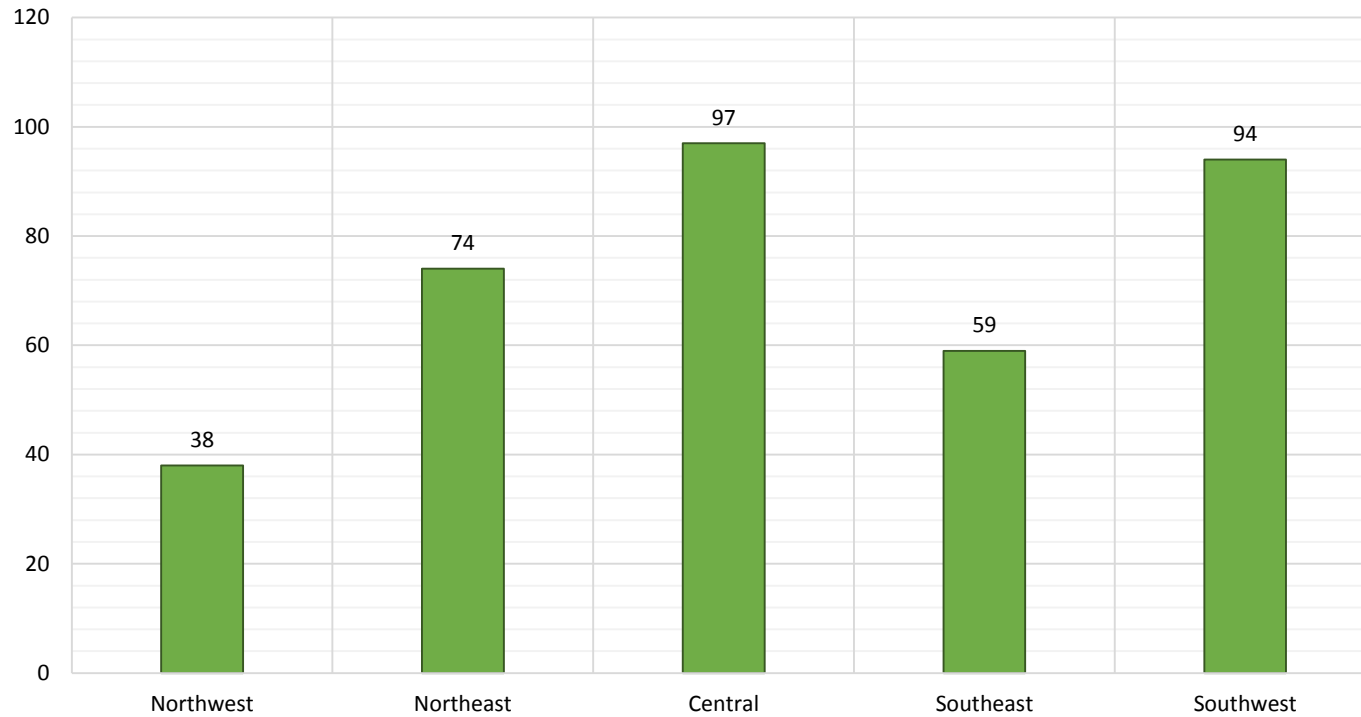




Average Starting Hourly Wage of May 2018 TANF Employments  
as reported by SL Start<sup>15</sup>



Number of New Employments in May 2018 by Region  
as reported by SL Start<sup>15</sup>  
Statewide Total: 362



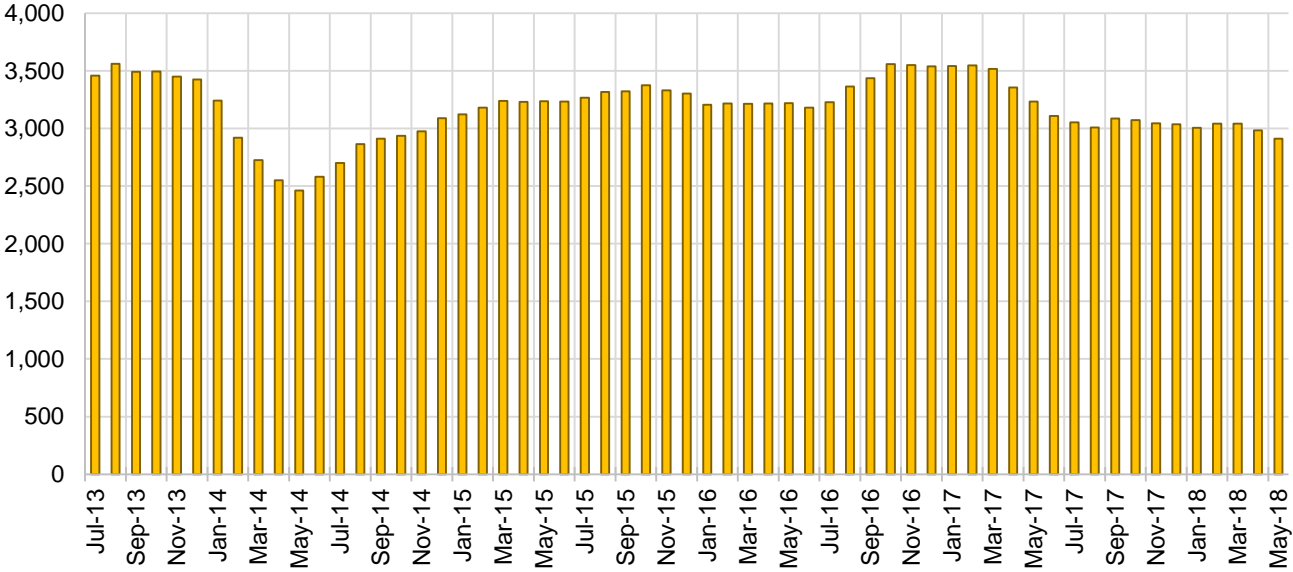
## General Assistance Cases by Field Office<sup>6</sup>

Office	May-17	Apr-18	May-18	Percent Change	
				May-17- May-18	Apr-18- May-18
Chaves County ISD	135	128	124	-8.1%	-3.1%
Cibola County ISD	52	39	36	-30.8%	-7.7%
Colfax County ISD	33	24	19	-42.4%	-20.8%
Curry County ISD	74	80	79	6.8%	-1.3%
East Dona Ana County ISD	121	110	99	-18.2%	-10.0%
Eddy Artesia County ISD	24	26	23	-4.2%	-11.5%
Eddy Carlsbad County ISD	73	73	71	-2.7%	-2.7%
Grant County ISD	78	66	61	-21.8%	-7.6%
Guadalupe County ISD	14	19	19	35.7%	0.0%
Hidalgo County ISD	13	13	13	0.0%	0.0%
Lea County ISD	98	81	84	-14.3%	3.7%
Lincoln County ISD	43	33	32	-25.6%	-3.0%
Luna County ISD	57	55	53	-7.0%	-3.6%
McKinley County ISD	32	57	56	75.0%	-1.8%
Northeast Bernalillo County ISD	370	355	356	-3.8%	0.3%
Northwest Bernalillo County ISD	307	300	298	-2.9%	-0.7%
Otero County ISD	97	94	87	-10.3%	-7.4%
Quay County ISD	37	23	26	-29.7%	13.0%
Rio Arriba County ISD	100	77	72	-28.0%	-6.5%
Roosevelt County ISD	22	0	0	-100.0%	N/A
San Juan County ISD	101	138	138	36.6%	0.0%
San Miguel County ISD	82	72	72	-12.2%	0.0%
Sandoval County ISD	131	132	126	-3.8%	-4.5%
Santa Fe County ISD	192	128	123	-35.9%	-3.9%
Sierra County ISD	34	27	26	-23.5%	-3.7%
Socorro County ISD	48	41	37	-22.9%	-9.8%
South Dona Ana ISD	56	57	57	1.8%	0.0%
Southeast Bernalillo County ISD	156	173	165	5.8%	-4.6%
Southwest Bernalillo County ISD	219	194	190	-13.2%	-2.1%
Taos County ISD	70	43	41	-41.4%	-4.7%
Torrance County ISD	61	46	47	-23.0%	2.2%
Valencia North County ISD	120	108	107	-10.8%	-0.9%
Valencia South County ISD	0	0	0	N/A	N/A
West Dona Ana County ISD	183	171	175	-4.4%	2.3%
Centralized Units	0	0	0	N/A	N/A
<b>Statewide Total</b>	<b>3,233</b>	<b>2,983</b>	<b>2,912</b>	<b>-9.9%</b>	<b>-2.4%</b>

## General Assistance Cases by Region<sup>6</sup>

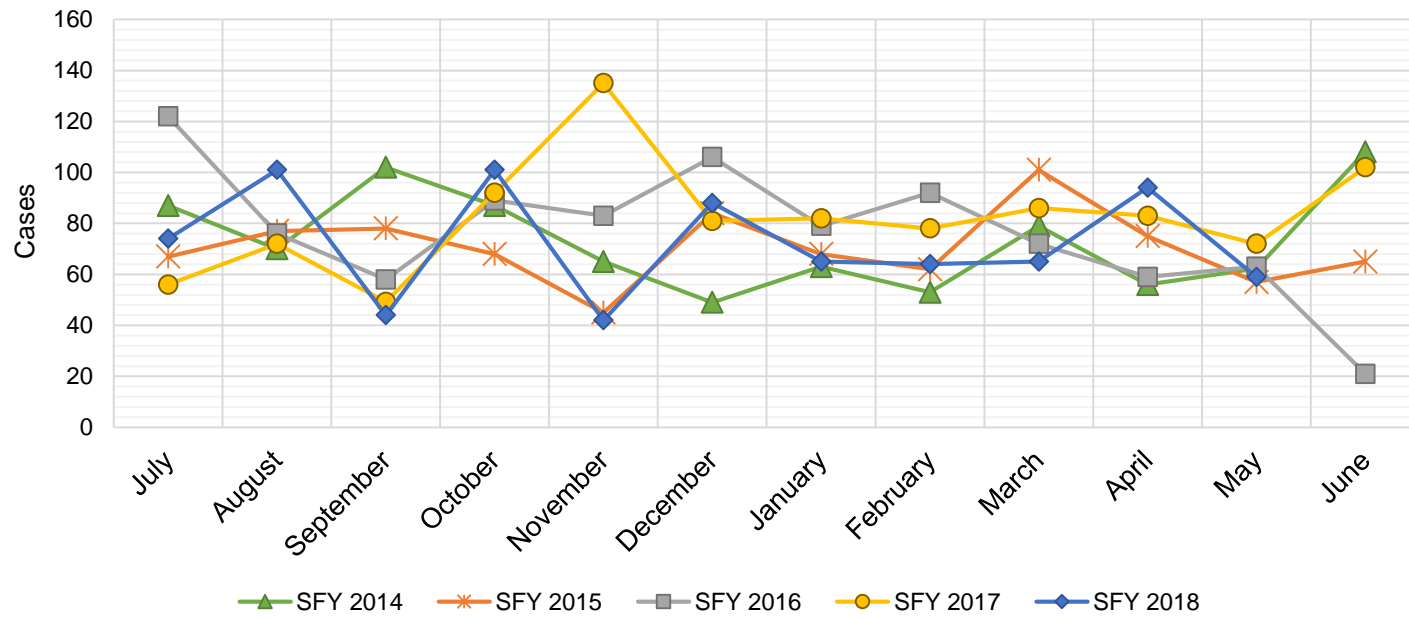
Region	May-17	Apr-18	May-18	Percent Change	
				May-17- May-18	Apr-18- May-18
Region 1 - NW	387	410	400	3.4%	-2.4%
Region 2 - NE	659	518	498	-24.4%	-3.9%
Region 3 - Central	1,113	1,068	1,056	-5.1%	-1.1%
Region 4 - SE	469	421	413	-11.9%	-1.9%
Region 5 - SW	605	566	545	-9.9%	-3.7%
Centralized Units	0	0	0	N/A	N/A
Statewide Total	3,233	2,983	2,912	-9.9%	-2.4%

**General Assistance Caseload: SFY-14 to Current**



## General Assistance Interim Assistance Reimbursements<sup>16</sup>

SFY 2014			SFY 2015			SFY 2016			SFY 2017			SFY 2018		
	Cases	Expenditures		Cases	Expenditures		Cases	Expenditures		Cases	Expenditures		Cases	Expenditures
Jul-13	87	\$185,368	Jul-14	67	\$144,679	Jul-15	122	\$342,648	Jul-16	56	\$164,970	Jul-17	74	\$241,438
Aug-13	70	\$184,639	Aug-14	77	\$244,233	Aug-15	76	\$245,236	Aug-16	72	\$223,182	Aug-17	101	\$339,301
Sep-13	102	\$268,243	Sep-14	78	\$168,421	Sep-15	58	\$170,093	Sep-16	49	\$158,027	Sep-17	44	\$131,229
Oct-13	87	\$165,578	Oct-14	68	\$182,265	Oct-15	89	\$277,912	Oct-16	92	\$257,830	Oct-17	101	\$335,752
Nov-13	65	\$139,197	Nov-14	45	\$134,482	Nov-15	83	\$238,948	Nov-16	135	\$402,305	Nov-17	42	\$139,572
Dec-13	49	\$147,853	Dec-14	84	\$239,926	Dec-15	106	\$388,102	Dec-16	81	\$227,569	Dec-17	88	\$245,453
Jan-14	63	\$178,944	Jan-15	68	\$227,066	Jan-16	79	\$239,263	Jan-17	82	\$274,050	Jan-18	65	\$258,239
Feb-14	53	\$130,352	Feb-15	62	\$159,564	Feb-16	92	\$296,332	Feb-17	78	\$227,569	Feb-18	64	\$195,815
Mar-14	79	\$176,756	Mar-15	101	\$317,899	Mar-16	72	\$254,360	Mar-17	86	\$278,219	Mar-18	65	\$172,188
Apr-14	56	\$155,245	Apr-15	75	\$199,038	Apr-16	59	\$208,631	Apr-17	83	\$267,187	Apr-18	94	\$312,340
May-14	62	\$138,827	May-15	57	\$167,383	May-16	63	\$182,241	May-17	72	\$232,836	May-18	59	\$155,406
Jun-14	108	\$241,016	Jun-15	65	\$188,159	Jun-16	21	\$51,760	Jun-17	102	\$306,228	Jun-18		
<b>TOTAL</b>	<b>881</b>	<b>\$2,112,017</b>	<b>847</b>	<b>\$2,373,115</b>	<b>920</b>	<b>\$2,895,525</b>	<b>988</b>	<b>\$3,019,972</b>	<b>797</b>	<b>\$2,526,733</b>				
<b>AVERAGE</b>	<b>73</b>	<b>\$176,001</b>	<b>71</b>	<b>\$197,760</b>	<b>77</b>	<b>\$241,294</b>	<b>82</b>	<b>\$251,664</b>	<b>72</b>	<b>\$229,703</b>				



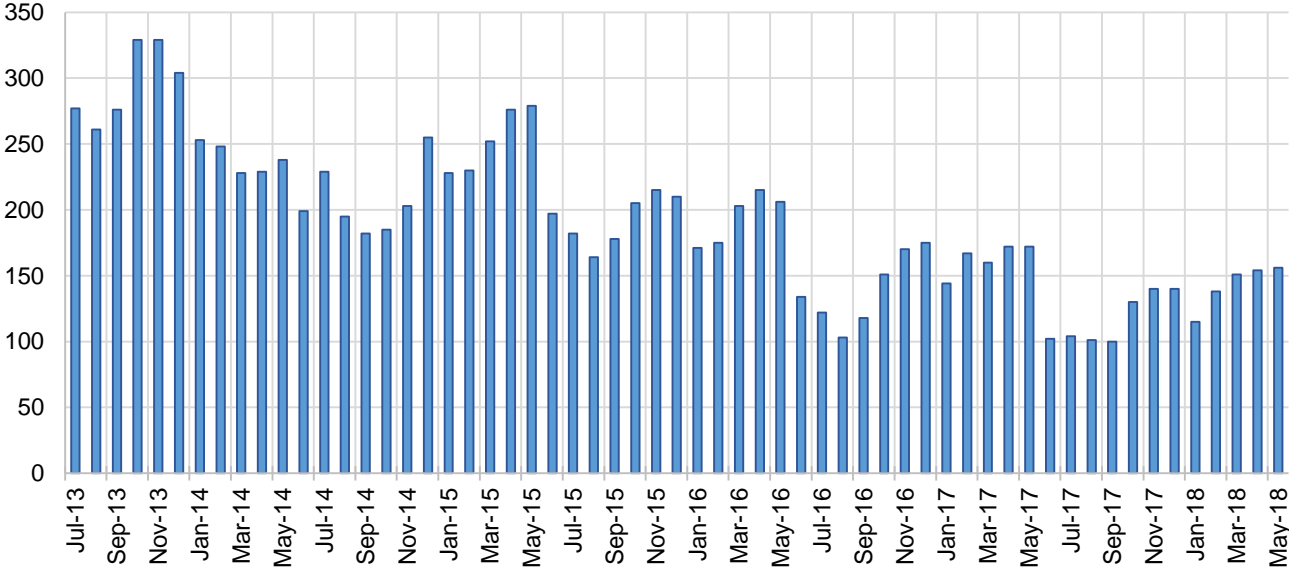
## Education Works Cases by Field Office<sup>6</sup>

Office				Percent Change	
	May-17	Apr-18	May-18	May-17- May-18	Apr-18- May-18
Chaves County ISD	2	3	4	100.0%	33.3%
Cibola County ISD	0	1	1	N/A	0.0%
Colfax County ISD	0	0	0	N/A	N/A
Curry County ISD	3	7	8	166.7%	14.3%
East Dona Ana County ISD	7	10	8	14.3%	-20.0%
Eddy Artesia County ISD	1	3	3	200.0%	0.0%
Eddy Carlsbad County ISD	1	3	2	100.0%	-33.3%
Grant County ISD	8	9	10	25.0%	11.1%
Guadalupe County ISD	1	0	0	-100.0%	N/A
Hidalgo County ISD	0	0	0	N/A	N/A
Lea County ISD	5	3	3	-40.0%	0.0%
Lincoln County ISD	0	1	1	N/A	0.0%
Luna County ISD	2	3	3	50.0%	0.0%
McKinley County ISD	0	0	0	N/A	N/A
Northeast Bernalillo County ISD	30	11	10	-66.7%	-9.1%
Northwest Bernalillo County ISD	12	12	12	0.0%	0.0%
Otero County ISD	1	2	2	100.0%	0.0%
Quay County ISD	1	0	0	-100.0%	N/A
Rio Arriba County ISD	4	6	7	75.0%	16.7%
Roosevelt County ISD	2	0	0	-100.0%	N/A
San Juan County ISD	5	4	4	-20.0%	0.0%
San Miguel County ISD	11	5	5	-54.5%	0.0%
Sandoval County ISD	12	14	13	8.3%	-7.1%
Santa Fe County ISD	10	14	13	30.0%	-7.1%
Sierra County ISD	1	1	1	0.0%	0.0%
Socorro County ISD	2	2	2	0.0%	0.0%
South Dona Ana ISD	14	19	21	50.0%	10.5%
Southeast Bernalillo County ISD	5	3	2	-60.0%	-33.3%
Southwest Bernalillo County ISD	16	6	9	-43.8%	50.0%
Taos County ISD	2	1	1	-50.0%	0.0%
Torrance County ISD	1	0	0	-100.0%	N/A
Valencia North County ISD	1	0	0	-100.0%	N/A
Valencia South County ISD	0	0	0	N/A	N/A
West Dona Ana County ISD	12	11	11	-8.3%	0.0%
Centralized Units	0	0	0	N/A	N/A
Statewide Total	172	154	156	-9.3%	1.3%

## Education Works Cases by Region<sup>6</sup>

				Percent Change	
Region	May-17	Apr-18	May-18	May-17- May-18	Apr-18- May-18
Region 1 - NW	9	8	8	-11.1%	0.0%
Region 2 - NE	41	40	39	-4.9%	-2.5%
Region 3 - Central	64	32	33	-48.4%	3.1%
Region 4 - SE	14	20	21	50.0%	5.0%
Region 5 - SW	44	54	55	25.0%	1.9%
Centralized Units	0	0	0	N/A	N/A
Statewide Total	172	154	156	-9.3%	1.3%

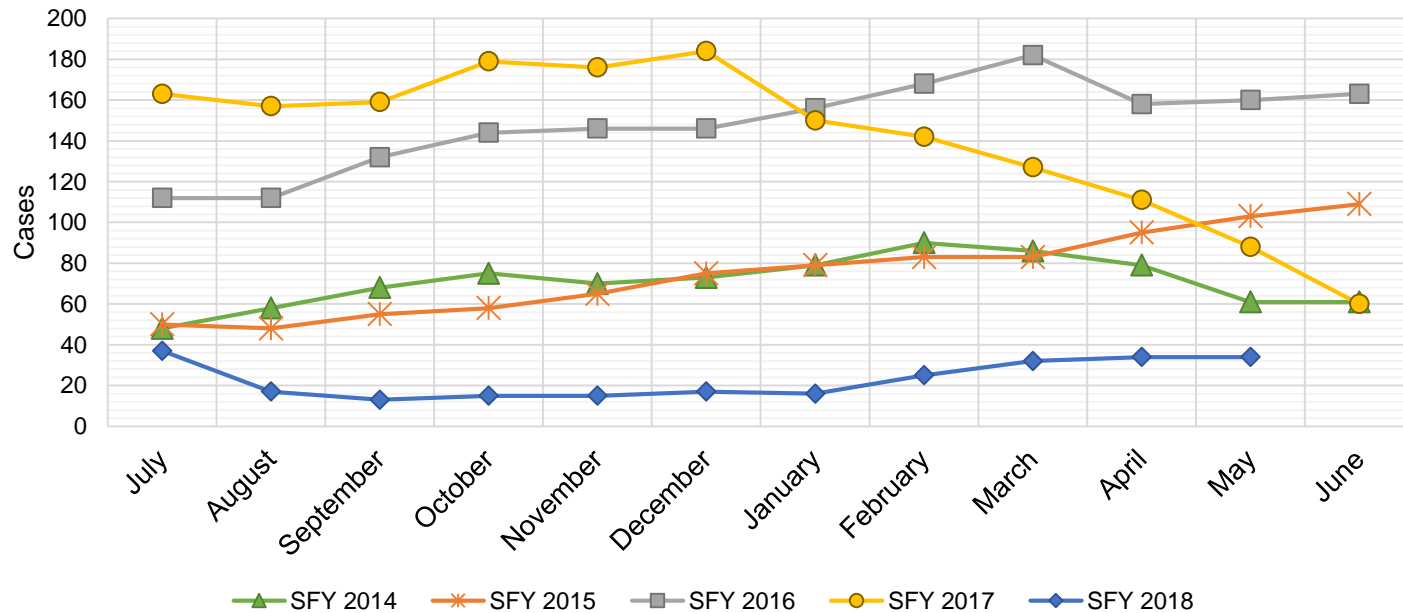
**Education Works Caseload: SFY-14 to Current**



## Refugee Cash Assistance

SFY 2014 <sup>12</sup>			SFY 2015 <sup>8,12,9</sup>			SFY 2016 <sup>8,9</sup>			SFY 2017 <sup>8,9</sup>			SFY 2018 <sup>8,9</sup>		
Cases	Expenditures		Cases	Expenditures		Cases	Expenditures		Cases	Expenditures		Cases	Expenditures	
Jul-13	48	\$12,013	Jul-14	50	\$11,679	Jul-15	112	\$27,516	Jul-16	163	\$39,756	Jul-17	37	\$9,981
Aug-13	58	\$16,129	Aug-14	48	\$11,760	Aug-15	112	\$27,438	Aug-16	157	\$40,115	Aug-17	17	\$4,704
Sep-13	68	\$19,061	Sep-14	55	\$13,094	Sep-15	132	\$31,321	Sep-16	159	\$39,359	Sep-17	13	\$3,159
Oct-13	75	\$20,962	Oct-14	58	\$13,726	Oct-15	144	\$36,153	Oct-16	179	\$41,520	Oct-17	15	\$3,543
Nov-13	70	\$21,880	Nov-14	65	\$16,461	Nov-15	146	\$36,515	Nov-16	176	\$45,434	Nov-17	15	\$4,263
Dec-13	73	\$22,053	Dec-14	75	\$18,699	Dec-15	146	\$35,763	Dec-16	184	\$46,673	Dec-17	17	\$4,795
Jan-14	79	\$22,670	Jan-15	79	\$19,009	Jan-16	156	\$38,686	Jan-17	150	\$38,790	Jan-18	16	\$4,166
Feb-14	90	\$23,227	Feb-15	83	\$21,349	Feb-16	168	\$41,368	Feb-17	142	\$37,956	Feb-18	25	\$5,723
Mar-14	86	\$21,808	Mar-15	83	\$20,730	Mar-16	182	\$45,307	Mar-17	127	\$33,066	Mar-18	32	\$7,636
Apr-14	79	\$20,109	Apr-15	95	\$23,495	Apr-16	158	\$41,143	Apr-17	111	\$29,183	Apr-18	34	\$8,827
May-14	61	\$15,703	May-15	103	\$25,363	May-16	160	\$38,332	May-17	88	\$23,343	May-18	34	\$8,939
Jun-14	61	\$14,783	Jun-15	109	\$27,958	Jun-16	163	\$39,856	Jun-17	60	\$15,538	Jun-18		

TOTAL	848	\$230,398	903	\$223,323	1,779	\$439,397	1,696	\$430,732	255	\$65,736
AVERAGE	71	\$19,200	75	\$18,610	148	\$36,616	141	\$35,894	23	\$5,976

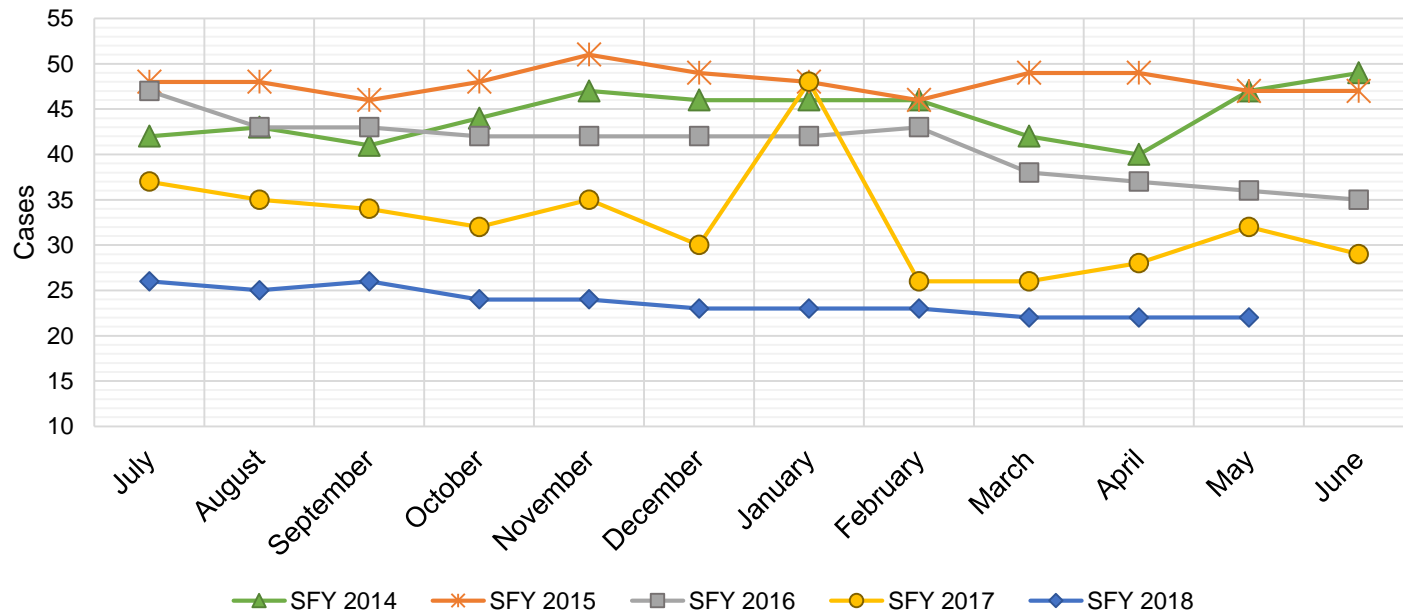




## State Supplement for Residential Care

SFY 2014 <sup>12</sup>			SFY 2015 <sup>12,9</sup>			SFY 2016 <sup>9</sup>			SFY 2017 <sup>9</sup>			SFY 2018 <sup>9</sup>		
	Cases	Expenditures		Cases	Expenditures		Cases	Expenditures		Cases	Expenditures		Cases	Expenditures
Jul-13	42	\$4,400	Jul-14	48	\$4,700	Jul-15	47	\$4,700	Jul-16	37	\$3,700	Jul-17	26	\$2,700
Aug-13	43	\$4,300	Aug-14	48	\$5,000	Aug-15	43	\$4,900	Aug-16	35	\$3,500	Aug-17	25	\$2,500
Sep-13	41	\$4,700	Sep-14	46	\$4,600	Sep-15	43	\$4,500	Sep-16	34	\$3,400	Sep-17	26	\$2,700
Oct-13	44	\$4,500	Oct-14	48	\$4,600	Oct-15	42	\$4,400	Oct-16	32	\$3,200	Oct-17	24	\$2,500
Nov-13	47	\$4,700	Nov-14	51	\$5,600	Nov-15	42	\$4,200	Nov-16	35	\$3,500	Nov-17	24	\$2,400
Dec-13	46	\$4,600	Dec-14	49	\$5,000	Dec-15	42	\$4,200	Dec-16	30	\$3,000	Dec-17	23	\$2,200
Jan-14	46	\$4,700	Jan-15	48	\$4,900	Jan-16	42	\$4,200	Jan-17	48	\$4,800	Jan-18	23	\$2,400
Feb-14	46	\$4,700	Feb-15	46	\$4,800	Feb-16	43	\$4,300	Feb-17	26	\$2,600	Feb-18	23	\$2,300
Mar-14	42	\$4,500	Mar-15	49	\$4,800	Mar-16	38	\$3,800	Mar-17	26	\$2,600	Mar-18	22	\$2,400
Apr-14	40	\$4,200	Apr-15	49	\$5,400	Apr-16	37	\$3,700	Apr-17	28	\$2,800	Apr-18	22	\$2,200
May-14	47	\$5,000	May-15	47	\$4,700	May-16	36	\$3,600	May-17	32	\$3,200	May-18	22	\$2,200
Jun-14	49	\$4,900	Jun-15	47	\$5,300	Jun-16	35	\$3,500	Jun-17	29	\$2,900	Jun-18		

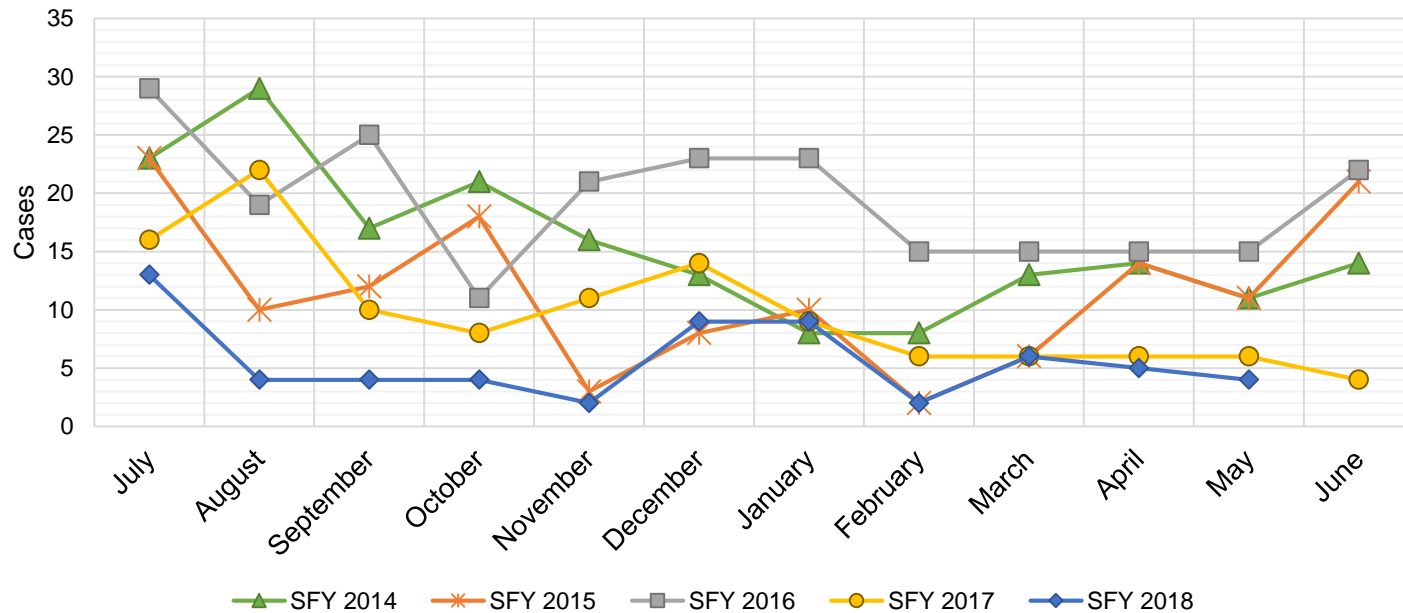
TOTAL	533	\$55,200	576	\$59,400	490	\$50,000	392	\$39,200	260	\$26,500
AVERAGE	44	\$4,600	48	\$4,950	41	\$4,167	33	\$3,267	24	\$2,409



## TANF Diversion Payments

SFY 2014 <sup>12</sup>			SFY 2015 <sup>12,9</sup>			SFY 2016 <sup>9</sup>			SFY 2017 <sup>9</sup>			SFY 2018 <sup>9</sup>		
	Cases	Expenditures		Cases	Expenditures		Cases	Expenditures		Cases	Expenditures		Cases	Expenditures
Jul-13	23	\$46,500	Jul-14	23	\$48,098	Jul-15	29	\$62,074	Jul-16	16	\$30,843	Jul-17	13	\$26,500
Aug-13	29	\$54,500	Aug-14	10	\$21,810	Aug-15	19	\$33,584	Aug-16	22	\$42,731	Aug-17	4	\$12,000
Sep-13	17	\$36,500	Sep-14	12	\$23,500	Sep-15	25	\$47,977	Sep-16	10	\$21,000	Sep-17	4	\$4,000
Oct-13	21	\$42,500	Oct-14	18	\$30,589	Oct-15	11	\$20,500	Oct-16	8	\$16,744	Oct-17	4	\$16,000
Nov-13	16	\$28,953	Nov-14	3	\$4,411	Nov-15	21	\$45,500	Nov-16	11	\$24,500	Nov-17	2	\$15,500
Dec-13	13	\$25,500	Dec-14	8	\$14,634	Dec-15	23	\$45,389	Dec-16	14	\$26,611	Dec-17	9	\$17,500
Jan-14	8	\$16,000	Jan-15	10	\$18,000	Jan-16	23	\$41,874	Jan-17	9	\$18,500	Jan-18	9	\$21,731
Feb-14	8	\$16,994	Feb-15	2	\$5,500	Feb-16	15	\$28,500	Feb-17	6	\$12,000	Feb-18	2	\$7,731
Mar-14	13	\$27,396	Mar-15	6	\$12,000	Mar-16	15	\$27,008	Mar-17	6	\$11,000	Mar-18	6	\$8,496
Apr-14	14	\$28,000	Apr-15	14	\$26,000	Apr-16	15	\$31,389	Apr-17	6	\$12,000	Apr-18	5	\$13,500
May-14	11	\$20,500	May-15	11	\$21,500	May-16	15	\$31,916	May-17	6	\$11,500	May-18	4	\$12,500
Jun-14	14	\$29,911	Jun-15	21	\$40,039	Jun-16	22	\$43,000	Jun-17	4	\$13,500	Jun-18		

TOTAL	187	\$373,254	138	\$266,081	233	\$458,711	118	\$240,929	62	\$155,458
AVERAGE	16	\$31,105	12	\$22,173	19	\$38,226	10	\$20,077	6	\$14,133

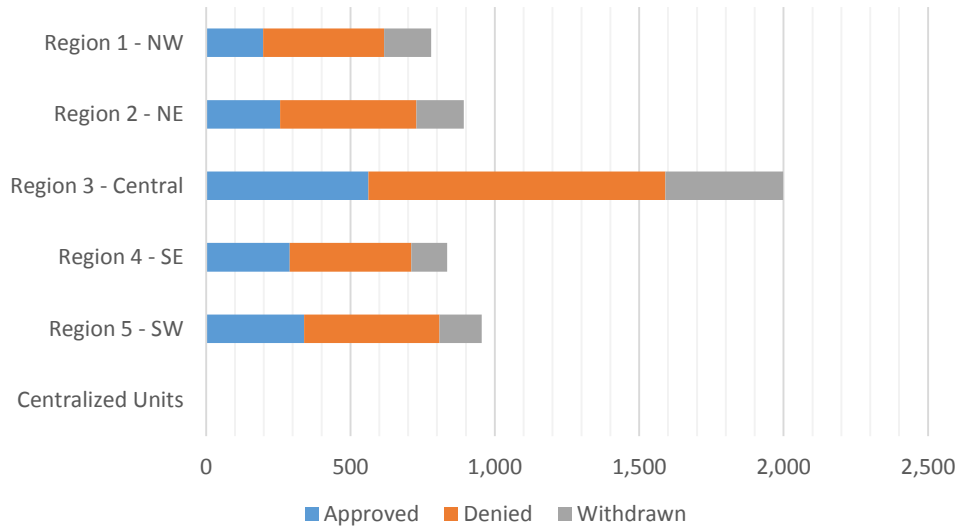


**Cash Assistance Applications by Field Office<sup>4,11</sup>**  
**May 2018**

Office	Approved	Denied	Withdrawn	Total Cases Processed
Chaves County ISD	66	94	43	203
Cibola County ISD	23	32	17	72
Colfax County ISD	22	24	8	54
Curry County ISD	95	117	31	243
East Dona Ana County ISD	53	111	30	194
Eddy Artesia County ISD	18	27	3	48
Eddy Carlsbad County ISD	26	48	14	88
Grant County ISD	31	37	14	82
Guadalupe County ISD	4	3	4	11
Hidalgo County ISD	0	0	0	0
Lea County ISD	72	97	30	199
Lincoln County ISD	12	35	3	50
Luna County ISD	29	29	22	80
McKinley County ISD	8	62	34	104
Northeast Bernalillo County ISD	160	331	137	628
Northwest Bernalillo County ISD	134	257	126	517
Otero County ISD	55	69	26	150
Quay County ISD	6	12	4	22
Rio Arriba County ISD	44	69	18	131
Roosevelt County ISD	1	3	0	4
San Juan County ISD	64	185	62	311
San Miguel County ISD	31	41	11	83
Sandoval County ISD	70	151	59	280
Santa Fe County ISD	62	129	48	239
Sierra County ISD	16	17	3	36
Socorro County ISD	19	20	8	47
South Dona Ana ISD	66	64	14	144
Southeast Bernalillo County ISD	100	175	52	327
Southwest Bernalillo County ISD	152	220	74	446
Taos County ISD	17	43	13	73
Torrance County ISD	16	46	18	80
Valencia North County ISD	68	102	38	208
Valencia South County ISD	0	1	0	1
West Dona Ana County ISD	106	158	41	305
Centralized Units	0	0	0	0
<b>Statewide Total</b>	<b>1,646</b>	<b>2,809</b>	<b>1,005</b>	<b>5,460</b>

## Cash Assistance Applications by Region<sup>4,11</sup> May 2018

	Approved	Denied	Withdrawn	Total Cases Processed
Region				
Region 1 - NW	198	419	162	779
Region 2 - NE	256	472	165	893
Region 3 - Central	562	1,029	407	1,998
Region 4 - SE	290	421	124	835
Region 5 - SW	340	468	147	955
Centralized Units	0	0	0	0
<b>Statewide Total</b>	<b>1,646</b>	<b>2,809</b>	<b>1,005</b>	<b>5,460</b>



**Children Youth and Families Department  
Children Receiving Child Care Assistance Subsidies By County**

County	May 2017	June 2017	July 2017	Aug 2017	Sep 2017	Oct 2017	Nov 2017	Dec 2017	Jan 2018	Feb 2018	Mar 2018	Apr 2018	May 2018	Change Fr. Last Year Cases	Percent
<i>Bernalillo</i>	7,519	7,895	7,547	7,616	8,154	7,848	7,985	7,903	7,801	7,739	7,824	7,853	7,925	406	5.4%
<b>Catron</b>	<b>0</b>	<b>0</b>	<b>0</b>	<b>0</b>	<b>0</b>	<b>0</b>	<b>0</b>	<b>5</b>	<b>5</b>	<b>0</b>	<b>0</b>	<b>0</b>	<b>0</b>	<b>0</b>	<b>0.0%</b>
<i>Chaves</i>	796	860	826	821	889	884	870	855	843	823	807	791	819	23	2.9%
<b>Cibola</b>	<b>299</b>	<b>305</b>	<b>293</b>	<b>294</b>	<b>311</b>	<b>304</b>	<b>303</b>	<b>296</b>	<b>291</b>	<b>289</b>	<b>277</b>	<b>291</b>	<b>286</b>	<b>-13</b>	<b>-4.3%</b>
<i>Colfax</i>	39	46	46	41	44	41	42	42	47	50	51	56	57	18	46.2%
<b>Curry</b>	<b>445</b>	<b>480</b>	<b>486</b>	<b>459</b>	<b>422</b>	<b>446</b>	<b>467</b>	<b>470</b>	<b>493</b>	<b>514</b>	<b>517</b>	<b>536</b>	<b>538</b>	<b>93</b>	<b>20.9%</b>
<i>De Baca</i>	14	14	12	11	11	9	11	10	10	8	4	4	4	-10	-71.4%
<b>Dona Ana</b>	<b>4,309</b>	<b>4,499</b>	<b>4,509</b>	<b>4,473</b>	<b>4,693</b>	<b>4,585</b>	<b>4,581</b>	<b>4,492</b>	<b>4,349</b>	<b>4,382</b>	<b>4,322</b>	<b>4,349</b>	<b>4,369</b>	<b>60</b>	<b>1.4%</b>
<i>Eddy</i>	301	306	292	287	313	297	297	263	256	257	240	242	234	-67	-22.3%
<b>Grant</b>	<b>159</b>	<b>161</b>	<b>134</b>	<b>114</b>	<b>164</b>	<b>161</b>	<b>157</b>	<b>159</b>	<b>139</b>	<b>127</b>	<b>133</b>	<b>140</b>	<b>138</b>	<b>-21</b>	<b>-13.2%</b>
<i>Guadalupe</i>	16	16	16	16	15	16	16	16	14	11	15	14	14	-2	-12.5%
<b>Harding</b>	<b>0</b>	<b>0</b>	<b>0</b>	<b>0</b>	<b>0</b>	<b>0</b>	<b>0</b>	<b>0</b>	<b>0</b>	<b>0</b>	<b>0</b>	<b>1</b>	<b>1</b>	<b>1</b>	<b>0.0%</b>
<i>Hidalgo</i>	39	40	37	37	39	39	35	32	32	36	40	35	37	-2	-5.1%
<b>Lea</b>	<b>781</b>	<b>818</b>	<b>837</b>	<b>856</b>	<b>954</b>	<b>909</b>	<b>895</b>	<b>833</b>	<b>824</b>	<b>827</b>	<b>855</b>	<b>805</b>	<b>817</b>	<b>36</b>	<b>4.6%</b>
<i>Lincoln</i>	136	147	146	145	150	147	136	132	129	129	128	130	133	-3	-2.2%
<b>Los Alamos</b>	<b>16</b>	<b>16</b>	<b>17</b>	<b>16</b>	<b>19</b>	<b>18</b>	<b>14</b>	<b>13</b>	<b>13</b>	<b>14</b>	<b>15</b>	<b>17</b>	<b>18</b>	<b>2</b>	<b>12.5%</b>
<i>Luna</i>	177	188	165	176	177	177	166	171	167	161	166	166	163	-14	-7.9%
<b>McKinley</b>	<b>170</b>	<b>171</b>	<b>145</b>	<b>136</b>	<b>161</b>	<b>165</b>	<b>167</b>	<b>166</b>	<b>168</b>	<b>156</b>	<b>158</b>	<b>162</b>	<b>168</b>	<b>-2</b>	<b>-1.2%</b>
<i>Mora</i>	21	21	18	18	19	18	20	21	20	18	20	18	21	0	0.0%
<b>Otero</b>	<b>498</b>	<b>532</b>	<b>500</b>	<b>491</b>	<b>530</b>	<b>525</b>	<b>518</b>	<b>531</b>	<b>519</b>	<b>533</b>	<b>532</b>	<b>518</b>	<b>504</b>	<b>6</b>	<b>1.2%</b>
<i>Out of State</i>	11	10	14	11	12	14	12	3	9	12	8	5	7	-4	-36.4%
<b>Quay</b>	<b>35</b>	<b>39</b>	<b>35</b>	<b>36</b>	<b>39</b>	<b>35</b>	<b>35</b>	<b>35</b>	<b>35</b>	<b>36</b>	<b>36</b>	<b>35</b>	<b>33</b>	<b>-2</b>	<b>-5.7%</b>
<i>Rio Arriba</i>	140	149	144	145	159	163	166	165	154	151	152	148	146	6	4.3%
<b>Roosevelt</b>	<b>118</b>	<b>134</b>	<b>123</b>	<b>125</b>	<b>137</b>	<b>120</b>	<b>120</b>	<b>127</b>	<b>119</b>	<b>117</b>	<b>113</b>	<b>109</b>	<b>101</b>	<b>-17</b>	<b>-14.4%</b>
<i>San Juan</i>	956	997	979	960	1,132	1,050	1,043	1,039	1,005	1,036	1,026	1,053	1,030	74	7.7%
<b>San Miguel</b>	<b>367</b>	<b>382</b>	<b>366</b>	<b>356</b>	<b>362</b>	<b>368</b>	<b>371</b>	<b>372</b>	<b>357</b>	<b>353</b>	<b>362</b>	<b>370</b>	<b>378</b>	<b>11</b>	<b>3.0%</b>
<i>Sandoval</i>	890	938	932	948	974	859	839	836	794	774	765	782	765	-125	-14.0%
<b>Santa Fe</b>	<b>499</b>	<b>536</b>	<b>534</b>	<b>520</b>	<b>580</b>	<b>554</b>	<b>547</b>	<b>526</b>	<b>514</b>	<b>523</b>	<b>506</b>	<b>514</b>	<b>531</b>	<b>32</b>	<b>6.4%</b>
<i>Sierra</i>	58	69	74	76	79	86	80	77	59	76	67	69	70	12	20.7%
<b>Socorro</b>	<b>59</b>	<b>58</b>	<b>56</b>	<b>63</b>	<b>63</b>	<b>68</b>	<b>66</b>	<b>70</b>	<b>70</b>	<b>70</b>	<b>73</b>	<b>75</b>	<b>73</b>	<b>14</b>	<b>23.7%</b>
<i>Taos</i>	120	127	132	137	145	139	142	141	141	139	139	138	135	15	12.5%
<b>Torrance</b>	<b>96</b>	<b>101</b>	<b>107</b>	<b>117</b>	<b>106</b>	<b>99</b>	<b>115</b>	<b>115</b>	<b>114</b>	<b>110</b>	<b>104</b>	<b>116</b>	<b>115</b>	<b>19</b>	<b>19.8%</b>
<i>Union</i>	4	4	5	5	5	4	6	5	5	5	5	5	5	1	25.0%
<b>Valencia</b>	<b>658</b>	<b>678</b>	<b>642</b>	<b>677</b>	<b>714</b>	<b>723</b>	<b>713</b>	<b>678</b>	<b>651</b>	<b>640</b>	<b>634</b>	<b>612</b>	<b>624</b>	<b>-34</b>	<b>-5.2%</b>
<b>Totals</b>	<b>19,746</b>	<b>20,737</b>	<b>20,169</b>	<b>20,183</b>	<b>21,572</b>	<b>20,871</b>	<b>20,935</b>	<b>20,599</b>	<b>20,147</b>	<b>20,116</b>	<b>20,094</b>	<b>20,159</b>	<b>20,259</b>	<b>513</b>	<b>2.6%</b>

**CHILDREN YOUTH AND FAMILIES DEPARTMENT  
CHILD CARE ASSISTANCE ELIGIBILITY PROGRAMS**

MONTH	JUNE'17	JULY'17	AUG'17	SEP'17	OCT'17	NOV'17	DEC'17	JAN'18	FEB'18	MAR'18	APR'18	May'18
<b>TANF (Child Care Priority 1 Clients)</b>												
CLIENTS	2,300	2,302	2,353	2,455	2,419	2,374	2,315	2,240	2,153	2,178	2,175	2,118
COST	\$ 1,271,336	\$ 1,323,182	\$ 1,381,202	\$ 1,364,956	\$ 1,423,748	\$ 1,411,060	\$ 1,382,073	\$ 1,317,716	\$ 1,272,232	\$ 1,325,003	\$ 1,300,872	\$ 1,244,115
TANF AVERAGE COST	\$553	\$575	\$587	\$556	\$589	\$594	\$597	\$588	\$591	\$608	\$598	\$587
<b>TRANSITION OFF TANF (Child Care Priority 2 Clients)</b>												
CLIENTS	213	197	189	179	181	154	152	141	138	142	148	169
COST	\$ 111,219	\$ 106,835	\$ 103,813	\$ 93,119	\$ 96,629	\$ 81,975	\$ 81,337	\$ 74,507	\$ 72,696	\$ 77,354	\$ 80,098	\$ 93,823
TRAN OFF TANF AVG COST	\$522	\$542	\$549	\$520	\$534	\$532	\$535	\$528	\$527	\$545	\$541	\$555
<b>TANF ELIGIBLE (Child Care Priority 1B Clients at or below 100% of the Federal Poverty Level)</b>												
CLIENTS	8,472	8,193	8,254	9,064	8,899	8,900	8,729	8,435	8,374	8,373	8,382	8,570
COST	\$ 4,448,742	\$ 4,521,900	\$ 4,657,974	\$ 4,755,691	\$ 5,021,574	\$ 5,099,212	\$ 4,994,373	\$ 4,722,370	\$ 4,675,492	\$ 4,802,863	\$ 4,766,353	\$ 4,896,651
TANF ELIGIBLE AVG COST	\$525	\$552	\$564	\$525	\$564	\$573	\$572	\$560	\$558	\$574	\$569	\$571
<b>INCOME ELIGIBLE (Child Care Priority 3, and Priority 4 Clients)</b>												
CLIENTS	7,832	7,426	7,337	7,749	7,464	7,578	7,580	7,665	7,868	7,944	8,059	8,099
COST	\$ 3,843,887	\$ 3,805,939	\$ 3,838,152	\$ 3,779,202	\$ 3,760,398	\$ 3,838,169	\$ 3,824,777	\$ 3,785,466	\$ 3,929,313	\$ 4,010,729	\$ 4,051,487	\$ 4,104,126
INCOME ELIG AVG COST	\$491	\$513	\$523	\$488	\$504	\$506	\$505	\$494	\$499	\$505	\$503	\$507
<b>AT-RISK CHILD PROTECTIVE SERVICES CHILD CARE PILOT (Priority 5 Clients)</b>												
CLIENTS	881	1,021	1,073	1,152	1,032	1,027	935	772	689	578	516	424
COST	\$ 535,980	\$ 622,872	\$ 686,919	\$ 723,334	\$ 684,194	\$ 678,258	\$ 628,399	\$ 509,028	\$ 486,780	\$ 381,318	\$ 337,243	\$ 276,746
CPS AVG COST	\$608	\$610	\$640	\$628	\$663	\$660	\$672	\$659	\$707	\$660	\$654	\$653
<b>CHILD PROTECTIVE SERVICES (Child Care CPS Clients)</b>												
CLIENTS	1,039	1,030	977	973	876	902	888	894	894	879	879	879
COST	\$ 649,417	\$ 652,471	\$ 663,134	\$ 623,416	\$ 567,608	\$ 585,009	\$ 573,312	\$ 583,824	\$ 602,246	\$ 605,523	\$ 564,253	\$ 619,678
CPS AVG COST	\$625	\$633	\$679	\$641	\$648	\$649	\$646	\$653	\$674	\$689	\$642	\$705
<b>GRAND TOTAL - ALL CHILD CARE PROGRAMS</b>												
CLIENTS	19,746	20,737	20,169	20,183	20,871	20,935	20,599	20,147	20,116	20,094	20,159	20,259
COST	\$ 10,426,385	\$ 10,860,581	\$ 11,033,199	\$ 11,331,194	\$ 11,554,151	\$ 11,693,682	\$ 11,484,272	\$ 10,992,912	\$ 11,038,760	\$ 11,202,789	\$ 11,100,307	\$ 11,235,139
ALL PROGRAMS AVG COST	\$ 523	\$ 529	\$ 528	\$ 524	\$ 547	\$ 561	\$ 558	\$ 546	\$ 549	\$ 558	\$ 551	\$ 555

## Income Eligibility Guidelines: October 1, 2017 - September 30, 2018

### Federal Poverty Guidelines (FPG) Monthly Income Standards

Supplemental Nutrition Program (SNAP)					
Household Size	100% FPG Net Income	130% FPG Gross Income	165% FPG Gross Income for Categorical Eligibility	Maximum SNAP Monthly Allotment	LIHEAP 150% FPG
1	\$1,005	\$1,307	\$1,659	\$192	\$1,508
2	\$1,354	\$1,760	\$2,233	\$352	\$2,031
3	\$1,702	\$2,213	\$2,808	\$504	\$2,553
4	\$2,050	\$2,665	\$3,383	\$640	\$3,075
5	\$2,399	\$3,118	\$3,958	\$760	\$3,599
6	\$2,747	\$3,571	\$4,532	\$913	\$4,121
7	\$3,095	\$4,024	\$5,107	\$1,009	\$4,643
8	\$3,444	\$4,477	\$5,682	\$1,153	\$5,166
+1	+\$349	+\$453	+\$575	+\$144	+\$523
Minimum Allotment of \$15 effective from 10/1/2017 - 9/30/2018					
DEDUCTIONS: Standard Deduction: For HH size 1-3 = \$160; 4 = \$170; 5 = \$199; 6 or more = \$228; Excess Shelter Deduction Limit: \$535; Heating and Cooling Standard Utility Allowance: \$320 (HCSUA) – Limited Utility Allowance: \$127 (LUA); Telephone Standard: \$42; Dependent Care: Actual Amount (No Limit); Earned Income Deduction: 20%; Homeless Shelter Standard: \$143					

CASH Assistance & Support Services					
Household Size	Federal Poverty Guidelines (FPG) Monthly Income Standards			Maximum Monthly Benefit	
	100% FPG Net Income	85% FPG Gross Limit	NM Works Cash Net Income	Maximum Monthly Benefit	General Assistance
1	\$1,005	\$854	\$266	\$244	\$245
2	\$1,354	\$1,151	\$357	\$327	\$329
3	\$1,702	\$1,447	\$447	\$409	\$412
4	\$2,050	\$1,743	\$539	\$493	\$496
5	\$2,399	\$2,039	\$630	\$576	\$580
6	\$2,747	\$2,335	\$721	\$659	\$664
7	\$3,095	\$2,631	\$812	\$743	\$748
8	\$3,444	\$2,927	\$922	\$843	\$849
+1	+\$349	+\$296	+\$91	+\$83	+\$84
Deductions- Dependent Care: For a child under age 2 = \$200; For a child age 2 and over = \$175. Work Incentives- Earned Income Disregard: Single parent = \$125 & ½ remainder; Two parent = \$225 & ½ remainder.					

<b>Medical Assistance Division</b>					
Federal Poverty Guidelines New Mexico Affordable Care Eligibility Groups Effective April 01, 2018 thru March 31, 2019 <b>Monthly Guidelines</b>					
HH SIZE	PERCENT OF POVERTY				
	138%	190%	240%	250%	300%
1	\$1,397	\$1,923	\$2,428	\$2,530	\$3,035
2	\$1,893	\$2,607	\$3,292	\$3,430	\$4,115
3	\$2,390	\$3,291	\$4,156	\$4,330	\$5,195
4	\$2,887	\$3,975	\$5,020	\$5,230	\$6,275
5	\$3,384	\$4,659	\$5,884	\$6,130	\$7,355
6	\$3,881	\$5,343	\$6,748	\$7,030	\$8,435
7	\$4,377	\$6,027	\$7,612	\$7,930	\$9,515
8	\$4,874	\$6,711	\$8,476	\$8,830	\$10,595
138% Adult Expansion, 190% Children ages 6 to 19 (Medicaid), 240% Children ages 0 to 6 (Medicaid); ages 6 to 19 (CHIP), 250% Pregnancy Related Services Only, 300% Children 0 to 6 (CHIP)					

<b>Medical Assistance Division</b>					
Federal Poverty Guidelines New Mexico Affordable Care Eligibility Groups Effective April 01, 2018 thru March 31, 2019 <b>Annual Guidelines</b>					
HH SIZE	PERCENT OF POVERTY				
	138%	190%	240%	250%	300%
1	\$16,764	\$23,076	\$29,136	\$30,360	\$36,420
2	\$22,716	\$31,284	\$39,504	\$41,160	\$49,380
3	\$28,680	\$39,492	\$49,872	\$51,960	\$62,340
4	\$34,644	\$47,700	\$60,240	\$62,760	\$75,300
5	\$40,608	\$55,908	\$70,608	\$73,560	\$88,260
6	\$46,572	\$64,116	\$80,976	\$84,360	\$101,220
7	\$52,524	\$72,324	\$91,344	\$95,160	\$114,180
8	\$58,488	\$80,532	\$101,712	\$105,960	\$127,140
138% Adult Expansion, 190% Children ages 6 to 19 (Medicaid), 240% Children ages 0 to 6 (Medicaid); ages 6 to 19 (CHIP), 250% Pregnancy Related Services Only, 300% Children 0 to 6 (CHIP)					



## References

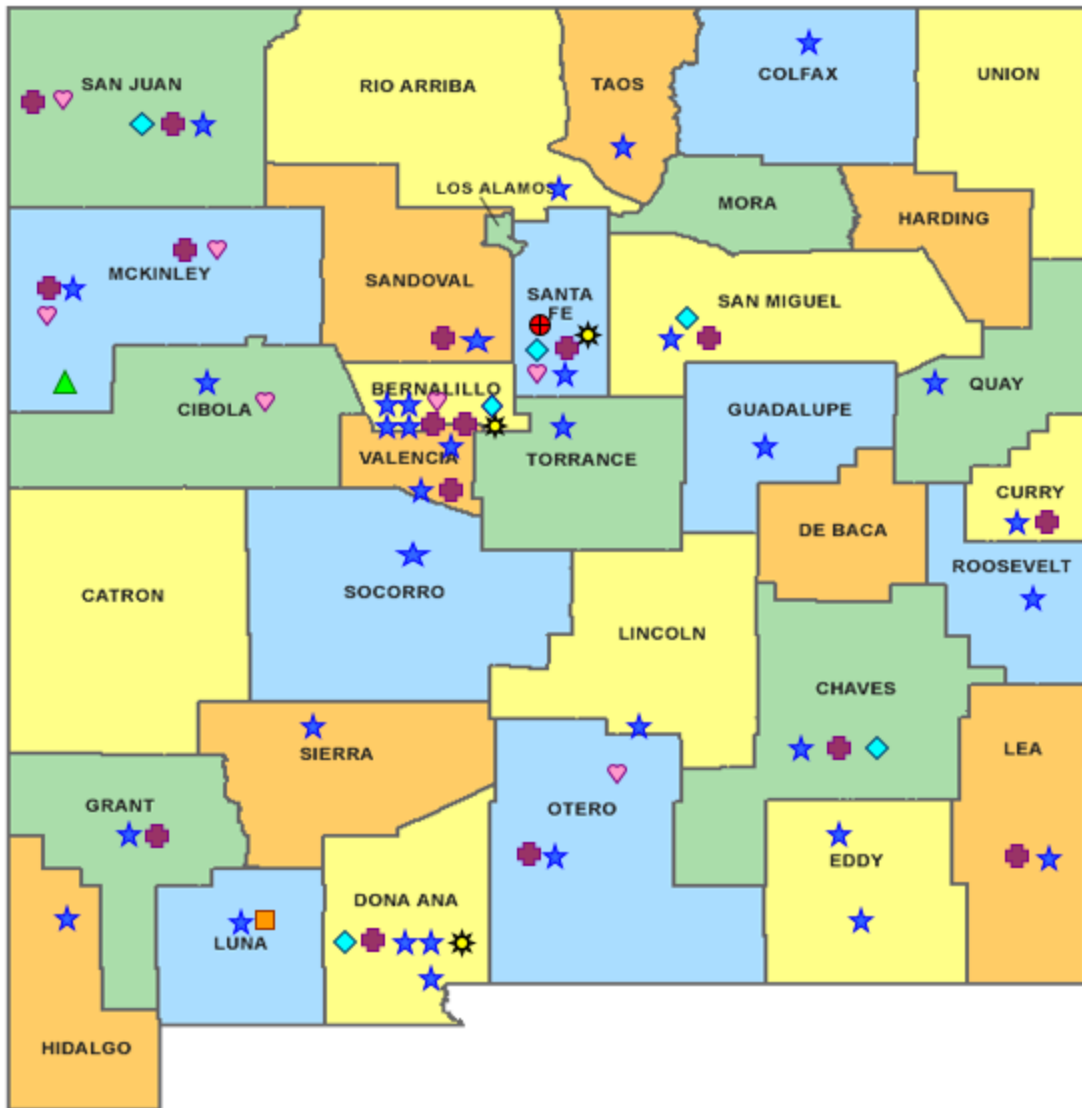
- <sup>1</sup> *Medicaid Expenditures* (Omnicaid, Medicare Buy-Ins, Lump Sum Payments), Received on June 22, 2018
- <sup>2</sup> *ASPEN Business Intelligence Tool: Eligibility*, Retrieved on June 15, 2018
- <sup>3</sup> New Mexico Human Services Department, *Medicaid Eligibility Reports*, Retrieved from <http://www.hsd.state.nm.us/LookingForInformation/medicaid-eligibility.aspx> on June 15, 2018
- <sup>4</sup> *ASPEN Business Intelligence Tool: Application Tracking*, Retrieved on June 15, 2018
- <sup>5</sup> Fidelity Information Services, *EBT Daily Statistical Report* (for 05/31/2017, 04/30/2018, and 05/31/2018), Retrieved on June 15, 2018
- <sup>6</sup> *ASPEN Report DQ-180: Length of Time Cases are Open* (for 05/01/2017-05/31/2017, 04/01/2018-04/30/2018, 05/01/2018-05/31/2018), Retrieved on June 15, 2018
- <sup>7</sup> *ASPEN Report EY-180: Individual Demographics by State and Age* (for 05/01/2017-05/31/2017, 04/01/2018-04/30/2018, 05/01/2018-05/31/2018), Retrieved June 15, 2018
- <sup>8</sup> *ASPEN Business Intelligence Tool: Benefit Issuance*, Retrieved on June 15, 2018
- <sup>9</sup> Fidelity Information Services, *EBT Daily Statistical Reports* (Month End), Retrieved on June 15, 2018
- <sup>10</sup> *ASPEN Report EY-180R: Individual Demographics by State, Race, Ethnicity and Gender* (for 05/01/2018-05/31/2018), Retrieved on June 15, 2018
- <sup>11</sup> SQL Queries from ASPEN, completed June 2018
- <sup>12</sup> JP Morgan, *New Mexico – NM EBT System- Monthly Benefit Draw Down Totals*
- <sup>13</sup> *ASPEN Business Intelligence Tool: Application Tracking* (w/Parameters: SNAP, Expedite, Approved), Retrieved on June 15, 2018
- <sup>14</sup> SL Start, *As of Today Report 5.31.18*, received June 15, 2018
- <sup>15</sup> SL Start, *Statewide Employment Report 05.01.18*, received June 15, 2018
- <sup>16</sup> *SSIAR Payments*, received June 5, 2018

<sup>17</sup> Children, Youth, and Families Department, *Children Receiving Child Care Assistance Subsidies by County*, Received on June 13, 2018

<sup>18</sup> Children, Youth, and Families Department, *Child Care Assistance Eligibility Programs*, Received on June 13, 2018









<sup>19</sup> EDG is defined as an Eligibility Determination Group

<sup>20</sup>SQL Query from ASPEN, completed June 27, 2018



## HUMAN SERVICES DEPARTMENT

New Mexico Human Services Department  
Field Offices

-  Central Office (1)
-  Income Support Division County Office (35)
-  Income Support Division Satellite Office (2)
-  Child Support Enforcement Regional Office (16)
-  Child Support Enforcement Satellite Office (1)
-  Quality Control Office (8)
-  Indian Health Services (7)
-  Hospital Site (3)

For a complete listing of field offices and other government and community resources:  
[http://www.hsd.state.nm.us/LookingForAssistance/Field\\_Offices\\_1.aspx](http://www.hsd.state.nm.us/LookingForAssistance/Field_Offices_1.aspx)