



Monthly Statistical Report

October 2018

There were 829,421 individuals that received Medicaid in October 2018, a 3.0% decrease from one year ago. The count of Medicaid recipients has increased by 3,217, or 0.4%, since last month.

The SNAP caseload in October 2018 was 223,146, a 0.6% increase from one year ago. The SNAP caseload has increased by 523 cases, or 0.2%, since last month.

The TANF caseload was 11,128 in October 2018, a decrease of 6.5% from October 2017. The TANF caseload had 28 fewer cases compared to September 2018, a decrease of 0.3%.

The caseload for General Assistance was 2,887 in October 2018, a decrease of 6.0% from one year ago and a decrease of 29 cases from last month.

Susana Martinez, Governor
Brent Earnest, Cabinet Secretary

Contents	Page
Summary	3-5
Medicaid	6-20
SNAP	21-41
Cash Assistance	42-56
Child Care Assistance	57-58
Income Eligibility Guidelines	59-60

Regions are reported as follows:

Region 1		
Catron	San Juan	Valencia
Cibola	Sierra	
McKinley	Socorro	
Region 2		
Colfax	Mora	Santa Fe
De Baca	Quay	Taos
Guadalupe	Rio Arriba	Union
Harding	Sandoval	
Los Alamos	San Miguel	
Region 3		
Bernalillo	Torrance	
Region 4		
Chaves	Eddy	Lincoln
Curry	Lea	Roosevelt
Region 5		
Dona Ana	Hidalgo	Otero
Grant	Luna	

The Mission of the Human Services Department

To reduce the impact of poverty on people living in New Mexico by providing support services that help families break the cycle of dependency on public assistance

Christopher Collins, Deputy Secretary
Michael Nelson, Deputy Secretary

Prepared by Income Support Division
PO Box 2348
Santa Fe, NM 87504-2348 ☐
505-827-7250

Mary Brogdon, Director
Vida Tapia-Sanchez, Deputy Director
Shanita Harrison, Deputy Director
Judith Parks, Deputy Director

<http://www.hsd.state.nm.us/monthly-statistical-reports.aspx>

Program Summary for October 2018

Medicaid				Percent Change	
				Oct-17- Oct-18	Sep-18- Oct-18
	Oct-17	Sep-18	Oct-18	Oct-17- Oct-18	Sep-18- Oct-18
Expenditures¹	\$439,315,207	\$434,741,710	\$455,796,046	3.8%	4.8%
Cases²	491,938	484,804	486,650	-1.1%	0.4%
Expenditures/Case	\$893	\$897	\$937	4.9%	4.4%
Recipients³	854,942	826,204	829,421	-3.0%	0.4%
<i>Adults</i>	484,570	470,439	472,503	-2.5%	0.4%
<i>Children</i>	370,372	355,765	356,918	-3.6%	0.3%
Recipients /Case	1.74	1.70	1.70	-1.9%	0.0%
Cases Processed⁴	15,252	11,275	12,924	-15.3%	14.6%
<i>Approvals⁴</i>	11,686	9,094	10,323	-11.7%	13.5%

Supplemental Nutrition Assistance Program (SNAP)				Percent Change	
				Oct-17- Oct-18	Sep-18- Oct-18
	Oct-17	Sep-18	Oct-18	Oct-17- Oct-18	Sep-18- Oct-18
Expenditures⁵	\$54,304,196	\$53,185,066	\$53,793,057	-0.9%	1.1%
Cases⁶	221,876	222,623	223,146	0.6%	0.2%
Expenditures/Case	\$245	\$239	\$241	-1.5%	0.9%
Recipients⁷	462,720	455,397	455,531	-1.6%	0.0%
<i>Adults</i>	264,188	263,009	263,371	-0.3%	0.1%
<i>Children</i>	198,532	192,388	192,160	-3.2%	-0.1%
Recipients /Case	2.09	2.05	2.04	-2.1%	-0.2%
Cases Processed⁴	21,023	17,032	20,265	-3.6%	19.0%
<i>Approvals⁴</i>	16,829	13,521	16,338	-2.9%	20.8%

Cash Assistance Programs				Percent Change	
				Oct-17- Oct-18	Sep-18- Oct-18
	Oct-17	Sep-18	Oct-18	Oct-17- Oct-18	Sep-18- Oct-18
Expenditures⁵	\$4,303,930	\$4,319,945	\$3,978,563	-7.6%	-7.9%
Cases⁶	15,142	14,238	14,202	-6.2%	-0.3%
Expenditures/Case	\$284	\$303	\$280	-1.4%	-7.7%
Recipients⁷	34,834	31,978	31,942	-8.3%	-0.1%
<i>Adults</i>	11,260	10,182	10,231	-9.1%	0.5%
<i>Children</i>	23,574	21,796	21,711	-7.9%	-0.4%
Recipients /Case	2.30	2.25	2.25	-2.2%	0.1%
Cases Processed⁴	6,043	5,112	5,470	-9.5%	7.0%
<i>Approvals⁴</i>	1,893	1,550	1,574	-16.9%	1.5%

Low Income Home Energy Assistance Program (LIHEAP)				Percent Change	
				Oct-17- Oct-18	Sep-18- Oct-18
	Oct-17	Sep-18	Oct-18	Oct-17- Oct-18	Sep-18- Oct-18
Expenditures⁸	\$3,805,188	\$553,035	\$5,306,960	39.5%	859.6%
Cases⁸	13,821	2,271	2,286	-83.5%	0.7%
Expenditures/Case	\$275	\$244	\$2,322	743.2%	853.3%
Recipients⁸	30,314	5,796	5,825	-80.8%	0.5%
<i>Adults</i>	17,877	3,035	3,057	-82.9%	0.7%
<i>Children</i>	12,437	2,761	2,768	-77.7%	0.3%
Recipients /Case	2.19	2.55	2.55	16.2%	-0.2%
Cases Processed⁴	14,489	5,982	16,859	16.4%	181.8%
<i>Approvals⁴</i>	12,726	4,796	15,666	23.1%	226.6%

Cash Assistance Summary for October 2018

Temporary Assistance for Needy Families (TANF)

	Oct-17	Sep-18	Oct-18	Percent Change	
				Oct-17- Oct-18	Sep-18- Oct-18
Expenditures ⁵	\$3,489,355	\$3,553,928	\$3,201,671	-8.2%	-9.9%
Cases ⁶	11,901	11,156	11,128	-6.5%	-0.3%
Expenditures/Case	\$293	\$319	\$288	-1.9%	-9.7%
Recipients ⁷	31,338	28,682	28,583	-8.8%	-0.3%
<i>Adults</i>	8,239	7,292	7,319	-11.2%	0.4%
<i>Children</i>	23,099	21,390	21,264	-7.9%	-0.6%
Approvals ⁴	1,547	1,349	1,364	-11.8%	1.1%

General Assistance (GA)

	Oct-17	Sep-18	Oct-18	Percent Change	
				Oct-17- Oct-18	Sep-18- Oct-18
Expenditures ⁵	\$762,823	\$710,864	\$714,155	-6.4%	0.5%
Cases ⁶	3,072	2,916	2,887	-6.0%	-1.0%
Expenditures/Case	\$248	\$244	\$247	-0.4%	1.5%
Recipients ⁷	3,082	2,927	2,925	-5.1%	-0.1%
<i>Adults</i>	2,833	2,713	2,712	-4.3%	0.0%
<i>Children</i>	249	214	213	-14.5%	-0.5%
Approvals ⁴	257	166	211	-17.9%	27.1%

Education Works

	Oct-17	Sep-18	Oct-18	Percent Change	
				Oct-17- Oct-18	Sep-18- Oct-18
Expenditures ⁵	\$45,709	\$46,206	\$54,414	19.0%	17.8%
Cases ⁶	130	115	134	3.1%	16.5%
Expenditures/Case	\$352	\$402	\$406	15.5%	1.1%
Recipients ⁷	372	318	381	2.4%	19.8%
<i>Adults</i>	146	126	147	0.7%	16.7%
<i>Children</i>	226	192	234	3.5%	21.9%
Approvals ⁴	7	20	4	-42.9%	-80.0%

Refugee Cash (RCA)

	Oct-17	Sep-18	Oct-18	Percent Change	
				Oct-17- Oct-18	Sep-18- Oct-18
Expenditures ⁵	\$3,543	\$6,947	\$6,323	78.5%	-9.0%
Cases ⁶	15	31	33	120.0%	6.5%
Expenditures/Case	\$236	\$224	\$192	-18.9%	-14.5%
Recipients ⁷	18	31	33	83.3%	6.5%
<i>Adults</i>	18	31	33	83.3%	6.5%
<i>Children</i>	0	0	0	N/A	N/A

State Supplement for Residential Care

	Oct-17	Sep-18	Oct-18	Percent Change	
				Oct-17- Oct-18	Sep-18- Oct-18
Expenditures ⁵	\$2,500	\$2,000	\$2,000	-20.0%	0.0%
Cases ⁶	24	20	20	-16.7%	0.0%
Expenditures/Case	\$104	\$100	\$100	-4.0%	0.0%
Recipients ⁷	24	20	20	-16.7%	0.0%
<i>Adults</i>	24	20	20	-16.7%	0.0%
<i>Children</i>	0	0	0	N/A	N/A

Expenditures YTD			
	SFY 2019	FFY 2018	CY 2018
Medicaid ¹	\$1,827,426,952	\$5,487,469,015	\$4,584,424,393
Supplemental Nutrition Assistance Program ⁹	\$212,785,114	\$638,535,473	\$530,858,880
Temporary Assistance for Needy Families ⁹	\$15,227,018	\$42,369,974	\$35,172,793
General Assistance ⁹	\$2,874,890	\$8,767,318	\$7,220,375
Education Work ⁹	\$188,223	\$574,478	\$484,588
LIHEAP ⁸	\$7,220,996	\$17,036,882	\$13,847,091

Average Caseload YTD			
	SFY 2019	FFY 2018	CY 2018
Medicaid ²	487,203	491,918	491,624
Supplemental Nutrition Assistance Program ⁶	222,445	221,815	221,993
Temporary Assistance for Needy Families ⁶	11,151	11,278	11,093
General Assistance ⁶	2,895	2,974	2,942
Education Work ⁶	110	127	124
LIHEAP ⁸	2,545	5,397	3,613

Demographic Profile- October 2018					
	SNAP	TANF	GA	Education Works	RCA
<i>Gender of Recipients¹⁰</i>					
Male	205,514	12,216	1,637	134	20
Female	250,017	16,367	1,288	247	13
<i>Ethnicity¹⁰</i>					
Hispanic	251,775	19,252	1,552	262	17
Non-Hispanic	203,756	9,331	1,373	119	16
<i>Race¹⁰</i>					
Native American or Alaskan Native	76,534	2,420	242	22	0
Asian	4,353	269	28	3	0
African American or Black	11,477	1,268	105	21	13
Native Hawaiian or Pacific Islander	872	37	2	0	0
White	352,086	23,758	2,479	325	16
Unknown / Not Declared	4,709	287	38	2	0
More than One Race	5,500	544	31	8	4

Medicaid demographic data can be found here: <http://www.hsd.state.nm.us/LookingForInformation/medicaid-eligibility.aspx>

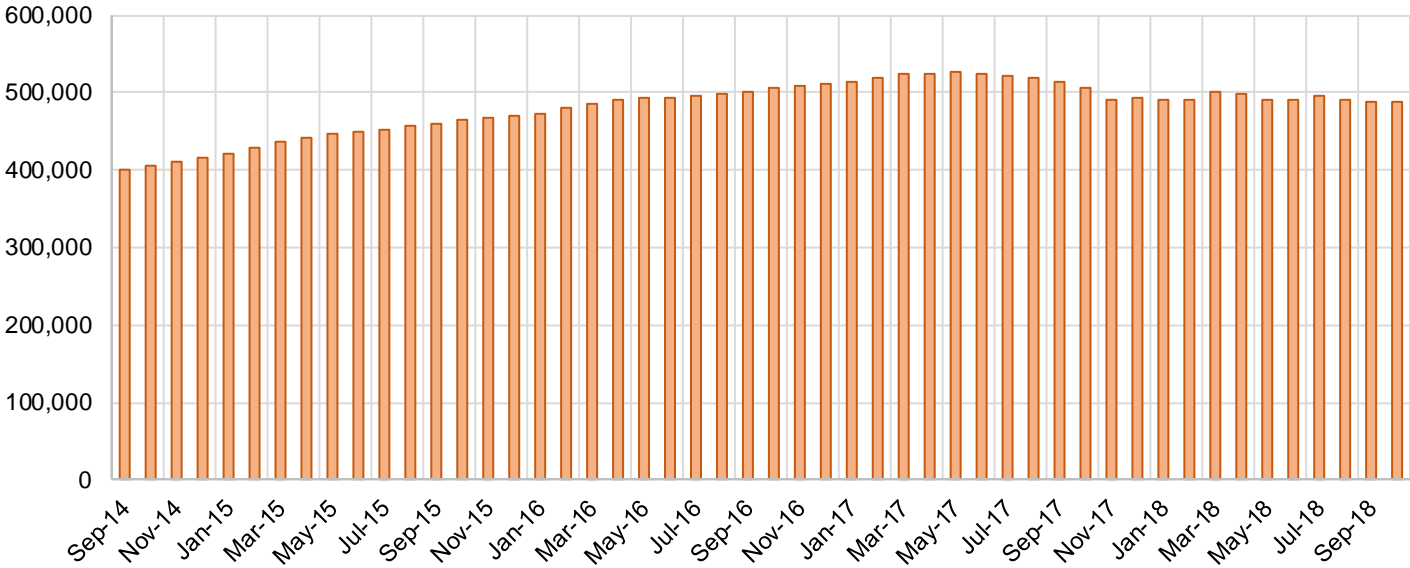
Medicaid Cases by Field Office²

Office	Percent Change				
	Oct-17	Sep-18	Oct-18	Oct-17- Oct-18	Sep-18- Oct-18
Chaves County ISD	16,148	15,830	15,848	-1.9%	0.1%
Cibola County ISD	7,515	7,453	7,557	0.6%	1.4%
Colfax County ISD	3,427	3,599	3,578	4.4%	-0.6%
Curry County ISD	9,926	13,998	14,131	42.4%	1.0%
East Dona Ana County ISD	17,680	17,580	17,619	-0.3%	0.2%
Eddy Artesia County ISD	3,867	3,813	3,835	-0.8%	0.6%
Eddy Carlsbad County ISD	7,974	7,565	7,563	-5.2%	0.0%
Grant County ISD	6,779	7,594	7,663	13.0%	0.9%
Guadalupe County ISD	1,764	1,685	1,680	-4.8%	-0.3%
Hidalgo County ISD	944	62	28	-97.0%	-54.8%
Lea County ISD	14,203	14,230	14,281	0.5%	0.4%
Lincoln County ISD	4,367	4,237	4,231	-3.1%	-0.1%
Luna County ISD	8,731	8,549	8,561	-1.9%	0.1%
McKinley County ISD	22,262	19,919	20,257	-9.0%	1.7%
Northeast Bernalillo County ISD	42,905	42,619	42,570	-0.8%	-0.1%
Northwest Bernalillo County ISD	47,621	49,616	49,780	4.5%	0.3%
Otero County ISD	11,922	11,786	11,829	-0.8%	0.4%
Quay County ISD	2,583	2,561	2,561	-0.9%	0.0%
Rio Arriba County ISD	14,382	13,789	13,850	-3.7%	0.4%
Roosevelt County ISD	3,909	13	14	-99.6%	7.7%
San Juan County ISD	29,921	29,656	29,825	-0.3%	0.6%
San Miguel County ISD	9,248	9,004	9,069	-1.9%	0.7%
Sandoval County ISD	25,535	25,302	25,361	-0.7%	0.2%
Santa Fe County ISD	25,173	24,352	24,430	-3.0%	0.3%
Sierra County ISD	5,536	5,308	5,324	-3.8%	0.3%
Socorro County ISD	5,408	5,228	5,231	-3.3%	0.1%
South Dona Ana ISD	19,866	19,550	19,648	-1.1%	0.5%
Southeast Bernalillo County ISD	26,441	24,755	24,833	-6.1%	0.3%
Southwest Bernalillo County ISD	39,058	38,232	38,342	-1.8%	0.3%
Taos County ISD	9,303	9,178	9,259	-0.5%	0.9%
Torrance County ISD	7,472	7,599	7,700	3.1%	1.3%
Valencia North County ISD	17,692	18,261	18,217	3.0%	-0.2%
Valencia South County ISD	3	104	103	3333.3%	-1.0%
West Dona Ana County ISD	22,370	21,774	21,869	-2.2%	0.4%
Centralized Units	3	3	3	0.0%	0.0%
Statewide Total	491,938	484,804	486,650	-1.1%	0.4%

Medicaid Cases by Region²

				Percent Change	
Region	Oct-17	Sep-18	Oct-18	Oct-17- Oct-18	Sep-18- Oct-18
Region 1 - NW	88,337	85,929	86,514	-2.1%	0.7%
Region 2 - NE	91,415	89,470	89,788	-1.8%	0.4%
Region 3 - Central	163,497	162,821	163,225	-0.2%	0.2%
Region 4 - SE	60,394	59,686	59,903	-0.8%	0.4%
Region 5 - SW	88,292	86,895	87,217	-1.2%	0.4%
Centralized Units	3	3	3	0.0%	0.0%
Statewide Total	491,938	484,804	486,650	-1.1%	0.4%

Medicaid Caseload: SFY-15 to Current



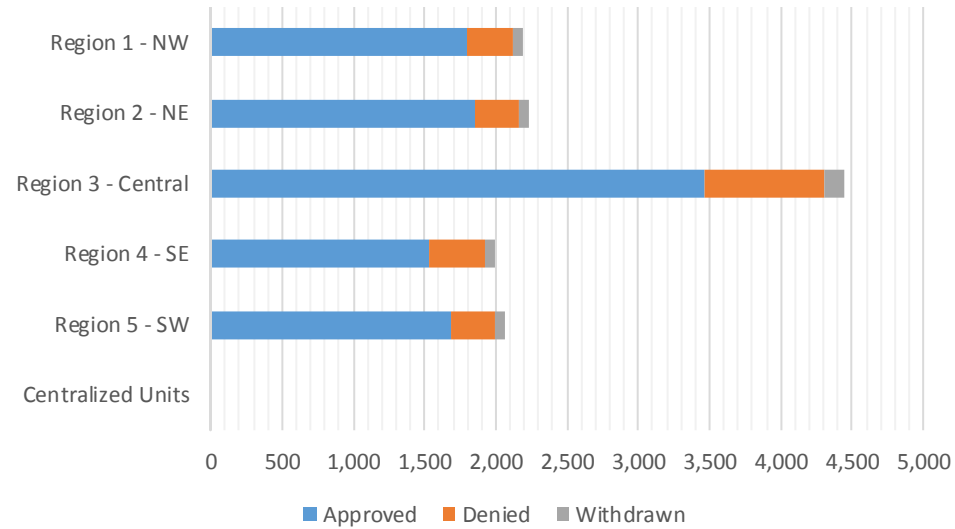
Medicaid Initial Applications by Field Office^{4,11}
October 2018

Office	Approved	Denied	Withdrawn	Total Cases Processed
Chaves County ISD	334	94	19	447
Cibola County ISD	184	31	5	220
Colfax County ISD	67	11	4	82
Curry County ISD	474	93	16	583
East Dona Ana County ISD	367	63	20	450
Eddy Artesia County ISD	83	22	1	106
Eddy Carlsbad County ISD	203	48	5	256
Grant County ISD	141	35	4	180
Guadalupe County ISD	34	1	2	37
Hidalgo County ISD	0	0	0	0
Lea County ISD	339	107	24	470
Lincoln County ISD	94	32	2	128
Luna County ISD	152	33	5	190
McKinley County ISD	426	85	19	530
Northeast Bernalillo County ISD	915	243	38	1,196
Northwest Bernalillo County ISD	875	213	34	1,122
Otero County ISD	244	28	12	284
Quay County ISD	50	8	2	60
Rio Arriba County ISD	242	28	9	279
Roosevelt County ISD	1	1		2
San Juan County ISD	690	127	19	836
San Miguel County ISD	304	36	7	347
Sandoval County ISD	515	87	24	626
Santa Fe County ISD	453	113	15	581
Sierra County ISD	101	11	14	126
Socorro County ISD	70	24	1	95
South Dona Ana ISD	326	55	10	391
Southeast Bernalillo County ISD	697	203	12	912
Southwest Bernalillo County ISD	787	158	50	995
Taos County ISD	186	22	11	219
Torrance County ISD	184	32	9	225
Valencia North County ISD	324	50	7	381
Valencia South County ISD	2	1		3
West Dona Ana County ISD	459	85	21	565
Centralized Units	0	0	0	0
Statewide Total	10,323	2,180	421	12,924

Medicaid Initial Applications by Region^{4,11}
October 2018

	Approved	Denied	Withdrawn	Total Cases Processed
Region				
Region 1 - NW	1,797	329	65	2,191
Region 2 - NE	1,851	306	74	2,231
Region 3 - Central	3,458	849	143	4,450
Region 4 - SE	1,528	397	67	1,992
Region 5 - SW	1,689	299	72	2,060
Centralized Units	0	0	0	0

Statewide Total	10,323	2,180	421	12,924
-----------------	--------	-------	-----	--------

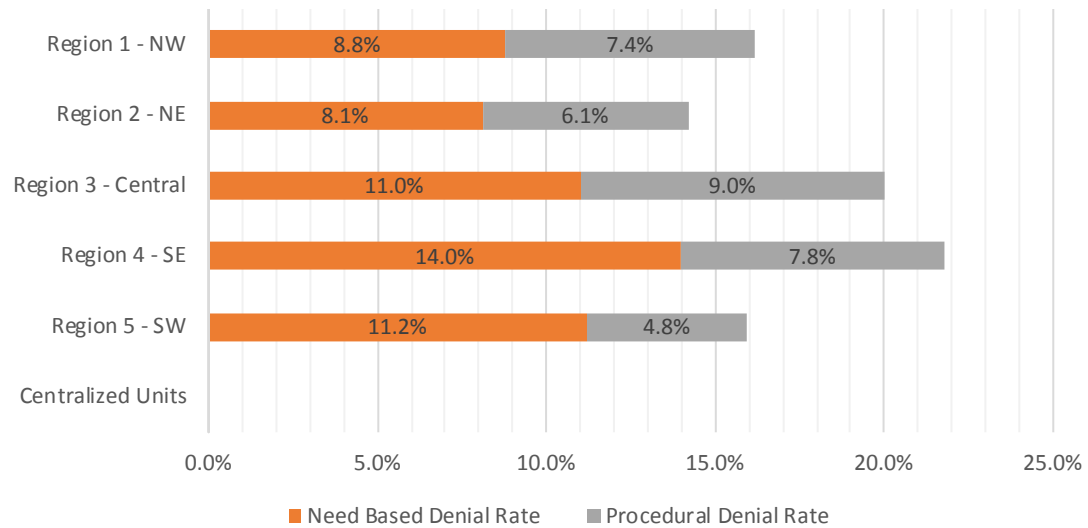


Medicaid EDG Initial Disposition Rates by Field Office^{4,11,19}
October 2018

Office	Approval Rate	Denial Rate	Need Based Denial Rate	Procedural Denial Rate
Chaves County ISD	76.8%	23.2%	16.3%	6.9%
Cibola County ISD	85.3%	14.7%	4.6%	10.1%
Colfax County ISD	84.1%	15.9%	6.1%	9.8%
Curry County ISD	82.1%	17.9%	10.8%	7.1%
East Dona Ana County ISD	83.2%	16.8%	11.8%	5.0%
Eddy Artesia County ISD	77.6%	22.4%	18.6%	3.8%
Eddy Carlsbad County ISD	81.1%	18.9%	10.6%	8.3%
Grant County ISD	78.5%	21.5%	7.0%	14.5%
Guadalupe County ISD	0.0%	0.0%	0.0%	0.0%
Hidalgo County ISD	0.0%	0.0%	0.0%	0.0%
Lea County ISD	74.6%	25.4%	17.0%	8.4%
Lincoln County ISD	74.0%	26.0%	12.3%	13.7%
Luna County ISD	81.4%	18.6%	13.1%	5.5%
McKinley County ISD	83.3%	16.7%	9.7%	7.0%
Northeast Bernalillo County ISD	77.8%	22.2%	8.4%	13.8%
Northwest Bernalillo County ISD	80.1%	19.9%	9.0%	10.9%
Otero County ISD	87.9%	12.1%	7.8%	4.3%
Quay County ISD	85.4%	14.6%	14.6%	0.0%
Rio Arriba County ISD	88.1%	11.9%	8.2%	3.7%
Roosevelt County ISD	0.0%	0.0%	0.0%	0.0%
San Juan County ISD	84.2%	15.8%	7.9%	7.9%
San Miguel County ISD	88.5%	11.5%	6.5%	5.0%
Sandoval County ISD	85.5%	14.5%	8.6%	5.9%
Santa Fe County ISD	82.2%	17.8%	9.5%	8.3%
Sierra County ISD	92.8%	7.2%	6.6%	0.6%
Socorro County ISD	70.9%	29.1%	12.9%	16.2%
South Dona Ana ISD	84.8%	15.2%	14.4%	0.8%
Southeast Bernalillo County ISD	77.6%	22.4%	19.8%	2.6%
Southwest Bernalillo County ISD	83.3%	16.7%	10.0%	6.7%
Taos County ISD	91.3%	8.7%	3.5%	5.2%
Torrance County ISD	84.3%	15.7%	7.5%	8.2%
Valencia North County ISD	83.8%	16.2%	11.4%	4.8%
Valencia South County ISD	0.0%	0.0%	0.0%	0.0%
West Dona Ana County ISD	84.5%	15.5%	10.8%	4.7%
Centralized Units	0.0%	0.0%	0.0%	0.0%
Statewide Total	82.3%	18.0%	10.6%	7.4%

Medicaid EDG Initial Disposition Rates by Region^{4,11,19}
October 2018

Region	Approval Rate	Denial Rate	Need Based Denial Rate	Procedural Denial Rate
Region 1 - NW	83.9%	16.2%	8.8%	7.4%
Region 2 - NE	87.8%	14.2%	8.1%	6.1%
Region 3 - Central	80.0%	20.0%	11.0%	9.0%
Region 4 - SE	78.3%	21.8%	14.0%	7.8%
Region 5 - SW	84.0%	16.0%	11.2%	4.8%
Centralized Units				
Statewide Total	82.3%	18.0%	10.6%	7.4%



Medicaid: Percentage of Initial EDG Approvals Processed Timely by Field Office^{13,19}

	Oct-18	Nov-18	Dec-18	Jan-19	Feb-19	Mar-19	Apr-19	May-19	Jun-19	Jul-19	Aug-19	Sep-19	Average
Cibola	100.0%												100.0%
McKinley	99.5%												99.5%
San Juan	98.9%												98.9%
Sierra	97.4%												97.4%
Socorro	100.0%												100.0%
Valencia North	98.9%												98.9%
Valencia South	100.0%												100.0%
NW Region 1 Total	99.1%												99.1%
Colfax	99.1%												99.1%
Guadalupe	96.8%												96.8%
Quay	98.6%												98.6%
Rio Arriba	99.7%												99.7%
San Miguel	99.7%												99.7%
Sandoval	98.2%												98.2%
Santa Fe	99.0%												99.0%
Taos	100.0%												100.0%
NE Region 2 Total	99.0%												99.0%
NE Bernalillo	97.5%												97.5%
NW Bernalillo	98.6%												98.6%
SE Bernalillo	98.4%												98.4%
SW Bernalillo	98.7%												98.7%
Torrance	99.3%												99.3%
Gen. Region 3 Total	98.3%												98.3%
Chaves	99.5%												99.5%
Curry	98.5%												98.5%
Eddy Artesia	100.0%												100.0%
Eddy Carlsbad	98.0%												98.0%
Lea	99.3%												99.3%
Lincoln	99.3%												99.3%
Roosevelt	100.0%												100.0%
SE Region 4 Total	99.0%												99.0%
East Dona Ana	99.7%												99.7%
Grant	98.4%												98.4%
Luna	97.5%												97.5%
Otero	98.4%												98.4%
South Dona Ana	99.6%												99.6%
West Dona Ana	98.9%												98.9%
SW Region 5 Total	99.0%												99.0%
STATE TOTAL	98.8%												98.8%

Medicaid: Percentage of Initial EDG Denials Processed Timely by Field Office ^{13,19}

	Oct-18	Nov-18	Dec-18	Jan-19	Feb-19	Mar-19	Apr-19	May-19	Jun-19	Jul-19	Aug-19	Sep-19	Average
Cibola	90.2%												90.2%
McKinley	95.2%												95.2%
San Juan	92.1%												92.1%
Sierra	92.3%												92.3%
Socorro	88.6%												88.6%
Valencia North	96.8%												96.8%
Valencia South	100.0%												100.0%
NW Region 1 Total	93.2%												93.2%
Colfax	100.0%												100.0%
Guadalupe	100.0%												100.0%
Quay	91.7%												91.7%
Rio Arriba	82.2%												82.2%
San Miguel	97.9%												97.9%
Sandoval	90.0%												90.0%
Santa Fe	92.7%												92.7%
Taos	96.4%												96.4%
NE Region 2 Total	91.9%												91.9%
NE Bernalillo	91.1%												91.1%
NW Bernalillo	89.6%												89.6%
SE Bernalillo	95.0%												95.0%
SW Bernalillo	83.6%												83.6%
Torrance	94.0%												94.0%
Gen. Region 3 Total	90.1%												90.1%
Chaves	98.2%												98.2%
Curry	92.0%												92.0%
Eddy Artesia	97.7%												97.7%
Eddy Carlsbad	90.1%												90.1%
Lea	90.8%												90.8%
Lincoln	92.5%												92.5%
Roosevelt	100.0%												100.0%
SE Region 4 Total	93.3%												93.3%
East Dona Ana	96.6%												96.6%
Grant	96.2%												96.2%
Luna	96.4%												96.4%
Otero	96.1%												96.1%
South Dona Ana	100.0%												100.0%
West Dona Ana	97.5%												97.5%
SW Region 5 Total	97.4%												97.4%
STATE TOTAL	92.6%												92.6%

Medicaid: Percentage of Initial EDG Approvals and Denials Combined Processed Timely by Field Office ^{13,19}

	Oct-18	Nov-18	Dec-18	Jan-19	Feb-19	Mar-19	Apr-19	May-19	Jun-19	Jul-19	Aug-19	Sep-19	Average
Cibola	98.6%												98.6%
McKinley	98.7%												98.7%
San Juan	97.8%												97.8%
Sierra	97.0%												97.0%
Socorro	96.6%												96.6%
Valencia North	98.6%												98.6%
Valencia South	100.0%												100.0%
NW Region 1 Total	98.1%												98.1%
Colfax	99.2%												99.2%
Guadalupe	96.8%												96.8%
Quay	97.6%												97.6%
Rio Arriba	97.6%												97.6%
San Miguel	99.5%												99.5%
Sandoval	97.0%												97.0%
Santa Fe	97.8%												97.8%
Taos	99.7%												99.7%
NE Region 2 Total	98.0%												98.0%
NE Bernalillo	96.1%												96.1%
NW Bernalillo	96.8%												96.8%
SE Bernalillo	97.6%												97.6%
SW Bernalillo	96.1%												96.1%
Torrance	98.4%												98.4%
Gen. Region 3 Total	96.7%												96.7%
Chaves	99.2%												99.2%
Curry	97.3%												97.3%
Eddy Artesia	99.5%												99.5%
Eddy Carlsbad	96.5%												96.5%
Lea	97.2%												97.2%
Lincoln	97.5%												97.5%
Roosevelt	100.0%												100.0%
SE Region 4 Total	97.7%												97.7%
East Dona Ana	99.1%												99.1%
Grant	97.9%												97.9%
Luna	97.3%												97.3%
Otero	98.1%												98.1%
South Dona Ana	99.7%												99.7%
West Dona Ana	98.7%												98.7%
SW Region 5 Total	98.7%												98.7%
STATE TOTAL	97.7%												97.7%

Medicaid Renewal Disposition Counts by Field Office^{4,11}
October 2018

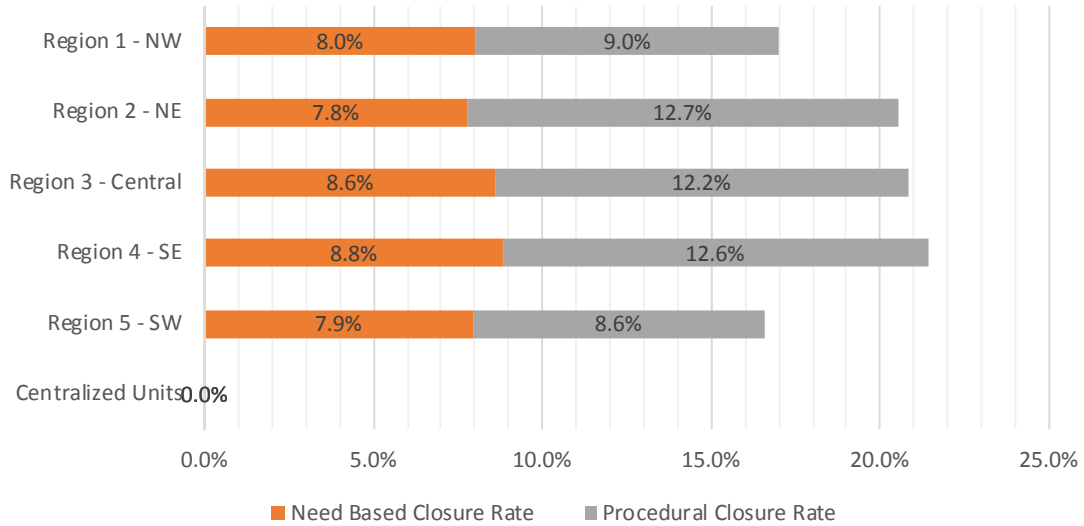
Office	Approvals	Closures	Need Based Closures	Procedural Closures
Chaves County ISD	2,645	713	311	402
Cibola County ISD	1,530	328	149	179
Colfax County ISD	491	135	45	90
Curry County ISD	2,742	565	243	322
East Dona Ana County ISD	3,446	843	374	469
Eddy Artesia County ISD	570	176	70	106
Eddy Carlsbad County ISD	898	349	121	228
Grant County ISD	1,398	288	139	149
Guadalupe County ISD	264	59	17	42
Hidalgo County ISD				
Lea County ISD	2,375	703	298	405
Lincoln County ISD	654	186	68	118
Luna County ISD	1,616	326	164	162
McKinley County ISD	4,761	875	422	453
Northeast Bernalillo County ISD	5,950	1614	627	987
Northwest Bernalillo County ISD	4,838	1461	552	909
Otero County ISD	2,179	400	182	218
Quay County ISD	551	87	48	39
Rio Arriba County ISD	2,285	486	177	309
Roosevelt County ISD	4	1		0
San Juan County ISD	5,296	1224	557	667
San Miguel County ISD	1,305	268	112	156
Sandoval County ISD	4,547	1112	484	628
Santa Fe County ISD	2,871	1050	329	721
Sierra County ISD	936	194	108	86
Socorro County ISD	842	175	93	82
South Dona Ana ISD	4,285	769	378	391
Southeast Bernalillo County ISD	3,447	793	328	465
Southwest Bernalillo County ISD	7,619	1880	864	1016
Taos County ISD	1,255	308	117	191
Torrance County ISD	1,255	324	146	178
Valencia North County ISD	3,342	631	287	344
Valencia South County ISD				
West Dona Ana County ISD	4,201	777	392	385
Centralized Units				
Statewide Total	80,398	19,100	8,203	10,897

Medicaid Renewal Disposition Rates by Field Office²⁰
October 2018

Office	Approval Rate	Closure Rate	Need Based Closure Rate	Procedural Closure Rate
Chaves County ISD	78.8%	21.2%	9.3%	12.0%
Cibola County ISD	82.3%	17.7%	8.0%	9.6%
Colfax County ISD	78.4%	21.6%	7.2%	14.4%
Curry County ISD	82.9%	17.1%	7.3%	9.7%
East Dona Ana County ISD	80.3%	19.7%	8.7%	10.9%
Eddy Artesia County ISD	76.4%	23.6%	9.4%	14.2%
Eddy Carlsbad County ISD	72.0%	28.0%	9.7%	18.3%
Grant County ISD	82.9%	17.1%	8.2%	8.8%
Guadalupe County ISD	81.7%	18.3%	5.3%	13.0%
Hidalgo County ISD	0.0%	0.0%	0.0%	0.0%
Lea County ISD	77.2%	22.8%	9.7%	13.2%
Lincoln County ISD	77.9%	22.1%	8.1%	14.0%
Luna County ISD	83.2%	16.8%	8.4%	8.3%
McKinley County ISD	84.5%	15.5%	7.5%	8.0%
Northeast Bernalillo County ISD	78.7%	21.3%	8.3%	13.0%
Northwest Bernalillo County ISD	76.8%	23.2%	8.8%	14.4%
Otero County ISD	84.5%	15.5%	7.1%	8.5%
Quay County ISD	86.4%	13.6%	7.5%	6.1%
Rio Arriba County ISD	82.5%	17.5%	6.4%	11.2%
Roosevelt County ISD	80.0%	20.0%	20.0%	0.0%
San Juan County ISD	81.2%	18.8%	8.5%	10.2%
San Miguel County ISD	83.0%	17.0%	7.1%	9.9%
Sandoval County ISD	80.3%	19.7%	8.6%	11.1%
Santa Fe County ISD	73.2%	26.8%	8.4%	18.4%
Sierra County ISD	82.8%	17.2%	9.6%	7.6%
Socorro County ISD	82.8%	17.2%	9.1%	8.1%
South Dona Ana ISD	84.8%	15.2%	7.5%	7.7%
Southeast Bernalillo County ISD	81.3%	18.7%	7.7%	11.0%
Southwest Bernalillo County ISD	80.2%	19.8%	9.1%	10.7%
Taos County ISD	80.3%	19.7%	7.5%	12.2%
Torrance County ISD	79.5%	20.5%	9.2%	11.3%
Valencia North County ISD	84.1%	15.9%	7.2%	8.7%
Valencia South County ISD	0.0%	0.0%	0.0%	0.0%
West Dona Ana County ISD	84.4%	15.6%	7.9%	7.7%
Centralized Units	0.0%	0.0%	0.0%	0.0%
Statewide Total	80.8%	19.2%	8.2%	11.0%

Medicaid Renewal Disposition Rates by Region²⁰
October 2018

Region	Approval Rate	Closure Rate	Need Based Closure Rate	Procedural Closure Rate
Region 1 - NW	83.0%	17.0%	8.0%	9.0%
Region 2 - NE	79.5%	20.5%	7.8%	12.7%
Region 3 - Central	79.2%	20.8%	8.6%	12.2%
Region 4 - SE	78.6%	21.4%	8.8%	12.6%
Region 5 - SW	83.4%	16.6%	7.9%	8.6%
Centralized Units				
Statewide Total	80.8%	19.2%	8.2%	11.0%



Medicaid: Percentage of Approved Renewal EDGs Processed by Certification Date ¹¹													
	Oct-18	Nov-18	Dec-18	Jan-19	Feb-19	Mar-19	Apr-19	May-19	Jun-19	Jul-19	Aug-19	Sep-19	Average
Cibola	99.7%												99.7%
McKinley	99.4%												99.4%
San Juan	99.2%												99.2%
Sierra	98.8%												98.8%
Socorro	99.2%												99.2%
Valencia North	99.0%												99.0%
Valencia South													
NW Region 1 Total	99.2%												99.2%
Colfax	99.2%												99.2%
Guadalupe	99.6%												99.6%
Quay	98.4%												98.4%
Rio Arriba	98.6%												98.6%
San Miguel	99.5%												99.5%
Sandoval	98.6%												98.6%
Santa Fe	97.9%												97.9%
Taos	98.2%												98.2%
NE Region 2 Total	98.8%												98.8%
NE Bernalillo	98.1%												98.1%
NW Bernalillo	97.9%												97.9%
SE Bernalillo	98.5%												98.5%
SW Bernalillo	98.2%												98.2%
Torrance	99.5%												99.5%
Gen. Region 3 Total	98.5%												98.5%
Chaves	98.8%												98.8%
Curry	98.9%												98.9%
Eddy Artesia	98.2%												98.2%
Eddy Carlsbad	98.9%												98.9%
Lea	98.9%												98.9%
Lincoln	98.6%												98.6%
Roosevelt	100.0%												100.0%
SE Region 4 Total	98.9%												98.9%
East Dona Ana	99.3%												99.3%
Grant	99.1%												99.1%
Luna	99.2%												99.2%
Otero	98.3%												98.3%
South Dona Ana	97.9%												97.9%
West Dona Ana	99.6%												99.6%
SW Region 5 Total	98.9%												98.9%
STATE TOTAL	98.9%												98.9%

Administrative, Annual, and Auto Renewals are included

Medicaid: Percentage of Closures EDGs Processed by Certification End Date¹¹

	Oct-18	Nov-18	Dec-18	Jan-19	Feb-19	Mar-19	Apr-19	May-19	Jun-19	Jul-19	Aug-19	Sep-19	Average
Cibola	96.0%												96.0%
McKinley	98.6%												98.6%
San Juan	97.1%												97.1%
Sierra	98.5%												98.5%
Socorro	96.0%												96.0%
Valencia North	98.3%												98.3%
Valencia South													
NW Region 1 Total	97.4%												97.4%
Colfax	96.3%												96.3%
Guadalupe	98.3%												98.3%
Quay	96.6%												96.6%
Rio Arriba	98.6%												98.6%
San Miguel	100.0%												100.0%
Sandoval	98.2%												98.2%
Santa Fe	98.0%												98.0%
Taos	97.4%												97.4%
NE Region 2 Total	98.1%												98.1%
NE Bernalillo	98.3%												98.3%
NW Bernalillo	98.2%												98.2%
SE Bernalillo	95.8%												95.8%
SW Bernalillo	97.8%												97.8%
Torrance	97.8%												97.8%
Gen. Region 3 Total	97.7%												97.7%
Chaves	98.2%												98.2%
Curry	98.9%												98.9%
Eddy Artesia	98.9%												98.9%
Eddy Carlsbad	99.1%												99.1%
Lea	97.7%												97.7%
Lincoln	99.5%												99.5%
Roosevelt	100.0%												100.0%
SE Region 4 Total	98.9%												98.9%
East Dona Ana	98.1%												98.1%
Grant	97.6%												97.6%
Luna	99.1%												99.1%
Otero	98.5%												98.5%
South Dona Ana	97.9%												97.9%
West Dona Ana	98.2%												98.2%
SW Region 5 Total	98.3%												98.3%
STATE TOTAL	98.1%												98.0%

Annual and Auto Renewals are included

Medicaid: Percentage of Approved and Terminated Renewal EDGs Combined Processed by Certification Date ¹¹													
	Oct-18	Nov-18	Dec-18	Jan-19	Feb-19	Mar-19	Apr-19	May-19	Jun-19	Jul-19	Aug-19	Sep-19	Average
Cibola	99.1%												99.1%
McKinley	99.3%												99.3%
San Juan	98.8%												98.8%
Sierra	98.8%												98.8%
Socorro	98.6%												98.6%
Valencia North	98.9%												98.9%
Valencia South													
NW Region 1 Total	98.9%												98.9%
Colfax	98.6%												98.6%
Guadalupe	99.4%												99.4%
Quay	98.1%												98.1%
Rio Arriba	98.6%												98.6%
San Miguel	99.6%												99.6%
Sandoval	98.6%												98.6%
Santa Fe	98.0%												98.0%
Taos	98.0%												98.0%
NE Region 2 Total	98.6%												98.6%
NE Bernalillo	98.1%												98.1%
NW Bernalillo	98.0%												98.0%
SE Bernalillo	98.0%												98.0%
SW Bernalillo	98.1%												98.1%
Torrance	99.2%												99.2%
Can. Region 3 Total	98.3%												98.3%
Chaves	98.7%												98.7%
Curry	98.9%												98.9%
Eddy Artesia	98.4%												98.4%
Eddy Carlsbad	99.0%												99.0%
Lea	98.6%												98.6%
Lincoln	98.8%												98.8%
Roosevelt	100.0%												100.0%
SE Region 4 Total	98.9%												98.9%
East Dona Ana	99.1%												99.1%
Grant	98.9%												98.9%
Luna	99.2%												99.2%
Otero	98.3%												98.3%
South Dona Ana	97.9%												97.9%
West Dona Ana	99.4%												99.4%
SW Region 5 Total	98.8%												98.8%
STATE TOTAL	98.7%												98.7%

Administrative, Annual, and Auto Renewals are included

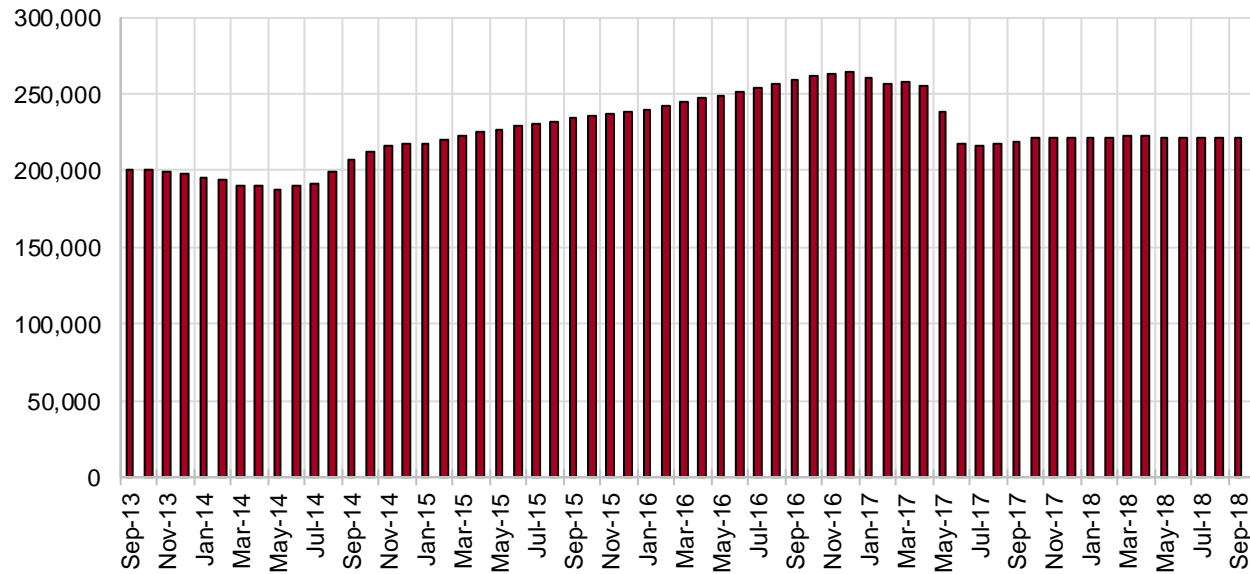
SNAP Cases by Field Office⁶

Office				Percent Change	
	Oct-17	Sep-18	Oct-18	Oct-17- Oct-18	Sep-18- Oct-18
Chaves County ISD	7,196	7,072	7,067	-1.8%	-0.1%
Cibola County ISD	3,694	3,682	3,724	0.8%	1.1%
Colfax County ISD	1,584	1,633	1,631	3.0%	-0.1%
Curry County ISD	4,795	6,882	6,978	45.5%	1.4%
East Dona Ana County ISD	8,049	8,007	8,030	-0.2%	0.3%
Eddy Artesia County ISD	1,711	1,620	1,624	-5.1%	0.2%
Eddy Carlsbad County ISD	3,356	2,905	2,894	-13.8%	-0.4%
Grant County ISD	3,578	3,475	3,944	10.2%	13.5%
Guadalupe County ISD	720	721	728	1.1%	1.0%
Hidalgo County ISD	425	463	2	-99.5%	-99.6%
Lea County ISD	5,829	5,684	5,704	-2.1%	0.4%
Lincoln County ISD	1,918	1,815	1,830	-4.6%	0.8%
Luna County ISD	4,270	4,153	4,139	-3.1%	-0.3%
McKinley County ISD	9,747	9,932	9,924	1.8%	-0.1%
Northeast Bernalillo County ISD	19,938	20,489	20,442	2.5%	-0.2%
Northwest Bernalillo County ISD	18,518	19,809	19,943	7.7%	0.7%
Otero County ISD	5,579	5,609	5,656	1.4%	0.8%
Quay County ISD	1,273	1,265	1,291	1.4%	2.1%
Rio Arriba County ISD	6,863	6,766	6,725	-2.0%	-0.6%
Roosevelt County ISD	1,699	1	3	-99.8%	200.0%
San Juan County ISD	13,373	13,585	13,631	1.9%	0.3%
San Miguel County ISD	5,025	4,932	4,986	-0.8%	1.1%
Sandoval County ISD	11,009	11,183	11,181	1.6%	0.0%
Santa Fe County ISD	10,095	9,561	9,542	-5.5%	-0.2%
Sierra County ISD	2,668	2,673	2,658	-0.4%	-0.6%
Socorro County ISD	2,860	2,770	2,786	-2.6%	0.6%
South Dona Ana ISD	8,693	8,577	8,598	-1.1%	0.2%
Southeast Bernalillo County ISD	12,091	11,710	11,784	-2.5%	0.6%
Southwest Bernalillo County ISD	18,659	18,689	18,661	0.0%	-0.1%
Taos County ISD	4,117	4,151	4,180	1.5%	0.7%
Torrance County ISD	3,316	3,466	3,507	5.8%	1.2%
Valencia North County ISD	8,418	8,485	8,472	0.6%	-0.2%
Valencia South County ISD	1	0	1	0.0%	N/A
West Dona Ana County ISD	10,763	10,835	10,852	0.8%	0.2%
Centralized Units	46	23	28	-39.1%	21.7%
Statewide Total	221,876	222,623	223,146	0.6%	0.2%

SNAP Cases by Region⁶

Region	Oct-17	Sep-18	Oct-18	Percent Change	
				Oct-17- Oct-18	Sep-18- Oct-18
Region 1 - NW	40,761	41,127	41,196	1.1%	0.2%
Region 2 - NE	40,686	40,212	40,264	-1.0%	0.1%
Region 3 - Central	72,522	74,163	74,337	2.5%	0.2%
Region 4 - SE	26,504	25,979	26,100	-1.5%	0.5%
Region 5 - SW	41,357	41,119	41,221	-0.3%	0.2%
Centralized Units	46	23	28	-39.1%	21.7%
Statewide Total	221,876	222,623	223,146	0.6%	0.2%

SNAP Caseload: SFY-14 to Current

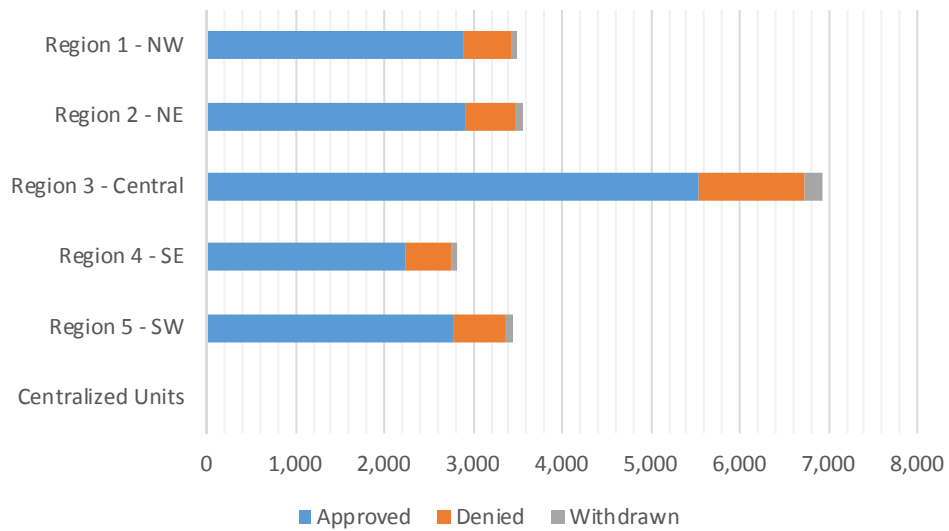


SNAP Initial Applications by Field Office^{4,11}
October 2018

Office	Approved	Denied	Withdrawn	Total Cases Processed
Chaves County ISD	580	139	30	749
Cibola County ISD	281	36	7	324
Colfax County ISD	108	24	5	137
Curry County ISD	604	134	12	750
East Dona Ana County ISD	622	144	22	788
Eddy Artesia County ISD	142	27	1	170
Eddy Carlsbad County ISD	278	63	8	349
Grant County ISD	249	70	6	325
Guadalupe County ISD	51	11	1	63
Hidalgo County ISD	0	0	0	0
Lea County ISD	471	115	13	599
Lincoln County ISD	155	39	5	199
Luna County ISD	255	43	15	313
McKinley County ISD	656	105	18	779
Northeast Bernalillo County ISD	1,643	359	57	2,059
Northwest Bernalillo County ISD	1,372	294	51	1,717
Otero County ISD	432	85	9	526
Quay County ISD	85	10	2	97
Rio Arriba County ISD	451	92	17	560
Roosevelt County ISD	3	0		3
San Juan County ISD	1,069	219	27	1,315
San Miguel County ISD	358	51	4	413
Sandoval County ISD	778	189	40	1,007
Santa Fe County ISD	750	141	14	905
Sierra County ISD	153	21	6	180
Socorro County ISD	156	39	3	198
South Dona Ana ISD	451	71	21	543
Southeast Bernalillo County ISD	981	203	27	1,211
Southwest Bernalillo County ISD	1,313	276	63	1,652
Taos County ISD	317	50	17	384
Torrance County ISD	230	59	10	299
Valencia North County ISD	577	102	19	698
Valencia South County ISD				0
West Dona Ana County ISD	767	159	27	953
Centralized Units	0	0	0	0
Statewide Total	16,338	3,370	557	20,265

SNAP Initial Applications by Region^{4,11} October 2018

Region	Approved	Denied	Withdrawn	Total Cases Processed
Region 1 - NW	2,892	522	80	3,494
Region 2 - NE	2,898	568	100	3,566
Region 3 - Central	5,539	1,191	208	6,938
Region 4 - SE	2,233	517	69	2,819
Region 5 - SW	2,776	572	100	3,448
Centralized Units	0	0	0	0
Statewide Total	16,338	3,370	557	20,265

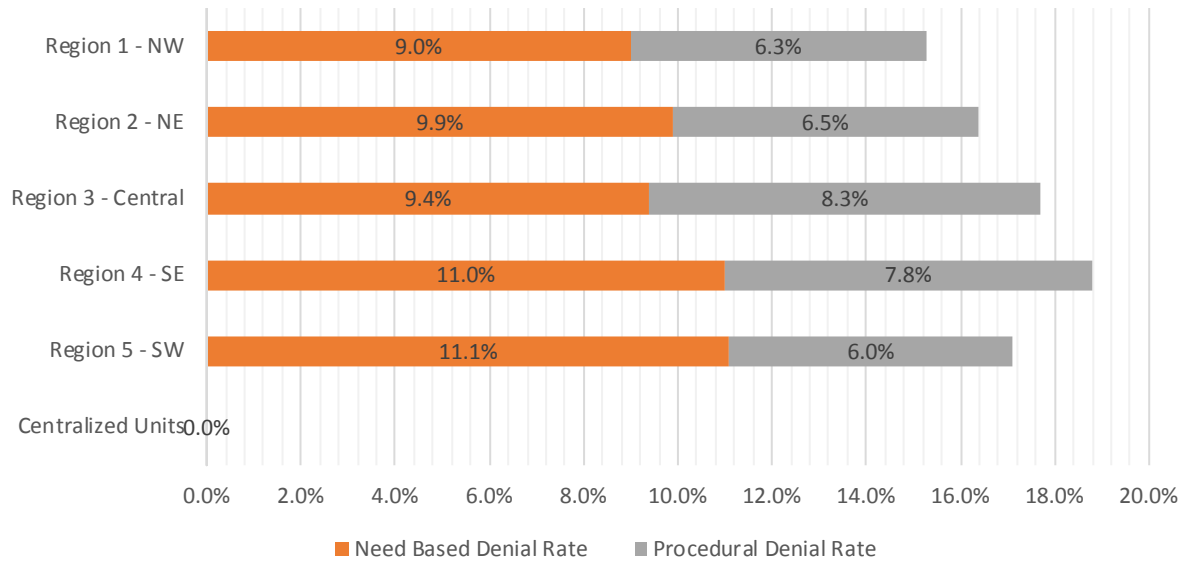


SNAP Initial Disposition Rates by Field Office^{4,11}
October 2018

Office	Approval Rate	Denial Rate	Need Based Denial Rate	Procedural Denial Rate
Chaves County ISD	80.7%	19.3%	12.2%	7.1%
Cibola County ISD	88.6%	11.4%	5.7%	5.7%
Colfax County ISD	81.8%	18.2%	14.4%	3.8%
Curry County ISD	81.8%	18.2%	11.8%	6.4%
East Dona Ana County ISD	81.2%	18.8%	11.8%	7.0%
Eddy Artesia County ISD	84.0%	16.0%	8.3%	7.7%
Eddy Carlsbad County ISD	81.5%	18.5%	9.7%	8.8%
Grant County ISD	78.1%	21.9%	14.1%	7.8%
Guadalupe County ISD	82.3%	17.7%	14.5%	3.2%
Hidalgo County ISD	0.0%	0.0%	0.0%	0.0%
Lea County ISD	80.4%	19.6%	11.2%	8.4%
Lincoln County ISD	79.9%	20.1%	7.7%	12.4%
Luna County ISD	85.6%	14.4%	10.0%	4.4%
McKinley County ISD	86.2%	13.8%	8.3%	5.5%
Northeast Bernalillo County ISD	82.1%	17.9%	8.5%	9.4%
Northwest Bernalillo County ISD	82.4%	17.6%	9.6%	8.0%
Otero County ISD	83.6%	16.4%	8.9%	7.5%
Quay County ISD	89.5%	10.5%	9.4%	1.1%
Rio Arriba County ISD	83.1%	16.9%	8.8%	8.1%
Roosevelt County ISD	100.0%	0.0%	0.0%	0.0%
San Juan County ISD	83.0%	17.0%	9.3%	7.7%
San Miguel County ISD	87.5%	12.5%	9.3%	3.2%
Sandoval County ISD	80.5%	19.5%	11.8%	7.7%
Santa Fe County ISD	84.2%	15.8%	8.7%	7.1%
Sierra County ISD	87.9%	12.1%	9.2%	2.9%
Socorro County ISD	80.0%	20.0%	14.4%	5.6%
South Dona Ana ISD	86.4%	13.6%	10.7%	2.9%
Southeast Bernalillo County ISD	82.9%	17.1%	9.7%	7.4%
Southwest Bernalillo County ISD	82.6%	17.4%	9.9%	7.5%
Taos County ISD	86.4%	13.6%	7.6%	6.0%
Torrance County ISD	79.6%	20.4%	10.4%	10.0%
Valencia North County ISD	85.0%	15.0%	9.3%	5.7%
Valencia South County ISD	0.0%	0.0%	0.0%	0.0%
West Dona Ana County ISD	82.8%	17.2%	11.3%	5.9%
Centralized Units				
Statewide Total	82.9%	17.1%	9.9%	7.2%

SNAP Initial Disposition Rates by Region^{4,11}
October 2018

Region	Approval Rate	Denial Rate	Need Based Denial Rate	Procedural Denial Rate
Region 1 - NW	84.7%	15.3%	9.0%	6.3%
Region 2 - NE	83.6%	16.4%	9.9%	6.5%
Region 3 - Central	82.3%	17.7%	9.4%	8.3%
Region 4 - SE	81.2%	18.8%	11.0%	7.8%
Region 5 - SW	82.9%	17.1%	11.1%	6.0%
Centralized Units				
Statewide Total	82.9%	17.1%	9.9%	7.2%



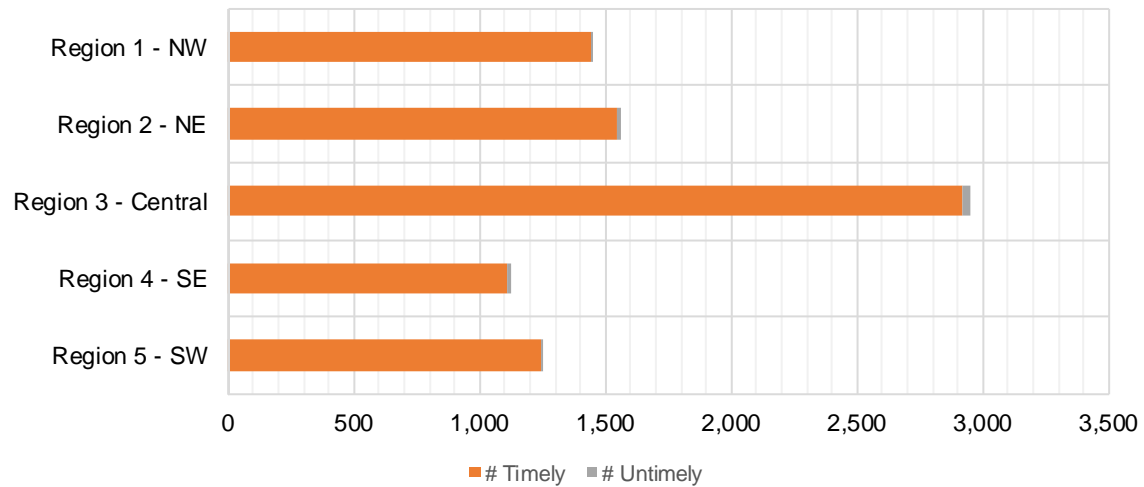
SNAP Expedite Timeliness by Field Office¹³
October 2018

Office Name	Total Expedited Approvals	# Timely	# Untimely	Percentage Timely
Chaves County ISD	256	253	3	98.8 %
Cibola County ISD	134	134	0	100.0 %
Colfax County ISD	57	57	0	100.0 %
Curry County ISD	312	306	6	98.1 %
East Dona Ana County ISD	278	277	1	99.6 %
Eddy Artesia County ISD	77	74	3	96.1 %
Eddy Carlsbad County ISD	159	154	5	96.9 %
Grant County ISD	133	130	3	97.7 %
Guadalupe County ISD	21	20	1	95.2 %
Lea County ISD	239	235	4	98.3 %
Lincoln County ISD	82	82	0	100.0 %
Luna County ISD	91	91	0	100.0 %
McKinley County ISD	325	321	4	98.8 %
Northeast Bernalillo County ISD	914	903	11	98.8 %
Northwest Bernalillo County ISD	778	770	8	99.0 %
Otero County ISD	194	191	3	98.5 %
Quay County ISD	42	42	0	100.0 %
Rio Arriba County ISD	277	273	4	98.6 %
Roosevelt County ISD	3	3	0	100.0 %
San Juan County ISD	567	563	4	99.3 %
San Miguel County ISD	204	204	0	100.0 %
Sandoval County ISD	386	382	4	99.0 %
Santa Fe County ISD	404	398	6	98.5 %
Sierra County ISD	64	64	0	100.0 %
Socorro County ISD	85	85	0	100.0 %
South Dona Ana ISD	179	178	1	99.4 %
Southeast Bernalillo County ISD	510	506	4	99.2 %
Southwest Bernalillo County ISD	630	622	8	98.7 %
Taos County ISD	167	165	2	98.8 %
Torrance County ISD	121	119	2	98.3 %
Valencia North County ISD	275	274	1	99.6 %
West Dona Ana County ISD	378	378	0	100.0 %
Statewide Total	8,342	8,254	88	98.9 %

SNAP Expedite Timeliness by Region¹³
October 2018

Region	Total Expedited Approvals	# Timely	# Untimely	Percentage Timely
Region 1 - NW	1,450	1,441	9	99.4%
Region 2 - NE	1,558	1,541	17	98.9%
Region 3 - Central	2,953	2,920	33	98.9%
Region 4 - SE	1,128	1,107	21	98.1%
Region 5 - SW	1,253	1,245	8	99.4%
Statewide Total	8,342	8,254	88	98.9%

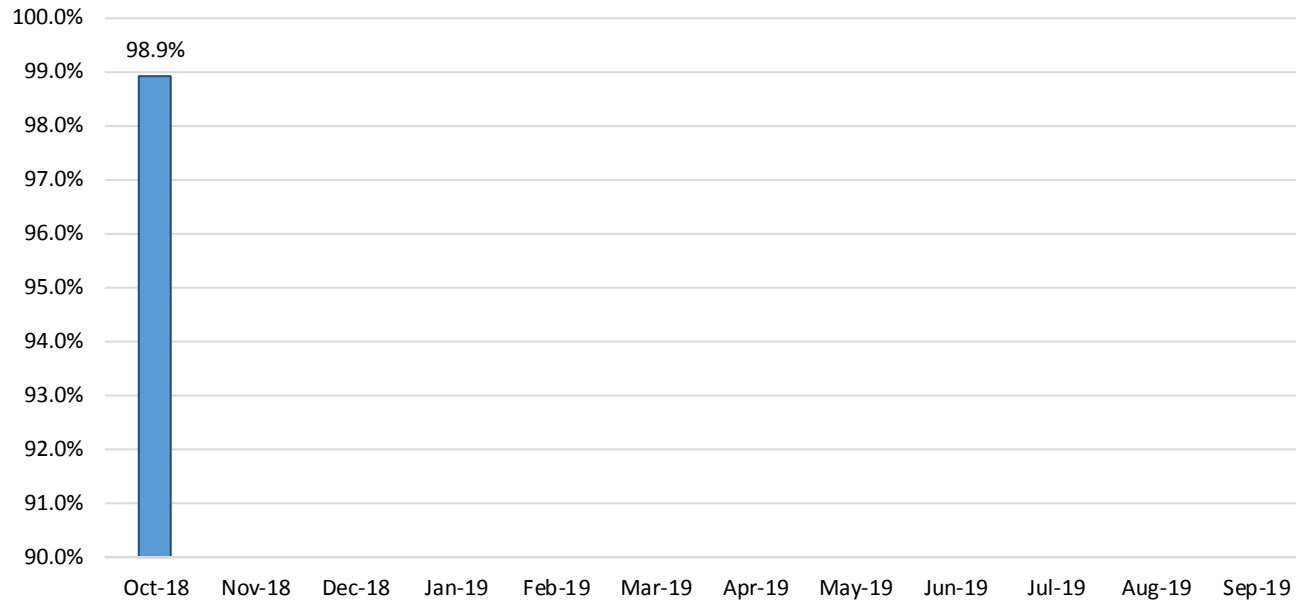
SNAP Expedite - Timeliness



SNAP: Percentage of Applications Processed Timely ¹³

	Oct-18	Nov-18	Dec-18	Jan-19	Feb-19	Mar-19	Apr-19	May-19	Jun-19	Jul-19	Aug-19	Sep-19	Average
APT	98.9%												98.9%

SNAP Application Processing Timeliness (APT)



SNAP Non-Expedite: Percentage of Initial Applications Processed Timely by Field Office¹³

	Oct-18	Nov-18	Dec-18	Jan-19	Feb-19	Mar-19	Apr-19	May-19	Jun-19	Jul-19	Aug-19	Sep-19	Average
Cibola	100.0%												100.0%
McKinley	98.8%												98.8%
San Juan	99.6%												99.6%
Sierra	98.9%												98.9%
Socorro	100.0%												100.0%
Valencia North	99.7%												99.7%
Valencia South													
NW Region 1 Total	99.4%												99.4%
Colfax	100.0%												100.0%
Guadalupe	100.0%												100.0%
Quay	100.0%												100.0%
Rio Arriba	100.0%												100.0%
San Miguel	100.0%												100.0%
Sandoval	99.5%												99.5%
Santa Fe	99.4%												99.4%
Taos	100.0%												100.0%
NE Region 2 Total	98.9%												98.9%
NE Bernalillo	98.9%												98.9%
NW Bernalillo	98.0%												98.0%
SE Bernalillo	99.6%												99.6%
SW Bernalillo	99.3%												99.3%
Torrance	100.0%												100.0%
Gen. Region 3 Total	98.9%												98.9%
Chaves	100.0%												100.0%
Curry	97.9%												97.9%
Eddy Artesia	100.0%												100.0%
Eddy Carlsbad	100.0%												100.0%
Lea	99.1%												99.1%
Lincoln	100.0%												100.0%
Roosevelt													
SE Region 4 Total	98.2%												98.2%
East Dona Ana	99.7%												99.7%
Grant	100.0%												100.0%
Luna	100.0%												100.0%
Otero	99.2%												99.2%
South Dona Ana	99.6%												99.6%
West Dona Ana	99.5%												99.5%
SW Region 5 Total	99.4%												99.4%
STATE TOTAL	99.0%												99.0%

SNAP Expedite: Percentage of Initial Applications Processed Timely by Field Office¹³

	Oct-18	Nov-18	Dec-18	Jan-19	Feb-19	Mar-19	Apr-19	May-19	Jun-19	Jul-19	Aug-19	Sep-19	Average
Cibola	100.0%												100.0%
McKinley	98.8%												98.8%
San Juan	99.3%												99.3%
Sierra	100.0%												100.0%
Socorro	100.0%												100.0%
Valencia North	99.6%												99.6%
Valencia South													
NW Region 1 Total	99.6%												99.6%
Colfax	100.0%												100.0%
Guadalupe	95.2%												95.2%
Quay	100.0%												100.0%
Rio Arriba	98.6%												98.6%
San Miguel	100.0%												100.0%
Sandoval	99.0%												99.0%
Santa Fe	98.5%												98.5%
Taos	98.8%												98.8%
NE Region 2 Total	98.8%												98.8%
NE Bernalillo	98.8%												98.8%
NW Bernalillo	99.0%												99.0%
SE Bernalillo	99.2%												99.2%
SW Bernalillo	98.7%												98.7%
Torrance	98.3%												98.3%
Gen. Region 3 Total	98.8%												98.8%
Chaves	98.8%												98.8%
Curry	98.1%												98.1%
Eddy Artesia	96.1%												96.1%
Eddy Carlsbad	97.0%												97.0%
Lea	98.7%												98.7%
Lincoln	100.0%												100.0%
Roosevelt	100.0%												100.0%
SE Region 4 Total	98.4%												98.4%
East Dona Ana	99.6%												99.6%
Grant	97.7%												97.7%
Luna	100.0%												100.0%
Otero	98.5%												98.5%
South Dona Ana	99.4%												99.4%
West Dona Ana	100.0%												100.0%
SW Region 5 Total	99.2%												99.2%
STATE TOTAL	98.9%												98.9%

SNAP: Percentage of Denied Initial Applications Processed Within 30 Days by Field Office¹³

	Oct-18	Nov-18	Dec-18	Jan-19	Feb-19	Mar-19	Apr-19	May-19	Jun-19	Jul-19	Aug-19	Sep-19	Average
Cibola	94.4%												94.4%
McKinley	96.2%												96.2%
San Juan	96.4%												96.4%
Sierra	100.0%												100.0%
Socorro	100.0%												100.0%
Valencia North	100.0%												100.0%
Valencia South													
NW Region 1 Total	97.3%												97.3%
Colfax	100.0%												100.0%
Guadalupe	100.0%												100.0%
Quay	100.0%												100.0%
Rio Arriba	94.6%												94.6%
San Miguel	100.0%												100.0%
Sandoval	98.4%												98.4%
Santa Fe	96.6%												96.6%
Taos	98.0%												98.0%
NE Region 2 Total	97.6%												97.6%
NE Bernalillo	94.8%												94.8%
NW Bernalillo	95.6%												95.6%
SE Bernalillo	94.1%												94.1%
SW Bernalillo	97.1%												97.1%
Torrance	93.2%												93.2%
Gen. Region 3 Total	95.3%												95.3%
Chaves	98.6%												98.6%
Curry	97.8%												97.8%
Eddy Artesia	92.6%												92.6%
Eddy Carlsbad	96.9%												96.9%
Lea	95.7%												95.7%
Lincoln	97.4%												97.4%
Roosevelt													
SE Region 4 Total	97.1%												97.1%
East Dona Ana	97.3%												97.3%
Grant	95.8%												95.8%
Luna	100.0%												100.0%
Otero	100.0%												100.0%
South Dona Ana	100.0%												100.0%
West Dona Ana	98.2%												98.2%
SW Region 5 Total	98.3%												98.3%
STATE TOTAL	96.8%												96.8%

SNAP: Combined Approvals and Denials Percentage of Initial Applications Processed Timely by Field Office¹³

	Oct-18	Nov-18	Dec-18	Jan-19	Feb-19	Mar-19	Apr-19	May-19	Jun-19	Jul-19	Aug-19	Sep-19	Average
Cibola	99.4%												99.4%
McKinley	98.4%												98.4%
San Juan	98.9%												98.9%
Sierra	99.4%												99.4%
Socorro	100.0%												100.0%
Valencia North	99.7%												99.7%
Valencia South													
NW Region 1 Total	99.1%												99.1%
Colfax	100.0%												100.0%
Guadalupe	98.4%												98.4%
Quay	100.0%												100.0%
Rio Arriba	98.3%												98.3%
San Miguel	100.0%												100.0%
Sandoval	99.1%												99.1%
Santa Fe	98.5%												98.5%
Taos	99.2%												99.2%
NE Region 2 Total	99.0%												99.0%
NE Bernalillo	98.1%												98.1%
NW Bernalillo	98.0%												98.0%
SE Bernalillo	98.5%												98.5%
SW Bernalillo	98.7%												98.7%
Torrance	97.9%												97.9%
Gen. Region 3 Total	98.3%												98.3%
Chaves	99.3%												99.3%
Curry	98.0%												98.0%
Eddy Artesia	97.0%												97.0%
Eddy Carlsbad	98.0%												98.0%
Lea	98.1%												98.1%
Lincoln	99.5%												99.5%
Roosevelt	100.0%												100.0%
SE Region 4 Total	98.4%												98.4%
East Dona Ana	99.2%												99.2%
Grant	98.1%												98.1%
Luna	100.0%												100.0%
Otero	99.0%												99.0%
South Dona Ana	99.6%												99.6%
West Dona Ana	99.5%												99.5%
SW Region 5 Total	99.3%												99.3%
STATE TOTAL	98.7%												98.7%

SNAP Renewals Processed by Field Office²⁰
October 2018

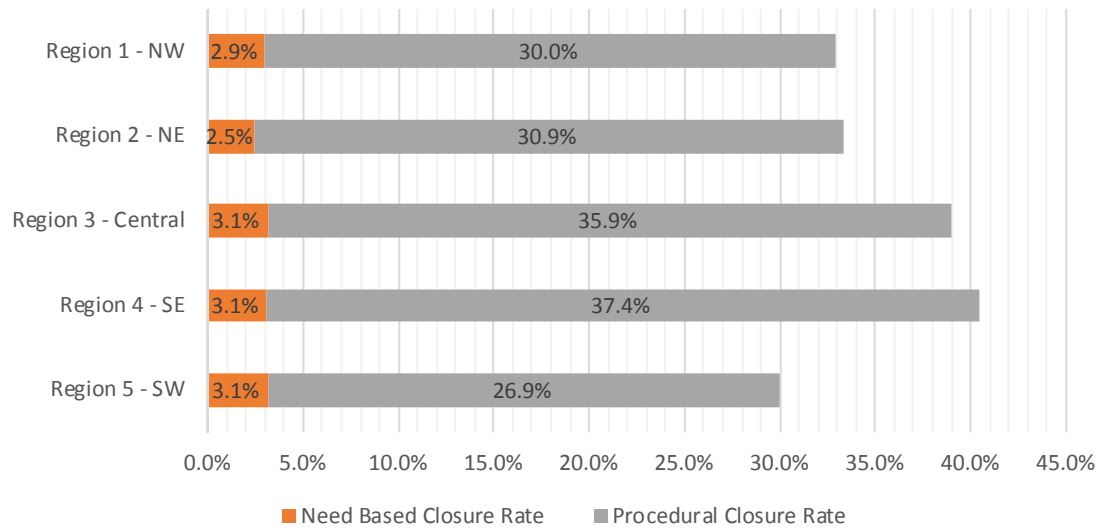
Office	Approvals	Closures	Need Based Closures	Procedural Closures
Chaves County ISD	222	145	7	138
Cibola County ISD	137	80	4	76
Colfax County ISD	69	32	2	30
Curry County ISD	235	118	8	110
East Dona Ana County ISD	282	146	22	124
Eddy Artesia County ISD	46	30	2	28
Eddy Carlsbad County ISD	69	58	8	50
Grant County ISD	147	68	7	61
Guadalupe County ISD	27	12	1	11
Hidalgo County ISD				
Lea County ISD	155	134	10	124
Lincoln County ISD	54	45	5	40
Luna County ISD	172	79	7	72
McKinley County ISD	467	181	15	166
Northeast Bernalillo County ISD	556	402	29	373
Northwest Bernalillo County ISD	493	317	25	292
Otero County ISD	208	116	6	110
Quay County ISD	51	18	1	17
Rio Arriba County ISD	248	110	8	102
Roosevelt County ISD				
San Juan County ISD	464	292	28	264
San Miguel County ISD	183	87	5	82
Sandoval County ISD	416	202	16	186
Santa Fe County ISD	283	158	14	144
Sierra County ISD	112	59	4	55
Socorro County ISD	119	48	1	47
South Dona Ana ISD	368	118	15	103
Southeast Bernalillo County ISD	396	247	16	231
Southwest Bernalillo County ISD	684	376	38	338
Taos County ISD	134	86	5	81
Torrance County ISD	112	90	7	83
Valencia North County ISD	339	145	20	125
Valencia South County ISD				
West Dona Ana County ISD	431	163	15	148
Centralized Units				
Statewide Total	7,679	4,162	351	3,811

SNAP Renewal Disposition Rates by Field Office²⁰
October 2018

Office	Approval Rate	Closure Rate	Need Based Closure Rate	Procedural Closure Rate
Chaves County ISD	60.5%	39.5%	1.9%	37.6%
Cibola County ISD	63.1%	36.9%	1.8%	35.0%
Colfax County ISD	68.3%	31.7%	2.0%	29.7%
Curry County ISD	66.6%	33.4%	2.3%	31.2%
East Dona Ana County ISD	65.9%	34.1%	5.1%	29.0%
Eddy Artesia County ISD	60.5%	39.5%	2.6%	36.8%
Eddy Carlsbad County ISD	54.3%	45.7%	6.3%	39.4%
Grant County ISD	68.4%	31.6%	3.3%	28.4%
Guadalupe County ISD	69.2%	30.8%	2.6%	28.2%
Hidalgo County ISD	0.0%	0.0%	0.0%	0.0%
Lea County ISD	53.6%	46.4%	3.5%	42.9%
Lincoln County ISD	54.5%	45.5%	5.1%	40.4%
Luna County ISD	68.5%	31.5%	2.8%	28.7%
McKinley County ISD	72.1%	27.9%	2.3%	25.6%
Northeast Bernalillo County ISD	58.0%	42.0%	3.0%	38.9%
Northwest Bernalillo County ISD	60.9%	39.1%	3.1%	36.0%
Otero County ISD	64.2%	35.8%	1.9%	34.0%
Quay County ISD	73.9%	26.1%	1.4%	24.6%
Rio Arriba County ISD	69.3%	30.7%	2.2%	28.5%
Roosevelt County ISD	0.0%	0.0%	0.0%	0.0%
San Juan County ISD	61.4%	38.6%	3.7%	34.9%
San Miguel County ISD	67.8%	32.2%	1.9%	30.4%
Sandoval County ISD	67.3%	32.7%	2.6%	30.1%
Santa Fe County ISD	64.2%	35.8%	3.2%	32.7%
Sierra County ISD	65.5%	34.5%	2.3%	32.2%
Socorro County ISD	71.3%	28.7%	0.6%	28.1%
South Dona Ana ISD	75.7%	24.3%	3.1%	21.2%
Southeast Bernalillo County ISD	61.6%	38.4%	2.5%	35.9%
Southwest Bernalillo County ISD	64.5%	35.5%	3.6%	31.9%
Taos County ISD	60.9%	39.1%	2.3%	36.8%
Torrance County ISD	55.4%	44.6%	3.5%	41.1%
Valencia North County ISD	70.0%	30.0%	4.1%	25.8%
Valencia South County ISD	0.0%	0.0%	0.0%	0.0%
West Dona Ana County ISD	72.6%	27.4%	2.5%	24.9%
Centralized Units	0.0%	0.0%	0.0%	0.0%
Statewide Total	64.9%	35.1%	3.0%	32.2%

SNAP Renewal Disposition Rates by Region²⁰
October 2018

Region	Approval Rate	Closure Rate	Need Based Closure Rate	Procedural Closure Rate
Region 1 - NW	67.0%	33.0%	2.9%	30.0%
Region 2 - NE	66.7%	33.3%	2.5%	30.9%
Region 3 - Central	61.0%	39.0%	3.1%	35.9%
Region 4 - SE	59.6%	40.4%	3.1%	37.4%
Region 5 - SW	70.0%	30.0%	3.1%	26.9%
Centralized Units				
Statewide Total	64.9%	35.1%	3.0%	32.2%



SNAP: Percentage of Approved Renewal Applications Processed ¹¹													
	Oct-18	Nov-18	Dec-18	Jan-19	Feb-19	Mar-19	Apr-19	May-19	Jun-19	Jul-19	Aug-19	Sep-19	Average
Cibola	96.4%												96.4%
McKinley	98.9%												98.9%
San Juan	98.5%												98.5%
Sierra	99.1%												99.1%
Socorro	98.3%												98.3%
Valencia North	99.1%												99.1%
Valencia South													
NW Region 1 Total	98.4%												98.4%
Colfax	100.0%												100.0%
Guadalupe	100.0%												100.0%
Quay	100.0%												100.0%
Rio Arriba	96.8%												96.8%
San Miguel	97.3%												97.3%
Sandoval	99.0%												99.0%
Santa Fe	98.9%												98.9%
Taos	98.5%												98.5%
NE Region 2 Total	98.8%												98.8%
NE Bernalillo	98.7%												98.7%
NW Bernalillo	98.8%												98.8%
SE Bernalillo	98.7%												98.7%
SW Bernalillo	99.4%												99.4%
Torrance	99.1%												99.1%
Cen. Region 3 Total	99.0%												99.0%
Chaves	99.1%												99.1%
Curry	97.9%												97.9%
Eddy Artesia	100.0%												100.0%
Eddy Carlsbad	100.0%												100.0%
Lea	98.7%												98.7%
Lincoln	100.0%												100.0%
Roosevelt													
SE Region 4 Total	99.3%												99.3%
East Dona Ana	99.6%												99.6%
Grant	99.3%												99.3%
Luna	98.3%												98.3%
Otero	99.5%												99.5%
South Dona Ana	100.0%												100.0%
West Dona Ana	99.5%												99.5%
SW Region 5 Total	99.4%												99.4%
STATE TOTAL	99.0%												99.0%

If a renewal packet was received on or before 15th of the renewal month, the case shall be considered timely if the case was processed by renewal due date

SNAP: Percentage of Approved Renewal Applications Processed ¹¹													
	Oct-18	Nov-18	Dec-18	Jan-19	Feb-19	Mar-19	Apr-19	May-19	Jun-19	Jul-19	Aug-19	Sep-19	Average
Cibola	95.8%												95.8%
McKinley	98.8%												98.8%
San Juan	98.5%												98.5%
Sierra	98.9%												98.9%
Socorro	97.9%												97.9%
Valencia North	99.0%												99.0%
Valencia South													
NW Region 1 Total	98.1%												98.1%
Colfax	100.0%												100.0%
Guadalupe	100.0%												100.0%
Quay	100.0%												100.0%
Rio Arriba	96.4%												96.4%
San Miguel	96.9%												96.9%
Sandoval	98.9%												98.9%
Santa Fe	98.8%												98.8%
Taos	98.3%												98.3%
NE Region 2 Total	98.6%												98.6%
NE Bernalillo	98.5%												98.5%
NW Bernalillo	98.5%												98.5%
SE Bernalillo	98.5%												98.5%
SW Bernalillo	99.3%												99.3%
Torrance	98.9%												98.9%
Gen. Region 3 Total	98.8%												98.8%
Chaves	99.0%												99.0%
Curry	97.5%												97.5%
Eddy Artesia	100.0%												100.0%
Eddy Carlsbad	100.0%												100.0%
Lea	98.5%												98.5%
Lincoln	100.0%												100.0%
Roosevelt													
SE Region 4 Total	99.2%												99.2%
East Dona Ana	99.6%												99.6%
Grant	99.3%												99.3%
Luna	98.0%												98.0%
Otero	99.5%												99.5%
South Dona Ana	100.0%												100.0%
West Dona Ana	99.5%												99.5%
SW Region 5 Total	99.3%												99.3%
STATE TOTAL	98.8%												98.8%

Only includes cases in which the Renewal Packet was received by the 15th of the month

SNAP: Percentage of Terminations Renewal Applications Processed ¹¹													
	Oct-18	Nov-18	Dec-18	Jan-19	Feb-19	Mar-19	Apr-19	May-19	Jun-19	Jul-19	Aug-19	Sep-19	Average
Cibola	97.5%												97.5%
McKinley	98.3%												98.3%
San Juan	96.9%												96.9%
Sierra	100.0%												100.0%
Socorro	100.0%												100.0%
Valencia North	98.6%												98.6%
Valencia South													
NW Region 1 Total	98.6%												98.6%
Colfax	96.9%												96.9%
Guadalupe	100.0%												100.0%
Quay	100.0%												100.0%
Rio Arriba	97.3%												97.3%
San Miguel	95.4%												95.4%
Sandoval	99.0%												99.0%
Santa Fe	98.7%												98.7%
Taos	100.0%												100.0%
NE Region 2 Total	98.4%												98.4%
NE Bernalillo	97.3%												97.3%
NW Bernalillo	98.1%												98.1%
SE Bernalillo	98.0%												98.0%
SW Bernalillo	98.1%												98.1%
Torrance	98.9%												98.9%
Cen. Region 3 Total	98.1%												98.1%
Chaves	98.6%												98.6%
Curry	99.2%												99.2%
Eddy Artesia	96.7%												96.7%
Eddy Carlsbad	100.0%												100.0%
Lea	97.8%												97.8%
Lincoln	95.6%												95.6%
Roosevelt													
SE Region 4 Total	98.0%												98.0%
East Dona Ana	98.6%												98.6%
Grant	97.1%												97.1%
Luna	100.0%												100.0%
Otero	99.1%												99.1%
South Dona Ana	100.0%												100.0%
West Dona Ana	100.0%												100.0%
SW Region 5 Total	99.1%												99.1%
STATE TOTAL	98.4%												98.4%

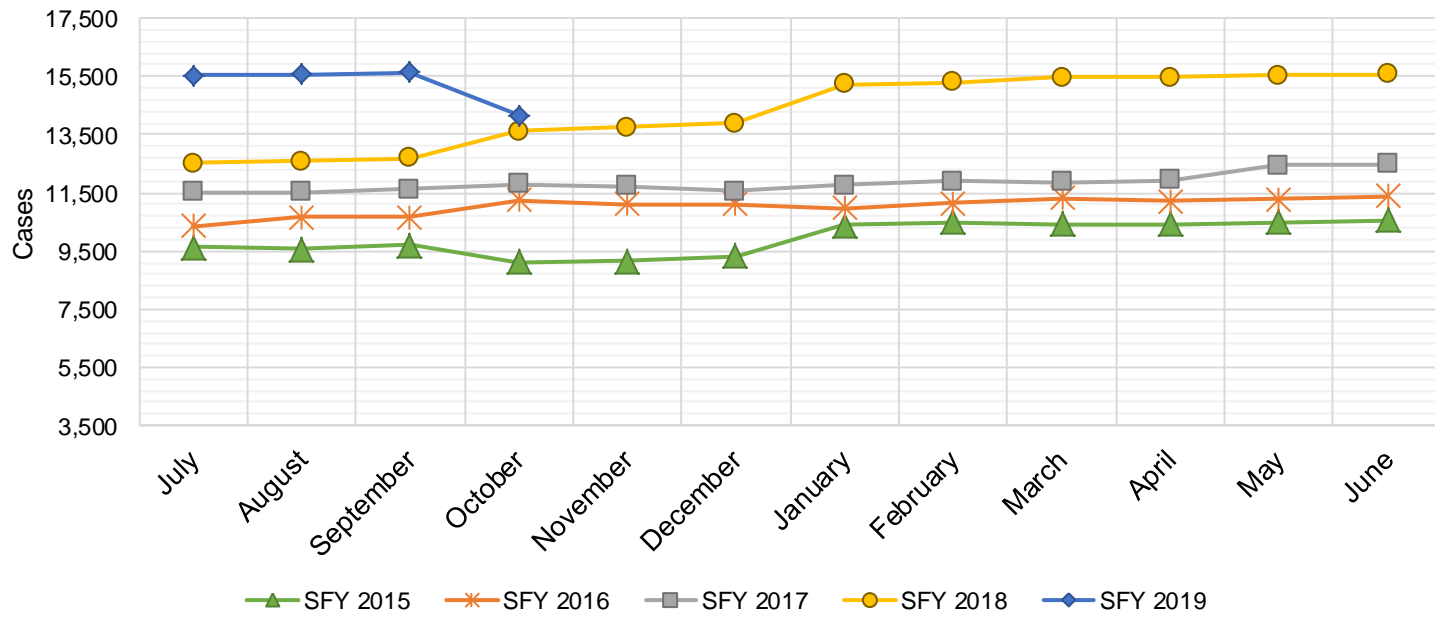
Includes cases for which no renewal application was received

SNAP: Combined Percentage of Approved and Terminated Renewal Applications Processed ¹¹													
	Oct-18	Nov-18	Dec-18	Jan-19	Feb-19	Mar-19	Apr-19	May-19	Jun-19	Jul-19	Aug-19	Sep-19	Average
Cibola	96.8%												96.8%
McKinley	98.8%												98.8%
San Juan	97.9%												97.9%
Sierra	99.4%												99.4%
Socorro	98.8%												98.8%
Valencia North	99.0%												99.0%
Valencia South													
NW Region 1 Total	98.4%												98.4%
Colfax	99.0%												99.0%
Guadalupe	100.0%												100.0%
Quay	100.0%												100.0%
Rio Arriba	96.9%												96.9%
San Miguel	96.7%												96.7%
Sandoval	99.0%												99.0%
Santa Fe	98.9%												98.9%
Taos	99.1%												99.1%
NE Region 2 Total	98.7%												98.7%
NE Bernalillo	98.1%												98.1%
NW Bernalillo	98.5%												98.5%
SE Bernalillo	98.4%												98.4%
SW Bernalillo	99.0%												99.0%
Torrance	99.0%												99.0%
Gen. Region 3 Total	98.6%												98.6%
Chaves	98.9%												98.9%
Curry	98.3%												98.3%
Eddy Artesia	98.7%												98.7%
Eddy Carlsbad	100.0%												100.0%
Lea	98.3%												98.3%
Lincoln	98.0%												98.0%
Roosevelt													
SE Region 4 Total	98.7%												98.7%
East Dona Ana	99.3%												99.3%
Grant	98.6%												98.6%
Luna	98.8%												98.8%
Otero	99.4%												99.4%
South Dona Ana	100.0%												100.0%
West Dona Ana	99.7%												99.7%
SW Region 5 Total	99.3%												99.3%
STATE TOTAL	98.7%												98.7%

State SNAP Supplement

SFY 2015 ¹²			SFY 2016 ^{12,9}			SFY 2017 ⁹			SFY 2018 ⁹			SFY 2019 ⁹		
	Cases	Expenditures		Cases	Expenditures		Cases	Expenditures		Cases	Expenditures		Cases	Expenditures
Jul-14	9,635	\$88,859	Jul-15	10,345	\$86,143	Jul-16	11,537	\$95,553	Jul-17	12,526	\$97,568	Jul-18	15,555	\$141,711
Aug-14	9,559	\$87,757	Aug-15	10,669	\$88,197	Aug-16	11,522	\$95,107	Aug-17	12,589	\$98,954	Aug-18	15,584	\$139,719
Sep-14	9,688	\$87,372	Sep-15	10,676	\$88,426	Sep-16	11,613	\$94,472	Sep-17	12,679	\$97,546	Sep-18	15,631	\$140,768
Oct-14	9,136	\$70,490	Oct-15	11,262	\$96,758	Oct-16	11,797	\$96,679	Oct-17	13,628	\$117,343	Oct-18	14,161	\$125,737
Nov-14	9,152	\$69,955	Nov-15	11,099	\$91,996	Nov-16	11,735	\$93,689	Nov-17	13,748	\$119,055	Nov-18		
Dec-14	9,322	\$73,226	Dec-15	11,125	\$90,771	Dec-16	11,556	\$93,739	Dec-17	13,877	\$120,585	Dec-18		
Jan-15	10,384	\$84,578	Jan-16	10,977	\$92,760	Jan-17	11,763	\$96,074	Jan-18	15,246	\$135,993	Jan-19		
Feb-15	10,477	\$82,901	Feb-16	11,153	\$95,363	Feb-17	11,907	\$98,251	Feb-18	15,308	\$137,296	Feb-19		
Mar-15	10,423	\$87,461	Mar-16	11,332	\$96,751	Mar-17	11,853	\$96,693	Mar-18	15,482	\$139,132	Mar-19		
Apr-15	10,440	\$79,605	Apr-16	11,222	\$93,959	Apr-17	11,944	\$97,060	Apr-18	15,466	\$139,202	Apr-19		
May-15	10,491	\$82,511	May-16	11,283	\$95,271	May-17	12,457	\$96,940	May-18	15,525	\$139,397	May-19		
Jun-15	10,575	\$85,134	Jun-16	11,389	\$93,061	Jun-17	12,498	\$97,405	Jun-18	15,577	\$140,802	Jun-19		

TOTAL	119,282	\$979,850	132,532	\$1,109,455	142,182	\$1,151,662	171,651	\$1,482,874	60,931	\$547,934
AVERAGE	9,940	\$81,654	11,044	\$92,455	11,849	\$95,972	14,304	\$123,573	15,233	\$136,984



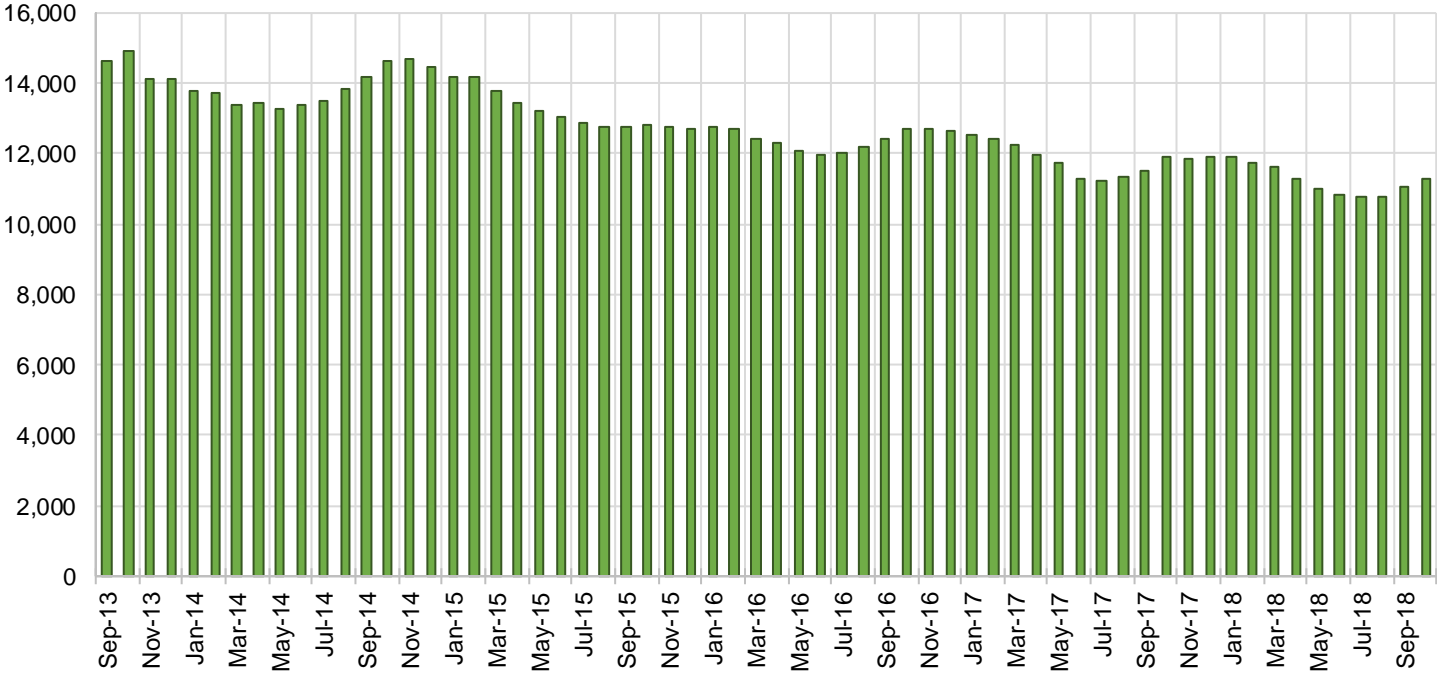
TANF Cases by Field Office⁶

Office	Oct-17	Sep-18	Oct-18	Percent Change	
				Oct-17- Oct-18	Sep-18- Oct-18
Chaves County ISD	567	452	446	-21.3%	-1.3%
Cibola County ISD	153	155	153	0.0%	-1.3%
Colfax County ISD	79	76	77	-2.5%	1.3%
Curry County ISD	521	687	683	31.1%	-0.6%
East Dona Ana County ISD	507	463	470	-7.3%	1.5%
Eddy Artesia County ISD	124	107	105	-15.3%	-1.9%
Eddy Carlsbad County ISD	168	143	151	-10.1%	5.6%
Grant County ISD	202	164	201	-0.5%	22.6%
Guadalupe County ISD	31	21	24	-22.6%	14.3%
Hidalgo County ISD	25	24	0	-100.0%	-100.0%
Lea County ISD	445	374	378	-15.1%	1.1%
Lincoln County ISD	92	95	100	8.7%	5.3%
Luna County ISD	213	238	233	9.4%	-2.1%
McKinley County ISD	64	74	74	15.6%	0.0%
Northeast Bernalillo County ISD	1,023	978	949	-7.2%	-3.0%
Northwest Bernalillo County ISD	811	830	825	1.7%	-0.6%
Otero County ISD	312	279	267	-14.4%	-4.3%
Quay County ISD	77	56	60	-22.1%	7.1%
Rio Arriba County ISD	412	373	366	-11.2%	-1.9%
Roosevelt County ISD	173	0	0	-100.0%	N/A
San Juan County ISD	336	304	306	-8.9%	0.7%
San Miguel County ISD	206	184	174	-15.5%	-5.4%
Sandoval County ISD	572	575	593	3.7%	3.1%
Santa Fe County ISD	440	413	393	-10.7%	-4.8%
Sierra County ISD	79	80	86	8.9%	7.5%
Socorro County ISD	89	85	88	-1.1%	3.5%
South Dona Ana ISD	733	715	717	-2.2%	0.3%
Southeast Bernalillo County ISD	669	595	610	-8.8%	2.5%
Southwest Bernalillo County ISD	1,170	1,150	1,125	-3.8%	-2.2%
Taos County ISD	138	132	133	-3.6%	0.8%
Torrance County ISD	182	182	198	8.8%	8.8%
Valencia North County ISD	517	436	428	-17.2%	-1.8%
Valencia South County ISD	0	0	0	N/A	N/A
West Dona Ana County ISD	761	714	713	-6.3%	-0.1%
Centralized Units	4	2	2	-50.0%	0.0%
Statewide Total	11,895	11,156	11,128	-6.4%	-0.3%

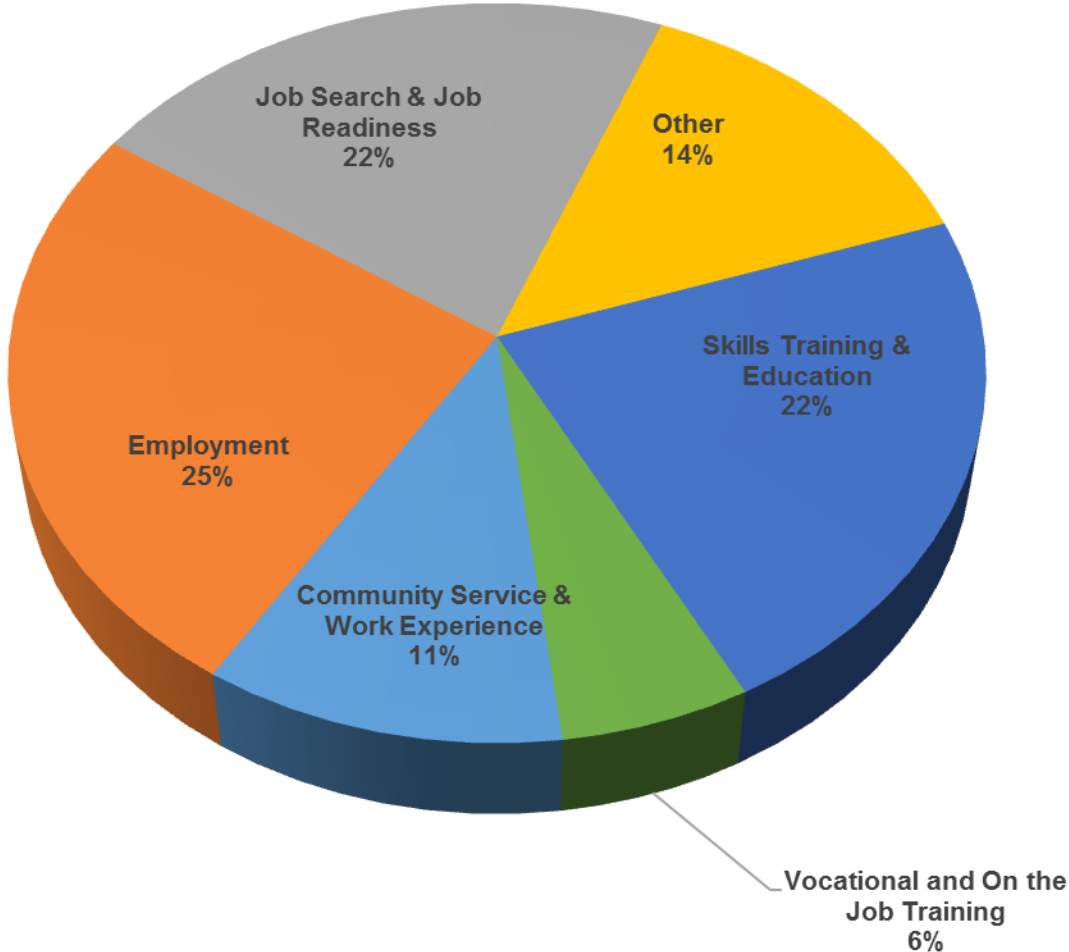
TANF Cases by Region⁶

Region	Oct-17	Sep-18	Oct-18	Percent Change	
				Oct-17- Oct-18	Sep-18- Oct-18
Region 1- NW	1,238	1,134	1,135	-8.3%	0.1%
Region 2- NE	1,955	1,830	1,820	-6.9%	-0.5%
Region 3- Central	3,855	3,735	3,707	-3.8%	-0.7%
Region 4- SE	2,090	1,858	1,863	-10.9%	0.3%
Region 5- SW	2,753	2,597	2,601	-5.5%	0.2%
Centralized Units	4	2	2	-50.0%	0.0%
Statewide Total	11,895	11,156	11,128	-6.4%	-0.3%

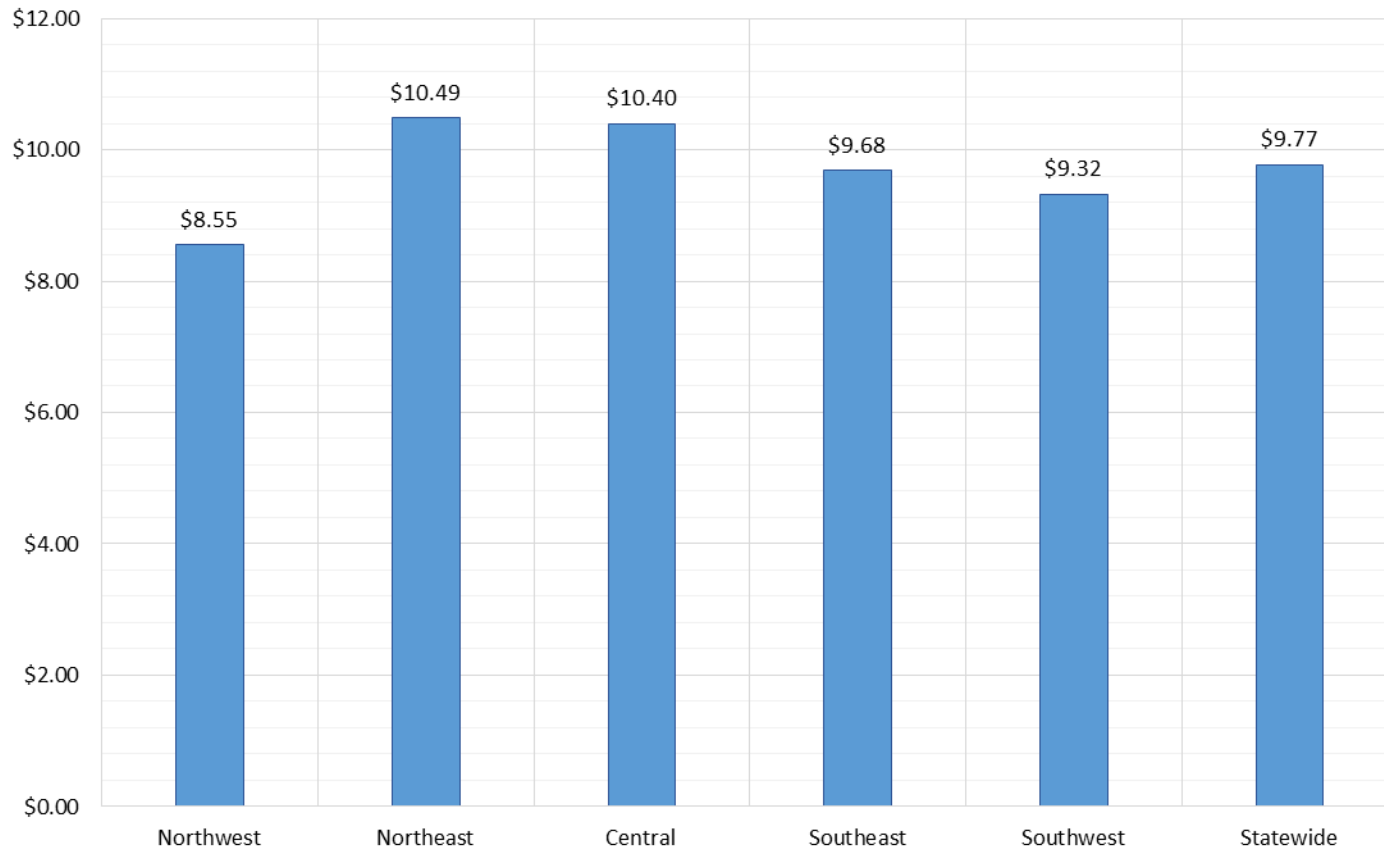
TANF Caseload: SFY-14 to Current



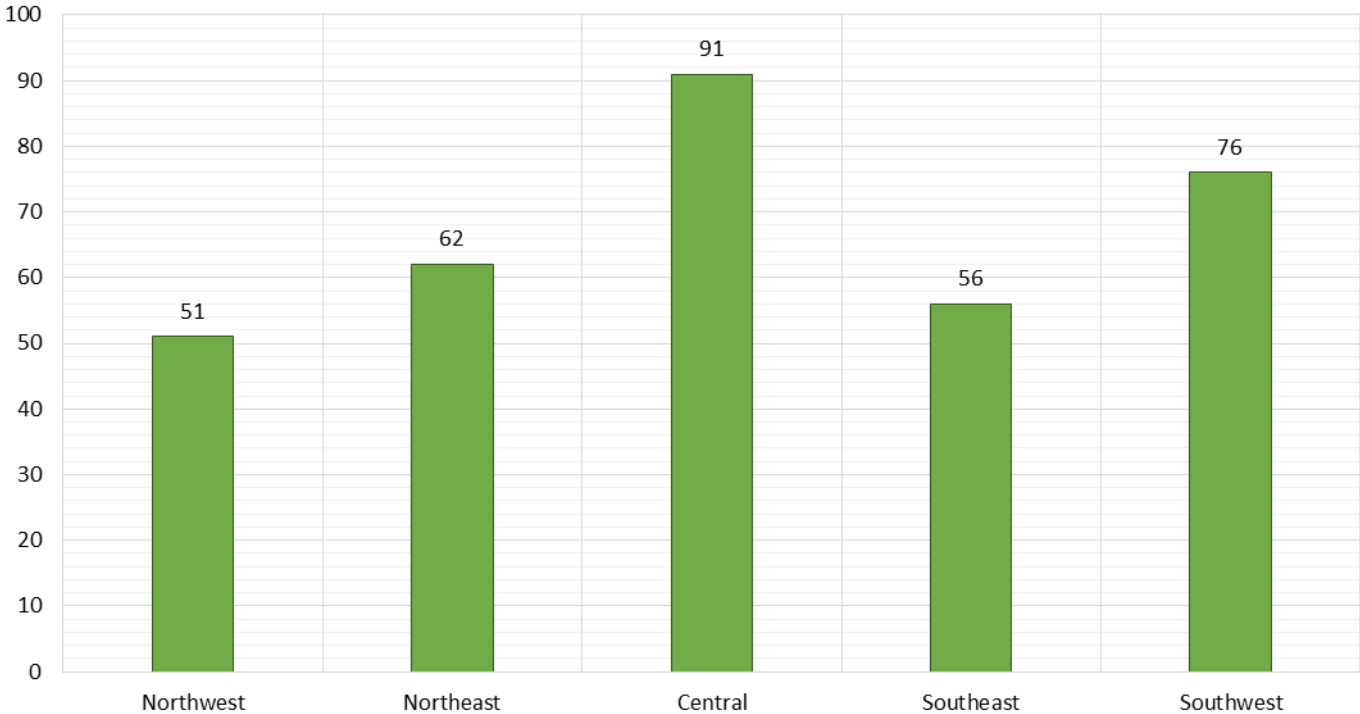
**NM Works Activity Placements on October 31, 2018
as reported by SL Start¹⁴**



Average Starting Hourly Wage of October 2018 TANF Employments
as reported by SL Start¹⁵



Number of New Employments in October 2018 by Region
as reported by SL Start¹⁵
Statewide Total: 327



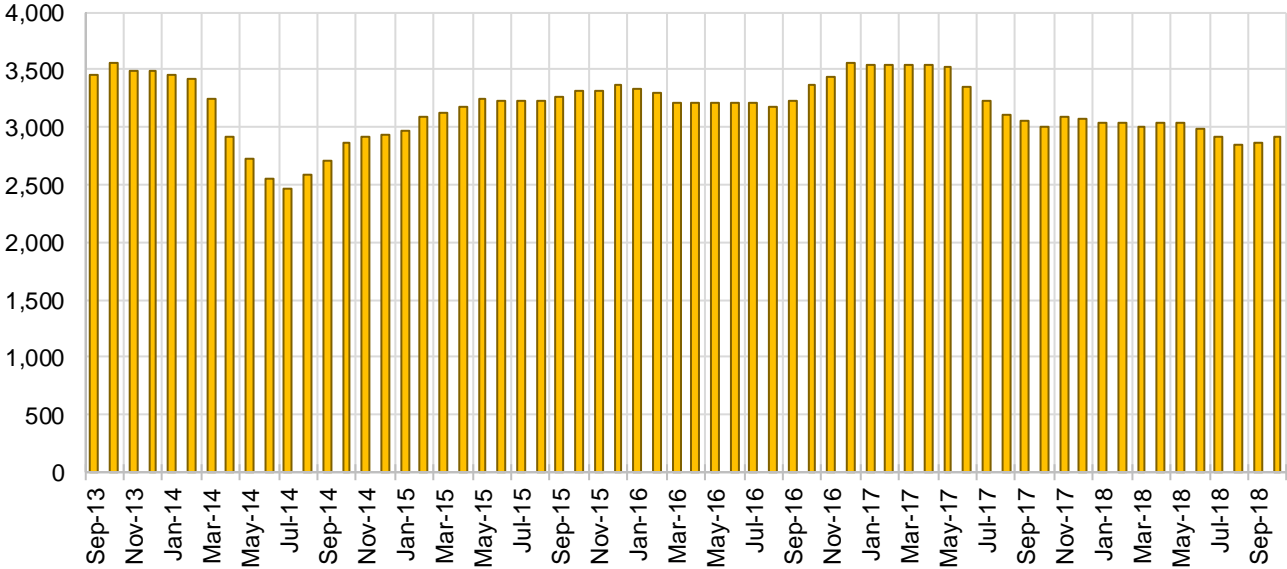
General Assistance Cases by Field Office⁶

Office	Oct-17	Sep-18	Oct-18	Percent Change	
				Oct-17- Oct-18	Sep-18- Oct-18
Chaves County ISD	131	133	134	2.3%	0.8%
Cibola County ISD	46	36	38	-17.4%	5.6%
Colfax County ISD	23	20	21	-8.7%	5.0%
Curry County ISD	62	79	90	45.2%	13.9%
East Dona Ana County ISD	118	108	117	-0.8%	8.3%
Eddy Artesia County ISD	30	23	23	-23.3%	0.0%
Eddy Carlsbad County ISD	69	74	71	2.9%	-4.1%
Grant County ISD	70	50	66	-5.7%	32.0%
Guadalupe County ISD	18	19	19	5.6%	0.0%
Hidalgo County ISD	13	14	0	-100.0%	-100.0%
Lea County ISD	83	84	85	2.4%	1.2%
Lincoln County ISD	30	32	30	0.0%	-6.3%
Luna County ISD	58	52	53	-8.6%	1.9%
McKinley County ISD	46	53	54	17.4%	1.9%
Northeast Bernalillo County ISD	367	329	310	-15.5%	-5.8%
Northwest Bernalillo County ISD	283	296	298	5.3%	0.7%
Otero County ISD	101	73	67	-33.7%	-8.2%
Quay County ISD	24	27	28	16.7%	3.7%
Rio Arriba County ISD	86	82	80	-7.0%	-2.4%
Roosevelt County ISD	18	0	0	-100.0%	N/A
San Juan County ISD	123	130	134	8.9%	3.1%
San Miguel County ISD	79	78	73	-7.6%	-6.4%
Sandoval County ISD	121	131	137	13.2%	4.6%
Santa Fe County ISD	151	122	124	-17.9%	1.6%
Sierra County ISD	34	32	30	-11.8%	-6.3%
Socorro County ISD	44	32	31	-29.5%	-3.1%
South Dona Ana ISD	61	65	64	4.9%	-1.5%
Southeast Bernalillo County ISD	172	169	168	-2.3%	-0.6%
Southwest Bernalillo County ISD	211	181	173	-18.0%	-4.4%
Taos County ISD	60	45	43	-28.3%	-4.4%
Torrance County ISD	47	43	40	-14.9%	-7.0%
Valencia North County ISD	118	119	117	-0.8%	-1.7%
Valencia South County ISD	0	0	0	N/A	N/A
West Dona Ana County ISD	175	185	169	-3.4%	-8.6%
Centralized Units	0	0	0	N/A	N/A
Statewide Total	3,072	2,916	2,887	-6.0%	-1.0%

General Assistance Cases by Region⁶

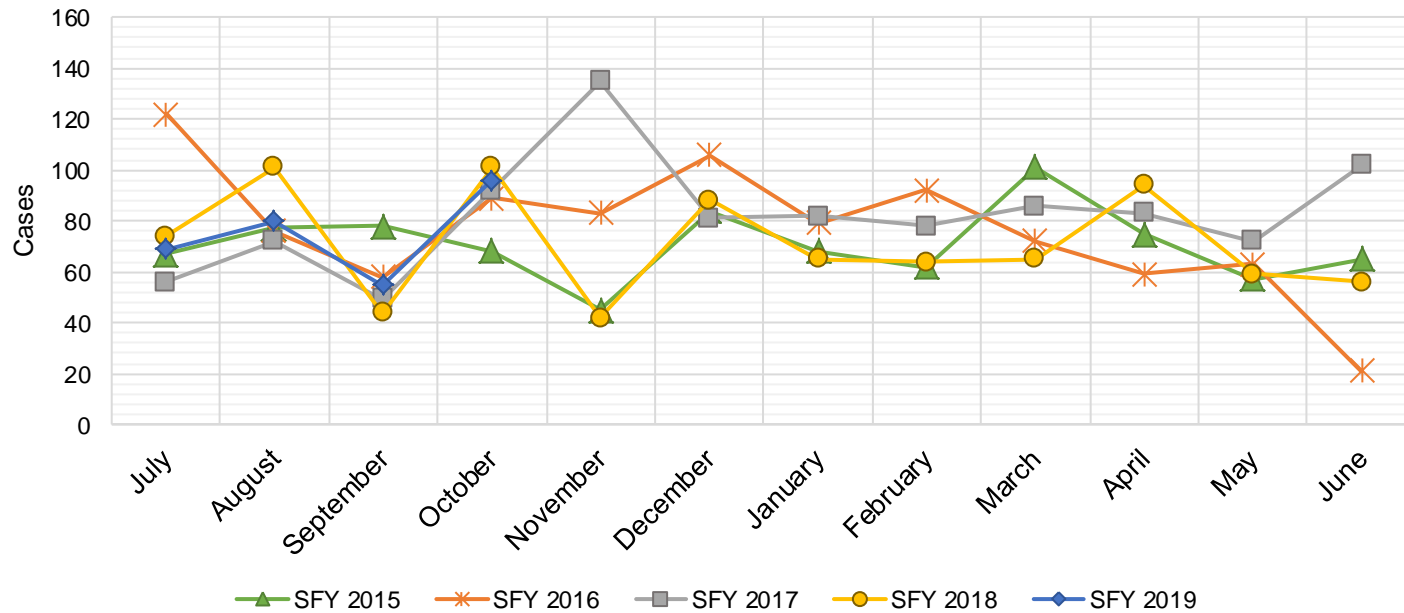
Region	Oct-17	Sep-18	Oct-18	Percent Change	
				Oct-17- Oct-18	Sep-18- Oct-18
Region 1 - NW	411	402	404	-1.7%	0.5%
Region 2 - NE	562	524	525	-6.6%	0.2%
Region 3 - Central	1,080	1,018	989	-8.4%	-2.8%
Region 4 - SE	423	425	433	2.4%	1.9%
Region 5 - SW	596	547	536	-10.1%	-2.0%
Centralized Units	0	0	0	N/A	N/A
Statewide Total	3,072	2,916	2,887	-6.0%	-1.0%

General Assistance Caseload: SFY-14 to Current



General Assistance Interim Assistance Reimbursements¹⁶

SFY 2015			SFY 2016			SFY 2017			SFY 2018			SFY 2019		
	Cases	Expenditures		Cases	Expenditures		Cases	Expenditures		Cases	Expenditures		Cases	Expenditures
Jul-14	67	\$144,679	Jul-15	122	\$342,648	Jul-16	56	\$164,970	Jul-17	74	\$241,438	Jul-18	69	\$228,333
Aug-14	77	\$244,233	Aug-15	76	\$245,236	Aug-16	72	\$223,182	Aug-17	101	\$339,301	Aug-18	80	\$241,292
Sep-14	78	\$168,421	Sep-15	58	\$170,093	Sep-16	49	\$158,027	Sep-17	44	\$131,229	Sep-18	55	\$188,192
Oct-14	68	\$182,265	Oct-15	89	\$277,912	Oct-16	92	\$257,830	Oct-17	101	\$335,752	Oct-18	96	\$298,502
Nov-14	45	\$134,482	Nov-15	83	\$238,948	Nov-16	135	\$402,305	Nov-17	42	\$139,572	Nov-18		
Dec-14	84	\$239,926	Dec-15	106	\$388,102	Dec-16	81	\$227,569	Dec-17	88	\$245,453	Dec-18		
Jan-15	68	\$227,066	Jan-16	79	\$239,263	Jan-17	82	\$274,050	Jan-18	65	\$258,239	Jan-19		
Feb-15	62	\$159,564	Feb-16	92	\$296,332	Feb-17	78	\$227,569	Feb-18	64	\$195,815	Feb-19		
Mar-15	101	\$317,899	Mar-16	72	\$254,360	Mar-17	86	\$278,219	Mar-18	65	\$172,188	Mar-19		
Apr-15	75	\$199,038	Apr-16	59	\$208,631	Apr-17	83	\$267,187	Apr-18	94	\$312,340	Apr-19		
May-15	57	\$167,383	May-16	63	\$182,241	May-17	72	\$232,836	May-18	59	\$155,406	May-19		
Jun-15	65	\$188,159	Jun-16	21	\$51,760	Jun-17	102	\$306,228	Jun-18	56	\$159,268	Jun-19		
TOTAL	847	\$2,373,115	920	\$2,895,525	988	\$3,019,972	853	\$2,686,001	300	\$956,319				
AVERAGE	71	\$197,760	77	\$241,294	82	\$251,664	71	\$223,833	75	\$239,080				



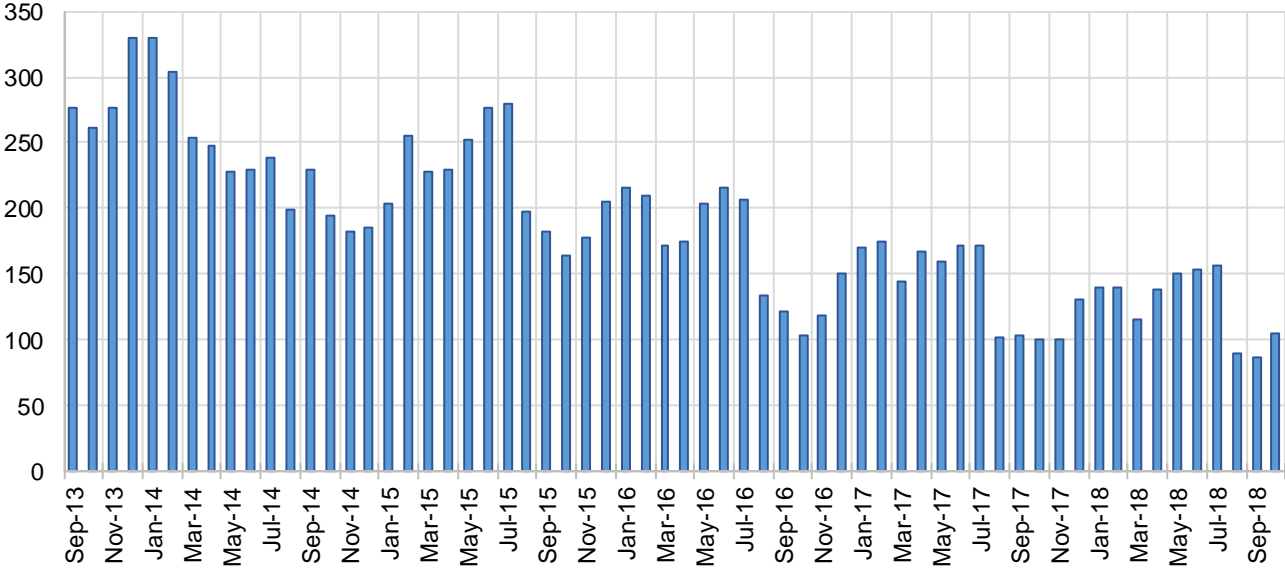
Education Works Cases by Field Office⁶

Office				Percent Change	
	Oct-17	Sep-18	Oct-18	Oct-17- Oct-18	Sep-18- Oct-18
Chaves County ISD	5	0	1	-80.0%	N/A
Cibola County ISD	0	0	0	N/A	N/A
Colfax County ISD	0	0	1	N/A	N/A
Curry County ISD	2	2	2	0.0%	0.0%
East Dona Ana County ISD	5	16	18	260.0%	12.5%
Eddy Artesia County ISD	1	1	1	0.0%	0.0%
Eddy Carlsbad County ISD	0	2	2	N/A	0.0%
Grant County ISD	10	9	9	-10.0%	0.0%
Guadalupe County ISD	1	0	0	-100.0%	N/A
Hidalgo County ISD	0	0	0	N/A	N/A
Lea County ISD	7	2	3	-57.1%	50.0%
Lincoln County ISD	0	0	0	N/A	N/A
Luna County ISD	2	1	1	-50.0%	0.0%
McKinley County ISD	0	0	0	N/A	N/A
Northeast Bernalillo County ISD	14	9	12	-14.3%	33.3%
Northwest Bernalillo County ISD	9	10	10	11.1%	0.0%
Otero County ISD	1	1	1	0.0%	0.0%
Quay County ISD	0	0	0	N/A	N/A
Rio Arriba County ISD	3	3	4	33.3%	33.3%
Roosevelt County ISD	2	0	0	-100.0%	N/A
San Juan County ISD	3	2	3	0.0%	50.0%
San Miguel County ISD	5	4	7	40.0%	75.0%
Sandoval County ISD	9	6	8	-11.1%	33.3%
Santa Fe County ISD	9	6	11	22.2%	83.3%
Sierra County ISD	0	0	0	N/A	N/A
Socorro County ISD	1	0	0	-100.0%	N/A
South Dona Ana ISD	18	14	15	-16.7%	7.1%
Southeast Bernalillo County ISD	5	6	6	20.0%	0.0%
Southwest Bernalillo County ISD	6	13	11	83.3%	-15.4%
Taos County ISD	2	0	0	-100.0%	N/A
Torrance County ISD	1	0	0	-100.0%	N/A
Valencia North County ISD	0	0	0	N/A	N/A
Valencia South County ISD	0	0	0	N/A	N/A
West Dona Ana County ISD	9	8	8	-11.1%	0.0%
Centralized Units	0	0	0	N/A	N/A
Statewide Total	130	115	134	3.1%	16.5%

Education Works Cases by Region⁶

Region	Oct-17	Sep-18	Oct-18	Percent Change	
				Oct-17- Oct-18	Sep-18- Oct-18
Region 1 - NW	4	2	3	-25.0%	50.0%
Region 2 - NE	29	19	31	6.9%	63.2%
Region 3 - Central	35	38	39	11.4%	2.6%
Region 4 - SE	17	7	9	-47.1%	28.6%
Region 5 - SW	45	49	52	15.6%	6.1%
Centralized Units	0	0	0	N/A	N/A
Statewide Total	130	115	134	3.1%	16.5%

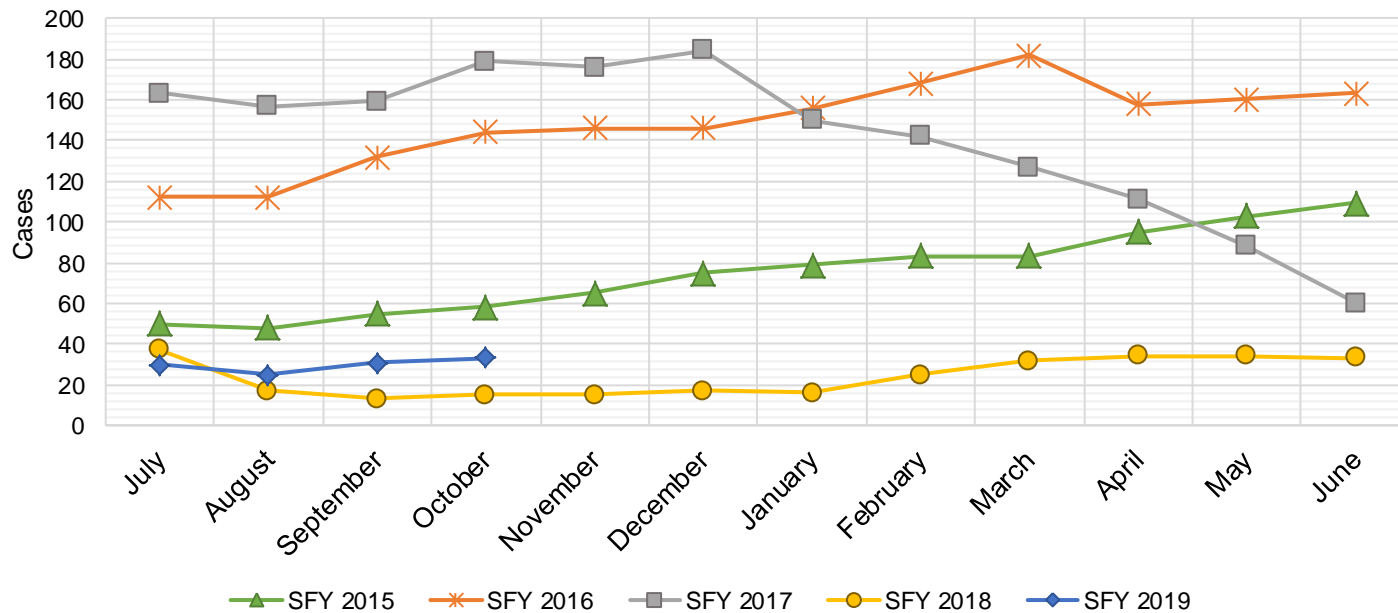
Education Works Caseload: SFY-14 to Current



Refugee Cash Assistance

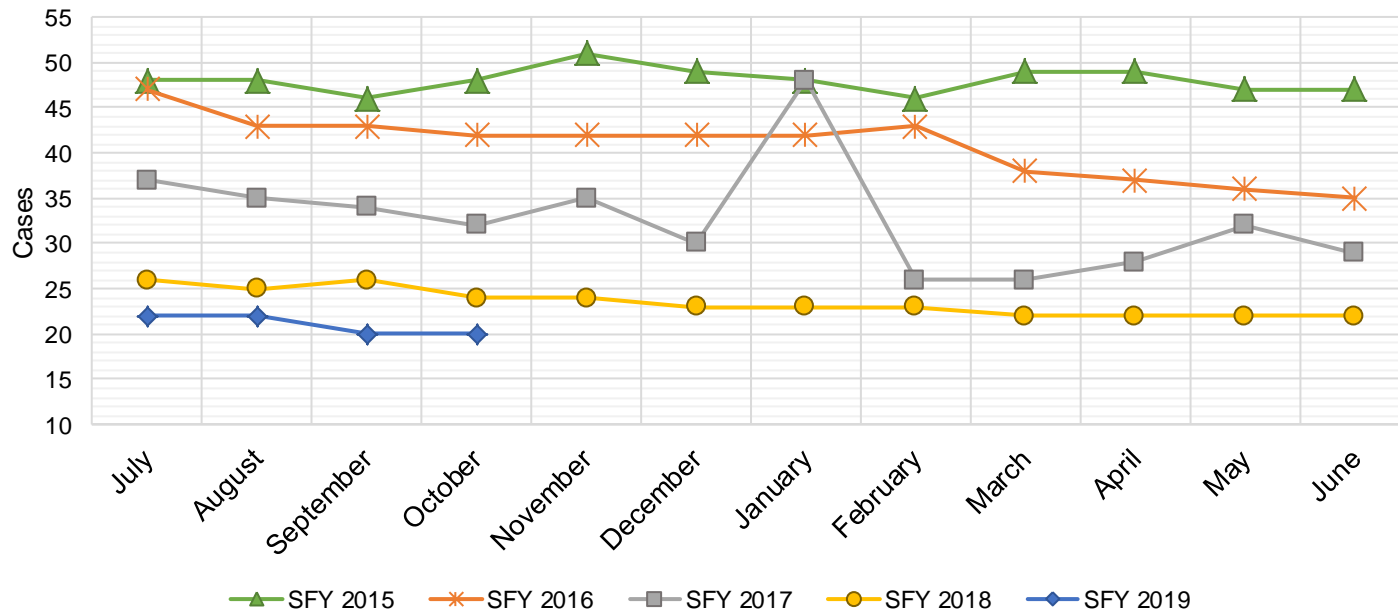
SFY 2015 ¹²			SFY 2016 ^{8,12,9}			SFY 2017 ^{8,9}			SFY 2018 ^{8,9}			SFY 2019 ^{8,9}		
	Cases	Expenditures		Cases	Expenditures		Cases	Expenditures		Cases	Expenditures		Cases	Expenditures
Jul-14	50	\$11,679	Jul-15	112	\$27,516	Jul-16	163	\$39,756	Jul-17	37	\$9,981	Jul-18	30	\$7,408
Aug-14	48	\$11,760	Aug-15	112	\$27,438	Aug-16	157	\$40,115	Aug-17	17	\$4,704	Aug-18	25	\$6,434
Sep-14	55	\$13,094	Sep-15	132	\$31,321	Sep-16	159	\$39,359	Sep-17	13	\$3,159	Sep-18	31	\$6,947
Oct-14	58	\$13,726	Oct-15	144	\$36,153	Oct-16	179	\$41,520	Oct-17	15	\$3,543	Oct-18	33	\$6,323
Nov-14	65	\$16,461	Nov-15	146	\$36,515	Nov-16	176	\$45,434	Nov-17	15	\$4,263	Nov-18		
Dec-14	75	\$18,699	Dec-15	146	\$35,763	Dec-16	184	\$46,673	Dec-17	17	\$4,795	Dec-18		
Jan-15	79	\$19,009	Jan-16	156	\$38,686	Jan-17	150	\$38,790	Jan-18	16	\$4,166	Jan-19		
Feb-15	83	\$21,349	Feb-16	168	\$41,368	Feb-17	142	\$37,956	Feb-18	25	\$5,723	Feb-19		
Mar-15	83	\$20,730	Mar-16	182	\$45,307	Mar-17	127	\$33,066	Mar-18	32	\$7,636	Mar-19		
Apr-15	95	\$23,495	Apr-16	158	\$41,143	Apr-17	111	\$29,183	Apr-18	34	\$8,827	Apr-19		
May-15	103	\$25,363	May-16	160	\$38,332	May-17	88	\$23,343	May-18	34	\$8,939	May-19		
Jun-15	109	\$27,958	Jun-16	163	\$39,856	Jun-17	60	\$15,538	Jun-18	33	\$8,513	Jun-19		

TOTAL	903	\$223,323	1,779	\$439,397	1,696	\$430,732	288	\$74,249	119	\$27,112
AVERAGE	75	\$18,610	148	\$36,616	141	\$35,894	24	\$6,187	30	\$6,778



State Supplement for Residential Care

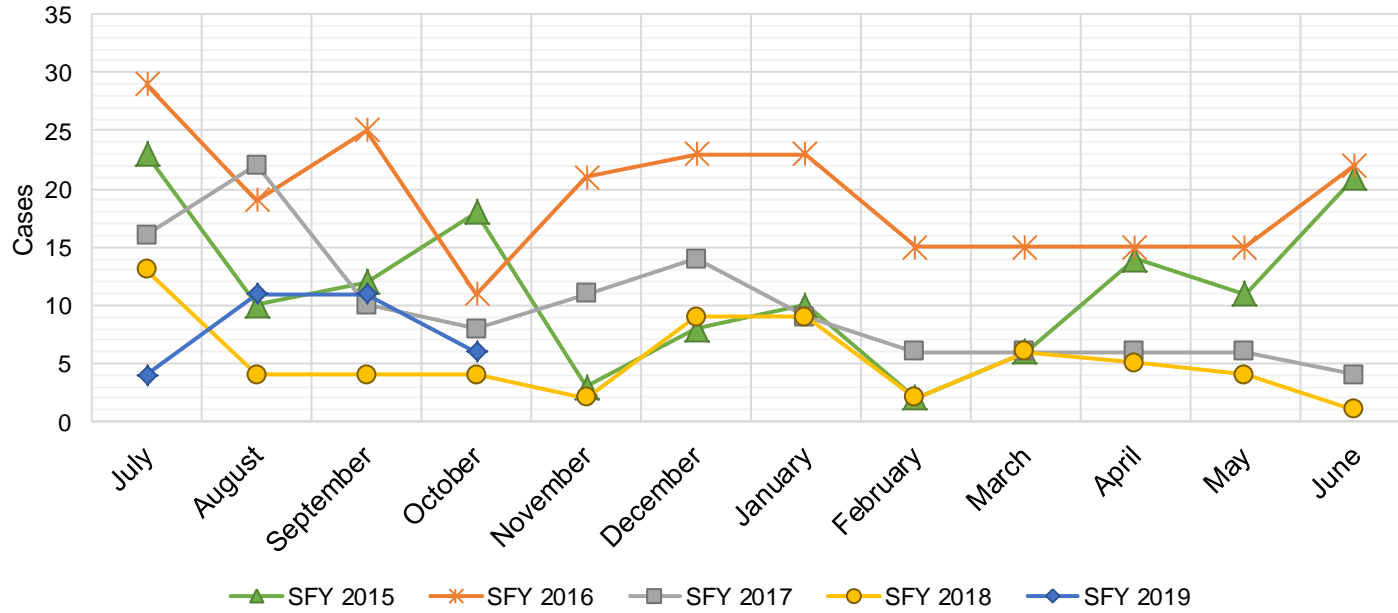
SFY 2015 ¹²			SFY 2016 ^{12,9}			SFY 2017 ⁹			SFY 2018 ⁹			SFY 2019 ⁹		
	Cases	Expenditures		Cases	Expenditures		Cases	Expenditures		Cases	Expenditures		Cases	Expenditures
Jul-14	48	\$4,700	Jul-15	47	\$4,700	Jul-16	37	\$3,700	Jul-17	26	\$2,700	Jul-18	22	\$2,200
Aug-14	48	\$5,000	Aug-15	43	\$4,900	Aug-16	35	\$3,500	Aug-17	25	\$2,500	Aug-18	22	\$2,200
Sep-14	46	\$4,600	Sep-15	43	\$4,500	Sep-16	34	\$3,400	Sep-17	26	\$2,700	Sep-18	20	\$2,000
Oct-14	48	\$4,600	Oct-15	42	\$4,400	Oct-16	32	\$3,200	Oct-17	24	\$2,500	Oct-18	20	\$2,000
Nov-14	51	\$5,600	Nov-15	42	\$4,200	Nov-16	35	\$3,500	Nov-17	24	\$2,400	Nov-18		
Dec-14	49	\$5,000	Dec-15	42	\$4,200	Dec-16	30	\$3,000	Dec-17	23	\$2,200	Dec-18		
Jan-15	48	\$4,900	Jan-16	42	\$4,200	Jan-17	48	\$4,800	Jan-18	23	\$2,400	Jan-19		
Feb-15	46	\$4,800	Feb-16	43	\$4,300	Feb-17	26	\$2,600	Feb-18	23	\$2,300	Feb-19		
Mar-15	49	\$4,800	Mar-16	38	\$3,800	Mar-17	26	\$2,600	Mar-18	22	\$2,400	Mar-19		
Apr-15	49	\$5,400	Apr-16	37	\$3,700	Apr-17	28	\$2,800	Apr-18	22	\$2,200	Apr-19		
May-15	47	\$4,700	May-16	36	\$3,600	May-17	32	\$3,200	May-18	22	\$2,200	May-19		
Jun-15	47	\$5,300	Jun-16	35	\$3,500	Jun-17	29	\$2,900	Jun-18	22	\$2,200	Jun-19		
TOTAL	576	\$59,400	490	\$50,000	392	\$39,200	282	\$28,700	84	\$8,400				
AVERAGE	48	\$4,950	41	\$4,167	33	\$3,267	24	\$2,392	21	\$2,100				



TANF Diversion Payments

SFY 2015 ¹²			SFY 2016 ^{12,9}			SFY 2017 ⁹			SFY 2018 ⁹			SFY 2019 ⁹		
	Cases	Expenditures		Cases	Expenditures		Cases	Expenditures		Cases	Expenditures		Cases	Expenditures
Jul-14	23	\$48,098	Jul-15	29	\$62,074	Jul-16	16	\$30,843	Jul-17	13	\$26,500	Jul-18	4	\$3,000
Aug-14	10	\$21,810	Aug-15	19	\$33,584	Aug-16	22	\$42,731	Aug-17	4	\$12,000	Aug-18	11	\$18,583
Sep-14	12	\$23,500	Sep-15	25	\$47,977	Sep-16	10	\$21,000	Sep-17	4	\$4,000	Sep-18	11	\$20,999
Oct-14	18	\$30,589	Oct-15	11	\$20,500	Oct-16	8	\$16,744	Oct-17	4	\$16,000	Oct-18	6	\$10,499
Nov-14	3	\$4,411	Nov-15	21	\$45,500	Nov-16	11	\$24,500	Nov-17	2	\$15,500	Nov-18		
Dec-14	8	\$14,634	Dec-15	23	\$45,389	Dec-16	14	\$26,611	Dec-17	9	\$17,500	Dec-18		
Jan-15	10	\$18,000	Jan-16	23	\$41,874	Jan-17	9	\$18,500	Jan-18	9	\$21,731	Jan-19		
Feb-15	2	\$5,500	Feb-16	15	\$28,500	Feb-17	6	\$12,000	Feb-18	2	\$7,731	Feb-19		
Mar-15	6	\$12,000	Mar-16	15	\$27,008	Mar-17	6	\$11,000	Mar-18	6	\$8,496	Mar-19		
Apr-15	14	\$26,000	Apr-16	15	\$31,389	Apr-17	6	\$12,000	Apr-18	5	\$13,500	Apr-19		
May-15	11	\$21,500	May-16	15	\$31,916	May-17	6	\$11,500	May-18	4	\$12,500	May-19		
Jun-15	21	\$40,039	Jun-16	22	\$43,000	Jun-17	4	\$13,500	Jun-18	1	\$5,389	Jun-19		

TOTAL	138	\$266,081	233	\$458,711	118	\$240,929	63	\$160,847	32	\$53,081
AVERAGE	12	\$22,173	19	\$38,226	10	\$20,077	5	\$13,404	8	\$13,270

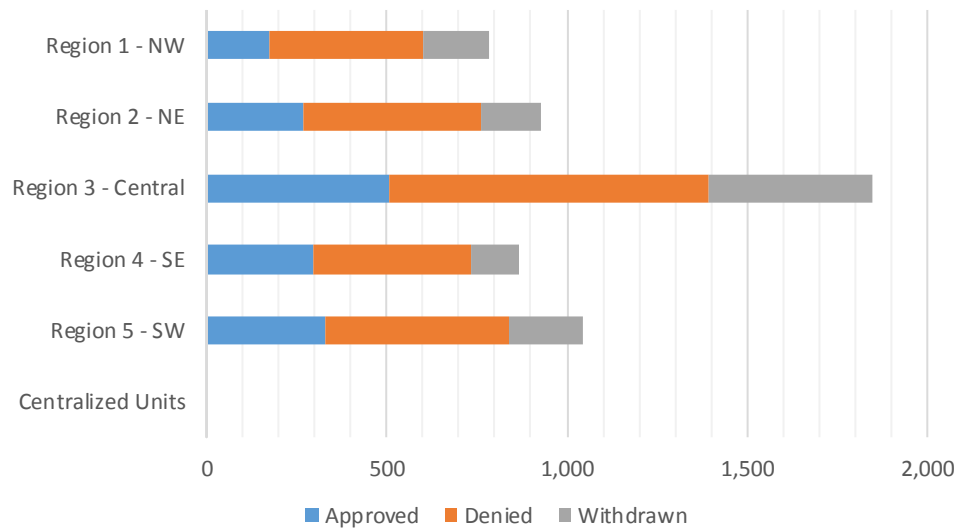


Cash Assistance Applications by Field Office^{4,11}
October 2018

Office	Approved	Denied	Withdrawn	Total Cases Processed
Chaves County ISD	60	118	27	205
Cibola County ISD	16	30	13	59
Colfax County ISD	16	27	9	52
Curry County ISD	99	125	42	266
East Dona Ana County ISD	72	114	38	224
Eddy Artesia County ISD	16	23	7	46
Eddy Carlsbad County ISD	34	57	18	109
Grant County ISD	36	51	14	101
Guadalupe County ISD	5	8		13
Hidalgo County ISD	0	0	0	0
Lea County ISD	72	79	29	180
Lincoln County ISD	13	37	9	59
Luna County ISD	26	29	20	75
McKinley County ISD	19	71	51	141
Northeast Bernalillo County ISD	140	278	162	580
Northwest Bernalillo County ISD	122	217	131	470
Otero County ISD	43	101	39	183
Quay County ISD	9	17	4	30
Rio Arriba County ISD	43	68	19	130
Roosevelt County ISD	1	0		1
San Juan County ISD	63	176	65	304
San Miguel County ISD	27	34	13	74
Sandoval County ISD	88	152	54	294
Santa Fe County ISD	65	145	48	258
Sierra County ISD	14	20	8	42
Socorro County ISD	13	24	16	53
South Dona Ana ISD	63	64	24	151
Southeast Bernalillo County ISD	88	132	69	289
Southwest Bernalillo County ISD	127	216	80	423
Taos County ISD	15	40	22	77
Torrance County ISD	31	44	13	88
Valencia North County ISD	48	104	32	184
Valencia South County ISD	0	1		1
West Dona Ana County ISD	90	150	68	308
Centralized Units	0	0	0	0
Statewide Total	1,574	2,752	1,144	5,470

Cash Assistance Applications by Region^{4,11} October 2018

	Approved	Denied	Withdrawn	Total Cases Processed
Region				
Region 1 - NW	173	426	185	784
Region 2 - NE	268	491	169	928
Region 3 - Central	508	887	455	1,850
Region 4 - SE	295	439	132	866
Region 5 - SW	330	509	203	1,042
Centralized Units	0	0	0	0
Statewide Total	1,574	2,752	1,144	5,470



**Children Youth and Families Department
Children Receiving Child Care Assistance Subsidies By County**

County	Oct 2017	Nov 2017	Dec 2017	Jan 2018	Feb 2018	Mar 2018	Apr 2018	May 2018	June 2018	July 2018	Aug 2018	Sept 2018	Oct 2018	Change Fr. Last Year Cases	Percent
Bernalillo	7,848	7,985	7,903	7,801	7,739	7,824	7,853	7,925	8,146	7,735	7,741	8,041	7,753	-95	-1.2%
Catron	0	0	5	5	0	0	0	0	0	0	0	0	0	0	0.0%
Chaves	884	870	855	843	823	807	791	819	865	837	828	861	817	-67	-7.6%
Cibola	304	303	296	291	289	277	291	286	295	289	278	312	316	12	3.9%
Colfax	41	42	42	47	50	51	56	57	59	56	56	59	62	21	51.2%
Curry	446	467	470	493	514	517	536	538	535	539	538	592	543	97	21.7%
De Baca	9	11	10	10	8	4	4	4	4	4	4	4	4	-5	-55.6%
Dona Ana	4,585	4,581	4,492	4,349	4,382	4,322	4,349	4,369	4,455	4,260	4,219	4,403	4,311	-274	-6.0%
Eddy	297	297	263	256	257	240	242	234	245	264	259	268	267	-30	-10.1%
Grant	161	157	159	139	127	133	140	138	142	110	111	134	133	-28	-17.4%
Guadalupe	16	16	16	14	11	15	14	14	14	14	18	11	16	0	0.0%
Harding	0	0	0	0	0	0	1	1	1	1	1	1	1	1	0.0%
Hidalgo	39	35	32	32	36	40	35	37	36	37	37	36	35	-4	-10.3%
Lea	909	895	833	824	827	855	805	817	817	806	813	877	840	-69	-7.6%
Lincoln	147	136	132	129	129	128	130	133	129	129	131	107	104	-43	-29.3%
Los Alamos	18	14	13	13	14	15	17	18	22	27	30	26	31	13	72.2%
Luna	177	166	171	167	161	166	166	163	162	143	149	153	142	-35	-19.8%
McKinley	165	167	166	168	156	158	162	168	176	168	157	188	173	8	4.8%
Mora	18	20	21	20	18	20	18	21	21	26	31	29	25	7	38.9%
Otero	525	518	531	519	533	532	518	504	502	490	496	520	505	-20	-3.8%
Out of State	14	12	3	9	12	8	5	7	8	6	6	4	4	-10	-71.4%
Quay	35	35	35	35	36	36	35	33	33	38	37	33	35	0	0.0%
Rio Arriba	163	166	165	154	151	152	148	146	147	146	143	139	141	-22	-13.5%
Roosevelt	120	120	127	119	117	113	109	101	102	94	88	101	106	-14	-11.7%
San Juan	1,050	1,043	1,039	1,005	1,036	1,026	1,053	1,030	1,059	928	892	1,020	954	-96	-9.1%
San Miguel	368	371	372	357	353	362	370	378	376	375	361	375	364	-4	-1.1%
Sandoval	859	839	836	794	774	765	782	765	798	739	756	763	693	-166	-19.3%
Santa Fe	554	547	526	514	523	506	514	531	545	533	511	497	448	-106	-19.1%
Sierra	86	80	77	59	76	67	69	70	62	53	50	64	62	-24	-27.9%
Socorro	68	66	70	70	70	73	75	73	68	55	63	62	65	-3	-4.4%
Taos	139	142	141	141	139	139	138	135	135	138	126	111	111	-28	-20.1%
Torrance	99	115	115	114	110	104	116	115	120	109	104	112	92	-7	-7.1%
Union	4	6	5	5	5	5	5	5	5	5	5	5	5	1	25.0%
Valencia	723	713	678	651	640	634	612	624	644	615	621	664	604	-119	-16.5%
Totals	20,871	20,935	20,599	20,147	20,116	20,094	20,159	20,259	20,728	19,769	19,660	20,572	19,762	-1,109	-5.3%

CHILDREN YOUTH AND FAMILIES DEPARTMENT CHILD CARE ASSISTANCE ELIGIBILITY PROGRAMS

MONTH	OCT'17	NOV'17	DEC'17	JAN'18	FEB'18	MAR'18	APR'18	May'18	June'18	July'18	Aug'18	Sept'18
TANF (Child Care Priority 1 Clients)												
CLIENTS	2,419	2,374	2,315	2,240	2,153	2,178	2,175	2,118	2,164	2,074	2,124	2,197
COST	\$1,423,748	\$1,411,060	\$1,382,073	\$1,317,716	\$1,272,232	\$1,325,003	\$1,300,872	\$1,244,115	\$1,242,370	\$1,255,788	\$1,288,094	\$1,335,587
TANF AVERAGE COST	\$589	\$594	\$597	\$588	\$591	\$608	\$598	\$587	\$574	\$605	\$606	\$608
TRANSITION OFF TANF (Child Care Priority 2 Clients)												
CLIENTS	181	154	152	141	138	142	148	169	172	161	170	157
COST	\$96,629	\$81,975	\$81,337	\$74,507	\$72,696	\$77,354	\$80,098	\$93,823	\$96,261	\$97,664	\$97,412	\$87,146
TRAN OFF TANF AVG COST	\$534	\$532	\$535	\$528	\$527	\$545	\$541	\$555	\$560	\$607	\$573	\$555
TANF ELIGIBLE (Child Care Priority 1B Clients at or below 100% of the Federal Poverty Level)												
CLIENTS	8,899	8,900	8,729	8,435	8,374	8,373	8,382	8,570	8,816	8,404	8,352	8,505
COST	\$5,021,574	\$5,099,212	\$4,994,373	\$4,722,370	\$4,675,492	\$4,802,863	\$4,766,353	\$4,896,651	\$4,879,475	\$4,946,700	\$4,973,346	\$4,957,788
TANF ELIGIBLE AVG COST	\$564	\$573	\$572	\$560	\$558	\$574	\$569	\$571	\$553	\$589	\$595	\$583
INCOME ELIGIBLE (Child Care Priority 3, and Priority 4 Clients)												
CLIENTS	7,464	7,578	7,580	7,665	7,868	7,944	8,059	8,099	8,261	7,808	7,743	7,686
COST	\$3,760,398	\$3,838,169	\$3,824,777	\$3,785,466	\$3,929,313	\$4,010,729	\$4,051,487	\$4,104,126	\$4,096,260	\$4,133,552	\$4,208,252	\$4,056,059
INCOME ELIG AVG COST	\$504	\$506	\$505	\$494	\$499	\$505	\$503	\$507	\$496	\$529	\$543	\$528
AT-RISK CHILD PROTECTIVE SERVICES CHILD CARE PILOT (Priority 5 Clients)												
CLIENTS	1,032	1,027	935	772	689	578	516	424	393	405	355	326
COST	\$684,194	\$678,258	\$628,399	\$509,028	\$486,780	\$381,318	\$337,243	\$276,746	\$265,193	\$270,783	\$228,483	\$213,687
CPS AVG COST	\$663	\$660	\$672	\$659	\$707	\$660	\$654	\$653	\$675	\$669	\$644	\$655
CHILD PROTECTIVE SERVICES (Child Care CPS Clients)												
CLIENTS	876	902	888	894	894	879	879	879	942	917	916	891
COST	\$567,608	\$585,009	\$573,312	\$583,824	\$602,246	\$605,523	\$564,253	\$619,678	\$600,858	\$597,105	\$637,227	\$613,927
CPS AVG COST	\$648	\$649	\$646	\$653	\$674	\$689	\$642	\$705	\$638	\$651	\$696	\$689
GRAND TOTAL - ALL CHILD CARE PROGRAMS												
CLIENTS	20,871	20,935	20,599	20,147	20,116	20,094	20,159	20,259	20,748	19,769	19,660	19,762
COST	\$11,554,151	\$11,693,682	\$11,484,272	\$10,992,912	\$11,038,760	\$11,202,789	\$11,100,307	\$11,235,139	\$11,180,418	\$11,301,592	\$11,432,813	\$11,264,199
ALL PROGRAMS AVG COST	\$547	\$561	\$558	\$546	\$549	\$558	\$551	\$555	\$539	\$572	\$582	\$570

Income Eligibility Guidelines: October 1, 2018- September 30, 2019

Federal Poverty Guidelines (FPG) Monthly Income Standards

Supplemental Nutrition Program (SNAP)					
Household Size	100% FPG Net Income	130% FPG Gross Income	165% FPG Gross Income for Categorical Eligibility	Maximum SNAP Monthly Allotment	LIHEAP 150% FPG
1	\$1,012	\$1,316	\$1,670	\$192	\$1,518
2	\$1,372	\$1,784	\$2,264	\$353	\$2,058
3	\$1,732	\$2,252	\$2,858	\$505	\$2,598
4	\$2,092	\$2,720	\$3,452	\$642	\$3,138
5	\$2,452	\$3,188	\$4,046	\$762	\$3,678
6	\$2,812	\$3,656	\$4,640	\$914	\$4,218
7	\$3,172	\$4,124	\$5,234	\$1,011	\$4,758
8	\$3,532	\$4,592	\$5,828	\$1,155	\$5,298
+1	+\$60	+\$468	+\$594	+\$144	+\$540
Minimum Allotment of \$15 effective from 10/1/2017 - 9/30/2018					
DEDUCTIONS: Standard Deduction: For HH size 1-3 = \$164; 4 = \$174; 5 = \$204; 6 or more = \$234; Excess Shelter Deduction Limit: \$552; Heating and Cooling Standard Utility Allowance: \$344 (HCSUA) – Limited Utility Allowance: \$ 139 (LUA); Telephone Standard: \$52; Dependent Care: Actual Amount (No Limit); Earned Income Deduction: 20%; Homeless Shelter Standard: \$143					

CASH Assistance & Support Services					
Household Size	Federal Poverty Guidelines (FPG) Monthly Income Standards			Maximum Monthly Benefit	
	100% FPG Net Income	85% FPG Gross Limit	NM Works Cash Net Income	Maximum Monthly Benefit	General Assistance
1	\$1,012	\$860	\$266	\$244	\$245
2	\$1,372	\$1,166	\$357	\$327	\$329
3	\$1,732	\$1,472	\$447	\$409	\$412
4	\$2,092	\$1,778	\$539	\$493	\$496
5	\$2,452	\$2,084	\$630	\$576	\$580
6	\$2,812	\$2,390	\$721	\$659	\$664
7	\$3,172	\$2,696	\$812	\$743	\$748
8	\$3,532	\$3,002	\$922	\$843	\$849
+1	+\$360	+\$306	+\$91	+\$83	+\$84
Deductions- Dependent Care: For a child under age 2 = \$200; For a child age 2 and over = \$175. Work Incentives- Earned Income Disregard: Single parent = \$125 & ½ remainder; Two parent = \$225 & ½ remainder.					

ISD 017 Revised 08/13/2018

Medical Assistance Division					
Federal Poverty Guidelines New Mexico Affordable Care Eligibility Groups Effective April 01, 2018 thru March 31, 2019 Monthly Guidelines					
HH SIZE	PERCENT OF POVERTY				
	138%	190%	240%	250%	300%
1	\$1,397	\$1,923	\$2,428	\$2,530	\$3,035
2	\$1,893	\$2,607	\$3,292	\$3,430	\$4,115
3	\$2,390	\$3,291	\$4,156	\$4,330	\$5,195
4	\$2,887	\$3,975	\$5,020	\$5,230	\$6,275
5	\$3,384	\$4,659	\$5,884	\$6,130	\$7,355
6	\$3,881	\$5,343	\$6,748	\$7,030	\$8,435
7	\$4,377	\$6,027	\$7,612	\$7,930	\$9,515
8	\$4,874	\$6,711	\$8,476	\$8,830	\$10,595
138% Adult Expansion, 190% Children ages 6 to 19 (Medicaid), 240% Children ages 0 to 6 (Medicaid); ages 6 to 19 (CHIP), 250% Pregnancy Related Services Only, 300% Children 0 to 6 (CHIP)					

Medical Assistance Division					
Federal Poverty Guidelines New Mexico Affordable Care Eligibility Groups Effective April 01, 2018 thru March 31, 2019 Annual Guidelines					
HH SIZE	PERCENT OF POVERTY				
	138%	190%	240%	250%	300%
1	\$16,764	\$23,076	\$29,136	\$30,360	\$36,420
2	\$22,716	\$31,284	\$39,504	\$41,160	\$49,380
3	\$28,680	\$39,492	\$49,872	\$51,960	\$62,340
4	\$34,644	\$47,700	\$60,240	\$62,760	\$75,300
5	\$40,608	\$55,908	\$70,608	\$73,560	\$88,260
6	\$46,572	\$64,116	\$80,976	\$84,360	\$101,220
7	\$52,524	\$72,324	\$91,344	\$95,160	\$114,180
8	\$58,488	\$80,532	\$101,712	\$105,960	\$127,140
138% Adult Expansion, 190% Children ages 6 to 19 (Medicaid), 240% Children ages 0 to 6 (Medicaid); ages 6 to 19 (CHIP), 250% Pregnancy Related Services Only, 300% Children 0 to 6 (CHIP)					

References

- ¹ *Medicaid Expenditures* (Omnicaid, Medicare Buy-Ins, Lump Sum Payments), Received on November 16, 2018
- ² *ASPEN Business Intelligence Tool: Eligibility*, Retrieved on November 13, 2018
- ³ New Mexico Human Services Department, *Medicaid Eligibility Reports*, Retrieved from <http://www.hsd.state.nm.us/LookingForInformation/medicaid-eligibility.aspx> on November 13, 2018
- ⁴ *ASPEN Business Intelligence Tool: Application Tracking*, Retrieved on November 13, 2018
- ⁵ Fidelity Information Services, *EBT Daily Statistical Report* (for 10/31/2017, 09/30/2018, and 10/31/2018), Retrieved on November 13, 2018
- ⁶ *ASPEN Report DQ-180: Length of Time Cases are Open* (for 10/01/2017-10/31/2017, 09/01/2018-09/30/2018, 10/01/2018-10/31/2018), Retrieved on October 16, 2018
- ⁷ *ASPEN Report EY-180: Individual Demographics by State and Age* (for 10/01/2017-10/30/2017, 09/01/2018-09/30/2018, 10/01/2018-10/31/2018), Retrieved October 16, 2018
- ⁸ *ASPEN Business Intelligence Tool: Benefit Issuance*, Retrieved on November 13, 2018
- ⁹ Fidelity Information Services, *EBT Daily Statistical Reports* (Month End), Retrieved on November 13, 2018
- ¹⁰ *ASPEN Report EY-180R: Individual Demographics by State, Race, Ethnicity and Gender* (for 10/01/2018-10/31/2018), Retrieved on November 16, 2018
- ¹¹ SQL Queries from ASPEN, completed November 2018
- ¹² JP Morgan, *New Mexico – NM EBT System- Monthly Benefit Draw Down Totals*
- ¹³ *ASPEN Business Intelligence Tool: Application Tracking* (w/Parameters: SNAP, Expedite, Approved), Retrieved on October 13, 2018
- ¹⁴ SL Start, *As of Today Report 10.31.18*, received November 10, 2018
- ¹⁵ SL Start, *Statewide Employment Report 10.01.18*, received November 10, 2018

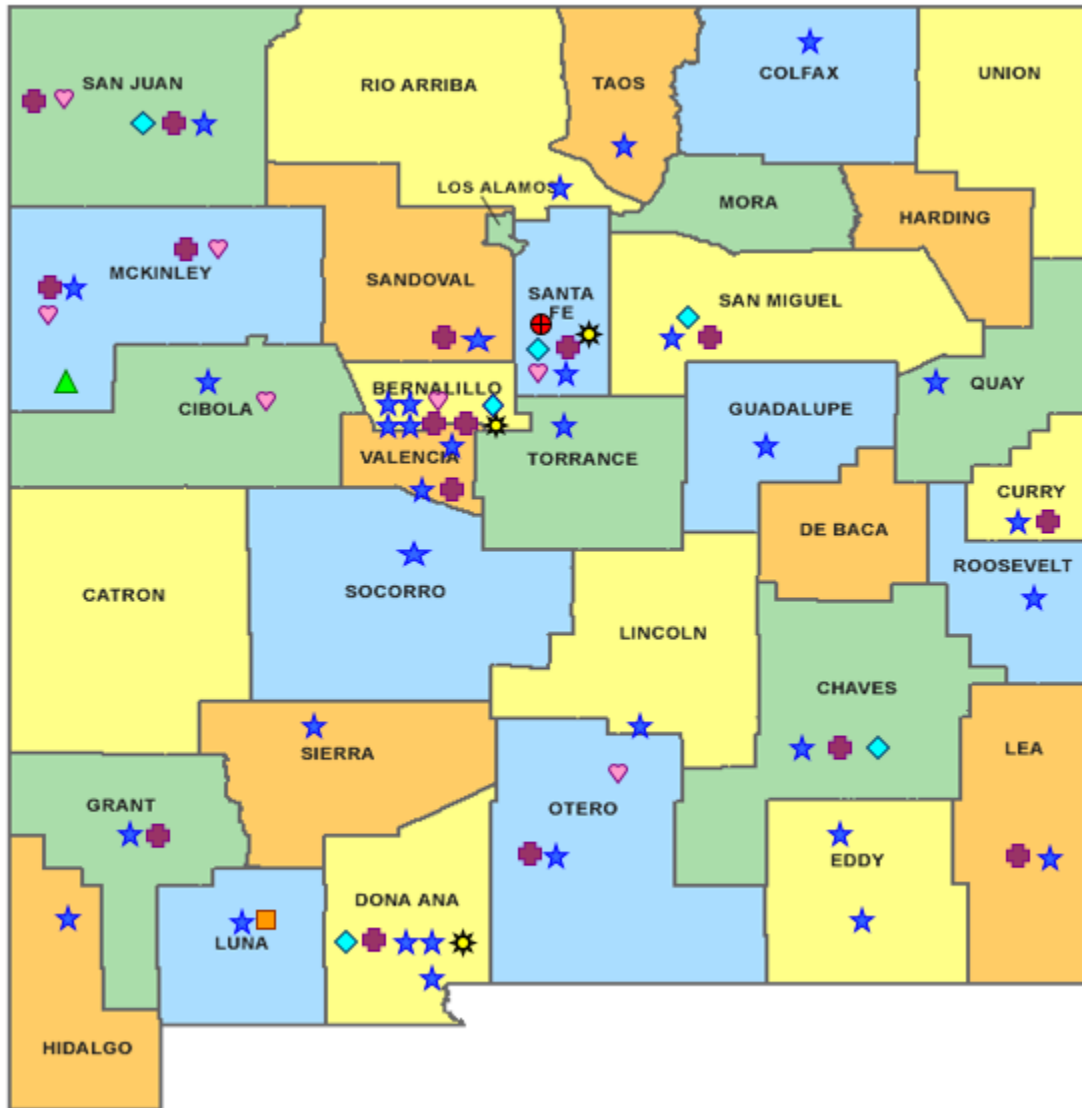
¹⁶SSIAR Payments, received November 2, 2018

¹⁷ Children, Youth, and Families Department, *Children Receiving Child Care Assistance Subsidies by County*, Received on November 10, 2018

¹⁸ Children, Youth, and Families Department, *Child Care Assistance Eligibility Programs*, Received on November 10, 2018

¹⁹ EDG is defined as an Eligibility Determination Group

²⁰SQL Query from ASPEN, completed November 25, 2018



HUMAN SERVICES
DEPARTMENT

New Mexico Human Services Department
Field Offices

- Central Office (1)
- ★ Income Support Division County Office (35)
- ▲ Income Support Division Satellite Office (2)
- Child Support Enforcement Regional Office (16)
- Child Support Enforcement Satellite Office (1)
- ◆ Quality Control Office (8)
- ♥ Indian Health Services (7)
- ☀ Hospital Site (3)