



Monthly Statistical Report

June 2019

There were 824,212 individuals that received Medicaid in June 2019, a 1.7% decrease from one year ago. The count of Medicaid recipients has decreased by 3,331, or 0.4%, since last month.

The SNAP caseload in June 2019 was 221,103, a 0.1% decrease from one year ago. The SNAP caseload has increased by 724 cases, or 0.3%, since last month.

The TANF caseload was 10,037 in June 2019, a decrease of 6.9% from June 2018. The TANF caseload had no change compared to May 2019, an increase of 0.0%.

The caseload for General Assistance was 2,455 in June 2019, a decrease of 14.0% from one year ago and a decrease of 49 cases from last month.

Michelle Lujan Grisham, Governor
David Scrase, M.D., Secretary

Contents	Page
Summary	3-5
Medicaid	6-20
SNAP	21-41
Cash Assistance	42-56
Child Care Assistance	57-58
Income Eligibility Guidelines	59-60

Regions are reported as follows:

Region 1		
Catron	San Juan	Valencia
Cibola	Sierra	
McKinley	Socorro	
Region 2		
Colfax	Mora	Santa Fe
De Baca	Quay	Taos
Guadalupe	Rio Arriba	Union
Harding	Sandoval	
Los Alamos	San Miguel	
Region 3		
Bernalillo	Torrance	
Region 4		
Chaves	Eddy	Lincoln
Curry	Lea	Roosevelt
Region 5		
Dona Ana	Hidalgo	Otero
Grant	Luna	

The Mission of the Human Services Department

To reduce the impact of poverty on people living in New Mexico by providing support services that help families break the cycle of dependency on public assistance

Angela Medrano, Deputy Secretary
Russell Toal, Deputy Secretary

Prepared by Income Support Division
PO Box 2348
Santa Fe, NM 87504-2348
505-827-7250

Karmela Martinez, Acting Director
Vida Tapia-Sanchez, Deputy Director
Shanita Harrison, Deputy Director
Judith Parks, Deputy Director

<http://www.hsd.state.nm.us/monthly-statistical-reports.aspx>

Program Summary for June 2019

				Percent Change	
				Jun-18	May-19
Expenditures¹	\$442,271,369	\$451,165,409	\$469,007,942	6.0%	4.0%
Cases²	491,763	492,053	491,282	-0.1%	-0.2%
Expenditures/Case	\$899	\$917	\$955	6.1%	4.1%
Recipients³	838,680	827,543	824,212	-1.7%	-0.4%
<i>Adults</i>	477,009	471,444	469,153	-1.6%	-0.5%
<i>Children</i>	361,671	356,099	355,059	-1.8%	-0.3%
Recipients /Case	1.71	1.68	1.68	-1.6%	-0.2%
Cases Processed⁴	12,019	11,163	10,542	-12.3%	-5.6%
<i>Approvals⁴</i>	9,534	8,488	8,070	-15.4%	-4.9%

				Percent Change	
				Jun-18	May-19
Expenditures⁵	\$52,676,828	\$52,122,576	\$52,411,973	-0.5%	0.6%
Cases⁶	221,245	220,379	221,103	-0.1%	0.3%
Expenditures/Case	\$238	\$237	\$237	-0.4%	0.2%
Recipients⁷	453,493	445,141	446,595	-1.5%	0.3%
<i>Adults</i>	261,885	259,865	260,692	-0.5%	0.3%
<i>Children</i>	191,608	185,276	185,903	-3.0%	0.3%
Recipients /Case	2.05	2.02	2.02	-1.5%	0.0%
Cases Processed⁴	18,653	17,884	16,775	-10.1%	-6.2%
<i>Approvals⁴</i>	15,091	14,942	13,926	-7.7%	-6.8%

				Percent Change	
				Jun-18	May-19
Expenditures⁵	\$3,859,680	\$3,916,102	\$3,870,340	0.3%	-1.2%
Cases⁶	13,782	12,727	12,630	-8.4%	-0.8%
Expenditures/Case	\$280	\$308	\$306	9.4%	-0.4%
Recipients⁷	30,774	28,282	28,074	-8.8%	-0.7%
<i>Adults</i>	9,710	8,960	8,763	-9.8%	-2.2%
<i>Children</i>	21,064	19,322	19,311	-8.3%	-0.1%
Recipients /Case	2.23	2.22	2.22	-0.5%	0.0%
Cases Processed⁴	5,270	3,888	3,926	-25.5%	1.0%
<i>Approvals⁴</i>	1,671	1,398	1,419	-15.1%	1.5%

				Percent Change	
				Jun-18	May-19
Expenditures⁸	\$591,360	\$675,820	\$556,040	-6.0%	-17.7%
Cases⁸	2,398	2,352	1,956	-18.4%	-16.8%
Expenditures/Case	\$247	\$287	\$284	15.3%	-1.1%
Recipients⁸	5,969	5,577	4,673	-21.7%	-16.2%
<i>Adults</i>	3,148	3,058	2,583	-17.9%	-15.5%
<i>Children</i>	2,821	2,519	2,090	-25.9%	-17.0%
Recipients /Case	2.49	2.37	2.39	-4.0%	0.8%
Cases Processed⁴	3,517	3,529	3,124	-11.2%	-11.5%
<i>Approvals⁴</i>	2,322	2,254	2,002	-13.8%	-11.2%

Cash Assistance Summary for June 2019

Temporary Assistance for Needy Families (TANF)

	Jun-18	May-19	Jun-19	Percent Change	
				Jun-18- Jun-19	May-19- Jun-19
Expenditures ⁵	\$3,127,514	\$3,223,032	\$3,213,197	2.7%	-0.3%
Cases ⁶	10,783	10,037	10,037	-6.9%	0.0%
Expenditures/Case	\$290	\$321	\$320	10.4%	-0.3%
Recipients ⁷	27,588	25,331	25,340	-8.1%	0.0%
<i>Adults</i>	6,892	6,444	6,378	-7.5%	-1.0%
<i>Children</i>	20,696	18,887	18,962	-8.4%	0.4%
Approvals ⁴	1,445	1,189	1,222	-15.4%	2.8%

General Assistance (GA)

	Jun-18	May-19	Jun-19	Percent Change	
				Jun-18- Jun-19	May-19- Jun-19
Expenditures ⁵	\$689,272	\$632,708	\$616,703	-10.5%	-2.5%
Cases ⁶	2,855	2,504	2,455	-14.0%	-2.0%
Expenditures/Case	\$241	\$253	\$251	4.0%	-0.6%
Recipients ⁷	2,864	2,542	2,476	-13.5%	-2.6%
<i>Adults</i>	2,662	2,320	2,241	-15.8%	-3.4%
<i>Children</i>	202	222	235	16.3%	5.9%
Approvals ⁴	170	164	148	-12.9%	-9.8%

Education Works

	Jun-18	May-19	Jun-19	Percent Change	
				Jun-18- Jun-19	May-19- Jun-19
Expenditures ⁵	\$32,181	\$46,739	\$24,882	-22.7%	-46.8%
Cases ⁶	89	119	62	-30.3%	-47.9%
Expenditures/Case	\$362	\$393	\$401	11.0%	2.2%
Recipients ⁷	266	341	181	-32.0%	-46.9%
<i>Adults</i>	100	128	67	-33.0%	-47.7%
<i>Children</i>	166	213	114	-31.3%	-46.5%
Approvals ⁴	9	1	1	-88.9%	0.0%

Refugee Cash (RCA)

	Jun-18	May-19	Jun-19	Percent Change	
				Jun-18- Jun-19	May-19- Jun-19
Expenditures ⁵	\$8,513	\$11,823	\$13,558	59.3%	14.7%
Cases ⁶	33	49	56	69.7%	14.3%
Expenditures/Case	\$258	\$241	\$242	-6.1%	0.3%
Recipients ⁷	34	50	58	70.6%	16.0%
<i>Adults</i>	34	50	58	70.6%	16.0%
<i>Children</i>	0	0	0	N/A	N/A

State Supplement for Residential Care

	Jun-18	May-19	Jun-19	Percent Change	
				Jun-18- Jun-19	May-19- Jun-19
Expenditures ⁵	\$2,200	\$1,800	\$2,000	-9.1%	11.1%
Cases ⁶	22	18	20	-9.1%	11.1%
Expenditures/Case	\$100	\$100	\$100	0.0%	0.0%
Recipients ⁷	22	18	19	-13.6%	5.6%
<i>Adults</i>	22	18	19	-13.6%	5.6%
<i>Children</i>	0	0	0	N/A	N/A

Expenditures YTD			
	SFY 2019	FFY 2019	CY 2019
Medicaid ¹	\$5,561,804,777	\$4,190,173,871	\$2,753,754,243
Supplemental Nutrition Assistance Program ⁹	\$633,258,302	\$474,266,245	\$314,006,111
Temporary Assistance for Needy Families ⁹	\$41,590,548	\$29,565,200	\$19,440,661
General Assistance ⁹	\$8,222,577	\$6,061,842	\$3,939,538
Education Work ⁹	\$558,464	\$424,655	\$252,961
LIHEAP ⁸	\$19,962,321	\$18,048,285	\$7,218,765

Average Caseload YTD			
	SFY 2019	FFY 2019	CY 2019
Medicaid ²	490,276	491,239	492,104
Supplemental Nutrition Assistance Program ⁶	221,560	221,342	220,634
Temporary Assistance for Needy Families ⁶	10,655	10,487	10,254
General Assistance ⁶	2,745	2,694	2,617
Education Work ⁶	114	118	105
LIHEAP ⁸	5,640	6,643	4,115

Demographic Profile- June 2019					
	SNAP	TANF	GA	Education Works	RCA
<i>Gender of Recipients</i> ¹⁰					
Male	201,802	10,750	1,400	62	41
Female	244,793	14,590	1,076	119	17
<i>Ethnicity</i> ¹⁰					
Hispanic	245,510	16,975	1,316	118	32
Non-Hispanic	201,085	8,365	1,160	63	26
<i>Race</i> ¹⁰					
Native American or Alaskan Native	76,444	2,120	221	11	0
Asian	4,109	190	18	1	0
African American or Black	11,446	1,137	105	14	15
Native Hawaiian or Pacific Islander	808	26	1	0	0
White	343,600	21,121	2,071	155	41
Unknown / Not Declared	3,964	199	28	0	0
More than One Race	6,224	547	32	0	2

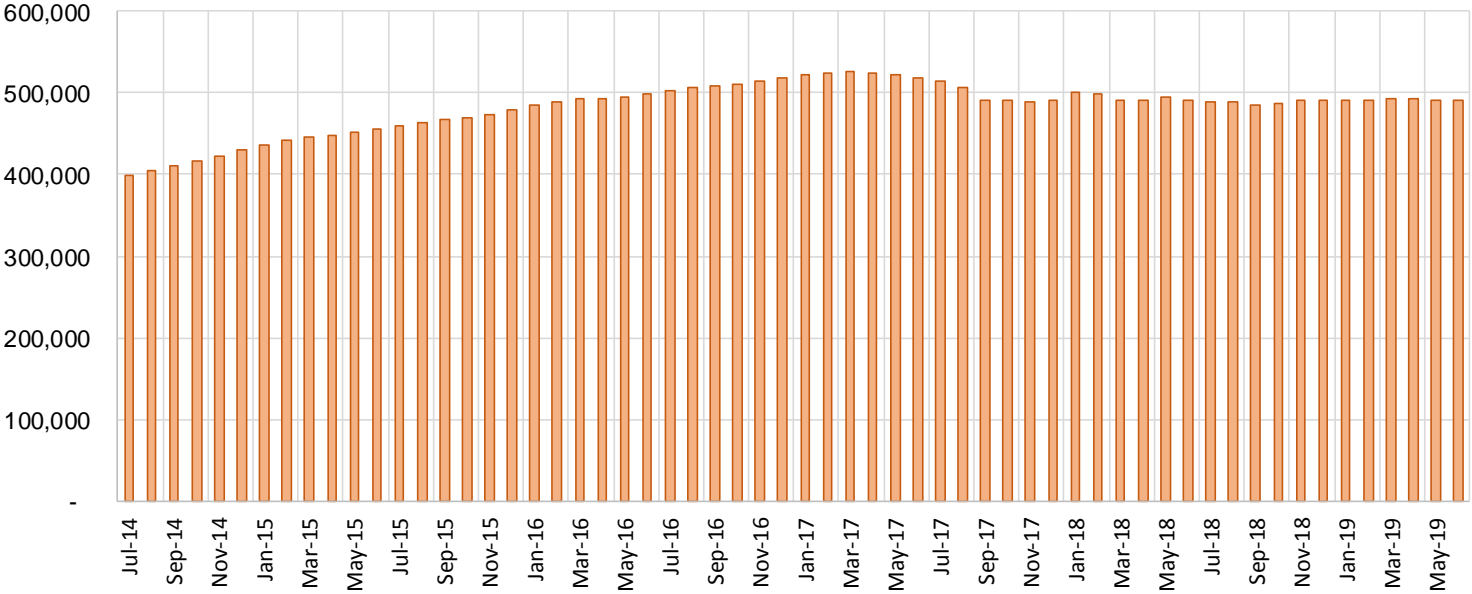
Medicaid Cases by Field Office²

Office				Percent Change	
	Jun-18	May-19	Jun-19	Jun-18- Jun-19	May-19- Jun-19
Chaves County ISD	16,053	15,905	15,886	-1.0%	-0.1%
Cibola County ISD	7,426	7,585	7,531	1.4%	-0.7%
Colfax County ISD	3,613	3,592	3,576	-1.0%	-0.4%
Curry County ISD	13,886	14,595	14,655	5.5%	0.4%
East Dona Ana County ISD	17,626	17,826	17,811	1.0%	-0.1%
Eddy Artesia County ISD	3,847	3,822	3,821	-0.7%	0.0%
Eddy Carlsbad County ISD	7,746	7,556	7,561	-2.4%	0.1%
Grant County ISD	6,751	7,749	7,763	15.0%	0.2%
Guadalupe County ISD	1,733	1,613	1,608	-7.2%	-0.3%
Hidalgo County ISD	971	49	51	-94.7%	4.1%
Lea County ISD	14,402	14,461	14,440	0.3%	-0.1%
Lincoln County ISD	4,314	4,333	4,314	0.0%	-0.4%
Luna County ISD	8,664	8,583	8,590	-0.9%	0.1%
McKinley County ISD	22,860	21,962	21,986	-3.8%	0.1%
Northeast Bernalillo County ISD	42,950	42,804	42,803	-0.3%	0.0%
Northwest Bernalillo County ISD	49,487	51,940	51,939	5.0%	0.0%
Otero County ISD	11,896	12,043	12,063	1.4%	0.2%
Quay County ISD	2,545	2,526	2,509	-1.4%	-0.7%
Rio Arriba County ISD	13,936	13,444	13,352	-4.2%	-0.7%
Roosevelt County ISD	22	9	13	-40.9%	44.4%
San Juan County ISD	29,896	30,298	30,235	1.1%	-0.2%
San Miguel County ISD	9,063	9,109	9,107	0.5%	0.0%
Sandoval County ISD	25,543	23,391	23,220	-9.1%	-0.7%
Santa Fe County ISD	24,765	24,406	24,312	-1.8%	-0.4%
Sierra County ISD	5,370	5,333	5,292	-1.5%	-0.8%
Socorro County ISD	5,319	5,300	5,262	-1.1%	-0.7%
South Dona Ana ISD	19,782	19,808	19,740	-0.2%	-0.3%
Southeast Bernalillo County ISD	25,234	24,962	24,851	-1.5%	-0.4%
Southwest Bernalillo County ISD	38,866	39,692	39,692	2.1%	0.0%
Taos County ISD	9,310	9,242	9,201	-1.2%	-0.4%
Torrance County ISD	7,548	7,897	7,873	4.3%	-0.3%
Valencia North County ISD	18,243	18,250	18,269	0.1%	0.1%
Valencia South County ISD	110	97	105	-4.5%	8.2%
West Dona Ana County ISD	21,982	21,869	21,849	-0.6%	-0.1%
Centralized Units	4	2	2	-50.0%	0.0%
Statewide Total	491,763	492,053	491,282	-0.1%	-0.2%

Medicaid Cases by Region²

				Percent Change	
Region	Jun-18	May-19	Jun-19	Jun-18- Jun-19	May-19- Jun-19
Region 1 - NW	89,224	88,825	88,680	-0.6%	-0.2%
Region 2 - NE	90,508	87,323	86,885	-4.0%	-0.5%
Region 3 - Central	164,085	167,295	167,158	1.9%	-0.1%
Region 4 - SE	60,270	60,681	60,690	0.7%	0.0%
Region 5 - SW	87,672	87,927	87,867	0.2%	-0.1%
Centralized Units	4	2	2	-50.0%	0.0%
Statewide Total	491,763	492,053	491,282	-0.1%	-0.2%

Medicaid Caseload: SFY-15 to Current

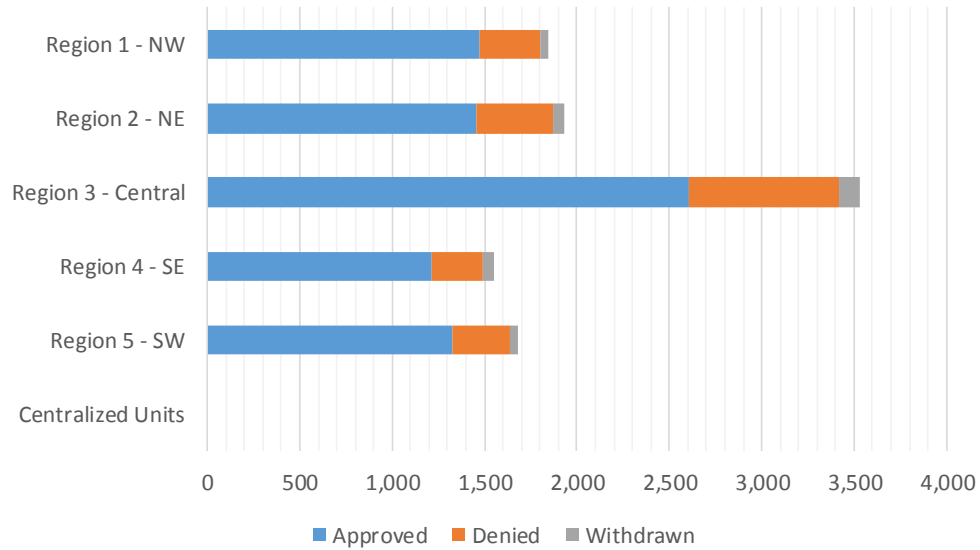


Medicaid Initial Applications by Field Office^{4,11}
June 2019

Office	Approved	Denied	Withdrawn	Total Cases Processed
Chaves County ISD	300	67	19	386
Cibola County ISD	134	34	2	170
Colfax County ISD	64	17	1	82
Curry County ISD	300	57	20	377
East Dona Ana County ISD	334	85	9	428
Eddy Artesia County ISD	68	18	0	86
Eddy Carlsbad County ISD	168	47	5	220
Grant County ISD	123	18	4	145
Guadalupe County ISD	25	1	1	27
Hidalgo County ISD	0	0	0	0
Lea County ISD	289	70	16	375
Lincoln County ISD	82	21	2	105
Luna County ISD	111	22	4	137
McKinley County ISD	391	65	16	472
Northeast Bernalillo County ISD	752	247	17	1,016
Northwest Bernalillo County ISD	587	142	34	763
Otero County ISD	194	44	2	240
Quay County ISD	25	2	1	28
Rio Arriba County ISD	200	43	9	252
Roosevelt County ISD	3	0	0	3
San Juan County ISD	530	135	13	678
San Miguel County ISD	195	37	8	240
Sandoval County ISD	447	140	13	600
Santa Fe County ISD	358	134	24	516
Sierra County ISD	66	26	3	95
Socorro County ISD	75	21	4	100
South Dona Ana ISD	231	63	6	300
Southeast Bernalillo County ISD	581	215	19	815
Southwest Bernalillo County ISD	588	174	35	797
Taos County ISD	139	44	7	190
Torrance County ISD	101	28	8	137
Valencia North County ISD	272	54	2	328
Valencia South County ISD	1	0	0	1
West Dona Ana County ISD	336	78	19	433
Centralized Units	0	0	0	0
Statewide Total	8,070	2,149	323	10,542

Medicaid Initial Applications by Region^{4,11}
June 2019

	Approved	Denied	Withdrawn	Total Cases Processed
Region				
Region 1 - NW	1,469	335	40	1,844
Region 2 - NE	1,453	418	64	1,935
Region 3 - Central	2,609	806	113	3,528
Region 4 - SE	1,210	280	62	1,552
Region 5 - SW	1,329	310	44	1,683
Centralized Units	0	0	0	0
Statewide Total	8,070	2,149	323	10,542



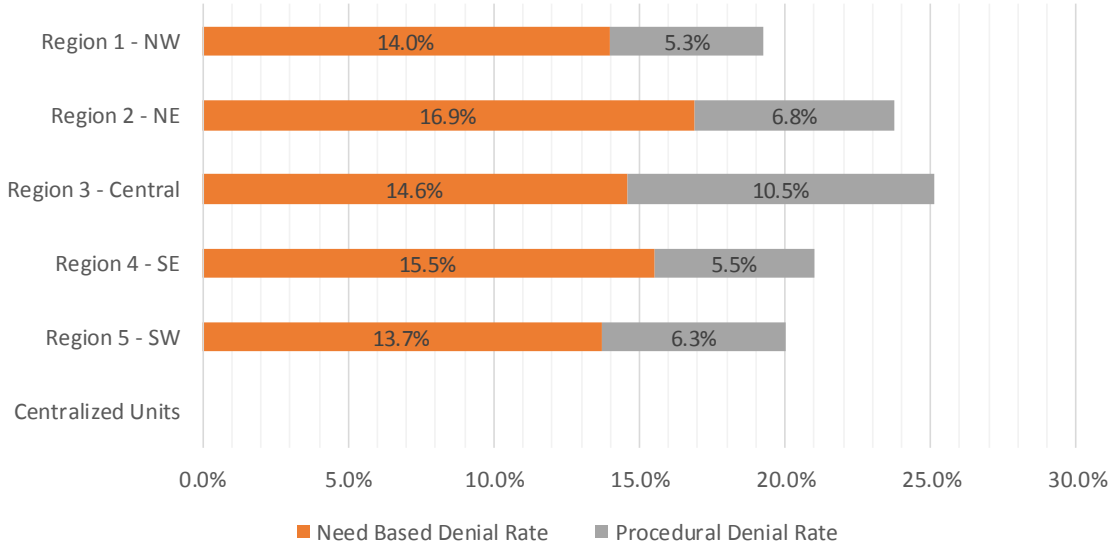
Medicaid EDG Initial Disposition Rates by Field Office^{4,11,19}
June 2019

Office	Approval Rate	Denial Rate	Need Based Denial Rate	Procedural Denial Rate
Chaves County ISD	78.1%	21.9%	16.7%	5.2%
Cibola County ISD	78.8%	21.2%	14.1%	7.1%
Colfax County ISD	79.0%	21.0%	13.6%	7.4%
Curry County ISD	80.9%	19.1%	13.4%	5.7%
East Dona Ana County ISD	78.6%	21.4%	14.6%	6.8%
Eddy Artesia County ISD	79.1%	20.9%	17.4%	3.5%
Eddy Carlsbad County ISD	78.1%	21.9%	13.1%	8.8%
Grant County ISD	84.8%	15.2%	10.4%	4.8%
Guadalupe County ISD	92.6%	7.4%	3.7%	3.7%
Hidalgo County ISD	0.0%	0.0%	0.0%	0.0%
Lea County ISD	78.5%	21.5%	16.9%	4.6%
Lincoln County ISD	78.8%	21.2%	17.4%	3.8%
Luna County ISD	81.6%	18.4%	14.0%	4.4%
McKinley County ISD	83.5%	16.5%	12.2%	4.3%
Northeast Bernalillo County ISD	74.9%	25.1%	12.4%	12.7%
Northwest Bernalillo County ISD	78.4%	21.6%	14.3%	7.3%
Otero County ISD	81.5%	18.5%	11.4%	7.1%
Quay County ISD	89.3%	10.7%	10.7%	0.0%
Rio Arriba County ISD	79.7%	20.3%	14.7%	5.6%
Roosevelt County ISD	100.0%	0.0%	0.0%	0.0%
San Juan County ISD	79.3%	20.7%	14.4%	6.3%
San Miguel County ISD	81.9%	18.1%	13.9%	4.2%
Sandoval County ISD	75.5%	24.5%	17.4%	7.1%
Santa Fe County ISD	71.0%	29.0%	20.9%	8.1%
Sierra County ISD	69.5%	30.5%	25.2%	5.3%
Socorro County ISD	75.8%	24.2%	14.1%	10.1%
South Dona Ana ISD	78.3%	21.7%	17.3%	4.4%
Southeast Bernalillo County ISD	71.3%	28.7%	16.2%	12.5%
Southwest Bernalillo County ISD	75.4%	24.6%	15.2%	9.4%
Taos County ISD	75.5%	24.5%	15.8%	8.7%
Torrance County ISD	75.9%	24.1%	17.3%	6.8%
Valencia North County ISD	85.0%	15.0%	12.8%	2.2%
Valencia South County ISD	100.0%	0.0%	0.0%	0.0%
West Dona Ana County ISD	79.4%	20.6%	12.8%	7.8%
Centralized Units	0.0%	0.0%	0.0%	0.0%
Statewide Total	77.6%	22.4%	14.9%	7.5%

Medicaid EDG Initial Disposition Rates by Region ^{4,11,19}
June 2019

Region	Approval Rate	Denial Rate	Need Based Denial Rate	Procedural Denial Rate
Region 1 - NW	80.7%	19.3%	14.0%	5.3%
Region 2 - NE	76.3%	23.7%	16.9%	6.8%
Region 3 - Central	74.9%	25.1%	14.6%	10.5%
Region 4 - SE	79.0%	21.0%	15.5%	5.5%
Region 5 - SW	80.0%	20.0%	13.7%	6.3%
Centralized Units				

Statewide Total	77.6%	22.4%	14.9%	7.5%
-----------------	-------	-------	-------	------



Medicaid: Percentage of Initial EDG Approvals Processed Timely by Field Office ^{13,19}

	Oct-18	Nov-18	Dec-18	Jan-19	Feb-19	Mar-19	Apr-19	May-19	Jun-19	Jul-19	Aug-19	Sep-19	Average
Cibola	100.0%	98.8%	96.8%	98.9%	99.5%	95.7%	99.1%	99.0%	99.0%				98.5%
McKinley	99.5%	99.4%	99.1%	99.3%	98.1%	98.6%	99.4%	99.4%	98.6%				99.0%
San Juan	98.9%	98.9%	99.2%	99.0%	99.3%	98.6%	99.1%	98.6%	97.9%				98.8%
Sierra	97.4%	99.3%	96.2%	99.2%	100.0%	100.0%	100.0%	99.1%	99.2%				98.9%
Socorro	100.0%	100.0%	100.0%	99.3%	99.3%	100.0%	100.0%	98.4%	98.2%				99.5%
Valencia North	98.9%	99.2%	99.3%	99.8%	99.1%	98.1%	100.0%	97.2%	98.4%				98.9%
Valencia South	100.0%	100.0%	100.0%	100.0%	100.0%	100.0%		100.0%	100.0%				100.0%
NW Region 1 Total	99.1%	99.1%	99.0%	99.3%	99.0%	98.7%	99.4%	98.6%	98.4%				99.0%
Colfax	99.1%	97.4%	97.3%	96.2%	100.0%	98.6%	100.0%	98.5%	100.0%				98.6%
Guadalupe	96.8%	100.0%	100.0%	100.0%	100.0%	100.0%	100.0%	96.0%	97.1%				98.9%
Quay	98.6%	100.0%	100.0%	100.0%	98.0%	100.0%	100.0%	96.7%	93.9%				98.6%
Rio Arriba	99.7%	99.4%	98.9%	98.9%	98.6%	98.3%	99.6%	98.3%	99.0%				99.0%
San Miguel	99.7%	100.0%	99.3%	99.7%	100.0%	99.0%	100.0%	100.0%	100.0%				99.7%
Sandoval	98.2%	99.2%	98.6%	98.7%	99.7%	98.0%	100.0%	98.5%	98.0%				98.8%
Santa Fe	99.0%	99.0%	99.7%	99.2%	99.0%	98.3%	99.2%	97.2%	98.2%				98.8%
Taos	100.0%	98.8%	99.0%	100.0%	99.6%	97.7%	99.6%	100.0%	98.1%				99.2%
NE Region 2 Total	99.0%	99.2%	99.1%	99.0%	99.4%	98.7%	99.7%	98.4%	98.4%				99.0%
NE Bernalillo	97.5%	98.5%	98.5%	97.9%	98.5%	97.9%	98.5%	97.4%	98.0%				98.1%
NW Bernalillo	98.6%	99.5%	99.4%	98.7%	99.0%	98.2%	99.0%	98.2%	98.7%				98.8%
SE Bernalillo	98.4%	98.7%	98.7%	98.6%	98.7%	97.4%	99.3%	97.4%	96.8%				98.2%
SW Bernalillo	98.7%	97.9%	98.6%	97.6%	99.5%	98.3%	98.6%	99.5%	98.0%				98.5%
Torrance	99.3%	97.8%	99.6%	98.2%	96.9%	98.3%	100.0%	97.9%	100.0%				98.7%
Gen. Region 3 Total	98.3%	98.6%	98.9%	98.2%	98.8%	98.0%	98.9%	99.0%	98.0%				98.5%
Chaves	99.5%	99.2%	98.3%	99.6%	99.8%	97.9%	99.8%	96.5%	98.9%				98.8%
Curry	98.5%	98.9%	99.1%	98.5%	98.5%	98.2%	99.4%	98.3%	98.5%				98.7%
Eddy Artesia	100.0%	97.7%	99.0%	98.6%	98.1%	98.5%	100.0%	97.9%	99.1%				98.8%
Eddy Carlsbad	98.0%	97.9%	99.6%	98.8%	97.0%	97.7%	99.3%	97.9%	96.8%				98.1%
Lea	99.3%	99.5%	99.4%	99.4%	99.4%	98.4%	100.0%	97.5%	98.5%				99.0%
Lincoln	99.3%	99.5%	98.1%	98.7%	100.0%	97.5%	100.0%	100.0%	98.0%				99.0%
Roosevelt	100.0%	100.0%	100.0%	100.0%	100.0%	98.1%			100.0%				99.7%
SE Region 4 Total	99.0%	99.0%	98.9%	99.1%	98.9%	98.0%	99.7%	97.8%	98.4%				98.8%
East Dona Ana	99.7%	97.3%	98.7%	99.0%	97.9%	97.1%	99.0%	97.8%	98.7%				98.4%
Grant	98.4%	99.2%	98.6%	98.9%	95.3%	98.9%	99.0%	97.0%	98.8%				98.2%
Luna	97.5%	100.0%	100.0%	99.6%	100.0%	100.0%	98.5%	99.0%	99.4%				99.3%
Otero	98.4%	98.9%	99.1%	98.3%	99.3%	98.6%	99.6%	97.5%	97.3%				98.6%
South Dona Ana	99.6%	99.2%	99.1%	98.9%	99.6%	98.7%	99.1%	97.3%	98.2%				98.9%
West Dona Ana	98.9%	99.2%	100.0%	98.9%	99.3%	98.9%	99.7%	97.6%	97.5%				98.9%
SW Region 5 Total	99.0%	98.8%	99.2%	98.9%	98.8%	98.7%	99.2%	97.6%	98.2%				98.7%
STATE TOTAL	98.8%	98.9%	99.0%	98.8%	98.9%	98.5%	99.3%	98.1%	98.2%				98.7%

Medicaid: Percentage of Initial EDG Denials Processed Timely by Field Office ^{13,19}

	Oct-18	Nov-18	Dec-18	Jan-19	Feb-19	Mar-19	Apr-19	May-19	Jun-19	Jul-19	Aug-19	Sep-19	Average
Cibola	90.2%	93.8%	97.1%	100.0%	96.6%	98.3%	100.0%	83.3%	100.0%				95.5%
McKinley	95.2%	97.7%	97.2%	96.7%	94.2%	94.2%	96.3%	96.4%	99.3%				96.4%
San Juan	92.1%	87.2%	96.8%	97.5%	96.2%	96.4%	97.5%	96.1%	97.3%				95.2%
Sierra	92.3%	100.0%	100.0%	100.0%	100.0%	100.0%	96.2%	100.0%	100.0%				98.7%
Socorro	88.6%	97.6%	100.0%	100.0%	96.8%	100.0%	94.9%	94.3%	100.0%				96.9%
Valencia North	96.8%	98.0%	94.4%	96.3%	98.4%	95.6%	100.0%	99.1%	100.0%				97.6%
Valencia South	100.0%	100.0%	100.0%			100.0%		100.0%					100.0%
NW Region 1 Total	93.2%	93.9%	96.8%	97.5%	96.5%	97.8%	97.6%	96.0%	98.7%				96.4%
Colfax	100.0%	100.0%	100.0%	98.1%	85.7%	100.0%	97.5%	100.0%	100.0%				97.9%
Guadalupe	100.0%	100.0%	100.0%	84.6%	100.0%	100.0%	100.0%	100.0%	100.0%				98.3%
Quay	91.7%	95.0%	100.0%	100.0%	100.0%	100.0%	100.0%	97.7%	100.0%				98.3%
Rio Arriba	82.2%	94.8%	89.6%	100.0%	98.9%	99.0%	99.0%	92.3%	96.3%				94.7%
San Miguel	97.9%	100.0%	99.0%	97.9%	97.0%	97.6%	100.0%	98.6%	98.4%				98.5%
Sandoval	90.0%	97.1%	98.4%	98.0%	99.2%	94.7%	96.2%	99.0%	96.6%				96.6%
Santa Fe	92.7%	93.4%	96.1%	98.0%	96.2%	94.3%	97.7%	97.9%	98.2%				96.1%
Taos	96.4%	98.0%	100.0%	96.5%	99.0%	96.5%	93.5%	98.5%	100.0%				97.6%
NE Region 2 Total	91.9%	96.2%	97.0%	97.8%	97.5%	97.8%	97.4%	97.6%	97.7%				96.8%
NE Bernalillo	91.1%	93.3%	96.9%	95.7%	92.6%	92.7%	92.4%	96.8%	96.3%				94.2%
NW Bernalillo	89.6%	97.4%	95.6%	98.0%	95.3%	93.2%	95.7%	97.4%	96.5%				95.4%
SE Bernalillo	95.0%	95.1%	96.3%	93.1%	90.6%	94.5%	98.2%	96.0%	97.5%				95.1%
SW Bernalillo	83.6%	97.8%	98.6%	97.7%	93.9%	96.0%	95.5%	98.4%	95.2%				95.2%
Torrance	94.0%	96.2%	100.0%	95.8%	98.9%	97.3%	100.0%	96.7%	100.0%				97.7%
Gen. Region 3 Total	90.1%	95.6%	96.9%	96.4%	93.6%	94.7%	95.4%	97.1%	96.5%				95.1%
Chaves	98.2%	98.0%	96.8%	98.2%	96.3%	99.5%	97.8%	98.9%	98.6%				98.0%
Curry	92.0%	90.8%	97.7%	94.5%	96.6%	97.9%	94.5%	97.2%	97.5%				95.4%
Eddy Artesia	97.7%	97.6%	96.2%	98.4%	100.0%	97.2%	100.0%	100.0%	100.0%				98.6%
Eddy Carlsbad	90.1%	95.0%	96.0%	97.7%	94.1%	98.6%	98.9%	97.1%	97.5%				96.1%
Lea	90.8%	98.6%	97.0%	97.1%	93.2%	97.0%	97.5%	97.8%	98.7%				96.4%
Lincoln	92.5%	98.2%	98.0%	95.8%	90.1%	100.0%	98.0%	100.0%	100.0%				97.0%
Roosevelt	100.0%	100.0%				100.0%		100.0%					100.0%
SE Region 4 Total	93.3%	96.6%	97.0%	96.9%	94.8%	98.6%	97.4%	98.2%	98.4%				96.8%
East Dona Ana	96.6%	94.0%	97.7%	97.8%	97.9%	98.5%	98.2%	94.6%	98.5%				97.1%
Grant	96.2%	100.0%	98.5%	98.6%	98.6%	100.0%	100.0%	100.0%	97.1%				98.8%
Luna	96.4%	100.0%	100.0%	91.8%	100.0%	97.8%	100.0%	97.1%	100.0%				98.1%
Otero	96.1%	98.8%	93.9%	96.2%	90.5%	95.7%	99.0%	97.9%	94.8%				95.9%
South Dona Ana	100.0%	99.2%	99.4%	97.1%	98.8%	98.9%	96.7%	100.0%	95.8%				98.4%
West Dona Ana	97.5%	97.2%	100.0%	96.7%	96.5%	99.2%	96.4%	98.6%	99.3%				97.9%
SW Region 5 Total	97.4%	97.7%	98.3%	96.6%	97.4%	98.4%	97.8%	97.8%	97.6%				97.7%
STATE TOTAL	92.6%	96.0%	97.1%	97.0%	95.5%	97.6%	96.8%	97.3%	97.5%				96.4%

Medicaid: Percentage of Initial EDG Approvals and Denials Combined Processed Timely by Field Office ^{13,19}

	Oct-18	Nov-18	Dec-18	Jan-19	Feb-19	Mar-19	Apr-19	May-19	Jun-19	Jul-19	Aug-19	Sep-19	Average
Cibola	98.6%	97.9%	96.8%	99.1%	98.8%	96.4%	99.3%	96.3%	99.2%				98.0%
McKinley	98.7%	99.1%	98.8%	98.7%	97.2%	97.7%	98.8%	98.8%	98.7%				98.5%
San Juan	97.8%	97.1%	98.7%	98.7%	98.5%	98.1%	98.7%	98.1%	97.8%				98.2%
Sierra	97.0%	99.4%	96.9%	99.4%	100.0%	100.0%	99.2%	99.3%	99.4%				99.0%
Socorro	96.6%	99.4%	100.0%	99.5%	98.8%	100.0%	98.8%	97.2%	98.6%				98.8%
Valencia North	98.6%	99.0%	98.3%	99.0%	98.9%	97.5%	100.0%	97.6%	98.7%				98.6%
Valencia South	100.0%	100.0%	100.0%	100.0%	100.0%	100.0%		100.0%	100.0%				100.0%
NW Region 1 Total	98.1%	98.3%	98.5%	98.8%	98.4%	98.5%	99.0%	98.1%	98.4%				98.5%
Colfax	99.2%	98.1%	98.1%	96.8%	95.7%	98.9%	99.4%	99.1%	100.0%				98.4%
Guadalupe	96.8%	100.0%	100.0%	96.7%	100.0%	100.0%	100.0%	97.2%	97.2%				98.7%
Quay	97.6%	98.0%	100.0%	100.0%	98.5%	100.0%	100.0%	97.1%	95.0%				98.5%
Rio Arriba	97.6%	98.3%	96.3%	99.1%	98.7%	98.5%	99.4%	96.6%	98.4%				98.1%
San Miguel	99.5%	100.0%	99.3%	99.3%	99.3%	98.7%	100.0%	99.7%	99.7%				99.5%
Sandoval	97.0%	98.8%	98.6%	98.5%	99.5%	97.1%	99.1%	98.6%	97.6%				98.3%
Santa Fe	97.8%	97.7%	98.9%	98.7%	98.0%	97.1%	98.9%	97.4%	98.2%				98.1%
Taos	99.7%	98.7%	99.3%	98.8%	99.4%	97.5%	98.3%	99.6%	98.6%				98.9%
NE Region 2 Total	98.0%	98.5%	98.6%	98.7%	98.8%	98.5%	99.1%	98.2%	98.2%				98.5%
NE Bernalillo	96.1%	97.2%	98.1%	97.3%	96.5%	96.5%	96.8%	97.2%	97.5%				97.0%
NW Bernalillo	96.8%	99.1%	98.4%	98.5%	97.9%	96.9%	98.2%	98.0%	98.2%				98.0%
SE Bernalillo	97.6%	97.8%	98.1%	97.1%	96.3%	96.5%	99.0%	97.0%	97.0%				97.4%
SW Bernalillo	96.1%	97.9%	98.6%	97.6%	97.9%	97.7%	97.8%	98.3%	97.3%				97.7%
Torrance	98.4%	97.6%	99.7%	97.5%	97.5%	98.1%	100.0%	98.8%	100.0%				98.6%
Gen. Region 3 Total	96.7%	98.0%	98.4%	97.6%	97.2%	97.1%	97.9%	97.7%	97.6%				97.6%
Chaves	99.2%	99.0%	97.8%	99.2%	98.7%	98.5%	99.2%	98.9%	98.9%				98.8%
Curry	97.3%	97.9%	98.7%	97.4%	98.0%	98.2%	98.5%	96.6%	98.3%				97.9%
Eddy Artesia	99.5%	97.6%	98.5%	98.5%	98.5%	98.2%	100.0%	98.7%	99.3%				98.8%
Eddy Carlsbad	96.5%	97.1%	98.7%	98.5%	96.0%	97.9%	99.2%	97.7%	97.0%				97.6%
Lea	97.2%	99.3%	98.8%	98.7%	97.5%	98.1%	99.4%	97.9%	98.5%				98.4%
Lincoln	97.5%	99.2%	98.1%	97.8%	96.2%	98.2%	99.5%	98.4%	98.4%				98.1%
Roosevelt	100.0%	100.0%	100.0%	100.0%	100.0%	100.0%		100.0%	100.0%				100.0%
SE Region 4 Total	97.7%	98.5%	98.4%	98.5%	97.6%	98.4%	99.2%	97.9%	98.4%				98.3%
East Dona Ana	99.1%	96.7%	98.4%	98.7%	97.9%	97.5%	98.8%	97.0%	98.6%				98.1%
Grant	97.9%	99.4%	98.6%	98.8%	96.3%	99.1%	99.2%	97.8%	98.5%				98.4%
Luna	97.3%	100.0%	100.0%	97.6%	100.0%	99.4%	98.9%	98.5%	99.5%				99.0%
Otero	98.1%	98.9%	97.8%	97.7%	97.6%	97.9%	99.5%	97.6%	96.7%				98.0%
South Dona Ana	99.7%	99.2%	99.2%	98.3%	99.4%	98.8%	98.4%	98.0%	97.6%				98.7%
West Dona Ana	98.7%	98.9%	100.0%	98.3%	98.6%	99.0%	98.9%	97.8%	97.9%				98.7%
SW Region 5 Total	98.7%	98.6%	99.0%	98.3%	98.4%	98.6%	98.9%	97.7%	98.0%				98.5%
STATE TOTAL	97.7%	98.3%	98.6%	98.3%	98.0%	98.3%	98.7%	97.9%	98.1%				98.2%

Medicaid Renewal Disposition Counts by Field Office^{4,11}
June 2019

Office	Approvals	Closures	Need Based Closures	Procedural Closures
Chaves County ISD	2,592	656	226	430
Cibola County ISD	1,370	311	109	202
Colfax County ISD	540	95	38	57
Curry County ISD	2,591	545	214	331
East Dona Ana County ISD	3,138	764	310	454
Eddy Artesia County ISD	602	180	61	119
Eddy Carlsbad County ISD	905	417	132	285
Grant County ISD	1,140	266	89	177
Guadalupe County ISD	210	46	13	33
Hidalgo County ISD	0	0	0	0
Lea County ISD	2,384	685	222	463
Lincoln County ISD	606	192	55	137
Luna County ISD	1,461	327	146	181
McKinley County ISD	4,110	1005	365	640
Northeast Bernalillo County ISD	5,576	1576	553	1023
Northwest Bernalillo County ISD	4,861	1332	408	924
Otero County ISD	1,904	410	161	249
Quay County ISD	394	90	35	55
Rio Arriba County ISD	1,967	424	154	270
Roosevelt County ISD	0	0	0	0
San Juan County ISD	5,219	1376	468	908
San Miguel County ISD	1,069	299	101	198
Sandoval County ISD	3,775	1060	344	716
Santa Fe County ISD	2,941	812	268	544
Sierra County ISD	735	166	67	99
Socorro County ISD	792	163	75	88
South Dona Ana ISD	3,840	724	324	400
Southeast Bernalillo County ISD	2,917	814	250	564
Southwest Bernalillo County ISD	7,096	1832	710	1122
Taos County ISD	1,150	360	98	262
Torrance County ISD	1,072	264	109	155
Valencia North County ISD	2,737	683	255	428
Valencia South County ISD	1	0	0	0
West Dona Ana County ISD	3,582	588	264	324
Centralized Units	0	0	0	0
Statewide Total	73,277	18,462	6,624	11,838

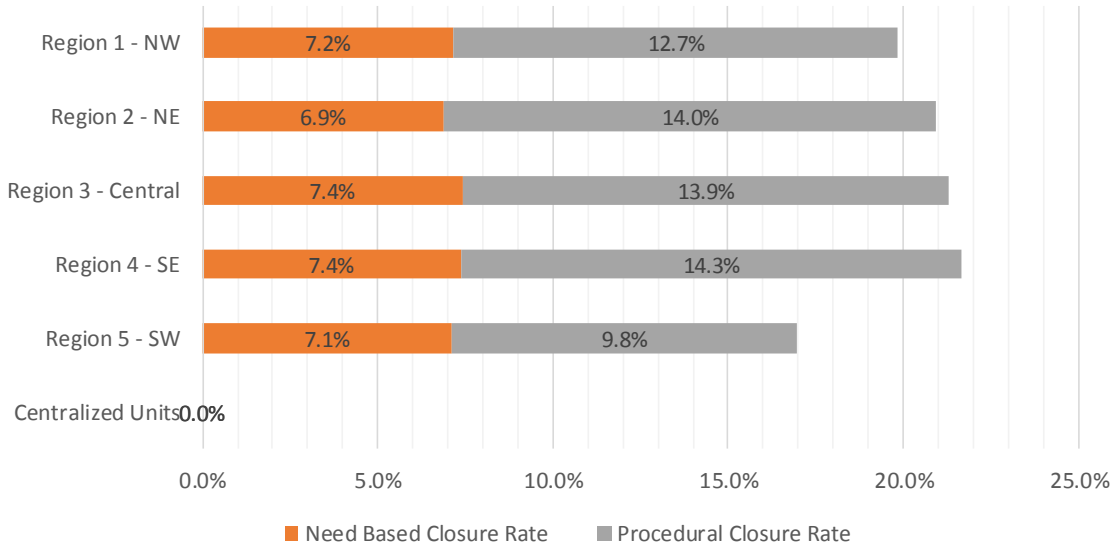
Medicaid Renewal Disposition Rates by Field Office²⁰
June 2019

Office	Approval Rate	Closure Rate	Need Based Closure Rate	Procedural Closure Rate
Chaves County ISD	79.8%	20.2%	7.0%	13.2%
Cibola County ISD	81.5%	18.5%	6.5%	12.0%
Colfax County ISD	85.0%	15.0%	6.0%	9.0%
Curry County ISD	82.6%	17.4%	6.8%	10.6%
East Dona Ana County ISD	80.4%	19.6%	7.9%	11.6%
Eddy Artesia County ISD	77.0%	23.0%	7.8%	15.2%
Eddy Carlsbad County ISD	68.5%	31.5%	10.0%	21.6%
Grant County ISD	81.1%	18.9%	6.3%	12.6%
Guadalupe County ISD	82.0%	18.0%	5.1%	12.9%
Hidalgo County ISD	0.0%	0.0%	0.0%	0.0%
Lea County ISD	77.7%	22.3%	7.2%	15.1%
Lincoln County ISD	75.9%	24.1%	6.9%	17.2%
Luna County ISD	81.7%	18.3%	8.2%	10.1%
McKinley County ISD	80.4%	19.6%	7.1%	12.5%
Northeast Bernalillo County ISD	78.0%	22.0%	7.7%	14.3%
Northwest Bernalillo County ISD	78.5%	21.5%	6.6%	14.9%
Otero County ISD	82.3%	17.7%	7.0%	10.8%
Quay County ISD	81.4%	18.6%	7.2%	11.4%
Rio Arriba County ISD	82.3%	17.7%	6.4%	11.3%
Roosevelt County ISD	0.0%	0.0%	0.0%	0.0%
San Juan County ISD	79.1%	20.9%	7.1%	13.8%
San Miguel County ISD	78.1%	21.9%	7.4%	14.5%
Sandoval County ISD	78.1%	21.9%	7.1%	14.8%
Santa Fe County ISD	78.4%	21.6%	7.1%	14.5%
Sierra County ISD	81.6%	18.4%	7.4%	11.0%
Socorro County ISD	82.9%	17.1%	7.9%	9.2%
South Dona Ana ISD	84.1%	15.9%	7.1%	8.8%
Southeast Bernalillo County ISD	78.2%	21.8%	6.7%	15.1%
Southwest Bernalillo County ISD	79.5%	20.5%	8.0%	12.6%
Taos County ISD	76.2%	23.8%	6.5%	17.4%
Torrance County ISD	80.2%	19.8%	8.2%	11.6%
Valencia North County ISD	80.0%	20.0%	7.5%	12.5%
Valencia South County ISD	100.0%	0.0%	0.0%	0.0%
West Dona Ana County ISD	85.9%	14.1%	6.3%	7.8%
Centralized Units	0.0%	0.0%	0.0%	0.0%
Statewide Total	79.9%	20.1%	7.2%	12.9%

Medicaid Renewal Disposition Rates by Region²⁰
June 2019

Region	Approval Rate	Closure Rate	Need Based Closure Rate	Procedural Closure Rate
Region 1 - NW	80.2%	19.8%	7.2%	12.7%
Region 2 - NE	79.1%	20.9%	6.9%	14.0%
Region 3 - Central	78.7%	21.3%	7.4%	13.9%
Region 4 - SE	78.3%	21.7%	7.4%	14.3%
Region 5 - SW	83.0%	17.0%	7.1%	9.8%
Centralized Units				

Statewide Total	79.9%	20.1%	7.2%	12.9%
-----------------	-------	-------	------	-------



Medicaid: Percentage of Approved Renewal EDGs Processed by Certification Date ¹¹

	Oct-18	Nov-18	Dec-18	Jan-19	Feb-19	Mar-19	Apr-19	May-19	Jun-19	Jul-19	Aug-19	Sep-19	Average
Cibola	99.7%	97.1%	97.8%	98.2%	98.2%	98.2%	98.6%	98.3%	98.4%				98.3%
McKinley	99.4%	97.5%	98.9%	99.1%	97.7%	98.2%	98.8%	99.0%	98.4%				98.5%
San Juan	99.2%	97.3%	99.0%	98.2%	99.0%	98.6%	98.9%	98.7%	99.0%				98.6%
Sierra	98.8%	97.6%	99.1%	98.7%	97.7%	97.0%	98.4%	97.4%	99.5%				98.3%
Socorro	99.2%	96.2%	96.8%	99.3%	98.8%	98.1%	98.5%	97.9%	98.6%				98.1%
Valencia North	99.0%	96.6%	97.9%	98.1%	98.4%	97.7%	97.4%	97.3%	97.4%				97.7%
Valencia South													
NW Region 1 Total	99.2%	97.1%	98.2%	98.6%	98.3%	98.0%	98.4%	98.1%	98.6%				98.3%
Colfax	99.2%	97.5%	97.6%	99.5%	98.0%	98.9%	99.2%	98.0%	98.9%				98.5%
Guadalupe	99.6%	96.9%	99.2%	100.0%	99.5%	99.6%	99.6%	99.6%	98.6%				99.2%
Quay	98.4%	97.0%	99.1%	99.0%	96.1%	97.6%	98.0%	97.8%	96.1%				97.7%
Rio Arriba	98.6%	97.1%	98.6%	97.7%	97.0%	96.3%	97.6%	97.3%	97.7%				97.5%
San Miguel	99.5%	97.3%	99.7%	99.3%	99.3%	99.1%	99.4%	99.8%	99.3%				99.2%
Sandoval	98.6%	97.1%	97.7%	98.4%	97.8%	98.9%	97.8%	99.0%	98.6%				98.2%
Santa Fe	97.9%	95.8%	98.1%	96.9%	97.7%	97.3%	95.9%	98.0%	97.9%				97.3%
Taos	98.2%	97.1%	99.1%	99.1%	98.1%	98.1%	97.8%	99.6%	98.6%				98.4%
NE Region 2 Total	98.8%	97.0%	98.7%	98.7%	97.9%	98.2%	98.2%	98.6%	98.2%				98.3%
NE Bernalillo	98.1%	96.7%	98.3%	98.2%	98.4%	98.6%	98.7%	98.5%	98.0%				98.2%
NW Bernalillo	97.9%	97.2%	98.5%	98.2%	98.9%	98.0%	98.1%	97.9%	98.2%				98.1%
SE Bernalillo	98.5%	96.9%	98.8%	98.7%	98.5%	98.8%	98.3%	98.6%	98.4%				98.4%
SW Bernalillo	98.2%	96.7%	98.3%	98.5%	97.8%	98.0%	97.6%	97.4%	97.7%				97.8%
Torrance	99.5%	98.0%	98.8%	99.2%	99.8%	99.4%	99.0%	98.8%	98.6%				99.0%
Gen. Region 3 Total	98.5%	97.1%	98.5%	98.6%	98.7%	98.6%	98.3%	98.2%	98.2%				98.3%
Chaves	98.8%	97.1%	98.8%	99.2%	98.1%	99.2%	98.6%	98.4%	98.6%				98.5%
Curry	98.9%	97.5%	98.7%	98.7%	98.2%	98.8%	98.2%	98.7%	99.3%				98.6%
Eddy Artesia	98.2%	96.9%	98.2%	99.5%	97.4%	98.4%	96.5%	98.0%	97.7%				97.9%
Eddy Carlsbad	98.9%	96.6%	97.0%	98.1%	97.2%	98.0%	98.0%	97.7%	98.8%				97.8%
Lea	98.9%	97.8%	99.2%	99.4%	99.3%	98.5%	98.4%	98.9%	98.1%				98.7%
Lincoln	98.6%	95.2%	98.6%	96.3%	98.3%	98.1%	97.6%	96.9%	99.2%				97.6%
Roosevelt	100.0%												100.0%
SE Region 4 Total	98.9%	96.9%	98.4%	98.6%	98.1%	98.5%	97.9%	98.1%	98.6%				98.2%
East Dona Ana	99.3%	97.1%	99.5%	99.3%	99.3%	99.2%	99.2%	99.2%	99.1%				99.0%
Grant	99.1%	97.4%	99.1%	99.8%	98.7%	99.0%	99.3%	99.4%	98.8%				99.0%
Luna	99.2%	97.2%	99.3%	99.6%	97.9%	98.5%	99.0%	98.5%	98.8%				98.7%
Otero	98.3%	96.6%	96.9%	97.6%	99.0%	97.7%	97.8%	97.9%	97.6%				97.7%
South Dona Ana	97.9%	97.4%	98.3%	97.7%	97.9%	97.9%	97.8%	98.1%	98.1%				97.9%
West Dona Ana	99.6%	98.0%	99.4%	99.2%	99.3%	99.1%	98.7%	100.0%	99.4%				99.2%
SW Region 5 Total	98.9%	97.3%	98.8%	98.9%	98.7%	98.6%	98.6%	98.9%	98.6%				98.6%
STATE TOTAL	98.9%	97.0%	98.5%	98.7%	98.3%	98.3%	98.3%	98.4%	98.4%				98.3%

Administrative, Annual, and Auto Renewals are included

Medicaid: Percentage of Closures EDGs Processed by Certification End Date¹¹

	Oct-18	Nov-18	Dec-18	Jan-19	Feb-19	Mar-19	Apr-19	May-19	Jun-19	Jul-19	Aug-19	Sep-19	Average
Cibola	96.0%	97.9%	98.2%	94.0%	94.9%	98.0%	97.8%	98.2%	96.9%				96.9%
McKinley	98.6%	98.9%	97.3%	98.3%	98.0%	99.0%	97.1%	96.9%	97.1%				97.9%
San Juan	97.1%	97.0%	96.2%	97.5%	97.3%	97.7%	97.6%	97.0%	97.1%				97.2%
Sierra	98.5%	95.6%	97.7%	97.5%	96.7%	97.0%	96.8%	97.5%	95.4%				97.0%
Socorro	96.0%	99.4%	93.8%	98.9%	95.3%	99.5%	96.6%	89.3%	94.8%				96.0%
Valencia North	98.3%	98.7%	97.0%	96.9%	98.3%	98.0%	98.5%	96.1%	96.6%				97.6%
Valencia South													
NW Region 1 Total	97.4%	97.9%	96.7%	97.2%	96.7%	98.2%	97.4%	95.8%	96.3%				97.1%
Colfax	96.3%	97.8%	95.0%	98.9%	93.3%	100.0%	98.5%	100.0%	95.0%				97.2%
Guadalupe	98.3%	100.0%	100.0%	100.0%	100.0%	96.7%	100.0%	94.6%	95.8%				98.4%
Quay	96.6%	97.0%	100.0%	100.0%	95.7%	100.0%	94.9%	96.0%	95.7%				97.3%
Rio Arriba	98.6%	98.1%	96.6%	98.4%	97.9%	98.7%	97.8%	97.9%	97.2%				97.9%
San Miguel	100.0%	98.8%	98.4%	98.6%	98.0%	98.0%	99.6%	98.2%	96.8%				98.5%
Sandoval	98.2%	98.1%	97.4%	95.0%	97.1%	97.8%	98.4%	98.3%	97.7%				97.5%
Santa Fe	98.0%	98.5%	95.3%	96.9%	96.5%	98.7%	97.6%	96.8%	96.1%				97.2%
Taos	97.4%	98.8%	95.2%	99.1%	98.5%	99.5%	97.7%	97.0%	96.0%				97.7%
NE Region 2 Total	97.9%	98.4%	97.2%	98.4%	97.1%	98.7%	98.1%	97.4%	96.3%				97.7%
NE Bernalillo	98.3%	97.6%	97.3%	97.0%	97.1%	98.5%	97.4%	97.4%	96.8%				97.5%
NW Bernalillo	98.2%	98.5%	96.5%	97.4%	97.1%	98.3%	97.6%	96.8%	96.9%				97.5%
SE Bernalillo	95.8%	98.4%	96.0%	97.3%	96.2%	98.8%	98.7%	97.7%	97.0%				97.3%
SW Bernalillo	97.8%	98.3%	95.9%	96.3%	97.0%	98.4%	97.6%	96.3%	96.7%				97.1%
Torrance	97.8%	98.5%	97.6%	99.1%	97.7%	98.9%	98.3%	95.3%	97.1%				97.8%
Gen. Region 3 Total	97.6%	98.3%	96.7%	97.4%	97.0%	98.6%	97.9%	96.7%	96.9%				97.4%
Chaves	98.2%	98.9%	98.2%	98.5%	98.3%	97.6%	98.7%	96.5%	97.9%				98.1%
Curry	98.9%	98.1%	98.2%	97.6%	99.2%	99.5%	98.4%	99.0%	98.6%				98.6%
Eddy Artesia	98.9%	97.3%	98.7%	95.4%	97.6%	98.9%	96.6%	94.7%	94.7%				97.0%
Eddy Carlsbad	99.1%	99.3%	99.0%	97.3%	97.0%	98.9%	98.1%	97.2%	97.4%				98.1%
Lea	97.7%	98.6%	98.6%	97.8%	96.2%	99.4%	98.4%	97.3%	98.6%				98.1%
Lincoln	99.5%	99.5%	98.1%	96.0%	97.6%	98.2%	98.4%	93.7%	99.5%				97.8%
Roosevelt	100.0%												100.0%
SE Region 4 Total	98.9%	98.6%	98.5%	97.1%	97.7%	98.8%	98.1%	96.4%	97.8%				98.0%
East Dona Ana	98.1%	97.9%	98.9%	98.1%	99.0%	99.5%	98.8%	96.4%	98.8%				98.4%
Grant	97.6%	97.4%	97.3%	96.5%	96.7%	98.9%	99.2%	99.6%	99.3%				98.1%
Luna	99.1%	98.5%	100.0%	99.5%	99.3%	99.3%	96.3%	99.7%	97.6%				98.8%
Otero	98.5%	98.9%	99.0%	99.6%	98.4%	97.9%	98.7%	98.7%	97.9%				98.6%
South Dona Ana	97.9%	98.1%	98.3%	98.8%	98.0%	98.1%	96.5%	98.1%	96.3%				97.8%
West Dona Ana	98.2%	98.4%	99.2%	97.8%	98.2%	99.3%	98.7%	97.5%	97.7%				98.3%
SW Region 5 Total	98.2%	98.2%	98.8%	98.4%	98.2%	98.8%	98.0%	98.3%	97.9%				98.3%
STATE TOTAL	98.0%	98.3%	97.6%	97.7%	97.3%	98.6%	97.9%	97.0%	97.0%				97.8%

Annual and Auto Renewals are included

Medicaid: Percentage of Approved and Terminated Renewal EDGs Combined Processed by Certification Date ¹¹

	Oct-18	Nov-18	Dec-18	Jan-19	Feb-19	Mar-19	Apr-19	May-19	Jun-19	Jul-19	Aug-19	Sep-19	Average
Cibola	99.1%	97.2%	97.8%	97.7%	97.7%	98.2%	98.5%	98.3%	98.1%				98.1%
McKinley	99.3%	97.7%	98.6%	99.0%	97.8%	98.3%	98.5%	98.6%	98.2%				98.4%
San Juan	98.8%	97.3%	98.5%	98.1%	98.7%	98.4%	98.7%	98.3%	98.6%				98.4%
Sierra	98.8%	97.4%	98.9%	98.6%	97.6%	97.0%	98.2%	97.4%	98.7%				98.1%
Socorro	98.6%	96.6%	96.3%	99.2%	98.3%	98.4%	98.2%	96.1%	97.9%				97.8%
Valencia North	98.9%	96.8%	97.7%	98.0%	98.3%	97.8%	97.6%	97.0%	97.3%				97.7%
Valencia South													
NW Region 1 Total	98.9%	97.2%	98.0%	98.4%	98.1%	98.0%	98.3%	97.6%	98.1%				98.1%
Colfax	98.6%	97.6%	97.2%	99.4%	97.3%	99.1%	99.1%	98.5%	98.3%				98.3%
Guadalupe	99.4%	97.3%	99.3%	100.0%	99.6%	99.0%	99.7%	98.0%	98.1%				99.0%
Quay	98.1%	97.0%	99.2%	99.1%	96.1%	98.0%	97.5%	97.6%	98.0%				97.6%
Rio Arriba	98.6%	97.2%	98.3%	97.8%	97.2%	96.9%	97.7%	97.4%	97.6%				97.6%
San Miguel	99.6%	97.4%	99.5%	99.2%	99.1%	98.8%	99.4%	99.5%	98.8%				99.0%
Sandoval	98.6%	97.2%	97.6%	97.9%	97.7%	98.6%	97.9%	98.9%	98.4%				98.1%
Santa Fe	98.0%	96.3%	97.5%	96.9%	97.5%	97.7%	96.3%	97.8%	97.5%				97.3%
Taos	98.0%	97.4%	98.3%	99.1%	98.2%	98.4%	97.7%	99.0%	98.0%				98.2%
NE Region 2 Total	98.6%	97.2%	98.4%	98.7%	97.8%	98.3%	98.2%	98.4%	97.8%				98.2%
NE Bernalillo	98.1%	96.9%	98.1%	98.0%	98.1%	98.6%	98.4%	98.2%	97.7%				98.0%
NW Bernalillo	98.0%	97.4%	98.2%	98.1%	98.6%	98.1%	98.0%	97.7%	98.0%				98.0%
SE Bernalillo	98.0%	97.1%	98.4%	98.5%	98.1%	98.8%	98.3%	98.5%	98.1%				98.2%
SW Bernalillo	98.1%	96.9%	97.9%	98.2%	97.6%	98.1%	97.6%	97.2%	97.5%				97.7%
Torrance	99.2%	98.1%	98.5%	99.2%	99.6%	99.3%	98.9%	98.1%	98.3%				98.8%
Gen. Region 3 Total	98.3%	97.3%	98.2%	98.4%	98.4%	98.6%	98.2%	97.9%	97.9%				98.1%
Chaves	98.7%	97.3%	98.7%	99.1%	98.1%	98.8%	98.6%	98.1%	98.5%				98.4%
Curry	98.9%	97.6%	98.6%	98.6%	98.4%	98.9%	98.2%	98.7%	99.2%				98.6%
Eddy Artesia	98.4%	97.0%	98.3%	98.9%	97.4%	98.6%	96.5%	97.3%	97.0%				97.7%
Eddy Carlsbad	99.0%	97.1%	97.6%	98.0%	97.2%	98.2%	98.0%	97.6%	98.4%				97.9%
Lea	98.6%	97.9%	99.0%	99.2%	98.7%	98.7%	98.4%	98.5%	98.2%				98.6%
Lincoln	98.8%	95.9%	98.5%	96.3%	98.1%	98.2%	97.8%	96.2%	99.3%				97.7%
Roosevelt	100.0%												100.0%
SE Region 4 Total	98.9%	97.1%	98.5%	98.3%	98.0%	98.6%	97.9%	97.7%	98.4%				98.2%
East Dona Ana	99.1%	97.2%	99.4%	99.1%	99.2%	99.3%	99.1%	98.6%	99.0%				98.9%
Grant	98.9%	97.4%	98.9%	99.4%	98.4%	98.9%	99.3%	99.4%	98.9%				98.8%
Luna	99.2%	97.4%	99.4%	99.6%	98.1%	98.7%	98.5%	98.7%	98.6%				98.7%
Otero	98.3%	96.9%	97.2%	97.9%	98.9%	97.8%	98.0%	98.1%	97.7%				97.9%
South Dona Ana	97.9%	97.5%	98.3%	97.8%	97.9%	97.9%	97.6%	98.1%	97.8%				97.9%
West Dona Ana	99.4%	98.0%	99.4%	99.1%	99.1%	99.1%	98.7%	98.9%	99.1%				99.0%
SW Region 5 Total	98.8%	97.4%	98.8%	98.8%	98.6%	98.6%	98.5%	98.6%	98.5%				98.5%
STATE TOTAL	98.7%	97.2%	98.4%	98.5%	98.1%	98.4%	98.2%	98.1%	98.2%				98.2%

Administrative, Annual, and Auto Renewals are included

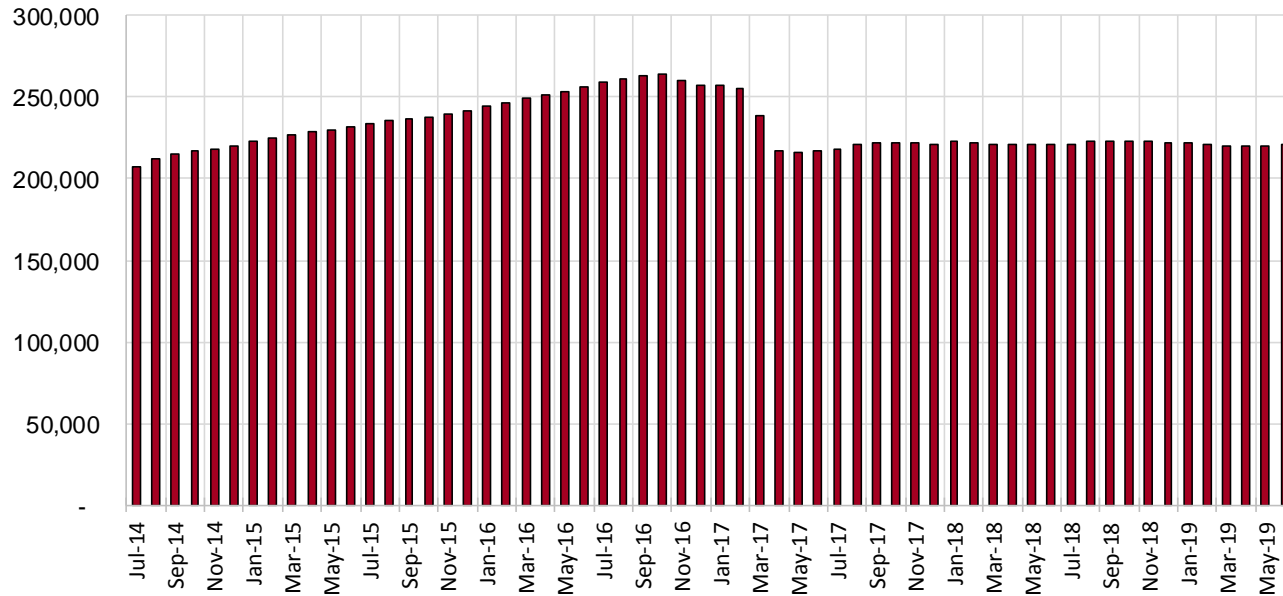
SNAP Cases by Field Office⁶

Office				Percent Change	
	Jun-18	May-19	Jun-19	Jun-18- Jun-19	May-19- Jun-19
Chaves County ISD	7,066	6,881	6,906	-2.3%	0.4%
Cibola County ISD	3,627	3,598	3,586	-1.1%	-0.3%
Colfax County ISD	1,637	1,673	1,663	1.6%	-0.6%
Curry County ISD	6,656	7,000	7,101	6.7%	1.4%
East Dona Ana County ISD	7,979	7,934	7,972	-0.1%	0.5%
Eddy Artesia County ISD	1,633	1,543	1,542	-5.6%	-0.1%
Eddy Carlsbad County ISD	2,940	2,764	2,819	-4.1%	2.0%
Grant County ISD	3,458	3,903	3,904	12.9%	0.0%
Guadalupe County ISD	706	694	689	-2.4%	-0.7%
Hidalgo County ISD	444	16	16	-96.4%	0.0%
Lea County ISD	5,648	5,462	5,510	-2.4%	0.9%
Lincoln County ISD	1,882	1,869	1,875	-0.4%	0.3%
Luna County ISD	4,196	4,180	4,184	-0.3%	0.1%
McKinley County ISD	9,772	9,995	10,081	3.2%	0.9%
Northeast Bernalillo County ISD	20,267	20,252	20,277	0.0%	0.1%
Northwest Bernalillo County ISD	19,475	19,646	19,779	1.6%	0.7%
Otero County ISD	5,568	5,633	5,690	2.2%	1.0%
Quay County ISD	1,256	1,249	1,258	0.2%	0.7%
Rio Arriba County ISD	6,686	6,487	6,478	-3.1%	-0.1%
Roosevelt County ISD	0	0	1	N/A	N/A
San Juan County ISD	13,409	13,746	13,780	2.8%	0.2%
San Miguel County ISD	4,899	5,014	5,020	2.5%	0.1%
Sandoval County ISD	10,972	9,913	9,860	-10.1%	-0.5%
Santa Fe County ISD	9,721	9,457	9,461	-2.7%	0.0%
Sierra County ISD	2,678	2,609	2,579	-3.7%	-1.1%
Socorro County ISD	2,772	2,744	2,766	-0.2%	0.8%
South Dona Ana ISD	8,511	8,481	8,479	-0.4%	0.0%
Southeast Bernalillo County ISD	11,867	11,885	11,869	0.0%	-0.1%
Southwest Bernalillo County ISD	18,712	19,109	19,200	2.6%	0.5%
Taos County ISD	4,139	4,154	4,167	0.7%	0.3%
Torrance County ISD	3,398	3,612	3,619	6.5%	0.2%
Valencia North County ISD	8,409	8,289	8,337	-0.9%	0.6%
Valencia South County ISD	0	1	4	N/A	300.0%
West Dona Ana County ISD	10,816	10,574	10,618	-1.8%	0.4%
Centralized Units	46	12	13	-71.7%	8.3%
Statewide Total	221,245	220,379	221,103	-0.1%	0.3%

SNAP Cases by Region⁶

Region	Jun-18	May-19	Jun-19	Percent Change	
				Jun-18- Jun-19	May-19- Jun-19
Region 1 - NW	40,667	40,982	41,133	1.1%	0.4%
Region 2 - NE	40,016	38,641	38,596	-3.5%	-0.1%
Region 3 - Central	73,719	74,504	74,744	1.4%	0.3%
Region 4 - SE	25,825	25,519	25,754	-0.3%	0.9%
Region 5 - SW	40,972	40,721	40,863	-0.3%	0.3%
Centralized Units	46	12	13	-71.7%	8.3%
Statewide Total	221,245	220,379	221,103	-0.1%	0.3%

SNAP Caseload: SFY-15 to Current



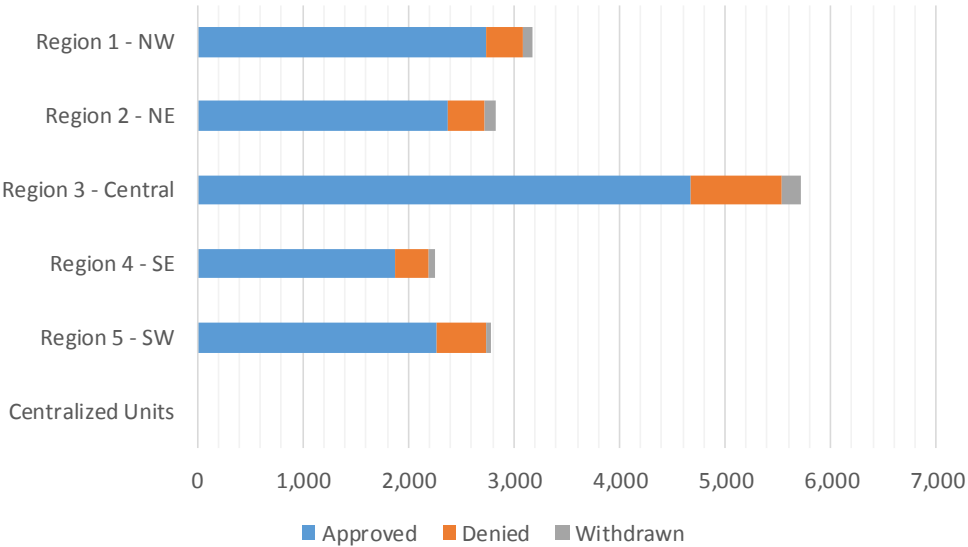
SNAP Initial Applications by Field Office^{4,11}
June 2019

Office	Approved	Denied	Withdrawn	Total Cases Processed
Chaves County ISD	480	101	15	596
Cibola County ISD	209	43	1	253
Colfax County ISD	112	27	2	141
Curry County ISD	482	54	25	561
East Dona Ana County ISD	468	104	14	586
Eddy Artesia County ISD	98	15	1	114
Eddy Carlsbad County ISD	261	55	8	324
Grant County ISD	220	40	3	263
Guadalupe County ISD	35	6	1	42
Hidalgo County ISD	0	0	0	0
Lea County ISD	421	70	16	507
Lincoln County ISD	121	22	5	148
Luna County ISD	265	32	11	308
McKinley County ISD	666	68	19	753
Northeast Bernalillo County ISD	1,415	273	43	1,731
Northwest Bernalillo County ISD	1,169	223	57	1,449
Otero County ISD	352	84	5	441
Quay County ISD	58	4	3	65
Rio Arriba County ISD	414	44	15	473
Roosevelt County ISD	6	0	0	6
San Juan County ISD	1,053	140	33	1,226
San Miguel County ISD	249	28	9	286
Sandoval County ISD	699	136	33	868
Santa Fe County ISD	576	75	30	681
Sierra County ISD	115	12	5	132
Socorro County ISD	168	14	9	191
South Dona Ana ISD	329	65	11	405
Southeast Bernalillo County ISD	812	134	22	968
Southwest Bernalillo County ISD	1,126	200	62	1,388
Taos County ISD	231	33	6	270
Torrance County ISD	157	25	7	189
Valencia North County ISD	523	76	10	609
Valencia South County ISD	0	0	19	19
West Dona Ana County ISD	636	146	0	782
Centralized Units	0	0	0	0
Statewide Total	13,926	2,349	500	16,775

SNAP Initial Applications by Region^{4,11}
June 2019

Region	Approved	Denied	Withdrawn	Total Cases Processed
Region 1 - NW	2,734	353	96	3,183
Region 2 - NE	2,374	353	99	2,826
Region 3 - Central	4,679	855	191	5,725
Region 4 - SE	1,869	317	70	2,256
Region 5 - SW	2,270	471	44	2,785
Centralized Units	0	0	0	0

Statewide Total	13,926	2,349	500	16,775
-----------------	--------	-------	-----	--------

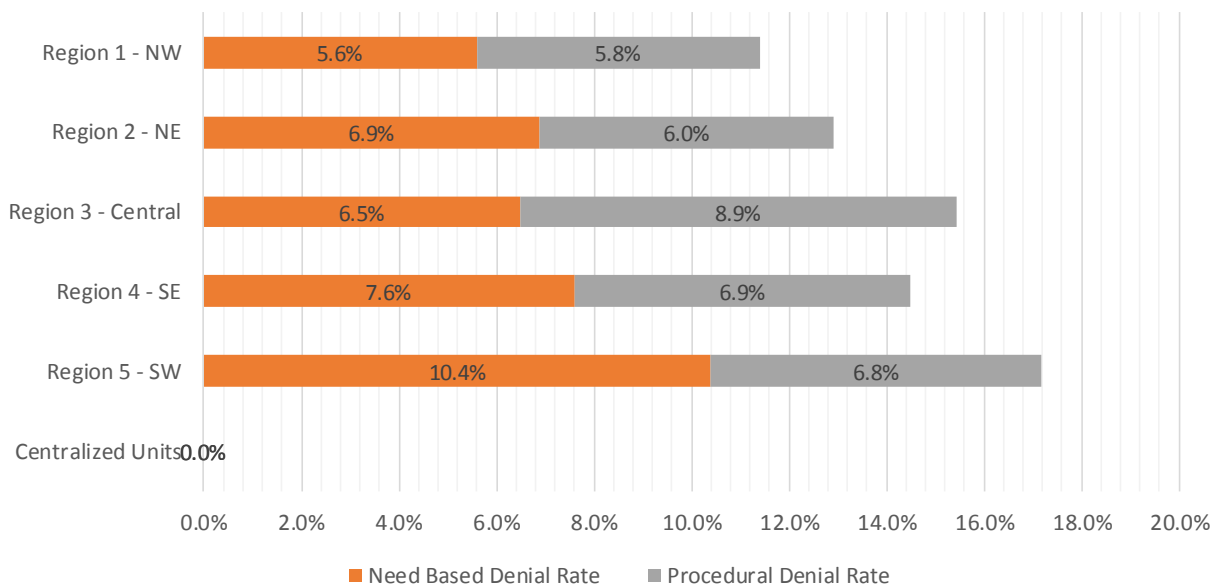


SNAP Initial Disposition Rates by Field Office^{4,11}
June 2019

Office	Approval Rate	Denial Rate	Need Based Denial Rate	Procedural Denial Rate
Chaves County ISD	82.6%	17.4%	9.3%	8.1%
Cibola County ISD	82.9%	17.1%	9.6%	7.5%
Colfax County ISD	80.6%	19.4%	15.1%	4.3%
Curry County ISD	89.9%	10.1%	5.1%	5.0%
East Dona Ana County ISD	81.8%	18.2%	11.2%	7.0%
Eddy Artesia County ISD	86.7%	13.3%	9.8%	3.5%
Eddy Carlsbad County ISD	82.6%	17.4%	8.5%	8.9%
Grant County ISD	84.6%	15.4%	8.5%	6.9%
Guadalupe County ISD	85.4%	14.6%	4.8%	9.8%
Hidalgo County ISD	0.0%	0.0%	0.0%	0.0%
Lea County ISD	85.7%	14.3%	8.0%	6.3%
Lincoln County ISD	84.6%	15.4%	5.6%	9.8%
Luna County ISD	89.2%	10.8%	4.7%	6.1%
McKinley County ISD	90.7%	9.3%	4.3%	5.0%
Northeast Bernalillo County ISD	83.8%	16.2%	6.8%	9.4%
Northwest Bernalillo County ISD	84.0%	16.0%	6.7%	9.3%
Otero County ISD	80.7%	19.3%	8.3%	11.0%
Quay County ISD	93.5%	6.5%	4.9%	1.6%
Rio Arriba County ISD	90.4%	9.6%	4.8%	4.8%
Roosevelt County ISD	100.0%	0.0%	0.0%	0.0%
San Juan County ISD	88.3%	11.7%	5.8%	5.9%
San Miguel County ISD	89.9%	10.1%	6.1%	4.0%
Sandoval County ISD	83.7%	16.3%	8.4%	7.9%
Santa Fe County ISD	88.5%	11.5%	5.4%	6.1%
Sierra County ISD	90.6%	9.4%	3.1%	6.3%
Socorro County ISD	92.3%	7.7%	2.8%	4.9%
South Dona Ana ISD	83.5%	16.5%	12.9%	3.6%
Southeast Bernalillo County ISD	85.8%	14.2%	7.0%	7.2%
Southwest Bernalillo County ISD	84.9%	15.1%	5.7%	9.4%
Taos County ISD	87.5%	12.5%	7.2%	5.3%
Torrance County ISD	86.3%	13.7%	6.0%	7.7%
Valencia North County ISD	87.3%	12.7%	6.7%	6.0%
Valencia South County ISD	0.0%	0.0%	0.0%	0.0%
West Dona Ana County ISD	81.3%	18.7%	12.6%	6.1%
Centralized Units	0.0%	0.0%	0.0%	0.0%
Statewide Total	85.6%	14.4%	7.2%	7.2%

SNAP Initial Disposition Rates by Region^{4,11}
June 2019

Region	Approval Rate	Denial Rate	Need Based Denial Rate	Procedural Denial Rate
Region 1 - NW	88.6%	11.4%	5.6%	5.8%
Region 2 - NE	87.1%	12.9%	6.9%	6.0%
Region 3 - Central	84.6%	15.4%	6.5%	8.9%
Region 4 - SE	85.5%	14.5%	7.6%	6.9%
Region 5 - SW	82.8%	17.2%	10.4%	6.8%
Centralized Units	0.0%	0.0%	0.0%	0.0%
Statewide Total	85.6%	14.4%	7.2%	7.2%



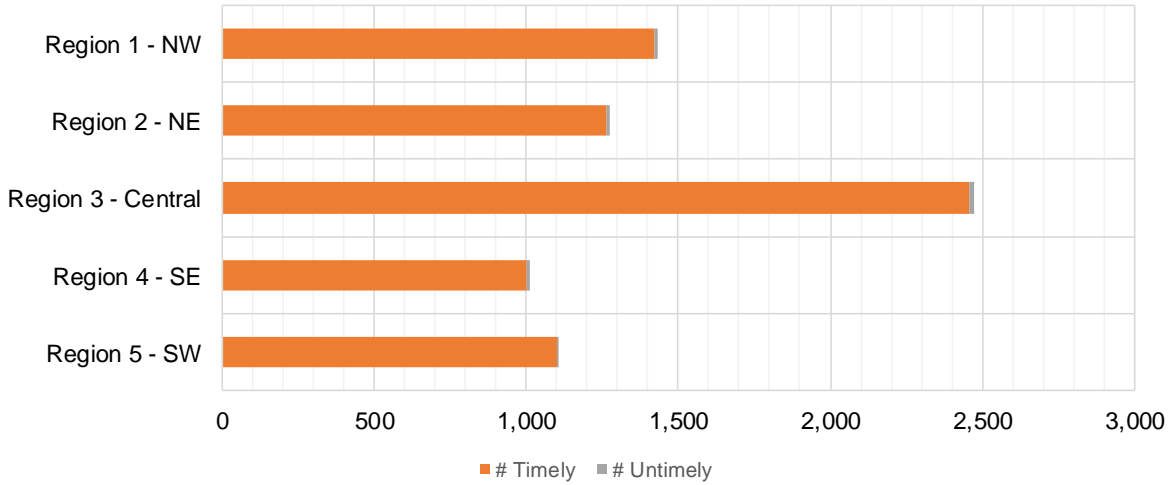
SNAP Expedite Timeliness by Field Office¹³
June 2019

Office Name	Total Expedited Approvals	# Timely	# Untimely	Percentage Timely
Chaves County ISD	226	221	5	97.8 %
Cibola County ISD	108	107	1	99.1 %
Colfax County ISD	52	52	0	100.0 %
Curry County ISD	277	276	1	99.6 %
East Dona Ana County ISD	210	209	1	99.5 %
Eddy Artesia County ISD	57	56	1	98.2 %
Eddy Carlsbad County ISD	164	164	0	100.0 %
Grant County ISD	120	120	0	100.0 %
Guadalupe County ISD	12	12	0	100.0 %
Lea County ISD	221	219	2	99.1 %
Lincoln County ISD	61	60	1	98.4 %
Luna County ISD	134	133	1	99.3 %
McKinley County ISD	335	334	1	99.7 %
Northeast Bernalillo County ISD	765	757	8	99.0 %
Northwest Bernalillo County ISD	630	627	3	99.5 %
Otero County ISD	183	182	1	99.5 %
Quay County ISD	23	23	0	100.0 %
Rio Arriba County ISD	263	261	2	99.2 %
Roosevelt County ISD	5	5	0	100.0 %
San Juan County ISD	614	608	6	99.0 %
San Miguel County ISD	120	117	3	97.5 %
Sandoval County ISD	364	361	3	99.2 %
Santa Fe County ISD	326	323	3	99.1 %
Sierra County ISD	40	40	0	100.0 %
Socorro County ISD	83	81	2	97.6 %
South Dona Ana ISD	137	137	0	100.0 %
Southeast Bernalillo County ISD	444	440	4	99.1 %
Southwest Bernalillo County ISD	558	556	2	99.6 %
Taos County ISD	114	113	1	99.1 %
Torrance County ISD	76	76	0	100.0 %
Valencia North County ISD	252	250	2	99.2 %
West Dona Ana County ISD	322	322	0	100.0 %
Statewide Total	7,296	7,242	54	99.3 %

SNAP Expedite Timeliness by Region¹³
June 2019

Region	Total Expedited Approvals	# Timely	# Untimely	Percentage Timely
Region 1 - NW	1,432	1,420	12	99.2%
Region 2 - NE	1,274	1,262	12	99.1%
Region 3 - Central	2,473	2,456	17	99.3%
Region 4 - SE	1,011	1,001	10	99.0%
Region 5 - SW	1,106	1,103	3	99.7%
Statewide Total	7,296	7,242	54	99.3%

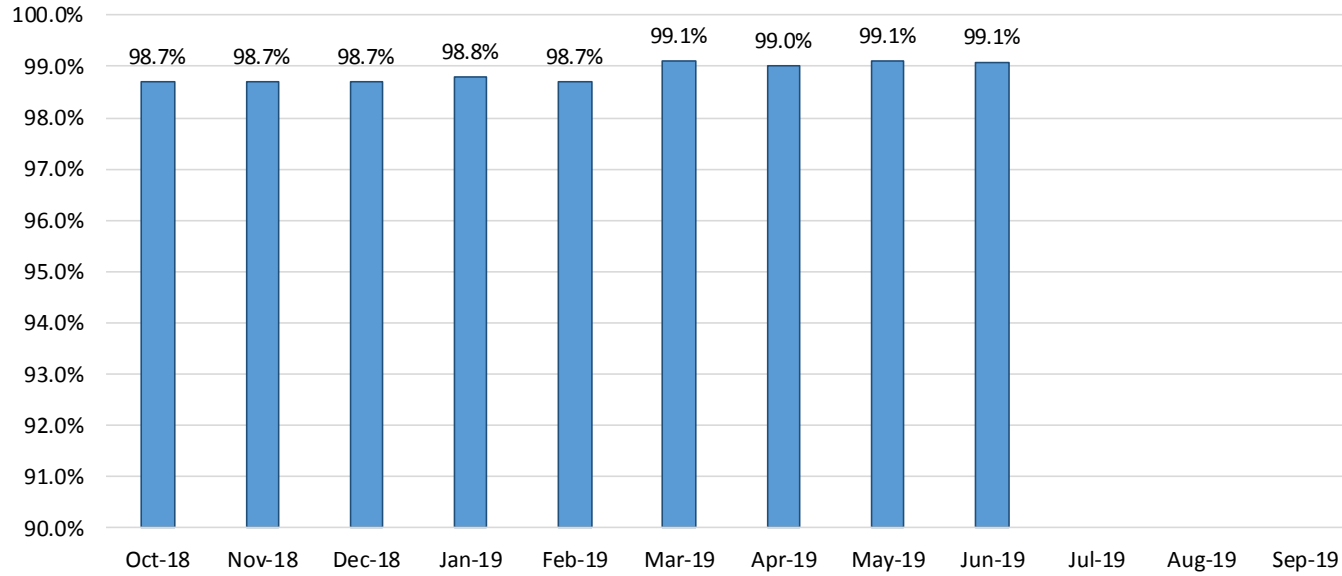
SNAP Expedite - Timeliness



SNAP: Percentage of Applications Processed Timely ¹³

	Oct-18	Nov-18	Dec-18	Jan-19	Feb-19	Mar-19	Apr-19	May-19	Jun-19	Jul-19	Aug-19	Sep-19	Average
APT	98.7%	98.7%	98.7%	98.8%	98.7%	99.1%	99.0%	99.1%	99.1%				98.9%

SNAP Application Processing Timeliness (APT)



SNAP Non-Expedite: Percentage of Initial Applications Processed Timely by Field Office¹³

	Oct-18	Nov-18	Dec-18	Jan-19	Feb-19	Mar-19	Apr-19	May-19	Jun-19	Jul-19	Aug-19	Sep-19	Average
Cibola	100.0%	99.0%	99.0%	97.5%	98.6%	98.5%	98.8%	99.3%	97.9%				98.7%
McKinley	98.8%	98.4%	98.9%	100.0%	96.6%	98.8%	99.3%	98.9%	98.8%				98.7%
San Juan	99.6%	99.2%	98.8%	99.1%	99.0%	98.8%	99.1%	99.1%	99.0%				99.1%
Sierra	98.9%	100.0%	100.0%	100.0%	100.0%	100.0%	100.0%	99.1%	100.0%				99.8%
Socorro	100.0%	98.4%	100.0%	100.0%	100.0%	100.0%	99.0%	100.0%	99.1%				99.6%
Valencia North	99.7%	99.3%	99.2%	100.0%	100.0%	99.7%	99.5%	99.5%	99.1%				99.6%
Valencia South													
NW Region 1 Total	99.4%	99.1%	99.1%	99.5%	98.8%	99.1%	99.2%	99.2%	99.0%				99.2%
Colfax	100.0%	100.0%	100.0%	100.0%	100.0%	100.0%	100.0%	100.0%	100.0%				100.0%
Guadalupe	100.0%	100.0%	96.3%	100.0%	100.0%	100.0%	100.0%	100.0%	100.0%				99.6%
Quay	100.0%	97.3%	100.0%	100.0%	100.0%	97.7%	100.0%	100.0%	100.0%				99.4%
Rio Arriba	100.0%	99.5%	98.1%	99.4%	98.9%	98.0%	98.0%	97.9%	98.6%				98.7%
San Miguel	100.0%	99.3%	99.2%	100.0%	100.0%	100.0%	100.0%	100.0%	100.0%				99.8%
Sandoval	99.5%	99.2%	99.6%	99.7%	99.6%	99.3%	99.4%	99.1%	99.8%				99.5%
Santa Fe	99.4%	98.6%	100.0%	99.3%	100.0%	99.7%	99.5%	98.8%	99.1%				99.4%
Taos	100.0%	98.4%	99.3%	98.9%	100.0%	100.0%	100.0%	100.0%	98.7%				99.5%
NE Region 2 Total	98.9%	99.0%	99.3%	99.5%	99.8%	99.4%	99.4%	99.1%	99.4%				99.3%
NE Bernalillo	98.9%	98.8%	98.8%	99.2%	99.4%	97.9%	98.5%	98.5%	98.0%				98.7%
NW Bernalillo	98.0%	99.3%	99.6%	99.0%	98.9%	97.4%	98.0%	98.5%	98.8%				98.6%
SE Bernalillo	99.6%	98.7%	99.0%	98.5%	99.3%	99.0%	99.3%	98.6%	97.9%				98.9%
SW Bernalillo	99.3%	99.5%	98.6%	99.6%	98.6%	98.8%	98.8%	99.1%	99.5%				99.1%
Torrance	100.0%	97.2%	97.3%	99.2%	97.7%	98.1%	99.4%	100.0%	99.1%				98.7%
Gen. Region 3 Total	98.9%	99.0%	98.9%	99.2%	99.0%	98.2%	98.6%	98.7%	98.6%				98.8%
Chaves	100.0%	99.6%	98.8%	99.7%	99.5%	99.4%	99.5%	99.0%	99.2%				99.4%
Curry	97.9%	98.4%	98.9%	98.4%	100.0%	100.0%	99.4%	100.0%	99.3%				99.1%
Eddy Artesia	100.0%	100.0%	100.0%	100.0%	100.0%	98.6%	100.0%	100.0%	96.5%				99.5%
Eddy Carlsbad	100.0%	99.1%	99.0%	100.0%	100.0%	99.3%	99.5%	99.4%	99.4%				99.5%
Lea	99.1%	99.5%	99.0%	97.8%	97.8%	99.2%	99.7%	99.1%	97.6%				98.8%
Lincoln	100.0%	98.8%	97.1%	98.8%	100.0%	99.2%	100.0%	100.0%	98.9%				99.2%
Roosevelt		100.0%		100.0%			100.0%	100.0%	100.0%				100.0%
SE Region 4 Total	98.2%	99.2%	98.8%	99.0%	99.4%	99.4%	99.6%	99.4%	98.7%				99.1%
East Dona Ana	99.7%	100.0%	99.3%	98.8%	100.0%	100.0%	98.7%	99.3%	99.7%				99.5%
Grant	100.0%	100.0%	99.0%	100.0%	100.0%	99.2%	99.4%	99.3%	99.3%				99.6%
Luna	100.0%	99.4%	99.3%	100.0%	100.0%	99.4%	100.0%	99.4%	97.1%				99.4%
Otero	99.2%	100.0%	99.3%	99.5%	100.0%	98.1%	99.3%	99.2%	99.2%				99.3%
South Dona Ana	99.6%	99.6%	98.4%	100.0%	100.0%	99.7%	99.7%	100.0%	100.0%				99.7%
West Dona Ana	99.5%	100.0%	99.3%	99.7%	100.0%	99.3%	99.4%	99.8%	99.8%				99.6%
SW Region 5 Total	99.4%	99.8%	99.1%	99.6%	100.0%	99.4%	99.3%	99.6%	99.4%				99.5%
STATE TOTAL	99.0%	99.2%	99.0%	99.3%	99.3%	98.9%	99.1%	99.1%	99.0%				99.1%

SNAP Expedite: Percentage of Initial Applications Processed Timely by Field Office¹³

	Oct-18	Nov-18	Dec-18	Jan-19	Feb-19	Mar-19	Apr-19	May-19	Jun-19	Jul-19	Aug-19	Sep-19	Average
Cibola	100.0%	99.2%	100.0%	97.8%	96.9%	96.1%	99.2%	98.2%	99.1%				98.5%
McKinley	98.8%	98.6%	100.0%	99.7%	99.3%	99.7%	99.1%	99.1%	99.7%				99.3%
San Juan	99.3%	99.5%	99.0%	99.4%	99.5%	99.8%	98.2%	99.6%	99.0%				99.3%
Sierra	100.0%	98.6%	100.0%	97.8%	100.0%	100.0%	97.9%	96.1%	100.0%				98.9%
Socorro	100.0%	98.6%	100.0%	100.0%	100.0%	100.0%	100.0%	100.0%	97.6%				99.6%
Valencia North	99.6%	99.6%	99.0%	99.2%	98.6%	100.0%	98.8%	99.2%	99.2%				99.2%
Valencia South				100.0%									
NW Region 1 Total	99.6%	99.2%	99.4%	99.3%	99.2%	99.5%	98.7%	99.2%	99.2%				99.3%
Colfax	100.0%	100.0%	100.0%	100.0%	100.0%	100.0%	100.0%	100.0%	100.0%				100.0%
Guadalupe	95.2%	100.0%	100.0%	100.0%	100.0%	100.0%	100.0%	100.0%	100.0%				99.5%
Quay	100.0%	100.0%	100.0%	97.6%	100.0%	100.0%	96.3%	97.4%	100.0%				99.0%
Rio Arriba	98.6%	97.9%	99.6%	98.0%	97.6%	99.5%	98.4%	100.0%	99.2%				98.8%
San Miguel	100.0%	100.0%	100.0%	99.1%	100.0%	98.9%	100.0%	98.8%	97.5%				99.4%
Sandoval	99.0%	98.5%	99.0%	98.8%	98.1%	99.0%	97.5%	98.2%	99.2%				98.6%
Santa Fe	98.5%	98.1%	99.2%	97.6%	99.1%	99.2%	99.2%	98.5%	99.1%				98.7%
Taos	98.8%	97.0%	94.3%	99.3%	99.0%	100.0%	98.7%	99.3%	99.1%				98.4%
NE Region 2 Total	98.8%	98.4%	98.9%	98.5%	98.7%	99.3%	98.7%	98.9%	99.1%				98.8%
NE Bernalillo	98.8%	98.5%	98.4%	98.1%	97.8%	98.5%	98.8%	98.1%	99.0%				98.4%
NW Bernalillo	99.0%	99.6%	99.4%	99.4%	99.3%	99.4%	99.1%	99.5%	99.5%				99.4%
SE Bernalillo	99.2%	99.1%	99.4%	99.6%	97.7%	98.8%	99.4%	99.8%	99.1%				99.1%
SW Bernalillo	98.7%	99.2%	97.5%	98.6%	98.9%	98.9%	99.3%	98.9%	99.6%				98.8%
Torrance	98.3%	100.0%	98.1%	100.0%	99.1%	98.3%	99.1%	98.2%	100.0%				99.0%
Gen. Region 3 Total	98.8%	99.1%	98.7%	98.9%	98.5%	98.8%	99.1%	98.9%	99.3%				98.9%
Chaves	98.8%	99.1%	100.0%	99.2%	100.0%	100.0%	99.6%	99.6%	97.8%				99.3%
Curry	98.1%	98.6%	98.4%	98.9%	97.6%	99.6%	99.4%	99.3%	99.6%				98.8%
Eddy Artesia	96.1%	100.0%	100.0%	100.0%	97.7%	94.7%	98.6%	100.0%	98.2%				98.4%
Eddy Carlsbad	97.0%	100.0%	98.6%	99.2%	98.9%	97.8%	100.0%	99.4%	100.0%				99.0%
Lea	98.7%	99.2%	99.1%	98.0%	100.0%	99.6%	100.0%	98.3%	99.1%				99.1%
Lincoln	100.0%	95.8%	98.2%	100.0%	100.0%	100.0%	98.2%	100.0%	98.3%				98.9%
Roosevelt	100.0%	100.0%	100.0%	100.0%	100.0%	100.0%	100.0%	100.0%	100.0%				100.0%
SE Region 4 Total	98.4%	98.9%	99.0%	98.9%	99.0%	99.2%	99.5%	99.2%	99.0%				99.0%
East Dona Ana	99.6%	99.0%	99.5%	99.3%	100.0%	100.0%	99.6%	99.5%	99.5%				99.6%
Grant	97.7%	99.3%	100.0%	99.4%	98.8%	100.0%	99.3%	99.3%	100.0%				99.3%
Luna	100.0%	100.0%	98.9%	98.4%	100.0%	100.0%	100.0%	97.5%	99.3%				99.3%
Otero	98.5%	99.5%	98.3%	98.9%	97.5%	99.5%	99.5%	99.5%	99.5%				99.0%
South Dona Ana	99.4%	100.0%	100.0%	100.0%	99.1%	100.0%	99.3%	100.0%	100.0%				99.8%
West Dona Ana	100.0%	100.0%	99.6%	99.7%	98.8%	100.0%	100.0%	99.7%	100.0%				99.8%
SW Region 5 Total	99.2%	99.6%	99.4%	99.4%	98.9%	99.9%	99.7%	99.4%	99.7%				99.5%
STATE TOTAL	98.9%	99.1%	99.0%	99.0%	98.8%	99.2%	99.1%	99.1%	99.3%				99.1%

SNAP: Percentage of Denied Initial Applications Processed Within 30 Days by Field Office ¹³

	Oct-18	Nov-18	Dec-18	Jan-19	Feb-19	Mar-19	Apr-19	May-19	Jun-19	Jul-19	Aug-19	Sep-19	Average
Cibola	94.4%	92.3%	95.1%	93.9%	97.7%	100.0%	100.0%	100.0%	97.7%				96.8%
McKinley	96.2%	97.6%	95.2%	99.0%	96.4%	95.5%	100.0%	96.4%	96.6%				97.0%
San Juan	96.4%	93.2%	93.3%	94.9%	91.5%	99.0%	97.4%	98.9%	97.1%				95.7%
Sierra	100.0%	93.9%	100.0%	100.0%	100.0%	100.0%	100.0%	100.0%	100.0%				99.3%
Socorro	100.0%	100.0%	96.8%	97.4%	96.2%	100.0%	100.0%	100.0%	100.0%				98.9%
Valencia North	100.0%	98.4%	100.0%	99.3%	97.8%	99.1%	100.0%	99.0%	97.7%				99.0%
Valencia South													
NW Region 1 Total	97.3%	95.7%	95.8%	97.0%	94.9%	98.9%	99.6%	99.1%	98.2%				97.4%
Colfax	100.0%	96.3%	100.0%	100.0%	100.0%	100.0%	100.0%	100.0%	100.0%				99.6%
Guadalupe	100.0%	100.0%	100.0%	100.0%	100.0%	100.0%	100.0%	100.0%	100.0%				100.0%
Quay	100.0%	100.0%	100.0%	92.3%	100.0%	91.7%	100.0%	100.0%	100.0%				98.2%
Rio Arriba	94.6%	89.7%	93.2%	98.5%	95.6%	94.6%	95.7%	96.7%	96.6%				95.0%
San Miguel	100.0%	100.0%	100.0%	100.0%	100.0%	100.0%	100.0%	100.0%	100.0%				100.0%
Sandoval	98.4%	99.5%	99.4%	97.0%	98.1%	98.2%	100.0%	98.2%	99.4%				98.7%
Santa Fe	96.6%	96.7%	96.7%	97.3%	99.3%	99.2%	100.0%	99.3%	97.1%				98.0%
Taos	98.0%	98.3%	100.0%	95.2%	97.9%	100.0%	100.0%	100.0%	94.9%				98.3%
NE Region 2 Total	97.6%	97.4%	98.1%	97.4%	98.4%	98.0%	99.5%	99.3%	98.5%				98.2%
NE Bernalillo	94.8%	97.3%	93.5%	96.0%	98.6%	96.6%	97.0%	97.3%	96.5%				96.4%
NW Bernalillo	95.6%	96.8%	97.3%	95.6%	94.9%	95.8%	96.2%	97.3%	98.6%				96.5%
SE Bernalillo	94.1%	95.5%	96.3%	96.2%	96.5%	99.4%	98.7%	97.4%	97.4%				96.8%
SW Bernalillo	97.1%	97.0%	98.3%	97.8%	98.6%	97.9%	96.7%	98.9%	99.2%				97.9%
Torrance	93.2%	95.2%	96.6%	93.3%	100.0%	93.0%	98.1%	100.0%	96.9%				96.3%
Gen. Region 3 Total	95.3%	96.7%	96.2%	96.2%	97.4%	96.5%	97.3%	98.2%	97.7%				96.8%
Chaves	98.6%	95.7%	100.0%	99.2%	98.1%	100.0%	98.9%	97.1%	99.1%				98.5%
Curry	97.8%	96.7%	96.6%	94.5%	99.0%	100.0%	98.9%	100.0%	97.5%				97.9%
Eddy Artesia	92.6%	93.1%	100.0%	95.8%	96.0%	95.5%	100.0%	100.0%	87.5%				95.6%
Eddy Carlsbad	96.9%	97.0%	98.6%	100.0%	97.1%	98.2%	97.9%	98.4%	100.0%				98.2%
Lea	95.7%	97.1%	95.2%	99.1%	99.0%	100.0%	98.7%	98.1%	95.3%				97.6%
Lincoln	97.4%	93.5%	95.2%	96.6%	96.6%	100.0%	100.0%	100.0%	96.3%				97.3%
Roosevelt		100.0%											100.0%
SE Region 4 Total	97.1%	96.0%	97.6%	97.9%	98.2%	99.0%	99.1%	98.9%	96.0%				97.7%
East Dona Ana	97.3%	100.0%	99.2%	97.5%	99.1%	100.0%	97.4%	100.0%	99.2%				98.9%
Grant	95.8%	93.8%	97.6%	100.0%	97.9%	100.0%	100.0%	97.8%	100.0%				98.1%
Luna	100.0%	100.0%	98.1%	100.0%	97.6%	100.0%	100.0%	97.6%	95.3%				98.7%
Otero	100.0%	98.9%	100.0%	97.6%	97.4%	98.9%	96.9%	100.0%	98.9%				98.7%
South Dona Ana	100.0%	98.4%	98.7%	98.9%	98.6%	100.0%	98.8%	100.0%	100.0%				99.3%
West Dona Ana	98.2%	98.9%	99.3%	100.0%	98.4%	99.3%	97.8%	100.0%	100.0%				99.1%
SW Region 5 Total	98.3%	98.8%	99.1%	98.9%	98.3%	99.7%	98.5%	99.2%	98.9%				98.9%
STATE TOTAL	96.8%	97.0%	97.1%	97.3%	97.4%	98.4%	98.9%	99.0%	97.9%				97.8%

SNAP: Combined Approvals and Denials Percentage of Initial Applications Processed Timely by Field Office ¹³

	Oct-18	Nov-18	Dec-18	Jan-19	Feb-19	Mar-19	Apr-19	May-19	Jun-19	Jul-19	Aug-19	Sep-19	Average
Cibola	99.4%	98.1%	98.9%	97.2%	97.8%	97.5%	99.0%	98.8%	98.4%				98.3%
McKinley	98.4%	98.4%	99.0%	99.8%	97.6%	99.2%	99.2%	99.1%	99.2%				98.9%
San Juan	98.9%	98.4%	98.0%	98.5%	97.6%	99.2%	98.6%	99.3%	99.0%				98.6%
Sierra	99.4%	98.6%	100.0%	99.0%	100.0%	100.0%	99.3%	98.7%	100.0%				99.4%
Socorro	100.0%	98.8%	99.4%	99.5%	99.1%	100.0%	99.4%	100.0%	98.4%				99.4%
Valencia North	99.7%	99.3%	99.3%	99.5%	99.1%	99.8%	99.2%	99.5%	99.2%				99.4%
Valencia South				100.0%				100.0%					100.0%
NW Region 1 Total	99.1%	98.6%	98.7%	99.0%	98.1%	99.3%	99.1%	99.3%	99.0%				98.9%
Colfax	100.0%	99.3%	100.0%	100.0%	100.0%	100.0%	100.0%	100.0%	100.0%				99.9%
Guadalupe	98.4%	100.0%	97.7%	100.0%	100.0%	100.0%	100.0%	100.0%	100.0%				99.6%
Quay	100.0%	98.6%	100.0%	97.9%	100.0%	98.6%	98.5%	98.9%	100.0%				99.2%
Rio Arriba	98.3%	97.4%	98.2%	98.5%	97.6%	98.8%	98.4%	99.0%	98.9%				98.3%
San Miguel	100.0%	99.7%	99.7%	99.5%	100.0%	99.4%	100.0%	99.5%	99.0%				99.6%
Sandoval	99.1%	99.0%	99.3%	98.9%	98.6%	99.2%	98.7%	98.7%	99.5%				99.0%
Santa Fe	98.5%	98.0%	99.0%	98.2%	99.4%	99.5%	99.3%	98.8%	99.1%				98.9%
Taos	99.2%	97.7%	97.5%	98.5%	99.2%	100.0%	99.4%	99.7%	98.9%				98.9%
NE Region 2 Total	99.0%	98.5%	98.9%	98.7%	99.0%	99.4%	99.3%	99.3%	99.4%				99.1%
NE Bernalillo	98.1%	98.4%	97.6%	98.1%	98.4%	98.2%	98.8%	98.3%	98.4%				98.3%
NW Bernalillo	98.0%	98.9%	99.0%	98.5%	98.2%	98.3%	98.5%	99.1%	99.1%				98.6%
SE Bernalillo	98.5%	98.3%	98.6%	98.6%	98.0%	98.9%	99.3%	99.2%	98.5%				98.7%
SW Bernalillo	98.7%	98.9%	98.1%	98.9%	98.7%	98.9%	99.1%	99.0%	99.6%				98.9%
Torrance	97.9%	98.2%	97.5%	98.4%	98.8%	98.2%	99.3%	99.1%	99.5%				98.5%
Gen. Region 3 Total	98.3%	98.6%	98.3%	98.5%	98.4%	98.5%	99.0%	98.9%	99.0%				98.6%
Chaves	99.3%	98.6%	99.4%	99.4%	99.3%	99.6%	99.5%	99.2%	98.8%				99.2%
Curry	98.0%	98.2%	98.3%	97.9%	98.7%	99.8%	99.4%	99.7%	99.5%				98.8%
Eddy Artesia	97.0%	98.5%	100.0%	99.3%	98.2%	96.9%	99.3%	100.0%	97.4%				98.5%
Eddy Carlsbad	98.0%	99.1%	98.7%	99.7%	98.7%	98.6%	99.7%	99.4%	99.7%				99.1%
Lea	98.1%	98.9%	98.4%	98.1%	99.0%	99.4%	99.8%	98.7%	98.2%				98.7%
Lincoln	99.5%	96.4%	97.0%	99.0%	99.2%	99.4%	99.4%	100.0%	98.6%				98.7%
Roosevelt	100.0%	100.0%	100.0%	100.0%	100.0%	100.0%	100.0%	100.0%	100.0%				100.0%
SE Region 4 Total	98.4%	98.5%	98.7%	98.8%	98.9%	99.1%	99.6%	99.6%	98.9%				98.9%
East Dona Ana	99.2%	99.7%	99.3%	98.7%	99.8%	100.0%	99.2%	99.4%	99.7%				99.4%
Grant	98.1%	98.7%	99.2%	99.7%	99.0%	99.6%	99.3%	99.3%	99.6%				99.2%
Luna	100.0%	99.7%	98.9%	99.5%	99.5%	99.6%	100.0%	98.6%	98.1%				99.3%
Otero	99.0%	99.6%	99.0%	99.0%	98.4%	98.8%	99.4%	99.4%	99.3%				99.1%
South Dona Ana	99.6%	99.6%	99.0%	99.8%	99.4%	99.8%	99.6%	100.0%	100.0%				99.6%
West Dona Ana	99.5%	99.8%	99.4%	99.8%	99.2%	99.6%	99.6%	99.8%	99.9%				99.6%
SW Region 5 Total	99.3%	99.6%	99.2%	99.4%	99.2%	99.6%	99.5%	99.4%	99.4%				99.4%
STATE TOTAL	98.7%	98.7%	98.7%	98.8%	98.7%	99.2%	99.3%	99.3%	99.2%				99.0%

SNAP Renewals Processed by Field Office²⁰
June 2019

Office	Approvals	Closures	Need Based Closures	Procedural Closures
Chaves County ISD	208	108	7	101
Cibola County ISD	108	64	3	61
Colfax County ISD	41	25	1	24
Curry County ISD	215	111	10	101
East Dona Ana County ISD	276	117	14	103
Eddy Artesia County ISD	53	32	3	29
Eddy Carlsbad County ISD	67	35	5	30
Grant County ISD	121	66	2	64
Guadalupe County ISD	21	9	0	9
Hidalgo County ISD	0	0	0	0
Lea County ISD	156	108	19	89
Lincoln County ISD	45	34	2	32
Luna County ISD	118	55	2	53
McKinley County ISD	315	150	10	140
Northeast Bernalillo County ISD	507	345	35	310
Northwest Bernalillo County ISD	458	276	24	252
Otero County ISD	175	90	5	85
Quay County ISD	30	21	0	21
Rio Arriba County ISD	201	100	7	93
Roosevelt County ISD	0	0	0	0
San Juan County ISD	330	249	19	230
San Miguel County ISD	145	84	7	77
Sandoval County ISD	324	202	14	188
Santa Fe County ISD	260	149	13	136
Sierra County ISD	75	39	0	39
Socorro County ISD	98	39	1	38
South Dona Ana ISD	345	137	24	113
Southeast Bernalillo County ISD	318	195	11	184
Southwest Bernalillo County ISD	705	381	39	342
Taos County ISD	107	70	8	62
Torrance County ISD	96	53	5	48
Valencia North County ISD	228	131	18	113
Valencia South County ISD	0	0	0	0
West Dona Ana County ISD	344	139	13	126
Centralized Units	0	0	0	0
Statewide Total	6,490	3,614	321	3,293

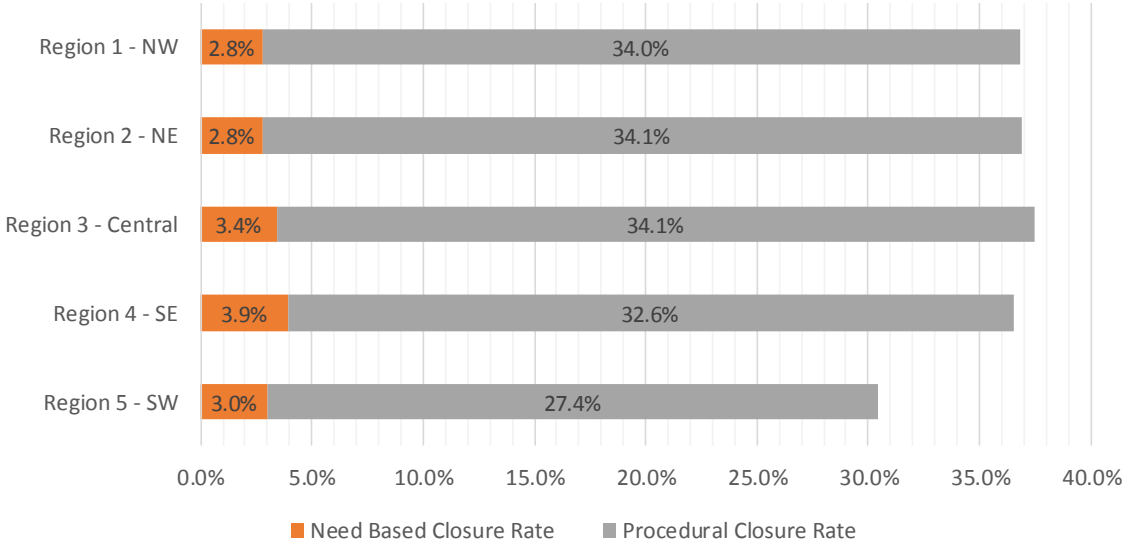
SNAP Renewal Disposition Rates by Field Office²⁰
June 2019

Office	Approval Rate	Closure Rate	Need Based Closure Rate	Procedural Closure Rate
Chaves County ISD	65.8%	34.2%	2.2%	32.0%
Cibola County ISD	62.8%	37.2%	1.7%	35.5%
Colfax County ISD	62.1%	37.9%	1.5%	36.4%
Curry County ISD	66.0%	34.0%	3.1%	31.0%
East Dona Ana County ISD	70.2%	29.8%	3.6%	26.2%
Eddy Artesia County ISD	62.4%	37.6%	3.5%	34.1%
Eddy Carlsbad County ISD	65.7%	34.3%	4.9%	29.4%
Grant County ISD	64.7%	35.3%	1.1%	34.2%
Guadalupe County ISD	70.0%	30.0%	0.0%	30.0%
Hidalgo County ISD	0.0%	0.0%	0.0%	0.0%
Lea County ISD	59.1%	40.9%	7.2%	33.7%
Lincoln County ISD	57.0%	43.0%	2.5%	40.5%
Luna County ISD	68.2%	31.8%	1.2%	30.6%
McKinley County ISD	67.7%	32.3%	2.2%	30.1%
Northeast Bernalillo County ISD	59.5%	40.5%	4.1%	36.4%
Northwest Bernalillo County ISD	62.4%	37.6%	3.3%	34.3%
Otero County ISD	66.0%	34.0%	1.9%	32.1%
Quay County ISD	58.8%	41.2%	0.0%	41.2%
Rio Arriba County ISD	66.8%	33.2%	2.3%	30.9%
Roosevelt County ISD	0.0%	0.0%	0.0%	0.0%
San Juan County ISD	57.0%	43.0%	3.3%	39.7%
San Miguel County ISD	63.3%	36.7%	3.1%	33.6%
Sandoval County ISD	61.6%	38.4%	2.7%	35.7%
Santa Fe County ISD	63.6%	36.4%	3.2%	33.3%
Sierra County ISD	65.8%	34.2%	0.0%	34.2%
Socorro County ISD	71.5%	28.5%	0.7%	27.7%
South Dona Ana ISD	71.6%	28.4%	5.0%	23.4%
Southeast Bernalillo County ISD	62.0%	38.0%	2.1%	35.9%
Southwest Bernalillo County ISD	64.9%	35.1%	3.6%	31.5%
Taos County ISD	60.5%	39.5%	4.5%	35.0%
Torrance County ISD	64.4%	35.6%	3.4%	32.2%
Valencia North County ISD	63.5%	36.5%	5.0%	31.5%
Valencia South County ISD	0.0%	0.0%	0.0%	0.0%
West Dona Ana County ISD	71.2%	28.8%	2.7%	26.1%
Centralized Units	0.0%	0.0%	0.0%	0.0%
Statewide Total	64.2%	35.8%	3.2%	32.6%

SNAP Renewal Disposition Rates by Region²⁰
June 2019

Region	Approval Rate	Closure Rate	Need Based Closure Rate	Procedural Closure Rate
Region 1 - NW	63.2%	36.8%	2.8%	34.0%
Region 2 - NE	63.1%	36.9%	2.8%	34.1%
Region 3 - Central	62.5%	37.5%	3.4%	34.1%
Region 4 - SE	63.5%	36.5%	3.9%	32.6%
Region 5 - SW	69.5%	30.5%	3.0%	27.4%
Centralized Units				

Statewide Total	64.2%	35.8%	3.2%	32.6%
-----------------	-------	-------	------	-------



SNAP: Percentage of Approved Renewal Applications Processed¹¹

	Oct-18	Nov-18	Dec-18	Jan-19	Feb-19	Mar-19	Apr-19	May-19	Jun-19	Jul-19	Aug-19	Sep-19	Average
Cibola	96.4%	97.6%	99.2%	100.0%	100.0%	95.3%	98.2%	96.3%	96.4%				97.7%
McKinley	98.9%	98.0%	97.1%	100.0%	98.2%	97.2%	98.7%	98.2%	98.1%				98.3%
San Juan	98.5%	95.8%	96.8%	99.3%	95.3%	97.2%	98.3%	98.6%	96.2%				97.3%
Sierra	99.1%	100.0%	98.8%	100.0%	98.8%	100.0%	100.0%	100.0%	98.7%				99.5%
Socorro	98.3%	96.3%	100.0%	100.0%	96.6%	100.0%	100.0%	100.0%	99.0%				98.9%
Valencia North	99.1%	99.2%	98.6%	99.6%	95.4%	97.7%	99.3%	99.6%	98.7%				98.6%
Valencia South													
NW Region 1 Total	98.4%	97.8%	98.4%	99.8%	97.4%	97.9%	99.1%	98.8%	97.9%				98.4%
Colfax	100.0%	92.2%	98.4%	100.0%	100.0%	100.0%	100.0%	100.0%	100.0%				99.0%
Guadalupe	100.0%	90.5%	100.0%	100.0%	100.0%	100.0%	100.0%	100.0%	100.0%				98.9%
Quay	100.0%	98.2%	95.9%	100.0%	100.0%	100.0%	100.0%	97.9%	100.0%				99.1%
Rio Arriba	96.8%	97.4%	96.7%	100.0%	98.5%	98.6%	100.0%	99.0%	98.0%				98.3%
San Miguel	97.3%	99.4%	98.8%	100.0%	97.4%	98.6%	100.0%	100.0%	98.0%				98.8%
Sandoval	99.0%	99.2%	98.0%	99.7%	100.0%	97.9%	99.0%	99.1%	98.8%				99.0%
Santa Fe	98.9%	99.3%	97.8%	100.0%	98.8%	98.5%	97.7%	99.6%	97.7%				98.7%
Taos	98.5%	99.2%	99.2%	100.0%	100.0%	99.2%	99.1%	97.8%	94.7%				98.6%
NE Region 2 Total	98.8%	96.9%	98.1%	100.0%	99.3%	99.1%	99.5%	99.2%	98.4%				98.8%
NE Bernalillo	98.7%	97.9%	97.3%	98.6%	98.1%	96.5%	97.9%	99.2%	98.1%				98.0%
NW Bernalillo	98.8%	98.0%	98.3%	97.6%	98.2%	96.5%	98.7%	99.2%	97.0%				98.0%
SE Bernalillo	98.7%	98.0%	98.3%	99.7%	98.2%	99.0%	98.8%	98.4%	97.2%				98.5%
SW Bernalillo	99.4%	99.3%	98.8%	99.7%	99.1%	99.4%	99.9%	99.0%	98.7%				99.3%
Torrance	99.1%	97.0%	96.0%	99.4%	97.9%	96.5%	100.0%	99.2%	99.0%				98.2%
Gen. Region 3 Total	99.0%	98.1%	97.7%	99.0%	98.3%	97.6%	99.1%	99.0%	98.0%				98.4%
Chaves	99.1%	98.7%	98.7%	99.5%	100.0%	98.0%	97.7%	99.5%	98.1%				98.8%
Curry	97.9%	96.1%	93.7%	100.0%	99.1%	98.6%	98.5%	100.0%	98.6%				98.0%
Eddy Artesia	100.0%	92.7%	90.9%	100.0%	100.0%	100.0%	100.0%	100.0%	98.1%				98.0%
Eddy Carlsbad	100.0%	98.5%	100.0%	100.0%	98.4%	100.0%	100.0%	100.0%	98.5%				99.5%
Lea	98.7%	98.1%	98.4%	98.8%	98.8%	99.4%	100.0%	98.5%	98.7%				98.8%
Lincoln	100.0%	96.1%	100.0%	100.0%	97.8%	100.0%	94.9%	100.0%	100.0%				98.8%
Roosevelt													
SE Region 4 Total	99.3%	96.7%	96.9%	99.7%	99.0%	99.3%	98.5%	99.7%	98.7%				98.6%
East Dona Ana	99.6%	100.0%	100.0%	100.0%	99.6%	100.0%	100.0%	100.0%	100.0%				99.9%
Grant	99.3%	99.3%	100.0%	100.0%	100.0%	100.0%	99.2%	99.2%	99.2%				99.6%
Luna	98.3%	99.3%	99.4%	100.0%	98.4%	99.2%	98.3%	98.6%	98.3%				98.9%
Otero	99.5%	100.0%	100.0%	100.0%	99.4%	100.0%	99.4%	99.4%	100.0%				99.8%
South Dona Ana	100.0%	99.4%	100.0%	100.0%	100.0%	99.7%	100.0%	100.0%	99.7%				99.9%
West Dona Ana	99.5%	99.1%	99.4%	100.0%	99.7%	99.4%	100.0%	99.7%	99.7%				99.6%
SW Region 5 Total	99.4%	99.5%	99.8%	100.0%	99.5%	99.7%	99.5%	99.5%	99.5%				99.6%
STATE TOTAL	99.0%	97.7%	98.2%	99.7%	98.8%	98.8%	99.1%	99.2%	98.5%				98.8%

If a renewal packet was received on or before 15th of the renewal month, the case shall be considered timely if the case was processed by renewal due date

SNAP: Percentage of Approved Renewal Applications Processed¹¹

	Oct-18	Nov-18	Dec-18	Jan-19	Feb-19	Mar-19	Apr-19	May-19	Jun-19	Jul-19	Aug-19	Sep-19	Average
Cibola	95.8%	97.4%	99.1%	100.0%	100.0%	100.0%	94.4%	93.8%	100.0%				97.8%
McKinley	98.8%	97.7%	96.7%	100.0%	98.1%	100.0%	100.0%	98.0%	100.0%				98.8%
San Juan	98.5%	95.4%	96.5%	99.5%	94.7%	98.2%	100.0%	98.2%	97.5%				97.6%
Sierra	98.9%	100.0%	98.6%	100.0%	98.6%	100.0%	100.0%	100.0%	100.0%				99.6%
Socorro	97.9%	96.1%	100.0%	100.0%	96.1%	100.0%	100.0%	100.0%	100.0%				98.9%
Valencia North	99.0%	99.1%	98.5%	99.6%	94.6%	95.2%	100.0%	100.0%	100.0%				98.4%
Valencia South													
NW Region 1 Total	98.1%	97.6%	98.2%	99.8%	97.0%	98.9%	99.1%	98.3%	99.6%				98.5%
Colfax	100.0%	91.1%	98.2%	100.0%	100.0%	100.0%	100.0%	100.0%	100.0%				98.8%
Guadalupe	100.0%	89.5%	100.0%	100.0%	100.0%	100.0%	100.0%	100.0%	100.0%				98.8%
Quay	100.0%	98.0%	95.7%	100.0%	100.0%	100.0%	100.0%	100.0%	100.0%				99.3%
Rio Arriba	96.4%	97.0%	96.1%	100.0%	98.3%	100.0%	100.0%	100.0%	100.0%				98.6%
San Miguel	96.9%	99.3%	98.6%	100.0%	97.0%	100.0%	100.0%	100.0%	100.0%				99.1%
Sandoval	98.9%	99.1%	97.7%	99.7%	100.0%	95.6%	100.0%	96.7%	100.0%				98.6%
Santa Fe	98.8%	99.3%	97.5%	100.0%	98.6%	97.9%	97.6%	100.0%	100.0%				98.8%
Taos	98.3%	99.1%	99.1%	100.0%	100.0%	100.0%	100.0%	100.0%	100.0%				99.6%
NE Region 2 Total	98.6%	96.5%	97.9%	100.0%	99.2%	99.2%	99.7%	99.6%	100.0%				99.0%
NE Bernalillo	98.5%	97.8%	96.9%	98.4%	97.9%	97.6%	98.9%	100.0%	98.5%				98.3%
NW Bernalillo	98.5%	97.7%	98.1%	97.3%	97.9%	97.8%	95.9%	100.0%	100.0%				98.1%
SE Bernalillo	98.5%	97.8%	98.0%	99.7%	98.1%	100.0%	100.0%	96.4%	100.0%				98.7%
SW Bernalillo	99.3%	99.2%	98.6%	99.7%	98.9%	98.3%	100.0%	100.0%	100.0%				99.3%
Torrance	98.9%	96.3%	95.5%	99.3%	97.7%	100.0%	100.0%	100.0%	100.0%				98.6%
Gen. Region 3 Total	98.8%	97.8%	97.4%	98.9%	98.1%	98.7%	99.0%	99.3%	99.7%				98.6%
Chaves	99.0%	98.5%	98.5%	99.5%	100.0%	97.1%	100.0%	100.0%	100.0%				99.2%
Curry	97.5%	95.5%	92.6%	100.0%	98.9%	100.0%	95.3%	100.0%	100.0%				97.8%
Eddy Artesia	100.0%	91.7%	87.1%	100.0%	100.0%	100.0%	100.0%	100.0%	100.0%				97.6%
Eddy Carlsbad	100.0%	98.2%	100.0%	100.0%	98.0%	100.0%	100.0%	100.0%	93.8%				98.9%
Lea	98.5%	98.0%	98.1%	98.6%	98.6%	95.8%	100.0%	94.7%	100.0%				98.0%
Lincoln	100.0%	97.7%	100.0%	100.0%	97.5%	100.0%	100.0%	100.0%	100.0%				99.5%
Roosevelt													
SE Region 4 Total	99.2%	96.6%	96.0%	99.7%	98.8%	98.8%	99.2%	99.1%	99.0%				98.5%
East Dona Ana	99.6%	100.0%	100.0%	100.0%	99.5%	100.0%	100.0%	100.0%	100.0%				99.9%
Grant	99.3%	99.2%	100.0%	100.0%	100.0%	100.0%	100.0%	100.0%	100.0%				99.8%
Luna	98.0%	100.0%	99.2%	100.0%	98.1%	100.0%	94.4%	100.0%	100.0%				98.9%
Otero	99.5%	100.0%	100.0%	100.0%	99.4%	100.0%	100.0%	100.0%	100.0%				99.9%
South Dona Ana	100.0%	99.4%	100.0%	100.0%	100.0%	100.0%	100.0%	100.0%	100.0%				99.9%
West Dona Ana	99.5%	99.0%	99.4%	100.0%	99.7%	98.5%	100.0%	100.0%	98.1%				99.3%
SW Region 5 Total	99.3%	99.6%	99.8%	100.0%	99.4%	99.8%	99.1%	100.0%	99.7%				99.6%
STATE TOTAL	98.8%	97.5%	97.9%	99.7%	98.6%	99.1%	99.2%	99.3%	99.6%				98.9%

Only includes cases in which the Renewal Packet was received by the 15th of the month

SNAP: Percentage of Terminations Renewal Applications Processed¹¹

	Oct-18	Nov-18	Dec-18	Jan-19	Feb-19	Mar-19	Apr-19	May-19	Jun-19	Jul-19	Aug-19	Sep-19	Average
Cibola	97.5%	94.7%	98.6%	100.0%	98.6%	98.6%	97.7%	95.9%	95.5%				97.5%
McKinley	98.3%	95.2%	95.0%	98.6%	100.0%	97.2%	98.4%	97.7%	98.0%				97.6%
San Juan	96.9%	96.0%	94.5%	96.6%	98.0%	96.6%	96.5%	97.8%	96.9%				96.7%
Sierra	100.0%	98.3%	100.0%	100.0%	100.0%	97.3%	97.7%	98.2%	97.5%				98.8%
Socorro	100.0%	95.1%	96.5%	100.0%	100.0%	100.0%	100.0%	97.7%	95.1%				98.3%
Valencia North	98.6%	98.8%	99.0%	98.8%	98.6%	97.0%	97.6%	98.6%	99.2%				98.5%
Valencia South													
NW Region 1 Total	98.6%	96.3%	97.3%	99.0%	99.2%	97.8%	98.0%	97.7%	97.0%				97.9%
Colfax	96.9%	96.6%	93.3%	95.8%	91.7%	92.6%	100.0%	100.0%	100.0%				96.3%
Guadalupe	100.0%	93.8%	100.0%	100.0%	100.0%	100.0%	100.0%	100.0%	100.0%				99.3%
Quay	100.0%	100.0%	100.0%	100.0%	100.0%	100.0%	100.0%	100.0%	100.0%				100.0%
Rio Arriba	97.3%	99.2%	98.6%	100.0%	97.9%	98.5%	99.1%	100.0%	98.0%				98.7%
San Miguel	95.4%	98.8%	100.0%	100.0%	98.6%	95.1%	97.7%	100.0%	100.0%				98.4%
Sandoval	99.0%	97.3%	97.3%	99.1%	100.0%	95.8%	98.3%	99.1%	97.6%				98.2%
Santa Fe	98.7%	99.4%	98.3%	97.4%	95.8%	98.9%	97.9%	97.9%	96.8%				97.9%
Taos	100.0%	96.8%	97.7%	100.0%	97.0%	100.0%	97.2%	98.5%	95.9%				98.1%
NE Region 2 Total	98.4%	97.7%	98.2%	99.0%	97.6%	97.6%	98.8%	99.4%	98.5%				98.4%
NE Bernalillo	97.3%	97.9%	95.8%	97.0%	98.9%	97.0%	99.0%	96.9%	96.1%				97.3%
NW Bernalillo	98.1%	97.5%	97.3%	97.0%	97.0%	97.9%	97.8%	98.8%	95.2%				97.4%
SE Bernalillo	98.0%	95.0%	98.1%	95.8%	97.7%	98.3%	98.6%	99.1%	96.5%				97.4%
SW Bernalillo	98.1%	98.3%	98.8%	98.1%	98.5%	98.7%	99.2%	97.1%	97.7%				98.3%
Torrance	98.9%	98.5%	90.7%	97.5%	98.6%	98.3%	100.0%	100.0%	98.1%				97.8%
Gen. Region 3 Total	98.1%	97.4%	96.1%	97.1%	98.1%	98.0%	98.9%	98.4%	96.7%				97.7%
Chaves	98.6%	95.1%	97.9%	97.9%	97.8%	96.0%	98.6%	97.4%	99.1%				97.6%
Curry	99.2%	100.0%	93.3%	100.0%	100.0%	97.6%	98.8%	100.0%	100.0%				98.8%
Eddy Artesia	96.7%	94.7%	93.1%	96.4%	100.0%	100.0%	100.0%	100.0%	97.0%				97.5%
Eddy Carlsbad	100.0%	98.1%	100.0%	94.4%	100.0%	98.5%	98.6%	100.0%	92.1%				98.0%
Lea	97.8%	97.4%	96.4%	98.8%	96.9%	100.0%	97.7%	96.9%	99.1%				97.9%
Lincoln	95.6%	94.3%	97.8%	100.0%	100.0%	100.0%	100.0%	97.2%	100.0%				98.3%
Roosevelt													
SE Region 4 Total	98.0%	96.6%	96.4%	97.9%	99.1%	98.7%	99.0%	98.6%	97.9%				98.0%
East Dona Ana	98.6%	99.2%	98.0%	100.0%	97.8%	100.0%	99.3%	99.4%	99.2%				99.1%
Grant	97.1%	98.6%	100.0%	100.0%	100.0%	100.0%	100.0%	95.8%	97.1%				98.7%
Luna	100.0%	98.6%	98.9%	100.0%	100.0%	100.0%	100.0%	97.1%	98.2%				99.2%
Otero	99.1%	99.2%	99.2%	100.0%	100.0%	98.4%	99.2%	99.0%	96.8%				99.0%
South Dona Ana	100.0%	100.0%	100.0%	98.9%	100.0%	100.0%	100.0%	100.0%	99.3%				99.8%
West Dona Ana	100.0%	99.3%	99.5%	100.0%	99.4%	97.9%	99.1%	98.9%	99.3%				99.3%
SW Region 5 Total	99.1%	99.2%	99.3%	99.8%	99.5%	99.4%	99.6%	98.4%	98.3%				99.2%
STATE TOTAL	98.4%	97.5%	97.5%	98.7%	98.7%	98.3%	98.8%	98.5%	97.8%				98.2%

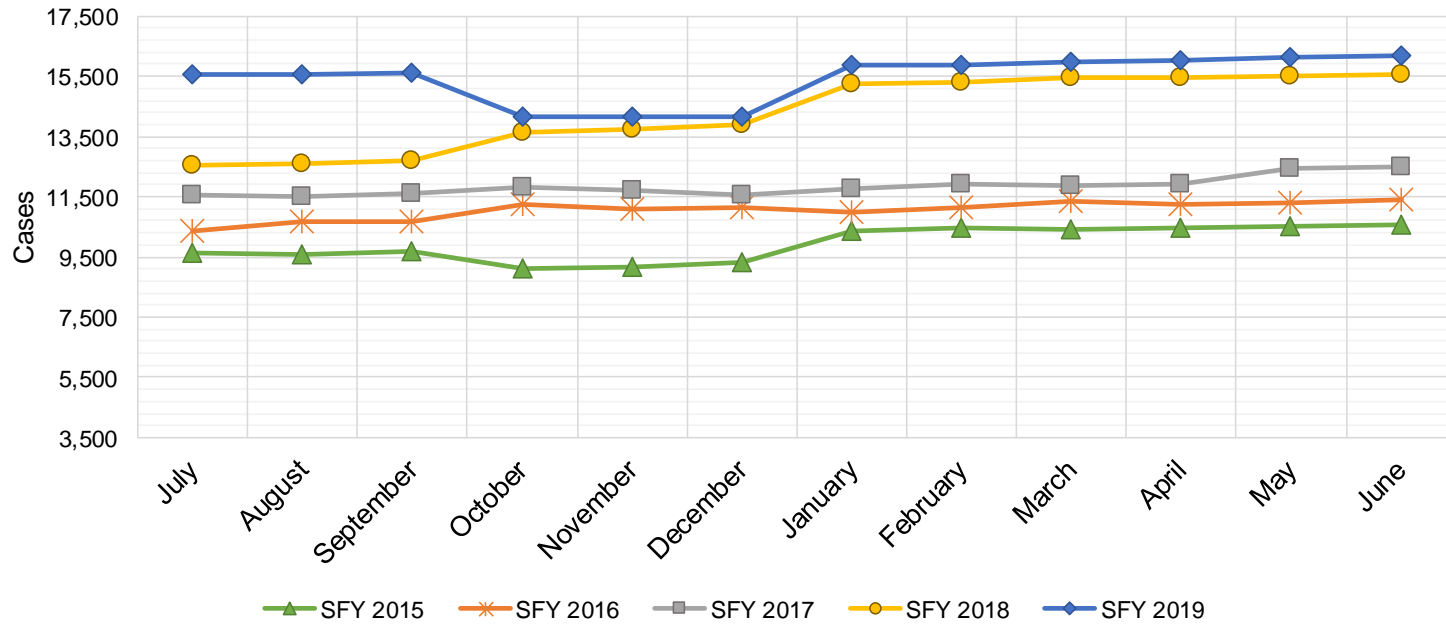
Includes cases for which no renewal application was received.

SNAP: Combined Percentage of Approved and Terminated Renewal Applications Processed¹¹

	Oct-18	Nov-18	Dec-18	Jan-19	Feb-19	Mar-19	Apr-19	May-19	Jun-19	Jul-19	Aug-19	Sep-19	Average
Cibola	96.8%	96.7%	99.0%	100.0%	99.4%	96.4%	98.0%	96.1%	96.1%				97.6%
McKinley	98.8%	97.3%	96.3%	99.7%	98.8%	97.2%	98.6%	98.1%	98.1%				98.1%
San Juan	97.9%	95.9%	95.9%	98.5%	96.5%	96.9%	97.5%	98.3%	96.5%				97.1%
Sierra	99.4%	99.3%	99.2%	100.0%	99.2%	99.2%	99.2%	99.3%	98.3%				99.2%
Socorro	98.8%	95.9%	98.7%	100.0%	97.6%	100.0%	100.0%	99.2%	97.9%				98.7%
Valencia North	99.0%	99.1%	98.8%	99.4%	96.6%	97.4%	98.7%	99.2%	98.9%				98.6%
Valencia South													
NW Region 1 Total	98.4%	97.4%	98.0%	99.6%	98.0%	97.9%	98.7%	98.4%	97.6%				98.2%
Colfax	99.0%	93.8%	96.8%	98.7%	97.2%	97.6%	100.0%	100.0%	100.0%				98.1%
Guadalupe	100.0%	91.9%	100.0%	100.0%	100.0%	100.0%	100.0%	100.0%	100.0%				99.1%
Quay	100.0%	98.7%	96.8%	100.0%	100.0%	100.0%	100.0%	98.6%	100.0%				99.3%
Rio Arriba	96.9%	98.0%	97.4%	100.0%	98.3%	98.6%	99.7%	99.4%	98.0%				98.5%
San Miguel	96.7%	99.2%	99.2%	100.0%	97.8%	97.3%	99.2%	100.0%	98.7%				98.7%
Sandoval	99.0%	98.5%	97.7%	99.5%	100.0%	97.2%	98.7%	99.1%	98.3%				98.7%
Santa Fe	98.9%	99.3%	98.0%	99.2%	97.8%	98.7%	97.8%	99.0%	97.4%				98.5%
Taos	99.1%	98.4%	98.6%	100.0%	98.9%	99.5%	98.4%	98.0%	95.2%				98.5%
NE Region 2 Total	98.7%	97.2%	98.1%	99.7%	98.7%	98.6%	99.2%	99.3%	98.5%				98.7%
NE Bernalillo	98.1%	97.9%	96.7%	98.1%	98.4%	96.7%	98.4%	98.2%	97.3%				97.8%
NW Bernalillo	98.5%	97.8%	97.9%	97.4%	97.8%	97.1%	98.3%	99.0%	96.3%				97.8%
SE Bernalillo	98.4%	97.0%	98.2%	98.6%	98.0%	98.7%	98.7%	98.7%	97.0%				98.1%
SW Bernalillo	99.0%	99.0%	98.8%	99.3%	98.9%	99.2%	99.6%	98.4%	98.4%				98.9%
Torrance	99.0%	97.5%	93.8%	99.0%	98.1%	97.1%	100.0%	99.5%	98.7%				98.1%
Gen. Region 3 Total	98.6%	97.8%	97.1%	98.5%	98.3%	97.8%	99.0%	98.8%	97.5%				98.1%
Chaves	98.9%	97.4%	98.4%	99.0%	99.0%	97.2%	98.1%	98.6%	98.4%				98.3%
Curry	98.3%	97.4%	93.5%	100.0%	99.4%	98.2%	98.6%	100.0%	99.1%				98.3%
Eddy Artesia	98.7%	93.5%	91.7%	98.6%	100.0%	100.0%	100.0%	100.0%	97.7%				97.8%
Eddy Carlsbad	100.0%	98.3%	100.0%	98.1%	99.1%	99.2%	99.3%	100.0%	96.2%				98.9%
Lea	98.3%	97.8%	97.5%	98.8%	97.9%	99.6%	98.9%	97.8%	98.9%				98.4%
Lincoln	98.0%	95.3%	98.9%	100.0%	98.7%	100.0%	96.8%	98.9%	100.0%				98.5%
Roosevelt													
SE Region 4 Total	98.7%	96.6%	96.7%	99.1%	99.0%	99.0%	98.6%	99.2%	98.4%				98.4%
East Dona Ana	99.3%	99.8%	99.3%	100.0%	99.0%	100.0%	99.8%	99.8%	99.7%				99.6%
Grant	98.6%	99.1%	100.0%	100.0%	100.0%	100.0%	99.5%	97.9%	98.4%				99.3%
Luna	98.8%	99.1%	99.2%	100.0%	99.0%	99.5%	98.9%	98.1%	98.3%				99.0%
Otero	99.4%	99.7%	99.7%	100.0%	99.6%	99.3%	99.3%	99.2%	98.9%				99.5%
South Dona Ana	100.0%	99.6%	100.0%	99.8%	100.0%	99.8%	100.0%	100.0%	99.6%				99.9%
West Dona Ana	99.7%	99.2%	99.4%	100.0%	99.6%	98.9%	99.7%	99.4%	99.6%				99.5%
SW Region 5 Total	99.3%	99.4%	99.6%	100.0%	99.5%	99.6%	99.5%	99.1%	99.1%				99.5%
STATE TOTAL	98.7%	97.7%	97.9%	99.4%	98.7%	98.6%	99.0%	99.0%	98.3%				98.6%

State SNAP Supplement

SFY 2015 ¹²			SFY 2016 ^{12,9}			SFY 2017 ⁹			SFY 2018 ⁹			SFY 2019 ⁹		
	Cases	Expenditures		Cases	Expenditures		Cases	Expenditures		Cases	Expenditures		Cases	Expenditures
Jul-14	9,635	\$88,859	Jul-15	10,345	\$86,143	Jul-16	11,537	\$95,553	Jul-17	12,526	\$97,568	Jul-18	15,555	\$141,711
Aug-14	9,559	\$87,757	Aug-15	10,669	\$88,197	Aug-16	11,522	\$95,107	Aug-17	12,589	\$98,954	Aug-18	15,584	\$139,719
Sep-14	9,688	\$87,372	Sep-15	10,676	\$88,426	Sep-16	11,613	\$94,472	Sep-17	12,679	\$97,546	Sep-18	15,631	\$140,768
Oct-14	9,136	\$70,490	Oct-15	11,262	\$96,758	Oct-16	11,797	\$96,679	Oct-17	13,628	\$117,343	Oct-18	14,161	\$125,737
Nov-14	9,152	\$69,955	Nov-15	11,099	\$91,996	Nov-16	11,735	\$93,689	Nov-17	13,748	\$119,055	Nov-18	14,160	\$125,401
Dec-14	9,322	\$73,226	Dec-15	11,125	\$90,771	Dec-16	11,556	\$93,739	Dec-17	13,877	\$120,585	Dec-18	14,163	\$126,263
Jan-15	10,384	\$84,578	Jan-16	10,977	\$92,760	Jan-17	11,763	\$96,074	Jan-18	15,246	\$135,993	Jan-19	15,890	\$141,357
Feb-15	10,477	\$82,901	Feb-16	11,153	\$95,363	Feb-17	11,907	\$98,251	Feb-18	15,308	\$137,296	Feb-19	15,882	\$142,396
Mar-15	10,423	\$87,461	Mar-16	11,332	\$96,751	Mar-17	11,853	\$96,693	Mar-18	15,482	\$139,132	Mar-19	15,970	\$142,427
Apr-15	10,440	\$79,605	Apr-16	11,222	\$93,959	Apr-17	11,944	\$97,060	Apr-18	15,466	\$139,202	Apr-19	16,032	\$143,982
May-15	10,491	\$82,511	May-16	11,283	\$95,271	May-17	12,457	\$96,940	May-18	15,525	\$139,397	May-19	16,126	\$143,697
Jun-15	10,575	\$85,134	Jun-16	11,389	\$93,061	Jun-17	12,498	\$97,405	Jun-18	15,577	\$140,802	Jun-19	16,182	\$143,128
TOTAL	119,282	\$979,850	132,532	\$1,109,455	142,182	\$1,151,662	171,651	\$1,482,874	185,336	\$1,656,584				
AVERAGE	9,940	\$81,654	11,044	\$92,455	11,849	\$95,972	14,304	\$123,573	15,445	\$138,049				



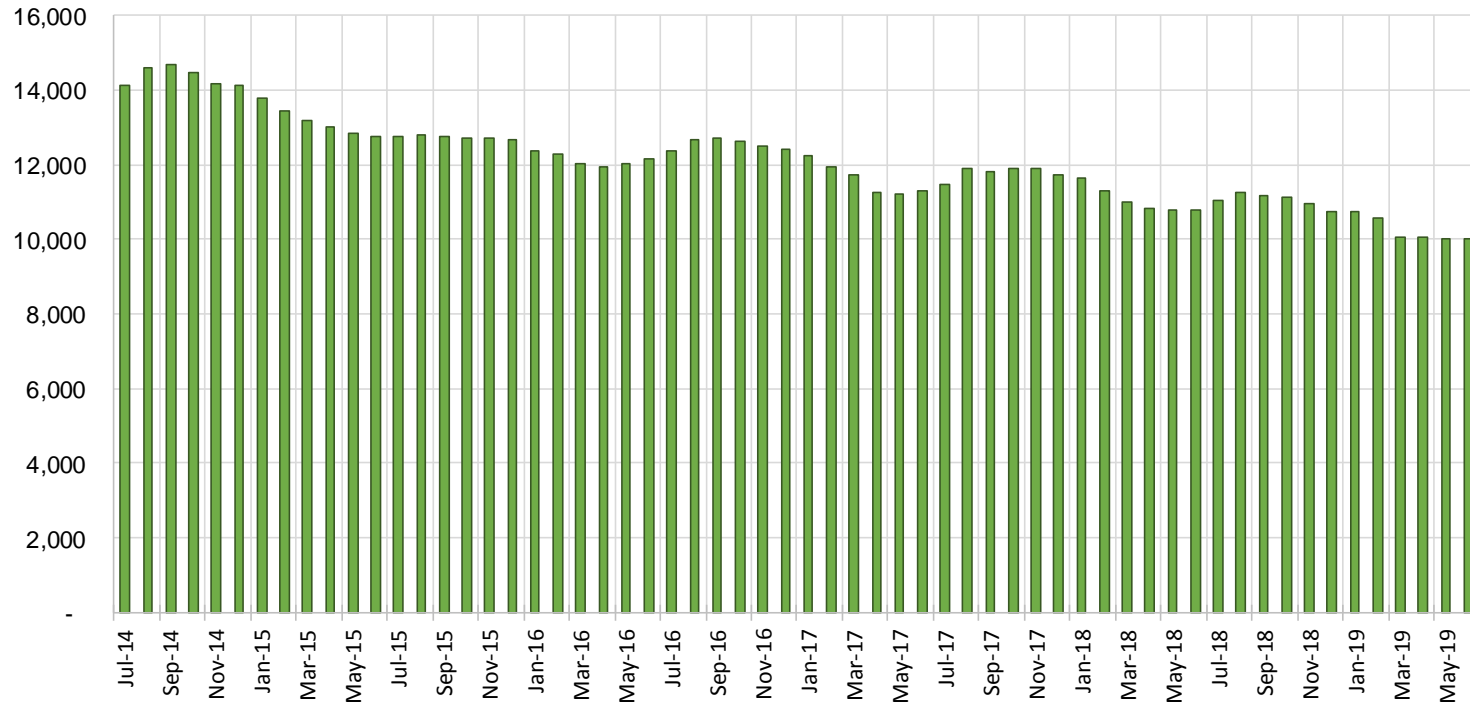
TANF Cases by Field Office⁶

Office	Jun-18	May-19	Jun-19	Percent Change	
				Jun-18- Jun-19	May-19- Jun-19
Chaves County ISD	456	392	396	-13.2%	1.0%
Cibola County ISD	147	128	122	-17.0%	-4.7%
Colfax County ISD	88	78	86	-2.3%	10.3%
Curry County ISD	655	610	614	-6.3%	0.7%
East Dona Ana County ISD	410	409	398	-2.9%	-2.7%
Eddy Artesia County ISD	99	80	81	-18.2%	1.3%
Eddy Carlsbad County ISD	130	119	118	-9.2%	-0.8%
Grant County ISD	155	191	185	19.4%	-3.1%
Guadalupe County ISD	25	27	26	4.0%	-3.7%
Hidalgo County ISD	22	0	0	-100.0%	N/A
Lea County ISD	363	311	326	-10.2%	4.8%
Lincoln County ISD	103	105	97	-5.8%	-7.6%
Luna County ISD	232	216	199	-14.2%	-7.9%
McKinley County ISD	60	71	69	15.0%	-2.8%
Northeast Bernalillo County ISD	934	863	864	-7.5%	0.1%
Northwest Bernalillo County ISD	772	774	788	2.1%	1.8%
Otero County ISD	273	256	267	-2.2%	4.3%
Quay County ISD	61	72	75	23.0%	4.2%
Rio Arriba County ISD	392	344	355	-9.4%	3.2%
Roosevelt County ISD	0	0	0	NA	N/A
San Juan County ISD	293	274	275	-6.1%	0.4%
San Miguel County ISD	195	173	175	-10.3%	1.2%
Sandoval County ISD	522	465	451	-13.6%	-3.0%
Santa Fe County ISD	414	365	371	-10.4%	1.6%
Sierra County ISD	73	70	72	-1.4%	2.9%
Socorro County ISD	92	87	81	-12.0%	-6.9%
South Dona Ana ISD	652	611	602	-7.7%	-1.5%
Southeast Bernalillo County ISD	603	568	543	-10.0%	-4.4%
Southwest Bernalillo County ISD	1,096	1,027	1,035	-5.6%	0.8%
Taos County ISD	143	144	144	0.7%	0.0%
Torrance County ISD	169	185	183	8.3%	-1.1%
Valencia North County ISD	445	404	412	-7.4%	2.0%
Valencia South County ISD	0	0	0	N/A	N/A
West Dona Ana County ISD	703	618	627	-10.8%	1.5%
Centralized Units	6	0	0	-100.0%	N/A
Statewide Total	10,783	10,037	10,037	-6.9%	0.0%

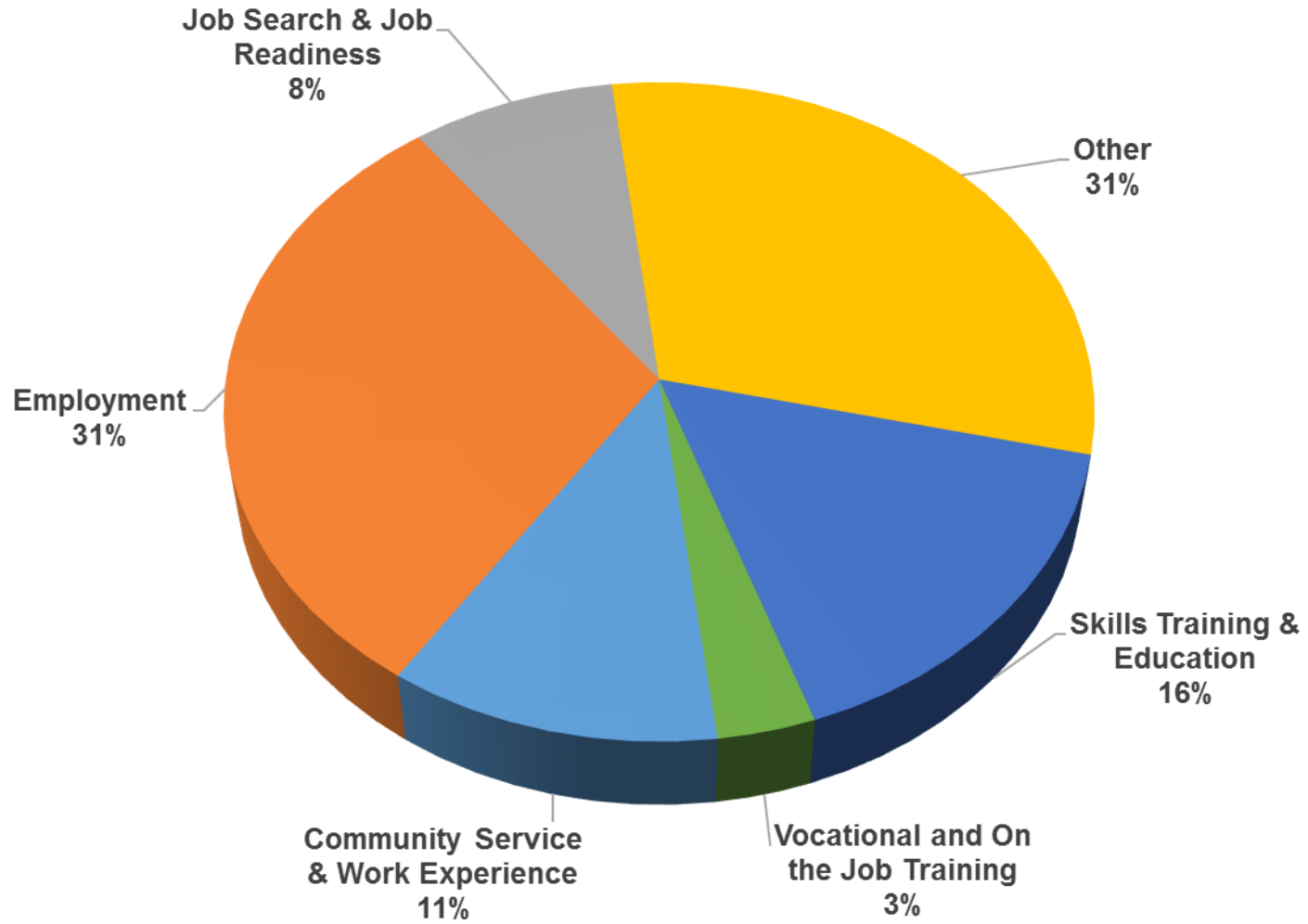
TANF Cases by Region⁶

Region	Jun-18	May-19	Jun-19	Percent Change	
				Jun-18- Jun-19	May-19- Jun-19
Region 1- NW	1,110	1,034	1,031	-7.1%	-0.3%
Region 2- NE	1,840	1,668	1,683	-8.5%	0.9%
Region 3- Central	3,574	3,417	3,413	-4.5%	-0.1%
Region 4- SE	1,806	1,617	1,632	-9.6%	0.9%
Region 5- SW	2,447	2,301	2,278	-6.9%	-1.0%
Centralized Units	6	0	0	-100.0%	N/A
Statewide Total	10,783	10,037	10,037	-6.9%	0.0%

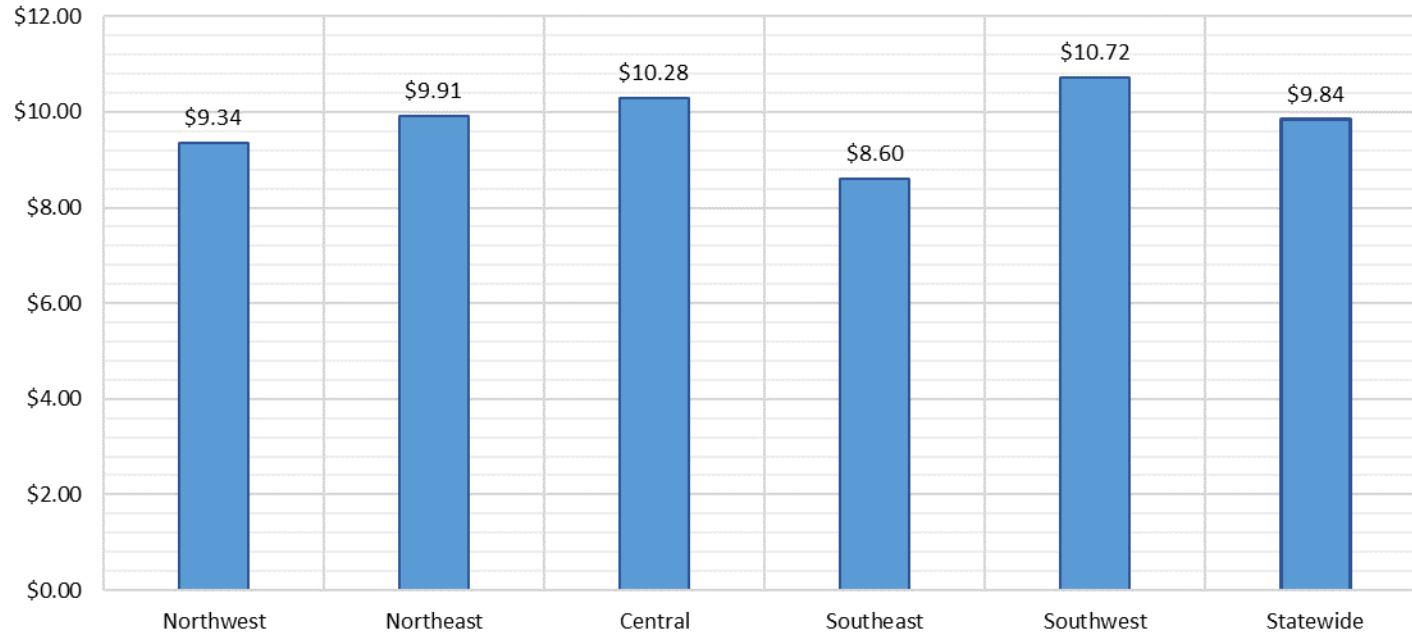
TANF Caseload: SFY-15 to Current



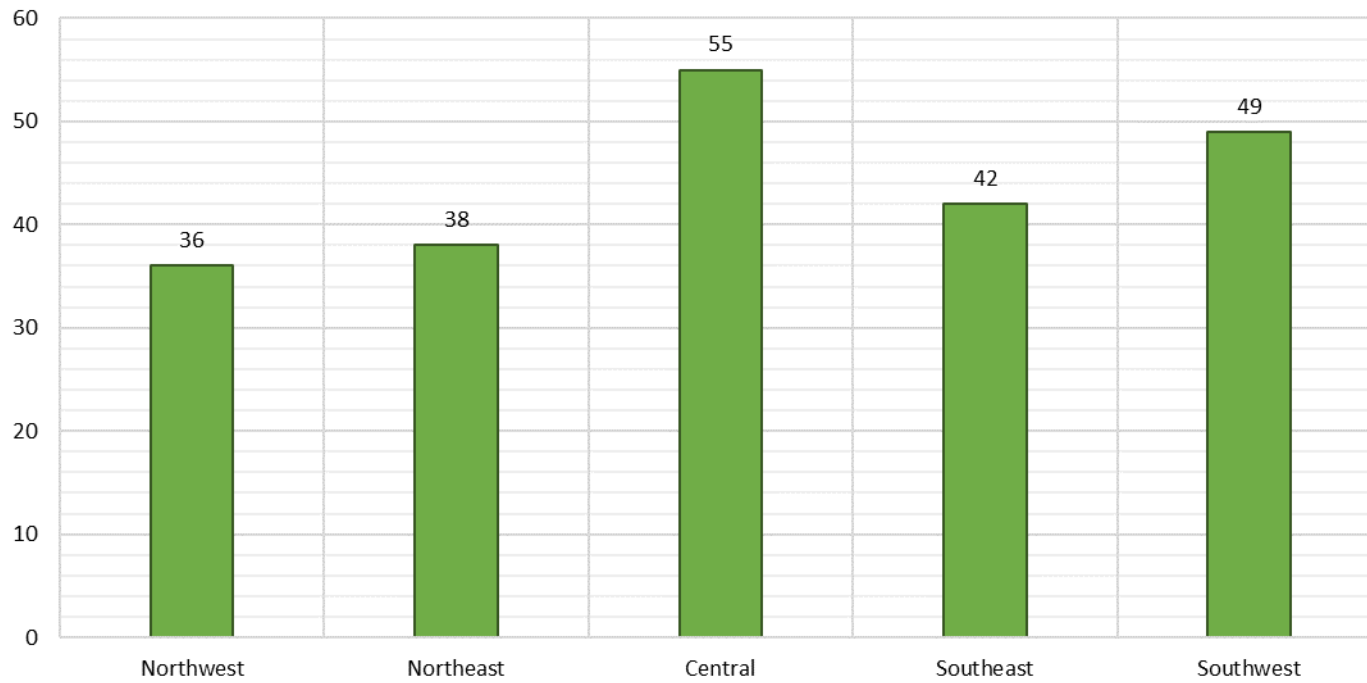
**NM Works Activity Placements on June 30, 2019
as reported by SL Start¹⁴**



Average Starting Hourly Wage of June 2019 TANF Employments
as reported by SL Start¹⁵



Number of New Employments in June 2019 by Region
as reported by SL Start¹⁵
Statewide Total: 220



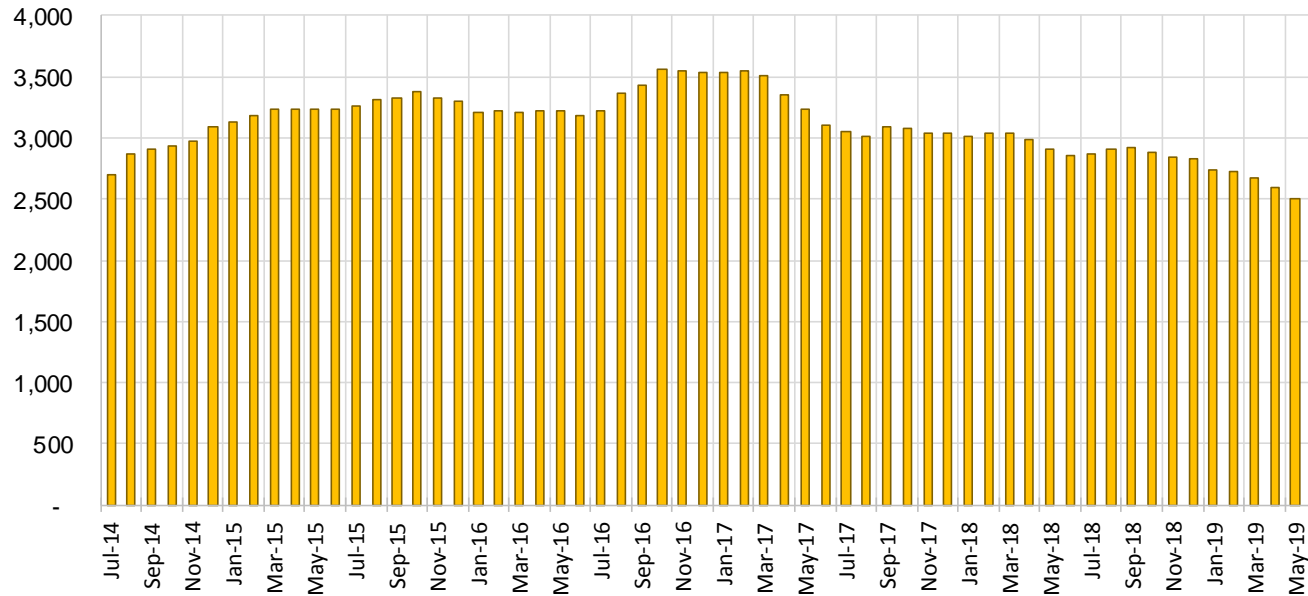
General Assistance Cases by Field Office⁶

Office	Jun-18	May-19	Jun-19	Percent Change	
				Jun-18- Jun-19	May-19- Jun-19
Chaves County ISD	118	96	101	-14.4%	5.2%
Cibola County ISD	37	47	41	10.8%	-12.8%
Colfax County ISD	19	18	19	0.0%	5.6%
Curry County ISD	81	86	91	12.3%	5.8%
East Dona Ana County ISD	105	103	95	-9.5%	-7.8%
Eddy Artesia County ISD	22	28	25	13.6%	-10.7%
Eddy Carlsbad County ISD	74	50	45	-39.2%	-10.0%
Grant County ISD	56	66	65	16.1%	-1.5%
Guadalupe County ISD	19	12	11	-42.1%	-8.3%
Hidalgo County ISD	12	0	0	-100.0%	N/A
Lea County ISD	79	69	68	-13.9%	-1.4%
Lincoln County ISD	30	29	30	0.0%	3.4%
Luna County ISD	51	53	52	2.0%	-1.9%
McKinley County ISD	52	48	52	0.0%	8.3%
Northeast Bernalillo County ISD	344	252	250	-27.3%	-0.8%
Northwest Bernalillo County ISD	298	242	232	-22.1%	-4.1%
Otero County ISD	85	61	63	-25.9%	3.3%
Quay County ISD	27	29	30	11.1%	3.4%
Rio Arriba County ISD	73	68	62	-15.1%	-8.8%
Roosevelt County ISD	0	0	0	N/A	N/A
San Juan County ISD	140	122	118	-15.7%	-3.3%
San Miguel County ISD	71	69	66	-7.0%	-4.3%
Sandoval County ISD	119	81	75	-37.0%	-7.4%
Santa Fe County ISD	127	100	100	-21.3%	0.0%
Sierra County ISD	27	30	30	11.1%	0.0%
Socorro County ISD	36	41	40	11.1%	-2.4%
South Dona Ana ISD	54	50	51	-5.6%	2.0%
Southeast Bernalillo County ISD	159	142	137	-13.8%	-3.5%
Southwest Bernalillo County ISD	176	180	185	5.1%	2.8%
Taos County ISD	40	31	29	-27.5%	-6.5%
Torrance County ISD	43	52	52	20.9%	0.0%
Valencia North County ISD	108	87	84	-22.2%	-3.4%
Valencia South County ISD	0	0	0	N/A	N/A
West Dona Ana County ISD	173	162	155	-10.4%	-4.3%
Centralized Units	0	0	1	N/A	N/A
Statewide Total	2,855	2,504	2,455	-14.0%	-2.0%

General Assistance Cases by Region⁶

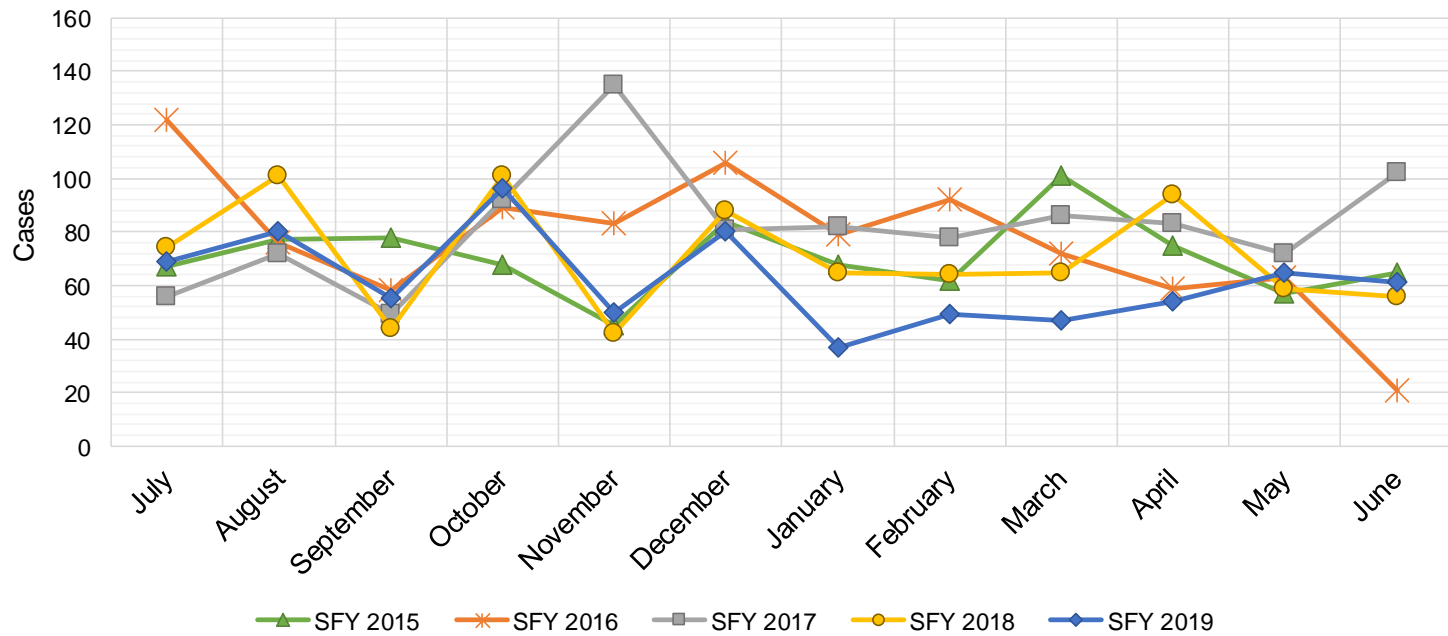
Region	Jun-18	May-19	Jun-19	Percent Change	
				Jun-18- Jun-19	May-19- Jun-19
Region 1 - NW	400	375	365	-8.8%	-2.7%
Region 2 - NE	495	408	392	-20.8%	-3.9%
Region 3 - Central	1,020	868	856	-16.1%	-1.4%
Region 4 - SE	404	358	360	-10.9%	0.6%
Region 5 - SW	536	495	481	-10.3%	-2.8%
Centralized Units	0	0	1	N/A	N/A
Statewide Total	2,855	2,504	2,455	-14.0%	-2.0%

General Assistance Caseload: SFY-15 to Current



General Assistance Interim Assistance Reimbursements¹⁶

SFY 2015			SFY 2016			SFY 2017			SFY 2018			SFY 2019		
	Cases	Expenditures		Cases	Expenditures		Cases	Expenditures		Cases	Expenditures		Cases	Expenditures
Jul-14	67	\$144,679	Jul-15	122	\$342,648	Jul-16	56	\$164,970	Jul-17	74	\$241,438	Jul-18	69	\$228,333
Aug-14	77	\$244,233	Aug-15	76	\$245,236	Aug-16	72	\$223,182	Aug-17	101	\$339,301	Aug-18	80	\$241,292
Sep-14	78	\$168,421	Sep-15	58	\$170,093	Sep-16	49	\$158,027	Sep-17	44	\$131,229	Sep-18	55	\$188,192
Oct-14	68	\$182,265	Oct-15	89	\$277,912	Oct-16	92	\$257,830	Oct-17	101	\$335,752	Oct-18	96	\$298,502
Nov-14	45	\$134,482	Nov-15	83	\$238,948	Nov-16	135	\$402,305	Nov-17	42	\$139,572	Nov-18	50	\$148,641
Dec-14	84	\$239,926	Dec-15	106	\$388,102	Dec-16	81	\$227,569	Dec-17	88	\$245,453	Dec-18	80	\$246,422
Jan-15	68	\$227,066	Jan-16	79	\$239,263	Jan-17	82	\$274,050	Jan-18	65	\$258,239	Jan-19	37	\$106,081
Feb-15	62	\$159,564	Feb-16	92	\$296,332	Feb-17	78	\$227,569	Feb-18	64	\$195,815	Feb-19	49	\$119,300
Mar-15	101	\$317,899	Mar-16	72	\$254,360	Mar-17	86	\$278,219	Mar-18	65	\$172,188	Mar-19	47	\$137,296
Apr-15	75	\$199,038	Apr-16	59	\$208,631	Apr-17	83	\$267,187	Apr-18	94	\$312,340	Apr-19	54	\$173,772
May-15	57	\$167,383	May-16	63	\$182,241	May-17	72	\$232,836	May-18	59	\$155,406	May-19	65	\$237,979
Jun-15	65	\$188,159	Jun-16	21	\$51,760	Jun-17	102	\$306,228	Jun-18	56	\$159,268	Jun-19	61	\$214,497
TOTAL	847	\$2,373,115	920	\$2,895,525	988	\$3,019,972	853	\$2,686,001	743	\$2,340,307				
AVERAGE	71	\$197,760	77	\$241,294	82	\$251,664	71	\$223,833	62	\$195,026				



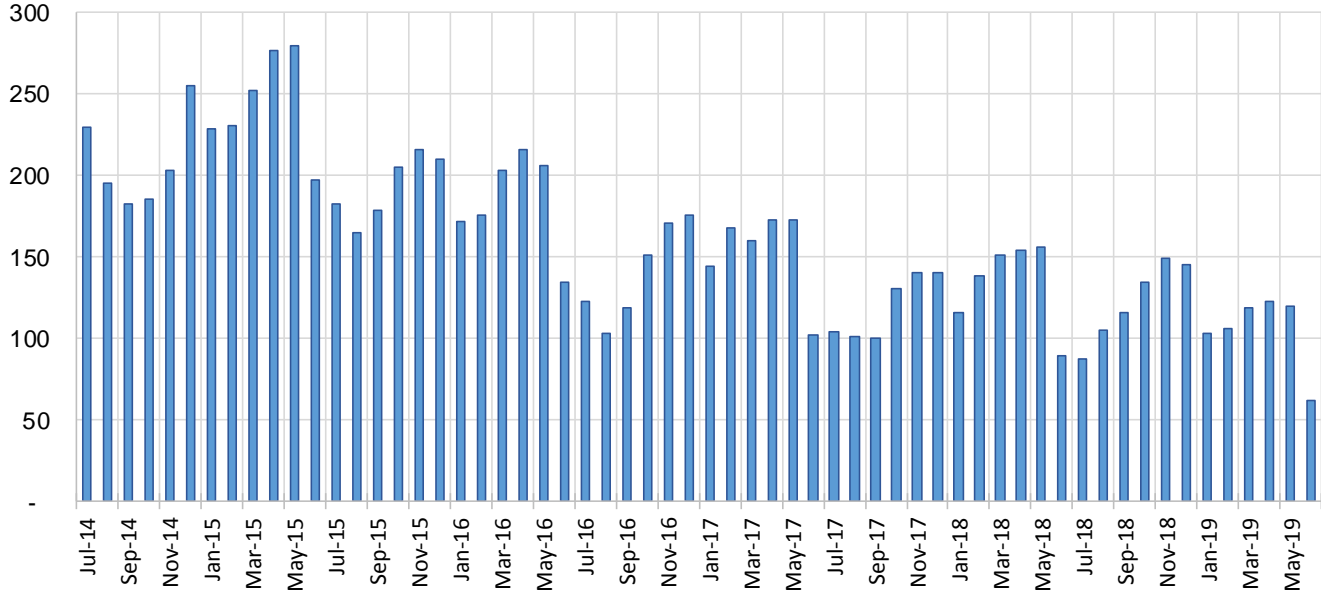
Education Works Cases by Field Office⁶

Office				Percent Change	
	Jun-18	May-19	Jun-19	Jun-18- Jun-19	May-19- Jun-19
Chaves County ISD	1	1	1	0.0%	0.0%
Cibola County ISD	0	1	0	N/A	-100.0%
Colfax County ISD	0	0	0	N/A	N/A
Curry County ISD	3	5	2	-33.3%	-60.0%
East Dona Ana County ISD	7	13	2	-71.4%	-84.6%
Eddy Artesia County ISD	1	2	0	-100.0%	-100.0%
Eddy Carlsbad County ISD	1	2	1	0.0%	-50.0%
Grant County ISD	8	3	1	-87.5%	-66.7%
Guadalupe County ISD	0	0	0	N/A	N/A
Hidalgo County ISD	0	0	0	N/A	N/A
Lea County ISD	1	1	0	-100.0%	-100.0%
Lincoln County ISD	0	0	0	N/A	N/A
Luna County ISD	1	2	2	100.0%	0.0%
McKinley County ISD	0	0	0	N/A	N/A
Northeast Bernalillo County ISD	6	9	3	-50.0%	-66.7%
Northwest Bernalillo County ISD	10	10	5	-50.0%	-50.0%
Otero County ISD	1	1	1	0.0%	0.0%
Quay County ISD	0	0	0	N/A	N/A
Rio Arriba County ISD	5	0	0	-100.0%	N/A
Roosevelt County ISD	0	0	0	N/A	N/A
San Juan County ISD	1	4	3	200.0%	-25.0%
San Miguel County ISD	3	3	1	-66.7%	-66.7%
Sandoval County ISD	6	11	7	16.7%	-36.4%
Santa Fe County ISD	7	11	4	-42.9%	-63.6%
Sierra County ISD	0	1	1	N/A	0.0%
Socorro County ISD	0	0	0	N/A	N/A
South Dona Ana ISD	11	12	9	-18.2%	-25.0%
Southeast Bernalillo County ISD	2	6	6	200.0%	0.0%
Southwest Bernalillo County ISD	10	7	6	-40.0%	-14.3%
Taos County ISD	1	0	0	-100.0%	N/A
Torrance County ISD	0	0	0	N/A	N/A
Valencia North County ISD	0	1	0	N/A	-100.0%
Valencia South County ISD	0	0	0	N/A	N/A
West Dona Ana County ISD	3	13	7	133.3%	-46.2%
Centralized Units	0	0	0	N/A	N/A
Statewide Total	89	119	62	-30.3%	-47.9%

Education Works Cases by Region⁶

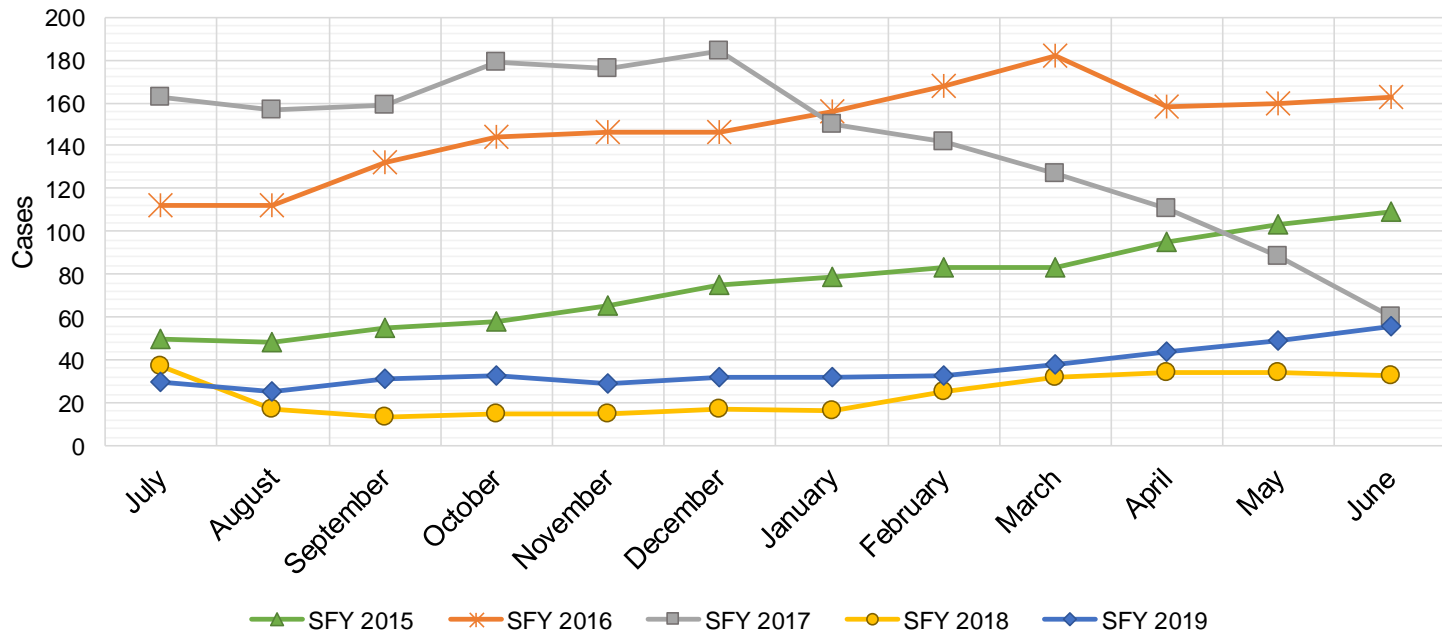
				Percent Change	
Region	Jun-18	May-19	Jun-19	Jun-18- Jun-19	May-19- Jun-19
Region 1 - NW	1	7	4	300.0%	-42.9%
Region 2 - NE	22	25	12	-45.5%	-52.0%
Region 3 - Central	28	32	20	-28.6%	-37.5%
Region 4 - SE	7	11	4	-42.9%	-63.6%
Region 5 - SW	31	44	22	-29.0%	-50.0%
Centralized Units	0	0	0	N/A	N/A
Statewide Total	89	119	62	-30.3%	-47.9%

Education Works Caseload: SFY-15 to Current



Refugee Cash Assistance

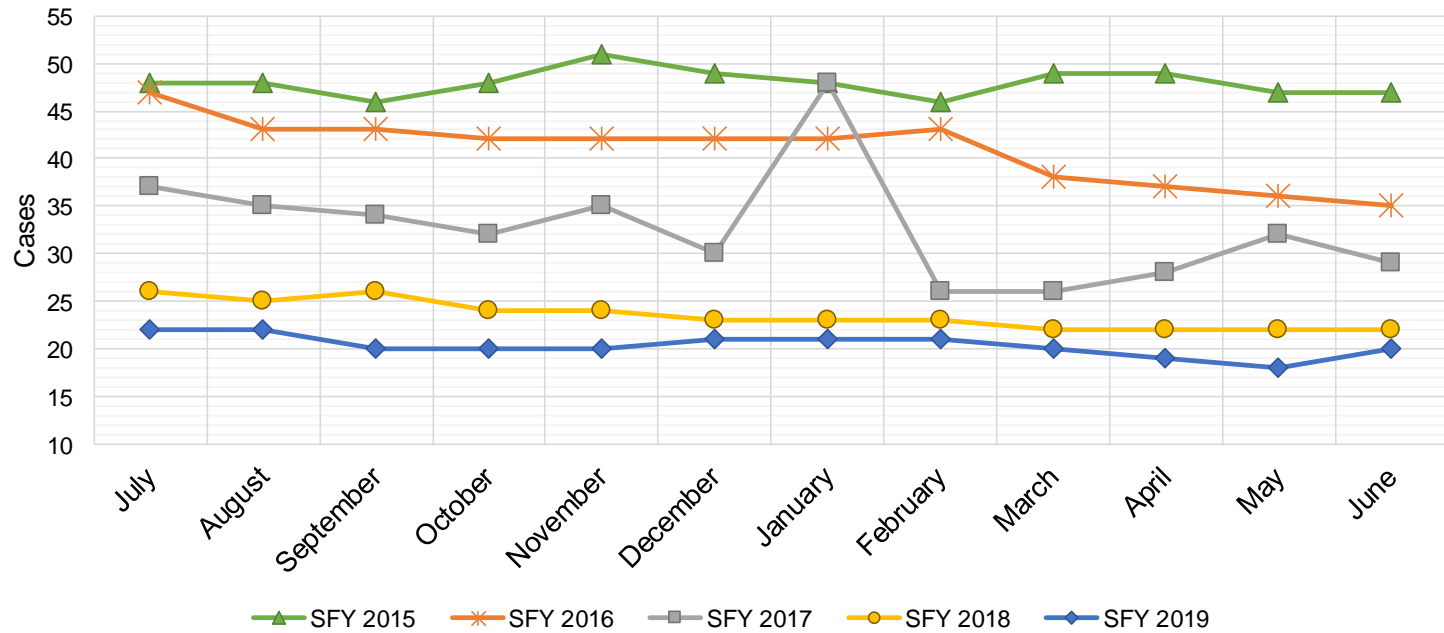
SFY 2015 ¹²			SFY 2016 ^{8,12,9}			SFY 2017 ^{8,9}			SFY 2018 ^{8,9}			SFY 2019 ^{8,9}		
	Cases	Expenditures		Cases	Expenditures		Cases	Expenditures		Cases	Expenditures		Cases	Expenditures
Jul-14	50	\$11,679	Jul-15	112	\$27,516	Jul-16	163	\$39,756	Jul-17	37	\$9,981	Jul-18	30	\$7,408
Aug-14	48	\$11,760	Aug-15	112	\$27,438	Aug-16	157	\$40,115	Aug-17	17	\$4,704	Aug-18	25	\$6,434
Sep-14	55	\$13,094	Sep-15	132	\$31,321	Sep-16	159	\$39,359	Sep-17	13	\$3,159	Sep-18	31	\$6,947
Oct-14	58	\$13,726	Oct-15	144	\$36,153	Oct-16	179	\$41,520	Oct-17	15	\$3,543	Oct-18	33	\$6,323
Nov-14	65	\$16,461	Nov-15	146	\$36,515	Nov-16	176	\$45,434	Nov-17	15	\$4,263	Nov-18	29	\$7,036
Dec-14	75	\$18,699	Dec-15	146	\$35,763	Dec-16	184	\$46,673	Dec-17	17	\$4,795	Dec-18	32	\$7,300
Jan-15	79	\$19,009	Jan-16	156	\$38,686	Jan-17	150	\$38,790	Jan-18	16	\$4,166	Jan-19	32	\$7,418
Feb-15	83	\$21,349	Feb-16	168	\$41,368	Feb-17	142	\$37,956	Feb-18	25	\$5,723	Feb-19	33	\$8,591
Mar-15	83	\$20,730	Mar-16	182	\$45,307	Mar-17	127	\$33,066	Mar-18	32	\$7,636	Mar-19	38	\$9,165
Apr-15	95	\$23,495	Apr-16	158	\$41,143	Apr-17	111	\$29,183	Apr-18	34	\$8,827	Apr-19	44	\$10,648
May-15	103	\$25,363	May-16	160	\$38,332	May-17	88	\$23,343	May-18	34	\$8,939	May-19	49	\$11,823
Jun-15	109	\$27,958	Jun-16	163	\$39,856	Jun-17	60	\$15,538	Jun-18	33	\$8,513	Jun-19	56	\$13,558
TOTAL	903	\$223,323	1,779	\$439,397	1,696	\$430,732	288	\$74,249	432	\$102,651				
AVERAGE	75	\$18,610	148	\$36,616	141	\$35,894	24	\$6,187	36	\$8,554				



State Supplement for Residential Care

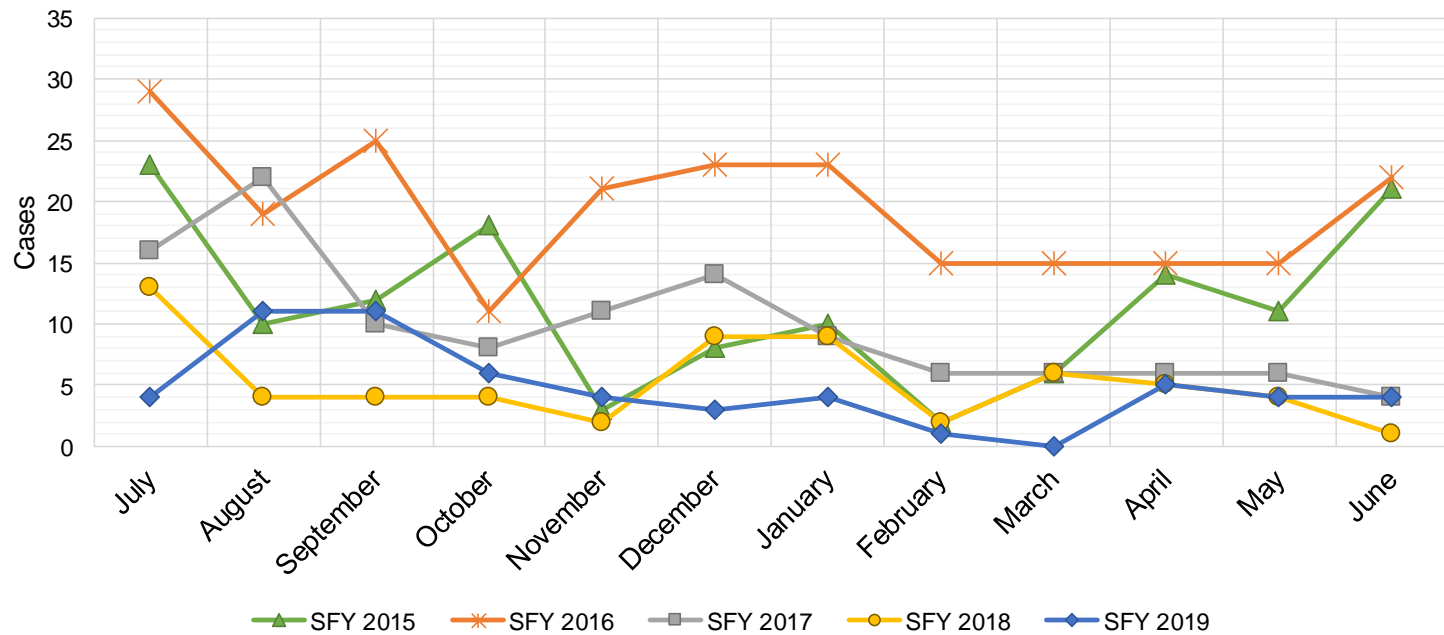
SFY 2015 ¹²			SFY 2016 ^{12,9}			SFY 2017 ⁹			SFY 2018 ⁹			SFY 2019 ⁹		
	Cases	Expenditures		Cases	Expenditures		Cases	Expenditures		Cases	Expenditures		Cases	Expenditures
Jul-14	48	\$4,700	Jul-15	47	\$4,700	Jul-16	37	\$3,700	Jul-17	26	\$2,700	Jul-18	22	\$2,200
Aug-14	48	\$5,000	Aug-15	43	\$4,900	Aug-16	35	\$3,500	Aug-17	25	\$2,500	Aug-18	22	\$2,200
Sep-14	46	\$4,600	Sep-15	43	\$4,500	Sep-16	34	\$3,400	Sep-17	26	\$2,700	Sep-18	20	\$2,000
Oct-14	48	\$4,600	Oct-15	42	\$4,400	Oct-16	32	\$3,200	Oct-17	24	\$2,500	Oct-18	20	\$2,000
Nov-14	51	\$5,600	Nov-15	42	\$4,200	Nov-16	35	\$3,500	Nov-17	24	\$2,400	Nov-18	20	\$2,000
Dec-14	49	\$5,000	Dec-15	42	\$4,200	Dec-16	30	\$3,000	Dec-17	23	\$2,200	Dec-18	21	\$2,100
Jan-15	48	\$4,900	Jan-16	42	\$4,200	Jan-17	48	\$4,800	Jan-18	23	\$2,400	Jan-19	21	\$2,000
Feb-15	46	\$4,800	Feb-16	43	\$4,300	Feb-17	26	\$2,600	Feb-18	23	\$2,300	Feb-19	21	\$2,200
Mar-15	49	\$4,800	Mar-16	38	\$3,800	Mar-17	26	\$2,600	Mar-18	22	\$2,400	Mar-19	20	\$1,900
Apr-15	49	\$5,400	Apr-16	37	\$3,700	Apr-17	28	\$2,800	Apr-18	22	\$2,200	Apr-19	19	\$1,800
May-15	47	\$4,700	May-16	36	\$3,600	May-17	32	\$3,200	May-18	22	\$2,200	May-19	18	\$1,800
Jun-15	47	\$5,300	Jun-16	35	\$3,500	Jun-17	29	\$2,900	Jun-18	22	\$2,200	Jun-19	20	\$2,000

TOTAL	576	\$59,400	490	\$50,000	392	\$39,200	282	\$28,700	244	\$24,200
AVERAGE	48	\$4,950	41	\$4,167	33	\$3,267	24	\$2,392	20	\$2,017



TANF Diversion Payments

SFY 2015 ¹²			SFY 2016 ^{12,9}			SFY 2017 ⁹			SFY 2018 ⁹			SFY 2019 ⁹		
	Cases	Expenditures		Cases	Expenditures		Cases	Expenditures		Cases	Expenditures		Cases	Expenditures
Jul-14	23	\$48,098	Jul-15	29	\$62,074	Jul-16	16	\$30,843	Jul-17	13	\$26,500	Jul-18	4	\$3,000
Aug-14	10	\$21,810	Aug-15	19	\$33,584	Aug-16	22	\$42,731	Aug-17	4	\$12,000	Aug-18	11	\$18,583
Sep-14	12	\$23,500	Sep-15	25	\$47,977	Sep-16	10	\$21,000	Sep-17	4	\$4,000	Sep-18	11	\$20,999
Oct-14	18	\$30,589	Oct-15	11	\$20,500	Oct-16	8	\$16,744	Oct-17	4	\$16,000	Oct-18	6	\$10,499
Nov-14	3	\$4,411	Nov-15	21	\$45,500	Nov-16	11	\$24,500	Nov-17	2	\$15,500	Nov-18	4	\$7,499
Dec-14	8	\$14,634	Dec-15	23	\$45,389	Dec-16	14	\$26,611	Dec-17	9	\$17,500	Dec-18	3	\$2,499
Jan-15	10	\$18,000	Jan-16	23	\$41,874	Jan-17	9	\$18,500	Jan-18	9	\$21,731	Jan-19	4	\$5,999
Feb-15	2	\$5,500	Feb-16	15	\$28,500	Feb-17	6	\$12,000	Feb-18	2	\$7,731	Feb-19	1	\$1,678
Mar-15	6	\$12,000	Mar-16	15	\$27,008	Mar-17	6	\$11,000	Mar-18	6	\$8,496	Mar-19	0	\$3,000
Apr-15	14	\$26,000	Apr-16	15	\$31,389	Apr-17	6	\$12,000	Apr-18	5	\$13,500	Apr-19	5	\$6,500
May-15	11	\$21,500	May-16	15	\$31,916	May-17	6	\$11,500	May-18	4	\$12,500	May-19	4	\$16,000
Jun-15	21	\$40,039	Jun-16	22	\$43,000	Jun-17	4	\$13,500	Jun-18	1	\$5,389	Jun-19	4	\$8,000
TOTAL	138	\$266,081	233	\$458,711	118	\$240,929	63	\$160,847	57	\$104,256				
AVERAGE	12	\$22,173	19	\$38,226	10	\$20,077	5	\$13,404	5	\$8,688				

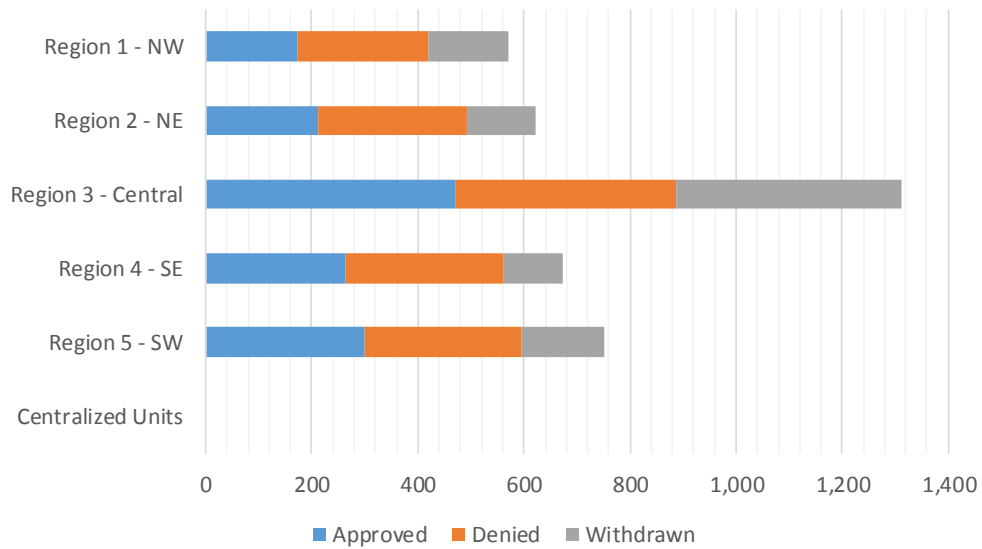


Cash Assistance Applications by Field Office^{4,11}
June 2019

Office	Approved	Denied	Withdrawn	Total Cases Processed
Chaves County ISD	65	66	32	163
Cibola County ISD	16	20	9	45
Colfax County ISD	11	16	4	31
Curry County ISD	81	89	27	197
East Dona Ana County ISD	64	62	41	167
Eddy Artesia County ISD	11	23	4	38
Eddy Carlsbad County ISD	25	36	13	74
Grant County ISD	22	32	10	64
Guadalupe County ISD	1	0	3	4
Hidalgo County ISD	0	0	0	0
Lea County ISD	61	77	22	160
Lincoln County ISD	19	5	11	35
Luna County ISD	25	13	21	59
McKinley County ISD	15	52	33	100
Northeast Bernalillo County ISD	121	119	151	391
Northwest Bernalillo County ISD	102	89	101	292
Otero County ISD	53	37	28	118
Quay County ISD	11	0	7	18
Rio Arriba County ISD	44	49	16	109
Roosevelt County ISD	2	3	0	5
San Juan County ISD	52	79	76	207
San Miguel County ISD	19	29	10	58
Sandoval County ISD	60	59	53	172
Santa Fe County ISD	53	96	23	172
Sierra County ISD	11	14	4	29
Socorro County ISD	16	27	6	49
South Dona Ana ISD	59	40	25	124
Southeast Bernalillo County ISD	83	65	71	219
Southwest Bernalillo County ISD	147	130	81	358
Taos County ISD	14	31	12	57
Torrance County ISD	19	12	22	53
Valencia North County ISD	62	57	21	140
Valencia South County ISD	0	0	0	0
West Dona Ana County ISD	75	114	30	219
Centralized Units	0	0	0	0
Statewide Total	1,419	1,541	967	3,927

Cash Assistance Applications by Region^{4,11} June 2019

	Approved	Denied	Withdrawn	Total Cases Processed
Region				
Region 1 - NW	172	249	149	570
Region 2 - NE	213	280	128	621
Region 3 - Central	472	415	426	1,313
Region 4 - SE	264	299	109	672
Region 5 - SW	298	298	155	751
Centralized Units	0	0	0	0
Statewide Total	1,419	1,541	967	3,927



Children Youth and Families Department
Children Receiving Child Care Assistance Subsidies By County

County	June 2018	July 2018	Aug 2018	Sept 2018	Oct 2018	Nov 2018	Dec 2018	Jan 2019	Feb 2019	Mar 2019	Apr 2019	May 2019	June 2019	Change Fr. Cases	Last Year Percent
Bernalillo	8,146	7,735	7,741	8,041	7,753	7,741	7,584	7,545	7,563	7,831	7,997	8,226	8,692	546	6.7%
Catron	0	0	0	0	0	0	0	0	0	0	0	0	0	0	0.0%
Chaves	865	837	828	861	817	836	814	812	834	878	868	868	875	10	1.2%
Cibola	295	289	278	312	316	315	302	287	285	289	306	286	292	-3	-1.0%
Colfax	59	56	56	59	62	60	57	62	57	59	52	50	44	-15	-25.4%
Curry	535	539	538	592	543	548	517	492	489	524	548	542	590	55	10.3%
De Baca	4	4	4	4	4	1	1	1	1	1	0	1	1	-3	-75.0%
Dona Ana	4,455	4,260	4,219	4,403	4,311	4,304	4,191	4,198	4,351	4,453	4,413	4,536	4,751	296	6.6%
Eddy	245	264	259	268	267	257	259	248	243	245	214	225	240	-5	-2.0%
Grant	142	110	111	134	133	139	126	125	134	131	127	130	136	-6	-4.2%
Guadalupe	14	14	18	11	16	14	12	11	11	11	11	11	11	-3	-21.4%
Harding	1	1	1	1	1	1	1	1	1	0	0	0	0	-1	0.0%
Hidalgo	36	37	37	36	35	32	28	23	26	24	20	27	27	-9	-25.0%
Lea	817	806	813	877	840	851	821	829	823	831	815	808	798	-19	-2.3%
Lincoln	129	129	131	107	104	100	97	97	102	104	104	100	104	-25	-19.4%
Los Alamos	22	27	30	26	31	34	34	34	34	34	36	40	40	18	81.8%
Luna	162	143	149	153	142	145	153	150	176	180	176	190	191	29	17.9%
McKinley	176	168	157	188	173	173	168	162	158	168	154	158	169	-7	-4.0%
Mora	21	26	31	29	25	18	16	16	13	11	11	13	9	-12	-57.1%
Otero	502	490	496	520	505	525	501	531	506	507	512	506	530	28	5.6%
Out of State	8	6	6	4	4	4	5	3	4	1	2	0	1	-7	-87.5%
Quay	33	38	37	33	35	34	33	34	32	34	33	33	38	5	15.2%
Rio Arriba	147	146	143	139	141	146	142	134	137	132	141	151	155	8	5.4%
Roosevelt	102	94	88	101	106	112	121	118	118	118	121	119	130	28	27.5%
San Juan	1,059	928	892	1,020	954	955	926	913	942	935	958	966	961	-98	-9.3%
San Miguel	376	375	361	375	364	357	345	317	316	319	332	349	373	-3	-0.8%
Sandoval	798	739	756	763	693	697	708	741	734	744	758	751	802	4	0.5%
Santa Fe	545	533	511	497	448	470	460	461	481	503	499	520	541	-4	-0.7%
Sierra	62	53	50	64	62	60	57	49	51	48	42	40	50	-12	-19.4%
Socorro	68	55	63	62	65	64	63	58	51	58	55	54	57	-11	-16.2%
Taos	135	138	126	111	111	112	102	115	118	117	124	125	136	1	0.7%
Torrance	120	109	104	112	92	94	88	90	85	79	69	67	82	-38	-31.7%
Union	5	5	5	5	5	5	5	5	5	5	3	3	4	-1	-20.0%
Valencia	644	615	621	664	604	611	610	614	604	589	591	607	656	12	1.9%
Totals	20,728	19,769	19,660	20,572	19,762	19,815	19,347	19,276	19,485	19,963	20,092	20,502	21,486	758	3.7%

CHILDREN YOUTH AND FAMILIES DEPARTMENT

CHILD CARE ASSISTANCE ELIGIBILITY PROGRAMS

MONTH	July'18	Aug'18	Sept'18	Oct'18	Nov'18	Dec'18	Jan'19	Feb'19	Mar'19	Apr'19	May'19	June'19
TANF (Child Care Priority 1 Clients)												
CLIENTS	2,074	2,124	2,221	2,197	2,202	2,149	2,131	2,107	2,138	2,147	2,140	2,253
COST	\$1,255,788	\$1,288,094	\$1,238,106	\$1,335,587	\$1,313,281	\$1,274,570	\$1,281,263	\$1,264,626	\$1,284,582	\$1,286,044	\$1,278,678	\$1,305,024
TANF AVERAGE COST	\$605	\$606	\$557	\$608	\$596	\$593	\$601	\$600	\$601	\$599	\$598	\$579
TRANSITION OFF TANF (Child Care Priority 2 Clients)												
CLIENTS	161	170	165	157	145	134	129	125	124	119	111	112
COST	\$97,664	\$97,412	\$89,581	\$87,146	\$81,849	\$78,119	\$81,456	\$75,852	\$73,930	\$71,395	\$69,505	\$74,593
TRAN OFF TANF AVG COST	\$607	\$573	\$543	\$555	\$564	\$583	\$631	\$607	\$596	\$600	\$626	\$666
TANF ELIGIBLE (Child Care Priority 1B Clients at or below 100% of the Federal Poverty Level)												
CLIENTS	8,404	8,352	8,755	8,505	8,452	8,269	8,227	8,125	8,248	8,275	8,494	8,777
COST	\$4,946,700	\$4,973,346	\$4,776,708	\$4,957,788	\$4,970,667	\$4,870,464	\$4,796,096	\$4,662,397	\$4,825,487	\$4,845,578	\$4,939,239	\$5,047,497
TANF ELIGIBLE AVG COST	\$589	\$595	\$546	\$583	\$588	\$589	\$583	\$574	\$585	\$586	\$581	\$575
INCOME ELIGIBLE (Child Care Priority 3, and Priority 4 Clients)												
CLIENTS	7,808	7,743	8,122	7,686	7,752	7,567	7,606	7,932	8,262	8,382	8,610	9,149
COST	\$4,133,552	\$4,208,252	\$3,980,270	\$4,056,059	\$4,049,318	\$3,991,789	\$3,956,942	\$4,144,807	\$4,325,025	\$4,401,790	\$4,546,220	\$4,693,955
INCOME ELIG AVG COST	\$529	\$543	\$490	\$528	\$522	\$528	\$520	\$523	\$523	\$525	\$528	\$513
AT-RISK CHILD PROTECTIVE SERVICES CHILD CARE PILOT (Priority 5 Clients)												
CLIENTS	405	355	364	326	351	344	338	336	342	322	303	321
COST	\$270,783	\$228,483	\$224,486	\$213,687	\$217,475	\$234,222	\$239,514	\$210,812	\$223,510	\$203,584	\$204,504	\$206,998
CPS AVG COST	\$669	\$644	\$617	\$655	\$620	\$681	\$709	\$627	\$654	\$632	\$675	\$645
CHILD PROTECTIVE SERVICES (Child Care CPS Clients)												
CLIENTS	917	916	945	891	913	884	845	860	849	847	844	874
COST	\$597,105	\$637,227	\$581,981	\$613,927	\$641,871	\$607,486	\$585,379	\$576,818	\$551,507	\$594,790	\$587,750	\$612,880
CPS AVG COST	\$651	\$696	\$616	\$689	\$703	\$687	\$693	\$671	\$650	\$702	\$696	\$701
GRAND TOTAL - ALL CHILD CARE PROGRAMS												
CLIENTS	19,769	19,660	20,572	19,762	19,815	19,347	19,276	19,485	19,963	20,092	20,502	21,486
COST	\$11,301,592	#####	\$10,891,133	\$11,264,194	#####	\$11,056,650	\$10,940,651	\$10,935,312	\$11,284,041	\$11,403,180	\$11,625,897	\$11,940,948
ALL PROGRAMS AVG COST	\$572	\$582	\$529	\$570	\$569	\$571	\$568	\$561	\$565	\$568	\$567	\$556

Income Eligibility Guidelines: October 1, 2018- September 30, 2019

Federal Poverty Guidelines (FPG) Monthly Income Standards

Supplemental Nutrition Program (SNAP)					
Household Size	100% FPG Net Income	130% FPG Gross Income	165% FPG Gross Income for Categorical Eligibility	Maximum SNAP Monthly Allotment	LIHEAP 150% FPG
1	\$1,012	\$1,316	\$1,670	\$192	\$1,518
2	\$1,372	\$1,784	\$2,264	\$353	\$2,058
3	\$1,732	\$2,252	\$2,858	\$505	\$2,598
4	\$2,092	\$2,720	\$3,452	\$642	\$3,138
5	\$2,452	\$3,188	\$4,046	\$762	\$3,678
6	\$2,812	\$3,656	\$4,640	\$914	\$4,218
7	\$3,172	\$4,124	\$5,234	\$1,011	\$4,758
8	\$3,532	\$4,592	\$5,828	\$1,155	\$5,298
+1	+\$60	+\$468	+\$594	+\$144	+\$540
Minimum Allotment of \$15 effective from 10/1/2017 - 9/30/2018					
DEDUCTIONS: Standard Deduction: For HH size 1-3 = \$164; 4 = \$174; 5 = \$204; 6 or more = \$234; Excess Shelter Deduction Limit: \$552; Heating and Cooling Standard Utility Allowance: \$344 (HCSUA) – Limited Utility Allowance: \$ 139 (LUA); Telephone Standard: \$52; Dependent Care: Actual Amount (No Limit); Earned Income Deduction: 20%; Homeless Shelter Standard: \$143					

CASH Assistance & Support Services					
Household Size	Federal Poverty Guidelines (FPG) Monthly Income Standards			Maximum Monthly Benefit	
	100% FPG Net Income	85% FPG Gross Limit	NM Works Cash Net Income	Maximum Monthly Benefit	General Assistance
1	\$1,012	\$860	\$266	\$244	\$245
2	\$1,372	\$1,166	\$357	\$327	\$329
3	\$1,732	\$1,472	\$447	\$409	\$412
4	\$2,092	\$1,778	\$539	\$493	\$496
5	\$2,452	\$2,084	\$630	\$576	\$580
6	\$2,812	\$2,390	\$721	\$659	\$664
7	\$3,172	\$2,696	\$812	\$743	\$748
8	\$3,532	\$3,002	\$922	\$843	\$849
+1	+\$360	+\$306	+\$91	+\$83	+\$84
Deductions- Dependent Care: For a child under age 2 = \$200; For a child age 2 and over = \$175. Work Incentives- Earned Income Disregard: Single parent = \$125 & ½ remainder; Two parent = \$225 & ½ remainder.					

ISD 017 Revised 08/13/2018

Medical Assistance Division					
Federal Poverty Guidelines New Mexico Affordable Care Eligibility Groups Effective April 01, 2019 thru March 31, 2020 Monthly Guidelines					
HH SIZE	PERCENT OF POVERTY				
	138%	190%	240%	250%	300%
1	\$1,437	\$1,978	\$2,498	\$2,603	\$3,123
2	\$1,945	\$2,678	\$3,382	\$3,523	\$4,228
3	\$2,453	\$3,378	\$4,266	\$4,444	\$5,333
4	\$2,962	\$4,078	\$5,150	\$5,365	\$6,438
5	\$3,470	\$4,777	\$6,034	\$6,286	\$7,543
6	\$3,978	\$5,477	\$6,918	\$7,207	\$8,648
7	\$4,487	\$6,177	\$7,802	\$8,128	\$9,753
8	\$4,995	\$6,877	\$8,686	\$9,048	\$10,858
138% Adult Expansion, 190% Children ages 6 to 19 (Medicaid), 240% Children ages 0 to 6 (Medicaid); ages 6 to 19 (CHIP), 250% Pregnancy Related Services Only, 300% Children 0 to 6 (CHIP)					

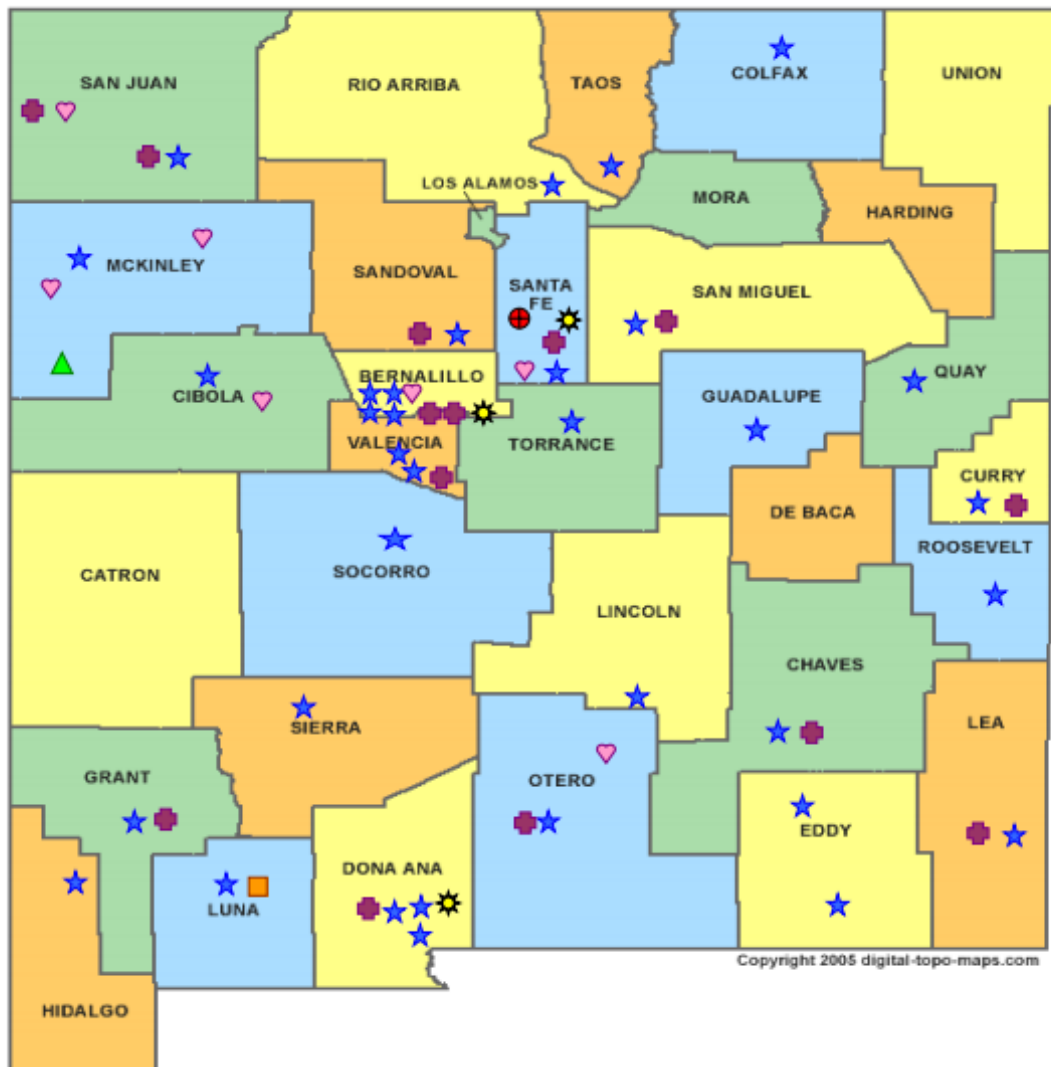
Medical Assistance Division					
Federal Poverty Guidelines New Mexico Affordable Care Eligibility Groups Effective April 01, 2019 thru March 31, 2020 Annual Guidelines					
HH SIZE	PERCENT OF POVERTY				
	138%	190%	240%	250%	300%
1	\$17,244	\$23,736	\$29,976	\$31,236	\$37,476
2	\$23,340	\$32,136	\$40,584	\$42,276	\$50,736
3	\$29,436	\$40,536	\$51,192	\$53,328	\$63,996
4	\$35,544	\$48,936	\$61,800	\$64,380	\$77,256
5	\$41,640	\$57,324	\$72,408	\$75,432	\$90,516
6	\$47,736	\$65,724	\$83,016	\$86,484	\$103,776
7	\$53,844	\$74,124	\$93,624	\$97,536	\$117,036
8	\$59,940	\$82,524	\$104,232	\$108,576	\$130,296
138% Adult Expansion, 190% Children ages 6 to 19 (Medicaid), 240% Children ages 0 to 6 (Medicaid); ages 6 to 19 (CHIP), 250% Pregnancy Related Services Only, 300% Children 0 to 6 (CHIP)					

References

- ¹ *Medicaid Expenditures* (Omnicaid, Medicare Buy-Ins, Lump Sum Payments)
- ² *ASPEN Business Intelligence Tool: Eligibility*
- ³ New Mexico Human Services Department, *Medicaid Eligibility Reports*, Retrieved from <http://www.hsd.state.nm.us/LookingForInformation/medicaid-eligibility.aspx> (for reporting month)
- ⁴ *ASPEN Business Intelligence Tool: Application Tracking*
- ⁵ Fidelity Information Services, *EBT Daily Statistical Report* (for reporting month)
- ⁶ *ASPEN Report DQ-180: Length of Time Cases are Open* (for reporting month)
- ⁷ *ASPEN Report EY-180: Individual Demographics by State and Age* (for reporting month)
- ⁸ *ASPEN Business Intelligence Tool: Benefit Issuance*
- ⁹ Fidelity Information Services, *EBT Daily Statistical Reports* (Month End)
- ¹⁰ *ASPEN Report EY-180R: Individual Demographics by State, Race, Ethnicity and Gender* (for reporting month)
- ¹¹ SQL Queries from ASPEN
- ¹² JP Morgan, *New Mexico – NM EBT System- Monthly Benefit Draw Down Totals*
- ¹³ *ASPEN Business Intelligence Tool: Application Tracking* (w/Parameters: SNAP, Expedite, Approved)
- ¹⁴ SL Start, *As of Today Report*
- ¹⁵ SL Start, *Statewide Employment Report*
- ¹⁶ *SSIAR Payments*
- ¹⁷ Children, Youth, and Families Department, *Children Receiving Child Care Assistance Subsidies by County*
- ¹⁸ Children, Youth, and Families Department, *Child Care Assistance Eligibility Programs*








¹⁹ EDG is defined as an Eligibility Determination Group

²⁰SQL Query from ASPEN



HUMAN SERVICES
DEPARTMENT

New Mexico Human Services Department
Field Offices

-  Central Office (1)
-  Income Support Division County Office (35)
-  Income Support Division Satellite Office (2)
-  Child Support Enforcement Regional Office (16)
-  Child Support Enforcement Satellite Office (1)
-  Indian Health Services (7)
-  Hospital Site (3)

For a complete listing of field offices and other government and community resources:
http://www.hsd.state.nm.us/LookingForAssistance/Field_Offices_1.aspx