



Monthly Statistical Report

July 2019

There were 824,026 individuals that received Medicaid in July 2019, a 1.0% decrease from one year ago. The count of Medicaid recipients has decreased by 186, or 0.02%, since last month.

The SNAP caseload in July 2019 was 222,195, a 0.5% increase from one year ago. The SNAP caseload has increased by 1,092 cases, or 0.5%, since last month.

The TANF caseload was 10,340 in July 2019, a decrease of 6.5% from July 2018. The TANF caseload had 303 more cases compared to June 2019, an increase of 3.0%.

The caseload for General Assistance was 2,411 in July 2019, a decrease of 15.9% from one year ago and a decrease of 44 cases from last month.

Michelle Lujan Grisham, Governor
David Scrase, M.D., Secretary

Contents	Page
Summary	3-5
Medicaid	6-20
SNAP	21-41
Cash Assistance	42-56
Child Care Assistance	57-58
Income Eligibility Guidelines	59-60

Regions are reported as follows:

Region 1		
Catron	San Juan	Valencia
Cibola	Sierra	
McKinley	Socorro	
Region 2		
Colfax	Mora	Santa Fe
De Baca	Quay	Taos
Guadalupe	Rio Arriba	Union
Harding	Sandoval	
Los Alamos	San Miguel	
Region 3		
Bernalillo	Torrance	
Region 4		
Chaves	Eddy	Lincoln
Curry	Lea	Roosevelt
Region 5		
Dona Ana	Hidalgo	Otero
Grant	Luna	

The Mission of the Human Services Department

To ensure that every New Mexican who is entitled to benefits and support services receives them

Angela Medrano, Deputy Secretary
 Russell Toal, Deputy Secretary

Prepared by Income Support Division
 PO Box 2348
 Santa Fe, NM 87504-2348
 505-827-7250

Karmela Martinez, Director
 Vida Tapia-Sanchez, Deputy Director
 Shanita Harrison, Deputy Director
 Judith Parks, Deputy Director

<http://www.hsd.state.nm.us/monthly-statistical-reports.aspx>

Program Summary for July 2019

				Percent Change	
				Jul-18- Jul-19	Jun-19- Jul-19
	Jul-18	Jun-19	Jul-19		
Expenditures¹	\$451,227,729	\$469,007,942	\$464,362,183	2.9%	-1.0%
Cases²	488,871	491,282	491,906	0.6%	0.1%
Expenditures/Case	\$923	\$955	\$944	2.3%	-1.1%
Recipients³	832,599	824,212	824,026	-1.0%	-0.02%
<i>Adults</i>	474,045	469,153	468,989	-1.1%	-0.03%
<i>Children</i>	358,554	355,059	355,037	-1.0%	-0.01%
Recipients /Case	1.70	1.68	1.68	-1.6%	-0.1%
Cases Processed⁴	12,118	10,542	11,729	-3.2%	11.3%
<i>Approvals⁴</i>	9,545	8,070	8,996	-5.8%	11.5%

				Percent Change	
				Jul-18- Jul-19	Jun-19- Jul-19
	Jul-18	Jun-19	Jul-19		
Expenditures⁵	\$52,761,380	\$52,411,973	\$52,743,702	-0.03%	0.6%
Cases⁶	221,195	221,103	222,195	0.5%	0.5%
Expenditures/Case	\$239	\$237	\$237	-0.5%	0.1%
Recipients⁷	453,169	446,595	448,253	-1.1%	0.4%
<i>Adults</i>	261,714	260,692	261,980	0.1%	0.5%
<i>Children</i>	191,455	185,903	186,273	-2.7%	0.2%
Recipients /Case	2.05	2.02	2.02	-1.5%	-0.1%
Cases Processed⁴	18,847	16,756	18,672	-0.9%	11.4%
<i>Approvals⁴</i>	15,510	13,926	15,528	0.1%	11.5%

				Percent Change	
				Jul-18- Jul-19	Jun-19- Jul-19
	Jul-18	Jun-19	Jul-19		
Expenditures⁵	\$4,292,123	\$3,870,340	\$4,101,435	-4.4%	6.0%
Cases⁶	14,065	12,630	12,888	-8.4%	2.0%
Expenditures/Case	\$305	\$306	\$318	4.3%	3.8%
Recipients⁷	31,656	28,074	29,036	-8.3%	3.4%
<i>Adults</i>	10,049	8,763	9,075	-9.7%	3.6%
<i>Children</i>	21,607	19,311	19,961	-7.6%	3.4%
Recipients /Case	2.25	2.22	2.25	0.1%	1.4%
Cases Processed⁴	5,570	3,926	4,540	-18.5%	15.6%
<i>Approvals⁴</i>	1,784	1,419	1,719	-3.6%	21.1%

				Percent Change	
				Jul-18- Jul-19	Jun-19- Jul-19
	Jul-18	Jun-19	Jul-19		
Expenditures⁸	\$617,934	\$556,040	\$677,800	9.7%	21.9%
Cases⁸	2,547	1,956	2,430	-4.6%	24.2%
Expenditures/Case	\$243	\$284	\$279	15.0%	-1.9%
Recipients⁸	6,604	4,673	6,134	-7.1%	31.3%
<i>Adults</i>	3,388	2,583	3,265	-3.6%	26.4%
<i>Children</i>	3,216	2,090	2,869	-10.8%	37.3%
Recipients /Case	2.59	2.39	2.52	-2.6%	5.7%
Cases Processed⁴	4,061	3,124	4,100	1.0%	31.2%
<i>Approvals⁴</i>	2,558	2,002	2,490	-2.7%	24.4%

Cash Assistance Summary for July 2019

Temporary Assistance for Needy Families (TANF)

	Jul-18	Jun-19	Jul-19	Percent Change	
				Jul-18- Jul-19	Jun-19- Jul-19
Expenditures ⁵	\$3,547,715	\$3,213,197	\$3,442,956	-3.0%	7.2%
Cases ⁶	11,059	10,037	10,340	-6.5%	3.0%
Expenditures/Case	\$321	\$320	\$333	3.8%	4.0%
Recipients ⁷	28,473	25,340	26,346	-7.5%	4.0%
<i>Adults</i>	7,232	6,378	6,721	-7.1%	5.4%
<i>Children</i>	21,241	18,962	19,625	-7.6%	3.5%
Approvals ⁴	1,563	1,222	1,493	-4.5%	22.2%

General Assistance (GA)

	Jul-18	Jun-19	Jul-19	Percent Change	
				Jul-18- Jul-19	Jun-19- Jul-19
Expenditures ⁵	\$700,091	\$616,703	\$618,683	-11.6%	0.3%
Cases ⁶	2,867	2,455	2,411	-15.9%	-1.8%
Expenditures/Case	\$244	\$251	\$257	5.1%	2.2%
Recipients ⁷	2,878	2,476	2,436	-15.4%	-1.6%
<i>Adults</i>	2,669	2,241	2,213	-17.1%	-1.2%
<i>Children</i>	209	235	223	6.7%	-5.1%
Approvals ⁴	199	148	177	-11.1%	19.6%

Education Works

	Jul-18	Jun-19	Jul-19	Percent Change	
				Jul-18- Jul-19	Jun-19- Jul-19
Expenditures ⁵	\$34,710	\$24,882	\$24,045	-30.7%	-3.4%
Cases ⁶	87	62	62	-28.7%	0.0%
Expenditures/Case	\$399	\$401	\$388	-2.8%	-3.4%
Recipients ⁷	252	181	178	-29.4%	-1.7%
<i>Adults</i>	95	67	65	-31.6%	-3.0%
<i>Children</i>	157	114	113	-28.0%	-0.9%
Approvals ⁴	15	1	0	-100.0%	-100.0%

Refugee Cash (RCA)

	Jul-18	Jun-19	Jul-19	Percent Change	
				Jul-18- Jul-19	Jun-19- Jul-19
Expenditures ⁵	\$7,408	\$13,558	\$13,851	87.0%	2.2%
Cases ⁶	30	56	55	83.3%	-1.8%
Expenditures/Case	\$247	\$242	\$252	2.0%	4.0%
Recipients ⁷	31	58	57	83.9%	-1.7%
<i>Adults</i>	31	58	57	83.9%	-1.7%
<i>Children</i>	0	0	0	N/A	N/A

State Supplement for Residential Care

	Jul-18	Jun-19	Jul-19	Percent Change	
				Jul-18- Jul-19	Jun-19- Jul-19
Expenditures ⁵	\$2,200	\$2,000	\$1,900	-13.6%	-5.0%
Cases ⁶	22	20	20	-9.1%	0.0%
Expenditures/Case	\$100	\$100	\$95	-5.0%	-5.0%
Recipients ⁷	22	19	19	-13.6%	0.0%
<i>Adults</i>	22	19	19	-13.6%	0.0%
<i>Children</i>	0	0	0	N/A	N/A

Expenditures YTD			
	SFY 2020	FFY 2019	CY 2019
Medicaid ¹	\$464,362,183	\$4,654,536,054	\$3,218,116,426
Supplemental Nutrition Assistance Program ⁹	\$52,743,702	\$527,009,947	\$366,749,813
Temporary Assistance for Needy Families ⁹	\$3,442,956	\$33,008,156	\$22,883,617
General Assistance ⁹	\$618,683	\$6,680,525	\$4,558,221
Education Work ⁹	\$24,045	\$448,700	\$277,006
LIHEAP ⁸	\$677,800	\$18,726,085	\$7,896,565

Average Caseload YTD			
	SFY 2020	FFY 2019	CY 2019
Medicaid ²	491,906	491,306	492,075
Supplemental Nutrition Assistance Program ⁶	222,195	221,428	220,857
Temporary Assistance for Needy Families ⁶	10,340	10,473	10,266
General Assistance ⁶	2,411	2,666	2,587
Education Work ⁶	62	112	99
LIHEAP ⁸	2,430	6,222	3,874

Demographic Profile- July 2019						
	SNAP	TANF	GA	Education Works	RCA	
<i>Gender of Recipients</i> ¹⁰						
Male	202,527	11,175	1,385	63	41	
Female	245,726	15,171	1,051	115	16	
<i>Ethnicity</i> ¹⁰						
Hispanic	246,454	17,573	1,292	108	36	
Non-Hispanic	201,799	8,773	1,144	70	21	
<i>Race</i> ¹⁰						
Native American or Alaskan Native	76,833	2,255	223	11	0	
Asian	4,111	195	18	0	0	
African American or Black	11,482	1,154	105	17	12	
Native Hawaiian or Pacific Islander	817	26	1	0	0	
White	344,863	21,925	2,031	150	44	
Unknown / Not Declared	3,908	212	24	0	0	
More than One Race	6,239	579	34	0	1	

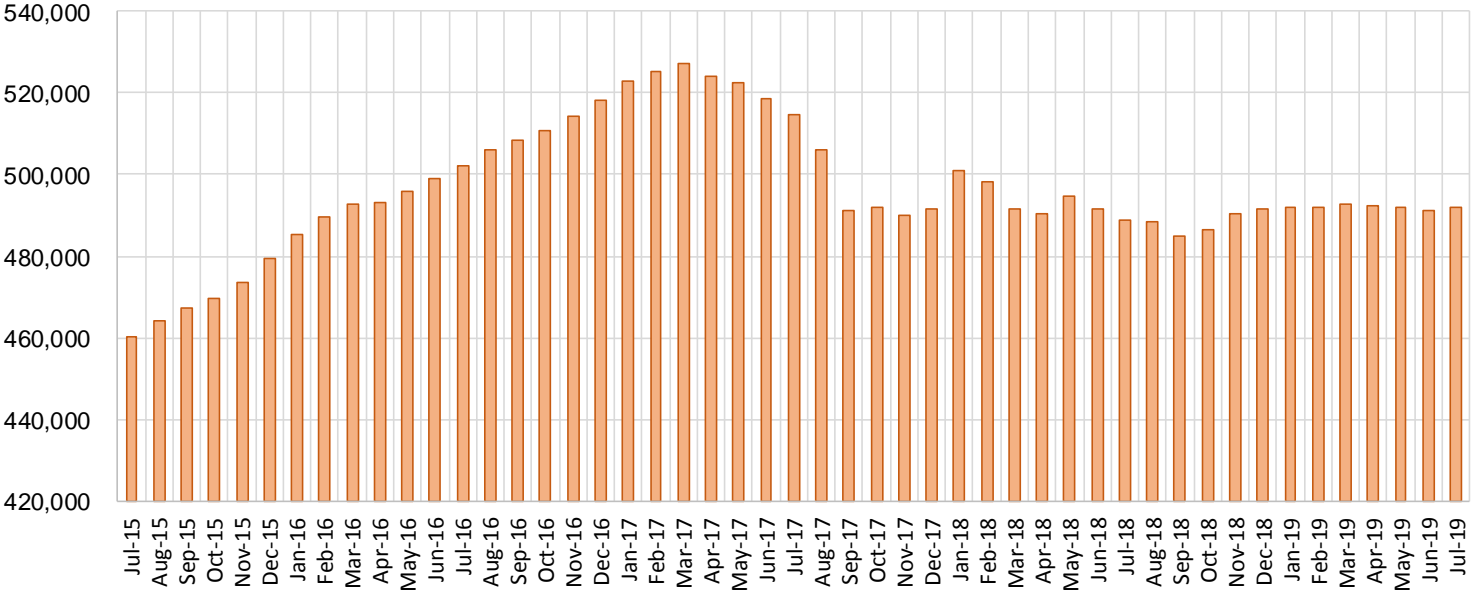
Medicaid Cases by Field Office²

Office				Percent Change	
	Jul-18	Jun-19	Jul-19	Jul-18- Jul-19	Jun-19- Jul-19
Chaves County ISD	15,908	15,886	15,938	0.2%	0.3%
Cibola County ISD	7,423	7,531	7,515	1.2%	-0.2%
Colfax County ISD	3,580	3,576	3,581	0.0%	0.1%
Curry County ISD	13,861	14,655	14,724	6.2%	0.5%
East Dona Ana County ISD	17,492	17,811	17,884	2.2%	0.4%
Eddy Artesia County ISD	3,825	3,821	3,811	-0.4%	-0.3%
Eddy Carlsbad County ISD	7,650	7,561	7,571	-1.0%	0.1%
Grant County ISD	6,675	7,763	7,797	16.8%	0.4%
Guadalupe County ISD	1,719	1,608	1,609	-6.4%	0.1%
Hidalgo County ISD	964	51	50	-94.8%	-2.0%
Lea County ISD	14,309	14,440	14,508	1.4%	0.5%
Lincoln County ISD	4,275	4,314	4,323	1.1%	0.2%
Luna County ISD	8,553	8,590	8,613	0.7%	0.3%
McKinley County ISD	22,713	21,986	22,054	-2.9%	0.3%
Northeast Bernalillo County ISD	42,775	42,803	42,806	0.1%	0.0%
Northwest Bernalillo County ISD	49,524	51,939	52,015	5.0%	0.1%
Otero County ISD	11,829	12,063	12,100	2.3%	0.3%
Quay County ISD	2,564	2,509	2,487	-3.0%	-0.9%
Rio Arriba County ISD	13,894	13,352	13,339	-4.0%	-0.1%
Roosevelt County ISD	20	13	9	-55.0%	-30.8%
San Juan County ISD	29,744	30,235	30,296	1.9%	0.2%
San Miguel County ISD	9,027	9,107	9,111	0.9%	0.0%
Sandoval County ISD	25,314	23,220	23,253	-8.1%	0.1%
Santa Fe County ISD	24,583	24,312	24,261	-1.3%	-0.2%
Sierra County ISD	5,312	5,292	5,278	-0.6%	-0.3%
Socorro County ISD	5,262	5,262	5,268	0.1%	0.1%
South Dona Ana ISD	19,597	19,740	19,661	0.3%	-0.4%
Southeast Bernalillo County ISD	25,030	24,851	24,822	-0.8%	-0.1%
Southwest Bernalillo County ISD	38,465	39,692	39,845	3.6%	0.4%
Taos County ISD	9,249	9,201	9,160	-1.0%	-0.4%
Torrance County ISD	7,567	7,873	7,841	3.6%	-0.4%
Valencia North County ISD	18,235	18,269	18,281	0.3%	0.1%
Valencia South County ISD	109	105	111	1.8%	5.7%
West Dona Ana County ISD	21,820	21,849	21,981	0.7%	0.6%
Centralized Units	4	2	2	-50.0%	0.0%
Statewide Total	488,871	491,282	491,905	0.6%	0.1%

Medicaid Cases by Region²

				Percent Change	
Region	Jul-18	Jun-19	Jul-19	Jul-18- Jul-19	Jun-19- Jul-19
Region 1 - NW	88,798	88,680	88,803	0.0%	0.1%
Region 2 - NE	89,930	86,885	86,801	-3.5%	-0.1%
Region 3 - Central	163,361	167,158	167,329	2.4%	0.1%
Region 4 - SE	59,848	60,690	60,884	1.7%	0.3%
Region 5 - SW	86,930	87,867	88,086	1.3%	0.2%
Centralized Units	4	2	2	-50.0%	0.0%
Statewide Total	488,871	491,282	491,905	0.6%	0.1%

Medicaid Caseload: SFY-16 to Current



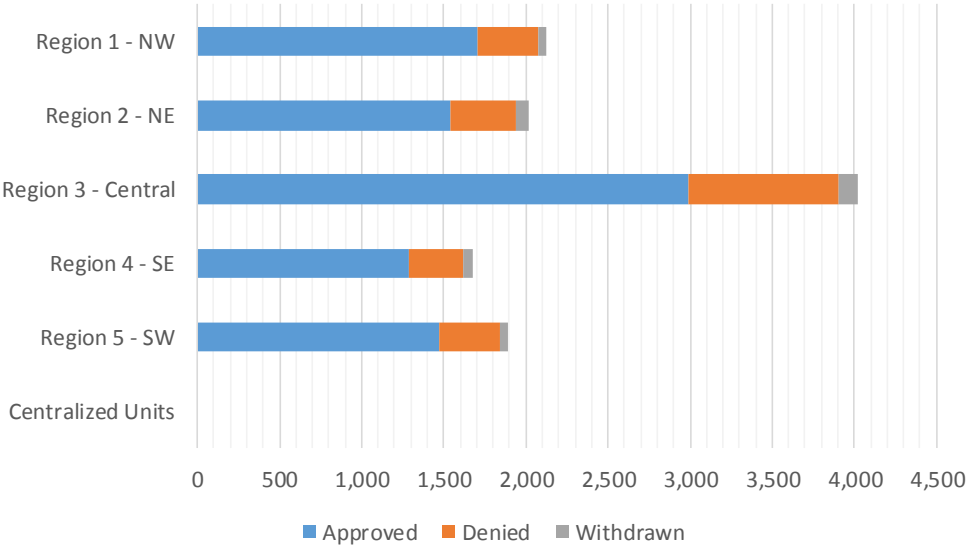
Medicaid Initial Applications by Field Office^{4,11}
July 2019

Office	Approved	Denied	Withdrawn	Total Cases Processed
Chaves County ISD	294	90	17	401
Cibola County ISD	146	23	5	174
Colfax County ISD	69	22	0	91
Curry County ISD	331	56	14	401
East Dona Ana County ISD	342	84	15	441
Eddy Artesia County ISD	66	8	6	80
Eddy Carlsbad County ISD	146	54	0	200
Grant County ISD	121	25	4	150
Guadalupe County ISD	20	2	2	24
Hidalgo County ISD	0	0	0	0
Lea County ISD	365	95	16	476
Lincoln County ISD	81	27	4	112
Luna County ISD	158	57	4	219
McKinley County ISD	433	88	14	535
Northeast Bernalillo County ISD	812	250	31	1,093
Northwest Bernalillo County ISD	693	228	23	944
Otero County ISD	196	60	3	259
Quay County ISD	27	10	0	37
Rio Arriba County ISD	180	45	12	237
Roosevelt County ISD	4	3	0	7
San Juan County ISD	660	139	16	815
San Miguel County ISD	185	29	10	224
Sandoval County ISD	497	131	22	650
Santa Fe County ISD	393	117	29	539
Sierra County ISD	79	22	3	104
Socorro County ISD	76	22	3	101
South Dona Ana ISD	257	78	10	345
Southeast Bernalillo County ISD	689	245	15	949
Southwest Bernalillo County ISD	673	167	42	882
Taos County ISD	167	41	3	211
Torrance County ISD	124	27	5	156
Valencia North County ISD	310	75	9	394
Valencia South County ISD	3	1	0	4
West Dona Ana County ISD	399	64	11	474
Centralized Units	0	0	0	0
Statewide Total	8,996	2,385	348	11,729

Medicaid Initial Applications by Region^{4,11}
July 2019

	Approved	Denied	Withdrawn	Total Cases Processed
Region				
Region 1 - NW	1,707	370	50	2,127
Region 2 - NE	1,538	397	78	2,013
Region 3 - Central	2,991	917	116	4,024
Region 4 - SE	1,287	333	57	1,677
Region 5 - SW	1,473	368	47	1,888
Centralized Units	0	0	0	0

Statewide Total	8,996	2,385	348	11,729
-----------------	-------	-------	-----	--------

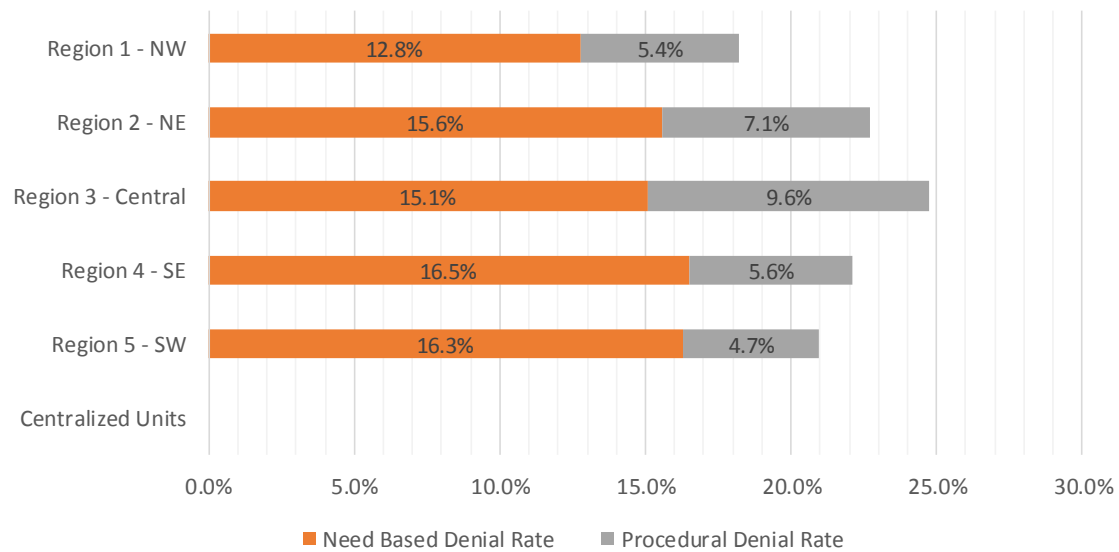


Medicaid EDG Initial Disposition Rates by Field Office^{4,11,19}
July 2019

Office	Approval Rate	Denial Rate	Need Based Denial Rate	Procedural Denial Rate
Chaves County ISD	74.6%	25.4%	19.3%	6.1%
Cibola County ISD	85.4%	14.6%	7.0%	7.6%
Colfax County ISD	77.5%	22.5%	16.9%	5.6%
Curry County ISD	83.0%	17.0%	15.0%	2.0%
East Dona Ana County ISD	77.9%	22.1%	19.1%	3.0%
Eddy Artesia County ISD	85.7%	14.3%	10.4%	3.9%
Eddy Carlsbad County ISD	74.9%	25.1%	17.4%	7.7%
Grant County ISD	82.9%	17.1%	13.0%	4.1%
Guadalupe County ISD	83.3%	16.7%	8.4%	8.3%
Hidalgo County ISD	0.0%	0.0%	0.0%	0.0%
Lea County ISD	77.5%	22.5%	14.9%	7.6%
Lincoln County ISD	73.6%	26.4%	20.0%	6.4%
Luna County ISD	71.5%	28.5%	22.2%	6.3%
McKinley County ISD	83.0%	17.0%	13.6%	3.4%
Northeast Bernalillo County ISD	75.3%	24.7%	12.0%	12.7%
Northwest Bernalillo County ISD	74.1%	25.9%	15.5%	10.4%
Otero County ISD	77.2%	22.8%	18.1%	4.7%
Quay County ISD	75.0%	25.0%	22.2%	2.8%
Rio Arriba County ISD	77.6%	22.4%	15.5%	6.9%
Roosevelt County ISD	57.1%	42.9%	42.9%	0.0%
San Juan County ISD	82.4%	17.6%	11.9%	5.7%
San Miguel County ISD	82.2%	17.8%	13.4%	4.4%
Sandoval County ISD	77.8%	22.2%	15.3%	6.9%
Santa Fe County ISD	73.0%	27.0%	17.5%	9.5%
Sierra County ISD	77.5%	22.5%	19.6%	2.9%
Socorro County ISD	75.2%	24.8%	13.9%	10.9%
South Dona Ana ISD	75.6%	24.4%	20.6%	3.8%
Southeast Bernalillo County ISD	72.9%	27.1%	17.0%	10.1%
Southwest Bernalillo County ISD	78.3%	21.7%	16.0%	5.7%
Taos County ISD	80.7%	19.3%	13.5%	5.8%
Torrance County ISD	81.0%	19.0%	15.7%	3.3%
Valencia North County ISD	80.1%	19.9%	14.2%	5.7%
Valencia South County ISD	75.0%	25.0%	25.0%	0.0%
West Dona Ana County ISD	86.0%	14.0%	7.7%	6.3%
Centralized Units	0.0%	0.0%	0.0%	0.0%
Statewide Total	77.8%	22.2%	15.1%	7.1%

Medicaid EDG Initial Disposition Rates by Region ^{4,11,19}
July 2019

Region	Approval Rate	Denial Rate	Need Based Denial Rate	Procedural Denial Rate
Region 1 - NW	81.8%	18.2%	12.8%	5.4%
Region 2 - NE	77.3%	22.7%	15.6%	7.1%
Region 3 - Central	75.3%	24.7%	15.1%	9.6%
Region 4 - SE	77.9%	22.1%	16.5%	5.6%
Region 5 - SW	79.0%	21.0%	16.3%	4.7%
Centralized Units				
Statewide Total	77.8%	22.2%	15.1%	7.1%



Medicaid: Percentage of Initial EDG Approvals Processed Timely by Field Office ^{13,19}

	Oct-18	Nov-18	Dec-18	Jan-19	Feb-19	Mar-19	Apr-19	May-19	Jun-19	Jul-19	Aug-19	Sep-19	Average
Cibola	100.0%	98.8%	96.8%	98.9%	99.5%	95.7%	99.1%	99.0%	99.0%	100.0%			98.7%
McKinley	99.5%	99.4%	99.1%	99.3%	98.1%	98.6%	99.4%	99.4%	98.6%	100.0%			99.1%
San Juan	98.9%	98.9%	99.2%	99.0%	99.3%	98.6%	99.1%	98.6%	97.9%	99.4%			98.9%
Sierra	97.4%	99.3%	96.2%	99.2%	100.0%	100.0%	100.0%	99.1%	99.2%	100.0%			99.0%
Socorro	100.0%	100.0%	100.0%	99.3%	99.3%	100.0%	100.0%	98.4%	98.2%	98.1%			99.3%
Valencia North	98.9%	99.2%	99.3%	99.8%	99.1%	98.1%	100.0%	97.2%	98.4%	99.2%			98.9%
Valencia South	100.0%	100.0%	100.0%	100.0%	100.0%	100.0%		100.0%	100.0%	100.0%			100.0%
NW Region 1 Total	99.1%	99.1%	99.0%	99.3%	99.0%	98.7%	99.4%	98.6%	98.4%	99.5%			99.0%
Colfax	99.1%	97.4%	97.3%	96.2%	100.0%	98.6%	100.0%	98.5%	100.0%	99.0%			98.6%
Guadalupe	96.8%	100.0%	100.0%	100.0%	100.0%	100.0%	100.0%	96.0%	97.1%	100.0%			99.0%
Quay	98.6%	100.0%	100.0%	100.0%	98.0%	100.0%	100.0%	96.7%	93.9%	100.0%			98.7%
Rio Arriba	99.7%	99.4%	98.9%	98.9%	98.6%	98.3%	99.6%	98.3%	99.0%	99.2%			99.0%
San Miguel	99.7%	100.0%	99.3%	99.7%	100.0%	99.0%	100.0%	100.0%	100.0%	100.0%			99.8%
Sandoval	98.2%	99.2%	98.6%	98.7%	99.7%	98.0%	100.0%	98.5%	98.0%	99.5%			98.8%
Santa Fe	99.0%	99.0%	99.7%	99.2%	99.0%	98.3%	99.2%	97.2%	98.2%	99.8%			98.9%
Taos	100.0%	98.8%	99.0%	100.0%	99.6%	97.7%	99.6%	100.0%	98.1%	99.3%			99.2%
NE Region 2 Total	99.0%	99.2%	99.1%	99.0%	99.4%	98.7%	99.7%	98.4%	98.4%	99.6%			99.1%
NE Bernalillo	97.5%	98.5%	98.5%	97.9%	98.5%	97.9%	98.5%	97.4%	98.0%	99.1%			98.2%
NW Bernalillo	98.6%	99.5%	99.4%	98.7%	99.0%	98.2%	99.0%	98.2%	98.7%	99.5%			98.9%
SE Bernalillo	98.4%	98.7%	98.7%	98.6%	98.7%	97.4%	99.3%	97.4%	96.8%	98.0%			98.2%
SW Bernalillo	98.7%	97.9%	98.6%	97.6%	99.5%	98.3%	98.6%	99.5%	98.0%	98.7%			98.5%
Torrance	99.3%	97.8%	99.6%	98.2%	96.9%	98.3%	100.0%	97.9%	100.0%	98.3%			98.6%
Gen. Region 3 Total	98.3%	98.6%	98.9%	98.2%	98.8%	98.0%	98.9%	99.0%	98.0%	98.8%			98.6%
Chaves	99.5%	99.2%	98.3%	99.6%	99.8%	97.9%	99.8%	96.5%	98.9%	99.8%			98.9%
Curry	98.5%	98.9%	99.1%	98.5%	98.5%	98.2%	99.4%	98.3%	98.5%	99.6%			98.8%
Eddy Artesia	100.0%	97.7%	99.0%	98.6%	98.1%	98.5%	100.0%	97.9%	99.1%	99.0%			98.8%
Eddy Carlsbad	98.0%	97.9%	99.6%	98.8%	97.0%	97.7%	99.3%	97.9%	96.8%	100.0%			98.3%
Lea	99.3%	99.5%	99.4%	99.4%	99.4%	98.4%	100.0%	97.5%	98.5%	99.7%			99.1%
Lincoln	99.3%	99.5%	98.1%	98.7%	100.0%	97.5%	100.0%	100.0%	98.0%	100.0%			99.1%
Roosevelt	100.0%	100.0%	100.0%	100.0%	100.0%	98.1%			100.0%	100.0%			99.8%
SE Region 4 Total	99.0%	99.0%	98.9%	99.1%	98.9%	98.0%	99.7%	97.8%	98.4%	99.7%			98.9%
East Dona Ana	99.7%	97.3%	98.7%	99.0%	97.9%	97.1%	99.0%	97.8%	98.7%	99.6%			98.5%
Grant	98.4%	99.2%	98.6%	98.9%	95.3%	98.9%	99.0%	97.0%	98.8%	100.0%			98.4%
Luna	97.5%	100.0%	100.0%	99.6%	100.0%	100.0%	98.5%	99.0%	99.4%	99.6%			99.4%
Otero	98.4%	98.9%	99.1%	98.3%	99.3%	98.6%	99.6%	97.5%	97.3%	99.4%			98.6%
South Dona Ana	99.6%	99.2%	99.1%	98.9%	99.6%	98.7%	99.1%	97.3%	98.2%	99.2%			98.9%
West Dona Ana	98.9%	99.2%	100.0%	98.9%	99.3%	98.9%	99.7%	97.6%	97.5%	99.3%			98.9%
SW Region 5 Total	99.0%	98.8%	99.2%	98.9%	98.8%	98.7%	99.2%	97.6%	98.2%	99.5%			98.8%
STATE TOTAL	98.8%	98.9%	99.0%	98.8%	98.9%	98.5%	99.3%	98.1%	98.2%	99.3%			98.8%

Medicaid: Percentage of Initial EDG Denials Processed Timely by Field Office ^{13,19}

	Oct-18	Nov-18	Dec-18	Jan-19	Feb-19	Mar-19	Apr-19	May-19	Jun-19	Jul-19	Aug-19	Sep-19	Average
Cibola	90.2%	93.8%	97.1%	100.0%	96.6%	98.3%	100.0%	83.3%	100.0%	91.4%			95.1%
McKinley	95.2%	97.7%	97.2%	96.7%	94.2%	94.2%	96.3%	96.4%	99.3%	99.0%			96.6%
San Juan	92.1%	87.2%	96.8%	97.5%	96.2%	96.4%	97.5%	96.1%	97.3%	97.5%			95.5%
Sierra	92.3%	100.0%	100.0%	100.0%	100.0%	100.0%	96.2%	100.0%	100.0%	100.0%			98.8%
Socorro	88.6%	97.6%	100.0%	100.0%	96.8%	100.0%	94.9%	94.3%	100.0%	100.0%			97.2%
Valencia North	96.8%	98.0%	94.4%	96.3%	98.4%	95.6%	100.0%	99.1%	100.0%	95.4%			97.4%
Valencia South	100.0%	100.0%	100.0%			100.0%		100.0%		100.0%			100.0%
NW Region 1 Total	93.2%	93.9%	96.8%	97.5%	96.5%	97.8%	97.6%	96.0%	98.7%	97.3%			96.5%
Colfax	100.0%	100.0%	100.0%	98.1%	85.7%	100.0%	97.5%	100.0%	100.0%	84.1%			96.5%
Guadalupe	100.0%	100.0%	100.0%	84.6%	100.0%	100.0%	100.0%	100.0%	100.0%	100.0%			98.5%
Quay	91.7%	95.0%	100.0%	100.0%	100.0%	100.0%	100.0%	97.7%	100.0%	100.0%			98.4%
Rio Arriba	82.2%	94.8%	89.6%	100.0%	98.9%	99.0%	99.0%	92.3%	96.3%	91.6%			94.4%
San Miguel	97.9%	100.0%	99.0%	97.9%	97.0%	97.6%	100.0%	98.6%	98.4%	100.0%			98.6%
Sandoval	90.0%	97.1%	98.4%	98.0%	99.2%	94.7%	96.2%	99.0%	96.6%	96.3%			96.6%
Santa Fe	92.7%	93.4%	96.1%	98.0%	96.2%	94.3%	97.7%	97.9%	98.2%	97.4%			96.2%
Taos	96.4%	98.0%	100.0%	96.5%	99.0%	96.5%	93.5%	98.5%	100.0%	96.2%			97.5%
NE Region 2 Total	91.9%	96.2%	97.0%	97.8%	97.5%	97.8%	97.4%	97.6%	97.7%	95.8%			96.7%
NE Bernalillo	91.1%	93.3%	96.9%	95.7%	92.6%	92.7%	92.4%	96.8%	96.3%	94.7%			94.2%
NW Bernalillo	89.6%	97.4%	95.6%	98.0%	95.3%	93.2%	95.7%	97.4%	96.5%	97.7%			95.6%
SE Bernalillo	95.0%	95.1%	96.3%	93.1%	90.6%	94.5%	98.2%	96.0%	97.5%	97.7%			95.4%
SW Bernalillo	83.6%	97.8%	98.6%	97.7%	93.9%	96.0%	95.5%	98.4%	95.2%	92.6%			94.9%
Torrance	94.0%	96.2%	100.0%	95.8%	98.9%	97.3%	100.0%	96.7%	100.0%	96.8%			97.6%
Gen. Region 3 Total	90.1%	95.6%	96.9%	96.4%	93.6%	94.7%	95.4%	97.1%	96.5%	95.7%			95.2%
Chaves	98.2%	98.0%	96.8%	98.2%	96.3%	99.5%	97.8%	98.9%	98.6%	99.0%			98.1%
Curry	92.0%	90.8%	97.7%	94.5%	96.6%	97.9%	94.5%	97.2%	97.5%	99.2%			95.8%
Eddy Artesia	97.7%	97.6%	96.2%	98.4%	100.0%	97.2%	100.0%	100.0%	100.0%	100.0%			98.7%
Eddy Carlsbad	90.1%	95.0%	96.0%	97.7%	94.1%	98.6%	98.9%	97.1%	97.5%	97.8%			96.3%
Lea	90.8%	98.6%	97.0%	97.1%	93.2%	97.0%	97.5%	97.8%	98.7%	98.7%			96.6%
Lincoln	92.5%	98.2%	98.0%	95.8%	90.1%	100.0%	98.0%	100.0%	100.0%	92.3%			96.5%
Roosevelt	100.0%	100.0%				100.0%		100.0%		100.0%			100.0%
SE Region 4 Total	93.3%	96.6%	97.0%	96.9%	94.8%	98.6%	97.4%	98.2%	98.4%	98.4%			97.0%
East Dona Ana	96.6%	94.0%	97.7%	97.8%	97.9%	98.5%	98.2%	94.6%	98.5%	98.3%			97.2%
Grant	96.2%	100.0%	98.5%	98.6%	98.6%	100.0%	100.0%	100.0%	97.1%	100.0%			98.9%
Luna	96.4%	100.0%	100.0%	91.8%	100.0%	97.8%	100.0%	97.1%	100.0%	97.6%			98.1%
Otero	96.1%	98.8%	93.9%	96.2%	90.5%	95.7%	99.0%	97.9%	94.8%	98.1%			96.1%
South Dona Ana	100.0%	99.2%	99.4%	97.1%	98.8%	98.9%	96.7%	100.0%	95.8%	100.0%			98.6%
West Dona Ana	97.5%	97.2%	100.0%	96.7%	96.5%	99.2%	96.4%	98.6%	99.3%	99.2%			98.1%
SW Region 5 Total	97.4%	97.7%	98.3%	96.6%	97.4%	98.4%	97.8%	97.8%	97.6%	98.8%			97.8%
STATE TOTAL	92.6%	96.0%	97.1%	97.0%	95.5%	97.6%	96.8%	97.3%	97.5%	97.0%			96.4%

Medicaid: Percentage of Initial EDG Approvals and Denials Combined Processed Timely by Field Office ^{13,19}

	Oct-18	Nov-18	Dec-18	Jan-19	Feb-19	Mar-19	Apr-19	May-19	Jun-19	Jul-19	Aug-19	Sep-19	Average
Cibola	98.6%	97.9%	96.8%	99.1%	98.8%	96.4%	99.3%	96.3%	99.2%	98.2%			98.1%
McKinley	98.7%	99.1%	98.8%	98.7%	97.2%	97.7%	98.8%	98.8%	98.7%	99.8%			98.6%
San Juan	97.8%	97.1%	98.7%	98.7%	98.5%	98.1%	98.7%	98.1%	97.8%	98.9%			98.2%
Sierra	97.0%	99.4%	96.9%	99.4%	100.0%	100.0%	99.2%	99.3%	99.4%	100.0%			99.1%
Socorro	96.6%	99.4%	100.0%	99.5%	98.8%	100.0%	98.8%	97.2%	98.6%	98.7%			98.8%
Valencia North	98.6%	99.0%	98.3%	99.0%	98.9%	97.5%	100.0%	97.6%	98.7%	98.3%			98.6%
Valencia South	100.0%	100.0%	100.0%	100.0%	100.0%	100.0%		100.0%	100.0%	100.0%			100.0%
NW Region 1 Total	98.1%	98.3%	98.5%	98.8%	98.4%	98.5%	99.0%	98.1%	98.4%	99.0%			98.5%
Colfax	99.2%	98.1%	98.1%	96.8%	95.7%	98.9%	99.4%	99.1%	100.0%	94.3%			98.0%
Guadalupe	96.8%	100.0%	100.0%	96.7%	100.0%	100.0%	100.0%	97.2%	97.2%	100.0%			98.8%
Quay	97.6%	98.0%	100.0%	100.0%	98.5%	100.0%	100.0%	97.1%	95.0%	100.0%			98.6%
Rio Arriba	97.6%	98.3%	96.3%	99.1%	98.7%	98.5%	99.4%	96.6%	98.4%	97.1%			98.0%
San Miguel	99.5%	100.0%	99.3%	99.3%	99.3%	98.7%	100.0%	99.7%	99.7%	100.0%			99.6%
Sandoval	97.0%	98.8%	98.6%	98.5%	99.5%	97.1%	99.1%	98.6%	97.6%	98.8%			98.4%
Santa Fe	97.8%	97.7%	98.9%	98.7%	98.0%	97.1%	98.9%	97.4%	98.2%	99.1%			98.2%
Taos	99.7%	98.7%	99.3%	98.8%	99.4%	97.5%	98.3%	99.6%	98.6%	98.6%			98.8%
NE Region 2 Total	98.0%	98.5%	98.6%	98.7%	98.8%	98.5%	99.1%	98.2%	98.2%	98.6%			98.5%
NE Bernalillo	96.1%	97.2%	98.1%	97.3%	96.5%	96.5%	96.8%	97.2%	97.5%	97.9%			97.1%
NW Bernalillo	96.8%	99.1%	98.4%	98.5%	97.9%	96.9%	98.2%	98.0%	98.2%	99.0%			98.1%
SE Bernalillo	97.6%	97.8%	98.1%	97.1%	96.3%	96.5%	99.0%	97.0%	97.0%	97.9%			97.4%
SW Bernalillo	96.1%	97.9%	98.6%	97.6%	97.9%	97.7%	97.8%	98.3%	97.3%	97.2%			97.6%
Torrance	98.4%	97.6%	99.7%	97.5%	97.5%	98.1%	100.0%	98.8%	100.0%	97.9%			98.6%
Gen. Region 3 Total	96.7%	98.0%	98.4%	97.6%	97.2%	97.1%	97.9%	97.7%	97.6%	98.0%			97.6%
Chaves	99.2%	99.0%	97.8%	99.2%	98.7%	98.5%	99.2%	98.9%	98.9%	99.6%			98.9%
Curry	97.3%	97.9%	98.7%	97.4%	98.0%	98.2%	98.5%	96.6%	98.3%	99.5%			98.0%
Eddy Artesia	99.5%	97.6%	98.5%	98.5%	98.5%	98.2%	100.0%	98.7%	99.3%	99.2%			98.8%
Eddy Carlsbad	96.5%	97.1%	98.7%	98.5%	96.0%	97.9%	99.2%	97.7%	97.0%	99.4%			97.8%
Lea	97.2%	99.3%	98.8%	98.7%	97.5%	98.1%	99.4%	97.9%	98.5%	99.5%			98.5%
Lincoln	97.5%	99.2%	98.1%	97.8%	96.2%	98.2%	99.5%	98.4%	98.4%	97.8%			98.1%
Roosevelt	100.0%	100.0%	100.0%	100.0%	100.0%	100.0%		100.0%	100.0%	100.0%			100.0%
SE Region 4 Total	97.7%	98.5%	98.4%	98.5%	97.6%	98.4%	99.2%	97.9%	98.4%	99.4%			98.4%
East Dona Ana	99.1%	96.7%	98.4%	98.7%	97.9%	97.5%	98.8%	97.0%	98.6%	99.3%			98.2%
Grant	97.9%	99.4%	98.6%	98.8%	96.3%	99.1%	99.2%	97.8%	98.5%	100.0%			98.6%
Luna	97.3%	100.0%	100.0%	97.6%	100.0%	99.4%	98.9%	98.5%	99.5%	99.0%			99.0%
Otero	98.1%	98.9%	97.8%	97.7%	97.6%	97.9%	99.5%	97.6%	96.7%	99.1%			98.1%
South Dona Ana	99.7%	99.2%	99.2%	98.3%	99.4%	98.8%	98.4%	98.0%	97.6%	99.4%			98.8%
West Dona Ana	98.7%	98.9%	100.0%	98.3%	98.6%	99.0%	98.9%	97.8%	97.9%	99.3%			98.7%
SW Region 5 Total	98.7%	98.6%	99.0%	98.3%	98.4%	98.6%	98.9%	97.7%	98.0%	99.3%			98.5%
STATE TOTAL	97.7%	98.3%	98.6%	98.3%	98.0%	98.3%	98.7%	97.9%	98.1%	98.7%			98.3%

Medicaid Renewal Disposition Counts by Field Office^{4,11}
July 2019

Office	Approvals	Closures	Need Based Closures	Procedural Closures
Chaves County ISD	2,871	684	292	392
Cibola County ISD	1,431	313	115	198
Colfax County ISD	471	135	42	93
Curry County ISD	2,737	650	304	346
East Dona Ana County ISD	3,400	714	339	375
Eddy Artesia County ISD	634	182	89	93
Eddy Carlsbad County ISD	1,128	361	144	217
Grant County ISD	1,346	221	106	115
Guadalupe County ISD	193	52	22	30
Hidalgo County ISD	0	0	0	0
Lea County ISD	2,491	642	223	419
Lincoln County ISD	702	187	69	118
Luna County ISD	1,527	289	165	124
McKinley County ISD	3,983	912	365	547
Northeast Bernalillo County ISD	5,918	1631	607	1024
Northwest Bernalillo County ISD	5,312	1415	519	896
Otero County ISD	2,077	479	199	280
Quay County ISD	427	77	39	38
Rio Arriba County ISD	1,758	482	198	284
Roosevelt County ISD	0	0	0	0
San Juan County ISD	5,346	1351	557	794
San Miguel County ISD	1,372	270	137	133
Sandoval County ISD	4,040	994	442	552
Santa Fe County ISD	3,169	824	311	513
Sierra County ISD	763	197	93	104
Socorro County ISD	755	189	80	109
South Dona Ana ISD	3,924	755	387	368
Southeast Bernalillo County ISD	3,165	775	298	477
Southwest Bernalillo County ISD	7,431	2150	827	1323
Taos County ISD	1,307	349	117	232
Torrance County ISD	1,261	303	112	191
Valencia North County ISD	2,929	762	316	446
Valencia South County ISD	0	0	0	0
West Dona Ana County ISD	3,822	699	368	331
Centralized Units	0	0	0	0

Statewide Total	77,690	19,044	7,882	11,162
-----------------	--------	--------	-------	--------

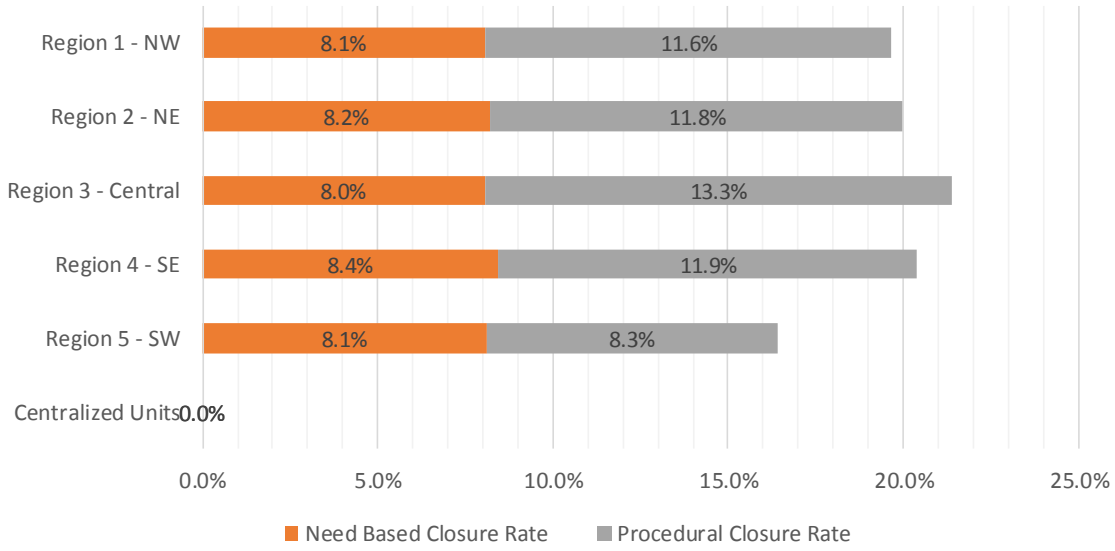
Medicaid Renewal Disposition Rates by Field Office²⁰
July 2019

Office	Approval Rate	Closure Rate	Need Based Closure Rate	Procedural Closure Rate
Chaves County ISD	80.8%	19.2%	8.2%	11.0%
Cibola County ISD	82.1%	17.9%	6.6%	11.4%
Colfax County ISD	77.7%	22.3%	6.9%	15.3%
Curry County ISD	80.8%	19.2%	9.0%	10.2%
East Dona Ana County ISD	82.6%	17.4%	8.2%	9.1%
Eddy Artesia County ISD	77.7%	22.3%	10.9%	11.4%
Eddy Carlsbad County ISD	75.8%	24.2%	9.7%	14.6%
Grant County ISD	85.9%	14.1%	6.8%	7.3%
Guadalupe County ISD	78.8%	21.2%	9.0%	12.2%
Hidalgo County ISD	0.0%	0.0%	0.0%	0.0%
Lea County ISD	79.5%	20.5%	7.1%	13.4%
Lincoln County ISD	79.0%	21.0%	7.8%	13.3%
Luna County ISD	84.1%	15.9%	9.1%	6.8%
McKinley County ISD	81.4%	18.6%	7.5%	11.2%
Northeast Bernalillo County ISD	78.4%	21.6%	8.0%	13.6%
Northwest Bernalillo County ISD	79.0%	21.0%	7.7%	13.3%
Otero County ISD	81.3%	18.7%	7.8%	11.0%
Quay County ISD	84.7%	15.3%	7.7%	7.5%
Rio Arriba County ISD	78.5%	21.5%	8.8%	12.7%
Roosevelt County ISD	0.0%	0.0%	0.0%	0.0%
San Juan County ISD	79.8%	20.2%	8.3%	11.9%
San Miguel County ISD	83.6%	16.4%	8.3%	8.1%
Sandoval County ISD	80.3%	19.7%	8.8%	11.0%
Santa Fe County ISD	79.4%	20.6%	7.8%	12.8%
Sierra County ISD	79.5%	20.5%	9.7%	10.8%
Socorro County ISD	80.0%	20.0%	8.5%	11.5%
South Dona Ana ISD	83.9%	16.1%	8.3%	7.9%
Southeast Bernalillo County ISD	80.3%	19.7%	7.6%	12.1%
Southwest Bernalillo County ISD	77.6%	22.4%	8.6%	13.8%
Taos County ISD	78.9%	21.1%	7.1%	14.0%
Torrance County ISD	80.6%	19.4%	7.2%	12.2%
Valencia North County ISD	79.4%	20.6%	8.6%	12.1%
Valencia South County ISD	0.0%	0.0%	0.0%	0.0%
West Dona Ana County ISD	84.5%	15.5%	8.1%	7.3%
Centralized Units	0.0%	0.0%	0.0%	0.0%
Statewide Total	80.3%	19.7%	8.1%	11.5%

Medicaid Renewal Disposition Rates by Region²⁰
July 2019

Region	Approval Rate	Closure Rate	Need Based Closure Rate	Procedural Closure Rate
Region 1 - NW	80.3%	19.7%	8.1%	11.6%
Region 2 - NE	80.0%	20.0%	8.2%	11.8%
Region 3 - Central	78.6%	21.4%	8.0%	13.3%
Region 4 - SE	79.6%	20.4%	8.4%	11.9%
Region 5 - SW	83.6%	16.4%	8.1%	8.3%
Centralized Units				

Statewide Total	80.3%	19.7%	8.1%	11.5%
-----------------	-------	-------	------	-------



Medicaid: Percentage of Approved Renewal EDGs Processed by Certification Date ¹¹

	Oct-18	Nov-18	Dec-18	Jan-19	Feb-19	Mar-19	Apr-19	May-19	Jun-19	Jul-19	Aug-19	Sep-19	Average
Cibola	99.7%	97.1%	97.8%	98.2%	98.2%	98.2%	98.6%	98.3%	98.4%	97.7%			98.2%
McKinley	99.4%	97.5%	98.9%	99.1%	97.7%	98.2%	98.8%	99.0%	98.4%	97.5%			98.4%
San Juan	99.2%	97.3%	99.0%	98.2%	99.0%	98.6%	98.9%	98.7%	99.0%	98.2%			98.6%
Sierra	98.8%	97.6%	99.1%	98.7%	97.7%	97.0%	98.4%	97.4%	99.5%	97.6%			98.2%
Socorro	99.2%	96.2%	96.8%	99.3%	98.8%	98.1%	98.5%	97.9%	98.6%	98.3%			98.2%
Valencia North	99.0%	96.6%	97.9%	98.1%	98.4%	97.7%	97.4%	97.3%	97.4%	96.0%			97.6%
Valencia South													
NW Region 1 Total	99.2%	97.1%	98.2%	98.6%	98.3%	98.0%	98.4%	98.1%	98.6%	97.6%			98.2%
Colfax	99.2%	97.5%	97.6%	99.5%	98.0%	98.9%	99.2%	98.0%	98.9%	98.3%			98.5%
Guadalupe	99.6%	96.9%	99.2%	100.0%	99.5%	99.6%	99.6%	99.6%	98.6%	98.5%			99.1%
Quay	98.4%	97.0%	99.1%	99.0%	96.1%	97.6%	98.0%	97.8%	96.1%	98.2%			97.7%
Rio Arriba	98.6%	97.1%	98.6%	97.7%	97.0%	96.3%	97.6%	97.3%	97.7%	95.8%			97.4%
San Miguel	99.5%	97.3%	99.7%	99.3%	99.3%	99.1%	99.4%	99.8%	99.3%	99.5%			99.2%
Sandoval	98.6%	97.1%	97.7%	98.4%	97.8%	98.9%	97.8%	99.0%	98.6%	98.2%			98.2%
Santa Fe	97.9%	95.8%	98.1%	96.9%	97.7%	97.3%	95.9%	98.0%	97.9%	96.8%			97.2%
Taos	98.2%	97.1%	99.1%	99.1%	98.1%	98.1%	97.8%	99.6%	98.6%	97.2%			98.3%
NE Region 2 Total	98.8%	97.0%	98.7%	98.7%	97.9%	98.2%	98.2%	98.6%	98.2%	97.8%			98.2%
NE Bernalillo	98.1%	96.7%	98.3%	98.2%	98.4%	98.6%	98.7%	98.5%	98.0%	97.1%			98.1%
NW Bernalillo	97.9%	97.2%	98.5%	98.2%	98.9%	98.0%	98.1%	97.9%	98.2%	98.2%			98.1%
SE Bernalillo	98.5%	96.9%	98.8%	98.7%	98.5%	98.8%	98.3%	98.6%	98.4%	97.5%			98.3%
SW Bernalillo	98.2%	96.7%	98.3%	98.5%	97.8%	98.0%	97.6%	97.4%	97.7%	96.5%			97.7%
Torrance	99.5%	98.0%	98.8%	99.2%	99.8%	99.4%	99.0%	98.8%	98.6%	99.1%			99.0%
Gen. Region 3 Total	98.5%	97.1%	98.5%	98.6%	98.7%	98.6%	98.3%	98.2%	98.2%	97.7%			98.2%
Chaves	98.8%	97.1%	98.8%	99.2%	98.1%	99.2%	98.6%	98.4%	98.6%	97.9%			98.5%
Curry	98.9%	97.5%	98.7%	98.7%	98.2%	98.8%	98.2%	98.7%	99.3%	98.7%			98.6%
Eddy Artesia	98.2%	96.9%	98.2%	99.5%	97.4%	98.4%	96.5%	98.0%	97.7%	98.4%			97.9%
Eddy Carlsbad	98.9%	96.6%	97.0%	98.1%	97.2%	98.0%	98.0%	97.7%	98.8%	97.7%			97.8%
Lea	98.9%	97.8%	99.2%	99.4%	99.3%	98.5%	98.4%	98.9%	98.1%	98.6%			98.7%
Lincoln	98.6%	95.2%	98.6%	96.3%	98.3%	98.1%	97.6%	96.9%	99.2%	99.2%			97.8%
Roosevelt	100.0%												100.0%
SE Region 4 Total	98.9%	96.9%	98.4%	98.6%	98.1%	98.5%	97.9%	98.1%	98.6%	98.4%			98.2%
East Dona Ana	99.3%	97.1%	99.5%	99.3%	99.3%	99.2%	99.2%	99.2%	99.1%	98.8%			99.0%
Grant	99.1%	97.4%	99.1%	99.8%	98.7%	99.0%	99.3%	99.4%	98.8%	97.0%			98.8%
Luna	99.2%	97.2%	99.3%	99.6%	97.9%	98.5%	99.0%	98.5%	98.8%	98.4%			98.6%
Otero	98.3%	96.6%	96.9%	97.6%	99.0%	97.7%	97.8%	97.9%	97.6%	97.1%			97.7%
South Dona Ana	97.9%	97.4%	98.3%	97.7%	97.9%	97.9%	97.8%	98.1%	98.1%	97.4%			97.9%
West Dona Ana	99.6%	98.0%	99.4%	99.2%	99.3%	99.1%	98.7%	100.0%	99.4%	98.8%			99.2%
SW Region 5 Total	98.9%	97.3%	98.8%	98.9%	98.7%	98.6%	98.6%	98.9%	98.6%	97.9%			98.5%
STATE TOTAL	98.9%	97.0%	98.5%	98.7%	98.3%	98.3%	98.3%	98.4%	98.4%	97.9%			98.3%

Administrative, Annual, and Auto Renewals are included

Medicaid: Percentage of Closures EDGs Processed by Certification End Date¹¹

	Oct-18	Nov-18	Dec-18	Jan-19	Feb-19	Mar-19	Apr-19	May-19	Jun-19	Jul-19	Aug-19	Sep-19	Average
Cibola	96.0%	97.9%	98.2%	94.0%	94.9%	98.0%	97.8%	98.2%	96.9%	94.8%			96.7%
McKinley	98.6%	98.9%	97.3%	98.3%	98.0%	99.0%	97.1%	96.9%	97.1%	97.5%			97.9%
San Juan	97.1%	97.0%	96.2%	97.5%	97.3%	97.7%	97.6%	97.0%	97.1%	97.5%			97.2%
Sierra	98.5%	95.6%	97.7%	97.5%	96.7%	97.0%	96.8%	97.5%	95.4%	97.0%			97.0%
Socorro	96.0%	99.4%	93.8%	98.9%	95.3%	99.5%	96.6%	89.3%	94.8%	97.9%			96.2%
Valencia North	98.3%	98.7%	97.0%	96.9%	98.3%	98.0%	98.5%	96.1%	96.6%	96.5%			97.5%
Valencia South													
NW Region 1 Total	97.4%	97.9%	96.7%	97.2%	96.7%	98.2%	97.4%	95.8%	96.3%	96.9%			97.1%
Colfax	96.3%	97.8%	95.0%	98.9%	93.3%	100.0%	98.5%	100.0%	95.0%	98.5%			97.3%
Guadalupe	98.3%	100.0%	100.0%	100.0%	100.0%	96.7%	100.0%	94.6%	95.8%	96.3%			98.2%
Quay	96.6%	97.0%	100.0%	100.0%	95.7%	100.0%	94.9%	96.0%	95.7%	95.1%			97.1%
Rio Arriba	98.6%	98.1%	96.6%	98.4%	97.9%	98.7%	97.8%	97.9%	97.2%	92.3%			97.3%
San Miguel	100.0%	98.8%	98.4%	98.6%	98.0%	98.0%	99.6%	98.2%	96.8%	96.1%			98.2%
Sandoval	98.2%	98.1%	97.4%	95.0%	97.1%	97.8%	98.4%	98.3%	97.7%	96.9%			97.5%
Santa Fe	98.0%	98.5%	95.3%	96.9%	96.5%	98.7%	97.6%	96.8%	96.1%	93.7%			96.8%
Taos	97.4%	98.8%	95.2%	99.1%	98.5%	99.5%	97.7%	97.0%	96.0%	96.1%			97.5%
NE Region 2 Total	97.9%	98.4%	97.2%	98.4%	97.1%	98.7%	98.1%	97.4%	96.3%	95.6%			97.5%
NE Bernalillo	98.3%	97.6%	97.3%	97.0%	97.1%	98.5%	97.4%	97.4%	96.8%	96.1%			97.4%
NW Bernalillo	98.2%	98.5%	96.5%	97.4%	97.1%	98.3%	97.6%	96.8%	96.9%	96.9%			97.4%
SE Bernalillo	95.8%	98.4%	96.0%	97.3%	96.2%	98.8%	98.7%	97.7%	97.0%	94.9%			97.1%
SW Bernalillo	97.8%	98.3%	95.9%	96.3%	97.0%	98.4%	97.6%	96.3%	96.7%	96.2%			97.0%
Torrance	97.8%	98.5%	97.6%	99.1%	97.7%	98.9%	98.3%	95.3%	97.1%	98.7%			97.9%
Gen. Region 3 Total	97.6%	98.3%	96.7%	97.4%	97.0%	98.6%	97.9%	96.7%	96.9%	96.6%			97.4%
Chaves	98.2%	98.9%	98.2%	98.5%	98.3%	97.6%	98.7%	96.5%	97.9%	97.9%			98.1%
Curry	98.9%	98.1%	98.2%	97.6%	99.2%	99.5%	98.4%	99.0%	98.6%	98.8%			98.6%
Eddy Artesia	98.9%	97.3%	98.7%	95.4%	97.6%	98.9%	96.6%	94.7%	94.7%	93.8%			96.7%
Eddy Carlsbad	99.1%	99.3%	99.0%	97.3%	97.0%	98.9%	98.1%	97.2%	97.4%	96.3%			98.0%
Lea	97.7%	98.6%	98.6%	97.8%	96.2%	99.4%	98.4%	97.3%	98.6%	97.1%			98.0%
Lincoln	99.5%	99.5%	98.1%	96.0%	97.6%	98.2%	98.4%	93.7%	99.5%	94.9%			97.5%
Roosevelt	100.0%												100.0%
SE Region 4 Total	98.9%	98.6%	98.5%	97.1%	97.7%	98.8%	98.1%	96.4%	97.8%	96.5%			97.8%
East Dona Ana	98.1%	97.9%	98.9%	98.1%	99.0%	99.5%	98.8%	96.4%	98.8%	97.5%			98.3%
Grant	97.6%	97.4%	97.3%	96.5%	96.7%	98.9%	99.2%	99.6%	99.3%	97.4%			98.0%
Luna	99.1%	98.5%	100.0%	99.5%	99.3%	99.3%	96.3%	99.7%	97.6%	99.3%			98.9%
Otero	98.5%	98.9%	99.0%	99.6%	98.4%	97.9%	98.7%	98.7%	97.9%	97.2%			98.5%
South Dona Ana	97.9%	98.1%	98.3%	98.8%	98.0%	98.1%	96.5%	98.1%	96.3%	97.2%			97.7%
West Dona Ana	98.2%	98.4%	99.2%	97.8%	98.2%	99.3%	98.7%	97.5%	97.7%	98.3%			98.3%
SW Region 5 Total	98.2%	98.2%	98.8%	98.4%	98.2%	98.8%	98.0%	98.3%	97.9%	97.8%			98.3%
STATE TOTAL	98.0%	98.3%	97.6%	97.7%	97.3%	98.6%	97.9%	97.0%	97.0%	96.6%			97.7%

Annual and Auto Renewals are included

Medicaid: Percentage of Approved and Terminated Renewal EDGs Combined Processed by Certification Date ¹¹

	Oct-18	Nov-18	Dec-18	Jan-19	Feb-19	Mar-19	Apr-19	May-19	Jun-19	Jul-19	Aug-19	Sep-19	Average
Cibola	99.1%	97.2%	97.8%	97.7%	97.7%	98.2%	98.5%	98.3%	98.1%	97.2%			98.0%
McKinley	99.3%	97.7%	98.6%	99.0%	97.8%	98.3%	98.5%	98.6%	98.2%	97.5%			98.3%
San Juan	98.8%	97.3%	98.5%	98.1%	98.7%	98.4%	98.7%	98.3%	98.6%	98.0%			98.3%
Sierra	98.8%	97.4%	98.9%	98.6%	97.6%	97.0%	98.2%	97.4%	98.7%	97.5%			98.0%
Socorro	98.6%	96.6%	96.3%	99.2%	98.3%	98.4%	98.2%	96.1%	97.9%	98.2%			97.8%
Valencia North	98.9%	96.8%	97.7%	98.0%	98.3%	97.8%	97.6%	97.0%	97.3%	96.1%			97.6%
Valencia South													
NW Region 1 Total	98.9%	97.2%	98.0%	98.4%	98.1%	98.0%	98.3%	97.6%	98.1%	97.4%			98.0%
Colfax	98.6%	97.6%	97.2%	99.4%	97.3%	99.1%	99.1%	98.5%	98.3%	98.4%			98.3%
Guadalupe	99.4%	97.3%	99.3%	100.0%	99.6%	99.0%	99.7%	98.6%	98.1%	98.0%			98.9%
Quay	98.1%	97.0%	99.2%	99.1%	96.1%	98.0%	97.5%	97.6%	96.0%	97.7%			97.6%
Rio Arriba	98.6%	97.2%	98.3%	97.8%	97.2%	96.9%	97.7%	97.4%	97.6%	95.0%			97.4%
San Miguel	99.6%	97.4%	99.5%	99.2%	99.1%	98.8%	99.4%	99.5%	98.8%	98.9%			99.0%
Sandoval	98.6%	97.2%	97.6%	97.9%	97.7%	98.6%	97.9%	98.9%	98.4%	97.9%			98.1%
Santa Fe	98.0%	96.3%	97.5%	96.9%	97.5%	97.7%	96.3%	97.8%	97.5%	96.2%			97.2%
Taos	98.0%	97.4%	98.3%	99.1%	98.2%	98.4%	97.7%	99.0%	98.0%	97.0%			98.1%
NE Region 2 Total	98.6%	97.2%	98.4%	98.7%	97.8%	98.3%	98.2%	98.4%	97.8%	97.4%			98.1%
NE Bernalillo	98.1%	96.9%	98.1%	98.0%	98.1%	98.6%	98.4%	98.2%	97.7%	96.9%			97.9%
NW Bernalillo	98.0%	97.4%	98.2%	98.1%	98.6%	98.1%	98.0%	97.7%	98.0%	97.9%			98.0%
SE Bernalillo	98.0%	97.1%	98.4%	98.5%	98.1%	98.8%	98.3%	98.5%	98.1%	97.0%			98.1%
SW Bernalillo	98.1%	96.9%	97.9%	98.2%	97.6%	98.1%	97.6%	97.2%	97.5%	96.5%			97.6%
Torrance	99.2%	98.1%	98.5%	99.2%	99.6%	99.3%	98.9%	98.1%	98.3%	99.1%			98.8%
Gen. Region 3 Total	98.3%	97.3%	98.2%	98.4%	98.4%	98.6%	98.2%	97.9%	97.9%	97.5%			98.1%
Chaves	98.7%	97.3%	98.7%	99.1%	98.1%	98.8%	98.6%	98.1%	98.5%	97.9%			98.4%
Curry	98.9%	97.6%	98.6%	98.6%	98.4%	98.9%	98.2%	98.7%	99.2%	98.7%			98.6%
Eddy Artesia	98.4%	97.0%	98.3%	98.9%	97.4%	98.6%	96.5%	97.3%	97.0%	97.4%			97.7%
Eddy Carlsbad	99.0%	97.1%	97.6%	98.0%	97.2%	98.2%	98.0%	97.6%	98.4%	97.4%			97.8%
Lea	98.6%	97.9%	99.0%	99.2%	98.7%	98.7%	98.4%	98.5%	98.2%	98.3%			98.6%
Lincoln	98.8%	95.9%	98.5%	96.3%	98.1%	98.2%	97.8%	96.2%	99.3%	98.2%			97.7%
Roosevelt	100.0%												100.0%
SE Region 4 Total	98.9%	97.1%	98.5%	98.3%	98.0%	98.6%	97.9%	97.7%	98.4%	98.0%			98.1%
East Dona Ana	99.1%	97.2%	99.4%	99.1%	99.2%	99.3%	99.1%	98.6%	99.0%	98.6%			98.9%
Grant	98.9%	97.4%	98.9%	99.4%	98.4%	98.9%	99.3%	99.4%	98.9%	97.1%			98.7%
Luna	99.2%	97.4%	99.4%	99.6%	98.1%	98.7%	98.5%	98.7%	98.6%	98.5%			98.7%
Otero	98.3%	96.9%	97.2%	97.9%	98.9%	97.8%	98.0%	98.1%	97.7%	97.1%			97.8%
South Dona Ana	97.9%	97.5%	98.3%	97.8%	97.9%	97.9%	97.6%	98.1%	97.8%	97.3%			97.8%
West Dona Ana	99.4%	98.0%	99.4%	99.1%	99.1%	99.1%	98.7%	98.9%	99.1%	98.8%			99.0%
SW Region 5 Total	98.8%	97.4%	98.8%	98.8%	98.6%	98.6%	98.5%	98.6%	98.5%	97.9%			98.5%
STATE TOTAL	98.7%	97.2%	98.4%	98.5%	98.1%	98.4%	98.2%	98.1%	98.2%	97.6%			98.1%

Administrative, Annual, and Auto Renewals are included

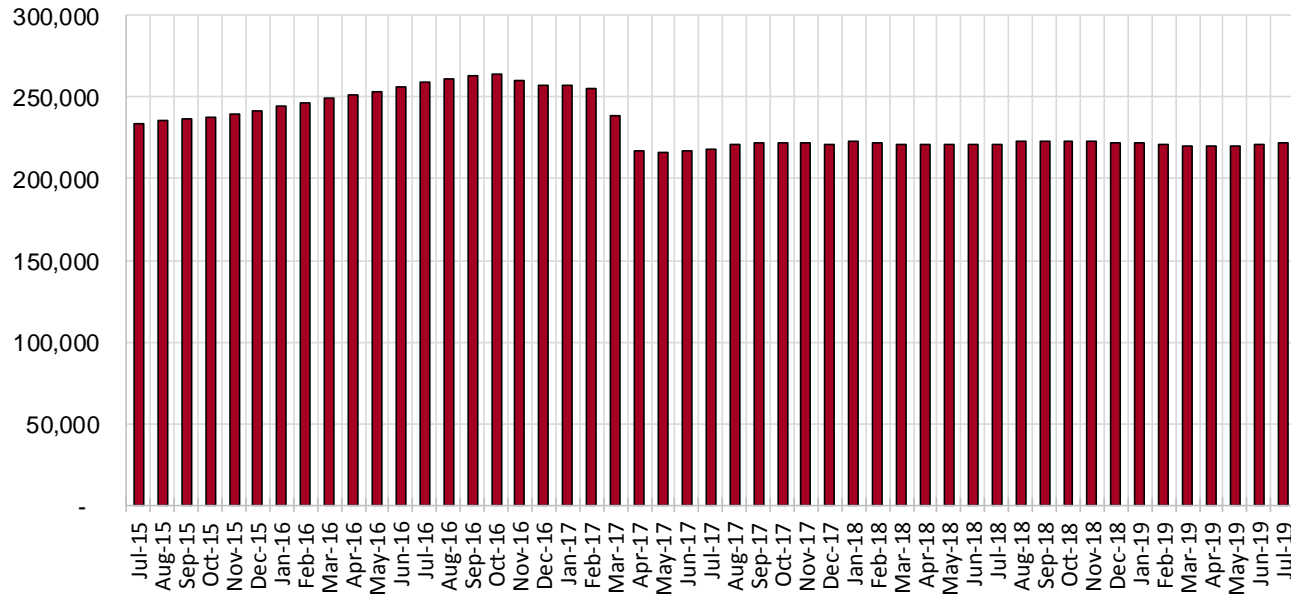
SNAP Cases by Field Office⁶

Office				Percent Change	
	Jul-18	Jun-19	Jul-19	Jul-18- Jul-19	Jun-19- Jul-19
Chaves County ISD	7,044	6,906	6,996	-0.7%	1.3%
Cibola County ISD	3,655	3,586	3,611	-1.2%	0.7%
Colfax County ISD	1,623	1,663	1,685	3.8%	1.3%
Curry County ISD	6,722	7,101	7,204	7.2%	1.5%
East Dona Ana County ISD	7,983	7,972	8,013	0.4%	0.5%
Eddy Artesia County ISD	1,628	1,542	1,540	-5.4%	-0.1%
Eddy Carlsbad County ISD	2,917	2,819	2,914	-0.1%	3.4%
Grant County ISD	3,411	3,904	3,944	15.6%	1.0%
Guadalupe County ISD	700	689	688	-1.7%	-0.1%
Hidalgo County ISD	451	16	15	-96.7%	-6.3%
Lea County ISD	5,611	5,510	5,618	0.1%	2.0%
Lincoln County ISD	1,853	1,875	1,873	1.1%	-0.1%
Luna County ISD	4,142	4,184	4,230	2.1%	1.1%
McKinley County ISD	9,807	10,081	10,211	4.1%	1.3%
Northeast Bernalillo County ISD	20,226	20,277	20,268	0.2%	0.0%
Northwest Bernalillo County ISD	19,645	19,779	19,947	1.5%	0.8%
Otero County ISD	5,541	5,690	5,695	2.8%	0.1%
Quay County ISD	1,264	1,258	1,254	-0.8%	-0.3%
Rio Arriba County ISD	6,689	6,478	6,471	-3.3%	-0.1%
Roosevelt County ISD	0	1	1	N/A	0.0%
San Juan County ISD	13,468	13,780	13,857	2.9%	0.6%
San Miguel County ISD	4,913	5,020	5,032	2.4%	0.2%
Sandoval County ISD	11,025	9,860	9,838	-10.8%	-0.2%
Santa Fe County ISD	9,622	9,461	9,436	-1.9%	-0.3%
Sierra County ISD	2,665	2,579	2,543	-4.6%	-1.4%
Socorro County ISD	2,740	2,766	2,769	1.1%	0.1%
South Dona Ana ISD	8,512	8,479	8,489	-0.3%	0.1%
Southeast Bernalillo County ISD	11,834	11,869	11,924	0.8%	0.5%
Southwest Bernalillo County ISD	18,661	19,200	19,327	3.6%	0.7%
Taos County ISD	4,150	4,167	4,158	0.2%	-0.2%
Torrance County ISD	3,403	3,619	3,595	5.6%	-0.7%
Valencia North County ISD	8,447	8,337	8,329	-1.4%	-0.1%
Valencia South County ISD	2	4	6	200.0%	50.0%
West Dona Ana County ISD	10,797	10,618	10,696	-0.9%	0.7%
Centralized Units	44	13	18	-59.1%	38.5%
Statewide Total	221,195	221,103	222,195	0.5%	0.5%

SNAP Cases by Region⁶

Region	Jul-18	Jun-19	Jul-19	Percent Change	
				Jul-18- Jul-19	Jun-19- Jul-19
Region 1 - NW	40,784	41,133	41,326	1.3%	0.5%
Region 2 - NE	39,986	38,596	38,562	-3.6%	-0.1%
Region 3 - Central	73,769	74,744	75,061	1.8%	0.4%
Region 4 - SE	25,775	25,754	26,146	1.4%	1.5%
Region 5 - SW	40,837	40,863	41,082	0.6%	0.5%
Centralized Units	44	13	18	-59.1%	38.5%
Statewide Total	221,195	221,103	222,195	0.5%	0.5%

SNAP Caseload: SFY-16 to Current



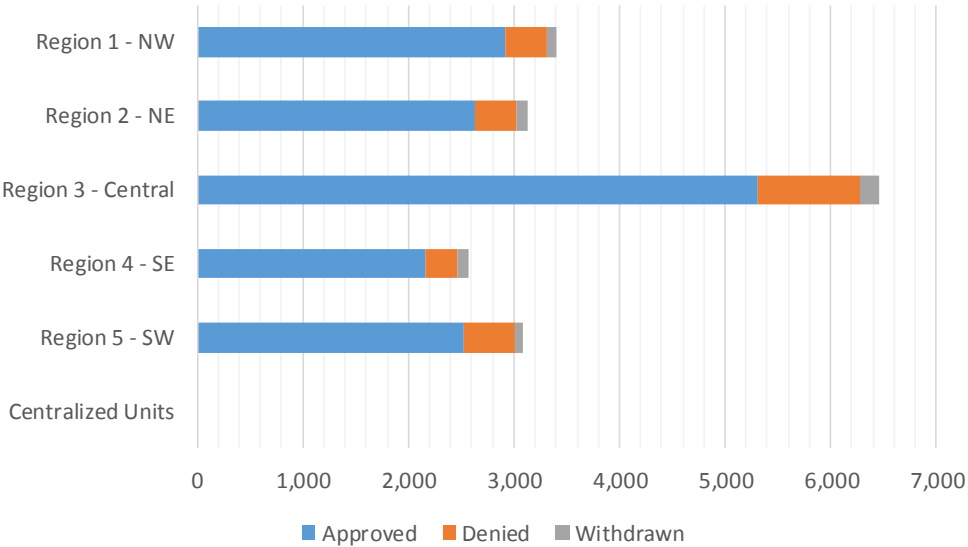
SNAP Initial Applications by Field Office^{4,11}
July 2019

Office	Approved	Denied	Withdrawn	Total Cases Processed
Chaves County ISD	532	72	32	636
Cibola County ISD	259	28	6	293
Colfax County ISD	116	18	2	136
Curry County ISD	550	68	31	649
East Dona Ana County ISD	536	111	19	666
Eddy Artesia County ISD	115	13	5	133
Eddy Carlsbad County ISD	305	48	16	369
Grant County ISD	281	37	5	323
Guadalupe County ISD	40	7	0	47
Hidalgo County ISD	0	0	0	0
Lea County ISD	507	96	16	619
Lincoln County ISD	137	18	6	161
Luna County ISD	299	40	8	347
McKinley County ISD	688	73	15	776
Northeast Bernalillo County ISD	1,570	294	56	1,920
Northwest Bernalillo County ISD	1,329	241	49	1,619
Otero County ISD	360	74	18	452
Quay County ISD	68	8	1	77
Rio Arriba County ISD	388	42	19	449
Roosevelt County ISD	10	0	0	10
San Juan County ISD	1,156	167	42	1,365
San Miguel County ISD	369	50	12	431
Sandoval County ISD	759	136	39	934
Santa Fe County ISD	621	113	21	755
Sierra County ISD	136	25	8	169
Socorro County ISD	167	20	5	192
South Dona Ana ISD	371	89	11	471
Southeast Bernalillo County ISD	887	156	35	1,078
Southwest Bernalillo County ISD	1,306	240	42	1,588
Taos County ISD	265	32	8	305
Torrance County ISD	222	27	11	260
Valencia North County ISD	507	87	18	612
Valencia South County ISD	0	0	0	0
West Dona Ana County ISD	672	137	21	830
Centralized Units	0	0	0	0
Statewide Total	15,528	2,567	577	18,672

SNAP Initial Applications by Region^{4,11}
July 2019

Region	Approved	Denied	Withdrawn	Total Cases Processed
Region 1 - NW	2,913	400	94	3,407
Region 2 - NE	2,626	406	102	3,134
Region 3 - Central	5,314	958	193	6,465
Region 4 - SE	2,156	315	106	2,577
Region 5 - SW	2,519	488	82	3,089
Centralized Units	0	0	0	0

Statewide Total	15,528	2,567	577	18,672
-----------------	--------	-------	-----	--------

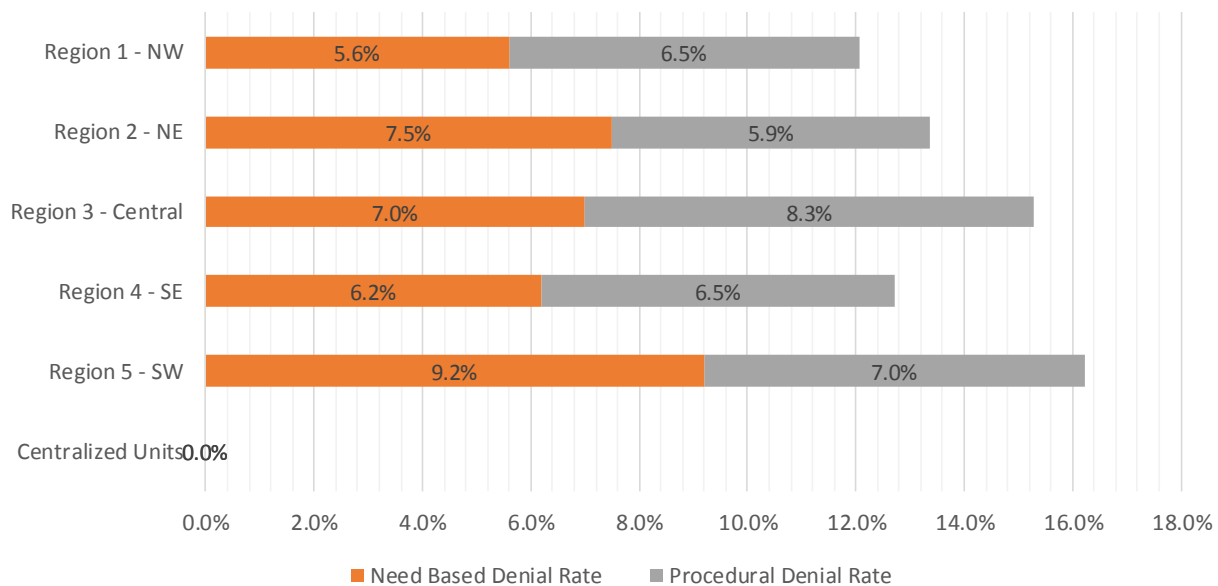


SNAP Initial Disposition Rates by Field Office^{4,11}
July 2019

Office	Approval Rate	Denial Rate	Need Based Denial Rate	Procedural Denial Rate
Chaves County ISD	88.1%	11.9%	5.6%	6.3%
Cibola County ISD	90.2%	9.8%	3.9%	5.9%
Colfax County ISD	86.6%	13.4%	10.4%	3.0%
Curry County ISD	89.0%	11.0%	6.5%	4.5%
East Dona Ana County ISD	82.8%	17.2%	10.4%	6.8%
Eddy Artesia County ISD	89.8%	10.2%	3.9%	6.3%
Eddy Carlsbad County ISD	86.4%	13.6%	7.4%	6.2%
Grant County ISD	88.4%	11.6%	5.6%	6.0%
Guadalupe County ISD	85.1%	14.9%	4.3%	10.6%
Hidalgo County ISD	0.0%	0.0%	0.0%	0.0%
Lea County ISD	84.1%	15.9%	6.8%	9.1%
Lincoln County ISD	88.4%	11.6%	5.1%	6.5%
Luna County ISD	88.2%	11.8%	4.7%	7.1%
McKinley County ISD	90.4%	9.6%	4.6%	5.0%
Northeast Bernalillo County ISD	84.2%	15.8%	6.3%	9.5%
Northwest Bernalillo County ISD	84.6%	15.4%	7.4%	8.0%
Otero County ISD	82.9%	17.1%	7.7%	9.4%
Quay County ISD	89.5%	10.5%	9.2%	1.3%
Rio Arriba County ISD	90.2%	9.8%	5.6%	4.2%
Roosevelt County ISD	100.0%	0.0%	0.0%	0.0%
San Juan County ISD	87.4%	12.6%	5.5%	7.1%
San Miguel County ISD	88.1%	11.9%	6.6%	5.3%
Sandoval County ISD	84.8%	15.2%	8.0%	7.2%
Santa Fe County ISD	84.6%	15.4%	8.5%	6.9%
Sierra County ISD	84.5%	15.5%	9.3%	6.2%
Socorro County ISD	89.3%	10.7%	7.0%	3.7%
South Dona Ana ISD	80.7%	19.3%	13.0%	6.3%
Southeast Bernalillo County ISD	85.0%	15.0%	7.7%	7.3%
Southwest Bernalillo County ISD	84.5%	15.5%	7.1%	8.4%
Taos County ISD	89.2%	10.8%	6.4%	4.4%
Torrance County ISD	89.2%	10.8%	6.4%	4.4%
Valencia North County ISD	85.4%	14.6%	6.5%	8.1%
Valencia South County ISD	0.0%	0.0%	0.0%	0.0%
West Dona Ana County ISD	83.1%	16.9%	10.2%	6.7%
Centralized Units	0.0%	0.0%	0.0%	0.0%
Statewide Total	85.8%	14.2%	7.1%	7.1%

SNAP Initial Disposition Rates by Region^{4,11}
July 2019

Region	Approval Rate	Denial Rate	Need Based Denial Rate	Procedural Denial Rate
Region 1 - NW	87.9%	12.1%	5.6%	6.5%
Region 2 - NE	86.6%	13.4%	7.5%	5.9%
Region 3 - Central	84.7%	15.3%	7.0%	8.3%
Region 4 - SE	87.3%	12.7%	6.2%	6.5%
Region 5 - SW	83.8%	16.2%	9.2%	7.0%
Centralized Units	0.0%	0.0%	0.0%	0.0%
Statewide Total	85.8%	14.2%	7.1%	7.1%



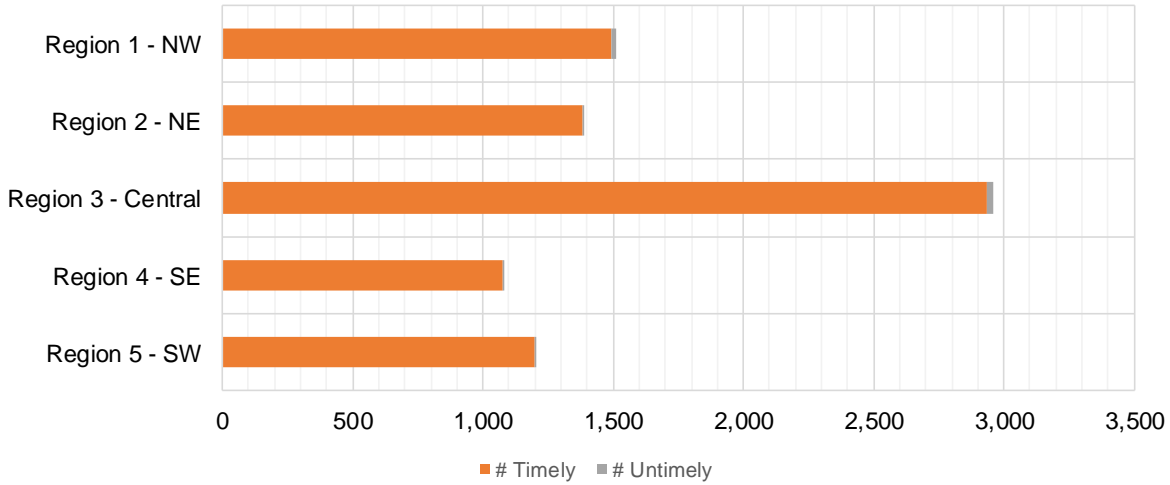
SNAP Expedite Timeliness by Field Office¹³
July 2019

Office Name	Total Expedited Approvals	# Timely	# Untimely	Percentage Timely
Chaves County ISD	225	222	3	98.7 %
Cibola County ISD	132	129	3	97.7 %
Colfax County ISD	58	58	0	100.0 %
Curry County ISD	284	281	3	98.9 %
East Dona Ana County ISD	233	232	1	99.6 %
Eddy Artesia County ISD	54	54	0	100.0 %
Eddy Carlsbad County ISD	184	183	1	99.5 %
Grant County ISD	163	162	1	99.4 %
Guadalupe County ISD	16	16	0	100.0 %
Lea County ISD	271	269	2	99.3 %
Lincoln County ISD	63	63	0	100.0 %
Luna County ISD	127	127	0	100.0 %
McKinley County ISD	379	372	7	98.2 %
Northeast Bernalillo County ISD	880	871	9	99.0 %
Northwest Bernalillo County ISD	789	785	4	99.5 %
Otero County ISD	199	198	1	99.5 %
Quay County ISD	27	26	1	96.3 %
Rio Arriba County ISD	227	225	2	99.1 %
Roosevelt County ISD	2	2	0	100.0 %
San Juan County ISD	637	633	4	99.4 %
San Miguel County ISD	218	215	3	98.6 %
Sandoval County ISD	366	365	1	99.7 %
Santa Fe County ISD	360	358	2	99.4 %
Sierra County ISD	65	64	1	98.5 %
Socorro County ISD	61	61	0	100.0 %
South Dona Ana ISD	157	156	1	99.4 %
Southeast Bernalillo County ISD	475	468	7	98.5 %
Southwest Bernalillo County ISD	706	698	8	98.9 %
Taos County ISD	118	118	0	100.0 %
Torrance County ISD	112	111	1	99.1 %
Valencia North County ISD	240	236	4	98.3 %
West Dona Ana County ISD	324	324	0	100.0 %
Statewide Total	8,152	8,082	70	99.1 %

SNAP Expedite Timeliness by Region¹³
July 2019

Region	Total Expedited Approvals	# Timely	# Untimely	Percentage Timely
Region 1 - NW	1,514	1,495	19	98.7%
Region 2 - NE	1,390	1,381	9	99.4%
Region 3 - Central	2,962	2,933	29	99.0%
Region 4 - SE	1,083	1,074	9	99.2%
Region 5 - SW	1,203	1,199	4	99.7%
Statewide Total	8,152	8,082	70	99.1%

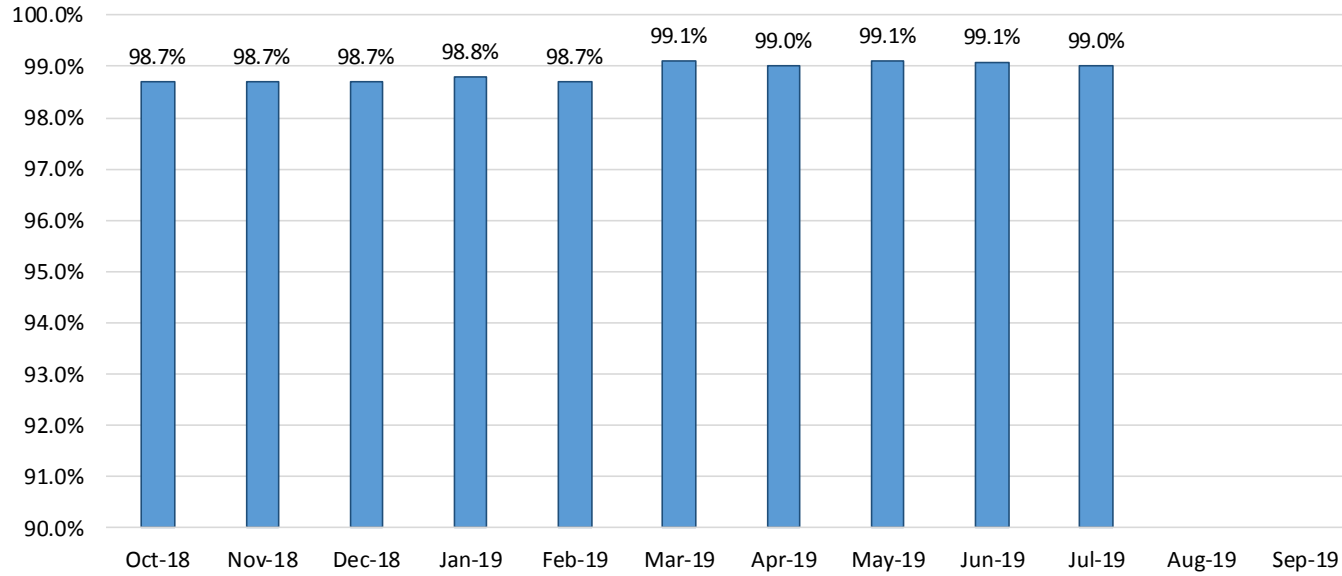
SNAP Expedite - Timeliness



SNAP: Percentage of Applications Processed Timely ¹³

	Oct-18	Nov-18	Dec-18	Jan-19	Feb-19	Mar-19	Apr-19	May-19	Jun-19	Jul-19	Aug-19	Sep-19	Average
APT	98.7%	98.7%	98.7%	98.8%	98.7%	99.1%	99.0%	99.1%	99.1%	99.0%			98.9%

SNAP Application Processing Timeliness (APT)



SNAP Non-Expedite: Percentage of Initial Applications Processed Timely by Field Office¹³

	Oct-18	Nov-18	Dec-18	Jan-19	Feb-19	Mar-19	Apr-19	May-19	Jun-19	Jul-19	Aug-19	Sep-19	Average
Cibola	100.0%	99.0%	99.0%	97.5%	98.6%	98.5%	98.8%	99.3%	97.9%	98.8%			98.7%
McKinley	98.8%	98.4%	98.9%	100.0%	96.6%	98.8%	99.3%	98.9%	98.8%	99.3%			98.8%
San Juan	99.6%	99.2%	98.8%	99.1%	99.0%	98.8%	99.1%	99.1%	99.0%	98.6%			99.0%
Sierra	98.9%	100.0%	100.0%	100.0%	100.0%	100.0%	100.0%	99.1%	100.0%	100.0%			99.8%
Socorro	100.0%	98.4%	100.0%	100.0%	100.0%	100.0%	99.0%	100.0%	99.1%	100.0%			99.7%
Valencia North	99.7%	99.3%	99.2%	100.0%	100.0%	99.7%	99.5%	99.5%	99.1%	98.9%			99.5%
Valencia South													
NW Region 1 Total	99.4%	99.1%	99.1%	99.5%	98.8%	99.1%	99.2%	99.2%	99.0%	99.0%			99.1%
Colfax	100.0%	100.0%	100.0%	100.0%	100.0%	100.0%	100.0%	100.0%	100.0%	100.0%			100.0%
Guadalupe	100.0%	100.0%	96.3%	100.0%	100.0%	100.0%	100.0%	100.0%	100.0%	100.0%			99.6%
Quay	100.0%	97.3%	100.0%	100.0%	100.0%	97.7%	100.0%	100.0%	100.0%	100.0%			99.5%
Rio Arriba	100.0%	99.5%	98.1%	99.4%	98.9%	98.0%	98.0%	97.9%	98.6%	99.1%			98.8%
San Miguel	100.0%	99.3%	99.2%	100.0%	100.0%	100.0%	100.0%	100.0%	100.0%	100.0%			99.9%
Sandoval	99.5%	99.2%	99.6%	99.7%	99.6%	99.3%	99.4%	99.1%	99.8%	99.5%			99.5%
Santa Fe	99.4%	98.6%	100.0%	99.3%	100.0%	99.7%	99.5%	98.8%	99.1%	99.5%			99.4%
Taos	100.0%	98.4%	99.3%	98.9%	100.0%	100.0%	100.0%	100.0%	98.7%	100.0%			99.5%
NE Region 2 Total	98.9%	99.0%	99.3%	99.5%	99.8%	99.4%	99.4%	99.1%	99.4%	99.6%			99.3%
NE Bernalillo	98.9%	98.8%	98.8%	99.2%	99.4%	97.9%	98.5%	98.5%	98.0%	97.7%			98.6%
NW Bernalillo	98.0%	99.3%	99.6%	99.0%	98.9%	97.4%	98.0%	98.5%	98.8%	98.7%			98.6%
SE Bernalillo	99.6%	98.7%	99.0%	98.5%	99.3%	99.0%	99.3%	98.6%	97.9%	98.6%			98.9%
SW Bernalillo	99.3%	99.5%	98.6%	99.6%	98.6%	98.8%	98.8%	99.1%	99.5%	98.6%			99.0%
Torrance	100.0%	97.2%	97.3%	99.2%	97.7%	98.1%	99.4%	100.0%	99.1%	96.5%			98.5%
Gen. Region 3 Total	98.9%	99.0%	98.9%	99.2%	99.0%	98.2%	98.6%	98.7%	98.6%	98.3%			98.7%
Chaves	100.0%	99.6%	98.8%	99.7%	99.5%	99.4%	99.5%	99.0%	99.2%	99.0%			99.4%
Curry	97.9%	98.4%	98.9%	98.4%	100.0%	100.0%	99.4%	100.0%	99.3%	99.5%			99.2%
Eddy Artesia	100.0%	100.0%	100.0%	100.0%	100.0%	98.6%	100.0%	100.0%	96.5%	98.7%			99.4%
Eddy Carlsbad	100.0%	99.1%	99.0%	100.0%	100.0%	99.3%	99.5%	99.4%	99.4%	97.9%			99.4%
Lea	99.1%	99.5%	99.0%	97.8%	97.8%	99.2%	99.7%	99.1%	97.6%	99.2%			98.8%
Lincoln	100.0%	98.8%	97.1%	98.8%	100.0%	99.2%	100.0%	100.0%	98.9%	96.9%			99.0%
Roosevelt		100.0%		100.0%			100.0%	100.0%	100.0%	100.0%			100.0%
SE Region 4 Total	98.2%	99.2%	98.8%	99.0%	99.4%	99.4%	99.6%	99.4%	98.7%	98.9%			99.1%
East Dona Ana	99.7%	100.0%	99.3%	98.8%	100.0%	100.0%	98.7%	99.3%	99.7%	99.5%			99.5%
Grant	100.0%	100.0%	99.0%	100.0%	100.0%	99.2%	99.4%	99.3%	99.3%	100.0%			99.6%
Luna	100.0%	99.4%	99.3%	100.0%	100.0%	99.4%	100.0%	99.4%	97.1%	100.0%			99.5%
Otero	99.2%	100.0%	99.3%	99.5%	100.0%	98.1%	99.3%	99.2%	99.2%	98.5%			99.2%
South Dona Ana	99.6%	99.6%	98.4%	100.0%	100.0%	99.7%	99.7%	100.0%	100.0%	99.4%			99.6%
West Dona Ana	99.5%	100.0%	99.3%	99.7%	100.0%	99.3%	99.4%	99.8%	99.8%	99.2%			99.6%
SW Region 5 Total	99.4%	99.8%	99.1%	99.6%	100.0%	99.4%	99.3%	99.6%	99.4%	99.4%			99.5%
STATE TOTAL	99.0%	99.2%	99.0%	99.3%	99.3%	98.9%	99.1%	99.1%	99.0%	98.9%			99.1%

SNAP Expedite: Percentage of Initial Applications Processed Timely by Field Office¹³

	Oct-18	Nov-18	Dec-18	Jan-19	Feb-19	Mar-19	Apr-19	May-19	Jun-19	Jul-19	Aug-19	Sep-19	Average
Cibola	100.0%	99.2%	100.0%	97.8%	96.9%	96.1%	99.2%	98.2%	99.1%	97.9%			98.4%
McKinley	98.8%	98.6%	100.0%	99.7%	99.3%	99.7%	99.1%	99.1%	99.7%	98.2%			99.2%
San Juan	99.3%	99.5%	99.0%	99.4%	99.5%	99.8%	98.2%	99.6%	99.0%	99.4%			99.3%
Sierra	100.0%	98.6%	100.0%	97.8%	100.0%	100.0%	97.9%	96.1%	100.0%	98.4%			98.9%
Socorro	100.0%	98.6%	100.0%	100.0%	100.0%	100.0%	100.0%	100.0%	97.6%	100.0%			99.6%
Valencia North	99.6%	99.6%	99.0%	99.2%	98.6%	100.0%	98.8%	99.2%	99.2%	98.3%			99.2%
Valencia South				100.0%									
NW Region 1 Total	99.6%	99.2%	99.4%	99.3%	99.2%	99.5%	98.7%	99.2%	99.2%	98.7%			99.2%
Colfax	100.0%	100.0%	100.0%	100.0%	100.0%	100.0%	100.0%	100.0%	100.0%	100.0%			100.0%
Guadalupe	95.2%	100.0%	100.0%	100.0%	100.0%	100.0%	100.0%	100.0%	100.0%	100.0%			99.5%
Quay	100.0%	100.0%	100.0%	97.6%	100.0%	100.0%	96.3%	97.4%	100.0%	96.3%			98.8%
Rio Arriba	98.6%	97.9%	99.6%	98.0%	97.6%	99.5%	98.4%	100.0%	99.2%	99.1%			98.8%
San Miguel	100.0%	100.0%	100.0%	99.1%	100.0%	98.9%	100.0%	98.8%	97.5%	98.6%			99.3%
Sandoval	99.0%	98.5%	99.0%	98.8%	98.1%	99.0%	97.5%	98.2%	99.2%	99.7%			98.7%
Santa Fe	98.5%	98.1%	99.2%	97.6%	99.1%	99.2%	99.2%	98.5%	99.1%	99.4%			98.8%
Taos	98.8%	97.0%	94.3%	99.3%	99.0%	100.0%	98.7%	99.3%	99.1%	100.0%			98.6%
NE Region 2 Total	98.8%	98.4%	98.9%	98.5%	98.7%	99.3%	98.7%	98.9%	99.1%	99.4%			98.9%
NE Bernalillo	98.8%	98.5%	98.4%	98.1%	97.8%	98.5%	98.8%	98.1%	99.0%	99.0%			98.5%
NW Bernalillo	99.0%	99.6%	99.4%	99.4%	99.3%	99.4%	99.1%	99.5%	99.5%	99.5%			99.4%
SE Bernalillo	99.2%	99.1%	99.4%	99.6%	97.7%	98.8%	99.4%	99.8%	99.1%	98.5%			99.1%
SW Bernalillo	98.7%	99.2%	97.5%	98.6%	98.9%	98.9%	99.3%	98.9%	99.6%	98.9%			98.9%
Torrance	98.3%	100.0%	98.1%	100.0%	99.1%	98.3%	99.1%	98.2%	100.0%	99.1%			99.0%
Gen. Region 3 Total	98.8%	99.1%	98.7%	98.9%	98.5%	98.8%	99.1%	98.9%	99.3%	99.0%			98.9%
Chaves	98.8%	99.1%	100.0%	99.2%	100.0%	100.0%	99.6%	99.6%	97.8%	98.7%			99.3%
Curry	98.1%	98.6%	98.4%	98.9%	97.6%	99.6%	99.4%	99.3%	99.6%	98.9%			98.8%
Eddy Artesia	96.1%	100.0%	100.0%	100.0%	97.7%	94.7%	98.6%	100.0%	98.2%	100.0%			98.5%
Eddy Carlsbad	97.0%	100.0%	98.6%	99.2%	98.9%	97.8%	100.0%	99.4%	100.0%	99.5%			99.0%
Lea	98.7%	99.2%	99.1%	98.0%	100.0%	99.6%	100.0%	98.3%	99.1%	99.3%			99.1%
Lincoln	100.0%	95.8%	98.2%	100.0%	100.0%	100.0%	98.2%	100.0%	98.3%	100.0%			99.1%
Roosevelt	100.0%	100.0%	100.0%	100.0%	100.0%	100.0%	100.0%	100.0%	100.0%	100.0%			100.0%
SE Region 4 Total	98.4%	98.9%	99.0%	98.9%	99.0%	99.2%	99.5%	99.2%	99.0%	99.2%			99.0%
East Dona Ana	99.6%	99.0%	99.5%	99.3%	100.0%	100.0%	99.6%	99.5%	99.5%	99.6%			99.6%
Grant	97.7%	99.3%	100.0%	99.4%	98.8%	100.0%	99.3%	99.3%	100.0%	99.4%			99.3%
Luna	100.0%	100.0%	98.9%	98.4%	100.0%	100.0%	100.0%	97.5%	99.3%	100.0%			99.4%
Otero	98.5%	99.5%	98.3%	98.9%	97.5%	99.5%	99.5%	99.5%	99.5%	99.5%			99.0%
South Dona Ana	99.4%	100.0%	100.0%	100.0%	99.1%	100.0%	99.3%	100.0%	100.0%	99.4%			99.7%
West Dona Ana	100.0%	100.0%	99.6%	99.7%	98.8%	100.0%	100.0%	99.7%	100.0%	100.0%			99.8%
SW Region 5 Total	99.2%	99.6%	99.4%	99.4%	98.9%	99.9%	99.7%	99.4%	99.7%	99.7%			99.5%
STATE TOTAL	98.9%	99.1%	99.0%	99.0%	98.8%	99.2%	99.1%	99.1%	99.3%	99.1%			99.1%

SNAP: Percentage of Denied Initial Applications Processed Within 30 Days by Field Office ¹³

	Oct-18	Nov-18	Dec-18	Jan-19	Feb-19	Mar-19	Apr-19	May-19	Jun-19	Jul-19	Aug-19	Sep-19	Average
Cibola	94.4%	92.3%	95.1%	93.9%	97.7%	100.0%	100.0%	100.0%	97.7%	100.0%			97.1%
McKinley	96.2%	97.6%	95.2%	99.0%	96.4%	95.5%	100.0%	96.4%	96.6%	98.9%			97.2%
San Juan	96.4%	93.2%	93.3%	94.9%	91.5%	99.0%	97.4%	98.9%	97.1%	98.1%			96.0%
Sierra	100.0%	93.9%	100.0%	100.0%	100.0%	100.0%	100.0%	100.0%	100.0%	100.0%			99.4%
Socorro	100.0%	100.0%	96.8%	97.4%	96.2%	100.0%	100.0%	100.0%	100.0%	100.0%			99.0%
Valencia North	100.0%	98.4%	100.0%	99.3%	97.8%	99.1%	100.0%	99.0%	97.7%	97.1%			98.8%
Valencia South													
NW Region 1 Total	97.3%	95.7%	95.8%	97.0%	94.9%	98.9%	99.6%	99.1%	98.2%	99.0%			97.5%
Colfax	100.0%	96.3%	100.0%	100.0%	100.0%	100.0%	100.0%	100.0%	100.0%	100.0%			99.6%
Guadalupe	100.0%	100.0%	100.0%	100.0%	100.0%	100.0%	100.0%	100.0%	100.0%	100.0%			100.0%
Quay	100.0%	100.0%	100.0%	92.3%	100.0%	91.7%	100.0%	100.0%	100.0%	100.0%			98.4%
Rio Arriba	94.6%	89.7%	93.2%	98.5%	95.6%	94.6%	95.7%	96.7%	96.6%	98.4%			95.4%
San Miguel	100.0%	100.0%	100.0%	100.0%	100.0%	100.0%	100.0%	100.0%	100.0%	100.0%			100.0%
Sandoval	98.4%	99.5%	99.4%	97.0%	98.1%	98.2%	100.0%	98.2%	99.4%	98.9%			98.7%
Santa Fe	96.6%	96.7%	96.7%	97.3%	99.3%	99.2%	100.0%	99.3%	97.1%	100.0%			98.2%
Taos	98.0%	98.3%	100.0%	95.2%	97.9%	100.0%	100.0%	100.0%	94.9%	100.0%			98.4%
NE Region 2 Total	97.6%	97.4%	98.1%	97.4%	98.4%	98.0%	99.5%	99.3%	98.5%	99.7%			98.4%
NE Bernalillo	94.8%	97.3%	93.5%	96.0%	98.6%	96.6%	97.0%	97.3%	96.5%	94.6%			96.2%
NW Bernalillo	95.6%	96.8%	97.3%	95.6%	94.9%	95.8%	96.2%	97.3%	98.6%	98.3%			96.6%
SE Bernalillo	94.1%	95.5%	96.3%	96.2%	96.5%	99.4%	98.7%	97.4%	97.4%	98.4%			97.0%
SW Bernalillo	97.1%	97.0%	98.3%	97.8%	98.6%	97.9%	96.7%	98.9%	99.2%	97.5%			97.9%
Torrance	93.2%	95.2%	96.6%	93.3%	100.0%	93.0%	98.1%	100.0%	96.9%	94.7%			96.1%
Gen. Region 3 Total	95.3%	96.7%	96.2%	96.2%	97.4%	96.5%	97.3%	98.2%	97.7%	96.7%			96.8%
Chaves	98.6%	95.7%	100.0%	99.2%	98.1%	100.0%	98.9%	97.1%	99.1%	100.0%			98.7%
Curry	97.8%	96.7%	96.6%	94.5%	99.0%	100.0%	98.9%	100.0%	97.5%	98.0%			97.9%
Eddy Artesia	92.6%	93.1%	100.0%	95.8%	96.0%	95.5%	100.0%	100.0%	87.5%	100.0%			96.1%
Eddy Carlsbad	96.9%	97.0%	98.6%	100.0%	97.1%	98.2%	97.9%	98.4%	100.0%	95.3%			97.9%
Lea	95.7%	97.1%	95.2%	99.1%	99.0%	100.0%	98.7%	98.1%	95.3%	97.3%			97.6%
Lincoln	97.4%	93.5%	95.2%	96.6%	96.6%	100.0%	100.0%	100.0%	96.3%	100.0%			97.6%
Roosevelt		100.0%											100.0%
SE Region 4 Total	97.1%	96.0%	97.6%	97.9%	98.2%	99.0%	99.1%	98.9%	96.0%	98.4%			97.8%
East Dona Ana	97.3%	100.0%	99.2%	97.5%	99.1%	100.0%	97.4%	100.0%	99.2%	99.2%			98.9%
Grant	95.8%	93.8%	97.6%	100.0%	97.9%	100.0%	100.0%	97.8%	100.0%	100.0%			98.3%
Luna	100.0%	100.0%	98.1%	100.0%	97.6%	100.0%	100.0%	97.6%	95.3%	100.0%			98.9%
Otero	100.0%	98.9%	100.0%	97.6%	97.4%	98.9%	96.9%	100.0%	98.9%	98.9%			98.8%
South Dona Ana	100.0%	98.4%	98.7%	98.9%	98.6%	100.0%	98.8%	100.0%	100.0%	100.0%			99.3%
West Dona Ana	98.2%	98.9%	99.3%	100.0%	98.4%	99.3%	97.8%	100.0%	100.0%	99.4%			99.1%
SW Region 5 Total	98.3%	98.8%	99.1%	98.9%	98.3%	99.7%	98.5%	99.2%	98.9%	99.6%			98.9%
STATE TOTAL	96.8%	97.0%	97.1%	97.3%	97.4%	98.4%	98.9%	99.0%	97.9%	98.8%			97.9%

SNAP: Combined Approvals and Denials Percentage of Initial Applications Processed Timely by Field Office ¹³

	Oct-18	Nov-18	Dec-18	Jan-19	Feb-19	Mar-19	Apr-19	May-19	Jun-19	Jul-19	Aug-19	Sep-19	Average
Cibola	99.4%	98.1%	98.9%	97.2%	97.8%	97.5%	99.0%	98.8%	98.4%	98.3%			98.3%
McKinley	98.4%	98.4%	99.0%	99.8%	97.6%	99.2%	99.2%	99.1%	99.2%	98.7%			98.9%
San Juan	98.9%	98.4%	98.0%	98.5%	97.6%	99.2%	98.6%	99.3%	99.0%	99.0%			98.7%
Sierra	99.4%	98.6%	100.0%	99.0%	100.0%	100.0%	99.3%	98.7%	100.0%	99.4%			99.4%
Socorro	100.0%	98.8%	99.4%	99.5%	99.1%	100.0%	99.4%	100.0%	98.4%	100.0%			99.5%
Valencia North	99.7%	99.3%	99.3%	99.5%	99.1%	99.8%	99.2%	99.5%	99.2%	98.7%			99.3%
Valencia South				100.0%				100.0%					100.0%
NW Region 1 Total	99.1%	98.6%	98.7%	99.0%	98.1%	99.3%	99.1%	99.3%	99.0%	99.0%			98.9%
Colfax	100.0%	99.3%	100.0%	100.0%	100.0%	100.0%	100.0%	100.0%	100.0%	100.0%			99.9%
Guadalupe	98.4%	100.0%	97.7%	100.0%	100.0%	100.0%	100.0%	100.0%	100.0%	100.0%			99.6%
Quay	100.0%	98.6%	100.0%	97.9%	100.0%	98.6%	98.5%	98.9%	100.0%	98.7%			99.1%
Rio Arriba	98.3%	97.4%	98.2%	98.5%	97.6%	98.8%	98.4%	99.0%	98.9%	99.3%			98.4%
San Miguel	100.0%	99.7%	99.7%	99.5%	100.0%	99.4%	100.0%	99.5%	99.0%	99.3%			99.6%
Sandoval	99.1%	99.0%	99.3%	98.9%	98.6%	99.2%	98.7%	98.7%	99.5%	99.6%			99.1%
Santa Fe	98.5%	98.0%	99.0%	98.2%	99.4%	99.5%	99.3%	98.8%	99.1%	99.5%			98.9%
Taos	99.2%	97.7%	97.5%	98.5%	99.2%	100.0%	99.4%	99.7%	98.9%	100.0%			99.0%
NE Region 2 Total	99.0%	98.5%	98.9%	98.7%	99.0%	99.4%	99.3%	99.3%	99.4%	99.6%			99.1%
NE Bernalillo	98.1%	98.4%	97.6%	98.1%	98.4%	98.2%	98.8%	98.3%	98.4%	98.3%			98.3%
NW Bernalillo	98.0%	98.9%	99.0%	98.5%	98.2%	98.3%	98.5%	99.1%	99.1%	99.1%			98.7%
SE Bernalillo	98.5%	98.3%	98.6%	98.6%	98.0%	98.9%	99.3%	99.2%	98.5%	98.6%			98.7%
SW Bernalillo	98.7%	98.9%	98.1%	98.9%	98.7%	98.9%	99.1%	99.0%	99.6%	98.7%			98.9%
Torrance	97.9%	98.2%	97.5%	98.4%	98.8%	98.2%	99.3%	99.1%	99.5%	97.7%			98.5%
Gen. Region 3 Total	98.3%	98.6%	98.3%	98.5%	98.4%	98.5%	99.0%	98.9%	99.0%	98.5%			98.6%
Chaves	99.3%	98.6%	99.4%	99.4%	99.3%	99.6%	99.5%	99.2%	98.8%	99.1%			99.2%
Curry	98.0%	98.2%	98.3%	97.9%	98.7%	99.8%	99.4%	99.7%	99.5%	99.2%			98.9%
Eddy Artesia	97.0%	98.5%	100.0%	99.3%	98.2%	96.9%	99.3%	100.0%	97.4%	99.2%			98.6%
Eddy Carlsbad	98.0%	99.1%	98.7%	99.7%	98.7%	98.6%	99.7%	99.4%	99.7%	98.6%			99.0%
Lea	98.1%	98.9%	98.4%	98.1%	99.0%	99.4%	99.8%	98.7%	98.2%	99.2%			98.8%
Lincoln	99.5%	96.4%	97.0%	99.0%	99.2%	99.4%	99.4%	100.0%	98.6%	98.1%			98.7%
Roosevelt	100.0%	100.0%	100.0%	100.0%	100.0%	100.0%	100.0%	100.0%	100.0%	100.0%			100.0%
SE Region 4 Total	98.4%	98.5%	98.7%	98.8%	98.9%	99.1%	99.6%	99.6%	98.9%	99.1%			99.0%
East Dona Ana	99.2%	99.7%	99.3%	98.7%	99.8%	100.0%	99.2%	99.4%	99.7%	99.5%			99.5%
Grant	98.1%	98.7%	99.2%	99.7%	99.0%	99.6%	99.3%	99.3%	99.6%	99.7%			99.2%
Luna	100.0%	99.7%	98.9%	99.5%	99.5%	99.6%	100.0%	98.6%	98.1%	100.0%			99.4%
Otero	99.0%	99.6%	99.0%	99.0%	98.4%	98.8%	99.4%	99.4%	99.3%	99.1%			99.1%
South Dona Ana	99.6%	99.6%	99.0%	99.8%	99.4%	99.8%	99.6%	100.0%	100.0%	99.6%			99.6%
West Dona Ana	99.5%	99.8%	99.4%	99.8%	99.2%	99.6%	99.6%	99.8%	99.9%	99.5%			99.6%
SW Region 5 Total	99.3%	99.6%	99.2%	99.4%	99.2%	99.6%	99.5%	99.4%	99.4%	99.6%			99.4%
STATE TOTAL	98.7%	98.7%	98.7%	98.8%	98.7%	99.2%	99.3%	99.3%	99.2%	99.2%			99.0%

SNAP Renewals Processed by Field Office²⁰
July 2019

Office	Approvals	Closures	Need Based Closures	Procedural Closures
Chaves County ISD	235	158	12	146
Cibola County ISD	131	93	2	91
Coffax County ISD	59	44	5	39
Curry County ISD	290	191	17	174
East Dona Ana County ISD	326	131	24	107
Eddy Artesia County ISD	47	28	1	27
Eddy Carlsbad County ISD	76	59	8	51
Grant County ISD	125	88	6	82
Guadalupe County ISD	28	15	2	13
Hidalgo County ISD	0	0	0	0
Lea County ISD	178	142	18	124
Lincoln County ISD	64	35	2	33
Luna County ISD	156	87	4	83
McKinley County ISD	435	200	18	182
Northeast Bernalillo County ISD	674	479	35	444
Northwest Bernalillo County ISD	555	364	22	342
Otero County ISD	164	115	7	108
Quay County ISD	51	39	0	31
Rio Arriba County ISD	188	166	8	158
Roosevelt County ISD	0	0	0	0
San Juan County ISD	441	319	27	292
San Miguel County ISD	169	102	5	97
Sandoval County ISD	347	211	25	186
Santa Fe County ISD	294	173	18	155
Sierra County ISD	79	53	4	49
Socorro County ISD	106	45	3	42
South Dona Ana ISD	417	147	16	131
Southeast Bernalillo County ISD	346	271	25	246
Southwest Bernalillo County ISD	815	501	39	462
Taos County ISD	132	85	4	81
Torrance County ISD	111	82	6	76
Valencia North County ISD	276	192	12	180
Valencia South County ISD	0	0	0	0
West Dona Ana County ISD	417	212	18	194
Centralized Units	0	0	0	0
Statewide Total	7,732	4,827	393	4,426

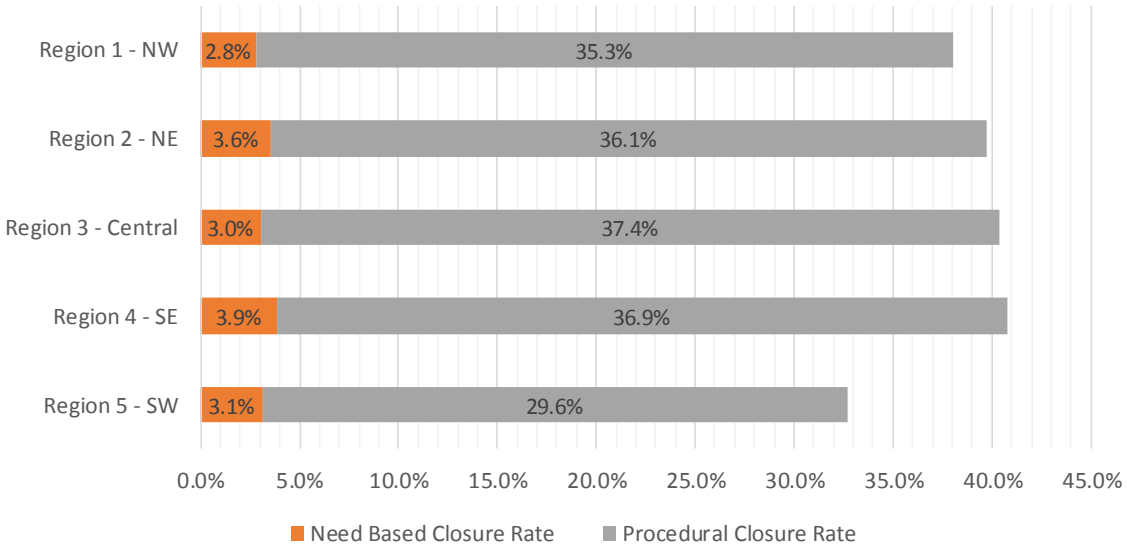
SNAP Renewal Disposition Rates by Field Office²⁰
July 2019

Office	Approval Rate	Closure Rate	Need Based Closure Rate	Procedural Closure Rate
Chaves County ISD	59.8%	40.2%	3.1%	37.2%
Cibola County ISD	58.5%	41.5%	0.9%	40.6%
Colfax County ISD	57.3%	42.7%	4.9%	37.9%
Curry County ISD	60.3%	39.7%	3.5%	36.2%
East Dona Ana County ISD	71.3%	28.7%	5.3%	23.4%
Eddy Artesia County ISD	62.7%	37.3%	1.3%	36.0%
Eddy Carlsbad County ISD	56.3%	43.7%	5.9%	37.8%
Grant County ISD	58.7%	41.3%	2.8%	38.5%
Guadalupe County ISD	65.1%	34.9%	4.7%	30.2%
Hidalgo County ISD	0.0%	0.0%	0.0%	0.0%
Lea County ISD	55.6%	44.4%	5.6%	38.8%
Lincoln County ISD	64.6%	35.4%	2.0%	33.3%
Luna County ISD	64.2%	35.8%	1.6%	34.2%
McKinley County ISD	68.5%	31.5%	2.8%	28.7%
Northeast Bernalillo County ISD	58.5%	41.5%	3.0%	38.5%
Northwest Bernalillo County ISD	60.4%	39.6%	2.4%	37.2%
Otero County ISD	58.8%	41.2%	2.5%	38.7%
Quay County ISD	56.7%	43.3%	8.9%	34.4%
Rio Arriba County ISD	53.1%	46.9%	2.3%	44.6%
Roosevelt County ISD	0.0%	0.0%	0.0%	0.0%
San Juan County ISD	58.0%	42.0%	3.6%	38.4%
San Miguel County ISD	62.4%	37.6%	1.8%	35.8%
Sandoval County ISD	62.2%	37.8%	4.5%	33.3%
Santa Fe County ISD	63.0%	37.0%	3.9%	33.2%
Sierra County ISD	59.8%	40.2%	3.0%	37.1%
Socorro County ISD	70.2%	29.8%	2.0%	27.8%
South Dona Ana ISD	73.9%	26.1%	2.8%	23.2%
Southeast Bernalillo County ISD	56.1%	43.9%	4.1%	39.9%
Southwest Bernalillo County ISD	61.9%	38.1%	3.0%	35.1%
Taos County ISD	60.8%	39.2%	1.8%	37.3%
Torrance County ISD	57.5%	42.5%	3.1%	39.4%
Valencia North County ISD	59.0%	41.0%	2.6%	38.5%
Valencia South County ISD	0.0%	0.0%	0.0%	0.0%
West Dona Ana County ISD	66.3%	33.7%	2.9%	30.8%
Centralized Units	0.0%	0.0%	0.0%	0.0%
Statewide Total	61.6%	38.4%	3.2%	35.2%

SNAP Renewal Disposition Rates by Region²⁰
July 2019

Region	Approval Rate	Closure Rate	Need Based Closure Rate	Procedural Closure Rate
Region 1 - NW	61.9%	38.1%	2.8%	35.3%
Region 2 - NE	60.3%	39.7%	3.6%	36.1%
Region 3 - Central	59.6%	40.4%	3.0%	37.4%
Region 4 - SE	59.2%	40.8%	3.9%	36.9%
Region 5 - SW	67.3%	32.7%	3.1%	29.6%
Centralized Units				

Statewide Total	61.6%	38.4%	3.2%	35.2%
-----------------	-------	-------	------	-------



SNAP: Percentage of Approved Renewal Applications Processed¹¹

	Oct-18	Nov-18	Dec-18	Jan-19	Feb-19	Mar-19	Apr-19	May-19	Jun-19	Jul-19	Aug-19	Sep-19	Average
Cibola	96.4%	97.6%	99.2%	100.0%	100.0%	95.3%	98.2%	96.3%	96.4%	97.0%			97.6%
McKinley	98.9%	98.0%	97.1%	100.0%	98.2%	97.2%	98.7%	98.2%	98.1%	97.8%			98.2%
San Juan	98.5%	95.8%	96.8%	99.3%	95.3%	97.2%	98.3%	98.6%	96.2%	95.9%			97.2%
Sierra	99.1%	100.0%	98.8%	100.0%	98.8%	100.0%	100.0%	100.0%	98.7%	100.0%			99.5%
Socorro	98.3%	96.3%	100.0%	100.0%	96.6%	100.0%	100.0%	100.0%	99.0%	99.1%			98.9%
Valencia North	99.1%	99.2%	98.6%	99.6%	95.4%	97.7%	99.3%	99.6%	98.7%	98.6%			98.6%
Valencia South													
NW Region 1 Total	98.4%	97.8%	98.4%	99.8%	97.4%	97.9%	99.1%	98.8%	97.9%	98.1%			98.4%
Colfax	100.0%	92.2%	98.4%	100.0%	100.0%	100.0%	100.0%	100.0%	100.0%	98.3%			98.9%
Guadalupe	100.0%	90.5%	100.0%	100.0%	100.0%	100.0%	100.0%	100.0%	100.0%	100.0%			99.0%
Quay	100.0%	98.2%	95.9%	100.0%	100.0%	100.0%	100.0%	97.9%	100.0%	100.0%			99.2%
Rio Arriba	96.8%	97.4%	96.7%	100.0%	98.5%	98.6%	100.0%	99.0%	98.0%	99.5%			98.4%
San Miguel	97.3%	99.4%	98.8%	100.0%	97.4%	98.6%	100.0%	100.0%	98.0%	98.8%			98.8%
Sandoval	99.0%	99.2%	98.0%	99.7%	100.0%	97.9%	99.0%	99.1%	98.8%	99.1%			99.0%
Santa Fe	98.9%	99.3%	97.8%	100.0%	98.8%	98.5%	97.7%	99.6%	97.7%	98.7%			98.7%
Taos	98.5%	99.2%	99.2%	100.0%	100.0%	99.2%	99.1%	97.8%	94.7%	95.0%			98.3%
NE Region 2 Total	98.8%	96.9%	98.1%	100.0%	99.3%	99.1%	99.5%	99.2%	98.4%	98.7%			98.8%
NE Bernalillo	98.7%	97.9%	97.3%	98.6%	98.1%	96.5%	97.9%	99.2%	98.1%	97.7%			98.0%
NW Bernalillo	98.8%	98.0%	98.3%	97.6%	98.2%	96.5%	98.7%	99.2%	97.0%	99.1%			98.1%
SE Bernalillo	98.7%	98.0%	98.3%	99.7%	98.2%	99.0%	98.8%	98.4%	97.2%	95.6%			98.2%
SW Bernalillo	99.4%	99.3%	98.8%	99.7%	99.1%	99.4%	99.9%	99.0%	98.7%	98.5%			99.2%
Torrance	99.1%	97.0%	96.0%	99.4%	97.9%	96.5%	100.0%	99.2%	99.0%	98.2%			98.2%
Gen. Region 3 Total	99.0%	98.1%	97.7%	99.0%	98.3%	97.6%	99.1%	99.0%	98.0%	97.8%			98.4%
Chaves	99.1%	98.7%	98.7%	99.5%	100.0%	98.0%	97.7%	99.5%	98.1%	97.9%			98.7%
Curry	97.9%	96.1%	93.7%	100.0%	99.1%	98.6%	98.5%	100.0%	98.6%	99.0%			98.1%
Eddy Artesia	100.0%	92.7%	90.9%	100.0%	100.0%	100.0%	100.0%	100.0%	98.1%	95.9%			97.8%
Eddy Carlsbad	100.0%	98.5%	100.0%	100.0%	98.4%	100.0%	100.0%	100.0%	98.5%	98.7%			99.4%
Lea	98.7%	98.1%	98.4%	98.8%	98.8%	99.4%	100.0%	98.5%	98.7%	100.0%			98.9%
Lincoln	100.0%	96.1%	100.0%	100.0%	97.8%	100.0%	94.9%	100.0%	100.0%	98.5%			98.7%
Roosevelt													
SE Region 4 Total	99.3%	96.7%	96.9%	99.7%	99.0%	99.3%	98.5%	99.7%	98.7%	98.3%			98.6%
East Dona Ana	99.6%	100.0%	100.0%	100.0%	99.6%	100.0%	100.0%	100.0%	100.0%	100.0%			99.9%
Grant	99.3%	99.3%	100.0%	100.0%	100.0%	100.0%	99.2%	99.2%	99.2%	99.2%			99.5%
Luna	98.3%	99.3%	99.4%	100.0%	98.4%	99.2%	98.3%	98.6%	98.3%	99.4%			98.9%
Otero	99.5%	100.0%	100.0%	100.0%	99.4%	100.0%	99.4%	99.4%	100.0%	98.8%			99.7%
South Dona Ana	100.0%	99.4%	100.0%	100.0%	100.0%	99.7%	100.0%	100.0%	99.7%	98.8%			99.9%
West Dona Ana	99.5%	99.1%	99.4%	100.0%	99.7%	99.4%	100.0%	99.7%	99.7%	100.0%			99.7%
SW Region 5 Total	99.4%	99.5%	99.8%	100.0%	99.5%	99.7%	99.5%	99.5%	99.5%	99.5%			99.6%
STATE TOTAL	99.0%	97.7%	98.2%	99.7%	98.8%	98.8%	99.1%	99.2%	98.5%	98.5%			98.8%

If a renewal packet was received on or before 15th of the renewal month, the case shall be considered timely if the case was processed by renewal due date

SNAP: Percentage of Approved Renewal Applications Processed¹¹

	Oct-18	Nov-18	Dec-18	Jan-19	Feb-19	Mar-19	Apr-19	May-19	Jun-19	Jul-19	Aug-19	Sep-19	Average
Cibola	95.8%	97.4%	99.1%	100.0%	100.0%	100.0%	94.4%	93.8%	100.0%	100.0%			98.1%
McKinley	98.8%	97.7%	96.7%	100.0%	98.1%	100.0%	100.0%	98.0%	100.0%	97.7%			98.7%
San Juan	98.5%	95.4%	96.5%	99.5%	94.7%	98.2%	100.0%	98.2%	97.5%	92.9%			97.1%
Sierra	98.9%	100.0%	98.6%	100.0%	98.6%	100.0%	100.0%	100.0%	100.0%	100.0%			99.6%
Socorro	97.9%	96.1%	100.0%	100.0%	96.1%	100.0%	100.0%	100.0%	100.0%	100.0%			99.0%
Valencia North	99.0%	99.1%	98.5%	99.6%	94.6%	95.2%	100.0%	100.0%	100.0%	98.1%			98.4%
Valencia South													
NW Region 1 Total	98.1%	97.6%	98.2%	99.8%	97.0%	98.9%	99.1%	98.3%	99.6%	98.1%			98.5%
Colfax	100.0%	91.1%	98.2%	100.0%	100.0%	100.0%	100.0%	100.0%	100.0%	100.0%			98.9%
Guadalupe	100.0%	89.5%	100.0%	100.0%	100.0%	100.0%	100.0%	100.0%	100.0%	100.0%			98.9%
Quay	100.0%	98.0%	95.7%	100.0%	100.0%	100.0%	100.0%	100.0%	100.0%	100.0%			99.4%
Rio Arriba	96.4%	97.0%	96.1%	100.0%	98.3%	100.0%	100.0%	100.0%	100.0%	100.0%			98.8%
San Miguel	96.9%	99.3%	98.6%	100.0%	97.0%	100.0%	100.0%	100.0%	100.0%	100.0%			99.2%
Sandoval	98.9%	99.1%	97.7%	99.7%	100.0%	95.6%	100.0%	96.7%	100.0%	98.4%			98.6%
Santa Fe	98.8%	99.3%	97.5%	100.0%	98.6%	97.9%	97.6%	100.0%	100.0%	100.0%			99.0%
Taos	98.3%	99.1%	99.1%	100.0%	100.0%	100.0%	100.0%	100.0%	100.0%	93.8%			99.0%
NE Region 2 Total	98.6%	96.5%	97.9%	100.0%	99.2%	99.2%	99.7%	99.6%	100.0%	99.0%			99.0%
NE Bernalillo	98.5%	97.8%	96.9%	98.4%	97.9%	97.6%	98.9%	100.0%	98.5%	96.2%			98.1%
NW Bernalillo	98.5%	97.7%	98.1%	97.3%	97.9%	97.8%	95.9%	100.0%	100.0%	98.3%			98.2%
SE Bernalillo	98.5%	97.8%	98.0%	99.7%	98.1%	100.0%	100.0%	96.4%	100.0%	94.3%			98.3%
SW Bernalillo	99.3%	99.2%	98.6%	99.7%	98.9%	98.3%	100.0%	100.0%	100.0%	98.0%			99.2%
Torrance	98.9%	96.3%	95.5%	99.3%	97.7%	100.0%	100.0%	100.0%	100.0%	100.0%			98.8%
Gen. Region 3 Total	98.8%	97.8%	97.4%	98.9%	98.1%	98.7%	99.0%	99.3%	99.7%	97.4%			98.5%
Chaves	99.0%	98.5%	98.5%	99.5%	100.0%	97.1%	100.0%	100.0%	100.0%	97.4%			99.0%
Curry	97.5%	95.5%	92.6%	100.0%	98.9%	100.0%	95.3%	100.0%	100.0%	100.0%			98.0%
Eddy Artesia	100.0%	91.7%	87.1%	100.0%	100.0%	100.0%	100.0%	100.0%	100.0%	100.0%			97.9%
Eddy Carlsbad	100.0%	98.2%	100.0%	100.0%	98.0%	100.0%	100.0%	100.0%	93.8%	92.3%			98.2%
Lea	98.5%	98.0%	98.1%	98.6%	98.6%	95.8%	100.0%	94.7%	100.0%	100.0%			98.2%
Lincoln	100.0%	97.7%	100.0%	100.0%	97.5%	100.0%	100.0%	100.0%	100.0%	100.0%			99.5%
Roosevelt													
SE Region 4 Total	99.2%	96.6%	96.0%	99.7%	98.8%	98.8%	99.2%	99.1%	99.0%	98.3%			98.5%
East Dona Ana	99.6%	100.0%	100.0%	100.0%	99.5%	100.0%	100.0%	100.0%	100.0%	100.0%			99.9%
Grant	99.3%	99.2%	100.0%	100.0%	100.0%	100.0%	100.0%	100.0%	100.0%	96.0%			99.4%
Luna	98.0%	100.0%	99.2%	100.0%	98.1%	100.0%	94.4%	100.0%	100.0%	100.0%			99.0%
Otero	99.5%	100.0%	100.0%	100.0%	99.4%	100.0%	100.0%	100.0%	100.0%	100.0%			99.9%
South Dona Ana	100.0%	99.4%	100.0%	100.0%	100.0%	100.0%	100.0%	100.0%	100.0%	100.0%			99.9%
West Dona Ana	99.5%	99.0%	99.4%	100.0%	99.7%	98.5%	100.0%	100.0%	98.1%	100.0%			99.4%
SW Region 5 Total	99.3%	99.6%	99.8%	100.0%	99.4%	99.8%	99.1%	100.0%	99.7%	99.3%			99.6%
STATE TOTAL	98.8%	97.5%	97.9%	99.7%	98.6%	99.1%	99.2%	99.3%	99.6%	98.5%			98.8%

Only includes cases in which the Renewal Packet was received by the 15th of the month

SNAP: Percentage of Terminations Renewal Applications Processed¹¹

	Oct-18	Nov-18	Dec-18	Jan-19	Feb-19	Mar-19	Apr-19	May-19	Jun-19	Jul-19	Aug-19	Sep-19	Average
Cibola	97.5%	94.7%	98.6%	100.0%	98.6%	98.6%	97.7%	95.9%	95.5%	96.9%			97.4%
McKinley	98.3%	95.2%	95.0%	98.6%	100.0%	97.2%	98.4%	97.7%	98.0%	95.2%			97.4%
San Juan	96.9%	96.0%	94.5%	96.6%	98.0%	96.6%	96.5%	97.8%	96.9%	96.1%			96.6%
Sierra	100.0%	98.3%	100.0%	100.0%	100.0%	97.3%	97.7%	98.2%	97.5%	100.0%			98.9%
Socorro	100.0%	95.1%	96.5%	100.0%	100.0%	100.0%	100.0%	97.7%	95.1%	97.8%			98.2%
Valencia North	98.6%	98.8%	99.0%	98.8%	98.6%	97.0%	97.6%	98.6%	99.2%	99.0%			98.5%
Valencia South													
NW Region 1 Total	98.6%	96.3%	97.3%	99.0%	99.2%	97.8%	98.0%	97.7%	97.0%	97.5%			97.8%
Colfax	96.9%	96.6%	93.3%	95.8%	91.7%	92.6%	100.0%	100.0%	100.0%	100.0%			96.7%
Guadalupe	100.0%	93.8%	100.0%	100.0%	100.0%	100.0%	100.0%	100.0%	100.0%	100.0%			99.4%
Quay	100.0%	100.0%	100.0%	100.0%	100.0%	100.0%	100.0%	100.0%	100.0%	100.0%			100.0%
Rio Arriba	97.3%	99.2%	98.6%	100.0%	97.9%	98.5%	99.1%	100.0%	98.0%	100.0%			98.9%
San Miguel	95.4%	98.8%	100.0%	100.0%	98.6%	95.1%	97.7%	100.0%	100.0%	98.1%			98.4%
Sandoval	99.0%	97.3%	97.3%	99.1%	100.0%	95.8%	98.3%	99.1%	97.6%	100.0%			98.3%
Santa Fe	98.7%	99.4%	98.3%	97.4%	95.8%	98.9%	97.9%	97.9%	96.8%	97.2%			97.8%
Taos	100.0%	96.8%	97.7%	100.0%	97.0%	100.0%	97.2%	98.5%	95.9%	98.8%			98.2%
NE Region 2 Total	98.4%	97.7%	98.2%	99.0%	97.6%	97.6%	98.8%	99.4%	98.5%	99.3%			98.5%
NE Bernalillo	97.3%	97.9%	95.8%	97.0%	98.9%	97.0%	99.0%	96.9%	96.1%	97.4%			97.3%
NW Bernalillo	98.1%	97.5%	97.3%	97.0%	97.0%	97.9%	97.8%	98.8%	95.2%	97.1%			97.4%
SE Bernalillo	98.0%	95.0%	98.1%	95.8%	97.7%	98.3%	98.6%	99.1%	96.5%	97.8%			97.5%
SW Bernalillo	98.1%	98.3%	98.8%	98.1%	98.5%	98.7%	99.2%	97.1%	97.7%	98.2%			98.3%
Torrance	98.9%	98.5%	90.7%	97.5%	98.6%	98.3%	100.0%	100.0%	98.1%	96.5%			97.7%
Gen. Region 3 Total	98.1%	97.4%	96.1%	97.1%	98.1%	98.0%	98.9%	98.4%	96.7%	97.4%			97.6%
Chaves	98.6%	95.1%	97.9%	97.9%	97.8%	96.0%	98.6%	97.4%	99.1%	99.4%			97.8%
Curry	99.2%	100.0%	93.3%	100.0%	100.0%	97.6%	98.8%	100.0%	100.0%	98.5%			98.7%
Eddy Artesia	96.7%	94.7%	93.1%	96.4%	100.0%	100.0%	100.0%	100.0%	97.0%	96.6%			97.5%
Eddy Carlsbad	100.0%	98.1%	100.0%	94.4%	100.0%	98.5%	98.6%	100.0%	92.1%	98.3%			98.0%
Lea	97.8%	97.4%	96.4%	98.8%	96.9%	100.0%	97.7%	96.9%	99.1%	99.3%			98.0%
Lincoln	95.6%	94.3%	97.8%	100.0%	100.0%	100.0%	100.0%	97.2%	100.0%	97.2%			98.2%
Roosevelt													
SE Region 4 Total	98.0%	96.6%	96.4%	97.9%	99.1%	98.7%	99.0%	98.6%	97.9%	98.2%			98.0%
East Dona Ana	98.6%	99.2%	98.0%	100.0%	97.8%	100.0%	99.3%	99.4%	99.2%	99.2%			99.1%
Grant	97.1%	98.6%	100.0%	100.0%	100.0%	100.0%	100.0%	95.8%	97.1%	100.0%			98.9%
Luna	100.0%	98.6%	98.9%	100.0%	100.0%	100.0%	100.0%	97.1%	98.2%	98.9%			99.2%
Otero	99.1%	99.2%	99.2%	100.0%	100.0%	98.4%	99.2%	99.0%	96.8%	100.0%			99.1%
South Dona Ana	100.0%	100.0%	100.0%	98.9%	100.0%	100.0%	100.0%	100.0%	99.3%	100.0%			99.8%
West Dona Ana	100.0%	99.3%	99.5%	100.0%	99.4%	97.9%	99.1%	98.9%	99.3%	98.1%			99.2%
SW Region 5 Total	99.1%	99.2%	99.3%	99.8%	99.5%	99.4%	99.6%	98.4%	98.3%	99.4%			99.2%
STATE TOTAL	98.4%	97.5%	97.5%	98.7%	98.7%	98.3%	98.8%	98.5%	97.8%	98.4%			98.3%

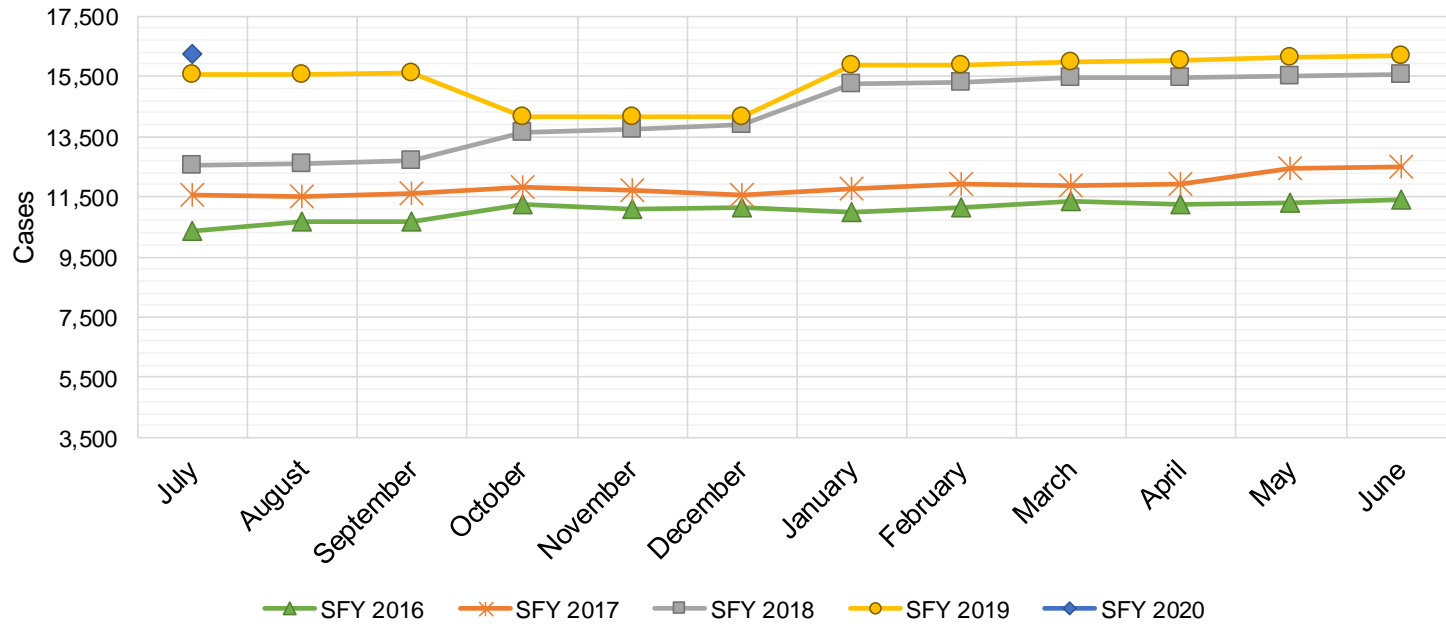
Includes cases for which no renewal application was received.

SNAP: Combined Percentage of Approved and Terminated Renewal Applications Processed¹¹

	<i>Oct-18</i>	<i>Nov-18</i>	<i>Dec-18</i>	<i>Jan-19</i>	<i>Feb-19</i>	<i>Mar-19</i>	<i>Apr-19</i>	<i>May-19</i>	<i>Jun-19</i>	<i>Jul-19</i>	<i>Aug-19</i>	<i>Sep-19</i>	<i>Average</i>
Cibola	96.8%	96.7%	99.0%	100.0%	99.4%	96.4%	98.0%	96.1%	96.1%	97.0%			97.6%
McKinley	98.8%	97.3%	96.3%	99.7%	98.8%	97.2%	98.6%	98.1%	98.1%	96.9%			98.0%
San Juan	97.9%	95.9%	95.9%	98.5%	96.5%	96.9%	97.5%	98.3%	96.5%	96.0%			97.0%
Sierra	99.4%	99.3%	99.2%	100.0%	99.2%	99.2%	99.2%	99.3%	98.3%	100.0%			99.3%
Socorro	98.8%	95.9%	98.7%	100.0%	97.6%	100.0%	100.0%	99.2%	97.9%	98.7%			98.7%
Valencia North	99.0%	99.1%	98.8%	99.4%	96.6%	97.4%	98.7%	99.2%	98.9%	98.7%			98.6%
Valencia South													
NW Region 1 Total	98.4%	97.4%	98.0%	99.6%	98.0%	97.9%	98.7%	98.4%	97.6%	97.9%			98.2%
Colfax	99.0%	93.8%	96.8%	98.7%	97.2%	97.6%	100.0%	100.0%	100.0%	99.0%			98.2%
Guadalupe	100.0%	91.9%	100.0%	100.0%	100.0%	100.0%	100.0%	100.0%	100.0%	100.0%			99.2%
Quay	100.0%	98.7%	96.8%	100.0%	100.0%	100.0%	100.0%	98.6%	100.0%	100.0%			99.4%
Rio Arriba	96.9%	98.0%	97.4%	100.0%	98.3%	98.6%	99.7%	99.4%	98.0%	99.7%			98.6%
San Miguel	96.7%	99.2%	99.2%	100.0%	97.8%	97.3%	99.2%	100.0%	98.7%	98.5%			98.7%
Sandoval	99.0%	98.5%	97.7%	99.5%	100.0%	97.2%	98.7%	99.1%	98.3%	99.5%			98.8%
Santa Fe	98.9%	99.3%	98.0%	99.2%	97.8%	98.7%	97.8%	99.0%	97.4%	98.1%			98.4%
Taos	99.1%	98.4%	98.6%	100.0%	98.9%	99.5%	98.4%	98.0%	95.2%	96.4%			98.2%
NE Region 2 Total	98.7%	97.2%	98.1%	99.7%	98.7%	98.6%	99.2%	99.3%	98.5%	98.9%			98.7%
NE Bernalillo	98.1%	97.9%	96.7%	98.1%	98.4%	96.7%	98.4%	98.2%	97.3%	97.5%			97.7%
NW Bernalillo	98.5%	97.8%	97.9%	97.4%	97.8%	97.1%	98.3%	99.0%	96.3%	98.3%			97.8%
SE Bernalillo	98.4%	97.0%	98.2%	98.6%	98.0%	98.7%	98.7%	98.7%	97.0%	96.6%			98.0%
SW Bernalillo	99.0%	99.0%	98.8%	99.3%	98.9%	99.2%	99.6%	98.4%	98.4%	98.4%			98.9%
Torrance	99.0%	97.5%	93.8%	99.0%	98.1%	97.1%	100.0%	99.5%	98.7%	97.5%			98.0%
Gen. Region 3 Total	98.6%	97.8%	97.1%	98.5%	98.3%	97.8%	99.0%	98.8%	97.5%	97.7%			98.1%
Chaves	98.9%	97.4%	98.4%	99.0%	99.0%	97.2%	98.1%	98.6%	98.4%	98.5%			98.4%
Curry	98.3%	97.4%	93.5%	100.0%	99.4%	98.2%	98.6%	100.0%	99.1%	98.8%			98.3%
Eddy Artesia	98.7%	93.5%	91.7%	98.6%	100.0%	100.0%	100.0%	100.0%	97.7%	96.2%			97.6%
Eddy Carlsbad	100.0%	98.3%	100.0%	98.1%	99.1%	99.2%	99.3%	100.0%	96.2%	98.5%			98.9%
Lea	98.3%	97.8%	97.5%	98.8%	97.9%	99.6%	98.9%	97.8%	98.9%	99.7%			98.5%
Lincoln	98.0%	95.3%	98.9%	100.0%	98.7%	100.0%	96.8%	98.9%	100.0%	98.0%			98.5%
Roosevelt													
SE Region 4 Total	98.7%	96.6%	96.7%	99.1%	99.0%	99.0%	98.6%	99.2%	98.4%	98.3%			98.4%
East Dona Ana	99.3%	99.8%	99.3%	100.0%	99.0%	100.0%	99.8%	99.8%	99.7%	99.8%			99.6%
Grant	98.6%	99.1%	100.0%	100.0%	100.0%	100.0%	99.5%	97.9%	98.4%	99.5%			99.3%
Luna	98.8%	99.1%	99.2%	100.0%	99.0%	99.5%	98.9%	98.1%	98.3%	99.2%			99.0%
Otero	99.4%	99.7%	99.7%	100.0%	99.6%	99.3%	99.3%	99.2%	98.9%	99.3%			99.4%
South Dona Ana	100.0%	99.6%	100.0%	99.8%	100.0%	99.8%	100.0%	100.0%	99.6%	99.8%			99.9%
West Dona Ana	99.7%	99.2%	99.4%	100.0%	99.6%	98.9%	99.7%	99.4%	99.6%	99.4%			99.5%
SW Region 5 Total	99.3%	99.4%	99.6%	100.0%	99.5%	99.6%	99.5%	99.1%	99.1%	99.5%			99.5%
STATE TOTAL	98.7%	97.7%	97.9%	99.4%	98.7%	98.6%	99.0%	99.0%	98.3%	98.5%			98.6%

State SNAP Supplement

SFY 2016 ^{12,9}			SFY 2017 ⁹			SFY 2018 ⁹			SFY 2019 ⁹			SFY 2020 ⁹		
	Cases	Expenditures		Cases	Expenditures		Cases	Expenditures		Cases	Expenditures		Cases	Expenditures
Jul-15	10,345	\$86,143	Jul-16	11,537	\$95,553	Jul-17	12,526	\$97,568	Jul-18	15,555	\$141,711	Jul-19	16,260	\$145,023
Aug-15	10,669	\$88,197	Aug-16	11,522	\$95,107	Aug-17	12,589	\$98,954	Aug-18	15,584	\$139,719	Aug-19		
Sep-15	10,676	\$88,426	Sep-16	11,613	\$94,472	Sep-17	12,679	\$97,546	Sep-18	15,631	\$140,768	Sep-19		
Oct-15	11,262	\$96,758	Oct-16	11,797	\$96,679	Oct-17	13,628	\$117,343	Oct-18	14,161	\$125,737	Oct-19		
Nov-15	11,099	\$91,996	Nov-16	11,735	\$93,689	Nov-17	13,748	\$119,055	Nov-18	14,160	\$125,401	Nov-19		
Dec-15	11,125	\$90,771	Dec-16	11,556	\$93,739	Dec-17	13,877	\$120,585	Dec-18	14,163	\$126,263	Dec-19		
Jan-16	10,977	\$92,760	Jan-17	11,763	\$96,074	Jan-18	15,246	\$135,993	Jan-19	15,890	\$141,357	Jan-20		
Feb-16	11,153	\$95,363	Feb-17	11,907	\$98,251	Feb-18	15,308	\$137,296	Feb-19	15,882	\$142,396	Feb-20		
Mar-16	11,332	\$96,751	Mar-17	11,853	\$96,693	Mar-18	15,482	\$139,132	Mar-19	15,970	\$142,427	Mar-20		
Apr-16	11,222	\$93,959	Apr-17	11,944	\$97,060	Apr-18	15,466	\$139,202	Apr-19	16,032	\$143,982	Apr-20		
May-16	11,283	\$95,271	May-17	12,457	\$96,940	May-18	15,525	\$139,397	May-19	16,126	\$143,697	May-20		
Jun-16	11,389	\$93,061	Jun-17	12,498	\$97,405	Jun-18	15,577	\$140,802	Jun-19	16,182	\$143,128	Jun-20		
TOTAL	132,532	\$1,109,455		142,182	\$1,151,662		171,651	\$1,482,874		185,336	\$1,656,584		16,260	\$145,023
AVERAGE	11,044	\$92,455		11,849	\$95,972		14,304	\$123,573		15,445	\$138,049		16,260	\$145,023



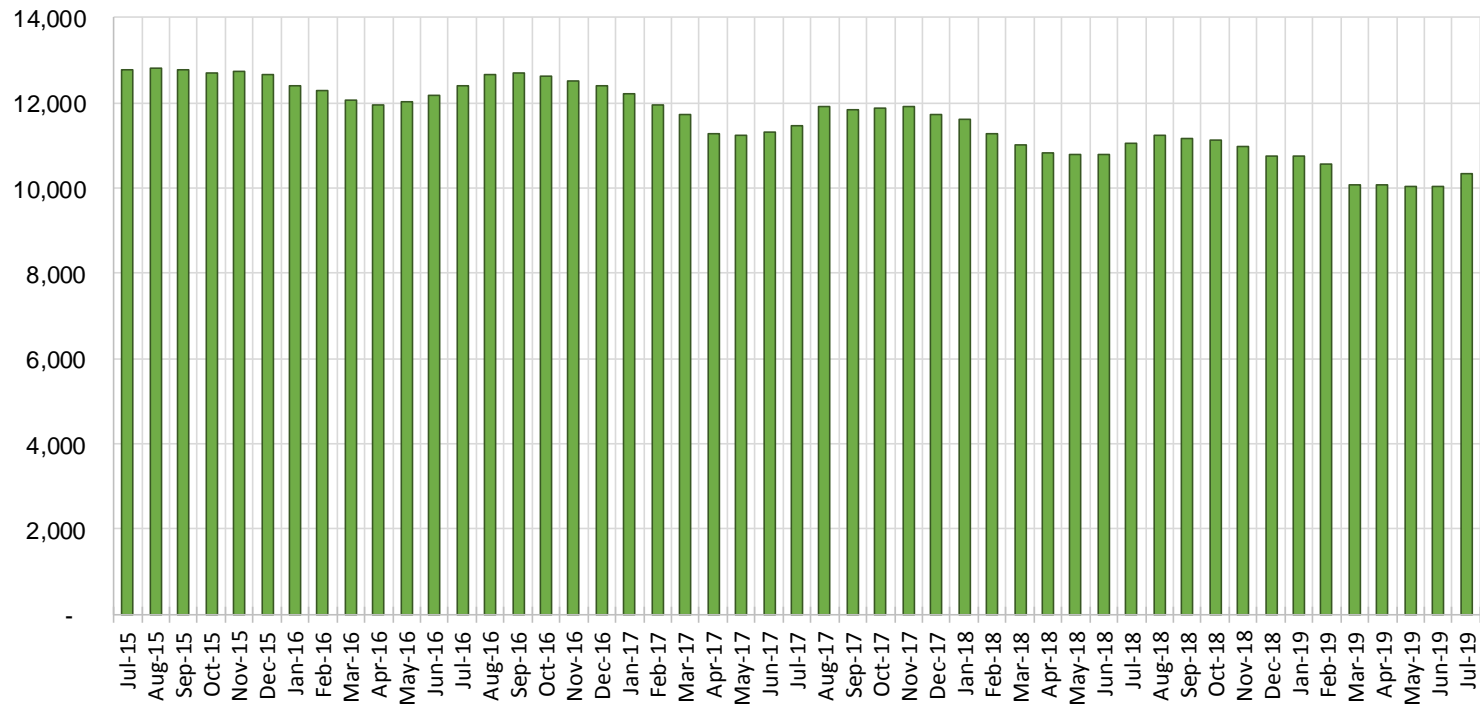
TANF Cases by Field Office⁶

Office	Jul-18	Jun-19	Jul-19	Percent Change	
				Jul-18- Jul-19	Jun-19- Jul-19
Chaves County ISD	466	396	419	-10.1%	5.8%
Cibola County ISD	152	122	130	-14.5%	6.6%
Colfax County ISD	84	86	88	4.8%	2.3%
Curry County ISD	678	614	630	-7.1%	2.6%
East Dona Ana County ISD	439	398	423	-3.6%	6.3%
Eddy Artesia County ISD	103	81	84	-18.4%	3.7%
Eddy Carlsbad County ISD	136	118	124	-8.8%	5.1%
Grant County ISD	159	185	183	15.1%	-1.1%
Guadalupe County ISD	24	26	29	20.8%	11.5%
Hidalgo County ISD	23	0	0	-100.0%	N/A
Lea County ISD	358	326	341	-4.7%	4.6%
Lincoln County ISD	96	97	91	-5.2%	-6.2%
Luna County ISD	218	199	205	-6.0%	3.0%
McKinley County ISD	58	69	79	36.2%	14.5%
Northeast Bernalillo County ISD	969	864	890	-8.2%	3.0%
Northwest Bernalillo County ISD	790	788	819	3.7%	3.9%
Otero County ISD	292	267	269	-7.9%	0.7%
Quay County ISD	59	75	77	30.5%	2.7%
Rio Arriba County ISD	400	355	364	-9.0%	2.5%
Roosevelt County ISD	0	0	0	NA	N/A
San Juan County ISD	305	275	287	-5.9%	4.4%
San Miguel County ISD	209	175	191	-8.6%	9.1%
Sandoval County ISD	569	451	462	-18.8%	2.4%
Santa Fe County ISD	414	371	372	-10.1%	0.3%
Sierra County ISD	79	72	72	-8.9%	0.0%
Socorro County ISD	96	81	76	-20.8%	-6.2%
South Dona Ana ISD	659	602	611	-7.3%	1.5%
Southeast Bernalillo County ISD	604	543	567	-6.1%	4.4%
Southwest Bernalillo County ISD	1,120	1,035	1,053	-6.0%	1.7%
Taos County ISD	140	144	151	7.9%	4.9%
Torrance County ISD	183	183	177	-3.3%	-3.3%
Valencia North County ISD	454	412	426	-6.2%	3.4%
Valencia South County ISD	2	0	0	-100.0%	N/A
West Dona Ana County ISD	716	627	650	-9.2%	3.7%
Centralized Units	5	0	0	-100.0%	N/A
Statewide Total	11,059	10,037	10,340	-6.5%	3.0%

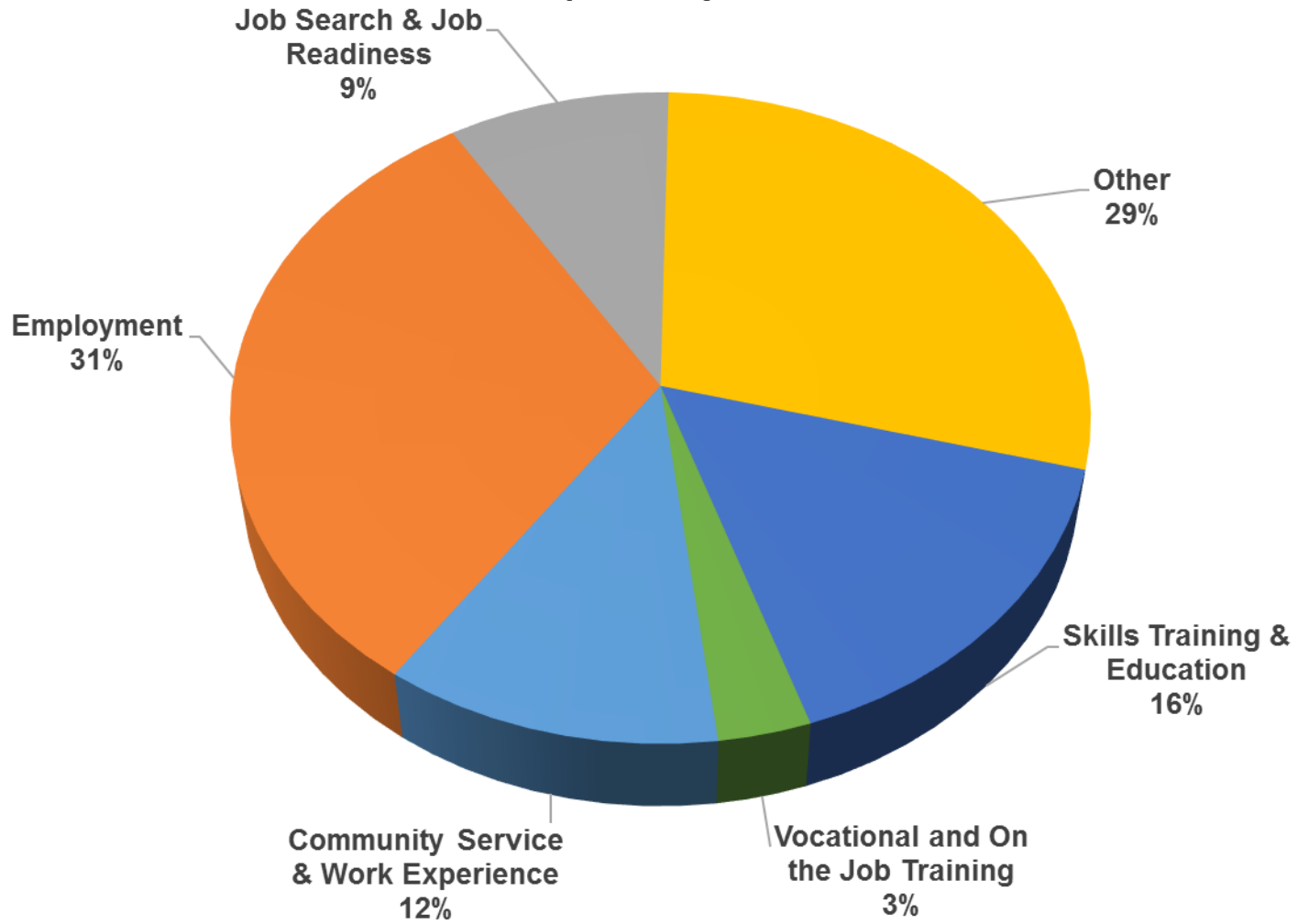
TANF Cases by Region⁶

Region	Jul-18	Jun-19	Jul-19	Percent Change	
				Jul-18- Jul-19	Jun-19- Jul-19
Region 1- NW	1,146	1,031	1,070	-6.6%	3.8%
Region 2- NE	1,899	1,683	1,734	-8.7%	3.0%
Region 3- Central	3,666	3,413	3,506	-4.4%	2.7%
Region 4- SE	1,837	1,632	1,689	-8.1%	3.5%
Region 5- SW	2,506	2,278	2,341	-6.6%	2.8%
Centralized Units	5	0	0	-100.0%	N/A
Statewide Total	11,059	10,037	10,340	-6.5%	3.0%

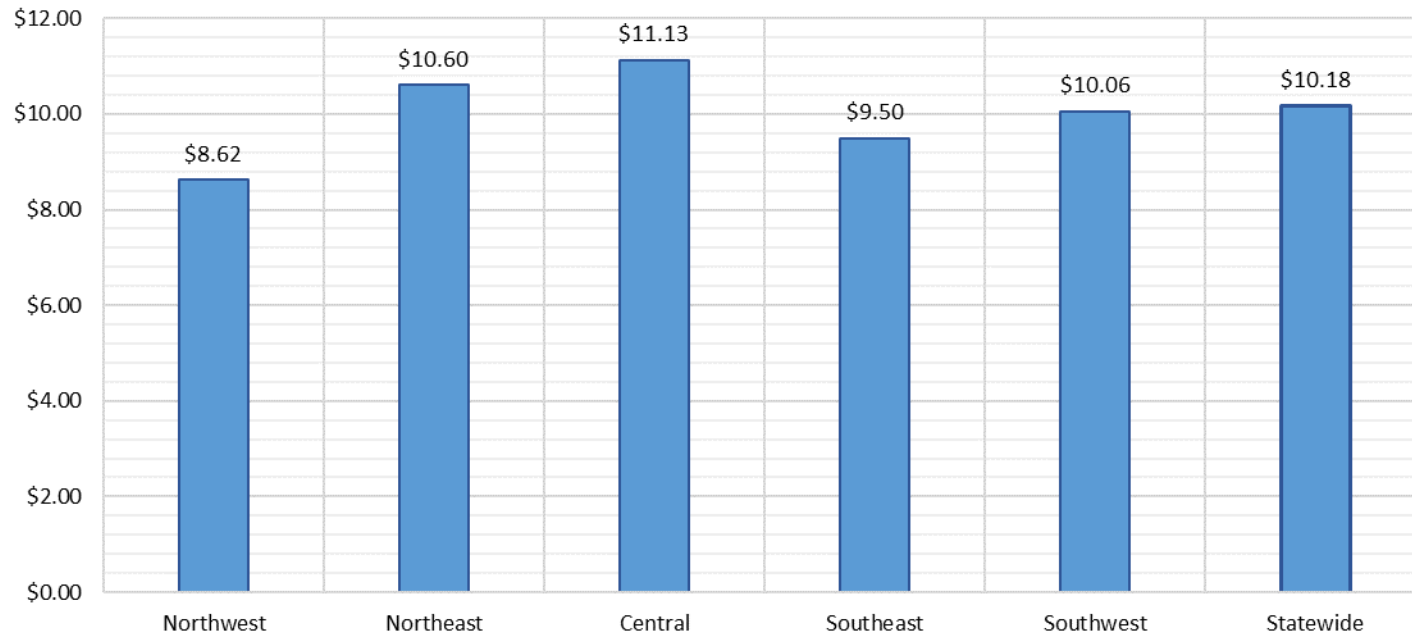
TANF Caseload: SFY-16 to Current



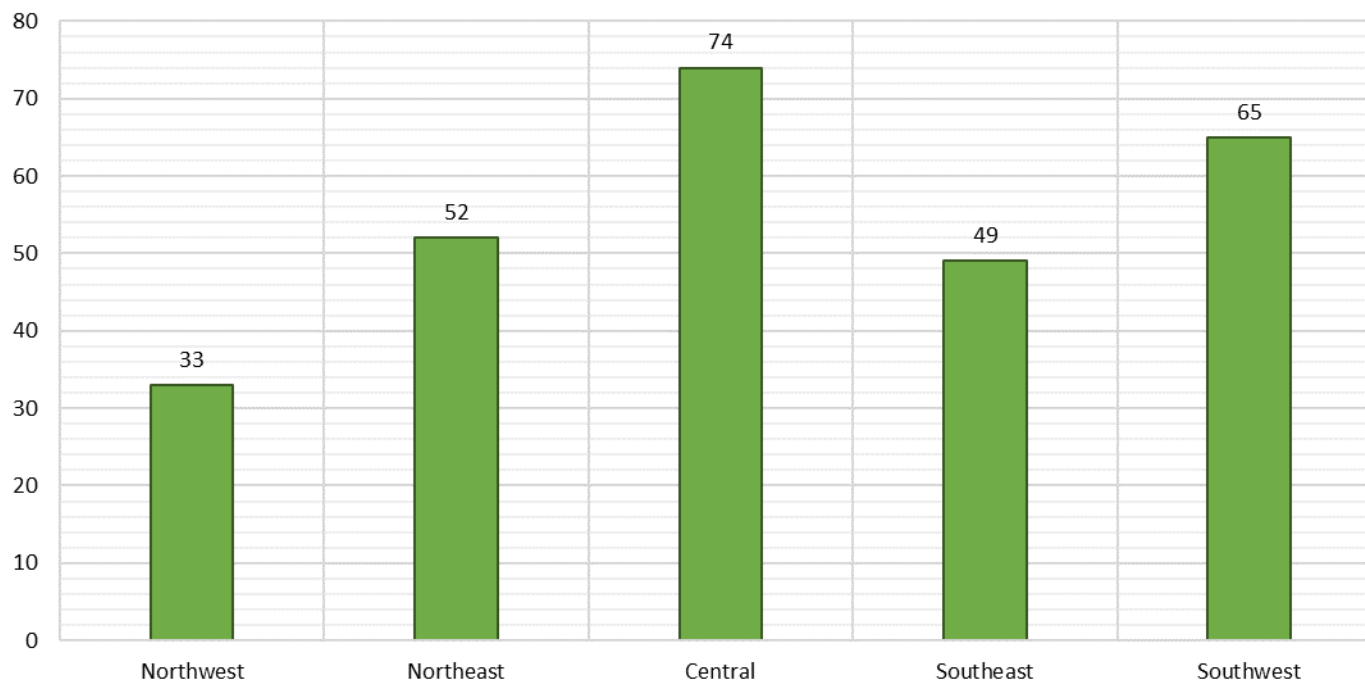
NM Works Activity Placements on July 31, 2019
as reported by SL Start¹⁴



Average Starting Hourly Wage of July 2019 TANF Employments
as reported by SL Start¹⁵



Number of New Employments in July 2019 by Region
as reported by SL Start¹⁵
Statewide Total: 273



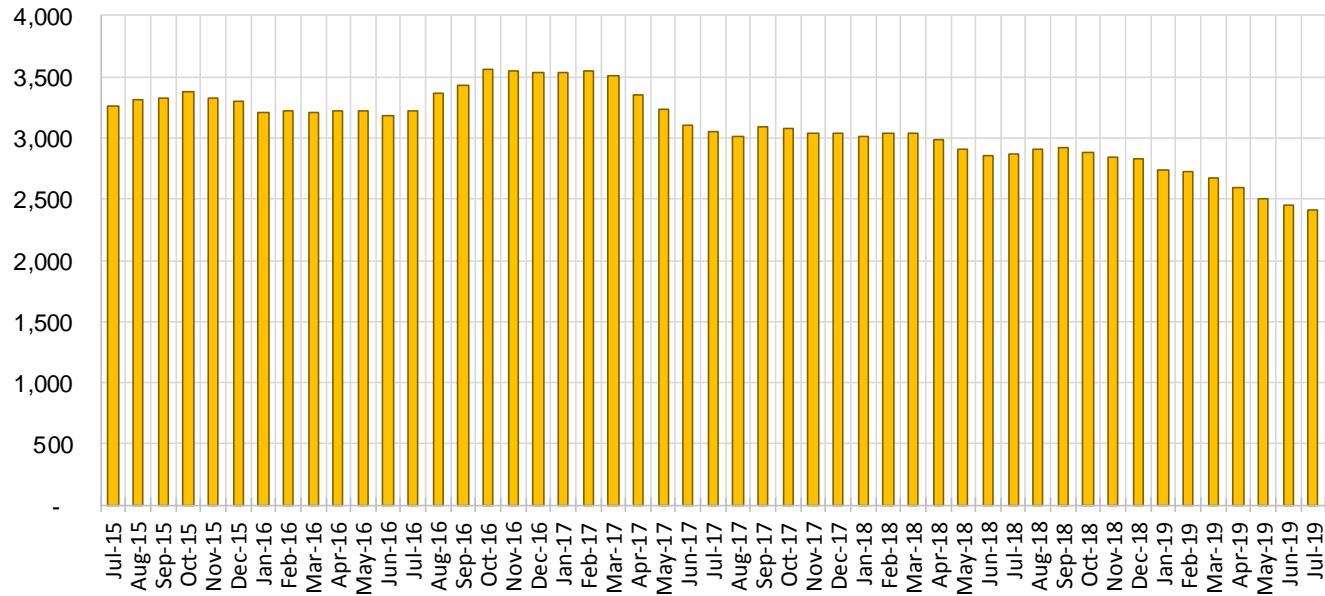
General Assistance Cases by Field Office⁶

Office	Jul-18	Jun-19	Jul-19	Percent Change	
				Jul-18- Jul-19	Jun-19- Jul-19
Chaves County ISD	120	101	100	-16.7%	-1.0%
Cibola County ISD	34	41	41	20.6%	0.0%
Colfax County ISD	20	19	21	5.0%	10.5%
Curry County ISD	78	91	83	6.4%	-8.8%
East Dona Ana County ISD	110	95	89	-19.1%	-6.3%
Eddy Artesia County ISD	24	25	22	-8.3%	-12.0%
Eddy Carlsbad County ISD	74	45	41	-44.6%	-8.9%
Grant County ISD	49	65	69	40.8%	6.2%
Guadalupe County ISD	16	11	9	-43.8%	-18.2%
Hidalgo County ISD	12	0	0	-100.0%	N/A
Lea County ISD	78	68	65	-16.7%	-4.4%
Lincoln County ISD	30	30	29	-3.3%	-3.3%
Luna County ISD	53	52	53	0.0%	1.9%
McKinley County ISD	54	52	52	-3.7%	0.0%
Northeast Bernalillo County ISD	332	250	251	-24.4%	0.4%
Northwest Bernalillo County ISD	292	232	229	-21.6%	-1.3%
Otero County ISD	78	63	63	-19.2%	0.0%
Quay County ISD	27	30	31	14.8%	3.3%
Rio Arriba County ISD	83	62	58	-30.1%	-6.5%
Roosevelt County ISD	0	0	0	N/A	N/A
San Juan County ISD	135	118	120	-11.1%	1.7%
San Miguel County ISD	75	66	63	-16.0%	-4.5%
Sandoval County ISD	122	75	78	-36.1%	4.0%
Santa Fe County ISD	131	100	98	-25.2%	-2.0%
Sierra County ISD	28	30	31	10.7%	3.3%
Socorro County ISD	32	40	41	28.1%	2.5%
South Dona Ana ISD	60	51	50	-16.7%	-2.0%
Southeast Bernalillo County ISD	161	137	133	-17.4%	-2.9%
Southwest Bernalillo County ISD	176	185	187	6.3%	1.1%
Taos County ISD	43	29	30	-30.2%	3.4%
Torrance County ISD	40	52	42	5.0%	-19.2%
Valencia North County ISD	118	84	84	-28.8%	0.0%
Valencia South County ISD	0	0	0	N/A	N/A
West Dona Ana County ISD	182	155	148	-18.7%	-4.5%
Centralized Units	0	1	0	N/A	-100.0%
Statewide Total	2,867	2,455	2,411	-15.9%	-1.8%

General Assistance Cases by Region⁶

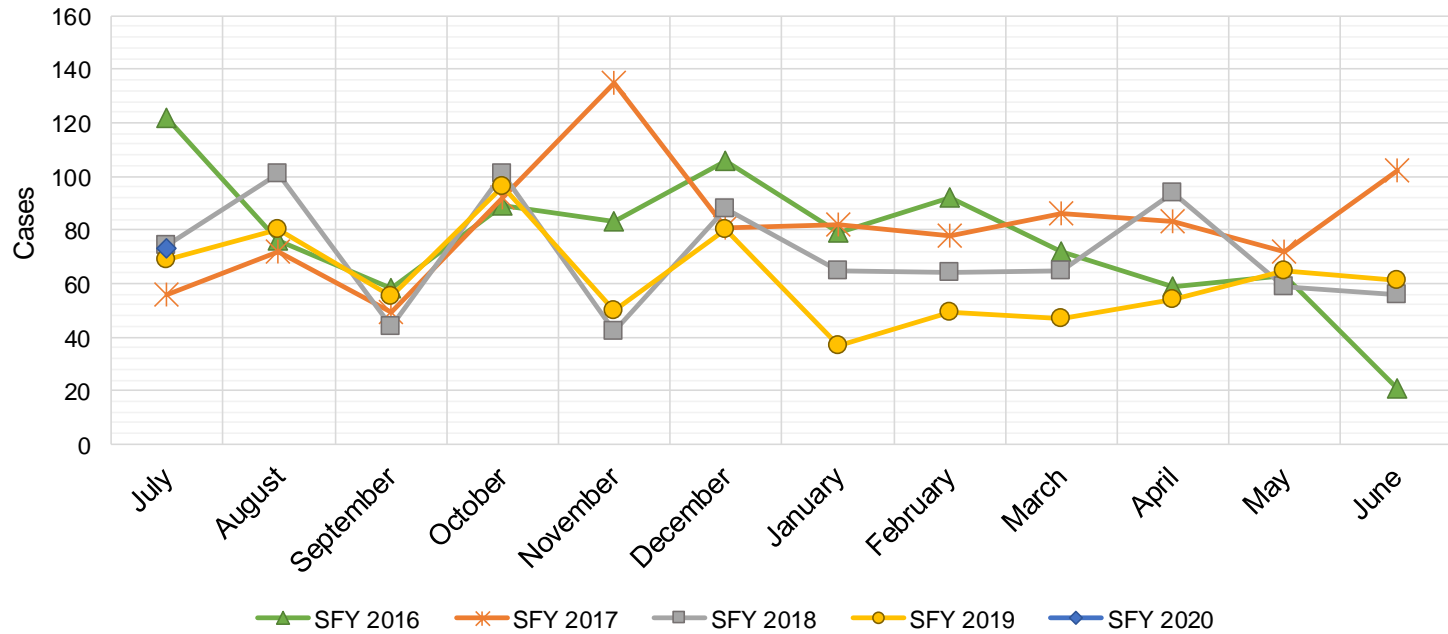
Region	Jul-18	Jun-19	Jul-19	Percent Change	
				Jul-18- Jul-19	Jun-19- Jul-19
Region 1 - NW	401	365	369	-8.0%	1.1%
Region 2 - NE	517	392	388	-25.0%	-1.0%
Region 3 - Central	1,001	856	842	-15.9%	-1.6%
Region 4 - SE	404	360	340	-15.8%	-5.6%
Region 5 - SW	544	481	472	-13.2%	-1.9%
Centralized Units	0	1	0	N/A	#####
Statewide Total	2,867	2,455	2,411	-15.9%	-1.8%

General Assistance Caseload: SFY-16 to Current



General Assistance Interim Assistance Reimbursements¹⁶

SFY 2016			SFY 2017			SFY 2018			SFY 2019			SFY 2020		
	Cases	Expenditures		Cases	Expenditures		Cases	Expenditures		Cases	Expenditures		Cases	Expenditures
Jul-15	122	\$342,648	Jul-16	56	\$164,970	Jul-17	74	\$241,438	Jul-18	69	\$228,333	Jul-19	73	\$303,584
Aug-15	76	\$245,236	Aug-16	72	\$223,182	Aug-17	101	\$339,301	Aug-18	80	\$241,292	Aug-19		
Sep-15	58	\$170,093	Sep-16	49	\$158,027	Sep-17	44	\$131,229	Sep-18	55	\$188,192	Sep-19		
Oct-15	89	\$277,912	Oct-16	92	\$257,830	Oct-17	101	\$335,752	Oct-18	96	\$298,502	Oct-19		
Nov-15	83	\$238,948	Nov-16	135	\$402,305	Nov-17	42	\$139,572	Nov-18	50	\$148,641	Nov-19		
Dec-15	106	\$388,102	Dec-16	81	\$227,569	Dec-17	88	\$245,453	Dec-18	80	\$246,422	Dec-19		
Jan-16	79	\$239,263	Jan-17	82	\$274,050	Jan-18	65	\$258,239	Jan-19	37	\$106,081	Jan-20		
Feb-16	92	\$296,332	Feb-17	78	\$227,569	Feb-18	64	\$195,815	Feb-19	49	\$119,300	Feb-20		
Mar-16	72	\$254,360	Mar-17	86	\$278,219	Mar-18	65	\$172,188	Mar-19	47	\$137,296	Mar-20		
Apr-16	59	\$208,631	Apr-17	83	\$267,187	Apr-18	94	\$312,340	Apr-19	54	\$173,772	Apr-20		
May-16	63	\$182,241	May-17	72	\$232,836	May-18	59	\$155,406	May-19	65	\$237,979	May-20		
Jun-16	21	\$51,760	Jun-17	102	\$306,228	Jun-18	56	\$159,268	Jun-19	61	\$214,497	Jun-20		
TOTAL	920	\$2,895,525	988	\$3,019,972	853	\$2,686,001	743	\$2,340,307	73	\$303,584				
AVERAGE	77	\$241,294	82	\$251,664	71	\$223,833	62	\$195,026	73	\$303,584				



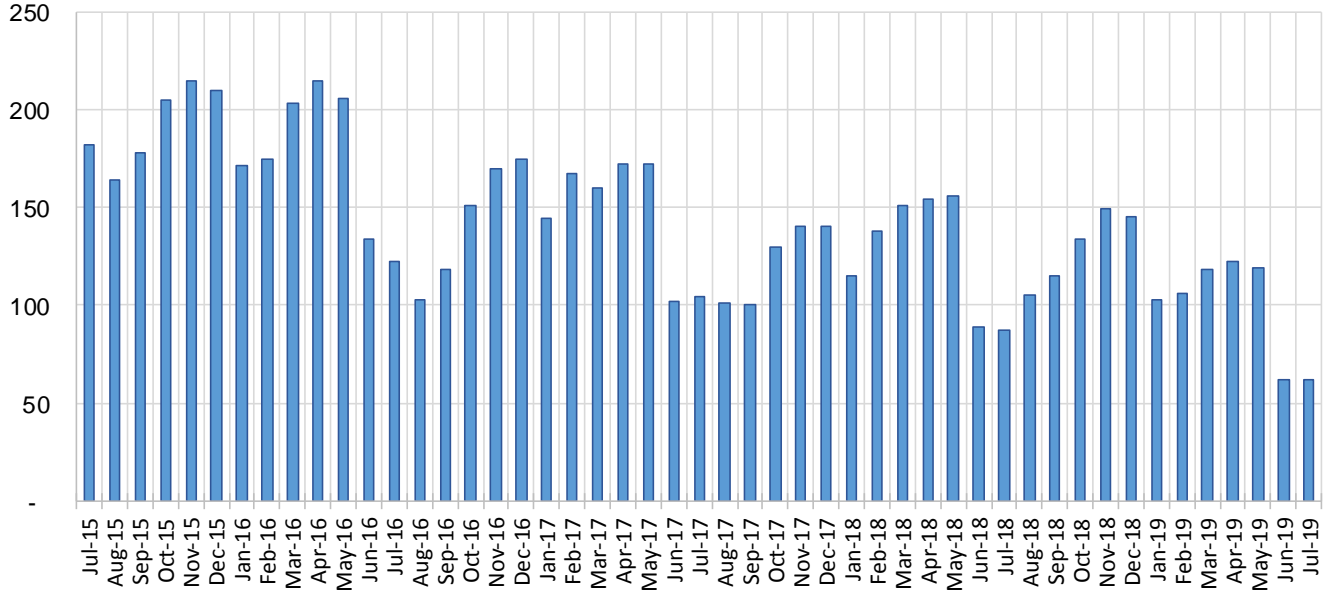
Education Works Cases by Field Office⁶

Office	Percent Change				
	Jul-18	Jun-19	Jul-19	Jul-18- Jul-19	Jun-19- Jul-19
Chaves County ISD	0	1	1	N/A	0.0%
Cibola County ISD	0	0	0	N/A	N/A
Colfax County ISD	0	0	0	N/A	N/A
Curry County ISD	3	2	2	-33.3%	0.0%
East Dona Ana County ISD	7	2	2	-71.4%	0.0%
Eddy Artesia County ISD	1	0	1	0.0%	N/A
Eddy Carlsbad County ISD	2	1	1	-50.0%	0.0%
Grant County ISD	7	1	0	-100.0%	-100.0%
Guadalupe County ISD	0	0	0	N/A	N/A
Hidalgo County ISD	0	0	0	N/A	N/A
Lea County ISD	1	0	1	0.0%	N/A
Lincoln County ISD	0	0	0	N/A	N/A
Luna County ISD	1	2	2	100.0%	0.0%
McKinley County ISD	0	0	0	N/A	N/A
Northeast Bernalillo County ISD	5	3	3	-40.0%	0.0%
Northwest Bernalillo County ISD	10	5	5	-50.0%	0.0%
Otero County ISD	1	1	1	0.0%	0.0%
Quay County ISD	0	0	0	N/A	N/A
Rio Arriba County ISD	3	0	0	-100.0%	N/A
Roosevelt County ISD	0	0	0	N/A	N/A
San Juan County ISD	1	3	3	200.0%	0.0%
San Miguel County ISD	3	1	1	-66.7%	0.0%
Sandoval County ISD	6	7	5	-16.7%	-28.6%
Santa Fe County ISD	5	4	7	40.0%	75.0%
Sierra County ISD	0	1	1	N/A	0.0%
Socorro County ISD	0	0	0	N/A	N/A
South Dona Ana ISD	14	9	8	-42.9%	-11.1%
Southeast Bernalillo County ISD	2	6	6	200.0%	0.0%
Southwest Bernalillo County ISD	11	6	5	-54.5%	-16.7%
Taos County ISD	1	0	0	-100.0%	N/A
Torrance County ISD	0	0	0	N/A	N/A
Valencia North County ISD	0	0	0	N/A	N/A
Valencia South County ISD	0	0	0	N/A	N/A
West Dona Ana County ISD	3	7	7	133.3%	0.0%
Centralized Units	0	0	0	N/A	N/A
Statewide Total	87	62	62	-28.7%	0.0%

Education Works Cases by Region⁶

				Percent Change	
Region	Jul-18	Jun-19	Jul-19	Jul-18- Jul-19	Jun-19- Jul-19
Region 1 - NW	1	4	4	300.0%	0.0%
Region 2 - NE	18	12	13	-27.8%	8.3%
Region 3 - Central	28	20	19	-32.1%	-5.0%
Region 4 - SE	7	4	6	-14.3%	50.0%
Region 5 - SW	33	22	20	-39.4%	-9.1%
Centralized Units	0	0	0	N/A	N/A
Statewide Total	87	62	62	-28.7%	0.0%

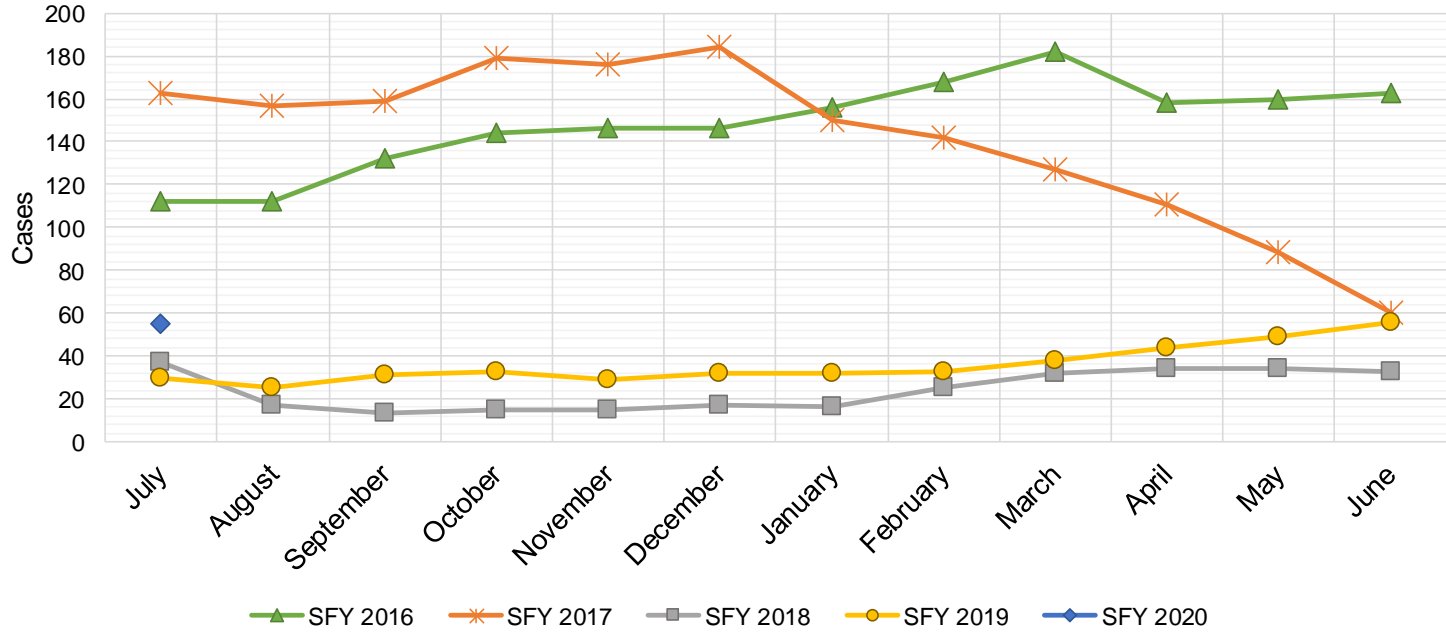
Education Works Caseload: SFY-16 to Current



Refugee Cash Assistance

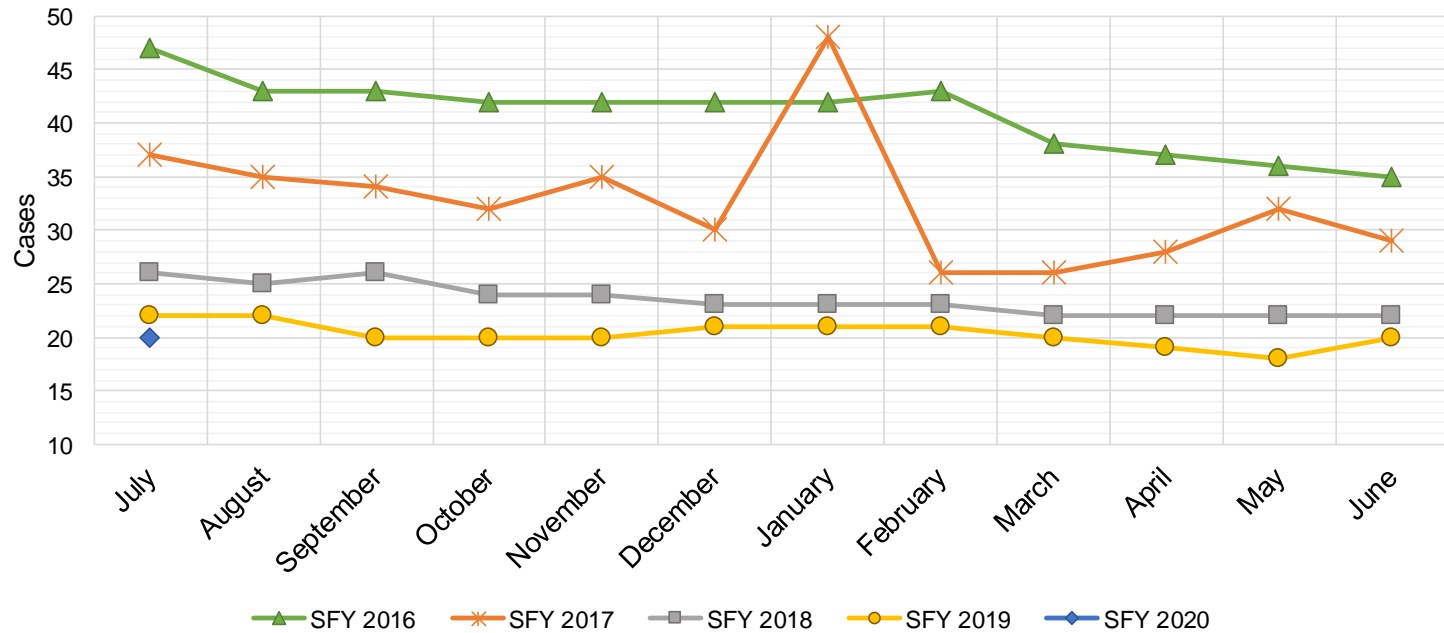
SFY 2016 ^{8,12,9}			SFY 2017 ^{8,9}			SFY 2018 ^{8,9}			SFY 2019 ^{8,9}			SFY 2020 ^{8,9}		
	Cases	Expenditures		Cases	Expenditures		Cases	Expenditures		Cases	Expenditures		Cases	Expenditures
Jul-15	112	\$27,516	Jul-16	163	\$39,756	Jul-17	37	\$9,981	Jul-18	30	\$7,408	Jul-19	55	\$13,851
Aug-15	112	\$27,438	Aug-16	157	\$40,115	Aug-17	17	\$4,704	Aug-18	25	\$6,434	Aug-19		
Sep-15	132	\$31,321	Sep-16	159	\$39,359	Sep-17	13	\$3,159	Sep-18	31	\$6,947	Sep-19		
Oct-15	144	\$36,153	Oct-16	179	\$41,520	Oct-17	15	\$3,543	Oct-18	33	\$6,323	Oct-19		
Nov-15	146	\$36,515	Nov-16	176	\$45,434	Nov-17	15	\$4,263	Nov-18	29	\$7,036	Nov-19		
Dec-15	146	\$35,763	Dec-16	184	\$46,673	Dec-17	17	\$4,795	Dec-18	32	\$7,300	Dec-19		
Jan-16	156	\$38,686	Jan-17	150	\$38,790	Jan-18	16	\$4,166	Jan-19	32	\$7,418	Jan-20		
Feb-16	168	\$41,368	Feb-17	142	\$37,956	Feb-18	25	\$5,723	Feb-19	33	\$8,591	Feb-20		
Mar-16	182	\$45,307	Mar-17	127	\$33,066	Mar-18	32	\$7,636	Mar-19	38	\$9,165	Mar-20		
Apr-16	158	\$41,143	Apr-17	111	\$29,183	Apr-18	34	\$8,827	Apr-19	44	\$10,648	Apr-20		
May-16	160	\$38,332	May-17	88	\$23,343	May-18	34	\$8,939	May-19	49	\$11,823	May-20		
Jun-16	163	\$39,856	Jun-17	60	\$15,538	Jun-18	33	\$8,513	Jun-19	56	\$13,558	Jun-20		

TOTAL	1,779	\$439,397	1,696	\$430,732	288	\$74,249	432	\$102,651	55	\$13,851
AVERAGE	148	\$36,616	141	\$35,894	24	\$6,187	36	\$8,554	55	\$13,851



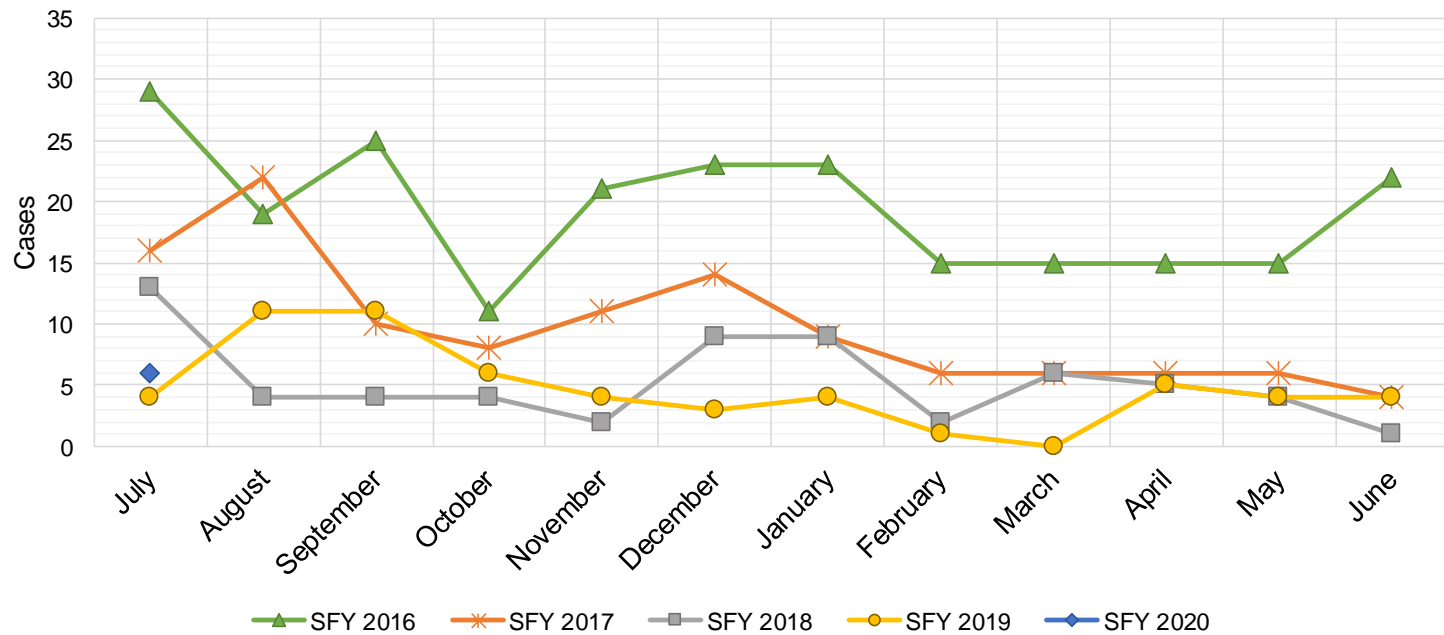
State Supplement for Residential Care

SFY 2016 ^{12,9}			SFY 2017 ⁹			SFY 2018 ⁹			SFY 2019 ⁹			SFY 2020 ⁹		
	Cases	Expenditures		Cases	Expenditures		Cases	Expenditures		Cases	Expenditures		Cases	Expenditures
Jul-15	47	\$4,700	Jul-16	37	\$3,700	Jul-17	26	\$2,700	Jul-18	22	\$2,200	Jul-19	20	\$1,900
Aug-15	43	\$4,900	Aug-16	35	\$3,500	Aug-17	25	\$2,500	Aug-18	22	\$2,200	Aug-19		
Sep-15	43	\$4,500	Sep-16	34	\$3,400	Sep-17	26	\$2,700	Sep-18	20	\$2,000	Sep-19		
Oct-15	42	\$4,400	Oct-16	32	\$3,200	Oct-17	24	\$2,500	Oct-18	20	\$2,000	Oct-19		
Nov-15	42	\$4,200	Nov-16	35	\$3,500	Nov-17	24	\$2,400	Nov-18	20	\$2,000	Nov-19		
Dec-15	42	\$4,200	Dec-16	30	\$3,000	Dec-17	23	\$2,200	Dec-18	21	\$2,100	Dec-19		
Jan-16	42	\$4,200	Jan-17	48	\$4,800	Jan-18	23	\$2,400	Jan-19	21	\$2,000	Jan-20		
Feb-16	43	\$4,300	Feb-17	26	\$2,600	Feb-18	23	\$2,300	Feb-19	21	\$2,200	Feb-20		
Mar-16	38	\$3,800	Mar-17	26	\$2,600	Mar-18	22	\$2,400	Mar-19	20	\$1,900	Mar-20		
Apr-16	37	\$3,700	Apr-17	28	\$2,800	Apr-18	22	\$2,200	Apr-19	19	\$1,800	Apr-20		
May-16	36	\$3,600	May-17	32	\$3,200	May-18	22	\$2,200	May-19	18	\$1,800	May-20		
Jun-16	35	\$3,500	Jun-17	29	\$2,900	Jun-18	22	\$2,200	Jun-19	20	\$2,000	Jun-20		
TOTAL	490	\$50,000	392	\$39,200	282	\$28,700	244	\$24,200	20	\$1,900				
AVERAGE	41	\$4,167	33	\$3,267	24	\$2,392	20	\$2,017	20	\$1,900				



TANF Diversion Payments

SFY 2016 ^{12,9}			SFY 2017 ⁹			SFY 2018 ⁹			SFY 2019 ⁹			SFY 2020 ⁹		
	Cases	Expenditures		Cases	Expenditures		Cases	Expenditures		Cases	Expenditures		Cases	Expenditures
Jul-15	29	\$62,074	Jul-16	16	\$30,843	Jul-17	13	\$26,500	Jul-18	4	\$3,000	Jul-19	6	\$18,500
Aug-15	19	\$33,584	Aug-16	22	\$42,731	Aug-17	4	\$12,000	Aug-18	11	\$18,583	Aug-19		
Sep-15	25	\$47,977	Sep-16	10	\$21,000	Sep-17	4	\$4,000	Sep-18	11	\$20,999	Sep-19		
Oct-15	11	\$20,500	Oct-16	8	\$16,744	Oct-17	4	\$16,000	Oct-18	6	\$10,499	Oct-19		
Nov-15	21	\$45,500	Nov-16	11	\$24,500	Nov-17	2	\$15,500	Nov-18	4	\$7,499	Nov-19		
Dec-15	23	\$45,389	Dec-16	14	\$26,611	Dec-17	9	\$17,500	Dec-18	3	\$2,499	Dec-19		
Jan-16	23	\$41,874	Jan-17	9	\$18,500	Jan-18	9	\$21,731	Jan-19	4	\$5,999	Jan-20		
Feb-16	15	\$28,500	Feb-17	6	\$12,000	Feb-18	2	\$7,731	Feb-19	1	\$1,678	Feb-20		
Mar-16	15	\$27,008	Mar-17	6	\$11,000	Mar-18	6	\$8,496	Mar-19	0	\$3,000	Mar-20		
Apr-16	15	\$31,389	Apr-17	6	\$12,000	Apr-18	5	\$13,500	Apr-19	5	\$6,500	Apr-20		
May-16	15	\$31,916	May-17	6	\$11,500	May-18	4	\$12,500	May-19	4	\$16,000	May-20		
Jun-16	22	\$43,000	Jun-17	4	\$13,500	Jun-18	1	\$5,389	Jun-19	4	\$8,000	Jun-20		
TOTAL	233	\$458,711		118	\$240,929		63	\$160,847		57	\$104,256		6	\$18,500
AVERAGE	19	\$38,226		10	\$20,077		5	\$13,404		5	\$8,688		6	\$18,500

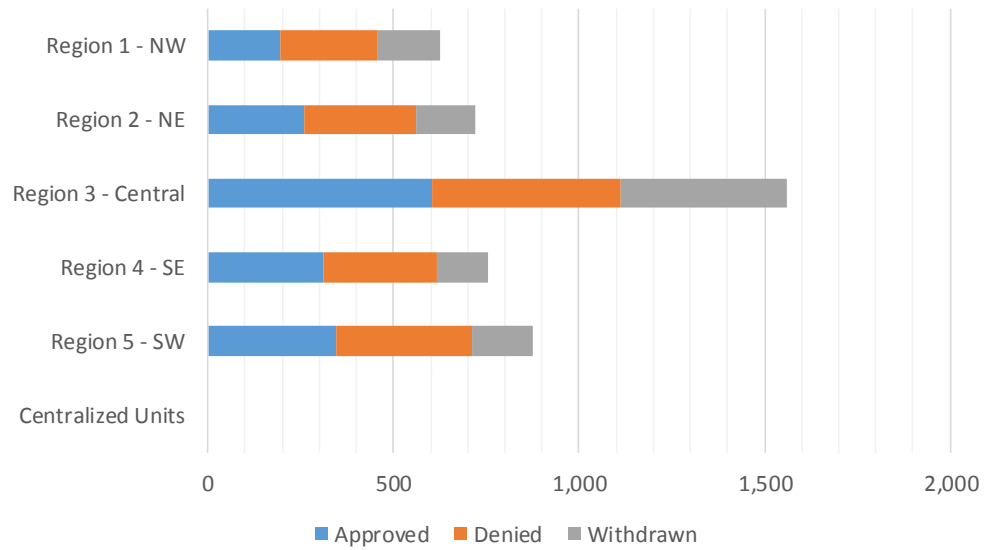


Cash Assistance Applications by Field Office^{4,11}
July 2019

Office	Approved	Denied	Withdrawn	Total Cases Processed
Chaves County ISD	85	80	33	198
Cibola County ISD	27	35	9	71
Colfax County ISD	13	10	6	29
Curry County ISD	95	62	44	201
East Dona Ana County ISD	66	92	33	191
Eddy Artesia County ISD	17	18	9	44
Eddy Carlsbad County ISD	35	46	22	103
Grant County ISD	36	41	7	84
Guadalupe County ISD	4	3	2	9
Hidalgo County ISD	0	0	0	0
Lea County ISD	69	81	26	176
Lincoln County ISD	11	16	6	33
Luna County ISD	41	11	23	75
McKinley County ISD	19	35	33	87
Northeast Bernalillo County ISD	189	148	149	486
Northwest Bernalillo County ISD	131	85	137	353
Otero County ISD	46	52	33	131
Quay County ISD	11	0	9	20
Rio Arriba County ISD	43	51	23	117
Roosevelt County ISD	0	1	0	1
San Juan County ISD	61	91	85	237
San Miguel County ISD	38	18	21	77
Sandoval County ISD	79	88	66	233
Santa Fe County ISD	48	103	19	170
Sierra County ISD	14	21	7	42
Socorro County ISD	9	14	9	32
South Dona Ana ISD	72	52	28	152
Southeast Bernalillo County ISD	107	96	77	280
Southwest Bernalillo County ISD	153	156	68	377
Taos County ISD	25	29	12	66
Torrance County ISD	23	23	19	65
Valencia North County ISD	66	68	24	158
Valencia South County ISD	0	0	0	0
West Dona Ana County ISD	86	117	40	243
Centralized Units	0	0	0	0
Statewide Total	1,719	1,743	1,079	4,541

Cash Assistance Applications by Region^{4,11} July 2019

	Approved	Denied	Withdrawn	Total Cases Processed
Region				
Region 1 - NW	196	264	167	627
Region 2 - NE	261	302	158	721
Region 3 - Central	603	508	450	1,561
Region 4 - SE	312	304	140	756
Region 5 - SW	347	365	164	876
Centralized Units	0	0	0	0
Statewide Total	1,719	1,743	1,079	4,541



Children Youth and Families Department
Children Receiving Child Care Assistance Subsidies By County

County	July 2018	Aug 2018	Sept 2018	Oct 2018	Nov 2018	Dec 2018	Jan 2019	Feb 2019	Mar 2019	Apr 2019	May 2019	June 2019	July 2019	Change Fr. Cases	Last Year Percent
Bernalillo	7,735	7,741	8,041	7,753	7,741	7,584	7,545	7,563	7,831	7,997	8,226	8,692	7,702	-33	-0.4%
Catron	0	0	0	0	0	0	0	0	0	0	0	0	0	0	0.0%
Chaves	837	828	861	817	836	814	812	834	878	868	868	875	830	-7	-0.8%
Cibola	289	278	312	316	315	302	287	285	289	306	286	292	283	-6	-2.1%
Colfax	56	56	59	62	60	57	62	57	59	52	50	44	38	-18	-32.1%
Curry	539	538	592	543	548	517	492	489	524	548	542	590	597	58	10.8%
De Baca	4	4	4	4	1	1	1	1	1	0	1	1	1	-3	-75.0%
Dona Ana	4,260	4,219	4,403	4,311	4,304	4,191	4,198	4,351	4,453	4,413	4,536	4,751	4,360	100	2.3%
Eddy	264	259	268	267	257	259	248	243	245	214	225	240	240	-24	-9.1%
Grant	110	111	134	133	139	126	125	134	131	127	130	136	133	23	20.9%
Guadalupe	14	18	11	16	14	12	11	11	11	11	11	11	10	-4	-28.6%
Harding	1	1	1	1	1	1	1	1	0	0	0	0	0	-1	0.0%
Hidalgo	37	37	36	35	32	28	23	26	24	20	27	27	27	-10	-27.0%
Lea	806	813	877	840	851	821	829	823	831	815	808	798	770	-36	-4.5%
Lincoln	129	131	107	104	100	97	97	102	104	104	100	104	103	-26	-20.2%
Los Alamos	27	30	26	31	34	34	34	34	34	36	40	40	37	10	37.0%
Luna	143	149	153	142	145	153	150	176	180	176	190	191	172	29	20.3%
McKinley	168	157	188	173	173	168	162	158	168	154	158	169	146	-22	-13.1%
Mora	26	31	29	25	18	16	16	13	11	11	13	9	9	-17	-65.4%
Otero	490	496	520	505	525	501	531	506	507	512	506	530	499	9	1.8%
Out of State	6	6	4	4	4	5	3	4	1	2	0	1	0	-6	-100.0%
Quay	38	37	33	35	34	33	34	32	34	33	33	38	34	-4	-10.5%
Rio Arriba	146	143	139	141	146	142	134	137	132	141	151	155	158	12	8.2%
Roosevelt	94	88	101	106	112	121	118	118	118	121	119	130	129	35	37.2%
San Juan	928	892	1,020	954	955	926	913	942	935	958	966	961	905	-23	-2.5%
San Miguel	375	361	375	364	357	345	317	316	319	332	349	373	363	-12	-3.2%
Sandoval	739	756	763	693	697	708	741	734	744	758	751	802	765	26	3.5%
Santa Fe	533	511	497	448	470	460	461	481	503	499	520	541	557	24	4.5%
Sierra	53	50	64	62	60	57	49	51	48	42	40	50	48	-5	-9.4%
Socorro	55	63	62	65	64	63	58	51	58	55	54	57	53	-2	-3.6%
Taos	138	126	111	111	112	102	115	118	117	124	125	136	138	0	0.0%
Torrance	109	104	112	92	94	88	90	85	79	69	67	82	68	-41	-37.6%
Union	5	5	5	5	5	5	5	5	5	3	3	4	3	-2	-40.0%
Valencia	615	621	664	604	611	610	614	604	589	591	607	656	559	-56	-9.1%
Totals	19,769	19,660	20,572	19,762	19,815	19,347	19,276	19,485	19,963	20,092	20,502	21,486	19,737	-32	-0.2%

CHILDREN YOUTH AND FAMILIES DEPARTMENT

CHILD CARE ASSISTANCE ELIGIBILITY PROGRAMS

MONTH	Aug'18	Sept'18	Oct'18	Nov'18	Dec'18	Jan'19	Feb'19	Mar'19	Apr'19	May'19	June'19	July'19
TANF (Child Care Priority 1 Clients)												
CLIENTS	2,124	2,221	2,197	2,202	2,149	2,131	2,107	2,138	2,147	2,140	2,253	2,054
COST	\$1,288,094	\$1,238,106	\$1,335,587	\$1,313,281	\$1,274,570	\$1,281,263	\$1,264,626	\$1,284,582	\$1,286,044	\$1,278,678	\$1,305,024	\$1,273,209
TANF AVERAGE COST	\$606	\$557	\$608	\$596	\$593	\$601	\$600	\$601	\$599	\$598	\$579	\$620
TRANSITION OFF TANF (Child Care Priority 2 Clients)												
CLIENTS	170	165	157	145	134	129	125	124	119	111	112	120
COST	\$97,412	\$89,581	\$87,146	\$81,849	\$78,119	\$81,456	\$75,852	\$73,930	\$71,395	\$69,505	\$74,593	\$74,688
TRAN OFF TANF AVG COST	\$573	\$543	\$555	\$564	\$583	\$631	\$607	\$596	\$600	\$626	\$666	\$622
TANF ELIGIBLE (Child Care Priority 1B Clients at or below 100% of the Federal Poverty Level)												
CLIENTS	8,352	8,755	8,505	8,452	8,269	8,227	8,125	8,248	8,275	8,494	8,777	8,104
COST	\$4,973,346	\$4,776,708	\$4,957,788	\$4,970,667	\$4,870,464	\$4,796,096	\$4,662,397	\$4,825,487	\$4,845,578	\$4,939,239	\$5,047,497	\$4,909,110
TANF ELIGIBLE AVG COST	\$595	\$546	\$583	\$588	\$589	\$583	\$574	\$585	\$586	\$581	\$575	\$606
INCOME ELIGIBLE (Child Care Priority 3, and Priority 4 Clients)												
CLIENTS	7,743	8,122	7,686	7,752	7,567	7,606	7,932	8,262	8,382	8,610	9,149	8,313
COST	\$4,208,252	\$3,980,270	\$4,056,059	\$4,049,318	\$3,991,789	\$3,956,942	\$4,144,807	\$4,325,025	\$4,401,790	\$4,546,220	\$4,693,955	\$4,573,196
INCOME ELIG AVG COST	\$543	\$490	\$528	\$522	\$528	\$520	\$523	\$523	\$525	\$528	\$513	\$550
AT-RISK CHILD PROTECTIVE SERVICES CHILD CARE PILOT (Priority 5 Clients)												
CLIENTS	355	364	326	351	344	338	336	342	322	303	321	297
COST	\$228,483	\$224,486	\$213,687	\$217,475	\$234,222	\$239,514	\$210,812	\$223,510	\$203,584	\$204,504	\$206,998	\$200,185
CPS AVG COST	\$644	\$617	\$655	\$620	\$681	\$709	\$627	\$654	\$632	\$675	\$645	\$674
CHILD PROTECTIVE SERVICES (Child Care CPS Clients)												
CLIENTS	916	945	891	913	884	845	860	849	847	844	874	849
COST	\$637,227	\$581,981	\$613,927	\$641,871	\$607,486	\$585,379	\$576,818	\$551,507	\$594,790	\$587,750	\$612,880	\$608,184
CPS AVG COST	\$696	\$616	\$689	\$703	\$687	\$693	\$671	\$650	\$702	\$696	\$701	\$716
GRAND TOTAL - ALL CHILD CARE PROGRAMS												
CLIENTS	19,660	20,572	19,762	19,815	19,347	19,276	19,485	19,963	20,092	20,502	21,486	19,737
COST	\$11,432,813	\$10,891,133	\$11,264,194	\$11,274,461	\$11,056,650	\$10,940,651	\$10,935,312	\$11,284,041	\$11,403,180	\$11,625,897	\$11,940,948	\$11,638,571
ALL PROGRAMS AVG COST	\$582	\$529	\$570	\$569	\$571	\$568	\$561	\$565	\$568	\$567	\$556	\$590

Income Eligibility Guidelines: October 1, 2018- September 30, 2019

Federal Poverty Guidelines (FPG) Monthly Income Standards

Supplemental Nutrition Program (SNAP)					
Household Size	100% FPG Net Income	130% FPG Gross Income	165% FPG Gross Income for Categorical Eligibility	Maximum SNAP Monthly Allotment	LIHEAP 150% FPG
1	\$1,012	\$1,316	\$1,670	\$192	\$1,518
2	\$1,372	\$1,784	\$2,264	\$353	\$2,058
3	\$1,732	\$2,252	\$2,858	\$505	\$2,598
4	\$2,092	\$2,720	\$3,452	\$642	\$3,138
5	\$2,452	\$3,188	\$4,046	\$762	\$3,678
6	\$2,812	\$3,656	\$4,640	\$914	\$4,218
7	\$3,172	\$4,124	\$5,234	\$1,011	\$4,758
8	\$3,532	\$4,592	\$5,828	\$1,155	\$5,298
+1	+\$60	+\$468	+\$594	+\$144	+\$540
Minimum Allotment of \$15 effective from 10/1/2017 - 9/30/2018					
DEDUCTIONS: Standard Deduction: For HH size 1-3 = \$164; 4 = \$174; 5 = \$204; 6 or more = \$234; Excess Shelter Deduction Limit: \$552; Heating and Cooling Standard Utility Allowance: \$344 (HCSUA) – Limited Utility Allowance: \$ 139 (LUA); Telephone Standard: \$52; Dependent Care: Actual Amount (No Limit); Earned Income Deduction: 20%; Homeless Shelter Standard: \$143					

CASH Assistance & Support Services					
Household Size	Federal Poverty Guidelines (FPG) Monthly Income Standards			Maximum Monthly Benefit	
	100% FPG Net Income	85% FPG Gross Limit	NM Works Cash Net Income	Maximum Monthly Benefit	General Assistance
1	\$1,012	\$860	\$266	\$244	\$245
2	\$1,372	\$1,166	\$357	\$327	\$329
3	\$1,732	\$1,472	\$447	\$409	\$412
4	\$2,092	\$1,778	\$539	\$493	\$496
5	\$2,452	\$2,084	\$630	\$576	\$580
6	\$2,812	\$2,390	\$721	\$659	\$664
7	\$3,172	\$2,696	\$812	\$743	\$748
8	\$3,532	\$3,002	\$922	\$843	\$849
+1	+\$360	+\$306	+\$91	+\$83	+\$84
Deductions- Dependent Care: For a child under age 2 = \$200; For a child age 2 and over = \$175. Work Incentives- Earned Income Disregard: Single parent = \$125 & ½ remainder; Two parent = \$225 & ½ remainder.					

ISD 017 Revised 08/13/2018

Medical Assistance Division					
Federal Poverty Guidelines New Mexico Affordable Care Eligibility Groups Effective April 01, 2019 thru March 31, 2020 Monthly Guidelines					
HH SIZE	PERCENT OF POVERTY				
	138%	190%	240%	250%	300%
1	\$1,437	\$1,978	\$2,498	\$2,603	\$3,123
2	\$1,945	\$2,678	\$3,382	\$3,523	\$4,228
3	\$2,453	\$3,378	\$4,266	\$4,444	\$5,333
4	\$2,962	\$4,078	\$5,150	\$5,365	\$6,438
5	\$3,470	\$4,777	\$6,034	\$6,286	\$7,543
6	\$3,978	\$5,477	\$6,918	\$7,207	\$8,648
7	\$4,487	\$6,177	\$7,802	\$8,128	\$9,753
8	\$4,995	\$6,877	\$8,686	\$9,048	\$10,858
138% Adult Expansion, 190% Children ages 6 to 19 (Medicaid), 240% Children ages 0 to 6 (Medicaid); ages 6 to 19 (CHIP), 250% Pregnancy Related Services Only, 300% Children 0 to 6 (CHIP)					

Medical Assistance Division					
Federal Poverty Guidelines New Mexico Affordable Care Eligibility Groups Effective April 01, 2019 thru March 31, 2020 Annual Guidelines					
HH SIZE	PERCENT OF POVERTY				
	138%	190%	240%	250%	300%
1	\$17,244	\$23,736	\$29,976	\$31,236	\$37,476
2	\$23,340	\$32,136	\$40,584	\$42,276	\$50,736
3	\$29,436	\$40,536	\$51,192	\$53,328	\$63,996
4	\$35,544	\$48,936	\$61,800	\$64,380	\$77,256
5	\$41,640	\$57,324	\$72,408	\$75,432	\$90,516
6	\$47,736	\$65,724	\$83,016	\$86,484	\$103,776
7	\$53,844	\$74,124	\$93,624	\$97,536	\$117,036
8	\$59,940	\$82,524	\$104,232	\$108,576	\$130,296
138% Adult Expansion, 190% Children ages 6 to 19 (Medicaid), 240% Children ages 0 to 6 (Medicaid); ages 6 to 19 (CHIP), 250% Pregnancy Related Services Only, 300% Children 0 to 6 (CHIP)					

References

¹ *Medicaid Expenditures* (Omnicaid, Medicare Buy-Ins, Lump Sum Payments)

² *ASPEN Business Intelligence Tool: Eligibility*

³ New Mexico Human Services Department, *Medicaid Eligibility Reports*, Retrieved from <http://www.hsd.state.nm.us/LookingForInformation/medicaid-eligibility.aspx> (for reporting month)

⁴ *ASPEN Business Intelligence Tool: Application Tracking*

⁵ Fidelity Information Services, *EBT Daily Statistical Report* (for reporting month)

⁶ *ASPEN Report DQ-180: Length of Time Cases are Open* (for reporting month)

⁷ *ASPEN Report EY-180: Individual Demographics by State and Age* (for reporting month)

⁸ *ASPEN Business Intelligence Tool: Benefit Issuance*

⁹ Fidelity Information Services, *EBT Daily Statistical Reports* (Month End)

¹⁰ *ASPEN Report EY-180R: Individual Demographics by State, Race, Ethnicity and Gender* (for reporting month)

¹¹ SQL Queries from ASPEN

¹² JP Morgan, *New Mexico – NM EBT System- Monthly Benefit Draw Down Totals*

¹³ *ASPEN Business Intelligence Tool: Application Tracking* (w/Parameters: SNAP, Expedite, Approved)

¹⁴ SL Start, *As of Today Report*

¹⁵ SL Start, *Statewide Employment Report*

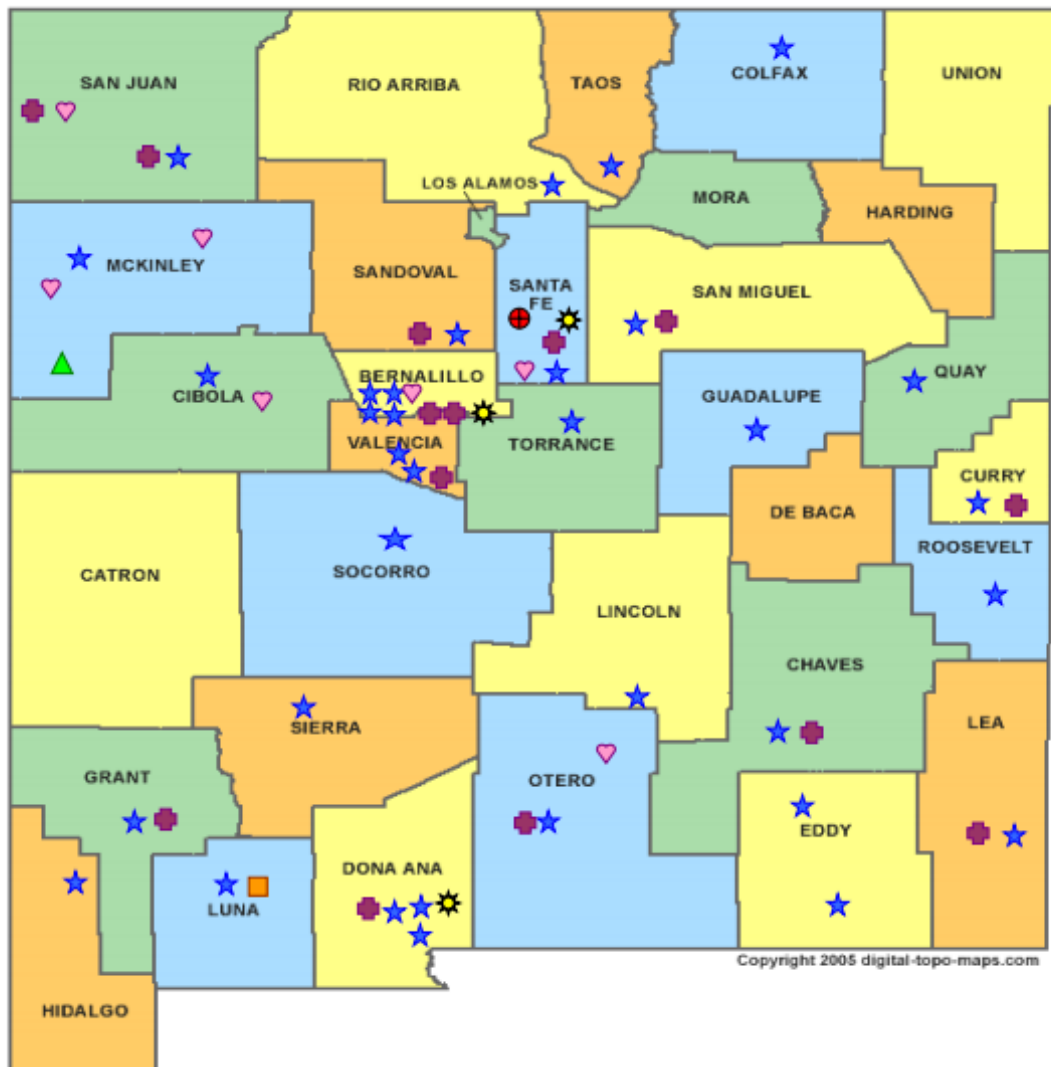

¹⁶ *SSIAR Payments*

¹⁷ Children, Youth, and Families Department, *Children Receiving Child Care Assistance Subsidies by County*

¹⁸ Children, Youth, and Families Department, *Child Care Assistance Eligibility Programs*








¹⁹ EDG is defined as an Eligibility Determination Group

²⁰SQL Query from ASPEN

HUMAN SERVICES
DEPARTMENT

New Mexico Human Services Department
Field Offices

-  Central Office (1)
-  Income Support Division County Office (35)
-  Income Support Division Satellite Office (2)
-  Child Support Enforcement Regional Office (16)
-  Child Support Enforcement Satellite Office (1)
-  Indian Health Services (7)
-  Hospital Site (3)

For a complete listing of field offices and other government and community resources:
http://www.hsd.state.nm.us/LookingForAssistance/Field_Offices_1.aspx