



Monthly Statistical Report

July 2018

There were 832,599 individuals that received Medicaid in July 2018, a 6.4% decrease from one year ago. The count of Medicaid recipients has decreased by 6,081, or 0.7%, since last month.

The SNAP caseload in July 2018 was 221,195, a 1.4% increase from one year ago. The SNAP caseload has decreased by 50 cases, or 0.0%, since last month.

The TANF caseload was 11,059 in July 2018, a decrease of 3.7% from July 2017. The TANF caseload had 276 more cases compared to June 2018, an increase of 2.6%.

The caseload for General Assistance was 2,867 in July 2018, a decrease of 6.1% from one year ago and an increase of 12 cases from last month.

Susana Martinez, Governor
Brent Earnest, Cabinet Secretary

Contents	Page
Summary	3-5
Medicaid	6-18
SNAP	19-37
Cash Assistance	38-52
Child Care Assistance	53-54
Income Eligibility Guidelines	55-56

Regions are reported as follows:

Region 1		
Catron	San Juan	Valencia
Cibola	Sierra	
McKinley	Socorro	
Region 2		
Colfax	Mora	Santa Fe
De Baca	Quay	Taos
Guadalupe	Rio Arriba	Union
Harding	Sandoval	
Los Alamos	San Miguel	
Region 3		
Bernalillo	Torrance	
Region 4		
Chaves	Eddy	Lincoln
Curry	Lea	Roosevelt
Region 5		
Dona Ana	Hidalgo	Otero
Grant	Luna	

The Mission of the Human Services Department

To reduce the impact of poverty on people living in New Mexico by providing support services that help families break the cycle of dependency on public assistance

Christopher Collins, Deputy Secretary
Michael Nelson, Deputy Secretary

Prepared by Income Support Division
PO Box 2348
Santa Fe, NM 87504-2348 ☐
505-827-7250

Mary Brogdon, Director
Vida Tapia-Sanchez, Deputy Director
Shanita Harrison, Deputy Director
Judith Parks, Deputy Director

<http://www.hsd.state.nm.us/monthly-statistical-reports.aspx>

Program Summary for July 2018

Medicaid				Percent Change	
				Jul-17- Jul-18	Jun-18- Jul-18
	Jul-17	Jun-18	Jul-18		
Expenditures¹	\$457,508,319	\$442,271,369	\$451,227,729	-1.4%	2.0%
Cases²	514,674	491,763	488,871	-5.0%	-0.6%
Expenditures/Case	\$889	\$899	\$923	3.8%	2.6%
Recipients³	889,692	838,680	832,599	-6.4%	-0.7%
<i>Adults</i>	507,390	477,009	474,045	-6.6%	-0.6%
<i>Children</i>	382,302	361,671	358,554	-6.2%	-0.9%
Recipients /Case	1.73	1.71	1.70	-1.5%	-0.1%
Cases Processed⁴	15,193	12,019	12,118	-20.2%	0.8%
<i>Approvals⁴</i>	10,661	9,534	9,545	-10.5%	0.1%

Supplemental Nutrition Assistance Program (SNAP)				Percent Change	
				Jul-17- Jul-18	Jun-18- Jul-18
	Jul-17	Jun-18	Jul-18		
Expenditures⁵	\$54,873,752	\$52,676,828	\$52,761,380	-3.8%	0.2%
Cases⁶	218,138	221,245	221,195	1.4%	0.0%
Expenditures/Case	\$252	\$238	\$239	-5.2%	0.2%
Recipients⁷	457,798	453,493	453,169	-1.0%	-0.1%
<i>Adults</i>	260,956	261,885	261,714	0.3%	-0.1%
<i>Children</i>	196,842	191,608	191,455	-2.7%	-0.1%
Recipients /Case	2.10	2.05	2.05	-2.4%	0.0%
Cases Processed⁴	19,424	18,653	19,417	0.0%	4.1%
<i>Approvals⁴</i>	15,331	15,091	15,510	1.2%	2.8%

Cash Assistance Programs				Percent Change	
				Jul-17- Jul-18	Jun-18- Jul-18
	Jul-17	Jun-18	Jul-18		
Expenditures⁵	\$4,161,858	\$3,859,680	\$4,292,123	3.1%	11.2%
Cases⁶	14,702	13,782	14,073	-4.3%	2.1%
Expenditures/Case	\$283	\$280	\$305	7.7%	8.9%
Recipients⁷	33,590	30,774	31,665	-5.7%	2.9%
<i>Adults</i>	10,865	9,710	10,058	-7.4%	3.6%
<i>Children</i>	22,725	21,064	21,607	-4.9%	2.6%
Recipients /Case	2.28	2.23	2.25	-1.5%	0.8%
Cases Processed⁴	5,927	5,270	5,570	-6.0%	5.7%
<i>Approvals⁴</i>	1,660	1,671	1,784	7.5%	6.8%

Low Income Home Energy Assistance Program (LIHEAP)				Percent Change	
				Jul-17- Jul-18	Jun-18- Jul-18
	Jul-17	Jun-18	Jul-18		
Expenditures⁸	\$622,237	\$591,360	\$617,934	-0.7%	4.5%
Cases⁸	2,527	2,398	2,547	0.8%	6.2%
Expenditures/Case	\$246	\$247	\$243	-1.5%	-1.6%
Recipients⁸	6,513	5,969	6,604	1.4%	10.6%
<i>Adults</i>	3,372	3,148	3,388	0.5%	7.6%
<i>Children</i>	3,141	2,821	3,216	2.4%	14.0%
Recipients /Case	2.58	2.49	2.59	0.6%	4.2%
Cases Processed⁴	4,406	3,517	4,061	-7.8%	15.5%
<i>Approvals⁴</i>	2,466	2,322	2,558	3.7%	10.2%

Cash Assistance Summary for July 2018

Temporary Assistance for Needy Families (TANF)

	Jul-17	Jun-18	Jul-18	Percent Change	
				Jul-17- Jul-18	Jun-18- Jul-18
Expenditures ⁵	\$3,383,382	\$3,127,514	\$3,547,715	4.9%	13.4%
Cases ⁶	11,483	10,783	11,059	-3.7%	2.6%
Expenditures/Case	\$295	\$290	\$321	8.9%	10.6%
Recipients ⁷	30,149	27,588	28,473	-5.6%	3.2%
<i>Adults</i>	7,845	6,892	7,232	-7.8%	4.9%
<i>Children</i>	22,304	20,696	21,241	-4.8%	2.6%
Approvals ⁴	1,378	1,445	1,563	13.4%	8.2%

General Assistance (GA)

	Jul-17	Jun-18	Jul-18	Percent Change	
				Jul-17- Jul-18	Jun-18- Jul-18
Expenditures ⁵	\$729,031	\$689,272	\$700,091	-4.0%	1.6%
Cases ⁶	3,052	2,855	2,867	-6.1%	0.4%
Expenditures/Case	\$239	\$241	\$244	2.2%	1.1%
Recipients ⁷	3,079	2,864	2,878	-6.5%	0.5%
<i>Adults</i>	2,842	2,662	2,669	-6.1%	0.3%
<i>Children</i>	237	202	209	-11.8%	3.5%
Approvals ⁴	217	170	199	-8.3%	17.1%

Education Works

	Jul-17	Jun-18	Jul-18	Percent Change	
				Jul-17- Jul-18	Jun-18- Jul-18
Expenditures ⁵	\$36,764	\$32,181	\$34,710	-5.6%	7.9%
Cases ⁶	104	89	87	-16.3%	-2.2%
Expenditures/Case	\$354	\$362	\$399	12.9%	10.3%
Recipients ⁷	297	266	252	-15.2%	-5.3%
<i>Adults</i>	113	100	95	-15.9%	-5.0%
<i>Children</i>	184	166	157	-14.7%	-5.4%
Approvals ⁴	1	9	15	1400.0%	66.7%

Refugee Cash (RCA)

	Jul-17	Jun-18	Jul-18	Percent Change	
				Jul-17- Jul-18	Jun-18- Jul-18
Expenditures ⁵	\$9,981	\$8,513	\$7,408	-25.8%	-13.0%
Cases ⁶	37	33	38	2.7%	15.2%
Expenditures/Case	\$270	\$258	\$195	-27.7%	-24.4%
Recipients ⁷	39	34	40	2.6%	17.6%
<i>Adults</i>	39	34	40	2.6%	17.6%
<i>Children</i>	0	0	0	N/A	N/A

State Supplement for Residential Care

	Jul-17	Jun-18	Jul-18	Percent Change	
				Jul-17- Jul-18	Jun-18- Jul-18
Expenditures ⁵	\$2,700	\$2,200	\$2,200	-18.5%	0.0%
Cases ⁶	26	22	22	-15.4%	0.0%
Expenditures/Case	\$104	\$100	\$100	-3.7%	0.0%
Recipients ⁷	26	22	22	-15.4%	0.0%
<i>Adults</i>	26	22	22	-15.4%	0.0%
<i>Children</i>	0	0	0	N/A	N/A

Expenditures YTD			
	SFY 2019	FFY 2018	CY 2018
Medicaid ¹	\$451,227,729	\$4,567,065,838	\$3,208,225,170
Supplemental Nutrition Assistance Program ⁹	\$52,761,380	\$532,304,796	\$370,835,146
Temporary Assistance for Needy Families ⁹	\$3,547,715	\$33,892,341	\$23,493,489
General Assistance ⁹	\$700,091	\$7,306,674	\$5,045,576
Education Work ⁹	\$34,710	\$475,379	\$331,075
LIHEAP ⁸	\$617,934	\$15,740,780	\$7,244,029

Average Caseload YTD			
	SFY 2019	FFY 2018	CY 2018
Medicaid ²	488,871	492,973	493,757
Supplemental Nutrition Assistance Program ⁶	221,195	221,634	221,621
Temporary Assistance for Needy Families ⁶	11,059	11,292	11,056
General Assistance ⁶	2,867	2,986	2,958
Education Work ⁶	87	130	127
LIHEAP ⁸	2,547	5,941	4,070

Demographic Profile- July 2018					
	SNAP	TANF	GA	Education Works	RCA
<i>Gender of Recipients¹⁰</i>					
Male	204,863	12,193	1,605	87	26
Female	248,306	16,280	1,273	165	14
<i>Ethnicity¹⁰</i>					
Hispanic	250,884	19,262	1,501	165	14
Non-Hispanic	202,285	9,211	1,377	87	26
<i>Race¹⁰</i>					
Native American or Alaskan Native	75,719	2,396	229	19	0
Asian	4,345	250	29	0	0
African American or Black	11,365	1,228	111	12	18
Native Hawaiian or Pacific Islander	866	32	3	0	0
White	351,208	23,738	2,440	220	18
Unknown / Not Declared	4,815	330	35	0	0
More than One Race	4,851	499	31	1	4

Medicaid demographic data can be found here: <http://www.hsd.state.nm.us/LookingForInformation/medicaid-eligibility.aspx>

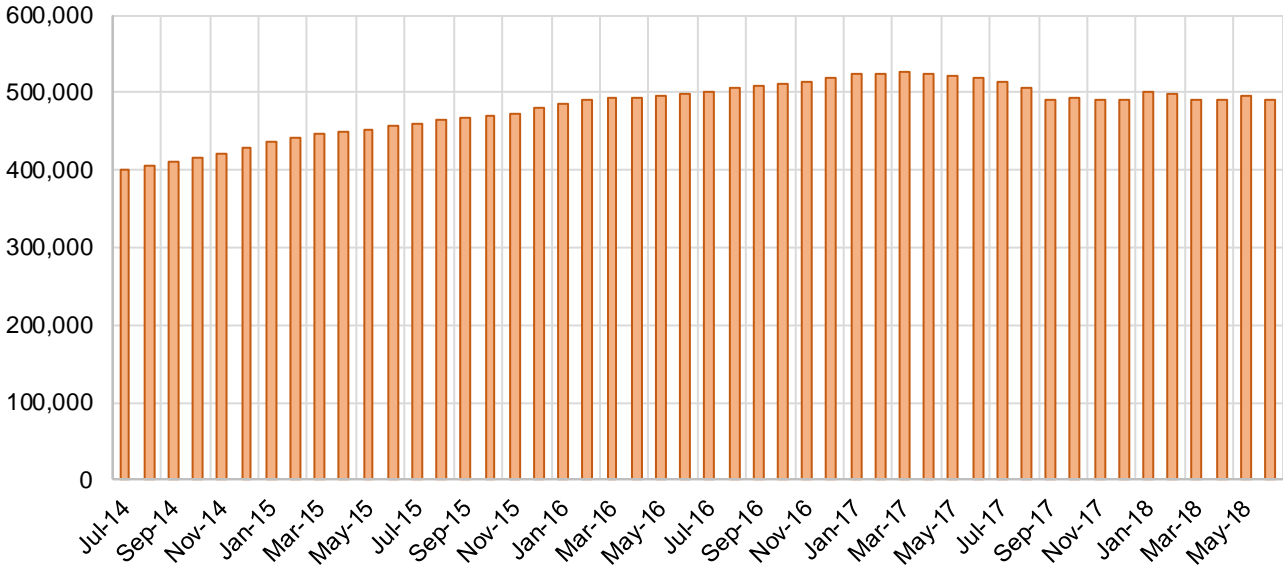
Medicaid Cases by Field Office²

Office				Percent Change	
	Jul-17	Jun-18	Jul-18	Jul-17- Jul-18	Jun-18- Jul-18
Chaves County ISD	16,382	16,053	15,908	-2.9%	-0.9%
Cibola County ISD	7,582	7,426	7,423	-2.1%	0.0%
Colfax County ISD	3,473	3,613	3,580	3.1%	-0.9%
Curry County ISD	10,214	13,886	13,861	35.7%	-0.2%
East Dona Ana County ISD	17,827	17,626	17,492	-1.9%	-0.8%
Eddy Artesia County ISD	3,876	3,847	3,825	-1.3%	-0.6%
Eddy Carlsbad County ISD	8,203	7,746	7,650	-6.7%	-1.2%
Grant County ISD	6,872	6,751	6,675	-2.9%	-1.1%
Guadalupe County ISD	1,664	1,733	1,719	3.3%	-0.8%
Hidalgo County ISD	970	971	964	-0.6%	-0.7%
Lea County ISD	14,474	14,402	14,309	-1.1%	-0.6%
Lincoln County ISD	4,411	4,314	4,275	-3.1%	-0.9%
Luna County ISD	8,782	8,664	8,553	-2.6%	-1.3%
McKinley County ISD	22,822	22,860	22,713	-0.5%	-0.6%
Northeast Bernalillo County ISD	46,430	42,950	42,775	-7.9%	-0.4%
Northwest Bernalillo County ISD	50,454	49,487	49,524	-1.8%	0.1%
Otero County ISD	11,912	11,896	11,829	-0.7%	-0.6%
Quay County ISD	2,626	2,545	2,564	-2.4%	0.7%
Rio Arriba County ISD	14,526	13,936	13,894	-4.4%	-0.3%
Roosevelt County ISD	3,992	22	20	-99.5%	-9.1%
San Juan County ISD	31,675	29,896	29,744	-6.1%	-0.5%
San Miguel County ISD	9,497	9,063	9,027	-4.9%	-0.4%
Sandoval County ISD	26,525	25,543	25,314	-4.6%	-0.9%
Santa Fe County ISD	26,983	24,765	24,583	-8.9%	-0.7%
Sierra County ISD	5,587	5,370	5,312	-4.9%	-1.1%
Socorro County ISD	5,628	5,319	5,262	-6.5%	-1.1%
South Dona Ana ISD	20,049	19,782	19,597	-2.3%	-0.9%
Southeast Bernalillo County ISD	29,854	25,234	25,030	-16.2%	-0.8%
Southwest Bernalillo County ISD	41,809	38,866	38,465	-8.0%	-1.0%
Taos County ISD	9,841	9,310	9,249	-6.0%	-0.7%
Torrance County ISD	7,997	7,548	7,567	-5.4%	0.3%
Valencia North County ISD	19,047	18,243	18,235	-4.3%	0.0%
Valencia South County ISD	71	110	109	53.5%	-0.9%
West Dona Ana County ISD	22,615	21,982	21,820	-3.5%	-0.7%
Centralized Units	4	4	4	0.0%	0.0%
Statewide Total	514,674	491,763	488,871	-5.0%	-0.6%

Medicaid Cases by Region²

Region				Percent Change	
	Jul-17	Jun-18	Jul-18	Jul-17- Jul-18	Jun-18- Jul-18
Region 1 - NW	92,412	89,224	88,798	-3.9%	-0.5%
Region 2 - NE	95,135	90,508	89,930	-5.5%	-0.6%
Region 3 - Central	176,544	164,085	163,361	-7.5%	-0.4%
Region 4 - SE	61,552	60,270	59,848	-2.8%	-0.7%
Region 5 - SW	89,027	87,672	86,930	-2.4%	-0.8%
Centralized Units	4	4	4	0.0%	0.0%
Statewide Total	514,674	491,763	488,871	-5.0%	-0.6%

Medicaid Caseload: SFY-15 to Current



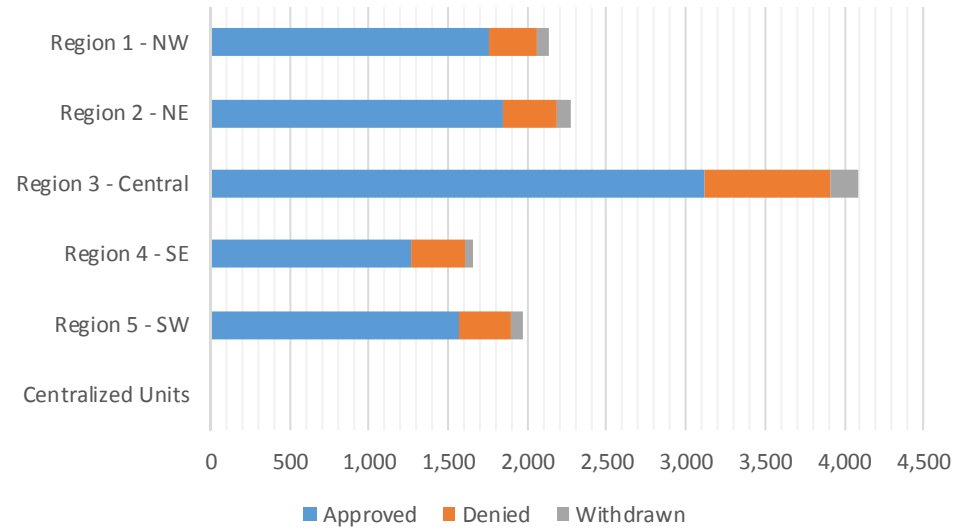
Medicaid Initial Applications by Field Office^{4,11}
July 2018

Office	Approved	Denied	Withdrawn	Total Cases Processed
Chaves County ISD	316	70	11	397
Cibola County ISD	147	29	5	181
Colfax County ISD	71	10	6	87
Curry County ISD	330	87	19	436
East Dona Ana County ISD	371	88	25	484
Eddy Artesia County ISD	74	26	3	103
Eddy Carlsbad County ISD	160	48	5	213
Grant County ISD	133	15	5	153
Guadalupe County ISD	26	2	0	28
Hidalgo County ISD	0	0	0	0
Lea County ISD	304	93	11	408
Lincoln County ISD	79	18	0	97
Luna County ISD	138	36	8	182
McKinley County ISD	495	90	11	596
Northeast Bernalillo County ISD	854	201	48	1,103
Northwest Bernalillo County ISD	777	214	43	1,034
Otero County ISD	216	35	3	254
Quay County ISD	55	2	2	59
Rio Arriba County ISD	212	39	9	260
Roosevelt County ISD	1	0	0	1
San Juan County ISD	647	120	32	799
San Miguel County ISD	296	28	7	331
Sandoval County ISD	558	122	35	715
Santa Fe County ISD	419	100	27	546
Sierra County ISD	63	6	5	74
Socorro County ISD	72	13	8	93
South Dona Ana ISD	304	66	17	387
Southeast Bernalillo County ISD	642	221	20	883
Southwest Bernalillo County ISD	683	133	45	861
Taos County ISD	205	38	6	249
Torrance County ISD	160	32	11	203
Valencia North County ISD	332	50	7	389
Valencia South County ISD	0	1	0	1
West Dona Ana County ISD	405	86	20	511
Centralized Units	0	0	0	0
Statewide Total	9,545	2,119	454	12,118

Medicaid Initial Applications by Region^{4,11} July 2018

	Approved	Denied	Withdrawn	Total Cases Processed
Region				
Region 1 - NW	1,756	309	68	2,133
Region 2 - NE	1,842	341	92	2,275
Region 3 - Central	3,116	801	167	4,084
Region 4 - SE	1,264	342	49	1,655
Region 5 - SW	1,567	326	78	1,971
Centralized Units	0	0	0	0

Statewide Total	9,545	2,119	454	12,118
-----------------	-------	-------	-----	--------

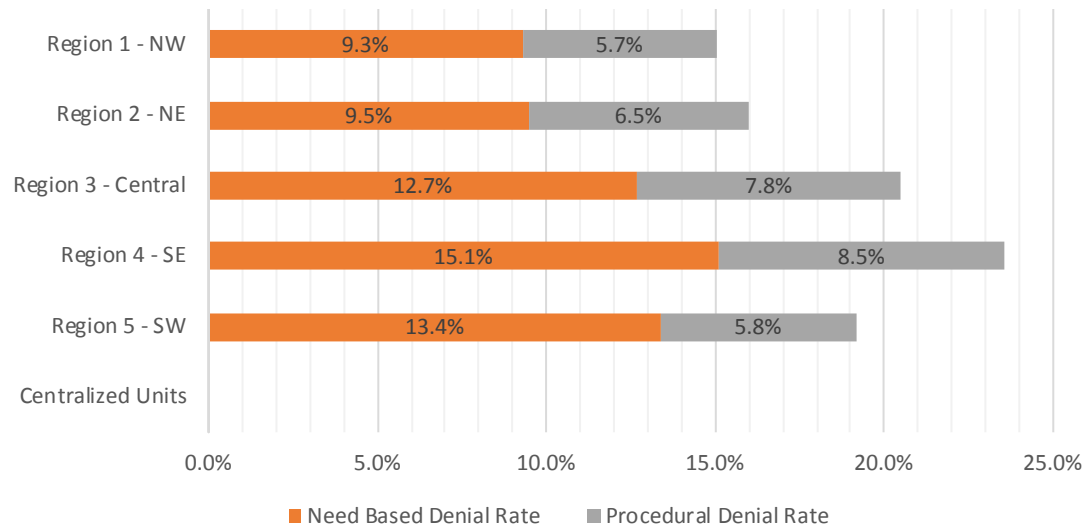


Medicaid EDG Initial Disposition Rates by Field Office^{4,11,19}
July 2018

Office	Approval Rate	Denial Rate	Need Based Denial Rate	Procedural Denial Rate
Chaves County ISD	78.9%	21.1%	15.1%	6.0%
Cibola County ISD	83.5%	16.5%	9.0%	7.5%
Colfax County ISD	88.3%	11.7%	10.9%	0.8%
Curry County ISD	79.2%	20.8%	12.8%	8.0%
East Dona Ana County ISD	80.0%	20.0%	14.3%	5.7%
Eddy Artesia County ISD	72.9%	27.1%	15.9%	11.2%
Eddy Carlsbad County ISD	73.3%	26.7%	11.4%	15.3%
Grant County ISD	87.0%	13.0%	9.5%	3.5%
Guadalupe County ISD	95.3%	4.7%	0.0%	4.7%
Hidalgo County ISD	0.0%	0.0%	0.0%	0.0%
Lea County ISD	73.8%	26.2%	18.6%	7.6%
Lincoln County ISD	77.6%	22.4%	15.8%	6.6%
Luna County ISD	80.0%	20.0%	16.8%	3.2%
McKinley County ISD	85.4%	14.6%	10.4%	4.2%
Northeast Bernalillo County ISD	80.5%	19.5%	10.6%	8.9%
Northwest Bernalillo County ISD	77.5%	22.5%	10.3%	12.2%
Otero County ISD	83.1%	16.9%	7.4%	9.5%
Quay County ISD	97.5%	2.5%	2.5%	0.0%
Rio Arriba County ISD	84.8%	15.2%	8.3%	6.9%
Roosevelt County ISD	100.0%	0.0%	0.0%	0.0%
San Juan County ISD	83.4%	16.6%	8.5%	8.1%
San Miguel County ISD	89.4%	10.6%	4.2%	6.4%
Sandoval County ISD	82.1%	17.9%	9.8%	8.1%
Santa Fe County ISD	81.3%	18.7%	13.9%	4.8%
Sierra County ISD	88.8%	11.2%	7.5%	3.7%
Socorro County ISD	86.0%	14.0%	8.2%	5.8%
South Dona Ana ISD	78.8%	21.2%	17.1%	4.1%
Southeast Bernalillo County ISD	74.3%	25.7%	22.4%	3.3%
Southwest Bernalillo County ISD	84.3%	15.7%	9.4%	6.3%
Taos County ISD	83.3%	16.7%	8.8%	7.9%
Torrance County ISD	82.6%	17.4%	13.9%	3.5%
Valencia North County ISD	87.8%	12.2%	9.9%	2.3%
Valencia South County ISD	0.0%	100.0%	0.0%	100.0%
West Dona Ana County ISD	80.7%	19.3%	12.2%	7.1%
Centralized Units	0.0%	0.0%	0.0%	0.0%
Statewide Total	81.1%	18.9%	12.0%	6.9%

Medicaid EDG Initial Disposition Rates by Region^{4,11,19}
July 2018

Region	Approval Rate	Denial Rate	Need Based Denial Rate	Procedural Denial Rate
Region 1 - NW	85.0%	15.0%	9.3%	5.7%
Region 2 - NE	84.0%	16.0%	9.5%	6.5%
Region 3 - Central	79.5%	20.5%	12.7%	7.8%
Region 4 - SE	76.4%	23.6%	15.1%	8.5%
Region 5 - SW	80.8%	19.2%	13.4%	5.8%
Centralized Units				
Statewide Total	81.1%	18.9%	12.0%	6.9%



Medicaid: Percentage of Initial EDG Approvals Processed Timely by Field Office^{13,19}

	Oct-17	Nov-17	Dec-17	Jan-18	Feb-18	Mar-18	Apr-18	May-18	Jun-18	Jul-18	Aug-18	Sep-18	Average
Cibola	92.2%	94.4%	94.6%	98.5%	98.0%	98.9%	99.0%	97.1%	98.1%	99.5%			97.0%
McKinley	95.6%	97.4%	96.9%	97.9%	98.3%	98.8%	99.3%	96.2%	99.1%	99.6%			97.9%
San Juan	93.4%	92.0%	94.3%	94.7%	94.8%	95.9%	96.2%	97.1%	97.9%	98.3%			95.5%
Sierra	95.8%	98.6%	96.9%	97.3%	99.4%	100.0%	99.1%	100.0%	99.4%	100.0%			98.7%
Socorro	95.4%	98.7%	96.7%	97.0%	95.7%	95.9%	98.0%	99.3%	99.2%	100.0%			97.6%
Valencia North	93.2%	94.1%	94.0%	95.2%	97.7%	98.9%	98.2%	99.6%	99.6%	99.8%			97.0%
Valencia South	100.0%	100.0%	100.0%	100.0%		100.0%	100.0%	100.0%	100.0%				100.0%
NW Region 1 Total	94.0%	94.7%	95.2%	96.2%	96.8%	97.7%	97.8%	97.7%	98.7%	99.2%			96.8%
Colfax	93.9%	98.4%	97.4%	98.4%	95.1%	100.0%	98.1%	100.0%	99.4%	99.1%			98.0%
Guadalupe	97.9%	100.0%	96.6%	100.0%	100.0%	100.0%	100.0%	100.0%	100.0%	100.0%			99.5%
Quay	98.0%	94.9%	94.6%	97.2%	97.1%	93.7%	97.4%	95.8%	100.0%	100.0%			96.9%
Rio Arriba	96.9%	94.7%	91.1%	96.9%	95.7%	97.3%	99.1%	96.2%	99.7%	99.0%			96.7%
San Miguel	97.3%	98.9%	99.0%	98.4%	98.0%	99.3%	99.0%	99.0%	99.3%	99.2%			98.7%
Sandoval	97.0%	97.0%	96.8%	97.9%	96.8%	97.7%	97.5%	99.0%	99.2%	98.3%			97.7%
Santa Fe	96.1%	95.7%	96.6%	95.2%	95.5%	98.4%	98.2%	98.4%	97.4%	98.6%			97.0%
Taos	98.3%	96.8%	98.2%	96.8%	97.0%	95.9%	98.7%	99.6%	97.9%	99.7%			97.9%
NE Region 2 Total	96.8%	96.6%	96.6%	97.1%	96.4%	97.9%	98.3%	98.5%	98.7%	98.8%			97.6%
NE Bernalillo	95.1%	93.6%	93.9%	94.5%	97.1%	96.7%	97.1%	97.7%	98.7%	98.5%			96.3%
NW Bernalillo	96.3%	95.4%	94.6%	94.7%	96.4%	96.9%	98.1%	98.0%	98.1%	98.9%			96.7%
SE Bernalillo	88.2%	90.8%	94.4%	92.2%	95.8%	95.9%	95.3%	96.4%	98.3%	97.3%			94.5%
SW Bernalillo	95.8%	96.2%	95.2%	94.9%	95.1%	97.1%	97.7%	97.7%	98.2%	98.0%			96.6%
Torrance	95.5%	95.1%	95.2%	94.8%	91.1%	99.2%	96.4%	97.5%	100.0%	98.1%			96.3%
Gen. Region 3 Total	94.3%	94.3%	94.5%	94.2%	95.9%	96.8%	97.2%	97.5%	98.4%	98.3%			96.1%
Chaves	96.4%	96.6%	97.1%	98.6%	97.4%	98.1%	98.6%	98.9%	98.8%	99.4%			98.0%
Curry	94.8%	94.2%	98.4%	98.3%	96.5%	97.3%	98.3%	98.0%	99.3%	98.9%			97.4%
Eddy Artesia	95.3%	94.9%	96.4%	93.2%	96.4%	98.2%	98.3%	100.0%	100.0%	99.2%			97.2%
Eddy Carlsbad	93.2%	98.4%	97.6%	94.8%	98.5%	96.6%	96.7%	98.3%	98.6%	99.6%			97.2%
Lea	96.1%	94.7%	94.0%	96.5%	99.5%	96.5%	97.5%	96.6%	99.4%	98.6%			96.9%
Lincoln	95.7%	94.7%	97.1%	97.4%	97.3%	99.4%	97.1%	98.4%	98.0%	98.3%			97.3%
Roosevelt	94.6%	94.2%	93.4%	94.9%		83.3%	100.0%	100.0%	100.0%	100.0%			95.6%
SE Region 4 Total	95.4%	95.5%	96.3%	96.9%	97.7%	97.4%	97.9%	98.1%	99.1%	99.0%			97.3%
East Dona Ana	96.1%	97.1%	97.5%	97.3%	97.1%	95.0%	97.5%	98.6%	99.0%	99.1%			97.4%
Grant	93.9%	96.8%	99.3%	97.5%	98.4%	97.0%	99.5%	99.4%	98.5%	98.5%			97.9%
Luna	96.8%	97.8%	97.4%	98.8%	98.2%	97.9%	99.2%	97.1%	98.6%	99.2%			98.1%
Otero	97.6%	96.4%	98.0%	96.3%	95.0%	97.6%	97.9%	98.1%	97.8%	99.7%			97.4%
South Dona Ana	97.2%	98.3%	98.0%	97.5%	98.6%	98.6%	99.4%	97.8%	99.3%	100.0%			98.5%
West Dona Ana	97.4%	96.7%	98.3%	98.5%	98.4%	98.6%	98.1%	98.7%	99.9%	98.2%			98.3%
SW Region 5 Total	96.7%	97.2%	98.0%	97.6%	97.7%	97.5%	98.5%	98.3%	99.1%	99.1%			98.0%
STATE TOTAL	95.3%	95.4%	95.8%	96.0%	96.7%	97.4%	97.8%	97.9%	98.7%	98.8%			97.0%

Medicaid: Percentage of Initial EDG Denials Processed Timely by Field Office^{13,19}

	Oct-17	Nov-17	Dec-17	Jan-18	Feb-18	Mar-18	Apr-18	May-18	Jun-18	Jul-18	Aug-18	Sep-18	Average
Cibola	51.4%	41.2%	76.0%	78.3%	72.7%	64.5%	88.2%	84.1%	94.4%	100.0%			75.1%
McKinley	54.4%	59.7%	54.4%	51.6%	59.3%	69.4%	74.4%	91.6%	92.4%	89.1%			69.6%
San Juan	53.1%	57.1%	45.5%	43.6%	44.9%	58.6%	63.1%	89.6%	93.7%	89.4%			63.9%
Sierra	92.9%	95.0%	96.3%	33.3%	30.8%	77.8%	80.0%	100.0%	100.0%	100.0%			80.6%
Socorro	57.5%	80.0%	96.3%	95.8%	100.0%	71.1%	77.1%	100.0%	92.9%	94.1%			86.5%
Valencia North	55.8%	52.1%	42.3%	38.3%	55.6%	64.4%	89.8%	91.0%	92.7%	95.9%			67.8%
Valencia South	66.7%							100.0%		100.0%			88.9%
NW Region 1 Total	55.0%	57.7%	53.2%	51.0%	53.0%	64.5%	73.5%	90.9%	93.6%	91.6%			68.4%
Colfax	90.6%	95.8%	100.0%	92.9%	94.3%	88.0%	84.6%	100.0%	93.8%	92.9%			93.3%
Guadalupe	90.0%	11.1%	75.0%	72.7%	76.5%	44.4%	66.7%	88.9%	100.0%	100.0%			72.5%
Quay	72.7%	33.3%	54.5%	78.6%	58.8%	58.3%	81.8%	100.0%	93.3%	50.0%			68.1%
Rio Arriba	71.4%	56.3%	53.2%	71.9%	49.6%	44.3%	64.6%	83.5%	91.7%	90.9%			67.7%
San Miguel	59.5%	67.3%	76.5%	78.8%	82.1%	71.4%	77.3%	74.5%	87.9%	95.6%			77.1%
Sandoval	43.6%	51.2%	63.7%	74.3%	75.9%	72.8%	83.7%	93.2%	95.3%	95.2%			74.9%
Santa Fe	59.1%	53.7%	37.8%	48.1%	64.7%	71.3%	89.3%	91.0%	99.1%	93.2%			70.7%
Taos	47.4%	76.5%	75.9%	87.9%	65.7%	56.5%	56.1%	91.4%	91.8%	98.4%			74.8%
NE Region 2 Total	57.2%	56.4%	55.2%	64.0%	67.8%	67.2%	80.0%	90.0%	94.5%	94.4%			72.7%
NE Bernalillo	45.7%	38.4%	35.2%	50.0%	67.6%	74.1%	70.3%	77.9%	88.5%	88.9%			63.7%
NW Bernalillo	39.2%	40.9%	41.8%	36.0%	42.4%	48.5%	68.1%	83.5%	92.0%	83.2%			57.6%
SE Bernalillo	56.6%	46.6%	67.6%	80.6%	79.3%	81.1%	80.0%	84.7%	91.6%	86.6%			75.5%
SW Bernalillo	68.5%	68.1%	80.1%	88.4%	80.8%	78.7%	86.2%	83.0%	91.8%	89.6%			81.5%
Torrance	56.8%	42.1%	43.8%	38.5%	42.7%	56.8%	89.3%	91.7%	94.7%	98.1%			65.4%
Gen. Region 3 Total	52.5%	48.0%	53.3%	59.5%	65.0%	70.0%	75.5%	82.7%	91.0%	87.3%			68.5%
Chaves	72.3%	60.2%	79.9%	83.6%	79.6%	83.9%	77.8%	93.6%	98.6%	93.6%			82.3%
Curry	61.4%	59.0%	65.6%	84.3%	73.0%	78.8%	64.9%	95.3%	91.8%	94.4%			76.8%
Eddy Artesia	65.6%	53.3%	81.3%	76.4%	82.9%	84.1%	88.6%	85.2%	84.2%	95.7%			79.7%
Eddy Carlsbad	51.8%	35.8%	61.7%	79.3%	83.8%	67.2%	71.2%	97.7%	91.3%	88.5%			72.8%
Lea	72.7%	69.6%	70.0%	88.0%	85.3%	85.6%	82.3%	93.4%	95.5%	94.4%			83.7%
Lincoln	35.9%	63.8%	77.3%	91.3%	85.4%	90.5%	55.9%	86.4%	75.0%	100.0%			76.1%
Roosevelt	36.4%	46.4%	64.5%	64.6%		100.0%			100.0%				68.7%
SE Region 4 Total	61.3%	56.6%	70.5%	83.1%	80.7%	82.0%	74.1%	94.0%	93.2%	93.8%			78.9%
East Dona Ana	80.0%	74.3%	73.1%	94.5%	67.5%	70.7%	85.7%	94.0%	93.0%	88.9%			82.2%
Grant	76.7%	32.4%	85.9%	79.7%	67.4%	83.3%	77.2%	97.1%	80.5%	86.7%			76.7%
Luna	47.7%	64.9%	41.8%	62.9%	61.5%	70.6%	73.8%	90.4%	89.4%	98.4%			70.1%
Otero	61.9%	48.3%	67.7%	62.8%	71.6%	80.6%	82.4%	83.0%	81.8%	92.4%			73.3%
South Dona Ana	86.3%	73.0%	86.6%	91.8%	82.3%	83.8%	90.1%	86.8%	97.9%	99.3%			87.8%
West Dona Ana	66.9%	67.0%	80.6%	94.7%	82.0%	84.0%	86.2%	96.2%	93.7%	91.2%			84.3%
SW Region 5 Total	73.8%	64.3%	76.4%	85.1%	74.8%	78.5%	84.7%	90.6%	91.7%	93.2%			81.3%
STATE TOTAL	58.4%	54.6%	59.5%	66.4%	66.9%	72.0%	77.3%	88.3%	92.5%	91.3%			72.7%

Medicaid Renewal Disposition Counts by Field Office^{4,11}
July 2018

Office	Approvals	Closures	Need Based Closures	Procedural Closures
Chaves County ISD	2,505	620	122	498
Cibola County ISD	1,104	277	40	237
Colfax County ISD	411	119	25	94
Curry County ISD	2,154	608	106	502
East Dona Ana County ISD	2,761	746	105	641
Eddy Artesia County ISD	560	179	24	155
Eddy Carlsbad County ISD	996	473	78	395
Grant County ISD	1,018	228	65	163
Guadalupe County ISD	266	55	6	49
Hidalgo County ISD	151	28	4	24
Lea County ISD	2,162	840	158	682
Lincoln County ISD	598	227	44	183
Luna County ISD	1,209	254	73	181
McKinley County ISD	3,461	927	153	774
Northeast Bernalillo County ISD	5,452	1710	291	1419
Northwest Bernalillo County ISD	4,340	1440	250	1190
Otero County ISD	1,617	412	64	348
Quay County ISD	362	66	15	51
Rio Arriba County ISD	1,680	466	63	403
Roosevelt County ISD	1	0	0	0
San Juan County ISD	4,663	1500	266	1234
San Miguel County ISD	1,113	252	37	215
Sandoval County ISD	3,830	1182	182	1000
Santa Fe County ISD	2,695	1008	103	905
Sierra County ISD	709	126	35	91
Socorro County ISD	685	155	29	126
South Dona Ana ISD	3,320	710	156	554
Southeast Bernalillo County ISD	2,955	832	140	692
Southwest Bernalillo County ISD	6,751	2017	415	1602
Taos County ISD	1,005	396	55	341
Torrance County ISD	1,013	278	69	209
Valencia North County ISD	2,752	771	157	614
Valencia South County ISD	0	0	0	0
West Dona Ana County ISD	3,371	647	125	522
Centralized Units	0	0	0	0
Statewide Total	67,670	19,549	3,455	16,094

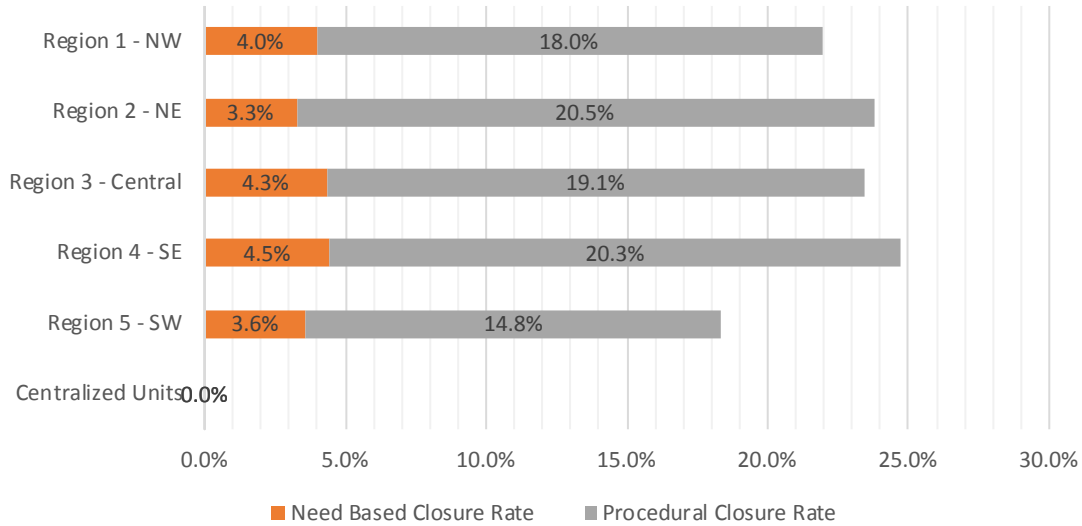
Determinations at Administrative, Annual, and Auto Renewals are included

Medicaid Renewal Disposition Rates by Field Office²⁰
July 2018

Office	Approval Rate	Closure Rate	Need Based Closure Rate	Procedural Closure Rate
Chaves County ISD	80.2%	19.8%	3.9%	15.9%
Cibola County ISD	79.9%	20.1%	2.9%	17.2%
Colfax County ISD	77.5%	22.5%	4.7%	17.7%
Curry County ISD	78.0%	22.0%	3.8%	18.2%
East Dona Ana County ISD	78.7%	21.3%	3.0%	18.3%
Eddy Artesia County ISD	75.8%	24.2%	3.2%	21.0%
Eddy Carlsbad County ISD	67.8%	32.2%	5.3%	26.9%
Grant County ISD	81.7%	18.3%	5.2%	13.1%
Guadalupe County ISD	82.9%	17.1%	1.9%	15.3%
Hidalgo County ISD	84.4%	15.6%	2.2%	13.4%
Lea County ISD	72.0%	28.0%	5.3%	22.7%
Lincoln County ISD	72.5%	27.5%	5.3%	22.2%
Luna County ISD	82.6%	17.4%	5.0%	12.4%
McKinley County ISD	78.9%	21.1%	3.5%	17.6%
Northeast Bernalillo County ISD	76.1%	23.9%	4.1%	19.8%
Northwest Bernalillo County ISD	75.1%	24.9%	4.3%	20.6%
Otero County ISD	79.7%	20.3%	3.2%	17.2%
Quay County ISD	84.6%	15.4%	3.5%	11.9%
Rio Arriba County ISD	78.3%	21.7%	2.9%	18.8%
Roosevelt County ISD	100.0%	0.0%	0.0%	0.0%
San Juan County ISD	75.7%	24.3%	4.3%	20.0%
San Miguel County ISD	81.5%	18.5%	2.7%	15.8%
Sandoval County ISD	76.4%	23.6%	3.6%	20.0%
Santa Fe County ISD	72.8%	27.2%	2.8%	24.4%
Sierra County ISD	84.9%	15.1%	4.2%	10.9%
Socorro County ISD	81.5%	18.5%	3.5%	15.0%
South Dona Ana ISD	82.4%	17.6%	3.9%	13.7%
Southeast Bernalillo County ISD	78.0%	22.0%	3.7%	18.3%
Southwest Bernalillo County ISD	77.0%	23.0%	4.7%	18.3%
Taos County ISD	71.7%	28.3%	3.9%	24.3%
Torrance County ISD	78.5%	21.5%	5.3%	16.2%
Valencia North County ISD	78.1%	21.9%	4.5%	17.4%
Valencia South County ISD	0.0%	0.0%	0.0%	0.0%
West Dona Ana County ISD	83.9%	16.1%	3.1%	13.0%
Centralized Units	0.0%	0.0%	0.0%	0.0%
Statewide Total	77.6%	22.4%	4.0%	18.5%

Medicaid Renewal Disposition Rates by Region²⁰
July 2018

Region	Approval Rate	Closure Rate	Need Based Closure Rate	Procedural Closure Rate
Region 1 - NW	78.1%	21.9%	4.0%	18.0%
Region 2 - NE	76.2%	23.8%	3.3%	20.5%
Region 3 - Central	76.6%	23.4%	4.3%	19.1%
Region 4 - SE	75.3%	24.7%	4.5%	20.3%
Region 5 - SW	81.6%	18.4%	3.6%	14.8%
Centralized Units				
Statewide Total	77.6%	22.4%	4.0%	18.5%



Medicaid: Percentage of Approved Renewal EDGs Processed by Certification Date ¹¹

	Oct-17	Nov-17	Dec-17	Jan-18	Feb-18	Mar-18	Apr-18	May-18	Jun-18	Jul-18	Aug-18	Sep-18	Average
Cibola		98.9%	98.5%	99.3%	98.5%	98.9%	98.3%	98.2%	98.7%	98.4%			98.6%
McKinley		98.9%	99.3%	98.7%	99.1%	98.7%	98.8%	98.9%	98.8%	98.5%			98.9%
San Juan		98.9%	98.4%	98.6%	98.4%	98.8%	97.8%	99.2%	99.2%	98.8%			98.7%
Sierra		99.1%	99.5%	99.0%	99.6%	98.7%	99.5%	99.4%	99.5%	99.4%			99.3%
Socorro		99.5%	99.1%	99.0%	99.2%	98.9%	98.7%	99.2%	98.6%	98.8%			99.0%
Valencia North		98.5%	98.7%	98.1%	98.8%	98.7%	98.5%	98.5%	99.3%	98.3%			98.6%
Valencia South													
NW Region 1 Total		99.0%	98.9%	98.8%	98.9%	98.8%	98.6%	98.9%	99.0%	98.7%			98.8%
Colfax		98.7%	99.6%	97.3%	99.4%	98.2%	99.8%	99.1%	99.2%	98.5%			98.9%
Guadalupe		99.2%	98.5%	96.6%	99.6%	99.5%	98.9%	99.6%	98.8%	98.1%			98.8%
Quay		99.0%	99.0%	98.9%	97.6%	99.3%	95.4%	99.3%	98.7%	98.1%			98.4%
Rio Arriba		98.4%	97.8%	97.1%	98.1%	98.4%	97.7%	97.6%	98.1%	99.0%			98.0%
San Miguel		99.5%	98.3%	98.9%	98.9%	97.7%	99.3%	99.8%	99.2%	99.3%			99.0%
Sandoval		98.4%	98.6%	98.3%	98.3%	98.6%	97.3%	98.3%	98.5%	96.8%			98.1%
Santa Fe		95.6%	95.7%	95.5%	96.7%	97.1%	97.2%	97.2%	98.4%	98.1%			96.8%
Taos		98.7%	98.6%	98.6%	96.9%	98.8%	98.0%	98.0%	98.3%	98.3%			98.2%
NE Region 2 Total		98.5%	98.2%	97.6%	98.2%	98.4%	98.0%	98.6%	98.6%	98.3%			98.3%
NE Bernalillo		97.8%	97.0%	96.9%	97.5%	97.7%	98.4%	98.3%	98.5%	97.0%			97.7%
NW Bernalillo		97.6%	97.8%	97.4%	98.5%	98.3%	98.6%	98.1%	97.9%	98.4%			98.1%
SE Bernalillo		86.5%	96.2%	97.5%	98.1%	99.0%	97.4%	98.1%	99.2%	98.3%			96.7%
SW Bernalillo		98.8%	96.0%	97.0%	97.8%	97.9%	98.2%	97.8%	98.0%	96.8%			97.6%
Torrance		98.8%	96.9%	96.5%	98.0%	97.4%	98.2%	99.1%	99.8%	99.3%			98.2%
Gen. Region 3 Total		95.9%	96.8%	97.1%	98.0%	98.0%	98.2%	98.3%	98.7%	98.0%			97.7%
Chaves		98.7%	98.5%	98.6%	98.5%	98.2%	98.7%	99.7%	99.5%	99.2%			98.9%
Curry		99.0%	98.7%	98.7%	99.0%	98.7%	98.9%	99.1%	99.2%	99.2%			98.9%
Eddy Artesia		99.2%	97.5%	97.1%	96.9%	98.6%	98.8%	98.9%	99.9%	98.8%			98.4%
Eddy Carlsbad		97.7%	98.8%	97.2%	98.2%	98.1%	98.0%	99.0%	98.8%	98.5%			98.3%
Lea		98.8%	97.8%	98.7%	98.6%	98.7%	97.1%	98.9%	99.0%	98.8%			98.5%
Lincoln		98.2%	97.5%	97.6%	97.7%	98.8%	97.9%	99.2%	97.7%	97.8%			98.1%
Roosevelt		99.4%	97.9%							100.0%			99.1%
SE Region 4 Total		98.7%	98.1%	98.0%	98.2%	98.5%	98.2%	99.2%	99.0%	98.9%			98.5%
East Dona Ana		98.9%	97.9%	98.6%	99.0%	98.6%	98.5%	99.7%	99.1%	98.7%			98.8%
Grant		98.5%	98.7%	98.5%	99.1%	98.9%	97.4%	98.7%	99.5%	98.8%			98.7%
Luna		99.1%	98.2%	98.1%	98.5%	98.3%	98.2%	99.2%	99.1%	97.7%			98.5%
Otero		98.9%	97.6%	98.0%	97.2%	97.5%	97.5%	98.0%	97.9%	96.8%			97.7%
South Dona Ana		98.2%	97.4%	98.1%	98.9%	98.5%	97.1%	97.8%	97.9%	96.7%			97.9%
West Dona Ana		99.2%	99.0%	98.7%	98.7%	98.3%	98.3%	98.9%	99.4%	99.1%			98.8%
SW Region 5 Total		98.8%	98.1%	98.3%	98.6%	98.3%	97.8%	98.7%	98.8%	98.0%			98.4%
STATE TOTAL		97.8%	97.8%	97.9%	98.3%	98.3%	98.1%	98.5%	98.7%	98.7%			98.2%

Administrative, Annual, and Auto Renewals are included
 No data available for October 2017

Medicaid: Percentage of Closures EDGs Processed by Certification End Date ¹¹													
	Oct-17	Nov-17	Dec-17	Jan-18	Feb-18	Mar-18	Apr-18	May-18	Jun-18	Jul-18	Aug-18	Sep-18	Average
Cibola		37.6%	27.5%	14.6%	21.3%	39.8%	28.8%	69.4%	99.5%	97.5%			48.4%
McKinley		23.9%	21.0%	21.7%	30.7%	39.5%	31.1%	61.0%	98.2%	97.6%			47.2%
San Juan		36.7%	19.9%	39.0%	39.1%	48.1%	24.2%	61.6%	98.8%	96.1%			51.5%
Sierra		45.6%	22.7%	26.7%	37.9%	34.3%	21.0%	70.1%	97.1%	97.6%			50.3%
Socorro		33.0%	20.7%	50.0%	40.0%	37.8%	62.8%	95.9%	97.5%	92.3%			58.9%
Valencia North		34.6%	30.5%	53.8%	38.6%	40.7%	50.6%	93.2%	99.1%	97.0%			59.8%
Valencia South													
NW Region 1 Total		35.2%	23.7%	34.3%	34.6%	40.1%	36.4%	66.8%	98.4%	96.4%			51.8%
Colfax		49.3%	27.8%	26.2%	21.5%	23.6%	36.9%	55.0%	99.4%	95.8%			48.4%
Guadalupe		28.6%	57.9%	27.1%	26.3%	41.7%	22.2%	77.4%	100.0%	100.0%			53.5%
Quay		24.7%	26.5%	17.1%	40.0%	54.1%	60.5%	96.8%	100.0%	98.5%			57.6%
Rio Arriba		23.3%	26.1%	24.9%	29.5%	32.3%	23.0%	54.7%	99.2%	99.1%			45.8%
San Miguel		19.4%	21.8%	23.6%	26.9%	44.3%	26.2%	53.4%	98.6%	94.4%			45.4%
Sandoval		20.5%	25.9%	21.6%	21.5%	39.2%	44.5%	95.1%	98.0%	96.8%			51.4%
Santa Fe		22.0%	22.6%	23.2%	33.1%	38.4%	29.3%	55.1%	98.7%	97.5%			46.7%
Taos		24.4%	21.5%	44.9%	24.4%	34.9%	32.5%	62.6%	98.9%	95.7%			48.9%
NE Region 2 Total		26.5%	28.8%	26.1%	27.9%	38.6%	34.4%	65.7%	99.1%	97.4%			49.4%
NE Bernalillo		20.3%	16.0%	16.1%	26.4%	28.4%	35.9%	58.6%	98.3%	94.4%			43.8%
NW Bernalillo		16.2%	20.8%	24.8%	30.1%	47.5%	33.1%	46.4%	97.9%	97.2%			46.0%
SE Bernalillo		18.7%	21.5%	27.2%	26.7%	44.1%	22.2%	49.7%	98.4%	97.2%			45.1%
SW Bernalillo		24.5%	28.2%	34.9%	33.9%	46.2%	76.7%	90.2%	98.1%	96.6%			58.8%
Torrance		25.4%	21.9%	33.9%	24.7%	37.8%	54.0%	97.6%	96.2%	96.8%			54.2%
Gen. Region 3 Total		21.0%	21.7%	27.4%	28.3%	40.8%	44.4%	61.5%	98.1%	96.5%			48.9%
Chaves		34.4%	24.7%	28.7%	22.0%	36.7%	50.4%	97.0%	99.0%	96.3%			54.3%
Curry		27.2%	25.2%	19.7%	27.3%	38.7%	36.4%	65.9%	99.6%	98.5%			48.7%
Eddy Artesia		31.1%	24.0%	21.3%	20.0%	29.9%	62.4%	97.1%	97.7%	98.3%			53.5%
Eddy Carlsbad		26.9%	23.2%	19.9%	27.2%	26.7%	27.7%	59.6%	96.2%	95.3%			44.7%
Lea		24.6%	21.4%	26.4%	20.4%	35.1%	20.0%	61.7%	98.1%	95.1%			44.7%
Lincoln		23.1%	31.9%	16.9%	20.0%	45.8%	46.6%	66.2%	99.0%	89.4%			48.8%
Roosevelt		24.3%	14.5%	0.0%									12.9%
SE Region 4 Total		27.4%	23.6%	19.0%	22.8%	35.5%	40.6%	70.9%	98.2%	95.5%			48.2%
East Dona Ana		28.5%	31.6%	28.5%	37.3%	35.6%	41.8%	95.7%	99.4%	97.5%			55.1%
Grant		38.7%	27.7%	18.1%	30.7%	33.2%	49.3%	65.9%	100.0%	96.1%			51.1%
Luna		37.1%	38.5%	26.9%	47.7%	43.2%	27.4%	51.5%	99.0%	96.9%			52.0%
Otero		37.3%	31.9%	28.1%	38.4%	32.8%	32.0%	52.8%	97.9%	99.0%			50.0%
South Dona Ana		41.6%	35.7%	27.7%	32.6%	37.6%	56.0%	93.3%	98.9%	97.9%			57.9%
West Dona Ana		35.1%	29.6%	37.4%	41.5%	39.3%	19.9%	62.5%	99.2%	97.7%			51.4%
SW Region 5 Total		36.4%	32.5%	27.8%	38.0%	37.0%	37.7%	69.3%	98.9%	97.2%			52.8%
STATE TOTAL		25.8%	24.2%	26.3%	30.1%	38.6%	42.1%	66.1%	98.5%	98.5%			50.0%

Annual and Auto Renewals are included
No data available for October 2017

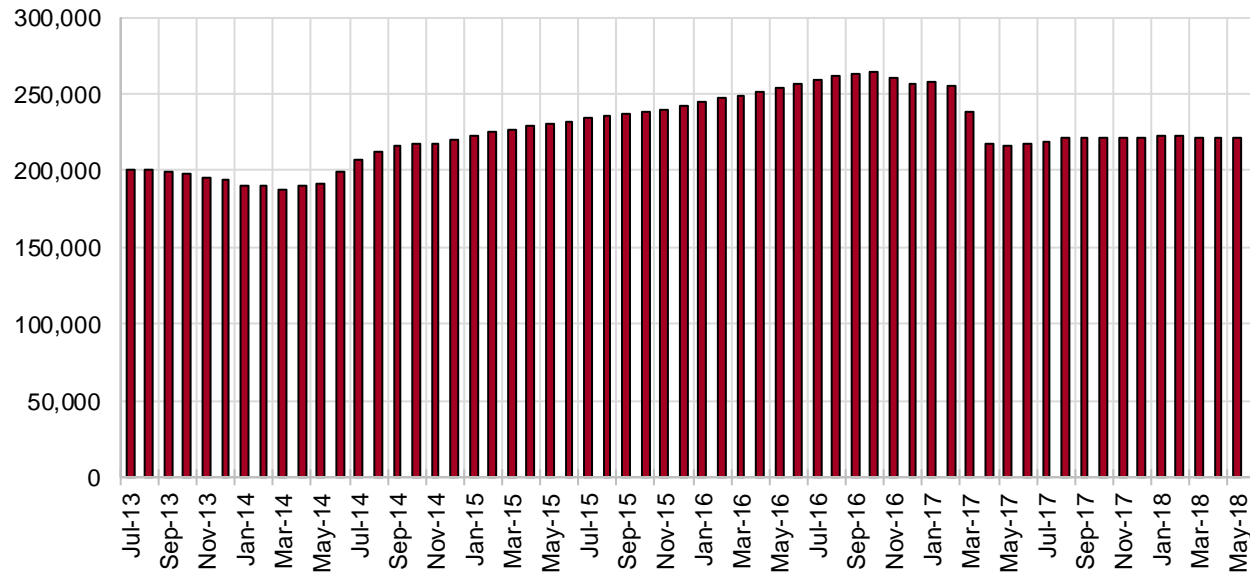
SNAP Cases by Field Office⁶

Office	Jul-17	Jun-18	Jul-18	Percent Change	
				Jul-17- Jul-18	Jun-18- Jul-18
Chaves County ISD	7,111	7,066	7,044	-0.9%	-0.3%
Cibola County ISD	3,647	3,627	3,655	0.2%	0.8%
Colfax County ISD	1,576	1,637	1,623	3.0%	-0.9%
Curry County ISD	4,639	6,656	6,722	44.9%	1.0%
East Dona Ana County ISD	8,029	7,979	7,983	-0.6%	0.1%
Eddy Artesia County ISD	1,699	1,633	1,628	-4.2%	-0.3%
Eddy Carlsbad County ISD	3,336	2,940	2,917	-12.6%	-0.8%
Grant County ISD	3,500	3,458	3,411	-2.5%	-1.4%
Guadalupe County ISD	706	706	700	-0.8%	-0.8%
Hidalgo County ISD	411	444	451	9.7%	1.6%
Lea County ISD	5,678	5,648	5,611	-1.2%	-0.7%
Lincoln County ISD	1,900	1,882	1,853	-2.5%	-1.5%
Luna County ISD	4,227	4,196	4,142	-2.0%	-1.3%
McKinley County ISD	9,492	9,772	9,807	3.3%	0.4%
Northeast Bernalillo County ISD	19,600	20,267	20,226	3.2%	-0.2%
Northwest Bernalillo County ISD	17,825	19,475	19,645	10.2%	0.9%
Otero County ISD	5,416	5,568	5,541	2.3%	-0.5%
Quay County ISD	1,244	1,256	1,264	1.6%	0.6%
Rio Arriba County ISD	6,792	6,686	6,689	-1.5%	0.0%
Roosevelt County ISD	1,675	0	0	-100.0%	N/A
San Juan County ISD	13,230	13,409	13,468	1.8%	0.4%
San Miguel County ISD	4,940	4,899	4,913	-0.5%	0.3%
Sandoval County ISD	10,783	10,972	11,025	2.2%	0.5%
Santa Fe County ISD	10,178	9,721	9,622	-5.5%	-1.0%
Sierra County ISD	2,671	2,678	2,665	-0.2%	-0.5%
Socorro County ISD	2,827	2,772	2,740	-3.1%	-1.2%
South Dona Ana ISD	8,602	8,511	8,512	-1.0%	0.0%
Southeast Bernalillo County ISD	12,109	11,867	11,834	-2.3%	-0.3%
Southwest Bernalillo County ISD	18,054	18,712	18,661	3.4%	-0.3%
Taos County ISD	4,043	4,139	4,150	2.6%	0.3%
Torrance County ISD	3,316	3,398	3,403	2.6%	0.1%
Valencia North County ISD	8,227	8,409	8,447	2.7%	0.5%
Valencia South County ISD	6	0	2	-66.7%	N/A
West Dona Ana County ISD	10,630	10,816	10,797	1.6%	-0.2%
Centralized Units	19	46	44	131.6%	-4.3%
Statewide Total	218,138	221,245	221,195	1.4%	0.0%

SNAP Cases by Region⁶

Region				Percent Change	
	Jul-17	Jun-18	Jul-18	Jul-17- Jul-18	Jun-18- Jul-18
Region 1 - NW	40,100	40,667	40,784	1.7%	0.3%
Region 2 - NE	40,262	40,016	39,986	-0.7%	-0.1%
Region 3 - Central	70,904	73,719	73,769	4.0%	0.1%
Region 4 - SE	26,038	25,825	25,775	-1.0%	-0.2%
Region 5 - SW	40,815	40,972	40,837	0.1%	-0.3%
Centralized Units	19	46	44	131.6%	-4.3%
Statewide Total	218,138	221,245	221,195	1.4%	0.0%

SNAP Caseload: SFY-14 to Current

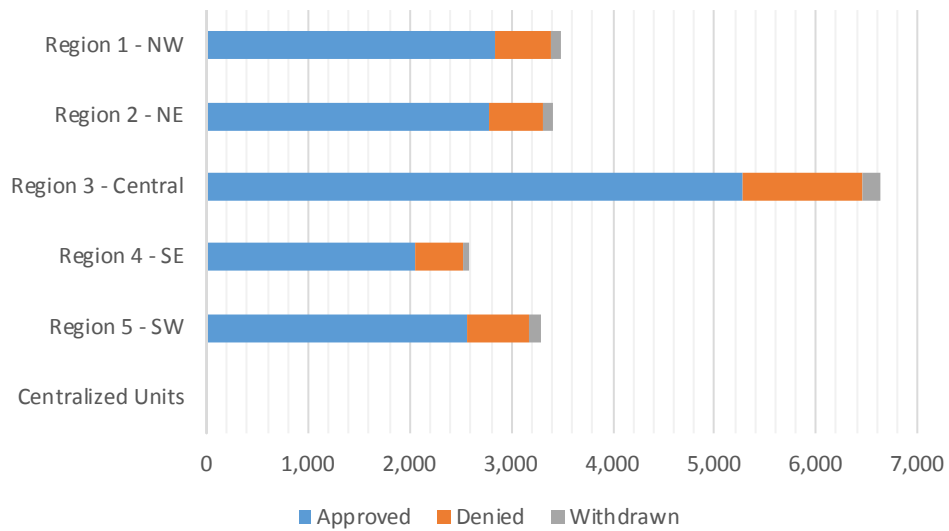


SNAP Initial Applications by Field Office^{4,11}
July 2018

Office	Approved	Denied	Withdrawn	Total Cases Processed
Chaves County ISD	503	126	18	647
Cibola County ISD	300	49	6	355
Colfax County ISD	103	15	4	122
Curry County ISD	551	113	21	685
East Dona Ana County ISD	546	169	34	749
Eddy Artesia County ISD	137	25	3	165
Eddy Carlsbad County ISD	269	68	4	341
Grant County ISD	230	59	7	296
Guadalupe County ISD	37	10	3	50
Hidalgo County ISD	0	0	0	0
Lea County ISD	458	113	17	588
Lincoln County ISD	122	28	3	153
Luna County ISD	253	43	16	312
McKinley County ISD	620	109	22	751
Northeast Bernalillo County ISD	1,558	391	63	2,012
Northwest Bernalillo County ISD	1,317	298	40	1,655
Otero County ISD	373	84	6	463
Quay County ISD	80	17	3	100
Rio Arriba County ISD	452	59	11	522
Roosevelt County ISD	5	3	0	8
San Juan County ISD	1,115	232	37	1,384
San Miguel County ISD	314	37	13	364
Sandoval County ISD	809	220	37	1,066
Santa Fe County ISD	662	124	14	800
Sierra County ISD	132	21	4	157
Socorro County ISD	142	27	5	174
South Dona Ana ISD	405	89	20	514
Southeast Bernalillo County ISD	893	168	30	1,091
Southwest Bernalillo County ISD	1,269	275	50	1,594
Taos County ISD	322	43	11	376
Torrance County ISD	233	48	9	290
Valencia North County ISD	539	104	33	676
Valencia South County ISD	0	0	0	0
West Dona Ana County ISD	761	170	26	957
Centralized Units	0	0	0	0
Statewide Total	15,510	3,337	570	19,417

SNAP Initial Applications by Region^{4,11} July 2018

Region	Approved	Denied	Withdrawn	Total Cases Processed
Region 1 - NW	2,848	542	107	3,497
Region 2 - NE	2,779	525	96	3,400
Region 3 - Central	5,270	1,180	192	6,642
Region 4 - SE	2,045	476	66	2,587
Region 5 - SW	2,568	614	109	3,291
Centralized Units	0	0	0	0
Statewide Total	15,510	3,337	570	19,417

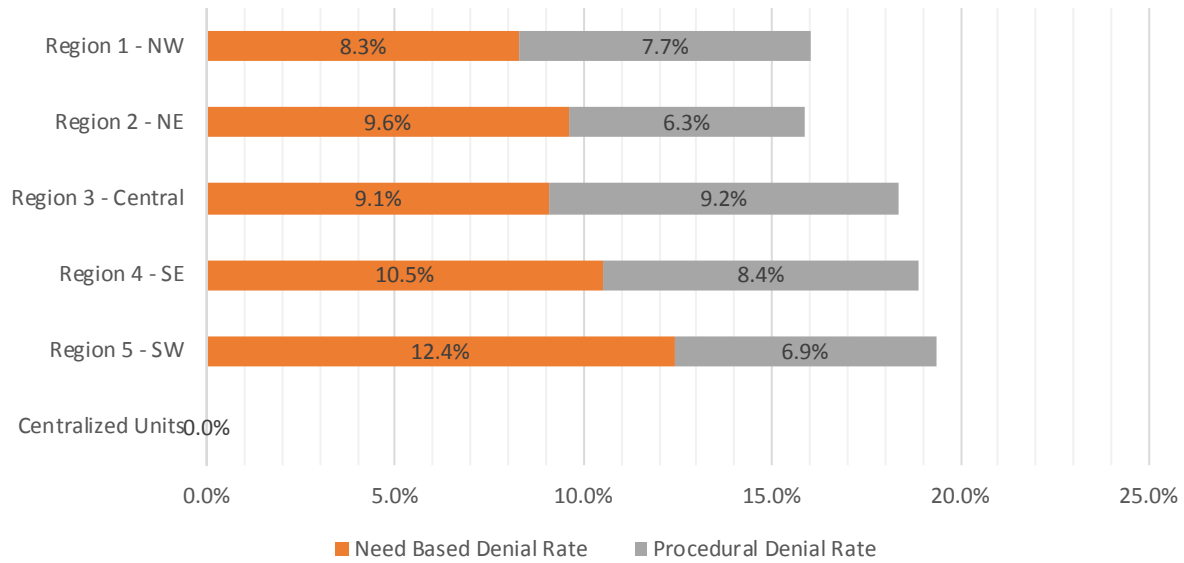


SNAP Initial Disposition Rates by Field Office^{4,11}
July 2018

Office	Approval Rate	Denial Rate	Need Based Denial Rate	Procedural Denial Rate
Chaves County ISD	80.0%	20.0%	12.5%	7.5%
Cibola County ISD	86.0%	14.0%	7.4%	6.6%
Colfax County ISD	87.3%	12.7%	10.2%	2.5%
Curry County ISD	83.0%	17.0%	9.5%	7.5%
East Dona Ana County ISD	76.4%	23.6%	14.8%	8.8%
Eddy Artesia County ISD	84.6%	15.4%	8.0%	7.4%
Eddy Carlsbad County ISD	79.8%	20.2%	9.2%	11.0%
Grant County ISD	79.6%	20.4%	11.7%	8.7%
Guadalupe County ISD	78.7%	21.3%	10.7%	10.6%
Hidalgo County ISD	0.0%	100.0%	100.0%	0.0%
Lea County ISD	80.2%	19.8%	10.9%	8.9%
Lincoln County ISD	81.3%	18.7%	8.7%	10.0%
Luna County ISD	85.5%	14.5%	9.1%	5.4%
McKinley County ISD	85.0%	15.0%	8.7%	6.3%
Northeast Bernalillo County ISD	79.9%	20.1%	9.3%	10.8%
Northwest Bernalillo County ISD	81.5%	18.5%	10.1%	8.4%
Otero County ISD	81.6%	18.4%	10.7%	7.7%
Quay County ISD	82.5%	17.5%	11.3%	6.2%
Rio Arriba County ISD	88.5%	11.5%	5.6%	5.9%
Roosevelt County ISD	62.5%	37.5%	37.5%	0.0%
San Juan County ISD	82.8%	17.2%	8.0%	9.2%
San Miguel County ISD	89.5%	10.5%	8.2%	2.3%
Sandoval County ISD	78.6%	21.4%	13.2%	8.2%
Santa Fe County ISD	84.2%	15.8%	8.7%	7.1%
Sierra County ISD	86.3%	13.7%	13.0%	0.7%
Socorro County ISD	84.0%	16.0%	7.7%	8.3%
South Dona Ana ISD	82.0%	18.0%	12.9%	5.1%
Southeast Bernalillo County ISD	84.2%	15.8%	8.0%	7.8%
Southwest Bernalillo County ISD	82.2%	17.8%	8.4%	9.4%
Taos County ISD	88.2%	11.8%	7.7%	4.1%
Torrance County ISD	82.9%	17.1%	9.3%	7.8%
Valencia North County ISD	83.8%	16.2%	7.8%	8.4%
Valencia South County ISD	0.0%	100.0%	100.0%	0.0%
West Dona Ana County ISD	81.7%	18.3%	12.6%	5.7%
Centralized Units				
Statewide Total	82.3%	17.7%	9.7%	8.0%

SNAP Initial Disposition Rates by Region^{4,11}
July 2018

Region	Approval Rate	Denial Rate	Need Based Denial Rate	Procedural Denial Rate
Region 1 - NW	84.0%	16.0%	8.3%	7.7%
Region 2 - NE	84.1%	15.9%	9.6%	6.3%
Region 3 - Central	81.7%	18.3%	9.1%	9.2%
Region 4 - SE	81.1%	18.9%	10.5%	8.4%
Region 5 - SW	80.7%	19.3%	12.4%	6.9%
Centralized Units				
Statewide Total	82.3%	17.7%	9.7%	8.0%



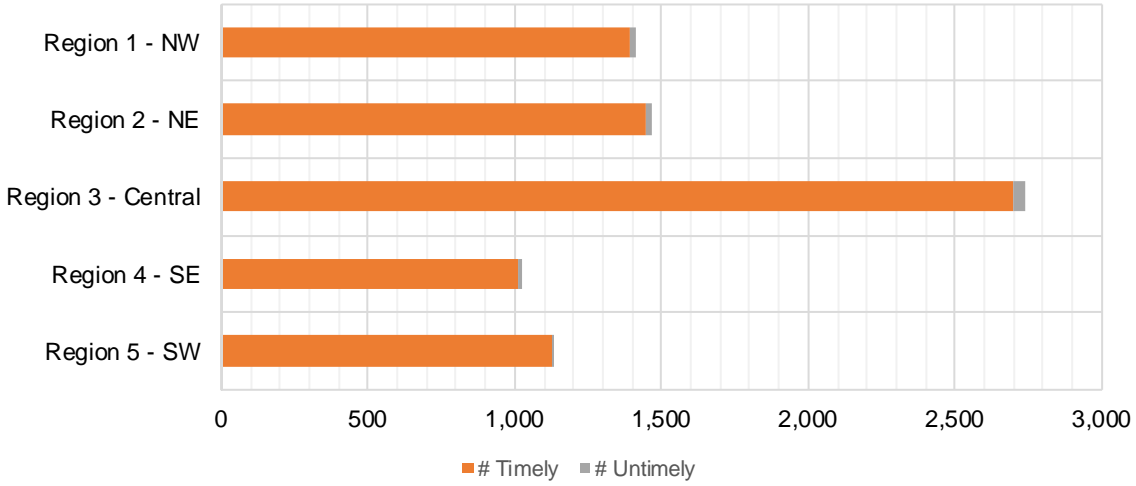
SNAP Expedite Timeliness by Field Office¹³
July 2018

Office Name	Total Expedited Approvals	# Timely	# Untimely	Percentage Timely
Chaves County ISD	218	218	0	100.0%
Cibola County ISD	137	137	0	100.0%
Colfax County ISD	51	51	0	100.0%
Curry County ISD	292	288	4	98.6%
East Dona Ana County ISD	239	237	2	99.2%
Eddy Artesia County ISD	57	56	1	98.2%
Eddy Carlsbad County ISD	145	142	3	97.9%
Grant County ISD	107	106	1	99.1%
Guadalupe County ISD	11	11	0	100.0%
Lea County ISD	252	251	1	99.6%
Lincoln County ISD	56	55	1	98.2%
Luna County ISD	103	103	0	100.0%
McKinley County ISD	300	294	6	98.0%
Northeast Bernalillo County ISD	838	816	22	97.4%
Northwest Bernalillo County ISD	709	697	12	98.3%
Otero County ISD	170	169	1	99.4%
Quay County ISD	42	42	0	100.0%
Rio Arriba County ISD	268	258	10	96.3%
Roosevelt County ISD	4	4	0	100.0%
San Juan County ISD	596	585	11	98.2%
San Miguel County ISD	185	183	2	98.9%
Sandoval County ISD	393	389	4	99.0%
Santa Fe County ISD	357	353	4	98.9%
Sierra County ISD	59	59	0	100.0%
Socorro County ISD	67	67	0	100.0%
South Dona Ana ISD	158	158	0	100.0%
Southeast Bernalillo County ISD	458	458	0	100.0%
Southwest Bernalillo County ISD	631	620	11	98.3%
Taos County ISD	163	161	2	98.8%
Torrance County ISD	106	106	0	100.0%
Valencia North County ISD	252	248	4	98.4%
West Dona Ana County ISD	359	357	2	99.4%
Statewide Total	7,783	7,679	104	98.7 %

SNAP Expedite Timeliness by Region¹³
July 2018

Region	Total Expedited Approvals	# Timely	# Untimely	Percentage Timely
Region 1 - NW	1,411	1,390	21	98.5%
Region 2 - NE	1,470	1,448	22	98.5%
Region 3 - Central	2,742	2,697	45	98.4%
Region 4 - SE	1,024	1,014	10	99.0%
Region 5 - SW	1,136	1,130	6	99.5%
Statewide Total	7,783	7,679	104	98.7%

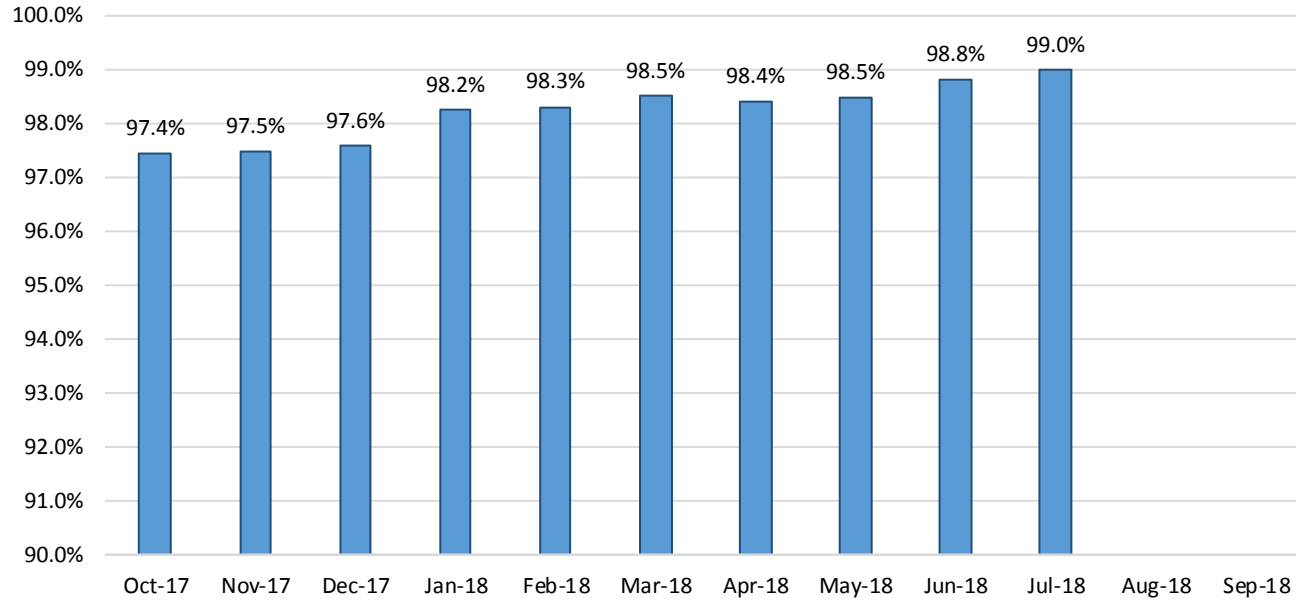
SNAP Expedite - Timeliness



SNAP: Percentage of Applications Processed Timely¹³

	Oct-17	Nov-17	Dec-17	Jan-18	Feb-18	Mar-18	Apr-18	May-18	Jun-18	Jul-18	Aug-18	Sep-18	Average
APT	97.4%	97.5%	97.6%	98.2%	98.3%	98.5%	98.4%	98.5%	98.8%	99.0%			98.2%

SNAP Application Processing Timeliness (APT)



SNAP Non-Expedite: Percentage of Initial Applications Processed Timely by Field Office¹³

	Oct-17	Nov-17	Dec-17	Jan-18	Feb-18	Mar-18	Apr-18	May-18	Jun-18	Jul-18	Aug-18	Sep-18	Average
Cibola	96.8%	97.2%	96.7%	92.9%	97.3%	100.0%	98.2%	100.0%	98.5%	99.4%			97.7%
McKinley	97.4%	98.8%	98.6%	99.3%	99.3%	99.6%	100.0%	99.1%	99.4%	99.7%			99.1%
San Juan	94.8%	93.5%	98.0%	97.8%	97.7%	97.9%	98.4%	98.4%	99.1%	99.4%			97.5%
Sierra	100.0%	100.0%	100.0%	100.0%	100.0%	100.0%	100.0%	98.7%	100.0%	100.0%			99.9%
Socorro	100.0%	96.8%	100.0%	98.9%	100.0%	98.8%	100.0%	100.0%	98.7%	100.0%			99.3%
Valencia North	96.5%	96.3%	96.6%	96.9%	99.6%	97.2%	98.5%	99.3%	99.3%	98.2%			97.8%
Valencia South	100.0%						100.0%						100.0%
NW Region 1 Total	96.5%	96.4%	98.0%	97.9%	98.7%	98.5%	99.0%	99.0%	99.2%	99.3%			98.2%
Colfax	100.0%	100.0%	98.2%	98.2%	100.0%	100.0%	100.0%	98.5%	100.0%	100.0%			99.5%
Guadalupe	100.0%	100.0%	100.0%	100.0%	100.0%	100.0%	100.0%	95.7%	100.0%	100.0%			99.6%
Quay	97.2%	100.0%	100.0%	100.0%	97.1%	100.0%	97.9%	100.0%	100.0%	100.0%			99.2%
Rio Arriba	97.0%	99.4%	91.2%	95.3%	97.7%	98.5%	97.5%	97.0%	100.0%	100.0%			97.4%
San Miguel	100.0%	98.5%	100.0%	99.4%	99.3%	99.2%	100.0%	100.0%	100.0%	100.0%			99.6%
Sandoval	98.2%	98.6%	97.8%	98.8%	98.9%	99.2%	99.2%	99.0%	98.5%	99.8%			98.8%
Santa Fe	97.6%	97.5%	99.6%	98.4%	99.3%	99.7%	98.4%	99.4%	98.9%	99.0%			98.8%
Taos	98.7%	98.7%	98.7%	99.2%	100.0%	98.3%	100.0%	98.6%	98.0%	98.0%			98.8%
NE Region 2 Total	98.2%	98.6%	97.8%	98.4%	99.0%	99.2%	99.0%	98.8%	99.0%	99.5%			98.7%
NE Bernalillo	95.4%	95.7%	94.9%	97.1%	98.1%	97.4%	98.3%	97.2%	99.1%	99.3%			97.3%
NW Bernalillo	97.6%	95.1%	96.7%	98.0%	97.0%	98.7%	97.7%	98.5%	99.0%	99.0%			97.7%
SE Bernalillo	96.0%	96.8%	97.4%	96.8%	99.7%	98.6%	99.0%	99.1%	99.0%	98.6%			98.1%
SW Bernalillo	97.9%	97.3%	99.1%	96.6%	96.8%	97.7%	99.2%	99.5%	99.5%	99.5%			98.3%
Torrance	98.9%	98.2%	96.6%	99.0%	97.1%	100.0%	100.0%	98.1%	100.0%	98.4%			98.6%
Cen. Region 3 Total	96.9%	96.3%	96.9%	97.2%	97.7%	98.1%	98.6%	98.5%	99.2%	99.1%			97.9%
Chaves	99.3%	98.9%	98.5%	99.7%	98.5%	99.3%	99.6%	100.0%	99.7%	99.3%			99.3%
Curry	95.7%	97.1%	97.9%	99.4%	99.1%	98.4%	98.1%	98.5%	98.0%	99.2%			98.1%
Eddy Artesia	100.0%	97.2%	100.0%	100.0%	98.5%	100.0%	95.4%	98.5%	98.5%	98.7%			98.7%
Eddy Carlsbad	94.8%	97.3%	100.0%	100.0%	96.8%	99.0%	100.0%	100.0%	100.0%	99.2%			98.7%
Lea	97.0%	98.3%	99.5%	98.5%	99.5%	98.0%	100.0%	98.6%	99.0%	99.0%			98.7%
Lincoln	97.8%	98.9%	100.0%	100.0%	100.0%	98.3%	98.4%	100.0%	98.4%	100.0%			99.2%
Roosevelt	100.0%	98.6%	100.0%	98.5%	100.0%	100.0%	100.0%	100.0%	100.0%	100.0%			99.7%
SE Region 4 Total	97.6%	98.2%	99.1%	99.4%	98.8%	98.7%	99.0%	99.2%	99.0%	99.2%			98.8%
East Dona Ana	99.6%	98.9%	100.0%	99.7%	99.6%	100.0%	100.0%	99.3%	99.7%	100.0%			99.7%
Grant	100.0%	99.0%	97.9%	100.0%	99.1%	99.0%	100.0%	99.0%	100.0%	98.4%			99.2%
Luna	100.0%	99.4%	100.0%	97.7%	97.9%	99.2%	99.4%	100.0%	99.3%	100.0%			99.3%
Otero	100.0%	98.9%	99.4%	100.0%	100.0%	100.0%	98.2%	99.5%	100.0%	98.4%			99.4%
South Dona Ana	100.0%	99.6%	100.0%	100.0%	99.6%	100.0%	99.6%	99.7%	98.6%	100.0%			99.7%
West Dona Ana	99.2%	98.7%	99.0%	100.0%	99.4%	99.5%	99.7%	99.5%	99.5%	99.5%			99.4%
SW Region 5 Total	99.7%	99.0%	99.5%	99.7%	99.4%	99.7%	99.5%	99.5%	99.4%	99.5%			99.5%
STATE TOTAL	97.7%	97.5%	98.1%	98.3%	98.6%	98.7%	99.0%	99.0%	99.2%	99.3%			98.5%

SNAP Expedite: Percentage of Initial Applications Processed Timely by Field Office¹³

	Oct-17	Nov-17	Dec-17	Jan-18	Feb-18	Mar-18	Apr-18	May-18	Jun-18	Jul-18	Aug-18	Sep-18	Average
Cibola	94.1%	100.0%	92.2%	98.5%	98.2%	94.5%	96.3%	97.3%	97.9%	100.0%			96.9%
McKinley	99.4%	99.4%	97.8%	97.3%	99.2%	99.7%	99.7%	99.7%	99.7%	98.0%			99.0%
San Juan	95.8%	94.2%	96.5%	96.7%	97.0%	97.1%	97.4%	96.6%	95.7%	98.2%			96.5%
Sierra	98.3%	100.0%	100.0%	100.0%	100.0%	100.0%	98.1%	100.0%	100.0%	100.0%			99.6%
Socorro	98.9%	100.0%	94.4%	98.0%	97.4%	100.0%	100.0%	97.4%	98.6%	100.0%			98.5%
Valencia North	97.1%	93.3%	97.1%	97.7%	98.2%	98.0%	99.0%	98.5%	98.3%	98.4%			97.6%
Valencia South	100.0%	100.0%				100.0%							100.0%
NW Region 1 Total	97.0%	96.4%	96.6%	97.4%	97.9%	97.9%	98.3%	97.9%	97.6%	98.5%			97.6%
Colfax	98.6%	100.0%	100.0%	100.0%	100.0%	100.0%	100.0%	100.0%	100.0%	100.0%			99.9%
Guadalupe	100.0%	100.0%	100.0%	100.0%	100.0%	100.0%	100.0%	100.0%	100.0%	100.0%			100.0%
Quay	100.0%	100.0%	100.0%	94.9%	92.6%	97.4%	96.3%	100.0%	97.3%	100.0%			97.8%
Rio Arriba	94.6%	97.3%	97.6%	97.3%	95.7%	99.0%	97.6%	99.2%	98.6%	96.3%			97.3%
San Miguel	99.1%	98.3%	99.4%	98.1%	97.5%	99.5%	98.0%	99.0%	100.0%	98.9%			98.8%
Sandoval	98.2%	98.3%	97.9%	98.4%	98.4%	99.5%	98.9%	98.4%	97.5%	99.0%			98.4%
Santa Fe	97.5%	97.7%	96.7%	98.1%	97.4%	98.6%	98.5%	98.6%	99.5%	98.9%			98.2%
Taos	98.7%	97.8%	95.7%	98.3%	98.7%	95.6%	97.5%	98.7%	98.4%	98.8%			97.8%
NE Region 2 Total	97.5%	98.0%	97.7%	98.1%	97.5%	98.7%	98.3%	98.8%	98.7%	98.5%			98.2%
NE Bernalillo	94.6%	96.4%	94.7%	98.2%	96.6%	96.5%	96.7%	98.3%	97.2%	97.4%			96.7%
NW Bernalillo	97.6%	95.6%	95.6%	97.1%	96.3%	97.4%	96.7%	95.1%	99.0%	98.3%			96.9%
SE Bernalillo	96.5%	95.7%	95.2%	96.6%	96.4%	97.7%	97.1%	96.6%	97.8%	100.0%			97.0%
SW Bernalillo	96.6%	96.4%	96.9%	97.8%	97.8%	96.8%	97.9%	97.9%	99.1%	98.3%			97.5%
Torrance	96.9%	96.5%	99.2%	97.7%	99.1%	95.5%	100.0%	97.9%	100.0%	100.0%			98.3%
Gen. Region 3 Total	96.3%	96.1%	95.7%	97.6%	96.8%	96.9%	97.1%	97.1%	98.3%	98.4%			97.0%
Chaves	98.1%	98.6%	99.2%	98.6%	99.5%	99.6%	98.2%	97.6%	99.6%	100.0%			98.9%
Curry	96.0%	98.7%	98.1%	98.3%	98.8%	97.3%	97.8%	99.3%	96.9%	98.6%			98.0%
Eddy Artesia	100.0%	98.4%	100.0%	95.9%	100.0%	98.1%	98.1%	96.2%	96.6%	98.2%			98.2%
Eddy Carlsbad	98.5%	98.6%	98.3%	99.4%	97.4%	98.7%	97.2%	98.2%	96.8%	97.9%			98.1%
Lea	98.4%	98.4%	98.3%	97.1%	96.1%	98.7%	96.8%	97.7%	99.5%	99.6%			98.1%
Lincoln	96.7%	98.6%	98.4%	100.0%	97.0%	100.0%	98.2%	100.0%	100.0%	98.2%			98.7%
Roosevelt	92.7%	100.0%	96.2%	100.0%	100.0%	100.0%	100.0%	100.0%	100.0%	100.0%			98.9%
SE Region 4 Total	97.4%	98.7%	98.4%	98.3%	98.1%	98.6%	97.6%	98.3%	98.2%	99.0%			98.3%
East Dona Ana	99.0%	98.8%	98.7%	99.7%	100.0%	99.2%	100.0%	98.9%	100.0%	99.2%			99.3%
Grant	97.9%	100.0%	100.0%	98.0%	100.0%	100.0%	99.4%	100.0%	99.3%	99.1%			99.4%
Luna	99.3%	100.0%	100.0%	99.3%	100.0%	100.0%	99.0%	100.0%	100.0%	100.0%			99.8%
Otero	98.8%	98.4%	98.5%	98.4%	98.7%	98.9%	99.1%	99.5%	98.9%	99.4%			98.9%
South Dona Ana	100.0%	99.4%	98.8%	99.0%	100.0%	99.3%	98.8%	99.4%	99.3%	100.0%			99.4%
West Dona Ana	99.5%	99.5%	98.6%	99.1%	99.7%	100.0%	99.5%	99.5%	100.0%	99.4%			99.5%
SW Region 5 Total	99.1%	99.3%	99.0%	98.9%	99.7%	99.6%	99.4%	99.4%	99.6%	99.5%			99.3%
STATE TOTAL	97.2%	97.3%	97.0%	97.9%	97.7%	98.0%	98.0%	98.0%	98.4%	98.7%			97.8%

SNAP: Percentage of Denied Initial Applications Processed Within 30 Days by Field Office¹³

	Oct-17	Nov-17	Dec-17	Jan-18	Feb-18	Mar-18	Apr-18	May-18	Jun-18	Jul-18	Aug-18	Sep-18	Average
Cibola	66.7%	50.0%	66.7%	65.9%	88.1%	77.1%	76.9%	93.0%	97.7%	87.8%			77.0%
McKinley	59.0%	57.8%	65.9%	47.9%	81.7%	66.2%	87.0%	95.6%	97.3%	93.6%			75.2%
San Juan	35.7%	51.8%	46.5%	66.8%	77.3%	83.0%	89.0%	90.8%	94.3%	95.3%			73.0%
Sierra	95.5%	90.9%	90.5%	91.7%	100.0%	100.0%	85.0%	100.0%	100.0%	95.2%			94.9%
Socorro	69.6%	68.2%	94.3%	100.0%	96.2%	87.5%	95.2%	100.0%	100.0%	100.0%			91.1%
Valencia North	45.9%	41.8%	45.0%	44.1%	78.8%	73.2%	90.8%	96.8%	98.0%	100.0%			71.4%
Valencia South													
NW Region 1 Total	48.3%	53.2%	55.5%	61.8%	80.5%	78.8%	88.6%	93.9%	96.5%	95.4%			75.3%
Colfax	100.0%	100.0%	100.0%	100.0%	95.2%	100.0%	95.2%	95.7%	95.2%	100.0%			98.1%
Guadalupe	73.3%	75.0%	90.0%	92.3%	75.0%	20.0%	80.0%	87.5%	100.0%	100.0%			79.3%
Quay	83.3%	33.3%	66.7%	70.6%	100.0%	44.4%	87.5%	100.0%	100.0%	100.0%			78.6%
Rio Arriba	70.1%	56.3%	43.0%	69.1%	72.3%	76.9%	82.5%	96.7%	92.2%	93.2%			75.2%
San Miguel	66.2%	77.3%	90.0%	92.1%	90.0%	85.5%	84.3%	94.4%	96.2%	100.0%			87.6%
Sandoval	70.8%	69.2%	74.6%	66.2%	85.8%	84.1%	92.3%	98.4%	100.0%	98.6%			84.0%
Santa Fe	64.7%	70.6%	62.1%	44.3%	79.6%	73.0%	82.5%	99.1%	96.9%	100.0%			77.3%
Taos	77.8%	79.2%	84.1%	84.4%	87.8%	82.9%	80.5%	95.0%	96.4%	97.7%			86.6%
NE Region 2 Total	70.8%	69.7%	68.8%	66.1%	83.3%	79.4%	86.6%	97.4%	97.3%	98.5%			81.8%
NE Bernalillo	43.5%	40.5%	44.9%	47.0%	84.7%	70.1%	86.1%	88.3%	94.3%	94.4%			69.4%
NW Bernalillo	41.7%	42.8%	48.7%	50.0%	78.9%	84.5%	85.1%	87.0%	95.9%	97.3%			71.2%
SE Bernalillo	52.3%	52.0%	74.2%	60.9%	93.5%	82.9%	83.5%	96.0%	94.5%	97.0%			78.7%
SW Bernalillo	63.9%	62.9%	50.9%	67.3%	95.3%	88.0%	90.3%	93.8%	95.2%	96.7%			80.4%
Torrance	60.4%	68.2%	51.0%	54.4%	84.8%	85.4%	93.1%	100.0%	97.8%	100.0%			79.5%
Gen. Region 3 Total	49.7%	50.0%	53.4%	55.5%	87.5%	80.8%	86.5%	91.1%	95.1%	96.3%			74.6%
Chaves	86.4%	85.7%	89.3%	91.5%	91.7%	81.3%	73.4%	93.5%	95.7%	100.0%			88.9%
Curry	63.5%	60.3%	80.9%	87.5%	95.0%	83.8%	89.4%	92.9%	98.8%	96.5%			84.9%
Eddy Artesia	75.8%	58.1%	76.9%	96.0%	86.7%	89.7%	92.0%	100.0%	96.3%	100.0%			87.1%
Eddy Carlsbad	60.7%	67.6%	76.4%	85.7%	94.8%	74.5%	86.3%	94.2%	92.9%	95.6%			82.9%
Lea	86.3%	63.8%	68.0%	82.6%	94.3%	87.0%	86.1%	94.4%	93.9%	98.2%			85.5%
Lincoln	55.0%	78.4%	94.9%	88.6%	89.3%	82.1%	93.3%	100.0%	83.3%	89.3%			85.4%
Roosevelt	77.1%	68.1%	88.4%	91.5%		100.0%	0.0%		100.0%	33.3%			69.8%
SE Region 4 Total	74.4%	69.2%	81.2%	88.3%	93.0%	83.2%	84.9%	94.4%	94.7%	97.1%			86.0%
East Dona Ana	81.2%	77.6%	72.7%	91.2%	92.1%	82.9%	83.8%	96.6%	97.6%	97.6%			87.3%
Grant	73.5%	81.1%	72.1%	80.0%	92.6%	96.3%	90.2%	97.4%	97.8%	91.5%			87.2%
Luna	55.8%	51.1%	65.9%	65.3%	90.2%	70.6%	89.1%	95.2%	96.4%	100.0%			78.0%
Otero	40.3%	38.6%	47.9%	40.7%	81.1%	84.1%	87.9%	98.8%	98.8%	96.4%			71.5%
South Dona Ana	70.8%	68.1%	63.2%	80.6%	81.1%	79.8%	92.9%	97.9%	98.8%	96.6%			83.0%
West Dona Ana	65.6%	55.7%	70.5%	79.5%	85.2%	86.4%	94.8%	98.4%	98.7%	97.6%			83.2%
SW Region 5 Total	66.6%	62.3%	66.5%	75.4%	86.4%	83.5%	89.8%	97.6%	98.2%	96.9%			82.3%
STATE TOTAL	59.5%	58.9%	62.6%	66.5%	86.1%	80.9%	87.3%	94.1%	96.2%	96.7%			78.9%

SNAP Renewals Processed by Field Office²⁰
July 2018

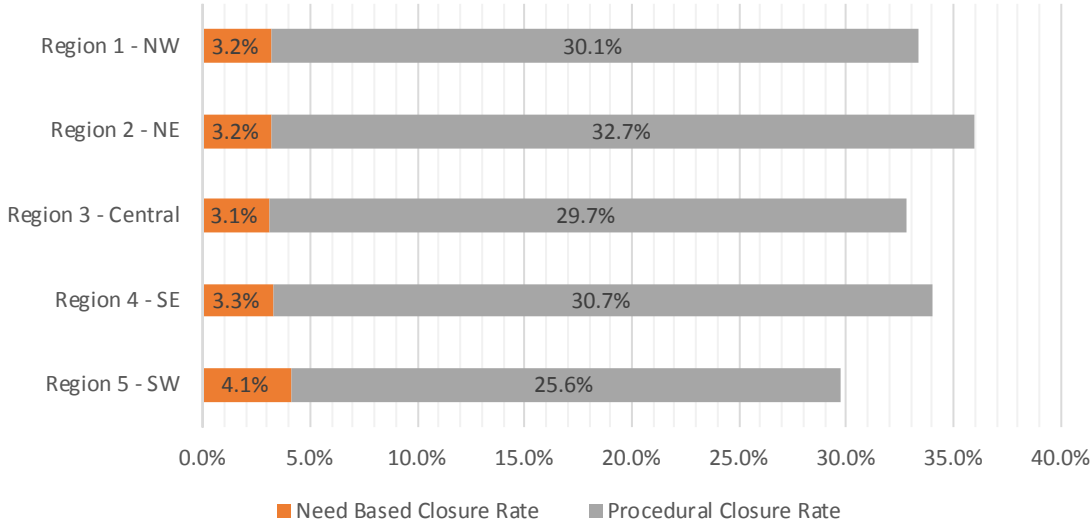
Office	Approvals	Closures	Need Based Closures	Procedural Closures
Chaves County ISD	239	123	16	107
Cibola County ISD	120	72	7	65
Colfax County ISD	55	22	3	19
Curry County ISD	262	98	7	91
East Dona Ana County ISD	292	124	21	103
Eddy Artesia County ISD	54	34	6	28
Eddy Carlsbad County ISD	81	57	4	53
Grant County ISD	97	54	5	49
Guadalupe County ISD	23	15	4	11
Hidalgo County ISD	11	5	0	5
Lea County ISD	197	113	8	105
Lincoln County ISD	73	42	4	38
Luna County ISD	135	63	6	57
McKinley County ISD	367	161	13	148
Northeast Bernalillo County ISD	625	319	29	290
Northwest Bernalillo County ISD	519	258	30	228
Otero County ISD	160	87	8	79
Quay County ISD	41	23	4	19
Rio Arriba County ISD	213	123	7	116
Roosevelt County ISD	0	0	0	0
San Juan County ISD	428	253	25	228
San Miguel County ISD	147	58	3	55
Sandoval County ISD	361	213	27	186
Santa Fe County ISD	299	172	12	160
Sierra County ISD	105	34	5	29
Socorro County ISD	112	40	2	38
South Dona Ana ISD	386	109	24	85
Southeast Bernalillo County ISD	377	204	11	193
Southwest Bernalillo County ISD	838	365	38	327
Taos County ISD	113	77	3	74
Torrance County ISD	101	53	5	48
Valencia North County ISD	267	139	15	124
Valencia South County ISD	0	0	0	0
West Dona Ana County ISD	359	167	20	147
Centralized Units	0	0	0	0
Statewide Total	7,457	3,677	372	3,305

SNAP Renewal Disposition Rates by Field Office²⁰
July 2018

Office	Approval Rate	Closure Rate	Need Based Closure Rate	Procedural Closure Rate
Chaves County ISD	66.0%	34.0%	4.4%	29.6%
Cibola County ISD	62.5%	37.5%	3.6%	33.9%
Colfax County ISD	71.4%	28.6%	3.9%	24.7%
Curry County ISD	72.8%	27.2%	1.9%	25.3%
East Dona Ana County ISD	70.2%	29.8%	5.0%	24.8%
Eddy Artesia County ISD	61.4%	38.6%	6.8%	31.8%
Eddy Carlsbad County ISD	58.7%	41.3%	2.9%	38.4%
Grant County ISD	64.2%	35.8%	3.3%	32.5%
Guadalupe County ISD	60.5%	39.5%	10.5%	28.9%
Hidalgo County ISD	68.8%	31.3%	0.0%	31.3%
Lea County ISD	63.5%	36.5%	2.6%	33.9%
Lincoln County ISD	63.5%	36.5%	3.5%	33.0%
Luna County ISD	68.2%	31.8%	3.0%	28.8%
McKinley County ISD	69.5%	30.5%	2.5%	28.0%
Northeast Bernalillo County ISD	66.2%	33.8%	3.1%	30.7%
Northwest Bernalillo County ISD	66.8%	33.2%	3.9%	29.3%
Otero County ISD	64.8%	35.2%	3.2%	32.0%
Quay County ISD	64.1%	35.9%	6.3%	29.7%
Rio Arriba County ISD	63.4%	36.6%	2.1%	34.5%
Roosevelt County ISD	0.0%	0.0%	0.0%	0.0%
San Juan County ISD	62.8%	37.2%	3.7%	33.5%
San Miguel County ISD	71.7%	28.3%	1.5%	26.8%
Sandoval County ISD	62.9%	37.1%	4.7%	32.4%
Santa Fe County ISD	63.5%	36.5%	2.5%	34.0%
Sierra County ISD	75.5%	24.5%	3.6%	20.9%
Socorro County ISD	73.7%	26.3%	1.3%	25.0%
South Dona Ana ISD	78.0%	22.0%	4.8%	17.2%
Southeast Bernalillo County ISD	64.9%	35.1%	1.9%	33.2%
Southwest Bernalillo County ISD	69.7%	30.3%	3.2%	27.2%
Taos County ISD	59.5%	40.5%	1.6%	38.9%
Torrance County ISD	65.6%	34.4%	3.2%	31.2%
Valencia North County ISD	65.8%	34.2%	3.7%	30.5%
Valencia South County ISD	0.0%	0.0%	0.0%	0.0%
West Dona Ana County ISD	68.3%	31.7%	3.8%	27.9%
Centralized Units	0.0%	0.0%	0.0%	0.0%
Statewide Total	67.0%	33.0%	3.3%	29.7%

SNAP Renewal Disposition Rates by Region²⁰
July 2018

Region	Approval Rate	Closure Rate	Need Based Closure Rate	Procedural Closure Rate
Region 1 - NW	66.7%	33.3%	3.2%	30.1%
Region 2 - NE	64.0%	36.0%	3.2%	32.7%
Region 3 - Central	67.2%	32.8%	3.1%	29.7%
Region 4 - SE	66.0%	34.0%	3.3%	30.7%
Region 5 - SW	70.3%	29.7%	4.1%	25.6%
Centralized Units				
Statewide Total	67.0%	33.0%	3.3%	29.7%



SNAP: Percentage of Approved Renewal Applications Processed by Normal Accessibility Date ¹¹													
	Oct-17	Nov-17	Dec-17	Jan-18	Feb-18	Mar-18	Apr-18	May-18	Jun-18	Jul-18	Aug-18	Sep-18	Average
Cibola		71.2%	73.1%	79.4%	90.4%	88.0%	93.1%	94.7%	92.6%	95.8%			86.5%
McKinley		90.4%	92.0%	95.6%	98.3%	96.4%	98.5%	98.0%	97.7%	97.5%			96.1%
San Juan		85.9%	80.5%	89.6%	94.2%	93.2%	96.5%	96.8%	92.9%	95.6%			91.7%
Sierra		98.1%	93.6%	92.8%	99.0%	99.0%	100.0%	100.0%	100.0%	96.2%			97.6%
Socorro		92.5%	89.7%	93.8%	100.0%	90.7%	94.3%	94.5%	99.0%	97.3%			94.7%
Valencia North		84.1%	86.9%	95.8%	98.6%	92.6%	96.0%	94.3%	94.0%	94.4%			93.0%
Valencia South													
NW Region 1 Total		87.1%	86.0%	91.2%	96.8%	93.3%	96.4%	96.4%	96.0%	96.1%			93.2%
Colfax		87.8%	82.5%	97.9%	100.0%	91.2%	91.1%	95.9%	95.9%	100.0%			93.6%
Guadalupe		94.4%	93.1%	100.0%	95.8%	100.0%	100.0%	100.0%	90.9%	100.0%			97.1%
Quay		94.3%	89.5%	100.0%	100.0%	88.0%	89.4%	98.1%	92.0%	95.1%			94.0%
Rio Arriba		79.7%	71.9%	94.2%	90.0%	88.3%	93.1%	90.3%	91.6%	86.4%			87.3%
San Miguel		90.4%	95.7%	98.5%	96.5%	97.4%	100.0%	98.5%	97.3%	98.6%			97.0%
Sandoval		90.1%	93.8%	96.2%	96.3%	96.3%	95.5%	94.5%	93.8%	96.1%			94.8%
Santa Fe		87.1%	92.0%	95.7%	96.9%	97.1%	98.1%	95.8%	96.4%	96.3%			95.0%
Taos		90.8%	91.5%	94.6%	97.0%	94.4%	98.3%	97.7%	97.9%	97.3%			95.5%
NE Region 2 Total		89.3%	88.8%	97.1%	96.6%	94.1%	95.7%	96.4%	94.5%	96.2%			94.3%
NE Bernalillo		71.8%	72.1%	85.0%	91.2%	92.6%	96.0%	95.1%	94.3%	95.2%			88.2%
NW Bernalillo		85.5%	80.4%	93.0%	96.1%	94.9%	96.8%	92.1%	95.1%	95.2%			92.1%
SE Bernalillo		79.7%	81.6%	91.7%	96.5%	96.5%	96.7%	93.6%	97.2%	97.1%			92.3%
SW Bernalillo		83.4%	89.0%	91.8%	96.1%	94.6%	96.3%	95.0%	96.9%	95.5%			93.2%
Torrance		74.5%	74.3%	90.3%	92.4%	95.7%	93.1%	97.4%	98.1%	98.0%			90.4%
Cen. Region 3 Total		79.0%	79.5%	90.3%	94.4%	94.9%	95.8%	94.6%	96.3%	96.2%			91.2%
Chaves		91.2%	92.0%	95.3%	98.6%	98.4%	100.0%	99.1%	97.8%	99.6%			96.9%
Curry		94.1%	81.9%	94.9%	94.6%	97.6%	98.9%	98.9%	97.9%	98.9%			95.3%
Eddy Artesia		94.1%	91.9%	95.2%	98.5%	98.3%	94.0%	92.3%	98.1%	98.1%			95.6%
Eddy Carlsbad		75.8%	90.8%	90.1%	93.6%	94.6%	96.4%	98.4%	98.4%	95.1%			92.6%
Lea		91.8%	90.9%	94.0%	95.8%	96.0%	98.8%	97.0%	96.3%	97.0%			95.3%
Lincoln		87.5%	92.6%	95.1%	100.0%	100.0%	100.0%	100.0%	96.2%	93.2%			96.1%
Roosevelt		93.6%	86.7%										90.1%
SE Region 4 Total		89.7%	89.5%	94.1%	96.8%	97.5%	98.0%	97.6%	97.5%	97.0%			95.3%
East Dona Ana		94.8%	93.1%	96.5%	98.2%	98.0%	97.5%	97.7%	96.6%	96.9%			96.6%
Grant		90.5%	93.5%	100.0%	96.7%	90.1%	94.1%	96.3%	92.1%	93.8%			94.1%
Luna		91.7%	84.0%	91.4%	95.1%	92.2%	95.7%	95.7%	94.2%	97.8%			93.1%
Otero		87.3%	86.5%	97.5%	93.5%	92.2%	93.5%	97.4%	88.6%	95.6%			92.5%
South Dona Ana		94.3%	93.1%	99.4%	99.1%	93.0%	93.9%	95.2%	96.8%	97.9%			95.9%
West Dona Ana		97.4%	95.0%	97.9%	98.9%	97.7%	99.2%	98.2%	98.1%	98.9%			97.9%
SW Region 5 Total		92.7%	90.9%	97.1%	96.9%	93.9%	95.7%	96.7%	94.4%	96.8%			95.0%
STATE TOTAL		86.4%	86.3%	93.6%	95.9%	94.7%	96.5%	95.7%	95.7%	95.7%			93.4%

*Includes cases in which the Renewal Packet was received after the 15th of the month, the due date for uninterrupted benefits.
No data available for October 2017*

SNAP: Percentage of Approved Renewal Applications Processed by Normal Accessibility Date ¹¹													
	Oct-17	Nov-17	Dec-17	Jan-18	Feb-18	Mar-18	Apr-18	May-18	Jun-18	Jul-18	Aug-18	Sep-18	Average
Cibola		72.8%	86.1%	82.3%	92.7%	96.6%	100.0%	100.0%	100.0%	99.0%			92.2%
McKinley		92.8%	93.9%	97.6%	99.0%	99.1%	99.7%	99.7%	99.7%	98.1%			97.7%
San Juan		89.0%	85.1%	92.8%	96.4%	97.4%	99.7%	99.4%	97.9%	98.6%			95.1%
Sierra		100.0%	97.5%	97.1%	100.0%	100.0%	100.0%	100.0%	100.0%	100.0%			99.4%
Socorro		94.7%	95.7%	96.9%	100.0%	100.0%	100.0%	98.9%	100.0%	100.0%			98.5%
Valencia North		89.1%	93.1%	96.3%	98.8%	98.7%	100.0%	99.5%	99.2%	100.0%			97.2%
Valencia South													
NW Region 1 Total		89.8%	91.9%	93.8%	97.8%	98.6%	99.9%	99.6%	99.4%	99.3%			96.7%
Colfax		95.1%	91.2%	100.0%	100.0%	100.0%	100.0%	97.6%	100.0%	100.0%			98.2%
Guadalupe		96.7%	92.9%	100.0%	100.0%	100.0%	100.0%	100.0%	100.0%	100.0%			98.8%
Quay		100.0%	95.6%	100.0%	100.0%	100.0%	100.0%	100.0%	100.0%	100.0%			99.5%
Rio Arriba		90.5%	84.5%	95.6%	94.6%	95.0%	100.0%	99.0%	98.3%	97.1%			95.0%
San Miguel		93.6%	96.9%	100.0%	96.5%	99.3%	100.0%	100.0%	99.2%	100.0%			98.4%
Sandoval		93.1%	97.0%	98.7%	98.5%	97.9%	100.0%	99.4%	99.7%	99.3%			98.2%
Santa Fe		91.6%	97.0%	97.8%	97.9%	99.7%	99.6%	99.6%	99.6%	100.0%			98.1%
Taos		95.8%	94.8%	96.8%	98.9%	98.4%	98.9%	99.1%	98.7%	100.0%			97.9%
NE Region 2 Total		94.6%	93.7%	98.6%	98.3%	98.8%	99.8%	99.3%	99.4%	99.6%			98.0%
NE Bernalillo		75.7%	77.9%	90.1%	93.2%	96.9%	99.8%	98.5%	98.8%	99.6%			92.3%
NW Bernalillo		88.7%	84.5%	95.0%	97.5%	98.7%	99.0%	97.5%	99.5%	99.7%			95.6%
SE Bernalillo		85.2%	87.3%	94.9%	97.7%	98.8%	99.0%	98.7%	99.4%	99.7%			95.6%
SW Bernalillo		88.9%	93.5%	95.2%	98.6%	98.1%	99.7%	99.1%	99.7%	99.6%			96.9%
Torrance		83.1%	80.7%	97.2%	95.5%	98.0%	99.0%	99.0%	100.0%	100.0%			94.7%
Gen. Region 3 Total		84.3%	84.8%	94.5%	96.5%	98.1%	99.3%	98.6%	99.5%	99.7%			95.0%
Chaves		92.0%	92.0%	96.8%	99.5%	99.1%	100.0%	100.0%	98.0%	100.0%			97.5%
Curry		94.6%	85.4%	96.7%	96.3%	98.3%	100.0%	100.0%	99.4%	99.1%			96.7%
Eddy Artesia		100.0%	96.0%	100.0%	100.0%	98.2%	97.6%	100.0%	100.0%	100.0%			99.1%
Eddy Carlsbad		80.3%	94.4%	95.7%	94.1%	97.4%	97.1%	100.0%	100.0%	100.0%			95.4%
Lea		94.6%	94.2%	97.5%	97.6%	97.8%	98.6%	98.7%	99.4%	99.4%			97.5%
Lincoln		88.5%	95.7%	95.9%	100.0%	100.0%	100.0%	100.0%	95.5%	95.3%			96.8%
Roosevelt		92.9%	85.0%										88.9%
SE Region 4 Total		91.8%	91.8%	97.1%	97.9%	98.5%	98.9%	99.8%	98.7%	99.0%			97.1%
East Dona Ana		96.8%	97.8%	99.0%	99.2%	99.2%	100.0%	99.6%	99.6%	99.6%			99.0%
Grant		94.2%	99.1%	100.0%	100.0%	98.8%	100.0%	100.0%	100.0%	96.9%			98.8%
Luna		96.9%	90.2%	92.9%	96.5%	97.6%	98.3%	99.1%	96.7%	100.0%			96.5%
Otero		96.2%	96.4%	100.0%	97.8%	100.0%	99.2%	100.0%	98.8%	100.0%			98.7%
South Dona Ana		97.4%	97.4%	100.0%	99.7%	99.6%	100.0%	99.3%	100.0%	100.0%			99.3%
West Dona Ana		99.1%	98.2%	99.1%	100.0%	99.3%	100.0%	99.7%	99.6%	100.0%			99.4%
SW Region 5 Total		96.8%	96.5%	98.5%	98.9%	99.1%	99.6%	99.6%	99.1%	99.4%			98.6%
STATE TOTAL		90.4%	91.3%	96.2%	97.6%	98.4%	99.6%	99.2%	99.3%	99.3%			96.8%

Only includes cases in which the Renewal Packet was received by the 15th of the month, the due date for uninterrupted benefits.
No data available for October 2017

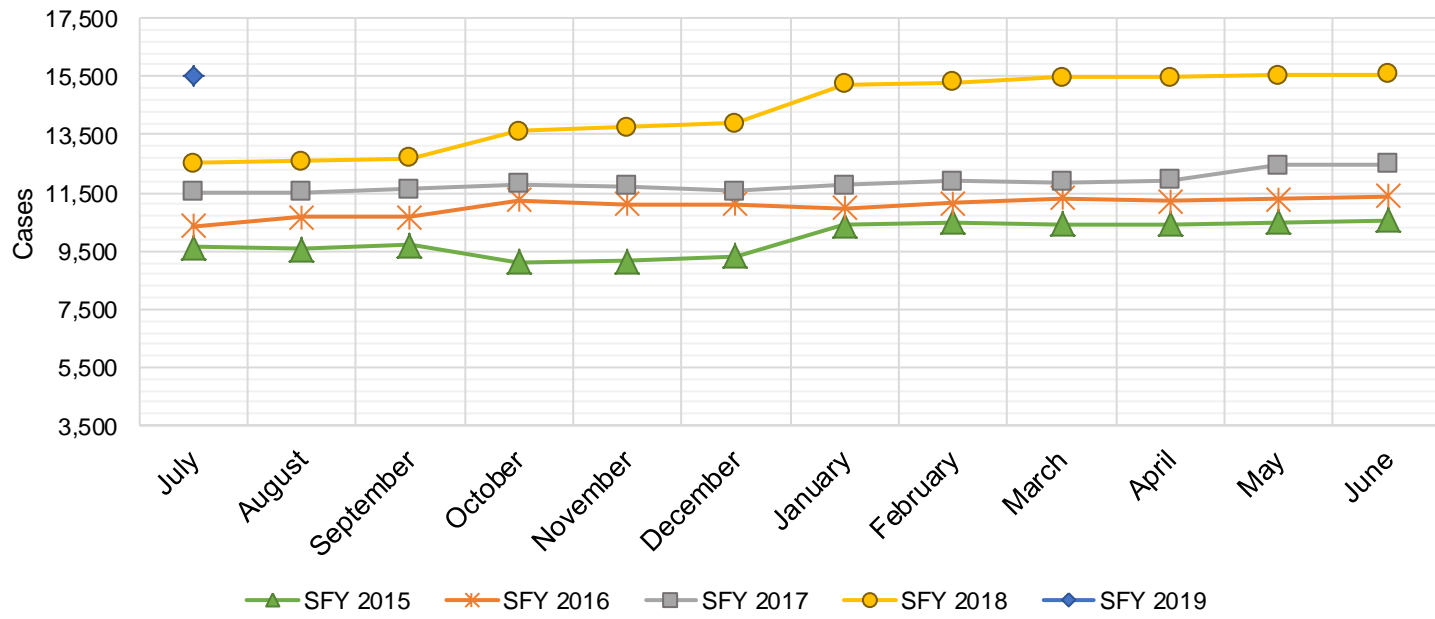
SNAP: Percentage of Closures at Renewal Processed by Certification End Date ¹¹													
	Oct-17	Nov-17	Dec-17	Jan-18	Feb-18	Mar-18	Apr-18	May-18	Jun-18	Jul-18	Aug-18	Sep-18	Average
Cibola		6.8%	3.3%	2.5%	9.1%	3.5%	10.0%	70.2%	95.2%	95.8%			32.9%
McKinley		3.7%	6.7%	6.8%	7.8%	6.1%	15.2%	85.4%	92.1%	92.5%			35.1%
San Juan		7.0%	5.1%	5.7%	8.0%	7.8%	32.5%	89.7%	93.3%	91.7%			37.9%
Sierra		19.2%	17.1%	8.8%	25.0%	15.6%	91.7%	100.0%	96.7%	73.5%			49.7%
Socorro		11.8%	4.3%	0.0%	7.7%	15.2%	77.3%	66.7%	100.0%	90.0%			41.4%
Valencia North		6.2%	9.8%	4.8%	10.5%	6.9%	75.4%	81.1%	94.7%	93.5%			42.5%
Valencia South													
NW Region 1 Total		9.1%	7.7%	4.8%	11.4%	9.2%	50.3%	82.2%	95.3%	89.5%			39.9%
Colfax		6.3%	11.1%	10.0%	3.4%	0.0%	51.9%	80.8%	84.2%	86.4%			37.1%
Guadalupe		7.7%	0.0%	0.0%	33.3%	0.0%	88.9%	75.0%	83.3%	93.3%			42.4%
Quay		15.8%	6.7%	0.0%	4.2%	7.7%	72.0%	80.0%	100.0%	100.0%			42.9%
Rio Arriba		6.1%	3.9%	2.9%	13.7%	3.8%	49.5%	70.3%	94.4%	91.9%			37.4%
San Miguel		4.7%	9.0%	8.6%	5.7%	6.8%	79.7%	88.7%	94.4%	100.0%			44.2%
Sandoval		12.9%	12.8%	3.0%	10.3%	7.1%	71.7%	81.0%	94.4%	92.5%			42.9%
Santa Fe		3.0%	5.8%	9.9%	4.9%	8.5%	77.5%	89.0%	93.6%	94.8%			43.0%
Taos		4.1%	3.7%	6.7%	3.3%	21.1%	52.7%	91.3%	91.5%	87.0%			40.1%
NE Region 2 Total		7.6%	6.6%	5.1%	9.9%	6.9%	68.0%	82.0%	92.0%	93.2%			41.2%
NE Bernalillo		3.0%	5.7%	3.5%	8.5%	9.4%	33.8%	86.3%	91.9%	94.7%			37.4%
NW Bernalillo		3.4%	3.8%	20.4%	51.8%	11.6%	60.9%	78.8%	96.0%	96.1%			47.0%
SE Bernalillo		4.1%	6.1%	4.2%	7.5%	7.7%	26.3%	84.2%	95.5%	94.6%			36.7%
SW Bernalillo		7.2%	6.6%	6.6%	7.5%	8.3%	77.0%	74.3%	91.1%	91.5%			41.1%
Torrance		3.6%	7.6%	5.1%	5.1%	20.5%	81.0%	92.4%	94.0%	92.5%			44.6%
Gen. Region 3 Total		4.3%	6.0%	8.0%	16.1%	11.5%	55.8%	83.2%	93.7%	93.9%			41.4%
Chaves		7.7%	12.2%	8.2%	13.9%	15.7%	94.5%	93.8%	93.3%	94.3%			48.2%
Curry		8.0%	3.8%	5.1%	5.8%	14.4%	44.5%	95.3%	92.1%	87.8%			39.7%
Eddy Artesia		6.9%	10.0%	10.0%	9.1%	11.1%	83.9%	75.0%	100.0%	91.2%			44.1%
Eddy Carlsbad		8.6%	4.7%	3.8%	6.8%	12.7%	8.7%	92.5%	95.4%	94.7%			36.4%
Lea		5.3%	14.8%	2.2%	7.0%	13.7%	31.9%	90.6%	90.8%	92.9%			38.8%
Lincoln		2.9%	9.3%	15.4%	10.3%	13.6%	24.2%	97.4%	85.7%	88.1%			38.6%
Roosevelt		15.0%	5.4%	0.0%									6.8%
SE Region 4 Total		7.8%	8.6%	6.4%	8.8%	13.6%	48.0%	90.8%	92.9%	91.5%			40.9%
East Dona Ana		12.9%	9.1%	5.6%	9.9%	14.6%	83.2%	84.4%	98.1%	89.5%			45.3%
Grant		6.0%	4.7%	3.4%	1.7%	10.9%	9.3%	86.2%	97.9%	96.3%			35.1%
Luna		5.6%	1.4%	3.2%	7.0%	9.1%	6.0%	85.9%	89.2%	95.2%			33.6%
Otero		2.9%	5.5%	3.5%	9.6%	2.8%	51.1%	74.1%	95.8%	95.4%			37.8%
South Dona Ana		13.8%	7.6%	14.3%	16.8%	8.3%	67.2%	71.4%	96.9%	98.2%			43.8%
West Dona Ana		8.9%	8.4%	6.8%	11.4%	8.8%	15.6%	89.5%	94.5%	92.2%			37.4%
SW Region 5 Total		8.3%	6.1%	6.1%	9.4%	9.1%	38.7%	81.9%	95.4%	94.5%			38.8%
STATE TOTAL		6.6%	7.1%	6.9%	12.3%	9.5%	52.2%	83.8%	93.8%	93.8%			40.7%

*Includes cases for which no renewal application was received.
No data available for October 2017*

State SNAP Supplement

SFY 2015 ¹²			SFY 2016 ^{12,9}			SFY 2017 ⁹			SFY 2018 ⁹			SFY 2019 ⁹		
	Cases	Expenditures		Cases	Expenditures		Cases	Expenditures		Cases	Expenditures		Cases	Expenditures
Jul-14	9,635	\$88,859	Jul-15	10,345	\$86,143	Jul-16	11,537	\$95,553	Jul-17	12,526	\$97,568	Jul-18	15,555	\$141,711
Aug-14	9,559	\$87,757	Aug-15	10,669	\$88,197	Aug-16	11,522	\$95,107	Aug-17	12,589	\$98,954	Aug-18		
Sep-14	9,688	\$87,372	Sep-15	10,676	\$88,426	Sep-16	11,613	\$94,472	Sep-17	12,679	\$97,546	Sep-18		
Oct-14	9,136	\$70,490	Oct-15	11,262	\$96,758	Oct-16	11,797	\$96,679	Oct-17	13,628	\$117,343	Oct-18		
Nov-14	9,152	\$69,955	Nov-15	11,099	\$91,996	Nov-16	11,735	\$93,689	Nov-17	13,748	\$119,055	Nov-18		
Dec-14	9,322	\$73,226	Dec-15	11,125	\$90,771	Dec-16	11,556	\$93,739	Dec-17	13,877	\$120,585	Dec-18		
Jan-15	10,384	\$84,578	Jan-16	10,977	\$92,760	Jan-17	11,763	\$96,074	Jan-18	15,246	\$135,993	Jan-19		
Feb-15	10,477	\$82,901	Feb-16	11,153	\$95,363	Feb-17	11,907	\$98,251	Feb-18	15,308	\$137,296	Feb-19		
Mar-15	10,423	\$87,461	Mar-16	11,332	\$96,751	Mar-17	11,853	\$96,693	Mar-18	15,482	\$139,132	Mar-19		
Apr-15	10,440	\$79,605	Apr-16	11,222	\$93,959	Apr-17	11,944	\$97,060	Apr-18	15,466	\$139,202	Apr-19		
May-15	10,491	\$82,511	May-16	11,283	\$95,271	May-17	12,457	\$96,940	May-18	15,525	\$139,397	May-19		
Jun-15	10,575	\$85,134	Jun-16	11,389	\$93,061	Jun-17	12,498	\$97,405	Jun-18	15,577	\$140,802	Jun-19		

TOTAL	119,282	\$979,850	132,532	\$1,109,455	142,182	\$1,151,662	171,651	\$1,482,874	15,555	\$141,711
AVERAGE	9,940	\$81,654	11,044	\$92,455	11,849	\$95,972	14,304	\$123,573	15,555	\$141,711



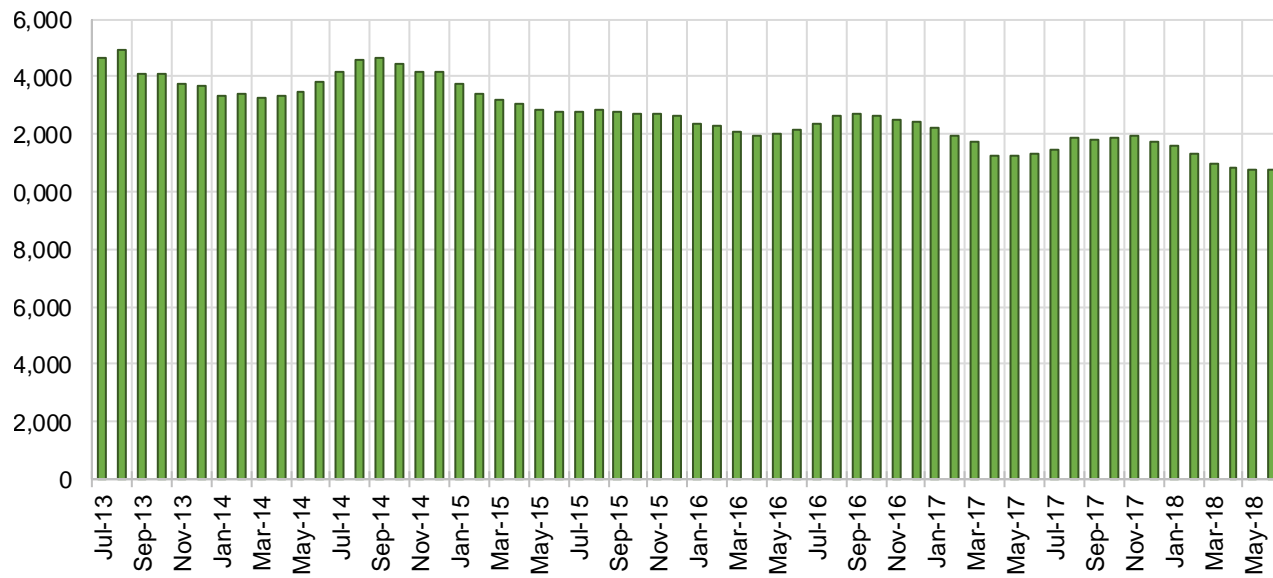
TANF Cases by Field Office⁶

Office				Percent Change	
	Jul-17	Jun-18	Jul-18	Jul-17- Jul-18	Jun-18- Jul-18
Chaves County ISD	547	456	466	-14.8%	2.2%
Cibola County ISD	132	147	152	15.2%	3.4%
Colfax County ISD	78	88	84	7.7%	-4.5%
Curry County ISD	495	655	678	37.0%	3.5%
East Dona Ana County ISD	482	410	439	-8.9%	7.1%
Eddy Artesia County ISD	125	99	103	-17.6%	4.0%
Eddy Carlsbad County ISD	182	130	136	-25.3%	4.6%
Grant County ISD	202	155	159	-21.3%	2.6%
Guadalupe County ISD	30	25	24	-20.0%	-4.0%
Hidalgo County ISD	20	22	23	15.0%	4.5%
Lea County ISD	420	363	358	-14.8%	-1.4%
Lincoln County ISD	107	103	96	-10.3%	-6.8%
Luna County ISD	219	232	218	-0.5%	-6.0%
McKinley County ISD	65	60	58	-10.8%	-3.3%
Northeast Bernalillo County ISD	985	934	969	-1.6%	3.7%
Northwest Bernalillo County ISD	790	772	790	0.0%	2.3%
Otero County ISD	279	273	292	4.7%	7.0%
Quay County ISD	85	61	59	-30.6%	-3.3%
Rio Arriba County ISD	408	392	400	-2.0%	2.0%
Roosevelt County ISD	167	0	0	-100.0%	N/A
San Juan County ISD	300	293	305	1.7%	4.1%
San Miguel County ISD	216	195	209	-3.2%	7.2%
Sandoval County ISD	538	522	569	5.8%	9.0%
Santa Fe County ISD	434	414	414	-4.6%	0.0%
Sierra County ISD	78	73	79	1.3%	8.2%
Socorro County ISD	92	92	96	4.3%	4.3%
South Dona Ana ISD	741	652	659	-11.1%	1.1%
Southeast Bernalillo County ISD	640	603	604	-5.6%	0.2%
Southwest Bernalillo County ISD	1,061	1,096	1,120	5.6%	2.2%
Taos County ISD	134	143	140	4.5%	-2.1%
Torrance County ISD	196	169	183	-6.6%	8.3%
Valencia North County ISD	464	445	454	-2.2%	2.0%
Valencia South County ISD	1	0	2	100.0%	N/A
West Dona Ana County ISD	770	703	716	-7.0%	1.8%
Centralized Units	0	6	5	NA	-16.7%
Statewide Total	11,483	10,783	11,059	-3.7%	2.6%

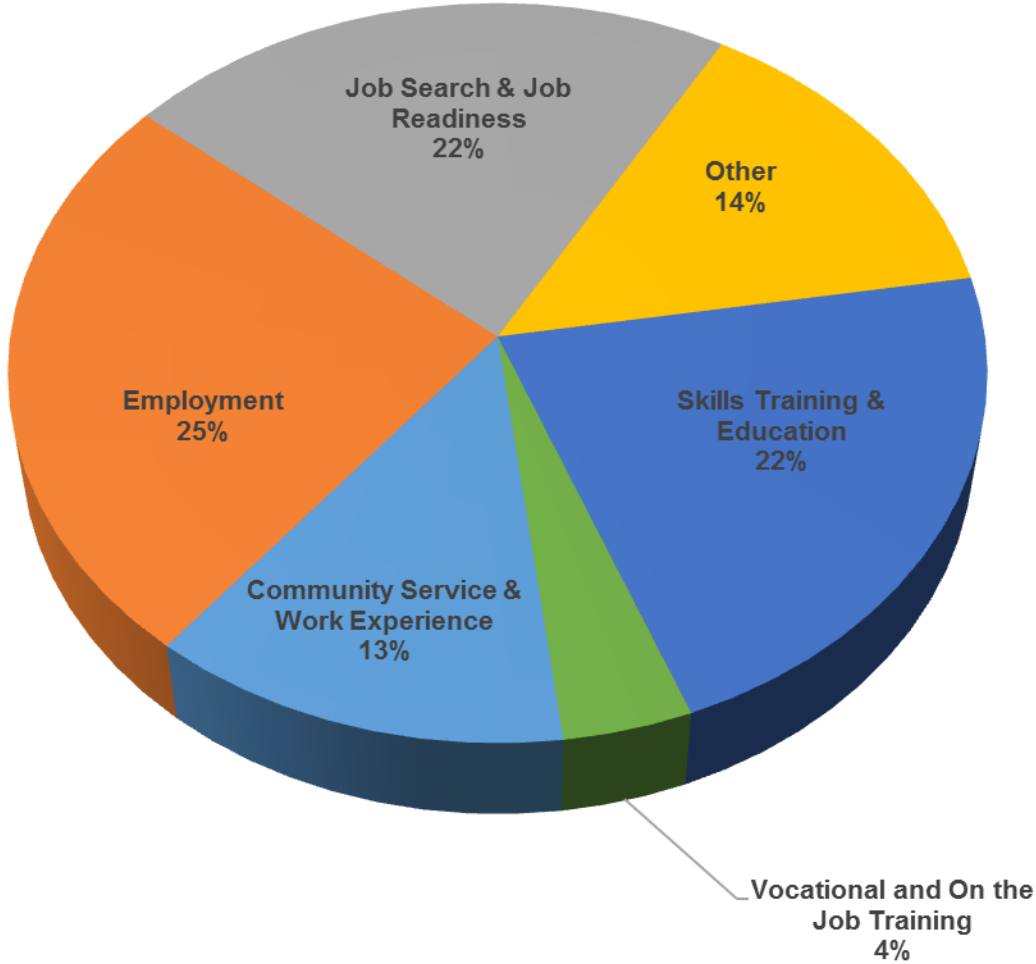
TANF Cases by Region⁶

Region	Jul-17	Jun-18	Jul-18	Percent Change	
				Jul-17- Jul-18	Jun-18- Jul-18
Region 1- NW	1,132	1,110	1,146	1.2%	3.2%
Region 2- NE	1,923	1,840	1,899	-1.2%	3.2%
Region 3- Central	3,672	3,574	3,666	-0.2%	2.6%
Region 4- SE	2,043	1,806	1,837	-10.1%	1.7%
Region 5- SW	2,713	2,447	2,506	-7.6%	2.4%
Centralized Units	0	6	5	N/A	-16.7%
Statewide Total	11,483	10,783	11,059	-3.7%	2.6%

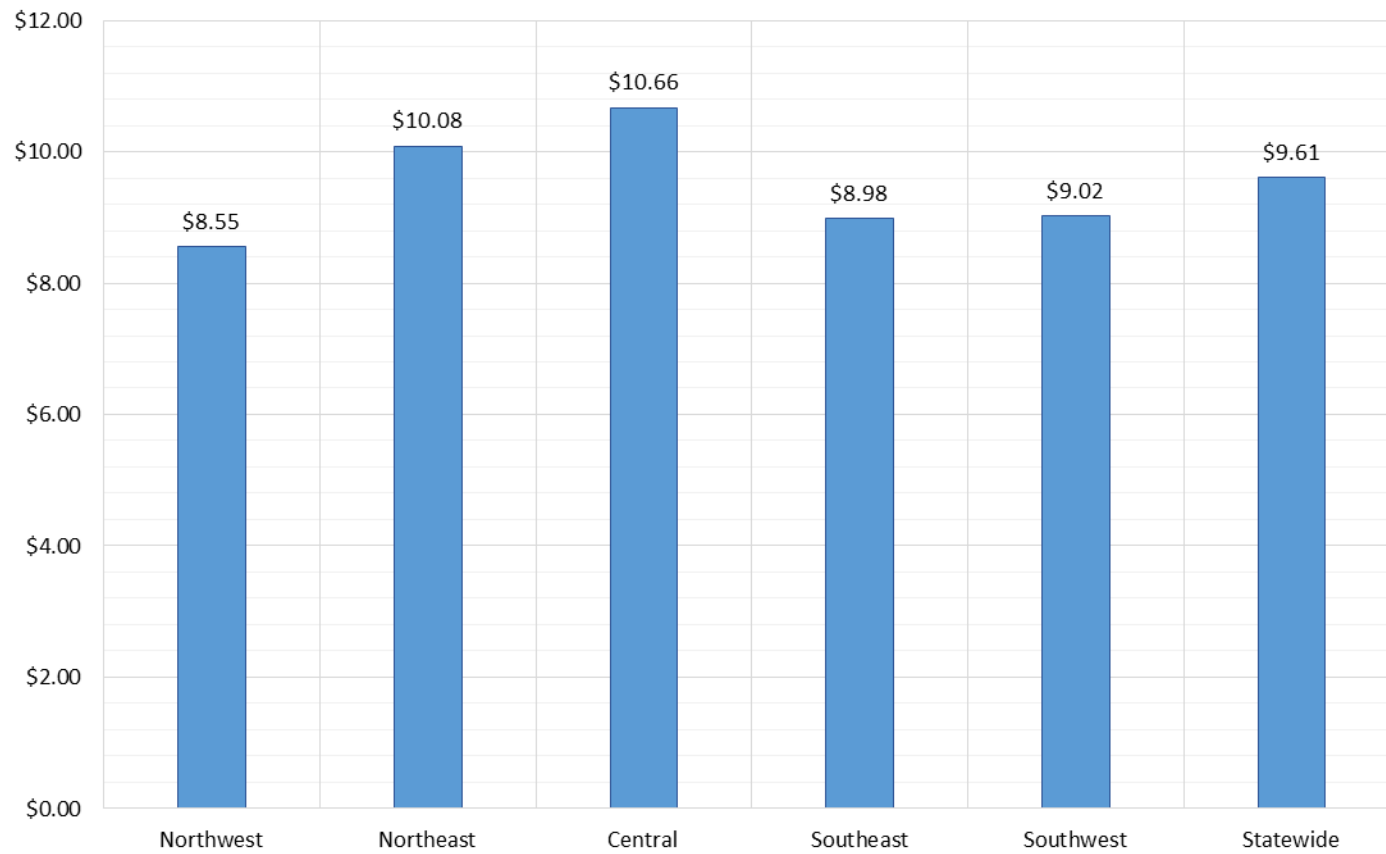
TANF Caseload: SFY-14 to Current



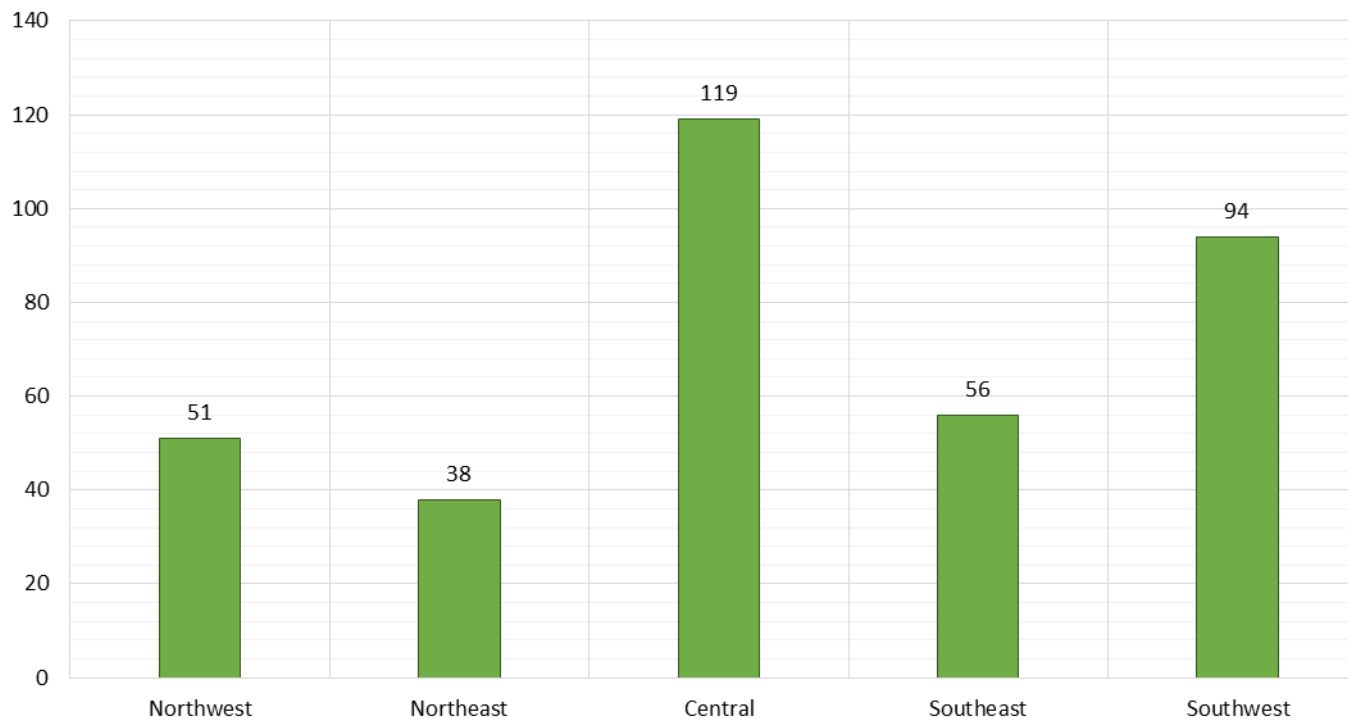
**NM Works Activity Placements on July 31, 2018
as reported by SL Start¹⁴**



Average Starting Hourly Wage of July 2018 TANF Employments
as reported by SL Start¹⁵



Number of New Employments in July 2018 by Region
as reported by SL Start¹⁵
Statewide Total: 358



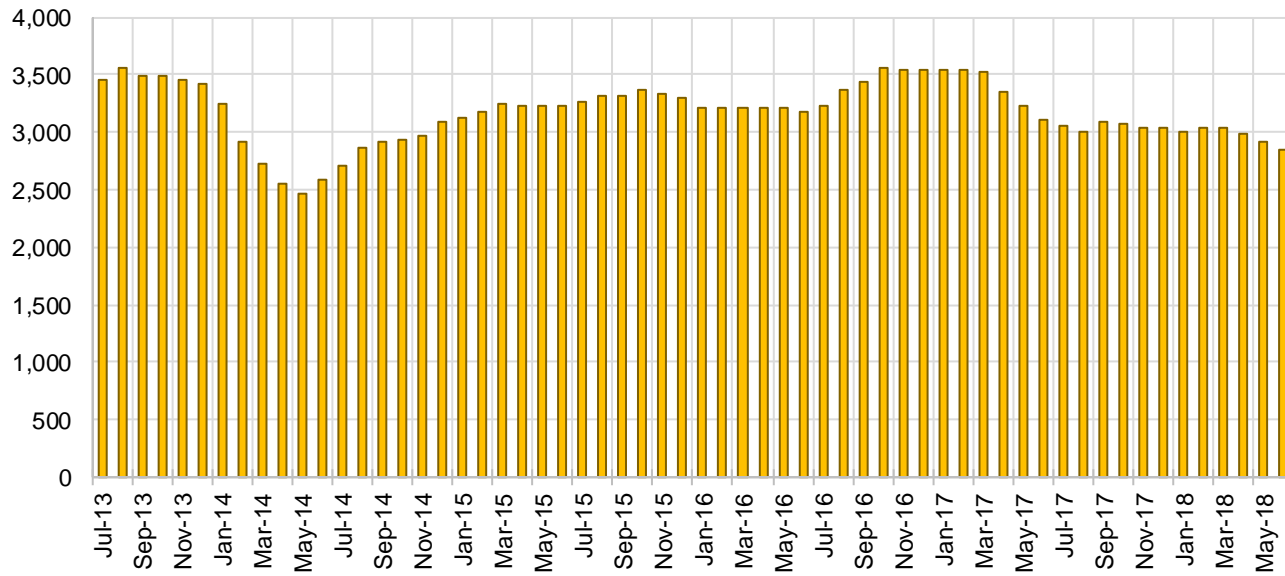
General Assistance Cases by Field Office⁶

Office	Jul-17	Jun-18	Jul-18	Percent Change	
				Jul-17- Jul-18	Jun-18- Jul-18
Chaves County ISD	130	118	120	-7.7%	1.7%
Cibola County ISD	50	37	34	-32.0%	-8.1%
Colfax County ISD	26	19	20	-23.1%	5.3%
Curry County ISD	66	81	78	18.2%	-3.7%
East Dona Ana County ISD	112	105	110	-1.8%	4.8%
Eddy Artesia County ISD	22	22	24	9.1%	9.1%
Eddy Carlsbad County ISD	71	74	74	4.2%	0.0%
Grant County ISD	75	56	49	-34.7%	-12.5%
Guadalupe County ISD	14	19	16	14.3%	-15.8%
Hidalgo County ISD	12	12	12	0.0%	0.0%
Lea County ISD	87	79	78	-10.3%	-1.3%
Lincoln County ISD	31	30	30	-3.2%	0.0%
Luna County ISD	64	51	53	-17.2%	3.9%
McKinley County ISD	38	52	54	42.1%	3.8%
Northeast Bernalillo County ISD	358	344	332	-7.3%	-3.5%
Northwest Bernalillo County ISD	289	298	292	1.0%	-2.0%
Otero County ISD	101	85	78	-22.8%	-8.2%
Quay County ISD	31	27	27	-12.9%	0.0%
Rio Arriba County ISD	89	73	83	-6.7%	13.7%
Roosevelt County ISD	20	0	0	-100.0%	N/A
San Juan County ISD	110	140	135	22.7%	-3.6%
San Miguel County ISD	76	71	75	-1.3%	5.6%
Sandoval County ISD	122	119	122	0.0%	2.5%
Santa Fe County ISD	165	127	131	-20.6%	3.1%
Sierra County ISD	33	27	28	-15.2%	3.7%
Socorro County ISD	45	36	32	-28.9%	-11.1%
South Dona Ana ISD	62	54	60	-3.2%	11.1%
Southeast Bernalillo County ISD	154	159	161	4.5%	1.3%
Southwest Bernalillo County ISD	202	176	176	-12.9%	0.0%
Taos County ISD	61	40	43	-29.5%	7.5%
Torrance County ISD	56	43	40	-28.6%	-7.0%
Valencia North County ISD	114	108	118	3.5%	9.3%
Valencia South County ISD	0	0	0	N/A	N/A
West Dona Ana County ISD	166	173	182	9.6%	5.2%
Centralized Units	0	0	0	N/A	N/A
Statewide Total	3,052	2,855	2,867	-6.1%	0.4%

General Assistance Cases by Region⁶

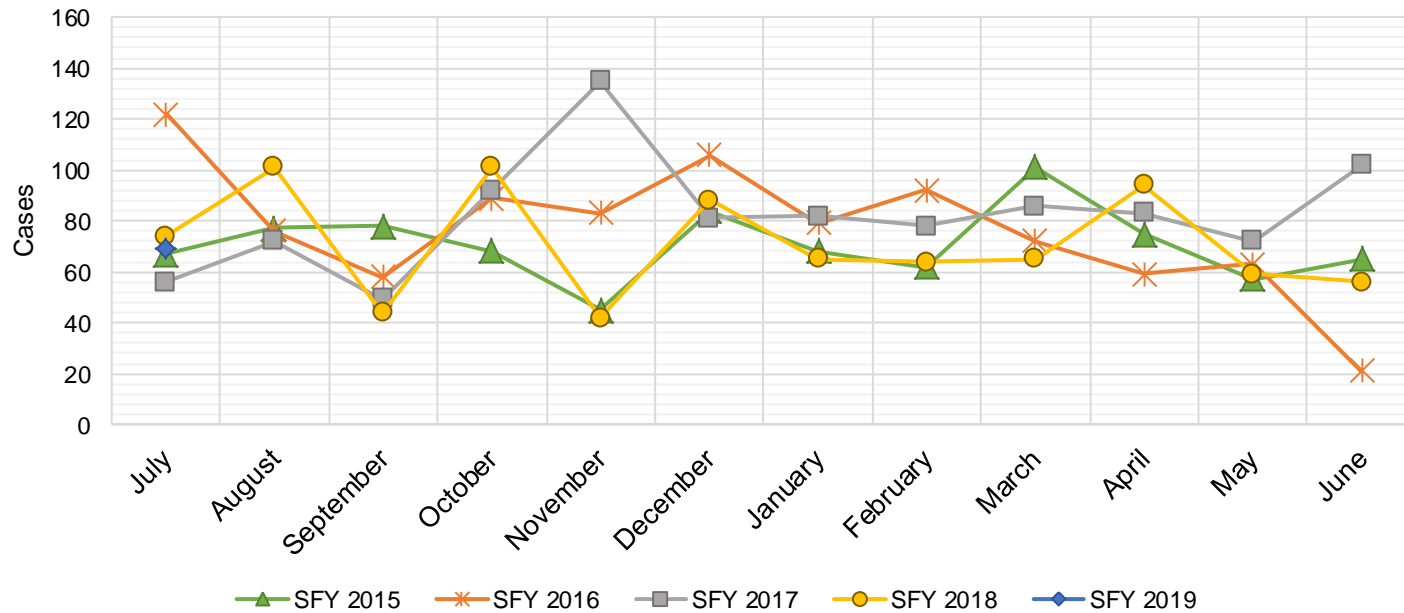
Region	Jul-17	Jun-18	Jul-18	Percent Change	
				Jul-17- Jul-18	Jun-18- Jul-18
Region 1 - NW	390	400	401	2.8%	0.2%
Region 2 - NE	584	495	517	-11.5%	4.4%
Region 3 - Central	1,059	1,020	1,001	-5.5%	-1.9%
Region 4 - SE	427	404	404	-5.4%	0.0%
Region 5 - SW	592	536	544	-8.1%	1.5%
Centralized Units	0	0	0	N/A	N/A
Statewide Total	3,052	2,855	2,867	-6.1%	0.4%

General Assistance Caseload: SFY-14 to Current



General Assistance Interim Assistance Reimbursements¹⁶

SFY 2015			SFY 2016			SFY 2017			SFY 2018			SFY 2019		
	Cases	Expenditures		Cases	Expenditures		Cases	Expenditures		Cases	Expenditures		Cases	Expenditures
Jul-14	67	\$144,679	Jul-15	122	\$342,648	Jul-16	56	\$164,970	Jul-17	74	\$241,438	Jul-18	69	\$228,333
Aug-14	77	\$244,233	Aug-15	76	\$245,236	Aug-16	72	\$223,182	Aug-17	101	\$339,301	Aug-18		
Sep-14	78	\$168,421	Sep-15	58	\$170,093	Sep-16	49	\$158,027	Sep-17	44	\$131,229	Sep-18		
Oct-14	68	\$182,265	Oct-15	89	\$277,912	Oct-16	92	\$257,830	Oct-17	101	\$335,752	Oct-18		
Nov-14	45	\$134,482	Nov-15	83	\$238,948	Nov-16	135	\$402,305	Nov-17	42	\$139,572	Nov-18		
Dec-14	84	\$239,926	Dec-15	106	\$388,102	Dec-16	81	\$227,569	Dec-17	88	\$245,453	Dec-18		
Jan-15	68	\$227,066	Jan-16	79	\$239,263	Jan-17	82	\$274,050	Jan-18	65	\$258,239	Jan-19		
Feb-15	62	\$159,564	Feb-16	92	\$296,332	Feb-17	78	\$227,569	Feb-18	64	\$195,815	Feb-19		
Mar-15	101	\$317,899	Mar-16	72	\$254,360	Mar-17	86	\$278,219	Mar-18	65	\$172,188	Mar-19		
Apr-15	75	\$199,038	Apr-16	59	\$208,631	Apr-17	83	\$267,187	Apr-18	94	\$312,340	Apr-19		
May-15	57	\$167,383	May-16	63	\$182,241	May-17	72	\$232,836	May-18	59	\$155,406	May-19		
Jun-15	65	\$188,159	Jun-16	21	\$51,760	Jun-17	102	\$306,228	Jun-18	56	\$159,268	Jun-19		
TOTAL	847	\$2,373,115	920	\$2,895,525	988	\$3,019,972	853	\$2,686,001	69	\$228,333				
AVERAGE	71	\$197,760	77	\$241,294	82	\$251,664	71	\$223,833	69	\$228,333				



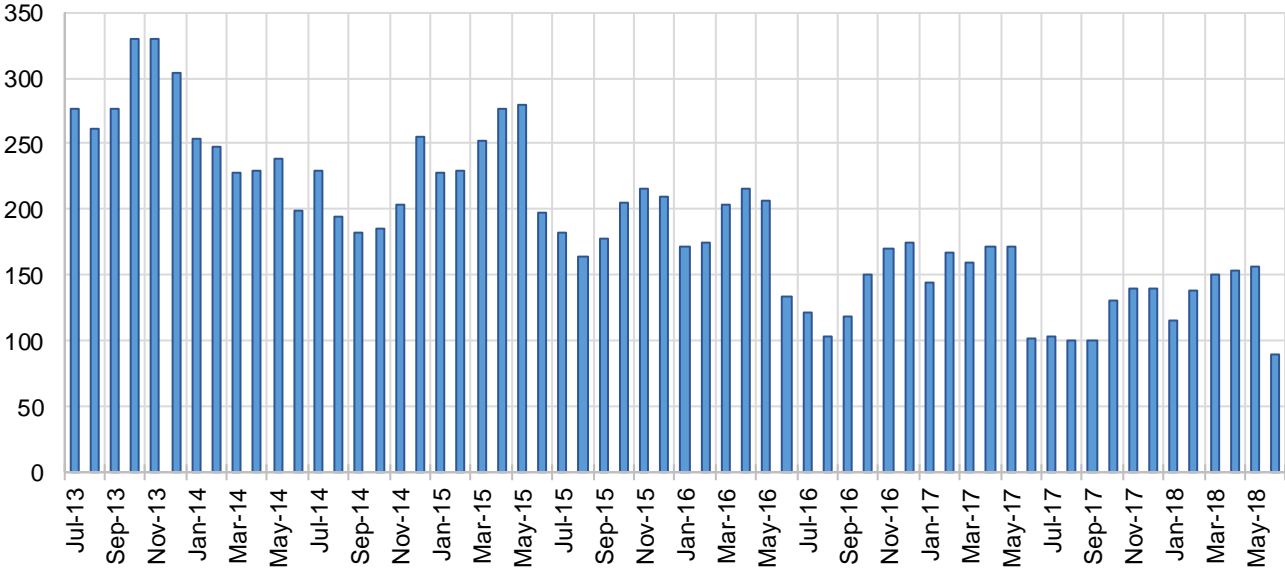
Education Works Cases by Field Office⁶

Office	Percent Change				
	Jul-17	Jun-18	Jul-18	Jul-17- Jul-18	Jun-18- Jul-18
Chaves County ISD	1	1	0	-100.0%	-100.0%
Cibola County ISD	0	0	0	N/A	N/A
Colfax County ISD	0	0	0	N/A	N/A
Curry County ISD	1	3	3	200.0%	0.0%
East Dona Ana County ISD	1	7	7	600.0%	0.0%
Eddy Artesia County ISD	1	1	1	0.0%	0.0%
Eddy Carlsbad County ISD	1	1	2	100.0%	100.0%
Grant County ISD	8	8	7	-12.5%	-12.5%
Guadalupe County ISD	1	0	0	-100.0%	N/A
Hidalgo County ISD	0	0	0	N/A	N/A
Lea County ISD	6	1	1	-83.3%	0.0%
Lincoln County ISD	0	0	0	N/A	N/A
Luna County ISD	0	1	1	N/A	0.0%
McKinley County ISD	0	0	0	N/A	N/A
Northeast Bernalillo County ISD	15	6	5	-66.7%	-16.7%
Northwest Bernalillo County ISD	7	10	10	42.9%	0.0%
Otero County ISD	0	1	1	N/A	0.0%
Quay County ISD	0	0	0	N/A	N/A
Rio Arriba County ISD	2	5	3	50.0%	-40.0%
Roosevelt County ISD	1	0	0	-100.0%	N/A
San Juan County ISD	3	1	1	-66.7%	0.0%
San Miguel County ISD	8	3	3	-62.5%	0.0%
Sandoval County ISD	8	6	6	-25.0%	0.0%
Santa Fe County ISD	8	7	5	-37.5%	-28.6%
Sierra County ISD	0	0	0	N/A	N/A
Socorro County ISD	1	0	0	-100.0%	N/A
South Dona Ana ISD	12	11	14	16.7%	27.3%
Southeast Bernalillo County ISD	3	2	2	-33.3%	0.0%
Southwest Bernalillo County ISD	10	10	11	10.0%	10.0%
Taos County ISD	2	1	1	-50.0%	0.0%
Torrance County ISD	0	0	0	N/A	N/A
Valencia North County ISD	1	0	0	-100.0%	N/A
Valencia South County ISD	0	0	0	N/A	N/A
West Dona Ana County ISD	3	3	3	0.0%	0.0%
Centralized Units	0	0	0	N/A	N/A
Statewide Total	104	89	87	-16.3%	-2.2%

Education Works Cases by Region⁶

Region	Jul-17	Jun-18	Jul-18	Percent Change	
				Jul-17- Jul-18	Jun-18- Jul-18
Region 1 - NW	5	1	1	-80.0%	0.0%
Region 2 - NE	29	22	18	-37.9%	-18.2%
Region 3 - Central	35	28	28	-20.0%	0.0%
Region 4 - SE	11	7	7	-36.4%	0.0%
Region 5 - SW	24	31	33	37.5%	6.5%
Centralized Units	0	0	0	N/A	N/A
Statewide Total	104	89	87	-16.3%	-2.2%

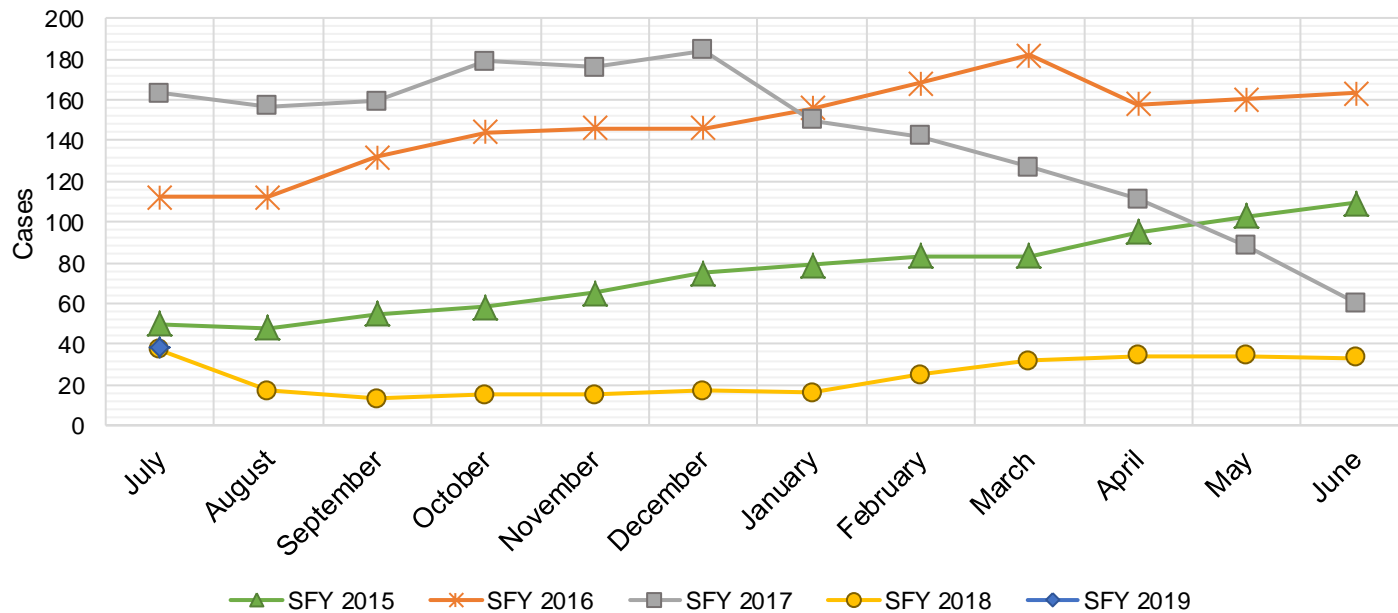
Education Works Caseload: SFY-14 to Current



Refugee Cash Assistance

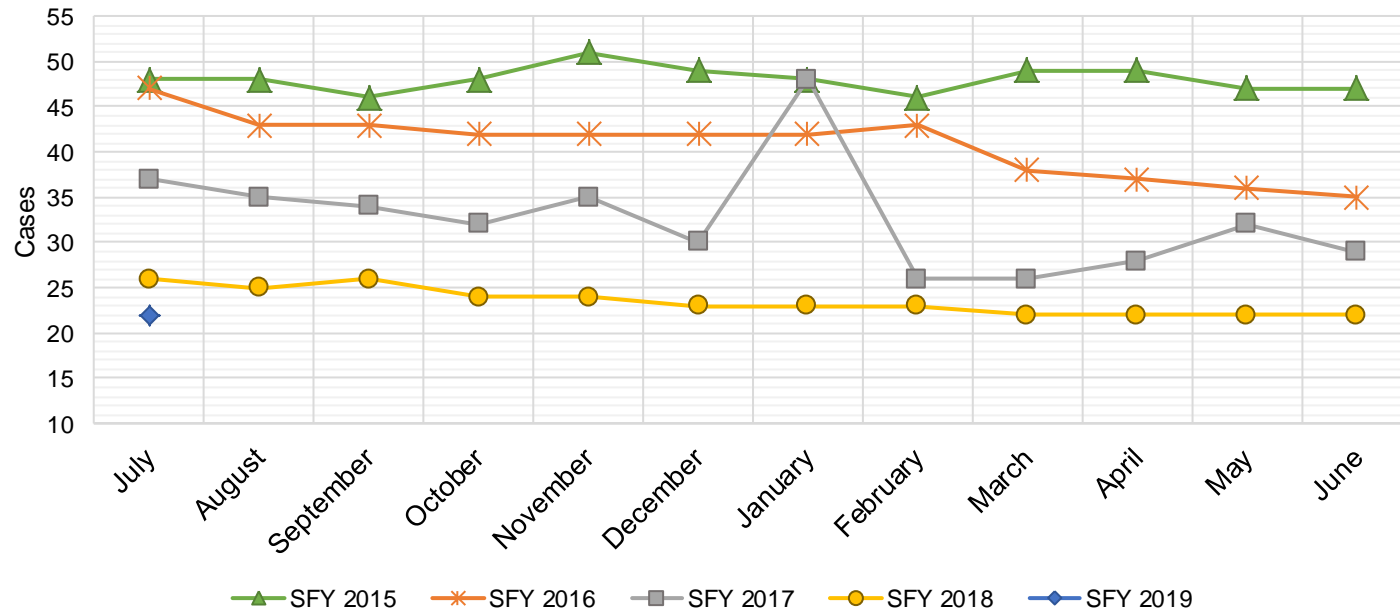
SFY 2015 ¹²			SFY 2016 ^{8,12,9}			SFY 2017 ^{8,9}			SFY 2018 ^{8,9}			SFY 2019 ^{8,9}		
	Cases	Expenditures		Cases	Expenditures		Cases	Expenditures		Cases	Expenditures		Cases	Expenditures
Jul-14	50	\$11,679	Jul-15	112	\$27,516	Jul-16	163	\$39,756	Jul-17	37	\$9,981	Jul-18	38	\$7,408
Aug-14	48	\$11,760	Aug-15	112	\$27,438	Aug-16	157	\$40,115	Aug-17	17	\$4,704	Aug-18		
Sep-14	55	\$13,094	Sep-15	132	\$31,321	Sep-16	159	\$39,359	Sep-17	13	\$3,159	Sep-18		
Oct-14	58	\$13,726	Oct-15	144	\$36,153	Oct-16	179	\$41,520	Oct-17	15	\$3,543	Oct-18		
Nov-14	65	\$16,461	Nov-15	146	\$36,515	Nov-16	176	\$45,434	Nov-17	15	\$4,263	Nov-18		
Dec-14	75	\$18,699	Dec-15	146	\$35,763	Dec-16	184	\$46,673	Dec-17	17	\$4,795	Dec-18		
Jan-15	79	\$19,009	Jan-16	156	\$38,686	Jan-17	150	\$38,790	Jan-18	16	\$4,166	Jan-19		
Feb-15	83	\$21,349	Feb-16	168	\$41,368	Feb-17	142	\$37,956	Feb-18	25	\$5,723	Feb-19		
Mar-15	83	\$20,730	Mar-16	182	\$45,307	Mar-17	127	\$33,066	Mar-18	32	\$7,636	Mar-19		
Apr-15	95	\$23,495	Apr-16	158	\$41,143	Apr-17	111	\$29,183	Apr-18	34	\$8,827	Apr-19		
May-15	103	\$25,363	May-16	160	\$38,332	May-17	88	\$23,343	May-18	34	\$8,939	May-19		
Jun-15	109	\$27,958	Jun-16	163	\$39,856	Jun-17	60	\$15,538	Jun-18	33	\$8,513	Jun-19		

TOTAL	903	\$223,323	1,779	\$439,397	1,696	\$430,732	288	\$74,249	38	\$7,408
AVERAGE	75	\$18,610	148	\$36,616	141	\$35,894	24	\$6,187	38	\$7,408



State Supplement for Residential Care

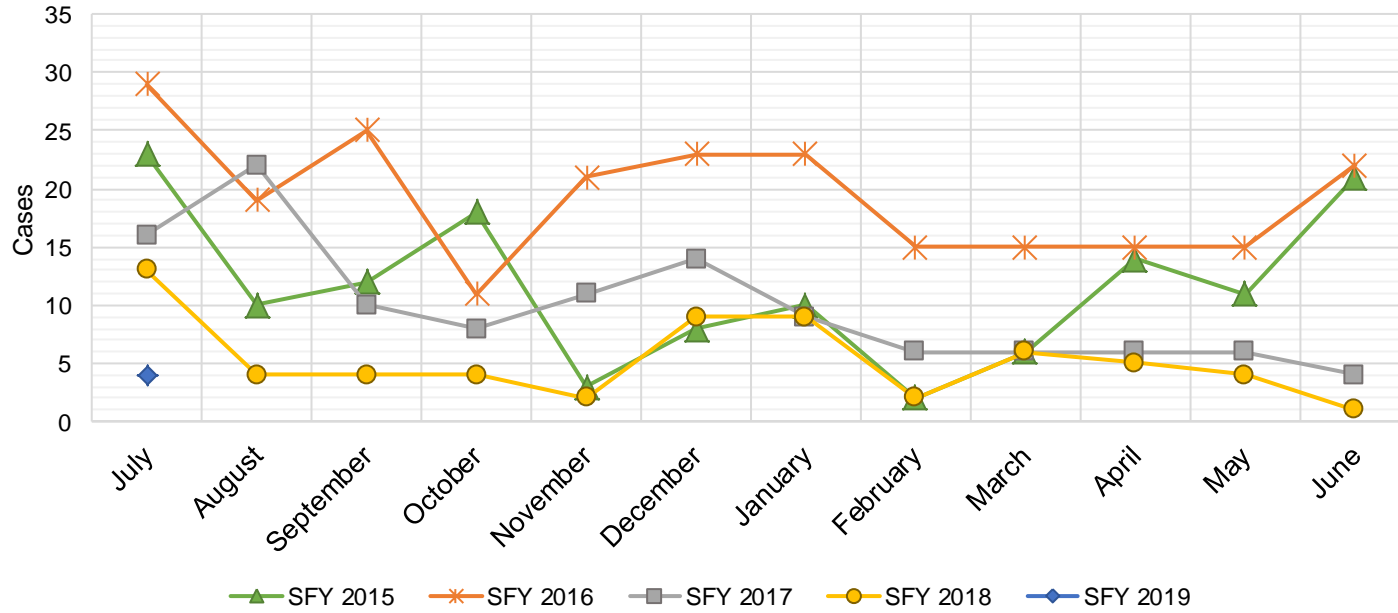
SFY 2015 ¹²			SFY 2016 ^{12,9}			SFY 2017 ⁹			SFY 2018 ⁹			SFY 2019 ⁹		
	Cases	Expenditures		Cases	Expenditures		Cases	Expenditures		Cases	Expenditures		Cases	Expenditures
Jul-14	48	\$4,700	Jul-15	47	\$4,700	Jul-16	37	\$3,700	Jul-17	26	\$2,700	Jul-18	22	\$2,200
Aug-14	48	\$5,000	Aug-15	43	\$4,900	Aug-16	35	\$3,500	Aug-17	25	\$2,500	Aug-18		
Sep-14	46	\$4,600	Sep-15	43	\$4,500	Sep-16	34	\$3,400	Sep-17	26	\$2,700	Sep-18		
Oct-14	48	\$4,600	Oct-15	42	\$4,400	Oct-16	32	\$3,200	Oct-17	24	\$2,500	Oct-18		
Nov-14	51	\$5,600	Nov-15	42	\$4,200	Nov-16	35	\$3,500	Nov-17	24	\$2,400	Nov-18		
Dec-14	49	\$5,000	Dec-15	42	\$4,200	Dec-16	30	\$3,000	Dec-17	23	\$2,200	Dec-18		
Jan-15	48	\$4,900	Jan-16	42	\$4,200	Jan-17	48	\$4,800	Jan-18	23	\$2,400	Jan-19		
Feb-15	46	\$4,800	Feb-16	43	\$4,300	Feb-17	26	\$2,600	Feb-18	23	\$2,300	Feb-19		
Mar-15	49	\$4,800	Mar-16	38	\$3,800	Mar-17	26	\$2,600	Mar-18	22	\$2,400	Mar-19		
Apr-15	49	\$5,400	Apr-16	37	\$3,700	Apr-17	28	\$2,800	Apr-18	22	\$2,200	Apr-19		
May-15	47	\$4,700	May-16	36	\$3,600	May-17	32	\$3,200	May-18	22	\$2,200	May-19		
Jun-15	47	\$5,300	Jun-16	35	\$3,500	Jun-17	29	\$2,900	Jun-18	22	\$2,200	Jun-19		
TOTAL	576	\$59,400	490	\$50,000	392	\$39,200	282	\$28,700	22	\$2,200	22	\$2,200		
AVERAGE	48	\$4,950	41	\$4,167	33	\$3,267	24	\$2,392	22	\$2,200	22	\$2,200		



TANF Diversion Payments

SFY 2015 ¹²			SFY 2016 ^{12,9}			SFY 2017 ⁹			SFY 2018 ⁹			SFY 2019 ⁹		
	Cases	Expenditures		Cases	Expenditures		Cases	Expenditures		Cases	Expenditures		Cases	Expenditures
Jul-14	23	\$48,098	Jul-15	29	\$62,074	Jul-16	16	\$30,843	Jul-17	13	\$26,500	Jul-18	4	\$3,000
Aug-14	10	\$21,810	Aug-15	19	\$33,584	Aug-16	22	\$42,731	Aug-17	4	\$12,000	Aug-18		
Sep-14	12	\$23,500	Sep-15	25	\$47,977	Sep-16	10	\$21,000	Sep-17	4	\$4,000	Sep-18		
Oct-14	18	\$30,589	Oct-15	11	\$20,500	Oct-16	8	\$16,744	Oct-17	4	\$16,000	Oct-18		
Nov-14	3	\$4,411	Nov-15	21	\$45,500	Nov-16	11	\$24,500	Nov-17	2	\$15,500	Nov-18		
Dec-14	8	\$14,634	Dec-15	23	\$45,389	Dec-16	14	\$26,611	Dec-17	9	\$17,500	Dec-18		
Jan-15	10	\$18,000	Jan-16	23	\$41,874	Jan-17	9	\$18,500	Jan-18	9	\$21,731	Jan-19		
Feb-15	2	\$5,500	Feb-16	15	\$28,500	Feb-17	6	\$12,000	Feb-18	2	\$7,731	Feb-19		
Mar-15	6	\$12,000	Mar-16	15	\$27,008	Mar-17	6	\$11,000	Mar-18	6	\$8,496	Mar-19		
Apr-15	14	\$26,000	Apr-16	15	\$31,389	Apr-17	6	\$12,000	Apr-18	5	\$13,500	Apr-19		
May-15	11	\$21,500	May-16	15	\$31,916	May-17	6	\$11,500	May-18	4	\$12,500	May-19		
Jun-15	21	\$40,039	Jun-16	22	\$43,000	Jun-17	4	\$13,500	Jun-18	1	\$5,389	Jun-19		

TOTAL	138	\$266,081	233	\$458,711	118	\$240,929	63	\$160,847	4	\$3,000
AVERAGE	12	\$22,173	19	\$38,226	10	\$20,077	5	\$13,404	4	\$3,000

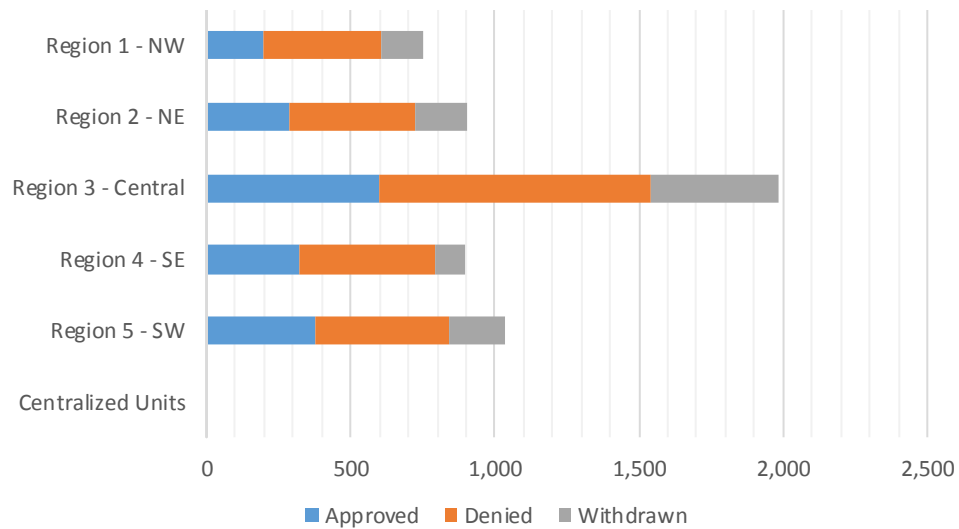


Cash Assistance Applications by Field Office^{4,11}
July 2018

Office	Approved	Denied	Withdrawn	Total Cases Processed
Chaves County ISD	84	113	30	227
Cibola County ISD	25	38	9	72
Colfax County ISD	7	16	4	27
Curry County ISD	101	132	23	256
East Dona Ana County ISD	79	105	50	234
Eddy Artesia County ISD	24	32	3	59
Eddy Carlsbad County ISD	26	60	19	105
Grant County ISD	38	38	10	86
Guadalupe County ISD	4	4	4	12
Hidalgo County ISD	0	0	0	0
Lea County ISD	78	102	23	203
Lincoln County ISD	11	26	9	46
Luna County ISD	36	26	30	92
McKinley County ISD	14	68	39	121
Northeast Bernalillo County ISD	174	277	176	627
Northwest Bernalillo County ISD	117	260	127	504
Otero County ISD	54	69	23	146
Quay County ISD	5	8	5	18
Rio Arriba County ISD	56	64	20	140
Roosevelt County ISD	0	2	0	2
San Juan County ISD	49	178	63	290
San Miguel County ISD	37	36	17	90
Sandoval County ISD	100	149	69	318
Santa Fe County ISD	61	119	46	226
Sierra County ISD	18	15	0	33
Socorro County ISD	12	24	9	45
South Dona Ana ISD	73	71	24	168
Southeast Bernalillo County ISD	94	151	63	308
Southwest Bernalillo County ISD	183	206	72	461
Taos County ISD	17	39	15	71
Torrance County ISD	30	46	8	84
Valencia North County ISD	79	89	25	193
Valencia South County ISD	0	0	0	0
West Dona Ana County ISD	98	153	55	306
Centralized Units	0	0	0	0
Statewide Total	1,784	2,716	1,070	5,570

Cash Assistance Applications by Region^{4,11} July 2018

	Approved	Denied	Withdrawn	Total Cases Processed
Region				
Region 1 - NW	197	412	145	754
Region 2 - NE	287	435	180	902
Region 3 - Central	598	940	446	1,984
Region 4 - SE	324	467	107	898
Region 5 - SW	378	462	192	1,032
Centralized Units	0	0	0	0
Statewide Total	1,784	2,716	1,070	5,570



Children Youth and Families Department
Children Receiving Child Care Assistance Subsidies By County

County	July 2017	Aug 2017	Sep 2017	Oct 2017	Nov 2017	Dec 2017	Jan 2018	Feb 2018	Mar 2018	Apr 2018	May 2018	June 2018	July 2018	Change Fr. Last Year Cases	Percent
<i>Bernalillo</i>	7,547	7,616	8,154	7,848	7,985	7,903	7,801	7,739	7,824	7,853	7,925	8,146	7,735	188	2.5%
Catron	0	0	0	0	0	5	5	0	0	0	0	0	0	0	0.0%
<i>Chaves</i>	826	821	889	884	870	855	843	823	807	791	819	865	837	11	1.3%
Cibola	293	294	311	304	303	296	291	289	277	291	286	295	289	-4	-1.4%
<i>Colfax</i>	46	41	44	41	42	42	47	50	51	56	57	59	56	10	21.7%
Curry	486	459	422	446	467	470	493	514	517	536	538	535	539	53	10.9%
<i>De Baca</i>	12	11	11	9	11	10	10	8	4	4	4	4	4	-8	-66.7%
Dona Ana	4,509	4,473	4,693	4,585	4,581	4,492	4,349	4,382	4,322	4,349	4,369	4,455	4,260	-249	-5.5%
<i>Eddy</i>	292	287	313	297	297	263	256	257	240	242	234	245	264	-28	-9.6%
Grant	134	114	164	161	157	159	139	127	133	140	138	142	110	-24	-17.9%
<i>Guadalupe</i>	16	16	15	16	16	16	14	11	15	14	14	14	14	-2	-12.5%
Harding	0	0	0	0	0	0	0	0	0	1	1	1	1	1	0.0%
<i>Hidalgo</i>	37	37	39	39	35	32	32	36	40	35	37	36	37	0	0.0%
Lea	837	856	954	909	895	833	824	827	855	805	817	817	806	-31	-3.7%
<i>Lincoln</i>	146	145	150	147	136	132	129	129	128	130	133	129	129	-17	-11.6%
Los Alamos	17	16	19	18	14	13	13	14	15	17	18	22	27	10	58.8%
<i>Luna</i>	165	176	177	177	166	171	167	161	166	166	163	162	143	-22	-13.3%
McKinley	145	136	161	165	167	166	168	156	158	162	168	176	168	23	15.9%
<i>Mora</i>	18	18	19	18	20	21	20	18	20	18	21	21	26	8	44.4%
Otero	500	491	530	525	518	531	519	533	532	518	504	502	490	-10	-2.0%
<i>Out of State</i>	14	11	12	14	12	3	9	12	8	5	7	8	6	-8	-57.1%
Quay	35	36	39	35	35	35	35	36	36	35	33	33	38	3	8.6%
<i>Rio Arriba</i>	144	145	159	163	166	165	154	151	152	148	146	147	146	2	1.4%
Roosevelt	123	125	137	120	120	127	119	117	113	109	101	102	94	-29	-23.6%
<i>San Juan</i>	979	960	1,132	1,050	1,043	1,039	1,005	1,036	1,026	1,053	1,030	1,059	928	-51	-5.2%
San Miguel	366	356	362	368	371	372	357	353	362	370	378	376	375	9	2.5%
<i>Sandoval</i>	932	948	974	859	839	836	794	774	765	782	765	798	739	-193	-20.7%
Santa Fe	534	520	580	554	547	526	514	523	506	514	531	545	533	-1	-0.2%
<i>Sierra</i>	74	76	79	86	80	77	59	76	67	69	70	62	53	-21	-28.4%
Socorro	56	63	63	68	66	70	70	70	73	75	73	68	55	-1	-1.8%
<i>Taos</i>	132	137	145	139	142	141	141	139	139	138	135	135	138	6	4.5%
Torrance	107	117	106	99	115	115	114	110	104	116	115	120	109	2	1.9%
<i>Union</i>	5	5	5	4	6	5	5	5	5	5	5	5	5	0	0.0%
Valencia	642	677	714	723	713	678	651	640	634	612	624	644	615	-27	-4.2%
Totals	20,169	20,183	21,572	20,871	20,935	20,599	20,147	20,116	20,094	20,159	20,259	20,728	19,769	-400	-2.0%

CHILDREN YOUTH AND FAMILIES DEPARTMENT

CHILD CARE ASSISTANCE ELIGIBILITY PROGRAMS

MONTH	AUG'17	SEP'17	OCT'17	NOV'17	DEC'17	JAN'18	FEB'18	MAR'18	APR'18	May'18	June'18	July'18
TANF (Child Care Priority 1 Clients)												
CLIENTS	2,353	2,455	2,419	2,374	2,315	2,240	2,153	2,178	2,175	2,118	2,164	2,074
COST	\$1,381,202	\$1,364,956	\$1,423,748	\$1,411,060	\$1,382,073	\$1,317,716	\$1,272,232	\$1,325,003	\$1,300,872	\$1,244,115	\$1,242,370	\$1,255,788
TANF AVERAGE COST	\$587	\$556	\$589	\$594	\$597	\$588	\$591	\$608	\$598	\$587	\$574	\$605
TRANSITION OFF TANF (Child Care Priority 2 Clients)												
CLIENTS	189	179	181	154	152	141	138	142	148	169	172	167
COST	\$103,813	\$93,119	\$96,629	\$81,975	\$81,337	\$74,507	\$72,696	\$77,354	\$80,098	\$93,823	\$96,261	\$97,664
TRAN OFF TANF AVG COST	\$549	\$520	\$534	\$532	\$535	\$528	\$527	\$545	\$541	\$555	\$560	\$607
TANF ELIGIBLE (Child Care Priority 1B Clients at or below 100% of the Federal Poverty Level)												
CLIENTS	8,254	9,064	8,899	8,900	8,729	8,435	8,374	8,373	8,382	8,570	8,816	8,404
COST	\$4,657,974	\$4,755,691	\$5,021,574	\$5,099,212	\$4,994,373	\$4,722,370	\$4,675,492	\$4,802,863	\$4,766,353	\$4,896,651	\$4,879,475	\$4,946,700
TANF ELIGIBLE AVG COST	\$564	\$525	\$564	\$573	\$572	\$560	\$558	\$574	\$569	\$571	\$553	\$589
INCOME ELIGIBLE (Child Care Priority 3, and Priority 4 Clients)												
CLIENTS	7,337	7,749	7,464	7,578	7,580	7,665	7,868	7,944	8,059	8,099	8,261	7,808
COST	\$3,838,152	\$3,779,202	\$3,760,398	\$3,838,169	\$3,824,777	\$3,785,466	\$3,929,313	\$4,010,729	\$4,051,487	\$4,104,126	\$4,096,260	\$4,133,552
INCOME ELIG AVG COST	\$523	\$488	\$504	\$506	\$505	\$494	\$499	\$505	\$503	\$507	\$496	\$529
AT-RISK CHILD PROTECTIVE SERVICES CHILD CARE PILOT (Priority 5 Clients)												
CLIENTS	1,073	1,152	1,032	1,027	935	772	689	578	516	424	393	405
COST	\$686,919	\$723,334	\$684,194	\$678,258	\$628,399	\$509,028	\$486,780	\$381,318	\$337,243	\$276,746	\$265,193	\$270,783
CPS AVG COST	\$640	\$628	\$663	\$660	\$672	\$659	\$707	\$660	\$654	\$653	\$675	\$669
CHILD PROTECTIVE SERVICES (Child Care CPS Clients)												
CLIENTS	977	973	876	902	888	894	894	879	879	879	942	917
COST	\$663,134	\$623,416	\$567,608	\$585,009	\$573,312	\$583,824	\$602,246	\$605,523	\$564,253	\$619,678	\$600,858	\$597,105
CPS AVG COST	\$679	\$641	\$648	\$649	\$646	\$653	\$674	\$689	\$642	\$705	\$638	\$651
GRAND TOTAL - ALL CHILD CARE PROGRAMS												
CLIENTS	20,169	20,183	20,871	20,935	20,599	20,147	20,116	20,094	20,159	20,259	20,748	19,769
COST	\$11,033,199	\$11,331,194	\$11,554,151	\$11,693,682	\$11,484,272	\$10,992,912	\$11,038,760	\$11,202,789	\$11,100,307	\$11,235,139	\$11,180,418	\$11,301,591
ALL PROGRAMS AVG COST	\$528	\$524	\$547	\$561	\$558	\$546	\$549	\$558	\$551	\$555	\$539	\$572

Income Eligibility Guidelines: October 1, 2017 - September 30, 2018

Federal Poverty Guidelines (FPG) Monthly Income Standards

Supplemental Nutrition Program (SNAP)

Household Size	100% FPG Net Income	130% FPG Gross Income	165% FPG Gross Income for Categorical Eligibility	Maximum SNAP Monthly Allotment	LIHEAP 150% FPG
1	\$1,005	\$1,307	\$1,659	\$192	\$1,508
2	\$1,354	\$1,760	\$2,233	\$352	\$2,031
3	\$1,702	\$2,213	\$2,808	\$504	\$2,553
4	\$2,050	\$2,665	\$3,383	\$640	\$3,075
5	\$2,399	\$3,118	\$3,958	\$760	\$3,599
6	\$2,747	\$3,571	\$4,532	\$913	\$4,121
7	\$3,095	\$4,024	\$5,107	\$1,009	\$4,643
8	\$3,444	\$4,477	\$5,682	\$1,153	\$5,166
+1	+\$349	+\$453	+\$575	+\$144	+\$523

Minimum Allotment of \$15 effective from 10/1/2017 - 9/30/2018

DEDUCTIONS: Standard Deduction: For HH size 1-3 = \$160; 4 = \$170; 5 = \$199; 6 or more = \$228; Excess Shelter Deduction Limit: \$535; Heating and Cooling Standard Utility Allowance: \$320 (HCSUA) – Limited Utility Allowance: \$127 (LUA); Telephone Standard: \$42; Dependent Care: Actual Amount (No Limit); Earned Income Deduction: 20%; Homeless Shelter Standard: \$143

CASH Assistance & Support Services

Household Size	Federal Poverty Guidelines (FPG) Monthly Income Standards			Maximum Monthly Benefit	
	100% FPG Net Income	85% FPG Gross Limit	NM Works Cash Net Income	Maximum Monthly Benefit	General Assistance
1	\$1,005	\$854	\$266	\$244	\$245
2	\$1,354	\$1,151	\$357	\$327	\$329
3	\$1,702	\$1,447	\$447	\$409	\$412
4	\$2,050	\$1,743	\$539	\$493	\$496
5	\$2,399	\$2,039	\$630	\$576	\$580
6	\$2,747	\$2,335	\$721	\$659	\$664
7	\$3,095	\$2,631	\$812	\$743	\$748
8	\$3,444	\$2,927	\$922	\$843	\$849
+1	+\$349	+\$296	+\$91	+\$83	+\$84

Deductions- Dependent Care: For a child under age 2 = \$200; For a child age 2 and over = \$175.

Work Incentives- Earned Income Disregard: Single parent = \$125 & ½ remainder; Two parent = \$225 & ½ remainder.

ISD 017 Revised 08/9/2017

Medical Assistance Division					
Federal Poverty Guidelines New Mexico Affordable Care Eligibility Groups Effective April 01, 2018 thru March 31, 2019 Monthly Guidelines					
HH SIZE	PERCENT OF POVERTY				
	138%	190%	240%	250%	300%
1	\$1,397	\$1,923	\$2,428	\$2,530	\$3,035
2	\$1,893	\$2,607	\$3,292	\$3,430	\$4,115
3	\$2,390	\$3,291	\$4,156	\$4,330	\$5,195
4	\$2,887	\$3,975	\$5,020	\$5,230	\$6,275
5	\$3,384	\$4,659	\$5,884	\$6,130	\$7,355
6	\$3,881	\$5,343	\$6,748	\$7,030	\$8,435
7	\$4,377	\$6,027	\$7,612	\$7,930	\$9,515
8	\$4,874	\$6,711	\$8,476	\$8,830	\$10,595
138% Adult Expansion, 190% Children ages 6 to 19 (Medicaid), 240% Children ages 0 to 6 (Medicaid); ages 6 to 19 (CHIP), 250% Pregnancy Related Services Only, 300% Children 0 to 6 (CHIP)					

Medical Assistance Division					
Federal Poverty Guidelines New Mexico Affordable Care Eligibility Groups Effective April 01, 2018 thru March 31, 2019 Annual Guidelines					
HH SIZE	PERCENT OF POVERTY				
	138%	190%	240%	250%	300%
1	\$16,764	\$23,076	\$29,136	\$30,360	\$36,420
2	\$22,716	\$31,284	\$39,504	\$41,160	\$49,380
3	\$28,680	\$39,492	\$49,872	\$51,960	\$62,340
4	\$34,644	\$47,700	\$60,240	\$62,760	\$75,300
5	\$40,608	\$55,908	\$70,608	\$73,560	\$88,260
6	\$46,572	\$64,116	\$80,976	\$84,360	\$101,220
7	\$52,524	\$72,324	\$91,344	\$95,160	\$114,180
8	\$58,488	\$80,532	\$101,712	\$105,960	\$127,140
138% Adult Expansion, 190% Children ages 6 to 19 (Medicaid), 240% Children ages 0 to 6 (Medicaid); ages 6 to 19 (CHIP), 250% Pregnancy Related Services Only, 300% Children 0 to 6 (CHIP)					

References

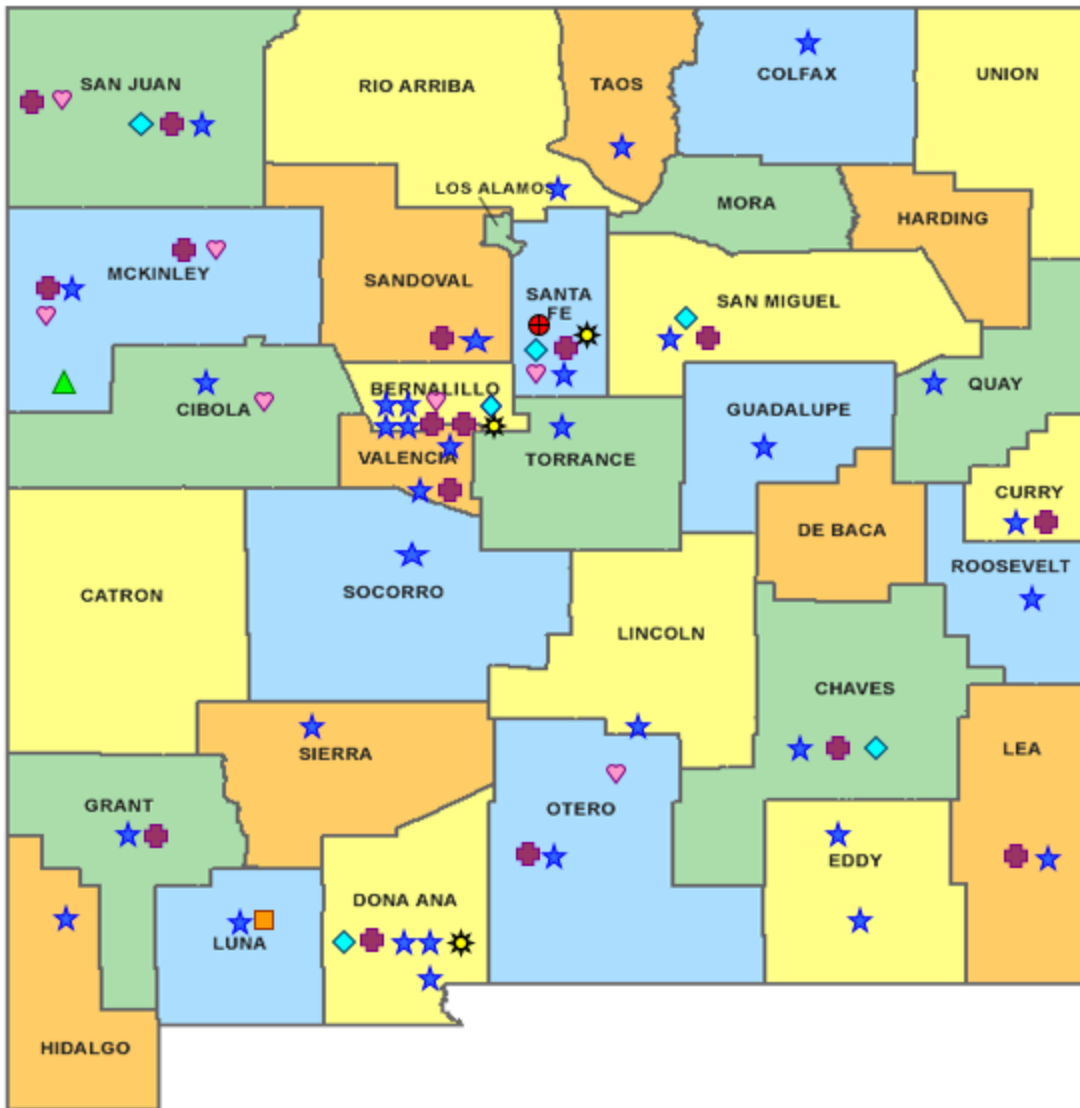
- ¹ *Medicaid Expenditures* (Omnicaid, Medicare Buy-Ins, Lump Sum Payments), Received on August 16, 2018
- ² *ASPEN Business Intelligence Tool: Eligibility*, Retrieved on August 13, 2018
- ³ New Mexico Human Services Department, *Medicaid Eligibility Reports*, Retrieved from <http://www.hsd.state.nm.us/LookingForInformation/medicaid-eligibility.aspx> on August 13, 2018
- ⁴ *ASPEN Business Intelligence Tool: Application Tracking*, Retrieved on August 13, 2018
- ⁵ Fidelity Information Services, *EBT Daily Statistical Report* (for 07/31/2017, 06/30/2018, and 07/31/2018), Retrieved on August 13, 2018
- ⁶ *ASPEN Report DQ-180: Length of Time Cases are Open* (for 07/01/2017-07/30/2017, 06/01/2018-06/30/2018, 07/01/2018-07/31/2018), Retrieved on August 16, 2018
- ⁷ *ASPEN Report EY-180: Individual Demographics by State and Age* (for 07/01/2017-07/31/2017, 06/01/2018-06/30/2018, 07/01/2018-07/31/2018), Retrieved July 16, 2018
- ⁸ *ASPEN Business Intelligence Tool: Benefit Issuance*, Retrieved on August 13, 2018
- ⁹ Fidelity Information Services, *EBT Daily Statistical Reports* (Month End), Retrieved on August 13, 2018
- ¹⁰ *ASPEN Report EY-180R: Individual Demographics by State, Race, Ethnicity and Gender* (for 07/01/2018-07/31/2018), Retrieved on August 16, 2018
- ¹¹ SQL Queries from ASPEN, completed August 2018
- ¹² JP Morgan, *New Mexico – NM EBT System- Monthly Benefit Draw Down Totals*
- ¹³ *ASPEN Business Intelligence Tool: Application Tracking* (w/Parameters: SNAP, Expedite, Approved), Retrieved on August 13, 2018
- ¹⁴ SL Start, *As of Today Report 07.31.18*, received August 10, 2018
- ¹⁵ SL Start, *Statewide Employment Report 07.01.18*, received August, 2018
- ¹⁶ *SSIAR Payments*, received August 2, 2018

¹⁷ Children, Youth, and Families Department, *Children Receiving Child Care Assistance Subsidies by County*, Received on August 10, 2018

¹⁸ Children, Youth, and Families Department, *Child Care Assistance Eligibility Programs*, Received on August 10, 2018









¹⁹ EDG is defined as an Eligibility Determination Group

²⁰ SQL Query from ASPEN, completed August 25, 2018



HUMAN SERVICES
DEPARTMENT

New Mexico Human Services Department
Field Offices

-  Central Office (1)
-  Income Support Division County Office (35)
-  Income Support Division Satellite Office (2)
-  Child Support Enforcement Regional Office (16)
-  Child Support Enforcement Satellite Office (1)
-  Quality Control Office (8)
-  Indian Health Services (7)
-  Hospital Site (3)

For a complete listing of field offices and other government and community resources:
http://www.hsd.state.nm.us/LookingForAssistance/Field_Offices_1.aspx