



Monthly Statistical Report

April 2019

There were 829,652 individuals that received Medicaid in April 2019, a 2.6% decrease from one year ago. The count of Medicaid recipients has decreased by 1,223, or 0.1%, since last month.

The SNAP caseload in April 2019 was 219,801, a 0.6% decrease from one year ago. The SNAP caseload has increased by 203 cases, or 0.1%, since last month.

The TANF caseload was 10,073 in April 2019, a decrease of 7.0% from April 2018. The TANF caseload had 3 more cases compared to March 2019, an increase of 0.0%.

The caseload for General Assistance was 2,601 in April 2019, a decrease of 12.8% from one year ago and a decrease of 75 cases from last month.

Michelle Lujan Grisham, Governor
David Scrase, M.D., Secretary

Contents	Page
Summary	3-5
Medicaid	6-20
SNAP	21-41
Cash Assistance	42-56
Child Care Assistance	57-58
Income Eligibility Guidelines	59-60

Regions are reported as follows:

Region 1		
Catron	San Juan	Valencia
Cibola	Sierra	
McKinley	Socorro	
Region 2		
Colfax	Mora	Santa Fe
De Baca	Quay	Taos
Guadalupe	Rio Arriba	Union
Harding	Sandoval	
Los Alamos	San Miguel	
Region 3		
Bernalillo	Torrance	
Region 4		
Chaves	Eddy	Lincoln
Curry	Lea	Roosevelt
Region 5		
Dona Ana	Hidalgo	Otero
Grant	Luna	

The Mission of the Human Services Department

To reduce the impact of poverty on people living in New Mexico by providing support services that help families break the cycle of dependency on public assistance

Angela Medrano, Deputy Secretary
Russell Toal, Deputy Secretary

Prepared by Income Support Division
PO Box 2348
Santa Fe, NM 87504-2348
505-827-7250

Karmela Martinez, Acting Director
Vida Tapia-Sanchez, Deputy Director
Shanita Harrison, Deputy Director
Judith Parks, Deputy Director

<http://www.hsd.state.nm.us/monthly-statistical-reports.aspx>

Program Summary for April 2019

Medicaid				Percent Change	
				Apr-18	Mar-19
Expenditures¹	\$479,371,511	\$493,663,534	\$455,065,923	-5.1%	-7.8%
Cases²	490,431	492,874	492,528	0.4%	-0.1%
Expenditures/Case	\$977	\$1,002	\$924	-5.5%	-7.8%
Recipients³	852,106	830,875	829,652	-2.6%	-0.1%
<i>Adults</i>	484,015	473,892	472,890	-2.3%	-0.2%
<i>Children</i>	368,091	356,983	356,762	-3.1%	-0.1%
Recipients /Case	1.74	1.69	1.68	-3.0%	-0.1%
Cases Processed⁴	12,180	10,973	11,144	-8.5%	1.6%
<i>Approvals⁴</i>	9,603	8,317	8,554	-10.9%	2.8%

Supplemental Nutrition Assistance Program (SNAP)				Percent Change	
				Apr-18	Mar-19
Expenditures⁵	\$52,928,465	\$52,190,262	\$52,090,228	-1.6%	-0.2%
Cases⁶	221,139	219,598	219,801	-0.6%	0.1%
Expenditures/Case	\$239	\$238	\$237	-1.0%	-0.3%
Recipients⁷	454,779	445,116	445,005	-2.1%	0.0%
<i>Adults</i>	262,242	259,308	259,412	-1.1%	0.0%
<i>Children</i>	192,537	185,808	185,593	-3.6%	-0.1%
Recipients /Case	2.06	2.03	2.02	-1.6%	-0.1%
Cases Processed⁴	18,275	16,137	18,005	-1.5%	11.6%
<i>Approvals⁴</i>	15,020	13,374	15,305	1.9%	14.4%

Cash Assistance Programs				Percent Change	
				Apr-18	Mar-19
Expenditures⁵	\$3,952,778	\$3,946,066	\$3,894,489	-1.5%	-1.3%
Cases⁶	14,024	12,922	12,859	-8.3%	-0.5%
Expenditures/Case	\$282	\$305	\$303	7.5%	-0.8%
Recipients⁷	31,219	28,737	28,710	-8.0%	-0.1%
<i>Adults</i>	10,093	9,135	9,087	-10.0%	-0.5%
<i>Children</i>	21,126	19,602	19,623	-7.1%	0.1%
Recipients /Case	2.23	2.22	2.23	0.3%	0.4%
Cases Processed⁴	5,159	3,426	3,800	-26.3%	10.9%
<i>Approvals⁴</i>	1,575	1,213	1,449	-8.0%	19.5%

Low Income Home Energy Assistance Program (LIHEAP)				Percent Change	
				Apr-18	Mar-19
Expenditures⁸	\$672,175	\$1,147,920	\$828,960	23.3%	-27.8%
Cases⁸	2,694	3,927	2,893	7.4%	-26.3%
Expenditures/Case	\$250	\$292	\$287	14.8%	-2.0%
Recipients⁸	6,352	8,733	6,745	6.2%	-22.8%
<i>Adults</i>	3,559	5,130	3,802	6.8%	-25.9%
<i>Children</i>	2,793	3,603	2,943	5.4%	-18.3%
Recipients /Case	2.36	2.22	2.33	-1.1%	4.8%
Cases Processed⁴	4,113	4,943	4,087	-0.6%	-17.3%
<i>Approvals⁴</i>	2,786	3,674	2,861	2.7%	-22.1%

Cash Assistance Summary for April 2019

Temporary Assistance for Needy Families (TANF)

	Apr-18	Mar-19	Apr-19	Percent Change	
				Apr-18- Apr-19	Mar-19- Apr-19
Expenditures ⁵	\$3,167,033	\$3,214,793	\$3,186,020	0.6%	-0.9%
Cases ⁶	10,831	10,070	10,073	-7.0%	0.0%
Expenditures/Case	\$292	\$319.24	\$316	8.2%	-0.9%
Recipients ⁷	27,693	25,645	25,662	-7.3%	0.1%
<i>Adults</i>	7,051	6,472	6,473	-8.2%	0.0%
<i>Children</i>	20,642	19,173	19,189	-7.0%	0.1%
Approvals ⁴	1,279	1,029	1,268	-0.9%	23.2%

General Assistance (GA)

	Apr-18	Mar-19	Apr-19	Percent Change	
				Apr-18- Apr-19	Mar-19- Apr-19
Expenditures ⁵	\$719,731	\$672,526	\$647,822	-10.0%	-3.7%
Cases ⁶	2,983	2,676	2,601	-12.8%	-2.8%
Expenditures/Case	\$241	\$251	\$249	3.2%	-0.9%
Recipients ⁷	3,022	2,685	2,633	-12.9%	-1.9%
<i>Adults</i>	2,807	2,474	2,417	-13.9%	-2.3%
<i>Children</i>	215	211	216	0.5%	2.4%
Approvals ⁴	247	175	131	-47.0%	-25.1%

Education Works

	Apr-18	Mar-19	Apr-19	Percent Change	
				Apr-18- Apr-19	Mar-19- Apr-19
Expenditures ⁵	\$54,986	\$47,682	\$48,200	-12.3%	1.1%
Cases ⁶	154	118	122	-20.8%	3.4%
Expenditures/Case	\$357	\$404	\$395	10.7%	-2.2%
Recipients ⁷	445	349	352	-20.9%	0.9%
<i>Adults</i>	176	131	134	-23.9%	2.3%
<i>Children</i>	269	218	218	-19.0%	0.0%
Approvals ⁴	3	0	1	-66.7%	N/A

Refugee Cash (RCA)

	Apr-18	Mar-19	Apr-19	Percent Change	
				Apr-18- Apr-19	Mar-19- Apr-19
Expenditures ⁵	\$8,827	\$9,165	\$10,648	20.6%	16.2%
Cases ⁶	34	38	44	29.4%	15.8%
Expenditures/Case	\$260	\$241	\$242	-6.8%	0.3%
Recipients ⁷	37	39	45	21.6%	15.4%
<i>Adults</i>	37	39	45	21.6%	15.4%
<i>Children</i>	0	0	0	N/A	N/A

State Supplement for Residential Care

	Apr-18	Mar-19	Apr-19	Percent Change	
				Apr-18- Apr-19	Mar-19- Apr-19
Expenditures ⁵	\$2,200	\$1,900	\$1,800	-18.2%	-5.3%
Cases ⁶	22	20	19	-13.6%	-5.0%
Expenditures/Case	\$100	\$95	\$95	-5.3%	-0.3%
Recipients ⁷	22	19	18	-18.2%	-5.3%
<i>Adults</i>	22	19	18	-18.2%	-5.3%
<i>Children</i>	0	0	0	N/A	N/A

Expenditures YTD			
	SFY 2019	FFY 2019	CY 2019
Medicaid ¹	\$4,641,631,425	\$3,270,000,519	\$1,833,580,891
Supplemental Nutrition Assistance Program ⁹	\$528,723,753	\$369,731,695	\$209,471,562
Temporary Assistance for Needy Families ⁹	\$35,141,964	\$23,116,616	\$12,992,077
General Assistance ⁹	\$6,967,375	\$4,806,640	\$2,684,336
Education Work ⁹	\$486,838	\$353,029	\$181,335
LIHEAP ⁸	\$18,730,461	\$16,816,425	\$5,986,905

Average Caseload YTD			
	SFY 2019	FFY 2019	CY 2019
Medicaid ²	489,998	491,117	492,322
Supplemental Nutrition Assistance Program ⁶	221,723	221,514	220,580
Temporary Assistance for Needy Families ⁶	10,779	10,616	10,363
General Assistance ⁶	2,798	2,756	2,685
Education Work ⁶	118	125	112
LIHEAP ⁸	6,338	7,926	5,096

Demographic Profile- April 2019					
	SNAP	TANF	GA	Education Works	RCA
Gender of Recipients¹⁰					
Male	201,304	10,899	1,465	125	32
Female	243,701	14,763	1,168	227	13
Ethnicity¹⁰					
Hispanic	245,018	17,190	1,406	227	22
Non-Hispanic	199,987	8,472	1,227	125	23
Race¹⁰					
Native American or Alaskan Native	75,296	2,238	233	33	0
Asian	4,171	216	22	2	0
African American or Black	11,227	1,095	105	18	17
Native Hawaiian or Pacific Islander	814	33	1	0	0
White	343,172	21,311	2,213	289	25
Unknown / Not Declared	4,165	223	27	4	0
More than One Race	6,160	546	32	6	3

Medicaid demographic data can be found here: <http://www.hsd.state.nm.us/LookingForInformation/medicaid-eligibility.aspx>

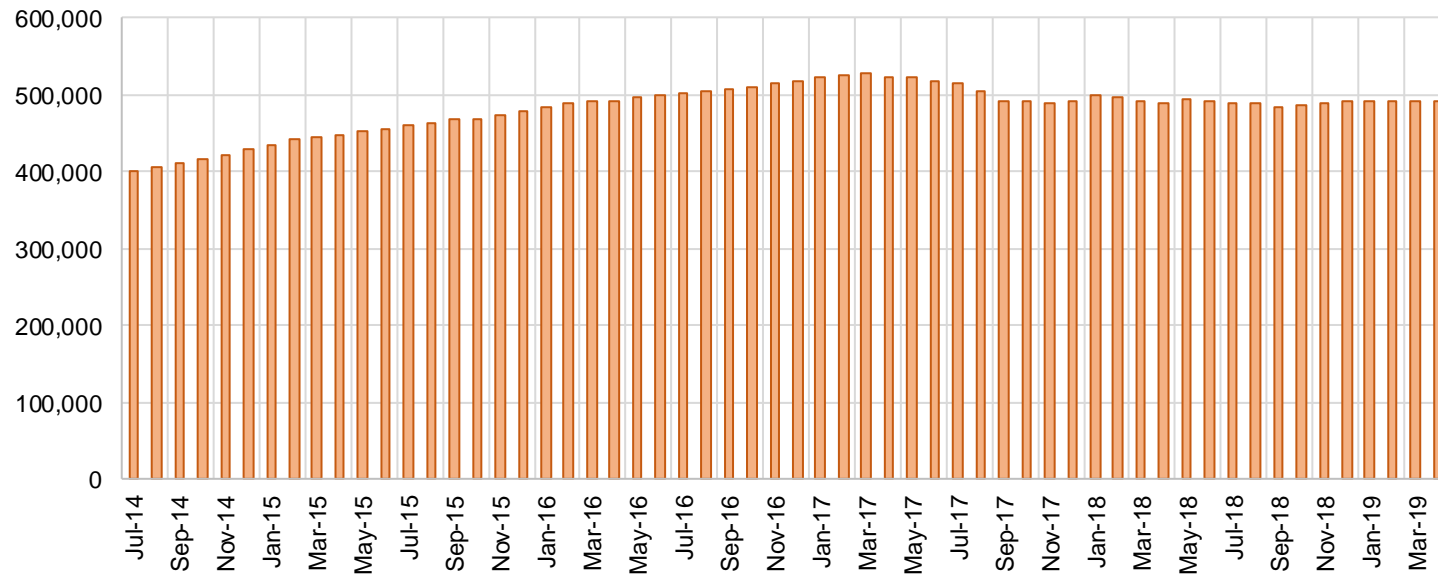
Medicaid Cases by Field Office²

Office	Apr-18	Mar-19	Apr-19	Percent Change	
				Apr-18- Apr-19	Mar-19- Apr-19
Chaves County ISD	15,901	15,875	15,904	0.0%	0.2%
Cibola County ISD	7,392	7,601	7,593	2.7%	-0.1%
Colfax County ISD	3,545	3,618	3,613	1.9%	-0.1%
Curry County ISD	13,815	14,533	14,595	5.6%	0.4%
East Dona Ana County ISD	17,798	17,885	17,847	0.3%	-0.2%
Eddy Artesia County ISD	3,777	3,863	3,847	1.9%	-0.4%
Eddy Carlsbad County ISD	7,761	7,551	7,557	-2.6%	0.1%
Grant County ISD	6,743	7,745	7,742	14.8%	0.0%
Guadalupe County ISD	1,744	1,627	1,627	-6.7%	0.0%
Hidalgo County ISD	963	53	51	-94.7%	-3.8%
Lea County ISD	14,310	14,443	14,459	1.0%	0.1%
Lincoln County ISD	4,264	4,305	4,316	1.2%	0.3%
Luna County ISD	8,754	8,601	8,595	-1.8%	-0.1%
McKinley County ISD	22,189	21,921	21,934	-1.1%	0.1%
Northeast Bernalillo County ISD	42,727	43,096	42,995	0.6%	-0.2%
Northwest Bernalillo County ISD	48,816	52,002	51,807	6.1%	-0.4%
Otero County ISD	11,890	12,060	12,036	1.2%	-0.2%
Quay County ISD	2,552	2,512	2,507	-1.8%	-0.2%
Rio Arriba County ISD	13,936	13,477	13,456	-3.4%	-0.2%
Roosevelt County ISD	22	9	9	-59.1%	0.0%
San Juan County ISD	29,932	30,253	30,276	1.1%	0.1%
San Miguel County ISD	9,034	9,152	9,128	1.0%	-0.3%
Sandoval County ISD	25,483	23,480	23,462	-7.9%	-0.1%
Santa Fe County ISD	25,029	24,690	24,598	-1.7%	-0.4%
Sierra County ISD	5,381	5,344	5,324	-1.1%	-0.4%
Socorro County ISD	5,356	5,342	5,319	-0.7%	-0.4%
South Dona Ana ISD	19,831	19,809	19,808	-0.1%	0.0%
Southeast Bernalillo County ISD	25,470	25,080	25,056	-1.6%	-0.1%
Southwest Bernalillo County ISD	38,925	39,444	39,676	1.9%	0.6%
Taos County ISD	9,335	9,251	9,265	-0.7%	0.2%
Torrance County ISD	7,427	7,905	7,881	6.1%	-0.3%
Valencia North County ISD	18,083	18,245	18,238	0.9%	0.0%
Valencia South County ISD	3	97	94	3033.3%	-3.1%
West Dona Ana County ISD	22,239	22,002	21,911	-1.5%	-0.4%
Centralized Units	4	3	2	-50.0%	-33.3%
Statewide Total	490,431	492,874	492,528	0.4%	-0.1%

Medicaid Cases by Region²

Region				Percent Change	
	Apr-18	Mar-19	Apr-19	Apr-18- Apr-19	Mar-19- Apr-19
Region 1 - NW	88,336	88,803	88,778	0.5%	0.0%
Region 2 - NE	90,658	87,807	87,656	-3.3%	-0.2%
Region 3 - Central	163,365	167,527	167,415	2.5%	-0.1%
Region 4 - SE	59,850	60,579	60,687	1.4%	0.2%
Region 5 - SW	88,218	88,155	87,990	-0.3%	-0.2%
Centralized Units	4	3	2	-50.0%	-33.3%
Statewide Total	490,431	492,874	492,528	0.4%	-0.1%

Medicaid Caseload: SFY-15 to Current



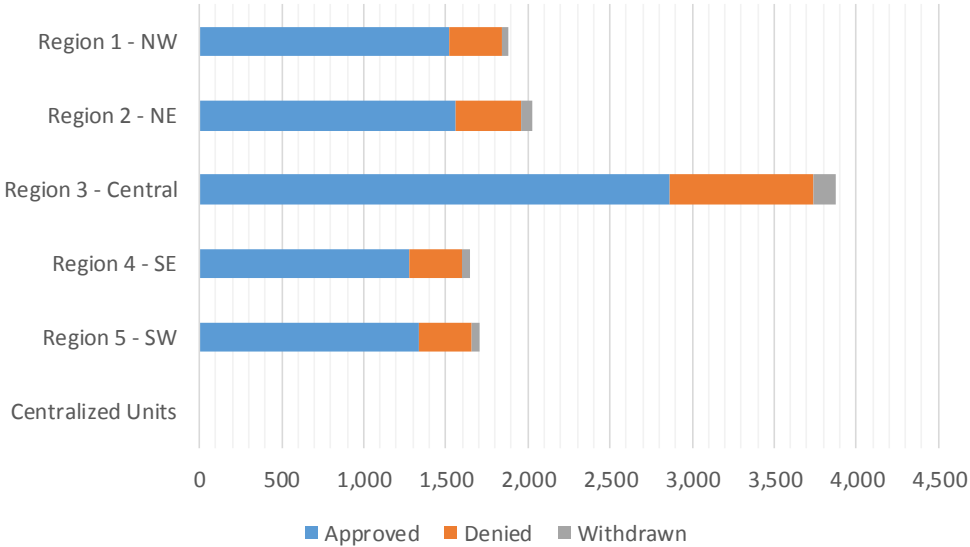
Medicaid Initial Applications by Field Office^{4,11}
April 2019

Office	Approved	Denied	Withdrawn	Total Cases Processed
Chaves County ISD	300	84	18	402
Cibola County ISD	142	36	1	179
Colfax County ISD	63	18	2	83
Curry County ISD	336	72	6	414
East Dona Ana County ISD	328	84	12	424
Eddy Artesia County ISD	69	21	2	92
Eddy Carlsbad County ISD	181	33	11	225
Grant County ISD	136	16	7	159
Guadalupe County ISD	25	8	0	33
Hidalgo County ISD	0	0	1	1
Lea County ISD	293	77	11	381
Lincoln County ISD	99	32	4	135
Luna County ISD	121	34	2	157
McKinley County ISD	405	80	7	492
Northeast Bernalillo County ISD	826	274	33	1,133
Northwest Bernalillo County ISD	644	203	25	872
Otero County ISD	192	44	4	240
Quay County ISD	31	10	2	43
Rio Arriba County ISD	178	55	7	240
Roosevelt County ISD	0	0	0	0
San Juan County ISD	564	124	16	704
San Miguel County ISD	229	39	9	277
Sandoval County ISD	429	114	25	568
Santa Fe County ISD	438	123	22	583
Sierra County ISD	70	10	8	88
Socorro County ISD	73	21	3	97
South Dona Ana ISD	276	78	10	364
Southeast Bernalillo County ISD	614	237	22	873
Southwest Bernalillo County ISD	641	136	46	823
Taos County ISD	163	37	3	203
Torrance County ISD	134	31	7	172
Valencia North County ISD	269	48	8	325
Valencia South County ISD	0	0	0	0
West Dona Ana County ISD	285	66	12	363
Centralized Units	0	0	0	0
Statewide Total	8,554	2,245	346	11,145

Medicaid Initial Applications by Region^{4,11}
April 2019

	Approved	Denied	Withdrawn	Total Cases Processed
Region				
Region 1 - NW	1,523	319	43	1,885
Region 2 - NE	1,556	404	70	2,030
Region 3 - Central	2,859	881	133	3,873
Region 4 - SE	1,278	319	52	1,649
Region 5 - SW	1,338	322	48	1,707
Centralized Units	0	0	0	0

Statewide Total	8,554	2,245	346	11,144
-----------------	-------	-------	-----	--------

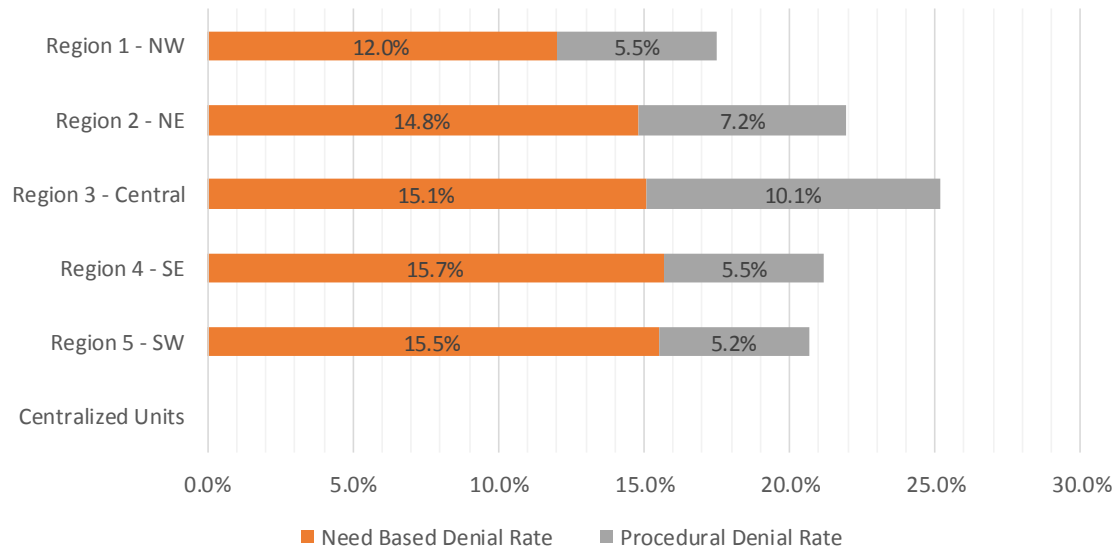


Medicaid EDG Initial Disposition Rates by Field Office^{4,11,19}
April 2019

Office	Approval Rate	Denial Rate	Need Based Denial Rate	Procedural Denial Rate
Chaves County ISD	75.4%	24.6%	18.3%	6.3%
Cibola County ISD	79.3%	20.7%	11.2%	9.5%
Colfax County ISD	76.8%	23.2%	18.3%	4.9%
Curry County ISD	82.6%	17.4%	14.7%	2.7%
East Dona Ana County ISD	78.1%	21.9%	15.2%	6.7%
Eddy Artesia County ISD	78.4%	21.6%	14.8%	6.8%
Eddy Carlsbad County ISD	81.9%	18.1%	10.0%	8.1%
Grant County ISD	85.5%	14.5%	13.9%	0.6%
Guadalupe County ISD	83.3%	16.7%	13.4%	3.3%
Hidalgo County ISD	0.0%	0.0%	0.0%	0.0%
Lea County ISD	78.6%	21.4%	16.0%	5.4%
Lincoln County ISD	73.9%	26.1%	19.4%	6.7%
Luna County ISD	77.6%	22.4%	14.7%	7.7%
McKinley County ISD	84.2%	15.8%	11.0%	4.8%
Northeast Bernalillo County ISD	73.9%	26.1%	14.5%	11.6%
Northwest Bernalillo County ISD	74.9%	25.1%	14.5%	10.6%
Otero County ISD	80.3%	19.7%	13.4%	6.3%
Quay County ISD	72.1%	27.9%	20.9%	7.0%
Rio Arriba County ISD	76.7%	23.3%	14.2%	9.1%
Roosevelt County ISD	0.0%	0.0%	0.0%	0.0%
San Juan County ISD	81.7%	18.3%	12.1%	6.2%
San Miguel County ISD	83.3%	16.7%	10.9%	5.8%
Sandoval County ISD	76.3%	23.7%	15.7%	8.0%
Santa Fe County ISD	76.4%	23.6%	15.7%	7.9%
Sierra County ISD	82.4%	17.6%	12.9%	4.7%
Socorro County ISD	79.3%	20.7%	13.1%	7.6%
South Dona Ana ISD	77.5%	22.5%	20.5%	2.0%
Southeast Bernalillo County ISD	70.8%	29.2%	17.7%	11.5%
Southwest Bernalillo County ISD	79.0%	21.0%	14.0%	7.0%
Taos County ISD	82.3%	17.7%	13.7%	4.0%
Torrance County ISD	81.2%	18.8%	14.6%	4.2%
Valencia North County ISD	84.1%	15.9%	13.4%	2.5%
Valencia South County ISD	0.0%	0.0%	0.0%	0.0%
West Dona Ana County ISD	79.8%	20.2%	13.5%	6.7%
Centralized Units	0.0%	0.0%	0.0%	0.0%
Statewide Total	78.0%	22.0%	14.7%	7.3%

Medicaid EDG Initial Disposition Rates by Region^{4,11,19}
April 2019

Region	Approval Rate	Denial Rate	Need Based Denial Rate	Procedural Denial Rate
Region 1 - NW	82.5%	17.5%	12.0%	5.5%
Region 2 - NE	78.0%	22.0%	14.8%	7.2%
Region 3 - Central	74.8%	25.2%	15.1%	10.1%
Region 4 - SE	78.8%	21.2%	15.7%	5.5%
Region 5 - SW	79.3%	20.7%	15.5%	5.2%
Centralized Units				
Statewide Total	78.0%	22.0%	14.7%	7.3%



Medicaid: Percentage of Initial EDG Approvals Processed Timely by Field Office ^{13,19}

	Oct-18	Nov-18	Dec-18	Jan-19	Feb-19	Mar-19	Apr-19	May-19	Jun-19	Jul-19	Aug-19	Sep-19	Average
Cibola	100.0%	98.8%	96.8%	98.9%	99.5%	95.7%	99.1%						98.4%
McKinley	99.5%	99.4%	99.1%	99.3%	98.1%	98.6%	99.4%						99.1%
San Juan	98.9%	98.9%	99.2%	99.0%	99.3%	98.6%	99.1%						99.0%
Sierra	97.4%	99.3%	96.2%	99.2%	100.0%	100.0%	100.0%						98.9%
Socorro	100.0%	100.0%	100.0%	99.3%	99.3%	100.0%	100.0%						99.8%
Valencia North	98.9%	99.2%	99.3%	99.8%	99.1%	98.1%	100.0%						99.2%
Valencia South	100.0%	100.0%	100.0%	100.0%	100.0%	100.0%							100.0%
NW Region 1 Total	99.1%	99.1%	99.0%	99.3%	99.0%	98.7%	99.4%						99.1%
Colfax	99.1%	97.4%	97.3%	96.2%	100.0%	98.6%	100.0%						98.4%
Guadalupe	96.8%	100.0%	100.0%	100.0%	100.0%	100.0%	100.0%						99.5%
Quay	98.6%	100.0%	100.0%	100.0%	98.0%	100.0%	100.0%						99.5%
Rio Arriba	99.7%	99.4%	98.9%	98.9%	98.6%	98.3%	99.6%						99.1%
San Miguel	99.7%	100.0%	99.3%	99.7%	100.0%	99.0%	100.0%						99.7%
Sandoval	98.2%	99.2%	98.6%	98.7%	99.7%	98.0%	100.0%						98.9%
Santa Fe	99.0%	99.0%	99.7%	99.2%	99.0%	98.3%	99.2%						99.1%
Taos	100.0%	98.8%	99.0%	100.0%	99.6%	97.7%	99.6%						99.2%
NE Region 2 Total	99.0%	99.2%	99.1%	99.0%	99.4%	98.7%	99.7%						99.2%
NE Bernalillo	97.5%	98.5%	98.5%	97.9%	98.5%	97.9%	98.5%						98.2%
NW Bernalillo	98.6%	99.5%	99.4%	98.7%	99.0%	98.2%	99.0%						98.9%
SE Bernalillo	98.4%	98.7%	98.7%	98.6%	98.7%	97.4%	99.3%						98.5%
SW Bernalillo	98.7%	97.9%	98.6%	97.6%	99.5%	98.3%	98.6%						98.5%
Torrance	99.3%	97.8%	99.6%	98.2%	96.9%	98.3%	100.0%						98.6%
Gen. Region 3 Total	98.3%	98.6%	98.9%	98.2%	98.8%	98.0%	98.9%						98.5%
Chaves	99.5%	99.2%	98.3%	99.6%	99.8%	97.9%	99.8%						99.2%
Curry	98.5%	98.9%	99.1%	98.5%	98.5%	98.2%	99.4%						98.7%
Eddy Artesia	100.0%	97.7%	99.0%	98.6%	98.1%	98.5%	100.0%						98.8%
Eddy Carlsbad	98.0%	97.9%	99.6%	98.8%	97.0%	97.7%	99.3%						98.3%
Lea	99.3%	99.5%	99.4%	99.4%	99.4%	98.4%	100.0%						99.3%
Lincoln	99.3%	99.5%	98.1%	98.7%	100.0%	97.5%	100.0%						99.0%
Roosevelt	100.0%	100.0%	100.0%	100.0%	100.0%	98.1%							99.7%
SE Region 4 Total	99.0%	99.0%	98.9%	99.1%	98.9%	98.0%	99.7%						98.9%
East Dona Ana	99.7%	97.3%	98.7%	99.0%	97.9%	97.1%	99.0%						98.4%
Grant	98.4%	99.2%	98.6%	98.9%	95.3%	98.9%	99.0%						98.3%
Luna	97.5%	100.0%	100.0%	99.6%	100.0%	100.0%	98.5%						99.4%
Otero	98.4%	98.9%	99.1%	98.3%	99.3%	98.6%	99.6%						98.9%
South Dona Ana	99.6%	99.2%	99.1%	98.9%	99.6%	98.7%	99.1%						99.2%
West Dona Ana	98.9%	99.2%	100.0%	98.9%	99.3%	98.9%	99.7%						99.3%
SW Region 5 Total	99.0%	98.8%	99.2%	98.9%	98.8%	98.7%	99.2%						98.9%
STATE TOTAL	98.8%	98.9%	99.0%	98.8%	98.9%	98.5%	99.3%						98.9%

Medicaid: Percentage of Initial EDG Denials Processed Timely by Field Office ^{13,19}

	Oct-18	Nov-18	Dec-18	Jan-19	Feb-19	Mar-19	Apr-19	May-19	Jun-19	Jul-19	Aug-19	Sep-19	Average
Cibola	90.2%	93.8%	97.1%	100.0%	96.6%	98.3%	100.0%						96.6%
McKinley	95.2%	97.7%	97.2%	96.7%	94.2%	94.2%	96.3%						95.9%
San Juan	92.1%	87.2%	96.8%	97.5%	96.2%	96.4%	97.5%						94.8%
Sierra	92.3%	100.0%	100.0%	100.0%	100.0%	100.0%	96.2%						98.4%
Socorro	88.6%	97.6%	100.0%	100.0%	96.8%	100.0%	94.9%						96.8%
Valencia North	96.8%	98.0%	94.4%	96.3%	98.4%	95.6%	100.0%						97.1%
Valencia South	100.0%	100.0%	100.0%			100.0%							100.0%
NW Region 1 Total	93.2%	93.9%	96.8%	97.5%	96.5%	97.8%	97.6%						96.2%
Colfax	100.0%	100.0%	100.0%	98.1%	85.7%	100.0%	97.5%						97.3%
Guadalupe	100.0%	100.0%	100.0%	84.6%	100.0%	100.0%	100.0%						97.8%
Quay	91.7%	95.0%	100.0%	100.0%	100.0%	100.0%	100.0%						98.1%
Rio Arriba	82.2%	94.8%	89.6%	100.0%	98.9%	99.0%	99.0%						94.8%
San Miguel	97.9%	100.0%	99.0%	97.9%	97.0%	97.6%	100.0%						98.5%
Sandoval	90.0%	97.1%	98.4%	98.0%	99.2%	94.7%	96.2%						96.2%
Santa Fe	92.7%	93.4%	96.1%	98.0%	96.2%	94.3%	97.7%						95.5%
Taos	96.4%	98.0%	100.0%	96.5%	99.0%	96.5%	93.5%						97.1%
NE Region 2 Total	91.9%	96.2%	97.0%	97.8%	97.5%	97.8%	97.4%						96.5%
NE Bernalillo	91.1%	93.3%	96.9%	95.7%	92.6%	92.7%	92.4%						93.5%
NW Bernalillo	89.6%	97.4%	95.6%	98.0%	95.3%	93.2%	95.7%						95.0%
SE Bernalillo	95.0%	95.1%	96.3%	93.1%	90.6%	94.5%	98.2%						94.7%
SW Bernalillo	83.6%	97.8%	98.6%	97.7%	93.9%	96.0%	95.5%						94.7%
Torrance	94.0%	96.2%	100.0%	95.8%	98.9%	97.3%	100.0%						97.5%
Gen. Region 3 Total	90.1%	95.6%	96.9%	96.4%	93.6%	94.7%	95.4%						94.7%
Chaves	98.2%	98.0%	96.8%	98.2%	96.3%	99.5%	97.8%						97.8%
Curry	92.0%	90.8%	97.7%	94.5%	96.6%	97.9%	94.5%						94.9%
Eddy Artesia	97.7%	97.6%	96.2%	98.4%	100.0%	97.2%	100.0%						98.2%
Eddy Carlsbad	90.1%	95.0%	96.0%	97.7%	94.1%	98.6%	98.9%						95.8%
Lea	90.8%	98.6%	97.0%	97.1%	93.2%	97.0%	97.5%						95.9%
Lincoln	92.5%	98.2%	98.0%	95.8%	90.1%	100.0%	98.0%						96.1%
Roosevelt	100.0%	100.0%				100.0%							100.0%
SE Region 4 Total	93.3%	96.6%	97.0%	96.9%	94.8%	98.6%	97.4%						96.4%
East Dona Ana	96.6%	94.0%	97.7%	97.8%	97.9%	98.5%	98.2%						97.2%
Grant	96.2%	100.0%	98.5%	98.6%	98.6%	100.0%	100.0%						98.8%
Luna	96.4%	100.0%	100.0%	91.8%	100.0%	97.8%	100.0%						98.0%
Otero	96.1%	98.8%	93.9%	96.2%	90.5%	95.7%	99.0%						95.7%
South Dona Ana	100.0%	99.2%	99.4%	97.1%	98.8%	98.9%	96.7%						98.6%
West Dona Ana	97.5%	97.2%	100.0%	96.7%	96.5%	99.2%	96.4%						97.6%
SW Region 5 Total	97.4%	97.7%	98.3%	96.6%	97.4%	98.4%	97.8%						97.7%
STATE TOTAL	92.6%	96.0%	97.1%	97.0%	95.5%	97.6%	96.8%						96.1%

Medicaid: Percentage of Initial EDG Approvals and Denials Combined Processed Timely by Field Office^{13,19}

	Oct-18	Nov-18	Dec-18	Jan-19	Feb-19	Mar-19	Apr-19	May-19	Jun-19	Jul-19	Aug-19	Sep-19	Average
Cibola	98.6%	97.9%	96.8%	99.1%	98.8%	96.4%	99.3%						98.1%
McKinley	98.7%	99.1%	98.8%	98.7%	97.2%	97.7%	98.8%						98.4%
San Juan	97.8%	97.1%	98.7%	98.7%	98.5%	98.1%	98.7%						98.2%
Sierra	97.0%	99.4%	96.9%	99.4%	100.0%	100.0%	99.2%						98.8%
Socorro	96.6%	99.4%	100.0%	99.5%	98.8%	100.0%	98.8%						99.0%
Valencia North	98.6%	99.0%	98.3%	99.0%	98.9%	97.5%	100.0%						98.8%
Valencia South	100.0%	100.0%	100.0%	100.0%	100.0%	100.0%							100.0%
NW Region 1 Total	98.1%	98.3%	98.5%	98.8%	98.4%	98.5%	99.0%						98.5%
Colfax	99.2%	98.1%	98.1%	96.8%	95.7%	98.9%	99.4%						98.0%
Guadalupe	96.8%	100.0%	100.0%	96.7%	100.0%	100.0%	100.0%						99.1%
Quay	97.6%	98.0%	100.0%	100.0%	98.5%	100.0%	100.0%						99.2%
Rio Arriba	97.6%	98.3%	96.3%	99.1%	98.7%	98.5%	99.4%						98.3%
San Miguel	99.5%	100.0%	99.3%	99.3%	99.3%	98.7%	100.0%						99.4%
Sandoval	97.0%	98.8%	98.6%	98.5%	99.5%	97.1%	99.1%						98.4%
Santa Fe	97.8%	97.7%	98.9%	98.7%	98.0%	97.1%	98.9%						98.2%
Taos	99.7%	98.7%	99.3%	98.8%	99.4%	97.5%	98.3%						98.8%
NE Region 2 Total	98.0%	98.5%	98.6%	98.7%	98.8%	98.5%	99.1%						98.6%
NE Bernalillo	96.1%	97.2%	98.1%	97.3%	96.5%	96.5%	96.8%						96.9%
NW Bernalillo	96.8%	99.1%	98.4%	98.5%	97.9%	96.9%	98.2%						98.0%
SE Bernalillo	97.6%	97.8%	98.1%	97.1%	96.3%	96.5%	99.0%						97.5%
SW Bernalillo	96.1%	97.9%	98.6%	97.6%	97.9%	97.7%	97.8%						97.7%
Torrance	98.4%	97.6%	99.7%	97.5%	97.5%	98.1%	100.0%						98.4%
Gen. Region 3 Total	96.7%	98.0%	98.4%	97.6%	97.2%	97.1%	97.9%						97.6%
Chaves	99.2%	99.0%	97.8%	99.2%	98.7%	98.5%	99.2%						98.8%
Curry	97.3%	97.9%	98.7%	97.4%	98.0%	98.2%	98.5%						98.0%
Eddy Artesia	99.5%	97.6%	98.5%	98.5%	98.5%	98.2%	100.0%						98.7%
Eddy Carlsbad	96.5%	97.1%	98.7%	98.5%	96.0%	97.9%	99.2%						97.7%
Lea	97.2%	99.3%	98.8%	98.7%	97.5%	98.1%	99.4%						98.4%
Lincoln	97.5%	99.2%	98.1%	97.8%	96.2%	98.2%	99.5%						98.1%
Roosevelt	100.0%	100.0%	100.0%	100.0%	100.0%	100.0%							100.0%
SE Region 4 Total	97.7%	98.5%	98.4%	98.5%	97.6%	98.4%	99.2%						98.3%
East Dona Ana	99.1%	96.7%	98.4%	98.7%	97.9%	97.5%	98.8%						98.2%
Grant	97.9%	99.4%	98.6%	98.8%	96.3%	99.1%	99.2%						98.5%
Luna	97.3%	100.0%	100.0%	97.6%	100.0%	99.4%	98.9%						99.0%
Otero	98.1%	98.9%	97.8%	97.7%	97.6%	97.9%	99.5%						98.2%
South Dona Ana	99.7%	99.2%	99.2%	98.3%	99.4%	98.8%	98.4%						99.0%
West Dona Ana	98.7%	98.9%	100.0%	98.3%	98.6%	99.0%	98.9%						98.9%
SW Region 5 Total	98.7%	98.6%	99.0%	98.3%	98.4%	98.6%	98.9%						98.6%
STATE TOTAL	97.7%	98.3%	98.6%	98.3%	98.0%	98.3%	98.7%						98.3%

Medicaid Renewal Disposition Counts by Field Office^{4,11}
April 2019

Office	Approvals	Closures	Need Based Closures	Procedural Closures
Chaves County ISD	2,620	674	301	373
Cibola County ISD	1,428	364	148	216
Colfax County ISD	523	132	70	62
Curry County ISD	2,667	633	258	375
East Dona Ana County ISD	3,242	850	307	543
Eddy Artesia County ISD	714	173	65	108
Eddy Carlsbad County ISD	964	404	116	288
Grant County ISD	1,264	252	115	137
Guadalupe County ISD	266	42	17	25
Hidalgo County ISD	1	0	0	0
Lea County ISD	2,278	658	217	441
Lincoln County ISD	691	186	74	112
Luna County ISD	1,541	283	133	150
McKinley County ISD	4,785	962	375	587
Northeast Bernalillo County ISD	5,982	1522	546	976
Northwest Bernalillo County ISD	5,185	1367	471	896
Otero County ISD	2,105	465	200	265
Quay County ISD	396	75	28	47
Rio Arriba County ISD	1,980	480	142	338
Roosevelt County ISD	0	0	0	0
San Juan County ISD	5,516	1351	533	818
San Miguel County ISD	1,286	267	106	161
Sandoval County ISD	3,823	1059	361	698
Santa Fe County ISD	3,103	937	248	689
Sierra County ISD	1,065	183	88	95
Socorro County ISD	806	173	72	101
South Dona Ana ISD	3,839	660	274	386
Southeast Bernalillo County ISD	3,486	818	297	521
Southwest Bernalillo County ISD	7,506	2037	786	1251
Taos County ISD	1,304	294	101	193
Torrance County ISD	1,352	291	125	166
Valencia North County ISD	3,307	829	316	513
Valencia South County ISD	2	0	0	0
West Dona Ana County ISD	3,756	745	313	432
Centralized Units	0	0	0	0

Statewide Total	78,783	19,166	7,203	11,963
-----------------	--------	--------	-------	--------

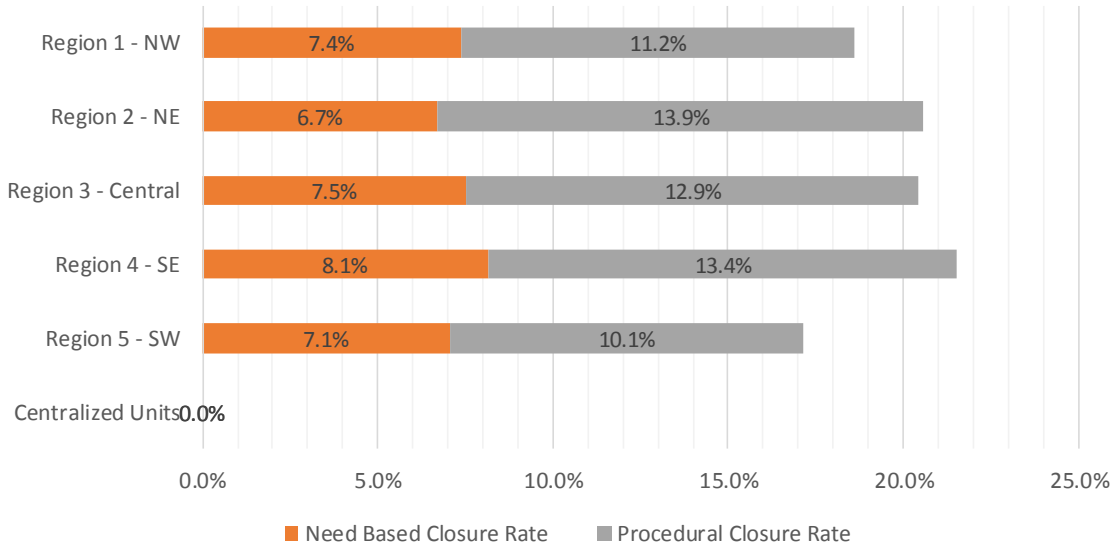
Medicaid Renewal Disposition Rates by Field Office²⁰
April 2019

Office	Approval Rate	Closure Rate	Need Based Closure Rate	Procedural Closure Rate
Chaves County ISD	79.5%	20.5%	9.1%	11.3%
Cibola County ISD	79.7%	20.3%	8.3%	12.1%
Colfax County ISD	79.8%	20.2%	10.7%	9.5%
Curry County ISD	80.8%	19.2%	7.8%	11.4%
East Dona Ana County ISD	79.2%	20.8%	7.5%	13.3%
Eddy Artesia County ISD	80.5%	19.5%	7.3%	12.2%
Eddy Carlsbad County ISD	70.5%	29.5%	8.5%	21.1%
Grant County ISD	83.4%	16.6%	7.6%	9.0%
Guadalupe County ISD	86.4%	13.6%	5.5%	8.1%
Hidalgo County ISD	100.0%	0.0%	0.0%	0.0%
Lea County ISD	77.6%	22.4%	7.4%	15.0%
Lincoln County ISD	78.8%	21.2%	8.4%	12.8%
Luna County ISD	84.5%	15.5%	7.3%	8.2%
McKinley County ISD	83.3%	16.7%	6.5%	10.2%
Northeast Bernalillo County ISD	79.7%	20.3%	7.3%	13.0%
Northwest Bernalillo County ISD	79.1%	20.9%	7.2%	13.7%
Otero County ISD	81.9%	18.1%	7.8%	10.3%
Quay County ISD	84.1%	15.9%	5.9%	10.0%
Rio Arriba County ISD	80.5%	19.5%	5.8%	13.7%
Roosevelt County ISD	0.0%	0.0%	0.0%	0.0%
San Juan County ISD	80.3%	19.7%	7.8%	11.9%
San Miguel County ISD	82.8%	17.2%	6.8%	10.4%
Sandoval County ISD	78.3%	21.7%	7.4%	14.3%
Santa Fe County ISD	76.8%	23.2%	6.1%	17.1%
Sierra County ISD	85.3%	14.7%	7.1%	7.6%
Socorro County ISD	82.3%	17.7%	7.4%	10.3%
South Dona Ana ISD	85.3%	14.7%	6.1%	8.6%
Southeast Bernalillo County ISD	81.0%	19.0%	6.9%	12.1%
Southwest Bernalillo County ISD	78.7%	21.3%	8.2%	13.1%
Taos County ISD	81.6%	18.4%	6.3%	12.1%
Torrance County ISD	82.3%	17.7%	7.6%	10.1%
Valencia North County ISD	80.0%	20.0%	7.6%	12.4%
Valencia South County ISD	100.0%	0.0%	0.0%	0.0%
West Dona Ana County ISD	83.4%	16.6%	7.0%	9.6%
Centralized Units	0.0%	0.0%	0.0%	0.0%
Statewide Total	80.4%	19.6%	7.4%	12.2%

Medicaid Renewal Disposition Rates by Region²⁰
April 2019

Region	Approval Rate	Closure Rate	Need Based Closure Rate	Procedural Closure Rate
Region 1 - NW	81.4%	18.6%	7.4%	11.2%
Region 2 - NE	79.4%	20.6%	6.7%	13.9%
Region 3 - Central	79.6%	20.4%	7.5%	12.9%
Region 4 - SE	78.5%	21.5%	8.1%	13.4%
Region 5 - SW	82.9%	17.1%	7.1%	10.1%
Centralized Units				

Statewide Total	80.4%	19.6%	7.4%	12.2%
-----------------	-------	-------	------	-------



Medicaid: Percentage of Approved Renewal EDGs Processed by Certification Date ¹¹

	Oct-18	Nov-18	Dec-18	Jan-19	Feb-19	Mar-19	Apr-19	May-19	Jun-19	Jul-19	Aug-19	Sep-19	Average
Cibola	99.7%	97.1%	97.8%	98.2%	98.2%	98.2%	98.6%						98.3%
McKinley	99.4%	97.5%	98.9%	99.1%	97.7%	98.2%	98.8%						98.5%
San Juan	99.2%	97.3%	99.0%	98.2%	99.0%	98.6%	98.9%						98.6%
Sierra	98.8%	97.6%	99.1%	98.7%	97.7%	97.0%	98.4%						98.2%
Socorro	99.2%	96.2%	96.8%	99.3%	98.8%	98.1%	98.5%						98.1%
Valencia North	99.0%	96.6%	97.9%	98.1%	98.4%	97.7%	97.4%						97.9%
Valencia South													
NW Region 1 Total	99.2%	97.1%	98.2%	98.6%	98.3%	98.0%	98.4%						98.3%
Colfax	99.2%	97.5%	97.6%	99.5%	98.0%	98.9%	99.2%						98.6%
Guadalupe	99.6%	96.9%	99.2%	100.0%	99.5%	99.6%	99.6%						99.2%
Quay	98.4%	97.0%	99.1%	99.0%	96.1%	97.6%	98.0%						97.9%
Rio Arriba	98.6%	97.1%	98.6%	97.7%	97.0%	96.3%	97.6%						97.5%
San Miguel	99.5%	97.3%	99.7%	99.3%	99.3%	99.1%	99.4%						99.1%
Sandoval	98.6%	97.1%	97.7%	98.4%	97.8%	98.9%	97.8%						98.0%
Santa Fe	97.9%	95.8%	98.1%	96.9%	97.7%	97.3%	95.9%						97.1%
Taos	98.2%	97.1%	99.1%	99.1%	98.1%	98.1%	97.8%						98.2%
NE Region 2 Total	98.8%	97.0%	98.7%	98.7%	97.9%	98.2%	98.2%						98.2%
NE Bernalillo	98.1%	96.7%	98.3%	98.2%	98.4%	98.6%	98.7%						98.1%
NW Bernalillo	97.9%	97.2%	98.5%	98.2%	98.9%	98.0%	98.1%						98.1%
SE Bernalillo	98.5%	96.9%	98.8%	98.7%	98.5%	98.8%	98.3%						98.4%
SW Bernalillo	98.2%	96.7%	98.3%	98.5%	97.8%	98.0%	97.6%						97.9%
Torrance	99.5%	98.0%	98.8%	99.2%	99.8%	99.4%	99.0%						99.1%
Gen. Region 3 Total	98.5%	97.1%	98.5%	98.6%	98.7%	98.6%	98.3%						98.3%
Chaves	98.8%	97.1%	98.8%	99.2%	98.1%	99.2%	98.6%						98.5%
Curry	98.9%	97.5%	98.7%	98.7%	98.2%	98.8%	98.2%						98.4%
Eddy Artesia	98.2%	96.9%	98.2%	99.5%	97.4%	98.4%	96.5%						97.9%
Eddy Carlsbad	98.9%	96.6%	97.0%	98.1%	97.2%	98.0%	98.0%						97.7%
Lea	98.9%	97.8%	99.2%	99.4%	99.3%	98.5%	98.4%						98.8%
Lincoln	98.6%	95.2%	98.6%	96.3%	98.3%	98.1%	97.6%						97.5%
Roosevelt	100.0%												100.0%
SE Region 4 Total	98.9%	96.9%	98.4%	98.6%	98.1%	98.5%	97.9%						98.2%
East Dona Ana	99.3%	97.1%	99.5%	99.3%	99.3%	99.2%	99.2%						99.0%
Grant	99.1%	97.4%	99.1%	99.8%	98.7%	99.0%	99.3%						98.9%
Luna	99.2%	97.2%	99.3%	99.6%	97.9%	98.5%	99.0%						98.7%
Otero	98.3%	96.6%	96.9%	97.6%	99.0%	97.7%	97.8%						97.7%
South Dona Ana	97.9%	97.4%	98.3%	97.7%	97.9%	97.9%	97.8%						97.8%
West Dona Ana	99.6%	98.0%	99.4%	99.2%	99.3%	99.1%	98.7%						99.1%
SW Region 5 Total	98.9%	97.3%	98.8%	98.9%	98.7%	98.6%	98.6%						98.5%
STATE TOTAL	98.9%	97.0%	98.5%	98.7%	98.3%	98.3%	98.3%						98.3%

Administrative, Annual, and Auto Renewals are included

Medicaid: Percentage of Closures EDGs Processed by Certification End Date¹¹

	Oct-18	Nov-18	Dec-18	Jan-19	Feb-19	Mar-19	Apr-19	May-19	Jun-19	Jul-19	Aug-19	Sep-19	Average
Cibola	96.0%	97.9%	98.2%	94.0%	94.9%	98.0%	97.8%						96.7%
McKinley	98.6%	98.9%	97.3%	98.3%	98.0%	99.0%	97.1%						98.2%
San Juan	97.1%	97.0%	96.2%	97.5%	97.3%	97.7%	97.6%						97.2%
Sierra	98.5%	95.6%	97.7%	97.5%	96.7%	97.0%	96.8%						97.1%
Socorro	96.0%	99.4%	93.8%	98.9%	95.3%	99.5%	96.6%						97.1%
Valencia North	98.3%	98.7%	97.0%	96.9%	98.3%	98.0%	98.5%						97.9%
Valencia South													
NW Region 1 Total	97.4%	97.9%	96.7%	97.2%	96.7%	98.2%	97.4%						97.4%
Colfax	96.3%	97.8%	95.0%	98.9%	93.3%	100.0%	98.5%						97.1%
Guadalupe	98.3%	100.0%	100.0%	100.0%	100.0%	96.7%	100.0%						99.3%
Quay	96.6%	97.0%	100.0%	100.0%	95.7%	100.0%	94.9%						97.7%
Rio Arriba	98.6%	98.1%	96.6%	98.4%	97.9%	98.7%	97.8%						98.0%
San Miguel	100.0%	98.8%	98.4%	98.6%	98.0%	98.0%	99.6%						98.8%
Sandoval	98.2%	98.1%	97.4%	95.0%	97.1%	97.8%	98.4%						97.4%
Santa Fe	98.0%	98.5%	95.3%	96.9%	96.5%	98.7%	97.6%						97.4%
Taos	97.4%	98.8%	95.2%	99.1%	98.5%	99.5%	97.7%						98.0%
NE Region 2 Total	97.9%	98.4%	97.2%	98.4%	97.1%	98.7%	98.1%						98.0%
NE Bernalillo	98.3%	97.6%	97.3%	97.0%	97.1%	98.5%	97.4%						97.6%
NW Bernalillo	98.2%	98.5%	96.5%	97.4%	97.1%	98.3%	97.6%						97.7%
SE Bernalillo	95.8%	98.4%	96.0%	97.3%	96.2%	98.8%	98.7%						97.3%
SW Bernalillo	97.8%	98.3%	95.9%	96.3%	97.0%	98.4%	97.6%						97.3%
Torrance	97.8%	98.5%	97.6%	99.1%	97.7%	98.9%	98.3%						98.3%
Gen. Region 3 Total	97.6%	98.3%	96.7%	97.4%	97.0%	98.6%	97.9%						97.6%
Chaves	98.2%	98.9%	98.2%	98.5%	98.3%	97.6%	98.7%						98.3%
Curry	98.9%	98.1%	98.2%	97.6%	99.2%	99.5%	98.4%						98.6%
Eddy Artesia	98.9%	97.3%	98.7%	95.4%	97.6%	98.9%	96.6%						97.6%
Eddy Carlsbad	99.1%	99.3%	99.0%	97.3%	97.0%	98.9%	98.1%						98.4%
Lea	97.7%	98.6%	98.6%	97.8%	96.2%	99.4%	98.4%						98.1%
Lincoln	99.5%	99.5%	98.1%	96.0%	97.6%	98.2%	98.4%						98.2%
Roosevelt	100.0%												100.0%
SE Region 4 Total	98.9%	98.6%	98.5%	97.1%	97.7%	98.8%	98.1%						98.2%
East Dona Ana	98.1%	97.9%	98.9%	98.1%	99.0%	99.5%	98.8%						98.6%
Grant	97.6%	97.4%	97.3%	96.5%	96.7%	98.9%	99.2%						97.7%
Luna	99.1%	98.5%	100.0%	99.5%	99.3%	99.3%	96.3%						98.9%
Otero	98.5%	98.9%	99.0%	99.6%	98.4%	97.9%	98.7%						98.7%
South Dona Ana	97.9%	98.1%	98.3%	98.8%	98.0%	98.1%	96.5%						97.9%
West Dona Ana	98.2%	98.4%	99.2%	97.8%	98.2%	99.3%	98.7%						98.6%
SW Region 5 Total	98.2%	98.2%	98.8%	98.4%	98.2%	98.8%	98.0%						98.4%
STATE TOTAL	98.0%	98.3%	97.6%	97.7%	97.3%	98.6%	97.9%						98.0%

Annual and Auto Renewals are included

Medicaid: Percentage of Approved and Terminated Renewal EDGs Combined Processed by Certification Date ¹¹

	Oct-18	Nov-18	Dec-18	Jan-19	Feb-19	Mar-19	Apr-19	May-19	Jun-19	Jul-19	Aug-19	Sep-19	Average
Cibola	99.1%	97.2%	97.8%	97.7%	97.7%	98.2%	98.5%						98.0%
McKinley	99.3%	97.7%	98.6%	99.0%	97.8%	98.3%	98.5%						98.4%
San Juan	98.8%	97.3%	98.5%	98.1%	98.7%	98.4%	98.7%						98.4%
Sierra	98.8%	97.4%	98.9%	98.6%	97.6%	97.0%	98.2%						98.1%
Socorro	98.6%	96.6%	96.3%	99.2%	98.3%	98.4%	98.2%						98.0%
Valencia North	98.9%	96.8%	97.7%	98.0%	98.3%	97.8%	97.6%						97.9%
Valencia South													
NW Region 1 Total	98.9%	97.2%	98.0%	98.4%	98.1%	98.0%	98.3%						98.1%
Colfax	98.6%	97.6%	97.2%	99.4%	97.3%	99.1%	99.1%						98.3%
Guadalupe	99.4%	97.3%	99.3%	100.0%	99.6%	99.0%	99.7%						99.2%
Quay	98.1%	97.0%	99.2%	99.1%	96.1%	98.0%	97.5%						97.9%
Rio Arriba	98.6%	97.2%	98.3%	97.8%	97.2%	96.9%	97.7%						97.7%
San Miguel	99.6%	97.4%	99.5%	99.2%	99.1%	98.8%	99.4%						99.0%
Sandoval	98.6%	97.2%	97.6%	97.9%	97.7%	98.6%	97.9%						97.9%
Santa Fe	98.0%	96.3%	97.5%	96.9%	97.5%	97.7%	96.3%						97.2%
Taos	98.0%	97.4%	98.3%	99.1%	98.2%	98.4%	97.7%						98.2%
NE Region 2 Total	98.6%	97.2%	98.4%	98.7%	97.8%	98.3%	98.2%						98.2%
NE Bernalillo	98.1%	96.9%	98.1%	98.0%	98.1%	98.6%	98.4%						98.0%
NW Bernalillo	98.0%	97.4%	98.2%	98.1%	98.6%	98.1%	98.0%						98.0%
SE Bernalillo	98.0%	97.1%	98.4%	98.5%	98.1%	98.8%	98.3%						98.2%
SW Bernalillo	98.1%	96.9%	97.9%	98.2%	97.6%	98.1%	97.6%						97.8%
Torrance	99.2%	98.1%	98.5%	99.2%	99.6%	99.3%	98.9%						99.0%
Gen. Region 3 Total	98.3%	97.3%	98.2%	98.4%	98.4%	98.6%	98.2%						98.2%
Chaves	98.7%	97.3%	98.7%	99.1%	98.1%	98.8%	98.6%						98.5%
Curry	98.9%	97.6%	98.6%	98.6%	98.4%	98.9%	98.2%						98.5%
Eddy Artesia	98.4%	97.0%	98.3%	98.9%	97.4%	98.6%	96.5%						97.9%
Eddy Carlsbad	99.0%	97.1%	97.6%	98.0%	97.2%	98.2%	98.0%						97.9%
Lea	98.6%	97.9%	99.0%	99.2%	98.7%	98.7%	98.4%						98.7%
Lincoln	98.8%	95.9%	98.5%	96.3%	98.1%	98.2%	97.8%						97.7%
Roosevelt	100.0%												100.0%
SE Region 4 Total	98.9%	97.1%	98.5%	98.3%	98.0%	98.6%	97.9%						98.2%
East Dona Ana	99.1%	97.2%	99.4%	99.1%	99.2%	99.3%	99.1%						98.9%
Grant	98.9%	97.4%	98.9%	99.4%	98.4%	98.9%	99.3%						98.7%
Luna	99.2%	97.4%	99.4%	99.6%	98.1%	98.7%	98.5%						98.7%
Otero	98.3%	96.9%	97.2%	97.9%	98.9%	97.8%	98.0%						97.9%
South Dona Ana	97.9%	97.5%	98.3%	97.8%	97.9%	97.9%	97.6%						97.9%
West Dona Ana	99.4%	98.0%	99.4%	99.1%	99.1%	99.1%	98.7%						99.0%
SW Region 5 Total	98.8%	97.4%	98.8%	98.8%	98.6%	98.6%	98.5%						98.5%
STATE TOTAL	98.7%	97.2%	98.4%	98.5%	98.1%	98.4%	98.2%						98.2%

Administrative, Annual, and Auto Renewals are included

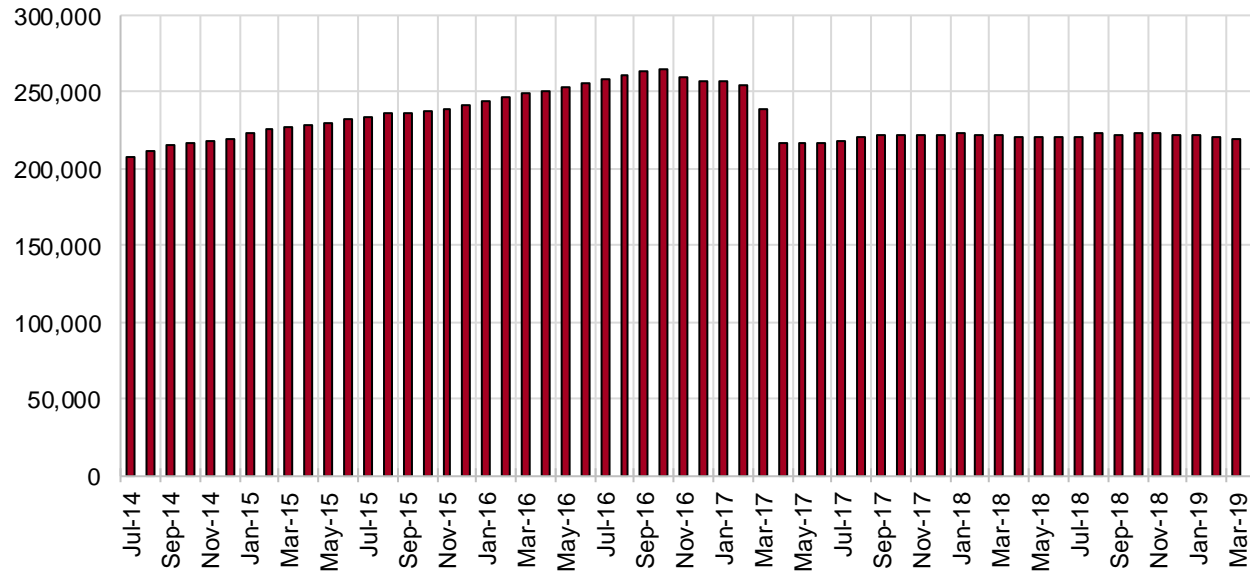
SNAP Cases by Field Office⁶

Office	Percent Change				
	Apr-18	Mar-19	Apr-19	Apr-18- Apr-19	Mar-19- Apr-19
Chaves County ISD	7,106	6,867	6,852	-3.6%	-0.2%
Cibola County ISD	3,590	3,624	3,625	1.0%	0.0%
Colfax County ISD	1,636	1,648	1,656	1.2%	0.5%
Curry County ISD	6,579	7,007	7,047	7.1%	0.6%
East Dona Ana County ISD	7,942	7,891	7,901	-0.5%	0.1%
Eddy Artesia County ISD	1,615	1,544	1,544	-4.4%	0.0%
Eddy Carlsbad County ISD	3,029	2,749	2,765	-8.7%	0.6%
Grant County ISD	3,529	3,872	3,910	10.8%	1.0%
Guadalupe County ISD	714	704	697	-2.4%	-1.0%
Hidalgo County ISD	434	15	16	-96.3%	6.7%
Lea County ISD	5,694	5,429	5,453	-4.2%	0.4%
Lincoln County ISD	1,916	1,841	1,850	-3.4%	0.5%
Luna County ISD	4,272	4,145	4,160	-2.6%	0.4%
McKinley County ISD	9,670	9,829	9,857	1.9%	0.3%
Northeast Bernalillo County ISD	20,379	20,285	20,297	-0.4%	0.1%
Northwest Bernalillo County ISD	19,333	19,834	19,661	1.7%	-0.9%
Otero County ISD	5,578	5,614	5,623	0.8%	0.2%
Quay County ISD	1,255	1,246	1,237	-1.4%	-0.7%
Rio Arriba County ISD	6,714	6,488	6,507	-3.1%	0.3%
Roosevelt County ISD	0	0	0	0.0%	N/A
San Juan County ISD	13,357	13,571	13,661	2.3%	0.7%
San Miguel County ISD	4,872	5,020	4,999	2.6%	-0.4%
Sandoval County ISD	10,960	9,918	9,803	-10.6%	-1.2%
Santa Fe County ISD	9,763	9,565	9,536	-2.3%	-0.3%
Sierra County ISD	2,654	2,652	2,630	-0.9%	-0.8%
Socorro County ISD	2,805	2,737	2,741	-2.3%	0.1%
South Dona Ana ISD	8,490	8,466	8,458	-0.4%	-0.1%
Southeast Bernalillo County ISD	11,895	11,813	11,845	-0.4%	0.3%
Southwest Bernalillo County ISD	18,603	18,677	18,910	1.7%	1.2%
Taos County ISD	4,223	4,108	4,111	-2.7%	0.1%
Torrance County ISD	3,425	3,592	3,614	5.5%	0.6%
Valencia North County ISD	8,401	8,241	8,242	-1.9%	0.0%
Valencia South County ISD	3	0	1	-66.7%	N/A
West Dona Ana County ISD	10,659	10,601	10,581	-0.7%	-0.2%
Centralized Units	44	5	11	-75.0%	120.0%
Statewide Total	221,139	219,598	219,801	-0.6%	0.1%

SNAP Cases by Region⁶

Region	Apr-18	Mar-19	Apr-19	Percent Change	
				Apr-18- Apr-19	Mar-19- Apr-19
Region 1 - NW	40,480	40,654	40,757	0.7%	0.3%
Region 2 - NE	40,137	38,697	38,546	-4.0%	-0.4%
Region 3 - Central	73,635	74,201	74,327	0.9%	0.2%
Region 4 - SE	25,939	25,437	25,511	-1.7%	0.3%
Region 5 - SW	40,904	40,604	40,649	-0.6%	0.1%
Centralized Units	44	5	11	-75.0%	120.0%
Statewide Total	221,139	219,598	219,801	-0.6%	0.1%

SNAP Caseload: SFY-15 to Current



SNAP Initial Applications by Field Office^{4,11}
April 2019

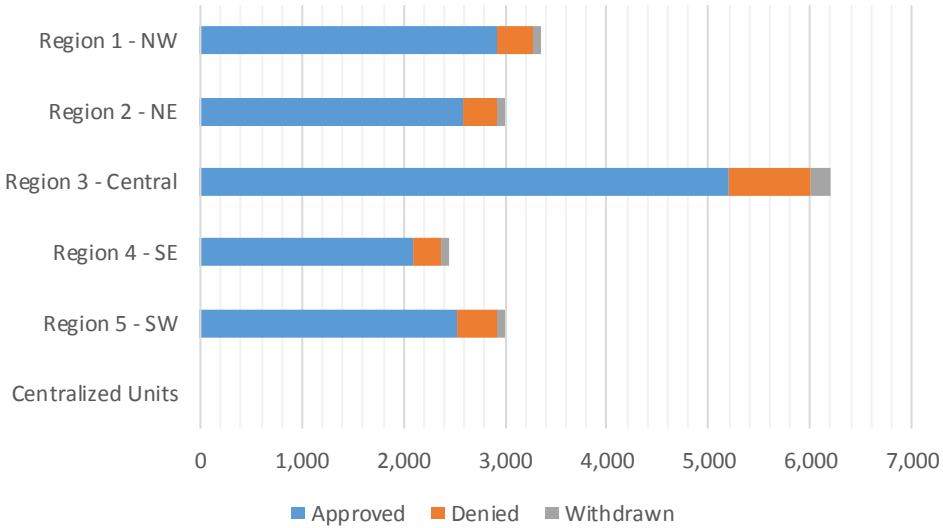
Office	Approved	Denied	Withdrawn	Total Cases Processed
Chaves County ISD	529	63	26	618
Cibola County ISD	257	33	4	294
Colfax County ISD	110	20	1	131
Curry County ISD	536	69	20	625
East Dona Ana County ISD	535	87	29	651
Eddy Artesia County ISD	132	10	3	145
Eddy Carlsbad County ISD	299	34	14	347
Grant County ISD	267	32	6	305
Guadalupe County ISD	32	7	1	40
Hidalgo County ISD	0	0	1	1
Lea County ISD	456	62	14	532
Lincoln County ISD	133	37	3	173
Luna County ISD	246	31	5	282
McKinley County ISD	683	66	15	764
Northeast Bernalillo County ISD	1,538	241	61	1,840
Northwest Bernalillo County ISD	1,156	222	42	1,420
Otero County ISD	401	53	12	466
Quay County ISD	59	7	2	68
Rio Arriba County ISD	405	37	9	451
Roosevelt County ISD	1	0	0	1
San Juan County ISD	1,157	136	20	1,313
San Miguel County ISD	303	37	8	348
Sandoval County ISD	726	109	41	876
Santa Fe County ISD	647	92	21	760
Sierra County ISD	128	17	7	152
Socorro County ISD	151	20	7	178
South Dona Ana ISD	380	67	15	462
Southeast Bernalillo County ISD	884	124	29	1,037
Southwest Bernalillo County ISD	1,389	176	67	1,632
Taos County ISD	300	25	8	333
Torrance County ISD	229	40	12	281
Valencia North County ISD	535	83	24	642
Valencia South County ISD	0	0	0	0
West Dona Ana County ISD	701	118	18	837
Centralized Units	0	0	0	0

Statewide Total	15,305	2,155	545	18,005
-----------------	--------	-------	-----	--------

SNAP Initial Applications by Region^{4,11}
April 2019

Region	Approved	Denied	Withdrawn	Total Cases Processed
Region 1 - NW	2,911	355	77	3,343
Region 2 - NE	2,582	334	91	3,007
Region 3 - Central	5,196	803	211	6,210
Region 4 - SE	2,086	275	80	2,441
Region 5 - SW	2,530	388	86	3,004
Centralized Units	0	0	0	0

Statewide Total	15,305	2,155	545	18,005
-----------------	--------	-------	-----	--------



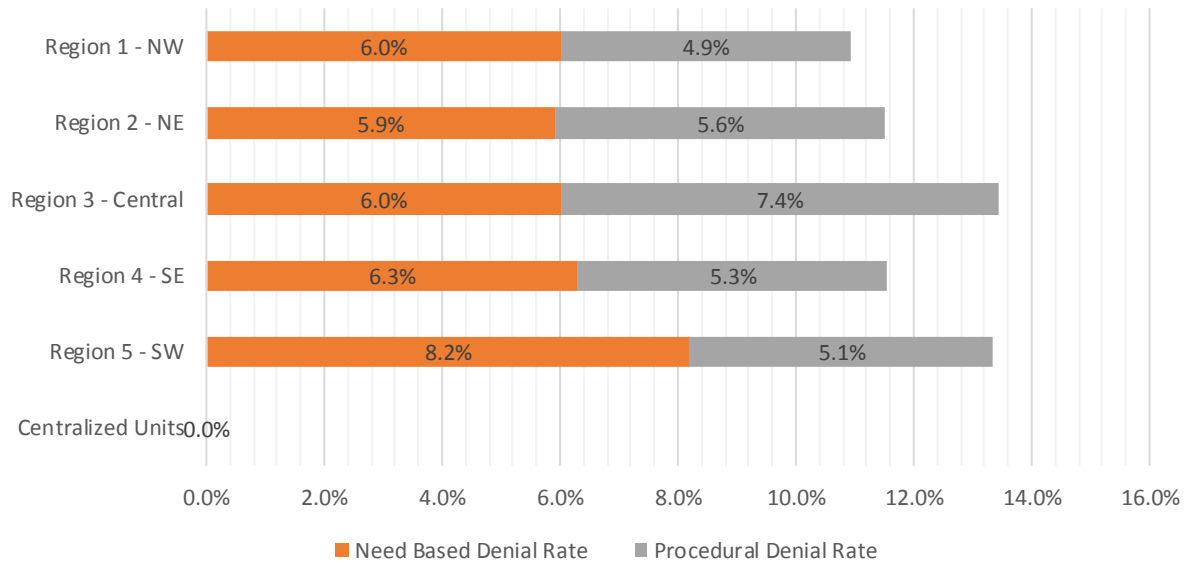
SNAP Initial Disposition Rates by Field Office^{4,11}
April 2019

Office	Approval Rate	Denial Rate	Need Based Denial Rate	Procedural Denial Rate
Chaves County ISD	89.4%	10.6%	5.5%	5.1%
Cibola County ISD	88.6%	11.4%	5.5%	5.9%
Colfax County ISD	84.6%	15.4%	12.3%	3.1%
Curry County ISD	88.6%	11.4%	7.1%	4.3%
East Dona Ana County ISD	86.0%	14.0%	7.7%	6.3%
Eddy Artesia County ISD	93.0%	7.0%	3.5%	3.5%
Eddy Carlsbad County ISD	89.8%	10.2%	4.5%	5.7%
Grant County ISD	89.3%	10.7%	6.7%	4.0%
Guadalupe County ISD	82.1%	17.9%	10.2%	7.7%
Hidalgo County ISD	0.0%	0.0%	0.0%	0.0%
Lea County ISD	88.0%	12.0%	6.0%	6.0%
Lincoln County ISD	78.2%	21.8%	14.2%	7.6%
Luna County ISD	88.8%	11.2%	6.5%	4.7%
McKinley County ISD	91.2%	8.8%	6.0%	2.8%
Northeast Bernalillo County ISD	86.5%	13.5%	5.9%	7.6%
Northwest Bernalillo County ISD	83.9%	16.1%	6.9%	9.2%
Otero County ISD	88.3%	11.7%	4.7%	7.0%
Quay County ISD	89.4%	10.6%	10.6%	0.0%
Rio Arriba County ISD	91.6%	8.4%	3.0%	5.4%
Roosevelt County ISD	100.0%	0.0%	0.0%	0.0%
San Juan County ISD	89.5%	10.5%	6.0%	4.5%
San Miguel County ISD	89.1%	10.9%	7.4%	3.5%
Sandoval County ISD	86.9%	13.1%	6.0%	7.1%
Santa Fe County ISD	87.6%	12.4%	6.2%	6.2%
Sierra County ISD	88.3%	11.7%	4.8%	6.9%
Socorro County ISD	88.3%	11.7%	4.1%	7.6%
South Dona Ana ISD	85.0%	15.0%	11.4%	3.6%
Southeast Bernalillo County ISD	87.7%	12.3%	5.9%	6.4%
Southwest Bernalillo County ISD	88.8%	11.2%	4.9%	6.3%
Taos County ISD	92.3%	7.7%	2.8%	4.9%
Torrance County ISD	85.1%	14.9%	7.1%	7.8%
Valencia North County ISD	86.6%	13.4%	6.6%	6.8%
Valencia South County ISD	0.0%	0.0%	0.0%	0.0%
West Dona Ana County ISD	85.6%	14.4%	9.8%	4.6%
Centralized Units				

Statewide Total	87.7%	12.3%	6.3%	6.0%
-----------------	-------	-------	------	------

SNAP Initial Disposition Rates by Region^{4,11}
April 2019

Region	Approval Rate	Denial Rate	Need Based Denial Rate	Procedural Denial Rate
Region 1 - NW	89.1%	10.9%	6.0%	4.9%
Region 2 - NE	88.5%	11.5%	5.9%	5.6%
Region 3 - Central	86.6%	13.4%	6.0%	7.4%
Region 4 - SE	88.4%	11.6%	6.3%	5.3%
Region 5 - SW	86.7%	13.3%	8.2%	5.1%
Centralized Units				
Statewide Total	87.7%	12.3%	6.3%	6.0%



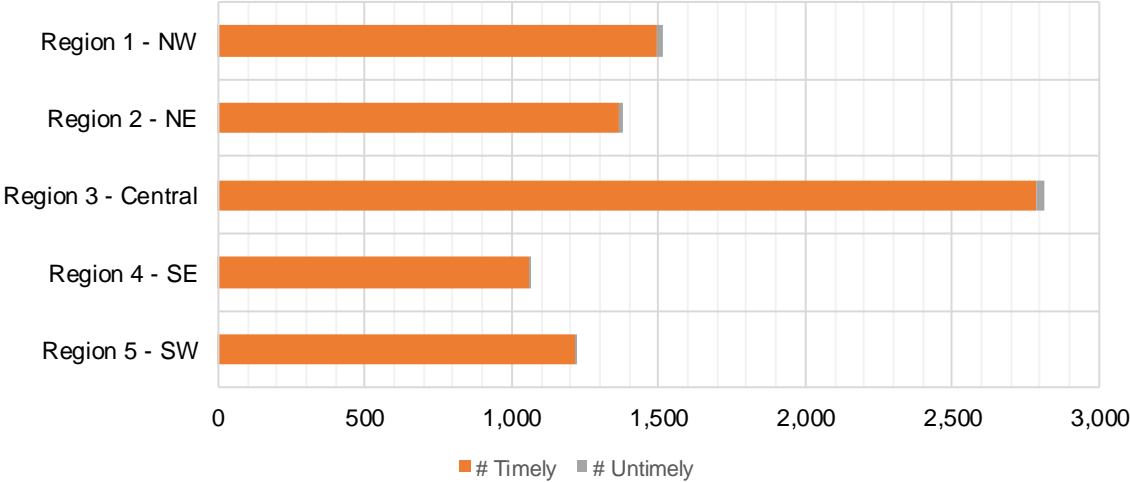
SNAP Expedite Timeliness by Field Office¹³
April 2019

Office Name	Total Expedited Approvals	# Timely	# Untimely	Percentage Timely
Chaves County ISD	238	237	1	99.6 %
Cibola County ISD	123	122	1	99.2 %
Colfax County ISD	63	63	0	100.0 %
Curry County ISD	309	307	2	99.4 %
East Dona Ana County ISD	264	263	1	99.6 %
Eddy Artesia County ISD	72	71	1	98.6 %
Eddy Carlsbad County ISD	162	162	0	100.0 %
Grant County ISD	145	144	1	99.3 %
Guadalupe County ISD	11	11	0	100.0 %
Lea County ISD	225	225	0	100.0 %
Lincoln County ISD	56	55	1	98.2 %
Luna County ISD	104	104	0	100.0 %
McKinley County ISD	348	345	3	99.1 %
Northeast Bernalillo County ISD	843	833	10	98.8 %
Northwest Bernalillo County ISD	642	636	6	99.1 %
Otero County ISD	201	200	1	99.5 %
Quay County ISD	27	26	1	96.3 %
Rio Arriba County ISD	253	249	4	98.4 %
Roosevelt County ISD	0	0	0	N/A
San Juan County ISD	672	660	12	98.2 %
San Miguel County ISD	176	176	0	100.0 %
Sandoval County ISD	331	323	8	97.6 %
Santa Fe County ISD	365	362	3	99.2 %
Sierra County ISD	48	47	1	97.9 %
Socorro County ISD	80	80	0	100.0 %
South Dona Ana ISD	149	148	1	99.3 %
Southeast Bernalillo County ISD	480	477	3	99.4 %
Southwest Bernalillo County ISD	736	731	5	99.3 %
Taos County ISD	154	152	2	98.7 %
Torrance County ISD	110	109	1	99.1 %
Valencia North County ISD	246	243	3	98.8 %
West Dona Ana County ISD	355	355	0	100.0 %
Statewide Total	7,988	7,916	72	99.1 %

SNAP Expedite Timeliness by Region¹³
April 2019

Region	Total Expedited Approvals	# Timely	# Untimely	Percentage Timely
Region 1 - NW	1,517	1,497	20	98.7%
Region 2 - NE	1,380	1,362	18	98.7%
Region 3 - Central	2,811	2,786	25	99.1%
Region 4 - SE	1,062	1,057	5	99.5%
Region 5 - SW	1,218	1,214	4	99.7%
Statewide Total	7,988	7,916	72	99.1%

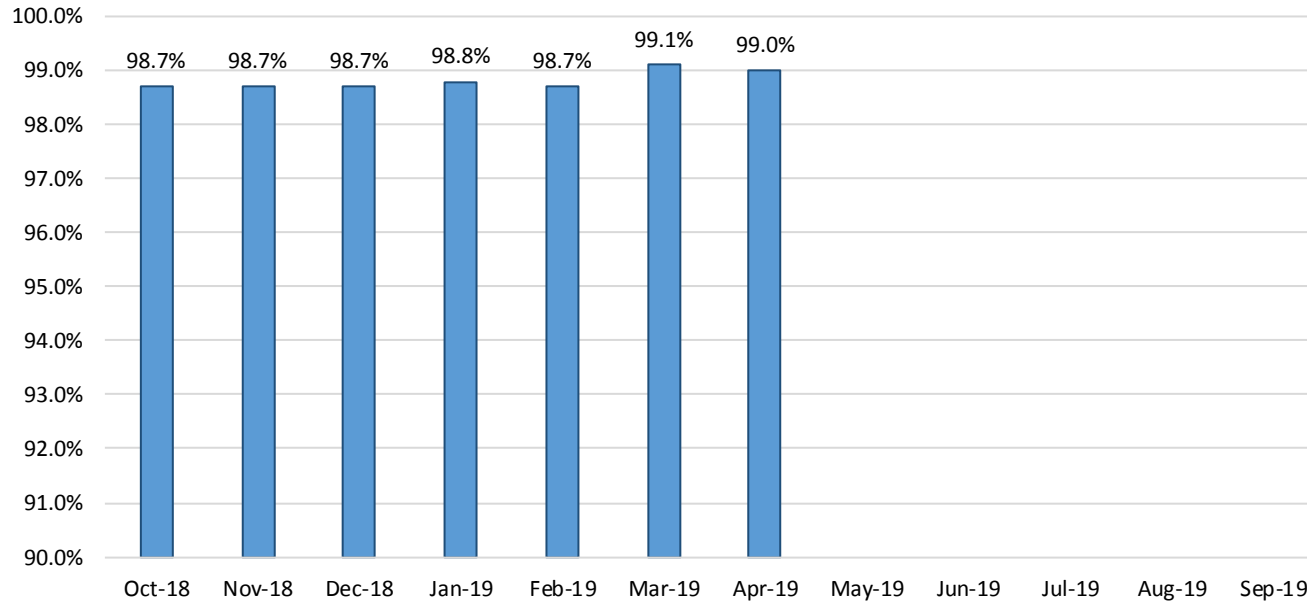
SNAP Expedite - Timeliness



SNAP: Percentage of Applications Processed Timely ¹³

	Oct-18	Nov-18	Dec-18	Jan-19	Feb-19	Mar-19	Apr-19	May-19	Jun-19	Jul-19	Aug-19	Sep-19	Average
APT	98.7%	98.7%	98.7%	98.8%	98.7%	99.1%	99.0%						98.8%

SNAP Application Processing Timeliness (APT)



SNAP Non-Expedite: Percentage of Initial Applications Processed Timely by Field Office¹³

	Oct-18	Nov-18	Dec-18	Jan-19	Feb-19	Mar-19	Apr-19	May-19	Jun-19	Jul-19	Aug-19	Sep-19	Average
Cibola	100.0%	99.0%	99.0%	97.5%	98.6%	98.5%	98.8%						98.8%
McKinley	98.8%	98.4%	98.9%	100.0%	96.6%	98.8%	99.3%						98.7%
San Juan	99.6%	99.2%	98.8%	99.1%	99.0%	98.8%	99.1%						99.1%
Sierra	98.9%	100.0%	100.0%	100.0%	100.0%	100.0%	100.0%						99.8%
Socorro	100.0%	98.4%	100.0%	100.0%	100.0%	100.0%	99.0%						99.6%
Valencia North	99.7%	99.3%	99.2%	100.0%	100.0%	99.7%	99.5%						99.6%
Valencia South													
NW Region 1 Total	99.4%	99.1%	99.1%	99.5%	98.8%	99.1%	99.2%						99.2%
Colfax	100.0%	100.0%	100.0%	100.0%	100.0%	100.0%	100.0%						100.0%
Guadalupe	100.0%	100.0%	96.3%	100.0%	100.0%	100.0%	100.0%						99.5%
Quay	100.0%	97.3%	100.0%	100.0%	100.0%	97.7%	100.0%						99.3%
Rio Arriba	100.0%	99.5%	98.1%	99.4%	98.9%	98.0%	98.0%						98.8%
San Miguel	100.0%	99.3%	99.2%	100.0%	100.0%	100.0%	100.0%						99.8%
Sandoval	99.5%	99.2%	99.6%	99.7%	99.6%	99.3%	99.4%						99.5%
Santa Fe	99.4%	98.6%	100.0%	99.3%	100.0%	99.7%	99.5%						99.5%
Taos	100.0%	98.4%	99.3%	98.9%	100.0%	100.0%	100.0%						99.5%
NE Region 2 Total	98.9%	99.0%	99.3%	99.5%	99.8%	99.4%	99.4%						99.3%
NE Bernalillo	98.9%	98.8%	98.8%	99.2%	99.4%	97.9%	98.5%						98.8%
NW Bernalillo	98.0%	99.3%	99.6%	99.0%	98.9%	97.4%	98.0%						98.6%
SE Bernalillo	99.6%	98.7%	99.0%	98.5%	99.3%	99.0%	99.3%						99.1%
SW Bernalillo	99.3%	99.5%	98.6%	99.6%	98.6%	98.8%	98.8%						99.0%
Torrance	100.0%	97.2%	97.3%	99.2%	97.7%	98.1%	99.4%						98.4%
Gen. Region 3 Total	98.9%	99.0%	98.9%	99.2%	99.0%	98.2%	98.6%						98.8%
Chaves	100.0%	99.6%	98.8%	99.7%	99.5%	99.4%	99.5%						99.5%
Curry	97.9%	98.4%	98.9%	98.4%	100.0%	100.0%	99.4%						99.0%
Eddy Artesia	100.0%	100.0%	100.0%	100.0%	100.0%	98.6%	100.0%						99.8%
Eddy Carlsbad	100.0%	99.1%	99.0%	100.0%	100.0%	99.3%	99.5%						99.6%
Lea	99.1%	99.5%	99.0%	97.8%	97.8%	99.2%	99.7%						98.9%
Lincoln	100.0%	98.8%	97.1%	98.8%	100.0%	99.2%	100.0%						99.1%
Roosevelt		100.0%		100.0%			100.0%						100.0%
SE Region 4 Total	98.2%	99.2%	98.8%	99.0%	99.4%	99.4%	99.6%						99.1%
East Dona Ana	99.7%	100.0%	99.3%	98.8%	100.0%	100.0%	98.7%						99.5%
Grant	100.0%	100.0%	99.0%	100.0%	100.0%	99.2%	99.4%						99.7%
Luna	100.0%	99.4%	99.3%	100.0%	100.0%	99.4%	100.0%						99.7%
Otero	99.2%	100.0%	99.3%	99.5%	100.0%	98.1%	99.3%						99.3%
South Dona Ana	99.6%	99.6%	98.4%	100.0%	100.0%	99.7%	99.7%						99.6%
West Dona Ana	99.5%	100.0%	99.3%	99.7%	100.0%	99.3%	99.4%						99.6%
SW Region 5 Total	99.4%	99.8%	99.1%	99.6%	100.0%	99.4%	99.3%						99.5%
STATE TOTAL	99.0%	99.2%	99.0%	99.3%	99.3%	98.9%	99.1%						99.1%

SNAP Expedite: Percentage of Initial Applications Processed Timely by Field Office¹³

	Oct-18	Nov-18	Dec-18	Jan-19	Feb-19	Mar-19	Apr-19	May-19	Jun-19	Jul-19	Aug-19	Sep-19	Average
Cibola	100.0%	99.2%	100.0%	97.8%	96.9%	96.1%	99.2%						98.5%
McKinley	98.8%	98.6%	100.0%	99.7%	99.3%	99.7%	99.1%						99.3%
San Juan	99.3%	99.5%	99.0%	99.4%	99.5%	99.8%	98.2%						99.2%
Sierra	100.0%	98.6%	100.0%	97.8%	100.0%	100.0%	97.9%						99.2%
Socorro	100.0%	98.6%	100.0%	100.0%	100.0%	100.0%	100.0%						99.8%
Valencia North	99.6%	99.6%	99.0%	99.2%	98.6%	100.0%	98.8%						99.3%
Valencia South				100.0%									
NW Region 1 Total	99.6%	99.2%	99.4%	99.3%	99.2%	99.5%	98.7%						99.3%
Colfax	100.0%	100.0%	100.0%	100.0%	100.0%	100.0%	100.0%						100.0%
Guadalupe	95.2%	100.0%	100.0%	100.0%	100.0%	100.0%	100.0%						99.3%
Quay	100.0%	100.0%	100.0%	97.6%	100.0%	100.0%	96.3%						99.1%
Rio Arriba	98.6%	97.9%	99.6%	98.0%	97.6%	99.5%	98.4%						98.5%
San Miguel	100.0%	100.0%	100.0%	99.1%	100.0%	98.9%	100.0%						99.7%
Sandoval	99.0%	98.5%	99.0%	98.8%	98.1%	99.0%	97.5%						98.6%
Santa Fe	98.5%	98.1%	99.2%	97.6%	99.1%	99.2%	99.2%						98.7%
Taos	98.8%	97.0%	94.3%	99.3%	99.0%	100.0%	98.7%						98.2%
NE Region 2 Total	98.8%	98.4%	98.9%	98.5%	98.7%	99.3%	98.7%						98.8%
NE Bernalillo	98.8%	98.5%	98.4%	98.1%	97.8%	98.5%	98.8%						98.4%
NW Bernalillo	99.0%	99.6%	99.4%	99.4%	99.3%	99.4%	99.1%						99.3%
SE Bernalillo	99.2%	99.1%	99.4%	99.6%	97.7%	98.8%	99.4%						99.0%
SW Bernalillo	98.7%	99.2%	97.5%	98.6%	98.9%	98.9%	99.3%						98.7%
Torrance	98.3%	100.0%	98.1%	100.0%	99.1%	98.3%	99.1%						99.0%
Gen. Region 3 Total	98.8%	99.1%	98.7%	98.9%	98.5%	98.8%	99.1%						98.8%
Chaves	98.8%	99.1%	100.0%	99.2%	100.0%	100.0%	99.6%						99.5%
Curry	98.1%	98.6%	98.4%	98.9%	97.6%	99.6%	99.4%						98.7%
Eddy Artesia	96.1%	100.0%	100.0%	100.0%	97.7%	94.7%	98.6%						98.2%
Eddy Carlsbad	97.0%	100.0%	98.6%	99.2%	98.9%	97.8%	100.0%						98.8%
Lea	98.7%	99.2%	99.1%	98.0%	100.0%	99.6%	100.0%						99.2%
Lincoln	100.0%	95.8%	98.2%	100.0%	100.0%	100.0%	98.2%						98.9%
Roosevelt	100.0%	100.0%	100.0%	100.0%	100.0%	100.0%	100.0%						100.0%
SE Region 4 Total	98.4%	98.9%	99.0%	98.9%	99.0%	99.2%	99.5%						99.0%
East Dona Ana	99.6%	99.0%	99.5%	99.3%	100.0%	100.0%	99.6%						99.6%
Grant	97.7%	99.3%	100.0%	99.4%	98.8%	100.0%	99.3%						99.2%
Luna	100.0%	100.0%	98.9%	98.4%	100.0%	100.0%	100.0%						99.6%
Otero	98.5%	99.5%	98.3%	98.9%	97.5%	99.5%	99.5%						98.8%
South Dona Ana	99.4%	100.0%	100.0%	100.0%	99.1%	100.0%	99.3%						99.7%
West Dona Ana	100.0%	100.0%	99.6%	99.7%	98.8%	100.0%	100.0%						99.7%
SW Region 5 Total	99.2%	99.6%	99.4%	99.4%	98.9%	99.9%	99.7%						99.4%
STATE TOTAL	98.9%	99.1%	99.0%	99.0%	98.8%	99.2%	99.1%						99.0%

SNAP: Percentage of Denied Initial Applications Processed Within 30 Days by Field Office¹³

	Oct-18	Nov-18	Dec-18	Jan-19	Feb-19	Mar-19	Apr-19	May-19	Jun-19	Jul-19	Aug-19	Sep-19	Average
Cibola	94.4%	92.3%	95.1%	93.9%	97.7%	100.0%	100.0%						96.2%
McKinley	96.2%	97.6%	95.2%	99.0%	96.4%	95.5%	100.0%						97.1%
San Juan	96.4%	93.2%	93.3%	94.9%	91.5%	99.0%	97.4%						95.1%
Sierra	100.0%	93.9%	100.0%	100.0%	100.0%	100.0%	100.0%						99.1%
Socorro	100.0%	100.0%	96.8%	97.4%	96.2%	100.0%	100.0%						98.6%
Valencia North	100.0%	98.4%	100.0%	99.3%	97.8%	99.1%	100.0%						99.2%
Valencia South													
NW Region 1 Total	97.3%	95.7%	95.8%	97.0%	94.9%	98.9%	99.6%						97.0%
Colfax	100.0%	96.3%	100.0%	100.0%	100.0%	100.0%	100.0%						99.5%
Guadalupe	100.0%	100.0%	100.0%	100.0%	100.0%	100.0%	100.0%						100.0%
Quay	100.0%	100.0%	100.0%	92.3%	100.0%	91.7%	100.0%						97.7%
Rio Arriba	94.6%	89.7%	93.2%	98.5%	95.6%	94.6%	95.7%						94.6%
San Miguel	100.0%	100.0%	100.0%	100.0%	100.0%	100.0%	100.0%						100.0%
Sandoval	98.4%	99.5%	99.4%	97.0%	98.1%	98.2%	100.0%						98.7%
Santa Fe	96.6%	96.7%	96.7%	97.3%	99.3%	99.2%	100.0%						98.0%
Taos	98.0%	98.3%	100.0%	95.2%	97.9%	100.0%	100.0%						98.5%
NE Region 2 Total	97.6%	97.4%	98.1%	97.4%	98.4%	98.0%	99.5%						98.0%
NE Bernalillo	94.8%	97.3%	93.5%	96.0%	98.6%	96.6%	97.0%						96.3%
NW Bernalillo	95.6%	96.8%	97.3%	95.6%	94.9%	95.8%	96.2%						96.0%
SE Bernalillo	94.1%	95.5%	96.3%	96.2%	96.5%	99.4%	98.7%						96.7%
SW Bernalillo	97.1%	97.0%	98.3%	97.8%	98.6%	97.9%	96.7%						97.6%
Torrance	93.2%	95.2%	96.6%	93.3%	100.0%	93.0%	98.1%						95.6%
Gen. Region 3 Total	95.3%	96.7%	96.2%	96.2%	97.4%	96.5%	97.3%						96.5%
Chaves	98.6%	95.7%	100.0%	99.2%	98.1%	100.0%	98.9%						98.6%
Curry	97.8%	96.7%	96.6%	94.5%	99.0%	100.0%	98.9%						97.6%
Eddy Artesia	92.6%	93.1%	100.0%	95.8%	96.0%	95.5%	100.0%						96.1%
Eddy Carlsbad	96.9%	97.0%	98.6%	100.0%	97.1%	98.2%	97.9%						98.0%
Lea	95.7%	97.1%	95.2%	99.1%	99.0%	100.0%	98.7%						97.8%
Lincoln	97.4%	93.5%	95.2%	96.6%	96.6%	100.0%	100.0%						97.0%
Roosevelt		100.0%											100.0%
SE Region 4 Total	97.1%	96.0%	97.6%	97.9%	98.2%	99.0%	99.1%						97.8%
East Dona Ana	97.3%	100.0%	99.2%	97.5%	99.1%	100.0%	97.4%						98.6%
Grant	95.8%	93.8%	97.6%	100.0%	97.9%	100.0%	100.0%						97.9%
Luna	100.0%	100.0%	98.1%	100.0%	97.6%	100.0%	100.0%						99.4%
Otero	100.0%	98.9%	100.0%	97.6%	97.4%	98.9%	96.9%						98.5%
South Dona Ana	100.0%	98.4%	98.7%	98.9%	98.6%	100.0%	98.8%						99.1%
West Dona Ana	98.2%	98.9%	99.3%	100.0%	98.4%	99.3%	97.8%						98.8%
SW Region 5 Total	98.3%	98.8%	99.1%	98.9%	98.3%	99.7%	98.5%						98.8%
STATE TOTAL	96.8%	97.0%	97.1%	97.3%	97.4%	98.4%	98.9%						97.6%

SNAP: Combined Approvals and Denials Percentage of Initial Applications Processed Timely by Field Office¹³

	Oct-18	Nov-18	Dec-18	Jan-19	Feb-19	Mar-19	Apr-19	May-19	Jun-19	Jul-19	Aug-19	Sep-19	Average
Cibola	99.4%	98.1%	98.9%	97.2%	97.8%	97.5%	99.0%						98.3%
McKinley	98.4%	98.4%	99.0%	99.8%	97.6%	99.2%	99.2%						98.8%
San Juan	98.9%	98.4%	98.0%	98.5%	97.6%	99.2%	98.6%						98.5%
Sierra	99.4%	98.6%	100.0%	99.0%	100.0%	100.0%	99.3%						99.5%
Socorro	100.0%	98.8%	99.4%	99.5%	99.1%	100.0%	99.4%						99.5%
Valencia North	99.7%	99.3%	99.3%	99.5%	99.1%	99.8%	99.2%						99.4%
Valencia South				100.0%									100.0%
NW Region 1 Total	99.1%	98.6%	98.7%	99.0%	98.1%	99.3%	99.1%						98.8%
Colfax	100.0%	99.3%	100.0%	100.0%	100.0%	100.0%	100.0%						99.9%
Guadalupe	98.4%	100.0%	97.7%	100.0%	100.0%	100.0%	100.0%						99.4%
Quay	100.0%	98.6%	100.0%	97.9%	100.0%	98.6%	98.5%						99.1%
Rio Arriba	98.3%	97.4%	98.2%	98.5%	97.6%	98.8%	98.4%						98.2%
San Miguel	100.0%	99.7%	99.7%	99.5%	100.0%	99.4%	100.0%						99.8%
Sandoval	99.1%	99.0%	99.3%	98.9%	98.6%	99.2%	98.7%						99.0%
Santa Fe	98.5%	98.0%	99.0%	98.2%	99.4%	99.5%	99.3%						98.8%
Taos	99.2%	97.7%	97.5%	98.5%	99.2%	100.0%	99.4%						98.8%
NE Region 2 Total	99.0%	98.5%	98.9%	98.7%	99.0%	99.4%	99.3%						99.0%
NE Bernalillo	98.1%	98.4%	97.6%	98.1%	98.4%	98.2%	98.8%						98.2%
NW Bernalillo	98.0%	98.9%	99.0%	98.5%	98.2%	98.3%	98.5%						98.5%
SE Bernalillo	98.5%	98.3%	98.6%	98.6%	98.0%	98.9%	99.3%						98.6%
SW Bernalillo	98.7%	98.9%	98.1%	98.9%	98.7%	98.9%	99.1%						98.8%
Torrance	97.9%	98.2%	97.5%	98.4%	98.8%	98.2%	99.3%						98.3%
Gen. Region 3 Total	98.3%	98.6%	98.3%	98.5%	98.4%	98.5%	99.0%						98.5%
Chaves	99.3%	98.6%	99.4%	99.4%	99.3%	99.6%	99.5%						99.3%
Curry	98.0%	98.2%	98.3%	97.9%	98.7%	99.8%	99.4%						98.6%
Eddy Artesia	97.0%	98.5%	100.0%	99.3%	98.2%	96.9%	99.3%						98.5%
Eddy Carlsbad	98.0%	99.1%	98.7%	99.7%	98.7%	98.6%	99.7%						98.9%
Lea	98.1%	98.9%	98.4%	98.1%	99.0%	99.4%	99.8%						98.8%
Lincoln	99.5%	96.4%	97.0%	99.0%	99.2%	99.4%	99.4%						98.6%
Roosevelt	100.0%	100.0%	100.0%	100.0%	100.0%	100.0%	100.0%						100.0%
SE Region 4 Total	98.4%	98.5%	98.7%	98.8%	98.9%	99.1%	99.6%						98.9%
East Dona Ana	99.2%	99.7%	99.3%	98.7%	99.8%	100.0%	99.2%						99.4%
Grant	98.1%	98.7%	99.2%	99.7%	99.0%	99.6%	99.3%						99.1%
Luna	100.0%	99.7%	98.9%	99.5%	99.5%	99.6%	100.0%						99.6%
Otero	99.0%	99.6%	99.0%	99.0%	98.4%	98.8%	99.4%						99.0%
South Dona Ana	99.6%	99.6%	99.0%	99.8%	99.4%	99.8%	99.6%						99.5%
West Dona Ana	99.5%	99.8%	99.4%	99.8%	99.2%	99.6%	99.6%						99.6%
SW Region 5 Total	99.3%	99.6%	99.2%	99.4%	99.2%	99.6%	99.5%						99.4%
STATE TOTAL	98.7%	98.7%	98.7%	98.8%	98.7%	99.2%	99.3%						98.9%

SNAP Renewals Processed by Field Office²⁰
April 2019

Office	Approvals	Closures	Need Based Closures	Procedural Closures
Chaves County ISD	170	145	9	136
Cibola County ISD	109	85	7	78
Coffax County ISD	33	27	6	21
Curry County ISD	197	162	16	146
East Dona Ana County ISD	289	147	15	132
Eddy Artesia County ISD	39	24	3	21
Eddy Carlsbad County ISD	68	69	11	58
Grant County ISD	125	56	4	52
Guadalupe County ISD	20	14	1	13
Hidalgo County ISD	0	0	0	0
Lea County ISD	140	127	9	118
Lincoln County ISD	37	24	3	21
Luna County ISD	115	70	11	59
McKinley County ISD	388	189	7	182
Northeast Bernalillo County ISD	565	396	30	366
Northwest Bernalillo County ISD	463	306	23	283
Otero County ISD	163	119	7	112
Quay County ISD	34	19	0	19
Rio Arriba County ISD	209	112	7	105
Roosevelt County ISD	0	0	0	0
San Juan County ISD	350	302	17	285
San Miguel County ISD	155	84	2	82
Sandoval County ISD	310	228	16	212
Santa Fe County ISD	297	190	14	176
Sierra County ISD	85	43	5	38
Socorro County ISD	72	62	5	57
South Dona Ana ISD	352	158	15	143
Southeast Bernalillo County ISD	332	210	21	189
Southwest Bernalillo County ISD	705	378	33	345
Taos County ISD	113	70	7	63
Torrance County ISD	120	51	12	39
Valencia North County ISD	279	164	11	153
Valencia South County ISD	0	0	0	0
West Dona Ana County ISD	364	212	28	184
Centralized Units	0	0	0	0
Statewide Total	6,698	4,243	355	3,888

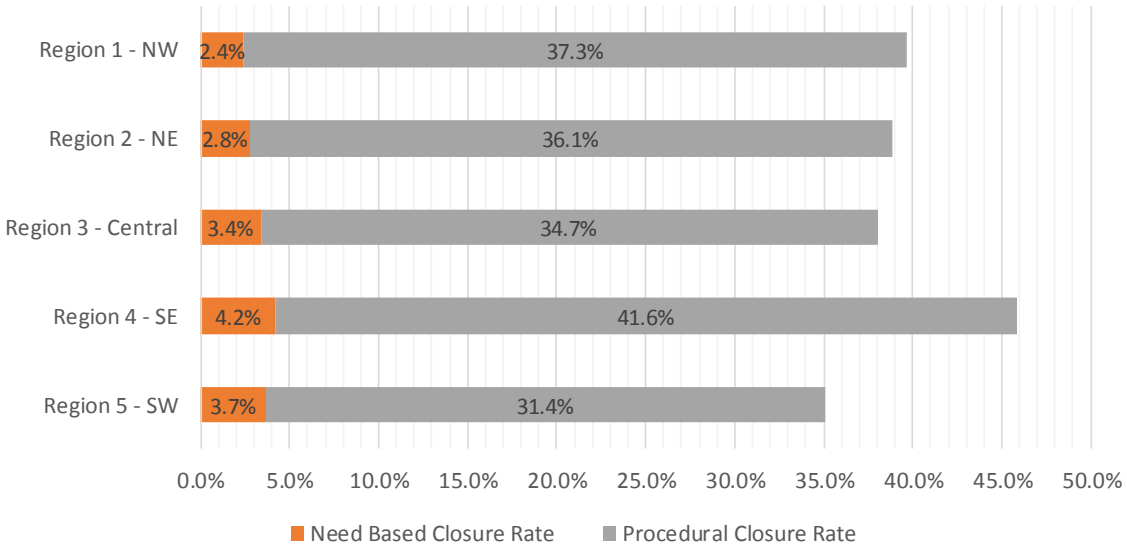
SNAP Renewal Disposition Rates by Field Office²⁰
April 2019

Office	Approval Rate	Closure Rate	Need Based Closure Rate	Procedural Closure Rate
Chaves County ISD	54.0%	46.0%	2.9%	43.2%
Cibola County ISD	56.2%	43.8%	3.6%	40.2%
Colfax County ISD	55.0%	45.0%	10.0%	35.0%
Curry County ISD	54.9%	45.1%	4.5%	40.7%
East Dona Ana County ISD	66.3%	33.7%	3.4%	30.3%
Eddy Artesia County ISD	61.9%	38.1%	4.8%	33.3%
Eddy Carlsbad County ISD	49.6%	50.4%	8.0%	42.3%
Grant County ISD	69.1%	30.9%	2.2%	28.7%
Guadalupe County ISD	58.8%	41.2%	2.9%	38.2%
Hidalgo County ISD	0.0%	0.0%	0.0%	0.0%
Lea County ISD	52.4%	47.6%	3.4%	44.2%
Lincoln County ISD	60.7%	39.3%	4.9%	34.4%
Luna County ISD	62.2%	37.8%	5.9%	31.9%
McKinley County ISD	67.2%	32.8%	1.2%	31.5%
Northeast Bernalillo County ISD	58.8%	41.2%	3.1%	38.1%
Northwest Bernalillo County ISD	60.2%	39.8%	3.0%	36.8%
Otero County ISD	57.8%	42.2%	2.5%	39.7%
Quay County ISD	64.2%	35.8%	0.0%	35.8%
Rio Arriba County ISD	65.1%	34.9%	2.2%	32.7%
Roosevelt County ISD	0.0%	0.0%	0.0%	0.0%
San Juan County ISD	53.7%	46.3%	2.6%	43.7%
San Miguel County ISD	64.9%	35.1%	0.8%	34.3%
Sandoval County ISD	57.6%	42.4%	3.0%	39.4%
Santa Fe County ISD	61.0%	39.0%	2.9%	36.1%
Sierra County ISD	66.4%	33.6%	3.9%	29.7%
Socorro County ISD	53.7%	46.3%	3.7%	42.5%
South Dona Ana ISD	69.0%	31.0%	2.9%	28.0%
Southeast Bernalillo County ISD	61.3%	38.7%	3.9%	34.9%
Southwest Bernalillo County ISD	65.1%	34.9%	3.0%	31.9%
Taos County ISD	61.7%	38.3%	3.8%	34.4%
Torrance County ISD	70.2%	29.8%	7.0%	22.8%
Valencia North County ISD	63.0%	37.0%	2.5%	34.5%
Valencia South County ISD	0.0%	0.0%	0.0%	0.0%
West Dona Ana County ISD	63.2%	36.8%	4.9%	31.9%
Centralized Units	0.0%	0.0%	0.0%	0.0%
Statewide Total	61.2%	38.8%	3.2%	35.5%

SNAP Renewal Disposition Rates by Region²⁰
April 2019

Region	Approval Rate	Closure Rate	Need Based Closure Rate	Procedural Closure Rate
Region 1 - NW	60.3%	39.7%	2.4%	37.3%
Region 2 - NE	61.1%	38.9%	2.8%	36.1%
Region 3 - Central	62.0%	38.0%	3.4%	34.7%
Region 4 - SE	54.2%	45.8%	4.2%	41.6%
Region 5 - SW	64.9%	35.1%	3.7%	31.4%
Centralized Units				

Statewide Total	61.2%	38.8%	3.2%	35.5%
-----------------	-------	-------	------	-------



SNAP: Percentage of Approved Renewal Applications Processed¹¹

	Oct-18	Nov-18	Dec-18	Jan-19	Feb-19	Mar-19	Apr-19	May-19	Jun-19	Jul-19	Aug-19	Sep-19	Average
Cibola	96.4%	97.6%	99.2%	100.0%	100.0%	95.3%	98.2%						98.1%
McKinley	98.9%	98.0%	97.1%	100.0%	98.2%	97.2%	98.7%						98.3%
San Juan	98.5%	95.8%	96.8%	99.3%	95.3%	97.2%	98.3%						97.3%
Sierra	99.1%	100.0%	98.8%	100.0%	98.8%	100.0%	100.0%						99.5%
Socorro	98.3%	96.3%	100.0%	100.0%	96.6%	100.0%	100.0%						98.8%
Valencia North	99.1%	99.2%	98.6%	99.6%	95.4%	97.7%	99.3%						98.4%
Valencia South													
NW Region 1 Total	98.4%	97.8%	98.4%	99.8%	97.4%	97.9%	99.1%						98.4%
Colfax	100.0%	92.2%	98.4%	100.0%	100.0%	100.0%	100.0%						98.7%
Guadalupe	100.0%	90.5%	100.0%	100.0%	100.0%	100.0%	100.0%						98.6%
Quay	100.0%	98.2%	95.9%	100.0%	100.0%	100.0%	100.0%						99.2%
Rio Arriba	96.8%	97.4%	96.7%	100.0%	98.5%	98.6%	100.0%						98.3%
San Miguel	97.3%	99.4%	98.8%	100.0%	97.4%	98.6%	100.0%						98.8%
Sandoval	99.0%	99.2%	98.0%	99.7%	100.0%	97.9%	99.0%						99.0%
Santa Fe	98.9%	99.3%	97.8%	100.0%	98.8%	98.5%	97.7%						98.7%
Taos	98.5%	99.2%	99.2%	100.0%	100.0%	99.2%	99.1%						99.3%
NE Region 2 Total	98.8%	96.9%	98.1%	100.0%	99.3%	99.1%	99.5%						98.8%
NE Bernalillo	98.7%	97.9%	97.3%	98.6%	98.1%	96.5%	97.9%						97.9%
NW Bernalillo	98.8%	98.0%	98.3%	97.6%	98.2%	96.5%	98.7%						98.0%
SE Bernalillo	98.7%	98.0%	98.3%	99.7%	98.2%	99.0%	98.8%						98.7%
SW Bernalillo	99.4%	99.3%	98.8%	99.7%	99.1%	99.4%	99.9%						99.4%
Torrance	99.1%	97.0%	96.0%	99.4%	97.9%	96.5%	100.0%						98.0%
Gen. Region 3 Total	99.0%	98.1%	97.7%	99.0%	98.3%	97.6%	99.1%						98.4%
Chaves	99.1%	98.7%	98.7%	99.5%	100.0%	98.0%	97.7%						98.8%
Curry	97.9%	96.1%	93.7%	100.0%	99.1%	98.6%	98.5%						97.7%
Eddy Artesia	100.0%	92.7%	90.9%	100.0%	100.0%	100.0%	100.0%						97.7%
Eddy Carlsbad	100.0%	98.5%	100.0%	100.0%	98.4%	100.0%	100.0%						99.5%
Lea	98.7%	98.1%	98.4%	98.8%	98.8%	99.4%	100.0%						98.9%
Lincoln	100.0%	96.1%	100.0%	100.0%	97.8%	100.0%	94.9%						98.4%
Roosevelt													
SE Region 4 Total	99.3%	96.7%	96.9%	99.7%	99.0%	99.3%	98.5%						98.5%
East Dona Ana	99.6%	100.0%	100.0%	100.0%	99.6%	100.0%	100.0%						99.9%
Grant	99.3%	99.3%	100.0%	100.0%	100.0%	100.0%	99.2%						99.7%
Luna	98.3%	99.3%	99.4%	100.0%	98.4%	99.2%	98.3%						99.0%
Otero	99.5%	100.0%	100.0%	100.0%	99.4%	100.0%	99.4%						99.8%
South Dona Ana	100.0%	99.4%	100.0%	100.0%	100.0%	99.7%	100.0%						99.9%
West Dona Ana	99.5%	99.1%	99.4%	100.0%	99.7%	99.4%	100.0%						99.6%
SW Region 5 Total	99.4%	99.5%	99.8%	100.0%	99.5%	99.7%	99.5%						99.6%
STATE TOTAL	99.0%	97.7%	98.2%	99.7%	98.8%	98.8%	99.1%						98.8%

If a renewal packet was received on or before 15th of the renewal month, the case shall be considered timely if the case was processed by renewal due date

SNAP: Percentage of Approved Renewal Applications Processed¹¹

	Oct-18	Nov-18	Dec-18	Jan-19	Feb-19	Mar-19	Apr-19	May-19	Jun-19	Jul-19	Aug-19	Sep-19	Average
Cibola	95.8%	97.4%	99.1%	100.0%	100.0%	100.0%	94.4%						98.1%
McKinley	98.8%	97.7%	96.7%	100.0%	98.1%	100.0%	100.0%						98.8%
San Juan	98.5%	95.4%	96.5%	99.5%	94.7%	98.2%	100.0%						97.5%
Sierra	98.9%	100.0%	98.6%	100.0%	98.6%	100.0%	100.0%						99.4%
Socorro	97.9%	96.1%	100.0%	100.0%	96.1%	100.0%	100.0%						98.6%
Valencia North	99.0%	99.1%	98.5%	99.6%	94.6%	95.2%	100.0%						98.0%
Valencia South													
NW Region 1 Total	98.1%	97.6%	98.2%	99.8%	97.0%	98.9%	99.1%						98.4%
Colfax	100.0%	91.1%	98.2%	100.0%	100.0%	100.0%	100.0%						98.5%
Guadalupe	100.0%	89.5%	100.0%	100.0%	100.0%	100.0%	100.0%						98.5%
Quay	100.0%	98.0%	95.7%	100.0%	100.0%	100.0%	100.0%						99.1%
Rio Arriba	96.4%	97.0%	96.1%	100.0%	98.3%	100.0%	100.0%						98.3%
San Miguel	96.9%	99.3%	98.6%	100.0%	97.0%	100.0%	100.0%						98.8%
Sandoval	98.9%	99.1%	97.7%	99.7%	100.0%	95.6%	100.0%						98.7%
Santa Fe	98.8%	99.3%	97.5%	100.0%	98.6%	97.9%	97.6%						98.5%
Taos	98.3%	99.1%	99.1%	100.0%	100.0%	100.0%	100.0%						99.5%
NE Region 2 Total	98.6%	96.5%	97.9%	100.0%	99.2%	99.2%	99.7%						98.7%
NE Bernalillo	98.5%	97.8%	96.9%	98.4%	97.9%	97.6%	98.9%						98.0%
NW Bernalillo	98.5%	97.7%	98.1%	97.3%	97.9%	97.8%	95.9%						97.6%
SE Bernalillo	98.5%	97.8%	98.0%	99.7%	98.1%	100.0%	100.0%						98.9%
SW Bernalillo	99.3%	99.2%	98.6%	99.7%	98.9%	98.3%	100.0%						99.2%
Torrance	98.9%	96.3%	95.5%	99.3%	97.7%	100.0%	100.0%						98.3%
Gen. Region 3 Total	98.8%	97.8%	97.4%	98.9%	98.1%	98.7%	99.0%						98.4%
Chaves	99.0%	98.5%	98.5%	99.5%	100.0%	97.1%	100.0%						98.9%
Curry	97.5%	95.5%	92.6%	100.0%	98.9%	100.0%	95.3%						97.1%
Eddy Artesia	100.0%	91.7%	87.1%	100.0%	100.0%	100.0%	100.0%						97.0%
Eddy Carlsbad	100.0%	98.2%	100.0%	100.0%	98.0%	100.0%	100.0%						99.5%
Lea	98.5%	98.0%	98.1%	98.6%	98.6%	95.8%	100.0%						98.2%
Lincoln	100.0%	97.7%	100.0%	100.0%	97.5%	100.0%	100.0%						99.3%
Roosevelt													
SE Region 4 Total	99.2%	96.6%	96.0%	99.7%	98.8%	98.8%	99.2%						98.3%
East Dona Ana	99.6%	100.0%	100.0%	100.0%	99.5%	100.0%	100.0%						99.9%
Grant	99.3%	99.2%	100.0%	100.0%	100.0%	100.0%	100.0%						99.8%
Luna	98.0%	100.0%	99.2%	100.0%	98.1%	100.0%	94.4%						98.5%
Otero	99.5%	100.0%	100.0%	100.0%	99.4%	100.0%	100.0%						99.8%
South Dona Ana	100.0%	99.4%	100.0%	100.0%	100.0%	100.0%	100.0%						99.9%
West Dona Ana	99.5%	99.0%	99.4%	100.0%	99.7%	98.5%	100.0%						99.4%
SW Region 5 Total	99.3%	99.6%	99.8%	100.0%	99.4%	99.8%	99.1%						99.6%
STATE TOTAL	98.8%	97.5%	97.9%	99.7%	98.6%	99.1%	99.2%						98.7%

Only includes cases in which the Renewal Packet was received by the 15th of the month

SNAP: Percentage of Terminations Renewal Applications Processed¹¹

	Oct-18	Nov-18	Dec-18	Jan-19	Feb-19	Mar-19	Apr-19	May-19	Jun-19	Jul-19	Aug-19	Sep-19	Average
Cibola	97.5%	94.7%	98.6%	100.0%	98.6%	98.6%	97.7%						98.0%
McKinley	98.3%	95.2%	95.0%	98.6%	100.0%	97.2%	98.4%						97.5%
San Juan	96.9%	96.0%	94.5%	96.6%	98.0%	96.6%	96.5%						96.5%
Sierra	100.0%	98.3%	100.0%	100.0%	100.0%	97.3%	97.7%						99.0%
Socorro	100.0%	95.1%	96.5%	100.0%	100.0%	100.0%	100.0%						98.8%
Valencia North	98.6%	98.8%	99.0%	98.8%	98.6%	97.0%	97.6%						98.4%
Valencia South													
NW Region 1 Total	98.6%	96.3%	97.3%	99.0%	99.2%	97.8%	98.0%						98.0%
Colfax	96.9%	96.6%	93.3%	95.8%	91.7%	92.6%	100.0%						95.3%
Guadalupe	100.0%	93.8%	100.0%	100.0%	100.0%	100.0%	100.0%						99.1%
Quay	100.0%	100.0%	100.0%	100.0%	100.0%	100.0%	100.0%						100.0%
Rio Arriba	97.3%	99.2%	98.6%	100.0%	97.9%	98.5%	99.1%						98.6%
San Miguel	95.4%	98.8%	100.0%	100.0%	98.6%	95.1%	97.7%						98.0%
Sandoval	99.0%	97.3%	97.3%	99.1%	100.0%	95.8%	98.3%						98.1%
Santa Fe	98.7%	99.4%	98.3%	97.4%	95.8%	98.9%	97.9%						98.1%
Taos	100.0%	96.8%	97.7%	100.0%	97.0%	100.0%	97.2%						98.4%
NE Region 2 Total	98.4%	97.7%	98.2%	99.0%	97.6%	97.6%	98.8%						98.2%
NE Bernalillo	97.3%	97.9%	95.8%	97.0%	98.9%	97.0%	99.0%						97.6%
NW Bernalillo	98.1%	97.5%	97.3%	97.0%	97.0%	97.9%	97.8%						97.5%
SE Bernalillo	98.0%	95.0%	98.1%	95.8%	97.7%	98.3%	98.6%						97.3%
SW Bernalillo	98.1%	98.3%	98.8%	98.1%	98.5%	98.7%	99.2%						98.5%
Torrance	98.9%	98.5%	90.7%	97.5%	98.6%	98.3%	100.0%						97.5%
Gen. Region 3 Total	98.1%	97.4%	96.1%	97.1%	98.1%	98.0%	98.9%						97.7%
Chaves	98.6%	95.1%	97.9%	97.9%	97.8%	96.0%	98.6%						97.4%
Curry	99.2%	100.0%	93.3%	100.0%	100.0%	97.6%	98.8%						98.4%
Eddy Artesia	96.7%	94.7%	93.1%	96.4%	100.0%	100.0%	100.0%						97.3%
Eddy Carlsbad	100.0%	98.1%	100.0%	94.4%	100.0%	98.5%	98.6%						98.5%
Lea	97.8%	97.4%	96.4%	98.8%	96.9%	100.0%	97.7%						97.8%
Lincoln	95.6%	94.3%	97.8%	100.0%	100.0%	100.0%	100.0%						98.2%
Roosevelt													
SE Region 4 Total	98.0%	96.6%	96.4%	97.9%	99.1%	98.7%	99.0%						98.0%
East Dona Ana	98.6%	99.2%	98.0%	100.0%	97.8%	100.0%	99.3%						99.0%
Grant	97.1%	98.6%	100.0%	100.0%	100.0%	100.0%	100.0%						99.4%
Luna	100.0%	98.6%	98.9%	100.0%	100.0%	100.0%	100.0%						99.6%
Otero	99.1%	99.2%	99.2%	100.0%	100.0%	98.4%	99.2%						99.3%
South Dona Ana	100.0%	100.0%	100.0%	98.9%	100.0%	100.0%	100.0%						99.8%
West Dona Ana	100.0%	99.3%	99.5%	100.0%	99.4%	97.9%	99.1%						99.3%
SW Region 5 Total	99.1%	99.2%	99.3%	99.8%	99.5%	99.4%	99.6%						99.4%
STATE TOTAL	98.4%	97.5%	97.5%	98.7%	98.7%	98.3%	98.8%						98.3%

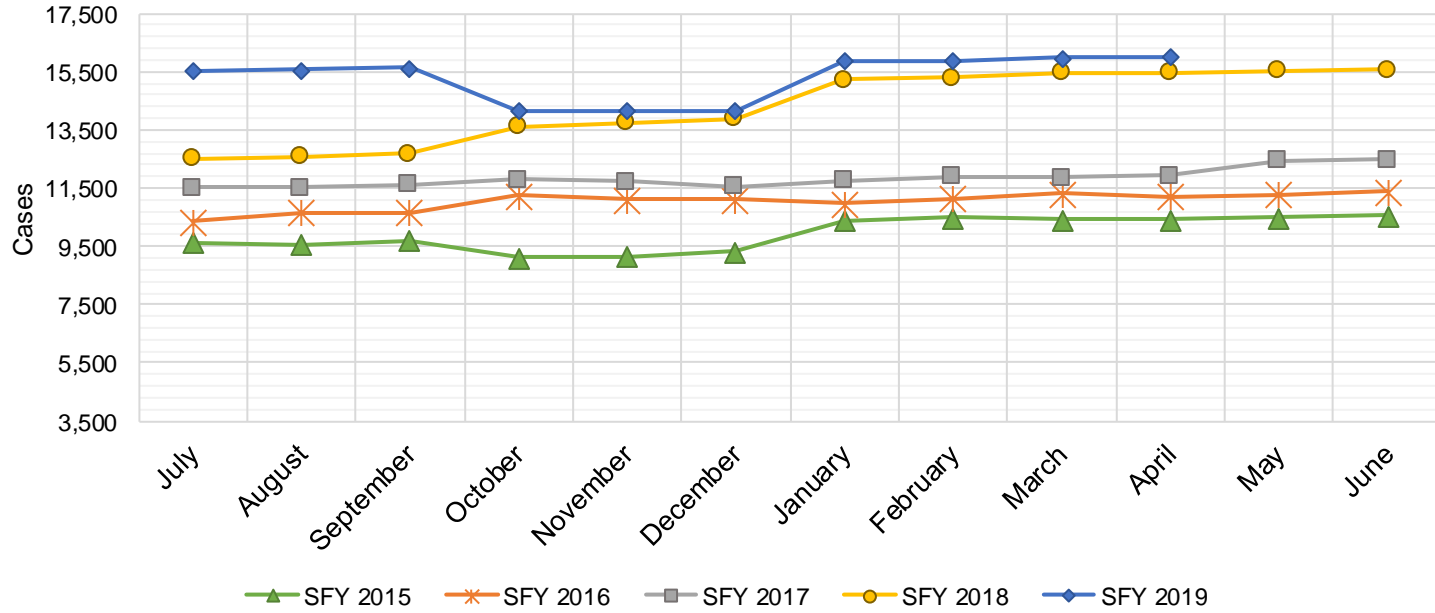
Includes cases for which no renewal application was received.

SNAP: Combined Percentage of Approved and Terminated Renewal Applications Processed¹¹

	Oct-18	Nov-18	Dec-18	Jan-19	Feb-19	Mar-19	Apr-19	May-19	Jun-19	Jul-19	Aug-19	Sep-19	Average
Cibola	96.8%	96.7%	99.0%	100.0%	99.4%	96.4%	98.0%						98.1%
McKinley	98.8%	97.3%	96.3%	99.7%	98.8%	97.2%	98.6%						98.1%
San Juan	97.9%	95.9%	95.9%	98.5%	96.5%	96.9%	97.5%						97.0%
Sierra	99.4%	99.3%	99.2%	100.0%	99.2%	99.2%	99.2%						99.4%
Socorro	98.8%	95.9%	98.7%	100.0%	97.6%	100.0%	100.0%						98.7%
Valencia North	99.0%	99.1%	98.8%	99.4%	96.6%	97.4%	98.7%						98.4%
Valencia South													
NW Region 1 Total	98.4%	97.4%	98.0%	99.6%	98.0%	97.9%	98.7%						98.3%
Colfax	99.0%	93.8%	96.8%	98.7%	97.2%	97.6%	100.0%						97.6%
Guadalupe	100.0%	91.9%	100.0%	100.0%	100.0%	100.0%	100.0%						98.8%
Quay	100.0%	98.7%	96.8%	100.0%	100.0%	100.0%	100.0%						99.4%
Rio Arriba	96.9%	98.0%	97.4%	100.0%	98.3%	98.6%	99.7%						98.4%
San Miguel	96.7%	99.2%	99.2%	100.0%	97.8%	97.3%	99.2%						98.5%
Sandoval	99.0%	98.5%	97.7%	99.5%	100.0%	97.2%	98.7%						98.7%
Santa Fe	98.9%	99.3%	98.0%	99.2%	97.8%	98.7%	97.8%						98.5%
Taos	99.1%	98.4%	98.6%	100.0%	98.9%	99.5%	98.4%						99.0%
NE Region 2 Total	98.7%	97.2%	98.1%	99.7%	98.7%	98.6%	99.2%						98.6%
NE Bernalillo	98.1%	97.9%	96.7%	98.1%	98.4%	96.7%	98.4%						97.8%
NW Bernalillo	98.5%	97.8%	97.9%	97.4%	97.8%	97.1%	98.3%						97.8%
SE Bernalillo	98.4%	97.0%	98.2%	98.6%	98.0%	98.7%	98.7%						98.2%
SW Bernalillo	99.0%	99.0%	98.8%	99.3%	98.9%	99.2%	99.6%						99.1%
Torrance	99.0%	97.5%	93.8%	99.0%	98.1%	97.1%	100.0%						97.8%
Gen. Region 3 Total	98.6%	97.8%	97.1%	98.5%	98.3%	97.8%	99.0%						98.1%
Chaves	98.9%	97.4%	98.4%	99.0%	99.0%	97.2%	98.1%						98.3%
Curry	98.3%	97.4%	93.5%	100.0%	99.4%	98.2%	98.6%						97.9%
Eddy Artesia	98.7%	93.5%	91.7%	98.6%	100.0%	100.0%	100.0%						97.5%
Eddy Carlsbad	100.0%	98.3%	100.0%	98.1%	99.1%	99.2%	99.3%						99.1%
Lea	98.3%	97.8%	97.5%	98.8%	97.9%	99.6%	98.9%						98.4%
Lincoln	98.0%	95.3%	98.9%	100.0%	98.7%	100.0%	96.8%						98.3%
Roosevelt													
SE Region 4 Total	98.7%	96.6%	96.7%	99.1%	99.0%	99.0%	98.6%						98.3%
East Dona Ana	99.3%	99.8%	99.3%	100.0%	99.0%	100.0%	99.8%						99.6%
Grant	98.6%	99.1%	100.0%	100.0%	100.0%	100.0%	99.5%						99.6%
Luna	98.8%	99.1%	99.2%	100.0%	99.0%	99.5%	98.9%						99.2%
Otero	99.4%	99.7%	99.7%	100.0%	99.6%	99.3%	99.3%						99.6%
South Dona Ana	100.0%	99.6%	100.0%	99.8%	100.0%	99.8%	100.0%						99.9%
West Dona Ana	99.7%	99.2%	99.4%	100.0%	99.6%	98.9%	99.7%						99.5%
SW Region 5 Total	99.3%	99.4%	99.6%	100.0%	99.5%	99.6%	99.5%						99.6%
STATE TOTAL	98.7%	97.7%	97.9%	99.4%	98.7%	98.6%	99.0%						98.6%

State SNAP Supplement

SFY 2015 ¹²			SFY 2016 ^{12,9}			SFY 2017 ⁹			SFY 2018 ⁹			SFY 2019 ⁹		
	Cases	Expenditures		Cases	Expenditures		Cases	Expenditures		Cases	Expenditures		Cases	Expenditures
Jul-14	9,635	\$88,859	Jul-15	10,345	\$86,143	Jul-16	11,537	\$95,553	Jul-17	12,526	\$97,568	Jul-18	15,555	\$141,711
Aug-14	9,559	\$87,757	Aug-15	10,669	\$88,197	Aug-16	11,522	\$95,107	Aug-17	12,589	\$98,954	Aug-18	15,584	\$139,719
Sep-14	9,688	\$87,372	Sep-15	10,676	\$88,426	Sep-16	11,613	\$94,472	Sep-17	12,679	\$97,546	Sep-18	15,631	\$140,768
Oct-14	9,136	\$70,490	Oct-15	11,262	\$96,758	Oct-16	11,797	\$96,679	Oct-17	13,628	\$117,343	Oct-18	14,161	\$125,737
Nov-14	9,152	\$69,955	Nov-15	11,099	\$91,996	Nov-16	11,735	\$93,689	Nov-17	13,748	\$119,055	Nov-18	14,160	\$125,401
Dec-14	9,322	\$73,226	Dec-15	11,125	\$90,771	Dec-16	11,556	\$93,739	Dec-17	13,877	\$120,585	Dec-18	14,163	\$126,263
Jan-15	10,384	\$84,578	Jan-16	10,977	\$92,760	Jan-17	11,763	\$96,074	Jan-18	15,246	\$135,993	Jan-19	15,890	\$141,357
Feb-15	10,477	\$82,901	Feb-16	11,153	\$95,363	Feb-17	11,907	\$98,251	Feb-18	15,308	\$137,296	Feb-19	15,882	\$142,396
Mar-15	10,423	\$87,461	Mar-16	11,332	\$96,751	Mar-17	11,853	\$96,693	Mar-18	15,482	\$139,132	Mar-19	15,970	\$142,427
Apr-15	10,440	\$79,605	Apr-16	11,222	\$93,959	Apr-17	11,944	\$97,060	Apr-18	15,466	\$139,202	Apr-19	16,032	\$143,982
May-15	10,491	\$82,511	May-16	11,283	\$95,271	May-17	12,457	\$96,940	May-18	15,525	\$139,397	May-19		
Jun-15	10,575	\$85,134	Jun-16	11,389	\$93,061	Jun-17	12,498	\$97,405	Jun-18	15,577	\$140,802	Jun-19		
TOTAL	119,282	\$979,850		132,532	\$1,109,455		142,182	\$1,151,662		171,651	\$1,482,874		153,028	\$1,369,759
AVERAGE	9,940	\$81,654		11,044	\$92,455		11,849	\$95,972		14,304	\$123,573		15,303	\$136,976



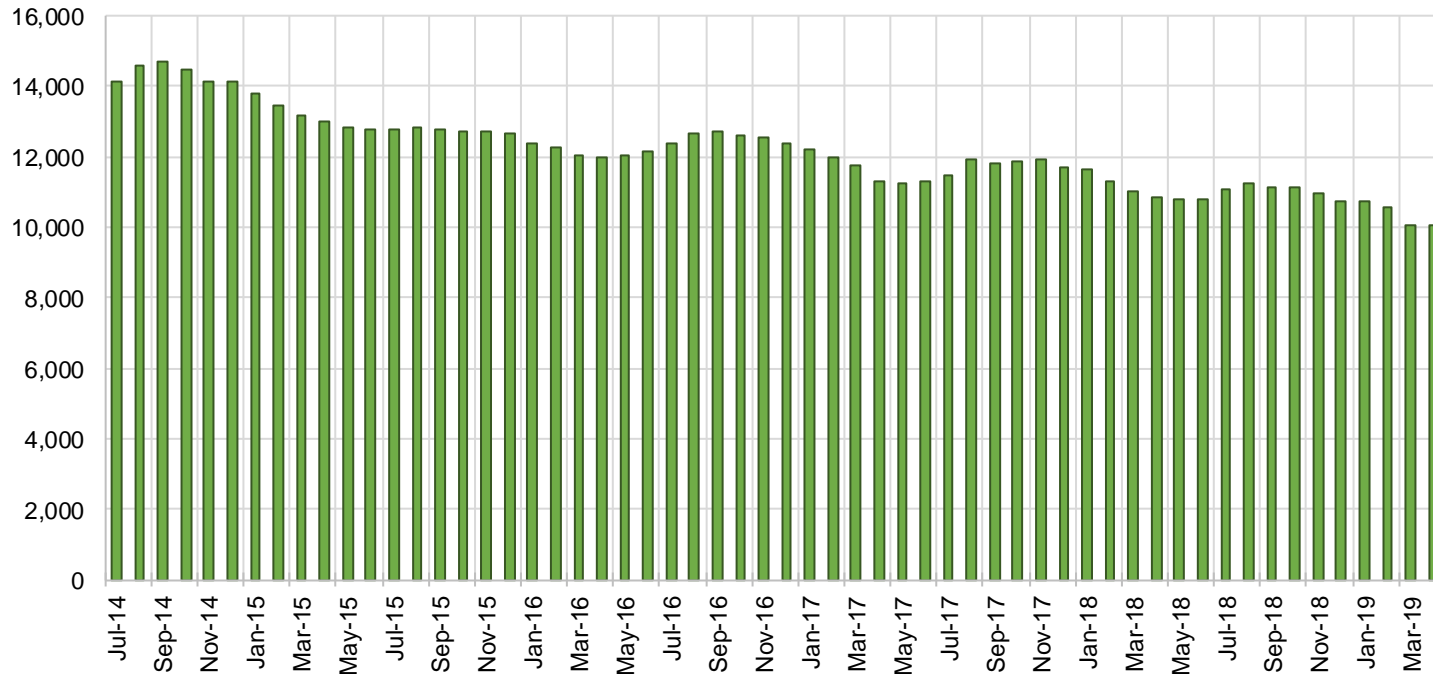
TANF Cases by Field Office⁶

Office				Percent Change	
	Apr-18	Mar-19	Apr-19	Apr-18- Apr-19	Mar-19- Apr-19
Chaves County ISD	480	382	378	-21.3%	-1.0%
Cibola County ISD	146	132	136	-6.8%	3.0%
Colfax County ISD	77	72	82	6.5%	13.9%
Curry County ISD	663	626	613	-7.5%	-2.1%
East Dona Ana County ISD	414	405	412	-0.5%	1.7%
Eddy Artesia County ISD	89	83	79	-11.2%	-4.8%
Eddy Carlsbad County ISD	134	133	127	-5.2%	-4.5%
Grant County ISD	174	186	185	6.3%	-0.5%
Guadalupe County ISD	31	24	27	-12.9%	12.5%
Hidalgo County ISD	21	0	0	-100.0%	N/A
Lea County ISD	379	297	297	-21.6%	0.0%
Lincoln County ISD	97	100	105	8.2%	5.0%
Luna County ISD	211	221	222	5.2%	0.5%
McKinley County ISD	58	80	70	20.7%	-12.5%
Northeast Bernalillo County ISD	949	867	882	-7.1%	1.7%
Northwest Bernalillo County ISD	788	777	779	-1.1%	0.3%
Otero County ISD	271	226	244	-10.0%	8.0%
Quay County ISD	65	63	64	-1.5%	1.6%
Rio Arriba County ISD	410	346	347	-15.4%	0.3%
Roosevelt County ISD	0	0	0	NA	N/A
San Juan County ISD	295	301	275	-6.8%	-8.6%
San Miguel County ISD	183	172	173	-5.5%	0.6%
Sandoval County ISD	544	468	453	-16.7%	-3.2%
Santa Fe County ISD	443	369	369	-16.7%	0.0%
Sierra County ISD	63	62	64	1.6%	3.2%
Socorro County ISD	91	84	85	-6.6%	1.2%
South Dona Ana ISD	634	623	620	-2.2%	-0.5%
Southeast Bernalillo County ISD	582	578	577	-0.9%	-0.2%
Southwest Bernalillo County ISD	1,071	1,033	1,030	-3.8%	-0.3%
Taos County ISD	145	154	150	3.4%	-2.6%
Torrance County ISD	186	187	191	2.7%	2.1%
Valencia North County ISD	444	378	394	-11.3%	4.2%
Valencia South County ISD	0	0	0	N/A	N/A
West Dona Ana County ISD	691	639	642	-7.1%	0.5%
Centralized Units	2	2	1	-50.0%	-50.0%
Statewide Total	10,831	10,070	10,073	-7.0%	0.0%

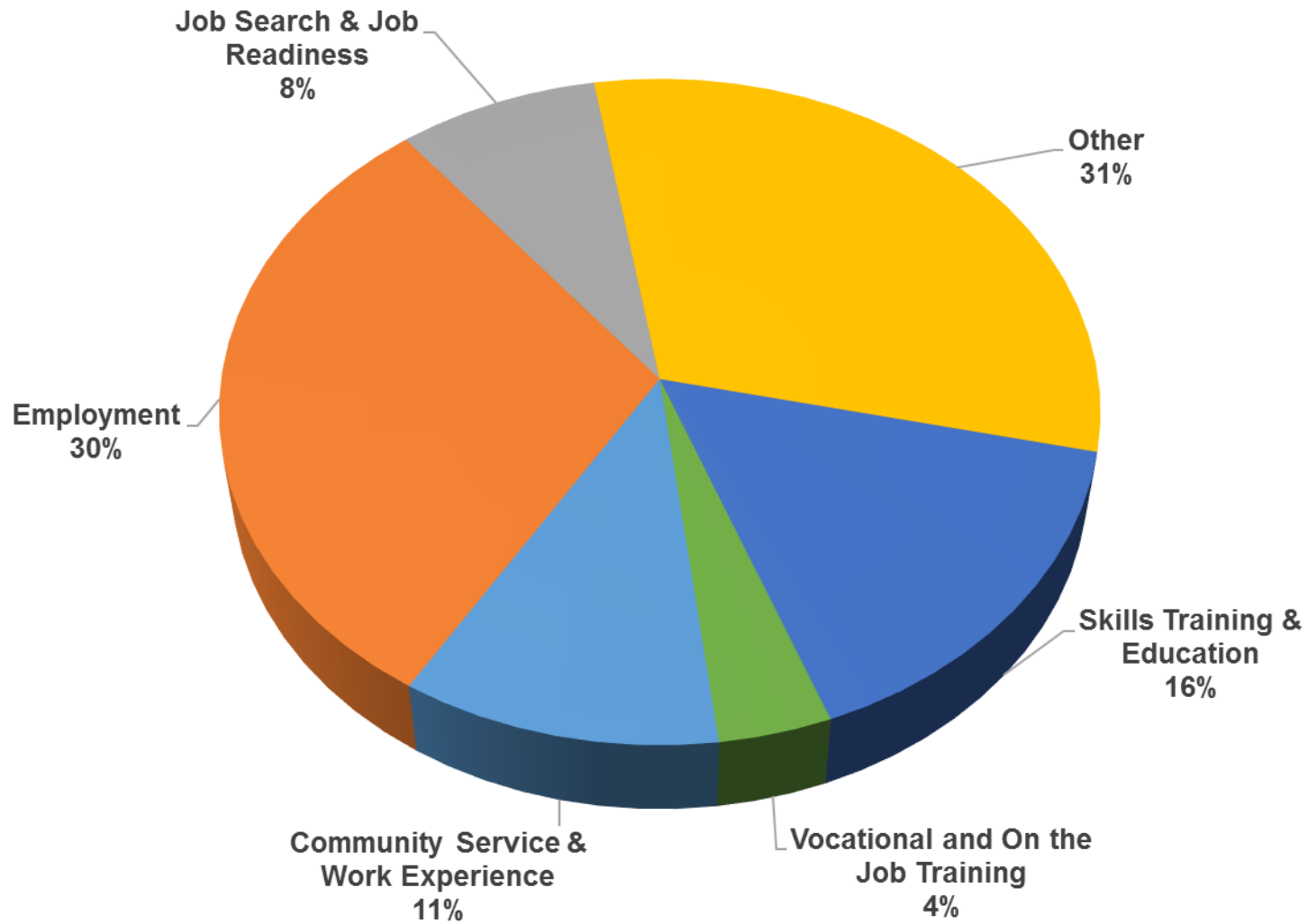
TANF Cases by Region⁶

Region	Percent Change				
	Apr-18	Mar-19	Apr-19	Apr-18- Apr-19	Mar-19- Apr-19
Region 1- NW	1,097	1,037	1,024	-6.7%	-1.3%
Region 2- NE	1,898	1,668	1,665	-12.3%	-0.2%
Region 3- Central	3,576	3,442	3,459	-3.3%	0.5%
Region 4- SE	1,842	1,621	1,599	-13.2%	-1.4%
Region 5- SW	2,416	2,300	2,325	-3.8%	1.1%
Centralized Units	2	2	1	-50.0%	-50.0%
Statewide Total	10,831	10,070	10,073	-7.0%	0.0%

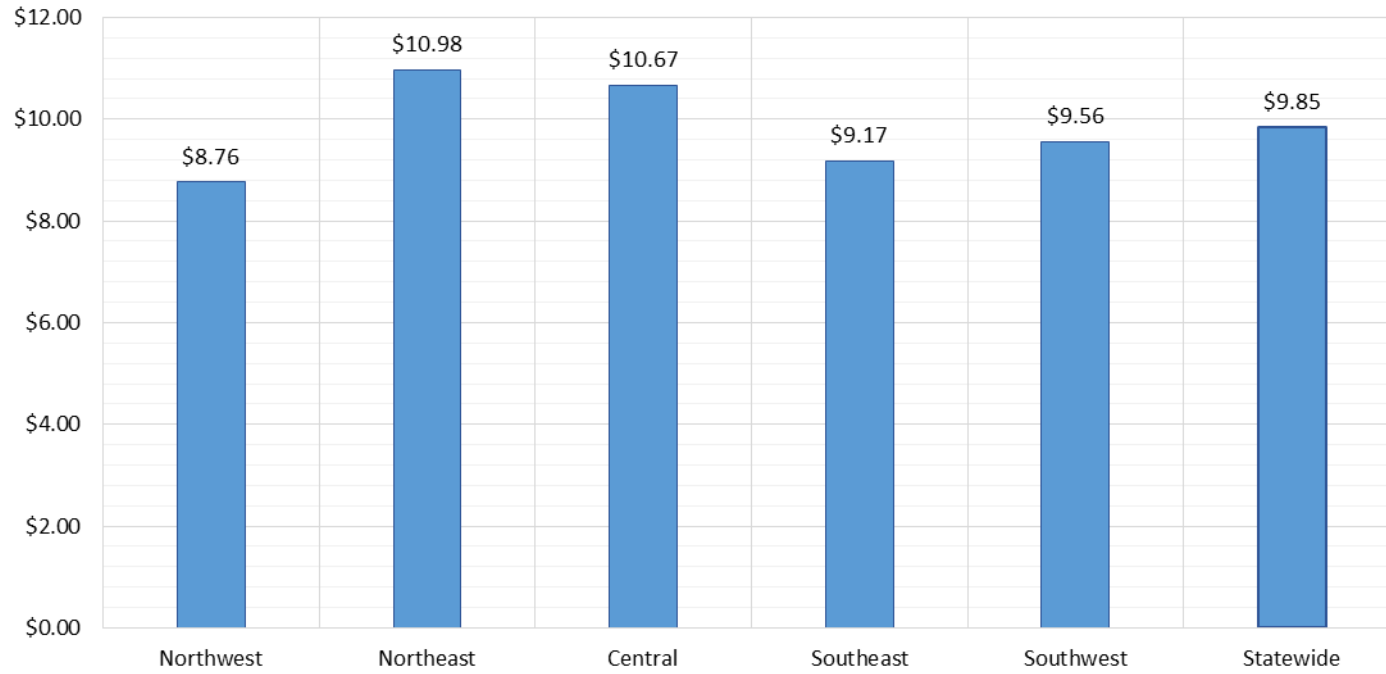
TANF Caseload: SFY-15 to Current



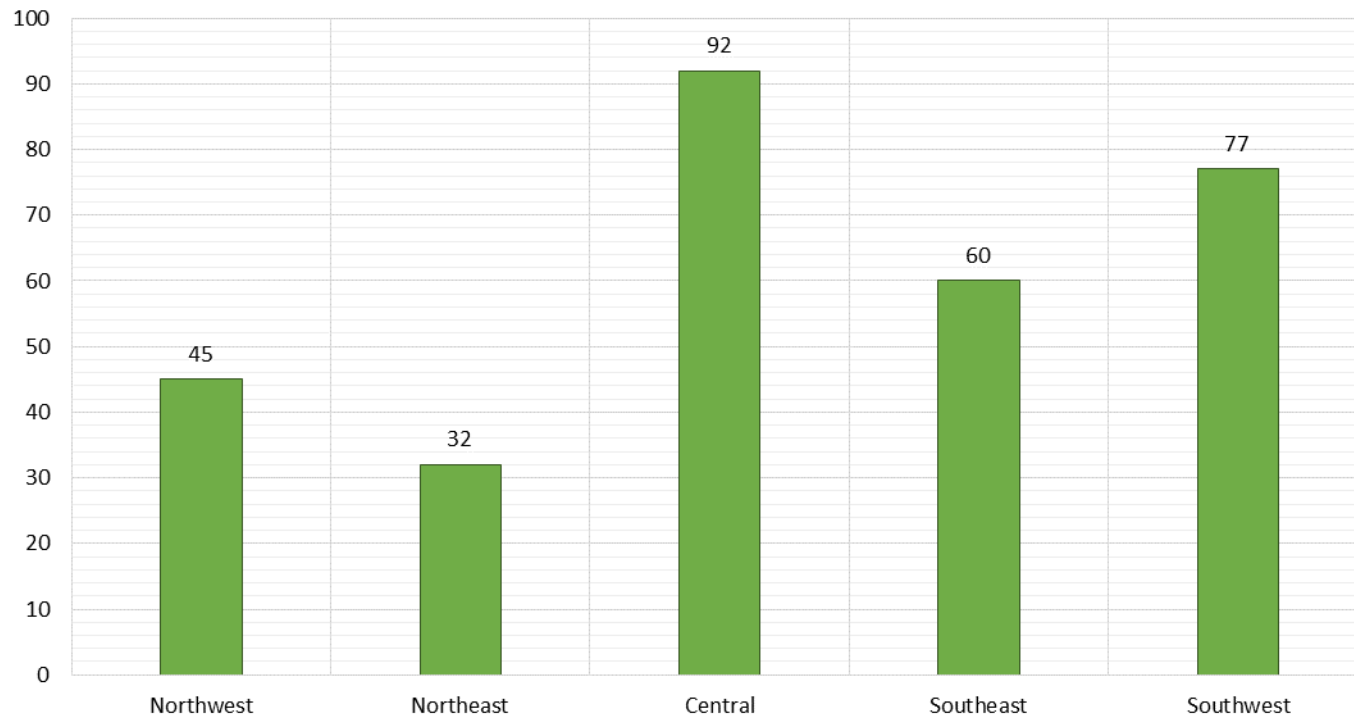
NM Works Activity Placements on April 30, 2019 as reported by SL Start¹⁴



Average Starting Hourly Wage of April 2019 TANF Employments
as reported by SL Start¹⁵



Number of New Employments in April 2019 by Region
as reported by SL Start¹⁵
Statewide Total: 306



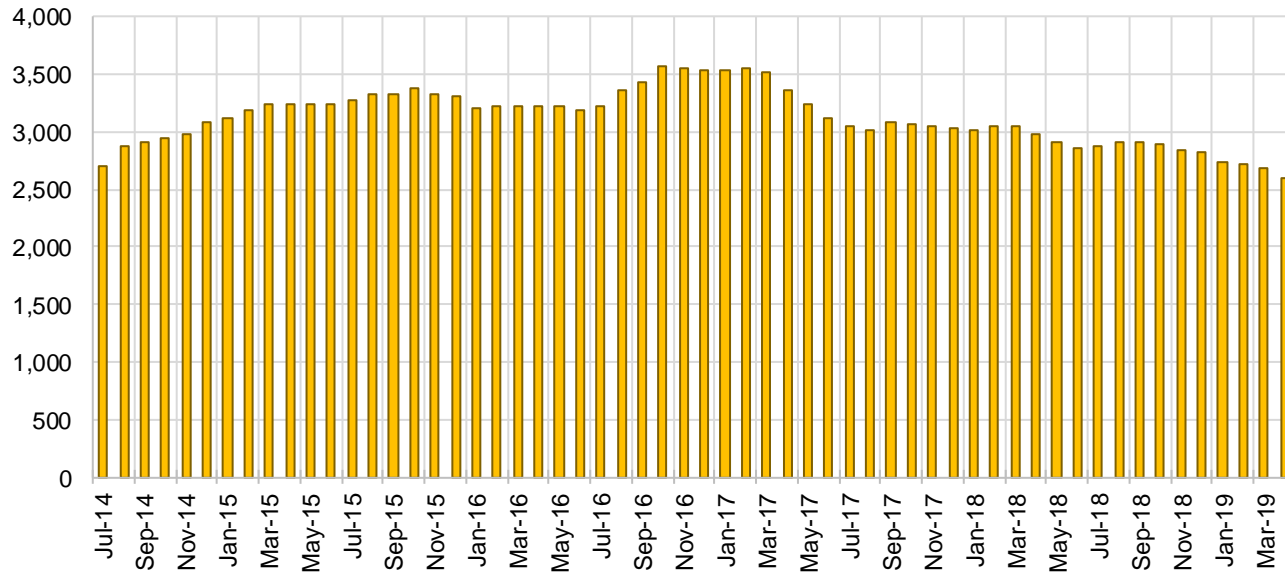
General Assistance Cases by Field Office⁶

Office	Percent Change				
	Apr-18	Mar-19	Apr-19	Apr-18- Apr-19	Mar-19- Apr-19
Chaves County ISD	128	112	101	-21.1%	-9.8%
Cibola County ISD	39	52	49	25.6%	-5.8%
Colfax County ISD	24	19	17	-29.2%	-10.5%
Curry County ISD	80	83	86	7.5%	3.6%
East Dona Ana County ISD	110	104	108	-1.8%	3.8%
Eddy Artesia County ISD	26	29	30	15.4%	3.4%
Eddy Carlsbad County ISD	73	58	53	-27.4%	-8.6%
Grant County ISD	66	66	65	-1.5%	-1.5%
Guadalupe County ISD	19	14	14	-26.3%	0.0%
Hidalgo County ISD	13	0	0	-100.0%	N/A
Lea County ISD	81	72	71	-12.3%	-1.4%
Lincoln County ISD	33	30	27	-18.2%	-10.0%
Luna County ISD	55	56	52	-5.5%	-7.1%
McKinley County ISD	57	61	56	-1.8%	-8.2%
Northeast Bernalillo County ISD	355	272	271	-23.7%	-0.4%
Northwest Bernalillo County ISD	300	250	238	-20.7%	-4.8%
Otero County ISD	94	62	60	-36.2%	-3.2%
Quay County ISD	23	33	34	47.8%	3.0%
Rio Arriba County ISD	77	78	72	-6.5%	-7.7%
Roosevelt County ISD	0	0	0	N/A	N/A
San Juan County ISD	138	120	118	-14.5%	-1.7%
San Miguel County ISD	72	65	69	-4.2%	6.2%
Sandoval County ISD	132	97	92	-30.3%	-5.2%
Santa Fe County ISD	128	117	107	-16.4%	-8.5%
Sierra County ISD	27	30	34	25.9%	13.3%
Socorro County ISD	41	33	39	-4.9%	18.2%
South Dona Ana ISD	57	51	51	-10.5%	0.0%
Southeast Bernalillo County ISD	173	161	150	-13.3%	-6.8%
Southwest Bernalillo County ISD	194	182	187	-3.6%	2.7%
Taos County ISD	43	38	37	-14.0%	-2.6%
Torrance County ISD	46	48	48	4.3%	0.0%
Valencia North County ISD	108	104	95	-12.0%	-8.7%
Valencia South County ISD	0	0	0	N/A	N/A
West Dona Ana County ISD	171	179	170	-0.6%	-5.0%
Centralized Units	0	0	0	N/A	N/A
Statewide Total	2,983	2,676	2,601	-12.8%	-2.8%

General Assistance Cases by Region⁶

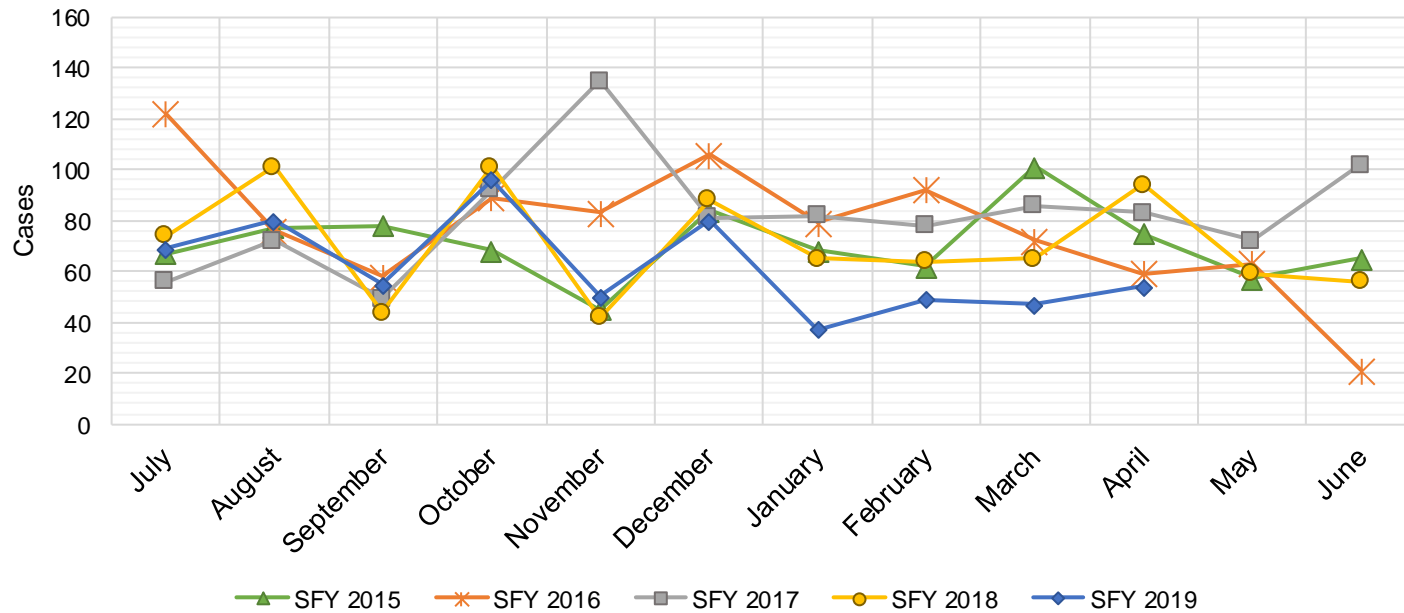
Region				Percent Change	
	Apr-18	Mar-19	Apr-19	Apr-18- Apr-19	Mar-19- Apr-19
Region 1 - NW	410	400	391	-4.6%	-2.3%
Region 2 - NE	518	461	442	-14.7%	-4.1%
Region 3 - Central	1,068	913	894	-16.3%	-2.1%
Region 4 - SE	421	384	368	-12.6%	-4.2%
Region 5 - SW	566	518	506	-10.6%	-2.3%
Centralized Units	0	0	0	N/A	N/A
Statewide Total	2,983	2,676	2,601	-12.8%	-2.8%

General Assistance Caseload: SFY-15 to Current



General Assistance Interim Assistance Reimbursements ¹⁶

SFY 2015			SFY 2016			SFY 2017			SFY 2018			SFY 2019		
	Cases	Expenditures		Cases	Expenditures		Cases	Expenditures		Cases	Expenditures		Cases	Expenditures
Jul-14	67	\$144,679	Jul-15	122	\$342,648	Jul-16	56	\$164,970	Jul-17	74	\$241,438	Jul-18	69	\$228,333
Aug-14	77	\$244,233	Aug-15	76	\$245,236	Aug-16	72	\$223,182	Aug-17	101	\$339,301	Aug-18	80	\$241,292
Sep-14	78	\$168,421	Sep-15	58	\$170,093	Sep-16	49	\$158,027	Sep-17	44	\$131,229	Sep-18	55	\$188,192
Oct-14	68	\$182,265	Oct-15	89	\$277,912	Oct-16	92	\$257,830	Oct-17	101	\$335,752	Oct-18	96	\$298,502
Nov-14	45	\$134,482	Nov-15	83	\$238,948	Nov-16	135	\$402,305	Nov-17	42	\$139,572	Nov-18	50	\$148,641
Dec-14	84	\$239,926	Dec-15	106	\$388,102	Dec-16	81	\$227,569	Dec-17	88	\$245,453	Dec-18	80	\$246,422
Jan-15	68	\$227,066	Jan-16	79	\$239,263	Jan-17	82	\$274,050	Jan-18	65	\$258,239	Jan-19	37	\$106,081
Feb-15	62	\$159,564	Feb-16	92	\$296,332	Feb-17	78	\$227,569	Feb-18	64	\$195,815	Feb-19	49	\$119,300
Mar-15	101	\$317,899	Mar-16	72	\$254,360	Mar-17	86	\$278,219	Mar-18	65	\$172,188	Mar-19	47	\$137,296
Apr-15	75	\$199,038	Apr-16	59	\$208,631	Apr-17	83	\$267,187	Apr-18	94	\$312,340	Apr-19	54	\$173,772
May-15	57	\$167,383	May-16	63	\$182,241	May-17	72	\$232,836	May-18	59	\$155,406	May-19		
Jun-15	65	\$188,159	Jun-16	21	\$51,760	Jun-17	102	\$306,228	Jun-18	56	\$159,268	Jun-19		
TOTAL	847	\$2,373,115	920	\$2,895,525	988	\$3,019,972	853	\$2,686,001	617	\$1,887,831				
AVERAGE	71	\$197,760	77	\$241,294	82	\$251,664	71	\$223,833	62	\$188,783				



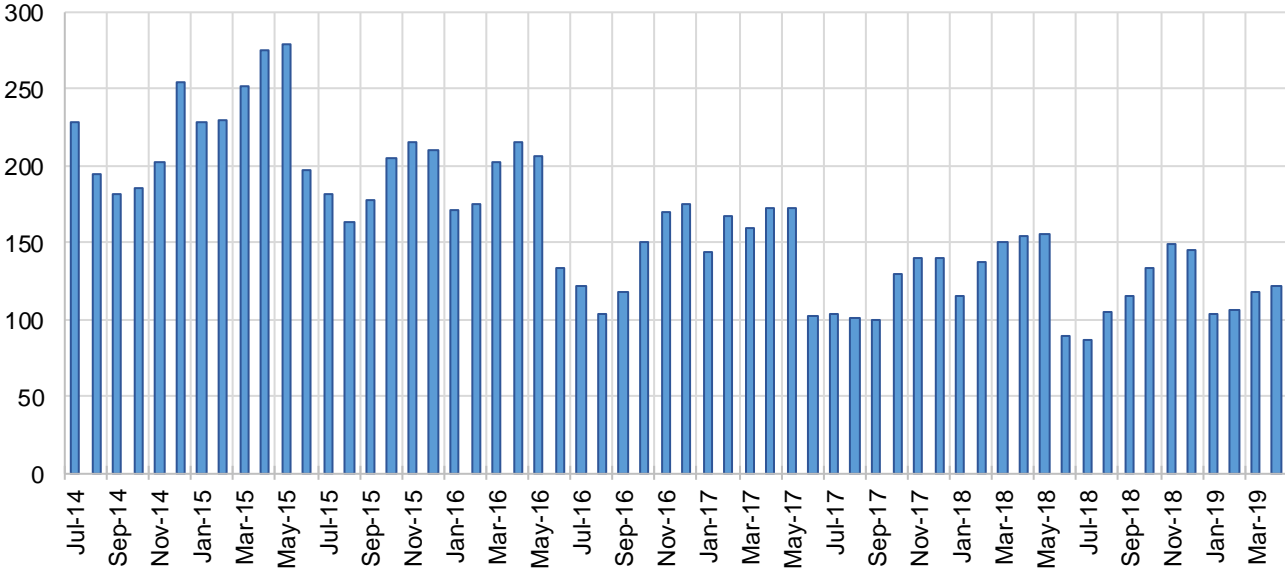
Education Works Cases by Field Office⁶

Office	Percent Change				
	Apr-18	Mar-19	Apr-19	Apr-18- Apr-19	Mar-19- Apr-19
Chaves County ISD	3	0	1	-66.7%	N/A
Cibola County ISD	1	0	0	-100.0%	N/A
Colfax County ISD	0	1	0	N/A	-100.0%
Curry County ISD	7	5	5	-28.6%	0.0%
East Dona Ana County ISD	10	14	13	30.0%	-7.1%
Eddy Artesia County ISD	3	2	2	-33.3%	0.0%
Eddy Carlsbad County ISD	3	2	3	0.0%	50.0%
Grant County ISD	9	4	3	-66.7%	-25.0%
Guadalupe County ISD	0	0	0	N/A	N/A
Hidalgo County ISD	0	0	0	N/A	N/A
Lea County ISD	3	2	2	-33.3%	0.0%
Lincoln County ISD	1	0	0	-100.0%	N/A
Luna County ISD	3	2	2	-33.3%	0.0%
McKinley County ISD	0	0	0	N/A	N/A
Northeast Bernalillo County ISD	11	11	12	9.1%	9.1%
Northwest Bernalillo County ISD	12	7	8	-33.3%	14.3%
Otero County ISD	2	1	1	-50.0%	0.0%
Quay County ISD	0	0	0	N/A	N/A
Rio Arriba County ISD	6	1	1	-83.3%	0.0%
Roosevelt County ISD	0	0	0	N/A	N/A
San Juan County ISD	4	3	4	0.0%	33.3%
San Miguel County ISD	5	5	6	20.0%	20.0%
Sandoval County ISD	14	8	10	-28.6%	25.0%
Santa Fe County ISD	14	10	9	-35.7%	-10.0%
Sierra County ISD	1	1	1	0.0%	0.0%
Socorro County ISD	2	0	0	-100.0%	N/A
South Dona Ana ISD	19	14	12	-36.8%	-14.3%
Southeast Bernalillo County ISD	3	5	7	133.3%	40.0%
Southwest Bernalillo County ISD	6	8	6	0.0%	-25.0%
Taos County ISD	1	0	0	-100.0%	N/A
Torrance County ISD	0	0	0	N/A	N/A
Valencia North County ISD	0	1	1	N/A	0.0%
Valencia South County ISD	0	0	0	N/A	N/A
West Dona Ana County ISD	11	11	13	18.2%	18.2%
Centralized Units	0	0	0	N/A	N/A
Statewide Total	154	118	122	-20.8%	3.4%

Education Works Cases by Region⁶

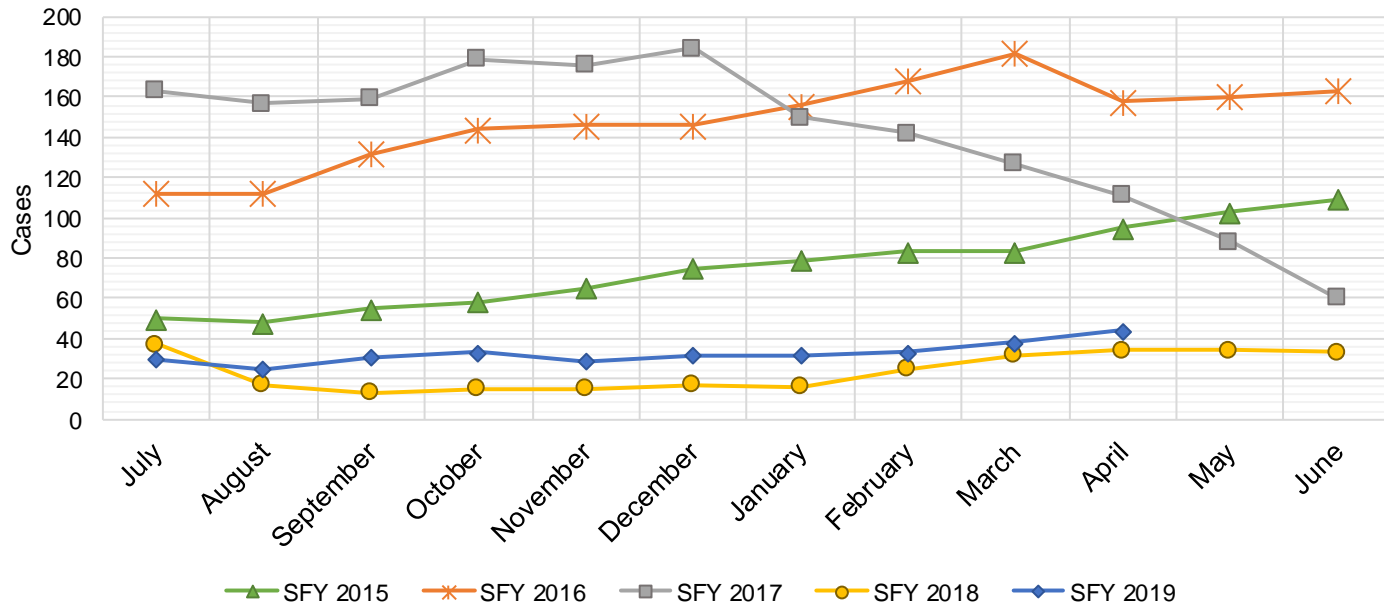
Region	Apr-18	Mar-19	Apr-19	Percent Change	
				Apr-18- Apr-19	Mar-19- Apr-19
Region 1 - NW	8	5	6	-25.0%	20.0%
Region 2 - NE	40	25	26	-35.0%	4.0%
Region 3 - Central	32	31	33	3.1%	6.5%
Region 4 - SE	20	11	13	-35.0%	18.2%
Region 5 - SW	54	46	44	-18.5%	-4.3%
Centralized Units	0	0	0	N/A	N/A
Statewide Total	154	118	122	-20.8%	3.4%

Education Works Caseload: SFY-15 to Current



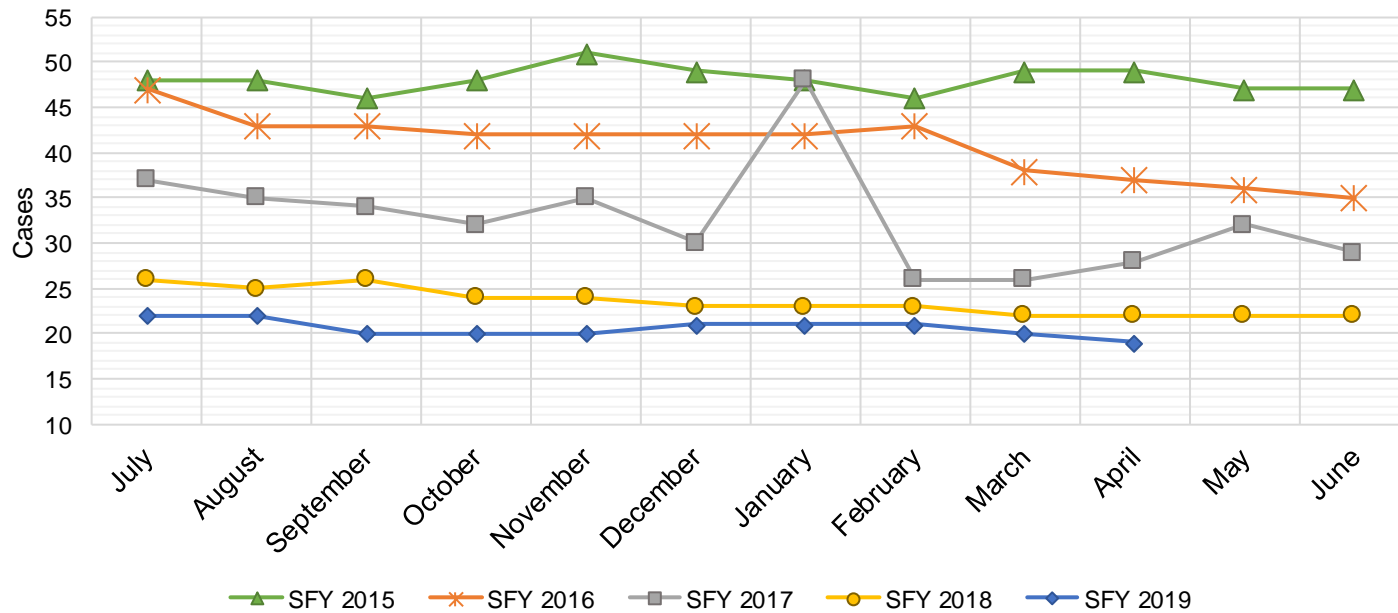
Refugee Cash Assistance

SFY 2015 ¹²			SFY 2016 ^{8,12,9}			SFY 2017 ^{8,9}			SFY 2018 ^{8,9}			SFY 2019 ^{8,9}		
Cases	Expenditures		Cases	Expenditures		Cases	Expenditures		Cases	Expenditures		Cases	Expenditures	
Jul-14	50	\$11,679	Jul-15	112	\$27,516	Jul-16	163	\$39,756	Jul-17	37	\$9,981	Jul-18	30	\$7,408
Aug-14	48	\$11,760	Aug-15	112	\$27,438	Aug-16	157	\$40,115	Aug-17	17	\$4,704	Aug-18	25	\$6,434
Sep-14	55	\$13,094	Sep-15	132	\$31,321	Sep-16	159	\$39,359	Sep-17	13	\$3,159	Sep-18	31	\$6,947
Oct-14	58	\$13,726	Oct-15	144	\$36,153	Oct-16	179	\$41,520	Oct-17	15	\$3,543	Oct-18	33	\$6,323
Nov-14	65	\$16,461	Nov-15	146	\$36,515	Nov-16	176	\$45,434	Nov-17	15	\$4,263	Nov-18	29	\$7,036
Dec-14	75	\$18,699	Dec-15	146	\$35,763	Dec-16	184	\$46,673	Dec-17	17	\$4,795	Dec-18	32	\$7,300
Jan-15	79	\$19,009	Jan-16	156	\$38,686	Jan-17	150	\$38,790	Jan-18	16	\$4,166	Jan-19	32	\$7,418
Feb-15	83	\$21,349	Feb-16	168	\$41,368	Feb-17	142	\$37,956	Feb-18	25	\$5,723	Feb-19	33	\$8,591
Mar-15	83	\$20,730	Mar-16	182	\$45,307	Mar-17	127	\$33,066	Mar-18	32	\$7,636	Mar-19	38	\$9,165
Apr-15	95	\$23,495	Apr-16	158	\$41,143	Apr-17	111	\$29,183	Apr-18	34	\$8,827	Apr-19	44	\$10,648
May-15	103	\$25,363	May-16	160	\$38,332	May-17	88	\$23,343	May-18	34	\$8,939	May-19		
Jun-15	109	\$27,958	Jun-16	163	\$39,856	Jun-17	60	\$15,538	Jun-18	33	\$8,513	Jun-19		
TOTAL	903	\$223,323	1,779	\$439,397		1,696	\$430,732		288	\$74,249		327	\$77,270	
AVERAGE	75	\$18,610	148	\$36,616		141	\$35,894		24	\$6,187		33	\$7,727	



State Supplement for Residential Care

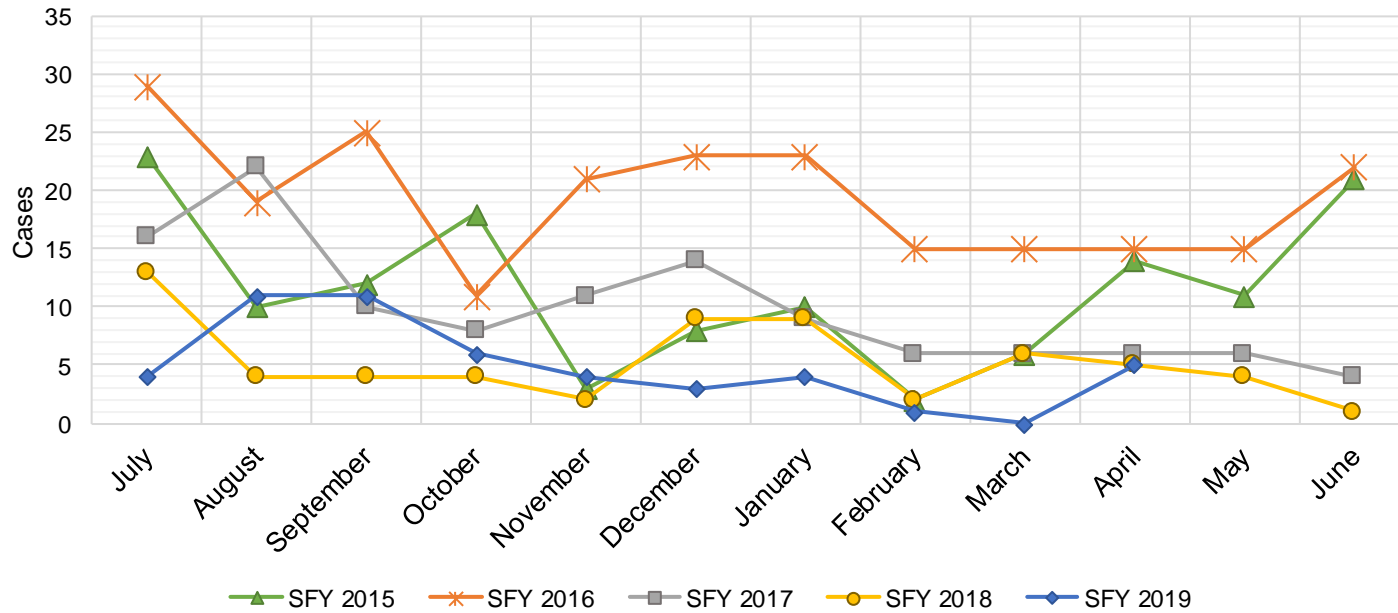
SFY 2015 ¹²			SFY 2016 ^{12,9}			SFY 2017 ⁹			SFY 2018 ⁹			SFY 2019 ⁹		
	Cases	Expenditures		Cases	Expenditures		Cases	Expenditures		Cases	Expenditures		Cases	Expenditures
Jul-14	48	\$4,700	Jul-15	47	\$4,700	Jul-16	37	\$3,700	Jul-17	26	\$2,700	Jul-18	22	\$2,200
Aug-14	48	\$5,000	Aug-15	43	\$4,900	Aug-16	35	\$3,500	Aug-17	25	\$2,500	Aug-18	22	\$2,200
Sep-14	46	\$4,600	Sep-15	43	\$4,500	Sep-16	34	\$3,400	Sep-17	26	\$2,700	Sep-18	20	\$2,000
Oct-14	48	\$4,600	Oct-15	42	\$4,400	Oct-16	32	\$3,200	Oct-17	24	\$2,500	Oct-18	20	\$2,000
Nov-14	51	\$5,600	Nov-15	42	\$4,200	Nov-16	35	\$3,500	Nov-17	24	\$2,400	Nov-18	20	\$2,000
Dec-14	49	\$5,000	Dec-15	42	\$4,200	Dec-16	30	\$3,000	Dec-17	23	\$2,200	Dec-18	21	\$2,100
Jan-15	48	\$4,900	Jan-16	42	\$4,200	Jan-17	48	\$4,800	Jan-18	23	\$2,400	Jan-19	21	\$2,000
Feb-15	46	\$4,800	Feb-16	43	\$4,300	Feb-17	26	\$2,600	Feb-18	23	\$2,300	Feb-19	21	\$2,200
Mar-15	49	\$4,800	Mar-16	38	\$3,800	Mar-17	26	\$2,600	Mar-18	22	\$2,400	Mar-19	20	\$1,900
Apr-15	49	\$5,400	Apr-16	37	\$3,700	Apr-17	28	\$2,800	Apr-18	22	\$2,200	Apr-19	19	\$1,800
May-15	47	\$4,700	May-16	36	\$3,600	May-17	32	\$3,200	May-18	22	\$2,200	May-19		
Jun-15	47	\$5,300	Jun-16	35	\$3,500	Jun-17	29	\$2,900	Jun-18	22	\$2,200	Jun-19		
TOTAL	576	\$59,400	490	\$50,000	392	\$39,200	282	\$28,700	206	\$20,400				
AVERAGE	48	\$4,950	41	\$4,167	33	\$3,267	24	\$2,392	21	\$2,040				



TANF Diversion Payments

SFY 2015 ¹²			SFY 2016 ^{12,9}			SFY 2017 ⁹			SFY 2018 ⁹			SFY 2019 ⁹		
	Cases	Expenditures		Cases	Expenditures		Cases	Expenditures		Cases	Expenditures		Cases	Expenditures
Jul-14	23	\$48,098	Jul-15	29	\$62,074	Jul-16	16	\$30,843	Jul-17	13	\$26,500	Jul-18	4	\$3,000
Aug-14	10	\$21,810	Aug-15	19	\$33,584	Aug-16	22	\$42,731	Aug-17	4	\$12,000	Aug-18	11	\$18,583
Sep-14	12	\$23,500	Sep-15	25	\$47,977	Sep-16	10	\$21,000	Sep-17	4	\$4,000	Sep-18	11	\$20,999
Oct-14	18	\$30,589	Oct-15	11	\$20,500	Oct-16	8	\$16,744	Oct-17	4	\$16,000	Oct-18	6	\$10,499
Nov-14	3	\$4,411	Nov-15	21	\$45,500	Nov-16	11	\$24,500	Nov-17	2	\$15,500	Nov-18	4	\$7,499
Dec-14	8	\$14,634	Dec-15	23	\$45,389	Dec-16	14	\$26,611	Dec-17	9	\$17,500	Dec-18	3	\$2,499
Jan-15	10	\$18,000	Jan-16	23	\$41,874	Jan-17	9	\$18,500	Jan-18	9	\$21,731	Jan-19	4	\$5,999
Feb-15	2	\$5,500	Feb-16	15	\$28,500	Feb-17	6	\$12,000	Feb-18	2	\$7,731	Feb-19	1	\$1,678
Mar-15	6	\$12,000	Mar-16	15	\$27,008	Mar-17	6	\$11,000	Mar-18	6	\$8,496	Mar-19	0	\$3,000
Apr-15	14	\$26,000	Apr-16	15	\$31,389	Apr-17	6	\$12,000	Apr-18	5	\$13,500	Apr-19	5	\$6,500
May-15	11	\$21,500	May-16	15	\$31,916	May-17	6	\$11,500	May-18	4	\$12,500	May-19		
Jun-15	21	\$40,039	Jun-16	22	\$43,000	Jun-17	4	\$13,500	Jun-18	1	\$5,389	Jun-19		

TOTAL	138	\$266,081	233	\$458,711	118	\$240,929	63	\$160,847	49	\$80,256
AVERAGE	12	\$22,173	19	\$38,226	10	\$20,077	5	\$13,404	5	\$8,026

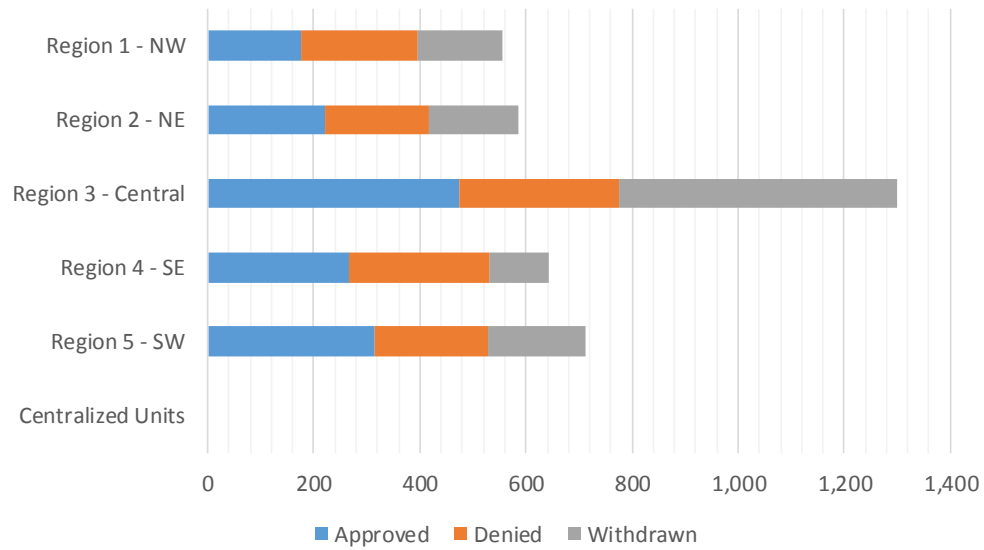


Cash Assistance Applications by Field Office^{4,11}
April 2019

Office	Approved	Denied	Withdrawn	Total Cases Processed
Chaves County ISD	68	54	32	154
Cibola County ISD	22	30	12	64
Colfax County ISD	11	6	9	26
Curry County ISD	85	71	29	185
East Dona Ana County ISD	65	79	27	171
Eddy Artesia County ISD	16	27	2	45
Eddy Carlsbad County ISD	22	40	20	82
Grant County ISD	30	31	11	72
Guadalupe County ISD	7	2	4	13
Hidalgo County ISD	0	0	1	1
Lea County ISD	59	53	21	133
Lincoln County ISD	16	19	9	44
Luna County ISD	28	7	24	59
McKinley County ISD	12	21	37	70
Northeast Bernalillo County ISD	145	28	193	366
Northwest Bernalillo County ISD	103	91	127	321
Otero County ISD	48	19	40	107
Quay County ISD	13	1	4	18
Rio Arriba County ISD	44	17	25	86
Roosevelt County ISD	0	0	0	0
San Juan County ISD	56	100	55	211
San Miguel County ISD	20	12	21	53
Sandoval County ISD	67	56	57	180
Santa Fe County ISD	47	92	33	172
Sierra County ISD	16	5	11	32
Socorro County ISD	14	15	6	35
South Dona Ana ISD	71	11	42	124
Southeast Bernalillo County ISD	81	57	68	206
Southwest Bernalillo County ISD	120	107	118	345
Taos County ISD	11	12	16	39
Torrance County ISD	24	20	19	63
Valencia North County ISD	56	50	39	145
Valencia South County ISD	0	0	0	0
West Dona Ana County ISD	72	66	41	179
Centralized Units	0	0	0	0
Statewide Total	1,449	1,199	1,153	3,801

Cash Assistance Applications by Region^{4,11}
April 2019

	Approved	Denied	Withdrawn	Total Cases Processed
Region				
Region 1 - NW	176	221	160	557
Region 2 - NE	220	198	169	587
Region 3 - Central	473	303	525	1,301
Region 4 - SE	266	264	113	643
Region 5 - SW	314	213	186	713
Centralized Units	0	0	0	0
Statewide Total	1,449	1,199	1,153	3,801



**Children Youth and Families Department
Children Receiving Child Care Assistance Subsidies By County**

County	Apr 2018	May 2018	June 2018	July 2018	Aug 2018	Sept 2018	Oct 2018	Nov 2018	Dec 2018	Jan 2019	Feb 2019	Mar 2019	Apr 2019	Change Fr. Last Year Cases	Percent
<i>Bernalillo</i>	7,853	7,925	8,146	7,735	7,741	8,041	7,753	7,741	7,584	7,545	7,563	7,831	7,997	144	1.8%
Catron	0	0	0	0	0	0	0	0	0	0	0	0	0	0	0.0%
<i>Chaves</i>	791	819	865	837	828	861	817	836	814	812	834	878	868	77	9.7%
Cibola	291	286	295	289	278	312	316	315	302	287	285	289	306	15	5.2%
<i>Colfax</i>	56	57	59	56	56	59	62	60	57	62	57	59	52	-4	-7.1%
Curry	536	538	535	539	538	592	543	548	517	492	489	524	548	12	2.2%
<i>De Baca</i>	4	4	4	4	4	4	4	1	1	1	1	1	0	-4	-100.0%
Dona Ana	4,349	4,369	4,455	4,260	4,219	4,403	4,311	4,304	4,191	4,198	4,351	4,453	4,413	64	1.5%
<i>Eddy</i>	242	234	245	264	259	268	267	257	259	248	243	245	214	-28	-11.6%
Grant	140	138	142	110	111	134	133	139	126	125	134	131	127	-13	-9.3%
<i>Guadalupe</i>	14	14	14	14	18	11	16	14	12	11	11	11	11	-3	-21.4%
Harding	1	1	1	1	1	1	1	1	1	1	1	0	0	-1	0.0%
<i>Hidalgo</i>	35	37	36	37	37	36	35	32	28	23	26	24	20	-15	-42.9%
Lea	805	817	817	806	813	877	840	851	821	829	823	831	815	10	1.2%
<i>Lincoln</i>	130	133	129	129	131	107	104	100	97	97	102	104	104	-26	-20.0%
Los Alamos	17	18	22	27	30	26	31	34	34	34	34	34	36	19	111.8%
<i>Luna</i>	166	163	162	143	149	153	142	145	153	150	176	180	176	10	6.0%
McKinley	162	168	176	168	157	188	173	173	168	162	158	168	154	-8	-4.9%
<i>Mora</i>	18	21	21	26	31	29	25	18	16	16	13	11	11	-7	-38.9%
Otero	518	504	502	490	496	520	505	525	501	531	506	507	512	-6	-1.2%
<i>Out of State</i>	5	7	8	6	6	4	4	4	5	3	4	1	2	-3	-60.0%
Quay	35	33	33	38	37	33	35	34	33	34	32	34	33	-2	-5.7%
<i>Rio Arriba</i>	148	146	147	146	143	139	141	146	142	134	137	132	141	-7	-4.7%
Roosevelt	109	101	102	94	88	101	106	112	121	118	118	118	121	12	11.0%
<i>San Juan</i>	1,053	1,030	1,059	928	892	1,020	954	955	926	913	942	935	958	-95	-9.0%
San Miguel	370	378	376	375	361	375	364	357	345	317	316	319	332	-38	-10.3%
<i>Sandoval</i>	782	765	798	739	756	763	693	697	708	741	734	744	758	-24	-3.1%
Santa Fe	514	531	545	533	511	497	448	470	460	461	481	503	499	-15	-2.9%
<i>Sierra</i>	69	70	62	53	50	64	62	60	57	49	51	48	42	-27	-39.1%
Socorro	75	73	68	55	63	62	65	64	63	58	51	58	55	-20	-26.7%
<i>Taos</i>	138	135	135	138	126	111	111	112	102	115	118	117	124	-14	-10.1%
Torrance	116	115	120	109	104	112	92	94	88	90	85	79	69	-47	-40.5%
<i>Union</i>	5	5	5	5	5	5	5	5	5	5	5	5	3	-2	-40.0%
Valencia	612	624	644	615	621	664	604	611	610	614	604	589	591	-21	-3.4%
Totals	20,159	20,259	20,728	19,769	19,660	20,572	19,762	19,815	19,347	19,276	19,485	19,963	20,092	-67	-0.3%

CHILDREN YOUTH AND FAMILIES DEPARTMENT

CHILD CARE ASSISTANCE ELIGIBILITY PROGRAMS

MONTH	May'18	June'18	July'18	Aug'18	Sept'18	Oct'18	Nov'18	Dec'18	Jan'19	Feb'19	Mar'19	Apr'19
TANF (Child Care Priority 1 Clients)												
CLIENTS	2,118	2,164	2,074	2,124	2,221	2,197	2,202	2,149	2,131	2,107	2,138	2,147
COST	\$ 1,244,115	\$ 1,242,370	\$ 1,255,788	\$ 1,288,094	\$ 1,238,106	\$ 1,335,587	\$ 1,313,281	\$ 1,274,570	\$ 1,281,263	\$ 1,264,626	\$ 1,284,582	\$ 1,286,044
TANF AVERAGE COST	\$ 587	\$ 574	\$ 605	\$ 606	\$ 557	\$ 608	\$ 596	\$ 593	\$ 601	\$ 600	\$ 601	\$ 599
TRANSITION OFF TANF (Child Care Priority 2 Clients)												
CLIENTS	169	172	161	170	165	157	145	134	129	125	124	119
COST	\$ 93,823	\$ 96,261	\$ 97,664	\$ 97,412	\$ 89,581	\$ 87,146	\$ 81,849	\$ 78,119	\$ 81,456	\$ 75,852	\$ 73,930	\$ 71,395
TRAN OFF TANF AVG COST	\$ 555	\$ 560	\$ 607	\$ 573	\$ 543	\$ 555	\$ 564	\$ 583	\$ 631	\$ 607	\$ 596	\$ 600
TANF ELIGIBLE (Child Care Priority 1B Clients at or below 100% of the Federal Poverty Level)												
CLIENTS	8,570	8,816	8,404	8,352	8,755	8,505	8,452	8,269	8,227	8,125	8,248	8,275
COST	\$ 4,896,651	\$ 4,879,475	\$ 4,946,700	\$ 4,973,346	\$ 4,776,708	\$ 4,957,788	\$ 4,970,667	\$ 4,870,464	\$ 4,796,096	\$ 4,662,397	\$ 4,825,487	\$ 4,845,578
TANF ELIGIBLE AVG COST	\$ 571	\$ 553	\$ 589	\$ 595	\$ 546	\$ 583	\$ 588	\$ 589	\$ 583	\$ 574	\$ 585	\$ 586
INCOME ELIGIBLE (Child Care Priority 3, and Priority 4 Clients)												
CLIENTS	8,099	8,261	7,808	7,743	8,122	7,686	7,752	7,567	7,606	7,932	8,262	8,382
COST	\$ 4,104,126	\$ 4,096,260	\$ 4,133,552	\$ 4,208,252	\$ 3,980,270	\$ 4,056,059	\$ 4,049,318	\$ 3,991,789	\$ 3,956,942	\$ 4,144,807	\$ 4,325,025	\$ 4,401,790
INCOME ELIG AVG COST	\$ 507	\$ 496	\$ 529	\$ 543	\$ 490	\$ 528	\$ 522	\$ 528	\$ 520	\$ 523	\$ 523	\$ 525
AT-RISK CHILD PROTECTIVE SERVICES CHILD CARE PILOT (Priority 5 Clients)												
CLIENTS	424	393	405	355	364	326	351	344	338	336	342	322
COST	\$ 276,746	\$ 265,193	\$ 270,783	\$ 228,483	\$ 224,486	\$ 213,687	\$ 217,475	\$ 234,222	\$ 239,514	\$ 210,812	\$ 223,510	\$ 203,584
CPS AVG COST	\$ 653	\$ 675	\$ 669	\$ 644	\$ 617	\$ 655	\$ 620	\$ 681	\$ 709	\$ 627	\$ 654	\$ 632
CHILD PROTECTIVE SERVICES (Child Care CPS Clients)												
CLIENTS	879	942	917	916	945	891	913	884	845	860	849	847
COST	\$ 619,678	\$ 600,858	\$ 597,105	\$ 637,227	\$ 581,981	\$ 613,927	\$ 641,871	\$ 607,486	\$ 585,379	\$ 576,818	\$ 551,507	\$ 594,790
CPS AVG COST	\$ 705	\$ 638	\$ 651	\$ 696	\$ 616	\$ 689	\$ 703	\$ 687	\$ 693	\$ 671	\$ 650	\$ 702
GRAND TOTAL - ALL CHILD CARE PROGRAMS												
CLIENTS	20,259	20,748	19,769	19,660	20,572	19,762	19,815	19,347	19,276	19,485	19,963	20,092
COST	\$ 11,235,139	\$ 11,180,418	\$ 11,301,592	\$ 11,432,813	\$ 10,891,133	\$ 11,264,194	\$ 11,274,461	\$ 11,056,650	\$ 10,940,651	\$ 10,935,312	\$ 11,284,041	\$ 11,403,180
ALL PROGRAMS AVG COST	\$ 555	\$ 539	\$ 572	\$ 582	\$ 529	\$ 570	\$ 569	\$ 571	\$ 568	\$ 561	\$ 565	\$ 568

Income Eligibility Guidelines: October 1, 2018- September 30, 2019

Federal Poverty Guidelines (FPG) Monthly Income Standards

Supplemental Nutrition Program (SNAP)					
Household Size	100% FPG Net Income	130% FPG Gross Income	165% FPG Gross Income for Categorical Eligibility	Maximum SNAP Monthly Allotment	LIHEAP 150% FPG
1	\$1,012	\$1,316	\$1,670	\$192	\$1,518
2	\$1,372	\$1,784	\$2,264	\$353	\$2,058
3	\$1,732	\$2,252	\$2,858	\$505	\$2,598
4	\$2,092	\$2,720	\$3,452	\$642	\$3,138
5	\$2,452	\$3,188	\$4,046	\$762	\$3,678
6	\$2,812	\$3,656	\$4,640	\$914	\$4,218
7	\$3,172	\$4,124	\$5,234	\$1,011	\$4,758
8	\$3,532	\$4,592	\$5,828	\$1,155	\$5,298
+1	+\$60	+\$468	+\$594	+\$144	+\$540
Minimum Allotment of \$15 effective from 10/1/2017 - 9/30/2018					
DEDUCTIONS: Standard Deduction: For HH size 1-3 = \$164; 4 = \$174; 5 = \$204; 6 or more = \$234; Excess Shelter Deduction Limit: \$552; Heating and Cooling Standard Utility Allowance: \$344 (HCSUA) – Limited Utility Allowance: \$ 139 (LUA); Telephone Standard: \$52; Dependent Care: Actual Amount (No Limit); Earned Income Deduction: 20%; Homeless Shelter Standard: \$143					

CASH Assistance & Support Services					
Household Size	Federal Poverty Guidelines (FPG) Monthly Income Standards			Maximum Monthly Benefit	
	100% FPG Net Income	85% FPG Gross Limit	NM Works Cash Net Income	Maximum Monthly Benefit	General Assistance
1	\$1,012	\$860	\$266	\$244	\$245
2	\$1,372	\$1,166	\$357	\$327	\$329
3	\$1,732	\$1,472	\$447	\$409	\$412
4	\$2,092	\$1,778	\$539	\$493	\$496
5	\$2,452	\$2,084	\$630	\$576	\$580
6	\$2,812	\$2,390	\$721	\$659	\$664
7	\$3,172	\$2,696	\$812	\$743	\$748
8	\$3,532	\$3,002	\$922	\$843	\$849
+1	+\$360	+\$306	+\$91	+\$83	+\$84
Deductions- Dependent Care: For a child under age 2 = \$200; For a child age 2 and over = \$175. Work Incentives- Earned Income Disregard: Single parent = \$125 & ½ remainder; Two parent = \$225 & ½ remainder.					

ISD 017 Revised 08/13/2018

Medical Assistance Division					
Federal Poverty Guidelines New Mexico Affordable Care Eligibility Groups Effective April 01, 2019 thru March 31, 2020 Monthly Guidelines					
HH SIZE	PERCENT OF POVERTY				
	138%	190%	240%	250%	300%
1	\$1,437	\$1,978	\$2,498	\$2,603	\$3,123
2	\$1,945	\$2,678	\$3,382	\$3,523	\$4,228
3	\$2,453	\$3,378	\$4,266	\$4,444	\$5,333
4	\$2,962	\$4,078	\$5,150	\$5,365	\$6,438
5	\$3,470	\$4,777	\$6,034	\$6,286	\$7,543
6	\$3,978	\$5,477	\$6,918	\$7,207	\$8,648
7	\$4,487	\$6,177	\$7,802	\$8,128	\$9,753
8	\$4,995	\$6,877	\$8,686	\$9,048	\$10,858
138% Adult Expansion, 190% Children ages 6 to 19 (Medicaid), 240% Children ages 0 to 6 (Medicaid); ages 6 to 19 (CHIP), 250% Pregnancy Related Services Only, 300% Children 0 to 6 (CHIP)					

Medical Assistance Division					
Federal Poverty Guidelines New Mexico Affordable Care Eligibility Groups Effective April 01, 2019 thru March 31, 2020 Annual Guidelines					
HH SIZE	PERCENT OF POVERTY				
	138%	190%	240%	250%	300%
1	\$17,244	\$23,736	\$29,976	\$31,236	\$37,476
2	\$23,340	\$32,136	\$40,584	\$42,276	\$50,736
3	\$29,436	\$40,536	\$51,192	\$53,328	\$63,996
4	\$35,544	\$48,936	\$61,800	\$64,380	\$77,256
5	\$41,640	\$57,324	\$72,408	\$75,432	\$90,516
6	\$47,736	\$65,724	\$83,016	\$86,484	\$103,776
7	\$53,844	\$74,124	\$93,624	\$97,536	\$117,036
8	\$59,940	\$82,524	\$104,232	\$108,576	\$130,296
138% Adult Expansion, 190% Children ages 6 to 19 (Medicaid), 240% Children ages 0 to 6 (Medicaid); ages 6 to 19 (CHIP), 250% Pregnancy Related Services Only, 300% Children 0 to 6 (CHIP)					

References

¹ *Medicaid Expenditures* (Omnicaid, Medicare Buy-Ins, Lump Sum Payments)

² *ASPEN Business Intelligence Tool: Eligibility*

³ New Mexico Human Services Department, *Medicaid Eligibility Reports*, Retrieved from <http://www.hsd.state.nm.us/LookingForInformation/medicaid-eligibility.aspx> on March 13, 2019

⁴ *ASPEN Business Intelligence Tool: Application Tracking*

⁵ Fidelity Information Services, *EBT Daily Statistical Report* (for reporting month)

⁶ *ASPEN Report DQ-180: Length of Time Cases are Open* (for reporting month)

⁷ *ASPEN Report EY-180: Individual Demographics by State and Age* (for reporting month)

⁸ *ASPEN Business Intelligence Tool: Benefit Issuance*

⁹ Fidelity Information Services, *EBT Daily Statistical Reports* (Month End)

¹⁰ *ASPEN Report EY-180R: Individual Demographics by State, Race, Ethnicity and Gender* (for reporting month)

¹¹ SQL Queries from ASPEN

¹² JP Morgan, *New Mexico – NM EBT System- Monthly Benefit Draw Down Totals*

¹³ *ASPEN Business Intelligence Tool: Application Tracking* (w/Parameters: SNAP, Expedite, Approved)

¹⁴ SL Start, *As of Today Report*

¹⁵ SL Start, *Statewide Employment Report*

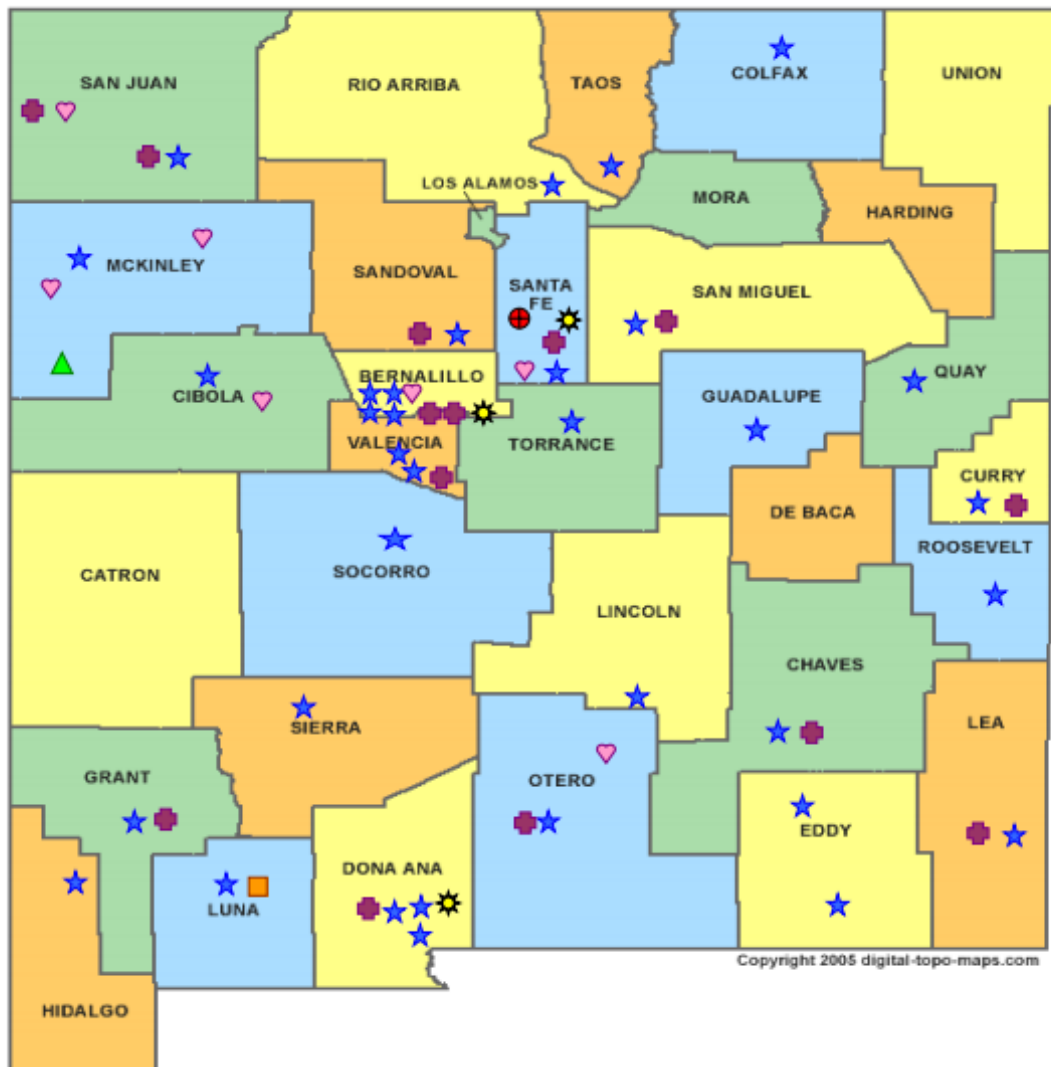
¹⁶ *SSIAR Payments*

¹⁷ Children, Youth, and Families Department, *Children Receiving Child Care Assistance Subsidies by County*

¹⁸ Children, Youth, and Families Department, *Child Care Assistance Eligibility Programs*








¹⁹ EDG is defined as an Eligibility Determination Group

²⁰SQL Query from ASPEN



HUMAN SERVICES
DEPARTMENT

New Mexico Human Services Department
Field Offices

-  Central Office (1)
-  Income Support Division County Office (35)
-  Income Support Division Satellite Office (2)
-  Child Support Enforcement Regional Office (16)
-  Child Support Enforcement Satellite Office (1)
-  Indian Health Services (7)
-  Hospital Site (3)

For a complete listing of field offices and other government and community resources:
http://www.hsd.state.nm.us/LookingForAssistance/Field_Offices_1.aspx