



# Monthly Statistical Report

## April 2017

The SNAP caseload in April 2017 was 217,242, a 13.5% decrease from one year ago. The SNAP caseload has decreased by 21,669 cases, or 9.1%, since last month.

The TANF caseload was 11,277 in April 2017, a decrease of 5.8% from April 2016. The TANF caseload had 468 fewer cases compared to March 2017, a decrease of 4.0%.

The caseload for General Assistance was 3,355 in April 2017, an increase of 4.3% from one year ago and a decrease of 161 cases from last month.

Susana Martinez, Governor  
Brent Earnest, Cabinet Secretary

<b>Contents</b>	<b>Page</b>
Summary	3-5
Medicaid	6-9
SNAP	10-16
Cash Assistance	17-31
Child Care Assistance	32-33
Income Eligibility Guidelines	34-35

**Regions are reported as follows:**

<b>Region 1</b>		
Catron	San Juan	Valencia
Cibola	Sierra	
McKinley	Socorro	
<b>Region 2</b>		
Colfax	Mora	Santa Fe
De Baca	Quay	Taos
Guadalupe	Rio Arriba	Union
Harding	Sandoval	
Los Alamos	San Miguel	
<b>Region 3</b>		
Bernalillo	Torrance	
<b>Region 4</b>		
Chaves	Eddy	Lincoln
Curry	Lea	Roosevelt
<b>Region 5</b>		
Dona Ana	Hidalgo	Otero
Grant	Luna	

***The Mission of the Human Services Department***

*To reduce the impact of poverty on people living in New Mexico by providing support services that help families break the cycle of dependency on public assistance*

Sean Pearson, Deputy Secretary  
Michael Nelson, Deputy Secretary

Prepared by Income Support Division  
PO Box 2348  
Santa Fe, NM 87504-2348  
505-827-7250

Vida Tapia-Sanchez, Deputy Director  
Shanita Harrison, Deputy Director

<http://www.hsd.state.nm.us/monthly-statistical-reports.aspx>

# Program Summary for April 2017

Medicaid				Percent Change	
	Apr-16	Mar-17	Apr-17	Apr-16- Apr-17	Mar-17- Apr-17
<b>Expenditures</b>	\$502,644,184	\$474,693,610	\$478,759,931	-4.8%	0.9%
<b>Cases</b>	493,029	526,510	524,007	6.3%	-0.5%
<b>Expenditures/Case</b>	\$1,020	\$902	\$914	-10.4%	1.3%
<b>Recipients</b>	858,894	908,750	905,265	5.4%	-0.4%
<i>Adults</i>	478,163	517,726	515,957	7.9%	-0.3%
<i>Children</i>	380,731	391,024	389,308	2.3%	-0.4%
<b>Recipients /Case</b>	1.74	1.73	1.73	-0.8%	0.1%
<b>Cases Processed</b>	12,345	14,680	11,650	-5.6%	-20.6%
<i>Approvals</i>	8,870	11,128	8,702	-1.9%	-21.8%

Supplemental Nutrition Assistance Program (SNAP)				Percent Change	
	Apr-16	Mar-17	Apr-17	Apr-16- Apr-17	Mar-17- Apr-17
<b>Expenditures</b>	\$57,912,291	\$55,820,032	\$55,289,574	-4.5%	-1.0%
<b>Cases</b>	251,188	238,911	217,242	-13.5%	-9.1%
<b>Expenditures/Case</b>	\$231	\$234	\$255	10.4%	8.9%
<b>Recipients</b>	523,919	502,701	458,782	-12.4%	-8.7%
<i>Adults</i>	300,365	291,518	260,744	-13.2%	-10.6%
<i>Children</i>	223,554	211,183	198,038	-11.4%	-6.2%
<b>Recipients /Case</b>	2.09	2.10	2.11	1.3%	0.4%
<b>Cases Processed</b>	11,936	20,335	17,151	43.7%	-15.7%
<i>Approvals</i>	9,644	14,291	13,708	42.1%	-4.1%

Cash Assistance Programs				Percent Change	
	Apr-16	Mar-17	Apr-17	Apr-16- Apr-17	Mar-17- Apr-17
<b>Expenditures</b>	\$4,425,681	\$4,409,270	\$4,227,023	-4.5%	-4.1%
<b>Cases</b>	15,597	15,574	14,943	-4.2%	-4.1%
<b>Expenditures/Case</b>	\$284	\$283	\$283	-0.3%	-0.1%
<b>Recipients</b>	35,234	34,994	33,567	-4.7%	-4.1%
<i>Adults</i>	11,738	11,751	11,159	-4.9%	-5.0%
<i>Children</i>	23,496	23,243	22,408	-4.6%	-3.6%
<b>Recipients /Case</b>	2.26	2.25	2.25	-0.6%	0.0%
<b>Cases Processed</b>	4,294	5,343	4,559	6.2%	-14.7%
<i>Approvals</i>	1,314	1,584	1,376	4.7%	-13.1%

Low Income Home Energy Assistance Program (LIHEAP)				Percent Change	
	Apr-16	Mar-17	Apr-17	Apr-16- Apr-17	Mar-17- Apr-17
<b>Expenditures</b>	\$672,120	\$1,247,100	\$702,415	4.5%	-43.7%
<b>Cases</b>	3,104	4,569	2,779	-10.5%	-39.2%
<b>Expenditures/Case</b>	\$217	\$273	\$253	16.7%	-7.4%
<b>Recipients</b>	7,426	10,363	6,510	-12.3%	-37.2%
<i>Adults</i>	4,113	6,000	3,623	-11.9%	-39.6%
<i>Children</i>	3,313	4,363	2,887	-12.9%	-33.8%
<b>Recipients /Case</b>	2.39	2.27	2.34	-2.1%	3.3%
<b>Cases Processed</b>	4,484	5,833	3,896	-13.1%	-33.2%
<i>Approvals</i>	2,825	4,472	2,760	-2.3%	-38.3%

# Cash Assistance Summary for April 2017

## Temporary Assistance for Needy Families (TANF)

	Apr-16	Mar-17	Apr-17	Percent Change	
				Apr-16- Apr-17	Mar-17- Apr-17
Expenditures	\$3,501,326	\$3,478,002	\$3,338,332	-4.7%	-4.0%
Cases	11,969	11,745	11,277	-5.8%	-4.0%
Expenditures/Case	\$293	\$296	\$296	1.2%	0.0%
Recipients	31,074	30,782	29,509	-5.0%	-4.1%
<i>Adults</i>	8,239	8,074	7,641	-7.3%	-5.4%
<i>Children</i>	22,835	22,708	21,868	-4.2%	-3.7%
Approvals	1,032	1,220	1,121	8.6%	-8.1%

## General Assistance (GA)

	Apr-16	Mar-17	Apr-17	Percent Change	
				Apr-16- Apr-17	Mar-17- Apr-17
Expenditures	\$801,883	\$839,234	\$795,861	-0.8%	-5.2%
Cases	3,218	3,516	3,355	4.3%	-4.6%
Expenditures/Case	\$249	\$239	\$237	-4.8%	-0.6%
Recipients	3,325	3,595	3,420	2.9%	-4.9%
<i>Adults</i>	3,055	3,345	3,186	4.3%	-4.8%
<i>Children</i>	270	250	234	-13.3%	-6.4%
Approvals	250	297	215	-14.0%	-27.6%

## Education Works

	Apr-16	Mar-17	Apr-17	Percent Change	
				Apr-16- Apr-17	Mar-17- Apr-17
Expenditures	\$77,629	\$56,368	\$60,846	-21.6%	7.9%
Cases	215	160	172	-20.0%	7.5%
Expenditures/Case	\$361	\$352	\$354	-2.0%	0.4%
Recipients	632	459	495	-21.7%	7.8%
<i>Adults</i>	241	174	189	-21.6%	8.6%
<i>Children</i>	391	285	306	-21.7%	7.4%
Approvals	2	7	3	50.0%	-57.1%

## Refugee Cash (RCA)

	Apr-16	Mar-17	Apr-17	Percent Change	
				Apr-16- Apr-17	Mar-17- Apr-17
Expenditures	\$41,143	\$33,066	\$29,183	-29.1%	-11.7%
Cases	158	127	111	-29.7%	-12.6%
Expenditures/Case	\$260	\$260	\$263	1.0%	1.0%
Recipients	166	132	115	-30.7%	-12.9%
<i>Adults</i>	166	132	115	-30.7%	-12.9%
<i>Children</i>	0	0	0	N/A	N/A

## State Supplement for Residential Care

	Apr-16	Mar-17	Apr-17	Percent Change	
				Apr-16- Apr-17	Mar-17- Apr-17
Expenditures	\$3,700	\$2,600	\$2,800	-24.3%	7.7%
Cases	37	26	28	-24.3%	7.7%
Expenditures/Case	\$100	\$100	\$100	0.0%	0.0%
Recipients	37	26	28	-24.3%	7.7%
<i>Adults</i>	37	26	28	-24.3%	7.7%
<i>Children</i>	0	0	0	N/A	N/A

<b>Expenditures YTD</b>			
	SFY 2017	FFY 2017	CY 2017
Medicaid	\$4,521,458,503	\$3,070,700,298	\$1,717,349,584
Supplemental Nutrition Assistance Program	\$571,368,587	\$393,424,236	\$222,763,746
Temporary Assistance for Needy Families	\$38,386,213	\$25,768,319	\$14,611,852
General Assistance	\$8,664,707	\$6,068,447	\$3,371,726
Education Works	\$537,868	\$406,535	\$228,010
LIHEAP	\$15,321,413	\$13,625,358	\$5,648,891

<b>Average Caseload YTD</b>			
	SFY 2017	FFY 2017	CY 2017
Medicaid	515,779	520,170	524,543
Supplemental Nutrition Assistance Program	253,436	250,005	242,199
Temporary Assistance for Needy Families	12,252	12,109	11,806
General Assistance	3,464	3,515	3,490
Education Works	148	163	161
LIHEAP	5,877	7,250	5,353

<b>Demographic Profile- April 2017</b>					
	SNAP	TANF	GA	Education Works	RCA
<b>Gender of Recipients</b>					
Male	208,564	12,677	1,975	197	73
Female	250,218	16,832	1,445	298	42
<b>Ethnicity</b>					
Hispanic	257,653	20,457	1,858	320	84
Non-Hispanic	201,129	9,052	1,562	175	31
<b>Race</b>					
Native American or Alaskan Native	75,598	2,065	212	50	0
Asian	4,605	303	35	4	1
African American or Black	10,900	1,183	123	15	4
Native Hawaiian or Pacific Islander	880	39	3	2	1
White	358,027	25,148	2,990	414	59
Unknown / Not Declared	4,842	275	34	3	2
More than One Race	3,930	496	23	7	48

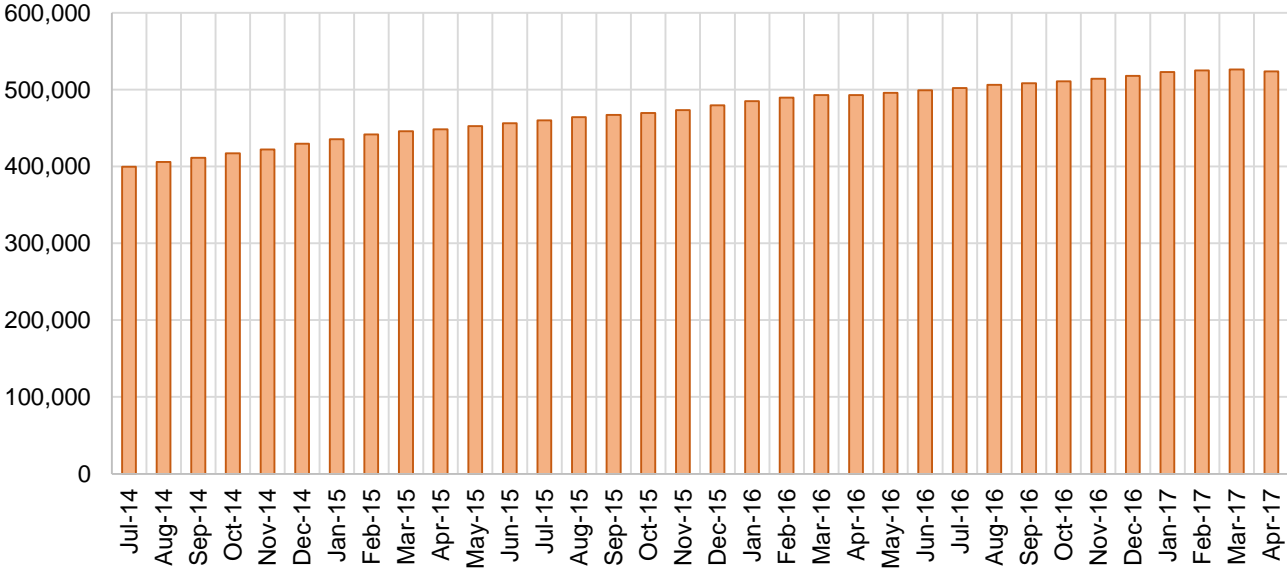
## Medicaid Cases by Field Office

Office	Apr-16	Mar-17	Apr-17	Percent Change	
				Apr-16- Apr-17	Mar-17- Apr-17
Chaves County ISD	16,202	17,180	16,676	2.9%	-2.9%
Cibola County ISD	7,212	7,708	7,645	6.0%	-0.8%
Colfax County ISD	3,371	3,593	3,578	6.1%	-0.4%
Curry County ISD	9,941	10,717	10,601	6.6%	-1.1%
East Dona Ana County ISD	17,462	18,828	18,787	7.6%	-0.2%
Eddy Artesia County ISD	3,674	4,044	4,047	10.2%	0.1%
Eddy Carlsbad County ISD	7,743	8,529	8,454	9.2%	-0.9%
Grant County ISD	6,911	7,232	7,221	4.5%	-0.2%
Guadalupe County ISD	1,598	1,680	1,669	4.4%	-0.7%
Hidalgo County ISD	1,037	1,077	1,082	4.3%	0.5%
Lea County ISD	13,480	15,143	14,944	10.9%	-1.3%
Lincoln County ISD	4,401	4,742	4,700	6.8%	-0.9%
Luna County ISD	8,731	9,205	9,217	5.6%	0.1%
McKinley County ISD	22,366	23,376	23,314	4.2%	-0.3%
Northeast Bernalillo County ISD	42,635	45,848	45,753	7.3%	-0.2%
Northwest Bernalillo County ISD	48,328	50,819	50,476	4.4%	-0.7%
Otero County ISD	11,403	12,266	12,314	8.0%	0.4%
Quay County ISD	2,549	2,663	2,647	3.8%	-0.6%
Rio Arriba County ISD	14,604	15,266	15,132	3.6%	-0.9%
Roosevelt County ISD	3,838	4,188	4,171	8.7%	-0.4%
San Juan County ISD	28,894	31,491	31,440	8.8%	-0.2%
San Miguel County ISD	9,354	9,853	9,803	4.8%	-0.5%
Sandoval County ISD	25,559	27,123	27,122	6.1%	0.0%
Santa Fe County ISD	25,811	27,793	27,749	7.5%	-0.2%
Sierra County ISD	5,404	5,710	5,699	5.5%	-0.2%
Socorro County ISD	5,705	5,931	5,751	0.8%	-3.0%
South Dona Ana ISD	19,414	20,804	20,728	6.8%	-0.4%
Southeast Bernalillo County ISD	28,962	30,636	30,438	5.1%	-0.6%
Southwest Bernalillo County ISD	40,103	42,320	42,194	5.2%	-0.3%
Taos County ISD	9,458	9,978	9,970	5.4%	-0.1%
Torrance County ISD	7,422	8,008	8,004	7.8%	0.0%
Valencia North County ISD	17,676	19,107	19,054	7.8%	-0.3%
Valencia South County ISD	58	48	51	-12.1%	6.3%
West Dona Ana County ISD	21,719	23,600	23,572	8.5%	-0.1%
Centralized Units	4	4	4	0.0%	0.0%
<b>Total</b>	<b>493,029</b>	<b>526,510</b>	<b>524,007</b>	<b>6.3%</b>	<b>-0.5%</b>

## Medicaid Cases by Region

				Percent Change	
Region	Apr-16	Mar-17	Apr-17	Apr-16- Apr-17	Mar-17- Apr-17
Region 1 - NW	87,315	93,371	92,954	6.5%	-0.4%
Region 2 - NE	92,304	97,949	97,670	5.8%	-0.3%
Region 3 - Central	167,450	177,631	176,865	5.6%	-0.4%
Region 4 - SE	59,279	64,543	63,593	7.3%	-1.5%
Region 5 - SW	86,677	93,012	92,921	7.2%	-0.1%
Centralized Units	4	4	4	0.0%	0.0%
Total	493,029	526,510	524,007	6.3%	-0.5%

### Medicaid Caseload: SFY-15 to Current



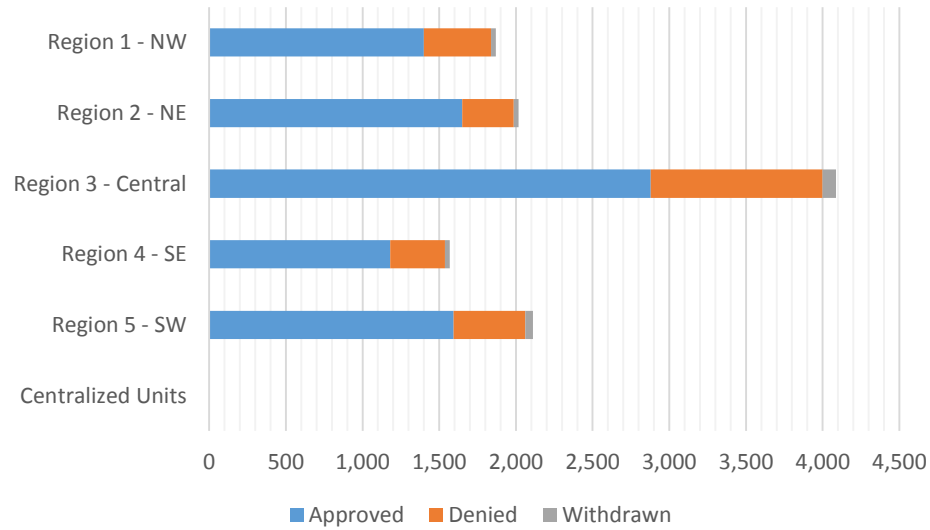
**Medicaid Applications by Field Office**  
**April 2017**

Office	Approved	Denied	Withdrawn	Total Cases Processed
Chaves County ISD	326	122	6	454
Cibola County ISD	130	15	4	149
Colfax County ISD	63	8	1	72
Curry County ISD	182	50	3	235
East Dona Ana County ISD	330	150	12	492
Eddy Artesia County ISD	80	20	2	102
Eddy Carlsbad County ISD	157	42	7	206
Grant County ISD	153	34	4	191
Guadalupe County ISD	16	4	1	21
Hidalgo County ISD	0	0	0	0
Lea County ISD	262	67	9	338
Lincoln County ISD	93	21	1	115
Luna County ISD	146	33	9	188
McKinley County ISD	345	67	5	417
Northeast Bernalillo County ISD	809	248	40	1,097
Northwest Bernalillo County ISD	688	504	20	1,212
Otero County ISD	253	57	2	312
Quay County ISD	53	16	2	71
Rio Arriba County ISD	233	38	3	274
Roosevelt County ISD	81	35	2	118
San Juan County ISD	511	191	11	713
San Miguel County ISD	252	29	1	282
Sandoval County ISD	405	94	9	508
Santa Fe County ISD	415	112	10	537
Sierra County ISD	68	5	4	77
Socorro County ISD	98	26	6	130
South Dona Ana ISD	308	89	8	405
Southeast Bernalillo County ISD	621	223	10	854
Southwest Bernalillo County ISD	645	129	14	788
Taos County ISD	212	36	4	252
Torrance County ISD	115	18	2	135
Valencia North County ISD	248	134	0	382
Valencia South County ISD	0	0	0	0
West Dona Ana County ISD	404	103	16	523
Centralized Units	0	0	0	0
<b>Total</b>	<b>8,702</b>	<b>2,720</b>	<b>228</b>	<b>11,650</b>



## Medicaid Applications by Region April 2017

	Approved	Denied	Withdrawn	Total Cases Processed
Region				
Region 1 - NW	1,400	438	30	1,868
Region 2 - NE	1,649	337	31	2,017
Region 3 - Central	2,878	1,122	86	4,086
Region 4 - SE	1,181	357	30	1,568
Region 5 - SW	1,594	466	51	2,111
Centralized Units	0	0	0	0
Total	8,702	2,720	228	11,650



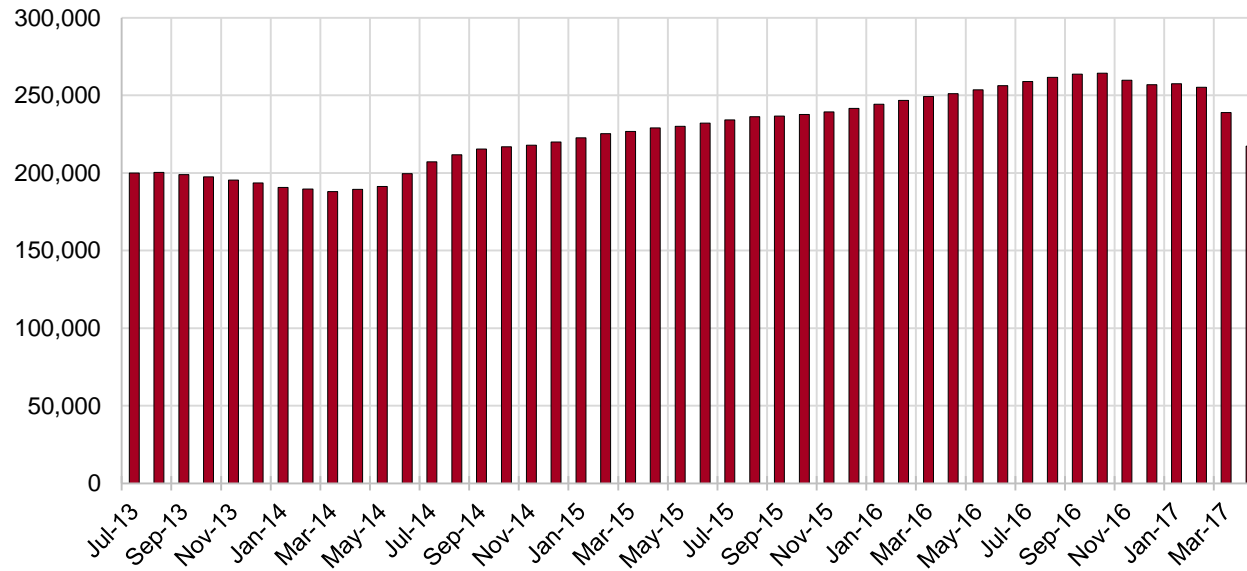
## SNAP Cases by Field Office

Office	Apr-16	Mar-17	Apr-17	Percent Change	
				Apr-16- Apr-17	Mar-17- Apr-17
Chaves County ISD	8,043	7,475	7,195	-10.5%	-3.7%
Cibola County ISD	3,943	3,630	3,603	-8.6%	-0.7%
Colfax County ISD	1,774	1,678	1,577	-11.1%	-6.0%
Curry County ISD	5,189	5,062	4,598	-11.4%	-9.2%
East Dona Ana County ISD	9,286	8,167	7,876	-15.2%	-3.6%
Eddy Artesia County ISD	1,778	1,892	1,677	-5.7%	-11.4%
Eddy Carlsbad County ISD	3,736	3,665	3,406	-8.8%	-7.1%
Grant County ISD	3,964	3,968	3,495	-11.8%	-11.9%
Guadalupe County ISD	781	718	713	-8.7%	-0.7%
Hidalgo County ISD	504	465	438	-13.1%	-5.8%
Lea County ISD	6,375	6,206	5,749	-9.8%	-7.4%
Lincoln County ISD	2,087	2,044	1,920	-8.0%	-6.1%
Luna County ISD	4,928	4,840	4,263	-13.5%	-11.9%
McKinley County ISD	10,618	9,740	9,358	-11.9%	-3.9%
Northeast Bernalillo County ISD	22,659	22,962	19,041	-16.0%	-17.1%
Northwest Bernalillo County ISD	19,821	20,694	17,485	-11.8%	-15.5%
Otero County ISD	5,764	5,629	5,401	-6.3%	-4.1%
Quay County ISD	1,387	1,254	1,250	-9.9%	-0.3%
Rio Arriba County ISD	8,046	7,049	6,766	-15.9%	-4.0%
Roosevelt County ISD	1,935	1,786	1,655	-14.5%	-7.3%
San Juan County ISD	14,445	15,054	13,558	-6.1%	-9.9%
San Miguel County ISD	5,720	5,271	4,948	-13.5%	-6.1%
Sandoval County ISD	12,456	11,571	10,586	-15.0%	-8.5%
Santa Fe County ISD	12,614	11,786	10,356	-17.9%	-12.1%
Sierra County ISD	2,952	2,833	2,665	-9.7%	-5.9%
Socorro County ISD	2,885	2,859	2,808	-2.7%	-1.8%
South Dona Ana ISD	9,137	9,098	8,506	-6.9%	-6.5%
Southeast Bernalillo County ISD	16,112	13,793	12,325	-23.5%	-10.6%
Southwest Bernalillo County ISD	21,456	19,408	17,920	-16.5%	-7.7%
Taos County ISD	4,615	4,306	4,027	-12.7%	-6.5%
Torrance County ISD	3,807	3,608	3,328	-12.6%	-7.8%
Valencia North County ISD	6,416	9,158	8,169	27.3%	-10.8%
Valencia South County ISD	3,685	2	5	-99.9%	150.0%
West Dona Ana County ISD	12,242	11,229	10,568	-13.7%	-5.9%
Centralized Units	28	11	7	-75.0%	-36.4%
<b>Total</b>	<b>251,188</b>	<b>238,911</b>	<b>217,242</b>	<b>-13.5%</b>	<b>-9.1%</b>

## SNAP Cases by Region

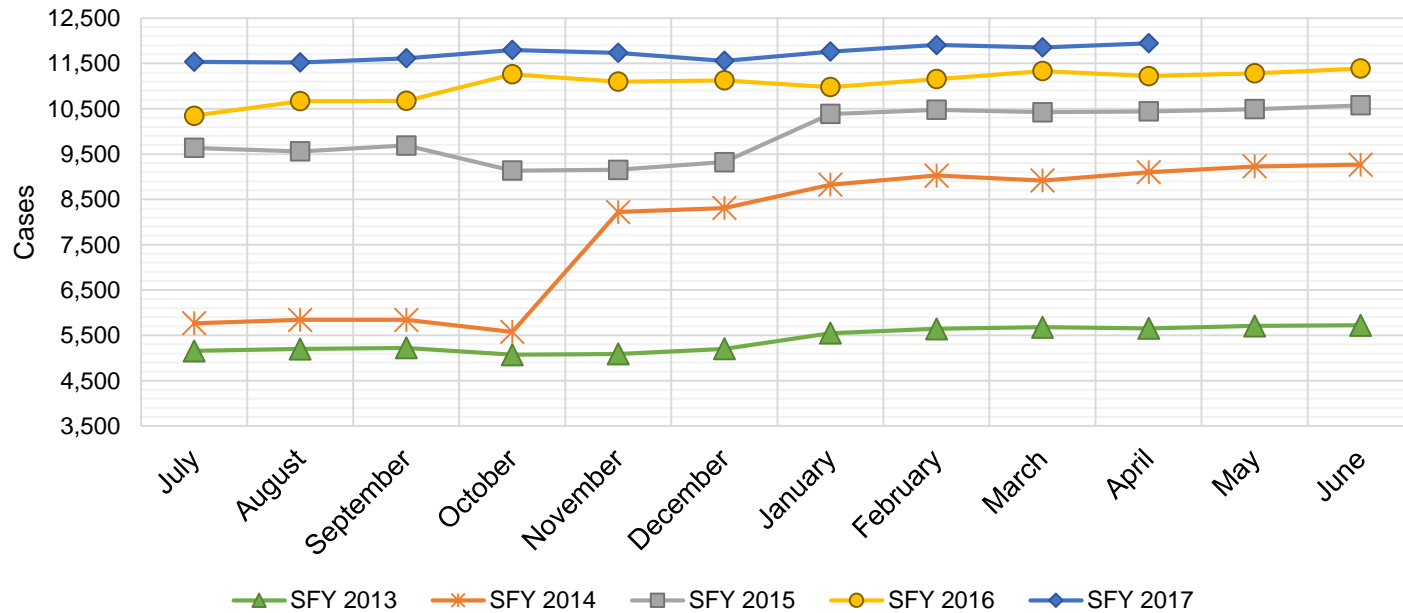
				Percent Change	
Region	Apr-16	Mar-17	Apr-17	Apr-16- Apr-17	Mar-17- Apr-17
Region 1 - NW	44,944	43,276	40,166	-10.6%	-7.2%
Region 2 - NE	47,393	43,633	40,223	-15.1%	-7.8%
Region 3 - Central	83,855	80,465	70,099	-16.4%	-12.9%
Region 4 - SE	29,143	28,130	26,200	-10.1%	-6.9%
Region 5 - SW	45,825	43,396	40,547	-11.5%	-6.6%
Centralized Units	28	11	7	-75.0%	-36.4%
<b>Total</b>	<b>251,188</b>	<b>238,911</b>	<b>217,242</b>	<b>-13.5%</b>	<b>-9.1%</b>

### SNAP Caseload: SFY-14 to Current



## State SNAP Supplement

SFY 2013			SFY 2014			SFY 2015			SFY 2016			SFY 2017		
	Cases	Expenditures		Cases	Expenditures		Cases	Expenditures		Cases	Expenditures		Cases	Expenditures
Jul-12	5,157	\$42,552	Jul-13	5,767	\$48,040	Jul-14	9,635	\$88,859	Jul-15	10,345	\$86,143	Jul-16	11,537	\$95,553
Aug-12	5,200	\$42,797	Aug-13	5,841	\$48,417	Aug-14	9,559	\$87,757	Aug-15	10,669	\$88,197	Aug-16	11,522	\$95,107
Sep-12	5,223	\$43,023	Sep-13	5,841	\$48,732	Sep-14	9,688	\$87,372	Sep-15	10,676	\$88,426	Sep-16	11,613	\$94,472
Oct-12	5,071	\$41,752	Oct-13	5,575	\$46,610	Oct-14	9,136	\$70,490	Oct-15	11,262	\$96,758	Oct-16	11,797	\$96,679
Nov-12	5,088	\$42,074	Nov-13	8,219	\$69,564	Nov-14	9,152	\$69,955	Nov-15	11,099	\$91,996	Nov-16	11,735	\$93,689
Dec-12	5,202	\$42,829	Dec-13	8,310	\$71,839	Dec-14	9,322	\$73,226	Dec-15	11,125	\$90,771	Dec-16	11,556	\$93,739
Jan-13	5,548	\$45,769	Jan-14	8,826	\$77,933	Jan-15	10,384	\$84,578	Jan-16	10,977	\$92,760	Jan-17	11,763	\$96,074
Feb-13	5,645	\$46,700	Feb-14	9,024	\$84,758	Feb-15	10,477	\$82,901	Feb-16	11,153	\$95,363	Feb-17	11,907	\$98,251
Mar-13	5,677	\$47,117	Mar-14	8,916	\$80,597	Mar-15	10,423	\$87,461	Mar-16	11,332	\$96,751	Mar-17	11,853	\$96,693
Apr-13	5,654	\$47,118	Apr-14	9,098	\$84,599	Apr-15	10,440	\$79,605	Apr-16	11,222	\$93,959	Apr-17	11,944	\$97,060
May-13	5,706	\$47,528	May-14	9,226	\$85,035	May-15	10,491	\$82,511	May-16	11,283	\$95,271	May-17		
Jun-13	5,720	\$47,625	Jun-14	9,264	\$84,329	Jun-15	10,575	\$85,134	Jun-16	11,389	\$93,061	Jun-17		
<b>TOTAL</b>	<b>64,891</b>	<b>\$536,884</b>	<b>93,907</b>	<b>\$830,453</b>	<b>119,282</b>	<b>\$979,850</b>	<b>132,532</b>	<b>\$1,109,455</b>	<b>117,227</b>	<b>\$957,317</b>				
<b>AVERAGE</b>	<b>5,408</b>	<b>\$44,740</b>	<b>7,826</b>	<b>\$69,204</b>	<b>9,940</b>	<b>\$81,654</b>	<b>11,044</b>	<b>\$92,455</b>	<b>11,723</b>	<b>\$95,732</b>				

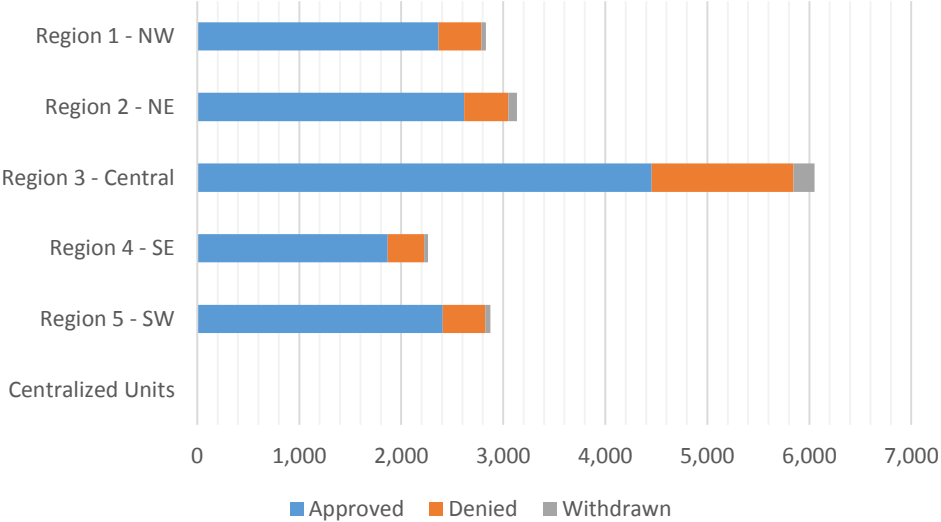


**SNAP Applications by Field Office  
April 2017**

Office	Approved	Denied	Withdrawn	Total Cases Processed
Chaves County ISD	457	82	7	546
Cibola County ISD	215	31	14	260
Colfax County ISD	120	11	2	133
Curry County ISD	321	69	5	395
East Dona Ana County ISD	503	116	14	633
Eddy Artesia County ISD	109	23	3	135
Eddy Carlsbad County ISD	290	52	8	350
Grant County ISD	249	36	6	291
Guadalupe County ISD	24	2	1	27
Hidalgo County ISD	0	0	0	0
Lea County ISD	424	89	8	521
Lincoln County ISD	141	18	4	163
Luna County ISD	212	27	3	242
McKinley County ISD	606	75	13	694
Northeast Bernalillo County ISD	1,428	556	134	2,118
Northwest Bernalillo County ISD	1,044	310	29	1,383
Otero County ISD	367	56	2	425
Quay County ISD	79	14	1	94
Rio Arriba County ISD	462	57	9	528
Roosevelt County ISD	124	25	4	153
San Juan County ISD	828	180	9	1,017
San Miguel County ISD	272	36	11	319
Sandoval County ISD	666	157	26	849
Santa Fe County ISD	719	106	19	844
Sierra County ISD	118	16	4	138
Socorro County ISD	135	16	4	155
South Dona Ana ISD	410	69	8	487
Southeast Bernalillo County ISD	807	230	18	1,055
Southwest Bernalillo County ISD	980	263	26	1,269
Taos County ISD	274	51	14	339
Torrance County ISD	195	30	2	227
Valencia North County ISD	463	103	0	566
Valencia South County ISD	0	0	0	0
West Dona Ana County ISD	666	112	17	795
Centralized Units	0	0	0	0
<b>Total</b>	<b>13,708</b>	<b>3,018</b>	<b>425</b>	<b>17,151</b>

## SNAP Applications by Region April 2017

Region	Approved	Denied	Withdrawn	Total Cases Processed
Region 1 - NW	2,365	421	44	2,830
Region 2 - NE	2,616	434	83	3,133
Region 3 - Central	4,454	1,389	209	6,052
Region 4 - SE	1,866	358	39	2,263
Region 5 - SW	2,407	416	50	2,873
Centralized Units	0	0	0	0
<b>Total</b>	<b>13,708</b>	<b>3,018</b>	<b>425</b>	<b>17,151</b>



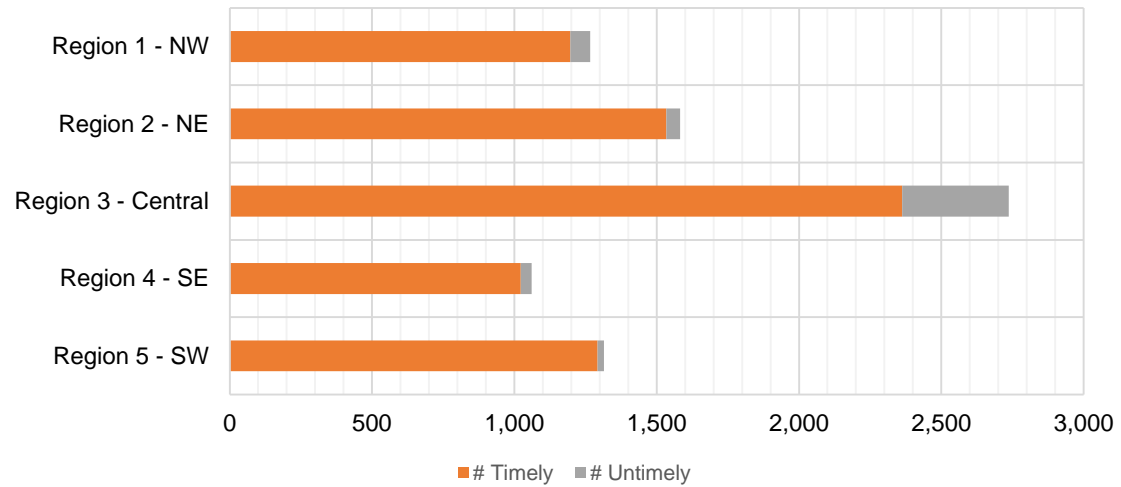
**SNAP Expedite Timeliness by Field Office  
April 2017**

Office Name	Total Expedited Approvals	# Timely	# Untimely	Percentage Timely
Chaves County ISD	238	235	3	98.7 %
Cibola County ISD	111	108	3	97.3 %
Colfax County ISD	60	59	1	98.3 %
Curry County ISD	184	175	9	95.1 %
East Dona Ana County ISD	284	278	6	97.9 %
Eddy Artesia County ISD	53	51	2	96.2 %
Eddy Carlsbad County ISD	190	183	7	96.3 %
Grant County ISD	160	157	3	98.1 %
Guadalupe County ISD	10	10	0	100.0 %
Lea County ISD	244	229	15	93.9 %
Lincoln County ISD	81	80	1	98.8 %
Luna County ISD	122	122	0	100.0 %
McKinley County ISD	293	291	2	99.3 %
Northeast Bernalillo County ISD	928	871	57	93.9 %
Northwest Bernalillo County ISD	649	541	108	83.4 %
Otero County ISD	200	198	2	99.0 %
Quay County ISD	41	40	1	97.6 %
Rio Arriba County ISD	305	300	5	98.4 %
Roosevelt County ISD	71	70	1	98.6 %
San Juan County ISD	479	428	51	89.4 %
San Miguel County ISD	130	127	3	97.7 %
Sandoval County ISD	409	399	10	97.6 %
Santa Fe County ISD	482	461	21	95.6 %
Sierra County ISD	56	56	0	100.0 %
Socorro County ISD	60	58	2	96.7 %
South Dona Ana ISD	179	173	6	96.6 %
Southeast Bernalillo County ISD	473	429	44	90.7 %
Southwest Bernalillo County ISD	583	424	159	72.7 %
Taos County ISD	145	138	7	95.2 %
Torrance County ISD	104	98	6	94.2 %
Valencia North County ISD	268	256	12	95.5 %
West Dona Ana County ISD	370	364	6	98.4 %
<b>Total</b>	<b>7,962</b>	<b>7,409</b>	<b>553</b>	<b>93.1 %</b>

## SNAP Expedite Timeliness by Region April 2017

Region	Total Expedited Approvals	# Timely	# Untimely	Percentage Timely
Region 1 - NW	1,267	1,197	70	94.5%
Region 2 - NE	1,582	1,534	48	97.0%
Region 3 - Central	2,737	2,363	374	86.3%
Region 4 - SE	1,061	1,023	38	96.4%
Region 5 - SW	1,315	1,292	23	98.3%
<b>Total</b>	<b>7,962</b>	<b>7,409</b>	<b>553</b>	<b>93.1%</b>

### SNAP Expedite - Timeliness





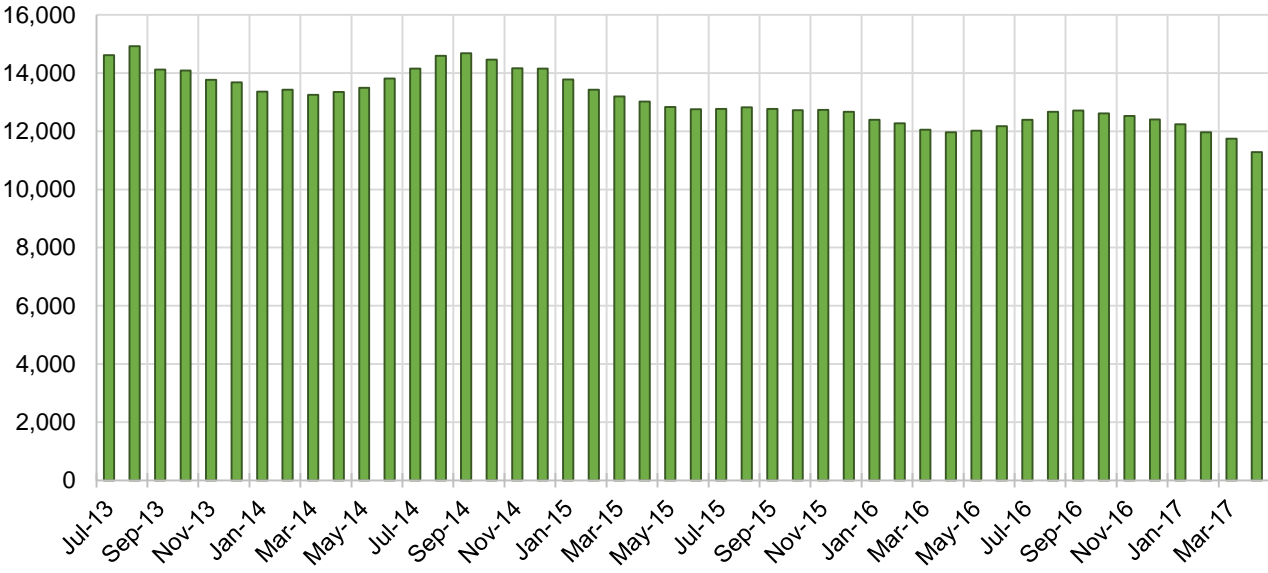
## TANF Cases by Field Office

Office				Percent Change	
	Apr-16	Mar-17	Apr-17	Apr-16- Apr-17	Mar-17- Apr-17
Chaves County ISD	546	582	550	0.7%	-5.5%
Cibola County ISD	163	135	135	-17.2%	0.0%
Colfax County ISD	81	68	63	-22.2%	-7.4%
Curry County ISD	510	513	489	-4.1%	-4.7%
East Dona Ana County ISD	525	485	473	-9.9%	-2.5%
Eddy Artesia County ISD	130	135	127	-2.3%	-5.9%
Eddy Carlsbad County ISD	226	216	203	-10.2%	-6.0%
Grant County ISD	162	200	195	20.4%	-2.5%
Guadalupe County ISD	36	29	24	-33.3%	-17.2%
Hidalgo County ISD	21	23	21	0.0%	-8.7%
Lea County ISD	422	469	437	3.6%	-6.8%
Lincoln County ISD	81	95	89	9.9%	-6.3%
Luna County ISD	218	217	213	-2.3%	-1.8%
McKinley County ISD	68	63	56	-17.6%	-11.1%
Northeast Bernalillo County ISD	920	969	952	3.5%	-1.8%
Northwest Bernalillo County ISD	810	799	773	-4.6%	-3.3%
Otero County ISD	208	297	277	33.2%	-6.7%
Quay County ISD	84	77	80	-4.8%	3.9%
Rio Arriba County ISD	486	419	393	-19.1%	-6.2%
Roosevelt County ISD	167	146	142	-15.0%	-2.7%
San Juan County ISD	318	307	289	-9.1%	-5.9%
San Miguel County ISD	237	207	197	-16.9%	-4.8%
Sandoval County ISD	516	544	525	1.7%	-3.5%
Santa Fe County ISD	529	500	465	-12.1%	-7.0%
Sierra County ISD	81	89	78	-3.7%	-12.4%
Socorro County ISD	111	95	85	-23.4%	-10.5%
South Dona Ana ISD	695	720	711	2.3%	-1.3%
Southeast Bernalillo County ISD	733	660	633	-13.6%	-4.1%
Southwest Bernalillo County ISD	1,226	1,083	1,045	-14.8%	-3.5%
Taos County ISD	140	145	147	5.0%	1.4%
Torrance County ISD	202	190	192	-5.0%	1.1%
Valencia North County ISD	359	490	463	29.0%	-5.5%
Valencia South County ISD	180	0	0	-100.0%	N/A
West Dona Ana County ISD	775	778	753	-2.8%	-3.2%
Centralized Units	3	0	2	-33.3%	N/A
<b>Total</b>	<b>11,969</b>	<b>11,745</b>	<b>11,277</b>	<b>-5.8%</b>	<b>-4.0%</b>

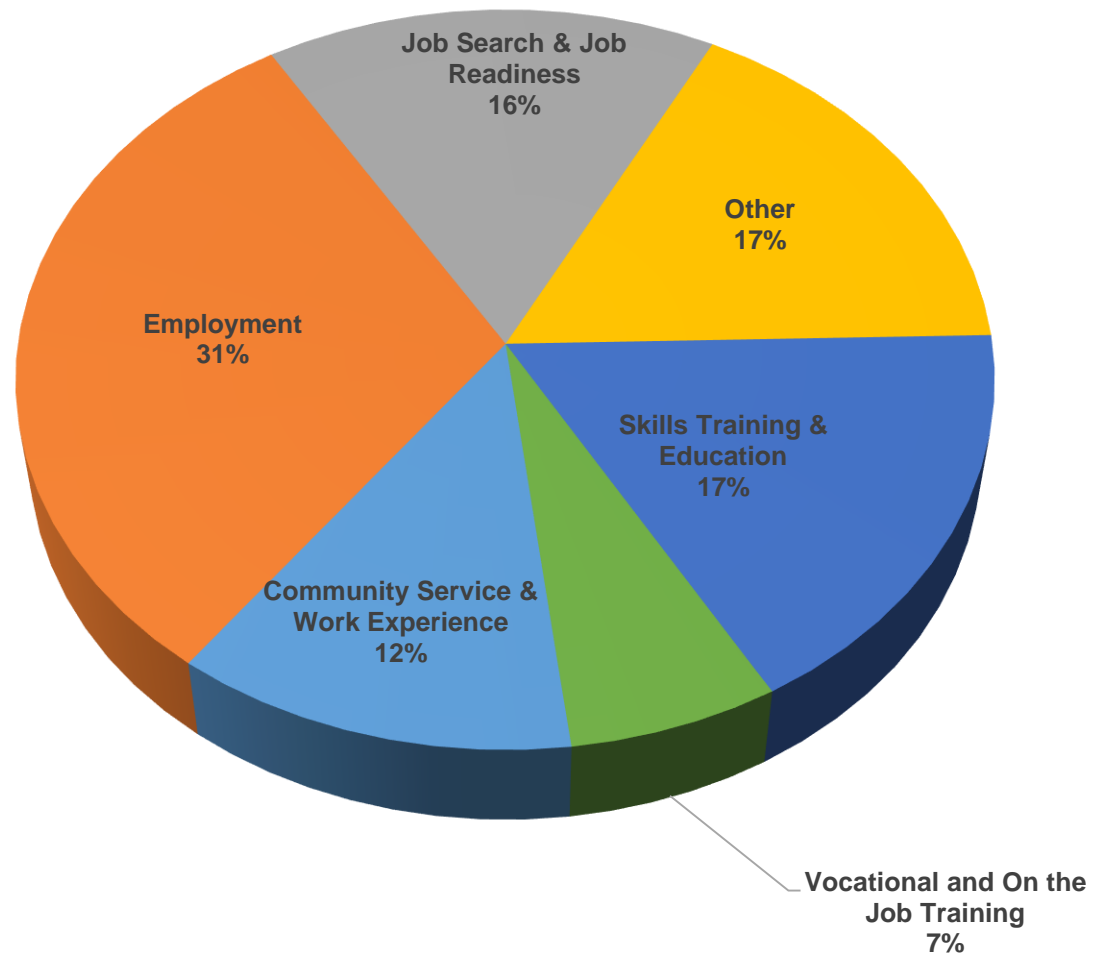
## TANF Cases by Region

				Percent Change	
Region	Apr-16	Mar-17	Apr-17	Apr-16- Apr-17	Mar-17- Apr-17
Region 1- NW	1,280	1,179	1,106	-13.6%	-6.2%
Region 2- NE	2,109	1,989	1,894	-10.2%	-4.8%
Region 3- Central	3,891	3,701	3,595	-7.6%	-2.9%
Region 4- SE	2,082	2,156	2,037	-2.2%	-5.5%
Region 5- SW	2,604	2,720	2,643	1.5%	-2.8%
Centralized Units	3	0	2	-33.3%	N/A
Total	11,969	11,745	11,277	-5.8%	-4.0%

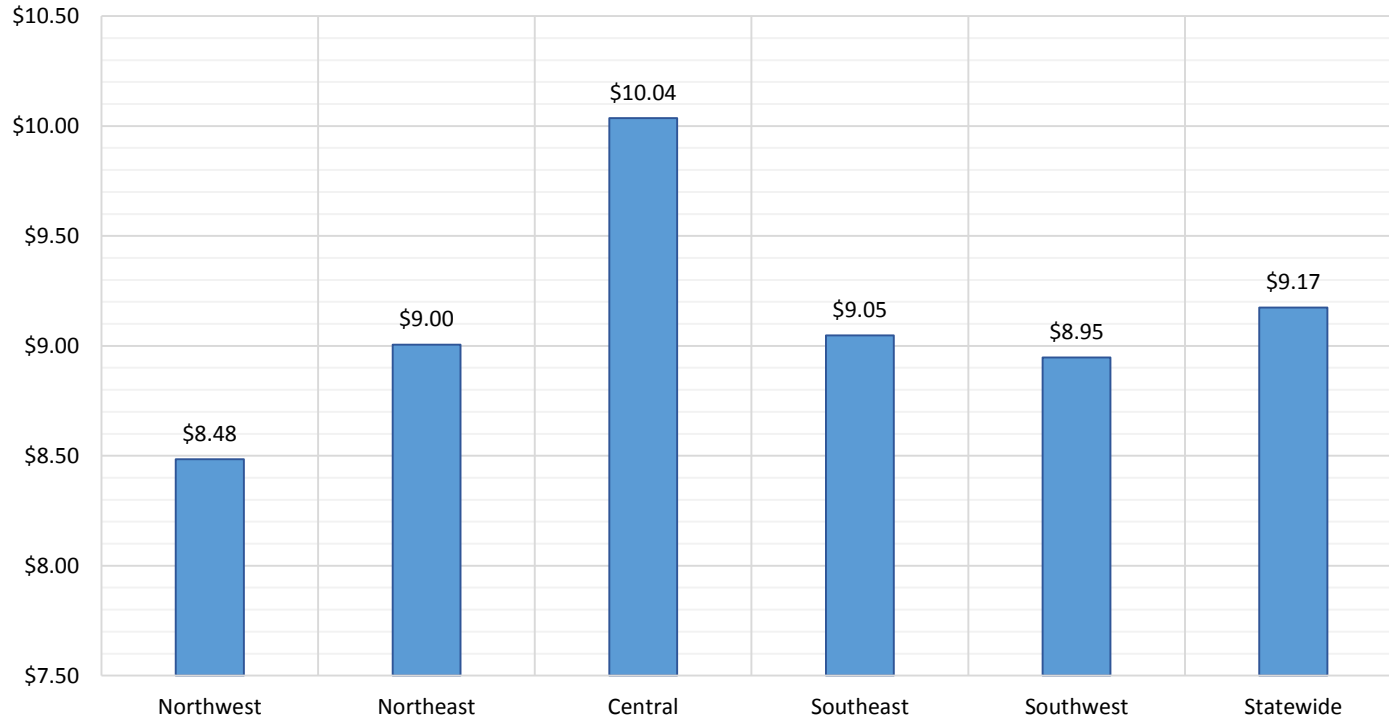
**TANF Caseload: SFY-14 to Current**



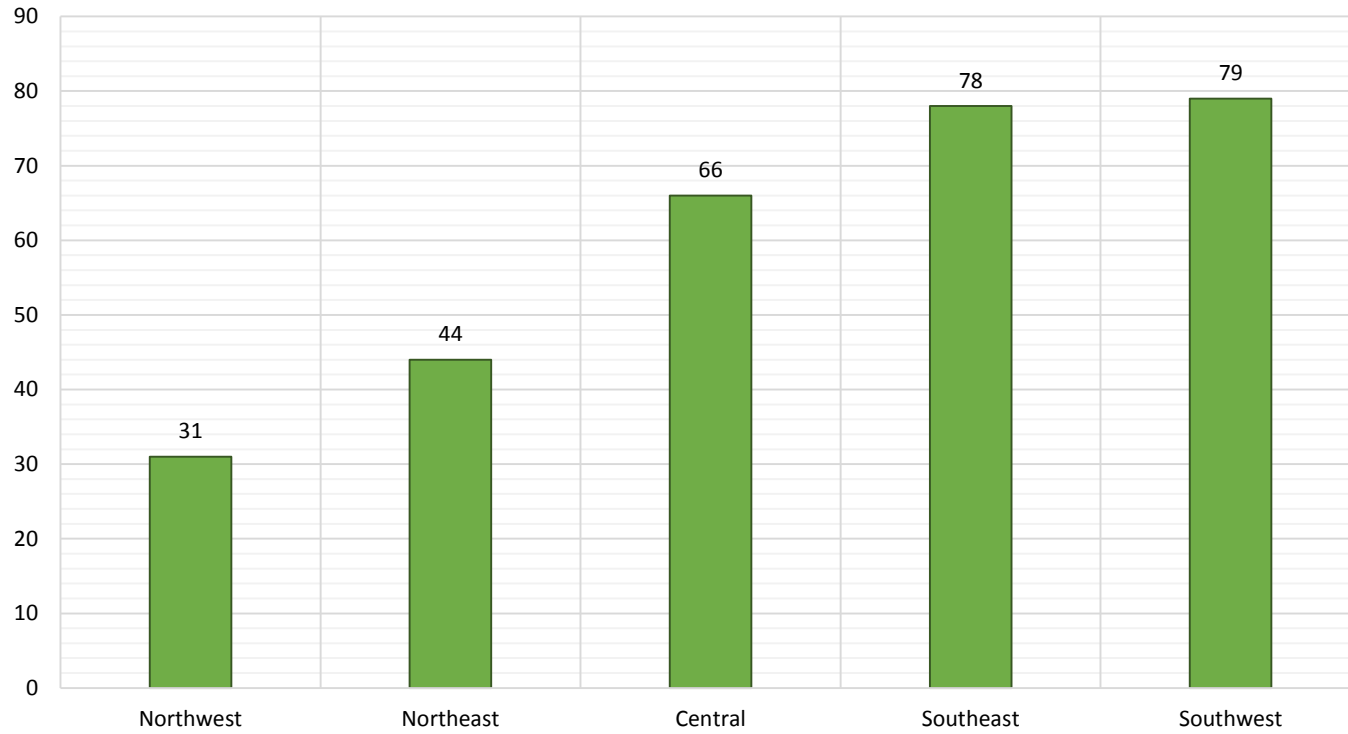
## NM Works Activity Placements on April 30, 2017 as reported by SL Start



### Average Starting Hourly Wage of April 2017 TANF Employments as reported by SL Start



Number of New Employments in April 2017 by Region  
as reported by SL Start  
Statewide Total: 298



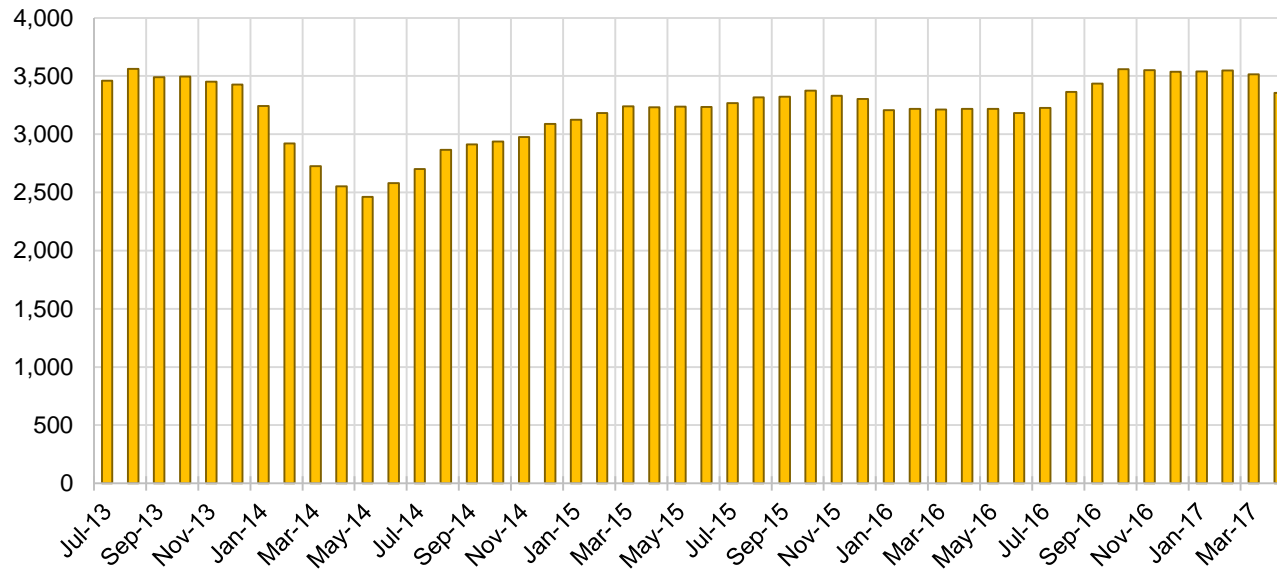
## General Assistance Cases by Field Office

Office	Apr-16	Mar-17	Apr-17	Percent Change	
				Apr-16- Apr-17	Mar-17- Apr-17
Chaves County ISD	117	146	139	18.8%	-4.8%
Cibola County ISD	55	49	53	-3.6%	8.2%
Colfax County ISD	29	36	34	17.2%	-5.6%
Curry County ISD	71	86	78	9.9%	-9.3%
East Dona Ana County ISD	92	122	116	26.1%	-4.9%
Eddy Artesia County ISD	24	22	22	-8.3%	0.0%
Eddy Carlsbad County ISD	64	81	83	29.7%	2.5%
Grant County ISD	69	82	85	23.2%	3.7%
Guadalupe County ISD	16	16	14	-12.5%	-12.5%
Hidalgo County ISD	13	16	13	0.0%	-18.8%
Lea County ISD	65	101	102	56.9%	1.0%
Lincoln County ISD	30	43	46	53.3%	7.0%
Luna County ISD	55	61	61	10.9%	0.0%
McKinley County ISD	20	28	30	50.0%	7.1%
Northeast Bernalillo County ISD	340	382	370	8.8%	-3.1%
Northwest Bernalillo County ISD	303	330	315	4.0%	-4.5%
Otero County ISD	80	107	102	27.5%	-4.7%
Quay County ISD	26	33	31	19.2%	-6.1%
Rio Arriba County ISD	115	105	106	-7.8%	1.0%
Roosevelt County ISD	21	20	22	4.8%	10.0%
San Juan County ISD	81	118	106	30.9%	-10.2%
San Miguel County ISD	109	85	78	-28.4%	-8.2%
Sandoval County ISD	151	153	143	-5.3%	-6.5%
Santa Fe County ISD	213	219	205	-3.8%	-6.4%
Sierra County ISD	31	35	34	9.7%	-2.9%
Socorro County ISD	54	52	53	-1.9%	1.9%
South Dona Ana ISD	47	62	57	21.3%	-8.1%
Southeast Bernalillo County ISD	229	192	171	-25.3%	-10.9%
Southwest Bernalillo County ISD	240	252	235	-2.1%	-6.7%
Taos County ISD	75	71	68	-9.3%	-4.2%
Torrance County ISD	71	64	61	-14.1%	-4.7%
Valencia North County ISD	96	133	127	32.3%	-4.5%
Valencia South County ISD	46	0	1	-97.8%	N/A
West Dona Ana County ISD	170	214	194	14.1%	-9.3%
Centralized Units	0	0	0	N/A	N/A
<b>Total</b>	<b>3,218</b>	<b>3,516</b>	<b>3,355</b>	<b>4.3%</b>	<b>-4.6%</b>

## General Assistance Cases by Region

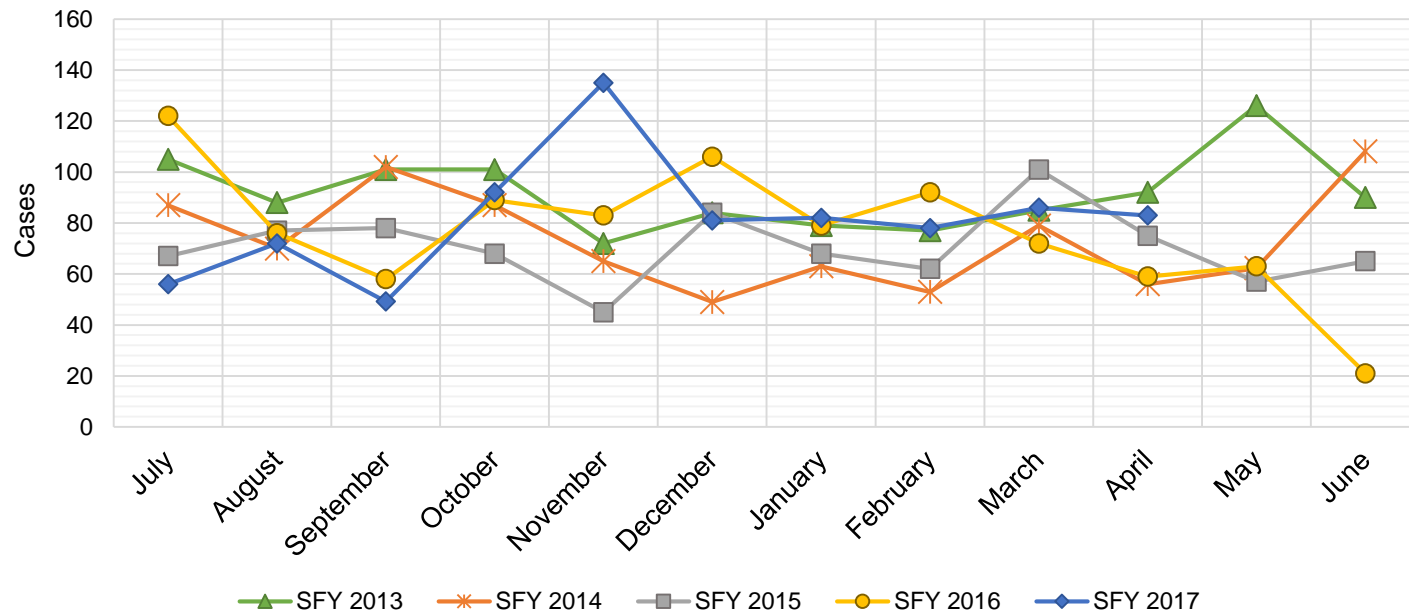
				Percent Change	
Region	Apr-16	Mar-17	Apr-17	Apr-16- Apr-17	Mar-17- Apr-17
Region 1 - NW	383	415	404	5.5%	-2.7%
Region 2 - NE	734	718	679	-7.5%	-5.4%
Region 3 - Central	1,183	1,220	1,152	-2.6%	-5.6%
Region 4 - SE	392	499	492	25.5%	-1.4%
Region 5 - SW	526	664	628	19.4%	-5.4%
Centralized Units	0	0	0	N/A	N/A
<b>Total</b>	<b>3,218</b>	<b>3,516</b>	<b>3,355</b>	<b>4.3%</b>	<b>-4.6%</b>

### General Assistance Caseload: SFY-14 to Current



## General Assistance Interim Assistance Reimbursements

SFY 2013			SFY 2014			SFY 2015			SFY 2016			SFY 2017		
	Cases	Expenditures		Cases	Expenditures		Cases	Expenditures		Cases	Expenditures		Cases	Expenditures
Jul-12	105	\$254,087	Jul-13	87	\$185,368	Jul-14	67	\$144,679	Jul-15	122	\$342,648	Jul-16	56	\$164,970
Aug-12	88	\$248,471	Aug-13	70	\$184,639	Aug-14	77	\$244,233	Aug-15	76	\$245,236	Aug-16	72	\$223,182
Sep-12	101	\$233,341	Sep-13	102	\$268,243	Sep-14	78	\$168,421	Sep-15	58	\$170,093	Sep-16	49	\$158,027
Oct-12	101	\$293,784	Oct-13	87	\$165,578	Oct-14	68	\$182,265	Oct-15	89	\$277,912	Oct-16	92	\$257,830
Nov-12	72	\$193,152	Nov-13	65	\$139,197	Nov-14	45	\$134,482	Nov-15	83	\$238,948	Nov-16	135	\$402,305
Dec-12	84	\$236,221	Dec-13	49	\$147,853	Dec-14	84	\$239,926	Dec-15	106	\$388,102	Dec-16	81	\$227,569
Jan-13	79	\$209,922	Jan-14	63	\$178,944	Jan-15	68	\$227,066	Jan-16	79	\$239,263	Jan-17	82	\$274,050
Feb-13	77	\$178,441	Feb-14	53	\$130,352	Feb-15	62	\$159,564	Feb-16	92	\$296,332	Feb-17	78	\$227,569
Mar-13	85	\$229,599	Mar-14	79	\$176,756	Mar-15	101	\$317,899	Mar-16	72	\$254,360	Mar-17	86	\$278,219
Apr-13	92	\$240,540	Apr-14	56	\$155,245	Apr-15	75	\$199,038	Apr-16	59	\$208,631	Apr-17	83	\$267,187
May-13	126	\$346,079	May-14	62	\$138,827	May-15	57	\$167,383	May-16	63	\$182,241	May-17		
Jun-13	90	\$225,355	Jun-14	108	\$241,016	Jun-15	65	\$188,159	Jun-16	21	\$51,760	Jun-17		
<b>TOTAL</b>	<b>1,100</b>	<b>\$2,888,992</b>	<b>881</b>	<b>\$2,112,017</b>	<b>847</b>	<b>\$2,373,115</b>	<b>920</b>	<b>\$2,895,525</b>	<b>814</b>	<b>\$2,480,909</b>				
<b>AVERAGE</b>	<b>92</b>	<b>\$240,749</b>	<b>73</b>	<b>\$176,001</b>	<b>71</b>	<b>\$197,760</b>	<b>77</b>	<b>\$241,294</b>	<b>81</b>	<b>\$248,091</b>				





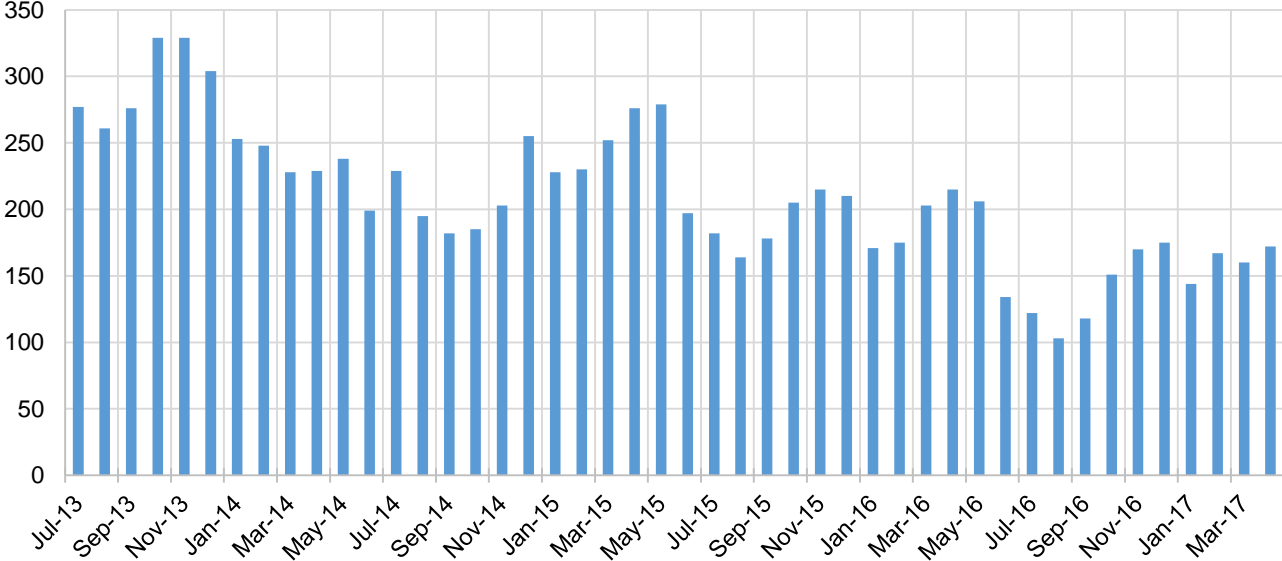
## Education Works Cases by Field Office

Office				Percent Change	
	Apr-16	Mar-17	Apr-17	Apr-16- Apr-17	Mar-17- Apr-17
Chaves County ISD	5	2	2	-60.0%	0.0%
Cibola County ISD	4	0	0	-100.0%	N/A
Colfax County ISD	3	1	0	-100.0%	-100.0%
Curry County ISD	3	3	3	0.0%	0.0%
East Dona Ana County ISD	15	6	8	-46.7%	33.3%
Eddy Artesia County ISD	0	1	1	N/A	0.0%
Eddy Carlsbad County ISD	3	2	2	-33.3%	0.0%
Grant County ISD	8	4	6	-25.0%	50.0%
Guadalupe County ISD	0	0	1	N/A	N/A
Hidalgo County ISD	0	0	0	N/A	N/A
Lea County ISD	2	7	6	200.0%	-14.3%
Lincoln County ISD	0	0	0	N/A	N/A
Luna County ISD	1	2	2	100.0%	0.0%
McKinley County ISD	1	0	0	-100.0%	N/A
Northeast Bernalillo County ISD	43	28	31	-27.9%	10.7%
Northwest Bernalillo County ISD	22	13	11	-50.0%	-15.4%
Otero County ISD	1	1	1	0.0%	0.0%
Quay County ISD	2	1	1	-50.0%	0.0%
Rio Arriba County ISD	4	2	4	0.0%	100.0%
Roosevelt County ISD	2	2	2	0.0%	0.0%
San Juan County ISD	1	5	5	400.0%	0.0%
San Miguel County ISD	16	7	12	-25.0%	71.4%
Sandoval County ISD	16	14	13	-18.8%	-7.1%
Santa Fe County ISD	6	7	8	33.3%	14.3%
Sierra County ISD	1	0	1	0.0%	N/A
Socorro County ISD	1	2	2	100.0%	0.0%
South Dona Ana ISD	9	16	14	55.6%	-12.5%
Southeast Bernalillo County ISD	10	8	5	-50.0%	-37.5%
Southwest Bernalillo County ISD	16	12	15	-6.3%	25.0%
Taos County ISD	2	0	2	0.0%	N/A
Torrance County ISD	2	1	1	-50.0%	0.0%
Valencia North County ISD	3	1	1	-66.7%	0.0%
Valencia South County ISD	1	0	0	-100.0%	N/A
West Dona Ana County ISD	12	12	12	0.0%	0.0%
Centralized Units	0	0	0	N/A	N/A
<b>Total</b>	<b>215</b>	<b>160</b>	<b>172</b>	<b>-20.0%</b>	<b>7.5%</b>

## Education Works Cases by Region

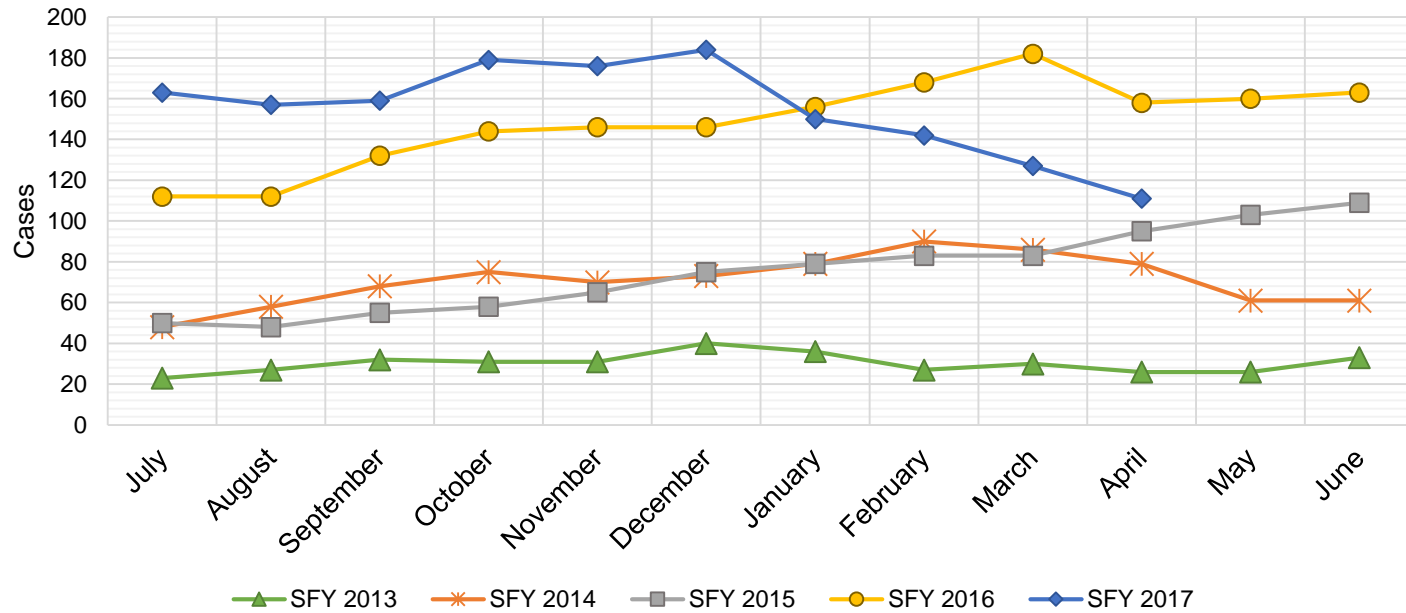
				Percent Change	
Region	Apr-16	Mar-17	Apr-17	Apr-16- Apr-17	Mar-17- Apr-17
Region 1 - NW	12	8	9	-25.0%	12.5%
Region 2 - NE	49	32	41	-16.3%	28.1%
Region 3 - Central	93	62	63	-32.3%	1.6%
Region 4 - SE	15	17	16	6.7%	-5.9%
Region 5 - SW	46	41	43	-6.5%	4.9%
Centralized Units	0	0	0	N/A	N/A
<b>Total</b>	<b>215</b>	<b>160</b>	<b>172</b>	<b>-20.0%</b>	<b>7.5%</b>

**Education Works Caseload: SFY-14 to Current**



## Refugee Cash Assistance

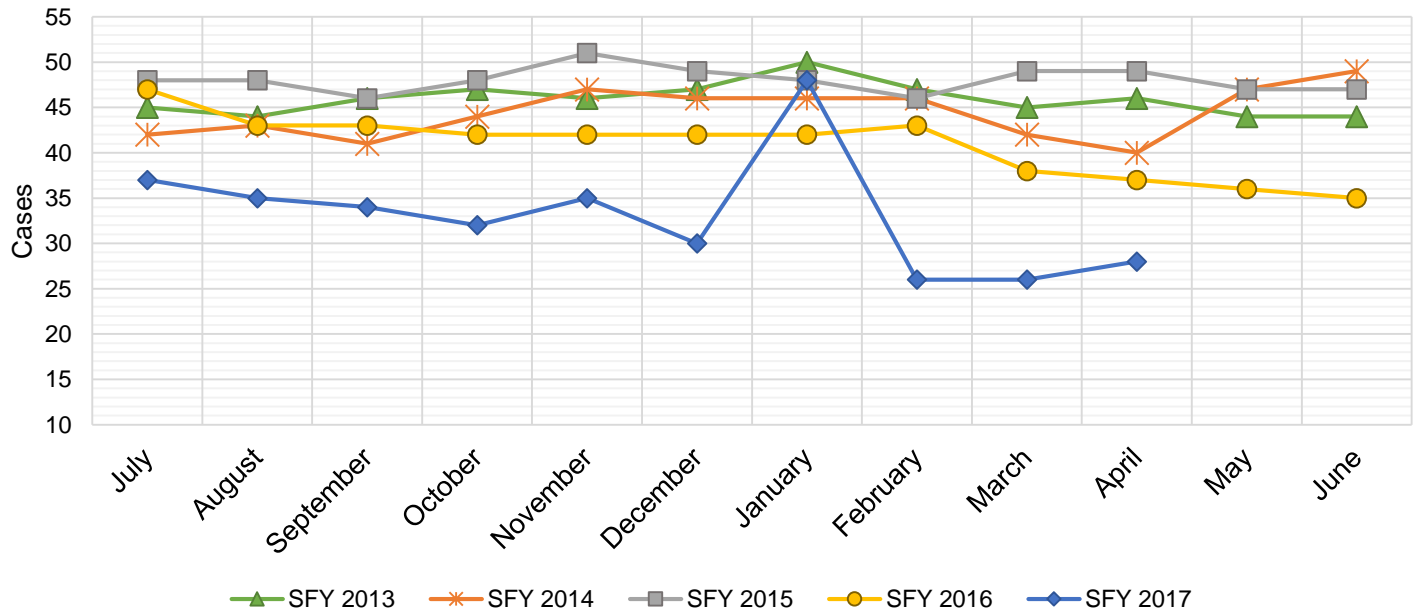
SFY 2013			SFY 2014			SFY 2015			SFY 2016			SFY 2017		
	Cases	Expenditures		Cases	Expenditures		Cases	Expenditures		Cases	Expenditures		Cases	Expenditures
Jul-12	23	\$7,155	Jul-13	48	\$12,013	Jul-14	50	\$11,679	Jul-15	112	\$27,516	Jul-16	163	\$39,756
Aug-12	27	\$7,742	Aug-13	58	\$16,129	Aug-14	48	\$11,760	Aug-15	112	\$27,438	Aug-16	157	\$40,115
Sep-12	32	\$8,267	Sep-13	68	\$19,061	Sep-14	55	\$13,094	Sep-15	132	\$31,321	Sep-16	159	\$39,359
Oct-12	31	\$9,803	Oct-13	75	\$20,962	Oct-14	58	\$13,726	Oct-15	144	\$36,153	Oct-16	179	\$41,520
Nov-12	31	\$9,552	Nov-13	70	\$21,880	Nov-14	65	\$16,461	Nov-15	146	\$36,515	Nov-16	176	\$45,434
Dec-12	40	\$10,435	Dec-13	73	\$22,053	Dec-14	75	\$18,699	Dec-15	146	\$35,763	Dec-16	184	\$46,673
Jan-13	36	\$11,489	Jan-14	79	\$22,670	Jan-15	79	\$19,009	Jan-16	156	\$38,686	Jan-17	150	\$38,790
Feb-13	27	\$11,107	Feb-14	90	\$23,227	Feb-15	83	\$21,349	Feb-16	168	\$41,368	Feb-17	142	\$37,956
Mar-13	30	\$8,678	Mar-14	86	\$21,808	Mar-15	83	\$20,730	Mar-16	182	\$45,307	Mar-17	127	\$33,066
Apr-13	26	\$9,410	Apr-14	79	\$20,109	Apr-15	95	\$23,495	Apr-16	158	\$41,143	Apr-17	111	\$29,183
May-13	26	\$8,901	May-14	61	\$15,703	May-15	103	\$25,363	May-16	160	\$38,332	May-17		
Jun-13	33	\$9,535	Jun-14	61	\$14,783	Jun-15	109	\$27,958	Jun-16	163	\$39,856	Jun-17		
<b>TOTAL</b>	<b>362</b>	<b>\$112,074</b>		<b>848</b>	<b>\$230,398</b>		<b>903</b>	<b>\$223,323</b>		<b>1,779</b>	<b>\$439,397</b>		<b>1,548</b>	<b>\$391,851</b>
<b>AVERAGE</b>	<b>30</b>	<b>\$9,340</b>		<b>71</b>	<b>\$19,200</b>		<b>75</b>	<b>\$18,610</b>		<b>148</b>	<b>\$36,616</b>		<b>155</b>	<b>\$39,185</b>



## State Supplement for Residential Care

SFY 2013			SFY 2014			SFY 2015			SFY 2016			SFY 2017		
	Cases	Expenditures		Cases	Expenditures		Cases	Expenditures		Cases	Expenditures		Cases	Expenditures
Jul-12	45	\$4,600	Jul-13	42	\$4,400	Jul-14	48	\$4,700	Jul-15	47	\$4,700	Jul-16	37	\$3,700
Aug-12	44	\$4,600	Aug-13	43	\$4,300	Aug-14	48	\$5,000	Aug-15	43	\$4,900	Aug-16	35	\$3,500
Sep-12	46	\$4,800	Sep-13	41	\$4,700	Sep-14	46	\$4,600	Sep-15	43	\$4,500	Sep-16	34	\$3,400
Oct-12	47	\$4,700	Oct-13	44	\$4,500	Oct-14	48	\$4,600	Oct-15	42	\$4,400	Oct-16	32	\$3,200
Nov-12	46	\$4,900	Nov-13	47	\$4,700	Nov-14	51	\$5,600	Nov-15	42	\$4,200	Nov-16	35	\$3,500
Dec-12	47	\$5,200	Dec-13	46	\$4,600	Dec-14	49	\$5,000	Dec-15	42	\$4,200	Dec-16	30	\$3,000
Jan-13	50	\$5,100	Jan-14	46	\$4,700	Jan-15	48	\$4,900	Jan-16	42	\$4,200	Jan-17	48	\$4,800
Feb-13	47	\$4,900	Feb-14	46	\$4,700	Feb-15	46	\$4,800	Feb-16	43	\$4,300	Feb-17	26	\$2,600
Mar-13	45	\$4,800	Mar-14	42	\$4,500	Mar-15	49	\$4,800	Mar-16	38	\$3,800	Mar-17	26	\$2,600
Apr-13	46	\$4,700	Apr-14	40	\$4,200	Apr-15	49	\$5,400	Apr-16	37	\$3,700	Apr-17	28	\$2,800
May-13	44	\$4,600	May-14	47	\$5,000	May-15	47	\$4,700	May-16	36	\$3,600	May-17		
Jun-13	44	\$4,400	Jun-14	49	\$4,900	Jun-15	47	\$5,300	Jun-16	35	\$3,500	Jun-17		

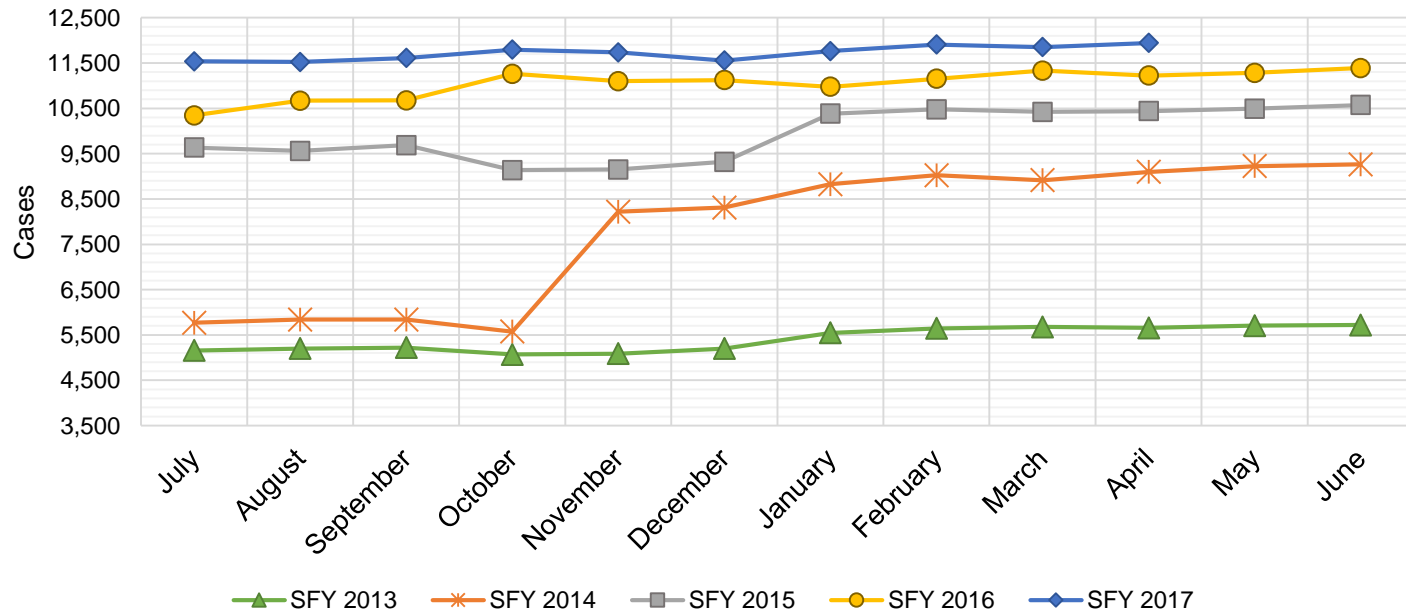
TOTAL	551	\$57,300	533	\$55,200	576	\$59,400	490	\$50,000	331	\$33,100
AVERAGE	46	\$4,775	44	\$4,600	48	\$4,950	41	\$4,167	33	\$3,310



## TANF Diversion Payments

SFY 2013			SFY 2014			SFY 2015			SFY 2016			SFY 2017		
	Cases	Expenditures	Cases	Expenditures	Cases	Expenditures	Cases	Expenditures	Cases	Expenditures	Cases	Expenditures		
Jul-12	10	\$20,000	Jul-13	23	\$46,500	Jul-14	23	\$48,098	Jul-15	29	\$62,074	Jul-16	16	\$30,843
Aug-12	10	\$19,000	Aug-13	29	\$54,500	Aug-14	10	\$21,810	Aug-15	19	\$33,584	Aug-16	22	\$42,731
Sep-12	14	\$31,500	Sep-13	17	\$36,500	Sep-14	12	\$23,500	Sep-15	25	\$47,977	Sep-16	10	\$21,000
Oct-12	10	\$18,000	Oct-13	21	\$42,500	Oct-14	18	\$30,589	Oct-15	11	\$20,500	Oct-16	8	\$16,744
Nov-12	8	\$15,000	Nov-13	16	\$28,953	Nov-14	3	\$4,411	Nov-15	21	\$45,500	Nov-16	11	\$24,500
Dec-12	12	\$25,000	Dec-13	13	\$25,500	Dec-14	8	\$14,634	Dec-15	23	\$45,389	Dec-16	14	\$26,611
Jan-13	9	\$17,500	Jan-14	8	\$16,000	Jan-15	10	\$18,000	Jan-16	23	\$41,874	Jan-17	9	\$18,500
Feb-13	7	\$13,500	Feb-14	8	\$16,994	Feb-15	2	\$5,500	Feb-16	15	\$28,500	Feb-17	6	\$12,000
Mar-13	9	\$17,500	Mar-14	13	\$27,396	Mar-15	6	\$12,000	Mar-16	15	\$27,008	Mar-17	6	\$11,000
Apr-13	14	\$30,000	Apr-14	14	\$28,000	Apr-15	14	\$26,000	Apr-16	15	\$31,389	Apr-17	6	\$12,000
May-13	15	\$30,500	May-14	11	\$20,500	May-15	11	\$21,500	May-16	15	\$31,916	May-17		
Jun-13	18	\$37,000	Jun-14	14	\$29,911	Jun-15	21	\$40,039	Jun-16	22	\$43,000	Jun-17		

<b>TOTAL</b>	136	\$274,500	187	\$373,254	138	\$266,081	233	\$458,711	108	\$215,929
<b>AVERAGE</b>	11	\$22,875	16	\$31,105	12	\$22,173	19	\$38,226	11	\$21,593

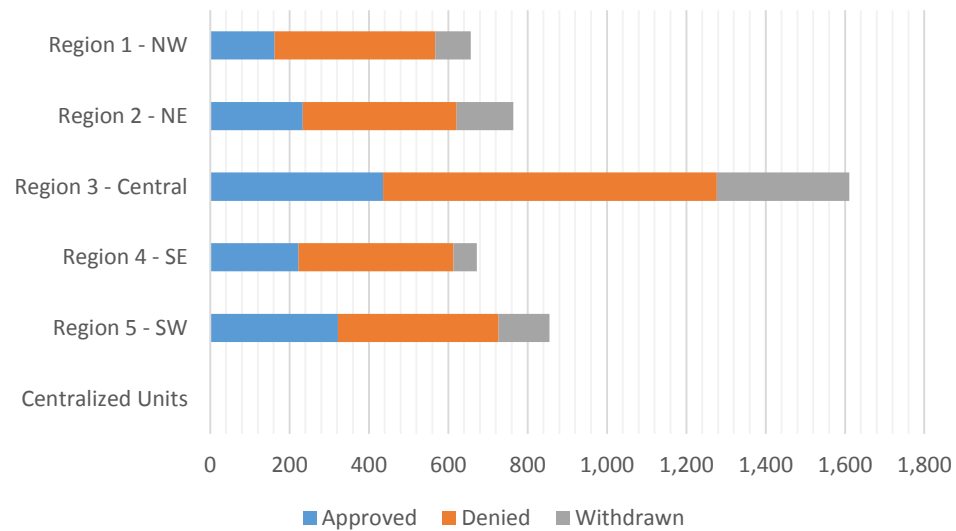


**Cash Assistance Applications by Field Office  
April 2017**

Office	Approved	Denied	Withdrawn	Total Cases Processed
Chaves County ISD	49	90	9	148
Cibola County ISD	19	32	9	60
Colfax County ISD	13	25	8	46
Curry County ISD	39	87	6	132
East Dona Ana County ISD	61	92	30	183
Eddy Artesia County ISD	15	29	4	48
Eddy Carlsbad County ISD	33	51	14	98
Grant County ISD	34	44	9	87
Guadalupe County ISD	7	7	0	14
Hidalgo County ISD	0	0	0	0
Lea County ISD	62	80	18	160
Lincoln County ISD	14	21	4	39
Luna County ISD	24	26	19	69
McKinley County ISD	8	74	28	110
Northeast Bernalillo County ISD	126	282	139	547
Northwest Bernalillo County ISD	121	214	64	399
Otero County ISD	38	69	25	132
Quay County ISD	7	12	6	25
Rio Arriba County ISD	38	56	13	107
Roosevelt County ISD	11	32	4	47
San Juan County ISD	43	184	46	273
San Miguel County ISD	27	29	12	68
Sandoval County ISD	67	125	50	242
Santa Fe County ISD	50	95	44	189
Sierra County ISD	11	9	1	21
Socorro County ISD	16	18	6	40
South Dona Ana ISD	60	60	9	129
Southeast Bernalillo County ISD	72	161	52	285
Southwest Bernalillo County ISD	96	145	63	304
Taos County ISD	24	39	10	73
Torrance County ISD	21	39	16	76
Valencia North County ISD	65	88	0	153
Valencia South County ISD	0	0	0	0
West Dona Ana County ISD	105	114	36	255
Centralized Units	0	0	0	0
<b>Total</b>	<b>1,376</b>	<b>2,429</b>	<b>754</b>	<b>4,559</b>

## Cash Assistance Applications by Region April 2017

	Approved	Denied	Withdrawn	Total Cases Processed
Region				
Region 1 - NW	162	405	90	657
Region 2 - NE	233	388	143	764
Region 3 - Central	436	841	334	1,611
Region 4 - SE	223	390	59	672
Region 5 - SW	322	405	128	855
Centralized Units	0	0	0	0
<b>Total</b>	<b>1,376</b>	<b>2,429</b>	<b>754</b>	<b>4,559</b>



**Children Youth and Families Department**  
**Children Receiving Child Care Assistance Subsidies By County**

County	Apr	May	June	July	Aug	Sep	Oct	Nov	Dec	Jan	Feb	Mar	Apr	Change Fr. Last Year	
	2016	2016	2016	2016	2016	2016	2016	2016	2016	2017	2017	2017	2017	Cases	Percent
Bernalillo	6,868	6,971	7,213	6,790	6,696	7,237	7,030	7,092	7,134	7,043	7,068	7,170	7,385	517	7.5%
Catron	2	4	4	2	2	2	0	0	0	0	0	0	0	-2	0.0%
Chaves	691	666	733	698	682	739	737	733	744	744	756	759	768	77	11.1%
Cibola	256	259	273	254	266	278	269	272	269	271	284	282	294	38	14.8%
Colfax	52	54	53	46	45	46	50	49	47	42	40	41	38	-14	-26.9%
Curry	379	382	397	381	386	389	361	384	394	413	398	398	437	58	15.3%
De Baca	6	7	9	10	12	12	12	11	11	11	10	12	13	7	116.7%
Dona Ana	3,844	3,930	4,083	3,600	3,687	3,957	3,915	4,005	3,976	4,003	4,047	4,084	4,217	373	9.7%
Eddy	242	257	272	265	263	285	265	263	277	271	275	283	294	52	21.5%
Grant	165	163	178	139	128	170	152	152	151	142	135	142	153	-12	-7.3%
Guadalupe	16	12	13	14	13	15	12	11	15	16	16	17	17	1	6.3%
Harding	0	0	0	0	0	0	0	0	0	0	0	0	0	0	0.0%
Hidalgo	23	27	25	25	25	33	28	33	34	35	35	35	35	12	52.2%
Lea	666	666	667	592	620	716	702	731	722	698	715	729	748	82	12.3%
Lincoln	103	108	114	122	135	135	129	130	135	132	139	135	141	38	36.9%
Los Alamos	15	15	15	10	11	7	7	14	15	16	15	13	15	0	0.0%
Luna	170	173	170	164	151	152	163	173	149	159	154	159	164	-6	-3.5%
McKinley	169	161	172	131	132	175	163	156	153	159	164	171	182	13	7.7%
Mora	17	15	15	16	17	19	19	19	20	18	20	20	21	4	23.5%
Otero	458	462	471	434	426	474	472	449	450	440	442	416	481	23	5.0%
Out of State	4	9	5	4	3	5	5	11	10	11	12	14	12	8	200.0%
Quay	38	38	43	41	40	39	40	36	34	33	38	40	38	0	0.0%
Rio Arriba	149	151	157	148	146	130	132	137	145	135	147	144	137	-12	-8.1%
Roosevelt	100	119	117	101	108	116	122	132	135	124	120	125	123	23	23.0%
San Juan	829	855	886	793	793	951	923	926	928	919	911	911	946	117	14.1%
San Miguel	366	378	401	369	375	390	395	387	375	371	374	373	366	0	0.0%
Sandoval	837	835	883	867	868	927	859	868	870	880	852	873	878	41	4.9%
Santa Fe	481	479	488	428	434	473	461	469	478	472	487	477	490	9	1.9%
Sierra	34	30	60	56	60	57	63	59	46	51	50	52	52	18	52.9%
Socorro	60	62	68	60	54	62	59	59	58	65	62	61	59	-1	-1.7%
Taos	106	111	130	120	120	113	115	109	114	116	114	112	118	12	11.3%
Torrance	61	72	80	78	78	81	80	82	77	79	83	87	91	30	49.2%
Union	6	6	6	6	5	3	5	5	5	5	5	5	5	-1	-16.7%
Valencia	613	618	619	552	543	583	593	608	602	593	585	583	629	16	2.6%
<b>Totals</b>	<b>17,826</b>	<b>18,095</b>	<b>18,820</b>	<b>17,316</b>	<b>17,324</b>	<b>18,771</b>	<b>18,338</b>	<b>18,565</b>	<b>18,573</b>	<b>18,467</b>	<b>18,553</b>	<b>18,723</b>	<b>19,347</b>	<b>1,521</b>	<b>8.5%</b>



**CHILDREN YOUTH AND FAMILIES DEPARTMENT  
CHILD CARE ASSISTANCE ELIGIBILITY PROGRAMS**

MONTH	MAY'16	JUNE'16	JUL'16	AUG'16	SEP'16	OCT'16	NOV'16	DEC'16	JAN'17	FEB'17	MAR'17	APR'17
<b>TANF (Child Care Priority 1 Clients)</b>												
CLIENTS	1,658	1,760	1,682	1,647	1,756	1,775	1,801	1,829	1,797	1,930	1,994	2,047
COST	\$831,919	\$823,149	\$865,546	\$845,125	\$831,259	\$882,251	\$920,189	\$936,139	\$914,933	\$1,005,906	\$1,096,473	\$1,148,841
TANF AVERAGE COST	\$502	\$468	\$515	\$513	\$473	\$497	\$511	\$512	\$509	\$521	\$550	\$561
<b>TRANSITION OFF TANF (Child Care Priority 2 Clients)</b>												
CLIENTS	207	191	165	182	179	180	193	212	202	212	197	202
COST	\$102,574	\$87,098	\$82,957	\$91,871	\$80,066	\$81,750	\$90,646	\$101,388	\$95,662	\$102,062	\$102,582	\$101,314
TRAN OFF TANF AVG COST	\$496	\$456	\$503	\$505	\$447	\$454	\$470	\$478	\$474	\$481	\$521	\$502
<b>TANF ELIGIBLE (Child Care Priority 1B Clients at or below 100% of the Federal Poverty Level)</b>												
CLIENTS	7,714	7,907	6,923	6,870	7,690	7,570	7,649	7,614	7,538	7,420	7,442	7,819
COST	\$3,748,503	\$3,553,273	\$3,468,543	\$3,496,809	\$3,390,070	\$3,746,796	\$3,824,118	\$3,904,245	\$3,557,568	\$3,662,965	\$3,957,431	\$4,194,223
TANF ELIGIBLE AVG COST	\$486	\$449	\$501	\$509	\$441	\$495	\$500	\$513	\$472	\$494	\$532	\$536
<b>INCOME ELIGIBLE (Child Care Priority 3, and Priority 4 Clients )</b>												
CLIENTS	7,346	7,728	7,261	7,304	7,798	7,507	7,569	7,539	7,527	7,514	7,559	7,612
COST	\$3,179,570	\$3,239,123	\$3,345,777	\$3,394,168	\$3,265,029	\$3,352,594	\$3,404,386	\$3,460,624	\$3,294,431	\$3,386,741	\$3,683,902	\$3,733,797
INCOME ELIG AVG COST	\$433	\$419	\$461	\$465	\$419	\$447	\$450	\$459	\$438	\$451	\$487	\$491
<b>AT-RISK CHILD PROTECTIVE SERVICES CHILD CARE PILOT (Priority 5 Clients)</b>												
CLIENTS	172	195	243	286	323	343	378	397	431	518	553	679
COST	\$104,833	\$117,152	\$142,841	\$184,819	\$193,530	\$214,804	\$232,406	\$257,933	\$266,739	\$305,785	\$335,795	\$396,799
CPS AVG COST	\$609	\$601	\$588	\$646	\$599	\$626	\$615	\$650	\$619	\$590	\$607	\$584
<b>CHILD PROTECTIVE SERVICES (Child Care CPS Clients)</b>												
CLIENTS	998	1,039	1,042	1,035	1,025	963	975	982	972	959	978	988
COST	\$567,010	\$579,356	\$611,411	\$614,807	\$577,908	\$555,413	\$600,010	\$579,310	\$567,980	\$559,627	\$607,288	\$652,529
CPS AVG COST	\$568	\$558	\$587	\$594	\$564	\$577	\$615	\$590	\$584	\$584	\$621	\$660
<b>GRAND TOTAL - ALL CHILD CARE PROGRAMS</b>												
CLIENTS	18,095	18,820	17,316	17,324	18,771	18,338	18,565	18,573	18,467	18,553	18,723	19,347
COST	\$8,534,409	\$8,399,151	\$8,517,075	\$8,627,599	\$8,337,862	\$8,833,608	\$9,071,755	\$9,239,639	\$8,697,313	\$9,023,086	\$9,783,471	\$10,227,503
ALL PROGRAMS AVG COST	\$472	\$446	\$492	\$498	\$444	\$482	\$489	\$497	\$471	\$486	\$523	\$529

## Income Eligibility Guidelines: October 1, 2016 - September 30, 2017

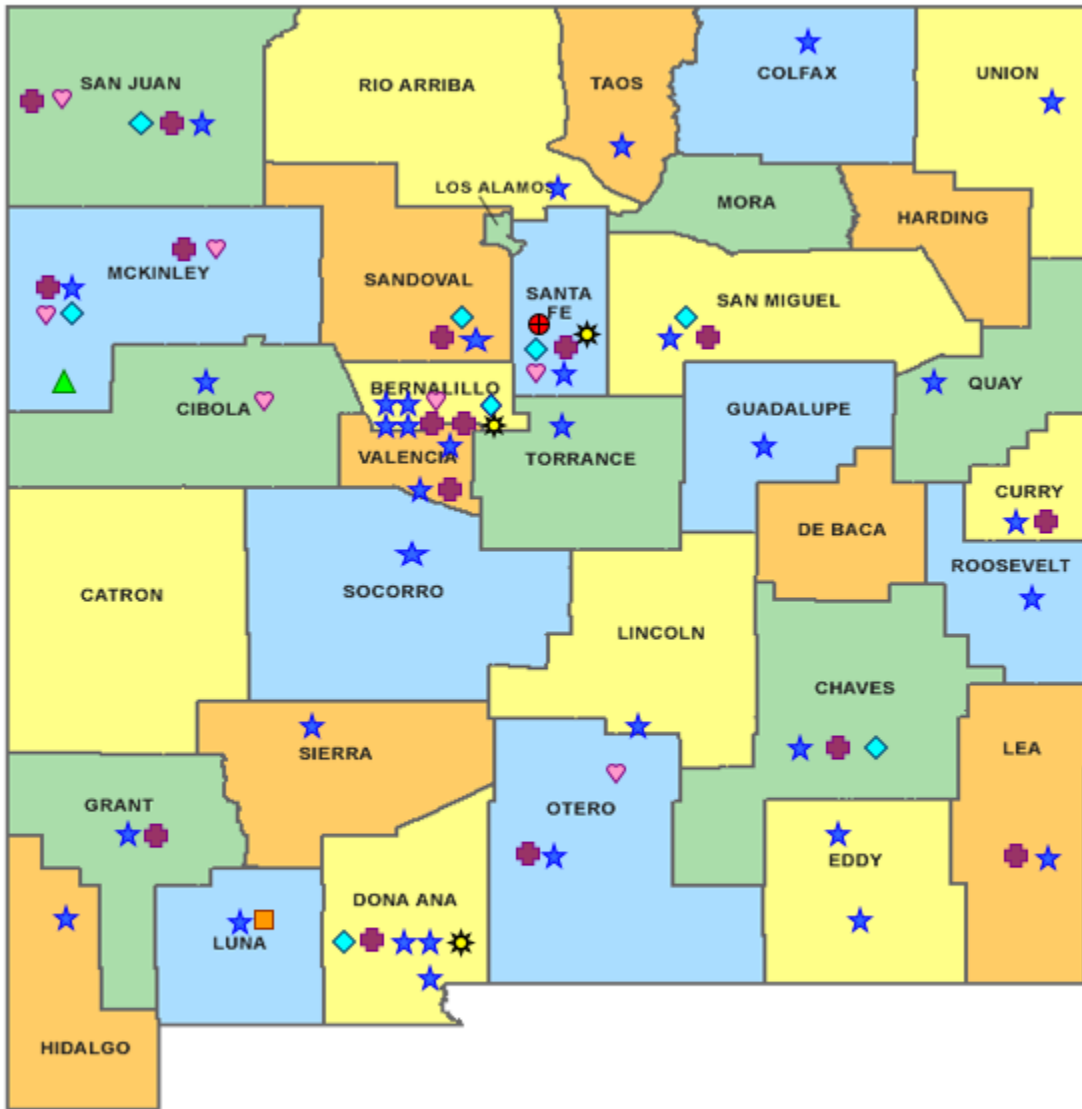

### Federal Poverty Guidelines (FPG) Monthly Income Standards

Supplemental Nutrition Program (SNAP)					
Household Size	100% FPG Net Income	130% FPG Gross Income	165% FPG Gross Income for Categorical Eligibility	Maximum SNAP Monthly Allotment	LIHEAP 150% FPG
1	\$990	\$1,287	\$1,634	\$194	\$1,485
2	\$1,335	\$1,736	\$2,203	\$357	\$2,003
3	\$1,680	\$2,184	\$2,772	\$511	\$2,520
4	\$2,025	\$2,633	\$3,342	\$649	\$3,038
5	\$2,370	\$3,081	\$3,911	\$771	\$3,555
6	\$2,715	\$3,530	\$4,480	\$925	\$4,073
7	\$3,061	\$3,980	\$5,051	\$1,022	\$4,592
8	\$3,408	\$4,430	\$5,623	\$1,169	\$5,112
+1	+\$347	+\$481	+\$572	+\$146	+\$521
Minimum Allotment of \$16 effective from 10/1/2016 - 9/30/2017					
DEDUCTIONS: Standard Deduction: For HH size 1-3 = \$157; 4 = \$168; 5 = \$197; 6 or more = \$226; Excess Shelter Deduction Limit: \$517; Heating and Cooling Standard Utility Allowance: \$325 (HCSUA) – Limited Utility Allowance: \$125 (LUA); Telephone Standard: \$40; Dependent Care: Actual Amount (No Limit); Earned Income Deduction: 20%; Homeless Shelter Standard: \$143					

CASH Assistance & Support Services					
Household Size	Federal Poverty Guidelines (FPG) Monthly Income Standards			Maximum Monthly Benefit	
	100% FPG Net Income	85% FPG Gross Limit	NM Works Cash Net Income	Maximum Monthly Benefit	General Assistance
1	\$990	\$842	\$266	\$244	\$245
2	\$1,335	\$1,135	\$357	\$327	\$329
3	\$1,680	\$1,428	\$447	\$409	\$412
4	\$2,025	\$1,721	\$539	\$493	\$496
5	\$2,370	\$2,015	\$630	\$576	\$580
6	\$2,715	\$2,308	\$721	\$659	\$664
7	\$3,061	\$2,602	\$812	\$743	\$748
8	\$3,408	\$2,897	\$922	\$843	\$849
+1	\$347	+\$295	+\$91	+\$83	+\$84
Deductions- Dependent Care: For a child under age 2 = \$200; For a child age 2 and over = \$175. Work Incentives- Earned Income Disregard: Single parent = \$125 & ½ remainder; Two parent = \$225 & ½ remainder.					









<b>Medical Assistance Division</b>					
Federal Poverty Guidelines New Mexico Affordable Care Eligibility Groups Effective April 01, 2017 thru March 31, 2018 <b>Monthly Guidelines</b>					
HH SIZE	PERCENT OF POVERTY				
	138%	190%	240%	250%	300%
1	\$1,387	\$1,910	\$2,412	\$2,513	\$3,015
2	\$1,868	\$2,572	\$3,248	\$3,384	\$4,060
3	\$2,349	\$3,234	\$4,084	\$4,255	\$5,105
4	\$2,829	\$3,895	\$4,920	\$5,125	\$6,150
5	\$3,310	\$4,557	\$5,756	\$5,996	\$7,195
6	\$3,791	\$5,219	\$6,592	\$6,867	\$8,240
7	\$4,272	\$5,881	\$7,428	\$7,738	\$9,285
8	\$4,752	\$6,543	\$8,264	\$8,609	\$10,330
138% Adult Expansion, 190% Children ages 6 to 19 (Medicaid), 240% Children ages 0 to 6 (Medicaid); ages 6 to 19 (CHIP), 250% Pregnancy Related Services Only, 300% Children 0 to 6 (CHIP)					

<b>Medical Assistance Division</b>					
Federal Poverty Guidelines New Mexico Affordable Care Eligibility Groups Effective April 01, 2017 thru March 31, 2018 <b>Annual Guidelines</b>					
HH SIZE	PERCENT OF POVERTY				
	138%	190%	240%	250%	300%
1	\$16,644	\$22,920	\$28,944	\$30,156	\$36,180
2	\$22,416	\$30,864	\$38,976	\$40,608	\$48,720
3	\$28,188	\$38,808	\$49,008	\$51,060	\$61,260
4	\$33,948	\$46,740	\$59,040	\$61,500	\$73,800
5	\$39,720	\$54,684	\$69,072	\$71,952	\$86,340
6	\$45,492	\$62,628	\$79,104	\$82,404	\$98,880
7	\$51,264	\$70,572	\$89,136	\$92,856	\$111,420
8	\$57,024	\$78,516	\$99,168	\$103,308	\$123,960
138% Adult Expansion, 190% Children ages 6 to 19 (Medicaid), 240% Children ages 0 to 6 (Medicaid); ages 6 to 19 (CHIP), 250% Pregnancy Related Services Only, 300% Children 0 to 6 (CHIP)					

**HUMAN SERVICES**  
DEPARTMENT

New Mexico Human Services Department  
Field Offices

-  Central Office (1)
-  Income Support Division County Office (35)
-  Income Support Division Satellite Office (2)
-  Child Support Enforcement Regional Office (16)
-  Child Support Enforcement Satellite Office (1)
-  Quality Control Office (8)
-  Indian Health Services (7)
-  Hospital Site (3)

For a complete listing of field offices and other government and community resources:  
[http://www.hsd.state.nm.us/LookingForAssistance/Field\\_Offices\\_1.aspx](http://www.hsd.state.nm.us/LookingForAssistance/Field_Offices_1.aspx)