



Monthly Statistical Report

April 2018

There were 852,106 individuals that received Medicaid in April 2018, a 5.9% decrease from one year ago. The count of Medicaid recipients has decreased by 2,129, or 0.2%, since last month.

The SNAP caseload in April 2018 was 221,139, a 1.8% increase from one year ago. The SNAP caseload has decreased by 408 cases, or 0.2%, since last month.

The TANF caseload was 10,831 in April 2018, a decrease of 4.0% from April 2017. The TANF caseload had 169 fewer cases compared to March 2018, a decrease of 1.5%.

The caseload for General Assistance was 2,983 in April 2018, a decrease of 11.1% from one year ago and a decrease of 58 cases from last month.

Susana Martinez, Governor
Brent Earnest, Cabinet Secretary

Contents	Page
Summary	3-5
Medicaid	6-18
SNAP	19-37
Cash Assistance	38-52
Child Care Assistance	53-54
Income Eligibility Guidelines	55-56

Regions are reported as follows:

Region 1		
Catron	San Juan	Valencia
Cibola	Sierra	
McKinley	Socorro	
Region 2		
Colfax	Mora	Santa Fe
De Baca	Quay	Taos
Guadalupe	Rio Arriba	Union
Harding	Sandoval	
Los Alamos	San Miguel	
Region 3		
Bernalillo	Torrance	
Region 4		
Chaves	Eddy	Lincoln
Curry	Lea	Roosevelt
Region 5		
Dona Ana	Hidalgo	Otero
Grant	Luna	

The Mission of the Human Services Department

To reduce the impact of poverty on people living in New Mexico by providing support services that help families break the cycle of dependency on public assistance

Christopher Collins, Deputy Secretary
Michael Nelson, Deputy Secretary

Prepared by Income Support Division
PO Box 2348
Santa Fe, NM 87504-2348
505-827-7250

Mary Brogdon, Director
Vida Tapia-Sanchez, Deputy Director
Shanita Harrison, Deputy Director
Judith Parks, Deputy Director

<http://www.hsd.state.nm.us/monthly-statistical-reports.aspx>

Program Summary for April 2018

Medicaid				Percent Change	
	Apr-17	Mar-18	Apr-18	Apr-17- Apr-18	Mar-18- Apr-18
Expenditures¹	\$478,759,931	\$477,875,383	\$479,371,511	0.1%	0.3%
Cases²	524,007	491,478	490,431	-6.4%	-0.2%
Expenditures/Case	\$914	\$972	\$977	7.0%	0.5%
Recipients³	905,265	854,235	852,106	-5.9%	-0.2%
<i>Adults</i>	515,957	485,059	484,015	-6.2%	-0.2%
<i>Children</i>	389,308	369,176	368,091	-5.4%	-0.3%
Recipients /Case	1.73	1.74	1.74	0.6%	0.0%
Cases Processed⁴	11,650	16,416	12,180	4.5%	-25.8%
<i>Approvals⁴</i>	8,702	11,945	9,603	10.4%	-19.6%

Supplemental Nutrition Assistance Program (SNAP)				Percent Change	
	Apr-17	Mar-18	Apr-18	Apr-17- Apr-18	Mar-18- Apr-18
Expenditures⁵	\$55,289,574	\$53,147,542	\$52,928,465	-4.3%	-0.4%
Cases⁶	217,242	221,547	221,139	1.8%	-0.2%
Expenditures/Case	\$255	\$240	\$239	-6.0%	-0.2%
Recipients⁷	458,782	456,739	454,779	-0.9%	-0.4%
<i>Adults</i>	260,744	262,820	262,242	0.6%	-0.2%
<i>Children</i>	198,038	193,919	192,537	-2.8%	-0.7%
Recipients /Case	2.11	2.06	2.06	-2.6%	-0.2%
Cases Processed⁴	17,171	18,124	18,275	6.4%	0.8%
<i>Approvals⁴</i>	13,728	14,579	15,020	9.4%	3.0%

Cash Assistance Programs				Percent Change	
	Apr-17	Mar-18	Apr-18	Apr-17- Apr-18	Mar-18- Apr-18
Expenditures⁵	\$4,227,023	\$4,007,501	\$3,952,778	-6.5%	-1.4%
Cases⁶	14,943	14,246	14,024	-6.2%	-1.6%
Expenditures/Case	\$283	\$281	\$282	-0.4%	0.2%
Recipients⁷	33,567	31,804	31,219	-7.0%	-1.8%
<i>Adults</i>	11,159	10,275	10,093	-9.6%	-1.8%
<i>Children</i>	22,408	21,529	21,126	-5.7%	-1.9%
Recipients /Case	2.25	2.23	2.23	-0.9%	-0.3%
Cases Processed⁴	4,559	4,718	5,159	13.2%	9.3%
<i>Approvals⁴</i>	1,376	1,448	1,575	14.5%	8.8%

Low Income Home Energy Assistance Program (LIHEAP)				Percent Change	
	Apr-17	Mar-18	Apr-18	Apr-17- Apr-18	Mar-18- Apr-18
Expenditures⁸	\$702,415	\$1,020,530	\$672,175	-4.3%	-34.1%
Cases⁸	2,779	3,996	2,694	-3.1%	-32.6%
Expenditures/Case	\$253	\$255	\$250	-1.3%	-2.3%
Recipients⁸	6,510	8,586	6,352	-2.4%	-26.0%
<i>Adults</i>	3,623	4,909	3,559	-1.8%	-27.5%
<i>Children</i>	2,887	3,677	2,793	-3.3%	-24.0%
Recipients /Case	2.34	2.15	2.36	0.7%	9.7%
Cases Processed⁴	3,896	6,354	4,113	5.6%	-35.3%
<i>Approvals⁴</i>	2,760	4,034	2,786	0.9%	-30.9%

Cash Assistance Summary for April 2018

Temporary Assistance for Needy Families (TANF)

	Apr-17	Mar-18	Apr-18	Percent Change	
				Apr-17- Apr-18	Mar-18- Apr-18
Expenditures ⁵	\$3,338,332	\$3,205,980	\$3,167,033	-5.1%	-1.2%
Cases ⁶	11,277	11,000	10,831	-4.0%	-1.5%
Expenditures/Case	\$296	\$291	\$292	-1.2%	0.3%
Recipients ⁷	29,509	28,255	27,693	-6.2%	-2.0%
<i>Adults</i>	7,641	7,210	7,051	-7.7%	-2.2%
<i>Children</i>	21,868	21,045	20,642	-5.6%	-1.9%
Approvals ⁴	1,121	1,118	1,279	14.1%	14.4%

General Assistance (GA)

	Apr-17	Mar-18	Apr-18	Percent Change	
				Apr-17- Apr-18	Mar-18- Apr-18
Expenditures ⁵	\$795,861	\$735,762	\$719,731	-9.6%	-2.2%
Cases ⁶	3,355	3,041	2,983	-11.1%	-1.9%
Expenditures/Case	\$237	\$242	\$241	1.7%	-0.3%
Recipients ⁷	3,420	3,043	3,022	-11.6%	-0.7%
<i>Adults</i>	3,186	2,833	2,807	-11.9%	-0.9%
<i>Children</i>	234	210	215	-8.1%	2.4%
Approvals ⁴	215	276	247	14.9%	-10.5%

Education Works

	Apr-17	Mar-18	Apr-18	Percent Change	
				Apr-17- Apr-18	Mar-18- Apr-18
Expenditures ⁵	\$60,846	\$55,723	\$54,986	-9.6%	-1.3%
Cases ⁶	172	151	154	-10.5%	2.0%
Expenditures/Case	\$354	\$369	\$357	0.9%	-3.2%
Recipients ⁷	495	449	445	-10.1%	-0.9%
<i>Adults</i>	189	175	176	-6.9%	0.6%
<i>Children</i>	306	274	269	-12.1%	-1.8%
Approvals ⁴	3	5	3	0.0%	-40.0%

Refugee Cash (RCA)

	Apr-17	Mar-18	Apr-18	Percent Change	
				Apr-17- Apr-18	Mar-18- Apr-18
Expenditures ⁵	\$29,183	\$7,636	\$8,827	-69.8%	15.6%
Cases ⁶	111	32	34	-69.4%	6.3%
Expenditures/Case	\$263	\$239	\$260	-1.3%	8.8%
Recipients ⁷	115	35	37	-67.8%	5.7%
<i>Adults</i>	115	35	37	-67.8%	5.7%
<i>Children</i>	0	0	0	N/A	N/A

State Supplement for Residential Care

	Apr-17	Mar-18	Apr-18	Percent Change	
				Apr-17- Apr-18	Mar-18- Apr-18
Expenditures ⁵	\$2,800	\$2,400	\$2,200	-21.4%	-8.3%
Cases ⁶	28	22	22	-21.4%	0.0%
Expenditures/Case	\$100	\$109	\$100	0.0%	-8.3%
Recipients ⁷	28	22	22	-21.4%	0.0%
<i>Adults</i>	28	22	22	-21.4%	0.0%
<i>Children</i>	0	0	0	N/A	N/A

Expenditures YTD			
	SFY 2018	FFY 2018	CY 2018
Medicaid ¹	\$4,466,607,420	\$3,240,451,456	\$1,881,610,788
Supplemental Nutrition Assistance Program ⁹	\$540,513,039	\$374,218,924	\$212,749,275
Temporary Assistance for Needy Families ⁹	\$35,821,230	\$24,067,839	\$13,668,987
General Assistance ⁹	\$7,449,435	\$5,202,133	\$2,941,035
Education Work ⁹	\$469,974	\$351,748	\$207,444
LIHEAP ⁸	\$15,969,543	\$13,934,071	\$5,437,320

Average Caseload YTD			
	SFY 2018	FFY 2018	CY 2018
Medicaid ²	496,650	493,503	495,273
Supplemental Nutrition Assistance Program ⁶	221,388	221,828	221,949
Temporary Assistance for Needy Families ⁶	11,550	11,470	11,189
General Assistance ⁶	3,037	3,033	3,019
Education Work ⁶	127	138	140
LIHEAP ⁸	5,705	7,439	5,289

Demographic Profile- April 2018					
	SNAP	TANF	GA	Education Works	RCA
Gender of Recipients¹⁰					
Male	206,043	11,915	1,703	162	23
Female	248,736	15,778	1,319	283	14
Ethnicity¹⁰					
Hispanic	252,826	18,898	1,549	286	12
Non-Hispanic	201,953	8,795	1,473	159	25
Race¹⁰					
Native American or Alaskan Native	75,550	2,288	258	26	0
Asian	4,417	269	32	2	0
African American or Black	11,240	1,092	121	21	19
Native Hawaiian or Pacific Islander	863	39	5	0	0
White	353,486	23,243	2,557	388	14
Unknown / Not Declared	4,849	309	27	5	0
More than One Race	4,374	453	22	3	4

Medicaid demographic data can be found here: <http://www.hsd.state.nm.us/LookingForInformation/medicaid-eligibility.aspx>

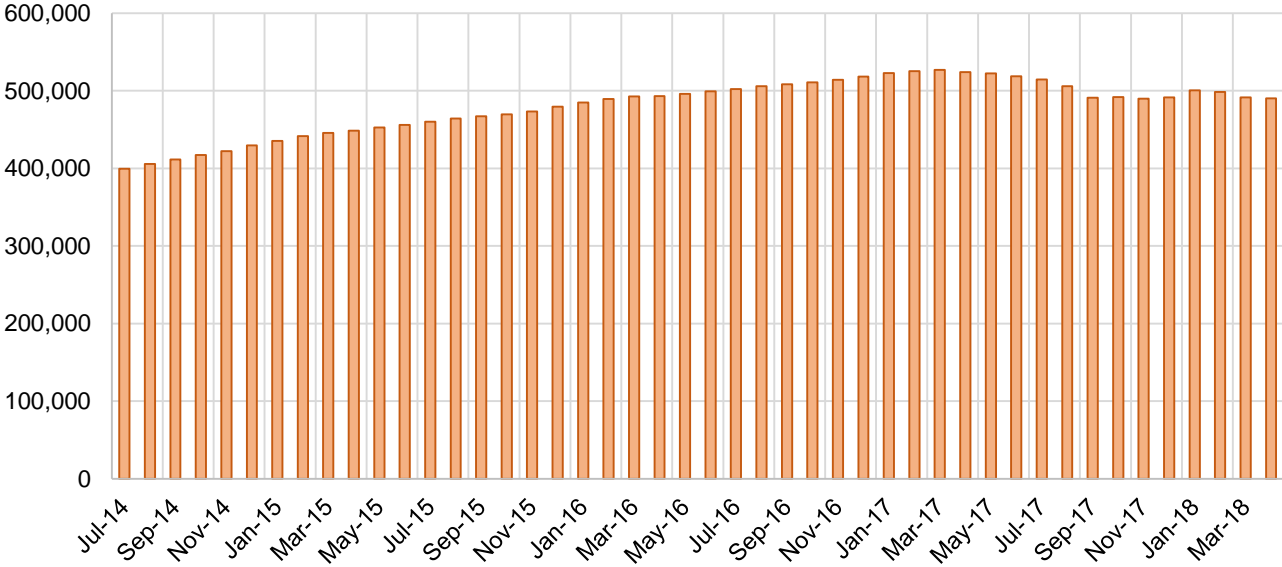
Medicaid Cases by Field Office²

Office				Percent Change	
	Apr-17	Mar-18	Apr-18	Apr-17- Apr-18	Mar-18- Apr-18
Chaves County ISD	16,676	15,940	15,901	-4.6%	-0.2%
Cibola County ISD	7,645	7,434	7,392	-3.3%	-0.6%
Colfax County ISD	3,578	3,523	3,545	-0.9%	0.6%
Curry County ISD	10,601	13,814	13,815	30.3%	0.0%
East Dona Ana County ISD	18,787	17,837	17,798	-5.3%	-0.2%
Eddy Artesia County ISD	4,047	3,817	3,777	-6.7%	-1.0%
Eddy Carlsbad County ISD	8,454	7,843	7,761	-8.2%	-1.0%
Grant County ISD	7,221	6,796	6,743	-6.6%	-0.8%
Guadalupe County ISD	1,669	1,757	1,744	4.5%	-0.7%
Hidalgo County ISD	1,082	973	963	-11.0%	-1.0%
Lea County ISD	14,944	14,297	14,310	-4.2%	0.1%
Lincoln County ISD	4,700	4,293	4,264	-9.3%	-0.7%
Luna County ISD	9,217	8,811	8,754	-5.0%	-0.6%
McKinley County ISD	23,314	22,202	22,189	-4.8%	-0.1%
Northeast Bernalillo County ISD	45,753	42,913	42,727	-6.6%	-0.4%
Northwest Bernalillo County ISD	50,476	48,437	48,816	-3.3%	0.8%
Otero County ISD	12,314	11,883	11,890	-3.4%	0.1%
Quay County ISD	2,647	2,565	2,552	-3.6%	-0.5%
Rio Arriba County ISD	15,132	14,087	13,936	-7.9%	-1.1%
Roosevelt County ISD	4,171	24	22	-99.5%	-8.3%
San Juan County ISD	31,440	30,153	29,932	-4.8%	-0.7%
San Miguel County ISD	9,803	9,117	9,034	-7.8%	-0.9%
Sandoval County ISD	27,122	25,521	25,483	-6.0%	-0.1%
Santa Fe County ISD	27,749	25,015	25,029	-9.8%	0.1%
Sierra County ISD	5,699	5,423	5,381	-5.6%	-0.8%
Socorro County ISD	5,751	5,389	5,356	-6.9%	-0.6%
South Dona Ana ISD	20,728	19,873	19,831	-4.3%	-0.2%
Southeast Bernalillo County ISD	30,438	25,590	25,470	-16.3%	-0.5%
Southwest Bernalillo County ISD	42,194	38,871	38,925	-7.7%	0.1%
Taos County ISD	9,970	9,428	9,335	-6.4%	-1.0%
Torrance County ISD	8,004	7,435	7,427	-7.2%	-0.1%
Valencia North County ISD	19,054	18,043	18,083	-5.1%	0.2%
Valencia South County ISD	51	3	3	-94.1%	0.0%
West Dona Ana County ISD	23,572	22,367	22,239	-5.7%	-0.6%
Centralized Units	4	4	4	0.0%	0.0%
Statewide Total	524,007	491,478	490,431	-6.4%	-0.2%

Medicaid Cases by Region²

Region				Percent Change	
	Apr-17	Mar-18	Apr-18	Apr-17- Apr-18	Mar-18- Apr-18
Region 1 - NW	92,954	88,647	88,336	-5.0%	-0.4%
Region 2 - NE	97,670	91,013	90,658	-7.2%	-0.4%
Region 3 - Central	176,865	163,246	163,365	-7.6%	0.1%
Region 4 - SE	63,593	60,028	59,850	-5.9%	-0.3%
Region 5 - SW	92,921	88,540	88,218	-5.1%	-0.4%
Centralized Units	4	4	4	0.0%	0.0%
Statewide Total	524,007	491,478	490,431	-6.4%	-0.2%

Medicaid Caseload: SFY-15 to Current

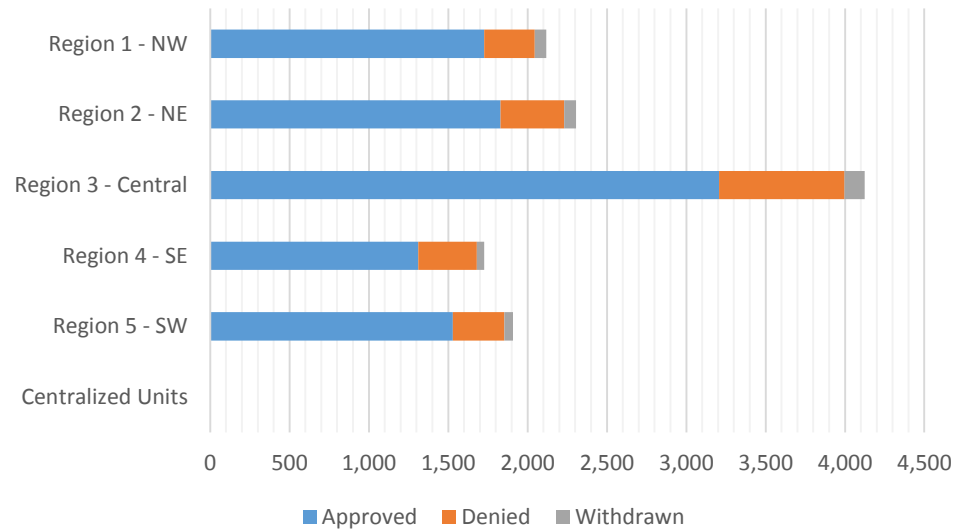


Medicaid Initial Applications by Field Office^{4,11}
April 2018

Office	Approved	Denied	Withdrawn	Total Cases Processed
Chaves County ISD	304	70	15	389
Cibola County ISD	130	22	5	157
Colfax County ISD	66	12	10	88
Curry County ISD	328	97	11	436
East Dona Ana County ISD	356	76	18	450
Eddy Artesia County ISD	66	24	1	91
Eddy Carlsbad County ISD	147	62	2	211
Grant County ISD	132	33	2	167
Guadalupe County ISD	20	3	0	23
Hidalgo County ISD	0	0	0	0
Lea County ISD	367	94	12	473
Lincoln County ISD	96	22	5	123
Luna County ISD	143	32	7	182
McKinley County ISD	451	74	14	539
Northeast Bernalillo County ISD	939	215	26	1,180
Northwest Bernalillo County ISD	771	198	39	1,008
Otero County ISD	233	51	4	288
Quay County ISD	50	11	1	62
Rio Arriba County ISD	226	61	6	293
Roosevelt County ISD	3	0	0	3
San Juan County ISD	654	132	28	814
San Miguel County ISD	308	28	13	349
Sandoval County ISD	536	125	24	685
Santa Fe County ISD	455	133	18	606
Sierra County ISD	85	7	6	98
Socorro County ISD	68	23	4	95
South Dona Ana ISD	293	66	7	366
Southeast Bernalillo County ISD	632	217	5	854
Southwest Bernalillo County ISD	714	143	49	906
Taos County ISD	168	29	3	200
Torrance County ISD	151	17	7	175
Valencia North County ISD	338	61	14	413
Valencia South County ISD	1	0	0	1
West Dona Ana County ISD	372	67	16	455
Centralized Units	0	0	0	0
Statewide Total	9,603	2,205	372	12,180

Medicaid Initial Applications by Region^{4,11}
April 2018

	Approved	Denied	Withdrawn	Total Cases Processed
Region				
Region 1 - NW	1,727	319	71	2,117
Region 2 - NE	1,829	402	75	2,306
Region 3 - Central	3,207	790	126	4,123
Region 4 - SE	1,311	369	46	1,726
Region 5 - SW	1,529	325	54	1,908
Centralized Units	0	0	0	0
Statewide Total	9,603	2,205	372	12,180

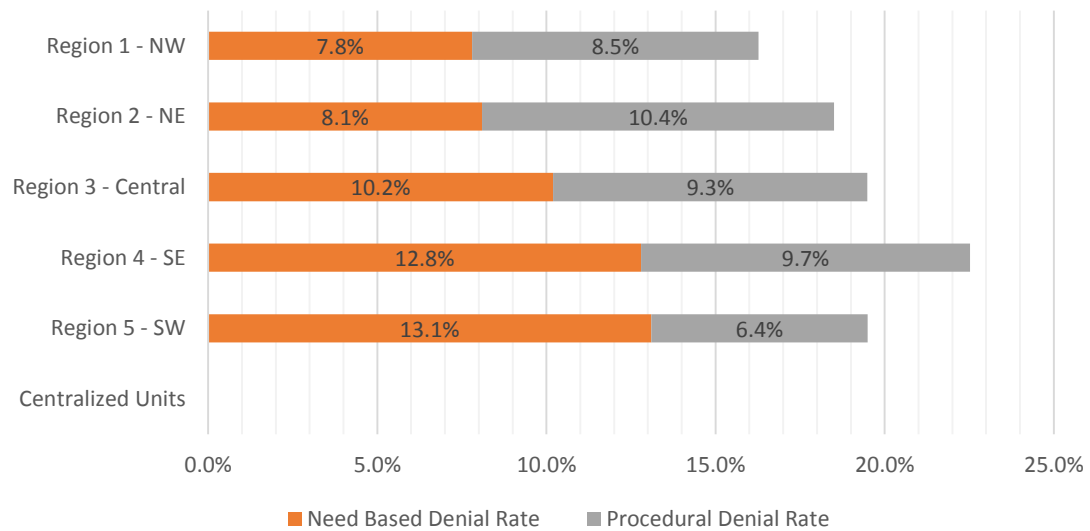


Medicaid EDG Initial Disposition Rates by Field Office^{4,11,19}
April 2018

Office	Approval Rate	Denial Rate	Need Based Denial Rate	Procedural Denial Rate
Chaves County ISD	81.3%	18.8%	12.4%	6.4%
Cibola County ISD	85.4%	14.6%	8.2%	6.4%
Colfax County ISD	89.3%	10.7%	5.7%	5.0%
Curry County ISD	78.3%	21.7%	12.2%	9.5%
East Dona Ana County ISD	80.7%	19.3%	13.9%	5.4%
Eddy Artesia County ISD	76.8%	23.2%	9.3%	13.9%
Eddy Carlsbad County ISD	66.2%	33.8%	15.7%	18.1%
Grant County ISD	78.5%	21.5%	9.0%	12.5%
Guadalupe County ISD	92.9%	7.1%	4.7%	2.4%
Hidalgo County ISD	0.0%	0.0%	0.0%	0.0%
Lea County ISD	78.5%	21.5%	13.6%	7.9%
Lincoln County ISD	80.0%	20.0%	10.0%	10.0%
Luna County ISD	85.9%	14.1%	7.0%	7.1%
McKinley County ISD	86.6%	13.4%	6.6%	6.8%
Northeast Bernalillo County ISD	82.0%	18.0%	10.6%	7.4%
Northwest Bernalillo County ISD	78.1%	21.9%	8.0%	13.9%
Otero County ISD	80.4%	19.6%	10.6%	9.0%
Quay County ISD	78.0%	22.0%	9.0%	13.0%
Rio Arriba County ISD	78.4%	21.6%	9.2%	12.4%
Roosevelt County ISD	100.0%	0.0%	0.0%	0.0%
San Juan County ISD	82.0%	18.0%	9.1%	8.9%
San Miguel County ISD	89.7%	10.3%	4.4%	5.9%
Sandoval County ISD	80.4%	19.6%	8.7%	10.9%
Santa Fe County ISD	77.8%	22.2%	9.4%	12.8%
Sierra County ISD	88.6%	11.4%	9.1%	2.3%
Socorro County ISD	74.5%	25.5%	8.7%	16.8%
South Dona Ana ISD	77.2%	22.8%	18.1%	4.7%
Southeast Bernalillo County ISD	75.5%	24.5%	16.7%	7.8%
Southwest Bernalillo County ISD	83.2%	16.8%	7.7%	9.1%
Taos County ISD	85.2%	14.8%	7.2%	7.6%
Torrance County ISD	90.0%	10.0%	6.4%	3.6%
Valencia North County ISD	83.5%	16.5%	6.2%	10.3%
Valencia South County ISD	100.0%	0.0%	0.0%	0.0%
West Dona Ana County ISD	82.0%	18.0%	13.5%	4.5%
Centralized Units	0.0%	0.0%	0.0%	0.0%
Statewide Total	80.8%	19.2%	10.3%	8.9%

Medicaid EDG Initial Disposition Rates by Region^{4,11,19}
April 2018

Region	Approval Rate	Denial Rate	Need Based Denial Rate	Procedural Denial Rate
Region 1 - NW	83.7%	16.3%	7.8%	8.5%
Region 2 - NE	81.5%	18.5%	8.1%	10.4%
Region 3 - Central	80.5%	19.5%	10.2%	9.3%
Region 4 - SE	77.5%	22.5%	12.8%	9.7%
Region 5 - SW	80.5%	19.5%	13.1%	6.4%
Centralized Units				
Statewide Total	80.8%	19.2%	10.3%	8.9%



Medicaid: Percentage of Initial EDG Approvals Processed Timely by Field Office ^{13,19}

	Oct-17	Nov-17	Dec-17	Jan-18	Feb-18	Mar-18	Apr-18	May-18	Jun-18	Jul-18	Aug-18	Sep-18	Average
Cibola	92.2%	94.4%	94.6%	98.5%	98.0%	98.9%	99.0%						96.5%
McKinley	95.6%	97.4%	96.9%	97.9%	98.3%	98.8%	99.3%						97.7%
San Juan	93.4%	92.0%	94.3%	94.7%	94.8%	95.9%	96.2%						94.5%
Sierra	95.8%	98.6%	96.9%	97.3%	99.4%	100.0%	99.1%						98.2%
Socorro	95.4%	98.7%	96.7%	97.0%	95.7%	95.9%	98.0%						96.8%
Valencia North	93.2%	94.1%	94.0%	95.2%	97.7%	98.9%	98.2%						95.9%
Valencia South	100.0%	100.0%	100.0%	100.0%		100.0%	100.0%						100.0%
NW Region 1 Total	94.0%	94.7%	95.2%	96.2%	96.8%	97.7%	97.8%						96.1%
Colfax	93.9%	98.4%	97.4%	98.4%	95.1%	100.0%	98.1%						97.3%
Guadalupe	97.9%	100.0%	96.6%	100.0%	100.0%	100.0%	100.0%						99.2%
Quay	98.0%	94.9%	94.6%	97.2%	97.1%	93.7%	97.4%						96.1%
Rio Arriba	96.9%	94.7%	91.1%	96.9%	95.7%	97.3%	99.1%						96.0%
San Miguel	97.3%	98.9%	99.0%	98.4%	98.0%	99.3%	99.0%						98.5%
Sandoval	97.0%	97.0%	96.8%	97.9%	96.8%	97.7%	97.5%						97.2%
Santa Fe	96.1%	95.7%	96.6%	95.2%	95.5%	98.4%	98.2%						96.5%
Taos	98.3%	96.8%	98.2%	96.8%	97.0%	95.9%	98.7%						97.4%
NE Region 2 Total	96.8%	96.6%	96.6%	97.1%	96.4%	97.9%	98.3%						97.1%
NE Bernalillo	95.1%	93.6%	93.9%	94.5%	97.1%	96.7%	97.1%						95.4%
NW Bernalillo	96.3%	95.4%	94.6%	94.7%	96.4%	96.9%	98.1%						96.1%
SE Bernalillo	88.2%	90.8%	94.4%	92.2%	95.8%	95.9%	95.3%						93.2%
SW Bernalillo	95.8%	96.2%	95.2%	94.9%	95.1%	97.1%	97.7%						96.0%
Torrance	95.5%	95.1%	95.2%	94.8%	91.1%	99.2%	96.4%						95.3%
Gen. Region 3 Total	94.3%	94.3%	94.5%	94.2%	95.9%	96.8%	97.2%						95.3%
Chaves	96.4%	96.6%	97.1%	98.6%	97.4%	98.1%	98.6%						97.5%
Curry	94.8%	94.2%	98.4%	98.3%	96.5%	97.3%	98.3%						96.8%
Eddy Artesia	95.3%	94.9%	96.4%	93.2%	96.4%	98.2%	98.3%						96.1%
Eddy Carlsbad	93.2%	98.4%	97.6%	94.8%	98.5%	96.6%	96.7%						96.5%
Lea	96.1%	94.7%	94.0%	96.5%	99.5%	96.5%	97.5%						96.4%
Lincoln	95.7%	94.7%	97.1%	97.4%	97.3%	99.4%	97.1%						96.9%
Roosevelt	94.6%	94.2%	93.4%	94.9%		83.3%	100.0%						93.4%
SE Region 4 Total	95.4%	95.5%	96.3%	96.9%	97.7%	97.4%	97.9%						96.7%
East Dona Ana	96.1%	97.1%	97.5%	97.3%	97.1%	95.0%	97.5%						96.8%
Grant	93.9%	96.8%	99.3%	97.5%	98.4%	97.0%	99.5%						97.5%
Luna	96.8%	97.8%	97.4%	98.8%	98.2%	97.9%	99.2%						98.0%
Otero	97.6%	96.4%	98.0%	96.3%	95.0%	97.6%	97.9%						97.0%
South Dona Ana	97.2%	98.3%	98.0%	97.5%	98.6%	98.6%	99.4%						98.2%
West Dona Ana	97.4%	96.7%	98.3%	98.5%	98.4%	98.6%	98.1%						98.0%
SW Region 5 Total	96.7%	97.2%	98.0%	97.6%	97.7%	97.5%	98.5%						97.6%
STATE TOTAL	95.3%	95.4%	95.8%	96.0%	96.7%	97.4%	97.8%						96.3%

Medicaid: Percentage of Initial EDG Denials Processed Timely by Field Office^{13,19}

	Oct-17	Nov-17	Dec-17	Jan-18	Feb-18	Mar-18	Apr-18	May-18	Jun-18	Jul-18	Aug-18	Sep-18	Average
Cibola	51.4%	41.2%	76.0%	78.3%	72.7%	64.5%	88.2%						67.5%
McKinley	54.4%	59.7%	54.4%	51.6%	59.3%	69.4%	74.4%						60.5%
San Juan	53.1%	57.1%	45.5%	43.6%	44.9%	58.6%	63.1%						52.3%
Sierra	92.9%	95.0%	96.3%	33.3%	30.8%	77.8%	80.0%						72.3%
Socorro	57.5%	80.0%	96.3%	95.8%	100.0%	71.1%	77.1%						82.5%
Valencia North	55.8%	52.1%	42.3%	38.3%	55.6%	64.4%	89.8%						56.9%
Valencia South	66.7%												66.7%
NW Region 1 Total	55.0%	57.7%	53.2%	51.0%	53.0%	64.5%	73.5%						58.3%
Colfax	90.6%	95.8%	100.0%	92.9%	94.3%	88.0%	84.6%						92.3%
Guadalupe	90.0%	11.1%	75.0%	72.7%	76.5%	44.4%	66.7%						62.4%
Quay	72.7%	33.3%	54.5%	78.6%	58.8%	58.3%	81.8%						62.6%
Rio Arriba	71.4%	56.3%	53.2%	71.9%	49.6%	44.3%	64.6%						58.8%
San Miguel	59.5%	67.3%	76.5%	78.8%	82.1%	71.4%	77.3%						73.3%
Sandoval	43.6%	51.2%	63.7%	74.3%	75.9%	72.8%	83.7%						66.5%
Santa Fe	59.1%	53.7%	37.8%	48.1%	64.7%	71.3%	89.3%						60.6%
Taos	47.4%	76.5%	75.9%	87.9%	65.7%	56.5%	56.1%						66.6%
NE Region 2 Total	57.2%	56.4%	55.2%	64.0%	67.8%	67.2%	80.0%						64.0%
NE Bernalillo	45.7%	38.4%	35.2%	50.0%	67.6%	74.1%	70.3%						54.5%
NW Bernalillo	39.2%	40.9%	41.8%	36.0%	42.4%	48.5%	68.1%						45.3%
SE Bernalillo	56.6%	46.6%	67.6%	80.6%	79.3%	81.1%	80.0%						70.2%
SW Bernalillo	68.5%	68.1%	80.1%	88.4%	80.8%	78.7%	86.2%						78.7%
Torrance	56.8%	42.1%	43.8%	38.5%	42.7%	56.8%	89.3%						52.9%
Gen. Region 3 Total	52.5%	48.0%	53.3%	59.5%	65.0%	70.0%	75.5%						60.5%
Chaves	72.3%	60.2%	79.9%	83.6%	79.6%	83.9%	77.8%						76.8%
Curry	61.4%	59.0%	65.6%	84.3%	73.0%	78.8%	64.9%						69.6%
Eddy Artesia	65.6%	53.3%	81.3%	76.4%	82.9%	84.1%	88.6%						76.0%
Eddy Carlsbad	51.8%	35.8%	61.7%	79.3%	83.8%	67.2%	71.2%						64.4%
Lea	72.7%	69.6%	70.0%	88.0%	85.3%	85.6%	82.3%						79.1%
Lincoln	35.9%	63.8%	77.3%	91.3%	85.4%	90.5%	55.9%						71.4%
Roosevelt	36.4%	46.4%	64.5%	64.6%		100.0%							62.4%
SE Region 4 Total	61.3%	56.6%	70.5%	83.1%	80.7%	82.0%	74.1%						72.6%
East Dona Ana	80.0%	74.3%	73.1%	94.5%	67.5%	70.7%	85.7%						78.0%
Grant	76.7%	32.4%	85.9%	79.7%	67.4%	83.3%	77.2%						71.8%
Luna	47.7%	64.9%	41.8%	62.9%	61.5%	70.6%	73.8%						60.5%
Otero	61.9%	48.3%	67.7%	62.8%	71.6%	80.6%	82.4%						67.9%
South Dona Ana	86.3%	73.0%	86.6%	91.8%	82.3%	83.8%	90.1%						84.8%
West Dona Ana	66.9%	67.0%	80.6%	94.7%	82.0%	84.0%	86.2%						80.2%
SW Region 5 Total	73.8%	64.3%	76.4%	85.1%	74.8%	78.5%	84.7%						76.8%
STATE TOTAL	58.4%	54.6%	59.5%	66.4%	66.9%	72.0%	77.3%						65.0%

Medicaid Renewal Disposition Counts by Field Office^{4,11}
April 2018

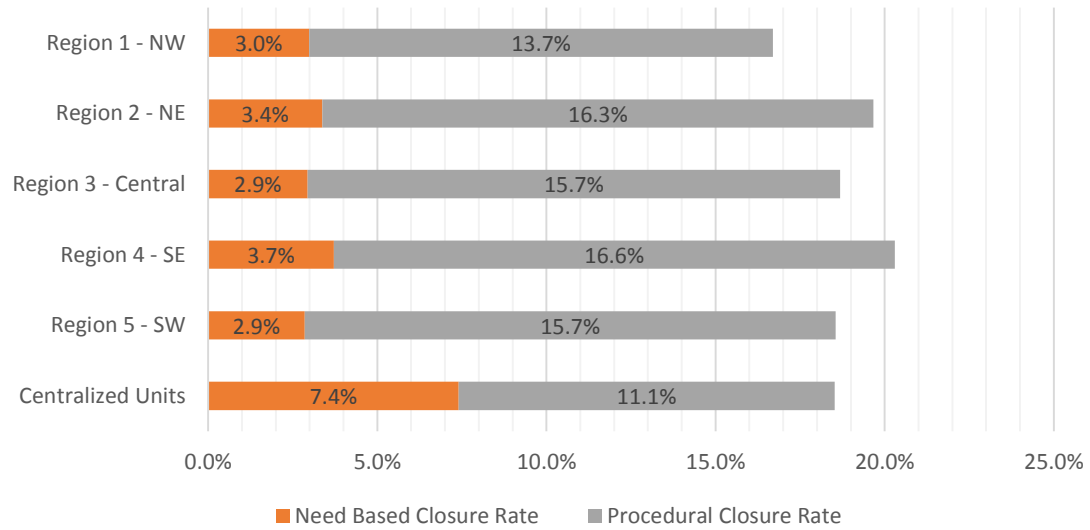
Office	Approvals	Closures	Need Based Closures	Procedural Closures
Chaves County ISD	2,760	877	130	747
Cibola County ISD	1,348	260	40	220
Colfax County ISD	613	65	23	42
Curry County ISD	2,790	503	110	393
East Dona Ana County ISD	3,501	1096	127	969
Eddy Artesia County ISD	648	229	38	191
Eddy Carlsbad County ISD	1,159	358	73	285
Grant County ISD	1,120	152	53	99
Guadalupe County ISD	264	36	7	29
Hidalgo County ISD	167	13	1	12
Lea County ISD	2,662	641	100	541
Lincoln County ISD	627	103	45	58
Luna County ISD	1,471	175	44	131
McKinley County ISD	4,659	643	149	494
Northeast Bernalillo County ISD	6,596	996	223	773
Northwest Bernalillo County ISD	5,420	987	187	800
Otero County ISD	2,056	266	60	206
Quay County ISD	455	124	15	109
Rio Arriba County ISD	2,176	439	87	352
Roosevelt County ISD	0	0	0	0
San Juan County ISD	5,541	1246	250	996
San Miguel County ISD	1,258	214	26	188
Sandoval County ISD	4,987	1579	169	1410
Santa Fe County ISD	3,724	910	240	670
Sierra County ISD	949	124	24	100
Socorro County ISD	984	234	35	199
South Dona Ana ISD	3,995	1119	140	979
Southeast Bernalillo County ISD	3,777	787	127	660
Southwest Bernalillo County ISD	7,730	2549	313	2236
Taos County ISD	1,257	240	52	188
Torrance County ISD	1,312	387	47	340
Valencia North County ISD	3,687	933	118	815
Valencia South County ISD	0	0	0	0
West Dona Ana County ISD	3,987	890	146	744
Centralized Units	22	5	2	3
Statewide Total	83,702	19,180	3,201	15,979

Medicaid Renewal Disposition Rates by Field Office²⁰
April 2018

Office	Approval Rate	Closure Rate	Need Based Closure Rate	Procedural Closure Rate
Chaves County ISD	75.9%	24.1%	3.6%	20.5%
Cibola County ISD	83.8%	16.2%	2.5%	13.7%
Colfax County ISD	90.4%	9.6%	3.4%	6.2%
Curry County ISD	84.7%	15.3%	3.3%	11.9%
East Dona Ana County ISD	76.2%	23.8%	2.8%	21.1%
Eddy Artesia County ISD	73.9%	26.1%	4.3%	21.8%
Eddy Carlsbad County ISD	76.4%	23.6%	4.8%	18.8%
Grant County ISD	88.1%	11.9%	4.2%	7.8%
Guadalupe County ISD	88.0%	12.0%	2.3%	9.7%
Hidalgo County ISD	92.8%	7.2%	0.6%	6.7%
Lea County ISD	80.6%	19.4%	3.0%	16.4%
Lincoln County ISD	85.9%	14.1%	6.2%	7.9%
Luna County ISD	89.4%	10.6%	2.7%	8.0%
McKinley County ISD	87.9%	12.1%	2.8%	9.3%
Northeast Bernalillo County ISD	86.9%	13.1%	2.9%	10.2%
Northwest Bernalillo County ISD	84.6%	15.4%	2.9%	12.5%
Otero County ISD	88.5%	11.5%	2.6%	8.9%
Quay County ISD	78.6%	21.4%	2.6%	18.8%
Rio Arriba County ISD	83.2%	16.8%	3.3%	13.5%
Roosevelt County ISD	0.0%	0.0%	0.0%	0.0%
San Juan County ISD	81.6%	18.4%	3.7%	14.7%
San Miguel County ISD	85.5%	14.5%	1.8%	12.8%
Sandoval County ISD	76.0%	24.0%	2.6%	21.5%
Santa Fe County ISD	80.4%	19.6%	5.2%	14.5%
Sierra County ISD	88.4%	11.6%	2.2%	9.3%
Socorro County ISD	80.8%	19.2%	2.9%	16.3%
South Dona Ana ISD	78.1%	21.9%	2.7%	19.1%
Southeast Bernalillo County ISD	82.8%	17.2%	2.8%	14.5%
Southwest Bernalillo County ISD	75.2%	24.8%	3.0%	21.8%
Taos County ISD	84.0%	16.0%	3.5%	12.6%
Torrance County ISD	77.2%	22.8%	2.8%	20.0%
Valencia North County ISD	79.8%	20.2%	2.6%	17.6%
Valencia South County ISD	0.0%	0.0%	0.0%	0.0%
West Dona Ana County ISD	81.8%	18.2%	3.0%	15.3%
Centralized Units	81.5%	18.5%	7.4%	11.1%
Statewide Total	81.4%	18.6%	3.1%	15.5%

Medicaid Renewal Disposition Rates by Region²⁰
April 2018

Region	Approval Rate	Closure Rate	Need Based Closure Rate	Procedural Closure Rate
Region 1 - NW	83.3%	16.7%	3.0%	13.7%
Region 2 - NE	80.3%	19.7%	3.4%	16.3%
Region 3 - Central	81.3%	18.7%	2.9%	15.7%
Region 4 - SE	79.7%	20.3%	3.7%	16.6%
Region 5 - SW	81.5%	18.5%	2.9%	15.7%
Centralized Units	81.5%	18.5%	7.4%	11.1%
Statewide Total	81.4%	18.6%	3.1%	15.5%



Medicaid: Percentage of Approved Renewal EDGs Processed by Certification Date ¹¹

	Oct-17	Nov-17	Dec-17	Jan-18	Feb-18	Mar-18	Apr-18	May-18	Jun-18	Jul-18	Aug-18	Sep-18	Average
Cibola		98.9%	98.5%	99.3%	98.5%	98.9%	98.3%						98.7%
McKinley		98.9%	99.3%	98.7%	99.1%	98.7%	98.8%						98.9%
San Juan		98.9%	98.4%	98.6%	98.4%	98.8%	97.8%						98.5%
Sierra		99.1%	99.5%	99.0%	99.6%	98.7%	99.5%						99.2%
Socorro		99.5%	99.1%	99.0%	99.2%	98.9%	98.7%						99.1%
Valencia North		98.5%	98.7%	98.1%	98.8%	98.7%	98.5%						98.6%
Valencia South													
NW Region 1 Total		99.0%	98.9%	98.8%	98.9%	98.8%	98.6%						98.8%
Colfax		98.7%	99.6%	97.3%	99.4%	98.2%	99.8%						98.8%
Guadalupe		99.2%	98.5%	96.6%	99.6%	99.5%	98.9%						98.7%
Quay		99.0%	99.0%	98.9%	97.6%	99.3%	95.4%						98.2%
Rio Arriba		98.4%	97.8%	97.1%	98.1%	98.4%	97.7%						97.9%
San Miguel		99.5%	98.3%	98.9%	98.9%	97.7%	99.3%						98.8%
Sandoval		98.4%	98.6%	98.3%	98.3%	98.6%	97.3%						98.2%
Santa Fe		95.6%	95.7%	95.5%	96.7%	97.1%	97.2%						96.3%
Taos		98.7%	98.6%	98.6%	96.9%	98.8%	98.0%						98.3%
NE Region 2 Total		98.5%	98.2%	97.6%	98.2%	98.4%	98.0%						98.2%
NE Bernalillo		97.8%	97.0%	96.9%	97.5%	97.7%	98.4%						97.6%
NW Bernalillo		97.6%	97.8%	97.4%	98.5%	98.3%	98.6%						98.0%
SE Bernalillo		86.5%	96.2%	97.5%	98.1%	99.0%	97.4%						95.8%
SW Bernalillo		98.8%	96.0%	97.0%	97.8%	97.9%	98.2%						97.6%
Torrance		98.8%	96.9%	96.5%	98.0%	97.4%	98.2%						97.6%
Gen. Region 3 Total		95.9%	96.8%	97.1%	98.0%	98.0%	98.2%						97.3%
Chaves		98.7%	98.5%	98.6%	98.5%	98.2%	98.7%						98.6%
Curry		99.0%	98.7%	98.7%	99.0%	98.7%	98.9%						98.8%
Eddy Artesia		99.2%	97.5%	97.1%	96.9%	98.6%	98.8%						98.0%
Eddy Carlsbad		97.7%	98.8%	97.2%	98.2%	98.1%	98.0%						98.0%
Lea		98.8%	97.8%	98.7%	98.6%	98.7%	97.1%						98.3%
Lincoln		98.2%	97.5%	97.6%	97.7%	98.8%	97.9%						98.0%
Roosevelt		99.4%	97.9%										98.7%
SE Region 4 Total		98.7%	98.1%	98.0%	98.2%	98.5%	98.2%						98.3%
East Dona Ana		98.9%	97.9%	98.6%	99.0%	98.6%	98.5%						98.6%
Grant		98.5%	98.7%	98.5%	99.1%	98.9%	97.4%						98.5%
Luna		99.1%	98.2%	98.1%	98.5%	98.3%	98.2%						98.4%
Otero		98.9%	97.6%	98.0%	97.2%	97.5%	97.5%						97.8%
South Dona Ana		98.2%	97.4%	98.1%	98.9%	98.5%	97.1%						98.0%
West Dona Ana		99.2%	99.0%	98.7%	98.7%	98.3%	98.3%						98.7%
SW Region 5 Total		98.8%	98.1%	98.3%	98.6%	98.3%	97.8%						98.3%
STATE TOTAL		97.8%	97.8%	97.9%	98.3%	98.3%	98.1%						98.0%

Administrative, Annual, and Auto Renewals are included
 No data available for October 2017

Medicaid: Percentage of Closures EDGs Processed by Certification End Date ¹¹													
	Oct-17	Nov-17	Dec-17	Jan-18	Feb-18	Mar-18	Apr-18	May-18	Jun-18	Jul-18	Aug-18	Sep-18	Average
Cibola		37.6%	27.5%	14.6%	21.3%	39.8%	28.8%						28.3%
McKinley		23.9%	21.0%	21.7%	30.7%	39.5%	31.1%						28.0%
San Juan		36.7%	19.9%	39.0%	39.1%	48.1%	24.2%						34.5%
Sierra		45.6%	22.7%	26.7%	37.9%	34.3%	21.0%						31.4%
Socorro		33.0%	20.7%	50.0%	40.0%	37.8%	62.8%						40.7%
Valencia North		34.6%	30.5%	53.8%	38.6%	40.7%	50.6%						41.5%
Valencia South													
NW Region 1 Total		35.2%	23.7%	34.3%	34.6%	40.1%	36.4%						34.1%
Colfax		49.3%	27.8%	26.2%	21.5%	23.6%	36.9%						30.9%
Guadalupe		28.6%	57.9%	27.1%	26.3%	41.7%	22.2%						34.0%
Quay		24.7%	26.5%	17.1%	40.0%	54.1%	60.5%						37.1%
Rio Arriba		23.3%	26.1%	24.9%	29.5%	32.3%	23.0%						26.5%
San Miguel		19.4%	21.8%	23.6%	26.9%	44.3%	26.2%						27.0%
Sandoval		20.5%	25.9%	21.6%	21.5%	39.2%	44.5%						28.9%
Santa Fe		22.0%	22.6%	23.2%	33.1%	38.4%	29.3%						28.1%
Taos		24.4%	21.5%	44.9%	24.4%	34.9%	32.5%						30.4%
NE Region 2 Total		26.5%	28.8%	26.1%	27.9%	38.6%	34.4%						30.4%
NE Bernalillo		20.3%	16.0%	16.1%	26.4%	28.4%	35.9%						23.9%
NW Bernalillo		16.2%	20.8%	24.8%	30.1%	47.5%	33.1%						28.7%
SE Bernalillo		18.7%	21.5%	27.2%	26.7%	44.1%	22.2%						26.7%
SW Bernalillo		24.5%	28.2%	34.9%	33.9%	46.2%	76.7%						40.8%
Torrance		25.4%	21.9%	33.9%	24.7%	37.8%	54.0%						32.9%
Gen. Region 3 Total		21.0%	21.7%	27.4%	28.3%	40.8%	44.4%						30.6%
Chaves		34.4%	24.7%	28.7%	22.0%	36.7%	50.4%						32.8%
Curry		27.2%	25.2%	19.7%	27.3%	38.7%	36.4%						29.1%
Eddy Artesia		31.1%	24.0%	21.3%	20.0%	29.9%	62.4%						31.5%
Eddy Carlsbad		26.9%	23.2%	19.9%	27.2%	26.7%	27.7%						25.3%
Lea		24.6%	21.4%	26.4%	20.4%	35.1%	20.0%						24.6%
Lincoln		23.1%	31.9%	16.9%	20.0%	45.8%	46.6%						30.7%
Roosevelt		24.3%	14.5%	0.0%									12.9%
SE Region 4 Total		27.4%	23.6%	19.0%	22.8%	35.5%	40.6%						28.1%
East Dona Ana		28.5%	31.6%	28.5%	37.3%	35.6%	41.8%						33.9%
Grant		38.7%	27.7%	18.1%	30.7%	33.2%	49.3%						33.0%
Luna		37.1%	38.5%	26.9%	47.7%	43.2%	27.4%						36.8%
Otero		37.3%	31.9%	28.1%	38.4%	32.8%	32.0%						33.4%
South Dona Ana		41.6%	35.7%	27.7%	32.6%	37.6%	56.0%						38.5%
West Dona Ana		35.1%	29.6%	37.4%	41.5%	39.3%	19.9%						33.8%
SW Region 5 Total		36.4%	32.5%	27.8%	38.0%	37.0%	37.7%						34.9%
STATE TOTAL		25.8%	24.2%	26.3%	30.1%	38.6%	42.1%						31.2%

Annual and Auto Renewals are included
No data available for October 2017

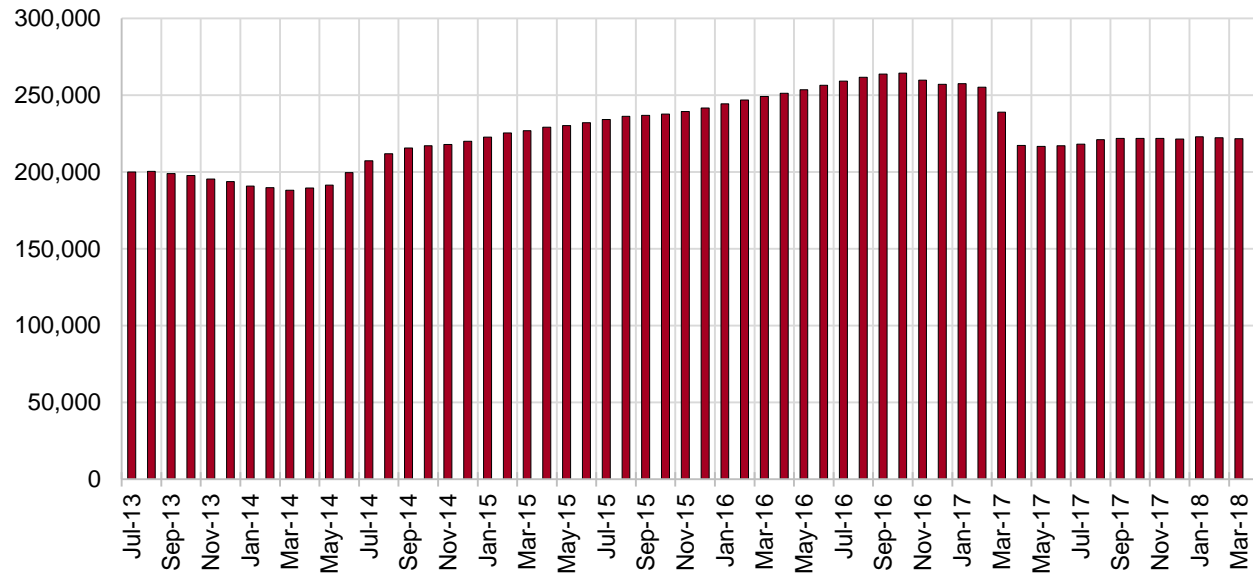
SNAP Cases by Field Office⁶

Office				Percent Change	
	Apr-17	Mar-18	Apr-18	Apr-17- Apr-18	Mar-18- Apr-18
Chaves County ISD	7,195	7,117	7,106	-1.2%	-0.2%
Cibola County ISD	3,603	3,617	3,590	-0.4%	-0.7%
Colfax County ISD	1,577	1,633	1,636	3.7%	0.2%
Curry County ISD	4,598	6,508	6,579	43.1%	1.1%
East Dona Ana County ISD	7,876	7,953	7,942	0.8%	-0.1%
Eddy Artesia County ISD	1,677	1,654	1,615	-3.7%	-2.4%
Eddy Carlsbad County ISD	3,406	3,078	3,029	-11.1%	-1.6%
Grant County ISD	3,495	3,561	3,529	1.0%	-0.9%
Guadalupe County ISD	713	719	714	0.1%	-0.7%
Hidalgo County ISD	438	439	434	-0.9%	-1.1%
Lea County ISD	5,749	5,729	5,694	-1.0%	-0.6%
Lincoln County ISD	1,920	1,927	1,916	-0.2%	-0.6%
Luna County ISD	4,263	4,304	4,272	0.2%	-0.7%
McKinley County ISD	9,358	9,638	9,670	3.3%	0.3%
Northeast Bernalillo County ISD	19,041	20,329	20,379	7.0%	0.2%
Northwest Bernalillo County ISD	17,485	19,201	19,333	10.6%	0.7%
Otero County ISD	5,401	5,556	5,578	3.3%	0.4%
Quay County ISD	1,250	1,267	1,255	0.4%	-0.9%
Rio Arriba County ISD	6,766	6,754	6,714	-0.8%	-0.6%
Roosevelt County ISD	1,655	0	0	-100.0%	N/A
San Juan County ISD	13,558	13,404	13,357	-1.5%	-0.4%
San Miguel County ISD	4,948	4,889	4,872	-1.5%	-0.3%
Sandoval County ISD	10,586	10,988	10,960	3.5%	-0.3%
Santa Fe County ISD	10,356	9,830	9,763	-5.7%	-0.7%
Sierra County ISD	2,665	2,695	2,654	-0.4%	-1.5%
Socorro County ISD	2,808	2,825	2,805	-0.1%	-0.7%
South Dona Ana ISD	8,506	8,531	8,490	-0.2%	-0.5%
Southeast Bernalillo County ISD	12,325	11,909	11,895	-3.5%	-0.1%
Southwest Bernalillo County ISD	17,920	18,669	18,603	3.8%	-0.4%
Taos County ISD	4,027	4,229	4,223	4.9%	-0.1%
Torrance County ISD	3,328	3,447	3,425	2.9%	-0.6%
Valencia North County ISD	8,169	8,390	8,401	2.8%	0.1%
Valencia South County ISD	5	0	3	-40.0%	N/A
West Dona Ana County ISD	10,568	10,725	10,659	0.9%	-0.6%
Centralized Units	7	32	44	528.6%	37.5%
Statewide Total	217,242	221,547	221,139	1.8%	-0.2%

SNAP Cases by Region⁶

Region	Apr-17	Mar-18	Apr-18	Percent Change	
				Apr-17- Apr-18	Mar-18- Apr-18
Region 1 - NW	40,166	40,569	40,480	0.8%	-0.2%
Region 2 - NE	40,223	40,309	40,137	-0.2%	-0.4%
Region 3 - Central	70,099	73,555	73,635	5.0%	0.1%
Region 4 - SE	26,200	26,013	25,939	-1.0%	-0.3%
Region 5 - SW	40,547	41,069	40,904	0.9%	-0.4%
Centralized Units	7	32	44	528.6%	37.5%
Statewide Total	217,242	221,547	221,139	1.8%	-0.2%

SNAP Caseload: SFY-14 to Current



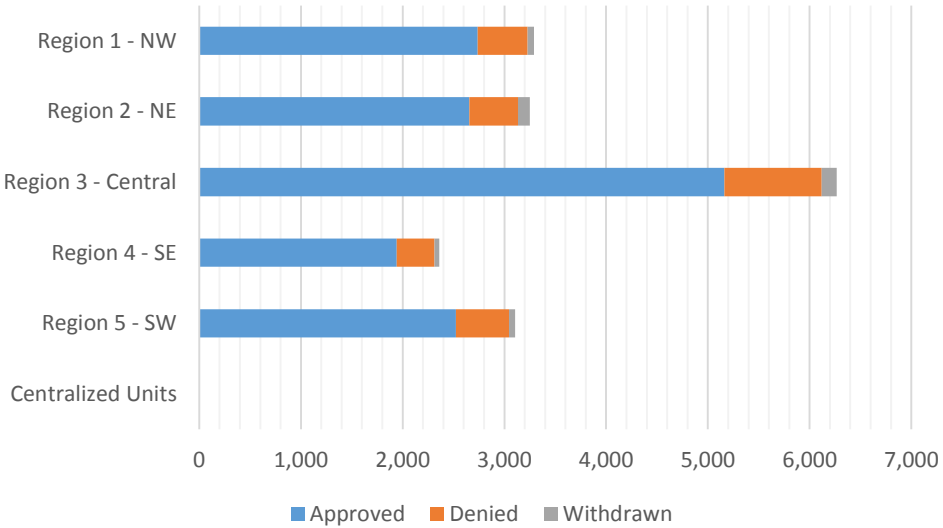
SNAP Initial Applications by Field Office^{4,11}
April 2018

Office	Approved	Denied	Withdrawn	Total Cases Processed
Chaves County ISD	471	79	12	562
Cibola County ISD	217	26	4	247
Colfax County ISD	125	21	4	150
Curry County ISD	521	85	9	615
East Dona Ana County ISD	525	136	23	684
Eddy Artesia County ISD	118	25	3	146
Eddy Carlsbad County ISD	276	51	8	335
Grant County ISD	254	51	1	306
Guadalupe County ISD	36	5	1	42
Hidalgo County ISD	0	0	0	0
Lea County ISD	429	101	14	544
Lincoln County ISD	117	30	2	149
Luna County ISD	252	46	8	306
McKinley County ISD	630	92	13	735
Northeast Bernalillo County ISD	1,581	274	36	1,891
Northwest Bernalillo County ISD	1,315	241	40	1,596
Otero County ISD	380	66	3	449
Quay County ISD	74	8	1	83
Rio Arriba County ISD	408	57	29	494
Roosevelt County ISD	8	1	0	9
San Juan County ISD	1,048	200	26	1,274
San Miguel County ISD	325	51	22	398
Sandoval County ISD	757	169	28	954
Santa Fe County ISD	641	126	21	788
Sierra County ISD	127	20	1	148
Socorro County ISD	146	21	3	170
South Dona Ana ISD	411	70	8	489
Southeast Bernalillo County ISD	857	194	22	1,073
Southwest Bernalillo County ISD	1,195	217	45	1,457
Taos County ISD	289	41	11	341
Torrance County ISD	215	29	6	250
Valencia North County ISD	569	131	17	717
Valencia South County ISD	1	0	0	1
West Dona Ana County ISD	702	153	17	872
Centralized Units	0	0	0	0
Statewide Total	15,020	2,817	438	18,275

SNAP Initial Applications by Region^{4,11}
April 2018

Region	Approved	Denied	Withdrawn	Total Cases Processed
Region 1 - NW	2,738	490	64	3,292
Region 2 - NE	2,655	478	117	3,250
Region 3 - Central	5,163	955	149	6,267
Region 4 - SE	1,940	372	48	2,360
Region 5 - SW	2,524	522	60	3,106
Centralized Units	0	0	0	0

Statewide Total	15,020	2,817	438	18,275
-----------------	--------	-------	-----	--------

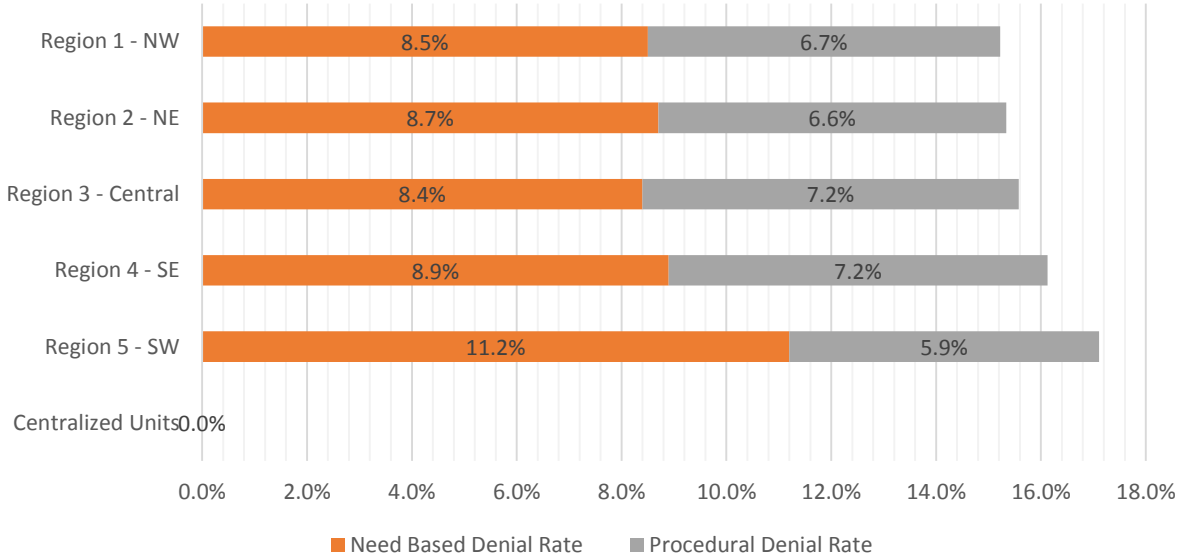


SNAP Initial Disposition Rates by Field Office^{4,11}
April 2018

Office	Approval Rate	Denial Rate	Need Based Denial Rate	Procedural Denial Rate
Chaves County ISD	85.6%	14.4%	5.7%	8.7%
Cibola County ISD	89.3%	10.7%	5.8%	4.9%
Colfax County ISD	85.6%	14.4%	9.6%	4.8%
Curry County ISD	86.0%	14.0%	9.5%	4.5%
East Dona Ana County ISD	79.4%	20.6%	12.3%	8.3%
Eddy Artesia County ISD	82.5%	17.5%	12.6%	4.9%
Eddy Carlsbad County ISD	84.4%	15.6%	8.9%	6.7%
Grant County ISD	83.3%	16.7%	11.5%	5.2%
Guadalupe County ISD	87.8%	12.2%	9.8%	2.4%
Hidalgo County ISD	0.0%	100.0%	100.0%	0.0%
Lea County ISD	80.9%	19.1%	9.9%	9.2%
Lincoln County ISD	79.6%	20.4%	10.9%	9.5%
Luna County ISD	84.6%	15.4%	9.7%	5.7%
McKinley County ISD	87.3%	12.7%	8.4%	4.3%
Northeast Bernalillo County ISD	85.2%	14.8%	7.7%	7.1%
Northwest Bernalillo County ISD	84.5%	15.5%	8.4%	7.1%
Otero County ISD	85.2%	14.8%	9.0%	5.8%
Quay County ISD	90.2%	9.8%	9.8%	0.0%
Rio Arriba County ISD	87.7%	12.3%	7.4%	4.9%
Roosevelt County ISD	88.9%	11.1%	11.1%	0.0%
San Juan County ISD	84.0%	16.0%	8.7%	7.3%
San Miguel County ISD	86.4%	13.6%	8.5%	5.1%
Sandoval County ISD	81.7%	18.3%	11.0%	7.3%
Santa Fe County ISD	83.6%	16.4%	7.9%	8.5%
Sierra County ISD	86.4%	13.6%	9.5%	4.1%
Socorro County ISD	87.4%	12.6%	7.8%	4.8%
South Dona Ana ISD	85.4%	14.6%	9.6%	5.0%
Southeast Bernalillo County ISD	81.5%	18.5%	9.9%	8.6%
Southwest Bernalillo County ISD	84.6%	15.4%	8.4%	7.0%
Taos County ISD	87.6%	12.4%	4.8%	7.6%
Torrance County ISD	88.1%	11.9%	8.2%	3.7%
Valencia North County ISD	81.3%	18.7%	8.8%	9.9%
Valencia South County ISD	100.0%	0.0%	0.0%	0.0%
West Dona Ana County ISD	82.1%	17.9%	13.0%	4.9%
Centralized Units				
Statewide Total	84.2%	15.8%	9.0%	6.8%

SNAP Initial Disposition Rates by Region^{4,11}
April 2018

Region	Approval Rate	Denial Rate	Need Based Denial Rate	Procedural Denial Rate
Region 1 - NW	84.8%	15.2%	8.5%	6.7%
Region 2 - NE	84.7%	15.3%	8.7%	6.6%
Region 3 - Central	84.4%	15.6%	8.4%	7.2%
Region 4 - SE	83.9%	16.1%	8.9%	7.2%
Region 5 - SW	82.9%	17.1%	11.2%	5.9%
Centralized Units				
Statewide Total	84.2%	15.8%	9.0%	6.8%



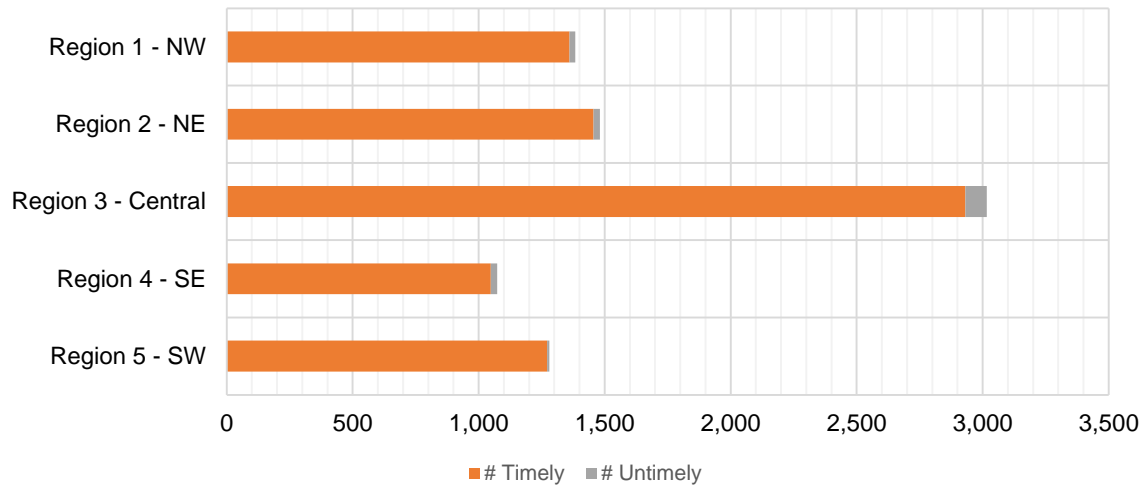
SNAP Expedite Timeliness by Field Office¹³
April 2018

Office Name	Total Expedited Approvals	# Timely	# Untimely	Percentage Timely
Chaves County ISD	222	218	4	98.2 %
Cibola County ISD	107	103	4	96.3 %
Colfax County ISD	70	70	0	100.0 %
Curry County ISD	312	305	7	97.8 %
East Dona Ana County ISD	267	267	0	100.0 %
Eddy Artesia County ISD	53	52	1	98.1 %
Eddy Carlsbad County ISD	177	172	5	97.2 %
Grant County ISD	166	165	1	99.4 %
Guadalupe County ISD	15	15	0	100.0 %
Lea County ISD	251	243	8	96.8 %
Lincoln County ISD	55	54	1	98.2 %
Luna County ISD	98	97	1	99.0 %
McKinley County ISD	301	300	1	99.7 %
Northeast Bernalillo County ISD	998	965	33	96.7 %
Northwest Bernalillo County ISD	795	769	26	96.7 %
Otero County ISD	212	210	2	99.1 %
Quay County ISD	27	26	1	96.3 %
Rio Arriba County ISD	251	245	6	97.6 %
Roosevelt County ISD	4	4	0	100.0 %
San Juan County ISD	547	533	14	97.4 %
San Miguel County ISD	198	194	4	98.0 %
Sandoval County ISD	368	364	4	98.9 %
Santa Fe County ISD	389	383	6	98.5 %
Sierra County ISD	53	52	1	98.1 %
Socorro County ISD	81	81	0	100.0 %
South Dona Ana ISD	171	169	2	98.8 %
Southeast Bernalillo County ISD	442	429	13	97.1 %
Southwest Bernalillo County ISD	667	653	14	97.9 %
Taos County ISD	163	159	4	97.5 %
Torrance County ISD	115	115	0	100.0 %
Valencia North County ISD	294	291	3	99.0 %
West Dona Ana County ISD	366	364	2	99.5 %
Statewide Total	8,235	8,067	168	98.0 %

SNAP Expedite Timeliness by Region¹³
April 2018

Region	Total Expedited Approvals	# Timely	# Untimely	Percentage Timely
Region 1 - NW	1,383	1,360	23	98.3%
Region 2 - NE	1,481	1,456	25	98.3%
Region 3 - Central	3,017	2,931	86	97.1%
Region 4 - SE	1,074	1,048	26	97.6%
Region 5 - SW	1,280	1,272	8	99.4%
Statewide Total	8,235	8,067	168	98.0%

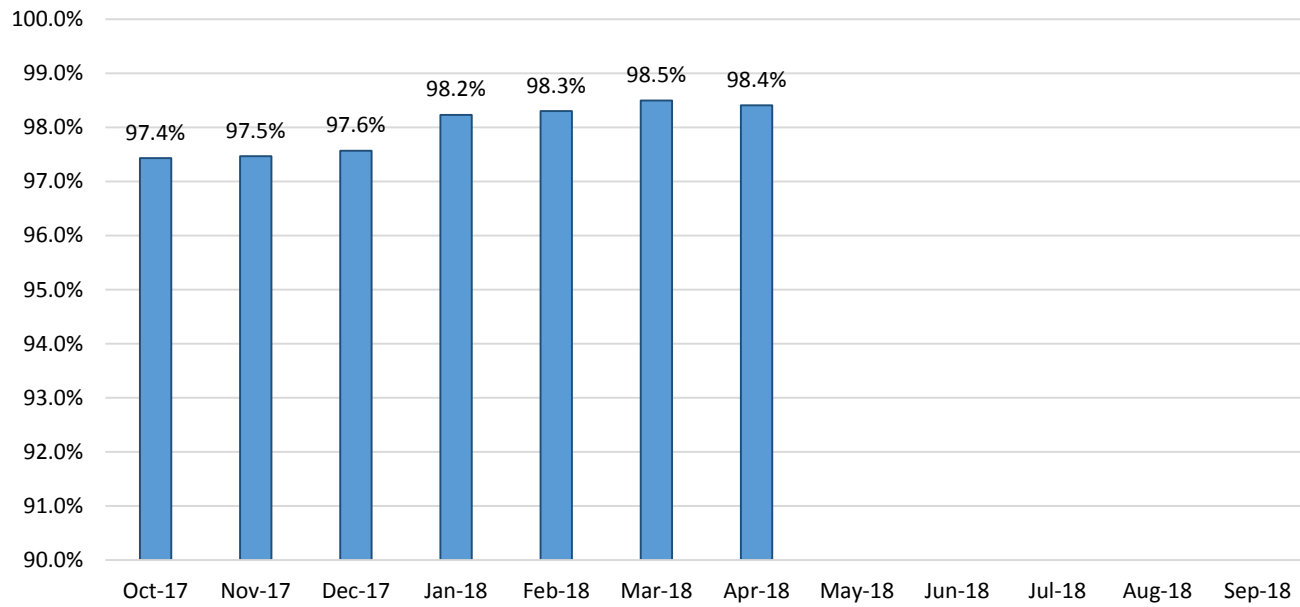
SNAP Expedite - Timeliness



SNAP: Percentage of Applications Processed Timely ¹³

	Oct-17	Nov-17	Dec-17	Jan-18	Feb-18	Mar-18	Apr-18	May-18	Jun-18	Jul-18	Aug-18	Sep-18	Average
APT	97.4%	97.5%	97.6%	98.2%	98.3%	98.5%	98.4%						98.0%

SNAP Application Processing Timeliness (APT)



SNAP Non-Expedite: Percentage of Initial Applications Processed Timely by Field Office¹³

	Oct-17	Nov-17	Dec-17	Jan-18	Feb-18	Mar-18	Apr-18	May-18	Jun-18	Jul-18	Aug-18	Sep-18	Average
Cibola	96.8%	97.2%	96.7%	92.9%	97.3%	100.0%	98.2%						97.0%
McKinley	97.4%	98.8%	98.6%	99.3%	99.3%	99.6%	100.0%						99.0%
San Juan	94.8%	93.5%	98.0%	97.8%	97.7%	97.9%	98.4%						96.9%
Sierra	100.0%	100.0%	100.0%	100.0%	100.0%	100.0%	100.0%						100.0%
Socorro	100.0%	96.8%	100.0%	98.9%	100.0%	98.8%	100.0%						99.2%
Valencia North	96.5%	96.3%	96.6%	96.9%	99.6%	97.2%	98.5%						97.4%
Valencia South	100.0%						100.0%						100.0%
NW Region 1 Total	96.5%	96.4%	98.0%	97.9%	98.7%	98.5%	99.0%						97.9%
Colfax	100.0%	100.0%	98.2%	98.2%	100.0%	100.0%	100.0%						99.5%
Guadalupe	100.0%	100.0%	100.0%	100.0%	100.0%	100.0%	100.0%						100.0%
Quay	97.2%	100.0%	100.0%	100.0%	97.1%	100.0%	97.9%						98.9%
Rio Arriba	97.0%	99.4%	91.2%	95.3%	97.7%	98.5%	97.5%						96.7%
San Miguel	100.0%	98.5%	100.0%	99.4%	99.3%	99.2%	100.0%						99.5%
Sandoval	98.2%	98.6%	97.8%	98.8%	98.9%	99.2%	99.2%						98.7%
Santa Fe	97.6%	97.5%	99.6%	98.4%	99.3%	99.7%	98.4%						98.6%
Taos	98.7%	98.7%	98.7%	99.2%	100.0%	98.3%	100.0%						99.1%
NE Region 2 Total	98.2%	98.6%	97.8%	98.4%	99.0%	99.2%	99.0%						98.6%
NE Bernalillo	95.4%	95.7%	94.9%	97.1%	98.1%	97.4%	98.3%						96.7%
NW Bernalillo	97.6%	95.1%	96.7%	98.0%	97.0%	98.7%	97.7%						97.3%
SE Bernalillo	96.0%	96.8%	97.4%	96.8%	99.7%	98.6%	99.0%						97.8%
SW Bernalillo	97.9%	97.3%	99.1%	96.6%	96.8%	97.7%	99.2%						97.8%
Torrance	98.9%	98.2%	96.6%	99.0%	97.1%	100.0%	100.0%						98.5%
Gen. Region 3 Total	96.9%	96.3%	96.9%	97.2%	97.7%	98.1%	98.6%						97.4%
Chaves	99.3%	98.9%	98.5%	99.7%	98.5%	99.3%	99.6%						99.1%
Curry	95.7%	97.1%	97.9%	99.4%	99.1%	98.4%	98.1%						98.0%
Eddy Artesia	100.0%	97.2%	100.0%	100.0%	98.5%	100.0%	95.4%						98.7%
Eddy Carlsbad	94.8%	97.3%	100.0%	100.0%	96.8%	99.0%	100.0%						98.3%
Lea	97.0%	98.3%	99.5%	98.5%	99.5%	98.0%	100.0%						98.7%
Lincoln	97.8%	98.9%	100.0%	100.0%	100.0%	98.3%	98.4%						99.1%
Roosevelt	100.0%	98.6%	100.0%	98.5%	100.0%	100.0%	100.0%						99.6%
SE Region 4 Total	97.6%	98.2%	99.1%	99.4%	98.8%	98.7%	99.0%						98.7%
East Dona Ana	99.6%	98.9%	100.0%	99.7%	99.6%	100.0%	100.0%						99.7%
Grant	100.0%	99.0%	97.9%	100.0%	99.1%	99.0%	100.0%						99.3%
Luna	100.0%	99.4%	100.0%	97.7%	97.9%	99.2%	99.4%						99.1%
Otero	100.0%	98.9%	99.4%	100.0%	100.0%	100.0%	98.2%						99.5%
South Dona Ana	100.0%	99.6%	100.0%	100.0%	99.6%	100.0%	99.6%						99.8%
West Dona Ana	99.2%	98.7%	99.0%	100.0%	99.4%	99.5%	99.7%						99.4%
SW Region 5 Total	99.7%	99.0%	99.5%	99.7%	99.4%	99.7%	99.5%						99.5%
STATE TOTAL	97.7%	97.5%	98.1%	98.3%	98.6%	98.7%	99.0%						98.3%

SNAP Expedite: Percentage of Initial Applications Processed Timely by Field Office¹³

	Oct-17	Nov-17	Dec-17	Jan-18	Feb-18	Mar-18	Apr-18	May-18	Jun-18	Jul-18	Aug-18	Sep-18	Average
Cibola	94.1%	100.0%	92.2%	98.5%	98.2%	94.5%	96.3%						96.3%
McKinley	99.4%	99.4%	97.8%	97.3%	99.2%	99.7%	99.7%						98.9%
San Juan	95.8%	94.2%	96.5%	96.7%	97.0%	97.1%	97.4%						96.4%
Sierra	98.3%	100.0%	100.0%	100.0%	100.0%	100.0%	98.1%						99.5%
Socorro	98.9%	100.0%	94.4%	98.0%	97.4%	100.0%	100.0%						98.4%
Valencia North	97.1%	93.3%	97.1%	97.7%	98.2%	98.0%	99.0%						97.2%
Valencia South	100.0%	100.0%				100.0%							100.0%
NW Region 1 Total	97.0%	96.4%	96.6%	97.4%	97.9%	97.9%	98.3%						97.4%
Colfax	98.6%	100.0%	100.0%	100.0%	100.0%	100.0%	100.0%						99.8%
Guadalupe	100.0%	100.0%	100.0%	100.0%	100.0%	100.0%	100.0%						100.0%
Quay	100.0%	100.0%	100.0%	94.9%	92.6%	97.4%	96.3%						97.3%
Rio Arriba	94.6%	97.3%	97.6%	97.3%	95.7%	99.0%	97.6%						97.0%
San Miguel	99.1%	98.3%	99.4%	98.1%	97.5%	99.5%	98.0%						98.6%
Sandoval	98.2%	98.3%	97.9%	98.4%	98.4%	99.5%	98.9%						98.5%
Santa Fe	97.5%	97.7%	96.7%	98.1%	97.4%	98.6%	98.5%						97.8%
Taos	98.7%	97.8%	95.7%	98.3%	98.7%	95.6%	97.5%						97.5%
NE Region 2 Total	97.5%	98.0%	97.7%	98.1%	97.5%	98.7%	98.3%						98.0%
NE Bernalillo	94.6%	96.4%	94.7%	98.2%	96.6%	96.5%	96.7%						96.2%
NW Bernalillo	97.6%	95.6%	95.6%	97.1%	96.3%	97.4%	96.7%						96.6%
SE Bernalillo	96.5%	95.7%	95.2%	96.6%	96.4%	97.7%	97.1%						96.4%
SW Bernalillo	96.6%	96.4%	96.9%	97.8%	97.8%	96.8%	97.9%						97.2%
Torrance	96.9%	96.5%	99.2%	97.7%	99.1%	95.5%	100.0%						97.8%
Gen. Region 3 Total	96.3%	96.1%	95.7%	97.6%	96.8%	96.9%	97.1%						96.6%
Chaves	98.1%	98.6%	99.2%	98.6%	99.5%	99.6%	98.2%						98.8%
Curry	96.0%	98.7%	98.1%	98.3%	98.8%	97.3%	97.8%						97.9%
Eddy Artesia	100.0%	98.4%	100.0%	95.9%	100.0%	98.1%	98.1%						98.7%
Eddy Carlsbad	98.5%	98.6%	98.3%	99.4%	97.4%	98.7%	97.2%						98.3%
Lea	98.4%	98.4%	98.3%	97.1%	96.1%	98.7%	96.8%						97.7%
Lincoln	96.7%	98.6%	98.4%	100.0%	97.0%	100.0%	98.2%						98.4%
Roosevelt	92.7%	100.0%	96.2%	100.0%	100.0%	100.0%	100.0%						98.4%
SE Region 4 Total	97.4%	98.7%	98.4%	98.3%	98.1%	98.6%	97.6%						98.2%
East Dona Ana	99.0%	98.8%	98.7%	99.7%	100.0%	99.2%	100.0%						99.3%
Grant	97.9%	100.0%	100.0%	98.0%	100.0%	100.0%	99.4%						99.3%
Luna	99.3%	100.0%	100.0%	99.3%	100.0%	100.0%	99.0%						99.7%
Otero	98.8%	98.4%	98.5%	98.4%	98.7%	98.9%	99.1%						98.7%
South Dona Ana	100.0%	99.4%	98.8%	99.0%	100.0%	99.3%	98.8%						99.3%
West Dona Ana	99.5%	99.5%	98.6%	99.1%	99.7%	100.0%	99.5%						99.4%
SW Region 5 Total	99.1%	99.3%	99.0%	98.9%	99.7%	99.6%	99.4%						99.3%
STATE TOTAL	97.2%	97.3%	97.0%	97.9%	97.7%	98.0%	98.0%						97.6%

SNAP: Percentage of Denied Initial Applications Processed Within 30 Days by Field Office¹³

	Oct-17	Nov-17	Dec-17	Jan-18	Feb-18	Mar-18	Apr-18	May-18	Jun-18	Jul-18	Aug-18	Sep-18	Average
Cibola	66.7%	50.0%	66.7%	65.9%	88.1%	77.1%	76.9%						70.2%
McKinley	59.0%	57.8%	65.9%	47.9%	81.7%	66.2%	87.0%						66.5%
San Juan	35.7%	51.8%	46.5%	66.8%	77.3%	83.0%	89.0%						64.3%
Sierra	95.5%	90.9%	90.5%	91.7%	100.0%	100.0%	85.0%						93.4%
Socorro	69.6%	68.2%	94.3%	100.0%	96.2%	87.5%	95.2%						87.3%
Valencia North	45.9%	41.8%	45.0%	44.1%	78.8%	73.2%	90.8%						60.0%
Valencia South													
NW Region 1 Total	48.3%	53.2%	55.5%	61.8%	80.5%	78.8%	88.6%						66.7%
Colfax	100.0%	100.0%	100.0%	100.0%	95.2%	100.0%	95.2%						98.6%
Guadalupe	73.3%	75.0%	90.0%	92.3%	75.0%	20.0%	80.0%						72.2%
Quay	83.3%	33.3%	66.7%	70.6%	100.0%	44.4%	87.5%						69.4%
Rio Arriba	70.1%	56.3%	43.0%	69.1%	72.3%	76.9%	82.5%						67.2%
San Miguel	66.2%	77.3%	90.0%	92.1%	90.0%	85.5%	84.3%						83.6%
Sandoval	70.8%	69.2%	74.6%	66.2%	85.8%	84.1%	92.3%						77.6%
Santa Fe	64.7%	70.6%	62.1%	44.3%	79.6%	73.0%	82.5%						68.1%
Taos	77.8%	79.2%	84.1%	84.4%	87.8%	82.9%	80.5%						82.4%
NE Region 2 Total	70.8%	69.7%	68.8%	66.1%	83.3%	79.4%	86.6%						75.0%
NE Bernalillo	43.5%	40.5%	44.9%	47.0%	84.7%	70.1%	86.1%						59.5%
NW Bernalillo	41.7%	42.8%	48.7%	50.0%	78.9%	84.5%	85.1%						61.7%
SE Bernalillo	52.3%	52.0%	74.2%	60.9%	93.5%	82.9%	83.5%						71.3%
SW Bernalillo	63.9%	62.9%	50.9%	67.3%	95.3%	88.0%	90.3%						74.1%
Torrance	60.4%	68.2%	51.0%	54.4%	84.8%	85.4%	93.1%						71.0%
Gen. Region 3 Total	49.7%	50.0%	53.4%	55.5%	87.5%	80.8%	86.5%						66.2%
Chaves	86.4%	85.7%	89.3%	91.5%	91.7%	81.3%	73.4%						85.6%
Curry	63.5%	60.3%	80.9%	87.5%	95.0%	83.8%	89.4%						80.1%
Eddy Artesia	75.8%	58.1%	76.9%	96.0%	86.7%	89.7%	92.0%						82.2%
Eddy Carlsbad	60.7%	67.6%	76.4%	85.7%	94.8%	74.5%	86.3%						78.0%
Lea	86.3%	63.8%	68.0%	82.6%	94.3%	87.0%	86.1%						81.2%
Lincoln	55.0%	78.4%	94.9%	88.6%	89.3%	82.1%	93.3%						83.1%
Roosevelt	77.1%	68.1%	88.4%	91.5%		100.0%	0.0%						70.8%
SE Region 4 Total	74.4%	69.2%	81.2%	88.3%	93.0%	83.2%	84.9%						82.0%
East Dona Ana	81.2%	77.6%	72.7%	91.2%	92.1%	82.9%	83.8%						83.1%
Grant	73.5%	81.1%	72.1%	80.0%	92.6%	96.3%	90.2%						83.7%
Luna	55.8%	51.1%	65.9%	65.3%	90.2%	70.6%	89.1%						69.7%
Otero	40.3%	38.6%	47.9%	40.7%	81.1%	84.1%	87.9%						60.1%
South Dona Ana	70.8%	68.1%	63.2%	80.6%	81.1%	79.8%	92.9%						76.6%
West Dona Ana	65.6%	55.7%	70.5%	79.5%	85.2%	86.4%	94.8%						76.8%
SW Region 5 Total	66.6%	62.3%	66.5%	75.4%	86.4%	83.5%	89.8%						75.8%
STATE TOTAL	59.5%	58.9%	62.6%	66.5%	86.1%	80.9%	87.3%						71.7%

SNAP Renewals Processed by Field Office²⁰
April 2018

Office	Approvals	Closures	Need Based Closures	Procedural Closures
Chaves County ISD	199	110	5	105
Cibola County ISD	130	70	5	65
Colfax County ISD	45	27	3	24
Curry County ISD	183	119	8	111
East Dona Ana County ISD	282	125	14	111
Eddy Artesia County ISD	50	31	3	28
Eddy Carlsbad County ISD	84	46	1	45
Grant County ISD	119	43	3	40
Guadalupe County ISD	20	9	2	7
Hidalgo County ISD	13	13	3	10
Lea County ISD	167	94	10	84
Lincoln County ISD	45	33	5	28
Luna County ISD	141	50	5	45
McKinley County ISD	392	132	11	121
Northeast Bernalillo County ISD	658	355	32	323
Northwest Bernalillo County ISD	507	274	28	246
Otero County ISD	170	88	5	83
Quay County ISD	47	25	4	21
Rio Arriba County ISD	232	109	6	103
Roosevelt County ISD	0	0	0	0
San Juan County ISD	398	240	19	221
San Miguel County ISD	140	64	8	56
Sandoval County ISD	380	184	20	164
Santa Fe County ISD	315	173	16	157
Sierra County ISD	99	24	1	23
Socorro County ISD	88	44	4	40
South Dona Ana ISD	377	122	19	103
Southeast Bernalillo County ISD	369	171	8	163
Southwest Bernalillo County ISD	820	348	29	319
Taos County ISD	116	74	12	62
Torrance County ISD	116	58	6	52
Valencia North County ISD	298	142	10	132
Valencia South County ISD	0	0	0	0
West Dona Ana County ISD	393	160	15	145
Centralized Units	0	0	0	0
Statewide Total	7,393	3,557	320	3,237

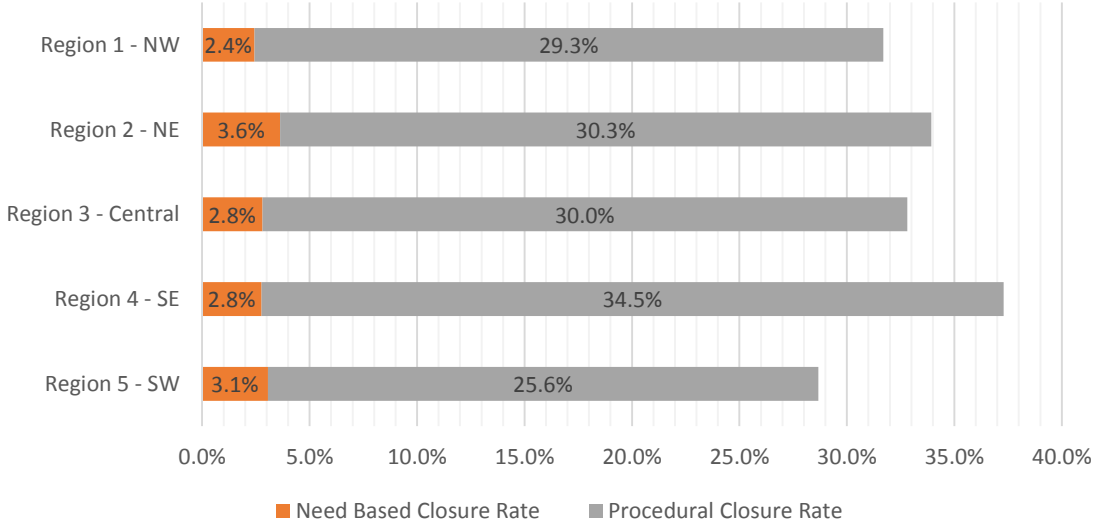
SNAP Renewal Disposition Rates by Field Office²⁰

April 2018

Office	Approval Rate	Closure Rate	Need Based Closure Rate	Procedural Closure Rate
Chaves County ISD	64.4%	35.6%	1.6%	34.0%
Cibola County ISD	65.0%	35.0%	2.5%	32.5%
Colfax County ISD	62.5%	37.5%	4.2%	33.3%
Curry County ISD	60.6%	39.4%	2.6%	36.8%
East Dona Ana County ISD	69.3%	30.7%	3.4%	27.3%
Eddy Artesia County ISD	61.7%	38.3%	3.7%	34.6%
Eddy Carlsbad County ISD	64.6%	35.4%	0.8%	34.6%
Grant County ISD	73.5%	26.5%	1.9%	24.7%
Guadalupe County ISD	69.0%	31.0%	6.9%	24.1%
Hidalgo County ISD	50.0%	50.0%	11.5%	38.5%
Lea County ISD	64.0%	36.0%	3.8%	32.2%
Lincoln County ISD	57.7%	42.3%	6.4%	35.9%
Luna County ISD	73.8%	26.2%	2.6%	23.6%
McKinley County ISD	74.8%	25.2%	2.1%	23.1%
Northeast Bernalillo County ISD	65.0%	35.0%	3.2%	31.9%
Northwest Bernalillo County ISD	64.9%	35.1%	3.6%	31.5%
Otero County ISD	65.9%	34.1%	1.9%	32.2%
Quay County ISD	65.3%	34.7%	5.6%	29.2%
Rio Arriba County ISD	68.0%	32.0%	1.8%	30.2%
Roosevelt County ISD	0.0%	0.0%	0.0%	0.0%
San Juan County ISD	62.4%	37.6%	3.0%	34.6%
San Miguel County ISD	68.6%	31.4%	3.9%	27.5%
Sandoval County ISD	67.4%	32.6%	3.5%	29.1%
Santa Fe County ISD	64.5%	35.5%	3.3%	32.2%
Sierra County ISD	80.5%	19.5%	0.8%	18.7%
Socorro County ISD	66.7%	33.3%	3.0%	30.3%
South Dona Ana ISD	75.6%	24.4%	3.8%	20.6%
Southeast Bernalillo County ISD	68.3%	31.7%	1.5%	30.2%
Southwest Bernalillo County ISD	70.2%	29.8%	2.5%	27.3%
Taos County ISD	61.1%	38.9%	6.3%	32.6%
Torrance County ISD	66.7%	33.3%	3.4%	29.9%
Valencia North County ISD	67.7%	32.3%	2.3%	30.0%
Valencia South County ISD	0.0%	0.0%	0.0%	0.0%
West Dona Ana County ISD	71.1%	28.9%	2.7%	26.2%
Centralized Units	0.0%	0.0%	0.0%	0.0%
Statewide Total	67.5%	32.5%	2.9%	29.6%

SNAP Renewal Disposition Rates by Region²⁰
April 2018

Region	Approval Rate	Closure Rate	Need Based Closure Rate	Procedural Closure Rate
Region 1 - NW	68.3%	31.7%	2.4%	29.3%
Region 2 - NE	66.1%	33.9%	3.6%	30.3%
Region 3 - Central	67.2%	32.8%	2.8%	30.0%
Region 4 - SE	62.7%	37.3%	2.8%	34.5%
Region 5 - SW	71.3%	28.7%	3.1%	25.6%
Centralized Units				
Statewide Total	67.5%	32.5%	2.9%	29.6%



SNAP: Percentage of Approved Renewal Applications Processed by Normal Accessibility Date ¹¹													
	Oct-17	Nov-17	Dec-17	Jan-18	Feb-18	Mar-18	Apr-18	May-18	Jun-18	Jul-18	Aug-18	Sep-18	Average
Cibola		71.2%	73.1%	79.4%	90.4%	88.0%	93.1%						82.5%
McKinley		90.4%	92.0%	95.6%	98.3%	96.4%	98.5%						95.2%
San Juan		85.9%	80.5%	89.6%	94.2%	93.2%	96.5%						90.0%
Sierra		98.1%	93.6%	92.8%	99.0%	99.0%	100.0%						97.1%
Socorro		92.5%	89.7%	93.8%	100.0%	90.7%	94.3%						93.5%
Valencia North		84.1%	86.9%	95.8%	98.6%	92.6%	96.0%						92.3%
Valencia South													
NW Region 1 Total		87.1%	86.0%	91.2%	96.8%	93.3%	96.4%						91.8%
Colfax		87.8%	82.5%	97.9%	100.0%	91.2%	91.1%						91.7%
Guadalupe		94.4%	93.1%	100.0%	95.8%	100.0%	100.0%						97.2%
Quay		94.3%	89.5%	100.0%	100.0%	88.0%	89.4%						93.5%
Rio Arriba		79.7%	71.9%	94.2%	90.0%	88.3%	93.1%						86.2%
San Miguel		90.4%	95.7%	98.5%	96.5%	97.4%	100.0%						96.4%
Sandoval		90.1%	93.8%	96.2%	96.3%	96.3%	95.5%						94.7%
Santa Fe		87.1%	92.0%	95.7%	96.9%	97.1%	98.1%						94.5%
Taos		90.8%	91.5%	94.6%	97.0%	94.4%	98.3%						94.4%
NE Region 2 Total		89.3%	88.8%	97.1%	96.6%	94.1%	95.7%						93.6%
NE Bernalillo		71.8%	72.1%	85.0%	91.2%	92.6%	96.0%						84.8%
NW Bernalillo		85.5%	80.4%	93.0%	96.1%	94.9%	96.8%						91.1%
SE Bernalillo		79.7%	81.6%	91.7%	96.5%	96.5%	96.7%						90.5%
SW Bernalillo		83.4%	89.0%	91.8%	96.1%	94.6%	96.3%						91.9%
Torrance		74.5%	74.3%	90.3%	92.4%	95.7%	93.1%						86.7%
Gen. Region 3 Total		79.0%	79.5%	90.3%	94.4%	94.9%	95.8%						89.0%
Chaves		91.2%	92.0%	95.3%	98.6%	98.4%	100.0%						95.9%
Curry		94.1%	81.9%	94.9%	94.6%	97.6%	98.9%						93.7%
Eddy Artesia		94.1%	91.9%	95.2%	98.5%	98.3%	94.0%						95.4%
Eddy Carlsbad		75.8%	90.8%	90.1%	93.6%	94.6%	96.4%						90.2%
Lea		91.8%	90.9%	94.0%	95.8%	96.0%	98.8%						94.5%
Lincoln		87.5%	92.6%	95.1%	100.0%	100.0%	100.0%						95.9%
Roosevelt		93.6%	86.7%										90.1%
SE Region 4 Total		89.7%	89.5%	94.1%	96.8%	97.5%	98.0%						94.3%
East Dona Ana		94.8%	93.1%	96.5%	98.2%	98.0%	97.5%						96.4%
Grant		90.5%	93.5%	100.0%	96.7%	90.1%	94.1%						94.2%
Luna		91.7%	84.0%	91.4%	95.1%	92.2%	95.7%						91.7%
Otero		87.3%	86.5%	97.5%	93.5%	92.2%	93.5%						91.8%
South Dona Ana		94.3%	93.1%	99.4%	99.1%	93.0%	93.9%						95.5%
West Dona Ana		97.4%	95.0%	97.9%	98.9%	97.7%	99.2%						97.7%
SW Region 5 Total		92.7%	90.9%	97.1%	96.9%	93.9%	95.7%						94.5%
STATE TOTAL		86.4%	86.3%	93.6%	95.9%	94.7%	96.5%						92.2%

*Includes cases in which the Renewal Packet was received after the 15th of the month, the due date for uninterrupted benefits.
No data available for October 2017*

SNAP: Percentage of Approved Renewal Applications Processed by Normal Accessibility Date ¹¹													
	Oct-17	Nov-17	Dec-17	Jan-18	Feb-18	Mar-18	Apr-18	May-18	Jun-18	Jul-18	Aug-18	Sep-18	Average
Cibola		72.8%	86.1%	82.3%	92.7%	96.6%	100.0%						88.4%
McKinley		92.8%	93.9%	97.6%	99.0%	99.1%	99.7%						97.0%
San Juan		89.0%	85.1%	92.8%	96.4%	97.4%	99.7%						93.4%
Sierra		100.0%	97.5%	97.1%	100.0%	100.0%	100.0%						99.1%
Socorro		94.7%	95.7%	96.9%	100.0%	100.0%	100.0%						97.9%
Valencia North		89.1%	93.1%	96.3%	98.8%	98.7%	100.0%						96.0%
Valencia South													
NW Region 1 Total		89.8%	91.9%	93.8%	97.8%	98.6%	99.9%						95.3%
Colfax		95.1%	91.2%	100.0%	100.0%	100.0%	100.0%						97.7%
Guadalupe		96.7%	92.9%	100.0%	100.0%	100.0%	100.0%						98.3%
Quay		100.0%	95.6%	100.0%	100.0%	100.0%	100.0%						99.3%
Rio Arriba		90.5%	84.5%	95.6%	94.6%	95.0%	100.0%						93.4%
San Miguel		93.6%	96.9%	100.0%	96.5%	99.3%	100.0%						97.7%
Sandoval		93.1%	97.0%	98.7%	98.5%	97.9%	100.0%						97.6%
Santa Fe		91.6%	97.0%	97.8%	97.9%	99.7%	99.6%						97.3%
Taos		95.8%	94.8%	96.8%	98.9%	98.4%	98.9%						97.3%
NE Region 2 Total		94.6%	93.7%	98.6%	98.3%	98.8%	99.8%						97.3%
NE Bernalillo		75.7%	77.9%	90.1%	93.2%	96.9%	99.8%						89.0%
NW Bernalillo		88.7%	84.5%	95.0%	97.5%	98.7%	99.0%						93.9%
SE Bernalillo		85.2%	87.3%	94.9%	97.7%	98.8%	99.0%						93.8%
SW Bernalillo		88.9%	93.5%	95.2%	98.6%	98.1%	99.7%						95.7%
Torrance		83.1%	80.7%	97.2%	95.5%	98.0%	99.0%						92.2%
Gen. Region 3 Total		84.3%	84.8%	94.5%	96.5%	98.1%	99.3%						92.9%
Chaves		92.0%	92.0%	96.8%	99.5%	99.1%	100.0%						96.6%
Curry		94.6%	85.4%	96.7%	96.3%	98.3%	100.0%						95.2%
Eddy Artesia		100.0%	96.0%	100.0%	100.0%	98.2%	97.6%						98.6%
Eddy Carlsbad		80.3%	94.4%	95.7%	94.1%	97.4%	97.1%						93.2%
Lea		94.6%	94.2%	97.5%	97.6%	97.8%	98.6%						96.7%
Lincoln		88.5%	95.7%	95.9%	100.0%	100.0%	100.0%						96.7%
Roosevelt		92.9%	85.0%										88.9%
SE Region 4 Total		91.8%	91.8%	97.1%	97.9%	98.5%	98.9%						96.0%
East Dona Ana		96.8%	97.8%	99.0%	99.2%	99.2%	100.0%						98.7%
Grant		94.2%	99.1%	100.0%	100.0%	98.8%	100.0%						98.7%
Luna		96.9%	90.2%	92.9%	96.5%	97.6%	98.3%						95.4%
Otero		96.2%	96.4%	100.0%	97.8%	100.0%	99.2%						98.3%
South Dona Ana		97.4%	97.4%	100.0%	99.7%	99.6%	100.0%						99.0%
West Dona Ana		99.1%	98.2%	99.1%	100.0%	99.3%	100.0%						99.3%
SW Region 5 Total		96.8%	96.5%	98.5%	98.9%	99.1%	99.6%						98.2%
STATE TOTAL		90.4%	91.3%	96.2%	97.6%	98.4%	99.6%						95.6%

Only includes cases in which the Renewal Packet was received by the 15th of the month, the due date for uninterrupted benefits.
No data available for October 2017

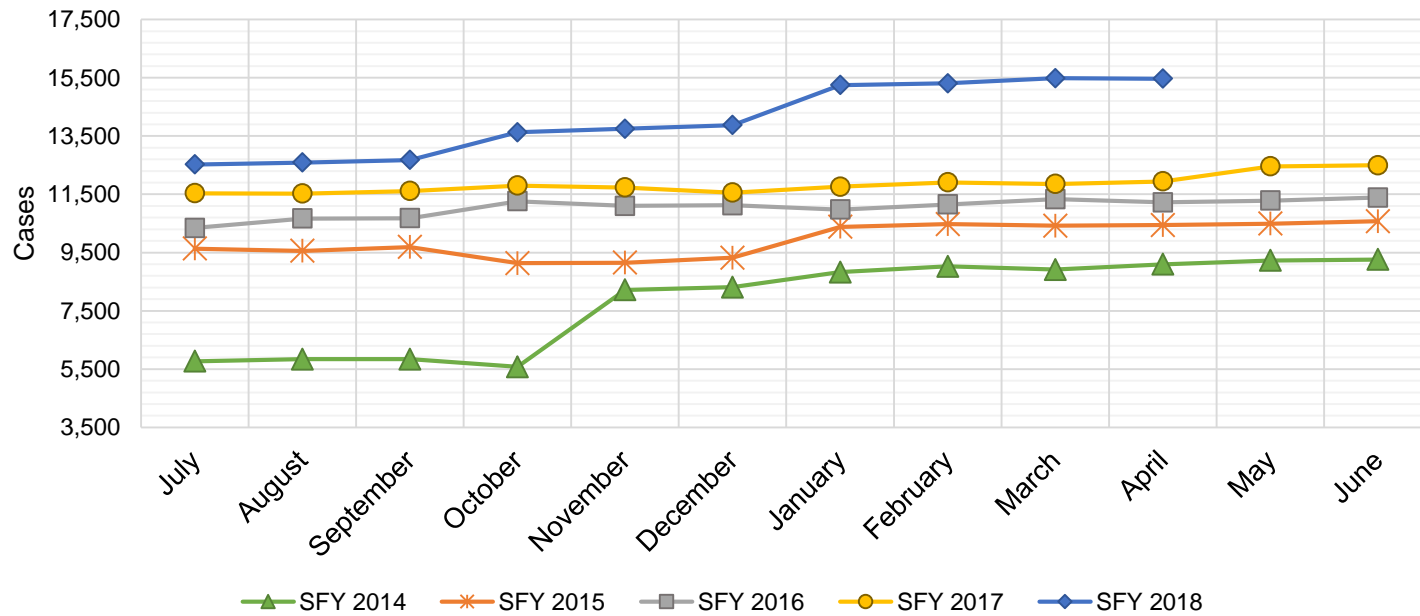
SNAP: Percentage of Closures at Renewal Processed by Certification End Date ¹¹													
	Oct-17	Nov-17	Dec-17	Jan-18	Feb-18	Mar-18	Apr-18	May-18	Jun-18	Jul-18	Aug-18	Sep-18	Average
Cibola		6.8%	3.3%	2.5%	9.1%	3.5%	10.0%						5.9%
McKinley		3.7%	6.7%	6.8%	7.8%	6.1%	15.2%						7.7%
San Juan		7.0%	5.1%	5.7%	8.0%	7.8%	32.5%						11.0%
Sierra		19.2%	17.1%	8.8%	25.0%	15.6%	91.7%						29.6%
Socorro		11.8%	4.3%	0.0%	7.7%	15.2%	77.3%						19.4%
Valencia North		6.2%	9.8%	4.8%	10.5%	6.9%	75.4%						18.9%
Valencia South													
NW Region 1 Total		9.1%	7.7%	4.8%	11.4%	9.2%	50.3%						15.4%
Colfax		6.3%	11.1%	10.0%	3.4%	0.0%	51.9%						13.8%
Guadalupe		7.7%	0.0%	0.0%	33.3%	0.0%	88.9%						21.7%
Quay		15.8%	6.7%	0.0%	4.2%	7.7%	72.0%						17.7%
Rio Arriba		6.1%	3.9%	2.9%	13.7%	3.8%	49.5%						13.3%
San Miguel		4.7%	9.0%	8.6%	5.7%	6.8%	79.7%						19.1%
Sandoval		12.9%	12.8%	3.0%	10.3%	7.1%	71.7%						19.6%
Santa Fe		3.0%	5.8%	9.9%	4.9%	8.5%	77.5%						18.3%
Taos		4.1%	3.7%	6.7%	3.3%	21.1%	52.7%						15.2%
NE Region 2 Total		7.6%	6.6%	5.1%	9.9%	6.9%	68.0%						17.3%
NE Bernalillo		3.0%	5.7%	3.5%	8.5%	9.4%	33.8%						10.7%
NW Bernalillo		3.4%	3.8%	20.4%	51.8%	11.6%	60.9%						25.3%
SE Bernalillo		4.1%	6.1%	4.2%	7.5%	7.7%	26.3%						9.3%
SW Bernalillo		7.2%	6.6%	6.6%	7.5%	8.3%	77.0%						18.9%
Torrance		3.6%	7.6%	5.1%	5.1%	20.5%	81.0%						20.5%
Cen. Region 3 Total		4.3%	6.0%	8.0%	16.1%	11.5%	55.8%						16.9%
Chaves		7.7%	12.2%	8.2%	13.9%	15.7%	94.5%						25.4%
Curry		8.0%	3.8%	5.1%	5.8%	14.4%	44.5%						13.6%
Eddy Artesia		6.9%	10.0%	10.0%	9.1%	11.1%	83.9%						21.8%
Eddy Carlsbad		8.6%	4.7%	3.8%	6.8%	12.7%	8.7%						7.5%
Lea		5.3%	14.8%	2.2%	7.0%	13.7%	31.9%						12.5%
Lincoln		2.9%	9.3%	15.4%	10.3%	13.6%	24.2%						12.6%
Roosevelt		15.0%	5.4%	0.0%									6.8%
SE Region 4 Total		7.8%	8.6%	6.4%	8.8%	13.6%	48.0%						15.5%
East Dona Ana		12.9%	9.1%	5.6%	9.9%	14.6%	83.2%						22.6%
Grant		6.0%	4.7%	3.4%	1.7%	10.9%	9.3%						6.0%
Luna		5.6%	1.4%	3.2%	7.0%	9.1%	6.0%						5.4%
Otero		2.9%	5.5%	3.5%	9.6%	2.8%	51.1%						12.6%
South Dona Ana		13.8%	7.6%	14.3%	16.8%	8.3%	67.2%						21.3%
West Dona Ana		8.9%	8.4%	6.8%	11.4%	8.8%	15.6%						10.0%
SW Region 5 Total		8.3%	6.1%	6.1%	9.4%	9.1%	38.7%						13.0%
STATE TOTAL		6.6%	7.1%	6.9%	12.3%	9.5%	52.2%						15.8%

*Includes cases for which no renewal application was received.
No data available for October 2017*

State SNAP Supplement

SFY 2014 ¹²			SFY 2015 ^{12,9}			SFY 2016 ⁹			SFY 2017 ⁹			SFY 2018 ⁹		
	Cases	Expenditures		Cases	Expenditures		Cases	Expenditures		Cases	Expenditures		Cases	Expenditures
Jul-13	5,767	\$48,040	Jul-14	9,635	\$88,859	Jul-15	10,345	\$86,143	Jul-16	11,537	\$95,553	Jul-17	12,526	\$97,568
Aug-13	5,841	\$48,417	Aug-14	9,559	\$87,757	Aug-15	10,669	\$88,197	Aug-16	11,522	\$95,107	Aug-17	12,589	\$98,954
Sep-13	5,841	\$48,732	Sep-14	9,688	\$87,372	Sep-15	10,676	\$88,426	Sep-16	11,613	\$94,472	Sep-17	12,679	\$97,546
Oct-13	5,575	\$46,610	Oct-14	9,136	\$70,490	Oct-15	11,262	\$96,758	Oct-16	11,797	\$96,679	Oct-17	13,628	\$117,343
Nov-13	8,219	\$69,564	Nov-14	9,152	\$69,955	Nov-15	11,099	\$91,996	Nov-16	11,735	\$93,689	Nov-17	13,748	\$119,055
Dec-13	8,310	\$71,839	Dec-14	9,322	\$73,226	Dec-15	11,125	\$90,771	Dec-16	11,556	\$93,739	Dec-17	13,877	\$120,585
Jan-14	8,826	\$77,933	Jan-15	10,384	\$84,578	Jan-16	10,977	\$92,760	Jan-17	11,763	\$96,074	Jan-18	15,246	\$135,993
Feb-14	9,024	\$84,758	Feb-15	10,477	\$82,901	Feb-16	11,153	\$95,363	Feb-17	11,907	\$98,251	Feb-18	15,308	\$137,296
Mar-14	8,916	\$80,597	Mar-15	10,423	\$87,461	Mar-16	11,332	\$96,751	Mar-17	11,853	\$96,693	Mar-18	15,482	\$139,132
Apr-14	9,098	\$84,599	Apr-15	10,440	\$79,605	Apr-16	11,222	\$93,959	Apr-17	11,944	\$97,060	Apr-18	15,466	\$139,202
May-14	9,226	\$85,035	May-15	10,491	\$82,511	May-16	11,283	\$95,271	May-17	12,457	\$96,940	May-18		
Jun-14	9,264	\$84,329	Jun-15	10,575	\$85,134	Jun-16	11,389	\$93,061	Jun-17	12,498	\$97,405	Jun-18		

TOTAL	93,907	\$830,453	119,282	\$979,850	132,532	\$1,109,455	142,182	\$1,151,662	140,549	\$1,202,674
AVERAGE	7,826	\$69,204	9,940	\$81,654	11,044	\$92,455	11,849	\$95,972	14,055	\$120,267



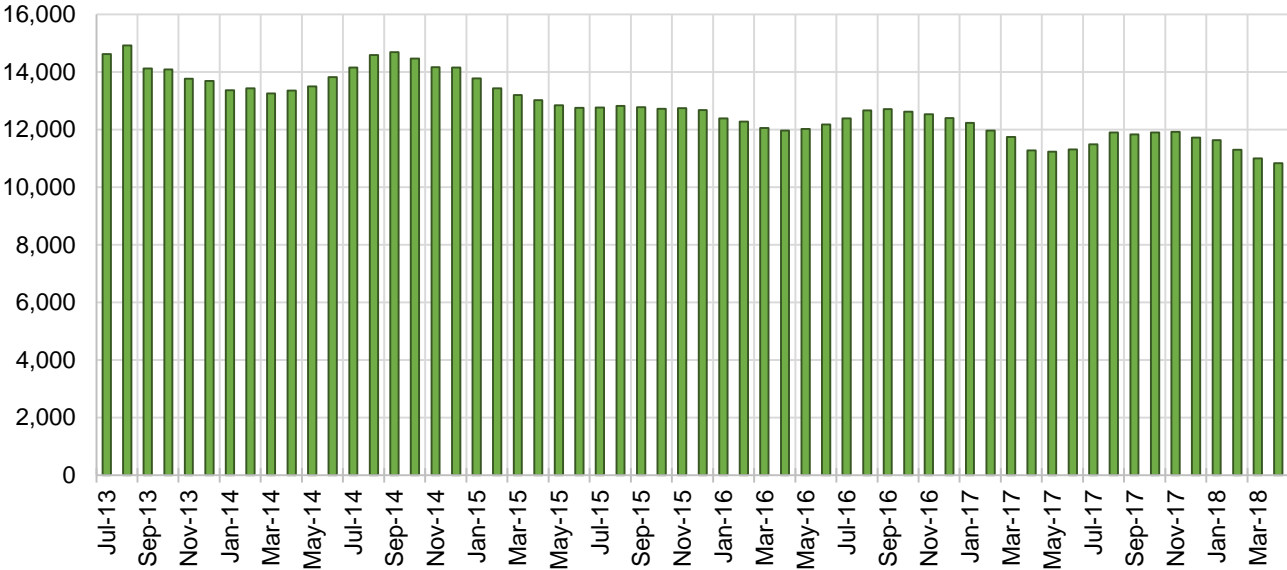
TANF Cases by Field Office⁶

Office				Percent Change	
	Apr-17	Mar-18	Apr-18	Apr-17- Apr-18	Mar-18- Apr-18
Chaves County ISD	550	492	480	-12.7%	-2.4%
Cibola County ISD	135	148	146	8.1%	-1.4%
Colfax County ISD	63	68	77	22.2%	13.2%
Curry County ISD	489	668	663	35.6%	-0.7%
East Dona Ana County ISD	473	437	414	-12.5%	-5.3%
Eddy Artesia County ISD	127	100	89	-29.9%	-11.0%
Eddy Carlsbad County ISD	203	141	134	-34.0%	-5.0%
Grant County ISD	195	174	174	-10.8%	0.0%
Guadalupe County ISD	24	34	31	29.2%	-8.8%
Hidalgo County ISD	21	22	21	0.0%	-4.5%
Lea County ISD	437	380	379	-13.3%	-0.3%
Lincoln County ISD	89	104	97	9.0%	-6.7%
Luna County ISD	213	221	211	-0.9%	-4.5%
McKinley County ISD	56	57	58	3.6%	1.8%
Northeast Bernalillo County ISD	952	934	949	-0.3%	1.6%
Northwest Bernalillo County ISD	773	798	788	1.9%	-1.3%
Otero County ISD	277	269	271	-2.2%	0.7%
Quay County ISD	80	69	65	-18.8%	-5.8%
Rio Arriba County ISD	393	406	410	4.3%	1.0%
Roosevelt County ISD	142	0	0	-100.0%	N/A
San Juan County ISD	289	309	295	2.1%	-4.5%
San Miguel County ISD	197	185	183	-7.1%	-1.1%
Sandoval County ISD	525	555	544	3.6%	-2.0%
Santa Fe County ISD	465	445	443	-4.7%	-0.4%
Sierra County ISD	78	65	63	-19.2%	-3.1%
Socorro County ISD	85	92	91	7.1%	-1.1%
South Dona Ana ISD	711	643	634	-10.8%	-1.4%
Southeast Bernalillo County ISD	633	604	582	-8.1%	-3.6%
Southwest Bernalillo County ISD	1,045	1,096	1,071	2.5%	-2.3%
Taos County ISD	147	144	145	-1.4%	0.7%
Torrance County ISD	192	183	186	-3.1%	1.6%
Valencia North County ISD	463	451	444	-4.1%	-1.6%
Valencia South County ISD	0	0	0	N/A	N/A
West Dona Ana County ISD	753	704	691	-8.2%	-1.8%
Centralized Units	2	2	2	0.0%	0.0%
Statewide Total	11,277	11,000	10,831	-4.0%	-1.5%

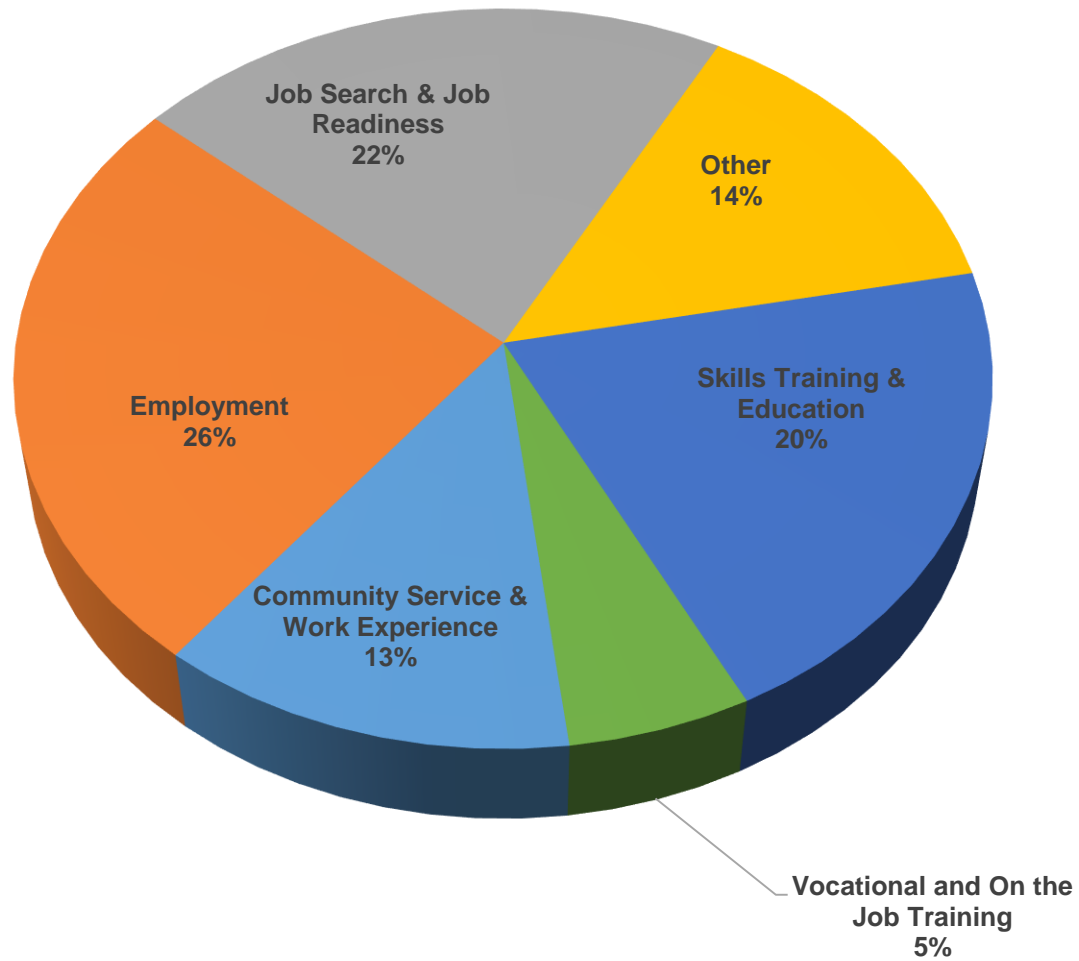
TANF Cases by Region⁶

Region	Percent Change				
	Apr-17	Mar-18	Apr-18	Apr-17- Apr-18	Mar-18- Apr-18
Region 1- NW	1,106	1,122	1,097	-0.8%	-2.2%
Region 2- NE	1,894	1,906	1,898	0.2%	-0.4%
Region 3- Central	3,595	3,615	3,576	-0.5%	-1.1%
Region 4- SE	2,037	1,885	1,842	-9.6%	-2.3%
Region 5- SW	2,643	2,470	2,416	-8.6%	-2.2%
Centralized Units	2	2	2	0.0%	0.0%
Statewide Total	11,277	11,000	10,831	-4.0%	-1.5%

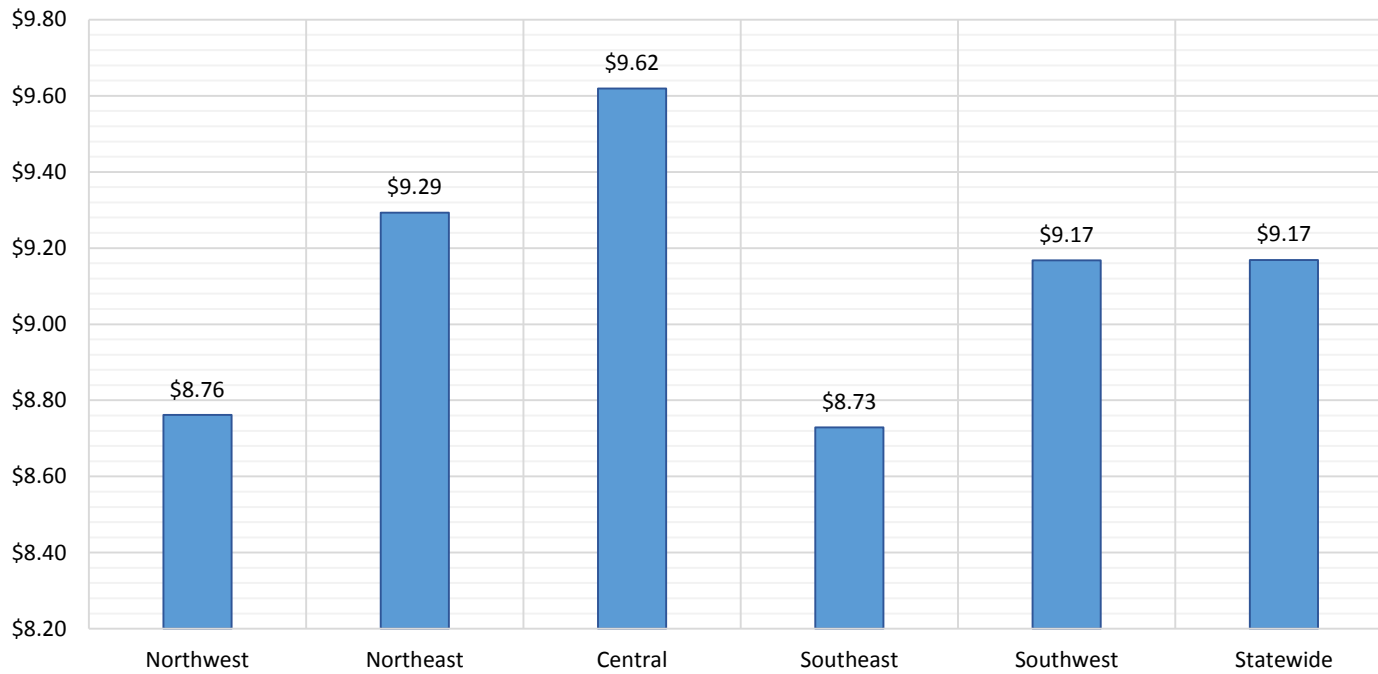
TANF Caseload: SFY-14 to Current



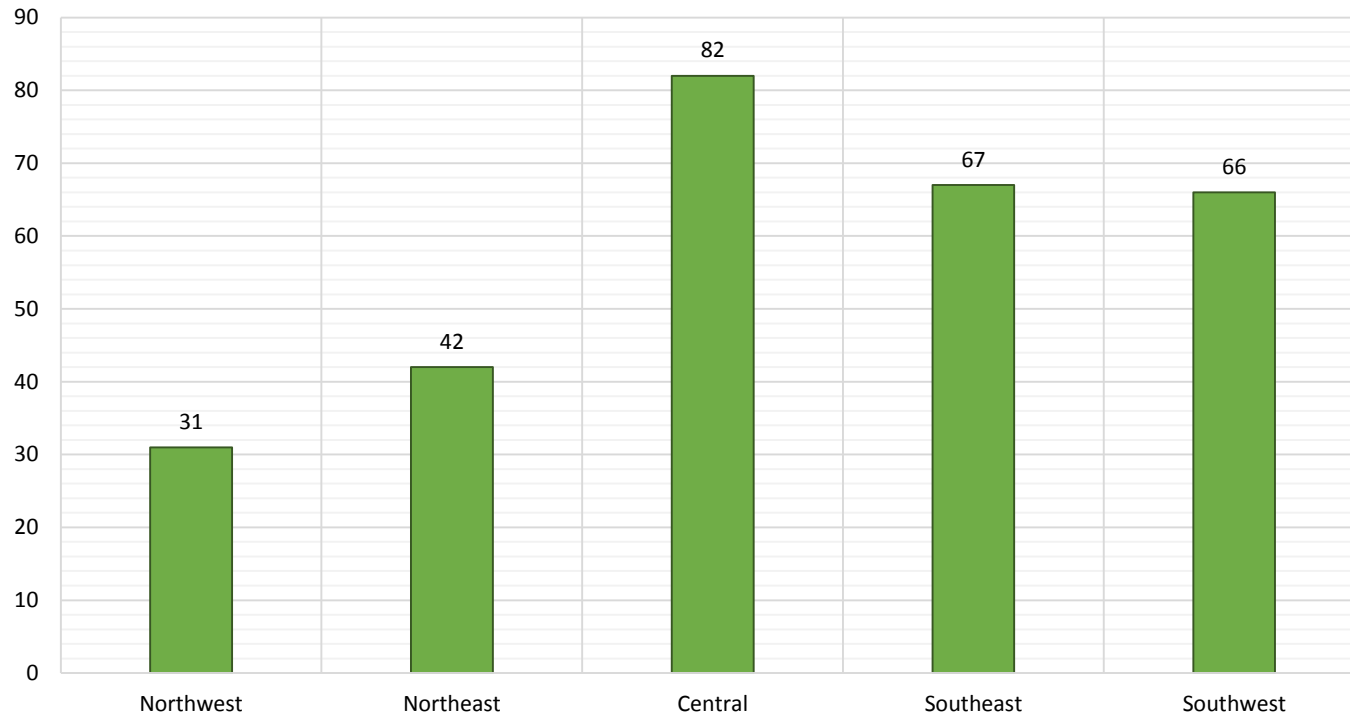
**NM Works Activity Placements on April 30, 2018
as reported by SL Start¹⁴**



Average Starting Hourly Wage of April 2018 TANF Employments
as reported by SL Start¹⁵



Number of New Employments in April 2018 by Region
as reported by SL Start¹⁵
Statewide Total: 288



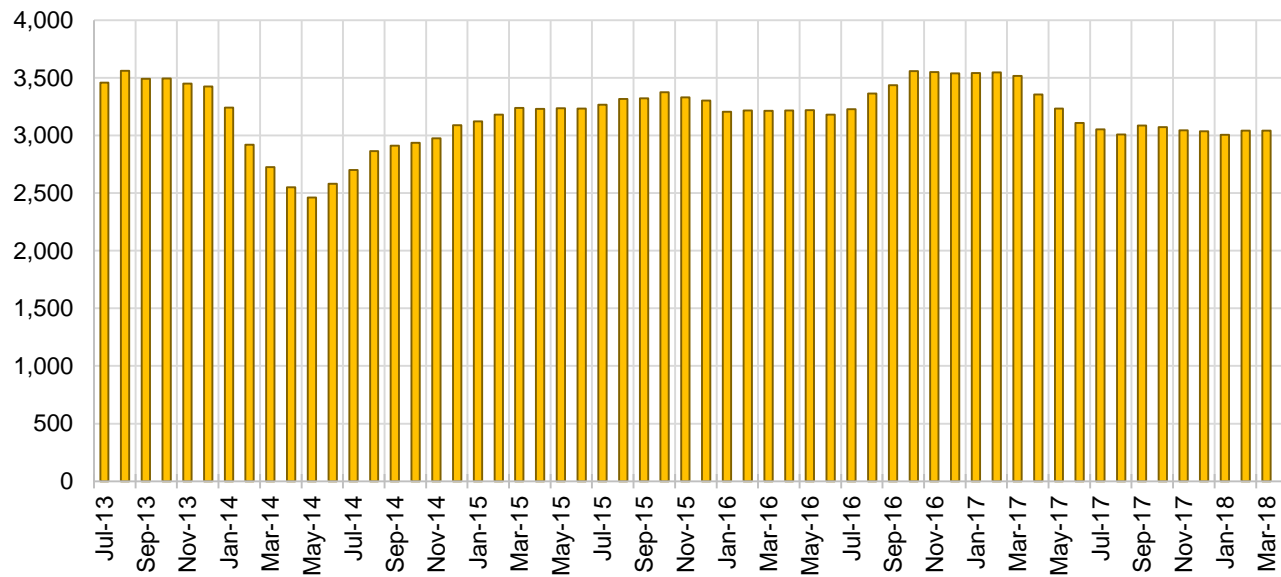
General Assistance Cases by Field Office⁶

Office	Apr-17	Mar-18	Apr-18	Percent Change	
				Apr-17- Apr-18	Mar-18- Apr-18
Chaves County ISD	139	132	128	-7.9%	-3.0%
Cibola County ISD	53	41	39	-26.4%	-4.9%
Colfax County ISD	34	26	24	-29.4%	-7.7%
Curry County ISD	78	79	80	2.6%	1.3%
East Dona Ana County ISD	116	120	110	-5.2%	-8.3%
Eddy Artesia County ISD	22	26	26	18.2%	0.0%
Eddy Carlsbad County ISD	83	73	73	-12.0%	0.0%
Grant County ISD	85	64	66	-22.4%	3.1%
Guadalupe County ISD	14	16	19	35.7%	18.8%
Hidalgo County ISD	13	14	13	0.0%	-7.1%
Lea County ISD	102	82	81	-20.6%	-1.2%
Lincoln County ISD	46	34	33	-28.3%	-2.9%
Luna County ISD	61	59	55	-9.8%	-6.8%
McKinley County ISD	30	58	57	90.0%	-1.7%
Northeast Bernalillo County ISD	370	349	355	-4.1%	1.7%
Northwest Bernalillo County ISD	315	312	300	-4.8%	-3.8%
Otero County ISD	102	92	94	-7.8%	2.2%
Quay County ISD	31	24	23	-25.8%	-4.2%
Rio Arriba County ISD	106	79	77	-27.4%	-2.5%
Roosevelt County ISD	22	0	0	-100.0%	N/A
San Juan County ISD	106	148	138	30.2%	-6.8%
San Miguel County ISD	78	70	72	-7.7%	2.9%
Sandoval County ISD	143	128	132	-7.7%	3.1%
Santa Fe County ISD	205	136	128	-37.6%	-5.9%
Sierra County ISD	34	26	27	-20.6%	3.8%
Socorro County ISD	53	40	41	-22.6%	2.5%
South Dona Ana ISD	57	56	57	0.0%	1.8%
Southeast Bernalillo County ISD	171	171	173	1.2%	1.2%
Southwest Bernalillo County ISD	235	203	194	-17.4%	-4.4%
Taos County ISD	68	52	43	-36.8%	-17.3%
Torrance County ISD	61	47	46	-24.6%	-2.1%
Valencia North County ISD	127	105	108	-15.0%	2.9%
Valencia South County ISD	1	0	0	-100.0%	N/A
West Dona Ana County ISD	194	179	171	-11.9%	-4.5%
Centralized Units	0	0	0	N/A	N/A
Statewide Total	3,355	3,041	2,983	-11.1%	-1.9%

General Assistance Cases by Region⁶

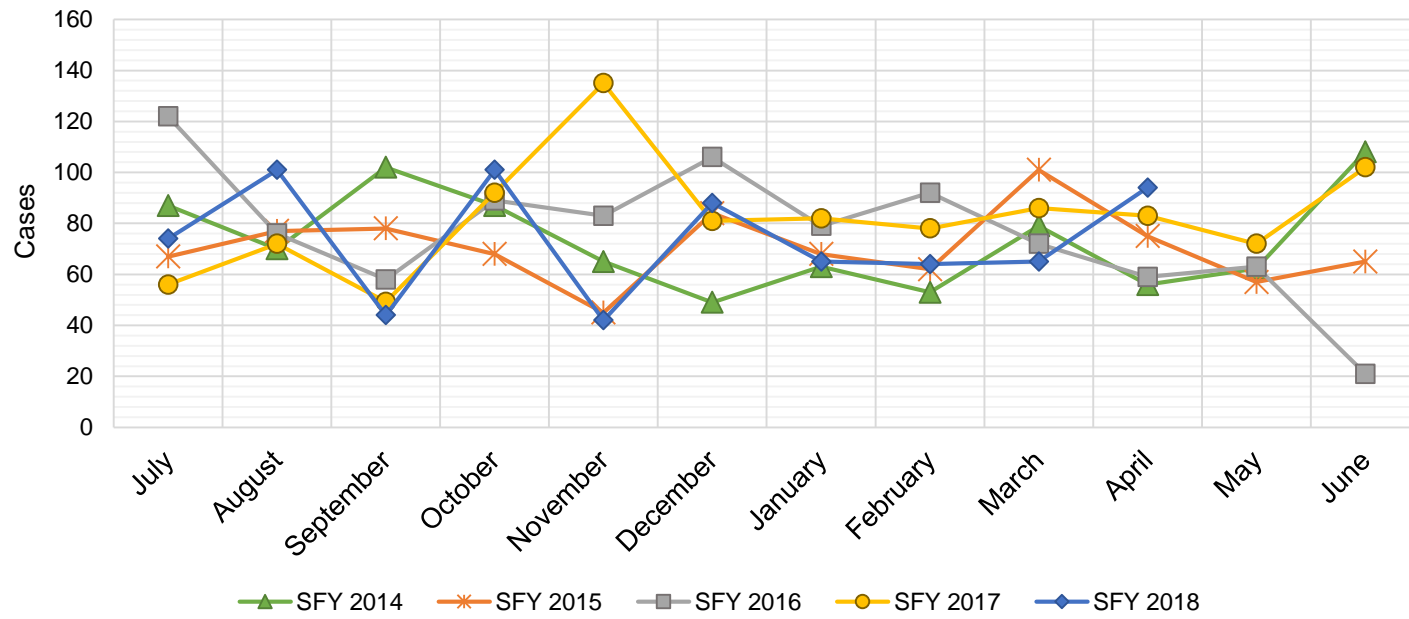
Region	Apr-17	Mar-18	Apr-18	Percent Change	
				Apr-17- Apr-18	Mar-18- Apr-18
Region 1 - NW	404	418	410	1.5%	-1.9%
Region 2 - NE	679	531	518	-23.7%	-2.4%
Region 3 - Central	1,152	1,082	1,068	-7.3%	-1.3%
Region 4 - SE	492	426	421	-14.4%	-1.2%
Region 5 - SW	628	584	566	-9.9%	-3.1%
Centralized Units	0	0	0	N/A	N/A
Statewide Total	3,355	3,041	2,983	-11.1%	-1.9%

General Assistance Caseload: SFY-14 to Current



General Assistance Interim Assistance Reimbursements¹⁶

SFY 2014			SFY 2015			SFY 2016			SFY 2017			SFY 2018		
	Cases	Expenditures		Cases	Expenditures		Cases	Expenditures		Cases	Expenditures		Cases	Expenditures
Jul-13	87	\$185,368	Jul-14	67	\$144,679	Jul-15	122	\$342,648	Jul-16	56	\$164,970	Jul-17	74	\$241,438
Aug-13	70	\$184,639	Aug-14	77	\$244,233	Aug-15	76	\$245,236	Aug-16	72	\$223,182	Aug-17	101	\$339,301
Sep-13	102	\$268,243	Sep-14	78	\$168,421	Sep-15	58	\$170,093	Sep-16	49	\$158,027	Sep-17	44	\$131,229
Oct-13	87	\$165,578	Oct-14	68	\$182,265	Oct-15	89	\$277,912	Oct-16	92	\$257,830	Oct-17	101	\$335,752
Nov-13	65	\$139,197	Nov-14	45	\$134,482	Nov-15	83	\$238,948	Nov-16	135	\$402,305	Nov-17	42	\$139,572
Dec-13	49	\$147,853	Dec-14	84	\$239,926	Dec-15	106	\$388,102	Dec-16	81	\$227,569	Dec-17	88	\$245,453
Jan-14	63	\$178,944	Jan-15	68	\$227,066	Jan-16	79	\$239,263	Jan-17	82	\$274,050	Jan-18	65	\$258,239
Feb-14	53	\$130,352	Feb-15	62	\$159,564	Feb-16	92	\$296,332	Feb-17	78	\$227,569	Feb-18	64	\$195,815
Mar-14	79	\$176,756	Mar-15	101	\$317,899	Mar-16	72	\$254,360	Mar-17	86	\$278,219	Mar-18	65	\$172,188
Apr-14	56	\$155,245	Apr-15	75	\$199,038	Apr-16	59	\$208,631	Apr-17	83	\$267,187	Apr-18	94	\$312,340
May-14	62	\$138,827	May-15	57	\$167,383	May-16	63	\$182,241	May-17	72	\$232,836	May-18		
Jun-14	108	\$241,016	Jun-15	65	\$188,159	Jun-16	21	\$51,760	Jun-17	102	\$306,228	Jun-18		
TOTAL	881	\$2,112,017	847	\$2,373,115	920	\$2,895,525	988	\$3,019,972	738	\$2,371,327				
AVERAGE	73	\$176,001	71	\$197,760	77	\$241,294	82	\$251,664	74	\$237,133				



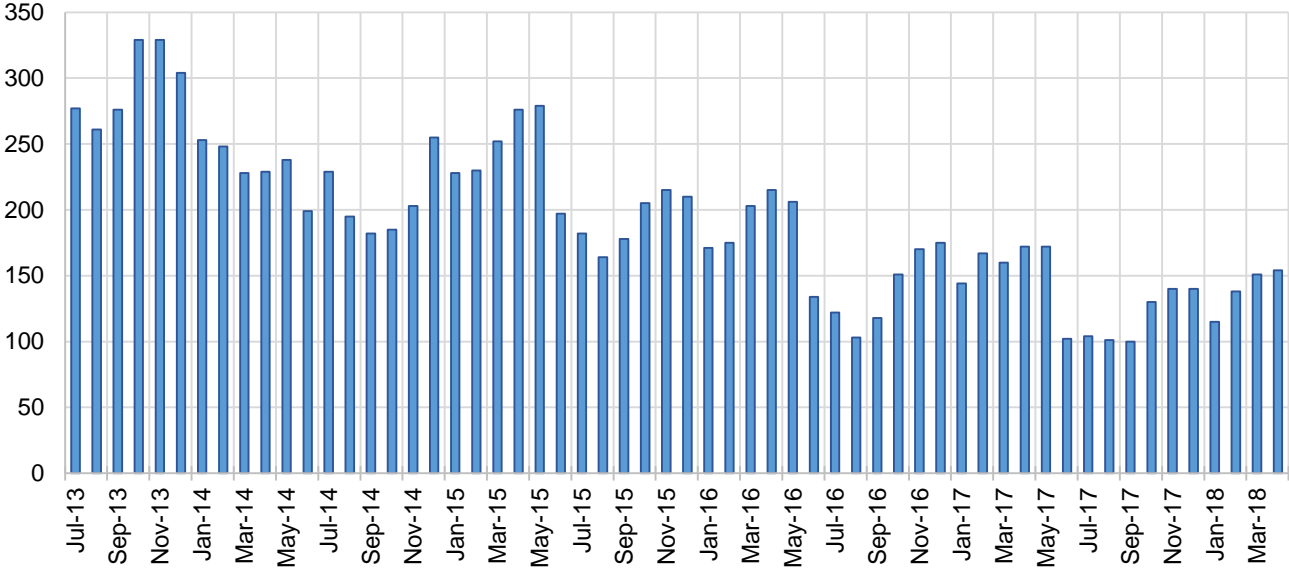
Education Works Cases by Field Office⁶

Office				Percent Change	
	Apr-17	Mar-18	Apr-18	Apr-17- Apr-18	Mar-18- Apr-18
Chaves County ISD	2	3	3	50.0%	0.0%
Cibola County ISD	0	1	1	N/A	0.0%
Colfax County ISD	0	0	0	N/A	N/A
Curry County ISD	3	6	7	133.3%	16.7%
East Dona Ana County ISD	8	11	10	25.0%	-9.1%
Eddy Artesia County ISD	1	3	3	200.0%	0.0%
Eddy Carlsbad County ISD	2	3	3	50.0%	0.0%
Grant County ISD	6	10	9	50.0%	-10.0%
Guadalupe County ISD	1	0	0	-100.0%	N/A
Hidalgo County ISD	0	0	0	N/A	N/A
Lea County ISD	6	3	3	-50.0%	0.0%
Lincoln County ISD	0	1	1	N/A	0.0%
Luna County ISD	2	3	3	50.0%	0.0%
McKinley County ISD	0	0	0	N/A	N/A
Northeast Bernalillo County ISD	31	10	11	-64.5%	10.0%
Northwest Bernalillo County ISD	11	11	12	9.1%	9.1%
Otero County ISD	1	3	2	100.0%	-33.3%
Quay County ISD	1	0	0	-100.0%	N/A
Rio Arriba County ISD	4	5	6	50.0%	20.0%
Roosevelt County ISD	2	0	0	-100.0%	N/A
San Juan County ISD	5	2	4	-20.0%	100.0%
San Miguel County ISD	12	5	5	-58.3%	0.0%
Sandoval County ISD	13	14	14	7.7%	0.0%
Santa Fe County ISD	8	13	14	75.0%	7.7%
Sierra County ISD	1	1	1	0.0%	0.0%
Socorro County ISD	2	2	2	0.0%	0.0%
South Dona Ana ISD	14	18	19	35.7%	5.6%
Southeast Bernalillo County ISD	5	4	3	-40.0%	-25.0%
Southwest Bernalillo County ISD	15	7	6	-60.0%	-14.3%
Taos County ISD	2	0	1	-50.0%	N/A
Torrance County ISD	1	0	0	-100.0%	N/A
Valencia North County ISD	1	0	0	-100.0%	N/A
Valencia South County ISD	0	0	0	N/A	N/A
West Dona Ana County ISD	12	12	11	-8.3%	-8.3%
Centralized Units	0	0	0	N/A	N/A
Statewide Total	172	151	154	-10.5%	2.0%

Education Works Cases by Region⁶

Region	Apr-17	Mar-18	Apr-18	Percent Change	
				Apr-17- Apr-18	Mar-18- Apr-18
Region 1 - NW	9	6	8	-11.1%	33.3%
Region 2 - NE	41	37	40	-2.4%	8.1%
Region 3 - Central	63	32	32	-49.2%	0.0%
Region 4 - SE	16	19	20	25.0%	5.3%
Region 5 - SW	43	57	54	25.6%	-5.3%
Centralized Units	0	0	0	N/A	N/A
Statewide Total	172	151	154	-10.5%	2.0%

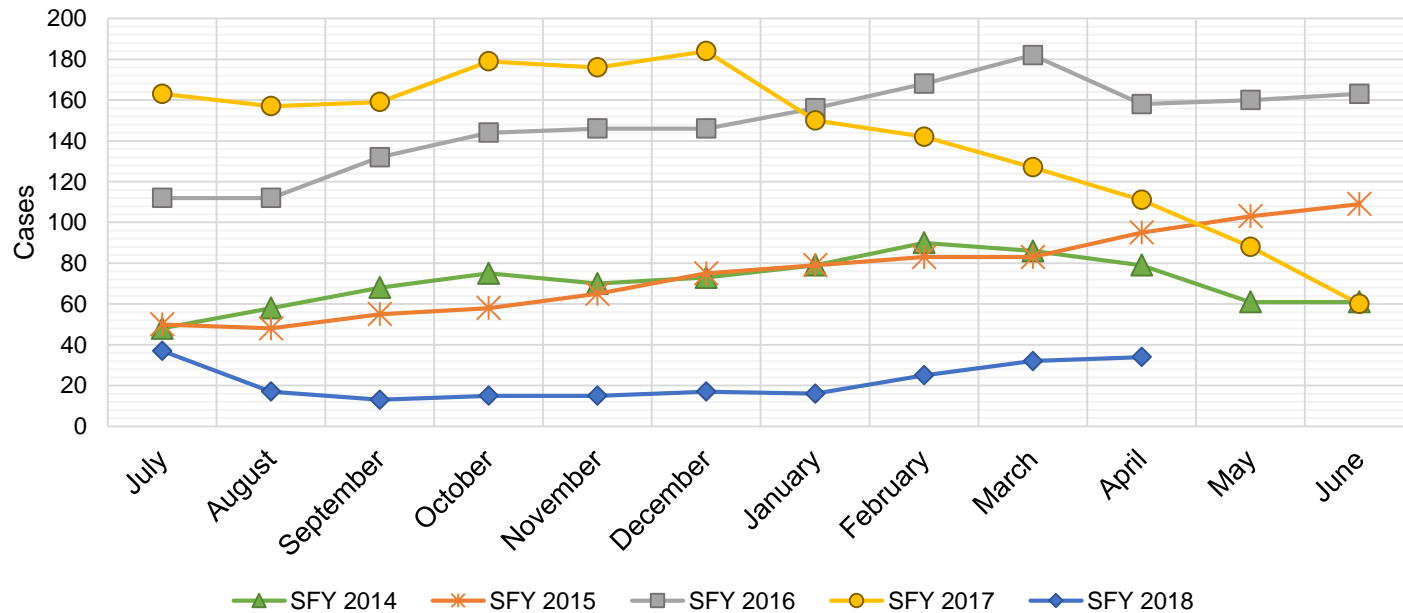
Education Works Caseload: SFY-14 to Current



Refugee Cash Assistance

SFY 2014 ¹²			SFY 2015 ^{8,12,9}			SFY 2016 ^{8,9}			SFY 2017 ^{8,9}			SFY 2018 ^{8,9}		
	Cases	Expenditures		Cases	Expenditures		Cases	Expenditures		Cases	Expenditures		Cases	Expenditures
Jul-13	48	\$12,013	Jul-14	50	\$11,679	Jul-15	112	\$27,516	Jul-16	163	\$39,756	Jul-17	37	\$9,981
Aug-13	58	\$16,129	Aug-14	48	\$11,760	Aug-15	112	\$27,438	Aug-16	157	\$40,115	Aug-17	17	\$4,704
Sep-13	68	\$19,061	Sep-14	55	\$13,094	Sep-15	132	\$31,321	Sep-16	159	\$39,359	Sep-17	13	\$3,159
Oct-13	75	\$20,962	Oct-14	58	\$13,726	Oct-15	144	\$36,153	Oct-16	179	\$41,520	Oct-17	15	\$3,543
Nov-13	70	\$21,880	Nov-14	65	\$16,461	Nov-15	146	\$36,515	Nov-16	176	\$45,434	Nov-17	15	\$4,263
Dec-13	73	\$22,053	Dec-14	75	\$18,699	Dec-15	146	\$35,763	Dec-16	184	\$46,673	Dec-17	17	\$4,795
Jan-14	79	\$22,670	Jan-15	79	\$19,009	Jan-16	156	\$38,686	Jan-17	150	\$38,790	Jan-18	16	\$4,166
Feb-14	90	\$23,227	Feb-15	83	\$21,349	Feb-16	168	\$41,368	Feb-17	142	\$37,956	Feb-18	25	\$5,723
Mar-14	86	\$21,808	Mar-15	83	\$20,730	Mar-16	182	\$45,307	Mar-17	127	\$33,066	Mar-18	32	\$7,636
Apr-14	79	\$20,109	Apr-15	95	\$23,495	Apr-16	158	\$41,143	Apr-17	111	\$29,183	Apr-18	34	\$8,827
May-14	61	\$15,703	May-15	103	\$25,363	May-16	160	\$38,332	May-17	88	\$23,343	May-18		
Jun-14	61	\$14,783	Jun-15	109	\$27,958	Jun-16	163	\$39,856	Jun-17	60	\$15,538	Jun-18		

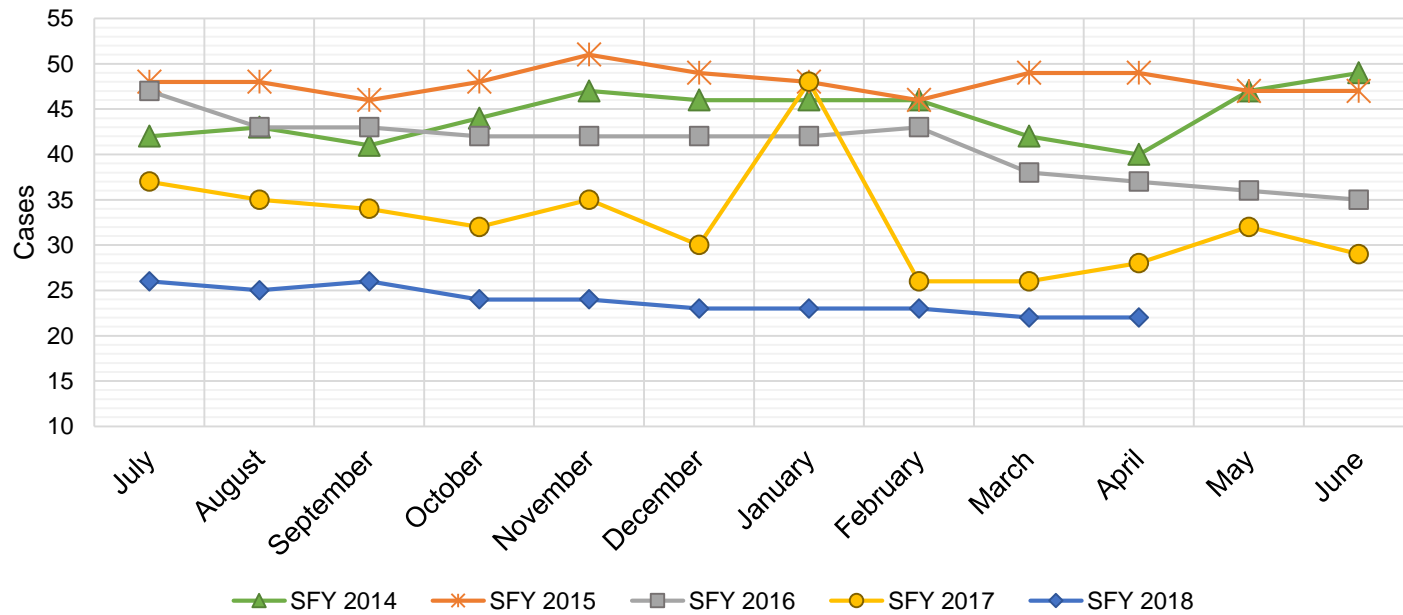
TOTAL	848	\$230,398	903	\$223,323	1,779	\$439,397	1,696	\$430,732	221	\$56,797
AVERAGE	71	\$19,200	75	\$18,610	148	\$36,616	141	\$35,894	22	\$5,680



State Supplement for Residential Care

SFY 2014 ¹²			SFY 2015 ^{12,9}			SFY 2016 ⁹			SFY 2017 ⁹			SFY 2018 ⁹		
	Cases	Expenditures		Cases	Expenditures		Cases	Expenditures		Cases	Expenditures		Cases	Expenditures
Jul-13	42	\$4,400	Jul-14	48	\$4,700	Jul-15	47	\$4,700	Jul-16	37	\$3,700	Jul-17	26	\$2,700
Aug-13	43	\$4,300	Aug-14	48	\$5,000	Aug-15	43	\$4,900	Aug-16	35	\$3,500	Aug-17	25	\$2,500
Sep-13	41	\$4,700	Sep-14	46	\$4,600	Sep-15	43	\$4,500	Sep-16	34	\$3,400	Sep-17	26	\$2,700
Oct-13	44	\$4,500	Oct-14	48	\$4,600	Oct-15	42	\$4,400	Oct-16	32	\$3,200	Oct-17	24	\$2,500
Nov-13	47	\$4,700	Nov-14	51	\$5,600	Nov-15	42	\$4,200	Nov-16	35	\$3,500	Nov-17	24	\$2,400
Dec-13	46	\$4,600	Dec-14	49	\$5,000	Dec-15	42	\$4,200	Dec-16	30	\$3,000	Dec-17	23	\$2,200
Jan-14	46	\$4,700	Jan-15	48	\$4,900	Jan-16	42	\$4,200	Jan-17	48	\$4,800	Jan-18	23	\$2,400
Feb-14	46	\$4,700	Feb-15	46	\$4,800	Feb-16	43	\$4,300	Feb-17	26	\$2,600	Feb-18	23	\$2,300
Mar-14	42	\$4,500	Mar-15	49	\$4,800	Mar-16	38	\$3,800	Mar-17	26	\$2,600	Mar-18	22	\$2,400
Apr-14	40	\$4,200	Apr-15	49	\$5,400	Apr-16	37	\$3,700	Apr-17	28	\$2,800	Apr-18	22	\$2,200
May-14	47	\$5,000	May-15	47	\$4,700	May-16	36	\$3,600	May-17	32	\$3,200	May-18		
Jun-14	49	\$4,900	Jun-15	47	\$5,300	Jun-16	35	\$3,500	Jun-17	29	\$2,900	Jun-18		

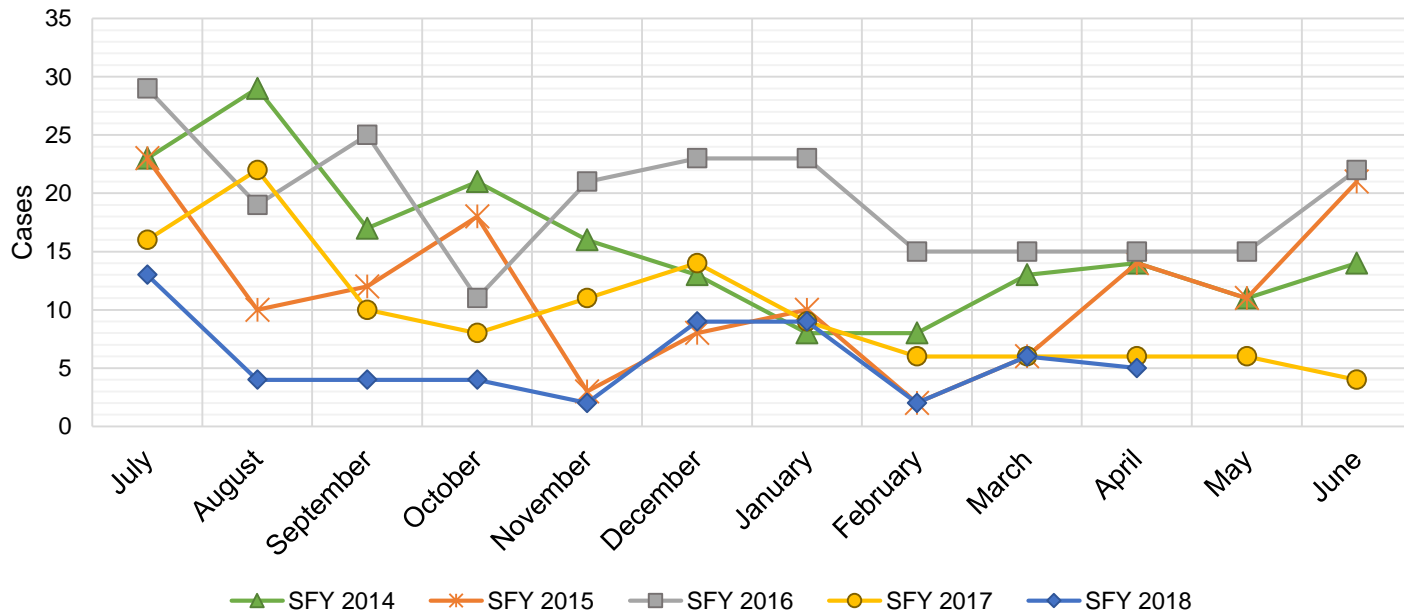
TOTAL	533	\$55,200	576	\$59,400	490	\$50,000	392	\$39,200	238	\$24,300
AVERAGE	44	\$4,600	48	\$4,950	41	\$4,167	33	\$3,267	24	\$2,430



TANF Diversion Payments

SFY 2014 ¹²			SFY 2015 ^{12,9}			SFY 2016 ⁹			SFY 2017 ⁹			SFY 2018 ⁹		
Cases	Expenditures		Cases	Expenditures		Cases	Expenditures		Cases	Expenditures		Cases	Expenditures	
Jul-13	23	\$46,500	Jul-14	23	\$48,098	Jul-15	29	\$62,074	Jul-16	16	\$30,843	Jul-17	13	\$26,500
Aug-13	29	\$54,500	Aug-14	10	\$21,810	Aug-15	19	\$33,584	Aug-16	22	\$42,731	Aug-17	4	\$12,000
Sep-13	17	\$36,500	Sep-14	12	\$23,500	Sep-15	25	\$47,977	Sep-16	10	\$21,000	Sep-17	4	\$4,000
Oct-13	21	\$42,500	Oct-14	18	\$30,589	Oct-15	11	\$20,500	Oct-16	8	\$16,744	Oct-17	4	\$16,000
Nov-13	16	\$28,953	Nov-14	3	\$4,411	Nov-15	21	\$45,500	Nov-16	11	\$24,500	Nov-17	2	\$15,500
Dec-13	13	\$25,500	Dec-14	8	\$14,634	Dec-15	23	\$45,389	Dec-16	14	\$26,611	Dec-17	9	\$17,500
Jan-14	8	\$16,000	Jan-15	10	\$18,000	Jan-16	23	\$41,874	Jan-17	9	\$18,500	Jan-18	9	\$21,731
Feb-14	8	\$16,994	Feb-15	2	\$5,500	Feb-16	15	\$28,500	Feb-17	6	\$12,000	Feb-18	2	\$7,731
Mar-14	13	\$27,396	Mar-15	6	\$12,000	Mar-16	15	\$27,008	Mar-17	6	\$11,000	Mar-18	6	\$8,496
Apr-14	14	\$28,000	Apr-15	14	\$26,000	Apr-16	15	\$31,389	Apr-17	6	\$12,000	Apr-18	5	\$13,500
May-14	11	\$20,500	May-15	11	\$21,500	May-16	15	\$31,916	May-17	6	\$11,500	May-18		
Jun-14	14	\$29,911	Jun-15	21	\$40,039	Jun-16	22	\$43,000	Jun-17	4	\$13,500	Jun-18		

TOTAL	187	\$373,254	138	\$266,081	233	\$458,711	118	\$240,929	58	\$142,958
AVERAGE	16	\$31,105	12	\$22,173	19	\$38,226	10	\$20,077	6	\$14,296

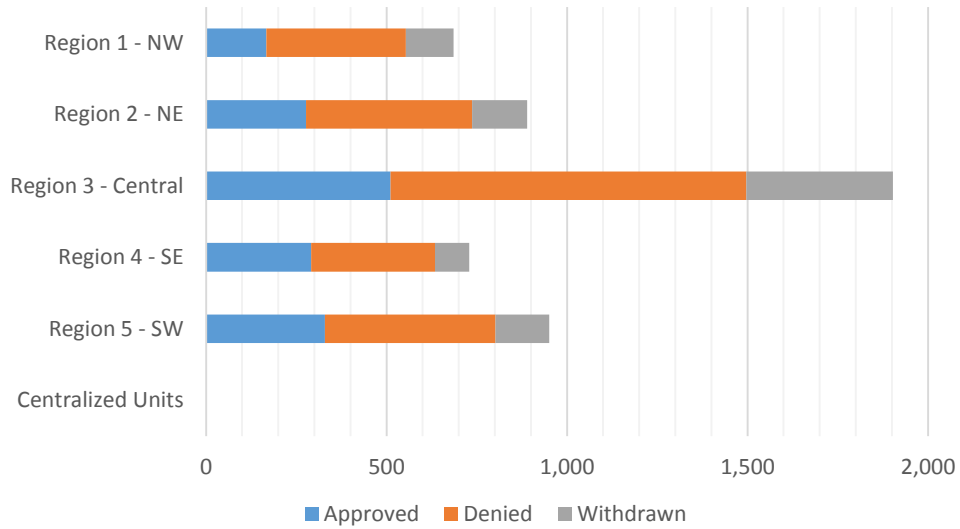


Cash Assistance Applications by Field Office^{4,11}
April 2018

Office	Approved	Denied	Withdrawn	Total Cases Processed
Chaves County ISD	72	83	28	183
Cibola County ISD	20	35	14	69
Colfax County ISD	19	13	7	39
Curry County ISD	98	92	21	211
East Dona Ana County ISD	54	102	38	194
Eddy Artesia County ISD	13	19	1	33
Eddy Carlsbad County ISD	21	45	16	82
Grant County ISD	34	52	10	96
Guadalupe County ISD	6	8	2	16
Hidalgo County ISD	0	0	0	0
Lea County ISD	73	81	23	177
Lincoln County ISD	14	23	6	43
Luna County ISD	22	15	18	55
McKinley County ISD	15	64	27	106
Northeast Bernalillo County ISD	163	311	148	622
Northwest Bernalillo County ISD	124	239	130	493
Otero County ISD	52	72	33	157
Quay County ISD	12	9	4	25
Rio Arriba County ISD	45	60	12	117
Roosevelt County ISD	0	0	0	0
San Juan County ISD	46	187	38	271
San Miguel County ISD	34	41	15	90
Sandoval County ISD	82	146	59	287
Santa Fe County ISD	58	140	37	235
Sierra County ISD	15	17	0	32
Socorro County ISD	10	18	10	38
South Dona Ana ISD	62	68	22	152
Southeast Bernalillo County ISD	76	132	54	262
Southwest Bernalillo County ISD	122	261	61	444
Taos County ISD	21	43	17	81
Torrance County ISD	26	43	13	82
Valencia North County ISD	61	66	43	170
Valencia South County ISD	0	0	0	0
West Dona Ana County ISD	105	164	28	297
Centralized Units	0	0	0	0
Statewide Total	1,575	2,649	935	5,159

Cash Assistance Applications by Region^{4,11}
April 2018

	Approved	Denied	Withdrawn	Total Cases Processed
Region				
Region 1 - NW	167	387	132	686
Region 2 - NE	277	460	153	890
Region 3 - Central	511	986	406	1,903
Region 4 - SE	291	343	95	729
Region 5 - SW	329	473	149	951
Centralized Units	0	0	0	0
Statewide Total	1,575	2,649	935	5,159



Children Youth and Families Department
Children Receiving Child Care Assistance Subsidies By County

County	Apr 2017	May 2017	June 2017	July 2017	Aug 2017	Sep 2017	Oct 2017	Nov 2017	Dec 2017	Jan 2018	Feb 2018	Mar 2018	Apr 2018	Change Fr. Cases	Last Year Percent
Bernalillo	7,385	7,519	7,895	7,547	7,616	8,154	7,848	7,985	7,903	7,801	7,739	7,824	7,853	468	6.3%
Catron	0	0	0	0	0	0	0	0	5	5	0	0	0	0	0.0%
Chaves	768	796	860	826	821	889	884	870	855	843	823	807	791	23	3.0%
Cibola	294	299	305	293	294	311	304	303	296	291	289	277	291	-3	-1.0%
Colfax	38	39	46	46	41	44	41	42	42	47	50	51	56	18	47.4%
Curry	437	445	480	486	459	422	446	467	470	493	514	517	536	99	22.7%
De Baca	13	14	14	12	11	11	9	11	10	10	8	4	4	-9	-69.2%
Dona Ana	4,217	4,309	4,499	4,509	4,473	4,693	4,585	4,581	4,492	4,349	4,382	4,322	4,349	132	3.1%
Eddy	294	301	306	292	287	313	297	297	263	256	257	240	242	-52	-17.7%
Grant	153	159	161	134	114	164	161	157	159	139	127	133	140	-13	-8.5%
Guadalupe	17	16	16	16	16	15	16	16	16	14	11	15	14	-3	-17.6%
Harding	0	0	0	0	0	0	0	0	0	0	0	0	1	1	0.0%
Hidalgo	35	39	40	37	37	39	39	35	32	32	36	40	35	0	0.0%
Lea	748	781	818	837	856	954	909	895	833	824	827	855	805	57	7.6%
Lincoln	141	136	147	146	145	150	147	136	132	129	129	128	130	-11	-7.8%
Los Alamos	15	16	16	17	16	19	18	14	13	13	14	15	17	2	13.3%
Luna	164	177	188	165	176	177	177	166	171	167	161	166	166	2	1.2%
McKinley	182	170	171	145	136	161	165	167	166	168	156	158	162	-20	-11.0%
Mora	21	21	21	18	18	19	18	20	21	20	18	20	18	-3	-14.3%
Otero	481	498	532	500	491	530	525	518	531	519	533	532	518	37	7.7%
Out of State	12	11	10	14	11	12	14	12	3	9	12	8	5	-7	-58.3%
Quay	38	35	39	35	36	39	35	35	35	35	36	36	35	-3	-7.9%
Rio Arriba	137	140	149	144	145	159	163	166	165	154	151	152	148	11	8.0%
Roosevelt	123	118	134	123	125	137	120	120	127	119	117	113	109	-14	-11.4%
San Juan	946	956	997	979	960	1,132	1,050	1,043	1,039	1,005	1,036	1,026	1,053	107	11.3%
San Miguel	366	367	382	366	356	362	368	371	372	357	353	362	370	4	1.1%
Sandoval	878	890	938	932	948	974	859	839	836	794	774	765	782	-96	-10.9%
Santa Fe	490	499	536	534	520	580	554	547	526	514	523	506	514	24	4.9%
Sierra	52	58	69	74	76	79	86	80	77	59	76	67	69	17	32.7%
Socorro	59	59	58	56	63	63	68	66	70	70	70	73	75	16	27.1%
Taos	118	120	127	132	137	145	139	142	141	141	139	139	138	20	16.9%
Torrance	91	96	101	107	117	106	99	115	115	114	110	104	116	25	27.5%
Union	5	4	4	5	5	5	4	6	5	5	5	5	5	0	0.0%
Valencia	629	658	678	642	677	714	723	713	678	651	640	634	612	-17	-2.7%
Totals	19,347	19,746	20,737	20,169	20,183	21,572	20,871	20,935	20,599	20,147	20,116	20,094	20,159	812	4.2%

**CHILDREN YOUTH AND FAMILIES DEPARTMENT
CHILD CARE ASSISTANCE ELIGIBILITY PROGRAMS**

MONTH	MAY'17	JUNE'17	JULY'17	AUG'17	SEP'17	OCT'17	NOV'17	DEC'17	JAN'18	FEB'18	MAR'18	APR'18
TANF (Child Care Priority 1 Clients)												
CLIENTS	2,121	2,300	2,302	2,353	2,455	2,419	2,374	2,315	2,240	2,153	2,178	2,175
COST	\$1,186,719	\$1,271,336	\$1,323,182	\$1,381,202	\$1,364,956	\$1,423,748	\$1,411,060	\$1,382,073	\$1,317,716	\$1,272,232	\$1,325,003	\$1,300,872
TANF AVERAGE COST	\$560	\$553	\$575	\$587	\$556	\$589	\$594	\$597	\$588	\$591	\$608	\$598
TRANSITION OFF TANF (Child Care Priority 2 Clients)												
CLIENTS	205	213	197	189	179	181	154	152	141	138	142	148
COST	\$104,115	\$111,219	\$106,835	\$103,813	\$93,119	\$96,629	\$81,975	\$81,337	\$74,507	\$72,696	\$77,354	\$80,098
TRAN OFF TANF AVG COST	\$508	\$522	\$542	\$549	\$520	\$534	\$532	\$535	\$528	\$527	\$545	\$541
TANF ELIGIBLE (Child Care Priority 1B Clients at or below 100% of the Federal Poverty Level)												
CLIENTS	8,075	8,472	8,193	8,254	9,064	8,899	8,900	8,729	8,435	8,374	8,373	8,382
COST	\$4,302,207	\$4,448,742	\$4,521,900	\$4,657,974	\$4,755,691	\$5,021,574	\$5,099,212	\$4,994,373	\$4,722,370	\$4,675,492	\$4,802,863	\$4,766,353
TANF ELIGIBLE AVG COST	\$533	\$525	\$552	\$564	\$525	\$564	\$573	\$572	\$560	\$558	\$574	\$569
INCOME ELIGIBLE (Child Care Priority 3, and Priority 4 Clients)												
CLIENTS	7,632	7,832	7,426	7,337	7,749	7,464	7,578	7,580	7,665	7,868	7,944	8,059
COST	\$3,757,012	\$3,843,887	\$3,805,939	\$3,838,152	\$3,779,202	\$3,760,398	\$3,838,169	\$3,824,777	\$3,785,466	\$3,929,313	\$4,010,729	\$4,051,487
INCOME ELIG AVG COST	\$492	\$491	\$513	\$523	\$488	\$504	\$506	\$505	\$494	\$499	\$505	\$503
AT-RISK CHILD PROTECTIVE SERVICES CHILD CARE PILOT (Priority 5 Clients)												
CLIENTS	733	881	1,021	1,073	1,152	1,032	1,027	935	772	689	578	516
COST	\$449,007	\$535,980	\$622,872	\$686,919	\$723,334	\$684,194	\$678,258	\$628,399	\$509,028	\$486,780	\$381,318	\$337,243
CPS AVG COST	\$613	\$608	\$610	\$640	\$628	\$663	\$660	\$672	\$659	\$707	\$660	\$654
CHILD PROTECTIVE SERVICES (Child Care CPS Clients)												
CLIENTS	980	1,039	1,030	977	973	876	902	888	894	894	879	879
COST	\$627,325	\$649,417	\$652,471	\$663,134	\$623,416	\$567,608	\$585,009	\$573,312	\$583,824	\$602,246	\$605,523	\$564,253
CPS AVG COST	\$640	\$625	\$633	\$679	\$641	\$648	\$649	\$646	\$653	\$674	\$689	\$642
GRAND TOTAL - ALL CHILD CARE PROGRAMS												
CLIENTS	19,347	19,746	20,737	20,169	20,183	20,871	20,935	20,599	20,147	20,116	20,094	20,159
COST	\$10,227,503	\$10,426,385	\$10,860,581	\$11,033,199	\$11,331,194	\$11,554,151	\$11,693,682	\$11,484,272	\$10,992,912	\$11,038,760	\$11,202,789	\$11,100,307
ALL PROGRAMS AVG COST	\$523	\$529	\$528	\$524	\$547	\$561	\$559	\$558	\$546	\$549	\$558	\$551

Income Eligibility Guidelines: October 1, 2017 - September 30, 2018

Federal Poverty Guidelines (FPG) Monthly Income Standards

Supplemental Nutrition Program (SNAP)					
Household Size	100% FPG Net Income	130% FPG Gross Income	165% FPG Gross Income for Categorical Eligibility	Maximum SNAP Monthly Allotment	LIHEAP 150% FPG
1	\$1,005	\$1,307	\$1,659	\$192	\$1,508
2	\$1,354	\$1,760	\$2,233	\$352	\$2,031
3	\$1,702	\$2,213	\$2,808	\$504	\$2,553
4	\$2,050	\$2,665	\$3,383	\$640	\$3,075
5	\$2,399	\$3,118	\$3,958	\$760	\$3,599
6	\$2,747	\$3,571	\$4,532	\$913	\$4,121
7	\$3,095	\$4,024	\$5,107	\$1,009	\$4,643
8	\$3,444	\$4,477	\$5,682	\$1,153	\$5,166
+1	+\$349	+\$453	+\$575	+\$144	+\$523

Minimum Allotment of \$15 effective from 10/1/2017 - 9/30/2018

DEDUCTIONS: Standard Deduction: For HH size 1-3 = \$160; 4 = \$170; 5 = \$199; 6 or more = \$228; Excess Shelter Deduction Limit: \$535; Heating and Cooling Standard Utility Allowance: \$320 (HCSUA) – Limited Utility Allowance: \$127 (LUA); Telephone Standard: \$42; Dependent Care: Actual Amount (No Limit); Earned Income Deduction: 20%; Homeless Shelter Standard: \$143

CASH Assistance & Support Services					
Household Size	Federal Poverty Guidelines (FPG) Monthly Income Standards			Maximum Monthly Benefit	
	100% FPG Net Income	85% FPG Gross Limit	NM Works Cash Net Income	Maximum Monthly Benefit	General Assistance
1	\$1,005	\$854	\$266	\$244	\$245
2	\$1,354	\$1,151	\$357	\$327	\$329
3	\$1,702	\$1,447	\$447	\$409	\$412
4	\$2,050	\$1,743	\$539	\$493	\$496
5	\$2,399	\$2,039	\$630	\$576	\$580
6	\$2,747	\$2,335	\$721	\$659	\$664
7	\$3,095	\$2,631	\$812	\$743	\$748
8	\$3,444	\$2,927	\$922	\$843	\$849
+1	+\$349	+\$296	+\$91	+\$83	+\$84

Deductions- Dependent Care: For a child under age 2 = \$200; For a child age 2 and over = \$175.
Work Incentives- Earned Income Disregard: Single parent = \$125 & ½ remainder; Two parent = \$225 & ½ remainder.

ISD 017 Revised 08/9/2017

Medical Assistance Division					
Federal Poverty Guidelines New Mexico Affordable Care Eligibility Groups Effective April 01, 2018 thru March 31, 2019 Monthly Guidelines					
HH SIZE	PERCENT OF POVERTY				
	138%	190%	240%	250%	300%
1	\$1,397	\$1,923	\$2,428	\$2,530	\$3,035
2	\$1,893	\$2,607	\$3,292	\$3,430	\$4,115
3	\$2,390	\$3,291	\$4,156	\$4,330	\$5,195
4	\$2,887	\$3,975	\$5,020	\$5,230	\$6,275
5	\$3,384	\$4,659	\$5,884	\$6,130	\$7,355
6	\$3,881	\$5,343	\$6,748	\$7,030	\$8,435
7	\$4,377	\$6,027	\$7,612	\$7,930	\$9,515
8	\$4,874	\$6,711	\$8,476	\$8,830	\$10,595
138% Adult Expansion, 190% Children ages 6 to 19 (Medicaid), 240% Children ages 0 to 6 (Medicaid); ages 6 to 19 (CHIP), 250% Pregnancy Related Services Only, 300% Children 0 to 6 (CHIP)					

Medical Assistance Division					
Federal Poverty Guidelines New Mexico Affordable Care Eligibility Groups Effective April 01, 2018 thru March 31, 2019 Annual Guidelines					
HH SIZE	PERCENT OF POVERTY				
	138%	190%	240%	250%	300%
1	\$16,764	\$23,076	\$29,136	\$30,360	\$36,420
2	\$22,716	\$31,284	\$39,504	\$41,160	\$49,380
3	\$28,680	\$39,492	\$49,872	\$51,960	\$62,340
4	\$34,644	\$47,700	\$60,240	\$62,760	\$75,300
5	\$40,608	\$55,908	\$70,608	\$73,560	\$88,260
6	\$46,572	\$64,116	\$80,976	\$84,360	\$101,220
7	\$52,524	\$72,324	\$91,344	\$95,160	\$114,180
8	\$58,488	\$80,532	\$101,712	\$105,960	\$127,140
138% Adult Expansion, 190% Children ages 6 to 19 (Medicaid), 240% Children ages 0 to 6 (Medicaid); ages 6 to 19 (CHIP), 250% Pregnancy Related Services Only, 300% Children 0 to 6 (CHIP)					

References

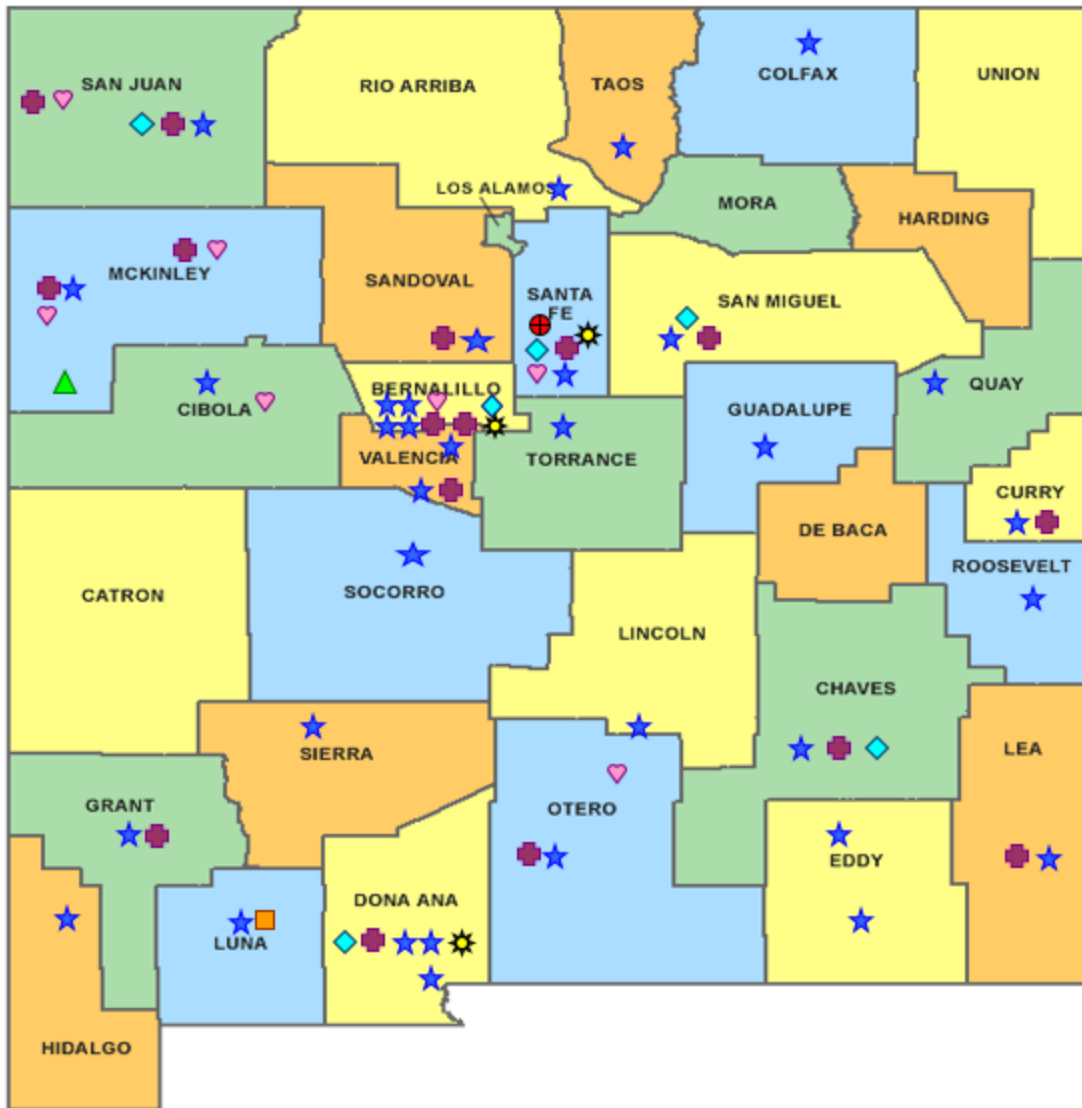
- ¹ *Medicaid Expenditures* (Omnicaid, Medicare Buy-Ins, Lump Sum Payments), Received on May 22, 2018
- ² *ASPEN Business Intelligence Tool: Eligibility*, Retrieved on May 14, 2018
- ³ New Mexico Human Services Department, *Medicaid Eligibility Reports*, Retrieved from <http://www.hsd.state.nm.us/LookingForInformation/medicaid-eligibility.aspx> on May 14, 2018
- ⁴ *ASPEN Business Intelligence Tool: Application Tracking*, Retrieved on May 14, 2018
- ⁵ Fidelity Information Services, *EBT Daily Statistical Report* (for 04/30/2017, 03/31/2018, and 04/30/2018), Retrieved on May 14, 2018
- ⁶ *ASPEN Report DQ-180: Length of Time Cases are Open* (for 04/01/2017-04/30/2017, 03/01/2018-03/31/2018, 04/01/2018-04/30/2018), Retrieved on May 15 2018
- ⁷ *ASPEN Report EY-180: Individual Demographics by State and Age* (for 04/01/2017-04/30/2017, 03/01/2018-03/31/2018, 04/01/2018-04/30/2018), Retrieved May 15, 2018
- ⁸ *ASPEN Business Intelligence Tool: Benefit Issuance*, Retrieved on May 15, 2018
- ⁹ Fidelity Information Services, *EBT Daily Statistical Reports* (Month End), Retrieved on May 14, 2018
- ¹⁰ *ASPEN Report EY-180R: Individual Demographics by State, Race, Ethnicity and Gender* (for 04/01/2018-04/30/2018), Retrieved on May 15, 2018
- ¹¹ SQL Queries from ASPEN, completed May 2018
- ¹² JP Morgan, *New Mexico – NM EBT System- Monthly Benefit Draw Down Totals*
- ¹³ *ASPEN Business Intelligence Tool: Application Tracking* (w/Parameters: SNAP, Expedite, Approved), Retrieved on May 15, 2018
- ¹⁴ SL Start, *As of Today Report 4.30.18*, received May 14, 2018
- ¹⁵ SL Start, *Statewide Employment Report 04.01.18*, received May 14, 2018
- ¹⁶ *SSIAR Payments*, received May 2, 2018

¹⁷ Children, Youth, and Families Department, *Children Receiving Child Care Assistance Subsidies by County*, Received on May 11, 2018

¹⁸ Children, Youth, and Families Department, *Child Care Assistance Eligibility Programs*, Received on May 11, 2018









¹⁹ EDG is defined as an Eligibility Determination Group

²⁰SQL Query from ASPEN, completed May 22, 2018



HUMAN SERVICES DEPARTMENT

New Mexico Human Services Department
Field Offices

-  Central Office (1)
-  Income Support Division County Office (35)
-  Income Support Division Satellite Office (2)
-  Child Support Enforcement Regional Office (16)
-  Child Support Enforcement Satellite Office (1)
-  Quality Control Office (8)
-  Indian Health Services (7)
-  Hospital Site (3)

For a complete listing of field offices and other government and community resources:
http://www.hsd.state.nm.us/LookingForAssistance/Field_Offices_1.aspx