



# Monthly Statistical Report

## November 2017

There were 852,374 individuals that received Medicaid in November 2017, a 4.1% decrease from one year ago. The count of Medicaid recipients has decreased by 2,568, or 0.3%, since last month.

The SNAP caseload in November 2017 was 221,745, a 14.7% decrease from one year ago. The SNAP caseload has decreased by 131 cases, or 0.1%, since last month.

The TANF caseload was 11,915 in November 2017, a decrease of 4.9% from November 2016. The TANF caseload had 14 more cases compared to October 2017, an increase of 0.1%.

The caseload for General Assistance was 3,044 in November 2017, a decrease of 14.3% from one year ago and a decrease of 28 cases from last month.

Susana Martinez, Governor  
Brent Earnest, Cabinet Secretary

<b>Contents</b>	<b>Page</b>
Summary	3-5
Medicaid	6-18
SNAP	19-37
Cash Assistance	38-52
Child Care Assistance	53-54
Income Eligibility Guidelines	55-56

**Regions are reported as follows:**

<b>Region 1</b>		
Catron	San Juan	Valencia
Cibola	Sierra	
McKinley	Socorro	
<b>Region 2</b>		
Colfax	Mora	Santa Fe
De Baca	Quay	Taos
Guadalupe	Rio Arriba	Union
Harding	Sandoval	
Los Alamos	San Miguel	
<b>Region 3</b>		
Bernalillo	Torrance	
<b>Region 4</b>		
Chaves	Eddy	Lincoln
Curry	Lea	Roosevelt
<b>Region 5</b>		
Dona Ana	Hidalgo	Otero
Grant	Luna	

***The Mission of the Human Services Department***

*To reduce the impact of poverty on people living in New Mexico by providing support services that help families break the cycle of dependency on public assistance*

Sean Pearson, Deputy Secretary  
Michael Nelson, Deputy Secretary

Prepared by Income Support Division  
PO Box 2348  
Santa Fe, NM 87504-2348  
505-827-7250

Mary Brogdon, Director  
Vida Tapia-Sanchez, Deputy Director  
Shanita Harrison, Deputy Director

<http://www.hsd.state.nm.us/monthly-statistical-reports.aspx>

# Program Summary for November 2017

Medicaid				Percent Change	
	Nov-16	Oct-17	Nov-17	Nov-16- Nov-17	Oct-17- Nov-17
<b>Expenditures<sup>1</sup></b>	\$430,122,327	\$439,315,207	\$427,736,768	-0.6%	-2.6%
<b>Cases<sup>2</sup></b>	514,186	491,938	489,917	-4.7%	-0.4%
<b>Expenditures/Case</b>	\$837	\$893	\$873	4.4%	-2.2%
<b>Recipients<sup>3</sup></b>	888,447	854,942	852,374	-4.1%	-0.3%
<i>Adults</i>	501,366	484,570	483,085	-3.6%	-0.3%
<i>Children</i>	387,081	370,372	369,289	-4.6%	-0.3%
<b>Recipients /Case</b>	1.73	1.74	1.74	0.7%	0.1%
<b>Cases Processed<sup>4</sup></b>	10,445	15,252	15,497	48.4%	1.6%
<i>Approvals<sup>4</sup></i>	7,960	11,686	11,730	47.4%	0.4%

Supplemental Nutrition Assistance Program (SNAP)				Percent Change	
	Nov-16	Oct-17	Nov-17	Nov-16- Nov-17	Oct-17- Nov-17
<b>Expenditures<sup>5</sup></b>	\$57,143,080	\$54,304,196	\$53,623,068	-6.2%	-1.3%
<b>Cases<sup>6</sup></b>	259,820	221,876	221,745	-14.7%	-0.1%
<b>Expenditures/Case</b>	\$220	\$245	\$242	10.0%	-1.2%
<b>Recipients<sup>7</sup></b>	531,482	462,720	461,268	-13.2%	-0.3%
<i>Adults</i>	309,517	264,188	263,750	-14.8%	-0.2%
<i>Children</i>	221,965	198,532	197,518	-11.0%	-0.5%
<b>Recipients /Case</b>	2.05	2.09	2.08	1.7%	-0.3%
<b>Cases Processed<sup>4</sup></b>	16,797	21,023	19,862	18.2%	-5.5%
<i>Approvals<sup>4</sup></i>	12,912	16,829	16,390	26.9%	-2.6%

Cash Assistance Programs				Percent Change	
	Nov-16	Oct-17	Nov-17	Nov-16- Nov-17	Oct-17- Nov-17
<b>Expenditures<sup>5</sup></b>	\$4,711,743	\$4,303,930	\$4,299,165	-8.8%	-0.1%
<b>Cases<sup>6</sup></b>	16,457	15,142	15,138	-8.0%	0.0%
<b>Expenditures/Case</b>	\$286	\$284	\$284	-0.8%	-0.1%
<b>Recipients<sup>7</sup></b>	37,538	34,834	34,941	-6.9%	0.3%
<i>Adults</i>	12,602	11,260	11,329	-10.1%	0.6%
<i>Children</i>	24,936	23,574	23,612	-5.3%	0.2%
<b>Recipients /Case</b>	2.28	2.30	2.31	1.2%	0.3%
<b>Cases Processed<sup>4</sup></b>	4,601	6,043	5,690	23.7%	-5.8%
<i>Approvals<sup>4</sup></i>	1,718	1,893	1,716	-0.1%	-9.4%

Low Income Home Energy Assistance Program (LIHEAP)				Percent Change	
	Nov-16	Oct-17	Nov-17	Nov-16- Nov-17	Oct-17- Nov-17
<b>Expenditures<sup>8</sup></b>	\$2,565,111	\$3,805,188	\$2,523,278	-1.6%	-33.7%
<b>Cases<sup>8</sup></b>	9,409	13,821	9,362	-0.5%	-32.3%
<b>Expenditures/Case</b>	\$273	\$275	\$270	-1.1%	-2.1%
<b>Recipients<sup>8</sup></b>	21,342	30,314	21,108	-1.1%	-30.4%
<i>Adults</i>	12,384	17,877	12,213	-1.4%	-31.7%
<i>Children</i>	8,958	12,437	8,895	-0.7%	-28.5%
<b>Recipients /Case</b>	2.27	2.19	2.25	-0.6%	2.8%
<b>Cases Processed<sup>4</sup></b>	10,330	14,489	11,606	12.4%	-19.9%
<i>Approvals<sup>4</sup></i>	9,115	12,726	9,593	5.2%	-24.6%

# Cash Assistance Summary for November 2017

## Temporary Assistance for Needy Families (TANF)

	Percent Change				
	Nov-16	Oct-17	Nov-17	Nov-16- Nov-17	Oct-17- Nov-17
Expenditures <sup>5</sup>	\$3,707,224	\$3,489,355	\$3,486,390	-6.0%	-0.1%
Cases <sup>6</sup>	12,526	11,901	11,915	-4.9%	0.1%
Expenditures/Case	\$296	\$293	\$293	-1.1%	-0.2%
Recipients <sup>7</sup>	33,158	31,338	31,410	-5.3%	0.2%
<i>Adults</i>	8,793	8,239	8,283	-5.8%	0.5%
<i>Children</i>	24,365	23,099	23,127	-5.1%	0.1%
Approvals <sup>4</sup>	1,332	1,547	1,369	2.8%	-11.5%

## General Assistance (GA)

	Percent Change				
	Nov-16	Oct-17	Nov-17	Nov-16- Nov-17	Oct-17- Nov-17
Expenditures <sup>5</sup>	\$894,295	\$762,823	\$757,191	-15.3%	-0.7%
Cases <sup>6</sup>	3,550	3,072	3,044	-14.3%	-0.9%
Expenditures/Case	\$252	\$248	\$249	-1.3%	0.2%
Recipients <sup>7</sup>	3,660	3,082	3,089	-15.6%	0.2%
<i>Adults</i>	3,398	2,833	2,847	-16.2%	0.5%
<i>Children</i>	262	249	242	-7.6%	-2.8%
Approvals <sup>4</sup>	284	257	283	-0.4%	10.1%

## Education Works

	Percent Change				
	Nov-16	Oct-17	Nov-17	Nov-16- Nov-17	Oct-17- Nov-17
Expenditures <sup>5</sup>	\$61,290	\$45,709	\$48,921	-20.2%	7.0%
Cases <sup>6</sup>	170	130	140	-17.6%	7.7%
Expenditures/Case	\$361	\$352	\$349	-3.1%	-0.6%
Recipients <sup>7</sup>	498	372	400	-19.7%	7.5%
<i>Adults</i>	189	146	157	-16.9%	7.5%
<i>Children</i>	309	226	243	-21.4%	7.5%
Approvals <sup>4</sup>	6	7	2	-66.7%	-71.4%

## Refugee Cash (RCA)

	Percent Change				
	Nov-16	Oct-17	Nov-17	Nov-16- Nov-17	Oct-17- Nov-17
Expenditures <sup>5</sup>	\$45,434	\$3,543	\$4,263	-90.6%	20.3%
Cases <sup>6</sup>	176	15	15	-91.5%	0.0%
Expenditures/Case	\$258	\$236	\$284	10.1%	20.3%
Recipients <sup>7</sup>	187	18	18	-90.4%	0.0%
<i>Adults</i>	187	18	18	-90.4%	0.0%
<i>Children</i>	0	0	0	N/A	N/A

## State Supplement for Residential Care

	Percent Change				
	Nov-16	Oct-17	Nov-17	Nov-16- Nov-17	Oct-17- Nov-17
Expenditures <sup>5</sup>	\$3,500	\$2,500	\$2,400	-31.4%	-4.0%
Cases <sup>6</sup>	35	24	24	-31.4%	0.0%
Expenditures/Case	\$100	\$104	\$100	0.0%	-4.0%
Recipients <sup>7</sup>	35	24	24	-31.4%	0.0%
<i>Adults</i>	35	24	24	-31.4%	0.0%
<i>Children</i>	0	0	0	N/A	N/A

<b>Expenditures YTD</b>			
	SFY 2018	FFY 2018	CY 2017
Medicaid <sup>1</sup>	\$2,093,207,939	\$867,051,975	\$4,713,128,956
Supplemental Nutrition Assistance Program <sup>9</sup>	\$274,221,379	\$107,927,264	\$606,909,978
Temporary Assistance for Needy Families <sup>9</sup>	\$18,729,136	\$6,975,745	\$39,992,293
General Assistance <sup>9</sup>	\$3,767,316	\$1,520,014	\$8,665,345
Education Work <sup>9</sup>	\$212,856	\$94,630	\$534,601
LIHEAP <sup>8</sup>	\$8,363,938	\$6,328,466	\$15,190,815

<b>Average Caseload YTD</b>			
	SFY 2018	FFY 2018	CY 2017
Medicaid <sup>2</sup>	498,767	490,928	512,110
Supplemental Nutrition Assistance Program <sup>6</sup>	220,941	221,811	227,924
Temporary Assistance for Needy Families <sup>6</sup>	11,805	11,908	11,708
General Assistance <sup>6</sup>	3,052	3,058	3,233
Education Work <sup>6</sup>	115	135	136
LIHEAP <sup>8</sup>	5,644	11,592	5,240

<b>Demographic Profile- November 2017</b>					
	SNAP	TANF	GA	Education Works	RCA
<b>Gender of Recipients<sup>10</sup></b>					
Male	208,636	13,353	1,745	151	11
Female	252,632	18,057	1,344	249	7
<b>Ethnicity<sup>10</sup></b>					
Hispanic	258,005	21,548	1,651	233	12
Non-Hispanic	203,263	9,862	1,438	167	6
<b>Race<sup>10</sup></b>					
Native American or Alaskan Native	75,912	2,512	248	27	0
Asian	4,549	287	37	3	0
African American or Black	11,175	1,288	117	12	2
Native Hawaiian or Pacific Islander	883	36	4	1	0
White	359,976	26,542	2,640	340	10
Unknown / Not Declared	4,870	291	21	10	1
More than One Race	3,903	454	22	7	5

Medicaid demographic data can be found here: <http://www.hsd.state.nm.us/LookingForInformation/medicaid-eligibility.aspx>

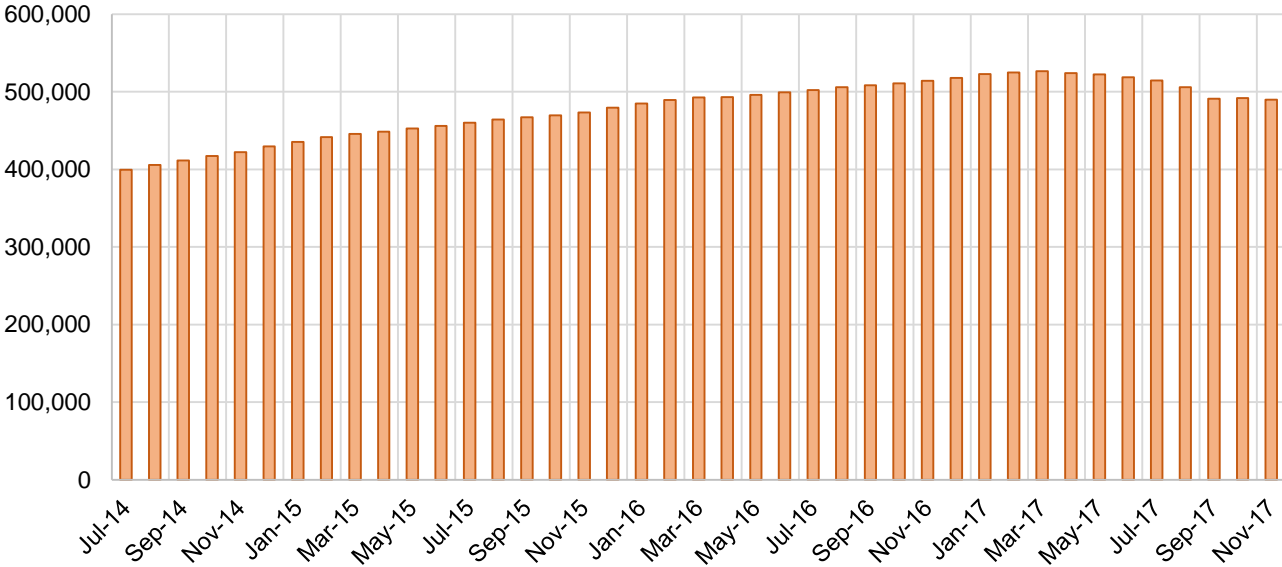
## Medicaid Cases by Field Office<sup>2</sup>

Office				Percent Change	
	Nov-16	Oct-17	Nov-17	Nov-16- Nov-17	Oct-17- Nov-17
Chaves County ISD	16,812	16,148	16,057	-4.5%	-0.6%
Cibola County ISD	7,482	7,515	7,510	0.4%	-0.1%
Colfax County ISD	3,512	3,427	3,445	-1.9%	0.5%
Curry County ISD	10,450	9,926	9,896	-5.3%	-0.3%
East Dona Ana County ISD	18,293	17,680	17,672	-3.4%	0.0%
Eddy Artesia County ISD	3,942	3,867	3,872	-1.8%	0.1%
Eddy Carlsbad County ISD	8,324	7,974	7,934	-4.7%	-0.5%
Grant County ISD	7,203	6,779	6,791	-5.7%	0.2%
Guadalupe County ISD	1,636	1,764	1,756	7.3%	-0.5%
Hidalgo County ISD	1,024	944	942	-8.0%	-0.2%
Lea County ISD	14,648	14,203	14,204	-3.0%	0.0%
Lincoln County ISD	4,618	4,367	4,333	-6.2%	-0.8%
Luna County ISD	9,007	8,731	8,745	-2.9%	0.2%
McKinley County ISD	23,289	22,262	22,320	-4.2%	0.3%
Northeast Bernalillo County ISD	45,136	42,905	42,609	-5.6%	-0.7%
Northwest Bernalillo County ISD	50,743	47,621	47,130	-7.1%	-1.0%
Otero County ISD	11,947	11,922	11,897	-0.4%	-0.2%
Quay County ISD	2,628	2,583	2,572	-2.1%	-0.4%
Rio Arriba County ISD	15,035	14,382	14,320	-4.8%	-0.4%
Roosevelt County ISD	4,022	3,909	3,897	-3.1%	-0.3%
San Juan County ISD	30,519	29,921	29,912	-2.0%	0.0%
San Miguel County ISD	9,692	9,248	9,194	-5.1%	-0.6%
Sandoval County ISD	26,673	25,535	25,518	-4.3%	-0.1%
Santa Fe County ISD	26,654	25,173	24,961	-6.4%	-0.8%
Sierra County ISD	5,562	5,536	5,542	-0.4%	0.1%
Socorro County ISD	5,758	5,408	5,414	-6.0%	0.1%
South Dona Ana ISD	20,039	19,866	19,829	-1.0%	-0.2%
Southeast Bernalillo County ISD	29,273	26,441	26,052	-11.0%	-1.5%
Southwest Bernalillo County ISD	41,542	39,058	38,856	-6.5%	-0.5%
Taos County ISD	9,653	9,303	9,323	-3.4%	0.2%
Torrance County ISD	7,808	7,472	7,448	-4.6%	-0.3%
Valencia North County ISD	18,657	17,692	17,681	-5.2%	-0.1%
Valencia South County ISD	5	3	5	0.0%	66.7%
West Dona Ana County ISD	22,599	22,370	22,277	-1.4%	-0.4%
Centralized Units	1	3	3	200.0%	0.0%
Statewide Total	514,186	491,938	489,917	-4.7%	-0.4%

## Medicaid Cases by Region<sup>2</sup>

				Percent Change	
Region	Nov-16	Oct-17	Nov-17	Nov-16- Nov-17	Oct-17- Nov-17
Region 1 - NW	91,272	88,337	88,384	-3.2%	0.1%
Region 2 - NE	95,483	91,415	91,089	-4.6%	-0.4%
Region 3 - Central	174,502	163,497	162,095	-7.1%	-0.9%
Region 4 - SE	62,816	60,394	60,193	-4.2%	-0.3%
Region 5 - SW	90,112	88,292	88,153	-2.2%	-0.2%
Centralized Units	1	3	3	200.0%	0.0%
Statewide Total	514,186	491,938	489,917	-4.7%	-0.4%

**Medicaid Caseload: SFY-15 to Current**



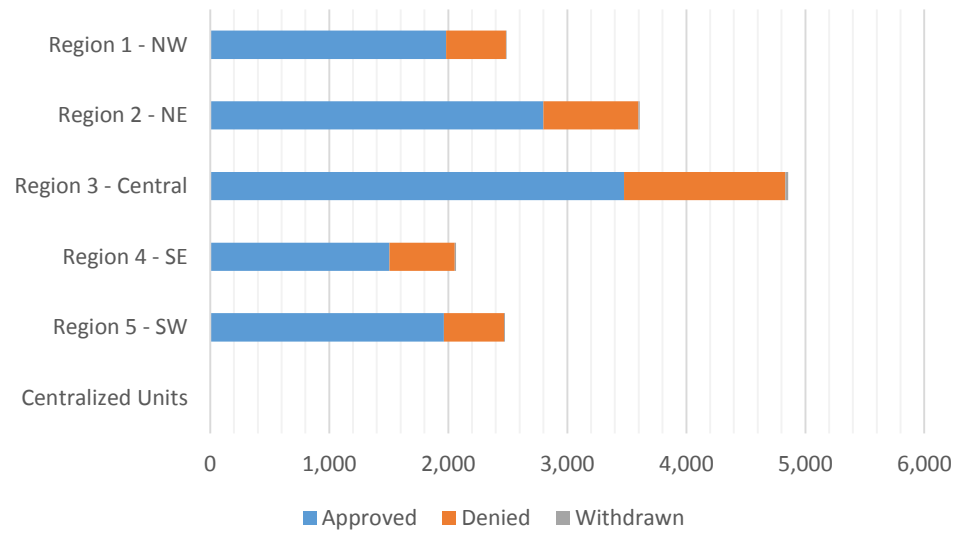
**Medicaid Initial Applications by Field Office<sup>4,11</sup>  
November 2017**

Office	Approved	Denied	Withdrawn	Total Cases Processed
Chaves County ISD	383	123	2	508
Cibola County ISD	154	33	0	187
Colfax County ISD	80	21	0	101
Curry County ISD	254	98	1	353
East Dona Ana County ISD	509	127	4	640
Eddy Artesia County ISD	189	77	1	267
Eddy Carlsbad County ISD	139	72	1	212
Grant County ISD	149	41	1	191
Guadalupe County ISD	24	10	0	34
Hidalgo County ISD	0	0	0	0
Lea County ISD	243	66	2	311
Lincoln County ISD	174	50	1	225
Luna County ISD	184	46	0	230
McKinley County ISD	517	141	1	659
Northeast Bernalillo County ISD	905	346	16	1,267
Northwest Bernalillo County ISD	827	266	3	1,096
Otero County ISD	265	63	1	329
Quay County ISD	82	21	0	103
Rio Arriba County ISD	262	80	3	345
Roosevelt County ISD	125	63	1	189
San Juan County ISD	687	180	1	868
San Miguel County ISD	482	165	1	648
Sandoval County ISD	1,018	219	3	1,240
Santa Fe County ISD	582	239	1	822
Sierra County ISD	98	10	1	109
Socorro County ISD	115	25	0	140
South Dona Ana ISD	365	108	0	473
Southeast Bernalillo County ISD	751	417	1	1,169
Southwest Bernalillo County ISD	755	267	2	1,024
Taos County ISD	269	45	1	315
Torrance County ISD	239	58	3	300
Valencia North County ISD	382	80	2	464
Valencia South County ISD	30	33	0	63
West Dona Ana County ISD	492	121	2	615
Centralized Units	0	0	0	0
Statewide Total	11,730	3,711	56	15,497



## Medicaid Initial Applications by Region<sup>4,11</sup> November 2017

	Approved	Denied	Withdrawn	Total Cases Processed
Region				
Region 1 - NW	1,983	502	5	2,490
Region 2 - NE	2,799	800	9	3,608
Region 3 - Central	3,477	1,354	25	4,856
Region 4 - SE	1,507	549	9	2,065
Region 5 - SW	1,964	506	8	2,478
Centralized Units	0	0	0	0
<b>Statewide Total</b>	<b>11,730</b>	<b>3,711</b>	<b>56</b>	<b>15,497</b>

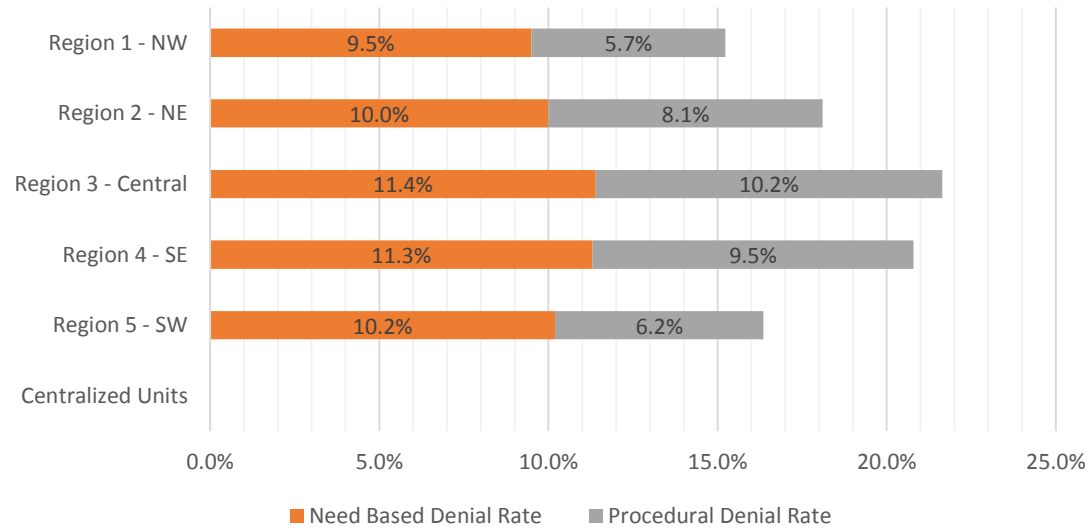


**Medicaid EDG Initial Disposition Rates by Field Office<sup>4,11,19</sup>**  
**November 2017**

Office	Approval Rate	Denial Rate	Need Based Denial Rate	Procedural Denial Rate
Chaves County ISD	82.3%	17.7%	11.3%	6.4%
Cibola County ISD	88.1%	11.9%	4.6%	7.3%
Colfax County ISD	83.8%	16.2%	15.5%	0.7%
Curry County ISD	78.6%	21.4%	10.6%	10.8%
East Dona Ana County ISD	82.7%	17.3%	12.1%	5.2%
Eddy Artesia County ISD	84.0%	16.0%	9.0%	7.0%
Eddy Carlsbad County ISD	74.9%	25.1%	10.4%	14.7%
Grant County ISD	86.7%	13.3%	4.7%	8.6%
Guadalupe County ISD	79.1%	20.9%	13.9%	7.0%
Hidalgo County ISD	0.0%	0.0%	0.0%	0.0%
Lea County ISD	81.7%	18.3%	13.3%	5.0%
Lincoln County ISD	74.4%	25.6%	12.8%	12.8%
Luna County ISD	87.9%	12.1%	6.5%	5.6%
McKinley County ISD	85.2%	14.8%	8.8%	6.0%
Northeast Bernalillo County ISD	79.1%	20.9%	8.8%	12.1%
Northwest Bernalillo County ISD	80.5%	19.5%	8.7%	10.8%
Otero County ISD	80.4%	19.6%	9.5%	10.1%
Quay County ISD	89.8%	10.2%	4.5%	5.7%
Rio Arriba County ISD	82.8%	17.2%	8.2%	9.0%
Roosevelt County ISD	71.3%	28.7%	8.7%	20.0%
San Juan County ISD	83.2%	16.8%	10.7%	6.1%
San Miguel County ISD	84.2%	15.8%	9.0%	6.8%
Sandoval County ISD	83.9%	16.1%	8.9%	7.2%
Santa Fe County ISD	74.6%	25.4%	12.7%	12.7%
Sierra County ISD	88.0%	12.0%	12.0%	0.0%
Socorro County ISD	91.1%	8.9%	5.9%	3.0%
South Dona Ana ISD	81.2%	18.8%	14.6%	4.2%
Southeast Bernalillo County ISD	71.6%	28.4%	18.4%	10.0%
Southwest Bernalillo County ISD	79.0%	21.0%	12.8%	8.2%
Taos County ISD	91.0%	9.0%	6.9%	2.1%
Torrance County ISD	88.2%	11.8%	3.4%	8.4%
Valencia North County ISD	83.1%	16.9%	10.7%	6.2%
Valencia South County ISD	100.0%	0.0%	0.0%	0.0%
West Dona Ana County ISD	85.5%	14.5%	8.7%	5.8%
Centralized Units	0.0%	0.0%	0.0%	0.0%
Statewide Total	81.2%	18.8%	10.5%	8.3%

## Medicaid EDG Initial Disposition Rates by Region<sup>4,11,19</sup> November 2017

Region	Approval Rate	Denial Rate	Need Based Denial Rate	Procedural Denial Rate
Region 1 - NW	84.8%	15.2%	9.5%	5.7%
Region 2 - NE	81.9%	18.1%	10.0%	8.1%
Region 3 - Central	78.4%	21.6%	11.4%	10.2%
Region 4 - SE	79.2%	20.8%	11.3%	9.5%
Region 5 - SW	83.6%	16.4%	10.2%	6.2%
Centralized Units				
<b>Statewide Total</b>	<b>81.2%</b>	<b>18.8%</b>	<b>10.5%</b>	<b>8.3%</b>



Medicaid: Percentage of Initial EDG Approvals Processed Timely by Field Office <sup>13,19</sup>

	Oct-17	Nov-17	Dec-17	Jan-18	Feb-18	Mar-18	Apr-18	May-18	Jun-18	Jul-18	Aug-18	Sep-18	Average
Cibola	92.2%	94.4%											93.3%
McKinley	95.6%	97.4%											96.5%
San Juan	93.4%	92.0%											92.7%
Sierra	95.8%	98.6%											97.2%
Socorro	95.4%	98.7%											97.1%
Valencia North	93.2%	94.1%											93.7%
Valencia South	100.0%	100.0%											100.0%
<b>NW Region 1 Total</b>	<b>94.0%</b>	<b>94.7%</b>											<b>94.4%</b>
Colfax	93.9%	98.4%											96.1%
Guadalupe	97.9%	100.0%											99.0%
Quay	98.0%	94.9%											96.5%
Rio Arriba	96.9%	94.7%											95.8%
San Miguel	97.3%	98.9%											98.1%
Sandoval	97.0%	97.0%											97.0%
Santa Fe	96.1%	95.7%											95.9%
Taos	98.3%	96.8%											97.6%
<b>NE Region 2 Total</b>	<b>96.8%</b>	<b>96.6%</b>											<b>96.7%</b>
NE Bernalillo	95.1%	93.6%											94.4%
NW Bernalillo	96.3%	95.4%											95.8%
SE Bernalillo	88.2%	90.8%											89.5%
SW Bernalillo	95.8%	96.2%											96.0%
Torrance	95.5%	95.1%											95.3%
<b>Gen. Region 3 Total</b>	<b>94.3%</b>	<b>94.3%</b>											<b>94.3%</b>
Chaves	96.4%	96.6%											96.5%
Curry	94.8%	94.2%											94.5%
Eddy Artesia	95.3%	94.9%											95.1%
Eddy Carlsbad	93.2%	98.4%											95.8%
Lea	96.1%	94.7%											95.4%
Lincoln	95.7%	94.7%											95.2%
Roosevelt	94.6%	94.2%											94.4%
<b>SE Region 4 Total</b>	<b>95.4%</b>	<b>95.5%</b>											<b>95.5%</b>
East Dona Ana	96.1%	97.1%											96.6%
Grant	93.9%	96.8%											95.4%
Luna	96.8%	97.8%											97.3%
Otero	97.6%	96.4%											97.0%
South Dona Ana	97.2%	98.3%											97.8%
West Dona Ana	97.4%	96.7%											97.0%
<b>SW Region 5 Total</b>	<b>96.7%</b>	<b>97.2%</b>											<b>97.0%</b>
<b>STATE TOTAL</b>	<b>95.3%</b>	<b>95.4%</b>											<b>95.4%</b>

**Medicaid: Percentage of Initial EDG Denials Processed Timely by Field Office** <sup>13,19</sup>

	Oct-17	Nov-17	Dec-17	Jan-18	Feb-18	Mar-18	Apr-18	May-18	Jun-18	Jul-18	Aug-18	Sep-18	Average
Cibola	51.4%	41.2%											46.3%
McKinley	54.4%	59.7%											57.1%
San Juan	53.1%	57.1%											55.1%
Sierra	92.9%	95.0%											94.0%
Socorro	57.5%	80.0%											68.8%
Valencia North	55.8%	52.1%											54.0%
Valencia South	66.7%												66.7%
<b>NW Region 1 Total</b>	<b>55.0%</b>	<b>57.7%</b>											<b>56.4%</b>
Colfax	90.6%	95.8%											93.2%
Guadalupe	90.0%	11.1%											50.6%
Quay	72.7%	33.3%											53.0%
Rio Arriba	71.4%	56.3%											63.9%
San Miguel	59.5%	67.3%											63.4%
Sandoval	43.6%	51.2%											47.4%
Santa Fe	59.1%	53.7%											56.4%
Taos	47.4%	76.5%											61.9%
<b>NE Region 2 Total</b>	<b>57.2%</b>	<b>56.4%</b>											<b>56.8%</b>
NE Bernalillo	45.7%	38.4%											42.1%
NW Bernalillo	39.2%	40.9%											40.1%
SE Bernalillo	56.6%	46.6%											51.6%
SW Bernalillo	68.5%	68.1%											68.3%
Torrance	56.8%	42.1%											49.5%
<b>Gen. Region 3 Total</b>	<b>52.5%</b>	<b>48.0%</b>											<b>50.2%</b>
Chaves	72.3%	60.2%											66.2%
Curry	61.4%	59.0%											60.2%
Eddy Artesia	65.6%	53.3%											59.5%
Eddy Carlsbad	51.8%	35.8%											43.8%
Lea	72.7%	69.6%											71.2%
Lincoln	35.9%	63.8%											49.8%
Roosevelt	36.4%	46.4%											41.4%
<b>SE Region 4 Total</b>	<b>61.3%</b>	<b>56.6%</b>											<b>58.9%</b>
East Dona Ana	80.0%	74.3%											77.2%
Grant	76.7%	32.4%											54.5%
Luna	47.7%	64.9%											56.3%
Otero	61.9%	48.3%											55.1%
South Dona Ana	86.3%	73.0%											79.7%
West Dona Ana	66.9%	67.0%											66.9%
<b>SW Region 5 Total</b>	<b>73.8%</b>	<b>64.3%</b>											<b>69.1%</b>
<b>STATE TOTAL</b>	<b>58.4%</b>	<b>54.6%</b>											<b>56.5%</b>

**Medicaid Renewal Disposition Counts by Field Office<sup>4,11</sup>**  
**November 2017**

Office	Approvals	Closures	Need Based Closures	Procedural Closures
Chaves County ISD	2,532	558	205	353
Cibola County ISD	1,537	245	100	145
Colfax County ISD	365	75	41	34
Curry County ISD	1,801	379	113	266
East Dona Ana County ISD	3,147	515	172	343
Eddy Artesia County ISD	723	151	48	103
Eddy Carlsbad County ISD	1,087	368	119	249
Grant County ISD	1,054	186	75	111
Guadalupe County ISD	247	21	6	15
Hidalgo County ISD	157	15	6	9
Lea County ISD	2,402	566	159	407
Lincoln County ISD	640	160	45	115
Luna County ISD	1,320	213	87	126
McKinley County ISD	3,823	766	217	549
Northeast Bernalillo County ISD	4,637	1469	373	1096
Northwest Bernalillo County ISD	4,897	2439	662	1777
Otero County ISD	1,973	381	153	228
Quay County ISD	402	73	22	51
Rio Arriba County ISD	1,696	416	113	303
Roosevelt County ISD	667	210	60	150
San Juan County ISD	5,141	959	387	572
San Miguel County ISD	1,054	237	51	186
Sandoval County ISD	3,932	959	231	728
Santa Fe County ISD	3,090	794	215	579
Sierra County ISD	954	103	52	51
Socorro County ISD	875	109	36	73
South Dona Ana ISD	3,956	517	230	287
Southeast Bernalillo County ISD	3,332	891	210	681
Southwest Bernalillo County ISD	5,338	1142	329	813
Taos County ISD	1,197	311	83	228
Torrance County ISD	1,052	276	74	202
Valencia North County ISD	2,964	434	165	269
Valencia South County ISD	0	0	0	0
West Dona Ana County ISD	3,334	579	222	357
Centralized Units	479	76	33	43
<b>Statewide Total</b>	<b>71,805</b>	<b>16,593</b>	<b>5,094</b>	<b>11,499</b>

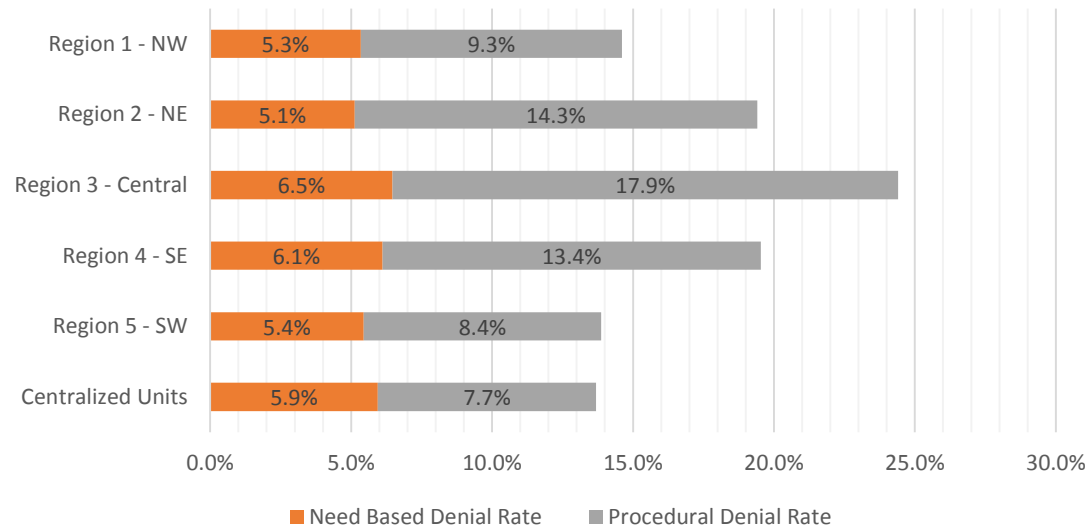
*Determinations at Administrative, Annual, and Auto Renewals are included*

**Medicaid Renewal Disposition Rates by Field Office<sup>20</sup>**  
**November 2017**

Office	Approval Rate	Closure Rate	Need Based Closure Rate	Procedural Closure Rate
Chaves County ISD	81.9%	18.1%	6.6%	11.4%
Cibola County ISD	86.3%	13.7%	5.6%	8.1%
Colfax County ISD	83.0%	17.0%	9.3%	7.7%
Curry County ISD	82.6%	17.4%	5.2%	12.2%
East Dona Ana County ISD	85.9%	14.1%	4.7%	9.4%
Eddy Artesia County ISD	82.7%	17.3%	5.5%	11.8%
Eddy Carlsbad County ISD	74.7%	25.3%	8.2%	17.1%
Grant County ISD	85.0%	15.0%	6.0%	9.0%
Guadalupe County ISD	92.2%	7.8%	2.2%	5.6%
Hidalgo County ISD	91.3%	8.7%	3.5%	5.2%
Lea County ISD	80.9%	19.1%	5.4%	13.7%
Lincoln County ISD	80.0%	20.0%	5.6%	14.4%
Luna County ISD	86.1%	13.9%	5.7%	8.2%
McKinley County ISD	83.3%	16.7%	4.7%	12.0%
Northeast Bernalillo County ISD	75.9%	24.1%	6.1%	17.9%
Northwest Bernalillo County ISD	66.8%	33.2%	9.0%	24.2%
Otero County ISD	83.8%	16.2%	6.5%	9.7%
Quay County ISD	84.6%	15.4%	4.6%	10.7%
Rio Arriba County ISD	80.3%	19.7%	5.4%	14.3%
Roosevelt County ISD	76.1%	23.9%	6.8%	17.1%
San Juan County ISD	84.3%	15.7%	6.3%	9.4%
San Miguel County ISD	81.6%	18.4%	4.0%	14.4%
Sandoval County ISD	80.4%	19.6%	4.7%	14.9%
Santa Fe County ISD	79.6%	20.4%	5.5%	14.9%
Sierra County ISD	90.3%	9.7%	4.9%	4.8%
Socorro County ISD	88.9%	11.1%	3.7%	7.4%
South Dona Ana ISD	88.4%	11.6%	5.1%	6.4%
Southeast Bernalillo County ISD	78.9%	21.1%	5.0%	16.1%
Southwest Bernalillo County ISD	82.4%	17.6%	5.1%	12.5%
Taos County ISD	79.4%	20.6%	5.5%	15.1%
Torrance County ISD	79.2%	20.8%	5.6%	15.2%
Valencia North County ISD	87.2%	12.8%	4.9%	7.9%
Valencia South County ISD	0.0%	0.0%	0.0%	0.0%
West Dona Ana County ISD	85.2%	14.8%	5.7%	9.1%
Centralized Units	86.3%	13.7%	5.9%	7.7%
Statewide Total	81.2%	18.8%	5.8%	13.0%

## Medicaid Renewal Disposition Rates by Region<sup>20</sup> November 2017

Region	Approval Rate	Closure Rate	Need Based Closure Rate	Procedural Closure Rate
Region 1 - NW	85.4%	14.6%	5.3%	9.3%
Region 2 - NE	80.6%	19.4%	5.1%	14.3%
Region 3 - Central	75.6%	24.4%	6.5%	17.9%
Region 4 - SE	80.5%	19.5%	6.1%	13.4%
Region 5 - SW	86.1%	13.9%	5.4%	8.4%
Centralized Units	86.3%	13.7%	5.9%	7.7%
<b>Statewide Total</b>	<b>81.2%</b>	<b>18.8%</b>	<b>5.8%</b>	<b>13.0%</b>





Medicaid: Percentage of Approved Renewal EDGs Processed by Certification Date <sup>11</sup>													
	Oct-17	Nov-17	Dec-17	Jan-18	Feb-18	Mar-18	Apr-18	May-18	Jun-18	Jul-18	Aug-18	Sep-18	Average
Cibola		98.9%											98.9%
McKinley		98.9%											98.9%
San Juan		98.9%											98.9%
Sierra		99.1%											99.1%
Socorro		99.5%											99.5%
Valencia North		98.5%											98.5%
Valencia South													
<b>NW Region 1 Total</b>		<b>99.0%</b>											<b>99.0%</b>
Colfax		98.7%											98.7%
Guadalupe		99.2%											99.2%
Quay		99.0%											99.0%
Rio Arriba		98.4%											98.4%
San Miguel		99.5%											99.5%
Sandoval		98.4%											98.4%
Santa Fe		95.6%											95.6%
Taos		98.7%											98.7%
<b>NE Region 2 Total</b>		<b>98.5%</b>											<b>98.5%</b>
NE Bernalillo		97.8%											97.8%
NW Bernalillo		97.6%											97.6%
SE Bernalillo		86.5%											86.5%
SW Bernalillo		98.8%											98.8%
Torrance		98.8%											98.8%
<b>Cen. Region 3 Total</b>		<b>95.9%</b>											<b>95.9%</b>
Chaves		98.7%											98.7%
Curry		99.0%											99.0%
Eddy Artesia		99.2%											99.2%
Eddy Carlsbad		97.7%											97.7%
Lea		98.8%											98.8%
Lincoln		98.2%											98.2%
Roosevelt		99.4%											99.4%
<b>SE Region 4 Total</b>		<b>98.7%</b>											<b>98.7%</b>
East Dona Ana		98.9%											98.9%
Grant		98.5%											98.5%
Luna		99.1%											99.1%
Otero		98.9%											98.9%
South Dona Ana		98.2%											98.2%
West Dona Ana		99.2%											99.2%
<b>SW Region 5 Total</b>		<b>98.8%</b>											<b>98.8%</b>
<b>STATE TOTAL</b>		<b>97.8%</b>											<b>97.8%</b>

Administrative, Annual, and Auto Renewals are included  
No data available for October 2017

Medicaid: Percentage of Closures EDGs Processed by Certification Date <sup>11</sup>													
	Oct-17	Nov-17	Dec-17	Jan-18	Feb-18	Mar-18	Apr-18	May-18	Jun-18	Jul-18	Aug-18	Sep-18	Average
Cibola		37.6%											37.6%
McKinley		23.9%											23.9%
San Juan		36.7%											36.7%
Sierra		45.6%											45.6%
Socorro		33.0%											33.0%
Valencia North		34.6%											34.6%
Valencia South													
<b>NW Region 1 Total</b>		<b>35.2%</b>											<b>35.2%</b>
Colfax		49.3%											49.3%
Guadalupe		28.6%											28.6%
Quay		24.7%											24.7%
Rio Arriba		23.3%											23.3%
San Miguel		19.4%											19.4%
Sandoval		20.5%											20.5%
Santa Fe		22.0%											22.0%
Taos		24.4%											24.4%
<b>NE Region 2 Total</b>		<b>26.5%</b>											<b>26.5%</b>
NE Bernalillo		20.3%											20.3%
NW Bernalillo		16.2%											16.2%
SE Bernalillo		18.7%											18.7%
SW Bernalillo		24.5%											24.5%
Torrance		25.4%											25.4%
<b>Gen. Region 3 Total</b>		<b>21.0%</b>											<b>21.0%</b>
Chaves		34.4%											34.4%
Curry		27.2%											27.2%
Eddy Artesia		31.1%											31.1%
Eddy Carlsbad		26.9%											26.9%
Lea		24.6%											24.6%
Lincoln		23.1%											23.1%
Roosevelt		24.3%											24.3%
<b>SE Region 4 Total</b>		<b>27.4%</b>											<b>27.4%</b>
East Dona Ana		28.5%											28.5%
Grant		38.7%											38.7%
Luna		37.1%											37.1%
Otero		37.3%											37.3%
South Dona Ana		41.6%											41.6%
West Dona Ana		35.1%											35.1%
<b>SW Region 5 Total</b>		<b>36.4%</b>											<b>36.4%</b>
<b>STATE TOTAL</b>		<b>25.8%</b>											<b>25.8%</b>

Annual and Auto Renewals are included  
No data available for October 2017

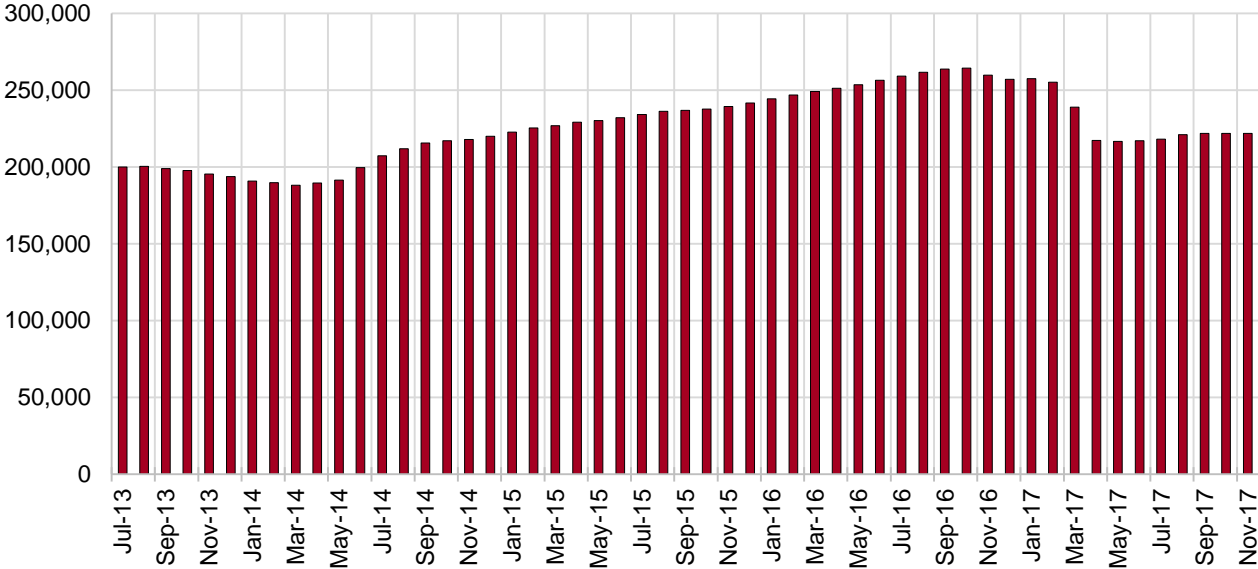
## SNAP Cases by Field Office<sup>6</sup>

Office	Nov-16	Oct-17	Nov-17	Percent Change	
				Nov-16- Nov-17	Oct-17- Nov-17
Chaves County ISD	8,207	7,196	7,160	-12.8%	-0.5%
Cibola County ISD	4,065	3,694	3,677	-9.5%	-0.5%
Colfax County ISD	1,840	1,584	1,598	-13.2%	0.9%
Curry County ISD	5,469	4,795	4,768	-12.8%	-0.6%
East Dona Ana County ISD	9,600	8,049	7,983	-16.8%	-0.8%
Eddy Artesia County ISD	1,956	1,711	1,719	-12.1%	0.5%
Eddy Carlsbad County ISD	4,076	3,356	3,303	-19.0%	-1.6%
Grant County ISD	4,055	3,578	3,567	-12.0%	-0.3%
Guadalupe County ISD	754	720	712	-5.6%	-1.1%
Hidalgo County ISD	518	425	420	-18.9%	-1.2%
Lea County ISD	7,063	5,829	5,839	-17.3%	0.2%
Lincoln County ISD	2,163	1,918	1,953	-9.7%	1.8%
Luna County ISD	5,055	4,270	4,293	-15.1%	0.5%
McKinley County ISD	10,676	9,747	9,683	-9.3%	-0.7%
Northeast Bernalillo County ISD	23,620	19,938	20,064	-15.1%	0.6%
Northwest Bernalillo County ISD	21,513	18,518	18,595	-13.6%	0.4%
Otero County ISD	6,075	5,579	5,573	-8.3%	-0.1%
Quay County ISD	1,380	1,273	1,268	-8.1%	-0.4%
Rio Arriba County ISD	7,971	6,863	6,818	-14.5%	-0.7%
Roosevelt County ISD	2,082	1,699	1,695	-18.6%	-0.2%
San Juan County ISD	15,329	13,373	13,372	-12.8%	0.0%
San Miguel County ISD	5,802	5,025	5,004	-13.8%	-0.4%
Sandoval County ISD	12,978	11,009	11,003	-15.2%	-0.1%
Santa Fe County ISD	12,954	10,095	9,983	-22.9%	-1.1%
Sierra County ISD	2,981	2,668	2,690	-9.8%	0.8%
Socorro County ISD	3,194	2,860	2,890	-9.5%	1.0%
South Dona Ana ISD	9,397	8,693	8,651	-7.9%	-0.5%
Southeast Bernalillo County ISD	15,771	12,091	12,048	-23.6%	-0.4%
Southwest Bernalillo County ISD	21,974	18,659	18,699	-14.9%	0.2%
Taos County ISD	4,627	4,117	4,137	-10.6%	0.5%
Torrance County ISD	4,002	3,316	3,367	-15.9%	1.5%
Valencia North County ISD	9,707	8,418	8,445	-13.0%	0.3%
Valencia South County ISD	9	1	1	-88.9%	0.0%
West Dona Ana County ISD	12,930	10,763	10,710	-17.2%	-0.5%
Centralized Units	27	46	57	111.1%	23.9%
Statewide Total	259,820	221,876	221,745	-14.7%	-0.1%

## SNAP Cases by Region<sup>6</sup>

				Percent Change	
Region	Nov-16	Oct-17	Nov-17	Nov-16- Nov-17	Oct-17- Nov-17
Region 1 - NW	45,961	40,761	40,758	-11.3%	0.0%
Region 2 - NE	48,306	40,686	40,523	-16.1%	-0.4%
Region 3 - Central	86,880	72,522	72,773	-16.2%	0.3%
Region 4 - SE	31,016	26,504	26,437	-14.8%	-0.3%
Region 5 - SW	47,630	41,357	41,197	-13.5%	-0.4%
Centralized Units	27	46	57	111.1%	23.9%
<b>Statewide Total</b>	<b>259,820</b>	<b>221,876</b>	<b>221,745</b>	<b>-14.7%</b>	<b>-0.1%</b>

**SNAP Caseload: SFY-14 to Current**

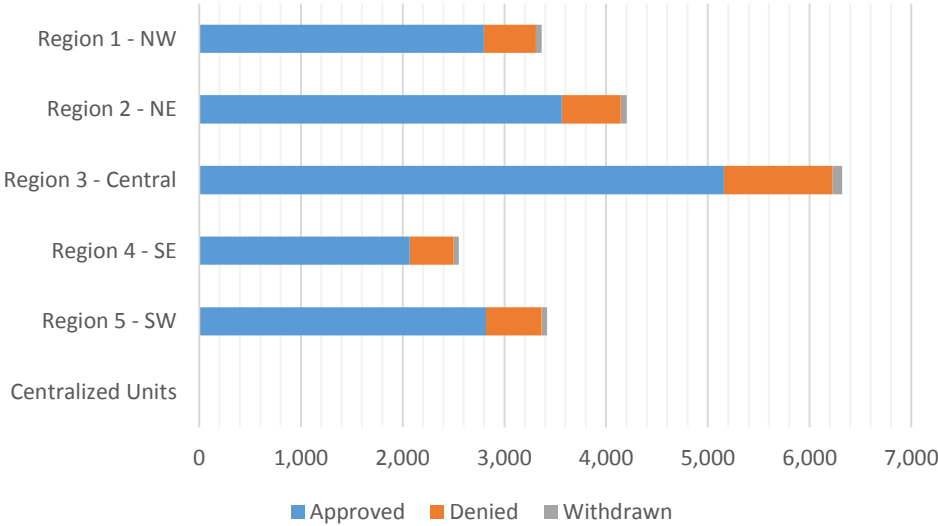


**SNAP Initial Applications by Field Office<sup>4,11</sup>**  
**November 2017**

Office	Approved	Denied	Withdrawn	Total Cases Processed
Chaves County ISD	536	83	19	638
Cibola County ISD	221	30	2	253
Colfax County ISD	117	20	2	139
Curry County ISD	379	71	12	462
East Dona Ana County ISD	616	133	15	764
Eddy Artesia County ISD	213	30	4	247
Eddy Carlsbad County ISD	215	65	5	285
Grant County ISD	247	37	4	288
Guadalupe County ISD	36	12	2	50
Hidalgo County ISD	0	0	0	0
Lea County ISD	373	104	6	483
Lincoln County ISD	183	37	1	221
Luna County ISD	287	45	10	342
McKinley County ISD	673	114	19	806
Northeast Bernalillo County ISD	1,509	275	24	1,808
Northwest Bernalillo County ISD	1,245	258	31	1,534
Otero County ISD	387	70	10	467
Quay County ISD	87	9	0	96
Rio Arriba County ISD	478	85	14	577
Roosevelt County ISD	165	47	5	217
San Juan County ISD	960	224	20	1,204
San Miguel County ISD	351	44	3	398
Sandoval County ISD	1,381	196	25	1,602
Santa Fe County ISD	768	162	6	936
Sierra County ISD	179	21	2	202
Socorro County ISD	194	22	3	219
South Dona Ana ISD	494	91	7	592
Southeast Bernalillo County ISD	905	244	17	1,166
Southwest Bernalillo County ISD	1,140	253	17	1,410
Taos County ISD	348	48	8	404
Torrance County ISD	351	44	8	403
Valencia North County ISD	551	109	9	669
Valencia South County ISD	12	0	0	12
West Dona Ana County ISD	789	167	12	968
Centralized Units	0	0	0	0
Statewide Total	16,390	3,150	322	19,862

## SNAP Initial Applications by Region<sup>4,11</sup> November 2017

Region	Approved	Denied	Withdrawn	Total Cases Processed
Region 1 - NW	2,790	520	55	3,365
Region 2 - NE	3,566	576	60	4,202
Region 3 - Central	5,150	1,074	97	6,321
Region 4 - SE	2,064	437	52	2,553
Region 5 - SW	2,820	543	58	3,421
Centralized Units	0	0	0	0
Statewide Total	16,390	3,150	322	19,862



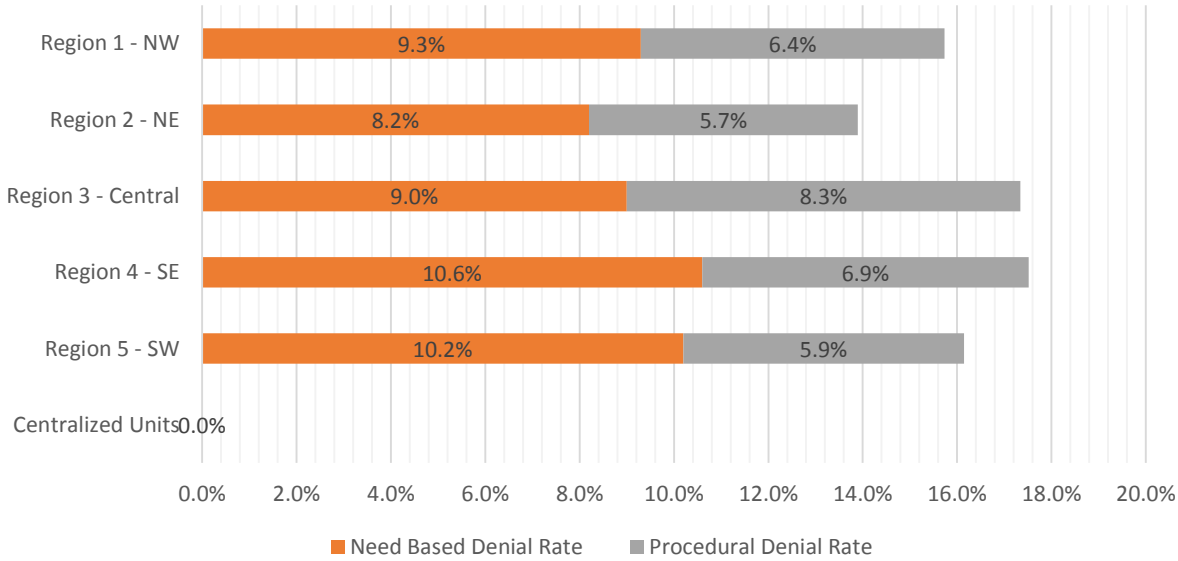
**SNAP Initial Disposition Rates by Field Office<sup>4,11</sup>**  
**November 2017**

Office	Approval Rate	Denial Rate	Need Based Denial Rate	Procedural Denial Rate
Chaves County ISD	86.6%	13.4%	9.4%	4.0%
Cibola County ISD	88.0%	12.0%	6.0%	6.0%
Colfax County ISD	85.4%	14.6%	13.9%	0.7%
Curry County ISD	84.2%	15.8%	8.2%	7.6%
East Dona Ana County ISD	82.2%	17.8%	12.3%	5.5%
Eddy Artesia County ISD	87.7%	12.3%	6.5%	5.8%
Eddy Carlsbad County ISD	76.8%	23.2%	13.2%	10.0%
Grant County ISD	87.0%	13.0%	8.1%	4.9%
Guadalupe County ISD	75.0%	25.0%	18.7%	6.3%
Hidalgo County ISD	0.0%	100.0%	100.0%	0.0%
Lea County ISD	78.2%	21.8%	13.4%	8.4%
Lincoln County ISD	83.2%	16.8%	12.3%	4.5%
Luna County ISD	86.4%	13.6%	6.7%	6.9%
McKinley County ISD	85.5%	14.5%	8.3%	6.2%
Northeast Bernalillo County ISD	84.6%	15.4%	7.9%	7.5%
Northwest Bernalillo County ISD	82.8%	17.2%	8.1%	9.1%
Otero County ISD	84.7%	15.3%	6.5%	8.8%
Quay County ISD	90.6%	9.4%	5.2%	4.2%
Rio Arriba County ISD	84.9%	15.1%	9.2%	5.9%
Roosevelt County ISD	77.8%	22.2%	11.8%	10.4%
San Juan County ISD	81.1%	18.9%	11.2%	7.7%
San Miguel County ISD	88.9%	11.1%	7.6%	3.5%
Sandoval County ISD	87.6%	12.4%	6.5%	5.9%
Santa Fe County ISD	82.6%	17.4%	10.2%	7.2%
Sierra County ISD	89.5%	10.5%	9.0%	1.5%
Socorro County ISD	89.8%	10.2%	7.0%	3.2%
South Dona Ana ISD	84.4%	15.6%	11.3%	4.3%
Southeast Bernalillo County ISD	78.8%	21.2%	10.6%	10.6%
Southwest Bernalillo County ISD	81.8%	18.2%	10.2%	8.0%
Taos County ISD	87.9%	12.1%	6.8%	5.3%
Torrance County ISD	88.9%	11.1%	7.3%	3.8%
Valencia North County ISD	83.5%	16.5%	9.2%	7.3%
Valencia South County ISD	100.0%	0.0%	0.0%	0.0%
West Dona Ana County ISD	82.5%	17.5%	11.5%	6.0%
Centralized Units				
Statewide Total	83.9%	16.1%	9.2%	6.9%

**SNAP Initial Disposition Rates by Region<sup>4,11</sup>**  
**November 2017**

Region	Approval Rate	Denial Rate	Need Based Denial Rate	Procedural Denial Rate
Region 1 - NW	84.3%	15.7%	9.3%	6.4%
Region 2 - NE	86.1%	13.9%	8.2%	5.7%
Region 3 - Central	82.7%	17.3%	9.0%	8.3%
Region 4 - SE	82.5%	17.5%	10.6%	6.9%
Region 5 - SW	83.9%	16.1%	10.2%	5.9%
Centralized Units				

Statewide Total	83.9%	16.1%	9.2%	6.9%
-----------------	-------	-------	------	------





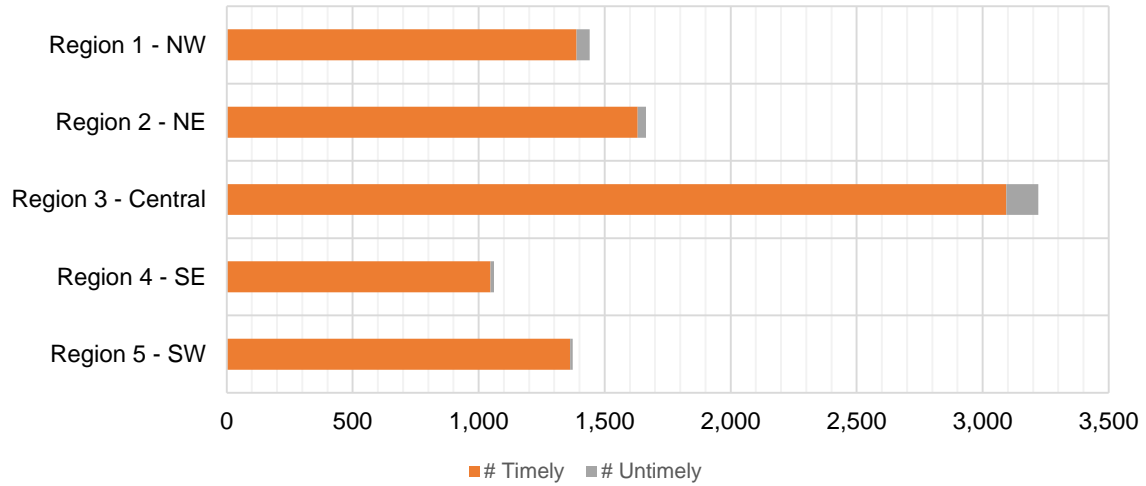
**SNAP Expedite Timeliness by Field Office<sup>13</sup>**  
**November 2017**

Office Name	Total Expedited Approvals	# Timely	# Untimely	Percentage Timely
Chaves County ISD	220	217	3	98.6 %
Cibola County ISD	99	99	0	100.0 %
Colfax County ISD	56	56	0	100.0 %
Curry County ISD	229	226	3	98.7 %
East Dona Ana County ISD	246	243	3	98.8 %
Eddy Artesia County ISD	64	63	1	98.4 %
Eddy Carlsbad County ISD	144	142	2	98.6 %
Grant County ISD	170	170	0	100.0 %
Guadalupe County ISD	18	18	0	100.0 %
Lea County ISD	243	239	4	98.4 %
Lincoln County ISD	73	72	1	98.6 %
Luna County ISD	141	141	0	100.0 %
McKinley County ISD	338	336	2	99.4 %
Northeast Bernalillo County ISD	1,051	1,013	38	96.4 %
Northwest Bernalillo County ISD	904	864	40	95.6 %
Otero County ISD	249	245	4	98.4 %
Quay County ISD	41	41	0	100.0 %
Rio Arriba County ISD	299	291	8	97.3 %
Roosevelt County ISD	88	88	0	100.0 %
San Juan County ISD	553	521	32	94.2 %
San Miguel County ISD	180	177	3	98.3 %
Sandoval County ISD	458	450	8	98.3 %
Santa Fe County ISD	433	423	10	97.7 %
Sierra County ISD	84	84	0	100.0 %
Socorro County ISD	97	97	0	100.0 %
South Dona Ana ISD	179	178	1	99.4 %
Southeast Bernalillo County ISD	494	473	21	95.7 %
Southwest Bernalillo County ISD	631	608	23	96.4 %
Taos County ISD	179	175	4	97.8 %
Torrance County ISD	141	136	5	96.5 %
Valencia North County ISD	270	252	18	93.3 %
West Dona Ana County ISD	388	386	2	99.5 %
<b>Statewide Total</b>	<b>8,760</b>	<b>8,524</b>	<b>236</b>	<b>97.3 %</b>

**SNAP Expedite Timeliness by Region<sup>13</sup>**  
**November 2017**

Region	Total Expedited Approvals	# Timely	# Untimely	Percentage Timely
Region 1 - NW	1,441	1,389	52	96.4%
Region 2 - NE	1,664	1,631	33	98.0%
Region 3 - Central	3,221	3,094	127	96.1%
Region 4 - SE	1,061	1,047	14	98.7%
Region 5 - SW	1,373	1,363	10	99.3%
Statewide Total	8,760	8,524	236	97.3%

**SNAP Expedite - Timeliness**



### SNAP: Percentage of Applications Processed Timely <sup>13</sup>

	Oct-17	Nov-17	Dec-17	Jan-18	Feb-18	Mar-18	Apr-18	May-18	Jun-18	Jul-18	Aug-18	Sep-18	Average
APT	97.4%	97.5%											97.5%

### SNAP Application Processing Timeliness (APT)



**SNAP Non-Expedite: Percentage of Initial Applications Processed Timely by Field Office <sup>13</sup>**

	Oct-17	Nov-17	Dec-17	Jan-18	Feb-18	Mar-18	Apr-18	May-18	Jun-18	Jul-18	Aug-18	Sep-18	Average
Cibola	96.8%	97.2%											97.0%
McKinley	97.4%	98.8%											98.1%
San Juan	94.8%	93.5%											94.2%
Sierra	100.0%	100.0%											100.0%
Socorro	100.0%	96.8%											98.4%
Valencia North	96.5%	96.3%											96.4%
Valencia South	100.0%												100.0%
<b>NW Region 1 Total</b>	<b>96.5%</b>	<b>96.4%</b>											<b>96.5%</b>
Colfax	100.0%	100.0%											100.0%
Guadalupe	100.0%	100.0%											100.0%
Quay	97.2%	100.0%											98.6%
Rio Arriba	97.0%	99.4%											98.2%
San Miguel	100.0%	98.5%											99.3%
Sandoval	98.2%	98.6%											98.4%
Santa Fe	97.6%	97.5%											97.6%
Taos	98.7%	98.7%											98.7%
<b>NE Region 2 Total</b>	<b>98.2%</b>	<b>98.6%</b>											<b>98.4%</b>
NE Bernalillo	95.4%	95.7%											95.6%
NW Bernalillo	97.6%	95.1%											96.4%
SE Bernalillo	96.0%	96.8%											96.4%
SW Bernalillo	97.9%	97.3%											97.6%
Torrance	98.9%	98.2%											98.6%
<b>Gen. Region 3 Total</b>	<b>96.9%</b>	<b>96.3%</b>											<b>96.6%</b>
Chaves	99.3%	98.9%											99.1%
Curry	95.7%	97.1%											96.4%
Eddy Artesia	100.0%	97.2%											98.6%
Eddy Carlsbad	94.8%	97.3%											96.1%
Lea	97.0%	98.3%											97.7%
Lincoln	97.8%	98.9%											98.4%
Roosevelt	100.0%	98.6%											99.3%
<b>SE Region 4 Total</b>	<b>97.6%</b>	<b>98.2%</b>											<b>97.9%</b>
East Dona Ana	99.6%	98.9%											99.3%
Grant	100.0%	99.0%											99.5%
Luna	100.0%	99.4%											99.7%
Otero	100.0%	98.9%											99.5%
South Dona Ana	100.0%	99.6%											99.8%
West Dona Ana	99.2%	98.7%											99.0%
<b>SW Region 5 Total</b>	<b>99.7%</b>	<b>99.0%</b>											<b>99.4%</b>
<b>STATE TOTAL</b>	<b>97.7%</b>	<b>97.5%</b>											<b>97.6%</b>

**SNAP Expedite: Percentage of Initial Applications Processed Timely by Field Office<sup>13</sup>**

	Oct-17	Nov-17	Dec-17	Jan-18	Feb-18	Mar-18	Apr-18	May-18	Jun-18	Jul-18	Aug-18	Sep-18	Average
Cibola	94.1%	100.0%											97.1%
McKinley	99.4%	99.4%											99.4%
San Juan	95.8%	94.2%											95.0%
Sierra	98.3%	100.0%											99.2%
Socorro	98.9%	100.0%											99.5%
Valencia North	97.1%	93.3%											95.2%
Valencia South	100.0%	100.0%											100.0%
<b>NW Region 1 Total</b>	<b>97.0%</b>	<b>96.4%</b>											<b>96.7%</b>
Colfax	98.6%	100.0%											99.3%
Guadalupe	100.0%	100.0%											100.0%
Quay	100.0%	100.0%											100.0%
Rio Arriba	94.6%	97.3%											96.0%
San Miguel	99.1%	98.3%											98.7%
Sandoval	98.2%	98.3%											98.3%
Santa Fe	97.5%	97.7%											97.6%
Taos	98.7%	97.8%											98.3%
<b>NE Region 2 Total</b>	<b>97.5%</b>	<b>98.0%</b>											<b>97.8%</b>
NE Bernalillo	94.6%	96.4%											95.5%
NW Bernalillo	97.6%	95.6%											96.6%
SE Bernalillo	96.5%	95.7%											96.1%
SW Bernalillo	96.6%	96.4%											96.5%
Torrance	96.9%	96.5%											96.7%
<b>Gen. Region 3 Total</b>	<b>96.3%</b>	<b>96.1%</b>											<b>96.2%</b>
Chaves	98.1%	98.6%											98.4%
Curry	96.0%	98.7%											97.4%
Eddy Artesia	100.0%	98.4%											99.2%
Eddy Carlsbad	98.5%	98.6%											98.6%
Lea	98.4%	98.4%											98.4%
Lincoln	96.7%	98.6%											97.7%
Roosevelt	92.7%	100.0%											96.4%
<b>SE Region 4 Total</b>	<b>97.4%</b>	<b>98.7%</b>											<b>98.1%</b>
East Dona Ana	99.0%	98.8%											98.9%
Grant	97.9%	100.0%											99.0%
Luna	99.3%	100.0%											99.7%
Otero	98.8%	98.4%											98.6%
South Dona Ana	100.0%	99.4%											99.7%
West Dona Ana	99.5%	99.5%											99.5%
<b>SW Region 5 Total</b>	<b>99.1%</b>	<b>99.3%</b>											<b>99.2%</b>
<b>STATE TOTAL</b>	<b>97.2%</b>	<b>97.3%</b>											<b>97.3%</b>

**SNAP: Percentage of Denied Initial Applications Processed Within 30 Days by Field Office<sup>13</sup>**

	Oct-17	Nov-17	Dec-17	Jan-18	Feb-18	Mar-18	Apr-18	May-18	Jun-18	Jul-18	Aug-18	Sep-18	Average
Cibola	66.7%	50.0%											58.3%
McKinley	59.0%	57.8%											58.4%
San Juan	35.7%	51.8%											43.7%
Sierra	95.5%	90.9%											93.2%
Socorro	69.6%	68.2%											68.9%
Valencia North	45.9%	41.8%											43.9%
Valencia South													#DIV/0!
<b>NW Region 1 Total</b>	<b>48.3%</b>	<b>53.2%</b>											<b>50.8%</b>
Colfax	100.0%	100.0%											100.0%
Guadalupe	73.3%	75.0%											74.2%
Quay	83.3%	33.3%											58.3%
Rio Arriba	70.1%	56.3%											63.2%
San Miguel	66.2%	77.3%											71.7%
Sandoval	70.8%	69.2%											70.0%
Santa Fe	64.7%	70.6%											67.6%
Taos	77.8%	79.2%											78.5%
<b>NE Region 2 Total</b>	<b>70.8%</b>	<b>69.7%</b>											<b>70.3%</b>
NE Bernalillo	43.5%	40.5%											42.0%
NW Bernalillo	41.7%	42.8%											42.3%
SE Bernalillo	52.3%	52.0%											52.1%
SW Bernalillo	63.9%	62.9%											63.4%
Torrance	60.4%	68.2%											64.3%
<b>Cen. Region 3 Total</b>	<b>49.7%</b>	<b>50.0%</b>											<b>49.9%</b>
Chaves	86.4%	85.7%											86.1%
Curry	63.5%	60.3%											61.9%
Eddy Artesia	75.8%	58.1%											66.9%
Eddy Carlsbad	60.7%	67.6%											64.1%
Lea	86.3%	63.8%											75.1%
Lincoln	55.0%	78.4%											66.7%
Roosevelt	77.1%	68.1%											72.6%
<b>SE Region 4 Total</b>	<b>74.4%</b>	<b>69.2%</b>											<b>71.8%</b>
East Dona Ana	81.2%	77.6%											79.4%
Grant	73.5%	81.1%											77.3%
Luna	55.8%	51.1%											53.4%
Otero	40.3%	38.6%											39.4%
South Dona Ana	70.8%	68.1%											69.5%
West Dona Ana	65.6%	55.7%											60.7%
<b>SW Region 5 Total</b>	<b>66.6%</b>	<b>62.3%</b>											<b>64.4%</b>
<b>STATE TOTAL</b>	<b>59.5%</b>	<b>58.9%</b>											<b>59.2%</b>

**SNAP Renewals Processed by Field Office<sup>20</sup>  
November 2017**

Office	Approvals	Closures	Need Based Closures	Procedural Closures
Chaves County ISD	214	138	20	118
Cibola County ISD	145	81	4	77
Colfax County ISD	39	23	1	22
Curry County ISD	191	95	9	86
East Dona Ana County ISD	341	142	28	114
Eddy Artesia County ISD	51	28	1	27
Eddy Carlsbad County ISD	73	80	12	68
Grant County ISD	176	87	12	75
Guadalupe County ISD	34	14	0	14
Hidalgo County ISD	25	8	1	7
Lea County ISD	183	133	13	120
Lincoln County ISD	47	34	2	32
Luna County ISD	171	88	7	81
McKinley County ISD	429	198	12	186
Northeast Bernalillo County ISD	553	386	30	356
Northwest Bernalillo County ISD	501	275	20	255
Otero County ISD	256	124	8	116
Quay County ISD	66	29	3	26
Rio Arriba County ISD	204	107	9	98
Roosevelt County ISD	48	28	4	24
San Juan County ISD	502	262	27	235
San Miguel County ISD	168	109	9	100
Sandoval County ISD	461	218	28	190
Santa Fe County ISD	371	175	14	161
Sierra County ISD	108	56	9	47
Socorro County ISD	135	53	8	45
South Dona Ana ISD	445	147	16	131
Southeast Bernalillo County ISD	439	254	19	235
Southwest Bernalillo County ISD	645	309	21	288
Taos County ISD	149	83	4	79
Torrance County ISD	147	66	9	57
Valencia North County ISD	338	184	20	164
Valencia South County ISD	0	0	0	0
West Dona Ana County ISD	427	192	15	177
Centralized Units	56	25	4	21
<b>Statewide Total</b>	<b>8,138</b>	<b>4,231</b>	<b>399</b>	<b>3,832</b>

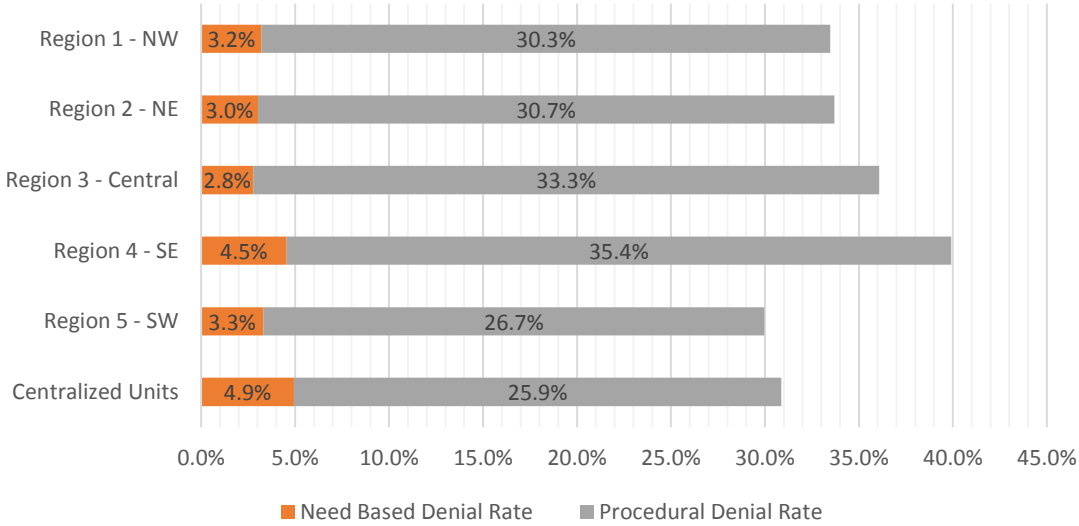
**SNAP Renewal Disposition Rates by Field Office<sup>20</sup>**  
**November 2017**

<b>Office</b>	<b>Approval Rate</b>	<b>Closure Rate</b>	<b>Need Based Closure Rate</b>	<b>Procedural Closure Rate</b>
Chaves County ISD	60.8%	39.2%	5.7%	33.5%
Cibola County ISD	64.2%	35.8%	1.8%	34.1%
Colfax County ISD	62.9%	37.1%	1.6%	35.5%
Curry County ISD	66.8%	33.2%	3.1%	30.1%
East Dona Ana County ISD	70.6%	29.4%	5.8%	23.6%
Eddy Artesia County ISD	64.6%	35.4%	1.3%	34.2%
Eddy Carlsbad County ISD	47.7%	52.3%	7.8%	44.4%
Grant County ISD	66.9%	33.1%	4.6%	28.5%
Guadalupe County ISD	70.8%	29.2%	0.0%	29.2%
Hidalgo County ISD	75.8%	24.2%	3.0%	21.2%
Lea County ISD	57.9%	42.1%	4.1%	38.0%
Lincoln County ISD	58.0%	42.0%	2.5%	39.5%
Luna County ISD	66.0%	34.0%	2.7%	31.3%
McKinley County ISD	68.4%	31.6%	1.9%	29.7%
Northeast Bernalillo County ISD	58.9%	41.1%	3.2%	37.9%
Northwest Bernalillo County ISD	64.6%	35.4%	2.6%	32.9%
Otero County ISD	67.4%	32.6%	2.1%	30.5%
Quay County ISD	69.5%	30.5%	3.2%	27.4%
Rio Arriba County ISD	65.6%	34.4%	2.9%	31.5%
Roosevelt County ISD	63.2%	36.8%	5.3%	31.6%
San Juan County ISD	65.7%	34.3%	3.5%	30.8%
San Miguel County ISD	60.6%	39.4%	3.2%	36.1%
Sandoval County ISD	67.9%	32.1%	4.1%	28.0%
Santa Fe County ISD	67.9%	32.1%	2.6%	29.5%
Sierra County ISD	65.9%	34.1%	5.5%	28.7%
Socorro County ISD	71.8%	28.2%	4.3%	23.9%
South Dona Ana ISD	75.2%	24.8%	2.7%	22.1%
Southeast Bernalillo County ISD	63.3%	36.7%	2.7%	33.9%
Southwest Bernalillo County ISD	67.6%	32.4%	2.2%	30.2%
Taos County ISD	64.2%	35.8%	1.7%	34.1%
Torrance County ISD	69.0%	31.0%	4.2%	26.8%
Valencia North County ISD	64.8%	35.2%	3.8%	31.4%
Valencia South County ISD	0.0%	0.0%	0.0%	0.0%
West Dona Ana County ISD	69.0%	31.0%	2.4%	28.6%
Centralized Units	69.1%	30.9%	4.9%	25.9%
<b>Statewide Total</b>	<b>65.8%</b>	<b>34.2%</b>	<b>3.2%</b>	<b>31.0%</b>



## SNAP Renewal Disposition Rates by Region<sup>20</sup> November 2017

Region	Approval Rate	Closure Rate	Need Based Closure Rate	Procedural Closure Rate
Region 1 - NW	66.5%	33.5%	3.2%	30.3%
Region 2 - NE	66.3%	33.7%	3.0%	30.7%
Region 3 - Central	63.9%	36.1%	2.8%	33.3%
Region 4 - SE	60.1%	39.9%	4.5%	35.4%
Region 5 - SW	70.0%	30.0%	3.3%	26.7%
Centralized Units	69.1%	30.9%	4.9%	25.9%
Statewide Total	65.8%	34.2%	3.2%	31.0%



SNAP: Percentage of Approved Renewal Applications Processed by Normal Accessibility Date <sup>11</sup>													
	Oct-17	Nov-17	Dec-17	Jan-18	Feb-18	Mar-18	Apr-18	May-18	Jun-18	Jul-18	Aug-18	Sep-18	Average
Cibola		72.8%											72.8%
McKinley		92.8%											92.8%
San Juan		89.0%											89.0%
Sierra		100.0%											100.0%
Socorro		94.7%											94.7%
Valencia North		89.1%											89.1%
Valencia South													
<b>NW Region 1 Total</b>		<b>89.8%</b>											<b>89.8%</b>
Colfax		95.1%											95.1%
Guadalupe		96.7%											96.7%
Quay		100.0%											100.0%
Rio Arriba		90.5%											90.5%
San Miguel		93.6%											93.6%
Sandoval		93.1%											93.1%
Santa Fe		91.6%											91.6%
Taos		95.8%											95.8%
<b>NE Region 2 Total</b>		<b>94.6%</b>											<b>94.6%</b>
NE Bernalillo		75.7%											75.7%
NW Bernalillo		88.7%											88.7%
SE Bernalillo		85.2%											85.2%
SW Bernalillo		88.9%											88.9%
Torrance		83.1%											83.1%
<b>Gen. Region 3 Total</b>		<b>84.3%</b>											<b>84.3%</b>
Chaves		92.0%											92.0%
Curry		94.6%											94.6%
Eddy Artesia		100.0%											100.0%
Eddy Carlsbad		80.3%											80.3%
Lea		94.6%											94.6%
Lincoln		88.5%											88.5%
Roosevelt		92.9%											92.9%
<b>SE Region 4 Total</b>		<b>91.8%</b>											<b>91.8%</b>
East Dona Ana		96.8%											96.8%
Grant		94.2%											94.2%
Luna		96.9%											96.9%
Otero		96.2%											96.2%
South Dona Ana		97.4%											97.4%
West Dona Ana		99.1%											99.1%
<b>SW Region 5 Total</b>		<b>96.8%</b>											<b>96.8%</b>
<b>STATE TOTAL</b>		<b>90.4%</b>											<b>90.4%</b>

Only includes cases in which the Renewal Packet was received by the 15th of the month, the due date for uninterrupted benefits.  
No data available for October 2017

SNAP: Percentage of Approved Renewal Applications Processed by Normal Accessibility Date <sup>11</sup>													
	Oct-17	Nov-17	Dec-17	Jan-18	Feb-18	Mar-18	Apr-18	May-18	Jun-18	Jul-18	Aug-18	Sep-18	Average
Cibola		71.2%											71.2%
McKinley		90.4%											90.4%
San Juan		85.9%											85.9%
Sierra		98.1%											98.1%
Socorro		92.5%											92.5%
Valencia North		84.1%											84.1%
Valencia South													
<b>NW Region 1 Total</b>		<b>87.1%</b>											<b>87.1%</b>
Colfax		87.8%											87.8%
Guadalupe		94.4%											94.4%
Quay		94.3%											94.3%
Rio Arriba		79.7%											79.7%
San Miguel		90.4%											90.4%
Sandoval		90.1%											90.1%
Santa Fe		87.1%											87.1%
Taos		90.8%											90.8%
<b>NE Region 2 Total</b>		<b>89.3%</b>											<b>89.3%</b>
NE Bernalillo		71.8%											71.8%
NW Bernalillo		85.5%											85.5%
SE Bernalillo		79.7%											79.7%
SW Bernalillo		83.4%											83.4%
Torrance		74.5%											74.5%
<b>Gen. Region 3 Total</b>		<b>79.0%</b>											<b>79.0%</b>
Chaves		91.2%											91.2%
Curry		94.1%											94.1%
Eddy Artesia		94.1%											94.1%
Eddy Carlsbad		75.8%											75.8%
Lea		91.8%											91.8%
Lincoln		87.5%											87.5%
Roosevelt		93.6%											93.6%
<b>SE Region 4 Total</b>		<b>89.7%</b>											<b>89.7%</b>
East Dona Ana		94.8%											94.8%
Grant		90.5%											90.5%
Luna		91.7%											91.7%
Otero		87.3%											87.3%
South Dona Ana		94.3%											94.3%
West Dona Ana		97.4%											97.4%
<b>SW Region 5 Total</b>		<b>92.7%</b>											<b>92.7%</b>
<b>STATE TOTAL</b>		<b>86.4%</b>											<b>86.4%</b>

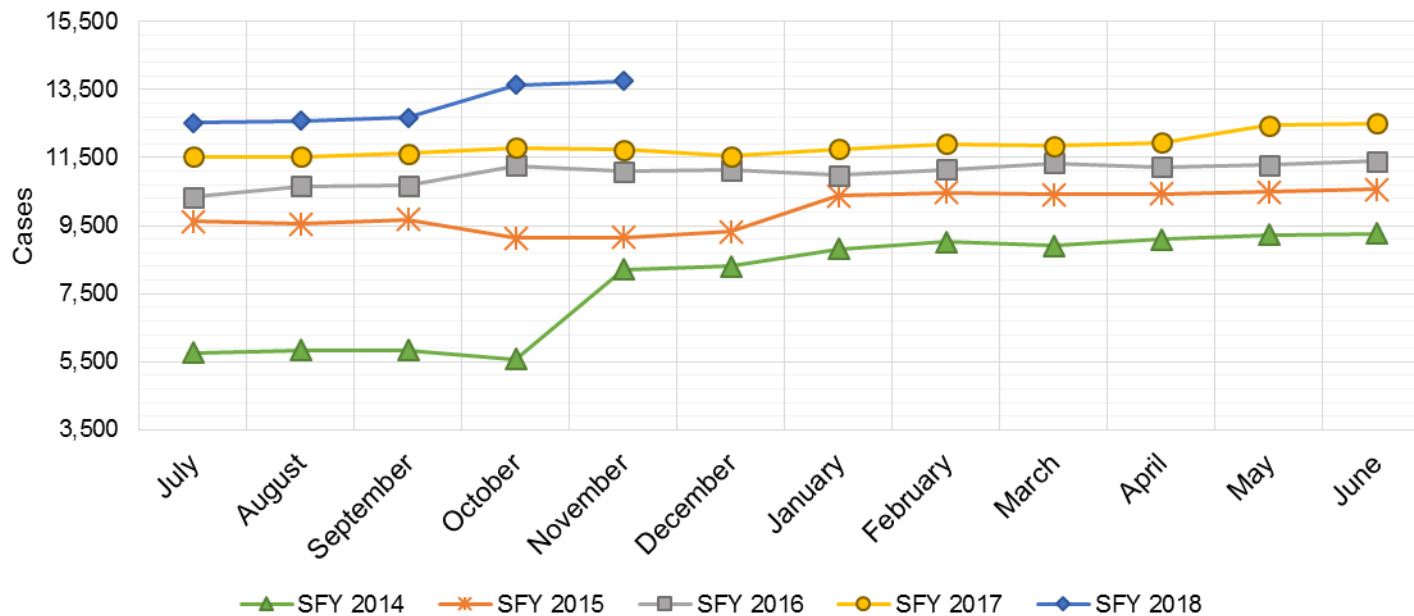
Includes cases in which the Renewal Packet was received after the 15th of the month, the due date for uninterrupted benefits.  
No data available for October 2017

SNAP: Percentage of Closures at Renewal Processed by Certification End Date <sup>11</sup>													
	Oct-17	Nov-17	Dec-17	Jan-18	Feb-18	Mar-18	Apr-18	May-18	Jun-18	Jul-18	Aug-18	Sep-18	Average
Cibola		6.8%											6.8%
McKinley		3.7%											3.7%
San Juan		7.0%											7.0%
Sierra		19.2%											19.2%
Socorro		11.8%											11.8%
Valencia North		6.2%											6.2%
Valencia South													
<b>NW Region 1 Total</b>		<b>9.1%</b>											<b>9.1%</b>
Colfax		6.3%											6.3%
Guadalupe		7.7%											7.7%
Quay		15.8%											15.8%
Rio Arriba		6.1%											6.1%
San Miguel		4.7%											4.7%
Sandoval		12.9%											12.9%
Santa Fe		3.0%											3.0%
Taos		4.1%											4.1%
<b>NE Region 2 Total</b>		<b>7.6%</b>											<b>7.6%</b>
NE Bernalillo		3.0%											3.0%
NW Bernalillo		3.4%											3.4%
SE Bernalillo		4.1%											4.1%
SW Bernalillo		7.2%											7.2%
Torrance		3.6%											3.6%
<b>Gen. Region 3 Total</b>		<b>4.3%</b>											<b>4.3%</b>
Chaves		7.7%											7.7%
Curry		8.0%											8.0%
Eddy Artesia		6.9%											6.9%
Eddy Carlsbad		8.6%											8.6%
Lea		5.3%											5.3%
Lincoln		2.9%											2.9%
Roosevelt		15.0%											15.0%
<b>SE Region 4 Total</b>		<b>7.8%</b>											<b>7.8%</b>
East Dona Ana		12.9%											12.9%
Grant		6.0%											6.0%
Luna		5.6%											5.6%
Otero		2.9%											2.9%
South Dona Ana		13.8%											13.8%
West Dona Ana		8.9%											8.9%
<b>SW Region 5 Total</b>		<b>8.3%</b>											<b>8.3%</b>
<b>STATE TOTAL</b>		<b>6.6%</b>											<b>6.6%</b>

*Includes cases for which no renewal application was received.  
No data available for October 2017*

## State SNAP Supplement

SFY 2014 <sup>12</sup>			SFY 2015 <sup>12,9</sup>			SFY 2016 <sup>9</sup>			SFY 2017 <sup>9</sup>			SFY 2018 <sup>9</sup>		
	Cases	Expenditures		Cases	Expenditures		Cases	Expenditures		Cases	Expenditures		Cases	Expenditures
Jul-13	5,767	\$48,040	Jul-14	9,635	\$88,859	Jul-15	10,345	\$86,143	Jul-16	11,537	\$95,553	Jul-17	12,526	\$97,568
Aug-13	5,841	\$48,417	Aug-14	9,559	\$87,757	Aug-15	10,669	\$88,197	Aug-16	11,522	\$95,107	Aug-17	12,589	\$98,954
Sep-13	5,841	\$48,732	Sep-14	9,688	\$87,372	Sep-15	10,676	\$88,426	Sep-16	11,613	\$94,472	Sep-17	12,679	\$97,546
Oct-13	5,575	\$46,610	Oct-14	9,136	\$70,490	Oct-15	11,262	\$96,758	Oct-16	11,797	\$96,679	Oct-17	13,628	\$117,343
Nov-13	8,219	\$69,564	Nov-14	9,152	\$69,955	Nov-15	11,099	\$91,996	Nov-16	11,735	\$93,689	Nov-17	13,748	\$119,055
Dec-13	8,310	\$71,839	Dec-14	9,322	\$73,226	Dec-15	11,125	\$90,771	Dec-16	11,556	\$93,739	Dec-17		
Jan-14	8,826	\$77,933	Jan-15	10,384	\$84,578	Jan-16	10,977	\$92,760	Jan-17	11,763	\$96,074	Jan-18		
Feb-14	9,024	\$84,758	Feb-15	10,477	\$82,901	Feb-16	11,153	\$95,363	Feb-17	11,907	\$98,251	Feb-18		
Mar-14	8,916	\$80,597	Mar-15	10,423	\$87,461	Mar-16	11,332	\$96,751	Mar-17	11,853	\$96,693	Mar-18		
Apr-14	9,098	\$84,599	Apr-15	10,440	\$79,605	Apr-16	11,222	\$93,959	Apr-17	11,944	\$97,060	Apr-18		
May-14	9,226	\$85,035	May-15	10,491	\$82,511	May-16	11,283	\$95,271	May-17	12,457	\$96,940	May-18		
Jun-14	9,264	\$84,329	Jun-15	10,575	\$85,134	Jun-16	11,389	\$93,061	Jun-17	12,498	\$97,405	Jun-18		
<b>TOTAL</b>	<b>93,907</b>	<b>\$830,453</b>		<b>119,282</b>	<b>\$979,850</b>		<b>132,532</b>	<b>\$1,109,455</b>		<b>142,182</b>	<b>\$1,151,662</b>		<b>65,170</b>	<b>\$530,466</b>
<b>AVERAGE</b>	<b>7,826</b>	<b>\$69,204</b>		<b>9,940</b>	<b>\$81,654</b>		<b>11,044</b>	<b>\$92,455</b>		<b>11,849</b>	<b>\$95,972</b>		<b>13,034</b>	<b>\$106,093</b>



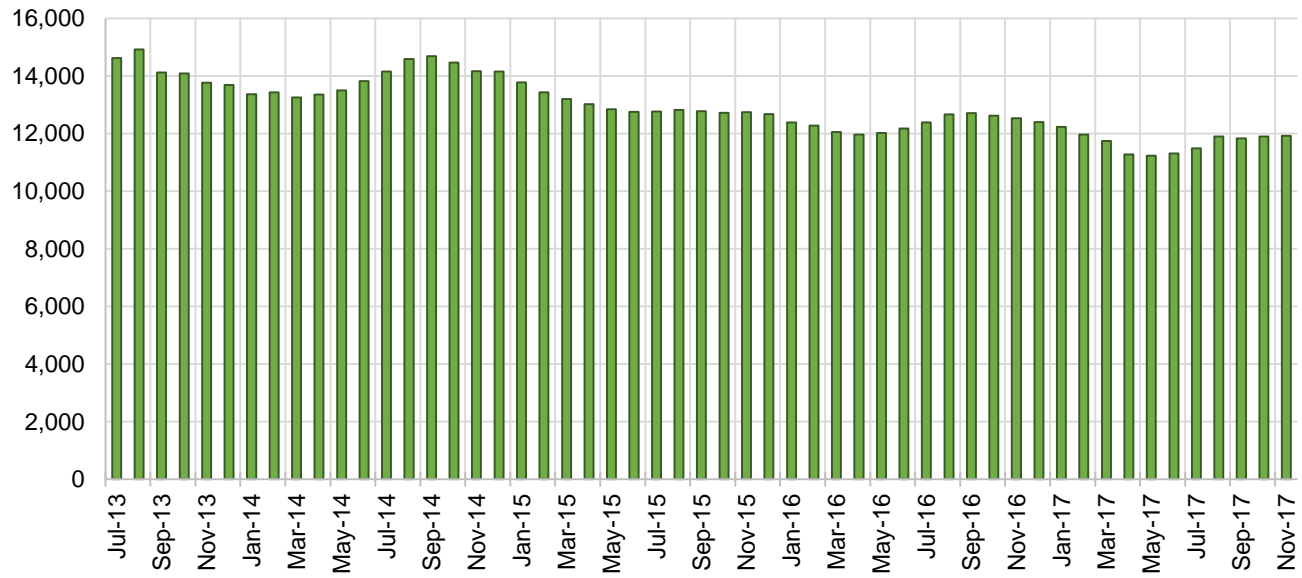
## TANF Cases by Field Office<sup>6</sup>

Office	Nov-16	Oct-17	Nov-17	Percent Change	
				Nov-16- Nov-17	Oct-17- Nov-17
Chaves County ISD	609	567	564	-7.4%	-0.5%
Cibola County ISD	169	153	145	-14.2%	-5.2%
Colfax County ISD	82	79	80	-2.4%	1.3%
Curry County ISD	518	521	527	1.7%	1.2%
East Dona Ana County ISD	531	507	514	-3.2%	1.4%
Eddy Artesia County ISD	163	124	127	-22.1%	2.4%
Eddy Carlsbad County ISD	241	168	167	-30.7%	-0.6%
Grant County ISD	197	202	190	-3.6%	-5.9%
Guadalupe County ISD	27	31	32	18.5%	3.2%
Hidalgo County ISD	27	25	23	-14.8%	-8.0%
Lea County ISD	534	445	448	-16.1%	0.7%
Lincoln County ISD	115	92	102	-11.3%	10.9%
Luna County ISD	217	213	217	0.0%	1.9%
McKinley County ISD	67	64	56	-16.4%	-12.5%
Northeast Bernalillo County ISD	967	1,023	1,000	3.4%	-2.2%
Northwest Bernalillo County ISD	838	811	829	-1.1%	2.2%
Otero County ISD	281	312	331	17.8%	6.1%
Quay County ISD	81	77	78	-3.7%	1.3%
Rio Arriba County ISD	455	412	399	-12.3%	-3.2%
Roosevelt County ISD	165	173	162	-1.8%	-6.4%
San Juan County ISD	343	336	323	-5.8%	-3.9%
San Miguel County ISD	234	206	207	-11.5%	0.5%
Sandoval County ISD	586	572	595	1.5%	4.0%
Santa Fe County ISD	568	440	452	-20.4%	2.7%
Sierra County ISD	90	79	83	-7.8%	5.1%
Socorro County ISD	115	89	91	-20.9%	2.2%
South Dona Ana ISD	735	733	722	-1.8%	-1.5%
Southeast Bernalillo County ISD	752	669	654	-13.0%	-2.2%
Southwest Bernalillo County ISD	1,187	1,170	1,186	-0.1%	1.4%
Taos County ISD	145	139	143	-1.4%	2.9%
Torrance County ISD	195	184	184	-5.6%	0.0%
Valencia North County ISD	513	518	512	-0.2%	-1.2%
Valencia South County ISD	2	0	0	-100.0%	N/A
West Dona Ana County ISD	775	763	767	-1.0%	0.5%
Centralized Units	2	4	5	150.0%	25.0%
Statewide Total	12,526	11,901	11,915	-4.9%	0.1%

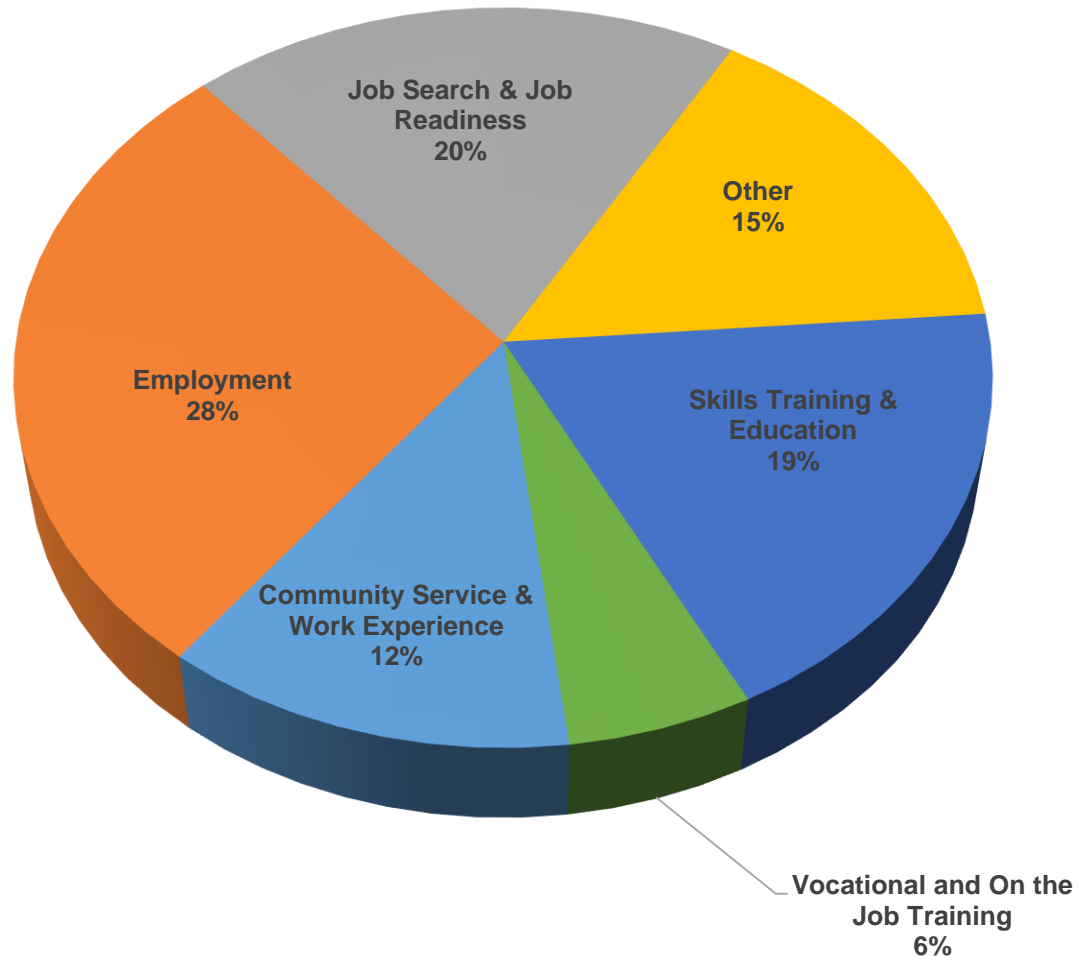
## TANF Cases by Region<sup>6</sup>

Region	Nov-16	Oct-17	Nov-17	Percent Change	
				Nov-16- Nov-17	Oct-17- Nov-17
Region 1- NW	1,299	1,239	1,210	-6.9%	-2.3%
Region 2- NE	2,178	1,956	1,986	-8.8%	1.5%
Region 3- Central	3,939	3,857	3,853	-2.2%	-0.1%
Region 4- SE	2,345	2,090	2,097	-10.6%	0.3%
Region 5- SW	2,763	2,755	2,764	0.0%	0.3%
Centralized Units	2	4	5	150.0%	25.0%
<b>Statewide Total</b>	<b>12,526</b>	<b>11,901</b>	<b>11,915</b>	<b>-4.9%</b>	<b>0.1%</b>

### TANF Caseload: SFY-14 to Current

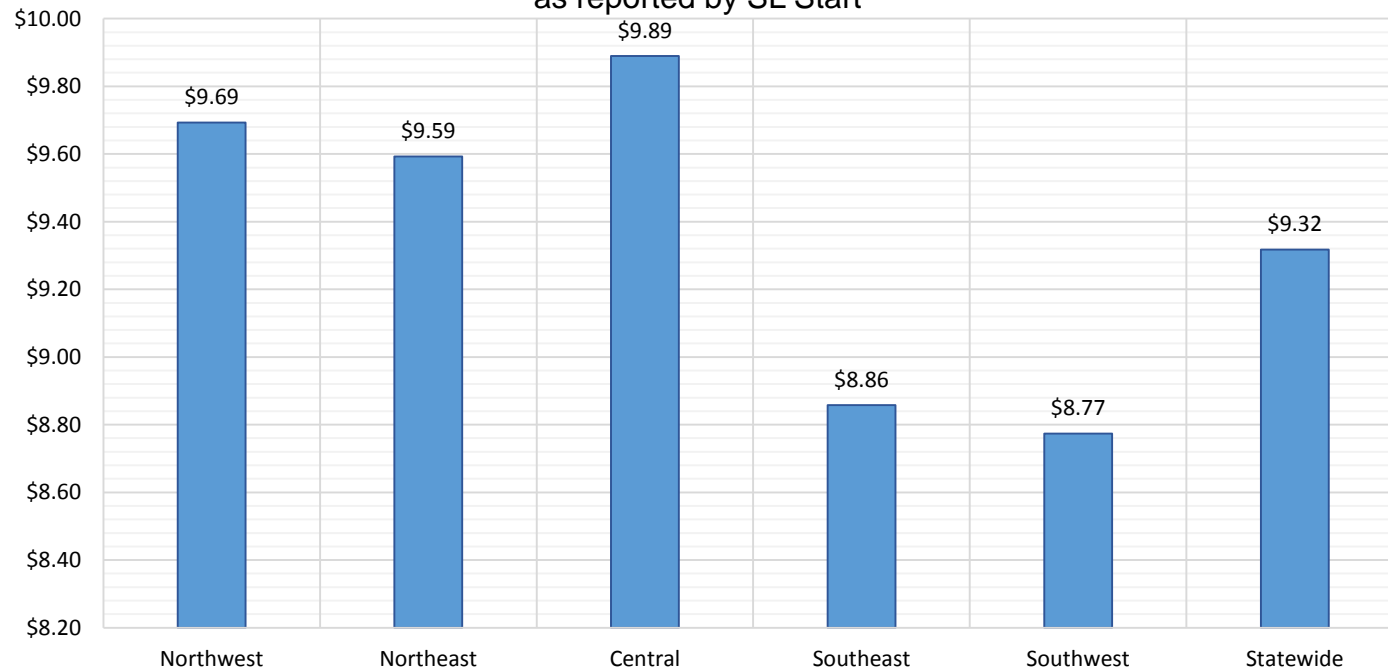


# NM Works Activity Placements on November 30, 2017 as reported by SL Start<sup>14</sup>

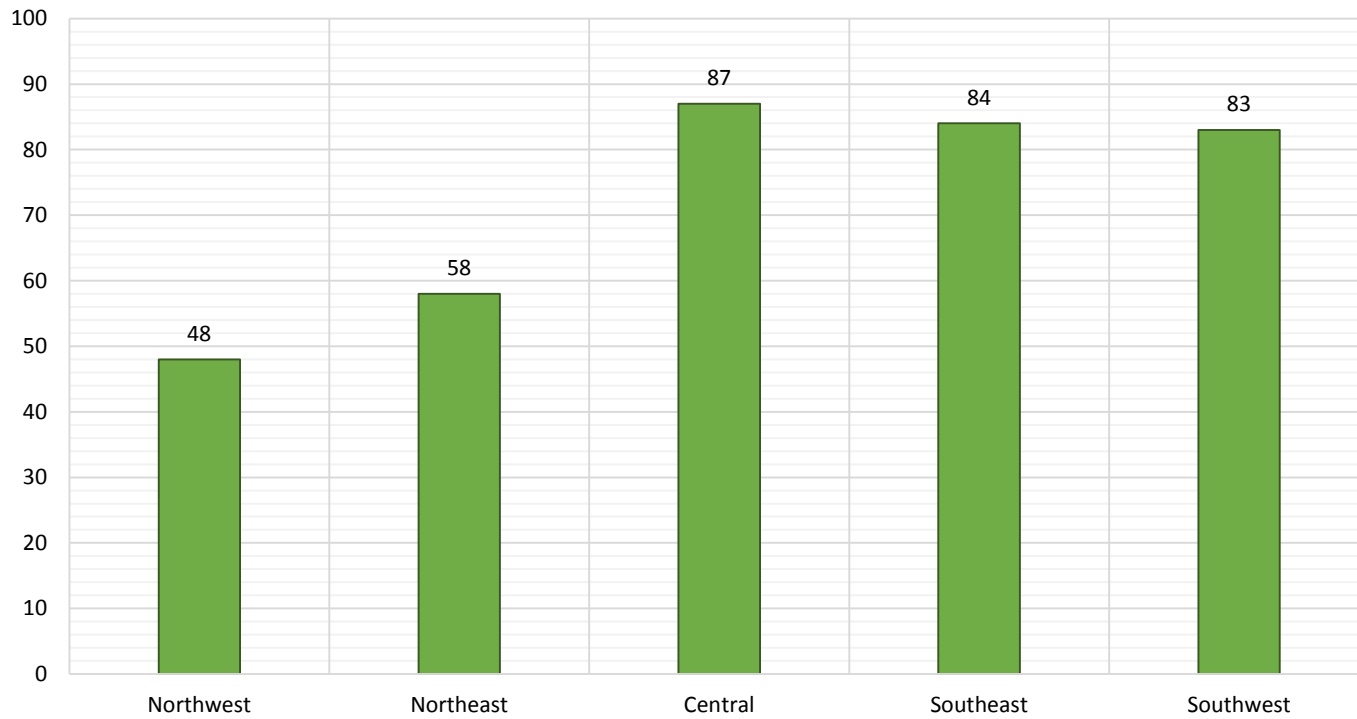




Average Starting Hourly Wage of November 2017 TANF  
Employments  
as reported by SL Start<sup>15</sup>



Number of New Employments in November 2017 by Region  
as reported by SL Start<sup>15</sup>  
Statewide Total: 360



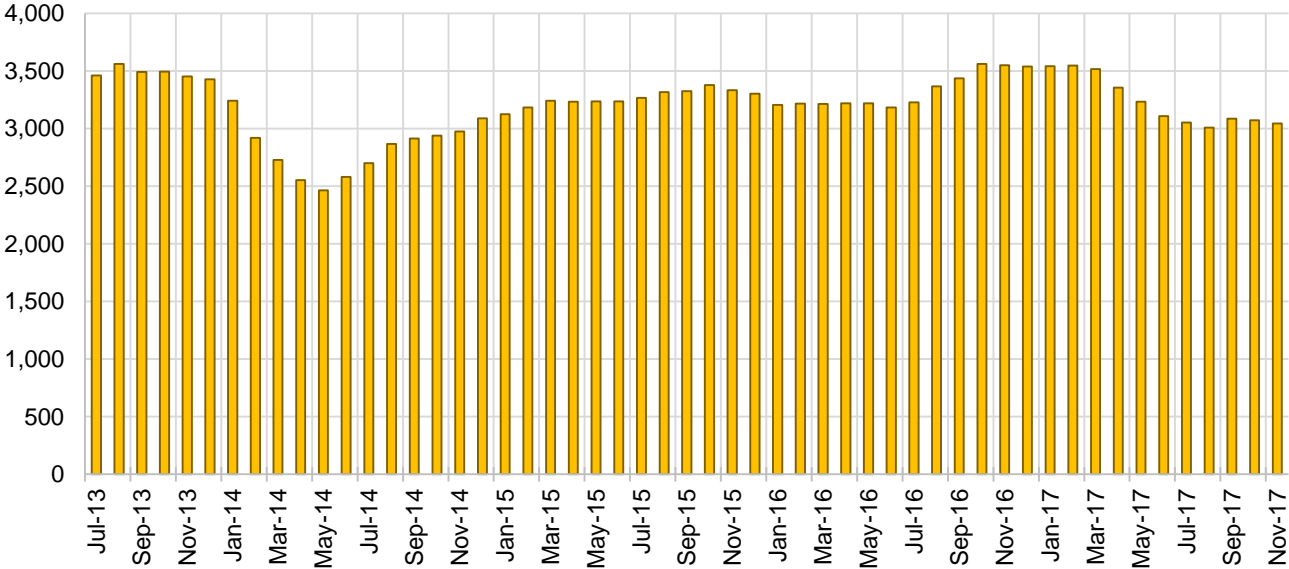
## General Assistance Cases by Field Office<sup>6</sup>

Office				Percent Change	
	Nov-16	Oct-17	Nov-17	Nov-16- Nov-17	Oct-17- Nov-17
Chaves County ISD	144	131	130	-9.7%	-0.8%
Cibola County ISD	46	46	49	6.5%	6.5%
Colfax County ISD	31	23	24	-22.6%	4.3%
Curry County ISD	81	62	65	-19.8%	4.8%
East Dona Ana County ISD	119	118	115	-3.4%	-2.5%
Eddy Artesia County ISD	28	30	30	7.1%	0.0%
Eddy Carlsbad County ISD	83	69	66	-20.5%	-4.3%
Grant County ISD	76	70	70	-7.9%	0.0%
Guadalupe County ISD	14	18	20	42.9%	11.1%
Hidalgo County ISD	13	13	11	-15.4%	-15.4%
Lea County ISD	103	83	86	-16.5%	3.6%
Lincoln County ISD	36	30	26	-27.8%	-13.3%
Luna County ISD	58	58	57	-1.7%	-1.7%
McKinley County ISD	30	46	49	63.3%	6.5%
Northeast Bernalillo County ISD	382	367	360	-5.8%	-1.9%
Northwest Bernalillo County ISD	352	283	287	-18.5%	1.4%
Otero County ISD	97	101	100	3.1%	-1.0%
Quay County ISD	27	24	20	-25.9%	-16.7%
Rio Arriba County ISD	116	86	87	-25.0%	1.2%
Roosevelt County ISD	22	18	15	-31.8%	-16.7%
San Juan County ISD	93	123	129	38.7%	4.9%
San Miguel County ISD	90	79	73	-18.9%	-7.6%
Sandoval County ISD	151	121	122	-19.2%	0.8%
Santa Fe County ISD	207	151	144	-30.4%	-4.6%
Sierra County ISD	35	34	27	-22.9%	-20.6%
Socorro County ISD	50	44	45	-10.0%	2.3%
South Dona Ana ISD	56	61	60	7.1%	-1.6%
Southeast Bernalillo County ISD	242	172	171	-29.3%	-0.6%
Southwest Bernalillo County ISD	277	211	213	-23.1%	0.9%
Taos County ISD	66	60	63	-4.5%	5.0%
Torrance County ISD	73	47	46	-37.0%	-2.1%
Valencia North County ISD	139	118	114	-18.0%	-3.4%
Valencia South County ISD	0	0	0	N/A	N/A
West Dona Ana County ISD	213	175	170	-20.2%	-2.9%
Centralized Units	0	0	0	N/A	N/A
Statewide Total	3,550	3,072	3,044	-14.3%	-0.9%

## General Assistance Cases by Region<sup>6</sup>

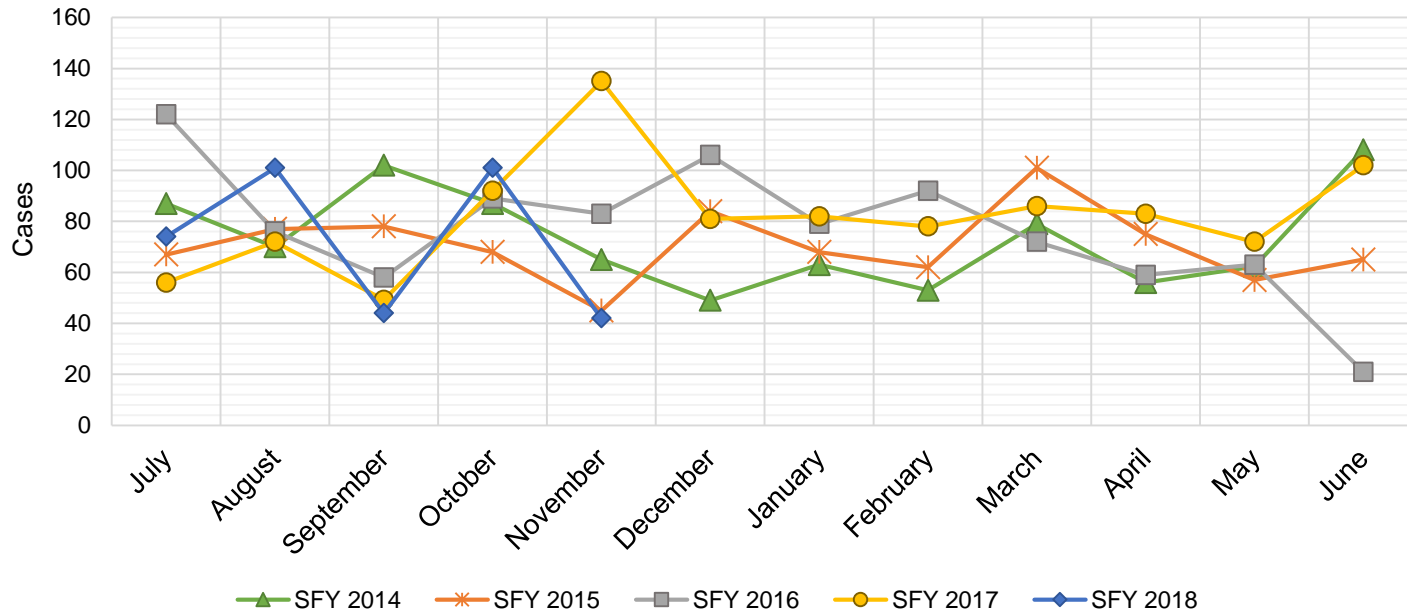
				Percent Change	
Region	Nov-16	Oct-17	Nov-17	Nov-16- Nov-17	Oct-17- Nov-17
Region 1 - NW	393	411	413	5.1%	0.5%
Region 2 - NE	702	562	553	-21.2%	-1.6%
Region 3 - Central	1,326	1,080	1,077	-18.8%	-0.3%
Region 4 - SE	497	423	418	-15.9%	-1.2%
Region 5 - SW	632	596	583	-7.8%	-2.2%
Centralized Units	0	0	0	N/A	N/A
Statewide Total	3,550	3,072	3,044	-14.3%	-0.9%

### General Assistance Caseload: SFY-14 to Current



## General Assistance Interim Assistance Reimbursements<sup>16</sup>

SFY 2014			SFY 2015			SFY 2016			SFY 2017			SFY 2018		
Cases	Expenditures		Cases	Expenditures		Cases	Expenditures		Cases	Expenditures		Cases	Expenditures	
Jul-13	87	\$185,368	Jul-14	67	\$144,679	Jul-15	122	\$342,648	Jul-16	56	\$164,970	Jul-17	74	\$241,438
Aug-13	70	\$184,639	Aug-14	77	\$244,233	Aug-15	76	\$245,236	Aug-16	72	\$223,182	Aug-17	101	\$339,301
Sep-13	102	\$268,243	Sep-14	78	\$168,421	Sep-15	58	\$170,093	Sep-16	49	\$158,027	Sep-17	44	\$131,229
Oct-13	87	\$165,578	Oct-14	68	\$182,265	Oct-15	89	\$277,912	Oct-16	92	\$257,830	Oct-17	101	\$335,752
Nov-13	65	\$139,197	Nov-14	45	\$134,482	Nov-15	83	\$238,948	Nov-16	135	\$402,305	Nov-17	42	\$139,572
Dec-13	49	\$147,853	Dec-14	84	\$239,926	Dec-15	106	\$388,102	Dec-16	81	\$227,569	Dec-17		
Jan-14	63	\$178,944	Jan-15	68	\$227,066	Jan-16	79	\$239,263	Jan-17	82	\$274,050	Jan-18		
Feb-14	53	\$130,352	Feb-15	62	\$159,564	Feb-16	92	\$296,332	Feb-17	78	\$227,569	Feb-18		
Mar-14	79	\$176,756	Mar-15	101	\$317,899	Mar-16	72	\$254,360	Mar-17	86	\$278,219	Mar-18		
Apr-14	56	\$155,245	Apr-15	75	\$199,038	Apr-16	59	\$208,631	Apr-17	83	\$267,187	Apr-18		
May-14	62	\$138,827	May-15	57	\$167,383	May-16	63	\$182,241	May-17	72	\$232,836	May-18		
Jun-14	108	\$241,016	Jun-15	65	\$188,159	Jun-16	21	\$51,760	Jun-17	102	\$306,228	Jun-18		
TOTAL	881	\$2,112,017	847	\$2,373,115	920	\$2,895,525	988	\$3,019,972	362	\$1,187,292				
AVERAGE	73	\$176,001	71	\$197,760	77	\$241,294	82	\$251,664	72	\$237,458				



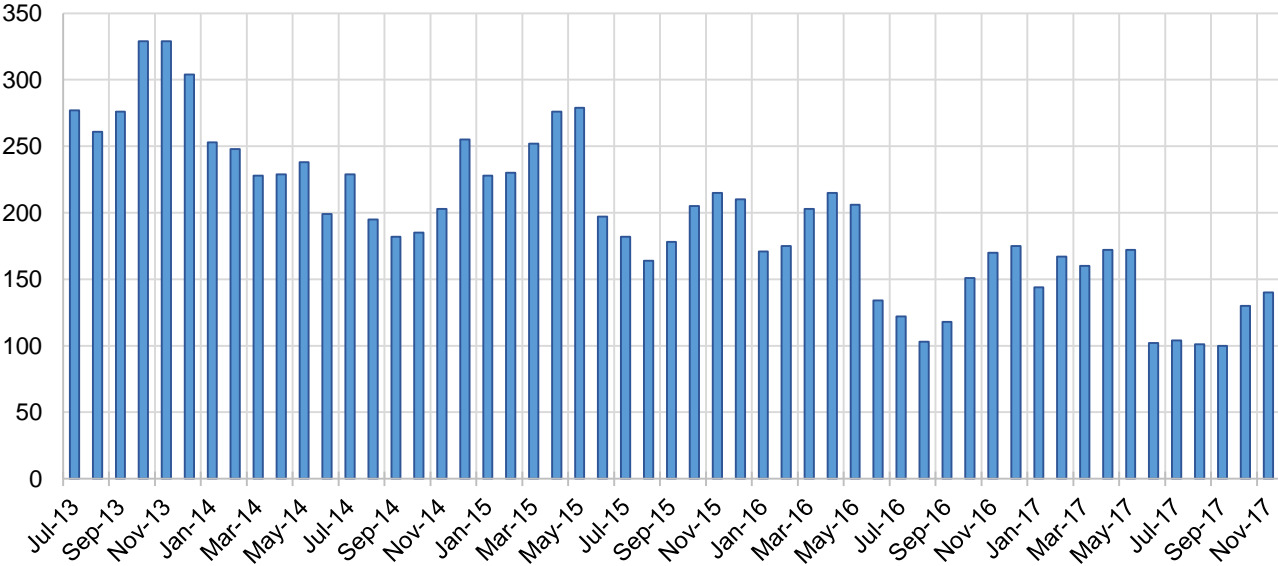
## Education Works Cases by Field Office<sup>6</sup>

Office				Percent Change	
	Nov-16	Oct-17	Nov-17	Nov-16- Nov-17	Oct-17- Nov-17
Chaves County ISD	3	5	3	0.0%	-40.0%
Cibola County ISD	2	0	0	-100.0%	N/A
Colfax County ISD	3	0	0	-100.0%	N/A
Curry County ISD	1	2	3	200.0%	50.0%
East Dona Ana County ISD	5	5	5	0.0%	0.0%
Eddy Artesia County ISD	0	1	1	N/A	0.0%
Eddy Carlsbad County ISD	1	0	2	100.0%	N/A
Grant County ISD	5	10	12	140.0%	20.0%
Guadalupe County ISD	1	1	1	0.0%	0.0%
Hidalgo County ISD	1	0	0	-100.0%	N/A
Lea County ISD	6	7	7	16.7%	0.0%
Lincoln County ISD	0	0	0	N/A	N/A
Luna County ISD	1	2	2	100.0%	0.0%
McKinley County ISD	0	0	0	N/A	N/A
Northeast Bernalillo County ISD	25	14	13	-48.0%	-7.1%
Northwest Bernalillo County ISD	15	9	10	-33.3%	11.1%
Otero County ISD	1	1	2	100.0%	100.0%
Quay County ISD	1	0	0	-100.0%	N/A
Rio Arriba County ISD	2	3	3	50.0%	0.0%
Roosevelt County ISD	2	2	2	0.0%	0.0%
San Juan County ISD	6	3	3	-50.0%	0.0%
San Miguel County ISD	6	5	6	0.0%	20.0%
Sandoval County ISD	15	9	12	-20.0%	33.3%
Santa Fe County ISD	5	9	12	140.0%	33.3%
Sierra County ISD	0	0	0	N/A	N/A
Socorro County ISD	1	1	1	0.0%	0.0%
South Dona Ana ISD	15	18	17	13.3%	-5.6%
Southeast Bernalillo County ISD	11	5	5	-54.5%	0.0%
Southwest Bernalillo County ISD	17	6	6	-64.7%	0.0%
Taos County ISD	1	2	2	100.0%	0.0%
Torrance County ISD	1	1	1	0.0%	0.0%
Valencia North County ISD	6	0	0	-100.0%	N/A
Valencia South County ISD	0	0	0	N/A	N/A
West Dona Ana County ISD	11	9	9	-18.2%	0.0%
Centralized Units	0	0	0	N/A	N/A
Statewide Total	170	130	140	-17.6%	7.7%

## Education Works Cases by Region<sup>6</sup>

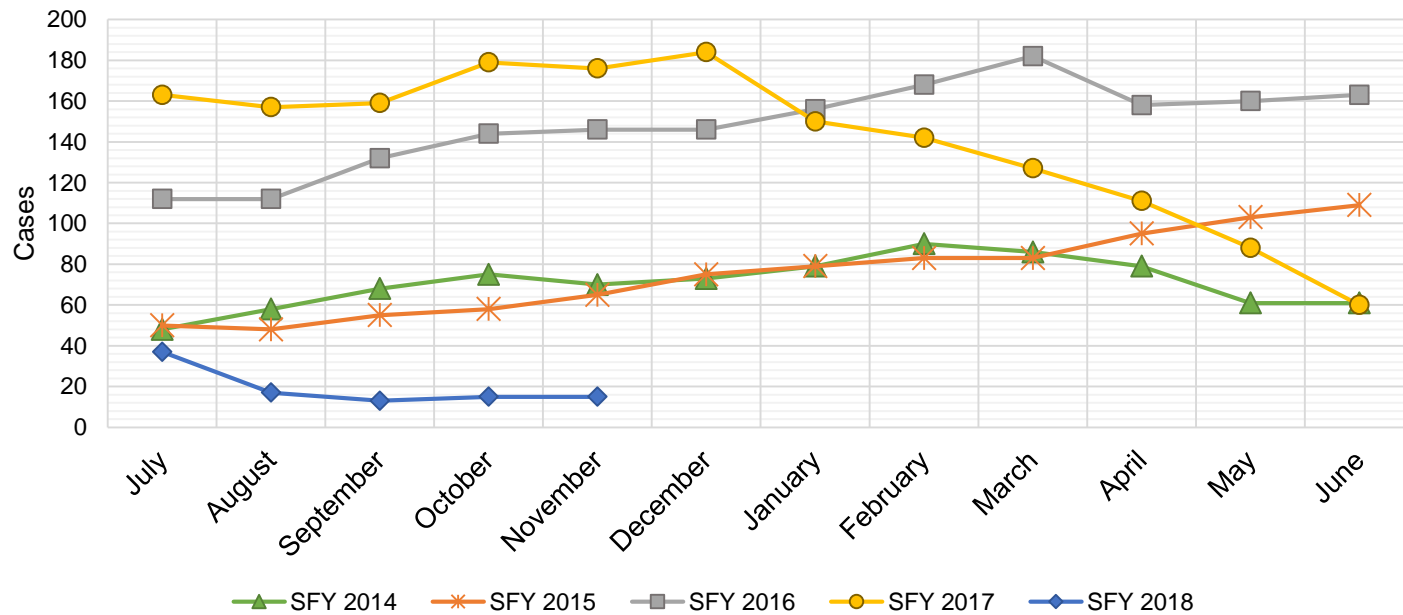
				Percent Change	
Region	Nov-16	Oct-17	Nov-17	Nov-16- Nov-17	Oct-17- Nov-17
Region 1 - NW	15	4	4	-73.3%	0.0%
Region 2 - NE	34	29	36	5.9%	24.1%
Region 3 - Central	69	35	35	-49.3%	0.0%
Region 4 - SE	13	17	18	38.5%	5.9%
Region 5 - SW	39	45	47	20.5%	4.4%
Centralized Units	0	0	0	N/A	N/A
Statewide Total	170	130	140	-17.6%	7.7%

**Education Works Caseload: SFY-14 to Current**



## Refugee Cash Assistance

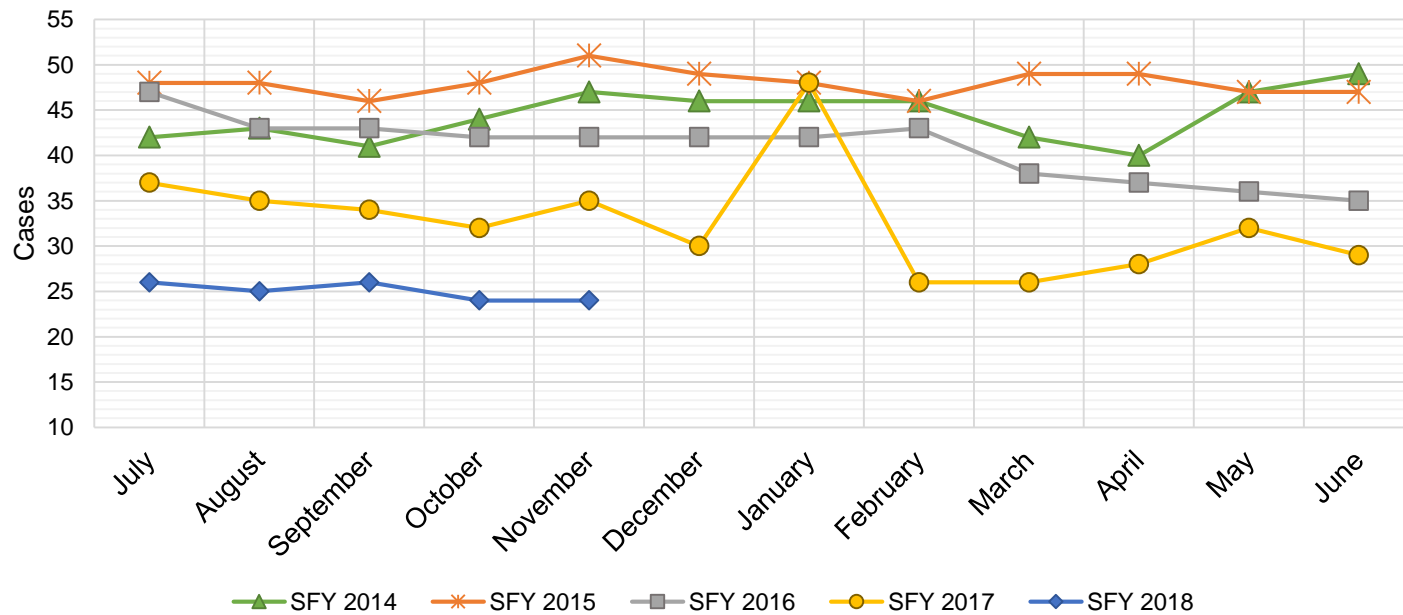
SFY 2014 <sup>12</sup>			SFY 2015 <sup>8,12,9</sup>			SFY 2016 <sup>8,9</sup>			SFY 2017 <sup>8,9</sup>			SFY 2018 <sup>8,9</sup>		
	Cases	Expenditures		Cases	Expenditures		Cases	Expenditures		Cases	Expenditures		Cases	Expenditures
Jul-13	48	\$12,013	Jul-14	50	\$11,679	Jul-15	112	\$27,516	Jul-16	163	\$39,756	Jul-17	37	\$9,981
Aug-13	58	\$16,129	Aug-14	48	\$11,760	Aug-15	112	\$27,438	Aug-16	157	\$40,115	Aug-17	17	\$4,704
Sep-13	68	\$19,061	Sep-14	55	\$13,094	Sep-15	132	\$31,321	Sep-16	159	\$39,359	Sep-17	13	\$3,159
Oct-13	75	\$20,962	Oct-14	58	\$13,726	Oct-15	144	\$36,153	Oct-16	179	\$41,520	Oct-17	15	\$3,543
Nov-13	70	\$21,880	Nov-14	65	\$16,461	Nov-15	146	\$36,515	Nov-16	176	\$45,434	Nov-17	15	\$4,263
Dec-13	73	\$22,053	Dec-14	75	\$18,699	Dec-15	146	\$35,763	Dec-16	184	\$46,673	Dec-17		
Jan-14	79	\$22,670	Jan-15	79	\$19,009	Jan-16	156	\$38,686	Jan-17	150	\$38,790	Jan-18		
Feb-14	90	\$23,227	Feb-15	83	\$21,349	Feb-16	168	\$41,368	Feb-17	142	\$37,956	Feb-18		
Mar-14	86	\$21,808	Mar-15	83	\$20,730	Mar-16	182	\$45,307	Mar-17	127	\$33,066	Mar-18		
Apr-14	79	\$20,109	Apr-15	95	\$23,495	Apr-16	158	\$41,143	Apr-17	111	\$29,183	Apr-18		
May-14	61	\$15,703	May-15	103	\$25,363	May-16	160	\$38,332	May-17	88	\$23,343	May-18		
Jun-14	61	\$14,783	Jun-15	109	\$27,958	Jun-16	163	\$39,856	Jun-17	60	\$15,538	Jun-18		
<b>TOTAL</b>	<b>848</b>	<b>\$230,398</b>	<b>903</b>	<b>\$223,323</b>	<b>1,779</b>	<b>\$439,397</b>	<b>1,696</b>	<b>\$430,732</b>	<b>97</b>	<b>\$25,650</b>				
<b>AVERAGE</b>	<b>71</b>	<b>\$19,200</b>	<b>75</b>	<b>\$18,610</b>	<b>148</b>	<b>\$36,616</b>	<b>141</b>	<b>\$35,894</b>	<b>19</b>	<b>\$5,130</b>				





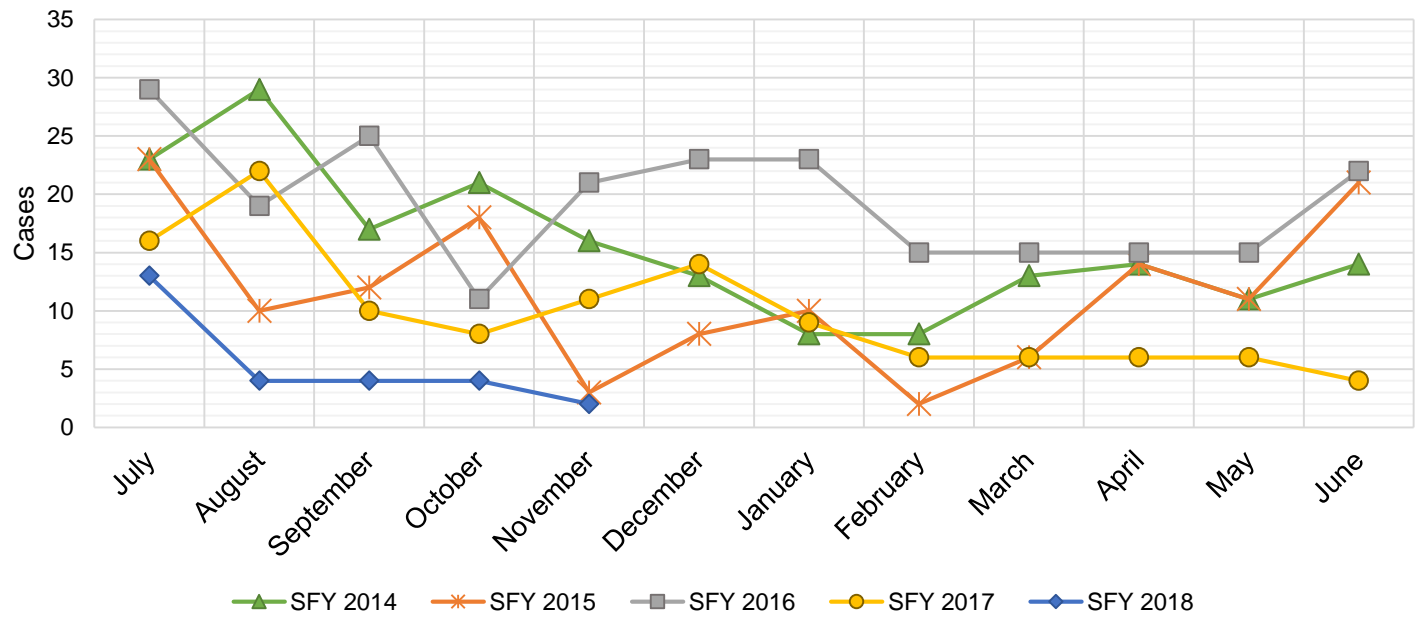
## State Supplement for Residential Care

SFY 2014 <sup>12</sup>			SFY 2015 <sup>12,9</sup>			SFY 2016 <sup>9</sup>			SFY 2017 <sup>9</sup>			SFY 2018 <sup>9</sup>		
	Cases	Expenditures		Cases	Expenditures		Cases	Expenditures		Cases	Expenditures		Cases	Expenditures
Jul-13	42	\$4,400	Jul-14	48	\$4,700	Jul-15	47	\$4,700	Jul-16	37	\$3,700	Jul-17	26	\$2,700
Aug-13	43	\$4,300	Aug-14	48	\$5,000	Aug-15	43	\$4,900	Aug-16	35	\$3,500	Aug-17	25	\$2,500
Sep-13	41	\$4,700	Sep-14	46	\$4,600	Sep-15	43	\$4,500	Sep-16	34	\$3,400	Sep-17	26	\$2,700
Oct-13	44	\$4,500	Oct-14	48	\$4,600	Oct-15	42	\$4,400	Oct-16	32	\$3,200	Oct-17	24	\$2,500
Nov-13	47	\$4,700	Nov-14	51	\$5,600	Nov-15	42	\$4,200	Nov-16	35	\$3,500	Nov-17	24	\$2,400
Dec-13	46	\$4,600	Dec-14	49	\$5,000	Dec-15	42	\$4,200	Dec-16	30	\$3,000	Dec-17		
Jan-14	46	\$4,700	Jan-15	48	\$4,900	Jan-16	42	\$4,200	Jan-17	48	\$4,800	Jan-18		
Feb-14	46	\$4,700	Feb-15	46	\$4,800	Feb-16	43	\$4,300	Feb-17	26	\$2,600	Feb-18		
Mar-14	42	\$4,500	Mar-15	49	\$4,800	Mar-16	38	\$3,800	Mar-17	26	\$2,600	Mar-18		
Apr-14	40	\$4,200	Apr-15	49	\$5,400	Apr-16	37	\$3,700	Apr-17	28	\$2,800	Apr-18		
May-14	47	\$5,000	May-15	47	\$4,700	May-16	36	\$3,600	May-17	32	\$3,200	May-18		
Jun-14	49	\$4,900	Jun-15	47	\$5,300	Jun-16	35	\$3,500	Jun-17	29	\$2,900	Jun-18		
<b>TOTAL</b>	<b>533</b>	<b>\$55,200</b>	<b>576</b>	<b>\$59,400</b>	<b>490</b>	<b>\$50,000</b>	<b>392</b>	<b>\$39,200</b>	<b>125</b>	<b>\$12,800</b>				
<b>AVERAGE</b>	<b>44</b>	<b>\$4,600</b>	<b>48</b>	<b>\$4,950</b>	<b>41</b>	<b>\$4,167</b>	<b>33</b>	<b>\$3,267</b>	<b>25</b>	<b>\$2,560</b>				



## TANF Diversion Payments

SFY 2014 <sup>12</sup>			SFY 2015 <sup>12,9</sup>			SFY 2016 <sup>9</sup>			SFY 2017 <sup>9</sup>			SFY 2018 <sup>9</sup>		
	Cases	Expenditures		Cases	Expenditures		Cases	Expenditures		Cases	Expenditures		Cases	Expenditures
Jul-13	23	\$46,500	Jul-14	23	\$48,098	Jul-15	29	\$62,074	Jul-16	16	\$30,843	Jul-17	13	\$26,500
Aug-13	29	\$54,500	Aug-14	10	\$21,810	Aug-15	19	\$33,584	Aug-16	22	\$42,731	Aug-17	4	\$12,000
Sep-13	17	\$36,500	Sep-14	12	\$23,500	Sep-15	25	\$47,977	Sep-16	10	\$21,000	Sep-17	4	\$4,000
Oct-13	21	\$42,500	Oct-14	18	\$30,589	Oct-15	11	\$20,500	Oct-16	8	\$16,744	Oct-17	4	\$16,000
Nov-13	16	\$28,953	Nov-14	3	\$4,411	Nov-15	21	\$45,500	Nov-16	11	\$24,500	Nov-17	2	\$15,500
Dec-13	13	\$25,500	Dec-14	8	\$14,634	Dec-15	23	\$45,389	Dec-16	14	\$26,611	Dec-17		
Jan-14	8	\$16,000	Jan-15	10	\$18,000	Jan-16	23	\$41,874	Jan-17	9	\$18,500	Jan-18		
Feb-14	8	\$16,994	Feb-15	2	\$5,500	Feb-16	15	\$28,500	Feb-17	6	\$12,000	Feb-18		
Mar-14	13	\$27,396	Mar-15	6	\$12,000	Mar-16	15	\$27,008	Mar-17	6	\$11,000	Mar-18		
Apr-14	14	\$28,000	Apr-15	14	\$26,000	Apr-16	15	\$31,389	Apr-17	6	\$12,000	Apr-18		
May-14	11	\$20,500	May-15	11	\$21,500	May-16	15	\$31,916	May-17	6	\$11,500	May-18		
Jun-14	14	\$29,911	Jun-15	21	\$40,039	Jun-16	22	\$43,000	Jun-17	4	\$13,500	Jun-18		
TOTAL	187	\$373,254		138	\$266,081		233	\$458,711		118	\$240,929		27	\$74,000
AVERAGE	16	\$31,105		12	\$22,173		19	\$38,226		10	\$20,077		5	\$14,800

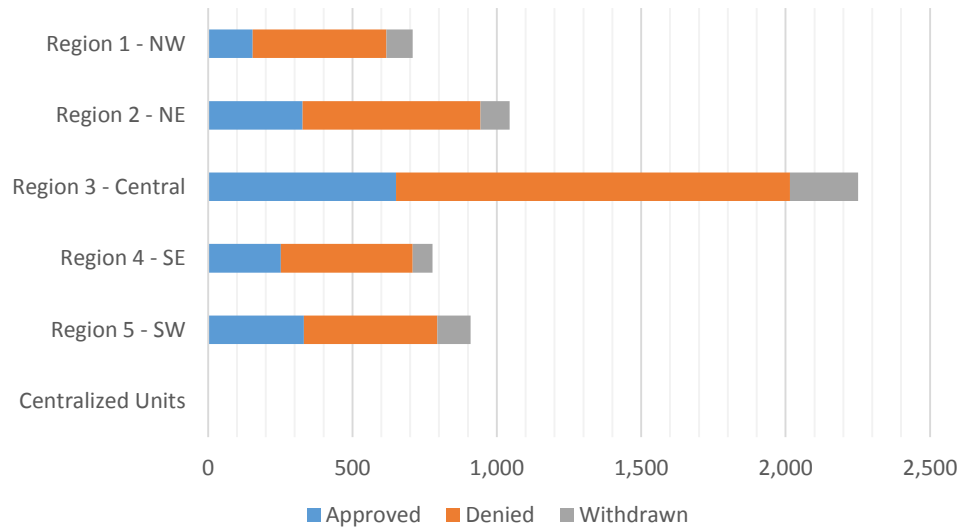


**Cash Assistance Applications by Field Office<sup>4,11</sup>**  
**November 2017**

Office	Approved	Denied	Withdrawn	Total Cases Processed
Chaves County ISD	75	123	20	218
Cibola County ISD	12	43	8	63
Colfax County ISD	11	16	2	29
Curry County ISD	55	75	16	146
East Dona Ana County ISD	75	107	32	214
Eddy Artesia County ISD	32	61	6	99
Eddy Carlsbad County ISD	19	41	10	70
Grant County ISD	24	40	9	73
Guadalupe County ISD	3	6	2	11
Hidalgo County ISD	0	0	0	0
Lea County ISD	34	73	11	118
Lincoln County ISD	19	43	1	63
Luna County ISD	32	31	4	67
McKinley County ISD	2	76	36	114
Northeast Bernalillo County ISD	112	272	92	476
Northwest Bernalillo County ISD	81	195	53	329
Otero County ISD	51	72	23	146
Quay County ISD	9	15	1	25
Rio Arriba County ISD	42	70	12	124
Roosevelt County ISD	18	41	4	63
San Juan County ISD	42	198	25	265
San Miguel County ISD	19	56	8	83
Sandoval County ISD	162	260	47	469
Santa Fe County ISD	57	150	21	228
Sierra County ISD	12	17	3	32
Socorro County ISD	15	16	6	37
South Dona Ana ISD	69	76	14	159
Southeast Bernalillo County ISD	62	175	43	280
Southwest Bernalillo County ISD	370	670	34	1,074
Taos County ISD	24	43	8	75
Torrance County ISD	26	52	14	92
Valencia North County ISD	70	94	13	177
Valencia South County ISD	1	20	0	21
West Dona Ana County ISD	81	136	33	250
Centralized Units	0	0	0	0
Statewide Total	1,716	3,363	611	5,690

**Cash Assistance Applications by Region<sup>4,11</sup>**  
**November 2017**

	Approved	Denied	Withdrawn	Total Cases Processed
Region				
Region 1 - NW	154	464	91	709
Region 2 - NE	327	616	101	1,044
Region 3 - Central	651	1,364	236	2,251
Region 4 - SE	252	457	68	777
Region 5 - SW	332	462	115	909
Centralized Units	0	0	0	0
<b>Statewide Total</b>	<b>1,716</b>	<b>3,363</b>	<b>611</b>	<b>5,690</b>



**Children Youth and Families Department**  
**Children Receiving Child Care Assistance Subsidies By County**

<b>County</b>	<b>Nov 2016</b>	<b>Dec 2016</b>	<b>Jan 2017</b>	<b>Feb 2017</b>	<b>Mar 2017</b>	<b>Apr 2017</b>	<b>May 2017</b>	<b>June 2017</b>	<b>July 2017</b>	<b>Aug 2017</b>	<b>Sep 2017</b>	<b>Oct 2017</b>	<b>Nov 2017</b>	<b>Change Fr. Last Year Cases</b>	<b>Percent</b>
<i>Bernalillo</i>	7,092	7,134	7,043	7,068	7,170	7,385	7,519	7,895	7,547	7,616	8,154	7,848	7,985	893	12.6%
<b>Catron</b>	<b>0</b>	<b>0</b>	<b>0</b>	<b>0</b>	<b>0</b>	<b>0</b>	<b>0</b>	<b>0</b>	<b>0</b>	<b>0</b>	<b>0</b>	<b>0</b>	<b>0</b>	<b>0</b>	0.0%
<i>Chaves</i>	733	744	744	756	759	768	796	860	826	821	889	884	870	137	18.7%
<b>Cibola</b>	<b>272</b>	<b>269</b>	<b>271</b>	<b>284</b>	<b>282</b>	<b>294</b>	<b>299</b>	<b>305</b>	<b>293</b>	<b>294</b>	<b>311</b>	<b>304</b>	<b>303</b>	<b>31</b>	11.4%
<i>Colfax</i>	49	47	42	40	41	38	39	46	46	41	44	41	42	-7	-14.3%
<b>Curry</b>	<b>384</b>	<b>394</b>	<b>413</b>	<b>398</b>	<b>398</b>	<b>437</b>	<b>445</b>	<b>480</b>	<b>486</b>	<b>459</b>	<b>422</b>	<b>446</b>	<b>467</b>	<b>83</b>	21.6%
<i>De Baca</i>	11	11	11	10	12	13	14	14	12	11	11	9	11	0	0.0%
<b>Dona Ana</b>	<b>4,005</b>	<b>3,976</b>	<b>4,003</b>	<b>4,047</b>	<b>4,084</b>	<b>4,217</b>	<b>4,309</b>	<b>4,499</b>	<b>4,509</b>	<b>4,473</b>	<b>4,693</b>	<b>4,585</b>	<b>4,581</b>	<b>576</b>	14.4%
<i>Eddy</i>	263	277	271	275	283	294	301	306	292	287	313	297	297	34	12.9%
<b>Grant</b>	<b>152</b>	<b>151</b>	<b>142</b>	<b>135</b>	<b>142</b>	<b>153</b>	<b>159</b>	<b>161</b>	<b>134</b>	<b>114</b>	<b>164</b>	<b>161</b>	<b>157</b>	<b>5</b>	3.3%
<i>Guadalupe</i>	11	15	16	16	17	17	16	16	16	16	15	16	16	5	45.5%
<b>Harding</b>	<b>0</b>	<b>0</b>	<b>0</b>	<b>0</b>	<b>0</b>	<b>0</b>	<b>0</b>	<b>0</b>	<b>0</b>	<b>0</b>	<b>0</b>	<b>0</b>	<b>0</b>	<b>0</b>	0.0%
<i>Hidalgo</i>	33	34	35	35	35	35	39	40	37	37	39	39	35	2	6.1%
<b>Lea</b>	<b>731</b>	<b>722</b>	<b>698</b>	<b>715</b>	<b>729</b>	<b>748</b>	<b>781</b>	<b>818</b>	<b>837</b>	<b>856</b>	<b>954</b>	<b>909</b>	<b>895</b>	<b>164</b>	22.4%
<i>Lincoln</i>	130	135	132	139	135	141	136	147	146	145	150	147	136	6	4.6%
<b>Los Alamos</b>	<b>14</b>	<b>15</b>	<b>16</b>	<b>15</b>	<b>13</b>	<b>15</b>	<b>16</b>	<b>16</b>	<b>17</b>	<b>16</b>	<b>19</b>	<b>18</b>	<b>14</b>	<b>0</b>	0.0%
<i>Luna</i>	173	149	159	154	159	164	177	188	165	176	177	177	166	-7	-4.0%
<b>McKinley</b>	<b>156</b>	<b>153</b>	<b>159</b>	<b>164</b>	<b>171</b>	<b>182</b>	<b>170</b>	<b>171</b>	<b>145</b>	<b>136</b>	<b>161</b>	<b>165</b>	<b>167</b>	<b>11</b>	7.1%
<i>Mora</i>	19	20	18	20	20	21	21	21	18	18	19	18	20	1	5.3%
<b>Otero</b>	<b>449</b>	<b>450</b>	<b>440</b>	<b>442</b>	<b>416</b>	<b>481</b>	<b>498</b>	<b>532</b>	<b>500</b>	<b>491</b>	<b>530</b>	<b>525</b>	<b>518</b>	<b>69</b>	15.4%
<i>Out of State</i>	11	10	11	12	14	12	11	10	14	11	12	14	12	1	9.1%
<b>Quay</b>	<b>36</b>	<b>34</b>	<b>33</b>	<b>38</b>	<b>40</b>	<b>38</b>	<b>35</b>	<b>39</b>	<b>35</b>	<b>36</b>	<b>39</b>	<b>35</b>	<b>35</b>	<b>-1</b>	-2.8%
<i>Rio Arriba</i>	137	145	135	147	144	137	140	149	144	145	159	163	166	29	21.2%
<b>Roosevelt</b>	<b>132</b>	<b>135</b>	<b>124</b>	<b>120</b>	<b>125</b>	<b>123</b>	<b>118</b>	<b>134</b>	<b>123</b>	<b>125</b>	<b>137</b>	<b>120</b>	<b>120</b>	<b>-12</b>	-9.1%
<i>San Juan</i>	926	928	919	911	911	946	956	997	979	960	1,132	1,050	1,043	117	12.6%
<b>San Miguel</b>	<b>387</b>	<b>375</b>	<b>371</b>	<b>374</b>	<b>373</b>	<b>366</b>	<b>367</b>	<b>382</b>	<b>366</b>	<b>356</b>	<b>362</b>	<b>368</b>	<b>371</b>	<b>-16</b>	-4.1%
<i>Sandoval</i>	868	870	880	852	873	878	890	938	932	948	974	859	839	-29	-3.3%
<b>Santa Fe</b>	<b>469</b>	<b>478</b>	<b>472</b>	<b>487</b>	<b>477</b>	<b>490</b>	<b>499</b>	<b>536</b>	<b>534</b>	<b>520</b>	<b>580</b>	<b>554</b>	<b>547</b>	<b>78</b>	16.6%
<i>Sierra</i>	59	46	51	50	52	52	58	69	74	76	79	86	80	21	35.6%
<b>Socorro</b>	<b>59</b>	<b>58</b>	<b>65</b>	<b>62</b>	<b>61</b>	<b>59</b>	<b>59</b>	<b>58</b>	<b>56</b>	<b>63</b>	<b>63</b>	<b>68</b>	<b>66</b>	<b>7</b>	11.9%
<i>Taos</i>	109	114	116	114	112	118	120	127	132	137	145	139	142	33	30.3%
<b>Torrance</b>	<b>82</b>	<b>77</b>	<b>79</b>	<b>83</b>	<b>87</b>	<b>91</b>	<b>96</b>	<b>101</b>	<b>107</b>	<b>117</b>	<b>106</b>	<b>99</b>	<b>115</b>	<b>33</b>	40.2%
<i>Union</i>	5	5	5	5	5	5	4	4	5	5	5	4	6	1	20.0%
<b>Valencia</b>	<b>608</b>	<b>602</b>	<b>593</b>	<b>585</b>	<b>583</b>	<b>629</b>	<b>658</b>	<b>678</b>	<b>642</b>	<b>677</b>	<b>714</b>	<b>723</b>	<b>713</b>	<b>105</b>	17.3%
<b>Totals</b>	<b>18,565</b>	<b>18,573</b>	<b>18,467</b>	<b>18,553</b>	<b>18,723</b>	<b>19,347</b>	<b>19,746</b>	<b>20,737</b>	<b>20,169</b>	<b>20,183</b>	<b>21,572</b>	<b>20,871</b>	<b>20,935</b>	<b>2,370</b>	<b>12.8%</b>

**CHILDREN YOUTH AND FAMILIES DEPARTMENT  
CHILD CARE ASSISTANCE ELIGIBILITY PROGRAMS**

MONTH	DEC'16	JAN'17	FEB'17	MAR'17	APR'17	MAY'17	JUNE'17	JULY'17	AUG'17	SEP'17	OCT'17	NOV'17
<b>TANF (Child Care Priority 1 Clients)</b>												
CLIENTS	1,829	1,797	1,930	1,994	2,047	2,121	2,300	2,302	2,353	2,455	2,419	2,374
COST	\$936,139	\$914,933	\$1,005,906	\$1,096,473	\$1,148,841	\$1,186,719	\$1,271,336	\$1,323,182	\$1,381,202	\$1,364,956	\$1,423,748	\$1,411,060
TANF AVERAGE COST	\$512	\$509	\$521	\$550	\$561	\$560	\$553	\$575	\$587	\$556	\$589	\$594
<b>TRANSITION OFF TANF (Child Care Priority 2 Clients)</b>												
CLIENTS	212	202	212	197	202	205	213	197	189	179	181	154
COST	\$101,388	\$95,662	\$102,062	\$102,582	\$101,314	\$104,115	\$111,219	\$106,835	\$103,813	\$93,119	\$96,629	\$81,975
TRAN OFF TANF AVG COST	\$478	\$474	\$481	\$521	\$502	\$508	\$522	\$542	\$549	\$520	\$534	\$532
<b>TANF ELIGIBLE (Child Care Priority 1B Clients at or below 100% of the Federal Poverty Level)</b>												
CLIENTS	7,614	7,538	7,420	7,442	7,819	8,075	8,472	8,193	8,254	9,064	8,899	8,900
COST	\$3,904,245	\$3,557,568	\$3,662,965	\$3,957,431	\$4,194,223	\$4,302,207	\$4,448,742	\$4,521,900	\$4,657,974	\$4,755,691	\$5,021,574	\$5,099,212
TANF ELIGIBLE AVG COST	\$513	\$472	\$494	\$532	\$536	\$533	\$525	\$552	\$564	\$525	\$564	\$573
<b>INCOME ELIGIBLE (Child Care Priority 3, and Priority 4 Clients)</b>												
CLIENTS	7,539	7,527	7,514	7,559	7,612	7,632	7,832	7,426	7,337	7,749	7,464	7,578
COST	\$3,460,624	\$3,294,431	\$3,386,741	\$3,683,902	\$3,733,797	\$3,757,012	\$3,843,887	\$3,805,939	\$3,838,152	\$3,779,202	\$3,760,398	\$3,838,169
INCOME ELIG AVG COST	\$459	\$438	\$451	\$487	\$491	\$492	\$491	\$513	\$523	\$488	\$504	\$506
<b>AT-RISK CHILD PROTECTIVE SERVICES CHILD CARE PILOT (Priority 5 Clients)</b>												
CLIENTS	397	431	518	553	679	733	881	1,021	1,073	1,152	1,032	1,027
COST	\$257,933	\$266,739	\$305,785	\$335,795	\$396,799	\$449,007	\$535,980	\$622,872	\$686,919	\$723,334	\$684,194	\$678,258
CPS AVG COST	\$650	\$619	\$590	\$607	\$584	\$613	\$608	\$610	\$640	\$628	\$663	\$660
<b>CHILD PROTECTIVE SERVICES (Child Care CPS Clients)</b>												
CLIENTS	982	972	959	978	988	980	1,039	1,030	977	973	876	902
COST	\$579,310	\$567,980	\$559,627	\$607,288	\$652,529	\$627,325	\$649,417	\$652,471	\$663,134	\$623,416	\$567,608	\$585,009
CPS AVG COST	\$590	\$584	\$584	\$621	\$660	\$640	\$625	\$633	\$679	\$641	\$648	\$649
<b>GRAND TOTAL - ALL CHILD CARE PROGRAMS</b>												
CLIENTS	18,565	18,573	18,467	18,553	18,723	19,347	19,746	20,737	20,169	20,183	20,871	20,935
COST	\$9,071,755	\$9,239,639	\$8,697,313	\$9,023,086	\$9,783,471	\$10,227,503	\$10,426,385	\$10,860,581	\$11,033,199	\$11,331,194	\$11,554,151	\$11,693,682
ALL PROGRAMS AVG COST	\$489	\$497	\$471	\$486	\$523	\$529	\$528	\$524	\$547	\$561	\$554	\$559

## Income Eligibility Guidelines: October 1, 2017 - September 30, 2018

### Federal Poverty Guidelines (FPG) Monthly Income Standards

Supplemental Nutrition Program (SNAP)					
Household Size	100% FPG Net Income	130% FPG Gross Income	165% FPG Gross Income for Categorical Eligibility	Maximum SNAP Monthly Allotment	LIHEAP 150% FPG
1	\$1,005	\$1,307	\$1,659	\$192	\$1,508
2	\$1,354	\$1,760	\$2,233	\$352	\$2,031
3	\$1,702	\$2,213	\$2,808	\$504	\$2,553
4	\$2,050	\$2,665	\$3,383	\$640	\$3,075
5	\$2,399	\$3,118	\$3,958	\$760	\$3,599
6	\$2,747	\$3,571	\$4,532	\$913	\$4,121
7	\$3,095	\$4,024	\$5,107	\$1,009	\$4,643
8	\$3,444	\$4,477	\$5,682	\$1,153	\$5,166
+1	+\$349	+\$453	+\$575	+\$144	+\$523

Minimum Allotment of \$15 effective from 10/1/2017 - 9/30/2018

DEDUCTIONS: Standard Deduction: For HH size 1-3 = \$160; 4 = \$170; 5 = \$199; 6 or more = \$228; Excess Shelter Deduction Limit: \$535; Heating and Cooling Standard Utility Allowance: \$320 (HCSUA) – Limited Utility Allowance: \$127 (LUA); Telephone Standard: \$42; Dependent Care: Actual Amount (No Limit); Earned Income Deduction: 20%; Homeless Shelter Standard: \$143

### CASH Assistance & Support Services

Household Size	Federal Poverty Guidelines (FPG) Monthly Income Standards			Maximum Monthly Benefit	
	100% FPG Net Income	85% FPG Gross Limit	NM Works Cash Net Income	Maximum Monthly Benefit	General Assistance
1	\$1,005	\$854	\$266	\$244	\$245
2	\$1,354	\$1,151	\$357	\$327	\$329
3	\$1,702	\$1,447	\$447	\$409	\$412
4	\$2,050	\$1,743	\$539	\$493	\$496
5	\$2,399	\$2,039	\$630	\$576	\$580
6	\$2,747	\$2,335	\$721	\$659	\$664
7	\$3,095	\$2,631	\$812	\$743	\$748
8	\$3,444	\$2,927	\$922	\$843	\$849
+1	+\$349	+\$296	+\$91	+\$83	+\$84

Deductions- Dependent Care: For a child under age 2 = \$200; For a child age 2 and over = \$175.  
 Work Incentives- Earned Income Disregard: Single parent = \$125 & ½ remainder; Two parent = \$225 & ½ remainder.

<b>Medical Assistance Division</b>					
Federal Poverty Guidelines New Mexico Affordable Care Eligibility Groups Effective April 01, 2017 thru March 31, 2018 <b>Monthly Guidelines</b>					
HH SIZE	PERCENT OF POVERTY				
	138%	190%	240%	250%	300%
1	\$1,387	\$1,910	\$2,412	\$2,513	\$3,015
2	\$1,868	\$2,572	\$3,248	\$3,384	\$4,060
3	\$2,349	\$3,234	\$4,084	\$4,255	\$5,105
4	\$2,829	\$3,895	\$4,920	\$5,125	\$6,150
5	\$3,310	\$4,557	\$5,756	\$5,996	\$7,195
6	\$3,791	\$5,219	\$6,592	\$6,867	\$8,240
7	\$4,272	\$5,881	\$7,428	\$7,738	\$9,285
8	\$4,752	\$6,543	\$8,264	\$8,609	\$10,330
138% Adult Expansion, 190% Children ages 6 to 19 (Medicaid), 240% Children ages 0 to 6 (Medicaid); ages 6 to 19 (CHIP), 250% Pregnancy Related Services Only, 300% Children 0 to 6 (CHIP)					

<b>Medical Assistance Division</b>					
Federal Poverty Guidelines New Mexico Affordable Care Eligibility Groups Effective April 01, 2017 thru March 31, 2018 <b>Annual Guidelines</b>					
HH SIZE	PERCENT OF POVERTY				
	138%	190%	240%	250%	300%
1	\$16,644	\$22,920	\$28,944	\$30,156	\$36,180
2	\$22,416	\$30,864	\$38,976	\$40,608	\$48,720
3	\$28,188	\$38,808	\$49,008	\$51,060	\$61,260
4	\$33,948	\$46,740	\$59,040	\$61,500	\$73,800
5	\$39,720	\$54,684	\$69,072	\$71,952	\$86,340
6	\$45,492	\$62,628	\$79,104	\$82,404	\$98,880
7	\$51,264	\$70,572	\$89,136	\$92,856	\$111,420
8	\$57,024	\$78,516	\$99,168	\$103,308	\$123,960
138% Adult Expansion, 190% Children ages 6 to 19 (Medicaid), 240% Children ages 0 to 6 (Medicaid); ages 6 to 19 (CHIP), 250% Pregnancy Related Services Only, 300% Children 0 to 6 (CHIP)					



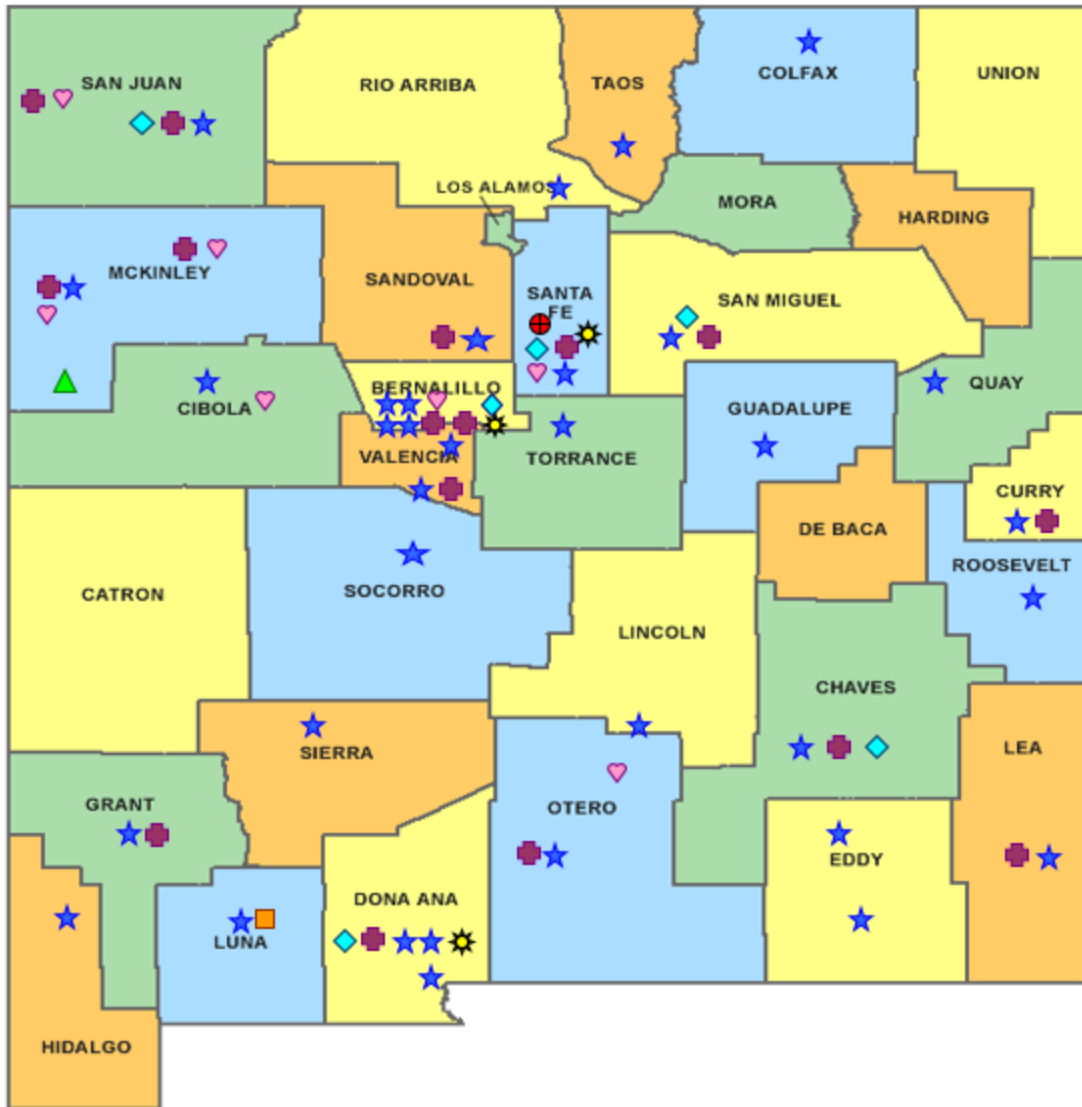
## References

- <sup>1</sup> *Medicaid Expenditures* (Omnicaid, Medicare Buy-Ins, Lump Sum Payments), Received on December 18, 2017
- <sup>2</sup> *ASPEN Business Intelligence Tool: Eligibility*, Retrieved on December 13, 2017
- <sup>3</sup> New Mexico Human Services Department, *Medicaid Eligibility Reports*, Retrieved from <http://www.hsd.state.nm.us/LookingForInformation/medicaid-eligibility.aspx> on December 13, 2017
- <sup>4</sup> *ASPEN Business Intelligence Tool: Application Tracking*, Retrieved on December 13, 2017
- <sup>5</sup> Fidelity Information Services, *EBT Daily Statistical Report* (for 11/30/2016, 10/31/2017, and 11/30/2017), Retrieved on December 11, 2017
- <sup>6</sup> *ASPEN Report DQ-180: Length of Time Cases are Open* (for 11/01/2016-11/30/2016, 10/01/2017-10/31/2017, 11/01/2017-11/30/2017), Retrieved on December 18, 2017
- <sup>7</sup> *ASPEN Report EY-180: Individual Demographics by State and Age* (for 11/01/2016-11/30/2016, 10/01/2017-10/31/2017, 11/01/2017-11/30/2017), Retrieved on December 18, 2017
- <sup>8</sup> *ASPEN Business Intelligence Tool: Benefit Issuance*, Retrieved on December 13, 2017
- <sup>9</sup> Fidelity Information Services, *EBT Daily Statistical Reports* (Month End), Retrieved on December 11, 2017
- <sup>10</sup> *ASPEN Report EY-180R: Individual Demographics by State, Race, Ethnicity and Gender* (for 11/01/2017-11/30/2017), Retrieved on December 18, 2017
- <sup>11</sup> SQL Queries from ASPEN, completed December 2017
- <sup>12</sup> JP Morgan, *New Mexico – NM EBT System- Monthly Benefit Draw Down Totals*
- <sup>13</sup> *ASPEN Business Intelligence Tool: Application Tracking* (w/Parameters: SNAP, Expedite, Approved), Retrieved on December 13, 2017
- <sup>14</sup> SL Start, *As of Today Report 11.30.17*, received December 18, 2017
- <sup>15</sup> SL Start, *Statewide Employment Report 11.01.17*, received December 18, 2017
- <sup>16</sup> *SSIAR Payments*, Received December 4, 2017
- <sup>17</sup> Children, Youth, and Families Department, *Children Receiving Child Care Assistance Subsidies by County*, Received on December 13, 2017

<sup>18</sup> Children, Youth, and Families Department, *Child Care Assistance Eligibility Programs*, Received on December 13, 2017









<sup>19</sup> EDG is defined as an Eligibility Determination Group

<sup>20</sup>SQL Query from ASPEN, completed December 20, 2017



# HUMAN SERVICES DEPARTMENT

New Mexico Human Services Department  
Field Offices

-  Central Office (1)
-  Income Support Division County Office (35)
-  Income Support Division Satellite Office (2)
-  Child Support Enforcement Regional Office (16)
-  Child Support Enforcement Satellite Office (1)
-  Quality Control Office (8)
-  Indian Health Services (7)
-  Hospital Site (3)

For a complete listing of field offices and other government and community resources:  
[http://www.hsd.state.nm.us/LookingForAssistance/Field\\_Offices\\_1.aspx](http://www.hsd.state.nm.us/LookingForAssistance/Field_Offices_1.aspx)